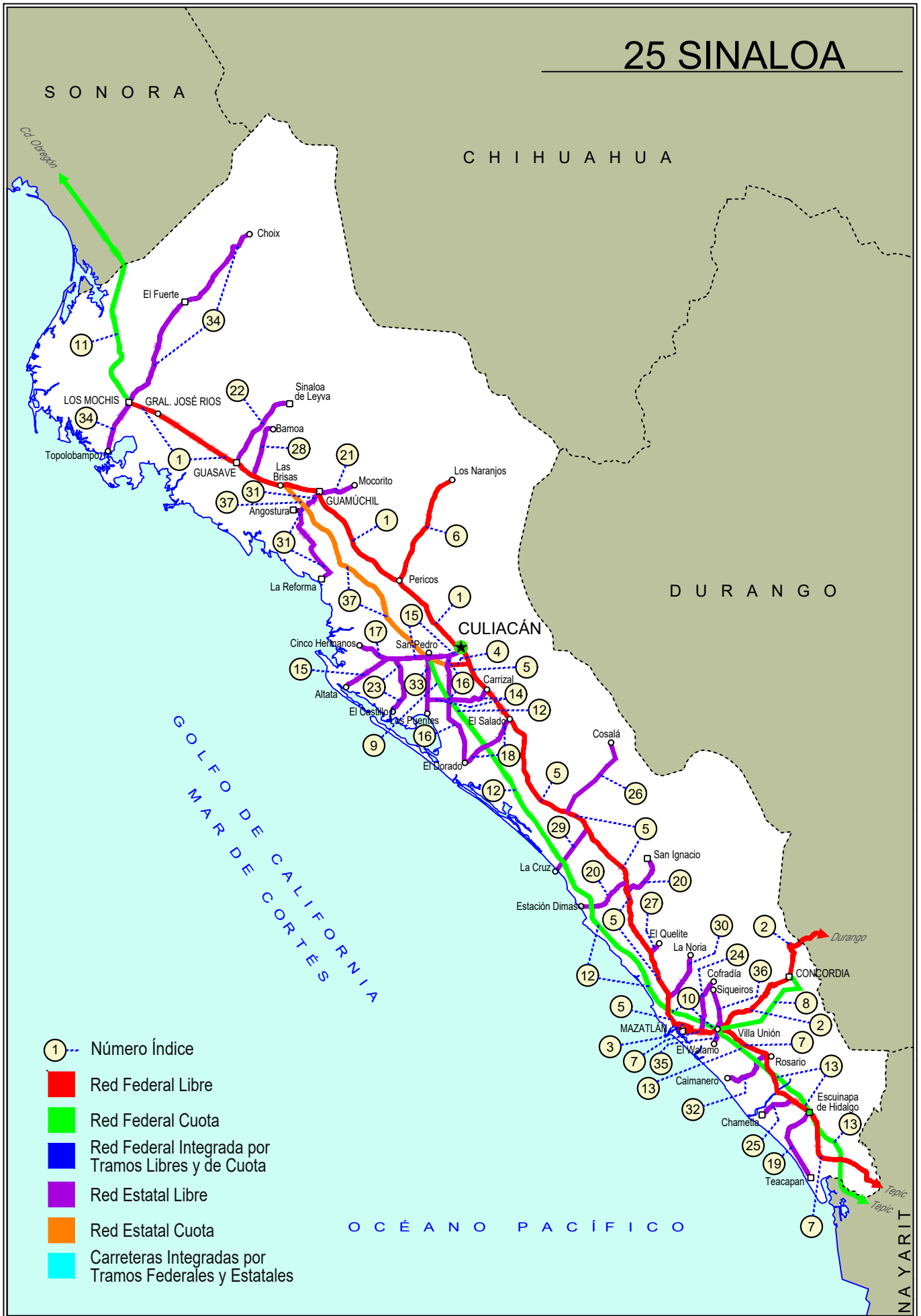


SINALOA

NO. INDICE CARRETERA		RUTA
	---RED FEDERAL LIBRE---	
1	Culiacán - Los Mochis	MEX-015
2	Durango - Villa Unión	MEX-040
3	Libramiento de Mazatlán	MEX-015
4	Libramiento Sur de Culiacán	MEX-015
5	Mazatlán - Culiacán	MEX-015
6	Pericos - Los Naranjos	MEX-024
7	Tepic - Mazatlán	MEX-015
	---RED FEDERAL DE CUOTA---	
8	Durango - Mazatlán (Cuota)	MEX-040D
9	Libramiento de Culiacán (Cuota)	MEX-015D
10	Libramiento de Mazatlán (Cuota)	MEX-015D
11	Los Mochis - Cd. Obregón (Cuota)	MEX-015D
12	Mazatlán - Culiacán (Cuota)	MEX-015D
13	Tepic - Villa Unión (cuota)	MEX-015D
	---RED ESTATAL LIBRE---	
14	Carrizal - Campo Aníbal	SIN-019
15	Culiacán - Altata	SIN-030
16	Culiacán - El Dorado	SIN-005
17	El Limoncito - Cinco Hermanos	SIN-016
18	El Salado - El Dorado	SIN-010
19	Escuinapa de Hidalgo - Teacapan	SIN-001
20	Estación Dimas - San Ignacio	SIN-006
21	Guamuchil - Mocerito	SIN-021
22	Guasave - Sinaloa de Leyva	SIN-023
23	Navolato - El Castillo	SIN-004
24	Pozole - Cofradía	SIN-080
25	Ramal a Chametla	SIN-002
26	Ramal a Cosalá	SIN-008
27	Ramal a El Quelite	SIN-060
28	Ramal a Estación Bamao	SIN-022
29	Ramal a La Cruz	SIN
30	Ramal a La Noria	SIN
31	Ramal a La Reforma	SIN-004
32	Rosario - Caimanero	SIN-003
33	San Pedro - Campo Aníbal	SIN
34	Topolobampo - Choix	SIN-023
35	Villa Unión - El Walamo	SIN-081
36	Villa Unión - Siqueiros	SIN-063
	---RED ESTATAL DE CUOTA---	
37	Culiacán - Las Brisas (Cuota)	SIN-001D

25 SINALOYA



SINALOA

1 CARR: Culiacán - Los Mochis

CLAVE: 25502

RUTA: MEX-015

AÑO: 2023

LUGAR	ESTACION				CLASIFICACION VEHICULAR EN PORCIENTO										COORDENADAS					
	KM	TE	SC	TDPA	M	A	B	C2	C3	T3S2	T3S3	T3S2R4	OTROS	A	B	C	K'	D	LATITUD	LONGITUD
Culiacán	0.00																			
T. Der. Los Monzones	4.00	1	1	11104	5.0	84.0	1.4	4.7	1.0	2.4	0.8	0.5	0.2	89.0	1.4	9.6	0.078	0.510	24.829785	-107.428488
T. Der. Los Monzones	4.00	1	2	10664	5.1	83.9	1.3	4.8	1.3	2.2	0.9	0.3	0.2	89.0	1.3	9.7	0.094	0.510	24.829684	-107.428579
Plaza de Cobro Puente Culiacán	22.00	2	1	4470	1.2	88.2	2.7	2.8	1.5	2.7	0.5	0.2	0.2	89.4	2.7	7.9	0.084	0.500	24.948949	-107.545695
Plaza de Cobro Puente Culiacán	22.00	2	2	4470	1.2	88.2	2.7	2.8	1.5	2.7	0.5	0.2	0.2	89.4	2.7	7.9	0.084	0.500	24.948949	-107.545695
T. Der. Presa López Mateos	27.20	3	0	9354	4.6	82.7	2.7	4.2	1.2	3.0	0.7	0.5	0.4	87.3	2.7	10.0	0.094	0.505	24.995060	-107.573966
X. C. Pericos - Los Naranjos	43.60	3	0	5908	1.8	85.6	2.7	3.2	1.2	3.2	0.9	0.7	0.7	87.4	2.7	9.9	0.111	0.538	25.093917	-107.697510
Guamuchil	104.70	1	0	8443	3.8	84.9	2.8	3.2	1.0	2.7	0.6	0.8	0.2	88.7	2.8	8.5	0.082	0.528	25.426041	-108.056583
Guamuchil	104.70	3	1	11287	8.5	81.2	2.1	2.8	2.3	1.8	0.6	0.5	0.2	89.7	2.1	8.2	0.085	0.508	25.470121	-108.099404
Guamuchil	104.70	3	2	11636	8.2	80.7	2.3	3.1	2.7	1.9	0.6	0.4	0.1	88.9	2.3	8.8	0.074	0.508	25.470001	-108.099409
T. Izq. Aut. Culiacán - Las Brisas	121.20	1	0	6517	3.2	82.7	3.4	2.7	1.7	4.2	0.8	1.0	0.3	85.9	3.4	10.7	0.101	0.506	25.489897	-108.223890
T. Izq. Aut. Culiacán - Las Brisas	121.20	3	1	7183	4.7	65.3	6.5	5.1	3.1	10.1	1.8	2.5	0.9	70.0	6.5	23.5	0.093	0.505	25.486630	-108.253739
T. Izq. Aut. Culiacán - Las Brisas	121.20	3	2	7320	5.2	64.8	7.0	4.5	2.5	10.3	2.4	2.4	0.9	70.0	7.0	23.0	0.078	0.505	25.486564	-108.253591
T. Der. Estación Bamoa	133.17	3	1	7643	7.7	61.6	4.6	5.3	3.8	11.6	1.9	2.8	0.7	69.3	4.6	26.1	0.093	0.501	25.519030	-108.361443
T. Der. Estación Bamoa	133.17	3	2	7660	8.0	59.0	5.0	5.6	3.9	11.8	2.5	3.3	0.9	67.0	5.0	28.0	0.075	0.501	25.518178	-108.359751
Plaza de Cobro Puente Sinaloa	136.00	2	1	6836	0.5	65.4	4.4	3.8	3.2	15.3	1.7	4.6	1.1	65.9	4.4	29.7	0.084	0.500	25.512854	-108.347613
Plaza de Cobro Puente Sinaloa	136.00	2	2	6836	0.5	65.4	4.4	3.8	3.2	15.3	1.7	4.6	1.1	65.9	4.4	29.7	0.084	0.500	25.512854	-108.347613
Guasave	146.28	3	1	12368	9.6	71.6	3.2	3.7	1.9	7.4	0.8	1.5	0.3	81.2	3.2	15.6	0.096	0.503	25.590462	-108.493995
Guasave	146.28	3	2	12507	10.8	69.2	2.4	4.0	2.1	8.1	1.3	1.7	0.4	80.0	2.4	17.6	0.080	0.503	25.590400	-108.494056
T. Der. Estación Naranja	155.88	3	1	11391	7.1	73.1	2.7	2.0	4.7	6.1	1.0	2.5	0.8	80.2	2.7	17.1	0.074	0.504	25.627133	-108.562737
T. Der. Estación Naranja	155.88	3	2	11220	6.9	70.9	3.1	2.3	4.8	7.0	1.6	2.6	0.8	77.8	3.1	19.1	0.071	0.504	25.627068	-108.562788
T. Izq. Los Mochis (1º Acceso)	201.97	1	1	13705	4.1	72.9	4.0	4.6	3.0	7.8	1.4	1.8	0.4	77.0	4.0	19.0	0.078	0.513	25.808298	-108.956686
T. Izq. Los Mochis (1º Acceso)	201.97	1	2	14452	3.8	74.6	3.8	5.2	2.1	6.7	1.3	2.1	0.4	78.4	3.8	17.8	0.084	0.513	25.808390	-108.956844
T. Izq. Los Mochis (1º Acceso)	201.97	3	1	14206	7.2	69.9	3.6	4.0	3.5	7.4	1.8	1.9	0.7	77.1	3.6	19.3	0.083	0.511	25.821215	-108.964393
T. Izq. Los Mochis (1º Acceso)	201.97	3	2	14851	7.6	67.5	3.7	4.2	5.5	7.5	1.9	1.6	0.5	75.1	3.7	21.2	0.091	0.511	25.819541	-108.963494
T. C. Topolobampo - Choix	205.21																			

2 CARR: Durango - Villa Unión

CLAVE: 0083

RUTA: MEX-040

AÑO: 2023

LUGAR	ESTACION				CLASIFICACION VEHICULAR EN PORCIENTO										COORDENADAS					
	KM	TE	SC	TDPA	M	A	B	C2	C3	T3S2	T3S3	T3S2R4	OTROS	A	B	C	K'	D	LATITUD	LONGITUD
Durango	0.00	3	0	4223	6.2	77.6	2.1	4.2	2.8	3.9	2.7	0.4	0.1	83.8	2.1	14.1	0.109	0.506	23.995132	-104.732795
T. Der. Pino	22.86	3	0	2448	5.7	77.4	2.0	4.6	2.8	4.3	2.9	0.2	0.1	83.1	2.0	14.9	0.127	0.508	23.967099	-104.820632
T. Izq. Estación Navíos	58.42	3	0	2224	4.2	77.2	2.0	3.9	2.9	5.1	2.8	1.5	0.4	81.4	2.0	16.6	0.111	0.513	23.896795	-105.051068
Llano Grande	77.23	1	0	2230	9.1	71.5	2.7	4.4	3.1	5.2	3.2	0.6	0.2	80.6	2.7	16.7	0.092	0.500	23.866618	-105.199287

SINALOA

2 CARR: Durango - Villa Unión

CLAVE: 0083

RUTA: MEX-040

AÑO: 2023

LUGAR	ESTACION				CLASIFICACION VEHICULAR EN PORCIENTO										COORDENADAS					
	KM	TE	SC	TDPA	M	A	B	C2	C3	T3S2	T3S3	T3S2R4	OTROS	A	B	C	K'	D	LATITUD	LONGITUD
El Salto	99.76	1	0	2440	9.7	77.0	2.4	4.7	2.7	1.6	0.5	1.0	0.4	86.7	2.4	10.9	0.083	0.511	23.805621	-105.338346
El Salto	99.76	3	0	2068	7.2	83.4	1.3	4.5	1.9	0.6	0.3	0.6	0.2	90.6	1.3	8.1	0.081	0.510	23.784359	-105.375910
Las Adjuntas	119.00	1	0	1615	7.7	75.5	3.1	8.8	1.7	1.6	1.4	0.1	0.1	83.2	3.1	13.7	0.113	0.529	23.725052	-105.491196
La Ciudad	145.50	1	0	1563	12.2	77.4	1.4	6.3	1.5	0.6	0.3	0.2	0.1	89.6	1.4	9.0	0.091	0.543	23.731835	-105.674610
La Ciudad	145.50	3	0	525	31.8	59.8	1.7	3.3	1.8	0.8	0.5	0.3	0.0	91.6	1.7	6.7	0.101	0.543	23.727222	-105.691847
Lim. Edos. Term. Dgo. Ppia. Sin.	198.50																			
Concordia	273.50	1	0	1864	18.3	65.4	2.1	2.6	1.6	6.4	3.5	0.1	0.0	83.7	2.1	14.2	0.099	0.507	23.293202	-106.051449
T. C. Tepic - Mazatlán	294.40	1	0	4423	8.5	77.2	3.8	3.9	2.1	2.8	1.4	0.2	0.1	85.7	3.8	10.5	0.099	0.510	23.204810	-106.197796

3 CARR: Libramiento de Mazatlán

CLAVE: 25604

RUTA: MEX-015

AÑO: 2023

LUGAR	ESTACION				CLASIFICACION VEHICULAR EN PORCIENTO										COORDENADAS					
	KM	TE	SC	TDPA	M	A	B	C2	C3	T3S2	T3S3	T3S2R4	OTROS	A	B	C	K'	D	LATITUD	LONGITUD
T. C. Tepic - Mazatlán	0.00	3	1	41752	12.2	78.7	1.6	4.1	1.1	1.0	0.3	0.8	0.2	90.9	1.6	7.5	0.072	0.505	23.237653	-106.389943
T. C. Tepic - Mazatlán	0.00	3	2	40922	15.7	75.3	1.5	3.6	1.5	1.2	0.2	0.8	0.2	91.0	1.5	7.5	0.083	0.505	23.237624	-106.390051
T. C. Mazatlán - Culiacán	5.40	1	1	26242	10.2	81.8	1.4	3.3	1.3	1.1	0.4	0.4	0.1	92.0	1.4	6.6	0.068	0.505	23.260609	-106.410285
T. C. Mazatlán - Culiacán	5.40	1	2	25755	10.7	81.3	1.6	3.0	1.4	1.3	0.3	0.3	0.1	92.0	1.6	6.4	0.075	0.505	23.260525	-106.410391

4 CARR: Libramiento Sur de Culiacán

CLAVE: 25500

RUTA: MEX-015

AÑO: 2023

LUGAR	ESTACION				CLASIFICACION VEHICULAR EN PORCIENTO										COORDENADAS					
	KM	TE	SC	TDPA	M	A	B	C2	C3	T3S2	T3S3	T3S2R4	OTROS	A	B	C	K'	D	LATITUD	LONGITUD
T. C. Mazatlán - Culiacán	0.00	3	1	19862	3.2	91.5	0.5	1.7	1.4	1.2	0.2	0.2	0.1	94.7	0.5	4.8	0.086	0.518	24.752687	-107.361487
T. C. Mazatlán - Culiacán	0.00	3	2	18475	3.3	90.9	0.8	2.2	1.3	1.1	0.2	0.2	0.0	94.2	0.8	5.0	0.092	0.518	24.752928	-107.359765
T. C. Culiacán - El Dorado	8.90	1	1	22399	4.6	85.4	0.8	2.5	2.6	2.4	0.6	0.7	0.4	90.0	0.8	9.2	0.101	0.515	24.742936	-107.442549
T. C. Culiacán - El Dorado	8.90	1	2	21094	5.1	85.8	0.9	2.7	2.5	1.9	0.3	0.5	0.3	90.9	0.9	8.2	0.093	0.515	24.742847	-107.442494

5 CARR: Mazatlán - Culiacán

CLAVE: 25501

RUTA: MEX-015

AÑO: 2023

LUGAR	ESTACION				CLASIFICACION VEHICULAR EN PORCIENTO										COORDENADAS					
	KM	TE	SC	TDPA	M	A	B	C2	C3	T3S2	T3S3	T3S2R4	OTROS	A	B	C	K'	D	LATITUD	LONGITUD
Mazatlán	0.00																			
T. Der. Libramiento de Mazatlán Libre	0.82	1	1	30351	10.1	83.1	2.1	2.9	0.9	0.4	0.1	0.3	0.1	93.2	2.1	4.7	0.078	0.526	23.259928	-106.417896
T. Der. Libramiento de Mazatlán Libre	0.82	1	2	27036	11.1	81.9	2.1	2.8	1.1	0.4	0.2	0.3	0.1	93.0	2.1	4.9	0.079	0.526	23.259578	-106.418078
T. Der. La Noria	10.92	1	0	6728	8.1	81.5	1.5	3.6	1.9	2.3	0.6	0.3	0.2	89.6	1.5	8.9	0.105	0.507	23.343441	-106.414615

SINALOA

5 CARR: Mazatlán - Culiacán

CLAVE: 25501

RUTA: MEX-015

AÑO: 2023

LUGAR	ESTACION				CLASIFICACION VEHICULAR EN PORCIENTO													COORDENADAS		
	KM	TE	SC	TDPA	M	A	B	C2	C3	T3S2	T3S3	T3S2R4	OTROS	A	B	C	K'	D	LATITUD	LONGITUD
T. Der. La Noria	10.92	3	0	4518	6.9	79.0	2.4	4.5	2.6	3.3	0.6	0.5	0.2	85.9	2.4	11.7	0.081	0.505	23.356327	-106.415858
T. Izq. Playa Los Cerritos	11.08	3	0	4486	6.7	80.4	1.5	4.5	2.2	3.1	0.9	0.4	0.3	87.1	1.5	11.4	0.103	0.505	23.360975	-106.419151
T. Der. El Quelite	33.00	1	0	3646	6.7	79.9	1.9	3.9	2.2	4.1	0.8	0.3	0.2	86.6	1.9	11.5	0.094	0.506	23.527059	-106.500487
T. Der. El Quelite	33.00	3	0	2593	5.0	76.9	2.9	3.8	2.5	6.7	1.5	0.4	0.3	81.9	2.9	15.2	0.111	0.521	23.535204	-106.508264
X. C. Estación Dimas - San Ignacio	66.77	1	0	2626	4.4	77.4	3.0	4.2	2.9	6.4	1.3	0.2	0.2	81.8	3.0	15.2	0.093	0.504	23.785405	-106.608119
X. C. Estación Dimas - San Ignacio	66.77	3	0	3128	6.0	78.2	2.8	3.5	2.6	4.9	1.4	0.4	0.2	84.2	2.8	13.0	0.082	0.525	23.795407	-106.612636
T. Izq. Estación Dimas	73.96	3	0	2596	5.0	78.4	3.8	3.1	2.7	5.2	1.4	0.2	0.2	83.4	3.8	12.8	0.086	0.504	23.841029	-106.614343
T. Der. Elota	91.92	3	0	2508	3.9	76.5	3.4	5.4	2.4	6.1	1.3	0.6	0.4	80.4	3.4	16.2	0.090	0.544	23.965773	-106.723835
T. Izq. La Cruz	105.21	3	0	3512	6.5	78.7	2.8	4.6	1.9	4.3	0.9	0.2	0.1	85.2	2.8	12.0	0.089	0.521	24.057849	-106.798529
El Salado	175.24	1	0	7299	7.1	82.4	1.7	3.7	1.6	2.3	0.6	0.5	0.1	89.5	1.7	8.8	0.085	0.516	24.502012	-107.156134
El Salado	175.24	3	0	8299	3.6	86.1	1.9	4.1	1.4	2.2	0.4	0.2	0.1	89.7	1.9	8.4	0.083	0.532	24.514200	-107.166391
T. Izq. Libramiento de Culiacán	210.40	1	1	9284	4.1	84.4	2.1	4.9	1.8	2.0	0.4	0.3	0.0	88.5	2.1	9.4	0.087	0.517	24.747487	-107.353941
T. Izq. Libramiento de Culiacán Culiacán	210.40 215.30	1 2	2	9931	5.4	84.1	1.7	4.6	1.6	1.9	0.4	0.3	0.0	89.5	1.7	8.8	0.088	0.517	24.747498	-107.354080

6 CARR: Pericos - Los Naranjos

CLAVE: 25598

RUTA: MEX-024

AÑO: 2023

LUGAR	ESTACION				CLASIFICACION VEHICULAR EN PORCIENTO													COORDENADAS		
	KM	TE	SC	TDPA	M	A	B	C2	C3	T3S2	T3S3	T3S2R4	OTROS	A	B	C	K'	D	LATITUD	LONGITUD
Pericos	0.00	3	0	3700	6.8	86.4	0.8	3.1	2.0	0.5	0.2	0.2	0.0	93.2	0.8	6.0	0.100	0.503	25.096012	-107.683632
Badiraguato	37.50	1	0	3090	17.4	77.0	0.7	2.6	1.4	0.5	0.2	0.2	0.0	94.4	0.7	4.9	0.104	0.515	25.348223	-107.558914
Naranjos	66.00																			

7 CARR: Tepic - Mazatlán

CLAVE: 00499

RUTA: MEX-015

AÑO: 2023

LUGAR	ESTACION				CLASIFICACION VEHICULAR EN PORCIENTO													COORDENADAS		
	KM	TE	SC	TDPA	M	A	B	C2	C3	T3S2	T3S3	T3S2R4	OTROS	A	B	C	K'	D	LATITUD	LONGITUD
Tepic (Baja)	0.00	3	1	11722	7.9	87.3	0.4	2.2	1.7	0.2	0.1	0.1	0.1	95.2	0.4	4.4	0.076	0.506	21.511947	-104.905741
Tepic (Alta)	0.00	3	1	11300	5.5	85.8	0.5	5.4	1.4	0.8	0.3	0.2	0.1	91.3	0.5	8.2	0.072	0.507	21.511873	-104.905780
Tepic (Baja)	0.00	3	2	11427	7.9	87.1	0.4	2.3	1.8	0.2	0.1	0.1	0.1	95.0	0.4	4.6	0.069	0.506	21.511595	-104.905630
Tepic (Alta)	0.00	3	2	10997	6.0	85.8	0.4	5.3	1.1	0.9	0.2	0.2	0.1	91.8	0.4	7.8	0.071	0.507	21.511665	-104.905584
T. Izq. Libramiento de Tepic (Baja)	2.56	1	1	11314	10.6	85.1	0.3	3.0	0.7	0.2	0.0	0.1	0.0	95.7	0.3	4.0	0.071	0.529	21.521260	-104.921987
T. Izq. Libramiento de Tepic (Alta)	2.56	1	1	11534	3.5	95.2	0.1	1.0	0.1	0.0	0.0	0.1	0.0	98.7	0.1	1.2	0.077	0.544	21.521075	-104.921784
T. Izq. Libramiento de Tepic (Alta)	2.56	1	2	9653	3.7	94.8	0.1	1.1	0.2	0.1	0.0	0.0	0.0	98.5	0.1	1.4	0.073	0.544	21.521058	-104.921948
T. Izq. Libramiento de Tepic (Baja)	2.56	1	2	10082	12.6	83.5	0.3	2.5	0.7	0.2	0.0	0.2	0.0	96.1	0.3	3.6	0.077	0.529	21.520987	-104.922012

SINALOA

7 CARR: Tepic - Mazatlán

CLAVE: 00499

RUTA: MEX-015

AÑO: 2023

LUGAR	ESTACION				CLASIFICACION VEHICULAR EN PORCIENTO														COORDENADAS	
	KM	TE	SC	TDPA	M	A	B	C2	C3	T3S2	T3S3	T3S2R4	OTROS	A	B	C	K'	D	LATITUD	LONGITUD
T. Izq. Aut. Tepic-Villa Unión (Cuota)	3.70	3	0	7523	6.7	78.9	2.2	3.0	2.0	4.8	1.5	0.8	0.1	85.6	2.2	12.2	0.078	0.540	21.538540	-104.933972
Los Oates	19.80	3	0	5750	3.6	74.2	5.9	7.9	2.4	3.7	1.1	1.0	0.2	77.8	5.9	16.3	0.074	0.506	21.641202	-104.973048
T. Izq. Jumatán	28.52	1	0	4549	4.0	75.5	2.9	3.7	3.9	6.8	2.2	0.9	0.1	79.5	2.9	17.6	0.072	0.548	21.669596	-105.021690
T. Izq. Jumatán	28.52	3	1	7914	6.2	70.3	4.1	3.4	2.9	7.4	1.2	3.6	0.9	76.5	4.1	19.4	0.088	0.512	21.668047	-105.029961
T. Izq. Jumatán	28.52	3	2	8289	6.2	70.4	4.1	3.5	2.8	7.4	1.1	3.6	0.9	76.6	4.1	19.3	0.073	0.512	21.667952	-105.029918
T. Izq. San Blas	33.54	1	1	8297	4.6	74.0	3.5	3.4	1.6	8.4	1.0	3.0	0.5	78.6	3.5	17.9	0.087	0.501	21.679405	-105.042584
T. Izq. San Blas	33.54	1	2	8249	4.8	73.9	3.2	3.4	1.6	8.7	1.0	2.9	0.5	78.7	3.2	18.1	0.082	0.501	21.679406	-105.042915
T. Izq. San Blas	33.54	3	1	8133	1.4	68.7	5.5	3.8	2.8	12.4	1.7	3.0	0.7	70.1	5.5	24.4	0.083	0.505	21.704591	-105.055297
T. Izq. San Blas	33.54	3	2	8286	3.1	65.4	5.9	3.9	2.9	13.7	2.0	2.5	0.6	68.5	5.9	25.6	0.082	0.505	21.704660	-105.055480
T. Izq. Villa Hidalgo	48.12	1	0	8141	6.1	76.4	2.4	3.7	3.0	6.4	1.6	0.3	0.1	82.5	2.4	15.1	0.088	0.521	21.806639	-105.102554
T. Izq. Villa Hidalgo	48.12	3	0	8611	6.4	75.7	4.6	3.8	2.3	5.4	1.7	0.1	0.0	82.1	4.6	13.3	0.074	0.525	21.811888	-105.107228
T. Izq. Santiago Ixcuintla	56.42	1	0	8865	4.3	73.7	5.8	5.3	2.8	5.9	1.5	0.6	0.1	78.0	5.8	16.2	0.070	0.532	21.853983	-105.152356
T. Izq. Santiago Ixcuintla	56.42	3	0	6838	3.5	74.5	4.3	7.6	2.2	5.2	2.0	0.6	0.1	78.0	4.3	17.7	0.073	0.507	21.859305	-105.155926
T. Izq. Tuxpan	70.60	1	0	8317	4.8	76.2	3.3	4.5	2.4	5.6	1.8	0.9	0.5	81.0	3.3	15.7	0.071	0.508	21.944201	-105.215566
T. Izq. Tuxpan	70.60	3	0	7405	4.9	75.8	3.9	4.6	2.5	6.1	1.7	0.3	0.2	80.7	3.9	15.4	0.060	0.519	21.962279	-105.221692
T. Der. Rosamorada	90.70	3	0	6192	6.9	58.5	6.6	8.2	4.6	10.7	3.7	0.6	0.2	65.4	6.6	28.0	0.083	0.524	22.128913	-105.221213
Tierra Generosa	110.40	1	0	3460	8.1	52.2	6.7	7.5	4.9	13.7	3.1	2.9	0.9	60.3	6.7	33.0	0.068	0.500	22.295897	-105.274179
T. Der. Acaponeta	136.52	1	0	8882	8.6	72.2	4.8	3.6	2.6	4.7	2.5	0.6	0.4	80.8	4.8	14.4	0.061	0.518	22.483303	-105.384375
T. Der. Acaponeta	136.52	3	0	6201	11.0	61.1	5.6	3.8	3.3	11.1	3.1	0.8	0.2	72.1	5.6	22.3	0.064	0.511	22.493962	-105.384274
Lim. Edos. Term. Nay. Ppia. Sin.	144.60																			
T. Der. Villa Unión (Cuota)	193.60	1	1	4578	6.9	49.1	7.9	5.7	2.2	20.7	3.0	3.6	0.9	56.0	7.9	36.1	0.063	0.507	22.802827	-105.718306
T. Der. Villa Unión (Cuota)	193.60	1	2	4448	7.3	47.3	10.6	5.6	2.2	19.9	2.3	3.9	0.9	54.6	10.6	34.8	0.073	0.507	22.802729	-105.718392
Escuinapa de Hidalgo	200.00	1	0	5643	13.2	63.2	4.4	5.2	2.6	8.1	2.3	0.8	0.2	76.4	4.4	19.2	0.068	0.512	22.832897	-105.761705
Escuinapa de Hidalgo	200.00	3	0	5757	7.9	67.1	6.4	5.9	2.7	7.4	2.1	0.4	0.1	75.0	6.4	18.6	0.076	0.508	22.846967	-105.792001
Rosario	221.71	1	0	10986	14.8	69.2	4.2	3.6	1.6	5.2	1.3	0.1	0.0	84.0	4.2	11.8	0.069	0.510	22.997097	-105.851401
Rosario	221.71	3	0	7645	7.4	73.8	3.2	5.1	1.8	6.3	1.8	0.3	0.3	81.2	3.2	15.6	0.074	0.511	23.003371	-105.868923
X. C. Durango - Mazatlán (Cuota)	265.20	1	0	5660	4.8	76.0	3.6	3.7	2.0	7.1	2.3	0.2	0.3	80.8	3.6	15.6	0.074	0.506	23.189964	-106.174169
T. Der. Durango	267.99	1	0	7229	6.6	73.8	3.5	4.2	2.8	6.6	2.0	0.3	0.2	80.4	3.5	16.1	0.077	0.503	23.189446	-106.202501
T. Der. Durango	267.99	3	1	9374	8.0	76.5	4.3	3.1	2.3	3.5	0.9	1.1	0.3	84.5	4.3	11.2	0.083	0.505	23.189309	-106.210105
T. Der. Durango	267.99	3	2	9182	8.0	76.9	4.4	3.0	2.2	3.4	0.8	1.1	0.2	84.9	4.4	10.7	0.080	0.505	23.189191	-106.210079
Villa Unión	269.52	3	1	11652	8.2	79.5	3.1	3.3	1.6	2.7	0.8	0.6	0.2	87.7	3.1	9.2	0.088	0.501	23.190423	-106.222400
Villa Unión	269.52	3	2	11591	9.6	77.7	3.3	3.4	1.6	2.8	0.6	0.8	0.2	87.3	3.3	9.4	0.083	0.501	23.190236	-106.222256
T. Der. Libramiento de Mazatlán	288.87	1	1	28094	11.9	79.6	1.2	3.3	1.6	1.5	0.5	0.3	0.1	91.5	1.2	7.3	0.073	0.511	23.225193	-106.383040
T. Der. Libramiento de Mazatlán	288.87	1	2	26760	10.9	80.4	1.6	3.4	1.4	1.5	0.3	0.4	0.1	91.3	1.6	7.1	0.073	0.511	23.225137	-106.383107
Mazatlán	292.00																			

SINALOA

8 CARR: Durango - Mazatlán (Cuota)

CLAVE: 00084

RUTA: MEX-040D

AÑO: 2023

LUGAR	ESTACION				CLASIFICACION VEHICULAR EN PORCIENTO													COORDENADAS		
	KM	TE	SC	TDPA	M	A	B	C2	C3	T3S2	T3S3	T3S2R4	OTROS	A	B	C	K'	D	LATITUD	LONGITUD
Libramiento de Durango	21.30	3	0	3532	5.4	61.8	5.6	3.9	2.4	10.3	2.7	7.0	0.9	67.2	5.6	27.2	0.101	0.510	24.006277	-104.730809
Plaza de Cobro Durango	22.20	2	0	4401	1.1	67.3	3.4	2.6	3.2	11.5	1.9	7.6	1.4	68.4	3.4	28.2	0.108	0.500	24.005080	-104.734540
Ent. Otinapa	44.50	1	0	3188	2.7	64.2	5.3	4.9	2.7	10.0	2.4	6.9	0.9	66.9	5.3	27.8	0.119	0.510	23.982230	-104.943277
Plaza de Cobro Llano Grande	73.80	2	0	4031	1.1	64.8	3.7	2.8	3.5	12.5	1.9	8.6	1.1	65.9	3.7	30.4	0.108	0.500	23.864514	-105.233202
X. C. Durango - Villa Unión	80.14	1	0	4321	2.9	62.2	6.4	5.9	2.1	11.6	3.0	5.0	0.9	65.1	6.4	28.5	0.098	0.523	23.857287	-105.251553
T. Der. El Salto 1er Acceso	91.60	1	0	4844	3.0	67.1	4.9	4.5	2.2	10.3	2.8	4.6	0.6	70.1	4.9	25.0	0.087	0.540	23.801375	-105.328162
T. Der. El Salto 2do Acceso	104.20	1	0	2775	4.3	54.3	7.2	8.0	2.2	14.9	3.0	5.5	0.6	58.6	7.2	34.2	0.100	0.523	23.756316	-105.424051
T. Der. El Salto 2do Acceso	104.20	3	0	5096	4.3	57.9	5.6	9.0	2.7	11.9	3.4	4.9	0.3	62.2	5.6	32.2	0.073	0.505	23.759357	-105.433967
T. Der. La Campana	111.00	3	0	4552	4.2	54.1	6.5	8.0	3.0	11.5	3.4	8.5	0.8	58.3	6.5	35.2	0.070	0.521	23.721699	-105.488159
Lim. Edos. Term. Dgo. Ppia. Sin.	157.40																			
Entronque Santa Lucia	172.20	3	0	4377	4.7	62.1	7.0	4.0	1.7	10.4	2.2	7.3	0.6	66.8	7.0	26.2	0.090	0.502	23.451933	-105.842560
Concordia	213.70	1	0	3362	4.4	61.3	5.5	5.0	1.8	11.0	2.5	7.6	0.9	65.7	5.5	28.8	0.112	0.534	23.263974	-106.045009
Concordia	213.70	3	0	3474	4.0	61.6	7.1	4.2	1.6	11.3	1.8	7.7	0.7	65.6	7.1	27.3	0.113	0.525	23.250122	-106.061853
Villa Unión	229.70	1	0	3645	3.8	60.2	7.6	7.3	1.4	9.7	2.1	7.3	0.6	64.0	7.6	28.4	0.108	0.506	23.200228	-106.166428

9 CARR: Libramiento de Culiacán (Cuota)

CLAVE:

RUTA: MEX-015D

AÑO: 2023

LUGAR	ESTACION				CLASIFICACION VEHICULAR EN PORCIENTO													COORDENADAS		
	KM	TE	SC	TDPA	M	A	B	C2	C3	T3S2	T3S3	T3S2R4	OTROS	A	B	C	K'	D	LATITUD	LONGITUD
T. C. Mazatlán - Culiacán (Cuota)	181.80																			
Plaza de Cobro San Pedro	197.10	2	1	1958	0.3	38.2	1.7	3.8	4.5	34.3	4.6	9.4	3.2	38.5	1.7	59.8	0.101	0.500	24.693361	-107.525419
Plaza de Cobro San Pedro	197.10	2	2	1958	0.3	38.2	1.7	3.8	4.5	34.3	4.6	9.4	3.2	38.5	1.7	59.8	0.101	0.500	24.693361	-107.525419
T. C. Culiacán - Las Brisas (Cuota)	203.30	1	1	2543	6.9	45.0	5.9	4.6	3.1	24.5	3.9	5.3	0.8	51.9	5.9	42.2	0.069	0.509	24.744948	-107.563755
T. C. Culiacán - Las Brisas (Cuota)	203.30	1	2	2450	7.3	43.7	5.7	4.4	3.8	25.2	4.1	4.9	0.9	51.0	5.7	43.3	0.085	0.509	24.744901	-107.563830

10 CARR: Libramiento de Mazatlán (Cuota)

CLAVE:

RUTA: MEX-015D

AÑO: 2023

LUGAR	ESTACION				CLASIFICACION VEHICULAR EN PORCIENTO													COORDENADAS		
	KM	TE	SC	TDPA	M	A	B	C2	C3	T3S2	T3S3	T3S2R4	OTROS	A	B	C	K'	D	LATITUD	LONGITUD
Villa Unión (Ent. Caleritas)	0.00	3	1	3944	2.9	46.2	8.9	5.9	1.9	22.9	3.3	7.1	0.9	49.1	8.9	42.0	0.083	0.510	23.201341	-106.213828
Villa Unión (Ent. Caleritas)	0.00	3	2	4107	1.9	43.6	9.6	5.5	2.1	25.8	3.2	7.4	0.9	45.5	9.6	44.9	0.096	0.510	23.201261	-106.213839
Plaza de Cobro El Vainillo	6.00	2	1	3799	1.0	49.3	3.6	4.1	4.3	24.5	3.3	7.7	2.2	50.3	3.6	46.1	0.090	0.500	23.216186	-106.260339
Plaza de Cobro El Vainillo	6.00	2	2	3799	1.0	49.3	3.6	4.1	4.3	24.5	3.3	7.7	2.2	50.3	3.6	46.1	0.090	0.500	23.216186	-106.260339
T. Izq. Aeropuerto Internacional de Mazatlán	6.45	3	1	5449	3.9	48.1	8.6	6.3	2.0	20.3	2.6	7.3	0.9	52.0	8.6	39.4	0.115	0.542	23.224308	-106.271882
T. Izq. Aeropuerto Internacional de Mazatlán	6.45	3	2	4599	4.7	48.9	8.3	6.7	2.6	19.2	2.9	5.8	0.9	53.6	8.3	38.1	0.090	0.542	23.224253	-106.271933

SINALOA

10 CARR: Libramiento de Mazatlán (Cuota)

CLAVE:

RUTA: MEX-015D

AÑO: 2023

LUGAR	ESTACION				CLASIFICACION VEHICULAR EN PORCIENTO													COORDENADAS		
	KM	TE	SC	TDPA	M	A	B	C2	C3	T3S2	T3S3	T3S2R4	OTROS	A	B	C	K'	D	LATITUD	LONGITUD
T. C. Mazatlán - Culiacán	28.60	1	1	6816	5.8	62.5	5.0	3.7	2.6	13.7	2.4	3.4	0.9	68.3	5.0	26.7	0.113	0.515	23.306212	-106.394648
T. C. Mazatlán - Culiacán	28.60	1	2	7232	5.6	64.1	5.2	3.2	2.3	14.0	1.6	3.2	0.8	69.7	5.2	25.1	0.092	0.515	23.306136	-106.394669
T. C. Mazatlán - Culiacán	28.60	3	1	6346	6.0	58.0	3.9	3.6	4.2	16.3	2.3	4.8	0.9	64.0	3.9	32.1	0.100	0.506	23.308341	-106.409984
T. C. Mazatlán - Culiacán	28.60	3	2	6491	6.0	59.7	2.8	2.9	4.8	16.3	2.3	4.3	0.9	65.7	2.8	31.5	0.093	0.506	23.308259	-106.409955

11 CARR: Los Mochis - Cd. Obregón (Cuota)

CLAVE: 26444

RUTA: MEX-015D

AÑO: 2023

LUGAR	ESTACION				CLASIFICACION VEHICULAR EN PORCIENTO													COORDENADAS		
	KM	TE	SC	TDPA	M	A	B	C2	C3	T3S2	T3S3	T3S2R4	OTROS	A	B	C	K'	D	LATITUD	LONGITUD
T. C. Topolobampo - Choix	0.00	3	1	10337	7.5	65.2	3.5	4.4	4.0	10.0	2.4	2.4	0.6	72.7	3.5	23.8	0.080	0.515	25.836071	-108.975300
T. C. Topolobampo - Choix	0.00	3	2	10962	7.9	67.4	3.1	4.5	3.5	8.5	1.9	2.5	0.7	75.3	3.1	21.6	0.079	0.515	25.836239	-108.975647
T. Izq. Ahome	17.13	3	1	9787	9.4	64.4	4.1	4.0	2.8	10.3	1.7	2.6	0.7	73.8	4.1	22.1	0.068	0.501	25.945602	-109.053353
T. Izq. Ahome	17.13	3	2	9817	10.6	64.1	4.2	3.6	3.0	9.5	1.8	2.5	0.7	74.7	4.2	21.1	0.078	0.501	25.945560	-109.053472
T. Izq. Coahuilampo	19.00	1	1	7905	6.5	64.1	3.7	5.0	3.4	11.9	1.9	2.8	0.7	70.6	3.7	25.7	0.069	0.513	25.958576	-109.053417
T. Izq. Coahuilampo	19.00	1	2	8311	6.1	67.4	4.2	4.7	2.7	10.5	1.5	2.3	0.6	73.5	4.2	22.3	0.069	0.513	25.958623	-109.053576
T. Izq. Coahuilampo	19.00	3	1	5886	6.2	57.6	6.3	5.1	2.6	14.1	2.3	4.9	0.9	63.8	6.3	29.9	0.073	0.516	25.970651	-109.039807
T. Izq. Coahuilampo	19.00	3	2	6273	5.7	56.8	5.5	4.5	3.7	15.6	2.6	4.7	0.9	62.5	5.5	32.0	0.080	0.516	25.970796	-109.039915
Poblado Chico	50.00	3	1	4968	5.3	59.7	5.7	5.4	2.4	14.3	2.1	4.2	0.9	65.0	5.7	29.3	0.076	0.505	26.228004	-109.054376
Poblado Chico	50.00	3	2	5059	5.2	61.5	4.7	4.2	2.4	14.7	2.6	3.8	0.9	66.7	4.7	28.6	0.079	0.505	26.228051	-109.054546
T. Der. El Fuerte	54.80	1	1	5399	5.1	59.5	7.0	4.7	2.1	14.1	2.5	4.1	0.9	64.6	7.0	28.4	0.073	0.506	26.261102	-109.044975
T. Der. El Fuerte	54.80	1	2	5281	4.6	60.3	6.5	4.3	2.0	15.2	2.2	4.0	0.9	64.9	6.5	28.6	0.091	0.506	26.261132	-109.045155
T. Der. El Fuerte	54.80	3	1	5868	6.0	56.1	7.2	5.0	1.4	16.3	2.8	4.3	0.9	62.1	7.2	30.7	0.067	0.502	26.278779	-109.039906
T. Der. El Fuerte	54.80	3	2	5925	6.4	56.0	6.8	4.5	1.8	15.8	3.4	4.4	0.9	62.4	6.8	30.8	0.071	0.502	26.280418	-109.039655
Lim. Edos. Term. Sin. Ppia. Son.	69.80																			
T. Izq. Camahuiroa	93.90	1	1	4931	8.2	44.4	8.9	7.6	2.4	19.0	3.8	4.8	0.9	52.6	8.9	38.5	0.069	0.513	26.577260	-109.158703
T. Izq. Camahuiroa	93.90	1	2	5196	8.3	46.1	8.7	7.3	2.0	19.0	3.6	4.1	0.9	54.4	8.7	36.9	0.069	0.513	26.577189	-109.158801
X. C. Alamos - Masiaca	114.30	1	1	4931	11.7	40.0	8.9	3.7	2.1	23.6	4.2	4.9	0.9	51.7	8.9	39.4	0.068	0.503	26.723175	-109.284882
X. C. Alamos - Masiaca	114.30	1	2	4990	11.9	40.2	9.0	3.4	2.0	23.1	4.6	4.9	0.9	52.1	9.0	38.9	0.067	0.503	26.723028	-109.285103
T. Izq. Huatabampo	128.50	1	1	3606	4.7	49.4	6.9	4.1	2.7	22.2	3.2	5.9	0.9	54.1	6.9	39.0	0.086	0.512	26.836457	-109.365916
T. Izq. Huatabampo	128.50	1	2	3786	4.9	51.6	7.2	4.0	2.1	21.1	2.4	5.8	0.9	56.5	7.2	36.3	0.113	0.512	26.836360	-109.366169
Plaza de Cobro Estacion Don (La Jaula)	129.90	2	1	3004	0.3	45.2	7.3	3.1	2.9	26.2	3.3	9.0	2.7	45.5	7.3	47.2	0.086	0.500	26.849735	-109.373267
Plaza de Cobro Estacion Don (La Jaula)	129.90	2	2	3004	0.3	45.2	7.3	3.1	2.9	26.2	3.3	9.0	2.7	45.5	7.3	47.2	0.086	0.500	26.849735	-109.373267
Navojoa	155.00	1	1	6151	8.8	56.0	7.2	4.5	2.5	13.9	2.2	4.0	0.9	64.8	7.2	28.0	0.096	0.508	27.029118	-109.434961
Navojoa	155.00	1	2	6350	9.1	56.7	8.0	4.3	2.2	13.5	1.6	3.7	0.9	65.8	8.0	26.2	0.133	0.508	27.029527	-109.435268
Navojoa	155.00	3	1	7646	14.2	74.7	4.3	4.3	0.8	0.7	0.3	0.4	0.3	88.9	4.3	6.8	0.077	0.510	27.103782	-109.447806

SINALOA

11 CARR: Los Mochis - Cd. Obregón (Cuota)

CLAVE: 26444

RUTA: MEX-015D

AÑO: 2023

LUGAR	ESTACION				CLASIFICACION VEHICULAR EN PORCIENTO													COORDENADAS		
	KM	TE	SC	TDPA	M	A	B	C2	C3	T3S2	T3S3	T3S2R4	OTROS	A	B	C	K'	D	LATITUD	LONGITUD
Navojoa	155.00	3	2	7973	13.7	76.9	3.3	3.7	0.8	0.8	0.3	0.3	0.2	90.6	3.3	6.1	0.086	0.510	27.103778	-109.447896
T. Izq. Villa Juárez	167.25	1	1	7152	4.6	64.6	5.6	3.8	2.0	13.1	1.9	3.5	0.9	69.2	5.6	25.2	0.075	0.502	27.152786	-109.504047
T. Izq. Villa Juárez	167.25	1	2	7208	5.2	63.9	5.5	4.5	1.9	13.4	1.8	2.9	0.9	69.1	5.5	25.4	0.066	0.502	27.152524	-109.504303
T. Izq. Villa Juárez	167.25	3	1	6911	4.7	62.1	6.5	4.4	2.0	13.3	2.3	3.8	0.9	66.8	6.5	26.7	0.082	0.519	27.158716	-109.511631
T. Izq. Villa Juárez	167.25	3	2	7443	4.2	61.9	7.1	4.8	1.6	13.5	2.2	3.8	0.9	66.1	7.1	26.8	0.069	0.519	27.158423	-109.511873
Plaza de Cobro Fundición	195.80	2	1	3962	0.3	54.2	7.0	3.4	2.6	20.9	2.6	7.0	2.0	54.5	7.0	38.5	0.086	0.500	27.320494	-109.719697
Plaza de Cobro Fundición	195.80	2	2	3962	0.3	54.2	7.0	3.4	2.6	20.9	2.6	7.0	2.0	54.5	7.0	38.5	0.086	0.500	27.320494	-109.719697
T. Der. Fundición	196.30	1	1	5768	2.7	60.6	7.0	3.3	1.9	16.5	2.6	4.5	0.9	63.3	7.0	29.7	0.074	0.504	27.312755	-109.709694
T. Der. Fundición	196.30	1	2	5869	3.1	60.6	7.2	3.5	1.9	16.1	2.3	4.4	0.9	63.7	7.2	29.1	0.075	0.504	27.312497	-109.709944
T. Der. Libramiento de Cd. Obregón (Cuota)	203.52	1	1	7009	3.3	63.0	7.2	3.9	2.5	14.0	2.2	3.0	0.9	66.3	7.2	26.5	0.081	0.504	27.365643	-109.777938
T. Der. Libramiento de Cd. Obregón (Cuota)	203.52	1	2	6886	3.7	61.8	8.4	3.6	2.1	14.1	2.1	3.3	0.9	65.5	8.4	26.1	0.068	0.504	27.360584	-109.771889
Cd. Obregón	222.70	1	1	10992	4.6	75.7	5.1	3.2	2.8	5.7	1.5	1.1	0.3	80.3	5.1	14.6	0.088	0.508	27.455094	-109.892912
Cd. Obregón	222.70	1	2	11371	5.4	75.9	4.5	2.9	2.6	5.4	1.4	1.5	0.4	81.3	4.5	14.2	0.079	0.508	27.454867	-109.893128

12 CARR: Mazatlán - Culiacán (Cuota)

CLAVE: 25045

RUTA: MEX-015D

AÑO: 2023

LUGAR	ESTACION				CLASIFICACION VEHICULAR EN PORCIENTO													COORDENADAS		
	KM	TE	SC	TDPA	M	A	B	C2	C3	T3S2	T3S3	T3S2R4	OTROS	A	B	C	K'	D	LATITUD	LONGITUD
Ent. Venadillo	0.00	3	1	6430	7.3	55.3	5.7	5.0	3.6	16.0	2.3	3.9	0.9	62.6	5.7	31.7	0.078	0.509	23.310229	-106.426989
Ent. Venadillo	0.00	3	2	6658	6.4	54.6	8.3	5.0	3.0	15.8	1.9	4.0	1.0	61.0	8.3	30.7	0.091	0.509	23.310177	-106.427066
Plaza de Cobro Mármol	25.15	3	1	4729	3.8	50.0	7.9	6.8	3.1	18.1	3.3	6.2	0.8	53.8	7.9	38.3	0.080	0.511	23.475623	-106.574706
Plaza de Cobro Mármol	25.15	3	2	4527	3.9	46.4	9.2	5.4	3.1	22.3	3.0	5.8	0.9	50.3	9.2	40.5	0.078	0.511	23.475559	-106.574762
T. Izq. Dimas	62.20	1	1	5420	2.0	49.9	8.2	7.1	2.3	20.4	3.5	6.0	0.6	51.9	8.2	39.9	0.097	0.511	23.721580	-106.769986
T. Izq. Dimas	62.20	1	2	5180	2.0	47.8	8.3	7.0	2.4	22.0	3.6	6.2	0.7	49.8	8.3	41.9	0.074	0.511	23.721536	-106.770060
T. Der. La Cruz	89.37	1	1	5457	6.0	50.6	9.1	6.0	2.4	17.1	2.8	5.1	0.9	56.6	9.1	34.3	0.077	0.506	23.911131	-106.924917
T. Der. La Cruz	89.37	1	2	5324	5.9	50.7	9.1	6.0	2.5	17.1	2.7	5.1	0.9	56.6	9.1	34.3	0.081	0.506	23.911105	-106.924999
T. Der. Quila	153.39	1	1	4647	4.0	51.0	8.0	4.5	2.3	20.5	2.9	6.1	0.7	55.0	8.0	37.0	0.075	0.538	24.395363	-107.269074
T. Der. Quila	153.39	1	2	5400	3.9	51.4	8.0	4.3	2.2	20.5	3.0	5.9	0.8	55.3	8.0	36.7	0.065	0.538	24.395189	-107.269279
Plaza de Cobro Costa Rica	187.80	3	1	4577	5.2	48.7	9.2	3.3	2.4	20.9	3.3	6.2	0.8	53.9	9.2	36.9	0.091	0.523	24.575955	-107.434551
Plaza de Cobro Costa Rica	187.80	3	2	5011	4.5	48.5	9.3	3.9	2.5	21.2	3.0	6.2	0.9	53.0	9.3	37.7	0.069	0.523	24.575660	-107.434681
T. C. Culiacán - El Dorado	190.26																			

SINALOA

13 CARR: Tepic - Villa Unión (cuota)

CLAVE: 00500

RUTA: MEX-015D

AÑO: 2023

LUGAR	ESTACION				CLASIFICACION VEHICULAR EN PORCIENTO										COORDENADAS					
	KM	TE	SC	TDPA	M	A	B	C2	C3	T3S2	T3S3	T3S2R4	OTROS	A	B	C	K'	D	LATITUD	LONGITUD
Tepic	0.00																			
Lib. de Tepic (Cuota)	6.60																			
Plaza de Cobro Trapichillo	8.65	1	1	7807	2.3	82.2	4.1	3.6	0.8	5.0	1.0	0.9	0.1	84.5	4.1	11.4	0.111	0.519	21.554010	-104.959372
Plaza de Cobro Trapichillo	8.65	1	2	7231	2.4	82.4	4.1	3.5	0.7	5.0	1.0	0.8	0.1	84.8	4.1	11.1	0.102	0.519	21.554054	-104.959498
Plaza de Cobro Trapichillo	8.65	2	1	5021	0.9	59.2	6.8	3.8	4.3	17.0	2.1	4.2	1.7	60.1	6.8	33.1	0.098	0.500	21.571789	-104.987394
Plaza de Cobro Trapichillo	8.65	2	2	5021	0.9	59.2	6.8	3.8	4.3	17.0	2.1	4.2	1.7	60.1	6.8	33.1	0.098	0.500	21.571789	-104.987394
T. C. Tepic - Mazatlán	21.00	1	1	5591	3.2	64.1	7.5	4.4	1.9	13.0	1.4	3.7	0.8	67.3	7.5	25.2	0.097	0.523	21.662719	-105.027809
T. C. Tepic - Mazatlán	21.00	1	2	5095	3.3	60.8	8.7	4.8	1.7	14.7	1.6	3.6	0.8	64.1	8.7	27.2	0.079	0.523	21.662989	-105.027811
T. C. Tepic - Mazatlán (Crucero de San Blas)	24.50	3	0	6354	4.9	49.9	10.6	5.4	1.9	19.3	2.2	4.9	0.9	54.8	10.6	34.6	0.071	0.521	21.714504	-105.060501
Est. Ruiz	54.90	1	0	6149	6.1	39.8	11.5	6.3	3.8	23.6	2.5	5.6	0.8	45.9	11.5	42.6	0.060	0.520	21.947595	-105.112421
Est. Ruiz	54.90	3	0	5601	3.4	42.4	11.4	7.4	1.5	23.7	3.2	6.5	0.5	45.8	11.4	42.8	0.051	0.506	21.962009	-105.123260
Rosamorada	73.50	1	0	6144	5.8	42.0	11.3	6.4	2.1	23.0	2.5	6.1	0.8	47.8	11.3	40.9	0.057	0.545	22.085003	-105.211310
Rosamorada	73.50	3	0	5833	5.5	45.6	9.7	4.5	2.0	23.6	2.2	6.1	0.8	51.1	9.7	39.2	0.056	0.503	22.093028	-105.221493
Acaponeta	120.20	1	0	5449	5.5	36.0	12.7	4.7	2.5	28.3	2.3	7.1	0.9	41.5	12.7	45.8	0.051	0.503	22.447355	-105.418567
Plaza de Cobro Acaponeta	120.20	2	0	4400	0.7	38.4	6.1	4.0	5.0	31.1	2.6	9.0	3.1	39.1	6.1	54.8	0.081	0.500	22.454065	-105.418726
Acaponeta	120.20	3	0	4737	3.3	44.0	9.6	4.6	3.2	23.7	2.3	8.4	0.9	47.3	9.6	43.1	0.070	0.509	22.458677	-105.430777
Lim. Edos. Term. Nay. Ppia. Sin.	132.80																			
T. C. Tepic - Mazatlán	164.00	1	0	5130	8.7	40.2	7.9	5.4	3.2	23.2	3.1	7.4	0.9	48.9	7.9	43.2	0.068	0.506	22.751120	-105.650413
Escuinapa de Hidalgo	208.60	1	1	2822	4.8	37.6	11.7	5.5	2.7	27.2	2.6	7.1	0.8	42.4	11.7	45.9	0.060	0.504	22.841221	-105.739582
Escuinapa de Hidalgo	208.60	1	2	2775	5.5	33.6	13.3	6.0	2.8	27.9	2.8	7.2	0.9	39.1	13.3	47.6	0.074	0.504	22.841200	-105.739614
Escuinapa de Hidalgo	208.60	3	0	5557	4.8	38.8	9.6	5.0	2.8	27.9	3.0	7.2	0.9	43.6	9.6	46.8	0.066	0.506	22.860402	-105.755870
Rosario	220.68	1	0	5224	5.8	45.5	9.9	4.0	2.2	23.1	2.6	6.0	0.9	51.3	9.9	38.8	0.069	0.504	22.979491	-105.871760
Plaza de Cobro Rosario	220.68	2	0	5084	0.7	40.2	6.5	3.8	4.6	30.1	2.9	8.4	2.8	40.9	6.5	52.6	0.081	0.500	22.984690	-105.878103
Rosario	220.68	3	1	3316	5.9	41.7	11.8	9.1	2.6	20.9	2.6	4.9	0.5	47.6	11.8	40.6	0.067	0.506	22.993040	-105.887562
Rosario	220.68	3	2	3394	5.8	41.5	11.7	9.1	2.7	21.0	2.7	5.0	0.5	47.3	11.7	41.0	0.080	0.506	22.993018	-105.887584
X. C. Durango - Villa Unión (Cuota)	240.90	1	0	6559	5.9	41.3	12.7	5.0	2.2	23.3	2.6	6.0	1.0	47.2	12.7	40.1	0.065	0.503	23.185872	-106.174197
X. C. Durango - Villa Unión (Cuota)	240.90	3	1	5331	7.4	43.8	9.5	7.9	2.3	17.9	2.7	7.5	1.0	51.2	9.5	39.3	0.076	0.503	23.195139	-106.192185
X. C. Durango - Villa Unión (Cuota)	240.90	3	2	5388	7.3	44.4	9.4	7.9	2.3	17.7	2.6	7.5	0.9	51.7	9.4	38.9	0.085	0.503	23.194914	-106.192340

14 CARR: Carrizal - Campo Anibal

CLAVE: 25585

RUTA: SIN-019

AÑO: 2023

LUGAR	ESTACION				CLASIFICACION VEHICULAR EN PORCIENTO										COORDENADAS					
	KM	TE	SC	TDPA	M	A	B	C2	C3	T3S2	T3S3	T3S2R4	OTROS	A	B	C	K'	D	LATITUD	LONGITUD
T. C. Mazatlán - Culiacán	0.00	3	0	2157	15.7	74.6	0.7	1.7	3.9	2.0	0.9	0.4	0.1	90.3	0.7	9.0	0.085	0.503	24.635634	-107.273512
X. C. Culiacán - El Dorado	29.20	1	0	12162	17.2	75.1	1.8	2.8	1.6	0.7	0.3	0.3	0.2	92.3	1.8	5.9	0.080	0.504	24.590340	-107.436921

SINALOA

14 CARR: Carrizal - Campo Anibal

CLAVE: 25585

RUTA: SIN-019

AÑO: 2023

LUGAR	ESTACION				CLASIFICACION VEHICULAR EN PORCIENTO										COORDENADAS					
	KM	TE	SC	TDPA	M	A	B	C2	C3	T3S2	T3S3	T3S2R4	OTROS	A	B	C	K'	D	LATITUD	LONGITUD
X. C. Culiacán - El Dorado	29.20	3	0	1215	11.8	74.2	2.5	4.7	3.6	2.0	0.5	0.6	0.1	86.0	2.5	11.5	0.081	0.502	24.599416	-107.477105
T. C. San Pedro - Campo Anibal	32.00	1	0	1451	17.1	71.6	2.5	3.9	2.9	1.2	0.4	0.3	0.1	88.7	2.5	8.8	0.075	0.500	24.590247	-107.540957

15 CARR: Culiacán - Altata

CLAVE: 25013

RUTA: SIN-030

AÑO: 2023

LUGAR	ESTACION				CLASIFICACION VEHICULAR EN PORCIENTO										COORDENADAS					
	KM	TE	SC	TDPA	M	A	B	C2	C3	T3S2	T3S3	T3S2R4	OTROS	A	B	C	K'	D	LATITUD	LONGITUD
Culiacán	0.00																			
T. Izq. El Dorado	6.20	1	1	36264	3.7	86.8	1.5	2.7	1.2	0.9	0.2	2.4	0.6	90.5	1.5	8.0	0.079	0.500	24.779991	-107.437711
T. Izq. El Dorado	6.20	1	2	36290	4.3	85.8	2.1	2.4	1.5	1.3	0.2	1.9	0.5	90.1	2.1	7.8	0.083	0.500	24.779808	-107.437751
T. Izq. El Dorado	6.20	3	1	33073	4.0	90.5	0.7	2.3	0.9	0.9	0.2	0.4	0.1	94.5	0.7	4.8	0.079	0.505	24.775480	-107.450374
T. Izq. El Dorado	6.20	3	2	33842	4.6	91.5	0.3	1.5	0.7	0.7	0.1	0.5	0.1	96.1	0.3	3.6	0.092	0.505	24.775349	-107.450344
T. Izq. Aeropuerto	8.70	3	1	21993	5.5	88.4	0.7	2.6	1.2	1.1	0.1	0.3	0.1	93.9	0.7	5.4	0.083	0.509	24.775134	-107.474514
T. Izq. Aeropuerto	8.70	3	2	22829	4.3	89.8	0.5	2.6	1.2	1.0	0.2	0.3	0.1	94.1	0.5	5.4	0.078	0.509	24.775024	-107.474514
Navolato	32.40	1	1	11777	9.4	83.1	0.8	2.1	3.2	1.0	0.2	0.2	0.0	92.5	0.8	6.7	0.102	0.538	24.755953	-107.686237
Navolato	32.40	1	2	10125	9.1	83.2	0.5	2.3	3.4	1.0	0.3	0.2	0.0	92.3	0.5	7.2	0.094	0.538	24.755870	-107.686244
Navolato	32.40	3	1	9657	10.8	80.2	1.9	4.9	0.9	0.6	0.3	0.2	0.2	91.0	1.9	7.1	0.096	0.503	24.755530	-107.705847
Navolato	32.40	3	2	9560	10.7	79.6	1.7	4.5	1.9	0.7	0.2	0.5	0.2	90.3	1.7	8.0	0.092	0.503	24.755413	-107.705853
T. Der. 5 Hermanos	38.20	3	1	4280	6.4	86.1	1.0	2.6	2.0	0.8	0.5	0.4	0.2	92.5	1.0	6.5	0.100	0.513	24.751876	-107.743122
T. Der. 5 Hermanos	38.20	3	2	4508	6.6	85.7	1.1	2.5	2.0	0.9	0.5	0.4	0.3	92.3	1.1	6.6	0.088	0.513	24.751782	-107.743063
Altata	67.00	1	1	2852	10.5	83.5	0.5	2.5	1.7	0.5	0.3	0.3	0.2	94.0	0.5	5.5	0.113	0.500	24.646204	-107.919996
Altata	67.00	1	2	2853	10.9	82.8	0.6	2.3	1.9	0.6	0.4	0.3	0.2	93.7	0.6	5.7	0.105	0.500	24.646115	-107.919985

16 CARR: Culiacán - El Dorado

CLAVE: 25044

RUTA: SIN-005

AÑO: 2023

LUGAR	ESTACION				CLASIFICACION VEHICULAR EN PORCIENTO										COORDENADAS					
	KM	TE	SC	TDPA	M	A	B	C2	C3	T3S2	T3S3	T3S2R4	OTROS	A	B	C	K'	D	LATITUD	LONGITUD
T. C. Culiacán - Altata	0.00	3	1	32094	5.3	87.7	1.9	1.4	1.1	1.5	0.2	0.7	0.2	93.0	1.9	5.1	0.072	0.503	24.768216	-107.447323
T. C. Culiacán - Altata	0.00	3	2	31668	5.8	86.5	1.7	1.9	1.5	1.7	0.2	0.6	0.1	92.3	1.7	6.0	0.080	0.503	24.768189	-107.447217
T. C. Libramiento Sur de Culiacán	3.60	3	1	21735	4.1	81.2	2.4	4.8	2.2	3.8	0.4	0.9	0.2	85.3	2.4	12.3	0.096	0.501	24.740271	-107.454098
T. C. Libramiento Sur de Culiacán	3.60	3	2	21823	4.0	83.0	2.5	3.7	1.9	3.1	0.5	1.0	0.3	87.0	2.5	10.5	0.084	0.501	24.739243	-107.454209
X. C. Carrizal - Campo Anibal	21.35	1	1	9797	5.3	77.8	4.1	3.9	2.6	3.8	0.7	1.4	0.4	83.1	4.1	12.8	0.081	0.520	24.602505	-107.444579
X. C. Carrizal - Campo Anibal	21.35	1	2	10607	3.4	80.0	4.2	3.6	2.7	3.6	0.9	1.1	0.5	83.4	4.2	12.4	0.090	0.520	24.602521	-107.444502
X. C. Carrizal - Campo Anibal	21.35	3	0	8299	13.3	76.2	1.5	2.7	2.0	2.0	0.7	1.0	0.6	89.5	1.5	9.0	0.080	0.541	24.580285	-107.444553
El Dorado	55.00	1	1	4401	15.6	77.6	1.4	1.8	2.3	0.7	0.4	0.1	0.1	93.2	1.4	5.4	0.084	0.503	24.341631	-107.370681

SINALOA

16 CARR: Culiacán - El Dorado

CLAVE: 25044

RUTA: SIN-005

AÑO: 2023

LUGAR	ESTACION				CLASIFICACION VEHICULAR EN PORCIENTO														COORDENADAS	
	KM	TE	SC	TDPA	M	A	B	C2	C3	T3S2	T3S3	T3S2R4	OTROS	A	B	C	K'	D	LATITUD	LONGITUD
El Dorado	55.00	1	2	4446	17.4	76.8	1.2	1.7	2.0	0.6	0.2	0.1	0.0	94.2	1.2	4.6	0.088	0.503	24.341633	-107.370582

17 CARR: El Limoncito - Cinco Hermanos

CLAVE: 25016

RUTA: SIN-016

AÑO: 2023

LUGAR	ESTACION				CLASIFICACION VEHICULAR EN PORCIENTO														COORDENADAS	
	KM	TE	SC	TDPA	M	A	B	C2	C3	T3S2	T3S3	T3S2R4	OTROS	A	B	C	K'	D	LATITUD	LONGITUD
T. C. Culiacán - Altata	0.00	3	0	3842	14.1	77.7	1.6	2.4	2.9	0.8	0.3	0.2	0.0	91.8	1.6	6.6	0.080	0.500	24.760418	-107.743445
Cinco Hermanos	16.00	1	0	1244	35.1	57.1	1.2	3.5	1.4	0.9	0.5	0.2	0.1	92.2	1.2	6.6	0.100	0.501	24.809055	-107.856983

18 CARR: El Salado - El Dorado

CLAVE: 25010

RUTA: SIN-010

AÑO: 2023

LUGAR	ESTACION				CLASIFICACION VEHICULAR EN PORCIENTO														COORDENADAS	
	KM	TE	SC	TDPA	M	A	B	C2	C3	T3S2	T3S3	T3S2R4	OTROS	A	B	C	K'	D	LATITUD	LONGITUD
T. C. Mazatlán - Culiacán	0.00	3	0	4001	7.6	80.5	0.7	3.0	1.7	1.9	4.4	0.2	0.0	88.1	0.7	11.2	0.074	0.511	24.505524	-107.167179
El Dorado	31.00	1	0	5016	26.0	69.1	0.9	1.8	1.2	0.6	0.2	0.2	0.0	95.1	0.9	4.0	0.074	0.545	24.333977	-107.345079

19 CARR: Escuinapa de Hidalgo - Teacapan

CLAVE: 25001

RUTA: SIN-001

AÑO: 2023

LUGAR	ESTACION				CLASIFICACION VEHICULAR EN PORCIENTO														COORDENADAS	
	KM	TE	SC	TDPA	M	A	B	C2	C3	T3S2	T3S3	T3S2R4	OTROS	A	B	C	K'	D	LATITUD	LONGITUD
Escuinapa de Hidalgo	0.00	3	0	3962	11.2	77.5	2.6	5.2	1.8	1.2	0.1	0.2	0.2	88.7	2.6	8.7	0.077	0.504	22.816931	-105.794528
Teacapan	41.00	1	0	2334	20.4	73.4	3.3	1.9	0.6	0.1	0.0	0.0	0.3	93.8	3.3	2.9	0.113	0.509	22.548463	-105.741438

20 CARR: Estación Dimas - San Ignacio

CLAVE: 25007

RUTA: SIN-006

AÑO: 2023

LUGAR	ESTACION				CLASIFICACION VEHICULAR EN PORCIENTO														COORDENADAS	
	KM	TE	SC	TDPA	M	A	B	C2	C3	T3S2	T3S3	T3S2R4	OTROS	A	B	C	K'	D	LATITUD	LONGITUD
Dimas	0.00																			
X. C. Mazatlán - Culiacán	23.15	1	0	897	9.8	79.9	1.0	3.4	4.6	0.9	0.3	0.1	0.0	89.7	1.0	9.3	0.073	0.508	23.838268	-106.617140
X. C. Mazatlán - Culiacán	23.15	3	0	2108	10.8	83.9	0.9	2.8	1.2	0.2	0.1	0.1	0.0	94.7	0.9	4.4	0.092	0.511	23.790830	-106.609295
San Ignacio	56.00	1	0	1655	21.2	69.5	0.5	7.6	0.5	0.6	0.0	0.1	0.0	90.7	0.5	8.8	0.082	0.506	23.925181	-106.429387

SINALOA

21 CARR: Guamuchil - Mocorito

CLAVE: 25021

RUTA: SIN-021

AÑO: 2023

LUGAR	ESTACION				CLASIFICACION VEHICULAR EN PORCIENTO												COORDENADAS			
	KM	TE	SC	TDPA	M	A	B	C2	C3	T3S2	T3S3	T3S2R4	OTROS	A	B	C	K'	D	LATITUD	LONGITUD
Guamuchil	0.00	3	0	6989	9.0	85.6	1.0	1.8	1.6	0.5	0.2	0.2	0.1	94.6	1.0	4.4	0.077	0.544	25.457762	-108.052329
Mocorito	17.00	1	1	3948	11.7	78.9	1.6	2.6	1.7	1.9	0.7	0.4	0.5	90.6	1.6	7.8	0.086	0.539	25.477915	-107.929672
Mocorito	17.00	1	2	3372	10.7	79.4	1.5	2.6	1.7	2.3	0.8	0.4	0.6	90.1	1.5	8.4	0.095	0.539	25.477997	-107.929707

22 CARR: Guasave - Sinaloa de Leyva

CLAVE: 25023

RUTA: SIN-023

AÑO: 2023

LUGAR	ESTACION				CLASIFICACION VEHICULAR EN PORCIENTO												COORDENADAS			
	KM	TE	SC	TDPA	M	A	B	C2	C3	T3S2	T3S3	T3S2R4	OTROS	A	B	C	K'	D	LATITUD	LONGITUD
Guasave	0.00																			
X. C. Culiacán - Los Mochis	1.15	3	1	5815	13.2	79.9	0.5	1.8	2.8	0.9	0.3	0.5	0.1	93.1	0.5	6.4	0.079	0.508	25.595476	-108.455136
X. C. Culiacán - Los Mochis	1.15	3	2	6012	12.8	80.6	0.9	2.1	2.3	0.8	0.2	0.2	0.1	93.4	0.9	5.7	0.072	0.508	25.595594	-108.455183
Sinaloa de Leyva	74.50	1	1	1734	7.7	87.4	0.8	2.3	1.0	0.3	0.2	0.3	0.0	95.1	0.8	4.1	0.080	0.507	25.829615	-108.233948
Sinaloa de Leyva	74.50	1	2	1685	9.8	84.8	1.0	2.6	0.8	0.3	0.3	0.4	0.0	94.6	1.0	4.4	0.082	0.507	25.829689	-108.233936

23 CARR: Navolato - El Castillo

CLAVE: 25004

RUTA: SIN-004

AÑO: 2023

LUGAR	ESTACION				CLASIFICACION VEHICULAR EN PORCIENTO												COORDENADAS			
	KM	TE	SC	TDPA	M	A	B	C2	C3	T3S2	T3S3	T3S2R4	OTROS	A	B	C	K'	D	LATITUD	LONGITUD
Navolato	0.00	3	0	6381	15.9	70.3	1.3	2.5	4.0	2.4	1.3	1.5	0.8	86.2	1.3	12.5	0.086	0.505	24.739170	-107.685478
El Castillo	29.00	1	0	1500	26.3	67.5	1.1	3.5	0.8	0.3	0.2	0.2	0.1	93.8	1.1	5.1	0.143	0.500	24.548979	-107.705202

24 CARR: Pozole - Cofradía

CLAVE: 25080

RUTA: SIN-080

AÑO: 2023

LUGAR	ESTACION				CLASIFICACION VEHICULAR EN PORCIENTO												COORDENADAS			
	KM	TE	SC	TDPA	M	A	B	C2	C3	T3S2	T3S3	T3S2R4	OTROS	A	B	C	K'	D	LATITUD	LONGITUD
T. C. Tepic - Mazatlán	0.00	3	0	4036	15.8	70.7	1.3	4.8	3.0	1.2	2.1	0.2	0.9	86.5	1.3	12.2	0.088	0.519	23.196152	-106.260199
Cofradía	9.10	1	0	1277	15.2	80.3	1.1	1.2	0.9	0.3	0.3	0.0	0.7	95.5	1.1	3.4	0.118	0.523	23.324895	-106.255734

25 CARR: Ramal a Chametla

CLAVE: 25002

RUTA: SIN-002

AÑO: 2023

LUGAR	ESTACION				CLASIFICACION VEHICULAR EN PORCIENTO												COORDENADAS			
	KM	TE	SC	TDPA	M	A	B	C2	C3	T3S2	T3S3	T3S2R4	OTROS	A	B	C	K'	D	LATITUD	LONGITUD
T. C. Tepic - Mazatlán	0.00	3	0	2937	16.9	69.8	3.8	4.2	2.3	2.2	0.3	0.3	0.2	86.7	3.8	9.5	0.085	0.501	22.930530	-105.835559
Chametla	15.00	1	0	1333	16.2	68.2	2.5	6.0	3.0	1.4	1.9	0.5	0.3	84.4	2.5	13.1	0.093	0.512	22.882937	-105.951937

SINALOA

26 CARR: Ramal a Cosalá

CLAVE: 25008

RUTA: SIN-008

AÑO: 2023

LUGAR	ESTACION				CLASIFICACION VEHICULAR EN PORCIENTO													COORDENADAS		
	KM	TE	SC	TDPA	M	A	B	C2	C3	T3S2	T3S3	T3S2R4	OTROS	A	B	C	K'	D	LATITUD	LONGITUD
T. C. Mazatlán - Culiacán	0.00	3	0	1771	10.6	76.9	2.3	6.2	1.0	0.7	0.7	1.0	0.6	87.5	2.3	10.2	0.076	0.504	24.073724	-106.796278
Cosalá	53.00	1	0	1643	20.4	67.3	1.9	3.5	1.3	2.1	1.5	1.4	0.6	87.7	1.9	10.4	0.082	0.503	24.407395	-106.714040

27 CARR: Ramal a El Quelite

CLAVE: 25060

RUTA: SIN-060

AÑO: 2023

LUGAR	ESTACION				CLASIFICACION VEHICULAR EN PORCIENTO													COORDENADAS		
	KM	TE	SC	TDPA	M	A	B	C2	C3	T3S2	T3S3	T3S2R4	OTROS	A	B	C	K'	D	LATITUD	LONGITUD
T. C. Mazatlán - Culiacán	0.00	3	0	1650	13.0	82.1	0.3	3.1	1.0	0.1	0.4	0.0	0.0	95.1	0.3	4.6	0.138	0.513	23.531976	-106.499918
El Quelite	6.00	1	0	1660	19.6	76.8	0.3	1.8	0.9	0.2	0.4	0.0	0.0	96.4	0.3	3.3	0.218	0.513	23.547968	-106.477421

28 CARR: Ramal a Estación Bamoa

CLAVE: 25022

RUTA: SIN-022

AÑO: 2023

LUGAR	ESTACION				CLASIFICACION VEHICULAR EN PORCIENTO													COORDENADAS		
	KM	TE	SC	TDPA	M	A	B	C2	C3	T3S2	T3S3	T3S2R4	OTROS	A	B	C	K'	D	LATITUD	LONGITUD
T. C. Culiacán - Los Mochis	0.00	3	0	3903	13.3	77.0	1.4	2.4	4.3	1.3	0.2	0.1	0.0	90.3	1.4	8.3	0.077	0.508	25.525895	-108.349534
Estación Bamoa	22.50	1	0	2529	13.0	77.0	3.0	5.2	0.8	0.5	0.3	0.2	0.0	90.0	3.0	7.0	0.092	0.518	25.682651	-108.311797

29 CARR: Ramal a La Cruz

CLAVE: 25043

RUTA: SIN

AÑO: 2023

LUGAR	ESTACION				CLASIFICACION VEHICULAR EN PORCIENTO													COORDENADAS		
	KM	TE	SC	TDPA	M	A	B	C2	C3	T3S2	T3S3	T3S2R4	OTROS	A	B	C	K'	D	LATITUD	LONGITUD
T. C. Mazatlán - Culiacán	0.00	3	0	2691	10.9	82.2	1.5	2.2	1.7	0.7	0.4	0.3	0.1	93.1	1.5	5.4	0.071	0.505	24.052376	-106.798305
La Cruz	18.00	1	0	4444	15.6	77.3	1.1	2.2	2.6	0.5	0.4	0.3	0.0	92.9	1.1	6.0	0.070	0.502	23.942728	-106.872128

30 CARR: Ramal a La Noria

CLAVE: 25592

RUTA: SIN

AÑO: 2023

LUGAR	ESTACION				CLASIFICACION VEHICULAR EN PORCIENTO													COORDENADAS		
	KM	TE	SC	TDPA	M	A	B	C2	C3	T3S2	T3S3	T3S2R4	OTROS	A	B	C	K'	D	LATITUD	LONGITUD
T. C. Mazatlán - Culiacán	0.00	3	0	2140	14.4	80.1	0.3	3.4	0.8	0.1	0.1	0.1	0.7	94.5	0.3	5.2	0.141	0.508	23.350531	-106.406812
La Noria	25.50	1	0	834	18.9	76.8	0.7	2.3	0.4	0.1	0.0	0.0	0.8	95.7	0.7	3.6	0.196	0.504	23.500147	-106.322216

SINALOA

31 CARR: Ramal a La Reforma

CLAVE: 25041

RUTA: SIN-004

AÑO: 2023

LUGAR	ESTACION				CLASIFICACION VEHICULAR EN PORCIENTO										COORDENADAS					
	KM	TE	SC	TDPA	M	A	B	C2	C3	T3S2	T3S3	T3S2R4	OTROS	A	B	C	K'	D	LATITUD	LONGITUD
T. C. Culiacán - Los Mochis	0.00	3	0	10016	8.6	85.5	1.2	1.4	2.1	0.7	0.2	0.3	0.0	94.1	1.2	4.7	0.079	0.503	25.445487	-108.085919
T. Der. La Angostura	14.00	3	0	3371	6.5	77.4	1.5	4.5	7.3	1.2	0.9	0.5	0.2	83.9	1.5	14.6	0.086	0.529	25.365625	-108.142762
La Reforma	60.00	1	0	3997	14.5	82.1	0.3	2.1	0.4	0.3	0.1	0.2	0.0	96.6	0.3	3.1	0.118	0.507	25.085427	-108.049546

32 CARR: Rosario - Caimanero

CLAVE: 25003

RUTA: SIN-003

AÑO: 2023

LUGAR	ESTACION				CLASIFICACION VEHICULAR EN PORCIENTO										COORDENADAS					
	KM	TE	SC	TDPA	M	A	B	C2	C3	T3S2	T3S3	T3S2R4	OTROS	A	B	C	K'	D	LATITUD	LONGITUD
Rosario	0.00	3	0	3819	29.7	63.8	1.3	2.7	1.3	1.0	0.1	0.1	0.0	93.5	1.3	5.2	0.111	0.502	22.981027	-105.878553
Caimanero	30.00	1	0	1202	20.8	72.9	1.6	2.3	1.5	0.6	0.2	0.1	0.0	93.7	1.6	4.7	0.101	0.537	22.882474	-106.061802

33 CARR: San Pedro - Campo Anibal

CLAVE: 25600

RUTA: SIN

AÑO: 2023

LUGAR	ESTACION				CLASIFICACION VEHICULAR EN PORCIENTO										COORDENADAS					
	KM	TE	SC	TDPA	M	A	B	C2	C3	T3S2	T3S3	T3S2R4	OTROS	A	B	C	K'	D	LATITUD	LONGITUD
T. C. Culiacán - Altata	0.00	3	0	4339	10.5	74.9	2.8	3.3	4.3	2.0	0.7	1.2	0.3	85.4	2.8	11.8	0.077	0.522	24.761804	-107.545534
Campo Anibal	24.50	1	0	1459	28.8	63.2	1.6	2.7	2.2	0.7	0.3	0.4	0.1	92.0	1.6	6.4	0.103	0.508	24.555487	-107.543313
Los Puentes	26.50																			

34 CARR: Topolobampo - Choix

CLAVE: 25032

RUTA: SIN-023

AÑO: 2023

LUGAR	ESTACION				CLASIFICACION VEHICULAR EN PORCIENTO										COORDENADAS					
	KM	TE	SC	TDPA	M	A	B	C2	C3	T3S2	T3S3	T3S2R4	OTROS	A	B	C	K'	D	LATITUD	LONGITUD
Topolobampo	0.00	3	1	4689	3.8	78.6	1.7	6.9	5.6	2.0	0.7	0.6	0.1	82.4	1.7	15.9	0.132	0.528	25.611781	-109.057476
Topolobampo	0.00	3	2	4189	3.5	79.3	1.5	6.5	5.2	2.3	0.8	0.8	0.1	82.8	1.5	15.7	0.151	0.528	25.611780	-109.057568
Los Mochis	24.00	1	1	10085	10.8	81.3	1.4	1.8	2.3	0.9	0.6	0.7	0.2	92.1	1.4	6.5	0.096	0.508	25.759161	-108.998507
Los Mochis	24.00	1	2	10401	11.1	79.2	1.6	1.9	2.4	1.5	1.2	0.9	0.2	90.3	1.6	8.1	0.083	0.508	25.758984	-108.998779
X. C. Los Mochis - Cd. Obregón (Cuota)	29.00	1	1	10323	4.7	86.5	2.0	3.5	1.4	0.7	0.6	0.5	0.1	91.2	2.0	6.8	0.083	0.513	25.819043	-108.974373
X. C. Los Mochis - Cd. Obregón (Cuota)	29.00	1	2	10858	5.0	85.3	2.1	4.2	1.4	1.1	0.4	0.4	0.1	90.3	2.1	7.6	0.089	0.513	25.819018	-108.974513
X. C. Los Mochis - Cd. Obregón (Cuota)	29.00	3	1	7471	3.6	85.9	1.9	4.6	2.4	0.8	0.4	0.3	0.1	89.5	1.9	8.6	0.087	0.508	25.840575	-108.964969
X. C. Los Mochis - Cd. Obregón (Cuota)	29.00	3	2	7714	4.3	84.4	2.4	5.2	2.1	0.7	0.5	0.3	0.1	88.7	2.4	8.9	0.097	0.508	25.840595	-108.965069
San Blas	65.00	1	1	3937	12.0	73.8	2.8	6.7	1.5	1.1	0.7	0.6	0.8	85.8	2.8	11.4	0.078	0.521	26.063030	-108.778426
San Blas	65.00	1	2	3625	11.9	74.2	2.9	6.7	1.6	0.9	0.8	0.4	0.6	86.1	2.9	11.0	0.098	0.521	26.063098	-108.778567
San Blas	65.00	3	1	2046	8.5	76.1	2.3	8.1	1.4	1.2	0.9	1.0	0.5	84.6	2.3	13.1	0.098	0.502	26.137158	-108.737013
San Blas	65.00	3	2	2033	8.2	76.0	2.7	8.1	1.3	1.2	0.9	0.9	0.7	84.2	2.7	13.1	0.116	0.502	26.137175	-108.737069

SINALOA

34 CARR: Topolobampo - Choix

CLAVE: 25032

RUTA: SIN-023

AÑO: 2023

LUGAR	ESTACION				CLASIFICACION VEHICULAR EN PORCIENTO										COORDENADAS					
	KM	TE	SC	TDPA	M	A	B	C2	C3	T3S2	T3S3	T3S2R4	OTROS	A	B	C	K'	D	LATITUD	LONGITUD
El Fuerte	107.70	1	1	2688	7.6	75.2	3.1	8.1	1.8	1.4	1.2	0.9	0.7	82.8	3.1	14.1	0.101	0.502	26.391889	-108.628040
El Fuerte	107.70	1	2	2667	7.7	75.1	3.1	8.3	1.8	1.3	1.1	0.9	0.7	82.8	3.1	14.1	0.088	0.502	26.391822	-108.628205
El Fuerte	107.70	3	0	3411	21.3	56.8	2.4	8.7	6.0	1.4	1.4	1.7	0.3	78.1	2.4	19.5	0.075	0.522	26.421582	-108.607051
Choix	159.00	1	0	2618	10.9	76.8	1.8	7.4	1.0	0.2	1.3	0.5	0.1	87.7	1.8	10.5	0.077	0.501	26.667882	-108.346417

35 CARR: Villa Unión - El Walamo

CLAVE: 25081

RUTA: SIN-081

AÑO: 2023

LUGAR	ESTACION				CLASIFICACION VEHICULAR EN PORCIENTO										COORDENADAS					
	KM	TE	SC	TDPA	M	A	B	C2	C3	T3S2	T3S3	T3S2R4	OTROS	A	B	C	K'	D	LATITUD	LONGITUD
Villa Unión	0.00	3	0	4037	23.9	71.2	1.1	2.8	0.5	0.2	0.1	0.1	0.1	95.1	1.1	3.8	0.098	0.505	23.166722	-106.220830
El Walamo	7.00	1	0	4055	26.4	67.4	1.4	3.4	0.9	0.2	0.0	0.1	0.2	93.8	1.4	4.8	0.084	0.502	23.143501	-106.238945

36 CARR: Villa Unión - Siqueiros

CLAVE: 25063

RUTA: SIN-063

AÑO: 2023

LUGAR	ESTACION				CLASIFICACION VEHICULAR EN PORCIENTO										COORDENADAS					
	KM	TE	SC	TDPA	M	A	B	C2	C3	T3S2	T3S3	T3S2R4	OTROS	A	B	C	K'	D	LATITUD	LONGITUD
Villa Unión	0.00	3	0	3912	19.4	73.7	0.8	2.9	2.0	0.5	0.5	0.1	0.1	93.1	0.8	6.1	0.082	0.501	23.205015	-106.207743
Siqueiros	11.00	1	0	1200	29.2	63.1	1.7	5.5	0.4	0.1	0.0	0.0	0.0	92.3	1.7	6.0	0.082	0.535	23.329750	-106.236476

37 CARR: Culiacán - Las Brisas (Cuota)

CLAVE: 25503

RUTA: SIN-001D

AÑO: 2023

LUGAR	ESTACION				CLASIFICACION VEHICULAR EN PORCIENTO										COORDENADAS					
	KM	TE	SC	TDPA	M	A	B	C2	C3	T3S2	T3S3	T3S2R4	OTROS	A	B	C	K'	D	LATITUD	LONGITUD
T. C. Culiacán - El Dorado	0.00																			
Plaza de Cobro Culiacán	1.50	3	1	4951	4.8	79.5	3.3	2.6	2.8	4.2	0.8	1.4	0.6	84.3	3.3	12.4	0.085	0.500	24.750692	-107.478284
Plaza de Cobro Culiacán	1.50	3	2	4960	4.3	77.9	4.2	2.6	3.2	4.3	1.3	1.6	0.6	82.2	4.2	13.6	0.112	0.500	24.750620	-107.478304
X. C. Culiacán - Altata	14.70	3	1	5853	4.8	55.5	7.7	5.5	3.5	15.9	1.9	4.3	0.9	60.3	7.7	32.0	0.077	0.516	24.772298	-107.582811
X. C. Culiacán - Altata	14.70	3	2	6242	4.5	55.8	7.8	5.4	3.8	15.6	1.6	4.6	0.9	60.3	7.8	31.9	0.078	0.516	24.772307	-107.582894
T. Der. Caimanero	44.79	1	1	4786	4.3	53.3	7.2	6.2	2.2	18.8	2.2	5.0	0.8	57.6	7.2	35.2	0.073	0.504	24.952415	-107.757545
T. Der. Caimanero	44.79	1	2	4861	4.4	57.0	7.1	6.0	2.1	16.0	2.2	4.3	0.9	61.4	7.1	31.5	0.087	0.504	24.952364	-107.757616
T. Der. Zapotillo	63.36	1	1	4852	3.9	52.6	8.8	5.7	2.7	17.7	2.2	5.5	0.9	56.5	8.8	34.7	0.070	0.504	25.066845	-107.872566
T. Der. Zapotillo	63.36	1	2	4925	4.4	50.8	9.4	6.3	2.4	17.9	2.7	5.2	0.9	55.2	9.4	35.4	0.085	0.504	25.066896	-107.872507
T. Der. Zapotillo	63.36	3	1	4454	4.9	52.3	9.1	6.2	2.5	17.4	2.1	4.6	0.9	57.2	9.1	33.7	0.072	0.501	25.076534	-107.882767
T. Der. Zapotillo	63.36	3	2	4433	4.2	53.0	9.7	6.0	2.6	16.4	2.3	4.9	0.9	57.2	9.7	33.1	0.070	0.501	25.076488	-107.882840
X. C. Ramal a La Reforma	110.00	1	1	3865	4.8	45.0	11.3	6.3	2.2	20.9	2.6	6.0	0.9	49.8	11.3	38.9	0.078	0.504	25.388984	-108.123367

SINALOA

37 CARR: Culiacán - Las Brisas (Cuota)

CLAVE: 25503

RUTA: SIN-001D

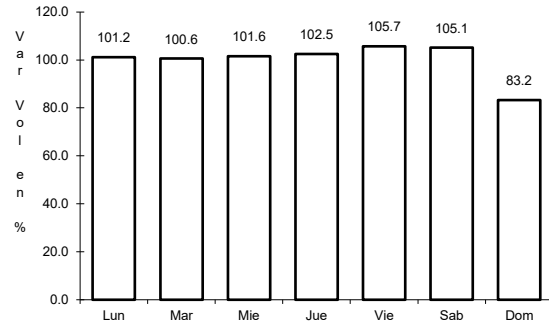
AÑO: 2023

LUGAR	ESTACION				CLASIFICACION VEHICULAR EN PORCIENTO													COORDENADAS		
	KM	TE	SC	TDPA	M	A	B	C2	C3	T3S2	T3S3	T3S2R4	OTROS	A	B	C	K'	D	LATITUD	LONGITUD
X. C. Ramal a La Reforma	110.00	1	2	3930	4.3	46.7	10.3	6.9	2.2	20.3	2.7	5.7	0.9	51.0	10.3	38.7	0.076	0.504	25.388937	-108.123430
T. C. Culiacán - Los Mochis	125.70	1	1	3879	4.2	45.5	10.0	5.3	3.1	23.4	2.3	5.3	0.9	49.7	10.0	40.3	0.079	0.501	25.481055	-108.224857
T. C. Culiacán - Los Mochis	125.70	1	2	3865	4.0	47.8	9.6	5.6	2.7	21.8	2.3	5.3	0.9	51.8	9.6	38.6	0.075	0.501	25.481013	-108.224930

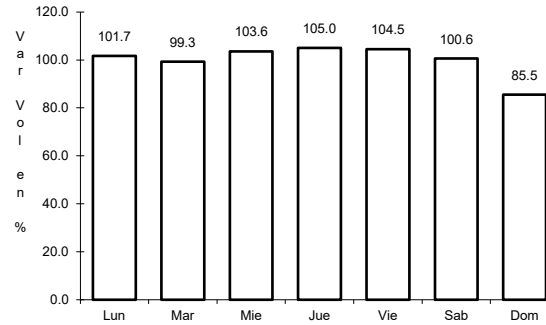
1 CARR: Culiacán - Los Mochis

CLAVE: 25502

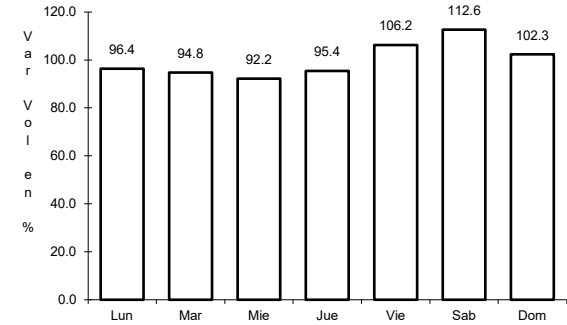
RUTA: MEX-015



Km: 4.00 Tipo: 1 Sent: 1



Km: 4.00 Tipo: 1 Sent: 2

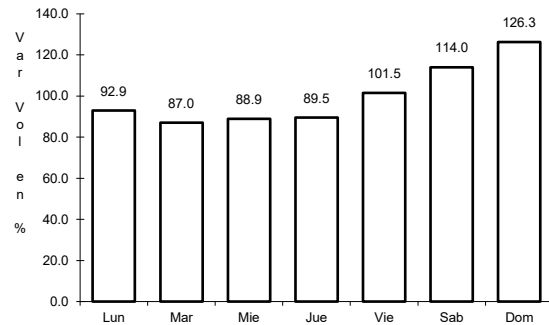


Km: 104.70 Tipo: 1 Sent: 0

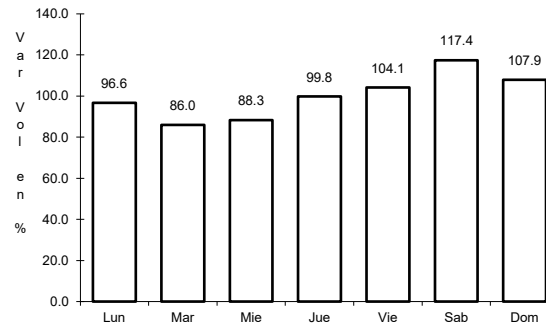
2 CARR: Durango - Villa Unión

CLAVE: 0083

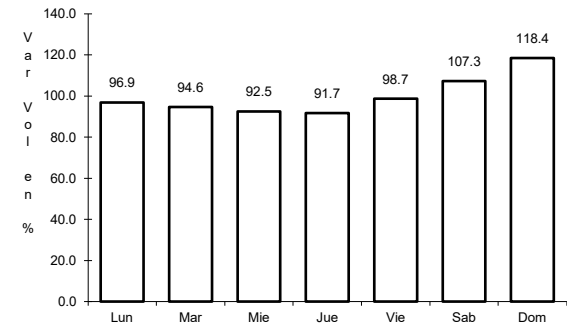
RUTA: MEX-040



Km: 0.00 Tipo: 3 Sent: 0



Km: 145.50 Tipo: 1 Sent: 0

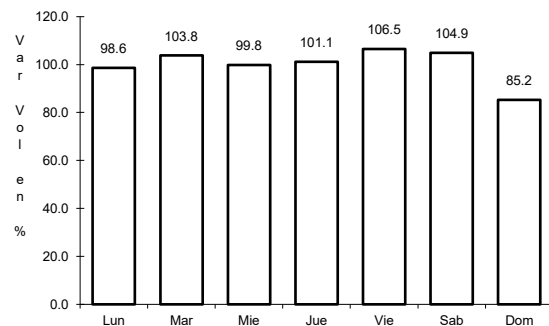


Km: 294.40 Tipo: 1 Sent: 0

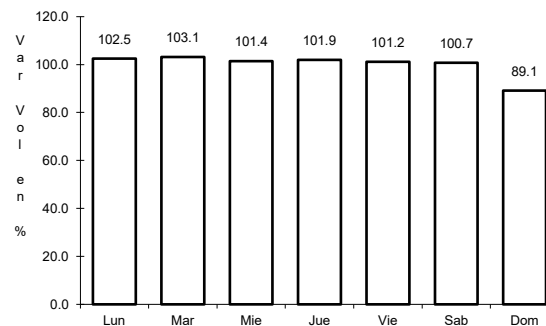
3 CARR: Libramiento de Mazatlán

CLAVE: 25604

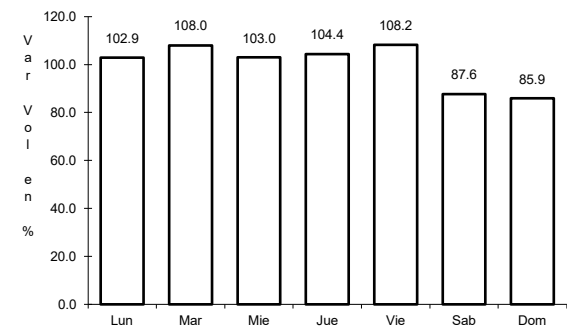
RUTA: MEX-015



Km: 0.00 Tipo: 3 Sent: 1



Km: 0.00 Tipo: 3 Sent: 2

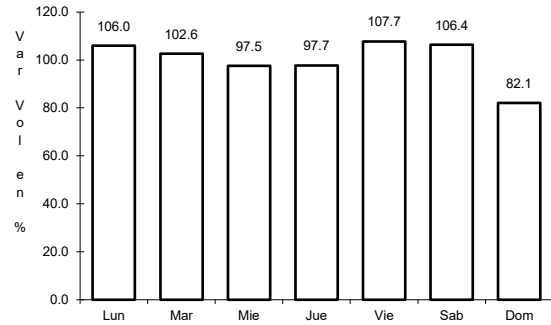


Km: 5.40 Tipo: 1 Sent: 1

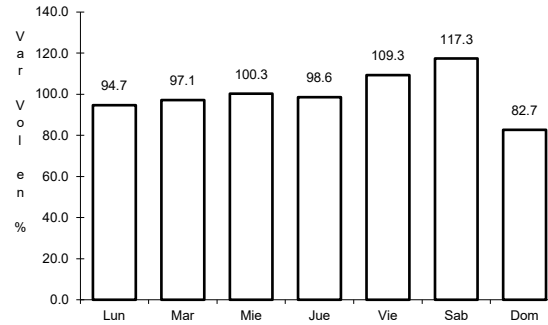
4 CARR: Libramiento Sur de Culiacán

CLAVE: 25500

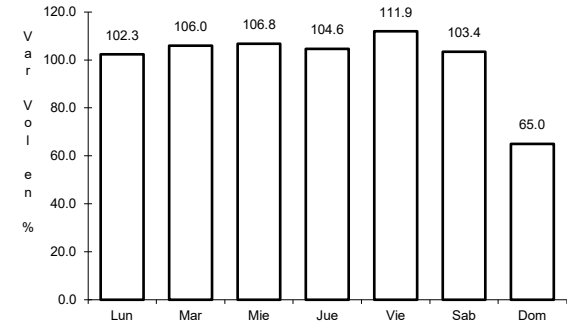
ruta: MEX-015



Km: 0.00 Tipo: 3 Sent: 1



Km: 0.00 Tipo: 3 Sent: 2

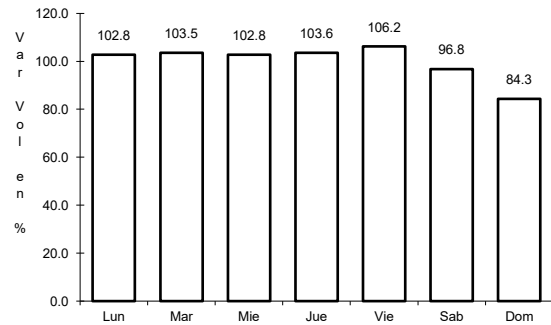


Km: 8.90 Tipo: 1 Sent: 1

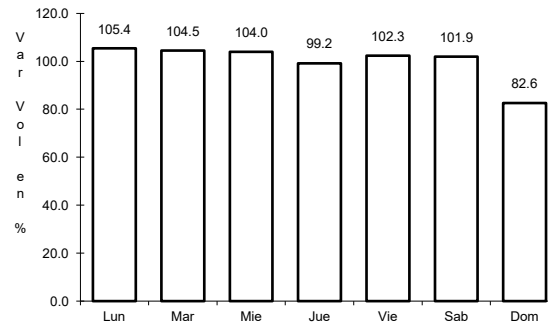
5 CARR: Mazatlán - Culiacán

CLAVE: 25501

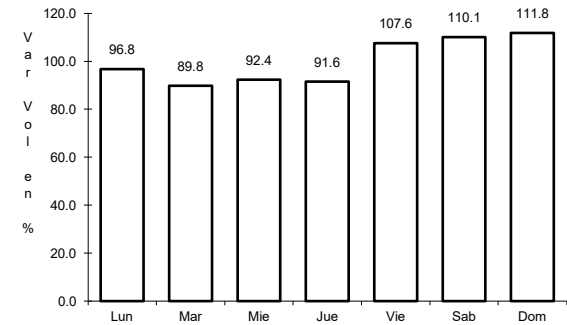
ruta: MEX-015



Km: 0.82 Tipo: 1 Sent: 1



Km: 0.82 Tipo: 1 Sent: 2

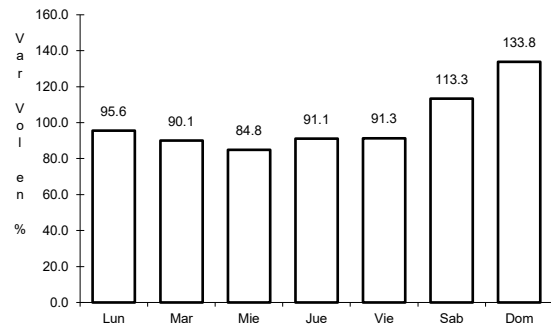


Km: 105.21 Tipo: 3 Sent: 0

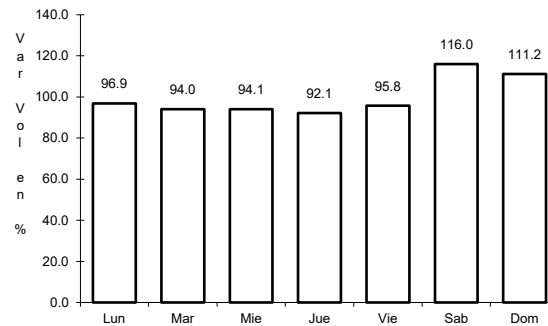
6 CARR: Pericos - Los Naranjos

CLAVE: 25598

ruta: MEX-024



Km: 0.00 Tipo: 3 Sent: 0

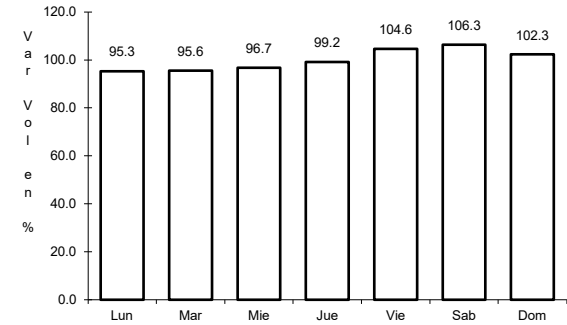
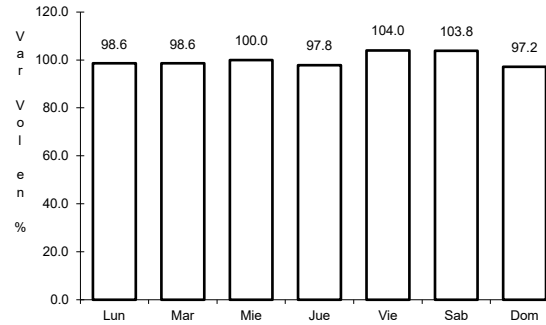
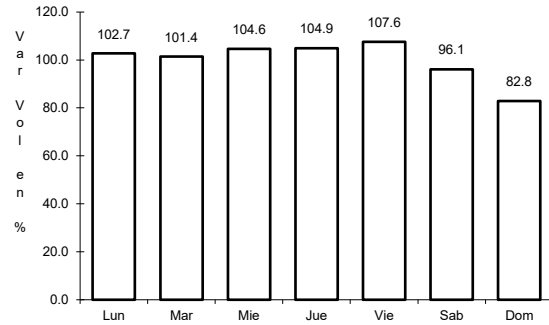


Km: 37.50 Tipo: 1 Sent: 0

7 CARR: Tepic - Mazatlán

CLAVE: 00499

ruta: MEX-015



Km: 0.00

Tipo: 3

Sent: 1

Km: 136.52

Tipo: 1

Sent: 0

Km: 267.99

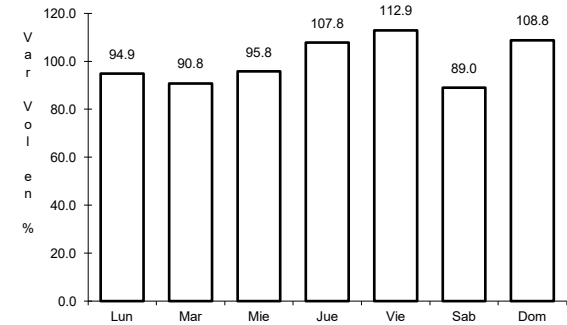
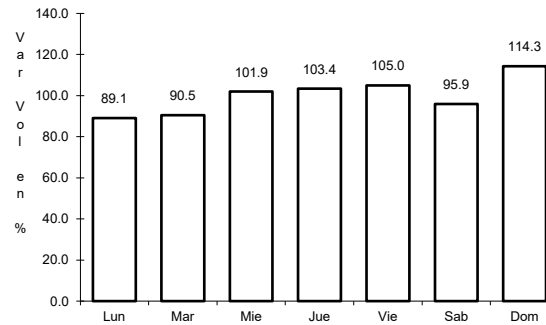
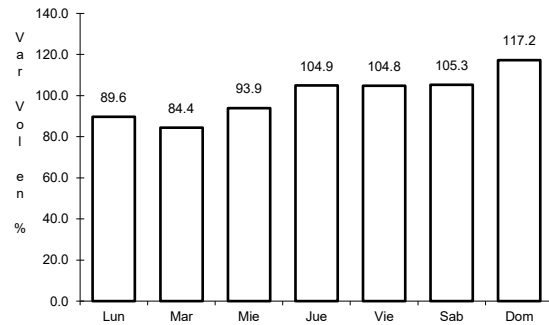
Tipo: 1

Sent: 0

8 CARR: Durango - Mazatlán (Cuota)

CLAVE: 00084

ruta: MEX-040D



Km: 21.30

Tipo: 3

Sent: 0

Km: 111.00

Tipo: 3

Sent: 0

Km: 229.70

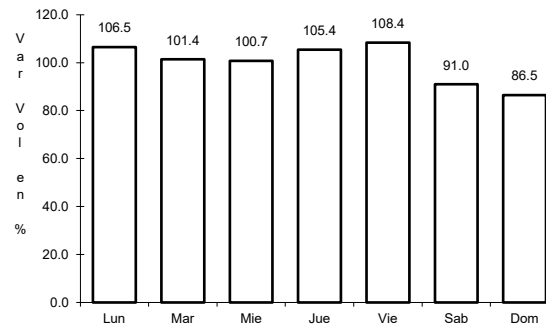
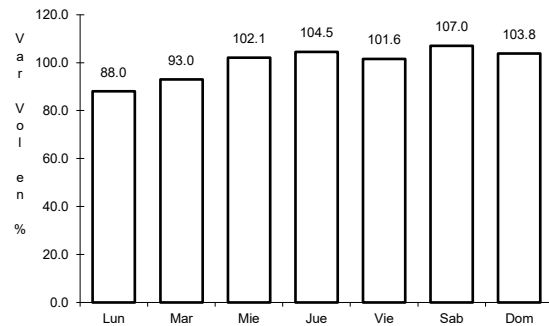
Tipo: 1

Sent: 0

9 CARR: Libramiento de Culiacán (Cuota)

CLAVE:

ruta: MEX-015D



Km: 203.30

Tipo: 1

Sent: 1

Km: 203.30

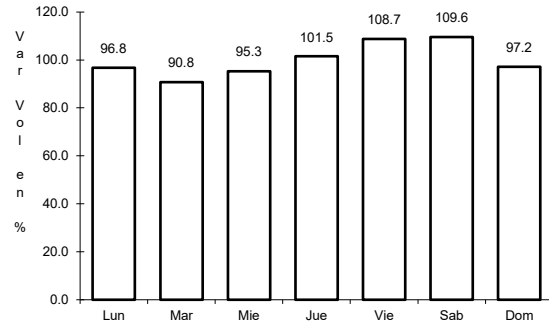
Tipo: 1

Sent: 2

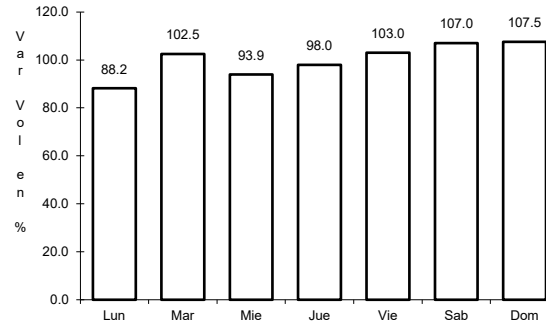
10 CARR: Libramiento de Mazatlán (Cuota)

CLAVE:

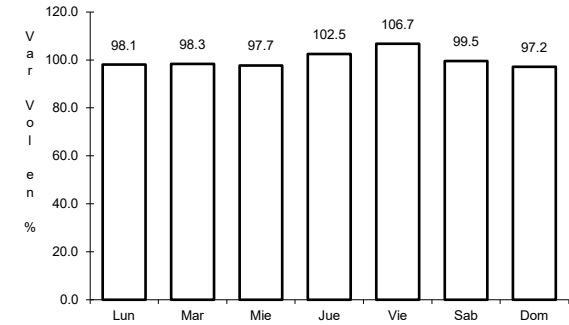
ruta: MEX-015D



Km: 0.00 Tipo: 3 Sent: 1



Km: 0.00 Tipo: 3 Sent: 2

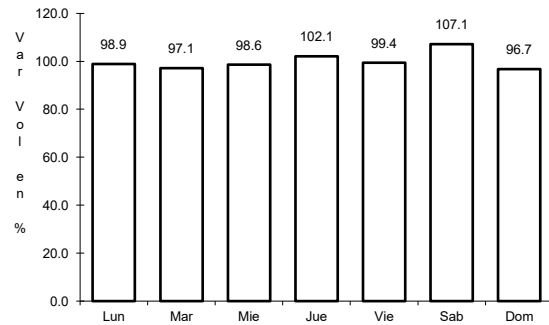


Km: 28.60 Tipo: 3 Sent: 1

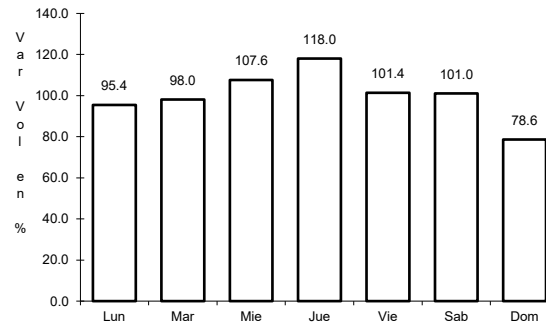
11 CARR: Los Mochis - Cd. Obregón (Cuota)

CLAVE: 26444

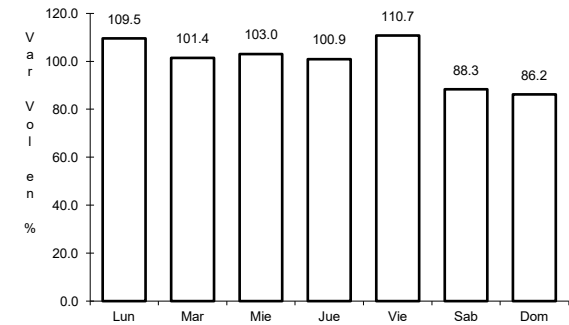
ruta: MEX-015D



Km: 0.00 Tipo: 3 Sent: 1



Km: 0.00 Tipo: 3 Sent: 2

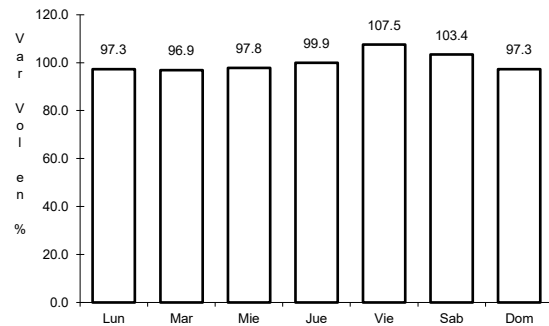


Km: 222.70 Tipo: 1 Sent: 1

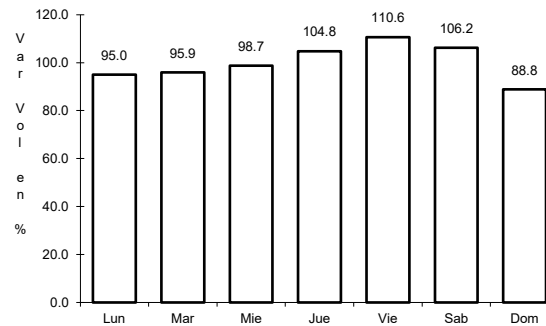
12 CARR: Mazatlán - Culiacán (Cuota)

CLAVE: 25045

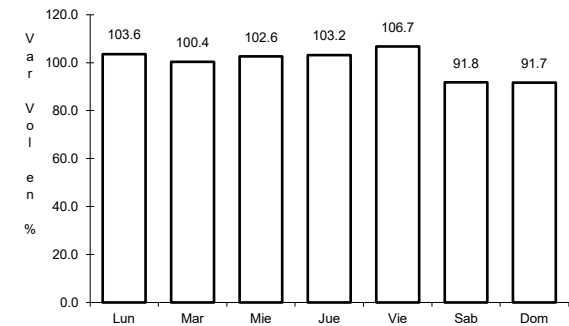
ruta: MEX-015D



Km: 0.00 Tipo: 3 Sent: 1



Km: 0.00 Tipo: 3 Sent: 2

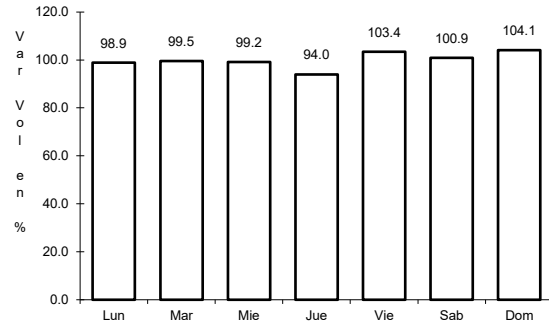


Km: 187.80 Tipo: 3 Sent: 1

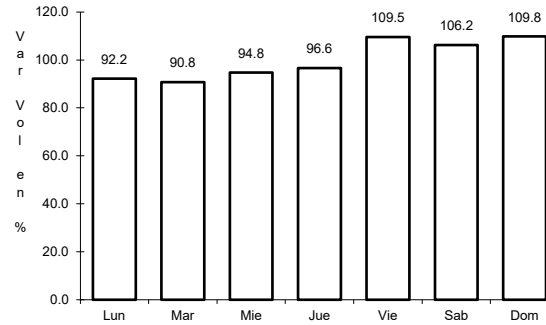
13 CARR: Tepic - Villa Unión (cuota)

CLAVE: 00500

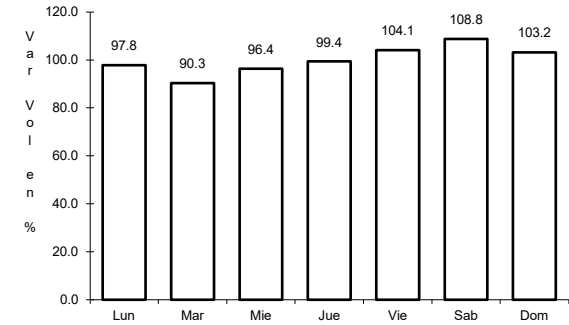
RUTA: MEX-015D



Km: 8.65 Tipo: 1 Sent: 1



Km: 8.65 Tipo: 1 Sent: 2

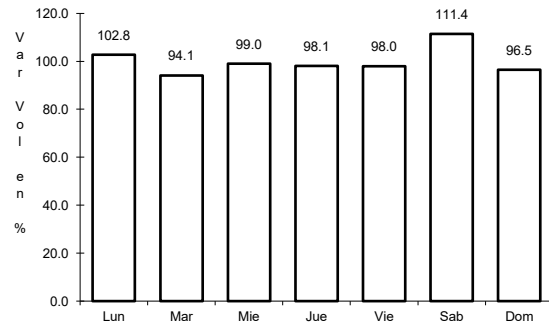


Km: 240.90 Tipo: 1 Sent: 0

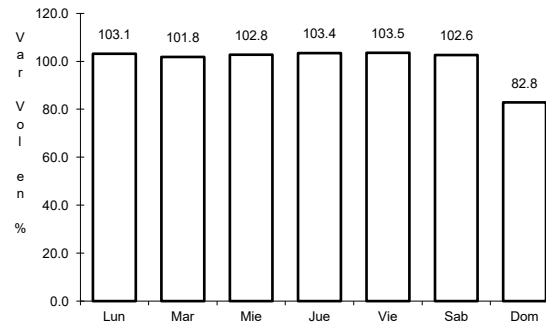
14 CARR: Carrizal - Campo Aníbal

CLAVE: 25585

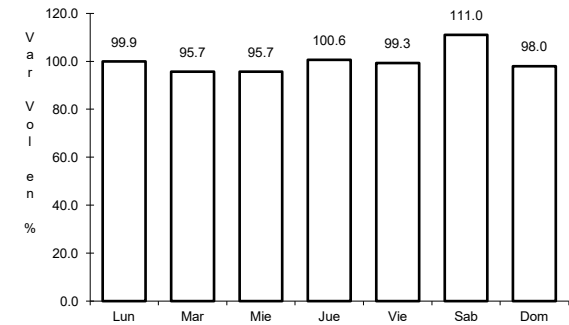
RUTA: SIN-019



Km: 0.00 Tipo: 3 Sent: 0



Km: 29.20 Tipo: 1 Sent: 0

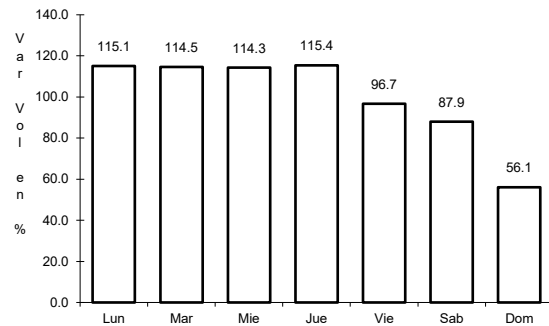


Km: 32.00 Tipo: 1 Sent: 0

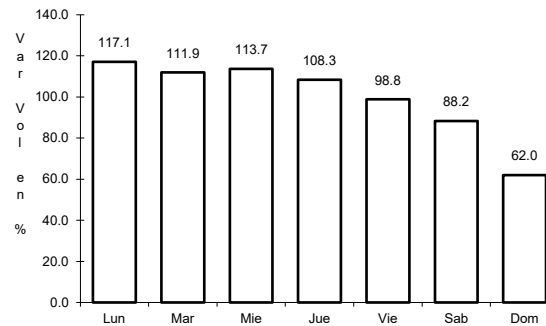
15 CARR: Culiacán - Altata

CLAVE: 25013

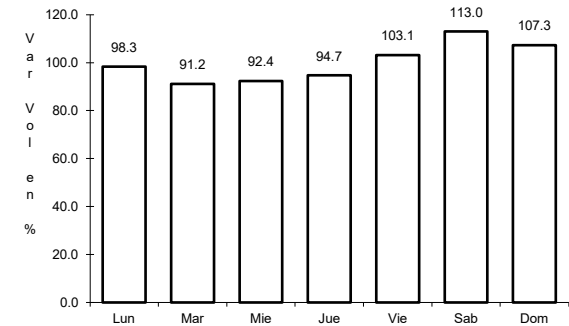
RUTA: SIN-030



Km: 6.20 Tipo: 1 Sent: 1



Km: 6.20 Tipo: 1 Sent: 2

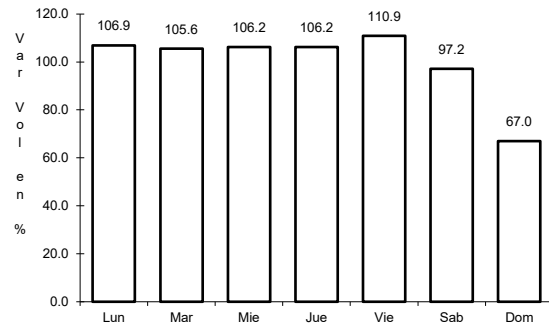


Km: 67.00 Tipo: 1 Sent: 1

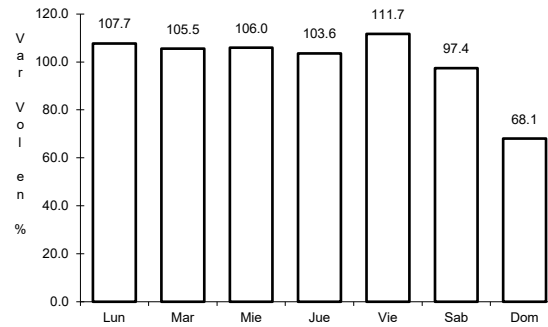
16 CARR: Culiacán - El Dorado

CLAVE: 25044

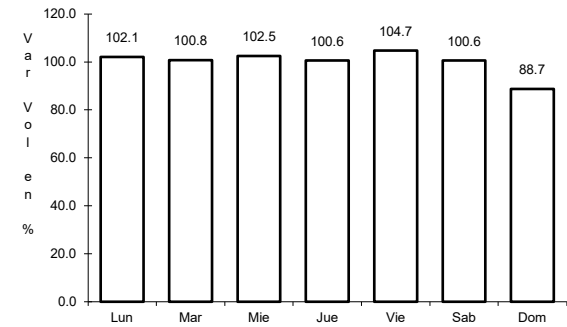
ruta: SIN-005



Km: 0.00 Tipo: 3 Sent: 1



Km: 0.00 Tipo: 3 Sent: 2

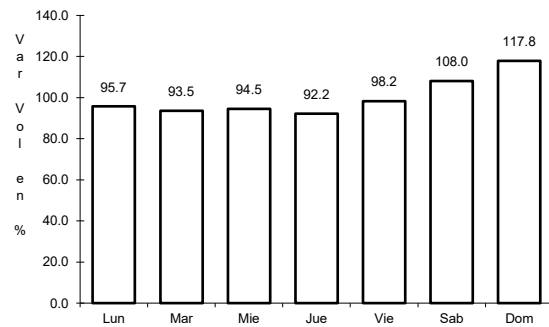


Km: 21.35 Tipo: 3 Sent: 0

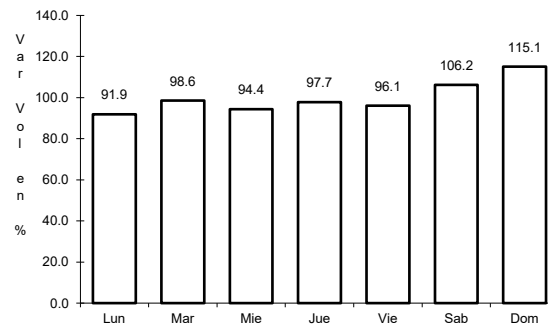
17 CARR: El Limoncito - Cinco Hermanos

CLAVE: 25016

ruta: SIN-016



Km: 0.00 Tipo: 3 Sent: 0

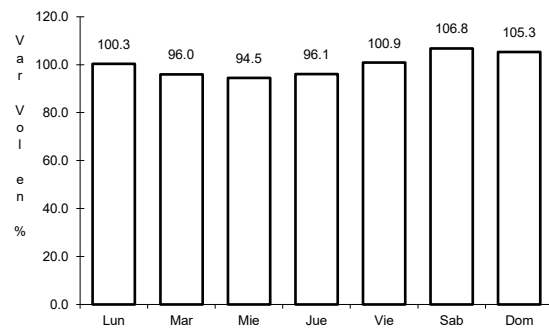


Km: 16.00 Tipo: 1 Sent: 0

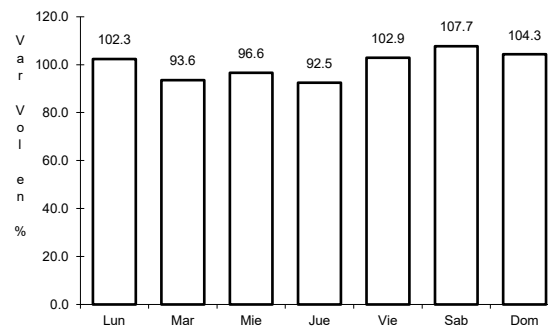
18 CARR: El Salado - El Dorado

CLAVE: 25010

ruta: SIN-010



Km: 0.00 Tipo: 3 Sent: 0

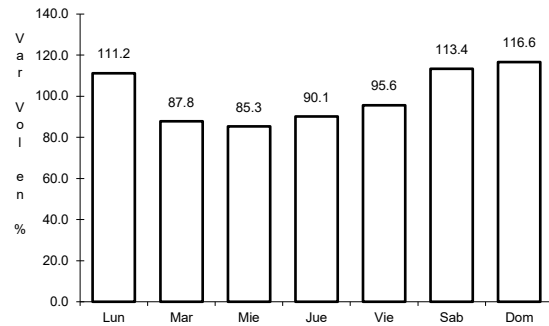


Km: 31.00 Tipo: 1 Sent: 0

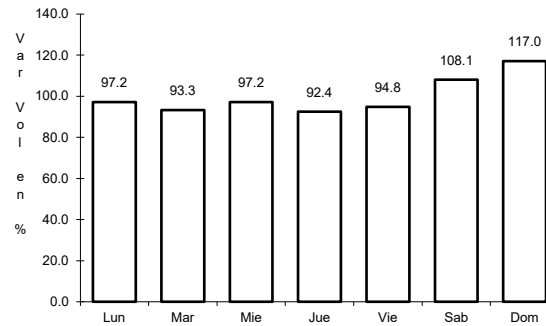
19 CARR: Escuinapa de Hidalgo - Teacapan

CLAVE: 25001

ruta: SIN-001



Km: 0.00 Tipo: 3 Sent: 0

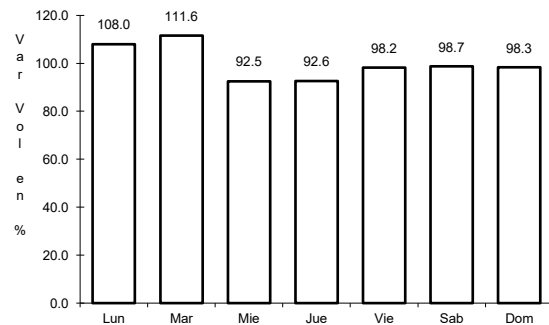


Km: 41.00 Tipo: 1 Sent: 0

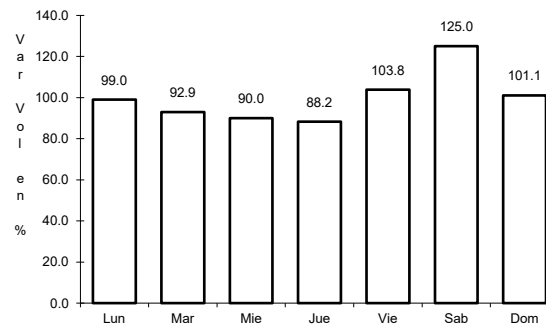
20 CARR: Estación Dimas - San Ignacio

CLAVE: 25007

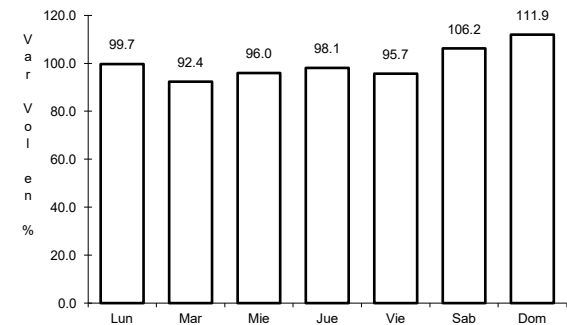
ruta: SIN-006



Km: 23.15 Tipo: 1 Sent: 0



Km: 23.15 Tipo: 3 Sent: 0

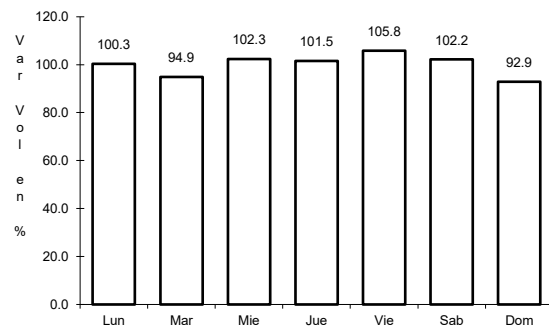


Km: 56.00 Tipo: 1 Sent: 0

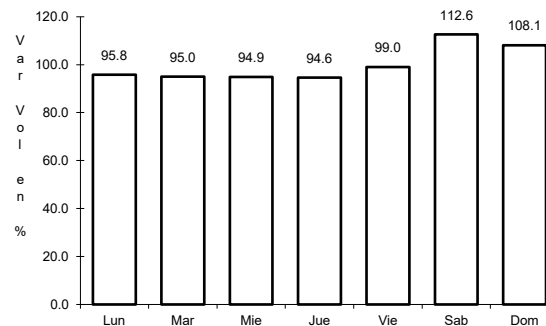
21 CARR: Guamuchil - Mocerito

CLAVE: 25021

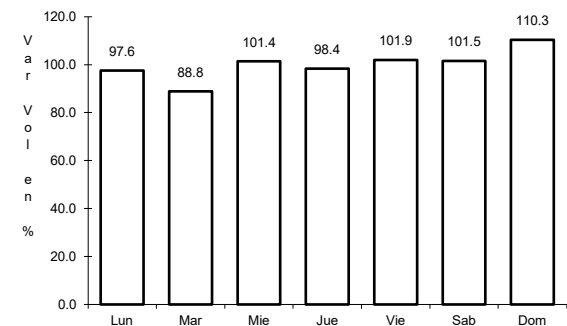
ruta: SIN-021



Km: 0.00 Tipo: 3 Sent: 0



Km: 17.00 Tipo: 1 Sent: 1

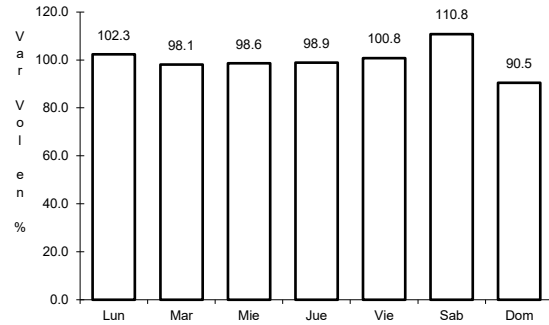


Km: 17.00 Tipo: 1 Sent: 2

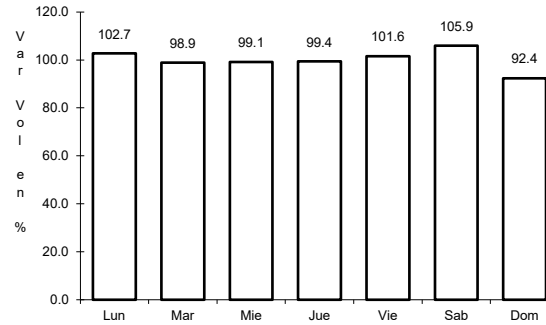
22 CARR: Guasave - Sinaloa de Leyva

CLAVE: 25023

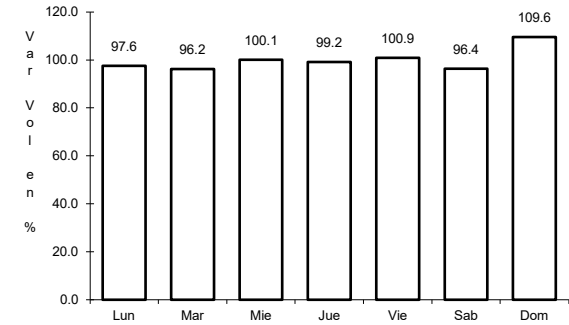
ruta: SIN-023



Km: 1.15 Tipo: 3 Sent: 1



Km: 1.15 Tipo: 3 Sent: 2

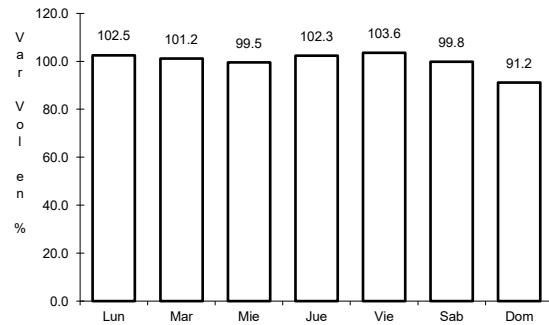


Km: 74.50 Tipo: 1 Sent: 1

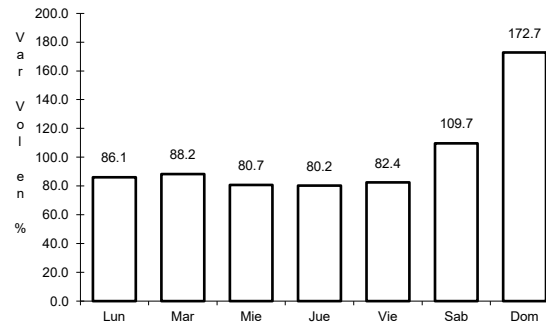
23 CARR: Navolato - El Castillo

CLAVE: 25004

ruta: SIN-004



Km: 0.00 Tipo: 3 Sent: 0

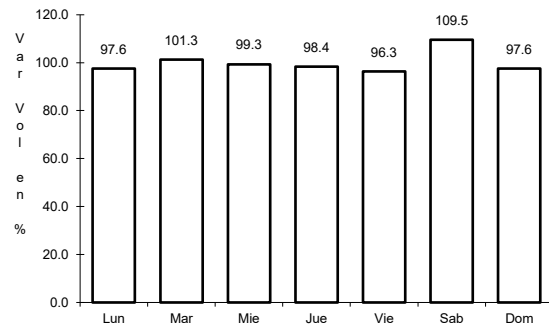


Km: 29.00 Tipo: 1 Sent: 0

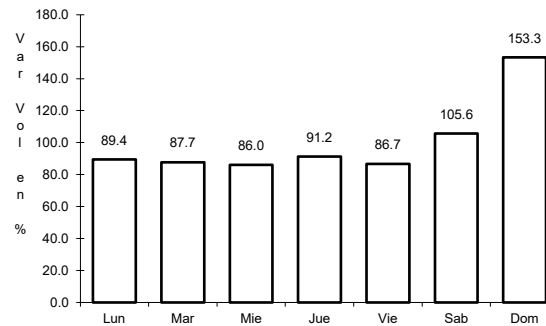
24 CARR: Pozole - Cofradía

CLAVE: 25080

ruta: SIN-080



Km: 0.00 Tipo: 3 Sent: 0

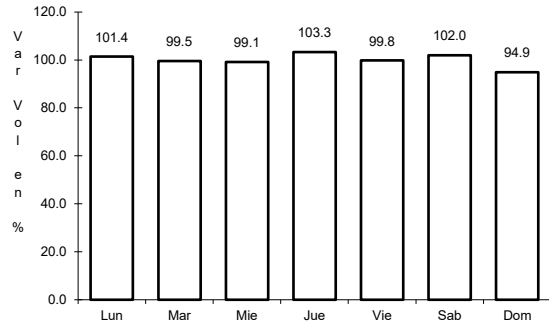


Km: 9.10 Tipo: 1 Sent: 0

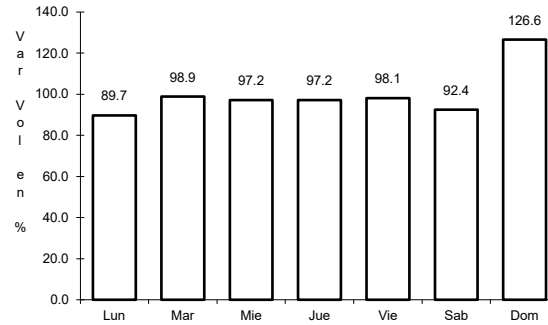
25 CARR: Ramal a Chametla

CLAVE: 25002

ruta: SIN-002



Km: 0.00 Tipo: 3 Sent: 0

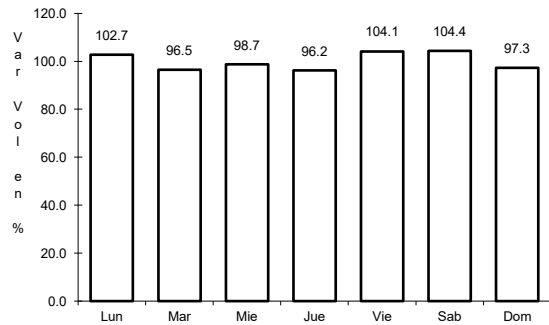


Km: 15.00 Tipo: 1 Sent: 0

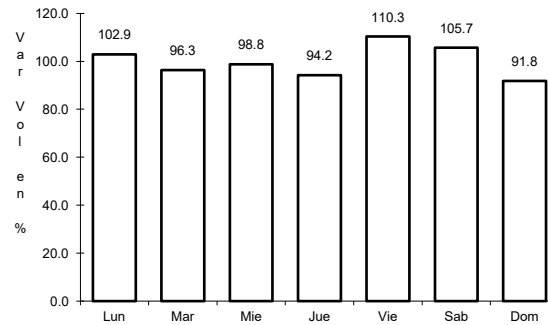
26 CARR: Ramal a Cosalá

CLAVE: 25008

ruta: SIN-008



Km: 0.00 Tipo: 3 Sent: 0

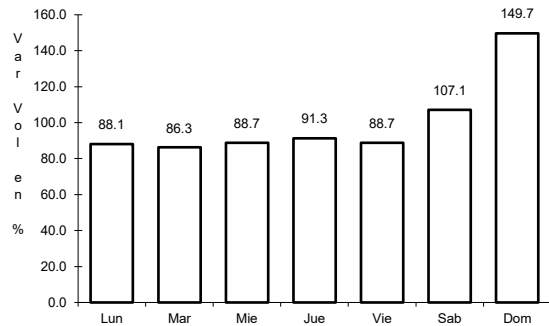


Km: 53.00 Tipo: 1 Sent: 0

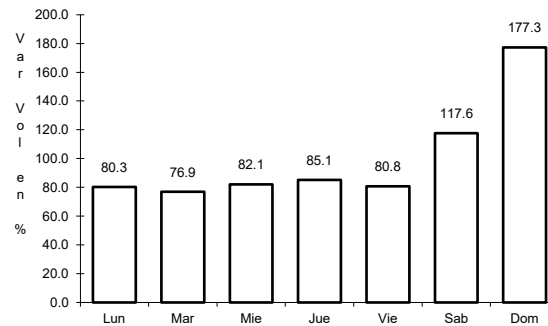
27 CARR: Ramal a El Quelite

CLAVE: 25060

ruta: SIN-060



Km: 0.00 Tipo: 3 Sent: 0

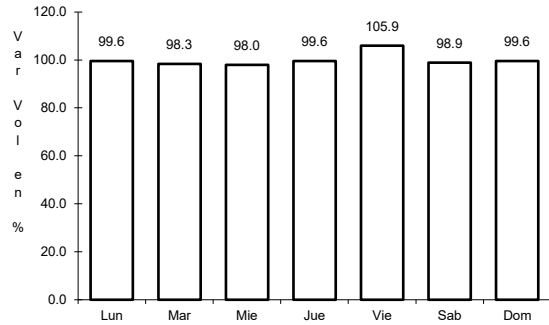


Km: 6.00 Tipo: 1 Sent: 0

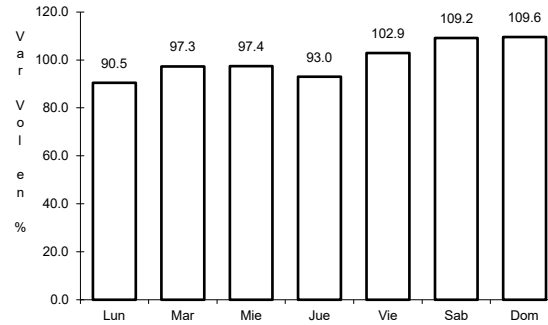
28 CARR: Ramal a Estación Bamoa

CLAVE: 25022

RUTA: SIN-022



Km: 0.00 Tipo: 3 Sent: 0

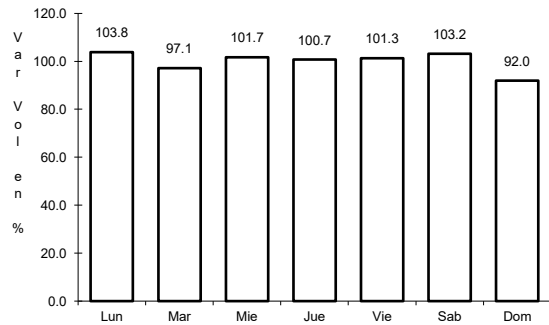


Km: 22.50 Tipo: 1 Sent: 0

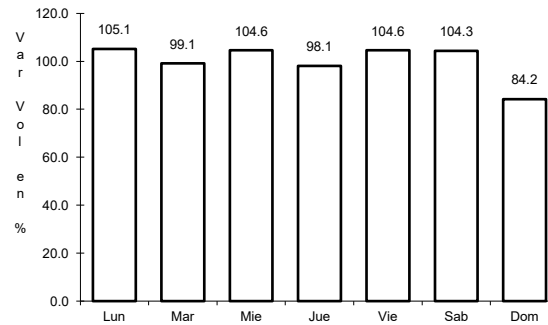
29 CARR: Ramal a La Cruz

CLAVE: 25043

RUTA: SIN



Km: 0.00 Tipo: 3 Sent: 0

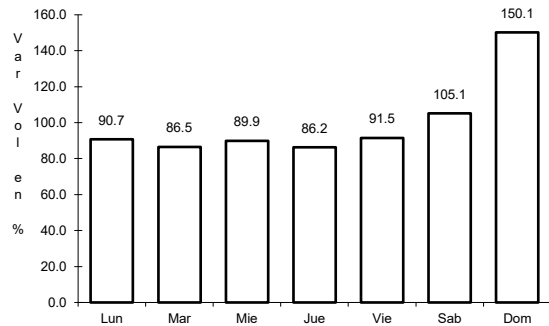


Km: 18.00 Tipo: 1 Sent: 0

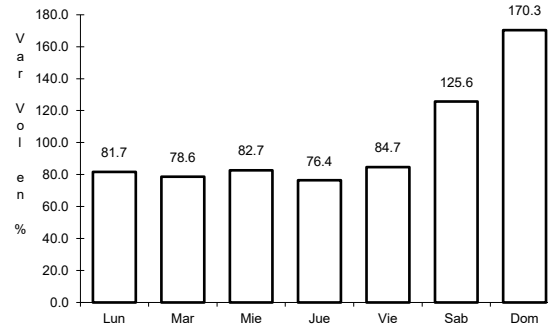
30 CARR: Ramal a La Noria

CLAVE: 25592

RUTA: SIN



Km: 0.00 Tipo: 3 Sent: 0

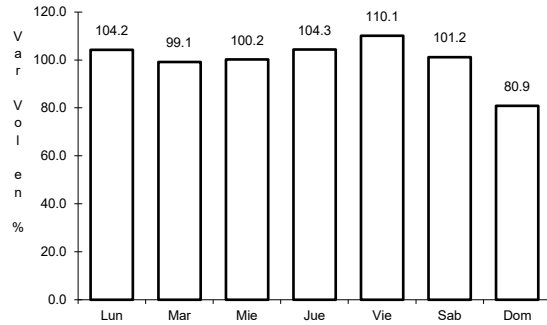


Km: 25.50 Tipo: 1 Sent: 0

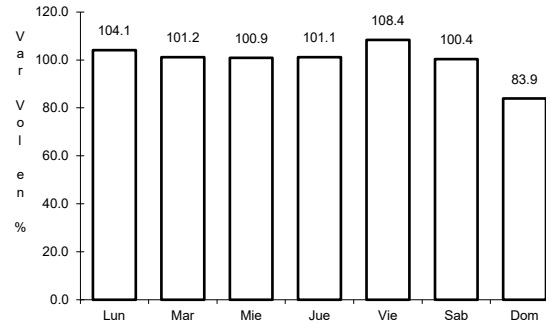
31 CARR: Ramal a La Reforma

CLAVE: 25041

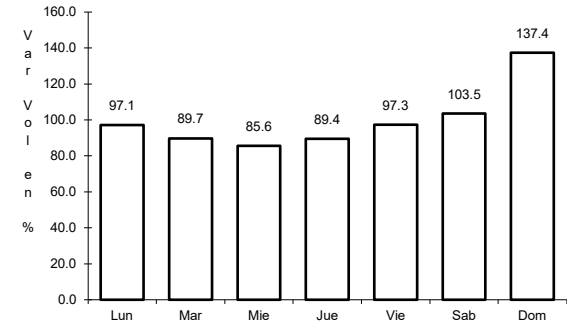
ruta: SIN-004



Km: 0.00 Tipo: 3 Sent: 0



Km: 14.00 Tipo: 3 Sent: 0

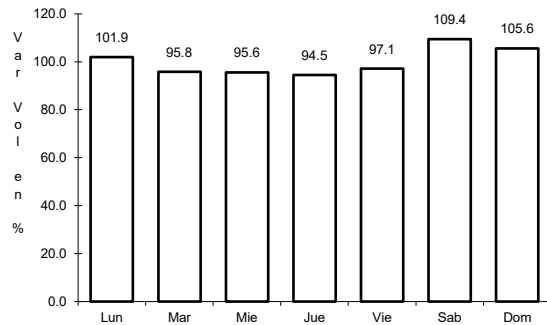


Km: 60.00 Tipo: 1 Sent: 0

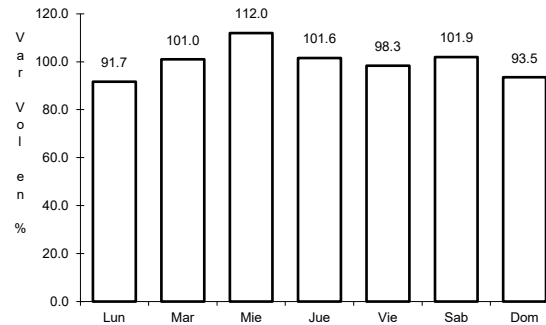
32 CARR: Rosario - Caimanero

CLAVE: 25003

ruta: SIN-003



Km: 0.00 Tipo: 3 Sent: 0

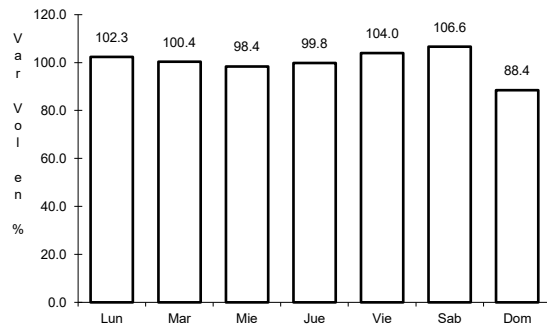


Km: 30.00 Tipo: 1 Sent: 0

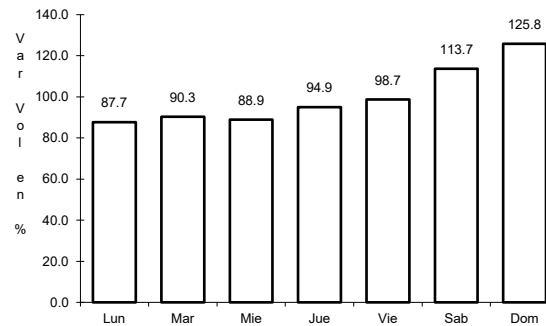
33 CARR: San Pedro - Campo Aníbal

CLAVE: 25600

ruta: SIN



Km: 0.00 Tipo: 3 Sent: 0

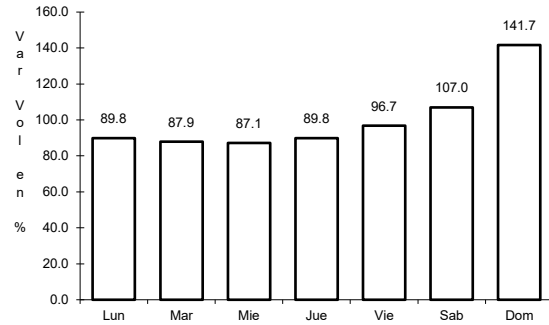


Km: 24.50 Tipo: 1 Sent: 0

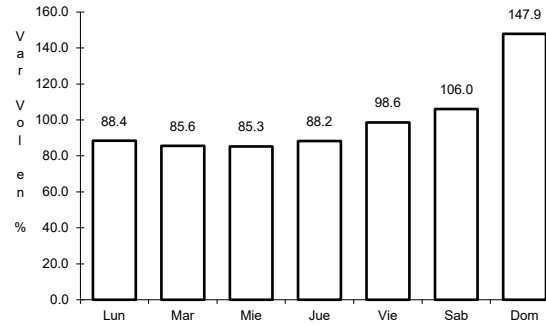
34 CARR: Topolobampo - Choix

CLAVE: 25032

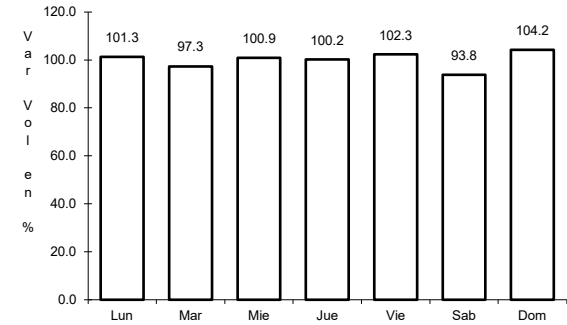
ruta: SIN-023



Km: 0.00 Tipo: 3 Sent: 1



Km: 0.00 Tipo: 3 Sent: 2

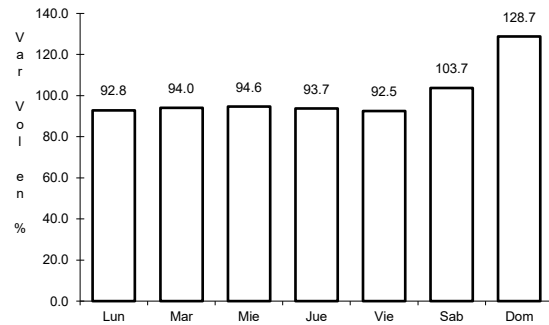


Km: 159.00 Tipo: 1 Sent: 0

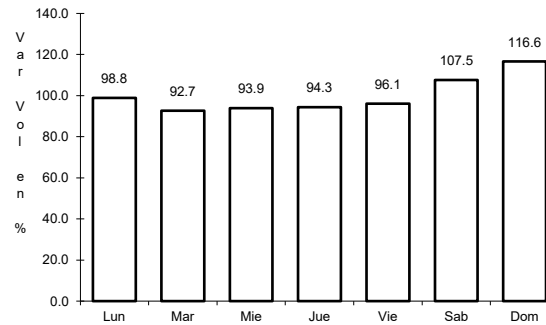
35 CARR: Villa Unión - El Walamo

CLAVE: 25081

ruta: SIN-081



Km: 0.00 Tipo: 3 Sent: 0

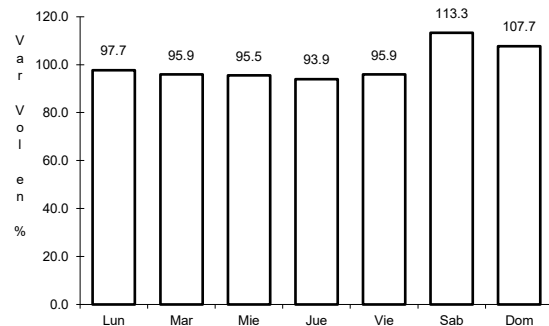


Km: 7.00 Tipo: 1 Sent: 0

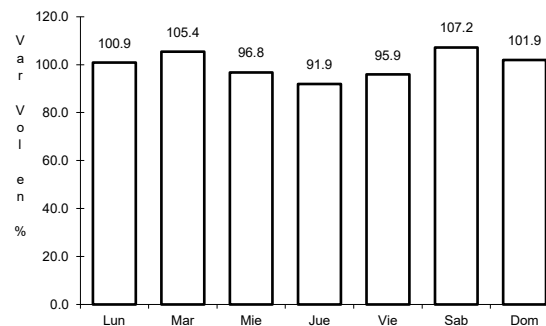
36 CARR: Villa Unión - Siqueiros

CLAVE: 25063

ruta: SIN-063

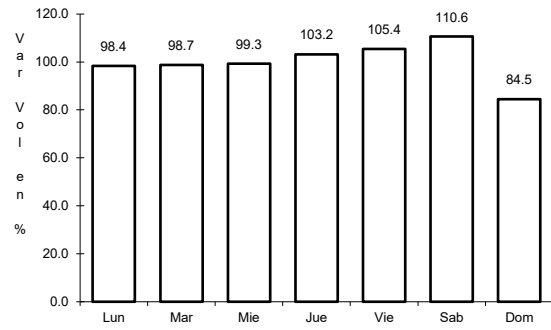


Km: 0.00 Tipo: 3 Sent: 0



Km: 11.00 Tipo: 1 Sent: 0

37 CARR: Culiacán - Las Brisas (Cuota)

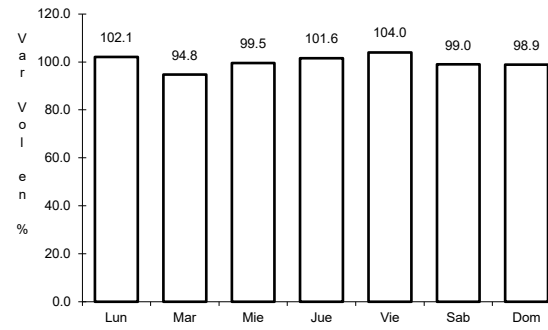


Km: 1.50

Tipo: 3

Sent: 1

CLAVE: 25503

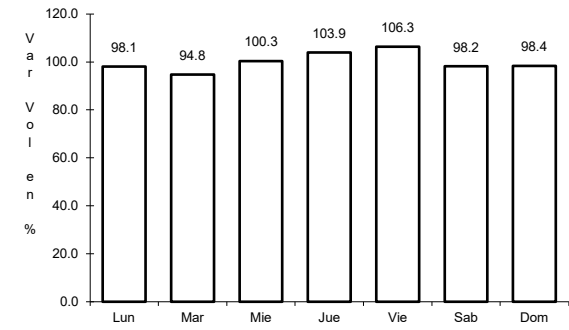


Km: 1.50

Tipo: 3

Sent: 2

RUTA: SIN-001D



Km: 125.70

Tipo: 1

Sent: 1