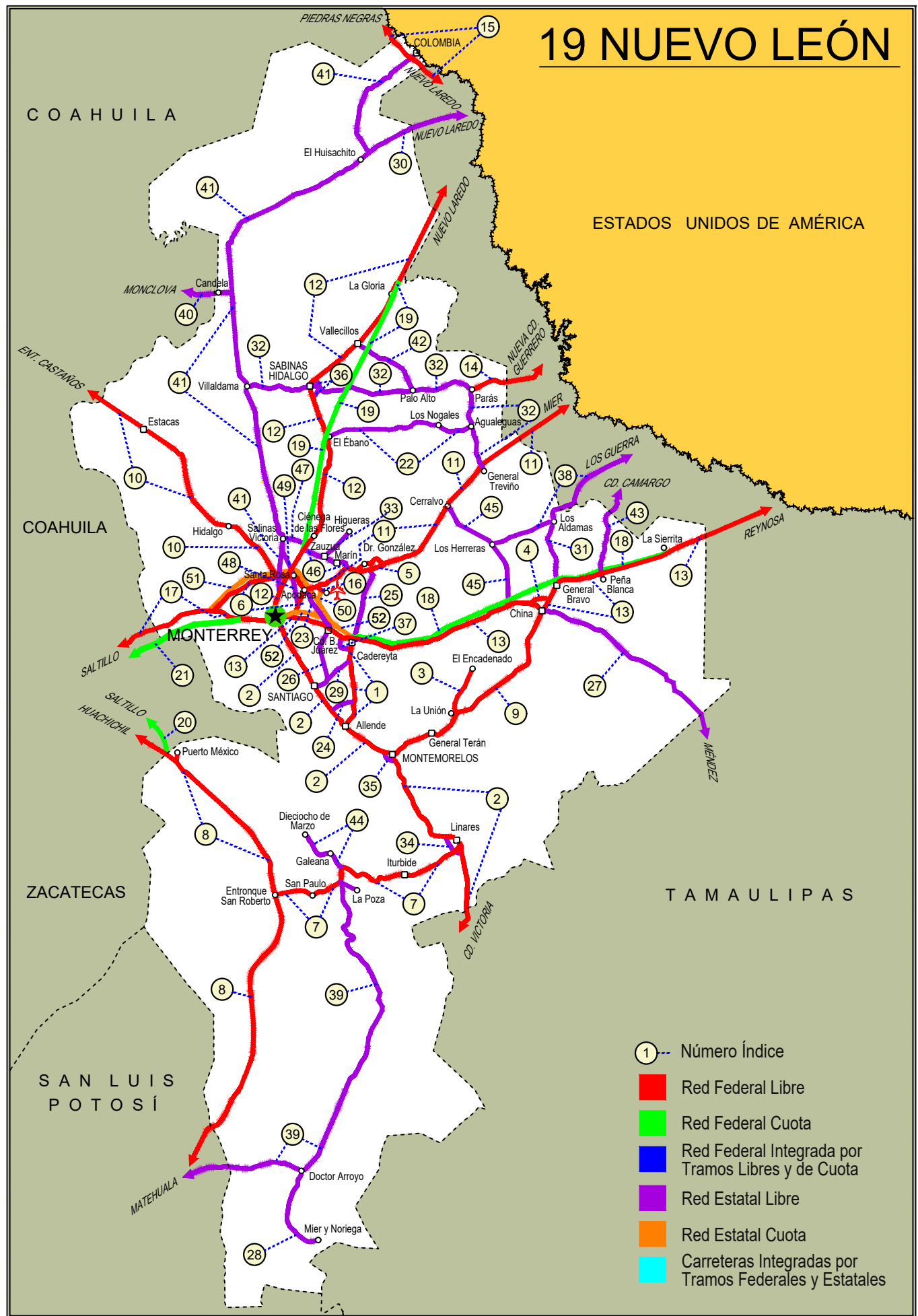


NUEVO LEON

NO. INDICE CARRETERA		RUTA
	---RED FEDERAL LIBRE---	
1	Cadereyta de Jiménez - Allende	MEX-009
2	Ciudad Victoria - Monterrey	MEX-085
3	La Unión - El Encadenado	MEX
4	Libramiento de China	MEX-040
5	Libramiento de Dr. González	MEX-054
6	Libramiento Noroeste de Monterrey	MEX-040
7	Linares - Ent. San Roberto	MEX-058
8	Matehuala - Ent. Puerto México	MEX-057
9	Montemorelos - China	MEX-035
10	Monterrey - Castaños	MEX-053
11	Monterrey - Mier	MEX-054
12	Monterrey - Nuevo Laredo (Libre)	MEX-085
13	Monterrey - Reynosa (Libre)	MEX-040
14	Paras - Nueva Ciudad Guerrero	MEX-030
15	Piedras Negras - Nuevo Laredo	MEX-002
16	Ramal a Aeropuerto Mariano Escobedo	MEX-054
17	Saltillo - Monterrey	MEX-040
	---RED FEDERAL DE CUOTA---	
18	Cadereyta - Reynosa (Cuota)	MEX-040D
19	Monterrey - Nuevo Laredo (Cuota)	MEX-085D
20	Puerto México - La Carbonera (Cuota)	MEX-057D
21	Saltillo - Monterrey (Cuota)	MEX-040D
	---RED ESTATAL LIBRE---	
22	Agualeguas - El Ébano	NL-023
23	Apodaca - Villa Juárez	NL
24	Atongo - Lazarillos	NL
25	Cadereyta de Jiménez - Doctor González	NL
26	Cd. Benito Juárez - Villa de Santiago	NL
27	China - Méndez	NL-TAM
28	Doctor Arroyo - Mier y Noriega	NL-088
29	Ent. Hacienda del Cielo - T. Der. Cadereyta	NL
30	Ent. Huisachito - Nuevo Laredo	NL-001-TAM
31	Gral. Bravo - Los Aldamas	NL-030
32	Gral. Treviño - Villaldama	NL-003
33	Hacienda Guadalupe - Higuera	NL-006
34	Libramiento de Linares	NL
35	Libramiento de Montemorelos	NL
36	Libramiento de Sabinas Hidalgo	NL
37	Libramiento Poniente de Cadereyta	NL
38	Los Guerra - Los Herreras	TAM-NL
39	Matehuala - La Poza	SLP-029-NL-061
40	Monclova - Estación Candela	COA-030-NL
41	Monterrey - Colombia	NL-001
42	Palo Alto - Vallecillos	NL
43	Peña Blanca - Cd. Camargo	NL-TAM
44	Ramal a 18 de Marzo	NL
45	Ramal a Cerralvo	NL-013
46	Ramal a Marín	NL
47	Salinas Victoria - Ciénega de Flores	NL
48	Santa Rosa - Mezquital	NL
49	Santa Rosa - Salinas Victoria	NL
	---RED ESTATAL DE CUOTA---	
50	Aeropuerto de Monterrey (Cuota)	NL-D
51	Anillo Periférico de Monterrey (Cuota)	NL-D
52	Monterrey - Cadereyta (Cuota)	NL-D

19 NUEVO LEÓN



NUEVO LEON

1 CARR: Cadereyta de Jiménez - Allende

CLAVE: 19009

RUTA: MEX-009

AÑO: 2023

LUGAR	ESTACION				CLASIFICACION VEHICULAR EN PORCIENTO										COORDENADAS					
	KM	TE	SC	TDPA	M	A	B	C2	C3	T3S2	T3S3	T3S2R4	OTROS	A	B	C	K'	D	LATITUD	LONGITUD
Cadereyta de Jiménez	0.00	3	1	6829	5.3	80.4	1.0	2.7	1.5	4.1	1.3	2.9	0.8	85.7	1.0	13.3	0.100	0.500	25.557249	-100.006028
Cadereyta de Jiménez	0.00	3	2	6817	5.3	79.7	1.1	2.9	1.5	4.1	1.4	3.1	0.9	85.0	1.1	13.9	0.106	0.500	25.557212	-100.005973
T. der. Huajuquito	7.30	3	0	11345	4.5	75.6	0.8	4.9	2.8	5.8	1.2	3.5	0.9	80.1	0.8	19.1	0.101	0.508	25.518560	-100.007079
T. Izq. Atongo	26.80	1	0	8504	3.8	68.8	1.2	8.9	2.8	7.9	1.2	4.6	0.8	72.6	1.2	26.2	0.084	0.540	25.375595	-99.986722
Allende	37.00	1	1	7273	2.6	77.6	1.1	7.3	3.6	3.1	1.4	2.5	0.8	80.2	1.1	18.7	0.094	0.510	25.292682	-100.012913
Allende	37.00	1	2	7558	2.8	77.6	1.1	7.3	3.5	3.1	1.3	2.4	0.9	80.4	1.1	18.5	0.082	0.510	25.292618	-100.012828

2 CARR: Ciudad Victoria - Monterrey

CLAVE: 00462

RUTA: MEX-085

AÑO: 2023

LUGAR	ESTACION				CLASIFICACION VEHICULAR EN PORCIENTO										COORDENADAS					
	KM	TE	SC	TDPA	M	A	B	C2	C3	T3S2	T3S3	T3S2R4	OTROS	A	B	C	K'	D	LATITUD	LONGITUD
Cd. Victoria (Central)	0.00	3	1	6539	10.0	81.7	1.6	2.0	2.1	0.9	0.2	1.4	0.1	91.7	1.6	6.7	0.088	0.525	23.777893	-99.136663
Cd. Victoria (Lateral)	0.00	3	1	980	10.5	81.7	1.2	4.1	1.2	0.7	0.4	0.2	0.0	92.2	1.2	6.6	0.092	0.512	23.778040	-99.136570
Cd. Victoria (Central)	0.00	3	2	7239	10.0	81.6	1.8	2.0	1.9	0.9	0.2	1.5	0.1	91.6	1.8	6.6	0.092	0.525	23.778306	-99.136689
Cd. Victoria (Lateral)	0.00	3	2	935	10.2	83.0	1.0	3.9	1.1	0.5	0.2	0.1	0.0	93.2	1.0	5.8	0.106	0.512	23.778260	-99.136777
T. Der. Gómez	19.60	3	0	6059	3.9	78.2	4.0	11.1	0.8	1.1	0.2	0.6	0.1	82.1	4.0	13.9	0.097	0.507	23.915671	-99.112366
T. Izq. Santa Engracia	27.35	3	0	10692	1.3	68.1	4.8	7.2	1.5	7.1	2.2	6.8	1.0	69.4	4.8	25.8	0.093	0.514	23.997099	-99.110442
Barretal	39.00	3	0	8887	3.9	66.9	5.5	4.5	1.6	6.7	2.2	7.7	1.0	70.8	5.5	23.7	0.087	0.509	24.093649	-99.144929
T. Izq. Hidalgo y La Mesa	77.50	1	0	9633	4.9	65.3	5.9	4.1	1.7	6.9	2.2	8.0	1.0	70.2	5.9	23.9	0.089	0.500	24.248121	-99.429592
Villagrán	106.00	1	0	8477	4.4	65.4	5.4	4.0	2.0	7.4	2.2	8.2	1.0	69.8	5.4	24.8	0.096	0.501	24.463664	-99.496501
Villagrán	106.00	3	0	6231	3.1	66.9	6.3	5.1	2.0	6.7	2.1	6.8	1.0	70.0	6.3	23.7	0.090	0.505	24.481971	-99.505562
T. Izq. Villa Mainero	118.00	3	1	4437	3.3	66.2	5.4	3.6	1.9	8.0	2.6	8.0	1.0	69.5	5.4	25.1	0.099	0.513	24.581739	-99.539253
T. Izq. Villa Mainero	118.00	3	2	4668	3.0	67.1	5.1	3.3	2.2	8.0	2.3	8.0	1.0	70.1	5.1	24.8	0.094	0.513	24.581821	-99.539288
Lim. Edos. Term. Tamps. Ppia. N. L.	126.20																			
T. Libramiento de Linares Sur	152.50																			
Linares	154.00	1	0	11472	2.6	71.5	4.6	3.1	1.4	7.5	1.6	6.8	0.9	74.1	4.6	21.3	0.068	0.516	24.837970	-99.560192
Linares	154.00	3	1	8700	3.6	74.7	3.0	6.5	1.1	4.1	1.2	5.0	0.8	78.3	3.0	18.7	0.070	0.513	24.882674	-99.588177
Linares	154.00	3	2	8248	3.7	75.1	2.9	6.0	1.3	4.2	1.0	5.0	0.8	78.8	2.9	18.3	0.075	0.513	24.882596	-99.588279
T. Libramiento de Linares Norte	157.30																			
La Laja	171.00	3	1	7115	2.9	67.8	4.5	5.7	1.5	7.6	2.4	6.9	0.7	70.7	4.5	24.8	0.079	0.503	24.923025	-99.688648
La Laja	171.00	3	2	7044	2.8	69.7	4.9	5.1	1.6	7.2	2.3	5.6	0.8	72.5	4.9	22.6	0.085	0.503	24.922989	-99.688751
T. C. Libramiento de Montemorelos Sur	197.50	3	0	3969	3.2	75.5	2.5	12.4	1.7	2.7	0.9	0.7	0.4	78.7	2.5	18.8	0.077	0.505	25.129113	-99.808484
Montemorelos	205.00	3	1	13837	3.6	76.4	3.5	5.6	1.9	4.9	1.1	2.4	0.6	80.0	3.5	16.5	0.095	0.502	25.202245	-99.906285
Montemorelos	205.00	3	2	13717	3.5	75.8	3.4	6.0	1.7	5.3	1.2	2.5	0.6	79.3	3.4	17.3	0.089	0.502	25.202074	-99.906252
T. C. Libramiento de Montemorelos Norte	208.50	1	1	10464	3.1	75.3	3.6	5.0	1.8	5.2	1.3	3.8	0.9	78.4	3.6	18.0	0.086	0.506	25.191307	-99.882462

NUEVO LEON

2 CARR: Ciudad Victoria - Monterrey

CLAVE: 00462

RUTA: MEX-085

AÑO: 2023

LUGAR	ESTACION				CLASIFICACION VEHICULAR EN PORCIENTO										COORDENADAS					
	KM	TE	SC	TDPA	M	A	B	C2	C3	T3S2	T3S3	T3S2R4	OTROS	A	B	C	K'	D	LATITUD	LONGITUD
T. C. Libramiento de Montemorelos Norte	208.50	1	2	10225	3.1	75.2	3.5	5.4	1.9	5.2	1.3	3.5	0.9	78.3	3.5	18.2	0.102	0.506	25.191152	-99.882487
Allende	227.45	1	1	12890	1.3	79.8	2.2	8.0	1.6	3.5	1.0	2.1	0.5	81.1	2.2	16.7	0.090	0.504	25.254893	-99.990838
Allende	227.45	1	2	13106	1.3	77.7	2.5	9.2	1.7	3.6	1.1	2.2	0.7	79.0	2.5	18.5	0.080	0.504	25.254788	-99.990951
Allende	227.45	3	1	15239	3.4	83.6	2.6	3.0	1.6	2.8	0.7	1.8	0.5	87.0	2.6	10.4	0.079	0.521	25.299502	-100.048581
Allende	227.45	3	2	16607	3.4	83.6	2.6	3.0	1.6	2.8	0.7	1.8	0.5	87.0	2.6	10.4	0.068	0.521	25.295018	-100.049106
El Cercado	249.00	1	1	26629	2.7	86.6	1.9	2.2	1.7	2.3	0.5	1.5	0.6	89.3	1.9	8.8	0.090	0.521	25.358250	-100.096268
El Cercado	249.00	1	2	24500	2.7	86.6	1.9	2.2	1.7	2.3	0.5	1.5	0.6	89.3	1.9	8.8	0.077	0.521	25.359305	-100.098284
T. Der. Las Huertas	257.00	3	1	33867	8.3	83.1	1.2	2.2	1.0	1.3	0.5	1.9	0.5	91.4	1.2	7.4	0.098	0.510	25.458118	-100.168027
T. Der. Las Huertas	257.00	3	2	32496	8.3	83.1	1.2	2.2	1.0	1.3	0.5	1.9	0.5	91.4	1.2	7.4	0.100	0.510	25.456386	-100.166812
T. Izq. el Barro	266.00	3	1	43797	4.8	88.2	0.8	1.9	1.2	1.5	0.6	0.7	0.3	93.0	0.8	6.2	0.087	0.505	25.533218	-100.215610
T. Izq. el Barro	266.00	3	2	44676	4.7	88.3	0.8	1.9	1.2	1.5	0.6	0.7	0.3	93.0	0.8	6.2	0.095	0.505	25.532783	-100.215439
La Estanzuela	274.82	3	1	67961	5.2	83.6	1.5	2.8	0.9	1.1	0.5	3.7	0.7	88.8	1.5	9.7	0.079	0.519	25.590347	-100.259732
La Estanzuela	274.82	3	2	62210	5.2	83.6	1.5	2.8	0.9	1.1	0.5	3.7	0.7	88.8	1.5	9.7	0.066	0.519	25.588961	-100.259147
Monterrey (Alta)	287.00	1	1	64243	3.1	89.0	1.5	1.6	1.1	1.1	0.2	2.1	0.3	92.1	1.5	6.4	0.087	0.523	25.602763	-100.266601
Monterrey (Baja)	287.00	1	1	18509	6.3	83.1	0.8	6.6	1.3	0.6	0.4	0.6	0.3	89.4	0.8	9.8	0.077	0.501	25.603157	-100.266654
Monterrey (Baja)	287.00	1	2	18439	6.2	83.2	0.8	6.6	1.3	0.6	0.4	0.6	0.3	89.4	0.8	9.8	0.080	0.501	25.602824	-100.266990
Monterrey (Alta)	287.00	1	2	71611	3.1	89.0	1.5	1.6	1.1	1.1	0.2	2.1	0.3	92.1	1.5	6.4	0.065	0.523	25.600110	-100.265397

3 CARR: La Unión - El Encadenado

CLAVE:

RUTA: MEX

AÑO: 2023

LUGAR	ESTACION				CLASIFICACION VEHICULAR EN PORCIENTO										COORDENADAS					
	KM	TE	SC	TDPA	M	A	B	C2	C3	T3S2	T3S3	T3S2R4	OTROS	A	B	C	K'	D	LATITUD	LONGITUD
La Unión	0.00	3	0	703	27.6	67.5	0.3	3.0	0.7	0.4	0.0	0.4	0.1	95.1	0.3	4.6	0.114	0.504	25.345134	-99.577362
El Encadenado	10.00	1	0	215	17.0	79.2	1.1	1.3	1.4	0.0	0.0	0.0	0.0	96.2	1.1	2.7	0.130	0.505	25.403852	-99.538867

4 CARR: Libramiento de China

CLAVE:

RUTA: MEX-040

AÑO: 2023

LUGAR	ESTACION				CLASIFICACION VEHICULAR EN PORCIENTO										COORDENADAS					
	KM	TE	SC	TDPA	M	A	B	C2	C3	T3S2	T3S3	T3S2R4	OTROS	A	B	C	K'	D	LATITUD	LONGITUD
T. C. Monterrey - Reynosa (Poniente)	0.00	3	0	3070	1.5	72.5	1.8	5.1	4.3	10.8	2.5	1.3	0.2	74.0	1.8	24.2	0.086	0.526	25.710638	-99.246026
T. C. Monterrey - Reynosa (Oriente)	2.41	1	0	3857	2.6	66.7	3.5	9.2	2.2	10.1	3.1	2.1	0.5	69.3	3.5	27.2	0.095	0.514	25.709771	-99.234878

NUEVO LEON

5 CARR: Libramiento de Dr. González

CLAVE: 00127

RUTA: MEX-054

AÑO: 2023

LUGAR	ESTACION				CLASIFICACION VEHICULAR EN PORCIENTO													COORDENADAS		
	KM	TE	SC	TDPA	M	A	B	C2	C3	T3S2	T3S3	T3S2R4	OTROS	A	B	C	K'	D	LATITUD	LONGITUD
T. C. Monterrey - Mier Oeste	0.00	3	0	3162	2.0	67.7	1.1	12.6	1.8	5.3	2.2	6.8	0.5	69.7	1.1	29.2	0.094	0.502	25.847210	-99.963713
T. C. Monterrey - Mier Este	10.90	1	0	3469	1.1	67.7	1.1	10.1	1.4	4.6	2.4	11.1	0.5	68.8	1.1	30.1	0.091	0.512	25.866558	-99.881963

6 CARR: Libramiento Noroeste de Monterrey

CLAVE: 19085

RUTA: MEX-040

AÑO: 2023

LUGAR	ESTACION				CLASIFICACION VEHICULAR EN PORCIENTO													COORDENADAS		
	KM	TE	SC	TDPA	M	A	B	C2	C3	T3S2	T3S3	T3S2R4	OTROS	A	B	C	K'	D	LATITUD	LONGITUD
T. C. Saltillo - Monterrey	0.00	3	1	14980	1.0	47.1	3.1	7.1	2.6	30.6	3.7	4.2	0.6	48.1	3.1	48.8	0.081	0.545	25.717974	-100.542670
T. C. Saltillo - Monterrey	0.00	3	2	12514	1.0	48.0	3.0	7.3	2.5	30.1	3.5	4.0	0.6	49.0	3.0	48.0	0.076	0.545	25.718028	-100.542736
T. Der. Monterrey	14.40	1	1	21787	2.4	53.9	3.5	7.9	3.6	22.4	2.8	3.0	0.5	56.3	3.5	40.2	0.095	0.526	25.775085	-100.463406
T. Der. Monterrey	14.40	1	2	19620	2.2	53.8	3.7	8.1	3.5	22.6	2.7	2.9	0.5	56.0	3.7	40.3	0.099	0.526	25.775224	-100.463256
T. Der. Monterrey	14.40	3	1	33271	1.9	64.9	3.0	5.8	3.2	16.0	2.2	2.4	0.6	66.8	3.0	30.2	0.087	0.502	25.783737	-100.438958
T. Der. Monterrey	14.40	3	2	33565	2.1	65.1	2.9	5.6	3.1	16.5	1.9	2.2	0.6	67.2	2.9	29.9	0.068	0.502	25.783809	-100.439010
X. C. Monterrey - Castaños	31.00	1	1	44116	3.7	66.1	3.1	6.7	3.5	11.4	2.2	2.6	0.7	69.8	3.1	27.1	0.079	0.506	25.824068	-100.305823
X. C. Monterrey - Castaños	31.00	1	2	45214	3.5	61.7	3.3	7.9	3.8	13.5	2.5	3.1	0.7	65.2	3.3	31.5	0.065	0.506	25.824162	-100.305843
X. C. Monterrey - Nuevo Laredo (Libre)	35.35	3	1	34669	5.9	75.0	2.9	3.9	3.3	5.2	2.1	1.4	0.3	80.9	2.9	16.2	0.084	0.511	25.830870	-100.249143
X. C. Monterrey - Nuevo Laredo (Libre)	35.35	3	2	36388	5.9	75.0	2.9	3.9	3.3	5.2	2.1	1.4	0.3	80.9	2.9	16.2	0.103	0.511	25.831082	-100.249138
Apodaca	41.50	1	1	29962	4.4	87.8	0.5	4.6	1.3	0.8	0.1	0.3	0.2	92.2	0.5	7.3	0.087	0.502	25.803396	-100.207029
Apodaca	41.50	1	2	30257	4.3	87.6	0.6	4.6	1.3	0.9	0.1	0.4	0.2	91.9	0.6	7.5	0.098	0.502	25.802841	-100.206271
T. C. Monterrey - Reynosa	48.00	1	1	36601	2.1	89.4	0.9	3.2	1.1	1.4	1.2	0.5	0.2	91.5	0.9	7.6	0.075	0.509	25.669306	-100.171667
T. C. Monterrey - Reynosa	48.00	1	2	35174	2.1	89.4	0.9	3.2	1.1	1.4	1.2	0.5	0.2	91.5	0.9	7.6	0.068	0.509	25.669054	-100.171682

7 CARR: Linares - Ent. San Roberto

CLAVE: 19031

RUTA: MEX-058

AÑO: 2023

LUGAR	ESTACION				CLASIFICACION VEHICULAR EN PORCIENTO													COORDENADAS		
	KM	TE	SC	TDPA	M	A	B	C2	C3	T3S2	T3S3	T3S2R4	OTROS	A	B	C	K'	D	LATITUD	LONGITUD
Linares	0.00	3	0	9733	6.0	78.4	0.4	8.7	0.7	4.3	1.1	0.3	0.1	84.4	0.4	15.2	0.085	0.507	24.833647	-99.579073
Iturbide	44.00	1	0	1970	2.2	72.9	4.2	10.3	3.8	3.4	2.9	0.2	0.1	75.1	4.2	20.7	0.080	0.500	24.723091	-99.897611
T. Izq. Doctor Arroyo	66.00	1	0	3848	1.6	80.0	1.9	11.3	1.8	2.1	1.3	0.0	0.0	81.6	1.9	16.5	0.076	0.511	24.728988	-100.038913
T. C. Matehuala - Ent. Huachichil	98.00	1	0	1828	2.2	67.7	3.3	16.5	3.0	4.5	2.2	0.5	0.1	69.9	3.3	26.8	0.074	0.503	24.675896	-100.294752

NUEVO LEON

8 CARR: Matehuala - Ent. Puerto México

CLAVE: 00405

RUTA: MEX-057

AÑO: 2023

LUGAR	ESTACION				CLASIFICACION VEHICULAR EN PORCIENTO										COORDENADAS					
	KM	TE	SC	TDPA	M	A	B	C2	C3	T3S2	T3S3	T3S2R4	OTROS	A	B	C	K'	D	LATITUD	LONGITUD
Matehuala	0.00	3	1	7081	5.1	68.9	2.7	9.6	1.8	8.8	1.8	1.1	0.2	74.0	2.7	23.3	0.100	0.518	23.668949	-100.631971
Matehuala	0.00	3	2	7607	5.2	68.7	2.6	9.5	1.7	9.0	1.9	1.2	0.2	73.9	2.6	23.5	0.083	0.518	23.669023	-100.632162
T. Izq. Cedral	8.47	1	1	5115	7.0	62.3	3.8	11.3	2.2	10.1	2.0	1.2	0.1	69.3	3.8	26.9	0.075	0.502	23.693444	-100.619840
T. Izq. Cedral	8.47	1	2	5149	7.2	61.8	3.7	11.4	2.3	10.2	2.2	1.1	0.1	69.0	3.7	27.3	0.066	0.502	23.693644	-100.620069
T. Izq. Cedral	8.47	3	1	2476	8.3	54.8	4.1	14.2	0.9	11.2	2.9	2.8	0.8	63.1	4.1	32.8	0.086	0.540	23.698921	-100.617143
T. Izq. Cedral	8.47	3	2	2908	8.4	55.4	4.1	14.3	0.9	11.1	2.7	2.4	0.7	63.8	4.1	32.1	0.083	0.540	23.699058	-100.617390
T. Izq. Libramiento de Matehuala (Cuota)	9.30	3	1	10425	1.7	33.4	6.0	8.0	2.4	39.1	3.7	4.8	0.9	35.1	6.0	58.9	0.063	0.508	23.713053	-100.610148
T. Izq. Libramiento de Matehuala (Cuota)	9.30	3	2	10092	1.8	32.9	6.1	8.2	2.5	39.2	3.8	4.7	0.8	34.7	6.1	59.2	0.068	0.508	23.713149	-100.610409
Lim. Edos. Term. S. L. P. Ppia. N. L.	24.64																			
Santa Ana	59.65	1	1	10609	2.8	30.5	5.3	6.1	3.2	42.2	4.2	4.8	0.9	33.3	5.3	61.4	0.059	0.514	24.084492	-100.384860
Santa Ana	59.65	1	2	11233	2.5	30.8	5.6	5.8	3.0	42.0	4.4	5.0	0.9	33.3	5.6	61.1	0.060	0.514	24.084636	-100.385104
T. Der. Linares	128.99	1	1	10757	3.0	34.1	5.9	5.7	2.9	38.0	4.3	5.2	0.9	37.1	5.9	57.0	0.056	0.510	24.612011	-100.274680
T. Der. Linares	128.99	1	2	10336	3.3	34.2	5.6	5.9	2.8	38.2	4.0	5.1	0.9	37.5	5.6	56.9	0.057	0.510	24.612089	-100.275028
T. Der. Linares	128.99	3	1	10640	2.4	36.0	6.0	5.6	2.6	37.8	3.4	5.3	0.9	38.4	6.0	55.6	0.060	0.506	24.680557	-100.300287
T. Der. Linares	128.99	3	2	10408	2.2	37.0	5.9	5.4	2.4	37.6	3.5	5.1	0.9	39.2	5.9	54.9	0.055	0.506	24.680628	-100.300588
San Rafael	177.18	1	1	10945	3.0	36.9	5.8	6.7	2.5	35.6	3.4	5.2	0.9	39.9	5.8	54.3	0.061	0.520	25.023191	-100.546063
San Rafael	177.18	1	2	11872	2.9	36.5	6.0	6.9	2.7	35.8	3.3	5.0	0.9	39.4	6.0	54.6	0.049	0.520	25.023115	-100.546462
T. C. Puerto México - La Carbonera (Cuota)	202.40	1	1	11321	6.2	33.7	6.0	6.0	2.5	36.0	3.3	5.5	0.8	39.9	6.0	54.1	0.060	0.503	25.166536	-100.717750
T. C. Puerto México - La Carbonera (Cuota)	202.40	1	2	11206	6.3	33.5	6.1	6.0	2.5	36.0	3.3	5.5	0.8	39.8	6.1	54.1	0.072	0.503	25.166679	-100.718596

9 CARR: Montemorelos - China

CLAVE: 19280

RUTA: MEX-035

AÑO: 2023

LUGAR	ESTACION				CLASIFICACION VEHICULAR EN PORCIENTO										COORDENADAS					
	KM	TE	SC	TDPA	M	A	B	C2	C3	T3S2	T3S3	T3S2R4	OTROS	A	B	C	K'	D	LATITUD	LONGITUD
Montemorelos	0.00	3	0	10521	5.1	79.0	0.8	9.3	1.4	3.1	0.7	0.4	0.2	84.1	0.8	15.1	0.085	0.508	25.194651	-99.812353
Gral. Terán	17.60	3	0	2726	2.5	77.4	1.2	12.1	1.8	2.4	1.4	1.0	0.2	79.9	1.2	18.9	0.079	0.505	25.249869	-99.661548
T. Der. La Barreta	23.10	3	0	2213	1.2	85.7	1.7	7.6	0.7	2.1	0.3	0.6	0.1	86.9	1.7	11.4	0.086	0.521	25.259084	-99.643461
China	93.00	1	0	1845	2.6	87.8	1.2	2.9	1.0	2.7	0.5	1.1	0.2	90.4	1.2	8.4	0.100	0.507	25.688779	-99.243678

10 CARR: Monterrey - Castaños

CLAVE: 00128

RUTA: MEX-053

AÑO: 2023

LUGAR	ESTACION				CLASIFICACION VEHICULAR EN PORCIENTO										COORDENADAS					
	KM	TE	SC	TDPA	M	A	B	C2	C3	T3S2	T3S3	T3S2R4	OTROS	A	B	C	K'	D	LATITUD	LONGITUD
T. C. Monterrey - Nuevo Laredo	0.00	3	0	21027	6.3	75.1	1.6	8.6	2.6	3.1	1.1	1.2	0.4	81.4	1.6	17.0	0.078	0.504	25.812520	-100.286783
X. C. Libramiento Noroeste de Monterrey	3.46	3	1	18124	4.3	72.6	2.5	8.5	3.3	5.1	1.7	1.3	0.7	76.9	2.5	20.6	0.085	0.501	25.831946	-100.307840

NUEVO LEON

10 CARR: Monterrey - Castaños

CLAVE: 00128

RUTA: MEX-053

AÑO: 2023

LUGAR	ESTACION				CLASIFICACION VEHICULAR EN PORCIENTO										COORDENADAS					
	KM	TE	SC	TDPA	M	A	B	C2	C3	T3S2	T3S3	T3S2R4	OTROS	A	B	C	K'	D	LATITUD	LONGITUD
X. C. Libramiento Noroeste de Monterrey	3.46	3	2	18174	4.2	70.6	2.6	9.2	3.5	5.8	1.9	1.4	0.8	74.8	2.6	22.6	0.093	0.501	25.831826	-100.307873
T. Der. Villa del Carmen	13.80	1	1	9421	2.6	78.4	1.3	7.1	2.8	2.2	3.3	1.8	0.5	81.0	1.3	17.7	0.073	0.517	25.891745	-100.348925
T. Der. Villa del Carmen	13.80	1	2	8808	2.5	76.8	1.5	7.7	3.1	2.5	3.5	1.9	0.5	79.3	1.5	19.2	0.075	0.517	25.891944	-100.349127
T. Izq. Hidalgo	24.78	1	0	15184	3.2	74.8	2.0	8.2	1.9	4.4	2.2	2.7	0.6	78.0	2.0	20.0	0.072	0.500	25.956156	-100.424589
T. Izq. Hidalgo	24.78	3	0	11787	3.9	72.9	2.2	6.2	2.3	5.8	3.5	2.5	0.7	76.8	2.2	21.0	0.069	0.526	25.982071	-100.451500
T. Izq. Mina	34.75	1	0	7708	2.8	69.7	2.1	8.6	2.2	6.0	4.2	3.5	0.9	72.5	2.1	25.4	0.085	0.521	26.000687	-100.516793
T. Izq. Espinazo	91.90	1	0	4328	2.4	59.9	2.8	7.7	2.5	11.9	6.6	5.4	0.8	62.3	2.8	34.9	0.082	0.510	26.360387	-100.874920
T. Izq. Espinazo	91.90	3	0	4193	2.5	54.8	2.7	9.3	3.4	13.1	7.4	5.8	1.0	57.3	2.7	40.0	0.083	0.512	26.365414	-100.883346
Lim. Edos. Term. N. L. Ppia. Coah.	115.90																			
T. C. Saltillo - Monclova	155.90	1	1	2131	2.0	61.6	4.4	5.0	3.2	11.9	6.5	4.5	0.9	63.6	4.4	32.0	0.090	0.502	26.689495	-101.380191
T. C. Saltillo - Monclova	155.90	1	2	2145	2.1	59.6	4.0	5.7	2.9	12.3	7.4	5.1	0.9	61.7	4.0	34.3	0.085	0.502	26.689495	-101.380191

11 CARR: Monterrey - Mier

CLAVE: 00127

RUTA: MEX-054

AÑO: 2023

LUGAR	ESTACION				CLASIFICACION VEHICULAR EN PORCIENTO										COORDENADAS					
	KM	TE	SC	TDPA	M	A	B	C2	C3	T3S2	T3S3	T3S2R4	OTROS	A	B	C	K'	D	LATITUD	LONGITUD
Monterrey	0.00																			
Apodaca	19.12	1	1	80226	4.1	86.0	1.1	3.2	1.6	1.7	1.1	0.5	0.7	90.1	1.1	8.8	0.066	0.510	25.750590	-100.199996
Apodaca	19.12	1	2	84250	4.2	86.0	1.1	3.2	1.5	1.6	1.1	0.5	0.8	90.2	1.1	8.7	0.076	0.510	25.750715	-100.200121
X. C. Libramiento Noroeste de Monterrey	21.30	3	1	55777	3.9	82.5	1.7	3.9	1.3	3.6	1.2	1.5	0.4	86.4	1.7	11.9	0.064	0.521	25.784586	-100.160110
X. C. Libramiento Noroeste de Monterrey	21.30	3	2	50741	3.8	81.4	1.9	4.4	1.5	3.7	1.3	1.6	0.4	85.2	1.9	12.9	0.062	0.521	25.784760	-100.160161
X. C. Zacatecas - Pesquería	28.15	1	1	20546	2.7	76.7	2.4	9.7	2.0	2.5	2.2	1.4	0.4	79.4	2.4	18.2	0.090	0.523	25.795048	-100.114984
X. C. Zacatecas - Pesquería	28.15	1	2	18720	2.8	76.6	2.3	9.5	2.2	2.5	2.0	1.6	0.5	79.4	2.3	18.3	0.087	0.523	25.795123	-100.114930
X. C. Zacatecas - Pesquería	28.15	3	0	9215	2.5	78.2	2.2	6.0	3.1	3.4	2.0	1.9	0.7	80.7	2.2	17.1	0.105	0.522	25.808190	-100.088544
X. C. Hacienda Guadalupe - Higuera	38.10	1	0	11285	2.3	80.3	2.1	5.0	2.0	3.8	1.1	2.7	0.7	82.6	2.1	15.3	0.096	0.516	25.846159	-100.033311
X. C. Hacienda Guadalupe - Higuera	38.10	3	0	4839	3.4	73.9	1.4	9.4	1.2	3.7	1.6	4.6	0.8	77.3	1.4	21.3	0.085	0.519	25.854117	-100.015128
Dr. González	47.60	1	0	2197	2.3	88.8	0.8	4.1	1.4	1.5	0.6	0.4	0.1	91.1	0.8	8.1	0.088	0.515	25.851092	-99.967044
Dr. González	47.60	3	0	474	9.3	74.3	4.1	9.6	0.7	1.1	0.2	0.6	0.1	83.6	4.1	12.3	0.089	0.514	25.867026	-99.932006
T. Der. Empalme Los Ramones	74.10	1	0	2784	3.5	71.5	2.1	3.8	1.3	6.1	2.2	8.6	0.9	75.0	2.1	22.9	0.088	0.528	25.922553	-99.722238
Cerralvo	95.95	1	0	4329	3.3	75.1	1.4	5.3	1.3	4.2	1.5	7.0	0.9	78.4	1.4	20.2	0.086	0.513	26.066639	-99.626401
Gral. Treviño	115.80	3	0	1895	5.2	62.4	4.1	6.2	2.0	6.4	2.3	10.8	0.6	67.6	4.1	28.3	0.102	0.512	26.232195	-99.470433
Lim. Edos. Term. N. L. Ppia. Tamps.	131.80																			
Mier	156.21	1	0	2631	1.6	74.3	1.7	2.8	1.6	6.4	1.8	9.5	0.3	75.9	1.7	22.4	0.100	0.528	26.425110	-99.166212

NUEVO LEON

12 CARR: Monterrey - Nuevo Laredo (Libre)

CLAVE: 00463

RUTA: MEX-085

AÑO: 2023

LUGAR	ESTACION				CLASIFICACION VEHICULAR EN PORCIENTO										COORDENADAS					
	KM	TE	SC	TDPA	M	A	B	C2	C3	T3S2	T3S3	T3S2R4	OTROS	A	B	C	K'	D	LATITUD	LONGITUD
Monterrey	0.00																			
T. Izq. Gral. Escobedo (Lateral)	12.10	3	1	21911	5.5	82.2	1.7	6.6	1.3	1.3	0.6	0.6	0.2	87.7	1.7	10.6	0.081	0.519	25.795721	-100.279194
T. Izq. Gral. Escobedo (Central)	12.10	3	1	45540	2.7	88.3	1.5	3.3	0.8	2.3	0.5	0.5	0.1	91.0	1.5	7.5	0.068	0.510	25.795747	-100.279294
T. Izq. Gral. Escobedo (Lateral)	12.10	3	2	20312	5.3	82.4	1.7	6.7	1.4	1.3	0.5	0.5	0.2	87.7	1.7	10.6	0.083	0.519	25.795823	-100.279478
T. Izq. Gral. Escobedo (Central)	12.10	3	2	43597	2.7	87.8	1.6	3.4	0.9	2.4	0.6	0.5	0.1	90.5	1.6	7.9	0.071	0.510	25.795750	-100.279434
X. C. Libramiento Noroeste de Monterrey (Central)	16.00	1	1	39380	3.3	87.3	1.2	3.6	1.0	2.1	0.6	0.7	0.2	90.6	1.2	8.2	0.071	0.504	25.820479	-100.265014
X. C. Libramiento Noroeste de Monterrey (Lateral)	16.00	1	1	7776	1.9	77.7	2.4	11.1	2.4	3.2	0.6	0.4	0.3	79.6	2.4	18.0	0.075	0.509	25.820419	-100.264931
X. C. Libramiento Noroeste de Monterrey (Central)	16.00	1	2	38718	3.3	85.9	1.2	4.2	1.2	2.5	0.6	0.9	0.2	89.2	1.2	9.6	0.073	0.504	25.820528	-100.265128
X. C. Libramiento Noroeste de Monterrey (Lateral)	16.00	1	2	7515	1.8	75.8	2.7	12.2	2.5	3.7	0.6	0.4	0.3	77.6	2.7	19.7	0.088	0.509	25.820645	-100.265149
X. C. Libramiento Noroeste de Monterrey	16.00	3	1	50328	2.3	74.6	2.1	5.6	3.4	9.1	1.2	1.1	0.6	76.9	2.1	21.0	0.091	0.503	25.836244	-100.254013
X. C. Libramiento Noroeste de Monterrey	16.00	3	2	49669	2.1	72.7	2.3	6.1	3.7	9.8	1.4	1.3	0.6	74.8	2.3	22.9	0.086	0.503	25.836287	-100.254106
X. C. Santa Rosa - Salinas Victoria	20.19	3	1	48193	4.1	67.3	2.6	6.0	2.8	13.8	1.2	1.8	0.4	71.4	2.6	26.0	0.084	0.515	25.857918	-100.238806
X. C. Santa Rosa - Salinas Victoria	20.19	3	2	45072	4.2	66.5	2.4	6.3	2.9	14.2	1.1	2.0	0.4	70.7	2.4	26.9	0.068	0.515	25.858308	-100.238769
T. C. Monterrey - Nuevo Laredo (Cuota)	23.99																			
Ciénega de Flores	32.00	1	0	25241	3.5	78.5	2.2	7.7	1.2	6.3	0.3	0.2	0.1	82.0	2.2	15.8	0.081	0.514	25.942266	-100.178508
T. Der. Agualeguas	78.23	3	0	6418	2.5	49.5	2.6	6.3	2.4	34.7	1.1	0.8	0.1	52.0	2.6	45.4	0.081	0.514	26.335653	-100.111718
Sabinas Hidalgo	98.90	3	0	5243	2.6	44.9	4.1	7.7	2.8	34.7	1.4	1.5	0.3	47.5	4.1	48.4	0.083	0.534	26.532719	-100.150889
Vallecillos	124.40	3	0	4286	2.9	37.4	3.5	8.1	2.4	42.0	1.5	1.8	0.4	40.3	3.5	56.2	0.071	0.538	26.663281	-99.980298
T. Izq. Anáhuac	156.80	1	0	4597	3.1	44.0	3.8	6.8	3.5	35.9	1.4	1.3	0.2	47.1	3.8	49.1	0.069	0.512	26.875030	-99.832433
T. Izq. Anáhuac	156.80	3	1	8258	2.0	36.2	4.6	6.5	2.8	45.0	1.1	1.4	0.4	38.2	4.6	57.2	0.080	0.507	26.903847	-99.809360
T. Izq. Anáhuac	156.80	3	2	8476	2.0	36.2	4.7	6.6	2.8	44.5	1.2	1.6	0.4	38.2	4.7	57.1	0.072	0.507	26.903548	-99.809881
Lim. Edos. Term. N. L. Ppia. Tamps.	184.56																			
T. Der. Mier	205.90	1	1	9884	1.5	37.2	4.1	4.1	3.0	46.9	0.8	1.9	0.5	38.7	4.1	57.2	0.094	0.539	27.288855	-99.604880
T. Der. Mier	205.90	1	2	11535	1.7	38.7	3.9	4.3	3.1	44.7	1.0	2.0	0.6	40.4	3.9	55.7	0.071	0.539	27.289061	-99.604929
T. Der. Mier	205.90	3	1	8122	0.8	44.8	4.6	9.1	5.2	33.0	1.1	1.0	0.4	45.6	4.6	49.8	0.073	0.500	27.308047	-99.594627
T. Der. Mier	205.90	3	2	8130	0.7	45.3	4.3	9.0	5.5	33.2	0.9	0.8	0.3	46.0	4.3	49.7	0.076	0.500	27.308430	-99.594584
Nuevo Laredo	228.00	1	1	10786	0.9	64.0	1.8	7.0	5.2	18.0	1.1	1.5	0.5	64.9	1.8	33.3	0.088	0.512	27.375333	-99.558670
Nuevo Laredo	228.00	1	2	10265	1.1	63.5	1.5	7.1	5.4	18.4	1.0	1.4	0.6	64.6	1.5	33.9	0.071	0.512	27.375391	-99.558830

13 CARR: Monterrey - Reynosa (Libre)

CLAVE: 00088

RUTA: MEX-040

AÑO: 2023

LUGAR	ESTACION				CLASIFICACION VEHICULAR EN PORCIENTO										COORDENADAS					
	KM	TE	SC	TDPA	M	A	B	C2	C3	T3S2	T3S3	T3S2R4	OTROS	A	B	C	K'	D	LATITUD	LONGITUD
T. C. Monterrey - Mier	0.00																			
Villa Juárez	19.10	1	1	31596	4.7	85.3	1.2	5.5	0.9	0.9	0.5	0.7	0.3	90.0	1.2	8.8	0.068	0.506	25.651981	-100.108206

NUEVO LEON

13 CARR: Monterrey - Reynosa (Libre)

CLAVE: 00088

RUTA: MEX-040

AÑO: 2023

LUGAR	ESTACION				CLASIFICACION VEHICULAR EN PORCIENTO										COORDENADAS					
	KM	TE	SC	TDPA	M	A	B	C2	C3	T3S2	T3S3	T3S2R4	OTROS	A	B	C	K'	D	LATITUD	LONGITUD
Villa Juárez	19.10	1	2	32458	4.5	85.8	1.3	5.1	1.0	0.8	0.5	0.7	0.3	90.3	1.3	8.4	0.066	0.506	25.652104	-100.108175
Villa Juárez	19.10	3	1	21728	7.0	82.9	1.0	4.4	1.3	1.0	0.5	1.4	0.5	89.9	1.0	9.1	0.079	0.512	25.636405	-100.083217
Villa Juárez	19.10	3	2	20687	7.1	82.3	1.1	4.4	1.5	1.1	0.5	1.5	0.5	89.4	1.1	9.5	0.071	0.512	25.636482	-100.083144
Puente Cadereyta	30.50	2	1	3034	2.1	77.5	0.2	5.2	3.2	5.8	2.4	2.8	0.8	79.6	0.2	20.2	0.091	0.500	25.601114	-100.005696
Puente Cadereyta	30.50	2	2	3034	2.1	77.5	0.2	5.2	3.2	5.8	2.4	2.8	0.8	79.6	0.2	20.2	0.091	0.500	25.601114	-100.005696
Refinería de Cadereyta	33.00	3	0	8128	2.7	80.0	1.5	3.8	2.7	5.0	2.2	1.5	0.6	82.7	1.5	15.8	0.086	0.511	25.594992	-99.923614
T. Izq. Los Ramones	68.78	3	0	4150	1.4	77.6	1.7	5.9	2.0	7.7	2.4	1.1	0.2	79.0	1.7	19.3	0.086	0.527	25.620332	-99.626398
China	114.10																			
Gral. Bravo	125.00	1	0	7387	1.2	79.7	1.5	5.4	1.0	6.5	2.3	2.0	0.4	80.9	1.5	17.6	0.101	0.506	25.774581	-99.190332
T. C. Cadereyta - Reynosa (Cuota)	178.00																			
Lim. Edos. Term. N. L. Ppia. Tamps.	192.00																			
T. Izq. Diaz Ordáz	192.55	1	1	5349	3.6	62.2	4.5	4.7	2.0	14.4	3.7	4.0	0.9	65.8	4.5	29.7	0.102	0.522	25.967502	-98.594039
T. Izq. Diaz Ordáz	192.55	1	2	5845	3.7	61.9	4.3	4.8	2.1	14.2	3.8	4.3	0.9	65.6	4.3	30.1	0.106	0.522	25.968079	-98.593887
T. Der. Libramiento de Reynosa Sur II	206.33	1	1	6020	4.0	64.7	3.5	4.9	2.7	11.9	2.9	4.6	0.8	68.7	3.5	27.8	0.091	0.532	26.016521	-98.467478
T. Der. Libramiento de Reynosa Sur II	206.33	1	2	6851	3.7	65.5	3.7	4.6	2.9	11.6	2.6	4.5	0.9	69.2	3.7	27.1	0.095	0.532	26.017063	-98.467425
Reynosa	225.00	1	1	24620	2.1	84.1	2.0	4.7	1.3	3.9	0.8	0.9	0.2	86.2	2.0	11.8	0.080	0.522	26.042239	-98.401919
Reynosa	225.00	1	2	22556	2.3	84.3	2.0	4.6	1.4	3.5	0.7	1.0	0.2	86.6	2.0	11.4	0.090	0.522	26.042587	-98.401959

14 CARR: Paras - Nueva Ciudad Guerrero

CLAVE: 00476

RUTA: MEX-030

AÑO: 2023

LUGAR	ESTACION				CLASIFICACION VEHICULAR EN PORCIENTO										COORDENADAS					
	KM	TE	SC	TDPA	M	A	B	C2	C3	T3S2	T3S3	T3S2R4	OTROS	A	B	C	K'	D	LATITUD	LONGITUD
Paras	0.00	3	0	460	0.7	65.9	1.3	23.2	1.4	2.4	1.9	3.2	0.0	66.6	1.3	32.1	0.118	0.514	26.502004	-99.516260
Lim. Edos. Term. N. L. Ppia. Tamps.	13.10																			
T. C. Reynosa - (T. C. Monterrey - Nuevo Laredo)	32.00	1	0	342	0.0	74.6	0.9	15.4	0.8	1.8	1.8	4.7	0.0	74.6	0.9	24.5	0.172	0.519	26.555008	-99.244291

15 CARR: Piedras Negras - Nuevo Laredo

CLAVE: 00503

RUTA: MEX-002

AÑO: 2023

LUGAR	ESTACION				CLASIFICACION VEHICULAR EN PORCIENTO										COORDENADAS					
	KM	TE	SC	TDPA	M	A	B	C2	C3	T3S2	T3S3	T3S2R4	OTROS	A	B	C	K'	D	LATITUD	LONGITUD
T. C. Monclova - Piedras Negras	0.00	3	1	5340	2.4	86.3	1.1	3.6	3.2	2.4	0.6	0.3	0.1	88.7	1.1	10.2	0.082	0.509	28.639883	-100.552189
T. C. Monclova - Piedras Negras	0.00	3	2	5153	2.5	86.5	1.1	3.6	2.9	2.4	0.6	0.3	0.1	89.0	1.1	9.9	0.102	0.509	28.639931	-100.552086
El Saucito	16.90	3	0	1143	1.4	61.4	2.0	13.2	3.8	9.3	0.9	7.1	0.9	62.8	2.0	35.2	0.086	0.506	28.501722	-100.467199
T. Der. Villa Unión	37.00	1	0	1046	0.9	63.7	2.8	10.4	4.2	8.0	1.1	8.0	0.9	64.6	2.8	32.6	0.090	0.510	28.347300	-100.392906
T. Der. Villa Unión	37.00	3	0	957	4.3	51.7	2.7	12.9	4.5	12.4	2.9	7.6	1.0	56.0	2.7	41.3	0.085	0.527	28.333064	-100.388573

NUEVO LEON

15 CARR: Piedras Negras - Nuevo Laredo

CLAVE: 00503

RUTA: MEX-002

AÑO: 2023

LUGAR	ESTACION				CLASIFICACION VEHICULAR EN PORCIENTO														COORDENADAS	
	KM	TE	SC	TDPA	M	A	B	C2	C3	T3S2	T3S3	T3S2R4	OTROS	A	B	C	K'	D	LATITUD	LONGITUD
Guerrero	42.00	3	0	772	2.3	55.1	3.0	7.7	5.9	13.7	1.0	10.5	0.8	57.4	3.0	39.6	0.091	0.508	28.307472	-100.364668
Lim. Edos. Term. Coah. Ppia. N. L.	124.40																			
T. C. Monclova - Colombia	134.00	3	0	3047	1.9	63.9	1.5	8.5	3.2	17.0	1.7	2.0	0.3	65.8	1.5	32.7	0.084	0.506	27.688679	-99.778447
Lim. Edos. Term. N. L. Ppia. Tamps.	138.20																			
T. Der. Libramiento de Nuevo Laredo	157.70	1	1	5639	7.6	45.1	1.4	5.4	12.1	24.8	1.2	1.6	0.8	52.7	1.4	45.9	0.102	0.539	27.572670	-99.604060
T. Der. Libramiento de Nuevo Laredo	157.70	1	2	4814	7.8	45.0	1.7	5.2	12.5	24.5	1.1	1.3	0.9	52.8	1.7	45.5	0.100	0.539	27.572761	-99.603996
Nuevo Laredo	175.00	1	1	12288	2.5	47.6	2.1	5.3	15.5	25.4	0.5	0.7	0.4	50.1	2.1	47.8	0.103	0.518	27.549957	-99.579760
Nuevo Laredo	175.00	1	2	11412	2.3	47.4	2.3	5.8	14.8	25.8	0.5	0.8	0.3	49.7	2.3	48.0	0.109	0.518	27.549943	-99.579601

16 CARR: Ramal a Aeropuerto Mariano Escobedo

CLAVE: 19510

RUTA: MEX-054

AÑO: 2023

LUGAR	ESTACION				CLASIFICACION VEHICULAR EN PORCIENTO														COORDENADAS	
	KM	TE	SC	TDPA	M	A	B	C2	C3	T3S2	T3S3	T3S2R4	OTROS	A	B	C	K'	D	LATITUD	LONGITUD
T. C. Monterrey - Cd. Mier	0.00	3	1	26945	2.0	85.2	1.3	3.8	1.8	3.5	0.5	1.5	0.4	87.2	1.3	11.5	0.071	0.506	25.787641	-100.137325
T. C. Monterrey - Cd. Mier	0.00	3	2	26282	1.8	85.6	1.1	4.0	1.6	3.7	0.4	1.3	0.5	87.4	1.1	11.5	0.084	0.506	25.787367	-100.136537
Aeropuerto	2.40																			

17 CARR: Saltillo - Monterrey

CLAVE: 00087

RUTA: MEX-040

AÑO: 2023

LUGAR	ESTACION				CLASIFICACION VEHICULAR EN PORCIENTO														COORDENADAS	
	KM	TE	SC	TDPA	M	A	B	C2	C3	T3S2	T3S3	T3S2R4	OTROS	A	B	C	K'	D	LATITUD	LONGITUD
T. C. Saltillo - Arteaga	0.00																			
T. Izq. Zinacamex	4.25	3	1	59651	2.5	90.8	0.8	3.2	0.7	0.6	0.1	1.0	0.3	93.3	0.8	5.9	0.104	0.519	25.483379	-100.971824
T. Izq. Zinacamex	4.25	3	2	54542	2.4	90.0	0.8	3.6	0.9	0.6	0.1	1.3	0.3	92.4	0.8	6.8	0.088	0.519	25.483556	-100.971935
Ramos Arizpe	11.30	1	1	45686	1.4	86.1	2.5	4.8	0.9	2.0	1.3	0.6	0.4	87.5	2.5	10.0	0.098	0.514	25.516381	-100.957242
Ramos Arizpe	11.30	1	2	48669	1.7	85.6	2.6	4.5	1.0	2.1	1.3	0.7	0.5	87.3	2.6	10.1	0.089	0.514	25.516197	-100.957568
T. Der. Aeropuerto	13.00	3	1	31514	3.9	77.5	3.6	6.8	1.2	4.2	1.5	0.9	0.4	81.4	3.6	15.0	0.147	0.516	25.554387	-100.927647
T. Der. Aeropuerto	13.00	3	2	33855	4.2	77.6	3.3	6.7	1.5	4.0	1.7	0.7	0.3	81.8	3.3	14.9	0.136	0.516	25.554311	-100.928056
T. Der. Libramiento J.L.P.	16.00	3	1	32725	2.8	75.9	1.9	7.8	2.1	7.2	0.9	1.1	0.3	78.7	1.9	19.4	0.135	0.519	25.567931	-100.912313
T. Der. Libramiento J.L.P.	16.00	3	2	30030	3.0	74.9	2.0	8.2	1.9	7.5	0.8	1.2	0.5	77.9	2.0	20.1	0.082	0.519	25.568401	-100.912092
Ojo Caliente	26.30	1	1	22554	3.2	55.0	4.2	5.9	2.3	24.2	2.0	2.6	0.6	58.2	4.2	37.6	0.074	0.508	25.610716	-100.844113
Ojo Caliente	26.30	1	2	21867	3.4	54.2	4.6	5.6	2.1	24.5	2.3	2.6	0.7	57.6	4.6	37.8	0.064	0.508	25.612848	-100.847527
Lim. Edos. Term. Coah. Ppia. N. L.	33.00																			
T. Izq. Libramiento Noroeste de Monterrey	54.00	1	1	19207	2.3	51.0	4.0	8.5	2.1	24.0	3.1	4.3	0.7	53.3	4.0	42.7	0.081	0.508	25.698309	-100.562384
T. Izq. Libramiento Noroeste de Monterrey	54.00	1	2	19871	2.4	50.8	4.2	8.6	2.2	23.7	2.9	4.5	0.7	53.2	4.2	42.6	0.057	0.508	25.698668	-100.562609

NUEVO LEON

17 CARR: Saltillo - Monterrey

CLAVE: 00087

RUTA: MEX-040

AÑO: 2023

LUGAR	ESTACION				CLASIFICACION VEHICULAR EN PORCIENTO										COORDENADAS					
	KM	TE	SC	TDPA	M	A	B	C2	C3	T3S2	T3S3	T3S2R4	OTROS	A	B	C	K'	D	LATITUD	LONGITUD
T. Der. Santa Catarina (1º Acceso)	62.46	1	1	40861	2.3	81.8	1.8	7.4	1.2	3.2	1.5	0.6	0.2	84.1	1.8	14.1	0.072	0.509	25.687226	-100.494937
T. Der. Santa Catarina (1º Acceso)	62.46	1	2	42428	2.4	82.2	1.8	7.2	1.1	3.0	1.4	0.6	0.3	84.6	1.8	13.6	0.081	0.509	25.687512	-100.495177
Ppia. Monterrey	79.20	1	1	74707	2.0	85.4	1.0	5.6	1.4	2.1	1.5	0.6	0.4	87.4	1.0	11.6	0.071	0.509	25.674391	-100.426731
Ppia. Monterrey	79.20	1	2	77966	1.8	85.6	1.1	5.4	1.3	2.2	1.7	0.5	0.4	87.4	1.1	11.5	0.069	0.509	25.674543	-100.426792

18 CARR: Cadereyta - Reynosa (Cuota)

CLAVE: 19002

RUTA: MEX-040D

AÑO: 2023

LUGAR	ESTACION				CLASIFICACION VEHICULAR EN PORCIENTO										COORDENADAS					
	KM	TE	SC	TDPA	M	A	B	C2	C3	T3S2	T3S3	T3S2R4	OTROS	A	B	C	K'	D	LATITUD	LONGITUD
Cadereyta de Jiménez	34.99																			
X. C. Cadereyta de Jiménez - Doctor González	37.00	3	1	4384	2.8	55.0	6.3	5.2	1.8	17.7	5.3	5.2	0.7	57.8	6.3	35.9	0.089	0.506	25.600022	-99.940969
X. C. Cadereyta de Jiménez - Doctor González	37.00	3	2	4482	2.8	52.1	6.5	6.0	1.8	18.8	5.4	5.7	0.9	54.9	6.5	38.6	0.093	0.506	25.600302	-99.940733
T. Izq. Los Ramones	70.60	3	1	3764	2.6	58.7	5.0	4.0	2.2	17.5	3.1	6.1	0.8	61.3	5.0	33.7	0.108	0.502	25.671278	-99.618861
T. Izq. Los Ramones	70.60	3	2	3726	2.6	57.6	5.1	4.2	2.5	18.0	3.2	6.0	0.8	60.2	5.1	34.7	0.100	0.502	25.671467	-99.619066
X. C. Ramal a Cerralvo	98.70	3	1	3751	2.5	57.9	5.4	4.1	2.1	18.6	2.9	5.7	0.8	60.4	5.4	34.2	0.106	0.542	25.759996	-99.365856
X. C. Ramal a Cerralvo	98.70	3	2	4436	2.7	59.6	5.2	3.1	2.1	18.3	2.9	5.3	0.8	62.3	5.2	32.5	0.099	0.542	25.760262	-99.365876
Plaza de Cobro General Bravo	120.00	2	1	3567	0.1	62.3	2.7	3.1	2.6	17.4	3.6	6.1	2.1	62.4	2.7	34.9	0.096	0.500	25.813517	-99.169575
Plaza de Cobro General Bravo	120.00	2	2	3567	0.1	62.3	2.7	3.1	2.6	17.4	3.6	6.1	2.1	62.4	2.7	34.9	0.096	0.500	25.813517	-99.169575
T. C. Monterrey - Reynosa (Libre)	166.90	1	1	3940	2.4	61.7	5.1	3.2	2.0	18.0	2.1	4.7	0.8	64.1	5.1	30.8	0.099	0.504	25.917715	-98.721997
T. C. Monterrey - Reynosa (Libre)	166.90	1	2	4011	2.7	61.9	5.2	2.8	1.5	16.9	3.3	4.9	0.8	64.6	5.2	30.2	0.110	0.504	25.918102	-98.721742

19 CARR: Monterrey - Nuevo Laredo (Cuota)

CLAVE: 19086

RUTA: MEX-085D

AÑO: 2023

LUGAR	ESTACION				CLASIFICACION VEHICULAR EN PORCIENTO										COORDENADAS					
	KM	TE	SC	TDPA	M	A	B	C2	C3	T3S2	T3S3	T3S2R4	OTROS	A	B	C	K'	D	LATITUD	LONGITUD
T. C. Monterrey - Nuevo Laredo	24.00	3	1	13655	2.4	57.9	2.8	6.1	3.1	25.6	1.0	0.8	0.3	60.3	2.8	36.9	0.107	0.524	25.899685	-100.224235
T. C. Monterrey - Nuevo Laredo	24.00	3	2	15016	2.2	57.2	3.1	5.9	2.9	26.2	1.1	1.0	0.4	59.4	3.1	37.5	0.088	0.524	25.899681	-100.224534
X. C. Salinas Victoria - Ciénega de Flores	30.65	3	1	17773	1.3	52.2	3.4	5.2	2.9	32.3	1.0	1.4	0.3	53.5	3.4	43.1	0.078	0.504	25.943811	-100.223335
X. C. Salinas Victoria - Ciénega de Flores	30.65	3	2	18070	1.4	54.6	3.2	5.2	2.9	30.3	1.0	1.1	0.3	56.0	3.2	40.8	0.078	0.504	25.944875	-100.223305
X. C. Agualeguas - El Ébano	79.60	3	1	8387	3.0	34.0	3.7	3.6	2.8	49.8	0.9	1.7	0.5	37.0	3.7	59.3	0.076	0.501	26.352810	-100.067349
X. C. Agualeguas - El Ébano	79.60	3	2	8416	3.4	40.0	3.2	3.6	2.6	44.7	0.8	1.3	0.4	43.4	3.2	53.4	0.075	0.501	26.352958	-100.067616
Plaza de Cobro Sabinas	99.30	2	1	7481	0.1	27.4	2.5	2.5	2.3	61.3	0.8	2.2	0.9	27.5	2.5	70.0	0.091	0.500	26.512100	-100.007195
Plaza de Cobro Sabinas	99.30	2	2	7481	0.1	27.4	2.5	2.5	2.3	61.3	0.8	2.2	0.9	27.5	2.5	70.0	0.091	0.500	26.512100	-100.007195
Plaza de Cobro Sabinas	99.30	3	1	8268	3.4	28.6	3.2	2.0	2.4	57.0	0.6	2.2	0.6	32.0	3.2	64.8	0.063	0.532	26.515511	-100.005500
Plaza de Cobro Sabinas	99.30	3	2	7275	3.4	28.3	3.3	2.0	2.3	57.2	0.7	2.2	0.6	31.7	3.3	65.0	0.082	0.532	26.515898	-100.005654

NUEVO LEON

19 CARR: Monterrey - Nuevo Laredo (Cuota)

CLAVE: 19086

RUTA: MEX-085D

AÑO: 2023

LUGAR	ESTACION				CLASIFICACION VEHICULAR EN PORCIENTO										COORDENADAS					
	KM	TE	SC	TDPA	M	A	B	C2	C3	T3S2	T3S3	T3S2R4	OTROS	A	B	C	K'	D	LATITUD	LONGITUD
X. C. Palo Alto - Vallecillos	115.50	3	1	9724	1.7	17.5	4.2	2.4	2.5	68.2	0.5	2.3	0.7	19.2	4.2	76.6	0.065	0.543	26.645628	-99.940730
X. C. Palo Alto - Vallecillos	115.50	3	2	8188	1.8	25.8	4.4	2.5	2.1	60.3	0.5	1.9	0.7	27.6	4.4	68.0	0.075	0.543	26.645753	-99.941012
Plaza de Cobro Ex-Garita	192.30	2	1	5790	0.1	35.2	2.9	2.6	2.5	52.0	0.9	2.7	1.1	35.3	2.9	61.8	0.080	0.500	27.270497	-99.613956
Plaza de Cobro Ex-Garita	192.30	2	2	5790	0.1	35.2	2.9	2.6	2.5	52.0	0.9	2.7	1.1	35.3	2.9	61.8	0.080	0.500	27.270497	-99.613956
T. C. Monterrey - Nuevo Laredo (Libre)	193.30	1	1	6955	3.0	32.1	4.5	5.2	2.7	49.2	1.2	1.6	0.5	35.1	4.5	60.4	0.091	0.508	26.868087	-99.829556
T. C. Monterrey - Nuevo Laredo (Libre)	193.30	1	2	7175	2.4	33.7	4.7	4.1	2.9	49.6	1.1	1.2	0.3	36.1	4.7	59.2	0.095	0.508	26.877666	-99.823733

20 CARR: Puerto México - La Carbonera (Cuota)

CLAVE: 00115

RUTA: MEX-057D

AÑO: 2023

LUGAR	ESTACION				CLASIFICACION VEHICULAR EN PORCIENTO										COORDENADAS					
	KM	TE	SC	TDPA	M	A	B	C2	C3	T3S2	T3S3	T3S2R4	OTROS	A	B	C	K'	D	LATITUD	LONGITUD
Ent. Puerto México	202.00																			
Plaza de Cobro Los Chorros	203.64	2	1	7749	0.2	30.3	4.7	3.4	1.9	48.4	3.3	6.6	1.2	30.5	4.7	64.8	0.076	0.500	25.186696	-100.731988
Plaza de Cobro Los Chorros	203.64	2	2	7749	0.2	30.3	4.7	3.4	1.9	48.4	3.3	6.6	1.2	30.5	4.7	64.8	0.076	0.500	25.186696	-100.731988
Lim. Edos. Term. N. L. Ppia. Coah.	204.07																			
Lim. Edos. Term. Coah. Ppia. N. L.	204.50																			
Lim. Edos. Term. N. L. Ppia. Coah.	205.76																			
T. Izq. Huachichil	213.39	1	1	7245	2.2	57.7	7.0	2.3	1.8	22.0	1.3	4.8	0.9	59.9	7.0	33.1	0.067	0.503	25.244981	-100.793749
T. Izq. Huachichil	213.39	1	2	7152	2.2	54.2	7.2	2.5	1.8	24.2	1.5	5.4	1.0	56.4	7.2	36.4	0.071	0.503	25.244926	-100.793807
T. Der. San Antonio de Las Alazanas	224.94	1	1	9307	2.8	38.4	5.3	6.6	2.2	36.3	3.0	4.4	1.0	41.2	5.3	53.5	0.066	0.515	25.345232	-100.794501
T. Der. San Antonio de Las Alazanas	224.94	1	2	9870	2.7	37.8	5.1	6.6	2.5	36.8	3.1	4.4	1.0	40.5	5.1	54.4	0.069	0.515	25.345232	-100.794606
T. Der. San Antonio de Las Alazanas	224.94	3	1	11685	2.7	40.0	6.4	4.6	2.6	36.3	2.4	4.1	0.9	42.7	6.4	50.9	0.101	0.510	25.351378	-100.794324
T. Der. San Antonio de Las Alazanas	224.94	3	2	12142	2.5	40.3	6.4	4.8	2.6	36.1	2.2	4.2	0.9	42.8	6.4	50.8	0.061	0.510	25.351482	-100.794423
Los Lirios	228.30	3	1	13700	2.2	51.5	5.0	4.5	2.5	26.9	2.7	3.8	0.9	53.7	5.0	41.3	0.085	0.515	25.406897	-100.800646
Los Lirios	228.30	3	2	12899	2.1	51.9	4.9	4.3	2.5	27.0	2.9	3.6	0.8	54.0	4.9	41.1	0.079	0.515	25.406924	-100.800749
Ent. La Carbonera	235.60																			

21 CARR: Saltillo - Monterrey (Cuota)

CLAVE: 00087

RUTA: MEX-040D

AÑO: 2023

LUGAR	ESTACION				CLASIFICACION VEHICULAR EN PORCIENTO										COORDENADAS					
	KM	TE	SC	TDPA	M	A	B	C2	C3	T3S2	T3S3	T3S2R4	OTROS	A	B	C	K'	D	LATITUD	LONGITUD
Ojo Caliente	46.21	3	1	5057	7.2	44.5	4.8	5.7	2.6	21.0	3.6	9.7	0.9	51.7	4.8	43.5	0.070	0.511	25.617033	-100.906741
Ojo Caliente	46.21	3	2	5284	7.5	45.0	4.6	5.5	2.8	20.6	3.4	9.6	1.0	52.5	4.6	42.9	0.068	0.511	25.617103	-100.906794
Lim. Edos. Term. Coah. Ppia. N. L.	61.08																			
T. Izq. Anillo Periférico de Monterrey (Cuota)	82.00	1	1	10135	2.3	58.5	5.6	6.9	1.9	18.8	2.0	3.0	1.0	60.8	5.6	33.6	0.084	0.520	25.697494	-100.596913

NUEVO LEON

21 CARR: Saltillo - Monterrey (Cuota)

CLAVE: 00087

RUTA: MEX-040D

AÑO: 2023

LUGAR	ESTACION				CLASIFICACION VEHICULAR EN PORCIENTO													COORDENADAS		
	KM	TE	SC	TDPA	M	A	B	C2	C3	T3S2	T3S3	T3S2R4	OTROS	A	B	C	K'	D	LATITUD	LONGITUD
T. Izq. Anillo Periférico de Monterrey (Cuota)	82.00	1	2	10974	2.0	58.4	5.3	7.2	1.7	19.5	2.0	3.0	0.9	60.4	5.3	34.3	0.083	0.520	25.697556	-100.596750
T. Izq. Anillo Periférico de Monterrey (Cuota)	82.00	3	1	6534	1.4	89.9	2.2	5.2	0.5	0.5	0.2	0.0	0.1	91.3	2.2	6.5	0.132	0.503	25.674650	-100.502946
T. Izq. Anillo Periférico de Monterrey (Cuota)	82.00	3	2	6454	1.6	89.6	2.4	5.1	0.4	0.5	0.2	0.1	0.1	91.2	2.4	6.4	0.101	0.503	25.674728	-100.502888
Morones Prieto	96.10																			

22 CARR: Agualeguas - El Ébano

CLAVE: 19004

RUTA: NL-023

AÑO: 2023

LUGAR	ESTACION				CLASIFICACION VEHICULAR EN PORCIENTO													COORDENADAS		
	KM	TE	SC	TDPA	M	A	B	C2	C3	T3S2	T3S3	T3S2R4	OTROS	A	B	C	K'	D	LATITUD	LONGITUD
Agualeguas	0.00	3	0	357	0.9	79.1	1.0	17.5	0.7	0.5	0.0	0.1	0.2	80.0	1.0	19.0	0.124	0.507	26.294856	-99.564784
T. C. Monterrey - Nuevo Laredo	54.00	1	0	1021	3.0	71.6	2.0	6.7	2.5	11.1	0.7	1.9	0.5	74.6	2.0	23.4	0.114	0.510	26.330077	-100.108797

23 CARR: Apodaca - Villa Juárez

CLAVE: 00087

RUTA: NL

AÑO: 2023

LUGAR	ESTACION				CLASIFICACION VEHICULAR EN PORCIENTO													COORDENADAS		
	KM	TE	SC	TDPA	M	A	B	C2	C3	T3S2	T3S3	T3S2R4	OTROS	A	B	C	K'	D	LATITUD	LONGITUD
T. C. Monterrey - Cd. Mier	0.00	3	0	19992	2.7	78.4	2.4	12.1	1.2	1.2	0.3	0.8	0.9	81.1	2.4	16.5	0.068	0.502	25.771709	-100.178990
T. Der. Santa Mónica	5.00	1	1	18441	4.5	82.7	1.5	6.6	1.6	1.4	0.3	0.9	0.5	87.2	1.5	11.3	0.089	0.517	25.744189	-100.160504
T. Der. Santa Mónica	5.00	1	2	19710	4.6	82.4	1.5	6.9	1.6	1.4	0.3	0.9	0.4	87.0	1.5	11.5	0.084	0.517	25.744058	-100.160312
T. Der. Santa Mónica	5.00	3	1	17333	5.3	82.7	1.4	6.1	1.7	1.3	0.4	0.7	0.4	88.0	1.4	10.6	0.074	0.504	25.738787	-100.156515
T. Der. Santa Mónica	5.00	3	2	17067	5.3	82.9	1.3	6.0	1.6	1.3	0.4	0.8	0.4	88.2	1.3	10.5	0.076	0.504	25.738884	-100.156443
T. Izq. Aeropuerto	8.60	1	1	14919	3.1	81.9	2.1	8.2	1.6	1.6	0.6	0.6	0.3	85.0	2.1	12.9	0.095	0.506	25.726307	-100.143850
T. Izq. Aeropuerto	8.60	1	2	14566	3.2	81.3	2.1	8.2	1.8	1.7	0.6	0.7	0.4	84.5	2.1	13.4	0.078	0.506	25.726424	-100.143718
T. Izq. Aeropuerto	8.60	3	0	19817	3.5	76.0	3.2	12.0	1.5	1.5	0.4	1.4	0.5	79.5	3.2	17.3	0.080	0.506	25.707718	-100.134469
T. Der. Dulces Nombres	10.40	1	0	20614	3.3	78.9	1.9	11.5	1.7	1.3	0.3	0.7	0.4	82.2	1.9	15.9	0.074	0.500	25.703072	-100.132755
T. Der. Dulces Nombres	10.40	3	0	24440	4.8	76.3	3.2	10.8	1.2	2.3	0.4	0.8	0.2	81.1	3.2	15.7	0.075	0.504	25.688086	-100.120733
Villa Juárez	16.00	1	1	15181	3.5	81.8	2.5	6.2	2.1	1.7	0.7	1.1	0.4	85.3	2.5	12.2	0.086	0.509	25.657595	-100.079210
Villa Juárez	16.00	1	2	15763	3.5	81.9	2.2	6.6	2.0	1.8	0.6	1.1	0.3	85.4	2.2	12.4	0.082	0.509	25.657494	-100.079022

24 CARR: Atongo - Lazarillos

CLAVE:

RUTA: NL

AÑO: 2023

LUGAR	ESTACION				CLASIFICACION VEHICULAR EN PORCIENTO													COORDENADAS		
	KM	TE	SC	TDPA	M	A	B	C2	C3	T3S2	T3S3	T3S2R4	OTROS	A	B	C	K'	D	LATITUD	LONGITUD
Atongo	0.00	3	0	695	3.5	83.5	0.2	9.4	1.7	1.0	0.5	0.1	0.1	87.0	0.2	12.8	0.092	0.532	25.347588	-100.001356
Lazarillos	7.78	1	0	2705	4.9	81.2	0.3	9.3	1.5	1.9	0.4	0.3	0.2	86.1	0.3	13.6	0.098	0.511	25.312789	-100.040809

NUEVO LEON

25 CARR: Cadereyta de Jiménez - Doctor González

CLAVE: 19473

RUTA: NL

AÑO: 2023

LUGAR	ESTACION				CLASIFICACION VEHICULAR EN PORCIENTO														COORDENADAS	
	KM	TE	SC	TDPA	M	A	B	C2	C3	T3S2	T3S3	T3S2R4	OTROS	A	B	C	K'	D	LATITUD	LONGITUD
T. C. Monterrey - Reynosa	0.00	3	0	994	3.3	47.4	4.1	14.6	4.8	11.1	5.1	9.4	0.2	50.7	4.1	45.2	0.107	0.506	25.598306	-99.940796
X. C. Pesquería - Santa María Floreña	18.00	3	0	602	4.1	55.1	0.7	9.7	8.2	9.2	1.0	11.8	0.2	59.2	0.7	40.1	0.122	0.504	25.753629	-99.913824
Doctor González	30.00	1	0	446	7.7	75.5	0.5	12.1	1.4	1.2	1.0	0.4	0.2	83.2	0.5	16.3	0.098	0.503	25.856159	-99.936024

26 CARR: Cd. Benito Juárez - Villa de Santiago

CLAVE: 00087

RUTA: NL

AÑO: 2023

LUGAR	ESTACION				CLASIFICACION VEHICULAR EN PORCIENTO														COORDENADAS	
	KM	TE	SC	TDPA	M	A	B	C2	C3	T3S2	T3S3	T3S2R4	OTROS	A	B	C	K'	D	LATITUD	LONGITUD
Cd. Benito Juárez	0.00	3	1	15557	4.7	88.6	0.9	3.5	0.9	0.6	0.3	0.3	0.2	93.3	0.9	5.8	0.068	0.513	25.623567	-100.103878
Cd. Benito Juárez	0.00	3	2	14779	4.1	88.6	1.0	4.0	0.9	0.5	0.3	0.3	0.3	92.7	1.0	6.3	0.069	0.513	25.623514	-100.103764
Arboledas de San Roque	4.70	3	0	6882	0.6	83.9	0.6	9.3	1.5	2.6	0.9	0.3	0.3	84.5	0.6	14.9	0.096	0.503	25.601745	-100.116175
T. Izq. Cadereyta de Jiménez	23.00	3	0	4243	3.6	80.3	0.3	9.8	1.2	3.5	0.5	0.3	0.5	83.9	0.3	15.8	0.163	0.505	25.466003	-100.095577
T. C. Cd. Victoria - Monterrey	39.00	1	0	7784	3.4	85.1	0.6	7.1	1.1	1.5	0.6	0.4	0.2	88.5	0.6	10.9	0.099	0.519	25.454441	-100.159691

27 CARR: China - Méndez

CLAVE: 00191

RUTA: NL-TAM

AÑO: 2023

LUGAR	ESTACION				CLASIFICACION VEHICULAR EN PORCIENTO														COORDENADAS	
	KM	TE	SC	TDPA	M	A	B	C2	C3	T3S2	T3S3	T3S2R4	OTROS	A	B	C	K'	D	LATITUD	LONGITUD
China	0.00	3	0	1693	3.0	70.8	1.7	18.4	1.7	2.2	1.2	1.0	0.0	73.8	1.7	24.5	0.089	0.522	25.697385	-99.221127
Lim. Edos. Term. N. L. Ppia. Tamps.	75.00																			
Méndez	100.00																			

28 CARR: Doctor Arroyo - Mier y Noriega

CLAVE: 19088

RUTA: NL-088

AÑO: 2023

LUGAR	ESTACION				CLASIFICACION VEHICULAR EN PORCIENTO														COORDENADAS	
	KM	TE	SC	TDPA	M	A	B	C2	C3	T3S2	T3S3	T3S2R4	OTROS	A	B	C	K'	D	LATITUD	LONGITUD
Doctor Arroyo	0.00	3	0	2303	10.6	76.9	0.5	10.1	0.5	1.3	0.1	0.0	0.0	87.5	0.5	12.0	0.096	0.505	23.653804	-100.188424
Mier y Noriega	31.00																			

29 CARR: Ent. Hacienda del Cielo - T. Der. Cadereyta

CLAVE:

RUTA: NL

AÑO: 2023

LUGAR	ESTACION				CLASIFICACION VEHICULAR EN PORCIENTO														COORDENADAS	
	KM	TE	SC	TDPA	M	A	B	C2	C3	T3S2	T3S3	T3S2R4	OTROS	A	B	C	K'	D	LATITUD	LONGITUD
Hacienda del Cielo	0.00	3	0	2224	3.9	80.9	0.4	9.1	2.3	2.2	0.9	0.2	0.1	84.8	0.4	14.8	0.106	0.501	25.522500	-100.012517
T. Der. Benito Juárez	11.50	1	0	2017	5.1	87.1	0.2	3.2	1.2	2.3	0.5	0.1	0.3	92.2	0.2	7.6	0.145	0.526	25.467177	-100.095468

NUEVO LEON

30 CARR: Ent. Huisachito - Nuevo Laredo

CLAVE: 00074

RUTA: NL-001-TAM

AÑO: 2023

LUGAR	ESTACION				CLASIFICACION VEHICULAR EN PORCIENTO													COORDENADAS		
	KM	TE	SC	TDPA	M	A	B	C2	C3	T3S2	T3S3	T3S2R4	OTROS	A	B	C	K'	D	LATITUD	LONGITUD
T. C. Monterrey - Colombia	0.00	3	0	1925	0.2	75.2	4.1	9.0	3.8	3.8	3.0	0.6	0.3	75.4	4.1	20.5	0.081	0.507	27.354518	-99.949175
Lim. Edos. Term. N. L. Ppia. Tamps.	19.00																			
X. C. Libramiento de Nuevo Laredo	47.00	1	0	2593	0.3	74.8	1.8	13.1	2.9	4.1	1.9	1.0	0.1	75.1	1.8	23.1	0.077	0.501	27.473850	-99.650217
Nuevo Laredo	51.00	1	0	16816	2.3	87.8	1.3	3.5	1.9	2.3	0.4	0.3	0.2	90.1	1.3	8.6	0.093	0.511	27.485691	-99.583259

31 CARR: Gral. Bravo - Los Aldamas

CLAVE: 19030

RUTA: NL-030

AÑO: 2023

LUGAR	ESTACION				CLASIFICACION VEHICULAR EN PORCIENTO													COORDENADAS		
	KM	TE	SC	TDPA	M	A	B	C2	C3	T3S2	T3S3	T3S2R4	OTROS	A	B	C	K'	D	LATITUD	LONGITUD
Gral. Bravo	0.00	3	0	1400	0.9	92.8	1.2	3.8	0.7	0.2	0.4	0.0	0.0	93.7	1.2	5.1	0.078	0.503	25.823668	-99.169852
Los Aldamas	31.00																			

32 CARR: Gral. Treviño - Villaldama

CLAVE: 19003

RUTA: NL-003

AÑO: 2023

LUGAR	ESTACION				CLASIFICACION VEHICULAR EN PORCIENTO													COORDENADAS		
	KM	TE	SC	TDPA	M	A	B	C2	C3	T3S2	T3S3	T3S2R4	OTROS	A	B	C	K'	D	LATITUD	LONGITUD
Gral. Treviño	0.00	3	0	897	1.6	77.4	0.4	16.0	0.9	1.2	0.1	2.3	0.1	79.0	0.4	20.6	0.095	0.506	26.237729	-99.490498
Agualeguas	13.00	3	0	752	2.7	85.0	0.4	9.4	0.7	1.0	0.1	0.7	0.0	87.7	0.4	11.9	0.106	0.519	26.321416	-99.537390
Paras	34.00	3	0	318	0.8	72.3	1.0	21.5	0.9	0.6	0.4	2.5	0.0	73.1	1.0	25.9	0.157	0.524	26.505063	-99.531618
El Álamo	62.00	1	0	611	2.4	74.6	1.6	18.5	0.9	0.9	0.2	0.8	0.1	77.0	1.6	21.4	0.116	0.512	26.490499	-99.771150
Villaldama	134.00	1	0	1963	2.4	84.9	0.6	9.4	0.8	1.7	0.1	0.0	0.1	87.3	0.6	12.1	0.102	0.505	26.504862	-100.412629

33 CARR: Hacienda Guadalupe - Higueras

CLAVE: 19006

RUTA: NL-006

AÑO: 2023

LUGAR	ESTACION				CLASIFICACION VEHICULAR EN PORCIENTO													COORDENADAS		
	KM	TE	SC	TDPA	M	A	B	C2	C3	T3S2	T3S3	T3S2R4	OTROS	A	B	C	K'	D	LATITUD	LONGITUD
Hacienda Guadalupe	0.00																			
Marin	3.00	1	1	3847	3.7	78.8	1.5	7.2	2.6	4.3	0.8	0.9	0.2	82.5	1.5	16.0	0.100	0.502	25.861530	-100.024306
Marin	3.00	1	2	3819	3.8	78.7	1.6	7.2	2.6	4.3	0.6	0.9	0.3	82.5	1.6	15.9	0.083	0.502	25.861502	-100.024482
Higueras	15.00																			

NUEVO LEON

34 CARR: Libramiento de Linares

CLAVE: 19506

RUTA: NL

AÑO: 2023

LUGAR	ESTACION				CLASIFICACION VEHICULAR EN PORCIENTO														COORDENADAS	
	KM	TE	SC	TDPA	M	A	B	C2	C3	T3S2	T3S3	T3S2R4	OTROS	A	B	C	K'	D	LATITUD	LONGITUD
T. C. Cd. Victoria - Monterrey (1° Acceso)	0.00	3	0	16157	5.5	69.8	3.0	5.2	1.4	6.4	1.8	6.2	0.7	75.3	3.0	21.7	0.073	0.512	24.843561	-99.564151
T. C. Linares - Ent. San Roberto	2.00	3	0	14782	4.0	66.5	2.8	9.0	1.7	7.0	1.8	6.7	0.5	70.5	2.8	26.7	0.082	0.502	24.854414	-99.578001
T. C. Cd. Victoria - Monterrey (2° Acceso)	6.50																			

35 CARR: Libramiento de Montemorelos

CLAVE: 19492

RUTA: NL

AÑO: 2023

LUGAR	ESTACION				CLASIFICACION VEHICULAR EN PORCIENTO														COORDENADAS	
	KM	TE	SC	TDPA	M	A	B	C2	C3	T3S2	T3S3	T3S2R4	OTROS	A	B	C	K'	D	LATITUD	LONGITUD
T. C. Cd. Victoria - Monterrey (1° Acceso)	0.00	3	1	6167	2.6	71.0	3.6	5.6	1.5	6.7	1.7	6.5	0.8	73.6	3.6	22.8	0.114	0.520	25.130115	-99.813601
T. C. Cd. Victoria - Monterrey (1° Acceso)	0.00	3	2	5703	2.6	68.4	3.9	6.6	1.6	7.2	1.8	7.1	0.8	71.0	3.9	25.1	0.075	0.520	25.130616	-99.814254
T. C. Cd. Victoria - Monterrey (2° Acceso)	3.70																			

36 CARR: Libramiento de Sabinas Hidalgo

CLAVE: 19492

RUTA: NL

AÑO: 2023

LUGAR	ESTACION				CLASIFICACION VEHICULAR EN PORCIENTO														COORDENADAS	
	KM	TE	SC	TDPA	M	A	B	C2	C3	T3S2	T3S3	T3S2R4	OTROS	A	B	C	K'	D	LATITUD	LONGITUD
T. C. Monterrey - Nuevo Laredo (Sur)	0.00	3	0	4256	1.8	38.6	2.6	13.4	4.0	32.2	5.4	1.8	0.2	40.4	2.6	57.0	0.053	0.502	26.464577	-100.162143
T. C. Monterrey - Nuevo Laredo (Norte)	9.20	1	0	3082	1.9	47.6	2.1	11.1	2.5	30.9	2.1	1.6	0.2	49.5	2.1	48.4	0.071	0.504	26.525059	-100.151744

37 CARR: Libramiento Poniente de Cadereyta

CLAVE: 19085

RUTA: NL

AÑO: 2023

LUGAR	ESTACION				CLASIFICACION VEHICULAR EN PORCIENTO														COORDENADAS	
	KM	TE	SC	TDPA	M	A	B	C2	C3	T3S2	T3S3	T3S2R4	OTROS	A	B	C	K'	D	LATITUD	LONGITUD
T. C. Monterrey - Reynosa (Libre)	0.00	3	0	23520	3.0	85.2	0.8	3.3	2.7	3.2	0.4	1.2	0.2	88.2	0.8	11.0	0.070	0.525	25.589075	-100.028037
T. C. Cadereyta - Allende	6.00																			

38 CARR: Los Guerra - Los Herreras

CLAVE: 19031

RUTA: TAM-NL

AÑO: 2023

LUGAR	ESTACION				CLASIFICACION VEHICULAR EN PORCIENTO														COORDENADAS	
	KM	TE	SC	TDPA	M	A	B	C2	C3	T3S2	T3S3	T3S2R4	OTROS	A	B	C	K'	D	LATITUD	LONGITUD
Los Guerra	0.00																			
Lim. Edos. Term. Tamps. Ppia. N. L.	46.00																			
Los Herreras	73.00	1	0	733	1.2	81.0	1.0	14.0	1.0	1.1	0.7	0.0	0.0	82.2	1.0	16.8	0.107	0.518	25.902622	-99.393499

NUEVO LEON

39 CARR: Matehuala - La Poza

CLAVE: 00086

RUTA: SLP-029-NL-061

AÑO: 2023

LUGAR	ESTACION				CLASIFICACION VEHICULAR EN PORCIENTO														COORDENADAS	
	KM	TE	SC	TDPA	M	A	B	C2	C3	T3S2	T3S3	T3S2R4	OTROS	A	B	C	K'	D	LATITUD	LONGITUD
Matehuala	0.00	3	0	4380	14.2	77.9	1.4	3.2	2.6	0.3	0.3	0.1	0.0	92.1	1.4	6.5	0.084	0.519	23.665208	-100.603663
Lim. Edos. Term. S. L. P. Ppia. N. L.	19.70																			
Lim. Edos. Term. N. L. Ppia. S. L. P.	19.90																			
Lim. Edos. Term. S. L. P. Ppia. N. L.	21.53																			
Doctor Arroyo	49.00	1	0	3900	7.0	83.6	1.3	5.4	1.6	0.5	0.3	0.2	0.1	90.6	1.3	8.1	0.079	0.507	23.688424	-100.215942
La Ascención	131.00	1	0	956	9.6	78.7	2.7	5.8	1.2	1.8	0.2	0.0	0.0	88.3	2.7	9.0	0.089	0.536	24.321671	-99.905830

40 CARR: Monclova - Estación Candela

CLAVE: 00501

RUTA: COA-030-NL

AÑO: 2023

LUGAR	ESTACION				CLASIFICACION VEHICULAR EN PORCIENTO														COORDENADAS	
	KM	TE	SC	TDPA	M	A	B	C2	C3	T3S2	T3S3	T3S2R4	OTROS	A	B	C	K'	D	LATITUD	LONGITUD
T. C. Monclova - Piedras Negras	0.00																			
T. Izq. Libramiento de Monclova	5.10	1	1	3193	6.5	60.1	6.8	24.1	1.5	0.7	0.1	0.1	0.1	66.6	6.8	26.6	0.090	0.501	26.928305	-101.389030
T. Izq. Libramiento de Monclova	5.10	1	2	3178	6.7	58.7	7.1	24.9	1.6	0.7	0.1	0.1	0.1	65.4	7.1	27.5	0.097	0.501	26.928375	-101.389142
Lim. Edos. Term. Coah. Ppia. N. L.	118.00																			
T. C. Monterrey - Colombia	125.50	1	0	594	0.1	73.4	1.5	15.7	1.1	7.2	0.4	0.5	0.1	73.5	1.5	25.0	0.196	0.503	26.837840	-100.493910

41 CARR: Monterrey - Colombia

CLAVE: 19001

RUTA: NL-001

AÑO: 2023

LUGAR	ESTACION				CLASIFICACION VEHICULAR EN PORCIENTO														COORDENADAS	
	KM	TE	SC	TDPA	M	A	B	C2	C3	T3S2	T3S3	T3S2R4	OTROS	A	B	C	K'	D	LATITUD	LONGITUD
T. C. Monterrey - Nuevo Laredo	0.00	3	1	25989	2.6	82.7	1.6	6.0	2.1	2.5	1.3	0.6	0.6	85.3	1.6	13.1	0.062	0.541	25.779369	-100.292001
T. C. Monterrey - Nuevo Laredo	0.00	3	2	22033	2.6	81.0	1.8	7.1	2.3	2.6	1.3	0.6	0.7	83.6	1.8	14.6	0.073	0.541	25.779347	-100.292186
X. C. Libramiento Noroeste de Monterrey	7.30	3	1	15609	2.5	69.4	1.3	8.5	6.9	7.8	1.8	1.2	0.6	71.9	1.3	26.8	0.096	0.506	25.835313	-100.295306
X. C. Libramiento Noroeste de Monterrey	7.30	3	2	15230	2.3	66.3	1.4	10.0	7.8	8.4	1.8	1.4	0.6	68.6	1.4	30.0	0.081	0.506	25.835309	-100.295434
T. Izq. Salinas Victoria (1º Acceso)	20.50	3	0	9069	1.5	74.2	2.5	8.3	2.3	4.4	3.3	2.7	0.8	75.7	2.5	21.8	0.085	0.511	25.965265	-100.276778
Villa Aldama	86.50	3	0	2385	1.3	68.7	1.8	16.6	1.9	3.1	3.3	2.7	0.6	70.0	1.8	28.2	0.081	0.510	26.511112	-100.432153
T. Izq. Bustamante	92.25	3	0	1530	0.8	69.4	1.2	15.5	2.0	3.6	3.5	3.5	0.5	70.2	1.2	28.6	0.092	0.515	26.547184	-100.459153
T. Izq. Candela	124.04	1	0	1334	0.6	66.9	1.4	15.2	2.2	4.0	4.7	4.5	0.5	67.5	1.4	31.1	0.108	0.502	26.836803	-100.492936
Lampazos de Naranja	164.00	1	0	2015	0.9	66.6	1.2	15.4	2.2	4.5	5.4	3.2	0.6	67.5	1.2	31.3	0.087	0.513	27.004244	-100.509855
Anáhuac	195.00	1	0	2117	0.4	67.3	2.6	19.4	1.0	4.6	2.3	2.0	0.4	67.7	2.6	29.7	0.116	0.513	27.222237	-100.157743
Huizache	212.70	3	0	2401	0.5	63.8	2.0	18.8	2.5	5.3	3.6	3.0	0.5	64.3	2.0	33.7	0.097	0.506	27.349831	-99.955384
Colombia	263.00	1	1	525	0.7	45.7	0.5	14.3	6.4	28.1	2.9	1.1	0.3	46.4	0.5	53.1	0.109	0.528	27.688493	-99.781334
Colombia	263.00	1	2	589	0.6	41.5	0.5	15.9	6.9	30.6	2.4	1.2	0.4	42.1	0.5	57.4	0.113	0.528	27.688529	-99.781360

NUEVO LEON

42 CARR: Palo Alto - Vallecillos

CLAVE: 19036

RUTA: NL

AÑO: 2023

LUGAR	ESTACION				CLASIFICACION VEHICULAR EN PORCIENTO														COORDENADAS	
	KM	TE	SC	TDPA	M	A	B	C2	C3	T3S2	T3S3	T3S2R4	OTROS	A	B	C	K'	D	LATITUD	LONGITUD
T. C. Gral. Treviño - Villa Aldama	0.00	3	0	217	2.2	79.9	0.5	13.4	2.1	0.6	0.0	1.3	0.0	82.1	0.5	17.4	0.095	0.521	26.497207	-99.761030
Vallecillos	43.00	1	0	167	8.6	64.5	1.4	21.8	1.1	2.6	0.0	0.0	0.0	73.1	1.4	25.5	0.119	0.505	26.658656	-99.982054

43 CARR: Peña Blanca - Cd. Camargo

CLAVE: 00102

RUTA: NL-TAM

AÑO: 2023

LUGAR	ESTACION				CLASIFICACION VEHICULAR EN PORCIENTO														COORDENADAS	
	KM	TE	SC	TDPA	M	A	B	C2	C3	T3S2	T3S3	T3S2R4	OTROS	A	B	C	K'	D	LATITUD	LONGITUD
T. C. Monterrey - Reynosa	0.00	3	0	367	0.8	77.9	1.1	12.8	1.3	2.3	3.3	0.3	0.2	78.7	1.1	20.2	0.103	0.506	25.836304	-99.008481
Lim. Edos. Term. N. L. Ppia. Tamps.	30.00																			
Cd. Camargo	65.00	1	0	2932	3.3	83.3	0.8	1.9	3.4	4.7	1.6	0.8	0.2	86.6	0.8	12.6	0.076	0.502	26.304258	-98.834754

44 CARR: Ramal a 18 de Marzo

CLAVE: 19475

RUTA: NL

AÑO: 2023

LUGAR	ESTACION				CLASIFICACION VEHICULAR EN PORCIENTO														COORDENADAS	
	KM	TE	SC	TDPA	M	A	B	C2	C3	T3S2	T3S3	T3S2R4	OTROS	A	B	C	K'	D	LATITUD	LONGITUD
T. C. Linares - Ent. San Roberto	0.00	3	0	3326	3.4	79.7	1.2	11.5	1.4	2.0	0.7	0.0	0.1	83.1	1.2	15.7	0.075	0.509	24.777316	-100.041818
18 de Marzo	14.00																			

45 CARR: Ramal a Cerralvo

CLAVE: 19013

RUTA: NL-013

AÑO: 2023

LUGAR	ESTACION				CLASIFICACION VEHICULAR EN PORCIENTO														COORDENADAS	
	KM	TE	SC	TDPA	M	A	B	C2	C3	T3S2	T3S3	T3S2R4	OTROS	A	B	C	K'	D	LATITUD	LONGITUD
T. C. Monterrey - Reynosa	0.00	3	0	679	0.5	76.3	1.6	10.0	1.8	2.1	1.5	5.2	1.0	76.8	1.6	21.6	0.101	0.511	25.735527	-99.371920
Los Herrera	21.00	3	0	766	1.3	67.0	1.1	14.2	2.0	3.6	3.0	7.2	0.6	68.3	1.1	30.6	0.093	0.517	25.920679	-99.420906
Cerralvo	58.00	1	0	2988	2.4	79.4	0.4	11.9	2.0	1.6	0.2	1.9	0.2	81.8	0.4	17.8	0.088	0.501	26.081131	-99.605016

46 CARR: Ramal a Marin

CLAVE: 19007

RUTA: NL

AÑO: 2023

LUGAR	ESTACION				CLASIFICACION VEHICULAR EN PORCIENTO														COORDENADAS	
	KM	TE	SC	TDPA	M	A	B	C2	C3	T3S2	T3S3	T3S2R4	OTROS	A	B	C	K'	D	LATITUD	LONGITUD
T. C. Monterrey - Nuevo Laredo	0.00	3	0	30591	2.8	79.0	5.9	8.9	1.1	1.3	0.5	0.4	0.1	81.8	5.9	12.3	0.072	0.518	25.916365	-100.194734
Marin	10.00																			

NUEVO LEON

47 CARR: Salinas Victoria - Ciénega de Flores

CLAVE: 19007

RUTA: NL

AÑO: 2023

LUGAR	ESTACION				CLASIFICACION VEHICULAR EN PORCIENTO													COORDENADAS		
	KM	TE	SC	TDPA	M	A	B	C2	C3	T3S2	T3S3	T3S2R4	OTROS	A	B	C	K'	D	LATITUD	LONGITUD
Salinas Victoria	0.00	3	0	8874	3.5	62.0	2.5	6.7	5.7	13.7	2.7	2.5	0.7	65.5	2.5	32.0	0.117	0.525	25.951121	-100.268802
T. C. Monterrey - Nuevo Laredo (Cuota)	6.00	1	0	9113	3.2	62.4	2.6	7.8	6.1	13.1	2.3	2.0	0.5	65.6	2.6	31.8	0.121	0.550	25.945161	-100.234412
Ciénega de Flores	10.00																			

48 CARR: Santa Rosa - Mezquital

CLAVE: 00087

RUTA: NL

AÑO: 2023

LUGAR	ESTACION				CLASIFICACION VEHICULAR EN PORCIENTO													COORDENADAS		
	KM	TE	SC	TDPA	M	A	B	C2	C3	T3S2	T3S3	T3S2R4	OTROS	A	B	C	K'	D	LATITUD	LONGITUD
X. C. Libramiento Noroeste de Monterrey	0.00	3	1	13080	2.6	75.8	1.2	5.8	2.2	8.8	1.7	1.2	0.7	78.4	1.2	20.4	0.091	0.509	25.814322	-100.222521
X. C. Libramiento Noroeste de Monterrey	0.00	3	2	13545	2.3	76.5	1.3	5.6	2.4	8.3	1.7	1.1	0.8	78.8	1.3	19.9	0.082	0.509	25.814260	-100.222412
Mezquital	9.00																			

49 CARR: Santa Rosa - Salinas Victoria

CLAVE: 19037

RUTA: NL

AÑO: 2023

LUGAR	ESTACION				CLASIFICACION VEHICULAR EN PORCIENTO													COORDENADAS		
	KM	TE	SC	TDPA	M	A	B	C2	C3	T3S2	T3S3	T3S2R4	OTROS	A	B	C	K'	D	LATITUD	LONGITUD
Ent. Salinas Victoria	0.00	3	1	13001	6.1	74.6	1.6	5.7	2.9	4.8	0.8	2.7	0.8	80.7	1.6	17.7	0.072	0.521	25.855932	-100.244245
Ent. Salinas Victoria	0.00	3	2	14135	5.9	74.9	1.7	5.9	3.0	4.6	0.7	2.6	0.7	80.8	1.7	17.5	0.085	0.521	25.855080	-100.244060
Salinas Victoria	13.85	1	1	5953	4.4	81.8	1.7	9.6	1.0	0.4	0.4	0.4	0.3	86.2	1.7	12.1	0.094	0.536	25.950272	-100.288035
Salinas Victoria	13.85	1	2	6891	4.3	82.3	1.6	9.6	0.8	0.4	0.3	0.4	0.3	86.6	1.6	11.8	0.090	0.536	25.950242	-100.288098

50 CARR: Aeropuerto de Monterrey (Cuota)

CLAVE:

RUTA: NL-D

AÑO: 2023

LUGAR	ESTACION				CLASIFICACION VEHICULAR EN PORCIENTO													COORDENADAS		
	KM	TE	SC	TDPA	M	A	B	C2	C3	T3S2	T3S3	T3S2R4	OTROS	A	B	C	K'	D	LATITUD	LONGITUD
T. C. Monterrey - Cadereyta (Cuota)	0.00																			
T. C. Apodaca - Villa Juarez	3.10	3	1	14435	4.1	82.0	2.5	4.5	1.2	2.8	1.4	1.1	0.4	86.1	2.5	11.4	0.096	0.502	25.721837	-100.134710
T. C. Apodaca - Villa Juarez	3.10	3	2	14573	4.1	81.9	2.5	4.5	1.3	2.8	1.4	1.1	0.4	86.0	2.5	11.5	0.125	0.502	25.729534	-100.132122
Aeropuerto Mariano Escobedo	10.50																			

51 CARR: Anillo Periférico de Monterrey (Cuota)

CLAVE: 19004

RUTA: NL-D

AÑO: 2023

LUGAR	ESTACION				CLASIFICACION VEHICULAR EN PORCIENTO													COORDENADAS		
	KM	TE	SC	TDPA	M	A	B	C2	C3	T3S2	T3S3	T3S2R4	OTROS	A	B	C	K'	D	LATITUD	LONGITUD
T. C. Saltillo - Monterrey	0.00	3	1	7405	1.7	53.5	2.9	7.0	3.5	22.2	2.3	6.0	0.9	55.2	2.9	41.9	0.067	0.526	25.710991	-100.557241

NUEVO LEON

51 CARR: Anillo Periférico de Monterrey (Cuota)

CLAVE: 19004

RUTA: NL-D

AÑO: 2023

LUGAR	ESTACION				CLASIFICACION VEHICULAR EN PORCIENTO										COORDENADAS					
	KM	TE	SC	TDPA	M	A	B	C2	C3	T3S2	T3S3	T3S2R4	OTROS	A	B	C	K'	D	LATITUD	LONGITUD
T. C. Saltillo - Monterrey	0.00	3	2	8202	1.6	53.7	3.0	6.9	3.4	22.5	2.1	5.9	0.9	55.3	3.0	41.7	0.069	0.526	25.711326	-100.557263
X. C. Monterrey - Nuevo Laredo (Libre)	37.70	1	1	6732	1.9	51.9	5.2	5.3	4.9	22.0	3.3	4.7	0.8	53.8	5.2	41.0	0.093	0.507	25.840543	-100.258255
X. C. Monterrey - Nuevo Laredo (Libre)	37.70	1	2	6914	2.1	53.2	4.9	5.2	4.7	21.6	3.1	4.5	0.7	55.3	4.9	39.8	0.106	0.507	25.840771	-100.258458
X. C. Monterrey - Mier	49.30	1	1	11111	2.9	50.5	3.5	5.9	5.5	22.2	3.8	4.7	1.0	53.4	3.5	43.1	0.085	0.501	25.800764	-100.178528
X. C. Monterrey - Mier	49.30	1	2	11163	3.0	49.4	3.7	6.2	5.3	22.5	4.0	5.0	0.9	52.4	3.7	43.9	0.088	0.501	25.800725	-100.178169
T. C. Monterrey - Cadereyta	66.80																			

52 CARR: Monterrey - Cadereyta (Cuota)

CLAVE: 19281

RUTA: NL-D

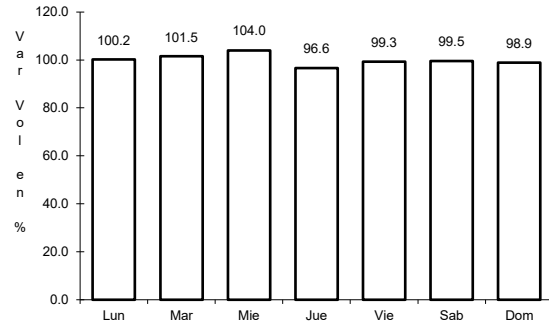
AÑO: 2023

LUGAR	ESTACION				CLASIFICACION VEHICULAR EN PORCIENTO										COORDENADAS					
	KM	TE	SC	TDPA	M	A	B	C2	C3	T3S2	T3S3	T3S2R4	OTROS	A	B	C	K'	D	LATITUD	LONGITUD
T. Av. Bonifacio Salinas	3.05																			
T. Izq. Apodaca (Aeropuerto)	12.50	1	1	16911	1.3	87.4	1.2	6.2	1.1	1.6	0.4	0.5	0.3	88.7	1.2	10.1	0.092	0.543	25.692236	-100.161621
T. Izq. Apodaca (Aeropuerto)	12.50	1	2	14254	1.3	87.4	1.2	6.2	1.1	1.6	0.4	0.5	0.3	88.7	1.2	10.1	0.094	0.543	25.692501	-100.161671
T. C. Anillo Periférico de Monterrey (Cuota)	21.80	3	1	6887	2.2	71.0	3.0	3.4	2.7	10.2	2.6	4.2	0.7	73.2	3.0	23.8	0.082	0.515	25.638897	-100.042709
T. C. Anillo Periférico de Monterrey (Cuota)	21.80	3	2	6486	1.9	71.4	3.2	3.6	2.5	10.4	2.0	4.3	0.7	73.3	3.2	23.5	0.117	0.515	25.639090	-100.042527
T. Der. Cadereyta	33.10																			

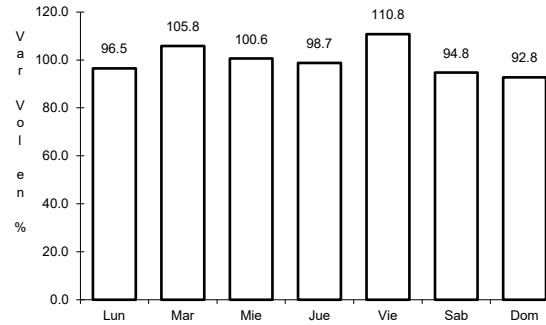
1 CARR: Cadereyta de Jiménez - Allende

CLAVE: 19009

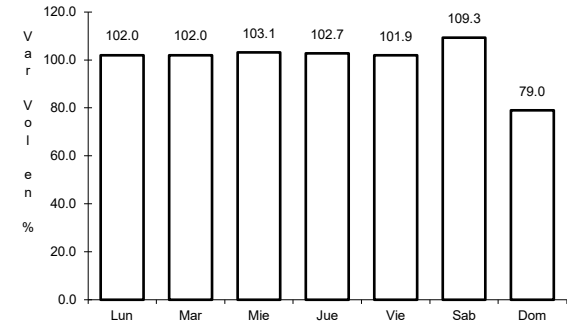
ruta: MEX-009



Km: 0.00 Tipo: 3 Sent: 1



Km: 0.00 Tipo: 3 Sent: 2

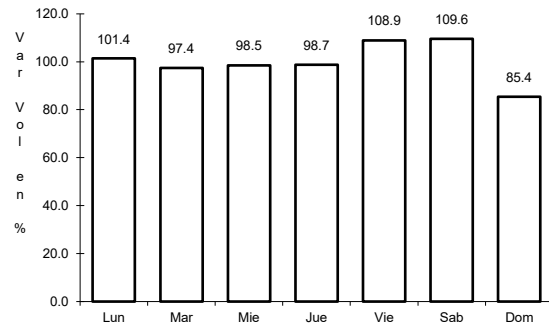


Km: 26.80 Tipo: 1 Sent: 0

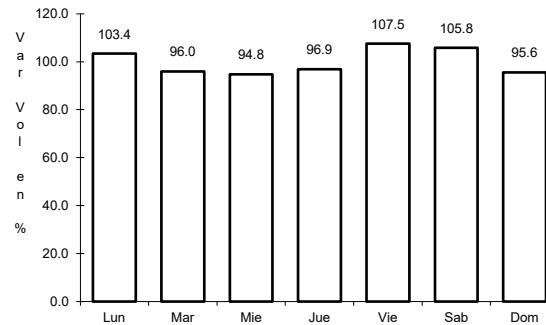
2 CARR: Ciudad Victoria - Monterrey

CLAVE: 00462

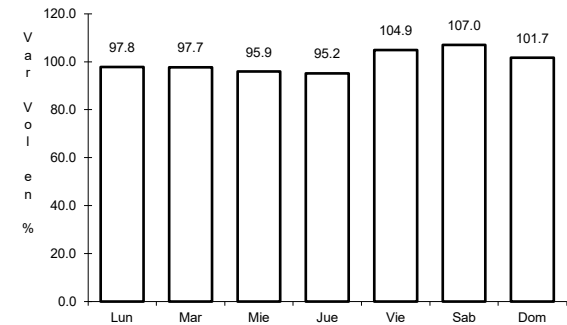
ruta: MEX-085



Km: 0.00 Tipo: 3 Sent: 1



Km: 0.00 Tipo: 3 Sent: 2

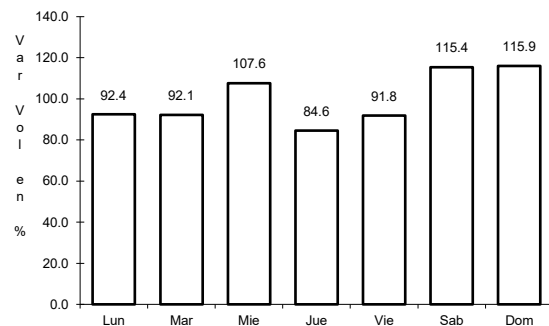


Km: 154.00 Tipo: 1 Sent: 0

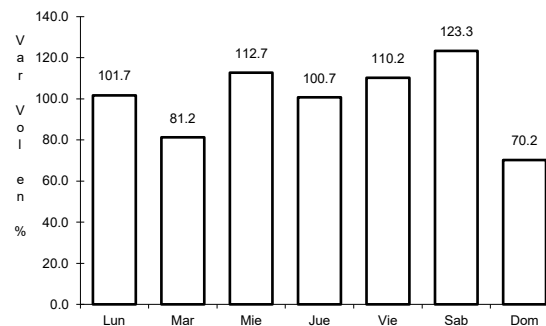
3 CARR: La Unión - El Encadenado

CLAVE:

ruta: MEX



Km: 0.00 Tipo: 3 Sent: 0

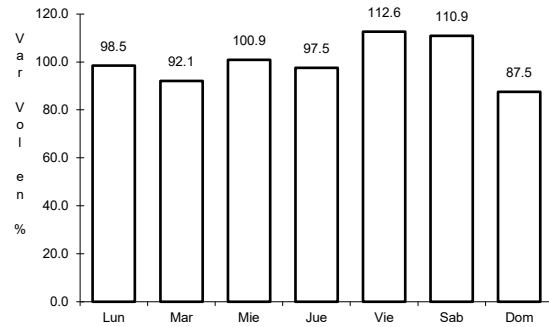


Km: 10.00 Tipo: 1 Sent: 0

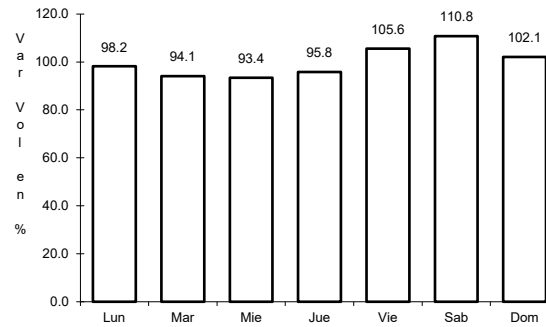
4 CARR: Libramiento de China

CLAVE:

RUTA: MEX-040



Km: 0.00 Tipo: 3 Sent: 0

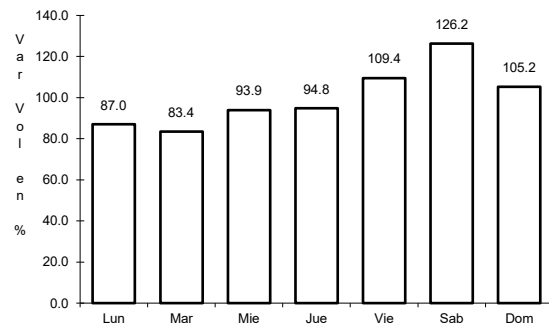


Km: 2.41 Tipo: 1 Sent: 0

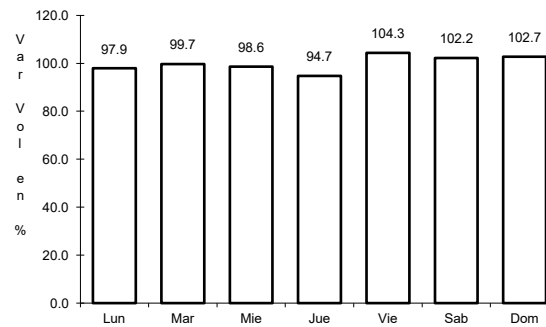
5 CARR: Libramiento de Dr. González

CLAVE: 00127

RUTA: MEX-054



Km: 0.00 Tipo: 3 Sent: 0

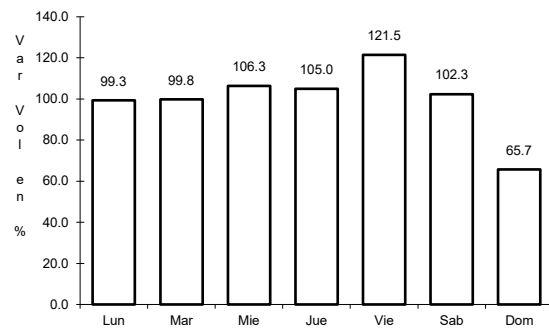


Km: 10.90 Tipo: 1 Sent: 0

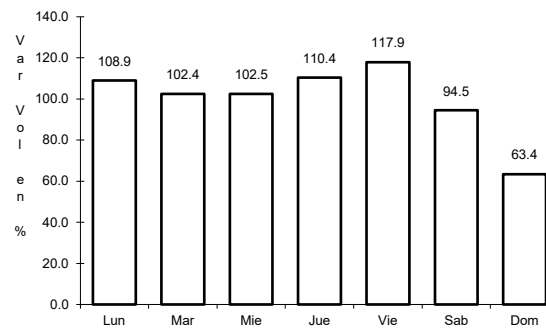
6 CARR: Libramiento Noroeste de Monterrey

CLAVE: 19085

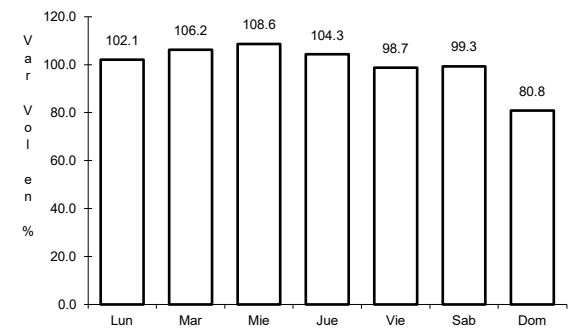
RUTA: MEX-040



Km: 0.00 Tipo: 3 Sent: 1



Km: 0.00 Tipo: 3 Sent: 2

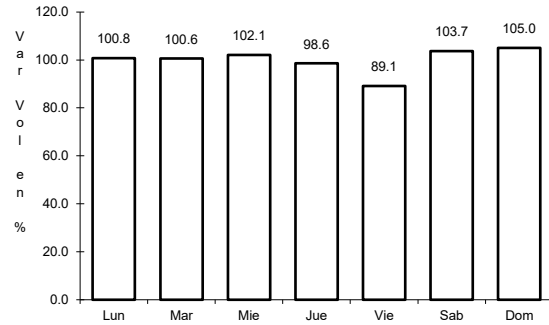


Km: 48.00 Tipo: 1 Sent: 1

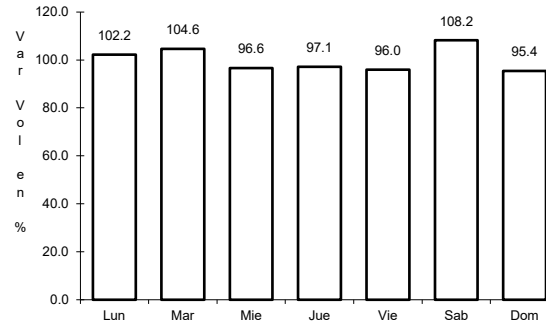
7 CARR: Linares - Ent. San Roberto

CLAVE: 19031

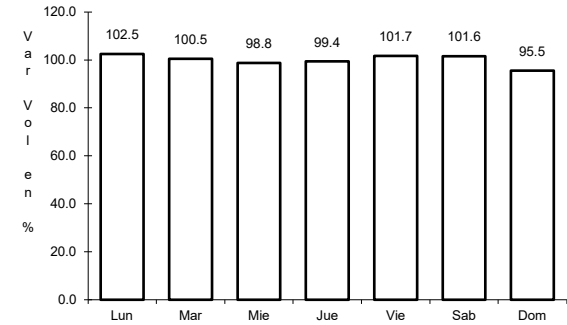
ruta: MEX-058



Km: 0.00 Tipo: 3 Sent: 0



Km: 66.00 Tipo: 1 Sent: 0

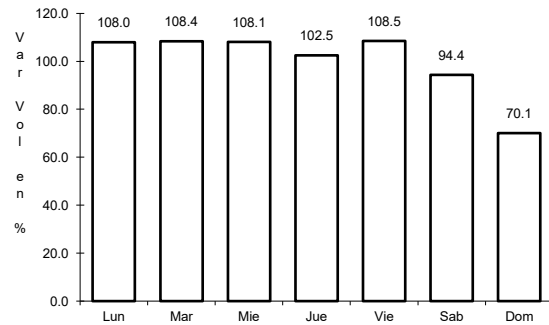


Km: 98.00 Tipo: 1 Sent: 0

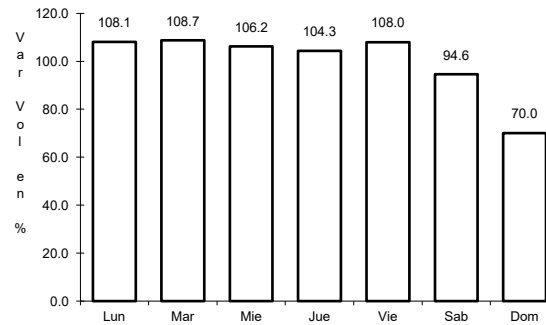
8 CARR: Matchuala - Ent. Puerto México

CLAVE: 00405

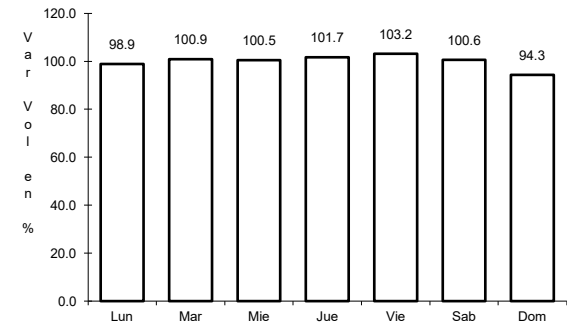
ruta: MEX-057



Km: 0.00 Tipo: 3 Sent: 1



Km: 0.00 Tipo: 3 Sent: 2

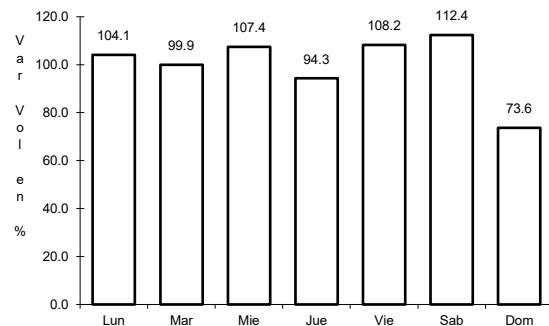


Km: 177.18 Tipo: 1 Sent: 1

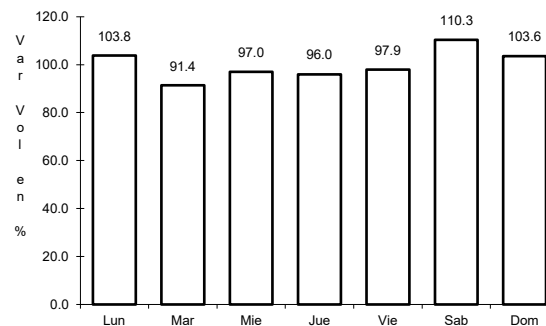
9 CARR: Montemorelos - China

CLAVE: 19280

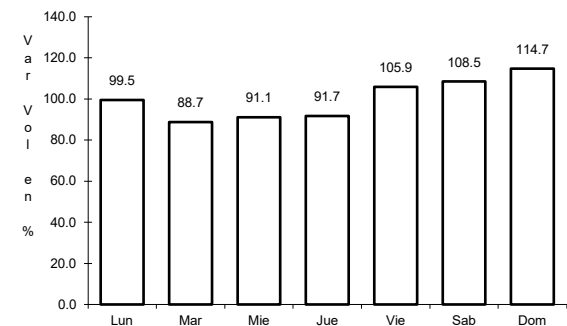
ruta: MEX-035



Km: 0.00 Tipo: 3 Sent: 0



Km: 23.10 Tipo: 3 Sent: 0

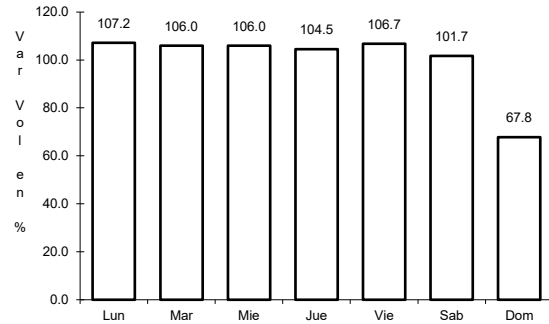


Km: 93.00 Tipo: 1 Sent: 0

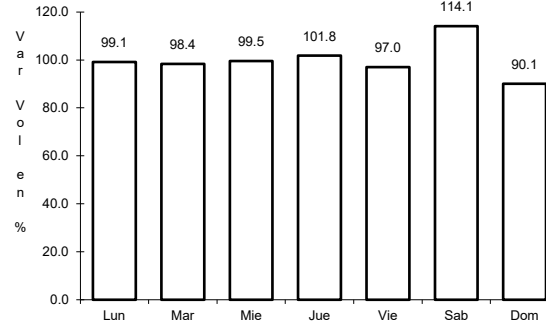
10 CARR: Monterrey - Castaños

CLAVE: 00128

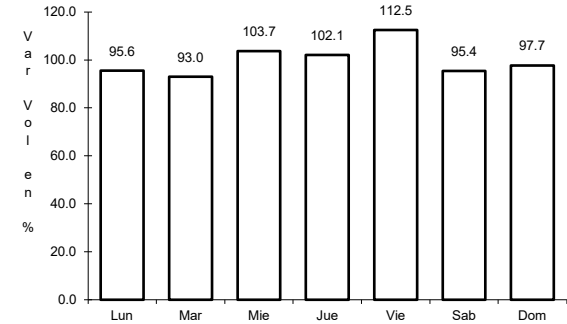
RUTA: MEX-053



Km: 0.00 Tipo: 3 Sent: 0



Km: 155.90 Tipo: 1 Sent: 1

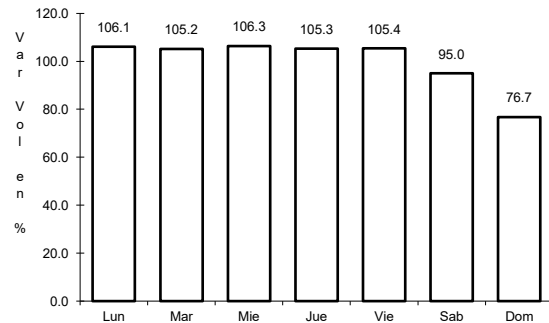


Km: 155.90 Tipo: 1 Sent: 2

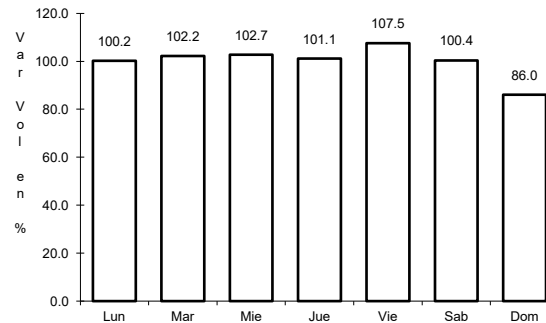
11 CARR: Monterrey - Mier

CLAVE: 00127

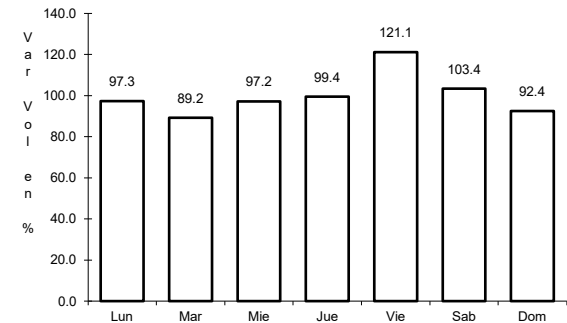
RUTA: MEX-054



Km: 19.12 Tipo: 1 Sent: 1



Km: 19.12 Tipo: 1 Sent: 2

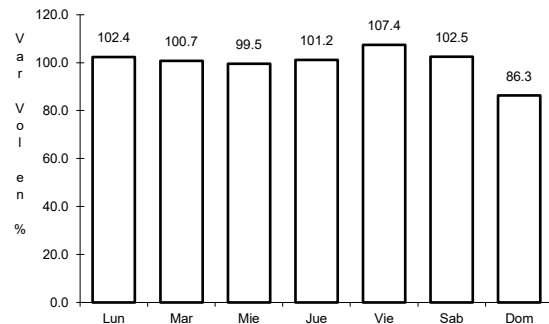


Km: 156.21 Tipo: 1 Sent: 0

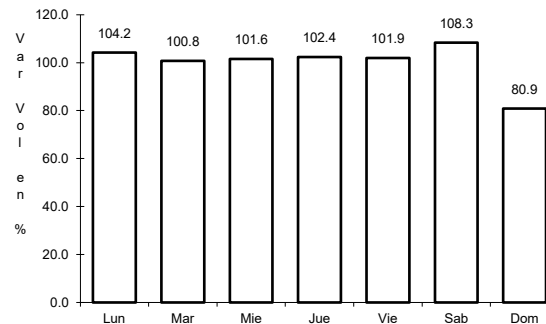
12 CARR: Monterrey - Nuevo Laredo (Libre)

CLAVE: 00463

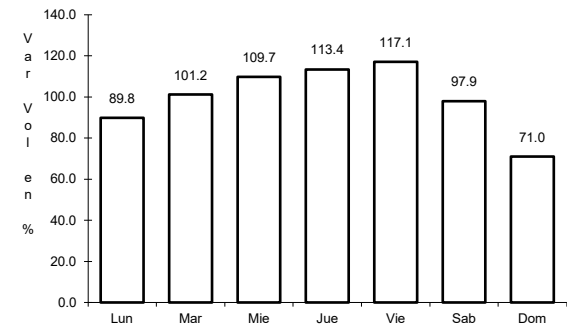
RUTA: MEX-085



Km: 12.10 Tipo: 3 Sent: 1



Km: 12.10 Tipo: 3 Sent: 2

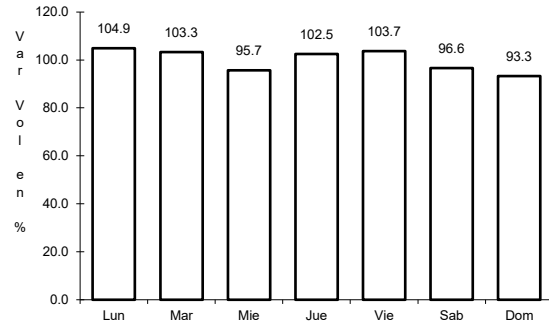


Km: 124.40 Tipo: 3 Sent: 0

13 CARR: Monterrey - Reynosa (Libre)

CLAVE: 00088

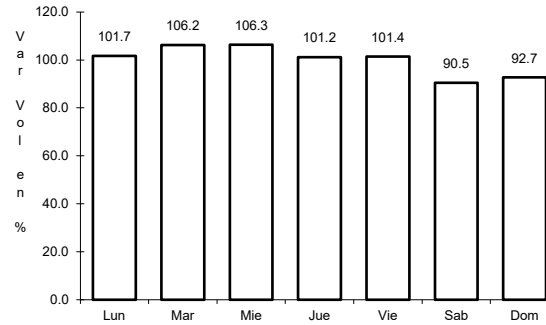
ruta: MEX-040



Km: 19.10

Tipo: 1

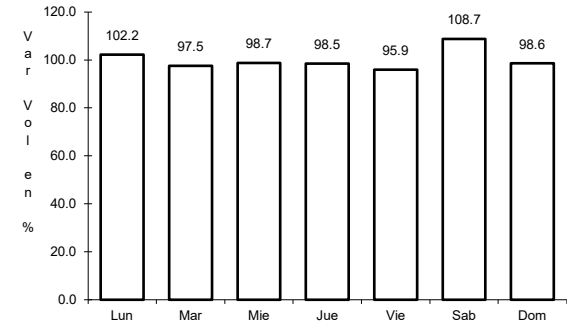
Sent: 1



Km: 19.10

Tipo: 1

Sent: 2



Km: 125.00

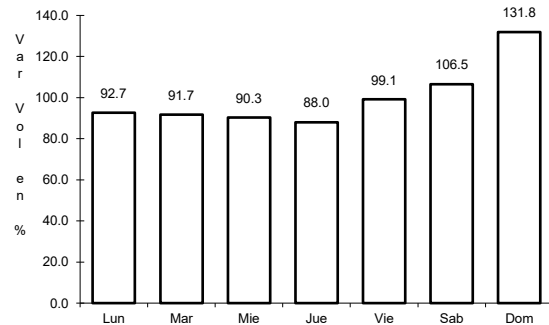
Tipo: 1

Sent: 0

14 CARR: Parás - Nueva Ciudad Guerrero

CLAVE: 00476

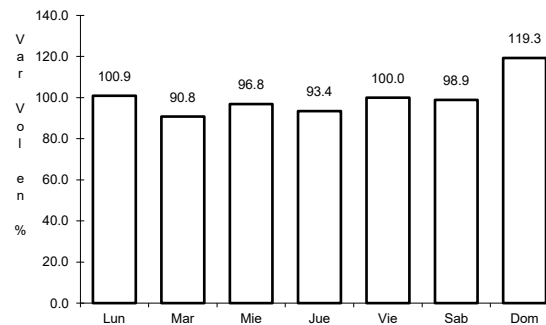
ruta: MEX-030



Km: 0.00

Tipo: 3

Sent: 0



Km: 32.00

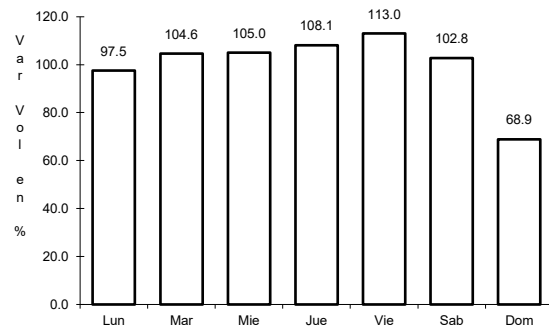
Tipo: 1

Sent: 0

15 CARR: Piedras Negras - Nuevo Laredo

CLAVE: 00503

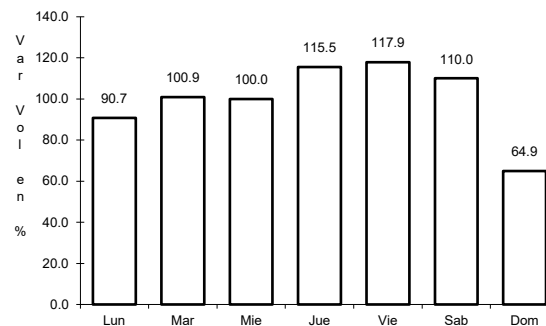
ruta: MEX-002



Km: 0.00

Tipo: 3

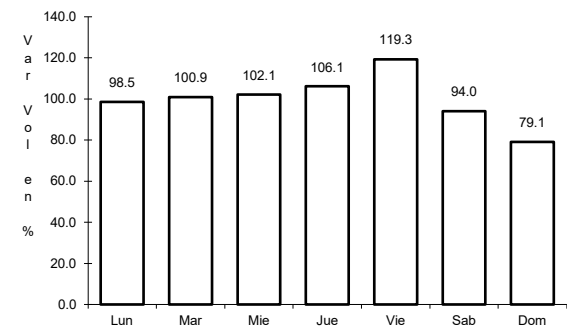
Sent: 1



Km: 0.00

Tipo: 3

Sent: 2



Km: 134.00

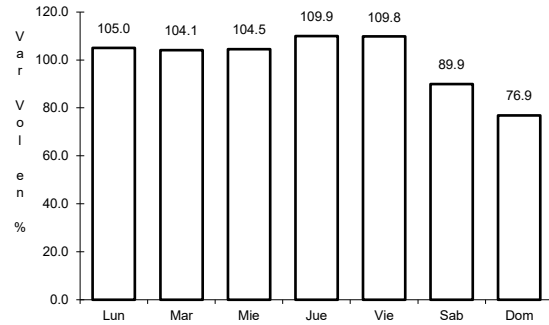
Tipo: 3

Sent: 0

16 CARR: Ramal a Aeropuerto Mariano Escobedo

CLAVE: 19510

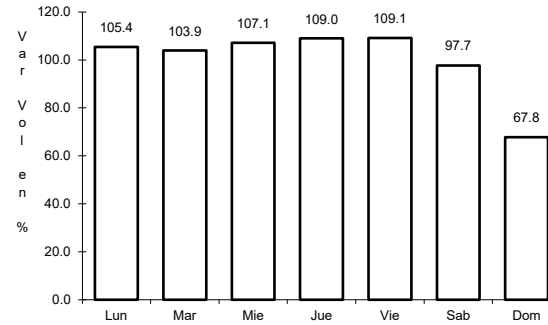
ruta: MEX-054



Km: 0.00

Tipo: 3

Sent: 1



Km: 0.00

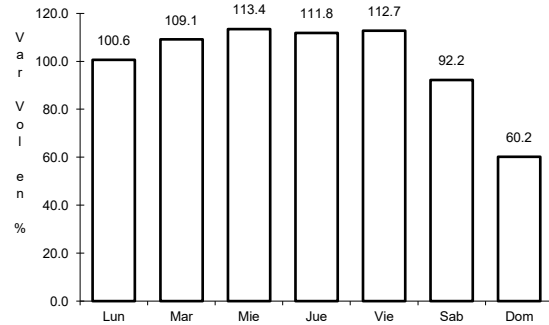
Tipo: 3

Sent: 2

17 CARR: Saltillo - Monterrey

CLAVE: 00087

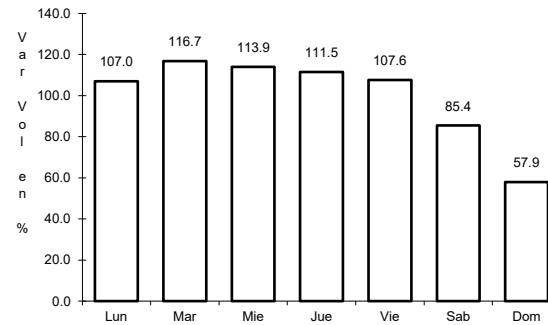
ruta: MEX-040



Km: 4.25

Tipo: 3

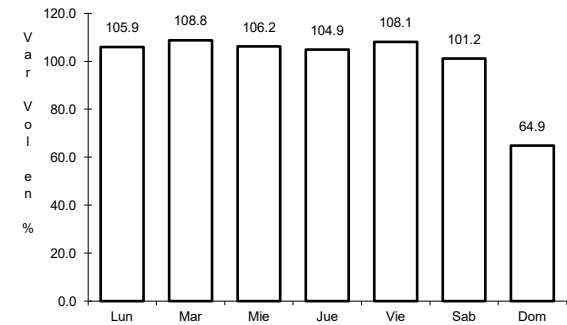
Sent: 1



Km: 4.25

Tipo: 3

Sent: 2



Km: 79.20

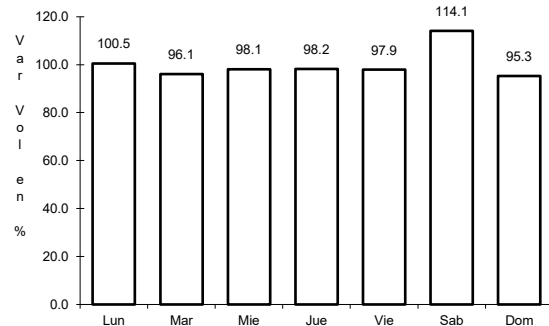
Tipo: 1

Sent: 1

18 CARR: Cadereyta - Reynosa (Cuota)

CLAVE: 19002

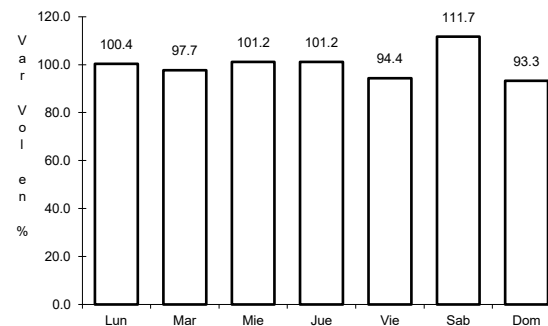
ruta: MEX-040D



Km: 37.00

Tipo: 3

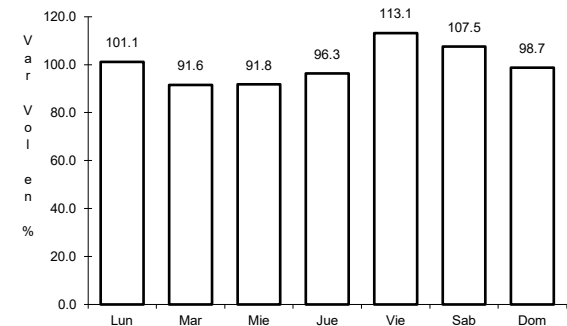
Sent: 1



Km: 37.00

Tipo: 3

Sent: 2



Km: 166.90

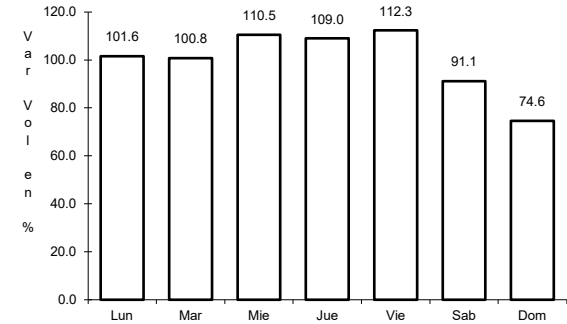
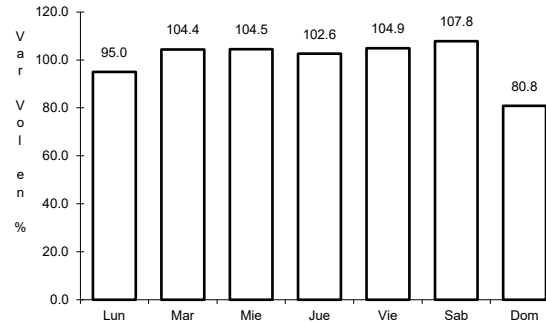
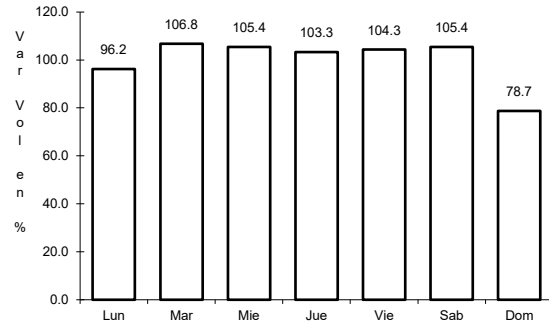
Tipo: 1

Sent: 1

19 CARR: Monterrey - Nuevo Laredo (Cuota)

CLAVE: 19086

ruta: MEX-085D



Km: 24.00 Tipo: 3 Sent: 1

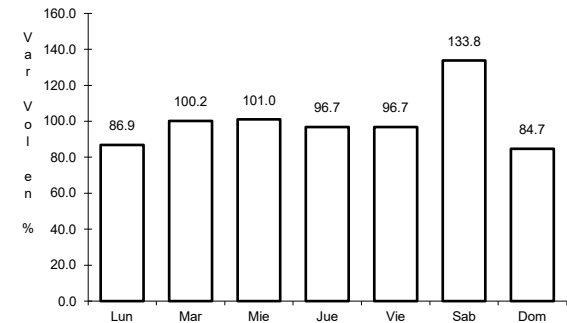
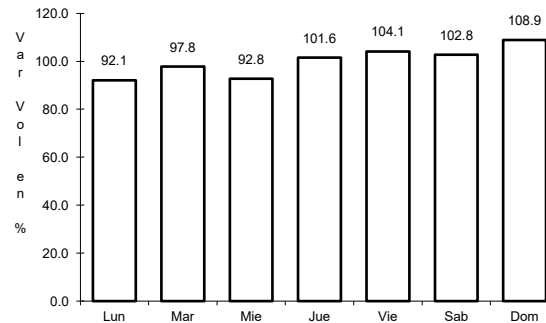
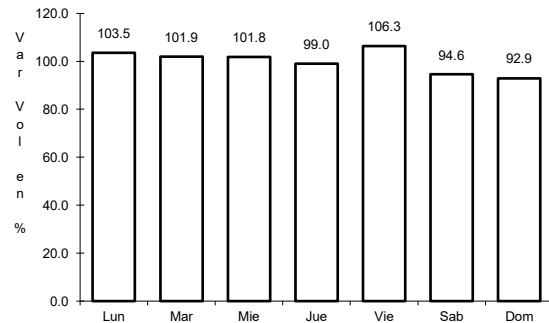
Km: 24.00 Tipo: 3 Sent: 2

Km: 193.30 Tipo: 1 Sent: 1

20 CARR: Puerto México - La Carbonera (Cuota)

CLAVE: 00115

ruta: MEX-057D



Km: 224.94 Tipo: 1 Sent: 1

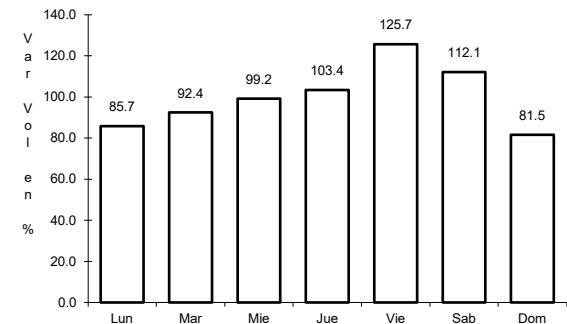
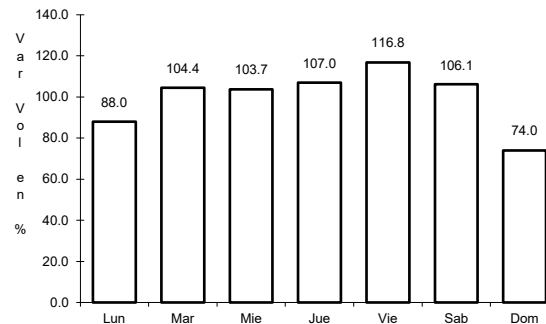
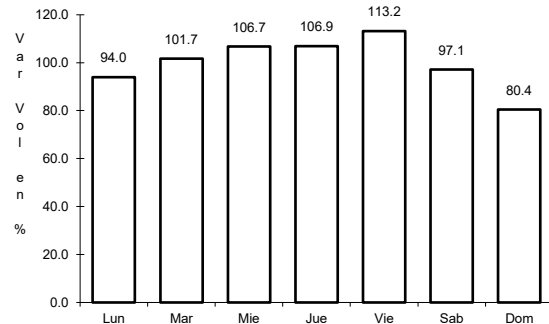
Km: 224.94 Tipo: 1 Sent: 2

Km: 228.30 Tipo: 3 Sent: 1

21 CARR: Saltillo - Monterrey (Cuota)

CLAVE: 00087

ruta: MEX-040D



Km: 46.21 Tipo: 3 Sent: 1

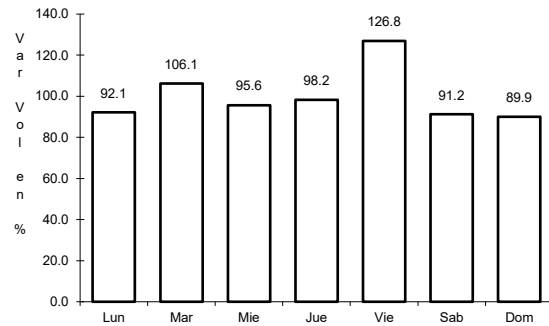
Km: 46.21 Tipo: 3 Sent: 2

Km: 82.00 Tipo: 3 Sent: 1

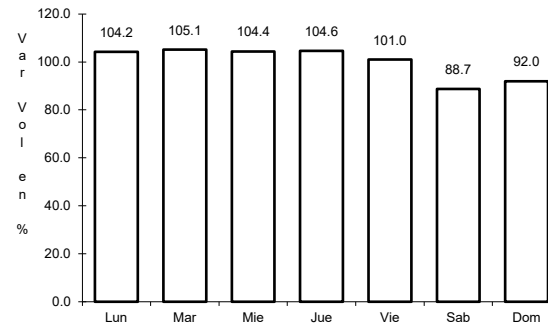
22 CARR: Agualeguas - El Ébano

CLAVE: 19004

RUTA: NL-023



Km: 0.00 Tipo: 3 Sent: 0

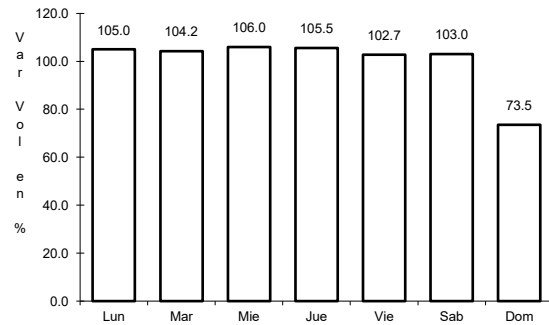


Km: 54.00 Tipo: 1 Sent: 0

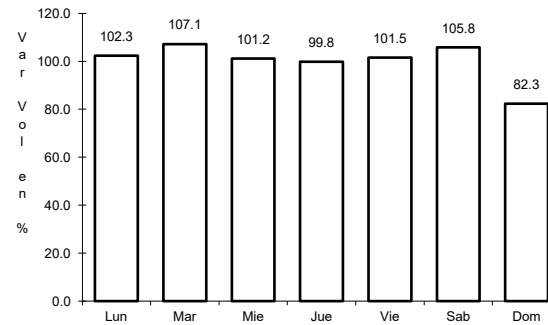
23 CARR: Apodaca - Villa Juárez

CLAVE: 00087

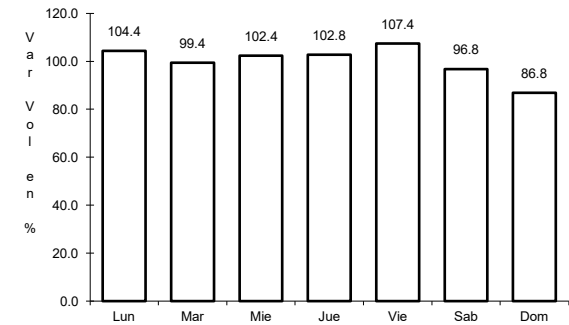
RUTA: NL



Km: 0.00 Tipo: 3 Sent: 0



Km: 16.00 Tipo: 1 Sent: 1

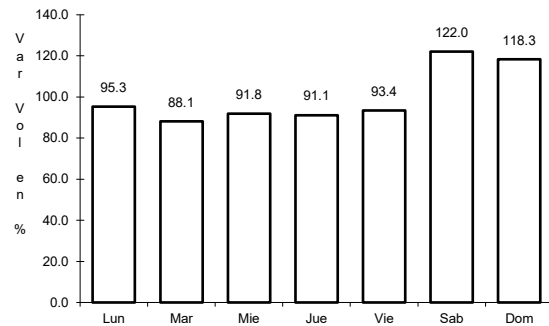


Km: 16.00 Tipo: 1 Sent: 2

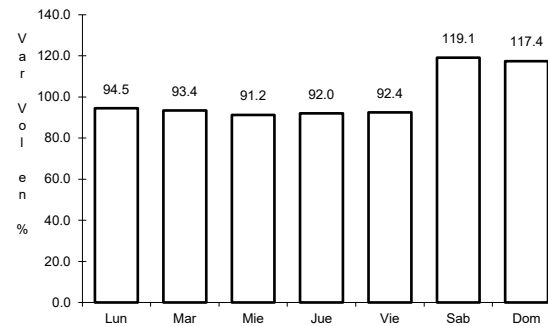
24 CARR: Atongo - Lazarillos

CLAVE:

RUTA: NL



Km: 0.00 Tipo: 3 Sent: 0

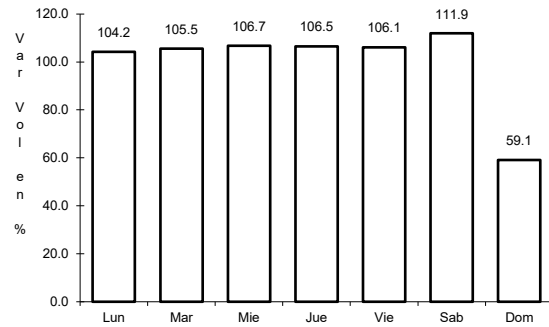


Km: 7.78 Tipo: 1 Sent: 0

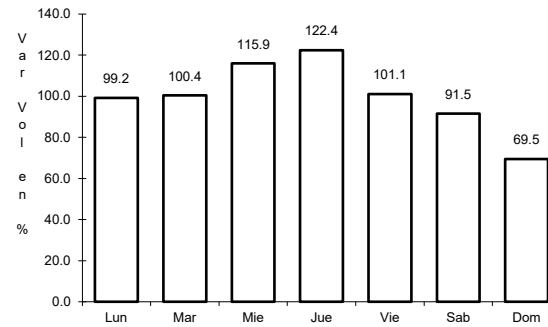
25 CARR: Cadereyta de Jiménez - Doctor González

CLAVE: 19473

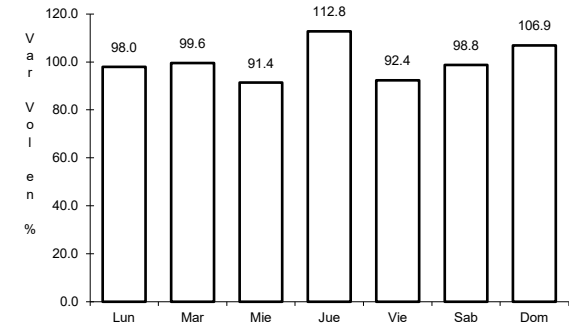
RUTA: NL



Km: 0.00 Tipo: 3 Sent: 0



Km: 18.00 Tipo: 3 Sent: 0

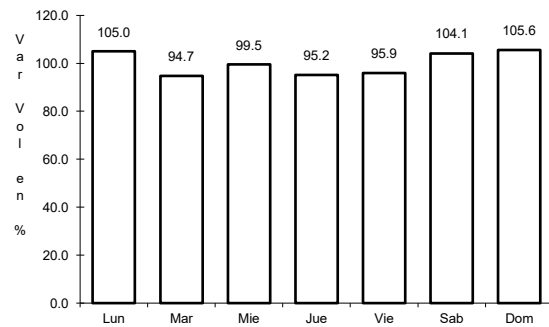


Km: 30.00 Tipo: 1 Sent: 0

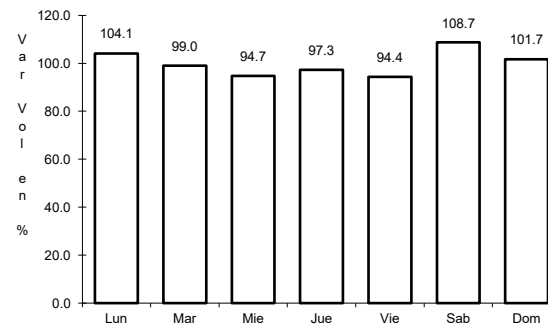
26 CARR: Cd. Benito Juárez - Villa de Santiago

CLAVE: 00087

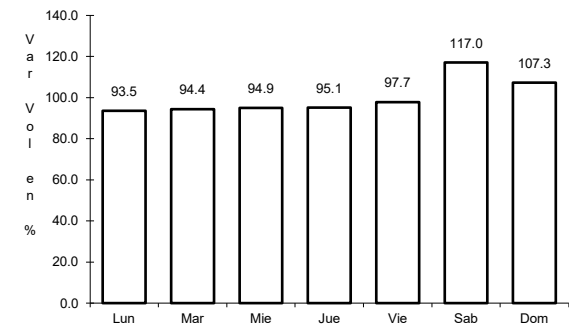
RUTA: NL



Km: 0.00 Tipo: 3 Sent: 1



Km: 0.00 Tipo: 3 Sent: 2

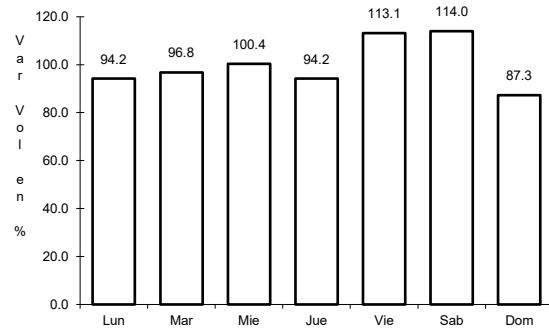


Km: 39.00 Tipo: 1 Sent: 0

27 CARR: China - Méndez

CLAVE: 00191

RUTA: NL-TAM

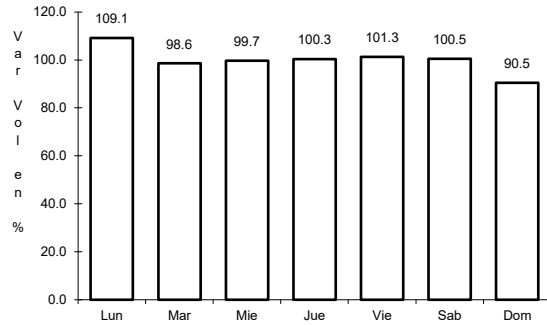


Km: 0.00 Tipo: 3 Sent: 0

28 CARR: Doctor Arroyo - Mier y Noriega

CLAVE: 19088

ruta: NL-088



Km: 0.00

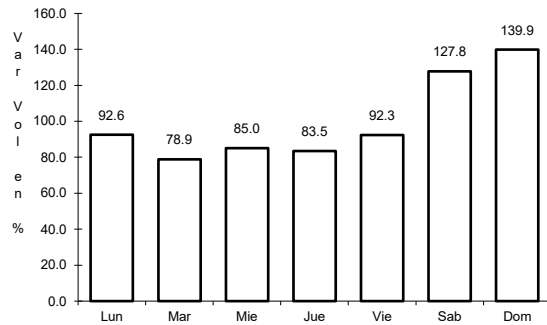
Tipo: 3

Sent: 0

29 CARR: Ent. Hacienda del Cielo - T. Der. Cadereyta

CLAVE:

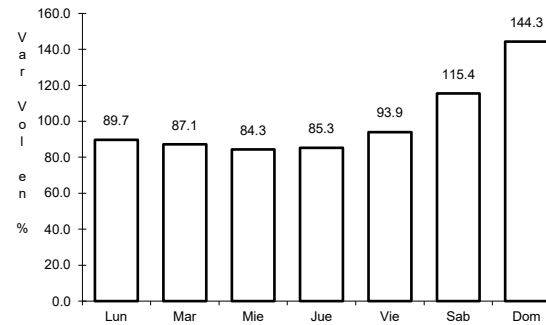
ruta: NL



Km: 0.00

Tipo: 3

Sent: 0



Km: 11.50

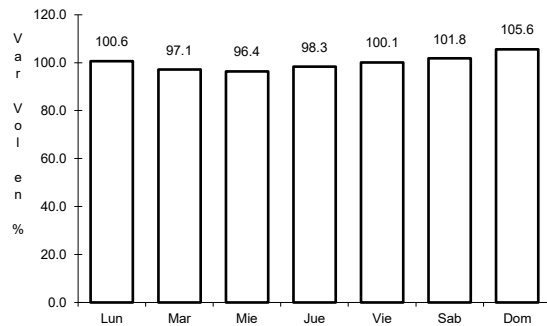
Tipo: 1

Sent: 0

30 CARR: Ent. Huisachito - Nuevo Laredo

CLAVE: 00074

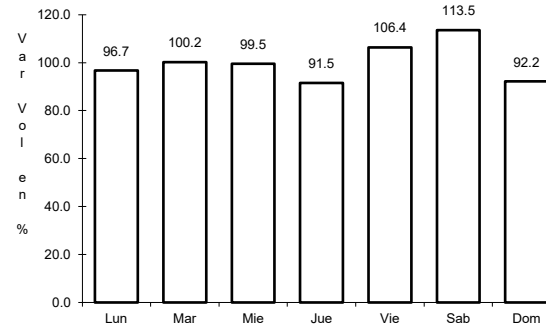
ruta: NL-001-TAM



Km: 0.00

Tipo: 3

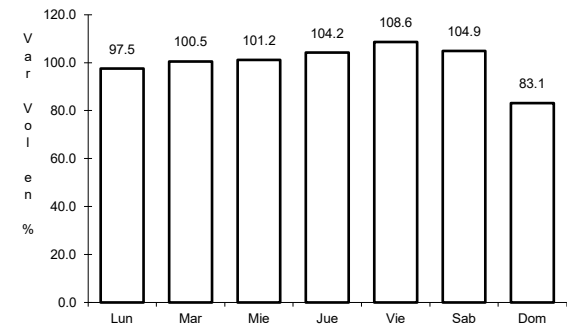
Sent: 0



Km: 47.00

Tipo: 1

Sent: 0



Km: 51.00

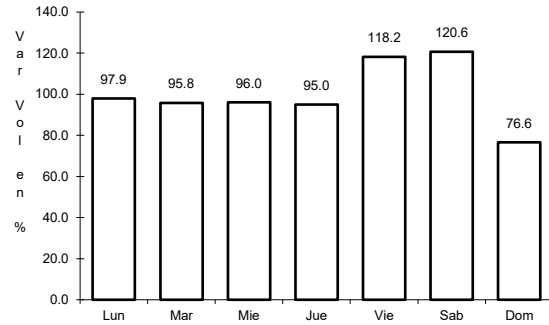
Tipo: 1

Sent: 0

31 CARR: Gral. Bravo - Los Aldamas

CLAVE: 19030

RUTA: NL-030



Km: 0.00

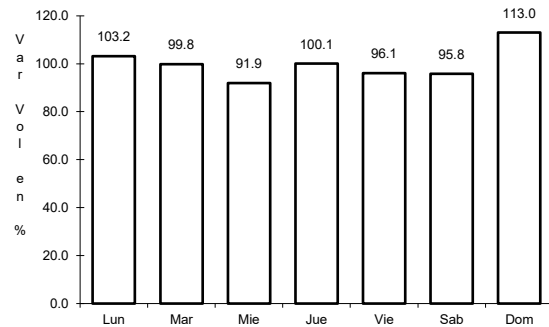
Tipo: 3

Sent: 0

32 CARR: Gral. Treviño - Villaldama

CLAVE: 19003

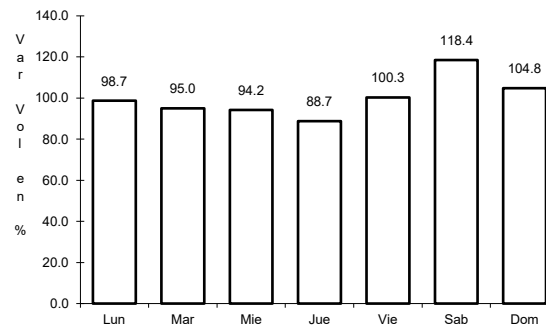
RUTA: NL-003



Km: 0.00

Tipo: 3

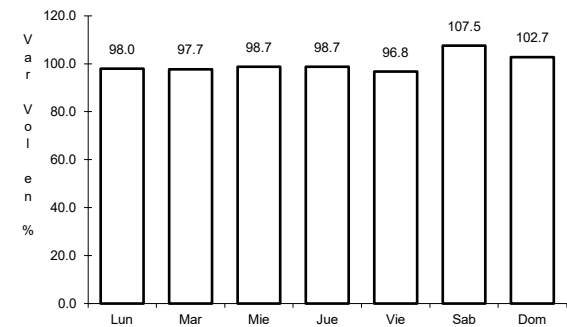
Sent: 0



Km: 62.00

Tipo: 1

Sent: 0



Km: 134.00

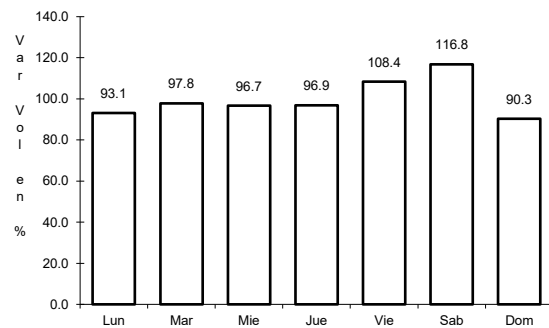
Tipo: 1

Sent: 0

33 CARR: Hacienda Guadalupe - Higuera

CLAVE: 19006

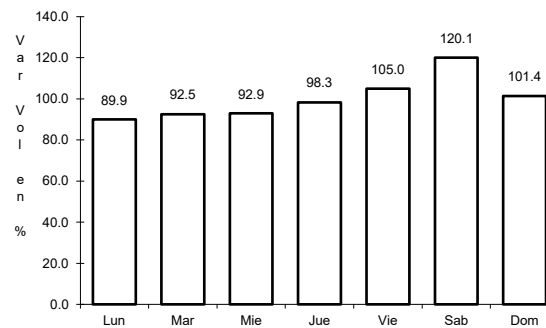
RUTA: NL-006



Km: 3.00

Tipo: 1

Sent: 1



Km: 3.00

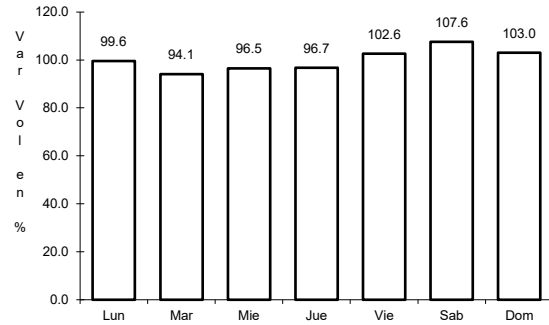
Tipo: 1

Sent: 2

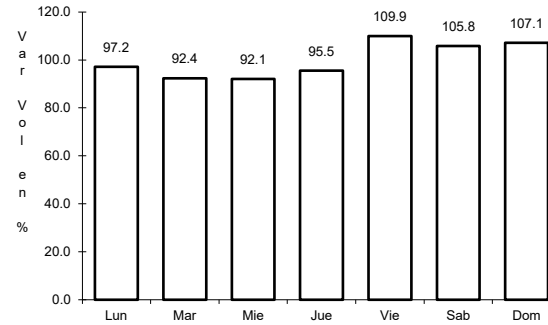
34 CARR: Libramiento de Linares

CLAVE: 19506

RUTA: NL



Km: 0.00 Tipo: 3 Sent: 0

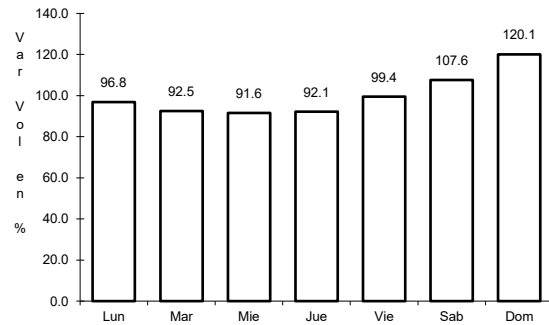


Km: 2.00 Tipo: 3 Sent: 0

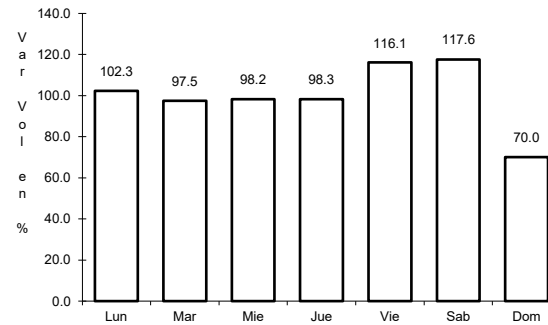
35 CARR: Libramiento de Montemorelos

CLAVE: 19492

RUTA: NL



Km: 0.00 Tipo: 3 Sent: 1

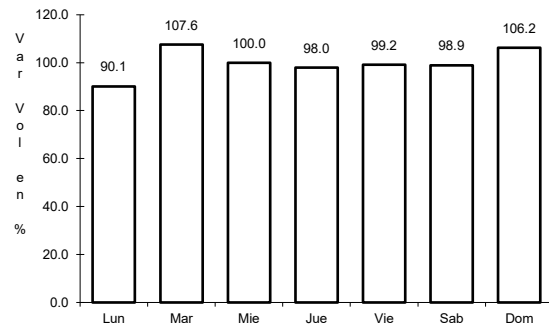


Km: 0.00 Tipo: 3 Sent: 2

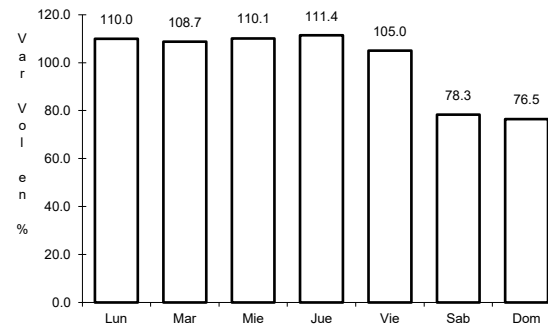
36 CARR: Libramiento de Sabinas Hidalgo

CLAVE: 19492

RUTA: NL



Km: 0.00 Tipo: 3 Sent: 0

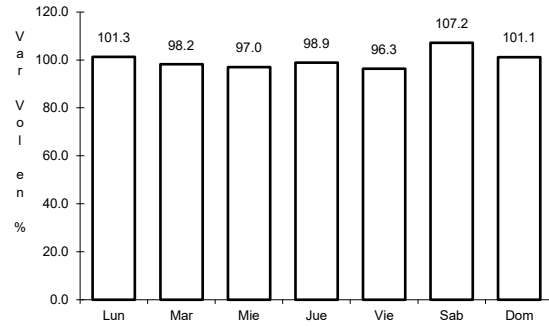


Km: 9.20 Tipo: 1 Sent: 0

37 CARR: Libramiento Poniente de Cadereyta

CLAVE: 19085

RUTA: NL



Km: 0.00

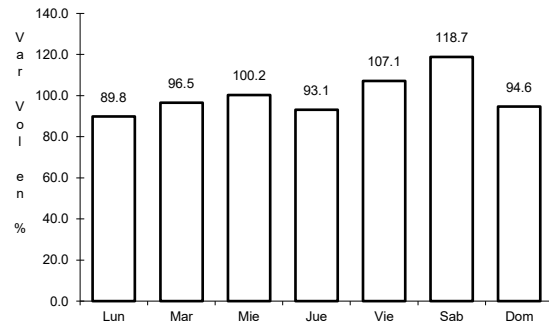
Tipo: 3

Sent: 0

38 CARR: Los Guerra - Los Herreras

CLAVE: 19031

RUTA: TAM-NL



Km: 73.00

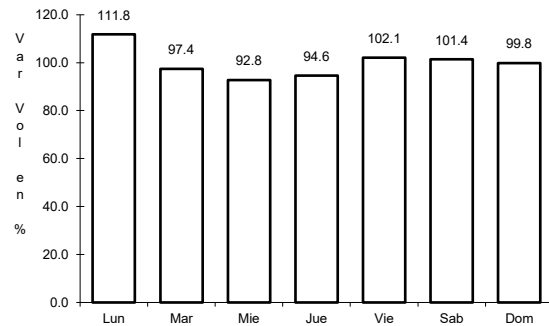
Tipo: 1

Sent: 0

39 CARR: Matchuala - La Poza

CLAVE: 00086

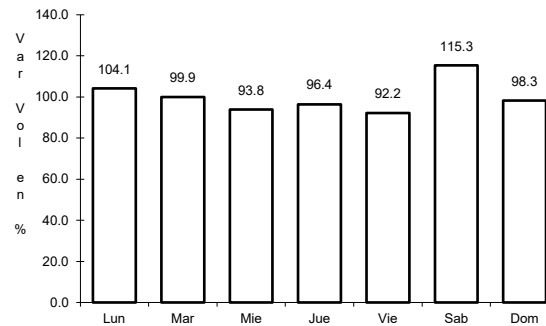
RUTA: SLP-029-NL-061



Km: 0.00

Tipo: 3

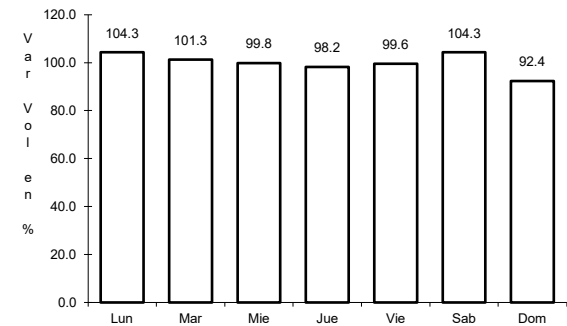
Sent: 0



Km: 49.00

Tipo: 1

Sent: 0



Km: 131.00

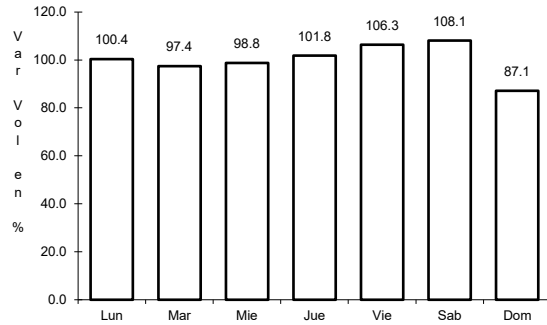
Tipo: 1

Sent: 0

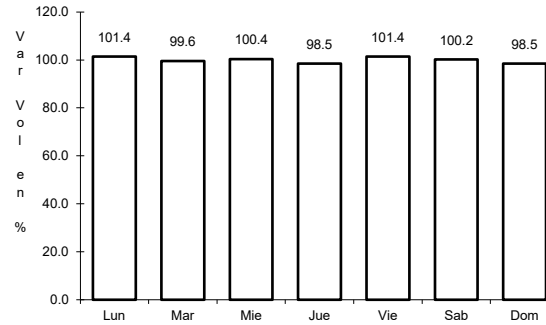
40 CARR: Monclova - Estación Candela

CLAVE: 00501

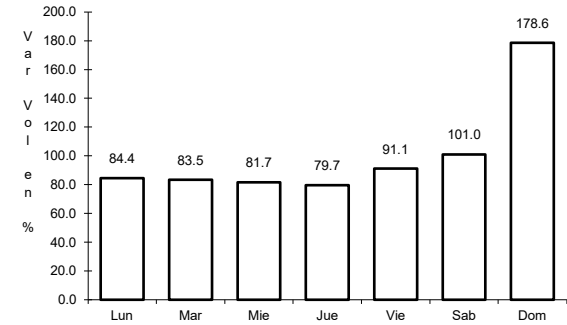
RUTA: COA-030-NL



Km: 5.10 Tipo: 1 Sent: 1



Km: 5.10 Tipo: 1 Sent: 2

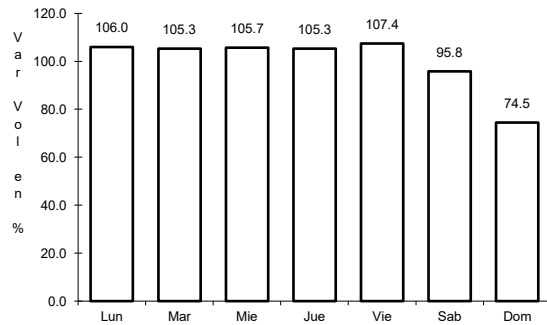


Km: 125.50 Tipo: 1 Sent: 0

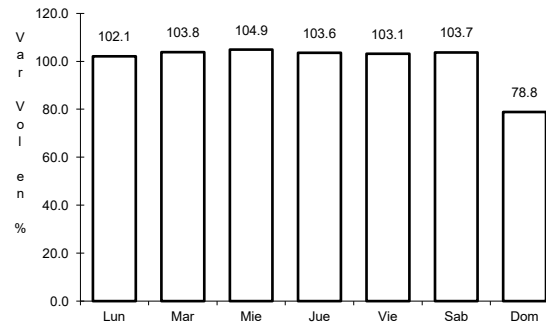
41 CARR: Monterrey - Colombia

CLAVE: 19001

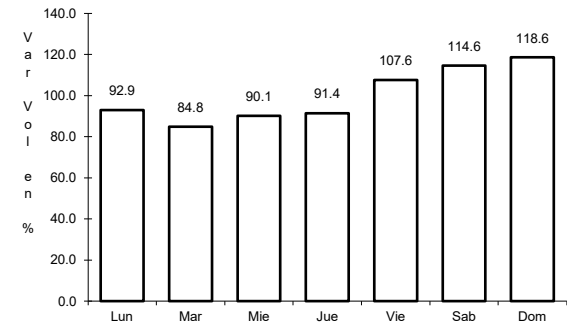
RUTA: NL-001



Km: 0.00 Tipo: 3 Sent: 1



Km: 0.00 Tipo: 3 Sent: 2

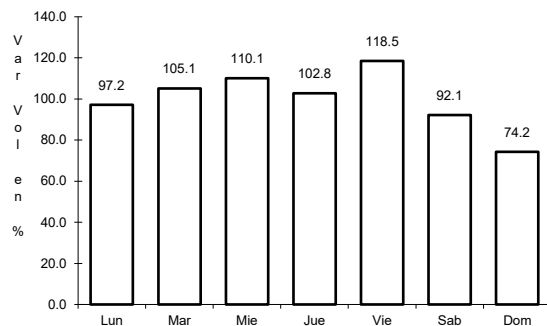


Km: 124.04 Tipo: 1 Sent: 0

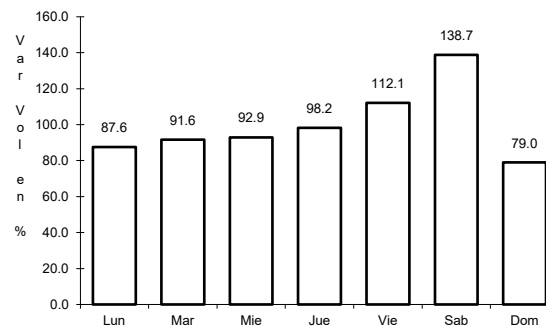
42 CARR: Palo Alto - Vallecillos

CLAVE: 19036

RUTA: NL



Km: 0.00 Tipo: 3 Sent: 0

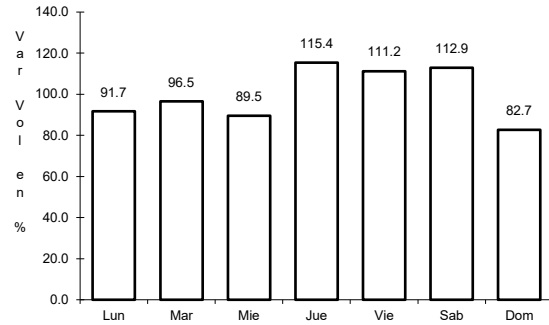


Km: 43.00 Tipo: 1 Sent: 0

43 CARR: Peña Blanca - Cd. Camargo

CLAVE: 00102

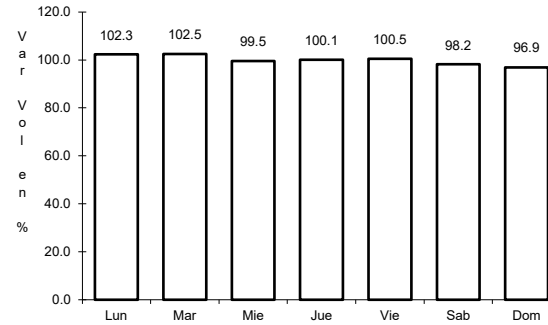
ruta: NL-TAM



Km: 0.00

Tipo: 3

Sent: 0



Km: 65.00

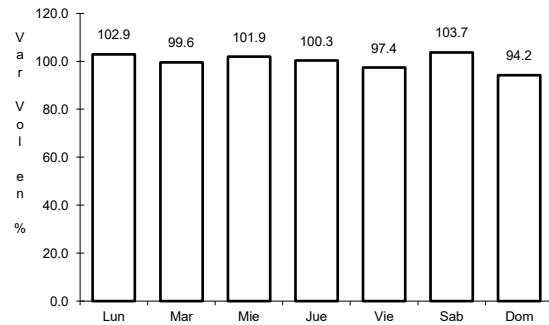
Tipo: 1

Sent: 0

44 CARR: Ramal a 18 de Marzo

CLAVE: 19475

ruta: NL



Km: 0.00

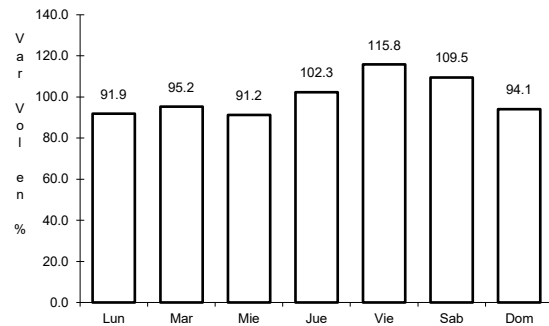
Tipo: 3

Sent: 0

45 CARR: Ramal a Cerralvo

CLAVE: 19013

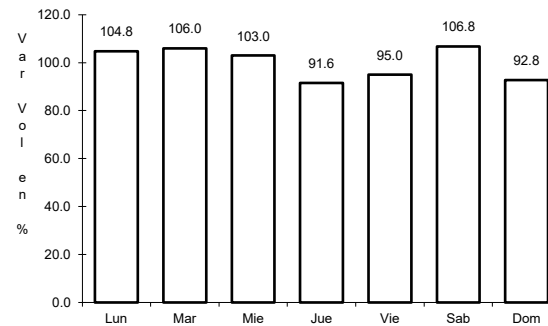
ruta: NL-013



Km: 0.00

Tipo: 3

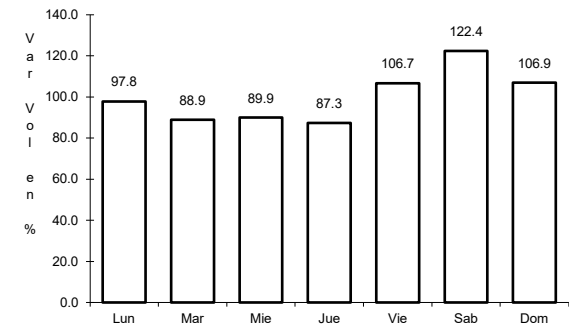
Sent: 0



Km: 21.00

Tipo: 3

Sent: 0



Km: 58.00

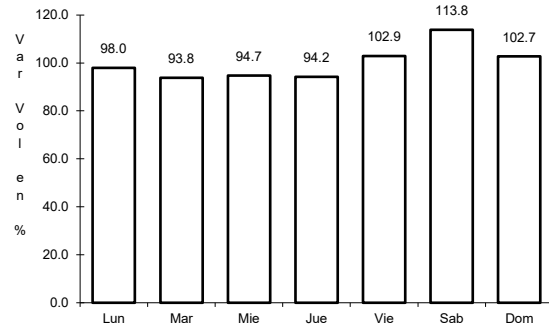
Tipo: 1

Sent: 0

46 CARR: Ramal a Marín

CLAVE: 19007

RUTA: NL



Km: 0.00

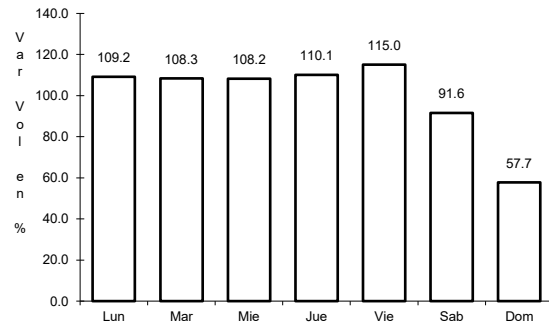
Tipo: 3

Sent: 0

47 CARR: Salinas Victoria - Ciénega de Flores

CLAVE: 19007

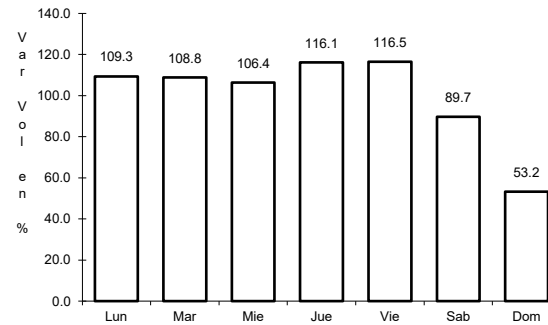
RUTA: NL



Km: 0.00

Tipo: 3

Sent: 0



Km: 6.00

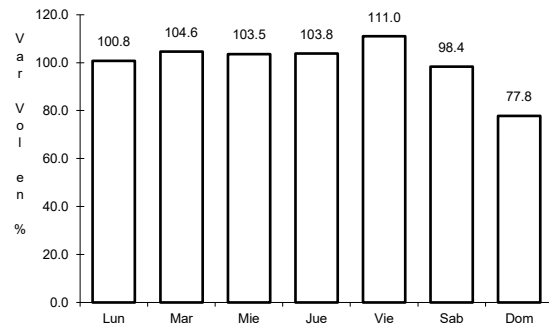
Tipo: 1

Sent: 0

48 CARR: Santa Rosa - Mezquital

CLAVE: 00087

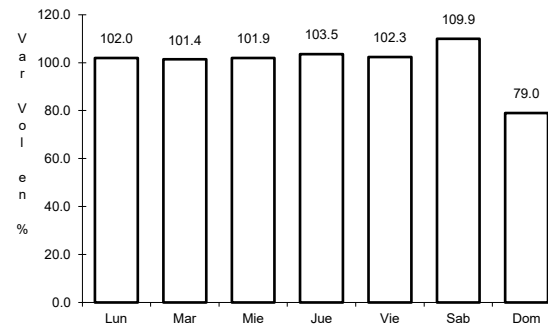
RUTA: NL



Km: 0.00

Tipo: 3

Sent: 1



Km: 0.00

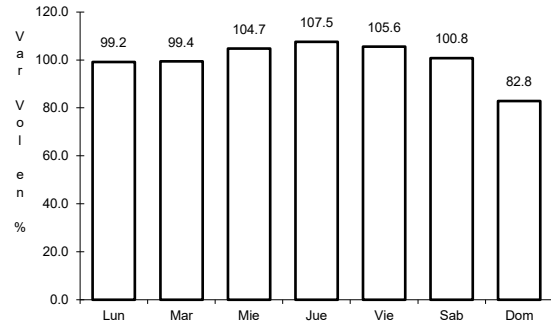
Tipo: 3

Sent: 2

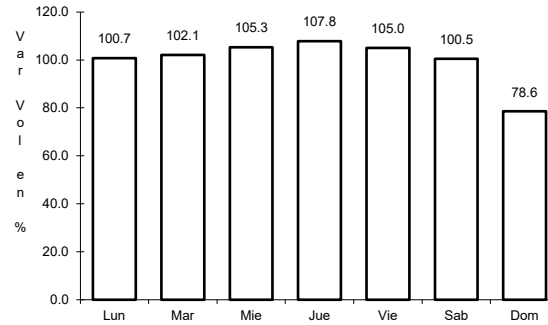
49 CARR: Santa Rosa - Salinas Victoria

CLAVE: 19037

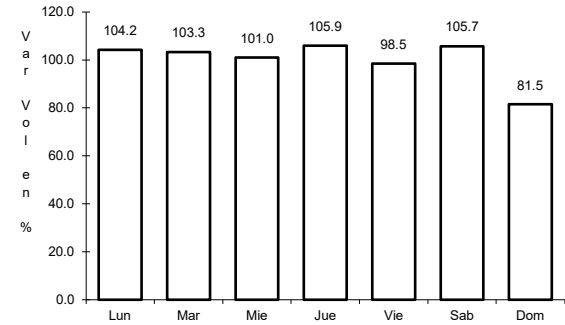
RUTA: NL



Km: 0.00 Tipo: 3 Sent: 1



Km: 0.00 Tipo: 3 Sent: 2

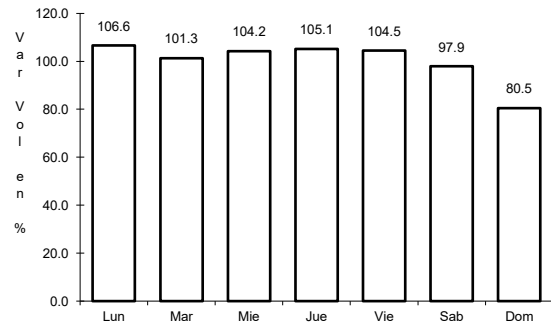


Km: 13.85 Tipo: 1 Sent: 1

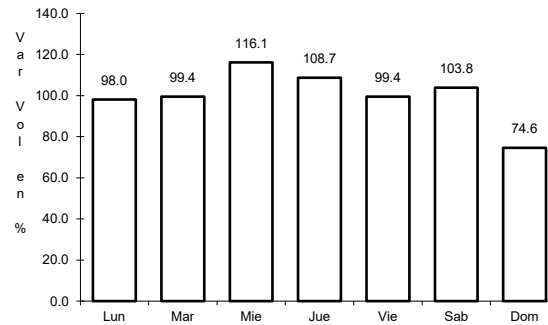
50 CARR: Aeropuerto de Monterrey (Cuota)

CLAVE:

RUTA: NL-D



Km: 3.10 Tipo: 3 Sent: 1

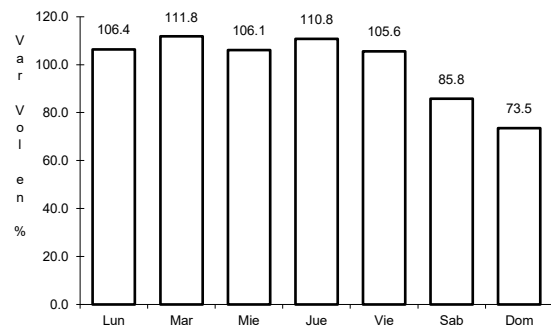


Km: 3.10 Tipo: 3 Sent: 2

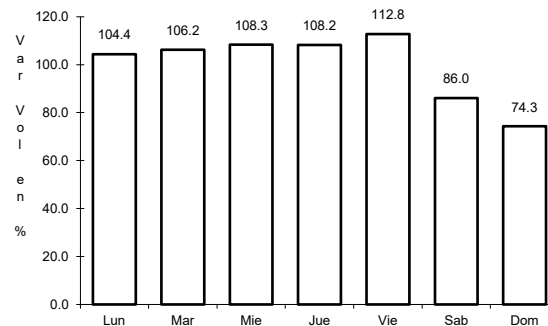
51 CARR: Anillo Periférico de Monterrey (Cuota)

CLAVE: 19004

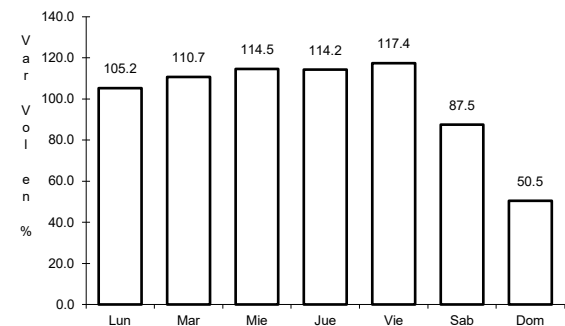
RUTA: NL-D



Km: 0.00 Tipo: 3 Sent: 1

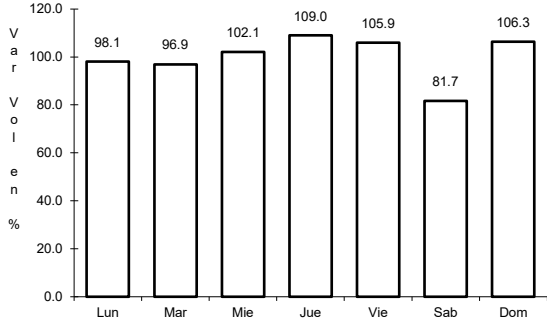


Km: 0.00 Tipo: 3 Sent: 2



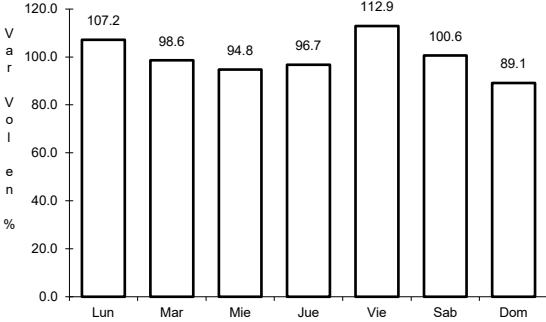
Km: 49.30 Tipo: 1 Sent: 1

52 CARR: Monterrey - Cadereyta (Cuota)



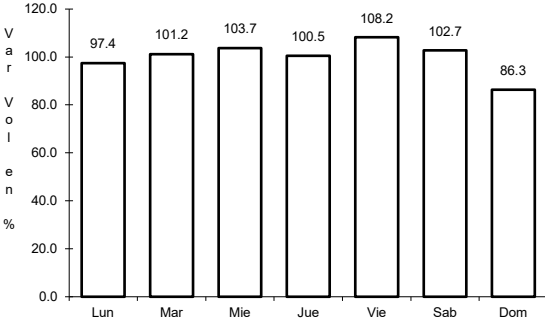
Km: 12.50 Tipo: 1 Sent: 1

CLAVE: 19281



Km: 12.50 Tipo: 1 Sent: 2

RUTA: NL-D



Km: 21.80 Tipo: 3 Sent: 1