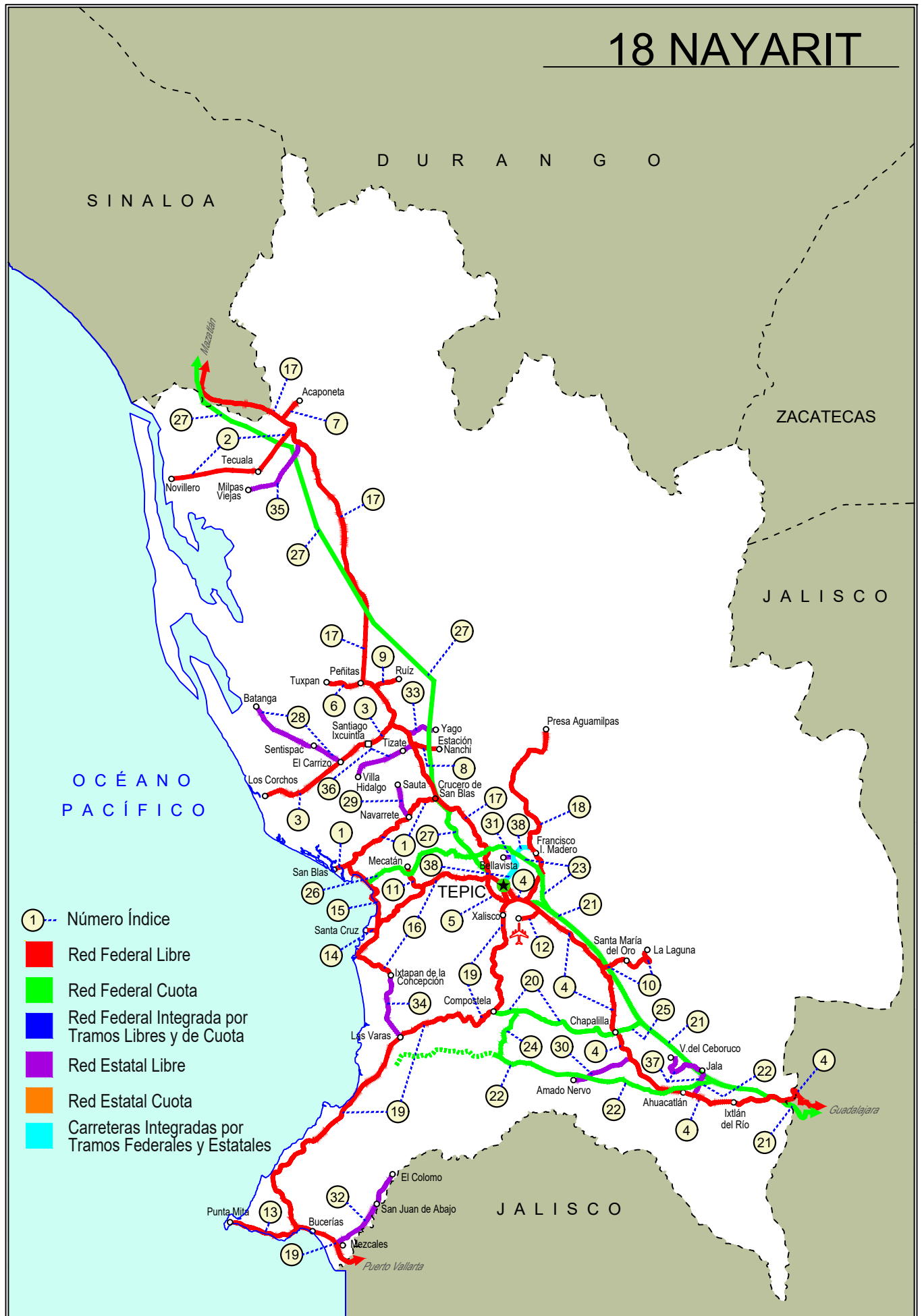


NAYARIT

NO. INDICE CARRETERA		RUTA
	---RED FEDERAL LIBRE---	
1	Crucero de San Blas - San Blas	MEX-015
2	Ent. Acaponeta - El Novillero	MEX-015
3	Ent. Santiago Ixcuintla - Playa Los Corchos	MEX-015
4	Guadalajara - Tepic	MEX-015
5	Libramiento de Tepic	MEX-015
6	Peñitas - Tuxpan	MEX-015
7	Ramal a Acaponeta	MEX-015
8	Ramal a Estación Nanchi	MEX-015
9	Ramal a Estación Ruíz	MEX-015
10	Ramal a La Laguna de Santa María	MEX-015
11	Ramal a Mecatán	MEX-015
12	Ramal a Nuevo Aeropuerto de Tepic	MEX-015
13	Ramal a Punta Mita	MEX-200
14	Ramal a Santa Cruz	MEX-015
15	Santa Cruz - San Blas	MEX-015
16	Tepic - Ixtapa de La Concepción	MEX-015
17	Tepic - Mazatlán	MEX-015
18	Tepic - Presa Aguamilpa	MEX-015
19	Tepic - Puerto Vallarta	MEX-200
	---RED FEDERAL DE CUOTA---	
20	Chapalilla - Compostela (Cuota)	MEX-068D
21	Guadalajara - Tepic (Cuota)	MEX-015D
22	Jala - Puerto Vallarta (Cuota)	MEX-070D
23	Libramiento de Tepic (Cuota)	MEX-015D
24	Ramal a Compostela (Cuota)	MEX-200D
25	Ramal a Tequepexpan	MEX-015D
26	Tepic - San Blas (Cuota)	MEX-D
27	Tepic - Villa Unión (cuota)	MEX-015D
	---RED ESTATAL LIBRE---	
28	El Carrizo - La Batanga	NAY-078
29	Navarrete - Sauta	NAY-013
30	Ramal a Amado Nervo	NAY
31	Ramal a Bellavista	NAY-059
32	Ramal a El Colomo	NAY
33	Ramal a Estación Yago	NAY
34	Ramal a Ixtapan de La Concepción	NAY
35	Ramal a Milpas Viejas	NAY
36	Ramal a Villa Hidalgo	NAY
37	Ramal a Volcán del Ceboruco	NAY
	---CARRETERAS INTEGRADAS POR TRAMOS FEDERALES Y ESTATALES---	
38	Tepic - Francisco I. Madero	NAY-MEX-015

# 18 NAYARIT





NAYARIT

1 CARR: Crucero de San Blas - San Blas

CLAVE: 18229

RUTA: MEX-015

AÑO: 2023

LUGAR	ESTACION				CLASIFICACION VEHICULAR EN PORCIENTO										COORDENADAS					
	KM	TE	SC	TDPA	M	A	B	C2	C3	T3S2	T3S3	T3S2R4	OTROS	A	B	C	K'	D	LATITUD	LONGITUD
T. C. Tepic - Mazatlán	0.00	3	0	2156	12.1	77.0	1.9	3.3	3.2	1.8	0.3	0.4	0.0	89.1	1.9	9.0	0.082	0.523	21.691372	-105.055222
Navarrete	11.00	3	0	2481	20.3	70.5	1.5	2.8	2.5	1.6	0.4	0.4	0.0	90.8	1.5	7.7	0.084	0.510	21.646558	-105.124441
San Blas	36.00	1	0	6325	10.0	85.7	0.5	2.1	0.9	0.5	0.1	0.2	0.0	95.7	0.5	3.8	0.101	0.501	21.544713	-105.269348

2 CARR: Ent. Acaponeta - El Novillero

CLAVE: 18023

RUTA: MEX-015

AÑO: 2023

LUGAR	ESTACION				CLASIFICACION VEHICULAR EN PORCIENTO										COORDENADAS					
	KM	TE	SC	TDPA	M	A	B	C2	C3	T3S2	T3S3	T3S2R4	OTROS	A	B	C	K'	D	LATITUD	LONGITUD
T. C. Tepic - Mazatlán	0.00	3	0	5267	14.2	77.1	2.9	3.2	1.5	0.7	0.2	0.2	0.0	91.3	2.9	5.8	0.079	0.533	22.486311	-105.385375
Tecuala	13.00	1	0	5067	20.9	70.7	2.5	3.5	1.2	0.5	0.3	0.3	0.1	91.6	2.5	5.9	0.079	0.525	22.425287	-105.439501
Tecuala	13.00	3	0	6551	28.2	68.0	0.6	1.5	0.6	0.4	0.2	0.3	0.2	96.2	0.6	3.2	0.093	0.504	22.399473	-105.487002
El Novillero	36.00	1	0	2132	25.5	71.3	0.5	1.8	0.9	0.0	0.0	0.0	0.0	96.8	0.5	2.7	0.128	0.508	22.382504	-105.659312

3 CARR: Ent. Santiago Ixcuintla - Playa Los Corchos

CLAVE: 18016

RUTA: MEX-015

AÑO: 2023

LUGAR	ESTACION				CLASIFICACION VEHICULAR EN PORCIENTO										COORDENADAS					
	KM	TE	SC	TDPA	M	A	B	C2	C3	T3S2	T3S3	T3S2R4	OTROS	A	B	C	K'	D	LATITUD	LONGITUD
T. C. Tepic - Mazatlán	0.00	3	1	2992	8.9	81.1	2.6	3.4	1.7	1.2	0.5	0.4	0.2	90.0	2.6	7.4	0.082	0.505	21.845750	-105.161280
T. C. Tepic - Mazatlán	0.00	3	2	3055	8.6	82.0	2.3	3.2	1.8	1.0	0.5	0.4	0.2	90.6	2.3	7.1	0.087	0.505	21.845702	-105.161213
Santiago Ixcuintla	8.00	1	1	4409	18.0	74.3	1.9	2.1	1.8	0.9	0.5	0.3	0.2	92.3	1.9	5.8	0.066	0.502	21.823324	-105.183210
Santiago Ixcuintla	8.00	1	2	4376	17.8	74.4	2.0	2.2	1.5	1.0	0.5	0.4	0.2	92.2	2.0	5.8	0.076	0.502	21.823267	-105.183150
Santiago Ixcuintla	8.00	3	0	7562	19.8	76.6	0.6	1.4	0.9	0.4	0.1	0.2	0.0	96.4	0.6	3.0	0.095	0.522	21.809054	-105.223155
T. Der. Mexcallitán	17.00	1	0	5191	24.5	72.3	0.4	1.2	1.0	0.2	0.1	0.3	0.0	96.8	0.4	2.8	0.091	0.500	21.773128	-105.271495
T. Der. Mexcallitán	17.00	3	0	4793	21.0	72.3	1.1	4.5	0.8	0.2	0.1	0.0	0.0	93.3	1.1	5.6	0.074	0.502	21.770429	-105.275229
Playa Los Corchos	39.00	1	0	1534	25.9	71.9	0.3	1.6	0.2	0.0	0.1	0.0	0.0	97.8	0.3	1.9	0.152	0.504	21.697484	-105.449118

4 CARR: Guadalajara - Tepic

CLAVE: 00031

RUTA: MEX-015

AÑO: 2023

LUGAR	ESTACION				CLASIFICACION VEHICULAR EN PORCIENTO										COORDENADAS					
	KM	TE	SC	TDPA	M	A	B	C2	C3	T3S2	T3S3	T3S2R4	OTROS	A	B	C	K'	D	LATITUD	LONGITUD
Guadalajara	0.00																			
T. Der. Base Aérea No. 2	8.30	3	1	47947	2.7	86.8	2.0	4.1	1.0	2.2	0.4	0.6	0.2	89.5	2.0	8.5	0.079	0.523	20.712858	-103.469622
T. Der. Base Aérea No. 2	8.30	3	2	43133	2.5	86.7	1.9	4.3	1.3	2.3	0.4	0.5	0.1	89.2	1.9	8.9	0.083	0.523	20.712761	-103.469772
T. Izq. La Primavera	20.50	1	1	30076	3.1	83.4	2.6	5.3	1.3	2.8	0.6	0.7	0.2	86.5	2.6	10.9	0.082	0.508	20.728171	-103.551874
T. Izq. La Primavera	20.50	1	2	29087	2.8	83.8	2.5	5.2	1.4	2.8	0.7	0.6	0.2	86.6	2.5	10.9	0.089	0.508	20.727991	-103.551889

NAYARIT

4 CARR: Guadalajara - Tepic

CLAVE: 00031

RUTA: MEX-015

AÑO: 2023

LUGAR	ESTACION				CLASIFICACION VEHICULAR EN PORCIENTO										COORDENADAS					
	KM	TE	SC	TDPA	M	A	B	C2	C3	T3S2	T3S3	T3S2R4	OTROS	A	B	C	K'	D	LATITUD	LONGITUD
T. C. Guadalajara - Tepic (Cuota)	22.75																			
El Arenal	36.20	1	1	9057	4.8	86.1	1.2	4.0	1.4	1.3	0.6	0.4	0.2	90.9	1.2	7.9	0.088	0.504	20.772000	-103.684449
El Arenal	36.20	1	2	8918	4.8	87.8	0.9	3.0	1.5	1.3	0.3	0.3	0.1	92.6	0.9	6.5	0.079	0.504	20.771866	-103.684421
Tequila	57.50	3	0	10686	11.1	77.8	1.5	4.6	1.7	1.7	0.5	0.5	0.6	88.9	1.5	9.6	0.074	0.505	20.897086	-103.836414
Magdalena	76.80	3	0	6807	9.8	77.8	1.5	6.0	1.7	1.5	0.5	0.6	0.6	87.6	1.5	10.9	0.077	0.527	20.922806	-103.996692
Lim. Edos. Term. Jal. Ppia. Nay.	123.09																			
Ixtlán del Río	138.84	1	0	4480	7.4	80.0	1.7	4.8	1.8	2.7	1.2	0.3	0.1	87.4	1.7	10.9	0.080	0.550	21.030921	-104.352489
Ixtlán del Río	138.84	3	0	9278	9.3	82.8	1.6	3.9	0.9	1.0	0.3	0.2	0.0	92.1	1.6	6.3	0.094	0.521	21.037199	-104.391803
Ahuacatlán	152.00	1	1	3889	6.4	81.5	3.4	3.8	1.5	2.5	0.7	0.1	0.1	87.9	3.4	8.7	0.081	0.532	21.053403	-104.474480
Ahuacatlán	152.00	1	2	4420	6.0	79.8	3.6	4.3	2.0	3.1	1.0	0.1	0.1	85.8	3.6	10.6	0.081	0.532	21.053347	-104.474534
Ahuacatlán	152.00	3	1	3396	9.3	76.1	2.4	3.8	2.7	3.7	1.4	0.5	0.1	85.4	2.4	12.2	0.075	0.536	21.058789	-104.493500
Ahuacatlán	152.00	3	2	3927	9.7	76.4	2.7	3.9	2.3	3.4	1.1	0.5	0.0	86.1	2.7	11.2	0.073	0.536	21.058682	-104.493516
X. C. Jala - Puerto Vallarta (Cuota)	154.65	3	0	5681	7.0	75.0	3.0	5.1	2.8	4.7	2.0	0.3	0.1	82.0	3.0	15.0	0.084	0.520	21.061315	-104.517170
T. Izq. Amado Nervo	167.32	1	0	4562	5.1	73.5	4.1	5.0	3.7	5.5	2.7	0.2	0.2	78.6	4.1	17.3	0.084	0.522	21.128952	-104.601487
Tequepexpan	174.70																			
T. Izq. Compostela	175.50	1	0	6404	4.5	76.9	3.7	4.8	2.7	4.9	1.8	0.6	0.1	81.4	3.7	14.9	0.077	0.512	21.187132	-104.633543
T. Izq. Compostela	175.50	3	0	4237	4.1	75.1	3.4	5.9	3.4	4.9	2.0	1.0	0.2	79.2	3.4	17.4	0.074	0.513	21.197596	-104.645544
T. Der. Santa María del Oro	196.00	1	0	4573	3.1	78.3	2.9	4.5	3.1	5.5	2.0	0.6	0.0	81.4	2.9	15.7	0.086	0.523	21.324470	-104.669837
T. Der. Santa María del Oro	196.00	3	0	6662	3.6	80.1	2.9	5.0	2.5	4.3	1.2	0.4	0.0	83.7	2.9	13.4	0.083	0.518	21.331234	-104.674895
T. Izq. Aeropuerto de Tepic	215.68	1	0	11465	10.0	78.4	1.4	2.6	2.5	2.7	0.7	1.3	0.4	88.4	1.4	10.2	0.076	0.521	21.446604	-104.811284
San Cayetano	215.90	3	1	9579	4.3	86.6	0.9	2.3	2.5	1.7	0.7	0.8	0.2	90.9	0.9	8.2	0.083	0.532	21.457429	-104.824615
San Cayetano	215.90	3	2	8415	4.9	85.9	1.0	2.6	2.2	1.5	0.8	0.9	0.2	90.8	1.0	8.2	0.077	0.532	21.457505	-104.824553
T. Izq. Libramiento de Tepic (Lateral)	219.10	1	1	4330	17.6	72.4	1.6	2.9	2.8	1.5	0.5	0.5	0.2	90.0	1.6	8.4	0.091	0.519	21.467426	-104.839424
T. Izq. Libramiento de Tepic (Central)	219.10	1	1	14670	7.9	78.2	2.8	3.1	3.5	2.7	0.8	0.8	0.2	86.1	2.8	11.1	0.083	0.544	21.467344	-104.839469
T. Izq. Libramiento de Tepic (Central)	219.10	1	2	12089	8.4	75.5	3.1	2.9	4.3	3.6	0.8	1.2	0.2	83.9	3.1	13.0	0.081	0.544	21.467244	-104.839362
T. Izq. Libramiento de Tepic (Lateral)	219.10	1	2	4680	17.5	71.9	1.7	3.4	2.6	1.7	0.5	0.5	0.2	89.4	1.7	8.9	0.115	0.519	21.467157	-104.839403
T. Izq. Libramiento de Tepic	219.10	3	1	19272	7.4	85.1	1.5	2.1	1.2	1.4	0.3	0.8	0.2	92.5	1.5	6.0	0.085	0.511	21.470249	-104.847765
T. Izq. Libramiento de Tepic	219.10	3	2	20135	6.8	85.8	1.6	2.1	1.1	1.5	0.2	0.7	0.2	92.6	1.6	5.8	0.086	0.511	21.470168	-104.847800
Tepic (Central)	224.80	1	1	23192	5.8	81.9	1.5	4.6	1.2	2.0	1.8	0.9	0.3	87.7	1.5	10.8	0.072	0.511	21.472199	-104.853412
Tepic (Lateral)	224.80	1	1	8845	8.7	79.7	2.9	3.8	2.1	1.2	1.1	0.4	0.1	88.4	2.9	8.7	0.071	0.517	21.472171	-104.853042
Tepic (Central)	224.80	1	2	24241	5.8	81.9	1.5	4.6	1.2	2.0	1.8	0.9	0.3	87.7	1.5	10.8	0.069	0.511	21.472139	-104.853418
Tepic (Lateral)	224.80	1	2	8258	8.1	81.5	1.7	4.5	1.6	1.1	1.1	0.3	0.1	89.6	1.7	8.7	0.073	0.517	21.472040	-104.853374

NAYARIT

5 CARR: Libramiento de Tepic

CLAVE: 18232

RUTA: MEX-015

AÑO: 2023

LUGAR	ESTACION				CLASIFICACION VEHICULAR EN PORCIENTO										COORDENADAS					
	KM	TE	SC	TDPA	M	A	B	C2	C3	T3S2	T3S3	T3S2R4	OTROS	A	B	C	K'	D	LATITUD	LONGITUD
T. C. Guadalajara - Tepic	0.00																			
X. C. Tepic - Puerto Vallarta	5.00	1	1	33903	6.0	87.9	1.2	1.7	0.9	1.5	0.4	0.3	0.1	93.9	1.2	4.9	0.083	0.528	21.469809	-104.886892
X. C. Tepic - Puerto Vallarta	5.00	1	2	30024	6.0	88.0	1.2	1.7	0.9	1.5	0.4	0.2	0.1	94.0	1.2	4.8	0.079	0.528	21.468821	-104.886036
T. C. Tepic - Mazatlán	12.40	1	1	16765	6.6	83.1	2.5	2.5	1.4	2.7	0.6	0.5	0.1	89.7	2.5	7.8	0.077	0.524	21.518894	-104.925344
T. C. Tepic - Mazatlán	12.40	1	2	15246	6.1	81.1	2.7	3.5	1.9	3.3	0.9	0.4	0.1	87.2	2.7	10.1	0.079	0.524	21.518878	-104.925478

6 CARR: Peñitas - Tuxpan

CLAVE: 18019

RUTA: MEX-015

AÑO: 2023

LUGAR	ESTACION				CLASIFICACION VEHICULAR EN PORCIENTO										COORDENADAS					
	KM	TE	SC	TDPA	M	A	B	C2	C3	T3S2	T3S3	T3S2R4	OTROS	A	B	C	K'	D	LATITUD	LONGITUD
Peñitas	0.00	3	0	6758	24.5	71.2	0.6	1.7	1.2	0.4	0.1	0.3	0.0	95.7	0.6	3.7	0.079	0.502	21.941927	-105.228209
Tuxpan	9.00	1	0	7687	27.2	67.2	0.8	3.0	0.9	0.5	0.2	0.2	0.0	94.4	0.8	4.8	0.083	0.502	21.942106	-105.280755

7 CARR: Ramal a Acaponeta

CLAVE: 18038

RUTA: MEX-015

AÑO: 2023

LUGAR	ESTACION				CLASIFICACION VEHICULAR EN PORCIENTO										COORDENADAS					
	KM	TE	SC	TDPA	M	A	B	C2	C3	T3S2	T3S3	T3S2R4	OTROS	A	B	C	K'	D	LATITUD	LONGITUD
T. C. Tepic - Mazatlán	0.00	3	1	6868	19.7	68.6	2.6	6.8	0.8	0.5	0.4	0.3	0.3	88.3	2.6	9.1	0.085	0.501	22.489783	-105.381295
T. C. Tepic - Mazatlán	0.00	3	2	6898	19.6	68.6	2.6	6.9	0.8	0.5	0.4	0.3	0.3	88.2	2.6	9.2	0.090	0.501	22.489868	-105.381235
Acaponeta	3.00																			

8 CARR: Ramal a Estación Nanchi

CLAVE: 18068

RUTA: MEX-015

AÑO: 2023

LUGAR	ESTACION				CLASIFICACION VEHICULAR EN PORCIENTO										COORDENADAS					
	KM	TE	SC	TDPA	M	A	B	C2	C3	T3S2	T3S3	T3S2R4	OTROS	A	B	C	K'	D	LATITUD	LONGITUD
T. C. Tepic - Mazatlán	0.00	3	0	1081	30.1	64.4	0.6	1.9	1.2	0.6	0.2	0.2	0.8	94.5	0.6	4.9	0.086	0.506	21.810405	-105.098307
Estación Nanchi	5.00																			

9 CARR: Ramal a Estación Ruiz

CLAVE: 18026

RUTA: MEX-015

AÑO: 2023

LUGAR	ESTACION				CLASIFICACION VEHICULAR EN PORCIENTO										COORDENADAS					
	KM	TE	SC	TDPA	M	A	B	C2	C3	T3S2	T3S3	T3S2R4	OTROS	A	B	C	K'	D	LATITUD	LONGITUD
T. C. Tepic - Mazatlán	0.00	3	0	5303	14.0	76.9	0.8	2.7	2.7	0.7	0.7	0.8	0.7	90.9	0.8	8.3	0.088	0.504	21.935286	-105.190077
Estación Ruiz	5.50	1	0	5641	27.8	60.9	1.4	5.4	1.3	0.7	1.1	0.9	0.5	88.7	1.4	9.9	0.082	0.513	21.943221	-105.163974

NAYARIT

10 CARR: Ramal a La Laguna de Santa María

CLAVE: 18005

RUTA: MEX-015

AÑO: 2023

LUGAR	ESTACION				CLASIFICACION VEHICULAR EN PORCIENTO										COORDENADAS					
	KM	TE	SC	TDPA	M	A	B	C2	C3	T3S2	T3S3	T3S2R4	OTROS	A	B	C	K'	D	LATITUD	LONGITUD
T. C. Guadalajara - Tepic	0.00	3	0	5240	3.1	86.4	2.3	4.2	1.8	1.3	0.7	0.2	0.0	89.5	2.3	8.2	0.106	0.501	21.326924	-104.668644
Santa María del Oro	11.50	1	1	2435	13.9	80.6	0.9	2.4	1.3	0.4	0.1	0.2	0.2	94.5	0.9	4.6	0.099	0.503	21.326203	-104.595167
Santa María del Oro	11.50	1	2	2464	13.8	81.0	0.8	2.3	1.3	0.3	0.1	0.2	0.2	94.8	0.8	4.4	0.116	0.503	21.326275	-104.595215
Laguna de Santa María	20.00	1	0	952	18.5	74.8	0.6	5.0	0.9	0.1	0.0	0.1	0.0	93.3	0.6	6.1	0.224	0.517	21.359780	-104.570779

11 CARR: Ramal a Mecatán

CLAVE: 18010

RUTA: MEX-015

AÑO: 2023

LUGAR	ESTACION				CLASIFICACION VEHICULAR EN PORCIENTO										COORDENADAS					
	KM	TE	SC	TDPA	M	A	B	C2	C3	T3S2	T3S3	T3S2R4	OTROS	A	B	C	K'	D	LATITUD	LONGITUD
T. C. (Tepic - Mazatlán) - Ixtapan de La Concepción	0.00	3	0	1144	8.5	88.3	0.2	0.2	1.5	1.0	0.1	0.2	0.0	96.8	0.2	3.0	0.074	0.526	21.500236	-105.084787
Mecatán	9.00																			

12 CARR: Ramal a Nuevo Aeropuerto de Tepic

CLAVE: 18012

RUTA: MEX-015

AÑO: 2023

LUGAR	ESTACION				CLASIFICACION VEHICULAR EN PORCIENTO										COORDENADAS					
	KM	TE	SC	TDPA	M	A	B	C2	C3	T3S2	T3S3	T3S2R4	OTROS	A	B	C	K'	D	LATITUD	LONGITUD
T. C. Guadalajara - Tepic	0.00	3	0	4973	11.0	80.6	0.5	1.7	4.8	0.6	0.3	0.4	0.1	91.6	0.5	7.9	0.101	0.517	21.444555	-104.820153
Aeropuerto de Tepic	5.00																			

13 CARR: Ramal a Punta Mita

CLAVE: 18020

RUTA: MEX-200

AÑO: 2023

LUGAR	ESTACION				CLASIFICACION VEHICULAR EN PORCIENTO										COORDENADAS					
	KM	TE	SC	TDPA	M	A	B	C2	C3	T3S2	T3S3	T3S2R4	OTROS	A	B	C	K'	D	LATITUD	LONGITUD
T. C. Tepic - Puerto Vallarta	0.00	3	0	18175	7.8	84.7	0.7	5.4	0.8	0.4	0.1	0.1	0.0	92.5	0.7	6.8	0.080	0.504	20.754619	-105.378994
San Ignacio	9.00	3	0	9716	6.4	82.6	2.8	5.4	1.9	0.4	0.2	0.3	0.0	89.0	2.8	8.2	0.094	0.504	20.756771	-105.456487
Punta Mita	18.00																			

14 CARR: Ramal a Santa Cruz

CLAVE: 18030

RUTA: MEX-015

AÑO: 2023

LUGAR	ESTACION				CLASIFICACION VEHICULAR EN PORCIENTO										COORDENADAS					
	KM	TE	SC	TDPA	M	A	B	C2	C3	T3S2	T3S3	T3S2R4	OTROS	A	B	C	K'	D	LATITUD	LONGITUD
T. C. Tepic - Ixtapan de La Concepción	0.00																			
Santa Cruz	1.30	1	0	3425	33.1	65.3	0.2	0.8	0.5	0.0	0.0	0.0	0.1	98.4	0.2	1.4	0.087	0.501	21.433217	-105.190575



NAYARIT

15 CARR: Santa Cruz - San Blas

CLAVE: 18230

RUTA: MEX-015

AÑO: 2023

LUGAR	ESTACION				CLASIFICACION VEHICULAR EN PORCIENTO										COORDENADAS					
	KM	TE	SC	TDPA	M	A	B	C2	C3	T3S2	T3S3	T3S2R4	OTROS	A	B	C	K'	D	LATITUD	LONGITUD
Santa Cruz	0.00	3	0	4056	11.5	74.0	1.4	5.3	4.3	1.6	1.0	0.7	0.2	85.5	1.4	13.1	0.092	0.505	21.435958	-105.186731
Playa Los Cocos	3.90	1	0	4314	17.1	77.9	1.0	1.2	1.1	1.2	0.3	0.2	0.0	95.0	1.0	4.0	0.079	0.525	21.462057	-105.187752
Aticama	5.00	3	0	5508	32.1	62.8	0.8	1.3	1.2	0.9	0.2	0.6	0.1	94.9	0.8	4.3	0.117	0.511	21.487872	-105.191340
T. C. Crucero San Blas - San Blas	17.00	1	0	6579	19.6	76.0	0.8	1.4	1.0	0.8	0.2	0.2	0.0	95.6	0.8	3.6	0.111	0.504	21.537480	-105.249253

16 CARR: Tepic - Ixtapa de La Concepción

CLAVE: 18028

RUTA: MEX-015

AÑO: 2023

LUGAR	ESTACION				CLASIFICACION VEHICULAR EN PORCIENTO										COORDENADAS					
	KM	TE	SC	TDPA	M	A	B	C2	C3	T3S2	T3S3	T3S2R4	OTROS	A	B	C	K'	D	LATITUD	LONGITUD
T. C. Tepic - Mazatlán	0.00	3	0	13392	7.8	81.6	2.4	6.5	0.6	0.4	0.3	0.4	0.0	89.4	2.4	8.2	0.085	0.515	21.518890	-104.937573
T. Der. Mecatán	19.00	1	0	1283	10.4	85.6	0.8	1.8	1.0	0.4	0.0	0.0	0.0	96.0	0.8	3.2	0.118	0.501	21.501001	-105.081646
T. Der. Mecatán	19.00	3	0	2757	11.0	81.9	1.3	3.5	2.1	0.2	0.0	0.0	0.0	92.9	1.3	5.8	0.101	0.504	21.497742	-105.082863
Jalcocotán	27.00	1	0	2813	17.6	78.4	0.6	1.8	1.1	0.3	0.1	0.1	0.0	96.0	0.6	3.4	0.087	0.509	21.484172	-105.090270
T. Der. Santa Cruz	50.00	3	0	4134	27.5	67.2	1.2	1.6	1.0	1.3	0.1	0.1	0.0	94.7	1.2	4.1	0.079	0.513	21.423444	-105.183674
Ixtapan de La Concepción	77.42	1	0	2246	15.7	78.0	1.4	1.8	1.3	1.7	0.1	0.0	0.0	93.7	1.4	4.9	0.122	0.501	21.313007	-105.155147

17 CARR: Tepic - Mazatlán

CLAVE: 00499

RUTA: MEX-015

AÑO: 2023

LUGAR	ESTACION				CLASIFICACION VEHICULAR EN PORCIENTO										COORDENADAS					
	KM	TE	SC	TDPA	M	A	B	C2	C3	T3S2	T3S3	T3S2R4	OTROS	A	B	C	K'	D	LATITUD	LONGITUD
Tepic (Baja)	0.00	3	1	11722	7.9	87.3	0.4	2.2	1.7	0.2	0.1	0.1	0.1	95.2	0.4	4.4	0.076	0.506	21.511947	-104.905741
Tepic (Alta)	0.00	3	1	11300	5.5	85.8	0.5	5.4	1.4	0.8	0.3	0.2	0.1	91.3	0.5	8.2	0.072	0.507	21.511873	-104.905780
Tepic (Alta)	0.00	3	2	10997	6.0	85.8	0.4	5.3	1.1	0.9	0.2	0.2	0.1	91.8	0.4	7.8	0.071	0.507	21.511665	-104.905584
Tepic (Baja)	0.00	3	2	11427	7.9	87.1	0.4	2.3	1.8	0.2	0.1	0.1	0.1	95.0	0.4	4.6	0.069	0.506	21.511595	-104.905630
T. Izq. Libramiento de Tepic (Alta)	2.56	1	1	11534	3.5	95.2	0.1	1.0	0.1	0.0	0.0	0.1	0.0	98.7	0.1	1.2	0.077	0.544	21.521075	-104.921784
T. Izq. Libramiento de Tepic (Baja)	2.56	1	1	11314	10.6	85.1	0.3	3.0	0.7	0.2	0.0	0.1	0.0	95.7	0.3	4.0	0.071	0.529	21.521260	-104.921987
T. Izq. Libramiento de Tepic (Baja)	2.56	1	2	10082	12.6	83.5	0.3	2.5	0.7	0.2	0.0	0.2	0.0	96.1	0.3	3.6	0.077	0.529	21.520987	-104.922012
T. Izq. Libramiento de Tepic (Alta)	2.56	1	2	9653	3.7	94.8	0.1	1.1	0.2	0.1	0.0	0.0	0.0	98.5	0.1	1.4	0.073	0.544	21.521058	-104.921948
T. Izq. Aut. Tepic-Villa Unión (Cuota)	3.70	3	0	7523	6.7	78.9	2.2	3.0	2.0	4.8	1.5	0.8	0.1	85.6	2.2	12.2	0.078	0.540	21.538540	-104.933972
Los Otates	19.80	3	0	5750	3.6	74.2	5.9	7.9	2.4	3.7	1.1	1.0	0.2	77.8	5.9	16.3	0.074	0.506	21.641202	-104.973048
T. Izq. Jumatán	28.52	1	0	4549	4.0	75.5	2.9	3.7	3.9	6.8	2.2	0.9	0.1	79.5	2.9	17.6	0.072	0.548	21.669596	-105.021690
T. Izq. Jumatán	28.52	3	1	7914	6.2	70.3	4.1	3.4	2.9	7.4	1.2	3.6	0.9	76.5	4.1	19.4	0.088	0.512	21.668047	-105.029961
T. Izq. Jumatán	28.52	3	2	8289	6.2	70.4	4.1	3.5	2.8	7.4	1.1	3.6	0.9	76.6	4.1	19.3	0.073	0.512	21.667952	-105.029918
T. Izq. San Blas	33.54	1	1	8297	4.6	74.0	3.5	3.4	1.6	8.4	1.0	3.0	0.5	78.6	3.5	17.9	0.087	0.501	21.679405	-105.042584
T. Izq. San Blas	33.54	1	2	8249	4.8	73.9	3.2	3.4	1.6	8.7	1.0	2.9	0.5	78.7	3.2	18.1	0.082	0.501	21.679406	-105.042915

NAYARIT

17 CARR: Tepic - Mazatlán

CLAVE: 00499

RUTA: MEX-015

AÑO: 2023

LUGAR	ESTACION				CLASIFICACION VEHICULAR EN PORCIENTO													COORDENADAS		
	KM	TE	SC	TDPA	M	A	B	C2	C3	T3S2	T3S3	T3S2R4	OTROS	A	B	C	K'	D	LATITUD	LONGITUD
T. Izq. San Blas	33.54	3	1	8133	1.4	68.7	5.5	3.8	2.8	12.4	1.7	3.0	0.7	70.1	5.5	24.4	0.083	0.505	21.704591	-105.055297
T. Izq. San Blas	33.54	3	2	8286	3.1	65.4	5.9	3.9	2.9	13.7	2.0	2.5	0.6	68.5	5.9	25.6	0.082	0.505	21.704660	-105.055480
T. Izq. Villa Hidalgo	48.12	1	0	8141	6.1	76.4	2.4	3.7	3.0	6.4	1.6	0.3	0.1	82.5	2.4	15.1	0.088	0.521	21.806639	-105.102554
T. Izq. Villa Hidalgo	48.12	3	0	8611	6.4	75.7	4.6	3.8	2.3	5.4	1.7	0.1	0.0	82.1	4.6	13.3	0.074	0.525	21.811888	-105.107228
T. Izq. Santiago Ixcuintla	56.42	1	0	8865	4.3	73.7	5.8	5.3	2.8	5.9	1.5	0.6	0.1	78.0	5.8	16.2	0.070	0.532	21.853983	-105.152356
T. Izq. Santiago Ixcuintla	56.42	3	0	6838	3.5	74.5	4.3	7.6	2.2	5.2	2.0	0.6	0.1	78.0	4.3	17.7	0.073	0.507	21.859305	-105.155926
T. Izq. Tuxpan	70.60	1	0	8317	4.8	76.2	3.3	4.5	2.4	5.6	1.8	0.9	0.5	81.0	3.3	15.7	0.071	0.508	21.944201	-105.215566
T. Izq. Tuxpan	70.60	3	0	7405	4.9	75.8	3.9	4.6	2.5	6.1	1.7	0.3	0.2	80.7	3.9	15.4	0.060	0.519	21.962279	-105.221692
T. Der. Rosamorada	90.70	3	0	6192	6.9	58.5	6.6	8.2	4.6	10.7	3.7	0.6	0.2	65.4	6.6	28.0	0.083	0.524	22.128913	-105.221213
Tierra Generosa	110.40	1	0	3460	8.1	52.2	6.7	7.5	4.9	13.7	3.1	2.9	0.9	60.3	6.7	33.0	0.068	0.500	22.295897	-105.274179
T. Der. Acaponeta	136.52	1	0	8882	8.6	72.2	4.8	3.6	2.6	4.7	2.5	0.6	0.4	80.8	4.8	14.4	0.061	0.518	22.483303	-105.384375
T. Der. Acaponeta	136.52	3	0	6201	11.0	61.1	5.6	3.8	3.3	11.1	3.1	0.8	0.2	72.1	5.6	22.3	0.064	0.511	22.493962	-105.384274
Lim. Edos. Term. Nay. Ppia. Sin.	144.60																			
T. Der. Villa Unión (Cuota)	193.60	1	1	4578	6.9	49.1	7.9	5.7	2.2	20.7	3.0	3.6	0.9	56.0	7.9	36.1	0.063	0.507	22.802827	-105.718306
T. Der. Villa Unión (Cuota)	193.60	1	2	4448	7.3	47.3	10.6	5.6	2.2	19.9	2.3	3.9	0.9	54.6	10.6	34.8	0.073	0.507	22.802729	-105.718392
Escuinapa de Hidalgo	200.00	1	0	5643	13.2	63.2	4.4	5.2	2.6	8.1	2.3	0.8	0.2	76.4	4.4	19.2	0.068	0.512	22.832897	-105.761705
Escuinapa de Hidalgo	200.00	3	0	5757	7.9	67.1	6.4	5.9	2.7	7.4	2.1	0.4	0.1	75.0	6.4	18.6	0.076	0.508	22.846967	-105.792001
Rosario	221.71	1	0	10986	14.8	69.2	4.2	3.6	1.6	5.2	1.3	0.1	0.0	84.0	4.2	11.8	0.069	0.510	22.997097	-105.851401
Rosario	221.71	3	0	7645	7.4	73.8	3.2	5.1	1.8	6.3	1.8	0.3	0.3	81.2	3.2	15.6	0.074	0.511	23.003371	-105.868923
X. C. Durango - Mazatlán (Cuota)	265.20	1	0	5660	4.8	76.0	3.6	3.7	2.0	7.1	2.3	0.2	0.3	80.8	3.6	15.6	0.074	0.506	23.189964	-106.174169
T. Der. Durango	267.99	1	0	7229	6.6	73.8	3.5	4.2	2.8	6.6	2.0	0.3	0.2	80.4	3.5	16.1	0.077	0.503	23.189446	-106.202501
T. Der. Durango	267.99	3	1	9374	8.0	76.5	4.3	3.1	2.3	3.5	0.9	1.1	0.3	84.5	4.3	11.2	0.083	0.505	23.189309	-106.210105
T. Der. Durango	267.99	3	2	9182	8.0	76.9	4.4	3.0	2.2	3.4	0.8	1.1	0.2	84.9	4.4	10.7	0.080	0.505	23.189191	-106.210079
Villa Unión	269.52	3	1	11652	8.2	79.5	3.1	3.3	1.6	2.7	0.8	0.6	0.2	87.7	3.1	9.2	0.088	0.501	23.190423	-106.222400
Villa Unión	269.52	3	2	11591	9.6	77.7	3.3	3.4	1.6	2.8	0.6	0.8	0.2	87.3	3.3	9.4	0.083	0.501	23.190236	-106.222256
T. Der. Libramiento de Mazatlán	288.87	1	1	28094	11.9	79.6	1.2	3.3	1.6	1.5	0.5	0.3	0.1	91.5	1.2	7.3	0.073	0.511	23.225193	-106.383040
T. Der. Libramiento de Mazatlán	288.87	1	2	26760	10.9	80.4	1.6	3.4	1.4	1.5	0.3	0.4	0.1	91.3	1.6	7.1	0.073	0.511	23.225137	-106.383107
Mazatlán	292.00																			

18 CARR: Tepic - Presa Aguamilpa

CLAVE: 18029

RUTA: MEX-015

AÑO: 2023

LUGAR	ESTACION				CLASIFICACION VEHICULAR EN PORCIENTO													COORDENADAS		
	KM	TE	SC	TDPA	M	A	B	C2	C3	T3S2	T3S3	T3S2R4	OTROS	A	B	C	K'	D	LATITUD	LONGITUD
T. C. Guadalajara - Tepic	0.00	3	1	16964	10.9	81.4	0.8	3.4	1.9	0.8	0.4	0.3	0.1	92.3	0.8	6.9	0.087	0.514	21.473688	-104.848264
T. C. Guadalajara - Tepic	0.00	3	2	17907	11.1	80.4	1.0	4.0	1.9	0.7	0.4	0.4	0.1	91.5	1.0	7.5	0.087	0.514	21.473734	-104.848370

NAYARIT

18 CARR: Tepic - Presa Aguamilpa

CLAVE: 18029

RUTA: MEX-015

AÑO: 2023

LUGAR	ESTACION				CLASIFICACION VEHICULAR EN PORCIENTO										COORDENADAS					
	KM	TE	SC	TDPA	M	A	B	C2	C3	T3S2	T3S3	T3S2R4	OTROS	A	B	C	K'	D	LATITUD	LONGITUD
X. C. Tepic - Fco. I. Madero	17.50	3	0	1670	16.9	79.4	0.3	2.5	0.6	0.1	0.0	0.1	0.1	96.3	0.3	3.4	0.088	0.501	21.593965	-104.842202
Presa Aguamilpa	54.00	1	0	351	13.8	83.0	0.5	1.9	0.5	0.2	0.0	0.1	0.0	96.8	0.5	2.7	0.104	0.502	21.813371	-104.836080

19 CARR: Tepic - Puerto Vallarta

CLAVE: 00068

RUTA: MEX-200

AÑO: 2023

LUGAR	ESTACION				CLASIFICACION VEHICULAR EN PORCIENTO										COORDENADAS					
	KM	TE	SC	TDPA	M	A	B	C2	C3	T3S2	T3S3	T3S2R4	OTROS	A	B	C	K'	D	LATITUD	LONGITUD
Tepic	0.00	3	1	19844	10.0	85.9	0.6	2.2	0.7	0.3	0.1	0.1	0.1	95.9	0.6	3.5	0.085	0.504	21.491368	-104.895579
Tepic	0.00	3	2	20195	10.7	85.2	0.4	2.9	0.4	0.2	0.0	0.1	0.1	95.9	0.4	3.7	0.074	0.504	21.491400	-104.895447
Limite de Zona Urbana Tepic	1.80	3	1	16034	6.0	83.6	1.8	4.7	1.6	1.0	0.4	0.5	0.4	89.6	1.8	8.6	0.070	0.527	21.474678	-104.890181
Limite de Zona Urbana Tepic	1.80	3	2	17831	6.0	83.6	1.8	4.7	1.6	1.0	0.4	0.5	0.4	89.6	1.8	8.6	0.070	0.527	21.474704	-104.890057
X. C. Libramiento De Tepic (Baja)	3.90	3	1	8307	15.4	76.3	1.5	5.2	0.9	0.4	0.1	0.2	0.0	91.7	1.5	6.8	0.073	0.502	21.465374	-104.889225
X. C. Libramiento De Tepic (Alta)	3.90	3	1	16025	2.4	96.5	0.1	0.2	0.3	0.1	0.0	0.3	0.1	98.9	0.1	1.0	0.070	0.549	21.465584	-104.888934
X. C. Libramiento De Tepic (Baja)	3.90	3	2	8232	15.4	76.6	1.4	5.1	0.9	0.3	0.1	0.2	0.0	92.0	1.4	6.6	0.088	0.502	21.465555	-104.888747
X. C. Libramiento De Tepic (Alta)	3.90	3	2	19517	2.0	96.0	0.2	0.5	0.4	0.2	0.0	0.6	0.1	98.0	0.2	1.8	0.085	0.549	21.465422	-104.888960
Jalisco	7.15	3	0	15005	7.6	85.6	1.1	2.9	1.1	0.8	0.3	0.5	0.1	93.2	1.1	5.7	0.068	0.518	21.432536	-104.899472
T. Izq. Emiliano Zapata	18.40	3	0	7090	2.9	86.9	2.9	3.8	1.3	1.4	0.4	0.4	0.0	89.8	2.9	7.3	0.074	0.501	21.357789	-104.919289
T. Izq. Compostela (1° Acceso)	35.80	1	0	6076	6.4	81.5	2.8	4.6	2.0	1.5	0.7	0.3	0.2	87.9	2.8	9.3	0.072	0.539	21.256329	-104.901552
T. Izq. Compostela (1° Acceso)	35.80	3	0	5800	7.1	82.5	2.2	3.5	1.9	1.8	0.7	0.3	0.0	89.6	2.2	8.2	0.085	0.513	21.248267	-104.903293
Las Varas	71.30	1	0	13163	5.1	81.5	3.3	4.5	1.5	1.9	1.0	1.0	0.2	86.6	3.3	10.1	0.084	0.521	21.187757	-105.122600
Las Varas	71.30	3	0	23885	5.0	82.1	3.3	4.5	1.6	1.8	0.6	0.8	0.3	87.1	3.3	9.6	0.089	0.525	21.172098	-105.147699
T. Izq. Altavista	81.50	1	0	13175	6.5	81.0	4.7	3.3	1.1	1.8	0.7	0.8	0.1	87.5	4.7	7.8	0.084	0.507	21.112511	-105.177778
T. Der. Rincón de Guayabitos	94.50	1	1	12215	8.4	84.8	1.9	2.5	0.9	0.8	0.3	0.3	0.1	93.2	1.9	4.9	0.081	0.513	21.030758	-105.255926
T. Der. Rincón de Guayabitos	94.50	1	2	11597	7.4	85.4	2.1	2.3	1.1	1.0	0.3	0.4	0.0	92.8	2.1	5.1	0.088	0.513	21.030638	-105.255957
T. Der. Rincón de Guayabitos	94.50	3	0	11312	8.3	81.7	3.0	3.4	1.2	1.5	0.7	0.2	0.0	90.0	3.0	7.0	0.094	0.523	21.011808	-105.271647
T. Der. Lo de Marcos	107.61	1	1	5999	8.2	77.6	3.4	4.7	2.9	2.4	0.7	0.1	0.0	85.8	3.4	10.8	0.078	0.507	20.952365	-105.343861
T. Der. Lo de Marcos	107.61	1	2	6166	8.8	78.4	3.5	4.6	1.8	2.3	0.5	0.1	0.0	87.2	3.5	9.3	0.082	0.507	20.952243	-105.343841
T. Der. Lo de Marcos	107.61	3	0	10823	5.6	79.1	5.4	4.6	1.5	2.4	1.0	0.3	0.1	84.7	5.4	9.9	0.077	0.502	20.945872	-105.355687
T. Der. Sayulita	122.91	1	0	12874	5.5	77.6	3.6	4.0	5.0	2.9	0.8	0.5	0.1	83.1	3.6	13.3	0.074	0.511	20.871463	-105.427285
T. Der. Sayulita	122.91	3	0	14873	7.7	77.8	3.0	7.5	0.8	1.6	0.7	0.6	0.3	85.5	3.0	11.5	0.069	0.510	20.860317	-105.424850
T. Der. Cruz de Juanacaxtle	137.30	3	1	18349	5.6	85.0	2.2	3.9	1.6	0.9	0.5	0.2	0.1	90.6	2.2	7.2	0.104	0.502	20.763594	-105.360702
T. Der. Cruz de Juanacaxtle	137.30	3	2	18493	3.8	86.1	2.8	4.2	1.6	0.9	0.4	0.1	0.1	89.9	2.8	7.3	0.096	0.502	20.763735	-105.360768
Bucerías	140.81	3	1	25529	6.3	85.8	1.6	3.2	1.5	0.9	0.4	0.2	0.1	92.1	1.6	6.3	0.086	0.501	20.749488	-105.319606
Bucerías	140.81	3	2	25615	6.9	84.8	1.8	3.3	1.6	0.9	0.4	0.2	0.1	91.7	1.8	6.5	0.084	0.501	20.749654	-105.319693
Lim. Edos. Term. Nay. Ppia. Jal.	152.60																			

NAYARIT

19 CARR: Tepic - Puerto Vallarta

CLAVE: 00068

RUTA: MEX-200

AÑO: 2023

LUGAR	ESTACION				CLASIFICACION VEHICULAR EN PORCIENTO										COORDENADAS					
	KM	TE	SC	TDPA	M	A	B	C2	C3	T3S2	T3S3	T3S2R4	OTROS	A	B	C	K'	D	LATITUD	LONGITUD
T. Der. Aeropuerto Díaz Ordáz	158.37	1	1	34720	4.9	87.5	2.6	4.3	0.3	0.2	0.1	0.1	0.0	92.4	2.6	5.0	0.074	0.515	20.683542	-105.241175
T. Der. Aeropuerto Díaz Ordáz	158.37	1	2	32477	5.4	86.0	2.9	5.0	0.3	0.2	0.1	0.1	0.0	91.4	2.9	5.7	0.073	0.515	20.683671	-105.240823
T. Der. Aeropuerto Díaz Ordáz (Alta)	158.37	3	1	19880	4.6	93.1	0.2	0.3	0.5	0.2	0.2	0.8	0.1	97.7	0.2	2.1	0.087	0.513	20.670322	-105.249316
T. Der. Aeropuerto Díaz Ordáz (Baja)	158.37	3	1	13133	5.7	81.9	4.1	6.3	1.2	0.5	0.1	0.2	0.0	87.6	4.1	8.3	0.082	0.533	20.670629	-105.249540
T. Der. Aeropuerto Díaz Ordáz (Baja)	158.37	3	2	15004	5.7	84.1	3.7	4.9	0.8	0.4	0.2	0.2	0.0	89.8	3.7	6.5	0.078	0.533	20.670451	-105.249148
T. Der. Aeropuerto Díaz Ordáz (Alta)	158.37	3	2	21955	4.0	94.2	0.1	0.4	0.3	0.2	0.3	0.4	0.1	98.2	0.1	1.7	0.072	0.513	20.670277	-105.249197
Puerto Vallarta	166.88																			

20 CARR: Chapalilla - Compostela (Cuota)

CLAVE: 18004

RUTA: MEX-068D

AÑO: 2023

LUGAR	ESTACION				CLASIFICACION VEHICULAR EN PORCIENTO										COORDENADAS					
	KM	TE	SC	TDPA	M	A	B	C2	C3	T3S2	T3S3	T3S2R4	OTROS	A	B	C	K'	D	LATITUD	LONGITUD
T. C. Guadalajara - Tepic	0.00	3	0	4636	4.9	77.5	4.3	4.9	2.3	3.9	1.8	0.2	0.2	82.4	4.3	13.3	0.083	0.502	21.190381	-104.643018
T. C. Ramal a Compostela (Cuota)	30.00	1	0	2743	6.8	74.2	4.4	5.0	2.7	3.5	2.0	1.3	0.1	81.0	4.4	14.6	0.093	0.512	21.233238	-104.862535
Plaza de Cobro Compostela	31.50	2	0	6600	1.5	80.0	6.3	3.4	2.8	3.6	1.5	0.6	0.3	81.5	6.3	12.2	0.114	0.500	21.229532	-104.887408
T. Der. Compostela	33.00	1	0	8216	3.1	78.9	6.6	4.2	1.5	2.9	1.2	1.3	0.3	82.0	6.6	11.4	0.118	0.501	21.228097	-104.899278
T. C. Tepic - Puerto Vallarta	35.60	1	0	8058	3.0	80.7	5.3	4.0	2.0	2.7	1.1	1.0	0.2	83.7	5.3	11.0	0.123	0.513	21.229806	-104.913805

21 CARR: Guadalajara - Tepic (Cuota)

CLAVE: 00033

RUTA: MEX-015D

AÑO: 2023

LUGAR	ESTACION				CLASIFICACION VEHICULAR EN PORCIENTO										COORDENADAS					
	KM	TE	SC	TDPA	M	A	B	C2	C3	T3S2	T3S3	T3S2R4	OTROS	A	B	C	K'	D	LATITUD	LONGITUD
T. C. Guadalajara - Tepic (Libre)	0.00	3	1	5997	4.5	71.6	7.5	3.9	2.1	7.2	1.4	1.5	0.3	76.1	7.5	16.4	0.089	0.511	20.739688	-103.583269
T. C. Guadalajara - Tepic (Libre)	0.00	3	2	5728	4.5	70.6	7.9	4.0	2.4	7.1	1.4	1.7	0.4	75.1	7.9	17.0	0.110	0.511	20.739543	-103.583278
Plaza de Cobro Arrenal	10.96	2	1	5289	0.8	70.6	8.0	2.9	4.1	9.2	2.0	1.5	0.9	71.4	8.0	20.6	0.092	0.500	20.778775	-103.662396
Plaza de Cobro Arrenal	10.96	2	2	5289	0.8	70.6	8.0	2.9	4.1	9.2	2.0	1.5	0.9	71.4	8.0	20.6	0.092	0.500	20.778775	-103.662396
T. Izq. Libramiento Sur de Guadalajara (Cuota)	16.44	3	1	8636	1.6	65.2	8.7	4.5	2.8	12.3	2.3	2.1	0.5	66.8	8.7	24.5	0.080	0.502	20.796763	-103.721864
T. Izq. Libramiento Sur de Guadalajara (Cuota)	16.44	3	2	8551	1.6	66.0	7.7	4.6	3.1	12.5	2.1	1.9	0.5	67.6	7.7	24.7	0.108	0.502	20.796673	-103.721889
T. Der. Magdalena	45.00	1	1	7851	2.7	60.4	10.2	5.9	2.4	12.9	2.4	2.5	0.6	63.1	10.2	26.7	0.084	0.501	20.900770	-103.958691
T. Der. Magdalena	45.00	1	2	7825	3.1	62.4	9.0	4.4	2.8	13.0	2.3	2.4	0.6	65.5	9.0	25.5	0.105	0.501	20.900723	-103.958763
T. Der. Magdalena	45.00	3	1	7940	3.0	61.1	8.5	4.8	3.7	13.5	2.7	2.2	0.5	64.1	8.5	27.4	0.080	0.501	20.901708	-103.977309
T. Der. Magdalena	45.00	3	2	7983	2.3	60.5	10.8	4.5	2.7	13.7	2.5	2.4	0.6	62.8	10.8	26.4	0.100	0.501	20.901528	-103.977293
Plaza de Cobro Plan de Barrancas	69.34	2	1	7034	0.7	59.8	6.7	3.6	6.0	15.2	3.0	3.3	1.7	60.5	6.7	32.8	0.092	0.500	21.005434	-104.144062
Plaza de Cobro Plan de Barrancas	69.34	2	2	7034	0.7	59.8	6.7	3.6	6.0	15.2	3.0	3.3	1.7	60.5	6.7	32.8	0.092	0.500	21.005434	-104.144062
Lim. Edos. Term. Jal. Ppia. Nay.	84.60																			

NAYARIT

21 CARR: Guadalajara - Tepic (Cuota)

CLAVE: 00033

RUTA: MEX-015D

AÑO: 2023

LUGAR	ESTACION				CLASIFICACION VEHICULAR EN PORCIENTO										COORDENADAS					
	KM	TE	SC	TDPA	M	A	B	C2	C3	T3S2	T3S3	T3S2R4	OTROS	A	B	C	K'	D	LATITUD	LONGITUD
T. Izq. Ixtlán del Río	97.20	1	1	6356	1.9	59.1	9.8	4.9	3.2	15.4	2.1	2.8	0.8	61.0	9.8	29.2	0.079	0.547	21.046864	-104.351193
T. Izq. Ixtlán del Río	97.20	1	2	7681	2.0	64.5	8.6	3.8	2.3	12.9	2.3	2.8	0.8	66.5	8.6	24.9	0.090	0.547	21.046785	-104.351207
T. Izq. Compostela (Cuota)	106.00	1	1	7367	2.9	63.3	9.1	6.6	2.2	11.0	2.1	2.2	0.6	66.2	9.1	24.7	0.089	0.502	21.071423	-104.419574
T. Izq. Compostela (Cuota)	106.00	1	2	7432	3.1	62.9	8.4	6.3	2.8	11.7	1.9	2.1	0.8	66.0	8.4	25.6	0.117	0.502	21.071397	-104.419657
T. Izq. Compostela (Cuota)	106.00	3	1	6846	3.4	65.2	7.6	4.3	2.2	11.5	1.9	3.1	0.8	68.6	7.6	23.8	0.068	0.501	21.086897	-104.434371
T. Izq. Compostela (Cuota)	106.00	3	2	6818	3.5	60.2	8.8	4.0	2.6	15.1	2.4	2.7	0.7	63.7	8.8	27.5	0.074	0.501	21.086913	-104.434528
T. Der. Jala	107.00	3	1	5701	3.4	61.2	9.1	4.0	2.3	14.2	1.9	3.1	0.8	64.6	9.1	26.3	0.065	0.516	21.097170	-104.449247
T. Der. Jala	107.00	3	2	5356	3.6	61.6	9.1	4.3	2.3	13.3	2.0	3.0	0.8	65.2	9.1	25.7	0.086	0.516	21.097104	-104.449302
X. C. Ramal a Tequepexpan	130.42	3	1	5881	2.2	65.4	8.5	4.4	2.3	12.4	1.7	2.4	0.7	67.6	8.5	23.9	0.084	0.508	21.222075	-104.600192
X. C. Ramal a Tequepexpan	130.42	3	2	5695	2.5	62.5	8.4	4.5	2.5	15.2	1.2	2.5	0.7	65.0	8.4	26.6	0.081	0.508	21.222003	-104.600250
Plaza de Cobro Santa Ma. del Oro	145.32	3	1	5266	3.3	57.6	8.4	4.2	3.0	16.6	2.3	3.7	0.9	60.9	8.4	30.7	0.070	0.506	21.333091	-104.667968
Plaza de Cobro Santa Ma. del Oro	145.32	3	2	5148	3.8	55.8	10.1	4.8	2.2	17.2	2.0	3.3	0.8	59.6	10.1	30.3	0.075	0.506	21.333043	-104.668034
T. Der. Libramiento de Tepic (Cuota)	163.00	1	1	4796	2.9	59.0	6.9	4.4	3.6	16.8	2.2	3.4	0.8	61.9	6.9	31.2	0.075	0.501	21.430944	-104.786625
T. Der. Libramiento de Tepic (Cuota)	163.00	1	2	4822	4.5	57.8	10.0	5.7	3.2	12.6	1.7	3.6	0.9	62.3	10.0	27.7	0.078	0.501	21.430898	-104.786690
T. C. Guadalajara - Tepic	168.80	1	1	3197	3.2	64.0	9.1	5.6	3.5	10.5	1.8	1.9	0.4	67.2	9.1	23.7	0.084	0.581	21.462915	-104.826785
T. C. Guadalajara - Tepic	168.80	1	2	4434	1.7	70.6	8.7	4.7	2.7	8.7	1.2	1.3	0.4	72.3	8.7	19.0	0.083	0.581	21.462842	-104.826814

22 CARR: Jala - Puerto Vallarta (Cuota)

CLAVE:

RUTA: MEX-070D

AÑO: 2023

LUGAR	ESTACION				CLASIFICACION VEHICULAR EN PORCIENTO										COORDENADAS					
	KM	TE	SC	TDPA	M	A	B	C2	C3	T3S2	T3S3	T3S2R4	OTROS	A	B	C	K'	D	LATITUD	LONGITUD
T. C. Guadalajara - Tepic (Cuota)	0.00	3	1	2303	2.1	76.3	8.1	4.1	2.2	4.0	2.2	0.9	0.1	78.4	8.1	13.5	0.120	0.511	21.078892	-104.432514
T. C. Guadalajara - Tepic (Cuota)	0.00	3	2	2409	1.6	77.4	9.0	3.2	2.0	4.0	1.6	1.1	0.1	79.0	9.0	12.0	0.193	0.511	21.078803	-104.432533
Plaza de Cobro Amado Nervo	32.00	2	1	2218	0.8	81.8	7.3	2.8	2.0	3.1	1.2	0.7	0.3	82.6	7.3	10.1	0.090	0.500	21.089054	-104.717268
Plaza de Cobro Amado Nervo	32.00	2	2	2218	0.8	81.8	7.3	2.8	2.0	3.1	1.2	0.7	0.3	82.6	7.3	10.1	0.090	0.500	21.089054	-104.717268
Ramal a Compostela	54.30																			

23 CARR: Libramiento de Tepic (Cuota)

CLAVE:

RUTA: MEX-015D

AÑO: 2023

LUGAR	ESTACION				CLASIFICACION VEHICULAR EN PORCIENTO										COORDENADAS					
	KM	TE	SC	TDPA	M	A	B	C2	C3	T3S2	T3S3	T3S2R4	OTROS	A	B	C	K'	D	LATITUD	LONGITUD
T. C. Guadalajara - Tepic	0.00																			
T. C. Guadalajara - Tepic (Cuota)	0.70	3	0	3447	4.7	44.5	8.2	4.1	2.5	27.2	2.1	5.8	0.9	49.2	8.2	42.6	0.080	0.521	21.454170	-104.803125
Plaza de Cobro La Cantera	7.70	2	0	2977	0.6	31.7	2.5	3.6	5.6	38.1	4.1	9.9	3.9	32.3	2.5	65.2	0.090	0.500	21.498477	-104.813387
T. C. Tepic - Villa Unión (Cuota)	29.47	1	0	4498	5.0	49.9	4.7	3.8	3.1	24.9	2.5	5.3	0.8	54.9	4.7	40.4	0.064	0.534	21.566030	-104.958458

NAYARIT

24 CARR: Ramal a Compostela (Cuota)

CLAVE:

RUTA: MEX-200D

AÑO: 2023

LUGAR	ESTACION				CLASIFICACION VEHICULAR EN PORCIENTO													COORDENADAS			
	KM	TE	SC	TDPA	M	A	B	C2	C3	T3S2	T3S3	T3S2R4	OTROS	A	B	C	K'	D	LATITUD	LONGITUD	
T. C. Jala - Compostela (Cuota)	0.00																				
T. C. Chapalilla - Compostela (Cuota)	12.90	1	0	5239	1.0	80.6	8.7	4.2	1.6	2.2	0.9	0.7	0.1	81.6	8.7	9.7	0.132	0.504	21.226972	-104.874858	

25 CARR: Ramal a Tequepexpan

CLAVE: 00068

RUTA: MEX-015D

AÑO: 2023

LUGAR	ESTACION				CLASIFICACION VEHICULAR EN PORCIENTO													COORDENADAS		
	KM	TE	SC	TDPA	M	A	B	C2	C3	T3S2	T3S3	T3S2R4	OTROS	A	B	C	K'	D	LATITUD	LONGITUD
Chapalilla	0.00	3	0	1847	5.1	74.4	3.7	4.9	4.6	4.5	0.9	1.7	0.2	79.5	3.7	16.8	0.080	0.504	21.180863	-104.627988
T. C. Guadalajara - Tepic (Cuota)	9.40	1	0	1903	4.2	66.8	6.7	5.8	3.5	8.3	2.1	2.3	0.3	71.0	6.7	22.3	0.091	0.517	21.209812	-104.594465

26 CARR: Tepic - San Blas (Cuota)

CLAVE:

RUTA: MEX-D

AÑO: 2023

LUGAR	ESTACION				CLASIFICACION VEHICULAR EN PORCIENTO													COORDENADAS		
	KM	TE	SC	TDPA	M	A	B	C2	C3	T3S2	T3S3	T3S2R4	OTROS	A	B	C	K'	D	LATITUD	LONGITUD
T. C Tepic - Villa Unión (Cuota)	0.00	3	0	4261	4.1	91.9	0.8	1.5	1.0	0.6	0.1	0.0	0.0	96.0	0.8	3.2	0.133	0.506	21.558567	-104.980647
El Camalote (T. C. Sta. Cruz - San Blas)	31.00	1	0	4676	4.3	91.0	0.8	2.2	1.0	0.7	0.0	0.0	0.0	95.3	0.8	3.9	0.186	0.525	21.513326	-105.192492

27 CARR: Tepic - Villa Unión (cuota)

CLAVE: 00500

RUTA: MEX-015D

AÑO: 2023

LUGAR	ESTACION				CLASIFICACION VEHICULAR EN PORCIENTO													COORDENADAS			
	KM	TE	SC	TDPA	M	A	B	C2	C3	T3S2	T3S3	T3S2R4	OTROS	A	B	C	K'	D	LATITUD	LONGITUD	
Tepic	0.00																				
Lib. de Tepic (Cuota)	6.60																				
Plaza de Cobro Trapichillo	8.65	1	1	7807	2.3	82.2	4.1	3.6	0.8	5.0	1.0	0.9	0.1	84.5	4.1	11.4	0.111	0.519	21.554010	-104.959372	
Plaza de Cobro Trapichillo	8.65	1	2	7231	2.4	82.4	4.1	3.5	0.7	5.0	1.0	0.8	0.1	84.8	4.1	11.1	0.102	0.519	21.554054	-104.959498	
Plaza de Cobro Trapichillo	8.65	2	1	5021	0.9	59.2	6.8	3.8	4.3	17.0	2.1	4.2	1.7	60.1	6.8	33.1	0.098	0.500	21.571789	-104.987394	
Plaza de Cobro Trapichillo	8.65	2	2	5021	0.9	59.2	6.8	3.8	4.3	17.0	2.1	4.2	1.7	60.1	6.8	33.1	0.098	0.500	21.571789	-104.987394	
T. C. Tepic - Mazatlán	21.00	1	1	5591	3.2	64.1	7.5	4.4	1.9	13.0	1.4	3.7	0.8	67.3	7.5	25.2	0.097	0.523	21.662719	-105.027809	
T. C. Tepic - Mazatlán	21.00	1	2	5095	3.3	60.8	8.7	4.8	1.7	14.7	1.6	3.6	0.8	64.1	8.7	27.2	0.079	0.523	21.662989	-105.027811	
T. C. Tepic - Mazatlán (Crucero de San Blas)	24.50	3	0	6354	4.9	49.9	10.6	5.4	1.9	19.3	2.2	4.9	0.9	54.8	10.6	34.6	0.071	0.521	21.714504	-105.060501	
Est. Ruíz	54.90	1	0	6149	6.1	39.8	11.5	6.3	3.8	23.6	2.5	5.6	0.8	45.9	11.5	42.6	0.060	0.520	21.947595	-105.112421	
Est. Ruíz	54.90	3	0	5601	3.4	42.4	11.4	7.4	1.5	23.7	3.2	6.5	0.5	45.8	11.4	42.8	0.051	0.506	21.962009	-105.123260	
Rosamorada	73.50	1	0	6144	5.8	42.0	11.3	6.4	2.1	23.0	2.5	6.1	0.8	47.8	11.3	40.9	0.057	0.545	22.085003	-105.211310	
Rosamorada	73.50	3	0	5833	5.5	45.6	9.7	4.5	2.0	23.6	2.2	6.1	0.8	51.1	9.7	39.2	0.056	0.503	22.093028	-105.221493	
Acaponeta	120.20	1	0	5449	5.5	36.0	12.7	4.7	2.5	28.3	2.3	7.1	0.9	41.5	12.7	45.8	0.051	0.503	22.447355	-105.418567	

NAYARIT

27 CARR: Tepic - Villa Unión (cuota)

CLAVE: 00500

RUTA: MEX-015D

AÑO: 2023

LUGAR	ESTACION				CLASIFICACION VEHICULAR EN PORCIENTO														COORDENADAS	
	KM	TE	SC	TDPA	M	A	B	C2	C3	T3S2	T3S3	T3S2R4	OTROS	A	B	C	K'	D	LATITUD	LONGITUD
Plaza de Cobro Acaponeta	120.20	2	0	4400	0.7	38.4	6.1	4.0	5.0	31.1	2.6	9.0	3.1	39.1	6.1	54.8	0.081	0.500	22.454065	-105.418726
Acaponeta	120.20	3	0	4737	3.3	44.0	9.6	4.6	3.2	23.7	2.3	8.4	0.9	47.3	9.6	43.1	0.070	0.509	22.458677	-105.430777
Lim. Edos. Term. Nay. Ppia. Sin.	132.80																			
T. C. Tepic - Mazatlán	164.00	1	0	5130	8.7	40.2	7.9	5.4	3.2	23.2	3.1	7.4	0.9	48.9	7.9	43.2	0.068	0.506	22.751120	-105.650413
Escuinapa de Hidalgo	208.60	1	1	2822	4.8	37.6	11.7	5.5	2.7	27.2	2.6	7.1	0.8	42.4	11.7	45.9	0.060	0.504	22.841221	-105.739582
Escuinapa de Hidalgo	208.60	1	2	2775	5.5	33.6	13.3	6.0	2.8	27.9	2.8	7.2	0.9	39.1	13.3	47.6	0.074	0.504	22.841200	-105.739614
Escuinapa de Hidalgo	208.60	3	0	5557	4.8	38.8	9.6	5.0	2.8	27.9	3.0	7.2	0.9	43.6	9.6	46.8	0.066	0.506	22.860402	-105.755870
Rosario	220.68	1	0	5224	5.8	45.5	9.9	4.0	2.2	23.1	2.6	6.0	0.9	51.3	9.9	38.8	0.069	0.504	22.979491	-105.871760
Plaza de Cobro Rosario	220.68	2	0	5084	0.7	40.2	6.5	3.8	4.6	30.1	2.9	8.4	2.8	40.9	6.5	52.6	0.081	0.500	22.984690	-105.878103
Rosario	220.68	3	1	3316	5.9	41.7	11.8	9.1	2.6	20.9	2.6	4.9	0.5	47.6	11.8	40.6	0.067	0.506	22.993040	-105.887562
Rosario	220.68	3	2	3394	5.8	41.5	11.7	9.1	2.7	21.0	2.7	5.0	0.5	47.3	11.7	41.0	0.080	0.506	22.993018	-105.887584
X. C. Durango - Villa Unión (Cuota)	240.90	1	0	6559	5.9	41.3	12.7	5.0	2.2	23.3	2.6	6.0	1.0	47.2	12.7	40.1	0.065	0.503	23.185872	-106.174197
X. C. Durango - Villa Unión (Cuota)	240.90	3	1	5331	7.4	43.8	9.5	7.9	2.3	17.9	2.7	7.5	1.0	51.2	9.5	39.3	0.076	0.503	23.195139	-106.192185
X. C. Durango - Villa Unión (Cuota)	240.90	3	2	5388	7.3	44.4	9.4	7.9	2.3	17.7	2.6	7.5	0.9	51.7	9.4	38.9	0.085	0.503	23.194914	-106.192340

28 CARR: El Carrizo - La Batanga

CLAVE: 18107

RUTA: NAY-078

AÑO: 2023

LUGAR	ESTACION				CLASIFICACION VEHICULAR EN PORCIENTO														COORDENADAS	
	KM	TE	SC	TDPA	M	A	B	C2	C3	T3S2	T3S3	T3S2R4	OTROS	A	B	C	K'	D	LATITUD	LONGITUD
T. C. Ent. Santiago Ixcuintla - Playa Los Corchos	0.00	3	0	7353	23.6	70.6	0.5	1.6	2.5	0.5	0.1	0.5	0.1	94.2	0.5	5.3	0.086	0.505	21.774797	-105.277436
Sentispac	9.00	1	0	2456	33.4	63.6	0.6	1.2	0.9	0.1	0.1	0.1	0.0	97.0	0.6	2.4	0.077	0.500	21.808973	-105.341244
La Batanga	25.00	1	0	150	9.3	86.7	1.4	2.0	0.2	0.2	0.2	0.0	0.0	96.0	1.4	2.6	0.163	0.512	21.883744	-105.459751

29 CARR: Navarrete - Sauta

CLAVE: 18013

RUTA: NAY-013

AÑO: 2023

LUGAR	ESTACION				CLASIFICACION VEHICULAR EN PORCIENTO														COORDENADAS	
	KM	TE	SC	TDPA	M	A	B	C2	C3	T3S2	T3S3	T3S2R4	OTROS	A	B	C	K'	D	LATITUD	LONGITUD
T. C. Crucero San Blas - San Blas	0.00	3	0	1831	27.6	64.4	1.5	1.6	2.7	1.5	0.5	0.2	0.0	92.0	1.5	6.5	0.092	0.501	21.655509	-105.119662
Sauta	7.00	1	0	2143	28.8	62.4	1.6	2.3	2.7	1.6	0.3	0.3	0.0	91.2	1.6	7.2	0.066	0.506	21.710275	-105.136897

30 CARR: Ramal a Amado Nervo

CLAVE: 18011

RUTA: NAY

AÑO: 2023

LUGAR	ESTACION				CLASIFICACION VEHICULAR EN PORCIENTO														COORDENADAS	
	KM	TE	SC	TDPA	M	A	B	C2	C3	T3S2	T3S3	T3S2R4	OTROS	A	B	C	K'	D	LATITUD	LONGITUD
T. C. Guadalajara - Tepic	0.00	3	0	1462	9.5	88.9	0.1	0.0	1.1	0.3	0.0	0.1	0.0	98.4	0.1	1.5	0.084	0.517	21.128055	-104.609692

NAYARIT

30 CARR: Ramal a Amado Nervo

CLAVE: 18011

RUTA: NAY

AÑO: 2023

LUGAR	ESTACION	CLASIFICACION VEHICULAR EN PORCIENTO														COORDENADAS						
		KM	TE	SC	TDPA	M	A	B	C2	C3	T3S2	T3S3	T3S2R4	OTROS	A	B	C	K'	D	LATITUD	LONGITUD	
Amado Nervo	15.00																					

31 CARR: Ramal a Bellavista

CLAVE: 18059

RUTA: NAY-059

AÑO: 2023

LUGAR	ESTACION	CLASIFICACION VEHICULAR EN PORCIENTO														COORDENADAS					
		KM	TE	SC	TDPA	M	A	B	C2	C3	T3S2	T3S3	T3S2R4	OTROS	A	B	C	K'	D	LATITUD	LONGITUD
T. C. Tepic - Francisco I. Madero	0.00	3	0	3032	24.5	72.0	0.3	0.3	1.2	0.5	0.3	0.7	0.2	96.5	0.3	3.2	0.072	0.514	21.565008	-104.878791	
Bellavista	1.30																				

32 CARR: Ramal a El Colomo

CLAVE: 18014

RUTA: NAY

AÑO: 2023

LUGAR	ESTACION	CLASIFICACION VEHICULAR EN PORCIENTO														COORDENADAS					
		KM	TE	SC	TDPA	M	A	B	C2	C3	T3S2	T3S3	T3S2R4	OTROS	A	B	C	K'	D	LATITUD	LONGITUD
T. C. Tepic - Puerto Vallarta	0.00																				
San Vicente	3.00	1	1	20136	8.3	85.4	1.5	3.6	0.7	0.3	0.0	0.1	0.1	93.7	1.5	4.8	0.088	0.546	20.742796	-105.256769	
San Vicente	3.00	1	2	16749	8.5	84.4	1.7	4.0	1.0	0.2	0.0	0.1	0.1	92.9	1.7	5.4	0.101	0.546	20.742826	-105.256860	
El Colomo	21.00																				

33 CARR: Ramal a Estación Yago

CLAVE: 18224

RUTA: NAY

AÑO: 2023

LUGAR	ESTACION	CLASIFICACION VEHICULAR EN PORCIENTO														COORDENADAS					
		KM	TE	SC	TDPA	M	A	B	C2	C3	T3S2	T3S3	T3S2R4	OTROS	A	B	C	K'	D	LATITUD	LONGITUD
T. C. Tepic - Mazatlán	0.00	3	0	2325	26.7	66.9	1.3	2.1	1.5	1.1	0.1	0.3	0.0	93.6	1.3	5.1	0.086	0.505	21.833426	-105.105406	
Estacion Yago	7.00																				

34 CARR: Ramal a Ixtapan de La Concepción

CLAVE: 18233

RUTA: NAY

AÑO: 2023

LUGAR	ESTACION	CLASIFICACION VEHICULAR EN PORCIENTO														COORDENADAS				
		KM	TE	SC	TDPA	M	A	B	C2	C3	T3S2	T3S3	T3S2R4	OTROS	A	B	C	K'	D	LATITUD
T. C. Tepic - Puerto Vallarta (Las Varas)	0.00	3	0	5545	8.1	85.6	0.9	2.7	1.5	0.7	0.3	0.2	0.0	93.7	0.9	5.4	0.087	0.501	21.188779	-105.145265
Ixtapan de La Concepción	20.00	1	0	2803	17.3	73.8	1.2	4.1	1.2	1.1	0.2	0.3	0.8	91.1	1.2	7.7	0.117	0.506	21.300313	-105.157353



NAYARIT

35 CARR: Ramal a Milpas Viejas

CLAVE: 18007

RUTA: NAY

AÑO: 2023

LUGAR	ESTACION				CLASIFICACION VEHICULAR EN PORCIENTO														COORDENADAS	
	KM	TE	SC	TDPA	M	A	B	C2	C3	T3S2	T3S3	T3S2R4	OTROS	A	B	C	K'	D	LATITUD	LONGITUD
T. C. Tepic - Mazatlán	0.00	3	0	2211	23.4	71.5	0.8	1.4	1.5	0.5	0.5	0.3	0.1	94.9	0.8	4.3	0.082	0.519	22.453457	-105.360878
Milpas Viejas	17.00																			

36 CARR: Ramal a Villa Hidalgo

CLAVE: 18031

RUTA: NAY

AÑO: 2023

LUGAR	ESTACION				CLASIFICACION VEHICULAR EN PORCIENTO														COORDENADAS	
	KM	TE	SC	TDPA	M	A	B	C2	C3	T3S2	T3S3	T3S2R4	OTROS	A	B	C	K'	D	LATITUD	LONGITUD
T. C. Tepic - Mazatlán	0.00	3	0	4341	7.2	82.7	0.2	0.2	4.7	2.7	1.1	1.0	0.2	89.9	0.2	9.9	0.079	0.518	21.804532	-105.112929
Villa Hidalgo	16.00	1	0	5859	10.1	85.2	0.9	2.0	0.7	0.7	0.2	0.2	0.0	95.3	0.9	3.8	0.080	0.502	21.754952	-105.227672

37 CARR: Ramal a Volcán del Ceboruco

CLAVE: 18003

RUTA: NAY

AÑO: 2023

LUGAR	ESTACION				CLASIFICACION VEHICULAR EN PORCIENTO														COORDENADAS	
	KM	TE	SC	TDPA	M	A	B	C2	C3	T3S2	T3S3	T3S2R4	OTROS	A	B	C	K'	D	LATITUD	LONGITUD
T. C. Guadalajara - Tepic	0.00	3	0	5159	7.8	76.7	4.0	5.2	1.8	2.4	1.5	0.6	0.0	84.5	4.0	11.5	0.092	0.530	21.052496	-104.459128
Volcán Ceboruco	25.00																			

38 CARR: Tepic - Francisco I. Madero

CLAVE: 18009

RUTA: NAY-MEX-015

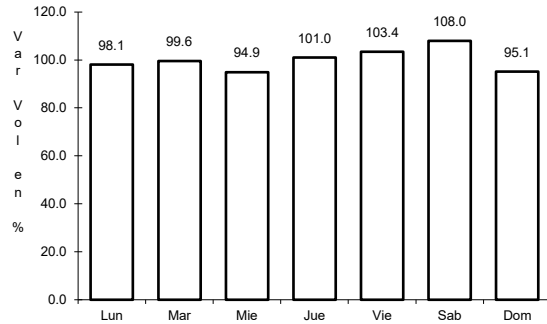
AÑO: 2023

LUGAR	ESTACION				CLASIFICACION VEHICULAR EN PORCIENTO														COORDENADAS	
	KM	TE	SC	TDPA	M	A	B	C2	C3	T3S2	T3S3	T3S2R4	OTROS	A	B	C	K'	D	LATITUD	LONGITUD
Tepic	0.00	3	0	8180	11.0	85.1	0.4	1.3	1.5	0.2	0.1	0.3	0.1	96.1	0.4	3.5	0.078	0.501	21.542959	-104.865078
Bellavista	9.00	3	0	5681	10.6	85.6	0.4	1.2	1.5	0.2	0.1	0.4	0.0	96.2	0.4	3.4	0.080	0.503	21.569976	-104.870975
Francisco I. Madero	16.00																			

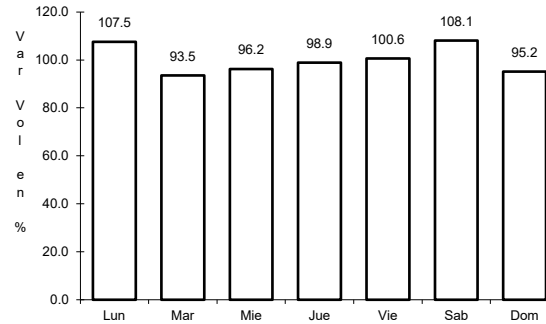
1 CARR: Crucero de San Blas - San Blas

CLAVE: 18229

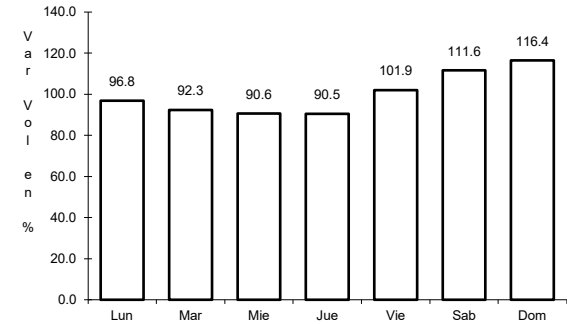
RUTA: MEX-015



Km: 0.00      Tipo: 3      Sent: 0



Km: 11.00      Tipo: 3      Sent: 0

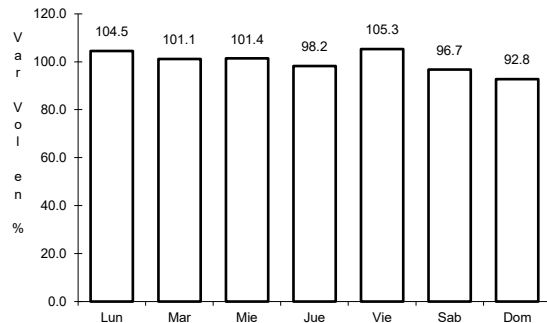


Km: 36.00      Tipo: 1      Sent: 0

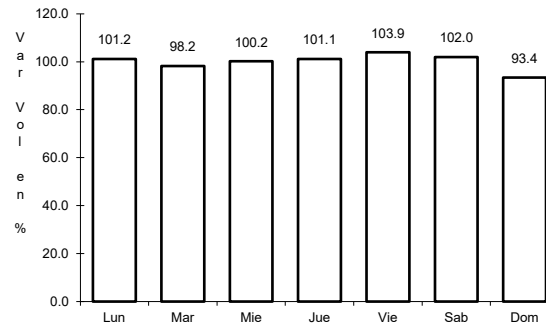
2 CARR: Ent. Acaponeta - El Novillero

CLAVE: 18023

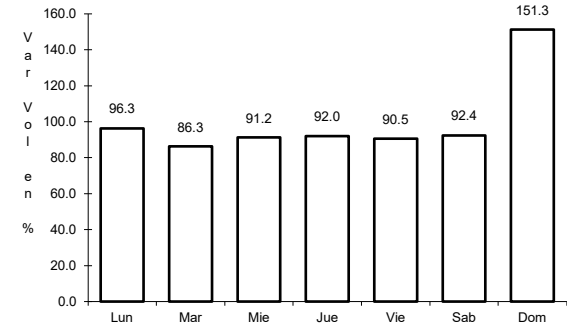
RUTA: MEX-015



Km: 0.00      Tipo: 3      Sent: 0



Km: 13.00      Tipo: 1      Sent: 0

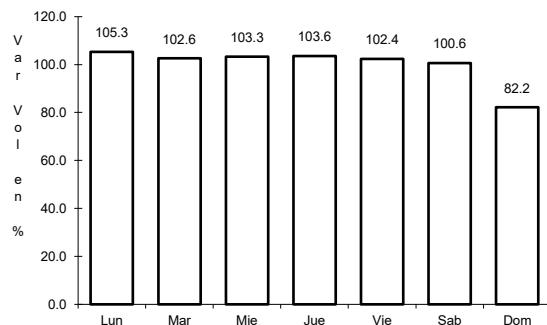


Km: 36.00      Tipo: 1      Sent: 0

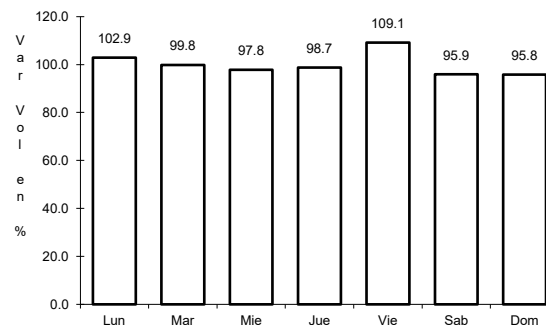
3 CARR: Ent. Santiago Ixcuintla - Playa Los Corchos

CLAVE: 18016

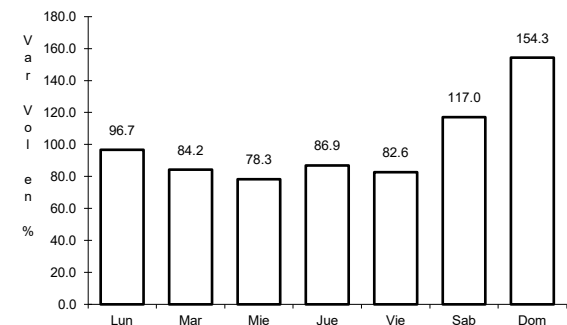
RUTA: MEX-015



Km: 0.00      Tipo: 3      Sent: 1



Km: 0.00      Tipo: 3      Sent: 2

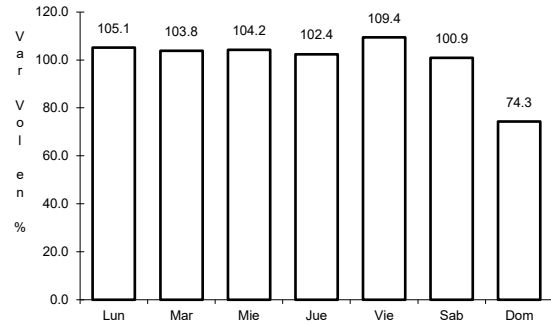


Km: 39.00      Tipo: 1      Sent: 0

4 CARR: Guadalajara - Tepic

CLAVE: 00031

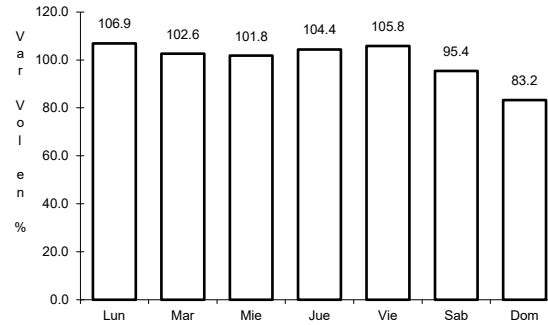
RUTA: MEX-015



Km: 8.30

Tipo: 3

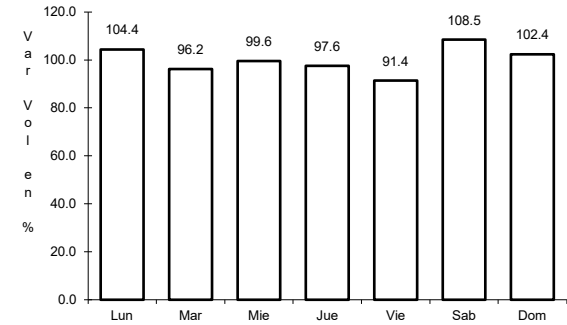
Sent: 1



Km: 8.30

Tipo: 3

Sent: 2



Km: 138.84

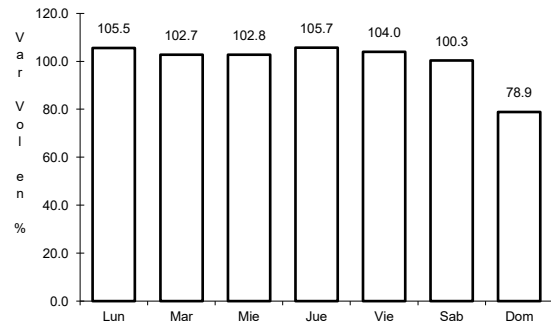
Tipo: 1

Sent: 0

5 CARR: Libramiento de Tepic

CLAVE: 18232

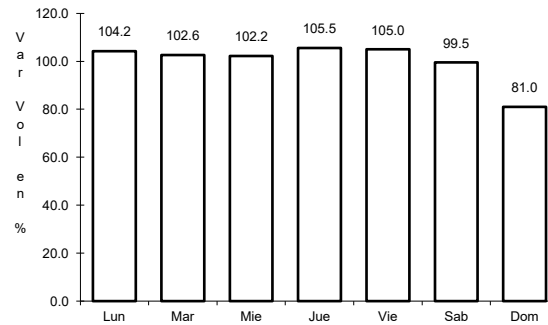
RUTA: MEX-015



Km: 5.00

Tipo: 1

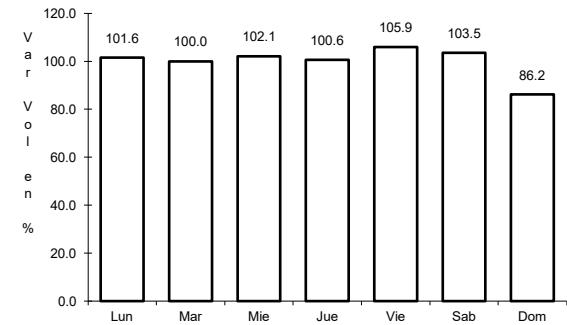
Sent: 1



Km: 5.00

Tipo: 1

Sent: 2



Km: 12.40

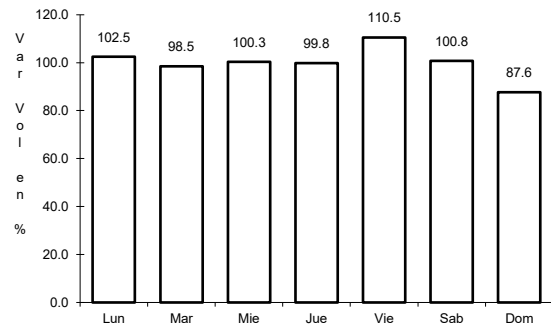
Tipo: 1

Sent: 1

6 CARR: Peñitas - Tuxpan

CLAVE: 18019

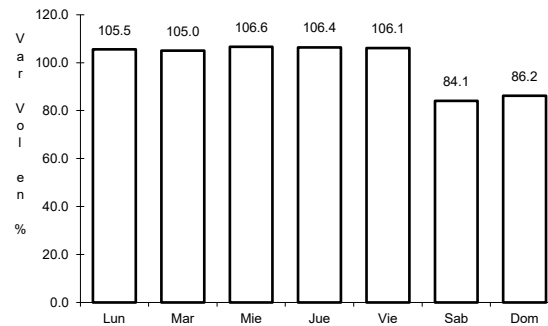
RUTA: MEX-015



Km: 0.00

Tipo: 3

Sent: 0



Km: 9.00

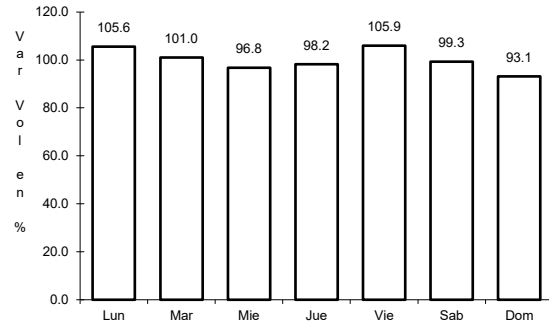
Tipo: 1

Sent: 0

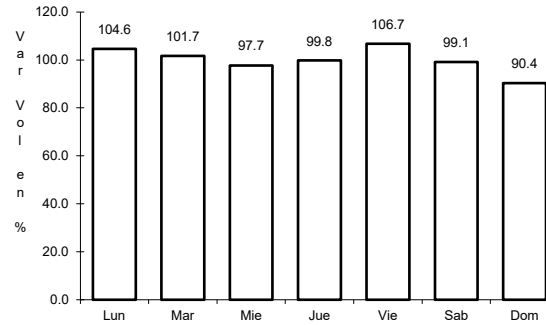
7 CARR: Ramal a Acaponeta

CLAVE: 18038

RUTA: MEX-015



Km: 0.00      Tipo: 3      Sent: 1

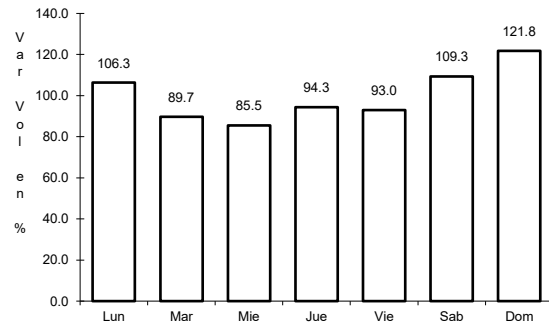


Km: 0.00      Tipo: 3      Sent: 2

8 CARR: Ramal a Estación Nanchi

CLAVE: 18068

RUTA: MEX-015

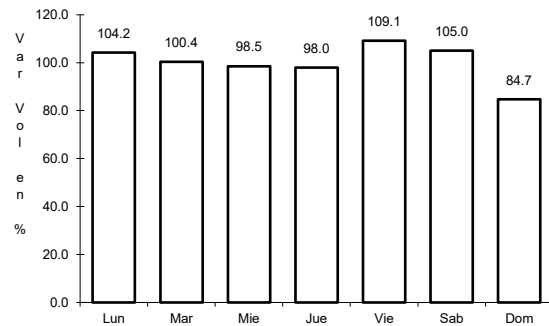


Km: 0.00      Tipo: 3      Sent: 0

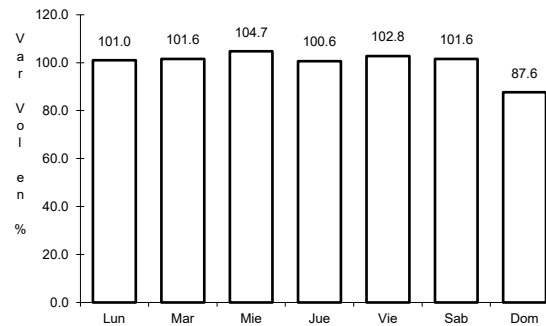
9 CARR: Ramal a Estación Ruíz

CLAVE: 18026

RUTA: MEX-015



Km: 0.00      Tipo: 3      Sent: 0

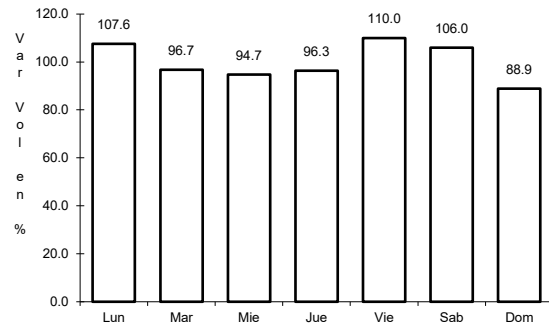


Km: 5.50      Tipo: 1      Sent: 0

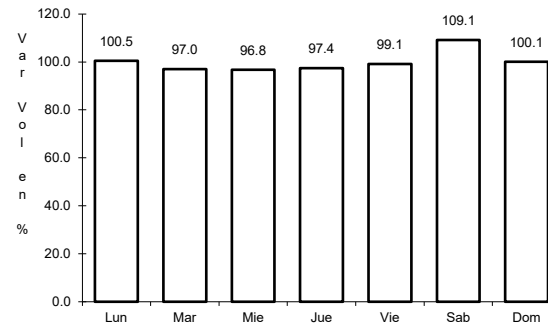
10 CARR: Ramal a La Laguna de Santa María

CLAVE: 18005

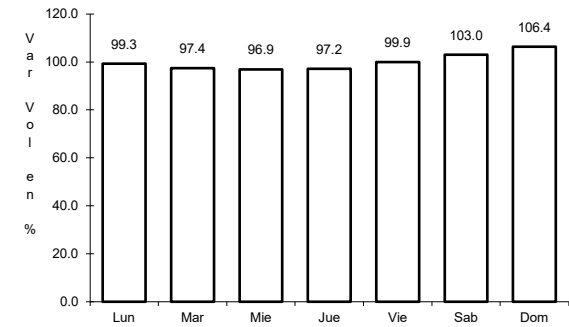
RUTA: MEX-015



Km: 0.00                      Tipo: 3                      Sent: 0



Km: 11.50                      Tipo: 1                      Sent: 1

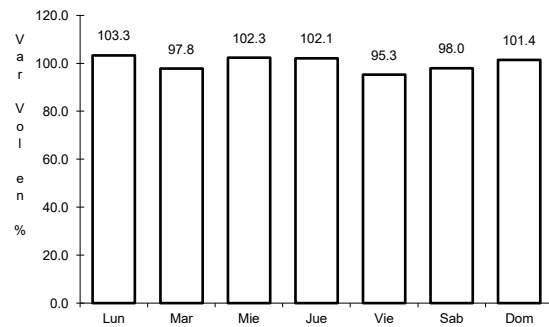


Km: 11.50                      Tipo: 1                      Sent: 2

11 CARR: Ramal a Mecatán

CLAVE: 18010

RUTA: MEX-015

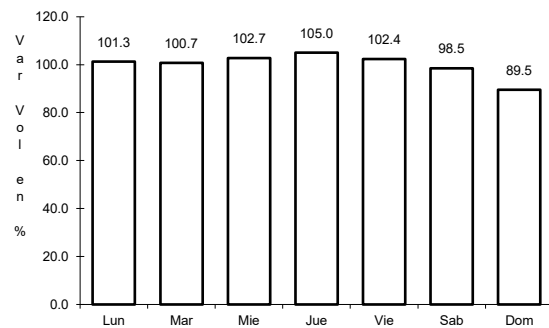


Km: 0.00                      Tipo: 3                      Sent: 0

12 CARR: Ramal a Nuevo Aeropuerto de Tepic

CLAVE: 18012

RUTA: MEX-015

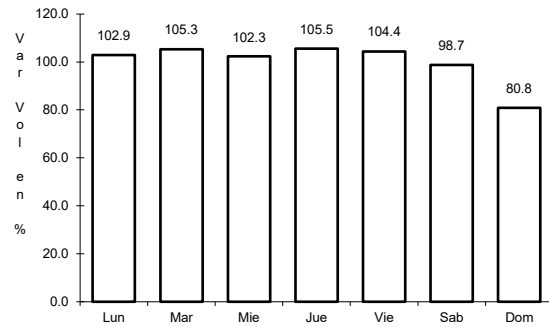


Km: 0.00                      Tipo: 3                      Sent: 0

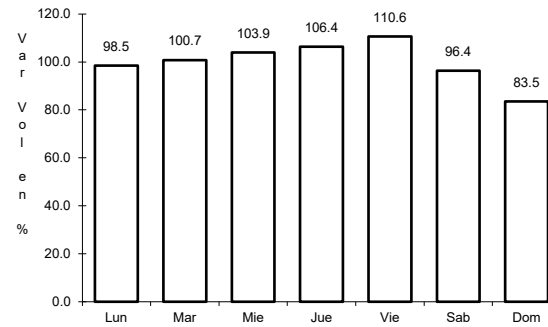
13 CARR: Ramal a Punta Mita

CLAVE: 18020

ruta: MEX-200



Km: 0.00      Tipo: 3      Sent: 0

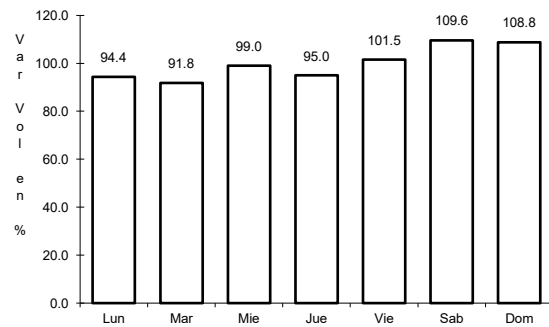


Km: 9.00      Tipo: 3      Sent: 0

14 CARR: Ramal a Santa Cruz

CLAVE: 18030

ruta: MEX-015

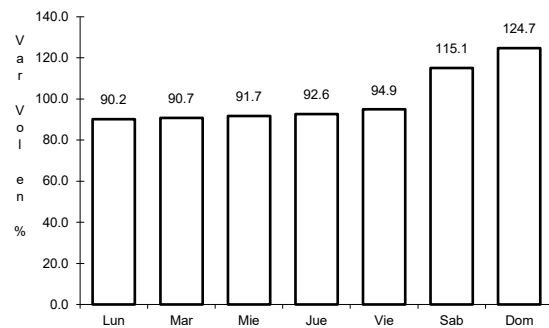


Km: 1.30      Tipo: 1      Sent: 0

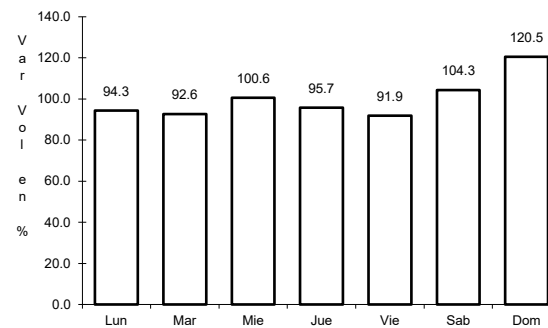
15 CARR: Santa Cruz - San Blas

CLAVE: 18230

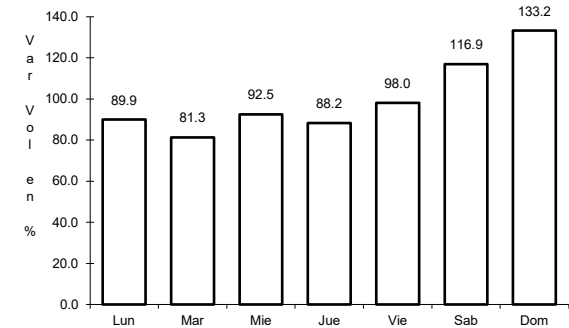
ruta: MEX-015



Km: 0.00      Tipo: 3      Sent: 0



Km: 5.00      Tipo: 3      Sent: 0

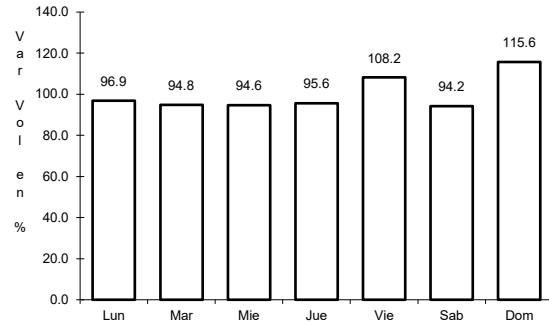


Km: 17.00      Tipo: 1      Sent: 0

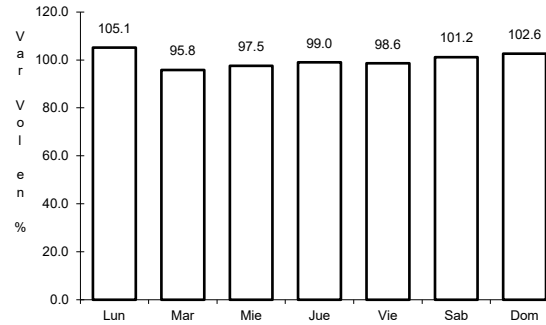
16 CARR: Tepic - Ixtapa de La Concepción

CLAVE: 18028

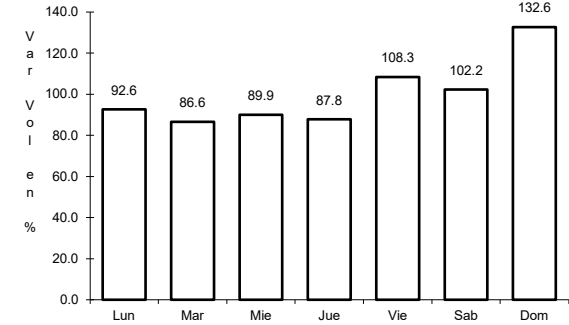
ruta: MEX-015



Km: 0.00      Tipo: 3      Sent: 0



Km: 27.00      Tipo: 1      Sent: 0

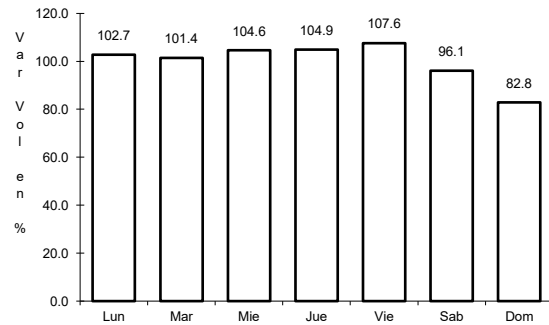


Km: 77.42      Tipo: 1      Sent: 0

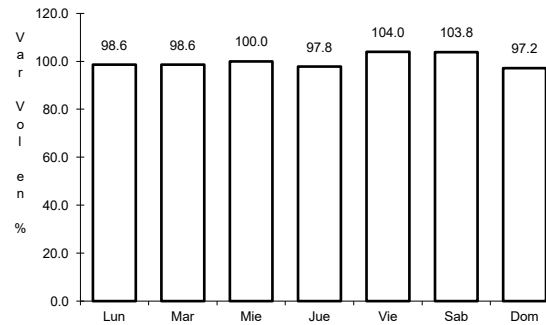
17 CARR: Tepic - Mazatlán

CLAVE: 00499

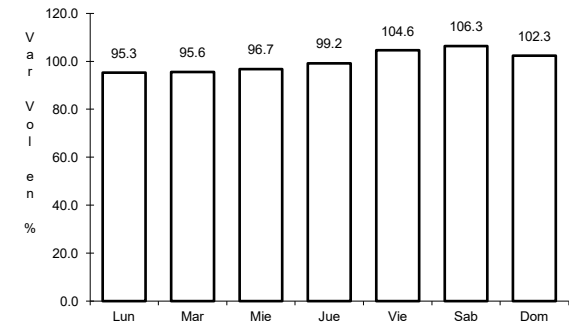
ruta: MEX-015



Km: 0.00      Tipo: 3      Sent: 1



Km: 136.52      Tipo: 1      Sent: 0

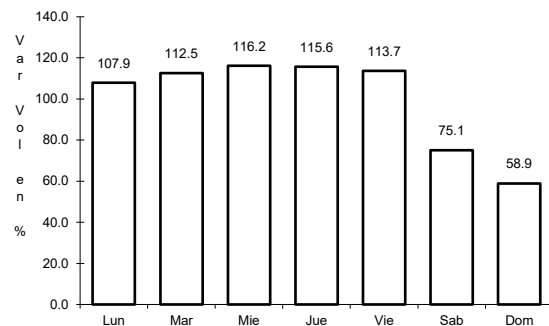


Km: 267.99      Tipo: 1      Sent: 0

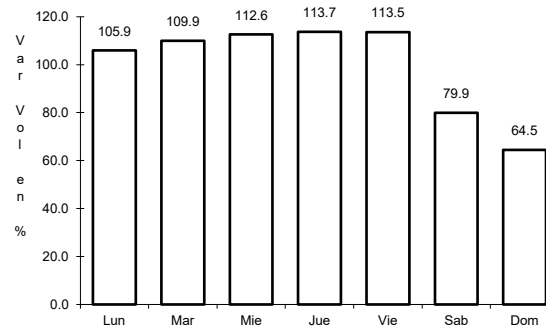
18 CARR: Tepic - Presa Aguamilpa

CLAVE: 18029

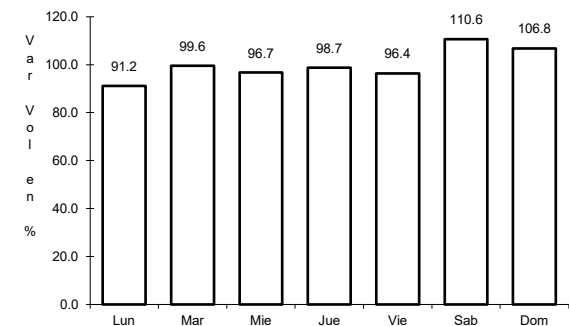
ruta: MEX-015



Km: 0.00      Tipo: 3      Sent: 1



Km: 0.00      Tipo: 3      Sent: 2

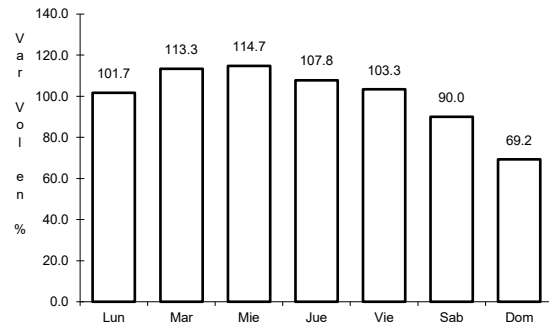


Km: 54.00      Tipo: 1      Sent: 0

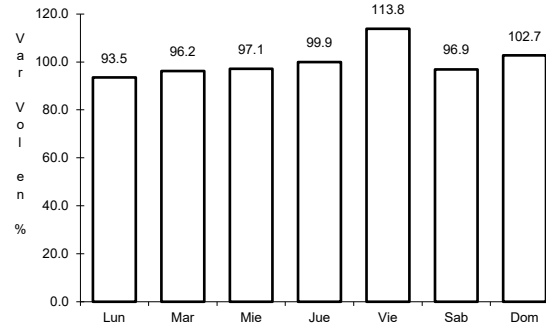
19 CARR: Tepic - Puerto Vallarta

CLAVE: 00068

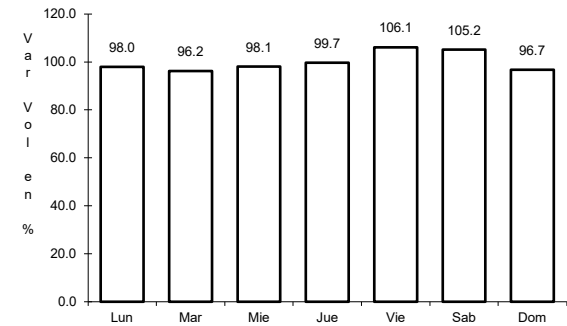
RUTA: MEX-200



Km: 0.00      Tipo: 3      Sent: 1



Km: 71.30      Tipo: 1      Sent: 0

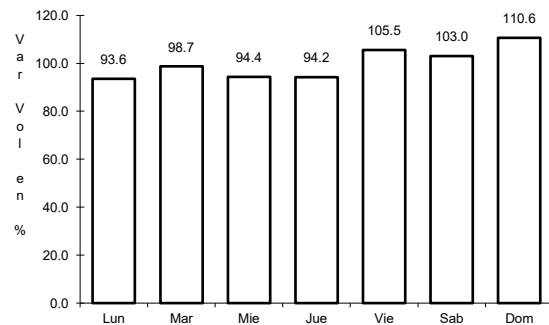


Km: 122.91      Tipo: 3      Sent: 0

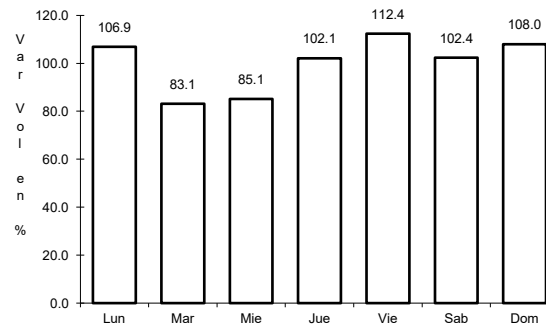
20 CARR: Chapalilla - Compostela (Cuota)

CLAVE: 18004

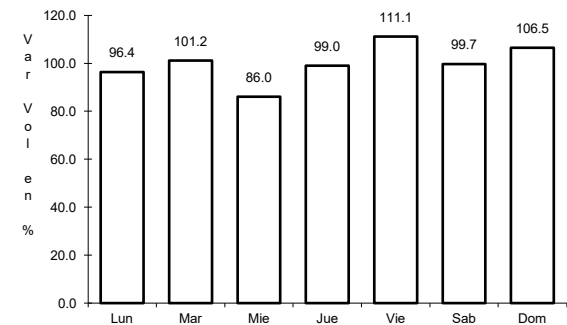
RUTA: MEX-068D



Km: 0.00      Tipo: 3      Sent: 0



Km: 33.00      Tipo: 1      Sent: 0

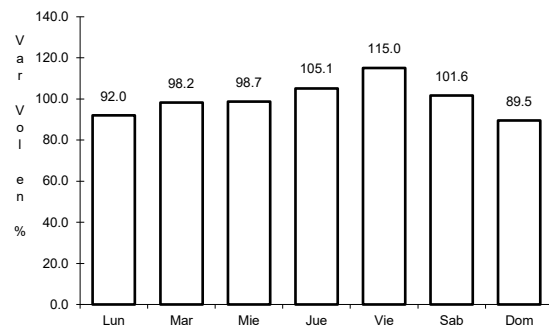


Km: 35.60      Tipo: 1      Sent: 0

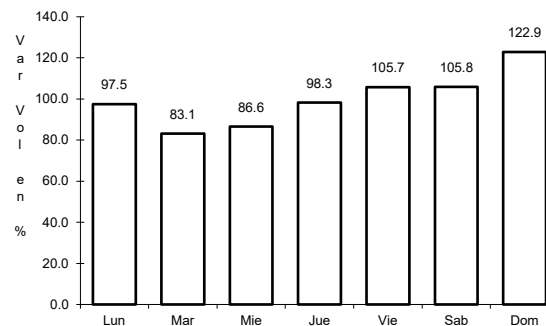
21 CARR: Guadalajara - Tepic (Cuota)

CLAVE: 00033

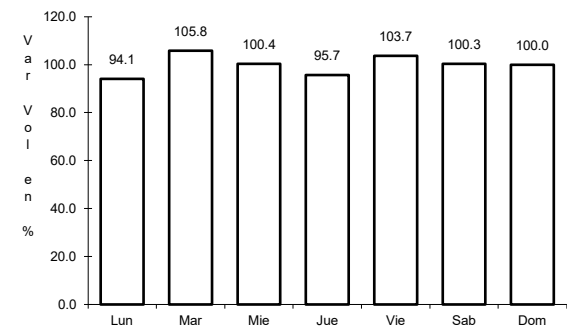
RUTA: MEX-015D



Km: 0.00      Tipo: 3      Sent: 1



Km: 0.00      Tipo: 3      Sent: 2



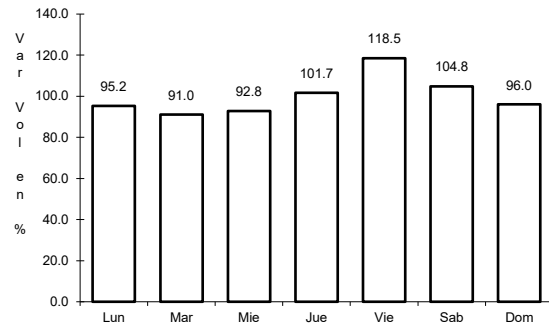
Km: 145.32      Tipo: 3      Sent: 1



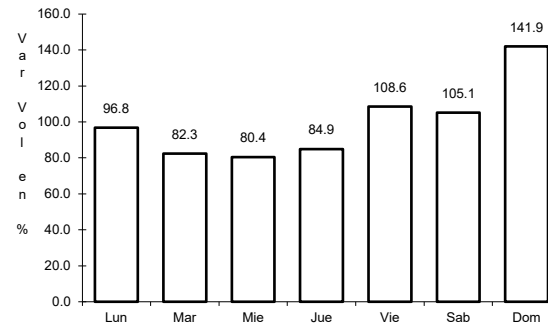
22 CARR: Jala - Puerto Vallarta (Cuota)

CLAVE:

RUTA: MEX-070D



Km: 0.00                      Tipo: 3                      Sent: 1

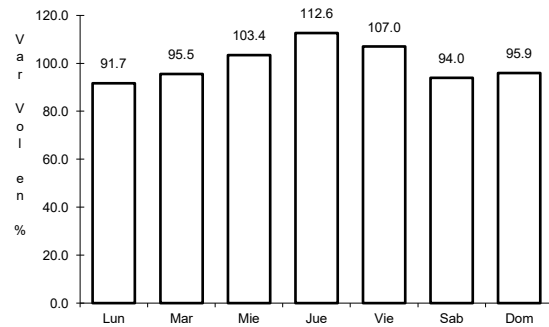


Km: 0.00                      Tipo: 3                      Sent: 2

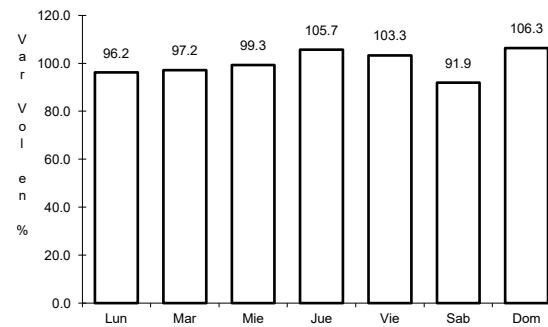
23 CARR: Libramiento de Tepic (Cuota)

CLAVE:

RUTA: MEX-015D



Km: 0.70                      Tipo: 3                      Sent: 0

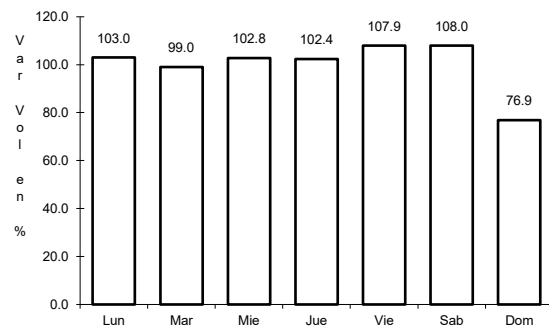


Km: 29.47                      Tipo: 1                      Sent: 0

24 CARR: Ramal a Compostela (Cuota)

CLAVE:

RUTA: MEX-200D

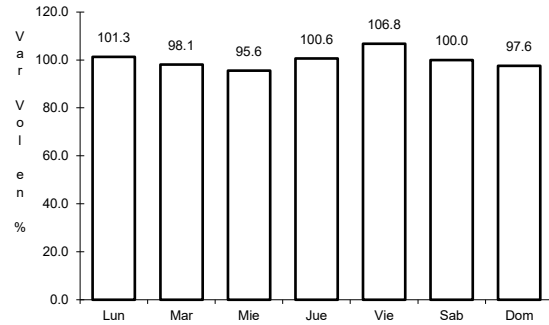


Km: 12.90                      Tipo: 1                      Sent: 0

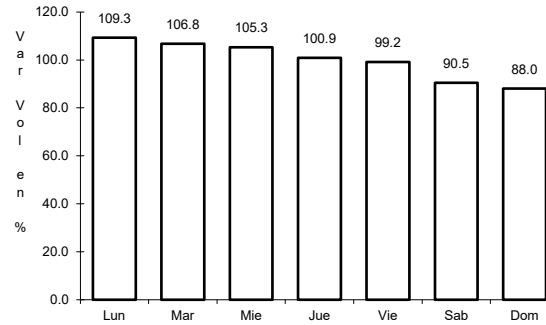
25 CARR: Ramal a Tequexpan

CLAVE: 00068

RUTA: MEX-015D



Km: 0.00      Tipo: 3      Sent: 0

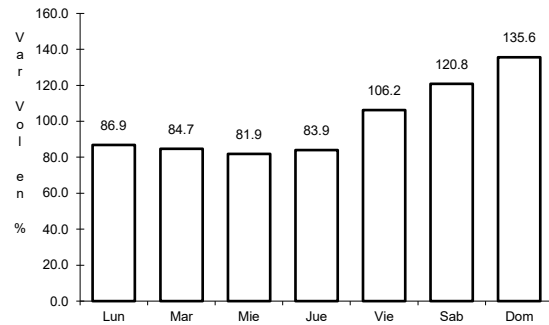


Km: 9.40      Tipo: 1      Sent: 0

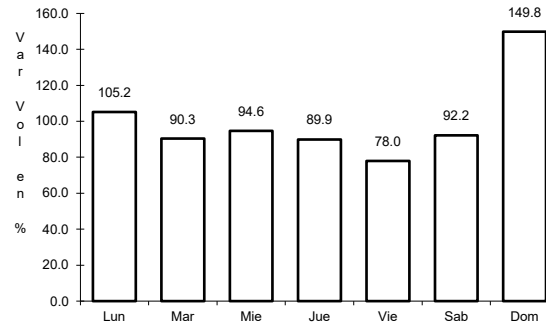
26 CARR: Tepic - San Blas (Cuota)

CLAVE:

RUTA: MEX-D



Km: 0.00      Tipo: 3      Sent: 0

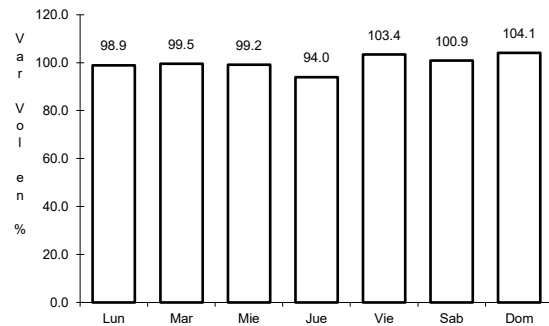


Km: 31.00      Tipo: 1      Sent: 0

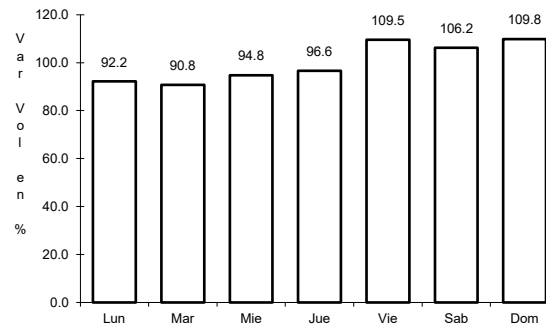
27 CARR: Tepic - Villa Unión (cuota)

CLAVE: 00500

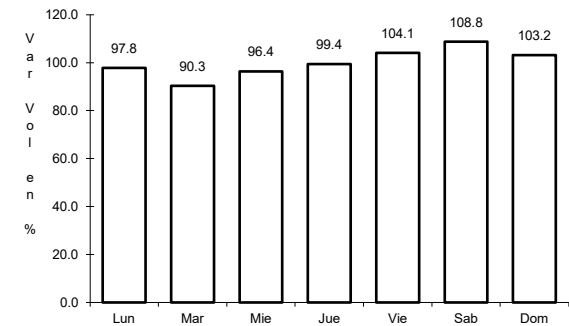
RUTA: MEX-015D



Km: 8.65      Tipo: 1      Sent: 1



Km: 8.65      Tipo: 1      Sent: 2

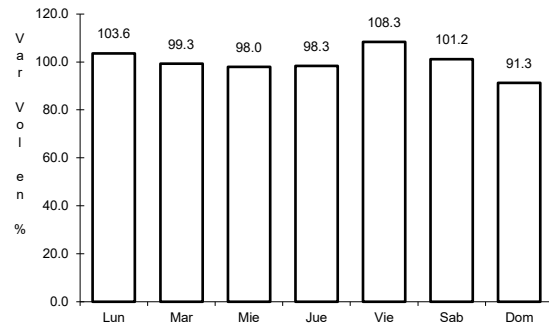


Km: 240.90      Tipo: 1      Sent: 0

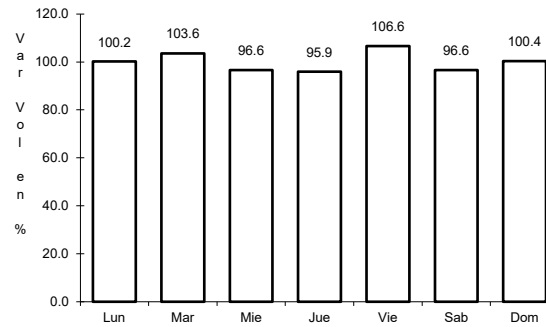
28 CARR: El Carrizo - La Batanga

CLAVE: 18107

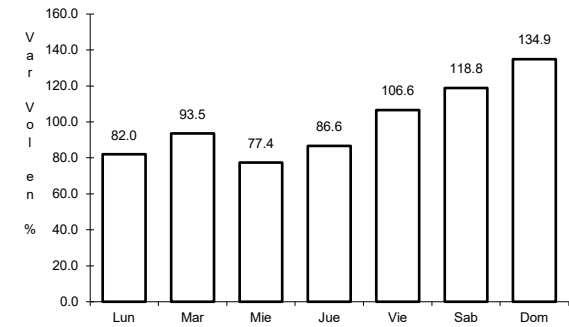
RUTA: NAY-078



Km: 0.00      Tipo: 3      Sent: 0



Km: 9.00      Tipo: 1      Sent: 0

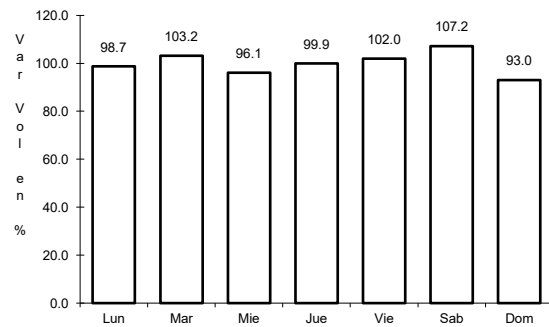


Km: 25.00      Tipo: 1      Sent: 0

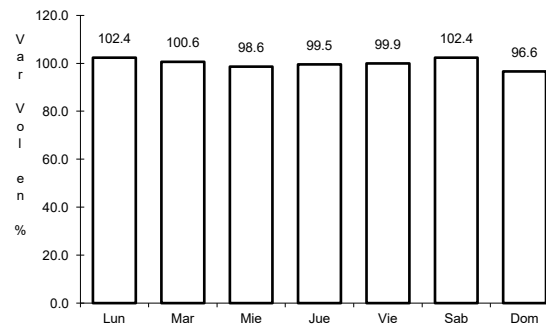
29 CARR: Navarrete - Sauta

CLAVE: 18013

RUTA: NAY-013



Km: 0.00      Tipo: 3      Sent: 0

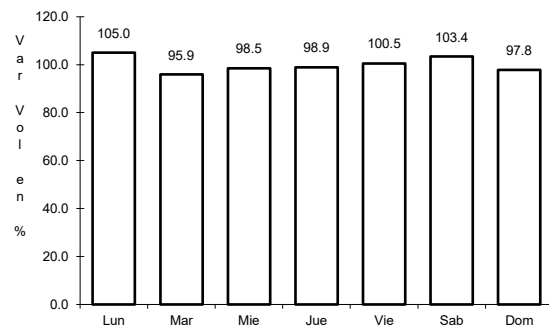


Km: 7.00      Tipo: 1      Sent: 0

30 CARR: Ramal a Amado Nervo

CLAVE: 18011

RUTA: NAY

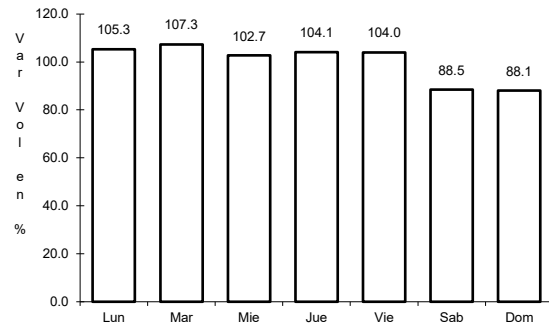


Km: 0.00      Tipo: 3      Sent: 0

31 CARR: Ramal a Bellavista

CLAVE: 18059

ruta: NAY-059



Km: 0.00

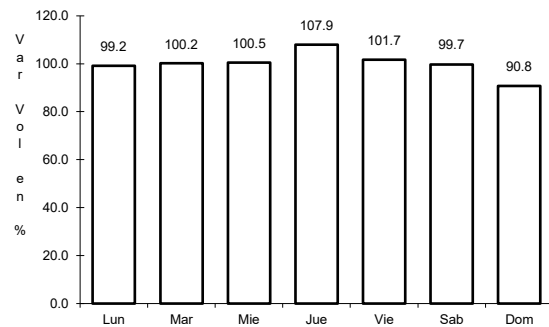
Tipo: 3

Sent: 0

32 CARR: Ramal a El Colomo

CLAVE: 18014

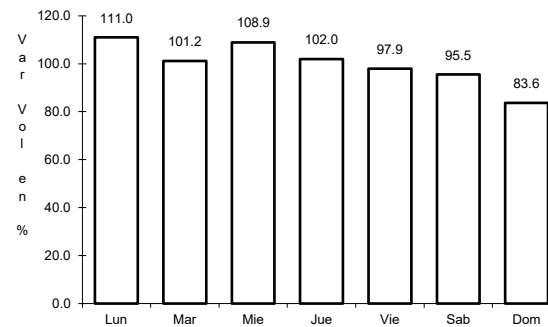
ruta: NAY



Km: 3.00

Tipo: 1

Sent: 1



Km: 3.00

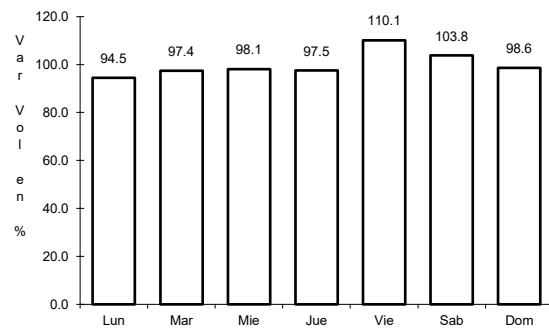
Tipo: 1

Sent: 2

33 CARR: Ramal a Estación Yago

CLAVE: 18224

ruta: NAY



Km: 0.00

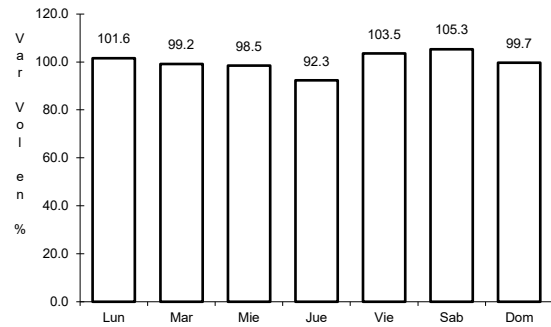
Tipo: 3

Sent: 0

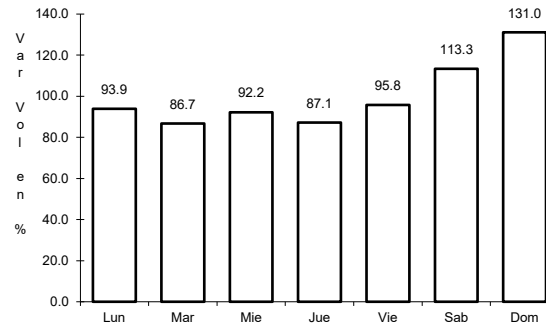
34 CARR: Ramal a Ixtapán de La Concepción

CLAVE: 18233

RUTA: NAY



Km: 0.00      Tipo: 3      Sent: 0

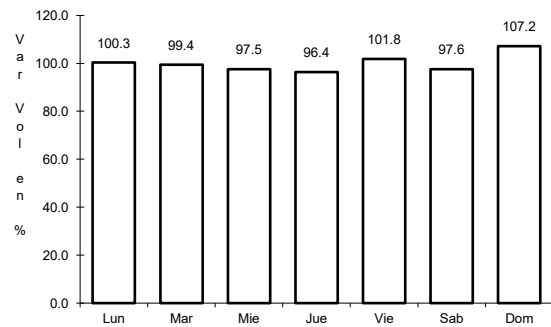


Km: 20.00      Tipo: 1      Sent: 0

35 CARR: Ramal a Milpas Viejas

CLAVE: 18007

RUTA: NAY

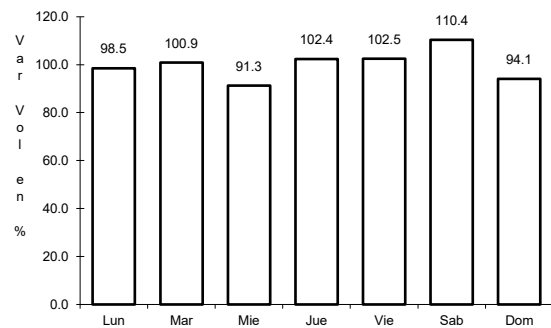


Km: 0.00      Tipo: 3      Sent: 0

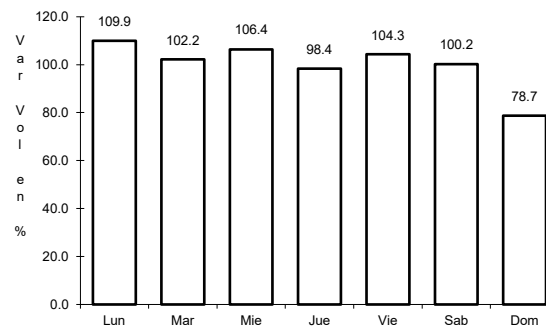
36 CARR: Ramal a Villa Hidalgo

CLAVE: 18031

RUTA: NAY



Km: 0.00      Tipo: 3      Sent: 0

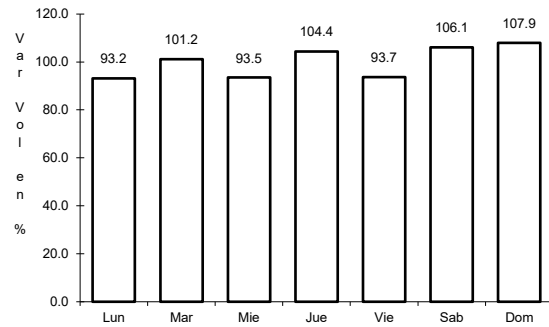


Km: 16.00      Tipo: 1      Sent: 0

37 CARR: Ramal a Volcán del Ceboruco

CLAVE: 18003

RUTA: NAY



Km: 0.00

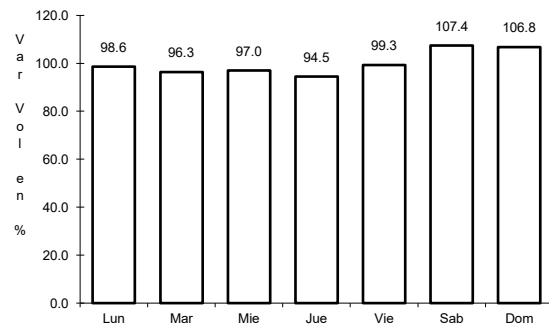
Tipo: 3

Sent: 0

38 CARR: Tepic - Francisco I. Madero

CLAVE: 18009

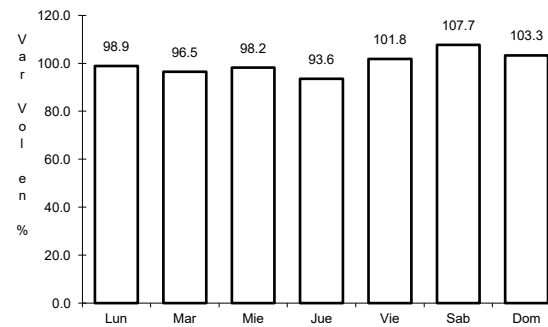
RUTA: NAY-MEX-015



Km: 0.00

Tipo: 3

Sent: 0



Km: 9.00

Tipo: 3

Sent: 0