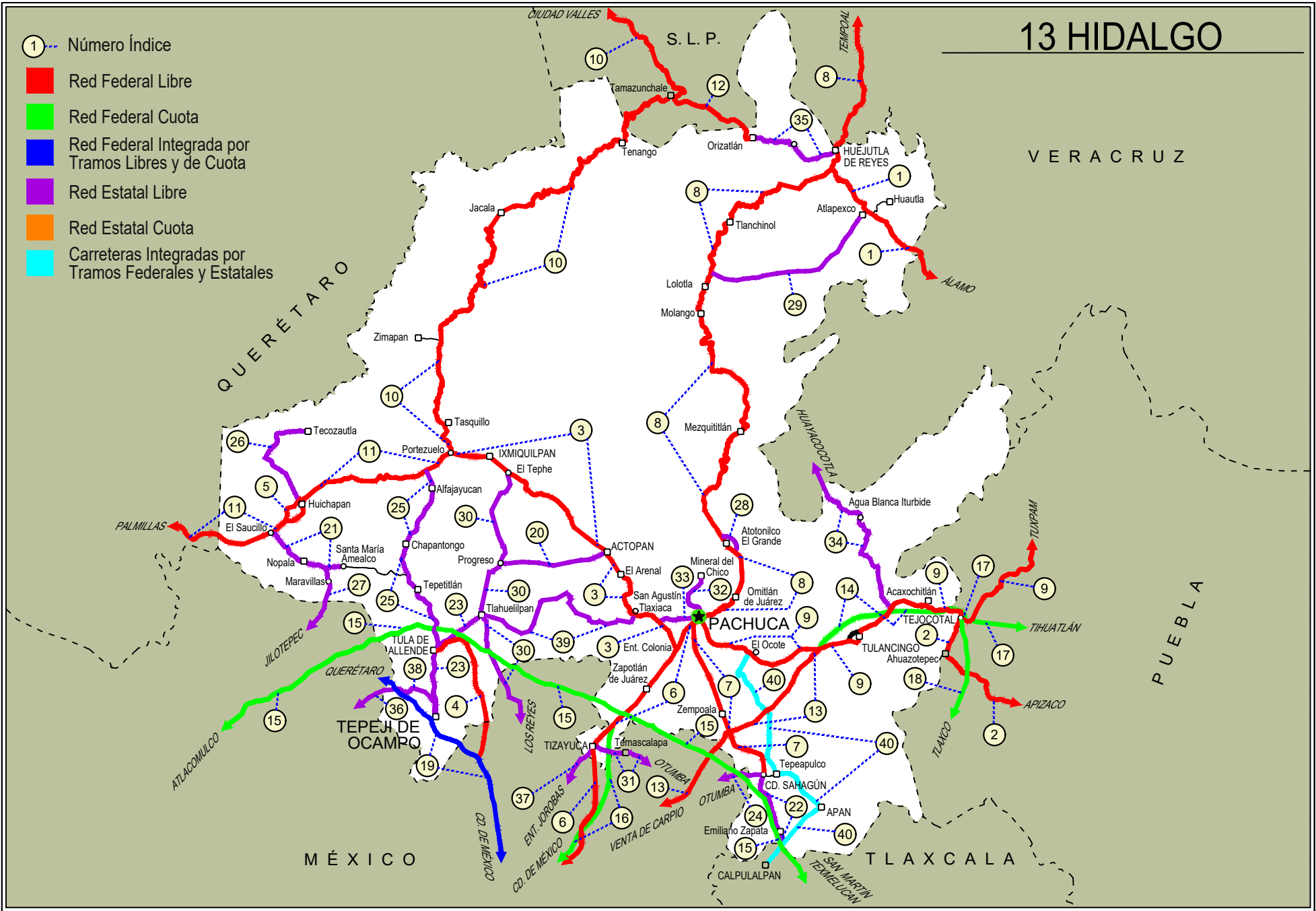


HIDALGO

NO. INDICE CARRETERA	RUTA
---RED FEDERAL LIBRE---	
1 Álamo - Huejutla de Reyes	MEX-127
2 Apizaco - Tejocotal	MEX-119
3 Ent. Colonia - Portezuelo	MEX-085
4 Ent. Jorobas - Tula	MEX-087
5 Libramiento de Huichapan	MEX-045
6 México - Pachuca (Libre)	MEX-085
7 Pachuca - Cd. Sahagún	MEX
8 Pachuca - Tempoal	MEX-105
9 Pachuca - Tuxpam	MEX-130
10 Portezuelo - Cd. Valles	MEX-085
11 Portezuelo - Palmillas	MEX-045
12 Tamazunchale - San Felipe Orizatlán	MEX-085
13 Venta de Carpio - T. C. (Pachuca - Tuxpam)	MEX-132
---RED FEDERAL DE CUOTA---	
14 Ent. Tulancingo - Venta Grande (Cuota)	MEX-132D
15 Libramiento Norte de la Ciudad de México (Cuota)	MEX-055D
16 México - Pachuca (Cuota)	MEX-085D
17 Tejocotal - Nuevo Necaxa (Cuota)	MEX-132D
18 Tlaxco - Tejocotal (Cuota)	MEX-119D
---RED FEDERAL INTEGRADA POR TRAMOS LIBRES Y DE CUOTA---	
19 México - Querétaro (Cuota)	MEX-057-MEX-057D
---RED ESTATAL LIBRE---	
20 Actopan - Progreso	HGO
21 El Saucillo - Amealco	HGO-103
22 Ent. Emiliano Zapata - Cd. Sahagún	HGO
23 Ent. Tepeji del Río - Tlahuelilpan	HGO-017
24 Ent. Tolman - Cd. Sahagún	EM-009-HGO
25 Francisco I. Madero - Tula de Allende	HGO
26 Huichapan - Tecozautla	HGO-030
27 Jilotepec - Maravillas	EM-HGO
28 Libramiento de Atotonilco El Grande	HGO
29 Lolotla - Atlapexco	HGO
30 Los Reyes - El Tephé	EM-HGO
31 Otumba - Tizayuca	EM-HGO
32 Ramal a El Chico	HGO
33 Ramal a Pachuca	HGO
34 San Alejo - Huayacocotla	HGO-051-VER-113
35 San Felipe Orizatlán - Huejutla de Reyes	HGO
36 Santo Domingo - T. C. (México - Querétaro)	EM-011-HGO
37 T. C. (Los Reyes - El Tephé) - Tizayuca	EM-HGO
38 Tepeji del Río - T. C. (México - Querétaro)	HGO
39 Tlahuelilpan - San Agustín Tlaxiaca	HGO
---CARRETERAS INTEGRADAS POR TRAMOS FEDERALES Y ESTATALES---	
40 Calpulalpan - El Ocote	MEX-HGO

13 HIDALGO

- ① Número Índice
- Red Federal Libre
- Red Federal Cuota
- Red Federal Integrada por Tramos Libres y de Cuota
- Red Estatal Libre
- Red Estatal Cuota
- Carreteras Integradas por Tramos Federales y Estatales



HIDALGO

1 CARR: Álamo - Huejutla de Reyes

CLAVE: 00116

RUTA: MEX-127

AÑO: 2023

LUGAR	ESTACION				CLASIFICACION VEHICULAR EN PORCIENTO										COORDENADAS					
	KM	TE	SC	TDPA	M	A	B	C2	C3	T3S2	T3S3	T3S2R4	OTROS	A	B	C	K'	D	LATITUD	LONGITUD
T. C. Tihuatlán - Potrero del Llano	0.00	3	0	4118	18.4	74.9	0.7	2.3	1.7	0.8	0.7	0.3	0.2	93.3	0.7	6.0	0.083	0.503	20.941780	-97.705322
Benito Juárez	73.00	1	0	1840	4.6	87.2	0.9	4.8	1.1	0.8	0.3	0.2	0.1	91.8	0.9	7.3	0.099	0.503	20.882866	-98.198633
T. Der. Chicontepec de Tejada	78.00	3	0	1174	10.2	80.1	0.4	6.9	0.9	0.8	0.3	0.4	0.0	90.3	0.4	9.3	0.100	0.526	20.923820	-98.221677
Lim. Edos. Term. Ver. Ppia. Hgo.	78.70																			
T. C. Pachuca - Tempoal (Huejutla de Reyes)	110.00																			

2 CARR: Apizaco - Tejocotal

CLAVE: 00430

RUTA: MEX-119

AÑO: 2023

LUGAR	ESTACION				CLASIFICACION VEHICULAR EN PORCIENTO										COORDENADAS					
	KM	TE	SC	TDPA	M	A	B	C2	C3	T3S2	T3S3	T3S2R4	OTROS	A	B	C	K'	D	LATITUD	LONGITUD
Apizaco	0.00	3	1	11205	4.2	85.2	2.3	4.6	1.1	1.7	0.3	0.5	0.1	89.4	2.3	8.3	0.085	0.519	19.437510	-98.131322
Apizaco	0.00	3	2	10394	4.2	84.9	2.3	4.6	1.1	1.7	0.4	0.6	0.2	89.1	2.3	8.6	0.101	0.519	19.437603	-98.131348
T. Der. Tetla	6.60	3	0	23950	0.7	86.5	1.7	5.3	1.5	2.2	1.2	0.5	0.4	87.2	1.7	11.1	0.078	0.528	19.473336	-98.112506
T. Izq. Atlangatepec	12.15	1	0	16405	1.4	86.3	1.8	4.6	1.6	2.4	1.0	0.6	0.3	87.7	1.8	10.5	0.088	0.503	19.505625	-98.117019
Tlaxco	23.91	1	1	5039	4.0	87.9	1.1	3.6	0.8	1.8	0.6	0.1	0.1	91.9	1.1	7.0	0.094	0.507	19.598670	-98.125476
Tlaxco	23.91	1	2	5180	4.2	87.2	1.3	3.3	0.9	2.0	0.8	0.2	0.1	91.4	1.3	7.3	0.094	0.507	19.598700	-98.125579
Tlaxco	23.91	3	0	6059	3.4	83.6	1.8	5.2	1.6	2.4	1.2	0.4	0.4	87.0	1.8	11.2	0.107	0.504	19.626266	-98.124862
Lim. Edos. Term. Tlax. Ppia. Pue.	34.45																			
T. Der. Tetela de Ocampo	52.20	1	0	8109	6.8	83.7	1.0	5.2	1.1	0.9	1.1	0.1	0.1	90.5	1.0	8.5	0.101	0.515	19.800863	-98.026546
Zacatlán	71.25	1	0	13536	7.3	85.3	1.4	3.5	1.0	0.8	0.3	0.3	0.1	92.6	1.4	6.0	0.098	0.511	19.918601	-97.959281
Lim. Edos. Term. Pue. Ppia. Hgo.	110.45																			
T. C. Pachuca - Tuxpam	113.15	1	0	10381	3.2	81.4	1.9	8.8	1.7	1.2	0.8	0.7	0.3	84.6	1.9	13.5	0.080	0.500	20.123369	-98.128803

3 CARR: Ent. Colonia - Portezuelo

CLAVE: 13257

RUTA: MEX-085

AÑO: 2023

LUGAR	ESTACION				CLASIFICACION VEHICULAR EN PORCIENTO										COORDENADAS					
	KM	TE	SC	TDPA	M	A	B	C2	C3	T3S2	T3S3	T3S2R4	OTROS	A	B	C	K'	D	LATITUD	LONGITUD
Ent. Colonia	0.00	3	1	28553	1.3	91.0	1.2	2.4	1.5	1.2	0.7	0.5	0.2	92.3	1.2	6.5	0.065	0.506	20.061237	-98.787124
Ent. Colonia	0.00	3	2	30962	1.4	90.4	1.3	2.5	1.6	1.3	0.8	0.5	0.2	91.8	1.3	6.9	0.070	0.506	20.061171	-98.787272
T. Der. Pachuca	8.34	3	1	19611	0.0	91.6	1.3	2.9	1.5	1.3	0.7	0.5	0.2	91.6	1.3	7.1	0.095	0.501	20.122972	-98.832281
T. Der. Pachuca	8.34	3	2	19529	2.0	89.1	1.4	3.2	1.6	1.3	0.7	0.5	0.2	91.1	1.4	7.5	0.083	0.501	20.127366	-98.837265
T. Izq. San Agustín Tlaxiaca	15.36	3	1	12217	2.0	87.8	2.1	3.2	1.9	1.5	0.7	0.6	0.2	89.8	2.1	8.1	0.096	0.517	20.142229	-98.891918
T. Izq. San Agustín Tlaxiaca	15.36	3	2	11409	2.1	86.8	2.2	3.6	2.0	1.6	0.9	0.6	0.2	88.9	2.2	8.9	0.080	0.517	20.141697	-98.892018
Actopan	34.13	1	1	15166	1.8	88.4	1.8	3.4	1.8	1.3	0.8	0.5	0.2	90.2	1.8	8.0	0.090	0.502	20.249904	-98.932524
Actopan	34.13	1	2	15065	1.9	87.9	1.8	3.6	1.7	1.5	0.9	0.5	0.2	89.8	1.8	8.4	0.105	0.502	20.249911	-98.932661

HIDALGO

3 CARR: Ent. Colonia - Portezuelo

CLAVE: 13257

RUTA: MEX-085

AÑO: 2023

LUGAR	ESTACION				CLASIFICACION VEHICULAR EN PORCIENTO												COORDENADAS			
	KM	TE	SC	TDPA	M	A	B	C2	C3	T3S2	T3S3	T3S2R4	OTROS	A	B	C	K'	D	LATITUD	LONGITUD
Actopan	34.13	3	1	10525	3.6	86.9	1.6	4.0	1.2	1.4	0.8	0.4	0.1	90.5	1.6	7.9	0.069	0.503	20.287730	-98.972005
Actopan	34.13	3	2	10380	3.6	85.9	1.8	4.5	1.3	1.6	0.8	0.4	0.1	89.5	1.8	8.7	0.070	0.503	20.290482	-98.975881
T. Izq. Tula	68.20	1	1	7613	3.2	85.5	2.1	4.2	1.5	1.9	0.9	0.5	0.2	88.7	2.1	9.2	0.071	0.529	20.439183	-99.163099
T. Izq. Tula	68.20	1	2	6784	3.4	84.0	2.3	4.8	1.8	2.0	1.1	0.4	0.2	87.4	2.3	10.3	0.089	0.529	20.439129	-99.163253
Ixmiquilpan	75.20	1	1	13945	6.7	86.8	0.9	2.1	1.4	0.9	0.5	0.6	0.1	93.5	0.9	5.6	0.088	0.505	20.463600	-99.195266
Ixmiquilpan	75.20	1	2	13662	7.1	85.8	1.0	2.3	1.5	1.1	0.5	0.6	0.1	92.9	1.0	6.1	0.090	0.505	20.463508	-99.195333
Ixmiquilpan	75.20	3	1	8513	9.1	83.2	1.3	2.6	1.2	0.9	0.8	0.7	0.2	92.3	1.3	6.4	0.089	0.501	20.479531	-99.248611
Ixmiquilpan	75.20	3	2	8559	7.8	83.6	1.4	3.0	1.4	1.0	0.8	0.8	0.2	91.4	1.4	7.2	0.086	0.501	20.479475	-99.248729
Portezuelo	82.00																			

4 CARR: Ent. Jorobas - Tula

CLAVE: 00159

RUTA: MEX-087

AÑO: 2023

LUGAR	ESTACION				CLASIFICACION VEHICULAR EN PORCIENTO												COORDENADAS			
	KM	TE	SC	TDPA	M	A	B	C2	C3	T3S2	T3S3	T3S2R4	OTROS	A	B	C	K'	D	LATITUD	LONGITUD
T. C. México - Querétaro (Cuota)	0.00	3	1	16578	2.8	84.9	1.8	4.2	1.5	2.5	1.2	0.8	0.3	87.7	1.8	10.5	0.079	0.514	19.834554	-99.243470
T. C. México - Querétaro (Cuota)	0.00	3	2	15647	4.0	79.5	2.3	5.5	2.1	3.9	1.6	0.9	0.2	83.5	2.3	14.2	0.086	0.514	19.834597	-99.243554
Lim. Edos. Term. Méx. Ppia. Hgo.	5.90																			
T. Der. Atotonilco	21.50	1	1	8608	1.4	83.6	1.7	6.0	1.8	3.1	1.7	0.6	0.1	85.0	1.7	13.3	0.075	0.528	20.015063	-99.247351
T. Der. Atotonilco	21.50	1	2	7680	1.6	82.3	2.1	6.2	2.0	3.1	2.0	0.6	0.1	83.9	2.1	14.0	0.078	0.528	20.015052	-99.247480
Tula de Allende	37.70	1	1	14204	3.8	81.4	2.4	5.9	1.2	2.2	1.7	0.8	0.6	85.2	2.4	12.4	0.089	0.520	20.061372	-99.280057
Tula de Allende	37.70	1	2	15367	3.4	80.8	2.5	6.1	1.4	2.3	1.9	1.0	0.6	84.2	2.5	13.3	0.082	0.520	20.061275	-99.280028

5 CARR: Libramiento de Huichapan

CLAVE:

RUTA: MEX-045

AÑO: 2023

LUGAR	ESTACION				CLASIFICACION VEHICULAR EN PORCIENTO												COORDENADAS			
	KM	TE	SC	TDPA	M	A	B	C2	C3	T3S2	T3S3	T3S2R4	OTROS	A	B	C	K'	D	LATITUD	LONGITUD
T. C. Portezuelo - Palmillas Oeste	0.00																			
T. C. Huichapan - Tecozautla	2.00	1	1	4437	1.8	94.1	0.7	1.3	0.5	0.9	0.3	0.3	0.1	95.9	0.7	3.4	0.098	0.505	20.384406	-99.655741
T. C. Huichapan - Tecozautla	2.00	1	2	4525	1.9	94.2	0.7	1.1	0.5	0.9	0.3	0.3	0.1	96.1	0.7	3.2	0.166	0.505	20.384307	-99.655673
T. C. Portezuelo - Palmillas Oeste	9.00	1	1	4193	5.0	72.8	2.6	4.0	3.2	6.4	3.0	2.4	0.6	77.8	2.6	19.6	0.087	0.504	20.337960	-99.691383
T. C. Portezuelo - Palmillas Oeste	9.00	1	2	4256	5.0	72.9	2.6	3.9	3.2	6.4	3.1	2.3	0.6	77.9	2.6	19.5	0.109	0.504	20.338938	-99.690688

HIDALGO

6 CARR: México - Pachuca (Libre)

CLAVE: 00431

RUTA: MEX-085

AÑO: 2023

LUGAR	ESTACION				CLASIFICACION VEHICULAR EN PORCIENTO														COORDENADAS	
	KM	TE	SC	TDPA	M	A	B	C2	C3	T3S2	T3S3	T3S2R4	OTROS	A	B	C	K'	D	LATITUD	LONGITUD
México	0.00																			
Lim. Edos. Term. CDMX Ppia. Méx.	9.89																			
T. Der. Pirámides	26.93	1	1	14762	5.1	85.6	0.5	4.3	0.4	2.0	1.4	0.4	0.3	90.7	0.5	8.8	0.074	0.510	19.616796	-99.011600
T. Der. Pirámides	26.93	1	2	15365	4.9	85.3	0.5	4.6	0.4	2.1	1.5	0.4	0.3	90.2	0.5	9.3	0.063	0.510	19.616796	-99.011600
Venta de Carpio	27.00	3	1	32114	4.1	87.8	0.6	4.4	0.8	1.1	0.9	0.1	0.2	91.9	0.6	7.5	0.059	0.509	19.625809	-99.002976
Venta de Carpio	27.00	3	2	30922	4.0	87.6	0.5	4.6	0.8	1.3	0.9	0.1	0.2	91.6	0.5	7.9	0.054	0.509	19.625494	-99.003299
T. Der. Aut. México - Pachuca (Cuota)	37.52	1	1	31335	5.1	89.0	0.3	3.4	0.9	0.7	0.4	0.1	0.1	94.1	0.3	5.6	0.068	0.503	19.704508	-98.978262
T. Der. Aut. México - Pachuca (Cuota)	37.52	1	2	30960	5.3	89.3	0.3	3.0	0.8	0.7	0.4	0.1	0.1	94.6	0.3	5.1	0.069	0.503	19.703736	-98.978738
Acceso al AIFA por San Jerónimo	42.00	1	1	18647	7.0	86.2	1.1	4.4	0.6	0.5	0.1	0.1	0.0	93.2	1.1	5.7	0.075	0.511	19.739732	-98.972050
Acceso al AIFA por San Jerónimo	42.00	1	2	19518	6.9	86.4	1.1	4.2	0.7	0.5	0.1	0.1	0.0	93.3	1.1	5.6	0.078	0.511	19.739730	-98.972130
Acceso al AIFA por San Jerónimo	42.00	3	1	18577	5.8	87.8	0.5	4.2	0.9	0.4	0.1	0.3	0.0	93.6	0.5	5.9	0.081	0.526	19.749263	-98.972564
Acceso al AIFA por San Jerónimo	42.00	3	2	20592	5.4	88.3	0.5	4.3	0.8	0.4	0.1	0.2	0.0	93.7	0.5	5.8	0.078	0.526	19.750974	-98.972914
T. C. Via Perimcentral AIFA	42.70	3	1	20348	7.2	83.0	0.9	7.4	0.7	0.5	0.1	0.2	0.0	90.2	0.9	8.9	0.077	0.510	19.756362	-98.973381
T. C. Via Perimcentral AIFA	42.70	3	2	21166	6.9	83.1	1.0	7.6	0.6	0.5	0.1	0.2	0.0	90.0	1.0	9.0	0.090	0.510	19.756353	-98.973471
T. Izq. Zumpango	44.68	1	1	19113	6.3	82.6	2.0	6.6	1.0	0.7	0.3	0.2	0.3	88.9	2.0	9.1	0.078	0.501	19.760446	-98.973573
T. Izq. Zumpango	44.68	1	2	19189	6.4	82.9	1.8	6.8	0.7	0.7	0.3	0.2	0.2	89.3	1.8	8.9	0.088	0.501	19.759555	-98.973703
T. Izq. Zumpango	44.68	3	1	11721	8.9	76.4	2.1	6.3	3.0	1.4	0.8	0.7	0.4	85.3	2.1	12.6	0.078	0.510	19.773062	-98.973087
T. Izq. Zumpango	44.68	3	2	12193	9.1	76.2	2.0	6.2	2.9	1.6	0.8	0.7	0.5	85.3	2.0	12.7	0.082	0.510	19.773001	-98.973121
Lim. Edos. Term. Méx. Ppia. Hgo.	49.30																			
Tizayuca	52.50	1	1	10362	9.0	80.8	1.8	5.7	0.9	1.1	0.3	0.2	0.2	89.8	1.8	8.4	0.085	0.536	19.814804	-98.975362
Tizayuca	52.50	1	2	11971	8.8	80.5	1.9	5.9	1.0	1.2	0.3	0.2	0.2	89.3	1.9	8.8	0.086	0.536	19.814861	-98.975499
Tizayuca	52.50	3	1	18918	3.6	88.7	1.5	4.4	0.7	0.5	0.3	0.1	0.2	92.3	1.5	6.2	0.090	0.503	19.858331	-98.968159
Tizayuca	52.50	3	2	18686	3.6	87.3	2.0	4.8	1.0	0.6	0.2	0.2	0.3	90.9	2.0	7.1	0.078	0.503	19.858395	-98.968247
T. C. México - Tizayuca (Cuota)	61.00	1	1	7300	5.5	82.2	3.0	5.7	1.7	0.8	0.5	0.4	0.2	87.7	3.0	9.3	0.074	0.502	19.878629	-98.947829
T. C. México - Tizayuca (Cuota)	61.00	1	2	7234	5.4	81.9	2.9	6.6	1.5	0.7	0.4	0.4	0.2	87.3	2.9	9.8	0.082	0.502	19.878741	-98.947886
T. C. México - Tizayuca (Cuota)	61.00	3	1	29282	0.6	87.4	2.6	5.4	1.8	1.2	0.7	0.1	0.2	88.0	2.6	9.4	0.069	0.513	19.898300	-98.928364
T. C. México - Tizayuca (Cuota)	61.00	3	2	31054	0.6	87.6	2.3	5.7	1.3	1.6	0.5	0.3	0.1	88.2	2.3	9.5	0.089	0.513	19.900959	-98.926136
X. C. Arco Norte de La Ciudad de México	64.20	1	1	29444	0.5	88.6	2.6	4.6	1.2	1.7	0.4	0.3	0.1	89.1	2.6	8.3	0.089	0.502	19.923080	-98.900667
X. C. Arco Norte de La Ciudad de México	64.20	1	2	29204	0.5	87.6	2.8	5.2	1.2	1.9	0.4	0.3	0.1	88.1	2.8	9.1	0.109	0.502	19.923251	-98.900865
X. C. Arco Norte de La Ciudad de México	64.20	3	1	32027	1.1	86.1	3.6	5.7	0.9	1.5	0.6	0.3	0.2	87.2	3.6	9.2	0.075	0.522	19.930872	-98.890873
X. C. Arco Norte de La Ciudad de México	64.20	3	2	29027	1.2	84.7	4.0	6.3	1.0	1.7	0.6	0.3	0.2	85.9	4.0	10.1	0.089	0.522	19.931075	-98.891034
Ent. Colonia	83.97	1	1	53044	0.9	90.3	2.7	3.5	0.5	0.7	0.5	0.7	0.2	91.2	2.7	6.1	0.094	0.515	20.043707	-98.792889
Ent. Colonia	83.97	1	2	49433	0.8	89.3	2.9	4.2	0.5	0.8	0.5	0.8	0.2	90.1	2.9	7.0	0.087	0.515	20.044919	-98.792571
X. C. Libramiento de Pachuca	86.50	1	1	42963	3.9	89.0	3.2	1.7	0.7	0.4	0.6	0.3	0.2	92.9	3.2	3.9	0.077	0.501	20.097784	-98.766022
X. C. Libramiento de Pachuca	86.50	1	2	42679	3.8	89.0	3.3	1.6	0.8	0.4	0.6	0.3	0.2	92.8	3.3	3.9	0.081	0.501	20.098026	-98.766122

HIDALGO

6 CARR: México - Pachuca (Libre)

CLAVE: 00431

RUTA: MEX-085

AÑO: 2023

LUGAR	ESTACION	CLASIFICACION VEHICULAR EN PORCIENTO														COORDENADAS						
		KM	TE	SC	TDPA	M	A	B	C2	C3	T3S2	T3S3	T3S2R4	OTROS	A	B	C	K'	D	LATITUD	LONGITUD	
Pachuca	94.00																					

7 CARR: Pachuca - Cd. Sahagún

CLAVE: 13088

RUTA: MEX

AÑO: 2023

LUGAR	ESTACION	CLASIFICACION VEHICULAR EN PORCIENTO														COORDENADAS					
		KM	TE	SC	TDPA	M	A	B	C2	C3	T3S2	T3S3	T3S2R4	OTROS	A	B	C	K'	D	LATITUD	LONGITUD
Pachuca	0.00	3	1	31824	5.5	83.4	1.2	5.1	1.4	1.8	0.9	0.6	0.1	88.9	1.2	9.9	0.076	0.507	20.067574	-98.744426	
Pachuca	0.00	3	2	30878	5.5	83.4	1.2	5.1	1.4	1.8	0.9	0.6	0.1	88.9	1.2	9.9	0.084	0.507	20.067600	-98.744243	
T. Der. Palma Gorda	11.00	1	1	35045	3.8	89.3	0.5	3.9	0.9	0.9	0.4	0.2	0.1	93.1	0.5	6.4	0.079	0.510	20.050394	-98.738805	
T. Der. Palma Gorda	11.00	1	2	36546	3.8	89.2	0.6	3.9	0.9	0.9	0.4	0.2	0.1	93.0	0.6	6.4	0.084	0.510	20.049909	-98.738405	
X. C. Venta de Carpio - Tulancingo	29.40	1	1	10359	1.5	86.9	1.2	5.9	1.2	2.1	0.9	0.3	0.0	88.4	1.2	10.4	0.088	0.502	19.896744	-98.670997	
X. C. Venta de Carpio - Tulancingo	29.40	1	2	10294	1.5	87.0	1.2	5.9	1.2	2.1	0.9	0.2	0.0	88.5	1.2	10.3	0.085	0.502	19.896551	-98.670777	
X. C. Venta de Carpio - Tulancingo	29.40	3	1	7609	1.6	89.1	0.9	4.5	1.1	1.9	0.7	0.2	0.0	90.7	0.9	8.4	0.098	0.532	19.870282	-98.661150	
X. C. Venta de Carpio - Tulancingo	29.40	3	2	8639	1.4	89.5	0.8	4.5	1.1	1.8	0.7	0.2	0.0	90.9	0.8	8.3	0.079	0.532	19.870310	-98.661070	
T. Izq. Tepeapulco	40.00	1	1	7629	1.2	88.7	0.7	4.7	1.1	2.0	1.0	0.3	0.3	89.9	0.7	9.4	0.095	0.514	19.829864	-98.604152	
T. Izq. Tepeapulco	40.00	1	2	7223	1.2	90.0	0.7	3.8	1.1	2.0	0.8	0.2	0.2	91.2	0.7	8.1	0.087	0.514	19.829932	-98.604030	
T. Izq. Tepeapulco	40.00	3	1	6571	1.1	88.0	0.9	5.1	1.1	2.3	0.9	0.3	0.3	89.1	0.9	10.0	0.101	0.500	19.815858	-98.585482	
T. Izq. Tepeapulco	40.00	3	2	6568	1.4	88.0	0.9	5.1	1.2	2.1	0.9	0.2	0.2	89.4	0.9	9.7	0.090	0.500	19.815810	-98.585341	
Cd. Sahagún	44.70																				

8 CARR: Pachuca - Tempoal

CLAVE: 00113

RUTA: MEX-105

AÑO: 2023

LUGAR	ESTACION	CLASIFICACION VEHICULAR EN PORCIENTO														COORDENADAS					
		KM	TE	SC	TDPA	M	A	B	C2	C3	T3S2	T3S3	T3S2R4	OTROS	A	B	C	K'	D	LATITUD	LONGITUD
Pachuca	0.00	3	0	3953	4.0	94.0	0.2	1.7	0.1	0.0	0.0	0.0	0.0	98.0	0.2	1.8	0.103	0.536	20.130674	-98.713980	
T. Der. Omittán de Juárez (1º Acceso)	18.20	1	0	13565	2.3	87.0	1.6	5.1	1.8	0.8	0.4	0.6	0.4	89.3	1.6	9.1	0.084	0.502	20.160078	-98.654615	
T. Der a Huasca	22.20																				
T. Libramiento de Atotonilco El Grande	30.25																				
Atotonilco El Grande	33.85	3	1	5182	3.3	88.7	1.1	4.5	0.9	0.6	0.6	0.1	0.2	92.0	1.1	6.9	0.075	0.504	20.302711	-98.681719	
Atotonilco El Grande	33.85	3	2	5276	3.7	88.0	1.1	4.4	0.8	1.0	0.6	0.1	0.3	91.7	1.1	7.2	0.084	0.504	20.302456	-98.681730	
T. Libramiento de Atotonilco El Grande	35.45																				
Cerro Colorado	48.15																				
T. Izq. Metztlán	63.70	1	0	5511	1.8	84.9	2.3	6.5	1.1	1.8	1.2	0.2	0.2	86.7	2.3	11.0	0.078	0.518	20.467391	-98.676332	
T. Izq. Metztlán	63.70	3	0	4071	1.7	83.6	2.3	6.9	1.6	2.4	0.9	0.5	0.1	85.3	2.3	12.4	0.079	0.511	20.474447	-98.668478	
Metzquitlán	75.00	1	0	5610	2.5	85.6	2.0	6.0	1.3	1.1	0.9	0.3	0.3	88.1	2.0	9.9	0.081	0.502	20.527355	-98.647028	

HIDALGO

8 CARR: Pachuca - Tempoal

CLAVE: 00113

RUTA: MEX-105

AÑO: 2023

LUGAR	ESTACION				CLASIFICACION VEHICULAR EN PORCIENTO												COORDENADAS			
	KM	TE	SC	TDPA	M	A	B	C2	C3	T3S2	T3S3	T3S2R4	OTROS	A	B	C	K'	D	LATITUD	LONGITUD
T. Izq. Zacualtipán	96.50	1	1	4727	2.9	86.6	1.3	6.2	0.9	0.9	0.8	0.3	0.1	89.5	1.3	9.2	0.086	0.502	20.641609	-98.635531
T. Izq. Zacualtipán	96.50	1	2	4690	2.9	86.0	1.5	6.1	1.0	1.3	0.7	0.3	0.2	88.9	1.5	9.6	0.088	0.502	20.641570	-98.635562
T. Izq. Zacualtipán	96.50	3	0	5268	3.5	84.6	1.7	6.1	1.3	1.2	0.9	0.4	0.3	88.1	1.7	10.2	0.106	0.508	20.664043	-98.673982
X. C. Molango - Xochicoatlán	129.80	1	0	3341	3.7	83.8	2.6	5.3	1.8	1.3	0.7	0.5	0.3	87.5	2.6	9.9	0.075	0.509	20.787130	-98.721453
X. C. Molango - Xochicoatlán	129.80	3	0	3701	2.5	85.1	2.0	4.8	1.7	1.9	1.4	0.4	0.2	87.6	2.0	10.4	0.090	0.518	20.795099	-98.726915
T. Izq. Tepehuacán de Guerrero	157.70	1	0	2586	2.8	81.2	3.4	5.5	2.4	3.0	0.9	0.5	0.3	84.0	3.4	12.6	0.086	0.507	20.964838	-98.686764
Tehuacán	199.20	1	0	2368	3.5	81.6	2.9	5.5	1.0	3.3	1.4	0.7	0.1	85.1	2.9	12.0	0.081	0.513	21.057323	-98.510011
T. Izq. Huejutla (1º Acceso)	214.60	1	1	6616	3.6	84.3	1.3	3.6	0.9	3.6	1.5	0.7	0.5	87.9	1.3	10.8	0.084	0.505	21.121399	-98.419492
T. Izq. Huejutla (1º Acceso)	214.60	1	2	6478	4.1	84.5	0.9	3.2	0.8	3.8	1.4	0.8	0.5	88.6	0.9	10.5	0.082	0.505	21.121435	-98.419559
T. Izq. Huejutla (1º Acceso)	214.60	3	1	7866	2.2	90.1	0.6	2.3	0.8	2.3	0.8	0.6	0.3	92.3	0.6	7.1	0.080	0.518	21.134920	-98.409389
T. Izq. Huejutla (1º Acceso)	214.60	3	2	7309	2.3	90.0	0.9	2.1	1.0	2.3	0.6	0.5	0.3	92.3	0.9	6.8	0.082	0.518	21.134923	-98.409466
Lim. Edos. Term. Hgo. Ppia. Ver.	217.20																			
T. C. Alazán - Canoas	260.68	1	0	2658	7.7	72.1	1.9	10.9	2.4	2.1	1.8	0.9	0.2	79.8	1.9	18.3	0.082	0.519	21.491927	-98.357221

9 CARR: Pachuca - Tuxpam

CLAVE: 00608

RUTA: MEX-130

AÑO: 2023

LUGAR	ESTACION				CLASIFICACION VEHICULAR EN PORCIENTO												COORDENADAS			
	KM	TE	SC	TDPA	M	A	B	C2	C3	T3S2	T3S3	T3S2R4	OTROS	A	B	C	K'	D	LATITUD	LONGITUD
Pachuca	0.00																			
X. C. Libramiento de Pachuca	2.60	3	1	31387	4.6	90.9	0.3	2.5	0.9	0.5	0.2	0.1	0.0	95.5	0.3	4.2	0.080	0.523	20.086766	-98.713324
X. C. Libramiento de Pachuca	2.60	3	2	28426	5.7	89.7	0.3	2.5	0.9	0.5	0.2	0.2	0.0	95.4	0.3	4.3	0.085	0.523	20.086810	-98.713158
T. Izq. Pachuquilla (1º Acceso)	7.00	1	1	21893	3.4	89.4	0.9	4.5	0.8	0.5	0.2	0.3	0.0	92.8	0.9	6.3	0.080	0.509	20.078165	-98.710069
T. Izq. Pachuquilla (1º Acceso)	7.00	1	2	22711	3.4	89.4	0.9	4.5	0.8	0.5	0.2	0.3	0.0	92.8	0.9	6.3	0.078	0.509	20.076733	-98.708528
T. Izq. Pachuquilla (2º Acceso)	10.50	1	1	12002	3.1	89.2	1.2	4.5	1.0	0.5	0.3	0.2	0.0	92.3	1.2	6.5	0.073	0.509	20.066553	-98.675681
T. Izq. Pachuquilla (2º Acceso)	10.50	1	2	12447	3.1	89.2	1.2	4.5	1.0	0.5	0.3	0.2	0.0	92.3	1.2	6.5	0.083	0.509	20.066650	-98.675678
T. Der. Cd. Sahagún	16.59	1	1	11813	3.9	90.7	0.9	2.2	1.2	0.5	0.2	0.4	0.0	94.6	0.9	4.5	0.081	0.504	20.060913	-98.636164
T. Der. Cd. Sahagún	16.59	1	2	12008	3.9	90.7	0.8	2.2	1.2	0.5	0.2	0.5	0.0	94.6	0.8	4.6	0.086	0.504	20.061009	-98.636047
T. Der. Cd. Sahagún	16.59	3	1	8336	4.6	88.8	1.3	3.3	1.0	0.5	0.3	0.2	0.0	93.4	1.3	5.3	0.092	0.502	20.044056	-98.609101
T. Der. Cd. Sahagún	16.59	3	2	8388	4.5	89.1	1.2	3.3	1.0	0.5	0.2	0.2	0.0	93.6	1.2	5.2	0.092	0.502	20.044169	-98.608975
T. C. Venta de Carpio - Tulancingo	36.45	1	1	10717	2.0	92.1	0.7	2.7	1.5	0.6	0.1	0.3	0.0	94.1	0.7	5.2	0.077	0.511	20.056718	-98.475395
T. C. Venta de Carpio - Tulancingo	36.45	1	2	10261	2.1	91.9	0.8	2.8	1.5	0.5	0.1	0.3	0.0	94.0	0.8	5.2	0.088	0.511	20.056483	-98.464486
T. C. Venta de Carpio - Tulancingo	36.45	3	1	16447	2.3	90.2	1.3	3.5	1.6	0.8	0.2	0.1	0.0	92.5	1.3	6.2	0.086	0.505	20.062744	-98.440133
T. C. Venta de Carpio - Tulancingo	36.45	3	2	16124	4.6	88.8	1.1	2.6	1.7	0.8	0.2	0.2	0.0	93.4	1.1	5.5	0.078	0.505	20.062873	-98.440165
T. Izq. Libramiento de Tulancingo	59.33	3	1	9070	4.2	86.7	1.3	4.7	1.4	0.7	0.4	0.3	0.3	90.9	1.3	7.8	0.081	0.520	20.151629	-98.285106
T. Izq. Libramiento de Tulancingo	59.33	3	2	8361	3.9	87.6	1.1	4.6	1.3	0.7	0.3	0.4	0.1	91.5	1.1	7.4	0.107	0.520	20.151572	-98.285258

HIDALGO

9 CARR: Pachuca - Tuxpam

CLAVE: 00608

RUTA: MEX-130

AÑO: 2023

LUGAR	ESTACION				CLASIFICACION VEHICULAR EN PORCIENTO										COORDENADAS					
	KM	TE	SC	TDPA	M	A	B	C2	C3	T3S2	T3S3	T3S2R4	OTROS	A	B	C	K'	D	LATITUD	LONGITUD
T. Izq. Huayacocolla	60.16	3	0	17042	4.4	90.4	0.5	2.1	1.2	0.5	0.2	0.6	0.1	94.8	0.5	4.7	0.080	0.501	20.157566	-98.278823
T. Izq. Honey	63.00	3	0	10635	6.0	81.2	3.2	7.3	1.4	0.3	0.2	0.4	0.0	87.2	3.2	9.6	0.090	0.506	20.161481	-98.259583
Lim. Edos. Term. Hgo. Ppia. Pue.	83.18																			
T. Der. Huauchinango (1º Acceso)	94.00	1	0	5175	3.7	85.8	1.4	4.4	3.0	0.9	0.4	0.2	0.2	89.5	1.4	9.1	0.075	0.511	20.168841	-98.074582
T. Der. Huauchinango (2º Acceso)	100.00	3	0	8756	4.0	86.3	1.8	5.0	1.4	0.5	0.6	0.2	0.2	90.3	1.8	7.9	0.088	0.514	20.193177	-98.036034
Villa Ávila Camacho	141.75	1	0	2784	6.8	74.4	3.3	11.4	2.0	0.9	0.3	0.9	0.0	81.2	3.3	15.5	0.084	0.512	20.380063	-97.885250
Villa Ávila Camacho	141.75	3	0	5023	2.9	79.9	4.7	9.5	1.3	0.9	0.2	0.5	0.1	82.8	4.7	12.5	0.098	0.529	20.394455	-97.873245
Piedras Negras	158.70	1	0	3526	4.1	75.8	4.6	8.1	2.6	2.6	0.9	1.2	0.1	79.9	4.6	15.5	0.090	0.513	20.440222	-97.761191
T. Izq. Venustiano Carranza	174.10	3	0	4282	3.5	77.0	5.0	7.2	2.4	2.1	1.8	0.9	0.1	80.5	5.0	14.5	0.087	0.509	20.481393	-97.638624
Lim. Edos. Term. Pue. Ppia. Ver.	180.00																			
T. Der. Poza Rica	197.00	1	0	12793	6.5	85.0	1.3	3.7	1.2	1.0	0.7	0.4	0.2	91.5	1.3	7.2	0.076	0.509	20.522138	-97.491928
T. Der. Poza Rica	197.00	3	0	24006	3.7	86.5	3.0	3.1	1.2	1.2	0.7	0.4	0.2	90.2	3.0	6.8	0.070	0.502	20.561119	-97.477056
Tehuatlán	217.00	1	0	11915	6.0	78.1	4.0	4.7	1.9	2.7	1.1	1.1	0.4	84.1	4.0	11.9	0.070	0.513	20.698734	-97.527786
Tehuatlán	217.00	3	0	3236	10.5	82.2	0.8	3.2	1.6	0.8	0.4	0.4	0.1	92.7	0.8	6.5	0.085	0.502	20.721087	-97.527773
T. C. Tehuatlán - Tuxpam (Cuota)	232.50	1	0	2103	10.0	75.1	1.2	7.4	1.3	2.7	1.6	0.4	0.3	85.1	1.2	13.7	0.082	0.505	20.806771	-97.477694

10 CARR: Portezuelo - Cd. Valles

CLAVE: 00023

RUTA: MEX-085

AÑO: 2023

LUGAR	ESTACION				CLASIFICACION VEHICULAR EN PORCIENTO										COORDENADAS					
	KM	TE	SC	TDPA	M	A	B	C2	C3	T3S2	T3S3	T3S2R4	OTROS	A	B	C	K'	D	LATITUD	LONGITUD
Portezuelo	0.00	3	0	6476	5.8	87.8	1.4	2.4	0.7	1.0	0.5	0.3	0.1	93.6	1.4	5.0	0.083	0.505	20.488373	-99.298631
T. Der. Tasquillo (2º Acceso)	10.50	1	0	4844	5.7	86.3	1.3	3.1	1.2	1.1	0.8	0.2	0.3	92.0	1.3	6.7	0.085	0.510	20.542206	-99.318295
T. Izq. Zimapán (1º Acceso)	32.00	1	0	6167	6.6	86.7	1.1	2.8	0.8	1.0	0.7	0.2	0.1	93.3	1.1	5.6	0.076	0.500	20.702941	-99.334508
T. Izq. Zimapán (1º Acceso)	32.00	3	0	2263	5.1	86.7	1.3	2.6	1.4	1.4	1.2	0.2	0.1	91.8	1.3	6.9	0.084	0.513	20.706057	-99.336200
La Estancia	41.00	3	0	2279	3.0	83.1	1.7	7.8	1.3	1.7	0.9	0.3	0.2	86.1	1.7	12.2	0.094	0.504	20.777742	-99.309861
Trancas	51.00	3	0	1880	3.6	81.2	1.9	8.4	1.5	1.2	1.5	0.4	0.3	84.8	1.9	13.3	0.088	0.513	20.801478	-99.261738
Jacala	98.60	3	0	2420	7.6	80.6	1.1	8.0	0.8	1.1	0.4	0.3	0.1	88.2	1.1	10.7	0.089	0.509	21.002261	-99.184735
Zacate Grande	143.10	1	0	1130	4.8	83.5	2.4	5.8	1.5	0.9	0.7	0.3	0.1	88.3	2.4	9.3	0.072	0.509	21.106569	-99.003043
T. Izq. Pisaflores	154.00	3	0	2287	6.2	83.9	1.5	5.5	1.4	0.6	0.5	0.3	0.1	90.1	1.5	8.4	0.088	0.501	21.153707	-98.945147
Lim. Edos. Term. Hgo. Ppia. S. L. P.	168.63																			
Tamazunchale	192.80	1	0	7018	25.1	65.4	2.2	3.8	2.0	0.6	0.2	0.6	0.1	90.5	2.2	7.3	0.075	0.500	21.263533	-98.799566
T. Izq. Xilitla	228.75	1	0	6373	8.6	78.8	2.2	4.6	3.1	1.1	0.5	0.9	0.2	87.4	2.2	10.4	0.094	0.501	21.443217	-98.925696
T. Izq. Xilitla	228.75	3	0	5561	13.0	74.6	2.3	4.4	2.8	1.3	0.7	0.4	0.5	87.6	2.3	10.1	0.084	0.506	21.448931	-98.930551
T. Izq. Aquismón	252.50	1	0	6325	8.5	78.1	2.3	4.4	3.6	1.4	0.7	0.8	0.2	86.6	2.3	11.1	0.088	0.503	21.622380	-98.987299
Agua Hedionda	265.00	1	0	6566	4.2	81.4	2.2	4.9	3.8	1.6	0.9	0.8	0.2	85.6	2.2	12.2	0.079	0.509	21.712375	-98.962011

HIDALGO

10 CARR: Portezuelo - Cd. Valles

CLAVE: 00023

RUTA: MEX-085

AÑO: 2023

LUGAR	ESTACION				CLASIFICACION VEHICULAR EN PORCIENTO													COORDENADAS		
	KM	TE	SC	TDPA	M	A	B	C2	C3	T3S2	T3S3	T3S2R4	OTROS	A	B	C	K'	D	LATITUD	LONGITUD
X. C. Rayón - Ent. Tamuín (Cuola)	286.41	1	1	4548	3.8	82.1	2.1	5.6	3.7	1.5	0.7	0.3	0.2	85.9	2.1	12.0	0.086	0.516	21.884734	-98.947361
X. C. Rayón - Ent. Tamuín (Cuola)	286.41	1	2	4262	3.9	82.2	2.1	5.4	3.7	1.4	0.7	0.4	0.2	86.1	2.1	11.8	0.082	0.516	21.884688	-98.947495
Cd. Valles	300.00	1	1	6784	6.5	83.3	1.9	4.9	1.6	0.7	0.5	0.4	0.2	89.8	1.9	8.3	0.083	0.502	21.959228	-98.998614
Cd. Valles	300.00	1	2	6722	6.5	83.2	1.9	4.9	1.7	0.7	0.5	0.4	0.2	89.7	1.9	8.4	0.083	0.502	21.959289	-98.998784

11 CARR: Portezuelo - Palmillas

CLAVE: 00194

RUTA: MEX-045

AÑO: 2023

LUGAR	ESTACION				CLASIFICACION VEHICULAR EN PORCIENTO													COORDENADAS		
	KM	TE	SC	TDPA	M	A	B	C2	C3	T3S2	T3S3	T3S2R4	OTROS	A	B	C	K'	D	LATITUD	LONGITUD
Portezuelo	0.00	3	1	4732	3.0	71.9	3.3	9.0	2.4	5.6	2.5	1.8	0.5	74.9	3.3	21.8	0.091	0.506	20.486603	-99.304287
Portezuelo	0.00	3	2	4851	2.7	72.5	2.9	8.5	2.0	6.2	3.2	1.6	0.4	75.2	2.9	21.9	0.086	0.506	20.486513	-99.304292
Jonacapa	29.41	3	0	5261	3.6	73.2	3.1	7.4	2.7	5.0	3.0	1.5	0.5	76.8	3.1	20.1	0.092	0.525	20.435452	-99.536380
Huichapan	45.10	1	1	4396	2.1	78.0	2.5	5.5	2.4	3.5	2.7	2.7	0.6	80.1	2.5	17.4	0.109	0.501	20.395415	-99.635343
Huichapan	45.10	1	2	4407	2.0	77.4	3.0	5.9	2.1	4.1	2.1	2.7	0.7	79.4	3.0	17.6	0.104	0.501	20.395336	-99.635276
T. Izq. Nopala	56.15	1	0	10355	2.8	75.8	3.1	4.8	3.1	4.8	2.8	2.3	0.5	78.6	3.1	18.3	0.096	0.519	20.317999	-99.713288
T. Izq. Nopala	56.15	3	0	7697	3.0	72.2	3.1	5.1	2.9	6.0	4.0	2.8	0.9	75.2	3.1	21.7	0.085	0.505	20.309694	-99.721394
Lim. Edos. Term. Hgo. Ppia. Oro.	71.40																			
Palmillas	80.00	1	1	5248	2.0	74.5	2.5	9.2	2.2	3.5	3.4	2.0	0.7	76.5	2.5	21.0	0.078	0.509	20.322142	-99.928659
Palmillas	80.00	1	2	5444	1.7	75.3	2.4	9.2	1.9	4.0	3.1	1.9	0.5	77.0	2.4	20.6	0.081	0.509	20.322177	-99.928788

12 CARR: Tamazunchale - San Felipe Orizatlán

CLAVE: 00609

RUTA: MEX-085

AÑO: 2023

LUGAR	ESTACION				CLASIFICACION VEHICULAR EN PORCIENTO													COORDENADAS		
	KM	TE	SC	TDPA	M	A	B	C2	C3	T3S2	T3S3	T3S2R4	OTROS	A	B	C	K'	D	LATITUD	LONGITUD
T. C. Portezuelo - Cd. Valles	0.00	3	0	16449	23.1	68.9	0.7	4.2	0.9	0.5	1.2	0.4	0.1	92.0	0.7	7.3	0.079	0.511	21.250516	-98.765904
Lim. Edos. Term. S. L. P. Ppia. Hgo.	18.50																			
San Felipe Orizatlán	27.10	1	0	3160	18.6	69.8	2.0	6.8	1.5	0.5	0.4	0.3	0.1	88.4	2.0	9.6	0.086	0.507	21.170705	-98.617920

13 CARR: Venta de Carpio - T. C. (Pachuca - Tuxpam)

CLAVE: 00455

RUTA: MEX-132

AÑO: 2023

LUGAR	ESTACION				CLASIFICACION VEHICULAR EN PORCIENTO													COORDENADAS		
	KM	TE	SC	TDPA	M	A	B	C2	C3	T3S2	T3S3	T3S2R4	OTROS	A	B	C	K'	D	LATITUD	LONGITUD
T. C. México - Pachuca (Libre)	0.00																			
T. Der. Texcoco	6.42	3	1	14622	5.7	87.2	0.4	2.9	1.3	1.6	0.5	0.2	0.2	92.9	0.4	6.7	0.067	0.524	19.610899	-98.947289
T. Der. Texcoco	6.42	3	2	13285	5.6	87.4	0.7	2.6	1.4	1.6	0.4	0.2	0.1	93.0	0.7	6.3	0.073	0.524	19.610992	-98.947288

HIDALGO

13 CARR: Venta de Carpio - T. C. (Pachuca - Tuxpam)

CLAVE: 00455

RUTA: MEX-132

AÑO: 2023

LUGAR	ESTACION				CLASIFICACION VEHICULAR EN PORCIENTO										COORDENADAS					
	KM	TE	SC	TDPA	M	A	B	C2	C3	T3S2	T3S3	T3S2R4	OTROS	A	B	C	K'	D	LATITUD	LONGITUD
Tepexpan	7.57	3	1	11195	5.5	85.7	0.6	5.0	1.0	1.4	0.3	0.2	0.3	91.2	0.6	8.2	0.082	0.500	19.620558	-98.934842
Tepexpan	7.57	3	2	11210	5.7	85.2	0.7	4.7	1.2	1.4	0.4	0.3	0.4	90.9	0.7	8.4	0.084	0.500	19.620546	-98.934941
Acolman	12.42	1	0	16245	7.4	84.9	0.7	2.2	0.9	1.6	0.7	1.1	0.5	92.3	0.7	7.0	0.077	0.528	19.632766	-98.917823
Teotihuacán	20.70	3	0	24673	8.3	84.1	0.6	4.5	0.6	0.6	0.3	0.6	0.4	92.4	0.6	7.0	0.075	0.534	19.681568	-98.863201
T. Der. Otumba	31.79	1	0	17565	4.6	88.6	0.6	2.9	1.1	0.6	0.5	0.4	0.7	93.2	0.6	6.2	0.061	0.507	19.717722	-98.802770
T. Der. Otumba	31.79	3	0	7015	8.2	76.5	2.4	8.3	1.9	1.0	0.5	0.7	0.5	84.7	2.4	12.9	0.095	0.545	19.722617	-98.788390
Ent. Santiago Tolman	34.09																			
X. C. Tizayuca - Otumba	37.85	1	1	13859	2.3	79.4	3.2	5.2	1.9	4.5	1.4	1.7	0.4	81.7	3.2	15.1	0.075	0.501	19.744688	-98.763364
X. C. Tizayuca - Otumba	37.85	1	2	13922	1.9	79.5	3.5	5.1	1.6	4.5	1.7	1.8	0.4	81.4	3.5	15.1	0.082	0.501	19.744757	-98.763464
X. C. Tizayuca - Otumba	37.85	3	1	14979	2.5	80.9	2.7	3.4	2.1	5.2	1.1	1.7	0.4	83.4	2.7	13.9	0.093	0.506	19.759085	-98.750825
X. C. Tizayuca - Otumba	37.85	3	2	14623	2.5	81.5	2.4	3.6	2.0	4.5	1.4	1.7	0.4	84.0	2.4	13.6	0.117	0.506	19.759147	-98.750933
X. C. Arco Norte de La Ciudad de México	48.00	1	1	13164	1.3	77.2	4.0	6.5	1.9	5.7	1.0	1.9	0.5	78.5	4.0	17.5	0.109	0.504	19.827674	-98.705644
X. C. Arco Norte de La Ciudad de México	48.00	1	2	13378	1.2	76.4	4.4	6.8	2.1	5.6	1.1	1.9	0.5	77.6	4.4	18.0	0.131	0.504	19.827751	-98.705739
X. C. Arco Norte de La Ciudad de México	48.00	3	1	12499	1.1	84.4	2.2	4.4	1.0	3.2	1.7	1.3	0.7	85.5	2.2	12.3	0.113	0.516	19.839836	-98.693053
X. C. Arco Norte de La Ciudad de México	48.00	3	2	11735	1.1	84.7	2.1	4.7	1.1	3.0	1.5	1.2	0.6	85.8	2.1	12.1	0.133	0.516	19.840387	-98.692604
Lim. Edos. Term. Méx. Ppia. Hgo.	51.00																			
X. C. Pachuca - Cd. Sahagún	54.00	3	1	11839	1.7	75.0	4.4	9.0	2.9	3.4	2.0	1.3	0.3	76.7	4.4	18.9	0.092	0.501	19.882142	-98.657995
X. C. Pachuca - Cd. Sahagún	54.00	3	2	11865	1.4	75.2	4.6	9.0	2.7	3.4	2.2	1.2	0.3	76.6	4.6	18.8	0.099	0.501	19.882210	-98.658094
X. C. Calpulalpan - El Ocote	64.17	1	1	9445	1.4	79.3	2.6	7.8	3.5	3.0	1.1	0.9	0.4	80.7	2.6	16.7	0.098	0.505	19.918198	-98.585502
X. C. Calpulalpan - El Ocote	64.17	1	2	9256	1.4	79.3	2.6	7.7	3.6	2.9	1.2	1.0	0.3	80.7	2.6	16.7	0.104	0.505	19.916451	-98.587400
X. C. Calpulalpan - El Ocote	64.17	3	1	8264	2.4	78.4	2.3	8.0	3.0	2.7	1.6	1.2	0.4	80.8	2.3	16.9	0.098	0.529	19.925760	-98.576036
X. C. Calpulalpan - El Ocote	64.17	3	2	9274	2.5	77.3	2.4	8.2	3.2	3.0	1.7	1.2	0.5	79.8	2.4	17.8	0.115	0.529	19.925963	-98.575905
T. C. Pachuca - Tuxpam	84.08	1	1	15870	2.7	80.5	3.0	4.5	2.8	3.4	1.4	1.1	0.6	83.2	3.0	13.8	0.083	0.513	20.048958	-98.463608
T. C. Pachuca - Tuxpam	84.08	1	2	16725	2.6	80.8	3.2	4.7	2.5	3.0	1.6	0.9	0.7	83.4	3.2	13.4	0.109	0.513	20.048552	-98.464273

14 CARR: Ent. Tulancingo - Venta Grande (Cuota)

CLAVE: 00026

RUTA: MEX-132D

AÑO: 2023

LUGAR	ESTACION				CLASIFICACION VEHICULAR EN PORCIENTO										COORDENADAS					
	KM	TE	SC	TDPA	M	A	B	C2	C3	T3S2	T3S3	T3S2R4	OTROS	A	B	C	K'	D	LATITUD	LONGITUD
T. C. Pachuca - Tuxpam	0.00																			
T. Izq. Acatlán	7.80	1	0	19982	3.9	80.3	1.8	4.6	2.1	3.3	1.4	1.8	0.8	84.2	1.8	14.0	0.106	0.533	20.105334	-98.406537
T. Izq. Acatlán	7.80	3	0	17956	2.3	75.9	4.1	6.3	2.2	4.3	1.5	2.6	0.8	78.2	4.1	17.7	0.116	0.507	20.110738	-98.393715
Plaza de Cobro San Alejo (Tejocotal)	21.80	1	0	16313	3.6	75.1	4.3	6.7	1.8	3.1	1.2	3.3	0.9	78.7	4.3	17.0	0.124	0.515	20.150746	-98.302182
Plaza de Cobro San Alejo (Tejocotal)	21.80	2	0	9922	1.2	70.8	5.0	3.1	4.0	5.9	2.3	6.4	1.3	72.0	5.0	23.0	0.115	0.500	20.147472	-98.285748
T. C. Tlaxco - Tejocotal (Cuota)	39.60	1	0	14301	5.0	73.5	3.7	6.3	2.6	4.6	1.7	2.1	0.5	78.5	3.7	17.8	0.096	0.504	20.141468	-98.136617

HIDALGO

15 CARR: Libramiento Norte de la Ciudad de México (Cuota)

CLAVE: 0902

RUTA: MEX-055D

AÑO: 2023

LUGAR	ESTACION				CLASIFICACION VEHICULAR EN PORCIENTO												COORDENADAS			
	KM	TE	SC	TDPA	M	A	B	C2	C3	T3S2	T3S3	T3S2R4	OTROS	A	B	C	K'	D	LATITUD	LONGITUD
T. C. Toluca - Palmillas	0.00																			
X. C. Toluca - Palmillas	12.90	1	1	5677	2.6	60.2	6.0	5.4	3.5	14.8	1.9	4.7	0.9	62.8	6.0	31.2	0.077	0.519	19.917558	-99.850479
X. C. Toluca - Palmillas	12.90	1	2	6133	2.8	59.8	6.1	5.8	3.3	14.4	2.4	4.5	0.9	62.6	6.1	31.3	0.061	0.519	19.917572	-99.850680
X. C. Toluca - Palmillas	12.90	3	1	5607	2.3	58.0	7.8	5.2	4.1	14.1	2.2	5.6	0.7	60.3	7.8	31.9	0.071	0.508	19.923116	-99.836527
X. C. Toluca - Palmillas	12.90	3	2	5433	2.5	57.6	8.0	4.8	3.5	15.5	2.0	5.2	0.9	60.1	8.0	31.9	0.088	0.508	19.922898	-99.836434
C. P. Jilotepec	48.70	1	1	5483	3.6	55.5	9.1	5.2	3.0	14.7	2.0	6.1	0.8	59.1	9.1	31.8	0.068	0.502	19.968926	-99.538351
C. P. Jilotepec	48.70	1	2	5450	3.2	56.0	8.8	5.6	3.0	14.6	1.6	6.3	0.9	59.2	8.8	32.0	0.090	0.502	19.968972	-99.538055
C. P. Jilotepec	48.70	3	1	6900	3.7	56.8	7.8	6.1	2.6	15.3	1.7	5.1	0.9	60.5	7.8	31.7	0.075	0.504	19.980261	-99.515966
C. P. Jilotepec	48.70	3	2	7014	3.3	56.6	7.8	5.9	3.4	14.8	2.3	5.0	0.9	59.9	7.8	32.3	0.070	0.504	19.980369	-99.516033
X. C. México - Querétaro	54.00	3	1	9739	2.5	53.2	8.0	5.6	4.3	15.8	3.0	6.8	0.8	55.7	8.0	36.3	0.077	0.538	20.003079	-99.483509
X. C. México - Querétaro	54.00	3	2	8348	2.8	55.1	7.8	4.9	3.9	15.2	4.0	5.6	0.7	57.9	7.8	34.3	0.096	0.538	20.003142	-99.483566
Plaza de Cobro Querétaro	55.00	3	1	9691	0.4	52.8	2.0	4.5	6.0	19.0	4.5	8.2	2.6	53.2	2.0	44.8	0.067	0.500	19.998714	-99.487788
Plaza de Cobro Querétaro	55.00	3	2	9691	0.4	52.8	2.0	4.5	6.0	19.0	4.5	8.2	2.6	53.2	2.0	44.8	0.067	0.500	19.998714	-99.487788
Lim. Edos. Term. Méx. Ppia. Hgo.	60.72																			
X. C. Ent. Tepeji del Río - Tlahuelilpan	79.00	1	1	9481	5.0	53.1	6.1	5.0	4.8	14.2	4.4	6.7	0.7	58.1	6.1	35.8	0.067	0.524	20.097363	-99.290651
X. C. Ent. Tepeji del Río - Tlahuelilpan	79.00	1	2	10456	5.3	53.7	5.5	4.7	4.6	15.1	3.9	6.5	0.7	59.0	5.5	35.5	0.065	0.524	20.097435	-99.290690
X. C. Ent. Tepeji del Río - Tlahuelilpan	79.00	3	1	10976	7.8	56.1	4.7	4.5	3.4	13.4	3.6	5.7	0.8	63.9	4.7	31.4	0.078	0.511	20.093753	-99.270576
X. C. Ent. Tepeji del Río - Tlahuelilpan	79.00	3	2	11486	7.0	57.7	3.7	4.7	3.9	13.4	3.6	5.2	0.8	64.7	3.7	31.6	0.074	0.511	20.094033	-99.270720
X. C. Los Reyes - El Tephé	86.40	1	1	11278	3.1	59.0	5.1	4.5	2.8	14.6	4.0	6.1	0.8	62.1	5.1	32.8	0.071	0.501	20.070173	-99.228120
X. C. Los Reyes - El Tephé	86.40	1	2	11225	2.6	58.2	5.2	4.5	3.3	14.9	4.3	6.3	0.7	60.8	5.2	34.0	0.070	0.501	20.070156	-99.227776
X. C. Los Reyes - El Tephé	86.40	3	1	11997	3.3	57.7	5.2	4.0	3.6	16.0	3.4	6.0	0.8	61.0	5.2	33.8	0.077	0.530	20.064823	-99.213920
X. C. Los Reyes - El Tephé	86.40	3	2	10629	3.2	57.7	5.1	4.3	3.1	15.9	3.5	6.4	0.8	60.9	5.1	34.0	0.064	0.530	20.064968	-99.213872
Lim. Edos. Term. Hgo. Ppia. Méx.	95.75																			
X. C. (Los Reyes - El Tephé) - Tianguistongo	108.60	1	1	11147	2.1	53.1	7.1	4.4	3.0	18.6	3.7	7.1	0.9	55.2	7.1	37.7	0.073	0.500	19.958443	-99.067742
X. C. (Los Reyes - El Tephé) - Tianguistongo	108.60	1	2	11145	2.2	54.2	7.0	4.3	3.1	18.4	3.4	6.5	0.9	56.4	7.0	36.6	0.073	0.500	19.958560	-99.067522
X. C. (Los Reyes - El Tephé) - Tianguistongo	108.60	3	1	11789	3.4	57.6	5.8	5.2	2.3	15.6	3.7	5.5	0.9	61.0	5.8	33.2	0.067	0.503	19.955087	-99.050098
X. C. (Los Reyes - El Tephé) - Tianguistongo	108.60	3	2	11928	3.7	55.9	5.4	5.5	3.0	16.3	3.0	6.3	0.9	59.6	5.4	35.0	0.070	0.503	19.955253	-99.050054
Lim. Edos. Term. Méx. Ppia. Hgo.	115.89																			
X. C. México - Pachuca	127.30	1	1	11591	2.8	60.6	4.8	4.1	3.2	15.3	3.4	5.1	0.7	63.4	4.8	31.8	0.079	0.510	19.932306	-98.902517
X. C. México - Pachuca	127.30	1	2	11134	2.6	57.1	5.7	4.7	3.5	16.8	3.2	5.7	0.7	59.7	5.7	34.6	0.072	0.510	19.932489	-98.902637
X. C. México - Pachuca	127.30	3	1	9212	3.7	52.7	5.7	4.2	3.6	18.5	4.1	6.7	0.8	56.4	5.7	37.9	0.082	0.508	19.926723	-98.878921
X. C. México - Pachuca	127.30	3	2	8927	3.7	56.5	5.8	4.1	3.5	16.5	3.5	5.6	0.8	60.2	5.8	34.0	0.076	0.508	19.926819	-98.878663
Lim. Edos. Term. Hgo. Ppia. Méx.	143.98																			
X. C. Venta de Carpio - T. C. (Pachuca - Tulancingo)	151.11	1	1	9224	4.4	51.9	5.8	4.8	3.8	18.0	3.9	6.7	0.7	56.3	5.8	37.9	0.076	0.526	19.840828	-98.709076
X. C. Venta de Carpio - T. C. (Pachuca - Tulancingo)	151.11	1	2	8310	4.4	51.8	5.8	4.8	3.8	18.0	3.9	6.7	0.8	56.2	5.8	38.0	0.084	0.526	19.839842	-98.707735

HIDALGO

15 CARR: Libramiento Norte de la Ciudad de México (Cuota)

CLAVE: 0902

RUTA: MEX-055D

AÑO: 2023

LUGAR	ESTACION				CLASIFICACION VEHICULAR EN PORCIENTO										COORDENADAS					
	KM	TE	SC	TDPA	M	A	B	C2	C3	T3S2	T3S3	T3S2R4	OTROS	A	B	C	K'	D	LATITUD	LONGITUD
X. C. Venta de Carpio - T. C. (Pachuca - Tulancingo)	151.11	3	1	8489	3.3	49.7	5.5	4.9	4.8	20.5	3.9	6.5	0.9	53.0	5.5	41.5	0.074	0.503	19.826974	-98.691977
X. C. Venta de Carpio - T. C. (Pachuca - Tulancingo)	151.11	3	2	8597	3.2	51.8	6.5	4.6	4.1	18.7	3.8	6.4	0.9	55.0	6.5	38.5	0.072	0.503	19.828396	-98.693462
X. C. Ent. Tolman - Cd. Sahagún	162.55	1	1	8746	3.6	48.4	8.4	4.8	3.2	20.7	3.9	6.1	0.9	52.0	8.4	39.6	0.077	0.502	19.761578	-98.632495
X. C. Ent. Tolman - Cd. Sahagún	162.55	1	2	8802	3.6	48.5	8.4	4.7	3.2	20.6	3.9	6.2	0.9	52.1	8.4	39.5	0.083	0.502	19.770293	-98.637676
X. C. Ent. Tolman - Cd. Sahagún	162.55	3	1	9639	1.4	53.7	6.3	7.3	2.9	17.3	3.4	6.8	0.9	55.1	6.3	38.6	0.088	0.501	19.746627	-98.624309
X. C. Ent. Tolman - Cd. Sahagún	162.55	3	2	9683	1.7	49.5	7.0	7.6	3.4	19.0	3.9	7.0	0.9	51.2	7.0	41.8	0.093	0.501	19.746742	-98.624176
Lim. Edos. Term. Méx. Ppia. Hgo.	166.53																			
X. C. Calpulallpan - El Ocote	180.39	1	1	11887	7.6	50.1	6.9	5.0	3.7	16.9	3.6	5.3	0.9	57.7	6.9	35.4	0.068	0.519	19.642020	-98.565440
X. C. Calpulallpan - El Ocote	180.39	1	2	11014	7.4	50.6	6.4	5.0	3.4	17.0	4.0	5.3	0.9	58.0	6.4	35.6	0.063	0.519	19.642050	-98.565251
X. C. Calpulallpan - El Ocote	180.39	3	1	11491	3.3	48.0	6.3	4.9	4.3	19.1	4.9	8.3	0.9	51.3	6.3	42.4	0.089	0.526	19.605782	-98.536386
X. C. Calpulallpan - El Ocote	180.39	3	2	12751	3.3	48.8	6.2	4.1	4.5	19.1	4.9	8.2	0.9	52.1	6.2	41.7	0.079	0.526	19.605800	-98.536172
Lim. Edos. Term. Hgo. Ppia. Tlax.	180.98																			
X. C. Los Reyes - Zacatepec	196.70	1	1	11414	6.0	50.3	5.9	4.2	2.8	18.3	4.4	7.2	0.9	56.3	5.9	37.8	0.064	0.519	19.520125	-98.472859
X. C. Los Reyes - Zacatepec	196.70	1	2	12298	6.0	50.4	5.9	4.2	2.8	18.3	4.4	7.2	0.8	56.4	5.9	37.7	0.063	0.519	19.520141	-98.472723
X. C. Los Reyes - Zacatepec	196.70	3	1	7989	5.8	52.6	6.3	4.9	2.8	17.9	3.5	5.3	0.9	58.4	6.3	35.3	0.067	0.500	19.508537	-98.467153
X. C. Los Reyes - Zacatepec	196.70	3	2	7982	5.9	52.5	6.3	4.9	2.8	17.9	3.5	5.3	0.9	58.4	6.3	35.3	0.072	0.500	19.508553	-98.467068
X. C. San Martín Texmelucan - Tlaxcala - El Molinito	220.95	1	1	10409	4.2	53.0	6.5	5.1	2.8	18.1	3.6	5.8	0.9	57.2	6.5	36.3	0.061	0.531	19.315339	-98.407358
X. C. San Martín Texmelucan - Tlaxcala - El Molinito	220.95	1	2	9206	4.1	53.1	6.4	4.9	2.8	18.1	3.6	6.0	1.0	57.2	6.4	36.4	0.061	0.531	19.314741	-98.407357
X. C. San Martín Texmelucan - Tlaxcala - El Molinito	220.95	3	1	12225	3.9	64.0	6.4	4.9	2.5	11.4	2.3	3.7	0.9	67.9	6.4	25.7	0.063	0.513	19.287878	-98.410761
X. C. San Martín Texmelucan - Tlaxcala - El Molinito	220.95	3	2	11623	3.3	64.6	6.4	4.9	2.6	11.4	2.2	3.7	0.9	67.9	6.4	25.7	0.067	0.513	19.287878	-98.410652
Plaza de Cobro San Martín Texmelucan	222.00	1	1	8169	0.4	50.6	2.1	5.5	5.8	21.4	3.8	8.2	2.2	51.0	2.1	46.9	0.067	0.500	19.301809	-98.409588
Plaza de Cobro San Martín Texmelucan	222.00	1	2	8169	0.4	50.6	2.1	5.5	5.8	21.4	3.8	8.2	2.2	51.0	2.1	46.9	0.067	0.500	19.301809	-98.409588
T. C. San Martín Texmelucan - Ocotoxco (Cuota)	222.44																			
T. C. México - Puebla (Cuota)	226.73	1	1	10630	3.7	62.6	7.1	4.2	3.5	11.9	2.2	3.9	0.9	66.3	7.1	26.6	0.070	0.514	19.270164	-98.419889
T. C. México - Puebla (Cuota)	226.73	1	2	11254	3.7	62.5	7.1	4.2	3.6	11.9	2.2	3.9	0.9	66.2	7.1	26.7	0.066	0.514	19.270014	-98.419878

16 CARR: México - Pachuca (Cuota)

CLAVE: 00432

RUTA: MEX-085D

AÑO: 2023

LUGAR	ESTACION				CLASIFICACION VEHICULAR EN PORCIENTO										COORDENADAS					
	KM	TE	SC	TDPA	M	A	B	C2	C3	T3S2	T3S3	T3S2R4	OTROS	A	B	C	K'	D	LATITUD	LONGITUD
T. C. México - Pachuca (Libre)	0.00																			
Lim. Edos. Term. CDMX Ppia. Méx.	9.86																			
Plaza de Cobro Ojo de Agua	25.00	2	1	41785	2.2	87.2	4.2	2.5	1.6	1.7	0.2	0.3	0.1	89.4	4.2	6.4	0.081	0.500	19.618737	-99.029315
Plaza de Cobro Ojo de Agua	25.00	2	2	41785	2.2	87.2	4.2	2.5	1.6	1.7	0.2	0.3	0.1	89.4	4.2	6.4	0.081	0.500	19.618737	-99.029315
Plaza de Cobro Ojo de Agua	25.00	3	1	37486	2.7	86.7	1.7	5.2	1.1	1.5	0.2	0.7	0.2	89.4	1.7	8.9	0.077	0.503	19.636511	-99.019993

HIDALGO

16 CARR: México - Pachuca (Cuota)

CLAVE: 00432

RUTA: MEX-085D

AÑO: 2023

LUGAR	ESTACION				CLASIFICACION VEHICULAR EN PORCIENTO										COORDENADAS					
	KM	TE	SC	TDPA	M	A	B	C2	C3	T3S2	T3S3	T3S2R4	OTROS	A	B	C	K'	D	LATITUD	LONGITUD
Plaza de Cobro Ojo de Agua	25.00	3	2	37023	2.9	86.9	1.8	5.4	0.8	1.3	0.2	0.5	0.2	89.8	1.8	8.4	0.074	0.503	19.629626	-99.023942
X. C. México - Pachuca (Libre) Ent. Ojo de Agua	30.62	3	1	38428	3.4	85.7	2.0	5.0	1.1	1.5	0.3	0.7	0.3	89.1	2.0	8.9	0.074	0.508	19.671562	-98.994905
X. C. México - Pachuca (Libre) Ent. Ojo de Agua	30.62	3	2	37127	3.4	85.0	2.3	5.2	1.0	1.5	0.4	0.8	0.4	88.4	2.3	9.3	0.069	0.508	19.675510	-98.990889
T. Izq. Tecámac	35.62	3	1	33653	1.7	86.5	2.5	3.6	2.6	2.3	0.5	0.2	0.1	88.2	2.5	9.3	0.088	0.510	19.707984	-98.966460
T. Izq. Tecámac	35.62	3	2	32269	1.9	86.6	2.4	3.4	2.7	2.0	0.6	0.2	0.2	88.5	2.4	9.1	0.086	0.510	19.712025	-98.964121
T. Izq. AIFA	40.50	3	1	33471	2.9	88.2	2.2	2.9	1.4	1.9	0.2	0.2	0.1	91.1	2.2	6.7	0.086	0.524	19.744425	-98.946003
T. Izq. AIFA	40.50	3	2	30138	2.6	88.4	2.5	2.8	1.3	1.8	0.3	0.2	0.1	91.0	2.5	6.5	0.096	0.524	19.743946	-98.946110
Lim. Edos. Term. Méx. Ppia. Hgo.	49.60																			
X. C. Otumba - Tizayuca	53.45	1	1	32605	1.8	88.6	2.4	2.8	1.2	2.2	0.5	0.3	0.2	90.4	2.4	7.2	0.092	0.500	19.826754	-98.949358
X. C. Otumba - Tizayuca	53.45	1	2	32562	1.9	89.4	2.2	2.8	1.1	2.0	0.3	0.2	0.1	91.3	2.2	6.5	0.100	0.500	19.826852	-98.949473
T. C. México - Pachuca (Libre)	60.50	1	1	23378	2.7	88.9	2.3	2.1	1.1	1.9	0.4	0.4	0.2	91.6	2.3	6.1	0.083	0.526	19.883620	-98.937487
T. C. México - Pachuca (Libre)	60.50	1	2	21080	2.5	89.7	2.3	1.9	1.0	1.7	0.4	0.3	0.2	92.2	2.3	5.5	0.113	0.526	19.881383	-98.937794

17 CARR: Tejocotal - Nuevo Necaxa (Cuota)

CLAVE: 00211

RUTA: MEX-132D

AÑO: 2023

LUGAR	ESTACION				CLASIFICACION VEHICULAR EN PORCIENTO										COORDENADAS					
	KM	TE	SC	TDPA	M	A	B	C2	C3	T3S2	T3S3	T3S2R4	OTROS	A	B	C	K'	D	LATITUD	LONGITUD
T. C. Tlaxco - Tejocotal (Cuota)	0.00	3	0	12879	2.9	74.0	5.3	7.0	3.1	3.8	1.3	1.8	0.8	76.9	5.3	17.8	0.080	0.501	20.135852	-98.113649
Lim. Edos. Term. Hgo. Ppia. Pue.	2.10																			
Plaza de Cobro Nuevo Necaxa	17.00	1	1	4662	1.7	73.1	4.8	6.5	2.4	6.0	2.1	2.8	0.6	74.8	4.8	20.4	0.094	0.503	20.168976	-98.026841
Plaza de Cobro Nuevo Necaxa	17.00	1	2	4711	1.8	72.0	4.6	6.9	2.6	5.8	2.4	3.2	0.7	73.8	4.6	21.6	0.162	0.503	20.168949	-98.026875
Plaza de Cobro Nuevo Necaxa	17.00	2	0	1934	0.8	78.9	1.1	3.8	4.3	5.2	2.8	2.0	1.1	79.7	1.1	19.2	0.092	0.500	20.186559	-98.029829
T. C. Pachuca - Tuxpam	18.70																			

18 CARR: Tlaxco - Tejocotal (Cuota)

CLAVE: 00209

RUTA: MEX-119D

AÑO: 2023

LUGAR	ESTACION				CLASIFICACION VEHICULAR EN PORCIENTO										COORDENADAS					
	KM	TE	SC	TDPA	M	A	B	C2	C3	T3S2	T3S3	T3S2R4	OTROS	A	B	C	K'	D	LATITUD	LONGITUD
T.C. Apan - Tlaxco	23.00	3	0	5392	1.5	86.2	3.0	3.5	1.8	2.2	1.0	0.7	0.1	87.7	3.0	9.3	0.108	0.503	19.607566	-98.156693
Lim. Edos. Term. Tlax. Ppia. Pue.	30.70																			
Ent. Chignahuapan	56.20	3	0	3761	1.8	86.2	2.5	3.1	2.0	2.2	1.3	0.8	0.1	88.0	2.5	9.5	0.095	0.506	19.870721	-98.061081
Lim. Edos. Term. Pue. Ppia. Hgo.	84.80																			
T. C. Apizaco - Tejocotal	85.60																			

HIDALGO

19 CARR: México - Querétaro (Cuota)

CLAVE: 00411

RUTA: MEX-057-MEX-057D

AÑO: 2023

LUGAR	ESTACION				CLASIFICACION VEHICULAR EN PORCIENTO														COORDENADAS		
	KM	TE	SC	TDPA	M	A	B	C2	C3	T3S2	T3S3	T3S2R4	OTROS	A	B	C	K'	D	LATITUD	LONGITUD	
México	0.00																				
Lim. Edos. Term. CDMX Ppia. Méx.	11.30																				
Lechería	29.41																				
Plaza de Cobro Tepetzotlán	43.01	2	1	30040	0.9	71.0	4.0	5.3	3.7	11.6	0.7	2.2	0.6	71.9	4.0	24.1	0.077	0.500	19.715361	-99.207448	
Plaza de Cobro Tepetzotlán	43.01	2	2	30040	0.9	71.0	4.0	5.3	3.7	11.6	0.7	2.2	0.6	71.9	4.0	24.1	0.077	0.500	19.715361	-99.207448	
Ent. Jorobas	56.18	1	1	30672	1.2	68.0	4.6	7.9	3.0	10.9	1.5	2.1	0.8	69.2	4.6	26.2	0.081	0.519	19.811442	-99.238533	
Ent. Jorobas	56.18	1	2	33309	1.2	68.0	4.6	7.9	3.0	10.9	1.5	2.1	0.8	69.2	4.6	26.2	0.071	0.519	19.801623	-99.234252	
Ent. Jorobas	56.18	3	1	41756	3.0	60.8	4.6	8.1	3.1	14.7	1.8	3.0	0.9	63.8	4.6	31.6	0.071	0.500	19.829442	-99.258270	
Ent. Jorobas	56.18	3	2	41832	3.1	57.3	5.2	9.3	3.4	15.3	2.1	3.3	1.0	60.4	5.2	34.4	0.074	0.500	19.832155	-99.265559	
Lim. Edos. Term. Méx. Ppia. Hgo.	59.85																				
T. Der. Tepeji del Río	69.36	1	1	37709	4.4	69.6	4.2	7.2	2.7	7.5	1.1	2.5	0.8	74.0	4.2	21.8	0.087	0.506	19.863072	-99.313993	
T. Der. Tepeji del Río	69.36	1	2	38626	4.4	69.6	4.2	7.2	2.7	7.5	1.1	2.5	0.8	74.0	4.2	21.8	0.094	0.506	19.872719	-99.339396	
T. Der. Tepeji del Río	69.36	3	1	32597	4.9	68.4	4.5	7.8	3.0	7.4	1.1	2.3	0.6	73.3	4.5	22.2	0.090	0.508	19.920899	-99.370419	
T. Der. Tepeji del Río	69.36	3	2	33788	4.9	68.4	4.5	7.8	3.0	7.4	1.1	2.3	0.6	73.3	4.5	22.2	0.077	0.508	19.919966	-99.369715	
T. Izq. Jilotepec	83.75	1	1	32362	4.8	67.4	4.9	7.5	2.9	7.8	1.5	2.6	0.6	72.2	4.9	22.9	0.091	0.517	19.972250	-99.434119	
T. Izq. Jilotepec	83.75	1	2	29987	4.7	67.5	4.9	7.5	2.9	7.8	1.5	2.6	0.6	72.2	4.9	22.9	0.084	0.517	19.977429	-99.437878	
T. Izq. Jilotepec	83.75	3	1	33105	4.7	67.1	5.3	7.3	3.0	7.9	1.5	2.7	0.5	71.8	5.3	22.9	0.090	0.529	19.989620	-99.458438	
T. Izq. Jilotepec	83.75	3	2	29113	4.7	67.1	5.3	7.3	3.0	7.9	1.5	2.7	0.5	71.8	5.3	22.9	0.074	0.529	19.988248	-99.454169	
Lim. Edos. Term. Hgo. Ppia. Méx.	86.00																				
X. C. Libramiento Norte de La Ciudad de México (Cuota)	89.44	3	1	38239	4.4	67.7	5.2	6.8	2.9	7.1	2.2	2.9	0.8	72.1	5.2	22.7	0.089	0.518	20.005128	-99.500836	
X. C. Libramiento Norte de La Ciudad de México (Cuota)	89.44	3	2	35261	4.5	67.3	5.3	6.9	2.9	7.2	2.2	2.9	0.8	71.8	5.3	22.9	0.069	0.518	20.003025	-99.497867	
T. Der. Palos Altos	97.80	1	1	30735	4.7	68.5	4.1	6.9	2.7	8.0	1.8	2.6	0.7	73.2	4.1	22.7	0.069	0.509	20.024315	-99.532143	
T. Der. Palos Altos	97.80	1	2	31926	4.7	68.6	4.1	6.9	2.7	8.0	1.8	2.6	0.6	73.3	4.1	22.6	0.079	0.509	20.034618	-99.557691	
X. C. Jilotepec - Maravillas	107.00	1	1	29210	5.3	65.2	4.3	4.0	3.8	10.6	1.5	4.6	0.7	70.5	4.3	25.2	0.080	0.505	20.080760	-99.619503	
X. C. Jilotepec - Maravillas	107.00	1	2	29851	5.2	63.5	4.4	4.2	3.9	11.6	1.6	4.8	0.8	68.7	4.4	26.9	0.095	0.505	20.075984	-99.614228	
X. C. Jilotepec - Maravillas	107.00	3	1	30897	4.7	57.8	9.7	5.9	2.2	13.8	1.6	3.5	0.8	62.5	9.7	27.8	0.084	0.505	20.082425	-99.635798	
X. C. Jilotepec - Maravillas	107.00	3	2	31608	4.6	57.9	8.3	5.4	2.7	14.5	2.0	3.9	0.7	62.5	8.3	29.2	0.094	0.505	20.082539	-99.633651	
T. Izq. Aculco	114.80	1	1	32925	5.2	59.1	6.8	5.0	2.9	14.5	1.8	4.0	0.7	64.3	6.8	28.9	0.081	0.507	20.097490	-99.692832	
T. Izq. Aculco	114.80	1	2	33906	5.2	58.7	6.7	5.0	3.1	14.5	1.9	4.2	0.7	63.9	6.7	29.4	0.082	0.507	20.091113	-99.686463	
T. Izq. Aculco	114.80	3	1	31084	4.6	60.4	7.7	5.9	2.5	12.9	1.7	3.5	0.8	65.0	7.7	27.3	0.083	0.519	20.109932	-99.707192	
T. Izq. Aculco	114.80	3	2	33774	4.6	59.6	8.1	6.9	2.4	12.5	1.7	3.4	0.8	64.2	8.1	27.7	0.069	0.519	20.108582	-99.704357	
T. Izq. Encinillas	121.70	1	1	31527	4.6	60.5	7.0	4.6	2.7	14.3	1.9	3.5	0.9	65.1	7.0	27.9	0.084	0.513	20.142743	-99.732436	
T. Izq. Encinillas	121.70	1	2	33380	5.0	59.9	7.0	5.4	2.2	13.8	2.2	3.6	0.9	64.9	7.0	28.1	0.074	0.513	20.145110	-99.734098	
Polotitlán	133.00	1	1	33481	5.2	63.5	7.2	3.6	2.7	11.7	2.0	3.4	0.7	68.7	7.2	24.1	0.086	0.508	20.220571	-99.804088	
Polotitlán	133.00	1	2	34649	5.3	60.5	7.2	3.7	2.9	13.6	2.3	3.7	0.8	65.8	7.2	27.0	0.090	0.508	20.220080	-99.803835	

HIDALGO

19 CARR: México - Querétaro (Cuota)

CLAVE: 00411

RUTA: MEX-057-MEX-057D

AÑO: 2023

LUGAR	ESTACION				CLASIFICACION VEHICULAR EN PORCIENTO										COORDENADAS					
	KM	TE	SC	TDPA	M	A	B	C2	C3	T3S2	T3S3	T3S2R4	OTROS	A	B	C	K'	D	LATITUD	LONGITUD
Lim. Edos. Term. Méx. Ppia. Qro.	145.50																			
Plaza de Cobro Palmillas	147.92	2	1	20964	0.5	59.5	3.1	6.3	4.8	18.8	1.8	4.1	1.1	60.0	3.1	36.9	0.077	0.500	20.296112	-99.929069
Plaza de Cobro Palmillas	147.92	2	2	20964	0.5	59.5	3.1	6.3	4.8	18.8	1.8	4.1	1.1	60.0	3.1	36.9	0.077	0.500	20.296112	-99.929069
T. Izq. Toluca	148.50	1	1	31654	4.6	62.1	5.0	4.1	3.0	14.5	1.8	4.0	0.9	66.7	5.0	28.3	0.086	0.503	20.287534	-99.913611
T. Izq. Toluca	148.50	1	2	31209	4.6	62.0	5.0	4.1	3.0	14.5	1.9	4.0	0.9	66.6	5.0	28.4	0.080	0.503	20.284593	-99.909231
T. Izq. Toluca	148.50	3	1	38253	1.2	67.1	5.7	6.2	3.6	11.2	1.9	2.3	0.8	68.3	5.7	26.0	0.061	0.502	20.312934	-99.931626
T. Izq. Toluca	148.50	3	2	38568	1.1	64.3	6.2	6.9	4.1	12.0	2.1	2.4	0.9	65.4	6.2	28.4	0.068	0.502	20.320074	-99.934114
T. Der. Portezuelo	151.53	3	1	39058	5.6	63.3	6.5	5.3	2.0	12.5	1.4	2.7	0.7	68.9	6.5	24.6	0.066	0.510	20.336777	-99.941306
T. Der. Portezuelo	151.53	3	2	40919	5.3	60.2	7.1	5.8	2.4	14.0	1.6	2.9	0.7	65.5	7.1	27.4	0.077	0.510	20.336548	-99.941629
T. Der. Poniente San Juan del Río	164.10	3	1	46192	7.4	65.5	5.4	5.3	2.5	8.4	1.3	3.4	0.8	72.9	5.4	21.7	0.065	0.513	20.373858	-99.994415
T. Der. Poniente San Juan del Río	164.10	3	2	43604	6.7	63.9	5.9	5.3	2.8	9.5	1.5	3.5	0.9	70.6	5.9	23.5	0.072	0.513	20.371958	-99.990429
La Estancia	169.40	1	1	52067	5.3	67.8	5.5	4.7	2.3	9.0	1.5	3.0	0.9	73.1	5.5	21.4	0.074	0.520	20.423584	-100.052229
La Estancia	169.40	1	2	57158	5.0	66.6	5.2	5.3	2.3	10.2	1.5	2.9	1.0	71.6	5.2	23.2	0.073	0.520	20.424511	-100.053515
T. Izq. Acámbaro	170.45	3	1	49441	5.1	67.0	5.6	5.4	2.0	10.2	1.2	2.7	0.8	72.1	5.6	22.3	0.077	0.516	20.447680	-100.079298
T. Izq. Acámbaro	170.45	3	2	46112	5.0	64.9	5.7	5.3	2.4	11.9	1.3	2.7	0.8	69.9	5.7	24.4	0.091	0.516	20.449881	-100.082349
T. Izq. El Sauz	176.50	3	1	46222	6.0	65.1	4.3	5.1	2.9	11.1	1.7	2.9	0.9	71.1	4.3	24.6	0.077	0.522	20.477772	-100.110882
T. Izq. El Sauz	176.50	3	2	41894	6.0	66.9	3.5	6.2	2.7	9.7	1.6	2.5	0.9	72.9	3.5	23.6	0.074	0.522	20.497771	-100.133982
T. Der. San Ildefonso	185.30	1	1	47931	4.2	72.0	4.2	6.9	1.1	7.5	1.8	1.5	0.8	76.2	4.2	19.6	0.074	0.536	20.520996	-100.168496
T. Der. San Ildefonso	185.30	1	2	40874	3.8	73.2	4.2	6.4	1.3	7.3	1.7	1.3	0.8	77.0	4.2	18.8	0.079	0.536	20.517314	-100.163865
T. Der. Libramiento Nororiental de Querétaro (Cuota)	192.50	1	1	50610	3.5	74.8	4.2	6.1	1.5	6.5	1.2	1.7	0.5	78.3	4.2	17.5	0.077	0.519	20.552636	-100.215635
T. Der. Libramiento Nororiental de Querétaro (Cuota)	192.50	1	2	46382	3.1	72.3	4.6	7.0	1.6	7.5	1.4	1.9	0.6	75.4	4.6	20.0	0.073	0.519	20.551670	-100.214620
T. Der. Libramiento Nororiental de Querétaro (Cuota)	192.50	3	1	58446	1.9	77.6	2.8	7.9	1.8	4.8	1.7	0.8	0.7	79.5	2.8	17.7	0.074	0.534	20.562657	-100.237199
T. Der. Libramiento Nororiental de Querétaro (Cuota)	192.50	3	2	68407	1.7	75.5	3.0	9.0	1.9	5.3	1.9	0.9	0.8	77.2	3.0	19.8	0.074	0.534	20.561648	-100.234728
T. Der. Libramiento de Querétaro a San Luis Potosí	207.00	1	1	77616	2.2	83.8	1.4	2.8	2.3	4.1	0.6	2.0	0.8	86.0	1.4	12.6	0.077	0.520	20.573483	-100.324085
T. Der. Libramiento de Querétaro a San Luis Potosí	207.00	1	2	70581	1.9	82.6	1.5	3.3	2.6	4.5	0.7	2.0	0.9	84.5	1.5	14.0	0.099	0.520	20.574448	-100.330912
T. Der. Libramiento de Querétaro a San Luis Potosí	207.00	3	1	74267	1.8	82.8	1.8	4.4	1.6	4.5	1.5	0.8	0.8	84.6	1.8	13.6	0.077	0.506	20.578195	-100.380764
T. Der. Libramiento de Querétaro a San Luis Potosí	207.00	3	1	28978	2.1	91.2	0.6	4.0	0.3	0.7	0.6	0.3	0.2	93.3	0.6	6.1	0.094	0.505	20.579404	-100.375490
T. Der. Libramiento de Querétaro a San Luis Potosí	207.00	3	2	29653	2.2	90.9	0.7	4.1	0.3	0.7	0.6	0.3	0.2	93.1	0.7	6.2	0.093	0.505	20.578375	-100.378506
T. Der. Libramiento de Querétaro a San Luis Potosí	207.00	3	2	70699	1.5	81.3	1.9	5.0	1.7	5.2	1.6	0.9	0.9	82.8	1.9	15.3	0.079	0.506	20.578513	-100.378541
Querétaro	211.60																			

HIDALGO

20 CARR: Actopan - Progreso

CLAVE: 13038

RUTA: HGO

AÑO: 2023

LUGAR	ESTACION				CLASIFICACION VEHICULAR EN PORCIENTO													COORDENADAS		
	KM	TE	SC	TDPA	M	A	B	C2	C3	T3S2	T3S3	T3S2R4	OTROS	A	B	C	K'	D	LATITUD	LONGITUD
Actopan	0.00	3	1	9686	2.8	91.9	0.8	3.0	0.9	0.3	0.2	0.1	0.0	94.7	0.8	4.5	0.088	0.509	20.266551	-98.954899
Actopan	0.00	3	2	10053	2.8	91.7	0.9	3.1	0.9	0.3	0.2	0.1	0.0	94.5	0.9	4.6	0.081	0.509	20.266461	-98.954853
Progreso	23.90	1	1	8616	3.1	90.9	0.8	3.2	1.0	0.5	0.3	0.1	0.1	94.0	0.8	5.2	0.086	0.504	20.245331	-99.175615
Progreso	23.90	1	2	8488	3.1	90.5	0.8	3.4	1.2	0.5	0.3	0.1	0.1	93.6	0.8	5.6	0.096	0.504	20.245208	-99.175603

21 CARR: El Saucillo - Amealco

CLAVE: 13103

RUTA: HGO-103

AÑO: 2023

LUGAR	ESTACION				CLASIFICACION VEHICULAR EN PORCIENTO													COORDENADAS		
	KM	TE	SC	TDPA	M	A	B	C2	C3	T3S2	T3S3	T3S2R4	OTROS	A	B	C	K'	D	LATITUD	LONGITUD
T. C. Portezuelo - Palmillas	0.00	3	0	4118	2.7	87.1	1.8	2.7	2.9	1.3	0.7	0.7	0.1	89.8	1.8	8.4	0.084	0.515	20.313339	-99.715554
Nopala	11.00	1	1	2171	4.6	88.9	1.1	1.8	1.5	0.8	0.6	0.5	0.2	93.5	1.1	5.4	0.087	0.509	20.254128	-99.652942
Nopala	11.00	1	2	2094	3.4	89.7	1.4	2.2	1.0	1.3	0.6	0.3	0.1	93.1	1.4	5.5	0.094	0.509	20.254227	-99.653000
Nopala	11.00	3	0	5028	4.7	84.7	1.9	2.8	1.8	2.0	0.7	0.9	0.5	89.4	1.9	8.7	0.081	0.529	20.245920	-99.636689
Amealco	21.40	1	0	2340	4.3	86.6	2.1	3.8	0.9	1.0	0.9	0.4	0.0	90.9	2.1	7.0	0.087	0.503	20.239311	-99.557888

22 CARR: Ent. Emiliano Zapata - Cd. Sahagún

CLAVE: 13255

RUTA: HGO

AÑO: 2023

LUGAR	ESTACION				CLASIFICACION VEHICULAR EN PORCIENTO													COORDENADAS		
	KM	TE	SC	TDPA	M	A	B	C2	C3	T3S2	T3S3	T3S2R4	OTROS	A	B	C	K'	D	LATITUD	LONGITUD
T. C. Calpulalpan - El Ocote	0.00																			
Emiliano Zapata	2.70	1	1	4368	2.3	81.5	1.7	7.8	1.6	3.0	1.2	0.7	0.2	83.8	1.7	14.5	0.081	0.509	19.642648	-98.538045
Emiliano Zapata	2.70	1	2	4535	3.2	81.7	1.5	7.2	1.5	3.0	1.2	0.6	0.1	84.9	1.5	13.6	0.088	0.509	19.642564	-98.538156
T. Izq. Otumba	14.00	1	1	6149	4.0	83.4	1.6	3.0	2.0	3.6	1.1	0.8	0.5	87.4	1.6	11.0	0.076	0.512	19.742850	-98.582608
T. Izq. Otumba	14.00	1	2	6462	3.3	83.9	1.5	3.1	2.3	3.8	0.8	0.9	0.4	87.2	1.5	11.3	0.080	0.512	19.742789	-98.582664
Cd. Sahagún	17.98	1	1	9319	3.8	86.9	2.3	3.0	1.9	1.0	0.3	0.6	0.2	90.7	2.3	7.0	0.074	0.525	19.764290	-98.587297
Cd. Sahagún	17.98	1	2	8434	3.4	87.0	2.3	3.5	1.9	0.9	0.3	0.5	0.2	90.4	2.3	7.3	0.076	0.525	19.764322	-98.587375

23 CARR: Ent. Tepeji del Río - Tlahuelilpan

CLAVE: 13017

RUTA: HGO-017

AÑO: 2023

LUGAR	ESTACION				CLASIFICACION VEHICULAR EN PORCIENTO													COORDENADAS		
	KM	TE	SC	TDPA	M	A	B	C2	C3	T3S2	T3S3	T3S2R4	OTROS	A	B	C	K'	D	LATITUD	LONGITUD
T. C. México - Querétaro (Cuota)	0.00																			
T. Izq. Tepeji del Río	3.00	3	1	7769	8.5	77.6	2.4	6.3	1.9	0.7	1.2	1.0	0.4	86.1	2.4	11.5	0.063	0.502	19.941060	-99.339210
T. Izq. Tepeji del Río	3.00	3	2	7825	7.5	81.2	1.8	5.7	1.0	0.5	1.3	0.7	0.3	88.7	1.8	9.5	0.073	0.502	19.941047	-99.339314
Tula de Allende	18.00	1	0	19175	9.3	79.3	1.5	5.3	0.7	2.2	1.0	0.5	0.2	88.6	1.5	9.9	0.074	0.503	20.047553	-99.340272

HIDALGO

23 CARR: Ent. Tepeji del Río - Tlahuelilpan

CLAVE: 13017

RUTA: HGO-017

AÑO: 2023

LUGAR	ESTACION				CLASIFICACION VEHICULAR EN PORCIENTO													COORDENADAS		
	KM	TE	SC	TDPA	M	A	B	C2	C3	T3S2	T3S3	T3S2R4	OTROS	A	B	C	K'	D	LATITUD	LONGITUD
X. C. Arco Norte de La Ciudad de México	19.40	1	1	11292	9.1	79.9	1.4	2.3	1.6	2.3	1.0	1.9	0.5	89.0	1.4	9.6	0.080	0.507	20.096751	-99.287252
X. C. Arco Norte de La Ciudad de México	19.40	1	2	10996	8.4	80.5	1.9	2.7	1.8	2.0	0.7	1.6	0.4	88.9	1.9	9.2	0.106	0.507	20.096853	-99.287321
Tlahuelilpan	32.00	1	1	9080	8.9	81.1	1.2	5.2	1.4	1.0	0.6	0.3	0.3	90.0	1.2	8.8	0.085	0.521	20.125861	-99.246516
Tlahuelilpan	32.00	1	2	8331	10.0	81.5	1.4	4.3	1.0	0.8	0.6	0.3	0.1	91.5	1.4	7.1	0.108	0.521	20.125981	-99.246540

24 CARR: Ent. Tolman - Cd. Sahagún

CLAVE: 00119

RUTA: EM-009-HGO

AÑO: 2023

LUGAR	ESTACION				CLASIFICACION VEHICULAR EN PORCIENTO													COORDENADAS		
	KM	TE	SC	TDPA	M	A	B	C2	C3	T3S2	T3S3	T3S2R4	OTROS	A	B	C	K'	D	LATITUD	LONGITUD
T. C. Venta de Carpio - Tulancingo	0.00	3	0	15882	4.6	90.2	0.7	2.3	0.7	0.8	0.4	0.3	0.0	94.8	0.7	4.5	0.074	0.546	19.714443	-98.790933
Otumba	5.00	3	0	5554	5.0	85.1	1.2	4.9	1.0	1.5	0.9	0.3	0.1	90.1	1.2	8.7	0.085	0.506	19.710492	-98.743203
T. Der. Jaltepec	21.00	3	0	3690	2.9	78.9	3.1	12.3	0.9	1.0	0.5	0.3	0.1	81.8	3.1	15.1	0.071	0.507	19.749625	-98.653339
Lim. Edos. Term. Méx. Ppia. Hgo.	25.00																			
Cd. Sahagún	32.00	1	0	7231	8.0	76.2	1.6	7.7	2.3	1.6	1.2	0.5	0.9	84.2	1.6	14.2	0.069	0.527	19.752520	-98.602743

25 CARR: Francisco I. Madero - Tula de Allende

CLAVE: 13043

RUTA: HGO

AÑO: 2023

LUGAR	ESTACION				CLASIFICACION VEHICULAR EN PORCIENTO													COORDENADAS		
	KM	TE	SC	TDPA	M	A	B	C2	C3	T3S2	T3S3	T3S2R4	OTROS	A	B	C	K'	D	LATITUD	LONGITUD
T. C. Portezuelo - Palmillas	0.00	3	0	5249	11.7	83.3	0.4	2.6	1.0	0.5	0.1	0.4	0.0	95.0	0.4	4.6	0.101	0.510	20.443385	-99.361270
Gral. Pedro María Anaya	38.20	1	0	5232	13.7	80.5	0.9	2.0	0.9	0.8	0.6	0.5	0.1	94.2	0.9	4.9	0.077	0.501	20.161854	-99.364037
T. C. (México - Querétaro) - Tlahuelilpan de Ocampo	52.70	1	0	10348	7.2	88.3	0.5	1.5	0.7	0.8	0.4	0.5	0.1	95.5	0.5	4.0	0.134	0.502	20.068640	-99.331344

26 CARR: Huichapan - Tecozautla

CLAVE: 13030

RUTA: HGO-030

AÑO: 2023

LUGAR	ESTACION				CLASIFICACION VEHICULAR EN PORCIENTO													COORDENADAS		
	KM	TE	SC	TDPA	M	A	B	C2	C3	T3S2	T3S3	T3S2R4	OTROS	A	B	C	K'	D	LATITUD	LONGITUD
Huichapan	0.00	3	0	7398	4.0	88.5	1.1	2.8	1.4	0.9	0.7	0.5	0.1	92.5	1.1	6.4	0.081	0.505	20.383608	-99.659767
Tecozautla	30.85																			

27 CARR: Jilotepec - Maravillas

CLAVE: 00015

RUTA: EM-HGO

AÑO: 2023

LUGAR	ESTACION				CLASIFICACION VEHICULAR EN PORCIENTO													COORDENADAS		
	KM	TE	SC	TDPA	M	A	B	C2	C3	T3S2	T3S3	T3S2R4	OTROS	A	B	C	K'	D	LATITUD	LONGITUD
Jilotepec	0.00	3	0	10205	7.4	85.8	0.7	2.9	1.0	0.6	0.5	0.6	0.5	93.2	0.7	6.1	0.078	0.510	19.955814	-99.558882

HIDALGO

27 CARR: Jilotepec - Maravillas

CLAVE: 00015

RUTA: EM-HGO

AÑO: 2023

LUGAR	ESTACION				CLASIFICACION VEHICULAR EN PORCIENTO										COORDENADAS					
	KM	TE	SC	TDPA	M	A	B	C2	C3	T3S2	T3S3	T3S2R4	OTROS	A	B	C	K'	D	LATITUD	LONGITUD
X. C. México - Querétaro (Cuota)	21.30	1	0	3023	4.3	87.4	0.8	3.5	1.5	1.1	0.7	0.5	0.2	91.7	0.8	7.5	0.079	0.505	20.080159	-99.632191
X. C. México - Querétaro (Cuota)	21.30	3	0	4399	3.6	82.6	2.2	9.1	0.9	0.9	0.3	0.4	0.0	86.2	2.2	11.6	0.081	0.536	20.093797	-99.626564
Acazuchitlán	29.00	1	0	2707	3.6	87.2	1.8	3.3	1.7	1.1	0.8	0.4	0.1	90.8	1.8	7.4	0.090	0.518	20.138935	-99.602672
Lim. Edos. Term. Méx. Ppia. Hgo.	29.30																			
Maravillas	36.40	1	0	1746	2.3	90.1	2.1	2.1	1.0	1.5	0.7	0.2	0.0	92.4	2.1	5.5	0.149	0.529	20.198075	-99.584407
T. C. El Saucillo - Amealco	40.00	1	0	3184	3.1	87.9	1.2	4.9	0.8	1.0	0.6	0.4	0.1	91.0	1.2	7.8	0.093	0.513	20.231429	-99.594478

28 CARR: Libramiento de Atotonilco El Grande

CLAVE: 13238

RUTA: HGO

AÑO: 2023

LUGAR	ESTACION				CLASIFICACION VEHICULAR EN PORCIENTO										COORDENADAS					
	KM	TE	SC	TDPA	M	A	B	C2	C3	T3S2	T3S3	T3S2R4	OTROS	A	B	C	K'	D	LATITUD	LONGITUD
T. C. Pachuca - Tempoal (1er. Acceso)	0.00	3	1	4352	1.2	85.6	1.6	7.1	2.0	1.6	0.8	0.1	0.0	86.8	1.6	11.6	0.103	0.503	20.273105	-98.646825
T. C. Pachuca - Tempoal (1er. Acceso)	0.00	3	2	4407	1.2	85.2	1.8	7.2	2.0	1.7	0.8	0.1	0.0	86.4	1.8	11.8	0.104	0.503	20.273087	-98.646921
T. C. Pachuca - Tempoal (2do. Acceso)	6.30	1	1	4790	2.4	83.9	1.5	7.4	2.4	1.4	0.8	0.2	0.0	86.3	1.5	12.2	0.108	0.511	20.295380	-98.665288
T. C. Pachuca - Tempoal (2do. Acceso)	6.30	1	2	4592	2.7	82.4	1.6	8.0	2.8	1.5	0.8	0.2	0.0	85.1	1.6	13.3	0.115	0.511	20.295272	-98.665643

29 CARR: Lolotla - Atlapexco

CLAVE: 13238

RUTA: HGO

AÑO: 2023

LUGAR	ESTACION				CLASIFICACION VEHICULAR EN PORCIENTO										COORDENADAS					
	KM	TE	SC	TDPA	M	A	B	C2	C3	T3S2	T3S3	T3S2R4	OTROS	A	B	C	K'	D	LATITUD	LONGITUD
T. C. Pachuca - Tempoal	0.00	3	0	1439	5.6	88.0	0.9	3.1	0.7	1.2	0.3	0.2	0.0	93.6	0.9	5.5	0.101	0.515	20.875559	-98.703226
Atlapexco	68.00	1	0	3302	5.8	85.9	1.5	4.4	0.3	1.5	0.2	0.3	0.1	91.7	1.5	6.8	0.080	0.505	21.015349	-98.351827
T. C. Álamo - Huejutla de Reyes	69.80																			

30 CARR: Los Reyes - El Tephé

CLAVE: 00021

RUTA: EM-HGO

AÑO: 2023

LUGAR	ESTACION				CLASIFICACION VEHICULAR EN PORCIENTO										COORDENADAS					
	KM	TE	SC	TDPA	M	A	B	C2	C3	T3S2	T3S3	T3S2R4	OTROS	A	B	C	K'	D	LATITUD	LONGITUD
T. C. México - Pachuca (Libre)	0.00																			
Los Reyes	1.35	3	1	9820	7.3	85.9	0.7	4.7	0.7	0.5	0.1	0.1	0.0	93.2	0.7	6.1	0.081	0.511	19.769167	-98.995172
Los Reyes	1.35	3	2	10244	8.0	86.6	0.3	3.7	0.6	0.6	0.1	0.1	0.0	94.6	0.3	5.1	0.076	0.511	19.769101	-98.995196
Zumpango	15.35	1	1	14506	12.6	79.2	1.9	3.4	1.6	0.7	0.2	0.3	0.1	91.8	1.9	6.3	0.074	0.501	19.792591	-99.074910
Zumpango	15.35	1	2	14429	14.7	80.2	0.5	2.1	1.4	0.5	0.2	0.2	0.2	94.9	0.5	4.6	0.071	0.501	19.792539	-99.075197
Zumpango	15.35	3	0	19894	7.8	83.7	0.5	4.1	1.6	1.4	0.6	0.3	0.0	91.5	0.5	8.0	0.064	0.505	19.820781	-99.115187
Tequixquiac	29.00	1	0	11528	11.2	78.3	0.9	5.1	1.5	1.5	0.7	0.6	0.2	89.5	0.9	9.6	0.070	0.504	19.882693	-99.137241

HIDALGO

30 CARR: Los Reyes - El Tephé

CLAVE: 00021

RUTA: EM-HGO

AÑO: 2023

LUGAR	ESTACION				CLASIFICACION VEHICULAR EN PORCIENTO										COORDENADAS					
	KM	TE	SC	TDPA	M	A	B	C2	C3	T3S2	T3S3	T3S2R4	OTROS	A	B	C	K'	D	LATITUD	LONGITUD
Apaxco	39.00	3	1	5178	8.9	76.9	2.5	5.4	2.3	2.0	1.5	0.3	0.2	85.8	2.5	11.7	0.096	0.504	19.983559	-99.179227
Apaxco	39.00	3	2	5089	8.5	76.0	2.7	6.0	2.6	2.0	1.7	0.3	0.2	84.5	2.7	12.8	0.093	0.504	19.983514	-99.179293
Lim. Edos. Term. Méx. Ppia. Hgo.	40.00																			
T. Izq. Atotonilco (1° Acceso)	42.00	1	0	9081	10.8	74.0	0.7	3.0	3.8	3.0	3.6	0.9	0.2	84.8	0.7	14.5	0.079	0.506	19.989681	-99.184128
X. C. Arco Norte de La Ciudad de México	50.00	3	1	6799	9.8	81.1	1.5	3.6	1.6	1.0	0.4	0.6	0.4	90.9	1.5	7.6	0.093	0.520	20.069532	-99.220554
X. C. Arco Norte de La Ciudad de México	50.00	3	2	7364	9.5	81.9	1.1	3.1	1.6	1.1	0.5	0.8	0.4	91.4	1.1	7.5	0.075	0.520	20.069528	-99.220662
Tlaxcoapan	52.00	3	1	4917	14.8	80.5	0.7	2.8	0.5	0.3	0.2	0.1	0.1	95.3	0.7	4.0	0.083	0.504	20.103300	-99.221596
Tlaxcoapan	52.00	3	2	4847	14.1	81.4	0.9	2.6	0.4	0.2	0.1	0.2	0.1	95.5	0.9	3.6	0.074	0.504	20.103300	-99.221663
Tlahuelilpan	60.00	3	1	11029	11.5	79.8	1.2	5.1	1.1	0.8	0.3	0.2	0.0	91.3	1.2	7.5	0.063	0.515	20.149728	-99.234227
Tlahuelilpan	60.00	3	2	11728	10.8	79.3	1.9	5.3	1.0	0.7	0.6	0.3	0.1	90.1	1.9	8.0	0.075	0.515	20.149761	-99.234323
Progreso	72.00	1	1	13565	14.8	80.3	0.8	2.3	0.8	0.5	0.3	0.1	0.1	95.1	0.8	4.1	0.072	0.508	20.236659	-99.195968
Progreso	72.00	1	2	14013	15.6	79.0	0.9	2.3	1.0	0.6	0.3	0.2	0.1	94.6	0.9	4.5	0.071	0.508	20.236595	-99.195917
El Tephé	97.00	1	0	9263	9.5	83.1	0.9	3.1	1.2	1.0	0.6	0.4	0.2	92.6	0.9	6.5	0.092	0.503	20.434957	-99.172193

31 CARR: Otumba - Tizayuca

CLAVE: 00012

RUTA: EM-HGO

AÑO: 2023

LUGAR	ESTACION				CLASIFICACION VEHICULAR EN PORCIENTO										COORDENADAS					
	KM	TE	SC	TDPA	M	A	B	C2	C3	T3S2	T3S3	T3S2R4	OTROS	A	B	C	K'	D	LATITUD	LONGITUD
Otumba	0.00	3	0	4527	8.6	87.7	0.6	1.4	1.0	0.4	0.2	0.1	0.0	96.3	0.6	3.1	0.094	0.500	19.712901	-98.758026
X. C. Venta de Carpio - Tulancingo	6.00	3	1	2461	4.8	89.2	0.2	2.8	1.4	0.6	0.6	0.3	0.1	94.0	0.2	5.8	0.099	0.513	19.757831	-98.758089
X. C. Venta de Carpio - Tulancingo	6.00	3	2	2590	3.8	89.4	0.3	3.6	1.4	0.6	0.5	0.3	0.1	93.2	0.3	6.5	0.102	0.513	19.755512	-98.756761
Temascalapa	26.50	3	1	3418	7.7	85.2	0.6	4.0	1.1	0.7	0.5	0.1	0.1	92.9	0.6	6.5	0.087	0.501	19.830311	-98.914474
Temascalapa	26.50	3	2	3438	7.8	85.4	0.4	4.0	1.0	0.7	0.5	0.1	0.1	93.2	0.4	6.4	0.109	0.501	19.830230	-98.914465
Lim. Edos. Term. Méx. Ppia. Hgo.	29.00																			
Tizayuca	37.10	1	1	8296	8.1	86.1	0.5	2.7	0.8	1.0	0.3	0.4	0.1	94.2	0.5	5.3	0.077	0.516	19.839260	-98.967331
Tizayuca	37.10	1	2	7791	8.5	85.8	0.5	2.9	0.7	1.0	0.2	0.3	0.1	94.3	0.5	5.2	0.076	0.516	19.839162	-98.967340

32 CARR: Ramal a El Chico

CLAVE: 13256

RUTA: HGO

AÑO: 2023

LUGAR	ESTACION				CLASIFICACION VEHICULAR EN PORCIENTO										COORDENADAS					
	KM	TE	SC	TDPA	M	A	B	C2	C3	T3S2	T3S3	T3S2R4	OTROS	A	B	C	K'	D	LATITUD	LONGITUD
T. C. Pachuca - Tempoal	0.00	3	0	2838	3.8	87.1	0.9	2.9	0.8	1.8	1.0	0.8	0.9	90.9	0.9	8.2	0.097	0.502	20.139037	-98.724896
Mineral El Chico	21.00	1	0	1502	3.5	92.7	0.3	2.6	0.4	0.3	0.1	0.1	0.0	96.2	0.3	3.5	0.230	0.512	20.209851	-98.727979

HIDALGO

33 CARR: Ramal a Pachuca

CLAVE: 13254

RUTA: HGO

AÑO: 2023

LUGAR	ESTACION				CLASIFICACION VEHICULAR EN PORCIENTO													COORDENADAS		
	KM	TE	SC	TDPA	M	A	B	C2	C3	T3S2	T3S3	T3S2R4	OTROS	A	B	C	K'	D	LATITUD	LONGITUD
T. C. Colonia - Portezuelo	0.00	3	1	17359	1.9	91.4	0.8	3.5	0.8	0.4	0.4	0.5	0.3	93.3	0.8	5.9	0.087	0.506	20.123097	-98.815650
T. C. Colonia - Portezuelo	0.00	3	2	16927	2.0	91.9	0.7	3.3	0.7	0.4	0.3	0.4	0.3	93.9	0.7	5.4	0.095	0.506	20.123243	-98.815635
Pachuca	10.00																			

34 CARR: San Alejo - Huayacocotla

CLAVE: 00132

RUTA: HGO-051-VER-113

AÑO: 2023

LUGAR	ESTACION				CLASIFICACION VEHICULAR EN PORCIENTO													COORDENADAS		
	KM	TE	SC	TDPA	M	A	B	C2	C3	T3S2	T3S3	T3S2R4	OTROS	A	B	C	K'	D	LATITUD	LONGITUD
T. C. Pachuca - Tuxpam	0.00	3	0	7893	6.2	80.2	1.1	7.3	1.5	2.1	0.7	0.6	0.3	86.4	1.1	12.5	0.077	0.503	20.154237	-98.286389
Metepec	11.80	3	0	3176	7.1	76.5	3.0	7.7	1.6	2.6	0.4	0.8	0.3	83.6	3.0	13.4	0.074	0.504	20.243587	-98.331305
Agua Blanca	29.48	3	0	4012	4.0	82.1	1.3	7.9	2.0	0.9	0.3	1.3	0.2	86.1	1.3	12.6	0.090	0.501	20.354081	-98.361125
Lim. Edos. Term. Hgo. Ppia. Ver.	36.48																			
Huayacocotla	66.00	1	0	2163	7.7	87.0	0.3	1.6	1.6	0.6	0.2	0.8	0.2	94.7	0.3	5.0	0.086	0.515	20.527363	-98.493043

35 CARR: San Felipe Orizatlán - Huejutla de Reyes

CLAVE: 13258

RUTA: HGO

AÑO: 2023

LUGAR	ESTACION				CLASIFICACION VEHICULAR EN PORCIENTO													COORDENADAS		
	KM	TE	SC	TDPA	M	A	B	C2	C3	T3S2	T3S3	T3S2R4	OTROS	A	B	C	K'	D	LATITUD	LONGITUD
San Felipe Orizatlán	0.00	3	0	4045	17.7	75.2	1.0	3.6	1.3	0.5	0.2	0.3	0.2	92.9	1.0	6.1	0.094	0.510	21.171935	-98.591099
Huejutla de Reyes	25.00	1	0	3114	17.0	76.6	0.6	3.9	0.5	0.5	0.4	0.3	0.2	93.6	0.6	5.8	0.079	0.502	21.125648	-98.468090

36 CARR: Santo Domingo - T. C. (México - Querétaro)

CLAVE: 00433

RUTA: EM-011-HGO

AÑO: 2023

LUGAR	ESTACION				CLASIFICACION VEHICULAR EN PORCIENTO													COORDENADAS		
	KM	TE	SC	TDPA	M	A	B	C2	C3	T3S2	T3S3	T3S2R4	OTROS	A	B	C	K'	D	LATITUD	LONGITUD
T. C. Toluca - Palmillas	0.00	3	0	10083	1.8	87.9	0.5	7.7	0.7	0.9	0.4	0.1	0.0	89.7	0.5	9.8	0.093	0.509	19.624047	-99.772157
X. C. Los Reyes - Ixtlahuaca	6.11	3	0	9663	3.0	88.4	1.5	4.3	1.1	1.1	0.5	0.1	0.0	91.4	1.5	7.1	0.093	0.506	19.658847	-99.723735
X. C. Villa del Carbón - Atlacomulco	23.94	3	1	2971	1.8	85.1	1.3	7.2	2.3	1.1	0.9	0.1	0.2	86.9	1.3	11.8	0.120	0.506	19.786142	-99.702038
X. C. Villa del Carbón - Atlacomulco	23.94	3	2	2904	1.6	85.2	1.4	7.3	2.5	1.0	0.7	0.1	0.2	86.8	1.4	11.8	0.094	0.506	19.786332	-99.702194
T. Der. Chapa de Mota	42.70	1	1	7908	5.1	87.5	1.2	3.3	1.0	0.9	0.4	0.4	0.2	92.6	1.2	6.2	0.098	0.510	19.926099	-99.582235
T. Der. Chapa de Mota	42.70	1	2	7596	6.0	86.0	1.1	3.2	1.5	0.9	0.4	0.7	0.2	92.0	1.1	6.9	0.091	0.510	19.926180	-99.582302
Lim. Edos. Term. Méx. Ppia. Hgo.	63.34																			
T. C. México - Querétaro (Cuota)	65.84	1	1	4937	2.7	86.8	1.5	4.7	1.7	1.2	0.7	0.4	0.3	89.5	1.5	9.0	0.145	0.506	19.971213	-99.451058
T. C. México - Querétaro (Cuota)	65.84	1	2	4810	2.8	86.8	1.4	4.7	1.6	1.4	0.6	0.4	0.3	89.6	1.4	9.0	0.082	0.506	19.971266	-99.451095

HIDALGO

37 CARR: T. C. (Los Reyes - El Tephé) - Tizayuca

CLAVE: 00014

RUTA: EM-HGO

AÑO: 2023

LUGAR	ESTACION				CLASIFICACION VEHICULAR EN PORCIENTO										COORDENADAS					
	KM	TE	SC	TDPA	M	A	B	C2	C3	T3S2	T3S3	T3S2R4	OTROS	A	B	C	K'	D	LATITUD	LONGITUD
T. C. Los Reyes - El Tephé	0.00	3	0	7151	11.4	80.9	0.6	2.3	1.4	1.5	0.6	0.7	0.6	92.3	0.6	7.1	0.079	0.522	19.784035	-99.025874
Lim. Edos. Term. Méx. Ppia. Hgo.	6.50																			
Tizayuca	8.00	1	0	9936	9.6	78.2	0.5	3.6	0.5	6.0	1.4	0.2	0.0	87.8	0.5	11.7	0.092	0.502	19.825596	-98.990904

38 CARR: Tepeji del Río - T.C. (México - Querétaro)

CLAVE: 13104

RUTA: HGO

AÑO: 2023

LUGAR	ESTACION				CLASIFICACION VEHICULAR EN PORCIENTO										COORDENADAS					
	KM	TE	SC	TDPA	M	A	B	C2	C3	T3S2	T3S3	T3S2R4	OTROS	A	B	C	K'	D	LATITUD	LONGITUD
T. C. Ent. Tepeji del Río - Tlahuelilpan de Ocampo	0.00	3	0	7365	3.1	88.2	0.6	5.1	0.8	0.9	0.6	0.6	0.1	91.3	0.6	8.1	0.078	0.524	19.943755	-99.341885
T. C. México - Querétaro	12.40	1	0	4048	4.0	82.3	2.8	5.4	1.4	1.7	1.3	0.9	0.2	86.3	2.8	10.9	0.087	0.518	19.977420	-99.435636

39 CARR: Tlahuelilpan - San Agustín Tlaxiaca

CLAVE: 13435

RUTA: HGO

AÑO: 2023

LUGAR	ESTACION				CLASIFICACION VEHICULAR EN PORCIENTO										COORDENADAS					
	KM	TE	SC	TDPA	M	A	B	C2	C3	T3S2	T3S3	T3S2R4	OTROS	A	B	C	K'	D	LATITUD	LONGITUD
Tlahuelilpan	0.00	3	0	2990	11.3	81.2	0.3	6.5	0.7	0.0	0.0	0.0	0.0	92.5	0.3	7.2	0.067	0.501	20.136865	-99.226246
Ignacio Zaragoza	25.50	3	0	3348	2.6	85.0	1.2	9.5	1.1	0.3	0.2	0.1	0.0	87.6	1.2	11.2	0.089	0.517	20.130703	-98.995101
T. C. (La Colonia - Portezuelo)	48.00	1	0	5935	3.9	91.7	0.5	2.6	0.5	0.3	0.2	0.2	0.1	95.6	0.5	3.9	0.098	0.502	20.120556	-98.906484

40 CARR: Calpulalpan - El Ocote

CLAVE: 00054

RUTA: MEX-HGO

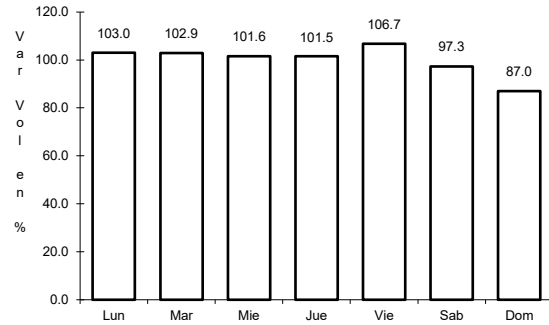
AÑO: 2023

LUGAR	ESTACION				CLASIFICACION VEHICULAR EN PORCIENTO										COORDENADAS					
	KM	TE	SC	TDPA	M	A	B	C2	C3	T3S2	T3S3	T3S2R4	OTROS	A	B	C	K'	D	LATITUD	LONGITUD
Calpulalpan	0.00	3	0	9160	3.7	77.7	3.0	7.4	1.7	3.8	1.3	1.1	0.3	81.4	3.0	15.6	0.081	0.526	19.612920	-98.556217
X. C. Arco Norte de La Ciudad de México	4.00	3	1	4155	2.7	79.8	1.5	6.9	1.6	4.2	2.0	1.0	0.3	82.5	1.5	16.0	0.079	0.504	19.626371	-98.542473
X. C. Arco Norte de La Ciudad de México	4.00	3	2	4082	2.6	79.3	1.9	7.9	2.0	3.9	1.2	0.9	0.3	81.9	1.9	16.2	0.083	0.504	19.626462	-98.542586
Lim. Edos. Term. Tlax. Ppia. Hgo.	5.00																			
Apan	19.58	3	1	4824	4.6	87.1	0.5	5.7	1.4	0.3	0.1	0.3	0.0	91.7	0.5	7.8	0.070	0.506	19.728985	-98.471494
Apan	19.58	3	2	4707	4.8	86.6	0.7	5.7	1.4	0.4	0.2	0.2	0.0	91.4	0.7	7.9	0.074	0.506	19.728940	-98.471519
Tepeapulco	34.92	3	0	4563	3.6	90.0	1.0	2.3	1.6	1.0	0.4	0.1	0.0	93.6	1.0	5.4	0.093	0.505	19.799298	-98.561098
X. C. Venta de Carpio - Tulancingo	51.18	1	1	1478	2.7	86.1	0.7	6.0	3.2	0.7	0.6	0.0	0.0	88.8	0.7	10.5	0.097	0.512	19.918339	-98.576270
X. C. Venta de Carpio - Tulancingo	51.18	1	2	1409	2.8	84.4	0.7	7.6	3.1	0.9	0.4	0.1	0.0	87.2	0.7	12.1	0.088	0.512	19.918260	-98.576322
X. C. Venta de Carpio - Tulancingo	51.18	3	0	1920	3.6	87.4	0.7	3.9	2.1	1.9	0.3	0.1	0.0	91.0	0.7	8.3	0.097	0.511	19.929714	-98.583951
El Ocote	70.44	1	1	1782	2.4	95.6	0.1	1.4	0.4	0.1	0.0	0.0	0.0	98.0	0.1	1.9	0.102	0.518	20.041233	-98.621347
El Ocote	70.44	1	2	1917	2.8	95.2	0.1	1.4	0.4	0.1	0.0	0.0	0.0	98.0	0.1	1.9	0.099	0.518	20.041378	-98.621375

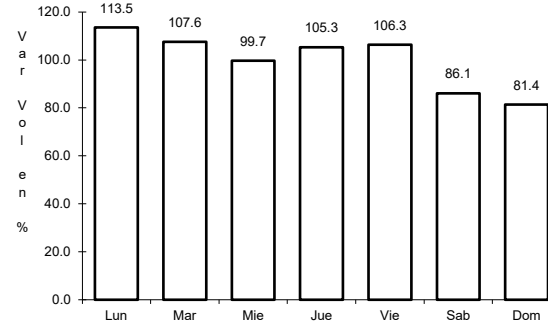
1 CARR: Álamo - Huejutla de Reyes

CLAVE: 00116

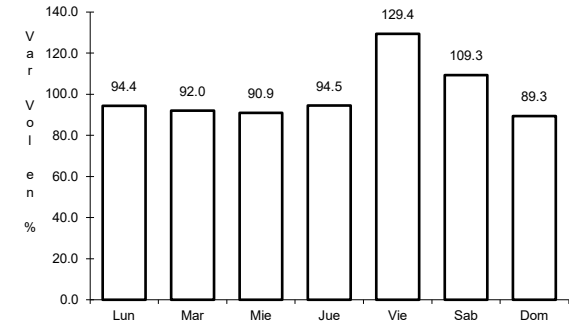
RUTA: MEX-127



Km: 0.00 Tipo: 3 Sent: 0



Km: 73.00 Tipo: 1 Sent: 0

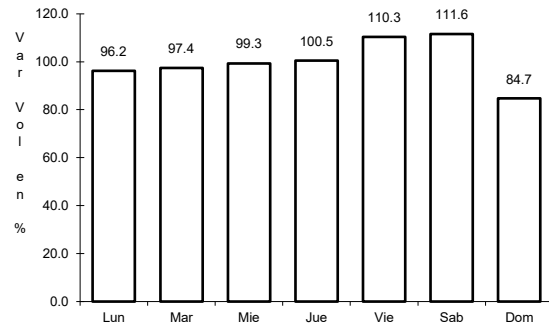


Km: 78.00 Tipo: 3 Sent: 0

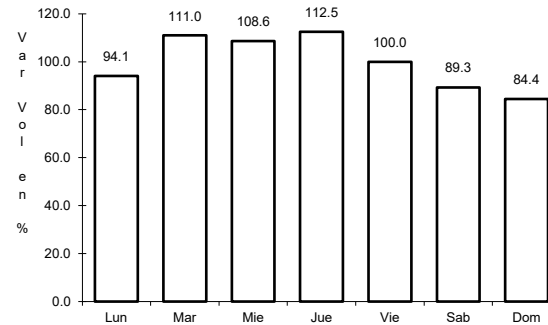
2 CARR: Apizaco - Tejocotal

CLAVE: 00430

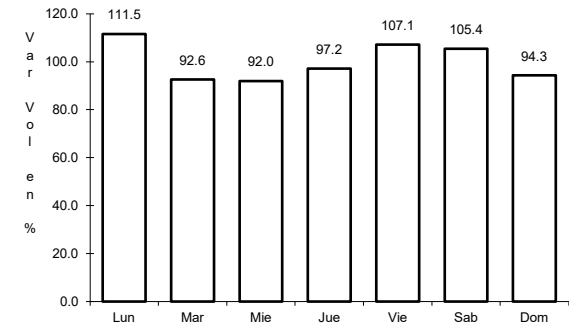
RUTA: MEX-119



Km: 0.00 Tipo: 3 Sent: 1



Km: 0.00 Tipo: 3 Sent: 2

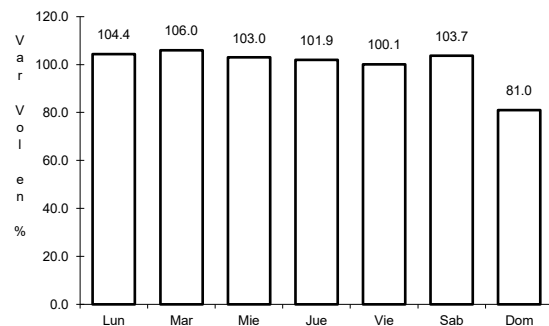


Km: 113.15 Tipo: 1 Sent: 0

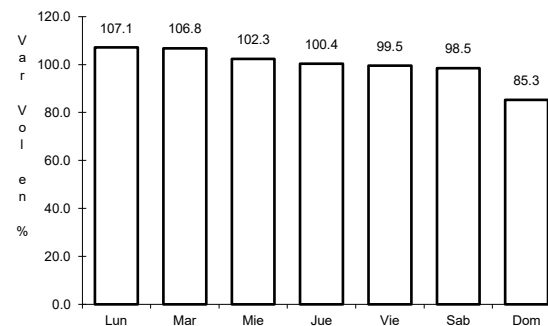
3 CARR: Ent. Colonia - Portezuelo

CLAVE: 13257

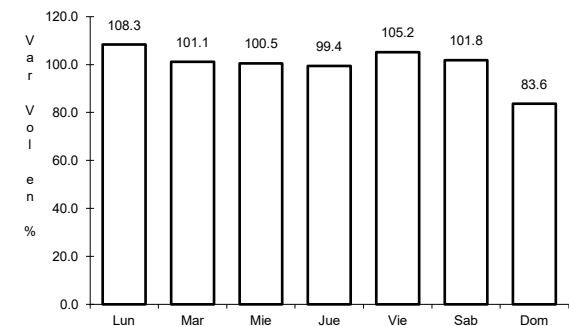
RUTA: MEX-085



Km: 0.00 Tipo: 3 Sent: 1



Km: 0.00 Tipo: 3 Sent: 2

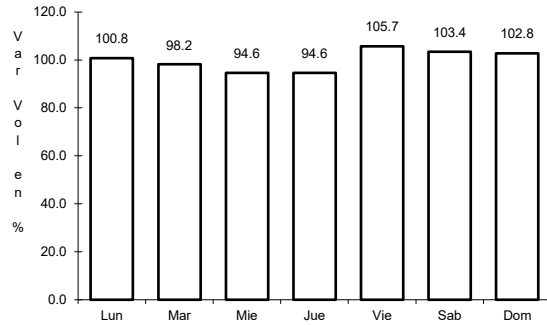


Km: 75.20 Tipo: 3 Sent: 1

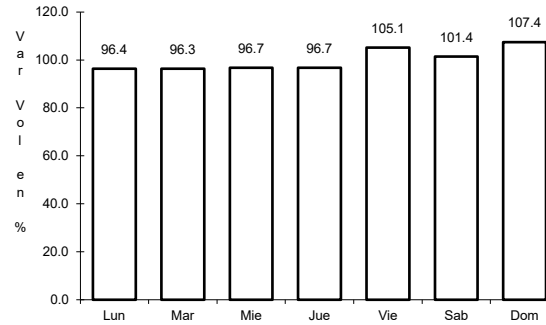
4 CARR: Ent. Jorobas - Tula

CLAVE: 00159

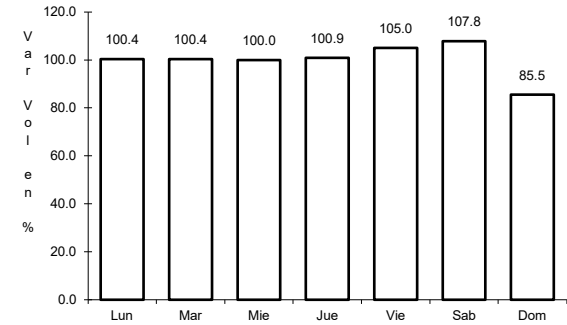
ruta: MEX-087



Km: 0.00 Tipo: 3 Sent: 1



Km: 0.00 Tipo: 3 Sent: 2

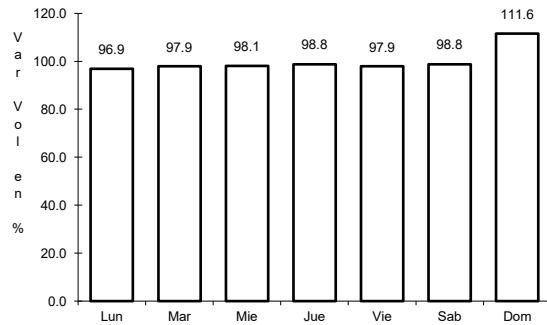


Km: 37.70 Tipo: 1 Sent: 1

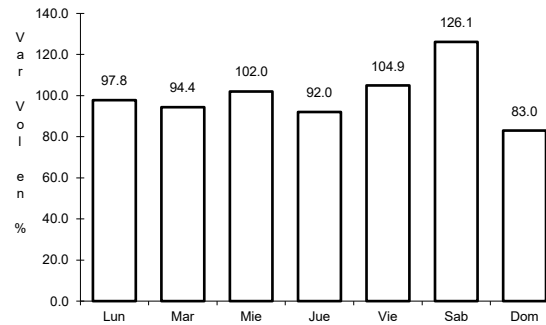
5 CARR: Libramiento de Huichapan

CLAVE:

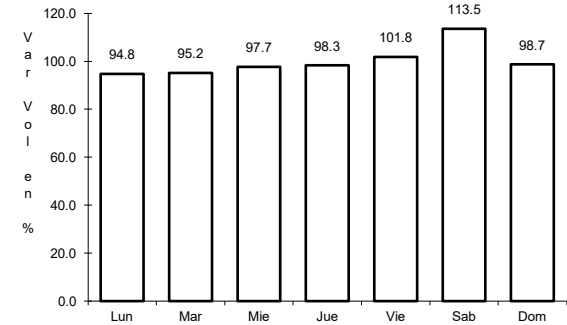
ruta: MEX-045



Km: 2.00 Tipo: 1 Sent: 1



Km: 2.00 Tipo: 1 Sent: 2

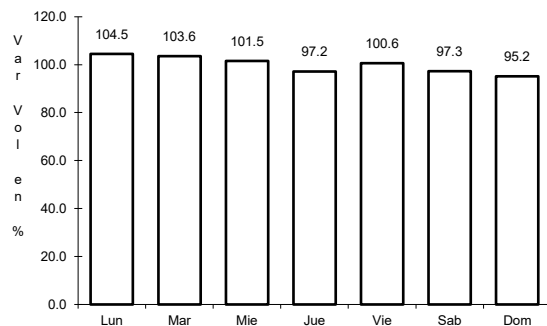


Km: 9.00 Tipo: 1 Sent: 1

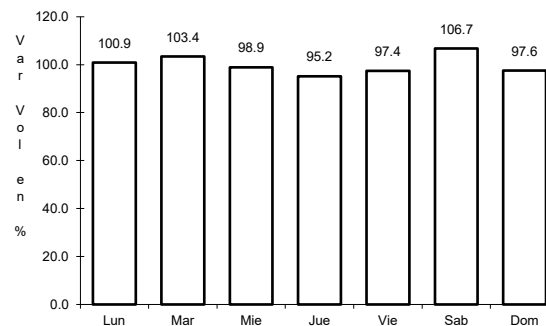
6 CARR: México - Pachuca (Libre)

CLAVE: 00431

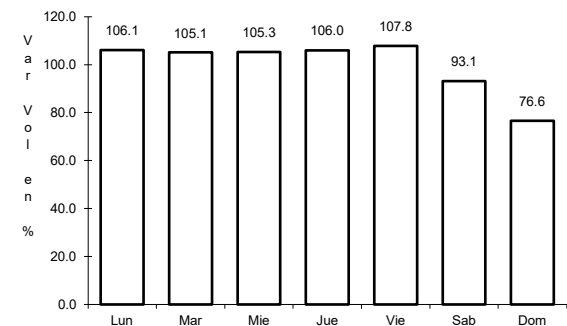
ruta: MEX-085



Km: 26.93 Tipo: 1 Sent: 1



Km: 26.93 Tipo: 1 Sent: 2

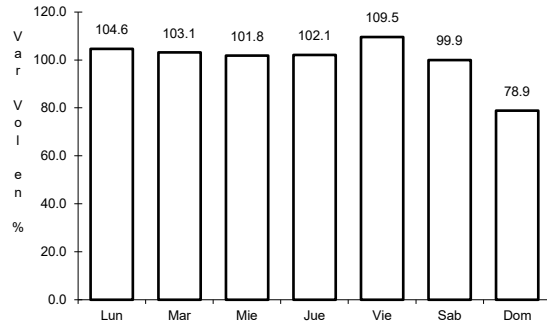


Km: 86.50 Tipo: 1 Sent: 1

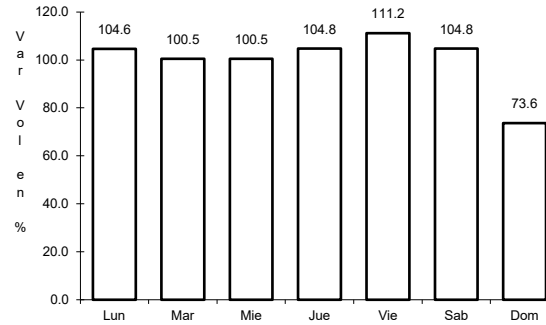
7 CARR: Pachuca - Cd. Sahagún

CLAVE: 13088

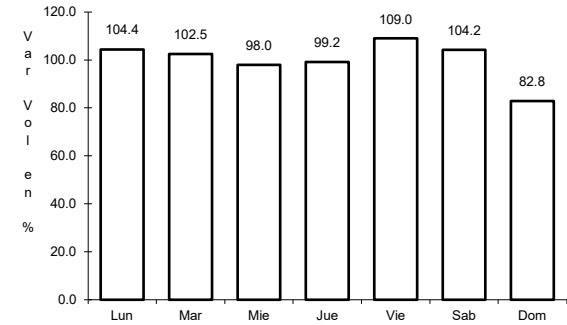
RUTA: MEX



Km: 0.00 Tipo: 3 Sent: 1



Km: 0.00 Tipo: 3 Sent: 2

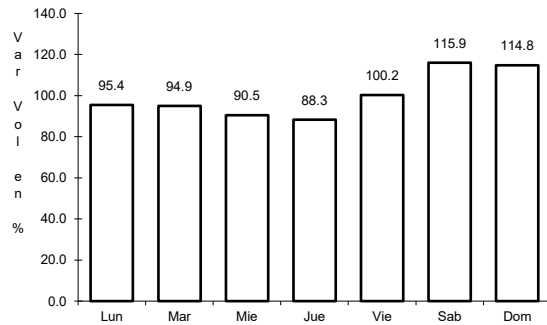


Km: 40.00 Tipo: 3 Sent: 1

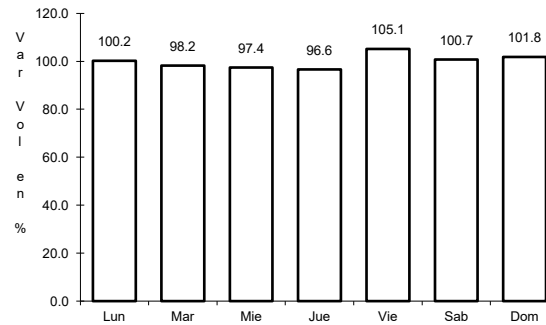
8 CARR: Pachuca - Tempoal

CLAVE: 00113

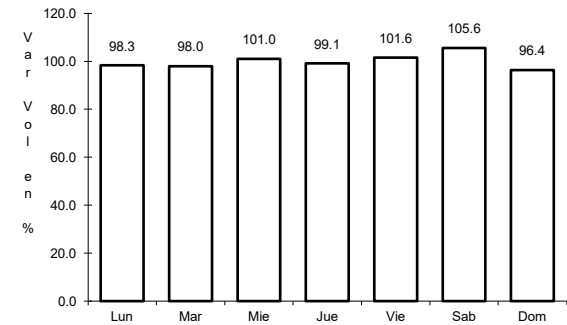
RUTA: MEX-105



Km: 0.00 Tipo: 3 Sent: 0



Km: 129.80 Tipo: 1 Sent: 0

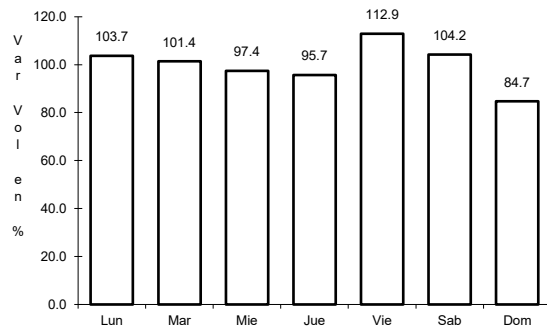


Km: 260.68 Tipo: 1 Sent: 0

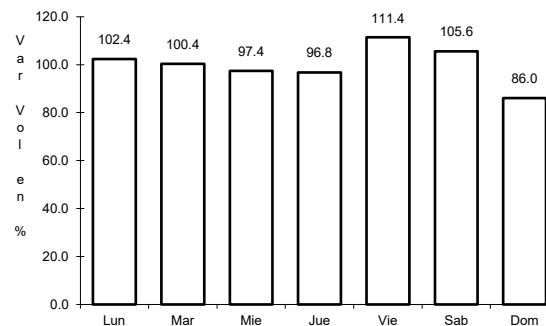
9 CARR: Pachuca - Túcpan

CLAVE: 00608

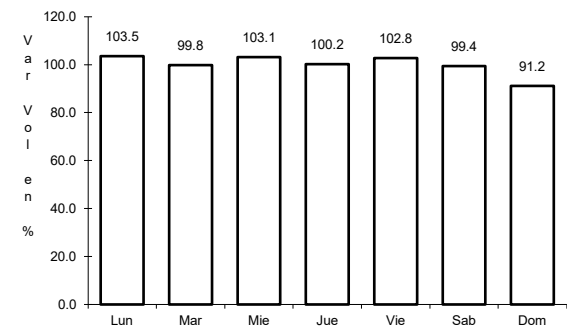
RUTA: MEX-130



Km: 2.60 Tipo: 3 Sent: 1



Km: 2.60 Tipo: 3 Sent: 2

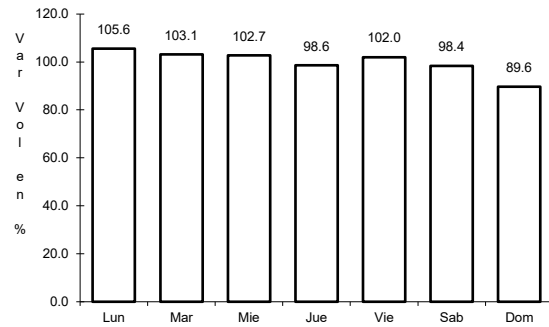


Km: 232.50 Tipo: 1 Sent: 0

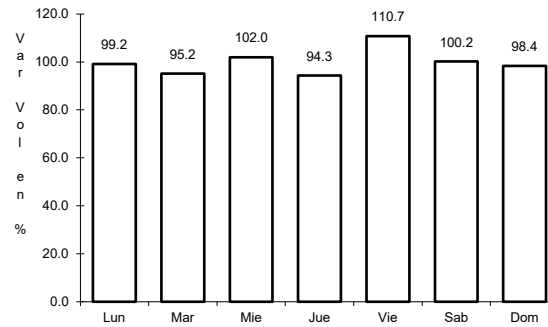
10 CARR: Portezuelo - Cd. Valles

CLAVE: 00023

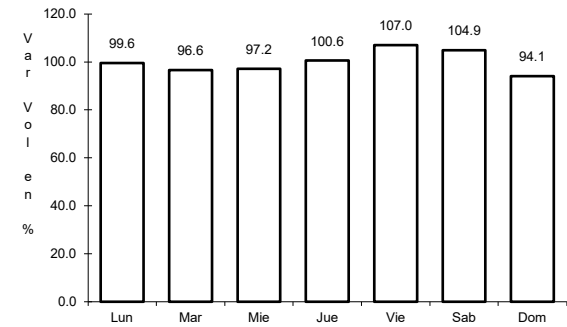
ruta: MEX-085



Km: 0.00 Tipo: 3 Sent: 0



Km: 154.00 Tipo: 3 Sent: 0

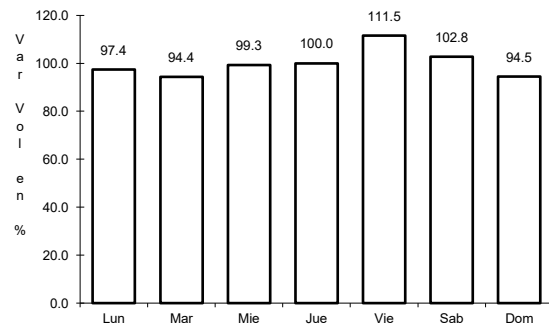


Km: 286.41 Tipo: 1 Sent: 1

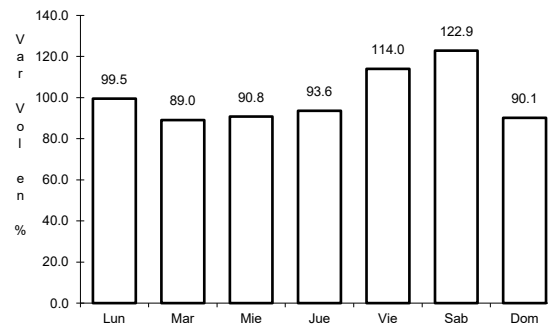
11 CARR: Portezuelo - Palmillas

CLAVE: 00194

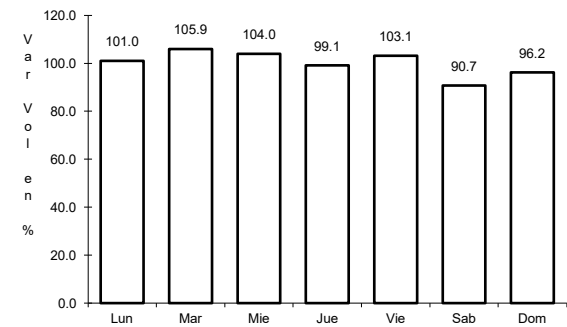
ruta: MEX-045



Km: 0.00 Tipo: 3 Sent: 1



Km: 0.00 Tipo: 3 Sent: 2

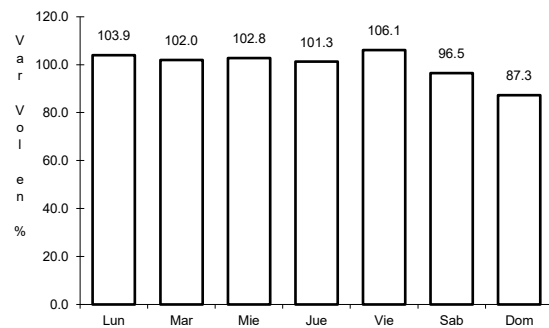


Km: 80.00 Tipo: 1 Sent: 1

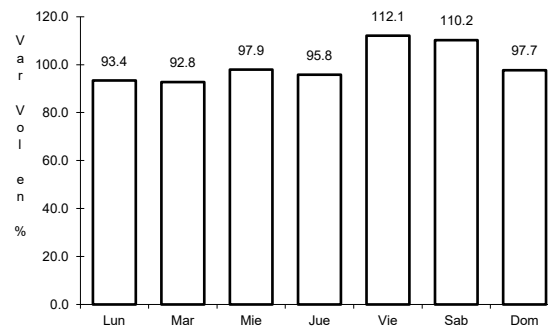
12 CARR: Tamazunchale - San Felipe Orizatlán

CLAVE: 00609

ruta: MEX-085



Km: 0.00 Tipo: 3 Sent: 0

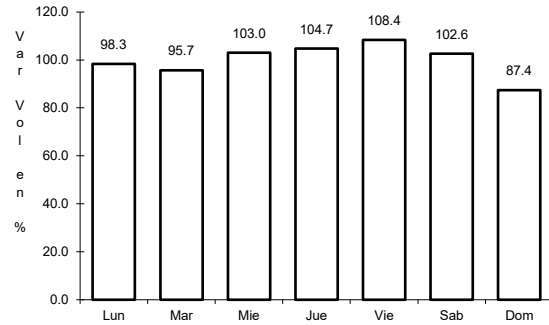


Km: 27.10 Tipo: 1 Sent: 0

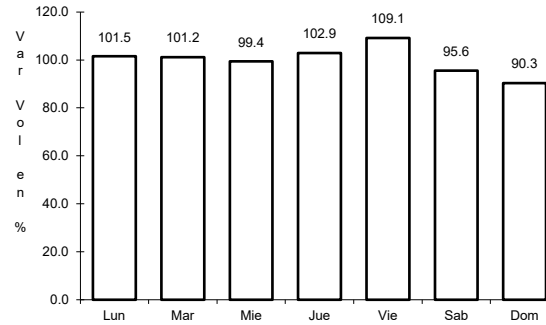
13 CARR: Venta de Carpio - T. C. (Pachuca - Tuxpam)

CLAVE: 00455

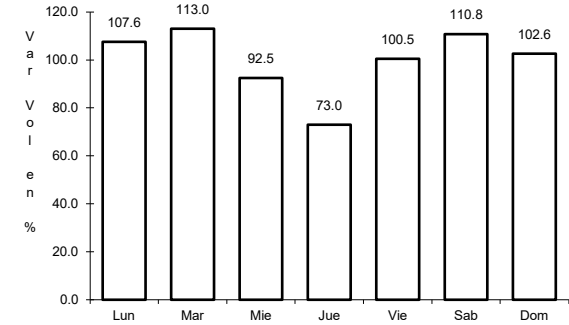
RUTA: MEX-132



Km: 6.42 Tipo: 3 Sent: 1



Km: 6.42 Tipo: 3 Sent: 2

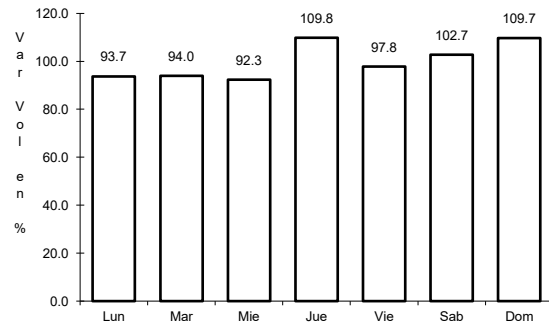


Km: 31.79 Tipo: 3 Sent: 0

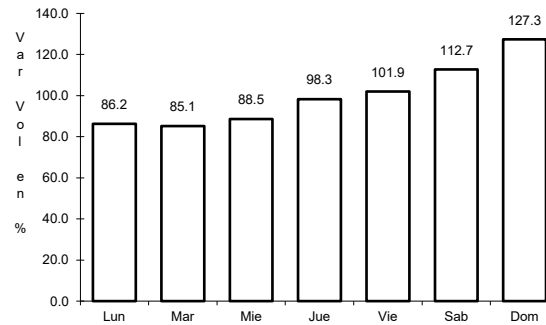
14 CARR: Ent. Tulancingo - Venta Grande (Cuota)

CLAVE: 00026

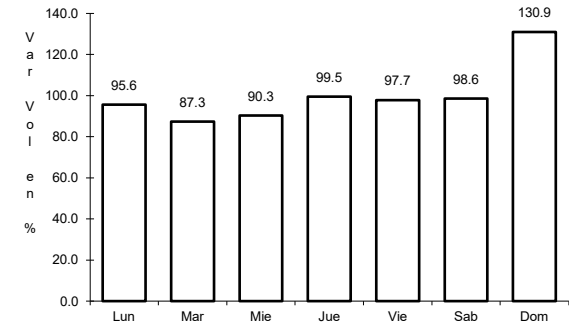
RUTA: MEX-132D



Km: 7.80 Tipo: 1 Sent: 0



Km: 21.80 Tipo: 1 Sent: 0

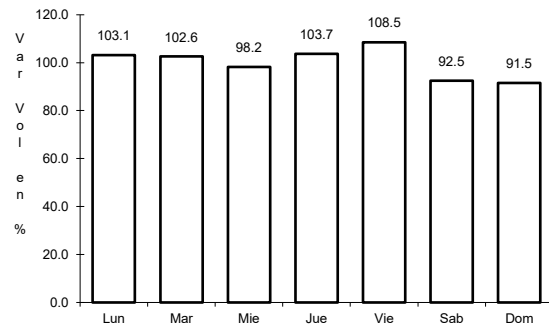


Km: 39.60 Tipo: 1 Sent: 0

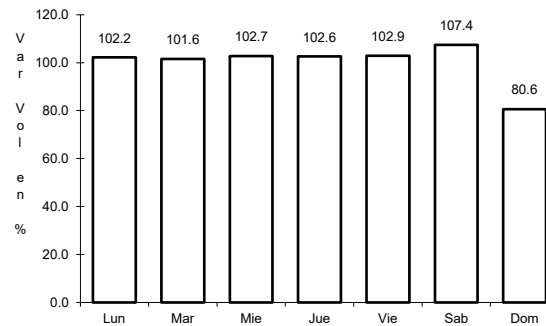
15 CARR: Libramiento Norte de la Ciudad de México (Cuota)

CLAVE: 0902

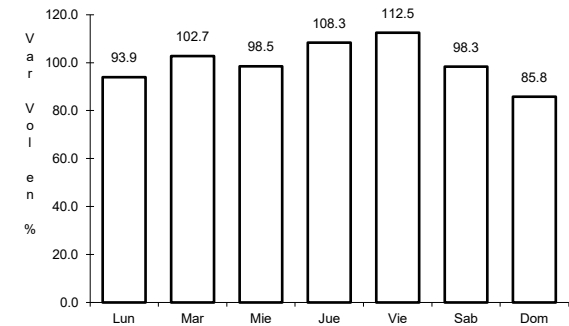
RUTA: MEX-055D



Km: 12.90 Tipo: 1 Sent: 1



Km: 12.90 Tipo: 1 Sent: 2

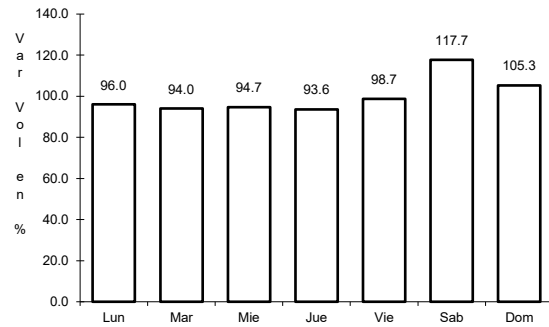


Km: 226.73 Tipo: 1 Sent: 1

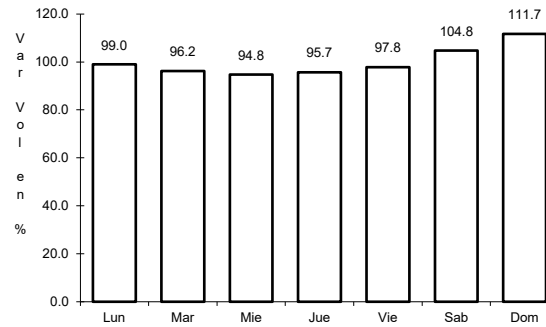
16 CARR: México - Pachuca (Cuota)

CLAVE: 00432

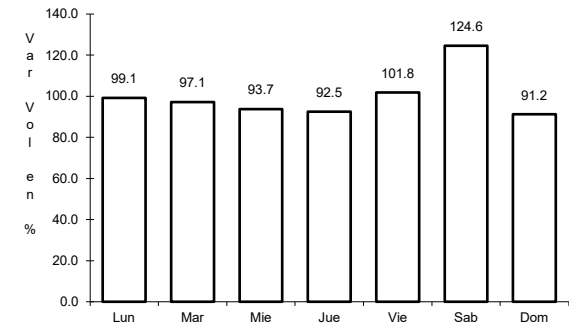
RUTA: MEX-085D



Km: 25.00 Tipo: 3 Sent: 1



Km: 25.00 Tipo: 3 Sent: 2

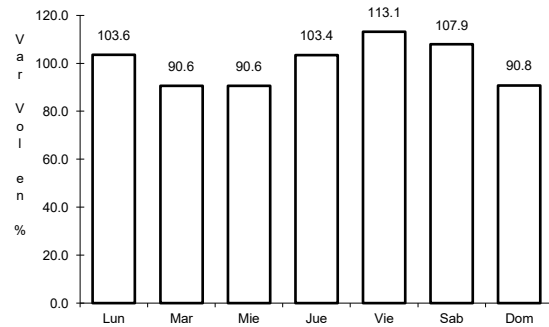


Km: 60.50 Tipo: 1 Sent: 1

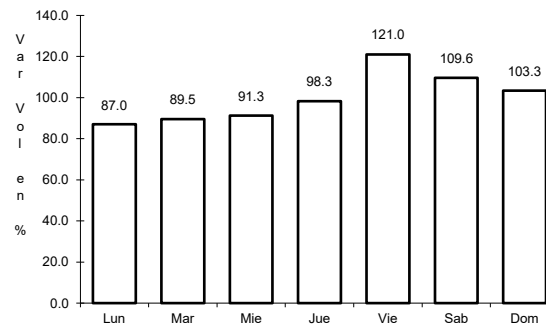
17 CARR: Tejocotal - Nuevo Necaxa (Cuota)

CLAVE: 00211

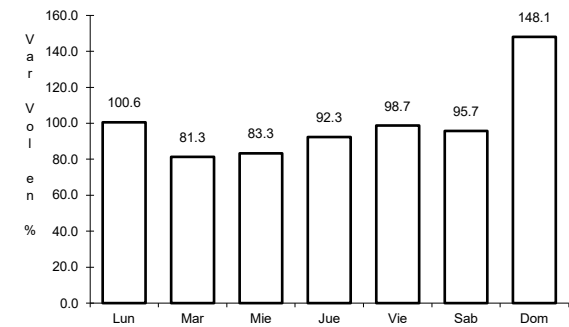
RUTA: MEX-132D



Km: 0.00 Tipo: 3 Sent: 0



Km: 17.00 Tipo: 1 Sent: 1

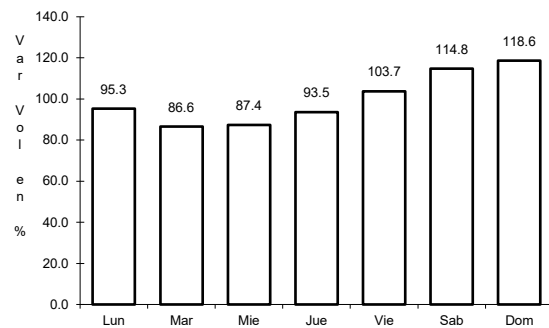


Km: 17.00 Tipo: 1 Sent: 2

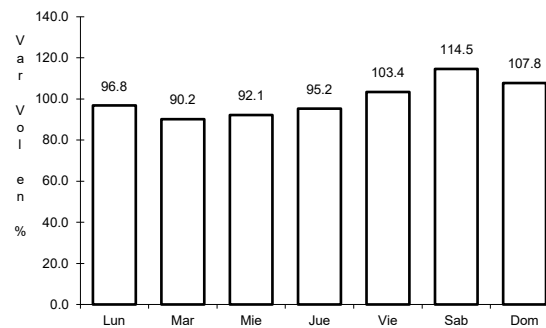
18 CARR: Tlaxco - Tejocotal (Cuota)

CLAVE: 00209

RUTA: MEX-119D



Km: 23.00 Tipo: 3 Sent: 0

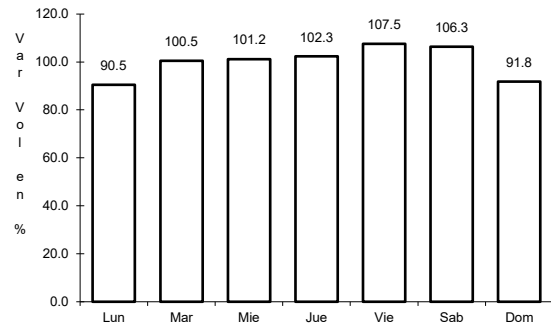


Km: 56.20 Tipo: 3 Sent: 0

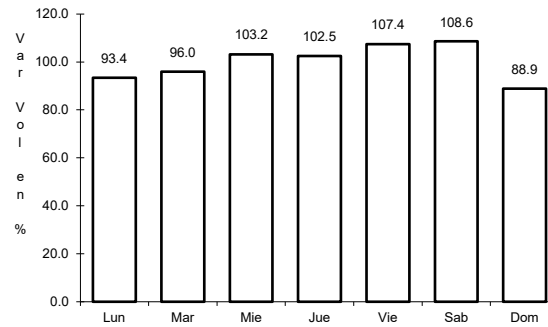
19 CARR: México - Querétaro (Cuota)

CLAVE: 00411

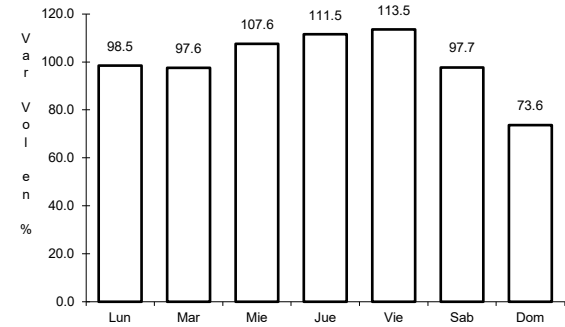
RUTA: MEX-057-MEX-057D



Km: 56.18 Tipo: 1 Sent: 1



Km: 56.18 Tipo: 1 Sent: 2

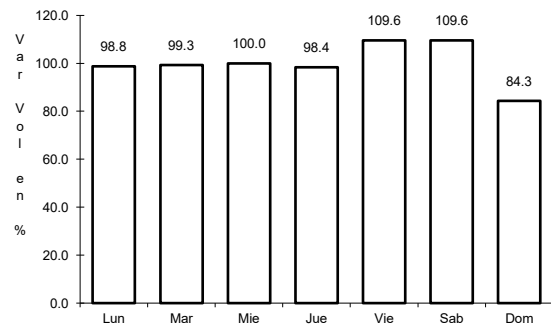


Km: 207.00 Tipo: 3 Sent: 1

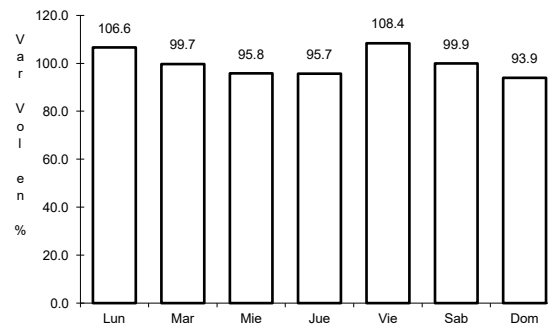
20 CARR: Actopan - Progreso

CLAVE: 13038

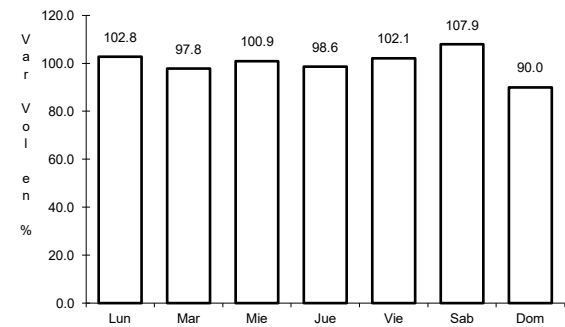
RUTA: HGO



Km: 0.00 Tipo: 3 Sent: 1



Km: 0.00 Tipo: 3 Sent: 2

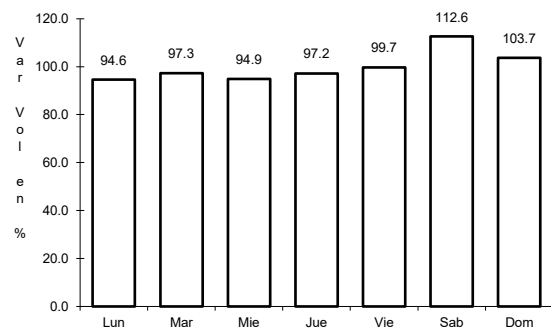


Km: 23.90 Tipo: 1 Sent: 1

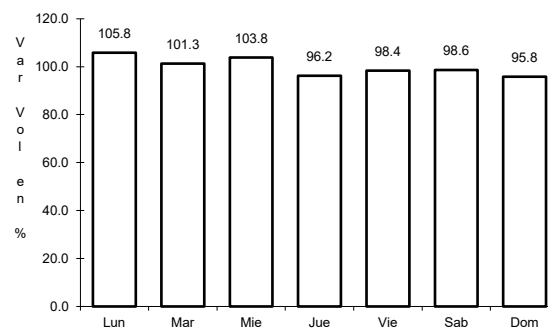
21 CARR: El Saucillo - Amealco

CLAVE: 13103

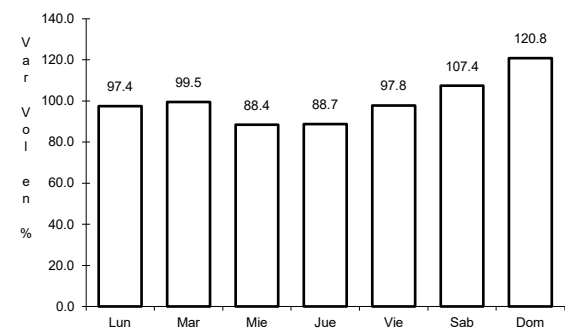
RUTA: HGO-103



Km: 0.00 Tipo: 3 Sent: 0



Km: 11.00 Tipo: 3 Sent: 0

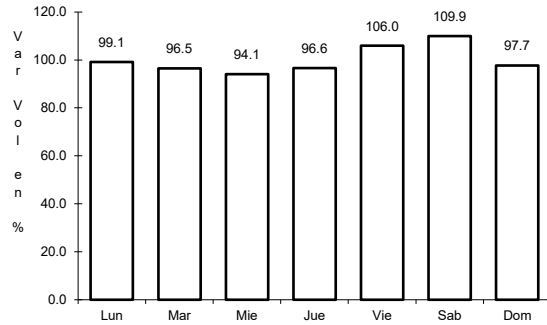


Km: 21.40 Tipo: 1 Sent: 0

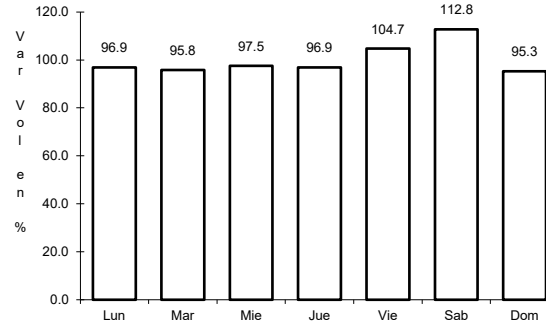
22 CARR: Ent. Emiliano Zapata - Cd. Sahagún

CLAVE: 13255

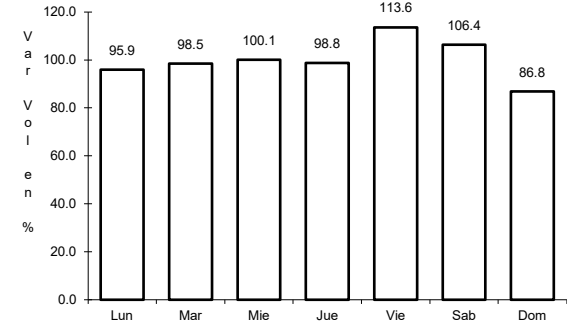
ruta: HGO



Km: 2.70 Tipo: 1 Sent: 1



Km: 2.70 Tipo: 1 Sent: 2

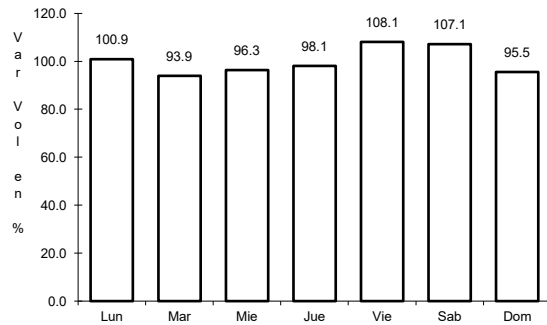


Km: 17.98 Tipo: 1 Sent: 1

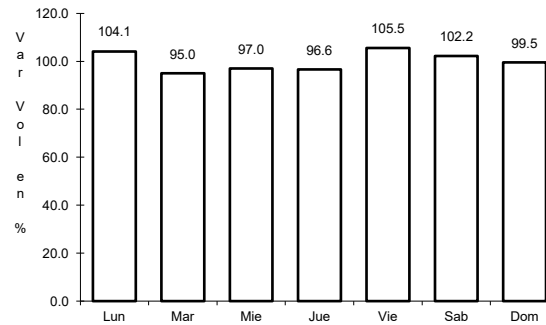
23 CARR: Ent. Tepeji del Río - Tlahuelilpan

CLAVE: 13017

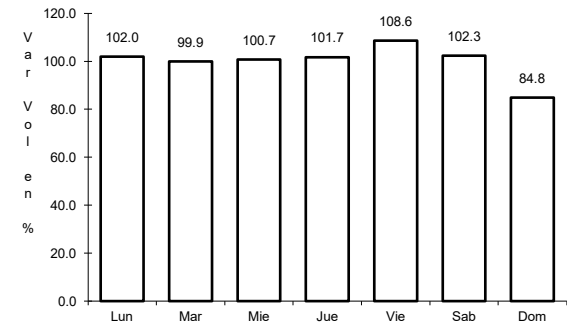
ruta: HGO-017



Km: 3.00 Tipo: 3 Sent: 1



Km: 3.00 Tipo: 3 Sent: 2

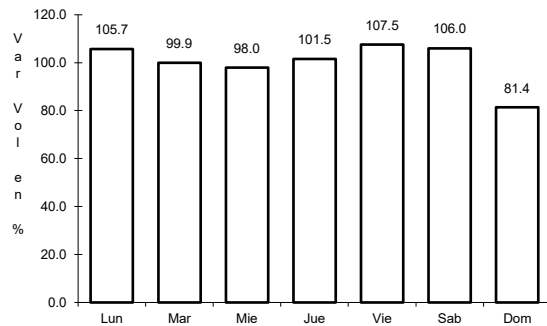


Km: 18.00 Tipo: 1 Sent: 0

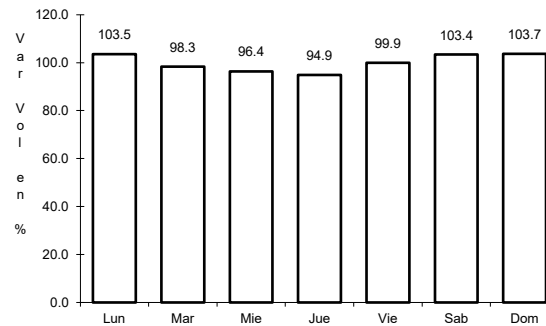
24 CARR: Ent. Tolman - Cd. Sahagún

CLAVE: 00119

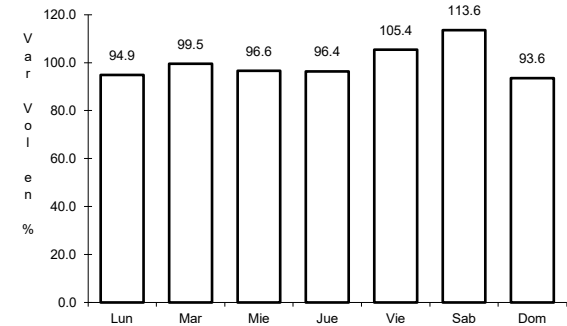
ruta: EM-009-HGO



Km: 0.00 Tipo: 3 Sent: 0



Km: 21.00 Tipo: 3 Sent: 0

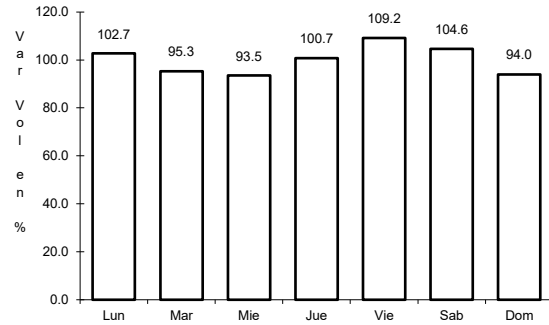


Km: 32.00 Tipo: 1 Sent: 0

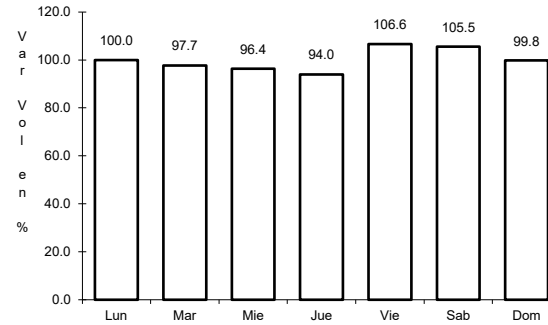
25 CARR: Francisco I. Madero - Tula de Allende

CLAVE: 13043

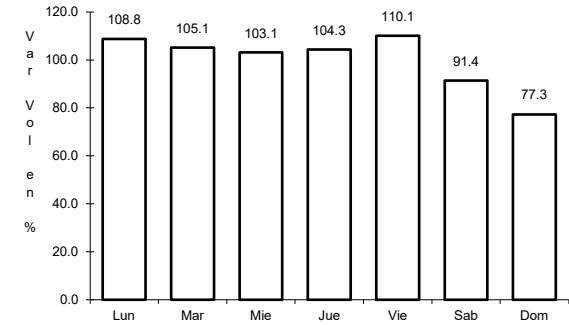
RUTA: HGO



Km: 0.00 Tipo: 3 Sent: 0



Km: 38.20 Tipo: 1 Sent: 0

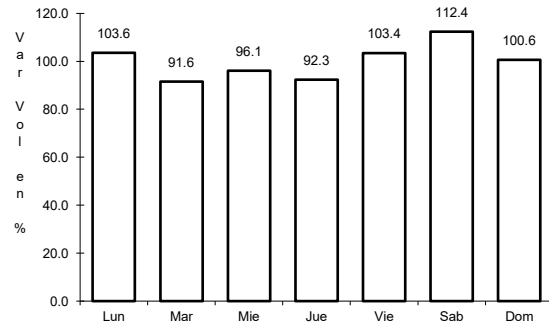


Km: 52.70 Tipo: 1 Sent: 0

26 CARR: Huichapan - Tecozautla

CLAVE: 13030

RUTA: HGO-030

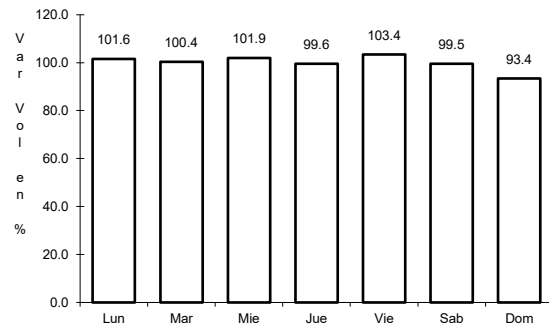


Km: 0.00 Tipo: 3 Sent: 0

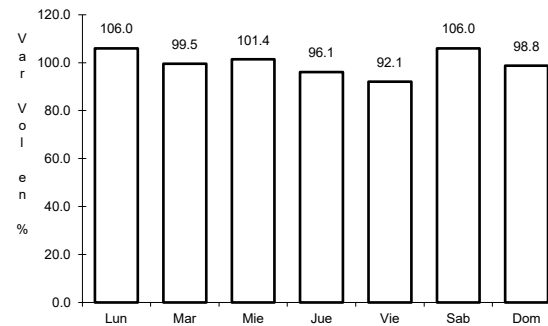
27 CARR: Jilotepec - Maravillas

CLAVE: 00015

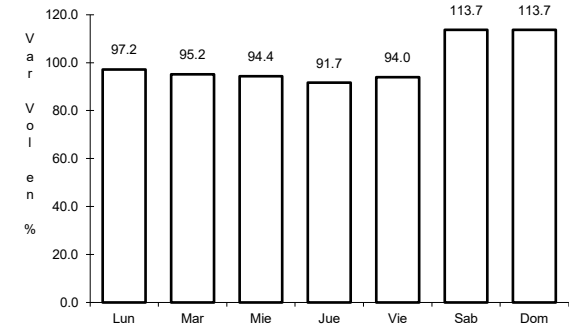
RUTA: EM-HGO



Km: 0.00 Tipo: 3 Sent: 0



Km: 21.30 Tipo: 1 Sent: 0

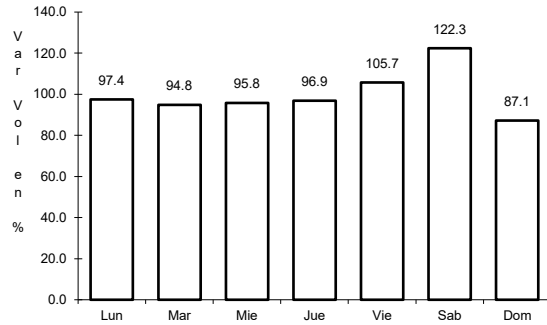


Km: 40.00 Tipo: 1 Sent: 0

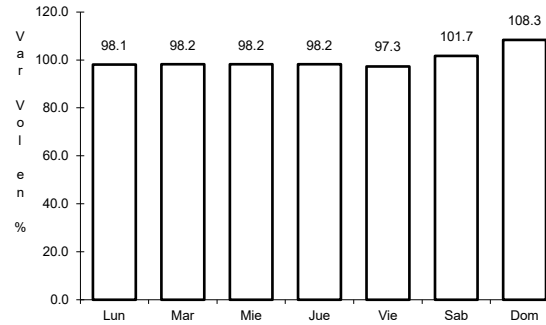
28 CARR: Libramiento de Atotonilco El Grande

CLAVE: 13238

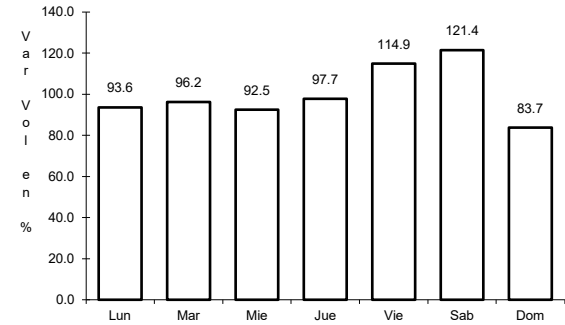
RUTA: HGO



Km: 0.00 Tipo: 3 Sent: 1



Km: 0.00 Tipo: 3 Sent: 2

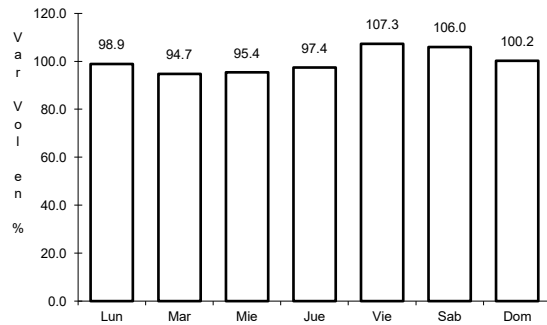


Km: 6.30 Tipo: 1 Sent: 1

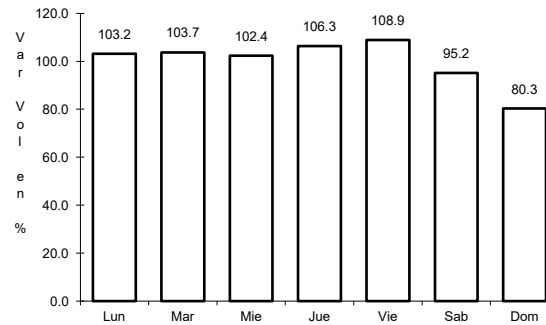
29 CARR: Lolotla - Atlapexco

CLAVE: 13238

RUTA: HGO



Km: 0.00 Tipo: 3 Sent: 0

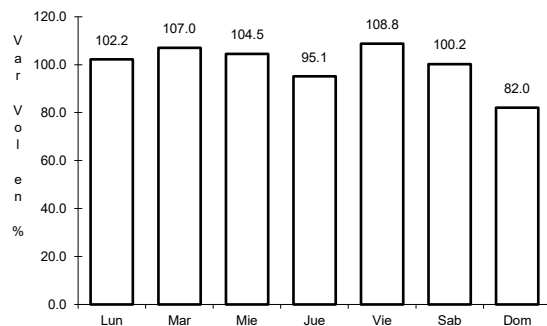


Km: 68.00 Tipo: 1 Sent: 0

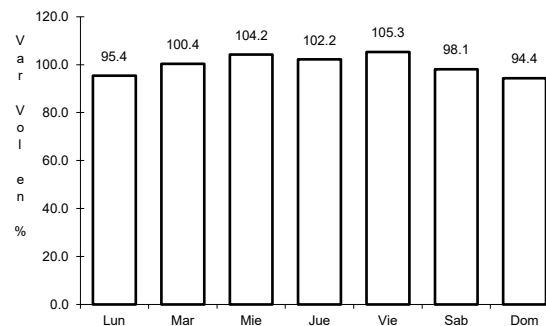
30 CARR: Los Reyes - El Tephé

CLAVE: 00021

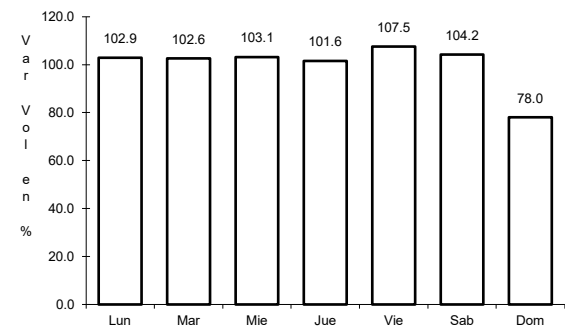
RUTA: EM-HGO



Km: 1.35 Tipo: 3 Sent: 1



Km: 1.35 Tipo: 3 Sent: 2

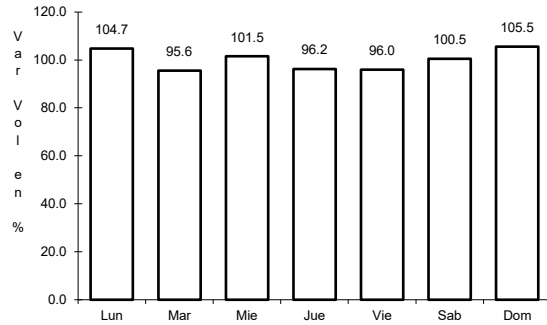


Km: 42.00 Tipo: 1 Sent: 0

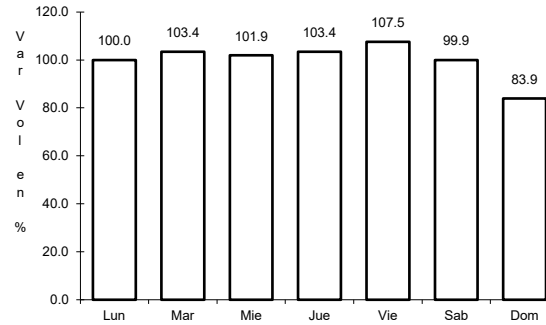
31 CARR: Otumba - Tizayuca

CLAVE: 00012

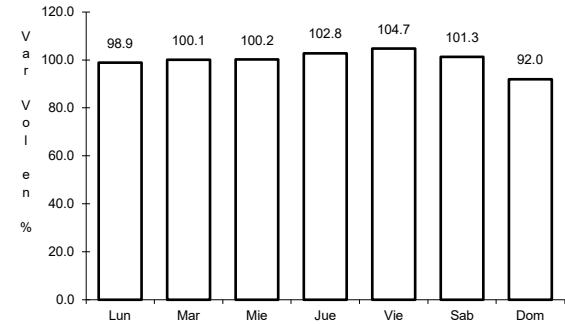
RUTA: EM-HGO



Km: 0.00 Tipo: 3 Sent: 0



Km: 37.10 Tipo: 1 Sent: 1

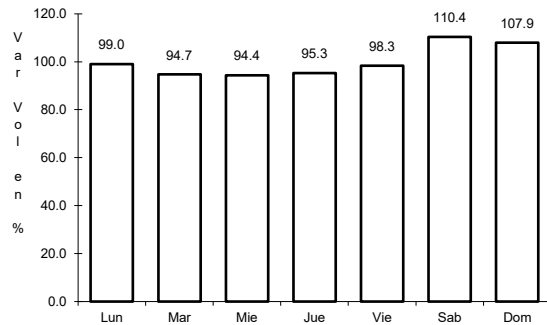


Km: 37.10 Tipo: 1 Sent: 2

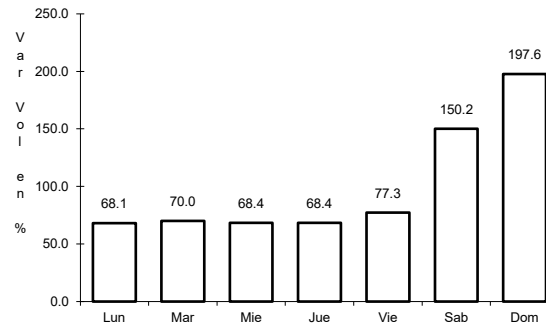
32 CARR: Ramal a El Chico

CLAVE: 13256

RUTA: HGO



Km: 0.00 Tipo: 3 Sent: 0

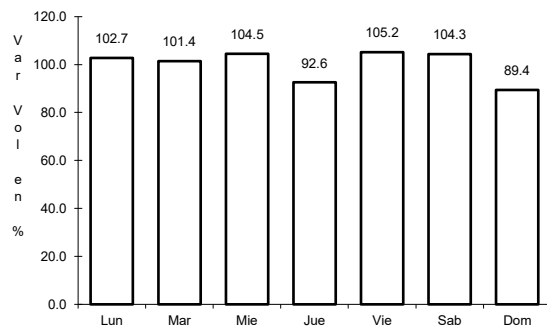


Km: 21.00 Tipo: 1 Sent: 0

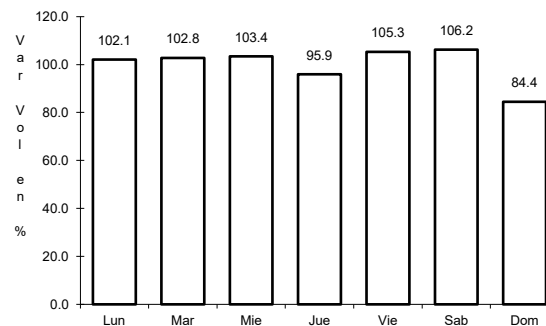
33 CARR: Ramal a Pachuca

CLAVE: 13254

RUTA: HGO



Km: 0.00 Tipo: 3 Sent: 1

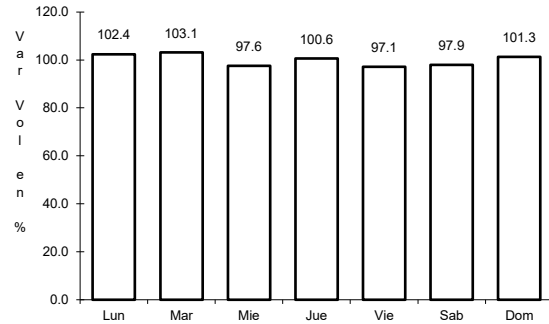


Km: 0.00 Tipo: 3 Sent: 2

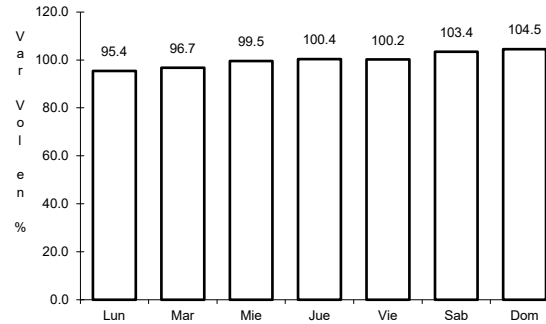
34 CARR: San Alejo - Huayacocotla

CLAVE: 00132

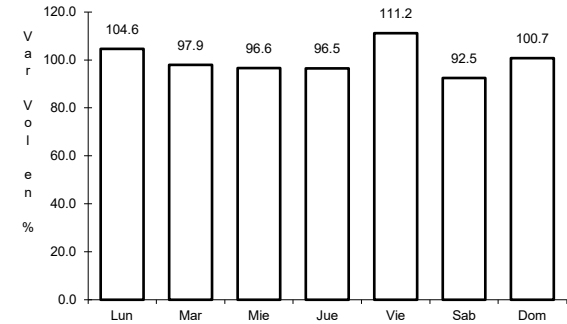
RUTA: HGO-051-VER-113



Km: 0.00 Tipo: 3 Sent: 0



Km: 29.48 Tipo: 3 Sent: 0

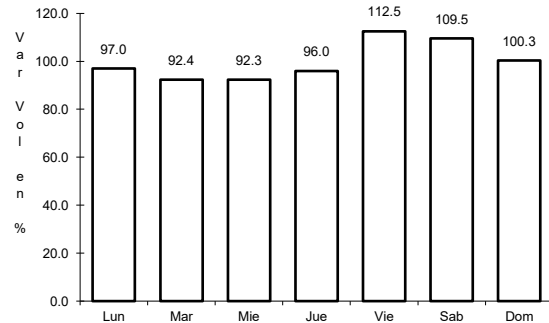


Km: 66.00 Tipo: 1 Sent: 0

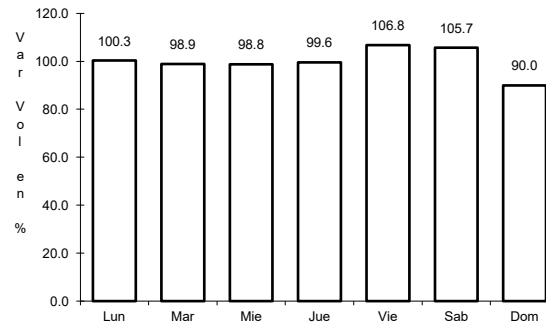
35 CARR: San Felipe Orizatlán - Huejutla de Reyes

CLAVE: 13258

RUTA: HGO



Km: 0.00 Tipo: 3 Sent: 0

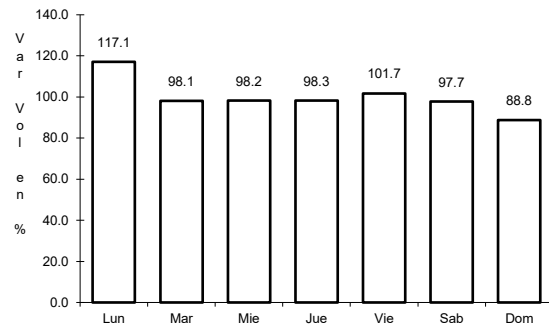


Km: 25.00 Tipo: 1 Sent: 0

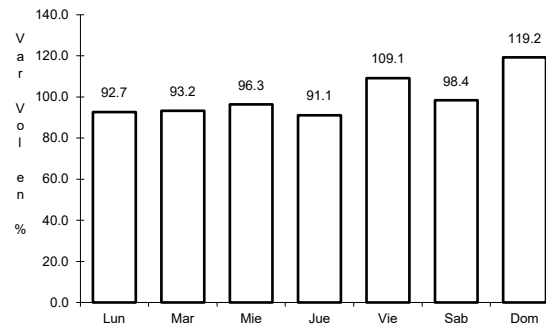
36 CARR: Santo Domingo - T. C. (México - Querétaro)

CLAVE: 00433

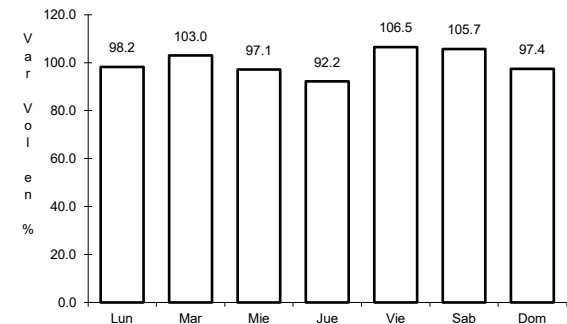
RUTA: EM-011-HGO



Km: 0.00 Tipo: 3 Sent: 0



Km: 65.84 Tipo: 1 Sent: 1

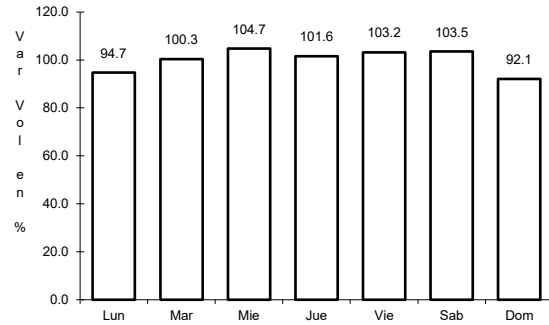


Km: 65.84 Tipo: 1 Sent: 2

37 CARR: T. C. (Los Reyes - El Tephé) - Tizayuca

CLAVE: 00014

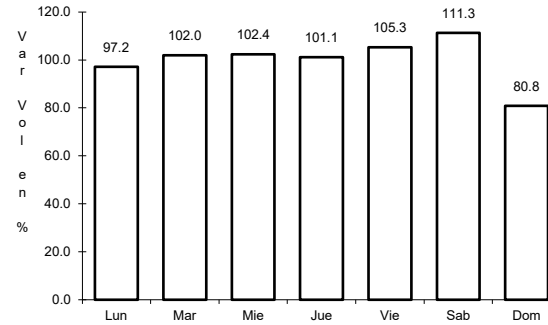
RUTA: EM-HGO



Km: 0.00

Tipo: 3

Sent: 0



Km: 8.00

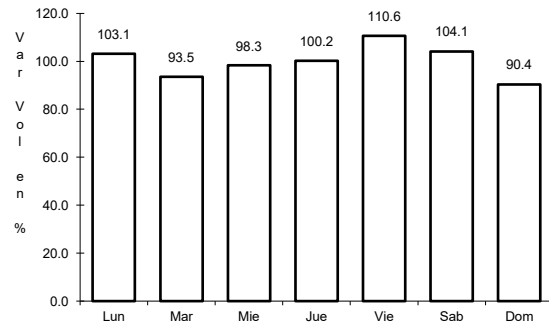
Tipo: 1

Sent: 0

38 CARR: Tepeji del Río - T.C. (México - Querétaro)

CLAVE: 13104

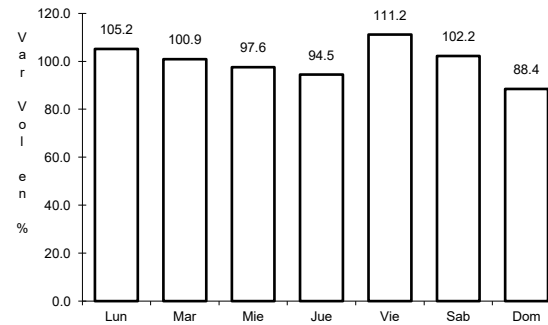
RUTA: HGO



Km: 0.00

Tipo: 3

Sent: 0



Km: 12.40

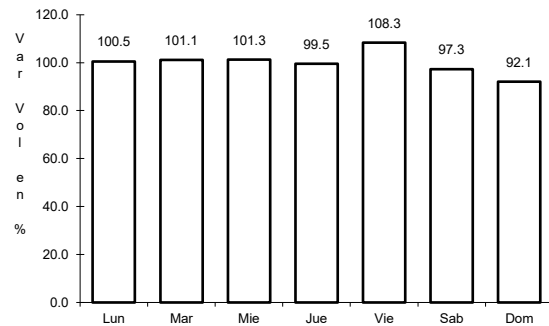
Tipo: 1

Sent: 0

39 CARR: Tlahuelilpan - San Agustín Tlaxiaca

CLAVE: 13435

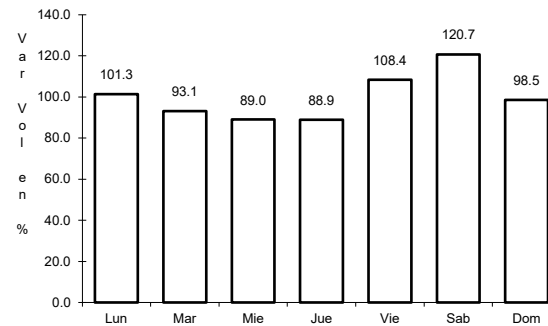
RUTA: HGO



Km: 0.00

Tipo: 3

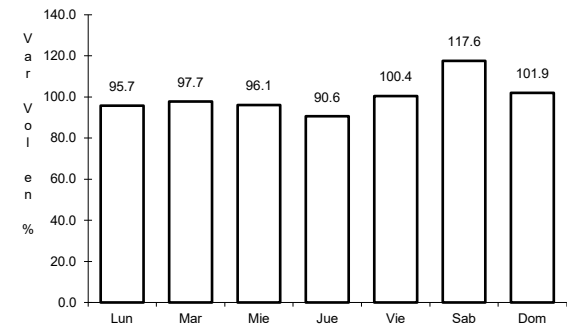
Sent: 0



Km: 25.50

Tipo: 3

Sent: 0

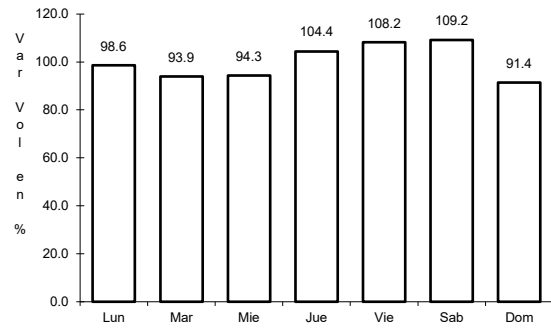


Km: 48.00

Tipo: 1

Sent: 0

40 CARR: Calpulalpan - El Ocote

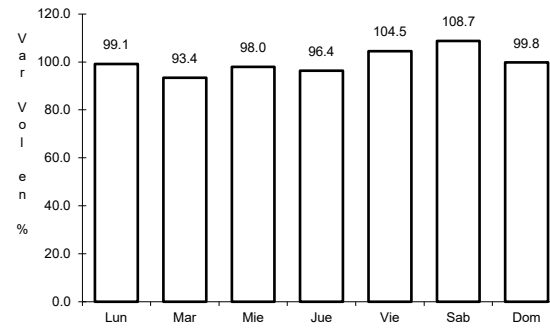


Km: 0.00

Tipo: 3

Sent: 0

CLAVE: 00054

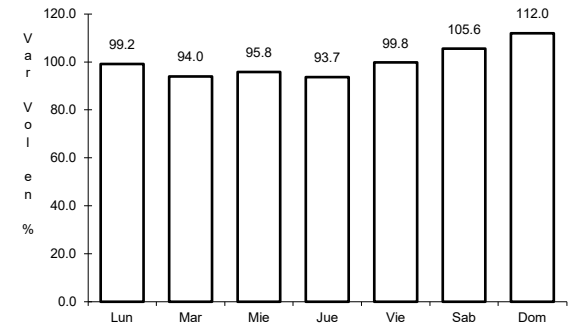


Km: 34.92

Tipo: 3

Sent: 0

RUTA: MEX-HGO



Km: 70.44

Tipo: 1

Sent: 1

