



COAHUILA

---RED FEDERAL LIBRE---

1 Cd. Acuña - Presa de La Amistad	MEX-002
2 Durango - Torreón	MEX-040
3 Ent. Bella Unión - Saltillo	MEX-057
4 Ent. La Cuchilla - San Pedro de las Colonias	MEX
5 Ent. Morelos - Saltillo	MEX-054
6 Gregorio García - Francisco I. Madero	MEX-040
7 Libramiento Allende - Nava	MEX-057
8 Monclova - Piedras Negras	MEX-057
9 Monclova - San Pedro de Las Colonias	MEX-030
10 Monterrey - Castaños	MEX-053
11 Morelos - Cd. Acuña	MEX-029
12 Nueva Rosita - Boquillas del Carmen	MEX-053
13 Ojo Caliente - Santa Cruz	MEX-057
14 Piedras Negras - Cd. Acuña	MEX-002
15 Piedras Negras - Nuevo Laredo	MEX-002
16 Puerto México - La Encantada	MEX-057
17 Saltillo - Monclova	MEX-057
18 Saltillo - Monterrey	MEX-040
19 Saltillo - Torreón	MEX-040
20 Torreón - San Pedro de las Colonias	MEX-030

---RED FEDERAL DE CUOTA---

21 Libramiento Norponiente de Saltillo (Cuota)	MEX-054D
22 Libramiento Norte de Torreón (Cuota)	MEX-040D
23 Libramiento Oriente de Saltillo (Cuota)	MEX-057D
24 Nueva Rosita - Ent. Allende (Cuota)	MEX-057D
25 Puerto México - La Carbonera (Cuota)	MEX-057D
26 Saltillo - Monterrey (Cuota)	MEX-040D
27 Saltillo - Torreón (Cuota) T1	MEX-040D
28 Saltillo - Torreón (Cuota) T2	MEX-040D

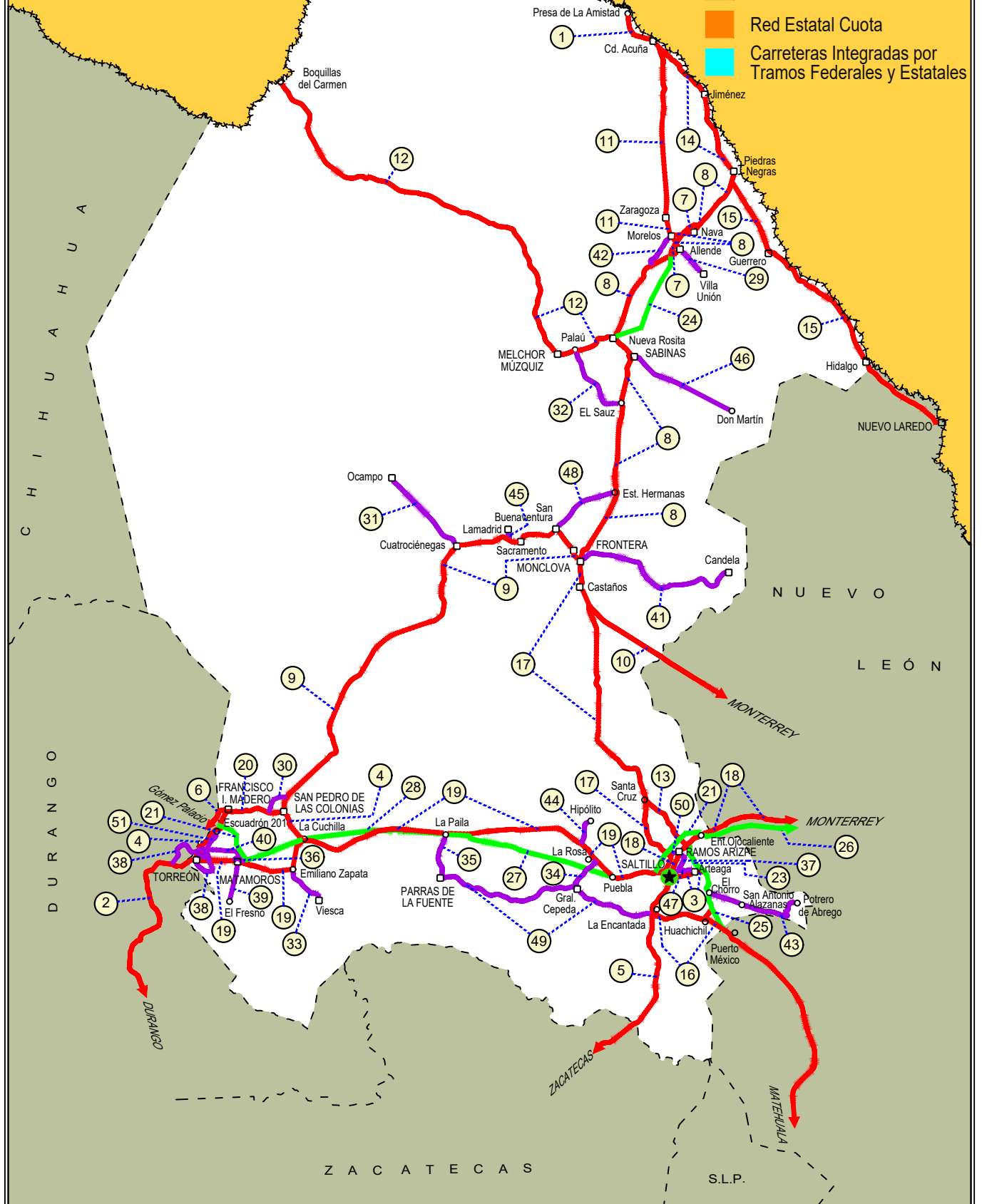
---RED ESTATAL LIBRE---

29 Allende - Villa Unión	COA-015
30 Corredor Libramiento de San Pedro	COA-087
31 Cuatro Ciénegas - Ocampo	COA-048
32 El Sauz - Palau	COA-022
33 Emiliano Zapata - Viesca	COA-082
34 Ent. La Rosa - General Cepeda	COA-034
35 Ent. Paila - Parras de La Fuente	COA-102
36 Libramiento de Matamoros	COA
37 Libramiento de Saltillo J.L.P.	COA
38 Libramiento de Torreón	COA
39 Matamoros - El Fresno	COA-078
40 Matamoros - La Unión	COA-070
41 Monclova - Estación Candela	COA-030-NL
42 Morelos - Ent. Las Corrientes	COA-010
43 Puerto de Flores - El Hondable	COA-112
44 Ramal a Hipólito	COA-114
45 Ramal a Lamadrid	COA-042
46 Sabinas - Don Martín	COA-025
47 Saltillo - Arteaga	COA-106
48 San Buenaventura - Estación Hermanas	COA-034
49 T. C. (Ent. Morelos - Saltillo) - Parras de La Fuente	COA-105
50 T. C. (Saltillo - Monclova) - Ramos Arizpe	COA
51 Torreón - Escuadrón 201	COA-011

05 COAHUILA

ESTADOS UNIDOS DE AMÉRICA

- 1 --- Número Índice
- Red Federal Libre
- Red Federal Cuota
- Red Federal Integrada por Tramos Libres y de Cuota
- Red Estatal Libre
- Red Estatal Cuota
- Carreteras Integradas por Tramos Federales y Estatales



COAHUILA

1 CARR: Cd. Acuña - Presa de La Amistad

CLAVE: 05085

RUTA: MEX-002

AÑO: 2023

LUGAR	ESTACION				CLASIFICACION VEHICULAR EN PORCIENTO										COORDENADAS					
	KM	TE	SC	TDPA	M	A	B	C2	C3	T3S2	T3S3	T3S2R4	OTROS	A	B	C	K'	D	LATITUD	LONGITUD
Cd. Acuña	0.00	3	1	12349	1.6	88.0	2.4	5.9	0.5	0.8	0.1	0.4	0.3	89.6	2.4	8.0	0.077	0.504	29.333940	-100.964579
Cd. Acuña	0.00	3	2	12547	1.8	88.3	2.2	5.5	0.7	0.8	0.1	0.4	0.2	90.1	2.2	7.7	0.103	0.504	29.333686	-100.963972
T. Izq. Santa Eulalia	10.60	1	1	5286	2.3	79.6	5.1	9.3	1.3	1.1	1.2	0.1	0.0	81.9	5.1	13.0	0.143	0.506	29.342720	-101.001760
T. Izq. Santa Eulalia	10.60	1	2	5170	2.3	79.8	5.0	9.3	1.2	1.2	1.1	0.1	0.0	82.1	5.0	12.9	0.105	0.506	29.342622	-101.001788
Presa de La Amistad	23.00	1	0	525	2.7	72.8	5.1	15.2	3.9	0.1	0.2	0.0	0.0	75.5	5.1	19.4	0.255	0.505	29.442908	-101.074292

2 CARR: Durango - Torreón

CLAVE: 10085

RUTA: MEX-040

AÑO: 2023

LUGAR	ESTACION				CLASIFICACION VEHICULAR EN PORCIENTO										COORDENADAS					
	KM	TE	SC	TDPA	M	A	B	C2	C3	T3S2	T3S3	T3S2R4	OTROS	A	B	C	K'	D	LATITUD	LONGITUD
Durango	0.00	3	1	10383	5.2	85.2	2.7	3.7	1.3	1.3	0.3	0.2	0.1	90.4	2.7	6.9	0.085	0.506	24.077611	-104.590175
Durango	0.00	3	2	10138	4.9	86.4	1.7	4.0	1.1	1.2	0.3	0.3	0.1	91.3	1.7	7.0	0.079	0.506	24.077507	-104.590458
T. Der. Cd. de Los Niños	7.70	3	1	7794	4.3	86.2	2.1	4.1	1.1	1.5	0.4	0.2	0.1	90.5	2.1	7.4	0.080	0.504	24.081823	-104.586560
T. Der. Cd. de Los Niños	7.70	3	2	7917	4.1	86.0	2.3	4.0	1.4	1.5	0.4	0.2	0.1	90.1	2.3	7.6	0.079	0.504	24.082203	-104.586432
X. Periférico de Durango	9.00	1	1	8087	4.0	86.2	1.7	4.1	2.3	0.9	0.5	0.2	0.1	90.2	1.7	8.1	0.082	0.507	24.088751	-104.580628
X. Periférico de Durango	9.00	1	2	8319	4.1	86.4	1.6	4.1	2.2	1.0	0.3	0.2	0.1	90.5	1.6	7.9	0.077	0.507	24.088851	-104.580730
T. Der. Aeropuerto	9.42	1	1	8017	3.7	85.9	2.2	3.7	1.5	1.9	0.5	0.5	0.1	89.6	2.2	8.2	0.104	0.515	24.093223	-104.576793
T. Der. Aeropuerto	9.42	1	2	8508	3.4	87.9	1.9	3.3	1.2	1.4	0.4	0.4	0.1	91.3	1.9	6.8	0.092	0.515	24.092563	-104.577583
T. Der. Aeropuerto	9.42	3	1	5363	13.5	74.1	1.5	3.3	4.1	1.7	0.9	0.4	0.5	87.6	1.5	10.9	0.078	0.506	24.098547	-104.576125
T. Der. Aeropuerto	9.42	3	2	5241	13.5	74.1	1.5	3.3	3.8	2.0	0.8	0.4	0.6	87.6	1.5	10.9	0.080	0.506	24.098627	-104.576208
La Calera	10.85	3	0	5486	3.6	79.7	2.7	6.2	2.0	3.4	1.6	0.7	0.1	83.3	2.7	14.0	0.085	0.502	24.111680	-104.571820
Abraham González	27.10	3	0	3920	2.4	78.8	2.8	5.2	1.4	5.5	3.3	0.5	0.1	81.2	2.8	16.0	0.067	0.514	24.201431	-104.524783
Francisco I. Madero	56.30	1	0	3731	4.6	73.6	3.5	6.2	1.9	5.3	3.6	1.1	0.2	78.2	3.5	18.3	0.087	0.525	24.392024	-104.331595
Francisco I. Madero	56.30	3	0	3954	3.5	75.5	3.7	5.1	2.3	5.2	2.5	1.9	0.3	79.0	3.7	17.3	0.083	0.503	24.405142	-104.306055
Guadalupe Victoria	77.50	1	0	6112	4.2	76.7	3.7	3.3	2.9	4.8	3.1	1.0	0.3	80.9	3.7	15.4	0.083	0.510	24.446798	-104.140063
Guadalupe Victoria	77.50	3	0	6681	3.7	81.2	2.4	3.3	1.5	4.2	2.8	0.8	0.1	84.9	2.4	12.7	0.085	0.506	24.452910	-104.104151
T. Der. Ignacio Allende	90.13	1	0	4311	1.9	79.9	2.7	3.2	1.6	5.6	4.3	0.7	0.1	81.8	2.7	15.5	0.080	0.511	24.494785	-104.028631
T. Der. Ignacio Allende	90.13	3	0	2773	2.1	71.6	3.7	4.4	3.3	9.4	4.2	1.2	0.1	73.7	3.7	22.6	0.092	0.510	24.505459	-104.012745
T. Izq. Peñón Blanco	120.90	1	0	2432	3.3	64.1	4.4	5.8	3.7	10.2	6.6	1.8	0.1	67.4	4.4	28.2	0.082	0.500	24.733991	-103.842818
T. Izq. Peñón Blanco	120.90	3	0	2272	3.2	62.3	6.1	5.6	2.8	10.3	7.1	2.3	0.3	65.5	6.1	28.4	0.084	0.516	24.742880	-103.837708
Cuencamé	144.30	1	0	1801	5.0	82.0	3.9	2.6	3.1	1.4	1.6	0.3	0.1	87.0	3.9	9.1	0.073	0.506	24.861251	-103.701351
Cuencamé	144.30	3	1	4912	3.6	51.2	5.0	11.1	3.7	15.6	4.5	4.6	0.7	54.8	5.0	40.2	0.106	0.502	24.878219	-103.698965
Cuencamé	144.30	3	2	4874	3.4	51.2	4.8	11.1	3.9	15.6	4.4	5.0	0.6	54.6	4.8	40.6	0.087	0.502	24.878217	-103.699046
T. C. Libramiento Exterior Cuencamé	148.70	1	0	2347	4.9	74.2	3.4	10.3	2.7	1.9	1.7	0.8	0.1	79.1	3.4	17.5	0.085	0.502	24.895381	-103.702079
X. C. Yerbanis - Gómez Palicio (Cuota)	157.80	1	0	7987	1.9	46.5	2.2	7.4	3.4	25.3	6.3	6.1	0.9	48.4	2.2	49.4	0.060	0.547	24.971273	-103.731772

COAHUILA

2 CARR: Durango - Torreón

CLAVE: 10085

RUTA: MEX-040

AÑO: 2023

LUGAR	ESTACION				CLASIFICACION VEHICULAR EN PORCIENTO													COORDENADAS		
	KM	TE	SC	TDPA	M	A	B	C2	C3	T3S2	T3S3	T3S2R4	OTROS	A	B	C	K'	D	LATITUD	LONGITUD
T. Izq. Nazas	171.61	1	0	4035	2.6	57.4	5.5	5.3	4.0	16.0	6.4	2.3	0.5	60.0	5.5	34.5	0.076	0.501	25.085907	-103.771248
T. Izq. Nazas	171.61	3	0	5918	2.8	64.2	3.6	6.1	4.3	10.4	3.4	4.3	0.9	67.0	3.6	29.4	0.072	0.523	25.091731	-103.769791
T. Der. Villa Juárez	194.40	3	0	8018	3.0	60.3	2.8	7.0	4.1	14.5	5.0	2.4	0.9	63.3	2.8	33.9	0.067	0.502	25.226565	-103.627169
León Guzmán	229.58	3	0	10140	7.3	71.1	2.4	5.5	2.2	6.7	2.9	1.5	0.4	78.4	2.4	19.2	0.073	0.502	25.508619	-103.650590
Cd. Lerdo	244.80	1	1	7175	3.6	75.6	3.2	4.3	3.3	5.1	2.5	1.7	0.7	79.2	3.2	17.6	0.094	0.506	25.511926	-103.541993
Cd. Lerdo	244.80	1	2	7359	3.9	75.8	3.1	4.7	3.2	4.8	2.3	1.7	0.5	79.7	3.1	17.2	0.083	0.506	25.512031	-103.541988
T. Izq. Gómez Palacio	248.90	3	1	27886	9.1	85.9	0.8	2.1	0.8	0.3	0.1	0.7	0.2	95.0	0.8	4.2	0.089	0.506	25.550663	-103.480704
T. Izq. Gómez Palacio	248.90	3	2	28624	9.1	86.4	0.6	1.9	0.7	0.4	0.1	0.6	0.2	95.5	0.6	3.9	0.088	0.506	25.550797	-103.480672
Lim. Edos. Term. Dgo. Ppia. Coah.	251.00																			
Torreón	255.80	1	1	22938	6.7	85.2	1.8	4.6	0.2	0.4	0.2	0.8	0.1	91.9	1.8	6.3	0.068	0.501	25.547216	-103.470886
Torreón	255.80	1	2	22867	6.8	85.1	1.6	4.4	0.3	0.4	0.2	1.0	0.2	91.9	1.6	6.5	0.080	0.501	25.546102	-103.469155

3 CARR: Ent. Bella Unión - Saltillo

CLAVE: 05003

RUTA: MEX-057

AÑO: 2023

LUGAR	ESTACION				CLASIFICACION VEHICULAR EN PORCIENTO													COORDENADAS		
	KM	TE	SC	TDPA	M	A	B	C2	C3	T3S2	T3S3	T3S2R4	OTROS	A	B	C	K'	D	LATITUD	LONGITUD
T. C. Ent. Puerto México - Ent. Ojo Caliente (Cuota)	0.00																			
T. Der. Arteaga	4.61	1	1	6606	2.5	82.8	1.6	5.6	1.5	4.4	0.7	0.6	0.3	85.3	1.6	13.1	0.118	0.513	25.444200	-100.834923
T. Der. Arteaga	4.61	1	2	6970	2.1	84.1	1.4	5.3	1.5	4.2	0.6	0.5	0.3	86.2	1.4	12.4	0.137	0.513	25.444046	-100.834944
Saltillo	17.00	1	1	32689	1.1	91.0	0.9	3.9	1.4	1.2	0.3	0.1	0.1	92.1	0.9	7.0	0.096	0.539	25.436316	-100.909017
Saltillo	17.00	1	2	38841	1.0	90.3	1.0	4.2	1.6	1.3	0.3	0.1	0.2	91.3	1.0	7.7	0.095	0.539	25.436203	-100.908987

4 CARR: Ent. La Cuchilla - San Pedro de las Colonias

CLAVE: 05021

RUTA: MEX

AÑO: 2023

LUGAR	ESTACION				CLASIFICACION VEHICULAR EN PORCIENTO													COORDENADAS		
	KM	TE	SC	TDPA	M	A	B	C2	C3	T3S2	T3S3	T3S2R4	OTROS	A	B	C	K'	D	LATITUD	LONGITUD
La Cuchilla	0.00	3	0	1168	7.4	77.2	4.7	4.1	1.1	3.4	0.8	1.2	0.1	84.6	4.7	10.7	0.092	0.520	25.626695	-102.882725
T. Der. Mayran	3.30	3	0	1624	10.1	73.8	5.1	5.2	1.3	2.9	0.6	0.9	0.1	83.9	5.1	11.0	0.096	0.531	25.652304	-102.910221
T. Izq. San Patricio	9.07	3	0	2304	11.5	73.0	3.4	5.6	2.6	2.0	0.7	1.1	0.1	84.5	3.4	12.1	0.087	0.509	25.679471	-102.935116
San Pedro de Las Colonias	18.70	1	1	2187	13.5	74.0	3.5	6.2	0.9	1.0	0.5	0.3	0.1	87.5	3.5	9.0	0.090	0.526	25.745656	-102.968788
San Pedro de Las Colonias	18.70	1	2	1973	13.2	74.3	3.7	6.0	1.0	0.9	0.6	0.2	0.1	87.5	3.7	8.8	0.102	0.526	25.745613	-102.968885

COAHUILA

5 CARR: Ent. Morelos - Saltillo

CLAVE: 00149

RUTA: MEX-054

AÑO: 2023

LUGAR	ESTACION				CLASIFICACION VEHICULAR EN PORCIENTO										COORDENADAS					
	KM	TE	SC	TDPA	M	A	B	C2	C3	T3S2	T3S3	T3S2R4	OTROS	A	B	C	K'	D	LATITUD	LONGITUD
T. C. Zacatecas - Durango	0.00	3	1	4235	1.9	72.5	3.3	9.3	2.5	5.9	1.8	2.2	0.6	74.4	3.3	22.3	0.068	0.511	22.869055	-102.619507
T. C. Zacatecas - Durango	0.00	3	2	4433	1.5	72.9	3.6	9.3	2.2	6.4	1.5	2.1	0.5	74.4	3.6	22.0	0.076	0.511	22.869126	-102.619572
T. Der. Sta. Mónica	11.00	1	1	5262	1.9	58.1	3.6	17.5	1.9	13.5	1.3	1.7	0.5	60.0	3.6	36.4	0.084	0.525	22.937493	-102.570175
T. Der. Sta. Mónica	11.00	1	2	4763	1.8	58.1	3.5	18.0	2.1	13.3	1.3	1.5	0.4	59.9	3.5	36.6	0.078	0.525	22.937575	-102.570226
T. Der. Sta. Mónica	11.00	3	1	3566	1.9	50.9	4.3	20.9	2.6	13.6	1.8	3.3	0.7	52.8	4.3	42.9	0.061	0.511	22.950482	-102.559143
T. Der. Sta. Mónica	11.00	3	2	3732	1.5	50.6	4.7	21.6	2.6	13.2	1.8	3.1	0.9	52.1	4.7	43.2	0.073	0.511	22.950539	-102.559201
T. Izq. Villa de Cos	53.90	1	1	4023	1.6	50.9	4.6	19.8	2.6	15.7	1.9	2.0	0.9	52.5	4.6	42.9	0.070	0.538	23.265230	-102.333067
T. Izq. Villa de Cos	53.90	1	2	4684	1.8	50.1	4.3	20.2	2.6	15.9	2.1	2.1	0.9	51.9	4.3	43.8	0.071	0.538	23.265120	-102.333258
T. Izq. Villa de Cos	53.90	3	1	3848	2.3	45.6	6.2	21.6	2.7	15.9	1.9	2.9	0.9	47.9	6.2	45.9	0.069	0.520	23.275974	-102.325290
T. Izq. Villa de Cos	53.90	3	2	4162	1.9	47.7	6.3	21.6	2.3	15.6	1.6	2.4	0.6	49.6	6.3	44.1	0.068	0.520	23.279459	-102.322980
T. Der. Illescas	58.41	3	1	3421	2.3	47.3	6.7	20.8	2.7	15.3	1.7	2.5	0.7	49.6	6.7	43.7	0.065	0.501	23.291440	-102.314083
T. Der. Illescas	58.41	3	2	3405	2.1	46.9	7.1	20.7	2.6	15.7	1.7	2.5	0.7	49.0	7.1	43.9	0.062	0.501	23.291543	-102.314227
Sierra Vieja	85.50	3	1	2506	2.1	46.5	6.8	20.6	2.5	16.9	1.7	2.4	0.5	48.6	6.8	44.6	0.081	0.517	23.505343	-102.121922
Sierra Vieja	85.50	3	2	2341	1.8	45.7	7.0	21.1	2.7	17.0	1.7	2.4	0.6	47.5	7.0	45.5	0.076	0.517	23.505443	-102.122028
T. Der. Majoma	144.50	3	1	2347	1.6	44.1	6.7	24.2	3.6	11.6	2.8	4.7	0.7	45.7	6.7	47.6	0.077	0.528	23.887628	-101.729528
T. Der. Majoma	144.50	3	2	2628	1.5	39.3	7.2	27.4	3.8	11.8	3.0	5.2	0.8	40.8	7.2	52.0	0.074	0.528	23.887691	-101.729668
T. Der. San Tiburcio	185.25	1	1	2157	2.5	47.7	6.0	18.4	1.8	12.5	3.2	7.0	0.9	50.2	6.0	43.8	0.073	0.540	24.155161	-101.497417
T. Der. San Tiburcio	185.25	1	2	2535	2.0	48.6	5.8	18.7	2.0	12.7	2.7	6.8	0.7	50.6	5.8	43.6	0.067	0.540	24.155238	-101.497543
T. Der. San Tiburcio	185.25	3	1	2962	2.9	48.8	6.6	17.8	3.4	12.2	3.1	4.3	0.9	51.7	6.6	41.7	0.063	0.524	24.162159	-101.492368
T. Der. San Tiburcio	185.25	3	2	2689	3.1	49.3	6.6	17.6	3.2	12.3	2.8	4.3	0.8	52.4	6.6	41.0	0.061	0.524	24.162261	-101.492487
T. Izq. Concepción del Oro	240.00	1	1	4029	2.2	46.6	5.0	24.5	3.0	12.1	1.9	3.8	0.9	48.8	5.0	46.2	0.068	0.506	24.611819	-101.369255
T. Izq. Concepción del Oro	240.00	1	2	3927	2.4	47.4	5.0	24.1	3.1	11.4	2.2	3.6	0.8	49.8	5.0	45.2	0.069	0.506	24.611723	-101.369366
T. Izq. Concepción del Oro	240.00	3	1	3798	1.6	51.3	5.9	13.2	3.4	18.4	2.2	3.4	0.6	52.9	5.9	41.2	0.071	0.526	24.647848	-101.349880
T. Izq. Concepción del Oro	240.00	3	2	4222	1.1	51.1	5.9	13.5	3.6	18.6	2.1	3.4	0.7	52.2	5.9	41.9	0.060	0.526	24.647867	-101.349198
Lim. Edos. Term. Zac. Ppia. Coah.	266.50																			
Agua Nueva	322.00	1	0	6834	2.8	59.1	4.2	4.9	1.9	18.4	2.5	5.3	0.9	61.9	4.2	33.9	0.069	0.502	25.179235	-101.094671
T. Der. La Trinidad	333.00	3	1	8864	0.7	80.9	5.3	8.5	1.6	2.6	0.2	0.1	0.1	81.6	5.3	13.1	0.130	0.505	25.283192	-101.087052
T. Der. La Trinidad	333.00	3	2	8690	0.9	79.9	5.5	8.8	1.9	2.6	0.2	0.1	0.1	80.8	5.5	13.7	0.140	0.505	25.283221	-101.087152
X. C. Libramiento de Saltillo	348.00	1	1	19616	1.0	86.3	3.4	5.9	1.3	1.4	0.2	0.4	0.1	87.3	3.4	9.3	0.084	0.502	25.367066	-101.015715
X. C. Libramiento de Saltillo	348.00	1	2	19771	1.2	85.4	3.3	6.1	1.4	1.6	0.3	0.5	0.2	86.6	3.3	10.1	0.073	0.502	25.367141	-101.015891
Saltillo	354.00	1	1	16980	2.5	91.2	1.4	3.9	0.4	0.3	0.1	0.1	0.1	93.7	1.4	4.9	0.093	0.519	25.387817	-101.006233
Saltillo	354.00	1	2	15709	2.2	91.5	1.3	4.2	0.3	0.2	0.1	0.1	0.1	93.7	1.3	5.0	0.084	0.519	25.387869	-101.006341

COAHUILA

6 CARR: Gregorio García - Francisco I. Madero

CLAVE: 00110

RUTA: MEX-040

AÑO: 2023

LUGAR	ESTACION				CLASIFICACION VEHICULAR EN PORCIENTO													COORDENADAS		
	KM	TE	SC	TDPA	M	A	B	C2	C3	T3S2	T3S3	T3S2R4	OTROS	A	B	C	K'	D	LATITUD	LONGITUD
T. C. Gómez Palacio - Tlahualillo	0.00																			
Lim. Edos. Term. Dgo. Ppia. Coah.	3.60																			
Francisco I. Madero	9.60	1	0	11218	7.9	82.2	2.4	4.0	1.1	1.5	0.5	0.3	0.1	90.1	2.4	7.5	0.083	0.540	25.772240	-103.298081

7 CARR: Libramiento Allende - Nava

CLAVE: 05518

RUTA: MEX-057

AÑO: 2023

LUGAR	ESTACION				CLASIFICACION VEHICULAR EN PORCIENTO													COORDENADAS		
	KM	TE	SC	TDPA	M	A	B	C2	C3	T3S2	T3S3	T3S2R4	OTROS	A	B	C	K'	D	LATITUD	LONGITUD
T. C. Monclova - Piedras Negras	0.00	3	1	5021	1.6	74.3	2.7	4.3	1.4	9.8	2.3	2.9	0.7	75.9	2.7	21.4	0.084	0.516	28.328908	-100.885346
T. C. Monclova - Piedras Negras	0.00	3	2	4704	1.3	73.3	3.0	4.5	1.8	10.0	2.1	3.2	0.8	74.6	3.0	22.4	0.091	0.516	28.328935	-100.885416
X. Der. Allende - Izq. Morelos	6.06	3	1	6146	1.4	79.4	2.8	4.8	0.9	6.0	1.8	2.3	0.6	80.8	2.8	16.4	0.074	0.503	28.376743	-100.859426
X. Der. Allende - Izq. Morelos	6.06	3	2	6222	1.2	78.8	3.1	5.0	1.0	6.3	1.8	2.2	0.6	80.0	3.1	16.9	0.084	0.503	28.376795	-100.859487
T. C. Monclova - Piedras Negras	18.55	1	1	6186	1.7	80.1	2.8	5.1	1.3	5.4	1.4	1.8	0.4	81.8	2.8	15.4	0.077	0.522	28.431097	-100.781854
T. C. Monclova - Piedras Negras	18.55	1	2	5670	1.8	80.2	3.0	4.9	1.1	5.2	1.5	1.9	0.4	82.0	3.0	15.0	0.091	0.522	28.431167	-100.781877

8 CARR: Monclova - Piedras Negras

CLAVE: 05407

RUTA: MEX-057

AÑO: 2023

LUGAR	ESTACION				CLASIFICACION VEHICULAR EN PORCIENTO													COORDENADAS		
	KM	TE	SC	TDPA	M	A	B	C2	C3	T3S2	T3S3	T3S2R4	OTROS	A	B	C	K'	D	LATITUD	LONGITUD
Monclova	0.00	3	1	12089	3.4	92.3	1.3	1.7	0.6	0.3	0.1	0.2	0.1	95.7	1.3	3.0	0.086	0.502	26.955227	-101.411142
Monclova	0.00	3	2	12007	2.8	92.9	1.3	1.7	0.6	0.3	0.1	0.2	0.1	95.7	1.3	3.0	0.099	0.502	26.955559	-101.411221
T. Der. Libramiento de Monclova	10.80	1	1	5233	6.4	71.5	4.1	5.7	1.2	6.2	1.3	2.9	0.7	77.9	4.1	18.0	0.087	0.508	26.968930	-101.382172
T. Der. Libramiento de Monclova	10.80	1	2	5397	5.9	72.7	3.9	5.5	1.3	6.3	1.3	2.5	0.6	78.6	3.9	17.5	0.104	0.508	26.969018	-101.382305
T. Der. Libramiento de Monclova	10.80	3	1	5238	3.8	70.6	4.7	10.3	1.1	5.2	1.5	2.2	0.6	74.4	4.7	20.9	0.085	0.507	26.980586	-101.374014
T. Der. Libramiento de Monclova	10.80	3	2	5383	3.8	68.8	5.0	11.3	1.0	5.8	1.3	2.4	0.6	72.6	5.0	22.4	0.077	0.507	26.980868	-101.373982
X. C. San Buenaventura - Estación Hermanas	43.00	1	1	3711	1.6	68.2	4.7	4.8	1.9	12.5	1.3	4.0	1.0	69.8	4.7	25.5	0.086	0.519	27.213534	-101.228515
X. C. San Buenaventura - Estación Hermanas	43.00	1	2	3997	1.6	70.5	4.4	4.5	1.8	10.6	1.7	4.0	0.9	72.1	4.4	23.5	0.098	0.519	27.213585	-101.228678
T. Der. Progreso	61.50	1	1	4263	5.0	70.5	3.9	4.2	1.6	9.0	1.7	3.3	0.8	75.5	3.9	20.6	0.089	0.531	27.386057	-101.215188
T. Der. Progreso	61.50	1	2	4818	4.8	68.6	4.1	4.8	1.7	10.0	1.7	3.4	0.9	73.4	4.1	22.5	0.089	0.531	27.386050	-101.215350
T. Izq. Palau	88.50	1	1	4237	1.4	73.9	3.3	3.6	1.9	10.0	1.7	3.3	0.9	75.3	3.3	21.4	0.090	0.510	27.634730	-101.181955
T. Izq. Palau	88.50	1	2	4410	1.9	73.4	3.6	4.1	1.9	9.1	1.8	3.3	0.9	75.3	3.6	21.1	0.099	0.510	27.634696	-101.182112
T. Izq. Palau	88.50	3	1	4717	1.3	73.7	3.6	4.2	1.8	9.2	2.1	3.3	0.8	75.0	3.6	21.4	0.087	0.514	27.642384	-101.184149
T. Izq. Palau	88.50	3	2	4986	1.4	72.4	3.6	4.6	1.9	9.9	2.2	3.2	0.8	73.8	3.6	22.6	0.082	0.514	27.642355	-101.184259
T. Der. Sabinas (2º Acceso)	115.00	1	1	8204	2.4	80.9	1.1	5.1	2.1	4.1	1.1	2.5	0.7	83.3	1.1	15.6	0.086	0.501	27.867734	-101.135087
T. Der. Sabinas (2º Acceso)	115.00	1	2	8225	2.6	81.2	1.4	5.4	1.8	3.8	0.8	2.4	0.6	83.8	1.4	14.8	0.080	0.501	27.867760	-101.135211

COAHUILA

8 CARR: Monclova - Piedras Negras

CLAVE: 05407

RUTA: MEX-057

AÑO: 2023

LUGAR	ESTACION				CLASIFICACION VEHICULAR EN PORCIENTO										COORDENADAS					
	KM	TE	SC	TDPA	M	A	B	C2	C3	T3S2	T3S3	T3S2R4	OTROS	A	B	C	K'	D	LATITUD	LONGITUD
Agujita	118.85	1	1	11614	2.2	83.9	3.0	3.8	0.9	4.0	0.8	1.1	0.3	86.1	3.0	10.9	0.077	0.505	27.888119	-101.149545
Agujita	118.85	1	2	11865	2.1	84.2	2.8	4.0	0.9	4.0	0.7	1.0	0.3	86.3	2.8	10.9	0.080	0.505	27.888160	-101.149721
Agujita	118.85	3	0	25564	1.5	83.5	2.1	4.7	1.1	3.9	1.3	1.2	0.7	85.0	2.1	12.9	0.077	0.514	27.904321	-101.168146
T. Izq. Nueva Rosita (1º Acceso)	126.30	3	0	4117	2.1	65.4	2.2	5.3	2.9	15.1	4.2	2.3	0.5	67.5	2.2	30.3	0.090	0.505	27.953922	-101.202127
T. C. Nueva Rosita - Ent. Allende (Cuota)	182.00	1	0	4677	2.4	70.8	3.9	5.5	1.9	10.8	2.5	1.8	0.4	73.2	3.9	22.9	0.081	0.525	28.313183	-100.908650
T. C. Libramiento Allende - Nava	183.45	1	1	5978	1.6	77.2	2.8	4.8	1.5	7.1	1.5	2.8	0.7	78.8	2.8	18.4	0.074	0.567	28.320002	-100.892137
T. C. Libramiento Allende - Nava	183.45	1	2	4569	1.5	77.0	2.9	4.7	1.6	7.2	1.5	2.8	0.8	78.5	2.9	18.6	0.078	0.567	28.320062	-100.892261
Allende	187.20	3	1	5287	1.3	91.8	1.9	3.9	0.5	0.3	0.1	0.2	0.0	93.1	1.9	5.0	0.075	0.514	28.365575	-100.861118
Allende	187.20	3	2	5000	1.1	92.3	1.7	3.7	0.7	0.3	0.1	0.1	0.0	93.4	1.7	4.9	0.086	0.514	28.365530	-100.861219
Nava	206.85	1	1	2644	1.5	89.4	2.7	5.0	1.0	0.3	0.1	0.0	0.0	90.9	2.7	6.4	0.080	0.509	28.421499	-100.783929
Nava	206.85	1	2	2554	1.6	88.9	2.9	5.2	0.8	0.5	0.1	0.0	0.0	90.5	2.9	6.6	0.083	0.509	28.421605	-100.783922
Nava	206.85	3	1	9696	1.1	86.8	2.2	3.5	0.9	3.3	1.0	1.1	0.1	87.9	2.2	9.9	0.075	0.529	28.437888	-100.761077
Nava	206.85	3	2	8647	1.3	85.9	2.4	3.6	1.0	3.5	0.8	1.3	0.2	87.2	2.4	10.4	0.086	0.529	28.437983	-100.761122
T. Der. Guerrero	240.28	1	1	9809	3.1	83.8	2.5	3.7	2.2	3.5	0.4	0.7	0.1	86.9	2.5	10.6	0.088	0.528	28.639922	-100.559549
T. Der. Guerrero	240.28	1	2	8769	3.0	83.3	2.7	3.5	2.6	3.7	0.5	0.6	0.1	86.3	2.7	11.0	0.095	0.528	28.640680	-100.559284
Piedras Negras	248.00																			

9 CARR: Monclova - San Pedro de Las Colonias

CLAVE: 05062

RUTA: MEX-030

AÑO: 2023

LUGAR	ESTACION				CLASIFICACION VEHICULAR EN PORCIENTO										COORDENADAS					
	KM	TE	SC	TDPA	M	A	B	C2	C3	T3S2	T3S3	T3S2R4	OTROS	A	B	C	K'	D	LATITUD	LONGITUD
Monclova	0.00																			
Frontera	2.00	3	1	11075	1.9	88.7	3.1	3.2	1.1	1.2	0.4	0.3	0.1	90.6	3.1	6.3	0.086	0.503	26.960361	-101.462585
Frontera	2.00	3	2	11196	1.9	89.0	2.8	3.5	1.0	1.3	0.3	0.2	0.0	90.9	2.8	6.3	0.091	0.503	26.959762	-101.462256
8 de Enero	11.00	3	1	7537	2.1	89.0	1.9	3.4	1.0	1.4	0.6	0.5	0.1	91.1	1.9	7.0	0.098	0.501	27.006736	-101.499387
8 de Enero	11.00	3	2	7511	2.2	87.6	2.4	3.5	1.2	1.8	0.8	0.4	0.1	89.8	2.4	7.8	0.092	0.501	27.006651	-101.499469
Nadadores	27.00	3	1	2287	1.9	88.0	1.5	3.0	1.3	2.3	0.7	1.1	0.2	89.9	1.5	8.6	0.112	0.501	27.031499	-101.602827
Nadadores	27.00	3	2	2295	2.1	86.9	1.8	3.4	1.2	2.5	0.9	1.1	0.1	89.0	1.8	9.2	0.114	0.501	27.031425	-101.602834
Sacramento	45.27	1	1	1474	1.9	87.1	1.7	3.3	1.3	2.4	0.9	1.2	0.2	89.0	1.7	9.3	0.101	0.520	27.010990	-101.719601
Sacramento	45.27	1	2	1599	2.1	86.2	1.9	3.3	1.4	2.5	0.9	1.5	0.2	88.3	1.9	9.8	0.125	0.520	27.010990	-101.719505
T. Der. La Madrid	51.00	3	1	1495	1.8	81.6	2.9	3.8	2.3	3.4	1.8	2.0	0.4	83.4	2.9	13.7	0.100	0.501	27.019351	-101.799991
T. Der. La Madrid	51.00	3	2	1500	1.8	82.2	2.5	3.7	2.3	3.4	1.8	1.9	0.4	84.0	2.5	13.5	0.132	0.501	27.019282	-101.800032
Cuatro Ciénegas	80.15	3	0	1437	1.6	69.2	5.1	5.4	2.1	9.5	3.5	3.2	0.4	70.8	5.1	24.1	0.121	0.516	26.975121	-102.073389
San Pedro de Las Colonias	267.00	1	1	1153	10.4	68.7	3.0	3.2	2.0	6.7	2.1	2.9	1.0	79.1	3.0	17.9	0.120	0.535	25.776665	-102.978977
San Pedro de Las Colonias	267.00	1	2	1000	11.0	66.7	3.7	3.8	2.1	6.7	2.2	2.8	1.0	77.7	3.7	18.6	0.097	0.535	25.776731	-102.978852

COAHUILA

10 CARR: Monterrey - Castaños

CLAVE: 00128

RUTA: MEX-053

AÑO: 2023

LUGAR	ESTACION				CLASIFICACION VEHICULAR EN PORCIENTO													COORDENADAS		
	KM	TE	SC	TDPA	M	A	B	C2	C3	T3S2	T3S3	T3S2R4	OTROS	A	B	C	K'	D	LATITUD	LONGITUD
T. C. Monterrey - Nuevo Laredo	0.00	3	0	21027	6.3	75.1	1.6	8.6	2.6	3.1	1.1	1.2	0.4	81.4	1.6	17.0	0.078	0.504	25.812520	-100.286783
X. C. Libramiento Noroeste de Monterrey	3.46	3	1	18124	4.3	72.6	2.5	8.5	3.3	5.1	1.7	1.3	0.7	76.9	2.5	20.6	0.085	0.501	25.831946	-100.307840
X. C. Libramiento Noroeste de Monterrey	3.46	3	2	18174	4.2	70.6	2.6	9.2	3.5	5.8	1.9	1.4	0.8	74.8	2.6	22.6	0.093	0.501	25.831826	-100.307873
T. Der. Villa del Carmen	13.80	1	1	9421	2.6	78.4	1.3	7.1	2.8	2.2	3.3	1.8	0.5	81.0	1.3	17.7	0.073	0.517	25.891745	-100.348925
T. Der. Villa del Carmen	13.80	1	2	8808	2.5	76.8	1.5	7.7	3.1	2.5	3.5	1.9	0.5	79.3	1.5	19.2	0.075	0.517	25.891944	-100.349127
T. Izq. Hidalgo	24.78	1	0	15184	3.2	74.8	2.0	8.2	1.9	4.4	2.2	2.7	0.6	78.0	2.0	20.0	0.072	0.500	25.956156	-100.424589
T. Izq. Hidalgo	24.78	3	0	11787	3.9	72.9	2.2	6.2	2.3	5.8	3.5	2.5	0.7	76.8	2.2	21.0	0.069	0.526	25.982071	-100.451500
T. Izq. Mina	34.75	1	0	7708	2.8	69.7	2.1	8.6	2.2	6.0	4.2	3.5	0.9	72.5	2.1	25.4	0.085	0.521	26.000687	-100.516793
T. Izq. Espinazo	91.90	1	0	4328	2.4	59.9	2.8	7.7	2.5	11.9	6.6	5.4	0.8	62.3	2.8	34.9	0.082	0.510	26.360387	-100.874920
T. Izq. Espinazo	91.90	3	0	4193	2.5	54.8	2.7	9.3	3.4	13.1	7.4	5.8	1.0	57.3	2.7	40.0	0.083	0.512	26.365414	-100.883346
Lim. Edos. Term. N. L. Ppia. Coah.	115.90																			
T. C. Saltillo - Monclova	155.90	1	1	2131	2.0	61.6	4.4	5.0	3.2	11.9	6.5	4.5	0.9	63.6	4.4	32.0	0.090	0.502	26.689495	-101.380191
T. C. Saltillo - Monclova	155.90	1	2	2145	2.1	59.6	4.0	5.7	2.9	12.3	7.4	5.1	0.9	61.7	4.0	34.3	0.085	0.502	26.689495	-101.380191

11 CARR: Morelos - Cd. Acuña

CLAVE: 05029

RUTA: MEX-029

AÑO: 2023

LUGAR	ESTACION				CLASIFICACION VEHICULAR EN PORCIENTO													COORDENADAS		
	KM	TE	SC	TDPA	M	A	B	C2	C3	T3S2	T3S3	T3S2R4	OTROS	A	B	C	K'	D	LATITUD	LONGITUD
Morelos	0.00	3	1	3263	1.3	86.4	2.2	5.1	1.1	2.9	0.5	0.5	0.0	87.7	2.2	10.1	0.101	0.506	28.418038	-100.890523
Morelos	0.00	3	2	3341	1.5	85.7	2.3	5.2	1.3	3.0	0.5	0.5	0.0	87.2	2.3	10.5	0.091	0.506	28.418015	-100.890602
T. Izq. El Remolino	40.10	1	0	2148	1.0	80.3	2.5	7.3	1.4	5.8	0.8	0.9	0.0	81.3	2.5	16.2	0.098	0.520	28.716939	-100.911969
T. Izq. El Remolino	40.10	3	0	1841	0.7	81.9	2.0	5.9	1.2	6.3	1.0	1.0	0.0	82.6	2.0	15.4	0.105	0.510	28.725760	-100.912293
San Carlos	73.84	1	0	2307	0.9	82.5	1.7	6.8	1.1	5.3	0.7	0.9	0.1	83.4	1.7	14.9	0.085	0.523	29.017249	-100.904933
T. Der. Piedras Negras	104.50	3	1	7580	2.4	84.1	4.5	4.4	1.7	2.1	0.4	0.3	0.1	86.5	4.5	9.0	0.079	0.502	29.296834	-100.914888
T. Der. Piedras Negras	104.50	3	2	7524	2.5	83.8	4.7	4.4	1.8	2.1	0.3	0.3	0.1	86.3	4.7	9.0	0.087	0.502	29.296777	-100.914979
Cd. Acuña	109.10	1	1	8093	1.4	92.0	1.6	4.0	0.5	0.2	0.1	0.1	0.1	93.4	1.6	5.0	0.079	0.547	29.303304	-100.921675
Cd. Acuña	109.10	1	2	9774	1.6	91.4	1.7	4.2	0.5	0.3	0.1	0.1	0.1	93.0	1.7	5.3	0.083	0.547	29.303240	-100.921769

12 CARR: Nueva Rosita - Boquillas del Carmen

CLAVE: 05028

RUTA: MEX-053

AÑO: 2023

LUGAR	ESTACION				CLASIFICACION VEHICULAR EN PORCIENTO													COORDENADAS		
	KM	TE	SC	TDPA	M	A	B	C2	C3	T3S2	T3S3	T3S2R4	OTROS	A	B	C	K'	D	LATITUD	LONGITUD
Nueva Rosita	0.00	3	1	4657	4.1	86.7	0.6	4.9	1.4	1.2	0.4	0.6	0.1	90.8	0.6	8.6	0.084	0.502	27.947763	-101.244743
Nueva Rosita	0.00	3	2	4689	4.1	86.3	0.6	5.1	1.5	1.3	0.4	0.6	0.1	90.4	0.6	9.0	0.090	0.502	27.947636	-101.244750
T. Der. Santa María	14.00	3	1	2861	4.3	84.8	1.0	5.1	1.6	1.9	0.7	0.5	0.1	89.1	1.0	9.9	0.076	0.518	27.911060	-101.325489

COAHUILA

12 CARR: Nueva Rosita - Boquillas del Carmen

CLAVE: 05028

RUTA: MEX-053

AÑO: 2023

LUGAR	ESTACION				CLASIFICACION VEHICULAR EN PORCIENTO													COORDENADAS		
	KM	TE	SC	TDPA	M	A	B	C2	C3	T3S2	T3S3	T3S2R4	OTROS	A	B	C	K'	D	LATITUD	LONGITUD
T. Der. Santa María	14.00	3	2	3068	4.0	83.8	1.2	5.8	1.8	2.0	0.8	0.5	0.1	87.8	1.2	11.0	0.077	0.518	27.910970	-101.325437
Palau	25.00	1	1	3878	3.2	86.8	1.1	4.5	1.9	1.3	0.6	0.5	0.1	90.0	1.1	8.9	0.079	0.515	27.887515	-101.412249
Palau	25.00	1	2	3654	2.8	86.4	1.2	5.0	1.9	1.5	0.6	0.5	0.1	89.2	1.2	9.6	0.081	0.515	27.887433	-101.412298
Palau	25.00	3	1	4166	2.2	84.5	2.3	8.2	1.2	1.0	0.4	0.2	0.0	86.7	2.3	11.0	0.081	0.516	27.887107	-101.432329
Palau	25.00	3	2	4433	1.9	84.8	2.5	8.4	1.2	0.8	0.3	0.1	0.0	86.7	2.5	10.8	0.093	0.516	27.886948	-101.432227
Melchor Múzquiz	35.00	3	0	3444	1.7	79.3	2.0	14.6	1.0	0.8	0.5	0.1	0.0	81.0	2.0	17.0	0.076	0.501	27.895527	-101.531957
Boquillas del Carmen	250.00																			

13 CARR: Ojo Caliente - Santa Cruz

CLAVE: 05007

RUTA: MEX-057

AÑO: 2023

LUGAR	ESTACION				CLASIFICACION VEHICULAR EN PORCIENTO													COORDENADAS		
	KM	TE	SC	TDPA	M	A	B	C2	C3	T3S2	T3S3	T3S2R4	OTROS	A	B	C	K'	D	LATITUD	LONGITUD
T. C. Saltillo - Monterrey	0.00	3	0	8292	5.1	64.7	3.9	5.3	2.8	10.6	3.6	3.1	0.9	69.8	3.9	26.3	0.080	0.514	25.600553	-100.895183
T. C. Saltillo - Monclova	34.00	1	0	5820	3.8	69.1	4.2	5.7	1.2	9.3	2.6	3.2	0.9	72.9	4.2	22.9	0.109	0.506	25.782690	-101.102449

14 CARR: Piedras Negras - Cd. Acuña

CLAVE: 05061

RUTA: MEX-002

AÑO: 2023

LUGAR	ESTACION				CLASIFICACION VEHICULAR EN PORCIENTO													COORDENADAS		
	KM	TE	SC	TDPA	M	A	B	C2	C3	T3S2	T3S3	T3S2R4	OTROS	A	B	C	K'	D	LATITUD	LONGITUD
Piedras Negras	0.00	3	1	5158	2.8	80.6	3.2	9.0	1.9	1.3	0.9	0.2	0.1	83.4	3.2	13.4	0.085	0.519	28.730522	-100.575003
Piedras Negras	0.00	3	2	5575	2.9	80.5	3.0	9.2	2.1	1.1	0.8	0.3	0.1	83.4	3.0	13.6	0.086	0.519	28.730472	-100.575102
T. C. Morelos - Cd. Acuña	83.30	1	0	4575	1.5	86.4	3.6	4.1	1.7	1.8	0.6	0.2	0.1	87.9	3.6	8.5	0.092	0.500	29.291438	-100.910592

15 CARR: Piedras Negras - Nuevo Laredo

CLAVE: 00503

RUTA: MEX-002

AÑO: 2023

LUGAR	ESTACION				CLASIFICACION VEHICULAR EN PORCIENTO													COORDENADAS		
	KM	TE	SC	TDPA	M	A	B	C2	C3	T3S2	T3S3	T3S2R4	OTROS	A	B	C	K'	D	LATITUD	LONGITUD
T. C. Monclova - Piedras Negras	0.00	3	1	5340	2.4	86.3	1.1	3.6	3.2	2.4	0.6	0.3	0.1	88.7	1.1	10.2	0.082	0.509	28.639883	-100.552189
T. C. Monclova - Piedras Negras	0.00	3	2	5153	2.5	86.5	1.1	3.6	2.9	2.4	0.6	0.3	0.1	89.0	1.1	9.9	0.102	0.509	28.639931	-100.552086
El Saucito	16.90	3	0	1143	1.4	61.4	2.0	13.2	3.8	9.3	0.9	7.1	0.9	62.8	2.0	35.2	0.086	0.506	28.501722	-100.467199
T. Der. Villa Unión	37.00	1	0	1046	0.9	63.7	2.8	10.4	4.2	8.0	1.1	8.0	0.9	64.6	2.8	32.6	0.090	0.510	28.347300	-100.392906
T. Der. Villa Unión	37.00	3	0	957	4.3	51.7	2.7	12.9	4.5	12.4	2.9	7.6	1.0	56.0	2.7	41.3	0.085	0.527	28.333064	-100.388573
Guerrero	42.00	3	0	772	2.3	55.1	3.0	7.7	5.9	13.7	1.0	10.5	0.8	57.4	3.0	39.6	0.091	0.508	28.307472	-100.364668
Lim. Edos. Term. Coah. Ppia. N. L.	124.40																			
T. C. Monclova - Colombia	134.00	3	0	3047	1.9	63.9	1.5	8.5	3.2	17.0	1.7	2.0	0.3	65.8	1.5	32.7	0.084	0.506	27.688679	-99.778447

COAHUILA

15 CARR: Piedras Negras - Nuevo Laredo

CLAVE: 00503

RUTA: MEX-002

AÑO: 2023

LUGAR	ESTACION				CLASIFICACION VEHICULAR EN PORCIENTO													COORDENADAS		
	KM	TE	SC	TDPA	M	A	B	C2	C3	T3S2	T3S3	T3S2R4	OTROS	A	B	C	K'	D	LATITUD	LONGITUD
Lim. Edos. Term. N. L. Ppia. Tamps.	138.20																			
T. Der. Libramiento de Nuevo Laredo	157.70	1	1	5639	7.6	45.1	1.4	5.4	12.1	24.8	1.2	1.6	0.8	52.7	1.4	45.9	0.102	0.539	27.572670	-99.604060
T. Der. Libramiento de Nuevo Laredo	157.70	1	2	4814	7.8	45.0	1.7	5.2	12.5	24.5	1.1	1.3	0.9	52.8	1.7	45.5	0.100	0.539	27.572761	-99.603996
Nuevo Laredo	175.00	1	1	12288	2.5	47.6	2.1	5.3	15.5	25.4	0.5	0.7	0.4	50.1	2.1	47.8	0.103	0.518	27.549957	-99.579760
Nuevo Laredo	175.00	1	2	11412	2.3	47.4	2.3	5.8	14.8	25.8	0.5	0.8	0.3	49.7	2.3	48.0	0.109	0.518	27.549943	-99.579601

16 CARR: Puerto México - La Encantada

CLAVE: 05002

RUTA: MEX-057

AÑO: 2023

LUGAR	ESTACION				CLASIFICACION VEHICULAR EN PORCIENTO													COORDENADAS		
	KM	TE	SC	TDPA	M	A	B	C2	C3	T3S2	T3S3	T3S2R4	OTROS	A	B	C	K'	D	LATITUD	LONGITUD
T. C. Aut. Puerto México - Ojo Caliente	0.00	3	0	2593	0.6	63.7	8.7	6.3	2.7	15.0	1.3	1.5	0.2	64.3	8.7	27.0	0.084	0.505	25.230426	-100.825519
Lim. Edos. Term. N. L. Ppia. Coah.	3.50																			
T. C. Ent. Morelos - Saltillo	41.00	1	0	2828	1.5	69.0	6.7	5.4	2.0	12.7	1.0	1.5	0.2	70.5	6.7	22.8	0.082	0.524	25.260552	-101.085502

17 CARR: Saltillo - Monclova

CLAVE: 05406

RUTA: MEX-057

AÑO: 2023

LUGAR	ESTACION				CLASIFICACION VEHICULAR EN PORCIENTO													COORDENADAS		
	KM	TE	SC	TDPA	M	A	B	C2	C3	T3S2	T3S3	T3S2R4	OTROS	A	B	C	K'	D	LATITUD	LONGITUD
Saltillo	0.00																			
T. Der. Ramos Arizpe	13.00	1	0	8182	6.6	68.7	3.7	7.1	3.2	6.3	1.2	2.3	0.9	75.3	3.7	21.0	0.094	0.517	25.527589	-101.002938
T. Der. Ramos Arizpe	13.00	3	0	2804	4.8	79.5	1.5	5.9	4.2	2.3	1.2	0.5	0.1	84.3	1.5	14.2	0.107	0.506	25.530038	-101.007733
T. C. Ojo Caliente - Santa Cruz	49.60	1	0	456	1.2	85.9	2.1	7.1	1.0	1.6	0.6	0.4	0.1	87.1	2.1	10.8	0.156	0.512	25.783080	-101.111938
T. C. Ojo Caliente - Santa Cruz	49.60	3	0	5187	2.2	69.1	3.8	5.1	1.3	9.8	3.0	4.8	0.9	71.3	3.8	24.9	0.103	0.509	25.798410	-101.116440
T. Der. Paredón	64.00	1	0	5481	1.9	73.7	3.2	6.3	1.0	7.0	2.6	3.5	0.8	75.6	3.2	21.2	0.099	0.501	25.900789	-101.147365
T. Der. Paredón	64.00	3	0	4600	2.0	71.2	3.5	5.0	1.3	8.2	3.4	4.6	0.8	73.2	3.5	23.3	0.107	0.520	25.920377	-101.157701
T. Izq. Hipólito	78.00	1	0	4879	1.7	71.4	3.6	4.9	1.0	8.6	3.4	4.5	0.9	73.1	3.6	23.3	0.112	0.510	25.966437	-101.255183
T. Izq. Hipólito	78.00	3	0	5556	3.0	72.0	3.6	5.6	1.2	7.2	2.6	3.9	0.9	75.0	3.6	21.4	0.143	0.526	25.979102	-101.269382
T. Der. Monterrey	165.50	1	0	5512	2.5	71.1	3.1	4.6	1.9	7.9	3.6	4.4	0.9	73.6	3.1	23.3	0.131	0.521	26.683180	-101.386575
T. Der. Monterrey	165.50	3	1	4930	3.1	68.8	3.7	4.6	1.5	9.4	4.1	3.9	0.9	71.9	3.7	24.4	0.088	0.508	26.711183	-101.393469
T. Der. Monterrey	165.50	3	2	5097	3.0	67.2	3.6	4.8	1.5	10.8	4.4	3.9	0.8	70.2	3.6	26.2	0.106	0.508	26.711138	-101.393665
T. Izq. Libramiento de Castaños (1º Acceso)	175.20	1	1	7838	1.4	77.7	3.5	3.6	2.2	6.4	2.5	2.2	0.5	79.1	3.5	17.4	0.096	0.503	26.762939	-101.410835
T. Izq. Libramiento de Castaños (1º Acceso)	175.20	1	2	7948	1.1	77.4	3.6	3.5	1.9	7.2	2.4	2.3	0.6	78.5	3.6	17.9	0.107	0.503	26.762901	-101.410974
T. Izq. Libramiento de Castaños (2º Acceso)	177.10	3	1	10988	3.8	78.4	2.1	5.1	2.4	4.1	1.5	2.1	0.5	82.2	2.1	15.7	0.099	0.512	26.805857	-101.420528
T. Izq. Libramiento de Castaños (2º Acceso)	177.10	3	2	11540	3.6	78.3	2.4	5.1	2.5	4.1	1.5	2.0	0.5	81.9	2.4	15.7	0.093	0.512	26.806016	-101.420663
T. Izq. Libramiento Lic. Carlos Salinas De Gortari	184.10	1	1	12766	3.6	80.9	2.6	3.1	2.3	3.7	1.4	1.8	0.6	84.5	2.6	12.9	0.083	0.519	26.828259	-101.421706

COAHUILA

17 CARR: Saltillo - Monclova

CLAVE: 05406

RUTA: MEX-057

AÑO: 2023

LUGAR	ESTACION				CLASIFICACION VEHICULAR EN PORCIENTO										COORDENADAS					
	KM	TE	SC	TDPA	M	A	B	C2	C3	T3S2	T3S3	T3S2R4	OTROS	A	B	C	K'	D	LATITUD	LONGITUD
T. Izq. Libramiento Lic. Carlos Salinas De Gortari	184.10	1	2	13767	3.7	80.4	2.7	3.4	2.3	3.8	1.4	1.8	0.5	84.1	2.7	13.2	0.076	0.519	26.828068	-101.421870
T. Izq. Libramiento Lic. Carlos Salinas De Gortari	184.10	3	1	23028	3.8	90.6	1.3	1.7	1.2	0.6	0.3	0.4	0.1	94.4	1.3	4.3	0.083	0.504	26.863125	-101.427211
T. Izq. Libramiento Lic. Carlos Salinas De Gortari	184.10	3	2	23375	3.5	90.5	1.5	2.0	1.0	0.6	0.3	0.4	0.2	94.0	1.5	4.5	0.073	0.504	26.863158	-101.427364
Monclova	192.00	1	1	27886	3.4	93.1	1.0	1.4	0.5	0.2	0.2	0.2	0.0	96.5	1.0	2.5	0.089	0.503	26.882701	-101.425346
Monclova	192.00	1	2	27483	4.1	92.3	1.2	1.2	0.4	0.3	0.1	0.3	0.1	96.4	1.2	2.4	0.088	0.503	26.882601	-101.425540

18 CARR: Saltillo - Monterrey

CLAVE: 00087

RUTA: MEX-040

AÑO: 2023

LUGAR	ESTACION				CLASIFICACION VEHICULAR EN PORCIENTO										COORDENADAS					
	KM	TE	SC	TDPA	M	A	B	C2	C3	T3S2	T3S3	T3S2R4	OTROS	A	B	C	K'	D	LATITUD	LONGITUD
T. C. Saltillo - Arteaga	0.00																			
T. Izq. Zinacamex	4.25	3	1	59651	2.5	90.8	0.8	3.2	0.7	0.6	0.1	1.0	0.3	93.3	0.8	5.9	0.104	0.519	25.483379	-100.971824
T. Izq. Zinacamex	4.25	3	2	54542	2.4	90.0	0.8	3.6	0.9	0.6	0.1	1.3	0.3	92.4	0.8	6.8	0.088	0.519	25.483556	-100.971935
Ramos Arizpe	11.30	1	1	45686	1.4	86.1	2.5	4.8	0.9	2.0	1.3	0.6	0.4	87.5	2.5	10.0	0.098	0.514	25.516381	-100.957242
Ramos Arizpe	11.30	1	2	48669	1.7	85.6	2.6	4.5	1.0	2.1	1.3	0.7	0.5	87.3	2.6	10.1	0.089	0.514	25.516197	-100.957568
T. Der. Aeropuerto	13.00	3	1	31514	3.9	77.5	3.6	6.8	1.2	4.2	1.5	0.9	0.4	81.4	3.6	15.0	0.147	0.516	25.554387	-100.927647
T. Der. Aeropuerto	13.00	3	2	33855	4.2	77.6	3.3	6.7	1.5	4.0	1.7	0.7	0.3	81.8	3.3	14.9	0.136	0.516	25.554311	-100.928056
T. Der. Libramiento J.L.P.	16.00	3	1	32725	2.8	75.9	1.9	7.8	2.1	7.2	0.9	1.1	0.3	78.7	1.9	19.4	0.135	0.519	25.567931	-100.912313
T. Der. Libramiento J.L.P.	16.00	3	2	30030	3.0	74.9	2.0	8.2	1.9	7.5	0.8	1.2	0.5	77.9	2.0	20.1	0.082	0.519	25.568401	-100.912092
Ojo Caliente	26.30	1	1	22554	3.2	55.0	4.2	5.9	2.3	24.2	2.0	2.6	0.6	58.2	4.2	37.6	0.074	0.508	25.610716	-100.844113
Ojo Caliente	26.30	1	2	21867	3.4	54.2	4.6	5.6	2.1	24.5	2.3	2.6	0.7	57.6	4.6	37.8	0.064	0.508	25.612848	-100.847527
Lim. Edos. Term. Coah. Ppia. N. L.	33.00																			
T. Izq. Libramiento Noroeste de Monterrey	54.00	1	1	19207	2.3	51.0	4.0	8.5	2.1	24.0	3.1	4.3	0.7	53.3	4.0	42.7	0.081	0.508	25.698309	-100.562384
T. Izq. Libramiento Noroeste de Monterrey	54.00	1	2	19871	2.4	50.8	4.2	8.6	2.2	23.7	2.9	4.5	0.7	53.2	4.2	42.6	0.057	0.508	25.698668	-100.562609
T. Der. Santa Catarina (1º Acceso)	62.46	1	1	40861	2.3	81.8	1.8	7.4	1.2	3.2	1.5	0.6	0.2	84.1	1.8	14.1	0.072	0.509	25.687226	-100.494937
T. Der. Santa Catarina (1º Acceso)	62.46	1	2	42428	2.4	82.2	1.8	7.2	1.1	3.0	1.4	0.6	0.3	84.6	1.8	13.6	0.081	0.509	25.687512	-100.495177
Ppia. Monterrey	79.20	1	1	74707	2.0	85.4	1.0	5.6	1.4	2.1	1.5	0.6	0.4	87.4	1.0	11.6	0.071	0.509	25.674391	-100.426731
Ppia. Monterrey	79.20	1	2	77966	1.8	85.6	1.1	5.4	1.3	2.2	1.7	0.5	0.4	87.4	1.1	11.5	0.069	0.509	25.674543	-100.426792

19 CARR: Saltillo - Torreón

CLAVE: 05086

RUTA: MEX-040

AÑO: 2023

LUGAR	ESTACION				CLASIFICACION VEHICULAR EN PORCIENTO										COORDENADAS					
	KM	TE	SC	TDPA	M	A	B	C2	C3	T3S2	T3S3	T3S2R4	OTROS	A	B	C	K'	D	LATITUD	LONGITUD
Saltillo	0.00																			
T. Der. Monclova	6.10	3	1	6619	4.5	59.3	5.1	6.3	2.5	13.6	3.1	4.6	1.0	63.8	5.1	31.1	0.076	0.518	25.452942	-101.080987

COAHUILA

19 CARR: Saltillo - Torreón

CLAVE: 05086

RUTA: MEX-040

AÑO: 2023

LUGAR	ESTACION				CLASIFICACION VEHICULAR EN PORCIENTO										COORDENADAS					
	KM	TE	SC	TDPA	M	A	B	C2	C3	T3S2	T3S3	T3S2R4	OTROS	A	B	C	K'	D	LATITUD	LONGITUD
T. Der. Monclova	6.10	3	2	6155	4.8	58.7	5.3	6.6	2.3	14.0	3.0	4.3	1.0	63.5	5.3	31.2	0.128	0.518	25.452837	-101.080966
X. C. Libramiento Norponiente de Saltillo (Cuota)	9.60	1	1	4252	3.3	81.0	2.3	4.6	3.4	3.9	0.6	0.8	0.1	84.3	2.3	13.4	0.086	0.504	25.453452	-101.059159
X. C. Libramiento Norponiente de Saltillo (Cuota)	9.60	1	2	4176	3.4	80.3	2.5	4.7	3.2	4.2	0.8	0.8	0.1	83.7	2.5	13.8	0.144	0.504	25.453348	-101.058893
T. C. Torreón - Saltillo (Cuota)	33.80																			
T. Izq. General Cepeda	44.14	1	0	4010	2.9	69.1	5.6	8.8	2.4	8.0	2.1	0.9	0.2	72.0	5.6	22.4	0.085	0.505	25.505124	-101.375267
T. Izq. General Cepeda	44.14	3	0	3212	2.5	68.1	6.1	7.3	3.0	9.1	2.4	1.3	0.2	70.6	6.1	23.3	0.101	0.514	25.512221	-101.382117
T. Der. Estación Marte	91.20	1	0	1902	2.0	61.7	6.3	8.1	3.5	13.4	3.7	1.2	0.1	63.7	6.3	30.0	0.107	0.502	25.658959	-101.760270
T. C. Torreón - Saltillo (Cuota)	118.10																			
Ent. Paila	127.90	1	1	5527	3.1	52.3	4.9	5.7	2.3	19.9	4.2	6.6	1.0	55.4	4.9	39.7	0.065	0.503	25.649391	-102.135742
Ent. Paila	127.90	1	2	5586	3.3	51.8	5.1	5.9	2.4	20.3	3.9	6.3	1.0	55.1	5.1	39.8	0.079	0.503	25.649209	-102.135801
T. Der. San Pedro de Las Colonias (La Cuchilla)	204.58	1	1	4825	4.3	44.8	6.2	5.8	2.5	23.2	4.6	7.6	1.0	49.1	6.2	44.7	0.086	0.515	25.632410	-102.866551
T. Der. San Pedro de Las Colonias (La Cuchilla)	204.58	1	2	4552	4.5	45.1	6.4	5.5	2.6	22.7	4.4	7.8	1.0	49.6	6.4	44.0	0.084	0.515	25.625308	-102.865483
Emiliano Zapata	221.68	1	0	919	1.8	59.0	4.9	10.8	4.0	15.3	3.1	1.0	0.1	60.8	4.9	34.3	0.086	0.510	25.499881	-102.943094
Emiliano Zapata	221.68	3	0	2082	3.7	72.5	3.6	8.6	3.6	5.3	1.5	1.1	0.1	76.2	3.6	20.2	0.068	0.503	25.488996	-102.952556
T. Der. Libramiento de Matamoros (1º Acceso)	246.80	1	0	7407	6.0	73.2	6.1	8.0	2.4	2.8	0.9	0.5	0.1	79.2	6.1	14.7	0.081	0.503	25.525750	-103.210044
T. Der. Libramiento de Matamoros (1º Acceso)	246.80	3	1	5578	12.7	81.2	1.0	3.6	0.7	0.4	0.1	0.2	0.1	93.9	1.0	5.1	0.089	0.517	25.527825	-103.218324
T. Der. Libramiento de Matamoros (1º Acceso)	246.80	3	2	5978	12.9	81.0	1.1	3.4	0.7	0.4	0.1	0.3	0.1	93.9	1.1	5.0	0.080	0.517	25.527735	-103.218345
Matamoros	252.80	3	1	11813	7.3	84.1	1.6	3.2	1.7	0.9	0.7	0.3	0.2	91.4	1.6	7.0	0.084	0.524	25.534833	-103.247141
Matamoros	252.80	3	2	12998	6.5	86.1	1.4	2.9	1.7	0.6	0.5	0.2	0.1	92.6	1.4	6.0	0.077	0.524	25.534684	-103.247035
T. Der. Libramiento de Matamoros (2º Acceso)	253.12	3	1	15587	5.1	78.8	2.6	5.5	1.7	4.4	0.9	0.8	0.2	83.9	2.6	13.5	0.075	0.501	25.535178	-103.262060
T. Der. Libramiento de Matamoros (2º Acceso)	253.12	3	2	15646	4.9	78.2	2.9	5.6	1.8	4.4	1.1	0.8	0.3	83.1	2.9	14.0	0.085	0.501	25.535284	-103.262035
T. Der. Libramiento de Torreón	264.50	3	1	39763	4.3	88.4	1.2	3.2	0.7	0.5	0.3	1.0	0.4	92.7	1.2	6.1	0.072	0.511	25.535277	-103.389007
T. Der. Libramiento de Torreón	264.50	3	2	41667	4.5	88.8	1.3	2.6	0.6	0.5	0.2	1.1	0.4	93.3	1.3	5.4	0.077	0.511	25.535128	-103.389028
Torreón	291.00																			

20 CARR: Torreón - San Pedro de las Colonias

CLAVE: 05021

RUTA: MEX-030

AÑO: 2023

LUGAR	ESTACION				CLASIFICACION VEHICULAR EN PORCIENTO										COORDENADAS					
	KM	TE	SC	TDPA	M	A	B	C2	C3	T3S2	T3S3	T3S2R4	OTROS	A	B	C	K'	D	LATITUD	LONGITUD
Torreón	0.00	3	1	32396	2.1	95.6	0.4	1.4	0.3	0.1	0.0	0.1	0.0	97.7	0.4	1.9	0.104	0.545	25.579675	-103.413512
Torreón	0.00	3	2	25264	2.3	95.5	0.3	1.5	0.2	0.1	0.0	0.1	0.0	97.8	0.3	1.9	0.101	0.545	25.579743	-103.413616
Libramiento de Torreón	1.50																			
Libramiento Norte de Torreón (Cuota)	10.00																			
Escuadrón 201	13.25	1	1	10069	4.3	84.1	3.2	4.0	1.2	1.3	0.9	0.6	0.4	88.4	3.2	8.4	0.086	0.508	25.669478	-103.353402
Escuadrón 201	13.25	1	2	10394	4.2	83.7	3.4	4.3	1.2	1.5	0.9	0.6	0.2	87.9	3.4	8.7	0.086	0.508	25.669621	-103.353366

COAHUILA

20 CARR : Torreón - San Pedro de las Colonias

CLAVE: 05021

RUTA: MEX-030

AÑO: 2023

LUGAR	ESTACION				CLASIFICACION VEHICULAR EN PORCIENTO														COORDENADAS	
	KM	TE	SC	TDPA	M	A	B	C2	C3	T3S2	T3S3	T3S2R4	OTROS	A	B	C	K'	D	LATITUD	LONGITUD
T. Der. Fco. I. Madero	25.30	1	1	10516	4.4	84.8	1.8	3.9	1.6	1.8	0.8	0.6	0.3	89.2	1.8	9.0	0.093	0.500	25.753744	-103.291435
T. Der. Fco. I. Madero	25.30	1	2	10519	5.0	83.5	2.0	4.4	1.6	2.0	0.7	0.6	0.2	88.5	2.0	9.5	0.092	0.500	25.753860	-103.291520
T. Der. Fco. I. Madero	25.30	3	1	6583	3.3	83.8	2.3	5.7	1.4	2.1	0.8	0.5	0.1	87.1	2.3	10.6	0.083	0.503	25.760913	-103.250832
T. Der. Fco. I. Madero	25.30	3	2	6671	3.8	82.6	2.1	5.9	1.5	2.4	0.9	0.7	0.1	86.4	2.1	11.5	0.085	0.503	25.761041	-103.250674
T. Der. Guadalupe Victoria	32.00	1	1	6397	6.2	79.7	3.9	6.1	1.1	1.5	0.7	0.7	0.1	85.9	3.9	10.2	0.085	0.500	25.762121	-103.228409
T. Der. Guadalupe Victoria	32.00	1	2	6394	7.0	77.8	4.3	6.4	1.1	1.7	0.9	0.7	0.1	84.8	4.3	10.9	0.081	0.500	25.761945	-103.227175
T. Der. Colón	35.00	1	1	6202	4.4	82.4	2.4	5.5	1.7	1.9	0.8	0.6	0.3	86.8	2.4	10.8	0.085	0.500	25.759270	-103.198142
T. Der. Colón	35.00	1	2	6197	4.6	81.5	3.0	5.3	1.8	2.0	0.9	0.6	0.3	86.1	3.0	10.9	0.078	0.500	25.759268	-103.198579
T. Izq. San Lorenzo	38.60	1	1	4917	3.4	83.9	3.1	4.6	1.3	1.9	0.9	0.7	0.2	87.3	3.1	9.6	0.076	0.502	25.761902	-103.168425
T. Izq. San Lorenzo	38.60	1	2	4888	3.2	83.2	3.1	5.0	1.5	2.0	0.9	0.9	0.2	86.4	3.1	10.5	0.079	0.502	25.762014	-103.168877
Urquizo	41.20	1	1	5230	3.9	83.3	3.3	5.0	1.2	2.1	0.6	0.5	0.1	87.2	3.3	9.5	0.082	0.502	25.772988	-103.135770
Urquizo	41.20	1	2	5264	3.9	83.7	2.4	4.4	1.6	2.4	0.7	0.8	0.1	87.6	2.4	10.0	0.081	0.502	25.773053	-103.135839
Urquizo	41.20	3	1	5429	3.4	84.8	3.9	3.8	1.0	1.9	0.6	0.5	0.1	88.2	3.9	7.9	0.080	0.500	25.768361	-103.090838
Urquizo	41.20	3	2	5421	3.7	84.6	3.8	3.9	0.8	1.6	0.6	0.8	0.2	88.3	3.8	7.9	0.085	0.500	25.768436	-103.090788
San Pedro de Las Colonias	55.00	1	1	6981	7.5	84.3	2.5	3.0	0.7	1.1	0.3	0.6	0.0	91.8	2.5	5.7	0.080	0.509	25.757504	-103.004905
San Pedro de Las Colonias	55.00	1	2	7224	8.0	82.9	3.1	3.2	0.7	1.1	0.4	0.5	0.1	90.9	3.1	6.0	0.078	0.509	25.757603	-103.004909

21 CARR : Libramiento Norponiente de Saltillo (Cuota)

CLAVE: 05022

RUTA: MEX-054D

AÑO: 2023

LUGAR	ESTACION				CLASIFICACION VEHICULAR EN PORCIENTO														COORDENADAS	
	KM	TE	SC	TDPA	M	A	B	C2	C3	T3S2	T3S3	T3S2R4	OTROS	A	B	C	K'	D	LATITUD	LONGITUD
T. C. Ent. Morelos - Saltillo	0.00	3	0	5990	3.8	37.8	4.8	7.1	3.7	31.3	2.5	8.0	1.0	41.6	4.8	53.6	0.087	0.508	25.292278	-101.090050
X. C. Saltillo - Torreón	22.44	1	0	6205	6.0	33.0	5.9	5.0	3.5	33.8	3.0	8.8	1.0	39.0	5.9	55.1	0.080	0.511	25.444663	-101.067922
X. C. Saltillo - Torreón	22.44	3	0	11447	4.2	35.7	6.1	4.4	3.0	32.0	3.9	9.7	1.0	39.9	6.1	54.0	0.075	0.502	25.460175	-101.057865
X. C. Saltillo - Monclova	32.44	1	0	12598	5.7	37.9	3.8	4.5	2.9	30.6	4.0	9.7	0.9	43.6	3.8	52.6	0.069	0.510	25.516514	-101.001188
X. C. Saltillo - Monclova	32.44	3	0	10575	6.3	36.2	5.6	4.7	2.8	30.2	3.8	9.4	1.0	42.5	5.6	51.9	0.076	0.512	25.532572	-100.982648
Ojo Caliente	46.21	1	0	12436	5.7	42.9	6.2	6.1	3.1	20.3	4.4	10.4	0.9	48.6	6.2	45.2	0.065	0.525	25.609666	-100.917071

22 CARR : Libramiento Norte de Torreón (Cuota)

CLAVE:

RUTA: MEX-040D

AÑO: 2023

LUGAR	ESTACION				CLASIFICACION VEHICULAR EN PORCIENTO														COORDENADAS	
	KM	TE	SC	TDPA	M	A	B	C2	C3	T3S2	T3S3	T3S2R4	OTROS	A	B	C	K'	D	LATITUD	LONGITUD
X. C. Gómez Palacio - Jiménez	0.00	3	0	4611	2.5	36.5	4.2	8.2	2.8	28.7	5.5	10.7	0.9	39.0	4.2	56.8	0.064	0.502	25.631340	-103.507214
Lim. Edos. Term. Dgo. Ppia. Coah.	15.60																			
X. C. La Cuchilla - Torreón	17.36	1	0	4374	3.5	38.5	5.6	4.5	3.8	26.4	5.1	11.8	0.8	42.0	5.6	52.4	0.068	0.505	25.660613	-103.388593

COAHUILA

22 CARR: Libramiento Norte de Torreón (Cuota)

CLAVE:

RUTA: MEX-040D

AÑO: 2023

LUGAR	ESTACION				CLASIFICACION VEHICULAR EN PORCIENTO													COORDENADAS		
	KM	TE	SC	TDPA	M	A	B	C2	C3	T3S2	T3S3	T3S2R4	OTROS	A	B	C	K'	D	LATITUD	LONGITUD
X. C. La Cuchilla - Torreón	17.36	3	0	3226	4.7	33.0	5.8	5.1	3.4	28.5	6.3	12.3	0.9	37.7	5.8	56.5	0.071	0.540	25.647728	-103.353691
X. C. Torreón - Saltillo	40.70	1	0	3913	5.7	28.5	9.1	7.1	4.2	29.0	4.7	10.8	0.9	34.2	9.1	56.7	0.087	0.502	25.547466	-103.226297

23 CARR: Libramiento Oriente de Saltillo (Cuota)

CLAVE: 00115

RUTA: MEX-057D

AÑO: 2023

LUGAR	ESTACION				CLASIFICACION VEHICULAR EN PORCIENTO													COORDENADAS			
	KM	TE	SC	TDPA	M	A	B	C2	C3	T3S2	T3S3	T3S2R4	OTROS	A	B	C	K'	D	LATITUD	LONGITUD	
Ent. La Carbonera	0.00																				
Plaza de Cobro Carbonera	12.30	2	1	8505	0.3	31.4	3.3	5.0	2.8	45.8	3.9	6.4	1.1	31.7	3.3	65.0	0.072	0.500	25.510948	-100.868249	
Plaza de Cobro Carbonera	12.30	2	2	8505	0.3	31.4	3.3	5.0	2.8	45.8	3.9	6.4	1.1	31.7	3.3	65.0	0.072	0.500	25.510948	-100.868249	
Plaza de Cobro Carbonera	12.30	3	1	9500	4.9	30.9	5.7	5.2	2.9	41.7	3.0	4.8	0.9	35.8	5.7	58.5	0.077	0.510	25.517935	-100.866105	
Plaza de Cobro Carbonera	12.30	3	2	9887	4.9	30.7	5.9	5.3	2.6	41.9	3.2	4.5	1.0	35.6	5.9	58.5	0.064	0.510	25.518001	-100.866387	
T. C. Saltillo - Monterrey	21.00																				

24 CARR: Nueva Rosita - Ent. Allende (Cuota)

CLAVE: 05502

RUTA: MEX-057D

AÑO: 2023

LUGAR	ESTACION				CLASIFICACION VEHICULAR EN PORCIENTO													COORDENADAS		
	KM	TE	SC	TDPA	M	A	B	C2	C3	T3S2	T3S3	T3S2R4	OTROS	A	B	C	K'	D	LATITUD	LONGITUD
T. C. Monclova - Piedras Negras Sur	0.00	3	1	2171	2.0	70.6	4.7	9.2	2.2	5.3	1.6	3.6	0.8	72.6	4.7	22.7	0.125	0.519	27.937741	-101.193766
T. C. Monclova - Piedras Negras Sur	0.00	3	2	2013	1.9	70.0	4.9	8.8	2.4	5.4	1.8	3.9	0.9	71.9	4.9	23.2	0.112	0.519	27.937801	-101.193831
T. C. Monclova - Piedras Negras Norte	54.00	1	1	1956	1.7	65.1	3.7	15.5	1.2	6.3	1.2	4.3	1.0	66.8	3.7	29.5	0.117	0.506	28.313456	-100.903853
T. C. Monclova - Piedras Negras Norte	54.00	1	2	2005	1.6	65.2	3.8	15.3	1.4	6.2	1.4	4.1	1.0	66.8	3.8	29.4	0.107	0.506	28.313537	-100.904016

25 CARR: Puerto México - La Carbonera (Cuota)

CLAVE: 00115

RUTA: MEX-057D

AÑO: 2023

LUGAR	ESTACION				CLASIFICACION VEHICULAR EN PORCIENTO													COORDENADAS			
	KM	TE	SC	TDPA	M	A	B	C2	C3	T3S2	T3S3	T3S2R4	OTROS	A	B	C	K'	D	LATITUD	LONGITUD	
Ent. Puerto México	202.00																				
Plaza de Cobro Los Chorros	203.64	2	1	7749	0.2	30.3	4.7	3.4	1.9	48.4	3.3	6.6	1.2	30.5	4.7	64.8	0.076	0.500	25.186696	-100.731988	
Plaza de Cobro Los Chorros	203.64	2	2	7749	0.2	30.3	4.7	3.4	1.9	48.4	3.3	6.6	1.2	30.5	4.7	64.8	0.076	0.500	25.186696	-100.731988	
Lim. Edos. Term. N. L. Ppia. Coah.	204.07																				
Lim. Edos. Term. Coah. Ppia. N. L.	204.50																				
Lim. Edos. Term. N. L. Ppia. Coah.	205.76																				
T. Izq. Huachichil	213.39	1	1	7245	2.2	57.7	7.0	2.3	1.8	22.0	1.3	4.8	0.9	59.9	7.0	33.1	0.067	0.503	25.244981	-100.793749	
T. Izq. Huachichil	213.39	1	2	7152	2.2	54.2	7.2	2.5	1.8	24.2	1.5	5.4	1.0	56.4	7.2	36.4	0.071	0.503	25.244926	-100.793807	

COAHUILA

25 CARR: Puerto México - La Carbonera (Cuota)

CLAVE: 00115

RUTA: MEX-057D

AÑO: 2023

LUGAR	ESTACION				CLASIFICACION VEHICULAR EN PORCIENTO										COORDENADAS					
	KM	TE	SC	TDPA	M	A	B	C2	C3	T3S2	T3S3	T3S2R4	OTROS	A	B	C	K'	D	LATITUD	LONGITUD
T. Der. San Antonio de Las Alazanas	224.94	1	1	9307	2.8	38.4	5.3	6.6	2.2	36.3	3.0	4.4	1.0	41.2	5.3	53.5	0.066	0.515	25.345232	-100.794501
T. Der. San Antonio de Las Alazanas	224.94	1	2	9870	2.7	37.8	5.1	6.6	2.5	36.8	3.1	4.4	1.0	40.5	5.1	54.4	0.069	0.515	25.345232	-100.794606
T. Der. San Antonio de Las Alazanas	224.94	3	1	11685	2.7	40.0	6.4	4.6	2.6	36.3	2.4	4.1	0.9	42.7	6.4	50.9	0.101	0.510	25.351378	-100.794324
T. Der. San Antonio de Las Alazanas	224.94	3	2	12142	2.5	40.3	6.4	4.8	2.6	36.1	2.2	4.2	0.9	42.8	6.4	50.8	0.061	0.510	25.351482	-100.794423
Los Lirios	228.30	3	1	13700	2.2	51.5	5.0	4.5	2.5	26.9	2.7	3.8	0.9	53.7	5.0	41.3	0.085	0.515	25.406897	-100.800646
Los Lirios	228.30	3	2	12899	2.1	51.9	4.9	4.3	2.5	27.0	2.9	3.6	0.8	54.0	4.9	41.1	0.079	0.515	25.406924	-100.800749
Ent. La Carbonera	235.60																			

26 CARR: Saltillo - Monterrey (Cuota)

CLAVE: 00087

RUTA: MEX-040D

AÑO: 2023

LUGAR	ESTACION				CLASIFICACION VEHICULAR EN PORCIENTO										COORDENADAS					
	KM	TE	SC	TDPA	M	A	B	C2	C3	T3S2	T3S3	T3S2R4	OTROS	A	B	C	K'	D	LATITUD	LONGITUD
Ojo Caliente	46.21	3	1	5057	7.2	44.5	4.8	5.7	2.6	21.0	3.6	9.7	0.9	51.7	4.8	43.5	0.070	0.511	25.617033	-100.906741
Ojo Caliente	46.21	3	2	5284	7.5	45.0	4.6	5.5	2.8	20.6	3.4	9.6	1.0	52.5	4.6	42.9	0.068	0.511	25.617103	-100.906794
Lim. Edos. Term. Coah. Ppia. N. L.	61.08																			
T. Izq. Anillo Periférico de Monterrey (Cuota)	82.00	1	1	10135	2.3	58.5	5.6	6.9	1.9	18.8	2.0	3.0	1.0	60.8	5.6	33.6	0.084	0.520	25.697494	-100.596913
T. Izq. Anillo Periférico de Monterrey (Cuota)	82.00	1	2	10974	2.0	58.4	5.3	7.2	1.7	19.5	2.0	3.0	0.9	60.4	5.3	34.3	0.083	0.520	25.697556	-100.596750
T. Izq. Anillo Periférico de Monterrey (Cuota)	82.00	3	1	6534	1.4	89.9	2.2	5.2	0.5	0.5	0.2	0.0	0.1	91.3	2.2	6.5	0.132	0.503	25.674650	-100.502946
T. Izq. Anillo Periférico de Monterrey (Cuota)	82.00	3	2	6454	1.6	89.6	2.4	5.1	0.4	0.5	0.2	0.1	0.1	91.2	2.4	6.4	0.101	0.503	25.674728	-100.502888
Morones Prieto	96.10																			

27 CARR: Saltillo - Torreón (Cuota) T1

CLAVE:

RUTA: MEX-040D

AÑO: 2023

LUGAR	ESTACION				CLASIFICACION VEHICULAR EN PORCIENTO										COORDENADAS					
	KM	TE	SC	TDPA	M	A	B	C2	C3	T3S2	T3S3	T3S2R4	OTROS	A	B	C	K'	D	LATITUD	LONGITUD
T. C. Saltillo - Torreón Este	0.00																			
Plaza de Cobro Plan de Ayala	0.50	2	1	4078	0.5	50.2	7.0	2.0	1.2	22.6	4.6	9.7	2.2	50.7	7.0	42.3	0.091	0.500	25.444203	-101.303908
Plaza de Cobro Plan de Ayala	0.50	2	2	4078	0.5	50.2	7.0	2.0	1.2	22.6	4.6	9.7	2.2	50.7	7.0	42.3	0.091	0.500	25.444203	-101.303908
T. C. Saltillo - Torreón Oeste	76.50	1	1	4336	4.4	47.7	5.9	5.2	2.1	22.4	4.0	7.3	1.0	52.1	5.9	42.0	0.067	0.512	25.636747	-102.012801
T. C. Saltillo - Torreón Oeste	76.50	1	2	4554	4.1	48.8	6.1	5.3	2.0	22.0	3.8	6.9	1.0	52.9	6.1	41.0	0.100	0.512	25.636583	-102.012867

COAHUILA

28 CARR: Saltillo - Torreón (Cuota) T2

CLAVE:

RUTA: MEX-040D

AÑO: 2023

LUGAR	ESTACION				CLASIFICACION VEHICULAR EN PORCIENTO														COORDENADAS		
	KM	TE	SC	TDPA	M	A	B	C2	C3	T3S2	T3S3	T3S2R4	OTROS	A	B	C	K'	D	LATITUD	LONGITUD	
T. C. Saltillo - Torreón Este	0.00																				
Plaza de Cobro La Cuchilla	1.00	2	1	3895	0.3	46.2	6.4	2.7	1.5	25.1	5.2	10.2	2.4	46.5	6.4	47.1	0.091	0.500	25.627052	-102.878352	
Plaza de Cobro La Cuchilla	1.00	2	2	3895	0.3	46.2	6.4	2.7	1.5	25.1	5.2	10.2	2.4	46.5	6.4	47.1	0.091	0.500	25.627052	-102.878352	
T. Der. San Pedro de Las Colonias (La Cuchilla)	1.10	3	1	3641	4.6	44.2	6.0	4.7	1.7	24.5	5.0	8.3	1.0	48.8	6.0	45.2	0.094	0.508	25.621025	-102.891628	
T. Der. San Pedro de Las Colonias (La Cuchilla)	1.10	3	2	3531	4.8	43.4	6.3	5.0	1.9	24.9	4.8	7.9	1.0	48.2	6.3	45.5	0.093	0.508	25.620901	-102.891565	
Matamoros	37.00	1	1	3932	4.1	50.4	5.1	4.8	2.3	20.9	4.8	6.7	0.9	54.5	5.1	40.4	0.098	0.504	25.539862	-103.195155	
Matamoros	37.00	1	2	3987	4.1	50.1	5.2	5.0	2.5	20.7	4.6	6.9	0.9	54.2	5.2	40.6	0.079	0.504	25.539596	-103.195179	
T. C. Saltillo - Torreón Oeste	37.80																				

29 CARR: Allende - Villa Unión

CLAVE: 05001

RUTA: COA-015

AÑO: 2023

LUGAR	ESTACION				CLASIFICACION VEHICULAR EN PORCIENTO														COORDENADAS	
	KM	TE	SC	TDPA	M	A	B	C2	C3	T3S2	T3S3	T3S2R4	OTROS	A	B	C	K'	D	LATITUD	LONGITUD
Allende	0.00	3	0	2431	2.0	83.8	1.5	12.2	0.3	0.1	0.1	0.0	0.0	85.8	1.5	12.7	0.077	0.505	28.335656	-100.838277
Villa Unión	19.00																			

30 CARR: Corredor Libramiento de San Pedro

CLAVE: 05023

RUTA: COA-087

AÑO: 2023

LUGAR	ESTACION				CLASIFICACION VEHICULAR EN PORCIENTO														COORDENADAS	
	KM	TE	SC	TDPA	M	A	B	C2	C3	T3S2	T3S3	T3S2R4	OTROS	A	B	C	K'	D	LATITUD	LONGITUD
T. C. Monclova - San Pedro de las Colonias	0.00	3	0	3733	14.6	69.9	2.6	5.8	1.3	3.1	1.2	1.3	0.2	84.5	2.6	12.9	0.110	0.514	25.774591	-102.982564
T. C. La Cuchilla - Torreón	3.60	1	0	6411	15.5	73.2	1.7	3.8	1.1	2.4	1.0	1.1	0.2	88.7	1.7	9.6	0.082	0.509	25.759388	-103.000025

31 CARR: Cuatro Ciénegas - Ocampo

CLAVE: 05026

RUTA: COA-048

AÑO: 2023

LUGAR	ESTACION				CLASIFICACION VEHICULAR EN PORCIENTO														COORDENADAS	
	KM	TE	SC	TDPA	M	A	B	C2	C3	T3S2	T3S3	T3S2R4	OTROS	A	B	C	K'	D	LATITUD	LONGITUD
Cuatro Ciénegas	0.00	3	0	1475	4.9	89.6	0.6	3.9	0.9	0.1	0.0	0.0	0.0	94.5	0.6	4.9	0.069	0.502	27.000141	-102.072650
Ocampo	50.00																			

32 CARR: El Sauz - Palau

CLAVE: 05060

RUTA: COA-022

AÑO: 2023

LUGAR	ESTACION				CLASIFICACION VEHICULAR EN PORCIENTO														COORDENADAS	
	KM	TE	SC	TDPA	M	A	B	C2	C3	T3S2	T3S3	T3S2R4	OTROS	A	B	C	K'	D	LATITUD	LONGITUD
El Sauz	0.00	3	1	1505	1.1	73.9	5.5	7.5	3.1	3.8	2.8	2.0	0.3	75.0	5.5	19.5	0.087	0.512	27.640490	-101.190062

COAHUILA

32 CARR: El Sauz - Palau

CLAVE: 05060

RUTA: COA-022

AÑO: 2023

LUGAR	ESTACION				CLASIFICACION VEHICULAR EN PORCIENTO														COORDENADAS	
	KM	TE	SC	TDPA	M	A	B	C2	C3	T3S2	T3S3	T3S2R4	OTROS	A	B	C	K'	D	LATITUD	LONGITUD
El Sauz	0.00	3	2	1434	0.9	71.4	5.8	8.7	3.6	4.2	3.0	2.1	0.3	72.3	5.8	21.9	0.081	0.512	27.640381	-101.190678
Minas de Barroterán	31.00	3	1	1333	2.0	74.8	4.2	7.9	2.8	3.6	2.5	1.7	0.5	76.8	4.2	19.0	0.084	0.510	27.668574	-101.290951
Minas de Barroterán	31.00	3	2	1280	2.2	72.1	4.7	9.0	2.9	3.9	2.6	2.1	0.5	74.3	4.7	21.0	0.082	0.510	27.668680	-101.291085
Palau	42.50	1	1	1370	2.9	72.7	4.8	7.3	2.7	3.8	3.3	2.1	0.4	75.6	4.8	19.6	0.072	0.506	27.875142	-101.415529
Palau	42.50	1	2	1405	2.8	70.7	5.4	7.9	2.8	4.4	3.4	2.2	0.4	73.5	5.4	21.1	0.072	0.506	27.875122	-101.415640

33 CARR: Emiliano Zapata - Viesca

CLAVE: 05521

RUTA: COA-082

AÑO: 2023

LUGAR	ESTACION				CLASIFICACION VEHICULAR EN PORCIENTO														COORDENADAS	
	KM	TE	SC	TDPA	M	A	B	C2	C3	T3S2	T3S3	T3S2R4	OTROS	A	B	C	K'	D	LATITUD	LONGITUD
Emiliano Zapata	0.00	3	0	1002	4.9	85.2	1.2	6.2	1.1	0.4	0.9	0.0	0.1	90.1	1.2	8.7	0.092	0.510	25.479351	-102.943373
Viesca	24.00																			

34 CARR: Ent. La Rosa - General Cepeda

CLAVE: 05034

RUTA: COA-034

AÑO: 2023

LUGAR	ESTACION				CLASIFICACION VEHICULAR EN PORCIENTO														COORDENADAS	
	KM	TE	SC	TDPA	M	A	B	C2	C3	T3S2	T3S3	T3S2R4	OTROS	A	B	C	K'	D	LATITUD	LONGITUD
T. C. Saltillo - Torreón	0.00	3	0	1230	1.0	90.9	1.2	4.7	0.8	1.0	0.3	0.0	0.1	91.9	1.2	6.9	0.167	0.524	25.507369	-101.378774
Gral. Cepeda	21.00	1	0	1244	4.1	85.0	2.3	6.3	1.2	0.6	0.4	0.0	0.1	89.1	2.3	8.6	0.098	0.506	25.387814	-101.476891

35 CARR: Ent. Paila - Parras de La Fuente

CLAVE: 05014

RUTA: COA-102

AÑO: 2023

LUGAR	ESTACION				CLASIFICACION VEHICULAR EN PORCIENTO														COORDENADAS	
	KM	TE	SC	TDPA	M	A	B	C2	C3	T3S2	T3S3	T3S2R4	OTROS	A	B	C	K'	D	LATITUD	LONGITUD
Ent. Paila	0.00	3	0	2680	3.1	84.0	2.2	6.4	1.0	2.1	0.7	0.4	0.1	87.1	2.2	10.7	0.092	0.526	25.643751	-102.148862
Parras de La Fuente	20.05	1	1	2544	3.3	84.6	2.7	6.8	0.6	0.9	0.6	0.3	0.2	87.9	2.7	9.4	0.117	0.515	25.468841	-102.173794
Parras de La Fuente	20.05	1	2	2703	3.8	83.5	2.9	6.9	0.7	1.0	0.7	0.3	0.2	87.3	2.9	9.8	0.118	0.515	25.468828	-102.173711

36 CARR: Libramiento de Matamoros

CLAVE: 05032

RUTA: COA

AÑO: 2023

LUGAR	ESTACION				CLASIFICACION VEHICULAR EN PORCIENTO														COORDENADAS	
	KM	TE	SC	TDPA	M	A	B	C2	C3	T3S2	T3S3	T3S2R4	OTROS	A	B	C	K'	D	LATITUD	LONGITUD
T. C. Saltillo - Torreón	0.00	3	0	10726	5.3	78.9	1.7	6.7	3.2	2.3	1.0	0.6	0.3	84.2	1.7	14.1	0.078	0.513	25.532209	-103.219292
X. C. Matamoros - La Unión	3.70	3	1	9635	5.1	71.8	2.9	6.5	2.6	6.9	1.4	2.2	0.6	76.9	2.9	20.2	0.081	0.522	25.538772	-103.226294
X. C. Matamoros - La Unión	3.70	3	2	10507	5.2	71.3	2.9	6.4	2.5	6.9	1.6	2.4	0.8	76.5	2.9	20.6	0.086	0.522	25.538384	-103.225804

COAHUILA

36 CARR: Libramiento de Matamoros

CLAVE: 05032

RUTA: COA

AÑO: 2023

LUGAR	ESTACION				CLASIFICACION VEHICULAR EN PORCIENTO													COORDENADAS		
	KM	TE	SC	TDPA	M	A	B	C2	C3	T3S2	T3S3	T3S2R4	OTROS	A	B	C	K'	D	LATITUD	LONGITUD
T. C. Saltillo - Torreón	5.32	1	1	7845	6.8	75.4	2.1	5.3	2.5	4.7	1.2	1.4	0.6	82.2	2.1	15.7	0.072	0.512	25.537637	-103.240895
T. C. Saltillo - Torreón	5.32	1	2	8245	7.2	74.5	2.3	5.2	2.8	4.6	1.2	1.6	0.6	81.7	2.3	16.0	0.076	0.512	25.537554	-103.240883

37 CARR: Libramiento de Saltillo J.L.P.

CLAVE: 05031

RUTA: COA

AÑO: 2023

LUGAR	ESTACION				CLASIFICACION VEHICULAR EN PORCIENTO													COORDENADAS		
	KM	TE	SC	TDPA	M	A	B	C2	C3	T3S2	T3S3	T3S2R4	OTROS	A	B	C	K'	D	LATITUD	LONGITUD
T. C. Ent. Bella Unión - Saltillo	0.00																			
X. C. Saltillo - Arteaga	2.50	3	1	18229	2.0	75.4	3.3	8.0	3.7	5.5	0.8	1.0	0.3	77.4	3.3	19.3	0.137	0.516	25.449662	-100.892619
X. C. Saltillo - Arteaga	2.50	3	2	17090	1.9	76.3	3.5	7.9	3.4	5.3	0.7	0.8	0.2	78.2	3.5	18.3	0.133	0.516	25.449762	-100.892873
T. C. Saltillo - Monterrey	18.00	1	1	13440	2.2	70.3	1.8	8.4	3.8	11.3	0.8	0.9	0.5	72.5	1.8	25.7	0.141	0.514	25.552641	-100.922012
T. C. Saltillo - Monterrey	18.00	1	2	12702	2.5	70.1	1.7	8.5	3.7	11.1	0.8	1.1	0.5	72.6	1.7	25.7	0.128	0.514	25.552688	-100.922282

38 CARR: Libramiento de Torreón

CLAVE: 05516

RUTA: COA

AÑO: 2023

LUGAR	ESTACION				CLASIFICACION VEHICULAR EN PORCIENTO													COORDENADAS		
	KM	TE	SC	TDPA	M	A	B	C2	C3	T3S2	T3S3	T3S2R4	OTROS	A	B	C	K'	D	LATITUD	LONGITUD
X. C. Saltillo - Torreón	0.00	3	1	47521	5.2	83.9	1.4	3.9	1.3	2.1	0.7	1.2	0.3	89.1	1.4	9.5	0.073	0.530	25.539466	-103.370536
X. C. Saltillo - Torreón	0.00	3	2	54503	5.2	84.3	1.6	3.8	1.2	1.9	0.6	1.0	0.4	89.5	1.6	8.9	0.082	0.530	25.539759	-103.370966
T. C. La Cuchilla - Torreón (Baja)	7.30	1	1	41072	3.4	84.9	1.3	4.2	0.7	3.2	0.9	1.1	0.3	88.3	1.3	10.4	0.094	0.532	25.582252	-103.402004
T. C. La Cuchilla - Torreón (Alta)	7.30	1	1	17460	1.7	86.9	1.3	3.6	2.0	2.7	0.9	0.7	0.2	88.6	1.3	10.1	0.104	0.506	25.582057	-103.402005
T. C. La Cuchilla - Torreón (Alta)	7.30	1	2	17884	1.8	86.9	1.2	3.7	2.0	2.6	0.9	0.7	0.2	88.7	1.2	10.1	0.087	0.506	25.581993	-103.402076
T. C. La Cuchilla - Torreón (Baja)	7.30	1	2	47419	3.5	83.3	1.4	5.1	0.8	3.4	1.0	1.2	0.3	86.8	1.4	11.8	0.089	0.532	25.581844	-103.402184
Lim. Edos. Term. Coah. Ppia. Dgo.	11.80																			
T. C. Durango - Torreón	28.60																			

39 CARR: Matamoros - El Fresno

CLAVE: 05023

RUTA: COA-078

AÑO: 2023

LUGAR	ESTACION				CLASIFICACION VEHICULAR EN PORCIENTO													COORDENADAS		
	KM	TE	SC	TDPA	M	A	B	C2	C3	T3S2	T3S3	T3S2R4	OTROS	A	B	C	K'	D	LATITUD	LONGITUD
Matamoros	0.00	3	0	3446	18.4	71.6	1.3	4.3	2.4	1.0	0.5	0.5	0.0	90.0	1.3	8.7	0.081	0.512	25.499926	-103.224734
El Fresno	12.60	1	0	1629	23.8	66.7	0.7	7.3	1.0	0.4	0.1	0.0	0.0	90.5	0.7	8.8	0.114	0.508	25.426333	-103.227842

COAHUILA

40 CARR: Matamoros - La Unión

CLAVE: 05023

RUTA: COA-070

AÑO: 2023

LUGAR	ESTACION				CLASIFICACION VEHICULAR EN PORCIENTO										COORDENADAS					
	KM	TE	SC	TDPA	M	A	B	C2	C3	T3S2	T3S3	T3S2R4	OTROS	A	B	C	K'	D	LATITUD	LONGITUD
X. C. Libramiento de Matamoros	1.00	3	1	2220	7.5	79.6	2.5	5.5	2.6	1.3	0.4	0.5	0.1	87.1	2.5	10.4	0.098	0.506	25.542817	-103.222511
X. C. Libramiento de Matamoros	1.00	3	2	2275	7.2	80.6	2.4	5.2	2.6	1.3	0.4	0.3	0.0	87.8	2.4	9.8	0.099	0.506	25.542837	-103.222660
La Partida	14.09	1	0	4475	7.9	70.1	1.3	15.6	2.5	1.6	0.4	0.5	0.1	78.0	1.3	20.7	0.102	0.519	25.586429	-103.297582
La Partida	14.09	3	0	6227	9.2	76.7	1.9	7.3	1.7	1.3	0.5	1.1	0.3	85.9	1.9	12.2	0.105	0.507	25.594614	-103.314939
X. C. Antigua Carretera a San Pedro	22.00	1	1	8327	6.0	85.8	0.8	2.9	1.9	1.0	0.5	0.7	0.4	91.8	0.8	7.4	0.140	0.518	25.598294	-103.375362
X. C. Antigua Carretera a San Pedro	22.00	1	2	7763	6.1	85.8	0.8	2.8	1.8	1.1	0.5	0.7	0.4	91.9	0.8	7.3	0.111	0.518	25.598170	-103.375355
La Unión	25.00	1	1	12504	5.7	86.8	0.6	4.5	0.9	0.6	0.5	0.3	0.1	92.5	0.6	6.9	0.114	0.526	25.597683	-103.390297
La Unión	25.00	1	2	13850	5.7	86.4	0.6	5.0	0.9	0.6	0.4	0.3	0.1	92.1	0.6	7.3	0.103	0.526	25.597605	-103.390305

41 CARR: Monclova - Estación Candela

CLAVE: 00501

RUTA: COA-030-NL

AÑO: 2023

LUGAR	ESTACION				CLASIFICACION VEHICULAR EN PORCIENTO										COORDENADAS					
	KM	TE	SC	TDPA	M	A	B	C2	C3	T3S2	T3S3	T3S2R4	OTROS	A	B	C	K'	D	LATITUD	LONGITUD
T. C. Monclova - Piedras Negras	0.00																			
T. Izq. Libramiento de Monclova	5.10	1	1	3193	6.5	60.1	6.8	24.1	1.5	0.7	0.1	0.1	0.1	66.6	6.8	26.6	0.090	0.501	26.928305	-101.389030
T. Izq. Libramiento de Monclova	5.10	1	2	3178	6.7	58.7	7.1	24.9	1.6	0.7	0.1	0.1	0.1	65.4	7.1	27.5	0.097	0.501	26.928375	-101.389142
Lim. Edos. Term. Coah. Ppia. N. L.	118.00																			
T. C. Monterrey - Colombia	125.50	1	0	594	0.1	73.4	1.5	15.7	1.1	7.2	0.4	0.5	0.1	73.5	1.5	25.0	0.196	0.503	26.837840	-100.493910

42 CARR: Morelos - Ent. Las Corrientes

CLAVE: 05500

RUTA: COA-010

AÑO: 2023

LUGAR	ESTACION				CLASIFICACION VEHICULAR EN PORCIENTO										COORDENADAS					
	KM	TE	SC	TDPA	M	A	B	C2	C3	T3S2	T3S3	T3S2R4	OTROS	A	B	C	K'	D	LATITUD	LONGITUD
T. C. Morelos - Cd. Acuña	0.00	3	0	1669	2.5	85.5	2.3	8.2	1.0	0.3	0.1	0.1	0.0	88.0	2.3	9.7	0.118	0.514	28.401827	-100.895172
Los Álamos	9.20	1	0	1035	3.6	89.5	1.5	5.3	0.1	0.0	0.0	0.0	0.0	93.1	1.5	5.4	0.098	0.518	28.355837	-100.941617
T. C. Monclova - Piedras Negras	20.00																			

43 CARR: Puerto de Flores - El Hondable

CLAVE: 05512

RUTA: COA-112

AÑO: 2023

LUGAR	ESTACION				CLASIFICACION VEHICULAR EN PORCIENTO										COORDENADAS					
	KM	TE	SC	TDPA	M	A	B	C2	C3	T3S2	T3S3	T3S2R4	OTROS	A	B	C	K'	D	LATITUD	LONGITUD
T. C. Aut. Puerto México - Ojo Caliente	0.00	3	0	3006	1.0	78.4	0.8	16.4	0.9	1.5	0.6	0.3	0.1	79.4	0.8	19.8	0.097	0.517	25.340647	-100.777633
San Antonio de Las Alazanas	24.00	1	0	2264	1.1	81.4	0.9	14.3	0.7	1.2	0.3	0.1	0.0	82.5	0.9	16.6	0.128	0.506	25.278562	-100.601003
El Hondable	50.50																			

COAHUILA

44 CARR: Ramal a Hipólito

CLAVE: 05509

RUTA: COA-114

AÑO: 2023

LUGAR	ESTACION				CLASIFICACION VEHICULAR EN PORCIENTO														COORDENADAS	
	KM	TE	SC	TDPA	M	A	B	C2	C3	T3S2	T3S3	T3S2R4	OTROS	A	B	C	K'	D	LATITUD	LONGITUD
T. C. Saltillo - Torreón	0.00	3	0	564	2.9	76.3	3.3	7.8	4.9	2.1	2.1	0.6	0.0	79.2	3.3	17.5	0.103	0.506	25.595147	-101.452055
Hipólito	13.00																			

45 CARR: Ramal a Lamadrid

CLAVE: 05522

RUTA: COA-042

AÑO: 2023

LUGAR	ESTACION				CLASIFICACION VEHICULAR EN PORCIENTO														COORDENADAS	
	KM	TE	SC	TDPA	M	A	B	C2	C3	T3S2	T3S3	T3S2R4	OTROS	A	B	C	K'	D	LATITUD	LONGITUD
T. C. Monclova - San Pedro de las Colonias	0.00	3	0	1235	2.5	86.1	4.3	6.6	0.4	0.1	0.0	0.0	0.0	88.6	4.3	7.1	0.092	0.507	27.016687	-101.791892
Lamadrid	4.00																			

46 CARR: Sabinas - Don Martín

CLAVE: 05501

RUTA: COA-025

AÑO: 2023

LUGAR	ESTACION				CLASIFICACION VEHICULAR EN PORCIENTO														COORDENADAS	
	KM	TE	SC	TDPA	M	A	B	C2	C3	T3S2	T3S3	T3S2R4	OTROS	A	B	C	K'	D	LATITUD	LONGITUD
Sabinas	0.00	3	0	2304	3.8	70.8	0.2	22.7	0.5	1.3	0.2	0.3	0.2	74.6	0.2	25.2	0.085	0.504	27.849804	-101.097055
T. Izq. La Mezquitosa	3.00	3	0	1197	1.4	70.0	0.5	24.7	0.7	1.3	0.7	0.4	0.3	71.4	0.5	28.1	0.099	0.505	27.828690	-101.068943
Juárez	53.00	3	0	395	1.3	68.6	1.3	23.4	0.7	2.9	0.7	0.4	0.7	69.9	1.3	28.8	0.114	0.503	27.619181	-100.704558
Don Martín	66.00	1	0	374	1.8	74.8	1.1	15.1	2.9	1.8	1.1	0.8	0.6	76.6	1.1	22.3	0.144	0.502	27.540005	-100.625297

47 CARR: Saltillo - Arteaga

CLAVE: 05008

RUTA: COA-106

AÑO: 2023

LUGAR	ESTACION				CLASIFICACION VEHICULAR EN PORCIENTO														COORDENADAS	
	KM	TE	SC	TDPA	M	A	B	C2	C3	T3S2	T3S3	T3S2R4	OTROS	A	B	C	K'	D	LATITUD	LONGITUD
Saltillo	0.00	3	1	16565	2.1	91.9	0.6	2.6	1.5	0.6	0.2	0.3	0.2	94.0	0.6	5.4	0.091	0.522	25.442274	-100.952661
Saltillo	0.00	3	2	18068	2.3	91.5	0.6	2.8	1.3	0.6	0.2	0.4	0.3	93.8	0.6	5.6	0.122	0.522	25.442388	-100.952672
X. C. Libramiento de Matehuala - Monterrey	9.00	1	1	7933	2.0	88.0	1.3	4.3	2.0	1.5	0.6	0.1	0.2	90.0	1.3	8.7	0.130	0.504	25.444525	-100.897203
X. C. Libramiento de Matehuala - Monterrey	9.00	1	2	7798	2.2	87.8	1.4	4.5	2.1	1.3	0.5	0.1	0.1	90.0	1.4	8.6	0.116	0.504	25.444625	-100.897211
X. C. Libramiento de Matehuala - Monterrey	9.00	3	1	3962	1.7	89.8	1.0	4.6	1.3	0.7	0.6	0.2	0.1	91.5	1.0	7.5	0.097	0.520	25.449523	-100.885431
X. C. Libramiento de Matehuala - Monterrey	9.00	3	2	3650	1.9	89.3	1.1	4.6	1.5	0.7	0.6	0.2	0.1	91.2	1.1	7.7	0.101	0.520	25.449813	-100.885287
Arteaga	12.00	1	1	3531	2.0	91.0	0.9	3.9	1.2	0.5	0.4	0.1	0.0	93.0	0.9	6.1	0.090	0.508	25.448611	-100.870622
Arteaga	12.00	1	2	3649	2.0	90.5	0.9	4.3	1.3	0.5	0.4	0.1	0.0	92.5	0.9	6.6	0.096	0.508	25.448692	-100.870663
T. C. Ent. Bella Unión - Saltillo	18.00																			

COAHUILA

48 CARR: San Buenaventura - Estación Hermanas

CLAVE: 05004

RUTA: COA-034

AÑO: 2023

LUGAR	ESTACION				CLASIFICACION VEHICULAR EN PORCIENTO										COORDENADAS					
	KM	TE	SC	TDPA	M	A	B	C2	C3	T3S2	T3S3	T3S2R4	OTROS	A	B	C	K'	D	LATITUD	LONGITUD
San Buenaventura	0.00	3	0	2459	3.7	87.7	0.6	4.7	1.7	1.4	0.2	0.0	0.0	91.4	0.6	8.0	0.101	0.502	27.078884	-101.531471
T. Izq. Santa Gertrudis	2.48	1	0	1986	3.3	88.7	0.6	4.4	1.5	1.3	0.2	0.0	0.0	92.0	0.6	7.4	0.072	0.508	27.089196	-101.514000
Abasolo	15.71	1	0	1054	3.2	89.7	1.1	4.0	1.3	0.4	0.3	0.0	0.0	92.9	1.1	6.0	0.105	0.505	27.174738	-101.431064
Los Rodríguez	31.00	3	0	645	3.1	89.1	1.0	4.7	1.7	0.4	0.0	0.0	0.0	92.2	1.0	6.8	0.082	0.511	27.199767	-101.349742
Estación Hermanas	50.00	1	0	669	1.5	92.2	0.6	3.5	1.1	0.7	0.3	0.1	0.0	93.7	0.6	5.7	0.106	0.520	27.221294	-101.239864

49 CARR: T. C. (Ent. Morelos - Saltillo) - Parras de La Fuente

CLAVE: 05510

RUTA: COA-105

AÑO: 2023

LUGAR	ESTACION				CLASIFICACION VEHICULAR EN PORCIENTO										COORDENADAS					
	KM	TE	SC	TDPA	M	A	B	C2	C3	T3S2	T3S3	T3S2R4	OTROS	A	B	C	K'	D	LATITUD	LONGITUD
T. C. Morelos - Saltillo	0.00	3	1	8386	4.2	65.6	3.1	10.0	3.6	10.3	1.8	0.9	0.5	69.8	3.1	27.1	0.116	0.510	25.261660	-101.099527
T. C. Morelos - Saltillo	0.00	3	2	8714	4.0	65.8	3.0	10.3	3.4	10.6	1.8	0.7	0.4	69.8	3.0	27.2	0.102	0.510	25.261547	-101.099530
Gral. Cepeda	40.00	1	0	1798	4.2	78.8	2.8	13.1	0.5	0.4	0.1	0.1	0.0	83.0	2.8	14.2	0.093	0.502	25.365817	-101.480633
Gral. Cepeda	40.00	3	0	996	2.2	74.5	2.3	19.2	0.8	0.5	0.5	0.0	0.0	76.7	2.3	21.0	0.085	0.501	25.385048	-101.494091
Parras de La Fuente	102.00	1	0	3434	3.4	88.4	0.7	4.8	0.9	0.5	0.5	0.6	0.2	91.8	0.7	7.5	0.094	0.504	25.443692	-102.157195

50 CARR: T. C. (Saltillo - Monclova) - Ramos Arizpe

CLAVE: 05508

RUTA: COA

AÑO: 2023

LUGAR	ESTACION				CLASIFICACION VEHICULAR EN PORCIENTO										COORDENADAS					
	KM	TE	SC	TDPA	M	A	B	C2	C3	T3S2	T3S3	T3S2R4	OTROS	A	B	C	K'	D	LATITUD	LONGITUD
T. C. Saltillo - Monclova	0.00	3	0	6609	3.5	72.4	2.4	7.2	2.7	8.9	1.1	1.4	0.4	75.9	2.4	21.7	0.093	0.502	25.528783	-101.003125
Ramos Arizpe	12.00																			

51 CARR: Torreón - Escuadrón 201

CLAVE: 05022

RUTA: COA-011

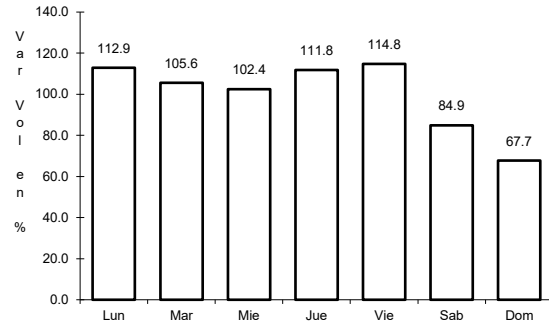
AÑO: 2023

LUGAR	ESTACION				CLASIFICACION VEHICULAR EN PORCIENTO										COORDENADAS					
	KM	TE	SC	TDPA	M	A	B	C2	C3	T3S2	T3S3	T3S2R4	OTROS	A	B	C	K'	D	LATITUD	LONGITUD
Torreón	0.00	3	1	18705	5.9	83.6	0.9	4.6	1.1	1.9	0.9	0.7	0.4	89.5	0.9	9.6	0.088	0.510	25.581937	-103.388982
Torreón	0.00	3	2	17977	5.8	83.7	0.8	4.7	1.0	2.0	0.9	0.7	0.4	89.5	0.8	9.7	0.076	0.510	25.581982	-103.389115
El Aguila	11.35	1	0	3444	11.3	79.8	0.7	6.0	1.2	0.4	0.3	0.3	0.0	91.1	0.7	8.2	0.093	0.504	25.625952	-103.367148
Escuadrón 201	17.06	1	0	1212	8.9	82.2	0.7	5.6	0.9	1.0	0.5	0.2	0.0	91.1	0.7	8.2	0.085	0.507	25.669161	-103.347951

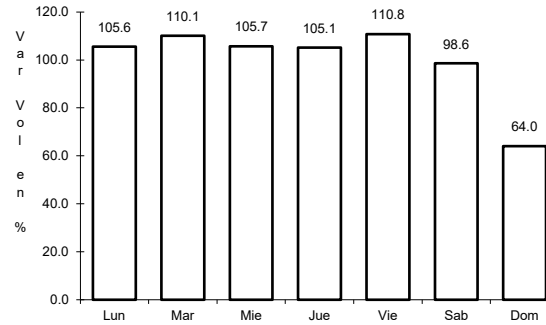
1 CARR: Cd. Acuña - Presa de La Amistad

CLAVE: 05085

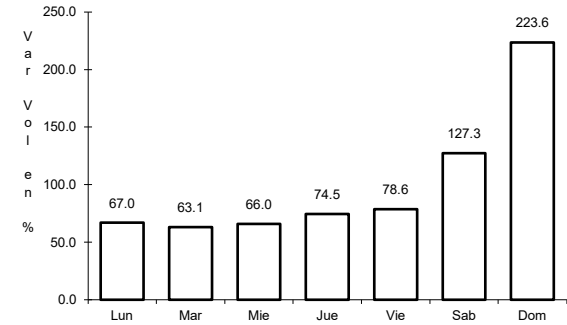
RUTA: MEX-002



Km: 0.00 Tipo: 3 Sent: 1



Km: 0.00 Tipo: 3 Sent: 2

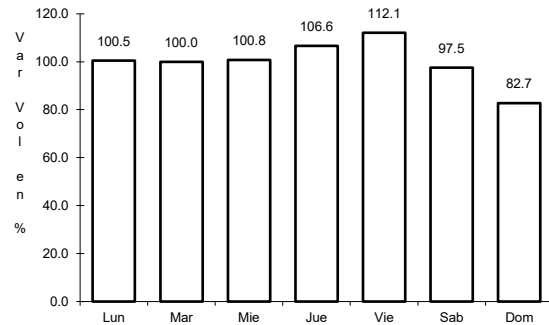


Km: 23.00 Tipo: 1 Sent: 0

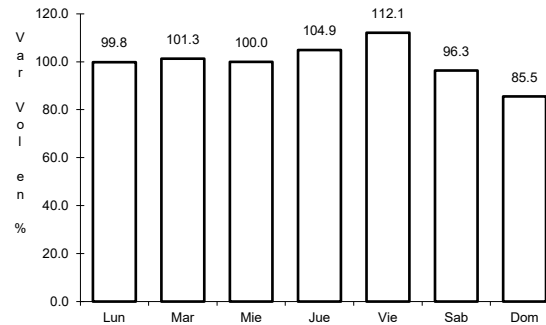
2 CARR: Durango - Torreón

CLAVE: 10085

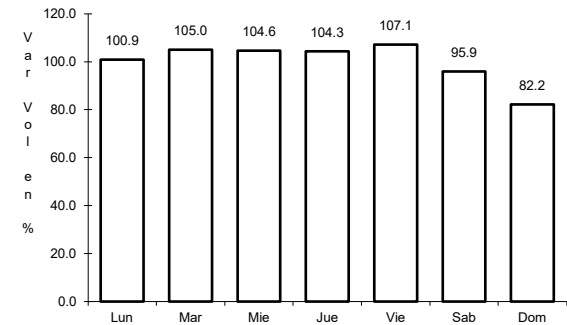
RUTA: MEX-040



Km: 0.00 Tipo: 3 Sent: 1



Km: 0.00 Tipo: 3 Sent: 2

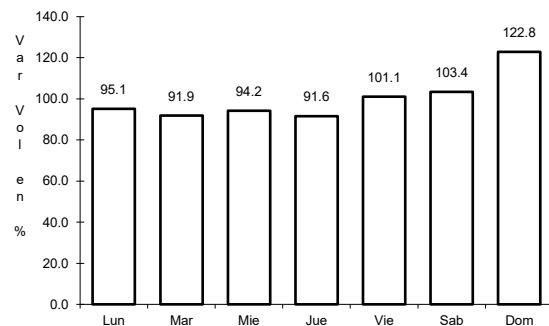


Km: 120.90 Tipo: 1 Sent: 0

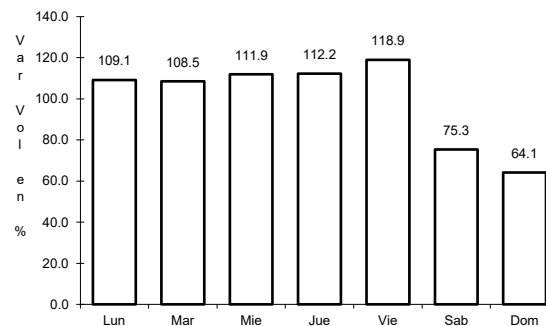
3 CARR: Ent. Bella Unión - Saltillo

CLAVE: 05003

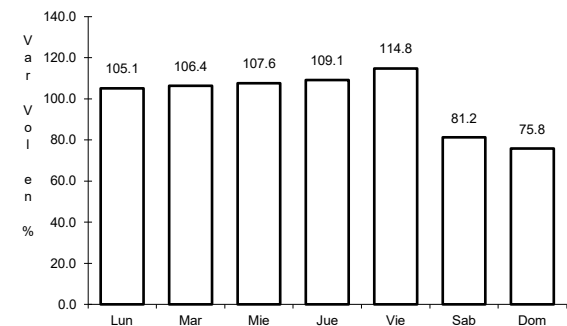
RUTA: MEX-057



Km: 4.61 Tipo: 1 Sent: 1



Km: 4.61 Tipo: 1 Sent: 2

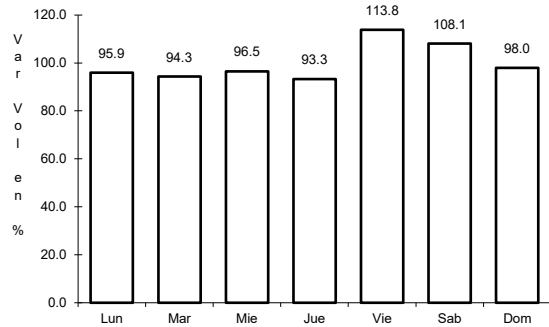


Km: 17.00 Tipo: 1 Sent: 1

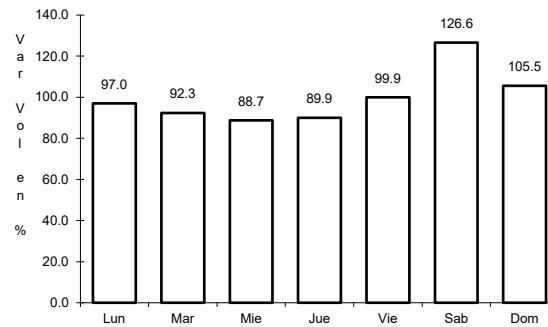
4 CARR: Ent. La Cuchilla - San Pedro de las Colonias

CLAVE: 05021

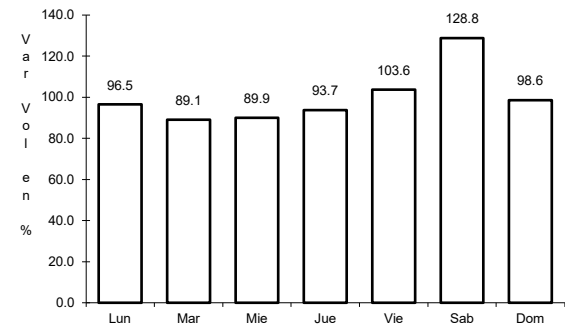
ruta: MEX



Km: 0.00 Tipo: 3 Sent: 0



Km: 18.70 Tipo: 1 Sent: 1

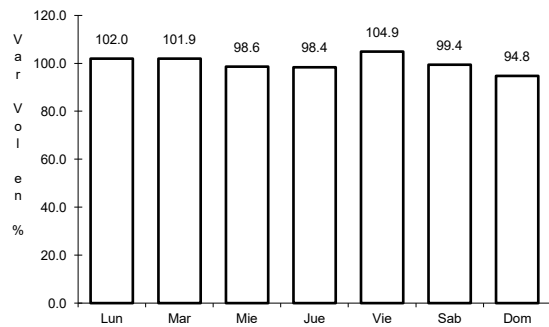


Km: 18.70 Tipo: 1 Sent: 2

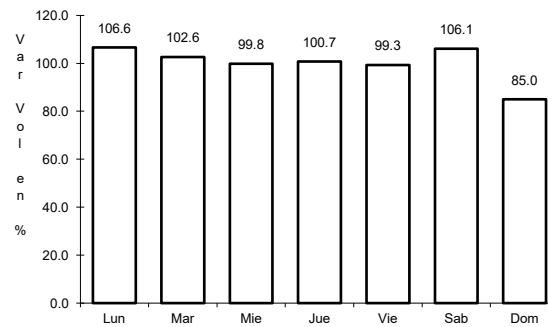
5 CARR: Ent. Morelos - Saltillo

CLAVE: 00149

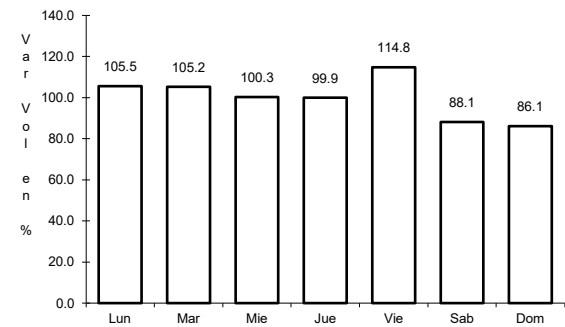
ruta: MEX-054



Km: 0.00 Tipo: 3 Sent: 1



Km: 0.00 Tipo: 3 Sent: 2

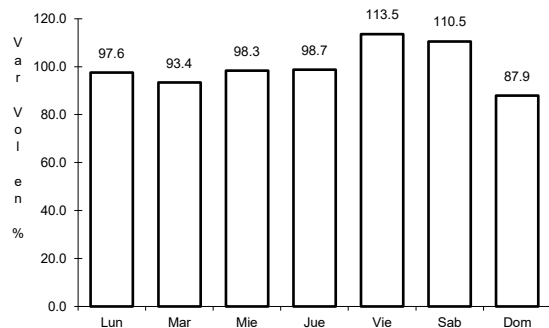


Km: 333.00 Tipo: 3 Sent: 1

6 CARR: Gregorio García - Francisco I. Madero

CLAVE: 00110

ruta: MEX-040

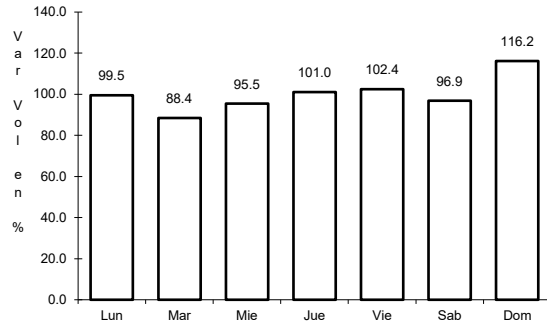


Km: 9.60 Tipo: 1 Sent: 0

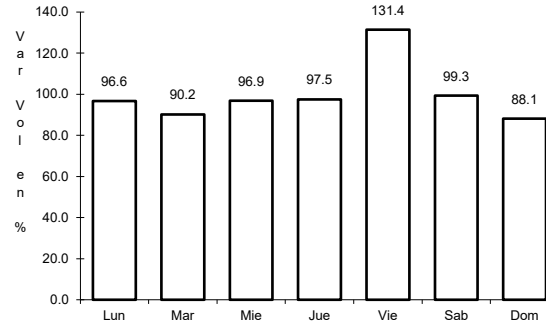
7 CARR: Libramiento Allende - Nava

CLAVE: 05518

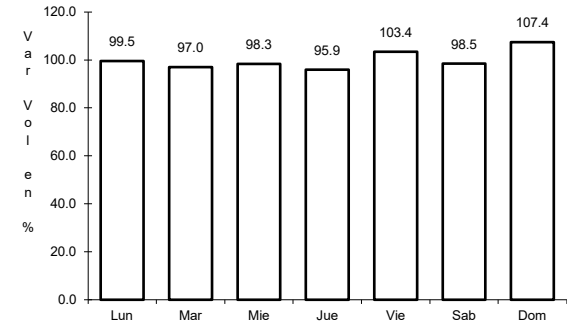
ruta: MEX-057



Km: 0.00 Tipo: 3 Sent: 1



Km: 0.00 Tipo: 3 Sent: 2

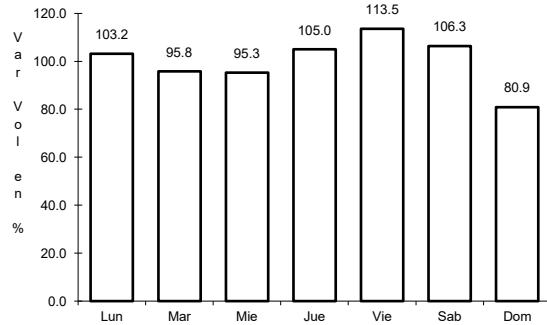


Km: 18.55 Tipo: 1 Sent: 1

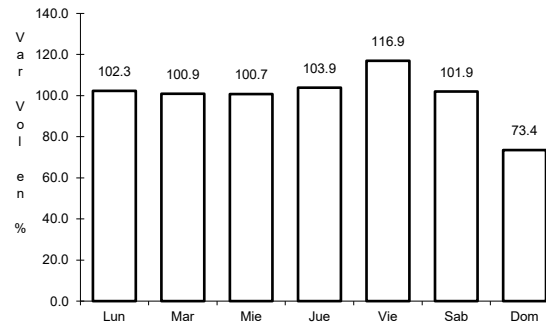
8 CARR: Monclova - Piedras Negras

CLAVE: 05407

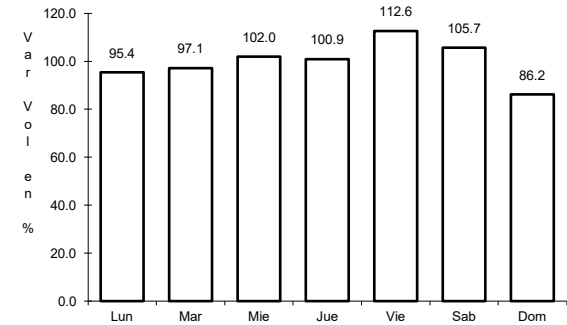
ruta: MEX-057



Km: 0.00 Tipo: 3 Sent: 1



Km: 0.00 Tipo: 3 Sent: 2

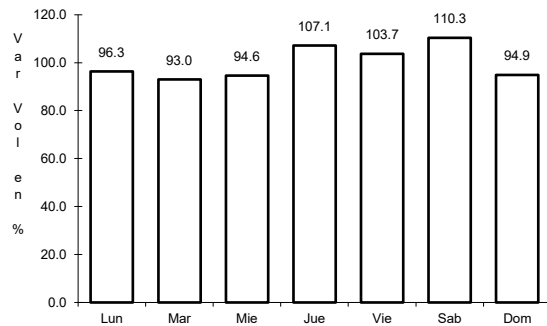


Km: 182.00 Tipo: 1 Sent: 0

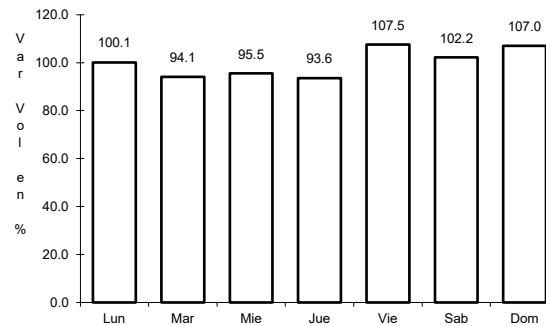
9 CARR: Monclova - San Pedro de Las Colonias

CLAVE: 05062

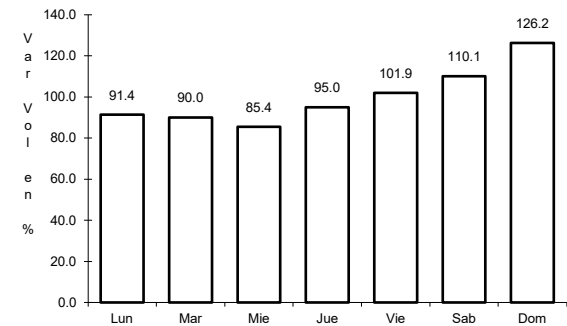
ruta: MEX-030



Km: 2.00 Tipo: 3 Sent: 1



Km: 2.00 Tipo: 3 Sent: 2

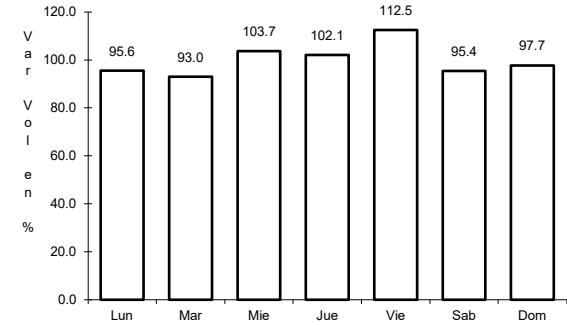
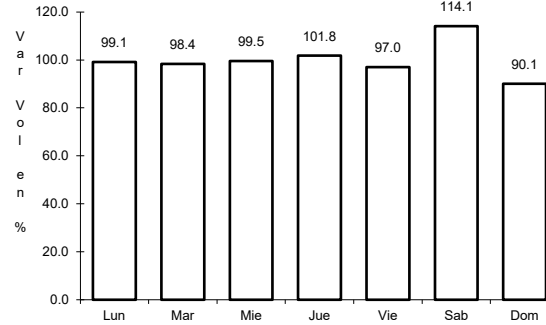
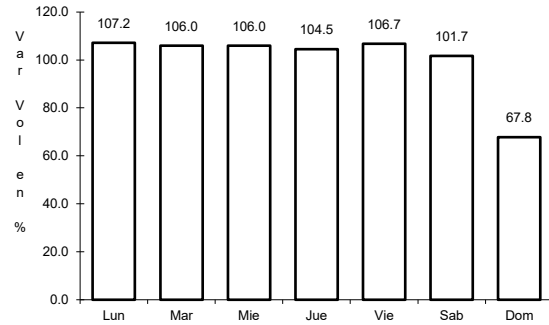


Km: 80.15 Tipo: 3 Sent: 0

10 CARR: Monterrey - Castaños

CLAVE: 00128

ruta: MEX-053



Km: 0.00 Tipo: 3 Sent: 0

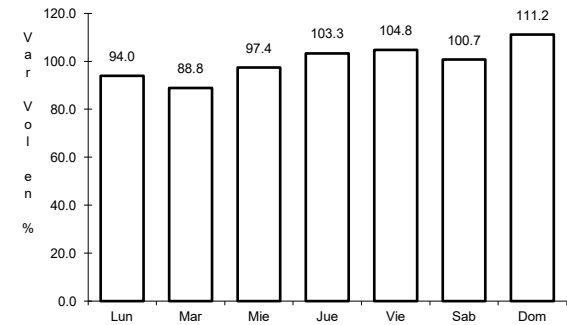
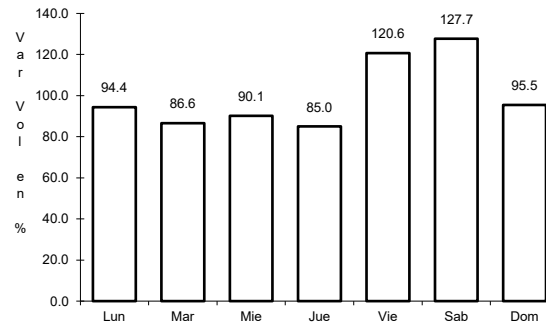
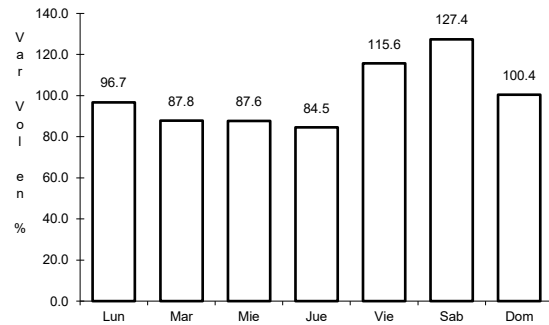
Km: 155.90 Tipo: 1 Sent: 1

Km: 155.90 Tipo: 1 Sent: 2

11 CARR: Morelos - Cd. Acuña

CLAVE: 05029

ruta: MEX-029



Km: 0.00 Tipo: 3 Sent: 1

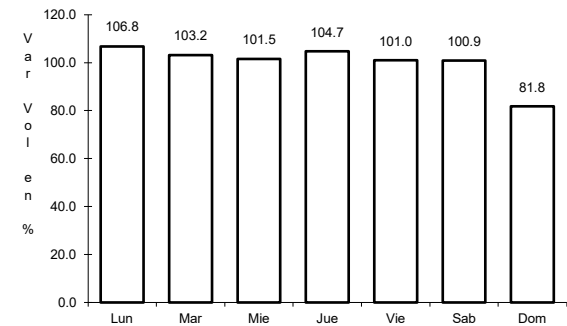
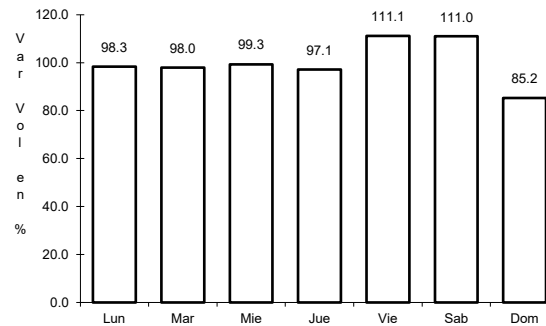
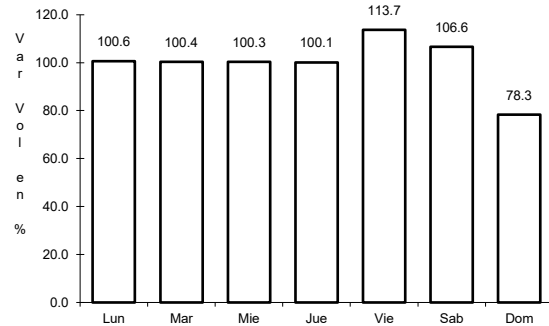
Km: 0.00 Tipo: 3 Sent: 2

Km: 73.84 Tipo: 1 Sent: 0

12 CARR: Nueva Rosita - Boquillas del Carmen

CLAVE: 05028

ruta: MEX-053



Km: 0.00 Tipo: 3 Sent: 1

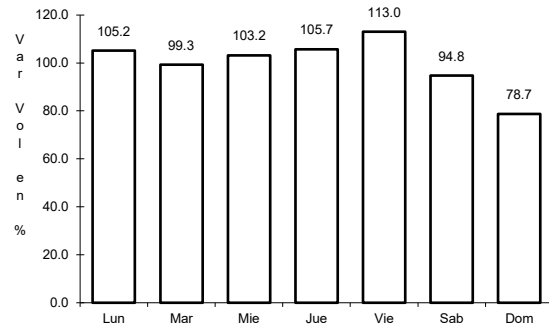
Km: 0.00 Tipo: 3 Sent: 2

Km: 35.00 Tipo: 3 Sent: 0

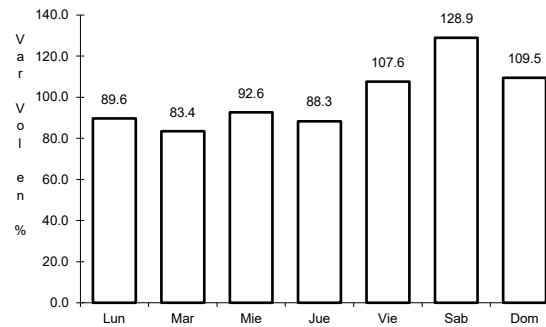
13 CARR: Ojo Caliente - Santa Cruz

CLAVE: 05007

ruta: MEX-057



Km: 0.00 Tipo: 3 Sent: 0

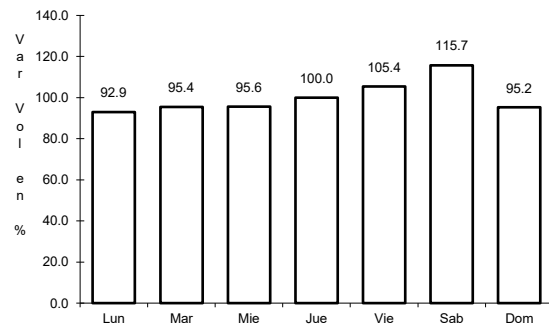


Km: 34.00 Tipo: 1 Sent: 0

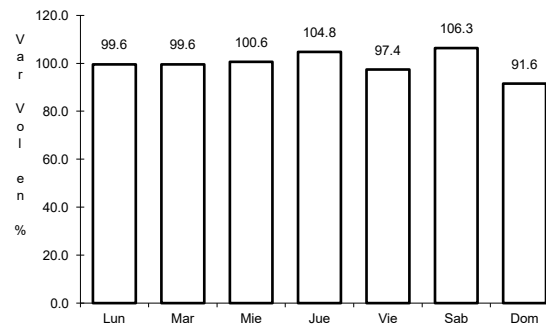
14 CARR: Piedras Negras - Cd. Acuña

CLAVE: 05061

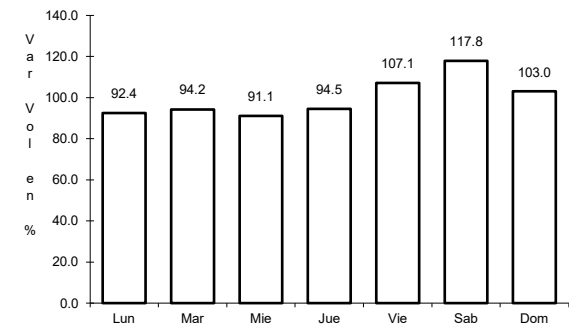
ruta: MEX-002



Km: 0.00 Tipo: 3 Sent: 1



Km: 0.00 Tipo: 3 Sent: 2

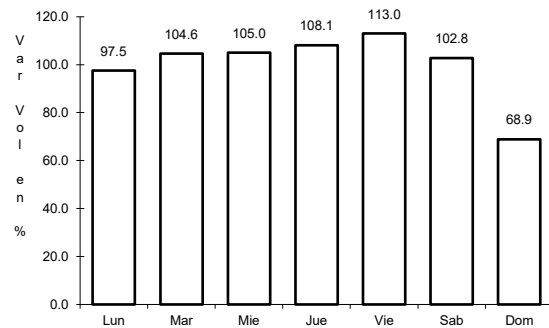


Km: 83.30 Tipo: 1 Sent: 0

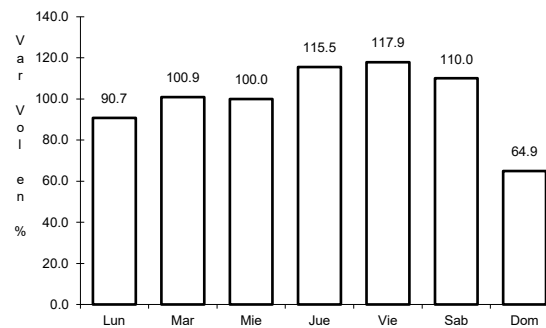
15 CARR: Piedras Negras - Nuevo Laredo

CLAVE: 00503

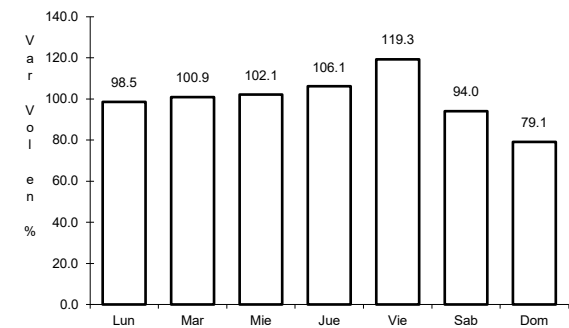
ruta: MEX-002



Km: 0.00 Tipo: 3 Sent: 1



Km: 0.00 Tipo: 3 Sent: 2

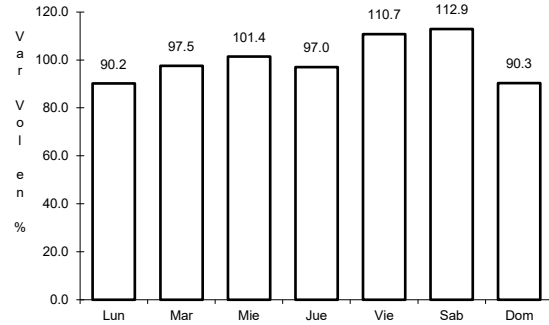


Km: 134.00 Tipo: 3 Sent: 0

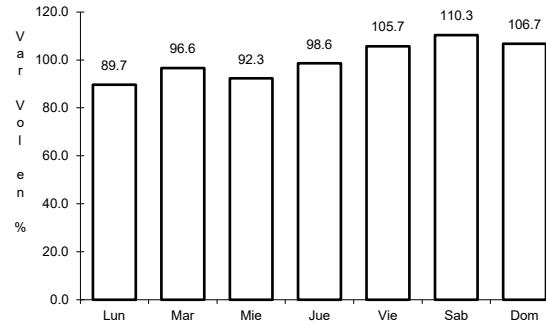
16 CARR: Puerto México - La Encantada

CLAVE: 05002

RUTA: MEX-057



Km: 0.00 Tipo: 3 Sent: 0

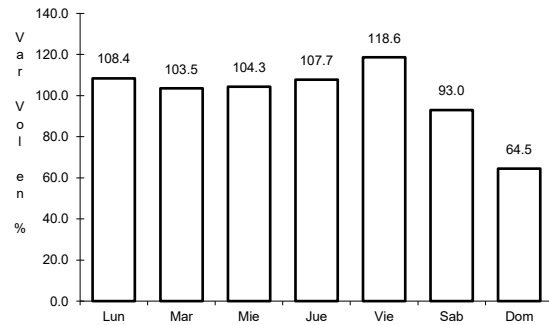


Km: 41.00 Tipo: 1 Sent: 0

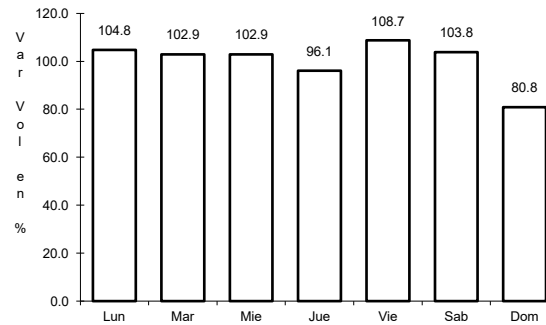
17 CARR: Saltillo - Monclova

CLAVE: 05406

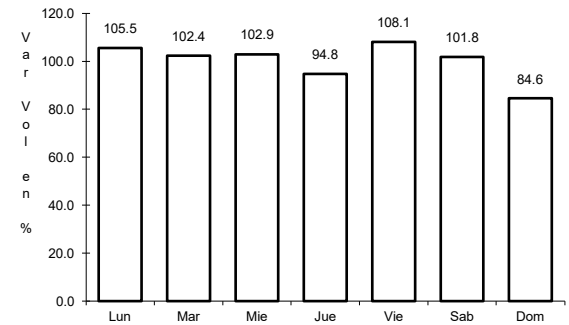
RUTA: MEX-057



Km: 13.00 Tipo: 1 Sent: 0



Km: 192.00 Tipo: 1 Sent: 1

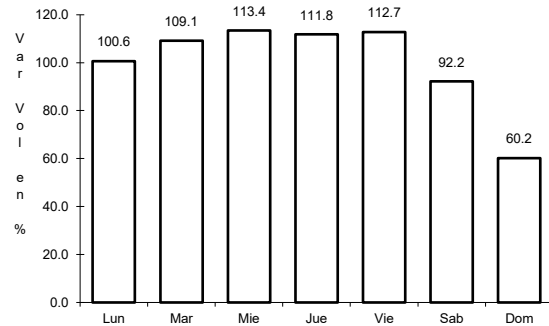


Km: 192.00 Tipo: 1 Sent: 2

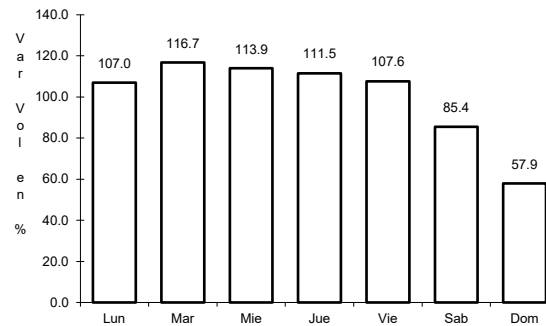
18 CARR: Saltillo - Monterrey

CLAVE: 00087

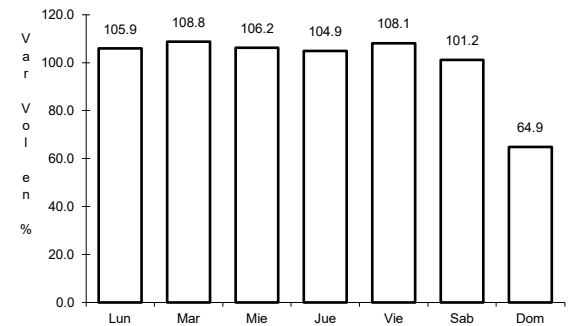
RUTA: MEX-040



Km: 4.25 Tipo: 3 Sent: 1



Km: 4.25 Tipo: 3 Sent: 2

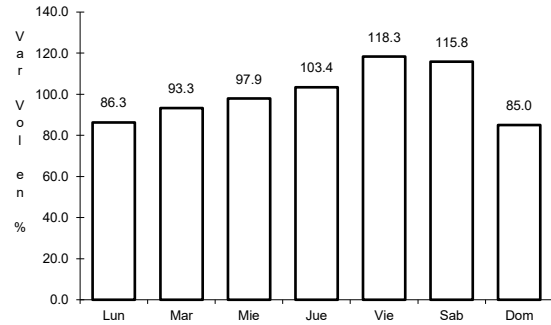


Km: 79.20 Tipo: 1 Sent: 1

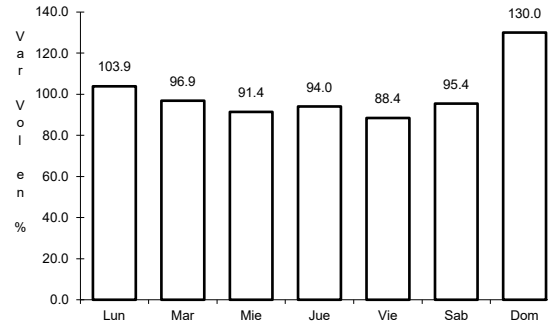
19 CARR: Saltillo - Torreón

CLAVE: 05086

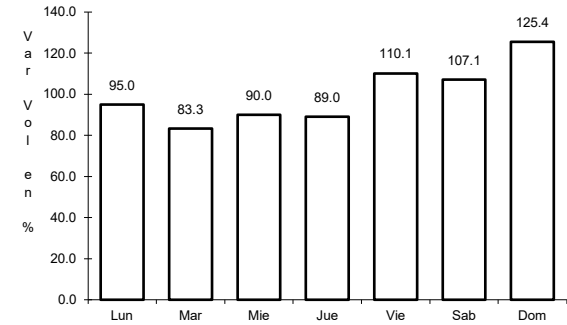
ruta: MEX-040



Km: 6.10 Tipo: 3 Sent: 1



Km: 6.10 Tipo: 3 Sent: 2

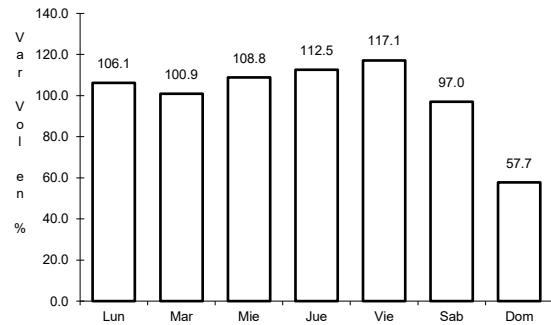


Km: 91.20 Tipo: 1 Sent: 0

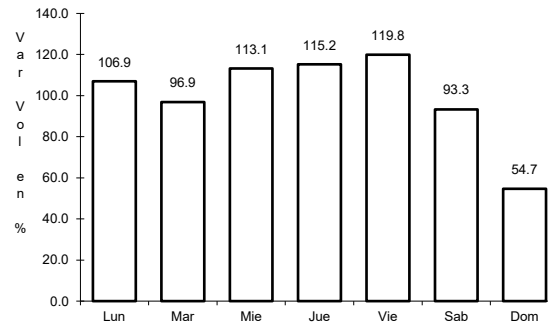
20 CARR: Torreón - San Pedro de las Colonias

CLAVE: 05021

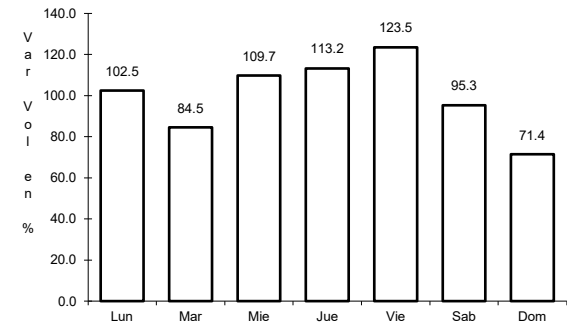
ruta: MEX-030



Km: 0.00 Tipo: 3 Sent: 1



Km: 0.00 Tipo: 3 Sent: 2

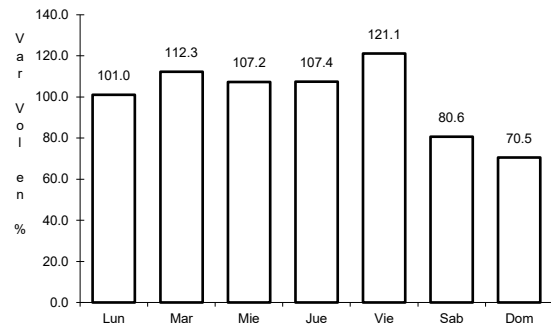


Km: 55.00 Tipo: 1 Sent: 1

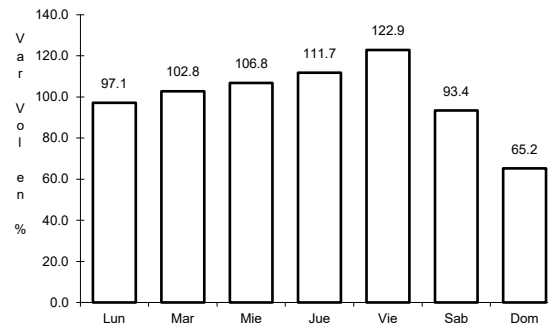
21 CARR: Libramiento Norponiente de Saltillo (Cuota)

CLAVE: 05022

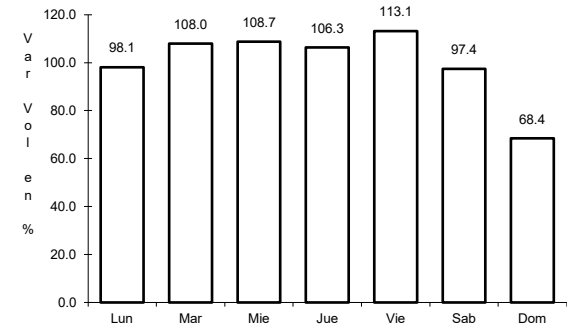
ruta: MEX-054D



Km: 0.00 Tipo: 3 Sent: 0



Km: 22.44 Tipo: 3 Sent: 0

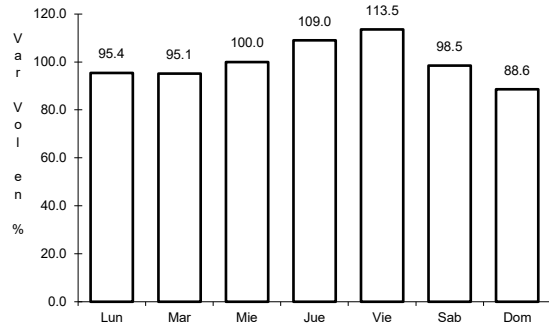


Km: 46.21 Tipo: 1 Sent: 0

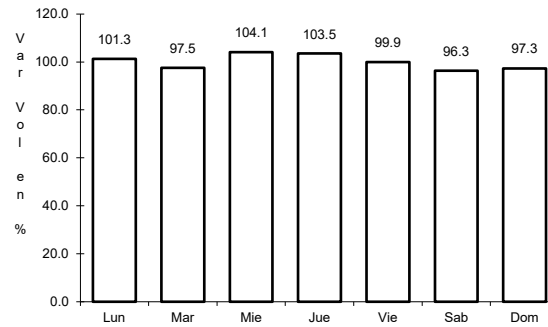
22 CARR: Libramiento Norte de Torreón (Cuota)

CLAVE:

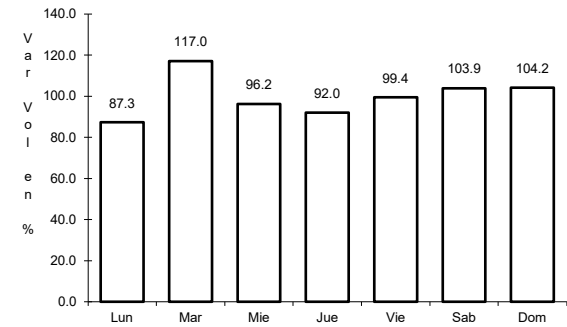
ruta: MEX-040D



Km: 0.00 Tipo: 3 Sent: 0



Km: 17.36 Tipo: 1 Sent: 0

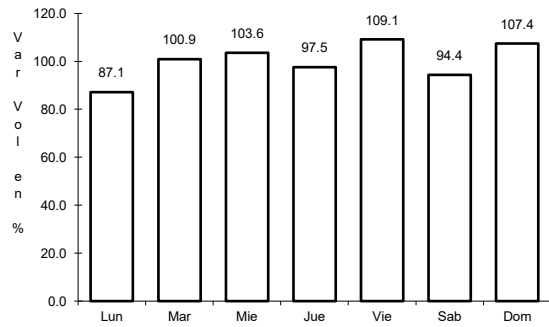


Km: 40.70 Tipo: 1 Sent: 0

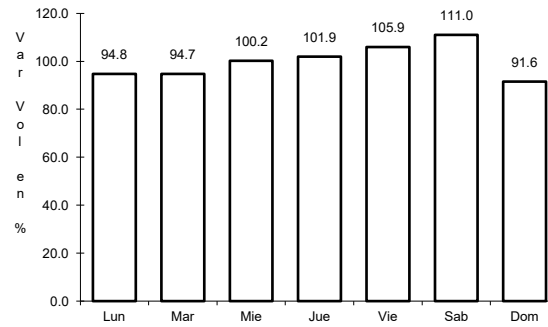
23 CARR: Libramiento Oriente de Saltillo (Cuota)

CLAVE: 00115

ruta: MEX-057D



Km: 12.30 Tipo: 3 Sent: 1

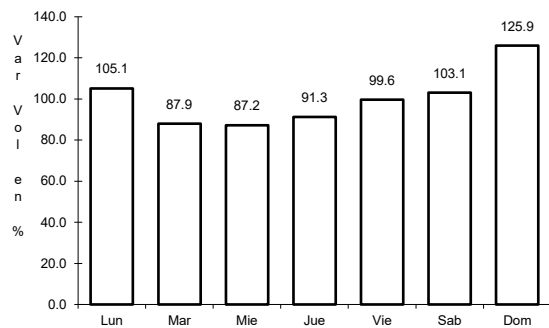


Km: 12.30 Tipo: 3 Sent: 2

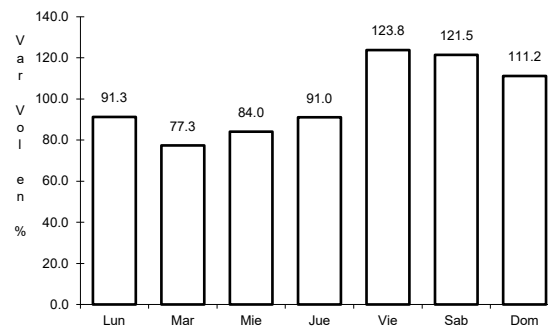
24 CARR: Nueva Rosita - Ent. Allende (Cuota)

CLAVE: 05502

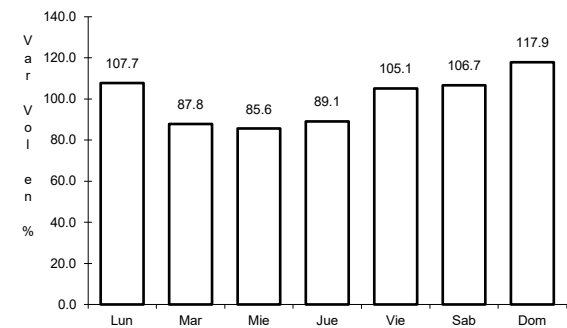
ruta: MEX-057D



Km: 0.00 Tipo: 3 Sent: 1



Km: 0.00 Tipo: 3 Sent: 2

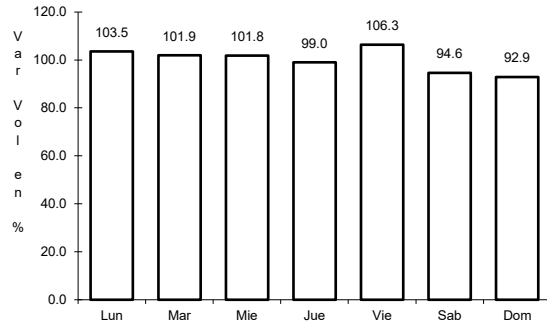


Km: 54.00 Tipo: 1 Sent: 1

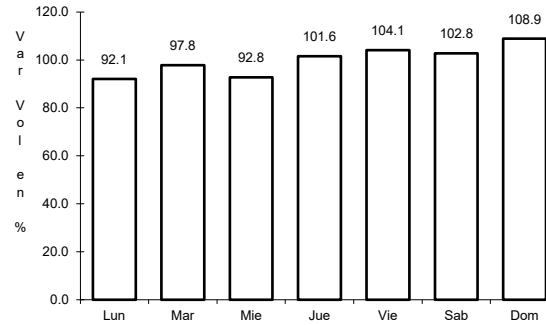
25 CARR: Puerto México - La Carbonera (Cuota)

CLAVE: 00115

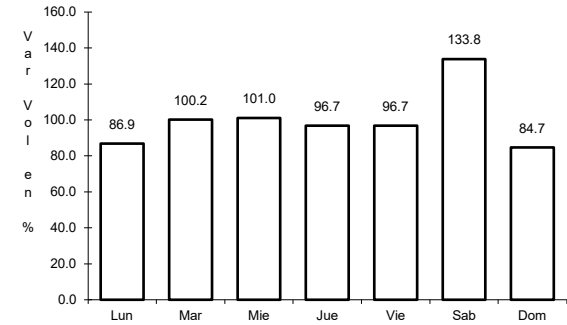
RUTA: MEX-057D



Km: 224.94 Tipo: 1 Sent: 1



Km: 224.94 Tipo: 1 Sent: 2

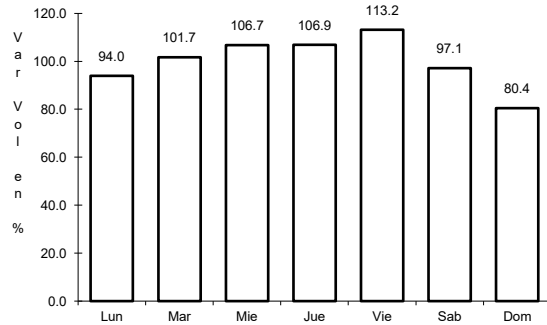


Km: 228.30 Tipo: 3 Sent: 1

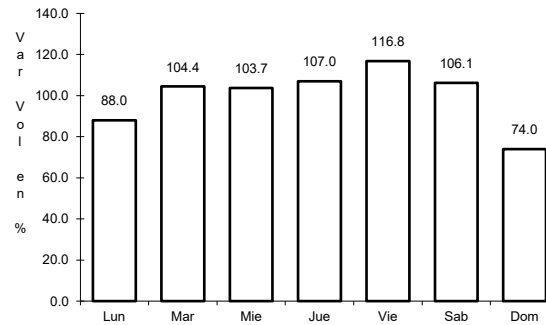
26 CARR: Saltillo - Monterrey (Cuota)

CLAVE: 00087

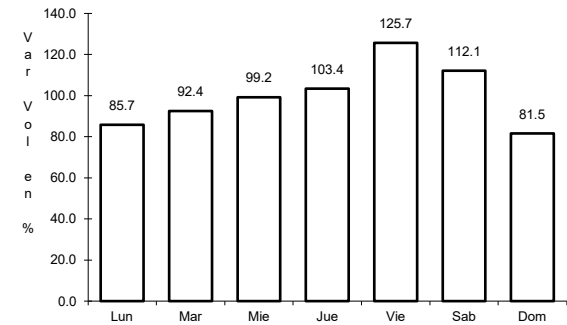
RUTA: MEX-040D



Km: 46.21 Tipo: 3 Sent: 1



Km: 46.21 Tipo: 3 Sent: 2

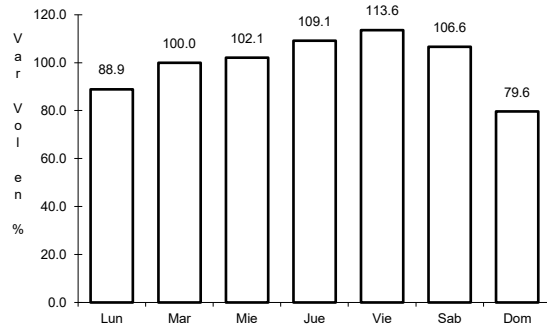


Km: 82.00 Tipo: 3 Sent: 1

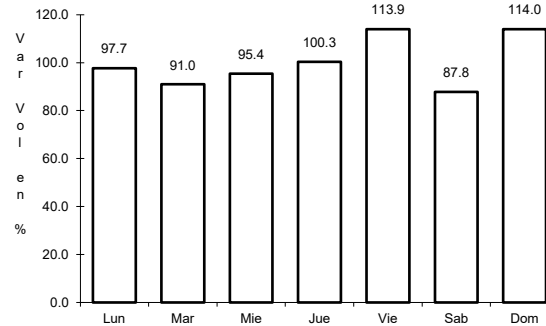
27 CARR: Saltillo - Torreón (Cuota) T1

CLAVE:

RUTA: MEX-040D



Km: 76.50 Tipo: 1 Sent: 1

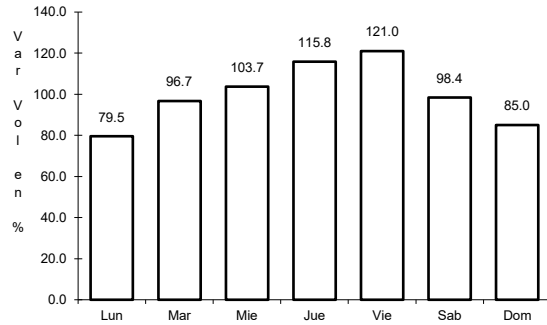


Km: 76.50 Tipo: 1 Sent: 2

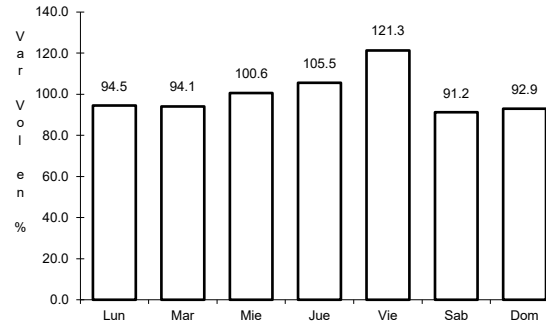
28 CARR: Saltillo - Torreón (Cuota) T2

CLAVE:

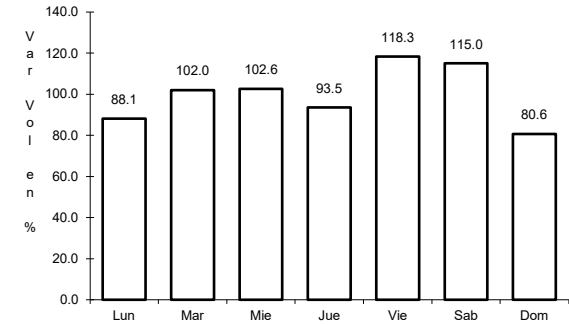
RUTA: MEX-040D



Km: 1.10 Tipo: 3 Sent: 1



Km: 1.10 Tipo: 3 Sent: 2

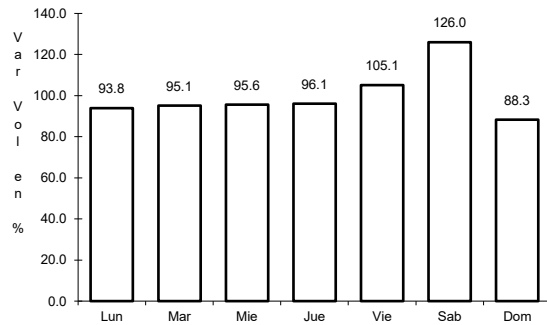


Km: 37.00 Tipo: 1 Sent: 1

29 CARR: Allende - Villa Unión

CLAVE: 05001

RUTA: COA-015

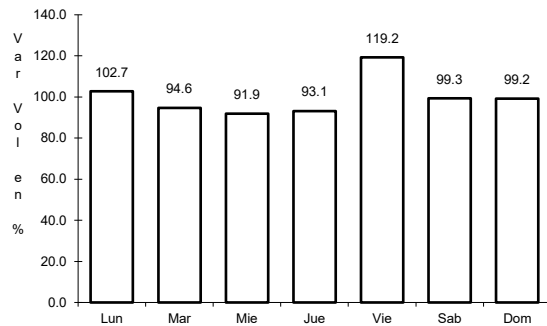


Km: 0.00 Tipo: 3 Sent: 0

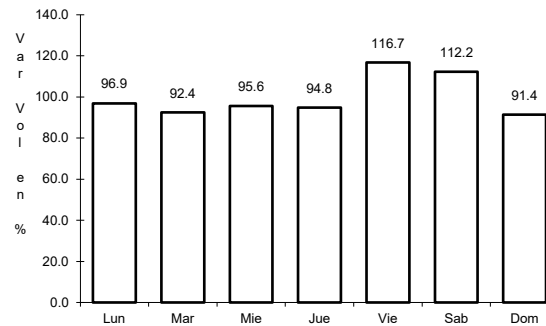
30 CARR: Corredor Libramiento de San Pedro

CLAVE: 05023

RUTA: COA-087



Km: 0.00 Tipo: 3 Sent: 0

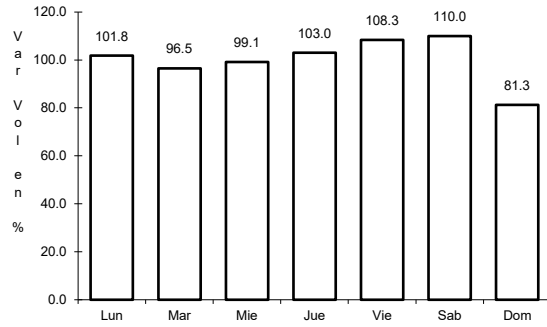


Km: 3.60 Tipo: 1 Sent: 0

31 CARR: Cuatro Ciénegas - Ocampo

CLAVE: 05026

RUTA: COA-048



Km: 0.00

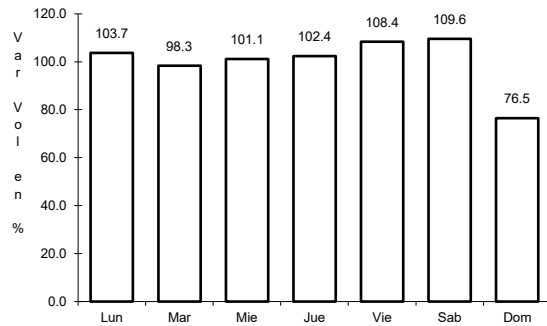
Tipo: 3

Sent: 0

32 CARR: El Sauz - Palau

CLAVE: 05060

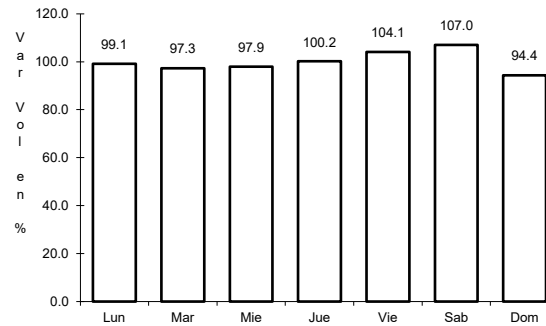
RUTA: COA-022



Km: 0.00

Tipo: 3

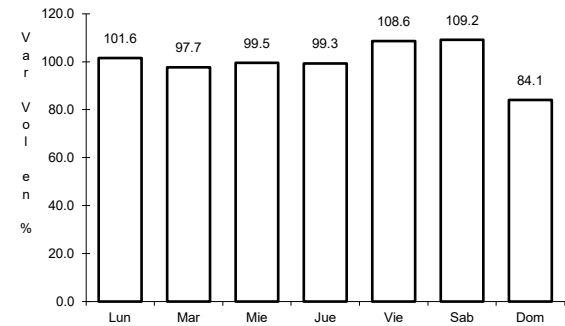
Sent: 1



Km: 0.00

Tipo: 3

Sent: 2



Km: 42.50

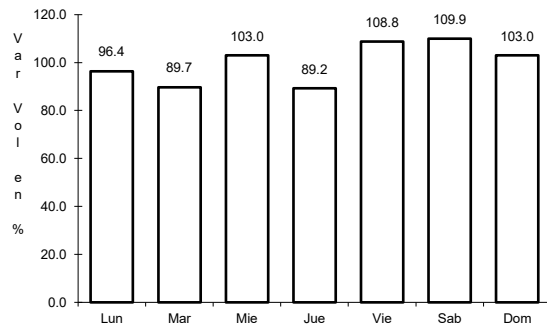
Tipo: 1

Sent: 1

33 CARR: Emiliano Zapata - Viesca

CLAVE: 05521

RUTA: COA-082



Km: 0.00

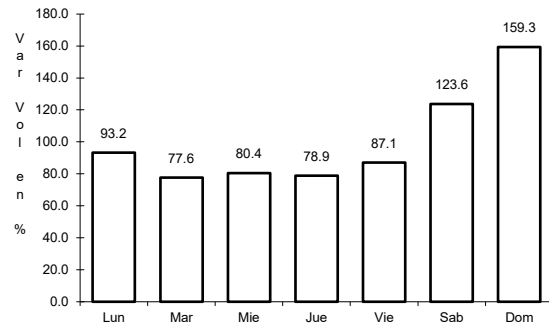
Tipo: 3

Sent: 0

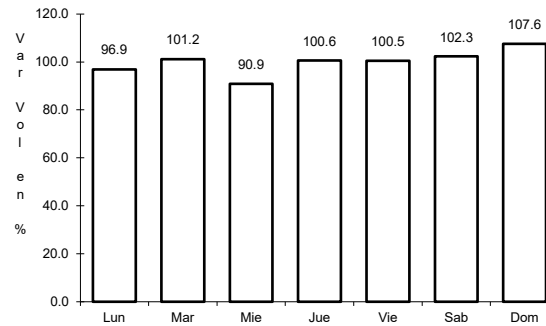
34 CARR: Ent. La Rosa - General Cepeda

CLAVE: 05034

RUTA: COA-034



Km: 0.00 Tipo: 3 Sent: 0

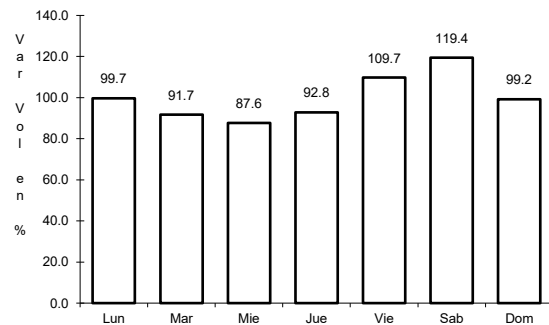


Km: 21.00 Tipo: 1 Sent: 0

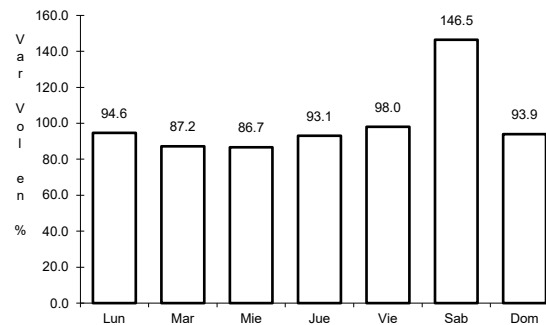
35 CARR: Ent. Paila - Parras de La Fuente

CLAVE: 05014

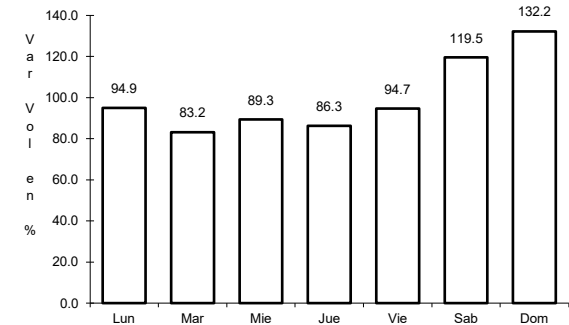
RUTA: COA-102



Km: 0.00 Tipo: 3 Sent: 0



Km: 20.05 Tipo: 1 Sent: 1

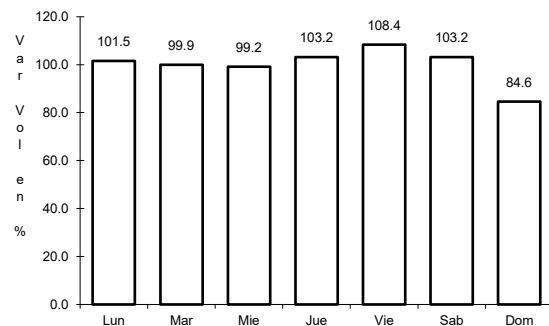


Km: 20.05 Tipo: 1 Sent: 2

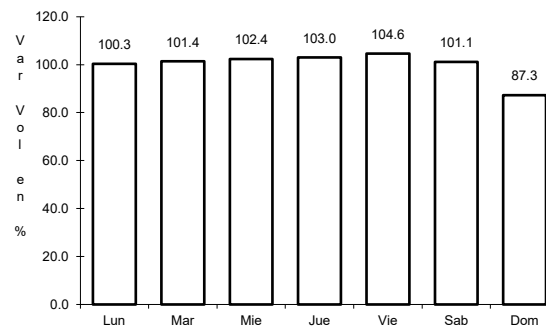
36 CARR: Libramiento de Matamoros

CLAVE: 05032

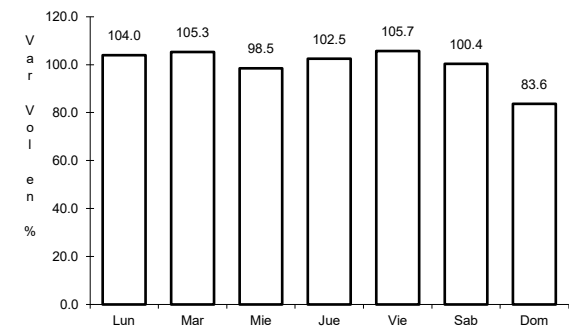
RUTA: COA



Km: 0.00 Tipo: 3 Sent: 0



Km: 5.32 Tipo: 1 Sent: 1

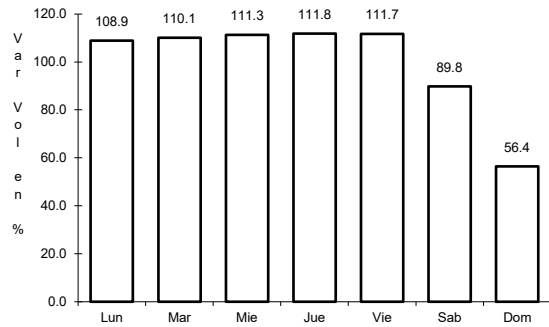


Km: 5.32 Tipo: 1 Sent: 2

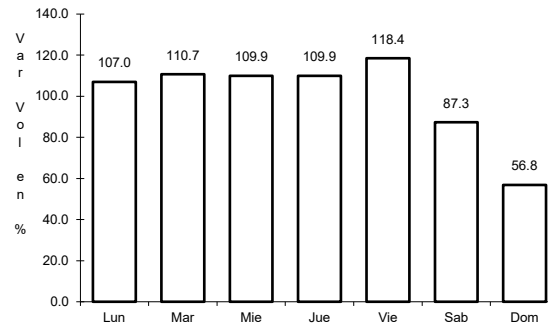
37 CARR: Libramiento de Saltillo J.L.P.

CLAVE: 05031

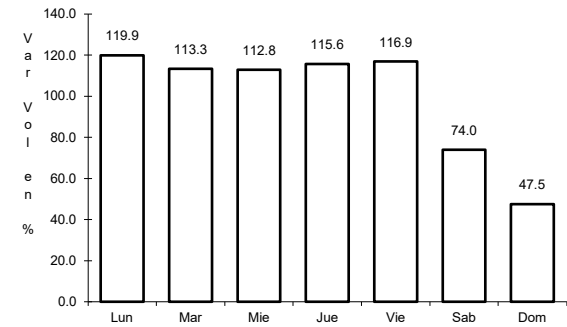
RUTA: COA



Km: 2.50 Tipo: 3 Sent: 1



Km: 2.50 Tipo: 3 Sent: 2

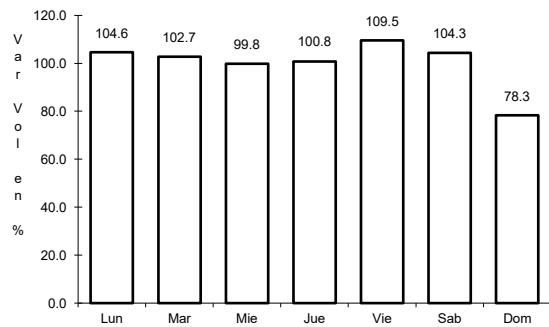


Km: 18.00 Tipo: 1 Sent: 1

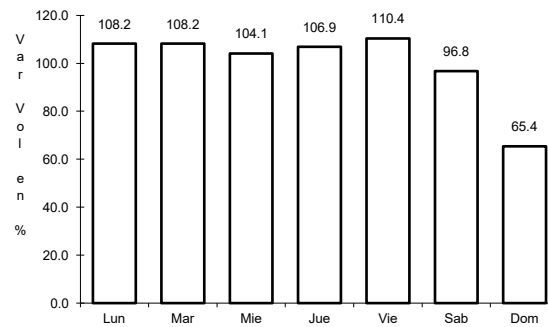
38 CARR: Libramiento de Torreón

CLAVE: 05516

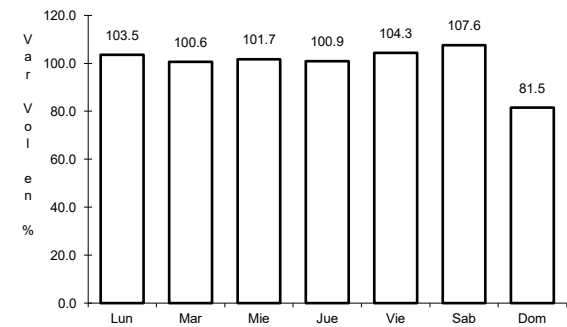
RUTA: COA



Km: 0.00 Tipo: 3 Sent: 1



Km: 0.00 Tipo: 3 Sent: 2

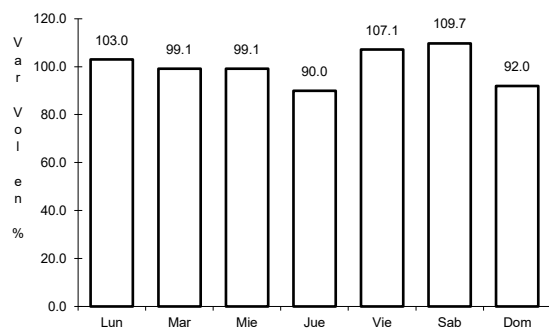


Km: 7.30 Tipo: 1 Sent: 1

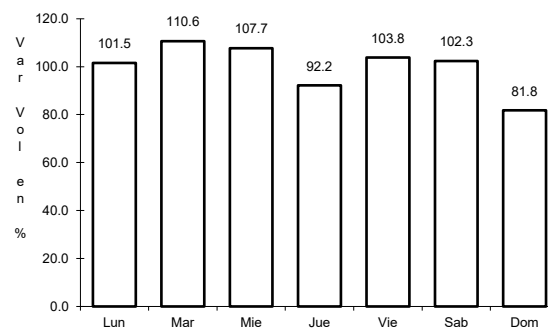
39 CARR: Matamoros - El Fresno

CLAVE: 05023

RUTA: COA-078



Km: 0.00 Tipo: 3 Sent: 0

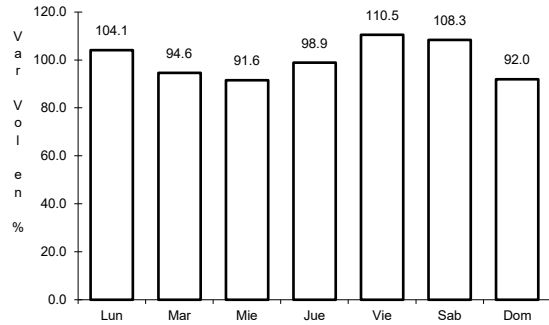


Km: 12.60 Tipo: 1 Sent: 0

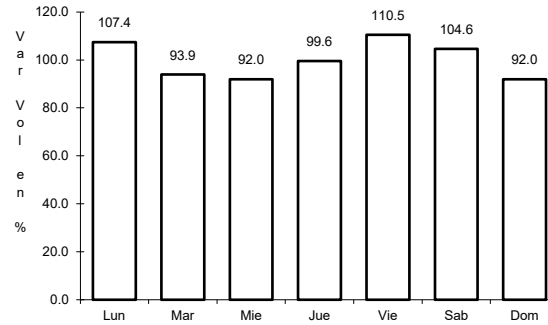
40 CARR: Matamoros - La Unión

CLAVE: 05023

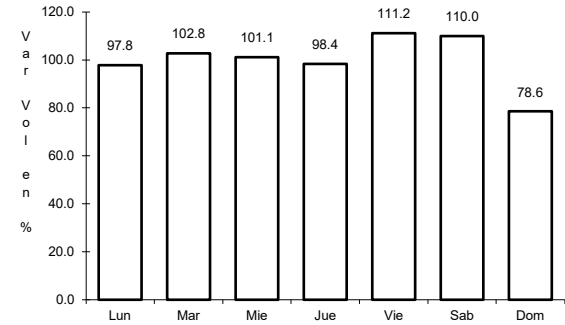
ruta: COA-070



Km: 1.00 Tipo: 3 Sent: 1



Km: 1.00 Tipo: 3 Sent: 2

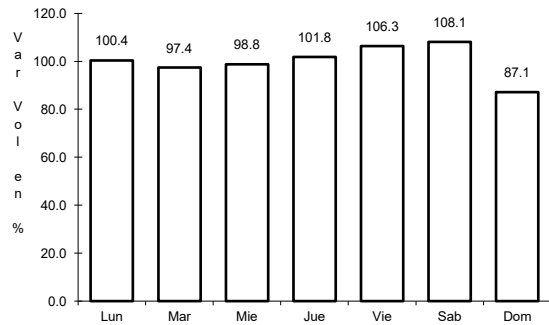


Km: 14.09 Tipo: 1 Sent: 0

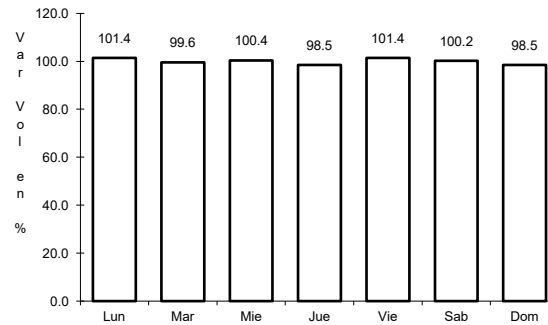
41 CARR: Monclova - Estación Candela

CLAVE: 00501

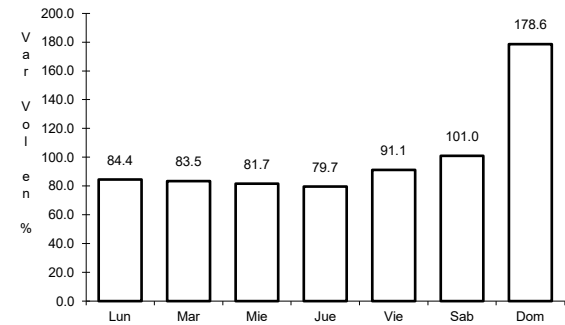
ruta: COA-030-NL



Km: 5.10 Tipo: 1 Sent: 1



Km: 5.10 Tipo: 1 Sent: 2

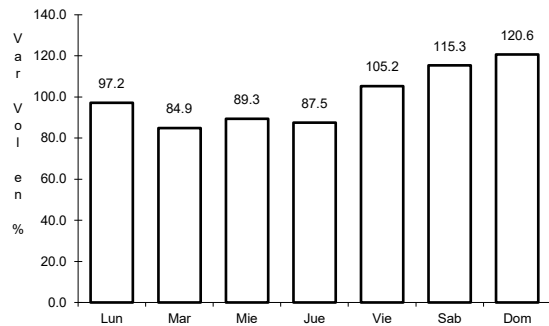


Km: 125.50 Tipo: 1 Sent: 0

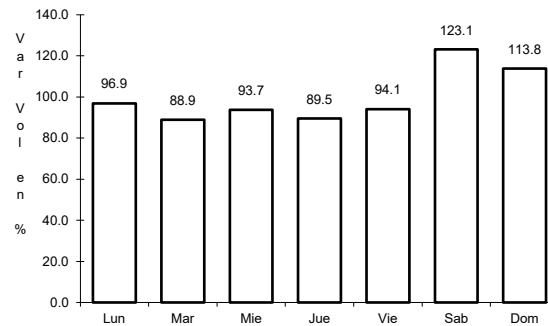
42 CARR: Morelos - Ent. Las Corrientes

CLAVE: 05500

ruta: COA-010



Km: 0.00 Tipo: 3 Sent: 0

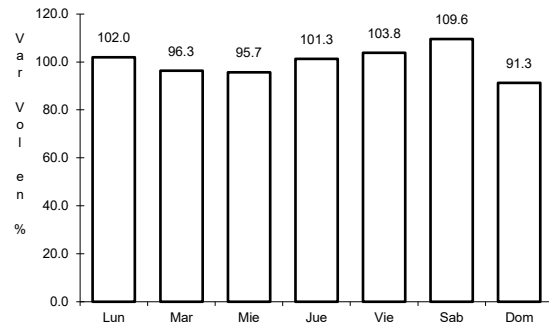


Km: 9.20 Tipo: 1 Sent: 0

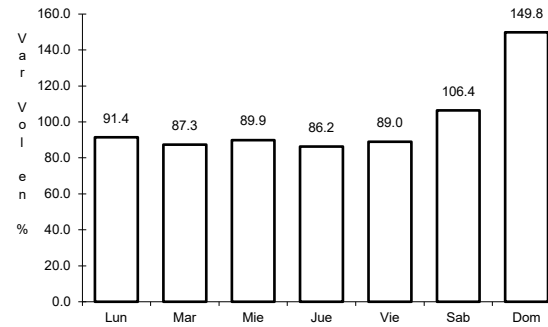
43 CARR: Puerto de Flores - El Hondable

CLAVE: 05512

RUTA: COA-112



Km: 0.00 Tipo: 3 Sent: 0

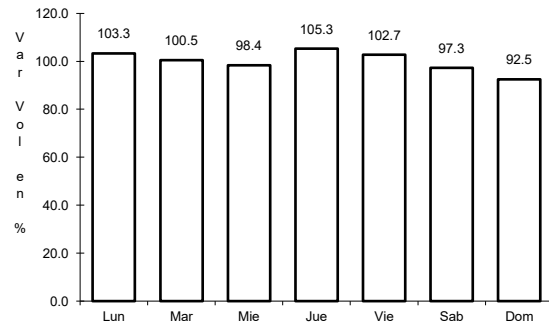


Km: 24.00 Tipo: 1 Sent: 0

44 CARR: Ramal a Hipólito

CLAVE: 05509

RUTA: COA-114

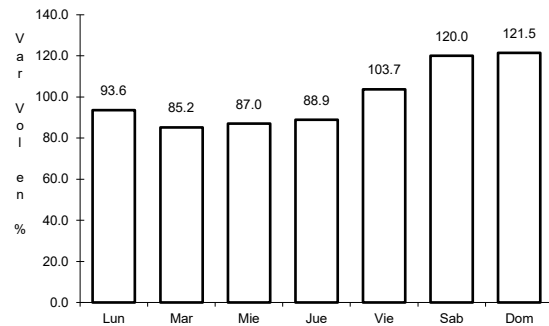


Km: 0.00 Tipo: 3 Sent: 0

45 CARR: Ramal a Lamadrid

CLAVE: 05522

RUTA: COA-042

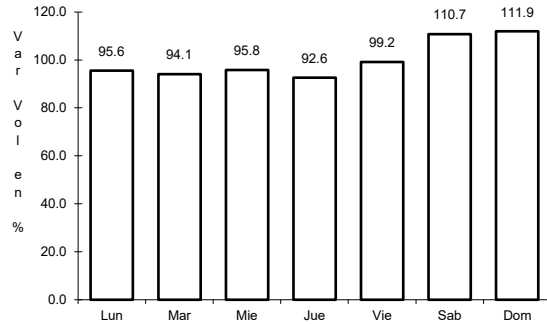


Km: 0.00 Tipo: 3 Sent: 0

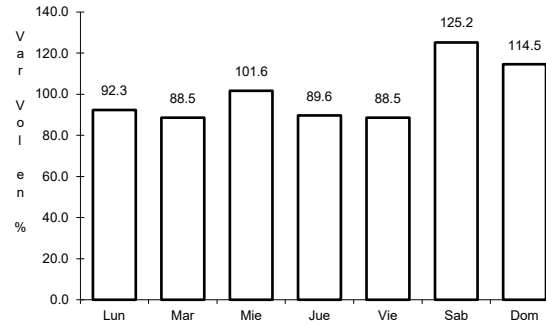
46 CARR: Sabinas - Don Martín

CLAVE: 05501

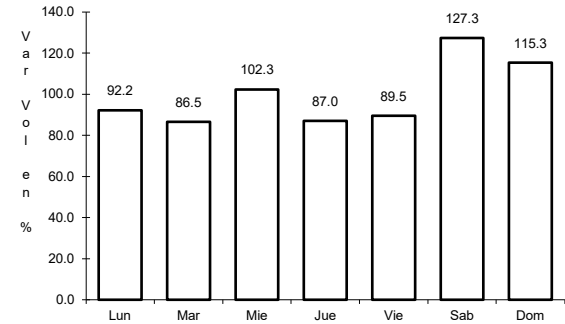
RUTA: COA-025



Km: 0.00 Tipo: 3 Sent: 0



Km: 53.00 Tipo: 3 Sent: 0

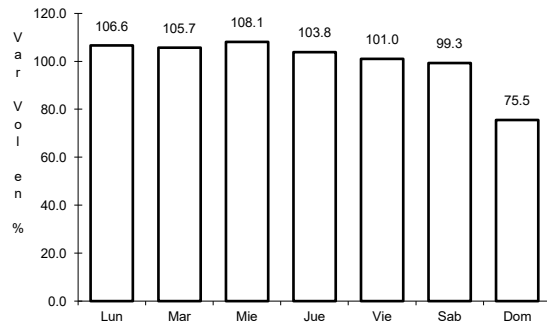


Km: 66.00 Tipo: 1 Sent: 0

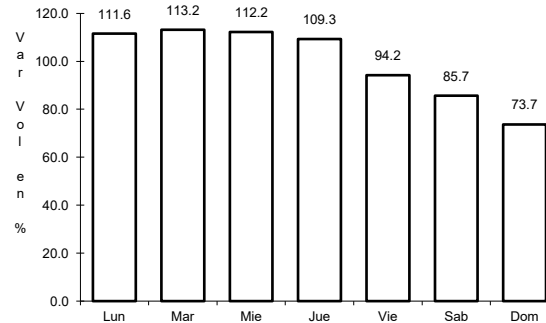
47 CARR: Saltillo - Arteaga

CLAVE: 05008

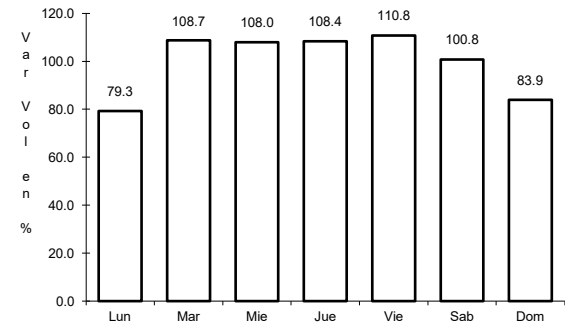
RUTA: COA-106



Km: 0.00 Tipo: 3 Sent: 1



Km: 0.00 Tipo: 3 Sent: 2

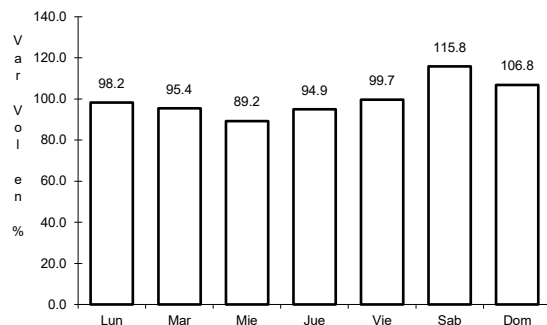


Km: 12.00 Tipo: 1 Sent: 1

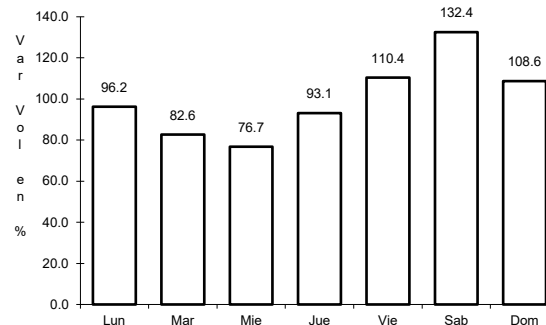
48 CARR: San Buenaventura - Estación Hermanas

CLAVE: 05004

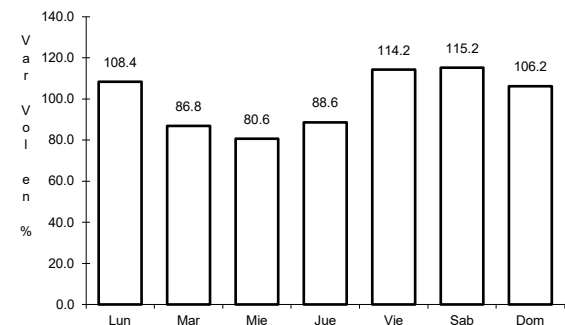
RUTA: COA-034



Km: 0.00 Tipo: 3 Sent: 0



Km: 15.71 Tipo: 1 Sent: 0

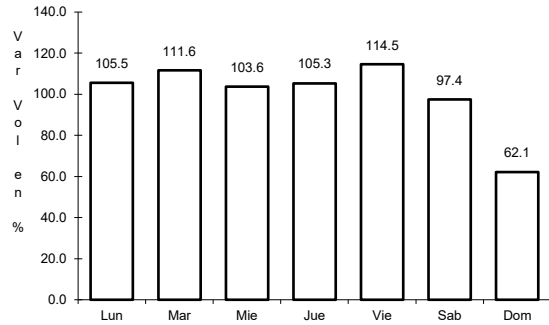


Km: 50.00 Tipo: 1 Sent: 0

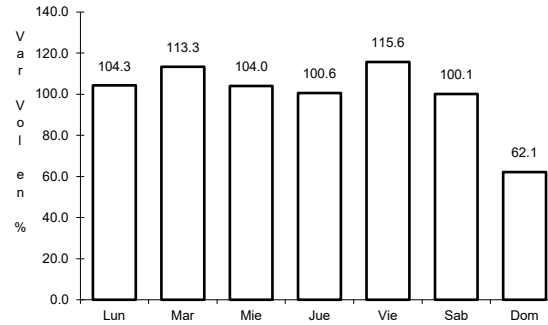
49 CARR: T. C. (Ent. Morelos - Saltillo) - Parras de La Fuente

CLAVE: 05510

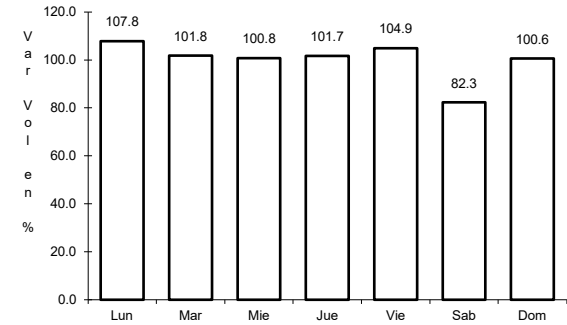
RUTA: COA-105



Km: 0.00 Tipo: 3 Sent: 1



Km: 0.00 Tipo: 3 Sent: 2

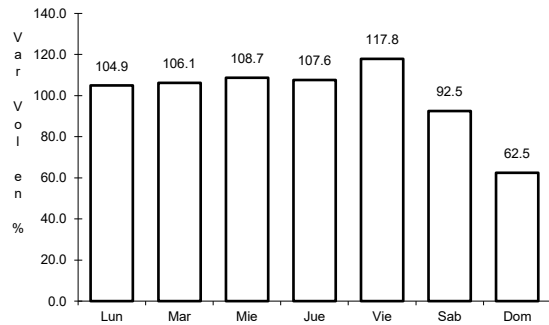


Km: 102.00 Tipo: 1 Sent: 0

50 CARR: T. C. (Saltillo - Monclova) - Ramos Arizpe

CLAVE: 05508

RUTA: COA

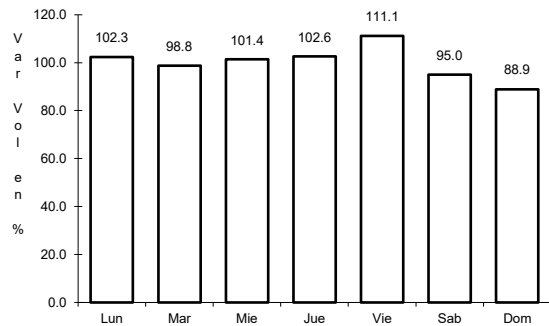


Km: 0.00 Tipo: 3 Sent: 0

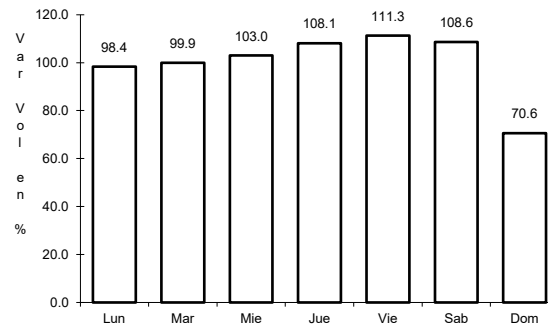
51 CARR: Torreón - Escuadrón 201

CLAVE: 05022

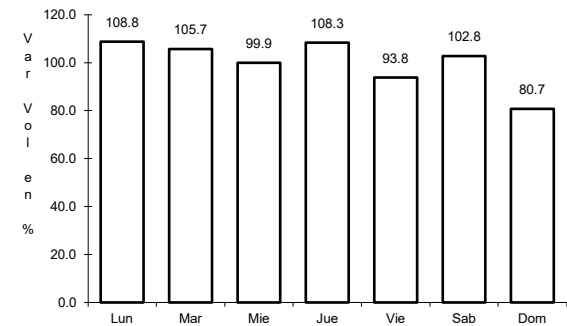
RUTA: COA-011



Km: 0.00 Tipo: 3 Sent: 1



Km: 0.00 Tipo: 3 Sent: 2



Km: 17.06 Tipo: 1 Sent: 0