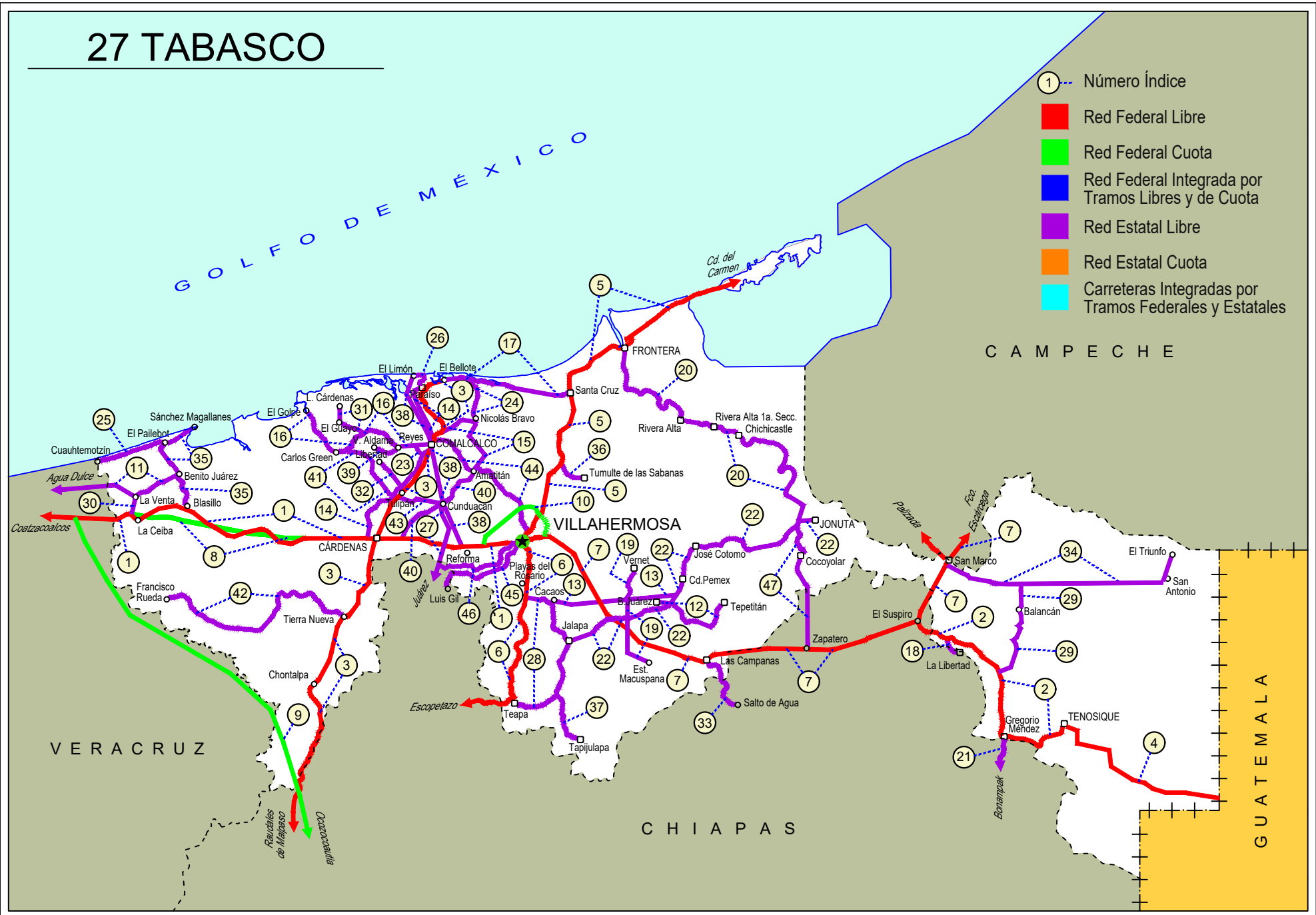


TABASCO

NO. INDICE CARRETERA		RUTA
	---RED FEDERAL LIBRE---	
1	Coatzacoalcos - Villahermosa	MEX-180
2	El Suspiro - Tenosique	MEX-203
3	Malpaso - El Bellote	MEX-187
4	Tenosique - El Ceibo	MEX-203
5	Villahermosa - Cd. del Carmen	MEX-180
6	Villahermosa - Escopetazo	MEX-195
7	Villahermosa - Francisco Escárcega	MEX-186
	---RED FEDERAL DE CUOTA---	
8	Ent. Agua Dulce - Cárdenas (Cuota)	MEX-180D
9	Las Choapas - Ocozocoautla (Cuota)	MEX-187D
10	Libramiento de Villahermosa (Cuota)	MEX-180D
	---RED ESTATAL LIBRE---	
11	Benito Juárez - Agua Dulce	TAB-VER
12	Benito Juárez - Tepetitán	TAB
13	Cacaos - La Granja	TAB
14	Cárdenas - Paraíso	TAB
15	Chichicapa - Ent. La Libertad	TAB
16	Comalcalco - El Golpe	TAB
17	El Bellote - Santa Cruz	TAB
18	Ent. Emiliano Zapata - La Libertad	CHIS-TAB
19	Estación Macuspana - Vernet	TAB-041
20	Frontera - T. C. (Jalapa - Jonuta)	TAB
21	Gregorio Méndez Magaña - Reforma de Ocampo	CHIS
22	Jalapa - Jonuta	TAB
23	Libramiento Sur de Comalcalco	TAB
24	Nicolás Bravo - T. C. (El Bellote - Santa Cruz)	TAB
25	Pailebot - Cuauhtemotzin	TAB
26	Paraíso - El Limón	TAB
27	Paso de Cunduacán - Estación Juárez	TAB-CHIS
28	Playas del Rosario - Teapa	TAB-001
29	Ramal a Balcan	TAB
30	Ramal a La Venta	TAB
31	Ramal a Lázaro Cárdenas	TAB
32	Ramal a Libertad	TAB
33	Ramal a Salto del Agua	TAB-CHIS
34	Ramal a San Antonio	TAB
35	Ramal a Sánchez Magallanes	TAB
36	Ramal a Tamulte de Las Sabanas	TAB
37	Ramal a Tapijulapa	TAB
38	Reforma - Dos Bocas	TAB
39	Reyes Hernández - Villa Aldama	TAB
40	Samaría - Amatitán	TAB
41	T. C. (Cárdenas - Paraíso) - Carlos Green	TAB
42	Tierra Nueva - Francisco Rueda	TAB
43	Tulipán - Cunduacán	TAB
44	Villahermosa - Comalcalco	TAB
45	Villahermosa - Luis Gil Pérez	TAB
46	Villahermosa - T. C. (P. de Cunduacán - Estación Juárez)	TAB
47	Zapatero - T. C. (Jalapa - Jonuta)	CHIS-TAB

27 TABASCO



TABASCO

1 CARR: Coatzacoalcos - Villahermosa

CLAVE: 00528

RUTA: MEX-180

AÑO: 2022

LUGAR	ESTACION				CLASIFICACION VEHICULAR EN PORCIENTO													COORDENADAS			
	KM	TE	SC	TDPA	M	A	B	C2	C3	T3S2	T3S3	T3S2R4	OTROS	A	B	C	K'	D	LATITUD	LONGITUD	
Coatzacoalcos	0.00	0	0																		
Plaza de Cobro Pte. Coatzacoalcos	3.00	1	0	21005	5.5	81.8	1.7	5.1	1.5	1.2	1.1	1.6	0.5	87.3	1.7	11.0	0.078	0.511	18.121690	-94.425169	
X. C. Pajaritos - Nanchital	6.53	1	0	19922	6.2	77.9	2.4	5.3	1.7	1.5	1.3	2.9	0.8	84.1	2.4	13.5	0.087	0.518	18.106355	-94.398767	
X. C. Pajaritos - Nanchital	6.53	3	0	13018	5.9	74.8	2.3	5.4	1.8	3.4	2.3	3.3	0.8	80.7	2.3	17.0	0.092	0.504	18.094166	-94.376553	
T. Der. Puente Antonio Dovalí Jaimes	14.60	1	0	9430	6.4	73.3	2.5	4.2	2.1	4.2	2.3	4.0	1.0	79.7	2.5	17.8	0.086	0.504	18.075966	-94.323782	
T. Der. Puente Antonio Dovalí Jaimes	14.60	3	1	8952	4.3	53.7	5.4	4.7	4.1	15.1	3.9	7.8	1.0	58.0	5.4	36.6	0.075	0.509	18.070842	-94.304791	
T. Der. Puente Antonio Dovalí Jaimes	14.60	3	2	8632	4.0	54.7	5.6	4.7	4.1	15.1	3.7	7.1	1.0	58.7	5.6	35.7	0.066	0.509	18.070955	-94.304994	
T. Der. Ocozocoautla	22.20	3	1	6663	5.8	55.6	5.6	5.7	2.9	13.1	2.9	7.4	1.0	61.4	5.6	33.0	0.072	0.503	18.068120	-94.234413	
T. Der. Ocozocoautla	22.20	3	2	6740	5.3	57.4	5.8	4.7	2.8	13.2	2.7	7.1	1.0	62.7	5.8	31.5	0.071	0.503	18.068283	-94.234363	
T. Der. Las Choapas	36.00	3	1	7458	5.2	58.3	5.0	4.8	4.6	12.0	3.1	6.0	1.0	63.5	5.0	31.5	0.071	0.515	18.051960	-94.121066	
T. Der. Las Choapas	36.00	3	2	7019	5.1	57.4	5.8	5.2	4.4	12.3	2.5	6.3	1.0	62.5	5.8	31.7	0.065	0.515	18.052561	-94.121074	
Lim. Edos. Term. Ver. Ppia. Tab.	41.48	0	0																		
T. Izq. Villa La Venta	47.26	3	0	2436	11.1	75.6	2.1	3.9	1.2	4.6	1.1	0.2	0.2	86.7	2.1	11.2	0.091	0.559	18.055131	-94.029341	
X. C. Agua Dulce - Cárdenas (Cuota)	51.80	3	0	3476	12.8	69.4	2.7	2.8	2.2	7.1	2.1	0.7	0.2	82.2	2.7	15.1	0.068	0.552	18.057300	-93.994069	
T. Izq. Campo Magallanes	65.20	1	0	4215	8.0	76.3	2.9	2.6	2.1	6.2	1.6	0.2	0.1	84.3	2.9	12.8	0.066	0.506	18.076811	-93.887146	
T. Izq. Campo Magallanes	65.20	3	0	3569	7.9	75.8	3.2	3.8	2.1	5.1	1.6	0.3	0.2	83.7	3.2	13.1	0.085	0.517	18.070503	-93.869417	
X. C. Agua Dulce - Cárdenas (Cuota)	78.80	1	0	4008	8.1	72.5	2.1	6.8	1.9	6.0	1.6	1.0	0.0	80.6	2.1	17.3	0.095	0.504	18.033336	-93.816767	
X. C. Agua Dulce - Cárdenas (Cuota)	78.80	3	0	4706	8.0	69.5	3.2	7.8	2.5	7.5	1.5	0.0	0.0	77.5	3.2	19.3	0.074	0.502	18.023987	-93.795837	
Pico de Oro	88.50	1	0	5240	9.3	78.5	2.0	3.5	1.2	4.2	1.1	0.2	0.0	87.8	2.0	10.2	0.074	0.509	18.017842	-93.688630	
Pico de Oro	88.50	3	0	6141	8.2	78.3	2.7	3.9	1.5	3.8	1.4	0.2	0.0	86.5	2.7	10.8	0.077	0.526	18.018989	-93.663369	
X. C. Agua Dulce - Cárdenas (Cuota)	104.00	1	0	8256	7.4	77.6	2.8	3.8	1.6	4.5	1.6	0.5	0.2	85.0	2.8	12.2	0.078	0.515	17.987500	-93.572153	
X. C. Agua Dulce - Cárdenas (Cuota)	104.00	3	1	9751	3.9	64.3	3.7	5.1	2.7	11.5	2.9	5.0	0.9	68.2	3.7	28.1	0.068	0.509	17.998782	-93.528079	
X. C. Agua Dulce - Cárdenas (Cuota)	104.00	3	2	10115	3.8	60.7	4.2	5.6	3.0	12.7	3.3	5.7	1.0	64.5	4.2	31.3	0.070	0.509	17.999105	-93.527699	
Cárdenas	122.10	1	1	15360	7.4	65.8	4.9	4.9	2.0	8.4	1.6	4.1	0.9	73.2	4.9	21.9	0.065	0.505	17.999137	-93.399537	
Cárdenas	122.10	1	2	15643	7.4	65.7	5.0	4.9	2.0	8.4	1.7	4.0	0.9	73.1	5.0	21.9	0.077	0.505	17.999323	-93.399919	
Cárdenas	122.10	3	1	19741	3.6	71.5	3.8	4.0	2.0	8.1	2.4	3.7	0.9	75.1	3.8	21.1	0.066	0.510	17.999073	-93.340371	
Cárdenas	122.10	3	2	20537	3.0	73.2	3.2	4.0	1.9	8.0	2.1	3.8	0.8	76.2	3.2	20.6	0.061	0.510	17.999240	-93.340345	
T. Izq. Samaria	132.50	3	1	17611	4.6	66.7	3.5	7.1	2.4	9.2	2.5	3.6	0.4	71.3	3.5	25.2	0.070	0.503	17.995106	-93.273121	
T. Izq. Samaria	132.50	3	2	17379	4.5	67.1	3.4	7.2	2.3	9.3	2.4	3.5	0.3	71.6	3.4	25.0	0.069	0.503	17.999623	-93.265339	
Cucuyulapa	134.80	1	1	15747	2.4	72.3	2.3	5.9	2.2	8.6	2.1	3.6	0.6	74.7	2.3	23.0	0.080	0.508	17.999008	-93.259284	
Cucuyulapa	134.80	1	2	15239	1.7	71.9	3.7	6.6	1.7	8.8	2.0	3.2	0.4	73.6	3.7	22.7	0.073	0.508	17.999166	-93.259278	
Cucuyulapa	134.80	3	1	15529	4.5	67.5	3.5	6.9	1.9	9.4	2.2	3.6	0.5	72.0	3.5	24.5	0.085	0.549	17.999015	-93.244618	
Cucuyulapa	134.80	3	2	12732	4.5	67.6	3.5	6.9	1.8	9.4	2.2	3.6	0.5	72.1	3.5	24.4	0.062	0.549	17.999200	-93.244527	
T. Der. La Reforma	148.80	1	1	22410	3.6	74.2	2.5	8.0	2.4	5.1	1.4	2.3	0.5	77.8	2.5	19.7	0.086	0.510	17.976285	-93.145262	
T. Der. La Reforma	148.80	1	2	23301	3.6	74.1	2.6	8.0	2.4	5.1	1.4	2.3	0.5	77.7	2.6	19.7	0.082	0.510	17.976334	-93.144954	

TABASCO

1 CARR: Coatzacoalcos - Villahermosa

CLAVE: 00528

RUTA: MEX-180

AÑO: 2022

LUGAR	ESTACION				CLASIFICACION VEHICULAR EN PORCIENTO													COORDENADAS		
	KM	TE	SC	TDPA	M	A	B	C2	C3	T3S2	T3S3	T3S2R4	OTROS	A	B	C	K'	D	LATITUD	LONGITUD
T. Der. La Reforma	148.80	3	1	31282	3.1	79.9	2.2	5.4	1.6	4.4	1.2	1.8	0.4	83.0	2.2	14.8	0.081	0.501	17.973639	-93.116342
T. Der. La Reforma	148.80	3	2	31407	3.1	79.9	2.2	5.4	1.6	4.4	1.2	1.8	0.4	83.0	2.2	14.8	0.079	0.501	17.973900	-93.121000
Villahermosa	171.15	1	1	31948	3.2	83.4	1.5	6.2	1.3	2.3	1.0	0.7	0.4	86.6	1.5	11.9	0.072	0.502	17.981757	-93.024113
Villahermosa	171.15	1	2	31658	3.2	83.4	1.5	6.2	1.3	2.3	1.0	0.7	0.4	86.6	1.5	11.9	0.083	0.502	17.981933	-93.024105

2 CARR: El Suspiro - Tenosique

CLAVE: 00276

RUTA: MEX-203

AÑO: 2022

LUGAR	ESTACION				CLASIFICACION VEHICULAR EN PORCIENTO													COORDENADAS		
	KM	TE	SC	TDPA	M	A	B	C2	C3	T3S2	T3S3	T3S2R4	OTROS	A	B	C	K'	D	LATITUD	LONGITUD
Ent. El Suspiro	0.00	3	0	5879	10.1	73.7	1.3	4.8	6.5	1.5	0.7	1.2	0.2	83.8	1.3	14.9	0.093	0.542	17.749284	-91.813157
Lim. Edos. Term. Chis. Ppia. Tab.	8.00	0	0																	
Emiliano Zapata	8.61	3	0	6785	10.1	74.4	1.3	4.5	6.2	1.4	0.7	1.1	0.3	84.5	1.3	14.2	0.095	0.542	17.727416	-91.756542
T. Der. La Libertad	12.10	3	0	3997	10.8	71.8	2.0	4.9	5.9	1.8	1.3	1.2	0.3	82.6	2.0	15.4	0.073	0.515	17.723863	-91.739329
T. Izq. Balancán	32.60	1	0	3376	5.7	76.7	5.2	6.8	1.4	1.8	1.2	1.0	0.2	82.4	5.2	12.4	0.083	0.504	17.634938	-91.602580
T. Izq. Balancán	32.60	3	0	2504	6.6	76.3	3.0	5.7	2.6	2.7	2.1	0.9	0.1	82.9	3.0	14.1	0.086	0.531	17.628368	-91.599983
Estación Zapata	53.00	1	0	2961	7.8	82.5	1.3	3.7	2.5	1.1	0.6	0.4	0.1	90.3	1.3	8.4	0.074	0.541	17.463346	-91.598707
Estación Zapata	53.00	3	0	4201	7.2	76.2	1.6	3.5	5.1	2.6	2.2	1.3	0.3	83.4	1.6	15.0	0.083	0.511	17.456325	-91.593667
Tenosique	75.30	0	0																	

3 CARR: Malpaso - El Bellote

CLAVE: 00137

RUTA: MEX-187

AÑO: 2022

LUGAR	ESTACION				CLASIFICACION VEHICULAR EN PORCIENTO													COORDENADAS		
	KM	TE	SC	TDPA	M	A	B	C2	C3	T3S2	T3S3	T3S2R4	OTROS	A	B	C	K'	D	LATITUD	LONGITUD
Presa Malpaso	0.00	0	0																	
Lim. Edos. Term. Chis. Ppia. Tab.	43.99	0	0																	
Lim. Edos. Term. Tab. Ppia. Chis.	44.59	0	0																	
Lim. Edos. Term. Chis. Ppia. Tab.	45.26	0	0																	
Lim. Edos. Term. Tab. Ppia. Chis.	45.63	0	0																	
Lim. Edos. Term. Chis. Ppia. Tab.	55.04	0	0																	
Macabil (La Estrella)	70.12	1	0	4067	16.0	74.3	1.9	4.2	1.2	1.3	0.5	0.4	0.2	90.3	1.9	7.8	0.082	0.520	17.604190	-93.520071
Estación Chontalpa	75.69	1	0	5133	15.7	74.9	2.1	4.4	1.3	0.7	0.4	0.3	0.2	90.6	2.1	7.3	0.071	0.504	17.650262	-93.487425
Estación Chontalpa	75.69	3	0	7420	22.0	70.6	1.7	3.5	0.9	0.7	0.2	0.3	0.1	92.6	1.7	5.7	0.075	0.503	17.675926	-93.475972
T. Izq. Francisco Rueda	90.49	1	0	6978	16.7	74.0	2.0	5.1	0.8	0.8	0.2	0.3	0.1	90.7	2.0	7.3	0.077	0.507	17.787021	-93.439555
T. Izq. Francisco Rueda	90.49	3	0	10469	15.7	75.8	1.3	3.4	1.1	1.1	0.7	0.5	0.4	91.5	1.3	7.2	0.074	0.515	17.793186	-93.431973
Huimanguillo	98.03	1	1	6745	28.2	61.9	1.4	4.7	0.9	1.3	0.4	0.8	0.4	90.1	1.4	8.5	0.087	0.507	17.818222	-93.402512

TABASCO

3 CARR: Malpaso - El Bellote

CLAVE: 00137

RUTA: MEX-187

AÑO: 2022

LUGAR	ESTACION				CLASIFICACION VEHICULAR EN PORCIENTO										COORDENADAS					
	KM	TE	SC	TDPA	M	A	B	C2	C3	T3S2	T3S3	T3S2R4	OTROS	A	B	C	K'	D	LATITUD	LONGITUD
Huimanguillo	98.03	1	2	6560	28.4	61.8	1.2	4.5	1.1	1.2	0.5	0.9	0.4	90.2	1.2	8.6	0.087	0.507	17.818294	-93.402597
Huimanguillo	98.03	3	1	7074	14.0	72.3	2.0	8.5	1.0	0.9	0.7	0.5	0.1	86.3	2.0	11.7	0.070	0.500	17.853075	-93.397038
Huimanguillo	98.03	3	2	7080	14.5	72.6	1.8	8.0	0.9	1.1	0.6	0.4	0.1	87.1	1.8	11.1	0.071	0.500	17.853078	-93.397130
Cárdenas	117.56	1	0	14819	8.5	80.8	1.0	6.4	0.8	1.2	0.6	0.4	0.3	89.3	1.0	9.7	0.087	0.503	17.946073	-93.362167
Cárdenas	117.56	3	0	17157	9.3	81.3	0.9	5.2	0.7	1.2	0.9	0.2	0.3	90.6	0.9	8.5	0.083	0.508	18.016536	-93.368656
Tulipán	134.70	3	0	7982	6.8	79.6	1.3	7.9	0.8	2.1	1.3	0.1	0.1	86.4	1.3	12.3	0.078	0.524	18.127669	-93.290288
T. Der. Cunduacán	141.70	1	0	7021	6.4	80.1	1.5	7.9	0.9	2.0	0.9	0.2	0.1	86.5	1.5	12.0	0.089	0.503	18.140024	-93.271537
T. Der. Cunduacán	141.70	3	0	6611	6.4	78.6	1.8	8.3	1.1	2.0	1.5	0.2	0.1	85.0	1.8	13.2	0.092	0.524	18.144334	-93.268503
T. Der. Jalpa	153.50	1	0	12856	11.4	75.0	1.4	8.1	1.2	1.0	1.2	0.4	0.3	86.4	1.4	12.2	0.086	0.506	18.241282	-93.210304
T. Der. Jalpa	153.50	3	1	10125	10.9	80.6	0.6	5.5	0.7	0.4	1.0	0.2	0.1	91.5	0.6	7.9	0.081	0.534	18.248585	-93.213417
T. Der. Jalpa	153.50	3	2	11597	11.0	80.4	0.6	5.5	0.7	0.3	1.0	0.3	0.2	91.4	0.6	8.0	0.088	0.534	18.248564	-93.213492
Paraíso	176.85	1	1	11757	6.0	83.9	0.7	7.0	0.9	0.6	0.5	0.3	0.1	89.9	0.7	9.4	0.104	0.517	18.377415	-93.221903
Paraíso	176.85	1	2	12595	6.0	83.5	0.8	7.0	1.0	0.7	0.6	0.2	0.2	89.5	0.8	9.7	0.096	0.517	18.377417	-93.221982
Paraíso	176.85	3	1	11732	9.6	80.9	0.9	5.3	2.0	0.6	0.4	0.2	0.1	90.5	0.9	8.6	0.129	0.502	18.409500	-93.196031
Paraíso	176.85	3	2	11659	9.8	79.9	1.0	5.4	2.2	0.7	0.5	0.3	0.2	89.7	1.0	9.3	0.111	0.502	18.409539	-93.196138
Ceiba	182.00	3	0	9488	10.2	79.4	0.4	3.4	0.4	4.1	1.1	0.2	0.8	89.6	0.4	10.0	0.100	0.513	18.422744	-93.163017
El Bellote	185.47	0	0																	

4 CARR: Tenosique - El Ceibo

CLAVE:

RUTA: MEX-203

AÑO: 2022

LUGAR	ESTACION				CLASIFICACION VEHICULAR EN PORCIENTO										COORDENADAS					
	KM	TE	SC	TDPA	M	A	B	C2	C3	T3S2	T3S3	T3S2R4	OTROS	A	B	C	K'	D	LATITUD	LONGITUD
Tenosique	0.00	3	0	1187	16.0	78.9	1.3	3.2	0.3	0.2	0.0	0.1	0.0	94.9	1.3	3.8	0.107	0.508	17.431090	-91.389965
El Ceibo	58.00	1	0	561	39.5	57.6	0.4	2.1	0.2	0.2	0.0	0.0	0.0	97.1	0.4	2.5	0.128	0.505	17.265042	-91.004217

5 CARR: Villahermosa - Cd. del Carmen

CLAVE: 00064

RUTA: MEX-180

AÑO: 2022

LUGAR	ESTACION				CLASIFICACION VEHICULAR EN PORCIENTO										COORDENADAS					
	KM	TE	SC	TDPA	M	A	B	C2	C3	T3S2	T3S3	T3S2R4	OTROS	A	B	C	K'	D	LATITUD	LONGITUD
Villahermosa	0.00	0	0																	
T. Izq. Cd. Industrial	4.30	3	1	33143	6.8	86.5	1.0	1.6	0.8	1.7	0.4	1.0	0.2	93.3	1.0	5.7	0.077	0.502	18.037229	-92.901482
T. Izq. Cd. Industrial	4.30	3	2	32840	6.6	86.6	1.1	1.6	0.8	1.8	0.4	0.9	0.2	93.2	1.1	5.7	0.108	0.502	18.037254	-92.901612
X. C. Libramiento de Villahermosa	8.10	3	1	22429	5.3	87.5	1.2	1.6	0.9	1.8	0.5	1.0	0.2	92.8	1.2	6.0	0.088	0.503	18.062956	-92.882168
X. C. Libramiento de Villahermosa	8.10	3	2	22125	5.1	88.0	1.4	1.5	0.7	1.8	0.5	0.8	0.2	93.1	1.4	5.5	0.117	0.503	18.063038	-92.882198
Macultepec	18.60	1	1	15412	8.0	82.1	1.3	2.3	1.2	3.3	0.6	1.0	0.2	90.1	1.3	8.6	0.079	0.536	18.140121	-92.865030

TABASCO

5 CARR: Villahermosa - Cd. del Carmen

CLAVE: 00064

RUTA: MEX-180

AÑO: 2022

LUGAR	ESTACION				CLASIFICACION VEHICULAR EN PORCIENTO														COORDENADAS	
	KM	TE	SC	TDPA	M	A	B	C2	C3	T3S2	T3S3	T3S2R4	OTROS	A	B	C	K'	D	LATITUD	LONGITUD
Macultepec	18.60	1	2	13325	7.6	81.8	1.7	2.2	1.2	3.7	0.5	1.1	0.2	89.4	1.7	8.9	0.075	0.536	18.140062	-92.865138
Macultepec	18.60	3	1	6507	3.5	74.6	5.3	5.7	1.2	5.7	1.4	2.3	0.3	78.1	5.3	16.6	0.075	0.502	18.166585	-92.858643
Macultepec	18.60	3	2	6460	3.2	75.6	4.9	6.2	1.2	5.2	1.4	2.0	0.3	78.8	4.9	16.3	0.085	0.502	18.166612	-92.858724
El Espino	33.20	1	0	9799	1.2	73.0	3.7	6.0	2.1	8.3	1.8	3.2	0.7	74.2	3.7	22.1	0.076	0.526	18.206545	-92.822703
El Espino	33.20	3	0	10119	3.2	73.0	3.9	5.1	1.7	7.7	1.5	3.2	0.7	76.2	3.9	19.9	0.074	0.503	18.256789	-92.831709
T. Izq. Simon Sarlat	45.00	3	0	9863	3.8	74.4	3.7	3.8	1.6	7.9	1.4	2.7	0.7	78.2	3.7	18.1	0.071	0.510	18.349710	-92.789801
T. Izq. El Bellote	49.67	3	0	9175	5.0	70.3	4.1	6.0	1.5	7.9	1.6	2.9	0.7	75.3	4.1	20.6	0.081	0.513	18.394133	-92.798048
T. Izq. Constanca y Venecia	56.10	3	0	10082	6.5	69.9	4.0	4.7	1.6	8.0	1.7	2.9	0.7	76.4	4.0	19.6	0.077	0.507	18.443909	-92.796034
Frontera	74.59	1	0	11380	8.3	72.4	2.5	2.7	2.7	7.0	1.5	2.7	0.2	80.7	2.5	16.8	0.082	0.501	18.512304	-92.648056
Frontera	74.59	3	0	7221	7.6	63.8	5.1	4.3	2.8	9.4	1.9	4.2	0.9	71.4	5.1	23.5	0.069	0.528	18.542381	-92.631673
T. Izq. Escolleras	78.00	3	0	5843	4.6	67.3	6.0	4.0	1.8	9.7	2.1	4.2	0.3	71.9	6.0	22.1	0.080	0.548	18.562467	-92.601291
Puente San Pedro	96.50	3	0	5619	3.9	64.6	5.1	6.6	2.0	10.6	2.3	4.6	0.3	68.5	5.1	26.4	0.076	0.509	18.641296	-92.463857
Lim. Edos. Term. Tab. Ppia. Camp.	99.75	0	0																	
Nuevo Campechito	100.00	3	0	5439	3.4	64.7	4.9	6.6	2.2	10.8	2.3	4.8	0.3	68.1	4.9	27.0	0.075	0.517	18.643095	-92.454325
Nuevo Progreso	113.60	1	0	5637	4.1	63.8	5.1	6.3	2.1	11.2	2.5	4.6	0.3	67.9	5.1	27.0	0.080	0.506	18.627046	-92.330233
Nuevo Progreso (2do Acceso)	119.00	1	0	5961	4.1	62.6	4.2	6.4	2.9	12.0	2.5	5.0	0.3	66.7	4.2	29.1	0.073	0.507	18.616623	-92.287911
T. Der. San Antonio Cárdenas (1er Acceso)	121.80	1	0	7237	8.8	61.3	6.3	4.2	2.2	10.6	1.8	3.9	0.9	70.1	6.3	23.6	0.078	0.541	18.618799	-92.248086
T. Der. San Antonio Cárdenas (2do Acceso)	125.20	1	0	5616	4.1	63.6	6.7	4.8	1.9	12.3	2.2	4.1	0.3	67.7	6.7	25.6	0.078	0.505	18.622234	-92.226972
T. Der. San Antonio Cárdenas (2do Acceso)	125.20	3	0	6446	7.1	63.5	5.8	3.9	2.3	11.2	1.9	3.9	0.4	70.6	5.8	23.6	0.079	0.524	18.617614	-92.208637
Puente Zacatal	162.41	1	0	6652	4.5	65.3	5.8	4.5	1.8	11.4	2.0	4.3	0.4	69.8	5.8	24.4	0.070	0.503	18.615184	-91.869592
Puente Zacatal	162.41	2	0	6425	1.8	67.0	3.8	4.7	3.6	11.2	1.8	5.4	0.7	68.8	3.8	27.4	0.077	0.500	18.641814	-92.460301
Cd. del Carmen	167.50	0	0																	

6 CARR: Villahermosa - Escopetazo

CLAVE: 00104

RUTA: MEX-195

AÑO: 2022

LUGAR	ESTACION				CLASIFICACION VEHICULAR EN PORCIENTO														COORDENADAS	
	KM	TE	SC	TDPA	M	A	B	C2	C3	T3S2	T3S3	T3S2R4	OTROS	A	B	C	K'	D	LATITUD	LONGITUD
Villahermosa	0.00	3	1	19983	5.3	87.3	0.6	5.0	0.4	0.7	0.3	0.3	0.1	92.6	0.6	6.8	0.092	0.516	17.942242	-92.917852
Villahermosa	0.00	3	2	21324	5.3	87.6	0.5	5.0	0.4	0.7	0.2	0.2	0.1	92.9	0.5	6.6	0.131	0.516	17.942249	-92.917761
Parrilla	10.00	1	1	25319	5.9	86.3	0.7	4.4	0.8	0.9	0.5	0.3	0.2	92.2	0.7	7.1	0.091	0.543	17.913641	-92.923328
Parrilla	10.00	1	2	21302	5.9	86.3	0.7	4.4	0.8	0.9	0.5	0.3	0.2	92.2	0.7	7.1	0.139	0.543	17.913682	-92.923230
Parrilla	10.00	3	1	25397	4.5	87.3	0.5	4.4	1.1	1.0	0.4	0.6	0.2	91.8	0.5	7.7	0.074	0.501	17.887166	-92.922574
Parrilla	10.00	3	2	25527	4.5	87.3	0.5	4.4	1.1	1.0	0.4	0.6	0.2	91.8	0.5	7.7	0.089	0.501	17.887260	-92.922500
T. Izq. Subte. García	20.00	3	1	7606	9.7	83.1	0.6	3.1	0.7	1.5	0.8	0.4	0.1	92.8	0.6	6.6	0.079	0.508	17.826936	-92.929070
T. Izq. Subte. García	20.00	3	2	7376	9.7	83.0	0.6	3.1	0.7	1.6	0.8	0.4	0.1	92.7	0.6	6.7	0.079	0.508	17.826918	-92.928977

TABASCO

6 CARR: Villahermosa - Escopetazo

CLAVE: 00104

RUTA: MEX-195

AÑO: 2022

LUGAR	ESTACION				CLASIFICACION VEHICULAR EN PORCIENTO										COORDENADAS					
	KM	TE	SC	TDPA	M	A	B	C2	C3	T3S2	T3S3	T3S2R4	OTROS	A	B	C	K'	D	LATITUD	LONGITUD
La Arena	44.00	1	0	8018	7.5	77.6	1.9	4.9	1.8	4.3	1.2	0.7	0.1	85.1	1.9	13.0	0.075	0.509	17.653504	-92.958918
T. Izq. Teapa	54.80	1	0	11652	15.9	67.8	0.6	6.1	1.0	5.8	1.4	0.5	0.9	83.7	0.6	15.7	0.073	0.513	17.573294	-92.957631
T. Izq. Teapa	54.80	3	0	6633	15.5	72.5	0.7	6.4	0.7	2.4	1.1	0.2	0.5	88.0	0.7	11.3	0.074	0.520	17.568361	-92.962725
Lim. Edos. Term. Tab. Ppia. Chis.	61.42	0	0																	
Pichucalco	76.00	1	0	3150	8.2	78.6	1.1	7.9	0.8	2.3	0.7	0.1	0.3	86.8	1.1	12.1	0.090	0.503	17.519834	-93.102086
Pichucalco	76.00	3	0	4014	22.2	70.3	0.2	3.4	0.6	2.4	0.6	0.1	0.2	92.5	0.2	7.3	0.090	0.502	17.497552	-93.102667
Solusuchiapa	112.00	1	0	1919	8.8	82.6	0.4	4.2	1.5	1.4	0.7	0.1	0.3	91.4	0.4	8.2	0.083	0.510	17.428557	-93.037880
Solusuchiapa	112.00	3	0	1810	7.1	83.8	0.3	5.2	1.3	1.3	0.7	0.1	0.2	90.9	0.3	8.8	0.110	0.501	17.419117	-93.027297
Rayón	146.00	1	0	2492	8.4	84.7	0.1	3.6	0.7	1.7	0.5	0.1	0.2	93.1	0.1	6.8	0.088	0.503	17.205150	-93.012048
Jitotol	197.79	1	0	2042	4.2	88.5	0.3	4.4	0.6	1.4	0.3	0.1	0.2	92.7	0.3	7.0	0.098	0.503	17.078238	-92.867001
Jitotol	197.79	3	0	3084	4.4	87.6	0.2	3.9	0.8	2.4	0.4	0.1	0.2	92.0	0.2	7.8	0.109	0.501	17.053951	-92.856606
Bochil	211.00	1	0	5289	4.3	83.4	0.3	3.1	0.9	5.7	1.3	0.8	0.2	87.7	0.3	12.0	0.078	0.500	16.989216	-92.879981
Soyaló	229.00	3	0	2909	2.7	86.5	0.7	5.0	1.2	2.1	1.1	0.3	0.4	89.2	0.7	10.1	0.087	0.505	16.880390	-92.918994
Ixtapa	247.00	1	0	4288	3.1	86.8	0.3	5.0	0.9	2.5	0.7	0.2	0.5	89.9	0.3	9.8	0.085	0.502	16.812895	-92.909159
Escopetazo	259.00	1	0	3418	1.5	87.7	0.4	4.3	2.0	2.4	1.0	0.3	0.4	89.2	0.4	10.4	0.108	0.508	16.758026	-92.938046

7 CARR: Villahermosa - Francisco Escárcega

CLAVE: 00092

RUTA: MEX-186

AÑO: 2022

LUGAR	ESTACION				CLASIFICACION VEHICULAR EN PORCIENTO										COORDENADAS					
	KM	TE	SC	TDPA	M	A	B	C2	C3	T3S2	T3S3	T3S2R4	OTROS	A	B	C	K'	D	LATITUD	LONGITUD
Villahermosa	0.00	3	1	15260	3.5	83.0	0.9	6.0	1.0	3.0	1.0	1.4	0.2	86.5	0.9	12.6	0.079	0.513	18.000678	-92.887541
Villahermosa	0.00	3	2	16098	3.5	82.0	1.0	6.8	1.0	3.0	1.0	1.5	0.2	85.5	1.0	13.5	0.072	0.513	18.000777	-92.887383
T. Izq. Aeropuerto (Alta)	12.00	1	1	14646	6.6	79.2	2.0	4.1	1.5	3.1	1.2	1.7	0.6	85.8	2.0	12.2	0.082	0.538	17.985017	-92.829565
T. Izq. Aeropuerto (Baja)	12.00	1	1	2122	19.1	68.0	2.0	3.6	3.4	1.2	0.6	1.6	0.5	87.1	2.0	10.9	0.071	0.533	17.984949	-92.829617
T. Izq. Aeropuerto (Alta)	12.00	1	2	13631	6.7	79.0	2.1	4.1	1.5	3.1	1.2	1.7	0.6	85.7	2.1	12.2	0.077	0.538	17.985090	-92.829512
T. Izq. Aeropuerto (Baja)	12.00	1	2	2424	19.3	68.1	1.8	3.4	3.1	1.2	0.9	1.5	0.7	87.4	1.8	10.8	0.073	0.533	17.985167	-92.829449
Puente Grijalva	17.60	2	1	8107	3.5	79.0	3.0	3.2	1.9	4.3	1.8	2.9	0.4	82.5	3.0	14.5	0.079	0.500	17.947602	-92.785235
Puente Grijalva	17.60	2	2	8107	3.5	79.0	3.0	3.2	1.9	4.3	1.8	2.9	0.4	82.5	3.0	14.5	0.079	0.500	17.947602	-92.785235
X. C. Cacaos - La Granja	32.46	1	1	7347	3.9	72.3	3.7	8.9	1.8	4.3	2.1	2.4	0.6	76.2	3.7	20.1	0.078	0.505	17.832812	-92.719608
X. C. Cacaos - La Granja	32.46	1	2	7488	3.9	72.2	3.7	8.9	1.8	4.3	2.2	2.4	0.6	76.1	3.7	20.2	0.075	0.505	17.832855	-92.719515
X. C. Cacaos - La Granja	32.46	3	1	6235	3.3	76.3	2.9	4.0	2.0	5.4	2.3	3.1	0.7	79.6	2.9	17.5	0.077	0.510	17.817728	-92.711078
X. C. Cacaos - La Granja	32.46	3	2	5981	3.3	76.5	2.9	4.0	1.9	5.3	2.2	3.2	0.7	79.8	2.9	17.3	0.073	0.510	17.817768	-92.710992
X. C. Jalapa - Jonuta	40.00	3	1	6218	2.9	75.1	3.3	6.1	1.7	5.0	1.6	3.6	0.7	78.0	3.3	18.7	0.073	0.508	17.774452	-92.673086
X. C. Jalapa - Jonuta	40.00	3	2	6426	2.9	75.0	3.3	6.1	1.8	5.0	1.6	3.7	0.6	77.9	3.3	18.8	0.098	0.508	17.774530	-92.673035
T. Izq. Macuspana	46.20	1	1	6121	3.6	76.8	1.8	4.2	2.3	4.9	2.6	3.1	0.7	80.4	1.8	17.8	0.072	0.504	17.744418	-92.634511

TABASCO

7 CARR: Villahermosa - Francisco Escárcega

CLAVE: 00092

RUTA: MEX-186

AÑO: 2022

LUGAR	ESTACION				CLASIFICACION VEHICULAR EN PORCIENTO													COORDENADAS		
	KM	TE	SC	TDPA	M	A	B	C2	C3	T3S2	T3S3	T3S2R4	OTROS	A	B	C	K'	D	LATITUD	LONGITUD
T. Izq. Macuspana	46.20	1	2	6035	4.8	73.7	2.1	5.5	2.1	5.2	2.8	3.2	0.6	78.5	2.1	19.4	0.073	0.504	17.744477	-92.634450
T. Izq. Macuspana	46.20	3	1	6509	3.8	75.6	2.6	3.9	2.5	5.6	2.1	3.1	0.8	79.4	2.6	18.0	0.077	0.506	17.734555	-92.621908
T. Izq. Macuspana	46.20	3	2	6358	4.0	76.3	1.8	2.9	3.5	4.9	2.3	3.5	0.8	80.3	1.8	17.9	0.071	0.506	17.734630	-92.621831
X. C. Estación Macuspana - Vernet	54.30	1	0	10409	7.5	70.7	2.1	3.6	3.1	6.3	2.4	3.4	0.9	78.2	2.1	19.7	0.073	0.504	17.712919	-92.583882
T. Der. Chivalito (Est. Pino Suárez)	70.00	1	0	9543	8.5	66.8	3.5	4.3	2.6	6.8	2.0	4.7	0.8	75.3	3.5	21.2	0.084	0.523	17.669183	-92.442148
T. Der. Chivalito (Est. Pino Suárez)	70.00	3	1	3600	6.0	66.5	3.6	4.6	3.0	8.4	2.2	5.1	0.6	72.5	3.6	23.9	0.073	0.508	17.666177	-92.432440
T. Der. Chivalito (Est. Pino Suárez)	70.00	3	2	3482	5.9	66.8	3.6	4.7	3.0	8.3	2.2	4.9	0.6	72.7	3.6	23.7	0.088	0.508	17.666214	-92.432424
T. Der. Estación Zopo	71.00	1	0	7406	5.2	66.3	4.5	5.0	2.8	8.0	2.5	4.8	0.9	71.5	4.5	24.0	0.085	0.503	17.670128	-92.418606
T. Der. Estación Zopo	71.00	3	1	3660	5.9	65.1	5.0	5.7	2.7	8.2	2.3	4.5	0.6	71.0	5.0	24.0	0.077	0.500	17.678720	-92.405290
T. Der. Estación Zopo	71.00	3	2	3657	5.8	65.7	4.9	5.5	2.6	8.2	2.4	4.3	0.6	71.5	4.9	23.6	0.081	0.500	17.678750	-92.405304
Lim. Edos. Term. Tab. Ppia. Chis.	76.90	0	0																	
T. Izq. Bonanza	88.00	1	0	8028	6.9	65.2	2.9	6.7	2.7	7.0	2.9	5.0	0.7	72.1	2.9	25.0	0.074	0.511	17.698114	-92.268716
T. Izq. Jonuta	101.00	1	0	7388	1.7	70.8	2.8	7.6	2.5	6.5	2.9	4.2	1.0	72.5	2.8	24.7	0.090	0.550	17.697951	-92.137232
T. Izq. Jonuta	101.00	3	0	7879	4.9	66.9	2.6	7.9	2.9	6.7	2.7	4.7	0.7	71.8	2.6	25.6	0.071	0.517	17.697599	-92.123033
X. C. Catazajá - Palenque	114.00	1	0	8273	6.3	64.4	3.0	7.8	2.9	7.7	2.1	5.3	0.5	70.7	3.0	26.3	0.072	0.513	17.707067	-92.026256
X. C. Catazajá - Palenque	114.00	3	0	6850	4.4	65.1	3.2	6.9	3.1	8.5	2.7	5.2	0.9	69.5	3.2	27.3	0.074	0.517	17.714846	-92.002206
T. Der. Emiliano Zapata	134.70	1	0	6597	4.0	64.5	3.4	7.9	3.3	8.6	2.5	5.1	0.7	68.5	3.4	28.1	0.067	0.508	17.770577	-91.837494
T. Der. Emiliano Zapata	134.70	3	0	5602	4.8	66.0	3.6	5.7	4.7	6.8	2.2	5.3	0.9	70.8	3.6	25.6	0.068	0.503	17.784955	-91.822270
Lim. Edos. Term. Chis. Ppia. Tab.	140.70	0	0																	
Puente Usumacinta	145.20	2	0	4974	6.9	61.3	3.4	3.6	4.4	9.9	2.4	7.3	0.8	68.2	3.4	28.4	0.079	0.500	17.859905	-91.783654
T. Izq. Palizada	154.05	1	0	4426	9.8	56.8	5.4	4.0	3.4	9.8	2.8	7.3	0.7	66.6	5.4	28.0	0.074	0.525	17.937725	-91.737262
T. Izq. Palizada	154.05	3	0	3154	9.9	51.6	6.6	4.5	2.8	12.4	3.3	8.2	0.7	61.5	6.6	31.9	0.072	0.510	17.946189	-91.730009
Lim. Edos. Term. Tab. Ppia. Camp.	154.60	0	0																	
T. Der. Candelaria	233.40	1	0	3737	4.7	56.4	6.7	5.2	2.1	12.2	2.8	9.2	0.7	61.1	6.7	32.2	0.072	0.504	18.373264	-91.201738
T. Der. Felipe Ángeles	253.00	1	0	4210	3.4	62.7	5.7	4.8	1.9	11.6	2.6	6.7	0.6	66.1	5.7	28.2	0.071	0.515	18.503873	-91.106577
T. Izq. Sabancuy	274.10	1	0	4609	6.7	61.7	5.0	4.2	1.8	10.6	2.3	6.9	0.8	68.4	5.0	26.6	0.085	0.511	18.629628	-90.988320
Francisco Escárcega	297.04	1	0	8761	14.9	66.5	2.6	2.7	2.0	5.9	1.2	3.4	0.8	81.4	2.6	16.0	0.083	0.501	18.609994	-90.776022

8 CARR: Ent. Agua Dulce - Cárdenas (Cuota)

CLAVE: 00010

RUTA: MEX-180D

AÑO: 2022

LUGAR	ESTACION				CLASIFICACION VEHICULAR EN PORCIENTO													COORDENADAS		
	KM	TE	SC	TDPA	M	A	B	C2	C3	T3S2	T3S3	T3S2R4	OTROS	A	B	C	K'	D	LATITUD	LONGITUD
Ent. La Ceiba	45.00	0	0																	
T. C. Coatzacoalcos - Villahermosa Oeste	45.60	3	1	5481	5.4	48.9	7.2	4.5	3.1	17.9	4.1	8.0	0.9	54.3	7.2	38.5	0.067	0.520	18.061502	-94.035441
T. C. Coatzacoalcos - Villahermosa Oeste	45.60	3	2	5068	5.3	49.0	7.1	4.5	3.2	17.9	4.1	8.0	0.9	54.3	7.1	38.6	0.064	0.520	18.061502	-94.033836

TABASCO

8 CARR: Ent. Agua Dulce - Cárdenas (Cuota)

CLAVE: 00010

RUTA: MEX-180D

AÑO: 2022

LUGAR	ESTACION				CLASIFICACION VEHICULAR EN PORCIENTO														COORDENADAS	
	KM	TE	SC	TDPA	M	A	B	C2	C3	T3S2	T3S3	T3S2R4	OTROS	A	B	C	K'	D	LATITUD	LONGITUD
T. C. Coatzacoalcos - Villahermosa	69.50	1	1	5892	5.8	47.1	7.0	4.6	3.3	17.8	4.1	9.4	0.9	52.9	7.0	40.1	0.056	0.521	18.032044	-93.821632
T. C. Coatzacoalcos - Villahermosa	69.50	1	2	5413	5.8	47.1	7.0	4.7	3.3	17.8	4.0	9.5	0.8	52.9	7.0	40.1	0.069	0.521	18.032238	-93.821472
Plaza de Cobro La Venta	69.50	2	1	5078	0.4	49.6	3.0	5.3	5.8	19.4	3.7	11.4	1.4	50.0	3.0	47.0	0.081	0.500	18.030572	-93.812914
Plaza de Cobro La Venta	69.50	2	2	5078	0.4	49.6	3.0	5.3	5.8	19.4	3.7	11.4	1.4	50.0	3.0	47.0	0.081	0.500	18.030572	-93.812914
T. C. Coatzacoalcos - Villahermosa	69.50	3	1	5688	3.9	55.4	5.0	5.3	3.1	15.2	3.5	7.6	1.0	59.3	5.0	35.7	0.056	0.505	18.029331	-93.806772
T. C. Coatzacoalcos - Villahermosa	69.50	3	2	5808	3.9	55.2	5.1	5.2	3.2	15.2	3.6	7.6	1.0	59.1	5.1	35.8	0.052	0.505	18.029596	-93.806715
Ent. Chontalpa	99.11	0	0																	

9 CARR: Las Choapas - Ocozocoautla (Cuota)

CLAVE: 00077

RUTA: MEX-187D

AÑO: 2022

LUGAR	ESTACION				CLASIFICACION VEHICULAR EN PORCIENTO														COORDENADAS	
	KM	TE	SC	TDPA	M	A	B	C2	C3	T3S2	T3S3	T3S2R4	OTROS	A	B	C	K'	D	LATITUD	LONGITUD
T. C. Coatzacoalcos - Villahermosa	0.00	3	0	5412	4.1	45.1	9.8	5.7	4.7	16.0	4.0	9.7	0.9	49.2	9.8	41.0	0.078	0.505	18.061478	-94.245549
Plaza de Cobro Las Choapas	16.80	1	0	5429	6.3	51.6	7.8	4.9	6.2	11.6	3.0	7.7	0.9	57.9	7.8	34.3	0.068	0.501	17.950623	-94.175290
Plaza de Cobro Las Choapas	16.80	3	0	3452	3.9	39.8	10.2	7.6	5.1	18.5	3.6	10.4	0.9	43.7	10.2	46.1	0.060	0.500	17.934416	-94.167133
Ent. Nuevo Progreso	62.40	1	0	3765	6.8	40.6	11.7	6.9	3.5	18.1	2.5	9.1	0.8	47.4	11.7	40.9	0.070	0.506	17.670218	-93.869373
Lim. Edos. Term. Ver. Ppia. Tab.	96.68	0	0																	
Plaza de Cobro Malpasito	112.70	1	0	2701	0.9	50.7	5.7	10.9	5.6	15.9	3.5	6.1	0.7	51.6	5.7	42.7	0.072	0.516	17.352495	-93.587893
Plaza de Cobro Malpasito	112.70	2	0	3570	0.5	43.8	4.9	6.4	8.8	18.7	3.2	11.9	1.8	44.3	4.9	50.8	0.072	0.500	17.349070	-93.586472
Lim. Edos. Term. Tab. Ppia. Chis.	113.70	0	0																	
T. Izq. Malpaso	123.79	1	0	4968	1.3	56.5	6.0	10.3	3.7	13.3	2.6	5.6	0.7	57.8	6.0	36.2	0.067	0.507	17.266823	-93.572653
X. C. Tepatán - Raudales Malpaso	134.00	1	0	4989	3.6	55.1	5.2	8.5	3.9	12.1	2.9	8.0	0.7	58.7	5.2	36.1	0.072	0.505	17.191633	-93.554752
T. Der a América Libre	163.40	1	0	5377	4.7	54.3	5.4	9.5	3.6	10.7	3.2	8.0	0.6	59.0	5.4	35.6	0.064	0.516	17.005032	-93.501411
Carrizal	173.60	1	0	5862	3.0	57.2	5.2	9.5	3.8	11.0	2.8	6.9	0.6	60.2	5.2	34.6	0.069	0.514	16.921506	-93.452359
Plaza de Cobro Ocozocoautla	182.50	1	0	5318	1.6	57.3	6.3	10.0	3.0	11.5	2.5	7.0	0.8	58.9	6.3	34.8	0.060	0.501	16.870721	-93.414339
Plaza de Cobro Ocozocoautla	182.50	2	0	5003	0.5	56.7	4.2	6.5	6.7	13.3	2.3	8.5	1.3	57.2	4.2	38.6	0.072	0.500	16.863183	-93.406856
T. C. Tapanatepec - Tuxtla Gutiérrez	197.50	1	0	6048	2.2	59.0	5.1	9.0	3.1	12.1	2.4	6.3	0.8	61.2	5.1	33.7	0.069	0.501	16.773517	-93.319459

10 CARR: Libramiento de Villahermosa (Cuota)

CLAVE:

RUTA: MEX-180D

AÑO: 2022

LUGAR	ESTACION				CLASIFICACION VEHICULAR EN PORCIENTO														COORDENADAS	
	KM	TE	SC	TDPA	M	A	B	C2	C3	T3S2	T3S3	T3S2R4	OTROS	A	B	C	K'	D	LATITUD	LONGITUD
T. C. Coatzacoalcos - Villahermosa	0.00	0	0																	
T. C. Coatzacoalcos - Villahermosa	0.00	3	1	3668	3.0	48.6	5.3	3.6	3.4	20.6	5.2	9.5	0.8	51.6	5.3	43.1	0.072	0.502	17.990393	-93.031600
T. C. Coatzacoalcos - Villahermosa	0.00	3	2	3701	3.0	47.2	6.2	4.0	3.0	22.0	4.4	9.3	0.9	50.2	6.2	43.6	0.090	0.502	17.990504	-93.031761

TABASCO

10 CARR: Libramiento de Villahermosa (Cuota)

CLAVE:

RUTA: MEX-180D

AÑO: 2022

LUGAR	ESTACION				CLASIFICACION VEHICULAR EN PORCIENTO														COORDENADAS	
	KM	TE	SC	TDPA	M	A	B	C2	C3	T3S2	T3S3	T3S2R4	OTROS	A	B	C	K'	D	LATITUD	LONGITUD
Plaza de Cobro Nacajuca	16.00	2	1	2869	0.4	33.7	0.5	6.6	7.5	27.5	6.0	15.6	2.2	34.1	0.5	65.4	0.090	0.500	18.076079	-92.930568
Plaza de Cobro Nacajuca	16.00	2	2	2869	0.4	33.7	0.5	6.6	7.5	27.5	6.0	15.6	2.2	34.1	0.5	65.4	0.090	0.500	18.076079	-92.930568
Plaza de Cobro Nacajuca	16.00	3	1	3346	3.6	42.6	5.3	3.6	4.2	23.3	5.6	10.9	0.9	46.2	5.3	48.5	0.073	0.530	18.076926	-92.922466
Plaza de Cobro Nacajuca	16.00	3	2	2974	3.5	42.5	5.2	3.5	4.3	23.3	5.7	11.0	1.0	46.0	5.2	48.8	0.066	0.530	18.077112	-92.922419
T. C. Villahermosa - Cd. Del Carmen	21.70	0	0																	
T. C. Villahermosa - Cd. Del Carmen	21.70	3	1	4037	3.4	43.4	5.8	4.2	4.6	21.7	5.7	10.4	0.8	46.8	5.8	47.4	0.066	0.503	18.054996	-92.883218
T. C. Villahermosa - Cd. Del Carmen	21.70	3	2	3993	4.8	42.6	6.1	4.5	3.8	21.6	5.4	10.4	0.8	47.4	6.1	46.5	0.073	0.503	18.055086	-92.883133

11 CARR: Benito Juárez - Agua Dulce

CLAVE: 00202

RUTA: TAB-VER

AÑO: 2022

LUGAR	ESTACION				CLASIFICACION VEHICULAR EN PORCIENTO														COORDENADAS	
	KM	TE	SC	TDPA	M	A	B	C2	C3	T3S2	T3S3	T3S2R4	OTROS	A	B	C	K'	D	LATITUD	LONGITUD
Benito Juárez	0.00	3	0	1471	12.4	77.7	0.9	6.2	0.5	1.5	0.3	0.3	0.2	90.1	0.9	9.0	0.077	0.505	18.166539	-93.920159
La Venta	16.80	1	0	1288	21.9	70.8	0.5	4.8	0.4	0.6	0.4	0.3	0.3	92.7	0.5	6.8	0.087	0.505	18.115935	-94.032672
Lim. Edos. Term. Tab. Ppia. Ver.	23.78	0	0																	
Agua Dulce	33.00	0	0																	

12 CARR: Benito Juárez - Tepetitán

CLAVE: 27204

RUTA: TAB

AÑO: 2022

LUGAR	ESTACION				CLASIFICACION VEHICULAR EN PORCIENTO														COORDENADAS	
	KM	TE	SC	TDPA	M	A	B	C2	C3	T3S2	T3S3	T3S2R4	OTROS	A	B	C	K'	D	LATITUD	LONGITUD
Benito Juárez	0.00	0	0																	
X. C. Jalapa - Jonuta	1.50	3	0	4313	18.4	74.3	0.9	2.3	1.3	1.0	0.6	0.7	0.5	92.7	0.9	6.4	0.075	0.500	17.824403	-92.513662
Limbano Blandín	18.50	1	0	1236	40.3	55.3	0.4	3.0	0.5	0.3	0.1	0.1	0.0	95.6	0.4	4.0	0.080	0.513	17.755480	-92.416433
Limbano Blandín	18.50	3	0	840	27.3	68.8	0.2	2.8	0.6	0.1	0.2	0.0	0.0	96.1	0.2	3.7	0.086	0.511	17.760478	-92.405733
Tepetitán	20.00	1	0	1338	40.9	55.5	0.6	2.4	0.4	0.1	0.0	0.1	0.0	96.4	0.6	3.0	0.104	0.504	17.814135	-92.377071

13 CARR: Cacaos - La Granja

CLAVE: 27002

RUTA: TAB

AÑO: 2022

LUGAR	ESTACION				CLASIFICACION VEHICULAR EN PORCIENTO														COORDENADAS	
	KM	TE	SC	TDPA	M	A	B	C2	C3	T3S2	T3S3	T3S2R4	OTROS	A	B	C	K'	D	LATITUD	LONGITUD
Cacaos	0.00	3	0	2905	12.1	83.9	0.5	1.3	1.6	0.2	0.2	0.1	0.1	96.0	0.5	3.5	0.070	0.509	17.829235	-92.854237
X. C. Villahermosa - Francisco Escárcega	16.00	3	0	4297	9.4	82.9	1.2	4.2	0.7	0.6	0.9	0.1	0.0	92.3	1.2	6.5	0.078	0.500	17.828136	-92.714522
T. C. Jalapa - Jonuta	39.00	1	0	6455	11.8	82.0	0.7	3.5	0.7	0.4	0.8	0.1	0.0	93.8	0.7	5.5	0.068	0.504	17.846013	-92.503015

TABASCO

14 CARR: Cárdenas - Paraíso

CLAVE: 27117

RUTA: TAB

AÑO: 2022

LUGAR	ESTACION				CLASIFICACION VEHICULAR EN PORCIENTO													COORDENADAS		
	KM	TE	SC	TDPA	M	A	B	C2	C3	T3S2	T3S3	T3S2R4	OTROS	A	B	C	K'	D	LATITUD	LONGITUD
T. C. Coatzacoalcos - Villahermosa	0.00	3	0	8324	15.8	75.9	0.8	1.4	3.1	1.0	0.4	1.2	0.4	91.7	0.8	7.5	0.086	0.532	18.001520	-93.385606
T. Izq. El Golpe	22.00	1	0	1664	18.4	71.0	2.5	2.2	1.3	1.2	1.5	1.1	0.8	89.4	2.5	8.1	0.082	0.522	18.111931	-93.308376
T. Izq. El Golpe	22.00	3	0	2140	23.1	66.1	0.6	3.4	2.2	1.8	0.6	1.4	0.8	89.2	0.6	10.2	0.074	0.510	18.116534	-93.303626
Comalcalco	37.00	3	0	3554	28.2	59.8	1.6	2.7	1.5	1.7	1.7	1.9	0.9	88.0	1.6	10.4	0.072	0.518	18.297026	-93.214246
Paraíso	52.00	1	0	6404	21.0	64.6	1.3	4.9	1.9	2.3	1.4	1.9	0.7	85.6	1.3	13.1	0.086	0.505	18.378157	-93.233009

15 CARR: Chichicapa - Ent. La Libertad

CLAVE: 27100

RUTA: TAB

AÑO: 2022

LUGAR	ESTACION				CLASIFICACION VEHICULAR EN PORCIENTO													COORDENADAS		
	KM	TE	SC	TDPA	M	A	B	C2	C3	T3S2	T3S3	T3S2R4	OTROS	A	B	C	K'	D	LATITUD	LONGITUD
Chichicapa	0.00	3	0	4118	23.8	71.2	0.5	2.4	0.8	0.8	0.1	0.3	0.1	95.0	0.5	4.5	0.093	0.503	18.273211	-93.182547
Nicolás Bravo	10.00	3	0	5418	31.3	62.8	0.9	1.8	1.0	1.0	0.2	0.8	0.2	94.1	0.9	5.0	0.119	0.504	18.294564	-93.157647
Ent. La Libertad	18.00	1	0	5273	31.7	62.7	0.8	1.8	0.9	0.9	0.3	0.7	0.2	94.4	0.8	4.8	0.128	0.508	18.317409	-93.170069

16 CARR: Comalcalco - El Golpe

CLAVE: 27102

RUTA: TAB

AÑO: 2022

LUGAR	ESTACION				CLASIFICACION VEHICULAR EN PORCIENTO													COORDENADAS		
	KM	TE	SC	TDPA	M	A	B	C2	C3	T3S2	T3S3	T3S2R4	OTROS	A	B	C	K'	D	LATITUD	LONGITUD
Comalcalco	0.00	3	0	24342	36.0	58.9	0.6	1.5	0.7	0.7	0.4	1.0	0.2	94.9	0.6	4.5	0.077	0.507	18.253479	-93.234274
Libramiento de Comalcalco	2.60	3	0	18762	29.9	62.4	2.0	2.8	1.1	0.6	0.4	0.4	0.4	92.3	2.0	5.7	0.089	0.500	18.249591	-93.242320
T. Izq. Villa Aldama	9.40	1	0	6875	18.0	69.2	2.1	6.5	1.5	0.7	0.6	0.8	0.6	87.2	2.1	10.7	0.074	0.505	18.253789	-93.302216
T. Izq. Villa Aldama	9.40	3	0	6917	22.6	70.5	1.1	2.2	0.9	0.9	0.6	0.7	0.5	93.1	1.1	5.8	0.086	0.503	18.262081	-93.313323
Tecolutilla	15.00	1	0	4973	21.6	70.4	1.2	2.6	0.9	0.9	0.8	0.9	0.7	92.0	1.2	6.8	0.077	0.507	18.270964	-93.314753
Tecolutilla	15.00	3	0	8598	21.0	71.5	1.6	0.9	0.8	1.7	0.6	1.4	0.5	92.5	1.6	5.9	0.109	0.500	18.285628	-93.343133
T. Der. Lazáro Cárdenas	20.00	3	0	2969	42.2	47.9	1.8	2.5	1.4	1.4	0.7	1.2	0.9	90.1	1.8	8.1	0.076	0.505	18.280096	-93.382402
Carlos Green	33.00	3	0	4181	21.0	70.6	1.3	2.4	0.7	1.3	1.0	1.1	0.6	91.6	1.3	7.1	0.089	0.504	18.232487	-93.457952
El Golpe	51.60	1	0	826	62.6	26.1	2.3	2.4	1.5	1.5	1.4	1.2	1.0	88.7	2.3	9.0	0.097	0.514	18.330655	-93.533191

17 CARR: El Bellote - Santa Cruz

CLAVE: 27105

RUTA: TAB

AÑO: 2022

LUGAR	ESTACION				CLASIFICACION VEHICULAR EN PORCIENTO													COORDENADAS		
	KM	TE	SC	TDPA	M	A	B	C2	C3	T3S2	T3S3	T3S2R4	OTROS	A	B	C	K'	D	LATITUD	LONGITUD
Bellote	0.00	3	0	7636	20.0	73.9	0.8	1.7	1.4	0.8	0.5	0.7	0.2	93.9	0.8	5.3	0.084	0.501	18.426208	-93.118010
T. Der. Chichicapa	8.00	3	0	4810	23.4	71.1	0.9	2.4	0.9	0.7	0.3	0.2	0.1	94.5	0.9	4.6	0.097	0.501	18.423203	-93.070257
Ignacio Allende	35.00	1	0	4559	11.9	80.3	0.9	2.7	1.1	1.1	0.9	0.9	0.2	92.2	0.9	6.9	0.076	0.504	18.385304	-92.861530

TABASCO

17 CARR: El Bellote - Santa Cruz

CLAVE: 27105

RUTA: TAB

AÑO: 2022

LUGAR	ESTACION				CLASIFICACION VEHICULAR EN PORCIENTO													COORDENADAS		
	KM	TE	SC	TDPA	M	A	B	C2	C3	T3S2	T3S3	T3S2R4	OTROS	A	B	C	K'	D	LATITUD	LONGITUD
Ignacio Allende	35.00	3	0	4036	12.9	81.4	1.0	1.7	0.4	1.0	0.9	0.5	0.2	94.3	1.0	4.7	0.090	0.505	18.382628	-92.828782
Santa Cruz	40.00	1	0	4462	7.0	84.7	0.8	5.1	1.0	0.6	0.3	0.2	0.3	91.7	0.8	7.5	0.076	0.521	18.386071	-92.807614

18 CARR: Ent. Emiliano Zapata - La Libertad

CLAVE: 00062

RUTA: CHIS-TAB

AÑO: 2022

LUGAR	ESTACION				CLASIFICACION VEHICULAR EN PORCIENTO													COORDENADAS		
	KM	TE	SC	TDPA	M	A	B	C2	C3	T3S2	T3S3	T3S2R4	OTROS	A	B	C	K'	D	LATITUD	LONGITUD
T. C. El Suspiro - Tenosique	0.00	3	0	1851	16.1	82.0	0.2	1.0	0.4	0.3	0.0	0.0	0.0	98.1	0.2	1.7	0.092	0.501	17.721422	-91.744585
Lim. Edos. Term. Tab. Ppia. Chis.	8.00	0	0																	
La Libertad	10.00	1	0	1573	7.9	85.5	0.2	2.7	0.4	3.0	0.1	0.1	0.1	93.4	0.2	6.4	0.075	0.511	17.690542	-91.722327

19 CARR: Estación Macuspana - Vernet

CLAVE: 27091

RUTA: TAB-041

AÑO: 2022

LUGAR	ESTACION				CLASIFICACION VEHICULAR EN PORCIENTO													COORDENADAS		
	KM	TE	SC	TDPA	M	A	B	C2	C3	T3S2	T3S3	T3S2R4	OTROS	A	B	C	K'	D	LATITUD	LONGITUD
Estación Macuspana	0.00	0	0																	
X. C. Villahermosa - Francisco Escárcega	11.00	1	0	2051	22.0	62.4	0.4	8.8	3.4	1.5	1.0	0.3	0.2	84.4	0.4	15.2	0.116	0.512	17.710285	-92.568664
X. C. Villahermosa - Francisco Escárcega	11.00	3	0	1775	32.5	54.6	0.4	4.4	4.6	2.3	0.7	0.3	0.2	87.1	0.4	12.5	0.106	0.504	17.704521	-92.569848
Belem	20.50	1	1	5836	19.6	76.7	0.5	1.7	0.4	0.6	0.3	0.1	0.1	96.3	0.5	3.2	0.077	0.508	17.775686	-92.607533
Belem	20.50	1	2	5652	19.3	76.9	0.5	1.8	0.4	0.5	0.4	0.1	0.1	96.2	0.5	3.3	0.073	0.508	17.775654	-92.607612
Belem	20.50	3	0	2726	23.9	70.2	0.5	3.7	0.4	0.7	0.4	0.1	0.1	94.1	0.5	5.4	0.086	0.507	17.802431	-92.606189
X. C. Cacaos - La Granja	25.50	3	0	1452	29.3	66.5	0.3	3.2	0.2	0.3	0.2	0.0	0.0	95.8	0.3	3.9	0.105	0.507	17.841832	-92.607517
Vernet	32.50	1	0	467	32.7	65.4	0.3	1.1	0.3	0.1	0.1	0.0	0.0	98.1	0.3	1.6	0.118	0.529	17.916359	-92.598229

20 CARR: Frontera - T. C. (Jalapa - Jonuta)

CLAVE: 27081

RUTA: TAB

AÑO: 2022

LUGAR	ESTACION				CLASIFICACION VEHICULAR EN PORCIENTO													COORDENADAS		
	KM	TE	SC	TDPA	M	A	B	C2	C3	T3S2	T3S3	T3S2R4	OTROS	A	B	C	K'	D	LATITUD	LONGITUD
Frontera	0.00	0	0																	
X. C. Villahermosa - Cd. del Carmen	1.00	3	0	1658	40.7	53.8	0.6	2.8	1.2	0.3	0.2	0.3	0.1	94.5	0.6	4.9	0.080	0.533	18.507162	-92.650518
T. C. Jalapa - Jonuta	123.00	1	0	439	14.2	74.8	2.2	7.9	0.2	0.2	0.4	0.1	0.0	89.0	2.2	8.8	0.121	0.505	18.101968	-92.169847

TABASCO

21 CARR: Gregorio Méndez Magaña - Reforma de Ocampo

CLAVE: 00103

RUTA: CHIS

AÑO: 2022

LUGAR	ESTACION				CLASIFICACION VEHICULAR EN PORCIENTO													COORDENADAS		
	KM	TE	SC	TDPA	M	A	B	C2	C3	T3S2	T3S3	T3S2R4	OTROS	A	B	C	K'	D	LATITUD	LONGITUD
Gregorio Méndez Magaña	0.00	3	0	955	27.3	62.7	1.4	4.1	2.1	0.8	1.3	0.3	0.0	90.0	1.4	8.6	0.092	0.514	17.446892	-91.596077
Lim. Edos. Term. Tab. Ppia. Chis.	3.00	0	0																	
T. C. Benemérito de Las Américas - Palenque	21.00	1	0	2571	8.9	82.9	1.4	5.1	1.0	0.3	0.2	0.1	0.1	91.8	1.4	6.8	0.074	0.505	17.322862	-91.692999
Reforma de Ocampo	22.00	0	0																	

22 CARR: Jalapa - Jonuta

CLAVE: 27107

RUTA: TAB

AÑO: 2022

LUGAR	ESTACION				CLASIFICACION VEHICULAR EN PORCIENTO													COORDENADAS		
	KM	TE	SC	TDPA	M	A	B	C2	C3	T3S2	T3S3	T3S2R4	OTROS	A	B	C	K'	D	LATITUD	LONGITUD
Jalapa	0.00	3	0	3642	36.6	59.4	0.4	1.3	1.4	0.3	0.1	0.4	0.1	96.0	0.4	3.6	0.088	0.505	17.721922	-92.805754
X. C. Villahermosa - Francisco Escárcega	15.00	1	0	2458	26.5	68.4	0.4	2.1	1.8	0.4	0.1	0.2	0.1	94.9	0.4	4.7	0.092	0.503	17.782854	-92.690695
X. C. Villahermosa - Francisco Escárcega	15.00	3	0	1698	28.3	68.1	0.5	1.8	0.5	0.3	0.2	0.2	0.1	96.4	0.5	3.1	0.074	0.501	17.782212	-92.679680
Belem	24.00	1	0	1132	39.0	54.2	0.4	5.5	0.1	0.3	0.2	0.2	0.1	93.2	0.4	6.4	0.089	0.525	17.781735	-92.619638
T. Izq. Cacaos	39.00	1	0	4352	20.6	75.3	0.4	2.0	1.1	0.3	0.1	0.1	0.1	95.9	0.4	3.7	0.088	0.513	17.843600	-92.502171
Cd. PEMEX	43.00	1	1	6628	18.6	76.3	0.5	3.6	0.4	0.3	0.2	0.1	0.0	94.9	0.5	4.6	0.093	0.508	17.879245	-92.484602
Cd. PEMEX	43.00	1	2	6420	18.2	76.6	0.4	3.8	0.3	0.4	0.2	0.1	0.0	94.8	0.4	4.8	0.076	0.508	17.879331	-92.484769
Cd. PEMEX	43.00	3	0	3170	21.3	73.8	0.7	3.5	0.2	0.3	0.1	0.1	0.0	95.1	0.7	4.2	0.075	0.506	17.895540	-92.482657
Jonuta	97.50	1	0	2528	8.8	81.0	1.7	7.1	0.7	0.3	0.3	0.1	0.0	89.8	1.7	8.5	0.073	0.505	18.101801	-92.162402

23 CARR: Libramiento Sur de Comalcalco

CLAVE:

RUTA: TAB

AÑO: 2022

LUGAR	ESTACION				CLASIFICACION VEHICULAR EN PORCIENTO													COORDENADAS		
	KM	TE	SC	TDPA	M	A	B	C2	C3	T3S2	T3S3	T3S2R4	OTROS	A	B	C	K'	D	LATITUD	LONGITUD
T. C. Malpaso - El Bellote	0.00	3	0	7477	20.2	70.1	1.7	4.4	1.2	0.9	0.5	0.5	0.5	90.3	1.7	8.0	0.135	0.546	18.229193	-93.213782
T. C. Comalcalco - El Golpe	4.40	0	0																	

24 CARR: Nicolás Bravo - T. C. (El Bellote - Santa Cruz)

CLAVE: 27010

RUTA: TAB

AÑO: 2022

LUGAR	ESTACION				CLASIFICACION VEHICULAR EN PORCIENTO													COORDENADAS		
	KM	TE	SC	TDPA	M	A	B	C2	C3	T3S2	T3S3	T3S2R4	OTROS	A	B	C	K'	D	LATITUD	LONGITUD
Nicolás Bravo	0.00	3	0	2837	29.2	66.2	0.8	2.0	0.8	0.4	0.3	0.3	0.0	95.4	0.8	3.8	0.086	0.502	18.297797	-93.132143
T. C. Bellote - Santa Cruz	22.00	1	0	1220	19.1	77.0	0.1	2.5	0.1	1.1	0.1	0.0	0.0	96.1	0.1	3.8	0.127	0.523	18.424691	-93.076141

TABASCO

25 CARR: Pailebot - Cuauhtemotzin

CLAVE: 27112

RUTA: TAB

AÑO: 2022

LUGAR	ESTACION				CLASIFICACION VEHICULAR EN PORCIENTO										COORDENADAS					
	KM	TE	SC	TDPA	M	A	B	C2	C3	T3S2	T3S3	T3S2R4	OTROS	A	B	C	K'	D	LATITUD	LONGITUD
Pailebot	0.00	3	0	929	17.0	81.7	0.3	0.3	0.5	0.1	0.1	0.0	0.0	98.7	0.3	1.0	0.121	0.508	18.257597	-93.952884
Cuauhtemotzin	23.00	1	0	771	21.1	77.4	0.2	0.5	0.5	0.1	0.1	0.0	0.1	98.5	0.2	1.3	0.101	0.511	18.205517	-94.121297

26 CARR: Paraíso - El Limón

CLAVE: 27108

RUTA: TAB

AÑO: 2022

LUGAR	ESTACION				CLASIFICACION VEHICULAR EN PORCIENTO										COORDENADAS					
	KM	TE	SC	TDPA	M	A	B	C2	C3	T3S2	T3S3	T3S2R4	OTROS	A	B	C	K'	D	LATITUD	LONGITUD
Paraíso	0.00	3	0	9848	9.5	77.1	0.9	3.3	3.7	2.6	1.4	1.1	0.4	86.6	0.9	12.5	0.104	0.512	18.399440	-93.218175
Limón	6.00	1	0	11294	13.6	72.9	1.2	3.3	2.3	2.3	0.9	2.7	0.8	86.5	1.2	12.3	0.084	0.503	18.405753	-93.215629

27 CARR: Paso de Cunduacán - Estación Juárez

CLAVE: 00588

RUTA: TAB-CHIS

AÑO: 2022

LUGAR	ESTACION				CLASIFICACION VEHICULAR EN PORCIENTO										COORDENADAS					
	KM	TE	SC	TDPA	M	A	B	C2	C3	T3S2	T3S3	T3S2R4	OTROS	A	B	C	K'	D	LATITUD	LONGITUD
Paso de Cunduacán	0.00	3	0	11278	5.1	82.9	0.4	7.3	0.9	1.7	0.9	0.6	0.2	88.0	0.4	11.6	0.097	0.504	17.960071	-93.138251
Lim. Edos. Term. Tab. Ppia. Chis.	9.00	0	0																	
Santa Teresa 2º Secc.	18.00	3	0	2330	11.0	77.8	0.4	6.8	1.6	1.9	0.4	0.0	0.1	88.8	0.4	10.8	0.080	0.505	17.766736	-93.169224
Estación Juárez	57.80	1	0	2875	14.9	76.1	0.2	5.2	1.0	1.8	0.5	0.1	0.2	91.0	0.2	8.8	0.070	0.501	17.621964	-93.166913

28 CARR: Playas del Rosario - Teapa

CLAVE: 27203

RUTA: TAB-001

AÑO: 2022

LUGAR	ESTACION				CLASIFICACION VEHICULAR EN PORCIENTO										COORDENADAS					
	KM	TE	SC	TDPA	M	A	B	C2	C3	T3S2	T3S3	T3S2R4	OTROS	A	B	C	K'	D	LATITUD	LONGITUD
T. C. Villahermosa - Escopetazo	0.00	3	1	5388	6.2	89.0	0.6	1.1	0.9	0.5	0.4	0.7	0.6	95.2	0.6	4.2	0.071	0.505	17.839842	-92.924041
T. C. Villahermosa - Escopetazo	0.00	3	2	5288	5.8	89.1	0.5	1.0	0.9	0.6	0.7	0.8	0.6	94.9	0.5	4.6	0.077	0.505	17.839877	-92.924027
Revolución Mexicana	1.20	3	0	8154	9.0	85.8	1.1	1.0	0.6	0.6	0.7	0.6	0.6	94.8	1.1	4.1	0.078	0.513	17.834886	-92.904605
Cacaos	7.00	1	0	6715	11.1	82.9	0.7	1.5	0.9	0.9	0.7	0.6	0.7	94.0	0.7	5.3	0.086	0.500	17.826407	-92.860278
Cacaos	7.00	3	0	4754	8.0	84.2	1.5	2.0	1.0	0.9	0.8	0.9	0.7	92.2	1.5	6.3	0.083	0.503	17.825143	-92.853710
Jalapa	23.00	1	0	5546	14.6	80.8	0.6	1.6	0.9	0.6	0.5	0.3	0.1	95.4	0.6	4.0	0.080	0.518	17.731374	-92.816522
Jalapa	23.00	3	0	4626	14.7	80.5	0.7	1.5	0.9	0.7	0.6	0.3	0.1	95.2	0.7	4.1	0.080	0.501	17.708254	-92.808240
T. Izq. Tacotalpa	39.00	1	0	4558	15.6	79.4	0.8	1.9	1.0	0.7	0.3	0.2	0.1	95.0	0.8	4.2	0.082	0.535	17.595547	-92.833190
T. Izq. Tacotalpa	39.00	3	1	3566	16.5	78.6	0.6	2.1	0.8	0.7	0.4	0.2	0.1	95.1	0.6	4.3	0.089	0.508	17.592392	-92.834495
T. Izq. Tacotalpa	39.00	3	2	3458	16.4	77.9	0.8	2.2	1.1	0.8	0.5	0.2	0.1	94.3	0.8	4.9	0.084	0.508	17.592347	-92.834467
Teapa	54.00	1	0	2903	11.2	78.6	1.2	2.5	1.4	1.6	1.5	1.2	0.8	89.8	1.2	9.0	0.092	0.502	17.551062	-92.944351

TABASCO

29 CARR: Ramal a Balancán

CLAVE: 27078

RUTA: TAB

AÑO: 2022

LUGAR	ESTACION				CLASIFICACION VEHICULAR EN PORCIENTO										COORDENADAS					
	KM	TE	SC	TDPA	M	A	B	C2	C3	T3S2	T3S3	T3S2R4	OTROS	A	B	C	K'	D	LATITUD	LONGITUD
T. C. El Suspiro - Tenosique	0.00	3	0	2089	2.8	91.9	1.4	1.4	1.5	0.7	0.3	0.0	0.0	94.7	1.4	3.9	0.086	0.516	17.632845	-91.600617
Balancán	24.00	1	0	3833	12.0	82.1	0.6	3.2	1.1	0.5	0.5	0.0	0.0	94.1	0.6	5.3	0.090	0.502	17.834965	-91.531171

30 CARR: Ramal a La Venta

CLAVE: 27078

RUTA: TAB

AÑO: 2022

LUGAR	ESTACION				CLASIFICACION VEHICULAR EN PORCIENTO										COORDENADAS					
	KM	TE	SC	TDPA	M	A	B	C2	C3	T3S2	T3S3	T3S2R4	OTROS	A	B	C	K'	D	LATITUD	LONGITUD
T. C. Coatzacoalcos - Villahermosa	0.00	3	0	5075	13.0	78.5	3.5	4.0	0.5	0.2	0.2	0.0	0.1	91.5	3.5	5.0	0.070	0.508	18.064610	-94.042334
La Venta	4.25	0	0																	

31 CARR: Ramal a Lázaro Cárdenas

CLAVE: 27208

RUTA: TAB

AÑO: 2022

LUGAR	ESTACION				CLASIFICACION VEHICULAR EN PORCIENTO										COORDENADAS					
	KM	TE	SC	TDPA	M	A	B	C2	C3	T3S2	T3S3	T3S2R4	OTROS	A	B	C	K'	D	LATITUD	LONGITUD
T. C. Comalcalco - El Golpe	0.00	3	0	2184	29.8	63.9	0.8	2.8	0.8	1.0	0.5	0.2	0.2	93.7	0.8	5.5	0.079	0.502	18.286791	-93.384721
Lázaro Cárdenas	14.00	1	0	2010	39.9	54.8	0.7	1.5	0.9	1.2	0.6	0.2	0.2	94.7	0.7	4.6	0.079	0.504	18.319336	-93.435504

32 CARR: Ramal a Libertad

CLAVE: 27205

RUTA: TAB

AÑO: 2022

LUGAR	ESTACION				CLASIFICACION VEHICULAR EN PORCIENTO										COORDENADAS					
	KM	TE	SC	TDPA	M	A	B	C2	C3	T3S2	T3S3	T3S2R4	OTROS	A	B	C	K'	D	LATITUD	LONGITUD
T. C. Cárdenas - Paraiso	0.00	3	0	3527	16.7	78.5	0.3	2.3	0.4	1.3	0.3	0.1	0.1	95.2	0.3	4.5	0.080	0.503	18.117680	-93.309818
Libertad	10.00	1	0	2530	35.6	57.8	0.9	1.8	1.6	1.5	0.5	0.2	0.1	93.4	0.9	5.7	0.091	0.505	18.176146	-93.361618

33 CARR: Ramal a Salto del Agua

CLAVE: 00069

RUTA: TAB-CHIS

AÑO: 2022

LUGAR	ESTACION				CLASIFICACION VEHICULAR EN PORCIENTO										COORDENADAS					
	KM	TE	SC	TDPA	M	A	B	C2	C3	T3S2	T3S3	T3S2R4	OTROS	A	B	C	K'	D	LATITUD	LONGITUD
T. C. Villahermosa - Francisco Escárcega	0.00	3	0	1795	7.0	68.7	2.2	2.9	4.8	5.4	3.6	4.9	0.5	75.7	2.2	22.1	0.075	0.540	17.665253	-92.436006
Lim. Edos. Term. Tab. Ppia. Chis.	12.00	0	0																	
Salto del Agua	17.00	1	0	2400	7.4	85.2	0.6	4.1	0.6	1.5	0.5	0.0	0.1	92.6	0.6	6.8	0.089	0.501	17.559572	-92.354077

TABASCO

34 CARR: Ramal a San Antonio

CLAVE: 27003

RUTA: TAB

AÑO: 2022

LUGAR	ESTACION				CLASIFICACION VEHICULAR EN PORCIENTO													COORDENADAS		
	KM	TE	SC	TDPA	M	A	B	C2	C3	T3S2	T3S3	T3S2R4	OTROS	A	B	C	K'	D	LATITUD	LONGITUD
T. C. Villahermosa - Francisco Escárcega	0.00	3	0	1058	14.6	75.1	0.9	2.4	3.9	1.3	0.7	1.0	0.1	89.7	0.9	9.4	0.129	0.502	17.928441	-91.743166
T. Der. Balancán	24.00	1	0	1794	20.8	70.1	0.7	1.9	3.7	1.0	0.7	1.0	0.1	90.9	0.7	8.4	0.124	0.508	17.871994	-91.533311
T. Der. Balancán	24.00	3	0	2461	23.5	71.6	0.4	1.2	1.5	0.5	0.2	0.9	0.2	95.1	0.4	4.5	0.102	0.503	17.872023	-91.522865
El Triunfo	72.00	0	0																	

35 CARR: Ramal a Sánchez Magallanes

CLAVE: 27016

RUTA: TAB

AÑO: 2022

LUGAR	ESTACION				CLASIFICACION VEHICULAR EN PORCIENTO													COORDENADAS		
	KM	TE	SC	TDPA	M	A	B	C2	C3	T3S2	T3S3	T3S2R4	OTROS	A	B	C	K'	D	LATITUD	LONGITUD
T. C. Coatzacoalcos - Villahermosa	0.00	3	0	1850	31.9	60.7	0.5	2.9	1.5	1.6	0.3	0.6	0.0	92.6	0.5	6.9	0.064	0.513	18.074933	-93.878033
Campo Magallanes	13.00	1	0	1557	20.4	70.8	1.4	4.0	1.5	1.3	0.3	0.3	0.0	91.2	1.4	7.4	0.068	0.534	18.163405	-93.905960
Campo Magallanes	13.00	3	0	3757	31.0	54.6	0.9	5.7	0.9	4.0	1.4	0.7	0.8	85.6	0.9	13.5	0.084	0.502	18.173585	-93.905239
Sánchez Magallanes	33.00	1	0	1251	20.6	69.7	1.5	6.9	0.9	0.3	0.1	0.0	0.0	90.3	1.5	8.2	0.101	0.506	18.275059	-93.894248

36 CARR: Ramal a Tamulte de Las Sabanas

CLAVE: 27080

RUTA: TAB

AÑO: 2022

LUGAR	ESTACION				CLASIFICACION VEHICULAR EN PORCIENTO													COORDENADAS		
	KM	TE	SC	TDPA	M	A	B	C2	C3	T3S2	T3S3	T3S2R4	OTROS	A	B	C	K'	D	LATITUD	LONGITUD
T. C. Villahermosa - Cd. del Carmen	0.00	3	0	2924	7.3	88.8	1.5	1.5	0.3	0.2	0.2	0.2	0.0	96.1	1.5	2.4	0.092	0.506	18.200043	-92.824163
Tamulte de Las Sabanas	7.00	0	0																	

37 CARR: Ramal a Tapijulapa

CLAVE: 27200

RUTA: TAB

AÑO: 2022

LUGAR	ESTACION				CLASIFICACION VEHICULAR EN PORCIENTO													COORDENADAS		
	KM	TE	SC	TDPA	M	A	B	C2	C3	T3S2	T3S3	T3S2R4	OTROS	A	B	C	K'	D	LATITUD	LONGITUD
T. C. Playas del Rosario - Teapa	0.00	3	0	3949	28.0	66.8	0.4	1.5	1.3	0.8	0.6	0.3	0.3	94.8	0.4	4.8	0.090	0.514	17.573721	-92.834810
Tapijulapa	20.00	1	0	2086	27.9	65.3	0.6	1.6	1.9	0.6	0.6	0.9	0.6	93.2	0.6	6.2	0.085	0.517	17.458292	-92.786083

38 CARR: Reforma - Dos Bocas

CLAVE: 27200

RUTA: TAB

AÑO: 2022

LUGAR	ESTACION				CLASIFICACION VEHICULAR EN PORCIENTO													COORDENADAS		
	KM	TE	SC	TDPA	M	A	B	C2	C3	T3S2	T3S3	T3S2R4	OTROS	A	B	C	K'	D	LATITUD	LONGITUD
Reforma	0.00	3	1	12860	4.6	85.0	1.9	4.2	1.1	1.7	0.9	0.5	0.1	89.6	1.9	8.5	0.084	0.502	17.978568	-93.127741
Reforma	0.00	3	2	12744	4.6	85.2	1.9	4.1	1.0	1.7	0.9	0.5	0.1	89.8	1.9	8.3	0.100	0.502	17.978898	-93.127802
Paraiso	49.70	0	0																	

TABASCO

38 CARR: Reforma - Dos Bocas

CLAVE: 27200

RUTA: TAB

AÑO: 2022

LUGAR	ESTACION				CLASIFICACION VEHICULAR EN PORCIENTO														COORDENADAS	
	KM	TE	SC	TDPA	M	A	B	C2	C3	T3S2	T3S3	T3S2R4	OTROS	A	B	C	K'	D	LATITUD	LONGITUD
Dos Bocas	53.00	1	1	3220	20.3	60.7	1.8	8.0	1.8	2.8	2.1	1.9	0.6	81.0	1.8	17.2	0.119	0.512	18.424276	-93.207479
Dos Bocas	53.00	1	2	3073	20.2	60.4	1.6	8.1	1.9	3.0	2.1	1.8	0.9	80.6	1.6	17.8	0.089	0.512	18.424281	-93.207598

39 CARR: Reyes Hernández - Villa Aldama

CLAVE: 27119

RUTA: TAB

AÑO: 2022

LUGAR	ESTACION				CLASIFICACION VEHICULAR EN PORCIENTO														COORDENADAS	
	KM	TE	SC	TDPA	M	A	B	C2	C3	T3S2	T3S3	T3S2R4	OTROS	A	B	C	K'	D	LATITUD	LONGITUD
Reyes Hernández	0.00	3	0	6333	27.5	65.5	0.8	2.8	1.4	0.9	0.3	0.6	0.2	93.0	0.8	6.2	0.082	0.527	18.241231	-93.278305
T. C. (Cárdenas - Paraíso) - Carlos Green	9.00	1	0	5597	26.7	66.9	0.9	2.1	0.7	0.9	0.5	1.0	0.3	93.6	0.9	5.5	0.075	0.501	18.239509	-93.342978

40 CARR: Samaria - Amatitán

CLAVE: 27114

RUTA: TAB

AÑO: 2022

LUGAR	ESTACION				CLASIFICACION VEHICULAR EN PORCIENTO														COORDENADAS	
	KM	TE	SC	TDPA	M	A	B	C2	C3	T3S2	T3S3	T3S2R4	OTROS	A	B	C	K'	D	LATITUD	LONGITUD
T. C. Coatzacoalcos - Villahermosa	0.00	3	0	2346	9.7	85.4	0.6	3.4	0.6	0.2	0.0	0.1	0.0	95.1	0.6	4.3	0.106	0.501	18.001772	-93.274224
Cunduacán	17.00	1	0	9206	23.6	74.1	0.4	0.8	0.5	0.2	0.1	0.2	0.1	97.7	0.4	1.9	0.107	0.503	18.054612	-93.190560
Cunduacán	17.00	3	0	4753	30.5	64.8	0.4	1.4	0.3	1.4	0.7	0.2	0.3	95.3	0.4	4.3	0.070	0.507	18.081617	-93.169334
Amatitán	31.40	1	0	6554	22.1	73.3	0.7	1.3	1.0	0.7	0.2	0.7	0.0	95.4	0.7	3.9	0.092	0.522	18.174669	-93.085830

41 CARR: T. C. (Cárdenas - Paraíso) - Carlos Green

CLAVE: 27111

RUTA: TAB

AÑO: 2022

LUGAR	ESTACION				CLASIFICACION VEHICULAR EN PORCIENTO														COORDENADAS	
	KM	TE	SC	TDPA	M	A	B	C2	C3	T3S2	T3S3	T3S2R4	OTROS	A	B	C	K'	D	LATITUD	LONGITUD
T. C. Cárdenas - Paraíso	0.00	3	0	528	19.1	69.0	1.8	2.7	2.2	1.6	1.3	1.6	0.7	88.1	1.8	10.1	0.117	0.511	18.107813	-93.321123
T. Der. Reyes Hernández	21.50	3	0	1158	31.6	60.2	1.0	3.7	0.9	0.7	0.7	0.7	0.5	91.8	1.0	7.2	0.090	0.511	18.180747	-93.395719
Carlos Green	30.70	1	0	1988	30.6	63.5	0.6	1.6	1.7	0.7	0.4	0.5	0.4	94.1	0.6	5.3	0.086	0.505	18.233227	-93.446616

42 CARR: Tierra Nueva - Francisco Rueda

CLAVE: 27110

RUTA: TAB

AÑO: 2022

LUGAR	ESTACION				CLASIFICACION VEHICULAR EN PORCIENTO														COORDENADAS	
	KM	TE	SC	TDPA	M	A	B	C2	C3	T3S2	T3S3	T3S2R4	OTROS	A	B	C	K'	D	LATITUD	LONGITUD
Tierra Nueva	0.00	3	0	3227	37.9	58.1	0.9	1.4	0.4	0.9	0.1	0.3	0.0	96.0	0.9	3.1	0.083	0.504	17.799164	-93.451803
Ocupan	14.00	3	0	1412	28.2	63.6	2.0	3.3	0.2	2.0	0.2	0.5	0.0	91.8	2.0	6.2	0.093	0.523	17.834738	-93.514692
T. Izq. Encomendadero	31.00	1	0	1363	39.4	55.9	0.4	1.4	0.2	2.0	0.5	0.2	0.0	95.3	0.4	4.3	0.127	0.503	17.794484	-93.627195
T. Izq. Encomendadero	31.00	3	0	1292	36.7	56.9	0.3	3.1	0.4	1.7	0.4	0.5	0.0	93.6	0.3	6.1	0.110	0.509	17.791897	-93.629305

TABASCO

42 CARR : Tierra Nueva - Francisco Rueda

CLAVE: 27110

RUTA: TAB

AÑO : 2022

LUGAR	ESTACION				CLASIFICACION VEHICULAR EN PORCIENTO														COORDENADAS	
	KM	TE	SC	TDPA	M	A	B	C2	C3	T3S2	T3S3	T3S2R4	OTROS	A	B	C	K'	D	LATITUD	LONGITUD
Francisco Rueda	71.00	1	0	692	39.3	55.7	0.6	2.1	1.6	0.2	0.2	0.3	0.0	95.0	0.6	4.4	0.098	0.508	17.835776	-93.926798

43 CARR : Tulipán - Cunduacán

CLAVE: 27115

RUTA: TAB

AÑO : 2022

LUGAR	ESTACION				CLASIFICACION VEHICULAR EN PORCIENTO														COORDENADAS	
	KM	TE	SC	TDPA	M	A	B	C2	C3	T3S2	T3S3	T3S2R4	OTROS	A	B	C	K'	D	LATITUD	LONGITUD
T. C. Malpaso - El Bellote	0.00	3	0	6528	26.4	69.1	0.7	1.4	0.8	0.8	0.1	0.6	0.1	95.5	0.7	3.8	0.086	0.503	18.112519	-93.290624
T. Der. Mote	14.00	1	0	4280	17.6	76.4	1.1	1.6	1.1	1.0	0.6	0.4	0.2	94.0	1.1	4.9	0.083	0.500	18.061828	-93.213459
Cunduacán	15.00	1	0	5546	25.2	70.4	0.6	2.1	0.5	0.5	0.1	0.5	0.1	95.6	0.6	3.8	0.102	0.529	18.057251	-93.200652

44 CARR : Villahermosa - Comalcalco

CLAVE: 27021

RUTA: TAB

AÑO : 2022

LUGAR	ESTACION				CLASIFICACION VEHICULAR EN PORCIENTO														COORDENADAS	
	KM	TE	SC	TDPA	M	A	B	C2	C3	T3S2	T3S3	T3S2R4	OTROS	A	B	C	K'	D	LATITUD	LONGITUD
T. C. Villahermosa - Cd. del Carmen	0.00	3	1	22023	4.7	92.1	0.2	2.0	0.2	0.1	0.2	0.3	0.2	96.8	0.2	3.0	0.090	0.509	18.034637	-92.930516
T. C. Villahermosa - Cd. del Carmen	0.00	3	2	22835	4.7	92.1	0.2	2.0	0.2	0.1	0.2	0.3	0.2	96.8	0.2	3.0	0.120	0.509	18.034617	-92.930614
Saloya	13.00	1	0	17548	10.7	86.7	0.2	0.7	0.4	0.3	0.2	0.4	0.4	97.4	0.2	2.4	0.104	0.501	18.089242	-92.939396
Saloya	13.00	3	0	15277	10.9	84.7	0.4	1.0	0.7	1.0	0.5	0.4	0.4	95.6	0.4	4.0	0.098	0.500	18.101156	-92.950149
Nacajuca	21.00	1	0	13391	15.2	80.7	0.6	1.2	0.8	0.6	0.4	0.2	0.3	95.9	0.6	3.5	0.107	0.528	18.152299	-93.011241
Nacajuca	21.00	3	1	7277	23.0	74.9	0.3	0.5	0.4	0.2	0.2	0.3	0.2	97.9	0.3	1.8	0.088	0.507	18.178074	-93.028093
Nacajuca	21.00	3	2	7084	21.8	75.5	0.2	0.7	0.6	0.3	0.1	0.3	0.5	97.3	0.2	2.5	0.086	0.507	18.177997	-93.028077
Jalpa de Méndez	27.00	3	0	7084	19.9	77.2	0.4	0.9	0.5	0.3	0.3	0.2	0.3	97.1	0.4	2.5	0.097	0.514	18.180612	-93.086989
Cupilco	40.00	1	0	4817	25.7	69.1	0.6	1.7	1.2	0.8	0.2	0.5	0.2	94.8	0.6	4.6	0.088	0.527	18.233710	-93.120676
Cupilco	40.00	3	0	5501	30.1	63.7	0.9	1.3	1.0	0.9	0.6	0.7	0.8	93.8	0.9	5.3	0.088	0.504	18.244932	-93.129383
Chichicapa	46.50	1	0	5164	18.1	76.3	0.6	2.9	1.0	0.4	0.2	0.3	0.2	94.4	0.6	5.0	0.092	0.503	18.261519	-93.169529
T. C. Malpaso - El Bellote	50.70	1	0	13523	11.7	76.7	1.0	3.8	2.2	1.8	0.7	1.5	0.6	88.4	1.0	10.6	0.079	0.538	18.247893	-93.202732

45 CARR : Villahermosa - Luis Gil Pérez

CLAVE: 27206

RUTA: TAB

AÑO : 2022

LUGAR	ESTACION				CLASIFICACION VEHICULAR EN PORCIENTO														COORDENADAS	
	KM	TE	SC	TDPA	M	A	B	C2	C3	T3S2	T3S3	T3S2R4	OTROS	A	B	C	K'	D	LATITUD	LONGITUD
Villahermosa	0.00	3	0	14221	9.0	87.6	0.1	1.9	0.3	0.4	0.3	0.3	0.1	96.6	0.1	3.3	0.079	0.519	17.943616	-92.978549
Luis Gil Pérez	22.00	1	0	4569	30.3	59.8	1.3	2.4	1.4	2.3	0.9	1.4	0.2	90.1	1.3	8.6	0.088	0.506	17.886743	-93.070327

TABASCO

46 CARR: Villahermosa - T. C. (P. de Cunduacán - Estación Juárez)

CLAVE: 27106

RUTA: TAB

AÑO: 2022

LUGAR	ESTACION				CLASIFICACION VEHICULAR EN PORCIENTO													COORDENADAS		
	KM	TE	SC	TDPA	M	A	B	C2	C3	T3S2	T3S3	T3S2R4	OTROS	A	B	C	K'	D	LATITUD	LONGITUD
Villahermosa	0.00	3	0	16230	8.0	86.2	0.3	2.9	0.4	1.2	0.5	0.2	0.3	94.2	0.3	5.5	0.095	0.509	17.959481	-92.981661
San Joaquín	4.00	3	0	5964	12.1	84.4	0.2	1.8	0.6	0.4	0.2	0.2	0.1	96.5	0.2	3.3	0.090	0.512	17.928378	-92.984280
T. Izq. Luis Gil Pérez	19.00	3	0	4989	22.6	72.8	0.3	1.4	1.1	0.9	0.2	0.6	0.1	95.4	0.3	4.3	0.080	0.502	17.896362	-93.066450
T. C. Paso de Cunduacán - Estación Juárez	25.20	1	0	4753	20.5	73.8	0.8	1.4	1.1	0.9	0.5	0.8	0.2	94.3	0.8	4.9	0.106	0.524	17.908386	-93.126899

47 CARR: Zapatero - T. C. (Jalapa - Jonuta)

CLAVE: 00061

RUTA: CHIS-TAB

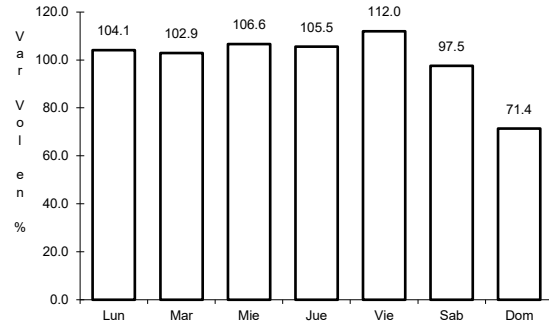
AÑO: 2022

LUGAR	ESTACION				CLASIFICACION VEHICULAR EN PORCIENTO													COORDENADAS		
	KM	TE	SC	TDPA	M	A	B	C2	C3	T3S2	T3S3	T3S2R4	OTROS	A	B	C	K'	D	LATITUD	LONGITUD
T. C. Villahermosa - Francisco Escárcega	0.00	3	0	1553	18.6	71.7	0.2	5.0	1.9	1.9	0.3	0.2	0.2	90.3	0.2	9.5	0.104	0.513	17.698994	-92.131890
Lim. Edos. Term. Chis. Ppia. Tab.	16.00	0	0																	
T. C. Jalapa - Jonuta	41.00	1	0	1508	15.4	77.9	0.2	4.6	1.4	0.2	0.2	0.1	0.0	93.3	0.2	6.5	0.086	0.503	18.029245	-92.157804

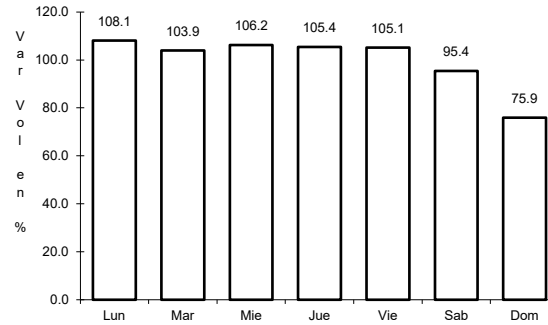
1 CARR: Coatzacoalcos - Villahermosa

CLAVE: 00528

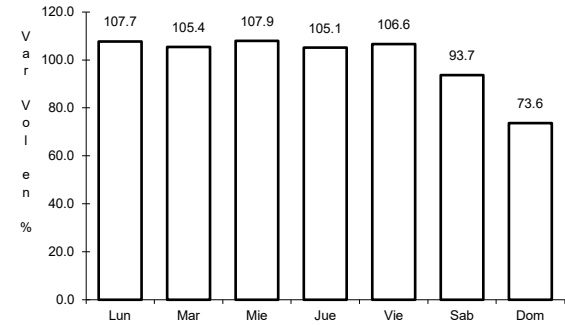
RUTA: MEX-180



Km: 3.00 Tipo: 1 Sent: 0



Km: 171.15 Tipo: 1 Sent: 1

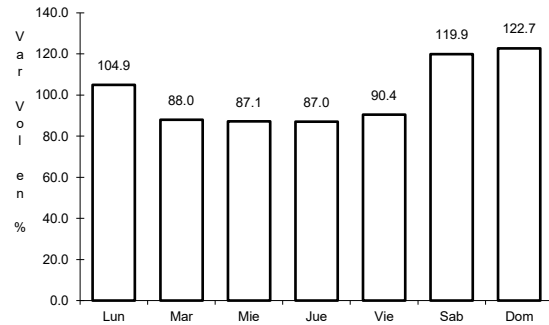


Km: 171.15 Tipo: 1 Sent: 2

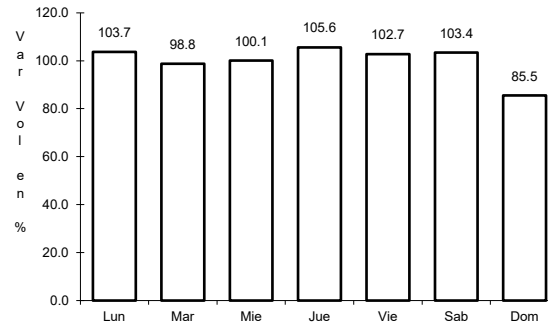
2 CARR: El Suspiro - Tenosique

CLAVE: 00276

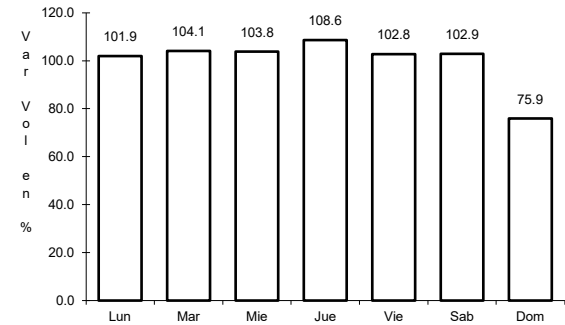
RUTA: MEX-203



Km: 0.00 Tipo: 3 Sent: 0



Km: 32.60 Tipo: 1 Sent: 0

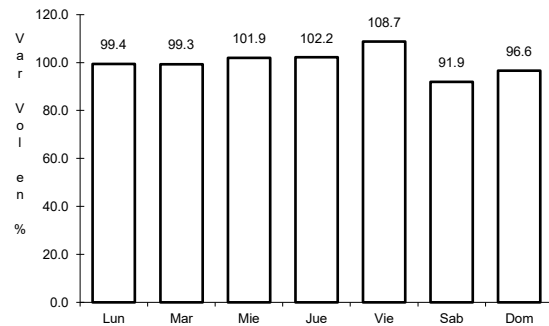


Km: 53.00 Tipo: 3 Sent: 0

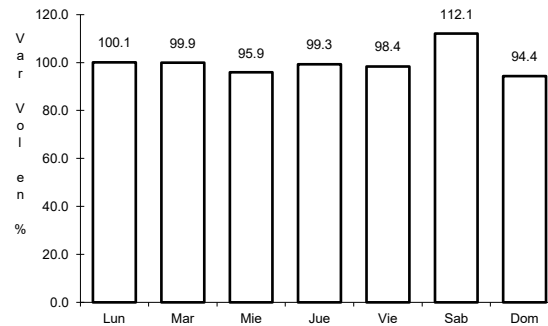
3 CARR: Malpaso - El Bellote

CLAVE: 00137

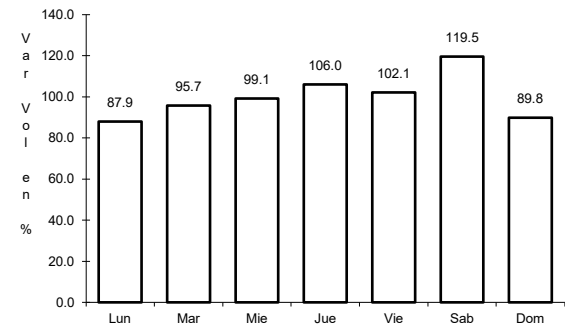
RUTA: MEX-187



Km: 70.12 Tipo: 1 Sent: 0



Km: 134.70 Tipo: 3 Sent: 0

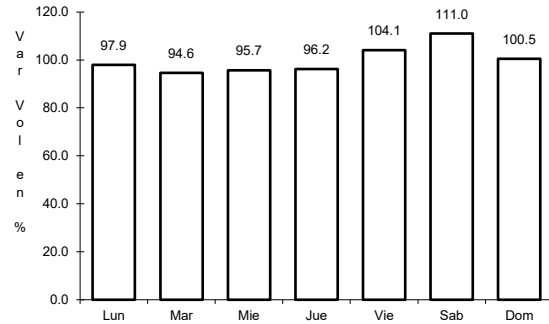


Km: 182.00 Tipo: 3 Sent: 0

4 CARR: Tenosique - El Ceibo

CLAVE:

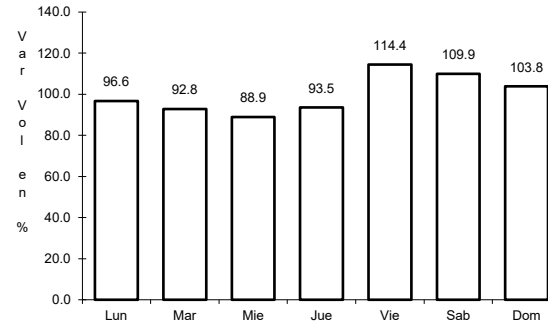
ruta: MEX-203



Km: 0.00

Tipo: 3

Sent: 0



Km: 58.00

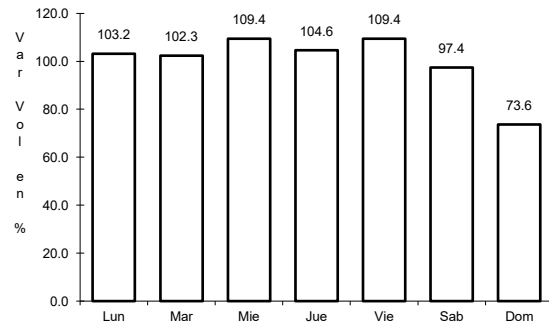
Tipo: 1

Sent: 0

5 CARR: Villahermosa - Cd. del Carmen

CLAVE: 00064

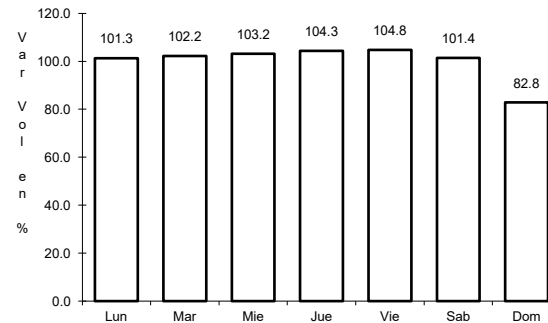
ruta: MEX-180



Km: 4.30

Tipo: 3

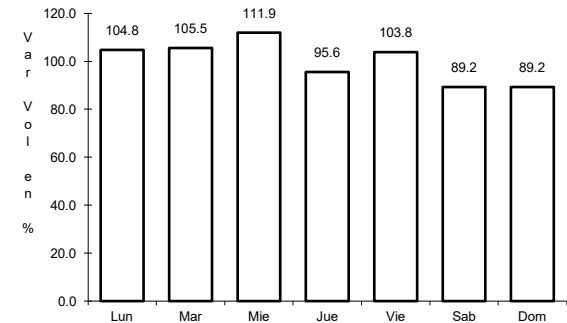
Sent: 1



Km: 4.30

Tipo: 3

Sent: 2



Km: 162.41

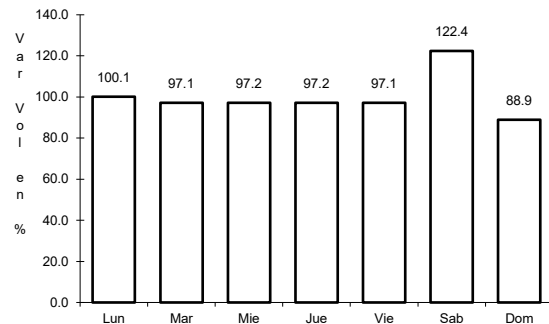
Tipo: 1

Sent: 0

6 CARR: Villahermosa - Escopetazo

CLAVE: 00104

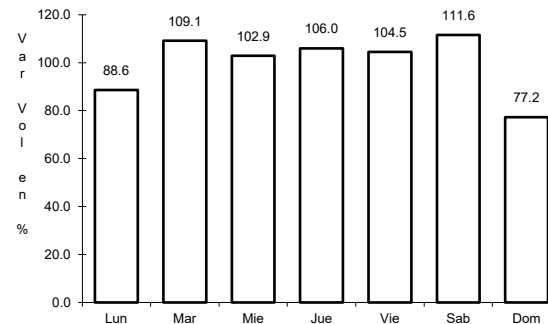
ruta: MEX-195



Km: 0.00

Tipo: 3

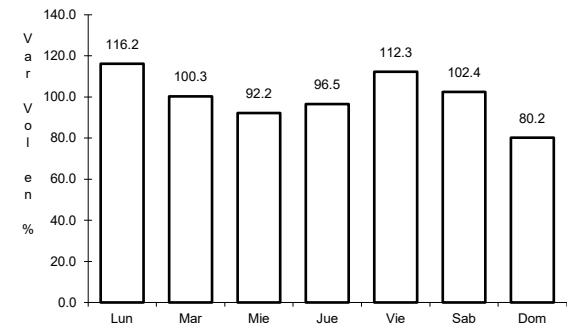
Sent: 1



Km: 0.00

Tipo: 3

Sent: 2



Km: 259.00

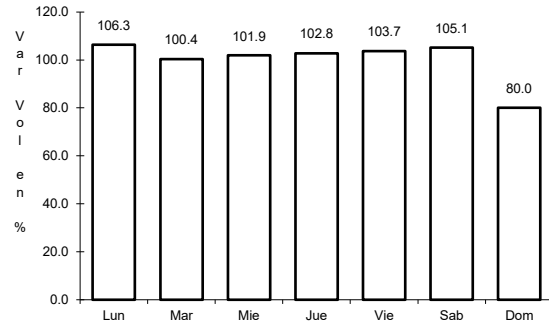
Tipo: 1

Sent: 0

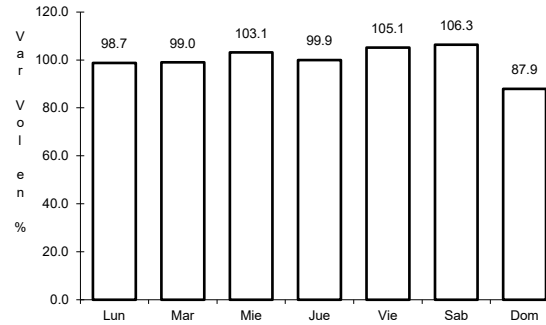
7 CARR: Villahermosa - Francisco Escárcega

CLAVE: 00092

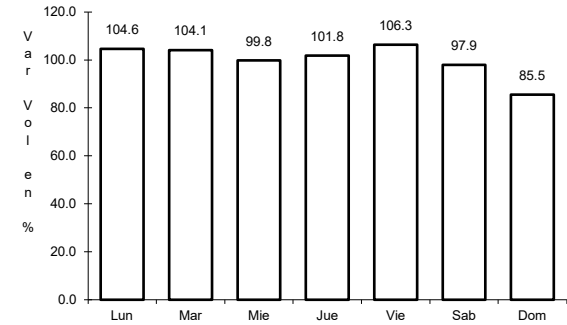
ruta: MEX-186



Km: 0.00 Tipo: 3 Sent: 1



Km: 0.00 Tipo: 3 Sent: 2

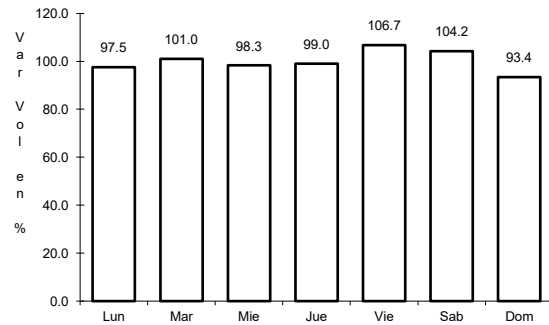


Km: 297.04 Tipo: 1 Sent: 0

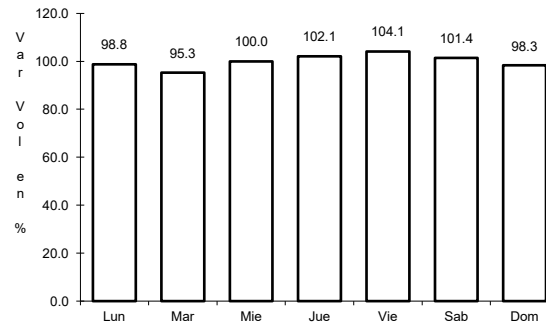
8 CARR: Ent. Agua Dulce - Cárdenas (Cuota)

CLAVE: 00010

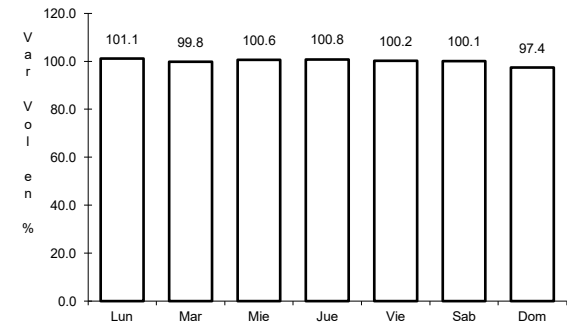
ruta: MEX-180D



Km: 69.50 Tipo: 1 Sent: 1



Km: 69.50 Tipo: 1 Sent: 2

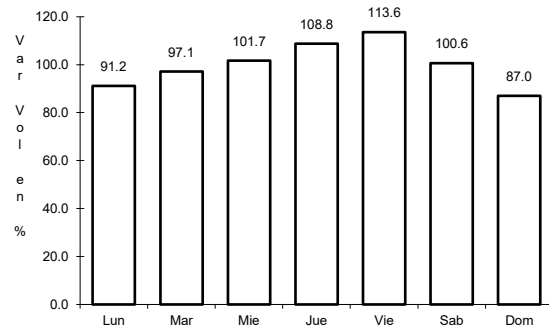


Km: 69.50 Tipo: 3 Sent: 1

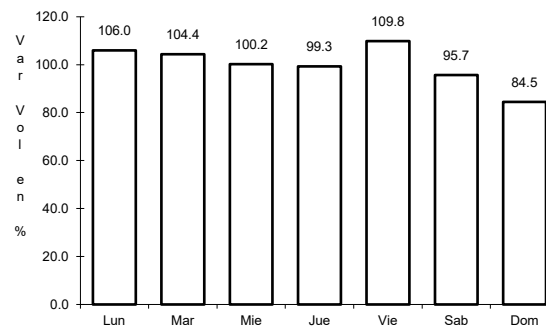
9 CARR: Las Choapas - Ocozocoautla (Cuota)

CLAVE: 00077

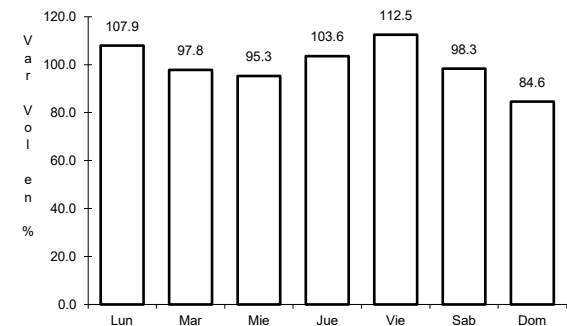
ruta: MEX-187D



Km: 0.00 Tipo: 3 Sent: 0



Km: 123.79 Tipo: 1 Sent: 0

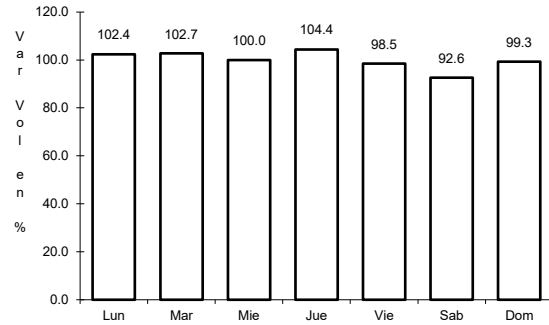


Km: 197.50 Tipo: 1 Sent: 0

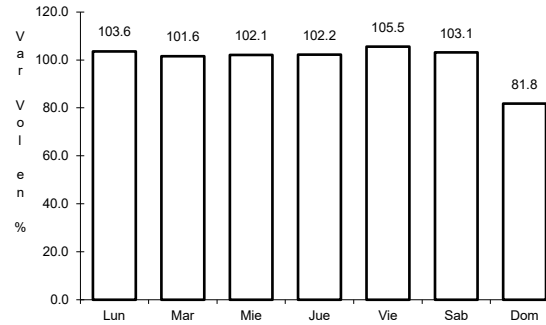
10 CARR: Libramiento de Villahermosa (Cuota)

CLAVE:

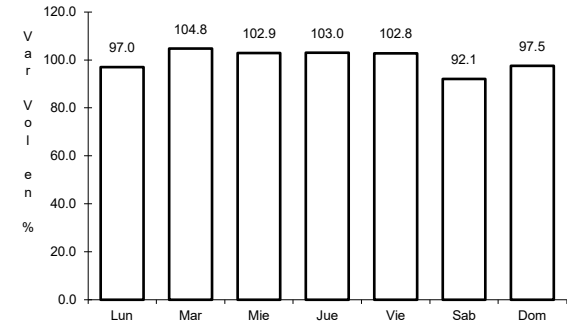
ruta: MEX-180D



Km: 0.00 Tipo: 3 Sent: 1



Km: 0.00 Tipo: 3 Sent: 2

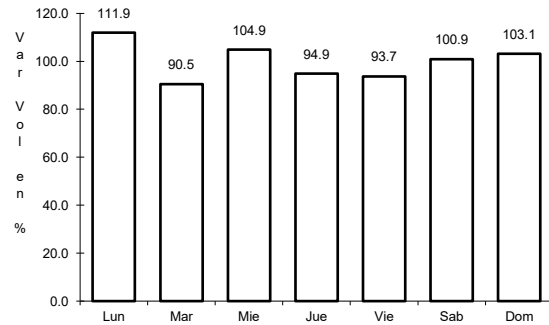


Km: 21.70 Tipo: 3 Sent: 1

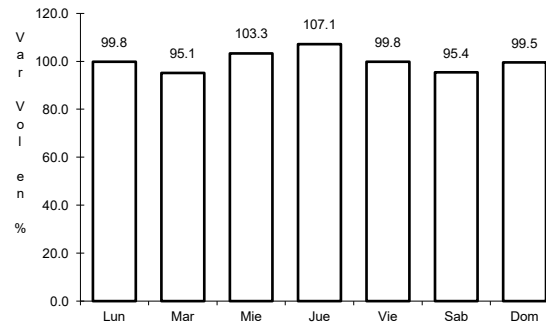
11 CARR: Benito Juárez - Agua Dulce

CLAVE: 00202

ruta: TAB-VER



Km: 0.00 Tipo: 3 Sent: 0

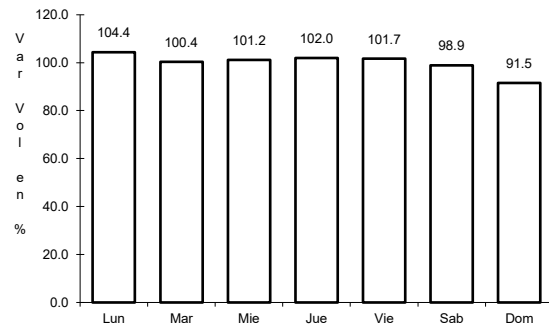


Km: 16.80 Tipo: 1 Sent: 0

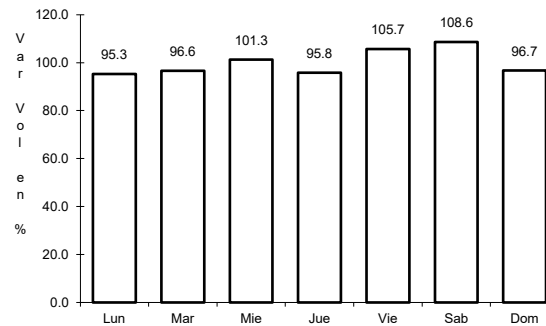
12 CARR: Benito Juárez - Tepetitán

CLAVE: 27204

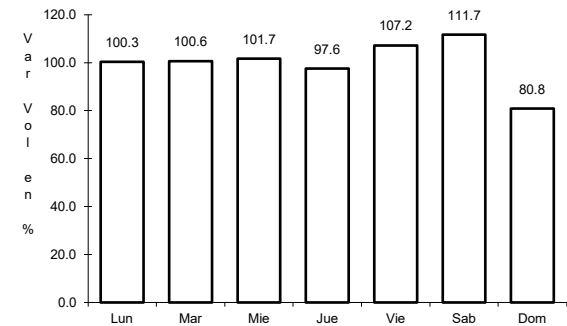
ruta: TAB



Km: 1.50 Tipo: 3 Sent: 0



Km: 18.50 Tipo: 1 Sent: 0

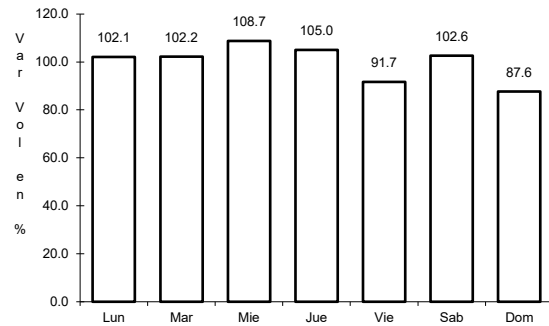


Km: 20.00 Tipo: 1 Sent: 0

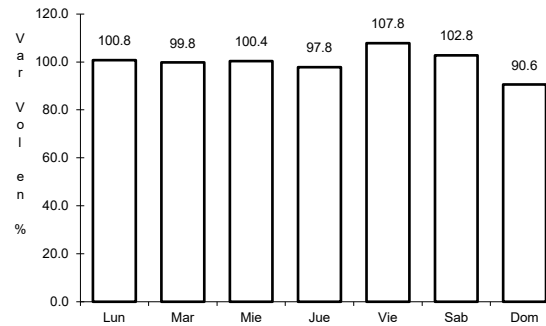
13 CARR: Cacaos - La Granja

CLAVE: 27002

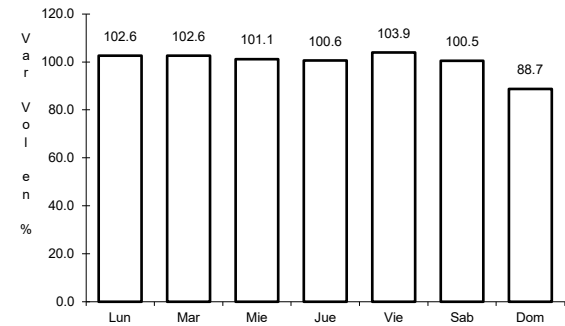
RUTA: TAB



Km: 0.00 Tipo: 3 Sent: 0



Km: 16.00 Tipo: 3 Sent: 0

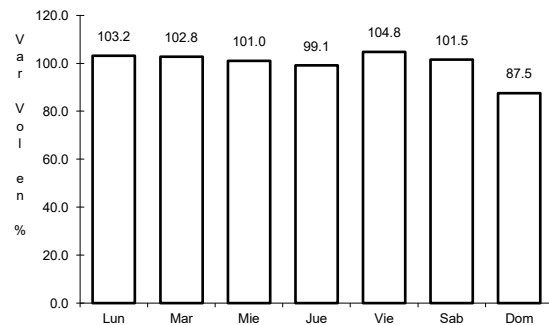


Km: 39.00 Tipo: 1 Sent: 0

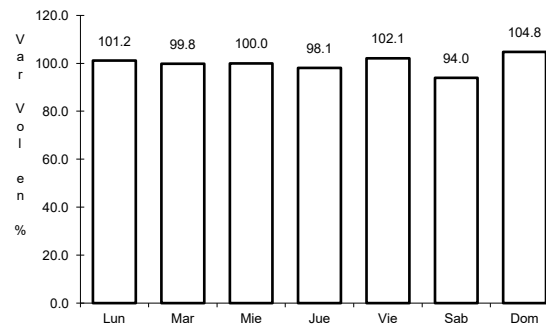
14 CARR: Cárdenas - Paraíso

CLAVE: 27117

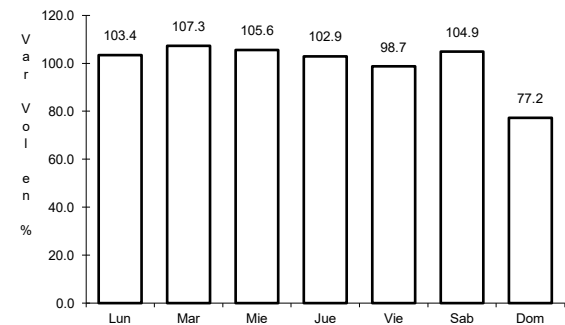
RUTA: TAB



Km: 0.00 Tipo: 3 Sent: 0



Km: 22.00 Tipo: 1 Sent: 0

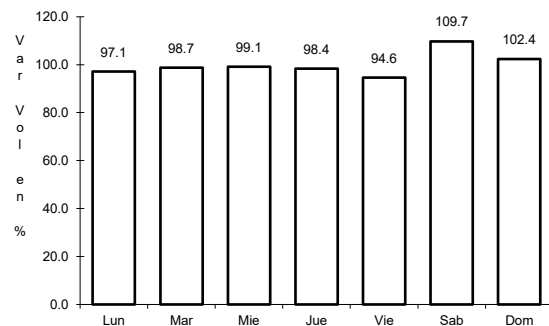


Km: 52.00 Tipo: 1 Sent: 0

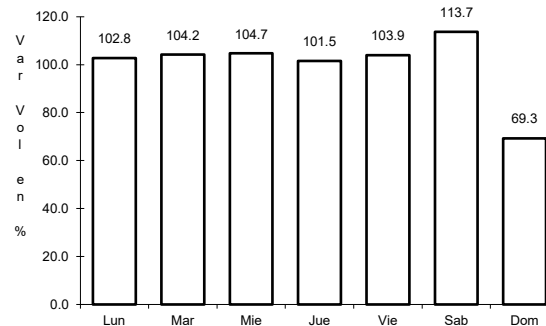
15 CARR: Chichicapa - Ent. La Libertad

CLAVE: 27100

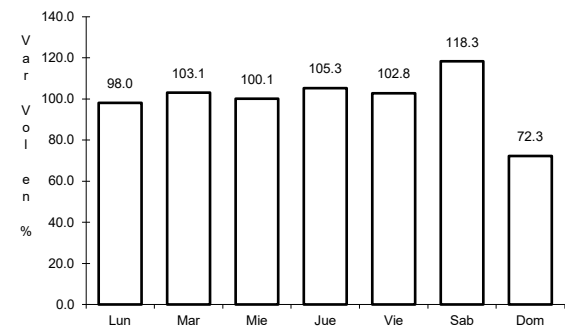
RUTA: TAB



Km: 0.00 Tipo: 3 Sent: 0



Km: 10.00 Tipo: 3 Sent: 0

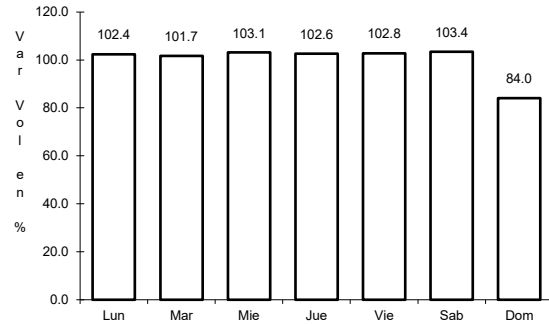


Km: 18.00 Tipo: 1 Sent: 0

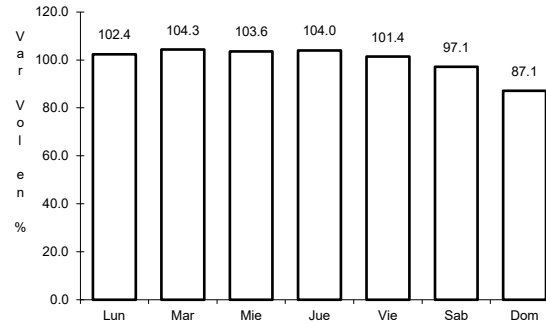
16 CARR: Comalcalco - El Golpe

CLAVE: 27102

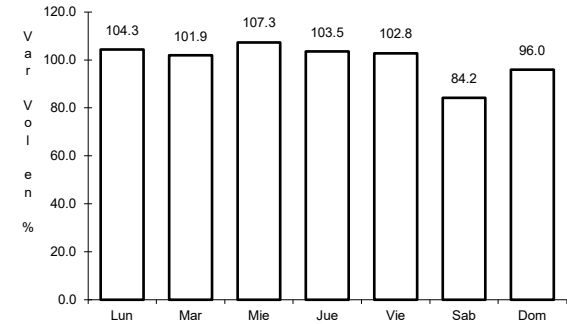
RUTA: TAB



Km: 0.00 Tipo: 3 Sent: 0



Km: 15.00 Tipo: 1 Sent: 0

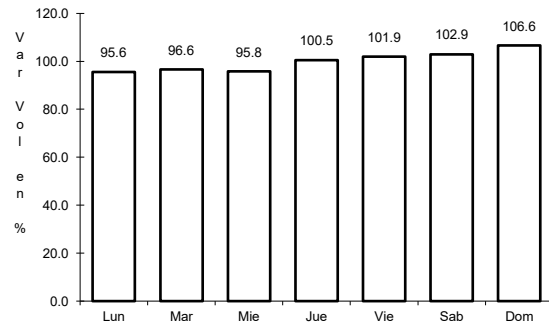


Km: 51.60 Tipo: 1 Sent: 0

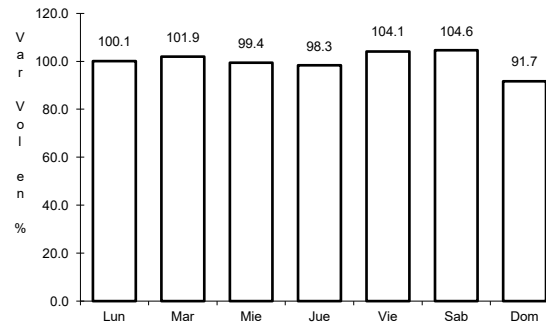
17 CARR: El Bellote - Santa Cruz

CLAVE: 27105

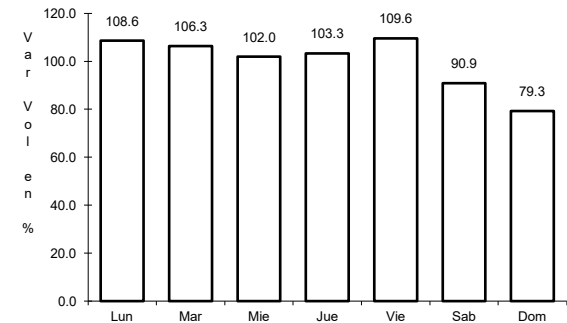
RUTA: TAB



Km: 0.00 Tipo: 3 Sent: 0



Km: 35.00 Tipo: 1 Sent: 0

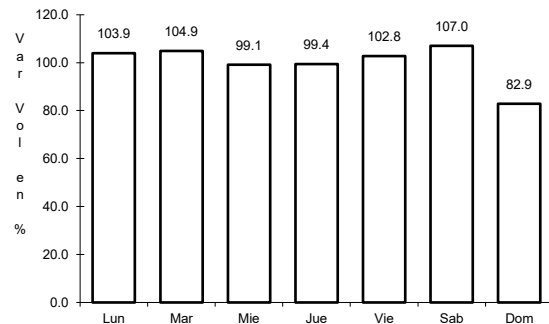


Km: 40.00 Tipo: 1 Sent: 0

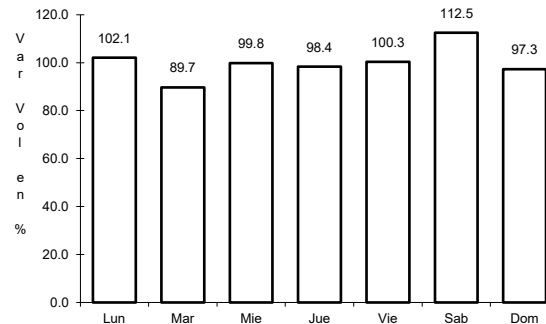
18 CARR: Ent. Emiliano Zapata - La Libertad

CLAVE: 00062

RUTA: CHIS-TAB



Km: 0.00 Tipo: 3 Sent: 0

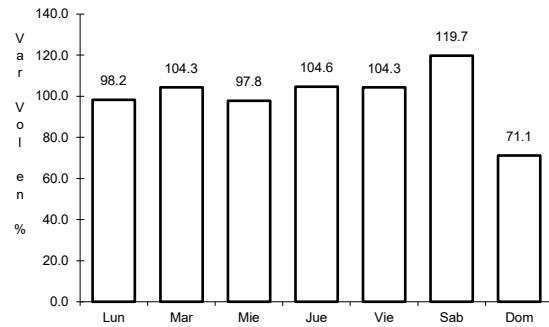


Km: 10.00 Tipo: 1 Sent: 0

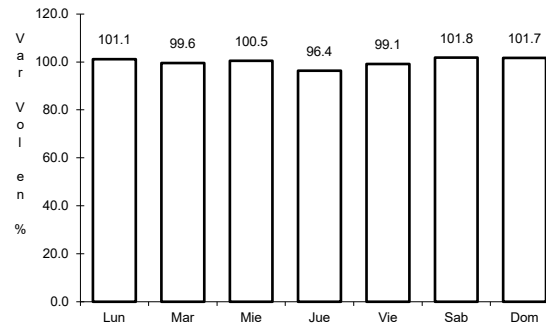
19 CARR: Estación Macuspana - Vernet

CLAVE: 27091

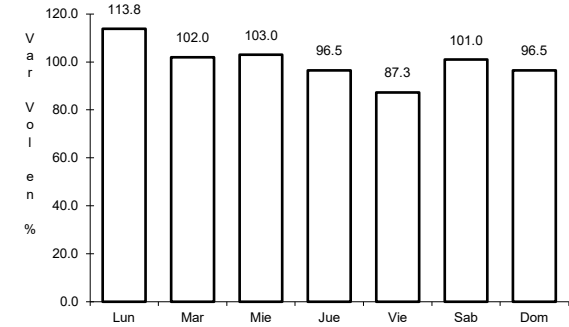
ruta: TAB-041



Km: 11.00 Tipo: 1 Sent: 0



Km: 20.50 Tipo: 3 Sent: 0

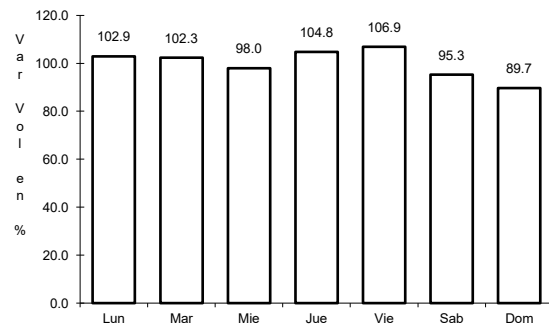


Km: 32.50 Tipo: 1 Sent: 0

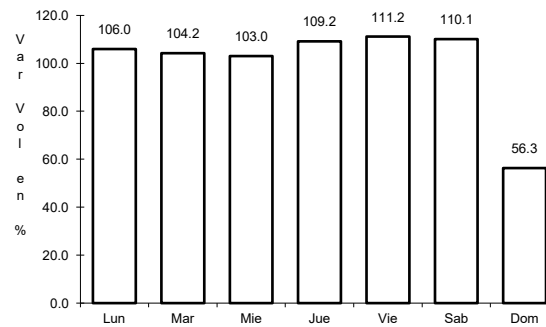
20 CARR: Frontera - T. C. (Jalapa - Jonuta)

CLAVE: 27081

ruta: TAB



Km: 1.00 Tipo: 3 Sent: 0

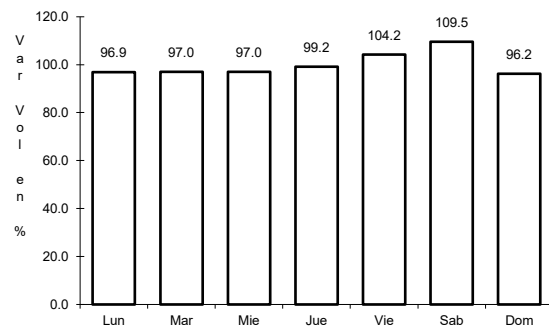


Km: 123.00 Tipo: 1 Sent: 0

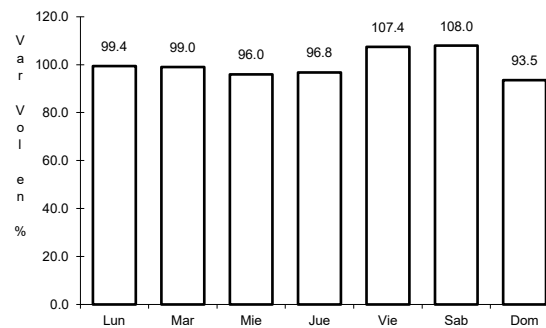
21 CARR: Gregorio Méndez Magaña - Reforma de Ocampo

CLAVE: 00103

ruta: CHIS



Km: 0.00 Tipo: 3 Sent: 0

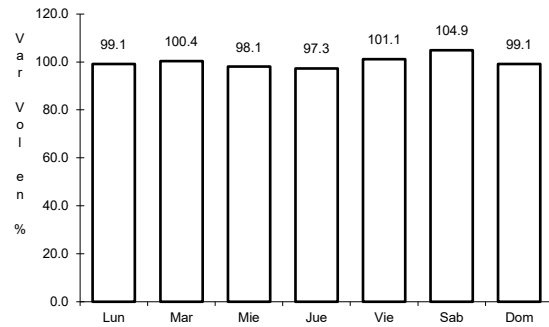


Km: 21.00 Tipo: 1 Sent: 0

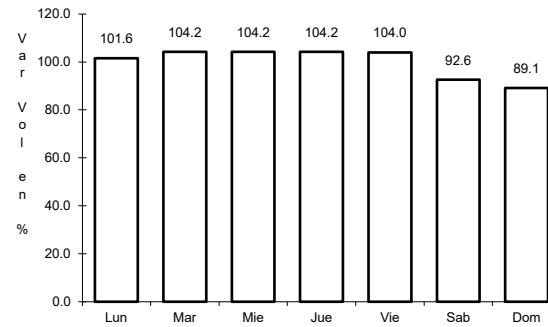
22 CARR: Jalapa - Jonuta

CLAVE: 27107

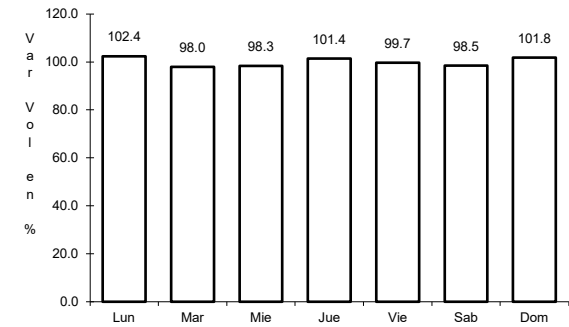
RUTA: TAB



Km: 0.00 Tipo: 3 Sent: 0



Km: 39.00 Tipo: 1 Sent: 0

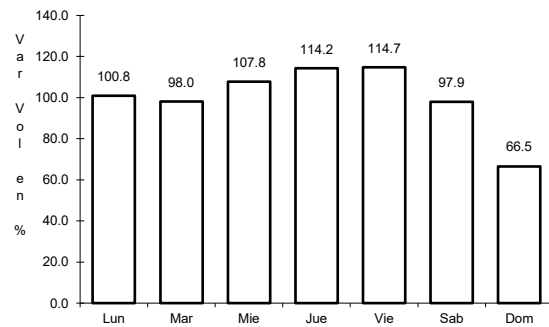


Km: 97.50 Tipo: 1 Sent: 0

23 CARR: Libramiento Sur de Comalcalco

CLAVE:

RUTA: TAB

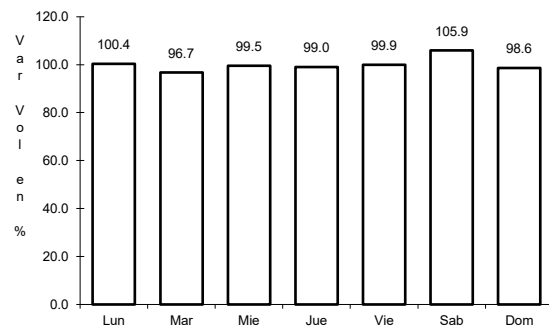


Km: 0.00 Tipo: 3 Sent: 0

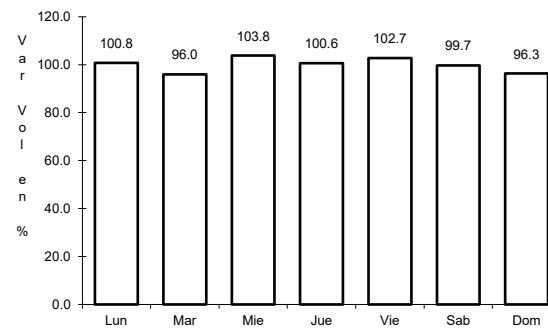
24 CARR: Nicolás Bravo - T. C. (El Bellote - Santa Cruz)

CLAVE: 27010

RUTA: TAB



Km: 0.00 Tipo: 3 Sent: 0

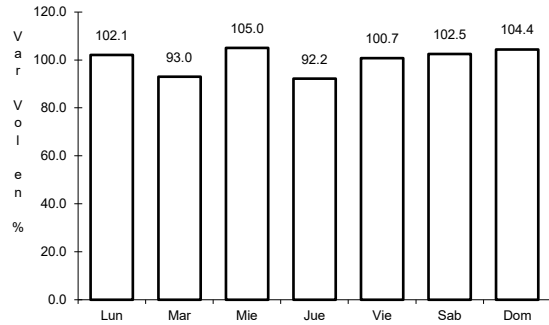


Km: 22.00 Tipo: 1 Sent: 0

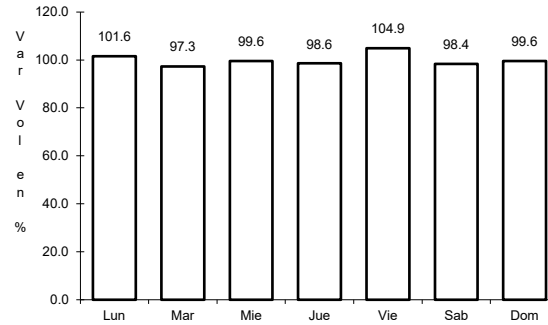
25 CARR: Pailebot - Cuauhtemotzin

CLAVE: 27112

RUTA: TAB



Km: 0.00 Tipo: 3 Sent: 0

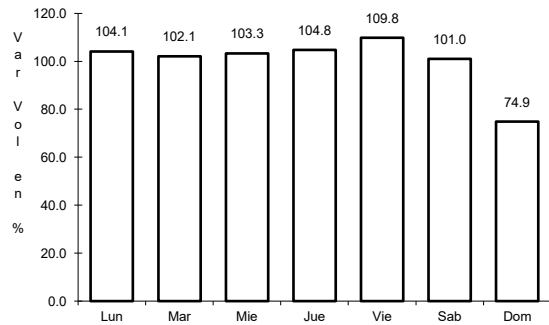


Km: 23.00 Tipo: 1 Sent: 0

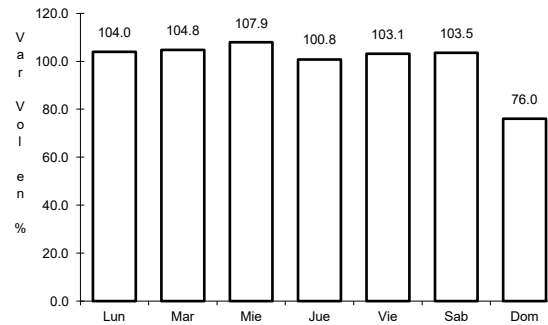
26 CARR: Paraíso - El Limón

CLAVE: 27108

RUTA: TAB



Km: 0.00 Tipo: 3 Sent: 0

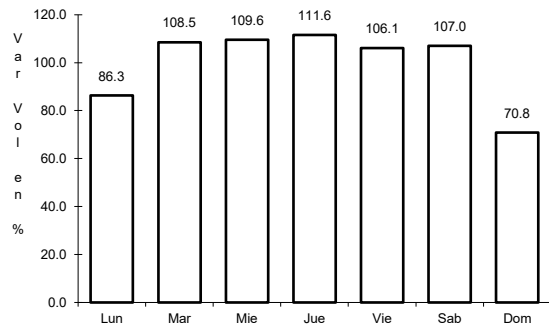


Km: 6.00 Tipo: 1 Sent: 0

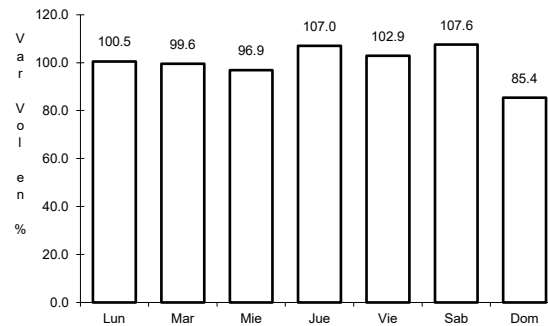
27 CARR: Paso de Cunduacán - Estación Juárez

CLAVE: 00588

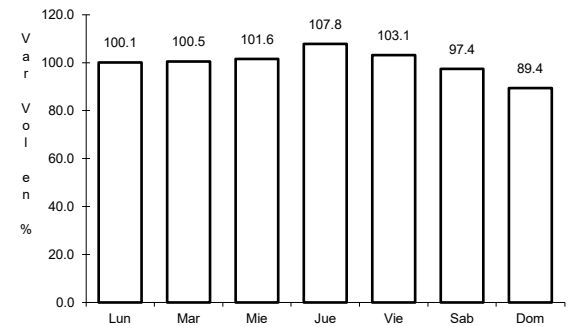
RUTA: TAB-CHIS



Km: 0.00 Tipo: 3 Sent: 0



Km: 18.00 Tipo: 3 Sent: 0

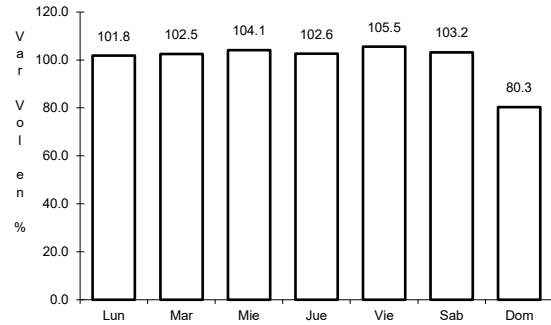


Km: 57.80 Tipo: 1 Sent: 0

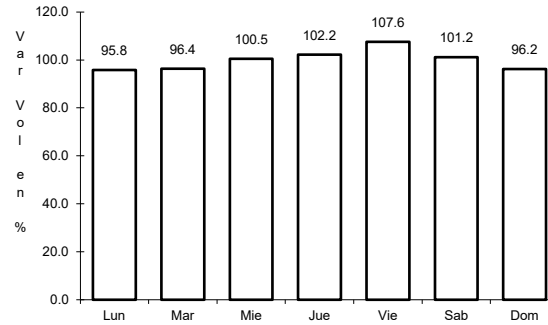
28 CARR: Playas del Rosario - Teapa

CLAVE: 27203

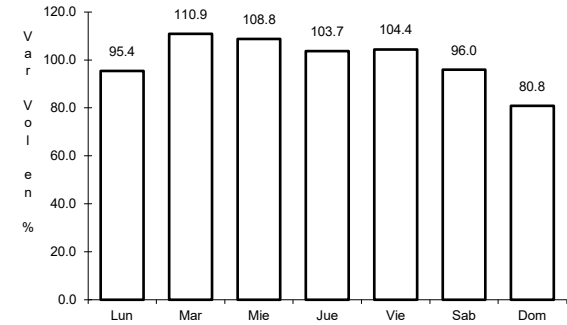
ruta: TAB-001



Km: 0.00 Tipo: 3 Sent: 1



Km: 0.00 Tipo: 3 Sent: 2

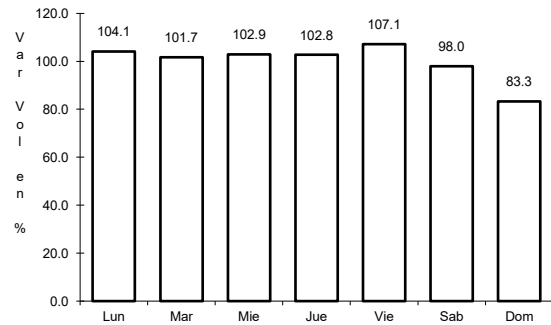


Km: 54.00 Tipo: 1 Sent: 0

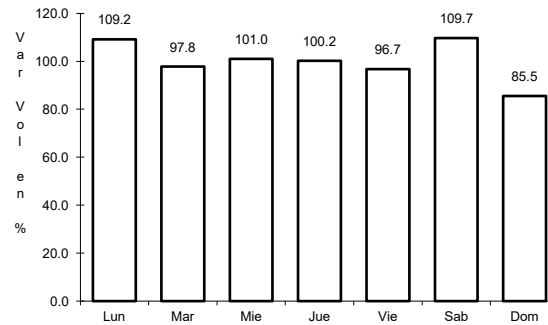
29 CARR: Ramal a Balancan

CLAVE: 27078

ruta: TAB



Km: 0.00 Tipo: 3 Sent: 0

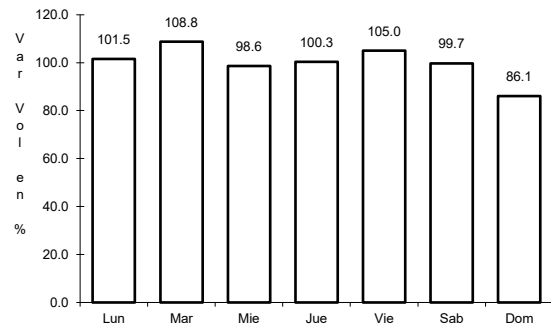


Km: 24.00 Tipo: 1 Sent: 0

30 CARR: Ramal a La Venta

CLAVE: 27078

ruta: TAB

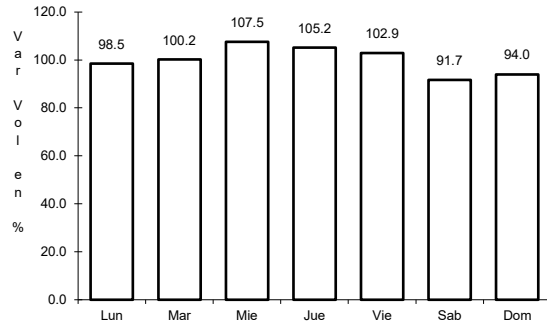


Km: 0.00 Tipo: 3 Sent: 0

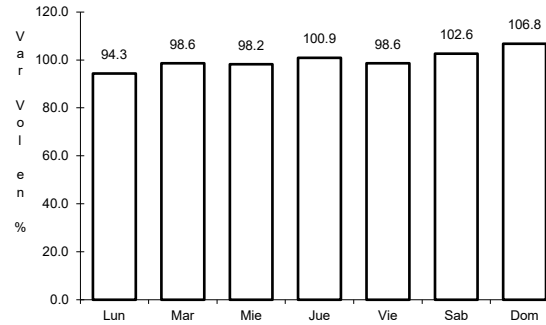
31 CARR: Ramal a Lázaro Cárdenas

CLAVE: 27208

ruta: TAB



Km: 0.00 Tipo: 3 Sent: 0

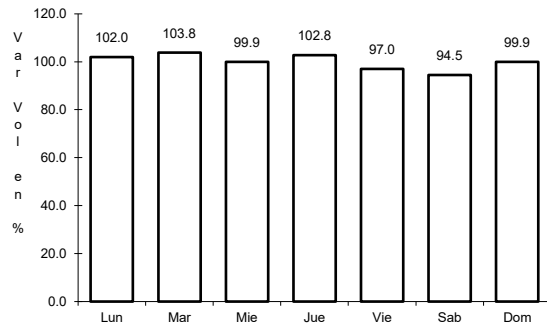


Km: 14.00 Tipo: 1 Sent: 0

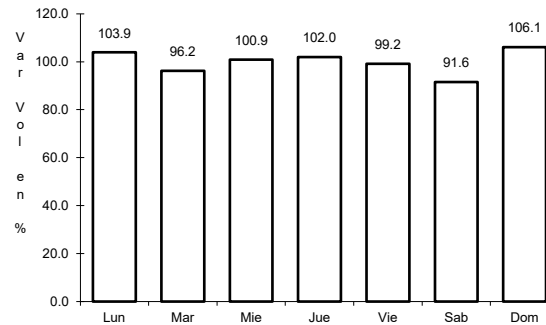
32 CARR: Ramal a Libertad

CLAVE: 27205

ruta: TAB



Km: 0.00 Tipo: 3 Sent: 0

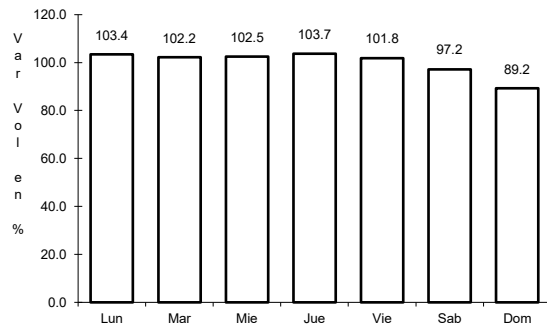


Km: 10.00 Tipo: 1 Sent: 0

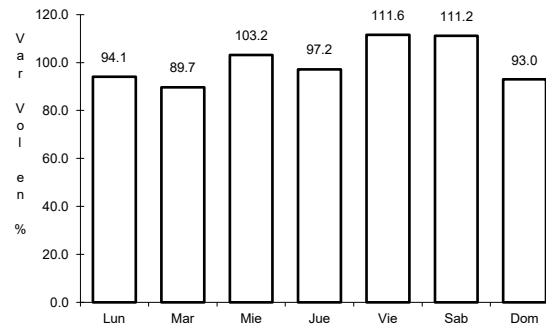
33 CARR: Ramal a Salto del Agua

CLAVE: 00069

ruta: TAB-CHIS



Km: 0.00 Tipo: 3 Sent: 0

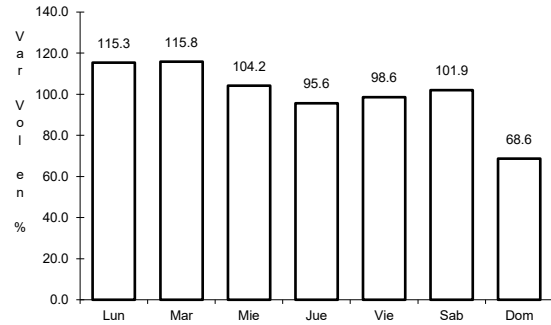


Km: 17.00 Tipo: 1 Sent: 0

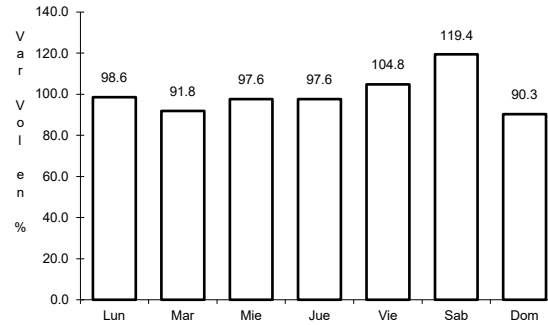
34 CARR: Ramal a San Antonio

CLAVE: 27003

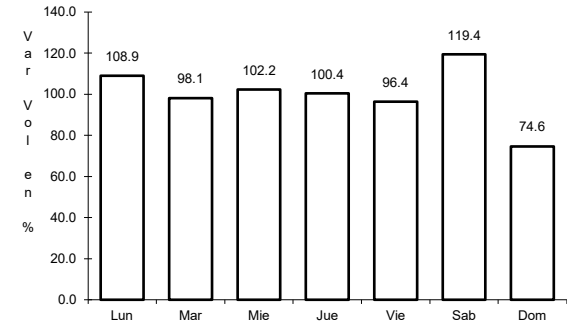
RUTA: TAB



Km: 0.00 Tipo: 3 Sent: 0



Km: 24.00 Tipo: 1 Sent: 0

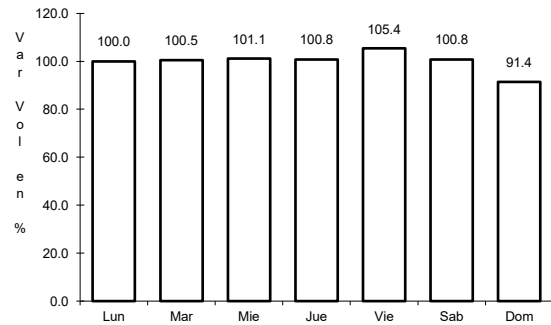


Km: 24.00 Tipo: 3 Sent: 0

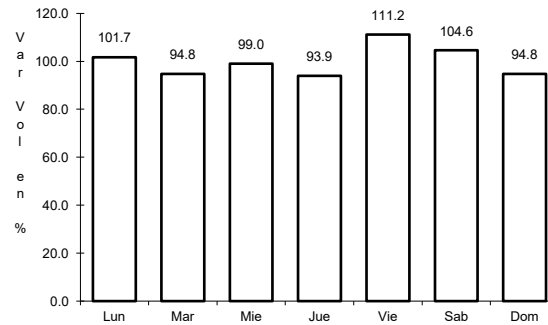
35 CARR: Ramal a Sánchez Magallanes

CLAVE: 27016

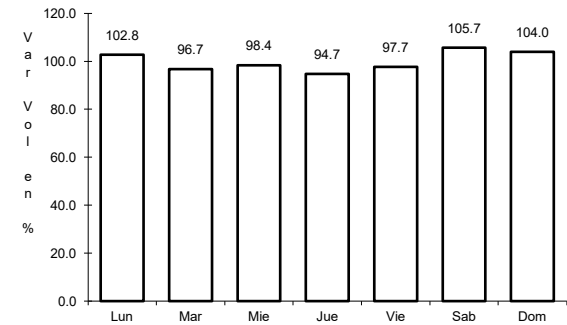
RUTA: TAB



Km: 0.00 Tipo: 3 Sent: 0



Km: 13.00 Tipo: 1 Sent: 0

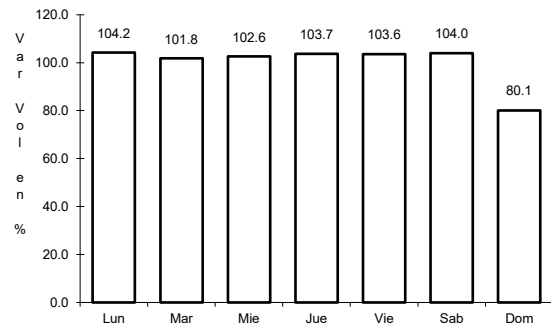


Km: 33.00 Tipo: 1 Sent: 0

36 CARR: Ramal a Tamulte de Las Sabanas

CLAVE: 27080

RUTA: TAB

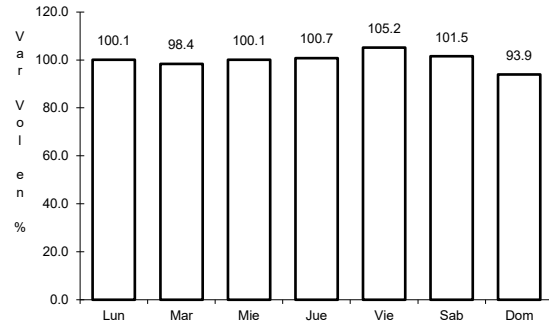


Km: 0.00 Tipo: 3 Sent: 0

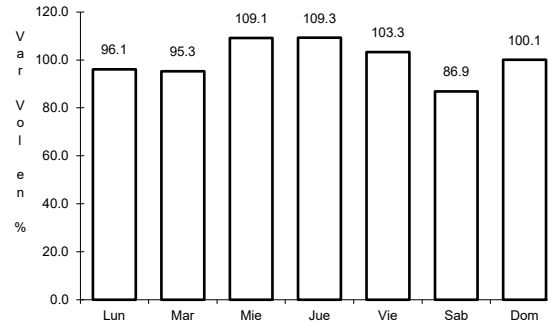
37 CARR: Ramal a Tapijulapa

CLAVE: 27200

RUTA: TAB



Km: 0.00 Tipo: 3 Sent: 0

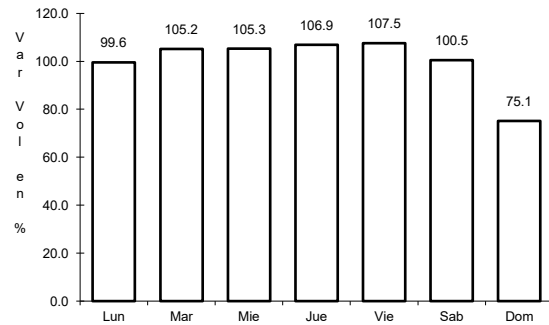


Km: 20.00 Tipo: 1 Sent: 0

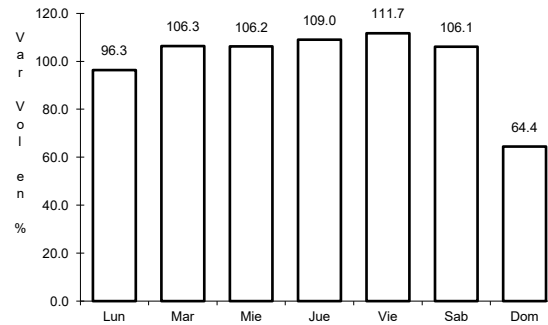
38 CARR: Reforma - Dos Bocas

CLAVE: 27200

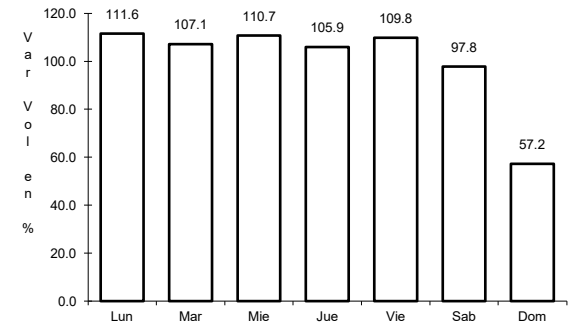
RUTA: TAB



Km: 0.00 Tipo: 3 Sent: 1



Km: 0.00 Tipo: 3 Sent: 2

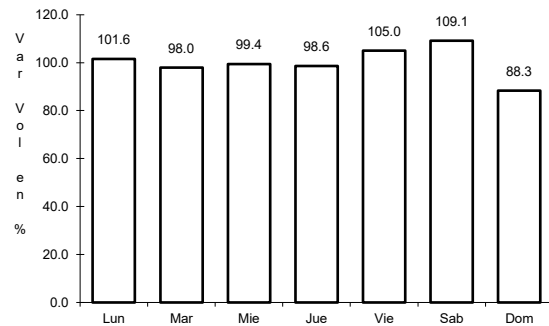


Km: 53.00 Tipo: 1 Sent: 1

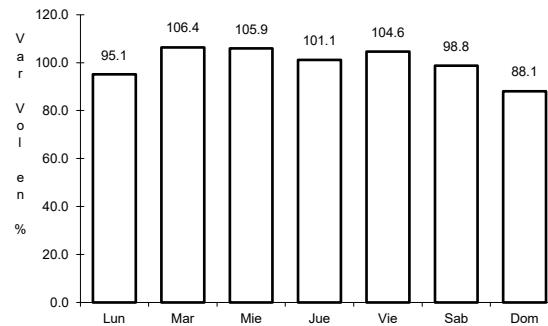
39 CARR: Reyes Hernández - Villa Aldama

CLAVE: 27119

RUTA: TAB



Km: 0.00 Tipo: 3 Sent: 0

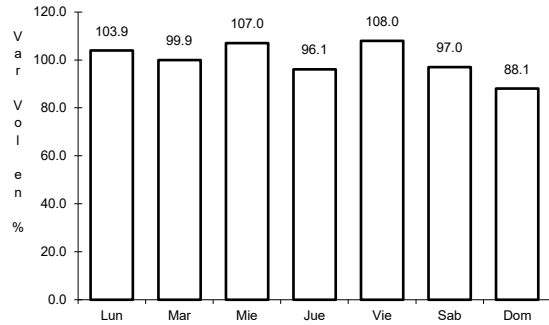


Km: 9.00 Tipo: 1 Sent: 0

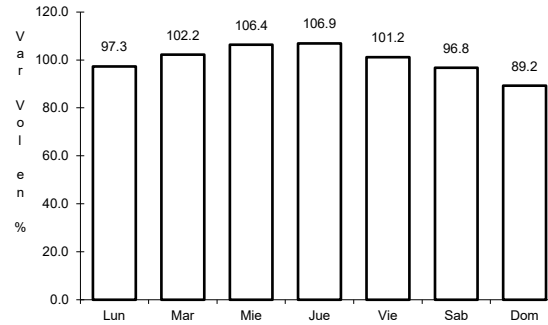
40 CARR: Samaria - Amatitán

CLAVE: 27114

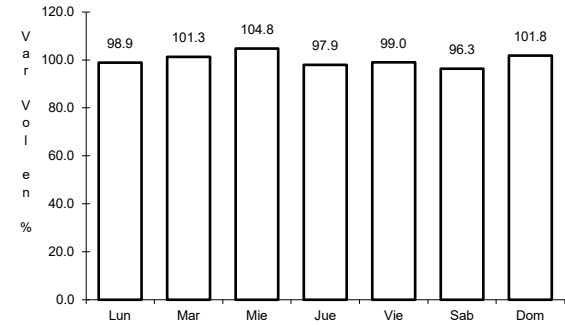
RUTA: TAB



Km: 0.00 Tipo: 3 Sent: 0



Km: 17.00 Tipo: 1 Sent: 0

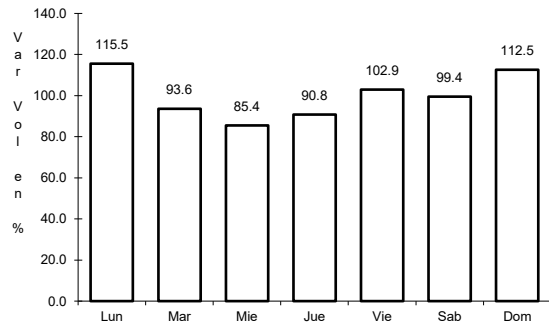


Km: 31.40 Tipo: 1 Sent: 0

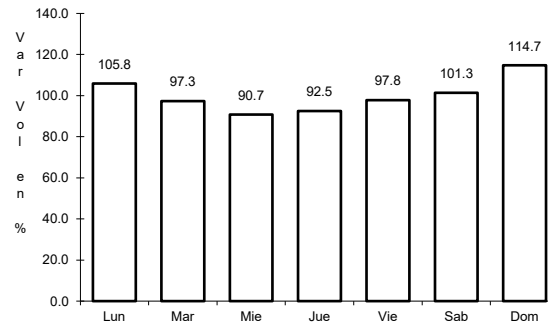
41 CARR: T. C. (Cárdenas - Paraíso) - Carlos Green

CLAVE: 27111

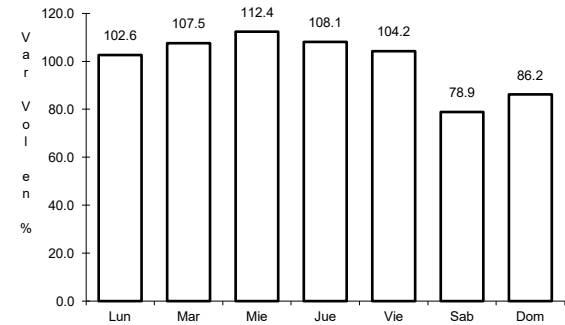
RUTA: TAB



Km: 0.00 Tipo: 3 Sent: 0



Km: 21.50 Tipo: 3 Sent: 0

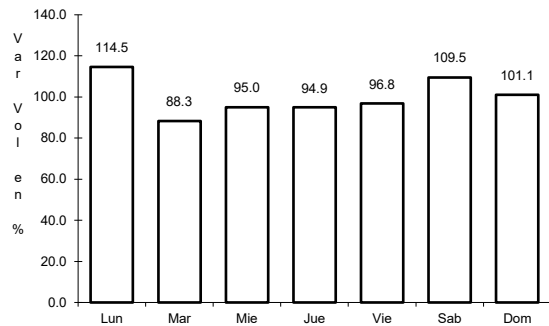


Km: 30.70 Tipo: 1 Sent: 0

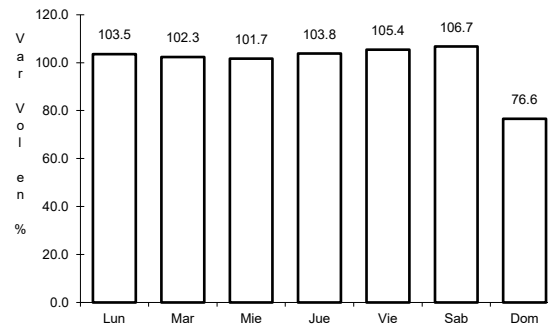
42 CARR: Tierra Nueva - Francisco Rueda

CLAVE: 27110

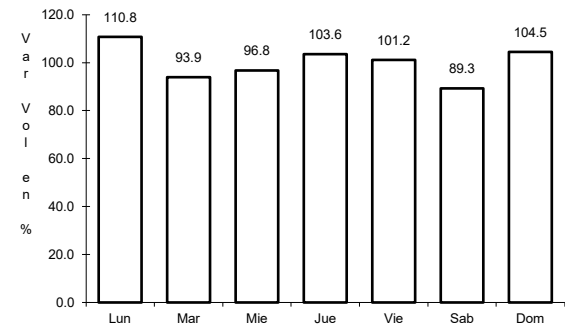
RUTA: TAB



Km: 0.00 Tipo: 3 Sent: 0



Km: 31.00 Tipo: 1 Sent: 0

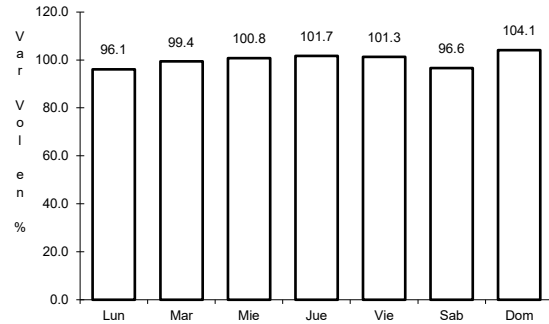


Km: 71.00 Tipo: 1 Sent: 0

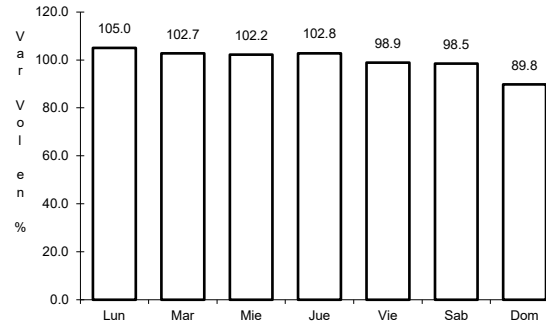
43 CARR: Tulipán - Conduacán

CLAVE: 27115

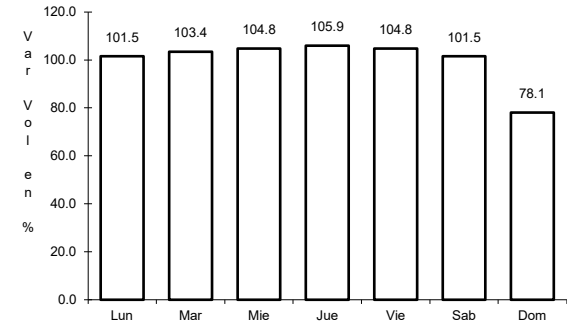
RUTA: TAB



Km: 0.00 Tipo: 3 Sent: 0



Km: 14.00 Tipo: 1 Sent: 0

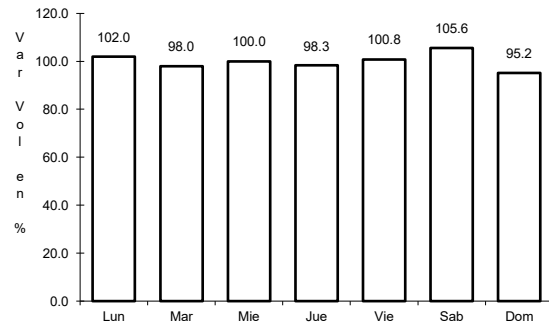


Km: 15.00 Tipo: 1 Sent: 0

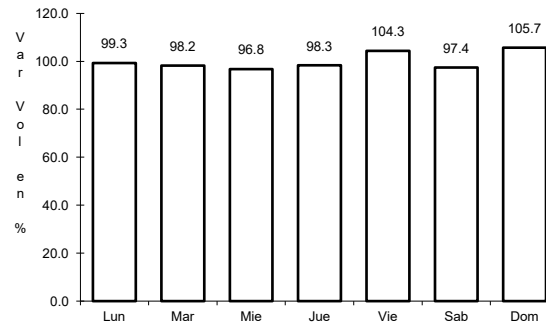
44 CARR: Villahermosa - Comalcalco

CLAVE: 27021

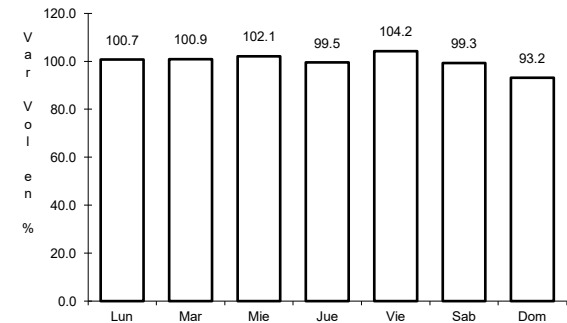
RUTA: TAB



Km: 0.00 Tipo: 3 Sent: 1



Km: 0.00 Tipo: 3 Sent: 2

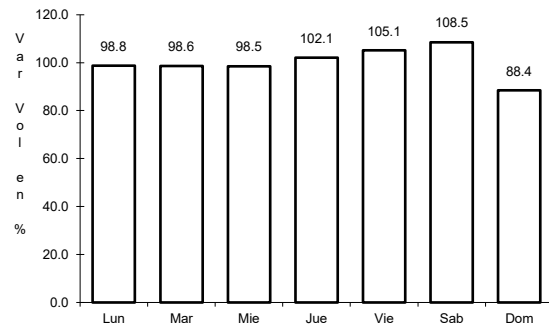


Km: 50.70 Tipo: 1 Sent: 0

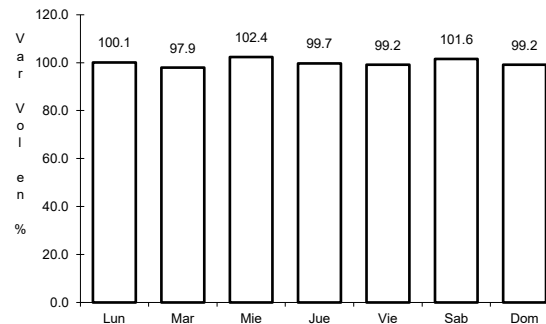
45 CARR: Villahermosa - Luis Gil Pérez

CLAVE: 27206

RUTA: TAB



Km: 0.00 Tipo: 3 Sent: 0

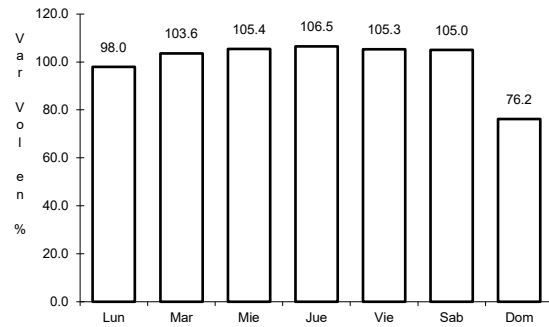


Km: 22.00 Tipo: 1 Sent: 0

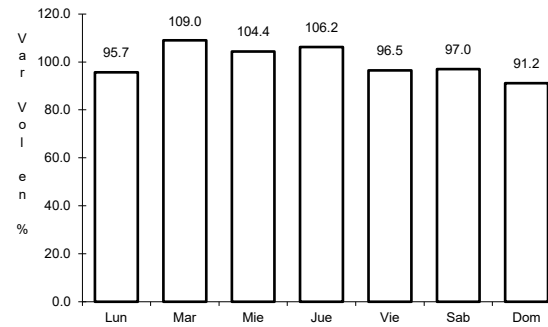
46 CARR: Villahermosa - T. C. (P. de Cunduacán - Estación Juárez)

CLAVE: 27106

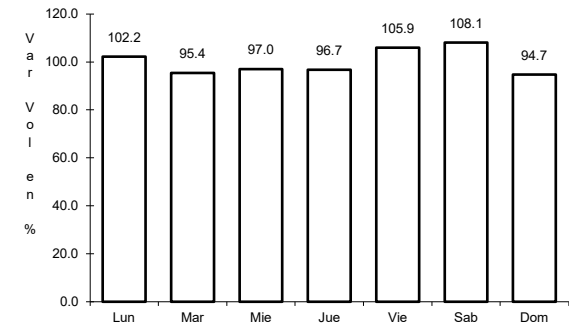
RUTA: TAB



Km: 0.00 Tipo: 3 Sent: 0



Km: 19.00 Tipo: 3 Sent: 0

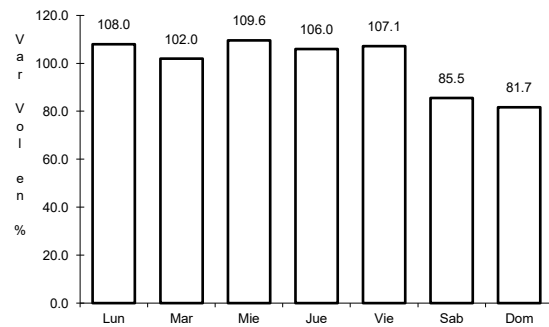


Km: 25.20 Tipo: 1 Sent: 0

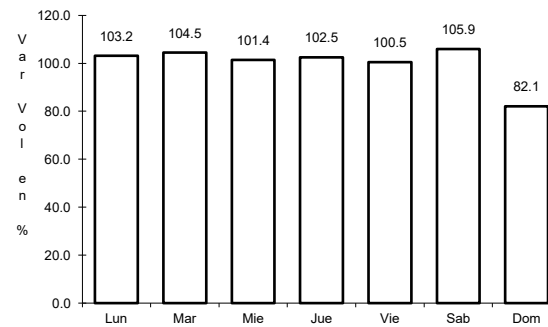
47 CARR: Zapatero - T. C. (Jalapa - Jonuta)

CLAVE: 00061

RUTA: CHIS-TAB



Km: 0.00 Tipo: 3 Sent: 0



Km: 41.00 Tipo: 1 Sent: 0