



TLAXCALA

NO. INDICE CARRETERA		RUTA
	---RED FEDERAL LIBRE---	
1	Amozoc - Teziutlán	MEX-129
2	Apizaco - San Pablo Apetatitlán	MEX-119
3	Apizaco - Tejocotal	MEX-119
4	Huamantla - La Venta	MEX-136
5	Huamantla - Terrenate	MEX-136
6	Libramiento de Apizaco	MEX-136
7	Libramiento Huamantla	MEX-136
8	Libramiento Hueyotlipan	MEX-136
9	Los Reyes - Zacatepec	MEX-136
10	Puebla - Belem	MEX-121
11	Puebla - Tlaxcala	MEX-119
12	Ramal a San Felipe de Hidalgo	MEX-136
13	San Martín Texmelucan - Tlaxcala	MEX-117
14	Tetlatlahuca - Santa Ana Chiautempan	MEX-119
15	Tlaxcala - Belem	MEX-119
16	Villa Alta - T. C. (Puebla - Tlaxcala)	MEX-119
	---RED FEDERAL DE CUOTA---	
17	Amozoc - Perote (Cuota)	MEX-140D
18	Libramiento de Tlaxcala (Cuota)	MEX-117D
19	Libramiento Norte de la Ciudad de México (Cuota)	MEX-M40D
20	México - Puebla (Cuota)	MEX-150D
21	San Martín Texmelucan - Tlaxcala - El Molinito (Cuota)	MEX-117D
22	Tlaxco - Tejocotal (Cuota)	MEX-119D
	---RED ESTATAL LIBRE---	
23	Libramiento de Ocotlán	TLAX
24	Ramal a Alzayanca de Hidalgo	TLAX
25	Ramal a San Pedro Ecatepec	TLAX
26	Ramal a Xalostoc	TLAX
27	Xalostoc - Terrenate	TLAX
	---RED ESTATAL DE CUOTA---	
28	Puebla - Tlaxcala (Cuota)	PUE-D
	---CARRETERAS INTEGRADAS POR TRAMOS FEDERALES Y ESTATALES---	
29	Acocotla - Vicente Guerrero	MEX-TLAX
30	Apizaco - Emiliano Zapata	TLAX-MEX-136
31	Calpulalpan - El Ocote	MEX-HGO
32	Calpulalpan - Nanacamilpa	TLAX-MEX-136





TLAXCALA

1 CARR: Amozoc - Teziutlán

CLAVE: 00210

RUTA: MEX-129

AÑO: 2021

LUGAR	ESTACION				CLASIFICACION VEHICULAR EN PORCIENTO										COORDENADAS						
	KM	TE	SC	TDPA	M	A	B	C2	C3	T3S2	T3S3	T3S2R4	OTROS	A	B	C	K'	D	LATITUD	LONGITUD	
Amozoc	0.00																				
X. C. Puebla - Córdoba (Cuota)	1.40	3	0	11406	1.6	83.5	0.5	8.4	1.9	2.0	1.2	0.5	0.4	85.1	0.5	14.4	0.078	0.514	19.051012	-98.028062	
Acajete	12.00	3	0	7556	2.5	70.4	1.7	14.1	2.4	6.1	1.6	0.7	0.5	72.9	1.7	25.4	0.078	0.529	19.124530	-97.939122	
Rafael Lara Grajales	35.50	1	0	5047	1.2	74.8	2.9	7.7	5.4	4.9	1.9	0.6	0.6	76.0	2.9	21.1	0.081	0.502	19.236525	-97.807813	
Rafael Lara Grajales	35.50	3	0	7954	2.5	70.5	1.7	14.1	2.4	6.1	1.6	0.6	0.5	73.0	1.7	25.3	0.077	0.509	19.231623	-97.785563	
Lim. Edos. Term. Pue. Ppia. Tlax.	50.54																				
X. C. Los Reyes - Zacatepec	56.31	1	0	3671	1.7	77.1	2.7	6.1	5.1	3.9	2.7	0.5	0.2	78.8	2.7	18.5	0.081	0.508	19.314501	-97.655416	
Lim. Edos. Term. Tlax. Ppia. Pue.	60.22																				
Oriental	62.62	1	0	4913	3.2	82.5	1.6	4.7	1.4	3.3	2.0	0.6	0.7	85.7	1.6	12.7	0.081	0.517	19.365614	-97.628741	
Oriental	62.62	3	0	6615	3.4	80.3	2.2	6.7	1.9	3.7	1.0	0.4	0.4	83.7	2.2	14.1	0.087	0.531	19.381674	-97.619376	
X. C. Amozoc - Perote (Cuota)	69.00	1	1	3956	2.9	85.4	1.8	6.3	1.2	1.1	1.0	0.1	0.2	88.3	1.8	9.9	0.086	0.513	19.411401	-97.635562	
X. C. Amozoc - Perote (Cuota)	69.00	1	2	4280	3.1	83.8	2.1	6.9	1.4	1.3	1.1	0.1	0.2	86.9	2.1	11.0	0.084	0.513	19.411251	-97.635634	
X. C. Amozoc - Perote (Cuota)	69.00	3	0	8362	2.8	82.2	2.4	6.4	1.8	2.8	1.0	0.2	0.4	85.0	2.4	12.6	0.089	0.508	19.419960	-97.643933	
Libres	76.35	3	0	9479	2.5	79.7	2.4	7.5	1.9	3.8	1.2	0.5	0.5	82.2	2.4	15.4	0.085	0.502	19.483218	-97.672877	
San Miguel Tenextatiloyán	106.70	1	0	3857	2.6	80.6	2.4	7.7	1.5	3.8	0.9	0.2	0.3	83.2	2.4	14.4	0.134	0.514	19.702404	-97.598949	
T. Izq. Zacapoaxtla	114.80	1	0	7385	3.0	84.6	1.7	4.5	1.1	3.4	0.8	0.4	0.5	87.6	1.7	10.7	0.083	0.506	19.760337	-97.567557	
T. Izq. Zacapoaxtla	114.80	3	0	9747	2.8	83.7	1.4	5.1	0.5	4.6	0.8	0.4	0.7	86.5	1.4	12.1	0.075	0.506	19.764664	-97.564261	
Zaragoza	116.80	3	0	8366	2.7	84.9	2.0	4.6	0.6	3.9	0.7	0.2	0.4	87.6	2.0	10.4	0.102	0.528	19.787183	-97.541406	
Teziutlán	157.80	1	0	12737	2.8	78.6	1.1	16.1	0.5	0.5	0.2	0.1	0.1	81.4	1.1	17.5	0.086	0.501	19.817543	-97.379516	

2 CARR: Apizaco - San Pablo Apetatitlán

CLAVE: 29035

RUTA: MEX-119

AÑO: 2021

LUGAR	ESTACION				CLASIFICACION VEHICULAR EN PORCIENTO										COORDENADAS					
	KM	TE	SC	TDPA	M	A	B	C2	C3	T3S2	T3S3	T3S2R4	OTROS	A	B	C	K'	D	LATITUD	LONGITUD
T. C. Los Reyes - Zacatepec	0.00	3	0	6826	4.5	86.7	0.9	7.7	0.1	0.1	0.0	0.0	0.0	91.2	0.9	7.9	0.075	0.539	19.410382	-98.118782
T. Der. Tecnológico	0.55	3	0	10022	5.2	90.3	0.4	3.7	0.1	0.2	0.1	0.0	0.0	95.5	0.4	4.1	0.082	0.530	19.405266	-98.117365
Cuaxomulco	9.10	3	0	3233	8.5	76.8	2.5	4.3	1.5	2.1	1.6	1.3	1.4	85.3	2.5	12.2	0.085	0.513	19.355816	-98.106180
Santa Cruz Tlaxcala	14.50	3	0	6086	6.4	88.7	0.5	2.5	0.1	0.3	0.9	0.2	0.4	95.1	0.5	4.4	0.079	0.508	19.353459	-98.157982
T. Izq. Contla	18.90	1	0	9677	8.2	83.9	1.5	4.5	0.5	0.5	0.4	0.4	0.1	92.1	1.5	6.4	0.065	0.513	19.342943	-98.178418
San Pablo Apetatitlán	20.00	1	0	15478	4.4	88.7	0.5	2.5	0.6	0.6	1.2	1.1	0.4	93.1	0.5	6.4	0.061	0.523	19.335928	-98.190011

TLAXCALA

3 CARR: Apizaco - Tejocotal

CLAVE: 00430

RUTA: MEX-119

AÑO: 2021

LUGAR	ESTACION				CLASIFICACION VEHICULAR EN PORCIENTO													COORDENADAS		
	KM	TE	SC	TDPA	M	A	B	C2	C3	T3S2	T3S3	T3S2R4	OTROS	A	B	C	K'	D	LATITUD	LONGITUD
Apizaco	0.00	3	1	11200	1.5	86.9	1.3	7.1	0.9	1.4	0.4	0.4	0.1	88.4	1.3	10.3	0.083	0.501	19.437569	-98.131282
Apizaco	0.00	3	2	11138	1.9	84.1	1.3	8.9	1.2	1.5	0.6	0.4	0.1	86.0	1.3	12.7	0.087	0.501	19.437362	-98.131464
T. Der. Tetla	6.60	3	0	18370	0.4	83.9	1.5	9.0	1.5	2.2	0.7	0.5	0.3	84.3	1.5	14.2	0.070	0.503	19.471984	-98.112328
T. Izq. Atlangatepec	12.15	1	0	14092	1.1	85.1	2.3	6.8	1.2	2.0	0.5	0.5	0.5	86.2	2.3	11.5	0.086	0.503	19.505750	-98.117002
Tlaxco	23.91	1	1	4559	0.8	90.8	0.4	2.9	0.5	3.3	1.0	0.1	0.2	91.6	0.4	8.0	0.110	0.501	19.598046	-98.125688
Tlaxco	23.91	1	2	4570	1.2	90.0	0.5	2.9	0.7	3.3	1.0	0.2	0.2	91.2	0.5	8.3	0.102	0.501	19.598064	-98.125762
Tlaxco	23.91	3	0	6368	4.4	85.2	0.7	6.9	1.0	0.8	0.7	0.2	0.1	89.6	0.7	9.7	0.094	0.513	19.626480	-98.124621
Lim. Edos. Term. Tlax. Ppia. Pue.	34.45																			
T. Der. Tetela de Ocampo	52.20	1	0	6609	6.0	82.5	1.1	8.8	0.5	0.5	0.3	0.1	0.2	88.5	1.1	10.4	0.101	0.507	19.800589	-98.026692
Zacatlán	71.25	1	0	10636	6.8	84.8	0.6	4.7	0.7	1.6	0.5	0.1	0.2	91.6	0.6	7.8	0.086	0.531	19.918560	-97.959350
Lim. Edos. Term. Pue. Ppia. Hgo.	110.45																			
T. C. Pachuca - Tuxpam	113.15	1	0	7333	2.1	82.5	1.6	9.8	1.2	1.1	0.8	0.7	0.2	84.6	1.6	13.8	0.090	0.509	20.118541	-98.130535

4 CARR: Huamantla - La Venta

CLAVE: 29564

RUTA: MEX-136

AÑO: 2021

LUGAR	ESTACION				CLASIFICACION VEHICULAR EN PORCIENTO													COORDENADAS		
	KM	TE	SC	TDPA	M	A	B	C2	C3	T3S2	T3S3	T3S2R4	OTROS	A	B	C	K'	D	LATITUD	LONGITUD
Huamantla	0.00	3	1	5328	5.4	87.3	0.5	4.0	0.9	0.5	0.5	0.5	0.4	92.7	0.5	6.8	0.072	0.523	19.296400	-97.920622
Huamantla	0.00	3	2	4855	5.5	87.4	0.4	4.2	0.8	0.5	0.5	0.4	0.3	92.9	0.4	6.7	0.076	0.523	19.296408	-97.920508
Ignacio Zaragoza	2.30	3	0	6492	3.7	84.6	1.2	7.4	0.7	1.0	0.5	0.3	0.6	88.3	1.2	10.5	0.079	0.505	19.283868	-97.920866
Ixtenco	8.00	1	0	5927	3.3	83.7	1.4	8.3	0.7	0.8	0.7	0.6	0.5	87.0	1.4	11.6	0.081	0.501	19.261516	-97.900213
Ixtenco	8.00	3	0	4608	1.5	81.5	1.3	12.4	0.8	1.8	0.4	0.1	0.2	83.0	1.3	15.7	0.076	0.512	19.241893	-97.896737
X. C. Amozoc - Perote (Cuota)	11.40	1	0	4261	1.5	81.2	0.7	12.8	0.9	2.2	0.4	0.1	0.2	82.7	0.7	16.6	0.069	0.502	19.227784	-97.902173
Zitlaltepec	13.60	1	0	3416	1.8	82.6	1.0	10.4	0.9	2.5	0.6	0.1	0.1	84.4	1.0	14.6	0.074	0.504	19.215551	-97.907859
Zitlaltepec	13.60	3	0	3566	2.4	77.8	0.5	14.9	0.7	2.4	0.9	0.2	0.2	80.2	0.5	19.3	0.069	0.503	19.193557	-97.918990
T. C. Amozoc - Teziutlán	17.60	1	0	3096	1.7	78.9	0.4	13.3	1.0	2.8	1.3	0.3	0.3	80.6	0.4	19.0	0.067	0.506	19.177405	-97.909951

5 CARR: Huamantla - Terrenate

CLAVE: 29036

RUTA: MEX-136

AÑO: 2021

LUGAR	ESTACION				CLASIFICACION VEHICULAR EN PORCIENTO													COORDENADAS		
	KM	TE	SC	TDPA	M	A	B	C2	C3	T3S2	T3S3	T3S2R4	OTROS	A	B	C	K'	D	LATITUD	LONGITUD
Huamantla	0.00	3	0	1580	5.5	83.1	0.3	7.9	0.9	1.5	0.5	0.1	0.2	88.6	0.3	11.1	0.091	0.506	19.336905	-97.934584
T. Izq. Xicoténcatl	12.50	1	0	765	5.8	84.2	0.2	7.4	1.2	0.7	0.5	0.0	0.0	90.0	0.2	9.8	0.128	0.530	19.412631	-97.968817
Terrenate	21.00	1	0	1237	3.2	86.3	0.1	7.4	1.0	1.1	0.4	0.1	0.4	89.5	0.1	10.4	0.073	0.500	19.463974	-97.929868

TLAXCALA

6 CARR : Libramiento de Apizaco

CLAVE: 29567

RUTA: MEX-136

AÑO: 2021

LUGAR	ESTACION				CLASIFICACION VEHICULAR EN PORCIENTO													COORDENADAS		
	KM	TE	SC	TDPA	M	A	B	C2	C3	T3S2	T3S3	T3S2R4	OTROS	A	B	C	K'	D	LATITUD	LONGITUD
T. C. Los Reyes - Zacatepec	0.00																			
T. Der. Amaxac de Guerrero	6.00	1	1	13367	0.9	75.3	2.8	6.0	2.5	6.6	2.6	2.5	0.8	76.2	2.8	21.0	0.073	0.512	19.377391	-98.156717
T. Der. Amaxac de Guerrero	6.00	1	2	14023	0.9	75.6	2.8	6.0	2.4	6.5	2.6	2.5	0.7	76.5	2.8	20.7	0.068	0.512	19.377535	-98.156640
T. Der. Amaxac de Guerrero	6.00	3	1	12065	14.2	62.4	2.7	4.2	2.9	7.8	2.5	2.6	0.7	76.6	2.7	20.7	0.078	0.520	19.400080	-98.101523
T. Der. Amaxac de Guerrero	6.00	3	2	13093	14.6	61.3	3.0	4.5	3.0	8.0	2.3	2.7	0.6	75.9	3.0	21.1	0.071	0.520	19.400138	-98.101598
T. C. Los Reyes - Zacatepec	10.40																			

7 CARR : Libramiento Huamantla

CLAVE: 29567

RUTA: MEX-136

AÑO: 2021

LUGAR	ESTACION				CLASIFICACION VEHICULAR EN PORCIENTO													COORDENADAS		
	KM	TE	SC	TDPA	M	A	B	C2	C3	T3S2	T3S3	T3S2R4	OTROS	A	B	C	K'	D	LATITUD	LONGITUD
T. C. Los Reyes - Zacatepec (Poniente)	0.00	3	1	7990	2.2	70.1	3.6	5.5	2.9	7.2	4.5	3.0	1.0	72.3	3.6	24.1	0.090	0.510	19.325269	-97.931065
T. C. Los Reyes - Zacatepec (Poniente)	0.00	3	2	8321	2.1	67.6	4.0	5.7	3.4	7.7	5.0	3.5	1.0	69.7	4.0	26.3	0.077	0.510	19.325350	-97.931131
T. C. Los Reyes - Zacatepec (Oriente)	4.60	1	1	7959	2.0	67.8	4.2	5.5	3.6	8.9	4.4	2.9	0.7	69.8	4.2	26.0	0.087	0.512	19.319800	-97.910922
T. C. Los Reyes - Zacatepec (Oriente)	4.60	1	2	8340	1.9	65.8	4.7	5.6	3.6	9.4	4.9	3.4	0.7	67.7	4.7	27.6	0.071	0.512	19.319863	-97.910836

8 CARR : Libramiento Hueyotlipan

CLAVE: 29567

RUTA: MEX-136

AÑO: 2021

LUGAR	ESTACION				CLASIFICACION VEHICULAR EN PORCIENTO													COORDENADAS		
	KM	TE	SC	TDPA	M	A	B	C2	C3	T3S2	T3S3	T3S2R4	OTROS	A	B	C	K'	D	LATITUD	LONGITUD
T. C. Los Reyes - Zacatepec (Poniente)	0.00	3	1	7890	1.0	67.9	3.9	5.3	3.9	11.0	3.2	3.2	0.6	68.9	3.9	27.2	0.087	0.503	19.476293	-98.351644
T. C. Los Reyes - Zacatepec (Poniente)	0.00	3	2	7971	1.1	67.7	3.8	5.4	3.8	11.0	3.4	3.2	0.6	68.8	3.8	27.4	0.095	0.503	19.476296	-98.352492
T. C. Los Reyes - Zacatepec (Oriente)	2.70	1	1	7918	2.0	62.3	3.7	5.8	4.9	13.1	3.9	3.6	0.7	64.3	3.7	32.0	0.082	0.509	19.475151	-98.342988
T. C. Los Reyes - Zacatepec (Oriente)	2.70	1	2	8219	2.0	62.3	3.7	5.8	4.9	13.1	4.0	3.6	0.6	64.3	3.7	32.0	0.101	0.509	19.475232	-98.342959

9 CARR : Los Reyes - Zacatepec

CLAVE: 00052

RUTA: MEX-136

AÑO: 2021

LUGAR	ESTACION				CLASIFICACION VEHICULAR EN PORCIENTO													COORDENADAS		
	KM	TE	SC	TDPA	M	A	B	C2	C3	T3S2	T3S3	T3S2R4	OTROS	A	B	C	K'	D	LATITUD	LONGITUD
T. C. México - Puebla (Libre)	0.00																			
T. Izq. La Magdalena	3.35	3	1	43083	5.2	85.5	1.0	3.6	1.4	1.5	0.6	0.9	0.3	90.7	1.0	8.3	0.056	0.516	19.379536	-98.941394
T. Izq. La Magdalena	3.35	3	2	46221	5.7	86.5	0.9	2.9	1.2	1.0	0.7	0.7	0.4	92.2	0.9	6.9	0.055	0.516	19.380301	-98.941257
T. Izq. Chimalhuacán	8.45	1	1	41655	5.6	85.9	0.9	2.7	1.2	1.2	0.6	1.6	0.3	91.5	0.9	7.6	0.056	0.519	19.413037	-98.920162
T. Izq. Chimalhuacán	8.45	1	2	38278	5.4	86.3	0.8	2.6	1.1	1.3	0.5	1.6	0.4	91.7	0.8	7.5	0.055	0.519	19.413118	-98.920295
T. C. San Bernardino - Tepexpan	17.00	1	1	35071	3.0	87.7	0.7	5.0	1.0	1.3	0.8	0.3	0.2	90.7	0.7	8.6	0.079	0.504	19.469957	-98.893455

TLAXCALA

9 CARR: Los Reyes - Zacatepec

CLAVE: 00052

RUTA: MEX-136

AÑO: 2021

LUGAR	ESTACION				CLASIFICACION VEHICULAR EN PORCIENTO														COORDENADAS	
	KM	TE	SC	TDPA	M	A	B	C2	C3	T3S2	T3S3	T3S2R4	OTROS	A	B	C	K'	D	LATITUD	LONGITUD
T. C. San Bernardino - Tepexpan	17.00	1	2	35801	2.7	87.6	0.8	5.2	1.1	1.5	0.7	0.2	0.2	90.3	0.8	8.9	0.062	0.504	19.470003	-98.893569
T. C. San Bernardino - Tepexpan	17.00	3	1	15145	3.4	88.5	0.8	6.0	0.5	0.2	0.3	0.2	0.1	91.9	0.8	7.3	0.075	0.531	19.483645	-98.886614
T. C. San Bernardino - Tepexpan	17.00	3	2	13386	3.9	87.9	0.7	6.3	0.6	0.3	0.2	0.1	0.0	91.8	0.7	7.5	0.073	0.531	19.483744	-98.886738
Texcoco	23.02	3	1	18139	3.8	84.4	1.7	2.3	3.4	3.3	0.4	0.5	0.2	88.2	1.7	10.1	0.083	0.524	19.527057	-98.858236
Texcoco	23.02	3	2	19940	3.8	85.6	1.8	3.1	1.4	3.2	0.6	0.4	0.1	89.4	1.8	8.8	0.079	0.524	19.527148	-98.858294
T. Izq. Tepetlaoxtoc	30.03	1	1	16481	4.5	77.4	2.1	6.9	2.4	3.9	1.7	0.8	0.3	81.9	2.1	16.0	0.087	0.502	19.545839	-98.826070
T. Izq. Tepetlaoxtoc	30.03	1	2	16344	3.9	76.2	2.2	7.9	2.6	4.3	1.8	0.7	0.4	80.1	2.2	17.7	0.085	0.502	19.545960	-98.826117
T. Der. San Jerónimo Amanalco	31.42	3	1	8336	3.9	75.1	3.3	4.1	2.8	8.1	1.6	0.8	0.3	79.0	3.3	17.7	0.083	0.512	19.550350	-98.793543
T. Der. San Jerónimo Amanalco	31.42	3	2	7935	3.7	76.3	3.5	4.2	2.3	7.6	1.4	0.7	0.3	80.0	3.5	16.5	0.072	0.512	19.550445	-98.793477
T. Der. Totolapan	42.00	3	1	6998	3.8	75.7	2.3	4.9	2.7	7.0	2.6	0.7	0.3	79.5	2.3	18.2	0.096	0.515	19.556602	-98.731631
T. Der. Totolapan	42.00	3	2	6591	3.8	73.2	2.7	5.4	3.0	8.2	2.6	0.8	0.3	77.0	2.7	20.3	0.093	0.515	19.557644	-98.728760
Lim. Edos. Term. Méx. Ppia. Tlax.	43.15																			
T. C. Calpulalpan - El Ocote	58.15																			
Calpulalpan	59.58	1	1	8659	1.7	79.1	3.4	2.9	2.7	7.6	1.2	1.0	0.4	80.8	3.4	15.8	0.082	0.512	19.593037	-98.583827
Calpulalpan	59.58	1	2	9068	1.9	79.3	3.2	3.0	2.8	6.9	1.6	0.9	0.4	81.2	3.2	15.6	0.103	0.512	19.593147	-98.584274
Calpulalpan	59.58	3	0	19307	1.1	76.5	3.6	3.5	2.4	9.4	1.6	1.2	0.7	77.6	3.6	18.8	0.078	0.508	19.580298	-98.528246
T. Der. Nanacamilpa	71.76	3	0	15496	1.0	73.6	4.9	6.7	2.5	8.3	1.4	1.3	0.3	74.6	4.9	20.5	0.085	0.501	19.525465	-98.479638
X. C. Arco Norte de La Ciudad de México	73.80	3	1	9418	4.7	70.2	3.5	5.1	2.3	8.9	2.6	2.3	0.4	74.9	3.5	21.6	0.128	0.516	19.513519	-98.453986
X. C. Arco Norte de La Ciudad de México	73.80	3	2	8846	4.9	66.7	3.4	5.8	3.1	9.9	3.1	2.6	0.5	71.6	3.4	25.0	0.093	0.516	19.513601	-98.453986
T. Libramiento Hueyotlipan Oeste	86.84																			
Hueyotlipan	88.21	1	1	8172	1.1	69.4	3.4	7.4	2.6	9.1	3.7	2.9	0.4	70.5	3.4	26.1	0.094	0.500	19.480021	-98.365589
Hueyotlipan	88.21	1	2	8187	1.2	69.1	3.4	7.4	2.6	9.2	3.8	2.9	0.4	70.3	3.4	26.3	0.092	0.500	19.480011	-98.365436
Hueyotlipan	88.21	3	1	9332	0.6	73.6	4.3	7.6	1.7	7.8	1.9	1.8	0.7	74.2	4.3	21.5	0.075	0.515	19.469382	-98.324804
Hueyotlipan	88.21	3	2	9925	0.6	73.5	4.3	7.6	1.7	7.9	1.9	1.8	0.7	74.1	4.3	21.6	0.109	0.515	19.469454	-98.324841
T. Libramiento HueyotlipanEste	89.51																			
Xaltocan	108.10	1	1	9771	0.5	73.3	4.2	8.0	1.8	7.8	1.8	1.9	0.7	73.8	4.2	22.0	0.074	0.514	19.423596	-98.215408
Xaltocan	108.10	1	2	10327	0.6	73.2	4.2	8.0	1.8	7.8	1.8	1.9	0.7	73.8	4.2	22.0	0.104	0.514	19.423668	-98.215370
T. Libramiento de Apizaco Oeste	111.50																			
Apizaco	117.74	1	1	20562	0.8	85.2	1.3	7.9	0.8	1.5	1.9	0.2	0.4	86.0	1.3	12.7	0.092	0.522	19.405686	-98.170809
Apizaco	117.74	1	2	22431	0.8	85.3	1.3	7.8	0.8	1.5	1.9	0.2	0.4	86.1	1.3	12.6	0.081	0.522	19.405731	-98.170913
Apizaco	117.74	3	0	19786	6.1	90.0	0.2	2.3	0.8	0.2	0.1	0.2	0.1	96.1	0.2	3.7	0.067	0.501	19.413065	-98.134089
T. Der. Cuaxomulco	119.85	3	1	18651	7.4	86.9	0.3	2.2	1.4	0.8	0.2	0.7	0.1	94.3	0.3	5.4	0.077	0.505	19.413187	-98.115182
T. Der. Cuaxomulco	119.85	3	2	18314	7.3	87.3	0.4	2.2	1.1	0.6	0.4	0.6	0.1	94.6	0.4	5.0	0.080	0.505	19.413259	-98.115162
T. Libramiento de Apizaco Este	122.70	3	1	17199	0.7	83.6	1.3	4.4	1.5	4.0	2.2	1.7	0.6	84.3	1.3	14.4	0.078	0.501	19.405408	-98.090135
T. Libramiento de Apizaco Este	122.70	3	2	17257	0.6	85.9	1.2	4.2	1.2	3.4	1.7	1.2	0.6	86.5	1.2	12.3	0.091	0.501	19.405498	-98.090106



TLAXCALA

9 CARR: Los Reyes - Zacatepec

CLAVE: 00052

RUTA: MEX-136

AÑO: 2021

LUGAR	ESTACION				CLASIFICACION VEHICULAR EN PORCIENTO														COORDENADAS	
	KM	TE	SC	TDPA	M	A	B	C2	C3	T3S2	T3S3	T3S2R4	OTROS	A	B	C	K'	D	LATITUD	LONGITUD
T. Izq. Xalostoc	126.67	3	1	11399	0.7	80.0	2.8	6.1	1.6	4.3	2.1	1.6	0.8	80.7	2.8	16.5	0.086	0.516	19.386004	-98.047135
T. Izq. Xalostoc	126.67	3	2	10706	0.7	79.2	2.8	6.3	1.7	4.8	2.1	1.6	0.8	79.9	2.8	17.3	0.088	0.516	19.386085	-98.047087
T. Izq. Libramiento de Huamantla	141.70	1	1	11962	0.9	77.4	2.8	7.4	2.0	5.1	2.0	1.7	0.7	78.3	2.8	18.9	0.082	0.511	19.325244	-97.953320
T. Izq. Libramiento de Huamantla	141.70	1	2	11441	0.9	76.6	3.1	7.4	2.4	5.1	2.1	1.7	0.7	77.5	3.1	19.4	0.084	0.511	19.325307	-97.953253
Huamantla	143.02	3	1	10378	0.9	74.2	3.0	8.4	2.2	6.4	2.4	1.6	0.9	75.1	3.0	21.9	0.077	0.509	19.315257	-97.884331
Huamantla	143.02	3	2	10005	1.0	74.3	3.0	8.3	2.2	6.1	2.6	1.6	0.9	75.3	3.0	21.7	0.078	0.509	19.315338	-97.884330
T. Libramiento de Huamantla Este	144.42																			
X. C. Amozoc - Perote (Cuota)	156.76	1	1	8735	1.0	67.8	4.0	8.0	2.9	9.0	4.2	2.2	0.9	68.8	4.0	27.2	0.072	0.516	19.308402	-97.810513
X. C. Amozoc - Perote (Cuota)	156.76	1	2	8191	1.0	68.2	3.9	7.8	3.0	8.8	4.1	2.3	0.9	69.2	3.9	26.9	0.072	0.516	19.308483	-97.810474
X. C. Amozoc - Perote (Cuota)	156.76	3	0	12090	3.8	72.4	1.2	5.0	4.9	6.0	3.3	2.7	0.7	76.2	1.2	22.6	0.087	0.521	19.305313	-97.791501
T. Der. Cuapiaxtla	159.40	1	0	9540	1.2	69.8	2.3	10.5	2.9	4.8	5.9	2.1	0.5	71.0	2.3	26.7	0.076	0.527	19.303636	-97.781054
X. C. Amozoc - Teziutlán	173.47	1	0	7084	1.1	59.9	3.6	8.9	3.8	13.0	5.4	3.4	0.9	61.0	3.6	35.4	0.082	0.502	19.327716	-97.671928
X. C. Amozoc - Teziutlán	173.47	3	0	5941	0.8	51.5	3.3	6.5	7.5	17.4	9.4	2.8	0.8	52.3	3.3	44.4	0.076	0.505	19.315942	-97.632794
Lim. Edos. Term. Tlax. Ppia. Pue.	177.57																			
Zacatepec	187.67	1	0	5652	0.8	51.8	3.7	7.5	8.1	15.7	8.9	2.6	0.9	52.6	3.7	43.7	0.070	0.506	19.270543	-97.541982

10 CARR: Puebla - Belem

CLAVE: 00055

RUTA: MEX-121

AÑO: 2021

LUGAR	ESTACION				CLASIFICACION VEHICULAR EN PORCIENTO														COORDENADAS	
	KM	TE	SC	TDPA	M	A	B	C2	C3	T3S2	T3S3	T3S2R4	OTROS	A	B	C	K'	D	LATITUD	LONGITUD
T. C. Puebla - Tlaxcala	0.00																			
X. C. Puebla - Córdoba (Cuota)	4.00	3	1	33284	1.3	85.5	1.7	8.0	0.9	1.4	0.7	0.3	0.2	86.8	1.7	11.5	0.055	0.512	19.102033	-98.182581
X. C. Puebla - Córdoba (Cuota)	4.00	3	2	29850	1.6	84.8	1.9	8.7	0.7	1.2	0.6	0.3	0.2	86.4	1.9	11.7	0.061	0.512	19.102070	-98.182714
Lim. Edos. Term. Pue. Ppia. Tlax.	6.60																			
Lim. Edos. Term. Tlax. Ppia. Pue.	9.77																			
Lim. Edos. Term. Pue. Ppia. Tlax.	10.25																			
T. Izq. Zacatelco	16.70	1	1	15042	2.2	86.0	1.0	5.8	1.3	2.4	0.7	0.5	0.1	88.2	1.0	10.8	0.072	0.525	19.204767	-98.195515
T. Izq. Zacatelco	16.70	1	2	16605	2.2	85.7	0.9	6.0	1.4	2.5	0.7	0.5	0.1	87.9	0.9	11.2	0.065	0.525	19.204722	-98.195639
X. C. Tlaxcala - Belem	28.80	1	1	26876	1.6	88.6	0.6	3.9	0.7	2.1	1.8	0.4	0.3	90.2	0.6	9.2	0.064	0.510	19.316682	-98.203679
X. C. Tlaxcala - Belem	28.80	1	2	24356	1.6	87.4	0.7	4.4	0.7	2.5	1.9	0.4	0.4	89.0	0.7	10.3	0.068	0.510	19.316719	-98.203746
T. C. San Martín Texmelucan - Ocotoxco (Cuota)	34.90																			

TLAXCALA

11 CARR: Puebla - Tlaxcala

CLAVE: 00475

RUTA: MEX-119

AÑO: 2021

LUGAR	ESTACION				CLASIFICACION VEHICULAR EN PORCIENTO												COORDENADAS			
	KM	TE	SC	TDPA	M	A	B	C2	C3	T3S2	T3S3	T3S2R4	OTROS	A	B	C	K'	D	LATITUD	LONGITUD
Puebla	0.00																			
X. C. Puebla - Córdoba (Cuota) Lateral	5.41	3	1	3632	3.4	80.0	1.2	11.8	0.8	1.0	0.8	0.4	0.6	83.4	1.2	15.4	0.068	0.509	19.096646	-98.207039
X. C. Puebla - Córdoba (Cuota) Central	5.41	3	1	13081	2.1	88.4	0.7	4.3	1.2	1.1	1.0	0.5	0.7	90.5	0.7	8.8	0.064	0.511	19.096641	-98.207124
X. C. Puebla - Córdoba (Cuota) Lateral	5.41	3	2	3766	3.4	79.1	1.3	12.5	0.8	1.0	1.0	0.4	0.5	82.5	1.3	16.2	0.064	0.509	19.096632	-98.207288
X. C. Puebla - Córdoba (Cuota) Central	5.41	3	2	13658	2.1	87.6	0.7	4.7	1.3	1.3	1.1	0.5	0.7	89.7	0.7	9.6	0.064	0.511	19.096632	-98.207205
Lim. Edos. Term. Pue. Ppia. Tlax.	11.83																			
Panzacola	13.14	3	1	10845	4.6	87.0	0.5	5.3	0.8	0.9	0.5	0.2	0.2	91.6	0.5	7.9	0.070	0.516	19.152102	-98.223598
Panzacola	13.14	3	2	11572	4.6	87.3	0.4	5.3	0.7	0.8	0.5	0.2	0.2	91.9	0.4	7.7	0.075	0.516	19.152104	-98.223678
San Toribio Xicohtzinco	16.10	3	1	9937	4.3	87.6	0.6	6.1	0.4	0.4	0.2	0.2	0.2	91.9	0.6	7.5	0.089	0.514	19.187173	-98.237796
San Toribio Xicohtzinco	16.10	3	2	9385	4.3	87.0	0.6	6.7	0.4	0.4	0.2	0.2	0.2	91.3	0.6	8.1	0.086	0.514	19.187169	-98.237875
Zacatelco	20.78	1	1	10807	3.9	89.1	0.3	6.1	0.2	0.3	0.1	0.0	0.0	93.0	0.3	6.7	0.071	0.502	19.207557	-98.240507
Zacatelco	20.78	1	2	10736	3.8	88.7	0.3	6.6	0.2	0.3	0.1	0.0	0.0	92.5	0.3	7.2	0.070	0.502	19.207543	-98.240582
T. Izq. San Martín Texmelucan	22.99	1	1	11726	6.3	86.7	0.4	5.2	0.5	0.4	0.3	0.2	0.0	93.0	0.4	6.6	0.074	0.502	19.234173	-98.243063
T. Izq. San Martín Texmelucan	22.99	1	2	11830	6.1	86.4	0.4	5.7	0.5	0.4	0.3	0.2	0.0	92.5	0.4	7.1	0.078	0.502	19.234152	-98.243165
T. Der. Tepeyanco (2° Acceso)	24.97	3	1	9039	8.1	87.6	1.6	1.9	0.3	0.2	0.1	0.1	0.1	95.7	1.6	2.7	0.077	0.507	19.249948	-98.235301
T. Der. Tepeyanco (2° Acceso)	24.97	3	2	9311	9.3	86.4	1.6	1.9	0.3	0.2	0.1	0.1	0.1	95.7	1.6	2.7	0.078	0.507	19.249581	-98.237303
T. Der. Ocotlán (Baja)	32.45	1	1	5196	4.8	91.1	0.2	2.1	0.3	0.9	0.3	0.0	0.3	95.9	0.2	3.9	0.077	0.518	19.303188	-98.240950
T. Der. Ocotlán (Alta)	32.45	1	1	8113	4.9	92.1	0.3	1.4	0.2	0.7	0.3	0.0	0.1	97.0	0.3	2.7	0.071	0.524	19.303188	-98.241072
T. Der. Ocotlán (Baja)	32.45	1	2	4832	1.2	95.3	0.1	2.3	0.1	0.5	0.4	0.0	0.1	96.5	0.1	3.4	0.069	0.518	19.303182	-98.241286
T. Der. Ocotlán (Alta)	32.45	1	2	8945	3.6	94.0	0.2	1.1	0.1	0.5	0.4	0.0	0.1	97.6	0.2	2.2	0.072	0.524	19.303189	-98.241170
Tlaxcala	33.22	1	1	9485	5.4	91.8	0.6	0.7	0.4	0.5	0.3	0.2	0.1	97.2	0.6	2.2	0.088	0.509	19.309722	-98.240467
Tlaxcala	33.22	1	2	9154	4.4	93.1	0.5	0.5	0.4	0.5	0.3	0.2	0.1	97.5	0.5	2.0	0.080	0.509	19.309744	-98.240515

12 CARR: Ramal a San Felipe de Hidalgo

CLAVE: 29565

RUTA: MEX-136

AÑO: 2021

LUGAR	ESTACION				CLASIFICACION VEHICULAR EN PORCIENTO												COORDENADAS			
	KM	TE	SC	TDPA	M	A	B	C2	C3	T3S2	T3S3	T3S2R4	OTROS	A	B	C	K'	D	LATITUD	LONGITUD
T. C. Los Reyes - Zacatepec	0.00	3	0	3851	1.1	87.4	0.8	7.1	1.2	2.0	0.2	0.1	0.1	88.5	0.8	10.7	0.077	0.513	19.524535	-98.485545
San Felipe de Hidalgo	10.50	1	0	1906	2.1	90.0	0.8	5.5	0.2	1.3	0.1	0.0	0.0	92.1	0.8	7.1	0.073	0.501	19.474986	-98.552135

13 CARR: San Martín Texmelucan - Tlaxcala

CLAVE: 00158

RUTA: MEX-117

AÑO: 2021

LUGAR	ESTACION				CLASIFICACION VEHICULAR EN PORCIENTO												COORDENADAS			
	KM	TE	SC	TDPA	M	A	B	C2	C3	T3S2	T3S3	T3S2R4	OTROS	A	B	C	K'	D	LATITUD	LONGITUD
San Martín Texmelucan	0.00	3	1	9237	7.0	84.2	0.5	3.9	0.5	1.4	1.4	0.5	0.6	91.2	0.5	8.3	0.073	0.501	19.287834	-98.423179

TLAXCALA

13 CARR: San Martín Texmelucan - Tlaxcala

CLAVE: 00158

RUTA: MEX-117

AÑO: 2021

LUGAR	ESTACION				CLASIFICACION VEHICULAR EN PORCIENTO										COORDENADAS					
	KM	TE	SC	TDPA	M	A	B	C2	C3	T3S2	T3S3	T3S2R4	OTROS	A	B	C	K'	D	LATITUD	LONGITUD
San Martín Texmelucan	0.00	3	2	9287	6.0	84.4	0.5	4.4	0.6	1.4	1.7	0.4	0.6	90.4	0.5	9.1	0.073	0.501	19.287944	-98.423211
X. C. San Martín Texmelucan - Ocotoxco (Cuota)	1.65	3	0	20461	7.3	84.0	0.8	5.9	0.6	0.5	0.7	0.0	0.2	91.3	0.8	7.9	0.075	0.517	19.291461	-98.412041
Lim. Edos. Term. Pue. Ppia. Tlax.	2.84																			
T. Der. Tepetitla	3.45	3	1	6829	9.2	85.6	0.6	1.8	1.0	0.8	0.3	0.6	0.1	94.8	0.6	4.6	0.088	0.507	19.293800	-98.404562
T. Der. Tepetitla	3.45	3	2	6638	10.5	83.3	1.1	2.0	1.0	0.9	0.3	0.7	0.2	93.8	1.1	5.1	0.092	0.507	19.293880	-98.404599
San Diego Xocoyucan	7.21	3	0	7059	7.3	85.9	1.1	2.8	1.1	0.6	0.4	0.2	0.6	93.2	1.1	5.7	0.076	0.507	19.307833	-98.370120
T. Der. Panotla	19.72	1	0	7872	9.8	83.6	1.0	3.2	0.9	0.4	0.5	0.5	0.1	93.4	1.0	5.6	0.085	0.540	19.319568	-98.277242
T. Der. Panotla	19.72	3	0	8549	5.6	90.2	0.8	1.5	0.8	0.5	0.2	0.2	0.2	95.8	0.8	3.4	0.081	0.526	19.319542	-98.269774
Totolac	21.38	1	0	8091	6.2	90.0	0.6	1.6	0.7	0.5	0.1	0.2	0.1	96.2	0.6	3.2	0.076	0.542	19.322703	-98.260140
Totolac	21.38	3	0	12036	4.6	88.3	1.0	2.2	0.6	0.8	0.2	1.1	1.2	92.9	1.0	6.1	0.078	0.532	19.329781	-98.250150
Tlaxcala	24.81	1	0	14388	3.8	92.2	0.3	1.7	0.3	0.5	0.5	0.4	0.3	96.0	0.3	3.7	0.085	0.516	19.325875	-98.246941

14 CARR: Tetlatlahuca - Santa Ana Chiautempan

CLAVE: 00158

RUTA: MEX-119

AÑO: 2021

LUGAR	ESTACION				CLASIFICACION VEHICULAR EN PORCIENTO										COORDENADAS					
	KM	TE	SC	TDPA	M	A	B	C2	C3	T3S2	T3S3	T3S2R4	OTROS	A	B	C	K'	D	LATITUD	LONGITUD
Tetlatlahuca	0.00																			
San Bartolomé Tenango	2.39	1	0	4661	4.2	86.3	0.2	5.5	0.6	2.2	0.6	0.1	0.3	90.5	0.2	9.3	0.073	0.502	19.247183	-98.296623
San Damián Texoloc	5.50	1	0	4601	3.8	87.0	0.3	4.5	0.7	3.0	0.5	0.1	0.1	90.8	0.3	8.9	0.077	0.502	19.272179	-98.284736
San Damián Texoloc	5.50	3	0	6424	3.0	90.3	0.1	3.2	0.5	2.2	0.5	0.1	0.1	93.3	0.1	6.6	0.075	0.502	19.278061	-98.275540
T. Izq. Cuahtelulpan	9.63	1	0	10059	3.0	86.7	0.3	3.3	0.3	5.5	0.5	0.1	0.3	89.7	0.3	10.0	0.086	0.513	19.288731	-98.251293
T. Izq. Cuahtelulpan	9.63	3	0	17235	3.8	93.6	0.4	1.1	0.4	0.2	0.1	0.3	0.1	97.4	0.4	2.2	0.076	0.506	19.291966	-98.249670
T. Der. Puebla	9.94	1	0	14155	5.0	90.7	0.7	1.5	0.6	0.5	0.3	0.4	0.3	95.7	0.7	3.6	0.084	0.507	19.300681	-98.245663
Santa Ana Chiautempan	16.00																			

15 CARR: Tlaxcala - Belem

CLAVE: 29389

RUTA: MEX-119

AÑO: 2021

LUGAR	ESTACION				CLASIFICACION VEHICULAR EN PORCIENTO										COORDENADAS					
	KM	TE	SC	TDPA	M	A	B	C2	C3	T3S2	T3S3	T3S2R4	OTROS	A	B	C	K'	D	LATITUD	LONGITUD
Tlaxcala	0.00																			
T. Der. Ocotlán	3.91	1	1	15650	2.5	93.3	0.2	2.3	0.3	0.7	0.4	0.1	0.2	95.8	0.2	4.0	0.076	0.512	19.324495	-98.214820
T. Der. Ocotlán	3.91	1	2	14928	2.5	93.0	0.3	2.3	0.4	0.8	0.4	0.1	0.2	95.5	0.3	4.2	0.075	0.512	19.324557	-98.214696
X. C. Puebla - Belem	4.55	1	1	22621	2.4	93.3	0.2	2.4	0.3	0.6	0.4	0.2	0.2	95.7	0.2	4.1	0.081	0.502	19.321539	-98.210005
X. C. Puebla - Belem	4.55	1	2	22426	2.4	93.5	0.2	2.4	0.3	0.6	0.4	0.1	0.1	95.9	0.2	3.9	0.076	0.502	19.321637	-98.209950
Santa Ana Chiautempan	5.82	1	1	10820	3.8	92.6	0.2	1.7	0.3	0.7	0.5	0.1	0.1	96.4	0.2	3.4	0.075	0.509	19.316720	-98.201892

TLAXCALA

15 CARR: Tlaxcala - Belem

CLAVE: 29389

RUTA: MEX-119

AÑO: 2021

LUGAR	ESTACION				CLASIFICACION VEHICULAR EN PORCIENTO										COORDENADAS					
	KM	TE	SC	TDPA	M	A	B	C2	C3	T3S2	T3S3	T3S2R4	OTROS	A	B	C	K'	D	LATITUD	LONGITUD
Santa Ana Chiautempan	5.82	1	2	11224	4.0	92.2	0.2	1.9	0.3	0.7	0.5	0.1	0.1	96.2	0.2	3.6	0.080	0.509	19.316778	-98.201854
T. Der. Ixcotla	7.19	3	1	10154	3.6	94.0	0.2	1.7	0.1	0.2	0.2	0.0	0.0	97.6	0.2	2.2	0.069	0.501	19.326792	-98.193949
T. Der. Ixcotla	7.19	3	2	10204	3.5	94.1	0.2	1.7	0.1	0.2	0.2	0.0	0.0	97.6	0.2	2.2	0.080	0.501	19.326774	-98.194082
Belem	10.06	1	0	7223	3.6	93.0	0.2	2.4	0.2	0.2	0.4	0.0	0.0	96.6	0.2	3.2	0.082	0.500	19.337488	-98.193297

16 CARR: Villa Alta - T. C. (Puebla - Tlaxcala)

CLAVE: 29566

RUTA: MEX-119

AÑO: 2021

LUGAR	ESTACION				CLASIFICACION VEHICULAR EN PORCIENTO										COORDENADAS					
	KM	TE	SC	TDPA	M	A	B	C2	C3	T3S2	T3S3	T3S2R4	OTROS	A	B	C	K'	D	LATITUD	LONGITUD
T. C. San Martín Texmelucan - Tlaxcala	0.00	3	0	7625	13.6	78.1	0.3	5.9	0.4	0.9	0.5	0.2	0.1	91.7	0.3	8.0	0.074	0.511	19.284340	-98.401343
Nativitas	10.50	3	0	8414	5.6	85.8	0.3	6.6	0.1	0.2	0.7	0.2	0.5	91.4	0.3	8.3	0.086	0.508	19.238458	-98.308248
T. C. Puebla - Tlaxcala	22.05	1	0	7429	6.6	84.5	0.5	6.8	0.6	0.3	0.2	0.2	0.3	91.1	0.5	8.4	0.088	0.507	19.234881	-98.244195

17 CARR: Amozoc - Perote (Cuota)

CLAVE: 00030

RUTA: MEX-140D

AÑO: 2021

LUGAR	ESTACION				CLASIFICACION VEHICULAR EN PORCIENTO										COORDENADAS					
	KM	TE	SC	TDPA	M	A	B	C2	C3	T3S2	T3S3	T3S2R4	OTROS	A	B	C	K'	D	LATITUD	LONGITUD
T. C. Puebla - Córdoba (Cuota)	0.00	3	0	11289	1.4	68.3	8.4	8.4	1.8	6.7	1.4	2.6	1.0	69.7	8.4	21.9	0.093	0.508	19.068850	-98.065338
Plaza de Cobro Amozoc	0.68	2	0	10515	0.6	75.8	4.4	4.1	3.7	7.5	0.8	2.3	0.8	76.4	4.4	19.2	0.085	0.500	19.063641	-98.069094
Lim. Edos. Term. Pue. Ppia. Tlax.	20.08																			
X. C. Huamantla - La Venta	25.80	3	0	10162	1.5	69.2	8.6	7.7	1.9	6.2	1.4	2.6	0.9	70.7	8.6	20.7	0.083	0.508	19.231072	-97.892790
Lim. Edos. Term. Tlax. Ppia. Pue.	30.50																			
Lim. Edos. Term. Pue. Ppia. Tlax.	31.26																			
Lim. Edos. Term. Tlax. Ppia. Pue.	31.67																			
Lim. Edos. Term. Pue. Ppia. Tlax.	38.93																			
Plaza de Cobro Cuapiaxtla	40.34	2	0	6065	0.6	78.2	2.2	4.1	3.8	6.1	0.9	2.9	1.2	78.8	2.2	19.0	0.085	0.500	19.310369	-97.797544
Lim. Edos. Term. Tlax. Ppia. Pue.	54.50																			
T. Der. Oriental	61.45	1	0	10857	4.2	73.9	3.3	9.0	1.7	3.6	1.5	2.3	0.5	78.1	3.3	18.6	0.085	0.502	19.411281	-97.651533
T. Der. Oriental	61.45	3	1	5221	1.8	72.6	6.9	7.5	2.2	3.8	1.6	3.0	0.6	74.4	6.9	18.7	0.086	0.515	19.420997	-97.637153
T. Der. Oriental	61.45	3	2	5539	1.9	69.3	7.9	8.9	2.3	4.0	1.8	3.3	0.6	71.2	7.9	20.9	0.111	0.515	19.421035	-97.637184
T. Izq. Teziutlán	62.70	3	0	7445	1.2	74.6	3.5	6.6	2.4	5.2	2.2	3.6	0.7	75.8	3.5	20.7	0.097	0.533	19.426402	-97.630069
Lim. Edos. Term. Pue. Ppia. Ver.	90.36																			
T. C. Lib. de Perote	105.00																			

TLAXCALA

18 CARR : Libramiento de Tlaxcala (Cuota)

CLAVE:

RUTA : MEX-117D

AÑO : 2021

LUGAR	ESTACION				CLASIFICACION VEHICULAR EN PORCIENTO										COORDENADAS					
	KM	TE	SC	TDPA	M	A	B	C2	C3	T3S2	T3S3	T3S2R4	OTROS	A	B	C	K'	D	LATITUD	LONGITUD
T. C. San Martín Texmelucan - Ocotoxco (Cuota)	0.00	3	1	11139	2.5	90.4	0.9	2.7	1.0	1.2	0.4	0.7	0.2	92.9	0.9	6.2	0.096	0.518	19.317196	-98.256465
T. C. San Martín Texmelucan - Ocotoxco (Cuota)	0.00	3	2	10370	2.5	90.5	0.9	2.7	1.0	1.2	0.4	0.7	0.1	93.0	0.9	6.1	0.093	0.518	19.317142	-98.256399
X. C. Puebla - Tlaxcala	6.50	1	1	9886	2.5	90.6	0.9	2.6	0.9	1.2	0.4	0.7	0.2	93.1	0.9	6.0	0.129	0.573	19.297259	-98.254384
X. C. Puebla - Tlaxcala	6.50	1	2	10194	2.5	90.4	0.9	2.7	1.0	1.2	0.4	0.7	0.2	92.9	0.9	6.2	0.106	0.573	19.297307	-98.254305
X. C. Puebla - Tlaxcala	6.50	3	1	11592	1.8	90.8	0.4	4.9	0.5	0.9	0.5	0.1	0.1	92.6	0.4	7.0	0.092	0.505	19.287534	-98.234049
X. C. Puebla - Tlaxcala	6.50	3	2	11823	1.6	90.8	0.4	5.3	0.4	0.8	0.5	0.1	0.1	92.4	0.4	7.2	0.104	0.505	19.287573	-98.234131
T. C. Puebla - Belén Atzizimitlán	11.00	1	1	11336	1.9	91.6	0.2	3.8	0.5	1.1	0.5	0.2	0.2	93.5	0.2	6.3	0.072	0.501	19.301904	-98.203175
T. C. Puebla - Belén Atzizimitlán	11.00	1	2	11385	1.9	91.4	0.2	3.7	0.8	1.1	0.5	0.2	0.2	93.3	0.2	6.5	0.074	0.501	19.301988	-98.203195

19 CARR : Libramiento Norte de la Ciudad de México (Cuota)

CLAVE: 0902

RUTA : MEX-M40D

AÑO : 2021

LUGAR	ESTACION				CLASIFICACION VEHICULAR EN PORCIENTO										COORDENADAS					
	KM	TE	SC	TDPA	M	A	B	C2	C3	T3S2	T3S3	T3S2R4	OTROS	A	B	C	K'	D	LATITUD	LONGITUD
T. C. Toluca - Palmillas	0.00																			
X. C. Toluca - Palmillas	12.90	1	1	4168	3.3	59.8	5.5	4.5	3.6	13.8	2.3	6.5	0.7	63.1	5.5	31.4	0.086	0.520	19.918207	-99.850286
X. C. Toluca - Palmillas	12.90	1	2	4515	2.3	60.8	5.1	3.8	3.1	15.7	2.4	6.1	0.7	63.1	5.1	31.8	0.075	0.520	19.919599	-99.850067
X. C. Toluca - Palmillas	12.90	3	1	3750	2.1	60.1	5.6	4.7	3.5	14.5	2.7	6.3	0.5	62.2	5.6	32.2	0.098	0.507	19.922898	-99.836922
X. C. Toluca - Palmillas	12.90	3	2	3851	1.8	61.9	5.2	4.7	3.5	13.2	2.5	6.8	0.4	63.7	5.2	31.1	0.080	0.507	19.923150	-99.836884
C. P. Jilotepec	48.70	1	1	4371	2.4	54.3	7.2	8.0	3.2	17.4	1.8	5.0	0.7	56.7	7.2	36.1	0.075	0.502	19.960321	-99.546390
C. P. Jilotepec	48.70	1	2	4405	2.5	54.5	7.2	7.9	3.2	16.0	2.4	5.5	0.8	57.0	7.2	35.8	0.076	0.502	19.960458	-99.546511
C. P. Jilotepec	48.70	3	1	5682	2.6	58.1	6.3	6.9	3.2	16.3	1.6	4.3	0.7	60.7	6.3	33.0	0.085	0.507	19.978290	-99.525498
C. P. Jilotepec	48.70	3	2	5524	2.4	52.1	7.7	8.3	3.3	17.7	2.2	5.5	0.8	54.5	7.7	37.8	0.079	0.507	19.978461	-99.525499
X. C. México - Querétaro	54.00	3	1	8778	1.8	51.0	5.9	6.2	4.3	19.3	3.7	6.9	0.9	52.8	5.9	41.3	0.071	0.530	20.003672	-99.482658
X. C. México - Querétaro	54.00	3	2	7782	1.8	52.8	8.0	4.8	3.9	19.1	2.9	5.8	0.9	54.6	8.0	37.4	0.073	0.530	20.003736	-99.482706
Plaza de Cobro Querétaro	55.00	3	1	8755	0.3	54.2	1.6	4.6	5.9	18.8	4.2	8.1	2.3	54.5	1.6	43.9	0.067	0.500	19.998714	-99.487788
Plaza de Cobro Querétaro	55.00	3	2	8755	0.3	54.2	1.6	4.6	5.9	18.8	4.2	8.1	2.3	54.5	1.6	43.9	0.067	0.500	19.998714	-99.487788
Lim. Edos. Term. Méx. Ppia. Hgo.	60.72																			
X. C. Ent. Tepeji del Río - Tlahuelilpan	79.00	1	1	8268	2.2	57.3	5.3	5.7	3.4	15.7	3.7	5.8	0.9	59.5	5.3	35.2	0.083	0.510	20.087991	-99.317512
X. C. Ent. Tepeji del Río - Tlahuelilpan	79.00	1	2	7943	2.1	54.0	5.7	6.3	3.7	17.2	4.3	5.8	0.9	56.1	5.7	38.2	0.083	0.510	20.088072	-99.317540
X. C. Ent. Tepeji del Río - Tlahuelilpan	79.00	3	1	9419	2.1	57.8	6.2	3.8	2.9	16.4	4.0	5.9	0.9	59.9	6.2	33.9	0.092	0.508	20.092699	-99.268556
X. C. Ent. Tepeji del Río - Tlahuelilpan	79.00	3	2	9713	2.3	57.4	6.2	3.9	3.2	17.0	4.0	5.1	0.9	59.7	6.2	34.1	0.083	0.508	20.092834	-99.268461
X. C. Los Reyes - El Tephé	86.40	1	1	9409	2.4	60.2	3.9	5.7	3.0	14.7	3.9	5.4	0.8	62.6	3.9	33.5	0.096	0.503	20.071976	-99.231231
X. C. Los Reyes - El Tephé	86.40	1	2	9311	2.3	59.2	3.8	6.3	3.2	15.3	3.8	5.3	0.8	61.5	3.8	34.7	0.073	0.503	20.072103	-99.231126
X. C. Los Reyes - El Tephé	86.40	3	1	8714	2.2	58.0	3.5	6.3	3.2	16.1	3.7	6.2	0.8	60.2	3.5	36.3	0.094	0.508	20.062809	-99.205903
X. C. Los Reyes - El Tephé	86.40	3	2	9008	2.3	57.7	3.6	6.2	3.3	16.0	3.8	6.3	0.8	60.0	3.6	36.4	0.078	0.508	20.062944	-99.205865

TLAXCALA

19 CARR : Libramiento Norte de la Ciudad de México (Cuota)

CLAVE: 0902

RUTA : MEX-M40D

AÑO : 2021

LUGAR	ESTACION				CLASIFICACION VEHICULAR EN PORCIENTO										COORDENADAS					
	KM	TE	SC	TDPA	M	A	B	C2	C3	T3S2	T3S3	T3S2R4	OTROS	A	B	C	K'	D	LATITUD	LONGITUD
Lim. Edos. Term. Hgo. Ppia. Méx.	95.75																			
X. C. (Los Reyes - El Tephé) - Tianguistongo	108.60	1	1	9194	4.7	53.7	4.5	6.5	3.3	16.8	3.6	6.2	0.7	58.4	4.5	37.1	0.097	0.517	19.958434	-99.067627
X. C. (Los Reyes - El Tephé) - Tianguistongo	108.60	1	2	8580	4.7	52.3	5.8	6.5	3.1	17.0	3.7	6.2	0.7	57.0	5.8	37.2	0.076	0.517	19.958569	-99.067589
X. C. (Los Reyes - El Tephé) - Tianguistongo	108.60	3	1	9617	2.7	56.8	5.6	6.0	3.1	15.8	3.4	5.8	0.8	59.5	5.6	34.9	0.096	0.503	19.960016	-99.032113
X. C. (Los Reyes - El Tephé) - Tianguistongo	108.60	3	2	9491	2.6	56.8	5.8	5.7	3.1	15.8	3.5	5.9	0.8	59.4	5.8	34.8	0.082	0.503	19.960151	-99.032189
Lim. Edos. Term. Méx. Ppia. Hgo.	115.89																			
X. C. México - Pachuca	127.30	1	1	9265	2.3	58.9	5.7	5.5	3.0	15.1	3.4	5.4	0.7	61.2	5.7	33.1	0.094	0.513	19.932621	-98.903879
X. C. México - Pachuca	127.30	1	2	9773	2.3	58.8	5.7	5.2	2.9	15.0	3.5	5.9	0.7	61.1	5.7	33.2	0.080	0.513	19.932765	-98.903851
X. C. México - Pachuca	127.30	3	1	8151	3.4	52.1	5.3	7.4	3.5	16.0	4.0	7.6	0.7	55.5	5.3	39.2	0.084	0.501	19.926686	-98.878762
X. C. México - Pachuca	127.30	3	2	8177	3.4	51.4	5.4	7.5	3.4	16.4	4.4	7.4	0.7	54.8	5.4	39.8	0.080	0.501	19.926840	-98.878714
Lim. Edos. Term. Hgo. Ppia. Méx.	143.98																			
X. C. Venta de Carpio - T. C. (Pachuca - Tulancingo)	151.11	1	1	8658	1.2	52.9	5.2	7.8	3.3	17.3	3.8	7.7	0.8	54.1	5.2	40.7	0.069	0.507	19.837706	-98.705365
X. C. Venta de Carpio - T. C. (Pachuca - Tulancingo)	151.11	1	2	8888	1.2	52.8	5.5	7.6	3.0	17.7	3.9	7.4	0.9	54.0	5.5	40.5	0.077	0.507	19.837816	-98.705261
X. C. Venta de Carpio - T. C. (Pachuca - Tulancingo)	151.11	3	1	7253	1.2	49.9	5.5	7.4	4.2	19.1	3.9	7.9	0.9	51.1	5.5	43.4	0.067	0.510	19.826824	-98.691750
X. C. Venta de Carpio - T. C. (Pachuca - Tulancingo)	151.11	3	2	7564	1.1	49.2	5.6	7.8	4.4	18.6	4.4	8.0	0.9	50.3	5.6	44.1	0.077	0.510	19.826936	-98.691621
X. C. Ent. Tolman - Cd. Sahagún	162.55	1	1	8573	1.1	56.0	5.0	7.2	3.4	15.9	3.6	7.1	0.7	57.1	5.0	37.9	0.070	0.512	19.760837	-98.632011
X. C. Ent. Tolman - Cd. Sahagún	162.55	1	2	8981	0.9	54.2	5.2	7.8	3.8	15.4	3.9	7.9	0.9	55.1	5.2	39.7	0.076	0.512	19.760893	-98.631866
X. C. Ent. Tolman - Cd. Sahagún	162.55	3	1	10051	1.5	53.4	6.7	7.5	3.4	17.0	3.6	6.0	0.9	54.9	6.7	38.4	0.072	0.523	19.749248	-98.625628
X. C. Ent. Tolman - Cd. Sahagún	162.55	3	2	9185	1.8	52.0	6.9	7.7	3.5	17.4	3.7	6.2	0.8	53.8	6.9	39.3	0.069	0.523	19.749325	-98.625464
Lim. Edos. Term. Méx. Ppia. Hgo.	166.53																			
X. C. Calpulallpan - El Ocote	180.39	1	1	9857	0.5	51.5	6.5	10.2	3.2	17.8	3.6	6.1	0.6	52.0	6.5	41.5	0.081	0.523	19.624894	-98.552633
X. C. Calpulallpan - El Ocote	180.39	1	2	8981	1.0	51.4	6.1	10.5	3.2	17.2	3.6	6.1	0.9	52.4	6.1	41.5	0.075	0.523	19.624994	-98.552520
X. C. Calpulallpan - El Ocote	180.39	3	1	7997	0.4	49.8	5.4	7.9	4.3	18.8	4.9	8.2	0.3	50.2	5.4	44.4	0.080	0.516	19.613440	-98.542838
X. C. Calpulallpan - El Ocote	180.39	3	2	8525	0.7	49.5	5.6	7.9	4.2	19.2	4.5	8.1	0.3	50.2	5.6	44.2	0.077	0.516	19.613583	-98.542728
Lim. Edos. Term. Hgo. Ppia. Tlax.	180.98																			
X. C. Los Reyes - Zacatepec	196.70	1	1	8627	3.0	63.6	4.9	3.7	3.0	13.7	3.0	4.4	0.7	66.6	4.9	28.5	0.078	0.538	19.520184	-98.472891
X. C. Los Reyes - Zacatepec	196.70	1	2	8033	3.0	63.7	4.9	3.7	3.0	13.6	3.0	4.4	0.7	66.7	4.9	28.4	0.087	0.538	19.520227	-98.472809
X. C. Los Reyes - Zacatepec	196.70	3	1	8426	2.4	58.6	5.3	4.9	2.5	15.2	5.4	5.0	0.7	61.0	5.3	33.7	0.084	0.547	19.508278	-98.467092
X. C. Los Reyes - Zacatepec	196.70	3	2	8378	2.3	59.2	5.2	4.8	2.5	15.1	5.3	5.0	0.6	61.5	5.2	33.3	0.082	0.547	19.508313	-98.466999
X. C. San Martín Texmelucan - Tlaxcala - El Molinito	220.95	1	1	7916	2.9	64.8	4.8	3.7	2.6	12.6	3.1	4.7	0.8	67.7	4.8	27.5	0.079	0.503	19.408900	-98.425578
X. C. San Martín Texmelucan - Tlaxcala - El Molinito	220.95	1	2	7827	2.9	59.0	5.6	4.1	3.1	15.8	3.0	5.6	0.9	61.9	5.6	32.5	0.076	0.503	19.408964	-98.425504
X. C. San Martín Texmelucan - Tlaxcala - El Molinito	220.95	3	1	9692	3.4	65.2	5.5	5.2	2.3	11.4	2.3	3.8	0.9	68.6	5.5	25.9	0.066	0.512	19.288129	-98.410753
X. C. San Martín Texmelucan - Tlaxcala - El Molinito	220.95	3	2	9246	3.4	65.2	5.6	5.2	2.3	11.4	2.3	3.7	0.9	68.6	5.6	25.8	0.077	0.512	19.288140	-98.410617
Plaza de Cobro San Martín Texmelucan	222.00	1	1	7546	0.3	51.8	1.6	5.4	5.8	21.3	3.7	8.2	1.9	52.1	1.6	46.3	0.067	0.500	19.301809	-98.409588
Plaza de Cobro San Martín Texmelucan	222.00	1	2	7546	0.3	51.8	1.6	5.4	5.8	21.3	3.7	8.2	1.9	52.1	1.6	46.3	0.067	0.500	19.301809	-98.409588

TLAXCALA

19 CARR: Libramiento Norte de la Ciudad de México (Cuota)

CLAVE: 0902

RUTA: MEX-M40D

AÑO: 2021

LUGAR	ESTACION				CLASIFICACION VEHICULAR EN PORCIENTO										COORDENADAS					
	KM	TE	SC	TDPA	M	A	B	C2	C3	T3S2	T3S3	T3S2R4	OTROS	A	B	C	K'	D	LATITUD	LONGITUD
T. C. San Martín Texmelucan - Ocotoxco (Cuota)	222.44																			
T. C. México - Puebla (Cuota)	226.73	1	1	8893	0.9	67.8	4.8	4.1	4.3	10.2	2.1	4.9	0.9	68.7	4.8	26.5	0.077	0.514	19.270094	-98.419977
T. C. México - Puebla (Cuota)	226.73	1	2	9406	1.2	67.4	4.8	4.1	4.3	10.2	2.2	4.9	0.9	68.6	4.8	26.6	0.068	0.514	19.270030	-98.419873

20 CARR: México - Puebla (Cuota)

CLAVE: 00450

RUTA: MEX-150D

AÑO: 2021

LUGAR	ESTACION				CLASIFICACION VEHICULAR EN PORCIENTO										COORDENADAS					
	KM	TE	SC	TDPA	M	A	B	C2	C3	T3S2	T3S3	T3S2R4	OTROS	A	B	C	K'	D	LATITUD	LONGITUD
México	0.00																			
Ent Concordía (T. Izq. Los Reyes) Central	17.00	3	1	80794	2.3	89.9	1.3	3.6	0.7	1.2	0.6	0.2	0.2	92.2	1.3	6.5	0.057	0.501	19.351898	-98.987755
Ent Concordía (T. Izq. Los Reyes) Lateral	17.00	3	1	21458	4.7	79.9	2.8	7.6	1.6	2.1	0.6	0.4	0.3	84.6	2.8	12.6	0.077	0.546	19.351790	-98.987870
Ent Concordía (T. Izq. Los Reyes) Central	17.00	3	2	80623	2.3	90.0	1.3	3.6	0.6	1.1	0.7	0.2	0.2	92.3	1.3	6.4	0.054	0.501	19.352585	-98.988308
Ent Concordía (T. Izq. Los Reyes) Lateral	17.00	3	2	25815	4.0	78.9	3.3	8.7	1.3	2.3	0.5	0.6	0.4	82.9	3.3	13.8	0.068	0.546	19.352657	-98.988222
Lim. Edos. Term. CDMX Ppia. Méx.	17.51																			
Av. Las Torres (Eje 6) Lateral	19.27	1	1	25187	4.3	85.4	1.2	6.8	0.8	0.9	0.2	0.3	0.1	89.7	1.2	9.1	0.066	0.501	19.346693	-98.982522
Av. Las Torres (Eje 6) Central	19.27	1	1	82756	2.3	90.5	1.2	3.0	0.8	1.2	0.6	0.2	0.2	92.8	1.2	6.0	0.053	0.500	19.346774	-98.982424
Av. Las Torres (Eje 6) Lateral	19.27	1	2	25276	4.0	74.4	5.8	12.1	1.0	1.7	0.4	0.4	0.2	78.4	5.8	15.8	0.078	0.501	19.346701	-98.981986
Av. Las Torres (Eje 6) Central	19.27	1	2	82845	2.3	90.0	1.3	3.6	0.6	1.1	0.7	0.2	0.2	92.3	1.3	6.4	0.050	0.500	19.346629	-98.982062
Av. Las Torres (Eje 6) Central	19.27	3	1	73415	3.4	89.2	1.3	3.4	0.6	1.0	0.7	0.2	0.2	92.6	1.3	6.1	0.060	0.508	19.339832	-98.976455
Av. Las Torres (Eje 6) Lateral	19.27	3	1	29092	3.9	76.5	2.3	12.9	1.0	1.4	0.6	1.0	0.4	80.4	2.3	17.3	0.064	0.529	19.339769	-98.976570
Av. Las Torres (Eje 6) Lateral	19.27	3	2	24341	3.5	74.0	3.1	14.4	1.4	2.1	0.9	0.3	0.3	77.5	3.1	19.4	0.060	0.529	19.341107	-98.976922
Av. Las Torres (Eje 6) Central	19.27	3	2	76136	3.4	88.2	1.3	4.0	0.9	1.1	0.7	0.2	0.2	91.6	1.3	7.1	0.054	0.508	19.341043	-98.977026
Eje 10 Sur (Central)	22.80	1	1	73973	2.5	88.5	1.5	3.9	0.9	1.3	0.6	0.5	0.3	91.0	1.5	7.5	0.052	0.500	19.329510	-98.965442
Eje 10 Sur (Lateral)	22.80	1	1	28165	4.8	85.7	1.0	6.2	0.7	0.6	0.5	0.2	0.3	90.5	1.0	8.5	0.064	0.515	19.329401	-98.965518
Eje 10 Sur (Lateral)	22.80	1	2	26574	3.6	79.3	2.2	11.6	0.9	1.2	0.6	0.3	0.3	82.9	2.2	14.9	0.062	0.515	19.329898	-98.965471
Eje 10 Sur (Central)	22.80	1	2	74005	2.3	89.5	1.4	3.8	0.7	1.2	0.7	0.2	0.2	91.8	1.4	6.8	0.051	0.500	19.329799	-98.965547
Eje 10 Sur (Central)	22.80	3	1	47347	2.7	87.4	2.2	3.4	1.1	1.7	0.3	0.3	0.9	90.1	2.2	7.7	0.064	0.536	19.313817	-98.946969
Eje 10 Sur (Lateral)	22.80	3	1	34378	3.5	85.2	1.3	7.4	0.7	0.8	0.6	0.2	0.3	88.7	1.3	10.0	0.064	0.503	19.313726	-98.947035
Eje 10 Sur (Lateral)	22.80	3	2	34802	2.6	76.8	4.2	14.3	0.6	0.5	0.5	0.2	0.3	79.4	4.2	16.4	0.062	0.503	19.315435	-98.948291
Eje 10 Sur (Central)	22.80	3	2	40335	2.6	86.4	2.6	3.9	1.1	1.9	0.4	0.3	0.8	89.0	2.6	8.4	0.065	0.536	19.315344	-98.948367
X. C. Santa Bárbara - Izúcar de Matamoros (Lateral)	32.14	1	1	9728	3.3	85.9	1.4	6.2	1.0	1.6	0.3	0.2	0.1	89.2	1.4	9.4	0.065	0.688	19.292175	-98.892124
X. C. Santa Bárbara - Izúcar de Matamoros (Central)	32.14	1	1	39770	1.9	86.8	2.5	4.1	1.4	2.4	0.4	0.4	0.1	88.7	2.5	8.8	0.058	0.500	19.292265	-98.892133
X. C. Santa Bárbara - Izúcar de Matamoros (Lateral)	32.14	1	2	21410	2.2	89.5	1.0	4.1	1.1	1.6	0.3	0.1	0.1	91.7	1.0	7.3	0.068	0.688	19.292563	-98.891962
X. C. Santa Bárbara - Izúcar de Matamoros (Central)	32.14	1	2	39732	1.9	86.8	2.5	4.5	1.2	2.3	0.4	0.3	0.1	88.7	2.5	8.8	0.063	0.500	19.292428	-98.891952
X. C. Santa Bárbara - Izúcar de Matamoros (Lateral)	32.14	3	1	1802	2.2	73.5	5.0	6.3	2.1	5.7	0.9	3.7	0.6	75.7	5.0	19.3	0.062	0.525	19.294595	-98.876276

TLAXCALA

20 CARR: México - Puebla (Cuota)

CLAVE: 00450

RUTA: MEX-150D

AÑO: 2021

LUGAR	ESTACION				CLASIFICACION VEHICULAR EN PORCIENTO													COORDENADAS		
	KM	TE	SC	TDPA	M	A	B	C2	C3	T3S2	T3S3	T3S2R4	OTROS	A	B	C	K'	D	LATITUD	LONGITUD
X. C. Santa Bárbara - Izúcar de Matamoros (Central)	32.14	3	1	13454	0.6	78.8	5.4	5.9	2.6	5.3	0.5	0.7	0.2	79.4	5.4	15.2	0.063	0.500	19.294759	-98.876347
X. C. Santa Bárbara - Izúcar de Matamoros (Central)	32.14	3	2	13466	0.5	78.5	5.4	5.8	2.3	5.9	0.6	0.7	0.3	79.0	5.4	15.6	0.061	0.500	19.295029	-98.875760
X. C. Santa Bárbara - Izúcar de Matamoros (Lateral)	32.14	3	2	1627	2.2	69.3	6.8	7.1	2.1	6.6	1.1	4.1	0.7	71.5	6.8	21.7	0.079	0.525	19.295156	-98.875808
Plaza de Cobro San Marcos	33.30	2	1	15474	0.6	75.5	3.9	5.3	3.8	7.1	0.6	2.8	0.4	76.1	3.9	20.0	0.068	0.500	19.296272	-98.870712
Plaza de Cobro San Marcos	33.30	2	2	15474	0.6	75.5	3.9	5.3	3.8	7.1	0.6	2.8	0.4	76.1	3.9	20.0	0.068	0.500	19.296272	-98.870712
T. Izq. Río Frío	63.79	3	1	15565	1.2	77.1	6.0	5.2	2.4	5.0	0.9	1.8	0.4	78.3	6.0	15.7	0.076	0.524	19.350757	-98.658948
T. Izq. Río Frío	63.79	3	2	17162	1.1	76.8	5.6	5.0	2.6	5.4	0.9	2.1	0.5	77.9	5.6	16.5	0.086	0.524	19.351183	-98.659461
Lim. Edos. Term. Méx. Ppia. Pue.	65.46																			
T. Izq. Tlaxcala	90.61	1	1	21170	0.9	80.3	5.1	5.2	2.0	3.8	0.7	1.6	0.4	81.2	5.1	13.7	0.076	0.505	19.274013	-98.436303
T. Izq. Tlaxcala	90.61	1	2	21591	1.0	78.4	5.5	5.6	2.1	4.4	0.8	1.8	0.4	79.4	5.5	15.1	0.086	0.505	19.274139	-98.436236
T. Izq. Tlaxcala	90.61	3	1	24762	0.7	69.4	5.7	8.8	2.6	7.6	1.6	3.3	0.3	70.1	5.7	24.2	0.063	0.502	19.261881	-98.417560
T. Izq. Tlaxcala	90.61	3	2	24959	0.9	65.9	6.4	9.6	2.9	8.6	1.6	3.8	0.3	66.8	6.4	26.8	0.072	0.502	19.261962	-98.417484
Plaza de Cobro San Martín Texmelucan	91.17	2	1	23685	0.7	69.7	3.6	4.9	4.5	10.4	1.3	4.2	0.7	70.4	3.6	26.0	0.068	0.500	19.241190	-98.385786
Plaza de Cobro San Martín Texmelucan	91.17	2	2	23685	0.7	69.7	3.6	4.9	4.5	10.4	1.3	4.2	0.7	70.4	3.6	26.0	0.068	0.500	19.241190	-98.385786
Lim. Edos. Term. Pue. Ppia. Tlax.	99.11																			
T. Der. Aeropuerto Internacional De Puebla	101.10	3	1	35053	2.3	73.0	4.1	5.2	2.0	9.5	2.5	0.6	0.8	75.3	4.1	20.6	0.063	0.541	19.209137	-98.349417
T. Der. Aeropuerto Internacional De Puebla	101.10	3	2	29236	2.3	70.8	5.0	6.0	2.0	9.5	3.0	0.6	0.8	73.1	5.0	21.9	0.076	0.541	19.209209	-98.349350
X. C. Xoxtla - Huactzinco	107.98	1	1	35361	3.4	71.6	3.0	5.4	3.8	8.9	3.0	0.2	0.7	75.0	3.0	22.0	0.074	0.502	19.182804	-98.317410
X. C. Xoxtla - Huactzinco	107.98	1	2	35721	3.2	71.7	3.0	5.4	3.8	8.9	3.0	0.2	0.8	74.9	3.0	22.1	0.074	0.502	19.182903	-98.317334
X. C. Xoxtla - Huactzinco	107.98	3	1	40851	5.3	68.1	6.0	5.0	2.4	8.3	1.2	3.0	0.7	73.4	6.0	20.6	0.065	0.514	19.164701	-98.297704
X. C. Xoxtla - Huactzinco	107.98	3	2	43540	5.1	67.8	6.0	5.0	2.4	8.3	1.3	3.3	0.8	72.9	6.0	21.1	0.069	0.514	19.164773	-98.297609
Lim. Edos. Term. Tlax. Ppia. Pue.	108.00																			
Anillo Periferico Poniente de Puebla (Central)	114.00	3	1	29963	2.0	72.3	5.7	5.4	3.3	7.1	0.8	2.9	0.5	74.3	5.7	20.0	0.086	0.515	19.126865	-98.263617
Anillo Periferico Poniente de Puebla (Lateral)	114.00	3	1	27166	2.3	83.5	1.9	4.0	1.0	3.5	1.9	0.9	1.0	85.8	1.9	12.3	0.087	0.501	19.126811	-98.263693
Anillo Periferico Poniente de Puebla (Central)	114.00	3	2	32065	2.1	69.3	6.4	5.8	3.6	8.1	0.9	3.2	0.6	71.4	6.4	22.2	0.069	0.515	19.126584	-98.263209
Anillo Periferico Poniente de Puebla (Lateral)	114.00	3	2	27024	2.5	82.0	2.2	4.5	1.0	3.8	1.9	1.1	1.0	84.5	2.2	13.3	0.070	0.501	19.126628	-98.263114
Boulevard Hermanos Serdán	120.46	3	1	65355	4.2	81.7	3.3	4.3	1.4	2.6	0.4	1.7	0.4	85.9	3.3	10.8	0.066	0.518	19.089340	-98.216626
Boulevard Hermanos Serdán	120.46	3	2	60150	4.5	81.4	3.3	4.3	1.4	2.6	0.4	1.7	0.4	85.9	3.3	10.8	0.063	0.518	19.089430	-98.216616
X. C. Puebla - Tlaxcala (Lateral)	123.00	3	1	32743	3.3	83.9	3.1	5.9	1.5	1.5	0.2	0.5	0.1	87.2	3.1	9.7	0.065	0.510	19.085943	-98.200159
X. C. Puebla - Tlaxcala (Central)	123.00	3	1	47810	1.4	84.0	1.9	3.2	3.0	4.1	1.0	1.1	0.3	85.4	1.9	12.7	0.066	0.526	19.086061	-98.200140
X. C. Puebla - Tlaxcala (Lateral)	123.00	3	2	31299	3.3	83.9	3.1	5.9	1.5	1.5	0.2	0.5	0.1	87.2	3.1	9.7	0.083	0.510	19.086167	-98.199607
X. C. Puebla - Tlaxcala (Central)	123.00	3	2	47402	1.6	82.5	1.9	3.7	3.1	4.6	1.0	1.3	0.3	84.1	1.9	14.0	0.068	0.526	19.086059	-98.199598
T. C. Puebla - Tlaxcala	124.90																			



TLAXCALA

21 CARR : San Martín Texmelucan - Tlaxcala - El Molinito (Cuota)

CLAVE: 00212

RUTA: MEX-117D

AÑO: 2021

LUGAR	ESTACION				CLASIFICACION VEHICULAR EN PORCIENTO										COORDENADAS					
	KM	TE	SC	TDPA	M	A	B	C2	C3	T3S2	T3S3	T3S2R4	OTROS	A	B	C	K'	D	LATITUD	LONGITUD
T. C. México - Puebla (Cuota)	0.00																			
X. C. San Martín Texmelucan - Tlaxcala	1.80	1	1	2066	3.9	83.7	3.8	3.1	1.7	2.9	0.4	0.3	0.2	87.6	3.8	8.6	0.080	0.602	19.293348	-98.414865
X. C. San Martín Texmelucan - Tlaxcala	1.80	1	2	1912	3.9	84.5	3.5	2.9	1.5	2.6	0.5	0.3	0.3	88.4	3.5	8.1	0.102	0.602	19.293429	-98.414917
Lim. Edos. Term. Pue. Ppia. Tlax.	4.05																			
Plaza de Cobro San Martín Texmelucan	5.45	2	1	2510	0.9	79.6	4.5	4.9	2.6	3.8	1.3	1.8	0.6	80.5	4.5	15.0	0.088	0.500	19.301602	-98.404063
Plaza de Cobro San Martín Texmelucan	5.45	2	2	2510	0.9	79.6	4.5	4.9	2.6	3.8	1.3	1.8	0.6	80.5	4.5	15.0	0.088	0.500	19.301602	-98.404063
X. C. San Martín Texmelucan - Tlaxcala (Trébol)	24.75	1	1	19520	3.1	91.7	0.8	1.4	0.8	0.9	0.2	0.9	0.2	94.8	0.8	4.4	0.075	0.513	19.325555	-98.250104
X. C. San Martín Texmelucan - Tlaxcala (Trébol)	24.75	1	2	18502	3.2	91.6	0.8	1.4	0.8	0.9	0.2	0.9	0.2	94.8	0.8	4.4	0.072	0.513	19.325668	-98.250174
X. C. San Martín Texmelucan - Tlaxcala (Trébol)	24.75	3	1	18253	2.3	89.9	2.2	3.2	0.6	0.9	0.2	0.6	0.1	92.2	2.2	5.6	0.076	0.527	19.331610	-98.239750
X. C. San Martín Texmelucan - Tlaxcala (Trébol)	24.75	3	2	16358	2.3	90.0	2.2	3.2	0.6	0.9	0.2	0.5	0.1	92.3	2.2	5.5	0.078	0.527	19.331679	-98.239828
T. Izq. Tizatlán	29.00	3	1	19131	1.2	91.3	1.5	3.1	0.7	1.0	0.3	0.6	0.3	92.5	1.5	6.0	0.075	0.515	19.337919	-98.211097
T. Izq. Tizatlán	29.00	3	2	18025	1.0	90.8	1.7	3.6	0.7	1.0	0.3	0.6	0.3	91.8	1.7	6.5	0.077	0.515	19.338009	-98.211125
T. Der. San Pablo Apetatitlán	31.65	3	1	40189	2.0	91.2	1.2	2.8	1.0	1.2	0.4	0.1	0.1	93.2	1.2	5.6	0.062	0.505	19.346807	-98.195812
T. Der. San Pablo Apetatitlán	31.65	3	2	39364	2.1	90.6	1.2	3.0	1.2	1.3	0.4	0.1	0.1	92.7	1.2	6.1	0.069	0.505	19.346943	-98.195897
Ocotoxco	35.20	1	1	36523	2.6	89.1	1.3	3.2	1.1	1.3	0.7	0.6	0.1	91.7	1.3	7.0	0.063	0.511	19.378939	-98.179200
Ocotoxco	35.20	1	2	34771	2.6	88.3	1.4	3.5	1.2	1.5	0.8	0.6	0.1	90.9	1.4	7.7	0.067	0.511	19.378949	-98.179362

22 CARR : Tlaxco - Tejocotal (Cuota)

CLAVE: 00209

RUTA: MEX-119D

AÑO: 2021

LUGAR	ESTACION				CLASIFICACION VEHICULAR EN PORCIENTO										COORDENADAS					
	KM	TE	SC	TDPA	M	A	B	C2	C3	T3S2	T3S3	T3S2R4	OTROS	A	B	C	K'	D	LATITUD	LONGITUD
T.C. Apan - Tlaxco	23.00	3	0	4453	2.6	82.7	2.7	7.4	1.8	1.1	0.5	0.6	0.6	85.3	2.7	12.0	0.131	0.513	19.607573	-98.156698
Lim. Edos. Term. Tlax. Ppia. Pue.	30.70																			
Ent. Chignahuapan	56.20	3	0	3024	1.4	79.3	2.3	11.7	1.9	1.5	0.8	0.8	0.3	80.7	2.3	17.0	0.111	0.507	19.870982	-98.061030
Lim. Edos. Term. Pue. Ppia. Hgo.	84.80																			
T. C. Apizaco - Tejocotal	85.60																			

23 CARR : Libramiento de Ocotlán

CLAVE: 29567

RUTA: TLAX

AÑO: 2021

LUGAR	ESTACION				CLASIFICACION VEHICULAR EN PORCIENTO										COORDENADAS					
	KM	TE	SC	TDPA	M	A	B	C2	C3	T3S2	T3S3	T3S2R4	OTROS	A	B	C	K'	D	LATITUD	LONGITUD
T. C. Tlaxcala - Belem	0.00	3	1	14051	1.6	94.7	0.2	1.1	0.1	1.0	1.1	0.1	0.1	96.3	0.2	3.5	0.067	0.513	19.317831	-98.214194
T. C. Tlaxcala - Belem	0.00	3	2	14781	1.6	94.9	0.2	1.0	0.1	1.0	1.0	0.1	0.1	96.5	0.2	3.3	0.073	0.513	19.317762	-98.214181
T. Libramiento IPN	5.50																			

TLAXCALA

24 CARR: Ramal a Altzayanca de Hidalgo

CLAVE: 29562

RUTA: TLAX

AÑO: 2021

LUGAR	ESTACION				CLASIFICACION VEHICULAR EN PORCIENTO														COORDENADAS	
	KM	TE	SC	TDPA	M	A	B	C2	C3	T3S2	T3S3	T3S2R4	OTROS	A	B	C	K'	D	LATITUD	LONGITUD
T. C. Los Reyes - Zacatepec	0.00	3	0	3193	3.8	80.0	2.0	8.8	0.9	2.4	1.0	0.3	0.8	83.8	2.0	14.2	0.066	0.527	19.322618	-97.844997
Xicoténcatl	6.50	3	0	2403	3.7	84.5	0.6	7.8	0.5	1.9	0.6	0.0	0.4	88.2	0.6	11.2	0.065	0.502	19.356857	-97.831961
Altzayanca de Hidalgo	15.00	1	0	2035	8.3	79.7	0.4	6.6	0.8	2.8	0.4	0.5	0.5	88.0	0.4	11.6	0.080	0.502	19.422717	-97.804402

25 CARR: Ramal a San Pedro Ecatepec

CLAVE: 29561

RUTA: TLAX

AÑO: 2021

LUGAR	ESTACION				CLASIFICACION VEHICULAR EN PORCIENTO														COORDENADAS	
	KM	TE	SC	TDPA	M	A	B	C2	C3	T3S2	T3S3	T3S2R4	OTROS	A	B	C	K'	D	LATITUD	LONGITUD
T. C. Apizaco - Tejocotal	0.00	3	0	1895	2.9	85.0	0.1	9.7	0.6	1.3	0.2	0.1	0.1	87.9	0.1	12.0	0.084	0.502	19.514494	-98.119628
San Pedro Ecatepec	4.60	1	0	1919	3.6	84.9	0.1	8.8	0.9	1.3	0.4	0.0	0.0	88.5	0.1	11.4	0.080	0.504	19.518865	-98.153558

26 CARR: Ramal a Xalostoc

CLAVE: 29563

RUTA: TLAX

AÑO: 2021

LUGAR	ESTACION				CLASIFICACION VEHICULAR EN PORCIENTO														COORDENADAS	
	KM	TE	SC	TDPA	M	A	B	C2	C3	T3S2	T3S3	T3S2R4	OTROS	A	B	C	K'	D	LATITUD	LONGITUD
T. C. Los Reyes - Zacatepec	0.00	3	0	9498	2.0	92.5	0.4	4.4	0.3	0.3	0.1	0.0	0.0	94.5	0.4	5.1	0.089	0.515	19.395987	-98.057210
Xalostoc	2.50	1	0	11133	4.5	87.9	0.3	6.5	0.4	0.2	0.1	0.1	0.0	92.4	0.3	7.3	0.082	0.508	19.400423	-98.051591

27 CARR: Xalostoc - Terrenate

CLAVE: 29390

RUTA: TLAX

AÑO: 2021

LUGAR	ESTACION				CLASIFICACION VEHICULAR EN PORCIENTO														COORDENADAS	
	KM	TE	SC	TDPA	M	A	B	C2	C3	T3S2	T3S3	T3S2R4	OTROS	A	B	C	K'	D	LATITUD	LONGITUD
Xalostoc	0.00	3	0	3643	2.2	89.4	0.2	5.0	0.6	2.2	0.2	0.0	0.2	91.6	0.2	8.2	0.076	0.500	19.431230	-98.014318
San Francisco Teometitla	7.10	3	0	2084	1.5	87.0	0.5	9.4	0.4	1.1	0.1	0.0	0.0	88.5	0.5	11.0	0.077	0.504	19.458822	-97.978821
T. C. Huamantla - Terrenate	17.50	1	0	2011	3.0	77.2	0.1	18.3	0.5	0.7	0.1	0.0	0.1	80.2	0.1	19.7	0.077	0.530	19.466980	-97.930752

28 CARR: Puebla - Tlaxcala (Cuota)

CLAVE:

RUTA: PUE-D

AÑO: 2021

LUGAR	ESTACION				CLASIFICACION VEHICULAR EN PORCIENTO														COORDENADAS	
	KM	TE	SC	TDPA	M	A	B	C2	C3	T3S2	T3S3	T3S2R4	OTROS	A	B	C	K'	D	LATITUD	LONGITUD
Anillo Periferico Poniente de Puebla	0.00	3	0	9333	1.1	90.8	1.1	2.6	1.0	1.5	0.7	1.0	0.2	91.9	1.1	7.0	0.084	0.515	19.159064	-98.270511
Lim. Edos. Term. Pue. Ppia. Tlax	2.40																			
T Der. Zacatelco	8.00	1	0	9098	1.1	90.4	1.5	2.5	0.7	1.7	0.7	1.1	0.3	91.5	1.5	7.0	0.091	0.518	19.202896	-98.262052
T Der. Zacatelco	8.00	3	0	8924	1.2	90.2	1.1	2.8	1.0	1.4	0.7	1.1	0.5	91.4	1.1	7.5	0.082	0.501	19.216448	-98.268042
Lib. de Tlaxcala (Cuota)	17.80	1	0	9403	1.3	89.0	1.5	2.9	1.1	1.6	1.2	1.3	0.1	90.3	1.5	8.2	0.069	0.554	19.280746	-98.247915

TLAXCALA

29 CARR: Acocotla - Vicente Guerrero

CLAVE: 29560

RUTA: MEX-TLAX

AÑO: 2021

LUGAR	ESTACION				CLASIFICACION VEHICULAR EN PORCIENTO														COORDENADAS	
	KM	TE	SC	TDPA	M	A	B	C2	C3	T3S2	T3S3	T3S2R4	OTROS	A	B	C	K'	D	LATITUD	LONGITUD
T. C. Los Reyes - Zacatepec	0.00	3	0	2185	3.1	78.3	2.7	5.8	2.0	2.1	1.8	2.1	2.1	81.4	2.7	15.9	0.084	0.520	19.371128	-98.028686
Vicente Guerrero	35.60	1	0	2868	8.3	71.9	1.7	17.3	0.3	0.4	0.1	0.0	0.0	80.2	1.7	18.1	0.074	0.508	19.135851	-98.144725

30 CARR: Apizaco - Emiliano Zapata

CLAVE: 29033

RUTA: TLAX-MEX-136

AÑO: 2021

LUGAR	ESTACION				CLASIFICACION VEHICULAR EN PORCIENTO														COORDENADAS	
	KM	TE	SC	TDPA	M	A	B	C2	C3	T3S2	T3S3	T3S2R4	OTROS	A	B	C	K'	D	LATITUD	LONGITUD
Apizaco	0.00	3	0	8392	6.2	79.7	0.5	5.8	0.6	4.9	1.0	0.5	0.8	85.9	0.5	13.6	0.080	0.504	19.417215	-98.129945
Capula	16.00	1	0	3670	3.5	86.6	1.1	3.9	0.8	1.2	0.9	1.2	0.8	90.1	1.1	8.8	0.078	0.503	19.530671	-98.040773
Emiliano Zapata	37.00	1	0	1595	2.3	80.9	1.9	4.5	1.3	1.9	2.2	1.9	3.1	83.2	1.9	14.9	0.132	0.531	19.552227	-97.917097

31 CARR: Calpulalpan - El Ocote

CLAVE: 00054

RUTA: MEX-HGO

AÑO: 2021

LUGAR	ESTACION				CLASIFICACION VEHICULAR EN PORCIENTO														COORDENADAS	
	KM	TE	SC	TDPA	M	A	B	C2	C3	T3S2	T3S3	T3S2R4	OTROS	A	B	C	K'	D	LATITUD	LONGITUD
Calpulalpan	0.00	3	0	8333	2.4	81.8	2.6	4.1	1.7	4.5	1.3	1.2	0.4	84.2	2.6	13.2	0.072	0.507	19.612979	-98.556167
X. C. Arco Norte de La Ciudad de México	4.00	3	1	4159	3.0	77.2	2.2	6.6	2.4	6.5	1.0	0.5	0.6	80.2	2.2	17.6	0.094	0.522	19.627443	-98.541502
X. C. Arco Norte de La Ciudad de México	4.00	3	2	3801	2.9	77.4	2.3	6.4	2.4	6.5	1.0	0.6	0.5	80.3	2.3	17.4	0.089	0.522	19.627508	-98.541599
Lim. Edos. Term. Tlax. Ppia. Hgo.	5.00																			
Apan	19.58	3	1	4491	3.3	91.2	0.6	2.5	0.7	0.5	0.3	0.4	0.5	94.5	0.6	4.9	0.080	0.507	19.726271	-98.468025
Apan	19.58	3	2	4620	3.2	91.3	0.5	2.5	0.8	0.6	0.3	0.3	0.5	94.5	0.5	5.0	0.083	0.507	19.726184	-98.468092
Tepeapulco	34.92	3	0	4126	1.2	85.1	0.6	8.2	1.4	2.5	0.5	0.2	0.3	86.3	0.6	13.1	0.098	0.505	19.799324	-98.561133
X. C. Venta de Carpio - Tulancingo	51.18	1	1	1520	1.1	83.5	0.8	10.9	2.7	0.6	0.4	0.0	0.0	84.6	0.8	14.6	0.078	0.511	19.919197	-98.577548
X. C. Venta de Carpio - Tulancingo	51.18	1	2	1446	1.2	81.2	1.0	12.6	3.0	0.6	0.4	0.0	0.0	82.4	1.0	16.6	0.085	0.511	19.918554	-98.576793
X. C. Venta de Carpio - Tulancingo	51.18	3	0	1997	2.9	83.2	0.7	10.2	1.2	1.2	0.4	0.0	0.2	86.1	0.7	13.2	0.083	0.524	19.927829	-98.582997
El Ocote	70.44	1	1	1717	1.4	90.3	0.3	5.4	1.1	0.9	0.5	0.0	0.1	91.7	0.3	8.0	0.091	0.503	20.041240	-98.621506
El Ocote	70.44	1	2	1737	0.7	90.4	0.3	5.9	1.3	1.0	0.4	0.0	0.0	91.1	0.3	8.6	0.097	0.503	20.041239	-98.621503

32 CARR: Calpulalpan - Nanacamilpa

CLAVE: 29034

RUTA: TLAX-MEX-136

AÑO: 2021

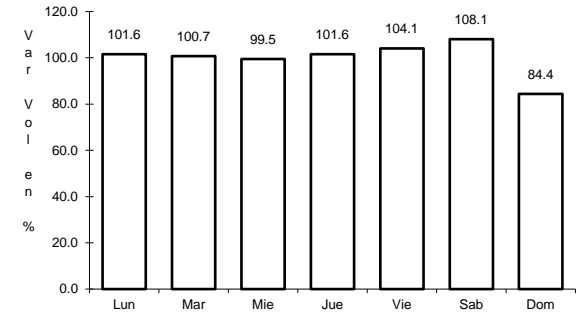
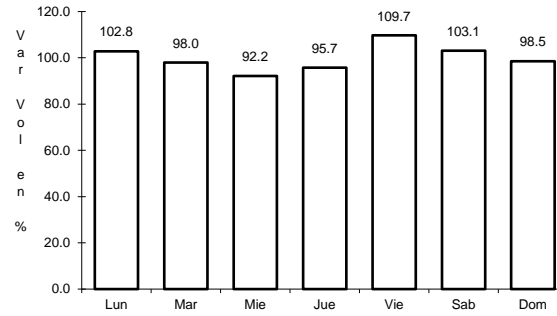
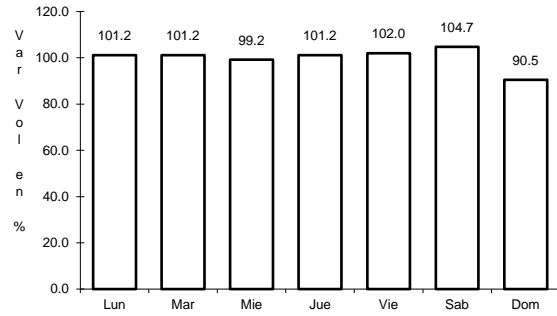
LUGAR	ESTACION				CLASIFICACION VEHICULAR EN PORCIENTO														COORDENADAS	
	KM	TE	SC	TDPA	M	A	B	C2	C3	T3S2	T3S3	T3S2R4	OTROS	A	B	C	K'	D	LATITUD	LONGITUD
Calpulalpan	0.00	3	0	2409	5.1	84.3	0.3	7.0	0.8	1.6	0.3	0.1	0.5	89.4	0.3	10.3	0.087	0.522	19.559812	-98.571616
Mazapa	7.00																			
Nanacamilpa	15.50	1	0	1779	9.2	80.8	0.4	6.1	1.2	1.8	0.2	0.1	0.2	90.0	0.4	9.6	0.117	0.540	19.500231	-98.533092



1 CARR: Amozoc - Teziutlán

CLAVE: 00210

RUTA: MEX-129



Km: 1.40                      Tipo: 3                      Sent: 0

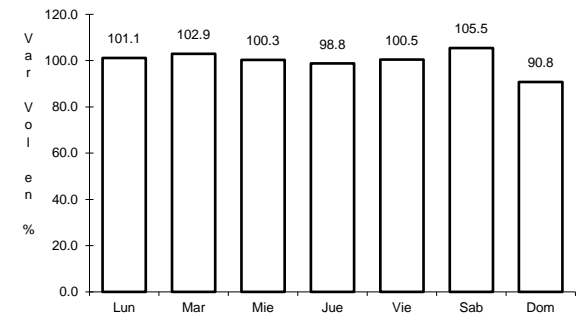
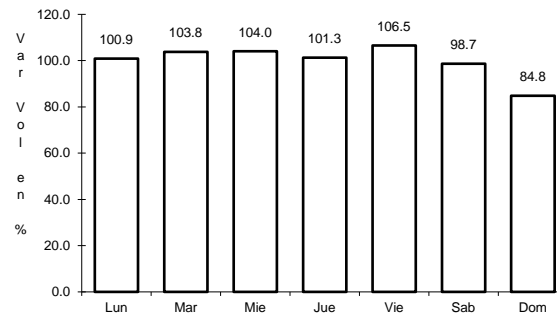
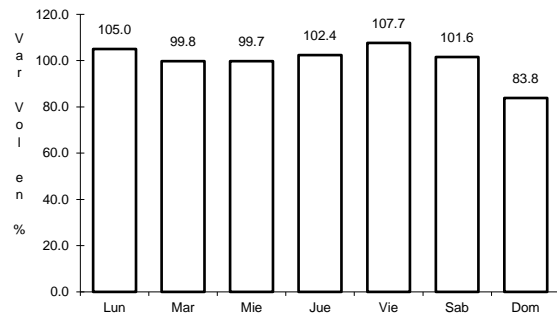
Km: 76.35                      Tipo: 3                      Sent: 0

Km: 157.80                      Tipo: 1                      Sent: 0

2 CARR: Apizaco - San Pablo Apetatitlán

CLAVE: 29035

RUTA: MEX-119



Km: 0.00                      Tipo: 3                      Sent: 0

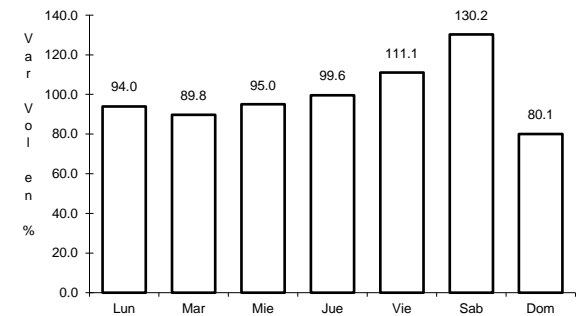
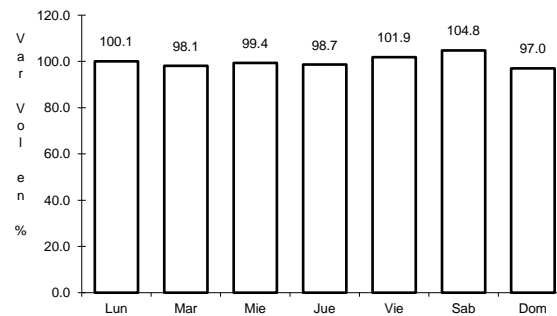
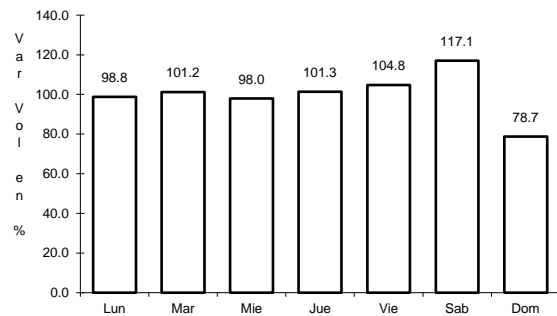
Km: 14.50                      Tipo: 3                      Sent: 0

Km: 20.00                      Tipo: 1                      Sent: 0

3 CARR: Apizaco - Tejocotal

CLAVE: 00430

RUTA: MEX-119



Km: 0.00                      Tipo: 3                      Sent: 1

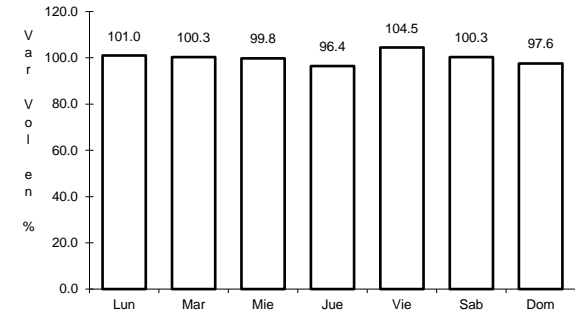
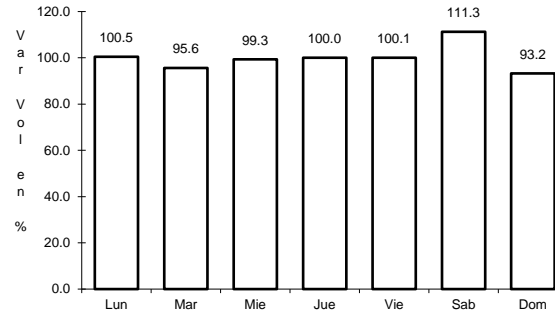
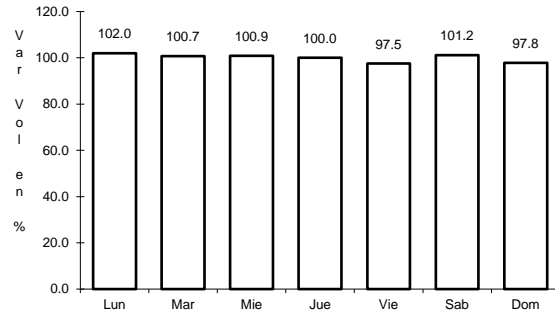
Km: 0.00                      Tipo: 3                      Sent: 2

Km: 113.15                      Tipo: 1                      Sent: 0

4 CARR: Huamantla - La Venta

CLAVE: 29564

RUTA: MEX-136



Km: 0.00                      Tipo: 3                      Sent: 1

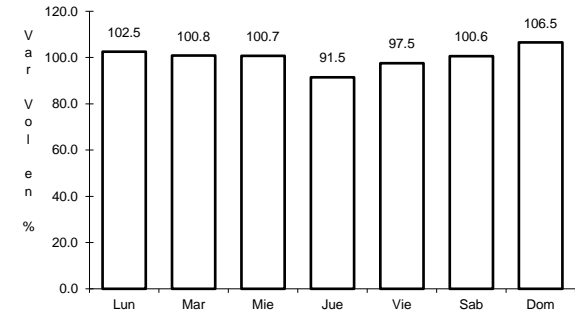
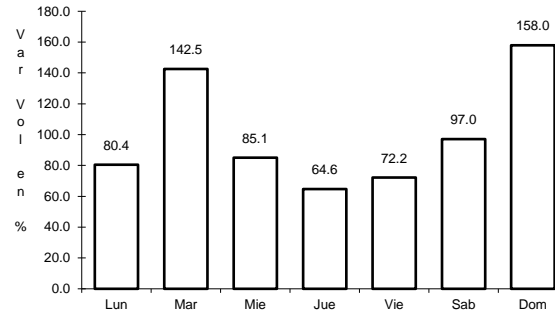
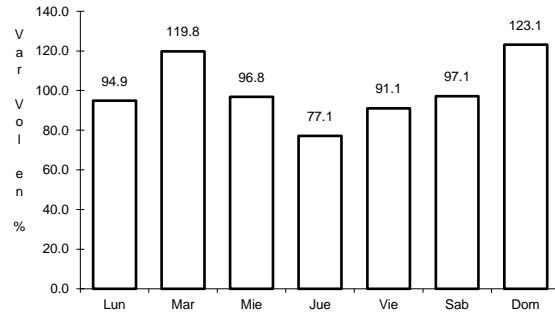
Km: 0.00                      Tipo: 3                      Sent: 2

Km: 17.60                      Tipo: 1                      Sent: 0

5 CARR: Huamantla - Terrenate

CLAVE: 29036

RUTA: MEX-136



Km: 0.00                      Tipo: 3                      Sent: 0

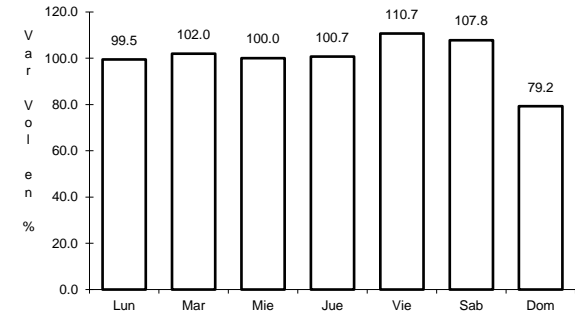
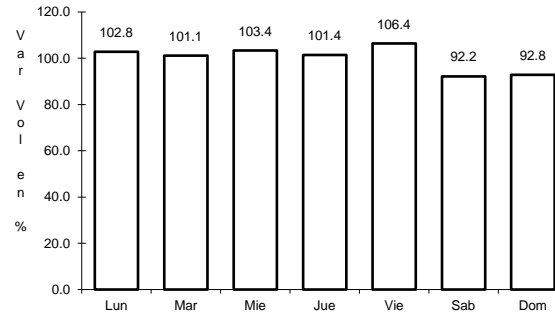
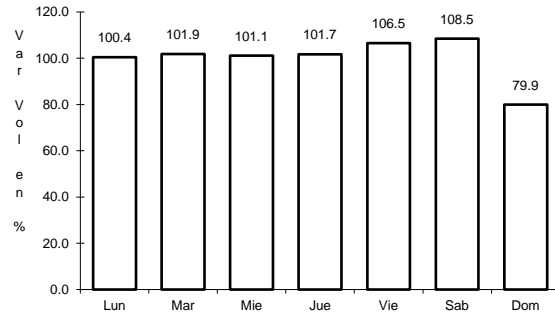
Km: 12.50                      Tipo: 1                      Sent: 0

Km: 21.00                      Tipo: 1                      Sent: 0

6 CARR: Libramiento de Apizaco

CLAVE: 29567

RUTA: MEX-136



Km: 6.00                      Tipo: 1                      Sent: 1

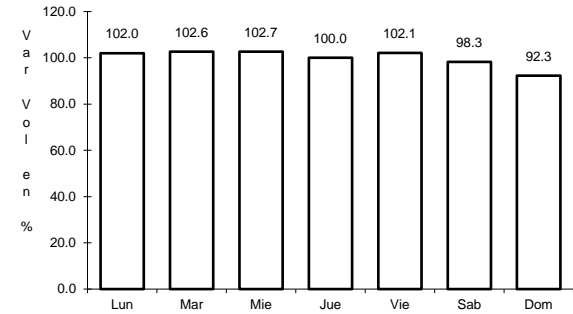
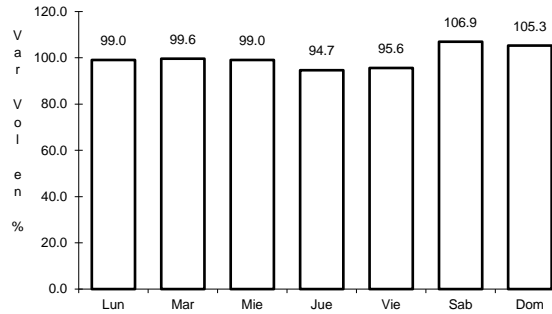
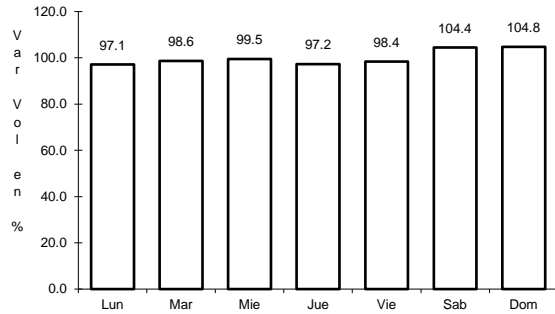
Km: 6.00                      Tipo: 1                      Sent: 2

Km: 6.00                      Tipo: 3                      Sent: 1

7 CARR: Libramiento Huamantla

CLAVE: 29567

RUTA: MEX-136



Km: 0.00                      Tipo: 3                      Sent: 1

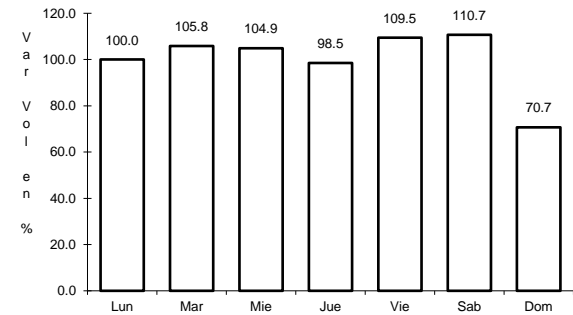
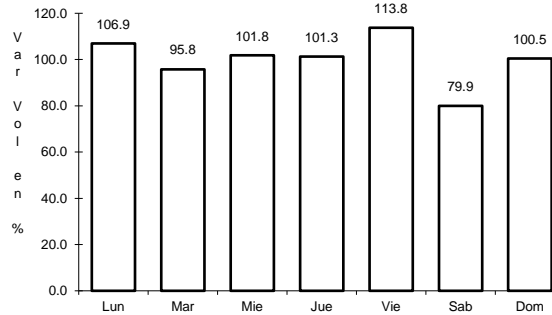
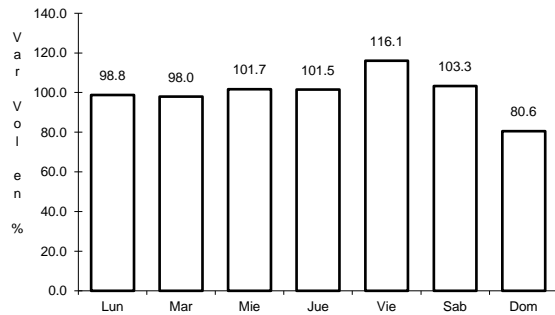
Km: 0.00                      Tipo: 3                      Sent: 2

Km: 4.60                      Tipo: 1                      Sent: 1

8 CARR: Libramiento Hueyotlipan

CLAVE: 29567

RUTA: MEX-136



Km: 0.00                      Tipo: 3                      Sent: 1

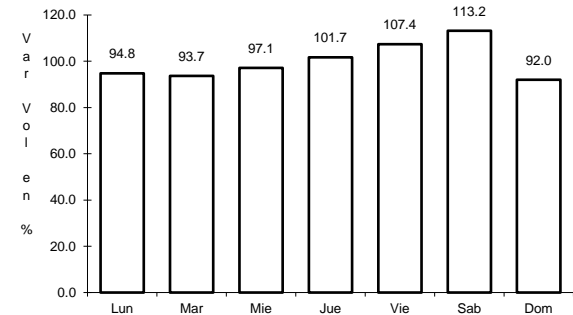
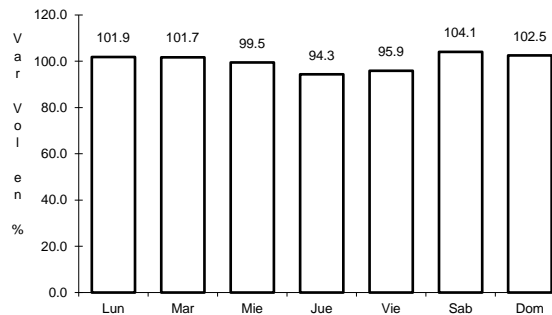
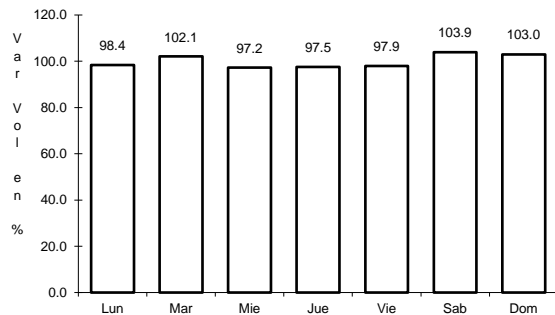
Km: 0.00                      Tipo: 3                      Sent: 2

Km: 2.70                      Tipo: 1                      Sent: 1

9 CARR: Los Reyes - Zacatepec

CLAVE: 00052

RUTA: MEX-136



Km: 3.35                      Tipo: 3                      Sent: 1

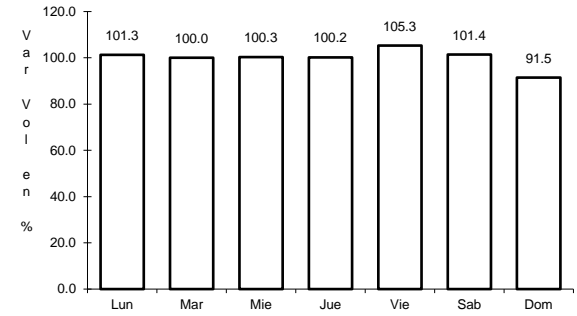
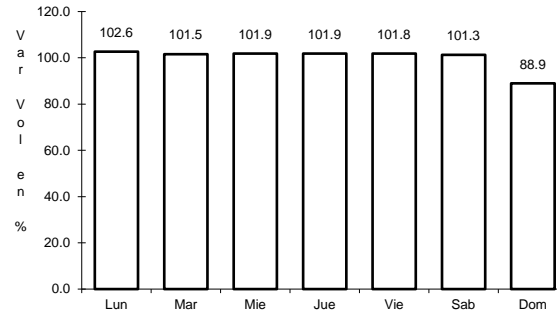
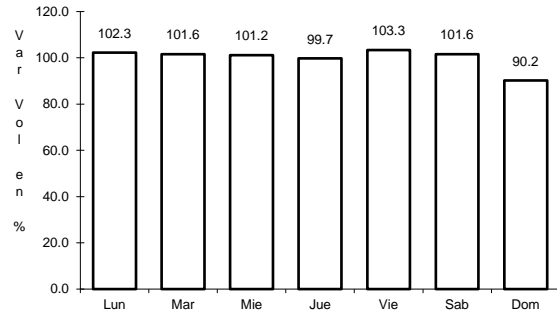
Km: 3.35                      Tipo: 3                      Sent: 2

Km: 187.67                      Tipo: 1                      Sent: 0

10 CARR: Puebla - Belem

CLAVE: 00055

RUTA: MEX-121



Km: 4.00      Tipo: 3      Sent: 1

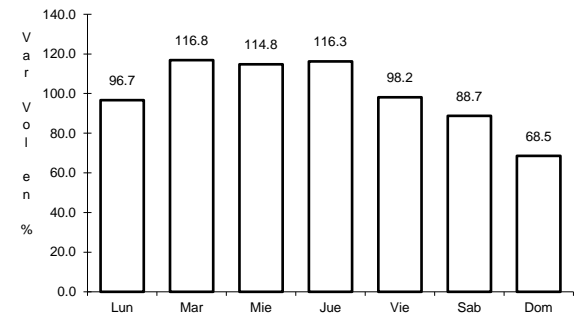
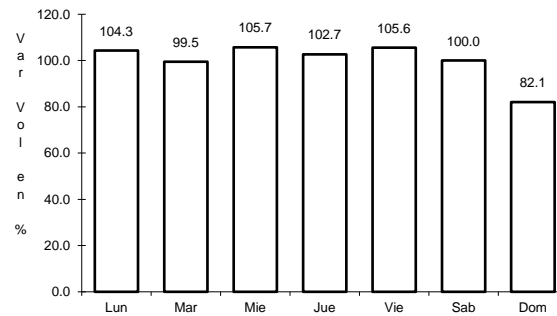
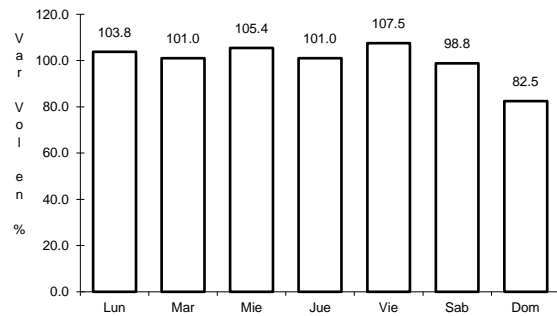
Km: 4.00      Tipo: 3      Sent: 2

Km: 28.80      Tipo: 1      Sent: 1

11 CARR: Puebla - Tlaxcala

CLAVE: 00475

RUTA: MEX-119



Km: 5.41      Tipo: 3      Sent: 1

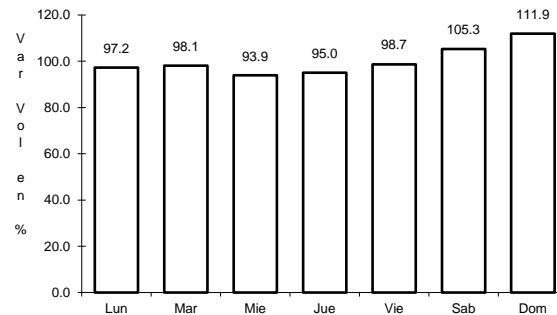
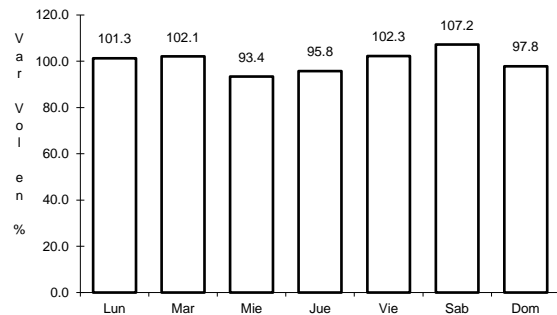
Km: 5.41      Tipo: 3      Sent: 2

Km: 33.22      Tipo: 1      Sent: 1

12 CARR: Ramal a San Felipe de Hidalgo

CLAVE: 29565

RUTA: MEX-136



Km: 0.00      Tipo: 3      Sent: 0

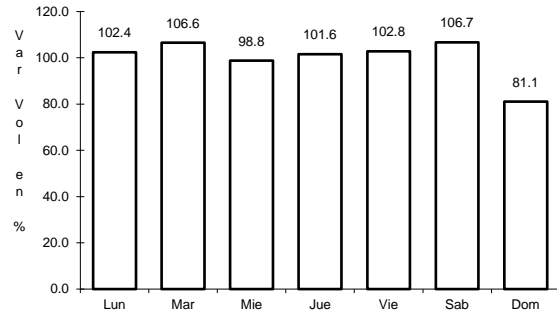
Km: 10.50      Tipo: 1      Sent: 0



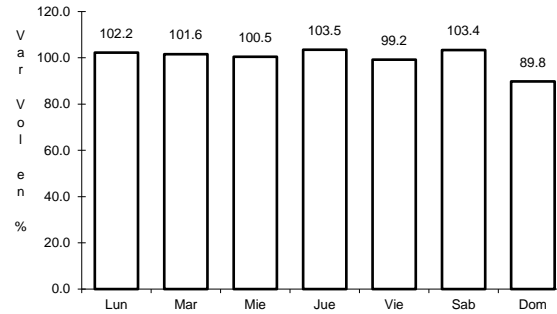
13 CARR: San Martín Texmelucan - Tlaxcala

CLAVE: 00158

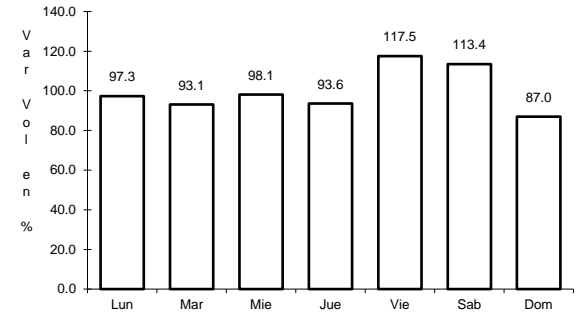
RUTA: MEX-117



Km: 0.00                      Tipo: 3                      Sent: 1



Km: 0.00                      Tipo: 3                      Sent: 2

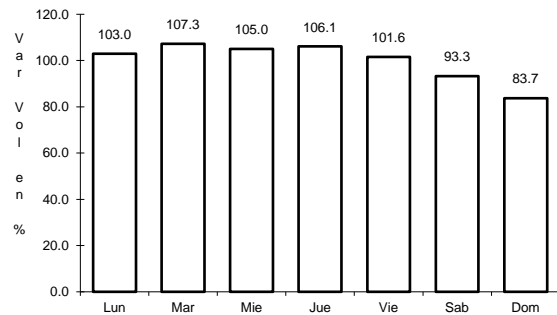


Km: 24.81                      Tipo: 1                      Sent: 0

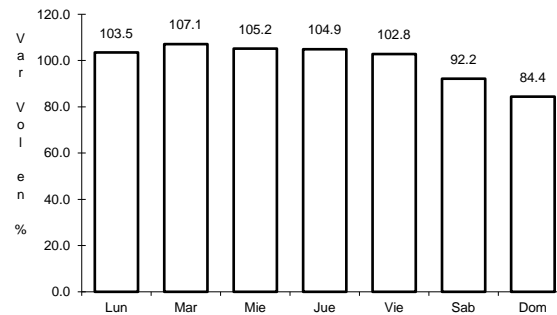
14 CARR: Tetlatlahuca - Santa Ana Chiautempan

CLAVE: 00158

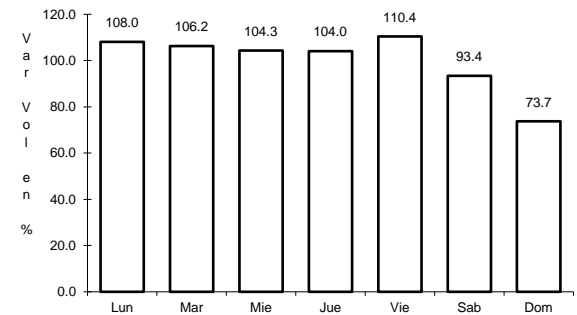
RUTA: MEX-119



Km: 2.39                      Tipo: 1                      Sent: 0



Km: 5.50                      Tipo: 1                      Sent: 0

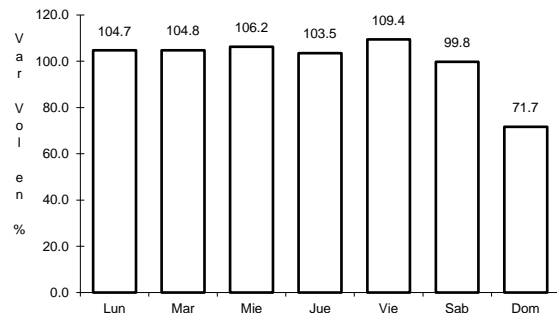


Km: 9.94                      Tipo: 1                      Sent: 0

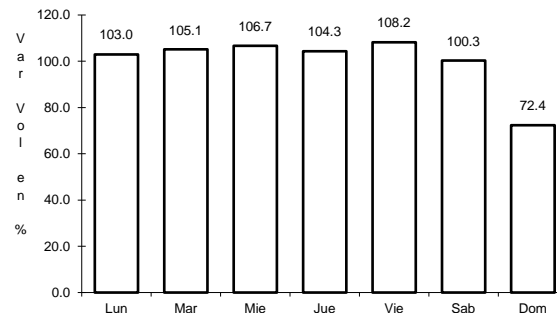
15 CARR: Tlaxcala - Belem

CLAVE: 29389

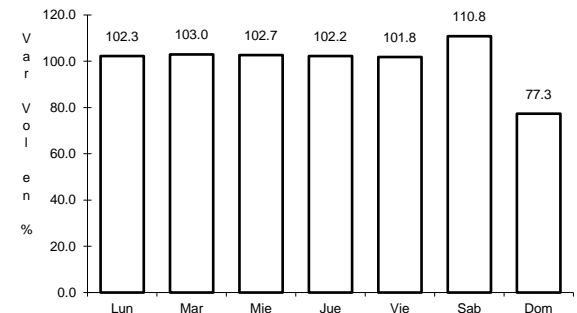
RUTA: MEX-119



Km: 3.91                      Tipo: 1                      Sent: 1



Km: 3.91                      Tipo: 1                      Sent: 2

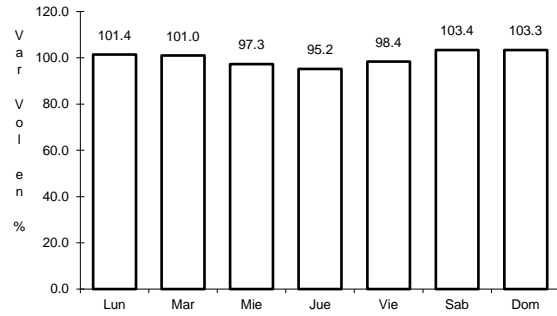


Km: 10.06                      Tipo: 1                      Sent: 0

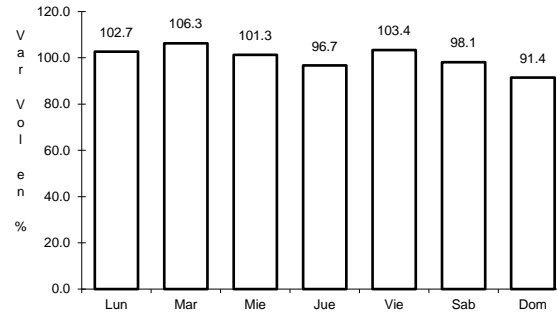
16 CARR: Villa Alta - T. C. (Puebla - Tlaxcala)

CLAVE: 29566

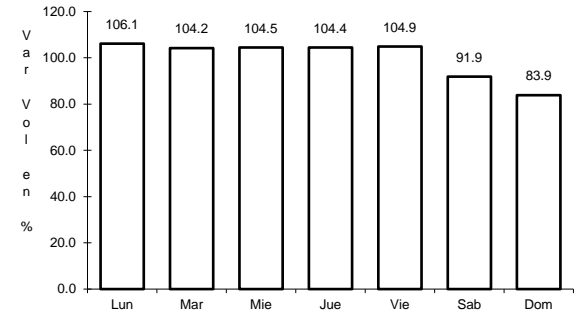
RUTA: MEX-119



Km: 0.00                      Tipo: 3                      Sent: 0



Km: 10.50                      Tipo: 3                      Sent: 0

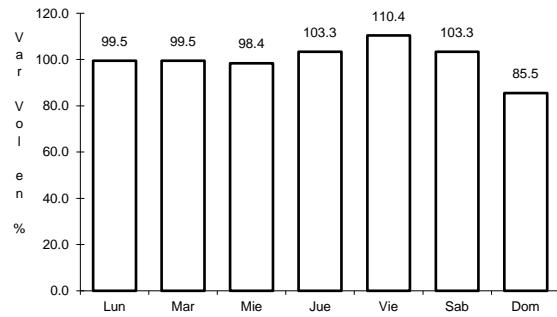


Km: 22.05                      Tipo: 1                      Sent: 0

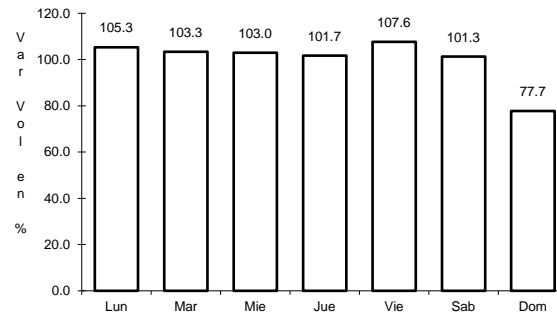
17 CARR: Amozoc - Perote (Cuota)

CLAVE: 00030

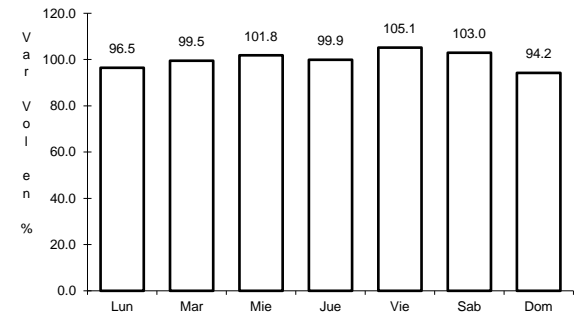
RUTA: MEX-140D



Km: 0.00                      Tipo: 3                      Sent: 0



Km: 25.80                      Tipo: 3                      Sent: 0

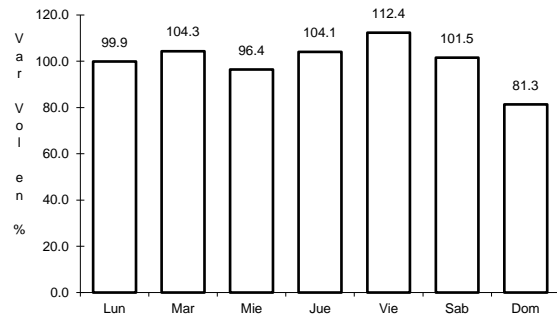


Km: 62.70                      Tipo: 3                      Sent: 0

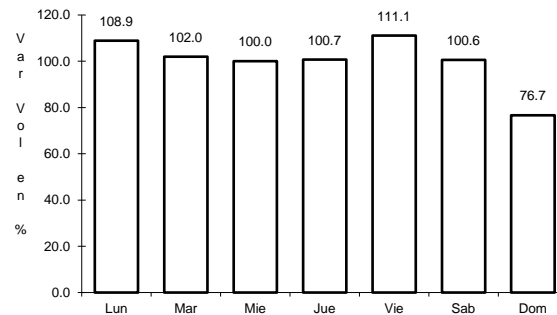
18 CARR: Libramiento de Tlaxcala (Cuota)

CLAVE:

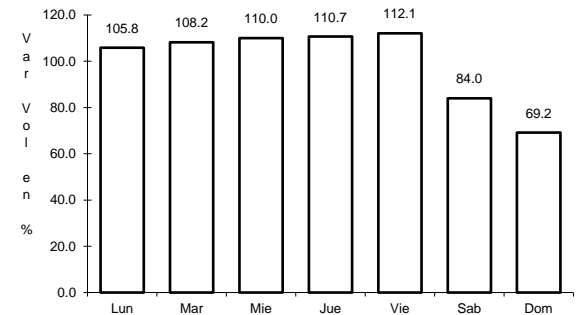
RUTA: MEX-117D



Km: 0.00                      Tipo: 3                      Sent: 1



Km: 0.00                      Tipo: 3                      Sent: 2

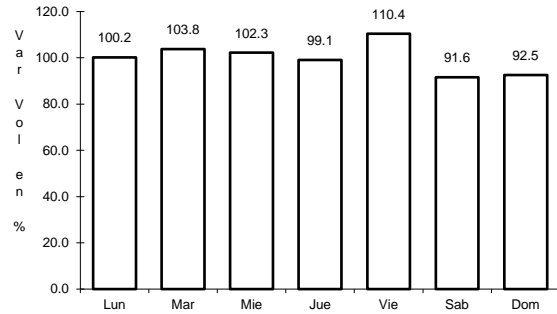


Km: 11.00                      Tipo: 1                      Sent: 1

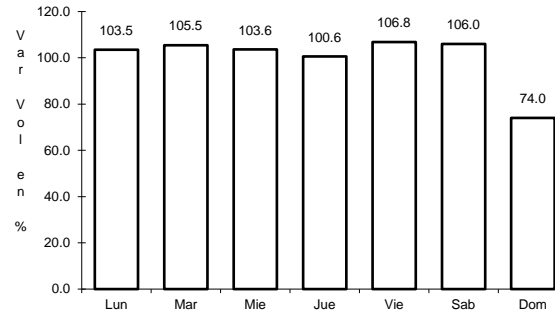
19 CARR: Libramiento Norte de la Ciudad de México (Cuota)

CLAVE: 0902

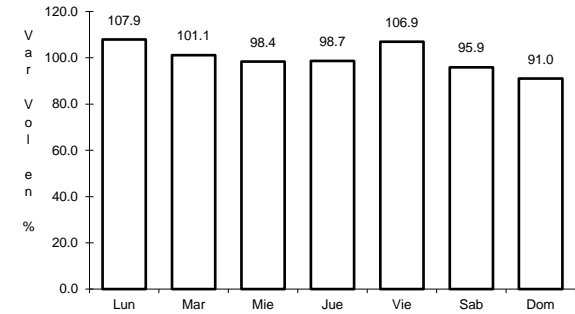
RUTA: MEX-M40D



Km: 12.90 Tipo: 1 Sent: 1



Km: 12.90 Tipo: 1 Sent: 2

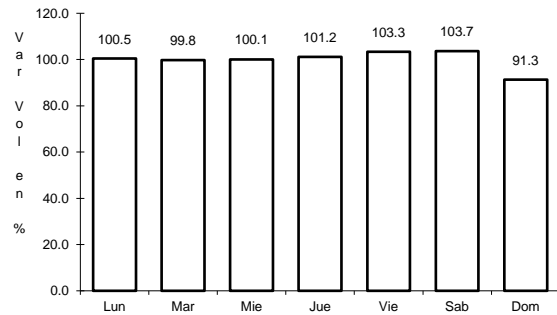


Km: 226.73 Tipo: 1 Sent: 1

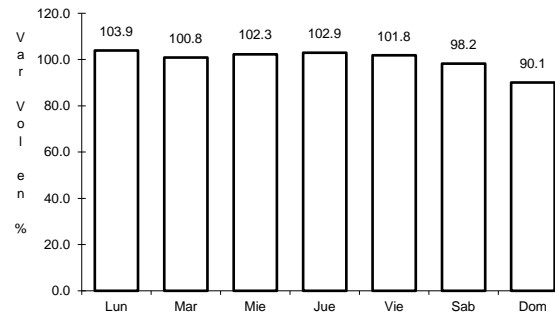
20 CARR: México - Puebla (Cuota)

CLAVE: 00450

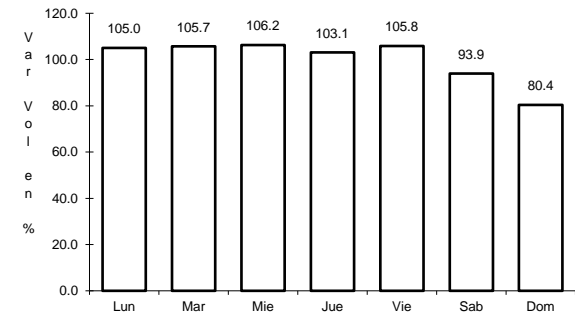
RUTA: MEX-150D



Km: 17.00 Tipo: 3 Sent: 1



Km: 17.00 Tipo: 3 Sent: 2

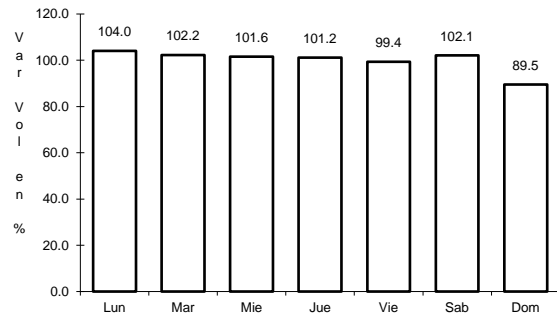


Km: 120.46 Tipo: 3 Sent: 1

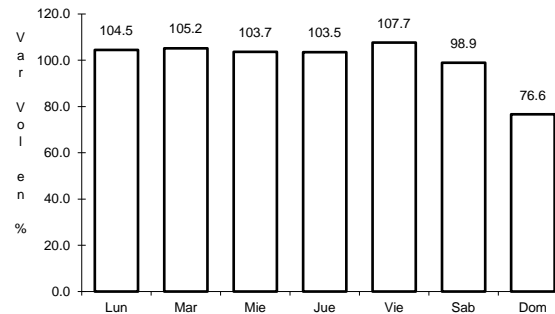
21 CARR: San Martin Texmelucan - Tlaxcala - El Molinito (Cuota)

CLAVE: 00212

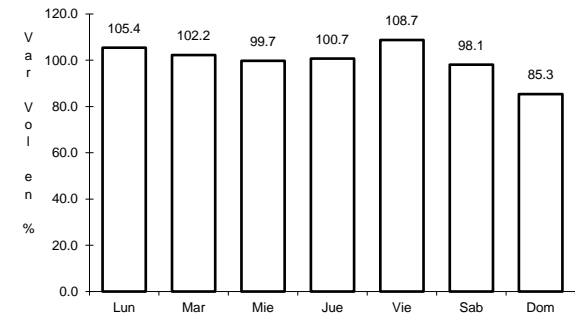
RUTA: MEX-117D



Km: 1.80 Tipo: 1 Sent: 1



Km: 35.20 Tipo: 1 Sent: 1

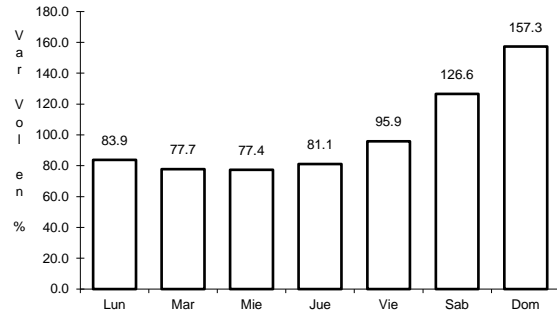


Km: 35.20 Tipo: 1 Sent: 2

22 CARR: Tlaxco - Tejocotal (Cuota)

CLAVE: 00209

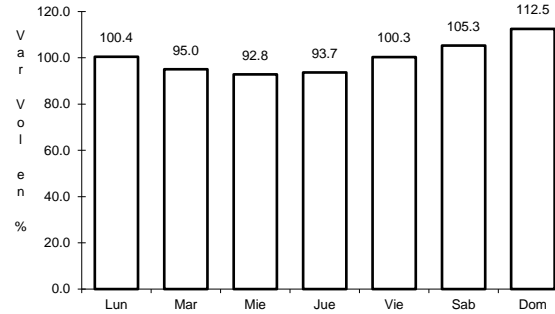
RUTA: MEX-119D



Km: 23.00

Tipo: 3

Sent: 0



Km: 56.20

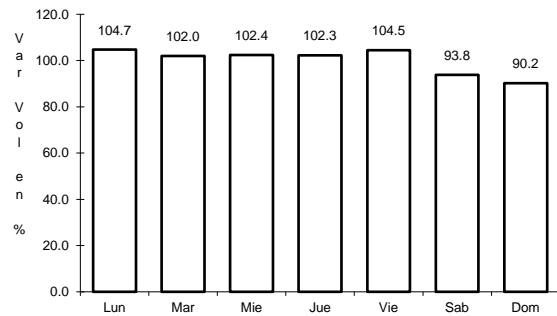
Tipo: 3

Sent: 0

23 CARR: Libramiento de Ocotlán

CLAVE: 29567

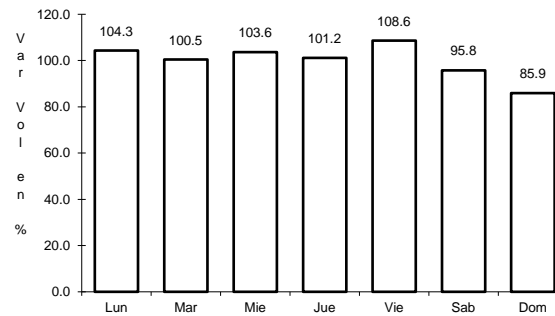
RUTA: TLAX



Km: 0.00

Tipo: 3

Sent: 1



Km: 0.00

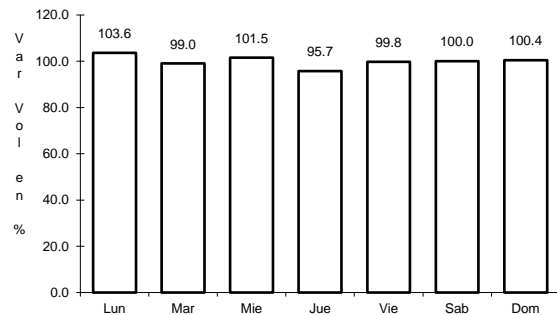
Tipo: 3

Sent: 2

24 CARR: Ramal a Altzayanca de Hidalgo

CLAVE: 29562

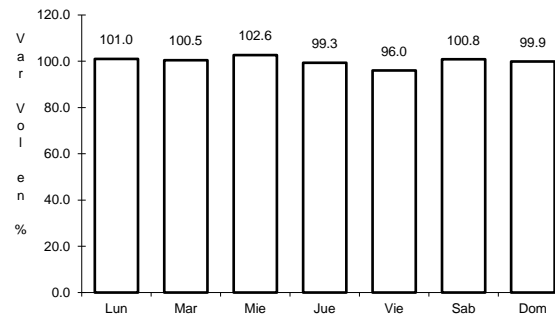
RUTA: TLAX



Km: 0.00

Tipo: 3

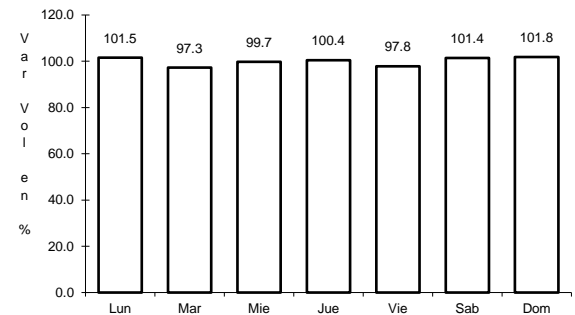
Sent: 0



Km: 6.50

Tipo: 3

Sent: 0



Km: 15.00

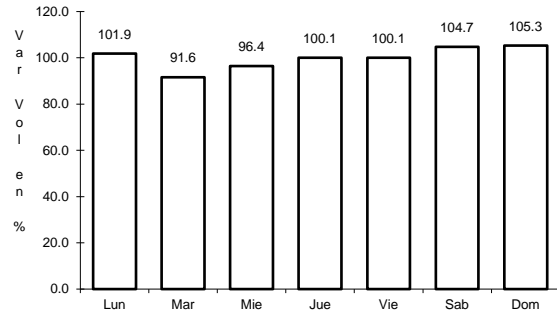
Tipo: 1

Sent: 0

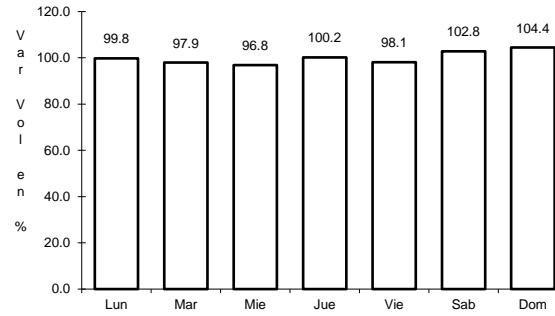
25 CARR: Ramal a San Pedro Ecatepec

CLAVE: 29561

RUTA: TLAX



Km: 0.00                      Tipo: 3                      Sent: 0

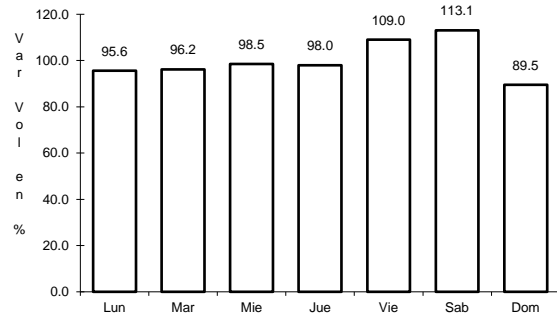


Km: 4.60                      Tipo: 1                      Sent: 0

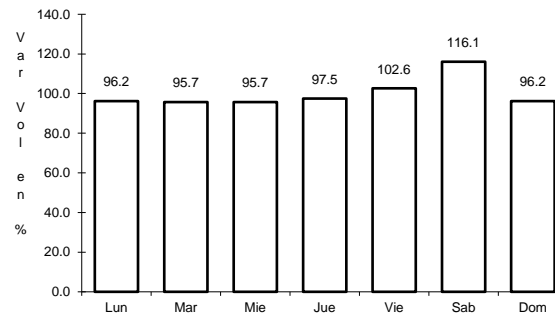
26 CARR: Ramal a Xalostoc

CLAVE: 29563

RUTA: TLAX



Km: 0.00                      Tipo: 3                      Sent: 0

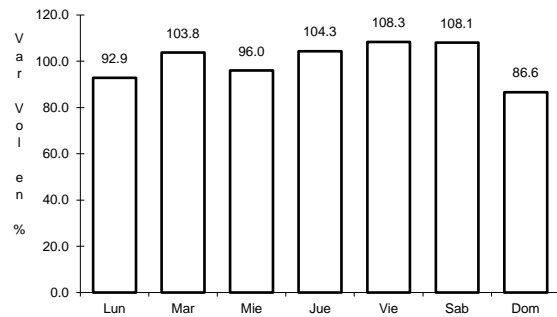


Km: 2.50                      Tipo: 1                      Sent: 0

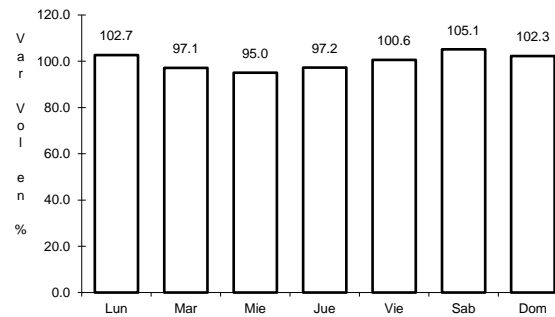
27 CARR: Xalostoc - Terrenate

CLAVE: 29390

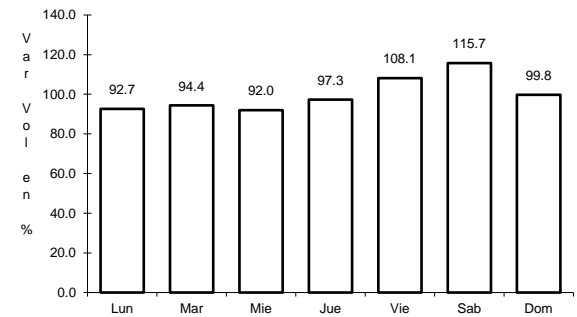
RUTA: TLAX



Km: 0.00                      Tipo: 3                      Sent: 0



Km: 7.10                      Tipo: 3                      Sent: 0

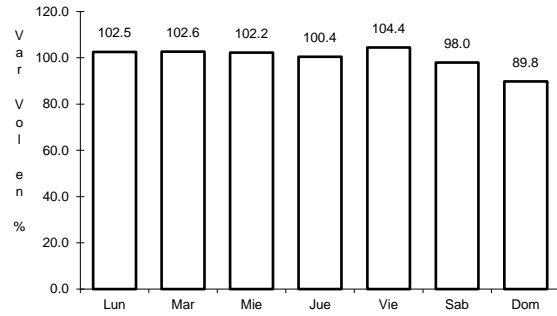


Km: 17.50                      Tipo: 1                      Sent: 0

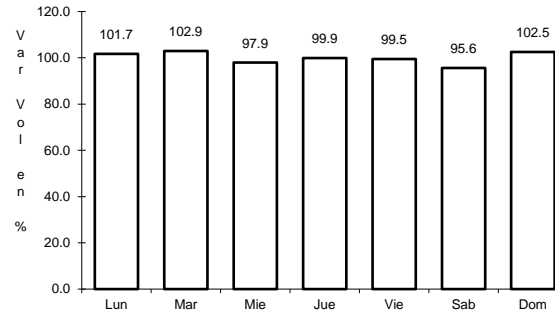
28 CARR: Puebla - Tlaxcala (Cuota)

CLAVE:

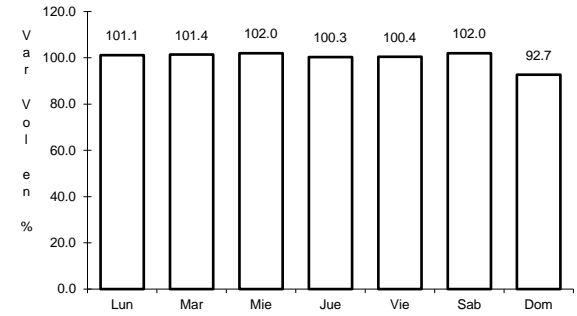
RUTA: PUE-D



Km: 0.00                      Tipo: 3                      Sent: 0



Km: 8.00                      Tipo: 3                      Sent: 0

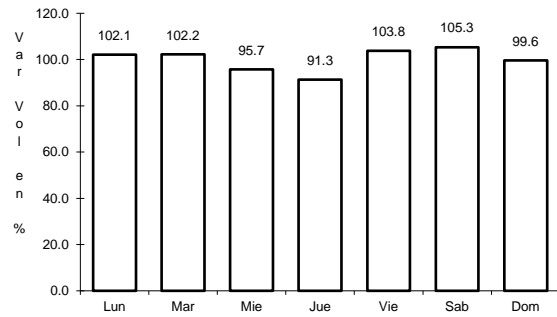


Km: 17.80                      Tipo: 1                      Sent: 0

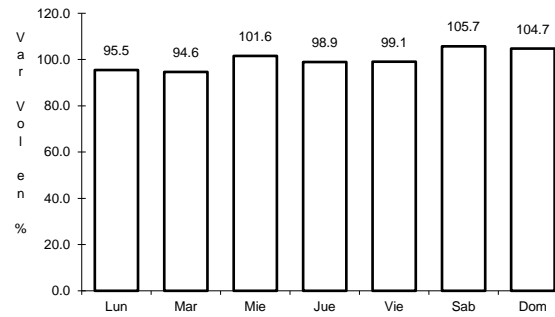
29 CARR: Acocotla - Vicente Guerrero

CLAVE: 29560

RUTA: MEX-TLAX



Km: 0.00                      Tipo: 3                      Sent: 0

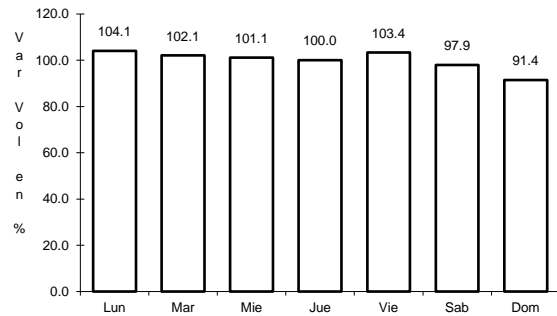


Km: 35.60                      Tipo: 1                      Sent: 0

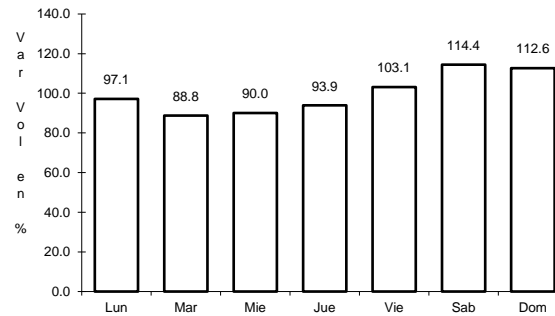
30 CARR: Apizaco - Emiliano Zapata

CLAVE: 29033

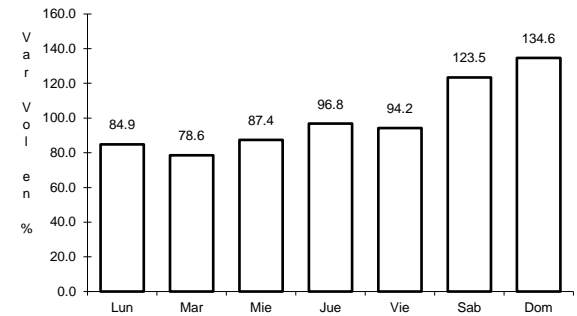
RUTA: TLAX-MEX-136



Km: 0.00                      Tipo: 3                      Sent: 0



Km: 16.00                      Tipo: 1                      Sent: 0

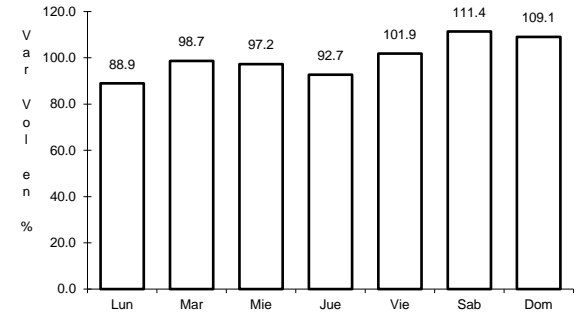
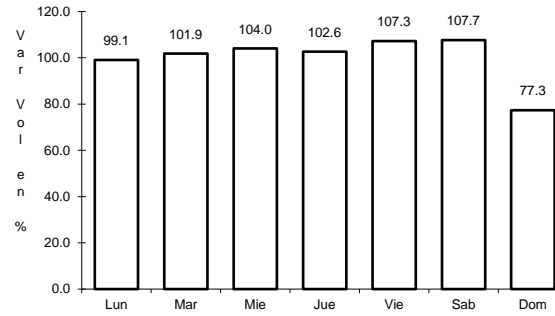
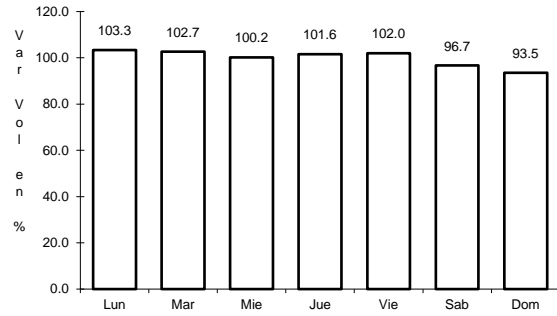


Km: 37.00                      Tipo: 1                      Sent: 0

31 CARR: Calpulalpan - El Ocote

CLAVE: 00054

RUTA: MEX-HGO



Km: 0.00                      Tipo: 3                      Sent: 0

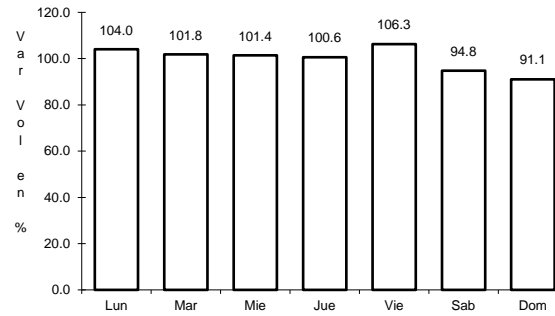
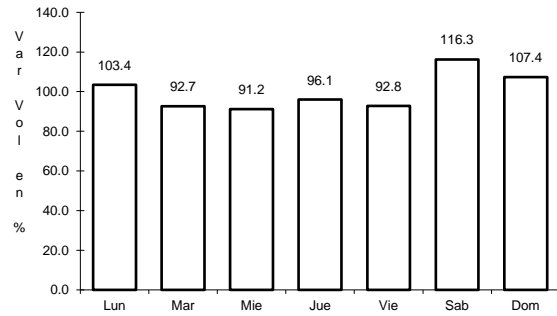
Km: 34.92                      Tipo: 3                      Sent: 0

Km: 70.44                      Tipo: 1                      Sent: 1

32 CARR: Calpulalpan - Nanacamilpa

CLAVE: 29034

RUTA: TLAX-MEX-136



Km: 0.00                      Tipo: 3                      Sent: 0

Km: 15.50                      Tipo: 1                      Sent: 0

