

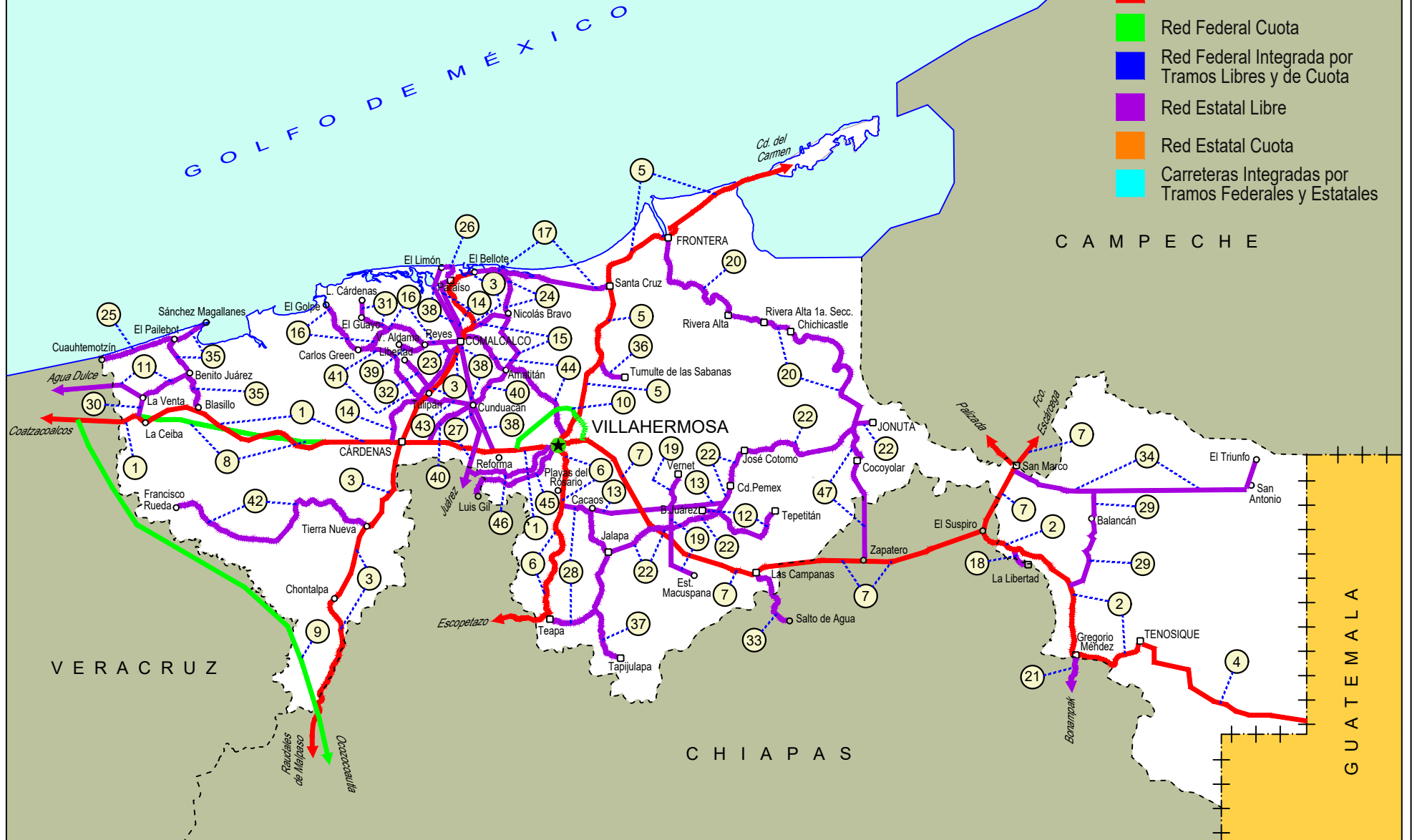
TABASCO

NO. INDICE CARRETERA		RUTA
	---RED FEDERAL LIBRE---	
1	Coatzacoalcos - Villahermosa	MEX-180
2	El Suspiro - Tenosique	MEX-203
3	Malpaso - El Bellote	MEX-187
4	Tenosique - El Ceibo	MEX-203
5	Villahermosa - Cd. del Carmen	MEX-180
6	Villahermosa - Escopetazo	MEX-195
7	Villahermosa - Francisco Escárcega	MEX-186
	---RED FEDERAL DE CUOTA---	
8	Ent. Agua Dulce - Cárdenas (Cuota)	MEX-180D
9	Las Choapas - Ocozocoautla (Cuota)	MEX-187D
10	Libramiento de Villahermosa (Cuota)	MEX-180D
	---RED ESTATAL LIBRE---	
11	Benito Juárez - Agua Dulce	TAB-VER
12	Benito Juárez - Tepetitán	TAB
13	Cacaos - La Granja	TAB
14	Cárdenas - Paraíso	TAB
15	Chichicapa - Ent. La Libertad	TAB
16	Comalcalco - El Golpe	TAB
17	El Bellote - Santa Cruz	TAB
18	Ent. Emiliano Zapata - La Libertad	CHIS-TAB
19	Estación Macuspana - Vernet	TAB-041
20	Frontera - T. C. (Jalapa - Jonuta)	TAB
21	Gregorio Méndez Magaña - Reforma de Ocampo	CHIS
22	Jalapa - Jonuta	TAB
23	Libramiento Sur de Comalcalco	TAB
24	Nicolás Bravo - T. C. (El Bellote - Santa Cruz)	TAB
25	Paillebot - Cuauhtemotzin	TAB
26	Paraíso - El Limón	TAB
27	Paso de Cunduacán - Estación Juárez	TAB-CHIS
28	Playas del Rosario - Teapa	TAB-001
29	Ramal a Balancan	TAB
30	Ramal a La Venta	TAB
31	Ramal a Lázaro Cárdenas	TAB
32	Ramal a Libertad	TAB
33	Ramal a Salto del Agua	TAB-CHIS
34	Ramal a San Antonio	TAB
35	Ramal a Sánchez Magallanes	TAB
36	Ramal a Tamulte de Las Sabanas	TAB
37	Ramal a Tapijulapa	TAB
38	Reforma - Dos Bocas	TAB
39	Reyes Hernández - Villa Aldama	TAB
40	Samaría - Amatitán	TAB
41	T. C. (Cárdenas - Paraíso) - Carlos Green	TAB
42	Tierra Nueva - Francisco Rueda	TAB
43	Tulipán - Cunduacán	TAB
44	Villahermosa - Comalcalco	TAB
45	Villahermosa - Luis Gil Pérez	TAB
46	Villahermosa - T. C. (P. de Cunduacán - Estación Juárez)	TAB
47	Zapatero - T. C. (Jalapa - Jonuta)	CHIS-TAB

# 27 TABASCO

SECRETARÍA DE COMUNICACIONES Y TRANSPORTES  
DIRECCIÓN GENERAL DE SERVICIOS TÉCNICOS

- ① --- Número Índice
- Red Federal Libre
- Red Federal Cuota
- Red Federal Integrada por Tramos Libres y de Cuota
- Red Estatal Libre
- Red Estatal Cuota
- Carreteras Integradas por Tramos Federales y Estatales





TABASCO

1 CARR: Coatzacoalcos - Villahermosa

CLAVE: 00528

RUTA: MEX-180

AÑO: 2021

LUGAR	ESTACION				CLASIFICACION VEHICULAR EN PORCIENTO													COORDENADAS		
	KM	TE	SC	TDPA	M	A	B	C2	C3	T3S2	T3S3	T3S2R4	OTROS	A	B	C	K'	D	LATITUD	LONGITUD
Coatzacoalcos	0.00																			
Plaza de Cobro Pte. Coatzacoalcos	3.00	1	0	21938	2.4	84.5	1.7	5.9	2.0	0.8	1.1	1.4	0.2	86.9	1.7	11.4	0.093	0.508	18.121748	-94.425295
X. C. Pajaritos - Nanchital	6.53	1	0	21103	2.5	82.0	2.9	6.3	1.5	1.3	1.2	2.1	0.2	84.5	2.9	12.6	0.094	0.512	18.106499	-94.398858
X. C. Pajaritos - Nanchital	6.53	3	0	14490	5.6	72.9	3.4	6.1	3.4	2.7	1.6	3.5	0.8	78.5	3.4	18.1	0.096	0.502	18.094580	-94.377402
T. Der. Puente Antonio Dovalí Jaimes	14.60	1	0	9451	7.2	71.0	2.9	3.8	3.0	4.3	2.6	4.5	0.7	78.2	2.9	18.9	0.068	0.505	18.076015	-94.323823
T. Der. Puente Antonio Dovalí Jaimes	14.60	3	1	9163	3.0	71.9	4.4	4.8	3.1	5.2	2.7	4.2	0.7	74.9	4.4	20.7	0.061	0.505	18.071547	-94.313109
T. Der. Puente Antonio Dovalí Jaimes	14.60	3	2	8997	2.9	70.6	4.4	5.1	3.4	5.1	3.0	4.8	0.7	73.5	4.4	22.1	0.063	0.505	18.071678	-94.313025
T. Der. Ocozocoautla	22.20	3	1	6116	5.1	70.9	4.9	5.5	2.6	4.9	2.0	3.4	0.7	76.0	4.9	19.1	0.077	0.506	18.068161	-94.234685
T. Der. Ocozocoautla	22.20	3	2	6260	4.3	71.7	5.2	5.3	2.9	4.7	2.0	3.2	0.7	76.0	5.2	18.8	0.075	0.506	18.068308	-94.234676
T. Der. Las Choapas	36.00	3	1	7854	5.2	59.9	4.9	3.5	2.7	15.3	1.8	6.1	0.6	65.1	4.9	30.0	0.062	0.500	18.052168	-94.122644
T. Der. Las Choapas	36.00	3	2	7859	4.1	59.7	5.6	3.5	2.9	15.2	2.3	6.0	0.7	63.8	5.6	30.6	0.068	0.500	18.052448	-94.119873
Lim. Edos. Term. Ver. Ppia. Tab.	41.48																			
T. Izq. Villa La Venta	47.26	3	0	2394	9.6	68.9	2.5	8.8	2.0	4.9	2.1	0.9	0.3	78.5	2.5	19.0	0.074	0.596	18.053979	-94.028043
X. C. Agua Dulce - Cárdenas (Cuota)	51.80	3	0	3425	7.8	70.8	3.6	7.8	1.9	5.7	1.8	0.4	0.2	78.6	3.6	17.8	0.069	0.552	18.057319	-93.994071
T. Izq. Campo Magallanes	65.20	1	0	3400	6.2	78.4	2.5	6.4	2.3	2.7	1.1	0.2	0.2	84.6	2.5	12.9	0.064	0.566	18.074682	-93.880815
T. Izq. Campo Magallanes	65.20	3	0	3593	5.9	74.8	2.5	7.6	2.1	3.8	1.5	0.9	0.9	80.7	2.5	16.8	0.062	0.540	18.071966	-93.872659
X. C. Agua Dulce - Cárdenas (Cuota)	78.80	1	0	4301	7.8	69.0	2.5	9.2	2.0	7.2	1.4	0.6	0.3	76.8	2.5	20.7	0.067	0.500	18.033316	-93.816836
X. C. Agua Dulce - Cárdenas (Cuota)	78.80	3	0	4343	6.9	69.7	3.2	8.0	2.5	7.8	1.4	0.3	0.2	76.6	3.2	20.2	0.067	0.507	18.024180	-93.797134
Pico de Oro	88.50	1	0	4705	5.9	68.4	3.2	8.2	4.2	7.7	1.5	0.6	0.3	74.3	3.2	22.5	0.065	0.512	18.018412	-93.684155
Pico de Oro	88.50	3	0	5411	5.7	71.1	3.1	8.8	3.2	5.1	1.8	0.9	0.3	76.8	3.1	20.1	0.067	0.521	18.017060	-93.658435
X. C. Agua Dulce - Cárdenas (Cuota)	104.00	1	0	7478	3.4	73.9	2.1	7.9	6.1	3.6	1.9	0.5	0.6	77.3	2.1	20.6	0.078	0.518	17.987889	-93.571247
X. C. Agua Dulce - Cárdenas (Cuota)	104.00	3	1	9502	2.3	62.6	4.6	7.0	3.4	11.1	2.7	5.4	0.9	64.9	4.6	30.5	0.092	0.508	17.998791	-93.530111
X. C. Agua Dulce - Cárdenas (Cuota)	104.00	3	2	9800	2.3	62.5	4.5	7.1	3.4	11.2	2.7	5.4	0.9	64.8	4.5	30.7	0.087	0.508	17.999071	-93.530122
Cárdenas	122.10	1	1	14714	4.5	65.7	4.3	11.7	1.7	7.0	1.7	3.1	0.3	70.2	4.3	25.5	0.065	0.502	17.999117	-93.402280
Cárdenas	122.10	1	2	14808	3.9	65.7	4.5	11.4	1.8	7.4	1.8	3.2	0.3	69.6	4.5	25.9	0.071	0.502	17.999298	-93.402302
Cárdenas	122.10	3	1	21149	2.9	76.8	2.1	5.1	1.9	4.9	1.7	3.6	1.0	79.7	2.1	18.2	0.085	0.509	17.999018	-93.340268
Cárdenas	122.10	3	2	20403	2.9	74.6	2.0	5.5	2.0	6.3	1.6	4.2	0.9	77.5	2.0	20.5	0.071	0.509	17.999182	-93.339947
T. Izq. Samaria	132.50	3	1	19496	1.4	72.1	2.7	6.8	1.8	9.2	2.2	3.4	0.4	73.5	2.7	23.8	0.076	0.506	17.994823	-93.272665
T. Izq. Samaria	132.50	3	2	19945	1.4	69.9	2.9	7.4	2.0	9.8	2.5	3.7	0.4	71.3	2.9	25.8	0.069	0.506	17.999753	-93.266261
Cucuyulapa	134.80	1	1	13115	1.4	71.0	2.8	7.2	1.9	9.5	2.6	3.2	0.4	72.4	2.8	24.8	0.076	0.506	17.998983	-93.257851
Cucuyulapa	134.80	1	2	13418	1.4	70.8	2.8	7.1	2.0	9.3	2.1	4.1	0.4	72.2	2.8	25.0	0.069	0.506	17.999164	-93.257861
Cucuyulapa	134.80	3	1	13768	1.9	71.1	2.7	7.1	1.9	9.3	2.5	3.1	0.4	73.0	2.7	24.3	0.080	0.504	17.999009	-93.244447
Cucuyulapa	134.80	3	2	13966	2.0	70.5	2.7	7.1	2.1	9.1	2.0	4.1	0.4	72.5	2.7	24.8	0.066	0.504	17.999181	-93.244428
T. Der. La Reforma	148.80	1	1	20263	2.6	77.7	1.9	6.6	1.7	5.0	1.5	2.6	0.4	80.3	1.9	17.8	0.069	0.526	17.976882	-93.146879
T. Der. La Reforma	148.80	1	2	22494	2.5	78.3	1.9	6.8	1.8	4.4	1.4	2.5	0.4	80.8	1.9	17.3	0.080	0.526	17.977045	-93.146822

TABASCO

1 CARR: Coatzacoalcos - Villahermosa

CLAVE: 00528

RUTA: MEX-180

AÑO: 2021

LUGAR	ESTACION				CLASIFICACION VEHICULAR EN PORCIENTO										COORDENADAS					
	KM	TE	SC	TDPA	M	A	B	C2	C3	T3S2	T3S3	T3S2R4	OTROS	A	B	C	K'	D	LATITUD	LONGITUD
T. Der. La Reforma	148.80	3	1	26325	1.7	80.4	1.7	6.4	1.5	4.6	1.3	2.2	0.2	82.1	1.7	16.2	0.079	0.500	17.973781	-93.121762
T. Der. La Reforma	148.80	3	2	26319	2.0	80.3	1.7	6.2	1.5	4.6	1.3	2.2	0.2	82.3	1.7	16.0	0.076	0.500	17.973926	-93.121772
Villahermosa	171.15	1	1	32822	2.3	82.5	1.5	6.6	1.3	2.9	1.4	0.9	0.6	84.8	1.5	13.7	0.070	0.509	17.981781	-93.023915
Villahermosa	171.15	1	2	31524	2.2	82.8	1.4	6.6	1.2	2.9	1.3	1.0	0.6	85.0	1.4	13.6	0.074	0.509	17.981943	-93.023981

2 CARR: El Suspiro - Tenosique

CLAVE: 00276

RUTA: MEX-203

AÑO: 2021

LUGAR	ESTACION				CLASIFICACION VEHICULAR EN PORCIENTO										COORDENADAS					
	KM	TE	SC	TDPA	M	A	B	C2	C3	T3S2	T3S3	T3S2R4	OTROS	A	B	C	K'	D	LATITUD	LONGITUD
Ent. El Suspiro	0.00	3	0	4737	2.2	79.9	2.0	9.8	1.4	3.0	0.7	0.5	0.5	82.1	2.0	15.9	0.083	0.502	17.749432	-91.813395
Lim. Edos. Term. Chis. Ppia. Tab.	8.00																			
Emiliano Zapata	8.61	3	0	5830	9.8	77.1	1.3	6.5	1.7	2.6	0.6	0.0	0.4	86.9	1.3	11.8	0.092	0.503	17.727702	-91.757418
T. Der. La Libertad	12.10	3	0	4253	4.1	83.1	1.7	7.9	1.3	1.4	0.4	0.1	0.0	87.2	1.7	11.1	0.076	0.501	17.724101	-91.738711
T. Izq. Balancán	32.60	1	0	3171	3.9	82.0	1.8	9.4	1.5	0.9	0.4	0.1	0.0	85.9	1.8	12.3	0.104	0.512	17.635047	-91.602624
T. Izq. Balancán	32.60	3	0	2248	4.7	79.7	1.6	4.9	1.7	1.4	1.1	2.6	2.3	84.4	1.6	14.0	0.092	0.503	17.628571	-91.600059
Estación Zapata	53.00	1	0	2379	3.0	81.0	2.1	4.7	1.4	1.9	1.4	2.3	2.2	84.0	2.1	13.9	0.072	0.504	17.462727	-91.598574
Estación Zapata	53.00	3	0	3194	4.8	82.4	1.6	3.3	1.1	1.4	1.7	1.8	1.9	87.2	1.6	11.2	0.072	0.500	17.456377	-91.595161
Tenosique	75.30																			

3 CARR: Malpaso - El Bellote

CLAVE: 00137

RUTA: MEX-187

AÑO: 2021

LUGAR	ESTACION				CLASIFICACION VEHICULAR EN PORCIENTO										COORDENADAS					
	KM	TE	SC	TDPA	M	A	B	C2	C3	T3S2	T3S3	T3S2R4	OTROS	A	B	C	K'	D	LATITUD	LONGITUD
Presa Malpaso	0.00																			
Lim. Edos. Term. Chis. Ppia. Tab.	43.99																			
Lim. Edos. Term. Tab. Ppia. Chis.	44.59																			
Lim. Edos. Term. Chis. Ppia. Tab.	45.26																			
Lim. Edos. Term. Tab. Ppia. Chis.	45.63																			
Lim. Edos. Term. Chis. Ppia. Tab.	55.04																			
Macabil (La Estrella)	70.12	1	0	3830	10.4	75.2	1.7	9.0	1.1	2.0	0.4	0.1	0.1	85.6	1.7	12.7	0.086	0.504	17.606593	-93.516964
Estación Chontalpa	75.69	1	0	5584	9.4	76.8	0.8	8.2	0.9	3.1	0.4	0.1	0.3	86.2	0.8	13.0	0.078	0.512	17.652790	-93.486137
Estación Chontalpa	75.69	3	0	6473	12.9	68.8	1.5	11.1	1.3	3.0	0.7	0.4	0.3	81.7	1.5	16.8	0.073	0.503	17.675704	-93.476037
T. Izq. Francisco Rueda	90.49	1	0	6474	11.1	75.3	1.0	7.2	1.1	3.0	0.6	0.4	0.3	86.4	1.0	12.6	0.076	0.500	17.786117	-93.440131
T. Izq. Francisco Rueda	90.49	3	0	9066	13.3	73.5	0.7	6.8	0.9	2.9	0.8	0.6	0.5	86.8	0.7	12.5	0.091	0.506	17.793202	-93.432057
Huimanguillo	98.03	1	1	6063	15.8	75.5	0.7	5.1	0.7	1.0	0.8	0.2	0.2	91.3	0.7	8.0	0.075	0.515	17.812632	-93.407493

TABASCO

3 CARR: Malpaso - El Bellote

CLAVE: 00137

RUTA: MEX-187

AÑO: 2021

LUGAR	ESTACION				CLASIFICACION VEHICULAR EN PORCIENTO													COORDENADAS		
	KM	TE	SC	TDPA	M	A	B	C2	C3	T3S2	T3S3	T3S2R4	OTROS	A	B	C	K'	D	LATITUD	LONGITUD
Huimanguillo	98.03	1	2	6436	15.3	74.3	0.9	6.3	0.8	1.0	1.0	0.2	0.2	89.6	0.9	9.5	0.070	0.515	17.812675	-93.407544
Huimanguillo	98.03	3	1	6263	10.4	77.7	1.4	6.6	1.0	1.3	0.8	0.5	0.3	88.1	1.4	10.5	0.073	0.508	17.852967	-93.397057
Huimanguillo	98.03	3	2	6456	10.1	76.4	1.6	7.7	1.0	1.5	0.9	0.5	0.3	86.5	1.6	11.9	0.076	0.508	17.852965	-93.397140
Cárdenas	117.56	1	0	12893	8.1	81.9	0.8	6.0	0.8	1.5	0.5	0.2	0.2	90.0	0.8	9.2	0.067	0.505	17.943987	-93.362732
Cárdenas	117.56	3	0	15846	6.1	86.1	0.6	4.8	0.5	0.9	0.6	0.2	0.2	92.2	0.6	7.2	0.066	0.502	18.016655	-93.368614
Tulipán	134.70	3	0	7825	6.3	81.4	1.2	6.8	1.4	1.6	1.1	0.1	0.1	87.7	1.2	11.1	0.083	0.511	18.128242	-93.289887
T. Der. Cunduacán	141.70	1	0	6764	6.9	84.1	1.1	3.7	1.3	1.6	0.9	0.3	0.1	91.0	1.1	7.9	0.090	0.519	18.139947	-93.271585
T. Der. Cunduacán	141.70	3	0	6885	6.4	78.2	1.3	9.4	1.4	1.7	1.3	0.2	0.1	84.6	1.3	14.1	0.083	0.520	18.143276	-93.269236
T. Der. Jalpa	153.50	1	0	10807	7.3	81.4	0.9	6.6	1.3	1.2	0.9	0.1	0.3	88.7	0.9	10.4	0.074	0.505	18.240368	-93.209916
T. Der. Jalpa	153.50	3	1	10016	11.4	75.2	0.9	6.9	1.2	0.8	3.0	0.2	0.4	86.6	0.9	12.5	0.077	0.501	18.247604	-93.213009
T. Der. Jalpa	153.50	3	2	9985	11.4	75.2	0.9	6.9	1.2	0.8	3.0	0.2	0.4	86.6	0.9	12.5	0.077	0.501	18.247577	-93.213056
Paraíso	176.85	1	1	11724	5.2	87.0	0.7	3.9	1.5	0.6	0.5	0.4	0.2	92.2	0.7	7.1	0.133	0.560	18.378053	-93.221896
Paraíso	176.85	1	2	11044	5.2	86.6	0.7	4.6	1.5	0.4	0.4	0.4	0.2	91.8	0.7	7.5	0.112	0.560	18.378053	-93.221981
Paraíso	176.85	3	1	9950	5.9	82.2	2.4	6.1	1.9	0.6	0.4	0.3	0.2	88.1	2.4	9.5	0.096	0.514	18.407823	-93.199107
Paraíso	176.85	3	2	9419	5.7	83.8	2.4	4.7	2.1	0.6	0.3	0.3	0.1	89.5	2.4	8.1	0.089	0.514	18.407913	-93.199107
Ceiba	182.00	3	0	9989	8.3	83.7	0.3	3.4	2.2	0.8	0.7	0.3	0.3	92.0	0.3	7.7	0.102	0.515	18.422626	-93.163198
El Bellote	185.47																			

4 CARR: Tenosique - El Ceibo

CLAVE:

RUTA: MEX-203

AÑO: 2021

LUGAR	ESTACION				CLASIFICACION VEHICULAR EN PORCIENTO													COORDENADAS		
	KM	TE	SC	TDPA	M	A	B	C2	C3	T3S2	T3S3	T3S2R4	OTROS	A	B	C	K'	D	LATITUD	LONGITUD
Tenosique	0.00	3	0	1088	13.0	77.7	1.6	6.7	0.7	0.2	0.1	0.0	0.0	90.7	1.6	7.7	0.087	0.509	17.431100	-91.390020
El Ceibo	58.00	1	0	485	25.3	62.2	1.9	10.3	0.2	0.0	0.1	0.0	0.0	87.5	1.9	10.6	0.115	0.524	17.264945	-91.004628

5 CARR: Villahermosa - Cd. del Carmen

CLAVE: 00064

RUTA: MEX-180

AÑO: 2021

LUGAR	ESTACION				CLASIFICACION VEHICULAR EN PORCIENTO													COORDENADAS		
	KM	TE	SC	TDPA	M	A	B	C2	C3	T3S2	T3S3	T3S2R4	OTROS	A	B	C	K'	D	LATITUD	LONGITUD
Villahermosa	0.00																			
T. Izq. Cd. Industrial	4.30	3	1	31370	3.2	87.0	0.6	3.8	0.8	2.6	1.0	0.9	0.1	90.2	0.6	9.2	0.071	0.517	18.037254	-92.901512
T. Izq. Cd. Industrial	4.30	3	2	29193	3.0	86.9	0.5	4.4	0.9	2.3	1.2	0.7	0.1	89.9	0.5	9.6	0.096	0.517	18.037263	-92.901607
Macultepec	18.60	1	1	12971	8.7	79.9	1.1	3.1	1.0	3.7	1.1	1.2	0.2	88.6	1.1	10.3	0.090	0.511	18.139793	-92.865096
Macultepec	18.60	1	2	12434	7.9	78.3	1.6	4.0	1.1	4.1	1.2	1.5	0.3	86.2	1.6	12.2	0.081	0.511	18.139802	-92.865191
Macultepec	18.60	3	1	5879	1.6	76.7	2.6	6.4	1.5	6.5	1.7	2.7	0.3	78.3	2.6	19.1	0.083	0.507	18.165738	-92.858855

TABASCO

5 CARR: Villahermosa - Cd. del Carmen

CLAVE: 00064

RUTA: MEX-180

AÑO: 2021

LUGAR	ESTACION				CLASIFICACION VEHICULAR EN PORCIENTO													COORDENADAS		
	KM	TE	SC	TDPA	M	A	B	C2	C3	T3S2	T3S3	T3S2R4	OTROS	A	B	C	K'	D	LATITUD	LONGITUD
Macultepec	18.60	3	2	5712	1.6	78.5	2.1	6.8	1.2	5.7	1.5	2.2	0.4	80.1	2.1	17.8	0.096	0.507	18.165756	-92.858949
El Espino	33.20	1	0	8530	1.7	72.6	2.4	7.4	2.4	7.6	1.7	3.6	0.6	74.3	2.4	23.3	0.088	0.503	18.208586	-92.822343
El Espino	33.20	3	0	8523	1.8	72.5	3.8	8.4	1.2	6.4	2.5	2.8	0.6	74.3	3.8	21.9	0.089	0.512	18.260284	-92.831098
T. Izq. El Bellote	49.67	3	0	8969	1.3	79.6	2.4	6.7	1.8	4.3	0.9	2.7	0.3	80.9	2.4	16.7	0.084	0.503	18.396053	-92.798417
Frontera	74.59	1	0	9875	9.3	73.0	2.1	5.0	1.1	5.4	1.9	2.1	0.1	82.3	2.1	15.6	0.080	0.505	18.512390	-92.648860
Frontera	74.59	3	0	6272	8.8	61.5	5.9	8.0	1.7	8.5	1.3	3.6	0.7	70.3	5.9	23.8	0.074	0.520	18.542436	-92.631657
T. Izq. Escolleras	78.00	3	0	5906	3.4	70.8	3.0	6.4	1.3	8.7	2.1	3.8	0.5	74.2	3.0	22.8	0.076	0.515	18.562051	-92.601887
Puente San Pedro	96.50	3	0	4517	4.3	66.8	8.6	8.5	1.6	5.9	1.8	1.6	0.9	71.1	8.6	20.3	0.074	0.511	18.641510	-92.462619
Lim. Edos. Term. Tab. Ppia. Camp.	99.75																			
Nuevo Campechito	100.00	3	0	4646	1.9	62.8	5.3	7.6	1.5	12.1	3.4	4.9	0.5	64.7	5.3	30.0	0.085	0.529	18.642435	-92.457572
Nuevo Progreso	116.57	1	0	4784	2.6	64.4	4.6	7.4	1.6	11.4	2.3	5.0	0.7	67.0	4.6	28.4	0.086	0.501	18.627280	-92.331709
Puente Zacatal	162.41	1	0	5175	4.5	68.7	5.1	8.6	2.2	4.6	1.6	3.9	0.8	73.2	5.1	21.7	0.094	0.505	18.615852	-91.872311
Puente Zacatal	162.41	2	0	5894	1.9	67.4	3.5	4.8	3.6	10.8	1.8	5.5	0.7	69.3	3.5	27.2	0.077	0.500	18.641814	-92.460301
Cd. del Carmen	167.50																			

6 CARR: Villahermosa - Escopetazo

CLAVE: 00104

RUTA: MEX-195

AÑO: 2021

LUGAR	ESTACION				CLASIFICACION VEHICULAR EN PORCIENTO													COORDENADAS		
	KM	TE	SC	TDPA	M	A	B	C2	C3	T3S2	T3S3	T3S2R4	OTROS	A	B	C	K'	D	LATITUD	LONGITUD
Villahermosa	0.00	3	1	22530	3.5	90.5	0.5	3.0	0.4	1.1	0.6	0.3	0.1	94.0	0.5	5.5	0.093	0.523	17.946787	-92.916463
Villahermosa	0.00	3	2	24698	2.8	90.9	0.5	3.4	0.4	1.1	0.5	0.3	0.1	93.7	0.5	5.8	0.106	0.523	17.946760	-92.916369
Parrilla	10.00	1	1	21594	3.2	88.9	0.9	4.1	0.9	0.8	0.8	0.3	0.1	92.1	0.9	7.0	0.104	0.534	17.913635	-92.923322
Parrilla	10.00	1	2	22469	3.1	89.1	0.9	4.0	0.9	0.8	0.8	0.3	0.1	92.2	0.9	6.9	0.102	0.534	17.913601	-92.923238
Parrilla	10.00	3	1	24085	2.4	84.0	0.8	4.1	0.8	5.0	2.2	0.5	0.2	86.4	0.8	12.8	0.099	0.502	17.886998	-92.922544
Parrilla	10.00	3	2	24272	3.9	84.0	0.7	4.2	0.9	3.5	2.1	0.5	0.2	87.9	0.7	11.4	0.085	0.502	17.887012	-92.922468
T. Izq. Subte. García	20.00	3	1	6929	8.8	81.7	0.5	3.8	0.9	2.2	1.1	0.3	0.7	90.5	0.5	9.0	0.088	0.500	17.826692	-92.929118
T. Izq. Subte. García	20.00	3	2	6926	8.5	82.7	0.4	3.4	0.6	1.7	1.6	0.4	0.7	91.2	0.4	8.4	0.081	0.500	17.826674	-92.929024
La Arena	44.00	1	0	7432	4.7	77.9	0.7	10.3	1.4	2.5	1.2	0.9	0.4	82.6	0.7	16.7	0.081	0.501	17.653452	-92.959102
T. Izq. Teapa	54.80	1	0	11577	5.1	80.3	0.4	6.0	1.0	4.9	1.0	0.4	0.9	85.4	0.4	14.2	0.078	0.506	17.573466	-92.957678
T. Izq. Teapa	54.80	3	0	6173	15.1	71.3	1.0	6.6	1.2	2.8	1.0	0.5	0.5	86.4	1.0	12.6	0.066	0.503	17.568342	-92.961684
Lim. Edos. Term. Tab. Ppia. Chis.	61.42																			
Pichucalco	76.00	1	0	3059	8.6	79.7	0.9	10.3	0.2	0.2	0.1	0.0	0.0	88.3	0.9	10.8	0.094	0.519	17.521408	-93.098064
Pichucalco	76.00	3	0	3296	13.4	79.1	0.3	4.1	0.8	1.5	0.6	0.0	0.2	92.5	0.3	7.2	0.092	0.508	17.494262	-93.102713
Solusuchiapa	112.00	1	0	1711	1.9	83.8	0.8	12.7	0.8	0.0	0.0	0.0	0.0	85.7	0.8	13.5	0.094	0.505	17.428299	-93.038155
Solusuchiapa	112.00	3	0	1435	10.8	76.7	1.0	7.3	2.0	1.2	0.8	0.1	0.1	87.5	1.0	11.5	0.095	0.516	17.417462	-93.028485



TABASCO

6 CARR: Villahermosa - Escopetazo

CLAVE: 00104

RUTA: MEX-195

AÑO: 2021

LUGAR	ESTACION				CLASIFICACION VEHICULAR EN PORCIENTO													COORDENADAS		
	KM	TE	SC	TDPA	M	A	B	C2	C3	T3S2	T3S3	T3S2R4	OTROS	A	B	C	K'	D	LATITUD	LONGITUD
Rayón	146.00	1	0	2254	3.0	87.8	0.3	4.7	0.7	2.2	0.7	0.2	0.4	90.8	0.3	8.9	0.084	0.506	17.204073	-93.012355
Jitotol	197.79	1	0	1912	2.2	91.1	0.3	4.1	0.6	1.2	0.4	0.0	0.1	93.3	0.3	6.4	0.086	0.510	17.086639	-92.866260
Jitotol	197.79	3	0	2734	2.2	91.8	0.2	4.0	0.5	0.8	0.3	0.0	0.2	94.0	0.2	5.8	0.099	0.505	17.054231	-92.856511
Bochil	211.00	1	0	5160	3.0	85.9	0.9	9.1	0.6	0.2	0.1	0.1	0.1	88.9	0.9	10.2	0.090	0.514	16.988518	-92.876139
Soyaló	229.00	3	0	2723	3.6	84.0	1.4	10.0	0.8	0.1	0.0	0.0	0.1	87.6	1.4	11.0	0.088	0.501	16.879060	-92.916582
Ixtapa	247.00	1	0	3850	3.3	85.9	1.3	9.0	0.2	0.1	0.1	0.1	0.0	89.2	1.3	9.5	0.076	0.506	16.825862	-92.897899
Escopetazo	259.00	1	0	3370	1.7	86.8	1.0	8.5	1.3	0.5	0.2	0.0	0.0	88.5	1.0	10.5	0.091	0.503	16.758080	-92.938177

7 CARR: Villahermosa - Francisco Escárcega

CLAVE: 00092

RUTA: MEX-186

AÑO: 2021

LUGAR	ESTACION				CLASIFICACION VEHICULAR EN PORCIENTO													COORDENADAS		
	KM	TE	SC	TDPA	M	A	B	C2	C3	T3S2	T3S3	T3S2R4	OTROS	A	B	C	K'	D	LATITUD	LONGITUD
Villahermosa	0.00	3	1	15639	3.6	82.9	0.9	5.8	1.1	3.2	0.9	1.4	0.2	86.5	0.9	12.6	0.071	0.500	18.001013	-92.890726
Villahermosa	0.00	3	2	15629	3.7	80.9	1.3	6.8	1.3	2.9	1.3	1.7	0.1	84.6	1.3	14.1	0.069	0.500	18.001154	-92.890695
T. Izq. Aeropuerto (Baja)	12.00	1	1	2179	12.6	74.2	1.1	5.9	1.6	2.9	0.9	0.6	0.2	86.8	1.1	12.1	0.078	0.530	17.984985	-92.829685
T. Izq. Aeropuerto (Alta)	12.00	1	1	14378	1.3	83.4	1.3	6.7	1.2	3.1	1.2	1.5	0.3	84.7	1.3	14.0	0.072	0.524	17.985044	-92.829626
T. Izq. Aeropuerto (Alta)	12.00	1	2	14170	1.8	82.5	1.2	5.9	1.5	3.6	1.4	1.7	0.4	84.3	1.2	14.5	0.079	0.524	17.985102	-92.829573
T. Izq. Aeropuerto (Baja)	12.00	1	2	1932	12.4	74.1	1.3	5.9	1.4	2.8	1.1	0.6	0.4	86.5	1.3	12.2	0.081	0.530	17.985168	-92.829513
Puente Grijalva	17.60	2	1	7203	3.3	79.9	2.7	3.3	2.1	4.2	1.6	2.5	0.4	83.2	2.7	14.1	0.079	0.500	17.947602	-92.785235
Puente Grijalva	17.60	2	2	7203	3.3	79.9	2.7	3.3	2.1	4.2	1.6	2.5	0.4	83.2	2.7	14.1	0.079	0.500	17.947602	-92.785235
X. C. Cacaos - La Granja	32.46	1	1	7651	1.0	81.3	1.4	6.6	1.1	3.9	2.7	1.7	0.3	82.3	1.4	16.3	0.087	0.508	17.832821	-92.719607
X. C. Cacaos - La Granja	32.46	1	2	7896	1.0	80.2	1.5	7.3	1.1	4.2	2.6	1.8	0.3	81.2	1.5	17.3	0.082	0.508	17.832867	-92.719530
X. C. Cacaos - La Granja	32.46	3	1	6361	1.5	78.8	1.2	5.2	1.4	7.5	2.1	1.6	0.7	80.3	1.2	18.5	0.081	0.512	17.817753	-92.711092
X. C. Cacaos - La Granja	32.46	3	2	6671	1.2	80.4	1.1	5.0	0.9	7.0	2.1	1.6	0.7	81.6	1.1	17.3	0.085	0.512	17.817780	-92.710996
X. C. Jalapa - Jonuta	40.00	3	1	6687	1.2	81.4	1.3	5.6	1.2	4.6	2.8	1.3	0.6	82.6	1.3	16.1	0.078	0.511	17.774606	-92.673299
X. C. Jalapa - Jonuta	40.00	3	2	6391	1.3	78.3	1.8	6.5	1.7	4.4	2.7	2.7	0.6	79.6	1.8	18.6	0.073	0.511	17.774677	-92.673244
T. Izq. Macuspana	46.20	1	1	6653	3.6	77.0	1.8	6.5	1.8	4.6	1.9	2.5	0.3	80.6	1.8	17.6	0.076	0.506	17.744224	-92.634276
T. Izq. Macuspana	46.20	1	2	6816	4.7	72.6	2.1	7.9	1.8	5.0	2.7	3.0	0.2	77.3	2.1	20.6	0.077	0.506	17.744288	-92.634215
T. Izq. Macuspana	46.20	3	1	6167	3.6	76.8	1.3	4.6	2.1	6.0	2.1	2.9	0.6	80.4	1.3	18.3	0.069	0.510	17.734467	-92.621872
T. Izq. Macuspana	46.20	3	2	5917	2.9	74.8	1.5	6.8	2.1	5.3	3.1	2.8	0.7	77.7	1.5	20.8	0.076	0.510	17.734540	-92.621815
X. C. Estación Macuspana - Vernet	54.30	1	0	10917	4.7	72.0	1.4	6.5	2.5	6.8	2.1	3.4	0.6	76.7	1.4	21.9	0.078	0.527	17.712801	-92.583568
T. Der. Chivalito (Est. Pino Suárez)	70.00	1	0	8813	6.6	67.9	2.0	7.5	2.1	6.7	2.7	3.7	0.8	74.5	2.0	23.5	0.072	0.501	17.670455	-92.446222
T. Der. Chivalito (Est. Pino Suárez)	70.00	3	1	3960	4.2	65.8	3.1	7.7	2.8	8.1	2.3	5.0	1.0	70.0	3.1	26.9	0.076	0.530	17.666829	-92.434630
T. Der. Chivalito (Est. Pino Suárez)	70.00	3	2	3510	4.2	66.0	3.1	7.7	2.8	8.1	2.2	5.0	0.9	70.2	3.1	26.7	0.083	0.530	17.666879	-92.434619
T. Der. Estación Zopo	71.00	1	0	7666	4.0	66.9	3.2	9.1	2.8	5.9	2.3	4.9	0.9	70.9	3.2	25.9	0.069	0.505	17.670128	-92.418568

TABASCO

7 CARR: Villahermosa - Francisco Escárcega

CLAVE: 00092

RUTA: MEX-186

AÑO: 2021

LUGAR	ESTACION				CLASIFICACION VEHICULAR EN PORCIENTO													COORDENADAS		
	KM	TE	SC	TDPA	M	A	B	C2	C3	T3S2	T3S3	T3S2R4	OTROS	A	B	C	K'	D	LATITUD	LONGITUD
T. Der. Estación Zopo	71.00	3	1	3728	5.7	61.9	3.6	9.3	2.9	7.7	2.6	5.7	0.6	67.6	3.6	28.8	0.080	0.503	17.676038	-92.409336
T. Der. Estación Zopo	71.00	3	2	3767	5.7	62.1	3.5	9.3	2.9	7.7	2.6	5.7	0.5	67.8	3.5	28.7	0.089	0.503	17.676088	-92.409381
Lim. Edos. Term. Tab. Ppia. Chis.	76.90																			
T. Izq. Bonanza	88.00	1	0	7290	6.5	66.4	2.7	6.9	2.6	6.8	2.7	4.8	0.6	72.9	2.7	24.4	0.077	0.509	17.698132	-92.268740
T. Izq. Jonuta	101.00	1	0	5916	3.5	66.2	2.6	7.9	2.8	8.9	2.6	5.0	0.5	69.7	2.6	27.7	0.078	0.520	17.697896	-92.134431
T. Izq. Jonuta	101.00	3	0	7095	4.2	69.2	2.4	7.7	2.8	6.1	2.6	4.4	0.6	73.4	2.4	24.2	0.074	0.515	17.697576	-92.122490
X. C. Catazajá - Palenque	114.00	1	0	7453	5.2	69.0	2.4	8.5	2.1	5.7	2.8	3.4	0.9	74.2	2.4	23.4	0.078	0.504	17.706848	-92.027044
X. C. Catazajá - Palenque	114.00	3	0	6878	2.3	65.1	3.0	8.2	3.7	10.0	1.8	5.3	0.6	67.4	3.0	29.6	0.076	0.505	17.717682	-91.993024
T. Der. Emiliano Zapata	134.70	1	0	6328	3.8	65.7	3.2	8.0	3.1	8.5	2.3	4.8	0.6	69.5	3.2	27.3	0.069	0.507	17.770559	-91.837571
T. Der. Emiliano Zapata	134.70	3	0	4460	3.5	67.3	2.9	8.0	3.1	8.2	2.1	4.5	0.4	70.8	2.9	26.3	0.068	0.500	17.785189	-91.822191
Lim. Edos. Term. Chis. Ppia. Tab.	140.70																			
Puente Usumacinta	145.20	2	0	4377	7.0	62.8	2.9	3.8	4.8	9.4	2.0	6.5	0.8	69.8	2.9	27.3	0.079	0.500	17.859905	-91.783654
T. Izq. Palizada	154.05	1	0	4053	5.9	62.3	2.9	6.4	3.3	9.6	2.9	6.1	0.6	68.2	2.9	28.9	0.071	0.512	17.937159	-91.737797
T. Izq. Palizada	154.05	3	0	3301	4.5	57.1	4.4	7.5	3.3	11.7	3.0	7.7	0.8	61.6	4.4	34.0	0.069	0.509	17.944729	-91.731350
Lim. Edos. Term. Tab. Ppia. Camp.	154.60																			
T. Der. Candelaria	233.40	1	0	3472	5.1	60.0	3.7	5.3	2.3	12.0	2.5	8.3	0.8	65.1	3.7	31.2	0.070	0.525	18.369693	-91.203879
T. Der. Felipe Ángeles	253.00	1	0	3508	6.7	62.4	3.8	6.9	1.6	9.4	2.6	6.0	0.6	69.1	3.8	27.1	0.081	0.515	18.503419	-91.106926
T. Izq. Sabancuy	274.10	1	0	4382	5.2	65.0	3.3	6.4	2.1	8.8	2.5	6.0	0.7	70.2	3.3	26.5	0.088	0.508	18.629633	-90.987940
Francisco Escárcega	297.04	1	0	7669	12.6	68.1	2.0	5.1	1.1	5.4	1.4	3.8	0.5	80.7	2.0	17.3	0.076	0.504	18.609992	-90.776070

8 CARR: Ent. Agua Dulce - Cárdenas (Cuota)

CLAVE: 00010

RUTA: MEX-180D

AÑO: 2021

LUGAR	ESTACION				CLASIFICACION VEHICULAR EN PORCIENTO													COORDENADAS		
	KM	TE	SC	TDPA	M	A	B	C2	C3	T3S2	T3S3	T3S2R4	OTROS	A	B	C	K'	D	LATITUD	LONGITUD
Ent. La Ceiba	45.00																			
T. C. Coatzacoalcos - Villahermosa	69.50	1	1	4853	2.1	55.9	6.0	5.0	3.5	15.4	2.9	8.6	0.6	58.0	6.0	36.0	0.080	0.521	18.032589	-93.824985
T. C. Coatzacoalcos - Villahermosa	69.50	1	2	4462	2.3	54.1	6.1	5.2	3.6	16.1	3.1	8.9	0.6	56.4	6.1	37.5	0.066	0.521	18.032856	-93.824916
Plaza de Cobro La Venta	69.50	2	1	4656	0.3	53.7	2.4	5.3	5.2	17.9	3.0	10.9	1.3	54.0	2.4	43.6	0.081	0.500	18.030572	-93.812914
Plaza de Cobro La Venta	69.50	2	2	4656	0.3	53.7	2.4	5.3	5.2	17.9	3.0	10.9	1.3	54.0	2.4	43.6	0.081	0.500	18.030572	-93.812914
T. C. Coatzacoalcos - Villahermosa	69.50	3	1	4477	2.9	56.1	4.6	5.9	2.7	15.8	4.0	7.1	0.9	59.0	4.6	36.4	0.076	0.507	18.029690	-93.808917
T. C. Coatzacoalcos - Villahermosa	69.50	3	2	4611	3.1	56.3	4.9	6.2	2.9	15.6	3.2	7.0	0.8	59.4	4.9	35.7	0.082	0.507	18.029947	-93.808841
Ent. Chontalpa	99.11																			

TABASCO

9 CARR: Las Choapas - Ocozocoautla (Cuota)

CLAVE: 00077

RUTA: MEX-187D

AÑO: 2021

LUGAR	ESTACION				CLASIFICACION VEHICULAR EN PORCIENTO														COORDENADAS	
	KM	TE	SC	TDPA	M	A	B	C2	C3	T3S2	T3S3	T3S2R4	OTROS	A	B	C	K'	D	LATITUD	LONGITUD
T. C. Coatzacoalcos - Villahermosa	0.00	3	0	4451	3.4	48.2	9.5	4.9	4.1	17.1	3.5	8.6	0.7	51.6	9.5	38.9	0.088	0.505	18.064430	-94.247267
Plaza de Cobro Las Choapas	16.80	1	0	4627	1.9	49.6	5.8	7.8	4.7	15.5	3.5	10.3	0.9	51.5	5.8	42.7	0.068	0.512	17.949374	-94.174687
Plaza de Cobro Las Choapas	16.80	3	0	3133	1.2	40.3	8.6	7.4	4.5	19.7	3.3	14.2	0.8	41.5	8.6	49.9	0.061	0.515	17.933424	-94.166670
Lim. Edos. Term. Ver. Ppia. Tab.	96.68																			
Plaza de Cobro Malpasito	112.70	1	0	2850	0.8	40.6	10.0	10.5	5.2	17.1	4.0	11.1	0.7	41.4	10.0	48.6	0.067	0.503	17.355848	-93.589234
Plaza de Cobro Malpasito	112.70	2	0	2927	0.4	35.6	5.4	6.0	9.6	22.2	3.9	14.8	2.1	36.0	5.4	58.6	0.072	0.500	17.349070	-93.586472
Lim. Edos. Term. Tab. Ppia. Chis.	113.70																			
T. Izq. Malpaso	123.79	1	0	4639	1.3	58.7	7.8	12.3	4.2	7.6	2.7	4.7	0.7	60.0	7.8	32.2	0.074	0.525	17.260724	-93.569740
Plaza de Cobro Ocozocoautla	182.50	1	0	5599	1.9	64.2	6.9	13.2	3.2	5.2	2.4	2.2	0.8	66.1	6.9	27.0	0.083	0.504	16.873211	-93.414751
Plaza de Cobro Ocozocoautla	182.50	2	0	4898	0.5	56.7	3.9	6.4	6.7	13.3	2.4	8.8	1.3	57.2	3.9	38.9	0.072	0.500	16.863183	-93.406856
T. C. Tapanatepec - Tuxtla Gutiérrez	197.50	1	0	6261	1.3	63.1	6.2	10.8	3.3	7.3	1.7	5.8	0.5	64.4	6.2	29.4	0.077	0.518	16.773057	-93.319062

10 CARR: Libramiento de Villahermosa (Cuota)

CLAVE:

RUTA: MEX-180D

AÑO: 2021

LUGAR	ESTACION				CLASIFICACION VEHICULAR EN PORCIENTO														COORDENADAS	
	KM	TE	SC	TDPA	M	A	B	C2	C3	T3S2	T3S3	T3S2R4	OTROS	A	B	C	K'	D	LATITUD	LONGITUD
T. C. Coatzacoalcos - Villahermosa	0.00																			
Plaza de Cobro Nacajuca	16.00	2	1	2627	0.4	34.0	0.4	6.6	7.4	27.5	5.8	15.7	2.2	34.4	0.4	65.2	0.090	0.500	18.076079	-92.930568
Plaza de Cobro Nacajuca	16.00	2	2	2627	0.4	34.0	0.4	6.6	7.4	27.5	5.8	15.7	2.2	34.4	0.4	65.2	0.090	0.500	18.076079	-92.930568
T. C. Villahermosa - Cd. Del Carmen	21.70																			

11 CARR: Benito Juárez - Agua Dulce

CLAVE: 00202

RUTA: TAB-VER

AÑO: 2021

LUGAR	ESTACION				CLASIFICACION VEHICULAR EN PORCIENTO														COORDENADAS	
	KM	TE	SC	TDPA	M	A	B	C2	C3	T3S2	T3S3	T3S2R4	OTROS	A	B	C	K'	D	LATITUD	LONGITUD
Benito Juárez	0.00	3	0	1253	14.8	75.4	0.4	7.2	0.4	1.5	0.1	0.1	0.1	90.2	0.4	9.4	0.083	0.500	18.166523	-93.920387
La Venta	16.80	1	0	1396	18.3	75.1	0.2	5.0	0.3	0.8	0.2	0.1	0.0	93.4	0.2	6.4	0.084	0.500	18.115478	-94.033429
Lim. Edos. Term. Tab. Ppia. Ver.	23.78																			
Agua Dulce	33.00																			

12 CARR: Benito Juárez - Tepetitán

CLAVE: 27204

RUTA: TAB

AÑO: 2021

LUGAR	ESTACION				CLASIFICACION VEHICULAR EN PORCIENTO														COORDENADAS	
	KM	TE	SC	TDPA	M	A	B	C2	C3	T3S2	T3S3	T3S2R4	OTROS	A	B	C	K'	D	LATITUD	LONGITUD
Benito Juárez	0.00																			

TABASCO

12 CARR: Benito Juárez - Tepetitán

CLAVE: 27204

RUTA: TAB

AÑO: 2021

LUGAR	ESTACION				CLASIFICACION VEHICULAR EN PORCIENTO													COORDENADAS		
	KM	TE	SC	TDPA	M	A	B	C2	C3	T3S2	T3S3	T3S2R4	OTROS	A	B	C	K'	D	LATITUD	LONGITUD
X. C. Jalapa - Jonuta	1.50	3	0	3849	16.4	76.3	0.1	3.6	0.2	2.7	0.3	0.0	0.4	92.7	0.1	7.2	0.077	0.511	17.824195	-92.513473
Limbano Blandín	18.50	1	0	1334	27.6	67.0	0.2	3.3	0.2	1.2	0.3	0.0	0.2	94.6	0.2	5.2	0.080	0.508	17.755326	-92.416180
Limbano Blandín	18.50	3	0	1105	25.3	67.4	0.4	4.7	0.6	1.2	0.3	0.0	0.1	92.7	0.4	6.9	0.071	0.502	17.760545	-92.405667
Tepetitán	20.00	1	0	1171	28.6	65.7	0.2	4.0	0.5	0.8	0.2	0.0	0.0	94.3	0.2	5.5	0.078	0.511	17.813990	-92.377127

13 CARR: Cacaos - La Granja

CLAVE: 27002

RUTA: TAB

AÑO: 2021

LUGAR	ESTACION				CLASIFICACION VEHICULAR EN PORCIENTO													COORDENADAS		
	KM	TE	SC	TDPA	M	A	B	C2	C3	T3S2	T3S3	T3S2R4	OTROS	A	B	C	K'	D	LATITUD	LONGITUD
Cacaos	0.00	3	0	2299	15.3	78.3	0.3	3.8	0.3	1.4	0.4	0.1	0.1	93.6	0.3	6.1	0.077	0.506	17.830123	-92.853579
X. C. Villahermosa - Francisco Escárcega	16.00	3	0	4662	6.4	80.7	1.5	7.1	0.6	2.4	0.9	0.1	0.3	87.1	1.5	11.4	0.069	0.506	17.828129	-92.714826
T. C. Jalapa - Jonuta	39.00	1	0	7022	4.8	80.5	0.7	8.5	0.8	2.5	1.0	0.5	0.7	85.3	0.7	14.0	0.076	0.501	17.846019	-92.503102

14 CARR: Cárdenas - Paraíso

CLAVE: 27117

RUTA: TAB

AÑO: 2021

LUGAR	ESTACION				CLASIFICACION VEHICULAR EN PORCIENTO													COORDENADAS		
	KM	TE	SC	TDPA	M	A	B	C2	C3	T3S2	T3S3	T3S2R4	OTROS	A	B	C	K'	D	LATITUD	LONGITUD
T. C. Coatzacoalcos - Villahermosa	0.00	3	0	6660	15.8	78.5	0.5	4.0	0.3	0.4	0.3	0.1	0.1	94.3	0.5	5.2	0.089	0.509	18.001907	-93.385549
T. Izq. El Golpe	22.00	1	0	1343	20.9	69.6	0.6	4.1	0.8	2.9	1.0	0.0	0.1	90.5	0.6	8.9	0.086	0.514	18.111688	-93.308680
T. Izq. El Golpe	22.00	3	0	1858	24.3	68.7	0.1	3.8	0.1	1.8	0.6	0.1	0.5	93.0	0.1	6.9	0.071	0.511	18.116257	-93.303792
Comalcalco	37.00	3	0	4200	26.7	61.9	0.1	8.0	0.1	2.5	0.3	0.1	0.3	88.6	0.1	11.3	0.066	0.501	18.296286	-93.214235
Paraíso	52.00	1	0	5236	21.1	50.6	0.9	7.0	7.0	7.0	3.2	2.1	1.1	71.7	0.9	27.4	0.086	0.548	18.387717	-93.233274

15 CARR: Chichicapa - Ent. La Libertad

CLAVE: 27100

RUTA: TAB

AÑO: 2021

LUGAR	ESTACION				CLASIFICACION VEHICULAR EN PORCIENTO													COORDENADAS		
	KM	TE	SC	TDPA	M	A	B	C2	C3	T3S2	T3S3	T3S2R4	OTROS	A	B	C	K'	D	LATITUD	LONGITUD
Chichicapa	0.00	3	0	3195	22.8	68.2	0.1	5.9	0.1	2.2	0.4	0.0	0.3	91.0	0.1	8.9	0.080	0.509	18.273370	-93.182425
Nicolás Bravo	10.00	3	0	4442	16.8	73.2	0.2	5.3	0.2	2.9	0.7	0.2	0.5	90.0	0.2	9.8	0.077	0.501	18.292219	-93.157882
Ent. La Libertad	18.00	1	0	4200	19.7	67.4	0.4	5.9	1.5	3.0	1.2	0.6	0.3	87.1	0.4	12.5	0.112	0.508	18.316448	-93.168956

TABASCO

16 CARR: Comalcalco - El Golpe

CLAVE: 27102

RUTA: TAB

AÑO: 2021

LUGAR	ESTACION				CLASIFICACION VEHICULAR EN PORCIENTO													COORDENADAS		
	KM	TE	SC	TDPA	M	A	B	C2	C3	T3S2	T3S3	T3S2R4	OTROS	A	B	C	K'	D	LATITUD	LONGITUD
Comalcalco	0.00	3	0	21384	31.2	62.8	0.9	3.8	0.4	0.4	0.4	0.1	0.0	94.0	0.9	5.1	0.077	0.504	18.253591	-93.233979
Libramiento de Comalcalco	2.60	3	0	16464	31.4	63.1	0.9	3.7	0.3	0.3	0.3	0.0	0.0	94.5	0.9	4.6	0.079	0.507	18.249621	-93.242317
T. Izq. Villa Aldama	9.40	1	0	6042	23.9	61.3	1.0	12.6	0.3	0.3	0.2	0.2	0.2	85.2	1.0	13.8	0.062	0.502	18.253901	-93.302591
T. Izq. Villa Aldama	9.40	3	0	6128	23.8	61.2	1.1	12.7	0.3	0.3	0.2	0.2	0.2	85.0	1.1	13.9	0.073	0.502	18.264202	-93.315503
Tecolutilla	15.00	1	0	4400	25.9	66.4	0.3	6.3	0.1	0.2	0.3	0.3	0.2	92.3	0.3	7.4	0.102	0.500	18.270991	-93.314768
Tecolutilla	15.00	3	0	6021	28.1	61.1	0.2	5.6	0.1	1.6	2.0	0.6	0.7	89.2	0.2	10.6	0.104	0.507	18.286847	-93.344382
T. Der. Lazáro Cárdenas	20.00	3	0	2528	38.1	53.4	0.7	5.4	0.2	1.6	0.5	0.0	0.1	91.5	0.7	7.8	0.078	0.501	18.280064	-93.382414
Carlos Green	33.00	3	0	3845	49.7	43.9	0.1	2.7	0.0	2.4	0.7	0.1	0.4	93.6	0.1	6.3	0.078	0.507	18.232485	-93.457966
El Golpe	51.60	1	0	683	48.1	42.9	1.0	6.6	0.1	0.8	0.4	0.0	0.1	91.0	1.0	8.0	0.089	0.523	18.331273	-93.533785

17 CARR: El Bellote - Santa Cruz

CLAVE: 27105

RUTA: TAB

AÑO: 2021

LUGAR	ESTACION				CLASIFICACION VEHICULAR EN PORCIENTO													COORDENADAS		
	KM	TE	SC	TDPA	M	A	B	C2	C3	T3S2	T3S3	T3S2R4	OTROS	A	B	C	K'	D	LATITUD	LONGITUD
Bellote	0.00	3	0	5929	13.9	82.2	0.4	2.0	0.4	0.7	0.0	0.4	0.0	96.1	0.4	3.5	0.127	0.504	18.426443	-93.123043
T. Der. Chichicapa	8.00	3	0	3901	9.2	80.0	0.9	5.4	0.4	3.5	0.4	0.1	0.1	89.2	0.9	9.9	0.078	0.504	18.423990	-93.072132
Ignacio Allende	35.00	1	0	4841	8.6	82.3	0.5	4.1	0.5	3.3	0.3	0.1	0.3	90.9	0.5	8.6	0.081	0.504	18.385412	-92.862215
Ignacio Allende	35.00	3	0	4003	8.6	78.3	1.2	6.7	0.8	3.4	0.6	0.2	0.2	86.9	1.2	11.9	0.083	0.501	18.382659	-92.830535
Santa Cruz	40.00	1	0	4069	5.8	84.6	0.4	4.6	0.6	3.2	0.4	0.1	0.3	90.4	0.4	9.2	0.079	0.502	18.386032	-92.808314

18 CARR: Ent. Emiliano Zapata - La Libertad

CLAVE: 00062

RUTA: CHIS-TAB

AÑO: 2021

LUGAR	ESTACION				CLASIFICACION VEHICULAR EN PORCIENTO													COORDENADAS		
	KM	TE	SC	TDPA	M	A	B	C2	C3	T3S2	T3S3	T3S2R4	OTROS	A	B	C	K'	D	LATITUD	LONGITUD
T. C. El Suspiro - Tenosique	0.00	3	0	1741	9.8	84.9	0.2	4.1	0.7	0.2	0.1	0.0	0.0	94.7	0.2	5.1	0.079	0.509	17.721235	-91.744519
Lim. Edos. Term. Tab. Ppia. Chis.	8.00																			
La Libertad	10.00	1	0	1674	7.2	82.3	0.3	8.2	0.3	1.5	0.2	0.0	0.0	89.5	0.3	10.2	0.080	0.520	17.690559	-91.722107

19 CARR: Estación Macuspana - Vernet

CLAVE: 27091

RUTA: TAB-041

AÑO: 2021

LUGAR	ESTACION				CLASIFICACION VEHICULAR EN PORCIENTO													COORDENADAS		
	KM	TE	SC	TDPA	M	A	B	C2	C3	T3S2	T3S3	T3S2R4	OTROS	A	B	C	K'	D	LATITUD	LONGITUD
Estación Macuspana	0.00																			
X. C. Villahermosa - Francisco Escárcega	11.00	1	0	2079	24.0	60.2	0.2	9.4	3.4	1.3	0.8	0.3	0.4	84.2	0.2	15.6	0.059	0.501	17.710306	-92.568675
X. C. Villahermosa - Francisco Escárcega	11.00	3	0	1388	20.1	69.0	0.2	5.8	2.0	1.7	0.5	0.3	0.4	89.1	0.2	10.7	0.090	0.556	17.704520	-92.569919

TABASCO

19 CARR: Estación Macuspana - Vernet

CLAVE: 27091

RUTA: TAB-041

AÑO: 2021

LUGAR	ESTACION				CLASIFICACION VEHICULAR EN PORCIENTO													COORDENADAS		
	KM	TE	SC	TDPA	M	A	B	C2	C3	T3S2	T3S3	T3S2R4	OTROS	A	B	C	K'	D	LATITUD	LONGITUD
Belem	20.50	1	1	5255	17.6	76.4	0.4	2.8	0.5	1.1	0.6	0.3	0.3	94.0	0.4	5.6	0.073	0.504	17.773914	-92.606185
Belem	20.50	1	2	5334	18.1	75.5	0.4	3.0	0.5	1.2	0.7	0.3	0.3	93.6	0.4	6.0	0.070	0.504	17.773862	-92.606249
Belem	20.50	3	0	2928	12.2	80.2	0.4	4.6	0.4	1.6	0.4	0.1	0.1	92.4	0.4	7.2	0.064	0.514	17.802642	-92.606302
X. C. Cacaos - La Granja	25.50	3	0	1274	11.5	81.3	0.3	5.0	0.3	1.2	0.3	0.0	0.1	92.8	0.3	6.9	0.085	0.511	17.841553	-92.607473
Vernet	32.50	1	0	498	23.8	73.3	0.3	2.1	0.0	0.5	0.0	0.0	0.0	97.1	0.3	2.6	0.096	0.500	17.916359	-92.598240

20 CARR: Frontera - T. C. (Jalapa - Jonuta)

CLAVE: 27081

RUTA: TAB

AÑO: 2021

LUGAR	ESTACION				CLASIFICACION VEHICULAR EN PORCIENTO													COORDENADAS		
	KM	TE	SC	TDPA	M	A	B	C2	C3	T3S2	T3S3	T3S2R4	OTROS	A	B	C	K'	D	LATITUD	LONGITUD
Frontera	0.00																			
X. C. Villahermosa - Cd. del Carmen	1.00	3	0	1565	34.6	60.5	0.2	3.2	0.3	1.0	0.1	0.0	0.1	95.1	0.2	4.7	0.083	0.501	18.507057	-92.650521
T. C. Jalapa - Jonuta	123.00	1	0	451	6.5	84.3	0.0	8.5	0.4	0.1	0.2	0.0	0.0	90.8	0.0	9.2	0.082	0.520	18.102017	-92.170117

21 CARR: Gregorio Méndez Magaña - Reforma de Ocampo

CLAVE: 00103

RUTA: CHIS

AÑO: 2021

LUGAR	ESTACION				CLASIFICACION VEHICULAR EN PORCIENTO													COORDENADAS		
	KM	TE	SC	TDPA	M	A	B	C2	C3	T3S2	T3S3	T3S2R4	OTROS	A	B	C	K'	D	LATITUD	LONGITUD
Gregorio Méndez Magaña	0.00	3	0	947	22.9	63.6	0.4	8.7	3.5	0.7	0.2	0.0	0.0	86.5	0.4	13.1	0.089	0.502	17.446619	-91.596023
Lim. Edos. Term. Tab. Ppia. Chis.	3.00																			
T. C. Benemérito de Las Américas - Palenque	21.00	1	0	2625	16.0	76.9	0.1	4.3	0.9	1.6	0.2	0.0	0.0	92.9	0.1	7.0	0.078	0.504	17.323465	-91.692429
Reforma de Ocampo	22.00																			

22 CARR: Jalapa - Jonuta

CLAVE: 27107

RUTA: TAB

AÑO: 2021

LUGAR	ESTACION				CLASIFICACION VEHICULAR EN PORCIENTO													COORDENADAS		
	KM	TE	SC	TDPA	M	A	B	C2	C3	T3S2	T3S3	T3S2R4	OTROS	A	B	C	K'	D	LATITUD	LONGITUD
Jalapa	0.00	3	0	3519	21.2	71.2	0.2	3.8	0.6	2.4	0.3	0.1	0.2	92.4	0.2	7.4	0.079	0.520	17.722083	-92.805384
X. C. Villahermosa - Francisco Escárcega	15.00	1	0	2558	12.0	80.2	0.3	5.7	0.8	0.5	0.3	0.1	0.1	92.2	0.3	7.5	0.071	0.513	17.782852	-92.690504
X. C. Villahermosa - Francisco Escárcega	15.00	3	0	1788	15.7	75.3	0.3	4.9	1.2	1.9	0.4	0.2	0.1	91.0	0.3	8.7	0.105	0.503	17.781702	-92.680476
Belem	24.00	1	0	996	34.0	59.5	0.2	5.2	0.1	0.9	0.1	0.0	0.0	93.5	0.2	6.3	0.079	0.503	17.781958	-92.619984
T. Izq. Cacaos	39.00	1	0	4256	8.8	83.4	0.2	3.8	0.3	2.9	0.3	0.0	0.3	92.2	0.2	7.6	0.097	0.500	17.843593	-92.502154
Cd. PEMEX	43.00	1	1	7084	9.0	85.8	0.3	3.1	0.3	0.7	0.5	0.1	0.2	94.8	0.3	4.9	0.109	0.504	17.878874	-92.484837
Cd. PEMEX	43.00	1	2	7189	10.4	83.9	0.3	3.6	0.3	0.7	0.5	0.1	0.2	94.3	0.3	5.4	0.089	0.504	17.878919	-92.484930
Cd. PEMEX	43.00	3	0	4167	10.6	81.8	0.2	4.3	0.4	2.2	0.3	0.0	0.2	92.4	0.2	7.4	0.087	0.500	17.897199	-92.482784

TABASCO

22 CARR: Jalapa - Jonuta

CLAVE: 27107

RUTA: TAB

AÑO: 2021

LUGAR	ESTACION				CLASIFICACION VEHICULAR EN PORCIENTO														COORDENADAS	
	KM	TE	SC	TDPA	M	A	B	C2	C3	T3S2	T3S3	T3S2R4	OTROS	A	B	C	K'	D	LATITUD	LONGITUD
Jonuta	97.50	1	0	2401	9.3	85.1	0.2	4.4	0.8	0.1	0.1	0.0	0.0	94.4	0.2	5.4	0.071	0.505	18.101783	-92.162200

23 CARR: Libramiento Sur de Comalcalco

CLAVE:

RUTA: TAB

AÑO: 2021

LUGAR	ESTACION				CLASIFICACION VEHICULAR EN PORCIENTO														COORDENADAS	
	KM	TE	SC	TDPA	M	A	B	C2	C3	T3S2	T3S3	T3S2R4	OTROS	A	B	C	K'	D	LATITUD	LONGITUD
T. C. Malpaso - El Bellote	0.00	3	0	6666	8.2	79.4	0.4	10.7	0.7	0.3	0.1	0.1	0.1	87.6	0.4	12.0	0.097	0.505	18.230068	-93.214936
T. C. Comalcalco - El Golpe	4.40																			

24 CARR: Nicolás Bravo - T. C. (El Bellote - Santa Cruz)

CLAVE: 27010

RUTA: TAB

AÑO: 2021

LUGAR	ESTACION				CLASIFICACION VEHICULAR EN PORCIENTO														COORDENADAS	
	KM	TE	SC	TDPA	M	A	B	C2	C3	T3S2	T3S3	T3S2R4	OTROS	A	B	C	K'	D	LATITUD	LONGITUD
Nicolás Bravo	0.00	3	0	2180	23.6	69.8	0.2	3.4	0.1	1.9	0.6	0.1	0.3	93.4	0.2	6.4	0.085	0.504	18.297376	-93.132200
T. C. Bellote - Santa Cruz	22.00	1	0	859	19.0	77.5	0.1	2.4	0.0	0.9	0.0	0.0	0.1	96.5	0.1	3.4	0.086	0.517	18.425187	-93.076072

25 CARR: Pailebot - Cuauhtemotzin

CLAVE: 27112

RUTA: TAB

AÑO: 2021

LUGAR	ESTACION				CLASIFICACION VEHICULAR EN PORCIENTO														COORDENADAS	
	KM	TE	SC	TDPA	M	A	B	C2	C3	T3S2	T3S3	T3S2R4	OTROS	A	B	C	K'	D	LATITUD	LONGITUD
Pailebot	0.00	3	0	808	41.7	51.8	0.4	5.5	0.5	0.1	0.0	0.0	0.0	93.5	0.4	6.1	0.098	0.510	18.257601	-93.952791
Cuauhtemotzin	23.00	1	0	665	49.3	47.6	0.0	2.0	0.1	1.0	0.0	0.0	0.0	96.9	0.0	3.1	0.094	0.506	18.205682	-94.120013

26 CARR: Paraiso - El Limón

CLAVE: 27108

RUTA: TAB

AÑO: 2021

LUGAR	ESTACION				CLASIFICACION VEHICULAR EN PORCIENTO														COORDENADAS	
	KM	TE	SC	TDPA	M	A	B	C2	C3	T3S2	T3S3	T3S2R4	OTROS	A	B	C	K'	D	LATITUD	LONGITUD
Paraiso	0.00	3	0	7905	14.7	69.0	0.6	6.1	1.9	3.2	3.1	1.2	0.2	83.7	0.6	15.7	0.108	0.529	18.400021	-93.217806
Limón	6.00	1	0	9624	13.3	72.5	0.4	4.0	0.9	6.0	1.6	0.9	0.4	85.8	0.4	13.8	0.087	0.535	18.406079	-93.215494

27 CARR: Paso de Cunduacán - Estación Juárez

CLAVE: 00588

RUTA: TAB-CHIS

AÑO: 2021

LUGAR	ESTACION				CLASIFICACION VEHICULAR EN PORCIENTO														COORDENADAS	
	KM	TE	SC	TDPA	M	A	B	C2	C3	T3S2	T3S3	T3S2R4	OTROS	A	B	C	K'	D	LATITUD	LONGITUD
Paso de Cunduacán	0.00	3	0	10657	1.4	84.9	0.5	7.6	1.1	2.4	1.1	0.7	0.3	86.3	0.5	13.2	0.128	0.510	17.959697	-93.138318

TABASCO

27 CARR: Paso de Cunduacán - Estación Juárez

CLAVE: 00588

RUTA: TAB-CHIS

AÑO: 2021

LUGAR	ESTACION				CLASIFICACION VEHICULAR EN PORCIENTO										COORDENADAS					
	KM	TE	SC	TDPA	M	A	B	C2	C3	T3S2	T3S3	T3S2R4	OTROS	A	B	C	K'	D	LATITUD	LONGITUD
Lim. Edos. Term. Tab. Ppia. Chis.	9.00																			
Santa Teresa 2° Secc.	18.00	3	0	2559	7.2	82.9	0.5	6.4	1.0	1.5	0.5	0.0	0.0	90.1	0.5	9.4	0.083	0.536	17.765945	-93.169047
Estación Juárez	57.80	1	0	3517	10.5	80.1	0.4	6.1	0.8	1.7	0.4	0.0	0.0	90.6	0.4	9.0	0.072	0.501	17.618943	-93.167828

28 CARR: Playas del Rosario - Teapa

CLAVE: 27203

RUTA: TAB-001

AÑO: 2021

LUGAR	ESTACION				CLASIFICACION VEHICULAR EN PORCIENTO										COORDENADAS					
	KM	TE	SC	TDPA	M	A	B	C2	C3	T3S2	T3S3	T3S2R4	OTROS	A	B	C	K'	D	LATITUD	LONGITUD
T. C. Villahermosa - Escopetazo	0.00	3	1	4710	5.9	90.0	0.1	2.7	0.4	0.5	0.3	0.1	0.0	95.9	0.1	4.0	0.073	0.504	17.839832	-92.924011
T. C. Villahermosa - Escopetazo	0.00	3	2	4660	5.4	89.3	0.2	3.7	0.5	0.4	0.4	0.1	0.0	94.7	0.2	5.1	0.075	0.504	17.839875	-92.924005
Revolución Mexicana	1.20	3	0	7658	9.5	80.0	0.5	5.5	0.8	2.5	0.9	0.1	0.2	89.5	0.5	10.0	0.078	0.510	17.837046	-92.912961
Cacaos	7.00	1	0	5964	9.7	80.1	0.5	5.4	0.7	2.5	0.7	0.1	0.3	89.8	0.5	9.7	0.076	0.502	17.830276	-92.866719
Cacaos	7.00	3	0	4267	7.2	83.0	0.5	4.5	0.7	2.9	0.8	0.1	0.3	90.2	0.5	9.3	0.082	0.501	17.825346	-92.854692
Jalapa	23.00	1	0	5029	11.6	80.0	0.4	3.6	0.5	2.8	0.7	0.1	0.3	91.6	0.4	8.0	0.077	0.506	17.730757	-92.815876
Jalapa	23.00	3	0	4848	11.7	78.0	0.3	5.4	0.9	2.8	0.4	0.1	0.4	89.7	0.3	10.0	0.064	0.506	17.708073	-92.808339
T. Izq. Tacotalpa	39.00	1	0	4701	11.8	76.8	0.3	6.2	0.7	2.9	0.9	0.1	0.3	88.6	0.3	11.1	0.076	0.503	17.595541	-92.833193
T. Izq. Tacotalpa	39.00	3	1	3529	17.3	79.4	0.1	1.9	0.4	0.4	0.4	0.0	0.1	96.7	0.1	3.2	0.090	0.500	17.592319	-92.834465
T. Izq. Tacotalpa	39.00	3	2	3537	16.5	79.8	0.1	2.3	0.5	0.4	0.3	0.0	0.1	96.3	0.1	3.6	0.090	0.500	17.592387	-92.834503
Teapa	54.00	1	0	2394	11.1	82.0	0.2	4.7	0.1	1.6	0.1	0.0	0.2	93.1	0.2	6.7	0.093	0.503	17.551140	-92.944364

29 CARR: Ramal a Balancán

CLAVE: 27078

RUTA: TAB

AÑO: 2021

LUGAR	ESTACION				CLASIFICACION VEHICULAR EN PORCIENTO										COORDENADAS					
	KM	TE	SC	TDPA	M	A	B	C2	C3	T3S2	T3S3	T3S2R4	OTROS	A	B	C	K'	D	LATITUD	LONGITUD
T. C. El Suspiro - Tenosique	0.00	3	0	1712	3.3	85.4	1.6	7.9	0.8	0.6	0.3	0.0	0.1	88.7	1.6	9.7	0.166	0.502	17.632940	-91.600247
Balancán	24.00	1	0	3454	10.8	82.4	0.4	5.1	0.8	0.2	0.2	0.0	0.1	93.2	0.4	6.4	0.091	0.501	17.831202	-91.531109

30 CARR: Ramal a La Venta

CLAVE: 27078

RUTA: TAB

AÑO: 2021

LUGAR	ESTACION				CLASIFICACION VEHICULAR EN PORCIENTO										COORDENADAS					
	KM	TE	SC	TDPA	M	A	B	C2	C3	T3S2	T3S3	T3S2R4	OTROS	A	B	C	K'	D	LATITUD	LONGITUD
T. C. Coatzacoalcos - Villahermosa	0.00	3	0	4624	9.6	81.4	3.6	4.3	0.6	0.2	0.1	0.0	0.2	91.0	3.6	5.4	0.080	0.501	18.064828	-94.042351
La Venta	4.25																			



TABASCO

31 CARR: Ramal a Lázaro Cárdenas

CLAVE: 27208

RUTA: TAB

AÑO: 2021

LUGAR	ESTACION				CLASIFICACION VEHICULAR EN PORCIENTO													COORDENADAS		
	KM	TE	SC	TDPA	M	A	B	C2	C3	T3S2	T3S3	T3S2R4	OTROS	A	B	C	K'	D	LATITUD	LONGITUD
T. C. Comalcalco - El Golpe	0.00	3	0	2066	37.3	55.3	0.3	4.3	0.4	1.4	0.6	0.0	0.4	92.6	0.3	7.1	0.083	0.502	18.287059	-93.385180
Lázaro Cárdenas	14.00	1	0	1844	48.0	47.3	0.3	1.9	0.0	1.5	0.6	0.1	0.3	95.3	0.3	4.4	0.105	0.516	18.319773	-93.435399

32 CARR: Ramal a Libertad

CLAVE: 27205

RUTA: TAB

AÑO: 2021

LUGAR	ESTACION				CLASIFICACION VEHICULAR EN PORCIENTO													COORDENADAS		
	KM	TE	SC	TDPA	M	A	B	C2	C3	T3S2	T3S3	T3S2R4	OTROS	A	B	C	K'	D	LATITUD	LONGITUD
T. C. Cárdenas - Paraiso	0.00	3	0	3175	17.5	76.1	0.2	4.3	0.1	1.5	0.2	0.0	0.1	93.6	0.2	6.2	0.075	0.503	18.117446	-93.309630
Libertad	10.00	1	0	2298	32.9	62.2	0.2	2.5	0.2	1.7	0.2	0.0	0.1	95.1	0.2	4.7	0.091	0.523	18.176342	-93.361810

33 CARR: Ramal a Salto del Agua

CLAVE: 00069

RUTA: TAB-CHIS

AÑO: 2021

LUGAR	ESTACION				CLASIFICACION VEHICULAR EN PORCIENTO													COORDENADAS		
	KM	TE	SC	TDPA	M	A	B	C2	C3	T3S2	T3S3	T3S2R4	OTROS	A	B	C	K'	D	LATITUD	LONGITUD
T. C. Villahermosa - Francisco Escárcega	0.00	3	0	1644	6.0	71.8	1.0	4.5	4.1	4.8	3.2	4.4	0.2	77.8	1.0	21.2	0.125	0.508	17.665354	-92.436061
Lim. Edos. Term. Tab. Ppia. Chis.	12.00																			
Salto del Agua	17.00	1	0	1912	10.5	80.3	0.7	5.9	1.1	1.1	0.4	0.0	0.0	90.8	0.7	8.5	0.095	0.524	17.559714	-92.354261

34 CARR: Ramal a San Antonio

CLAVE: 27003

RUTA: TAB

AÑO: 2021

LUGAR	ESTACION				CLASIFICACION VEHICULAR EN PORCIENTO													COORDENADAS		
	KM	TE	SC	TDPA	M	A	B	C2	C3	T3S2	T3S3	T3S2R4	OTROS	A	B	C	K'	D	LATITUD	LONGITUD
T. C. Villahermosa - Francisco Escárcega	0.00	3	0	751	14.0	71.3	2.9	8.8	1.5	0.9	0.4	0.1	0.1	85.3	2.9	11.8	0.097	0.560	17.928362	-91.742866
T. Der. Balancán	24.00	1	0	1122	17.4	70.8	1.7	8.4	0.8	0.6	0.1	0.1	0.1	88.2	1.7	10.1	0.112	0.542	17.871995	-91.532547
T. Der. Balancán	24.00	3	0	2068	5.8	80.3	0.7	10.7	0.5	1.6	0.2	0.1	0.1	86.1	0.7	13.2	0.084	0.547	17.872006	-91.527107
El Triunfo	72.00																			

35 CARR: Ramal a Sánchez Magallanes

CLAVE: 27016

RUTA: TAB

AÑO: 2021

LUGAR	ESTACION				CLASIFICACION VEHICULAR EN PORCIENTO													COORDENADAS		
	KM	TE	SC	TDPA	M	A	B	C2	C3	T3S2	T3S3	T3S2R4	OTROS	A	B	C	K'	D	LATITUD	LONGITUD
T. C. Coatzacoalcos - Villahermosa	0.00	3	0	1772	18.4	69.4	0.6	6.9	0.9	2.7	0.6	0.2	0.3	87.8	0.6	11.6	0.089	0.513	18.074841	-93.877986
Campo Magallanes	13.00	1	0	1711	18.3	70.5	0.3	6.5	1.1	2.4	0.5	0.2	0.2	88.8	0.3	10.9	0.080	0.502	18.164506	-93.905014
Campo Magallanes	13.00	3	0	3882	12.4	76.1	0.3	5.3	0.6	3.6	1.0	0.3	0.4	88.5	0.3	11.2	0.071	0.506	18.173919	-93.905569
Sánchez Magallanes	33.00	1	0	1351	16.4	73.2	0.6	8.0	0.5	1.2	0.1	0.0	0.0	89.6	0.6	9.8	0.101	0.507	18.274961	-93.894343

TABASCO

36 CARR: Ramal a Tamulte de Las Sabanas

CLAVE: 27080

RUTA: TAB

AÑO: 2021

LUGAR	ESTACION				CLASIFICACION VEHICULAR EN PORCIENTO														COORDENADAS	
	KM	TE	SC	TDPA	M	A	B	C2	C3	T3S2	T3S3	T3S2R4	OTROS	A	B	C	K'	D	LATITUD	LONGITUD
T. C. Villahermosa - Cd. del Carmen	0.00	3	0	2859	6.2	87.7	0.5	2.9	0.4	1.8	0.2	0.0	0.3	93.9	0.5	5.6	0.073	0.503	18.200102	-92.824337
Tamulte de Las Sabanas	7.00																			

37 CARR: Ramal a Tapijulapa

CLAVE: 27200

RUTA: TAB

AÑO: 2021

LUGAR	ESTACION				CLASIFICACION VEHICULAR EN PORCIENTO														COORDENADAS	
	KM	TE	SC	TDPA	M	A	B	C2	C3	T3S2	T3S3	T3S2R4	OTROS	A	B	C	K'	D	LATITUD	LONGITUD
T. C. Playas del Rosario - Teapa	0.00	3	0	3798	10.0	81.0	0.9	3.5	0.4	2.6	1.0	0.3	0.3	91.0	0.9	8.1	0.099	0.534	17.573686	-92.834671
Tapijulapa	20.00	1	0	2013	9.3	83.3	0.3	5.4	0.2	1.2	0.2	0.0	0.1	92.6	0.3	7.1	0.094	0.515	17.458187	-92.785962

38 CARR: Reforma - Dos Bocas

CLAVE: 27200

RUTA: TAB

AÑO: 2021

LUGAR	ESTACION				CLASIFICACION VEHICULAR EN PORCIENTO														COORDENADAS	
	KM	TE	SC	TDPA	M	A	B	C2	C3	T3S2	T3S3	T3S2R4	OTROS	A	B	C	K'	D	LATITUD	LONGITUD
Reforma	0.00	3	1	10777	3.2	80.3	0.9	7.4	2.4	2.5	2.0	0.9	0.4	83.5	0.9	15.6	0.084	0.501	17.978993	-93.127584
Reforma	0.00	3	2	10831	3.4	81.6	0.8	6.2	2.3	2.8	1.7	0.9	0.3	85.0	0.8	14.2	0.103	0.501	17.979047	-93.127754
Paraiso	49.70																			
Dos Bocas	53.00	1	1	4050	8.7	74.2	0.3	11.4	0.8	2.1	2.1	0.2	0.2	82.9	0.3	16.8	0.128	0.503	18.424040	-93.207449
Dos Bocas	53.00	1	2	3995	8.5	75.2	0.2	10.6	0.8	2.2	2.0	0.2	0.3	83.7	0.2	16.1	0.104	0.503	18.423842	-93.207592

39 CARR: Reyes Hernández - Villa Aldama

CLAVE: 27119

RUTA: TAB

AÑO: 2021

LUGAR	ESTACION				CLASIFICACION VEHICULAR EN PORCIENTO														COORDENADAS	
	KM	TE	SC	TDPA	M	A	B	C2	C3	T3S2	T3S3	T3S2R4	OTROS	A	B	C	K'	D	LATITUD	LONGITUD
Reyes Hernández	0.00	3	0	4913	19.2	70.1	1.1	5.8	0.2	2.8	0.4	0.1	0.3	89.3	1.1	9.6	0.081	0.502	18.241262	-93.278196
T. C. (Cárdenas - Paraiso) - Carlos Green	9.00	1	0	4697	20.5	70.6	0.3	5.4	0.2	2.2	0.4	0.1	0.3	91.1	0.3	8.6	0.069	0.501	18.239621	-93.343110

40 CARR: Samaria - Amatitán

CLAVE: 27114

RUTA: TAB

AÑO: 2021

LUGAR	ESTACION				CLASIFICACION VEHICULAR EN PORCIENTO														COORDENADAS	
	KM	TE	SC	TDPA	M	A	B	C2	C3	T3S2	T3S3	T3S2R4	OTROS	A	B	C	K'	D	LATITUD	LONGITUD
T. C. Coatzacoalcos - Villahermosa	0.00	3	0	2156	8.3	82.4	0.3	6.7	0.2	1.6	0.3	0.1	0.1	90.7	0.3	9.0	0.088	0.513	18.006968	-93.274227
Cunduacán	17.00	1	0	7170	22.4	68.2	0.3	3.1	0.3	4.4	0.5	0.2	0.6	90.6	0.3	9.1	0.078	0.510	18.054603	-93.190399
Cunduacán	17.00	3	0	4417	23.7	71.3	1.2	0.9	0.1	1.4	0.6	0.5	0.3	95.0	1.2	3.8	0.077	0.538	18.082119	-93.169090
Amatitán	31.40	1	0	5821	21.5	50.2	0.9	7.0	7.0	7.0	3.2	2.1	1.1	71.7	0.9	27.4	0.077	0.548	18.174926	-93.085497

TABASCO

41 CARR: T. C. (Cárdenas - Paraíso) - Carlos Green

CLAVE: 27111

RUTA: TAB

AÑO: 2021

LUGAR	ESTACION				CLASIFICACION VEHICULAR EN PORCIENTO													COORDENADAS		
	KM	TE	SC	TDPA	M	A	B	C2	C3	T3S2	T3S3	T3S2R4	OTROS	A	B	C	K'	D	LATITUD	LONGITUD
T. C. Cárdenas - Paraíso	0.00	3	0	270	25.6	65.3	0.2	8.1	0.3	0.5	0.0	0.0	0.0	90.9	0.2	8.9	0.092	0.502	18.107858	-93.321142
T. Der. Reyes Hernández	21.50	3	0	1225	51.8	40.7	0.3	4.9	0.2	1.4	0.5	0.0	0.2	92.5	0.3	7.2	0.084	0.532	18.180786	-93.396281
Carlos Green	30.70	1	0	1991	50.0	40.7	0.3	6.7	0.1	1.8	0.3	0.0	0.1	90.7	0.3	9.0	0.074	0.505	18.233298	-93.446080

42 CARR: Tierra Nueva - Francisco Rueda

CLAVE: 27110

RUTA: TAB

AÑO: 2021

LUGAR	ESTACION				CLASIFICACION VEHICULAR EN PORCIENTO													COORDENADAS		
	KM	TE	SC	TDPA	M	A	B	C2	C3	T3S2	T3S3	T3S2R4	OTROS	A	B	C	K'	D	LATITUD	LONGITUD
Tierra Nueva	0.00	3	0	3459	28.1	62.8	0.4	3.8	0.7	2.0	0.4	1.5	0.3	90.9	0.4	8.7	0.073	0.503	17.797644	-93.450127
Ocuapan	14.00	3	0	1097	44.4	45.4	0.3	6.5	0.5	1.4	0.4	1.0	0.1	89.8	0.3	9.9	0.091	0.509	17.833687	-93.514308
T. Izq. Encomendadero	31.00	1	0	1242	32.9	56.7	0.3	6.0	1.8	1.0	0.5	0.7	0.1	89.6	0.3	10.1	0.100	0.502	17.795754	-93.626437
T. Izq. Encomendadero	31.00	3	0	1115	24.1	60.1	0.8	7.5	3.5	2.2	0.9	0.6	0.3	84.2	0.8	15.0	0.132	0.527	17.783406	-93.634406
Francisco Rueda	71.00	1	0	662	36.2	54.1	1.0	6.5	1.1	0.7	0.2	0.1	0.1	90.3	1.0	8.7	0.100	0.503	17.835753	-93.927141

43 CARR: Tulipán - Cunduacán

CLAVE: 27115

RUTA: TAB

AÑO: 2021

LUGAR	ESTACION				CLASIFICACION VEHICULAR EN PORCIENTO													COORDENADAS		
	KM	TE	SC	TDPA	M	A	B	C2	C3	T3S2	T3S3	T3S2R4	OTROS	A	B	C	K'	D	LATITUD	LONGITUD
T. C. Malpaso - El Bellote	0.00	3	0	5053	21.2	76.6	0.1	1.9	0.1	0.1	0.0	0.0	0.0	97.8	0.1	2.1	0.084	0.509	18.112047	-93.289009
T. Der. Mote	14.00	1	0	3668	15.2	80.9	0.1	2.1	0.0	1.4	0.2	0.0	0.1	96.1	0.1	3.8	0.079	0.504	18.061867	-93.213490
Cunduacán	15.00	1	0	5010	20.2	77.5	0.2	1.3	0.2	0.3	0.1	0.2	0.0	97.7	0.2	2.1	0.092	0.500	18.056763	-93.199841

44 CARR: Villahermosa - Comalcalco

CLAVE: 27021

RUTA: TAB

AÑO: 2021

LUGAR	ESTACION				CLASIFICACION VEHICULAR EN PORCIENTO													COORDENADAS		
	KM	TE	SC	TDPA	M	A	B	C2	C3	T3S2	T3S3	T3S2R4	OTROS	A	B	C	K'	D	LATITUD	LONGITUD
T. C. Villahermosa - Cd. del Carmen	0.00	3	1	18495	4.5	93.0	0.1	1.9	0.2	0.1	0.2	0.0	0.0	97.5	0.1	2.4	0.135	0.505	18.034772	-92.930576
T. C. Villahermosa - Cd. del Carmen	0.00	3	2	18132	4.6	92.8	0.1	2.1	0.1	0.1	0.1	0.0	0.0	97.4	0.1	2.5	0.137	0.505	18.034747	-92.930654
Saloya	13.00	1	0	15742	6.6	87.4	0.3	2.4	1.0	0.9	0.7	0.4	0.3	94.0	0.3	5.7	0.078	0.503	18.090525	-92.939929
Saloya	13.00	3	0	13529	6.5	84.2	0.4	3.9	1.1	2.4	0.9	0.3	0.3	90.7	0.4	8.9	0.084	0.510	18.101302	-92.950445
Nacajuca	21.00	1	0	11571	13.5	80.0	0.5	2.4	0.3	2.1	0.7	0.2	0.3	93.5	0.5	6.0	0.083	0.515	18.153271	-93.011147
Nacajuca	21.00	3	1	6827	8.0	85.0	0.3	2.6	0.6	2.2	0.7	0.3	0.3	93.0	0.3	6.7	0.081	0.529	18.178080	-93.027705
Nacajuca	21.00	3	2	6542	7.9	85.0	0.4	2.7	0.5	2.1	0.7	0.4	0.3	92.9	0.4	6.7	0.084	0.529	18.177989	-93.027696
Jalpa de Méndez	27.00	3	0	7204	18.3	78.3	0.0	2.4	0.5	0.5	0.0	0.0	0.0	96.6	0.0	3.4	0.071	0.513	18.180612	-93.086999
Cupilco	40.00	1	0	4630	19.7	73.7	0.0	2.9	0.3	2.3	0.8	0.0	0.3	93.4	0.0	6.6	0.092	0.502	18.233594	-93.120485

TABASCO

44 CARR: Villahermosa - Comalcalco

CLAVE: 27021

RUTA: TAB

AÑO: 2021

LUGAR	ESTACION				CLASIFICACION VEHICULAR EN PORCIENTO													COORDENADAS		
	KM	TE	SC	TDPA	M	A	B	C2	C3	T3S2	T3S3	T3S2R4	OTROS	A	B	C	K'	D	LATITUD	LONGITUD
Cupilco	40.00	3	0	5073	18.4	71.4	0.1	3.7	0.8	3.5	1.4	0.0	0.7	89.8	0.1	10.1	0.094	0.509	18.245754	-93.129783
Chichicapa	46.50	1	0	5350	14.9	79.7	0.1	4.8	0.3	0.1	0.1	0.0	0.0	94.6	0.1	5.3	0.090	0.517	18.261495	-93.169215
T. C. Malpaso - El Bellote	50.70	1	0	10523	5.9	83.7	0.6	3.5	0.8	3.4	1.0	0.7	0.4	89.6	0.6	9.8	0.089	0.522	18.247923	-93.202868

45 CARR: Villahermosa - Luis Gil Pérez

CLAVE: 27206

RUTA: TAB

AÑO: 2021

LUGAR	ESTACION				CLASIFICACION VEHICULAR EN PORCIENTO													COORDENADAS		
	KM	TE	SC	TDPA	M	A	B	C2	C3	T3S2	T3S3	T3S2R4	OTROS	A	B	C	K'	D	LATITUD	LONGITUD
Villahermosa	0.00	3	0	11316	6.1	89.7	0.1	2.6	0.3	0.5	0.5	0.1	0.1	95.8	0.1	4.1	0.082	0.523	17.943249	-92.978479
Luis Gil Pérez	22.00	1	0	4844	8.9	83.4	0.2	3.6	0.1	2.0	1.2	0.2	0.4	92.3	0.2	7.5	0.076	0.505	17.887707	-93.068486

46 CARR: Villahermosa - T. C. (P. de Cunduacán - Estación Juárez)

CLAVE: 27106

RUTA: TAB

AÑO: 2021

LUGAR	ESTACION				CLASIFICACION VEHICULAR EN PORCIENTO													COORDENADAS		
	KM	TE	SC	TDPA	M	A	B	C2	C3	T3S2	T3S3	T3S2R4	OTROS	A	B	C	K'	D	LATITUD	LONGITUD
Villahermosa	0.00	3	0	13867	11.3	83.8	0.1	3.7	0.1	0.4	0.5	0.0	0.1	95.1	0.1	4.8	0.085	0.537	17.959438	-92.981688
San Joaquín	4.00	3	0	5832	11.7	85.4	0.1	1.6	0.3	0.3	0.3	0.1	0.2	97.1	0.1	2.8	0.079	0.516	17.928399	-92.984288
T. Izq. Luis Gil Pérez	19.00	3	0	5360	13.9	81.5	0.3	1.3	1.2	0.4	0.5	0.4	0.5	95.4	0.3	4.3	0.086	0.510	17.897488	-93.067626
T. C. Paso de Cunduacán - Estación Juárez	25.20	1	0	4160	16.6	79.0	0.3	1.3	1.0	0.4	0.5	0.4	0.5	95.6	0.3	4.1	0.081	0.526	17.908455	-93.127175

47 CARR: Zapatero - T. C. (Jalapa - Jonuta)

CLAVE: 00061

RUTA: CHIS-TAB

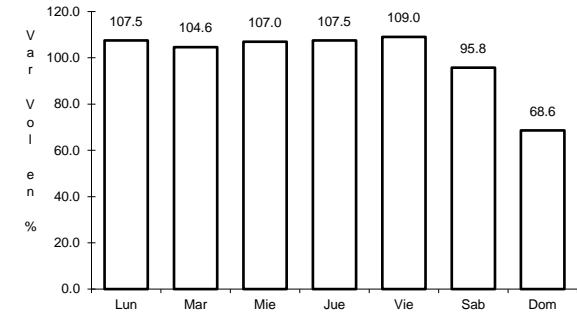
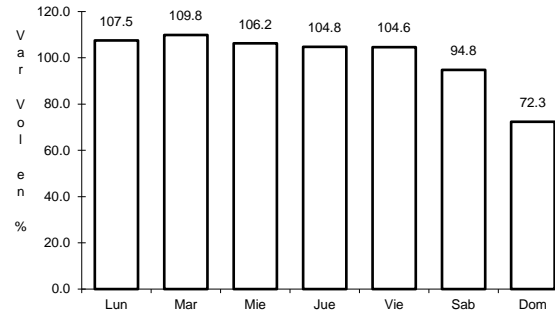
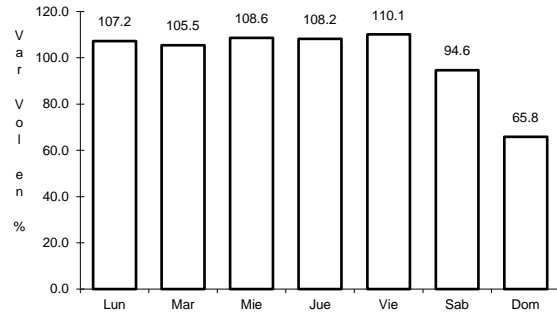
AÑO: 2021

LUGAR	ESTACION				CLASIFICACION VEHICULAR EN PORCIENTO													COORDENADAS		
	KM	TE	SC	TDPA	M	A	B	C2	C3	T3S2	T3S3	T3S2R4	OTROS	A	B	C	K'	D	LATITUD	LONGITUD
T. C. Villahermosa - Francisco Escárcega	0.00	3	0	1549	11.6	80.9	0.3	4.8	0.7	1.4	0.2	0.0	0.1	92.5	0.3	7.2	0.080	0.505	17.700029	-92.131873
Lim. Edos. Term. Chis. Ppia. Tab.	16.00																			
T. C. Jalapa - Jonuta	41.00	1	0	1430	10.6	84.7	0.2	3.3	0.3	0.7	0.2	0.0	0.0	95.3	0.2	4.5	0.096	0.540	18.029173	-92.157768

1 CARR: Coatzacoalcos - Villahermosa

CLAVE: 00528

RUTA: MEX-180



Km: 3.00                      Tipo: 1                      Sent: 0

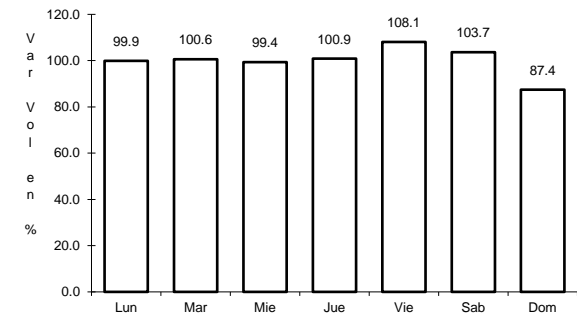
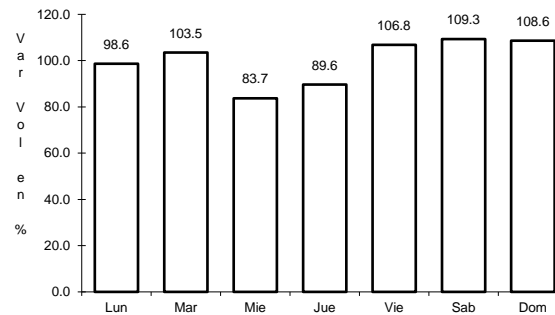
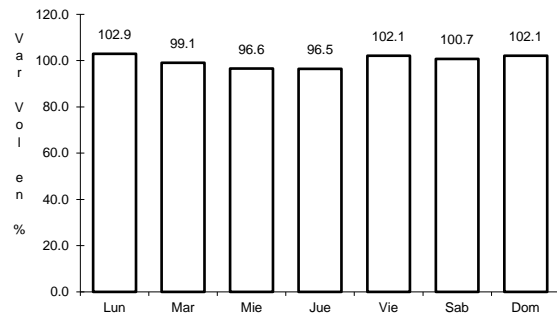
Km: 171.15                      Tipo: 1                      Sent: 1

Km: 171.15                      Tipo: 1                      Sent: 2

2 CARR: El Suspiro - Tenosique

CLAVE: 00276

RUTA: MEX-203



Km: 0.00                      Tipo: 3                      Sent: 0

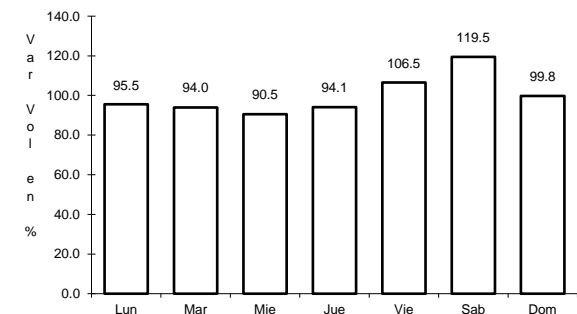
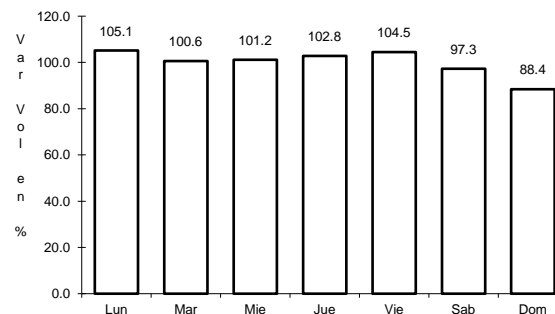
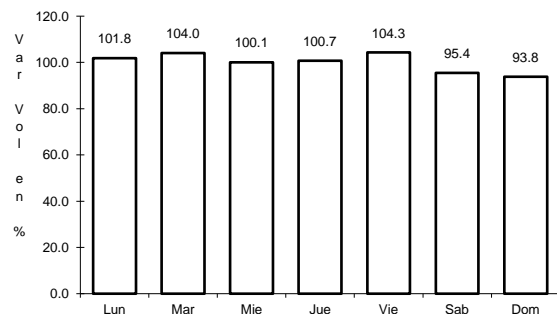
Km: 32.60                      Tipo: 1                      Sent: 0

Km: 53.00                      Tipo: 3                      Sent: 0

3 CARR: Malpaso - El Bellote

CLAVE: 00137

RUTA: MEX-187



Km: 70.12                      Tipo: 1                      Sent: 0

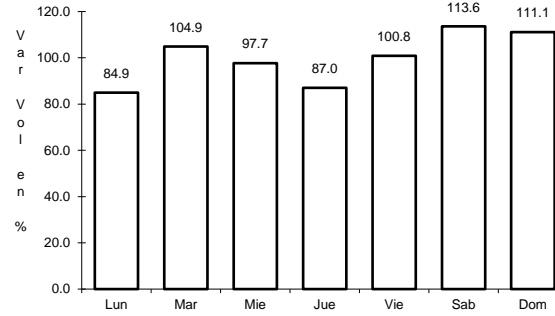
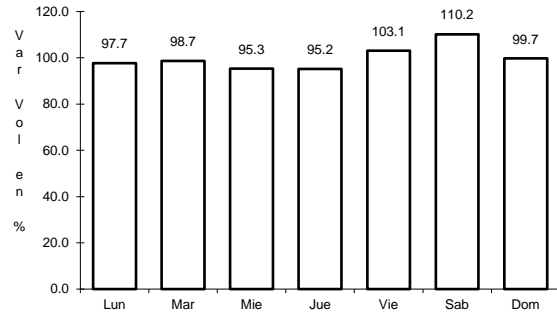
Km: 134.70                      Tipo: 3                      Sent: 0

Km: 182.00                      Tipo: 3                      Sent: 0

4 CARR: Tenosique - El Ceibo

CLAVE:

RUTA: MEX-203



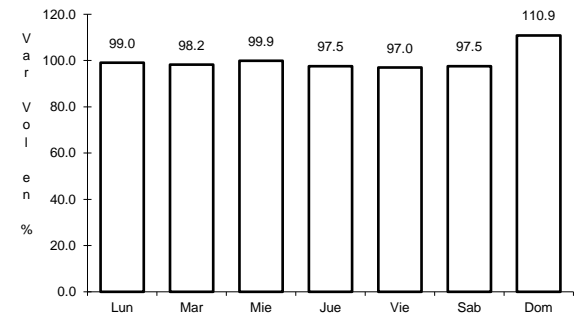
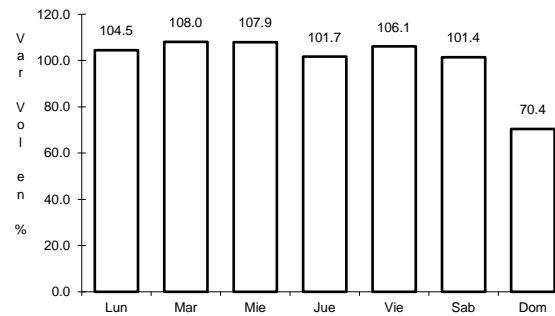
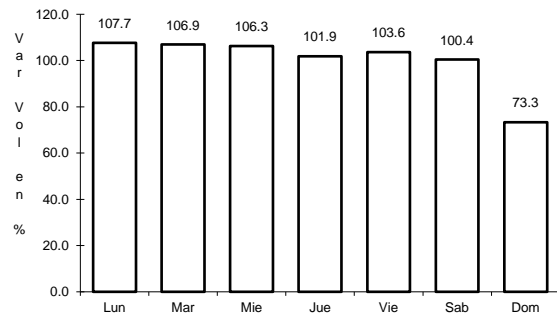
Km: 0.00                      Tipo: 3                      Sent: 0

Km: 58.00                      Tipo: 1                      Sent: 0

5 CARR: Villahermosa - Cd. del Carmen

CLAVE: 00064

RUTA: MEX-180



Km: 4.30                      Tipo: 3                      Sent: 1

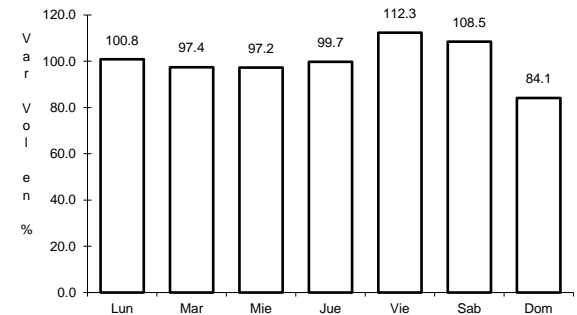
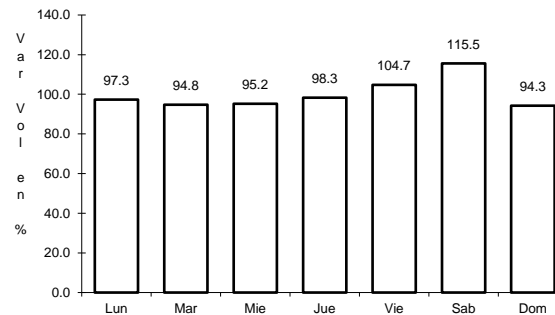
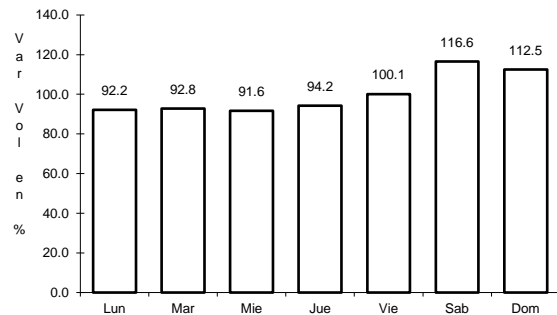
Km: 4.30                      Tipo: 3                      Sent: 2

Km: 162.41                      Tipo: 1                      Sent: 0

6 CARR: Villahermosa - Escopetazo

CLAVE: 00104

RUTA: MEX-195



Km: 0.00                      Tipo: 3                      Sent: 1

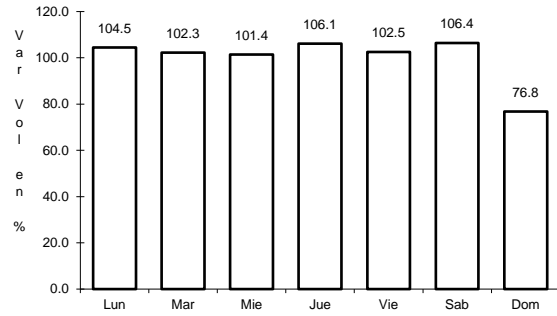
Km: 0.00                      Tipo: 3                      Sent: 2

Km: 259.00                      Tipo: 1                      Sent: 0

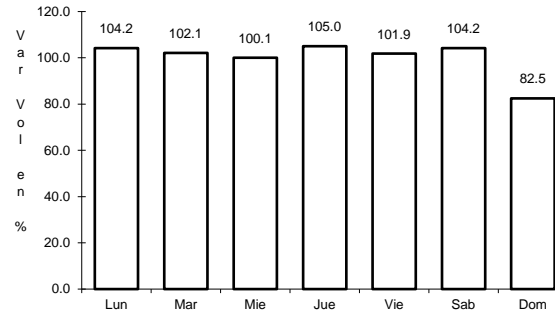
7 CARR: Villahermosa - Francisco Escárcega

CLAVE: 00092

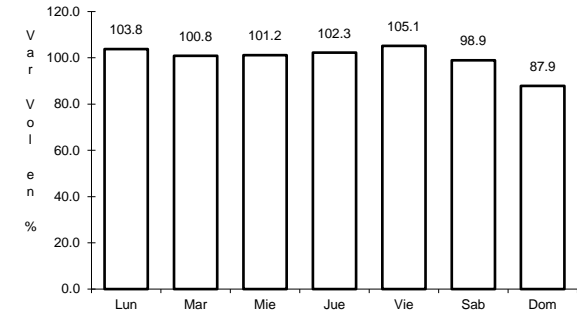
RUTA: MEX-186



Km: 0.00      Tipo: 3      Sent: 1



Km: 0.00      Tipo: 3      Sent: 2

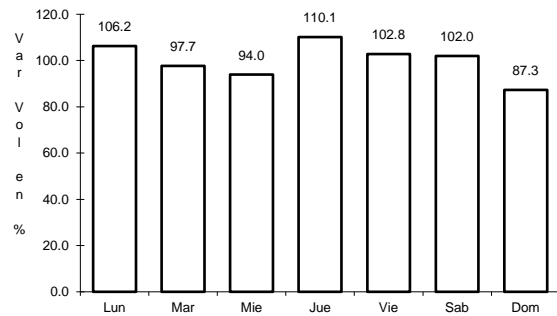


Km: 297.04      Tipo: 1      Sent: 0

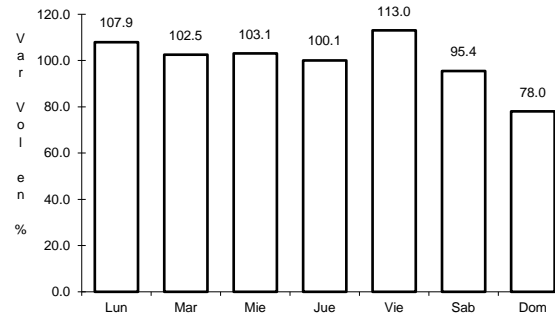
8 CARR: Ent. Agua Dulce - Cárdenas (Cuota)

CLAVE: 00010

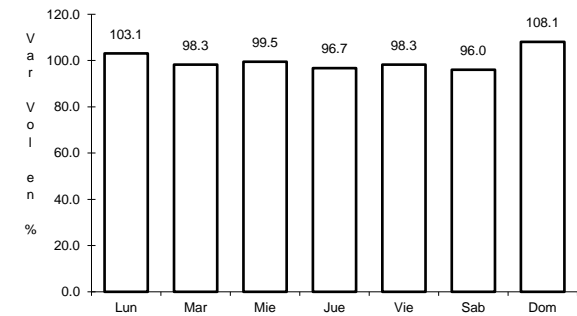
RUTA: MEX-180D



Km: 69.50      Tipo: 1      Sent: 1



Km: 69.50      Tipo: 1      Sent: 2

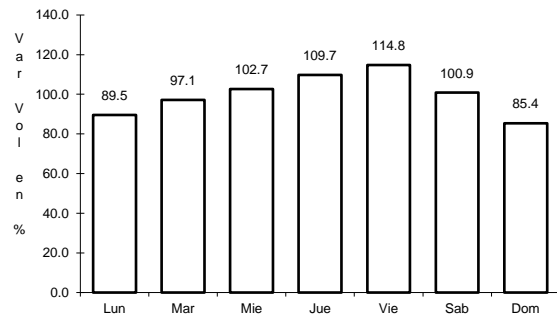


Km: 69.50      Tipo: 3      Sent: 1

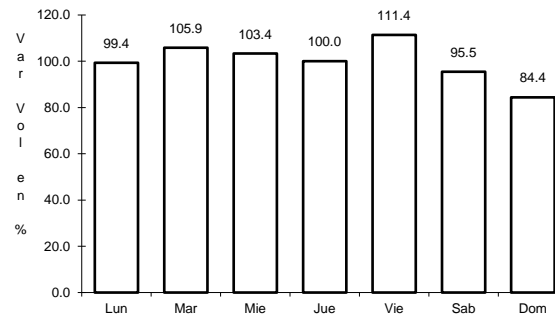
9 CARR: Las Choapas - Ocozocoautla (Cuota)

CLAVE: 00077

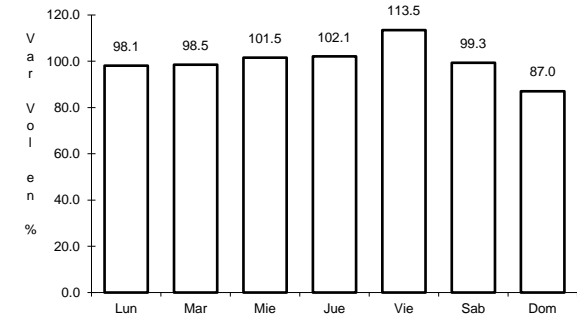
RUTA: MEX-187D



Km: 0.00      Tipo: 3      Sent: 0



Km: 123.79      Tipo: 1      Sent: 0

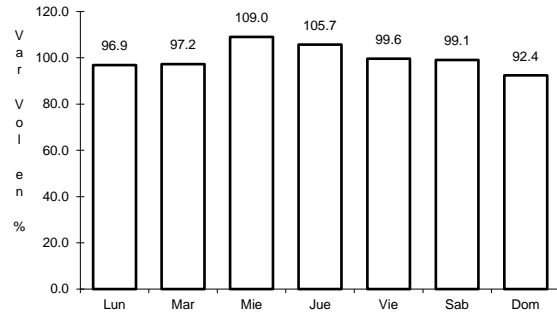


Km: 197.50      Tipo: 1      Sent: 0

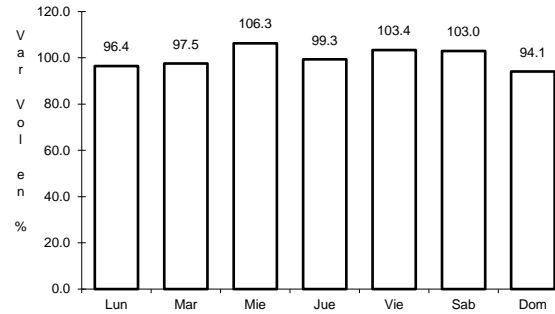
11 CARR: Benito Juárez - Agua Dulce

CLAVE: 00202

RUTA: TAB-VER



Km: 0.00                      Tipo: 3                      Sent: 0

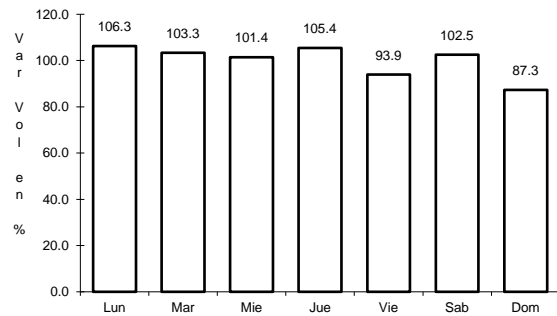


Km: 16.80                      Tipo: 1                      Sent: 0

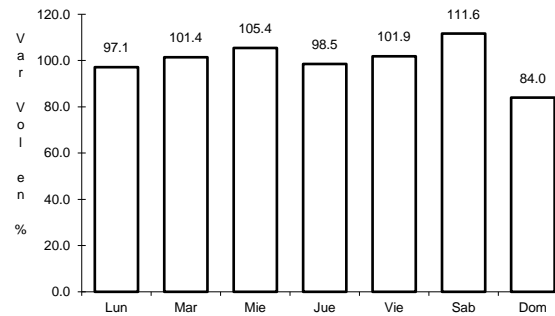
12 CARR: Benito Juárez - Tepetitán

CLAVE: 27204

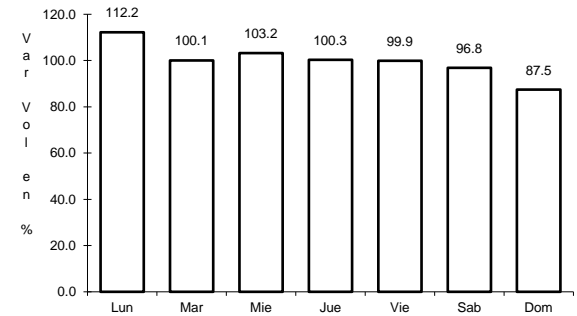
RUTA: TAB



Km: 1.50                      Tipo: 3                      Sent: 0



Km: 18.50                      Tipo: 1                      Sent: 0

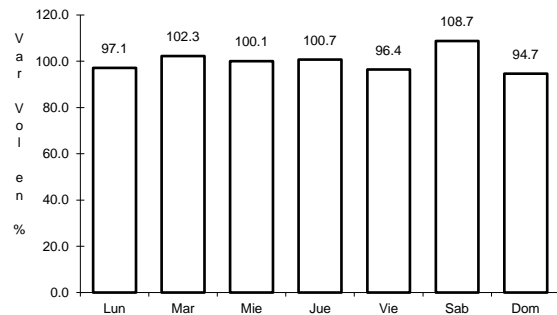


Km: 20.00                      Tipo: 1                      Sent: 0

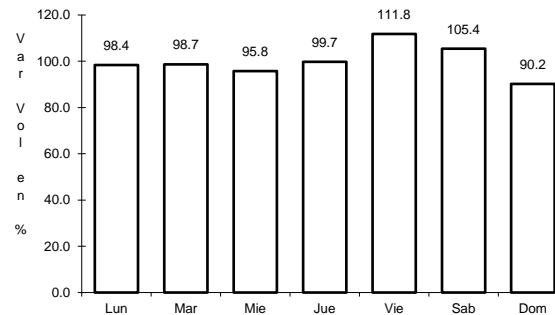
13 CARR: Cacaos - La Granja

CLAVE: 27002

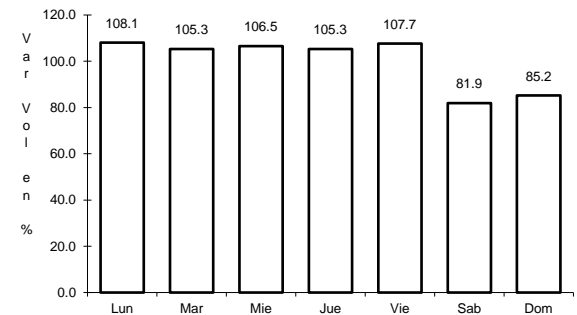
RUTA: TAB



Km: 0.00                      Tipo: 3                      Sent: 0



Km: 16.00                      Tipo: 3                      Sent: 0



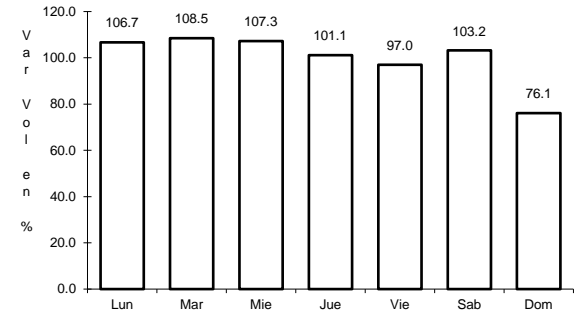
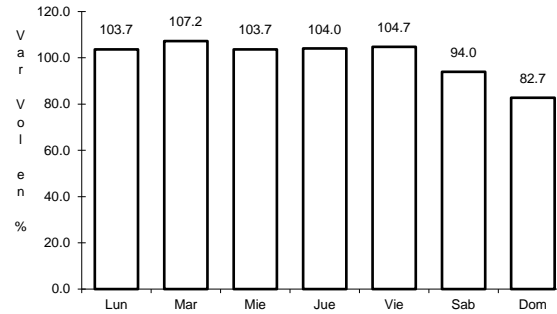
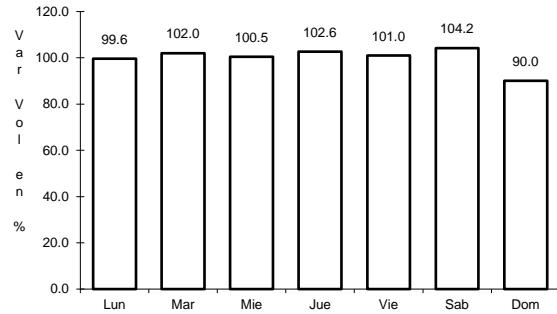
Km: 39.00                      Tipo: 1                      Sent: 0



14 CARR: Cárdenas - Paraíso

CLAVE: 27117

RUTA: TAB



Km: 0.00                      Tipo: 3                      Sent: 0

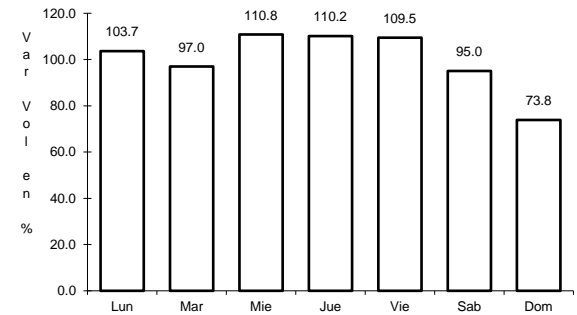
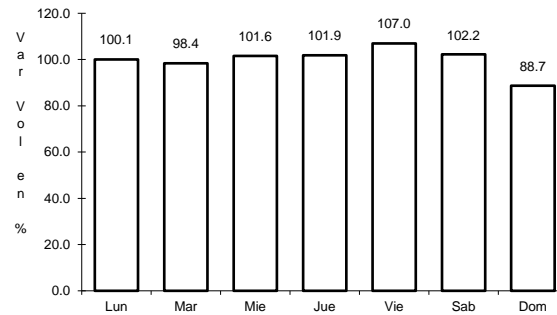
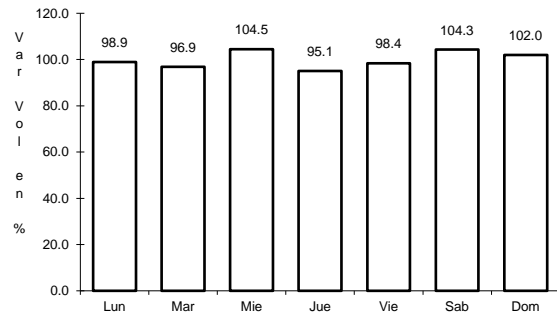
Km: 22.00                      Tipo: 1                      Sent: 0

Km: 52.00                      Tipo: 1                      Sent: 0

15 CARR: Chichicapa - Ent. La Libertad

CLAVE: 27100

RUTA: TAB



Km: 0.00                      Tipo: 3                      Sent: 0

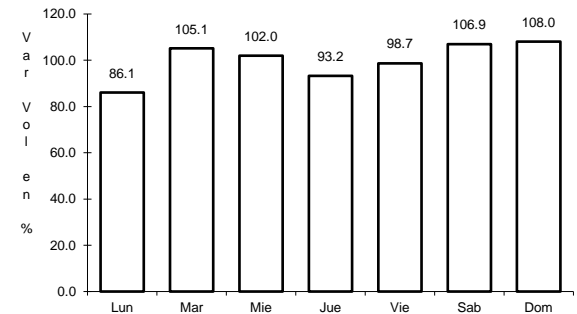
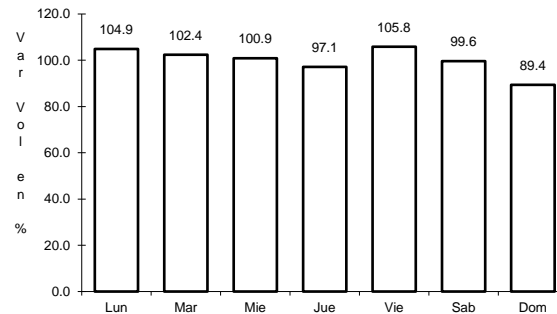
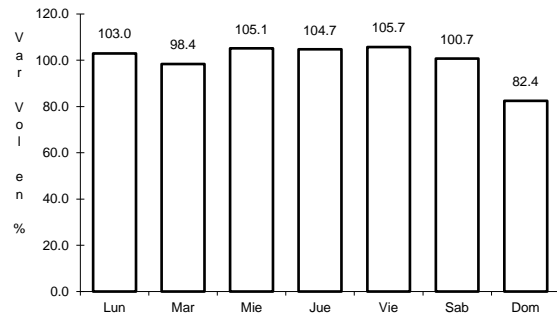
Km: 10.00                      Tipo: 3                      Sent: 0

Km: 18.00                      Tipo: 1                      Sent: 0

16 CARR: Comalcalco - El Golpe

CLAVE: 27102

RUTA: TAB



Km: 0.00                      Tipo: 3                      Sent: 0

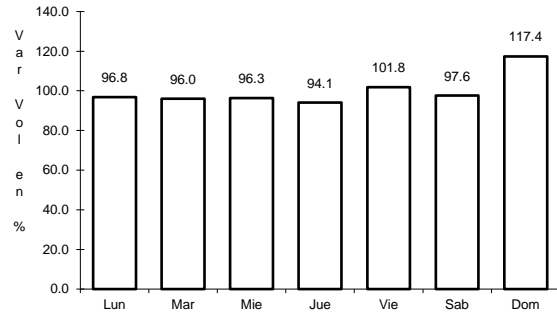
Km: 15.00                      Tipo: 1                      Sent: 0

Km: 51.60                      Tipo: 1                      Sent: 0

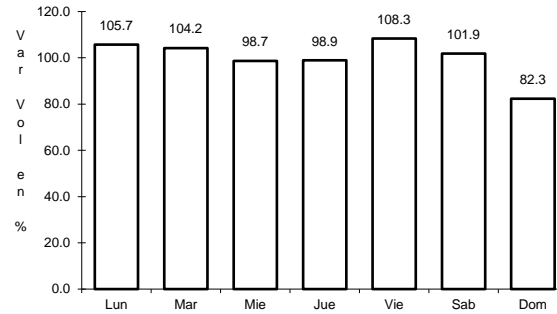
17 CARR: El Bellote - Santa Cruz

CLAVE: 27105

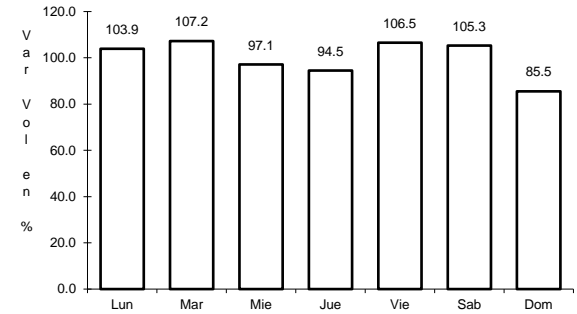
RUTA: TAB



Km: 0.00                      Tipo: 3                      Sent: 0



Km: 35.00                      Tipo: 1                      Sent: 0

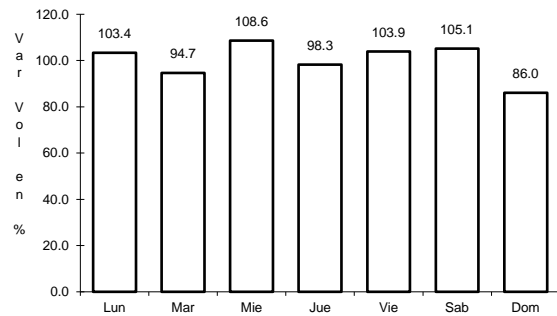


Km: 40.00                      Tipo: 1                      Sent: 0

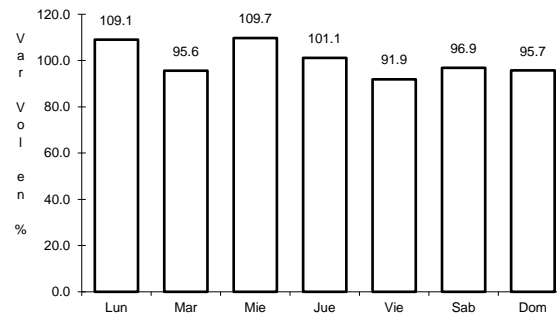
18 CARR: Ent. Emiliano Zapata - La Libertad

CLAVE: 00062

RUTA: CHIS-TAB



Km: 0.00                      Tipo: 3                      Sent: 0

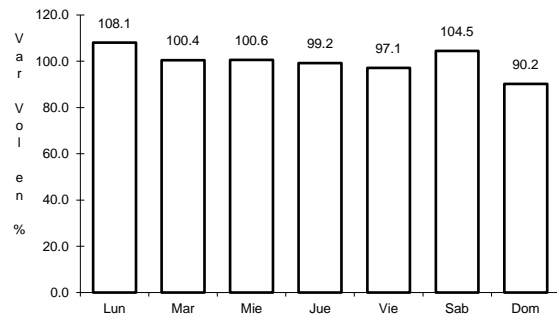


Km: 10.00                      Tipo: 1                      Sent: 0

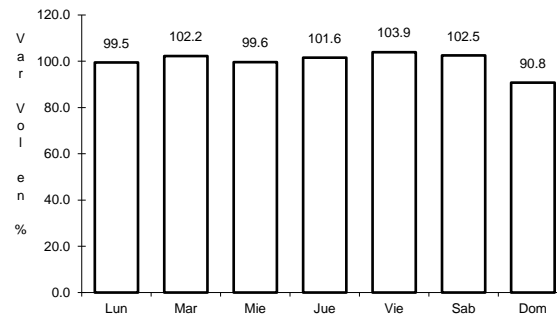
19 CARR: Estación Macuspana - Vernet

CLAVE: 27091

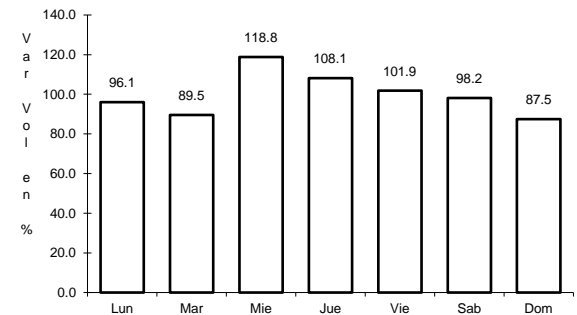
RUTA: TAB-041



Km: 11.00                      Tipo: 1                      Sent: 0



Km: 20.50                      Tipo: 3                      Sent: 0

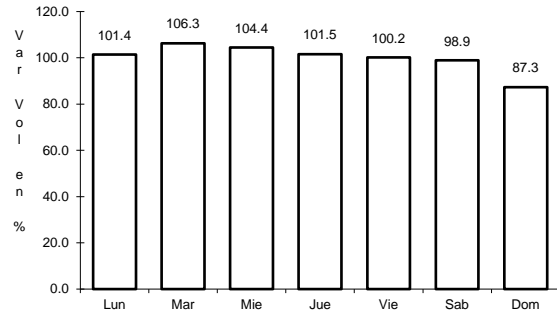


Km: 32.50                      Tipo: 1                      Sent: 0

20 CARR: Frontera - T. C. (Jalapa - Jonuta)

CLAVE: 27081

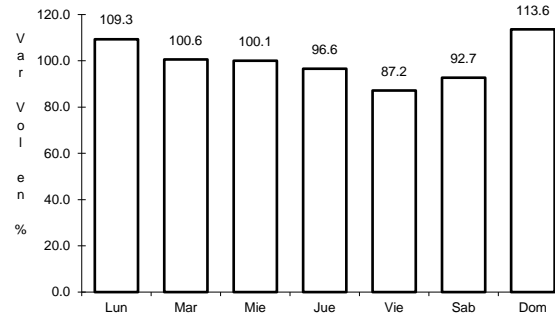
RUTA: TAB



Km: 1.00

Tipo: 3

Sent: 0



Km: 123.00

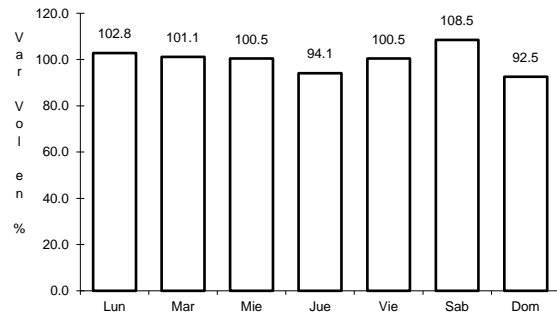
Tipo: 1

Sent: 0

21 CARR: Gregorio Méndez Magaña - Reforma de Ocampo

CLAVE: 00103

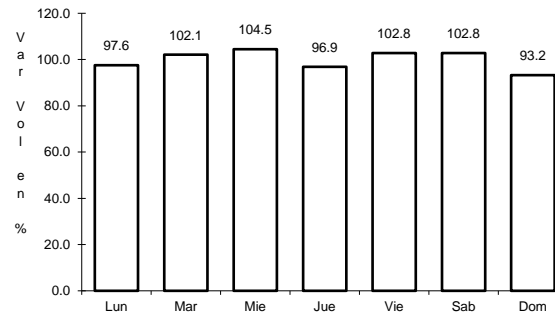
RUTA: CHIS



Km: 0.00

Tipo: 3

Sent: 0



Km: 21.00

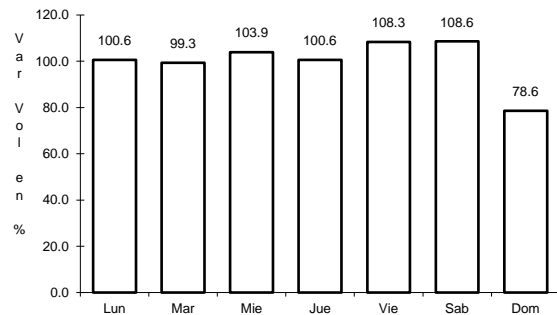
Tipo: 1

Sent: 0

22 CARR: Jalapa - Jonuta

CLAVE: 27107

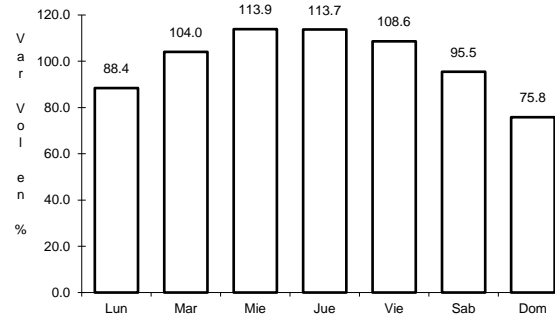
RUTA: TAB



Km: 0.00

Tipo: 3

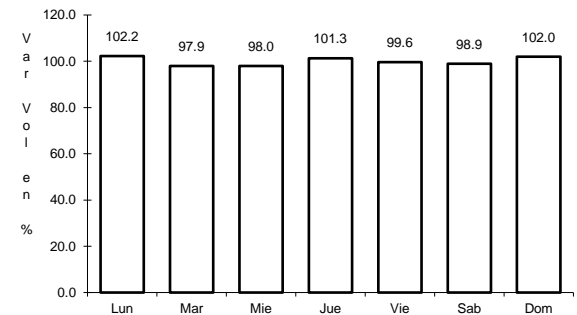
Sent: 0



Km: 39.00

Tipo: 1

Sent: 0



Km: 97.50

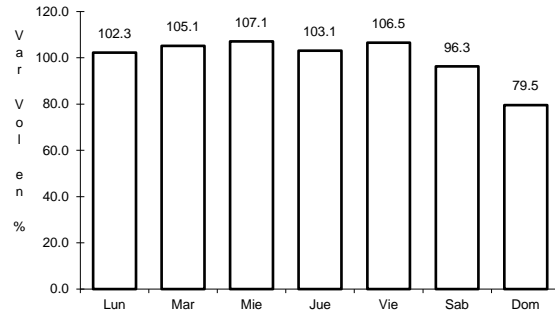
Tipo: 1

Sent: 0

23 CARR: Libramiento Sur de Comalcalco

CLAVE:

RUTA: TAB



Km: 0.00

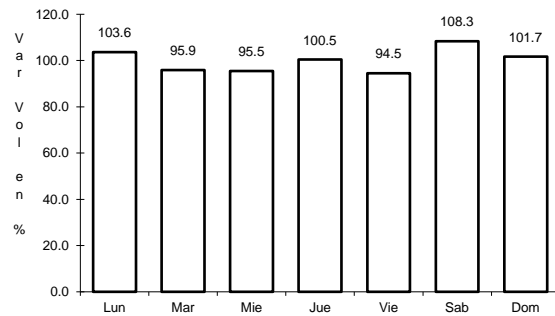
Tipo: 3

Sent: 0

24 CARR: Nicolás Bravo - T. C. (El Bellote - Santa Cruz)

CLAVE: 27010

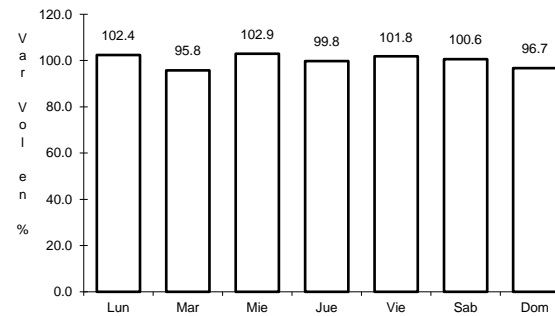
RUTA: TAB



Km: 0.00

Tipo: 3

Sent: 0



Km: 22.00

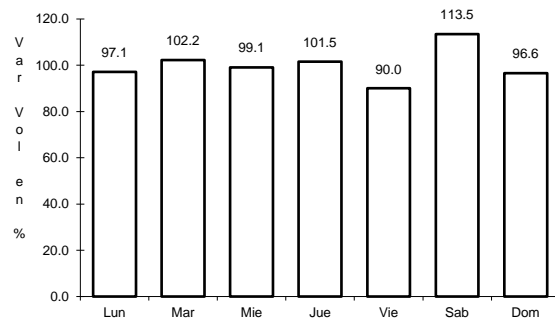
Tipo: 1

Sent: 0

25 CARR: Pailebot - Cuauhtemotzin

CLAVE: 27112

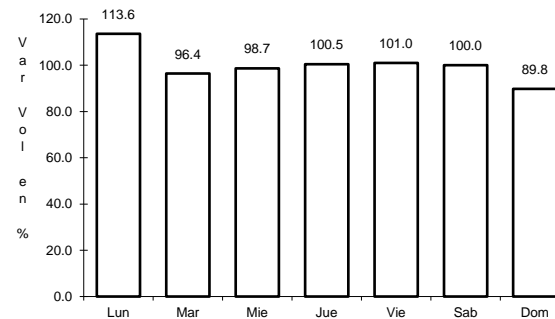
RUTA: TAB



Km: 0.00

Tipo: 3

Sent: 0



Km: 23.00

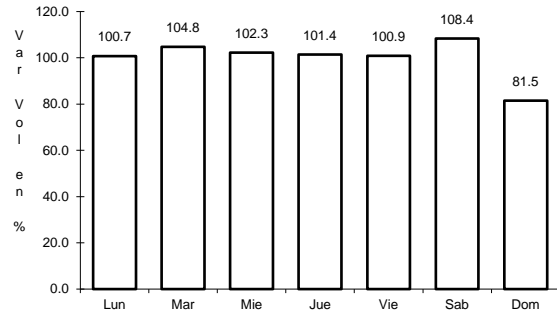
Tipo: 1

Sent: 0

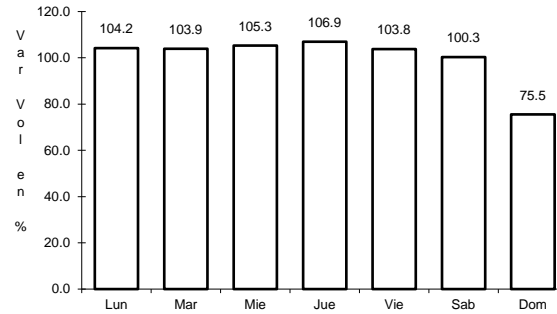
26 CARR: Paraíso - El Limón

CLAVE: 27108

RUTA: TAB



Km: 0.00                      Tipo: 3                      Sent: 0

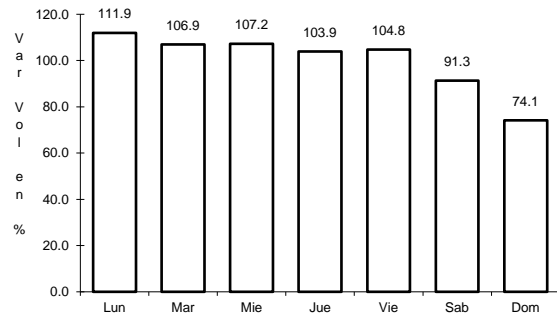


Km: 6.00                      Tipo: 1                      Sent: 0

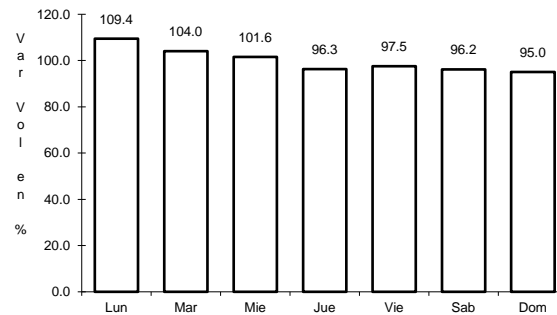
27 CARR: Paso de Cunduacán - Estación Juárez

CLAVE: 00588

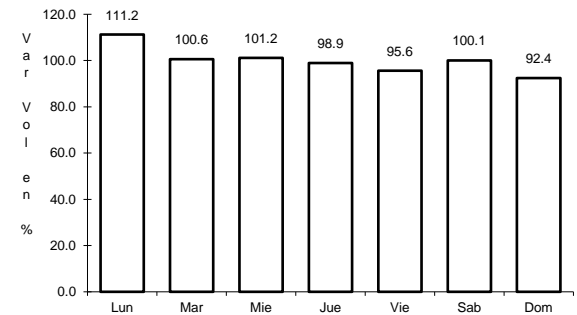
RUTA: TAB-CHIS



Km: 0.00                      Tipo: 3                      Sent: 0



Km: 18.00                      Tipo: 3                      Sent: 0

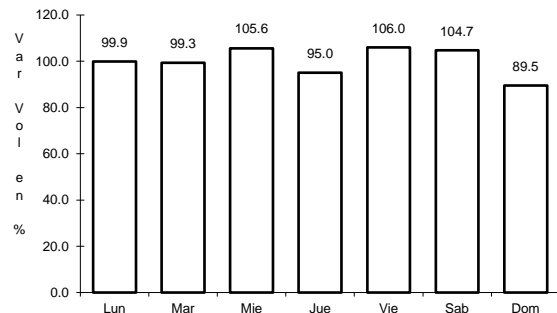


Km: 57.80                      Tipo: 1                      Sent: 0

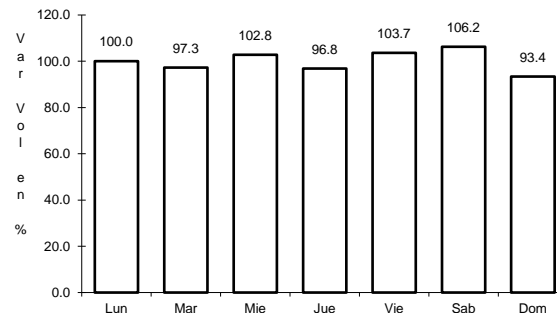
28 CARR: Playas del Rosario - Teapa

CLAVE: 27203

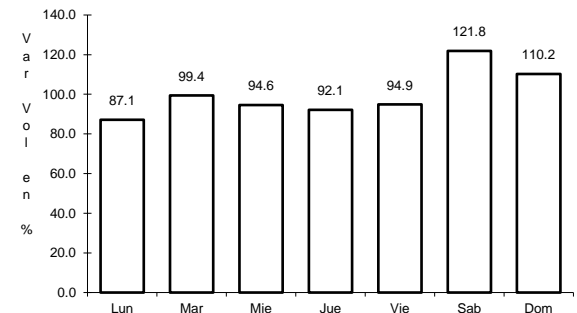
RUTA: TAB-001



Km: 0.00                      Tipo: 3                      Sent: 1



Km: 0.00                      Tipo: 3                      Sent: 2

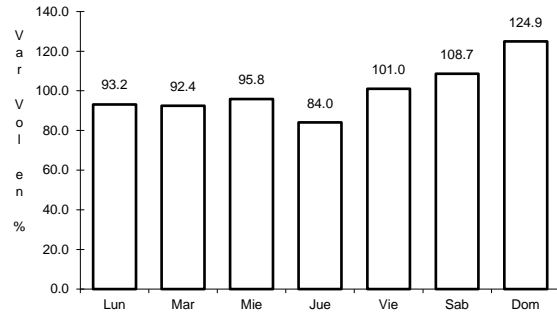


Km: 54.00                      Tipo: 1                      Sent: 0

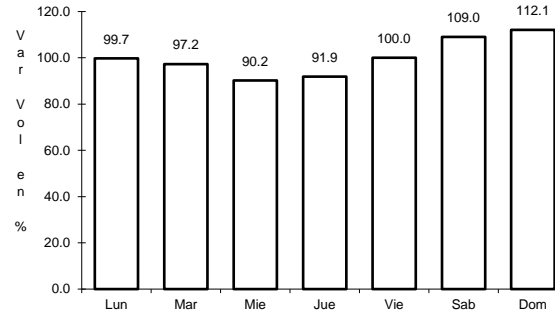
29 CARR: Ramal a Balancan

CLAVE: 27078

RUTA: TAB



Km: 0.00                      Tipo: 3                      Sent: 0

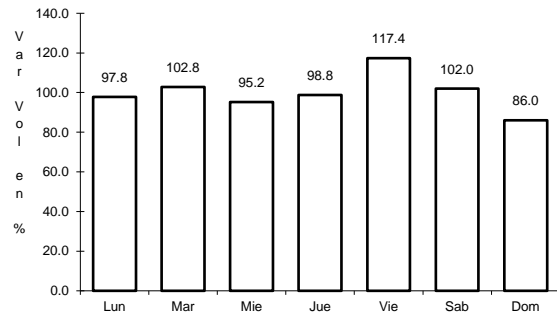


Km: 24.00                      Tipo: 1                      Sent: 0

30 CARR: Ramal a La Venta

CLAVE: 27078

RUTA: TAB

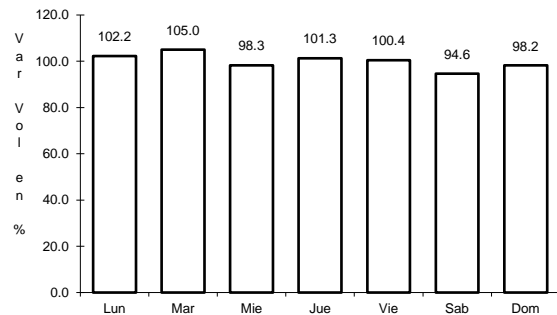


Km: 0.00                      Tipo: 3                      Sent: 0

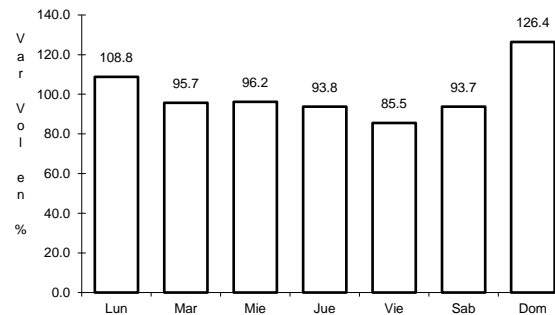
31 CARR: Ramal a Lázaro Cárdenas

CLAVE: 27208

RUTA: TAB



Km: 0.00                      Tipo: 3                      Sent: 0

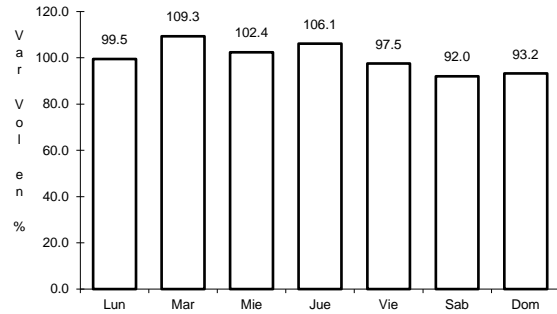


Km: 14.00                      Tipo: 1                      Sent: 0

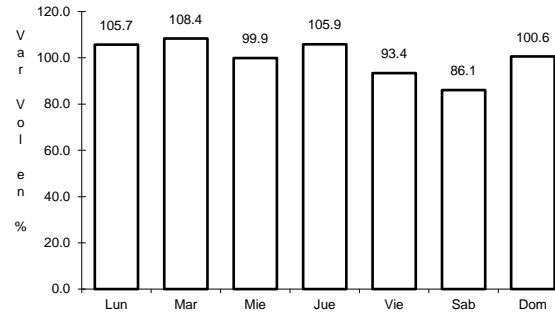
32 CARR: Ramal a Libertad

CLAVE: 27205

RUTA: TAB



Km: 0.00                      Tipo: 3                      Sent: 0

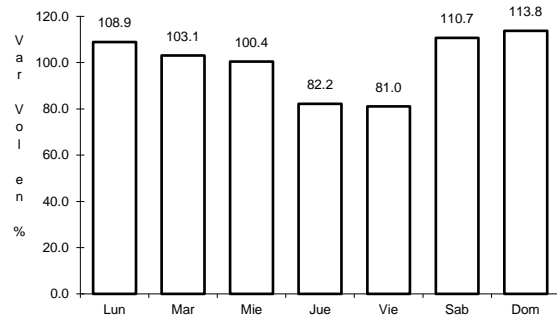


Km: 10.00                      Tipo: 1                      Sent: 0

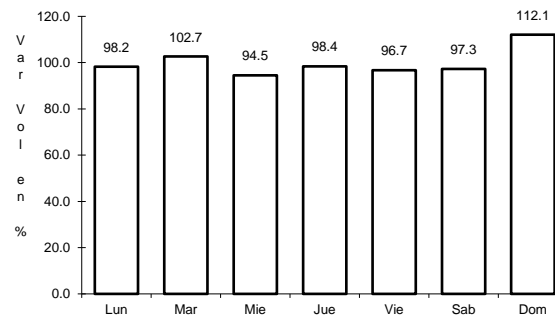
33 CARR: Ramal a Salto del Agua

CLAVE: 00069

RUTA: TAB-CHIS



Km: 0.00                      Tipo: 3                      Sent: 0

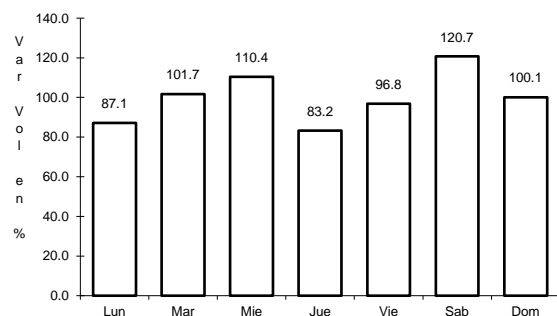


Km: 17.00                      Tipo: 1                      Sent: 0

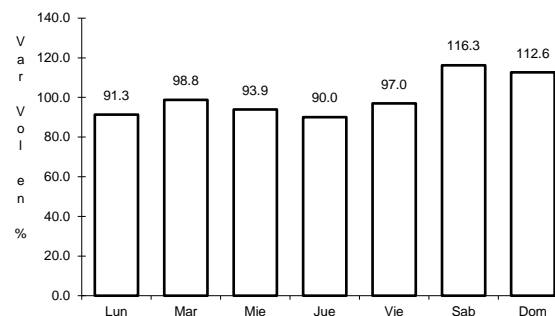
34 CARR: Ramal a San Antonio

CLAVE: 27003

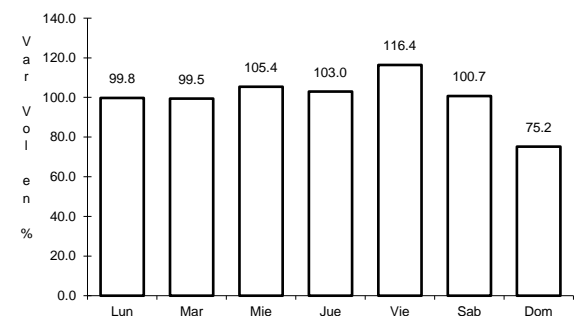
RUTA: TAB



Km: 0.00                      Tipo: 3                      Sent: 0



Km: 24.00                      Tipo: 1                      Sent: 0

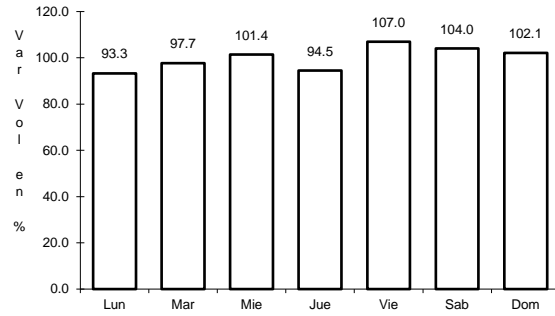


Km: 24.00                      Tipo: 3                      Sent: 0

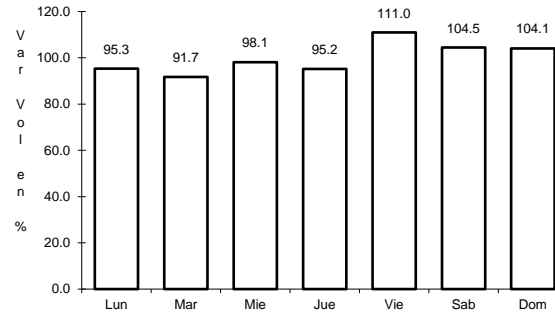
35 CARR: Ramal a Sánchez Magallanes

CLAVE: 27016

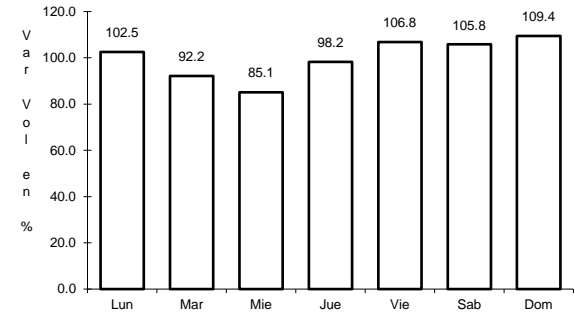
ruta: TAB



Km: 0.00                      Tipo: 3                      Sent: 0



Km: 13.00                      Tipo: 1                      Sent: 0

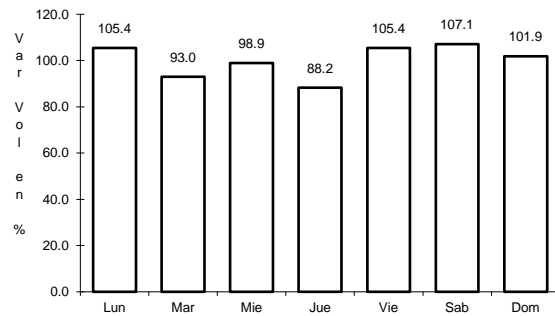


Km: 33.00                      Tipo: 1                      Sent: 0

36 CARR: Ramal a Tamulte de Las Sabanas

CLAVE: 27080

ruta: TAB

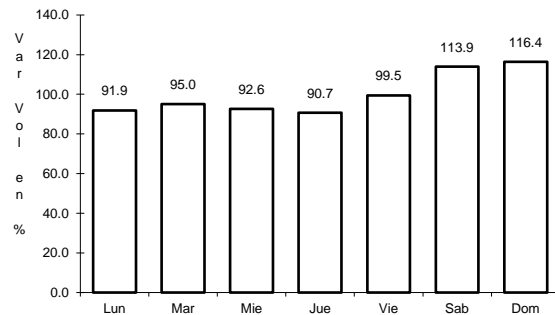


Km: 0.00                      Tipo: 3                      Sent: 0

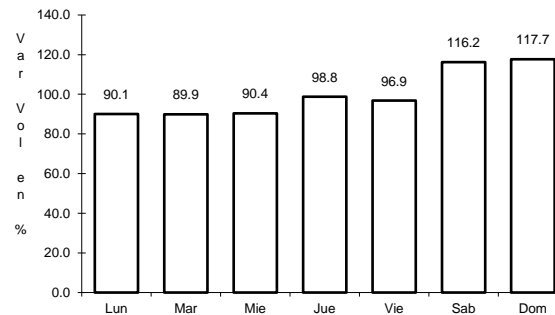
37 CARR: Ramal a Tapijulapa

CLAVE: 27200

ruta: TAB



Km: 0.00                      Tipo: 3                      Sent: 0



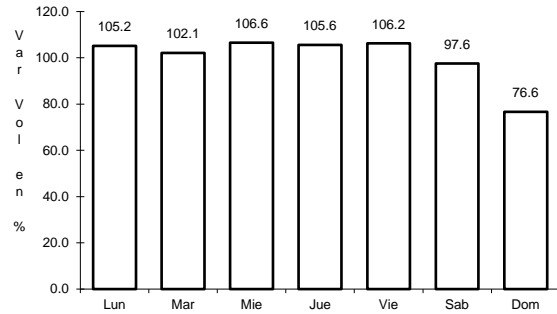
Km: 20.00                      Tipo: 1                      Sent: 0



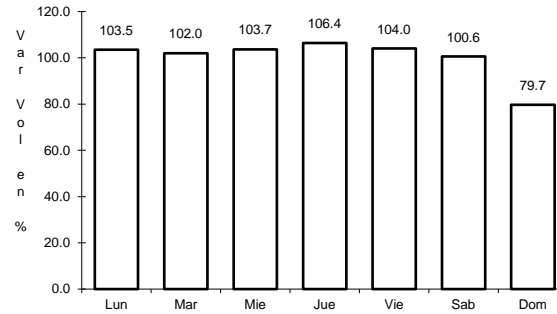
38 CARR: Reforma - Dos Bocas

CLAVE: 27200

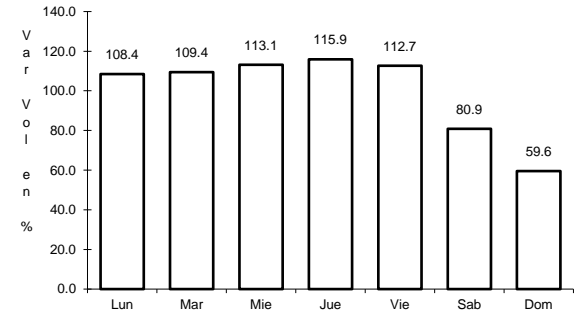
RUTA: TAB



Km: 0.00                      Tipo: 3                      Sent: 1



Km: 0.00                      Tipo: 3                      Sent: 2

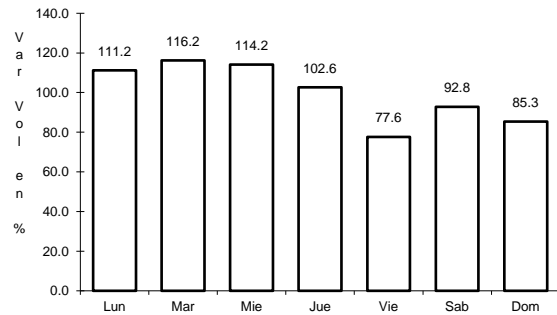


Km: 53.00                      Tipo: 1                      Sent: 1

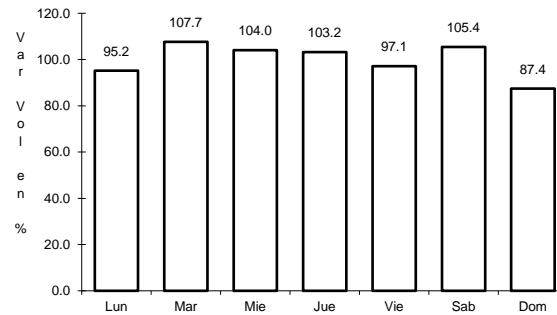
39 CARR: Reyes Hernández - Villa Aldama

CLAVE: 27119

RUTA: TAB



Km: 0.00                      Tipo: 3                      Sent: 0

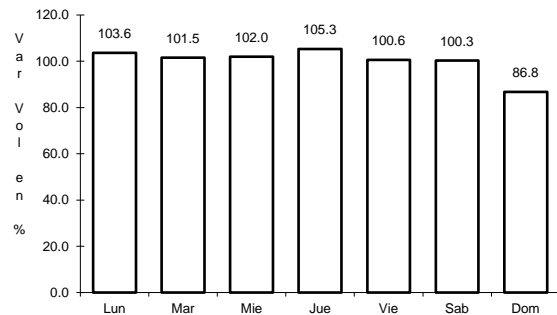


Km: 9.00                      Tipo: 1                      Sent: 0

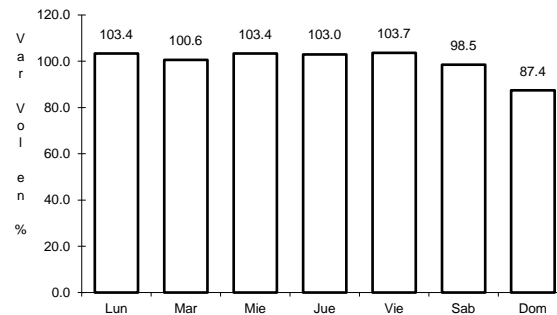
40 CARR: Samaria - Amatitán

CLAVE: 27114

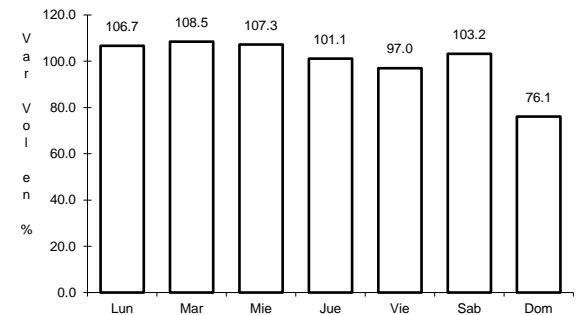
RUTA: TAB



Km: 0.00                      Tipo: 3                      Sent: 0



Km: 17.00                      Tipo: 1                      Sent: 0

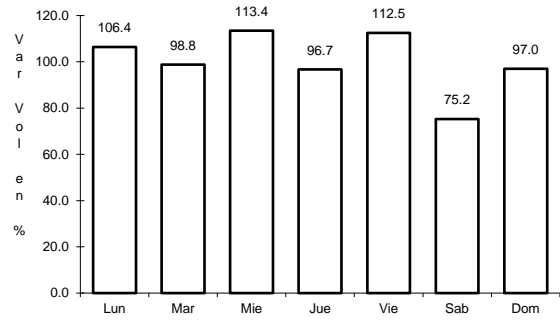


Km: 31.40                      Tipo: 1                      Sent: 0

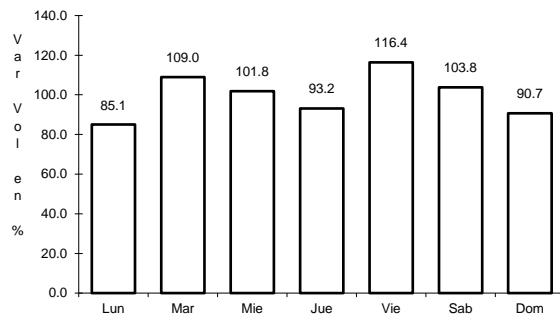
41 CARR: T. C. (Cárdenas - Paraíso) - Carlos Green

CLAVE: 27111

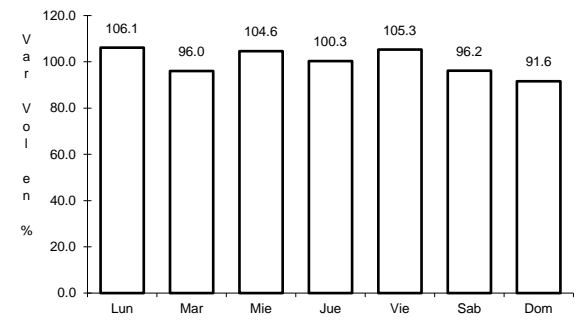
RUTA: TAB



Km: 0.00                      Tipo: 3                      Sent: 0



Km: 21.50                      Tipo: 3                      Sent: 0

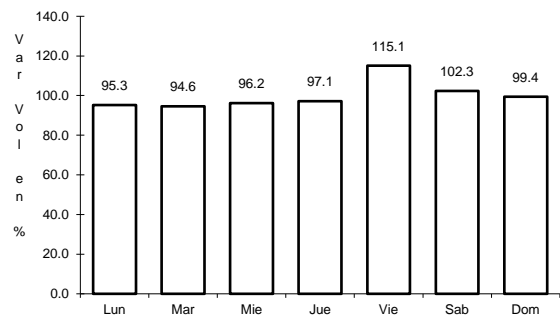


Km: 30.70                      Tipo: 1                      Sent: 0

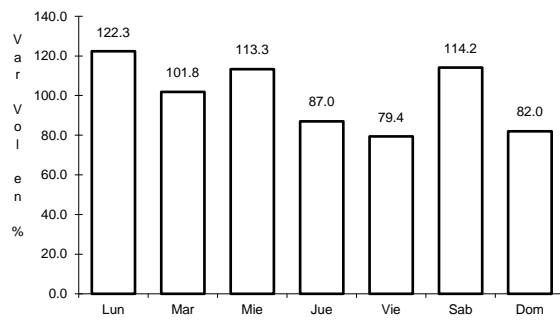
42 CARR: Tierra Nueva - Francisco Rueda

CLAVE: 27110

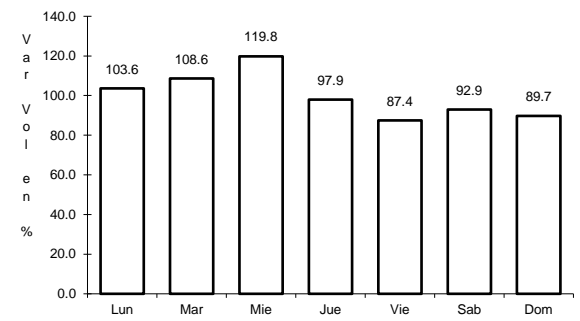
RUTA: TAB



Km: 0.00                      Tipo: 3                      Sent: 0



Km: 31.00                      Tipo: 1                      Sent: 0

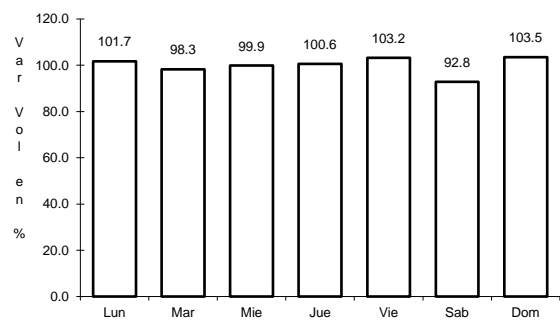


Km: 71.00                      Tipo: 1                      Sent: 0

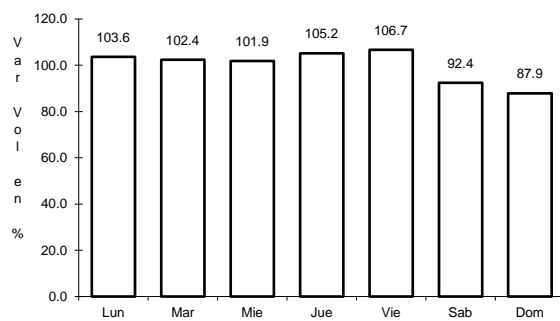
43 CARR: Tulipán - Cunduacán

CLAVE: 27115

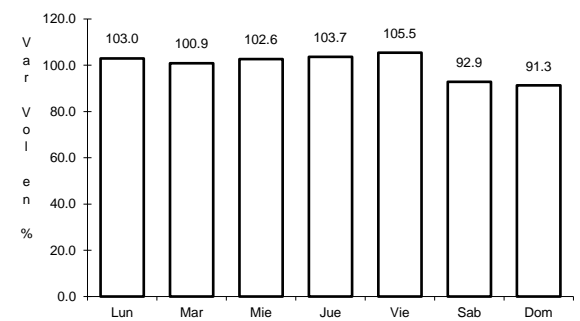
RUTA: TAB



Km: 0.00                      Tipo: 3                      Sent: 0



Km: 14.00                      Tipo: 1                      Sent: 0

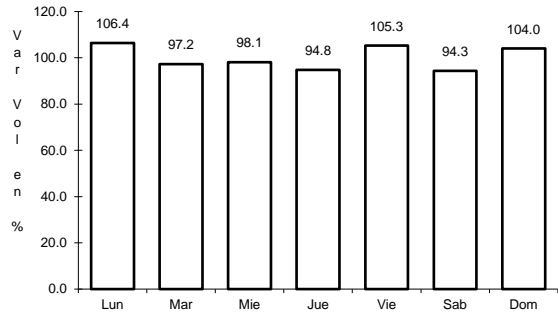


Km: 15.00                      Tipo: 1                      Sent: 0

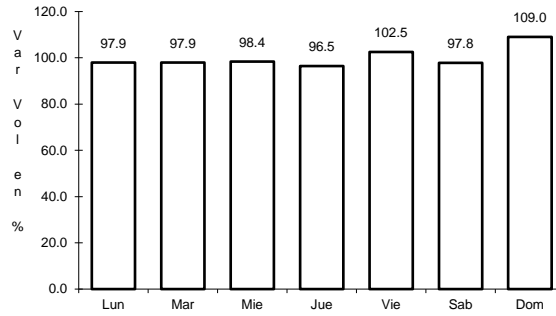
44 CARR: Villahermosa - Comalcalco

CLAVE: 27021

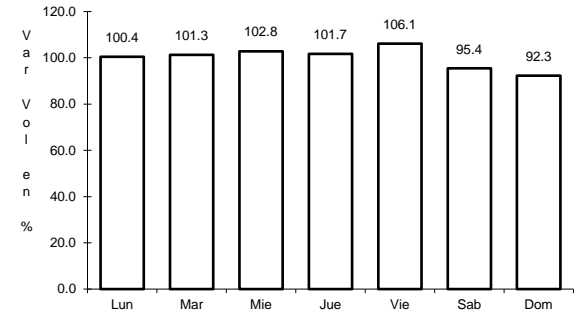
RUTA: TAB



Km: 0.00                      Tipo: 3                      Sent: 1



Km: 0.00                      Tipo: 3                      Sent: 2

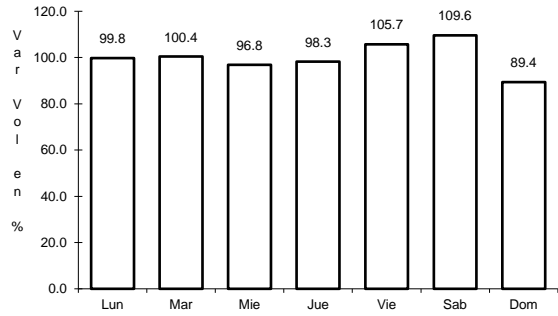


Km: 50.70                      Tipo: 1                      Sent: 0

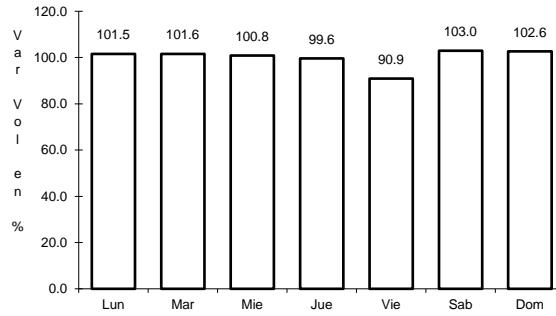
45 CARR: Villahermosa - Luis Gil Pérez

CLAVE: 27206

RUTA: TAB



Km: 0.00                      Tipo: 3                      Sent: 0

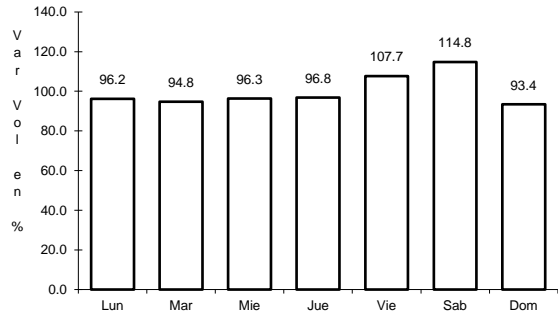


Km: 22.00                      Tipo: 1                      Sent: 0

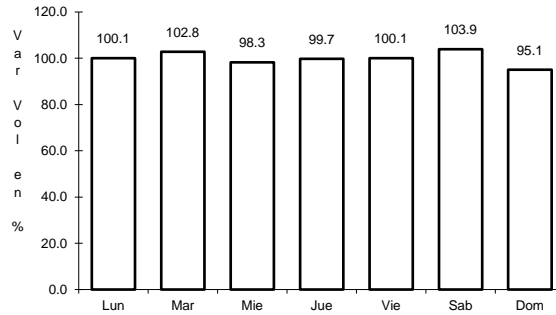
46 CARR: Villahermosa - T. C. (P. de Cunduacán - Estación Juárez)

CLAVE: 27106

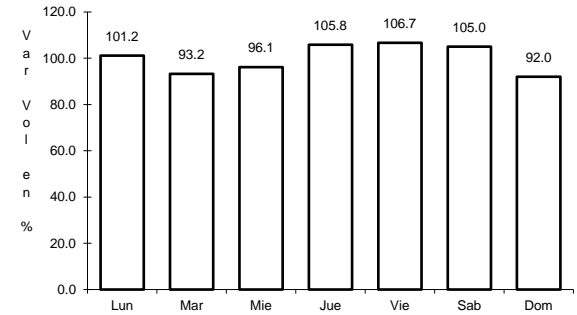
RUTA: TAB



Km: 0.00                      Tipo: 3                      Sent: 0



Km: 19.00                      Tipo: 3                      Sent: 0

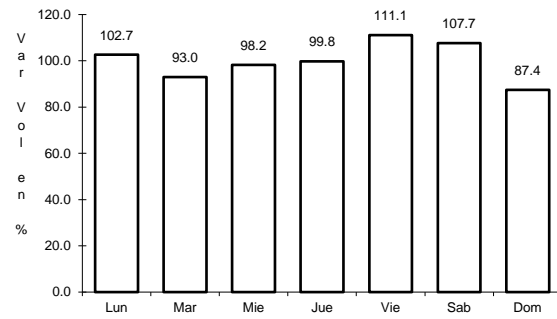


Km: 25.20                      Tipo: 1                      Sent: 0

47 CARR: Zapatero - T. C. (Jalapa - Jonuta)

CLAVE: 00061

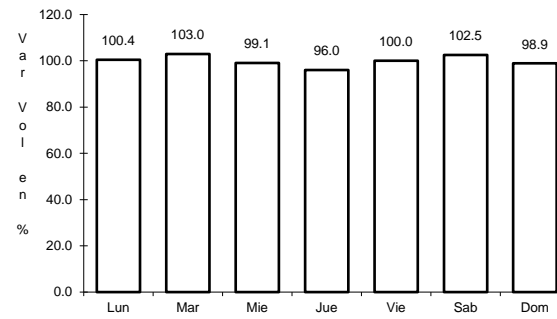
RUTA: CHIS-TAB



Km: 0.00

Tipo: 3

Sent: 0



Km: 41.00

Tipo: 1

Sent: 0