

SAN LUIS POTOSI

## ---RED FEDERAL LIBRE---

1	Antiguo Morelos - Ent. El Huizache	MEX-080
2	Carbonera - T. C. (Ent. Morelos - Saltillo)	MEX-062
3	Cd. Valles - Cd. Victoria	MEX-085
4	Cd. Valles - San Luis Potosí	MEX-070
5	Cd. Valles - Tampico	MEX-070
6	El Clarín - Agua Buena	MEX-070
7	Ent. Ahualulco - Ent. La Bonita	MEX-063
8	Ent. de Zaragoza - San Felipe	MEX-037
9	Ent. Tula - Cd. Victoria	MEX-101
10	Jalpan de Serra - Rioverde	MEX-069
11	Libramiento de Cd. Valles	MEX-070
12	Libramiento de Villa de Reyes	MEX-037
13	Libramiento de Villa de Reyes (Poniente)	MEX-037
14	Libramiento Villa de Arriaga	MEX-080
15	Matehuala - Ent. Puerto México	MEX-057
16	Portezuelo - Cd. Valles	MEX-085
17	Querétaro - San Luis Potosí	MEX-057
18	Ramal a Aeropuerto de S. L. P.	MEX-057
19	Ramal a Ojo de Agua	MEX-062
20	Ramal a Rayón	MEX-070
21	San Juan del Río - Xilitla	MEX-120
22	San Luis Potosí - Ent. Arcinas	MEX-049
23	San Luis Potosí - Lagos de Moreno	MEX-070-080
24	San Luis Potosí - Matehuala	MEX-057
25	T. C. (Ent. El Huizache- Ant. Morelos)-El Salto	MEX-080
26	T. C. (Qro - S.L.P.) - Tierra Nueva	MEX-057
27	T. C. (S.L.P. - Matehuala) - Villa Hidalgo	MEX-057
28	Tamazunchale - San Felipe Orizatlán	MEX-085

## ---RED FEDERAL DE CUOTA---

29	Lagos de Moreno - Villa de Arriaga (Cuota)	MEX-080D
30	Libramiento de Matehuala (Cuota)	MEX-057D
31	Libramiento Norponiente de San Luis Potosí (Cuota)	MEX-057D
32	Libramiento Oriente de San Luis Potosí (Cuota)	MEX-057D
33	Rayón - Ent. Tamuín (Cuota)	MEX-070D

## ---RED ESTATAL LIBRE---

34	Charcas - Villa Santo Domingo	SLP-017
35	Ébano - Estación Manuel	SLP-TAM
36	Matehuala - La Paz	SLP-020
37	Matehuala - La Poza	SLP-029-NL-061
38	Periférico de San Luis Potosí	SLP-032
39	Ramal a Cerritos	SLP-007
40	Ramal a Pozo de Acuña	SLP-009
41	Rayón - Arroyo Seco	SLP-011
42	Santo Domingo - Cerro Gordo	SLP-022
43	Tamuín - Estación F.F.C.C. Tamuín	SLP-040
44	Tamuín - Xolol	SLP-014

## ---RED ESTATAL DE CUOTA---

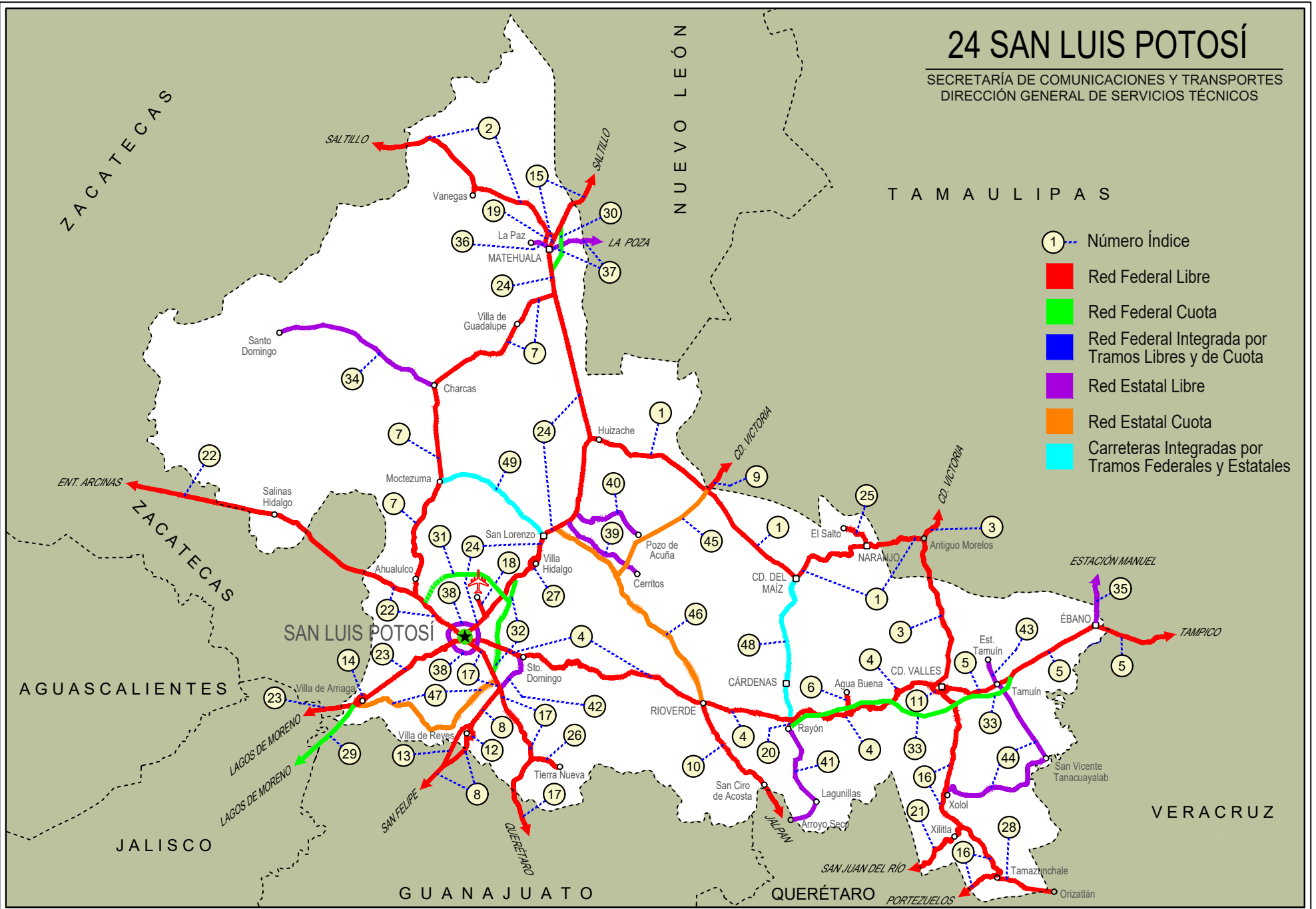
45	Cerritos - Ent. Tula (Cuota)	SLP-075D
46	Cerritos - Rioverde (Cuota)	SLP-D
47	San Luis Potosí - Villa de Arriaga (Cuota)	SLP-D

## ---CARRETERAS INTEGRADAS POR TRAMOS FEDERALES Y ESTATALES---

48	Rayón - Cd. del Maíz	MEX-070-SLP-005
49	San Lorenzo - Moctezuma	MEX-063-SLP-012

# 24 SAN LUIS POTOSÍ

SECRETARÍA DE COMUNICACIONES Y TRANSPORTES  
DIRECCIÓN GENERAL DE SERVICIOS TÉCNICOS





SAN LUIS POTOSI

1 CARR: Antiguo Morelos - Ent. El Huizache

CLAVE: 00136

RUTA: MEX-080

AÑO: 2021

LUGAR	ESTACION				CLASIFICACION VEHICULAR EN PORCIENTO										COORDENADAS					
	KM	TE	SC	TDPA	M	A	B	C2	C3	T3S2	T3S3	T3S2R4	OTROS	A	B	C	K'	D	LATITUD	LONGITUD
Antiguo Morelos	0.00	3	0	2161	5.6	76.6	1.6	9.7	2.2	2.6	1.3	0.3	0.1	82.2	1.6	16.2	0.099	0.506	22.553908	-99.090701
Nuevo Morelos	19.28	1	0	1205	5.6	74.1	2.1	10.2	2.6	3.1	1.8	0.3	0.2	79.7	2.1	18.2	0.093	0.507	22.540907	-99.212253
Lim. Edos. Term. Tamps. Ppia. S. L. P.	25.00																			
El Naranjo	32.00	1	0	4345	3.7	64.4	4.0	6.9	2.0	10.0	2.1	5.8	1.1	68.1	4.0	27.9	0.080	0.508	22.532364	-99.307501
El Naranjo	32.00	3	0	2621	7.8	80.7	1.0	7.7	0.7	1.8	0.2	0.0	0.1	88.5	1.0	10.5	0.077	0.509	22.518141	-99.335706
Cd. del Maíz	86.00	3	0	1539	2.4	70.3	1.8	21.1	1.8	1.7	0.6	0.2	0.1	72.7	1.8	25.5	0.089	0.516	22.417143	-99.625497
T. Der. Tula	141.21	3	0	2506	3.1	38.0	2.2	6.6	4.0	21.3	6.1	17.0	1.7	41.1	2.2	56.7	0.062	0.515	22.738633	-99.980491
T. C. San Luis Potosí - Matehuala (Ent. El Huizache)	198.83	1	0	2958	2.9	44.4	1.9	10.2	3.5	17.9	4.3	13.6	1.3	47.3	1.9	50.8	0.070	0.510	22.930791	-100.448460

2 CARR: Carbonera - T. C. (Ent. Morelos - Saltillo)

CLAVE: 00218

RUTA: MEX-062

AÑO: 2021

LUGAR	ESTACION				CLASIFICACION VEHICULAR EN PORCIENTO										COORDENADAS					
	KM	TE	SC	TDPA	M	A	B	C2	C3	T3S2	T3S3	T3S2R4	OTROS	A	B	C	K'	D	LATITUD	LONGITUD
Carbonera	0.00	3	0	3371	10.0	73.4	1.0	9.8	1.9	2.2	0.6	1.0	0.1	83.4	1.0	15.6	0.081	0.517	23.702602	-100.626215
Cedral	18.00	1	0	4009	7.0	75.4	0.7	12.4	1.1	2.4	0.3	0.5	0.2	82.4	0.7	16.9	0.101	0.512	23.794200	-100.698373
Cedral	18.00	3	0	3760	9.1	75.3	0.7	9.2	1.7	2.6	0.7	0.5	0.2	84.4	0.7	14.9	0.070	0.517	23.829250	-100.738542
Lim. Edos. Term. S. L. P. Ppia. Zac.	79.20																			
T. C. Ent. Morelos - Saltillo	112.00	1	0	1328	2.1	78.8	1.4	13.7	1.9	1.8	0.2	0.1	0.0	80.9	1.4	17.7	0.069	0.542	24.157078	-101.493236

3 CARR: Cd. Valles - Cd. Victoria

CLAVE: 00509

RUTA: MEX-085

AÑO: 2021

LUGAR	ESTACION				CLASIFICACION VEHICULAR EN PORCIENTO										COORDENADAS					
	KM	TE	SC	TDPA	M	A	B	C2	C3	T3S2	T3S3	T3S2R4	OTROS	A	B	C	K'	D	LATITUD	LONGITUD
Cd. Valles	0.00	3	0	11484	4.8	84.2	3.3	5.1	1.0	0.7	0.2	0.5	0.2	89.0	3.3	7.7	0.059	0.502	22.007541	-99.004349
Lim. Edos. Term. S. L. P. Ppia. Tamps.	50.40																			
Antiguo Morelos	66.90	1	0	2183	3.8	75.2	4.2	9.1	1.8	2.7	0.9	1.9	0.4	79.0	4.2	16.8	0.087	0.504	22.549617	-99.078450
Antiguo Morelos	66.90	3	0	3846	3.8	76.0	4.5	8.8	1.4	2.8	0.7	1.7	0.3	79.8	4.5	15.7	0.083	0.504	22.559808	-99.077944
Cd. Mante	98.00	1	0	7091	8.7	84.1	1.2	1.6	1.5	1.3	0.6	0.8	0.2	92.8	1.2	6.0	0.103	0.515	22.712092	-98.988646
T. Izq. Ocampo	110.00	3	0	3553	9.4	77.0	3.8	6.6	0.8	2.0	0.2	0.1	0.1	86.4	3.8	9.8	0.094	0.501	22.838731	-99.024350
T. Izq. Gómez Farías	132.84	3	0	1888	7.1	74.5	7.9	7.0	1.3	1.5	0.6	0.1	0.0	81.6	7.9	10.5	0.095	0.502	23.030479	-99.093722
T. Izq. Llera de Canales	170.00	3	0	3491	0.9	83.2	3.9	7.6	1.3	1.8	0.4	0.8	0.1	84.1	3.9	12.0	0.080	0.508	23.310573	-99.016658
T. Der. González	172.50	3	0	2104	1.1	84.6	4.6	6.0	0.9	1.2	0.8	0.8	0.0	85.7	4.6	9.7	0.111	0.505	23.321757	-98.998087
Cd. Victoria	232.00	1	0	2686	1.0	81.3	4.3	7.9	2.6	1.5	0.9	0.4	0.1	82.3	4.3	13.4	0.099	0.520	23.659918	-99.096575

SAN LUIS POTOSI

4 CARR: Cd. Valles - San Luis Potosi

CLAVE: 24135

RUTA: MEX-070

AÑO: 2021

LUGAR	ESTACION				CLASIFICACION VEHICULAR EN PORCIENTO												COORDENADAS			
	KM	TE	SC	TDPA	M	A	B	C2	C3	T3S2	T3S3	T3S2R4	OTROS	A	B	C	K'	D	LATITUD	LONGITUD
Cd. Valles	0.00	3	1	4434	5.8	85.1	2.1	2.7	1.4	1.1	0.5	0.6	0.7	90.9	2.1	7.0	0.100	0.507	21.990986	-99.047785
Cd. Valles	0.00	3	2	4313	5.8	84.6	2.0	2.5	1.5	1.4	0.9	0.6	0.7	90.4	2.0	7.6	0.080	0.507	21.990883	-99.047823
X. C. Rayón - Ent. Tamuín (Cuota)	11.59	1	1	2500	5.6	80.2	1.8	6.3	1.5	1.9	1.3	0.8	0.6	85.8	1.8	12.4	0.084	0.506	22.002761	-99.100748
X. C. Rayón - Ent. Tamuín (Cuota)	11.59	1	2	2564	3.8	81.1	2.5	6.2	1.5	2.1	1.2	0.9	0.7	84.9	2.5	12.6	0.076	0.506	22.002674	-99.100753
T. Der. Damián Carmona	31.25	3	0	2051	4.4	77.9	1.8	10.2	2.1	2.4	0.7	0.3	0.2	82.3	1.8	15.9	0.091	0.502	21.925264	-99.229566
T. Der. Canoas	75.40	1	0	1741	4.4	82.8	1.5	5.2	1.8	2.2	0.9	0.2	1.0	87.2	1.5	11.3	0.104	0.505	21.874693	-99.496803
X. C. Cárdenas - Rayón	93.00	1	0	3032	4.0	78.0	0.7	11.4	1.7	2.5	0.9	0.2	0.6	82.0	0.7	17.3	0.083	0.502	21.852668	-99.625797
X. C. Cárdenas - Rayón	93.00	3	0	7159	2.9	78.0	4.2	4.2	1.6	3.8	1.4	3.0	0.9	80.9	4.2	14.9	0.078	0.507	21.859336	-99.653154
T. Der. Santa Rita	118.00	3	0	9449	3.2	79.0	3.4	3.9	1.6	4.2	1.6	2.3	0.8	82.2	3.4	14.4	0.084	0.510	21.897689	-99.848467
Río Verde	133.76	1	1	10011	9.1	79.2	1.1	5.1	1.7	1.2	2.0	0.3	0.3	88.3	1.1	10.6	0.094	0.519	21.922664	-99.984273
Río Verde	133.76	1	2	9269	9.6	77.4	1.2	5.5	1.7	1.8	2.2	0.3	0.3	87.0	1.2	11.8	0.096	0.519	21.922560	-99.984275
Río Verde	133.76	3	1	10062	0.7	89.9	0.7	7.2	0.9	0.3	0.3	0.0	0.0	90.6	0.7	8.7	0.088	0.516	21.936213	-100.027896
Río Verde	133.76	3	2	9439	0.8	89.2	0.7	7.7	1.0	0.3	0.3	0.0	0.0	90.0	0.7	9.3	0.089	0.516	21.936111	-100.027942
T. Der. La Reformita	145.90	1	0	5150	4.0	84.0	1.0	7.5	1.4	0.9	0.8	0.2	0.2	88.0	1.0	11.0	0.083	0.510	21.963919	-100.090416
T. Der. La Reformita	145.90	3	0	4569	3.5	84.3	1.6	4.9	2.3	1.6	0.9	0.4	0.5	87.8	1.6	10.6	0.087	0.503	21.972392	-100.101343
T. Izq. La Tapona	157.76	1	0	3446	2.8	86.8	1.4	3.8	1.8	1.5	0.8	0.3	0.8	89.6	1.4	9.0	0.104	0.505	22.020106	-100.181896
T. Izq. La Tapona	157.76	3	0	3617	3.4	86.4	1.4	3.5	1.9	1.5	0.8	0.4	0.7	89.8	1.4	8.8	0.096	0.503	22.021714	-100.197722
T. Der. Guaxcama	161.04	3	0	3038	6.6	76.8	1.2	12.8	1.0	0.5	0.4	0.4	0.3	83.4	1.2	15.4	0.093	0.510	22.038513	-100.277159
San Antonio	180.70	1	0	3153	2.5	86.8	1.4	3.9	2.2	1.6	0.9	0.2	0.5	89.3	1.4	9.3	0.086	0.516	22.017923	-100.368731
T. Izq. Puente Prieto	181.93	3	0	3235	2.2	82.0	1.6	8.5	2.1	2.0	1.2	0.2	0.2	84.2	1.6	14.2	0.101	0.506	22.018536	-100.394901
San Nicolás Tolentino	191.00	1	0	3182	2.6	83.1	1.5	7.3	2.1	1.6	1.4	0.2	0.2	85.7	1.5	12.8	0.109	0.511	22.049122	-100.447668
T. Der. San Martín de Abajo	199.60	1	0	2668	2.3	81.4	1.4	8.9	2.2	1.8	1.5	0.2	0.3	83.7	1.4	14.9	0.152	0.527	22.070193	-100.492422
T. Der. San Martín de Abajo	199.60	3	0	2982	4.8	81.1	1.1	6.8	1.8	1.7	1.6	0.5	0.6	85.9	1.1	13.0	0.085	0.506	22.072900	-100.498061
T. Izq. Zaragoza	239.50	1	0	4592	3.6	84.7	1.3	5.0	1.6	1.8	0.7	0.3	1.0	88.3	1.3	10.4	0.149	0.505	22.098297	-100.741872
T. Izq. Zaragoza	239.50	3	0	7448	3.5	82.3	1.0	7.8	1.4	2.2	0.7	0.3	0.8	85.8	1.0	13.2	0.118	0.510	22.102134	-100.752551
X. Lib. Ote. de San Luis Potosí	255.00	1	0	6746	3.5	82.1	1.0	8.2	1.3	2.1	0.7	0.3	0.8	85.6	1.0	13.4	0.128	0.510	22.125799	-100.818883
X. Periférico de San Luis Potosí	257.44	1	1	27416	3.7	89.5	0.5	3.6	1.0	0.9	0.3	0.2	0.3	93.2	0.5	6.3	0.074	0.521	22.154367	-100.898647
X. Periférico de San Luis Potosí	257.44	1	2	30050	3.6	89.4	0.5	3.6	1.2	0.9	0.3	0.2	0.3	93.0	0.5	6.5	0.080	0.521	22.154249	-100.898685
San Luis Potosí	261.94																			

5 CARR: Cd. Valles - Tampico

CLAVE: 00138

RUTA: MEX-070

AÑO: 2021

LUGAR	ESTACION				CLASIFICACION VEHICULAR EN PORCIENTO												COORDENADAS			
	KM	TE	SC	TDPA	M	A	B	C2	C3	T3S2	T3S3	T3S2R4	OTROS	A	B	C	K'	D	LATITUD	LONGITUD
Cd. Valles	0.00	3	0	8273	3.9	78.4	2.2	7.0	3.2	2.6	0.9	1.2	0.6	82.3	2.2	15.5	0.070	0.503	21.976167	-98.958034

SAN LUIS POTOSI

5 CARR: Cd. Valles - Tampico

CLAVE: 00138

RUTA: MEX-070

AÑO: 2021

LUGAR	ESTACION				CLASIFICACION VEHICULAR EN PORCIENTO										COORDENADAS					
	KM	TE	SC	TDPA	M	A	B	C2	C3	T3S2	T3S3	T3S2R4	OTROS	A	B	C	K'	D	LATITUD	LONGITUD
T. Der. Santa Elena	15.25	3	0	5765	4.5	80.2	2.6	5.0	2.7	2.2	1.5	1.1	0.2	84.7	2.6	12.7	0.069	0.503	21.963555	-98.870318
Tamuín	29.60	1	0	5316	6.5	78.7	2.4	5.1	2.6	2.1	1.2	1.2	0.2	85.2	2.4	12.4	0.082	0.530	21.998317	-98.782088
T. C. Rayón - Ent. Tamuín (Cuota)	34.40	1	0	3931	13.0	71.7	1.9	3.5	3.9	1.9	0.9	2.6	0.6	84.7	1.9	13.4	0.092	0.525	22.002274	-98.745692
T. C. Rayón - Ent. Tamuín (Cuota)	34.40	3	1	2209	6.6	69.9	4.3	4.5	2.6	4.9	2.3	4.1	0.8	76.5	4.3	19.2	0.103	0.502	22.010759	-98.729719
T. C. Rayón - Ent. Tamuín (Cuota)	34.40	3	2	2189	7.0	66.2	4.7	6.5	2.9	5.5	3.0	3.4	0.8	73.2	4.7	22.1	0.094	0.502	22.010798	-98.729820
Ébano	79.00	1	0	8778	8.7	69.2	2.9	2.9	2.4	4.8	2.7	5.6	0.8	77.9	2.9	19.2	0.072	0.501	22.210046	-98.401177
Ébano	79.00	3	0	4901	7.5	65.0	5.1	4.1	2.8	6.2	2.7	5.8	0.8	72.5	5.1	22.4	0.078	0.509	22.211077	-98.358702
Lim. Edos. Term. S. L. P. Ppia. Ver.	83.57																			
T. Der. Pánuco	103.00	1	0	6929	11.5	69.2	2.9	4.1	2.3	3.1	1.7	4.2	1.0	80.7	2.9	16.4	0.076	0.500	22.155728	-98.155130
T. Der. Pánuco	103.00	3	0	7913	11.5	68.9	2.8	6.1	1.8	3.5	1.6	3.0	0.8	80.4	2.8	16.8	0.090	0.508	22.158795	-98.149283
T. C. Anáhuac - El Prieto	128.40	1	1	5317	4.0	78.3	2.8	5.4	1.8	3.0	1.5	2.6	0.6	82.3	2.8	14.9	0.085	0.503	22.214916	-97.946690
T. C. Anáhuac - El Prieto	128.40	1	2	5379	4.3	77.3	2.6	5.3	2.0	3.1	1.9	2.8	0.7	81.6	2.6	15.8	0.095	0.503	22.215091	-97.946707
T. C. Anáhuac - El Prieto	128.40	3	1	7129	4.0	72.3	3.3	6.7	2.1	5.3	2.4	3.1	0.8	76.3	3.3	20.4	0.097	0.504	22.218073	-97.933191
T. C. Anáhuac - El Prieto	128.40	3	2	7026	4.1	70.5	3.9	6.6	2.1	5.9	2.6	3.5	0.8	74.6	3.9	21.5	0.102	0.504	22.218217	-97.933219
Lim. Edos. Term. Ver. Ppia. Tamps.	133.81																			
Tampico	138.00	1	1	9199	9.5	70.3	2.4	6.9	1.3	4.3	1.4	3.1	0.8	79.8	2.4	17.8	0.080	0.541	22.226843	-97.894273
Tampico	138.00	1	2	10822	9.1	69.5	2.7	7.2	1.6	4.5	1.8	2.9	0.7	78.6	2.7	18.7	0.074	0.541	22.226946	-97.894286

6 CARR: El Clarín - Agua Buena

CLAVE: 24283

RUTA: MEX-070

AÑO: 2021

LUGAR	ESTACION				CLASIFICACION VEHICULAR EN PORCIENTO										COORDENADAS					
	KM	TE	SC	TDPA	M	A	B	C2	C3	T3S2	T3S3	T3S2R4	OTROS	A	B	C	K'	D	LATITUD	LONGITUD
T. C. Cd. Valles - San Luis Potosí	0.00	3	0	1278	4.7	76.7	1.6	15.8	0.2	0.7	0.2	0.0	0.1	81.4	1.6	17.0	0.095	0.510	21.892146	-99.382501
Agua Buena	11.23	1	0	4163	13.9	73.2	1.1	8.7	0.4	2.2	0.4	0.0	0.1	87.1	1.1	11.8	0.085	0.514	21.950870	-99.391657

7 CARR: Ent. Ahualulco - Ent. La Bonita

CLAVE: 24258

RUTA: MEX-063

AÑO: 2021

LUGAR	ESTACION				CLASIFICACION VEHICULAR EN PORCIENTO										COORDENADAS					
	KM	TE	SC	TDPA	M	A	B	C2	C3	T3S2	T3S3	T3S2R4	OTROS	A	B	C	K'	D	LATITUD	LONGITUD
T. C. San Luis Potosí - Ent. Arcinas	0.00	3	0	5359	3.9	80.0	1.2	12.5	0.6	0.5	0.5	0.4	0.4	83.9	1.2	14.9	0.105	0.500	22.321533	-101.165283
Ahualulco	11.00	3	0	5025	5.9	79.5	1.1	11.0	0.8	1.1	0.4	0.1	0.1	85.4	1.1	13.5	0.098	0.501	22.410623	-101.159523
Moctezuma	59.00	1	0	2495	6.2	70.7	1.4	19.0	0.8	1.1	0.5	0.1	0.2	76.9	1.4	21.7	0.097	0.512	22.728456	-101.088855
Charcas	100.00	1	0	2488	8.3	71.8	3.0	14.6	1.0	0.5	0.3	0.3	0.2	80.1	3.0	16.9	0.089	0.517	23.109587	-101.103120
Charcas	100.00	3	0	1561	11.6	69.4	2.5	14.1	0.8	1.1	0.1	0.3	0.1	81.0	2.5	16.5	0.092	0.520	23.130268	-101.100378
T. C. San Luis Potosí - Matehuala	169.90	1	0	1464	6.8	67.8	1.6	21.3	1.3	1.0	0.2	0.0	0.0	74.6	1.6	23.8	0.091	0.506	23.481302	-100.623147

SAN LUIS POTOSI

8 CARR: Ent. de Zaragoza - San Felipe

CLAVE: 00240

RUTA: MEX-037

AÑO: 2021

LUGAR	ESTACION				CLASIFICACION VEHICULAR EN PORCIENTO													COORDENADAS		
	KM	TE	SC	TDPA	M	A	B	C2	C3	T3S2	T3S3	T3S2R4	OTROS	A	B	C	K'	D	LATITUD	LONGITUD
T. C. Querétaro - San Luis Potosí	0.00	3	0	11410	0.7	60.2	6.0	12.6	2.7	12.5	3.0	1.5	0.8	60.9	6.0	33.1	0.069	0.511	21.961341	-100.822591
Lim. Edos. Term. S. L. P. Ppia. Gto.	32.00																			
San Felipe	72.00	1	0	7722	5.1	49.4	4.9	14.3	3.3	19.1	2.1	1.4	0.4	54.5	4.9	40.6	0.088	0.501	21.481448	-101.153231

9 CARR: Ent. Tula - Cd. Victoria

CLAVE: 00179

RUTA: MEX-101

AÑO: 2021

LUGAR	ESTACION				CLASIFICACION VEHICULAR EN PORCIENTO													COORDENADAS		
	KM	TE	SC	TDPA	M	A	B	C2	C3	T3S2	T3S3	T3S2R4	OTROS	A	B	C	K'	D	LATITUD	LONGITUD
T. C. Antiguo Morelos - El Huizache	0.00	3	0	3556	4.3	50.8	4.7	4.4	2.0	19.6	2.6	11.1	0.5	55.1	4.7	40.2	0.076	0.501	22.744633	-99.962501
Lim. Edos. Term. S. L. P. Ppia. Tamps.	2.40																			
T. Der. Tula (1º Acceso)	38.00	1	0	5094	4.4	50.9	4.6	4.2	2.2	19.1	2.6	11.8	0.2	55.3	4.6	40.1	0.067	0.511	22.979287	-99.737839
T. Der. Tula (2º Acceso)	41.95	3	0	4510	4.2	56.0	3.8	3.6	1.2	18.6	2.1	10.1	0.4	60.2	3.8	36.0	0.078	0.524	23.021639	-99.713631
Jaumave	112.68	1	0	5939	4.8	61.9	3.7	2.8	1.2	14.8	1.8	8.7	0.3	66.7	3.7	29.6	0.072	0.519	23.389370	-99.424852
Jaumave	112.68	3	0	5769	4.9	59.8	3.5	2.9	1.2	16.3	2.2	8.9	0.3	64.7	3.5	31.8	0.069	0.509	23.424258	-99.372098
T. Libramiento de Cd. Victoria	134.68																			
Cd. Victoria	180.00	1	1	3805	17.2	80.9	0.2	1.0	0.5	0.1	0.0	0.1	0.0	98.1	0.2	1.7	0.078	0.528	23.710914	-99.176000
Cd. Victoria	180.00	1	2	3396	14.8	82.9	0.2	1.4	0.6	0.1	0.0	0.0	0.0	97.7	0.2	2.1	0.079	0.528	23.710990	-99.176091

10 CARR: Jalpan de Serra - Rioverde

CLAVE: 00265

RUTA: MEX-069

AÑO: 2021

LUGAR	ESTACION				CLASIFICACION VEHICULAR EN PORCIENTO													COORDENADAS		
	KM	TE	SC	TDPA	M	A	B	C2	C3	T3S2	T3S3	T3S2R4	OTROS	A	B	C	K'	D	LATITUD	LONGITUD
Jalpan de Serra	0.00	3	0	5805	3.6	92.4	0.4	2.6	0.6	0.2	0.1	0.1	0.0	96.0	0.4	3.6	0.099	0.510	21.240500	-99.482729
T. Izq. Conca	35.01	1	0	2537	2.0	85.4	0.5	9.0	0.8	1.9	0.3	0.0	0.1	87.4	0.5	12.1	0.088	0.502	21.444633	-99.626803
Arroyo Seco	48.60	1	0	1829	1.9	80.0	0.6	14.6	1.0	1.6	0.2	0.0	0.1	81.9	0.6	17.5	0.075	0.509	21.541937	-99.688213
Lim. Edos. Term. Qro. Ppia. S. L. P.	52.27																			
San Ciro de Acosta	69.42	1	0	2234	6.8	76.5	0.6	13.2	0.7	1.4	0.5	0.1	0.2	83.3	0.6	16.1	0.079	0.502	21.648171	-99.808744
San Ciro de Acosta	69.42	3	0	3060	4.4	80.8	0.4	11.0	0.8	2.0	0.3	0.1	0.2	85.2	0.4	14.4	0.079	0.507	21.661921	-99.827591
Rioverde	105.43	1	0	7682	3.1	76.5	0.6	14.5	0.7	2.7	0.8	0.4	0.7	79.6	0.6	19.8	0.078	0.511	21.877355	-99.974307

11 CARR: Libramiento de Cd. Valles

CLAVE: 24205

RUTA: MEX-070

AÑO: 2021

LUGAR	ESTACION				CLASIFICACION VEHICULAR EN PORCIENTO													COORDENADAS		
	KM	TE	SC	TDPA	M	A	B	C2	C3	T3S2	T3S3	T3S2R4	OTROS	A	B	C	K'	D	LATITUD	LONGITUD
T. C. Cd. Valles - San Luis Potosí	0.00	3	0	7994	8.8	76.1	2.5	5.7	3.0	1.7	1.0	1.0	0.2	84.9	2.5	12.6	0.069	0.529	21.984355	-99.034794



SAN LUIS POTOSI

11 CARR : Libramiento de Cd. Valles

CLAVE: 24205

RUTA: MEX-070

AÑO: 2021

LUGAR	ESTACION				CLASIFICACION VEHICULAR EN PORCIENTO														COORDENADAS	
	KM	TE	SC	TDPA	M	A	B	C2	C3	T3S2	T3S3	T3S2R4	OTROS	A	B	C	K'	D	LATITUD	LONGITUD
T. C. Cd. Valles - Tampico	11.54	1	0	2864	5.1	67.4	4.6	4.6	8.4	4.5	3.0	2.0	0.4	72.5	4.6	22.9	0.072	0.503	21.971929	-98.966118

12 CARR : Libramiento de Villa de Reyes

CLAVE: 24010

RUTA: MEX-037

AÑO: 2021

LUGAR	ESTACION				CLASIFICACION VEHICULAR EN PORCIENTO														COORDENADAS	
	KM	TE	SC	TDPA	M	A	B	C2	C3	T3S2	T3S3	T3S2R4	OTROS	A	B	C	K'	D	LATITUD	LONGITUD
T. C. Ent. Zaragoza - San Felipe	0.00	3	0	5680	2.2	84.1	3.0	7.5	1.2	1.7	0.2	0.1	0.0	86.3	3.0	10.7	0.088	0.524	21.802309	-100.931209
T. C. Villa de Reyes - Bledos	3.10																			

13 CARR : Libramiento de Villa de Reyes (Poniente)

CLAVE:

RUTA: MEX-037

AÑO: 2021

LUGAR	ESTACION				CLASIFICACION VEHICULAR EN PORCIENTO														COORDENADAS	
	KM	TE	SC	TDPA	M	A	B	C2	C3	T3S2	T3S3	T3S2R4	OTROS	A	B	C	K'	D	LATITUD	LONGITUD
T. C. Ent. Zaragoza - San Felipe Sur	125.60																			
Lim. Edos. Term. Gto. Ppia. S. L. P.	132.90																			
T. C. Ent. Zaragoza - San Felipe Norte	143.64	1	0	7122	6.8	55.1	2.2	9.0	2.6	19.5	2.2	2.0	0.6	61.9	2.2	35.9	0.059	0.506	21.819083	-100.943605

14 CARR : Libramiento Villa de Arriaga

CLAVE: 24009

RUTA: MEX-080

AÑO: 2021

LUGAR	ESTACION				CLASIFICACION VEHICULAR EN PORCIENTO														COORDENADAS	
	KM	TE	SC	TDPA	M	A	B	C2	C3	T3S2	T3S3	T3S2R4	OTROS	A	B	C	K'	D	LATITUD	LONGITUD
T. C. San Luis Potosí - Lagos de Moreno (Poniente)	0.00	3	0	7876	5.7	55.4	4.6	3.4	2.2	17.4	3.6	6.8	0.9	61.1	4.6	34.3	0.062	0.545	21.924222	-101.372711
T. C. San Luis Potosí - Lagos de Moreno (Oriente)	5.00																			

15 CARR : Matehuala - Ent. Puerto México

CLAVE: 00405

RUTA: MEX-057

AÑO: 2021

LUGAR	ESTACION				CLASIFICACION VEHICULAR EN PORCIENTO														COORDENADAS	
	KM	TE	SC	TDPA	M	A	B	C2	C3	T3S2	T3S3	T3S2R4	OTROS	A	B	C	K'	D	LATITUD	LONGITUD
Matehuala	0.00	3	1	7133	5.5	69.9	2.5	8.3	1.7	8.4	2.2	1.0	0.5	75.4	2.5	22.1	0.078	0.532	23.669077	-100.631888
Matehuala	0.00	3	2	8093	8.7	67.2	2.7	7.8	1.8	8.2	2.0	1.1	0.5	75.9	2.7	21.4	0.070	0.532	23.669137	-100.632084
T. Izq. Cedral	8.47	1	1	4496	11.1	56.9	3.4	12.5	2.6	10.3	2.0	1.0	0.2	68.0	3.4	28.6	0.072	0.516	23.692266	-100.620404
T. Izq. Cedral	8.47	1	2	4783	4.2	65.5	4.1	10.3	2.6	10.3	2.0	0.8	0.2	69.7	4.1	26.2	0.066	0.516	23.692365	-100.620674
T. Izq. Cedral	8.47	3	1	2731	6.3	56.1	4.7	8.8	1.9	16.6	2.9	2.1	0.6	62.4	4.7	32.9	0.073	0.503	23.698822	-100.617165
T. Izq. Cedral	8.47	3	2	2765	7.3	55.1	4.8	8.9	2.1	16.4	2.8	2.0	0.6	62.4	4.8	32.8	0.068	0.503	23.698918	-100.617450
T. Izq. Libramiento de Matehuala (Cuota)	9.30	3	1	7474	1.7	40.3	5.8	8.9	2.5	32.0	3.5	4.6	0.7	42.0	5.8	52.2	0.083	0.508	23.718709	-100.607386

SAN LUIS POTOSI

15 CARR: Matehuala - Ent. Puerto México

CLAVE: 00405

RUTA: MEX-057

AÑO: 2021

LUGAR	ESTACION				CLASIFICACION VEHICULAR EN PORCIENTO										COORDENADAS					
	KM	TE	SC	TDPA	M	A	B	C2	C3	T3S2	T3S3	T3S2R4	OTROS	A	B	C	K'	D	LATITUD	LONGITUD
T. Izq. Libramiento de Matehuala (Cuota)	9.30	3	2	7242	1.6	37.5	6.0	8.2	3.1	34.3	3.9	4.8	0.6	39.1	6.0	54.9	0.073	0.508	23.718788	-100.607652
Lim. Edos. Term. S. L. P. Ppia. N. L.	24.64																			
Santa Ana	59.65	1	1	8601	3.6	42.2	4.7	4.8	1.8	34.5	3.0	4.6	0.8	45.8	4.7	49.5	0.078	0.524	24.084697	-100.384796
Santa Ana	59.65	1	2	7810	1.8	47.8	5.0	4.7	1.9	31.1	2.9	4.0	0.8	49.6	5.0	45.4	0.083	0.524	24.084748	-100.385082
T. Der. Linares	128.99	1	1	8823	2.0	51.2	6.3	5.1	1.9	25.4	2.7	4.9	0.5	53.2	6.3	40.5	0.076	0.528	24.612148	-100.274737
T. Der. Linares	128.99	1	2	7881	2.0	51.2	6.2	5.2	1.9	25.2	2.7	5.0	0.6	53.2	6.2	40.6	0.085	0.528	24.612037	-100.275001
T. Der. Linares	128.99	3	1	10195	1.8	47.8	6.4	5.4	1.7	28.1	2.9	5.4	0.5	49.6	6.4	44.0	0.066	0.511	24.680064	-100.300206
T. Der. Linares	128.99	3	2	9769	1.9	47.8	6.4	5.4	1.7	28.1	2.8	5.4	0.5	49.7	6.4	43.9	0.066	0.511	24.678927	-100.300290
San Rafael	177.18	1	1	8891	2.1	38.0	6.0	6.7	2.0	35.4	3.6	5.7	0.5	40.1	6.0	53.9	0.078	0.515	25.023450	-100.546413
San Rafael	177.18	1	2	9445	2.2	37.9	6.0	6.7	2.1	35.4	3.6	5.6	0.5	40.1	6.0	53.9	0.062	0.515	25.023196	-100.546591
Ent. Puerto México	205.97																			

16 CARR: Portezuelo - Cd. Valles

CLAVE: 00023

RUTA: MEX-085

AÑO: 2021

LUGAR	ESTACION				CLASIFICACION VEHICULAR EN PORCIENTO										COORDENADAS					
	KM	TE	SC	TDPA	M	A	B	C2	C3	T3S2	T3S3	T3S2R4	OTROS	A	B	C	K'	D	LATITUD	LONGITUD
Portezuelo	0.00	3	0	5693	4.8	88.5	1.1	2.5	1.1	0.9	0.7	0.3	0.1	93.3	1.1	5.6	0.076	0.501	20.488287	-99.298554
T. Der. Tasquillo (2° Acceso)	10.50	1	0	4731	3.2	83.7	0.8	6.6	1.2	2.5	1.3	0.1	0.6	86.9	0.8	12.3	0.080	0.520	20.542083	-99.318208
T. Izq. Zimapán (1° Acceso)	32.00	1	0	5619	6.2	87.5	1.1	2.2	1.2	0.8	0.6	0.2	0.2	93.7	1.1	5.2	0.077	0.501	20.703592	-99.335081
T. Izq. Zimapán (1° Acceso)	32.00	3	0	2397	1.7	86.1	1.2	6.6	1.5	1.7	1.0	0.0	0.2	87.8	1.2	11.0	0.073	0.521	20.705958	-99.336162
La Estancia	41.00	3	0	2183	1.1	86.3	1.2	7.3	1.3	1.5	0.9	0.1	0.3	87.4	1.2	11.4	0.084	0.513	20.777718	-99.309947
Trancas	51.00	3	0	1527	0.5	83.2	1.6	9.4	1.7	1.7	1.5	0.0	0.4	83.7	1.6	14.7	0.088	0.507	20.806012	-99.259159
Jacala	98.60	3	0	2422	1.8	84.3	1.0	9.8	0.9	1.5	0.4	0.0	0.3	86.1	1.0	12.9	0.083	0.505	21.007494	-99.185213
Zacate Grande	143.10	1	0	1076	2.9	84.5	2.0	6.8	1.8	1.1	0.7	0.0	0.2	87.4	2.0	10.6	0.081	0.501	21.111392	-99.002014
T. Izq. Pisaflores	154.00	3	0	2068	4.1	86.6	1.2	5.3	1.2	1.2	0.3	0.0	0.1	90.7	1.2	8.1	0.087	0.508	21.153940	-98.945291
Lim. Edos. Term. Hgo. Ppia. S. L. P.	168.63																			
Tamazunchale	192.80	1	0	6120	11.8	79.5	1.6	2.3	2.6	0.8	0.2	0.9	0.3	91.3	1.6	7.1	0.080	0.510	21.260465	-98.801280
T. Izq. Xilitla	228.75	1	0	6266	4.3	82.2	2.4	1.6	3.8	2.0	1.5	1.7	0.5	86.5	2.4	11.1	0.096	0.517	21.441157	-98.924188
T. Izq. Xilitla	228.75	3	0	5286	6.0	76.5	1.7	9.4	2.1	3.1	0.7	0.1	0.4	82.5	1.7	15.8	0.097	0.500	21.447601	-98.930126
T. Izq. Aquismón	252.50	1	0	5532	9.4	79.2	2.0	4.9	2.3	1.1	0.6	0.5	0.0	88.6	2.0	9.4	0.085	0.515	21.622095	-98.987338
Agua Hedionda	265.00	1	0	5337	7.2	79.5	2.3	5.2	3.0	1.2	0.9	0.5	0.2	86.7	2.3	11.0	0.081	0.503	21.723625	-98.963388
X. C. Rayón - Ent. Tamuín (Cuota)	286.41	1	0	7952	8.3	78.4	1.6	4.7	3.7	1.7	0.7	0.6	0.3	86.7	1.6	11.7	0.081	0.505	21.884275	-98.947260
Cd. Valles	300.00	1	1	6164	4.7	81.2	2.2	5.7	1.4	3.4	0.6	0.4	0.4	85.9	2.2	11.9	0.085	0.511	21.959062	-98.998677
Cd. Valles	300.00	1	2	5898	4.7	79.8	2.2	6.7	1.5	3.5	0.7	0.5	0.4	84.5	2.2	13.3	0.082	0.511	21.959138	-98.998812

SAN LUIS POTOSI

17 CARR: Querétaro - San Luis Potosi

CLAVE: 00165

RUTA: MEX-057

AÑO: 2021

LUGAR	ESTACION				CLASIFICACION VEHICULAR EN PORCIENTO										COORDENADAS					
	KM	TE	SC	TDPA	M	A	B	C2	C3	T3S2	T3S3	T3S2R4	OTROS	A	B	C	K'	D	LATITUD	LONGITUD
Querétaro	0.00																			
T. Der. Libramiento de Querétaro	6.28	3	1	55161	1.0	91.1	1.0	3.7	0.7	1.7	0.5	0.1	0.2	92.1	1.0	6.9	0.089	0.506	20.636652	-100.428726
T. Der. Libramiento de Querétaro	6.28	3	2	56849	0.9	91.2	1.0	3.7	0.7	1.7	0.5	0.1	0.2	92.1	1.0	6.9	0.090	0.506	20.636626	-100.428905
T. Izq. Juriquilla	15.63	3	1	30765	2.4	87.7	1.6	4.6	1.1	1.9	0.3	0.3	0.1	90.1	1.6	8.3	0.118	0.501	20.710280	-100.437942
T. Izq. Juriquilla	15.63	3	2	30698	3.6	86.9	1.2	4.8	0.8	1.7	0.3	0.6	0.1	90.5	1.2	8.3	0.103	0.501	20.710279	-100.438078
T. Izq. San Miguel de Allende	28.53	1	1	31430	4.2	80.2	1.9	6.9	1.2	3.8	0.7	0.9	0.2	84.4	1.9	13.7	0.125	0.508	20.801761	-100.448619
T. Izq. San Miguel de Allende	28.53	1	2	32566	4.2	79.2	1.9	7.3	1.3	3.7	1.0	1.0	0.4	83.4	1.9	14.7	0.083	0.508	20.800923	-100.448726
T. Izq. San Miguel de Allende	28.53	3	1	26844	6.4	59.3	3.6	8.3	3.2	13.1	2.3	3.1	0.7	65.7	3.6	30.7	0.062	0.510	20.839725	-100.437839
T. Izq. San Miguel de Allende	28.53	3	2	25764	6.7	58.3	3.9	8.1	3.7	13.1	2.4	3.2	0.6	65.0	3.9	31.1	0.064	0.510	20.839803	-100.438011
Lim. Edos. Term. Qro. Ppia. Gto.	36.70																			
X. C. San José Iturbide - El Arenal	46.83	1	1	25487	1.6	43.1	2.9	8.6	4.0	31.6	3.3	4.2	0.7	44.7	2.9	52.4	0.074	0.510	20.967700	-100.428787
X. C. San José Iturbide - El Arenal	46.83	1	2	26637	2.0	39.1	4.0	9.3	3.8	33.0	3.0	5.0	0.8	41.1	4.0	54.9	0.074	0.510	20.967638	-100.428946
X. C. San José Iturbide - El Arenal	46.83	3	1	14105	1.9	51.1	2.7	7.5	4.3	23.5	4.1	4.0	0.9	53.0	2.7	44.3	0.078	0.520	20.983874	-100.434971
X. C. San José Iturbide - El Arenal	46.83	3	2	15308	1.9	46.3	4.0	8.7	4.3	24.6	4.6	4.7	0.9	48.2	4.0	47.8	0.087	0.520	20.983784	-100.435128
X. C. Ent. San Miguel de Allende - Dr. Mora	61.93	1	1	15070	1.3	54.5	4.6	9.2	2.8	23.9	0.8	2.3	0.6	55.8	4.6	39.6	0.066	0.520	21.077068	-100.512548
X. C. Ent. San Miguel de Allende - Dr. Mora	61.93	1	2	16315	1.3	51.6	4.1	10.0	2.7	24.7	1.7	3.3	0.6	52.9	4.1	43.0	0.074	0.520	21.076959	-100.512677
X. C. San Luis de La Paz - Guanajuato	86.68	1	1	12878	1.1	51.6	3.5	10.2	2.3	26.1	1.7	2.7	0.8	52.7	3.5	43.8	0.066	0.523	21.270960	-100.589552
X. C. San Luis de La Paz - Guanajuato	86.68	1	2	14123	1.2	48.6	3.7	11.0	2.5	27.7	1.7	2.9	0.7	49.8	3.7	46.5	0.072	0.523	21.268858	-100.589308
T. Izq. San Diego de La Unión	119.07	1	1	10269	1.1	47.3	5.0	8.1	5.9	24.8	2.7	4.1	1.0	48.4	5.0	46.6	0.071	0.520	21.528080	-100.740079
T. Izq. San Diego de La Unión	119.07	1	2	11121	1.0	50.3	4.9	7.9	6.7	21.6	2.6	4.1	0.9	51.3	4.9	43.8	0.073	0.520	21.531293	-100.742087
T. Izq. San Diego de La Unión	119.07	3	1	11561	1.0	50.9	4.4	6.9	6.7	22.8	2.3	4.0	1.0	51.9	4.4	43.7	0.068	0.529	21.540841	-100.747153
T. Izq. San Diego de La Unión	119.07	3	2	12989	1.0	50.5	4.5	7.8	6.8	22.1	2.3	4.0	1.0	51.5	4.5	44.0	0.088	0.529	21.540758	-100.747335
Lim. Edos. Term. Gto. Ppia. S. L. P.	124.74																			
T. Der. Tierra Nueva	140.65	1	1	10892	9.8	43.0	5.8	8.5	2.4	21.6	3.2	4.9	0.8	52.8	5.8	41.4	0.074	0.541	21.688095	-100.691612
T. Der. Tierra Nueva	140.65	1	2	12847	11.1	43.1	5.3	8.8	2.1	21.1	3.4	4.5	0.6	54.2	5.3	40.5	0.073	0.541	21.688209	-100.691741
T. Der. Tierra Nueva	140.65	3	1	12322	10.0	42.6	5.6	8.5	2.3	22.0	3.4	4.7	0.9	52.6	5.6	41.8	0.062	0.521	21.704222	-100.684369
T. Der. Tierra Nueva	140.65	3	2	13413	9.0	43.4	5.7	8.1	2.6	22.4	3.5	4.5	0.8	52.4	5.7	41.9	0.064	0.521	21.704165	-100.684526
T. Izq. Santa María del Río	155.88	3	1	14568	8.5	46.3	5.8	8.2	2.3	21.2	3.1	4.3	0.3	54.8	5.8	39.4	0.072	0.505	21.838520	-100.734401
T. Izq. Santa María del Río	155.88	3	2	14292	7.8	44.3	6.0	8.9	2.7	21.6	3.5	4.4	0.8	52.1	6.0	41.9	0.070	0.505	21.838409	-100.734531
T. Izq. Villa de Reyes	176.35	1	1	13635	8.7	41.1	5.2	9.8	3.4	23.6	3.6	4.4	0.2	49.8	5.2	45.0	0.067	0.504	21.960309	-100.811195
T. Izq. Villa de Reyes	176.35	1	2	13442	9.4	40.3	5.9	9.7	3.3	23.7	3.1	4.4	0.2	49.7	5.9	44.4	0.076	0.504	21.960254	-100.811360
T. Izq. Villa de Reyes	176.35	3	1	24886	4.7	55.0	3.7	9.1	2.2	17.9	2.5	4.2	0.7	59.7	3.7	36.6	0.055	0.500	21.984945	-100.824537
T. Izq. Villa de Reyes	176.35	3	2	24918	5.1	52.5	4.0	10.0	2.4	17.9	2.4	4.9	0.8	57.6	4.0	38.4	0.052	0.500	21.984848	-100.824733
T. Izq. Villa de Arriaga (Cuota)	182.60	1	1	26871	5.9	60.8	7.9	4.6	2.4	12.7	1.8	3.1	0.8	66.7	7.9	25.4	0.079	0.532	22.011528	-100.838987
T. Izq. Villa de Arriaga (Cuota)	182.60	1	2	22240	5.9	60.6	8.1	4.6	2.5	12.5	1.8	3.2	0.8	66.5	8.1	25.4	0.094	0.532	22.011454	-100.839160

SAN LUIS POTOSI

17 CARR: Querétaro - San Luis Potosí

CLAVE: 00165

RUTA: MEX-057

AÑO: 2021

LUGAR	ESTACION				CLASIFICACION VEHICULAR EN PORCIENTO													COORDENADAS		
	KM	TE	SC	TDPA	M	A	B	C2	C3	T3S2	T3S3	T3S2R4	OTROS	A	B	C	K'	D	LATITUD	LONGITUD
X. C. Libramiento de San Luis Potosí	184.80	1	1	37261	2.3	66.7	4.6	4.9	2.0	15.1	1.7	2.2	0.5	69.0	4.6	26.4	0.071	0.525	22.033062	-100.850695
X. C. Libramiento de San Luis Potosí	184.80	1	2	33378	2.3	66.5	4.6	4.9	2.1	15.2	1.7	2.2	0.5	68.8	4.6	26.6	0.074	0.525	22.032979	-100.850839
X. Periférico de San Luis Potosí (Lateral)	197.50	1	1	21783	4.4	77.3	2.4	8.4	2.4	3.0	0.7	1.1	0.3	81.7	2.4	15.9	0.121	0.523	22.122051	-100.912879
X. Periférico de San Luis Potosí (Central)	197.50	1	1	46074	3.7	91.0	0.6	2.6	0.5	0.3	0.1	1.0	0.2	94.7	0.6	4.7	0.062	0.503	22.121932	-100.912955
X. Periférico de San Luis Potosí (Central)	197.50	1	2	46790	3.7	91.0	0.6	2.6	0.5	0.3	0.1	1.0	0.2	94.7	0.6	4.7	0.052	0.503	22.121787	-100.913069
X. Periférico de San Luis Potosí (Lateral)	197.50	1	2	19850	4.3	77.4	2.4	8.4	2.4	3.0	0.7	1.1	0.3	81.7	2.4	15.9	0.091	0.523	22.121504	-100.913298
San Luis Potosí	201.66																			

18 CARR: Ramal a Aeropuerto de S. L. P.

CLAVE: 24206

RUTA: MEX-057

AÑO: 2021

LUGAR	ESTACION				CLASIFICACION VEHICULAR EN PORCIENTO													COORDENADAS		
	KM	TE	SC	TDPA	M	A	B	C2	C3	T3S2	T3S3	T3S2R4	OTROS	A	B	C	K'	D	LATITUD	LONGITUD
T. C. San Luis Potosí - Matehuala	0.00	3	0	6264	6.0	84.2	0.9	4.1	1.8	1.4	0.2	1.2	0.2	90.2	0.9	8.9	0.079	0.508	22.225917	-100.917166
Aeropuerto de S. L. P.	6.00																			

19 CARR: Ramal a Ojo de Agua

CLAVE: 24023

RUTA: MEX-062

AÑO: 2021

LUGAR	ESTACION				CLASIFICACION VEHICULAR EN PORCIENTO													COORDENADAS		
	KM	TE	SC	TDPA	M	A	B	C2	C3	T3S2	T3S3	T3S2R4	OTROS	A	B	C	K'	D	LATITUD	LONGITUD
T. C. Ent. Carbonera - Ent. San Tiburcio	0.00	3	0	2769	5.2	80.7	0.4	11.6	0.2	1.7	0.1	0.1	0.0	85.9	0.4	13.7	0.083	0.529	23.718523	-100.650723
Ojo de Agua	6.23																			

20 CARR: Ramal a Rayón

CLAVE: 24626

RUTA: MEX-070

AÑO: 2021

LUGAR	ESTACION				CLASIFICACION VEHICULAR EN PORCIENTO													COORDENADAS		
	KM	TE	SC	TDPA	M	A	B	C2	C3	T3S2	T3S3	T3S2R4	OTROS	A	B	C	K'	D	LATITUD	LONGITUD
T. C. (Cd. Valles - San Luis Potosí)	0.00																			
Rayón	1.50	1	0	4367	4.5	78.3	1.2	12.6	0.5	2.6	0.3	0.0	0.0	82.8	1.2	16.0	0.076	0.502	21.847830	-99.629877

21 CARR: San Juan del Río - Xilitla

CLAVE: 00183

RUTA: MEX-120

AÑO: 2021

LUGAR	ESTACION				CLASIFICACION VEHICULAR EN PORCIENTO													COORDENADAS		
	KM	TE	SC	TDPA	M	A	B	C2	C3	T3S2	T3S3	T3S2R4	OTROS	A	B	C	K'	D	LATITUD	LONGITUD
San Juan del Río	0.00																			
T. Der. Libramiento de San Juan del Río	5.20	3	1	13961	2.9	89.2	1.4	2.8	1.4	1.6	0.4	0.3	0.0	92.1	1.4	6.5	0.102	0.501	20.424461	-99.976086

SAN LUIS POTOSI

21 CARR: San Juan del Río - Xilitla

CLAVE: 00183

RUTA: MEX-120

AÑO: 2021

LUGAR	ESTACION				CLASIFICACION VEHICULAR EN PORCIENTO										COORDENADAS					
	KM	TE	SC	TDPA	M	A	B	C2	C3	T3S2	T3S3	T3S2R4	OTROS	A	B	C	K'	D	LATITUD	LONGITUD
T. Der. Libramiento de San Juan del Río	5.20	3	2	13914	3.1	90.0	1.0	2.6	1.4	1.2	0.5	0.2	0.0	93.1	1.0	5.9	0.090	0.501	20.424542	-99.976202
T. Der. Tequisquiapan	19.80	1	1	9808	3.1	90.0	1.1	2.6	1.4	1.1	0.5	0.2	0.0	93.1	1.1	5.8	0.094	0.530	20.513143	-99.905785
T. Der. Tequisquiapan	19.80	1	2	11061	3.1	90.3	1.0	2.4	1.4	1.0	0.6	0.2	0.0	93.4	1.0	5.6	0.089	0.530	20.513242	-99.905862
T. Der. Tequisquiapan	19.80	3	1	8779	3.5	88.2	1.6	2.9	1.9	1.2	0.4	0.2	0.1	91.7	1.6	6.7	0.089	0.508	20.543666	-99.902003
T. Der. Tequisquiapan	19.80	3	2	9078	3.4	88.3	1.8	2.9	1.4	1.2	0.7	0.2	0.1	91.7	1.8	6.5	0.074	0.508	20.543638	-99.902118
Ezequiel Montes	36.50	1	1	7320	3.7	86.0	1.5	2.8	2.4	2.2	1.0	0.3	0.1	89.7	1.5	8.8	0.089	0.510	20.644997	-99.905577
Ezequiel Montes	36.50	1	2	7606	3.6	86.1	1.5	2.5	2.7	2.1	1.1	0.3	0.1	89.7	1.5	8.8	0.091	0.510	20.645026	-99.905691
Ezequiel Montes	36.50	3	1	6265	3.6	91.4	0.5	2.8	1.0	0.3	0.2	0.1	0.1	95.0	0.5	4.5	0.093	0.509	20.680927	-99.888340
Ezequiel Montes	36.50	3	2	6495	3.5	91.1	0.6	3.0	0.9	0.4	0.3	0.1	0.1	94.6	0.6	4.8	0.109	0.509	20.681019	-99.888437
Cadereyta	47.90	3	1	4851	2.9	84.7	0.4	4.7	3.3	1.3	2.1	0.5	0.1	87.6	0.4	12.0	0.098	0.519	20.702437	-99.801702
Cadereyta	47.90	3	2	5235	2.8	85.0	0.4	4.8	3.4	1.1	2.0	0.4	0.1	87.8	0.4	11.8	0.088	0.519	20.702516	-99.801720
Vizarrón de Montes	73.50	3	0	3430	0.8	72.8	0.9	12.6	5.4	1.7	4.9	0.3	0.6	73.6	0.9	25.5	0.080	0.505	20.847256	-99.713404
T. Der. San Joaquín	79.50	3	0	1459	1.7	80.4	1.2	12.1	2.1	1.3	1.0	0.0	0.2	82.1	1.2	16.7	0.090	0.520	20.885351	-99.707482
T. Izq. Higuerrillas	89.10	3	0	2081	1.4	77.8	2.2	14.6	1.7	1.2	1.0	0.0	0.1	79.2	2.2	18.6	0.104	0.514	20.950740	-99.749058
T. Izq. Peñamiller	103.00	3	0	1641	0.4	81.7	2.6	10.8	2.0	1.9	0.4	0.0	0.2	82.1	2.6	15.3	0.109	0.506	21.039196	-99.739531
Pinal de Amoles	140.00	3	0	2226	0.8	86.5	1.0	8.1	1.1	1.4	0.8	0.0	0.3	87.3	1.0	11.7	0.086	0.503	21.138747	-99.620214
Jalpan de Serra	179.30	3	0	7567	2.3	87.5	0.5	8.3	0.6	0.4	0.1	0.2	0.1	89.8	0.5	9.7	0.084	0.503	21.205839	-99.451419
Landa de Matamoros	201.60	3	0	3065	2.0	85.1	0.9	9.3	0.7	1.4	0.4	0.0	0.2	87.1	0.9	12.0	0.076	0.519	21.186613	-99.312786
El Lobo	236.40	3	0	1049	1.9	83.9	2.3	6.1	2.2	2.0	0.7	0.0	0.9	85.8	2.3	11.9	0.096	0.513	21.292191	-99.116060
Lim. Edos. Term. Qro. Ppia. S. L. P.	238.33																			
Xilitla	266.40	1	0	2461	7.5	79.3	0.8	8.8	1.0	1.8	0.5	0.1	0.2	86.8	0.8	12.4	0.110	0.504	21.379041	-98.999004
T. C. Portezuelo - Cd. Valles	276.98	1	0	3796	5.6	81.7	1.3	7.8	1.2	1.8	0.4	0.0	0.2	87.3	1.3	11.4	0.090	0.501	21.442543	-98.929836

22 CARR: San Luis Potosí - Ent. Arcinas

CLAVE: 00134

RUTA: MEX-049

AÑO: 2021

LUGAR	ESTACION				CLASIFICACION VEHICULAR EN PORCIENTO										COORDENADAS					
	KM	TE	SC	TDPA	M	A	B	C2	C3	T3S2	T3S3	T3S2R4	OTROS	A	B	C	K'	D	LATITUD	LONGITUD
T. C. San Luis Potosí - Matehuala	0.00																			
T. Izq. Periférico de San Luis Potosí	9.35	3	1	11758	5.6	84.3	1.2	3.7	1.2	1.9	0.8	0.9	0.4	89.9	1.2	8.9	0.099	0.514	22.208576	-101.035605
T. Izq. Periférico de San Luis Potosí	9.35	3	2	11133	4.8	82.9	2.5	3.7	1.4	2.3	1.1	1.0	0.3	87.7	2.5	9.8	0.087	0.514	22.208466	-101.035672
Mexquitic	22.50	1	1	7698	5.0	73.4	4.1	3.6	2.5	6.2	1.9	2.7	0.6	78.4	4.1	17.5	0.112	0.503	22.247432	-101.101586
Mexquitic	22.50	1	2	7618	5.4	72.2	3.9	3.5	2.6	6.7	2.1	2.9	0.7	77.6	3.9	18.5	0.118	0.503	22.247332	-101.101633
Mexquitic	22.50	3	1	5884	6.7	62.4	5.7	4.3	2.3	10.9	2.5	4.2	1.0	69.1	5.7	25.2	0.113	0.520	22.256180	-101.125357
Mexquitic	22.50	3	2	6378	5.6	62.8	5.8	4.5	2.3	11.1	2.5	4.4	1.0	68.4	5.8	25.8	0.100	0.520	22.256116	-101.125405
T. Der. Charcas	30.90	1	1	6397	4.5	68.5	3.2	4.4	3.0	9.0	2.7	3.8	0.9	73.0	3.2	23.8	0.093	0.510	22.309607	-101.157704

SAN LUIS POTOSI

22 CARR: San Luis Potosi - Ent. Arcinas

CLAVE: 00134

RUTA: MEX-049

AÑO: 2021

LUGAR	ESTACION				CLASIFICACION VEHICULAR EN PORCIENTO													COORDENADAS		
	KM	TE	SC	TDPA	M	A	B	C2	C3	T3S2	T3S3	T3S2R4	OTROS	A	B	C	K'	D	LATITUD	LONGITUD
T. Der. Charcas	30.90	1	2	6152	5.2	68.0	3.0	4.3	3.0	8.9	2.5	4.1	1.0	73.2	3.0	23.8	0.094	0.510	22.309515	-101.157771
T. Der. Charcas	30.90	3	1	4543	4.5	62.2	6.0	4.2	2.5	12.2	3.2	4.2	1.0	66.7	6.0	27.3	0.084	0.501	22.318340	-101.170425
T. Der. Charcas	30.90	3	2	4555	4.5	63.2	4.4	5.5	2.8	11.7	2.8	4.1	1.0	67.7	4.4	27.9	0.088	0.501	22.318249	-101.170473
Lim. Edos. Term. S. L. P. Ppia. Zac.	55.13																			
Lim. Edos. Term. Zac. Ppia. S. L. P.	89.30																			
T. Der. Salinas	99.00	1	1	3542	4.2	60.2	5.8	4.2	2.4	14.5	3.0	4.7	1.0	64.4	5.8	29.8	0.071	0.539	22.604242	-101.708788
T. Der. Salinas	99.00	1	2	4139	4.2	57.7	6.0	4.2	3.1	15.4	3.3	5.2	0.9	61.9	6.0	32.1	0.079	0.539	22.604133	-101.708834
T. Der. Salinas	99.00	3	1	3418	4.1	57.0	6.9	4.8	2.7	15.4	3.2	4.9	1.0	61.1	6.9	32.0	0.068	0.548	22.619315	-101.738116
T. Der. Salinas	99.00	3	2	4142	4.1	58.4	5.6	4.1	3.2	15.1	3.4	5.2	0.9	62.5	5.6	31.9	0.078	0.548	22.619151	-101.738162
Lim. Edos. Term. S. L. P. Ppia. Zac.	122.47																			
T. Izq. Pánfilo Natera	139.00	1	1	3224	1.9	50.5	4.9	14.1	3.5	13.1	3.8	6.6	1.6	52.4	4.9	42.7	0.075	0.501	22.679211	-102.098795
T. Izq. Pánfilo Natera	139.00	1	2	3239	1.9	50.1	5.0	14.4	3.6	13.2	3.6	6.7	1.5	52.0	5.0	43.0	0.089	0.501	22.678631	-102.096677
Ent. Arcinas	162.98	1	1	4261	1.5	58.8	5.0	12.1	3.2	10.8	2.9	4.9	0.8	60.3	5.0	34.7	0.083	0.530	22.719792	-102.324418
Ent. Arcinas	162.98	1	2	3777	1.6	59.0	4.9	12.0	3.1	10.7	3.0	5.0	0.7	60.6	4.9	34.5	0.072	0.530	22.719508	-102.324180

23 CARR: San Luis Potosi - Lagos de Moreno

CLAVE: 00133

RUTA: MEX-070-080

AÑO: 2021

LUGAR	ESTACION				CLASIFICACION VEHICULAR EN PORCIENTO													COORDENADAS		
	KM	TE	SC	TDPA	M	A	B	C2	C3	T3S2	T3S3	T3S2R4	OTROS	A	B	C	K'	D	LATITUD	LONGITUD
San Luis Potosi	0.00	3	1	19725	14.2	77.3	0.3	1.5	0.7	2.0	0.4	2.9	0.7	91.5	0.3	8.2	0.078	0.519	22.134249	-101.030416
San Luis Potosi	0.00	3	2	18304	14.2	83.4	0.3	0.5	0.3	0.4	0.1	0.5	0.3	97.6	0.3	2.1	0.076	0.519	22.134123	-101.030336
X. Periférico de San Luis Potosi	8.41	3	0	10808	8.7	75.7	2.2	6.9	1.7	1.8	0.7	1.6	0.7	84.4	2.2	13.4	0.073	0.595	22.127757	-101.045530
El Tepetate	41.90	1	0	7877	3.3	70.0	2.7	3.8	2.7	10.3	2.1	4.8	0.3	73.3	2.7	24.0	0.095	0.526	22.028539	-101.220369
El Tepetate	41.90	3	0	7569	3.2	68.3	3.5	3.8	2.4	11.0	2.4	4.9	0.5	71.5	3.5	25.0	0.080	0.518	22.006716	-101.250705
Villa de Arriaga	61.90	3	0	4416	4.0	66.5	3.3	8.6	2.6	9.3	3.1	2.0	0.6	70.5	3.3	26.2	0.079	0.519	21.896753	-101.409895
Lim. Edos. Term. S. L. P. Ppia. Zac.	70.23																			
Lim. Edos. Term. Zac. Ppia. Jal.	82.94																			
Ojuelos de Jalisco	83.20	1	0	6095	12.4	64.6	3.8	6.0	2.2	6.4	2.4	1.2	1.0	77.0	3.8	19.2	0.077	0.514	21.875779	-101.570754
Ojuelos de Jalisco	83.20	3	0	3151	5.6	56.3	4.6	7.2	3.2	12.3	5.3	5.1	0.4	61.9	4.6	33.5	0.071	0.503	21.854372	-101.593872
X. C. Lagos de Moreno - San Luis Potosi (Cuota)	140.00	1	0	3669	3.6	77.9	2.7	5.8	2.4	4.4	1.7	1.2	0.3	81.5	2.7	15.8	0.101	0.523	21.451439	-101.803415
X. C. León - Aguascalientes	146.90	1	1	5788	7.8	58.1	4.2	4.8	3.6	13.4	2.7	5.1	0.3	65.9	4.2	29.9	0.112	0.507	21.375864	-101.894213
X. C. León - Aguascalientes	146.90	1	2	5958	7.9	60.5	3.4	5.2	2.9	12.5	1.9	5.4	0.3	68.4	3.4	28.2	0.112	0.507	21.375775	-101.894153
Lagos de Moreno	150.00																			

SAN LUIS POTOSI

24 CARR: San Luis Potosí - Matehuala

CLAVE: 24508

RUTA: MEX-057

AÑO: 2021

LUGAR	ESTACION				CLASIFICACION VEHICULAR EN PORCIENTO												COORDENADAS			
	KM	TE	SC	TDPA	M	A	B	C2	C3	T3S2	T3S3	T3S2R4	OTROS	A	B	C	K'	D	LATITUD	LONGITUD
San Luis Potosí	0.00																			
X. Periférico de San Luis Potosí	7.36	3	1	16224	3.5	81.4	1.6	4.0	2.4	3.7	2.1	1.0	0.3	84.9	1.6	13.5	0.078	0.509	22.207173	-100.919966
X. Periférico de San Luis Potosí	7.36	3	2	16827	3.0	78.9	2.4	5.2	2.5	3.7	2.6	1.3	0.4	81.9	2.4	15.7	0.085	0.509	22.207226	-100.920054
Ventura (X. Nuevo Libramiento de SLP)	33.20	3	1	16294	2.3	48.8	4.5	4.4	2.8	29.1	3.6	4.3	0.2	51.1	4.5	44.4	0.094	0.506	22.339287	-100.797533
Ventura (X. Nuevo Libramiento de SLP)	33.20	3	2	15932	2.2	48.6	4.6	4.1	2.9	29.3	3.7	4.5	0.1	50.8	4.6	44.6	0.095	0.506	22.339316	-100.798135
T. Der. Villa Hidalgo	45.94	1	1	14728	1.5	47.5	4.1	5.5	1.8	29.3	4.1	5.7	0.5	49.0	4.1	46.9	0.056	0.508	22.418008	-100.718913
T. Der. Villa Hidalgo	45.94	1	2	15227	1.4	47.1	4.2	5.6	1.8	29.4	4.2	5.8	0.5	48.5	4.2	47.3	0.063	0.508	22.421575	-100.716043
T. Der. Villa Hidalgo	45.94	3	1	14141	1.1	50.1	4.4	6.0	1.6	27.6	3.8	4.9	0.5	51.2	4.4	44.4	0.062	0.519	22.433625	-100.710139
T. Der. Villa Hidalgo	45.94	3	2	15232	1.0	51.6	4.1	6.7	1.6	25.7	4.0	4.8	0.5	52.6	4.1	43.3	0.062	0.519	22.433667	-100.710422
T. Izq. Villa Arista	61.35	1	1	14416	1.1	47.5	4.4	5.8	2.0	29.7	3.7	5.2	0.6	48.6	4.4	47.0	0.065	0.518	22.566683	-100.639750
T. Izq. Villa Arista	61.35	1	2	15506	1.0	47.3	4.4	5.9	2.0	29.8	3.7	5.3	0.6	48.3	4.4	47.3	0.073	0.518	22.566827	-100.639849
T. Der. Ríoverde (Cuota)	65.22	1	1	14953	1.9	55.1	3.8	5.1	2.1	23.9	3.5	4.2	0.4	57.0	3.8	39.2	0.068	0.514	22.581094	-100.611542
T. Der. Ríoverde (Cuota)	65.22	1	2	14116	1.7	54.8	3.9	5.5	2.2	23.6	3.6	4.3	0.4	56.5	3.9	39.6	0.073	0.514	22.581246	-100.611621
T. Der. Guadalcázar	75.70	1	1	11404	1.2	46.9	5.4	6.2	2.1	28.4	3.0	6.2	0.6	48.1	5.4	46.5	0.056	0.508	22.627042	-100.527875
T. Der. Guadalcázar	75.70	1	2	11779	1.1	45.9	5.9	6.3	2.3	28.1	3.3	6.5	0.6	47.0	5.9	47.1	0.051	0.508	22.627149	-100.528032
T. Der. Guadalcázar	75.70	3	1	10777	1.1	44.0	5.1	6.1	2.3	32.0	2.9	5.8	0.7	45.1	5.1	49.8	0.074	0.519	22.643978	-100.516269
T. Der. Guadalcázar	75.70	3	2	11615	1.1	45.6	4.9	6.0	2.3	30.6	3.0	5.8	0.7	46.7	4.9	48.4	0.065	0.519	22.644049	-100.516435
T. Der. Cd. del Maíz	109.62	3	1	9211	1.3	46.8	4.7	7.2	2.0	28.9	3.0	5.6	0.5	48.1	4.7	47.2	0.062	0.510	22.941292	-100.461599
T. Der. Cd. del Maíz	109.62	3	2	9601	1.2	48.0	5.7	8.6	1.9	24.3	3.6	6.2	0.5	49.2	5.7	45.1	0.070	0.510	22.941227	-100.461764
La Bonita	171.40	1	1	8899	1.0	47.3	5.6	9.4	2.0	28.1	2.7	3.4	0.5	48.3	5.6	46.1	0.091	0.514	23.477983	-100.613119
La Bonita	171.40	1	2	9405	1.2	46.7	5.8	9.2	2.1	28.0	3.1	3.5	0.4	47.9	5.8	46.3	0.070	0.514	23.477945	-100.613294
Matehuala	187.39	1	1	10274	1.0	44.3	6.1	7.4	3.6	29.2	2.8	5.2	0.4	45.3	6.1	48.6	0.063	0.513	23.574518	-100.631196
Matehuala	187.39	1	2	10830	0.7	46.2	5.8	7.2	3.8	27.2	3.4	5.3	0.4	46.9	5.8	47.3	0.059	0.513	23.574452	-100.631479

25 CARR: T. C. (Ent. El Huizache- Ant. Morelos)-El Salto

CLAVE: 24204

RUTA: MEX-080

AÑO: 2021

LUGAR	ESTACION				CLASIFICACION VEHICULAR EN PORCIENTO												COORDENADAS			
	KM	TE	SC	TDPA	M	A	B	C2	C3	T3S2	T3S3	T3S2R4	OTROS	A	B	C	K'	D	LATITUD	LONGITUD
T. C. El Huizache - Ant. Morelos	0.00	3	0	2905	3.7	84.8	0.1	7.6	1.2	1.7	0.3	0.4	0.2	88.5	0.1	11.4	0.082	0.516	22.535132	-99.307408
Salto del Agua	12.00																			

SAN LUIS POTOSI

26 CARR: T. C. (Qro - S.L.P.) - Tierra Nueva

CLAVE: 24203

RUTA: MEX-057

AÑO: 2021

LUGAR	ESTACION				CLASIFICACION VEHICULAR EN PORCIENTO													COORDENADAS		
	KM	TE	SC	TDPA	M	A	B	C2	C3	T3S2	T3S3	T3S2R4	OTROS	A	B	C	K'	D	LATITUD	LONGITUD
T. C. Querétaro - San Luis Potosí	0.00	3	0	1905	1.6	78.9	0.6	12.5	3.4	1.4	1.5	0.0	0.1	80.5	0.6	18.9	0.087	0.504	21.693791	-100.684685
Tierra Nueva	13.10																			

27 CARR: T. C. (S.L.P. - Matehuala) - Villa Hidalgo

CLAVE: 24619

RUTA: MEX-057

AÑO: 2021

LUGAR	ESTACION				CLASIFICACION VEHICULAR EN PORCIENTO													COORDENADAS		
	KM	TE	SC	TDPA	M	A	B	C2	C3	T3S2	T3S3	T3S2R4	OTROS	A	B	C	K'	D	LATITUD	LONGITUD
Paso por Villa Hidalgo (Sur)	0.00	3	0	2348	8.4	70.6	3.1	6.8	1.4	5.5	1.8	1.9	0.5	79.0	3.1	17.9	0.092	0.515	22.431559	-100.703059
Paso por Villa Hidalgo (Norte)	10.20	1	0	2688	1.3	83.2	3.3	6.1	0.9	2.9	1.9	0.3	0.1	84.5	3.3	12.2	0.083	0.563	22.468419	-100.668238

28 CARR: Tamazunchale - San Felipe Orizatlán

CLAVE: 00609

RUTA: MEX-085

AÑO: 2021

LUGAR	ESTACION				CLASIFICACION VEHICULAR EN PORCIENTO													COORDENADAS		
	KM	TE	SC	TDPA	M	A	B	C2	C3	T3S2	T3S3	T3S2R4	OTROS	A	B	C	K'	D	LATITUD	LONGITUD
T. C. Portezuelo - Cd. Valles	0.00	3	0	10964	22.9	66.7	0.4	7.2	0.6	0.5	1.3	0.3	0.1	89.6	0.4	10.0	0.091	0.517	21.250466	-98.766029
Lim. Edos. Term. S. L. P. Ppia. Hgo.	18.50																			
San Felipe Orizatlán	27.10	1	0	2738	17.3	71.3	0.9	7.1	0.8	1.8	0.6	0.0	0.2	88.6	0.9	10.5	0.083	0.505	21.170689	-98.617899

29 CARR: Lagos de Moreno - Villa de Arriaga (Cuota)

CLAVE:

RUTA: MEX-080D

AÑO: 2021

LUGAR	ESTACION				CLASIFICACION VEHICULAR EN PORCIENTO													COORDENADAS		
	KM	TE	SC	TDPA	M	A	B	C2	C3	T3S2	T3S3	T3S2R4	OTROS	A	B	C	K'	D	LATITUD	LONGITUD
X. C. San Luis Potosí - Lagos de Moreno	12.10	3	0	4961	6.7	40.8	5.3	5.2	2.4	23.3	3.3	10.2	2.8	47.5	5.3	47.2	0.072	0.522	21.449054	-101.812684
T. Der. El Cuarenta	22.20	3	0	8599	8.8	39.0	8.3	5.5	3.2	22.9	4.3	6.8	1.2	47.8	8.3	43.9	0.059	0.512	21.508528	-101.738689
Lim. Edos. Term. Jal. Ppia. Gto.	46.30																			
X. C. Dolores Hidalgo - Ojuelos de Jalisco	58.18	1	0	9369	1.6	69.4	6.9	16.3	1.7	0.9	1.6	1.3	0.3	71.0	6.9	22.1	0.066	0.505	21.739165	-101.524398
Lim. Edos. Term. Gto. Ppia. SLP.	68.63																			
X. C. San Luis Potosí - Villa de Arriaga (Cuota)	78.00	1	0	7849	3.8	44.8	7.5	11.2	2.9	17.4	2.9	8.5	1.0	48.6	7.5	43.9	0.049	0.511	21.886456	-101.409166

30 CARR: Libramiento de Matehuala (Cuota)

CLAVE: 24205

RUTA: MEX-057D

AÑO: 2021

LUGAR	ESTACION				CLASIFICACION VEHICULAR EN PORCIENTO													COORDENADAS		
	KM	TE	SC	TDPA	M	A	B	C2	C3	T3S2	T3S3	T3S2R4	OTROS	A	B	C	K'	D	LATITUD	LONGITUD
T. C. San Luis Potosí - Matehuala	0.00	3	1	7642	1.6	34.8	6.5	5.6	1.9	39.1	3.2	6.7	0.6	36.4	6.5	57.1	0.068	0.529	23.602898	-100.621983
T. C. San Luis Potosí - Matehuala	0.00	3	2	6797	1.5	35.0	5.8	5.6	2.2	39.1	3.6	6.7	0.5	36.5	5.8	57.7	0.064	0.529	23.603058	-100.622249



SAN LUIS POTOSI

30 CARR: Libramiento de Matehuala (Cuota)

CLAVE: 24205

RUTA: MEX-057D

AÑO: 2021

LUGAR	ESTACION				CLASIFICACION VEHICULAR EN PORCIENTO														COORDENADAS	
	KM	TE	SC	TDPA	M	A	B	C2	C3	T3S2	T3S3	T3S2R4	OTROS	A	B	C	K'	D	LATITUD	LONGITUD
Plaza de Cobro Matehuala	7.00	2	1	6881	0.1	26.7	1.6	5.6	3.5	49.9	3.8	7.6	1.2	26.8	1.6	71.6	0.073	0.500	23.664125	-100.607230
Plaza de Cobro Matehuala	7.00	2	2	6881	0.1	26.7	1.6	5.6	3.5	49.9	3.8	7.6	1.2	26.8	1.6	71.6	0.073	0.500	23.664125	-100.607230
T. C. Matehuala - Ent. Puerto México	14.20	1	1	6536	1.6	32.0	7.2	7.9	1.9	38.8	3.8	6.1	0.7	33.6	7.2	59.2	0.069	0.515	23.698080	-100.612154
T. C. Matehuala - Ent. Puerto México	14.20	1	2	6160	1.6	32.3	7.2	7.7	1.7	39.1	3.8	6.0	0.6	33.9	7.2	58.9	0.062	0.515	23.698032	-100.612448

31 CARR: Libramiento Norponiente de San Luis Potosí (Cuota)

CLAVE:

RUTA: MEX-057D

AÑO: 2021

LUGAR	ESTACION				CLASIFICACION VEHICULAR EN PORCIENTO														COORDENADAS	
	KM	TE	SC	TDPA	M	A	B	C2	C3	T3S2	T3S3	T3S2R4	OTROS	A	B	C	K'	D	LATITUD	LONGITUD
T. Libramiento Oriente de San Luis Potosí (Cuota)	0.00																			
X. C. San Luis Potosí - Matehuala	5.60	1	0	3709	8.4	28.7	9.5	5.7	4.0	24.8	6.6	9.6	2.7	37.1	9.5	53.4	0.065	0.509	22.254990	-100.856559
X. C. San Luis Potosí - Matehuala	5.60	3	0	4911	5.4	25.9	7.8	7.1	3.0	32.2	4.9	12.8	0.9	31.3	7.8	60.9	0.068	0.502	22.282635	-100.894407
Plaza de Cobro Vicente Rangel Lozano	17.40	2	0	4916	0.2	23.4	1.8	4.3	5.4	37.6	6.0	18.3	3.0	23.6	1.8	74.6	0.067	0.500	22.299904	-100.971154
T. C. San Luis Potosí - Ent. Arcinas	31.20	1	0	4813	1.5	27.8	5.0	3.5	4.7	33.2	6.1	17.2	1.0	29.3	5.0	65.7	0.057	0.500	22.226652	-101.049445
T. C. San Luis Potosí - Ent. Arcinas	31.20	3	0	5203	4.1	30.0	6.2	5.3	6.4	25.6	7.7	13.7	1.0	34.1	6.2	59.7	0.047	0.511	22.208546	-101.058773
T. C. San Luis Potosí Lagos de Moreno	54.50																			

32 CARR: Libramiento Oriente de San Luis Potosí (Cuota)

CLAVE: 24009

RUTA: MEX-057D

AÑO: 2021

LUGAR	ESTACION				CLASIFICACION VEHICULAR EN PORCIENTO														COORDENADAS	
	KM	TE	SC	TDPA	M	A	B	C2	C3	T3S2	T3S3	T3S2R4	OTROS	A	B	C	K'	D	LATITUD	LONGITUD
T. C. Querétaro - San Luis Potosí	0.00																			
X. C. Cd. Valles - San Luis Potosí	11.20	1	1	10588	1.1	34.2	4.7	7.6	3.8	38.1	4.4	5.4	0.7	35.3	4.7	60.0	0.063	0.513	22.118774	-100.826011
X. C. Cd. Valles - San Luis Potosí	11.20	1	2	11145	1.1	33.1	5.2	8.3	4.0	36.2	5.3	6.1	0.7	34.2	5.2	60.6	0.055	0.513	22.118790	-100.826195
Plaza de Cobro San Nicolás de Los Jassos	11.22	2	1	8839	0.1	23.6	1.8	5.7	4.7	49.3	4.4	8.8	1.6	23.7	1.8	74.5	0.067	0.500	22.129780	-100.825002
Plaza de Cobro San Nicolás de Los Jassos	11.22	2	2	8839	0.1	23.6	1.8	5.7	4.7	49.3	4.4	8.8	1.6	23.7	1.8	74.5	0.067	0.500	22.129780	-100.825002
T. C. San Luis Potosí - Matehuala	33.76	1	1	8670	1.8	30.8	5.9	6.3	2.8	41.2	4.7	5.7	0.8	32.6	5.9	61.5	0.063	0.507	22.312357	-100.805545
T. C. San Luis Potosí - Matehuala	33.76	1	2	8916	1.8	30.6	5.9	6.3	2.8	41.3	4.7	5.7	0.9	32.4	5.9	61.7	0.079	0.507	22.312392	-100.805720

33 CARR: Rayón - Ent. Tamuín (Cuota)

CLAVE:

RUTA: MEX-070D

AÑO: 2021

LUGAR	ESTACION				CLASIFICACION VEHICULAR EN PORCIENTO														COORDENADAS	
	KM	TE	SC	TDPA	M	A	B	C2	C3	T3S2	T3S3	T3S2R4	OTROS	A	B	C	K'	D	LATITUD	LONGITUD
Rayón	0.00																			
Plaza de Cobro Rayón	2.05	2	0	3700	0.5	90.7	1.3	2.1	1.6	1.8	0.9	0.9	0.2	91.2	1.3	7.5	0.090	0.500	21.863597	-99.623291

SAN LUIS POTOSI

33 CARR: Rayón - Ent. Tamuín (Cuota)

CLAVE:

RUTA: MEX-070D

AÑO: 2021

LUGAR	ESTACION				CLASIFICACION VEHICULAR EN PORCIENTO														COORDENADAS	
	KM	TE	SC	TDPA	M	A	B	C2	C3	T3S2	T3S3	T3S2R4	OTROS	A	B	C	K'	D	LATITUD	LONGITUD
Vicente Guerrero	19.70	1	0	3305	5.3	61.2	6.6	5.6	4.4	6.8	4.3	4.8	1.0	66.5	6.6	26.9	0.071	0.519	21.865818	-99.498848
Vicente Guerrero	19.70	3	0	3331	4.1	61.6	6.7	5.9	4.2	7.2	4.4	4.9	1.0	65.7	6.7	27.6	0.072	0.502	21.864158	-99.477841
Plaza de Cobro La Pitahaya	62.00	2	0	4705	0.8	90.7	1.3	2.0	1.9	1.5	0.9	0.7	0.2	91.5	1.3	7.2	0.090	0.500	21.967581	-99.174618
Ent. La Pitahaya	68.58	1	0	3340	4.0	69.3	5.7	5.7	2.6	6.4	2.5	3.0	0.8	73.3	5.7	21.0	0.072	0.507	22.005730	-99.125520
Ent. La Pitahaya	68.58	3	0	1962	4.8	57.4	7.4	5.5	3.4	8.6	3.7	8.2	1.0	62.2	7.4	30.4	0.078	0.503	21.998414	-99.111609
Plaza de Cobro La Calera	89.60	2	0	1315	0.4	48.6	1.1	3.5	4.2	17.8	6.7	15.3	2.4	49.0	1.1	49.9	0.090	0.500	21.904164	-98.955523
X. C. Cd. Valles - Tampico	107.33	1	0	2018	6.5	56.8	7.0	4.5	3.0	9.9	4.5	7.0	0.8	63.3	7.0	29.7	0.092	0.527	21.956409	-98.823175
X. C. Tamuín - Xolol	112.53	1	0	2109	6.3	57.6	7.3	3.6	2.4	10.1	4.3	7.6	0.8	63.9	7.3	28.8	0.083	0.504	21.980343	-98.776424
X. C. Cd. Valles - Tampico	117.30	1	0	1743	7.0	51.6	7.9	4.6	2.9	10.4	5.9	9.2	0.5	58.6	7.9	33.5	0.077	0.518	21.994260	-98.735039

34 CARR: Charcas - Villa Santo Domingo

CLAVE: 24624

RUTA: SLP-017

AÑO: 2021

LUGAR	ESTACION				CLASIFICACION VEHICULAR EN PORCIENTO														COORDENADAS	
	KM	TE	SC	TDPA	M	A	B	C2	C3	T3S2	T3S3	T3S2R4	OTROS	A	B	C	K'	D	LATITUD	LONGITUD
Charcas	0.00	3	0	1880	24.7	59.2	3.1	9.6	1.9	1.0	0.3	0.1	0.1	83.9	3.1	13.0	0.128	0.513	23.138097	-101.131505
Villa Santo Domingo	75.00																			

35 CARR: Ébano - Estación Manuel

CLAVE: 24624

RUTA: SLP-TAM

AÑO: 2021

LUGAR	ESTACION				CLASIFICACION VEHICULAR EN PORCIENTO														COORDENADAS	
	KM	TE	SC	TDPA	M	A	B	C2	C3	T3S2	T3S3	T3S2R4	OTROS	A	B	C	K'	D	LATITUD	LONGITUD
Ébano	0.00	3	0	2683	19.6	66.0	0.2	9.5	1.1	2.1	0.6	0.7	0.2	85.6	0.2	14.2	0.098	0.500	22.234186	-98.365722
Lím. de Edos. Term. S. L. P. Ppia. Ver.	2.71																			
Lím. de Edos. Term. Ver. Ppia. S. L. P.	3.95																			
Lím. de Edos. Term. S. L. P. Ppia. Ver.	5.00																			
Lím. de Edos. Term. Ver. Ppia. Tamps.	25.00																			
Estación Manuel	65.60																			

36 CARR: Matehuala - La Paz

CLAVE: 24621

RUTA: SLP-020

AÑO: 2021

LUGAR	ESTACION				CLASIFICACION VEHICULAR EN PORCIENTO														COORDENADAS	
	KM	TE	SC	TDPA	M	A	B	C2	C3	T3S2	T3S3	T3S2R4	OTROS	A	B	C	K'	D	LATITUD	LONGITUD
Matehuala	0.00	3	1	2776	17.5	72.6	0.1	8.4	0.6	0.4	0.2	0.1	0.1	90.1	0.1	9.8	0.070	0.520	23.669973	-100.654072
Matehuala	0.00	3	2	3077	21.4	68.1	0.1	9.2	0.6	0.3	0.1	0.1	0.1	89.5	0.1	10.4	0.073	0.520	23.669949	-100.654181
La Paz	8.00	1	1	2547	26.0	66.2	0.5	6.1	0.5	0.5	0.1	0.1	0.0	92.2	0.5	7.3	0.097	0.500	23.680216	-100.700874

SAN LUIS POTOSI

36 CARR: Matehuala - La Paz

CLAVE: 24621

RUTA: SLP-020

AÑO: 2021

LUGAR	ESTACION				CLASIFICACION VEHICULAR EN PORCIENTO														COORDENADAS	
	KM	TE	SC	TDPA	M	A	B	C2	C3	T3S2	T3S3	T3S2R4	OTROS	A	B	C	K'	D	LATITUD	LONGITUD
La Paz	8.00	1	2	2521	24.3	67.6	0.5	6.5	0.5	0.4	0.1	0.1	0.0	91.9	0.5	7.6	0.080	0.500	23.680133	-100.700769

37 CARR: Matehuala - La Poza

CLAVE: 00086

RUTA: SLP-029-NL-061

AÑO: 2021

LUGAR	ESTACION				CLASIFICACION VEHICULAR EN PORCIENTO														COORDENADAS	
	KM	TE	SC	TDPA	M	A	B	C2	C3	T3S2	T3S3	T3S2R4	OTROS	A	B	C	K'	D	LATITUD	LONGITUD
Matehuala	0.00	3	0	4795	8.9	70.1	1.3	13.5	3.0	2.1	0.6	0.3	0.2	79.0	1.3	19.7	0.080	0.512	23.666283	-100.600860
Lim. Edos. Term. S. L. P. Ppia. N. L.	19.70																			
Lim. Edos. Term. N. L. Ppia. S. L. P.	19.90																			
Lim. Edos. Term. S. L. P. Ppia. N. L.	21.53																			
Doctor Arroyo	49.00	1	0	4558	3.7	76.7	1.0	13.4	2.6	1.8	0.3	0.4	0.1	80.4	1.0	18.6	0.074	0.503	23.689250	-100.218012
La Ascención	131.00	1	0	919	2.9	79.1	2.6	12.2	1.4	1.8	0.0	0.0	0.0	82.0	2.6	15.4	0.078	0.520	24.321369	-99.905749

38 CARR: Periférico de San Luis Potosí

CLAVE: 24618

RUTA: SLP-032

AÑO: 2021

LUGAR	ESTACION				CLASIFICACION VEHICULAR EN PORCIENTO														COORDENADAS	
	KM	TE	SC	TDPA	M	A	B	C2	C3	T3S2	T3S3	T3S2R4	OTROS	A	B	C	K'	D	LATITUD	LONGITUD
T. C. San Luis Potosí - Ent. Arcinas	0.00																			
X. C. Querétaro - San Luis Potosí (Lateral)	22.00	3	1	7146	6.9	71.5	2.7	7.2	2.9	4.5	1.8	2.0	0.5	78.4	2.7	18.9	0.073	0.529	22.134908	-100.916959
X. C. Querétaro - San Luis Potosí (Central)	22.00	3	1	16386	7.9	73.7	1.6	7.1	2.5	3.4	1.4	1.9	0.5	81.6	1.6	16.8	0.085	0.501	22.134898	-100.917056
X. C. Querétaro - San Luis Potosí (Lateral)	22.00	3	2	8022	6.9	71.5	2.6	7.1	3.0	4.5	1.8	2.0	0.6	78.4	2.6	19.0	0.083	0.529	22.134923	-100.917240
X. C. Querétaro - San Luis Potosí (Central)	22.00	3	2	18080	7.9	73.7	1.6	7.1	2.5	3.4	1.4	1.9	0.5	81.6	1.6	16.8	0.076	0.501	22.134915	-100.917143
X. C. San Luis Potosí - Cd. Valles	25.00	3	1	19811	9.8	80.4	1.0	4.2	1.3	1.5	0.5	1.0	0.3	90.2	1.0	8.8	0.085	0.526	22.166410	-100.915146
X. C. San Luis Potosí - Cd. Valles	25.00	3	2	21941	9.8	78.4	1.0	4.6	1.6	2.2	0.7	1.4	0.3	88.2	1.0	10.8	0.083	0.526	22.166391	-100.915262
X. C. San Luis Potosí - Matehuala	30.70	1	1	17269	5.5	76.8	1.5	7.2	2.7	3.6	1.3	0.9	0.5	82.3	1.5	16.2	0.077	0.500	22.195630	-100.920061
X. C. San Luis Potosí - Matehuala	30.70	1	2	17237	5.5	76.8	1.4	7.2	2.7	3.6	1.4	0.9	0.5	82.3	1.4	16.3	0.069	0.500	22.195629	-100.920187
T. C. San Luis Potosí - Ent. Arcinas	44.80																			

39 CARR: Ramal a Cerritos

CLAVE: 24615

RUTA: SLP-007

AÑO: 2021

LUGAR	ESTACION				CLASIFICACION VEHICULAR EN PORCIENTO														COORDENADAS	
	KM	TE	SC	TDPA	M	A	B	C2	C3	T3S2	T3S3	T3S2R4	OTROS	A	B	C	K'	D	LATITUD	LONGITUD
T. C. San Luis Potosí - Matehuala	0.00	3	0	446	3.1	71.4	1.9	12.7	1.5	4.9	3.7	0.0	0.8	74.5	1.9	23.6	0.108	0.533	22.612185	-100.546978
Cerritos	37.00																			

SAN LUIS POTOSI

40 CARR: Ramal a Pozo de Acuña

CLAVE: 24626

RUTA: SLP-009

AÑO: 2021

LUGAR	ESTACION				CLASIFICACION VEHICULAR EN PORCIENTO													COORDENADAS		
	KM	TE	SC	TDPA	M	A	B	C2	C3	T3S2	T3S3	T3S2R4	OTROS	A	B	C	K'	D	LATITUD	LONGITUD
T. C. San Luis Potosí - Matehuala	0.00	3	0	448	2.2	79.9	0.5	16.3	1.1	0.0	0.0	0.0	0.0	82.1	0.5	17.4	0.092	0.501	22.640517	-100.512727
Pozo de Acuña	37.90																			

41 CARR: Rayón - Arroyo Seco

CLAVE: 24008

RUTA: SLP-011

AÑO: 2021

LUGAR	ESTACION				CLASIFICACION VEHICULAR EN PORCIENTO													COORDENADAS		
	KM	TE	SC	TDPA	M	A	B	C2	C3	T3S2	T3S3	T3S2R4	OTROS	A	B	C	K'	D	LATITUD	LONGITUD
Rayón	0.00	3	0	1396	5.8	72.8	0.4	16.8	1.4	1.8	0.8	0.0	0.2	78.6	0.4	21.0	0.098	0.516	21.848070	-99.626931
Lagunillas	36.00	1	0	362	4.6	73.8	0.0	18.6	1.7	0.8	0.5	0.0	0.0	78.4	0.0	21.6	0.117	0.500	21.594235	-99.565213
Lim. De Edos. Term. S.L.P. Ppia Qro.	51.00																			
Arroyo Seco	57.00	1	0	587	6.6	72.7	0.0	18.8	1.4	0.5	0.0	0.0	0.0	79.3	0.0	20.7	0.099	0.506	21.553137	-99.682099

42 CARR: Santo Domingo - Cerro Gordo

CLAVE: 24614

RUTA: SLP-022

AÑO: 2021

LUGAR	ESTACION				CLASIFICACION VEHICULAR EN PORCIENTO													COORDENADAS		
	KM	TE	SC	TDPA	M	A	B	C2	C3	T3S2	T3S3	T3S2R4	OTROS	A	B	C	K'	D	LATITUD	LONGITUD
T. C. Cd. Valles - San Luis Potosí	0.00	3	0	4256	1.7	74.5	0.8	12.4	1.6	5.6	2.1	0.4	0.9	76.2	0.8	23.0	0.082	0.516	22.093842	-100.744545
T. C. Querétaro - San Luis Potosí	19.00	1	0	4350	2.9	68.8	0.8	12.1	3.5	4.9	6.2	0.6	0.2	71.7	0.8	27.5	0.072	0.507	21.976453	-100.818209

43 CARR: Tamuín - Estación F.F.C.C. Tamuín

CLAVE: 24022

RUTA: SLP-040

AÑO: 2021

LUGAR	ESTACION				CLASIFICACION VEHICULAR EN PORCIENTO													COORDENADAS		
	KM	TE	SC	TDPA	M	A	B	C2	C3	T3S2	T3S3	T3S2R4	OTROS	A	B	C	K'	D	LATITUD	LONGITUD
Tamuín	0.00	3	0	6026	13.2	72.3	2.9	6.0	2.5	1.2	0.6	1.0	0.3	85.5	2.9	11.6	0.083	0.505	22.014205	-98.784296
Estación F.F.C.C. Tamuín	10.00	1	0	1457	33.1	59.9	0.3	4.1	0.3	1.8	0.4	0.0	0.1	93.0	0.3	6.7	0.092	0.504	22.078127	-98.811198

44 CARR: Tamuín - Xolol

CLAVE: 24027

RUTA: SLP-014

AÑO: 2021

LUGAR	ESTACION				CLASIFICACION VEHICULAR EN PORCIENTO													COORDENADAS		
	KM	TE	SC	TDPA	M	A	B	C2	C3	T3S2	T3S3	T3S2R4	OTROS	A	B	C	K'	D	LATITUD	LONGITUD
Tamuín	0.00	3	0	3598	11.6	68.6	0.7	9.7	2.7	3.9	1.3	1.1	0.4	80.2	0.7	19.1	0.087	0.516	21.999234	-98.762769
X. C. Rayón - Ent. Tamuín (Cuota)	2.56	3	0	3226	15.1	68.6	2.0	6.0	2.8	3.3	1.3	0.8	0.1	83.7	2.0	14.3	0.097	0.503	21.977837	-98.756310
San Vicente Tancuayalab	37.62																			
Xolol	97.00																			

SAN LUIS POTOSI

45 CARR : Cerritos - Ent. Tula (Cuota)

CLAVE:

RUTA : SLP-075D

AÑO : 2021

LUGAR	ESTACION				CLASIFICACION VEHICULAR EN PORCIENTO													COORDENADAS		
	KM	TE	SC	TDPA	M	A	B	C2	C3	T3S2	T3S3	T3S2R4	OTROS	A	B	C	K'	D	LATITUD	LONGITUD
T. C. Carritos - Rioverde (Cuota)	0.00	3	0	2574	2.8	65.7	3.4	3.0	1.3	12.1	1.9	8.8	1.0	68.5	3.4	28.1	0.091	0.518	22.448125	-100.328846
T. Der. Cerritos	2.69	3	0	2466	2.7	62.2	3.5	3.7	2.5	13.5	1.9	9.1	0.9	64.9	3.5	31.6	0.096	0.525	22.460533	-100.314477
T. Der. San José	18.70	3	0	2387	2.8	65.6	3.4	2.8	1.2	12.6	1.9	8.7	1.0	68.4	3.4	28.2	0.094	0.519	22.577286	-100.222198
T. Der. Buenavista	32.15	3	0	2318	3.1	60.7	3.9	3.0	1.8	14.2	2.1	10.2	1.0	63.8	3.9	32.3	0.096	0.517	22.636078	-100.100939
T. C. Antigua Morelos-Ent. El Huizache	51.20																			

46 CARR : Cerritos - Rioverde (Cuota)

CLAVE: 00138

RUTA : SLP-D

AÑO : 2021

LUGAR	ESTACION				CLASIFICACION VEHICULAR EN PORCIENTO													COORDENADAS		
	KM	TE	SC	TDPA	M	A	B	C2	C3	T3S2	T3S3	T3S2R4	OTROS	A	B	C	K'	D	LATITUD	LONGITUD
Cerritos	0.00	3	0	5398	2.9	54.5	6.3	7.4	2.2	13.0	4.9	8.2	0.6	57.4	6.3	36.3	0.085	0.509	22.586311	-100.581554
Villa Juárez	58.00	3	0	3817	4.7	69.1	7.1	5.4	2.1	5.9	2.4	3.1	0.2	73.8	7.1	19.1	0.082	0.501	22.317022	-100.283934
Río Verde	103.00	1	0	5106	2.2	74.4	4.3	7.0	1.8	4.9	2.1	2.5	0.8	76.6	4.3	19.1	0.087	0.501	21.923547	-99.959397

47 CARR : San Luis Potosí - Villa de Arriaga (Cuota)

CLAVE: 24209

RUTA : SLP-D

AÑO : 2021

LUGAR	ESTACION				CLASIFICACION VEHICULAR EN PORCIENTO													COORDENADAS		
	KM	TE	SC	TDPA	M	A	B	C2	C3	T3S2	T3S3	T3S2R4	OTROS	A	B	C	K'	D	LATITUD	LONGITUD
T. C. Querétaro - San Luis Potosí	0.00	3	0	11024	0.7	59.5	3.4	7.3	4.1	18.5	1.6	3.9	1.0	60.2	3.4	36.4	0.140	0.521	22.004392	-100.850303
Villa de Arriaga	77.00	1	0	3485	2.0	37.6	5.9	7.5	2.9	27.9	3.8	11.6	0.8	39.6	5.9	54.5	0.067	0.510	21.893027	-101.382663

48 CARR : Rayón - Cd. del Maíz

CLAVE: 24206

RUTA : MEX-070-SLP-005

AÑO : 2021

LUGAR	ESTACION				CLASIFICACION VEHICULAR EN PORCIENTO													COORDENADAS		
	KM	TE	SC	TDPA	M	A	B	C2	C3	T3S2	T3S3	T3S2R4	OTROS	A	B	C	K'	D	LATITUD	LONGITUD
T. C. (Cd. Valles - San Luis Potosí)	0.00																			
Cárdenas	15.80	1	0	3235	2.1	80.7	0.7	13.2	1.1	1.5	0.5	0.1	0.1	82.8	0.7	16.5	0.083	0.500	21.983716	-99.647592
Cd. del Maíz	55.70	1	0	958	3.0	80.0	1.0	15.5	0.4	0.0	0.1	0.0	0.0	83.0	1.0	16.0	0.102	0.505	22.394087	-99.611941

49 CARR : San Lorenzo - Moctezuma

CLAVE: 24016

RUTA : MEX-063-SLP-012

AÑO : 2021

LUGAR	ESTACION				CLASIFICACION VEHICULAR EN PORCIENTO													COORDENADAS		
	KM	TE	SC	TDPA	M	A	B	C2	C3	T3S2	T3S3	T3S2R4	OTROS	A	B	C	K'	D	LATITUD	LONGITUD
T. C. San Luis Potosí - Matehuala	0.00	3	0	1710	3.9	68.1	2.2	17.4	1.7	4.3	1.6	0.6	0.2	72.0	2.2	25.8	0.088	0.502	22.568763	-100.639754
Estación Moctezuma	49.00																			

SAN LUIS POTOSI

49 CARR: San Lorenzo - Moctezuma

CLAVE: 24016

RUTA: MEX-063-SLP-012

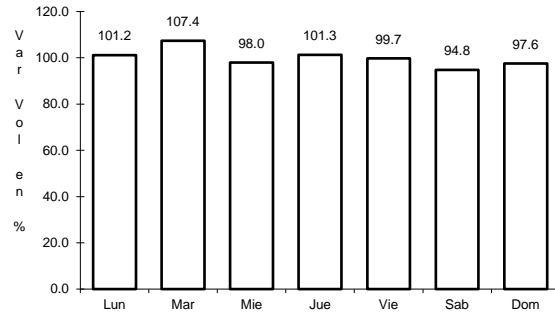
AÑO: 2021

L U G A R	E S T A C I O N				C L A S I F I C A C I O N V E H I C U L A R E N P O R C I E N T O														C O O R D E N A D A S	
	KM	TE	SC	TDPA	M	A	B	C2	C3	T3S2	T3S3	T3S2R4	OTROS	A	B	C	K'	D	LATITUD	LONGITUD
Moctezuma	54.00	1	0	1974	5.7	80.7	1.8	4.0	2.1	1.8	1.8	1.6	0.5	86.4	1.8	11.8	0.089	0.512	22.758389	-101.065365

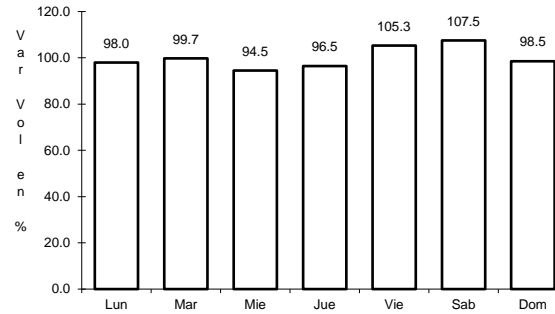
1 CARR: Antiguo Morelos - Ent. El Huizache

CLAVE: 00136

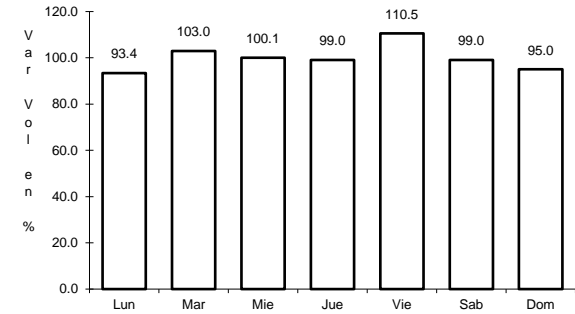
RUTA: MEX-080



Km: 0.00                      Tipo: 3                      Sent: 0



Km: 86.00                      Tipo: 3                      Sent: 0

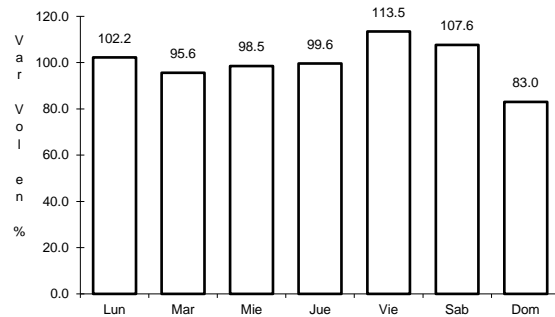


Km: 198.83                      Tipo: 1                      Sent: 0

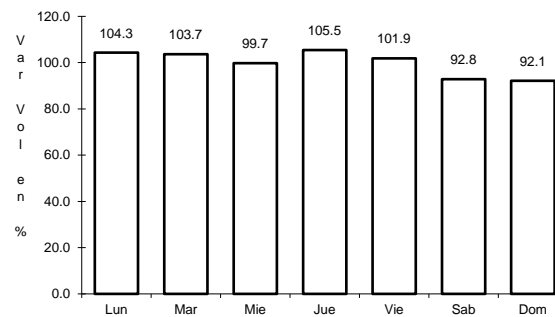
2 CARR: Carbonera - T. C. (Ent. Morelos - Saltillo)

CLAVE: 00218

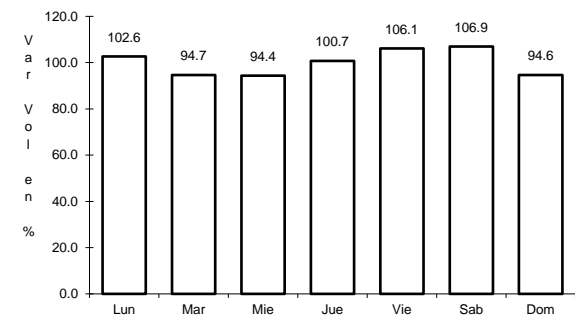
RUTA: MEX-062



Km: 0.00                      Tipo: 3                      Sent: 0



Km: 18.00                      Tipo: 1                      Sent: 0

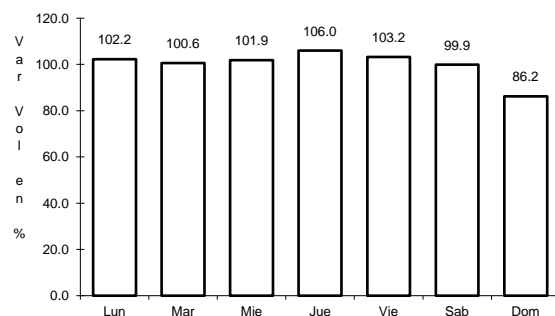


Km: 112.00                      Tipo: 1                      Sent: 0

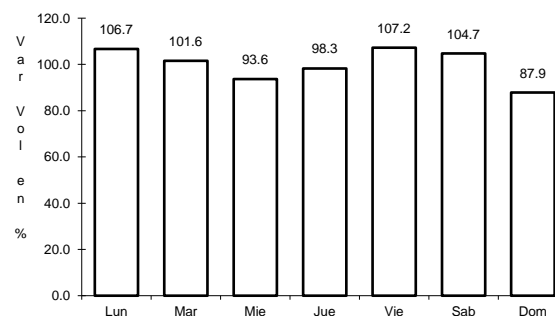
3 CARR: Cd. Valles - Cd. Victoria

CLAVE: 00509

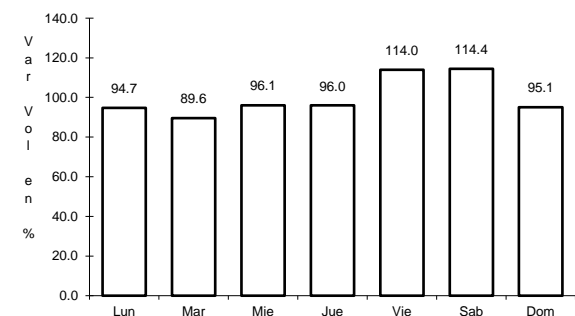
RUTA: MEX-085



Km: 0.00                      Tipo: 3                      Sent: 0



Km: 110.00                      Tipo: 3                      Sent: 0

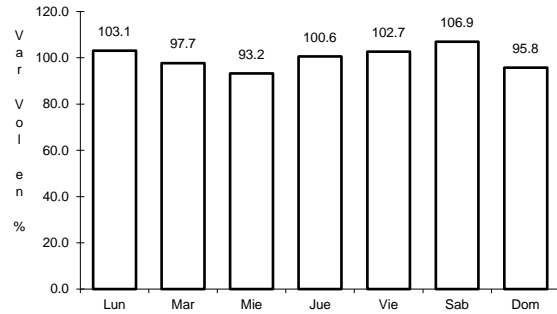


Km: 232.00                      Tipo: 1                      Sent: 0

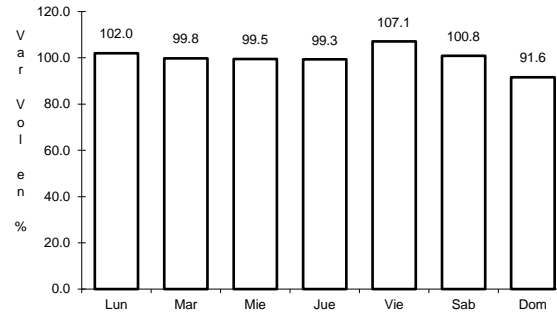
4 CARR: Cd. Valles - San Luis Potosí

CLAVE: 24135

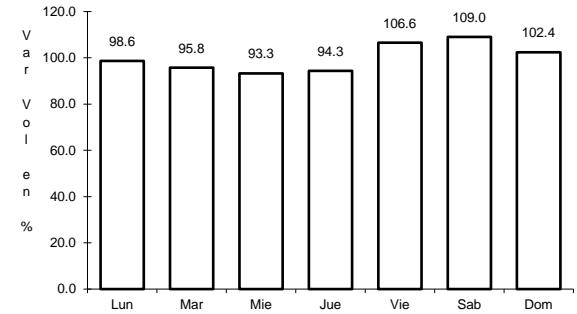
RUTA: MEX-070



Km: 0.00                      Tipo: 3                      Sent: 1



Km: 0.00                      Tipo: 3                      Sent: 2

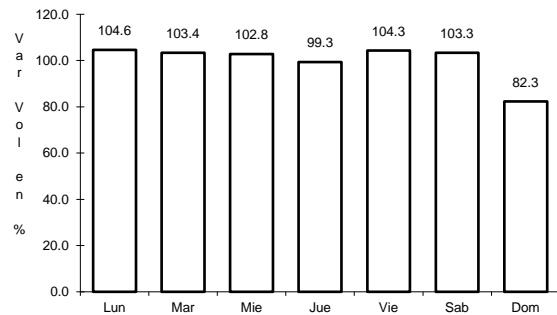


Km: 145.90                      Tipo: 1                      Sent: 0

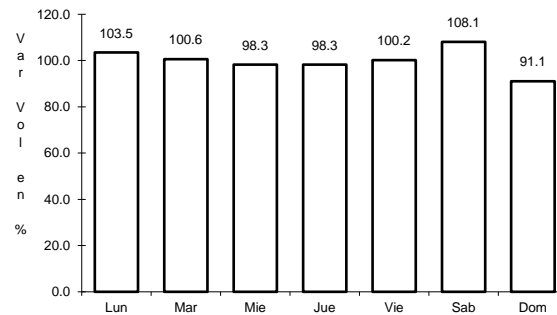
5 CARR: Cd. Valles - Tampico

CLAVE: 00138

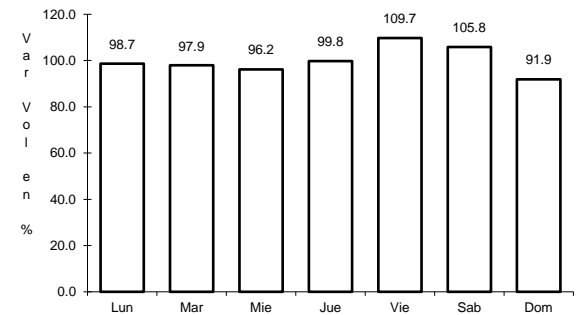
RUTA: MEX-070



Km: 0.00                      Tipo: 3                      Sent: 0



Km: 138.00                      Tipo: 1                      Sent: 1

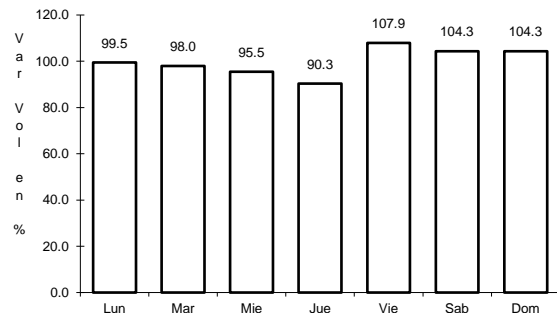


Km: 138.00                      Tipo: 1                      Sent: 2

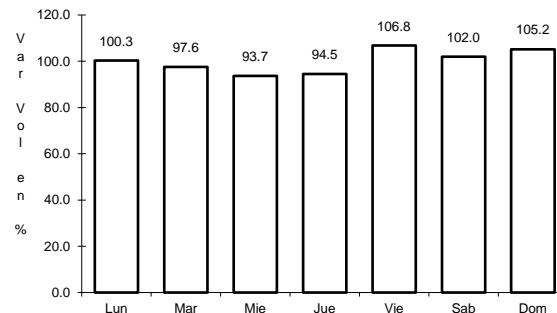
6 CARR: El Clarín - Agua Buena

CLAVE: 24283

RUTA: MEX-070



Km: 0.00                      Tipo: 3                      Sent: 0



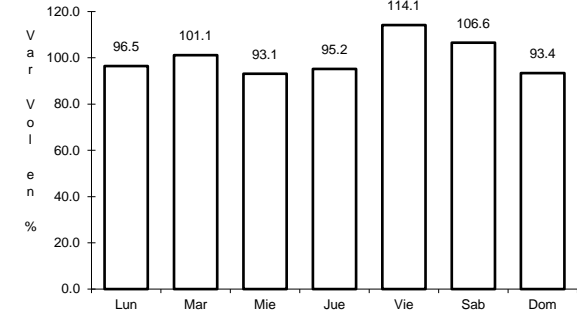
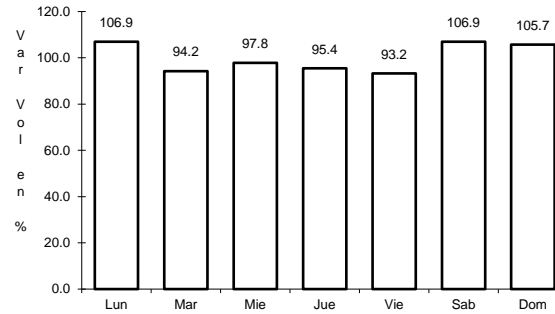
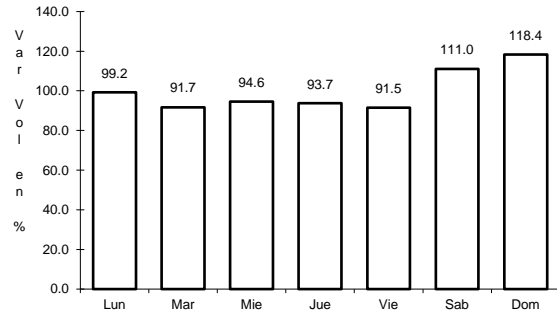
Km: 11.23                      Tipo: 1                      Sent: 0



7 CARR: Ent. Ahualulco - Ent. La Bonita

CLAVE: 24258

RUTA: MEX-063



Km: 0.00                      Tipo: 3                      Sent: 0

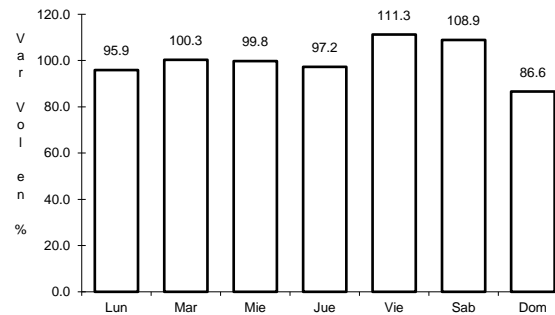
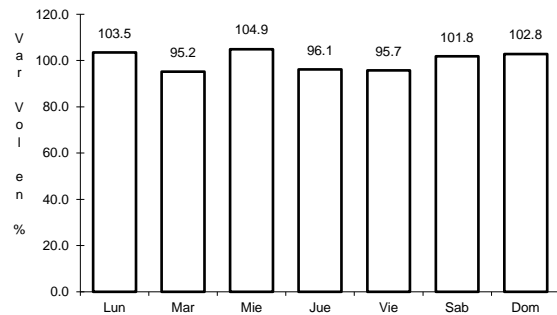
Km: 59.00                      Tipo: 1                      Sent: 0

Km: 169.90                      Tipo: 1                      Sent: 0

8 CARR: Ent. de Zaragoza - San Felipe

CLAVE: 00240

RUTA: MEX-037



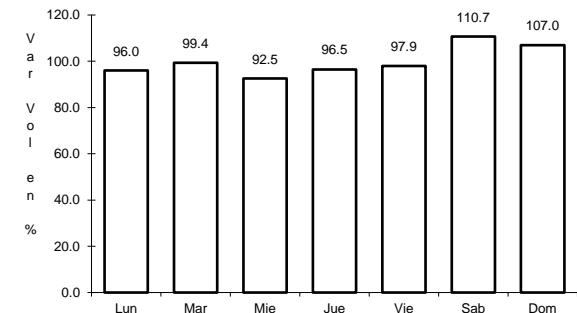
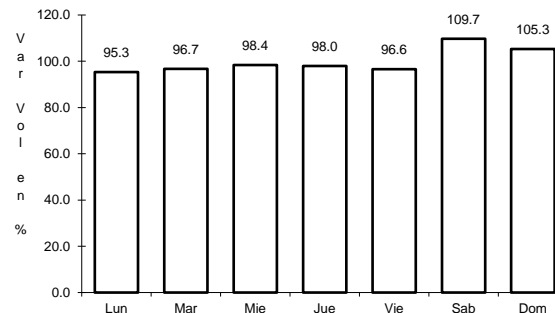
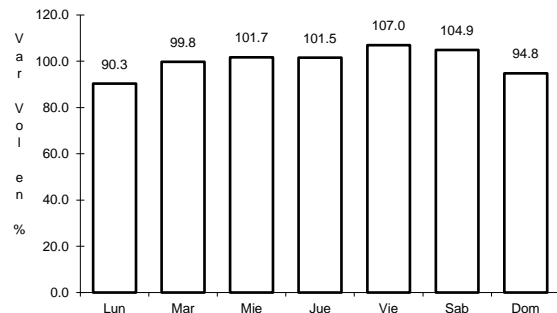
Km: 0.00                      Tipo: 3                      Sent: 0

Km: 72.00                      Tipo: 1                      Sent: 0

9 CARR: Ent. Tula - Cd. Victoria

CLAVE: 00179

RUTA: MEX-101



Km: 0.00                      Tipo: 3                      Sent: 0

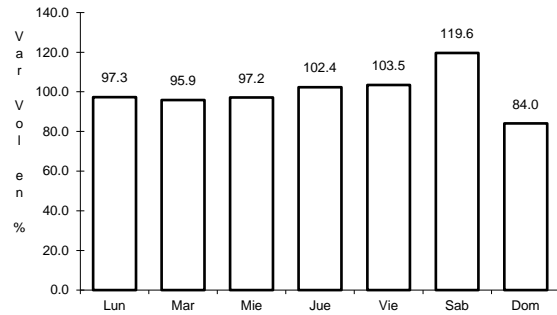
Km: 180.00                      Tipo: 1                      Sent: 1

Km: 180.00                      Tipo: 1                      Sent: 2

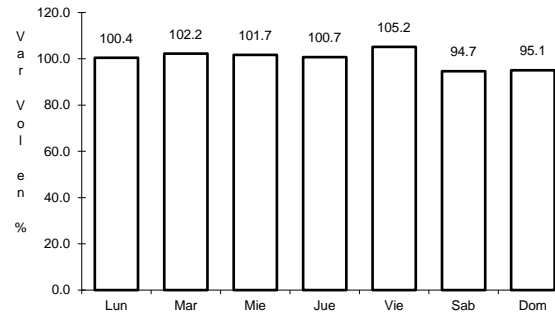
10 CARR: Jalpan de Serra - Rioverde

CLAVE: 00265

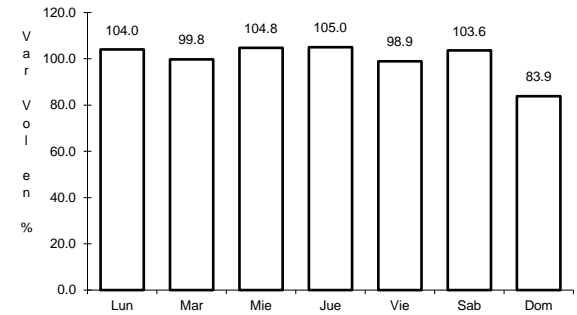
RUTA: MEX-069



Km: 0.00                      Tipo: 3                      Sent: 0



Km: 48.60                      Tipo: 1                      Sent: 0

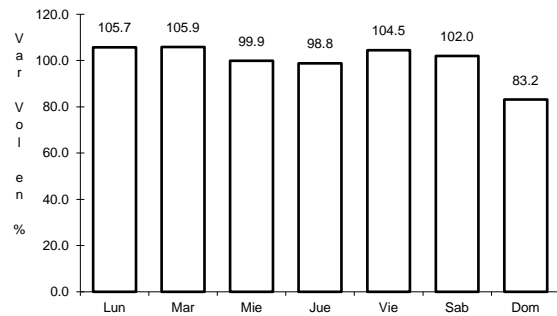


Km: 105.43                      Tipo: 1                      Sent: 0

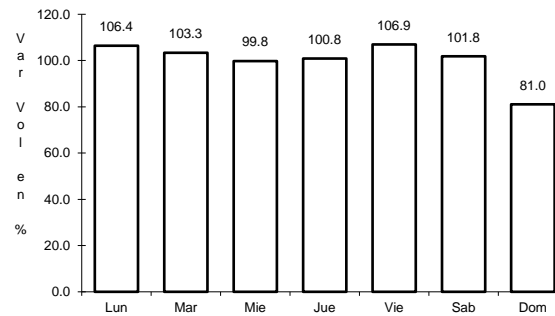
11 CARR: Libramiento de Cd. Valles

CLAVE: 24205

RUTA: MEX-070



Km: 0.00                      Tipo: 3                      Sent: 0

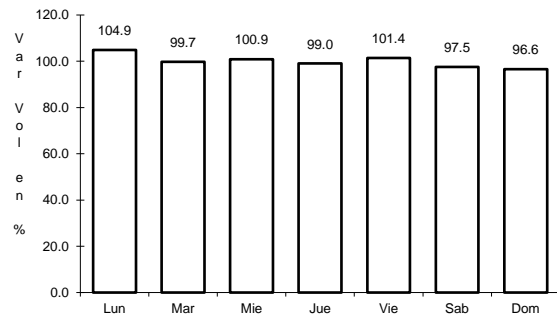


Km: 11.54                      Tipo: 1                      Sent: 0

12 CARR: Libramiento de Villa de Reyes

CLAVE: 24010

RUTA: MEX-037

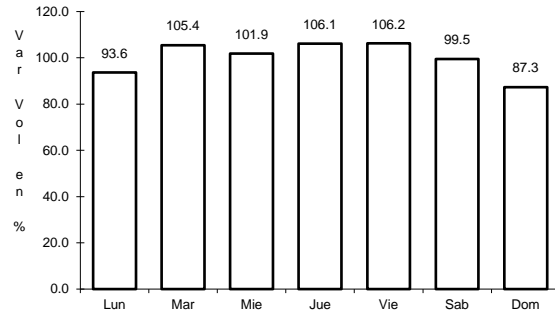


Km: 0.00                      Tipo: 3                      Sent: 0

13 CARR: Libramiento de Villa de Reyes (Poniente)

CLAVE:

RUTA: MEX-037



Km: 143.64

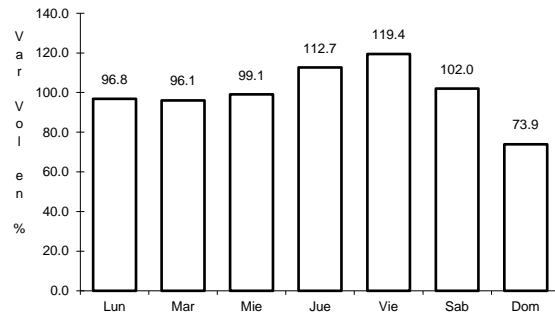
Tipo: 1

Sent: 0

14 CARR: Libramiento Villa de Arriaga

CLAVE: 24009

RUTA: MEX-080



Km: 0.00

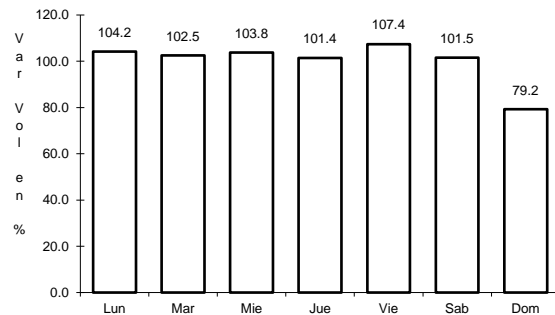
Tipo: 3

Sent: 0

15 CARR: Matehuala - Ent. Puerto México

CLAVE: 00405

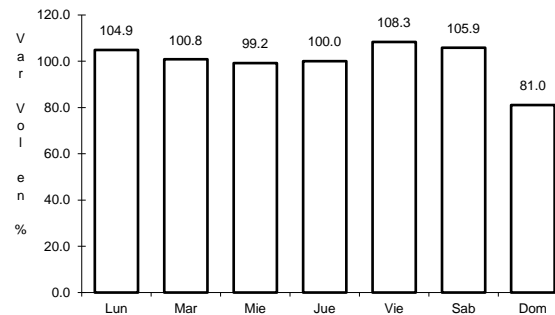
RUTA: MEX-057



Km: 0.00

Tipo: 3

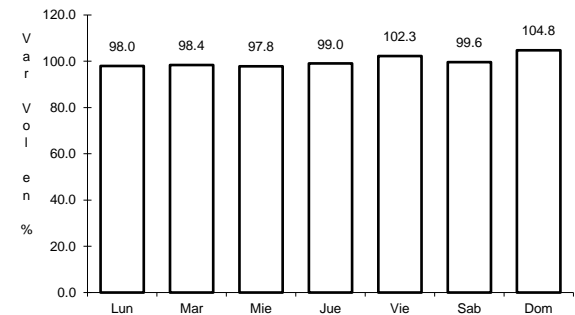
Sent: 1



Km: 0.00

Tipo: 3

Sent: 2



Km: 177.18

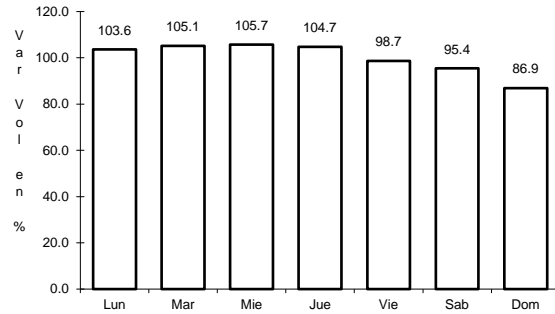
Tipo: 1

Sent: 1

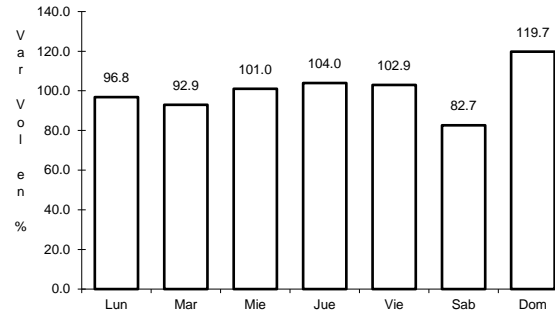
16 CARR: Portezuelo - Cd. Valles

CLAVE: 00023

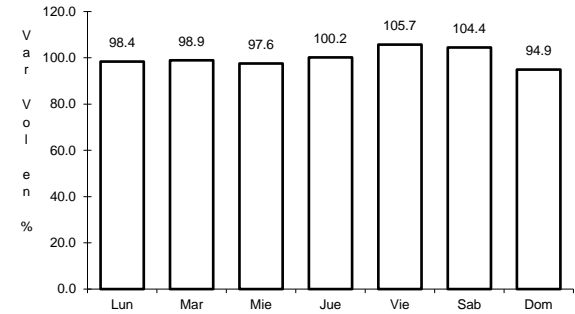
RUTA: MEX-085



Km: 0.00                      Tipo: 3                      Sent: 0



Km: 154.00                      Tipo: 3                      Sent: 0

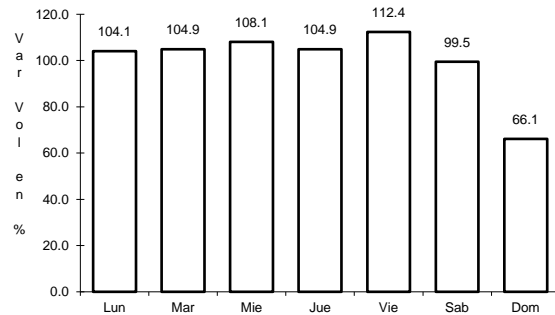


Km: 286.41                      Tipo: 1                      Sent: 0

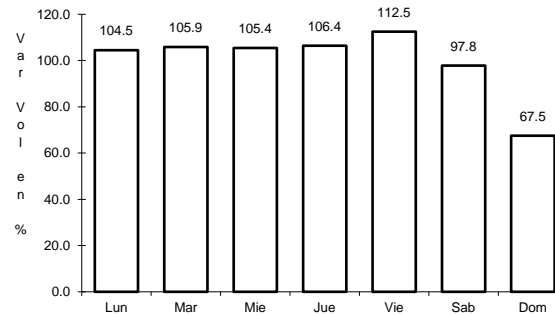
17 CARR: Querétaro - San Luis Potosí

CLAVE: 00165

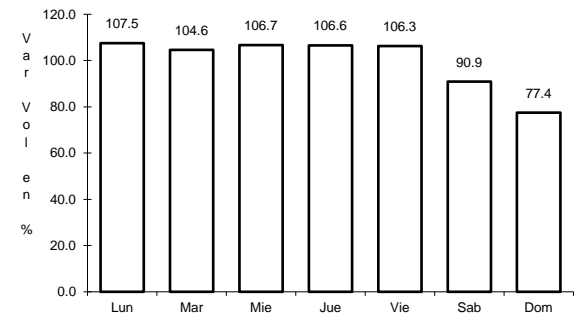
RUTA: MEX-057



Km: 6.28                      Tipo: 3                      Sent: 1



Km: 6.28                      Tipo: 3                      Sent: 2

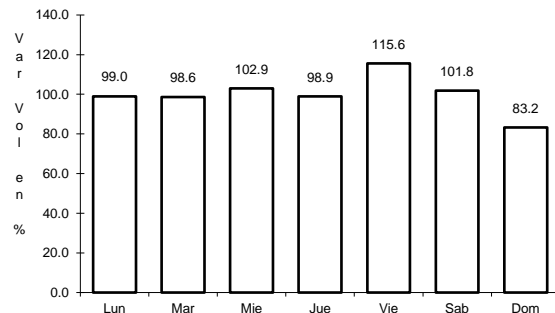


Km: 184.80                      Tipo: 1                      Sent: 1

18 CARR: Ramal a Aeropuerto de S. L. P.

CLAVE: 24206

RUTA: MEX-057

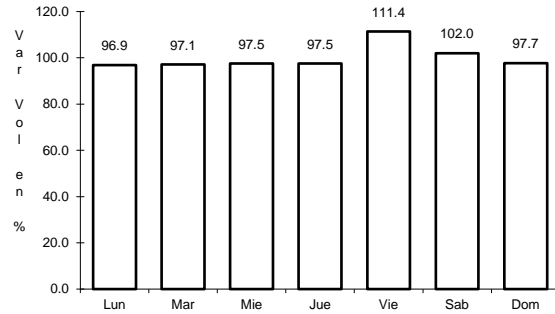


Km: 0.00                      Tipo: 3                      Sent: 0

19 CARR: Ramal a Ojo de Agua

CLAVE: 24023

ruta: MEX-062

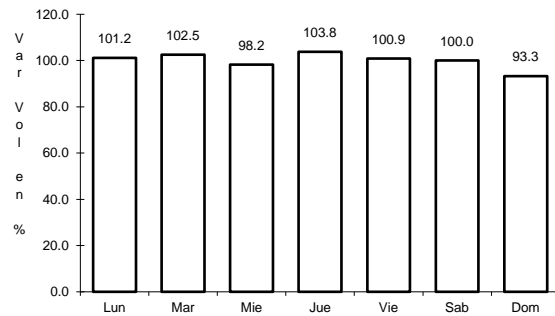


Km: 0.00                      Tipo: 3                      Sent: 0

20 CARR: Ramal a Rayón

CLAVE: 24626

ruta: MEX-070

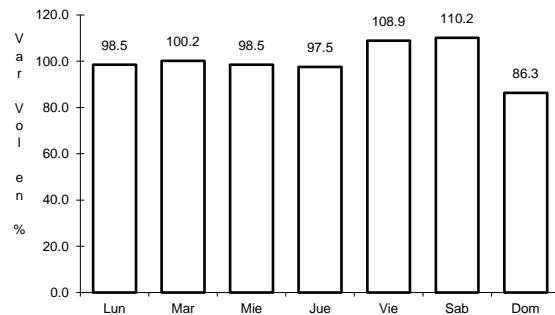


Km: 1.50                      Tipo: 1                      Sent: 0

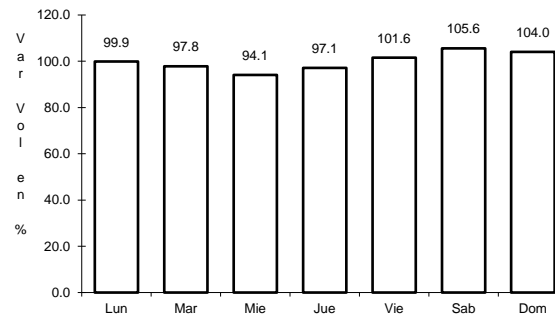
21 CARR: San Juan del Río - Xilitla

CLAVE: 00183

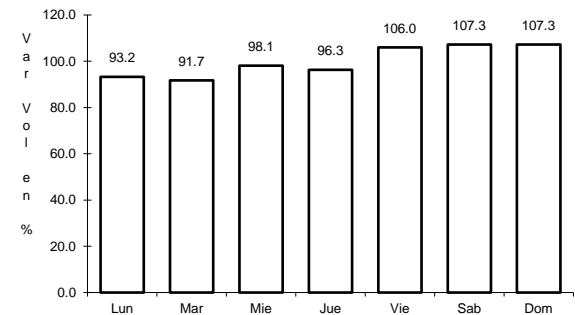
ruta: MEX-120



Km: 5.20                      Tipo: 3                      Sent: 1



Km: 5.20                      Tipo: 3                      Sent: 2

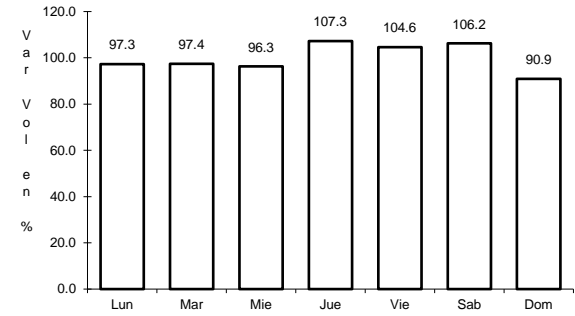
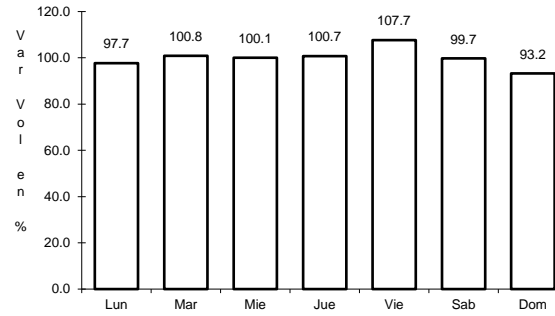
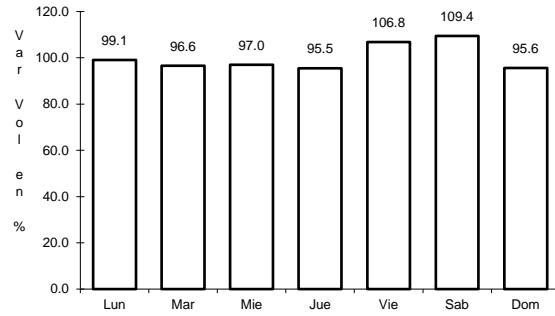


Km: 276.98                      Tipo: 1                      Sent: 0

22 CARR: San Luis Potosí - Ent. Arcinas

CLAVE: 00134

RUTA: MEX-049



Km: 9.35      Tipo: 3      Sent: 1

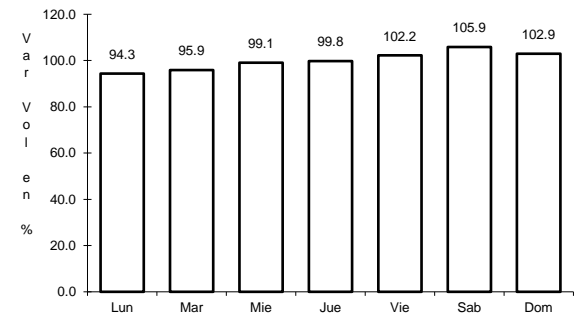
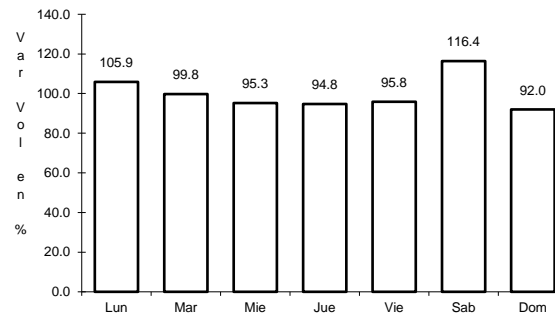
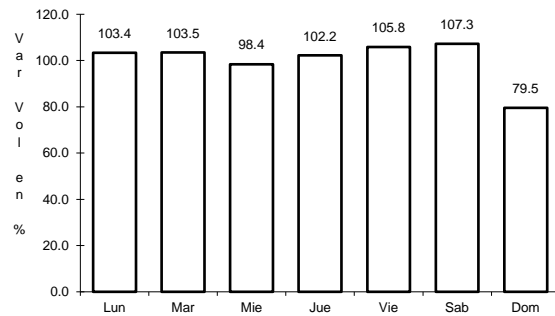
Km: 9.35      Tipo: 3      Sent: 2

Km: 162.98      Tipo: 1      Sent: 1

23 CARR: San Luis Potosí - Lagos de Moreno

CLAVE: 00133

RUTA: MEX-070-080



Km: 0.00      Tipo: 3      Sent: 1

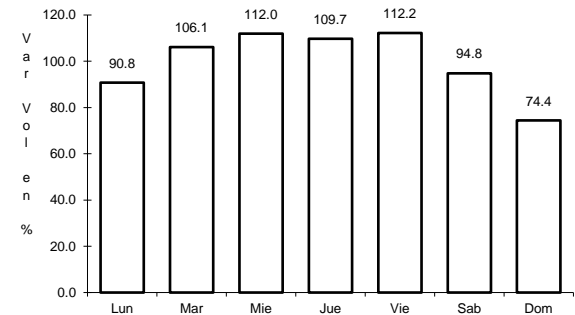
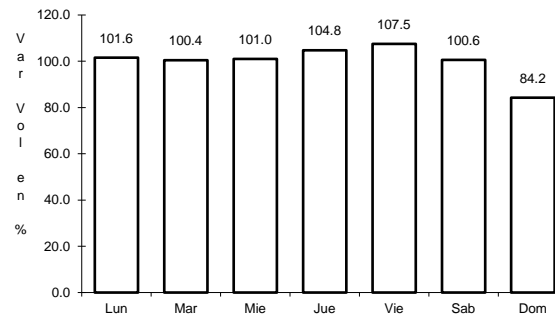
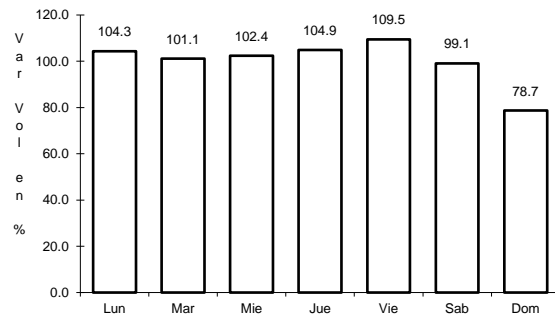
Km: 0.00      Tipo: 3      Sent: 2

Km: 61.90      Tipo: 3      Sent: 0

24 CARR: San Luis Potosí - Matehuala

CLAVE: 24508

RUTA: MEX-057



Km: 7.36      Tipo: 3      Sent: 1

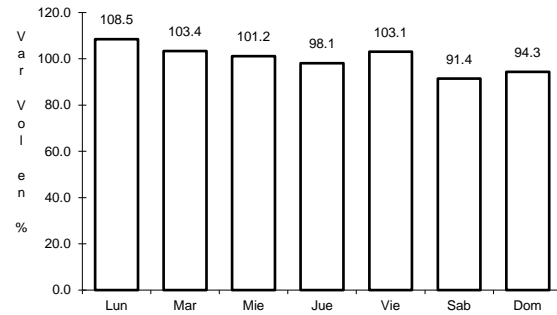
Km: 7.36      Tipo: 3      Sent: 2

Km: 187.39      Tipo: 1      Sent: 1

25 CARR: T. C. (Ent. El Huizache- Ant. Morelos)-El Salto

CLAVE: 24204

RUTA: MEX-080



Km: 0.00

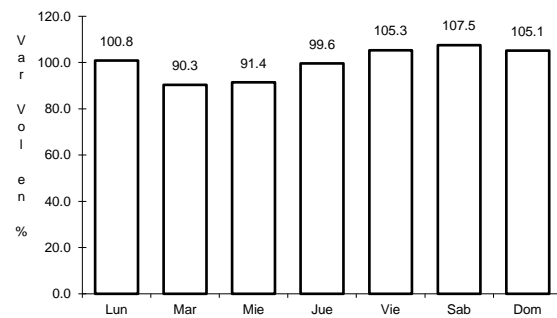
Tipo: 3

Sent: 0

26 CARR: T. C. (Qro - S.L.P.) - Tierra Nueva

CLAVE: 24203

RUTA: MEX-057



Km: 0.00

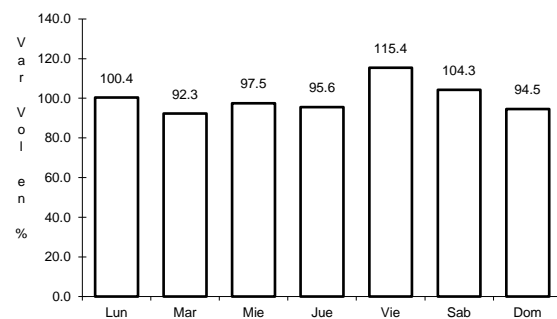
Tipo: 3

Sent: 0

27 CARR: T. C. (S.L.P. - Matehuala) - Villa Hidalgo

CLAVE: 24619

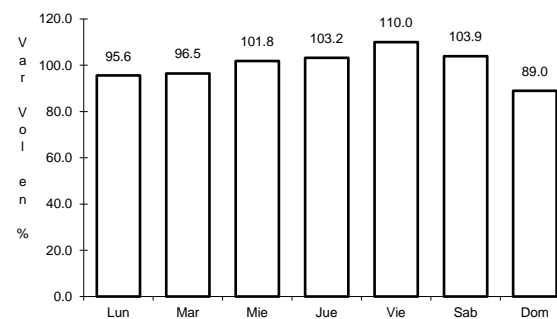
RUTA: MEX-057



Km: 0.00

Tipo: 3

Sent: 0



Km: 10.20

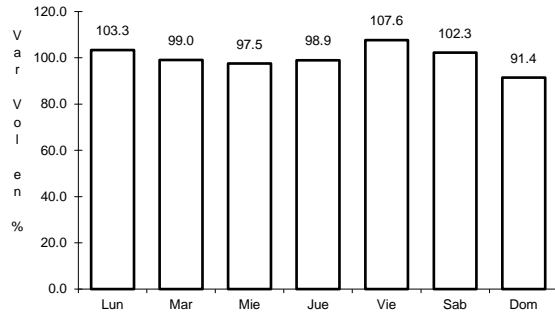
Tipo: 1

Sent: 0

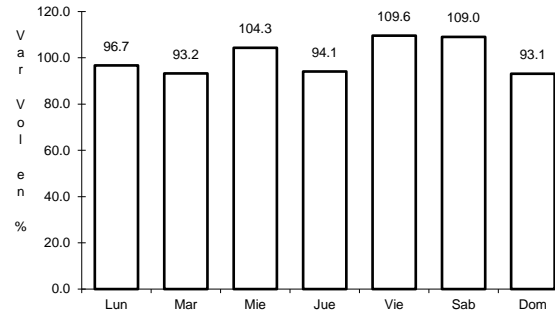
28 CARR: Tamazunchale - San Felipe Orizatlán

CLAVE: 00609

RUTA: MEX-085



Km: 0.00      Tipo: 3      Sent: 0

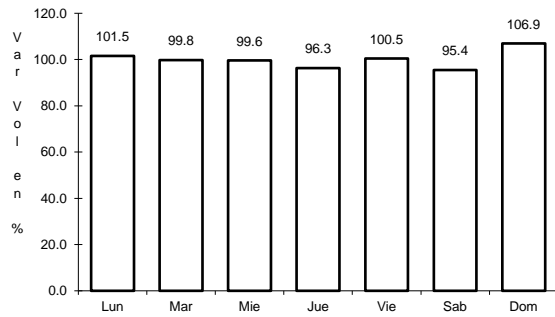


Km: 27.10      Tipo: 1      Sent: 0

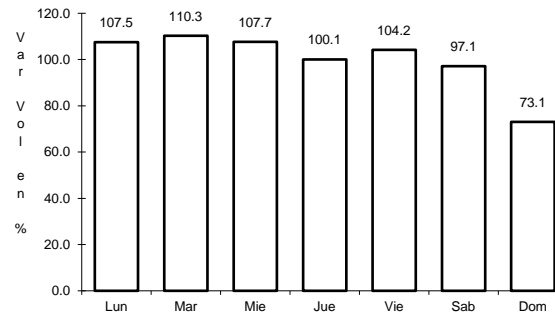
29 CARR: Lagos de Moreno - Villa de Arriaga (Cuota)

CLAVE:

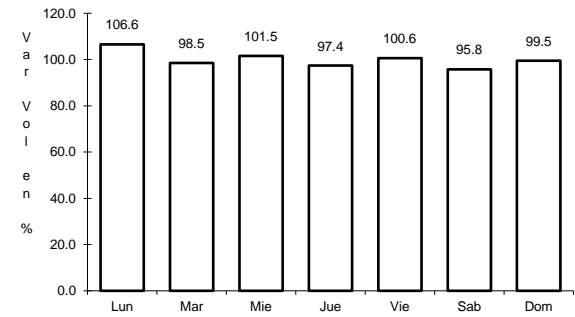
RUTA: MEX-080D



Km: 12.10      Tipo: 3      Sent: 0



Km: 58.18      Tipo: 1      Sent: 0

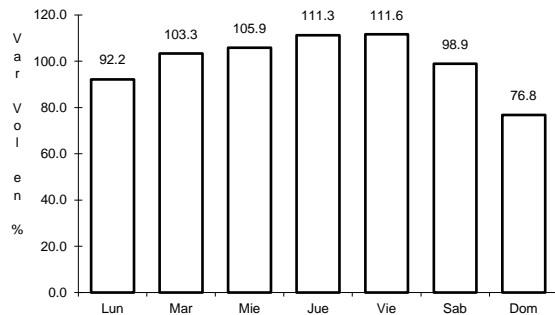


Km: 78.00      Tipo: 1      Sent: 0

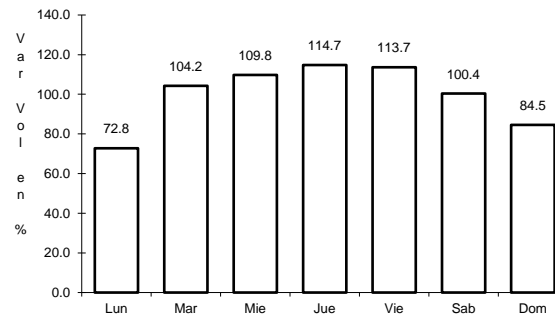
30 CARR: Libramiento de Matehuala (Cuota)

CLAVE: 24205

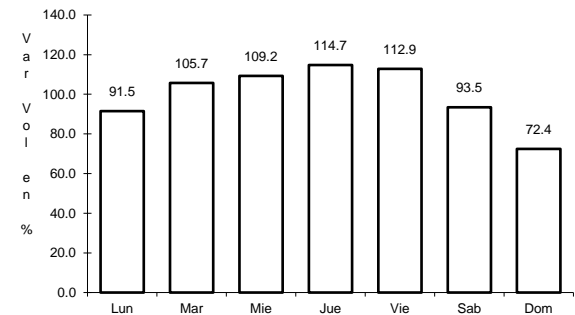
RUTA: MEX-057D



Km: 0.00      Tipo: 3      Sent: 1



Km: 0.00      Tipo: 3      Sent: 2



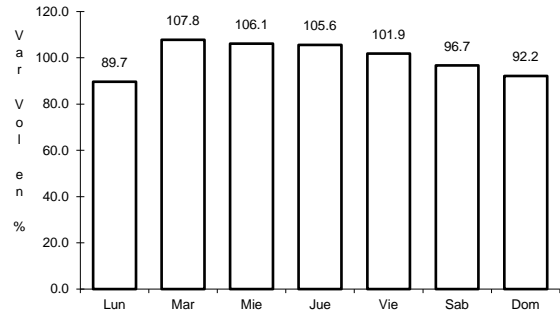
Km: 14.20      Tipo: 1      Sent: 1



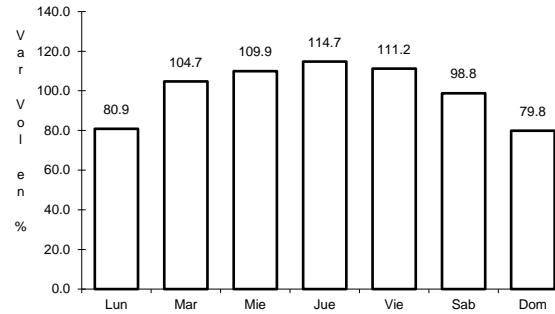
31 CARR: Libramiento Norponiente de San Luis Potosí (Cuota)

CLAVE:

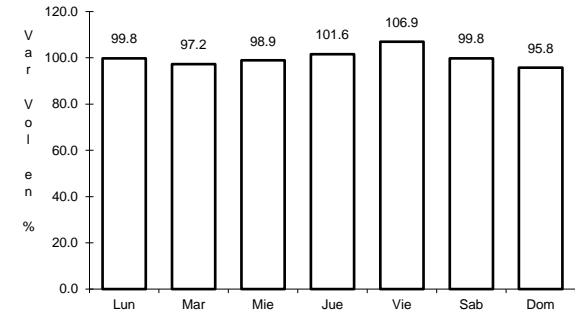
RUTA: MEX-057D



Km: 5.60      Tipo: 1      Sent: 0



Km: 5.60      Tipo: 3      Sent: 0

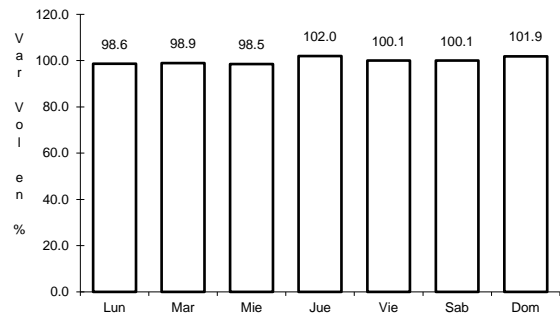


Km: 31.20      Tipo: 3      Sent: 0

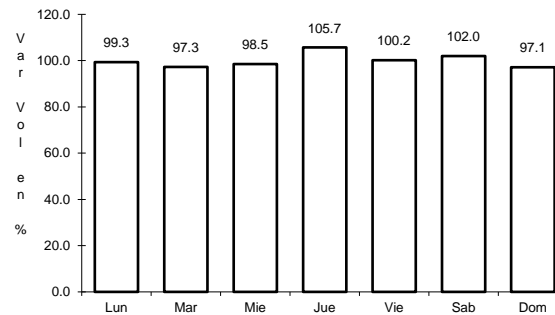
32 CARR: Libramiento Oriente de San Luis Potosí (Cuota)

CLAVE: 24009

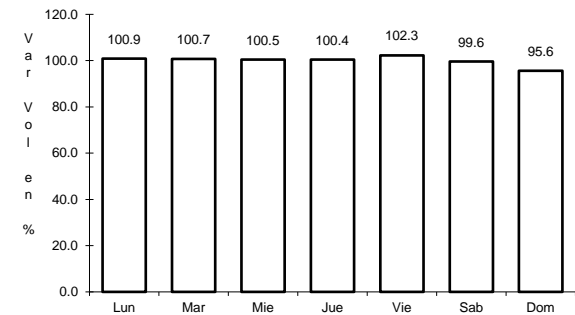
RUTA: MEX-057D



Km: 11.20      Tipo: 1      Sent: 1



Km: 11.20      Tipo: 1      Sent: 2

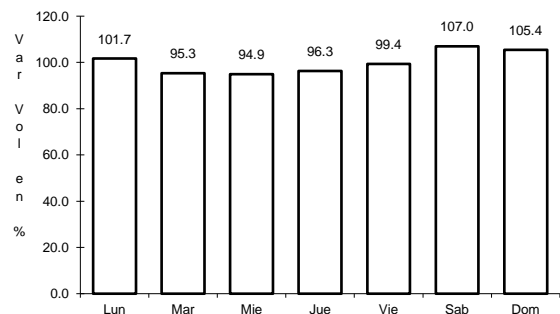


Km: 33.76      Tipo: 1      Sent: 1

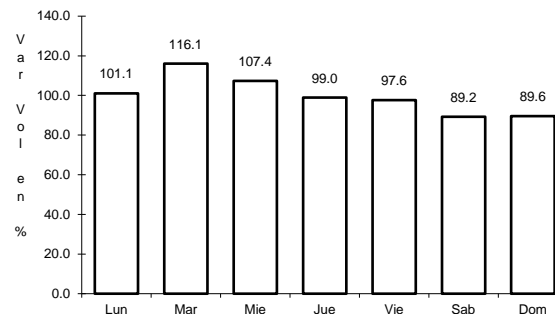
33 CARR: Rayón - Ent. Tamián (Cuota)

CLAVE:

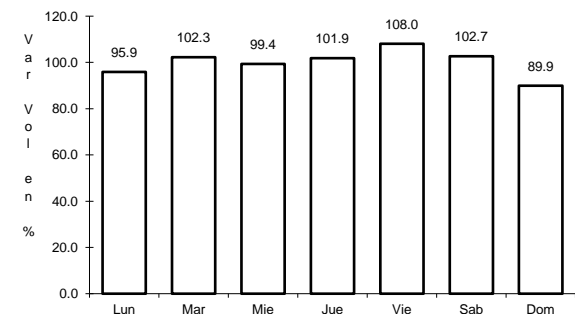
RUTA: MEX-070D



Km: 19.70      Tipo: 1      Sent: 0



Km: 68.58      Tipo: 3      Sent: 0

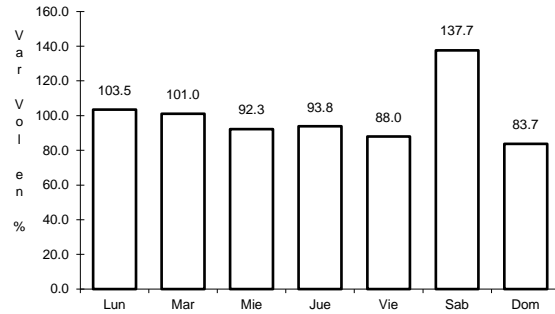


Km: 117.30      Tipo: 1      Sent: 0

34 CARR: Charcas - Villa Santo Domingo

CLAVE: 24624

RUTA: SLP-017



Km: 0.00

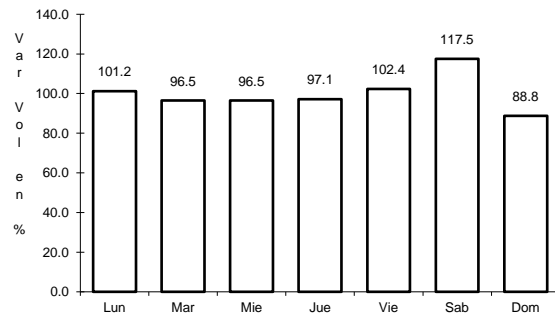
Tipo: 3

Sent: 0

35 CARR: Ébano - Estación Manuel

CLAVE: 24624

RUTA: SLP-TAM



Km: 0.00

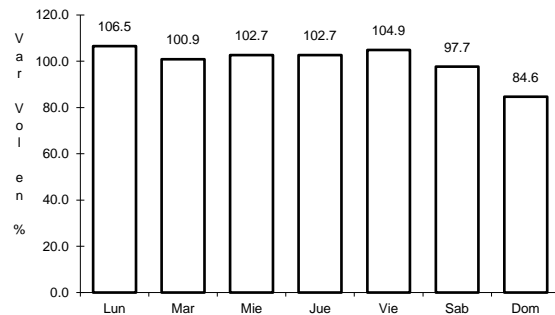
Tipo: 3

Sent: 0

36 CARR: Matehuala - La Paz

CLAVE: 24621

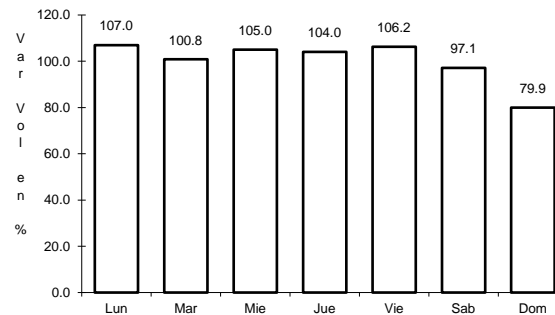
RUTA: SLP-020



Km: 0.00

Tipo: 3

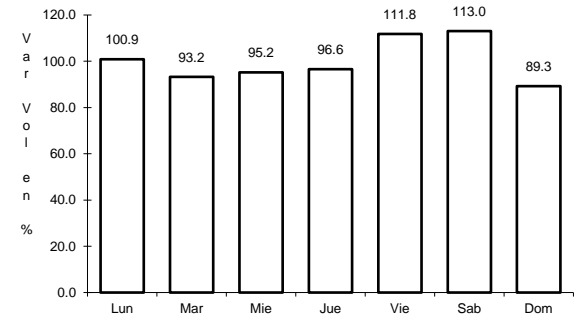
Sent: 1



Km: 0.00

Tipo: 3

Sent: 2



Km: 8.00

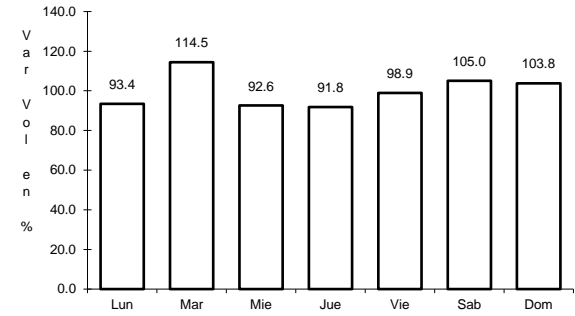
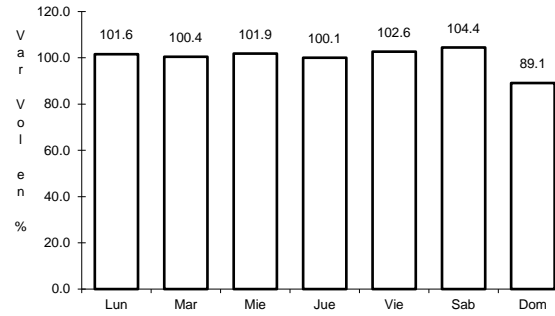
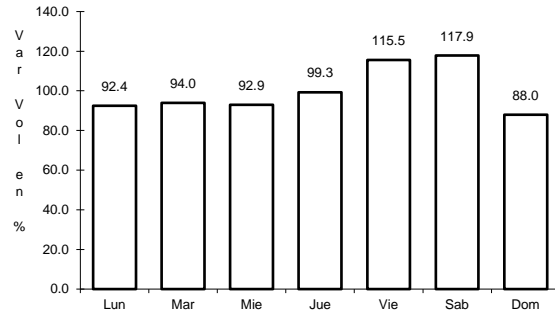
Tipo: 1

Sent: 1

37 CARR: Matchuala - La Poza

CLAVE: 00086

RUTA: SLP-029-NL-061



Km: 0.00                      Tipo: 3                      Sent: 0

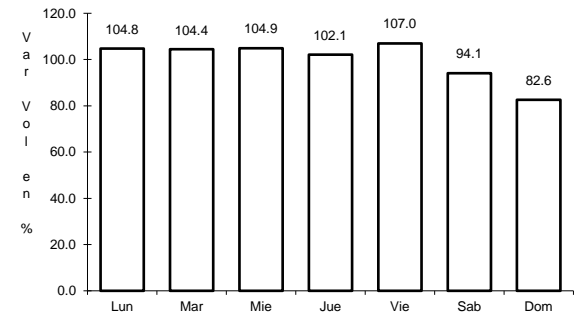
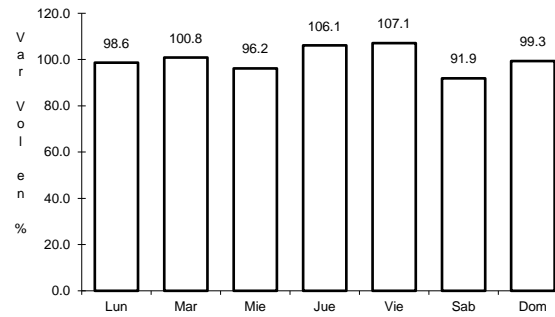
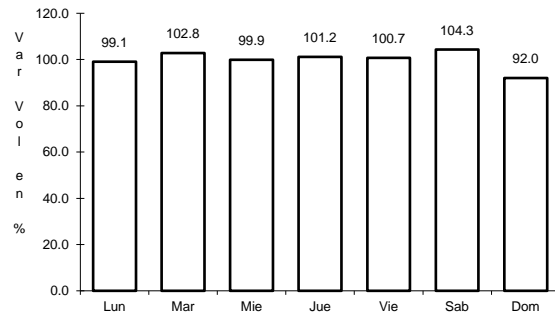
Km: 49.00                      Tipo: 1                      Sent: 0

Km: 131.00                      Tipo: 1                      Sent: 0

38 CARR: Periférico de San Luis Potosí

CLAVE: 24618

RUTA: SLP-032



Km: 22.00                      Tipo: 3                      Sent: 1

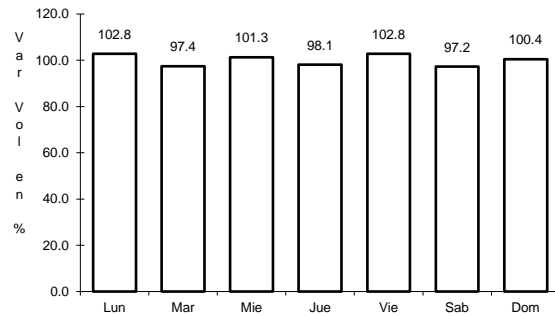
Km: 22.00                      Tipo: 3                      Sent: 2

Km: 30.70                      Tipo: 1                      Sent: 1

39 CARR: Ramal a Cerritos

CLAVE: 24615

RUTA: SLP-007

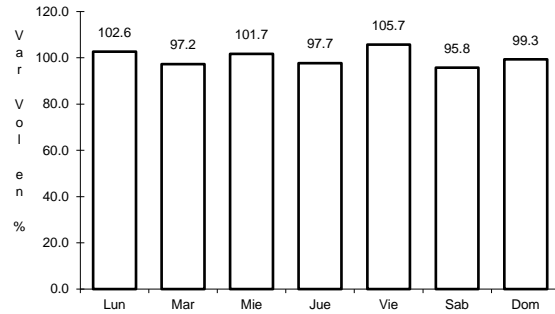


Km: 0.00                      Tipo: 3                      Sent: 0

40 CARR: Ramal a Pozo de Acuña

CLAVE: 24626

ruta: SLP-009

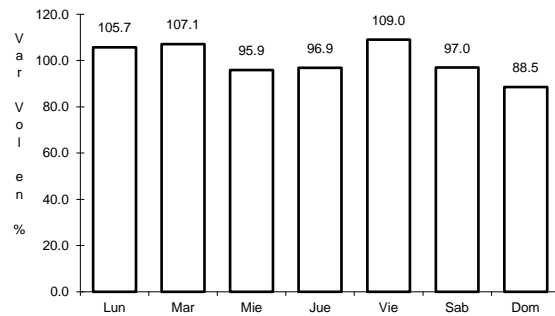


Km: 0.00      Tipo: 3      Sent: 0

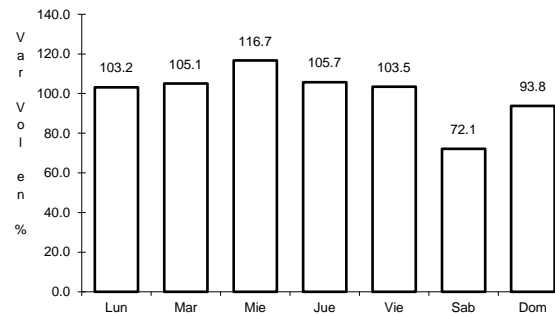
41 CARR: Rayón - Arroyo Seco

CLAVE: 24008

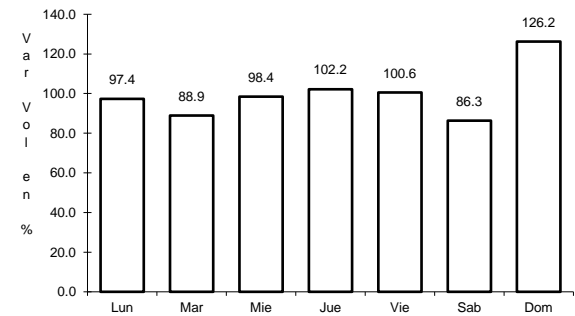
ruta: SLP-011



Km: 0.00      Tipo: 3      Sent: 0



Km: 36.00      Tipo: 1      Sent: 0

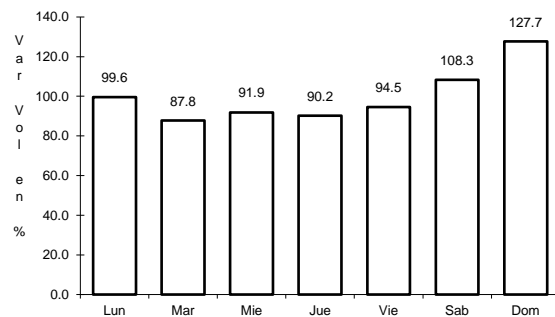


Km: 57.00      Tipo: 1      Sent: 0

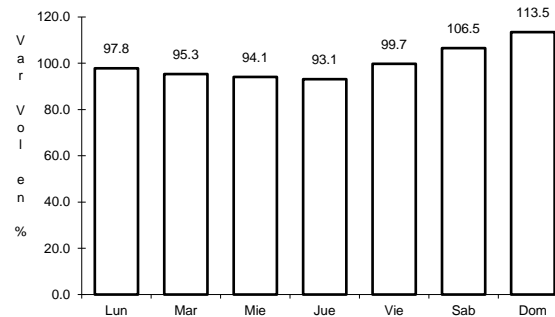
42 CARR: Santo Domingo - Cerro Gordo

CLAVE: 24614

ruta: SLP-022



Km: 0.00      Tipo: 3      Sent: 0

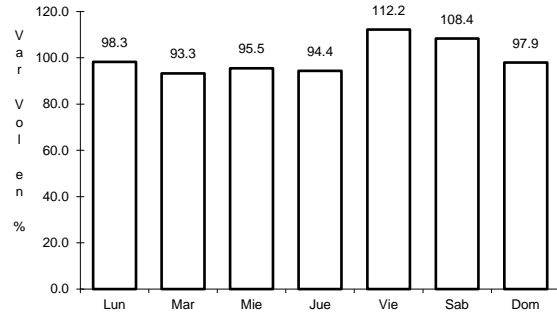


Km: 19.00      Tipo: 1      Sent: 0

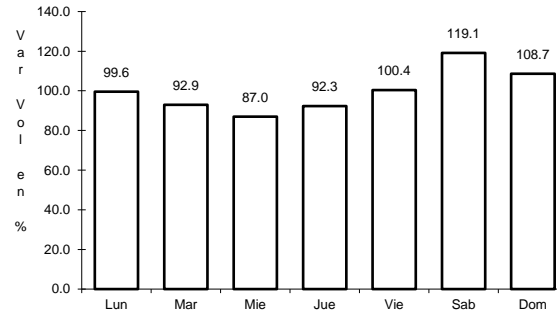
43 CARR: Tamuín - Estación F.F.C.C. Tamuín

CLAVE: 24022

RUTA: SLP-040



Km: 0.00                      Tipo: 3                      Sent: 0

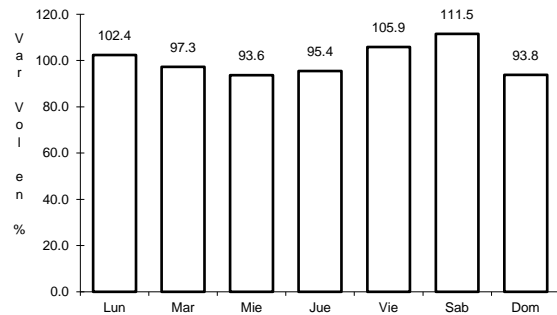


Km: 10.00                      Tipo: 1                      Sent: 0

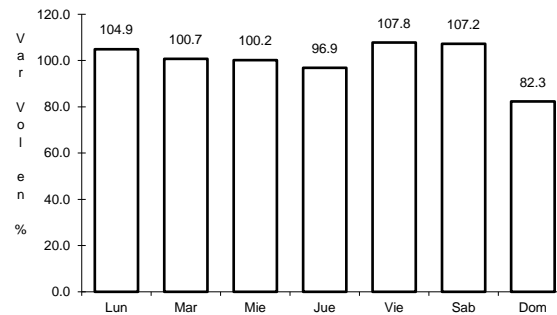
44 CARR: Tamuín - Xolol

CLAVE: 24027

RUTA: SLP-014



Km: 0.00                      Tipo: 3                      Sent: 0

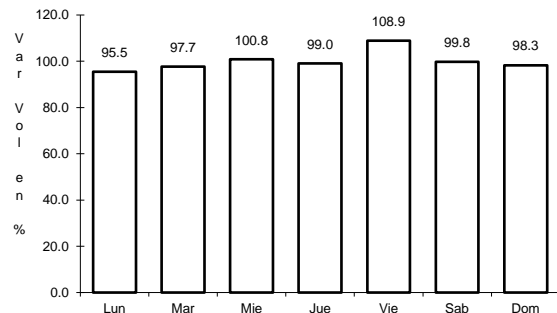


Km: 2.56                      Tipo: 3                      Sent: 0

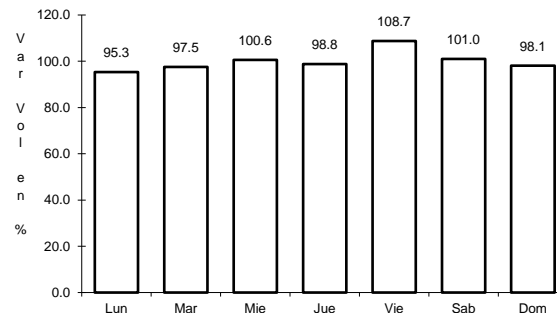
45 CARR: Cerritos - Ent. Tula (Cuota)

CLAVE:

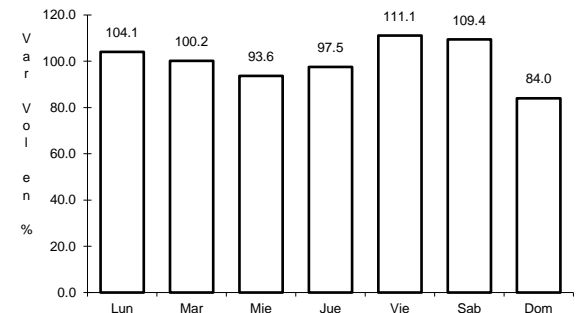
RUTA: SLP-075D



Km: 0.00                      Tipo: 3                      Sent: 0



Km: 18.70                      Tipo: 3                      Sent: 0

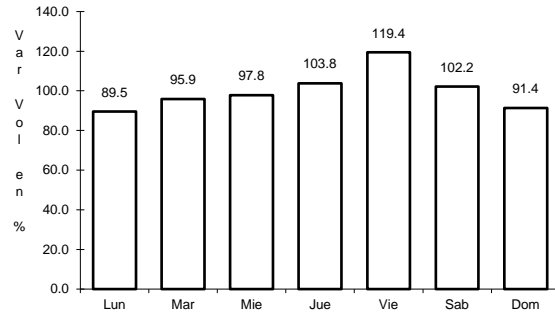


Km: 32.15                      Tipo: 3                      Sent: 0

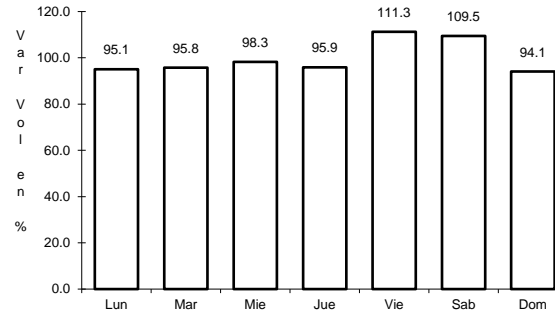
46 CARR: Cerritos - Rioverde (Cuota)

CLAVE: 00138

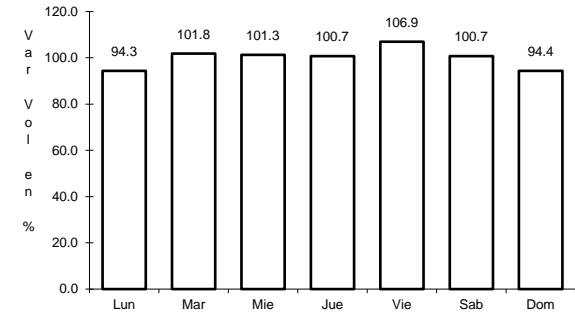
RUTA: SLP-D



Km: 0.00                      Tipo: 3                      Sent: 0



Km: 58.00                      Tipo: 3                      Sent: 0

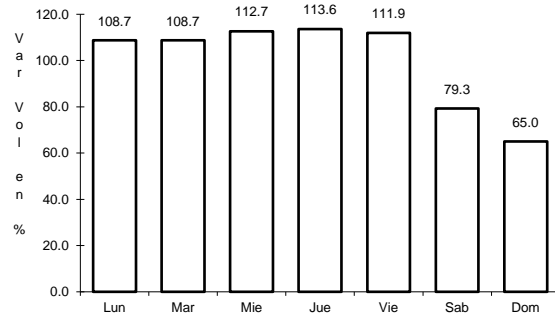


Km: 103.00                      Tipo: 1                      Sent: 0

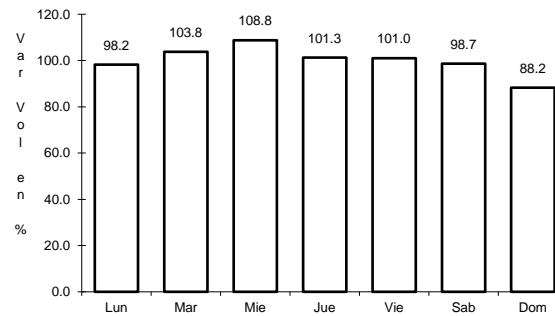
47 CARR: San Luis Potosí - Villa de Arriaga (Cuota)

CLAVE: 24209

RUTA: SLP-D



Km: 0.00                      Tipo: 3                      Sent: 0

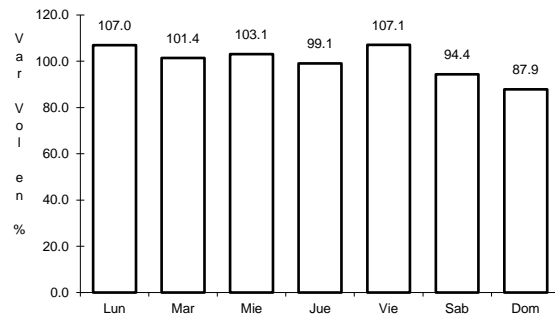


Km: 77.00                      Tipo: 1                      Sent: 0

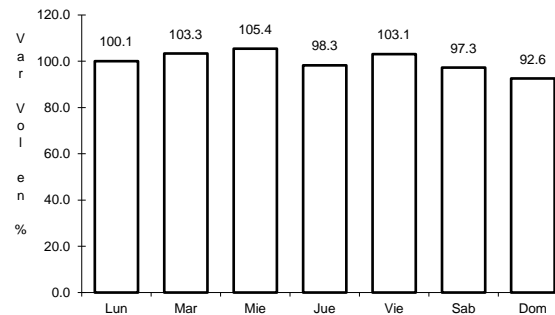
48 CARR: Rayón - Cd. del Maíz

CLAVE: 24206

RUTA: MEX-070-SLP-005



Km: 15.80                      Tipo: 1                      Sent: 0

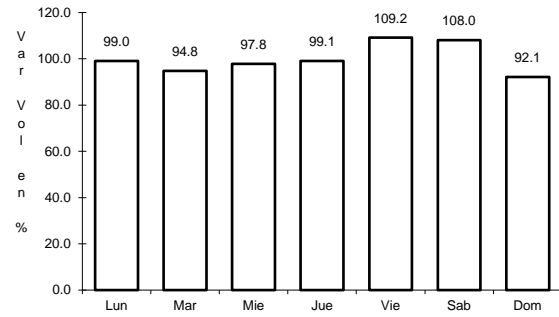


Km: 55.70                      Tipo: 1                      Sent: 0

49 CARR: San Lorenzo - Moctezuma

CLAVE: 24016

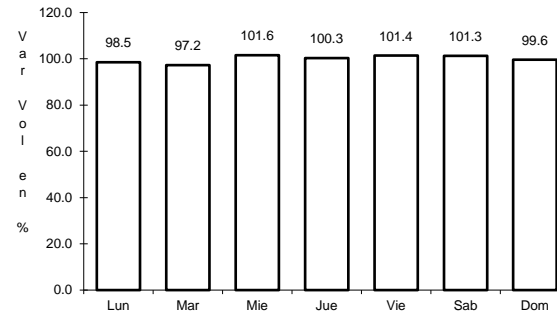
RUTA: MEX-063-SLP-012



Km: 0.00

Tipo: 3

Sent: 0



Km: 54.00

Tipo: 1

Sent: 0

