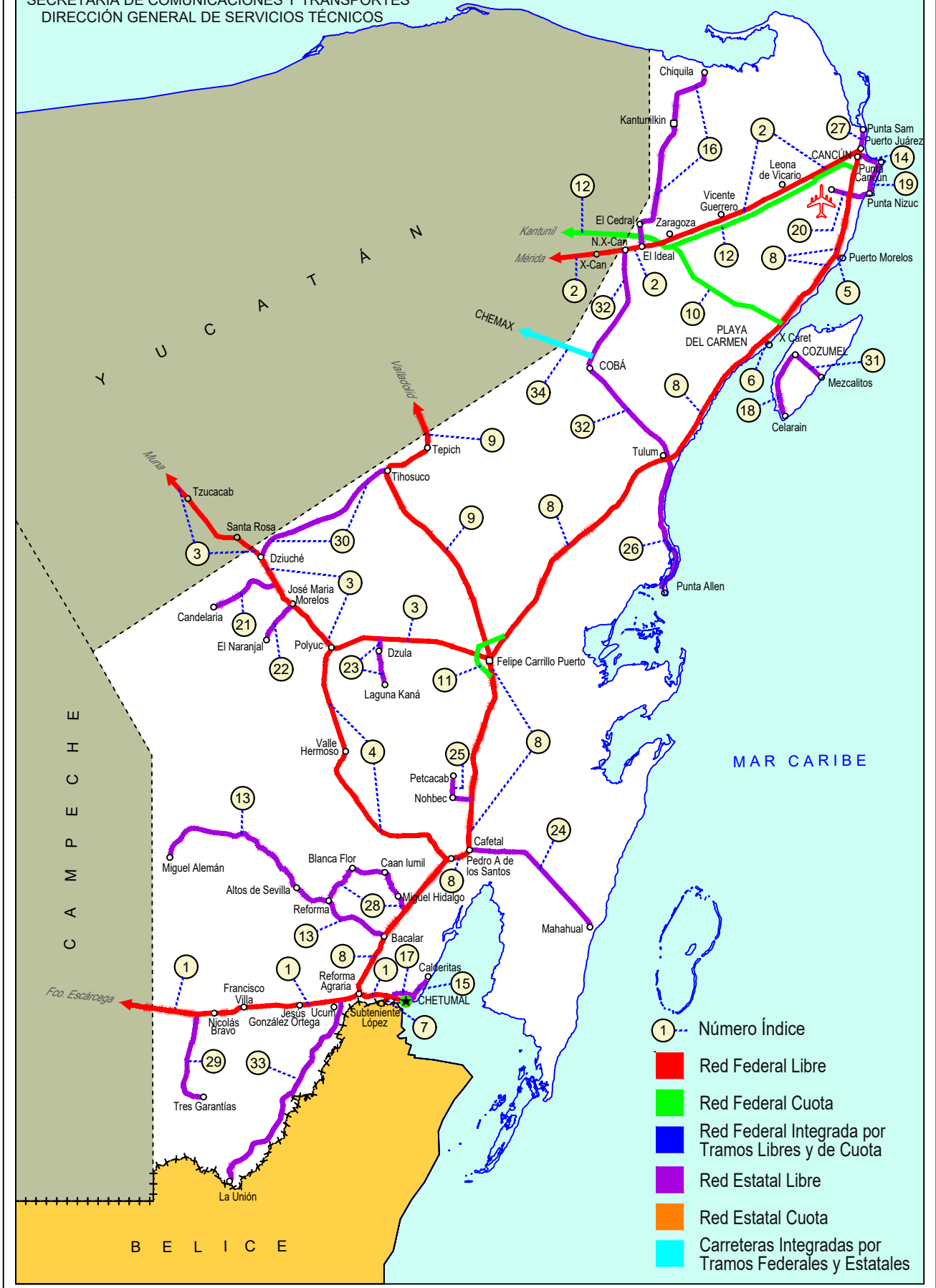


QUINTANA ROO

NO. INDICE CARRETERA		RUTA
	---RED FEDERAL LIBRE---	
1	Francisco Escárcega - Chetumal	MEX-186
2	Mérida - Puerto Juárez	MEX-180
3	Muna - Felipe Carrillo Puerto	MEX-184
4	Polyuc - T. C. (Reforma Agraria - Puerto Juárez)	MEX-293
5	Ramal a Puerto Morelos	MEX
6	Ramal a Punta Piedra	MEX
7	Ramal a Subteniente López	MEX-186
8	Reforma Agraria - Puerto Juárez	MEX-307
9	Valladolid - Felipe Carrillo Puerto	MEX-295
	---RED FEDERAL DE CUOTA---	
10	El Cedral - Playa del Carmen (Cuota)	MEX-180D
11	Libramiento de Felipe Carrillo Puerto (Cuota)	MEX-307D
12	Mérida - Cancún (Cuota)	MEX-180D
	---RED ESTATAL LIBRE---	
13	Bacalar - Miguel Alemán	QR
14	Cancún - Punta Cancún	QR
15	Chetumal - Calderitas	QR-004
16	El Ideal - Chiquila	QR-005
17	Libramiento de Chetumal	QR
18	Perimetral Cozumel	QR
19	Punta Nizuc - Cancún	QR
20	Ramal a Aeropuerto Cancún	QR
21	Ramal a Candelaria	QR
22	Ramal a El Naranjal	QR
23	Ramal a Laguna de Kaná	QR
24	Ramal a Mahahual	QR
25	Ramal a Petcacab	QR-018
26	Ramal a Punta Allen	QR-015
27	Ramal a Punta Sam	QR
28	Ramal a Reforma	QR-016
29	Ramal a Tres Garantías	QR
30	Tihosuco - Dziuche	QR
31	Transversal de Cozumel	QR
32	Tulum - Nuevo X-Can	QR
33	Ucum - Unión	QR
	---CARRETERAS INTEGRADAS POR TRAMOS FEDERALES Y ESTATALES---	
34	Chemax - Cobá	YUC-MEX-180

23 QUINTANA ROO

SECRETARÍA DE COMUNICACIONES Y TRANSPORTES
DIRECCIÓN GENERAL DE SERVICIOS TÉCNICOS



QUINTANA ROO

1 CARR: Francisco Escárcega - Chetumal

CLAVE: 00093

RUTA: MEX-186

AÑO: 2021

LUGAR	ESTACION				CLASIFICACION VEHICULAR EN PORCIENTO														COORDENADAS	
	KM	TE	SC	TDPA	M	A	B	C2	C3	T3S2	T3S3	T3S2R4	OTROS	A	B	C	K'	D	LATITUD	LONGITUD
Francisco Escárcega	0.00	3	0	3520	6.4	75.0	2.6	4.7	0.8	6.1	1.0	3.0	0.4	81.4	2.6	16.0	0.078	0.532	18.604186	-90.718879
Adolfo López Mateos	41.50	1	0	2944	7.9	65.1	5.4	7.6	1.5	5.4	1.2	5.2	0.7	73.0	5.4	21.6	0.082	0.523	18.642542	-90.315701
T. Der. Silvituc	55.70	1	0	2959	4.6	73.6	3.0	6.2	2.1	4.1	2.0	3.8	0.6	78.2	3.0	18.8	0.083	0.523	18.651235	-90.276028
T. Der. Silvituc	55.70	3	0	2297	4.7	71.1	2.9	6.9	2.6	4.7	2.2	4.0	0.9	75.8	2.9	21.3	0.064	0.502	18.649378	-90.261279
Conhuás	100.00	1	0	1823	1.9	68.4	6.3	6.4	1.3	6.9	2.4	5.7	0.7	70.3	6.3	23.4	0.074	0.514	18.540392	-89.917802
Xpujil	155.73	1	0	2710	3.5	72.2	3.4	7.1	0.8	6.7	1.7	4.3	0.3	75.7	3.4	20.9	0.073	0.535	18.509475	-89.412432
Lim. Edos. Term. Camp. Ppia. Qroo.	179.90																			
Nicolás Bravo	206.01	1	0	2991	4.7	70.4	4.4	7.0	1.3	6.0	1.0	4.6	0.6	75.1	4.4	20.5	0.070	0.500	18.458448	-88.940955
Nicolás Bravo	206.01	3	0	3386	3.3	71.3	3.5	9.3	1.3	5.4	1.2	4.0	0.7	74.6	3.5	21.9	0.075	0.508	18.459071	-88.920896
T. Izq. Morocoy	214.90	1	0	2937	3.6	73.7	3.9	6.6	1.3	5.7	1.2	3.8	0.2	77.3	3.9	18.8	0.074	0.510	18.478537	-88.825477
T. Izq. Morocoy	214.90	3	0	2723	4.1	69.8	4.7	7.0	1.6	6.6	1.9	3.8	0.5	73.9	4.7	21.4	0.073	0.504	18.479206	-88.803783
T. Der. Unión	247.50	1	0	4799	6.6	75.4	2.5	5.9	1.3	4.7	0.8	2.3	0.5	82.0	2.5	15.5	0.065	0.516	18.503818	-88.535253
T. Der. Unión	247.50	3	0	7366	9.6	79.6	1.4	4.0	0.9	2.0	0.6	1.5	0.4	89.2	1.4	9.4	0.074	0.507	18.508732	-88.504488
T. Izq. Fpe. Carrillo Puerto	255.15	1	0	5515	8.9	77.1	1.8	4.7	2.4	2.6	0.9	1.3	0.3	86.0	1.8	12.2	0.077	0.507	18.523837	-88.473448
T. Der. Subteniente López	268.57	1	1	8780	4.1	88.1	1.0	4.6	0.7	0.7	0.3	0.3	0.2	92.2	1.0	6.8	0.090	0.501	18.516634	-88.377969
T. Der. Subteniente López	268.57	1	2	8829	4.1	87.2	1.1	5.2	0.8	0.8	0.3	0.3	0.2	91.3	1.1	7.6	0.078	0.501	18.516804	-88.378217
T. Izq. Av. Insurgentes	270.00	1	1	12104	7.5	88.5	0.7	1.4	0.9	0.5	0.1	0.2	0.2	96.0	0.7	3.3	0.089	0.514	18.513307	-88.363126
T. Izq. Av. Insurgentes	270.00	1	2	12796	7.6	87.8	0.7	1.7	0.9	0.6	0.2	0.2	0.3	95.4	0.7	3.9	0.082	0.514	18.513444	-88.363108
T. Izq. Av. Insurgentes	270.00	3	1	4631	4.6	92.0	0.5	1.2	0.6	0.3	0.2	0.2	0.4	96.6	0.5	2.9	0.076	0.513	18.510176	-88.353279
T. Izq. Av. Insurgentes	270.00	3	2	4392	5.0	91.6	0.6	1.2	0.5	0.3	0.2	0.2	0.4	96.6	0.6	2.8	0.091	0.513	18.510275	-88.353246
Chetumal	277.36	1	1	8163	10.7	87.1	0.2	0.8	0.6	0.2	0.0	0.1	0.3	97.8	0.2	2.0	0.080	0.537	18.501559	-88.320691
Chetumal	277.36	1	2	7032	11.0	86.2	0.3	1.4	0.6	0.2	0.0	0.1	0.2	97.2	0.3	2.5	0.080	0.537	18.501665	-88.320665

2 CARR: Mérida - Puerto Juárez

CLAVE: 00067

RUTA: MEX-180

AÑO: 2021

LUGAR	ESTACION				CLASIFICACION VEHICULAR EN PORCIENTO														COORDENADAS	
	KM	TE	SC	TDPA	M	A	B	C2	C3	T3S2	T3S3	T3S2R4	OTROS	A	B	C	K'	D	LATITUD	LONGITUD
Mérida	0.00																			
X. Periférico de Mérida	5.60	1	1	11053	11.2	81.1	0.4	3.7	0.3	1.9	0.9	0.1	0.4	92.3	0.4	7.3	0.081	0.528	20.958010	-89.573433
X. Periférico de Mérida	5.60	1	2	12361	13.4	78.8	0.5	3.6	0.3	1.9	1.0	0.1	0.4	92.2	0.5	7.3	0.075	0.528	20.958095	-89.573385
X. Periférico de Mérida	5.60	3	1	17367	8.5	81.4	1.2	3.0	1.9	2.1	0.4	1.2	0.3	89.9	1.2	8.9	0.095	0.522	20.951835	-89.561991
X. Periférico de Mérida	5.60	3	2	15927	8.8	80.6	1.6	2.6	2.0	2.3	0.4	1.4	0.3	89.4	1.6	9.0	0.085	0.522	20.951978	-89.561938
Teya	13.00	1	1	12303	7.7	79.2	1.7	4.3	2.0	2.8	0.5	1.4	0.4	86.9	1.7	11.4	0.116	0.509	20.938030	-89.537110
Teya	13.00	1	2	11887	7.8	79.8	1.7	3.2	2.3	3.0	0.4	1.5	0.3	87.6	1.7	10.7	0.105	0.509	20.938156	-89.537046
T. Der. Seyé	28.79	1	1	6272	3.0	82.0	1.8	5.4	1.3	3.0	1.0	2.2	0.3	85.0	1.8	13.2	0.104	0.500	20.895783	-89.391617

QUINTANA ROO

2 CARR: Mérida - Puerto Juárez

CLAVE: 00067

RUTA: MEX-180

AÑO: 2021

LUGAR	ESTACION				CLASIFICACION VEHICULAR EN PORCIENTO														COORDENADAS	
	KM	TE	SC	TDPA	M	A	B	C2	C3	T3S2	T3S3	T3S2R4	OTROS	A	B	C	K'	D	LATITUD	LONGITUD
T. Der. Seyé	28.79	1	2	6271	3.5	80.4	2.0	6.0	1.5	3.1	0.7	2.5	0.3	83.9	2.0	14.1	0.100	0.500	20.895903	-89.391536
T. Der. Seyé	28.79	3	1	5861	2.2	82.8	1.6	5.0	1.4	3.1	1.0	2.6	0.3	85.0	1.6	13.4	0.090	0.510	20.891693	-89.374776
T. Der. Seyé	28.79	3	2	5636	2.3	81.1	2.0	5.6	1.7	3.3	0.8	2.9	0.3	83.4	2.0	14.6	0.101	0.510	20.891838	-89.374752
Tahmek	42.00	1	1	5775	2.1	79.8	2.2	6.2	1.8	3.5	1.3	2.8	0.3	81.9	2.2	15.9	0.089	0.501	20.876039	-89.279169
Tahmek	42.00	1	2	5745	2.4	80.0	2.2	6.2	1.7	3.4	0.8	2.9	0.4	82.4	2.2	15.4	0.097	0.501	20.876182	-89.279174
T. Izq. Hochtún (1º Acceso)	46.65	1	0	2412	26.0	63.7	1.2	7.6	0.6	0.4	0.3	0.2	0.0	89.7	1.2	9.1	0.092	0.501	20.868586	-89.219667
T. Izq. Hochtún (2º Acceso)	48.62	1	0	1243	22.9	68.0	0.7	5.2	1.3	1.0	0.4	0.5	0.0	90.9	0.7	8.4	0.101	0.502	20.858746	-89.202870
T. Izq. Hochtún (2º Acceso)	48.62	3	0	2314	27.8	61.5	1.1	7.0	0.5	1.4	0.4	0.2	0.1	89.3	1.1	9.6	0.089	0.501	20.854472	-89.195942
T. Libramiento de Xocchel	55.72																			
Kantunil	67.28	1	1	3755	1.3	75.6	3.1	6.7	2.4	4.3	1.3	5.0	0.3	76.9	3.1	20.0	0.092	0.519	20.803086	-89.058045
Kantunil	67.28	1	2	3475	1.3	78.2	2.6	6.1	2.0	4.1	0.9	4.4	0.4	79.5	2.6	17.9	0.109	0.519	20.803238	-89.058014
Kantunil	67.28	3	0	3156	4.6	80.3	1.7	6.0	2.5	2.7	1.1	0.7	0.4	84.9	1.7	13.4	0.096	0.507	20.791198	-89.019128
Libre Unión	92.91	1	0	2455	5.5	76.5	1.8	7.9	3.3	2.6	1.2	1.1	0.1	82.0	1.8	16.2	0.097	0.518	20.708408	-88.816078
Libre Unión	92.91	3	0	2362	5.4	77.1	1.7	8.0	3.2	2.5	1.0	1.0	0.1	82.5	1.7	15.8	0.104	0.518	20.706915	-88.799653
Piste	116.30	3	0	6903	18.4	74.2	1.6	2.2	2.0	0.5	0.5	0.5	0.1	92.6	1.6	5.8	0.090	0.520	20.691450	-88.580300
1er. Acceso a Zona Arqueológica de Chichen-Itzá	117.90	3	0	5274	14.3	71.3	1.8	6.6	1.5	3.0	0.7	0.5	0.3	85.6	1.8	12.6	0.087	0.517	20.688336	-88.572490
2do. Acceso a Zona Arqueológica de Chichen-Itzá	121.10	3	0	5548	15.1	74.8	2.4	3.8	1.9	1.1	0.4	0.5	0.0	89.9	2.4	7.7	0.081	0.517	20.669428	-88.557487
T. Der. Chankom	127.00	1	0	4109	8.4	79.1	3.1	4.4	2.1	1.3	0.8	0.7	0.1	87.5	3.1	9.4	0.096	0.503	20.644674	-88.496757
T. Der. Chankom	127.00	3	0	4123	7.4	79.3	1.6	6.7	1.4	2.4	0.6	0.4	0.2	86.7	1.6	11.7	0.099	0.514	20.641078	-88.485432
Kaua	137.47	3	0	4353	8.3	79.9	3.1	4.1	2.1	1.3	0.5	0.6	0.1	88.2	3.1	8.7	0.099	0.516	20.622726	-88.406504
X. C. Periférico de Valladolid	157.12	1	0	6150	15.2	75.1	2.2	4.0	1.5	0.9	0.5	0.5	0.1	90.3	2.2	7.5	0.079	0.512	20.673827	-88.247885
Valladolid	160.68	1	0	5930	18.7	75.8	1.7	2.7	0.7	0.2	0.1	0.1	0.0	94.5	1.7	3.8	0.080	0.516	20.680685	-88.236938
Valladolid	160.68	3	0	7181	21.2	72.4	0.7	2.2	2.5	0.5	0.1	0.4	0.0	93.6	0.7	5.7	0.090	0.544	20.695220	-88.162469
X. C. Periférico de Valladolid	165.60	3	0	9059	11.2	79.1	1.7	2.9	1.6	1.7	0.5	1.0	0.3	90.3	1.7	8.0	0.086	0.501	20.696441	-88.154019
T. Der. Coba	187.80	1	0	6540	6.4	83.9	1.8	3.1	1.5	1.7	0.5	0.9	0.2	90.3	1.8	7.9	0.099	0.513	20.659492	-87.960915
T. Der. Chemax	189.79	1	0	4509	9.5	81.2	1.0	2.9	1.5	2.1	0.6	0.7	0.5	90.7	1.0	8.3	0.086	0.502	20.657886	-87.951529
T. Der. Chemax	189.79	3	0	3761	10.0	81.2	1.4	3.0	1.5	1.6	0.4	0.5	0.4	91.2	1.4	7.4	0.103	0.508	20.664231	-87.925709
X-Can	225.00	3	0	2923	6.1	81.5	2.2	5.2	1.8	2.0	0.4	0.7	0.1	87.6	2.2	10.2	0.108	0.501	20.860095	-87.658737
Lim. Edos. Term. Yuc. Ppia. Q. R.	230.40																			
Nuevo X-Can	231.90	3	0	2887	4.7	83.1	2.0	5.1	1.8	1.8	0.5	0.9	0.1	87.8	2.0	10.2	0.086	0.513	20.871281	-87.592959
Zaragoza	239.00	1	0	4135	6.2	81.3	2.0	5.0	1.9	2.1	0.7	0.7	0.1	87.5	2.0	10.5	0.096	0.500	20.881289	-87.533472
Zaragoza	239.00	3	0	3714	4.3	83.3	2.0	5.0	1.9	2.2	0.6	0.6	0.1	87.6	2.0	10.4	0.095	0.502	20.884516	-87.514292
Vicente Guerrero	261.00	1	0	3260	7.2	81.6	2.7	4.1	2.0	1.2	0.4	0.7	0.1	88.8	2.7	8.5	0.094	0.503	20.940338	-87.333212
Leona Vicario	275.50	1	0	5016	7.0	84.0	2.0	3.5	1.2	1.1	0.3	0.8	0.1	91.0	2.0	7.0	0.093	0.503	20.982204	-87.219759
Leona Vicario	275.50	3	0	6346	5.9	84.8	2.1	4.5	0.9	0.9	0.2	0.6	0.1	90.7	2.1	7.2	0.091	0.506	20.993389	-87.188895

QUINTANA ROO

2 CARR: Mérida - Puerto Juárez

CLAVE: 00067

RUTA: MEX-180

AÑO: 2021

LUGAR	ESTACION				CLASIFICACION VEHICULAR EN PORCIENTO														COORDENADAS	
	KM	TE	SC	TDPA	M	A	B	C2	C3	T3S2	T3S3	T3S2R4	OTROS	A	B	C	K'	D	LATITUD	LONGITUD
T. Der. Aeropuerto	302.50	1	0	7911	4.9	86.1	1.8	3.5	1.1	1.3	0.6	0.6	0.1	91.0	1.8	7.2	0.087	0.505	21.095834	-86.984135
T. Der. Aeropuerto	302.50	3	1	5260	3.2	78.0	2.1	7.7	4.5	1.6	1.0	1.5	0.4	81.2	2.1	16.7	0.114	0.515	21.102677	-86.970212
T. Der. Aeropuerto	302.50	3	2	4955	3.4	75.5	2.4	9.1	4.8	1.9	0.9	1.5	0.5	78.9	2.4	18.7	0.156	0.515	21.102803	-86.970304
T. Der. Alfredo V. Bonfil	310.00	1	1	25566	7.3	84.4	0.9	2.6	1.5	1.3	0.4	1.3	0.3	91.7	0.9	7.4	0.078	0.547	21.138891	-86.897574
T. Der. Alfredo V. Bonfil	310.00	1	2	26445	7.3	84.4	0.9	2.6	1.5	1.3	0.4	1.3	0.3	91.7	0.9	7.4	0.083	0.547	21.139035	-86.897649
Puerto Juárez	321.41																			

3 CARR: Muna - Felipe Carrillo Puerto

CLAVE: 00148

RUTA: MEX-184

AÑO: 2021

LUGAR	ESTACION				CLASIFICACION VEHICULAR EN PORCIENTO														COORDENADAS	
	KM	TE	SC	TDPA	M	A	B	C2	C3	T3S2	T3S3	T3S2R4	OTROS	A	B	C	K'	D	LATITUD	LONGITUD
Muna	0.00	3	0	4051	10.4	73.5	1.1	9.5	1.5	2.5	0.8	0.4	0.3	83.9	1.1	15.0	0.068	0.512	20.474390	-89.694381
Ticul	19.10	1	0	3777	8.3	77.2	0.9	9.6	1.2	1.9	0.4	0.4	0.1	85.5	0.9	13.6	0.083	0.506	20.407145	-89.574449
Ticul	19.10	3	0	7065	40.4	50.4	0.7	3.3	0.3	3.8	0.6	0.1	0.4	90.8	0.7	8.5	0.076	0.503	20.373932	-89.517965
Oxkutzcab	40.50	3	0	6375	37.3	58.2	0.7	1.9	0.9	0.4	0.1	0.3	0.2	95.5	0.7	3.8	0.092	0.505	20.286312	-89.382988
Tekax	53.90	3	0	3841	27.6	63.9	0.3	5.2	0.5	2.1	0.3	0.0	0.1	91.5	0.3	8.2	0.072	0.511	20.188211	-89.267730
Tzucacab	86.60	1	0	2065	25.8	63.7	0.4	7.9	0.8	1.2	0.2	0.0	0.0	89.5	0.4	10.1	0.073	0.502	20.078415	-89.062187
Tzucacab	86.60	3	0	1526	29.1	62.3	0.3	6.5	0.6	0.9	0.2	0.1	0.0	91.4	0.3	8.3	0.080	0.505	20.062823	-89.036452
Santa Rosa	109.60	3	0	2253	5.8	74.4	1.9	8.5	2.7	2.5	1.4	2.7	0.1	80.2	1.9	17.9	0.064	0.510	19.947114	-88.879967
Lim. Edos. Term. Yuc. Ppia. Q. R.	117.00																			
Dziuche	118.00	1	0	2453	4.2	74.0	3.3	9.8	2.3	2.1	0.9	3.3	0.1	78.2	3.3	18.5	0.080	0.508	19.905529	-88.819735
Dziuche	118.00	3	0	3177	5.0	78.0	2.6	7.8	1.8	1.6	0.7	2.4	0.1	83.0	2.6	14.4	0.075	0.507	19.888987	-88.803894
José María Morelos	138.60	1	0	4035	8.8	79.8	1.5	6.0	1.4	0.9	0.5	1.0	0.1	88.6	1.5	9.9	0.081	0.519	19.764500	-88.725149
José María Morelos	138.60	3	0	3301	9.1	75.6	2.0	8.4	1.5	1.2	0.7	1.4	0.1	84.7	2.0	13.3	0.069	0.526	19.736785	-88.691979
Polyuc	161.94	1	0	2724	6.8	76.3	2.0	7.7	2.3	2.1	1.0	1.7	0.1	83.1	2.0	14.9	0.068	0.504	19.611548	-88.571651
Polyuc	161.94	3	0	1403	8.9	78.4	0.7	7.9	1.5	1.4	0.5	0.6	0.1	87.3	0.7	12.0	0.083	0.503	19.609514	-88.553468
T. Der. Dzulá	178.11	3	0	1358	6.3	80.6	1.3	8.0	1.6	0.9	0.3	1.0	0.0	86.9	1.3	11.8	0.080	0.552	19.643441	-88.404549
Felipe Carrillo Puerto	216.97	1	0	5782	28.1	67.8	1.0	1.7	0.7	0.3	0.2	0.2	0.0	95.9	1.0	3.1	0.067	0.516	19.584450	-88.057888

4 CARR: Polyuc - T. C. (Reforma Agraria - Puerto Juárez)

CLAVE: 23014

RUTA: MEX-293

AÑO: 2021

LUGAR	ESTACION				CLASIFICACION VEHICULAR EN PORCIENTO														COORDENADAS	
	KM	TE	SC	TDPA	M	A	B	C2	C3	T3S2	T3S3	T3S2R4	OTROS	A	B	C	K'	D	LATITUD	LONGITUD
Polyuc	0.00	3	0	2624	11.2	80.9	1.2	2.0	1.0	1.3	0.5	1.5	0.4	92.1	1.2	6.7	0.086	0.512	19.607891	-88.571678
T. Der. Ramonal	24.00	1	0	1445	4.4	80.4	2.9	3.3	1.8	3.1	0.8	2.8	0.5	84.8	2.9	12.3	0.087	0.526	19.405123	-88.566458

QUINTANA ROO

4 CARR: Polyuc - T. C. (Reforma Agraria - Puerto Juárez)

CLAVE: 23014

RUTA: MEX-293

AÑO: 2021

LUGAR	ESTACION				CLASIFICACION VEHICULAR EN PORCIENTO													COORDENADAS		
	KM	TE	SC	TDPA	M	A	B	C2	C3	T3S2	T3S3	T3S2R4	OTROS	A	B	C	K'	D	LATITUD	LONGITUD
T. Der. Ramonal	24.00	3	0	1555	3.2	76.2	3.2	8.4	2.4	2.4	1.2	2.9	0.1	79.4	3.2	17.4	0.086	0.502	19.397829	-88.564236
T. Izq. Santa María Poniente	35.00	1	0	1778	4.1	73.4	2.7	9.6	3.1	2.6	1.5	2.8	0.2	77.5	2.7	19.8	0.072	0.526	19.344848	-88.548293
T. Izq. Santa María Poniente	35.00	3	0	1607	8.0	75.6	0.9	4.1	5.2	1.7	1.5	2.6	0.4	83.6	0.9	15.5	0.086	0.509	19.338862	-88.546448
Valle Hermoso	50.00	3	0	1583	11.8	69.1	3.2	7.8	2.4	1.8	1.0	2.7	0.2	80.9	3.2	15.9	0.087	0.510	19.180850	-88.523317
T. Izq. Chacchoben	93.50	1	0	1824	6.1	73.9	3.3	9.5	1.8	1.8	1.2	2.2	0.2	80.0	3.3	16.7	0.083	0.557	18.982869	-88.218741
T. Izq. Chacchoben	93.50	3	0	1706	5.2	74.7	3.2	9.2	2.0	1.9	0.9	2.8	0.1	79.9	3.2	16.9	0.083	0.525	18.968204	-88.205174
T. C. Reforma Agraria - Puerto Juárez	99.00	1	0	1563	3.6	81.0	2.0	5.7	1.9	2.3	1.1	2.3	0.1	84.6	2.0	13.4	0.097	0.502	18.950605	-88.188806

5 CARR: Ramal a Puerto Morelos

CLAVE: 23569

RUTA: MEX

AÑO: 2021

LUGAR	ESTACION				CLASIFICACION VEHICULAR EN PORCIENTO													COORDENADAS		
	KM	TE	SC	TDPA	M	A	B	C2	C3	T3S2	T3S3	T3S2R4	OTROS	A	B	C	K'	D	LATITUD	LONGITUD
T. C. Reforma Agraria - Puerto Juárez	0.00	3	0	12365	6.4	90.4	1.3	1.5	0.2	0.2	0.0	0.0	0.0	96.8	1.3	1.9	0.079	0.506	20.851173	-86.884295
Puerto Morelos	2.20																			

6 CARR: Ramal a Punta Piedra

CLAVE: 23575

RUTA: MEX

AÑO: 2021

LUGAR	ESTACION				CLASIFICACION VEHICULAR EN PORCIENTO													COORDENADAS		
	KM	TE	SC	TDPA	M	A	B	C2	C3	T3S2	T3S3	T3S2R4	OTROS	A	B	C	K'	D	LATITUD	LONGITUD
T. C. Reforma Agraria - Puerto Juárez	0.00	3	1	10587	15.6	76.9	1.9	3.3	0.9	0.5	0.0	0.7	0.2	92.5	1.9	5.6	0.069	0.539	20.625945	-87.080913
T. C. Reforma Agraria - Puerto Juárez	0.00	3	2	9062	15.6	77.2	1.9	3.2	0.9	0.4	0.0	0.6	0.2	92.8	1.9	5.3	0.063	0.539	20.626009	-87.080875
Punta Piedra (Playa del Carmen)	1.50																			

7 CARR: Ramal a Subteniente López

CLAVE: 23567

RUTA: MEX-186

AÑO: 2021

LUGAR	ESTACION				CLASIFICACION VEHICULAR EN PORCIENTO													COORDENADAS		
	KM	TE	SC	TDPA	M	A	B	C2	C3	T3S2	T3S3	T3S2R4	OTROS	A	B	C	K'	D	LATITUD	LONGITUD
T. C. Francisco Escárcega - Chetumal	0.00	3	1	3466	6.5	85.3	1.0	1.5	0.9	1.7	1.0	1.5	0.6	91.8	1.0	7.2	0.097	0.503	18.512236	-88.376473
T. C. Francisco Escárcega - Chetumal	0.00	3	2	3424	5.1	86.4	0.6	1.8	1.0	1.5	1.0	1.8	0.8	91.5	0.6	7.9	0.089	0.503	18.512188	-88.376404
Subteniente López	3.00																			

QUINTANA ROO

8 CARR: Reforma Agraria - Puerto Juárez

CLAVE: 23132

RUTA: MEX-307

AÑO: 2021

LUGAR	ESTACION				CLASIFICACION VEHICULAR EN PORCIENTO													COORDENADAS		
	KM	TE	SC	TDPA	M	A	B	C2	C3	T3S2	T3S3	T3S2R4	OTROS	A	B	C	K'	D	LATITUD	LONGITUD
T. C. Francisco Escárcega - Chetumal	0.00	3	1	5897	2.8	83.0	2.1	6.0	0.9	2.1	0.7	2.0	0.4	85.8	2.1	12.1	0.080	0.516	18.540142	-88.467281
T. C. Francisco Escárcega - Chetumal	0.00	3	2	5533	2.7	82.2	2.1	6.6	1.0	2.2	0.8	2.0	0.4	84.9	2.1	13.0	0.075	0.516	18.540141	-88.467385
Bacalar	19.15	1	1	5743	2.9	83.6	1.9	5.9	0.9	2.0	0.6	1.8	0.4	86.5	1.9	11.6	0.080	0.515	18.659798	-88.405077
Bacalar	19.15	1	2	5402	2.5	82.5	2.2	6.3	1.1	2.1	0.8	2.1	0.4	85.0	2.2	12.8	0.080	0.515	18.659860	-88.405181
Bacalar	19.15	3	0	7491	2.3	82.1	2.8	5.8	1.0	2.6	0.7	2.3	0.4	84.4	2.8	12.8	0.075	0.504	18.696003	-88.388289
T. Izq. Reforma	22.24	3	0	7395	2.9	81.0	2.8	5.6	1.8	2.9	0.8	1.8	0.4	83.9	2.8	13.3	0.077	0.506	18.706756	-88.384555
Buenavista	46.90	1	0	5542	3.2	80.7	3.1	5.2	1.8	2.9	0.9	1.7	0.5	83.9	3.1	13.0	0.075	0.516	18.878005	-88.247482
Buenavista	46.90	3	0	5421	2.9	81.2	2.7	5.3	1.6	3.1	1.0	1.8	0.4	84.1	2.7	13.2	0.073	0.513	18.889921	-88.237175
T. Izq. Lazáro Cárdenas	56.30	1	0	5011	2.7	80.2	2.8	6.2	1.4	3.4	0.9	2.0	0.4	82.9	2.8	14.3	0.084	0.508	18.938909	-88.192420
T. Izq. Lazáro Cárdenas	56.30	3	0	4340	2.3	80.7	2.8	6.5	1.2	3.5	0.7	2.0	0.3	83.0	2.8	14.2	0.076	0.507	18.950512	-88.181040
T. Izq. Chacchoben	70.80	1	0	4927	2.8	75.9	4.1	7.0	1.3	4.4	0.8	3.2	0.5	78.7	4.1	17.2	0.093	0.509	19.010394	-88.111255
T. Izq. Chacchoben	70.80	3	0	3842	3.0	74.6	4.2	7.1	1.2	4.7	1.0	3.7	0.5	77.6	4.2	18.2	0.072	0.512	19.035883	-88.110056
T. Izq. Noh-Bec	81.94	1	0	3643	3.1	73.9	4.8	7.0	1.1	4.9	1.0	3.8	0.4	77.0	4.8	18.2	0.075	0.508	19.133703	-88.105308
T. Izq. Noh-Bec	81.94	3	0	3841	3.0	77.6	3.9	6.3	1.3	3.6	1.0	2.7	0.6	80.6	3.9	15.5	0.077	0.513	19.140355	-88.104991
Libramiento Felipe Carrillo Puerto (Cuota)	128.00	1	0	4767	2.8	82.0	3.5	4.0	1.6	2.9	0.7	2.0	0.5	84.8	3.5	11.7	0.070	0.513	19.532185	-88.039505
Felipe Carrillo Puerto	132.00	1	0	4287	2.4	83.8	3.2	4.1	1.3	2.5	0.5	1.9	0.3	86.2	3.2	10.6	0.083	0.517	19.550782	-88.042484
Felipe Carrillo Puerto	132.00	3	0	3386	2.7	85.0	3.9	3.5	1.1	1.9	0.4	1.3	0.2	87.7	3.9	8.4	0.087	0.501	19.597222	-88.033748
Libramiento Felipe Carrillo Puerto (Cuota)	138.25	1	0	2525	2.4	83.7	3.4	4.6	1.3	2.4	0.3	1.6	0.3	86.1	3.4	10.5	0.101	0.520	19.620577	-88.015241
Tulum Pueblo	227.00	1	0	8141	6.3	83.0	2.0	2.8	2.2	1.8	0.4	1.1	0.4	89.3	2.0	8.7	0.101	0.521	20.204171	-87.484500
Tulum Pueblo	227.00	3	1	10599	2.4	95.2	0.2	1.0	0.5	0.3	0.1	0.1	0.2	97.6	0.2	2.2	0.089	0.509	20.209666	-87.467315
Tulum Pueblo	227.00	3	2	10237	2.7	95.5	0.2	0.7	0.3	0.2	0.1	0.1	0.2	98.2	0.2	1.6	0.090	0.509	20.209729	-87.467344
T. Izq. Cobá	229.19	1	1	10915	2.9	92.1	0.6	1.1	1.2	0.9	0.3	0.4	0.5	95.0	0.6	4.4	0.075	0.506	20.213876	-87.454051
T. Izq. Cobá	229.19	1	2	11188	2.6	92.4	0.6	1.2	1.2	0.8	0.3	0.4	0.5	95.0	0.6	4.4	0.073	0.506	20.213929	-87.454348
T. Izq. Cobá	229.19	3	1	10387	2.9	90.0	1.6	2.8	0.8	0.8	0.2	0.6	0.3	92.9	1.6	5.5	0.105	0.513	20.215442	-87.449202
T. Izq. Cobá	229.19	3	2	10942	2.9	89.4	1.8	3.1	0.8	0.8	0.2	0.6	0.4	92.3	1.8	5.9	0.103	0.513	20.215541	-87.449250
X. C. Tulum - Aeropuerto	231.19	1	1	10608	2.3	88.2	2.2	4.1	1.3	0.9	0.2	0.5	0.3	90.5	2.2	7.3	0.122	0.512	20.219122	-87.437811
X. C. Tulum - Aeropuerto	231.19	1	2	11147	2.3	87.6	2.2	4.3	1.5	1.1	0.2	0.5	0.3	89.9	2.2	7.9	0.111	0.512	20.219221	-87.437869
X. C. Tulum - Aeropuerto	231.19	3	1	9725	3.3	87.0	1.8	4.0	1.6	0.9	0.2	0.7	0.5	90.3	1.8	7.9	0.104	0.506	20.220069	-87.434856
X. C. Tulum - Aeropuerto	231.19	3	2	9499	3.3	85.9	2.2	4.4	1.7	1.1	0.3	0.7	0.4	89.2	2.2	8.6	0.107	0.506	20.220159	-87.434904
T. Der. Xel-Ha	244.80	1	1	9485	2.1	88.6	2.2	3.9	1.3	0.9	0.2	0.5	0.3	90.7	2.2	7.1	0.121	0.509	20.314624	-87.367819
T. Der. Xel-Ha	244.80	1	2	9848	2.2	87.7	1.9	4.4	1.5	1.2	0.2	0.6	0.3	89.9	1.9	8.2	0.111	0.509	20.314669	-87.367934
T. Der. Xel-Ha	244.80	3	1	8933	2.0	89.4	2.1	3.3	1.1	1.1	0.3	0.5	0.2	91.4	2.1	6.5	0.119	0.511	20.330673	-87.358498
T. Der. Xel-Ha	244.80	3	2	9342	2.1	87.6	2.5	4.6	1.0	1.1	0.3	0.6	0.2	89.7	2.5	7.8	0.110	0.511	20.330710	-87.358555
T. Der. Akumal	254.44	1	1	10601	4.2	86.4	2.9	4.0	0.9	0.9	0.2	0.4	0.1	90.6	2.9	6.5	0.124	0.510	20.395164	-87.321653
T. Der. Akumal	254.44	1	2	10167	4.1	85.5	3.1	4.6	1.0	0.9	0.2	0.5	0.1	89.6	3.1	7.3	0.111	0.510	20.395227	-87.321788

QUINTANA ROO

8 CARR: Reforma Agraria - Puerto Juárez

CLAVE: 23132

RUTA: MEX-307

AÑO: 2021

LUGAR	ESTACION				CLASIFICACION VEHICULAR EN PORCIENTO										COORDENADAS					
	KM	TE	SC	TDPA	M	A	B	C2	C3	T3S2	T3S3	T3S2R4	OTROS	A	B	C	K'	D	LATITUD	LONGITUD
Puerto Aventuras	269.34	3	1	18181	4.5	86.9	2.3	4.0	1.0	0.7	0.2	0.3	0.1	91.4	2.3	6.3	0.096	0.507	20.517775	-87.209967
Puerto Aventuras	269.34	3	2	17688	4.2	87.3	1.8	4.1	1.1	0.8	0.2	0.4	0.1	91.5	1.8	6.7	0.092	0.507	20.517865	-87.210034
Playa del Carmen	289.70	1	1	25669	4.7	86.7	3.7	3.0	0.8	0.5	0.1	0.4	0.1	91.4	3.7	4.9	0.096	0.501	20.608950	-87.105783
Playa del Carmen	289.70	1	2	25614	4.6	87.5	2.8	3.1	0.8	0.6	0.1	0.4	0.1	92.1	2.8	5.1	0.109	0.501	20.609098	-87.105924
Playa del Carmen	289.70	3	1	32593	4.8	88.0	2.1	4.0	0.5	0.2	0.1	0.2	0.1	92.8	2.1	5.1	0.071	0.505	20.663193	-87.056298
Playa del Carmen	289.70	3	2	31941	4.9	88.0	1.9	4.1	0.5	0.2	0.1	0.2	0.1	92.9	1.9	5.2	0.072	0.505	20.663319	-87.056442
T. Der. Puerto Morelos	321.48	1	1	23234	3.9	88.1	1.8	4.9	0.5	0.3	0.2	0.2	0.1	92.0	1.8	6.2	0.075	0.502	20.838177	-86.909833
T. Der. Puerto Morelos	321.48	1	2	23084	4.0	87.6	2.1	5.0	0.5	0.3	0.2	0.2	0.1	91.6	2.1	6.3	0.073	0.502	20.838303	-86.909977
T. Der. Puerto Morelos	321.48	3	1	27184	3.9	88.2	2.2	4.2	0.5	0.5	0.2	0.2	0.1	92.1	2.2	5.7	0.075	0.502	20.870975	-86.891336
T. Der. Puerto Morelos	321.48	3	2	27009	4.0	87.2	2.3	4.8	0.5	0.7	0.2	0.2	0.1	91.2	2.3	6.5	0.073	0.502	20.871011	-86.891509
T. Izq. Aeropuerto Cancún	341.50	1	1	32867	1.2	85.4	1.5	10.7	0.5	0.4	0.2	0.1	0.0	86.6	1.5	11.9	0.072	0.511	21.024422	-86.853323
T. Izq. Aeropuerto Cancún	341.50	1	2	34528	1.1	86.0	1.3	10.6	0.4	0.4	0.2	0.0	0.0	87.1	1.3	11.6	0.074	0.511	21.024449	-86.853459
T. Izq. Aeropuerto Cancún	341.50	3	1	40992	1.0	88.6	1.3	6.7	0.2	0.8	1.1	0.1	0.2	89.6	1.3	9.1	0.081	0.530	21.041173	-86.849813
T. Izq. Aeropuerto Cancún	341.50	3	2	35843	1.7	86.8	1.5	6.8	0.2	1.1	1.5	0.2	0.2	88.5	1.5	10.0	0.080	0.530	21.041174	-86.849960
T. Izq. Alfredo V. Bonfil	348.22	1	1	35335	1.5	87.1	1.5	8.0	0.2	0.6	0.9	0.0	0.2	88.6	1.5	9.9	0.099	0.516	21.075633	-86.844415
T. Izq. Alfredo V. Bonfil	348.22	1	2	32883	2.1	82.6	1.5	11.5	0.2	0.6	1.2	0.1	0.2	84.7	1.5	13.8	0.089	0.516	21.075650	-86.844568
Cancún	355.48	1	1	51344	1.5	90.1	2.9	3.8	0.7	0.4	0.0	0.4	0.2	91.6	2.9	5.5	0.088	0.544	21.107232	-86.839509
Cancún	355.48	1	2	42053	1.9	89.9	2.9	3.8	0.4	0.4	0.1	0.4	0.2	91.8	2.9	5.3	0.086	0.544	21.107263	-86.839646
T. C. Mérida - Puerto Juárez	357.48																			

9 CARR: Valladolid - Felipe Carrillo Puerto

CLAVE: 00010

RUTA: MEX-295

AÑO: 2021

LUGAR	ESTACION				CLASIFICACION VEHICULAR EN PORCIENTO										COORDENADAS					
	KM	TE	SC	TDPA	M	A	B	C2	C3	T3S2	T3S3	T3S2R4	OTROS	A	B	C	K'	D	LATITUD	LONGITUD
Valladolid	0.00	3	0	5807	31.7	65.0	0.3	2.5	0.3	0.1	0.0	0.1	0.0	96.7	0.3	3.0	0.103	0.508	20.673367	-88.204455
Chichimilá	6.90	3	0	2422	11.9	82.4	0.4	3.2	0.6	1.2	0.1	0.1	0.1	94.3	0.4	5.3	0.076	0.501	20.620527	-88.235879
Tekom	12.05	3	0	1591	11.1	79.8	3.1	5.1	0.5	0.4	0.0	0.0	0.0	90.9	3.1	6.0	0.077	0.510	20.590749	-88.265349
Tixcacalcupul	19.80	3	0	1000	12.7	78.8	0.5	6.2	0.8	0.7	0.2	0.1	0.0	91.5	0.5	8.0	0.087	0.502	20.520274	-88.270781
Lim. Edos. Term. Yuc. Ppia. Q. R.	46.00																			
Tepich	51.40	1	0	761	11.2	78.2	0.4	8.2	0.5	1.0	0.4	0.1	0.0	89.4	0.4	10.2	0.108	0.507	20.249281	-88.255102
Tihosuco	65.00	1	0	920	8.8	80.3	1.1	7.9	0.7	0.8	0.3	0.1	0.0	89.1	1.1	9.8	0.087	0.506	20.193191	-88.360276
Tihosuco	65.00	3	0	1130	10.0	79.2	1.3	7.9	0.6	0.6	0.2	0.1	0.1	89.2	1.3	9.5	0.077	0.522	20.190595	-88.386824
T. Izq. San Felipe Berriozábal	99.00	1	0	615	6.7	81.7	1.0	7.7	1.5	0.8	0.3	0.3	0.0	88.4	1.0	10.6	0.093	0.507	19.963452	-88.242608
T. Izq. San Felipe Berriozábal	99.00	3	0	689	5.7	83.0	1.4	7.5	1.3	0.4	0.4	0.3	0.0	88.7	1.4	9.9	0.094	0.507	19.961197	-88.240338
Señor	116.50	1	0	886	4.9	83.6	1.5	7.7	0.7	0.9	0.4	0.3	0.0	88.5	1.5	10.0	0.090	0.502	19.852520	-88.144681

QUINTANA ROO

9 CARR: Valladolid - Felipe Carrillo Puerto

CLAVE: 00010

RUTA: MEX-295

AÑO: 2021

LUGAR	ESTACION				CLASIFICACION VEHICULAR EN PORCIENTO													COORDENADAS		
	KM	TE	SC	TDPA	M	A	B	C2	C3	T3S2	T3S3	T3S2R4	OTROS	A	B	C	K'	D	LATITUD	LONGITUD
Señor	116.50	3	0	1373	7.0	82.6	1.4	7.2	0.6	0.6	0.4	0.2	0.0	89.6	1.4	9.0	0.075	0.511	19.830985	-88.130834
Felipe Carrillo Puerto	147.70	1	0	1610	5.8	82.9	1.3	8.8	0.5	0.4	0.2	0.1	0.0	88.7	1.3	10.0	0.084	0.506	19.601844	-88.053425

10 CARR: El Cedral - Playa del Carmen (Cuota)

CLAVE:

RUTA: MEX-180D

AÑO: 2021

LUGAR	ESTACION				CLASIFICACION VEHICULAR EN PORCIENTO													COORDENADAS		
	KM	TE	SC	TDPA	M	A	B	C2	C3	T3S2	T3S3	T3S2R4	OTROS	A	B	C	K'	D	LATITUD	LONGITUD
El Cedral	0.00																			
X. C. Mérida - Cancún (Cuota)	10.05	1	0	1274	2.3	91.4	1.5	4.0	0.7	0.1	0.0	0.0	0.0	93.7	1.5	4.8	0.100	0.505	20.906582	-87.444891
X. C. Mérida - Cancún (Cuota)	10.05	3	0	1857	1.4	85.5	2.0	6.4	0.3	1.5	0.5	2.3	0.1	86.9	2.0	11.1	0.099	0.500	20.884247	-87.426817
Plaza de Cobro Tintal	50.00	2	0	1923	1.2	89.2	2.6	1.6	0.8	1.3	0.3	2.9	0.1	90.4	2.6	7.0	0.090	0.500	20.698987	-87.144285
Playa del Carmen	56.30																			

11 CARR: Libramiento de Felipe Carrillo Puerto (Cuota)

CLAVE:

RUTA: MEX-307D

AÑO: 2021

LUGAR	ESTACION				CLASIFICACION VEHICULAR EN PORCIENTO													COORDENADAS		
	KM	TE	SC	TDPA	M	A	B	C2	C3	T3S2	T3S3	T3S2R4	OTROS	A	B	C	K'	D	LATITUD	LONGITUD
T. C. Reforma Agraria - Puerto Juárez (Sur)	0.00	3	0	1526	2.6	83.9	3.2	4.2	2.1	1.4	1.0	1.5	0.1	86.5	3.2	10.3	0.107	0.502	19.548212	-88.047672
Plaza de Cobro Felipe Carrillo Puerto	6.10	2	0	817	0.6	69.7	5.6	3.1	3.0	8.8	1.9	6.7	0.6	70.3	5.6	24.1	0.090	0.500	19.590397	-88.071289
X. C. Valladolid - Felipe Carrillo Puerto	9.00	1	0	1633	4.2	83.7	2.8	3.9	1.7	1.1	0.9	1.4	0.3	87.9	2.8	9.3	0.089	0.502	19.605828	-88.061164
T. C. Reforma Agraria - Puerto Juárez (Norte)	13.92	1	0	1117	4.9	82.4	2.9	4.1	1.8	1.4	0.9	1.3	0.3	87.3	2.9	9.8	0.100	0.500	19.621576	-88.020788

12 CARR: Mérida - Cancún (Cuota)

CLAVE: 00071

RUTA: MEX-180D

AÑO: 2021

LUGAR	ESTACION				CLASIFICACION VEHICULAR EN PORCIENTO													COORDENADAS		
	KM	TE	SC	TDPA	M	A	B	C2	C3	T3S2	T3S3	T3S2R4	OTROS	A	B	C	K'	D	LATITUD	LONGITUD
T. C. Mérida - Puerto Juárez	0.00																			
Plaza de Cobro Piste	51.00	1	1	2260	0.7	74.4	3.2	6.7	1.7	3.8	2.4	6.3	0.8	75.1	3.2	21.7	0.084	0.515	20.730353	-88.590303
Plaza de Cobro Piste	51.00	1	2	2125	1.2	72.2	3.1	7.0	1.8	4.6	2.2	7.1	0.8	73.4	3.1	23.5	0.076	0.515	20.730631	-88.590224
Plaza de Cobro X-Can	155.00	1	1	1859	0.9	79.9	4.3	4.8	0.9	3.0	1.3	4.6	0.3	80.8	4.3	14.9	0.087	0.530	20.875096	-87.652655
Plaza de Cobro X-Can	155.00	1	2	1647	1.2	77.9	4.6	5.8	1.1	2.8	1.3	5.0	0.3	79.1	4.6	16.3	0.086	0.530	20.875367	-87.652656
Lim. Edos. Term. Yuc. Ppia. Q. R.	160.00																			
T. C. Mérida - Puerto Juárez	292.00	1	1	1577	6.2	69.8	2.8	5.8	4.7	3.9	1.6	4.4	0.8	76.0	2.8	21.2	0.096	0.509	21.093350	-86.983630
T. C. Mérida - Puerto Juárez	292.00	1	2	1635	6.7	68.6	2.7	6.3	4.8	4.2	1.3	4.7	0.7	75.3	2.7	22.0	0.083	0.509	21.093610	-86.983759
T. C. Reforma Agraria - Puerto Juárez	308.10	1	0	16951	4.3	85.5	1.3	4.0	1.5	1.5	0.9	0.8	0.2	89.8	1.3	8.9	0.102	0.504	21.021822	-86.860642

QUINTANA ROO

13 CARR: Bacalar - Miguel Alemán

CLAVE: 20030

RUTA: QR

AÑO: 2021

LUGAR	ESTACION				CLASIFICACION VEHICULAR EN PORCIENTO										COORDENADAS					
	KM	TE	SC	TDPA	M	A	B	C2	C3	T3S2	T3S3	T3S2R4	OTROS	A	B	C	K'	D	LATITUD	LONGITUD
T. C. (Reforma Agraria - Puerto Juárez)	0.00																			
Reforma	21.00	3	0	1046	20.3	68.9	0.7	7.7	0.9	1.2	0.3	0.0	0.0	89.2	0.7	10.1	0.096	0.503	18.813201	-88.580819
Altos de Sevilla	31.00	1	0	673	13.7	75.3	0.6	7.5	1.0	1.4	0.5	0.0	0.0	89.0	0.6	10.4	0.086	0.506	18.847790	-88.673126
Altos de Sevilla	31.00	3	0	536	22.4	67.0	0.9	8.5	0.7	0.4	0.1	0.0	0.0	89.4	0.9	9.7	0.097	0.500	18.854926	-88.677499
Miguel Alemán	110.00																			

14 CARR: Cancún - Punta Cancún

CLAVE: 23581

RUTA: QR

AÑO: 2021

LUGAR	ESTACION				CLASIFICACION VEHICULAR EN PORCIENTO										COORDENADAS					
	KM	TE	SC	TDPA	M	A	B	C2	C3	T3S2	T3S3	T3S2R4	OTROS	A	B	C	K'	D	LATITUD	LONGITUD
Cancún	0.00	3	1	29871	7.4	85.4	0.5	6.2	0.3	0.1	0.0	0.1	0.0	92.8	0.5	6.7	0.091	0.534	21.157113	-86.815136
Cancún	0.00	3	2	24421	7.4	85.0	0.5	6.6	0.3	0.1	0.0	0.1	0.0	92.4	0.5	7.1	0.080	0.534	21.157217	-86.815164
T. Der. Colibrí	7.00	1	1	23619	3.0	89.2	0.8	6.8	0.2	0.0	0.0	0.0	0.0	92.2	0.8	7.0	0.090	0.516	21.136697	-86.766255
T. Der. Colibrí	7.00	1	2	22140	3.0	88.3	0.8	7.7	0.2	0.0	0.0	0.0	0.0	91.3	0.8	7.9	0.082	0.516	21.136800	-86.766193
Punta Cancún	8.00	1	1	23273	3.9	87.6	0.9	7.0	0.3	0.1	0.1	0.1	0.0	91.5	0.9	7.6	0.089	0.509	21.134701	-86.755741
Punta Cancún	8.00	1	2	22474	3.9	87.4	0.9	7.2	0.3	0.1	0.1	0.1	0.0	91.3	0.9	7.8	0.081	0.509	21.134807	-86.755720

15 CARR: Chetumal - Calderitas

CLAVE: 23004

RUTA: QR-004

AÑO: 2021

LUGAR	ESTACION				CLASIFICACION VEHICULAR EN PORCIENTO										COORDENADAS					
	KM	TE	SC	TDPA	M	A	B	C2	C3	T3S2	T3S3	T3S2R4	OTROS	A	B	C	K'	D	LATITUD	LONGITUD
Chetumal	0.00	3	1	13238	11.6	84.2	0.3	2.6	0.4	0.4	0.3	0.1	0.1	95.8	0.3	3.9	0.081	0.512	18.533532	-88.277731
Chetumal	0.00	3	2	12625	11.5	84.4	0.3	2.6	0.4	0.3	0.3	0.1	0.1	95.9	0.3	3.8	0.089	0.512	18.533561	-88.277791
Calderitas	9.00	1	1	2895	12.0	85.5	0.0	2.3	0.2	0.0	0.0	0.0	0.0	97.5	0.0	2.5	0.094	0.514	18.553688	-88.257984
Calderitas	9.00	1	2	2759	12.0	85.4	0.0	2.5	0.1	0.0	0.0	0.0	0.0	97.4	0.0	2.6	0.078	0.514	18.553804	-88.257937

16 CARR: El Ideal - Chiquila

CLAVE: 23005

RUTA: QR-005

AÑO: 2021

LUGAR	ESTACION				CLASIFICACION VEHICULAR EN PORCIENTO										COORDENADAS					
	KM	TE	SC	TDPA	M	A	B	C2	C3	T3S2	T3S3	T3S2R4	OTROS	A	B	C	K'	D	LATITUD	LONGITUD
T. C. Mérida - Puerto Juárez	0.00	3	0	1151	4.1	89.3	0.8	4.6	0.7	0.5	0.0	0.0	0.0	93.4	0.8	5.8	0.080	0.527	20.891181	-87.546411
Kantunilkin	31.20	1	0	2904	5.9	85.5	1.1	6.4	0.7	0.4	0.0	0.0	0.0	91.4	1.1	7.5	0.076	0.513	21.077616	-87.489366
Kantunilkin	31.20	3	0	2790	14.9	76.3	1.0	6.8	0.7	0.3	0.0	0.0	0.0	91.2	1.0	7.8	0.094	0.527	21.117595	-87.484551
Chiquila	75.60	1	0	1940	12.1	79.3	1.0	6.6	0.8	0.2	0.0	0.0	0.0	91.4	1.0	7.6	0.100	0.506	21.418068	-87.337648

QUINTANA ROO

17 CARR: Libramiento de Chetumal

CLAVE: 23130

RUTA: QR

AÑO: 2021

LUGAR	ESTACION				CLASIFICACION VEHICULAR EN PORCIENTO													COORDENADAS		
	KM	TE	SC	TDPA	M	A	B	C2	C3	T3S2	T3S3	T3S2R4	OTROS	A	B	C	K'	D	LATITUD	LONGITUD
T. C. Francisco Escárcega - Chetumal	0.00	3	1	8559	11.8	85.6	0.5	0.9	0.3	0.4	0.2	0.2	0.1	97.4	0.5	2.1	0.076	0.525	18.517418	-88.344601
T. C. Francisco Escárcega - Chetumal	0.00	3	2	9444	11.0	86.5	0.5	0.9	0.3	0.4	0.1	0.2	0.1	97.5	0.5	2.0	0.084	0.525	18.517606	-88.344621
T. C. Chetumal - Calderitas	5.00																			

18 CARR: Perimetral Cozumel

CLAVE: 00148

RUTA: QR

AÑO: 2021

LUGAR	ESTACION				CLASIFICACION VEHICULAR EN PORCIENTO													COORDENADAS		
	KM	TE	SC	TDPA	M	A	B	C2	C3	T3S2	T3S3	T3S2R4	OTROS	A	B	C	K'	D	LATITUD	LONGITUD
Cozumel	0.00	3	0	12230	34.9	61.8	0.5	1.9	0.7	0.1	0.0	0.1	0.0	96.7	0.5	2.8	0.081	0.505	20.465789	-86.976854
El Cedral	13.40	1	1	2050	12.7	78.3	0.3	8.4	0.3	0.0	0.0	0.0	0.0	91.0	0.3	8.7	0.097	0.500	20.385255	-87.018579
El Cedral	13.40	1	2	2011	11.3	79.4	0.4	8.6	0.3	0.0	0.0	0.0	0.0	90.7	0.4	8.9	0.108	0.500	20.385163	-87.018381
El Cedral	13.40	3	1	585	21.3	73.4	0.5	4.7	0.1	0.0	0.0	0.0	0.0	94.7	0.5	4.8	0.236	0.546	20.362881	-87.018070
El Cedral	13.40	3	2	712	18.9	76.0	0.4	4.7	0.0	0.0	0.0	0.0	0.0	94.9	0.4	4.7	0.212	0.546	20.362853	-87.018010
Celarain	25.00	1	0	949	16.9	79.3	0.3	3.5	0.0	0.0	0.0	0.0	0.0	96.2	0.3	3.5	0.188	0.509	20.294384	-86.965862

19 CARR: Punta Nizuc - Cancún

CLAVE: 23014

RUTA: QR

AÑO: 2021

LUGAR	ESTACION				CLASIFICACION VEHICULAR EN PORCIENTO													COORDENADAS		
	KM	TE	SC	TDPA	M	A	B	C2	C3	T3S2	T3S3	T3S2R4	OTROS	A	B	C	K'	D	LATITUD	LONGITUD
Punta Nizuc	0.00	3	1	10605	4.5	79.3	1.3	10.1	3.8	0.3	0.4	0.2	0.1	83.8	1.3	14.9	0.108	0.548	21.049142	-86.783021
Punta Nizuc	0.00	3	2	12863	3.9	80.7	1.4	9.7	3.6	0.3	0.2	0.1	0.1	84.6	1.4	14.0	0.098	0.548	21.049216	-86.783195
Punta Cancún	12.40																			

20 CARR: Ramal a Aeropuerto Cancún

CLAVE: 23574

RUTA: QR

AÑO: 2021

LUGAR	ESTACION				CLASIFICACION VEHICULAR EN PORCIENTO													COORDENADAS		
	KM	TE	SC	TDPA	M	A	B	C2	C3	T3S2	T3S3	T3S2R4	OTROS	A	B	C	K'	D	LATITUD	LONGITUD
T. C. Reforma Agraria - Puerto Juárez	0.00	3	1	20219	0.5	91.9	0.5	5.9	0.1	0.5	0.3	0.1	0.2	92.4	0.5	7.1	0.067	0.517	21.035495	-86.857178
T. C. Reforma Agraria - Puerto Juárez	0.00	3	2	18891	0.8	91.0	0.5	6.5	0.1	0.5	0.3	0.1	0.2	91.8	0.5	7.7	0.064	0.517	21.035414	-86.857243
Aeropuerto Cancún	2.00	1	1	19304	1.1	90.7	0.6	5.6	0.1	0.5	0.9	0.4	0.1	91.8	0.6	7.6	0.067	0.515	21.040563	-86.865234
Aeropuerto Cancún	2.00	1	2	20470	0.9	91.2	0.6	5.3	0.1	0.5	0.9	0.4	0.1	92.1	0.6	7.3	0.076	0.515	21.040480	-86.865293

QUINTANA ROO

21 CARR: Ramal a Candelaria

CLAVE: 23027

RUTA: QR

AÑO: 2021

LUGAR	ESTACION				CLASIFICACION VEHICULAR EN PORCIENTO														COORDENADAS	
	KM	TE	SC	TDPA	M	A	B	C2	C3	T3S2	T3S3	T3S2R4	OTROS	A	B	C	K'	D	LATITUD	LONGITUD
T. C. Muna - Felipe Carrillo Puerto	0.00	3	0	1656	24.8	68.9	0.3	4.3	0.3	1.2	0.1	0.0	0.1	93.7	0.3	6.0	0.076	0.511	19.806624	-88.757947
Candelaria	15.30																			

22 CARR: Ramal a El Naranjal

CLAVE: 23579

RUTA: QR

AÑO: 2021

LUGAR	ESTACION				CLASIFICACION VEHICULAR EN PORCIENTO														COORDENADAS	
	KM	TE	SC	TDPA	M	A	B	C2	C3	T3S2	T3S3	T3S2R4	OTROS	A	B	C	K'	D	LATITUD	LONGITUD
José María Morelos	0.00	3	0	956	40.1	53.6	0.4	4.5	0.5	0.4	0.5	0.0	0.0	93.7	0.4	5.9	0.102	0.513	19.734378	-88.717308
El Naranjal	16.00																			

23 CARR: Ramal a Laguna de Kaná

CLAVE: 23213

RUTA: QR

AÑO: 2021

LUGAR	ESTACION				CLASIFICACION VEHICULAR EN PORCIENTO														COORDENADAS	
	KM	TE	SC	TDPA	M	A	B	C2	C3	T3S2	T3S3	T3S2R4	OTROS	A	B	C	K'	D	LATITUD	LONGITUD
T. C. Muna - Felipe Carrillo Puerto	0.00	3	0	487	23.8	65.6	1.2	7.5	1.2	0.5	0.2	0.0	0.0	89.4	1.2	9.4	0.110	0.504	19.642998	-88.411643
Laguna de Kaná	12.20																			

24 CARR: Ramal a Mahahual

CLAVE: 23583

RUTA: QR

AÑO: 2021

LUGAR	ESTACION				CLASIFICACION VEHICULAR EN PORCIENTO														COORDENADAS	
	KM	TE	SC	TDPA	M	A	B	C2	C3	T3S2	T3S3	T3S2R4	OTROS	A	B	C	K'	D	LATITUD	LONGITUD
T. C. Reforma Agraria - Puerto Juárez	0.00	3	0	1402	6.2	85.8	1.4	5.1	0.4	0.9	0.0	0.0	0.2	92.0	1.4	6.6	0.098	0.511	18.980088	-88.110477
Mahahual	60.09																			

25 CARR: Ramal a Petcacab

CLAVE: 23018

RUTA: QR-018

AÑO: 2021

LUGAR	ESTACION				CLASIFICACION VEHICULAR EN PORCIENTO														COORDENADAS	
	KM	TE	SC	TDPA	M	A	B	C2	C3	T3S2	T3S3	T3S2R4	OTROS	A	B	C	K'	D	LATITUD	LONGITUD
T. C. Reforma Agraria - Puerto Juárez	0.00	3	0	785	16.9	74.1	0.8	5.8	0.6	0.5	0.3	0.9	0.1	91.0	0.8	8.2	0.125	0.518	19.135348	-88.106054
Petcacab	37.00																			

QUINTANA ROO

26 CARR: Ramal a Punta Allen

CLAVE: 23015

RUTA: QR-015

AÑO: 2021

LUGAR	ESTACION				CLASIFICACION VEHICULAR EN PORCIENTO													COORDENADAS		
	KM	TE	SC	TDPA	M	A	B	C2	C3	T3S2	T3S3	T3S2R4	OTROS	A	B	C	K'	D	LATITUD	LONGITUD
T. C. Reforma Agraria - Puerto Juárez	0.00	3	0	11975	9.0	86.0	0.1	3.4	0.3	0.3	0.5	0.2	0.2	95.0	0.1	4.9	0.078	0.505	20.205771	-87.450266
Beh-Ha	10.20	1	0	1189	7.0	84.4	0.2	7.9	0.1	0.1	0.2	0.0	0.1	91.4	0.2	8.4	0.107	0.507	20.128641	-87.465460
Punta Allen	57.00																			

27 CARR: Ramal a Punta Sam

CLAVE: 23582

RUTA: QR

AÑO: 2021

LUGAR	ESTACION				CLASIFICACION VEHICULAR EN PORCIENTO													COORDENADAS		
	KM	TE	SC	TDPA	M	A	B	C2	C3	T3S2	T3S3	T3S2R4	OTROS	A	B	C	K'	D	LATITUD	LONGITUD
Puerto Juárez	0.00	3	0	7127	9.0	84.6	0.5	4.3	0.4	0.3	0.3	0.3	0.3	93.6	0.5	5.9	0.075	0.516	21.196524	-86.805676
Punta Sam	5.00	1	0	2470	5.6	89.3	0.3	2.3	0.1	2.1	0.1	0.1	0.1	94.9	0.3	4.8	0.085	0.536	21.217306	-86.802337

28 CARR: Ramal a Reforma

CLAVE: 23016

RUTA: QR-016

AÑO: 2021

LUGAR	ESTACION				CLASIFICACION VEHICULAR EN PORCIENTO													COORDENADAS		
	KM	TE	SC	TDPA	M	A	B	C2	C3	T3S2	T3S3	T3S2R4	OTROS	A	B	C	K'	D	LATITUD	LONGITUD
T. C. Reforma Agraria - Puerto Juárez	0.00	3	0	1844	17.1	74.0	0.6	7.2	0.5	0.2	0.2	0.2	0.0	91.1	0.6	8.3	0.093	0.503	18.705254	-88.388384
Reforma	44.00																			

29 CARR: Ramal a Tres Garantías

CLAVE: 23585

RUTA: QR

AÑO: 2021

LUGAR	ESTACION				CLASIFICACION VEHICULAR EN PORCIENTO													COORDENADAS		
	KM	TE	SC	TDPA	M	A	B	C2	C3	T3S2	T3S3	T3S2R4	OTROS	A	B	C	K'	D	LATITUD	LONGITUD
T. C. Francisco Escárcega - Chetumal	0.00	3	0	166	18.8	71.3	0.1	9.1	0.1	0.5	0.1	0.0	0.0	90.1	0.1	9.8	0.131	0.502	18.456210	-89.000908
Tres Garantías	30.00																			

30 CARR: Tihosuco - Dziuche

CLAVE: 23576

RUTA: QR

AÑO: 2021

LUGAR	ESTACION				CLASIFICACION VEHICULAR EN PORCIENTO													COORDENADAS		
	KM	TE	SC	TDPA	M	A	B	C2	C3	T3S2	T3S3	T3S2R4	OTROS	A	B	C	K'	D	LATITUD	LONGITUD
T. C. Valladolid - Felipe Carrillo Puerto	0.00	3	0	474	11.4	82.9	0.4	4.3	0.7	0.3	0.0	0.0	0.0	94.3	0.4	5.3	0.084	0.517	20.176667	-88.397416
Dziuche	60.50	1	0	1069	26.3	68.0	0.6	4.4	0.6	0.1	0.0	0.0	0.0	94.3	0.6	5.1	0.097	0.503	19.912618	-88.808167

QUINTANA ROO

31 CARR: Transversal de Cozumel

CLAVE: 23577

RUTA: QR

AÑO: 2021

LUGAR	ESTACION				CLASIFICACION VEHICULAR EN PORCIENTO												COORDENADAS			
	KM	TE	SC	TDPA	M	A	B	C2	C3	T3S2	T3S3	T3S2R4	OTROS	A	B	C	K'	D	LATITUD	LONGITUD
Cozumel	0.00	3	1	3719	40.2	55.2	0.2	2.0	0.6	0.9	0.5	0.2	0.2	95.4	0.2	4.4	0.103	0.513	20.480688	-86.912254
Cozumel	0.00	3	2	3443	42.6	52.6	0.2	2.5	0.5	0.8	0.4	0.2	0.2	95.2	0.2	4.6	0.106	0.513	20.480655	-86.912320
Mezcalitos	14.00																			

32 CARR: Tulum - Nuevo X-Can

CLAVE: 23570

RUTA: QR

AÑO: 2021

LUGAR	ESTACION				CLASIFICACION VEHICULAR EN PORCIENTO												COORDENADAS			
	KM	TE	SC	TDPA	M	A	B	C2	C3	T3S2	T3S3	T3S2R4	OTROS	A	B	C	K'	D	LATITUD	LONGITUD
T. C. Reforma Agraria - Puerto Juárez	0.00	3	1	6496	10.5	78.2	1.3	4.5	1.8	1.7	0.9	0.5	0.6	88.7	1.3	10.0	0.109	0.511	20.218410	-87.454811
T. C. Reforma Agraria - Puerto Juárez	0.00	3	2	6217	9.4	79.0	1.3	4.6	2.0	1.6	0.9	0.6	0.6	88.4	1.3	10.3	0.103	0.511	20.218392	-87.454868
T. Izq. Ruinas Cobá	42.95	1	0	6179	2.6	85.1	2.1	6.1	0.9	1.5	0.6	1.0	0.1	87.7	2.1	10.2	0.117	0.510	20.502722	-87.713798
T. Izq. Ruinas Cobá	42.95	3	0	622	5.1	81.8	1.3	10.6	0.3	0.4	0.4	0.1	0.0	86.9	1.3	11.8	0.095	0.503	20.509466	-87.717249
Lim. Edos. Term. Q. Roo. Ppia. Yuc.	49.42																			
Lim. Edos. Term. Yuc. Ppia. Q. Roo.	64.97																			
Nuevo X-Can	87.40	1	0	583	2.8	88.7	0.4	7.5	0.5	0.0	0.1	0.0	0.0	91.5	0.4	8.1	0.074	0.503	20.858679	-87.600863

33 CARR: Ucum - Unión

CLAVE: 23571

RUTA: QR

AÑO: 2021

LUGAR	ESTACION				CLASIFICACION VEHICULAR EN PORCIENTO												COORDENADAS			
	KM	TE	SC	TDPA	M	A	B	C2	C3	T3S2	T3S3	T3S2R4	OTROS	A	B	C	K'	D	LATITUD	LONGITUD
Ucum	0.00	3	0	3945	11.4	75.7	0.8	5.3	3.3	1.8	0.6	1.0	0.1	87.1	0.8	12.1	0.095	0.501	18.475657	-88.518140
T. Der. Ingenio Álvaro Obregón	31.00	1	0	1475	10.6	77.0	0.5	5.9	2.0	0.8	1.0	2.0	0.2	87.6	0.5	11.9	0.085	0.507	18.253485	-88.648350
T. Der. Ingenio Álvaro Obregón	31.00	3	0	2372	19.3	69.7	0.8	5.3	3.7	0.8	0.2	0.1	0.1	89.0	0.8	10.2	0.083	0.503	18.245509	-88.652286
T. Der. U. A. Galeras	75.00	1	0	199	12.2	69.5	1.0	15.6	0.9	0.6	0.2	0.0	0.0	81.7	1.0	17.3	0.121	0.543	17.989850	-88.847819
T. Der. U. A. Galeras	75.00	3	0	186	15.0	71.6	0.8	12.2	0.2	0.1	0.0	0.0	0.1	86.6	0.8	12.6	0.089	0.512	17.987556	-88.856867
Unión	88.00	1	0	525	20.5	68.6	0.3	9.1	0.3	1.0	0.1	0.0	0.1	89.1	0.3	10.6	0.122	0.510	17.907803	-88.881527

34 CARR: Chemax - Cobá

CLAVE:

RUTA: YUC-MEX-180

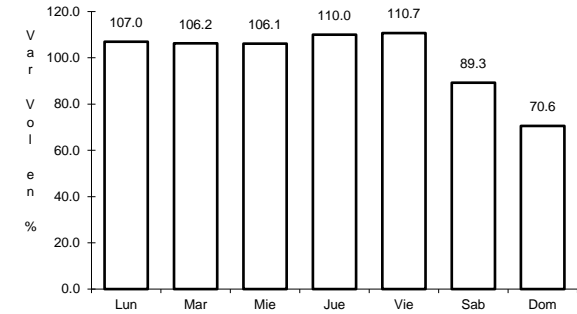
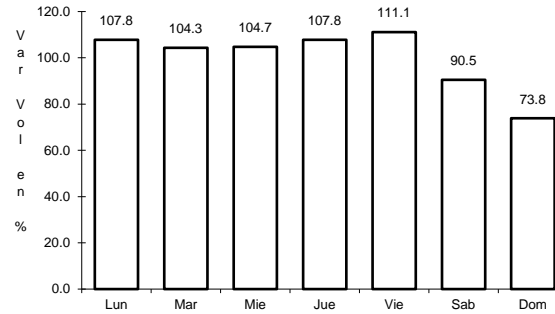
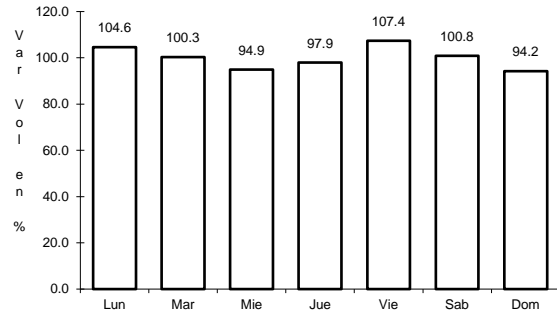
AÑO: 2021

LUGAR	ESTACION				CLASIFICACION VEHICULAR EN PORCIENTO												COORDENADAS			
	KM	TE	SC	TDPA	M	A	B	C2	C3	T3S2	T3S3	T3S2R4	OTROS	A	B	C	K'	D	LATITUD	LONGITUD
Chemax	0.00	3	0	4672	1.6	88.1	1.6	3.2	2.3	1.5	0.5	1.0	0.2	89.7	1.6	8.7	0.101	0.516	20.656677	-87.954439
Lim. Edos. Term. Yucatán Ppia. Q Roo.	25.00																			
Cobá	30.90	1	0	4052	2.0	86.1	2.2	4.1	1.9	1.7	0.6	1.3	0.1	88.1	2.2	9.7	0.094	0.504	20.509693	-87.721788

1 CARR: Francisco Escárcega - Chetumal

CLAVE: 00093

ruta: MEX-186



Km: 0.00 Tipo: 3 Sent: 0

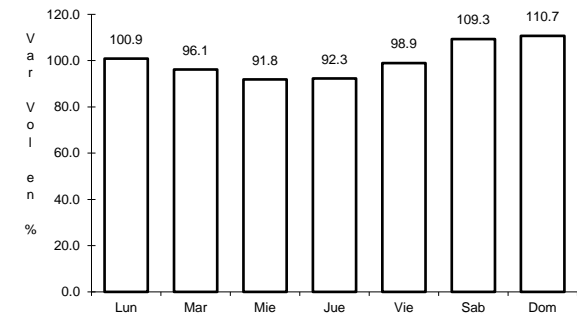
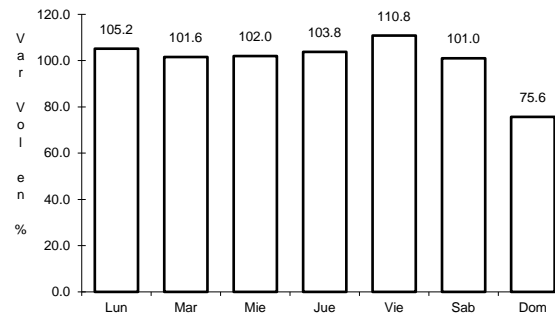
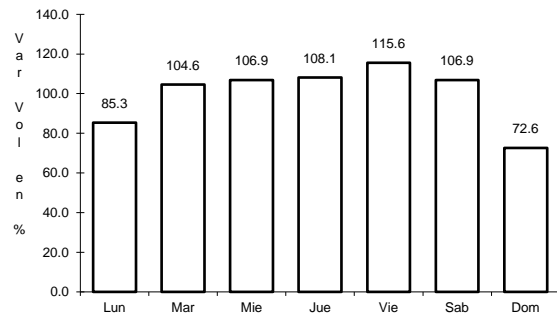
Km: 277.36 Tipo: 1 Sent: 1

Km: 277.36 Tipo: 1 Sent: 2

2 CARR: Mérida - Puerto Juárez

CLAVE: 00067

ruta: MEX-180



Km: 5.60 Tipo: 1 Sent: 1

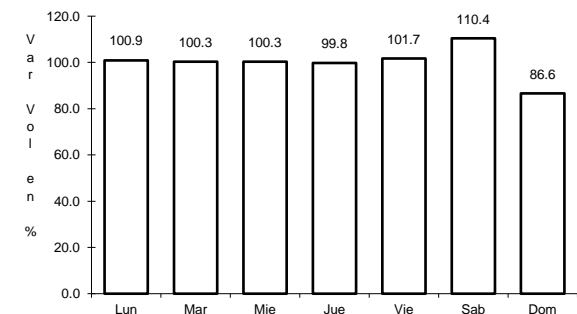
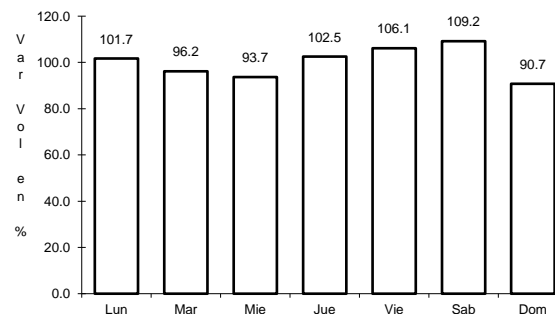
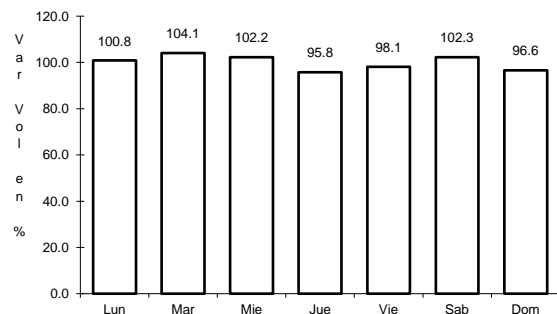
Km: 5.60 Tipo: 1 Sent: 2

Km: 302.50 Tipo: 1 Sent: 0

3 CARR: Muna - Felipe Carrillo Puerto

CLAVE: 00148

ruta: MEX-184



Km: 0.00 Tipo: 3 Sent: 0

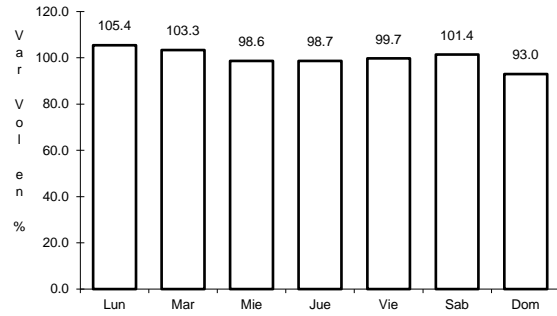
Km: 109.60 Tipo: 3 Sent: 0

Km: 216.97 Tipo: 1 Sent: 0

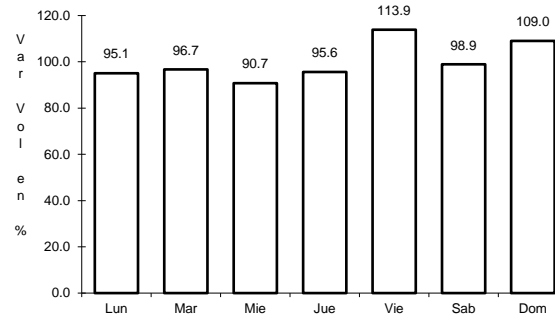
4 CARR: Polyuc - T. C. (Reforma Agraria - Puerto Juárez)

CLAVE: 23014

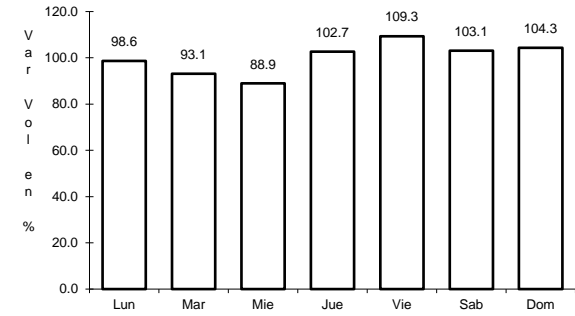
RUTA: MEX-293



Km: 0.00 Tipo: 3 Sent: 0



Km: 50.00 Tipo: 3 Sent: 0

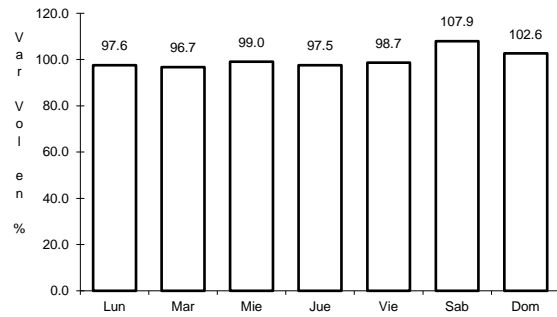


Km: 99.00 Tipo: 1 Sent: 0

5 CARR: Ramal a Puerto Morelos

CLAVE: 23569

RUTA: MEX

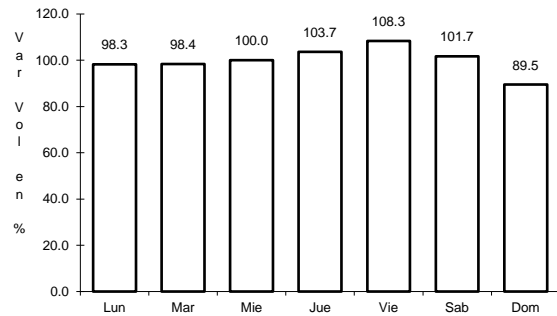


Km: 0.00 Tipo: 3 Sent: 0

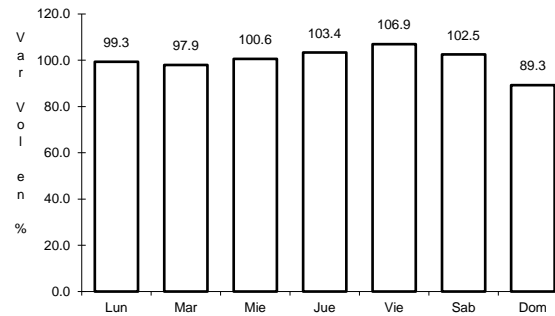
6 CARR: Ramal a Punta Piedra

CLAVE: 23575

RUTA: MEX



Km: 0.00 Tipo: 3 Sent: 1

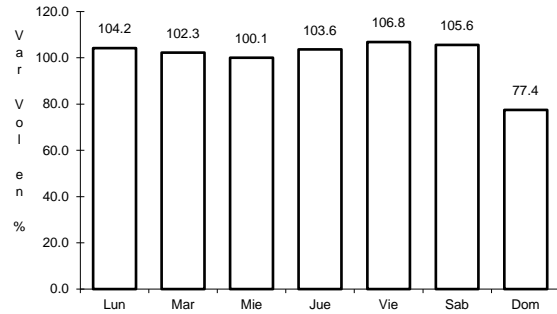


Km: 0.00 Tipo: 3 Sent: 2

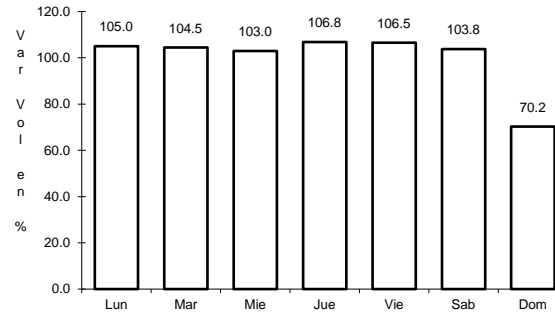
7 CARR: Ramal a Subteniente López

CLAVE: 23567

RUTA: MEX-186



Km: 0.00 Tipo: 3 Sent: 1

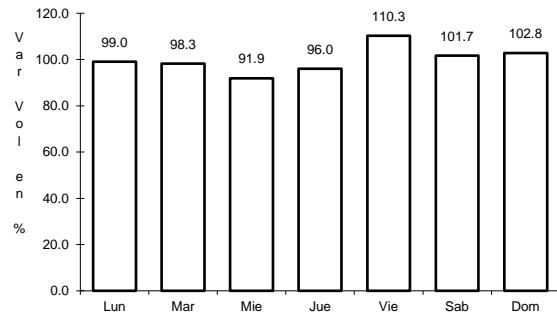


Km: 0.00 Tipo: 3 Sent: 2

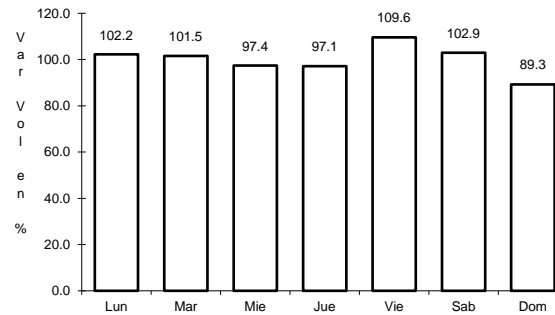
8 CARR: Reforma Agraria - Puerto Juárez

CLAVE: 23132

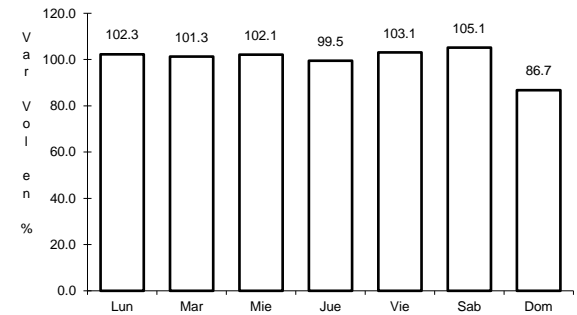
RUTA: MEX-307



Km: 0.00 Tipo: 3 Sent: 1



Km: 0.00 Tipo: 3 Sent: 2

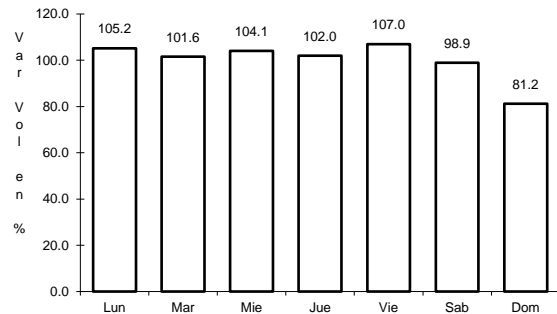


Km: 227.00 Tipo: 1 Sent: 0

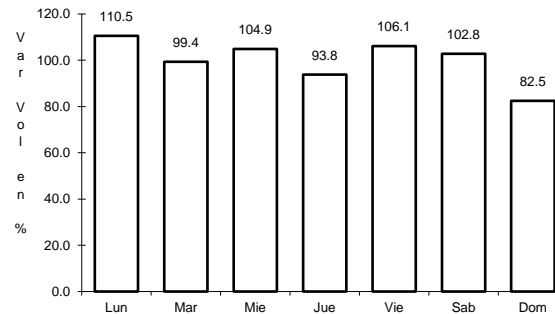
9 CARR: Valladolid - Felipe Carrillo Puerto

CLAVE: 00010

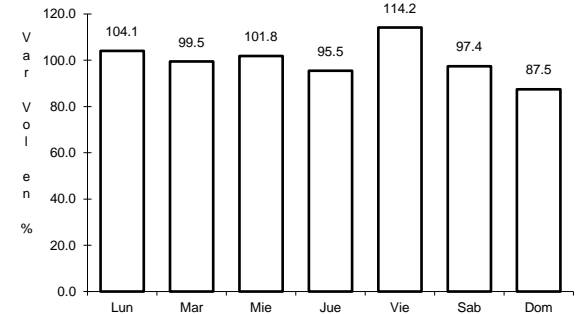
RUTA: MEX-295



Km: 0.00 Tipo: 3 Sent: 0



Km: 99.00 Tipo: 1 Sent: 0

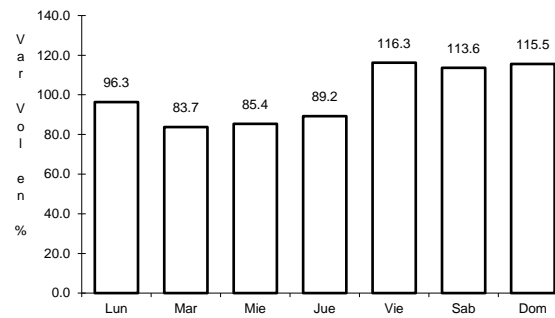
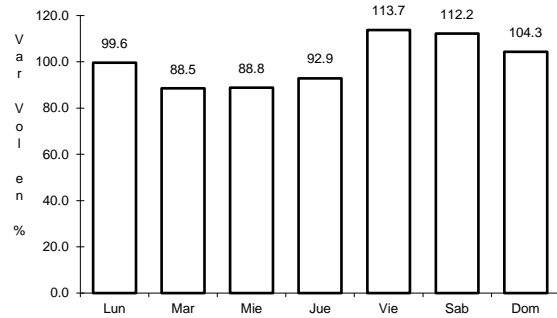


Km: 147.70 Tipo: 1 Sent: 0

10 CARR: El Cedral - Playa del Carmen (Cuota)

CLAVE:

RUTA: MEX-180D



Km: 10.05

Tipo: 1

Sent: 0

Km: 10.05

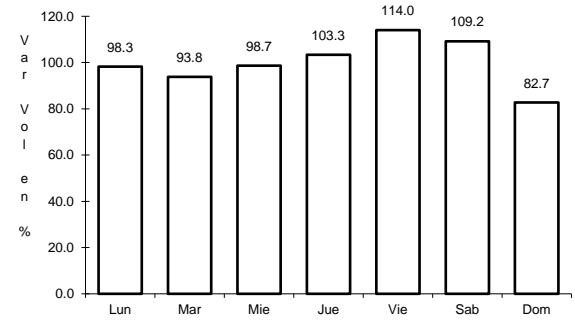
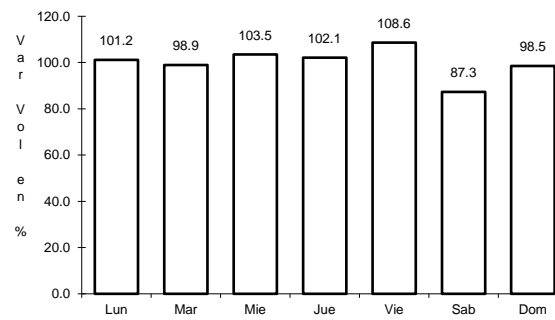
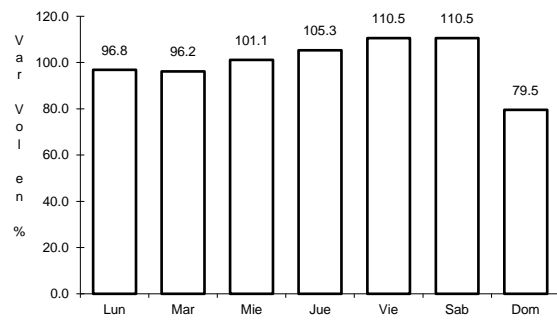
Tipo: 3

Sent: 0

11 CARR: Libramiento de Felipe Carrillo Puerto (Cuota)

CLAVE:

RUTA: MEX-307D



Km: 0.00

Tipo: 3

Sent: 0

Km: 9.00

Tipo: 1

Sent: 0

Km: 13.92

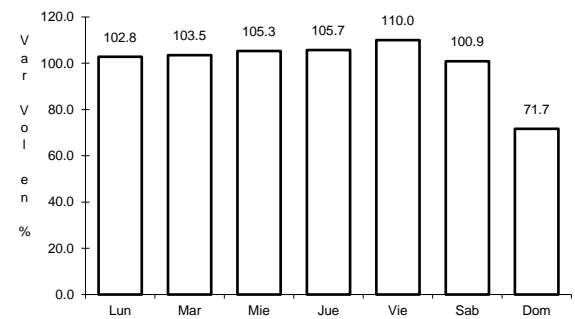
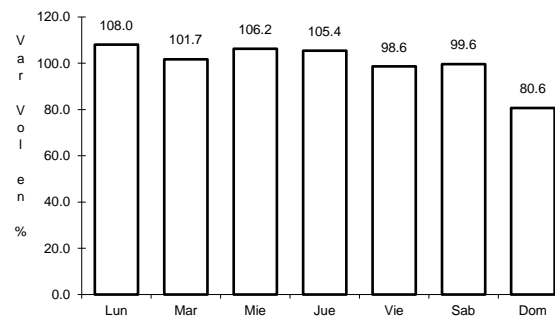
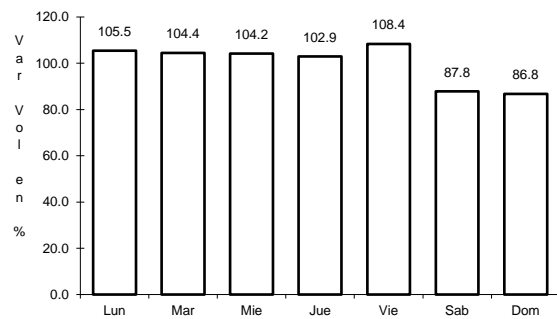
Tipo: 1

Sent: 0

12 CARR: Mérida - Cancún (Cuota)

CLAVE: 00071

RUTA: MEX-180D



Km: 51.00

Tipo: 1

Sent: 1

Km: 51.00

Tipo: 1

Sent: 2

Km: 308.10

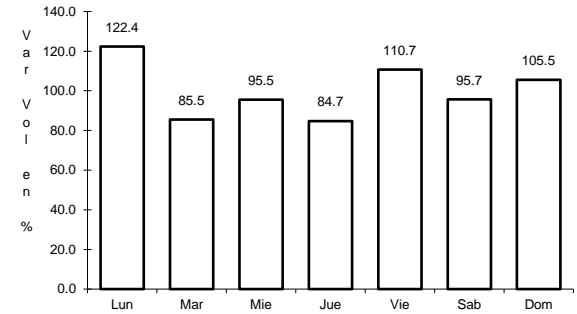
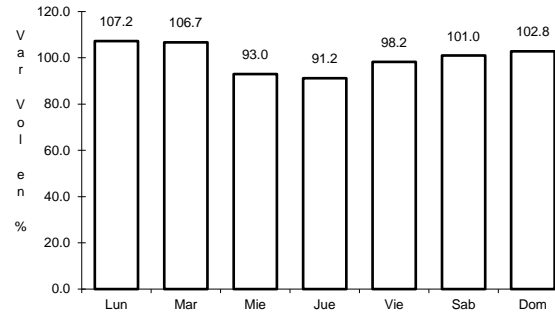
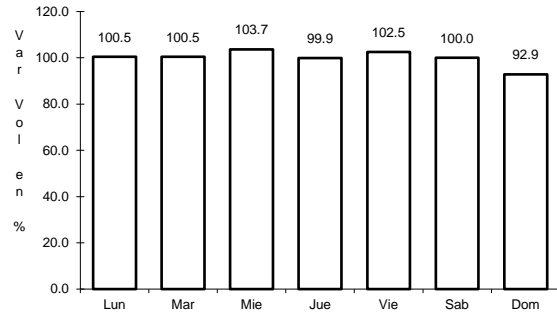
Tipo: 1

Sent: 0

13 CARR: Bacalar - Miguel Alemán

CLAVE: 20030

RUTA: QR



Km: 21.00 Tipo: 3 Sent: 0

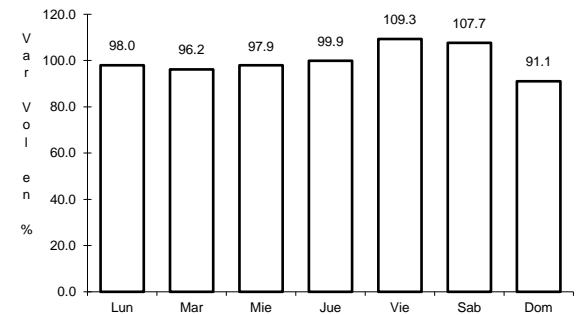
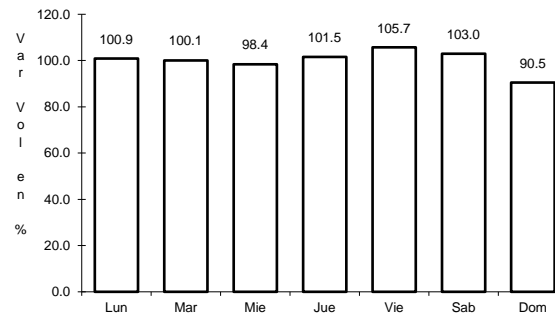
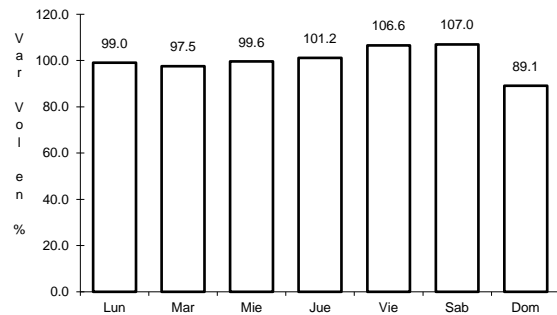
Km: 31.00 Tipo: 1 Sent: 0

Km: 31.00 Tipo: 3 Sent: 0

14 CARR: Cancún - Punta Cancún

CLAVE: 23581

RUTA: QR



Km: 0.00 Tipo: 3 Sent: 1

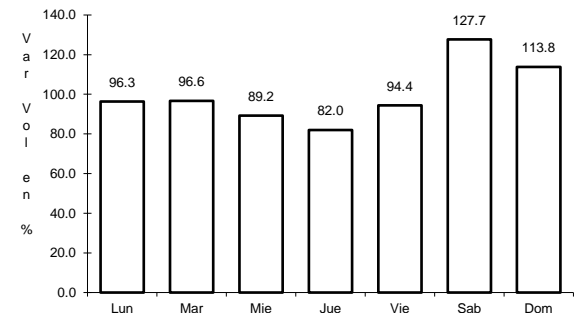
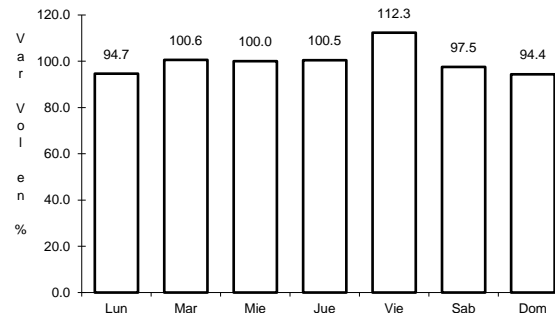
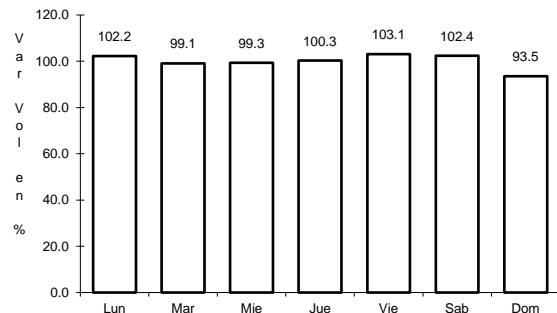
Km: 0.00 Tipo: 3 Sent: 2

Km: 8.00 Tipo: 1 Sent: 1

15 CARR: Chetumal - Calderitas

CLAVE: 23004

RUTA: QR-004



Km: 0.00 Tipo: 3 Sent: 1

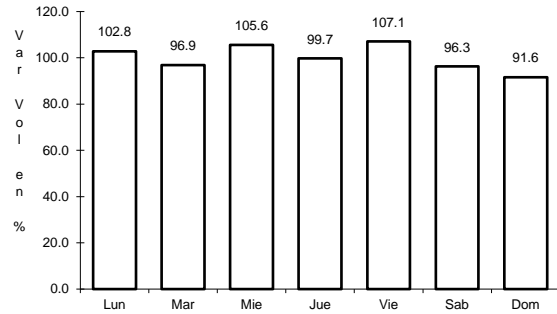
Km: 0.00 Tipo: 3 Sent: 2

Km: 9.00 Tipo: 1 Sent: 1

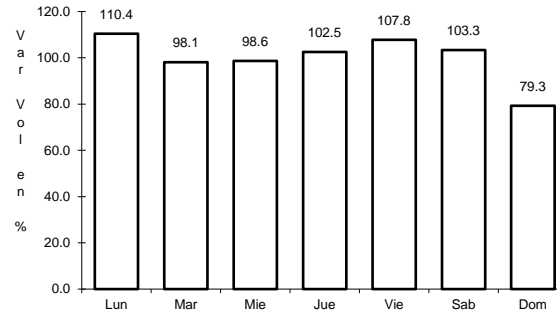
16 CARR: El Ideal - Chiquila

CLAVE: 23005

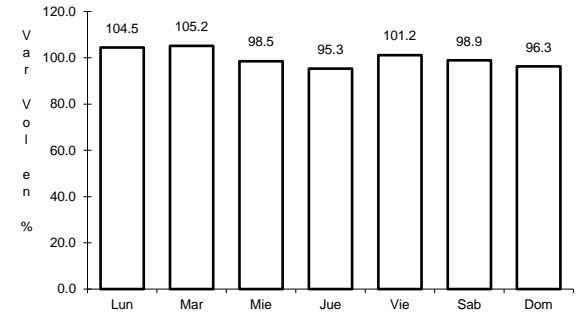
RUTA: QR-005



Km: 0.00 Tipo: 3 Sent: 0



Km: 31.20 Tipo: 1 Sent: 0

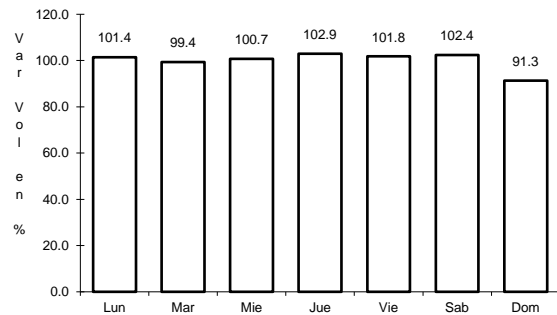


Km: 75.60 Tipo: 1 Sent: 0

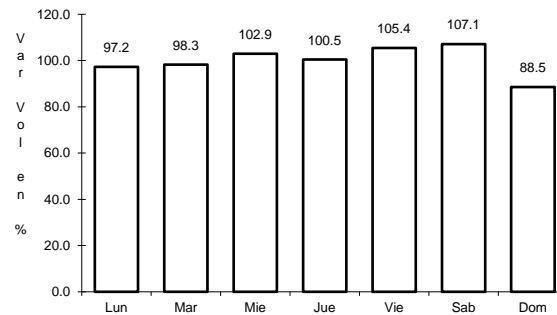
17 CARR: Libramiento de Chetumal

CLAVE: 23130

RUTA: QR



Km: 0.00 Tipo: 3 Sent: 1

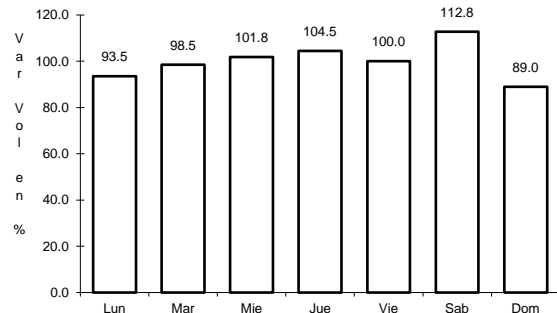


Km: 0.00 Tipo: 3 Sent: 2

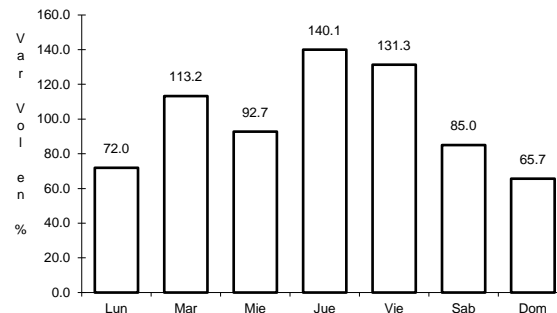
18 CARR: Perimetral Cozumel

CLAVE: 00148

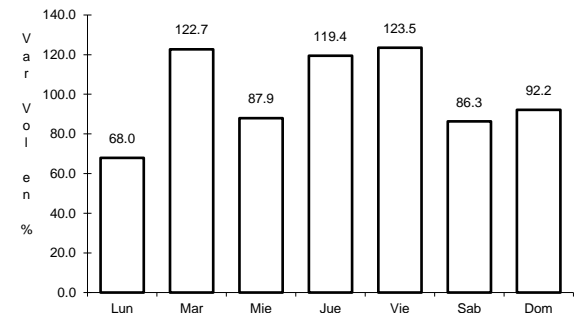
RUTA: QR



Km: 0.00 Tipo: 3 Sent: 0



Km: 13.40 Tipo: 3 Sent: 1

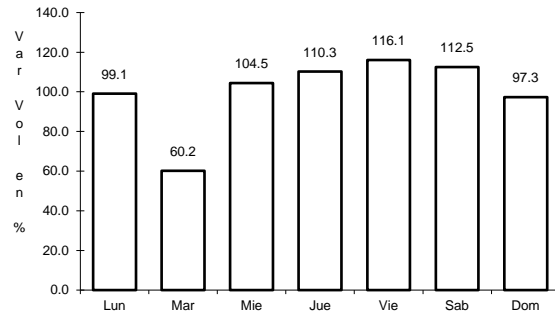


Km: 13.40 Tipo: 3 Sent: 2

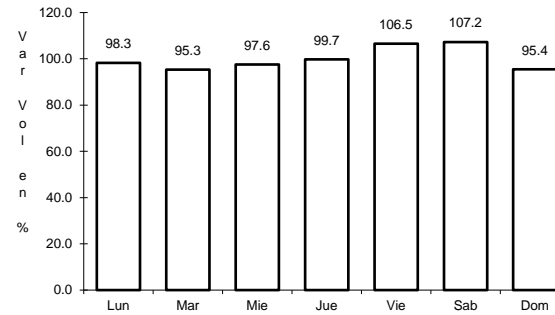
19 CARR: Punta Nizuc - Cancún

CLAVE: 23014

RUTA: QR



Km: 0.00 Tipo: 3 Sent: 1

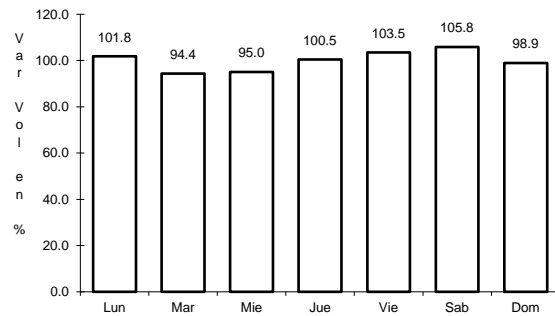


Km: 0.00 Tipo: 3 Sent: 2

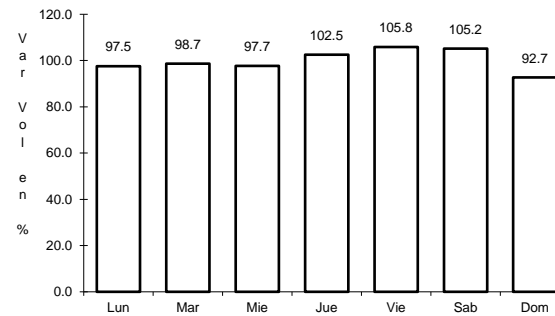
20 CARR: Ramal a Aeropuerto Cancún

CLAVE: 23574

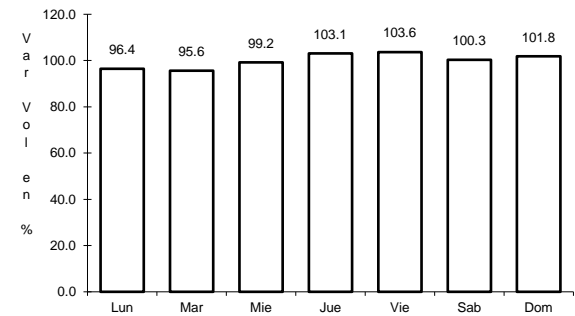
RUTA: QR



Km: 0.00 Tipo: 3 Sent: 1



Km: 0.00 Tipo: 3 Sent: 2

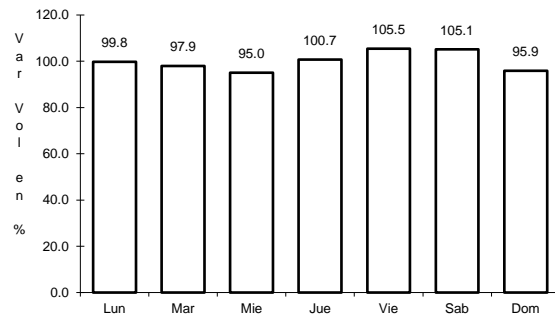


Km: 2.00 Tipo: 1 Sent: 1

21 CARR: Ramal a Candelaria

CLAVE: 23027

RUTA: QR

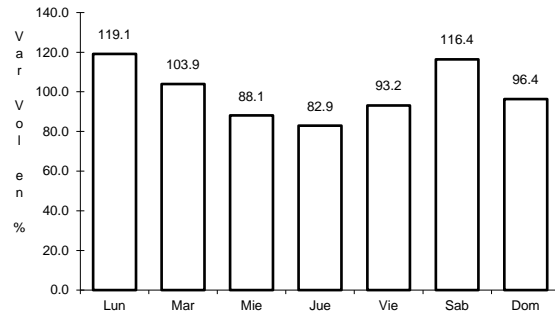


Km: 0.00 Tipo: 3 Sent: 0

22 CARR: Ramal a El Naranjal

CLAVE: 23579

RUTA: QR



Km: 0.00

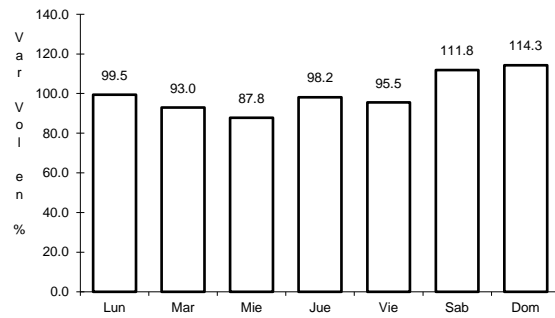
Tipo: 3

Sent: 0

23 CARR: Ramal a Laguna de Kaná

CLAVE: 23213

RUTA: QR



Km: 0.00

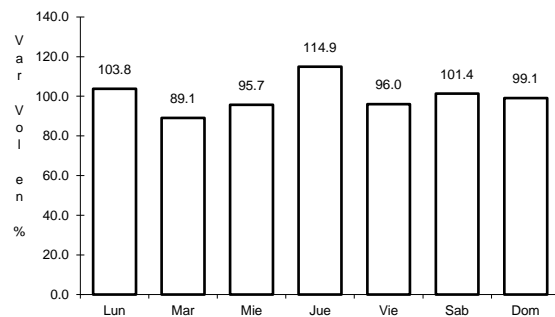
Tipo: 3

Sent: 0

24 CARR: Ramal a Mahahual

CLAVE: 23583

RUTA: QR



Km: 0.00

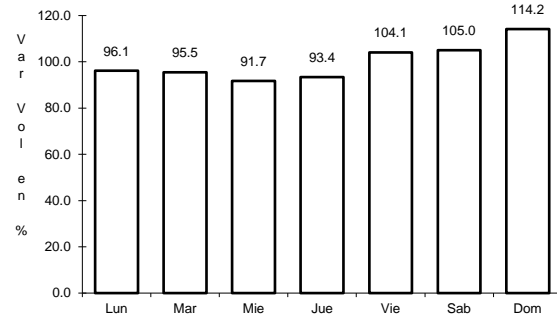
Tipo: 3

Sent: 0

25 CARR: Ramal a Petcacab

CLAVE: 23018

RUTA: QR-018

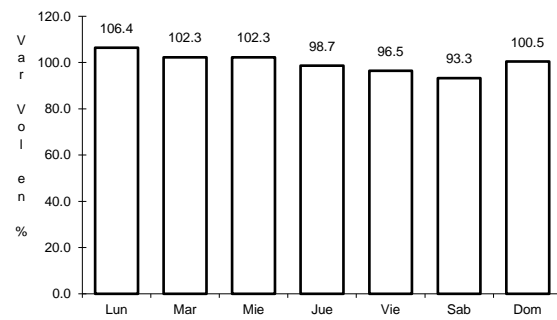


Km: 0.00 Tipo: 3 Sent: 0

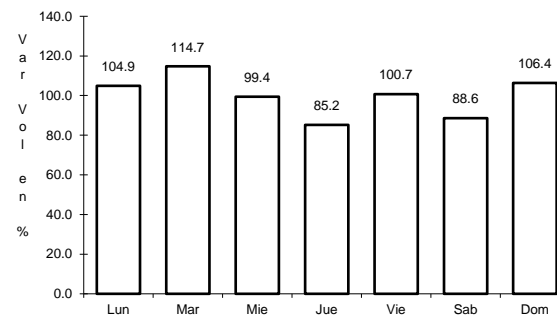
26 CARR: Ramal a Punta Allen

CLAVE: 23015

RUTA: QR-015



Km: 0.00 Tipo: 3 Sent: 0

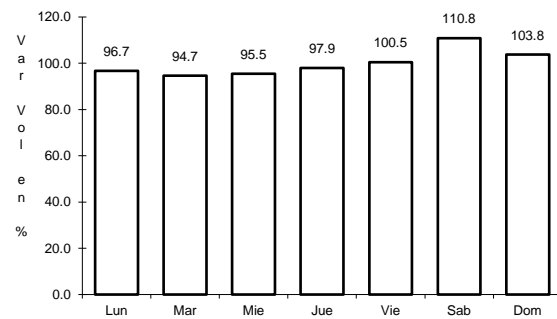


Km: 10.20 Tipo: 1 Sent: 0

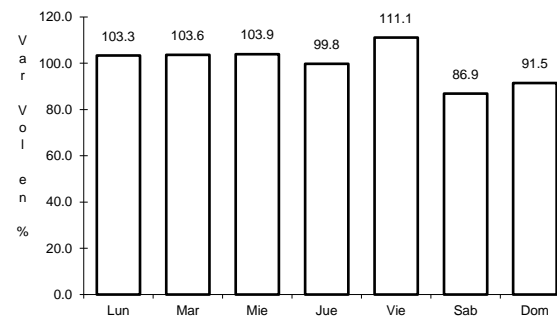
27 CARR: Ramal a Punta Sam

CLAVE: 23582

RUTA: QR



Km: 0.00 Tipo: 3 Sent: 0

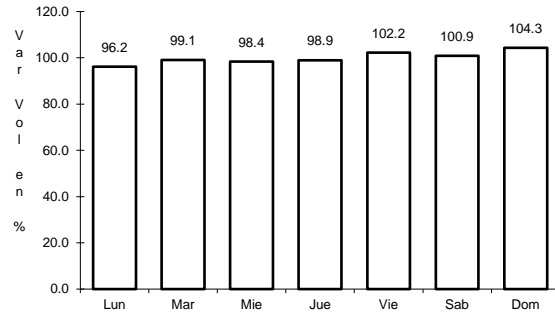


Km: 5.00 Tipo: 1 Sent: 0

28 CARR: Ramal a Reforma

CLAVE: 23016

RUTA: QR-016



Km: 0.00

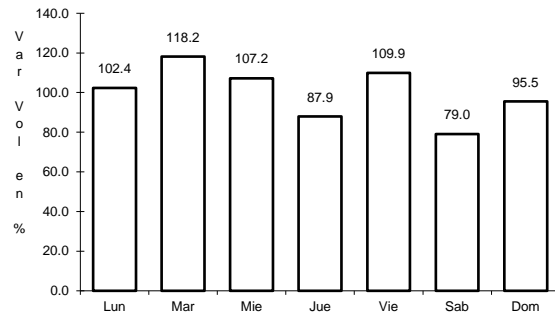
Tipo: 3

Sent: 0

29 CARR: Ramal a Tres Garantías

CLAVE: 23585

RUTA: QR



Km: 0.00

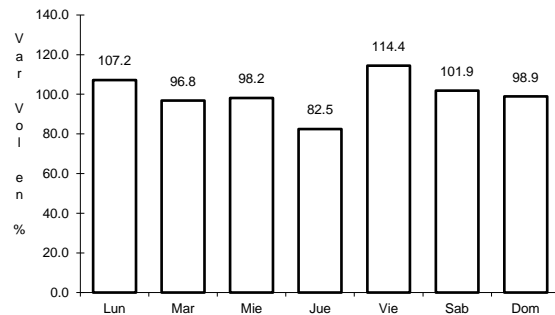
Tipo: 3

Sent: 0

30 CARR: Tihosuco - Dziuche

CLAVE: 23576

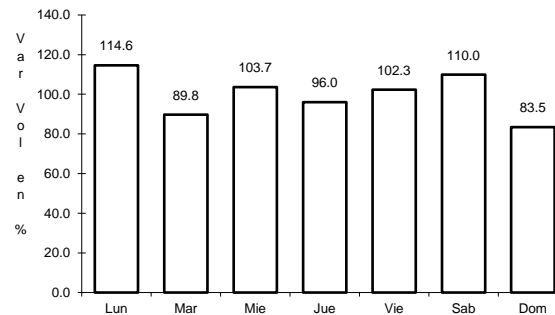
RUTA: QR



Km: 0.00

Tipo: 3

Sent: 0



Km: 60.50

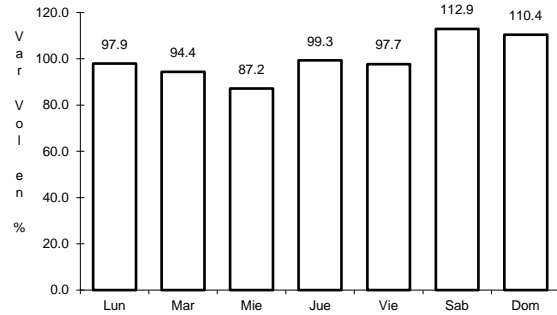
Tipo: 1

Sent: 0

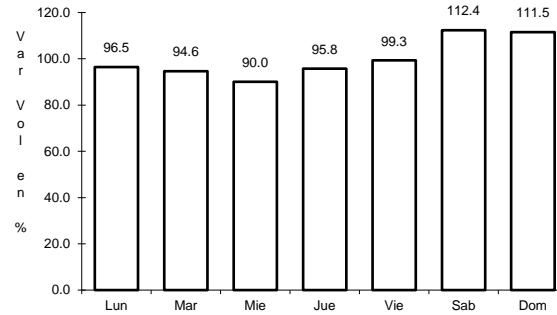
31 CARR: Transversal de Cozumel

CLAVE: 23577

RUTA: QR



Km: 0.00 Tipo: 3 Sent: 1

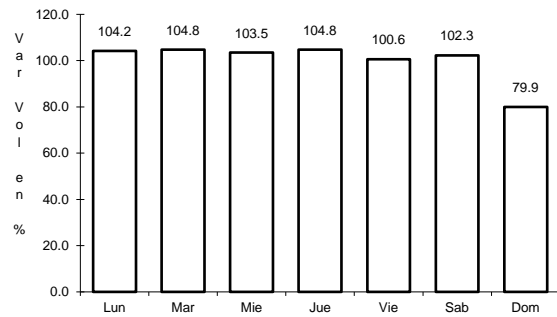


Km: 0.00 Tipo: 3 Sent: 2

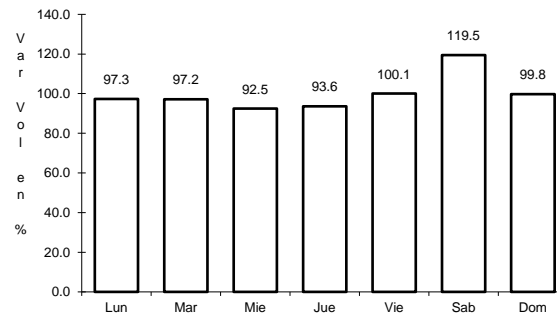
32 CARR: Tulum - Nuevo X-Can

CLAVE: 23570

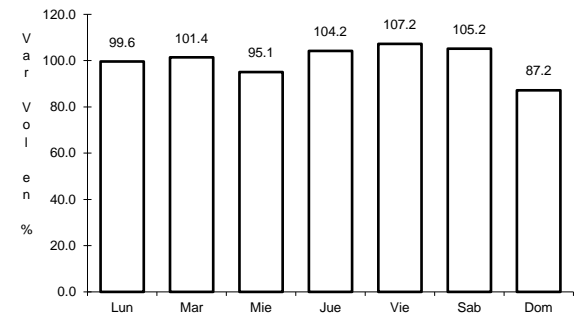
RUTA: QR



Km: 0.00 Tipo: 3 Sent: 1



Km: 42.95 Tipo: 1 Sent: 0

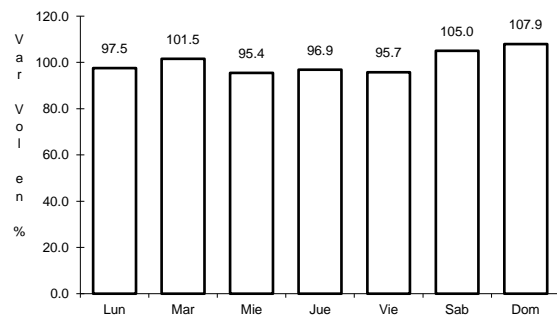


Km: 87.40 Tipo: 1 Sent: 0

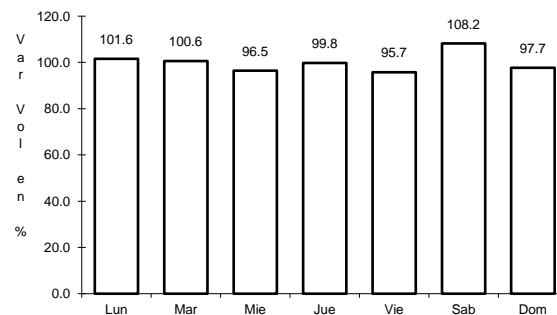
33 CARR: Ucum - Unión

CLAVE: 23571

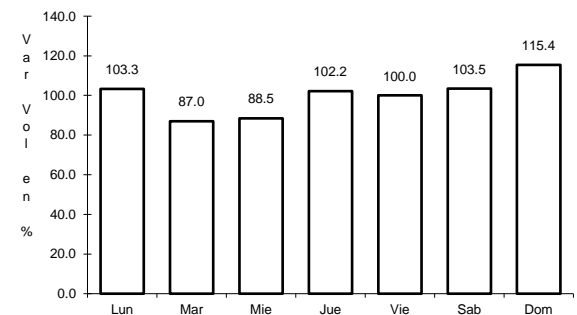
RUTA: QR



Km: 0.00 Tipo: 3 Sent: 0



Km: 31.00 Tipo: 3 Sent: 0

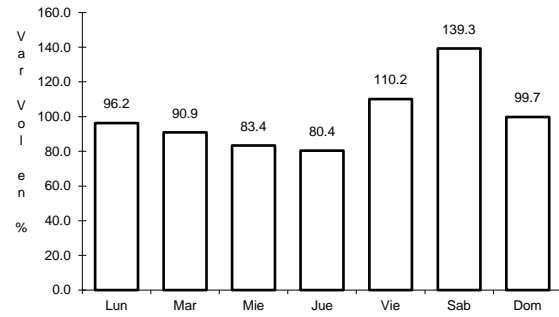


Km: 88.00 Tipo: 1 Sent: 0

34 CARR: Chemax - Cobá

CLAVE:

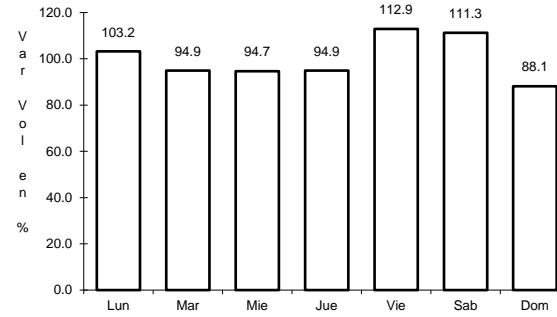
RUTA: YUC-MEX-180



Km: 0.00

Tipo: 3

Sent: 0



Km: 30.90

Tipo: 1

Sent: 0