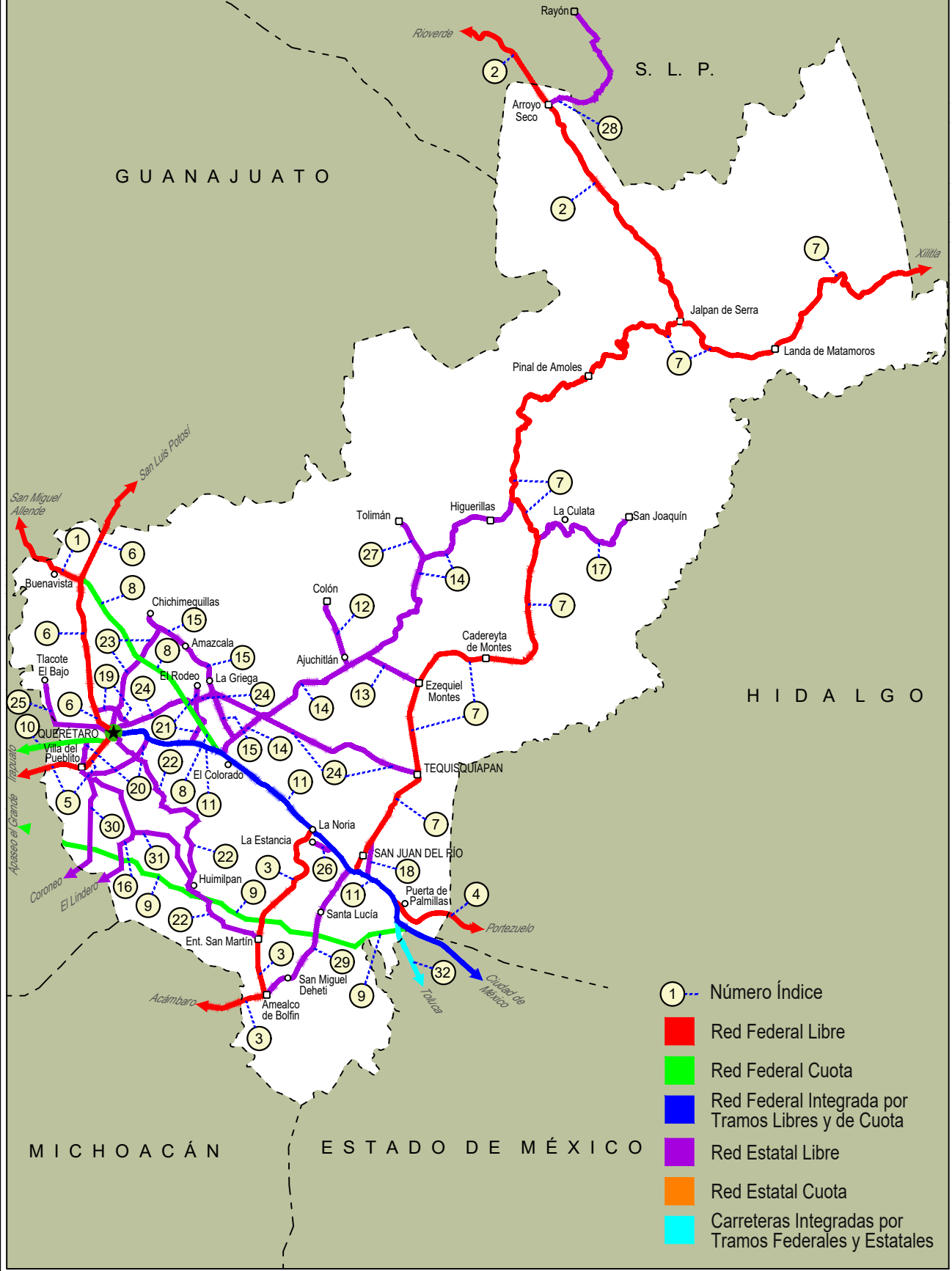


QUERETARO

NO. INDICE CARRETERA	RUTA
---RED FEDERAL LIBRE---	
1 Ent. Buenavista - San Miguel de Allende	MEX-057
2 Jalpan de Serra - Rioverde	MEX-069
3 La Noria - Acámbaro	MEX-120
4 Portezuelo - Palmillas	MEX-045
5 Querétaro - Irapuato (Libre)	MEX-045
6 Querétaro - San Luis Potosí	MEX-057
7 San Juan del Río - Xilitla	MEX-120
---RED FEDERAL DE CUOTA---	
8 Libramiento Nororiente de Querétaro (Cuota)	MEX-057D
9 Palmillas - Apaseo el Grande (Cuota)	MEX-045D
10 Querétaro - Irapuato (Cuota)	MEX-045D
---RED FEDERAL INTEGRADA POR TRAMOS LIBRES Y DE CUOTA---	
11 México - Querétaro (Cuota)	MEX-057-MEX-057D
---RED ESTATAL LIBRE---	
12 Ajuchitlán - Colón	QRO-005
13 Ajuchitlán - Ezequiel Montes	QRO-005
14 El Colorado - Higueraillas	QRO-004
15 Hacienda Paraíso - Chichimequillas	QRO-001
16 Huimilpan - El Lindero	QRO-GTO
17 La Culata - San Joaquín	QRO-021
18 Libramiento de San Juan del Río	QRO
19 Libramiento Norte de Querétaro	QRO
20 Libramiento Surponiente de Querétaro	QRO
21 Peña Colorada - El Rodeo	QRO
22 Querétaro - Ent. San Martín	QRO
23 Querétaro - Estación Chichimequillas	QRO
24 Querétaro - Tequisquiapan	QRO
25 Querétaro - Tlacote El Bajo	QRO
26 Ramal a La Estancia	QRO
27 Ramal a Tolimán	QRO
28 Rayón - Arroyo Seco	SLP-011
29 San Juan del Río - Amealco	QRO
30 T. C. (Villa del Pueblito - Huimilpan) - Coroneo	QRO-GTO
31 Villa del Pueblito - Huimilpan	QRO
---CARRETERAS INTEGRADAS POR TRAMOS FEDERALES Y ESTATALES---	
32 Toluca - Palmillas	EM(D)-MEX-055

22 QUERÉTARO

SECRETARÍA DE COMUNICACIONES Y TRANSPORTES
DIRECCIÓN GENERAL DE SERVICIOS TÉCNICOS



QUERETARO

1 CARR: Ent. Buenavista - San Miguel de Allende

CLAVE: 00111

RUTA: MEX-057

AÑO: 2021

LUGAR	ESTACION				CLASIFICACION VEHICULAR EN PORCIENTO													COORDENADAS		
	KM	TE	SC	TDPA	M	A	B	C2	C3	T3S2	T3S3	T3S2R4	OTROS	A	B	C	K'	D	LATITUD	LONGITUD
T. C. Querétaro - San Luis Potosí	0.00	3	0	18152	2.4	87.8	1.8	3.8	1.4	1.4	0.4	0.7	0.3	90.2	1.8	8.0	0.084	0.514	20.824423	-100.462635
Lim. Edos. Term. Qro. Ppia. Gto.	7.91																			
T. Izq. Guadalupe	12.00	1	0	10457	0.8	87.7	1.0	7.2	1.4	1.3	0.2	0.1	0.3	88.5	1.0	10.5	0.091	0.500	20.882364	-100.568682
San Miguel de Allende	35.11	1	0	12893	2.8	85.3	1.3	6.1	2.7	1.2	0.5	0.1	0.0	88.1	1.3	10.6	0.094	0.524	20.902410	-100.709804

2 CARR: Jalpan de Serra - Rioverde

CLAVE: 00265

RUTA: MEX-069

AÑO: 2021

LUGAR	ESTACION				CLASIFICACION VEHICULAR EN PORCIENTO													COORDENADAS		
	KM	TE	SC	TDPA	M	A	B	C2	C3	T3S2	T3S3	T3S2R4	OTROS	A	B	C	K'	D	LATITUD	LONGITUD
Jalpan de Serra	0.00	3	0	5805	3.6	92.4	0.4	2.6	0.6	0.2	0.1	0.1	0.0	96.0	0.4	3.6	0.099	0.510	21.240500	-99.482729
T. Izq. Conca	35.01	1	0	2537	2.0	85.4	0.5	9.0	0.8	1.9	0.3	0.0	0.1	87.4	0.5	12.1	0.088	0.502	21.444633	-99.626803
Arroyo Seco	48.60	1	0	1829	1.9	80.0	0.6	14.6	1.0	1.6	0.2	0.0	0.1	81.9	0.6	17.5	0.075	0.509	21.541937	-99.688213
Lim. Edos. Term. Qro. Ppia. S. L. P.	52.27																			
San Ciro de Acosta	69.42	1	0	2234	6.8	76.5	0.6	13.2	0.7	1.4	0.5	0.1	0.2	83.3	0.6	16.1	0.079	0.502	21.648171	-99.808744
San Ciro de Acosta	69.42	3	0	3060	4.4	80.8	0.4	11.0	0.8	2.0	0.3	0.1	0.2	85.2	0.4	14.4	0.079	0.507	21.661921	-99.827591
Rioverde	105.43	1	0	7682	3.1	76.5	0.6	14.5	0.7	2.7	0.8	0.4	0.7	79.6	0.6	19.8	0.078	0.511	21.877355	-99.974307

3 CARR: La Noria - Acámbaro

CLAVE: 00131

RUTA: MEX-120

AÑO: 2021

LUGAR	ESTACION				CLASIFICACION VEHICULAR EN PORCIENTO													COORDENADAS		
	KM	TE	SC	TDPA	M	A	B	C2	C3	T3S2	T3S3	T3S2R4	OTROS	A	B	C	K'	D	LATITUD	LONGITUD
La Noria	0.00	3	0	9058	2.1	86.5	1.2	6.6	1.8	1.2	0.4	0.1	0.1	88.6	1.2	10.2	0.088	0.522	20.438067	-100.074413
Amealco	34.66	1	0	5836	2.1	85.9	3.7	4.3	1.7	1.4	0.6	0.2	0.1	88.0	3.7	8.3	0.078	0.511	20.201317	-100.150378
Amealco	34.66	3	0	5232	1.9	89.9	0.9	4.1	1.1	0.9	0.8	0.2	0.2	91.8	0.9	7.3	0.083	0.513	20.186698	-100.157304
Lim. Edos. Term. Qro. Ppia. Mich.	39.15																			
Lim. Edos. Term. Mich. Ppia. Gto.	55.90																			
Coroneo	59.35	3	0	2136	2.9	82.1	2.2	8.9	0.9	1.4	1.2	0.3	0.1	85.0	2.2	12.8	0.084	0.543	20.194937	-100.376018
Jerécuaro	79.70	3	0	2877	3.7	82.7	1.2	9.6	0.7	1.3	0.6	0.1	0.1	86.4	1.2	12.4	0.081	0.503	20.144137	-100.539019
Acámbaro	111.12	1	0	6856	6.5	82.5	0.7	8.2	0.9	0.7	0.3	0.2	0.0	89.0	0.7	10.3	0.104	0.501	20.052056	-100.697029

4 CARR: Portezuelo - Palmillas

CLAVE: 00194

RUTA: MEX-045

AÑO: 2021

LUGAR	ESTACION				CLASIFICACION VEHICULAR EN PORCIENTO													COORDENADAS		
	KM	TE	SC	TDPA	M	A	B	C2	C3	T3S2	T3S3	T3S2R4	OTROS	A	B	C	K'	D	LATITUD	LONGITUD
Portezuelo	0.00	3	1	4229	2.0	72.9	2.8	9.8	2.2	6.1	2.8	1.0	0.4	74.9	2.8	22.3	0.083	0.515	20.484418	-99.314609

QUERETARO

4 CARR: Portezuelo - Palmillas

CLAVE: 00194

RUTA: MEX-045

AÑO: 2021

LUGAR	ESTACION				CLASIFICACION VEHICULAR EN PORCIENTO										COORDENADAS					
	KM	TE	SC	TDPA	M	A	B	C2	C3	T3S2	T3S3	T3S2R4	OTROS	A	B	C	K'	D	LATITUD	LONGITUD
Portezuelo	0.00	3	2	3975	2.0	70.8	3.5	9.5	2.7	6.8	3.1	1.1	0.5	72.8	3.5	23.7	0.075	0.515	20.484319	-99.314561
Jonacapa	29.41	3	0	5511	2.4	75.6	3.4	7.3	2.0	4.8	2.7	1.5	0.3	78.0	3.4	18.6	0.096	0.504	20.435161	-99.536860
Huichapan	45.10	1	1	4852	2.7	71.8	3.4	5.5	2.8	6.2	3.1	3.8	0.7	74.5	3.4	22.1	0.083	0.511	20.398454	-99.632014
Huichapan	45.10	1	2	4645	2.8	71.9	3.4	5.5	2.7	6.2	3.0	3.8	0.7	74.7	3.4	21.9	0.071	0.511	20.398382	-99.631937
T. Izq. Nopala	56.15	1	0	8507	2.8	76.3	2.8	4.1	2.6	5.0	3.1	2.4	0.9	79.1	2.8	18.1	0.110	0.523	20.316107	-99.715012
T. Izq. Nopala	56.15	3	0	6755	2.8	75.1	2.9	5.1	2.1	5.3	3.3	2.5	0.9	77.9	2.9	19.2	0.101	0.501	20.312560	-99.718214
Lim. Edos. Term. Hgo. Ppia. Qro.	71.40																			
Palmillas	80.00	1	1	4911	1.2	78.7	2.1	9.7	1.9	2.1	2.3	1.5	0.5	79.9	2.1	18.0	0.080	0.507	20.324490	-99.930467
Palmillas	80.00	1	2	4772	1.1	78.9	2.1	9.5	2.1	2.2	2.2	1.4	0.5	80.0	2.1	17.9	0.088	0.507	20.324453	-99.930553

5 CARR: Querétaro - Irapuato (Libre)

CLAVE: 00154

RUTA: MEX-045

AÑO: 2021

LUGAR	ESTACION				CLASIFICACION VEHICULAR EN PORCIENTO										COORDENADAS					
	KM	TE	SC	TDPA	M	A	B	C2	C3	T3S2	T3S3	T3S2R4	OTROS	A	B	C	K'	D	LATITUD	LONGITUD
Querétaro Poniente	0.00	3	1	73012	3.5	84.0	0.1	5.0	0.3	3.6	2.5	0.2	0.8	87.5	0.1	12.4	0.075	0.532	20.553681	-100.421543
Querétaro Poniente	0.00	3	2	62693	3.5	83.5	0.2	5.0	0.3	3.9	2.6	0.3	0.7	87.0	0.2	12.8	0.062	0.532	20.553600	-100.421447
T. Der. Villa del Pueblito	6.67	3	1	24692	1.4	86.1	0.2	5.1	0.4	3.2	2.7	0.3	0.6	87.5	0.2	12.3	0.076	0.501	20.534046	-100.450648
T. Der. Villa del Pueblito	6.67	3	2	24614	1.4	84.9	0.2	5.5	0.5	3.6	2.9	0.3	0.7	86.3	0.2	13.5	0.080	0.501	20.533977	-100.450673
Los Ángeles	12.60	3	1	22104	1.0	75.2	2.0	7.5	2.7	8.9	1.9	0.6	0.2	76.2	2.0	21.8	0.087	0.504	20.535054	-100.495879
Los Ángeles	12.60	3	2	22419	1.0	75.2	2.4	7.1	2.9	8.7	1.8	0.7	0.2	76.2	2.4	21.4	0.072	0.504	20.534958	-100.495829
Lim. Edos. Term. Qro. Ppia. Gto.	13.49																			
T. C. Palmillas - Apaseo el Grande (Cuota)	23.50	1	1	10718	0.5	76.1	2.5	8.2	3.0	7.5	1.3	0.7	0.2	76.6	2.5	20.9	0.104	0.520	20.504928	-100.581160
T. C. Palmillas - Apaseo el Grande (Cuota)	23.50	1	2	11608	0.5	76.2	2.5	8.1	3.0	7.5	1.3	0.7	0.2	76.7	2.5	20.8	0.100	0.520	20.504052	-100.582299
T. C. Palmillas - Apaseo el Grande (Cuota)	23.50	3	1	12267	0.8	73.1	2.7	9.9	3.6	8.3	0.9	0.5	0.2	73.9	2.7	23.4	0.091	0.512	20.487264	-100.601674
T. C. Palmillas - Apaseo el Grande (Cuota)	23.50	3	2	11673	0.9	73.7	2.4	9.6	3.5	7.3	1.8	0.6	0.2	74.6	2.4	23.0	0.084	0.512	20.487225	-100.601600
T. Izq. Apaseo El Alto	28.37	3	1	17090	1.5	76.3	2.9	6.4	2.9	7.7	1.6	0.5	0.2	77.8	2.9	19.3	0.084	0.529	20.465613	-100.634391
T. Izq. Apaseo El Alto	28.37	3	2	15227	1.2	79.3	3.0	5.1	2.8	6.7	1.3	0.4	0.2	80.5	3.0	16.5	0.082	0.529	20.466742	-100.635508
T. Der. Apaseo El Grande	40.11	3	1	21773	1.1	73.3	2.6	10.4	1.8	7.0	2.4	1.1	0.3	74.4	2.6	23.0	0.079	0.504	20.532113	-100.715993
T. Der. Apaseo El Grande	40.11	3	2	22129	0.9	74.4	3.4	6.5	2.2	8.8	2.4	1.1	0.3	75.3	3.4	21.3	0.067	0.504	20.532036	-100.715963
T. Izq. Libramiento de Celaya Ote.	49.90	1	1	22725	0.8	76.4	4.1	8.5	2.0	5.4	2.4	0.3	0.1	77.2	4.1	18.7	0.088	0.509	20.521422	-100.749637
T. Izq. Libramiento de Celaya Ote.	49.90	1	2	23595	1.0	74.3	6.9	7.6	2.2	5.1	2.5	0.3	0.1	75.3	6.9	17.8	0.085	0.509	20.521341	-100.749602
T. Izq. Libramiento de Celaya Pte.	55.61	3	1	31030	0.8	77.0	5.5	8.8	1.8	3.9	1.7	0.4	0.1	77.8	5.5	16.7	0.071	0.503	20.516075	-100.885423
T. Izq. Libramiento de Celaya Pte.	55.61	3	2	30564	1.7	79.5	3.0	7.5	2.3	4.1	1.0	0.7	0.2	81.2	3.0	15.8	0.086	0.503	20.515889	-100.886811
T. Izq. Cortazar	67.50	3	1	28880	2.4	76.8	4.1	7.9	2.8	4.3	1.1	0.5	0.1	79.2	4.1	16.7	0.098	0.522	20.509712	-100.974413
T. Izq. Cortazar	67.50	3	2	31788	2.4	76.8	4.1	7.9	2.8	4.3	1.1	0.5	0.1	79.2	4.1	16.7	0.078	0.522	20.509640	-100.974422

QUERETARO

5 CARR: Querétaro - Irapuato (Libre)

CLAVE: 00154

RUTA: MEX-045

AÑO: 2021

LUGAR	ESTACION				CLASIFICACION VEHICULAR EN PORCIENTO										COORDENADAS					
	KM	TE	SC	TDPA	M	A	B	C2	C3	T3S2	T3S3	T3S2R4	OTROS	A	B	C	K'	D	LATITUD	LONGITUD
T. Izq. Libramiento de Salamanca	93.80	1	1	22069	4.3	71.6	4.4	12.4	1.8	3.6	0.8	0.9	0.2	75.9	4.4	19.7	0.082	0.567	20.552977	-101.150284
T. Izq. Libramiento de Salamanca	93.80	1	2	21690	2.4	72.3	4.7	11.8	2.0	4.7	1.0	0.8	0.3	74.7	4.7	20.6	0.085	0.567	20.553280	-101.151343
T. Izq. Libramiento de Salamanca	102.10																			
Irapuato	113.70	1	1	12568	3.3	82.1	2.6	6.9	2.1	1.9	0.5	0.5	0.1	85.4	2.6	12.0	0.099	0.502	20.658034	-101.303021
Irapuato	113.70	1	2	12489	3.4	81.9	2.5	7.3	2.1	1.7	0.5	0.5	0.1	85.3	2.5	12.2	0.106	0.502	20.657952	-101.303106

6 CARR: Querétaro - San Luis Potosí

CLAVE: 00165

RUTA: MEX-057

AÑO: 2021

LUGAR	ESTACION				CLASIFICACION VEHICULAR EN PORCIENTO										COORDENADAS					
	KM	TE	SC	TDPA	M	A	B	C2	C3	T3S2	T3S3	T3S2R4	OTROS	A	B	C	K'	D	LATITUD	LONGITUD
Querétaro	0.00																			
T. Der. Libramiento de Querétaro	6.28	3	1	55161	1.0	91.1	1.0	3.7	0.7	1.7	0.5	0.1	0.2	92.1	1.0	6.9	0.089	0.506	20.636652	-100.428726
T. Der. Libramiento de Querétaro	6.28	3	2	56849	0.9	91.2	1.0	3.7	0.7	1.7	0.5	0.1	0.2	92.1	1.0	6.9	0.090	0.506	20.636626	-100.428905
T. Izq. Juriquilla	15.63	3	1	30765	2.4	87.7	1.6	4.6	1.1	1.9	0.3	0.3	0.1	90.1	1.6	8.3	0.118	0.501	20.710280	-100.437942
T. Izq. Juriquilla	15.63	3	2	30698	3.6	86.9	1.2	4.8	0.8	1.7	0.3	0.6	0.1	90.5	1.2	8.3	0.103	0.501	20.710279	-100.438078
T. Izq. San Miguel de Allende	28.53	1	1	31430	4.2	80.2	1.9	6.9	1.2	3.8	0.7	0.9	0.2	84.4	1.9	13.7	0.125	0.508	20.801761	-100.448619
T. Izq. San Miguel de Allende	28.53	1	2	32566	4.2	79.2	1.9	7.3	1.3	3.7	1.0	1.0	0.4	83.4	1.9	14.7	0.083	0.508	20.800923	-100.448726
T. Izq. San Miguel de Allende	28.53	3	1	26844	6.4	59.3	3.6	8.3	3.2	13.1	2.3	3.1	0.7	65.7	3.6	30.7	0.062	0.510	20.839725	-100.437839
T. Izq. San Miguel de Allende	28.53	3	2	25764	6.7	58.3	3.9	8.1	3.7	13.1	2.4	3.2	0.6	65.0	3.9	31.1	0.064	0.510	20.839803	-100.438011
Lim. Edos. Term. Qro. Ppia. Gto.	36.70																			
X. C. San José Iturbide - El Arenal	46.83	1	1	25487	1.6	43.1	2.9	8.6	4.0	31.6	3.3	4.2	0.7	44.7	2.9	52.4	0.074	0.510	20.967700	-100.428787
X. C. San José Iturbide - El Arenal	46.83	1	2	26637	2.0	39.1	4.0	9.3	3.8	33.0	3.0	5.0	0.8	41.1	4.0	54.9	0.074	0.510	20.967638	-100.428946
X. C. San José Iturbide - El Arenal	46.83	3	1	14105	1.9	51.1	2.7	7.5	4.3	23.5	4.1	4.0	0.9	53.0	2.7	44.3	0.078	0.520	20.983874	-100.434971
X. C. San José Iturbide - El Arenal	46.83	3	2	15308	1.9	46.3	4.0	8.7	4.3	24.6	4.6	4.7	0.9	48.2	4.0	47.8	0.087	0.520	20.983784	-100.435128
X. C. Ent. San Miguel de Allende - Dr. Mora	61.93	1	1	15070	1.3	54.5	4.6	9.2	2.8	23.9	0.8	2.3	0.6	55.8	4.6	39.6	0.066	0.520	21.077068	-100.512548
X. C. Ent. San Miguel de Allende - Dr. Mora	61.93	1	2	16315	1.3	51.6	4.1	10.0	2.7	24.7	1.7	3.3	0.6	52.9	4.1	43.0	0.074	0.520	21.076959	-100.512677
X. C. San Luis de La Paz - Guanajuato	86.68	1	1	12878	1.1	51.6	3.5	10.2	2.3	26.1	1.7	2.7	0.8	52.7	3.5	43.8	0.066	0.523	21.270960	-100.589552
X. C. San Luis de La Paz - Guanajuato	86.68	1	2	14123	1.2	48.6	3.7	11.0	2.5	27.7	1.7	2.9	0.7	49.8	3.7	46.5	0.072	0.523	21.268858	-100.589308
T. Izq. San Diego de La Unión	119.07	1	1	10269	1.1	47.3	5.0	8.1	5.9	24.8	2.7	4.1	1.0	48.4	5.0	46.6	0.071	0.520	21.528080	-100.740079
T. Izq. San Diego de La Unión	119.07	1	2	11121	1.0	50.3	4.9	7.9	6.7	21.6	2.6	4.1	0.9	51.3	4.9	43.8	0.073	0.520	21.531293	-100.742087
T. Izq. San Diego de La Unión	119.07	3	1	11561	1.0	50.9	4.4	6.9	6.7	22.8	2.3	4.0	1.0	51.9	4.4	43.7	0.068	0.529	21.540841	-100.747153
T. Izq. San Diego de La Unión	119.07	3	2	12989	1.0	50.5	4.5	7.8	6.8	22.1	2.3	4.0	1.0	51.5	4.5	44.0	0.088	0.529	21.540758	-100.747335
Lim. Edos. Term. Gto. Ppia. S. L. P.	124.74																			
T. Der. Tierra Nueva	140.65	1	1	10892	9.8	43.0	5.8	8.5	2.4	21.6	3.2	4.9	0.8	52.8	5.8	41.4	0.074	0.541	21.688095	-100.691612
T. Der. Tierra Nueva	140.65	1	2	12847	11.1	43.1	5.3	8.8	2.1	21.1	3.4	4.5	0.6	54.2	5.3	40.5	0.073	0.541	21.688209	-100.691741

QUERETARO

6 CARR : Querétaro - San Luis Potosí

CLAVE: 00165

RUTA : MEX-057

AÑO : 2021

LUGAR	ESTACION				CLASIFICACION VEHICULAR EN PORCIENTO										COORDENADAS					
	KM	TE	SC	TDPA	M	A	B	C2	C3	T3S2	T3S3	T3S2R4	OTROS	A	B	C	K'	D	LATITUD	LONGITUD
T. Der. Tierra Nueva	140.65	3	1	12322	10.0	42.6	5.6	8.5	2.3	22.0	3.4	4.7	0.9	52.6	5.6	41.8	0.062	0.521	21.704222	-100.684369
T. Der. Tierra Nueva	140.65	3	2	13413	9.0	43.4	5.7	8.1	2.6	22.4	3.5	4.5	0.8	52.4	5.7	41.9	0.064	0.521	21.704165	-100.684526
T. Izq. Santa María del Río	155.88	3	1	14568	8.5	46.3	5.8	8.2	2.3	21.2	3.1	4.3	0.3	54.8	5.8	39.4	0.072	0.505	21.838520	-100.734401
T. Izq. Santa María del Río	155.88	3	2	14292	7.8	44.3	6.0	8.9	2.7	21.6	3.5	4.4	0.8	52.1	6.0	41.9	0.070	0.505	21.838409	-100.734531
T. Izq. Villa de Reyes	176.35	1	1	13635	8.7	41.1	5.2	9.8	3.4	23.6	3.6	4.4	0.2	49.8	5.2	45.0	0.067	0.504	21.960309	-100.811195
T. Izq. Villa de Reyes	176.35	1	2	13442	9.4	40.3	5.9	9.7	3.3	23.7	3.1	4.4	0.2	49.7	5.9	44.4	0.076	0.504	21.960254	-100.811360
T. Izq. Villa de Reyes	176.35	3	1	24886	4.7	55.0	3.7	9.1	2.2	17.9	2.5	4.2	0.7	59.7	3.7	36.6	0.055	0.500	21.984945	-100.824537
T. Izq. Villa de Reyes	176.35	3	2	24918	5.1	52.5	4.0	10.0	2.4	17.9	2.4	4.9	0.8	57.6	4.0	38.4	0.052	0.500	21.984848	-100.824733
T. Izq. Villa de Arriaga (Cuota)	182.60	1	1	26871	5.9	60.8	7.9	4.6	2.4	12.7	1.8	3.1	0.8	66.7	7.9	25.4	0.079	0.532	22.011528	-100.838987
T. Izq. Villa de Arriaga (Cuota)	182.60	1	2	22240	5.9	60.6	8.1	4.6	2.5	12.5	1.8	3.2	0.8	66.5	8.1	25.4	0.094	0.532	22.011454	-100.839160
X. C. Libramiento de San Luis Potosí	184.80	1	1	37261	2.3	66.7	4.6	4.9	2.0	15.1	1.7	2.2	0.5	69.0	4.6	26.4	0.071	0.525	22.033062	-100.850695
X. C. Libramiento de San Luis Potosí	184.80	1	2	33378	2.3	66.5	4.6	4.9	2.1	15.2	1.7	2.2	0.5	68.8	4.6	26.6	0.074	0.525	22.032979	-100.850839
X. Periférico de San Luis Potosí (Lateral)	197.50	1	1	21783	4.4	77.3	2.4	8.4	2.4	3.0	0.7	1.1	0.3	81.7	2.4	15.9	0.121	0.523	22.122051	-100.912879
X. Periférico de San Luis Potosí (Central)	197.50	1	1	46074	3.7	91.0	0.6	2.6	0.5	0.3	0.1	1.0	0.2	94.7	0.6	4.7	0.062	0.503	22.121932	-100.912955
X. Periférico de San Luis Potosí (Central)	197.50	1	2	46790	3.7	91.0	0.6	2.6	0.5	0.3	0.1	1.0	0.2	94.7	0.6	4.7	0.052	0.503	22.121787	-100.913069
X. Periférico de San Luis Potosí (Lateral)	197.50	1	2	19850	4.3	77.4	2.4	8.4	2.4	3.0	0.7	1.1	0.3	81.7	2.4	15.9	0.091	0.523	22.121504	-100.913298
San Luis Potosí	201.66																			

7 CARR : San Juan del Río - Xilitla

CLAVE: 00183

RUTA : MEX-120

AÑO : 2021

LUGAR	ESTACION				CLASIFICACION VEHICULAR EN PORCIENTO										COORDENADAS					
	KM	TE	SC	TDPA	M	A	B	C2	C3	T3S2	T3S3	T3S2R4	OTROS	A	B	C	K'	D	LATITUD	LONGITUD
San Juan del Río	0.00																			
T. Der. Libramiento de San Juan del Río	5.20	3	1	13961	2.9	89.2	1.4	2.8	1.4	1.6	0.4	0.3	0.0	92.1	1.4	6.5	0.102	0.501	20.424461	-99.976086
T. Der. Libramiento de San Juan del Río	5.20	3	2	13914	3.1	90.0	1.0	2.6	1.4	1.2	0.5	0.2	0.0	93.1	1.0	5.9	0.090	0.501	20.424542	-99.976202
T. Der. Tequisquiapan	19.80	1	1	9808	3.1	90.0	1.1	2.6	1.4	1.1	0.5	0.2	0.0	93.1	1.1	5.8	0.094	0.530	20.513143	-99.905785
T. Der. Tequisquiapan	19.80	1	2	11061	3.1	90.3	1.0	2.4	1.4	1.0	0.6	0.2	0.0	93.4	1.0	5.6	0.089	0.530	20.513242	-99.905862
T. Der. Tequisquiapan	19.80	3	1	8779	3.5	88.2	1.6	2.9	1.9	1.2	0.4	0.2	0.1	91.7	1.6	6.7	0.089	0.508	20.543666	-99.902003
T. Der. Tequisquiapan	19.80	3	2	9078	3.4	88.3	1.8	2.9	1.4	1.2	0.7	0.2	0.1	91.7	1.8	6.5	0.074	0.508	20.543638	-99.902118
Ezequiel Montes	36.50	1	1	7320	3.7	86.0	1.5	2.8	2.4	2.2	1.0	0.3	0.1	89.7	1.5	8.8	0.089	0.510	20.644997	-99.905577
Ezequiel Montes	36.50	1	2	7606	3.6	86.1	1.5	2.5	2.7	2.1	1.1	0.3	0.1	89.7	1.5	8.8	0.091	0.510	20.645026	-99.905691
Ezequiel Montes	36.50	3	1	6265	3.6	91.4	0.5	2.8	1.0	0.3	0.2	0.1	0.1	95.0	0.5	4.5	0.093	0.509	20.680927	-99.888340
Ezequiel Montes	36.50	3	2	6495	3.5	91.1	0.6	3.0	0.9	0.4	0.3	0.1	0.1	94.6	0.6	4.8	0.109	0.509	20.681019	-99.888437
Cadereyta	47.90	3	1	4851	2.9	84.7	0.4	4.7	3.3	1.3	2.1	0.5	0.1	87.6	0.4	12.0	0.098	0.519	20.702437	-99.801702
Cadereyta	47.90	3	2	5235	2.8	85.0	0.4	4.8	3.4	1.1	2.0	0.4	0.1	87.8	0.4	11.8	0.088	0.519	20.702516	-99.801720

QUERETARO

7 CARR: San Juan del Río - Xilitla

CLAVE: 00183

RUTA: MEX-120

AÑO: 2021

LUGAR	ESTACION				CLASIFICACION VEHICULAR EN PORCIENTO													COORDENADAS		
	KM	TE	SC	TDPA	M	A	B	C2	C3	T3S2	T3S3	T3S2R4	OTROS	A	B	C	K'	D	LATITUD	LONGITUD
Vizarrón de Montes	73.50	3	0	3430	0.8	72.8	0.9	12.6	5.4	1.7	4.9	0.3	0.6	73.6	0.9	25.5	0.080	0.505	20.847256	-99.713404
T. Der. San Joaquín	79.50	3	0	1459	1.7	80.4	1.2	12.1	2.1	1.3	1.0	0.0	0.2	82.1	1.2	16.7	0.090	0.520	20.885351	-99.707482
T. Izq. Higuerillas	89.10	3	0	2081	1.4	77.8	2.2	14.6	1.7	1.2	1.0	0.0	0.1	79.2	2.2	18.6	0.104	0.514	20.950740	-99.749058
T. Izq. Peñamiller	103.00	3	0	1641	0.4	81.7	2.6	10.8	2.0	1.9	0.4	0.0	0.2	82.1	2.6	15.3	0.109	0.506	21.039196	-99.739531
Pinal de Amoles	140.00	3	0	2226	0.8	86.5	1.0	8.1	1.1	1.4	0.8	0.0	0.3	87.3	1.0	11.7	0.086	0.503	21.138747	-99.620214
Jalpan de Serra	179.30	3	0	7567	2.3	87.5	0.5	8.3	0.6	0.4	0.1	0.2	0.1	89.8	0.5	9.7	0.084	0.503	21.205839	-99.451419
Landa de Matamoros	201.60	3	0	3065	2.0	85.1	0.9	9.3	0.7	1.4	0.4	0.0	0.2	87.1	0.9	12.0	0.076	0.519	21.186613	-99.312786
El Lobo	236.40	3	0	1049	1.9	83.9	2.3	6.1	2.2	2.0	0.7	0.0	0.9	85.8	2.3	11.9	0.096	0.513	21.292191	-99.116060
Lim. Edos. Term. Qro. Ppia. S. L. P.	238.33																			
Xilitla	266.40	1	0	2461	7.5	79.3	0.8	8.8	1.0	1.8	0.5	0.1	0.2	86.8	0.8	12.4	0.110	0.504	21.379041	-98.999004
T. C. Portezuelo - Cd. Valles	276.98	1	0	3796	5.6	81.7	1.3	7.8	1.2	1.8	0.4	0.0	0.2	87.3	1.3	11.4	0.090	0.501	21.442543	-98.929836

8 CARR: Libramiento Nororiente de Querétaro (Cuota)

CLAVE: 22266

RUTA: MEX-057D

AÑO: 2021

LUGAR	ESTACION				CLASIFICACION VEHICULAR EN PORCIENTO													COORDENADAS		
	KM	TE	SC	TDPA	M	A	B	C2	C3	T3S2	T3S3	T3S2R4	OTROS	A	B	C	K'	D	LATITUD	LONGITUD
T. C. México - Querétaro	0.00	3	1	9864	4.1	37.3	7.3	7.3	3.5	30.4	3.9	5.5	0.7	41.4	7.3	51.3	0.047	0.504	20.568659	-100.233276
T. C. México - Querétaro	0.00	3	2	9704	4.1	38.3	7.0	7.1	3.0	30.6	3.8	5.4	0.7	42.4	7.0	50.6	0.048	0.504	20.568574	-100.233439
Plaza de Cobro Chichimequillas	20.32	2	1	8883	0.2	39.1	1.3	6.4	5.3	35.2	3.9	7.1	1.5	39.3	1.3	59.4	0.066	0.500	20.705589	-100.343736
Plaza de Cobro Chichimequillas	20.32	2	2	8883	0.2	39.1	1.3	6.4	5.3	35.2	3.9	7.1	1.5	39.3	1.3	59.4	0.066	0.500	20.705589	-100.343736
T. C. Querétaro - San Luis Potosí	37.50	1	1	8629	1.5	39.1	6.8	5.5	3.3	33.1	3.2	6.6	0.9	40.6	6.8	52.6	0.068	0.513	20.812878	-100.441772
T. C. Querétaro - San Luis Potosí	37.50	1	2	9090	1.3	48.9	5.2	5.7	3.1	22.7	2.9	9.4	0.8	50.2	5.2	44.6	0.077	0.513	20.812823	-100.441830

9 CARR: Palmillas - Apaseo el Grande (Cuota)

CLAVE:

RUTA: MEX-045D

AÑO: 2021

LUGAR	ESTACION				CLASIFICACION VEHICULAR EN PORCIENTO													COORDENADAS		
	KM	TE	SC	TDPA	M	A	B	C2	C3	T3S2	T3S3	T3S2R4	OTROS	A	B	C	K'	D	LATITUD	LONGITUD
T. C. México - Querétaro (Cuota)	0.00																			
Ent. Palmillas	1.60	1	1	6097	3.2	55.0	9.6	3.5	3.5	16.6	2.4	5.3	0.9	58.2	9.6	32.2	0.076	0.538	20.292742	-99.928314
Ent. Palmillas	1.60	1	2	5245	3.3	55.1	8.5	3.4	3.8	16.6	2.6	5.6	1.1	58.4	8.5	33.1	0.105	0.538	20.292615	-99.928294
Ent. Palmillas	1.60	3	1	6665	2.6	55.4	8.5	5.8	4.4	15.5	2.4	4.6	0.8	58.0	8.5	33.5	0.080	0.539	20.292302	-99.936270
Ent. Palmillas	1.60	3	2	5693	3.1	53.0	9.8	4.3	4.3	15.7	2.9	5.9	1.0	56.1	9.8	34.1	0.081	0.539	20.292166	-99.936279
T. Izq. Amealco	15.40	3	1	6339	2.8	54.5	8.6	4.2	4.1	16.8	2.6	5.5	0.9	57.3	8.6	34.1	0.074	0.521	20.282245	-100.068313
T. Izq. Amealco	15.40	3	2	5829	3.0	53.8	9.0	4.1	4.1	16.5	2.8	5.7	1.0	56.8	9.0	34.2	0.090	0.521	20.282172	-100.068319
T. C. (Villa del Pueblito - Huimilpan) - Coroneo	40.60	3	1	6269	3.2	54.7	8.8	5.0	4.1	15.2	2.7	5.3	1.0	57.9	8.8	33.3	0.070	0.517	20.349628	-100.276973

QUERETARO

9 CARR: Palmillas - Apaseo el Grande (Cuota)

CLAVE:

RUTA: MEX-045D

AÑO: 2021

LUGAR	ESTACION				CLASIFICACION VEHICULAR EN PORCIENTO										COORDENADAS					
	KM	TE	SC	TDPA	M	A	B	C2	C3	T3S2	T3S3	T3S2R4	OTROS	A	B	C	K'	D	LATITUD	LONGITUD
T. C. (Villa del Pueblito - Huimilpan) - Coroneo	40.60	3	2	5858	3.1	56.2	7.3	5.6	4.6	14.1	2.8	5.4	0.9	59.3	7.3	33.4	0.073	0.517	20.349563	-100.277025
Lim. Edos. Term. Qro. Ppia. Gto.	65.40																			
T. C. Querétaro - Irapuato (Libre)	78.80																			
T. C. Querétaro - Irapuato (Cuota)	85.20	1	1	5738	2.5	59.7	9.5	5.7	3.6	13.2	2.1	2.9	0.8	62.2	9.5	28.3	0.081	0.517	20.526103	-100.616203
T. C. Querétaro - Irapuato (Cuota)	85.20	1	2	5356	2.6	56.1	10.3	6.5	3.5	14.7	2.3	3.2	0.8	58.7	10.3	31.0	0.089	0.517	20.526059	-100.616262

10 CARR: Querétaro - Irapuato (Cuota)

CLAVE: 00423

RUTA: MEX-045D

AÑO: 2021

LUGAR	ESTACION				CLASIFICACION VEHICULAR EN PORCIENTO										COORDENADAS					
	KM	TE	SC	TDPA	M	A	B	C2	C3	T3S2	T3S3	T3S2R4	OTROS	A	B	C	K'	D	LATITUD	LONGITUD
Querétaro	0.00	3	1	16543	1.5	64.5	7.0	6.4	4.1	10.5	2.4	3.0	0.6	66.0	7.0	27.0	0.067	0.526	20.576624	-100.420749
Querétaro	0.00	3	2	18367	1.5	64.4	7.0	6.4	4.1	10.6	2.4	3.0	0.6	65.9	7.0	27.1	0.073	0.526	20.576519	-100.420454
Plaza de Cobro Querétaro	7.00	2	1	7294	0.3	66.0	3.4	6.1	4.5	13.6	1.4	3.4	1.3	66.3	3.4	30.3	0.079	0.500	20.572203	-100.472827
Plaza de Cobro Querétaro	7.00	2	2	7294	0.3	66.0	3.4	6.1	4.5	13.6	1.4	3.4	1.3	66.3	3.4	30.3	0.079	0.500	20.572203	-100.472827
Lim. Edos. Term. Qro. Ppia. Gto.	8.97																			
T. C. Palmillas - Apaseo el Grande (Cuota)	24.50	1	1	11874	0.9	69.4	2.2	5.6	6.3	10.0	1.8	3.2	0.6	70.3	2.2	27.5	0.102	0.530	20.541008	-100.598783
T. C. Palmillas - Apaseo el Grande (Cuota)	24.50	1	2	10530	1.2	67.3	3.1	6.5	6.3	10.0	1.8	3.2	0.6	68.5	3.1	28.4	0.085	0.530	20.540923	-100.598743
T. C. Palmillas - Apaseo el Grande (Cuota)	24.50	3	1	12558	1.1	68.8	3.1	6.2	4.6	12.1	1.4	2.2	0.5	69.9	3.1	27.0	0.083	0.502	20.532335	-100.635155
T. C. Palmillas - Apaseo el Grande (Cuota)	24.50	3	2	12441	1.1	64.7	4.5	6.5	5.3	12.3	1.7	3.1	0.8	65.8	4.5	29.7	0.088	0.502	20.532211	-100.639754
T. C. Libramiento de Celaya (Cuota)	37.20	3	1	14861	3.0	62.0	4.3	9.0	4.3	14.3	0.8	1.8	0.5	65.0	4.3	30.7	0.103	0.506	20.548731	-100.754963
T. C. Libramiento de Celaya (Cuota)	37.20	3	2	15218	3.0	62.2	4.3	9.0	4.3	14.3	0.7	1.7	0.5	65.2	4.3	30.5	0.103	0.506	20.548258	-100.754058
X. C. Celaya - Dolores Hidalgo	44.10	1	1	16929	1.4	63.9	5.8	8.8	3.8	10.1	1.2	4.0	1.0	65.3	5.8	28.9	0.088	0.503	20.556913	-100.811279
X. C. Celaya - Dolores Hidalgo	44.10	1	2	17101	1.4	65.2	5.8	8.8	3.8	10.0	0.9	3.3	0.8	66.6	5.8	27.6	0.075	0.503	20.556684	-100.810710
T. Der. Juventino Rosas	63.00	3	1	12930	1.1	65.8	5.4	9.2	3.3	9.1	1.8	3.4	0.9	66.9	5.4	27.7	0.070	0.536	20.582232	-101.001710
T. Der. Juventino Rosas	63.00	3	2	14920	1.0	67.7	5.2	7.9	3.8	8.9	1.5	3.2	0.8	68.7	5.2	26.1	0.077	0.536	20.581745	-100.999368
T. C. Salamanca - León (Cuota)	78.00	1	1	14557	0.6	68.7	5.3	10.6	2.0	7.8	1.0	3.2	0.8	69.3	5.3	25.4	0.094	0.517	20.589756	-101.111937
T. C. Salamanca - León (Cuota)	78.00	1	2	13608	0.5	67.4	4.9	10.2	2.8	8.6	1.2	3.5	0.9	67.9	4.9	27.2	0.087	0.517	20.589594	-101.111839
T. Izq. Salamanca	81.54	1	1	8690	0.4	70.0	3.9	8.9	3.3	8.5	1.0	3.3	0.7	70.4	3.9	25.7	0.093	0.538	20.593200	-101.154090
T. Izq. Salamanca	81.54	1	2	7475	0.5	72.4	4.2	7.6	2.3	7.3	1.1	3.7	0.9	72.9	4.2	22.9	0.084	0.538	20.593028	-101.154116
T. Izq. Salamanca	81.54	3	1	7739	1.0	63.4	6.0	9.6	4.1	9.0	2.0	3.9	1.0	64.4	6.0	29.6	0.070	0.530	20.599587	-101.186358
T. Izq. Salamanca	81.54	3	2	6875	0.9	66.7	6.1	7.9	2.9	8.7	1.9	3.9	1.0	67.6	6.1	26.3	0.076	0.530	20.599543	-101.186933
Plaza de Cobro Salamanca	83.25	2	1	5808	0.3	57.2	2.9	6.8	7.2	16.6	2.0	5.9	1.1	57.5	2.9	39.6	0.079	0.500	20.598482	-101.180975
Plaza de Cobro Salamanca	83.25	2	2	5808	0.3	57.2	2.9	6.8	7.2	16.6	2.0	5.9	1.1	57.5	2.9	39.6	0.079	0.500	20.598482	-101.180975
T. Der. Libramiento de Irapuato	96.30	1	1	8069	1.3	68.7	5.2	8.3	4.3	8.2	1.0	2.4	0.6	70.0	5.2	24.8	0.089	0.520	20.651493	-101.284233
T. Der. Libramiento de Irapuato	96.30	1	2	8751	1.9	66.1	4.9	10.3	4.1	8.3	0.8	2.9	0.7	68.0	4.9	27.1	0.090	0.520	20.650658	-101.283204

QUERETARO

10 CARR: Querétaro - Irapuato (Cuota)

CLAVE: 00423

RUTA: MEX-045D

AÑO: 2021

LUGAR	ESTACION				CLASIFICACION VEHICULAR EN PORCIENTO													COORDENADAS		
	KM	TE	SC	TDPA	M	A	B	C2	C3	T3S2	T3S3	T3S2R4	OTROS	A	B	C	K'	D	LATITUD	LONGITUD
T. Der. Libramiento de Irapuato	96.30	3	1	18763	1.5	70.4	4.8	9.2	2.8	7.6	1.8	1.7	0.2	71.9	4.8	23.3	0.089	0.526	20.654588	-101.294632
T. Der. Libramiento de Irapuato	96.30	3	2	20803	1.7	70.0	4.6	9.4	3.8	6.9	1.5	1.6	0.5	71.7	4.6	23.7	0.083	0.526	20.654471	-101.294601
T. C. Irapuato - Zapotlanejo	104.70																			

11 CARR: México - Querétaro (Cuota)

CLAVE: 00411

RUTA: MEX-057-MEX-057D

AÑO: 2021

LUGAR	ESTACION				CLASIFICACION VEHICULAR EN PORCIENTO													COORDENADAS		
	KM	TE	SC	TDPA	M	A	B	C2	C3	T3S2	T3S3	T3S2R4	OTROS	A	B	C	K'	D	LATITUD	LONGITUD
México	0.00																			
Lim. Edos. Term. CDMX Ppia. Méx.	11.30																			
Lechería	29.41																			
Plaza de Cobro Tepetzotlán	43.01	2	1	29448	0.6	72.3	3.9	5.0	3.7	10.9	0.7	2.2	0.7	72.9	3.9	23.2	0.077	0.500	19.715361	-99.207448
Plaza de Cobro Tepetzotlán	43.01	2	2	29448	0.6	72.3	3.9	5.0	3.7	10.9	0.7	2.2	0.7	72.9	3.9	23.2	0.077	0.500	19.715361	-99.207448
Ent. Jorobas	56.18	1	1	33848	1.1	68.8	4.2	7.8	2.7	10.6	1.8	2.2	0.8	69.9	4.2	25.9	0.075	0.507	19.811473	-99.238527
Ent. Jorobas	56.18	1	2	34915	1.2	65.5	4.8	8.5	3.0	11.6	1.9	2.5	1.0	66.7	4.8	28.5	0.068	0.507	19.811392	-99.238706
Ent. Jorobas	56.18	3	1	41148	1.4	62.4	4.7	8.5	3.2	14.0	2.0	2.9	0.9	63.8	4.7	31.5	0.067	0.504	19.829257	-99.257767
Ent. Jorobas	56.18	3	2	41847	1.3	58.9	5.1	8.9	3.4	16.1	2.0	3.3	1.0	60.2	5.1	34.7	0.073	0.504	19.837399	-99.274233
Lim. Edos. Term. Méx. Ppia. Hgo.	59.85																			
T. Der. Tepeji del Río	69.36	1	1	35444	4.4	69.6	4.8	7.3	2.3	7.3	1.1	2.6	0.6	74.0	4.8	21.2	0.072	0.505	19.863541	-99.316164
T. Der. Tepeji del Río	69.36	1	2	36331	4.4	68.9	4.7	7.0	2.6	7.6	1.3	2.9	0.6	73.3	4.7	22.0	0.070	0.505	19.874082	-99.340051
T. Der. Tepeji del Río	69.36	3	1	33020	4.6	67.6	4.8	5.7	2.5	9.9	1.2	3.1	0.6	72.2	4.8	23.0	0.065	0.536	19.920871	-99.370337
T. Der. Tepeji del Río	69.36	3	2	34856	4.7	68.1	4.5	5.7	2.6	9.5	1.3	3.0	0.6	72.8	4.5	22.7	0.053	0.536	19.920782	-99.370517
T. Izq. Jilotepec	83.75	1	1	33353	4.9	66.8	5.3	5.2	2.7	9.4	1.4	3.6	0.7	71.7	5.3	23.0	0.070	0.504	19.972292	-99.434135
T. Izq. Jilotepec	83.75	1	2	32771	4.5	63.6	6.0	5.6	2.9	11.0	1.6	4.0	0.8	68.1	6.0	25.9	0.061	0.504	19.975527	-99.437307
T. Izq. Jilotepec	83.75	3	1	31514	4.2	65.2	5.4	5.7	2.9	11.2	1.2	3.5	0.7	69.4	5.4	25.2	0.070	0.509	19.989658	-99.458342
T. Izq. Jilotepec	83.75	3	2	30270	4.6	64.3	5.6	5.6	2.9	11.5	1.4	3.4	0.7	68.9	5.6	25.5	0.063	0.509	19.985707	-99.444701
Lim. Edos. Term. Hgo. Ppia. Méx.	86.00																			
X. C. Libramiento Norte de La Ciudad de México (Cuota)	89.44	3	1	37444	4.4	64.1	5.6	5.2	2.5	12.2	1.8	3.4	0.8	68.5	5.6	25.9	0.056	0.526	20.005053	-99.500723
X. C. Libramiento Norte de La Ciudad de México (Cuota)	89.44	3	2	33416	5.0	61.1	5.9	5.8	2.8	13.0	1.9	3.5	1.0	66.1	5.9	28.0	0.084	0.526	20.003159	-99.498138
T. Der. Palos Altos	97.80	1	1	38588	5.0	60.3	5.5	5.1	2.9	14.2	1.9	4.2	0.9	65.3	5.5	29.2	0.068	0.507	20.032912	-99.552469
T. Der. Palos Altos	97.80	1	2	37430	5.2	60.0	5.4	5.0	2.8	14.3	2.1	4.3	0.9	65.2	5.4	29.4	0.069	0.507	20.032491	-99.552222
X. C. Jilotepec - Maravillas	107.00	1	1	33825	5.1	60.9	5.4	4.9	2.7	14.0	1.7	4.4	0.9	66.0	5.4	28.6	0.067	0.505	20.076833	-99.614807
X. C. Jilotepec - Maravillas	107.00	1	2	34588	5.2	62.5	5.3	4.7	2.6	13.1	1.9	3.8	0.9	67.7	5.3	27.0	0.079	0.505	20.075436	-99.613585
X. C. Jilotepec - Maravillas	107.00	3	1	34860	5.2	58.6	5.6	5.3	3.5	14.3	2.1	4.5	0.9	63.8	5.6	30.6	0.061	0.511	20.082420	-99.635815
X. C. Jilotepec - Maravillas	107.00	3	2	33242	5.5	58.4	5.6	5.2	3.3	14.5	2.2	4.4	0.9	63.9	5.6	30.5	0.069	0.511	20.082462	-99.633896

QUERETARO

11 CARR: México - Querétaro (Cuota)

CLAVE: 00411

RUTA: MEX-057-MEX-057D

AÑO: 2021

LUGAR	ESTACION				CLASIFICACION VEHICULAR EN PORCIENTO													COORDENADAS		
	KM	TE	SC	TDPA	M	A	B	C2	C3	T3S2	T3S3	T3S2R4	OTROS	A	B	C	K'	D	LATITUD	LONGITUD
T. Izq. Aculco	114.80	1	1	33187	5.2	58.1	6.0	5.2	3.6	14.2	2.2	4.5	1.0	63.3	6.0	30.7	0.059	0.509	20.097580	-99.692891
T. Izq. Aculco	114.80	1	2	31847	5.5	57.4	6.0	5.1	3.4	14.7	2.1	4.8	1.0	62.9	6.0	31.1	0.078	0.509	20.091274	-99.686640
T. Izq. Aculco	114.80	3	1	31578	6.5	50.6	7.8	7.7	3.2	15.8	2.8	4.7	0.9	57.1	7.8	35.1	0.058	0.526	20.104740	-99.698615
T. Izq. Aculco	114.80	3	2	31903	6.4	53.0	7.7	7.4	3.0	14.7	2.4	4.5	0.9	59.4	7.7	32.9	0.053	0.526	20.110151	-99.708365
T. Izq. Encinillas	121.70	1	1	32188	7.7	58.1	7.2	5.4	2.1	12.8	1.8	4.0	0.9	65.8	7.2	27.0	0.057	0.512	20.147366	-99.735868
T. Izq. Encinillas	121.70	1	2	33903	7.4	58.3	7.0	5.2	2.5	12.7	1.8	4.2	0.9	65.7	7.0	27.3	0.065	0.512	20.145467	-99.734492
Polotitlán	133.00	1	1	34141	8.6	55.2	7.5	5.8	1.7	14.1	1.8	4.4	0.9	63.8	7.5	28.7	0.055	0.526	20.218615	-99.801684
Polotitlán	133.00	1	2	30530	8.9	53.6	7.4	6.2	1.9	15.1	1.9	4.1	0.9	62.5	7.4	30.1	0.071	0.526	20.220110	-99.803888
Lim. Edos. Term. Méx. Ppia. Qro.	145.50																			
Plaza de Cobro Palmillas	145.80	2	1	20352	0.4	60.7	2.5	6.0	4.9	18.1	1.7	4.2	1.5	61.1	2.5	36.4	0.077	0.500	20.296112	-99.929069
Plaza de Cobro Palmillas	145.80	2	2	20352	0.4	60.7	2.5	6.0	4.9	18.1	1.7	4.2	1.5	61.1	2.5	36.4	0.077	0.500	20.296112	-99.929069
T. Izq. Toluca	148.50	1	1	32055	8.2	53.2	7.3	5.7	2.9	14.3	2.4	5.1	0.9	61.4	7.3	31.3	0.057	0.500	20.287387	-99.913294
T. Izq. Toluca	148.50	1	2	32003	7.9	53.9	7.5	5.4	3.0	13.8	2.5	5.0	1.0	61.8	7.5	30.7	0.072	0.500	20.286313	-99.912280
T. Izq. Toluca	148.50	3	1	36349	8.5	56.9	6.0	5.0	3.3	13.7	1.8	3.8	1.0	65.4	6.0	28.6	0.056	0.511	20.307825	-99.934122
T. Izq. Toluca	148.50	3	2	38140	8.3	59.4	5.8	5.2	3.7	11.4	1.6	3.6	1.0	67.7	5.8	26.5	0.066	0.511	20.319927	-99.934116
T. Der. Portezuelo	151.53	3	1	39942	7.2	62.4	4.7	5.5	4.2	10.2	1.2	3.6	1.0	69.6	4.7	25.7	0.060	0.520	20.336783	-99.941289
T. Der. Portezuelo	151.53	3	2	43762	7.0	63.3	4.6	6.0	4.0	9.2	1.3	3.6	1.0	70.3	4.6	25.1	0.067	0.520	20.337817	-99.942648
T. Der. Poniente San Juan del Río	164.10	3	1	45911	7.3	67.2	4.4	4.6	1.8	8.1	1.4	4.2	1.0	74.5	4.4	21.1	0.064	0.510	20.373898	-99.994540
T. Der. Poniente San Juan del Río	164.10	3	2	43946	7.0	68.7	4.0	4.2	1.8	7.9	1.4	4.0	1.0	75.7	4.0	20.3	0.070	0.510	20.372670	-99.992190
La Estancia	169.40	1	1	48402	6.3	72.9	3.5	3.8	1.7	7.7	1.0	2.2	0.9	79.2	3.5	17.3	0.060	0.516	20.421299	-100.049589
La Estancia	169.40	1	2	45128	6.6	72.8	3.3	3.9	1.8	7.3	1.3	2.1	0.9	79.4	3.3	17.3	0.071	0.516	20.424475	-100.053476
T. Izq. Acámbaro	170.45	3	1	50975	5.4	69.8	3.9	5.1	1.8	9.6	1.3	2.3	0.8	75.2	3.9	20.9	0.061	0.528	20.447311	-100.078603
T. Izq. Acámbaro	170.45	3	2	44958	5.6	70.0	3.5	5.4	1.8	9.0	1.3	2.6	0.8	75.6	3.5	20.9	0.066	0.528	20.449086	-100.081337
T. Der. Libramiento Nororiente de Querétaro (Cuota)	192.50	1	1	47573	4.8	73.2	4.2	3.7	1.9	7.9	1.4	2.1	0.8	78.0	4.2	17.8	0.073	0.528	20.552519	-100.215411
T. Der. Libramiento Nororiente de Querétaro (Cuota)	192.50	1	2	41896	5.1	73.1	4.0	4.1	1.7	7.7	1.2	2.3	0.8	78.2	4.0	17.8	0.079	0.528	20.551709	-100.214703
T. Der. Libramiento Nororiente de Querétaro (Cuota)	192.50	3	1	65162	5.8	73.3	3.1	4.6	2.7	5.9	1.2	2.7	0.7	79.1	3.1	17.8	0.056	0.507	20.562668	-100.237157
T. Der. Libramiento Nororiente de Querétaro (Cuota)	192.50	3	2	63170	5.1	76.0	2.8	4.4	2.3	5.3	0.9	2.5	0.7	81.1	2.8	16.1	0.065	0.507	20.561698	-100.234939
T. Der. Libramiento de Querétaro a San Luis Potosí	207.00	1	1	72836	7.0	77.7	1.4	3.6	2.5	4.3	0.7	1.9	0.9	84.7	1.4	13.9	0.067	0.520	20.573135	-100.323050
T. Der. Libramiento de Querétaro a San Luis Potosí	207.00	1	2	66289	6.2	79.2	1.3	2.6	2.7	4.5	0.6	2.0	0.9	85.4	1.3	13.3	0.076	0.520	20.574433	-100.330934
T. Der. Libramiento de Querétaro a San Luis Potosí	207.00	3	1	82724	6.6	78.6	1.5	4.3	2.7	3.7	1.2	0.5	0.9	85.2	1.5	13.3	0.059	0.541	20.578213	-100.380710
T. Der. Libramiento de Querétaro a San Luis Potosí	207.00	3	2	85186	5.7	79.0	1.6	4.6	2.6	3.8	1.3	0.5	0.9	84.7	1.6	13.7	0.065	0.541	20.578502	-100.378521
Querétaro	211.60																			

QUERETARO

12 CARR: Ajuchitlán - Colón

CLAVE: 22010

RUTA: QRO-005

AÑO: 2021

LUGAR	ESTACION				CLASIFICACION VEHICULAR EN PORCIENTO													COORDENADAS		
	KM	TE	SC	TDPA	M	A	B	C2	C3	T3S2	T3S3	T3S2R4	OTROS	A	B	C	K'	D	LATITUD	LONGITUD
T. C. El Colorado - Higuerrillas	0.00	3	1	4185	0.7	85.8	1.8	6.9	0.5	2.7	0.7	0.3	0.6	86.5	1.8	11.7	0.081	0.514	20.693022	-100.015581
T. C. El Colorado - Higuerrillas	0.00	3	2	4503	1.2	82.9	2.2	8.0	0.7	3.1	0.9	0.3	0.7	84.1	2.2	13.7	0.094	0.514	20.692953	-100.015681
Colón	14.00	1	1	4114	1.2	89.3	0.8	7.6	0.4	0.5	0.1	0.1	0.0	90.5	0.8	8.7	0.095	0.502	20.764431	-100.046397
Colón	14.00	1	2	4158	1.3	88.7	0.8	8.1	0.4	0.5	0.1	0.1	0.0	90.0	0.8	9.2	0.105	0.502	20.764349	-100.046511

13 CARR: Ajuchitlán - Ezequiel Montes

CLAVE: 22005

RUTA: QRO-005

AÑO: 2021

LUGAR	ESTACION				CLASIFICACION VEHICULAR EN PORCIENTO													COORDENADAS		
	KM	TE	SC	TDPA	M	A	B	C2	C3	T3S2	T3S3	T3S2R4	OTROS	A	B	C	K'	D	LATITUD	LONGITUD
T. C. El Colorado - Higuerrillas	0.00	3	1	6772	1.9	87.7	1.0	3.7	1.8	2.0	1.2	0.5	0.2	89.6	1.0	9.4	0.098	0.502	20.702802	-99.976654
T. C. El Colorado - Higuerrillas	0.00	3	2	6707	1.8	87.4	0.9	3.6	2.0	2.2	1.4	0.4	0.3	89.2	0.9	9.9	0.085	0.502	20.702885	-99.976614
Ezequiel Montes	10.60	1	0	12138	2.1	91.8	0.5	3.7	1.0	0.3	0.2	0.1	0.3	93.9	0.5	5.6	0.096	0.505	20.670079	-99.909800

14 CARR: El Colorado - Higuerrillas

CLAVE: 22004

RUTA: QRO-004

AÑO: 2021

LUGAR	ESTACION				CLASIFICACION VEHICULAR EN PORCIENTO													COORDENADAS		
	KM	TE	SC	TDPA	M	A	B	C2	C3	T3S2	T3S3	T3S2R4	OTROS	A	B	C	K'	D	LATITUD	LONGITUD
T. C. México - Querétaro (Cuota)	0.00	3	1	22100	1.5	75.0	1.4	10.4	3.3	4.5	1.4	1.8	0.7	76.5	1.4	22.1	0.085	0.504	20.572907	-100.208197
T. C. México - Querétaro (Cuota)	0.00	3	2	21760	1.5	75.1	1.4	10.9	4.0	3.8	1.2	1.5	0.6	76.6	1.4	22.0	0.077	0.504	20.572995	-100.208257
T. Izq. Chichimequillas	3.80	3	1	15708	1.0	83.1	1.3	7.2	1.8	2.7	1.7	0.9	0.3	84.1	1.3	14.6	0.095	0.504	20.605784	-100.166145
T. Izq. Chichimequillas	3.80	3	2	15440	1.2	81.5	1.3	7.6	2.2	2.8	1.9	1.1	0.4	82.7	1.3	16.0	0.082	0.504	20.605849	-100.166214
X. C. Querétaro - Tequisquiapan	9.10	3	1	8725	1.5	82.1	1.1	8.3	1.7	2.2	1.8	0.7	0.6	83.6	1.1	15.3	0.093	0.504	20.620171	-100.136009
X. C. Querétaro - Tequisquiapan	9.10	3	2	8860	1.7	81.6	1.1	7.9	1.9	2.3	2.0	0.8	0.7	83.3	1.1	15.6	0.083	0.504	20.620241	-100.136075
T. Der. Ezequiel Montes	31.90	1	1	9313	1.7	83.9	0.8	7.3	1.8	2.0	1.6	0.7	0.2	85.6	0.8	13.6	0.107	0.508	20.702950	-99.991547
T. Der. Ezequiel Montes	31.90	1	2	9030	1.8	83.6	0.9	7.1	2.1	2.0	1.6	0.7	0.2	85.4	0.9	13.7	0.129	0.508	20.703058	-99.991613
T. Der. Ezequiel Montes	31.90	3	1	4975	1.4	85.1	1.2	7.5	1.5	1.1	1.5	0.4	0.3	86.5	1.2	12.3	0.085	0.523	20.709976	-99.978798
T. Der. Ezequiel Montes	31.90	3	2	4486	1.6	83.2	1.4	8.4	1.7	1.1	1.7	0.5	0.4	84.8	1.4	13.8	0.067	0.523	20.710082	-99.978929
T. Izq. San Pablo Tolimán	57.00	3	0	1369	1.2	88.2	1.0	6.5	1.6	1.0	0.4	0.0	0.1	89.4	1.0	9.6	0.065	0.522	20.855868	-99.886603
T. C. San Juan del Río - Xilitla	81.90	1	0	1365	1.1	88.0	1.0	7.1	1.9	0.6	0.2	0.0	0.1	89.1	1.0	9.9	0.074	0.508	20.937752	-99.750554

15 CARR: Hacienda Paraíso - Chichimequillas

CLAVE: 22001

RUTA: QRO-001

AÑO: 2021

LUGAR	ESTACION				CLASIFICACION VEHICULAR EN PORCIENTO													COORDENADAS		
	KM	TE	SC	TDPA	M	A	B	C2	C3	T3S2	T3S3	T3S2R4	OTROS	A	B	C	K'	D	LATITUD	LONGITUD
Hacienda Paraíso	0.00	3	1	5764	2.4	80.7	1.5	6.0	2.6	4.4	0.7	0.6	1.1	83.1	1.5	15.4	0.085	0.511	20.586375	-100.203534

QUERETARO

15 CARR: Hacienda Paraíso - Chichimequillas

CLAVE: 22001

RUTA: QRO-001

AÑO: 2021

LUGAR	ESTACION				CLASIFICACION VEHICULAR EN PORCIENTO														COORDENADAS	
	KM	TE	SC	TDPA	M	A	B	C2	C3	T3S2	T3S3	T3S2R4	OTROS	A	B	C	K'	D	LATITUD	LONGITUD
Hacienda Paraíso	0.00	3	2	5510	2.5	80.9	1.4	5.9	2.6	4.2	0.7	0.6	1.2	83.4	1.4	15.2	0.076	0.511	20.586317	-100.203597
T. Der. Navajas	7.90	3	0	13213	3.0	79.3	1.4	6.5	4.4	3.9	0.2	0.7	0.6	82.3	1.4	16.3	0.089	0.505	20.646278	-100.232583
La Griega	10.35	3	0	9068	24.2	62.2	1.0	6.6	2.5	2.3	0.7	0.4	0.1	86.4	1.0	12.6	0.089	0.517	20.685979	-100.239810
Amazcala	15.45	3	0	8000	2.5	83.3	2.9	5.1	2.5	2.1	0.4	0.3	0.9	85.8	2.9	11.3	0.080	0.537	20.711458	-100.269452
Chichimequillas	26.61																			

16 CARR: Huimilpan - El Lindero

CLAVE: 00155

RUTA: QRO-GTO

AÑO: 2021

LUGAR	ESTACION				CLASIFICACION VEHICULAR EN PORCIENTO														COORDENADAS	
	KM	TE	SC	TDPA	M	A	B	C2	C3	T3S2	T3S3	T3S2R4	OTROS	A	B	C	K'	D	LATITUD	LONGITUD
Huimilpan	0.00																			
T. C. Palmillas - Apaseo el Grande (Cuota)	2.60	1	0	4722	2.7	91.8	0.6	1.6	1.3	1.3	0.1	0.2	0.4	94.5	0.6	4.9	0.102	0.505	20.352540	-100.278433
T. C. Palmillas - Apaseo el Grande (Cuota)	2.60	3	0	2113	4.4	91.0	1.8	1.2	0.3	0.7	0.1	0.1	0.4	95.4	1.8	2.8	0.133	0.502	20.346059	-100.280094
Lim. Edos. Term. Qro. Ppia. Gto.	17.50																			
El Lindero	20.50																			

17 CARR: La Culata - San Joaquín

CLAVE: 22021

RUTA: QRO-021

AÑO: 2021

LUGAR	ESTACION				CLASIFICACION VEHICULAR EN PORCIENTO														COORDENADAS	
	KM	TE	SC	TDPA	M	A	B	C2	C3	T3S2	T3S3	T3S2R4	OTROS	A	B	C	K'	D	LATITUD	LONGITUD
La Culata	0.00	3	0	1558	0.9	75.1	0.9	11.1	2.6	4.4	3.6	0.6	0.8	76.0	0.9	23.1	0.079	0.506	20.886840	-99.702378
San Joaquín	31.80	1	0	2282	0.7	85.6	0.3	10.3	0.2	2.3	0.3	0.0	0.3	86.3	0.3	13.4	0.090	0.501	20.894881	-99.577229

18 CARR: Libramiento de San Juan del Río

CLAVE: 22266

RUTA: QRO

AÑO: 2021

LUGAR	ESTACION				CLASIFICACION VEHICULAR EN PORCIENTO														COORDENADAS	
	KM	TE	SC	TDPA	M	A	B	C2	C3	T3S2	T3S3	T3S2R4	OTROS	A	B	C	K'	D	LATITUD	LONGITUD
T. C. México - Querétaro (Después del F.F.C.C.)	0.00	3	1	18796	6.3	80.2	2.0	3.1	1.7	3.3	0.6	2.2	0.6	86.5	2.0	11.5	0.070	0.514	20.378299	-99.985761
T. C. México - Querétaro (Después del F.F.C.C.)	0.00	3	2	19879	5.3	81.8	1.7	3.3	1.4	2.8	0.6	2.5	0.6	87.1	1.7	11.2	0.069	0.514	20.378317	-99.985924
T. C. San Juan del Río - Xilitla	5.05	1	1	17609	5.8	81.4	2.0	4.0	1.6	2.4	0.7	1.6	0.5	87.2	2.0	10.8	0.078	0.551	20.413120	-99.981219
T. C. San Juan del Río - Xilitla	5.05	1	2	14370	5.1	81.0	1.9	4.0	1.9	2.5	0.8	2.1	0.7	86.1	1.9	12.0	0.078	0.551	20.413146	-99.981411

QUERETARO

19 CARR: Libramiento Norte de Querétaro

CLAVE: 22500

RUTA: QRO

AÑO: 2021

LUGAR	ESTACION				CLASIFICACION VEHICULAR EN PORCIENTO													COORDENADAS		
	KM	TE	SC	TDPA	M	A	B	C2	C3	T3S2	T3S3	T3S2R4	OTROS	A	B	C	K'	D	LATITUD	LONGITUD
T. C. Querétaro - San Luis Potosí	0.00	3	1	76395	3.3	94.0	0.2	0.5	0.4	0.3	0.1	0.9	0.3	97.3	0.2	2.5	0.057	0.511	20.620487	-100.414172
T. C. Querétaro - San Luis Potosí	0.00	3	2	76805	3.6	93.5	0.2	0.6	0.5	0.3	0.2	0.8	0.3	97.1	0.2	2.7	0.060	0.511	20.620575	-100.413841
T. C. México - Querétaro	8.00	1	1	55962	3.0	94.1	0.4	0.5	0.4	0.4	0.1	0.8	0.2	97.1	0.4	2.5	0.081	0.521	20.584265	-100.362241
T. C. México - Querétaro	8.00	1	2	50852	2.9	94.3	0.4	0.5	0.4	0.3	0.2	0.8	0.2	97.2	0.4	2.4	0.082	0.521	20.585087	-100.362450
T. C. México - Querétaro	8.00	3	1	24821	1.9	94.1	0.5	2.0	0.8	0.3	0.2	0.1	0.1	96.0	0.5	3.5	0.104	0.503	20.566974	-100.357435
T. C. México - Querétaro	8.00	3	2	25150	1.8	94.1	0.6	1.8	0.9	0.4	0.2	0.1	0.1	95.9	0.6	3.5	0.139	0.503	20.567048	-100.357073
T.C. Libramiento Surponiente de Querétaro	12.00																			

20 CARR: Libramiento Surponiente de Querétaro

CLAVE: 22501

RUTA: QRO

AÑO: 2021

LUGAR	ESTACION				CLASIFICACION VEHICULAR EN PORCIENTO													COORDENADAS		
	KM	TE	SC	TDPA	M	A	B	C2	C3	T3S2	T3S3	T3S2R4	OTROS	A	B	C	K'	D	LATITUD	LONGITUD
X. C. Querétaro - Ent. San Martín	0.00	3	1	30840	1.2	92.5	0.2	3.3	0.6	0.6	1.3	0.1	0.2	93.7	0.2	6.1	0.106	0.524	20.551870	-100.371316
X. C. Querétaro - Ent. San Martín	0.00	3	2	34261	1.2	92.5	0.2	3.3	0.6	0.6	1.3	0.1	0.2	93.7	0.2	6.1	0.138	0.524	20.551742	-100.371223
T. Der. a Candiles	4.20	1	1	26315	0.7	93.0	0.1	3.0	0.6	0.8	1.6	0.1	0.1	93.7	0.1	6.2	0.111	0.505	20.537480	-100.394094
T. Der. a Candiles	4.20	1	2	26810	0.6	93.0	0.1	3.1	0.6	0.8	1.6	0.1	0.1	93.6	0.1	6.3	0.123	0.505	20.537423	-100.393543
T. Izq. a Santa Bárbara (1º acceso)	5.00	1	1	19625	0.8	91.9	0.2	3.5	0.8	1.0	1.6	0.1	0.1	92.7	0.2	7.1	0.116	0.545	20.534591	-100.398130
T. Izq. a Santa Bárbara (1º acceso)	5.00	1	2	23525	0.8	92.4	0.2	3.2	0.7	1.0	1.5	0.1	0.1	93.2	0.2	6.6	0.104	0.545	20.534358	-100.398101
T. Izq. a Santa Bárbara (2º acceso)	7.30	3	1	15195	1.4	92.0	0.8	2.9	1.4	0.8	0.3	0.4	0.0	93.4	0.8	5.8	0.093	0.515	20.525976	-100.423358
T. Izq. a Santa Bárbara (2º acceso)	7.30	3	2	14303	1.4	91.9	0.8	2.9	1.4	0.7	0.4	0.4	0.1	93.3	0.8	5.9	0.081	0.515	20.525863	-100.423286
T. C. Villa del Pueblito - Huimilpan	9.40	3	1	10607	2.6	90.4	0.6	4.2	1.3	0.4	0.3	0.1	0.1	93.0	0.6	6.4	0.095	0.505	20.530151	-100.447118
T. C. Villa del Pueblito - Huimilpan	9.40	3	2	10799	2.5	90.6	0.7	3.9	1.2	0.5	0.3	0.2	0.1	93.1	0.7	6.2	0.085	0.505	20.530081	-100.447171
T. Izq. a La Negreta	10.10	3	1	11634	4.1	89.5	0.6	3.0	1.5	0.8	0.2	0.2	0.1	93.6	0.6	5.8	0.083	0.539	20.525669	-100.462836
T. Izq. a La Negreta	10.10	3	2	11326	4.1	89.3	0.6	3.2	1.6	0.8	0.3	0.1	0.0	93.4	0.6	6.0	0.086	0.539	20.525552	-100.462798
Querétaro - Irapuato	15.00	1	1	7588	3.0	90.0	1.0	3.0	1.5	1.0	0.3	0.1	0.1	93.0	1.0	6.0	0.092	0.531	20.534344	-100.479695
Querétaro - Irapuato	15.00	1	2	8607	3.0	89.5	0.9	3.2	1.8	1.1	0.2	0.2	0.1	92.5	0.9	6.6	0.092	0.531	20.534349	-100.479777
T. C. Querétaro - Irapuato (Cuota)	18.60	1	1	19805	4.5	82.1	2.0	3.3	1.9	3.8	1.0	1.2	0.2	86.6	2.0	11.4	0.092	0.502	20.555727	-100.482032
T. C. Querétaro - Irapuato (Cuota)	18.60	1	2	19969	4.0	81.7	2.5	3.2	1.9	4.3	1.0	1.2	0.2	85.7	2.5	11.8	0.094	0.502	20.555722	-100.482156
T. C. Querétaro - Irapuato (Cuota)	18.60	3	1	21390	5.4	82.2	1.5	3.0	1.7	3.1	0.8	2.1	0.2	87.6	1.5	10.9	0.092	0.514	20.577771	-100.483114
T. C. Querétaro - Irapuato (Cuota)	18.60	3	2	20232	5.6	80.3	2.2	3.4	1.9	3.1	1.0	2.2	0.3	85.9	2.2	11.9	0.082	0.514	20.577718	-100.483185
T. Der. a Las Adjuntas	21.00	3	1	23606	3.7	86.0	1.4	2.6	1.5	2.8	0.5	1.3	0.2	89.7	1.4	8.9	0.101	0.504	20.596488	-100.490174
T. Der. a Las Adjuntas	21.00	3	2	23191	3.6	85.5	1.3	2.9	1.6	2.9	0.6	1.4	0.2	89.1	1.3	9.6	0.109	0.504	20.596457	-100.490313
T. Der. a Tlacote el Bajo	27.70	1	1	20950	3.3	84.5	1.2	3.5	1.9	3.5	0.6	1.3	0.2	87.8	1.2	11.0	0.089	0.528	20.633964	-100.499420
T. Der. a Tlacote el Bajo	27.70	1	2	18723	3.6	83.3	1.6	3.5	2.0	3.7	0.7	1.4	0.2	86.9	1.6	11.5	0.103	0.528	20.633946	-100.499541
T. Der. a Tlacote el Bajo	27.70	3	1	11143	3.2	79.0	2.7	3.5	2.7	5.8	0.8	2.0	0.3	82.2	2.7	15.1	0.101	0.511	20.653894	-100.512567

QUERETARO

20 CARR: Libramiento Surponiente de Querétaro

CLAVE: 22501

RUTA: QRO

AÑO: 2021

LUGAR	ESTACION				CLASIFICACION VEHICULAR EN PORCIENTO													COORDENADAS		
	KM	TE	SC	TDPA	M	A	B	C2	C3	T3S2	T3S3	T3S2R4	OTROS	A	B	C	K'	D	LATITUD	LONGITUD
T. Der. a Tlacote el Bajo	27.70	3	2	10657	2.8	77.7	3.1	3.8	3.0	6.2	1.1	2.0	0.3	80.5	3.1	16.4	0.126	0.511	20.653789	-100.512599
Obrajuelos (El Zapote)	29.70	3	1	9654	2.6	70.6	4.5	7.5	2.2	7.6	1.6	2.7	0.7	73.2	4.5	22.3	0.104	0.510	20.660678	-100.517127
Obrajuelos (El Zapote)	29.70	3	2	9276	2.8	68.9	4.9	7.9	2.3	8.0	1.7	2.9	0.6	71.7	4.9	23.4	0.140	0.510	20.660752	-100.517204
Santo Niño de Praga	31.20	3	1	10711	2.6	78.9	2.1	4.3	1.9	6.7	0.9	2.1	0.5	81.5	2.1	16.4	0.103	0.539	20.674934	-100.508316
Santo Niño de Praga	31.20	3	2	9149	2.4	78.3	2.1	4.5	2.1	6.8	1.1	2.1	0.6	80.7	2.1	17.2	0.152	0.539	20.674917	-100.508430
X. C. juriquilla - Mompani	34.00	3	1	7374	6.4	69.6	2.0	6.6	2.3	8.3	1.0	3.0	0.8	76.0	2.0	22.0	0.124	0.520	20.691190	-100.495466
X. C. juriquilla - Mompani	34.00	3	2	7980	6.1	70.3	3.3	5.7	2.2	7.8	1.4	2.5	0.7	76.4	3.3	20.3	0.183	0.520	20.691275	-100.495529
T. Der. a El Nabo	36.30	3	1	8134	3.1	73.2	3.6	5.6	2.1	7.9	1.1	2.7	0.7	76.3	3.6	20.1	0.133	0.509	20.702166	-100.479655
T. Der. a El Nabo	36.30	3	2	8417	2.5	74.4	3.0	5.9	2.2	7.5	1.4	2.4	0.7	76.9	3.0	20.1	0.176	0.509	20.702183	-100.479778
Pie de Gallo	44.10	1	1	11569	2.6	79.6	3.5	3.6	1.6	5.9	0.8	1.9	0.5	82.2	3.5	14.3	0.129	0.505	20.747599	-100.458030
Pie de Gallo	44.10	1	2	11327	2.9	78.5	3.5	4.0	1.8	5.7	1.0	2.0	0.6	81.4	3.5	15.1	0.145	0.505	20.747643	-100.458158
Pie de Gallo	44.10	3	1	10891	3.2	77.2	2.3	5.9	1.8	6.3	1.0	1.8	0.5	80.4	2.3	17.3	0.147	0.504	20.755917	-100.449497
Pie de Gallo	44.10	3	2	10704	2.8	76.4	2.5	6.3	2.0	6.6	1.0	1.9	0.5	79.2	2.5	18.3	0.150	0.504	20.755995	-100.449519
T. C. Querétaro - San Luis Potosi	45.70																			

21 CARR: Peña Colorada - El Rodeo

CLAVE: 22002

RUTA: QRO

AÑO: 2021

LUGAR	ESTACION				CLASIFICACION VEHICULAR EN PORCIENTO													COORDENADAS		
	KM	TE	SC	TDPA	M	A	B	C2	C3	T3S2	T3S3	T3S2R4	OTROS	A	B	C	K'	D	LATITUD	LONGITUD
T. C. México - Querétaro	0.00	3	1	12415	3.9	88.1	0.7	4.3	1.5	0.7	0.3	0.4	0.1	92.0	0.7	7.3	0.091	0.522	20.585036	-100.250529
T. C. México - Querétaro	0.00	3	2	13584	3.9	88.0	0.8	4.3	1.5	0.7	0.2	0.4	0.2	91.9	0.8	7.3	0.086	0.522	20.585054	-100.250569
X. C. Querétaro - Tequisquiapan	9.00	1	1	8927	4.1	86.6	0.7	5.1	1.3	1.1	0.4	0.4	0.3	90.7	0.7	8.6	0.090	0.547	20.633368	-100.260247
X. C. Querétaro - Tequisquiapan	9.00	1	2	7397	4.7	85.0	0.8	5.7	1.5	1.2	0.3	0.4	0.4	89.7	0.8	9.5	0.092	0.547	20.633385	-100.260301
El Rodeo	11.00	1	0	2855	4.6	82.8	0.8	9.3	0.8	1.2	0.3	0.0	0.2	87.4	0.8	11.8	0.076	0.506	20.658967	-100.258956

22 CARR: Querétaro - Ent. San Martín

CLAVE: 22067

RUTA: QRO

AÑO: 2021

LUGAR	ESTACION				CLASIFICACION VEHICULAR EN PORCIENTO													COORDENADAS		
	KM	TE	SC	TDPA	M	A	B	C2	C3	T3S2	T3S3	T3S2R4	OTROS	A	B	C	K'	D	LATITUD	LONGITUD
T. C. México - Querétaro	0.00	3	1	14807	5.2	91.3	0.3	2.0	0.5	0.2	0.1	0.3	0.1	96.5	0.3	3.2	0.119	0.504	20.558734	-100.367677
T. C. México - Querétaro	0.00	3	2	14587	5.2	91.4	0.3	1.9	0.5	0.2	0.1	0.3	0.1	96.6	0.3	3.1	0.134	0.504	20.559124	-100.367609
Lagunillas	18.70	1	0	5906	0.8	87.1	0.3	8.7	1.1	1.6	0.4	0.0	0.0	87.9	0.3	11.8	0.085	0.505	20.468804	-100.292824
T. Der. Huimilpan	32.70	1	0	5666	0.9	86.3	0.7	9.4	0.7	1.8	0.2	0.0	0.0	87.2	0.7	12.1	0.090	0.504	20.393614	-100.268849
Ent. San Martín	53.00	1	0	2291	0.9	86.4	0.4	9.6	0.8	1.2	0.7	0.0	0.0	87.3	0.4	12.3	0.099	0.507	20.278200	-100.158087

QUERETARO

23 CARR: Querétaro - Estación Chichimequillas

CLAVE: 22270

RUTA: QRO

AÑO: 2021

LUGAR	ESTACION				CLASIFICACION VEHICULAR EN PORCIENTO													COORDENADAS		
	KM	TE	SC	TDPA	M	A	B	C2	C3	T3S2	T3S3	T3S2R4	OTROS	A	B	C	K'	D	LATITUD	LONGITUD
T. C. Libramiento de Querétaro	0.00	3	1	14436	4.8	88.9	0.5	4.7	0.5	0.3	0.1	0.1	0.1	93.7	0.5	5.8	0.103	0.506	20.625324	-100.387761
T. C. Libramiento de Querétaro	0.00	3	2	14105	4.8	88.9	0.5	4.7	0.5	0.3	0.1	0.1	0.1	93.7	0.5	5.8	0.097	0.506	20.625415	-100.387772
X. C. Hacienda Paraiso - Chichimequillas	18.00	1	0	7104	5.6	86.2	0.9	4.4	1.5	0.8	0.2	0.3	0.1	91.8	0.9	7.3	0.096	0.510	20.751162	-100.322125
Estación Chichimequillas	19.20																			

24 CARR: Querétaro - Tequisquiapan

CLAVE: 22502

RUTA: QRO

AÑO: 2021

LUGAR	ESTACION				CLASIFICACION VEHICULAR EN PORCIENTO													COORDENADAS		
	KM	TE	SC	TDPA	M	A	B	C2	C3	T3S2	T3S3	T3S2R4	OTROS	A	B	C	K'	D	LATITUD	LONGITUD
Querétaro	0.00	3	1	7963	0.9	93.1	1.8	3.2	0.6	0.1	0.1	0.1	0.1	94.0	1.8	4.2	0.099	0.509	20.600106	-100.361514
Querétaro	0.00	3	2	7670	0.9	93.0	1.9	3.1	0.7	0.1	0.1	0.1	0.1	93.9	1.9	4.2	0.089	0.509	20.600193	-100.361479
X. C. Peña Colorada - El Rodeo	14.00	1	1	7659	3.6	84.5	0.6	8.2	1.6	0.4	0.5	0.2	0.4	88.1	0.6	11.3	0.101	0.506	20.634160	-100.265580
X. C. Peña Colorada - El Rodeo	14.00	1	2	7836	3.7	84.2	0.6	8.2	1.8	0.4	0.5	0.2	0.4	87.9	0.6	11.5	0.118	0.506	20.634319	-100.265579
T. Izq. La Griega	16.60	3	1	6692	4.0	86.5	2.5	2.8	1.7	1.2	0.5	0.4	0.4	90.5	2.5	7.0	0.129	0.501	20.640767	-100.218696
T. Izq. La Griega	16.60	3	2	6665	4.0	85.3	2.9	3.3	1.7	1.3	0.6	0.4	0.5	89.3	2.9	7.8	0.108	0.501	20.640831	-100.218691
X. C. El Colorado - Higuerrillas	25.70	1	1	7348	5.4	81.3	1.9	7.3	1.8	1.3	0.4	0.3	0.3	86.7	1.9	11.4	0.115	0.509	20.615898	-100.161752
X. C. El Colorado - Higuerrillas	25.70	1	2	7076	5.4	81.3	1.8	7.5	1.7	1.3	0.4	0.3	0.3	86.7	1.8	11.5	0.130	0.509	20.615944	-100.161625
X. C. San Juan del Río - Xilitla	56.90	1	1	4417	7.6	80.1	2.3	6.0	2.3	0.8	0.4	0.4	0.1	87.7	2.3	10.0	0.109	0.510	20.530787	-99.921657
X. C. San Juan del Río - Xilitla	56.90	1	2	4247	7.5	80.3	2.2	6.0	2.3	0.8	0.4	0.4	0.1	87.8	2.2	10.0	0.094	0.510	20.530787	-99.921657
Tequisquiapan	57.40	1	0	9971	8.0	86.4	0.9	2.6	1.1	0.5	0.1	0.3	0.1	94.4	0.9	4.7	0.085	0.520	20.533786	-99.897629

25 CARR: Querétaro - Tlacote El Bajo

CLAVE: 22069

RUTA: QRO

AÑO: 2021

LUGAR	ESTACION				CLASIFICACION VEHICULAR EN PORCIENTO													COORDENADAS		
	KM	TE	SC	TDPA	M	A	B	C2	C3	T3S2	T3S3	T3S2R4	OTROS	A	B	C	K'	D	LATITUD	LONGITUD
Querétaro	0.00	3	1	12403	3.6	86.7	1.4	4.8	0.5	1.2	1.3	0.2	0.3	90.3	1.4	8.3	0.084	0.509	20.591211	-100.453815
Querétaro	0.00	3	2	11966	3.7	86.5	1.5	4.7	0.5	1.2	1.3	0.3	0.3	90.2	1.5	8.3	0.103	0.509	20.591120	-100.453821
Tlacote El Bajo	18.00																			

26 CARR: Ramal a La Estancia

CLAVE: 22504

RUTA: QRO

AÑO: 2021

LUGAR	ESTACION				CLASIFICACION VEHICULAR EN PORCIENTO													COORDENADAS		
	KM	TE	SC	TDPA	M	A	B	C2	C3	T3S2	T3S3	T3S2R4	OTROS	A	B	C	K'	D	LATITUD	LONGITUD
T. C. México - Querétaro (Cuota)	0.00	3	0	5621	5.9	86.9	0.8	4.8	0.9	0.4	0.1	0.2	0.0	92.8	0.8	6.4	0.093	0.509	20.424846	-100.063049
La Estancia	3.00																			

QUERETARO

27 CARR: Ramal a Tolimán

CLAVE: 22265

RUTA: QRO

AÑO: 2021

LUGAR	ESTACION				CLASIFICACION VEHICULAR EN PORCIENTO										COORDENADAS					
	KM	TE	SC	TDPA	M	A	B	C2	C3	T3S2	T3S3	T3S2R4	OTROS	A	B	C	K'	D	LATITUD	LONGITUD
T. C. El Colorado - Higuerrillas	0.00	3	0	3664	4.2	83.6	0.3	7.7	0.8	2.4	0.4	0.2	0.4	87.8	0.3	11.9	0.077	0.514	20.859353	-99.895110
Tolimán	7.00	1	0	3966	3.8	84.2	0.1	8.7	0.4	2.3	0.2	0.0	0.3	88.0	0.1	11.9	0.072	0.502	20.895145	-99.918158

28 CARR: Rayón - Arroyo Seco

CLAVE: 24008

RUTA: SLP-011

AÑO: 2021

LUGAR	ESTACION				CLASIFICACION VEHICULAR EN PORCIENTO										COORDENADAS					
	KM	TE	SC	TDPA	M	A	B	C2	C3	T3S2	T3S3	T3S2R4	OTROS	A	B	C	K'	D	LATITUD	LONGITUD
Rayón	0.00	3	0	1396	5.8	72.8	0.4	16.8	1.4	1.8	0.8	0.0	0.2	78.6	0.4	21.0	0.098	0.516	21.848070	-99.626931
Lagunillas	36.00	1	0	362	4.6	73.8	0.0	18.6	1.7	0.8	0.5	0.0	0.0	78.4	0.0	21.6	0.117	0.500	21.594235	-99.565213
Lim. De Edos. Term. S.L.P. Ppia Qro.	51.00																			
Arroyo Seco	57.00	1	0	587	6.6	72.7	0.0	18.8	1.4	0.5	0.0	0.0	0.0	79.3	0.0	20.7	0.099	0.506	21.553137	-99.682099

29 CARR: San Juan del Río - Amealco

CLAVE: 22011

RUTA: QRO

AÑO: 2021

LUGAR	ESTACION				CLASIFICACION VEHICULAR EN PORCIENTO										COORDENADAS					
	KM	TE	SC	TDPA	M	A	B	C2	C3	T3S2	T3S3	T3S2R4	OTROS	A	B	C	K'	D	LATITUD	LONGITUD
T. C. México - Querétaro	0.00	3	0	11507	4.2	90.5	0.5	3.9	0.4	0.3	0.1	0.1	0.0	94.7	0.5	4.8	0.092	0.503	20.374542	-100.016972
Amealco	28.00	1	0	5032	0.8	88.5	0.8	7.0	0.4	1.7	0.4	0.2	0.2	89.3	0.8	9.9	0.078	0.502	20.200145	-100.134337

30 CARR: T. C. (Villa del Pueblito - Huimilpan) - Coroneo

CLAVE: 00155

RUTA: QRO-GTO

AÑO: 2021

LUGAR	ESTACION				CLASIFICACION VEHICULAR EN PORCIENTO										COORDENADAS					
	KM	TE	SC	TDPA	M	A	B	C2	C3	T3S2	T3S3	T3S2R4	OTROS	A	B	C	K'	D	LATITUD	LONGITUD
T. C. Villa del Pueblito - Huimilpan	0.00	3	0	7144	1.9	84.8	0.6	8.8	1.8	0.9	0.3	0.3	0.6	86.7	0.6	12.7	0.115	0.507	20.510118	-100.431392
T. der a Joaquín Herrera	5.00	3	0																	
Lim. Edos. Term. Qro. Ppia. Gto.	20.00																			
Coroneo	45.20	1	0	3192	1.6	86.3	0.2	9.4	0.3	1.7	0.3	0.0	0.2	87.9	0.2	11.9	0.130	0.501	20.213812	-100.366612

31 CARR: Villa del Pueblito - Huimilpan

CLAVE: 22503

RUTA: QRO

AÑO: 2021

LUGAR	ESTACION				CLASIFICACION VEHICULAR EN PORCIENTO										COORDENADAS					
	KM	TE	SC	TDPA	M	A	B	C2	C3	T3S2	T3S3	T3S2R4	OTROS	A	B	C	K'	D	LATITUD	LONGITUD
T. C. Querétaro - Irapuato (Libre)	0.00	3	1	19224	4.6	88.9	0.8	2.5	1.0	0.6	0.5	0.9	0.2	93.5	0.8	5.7	0.076	0.503	20.529836	-100.441422
T. C. Querétaro - Irapuato (Libre)	0.00	3	2	19025	4.2	89.4	0.6	2.4	1.0	0.8	0.5	0.7	0.4	93.6	0.6	5.8	0.077	0.503	20.529858	-100.441225
Huimilpan	27.00	1	0	1646	1.4	85.7	0.2	10.4	0.5	1.3	0.4	0.0	0.1	87.1	0.2	12.7	0.118	0.505	20.379200	-100.278499

QUERETARO

32 CARR: Toluca - Palmillas

CLAVE: 00496

RUTA: EM(D)-MEX-055

AÑO: 2021

LUGAR	ESTACION				CLASIFICACION VEHICULAR EN PORCIENTO													COORDENADAS			
	KM	TE	SC	TDPA	M	A	B	C2	C3	T3S2	T3S3	T3S2R4	OTROS	A	B	C	K'	D	LATITUD	LONGITUD	
Toluca	0.00																				
T. Izq. Calixtlahuaca de Rayón (Baja)	7.21	3	1	9537	4.6	67.2	5.6	10.3	3.4	6.7	1.2	0.8	0.2	71.8	5.6	22.6	0.078	0.511	19.340987	-99.670326	
T. Izq. Calixtlahuaca de Rayón (Alta)	7.21	3	1	30449	1.5	95.1	0.4	1.8	0.7	0.3	0.1	0.1	0.0	96.6	0.4	3.0	0.091	0.516	19.346199	-99.675678	
T. Izq. Calixtlahuaca de Rayón (Alta)	7.21	3	2	28414	1.7	94.3	0.6	2.3	0.6	0.3	0.1	0.1	0.0	96.0	0.6	3.4	0.077	0.516	19.343666	-99.673954	
T. Izq. Calixtlahuaca de Rayón (Baja)	7.21	3	2	9959	4.4	67.1	5.9	10.1	3.2	6.7	1.4	1.0	0.2	71.5	5.9	22.6	0.088	0.511	19.343594	-99.674059	
X. C. Lib. Nororiente de Toluca (Cuota)	14.21	1	1	28311	2.0	86.4	1.9	3.8	1.4	2.5	0.4	1.2	0.4	88.4	1.9	9.7	0.094	0.501	19.382310	-99.704843	
X. C. Lib. Nororiente de Toluca (Cuota)	14.21	1	2	28107	2.2	85.2	1.9	4.3	1.6	2.7	0.4	1.3	0.4	87.4	1.9	10.7	0.100	0.501	19.379144	-99.703108	
El Dorado	16.00	1	1	34049	2.0	81.9	2.3	5.8	1.5	4.7	0.7	0.9	0.2	83.9	2.3	13.8	0.082	0.504	19.401807	-99.713220	
El Dorado	16.00	1	2	34682	1.9	80.8	2.5	6.2	1.8	5.0	0.7	0.9	0.2	82.7	2.5	14.8	0.085	0.504	19.401696	-99.713505	
T. C. Amomolulco - T. C. (Toluca - Palmillas)	19.76	1	1	20582	0.8	81.2	3.1	5.1	2.5	5.0	1.2	0.8	0.3	82.0	3.1	14.9	0.077	0.512	19.429028	-99.724599	
T. C. Amomolulco - T. C. (Toluca - Palmillas)	19.76	1	2	21610	0.9	81.3	3.0	4.9	2.6	4.8	1.4	0.8	0.3	82.2	3.0	14.8	0.083	0.512	19.428441	-99.724700	
Ixtlahuaca de Rayón	31.20	1	1	22448	0.7	79.6	3.0	8.3	1.7	4.9	0.7	0.9	0.2	80.3	3.0	16.7	0.086	0.507	19.557274	-99.759522	
Ixtlahuaca de Rayón	31.20	1	2	23118	0.7	78.9	3.2	8.3	1.9	5.0	0.8	1.0	0.2	79.6	3.2	17.2	0.094	0.507	19.557101	-99.759786	
Ixtlahuaca de Rayón	31.20	3	1	22133	1.1	80.4	1.5	9.7	1.1	4.4	1.0	0.6	0.2	81.5	1.5	17.0	0.083	0.503	19.581848	-99.763850	
Ixtlahuaca de Rayón	31.20	3	2	22372	0.9	80.0	1.7	9.7	1.2	4.7	1.0	0.6	0.2	80.9	1.7	17.4	0.102	0.503	19.583082	-99.769078	
T. C. Ixtlahuaca de Rayón - Naucalpan	32.20	1	1	20878	1.5	80.1	3.2	4.4	1.9	6.4	1.3	1.0	0.2	81.6	3.2	15.2	0.074	0.507	19.567325	-99.760412	
T. C. Ixtlahuaca de Rayón - Naucalpan	32.20	1	2	21465	1.5	79.5	3.3	4.7	2.0	6.4	1.4	1.0	0.2	81.0	3.3	15.7	0.076	0.507	19.567359	-99.760695	
Pastejé	45.20	1	1	17115	4.0	75.8	3.5	7.0	1.9	5.4	0.8	1.0	0.6	79.8	3.5	16.7	0.093	0.503	19.631445	-99.780370	
Pastejé	45.20	1	2	17323	3.9	75.4	3.6	7.1	2.1	5.3	0.8	1.2	0.6	79.3	3.6	17.1	0.113	0.503	19.631356	-99.780776	
Pastejé	45.20	3	1	19607	1.2	81.4	2.3	4.1	1.9	6.5	1.0	1.0	0.6	82.6	2.3	15.1	0.079	0.512	19.658031	-99.793401	
Pastejé	45.20	3	2	18720	1.2	80.6	2.6	4.2	2.1	6.6	1.0	1.0	0.7	81.8	2.6	15.6	0.083	0.512	19.656086	-99.792500	
Atlacomulco	65.00	1	1	19713	1.5	79.7	2.4	6.7	1.8	5.8	0.8	0.8	0.5	81.2	2.4	16.4	0.075	0.502	19.778771	-99.863086	
Atlacomulco	65.00	1	2	19900	1.6	79.4	2.5	7.0	1.9	5.4	0.8	0.9	0.5	81.0	2.5	16.5	0.087	0.502	19.777855	-99.862791	
Atlacomulco	65.00	3	1	18835	10.8	71.7	2.8	4.2	2.6	4.2	0.7	2.3	0.7	82.5	2.8	14.7	0.078	0.512	19.811244	-99.871770	
Atlacomulco	65.00	3	2	17920	10.8	71.7	2.8	4.2	2.6	4.2	0.8	2.3	0.6	82.5	2.8	14.7	0.074	0.512	19.811252	-99.871908	
X. C. Libramiento Norte de la Ciudad de México (Cuota)	81.52	1	1	7869	5.6	76.7	3.0	3.5	2.2	6.7	1.0	0.9	0.4	82.3	3.0	14.7	0.104	0.532	19.918248	-99.845005	
X. C. Libramiento Norte de la Ciudad de México (Cuota)	81.52	1	2	6926	5.6	76.4	3.0	3.6	2.2	6.7	1.0	1.0	0.5	82.0	3.0	15.0	0.095	0.532	19.917717	-99.845382	
X. C. Libramiento Norte de la Ciudad de México (Cuota)	81.52	3	1	7431	4.8	77.1	1.4	3.1	4.9	5.0	1.4	1.6	0.7	81.9	1.4	16.7	0.111	0.526	19.927498	-99.841994	
X. C. Libramiento Norte de la Ciudad de México (Cuota)	81.52	3	2	6686	4.8	77.0	1.4	3.1	4.9	5.0	1.5	1.6	0.7	81.8	1.4	16.8	0.097	0.526	19.927567	-99.842119	
Acambay	85.64	3	0	11018	1.6	93.0	0.6	1.9	1.2	0.6	0.4	0.4	0.3	94.6	0.6	4.8	0.079	0.514	19.964211	-99.852265	
T. Der. Aculco de Espinoza	104.43	1	1	5394	3.6	64.8	4.1	9.5	2.5	12.3	1.3	1.5	0.4	68.4	4.1	27.5	0.140	0.501	20.079968	-99.862940	
T. Der. Aculco de Espinoza	104.43	1	2	5383	3.8	63.5	4.5	9.8	2.6	12.3	1.4	1.6	0.5	67.3	4.5	28.2	0.096	0.501	20.079930	-99.863009	
T. Der. Aculco de Espinoza	104.43	3	1	5012	2.4	69.8	4.5	5.0	2.9	12.1	1.4	1.5	0.4	72.2	4.5	23.3	0.156	0.505	20.098614	-99.861775	
T. Der. Aculco de Espinoza	104.43	3	2	5107	2.3	70.5	5.4	5.0	2.7	10.2	1.7	1.7	0.5	72.8	5.4	21.8	0.111	0.505	20.098615	-99.861858	
T. Der. Polotitlán	122.73	1	1	5581	1.7	68.1	6.2	7.8	2.7	11.1	1.2	1.0	0.2	69.8	6.2	24.0	0.079	0.500	20.225660	-99.899208	

QUERETARO

32 CARR: Toluca - Palmillas

CLAVE: 00496

RUTA: EM(D)-MEX-055

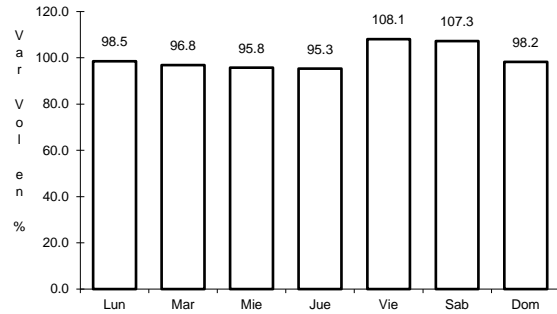
AÑO: 2021

LUGAR	ESTACION				CLASIFICACION VEHICULAR EN PORCIENTO														COORDENADAS	
	KM	TE	SC	TDPA	M	A	B	C2	C3	T3S2	T3S3	T3S2R4	OTROS	A	B	C	K'	D	LATITUD	LONGITUD
T. Der. Polotitlán	122.73	1	2	5580	1.7	67.3	5.9	9.7	2.3	10.1	1.8	1.0	0.2	69.0	5.9	25.1	0.076	0.500	20.225598	-99.899261
Lim. Edos. Term. Méx. Ppia. Qro.	128.10																			
T. C. Palmillas - Apaseo el Grande (Cuota)	130.60	1	1	7426	1.4	75.0	2.5	7.8	2.7	8.0	1.5	0.6	0.5	76.4	2.5	21.1	0.093	0.505	20.280161	-99.931032
T. C. Palmillas - Apaseo el Grande (Cuota)	130.60	1	2	7564	1.3	74.7	2.1	6.3	3.2	8.8	1.8	1.4	0.4	76.0	2.1	21.9	0.119	0.505	20.280152	-99.931101
T. C. México - Querétaro	131.52	1	1	7366	1.3	68.4	4.4	7.4	3.1	12.4	1.5	1.1	0.4	69.7	4.4	25.9	0.092	0.503	20.294731	-99.933105
T. C. México - Querétaro	131.52	1	2	7444	1.3	68.4	4.3	7.4	3.1	12.4	1.5	1.2	0.4	69.7	4.3	26.0	0.106	0.503	20.294733	-99.933224

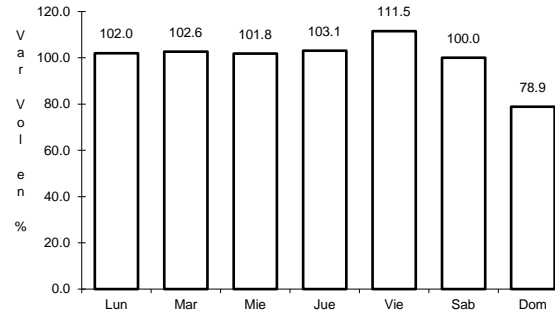
1 CARR: Ent. Buenavista - San Miguel de Allende

CLAVE: 00111

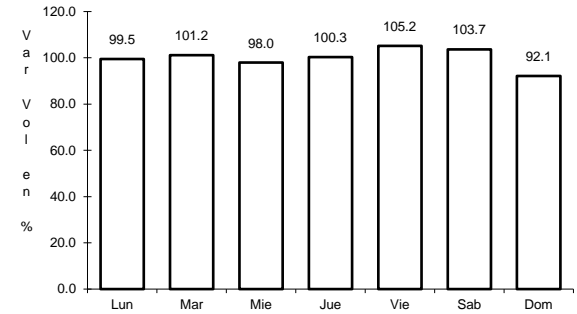
RUTA: MEX-057



Km: 0.00 Tipo: 3 Sent: 0



Km: 12.00 Tipo: 1 Sent: 0

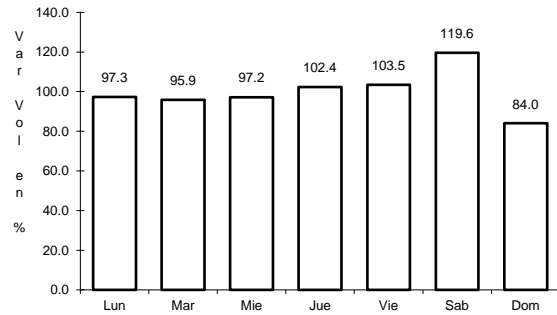


Km: 35.11 Tipo: 1 Sent: 0

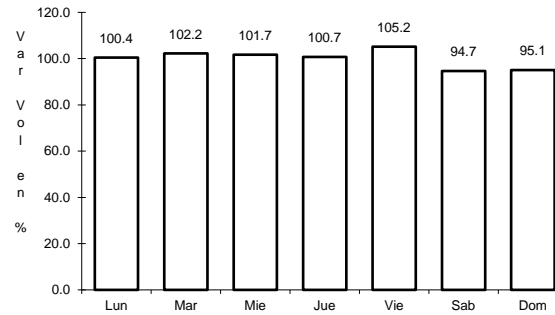
2 CARR: Jalpan de Serra - Rioverde

CLAVE: 00265

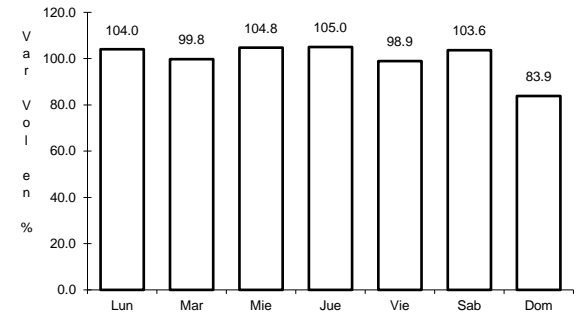
RUTA: MEX-069



Km: 0.00 Tipo: 3 Sent: 0



Km: 48.60 Tipo: 1 Sent: 0

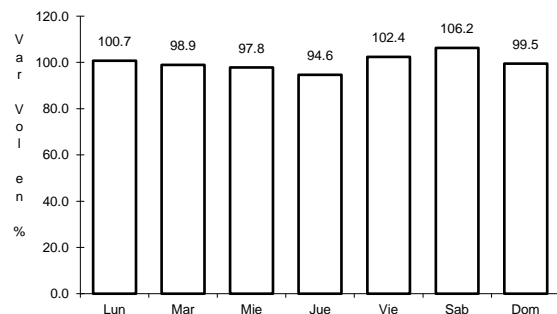


Km: 105.43 Tipo: 1 Sent: 0

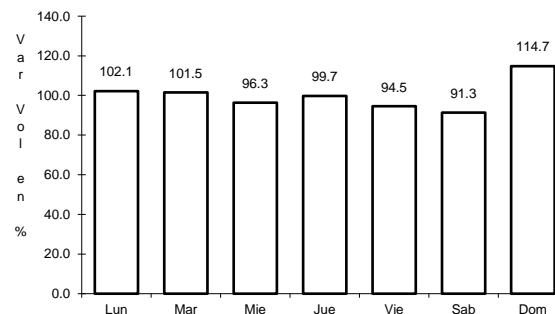
3 CARR: La Noria - Acámbaro

CLAVE: 00131

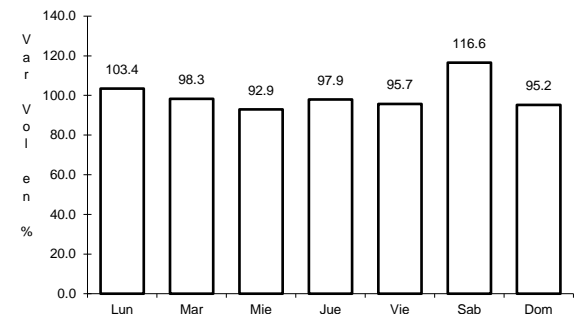
RUTA: MEX-120



Km: 0.00 Tipo: 3 Sent: 0



Km: 59.35 Tipo: 3 Sent: 0

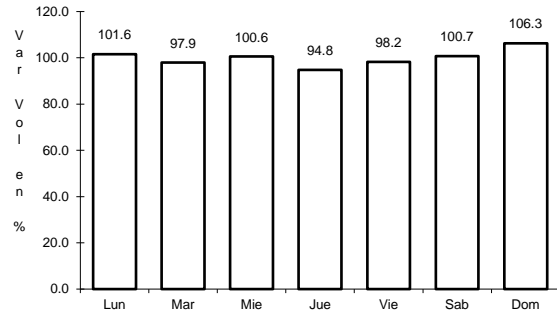


Km: 111.12 Tipo: 1 Sent: 0

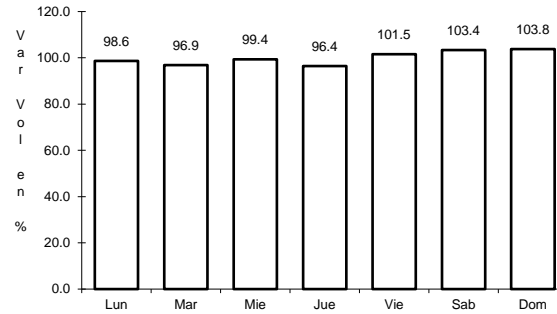
4 CARR: Portezuelo - Palmillas

CLAVE: 00194

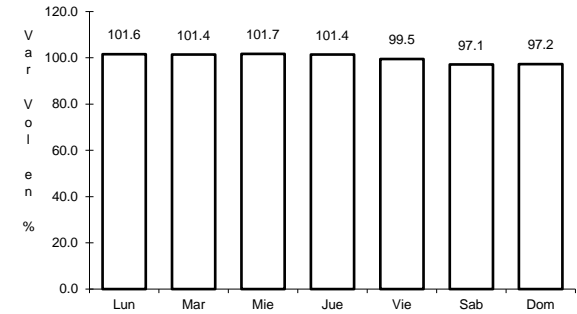
RUTA: MEX-045



Km: 0.00 Tipo: 3 Sent: 1



Km: 0.00 Tipo: 3 Sent: 2

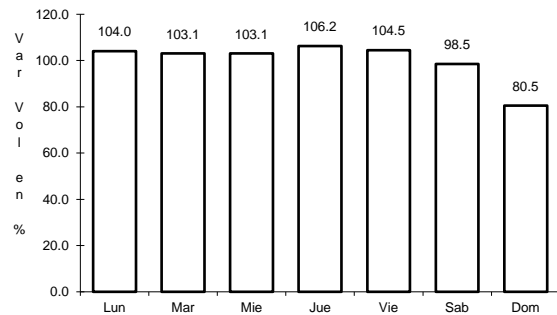


Km: 80.00 Tipo: 1 Sent: 1

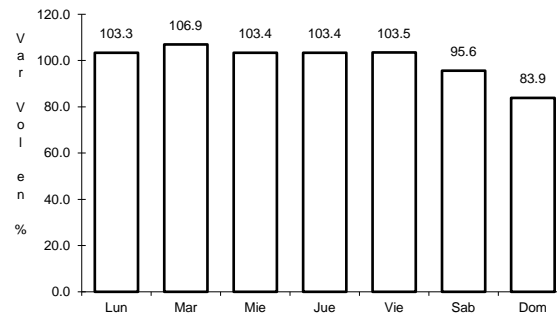
5 CARR: Querétaro - Irapuato (Libre)

CLAVE: 00154

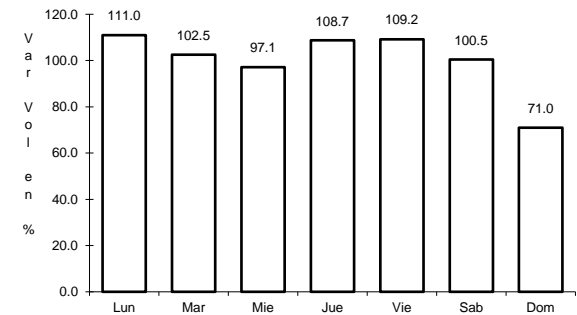
RUTA: MEX-045



Km: 0.00 Tipo: 3 Sent: 1



Km: 0.00 Tipo: 3 Sent: 2

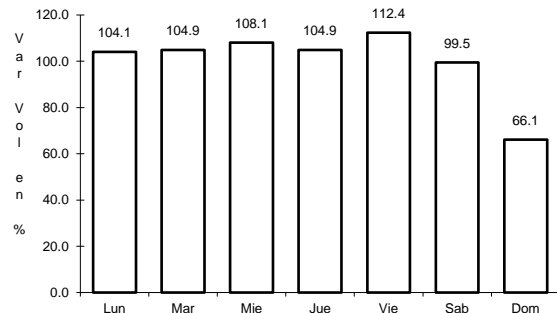


Km: 113.70 Tipo: 1 Sent: 1

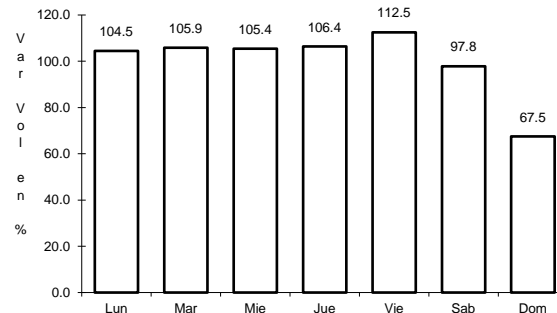
6 CARR: Querétaro - San Luis Potosí

CLAVE: 00165

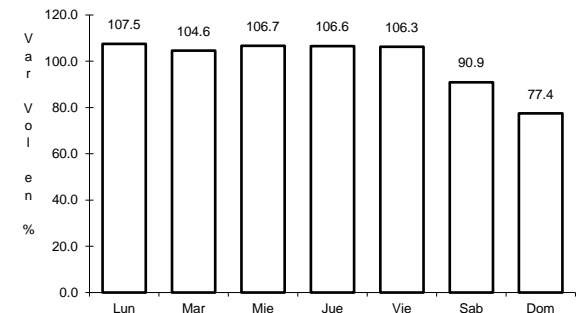
RUTA: MEX-057



Km: 6.28 Tipo: 3 Sent: 1



Km: 6.28 Tipo: 3 Sent: 2

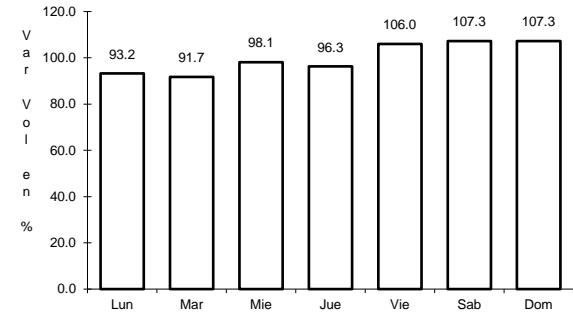
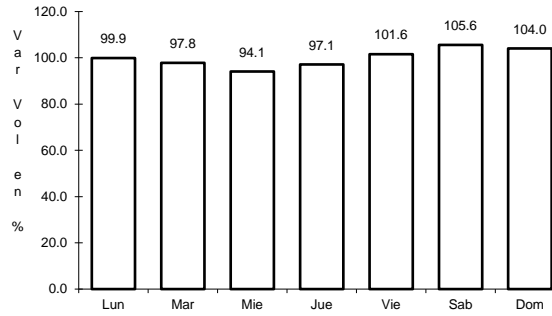
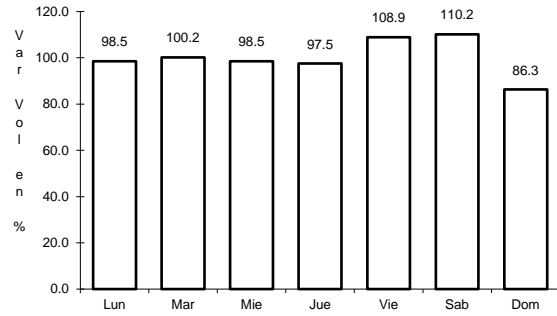


Km: 184.80 Tipo: 1 Sent: 1

7 CARR: San Juan del Río - Xilitla

CLAVE: 00183

RUTA: MEX-120



Km: 5.20 Tipo: 3 Sent: 1

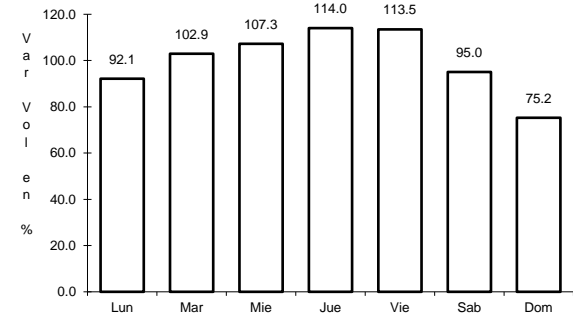
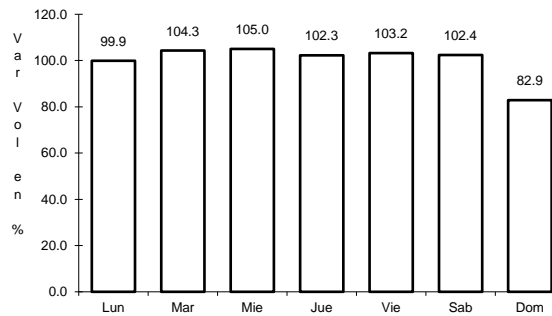
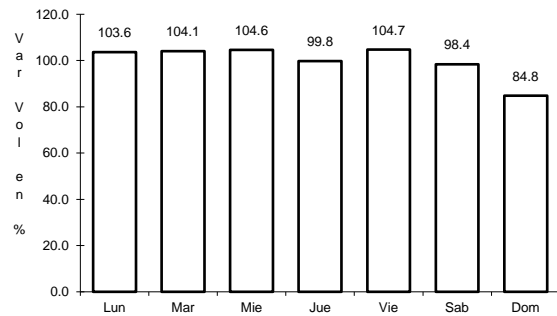
Km: 5.20 Tipo: 3 Sent: 2

Km: 276.98 Tipo: 1 Sent: 0

8 CARR: Libramiento Nororiente de Querétaro (Cuota)

CLAVE: 22266

RUTA: MEX-057D



Km: 0.00 Tipo: 3 Sent: 1

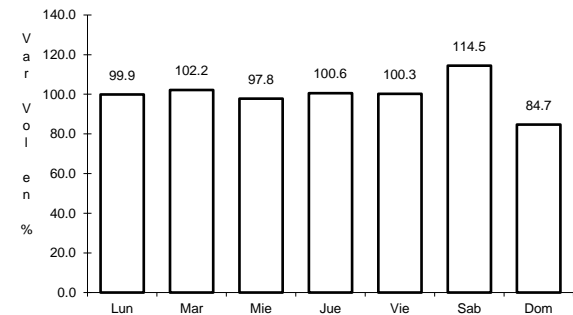
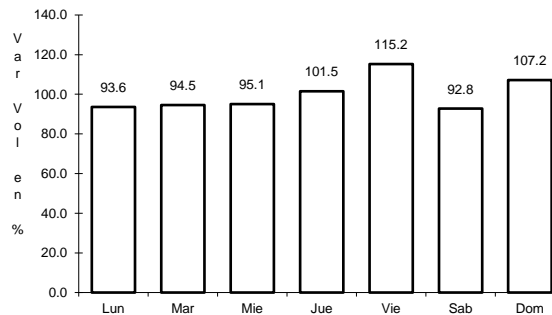
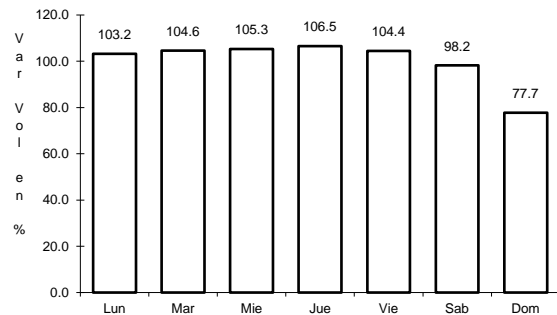
Km: 0.00 Tipo: 3 Sent: 2

Km: 37.50 Tipo: 1 Sent: 1

9 CARR: Palmillas - Apaseo el Grande (Cuota)

CLAVE:

RUTA: MEX-045D



Km: 1.60 Tipo: 1 Sent: 1

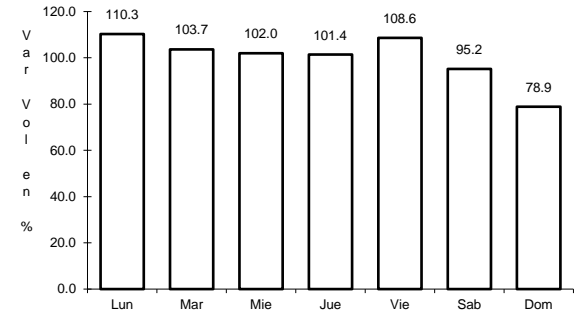
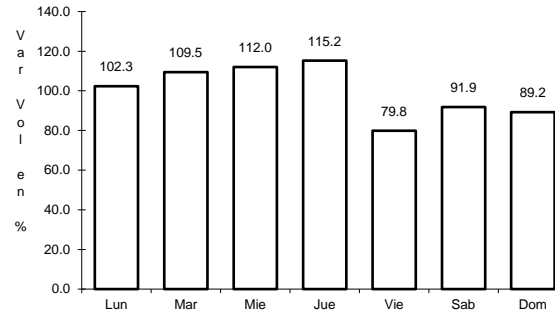
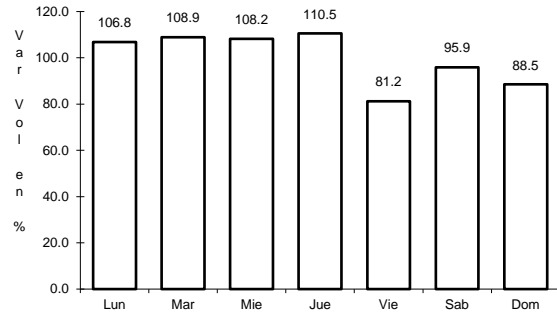
Km: 1.60 Tipo: 1 Sent: 2

Km: 85.20 Tipo: 1 Sent: 1

10 CARR: Querétaro - Irapuato (Cuota)

CLAVE: 00423

RUTA: MEX-045D



Km: 0.00 Tipo: 3 Sent: 1

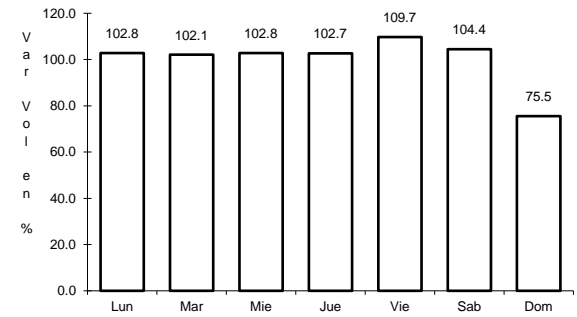
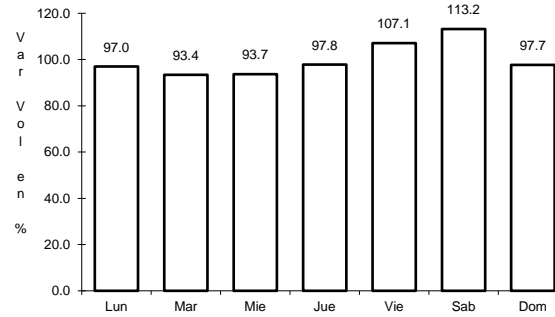
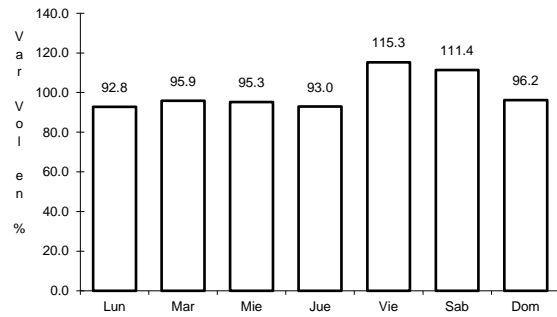
Km: 0.00 Tipo: 3 Sent: 2

Km: 96.30 Tipo: 3 Sent: 1

11 CARR: México - Querétaro (Cuota)

CLAVE: 00411

RUTA: MEX-057-MEX-057D



Km: 56.18 Tipo: 1 Sent: 1

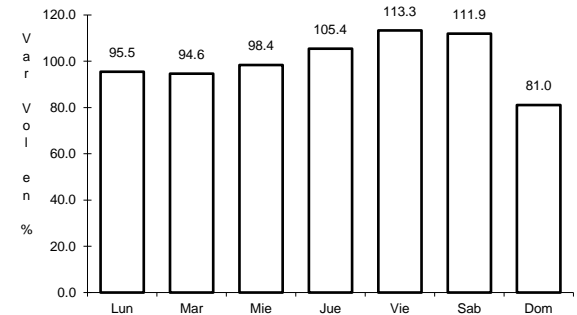
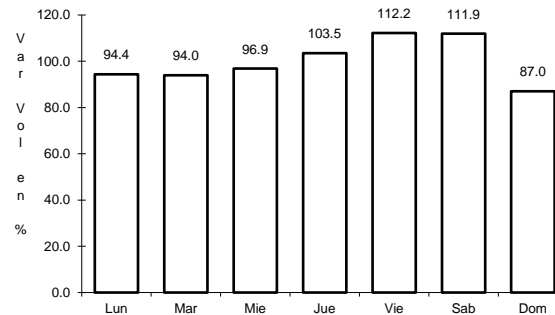
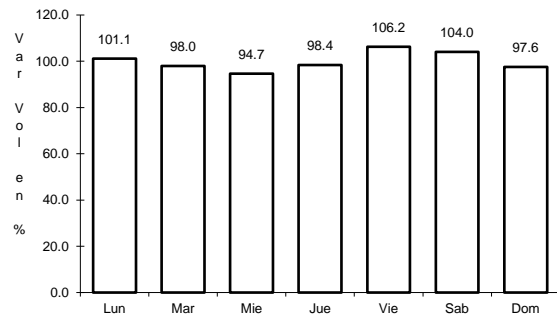
Km: 56.18 Tipo: 1 Sent: 2

Km: 207.00 Tipo: 3 Sent: 1

12 CARR: Ajuchitlán - Colón

CLAVE: 22010

RUTA: QRO-005



Km: 0.00 Tipo: 3 Sent: 1

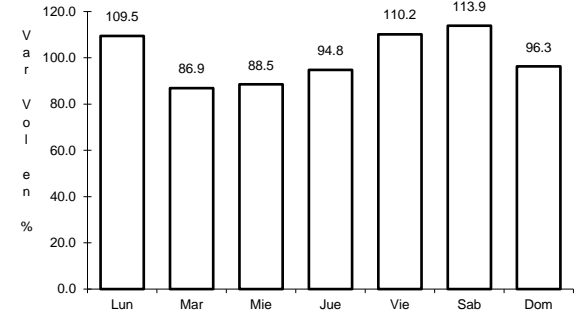
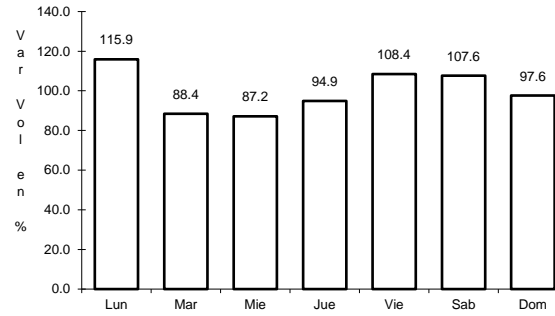
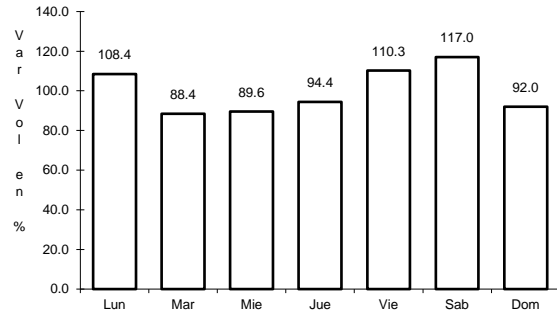
Km: 14.00 Tipo: 1 Sent: 1

Km: 14.00 Tipo: 1 Sent: 2

13 CARR: Ajuchitlán - Ezequiel Montes

CLAVE: 22005

RUTA: QRO-005



Km: 0.00 Tipo: 3 Sent: 1

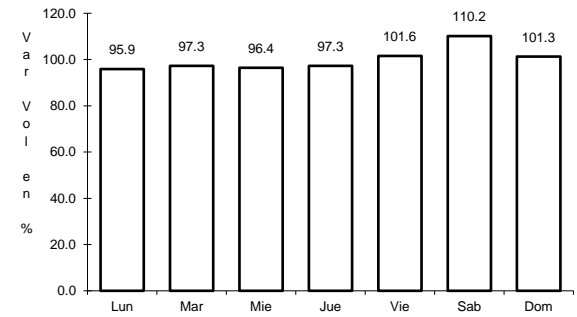
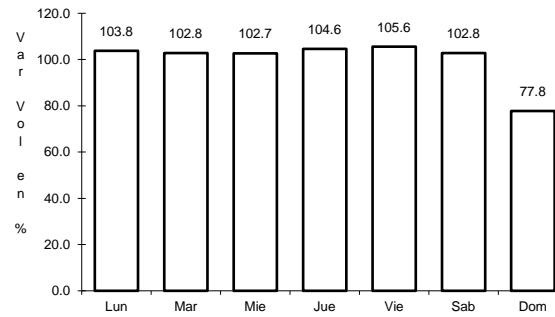
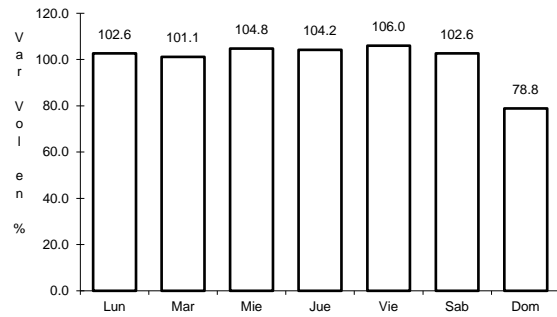
Km: 0.00 Tipo: 3 Sent: 2

Km: 10.60 Tipo: 1 Sent: 0

14 CARR: El Colorado - Higuerrillas

CLAVE: 22004

RUTA: QRO-004



Km: 0.00 Tipo: 3 Sent: 1

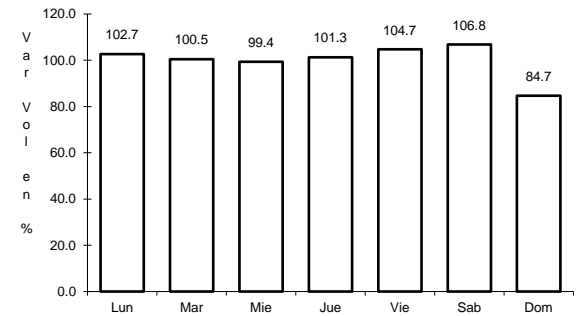
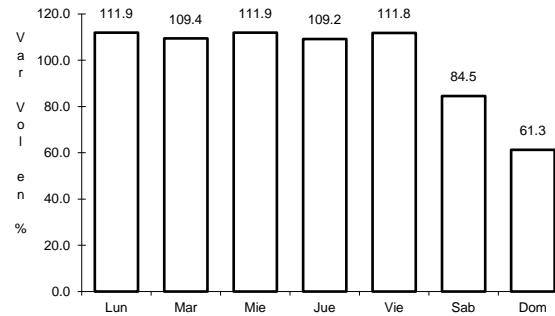
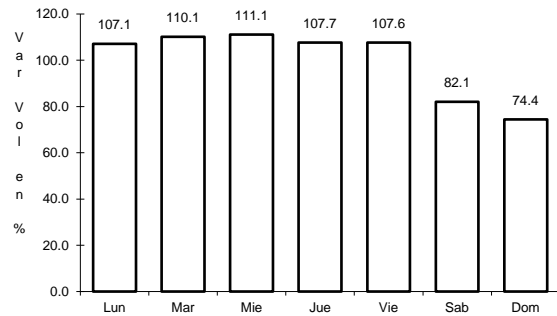
Km: 0.00 Tipo: 3 Sent: 2

Km: 81.90 Tipo: 1 Sent: 0

15 CARR: Hacienda Paraíso - Chichimequillas

CLAVE: 22001

RUTA: QRO-001



Km: 0.00 Tipo: 3 Sent: 1

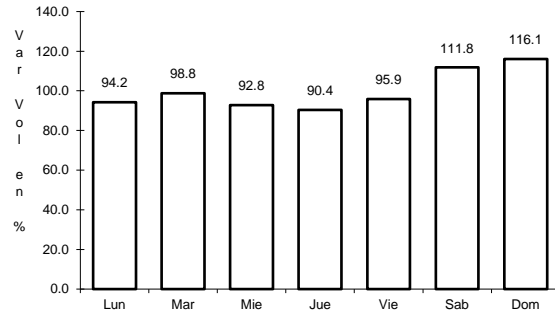
Km: 0.00 Tipo: 3 Sent: 2

Km: 15.45 Tipo: 3 Sent: 0

16 CARR: Huimilpan - El Lindero

CLAVE: 00155

RUTA: QRO-GTO



Km: 2.60

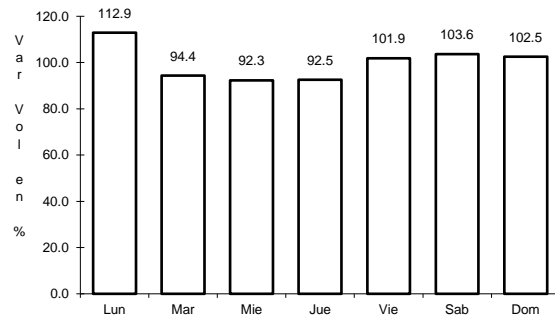
Tipo: 3

Sent: 0

17 CARR: La Culata - San Joaquín

CLAVE: 22021

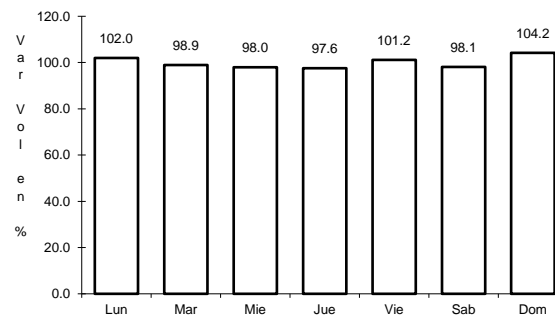
RUTA: QRO-021



Km: 0.00

Tipo: 3

Sent: 0



Km: 31.80

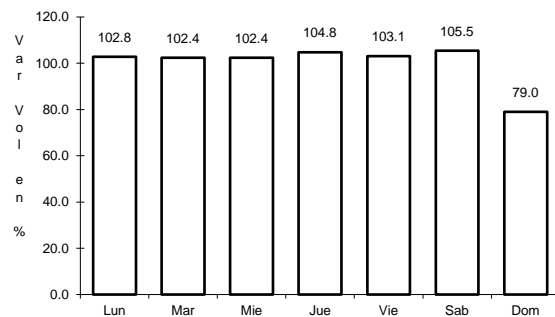
Tipo: 1

Sent: 0

18 CARR: Libramiento de San Juan del Río

CLAVE: 22266

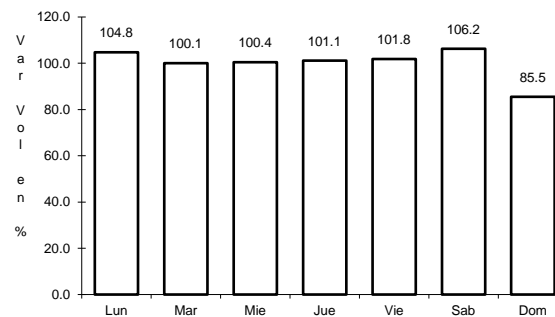
RUTA: QRO



Km: 0.00

Tipo: 3

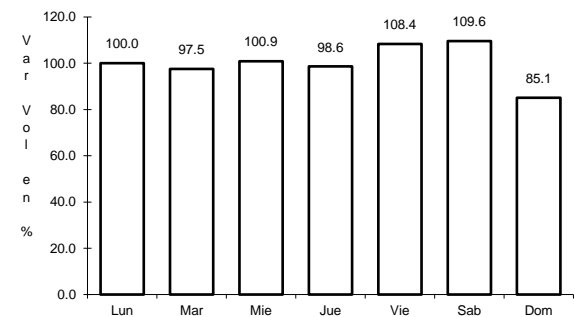
Sent: 1



Km: 0.00

Tipo: 3

Sent: 2



Km: 5.05

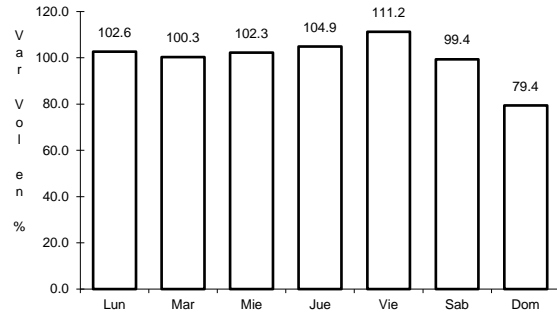
Tipo: 1

Sent: 1

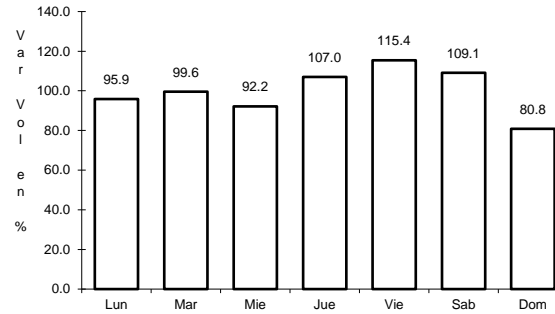
19 CARR: Libramiento Norte de Querétaro

CLAVE: 22500

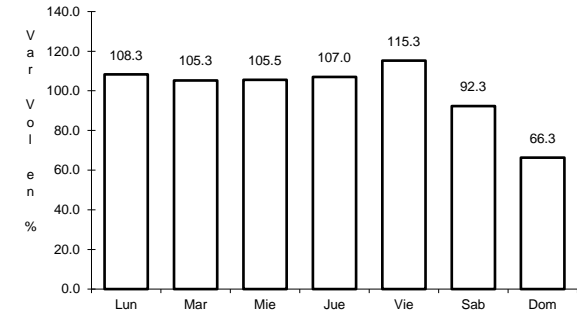
RUTA: QRO



Km: 0.00 Tipo: 3 Sent: 1



Km: 0.00 Tipo: 3 Sent: 2

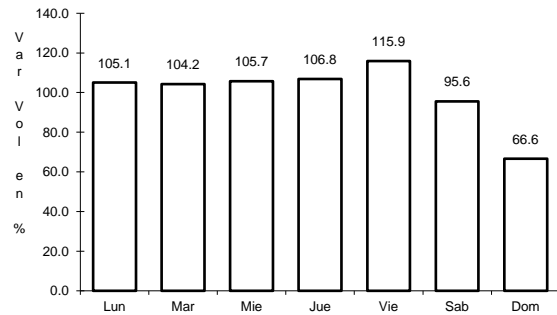


Km: 8.00 Tipo: 3 Sent: 1

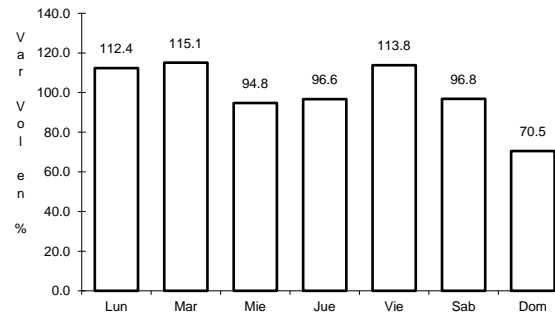
20 CARR: Libramiento Surponiente de Querétaro

CLAVE: 22501

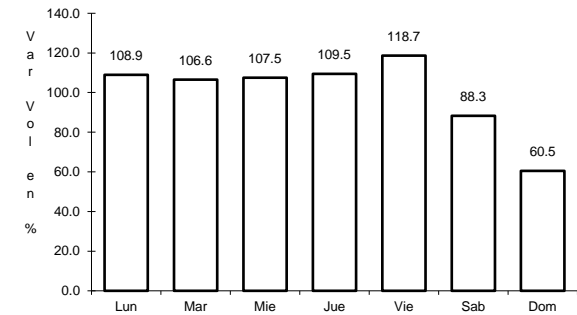
RUTA: QRO



Km: 0.00 Tipo: 3 Sent: 1



Km: 0.00 Tipo: 3 Sent: 2

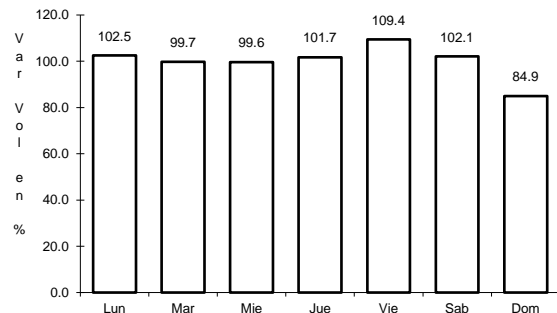


Km: 44.10 Tipo: 3 Sent: 1

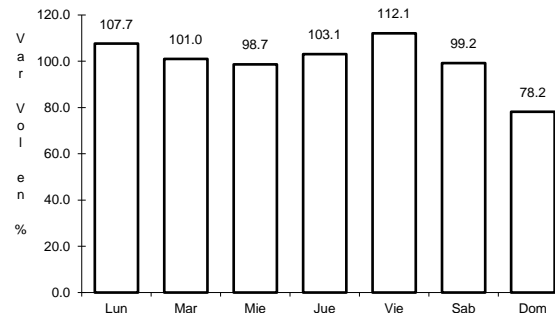
21 CARR: Peña Colorada - El Rodeo

CLAVE: 22002

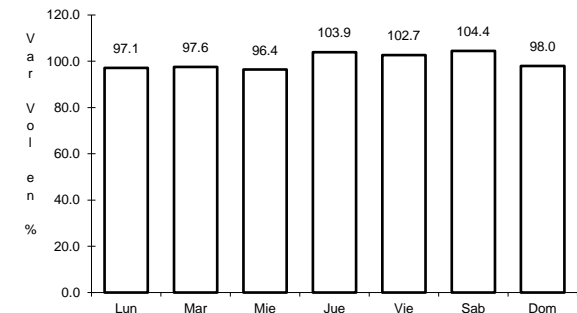
RUTA: QRO



Km: 0.00 Tipo: 3 Sent: 1



Km: 0.00 Tipo: 3 Sent: 2

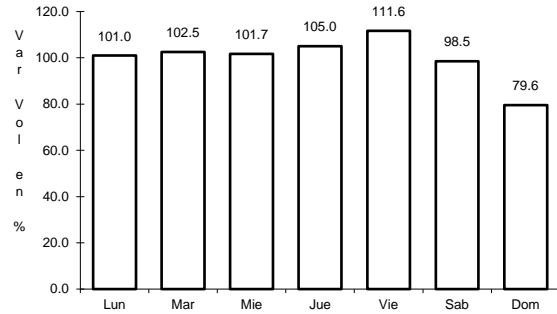


Km: 11.00 Tipo: 1 Sent: 0

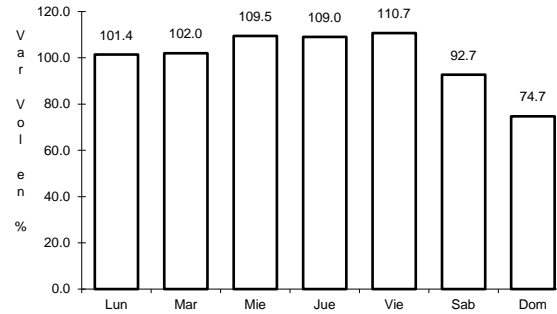
22 CARR: Querétaro - Ent. San Martín

CLAVE: 22067

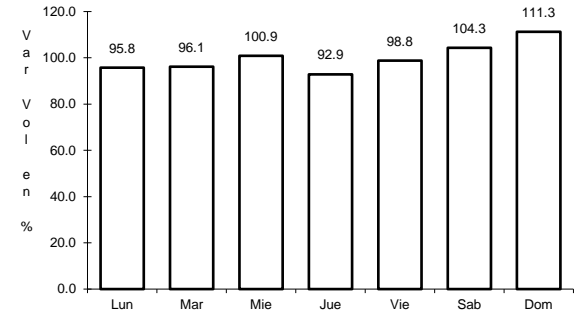
RUTA: QRO



Km: 0.00 Tipo: 3 Sent: 1



Km: 0.00 Tipo: 3 Sent: 2

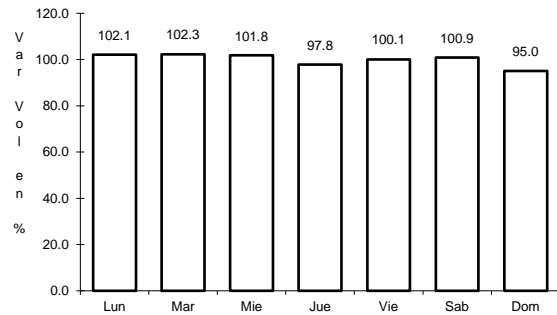


Km: 53.00 Tipo: 1 Sent: 0

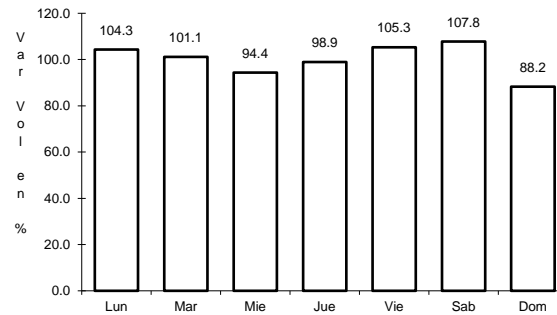
23 CARR: Querétaro - Estación Chichimequillas

CLAVE: 22270

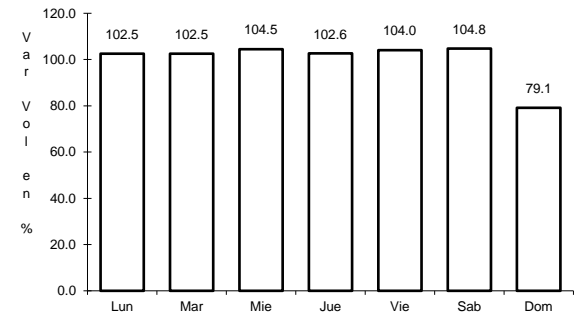
RUTA: QRO



Km: 0.00 Tipo: 3 Sent: 1



Km: 0.00 Tipo: 3 Sent: 2

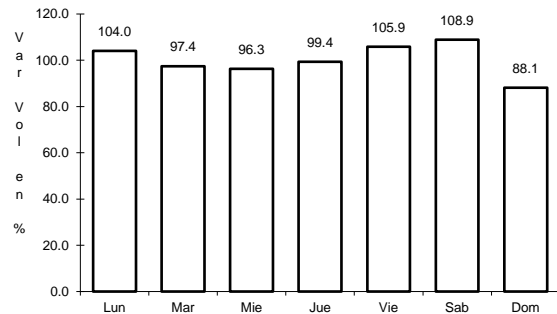


Km: 18.00 Tipo: 1 Sent: 0

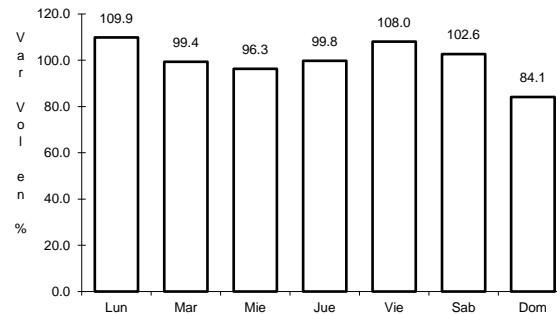
24 CARR: Querétaro - Tequisquiapan

CLAVE: 22502

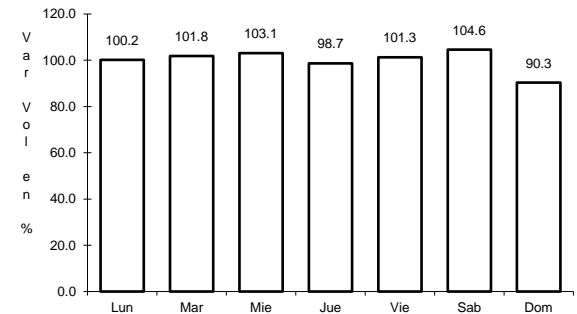
RUTA: QRO



Km: 0.00 Tipo: 3 Sent: 1



Km: 0.00 Tipo: 3 Sent: 2

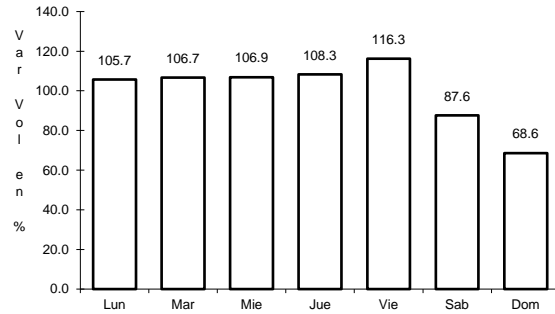


Km: 57.40 Tipo: 1 Sent: 0

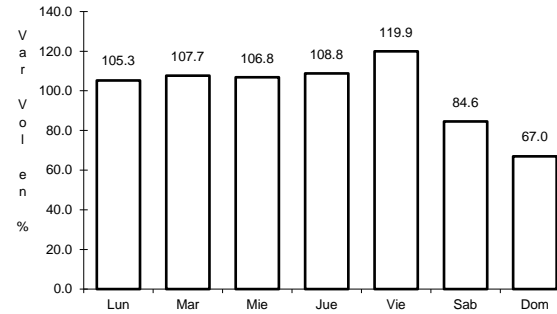
25 CARR: Querétaro - Tlacote El Bajo

CLAVE: 22069

RUTA: QRO



Km: 0.00 Tipo: 3 Sent: 1

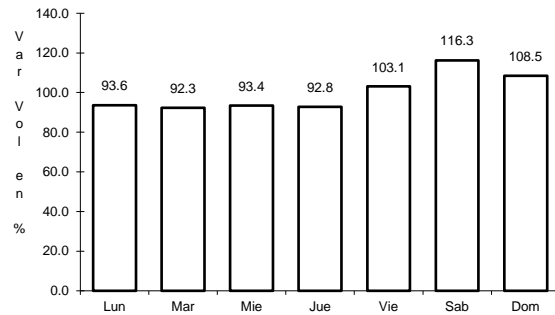


Km: 0.00 Tipo: 3 Sent: 2

26 CARR: Ramal a La Estancia

CLAVE: 22504

RUTA: QRO

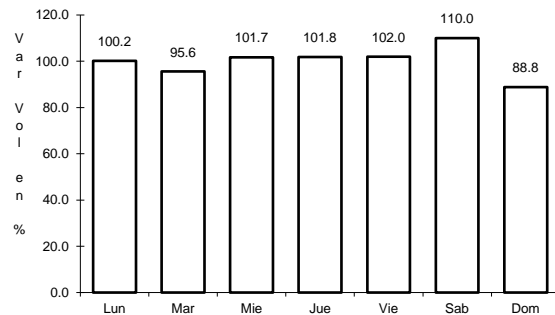


Km: 0.00 Tipo: 3 Sent: 0

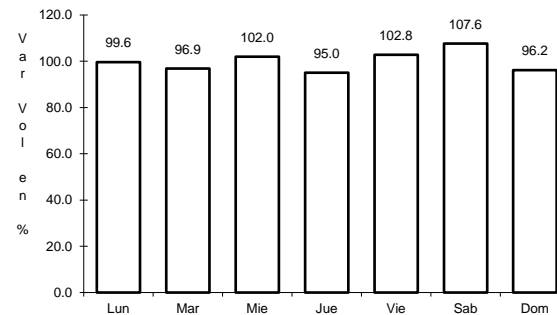
27 CARR: Ramal a Tolimán

CLAVE: 22265

RUTA: QRO



Km: 0.00 Tipo: 3 Sent: 0

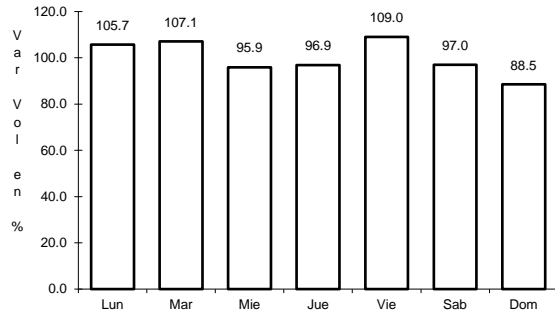


Km: 7.00 Tipo: 1 Sent: 0

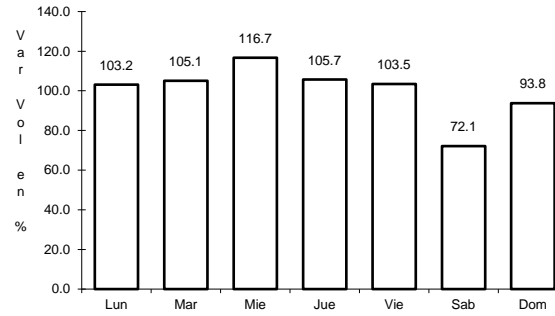
28 CARR: Rayón - Arroyo Seco

CLAVE: 24008

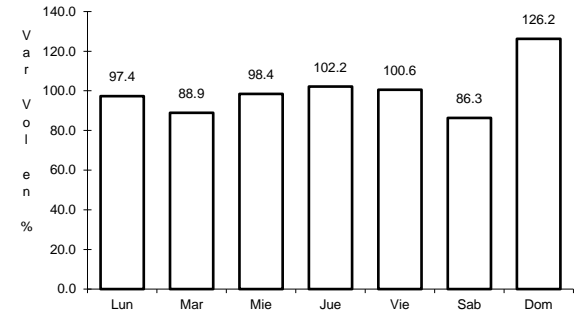
RUTA: SLP-011



Km: 0.00 Tipo: 3 Sent: 0



Km: 36.00 Tipo: 1 Sent: 0

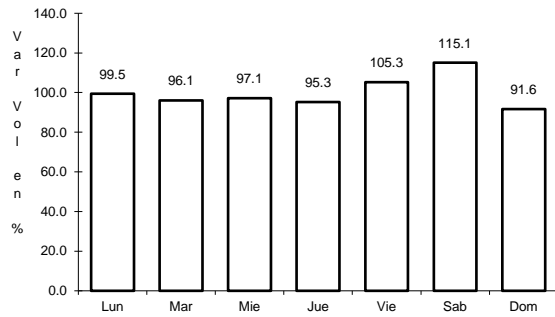


Km: 57.00 Tipo: 1 Sent: 0

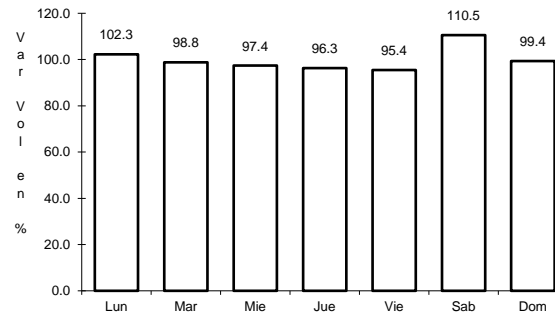
29 CARR: San Juan del Río - Amealco

CLAVE: 22011

RUTA: QRO



Km: 0.00 Tipo: 3 Sent: 0

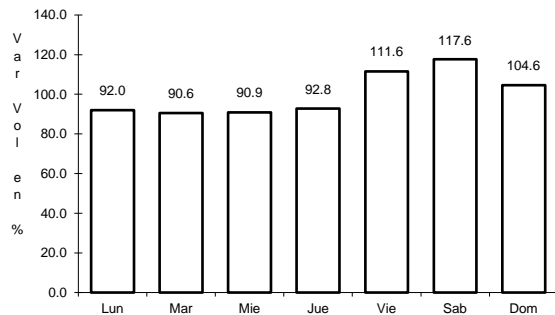


Km: 28.00 Tipo: 1 Sent: 0

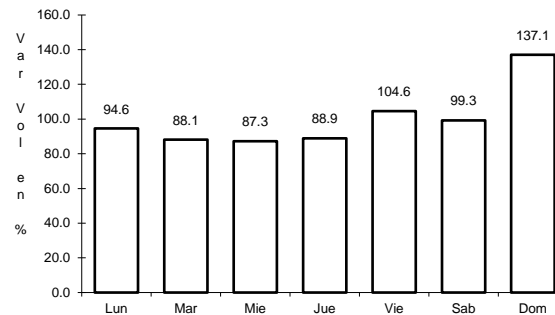
30 CARR: T. C. (Villa del Pueblito - Huimilpan) - Coroneo

CLAVE: 00155

RUTA: QRO-GTO



Km: 0.00 Tipo: 3 Sent: 0

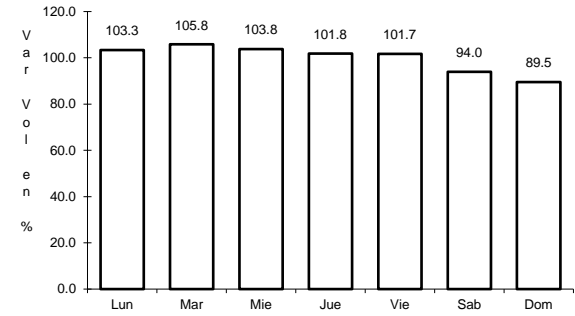
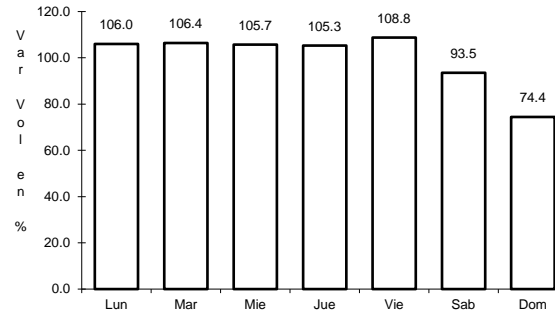
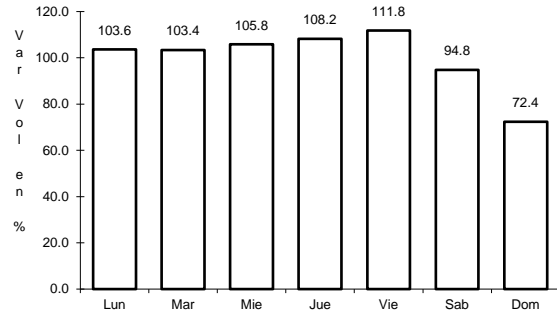


Km: 45.20 Tipo: 1 Sent: 0

31 CARR: Villa del Pueblito - Huimilpan

CLAVE: 22503

ruta: QRO



Km: 0.00

Tipo: 3

Sent: 1

Km: 0.00

Tipo: 3

Sent: 2

Km: 27.00

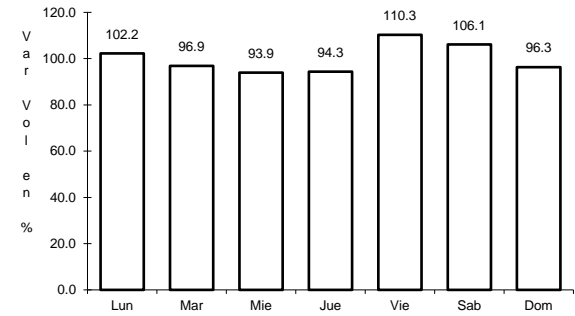
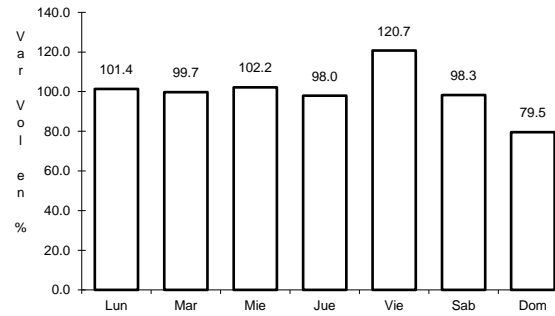
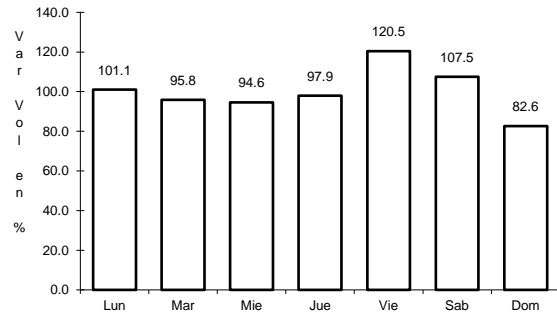
Tipo: 1

Sent: 0

32 CARR: Toluca - Palmillas

CLAVE: 00496

ruta: EM(D)-MEX-055



Km: 14.21

Tipo: 1

Sent: 1

Km: 14.21

Tipo: 1

Sent: 2

Km: 85.64

Tipo: 3

Sent: 0

