



OAXACA

---RED FEDERAL LIBRE---

1 Acceso al Puerto Salina Cruz	MEX-090
2 Buenavista - Tuxtepec	MEX-175
3 Cd. Alemán - Sayula	MEX-145
4 Coatzacoalcos - Salina Cruz	MEX-185
5 Ent. La Ventosa - San Pedro Tapanatepec	MEX-190
6 Huajuapán de León - Oaxaca	MEX-190
7 Juchitán - Ixtepec	MEX-185
8 La Granja - Temascal	MEX-145
9 Las Cruces - Pinotepa Nacional	MEX-200
10 Libramiento de Pochutla	MEX-200
11 Libramiento de San Pedro Tapanatepec	MEX-200
12 Libramiento de Santa María del Tule	MEX-190
13 Oaxaca - Puerto Ángel	MEX-175
14 Oaxaca - Tehuantepec	MEX-190
15 Puebla - Huajuapán de León	MEX-190
16 Ramal a Asunción Ixtaltepec	MEX-185
17 Ramal a Monte Albán	MEX
18 Ramal a Refinería Pemex (Refinería del Pacífico)	MEX
19 San Pablo Villa de Mitla - T. C. (Tuxtepec - Palomares)	MEX-179
20 Santiago Pinotepa Nacional - Salina Cruz	MEX-200
21 Tapanatepec - Talismán	MEX-200
22 Tapanatepec - Tuxtla Gutiérrez	MEX-190
23 Tehuacán - Huajuapán de León	MEX-125
24 Tuxtepec - Ent. Palomares	MEX-147
25 Tuxtepec - T. C. (Oaxaca - Tehuantepec)	MEX-175
26 Yucudaa - Santiago Pinotepa Nacional	MEX-125

---RED FEDERAL DE CUOTA---

27 Cuacnopalan - Oaxaca (Cuota)	MEX-135D
28 Mitla - Tehuantepec (Cuota)	MEX-190D
29 Salina Cruz - La Ventosa (Cuota)	MEX-185D

---RED ESTATAL LIBRE---

30 Cd. Ixtepec - Guevea de Humboldt	OAX
31 El Zapote - Copalita	OAX
32 Huajuapán de León - El Carrizal	OAX
33 Loma Bonita - Mixtán	OAX
34 Ramal a Reforma de Pineda	OAX
35 Ramal a Unión Hidalgo	OAX
36 San Antonio - Puerto Ángel	OAX

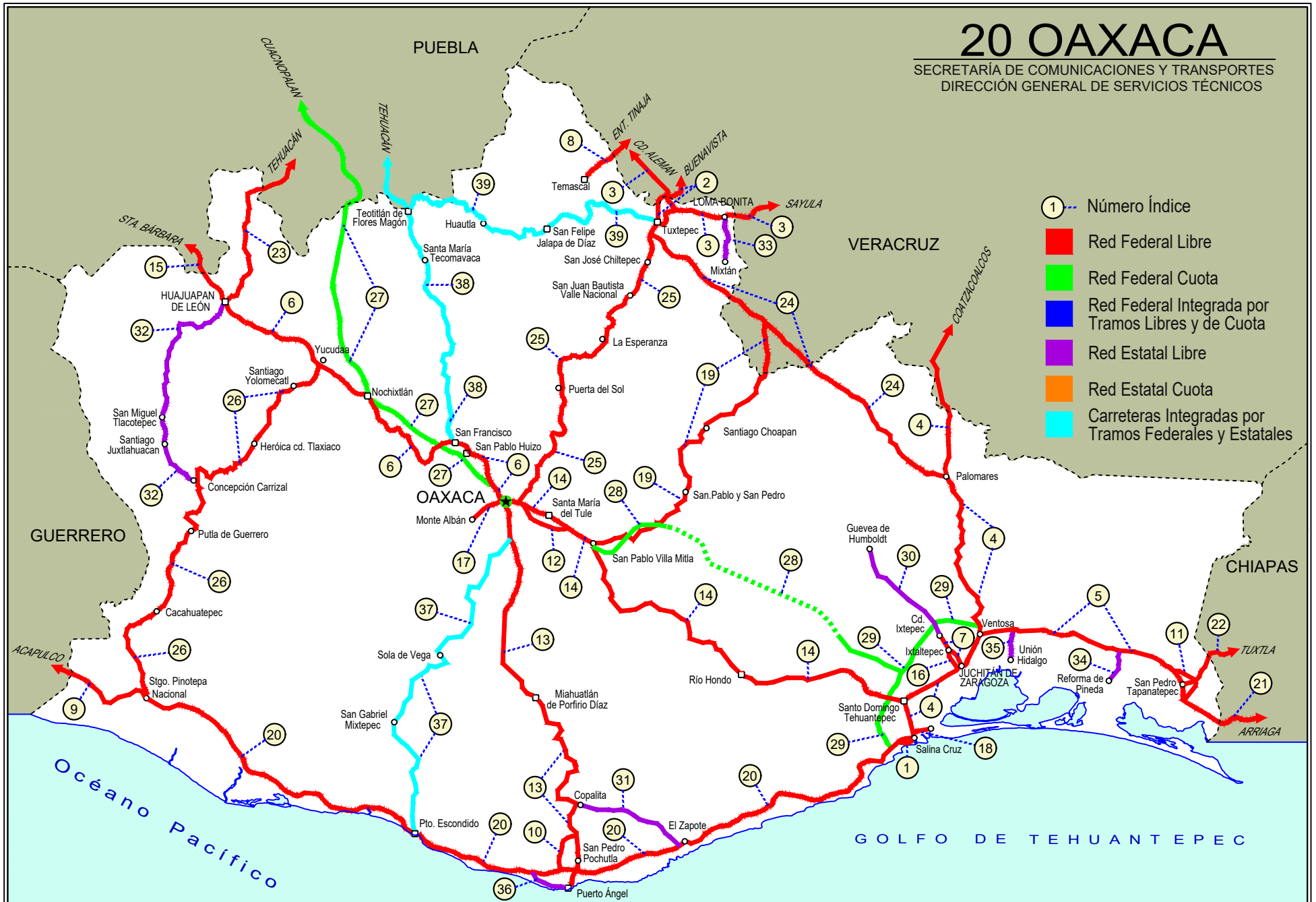
---CARRETERAS INTEGRADAS POR TRAMOS FEDERALES Y ESTATALES---

37 T. C. (Oaxaca - Puerto Ángel) - Puerto Escondido	MEX-OAX-161
38 Tehuacán - Huitzo	PUE-MEX-135
39 Teotitlán de Flores Magón - Tuxtepec	OAX-PUE-MEX-182

20 OAXACA

SECRETARÍA DE COMUNICACIONES Y TRANSPORTES
DIRECCIÓN GENERAL DE SERVICIOS TÉCNICOS

- ① --- Número Índice
- Red Federal Libre
- Red Federal Cuota
- Red Federal Integrada por Tramos Libres y de Cuota
- Red Estatal Libre
- Red Estatal Cuota
- Carreteras Integradas por Tramos Federales y Estatales



OAXACA

1 CARR: Acceso al Puerto Salina Cruz

CLAVE:

RUTA: MEX-090

AÑO: 2021

LUGAR	ESTACION				CLASIFICACION VEHICULAR EN PORCIENTO													COORDENADAS		
	KM	TE	SC	TDPA	M	A	B	C2	C3	T3S2	T3S3	T3S2R4	OTROS	A	B	C	K'	D	LATITUD	LONGITUD
T. C. Santiago Pinotepa Nacional - Salina Cruz	0.00	3	0	2573	4.5	88.4	1.0	4.1	1.0	0.5	0.3	0.1	0.1	92.9	1.0	6.1	0.073	0.514	16.177484	-95.217703
Salina Cruz	3.80																			

2 CARR: Buenavista - Tuxtepec

CLAVE: 00624

RUTA: MEX-175

AÑO: 2021

LUGAR	ESTACION				CLASIFICACION VEHICULAR EN PORCIENTO													COORDENADAS		
	KM	TE	SC	TDPA	M	A	B	C2	C3	T3S2	T3S3	T3S2R4	OTROS	A	B	C	K'	D	LATITUD	LONGITUD
T. C. Paso del Toro - Acayucan	0.00	3	0	1360	5.9	75.9	1.3	10.5	3.7	2.1	0.5	0.1	0.0	81.8	1.3	16.9	0.089	0.500	18.713414	-95.637965
Puente Tlacotalpan	1.55	2	0	1426	10.0	81.9	2.5	2.6	2.1	0.7	0.1	0.0	0.1	91.9	2.5	5.6	0.085	0.500	18.704579	-95.641360
Tlacotalpan	18.00	1	0	1750	12.4	68.8	1.1	10.4	4.6	2.1	0.4	0.1	0.1	81.2	1.1	17.7	0.084	0.503	18.614754	-95.645105
Tlacotalpan	18.00	3	0	2113	14.5	71.5	1.0	11.4	0.3	0.9	0.2	0.1	0.1	86.0	1.0	13.0	0.082	0.502	18.616431	-95.680717
Carlos A. Carrillo	56.00	1	0	4592	18.8	70.2	0.7	5.3	0.3	3.1	1.2	0.2	0.2	89.0	0.7	10.3	0.074	0.521	18.380247	-95.742944
Cosamaloapan	60.00	1	0	14155	36.6	60.8	0.3	0.9	0.5	0.3	0.1	0.4	0.1	97.4	0.3	2.3	0.086	0.501	18.365441	-95.776832
Cosamaloapan	60.00	3	0	8004	25.3	68.8	1.7	1.6	1.3	0.6	0.1	0.4	0.2	94.1	1.7	4.2	0.077	0.507	18.351469	-95.806844
T. C. La Tinaja - Santa Cruz	107.00	1	0	3818	5.8	78.6	1.3	8.3	1.6	2.8	0.5	0.9	0.2	84.4	1.3	14.3	0.081	0.502	18.168665	-96.088334
T. C. Cd. Alemán - Sayula	108.92	1	0	3674	5.2	76.7	0.9	11.8	1.0	3.3	0.4	0.4	0.3	81.9	0.9	17.2	0.075	0.513	18.168436	-96.096854
T. C. Cd. Alemán - Sayula	108.92	3	0	6129	9.3	69.7	3.3	8.3	2.1	2.2	0.7	4.2	0.2	79.0	3.3	17.7	0.075	0.500	18.168773	-96.101219
Lim. Edos. Term. Ver. Ppia. Oax.	115.00																			
Puente Caracol	117.20	2	0	6253	9.0	72.0	5.1	3.7	2.5	2.3	0.4	4.9	0.1	81.0	5.1	13.9	0.085	0.500	18.133084	-96.136714
Tuxtepec	121.25	1	1	5918	9.0	70.1	3.1	7.8	2.0	2.5	0.8	4.4	0.3	79.1	3.1	17.8	0.089	0.501	18.106138	-96.133872
Tuxtepec	121.25	1	2	5943	9.3	69.7	3.4	8.1	2.1	2.3	0.7	4.2	0.2	79.0	3.4	17.6	0.084	0.501	18.106191	-96.133798

3 CARR: Cd. Alemán - Sayula

CLAVE: 00301

RUTA: MEX-145

AÑO: 2021

LUGAR	ESTACION				CLASIFICACION VEHICULAR EN PORCIENTO													COORDENADAS		
	KM	TE	SC	TDPA	M	A	B	C2	C3	T3S2	T3S3	T3S2R4	OTROS	A	B	C	K'	D	LATITUD	LONGITUD
Cd. Alemán	0.00	3	0	7388	12.6	65.5	3.0	7.8	2.5	4.1	0.4	4.0	0.1	78.1	3.0	18.9	0.065	0.521	18.181663	-96.094027
Lim. Edos. Term. Ver. Ppia. Oax.	2.80																			
Puente Papaloapan	3.50	2	0	2158	12.9	64.0	3.4	6.6	6.2	4.5	0.8	1.4	0.2	76.9	3.4	19.7	0.076	0.500	18.159601	-96.096694
T. Der. Tuxtepec	9.36	3	0	3421	4.4	73.5	2.7	6.6	2.7	5.0	1.3	3.0	0.8	77.9	2.7	19.4	0.089	0.519	18.118374	-96.061639
T. Izq. Loma Bonita	30.00	1	0	4643	4.6	74.6	2.3	5.9	2.3	5.6	1.6	2.9	0.2	79.2	2.3	18.5	0.067	0.518	18.094835	-95.880893
T. Izq. Loma Bonita	30.00	3	0	4206	5.7	74.0	2.4	6.3	3.3	4.2	1.8	2.1	0.2	79.7	2.4	17.9	0.090	0.521	18.096478	-95.868855
Lim. Edos. Term. Oax. Ppia. Ver.	34.40																			
T. Der. Villa Azueta	41.50	1	0	4184	9.9	68.3	1.9	10.4	1.7	6.1	0.5	0.9	0.3	78.2	1.9	19.9	0.077	0.518	18.091273	-95.781217
T. Izq. Tesechoacán	56.70	1	0	3888	8.4	66.0	2.7	11.3	2.5	7.1	0.7	1.1	0.2	74.4	2.7	22.9	0.084	0.515	18.127756	-95.655383

OAXACA

3 CARR: Cd. Alemán - Sayula

CLAVE: 00301

RUTA: MEX-145

AÑO: 2021

LUGAR	ESTACION				CLASIFICACION VEHICULAR EN PORCIENTO										COORDENADAS					
	KM	TE	SC	TDPA	M	A	B	C2	C3	T3S2	T3S3	T3S2R4	OTROS	A	B	C	K'	D	LATITUD	LONGITUD
X. C. Santiago Tuxtla - Playa Vicente	71.40	1	0	3862	10.0	66.6	2.6	10.3	2.4	5.4	1.2	1.4	0.1	76.6	2.6	20.8	0.069	0.506	18.068122	-95.532836
X. C. Santiago Tuxtla - Playa Vicente	71.40	3	0	4083	10.1	66.0	2.4	10.1	2.6	5.4	1.0	2.0	0.4	76.1	2.4	21.5	0.076	0.512	18.066252	-95.527803
San Juan Evangelista	118.35	1	0	3255	7.2	75.6	2.6	3.6	2.8	4.6	0.8	2.3	0.5	82.8	2.6	14.6	0.079	0.524	17.915066	-95.145672
Sayula de Alemán	136.40	1	0	5286	7.1	76.4	2.3	3.3	2.6	4.5	0.9	2.4	0.5	83.5	2.3	14.2	0.093	0.543	17.887493	-94.964935

4 CARR: Coatzacoalcos - Salina Cruz

CLAVE: 00147

RUTA: MEX-185

AÑO: 2021

LUGAR	ESTACION				CLASIFICACION VEHICULAR EN PORCIENTO										COORDENADAS					
	KM	TE	SC	TDPA	M	A	B	C2	C3	T3S2	T3S3	T3S2R4	OTROS	A	B	C	K'	D	LATITUD	LONGITUD
Coatzacoalcos	0.00	3	1	11769	3.2	81.4	4.9	5.4	1.5	1.3	0.7	0.6	1.0	84.6	4.9	10.5	0.080	0.508	18.075473	-94.475046
Coatzacoalcos	0.00	3	2	12135	3.2	80.4	4.9	6.0	1.6	1.4	0.9	0.6	1.0	83.6	4.9	11.5	0.087	0.508	18.085721	-94.467319
T. C. Nuevo Teapa - Cosoleacaque	21.00	1	1	10544	2.8	84.4	4.2	4.4	1.2	1.0	0.6	0.4	1.0	87.2	4.2	8.6	0.092	0.505	18.026843	-94.535320
T. C. Nuevo Teapa - Cosoleacaque	21.00	1	2	10324	2.8	83.0	4.6	5.1	1.4	1.1	0.6	0.4	1.0	85.8	4.6	9.6	0.080	0.505	18.027074	-94.534002
Minatitlán	21.60	3	1	15939	8.2	85.0	1.2	2.8	1.4	0.6	0.2	0.5	0.1	93.2	1.2	5.6	0.065	0.511	17.997784	-94.587412
Minatitlán	21.60	3	2	15268	8.0	84.1	1.6	2.7	1.9	0.5	0.2	0.8	0.2	92.1	1.6	6.3	0.061	0.511	17.997680	-94.587484
Cosoleacaque	31.50	1	0	12032	6.5	83.5	1.9	4.8	0.8	1.2	0.4	0.7	0.2	90.0	1.9	8.1	0.061	0.517	18.006998	-94.627504
T. Der. Soteapan	34.00	1	0	12855	7.4	83.8	1.2	4.7	1.1	0.8	0.3	0.6	0.1	91.2	1.2	7.6	0.058	0.517	17.987074	-94.658065
T. Der. Soteapan	34.00	3	0	9522	8.8	79.9	2.0	4.6	1.2	1.3	0.8	1.2	0.2	88.7	2.0	9.3	0.082	0.515	17.986615	-94.659102
Jáltipan de Morelos	38.60	3	1	4175	7.0	81.1	2.4	4.4	1.1	1.7	0.7	1.3	0.3	88.1	2.4	9.5	0.078	0.520	17.961700	-94.730889
Jáltipan de Morelos	38.60	3	2	3859	7.1	80.3	2.3	4.8	1.5	1.6	0.8	1.3	0.3	87.4	2.3	10.3	0.074	0.520	17.961616	-94.730883
Acayucan	59.60	1	1	4714	7.1	80.8	2.8	4.7	1.0	1.7	0.6	1.0	0.3	87.9	2.8	9.3	0.068	0.515	17.956194	-94.843931
Acayucan	59.60	1	2	4448	7.4	80.4	2.4	4.7	1.5	1.5	0.7	1.1	0.3	87.8	2.4	9.8	0.069	0.515	17.956113	-94.843921
Acayucan	59.60	3	1	7490	7.4	81.1	3.2	3.1	1.1	1.7	0.6	1.5	0.3	88.5	3.2	8.3	0.086	0.506	17.929652	-94.923825
Acayucan	59.60	3	2	7667	7.3	82.2	3.1	2.4	1.1	1.6	0.5	1.5	0.3	89.5	3.1	7.4	0.076	0.506	17.929254	-94.923987
Sayula de Alemán	71.00	1	1	8372	8.1	77.6	2.4	2.1	1.7	4.0	1.0	2.1	1.0	85.7	2.4	11.9	0.077	0.513	17.895964	-94.950371
Sayula de Alemán	71.00	1	2	7939	7.2	78.6	2.5	2.0	1.6	3.9	1.1	2.1	1.0	85.8	2.5	11.7	0.075	0.513	17.895902	-94.950273
Sayula de Alemán	71.00	3	0	8104	10.5	72.0	3.0	2.7	2.9	4.3	1.7	2.2	0.7	82.5	3.0	14.5	0.075	0.512	17.873288	-94.968134
Campo Nuevo	94.50	3	0	6354	9.1	73.4	3.5	1.8	1.4	5.4	1.5	2.9	1.0	82.5	3.5	14.0	0.072	0.510	17.695039	-95.075172
T. Izq. Jesús Carranza	126.80	1	0	4683	6.4	66.5	4.3	4.3	2.7	7.2	2.7	2.8	3.1	72.9	4.3	22.8	0.074	0.537	17.439447	-95.078196
T. Izq. Jesús Carranza	126.80	3	0	4681	5.9	63.8	5.1	4.5	3.3	7.3	2.7	5.2	2.2	69.7	5.1	25.2	0.069	0.527	17.433059	-95.076761
Lim. Edos. Term. Ver. Ppia. Oax.	139.90																			
T. Der. Tuxtepec	166.20	1	0	4952	8.7	61.6	5.0	7.3	2.7	7.0	2.2	4.4	1.1	70.3	5.0	24.7	0.072	0.514	17.150680	-95.065164
T. Der. Tuxtepec	166.20	3	0	5965	7.4	67.4	4.1	7.5	2.1	5.6	1.9	3.8	0.2	74.8	4.1	21.1	0.066	0.512	17.131719	-95.059879
T. Der. Estación Mogoñe	182.15	1	0	6024	5.4	66.6	4.8	6.4	2.5	6.9	2.0	4.5	0.9	72.0	4.8	23.2	0.066	0.508	17.018747	-95.008657
T. Der. Matías Romero	196.00	1	0	9524	7.8	72.0	2.3	4.3	2.9	6.0	1.2	2.6	0.9	79.8	2.3	17.9	0.075	0.504	16.883453	-95.020330

OAXACA

4 CARR : Coatzacoalcos - Salina Cruz

CLAVE: 00147

RUTA : MEX-185

AÑO : 2021

LUGAR	ESTACION				CLASIFICACION VEHICULAR EN PORCIENTO										COORDENADAS					
	KM	TE	SC	TDPA	M	A	B	C2	C3	T3S2	T3S3	T3S2R4	OTROS	A	B	C	K'	D	LATITUD	LONGITUD
T. Der. Barrio de La Soledad	203.05	1	0	7632	3.5	70.1	3.4	6.7	2.0	7.3	1.9	4.2	0.9	73.6	3.4	23.0	0.065	0.505	16.818041	-95.033552
T. Der. Barrio de La Soledad	203.05	3	0	5541	3.5	61.8	5.0	6.3	2.3	9.5	4.7	6.0	0.9	65.3	5.0	29.7	0.060	0.518	16.812381	-95.032520
El Ajal	211.60	1	0	4981	9.9	59.6	3.2	6.9	2.3	6.7	6.1	5.2	0.1	69.5	3.2	27.3	0.074	0.508	16.774112	-95.018786
El Mezquite	222.64	1	0	4627	5.0	63.7	5.3	10.7	2.0	5.6	4.1	2.8	0.8	68.7	5.3	26.0	0.086	0.501	16.705109	-94.964075
T. C. La Ventosa - Salina Cruz (Cuota)	236.00	1	0	5910	2.1	63.1	4.9	9.3	2.6	8.3	4.1	5.2	0.4	65.2	4.9	29.9	0.066	0.511	16.596469	-94.945190
T. C. La Ventosa - Salina Cruz (Cuota)	236.00	3	0	3156	2.1	78.2	4.5	9.0	1.8	1.5	1.8	0.9	0.2	80.3	4.5	15.2	0.075	0.501	16.576449	-94.944981
T. Izq. San Pedro Tapanatepec (2° Acceso)	241.70	1	0	3367	3.8	82.1	2.1	6.4	1.8	1.4	1.6	0.6	0.2	85.9	2.1	12.0	0.075	0.508	16.558129	-94.948406
T. Izq. San Pedro Tapanatepec (2° Acceso)	241.70	3	0	7966	2.2	81.5	3.3	8.5	2.5	0.8	0.8	0.3	0.1	83.7	3.3	13.0	0.077	0.514	16.542857	-94.953393
Juchitán de Zaragoza	255.55	1	0	9738	5.7	84.7	1.9	4.8	1.2	0.7	0.6	0.3	0.1	90.4	1.9	7.7	0.080	0.503	16.454184	-95.002068
Juchitán de Zaragoza	255.55	3	1	8920	11.5	79.9	1.3	5.1	0.8	0.5	0.7	0.1	0.1	91.4	1.3	7.3	0.082	0.502	16.437522	-95.032277
Juchitán de Zaragoza	255.55	3	2	8865	10.5	80.3	1.4	5.6	0.8	0.5	0.7	0.1	0.1	90.8	1.4	7.8	0.071	0.502	16.437459	-95.032208
Santo Domingo Tehuantepec	283.95	1	1	3815	3.2	86.1	2.2	5.0	0.8	1.0	0.8	0.5	0.4	89.3	2.2	8.5	0.105	0.585	16.347415	-95.209397
Santo Domingo Tehuantepec	283.95	1	2	3884	3.1	86.7	2.1	4.9	0.7	1.0	0.8	0.4	0.3	89.8	2.1	8.1	0.101	0.585	16.347344	-95.209384
Santo Domingo Tehuantepec	283.95	3	1	12595	4.2	87.1	1.1	4.0	0.7	1.1	0.9	0.5	0.4	91.3	1.1	7.6	0.080	0.513	16.313245	-95.237019
Santo Domingo Tehuantepec	283.95	3	2	13275	4.2	87.2	1.1	3.9	0.6	1.2	0.9	0.5	0.4	91.4	1.1	7.5	0.077	0.513	16.313290	-95.236912
Salina Cruz	302.35	1	1	11139	2.5	87.1	0.9	6.0	1.0	0.7	0.7	0.6	0.5	89.6	0.9	9.5	0.075	0.516	16.236607	-95.213171
Salina Cruz	302.35	1	2	11886	3.4	88.1	0.8	4.7	0.8	0.8	0.5	0.5	0.4	91.5	0.8	7.7	0.071	0.516	16.236640	-95.213094

5 CARR : Ent. La Ventosa - San Pedro Tapanatepec

CLAVE: 20059

RUTA : MEX-190

AÑO : 2021

LUGAR	ESTACION				CLASIFICACION VEHICULAR EN PORCIENTO										COORDENADAS					
	KM	TE	SC	TDPA	M	A	B	C2	C3	T3S2	T3S3	T3S2R4	OTROS	A	B	C	K'	D	LATITUD	LONGITUD
La Ventosa	0.00	3	0	3633	4.3	84.9	2.6	6.1	0.8	0.5	0.3	0.3	0.2	89.2	2.6	8.2	0.078	0.505	16.552069	-94.939578
T. C. La Ventosa - Salina Cruz (Cuota)	7.20	3	0	5592	3.9	79.5	2.6	8.7	0.9	2.3	1.1	0.3	0.7	83.4	2.6	14.0	0.077	0.524	16.571547	-94.885028
T. Der. Unión Hidalgo	14.55	3	0	4609	3.9	72.7	2.7	5.3	1.6	7.0	3.0	2.9	0.9	76.6	2.7	20.7	0.083	0.504	16.573838	-94.805612
T. Izq. Nitepec	38.01	3	0	3975	2.4	63.5	4.0	6.0	2.4	10.7	4.9	5.5	0.6	65.9	4.0	30.1	0.070	0.513	16.554496	-94.600530
T. Der. Reforma de Pineda	59.80	1	0	3968	3.1	64.6	4.3	5.3	3.0	9.4	3.4	6.0	0.9	67.7	4.3	28.0	0.063	0.517	16.501902	-94.442965
T. Der. Reforma de Pineda	59.80	3	0	4684	5.8	59.7	4.3	8.6	3.8	8.3	3.6	5.0	0.9	65.5	4.3	30.2	0.067	0.509	16.493324	-94.420902
Santo Domingo Zanatepec	68.25	3	0	4522	2.7	65.7	3.8	8.2	3.3	8.0	3.4	4.1	0.8	68.4	3.8	27.8	0.060	0.527	16.476438	-94.342711
San Pedro Tapanatepec	91.80	1	0	1906	7.9	80.2	1.3	9.6	0.1	0.3	0.2	0.2	0.2	88.1	1.3	10.6	0.087	0.504	16.384297	-94.201025

OAXACA

6 CARR: Huajuapán de León - Oaxaca

CLAVE: 20056

RUTA: MEX-190

AÑO: 2021

LUGAR	ESTACION				CLASIFICACION VEHICULAR EN PORCIENTO										COORDENADAS					
	KM	TE	SC	TDPA	M	A	B	C2	C3	T3S2	T3S3	T3S2R4	OTROS	A	B	C	K'	D	LATITUD	LONGITUD
Huajuapán de León	0.00																			
T. Izq. Tehuacán	1.35	1	0	14514	3.7	82.2	0.4	3.3	0.4	8.1	0.9	0.5	0.5	85.9	0.4	13.7	0.061	0.515	17.812983	-97.766808
T. Izq. Tehuacán	1.35	3	0	12343	7.7	84.3	0.3	6.3	0.4	0.4	0.4	0.1	0.1	92.0	0.3	7.7	0.078	0.507	17.810506	-97.760056
Tamazulapán	38.61	1	0	3363	6.2	69.5	7.2	11.9	1.4	1.5	1.5	0.4	0.4	75.7	7.2	17.1	0.067	0.514	17.686514	-97.585490
Tamazulapán	38.61	3	0	3245	4.6	80.5	0.4	12.5	0.4	0.5	0.3	0.4	0.4	85.1	0.4	14.5	0.079	0.509	17.671509	-97.561454
T. Izq. Santiago Tejuapán	49.62	3	0	3120	2.5	74.6	2.8	13.0	2.0	2.9	1.4	0.4	0.4	77.1	2.8	20.1	0.082	0.502	17.655842	-97.471700
T. Der. Tlaxiaco	61.43	3	0	3161	2.2	77.0	2.0	12.2	1.6	2.9	1.5	0.3	0.3	79.2	2.0	18.8	0.080	0.523	17.576028	-97.420760
Asunción Nochixtlán	90.40	1	0	7798	3.9	86.5	0.9	5.7	1.0	0.9	0.6	0.2	0.3	90.4	0.9	8.7	0.070	0.507	17.464961	-97.259207
T. Izq. Tehuacán	161.73	1	0	807	4.5	88.2	0.2	4.4	1.1	0.5	0.2	0.9	0.0	92.7	0.2	7.1	0.074	0.505	17.285200	-96.912657
T. Izq. Tehuacán	161.73	3	0	6633	11.2	84.0	0.7	2.3	0.7	0.7	0.1	0.2	0.1	95.2	0.7	4.1	0.087	0.504	17.284854	-96.900119
T. Der. Tlaltinango	170.29	1	0	7473	12.7	82.3	0.6	2.2	0.9	0.6	0.2	0.3	0.2	95.0	0.6	4.4	0.078	0.510	17.249757	-96.854996
T. Der. Tlaltinango	170.29	3	0	8436	9.3	86.4	0.6	2.1	0.8	0.5	0.1	0.1	0.1	95.7	0.6	3.7	0.078	0.510	17.242124	-96.835002
T. Der. Nazareno Etla	179.23	3	1	16221	10.1	85.6	0.7	2.3	0.7	0.4	0.1	0.1	0.0	95.7	0.7	3.6	0.084	0.502	17.167109	-96.787897
T. Der. Nazareno Etla	179.23	3	2	16114	10.1	85.7	0.7	2.3	0.6	0.4	0.1	0.1	0.0	95.8	0.7	3.5	0.081	0.502	17.167176	-96.787786
T. Aut. Cuacnopalan - Oaxaca	181.80	3	1	26125	11.3	80.7	1.8	2.9	1.1	1.0	0.3	0.7	0.2	92.0	1.8	6.2	0.071	0.511	17.140386	-96.776803
T. Aut. Cuacnopalan - Oaxaca	181.80	3	2	27304	11.3	81.0	1.5	2.9	1.1	1.0	0.2	0.8	0.2	92.3	1.5	6.2	0.071	0.511	17.140374	-96.776680
Oaxaca	190.60	1	1	36477	8.9	85.9	0.6	3.1	0.5	0.4	0.4	0.1	0.1	94.8	0.6	4.6	0.080	0.516	17.099809	-96.751168
Oaxaca	190.60	1	2	39195	8.3	86.5	0.8	3.0	0.5	0.4	0.3	0.1	0.1	94.8	0.8	4.4	0.069	0.516	17.099866	-96.751020

7 CARR: Juchitán - Ixtepec

CLAVE: 20359

RUTA: MEX-185

AÑO: 2021

LUGAR	ESTACION				CLASIFICACION VEHICULAR EN PORCIENTO										COORDENADAS					
	KM	TE	SC	TDPA	M	A	B	C2	C3	T3S2	T3S3	T3S2R4	OTROS	A	B	C	K'	D	LATITUD	LONGITUD
Juchitán de Zaragoza	0.00																			
X. C. Coatzacoalcos - Salina Cruz	0.15	3	1	8100	8.6	65.3	8.3	11.2	5.7	0.2	0.1	0.5	0.1	73.9	8.3	17.8	0.079	0.503	16.454635	-95.027749
X. C. Coatzacoalcos - Salina Cruz	0.15	3	2	8003	8.1	66.6	7.9	10.6	5.5	0.3	0.2	0.6	0.2	74.7	7.9	17.4	0.087	0.503	16.454614	-95.027861
Asunción Ixtaltepec	7.40	1	1	3766	9.5	81.3	0.7	7.5	0.7	0.1	0.2	0.0	0.0	90.8	0.7	8.5	0.072	0.501	16.503732	-95.053065
Asunción Ixtaltepec	7.40	1	2	3811	9.9	81.1	0.6	7.3	0.8	0.1	0.1	0.0	0.1	91.0	0.6	8.4	0.078	0.501	16.501679	-95.055427
Asunción Ixtaltepec	7.40	3	1	5160	9.3	86.0	0.3	1.0	1.4	0.1	0.3	1.3	0.3	95.3	0.3	4.4	0.080	0.505	16.510295	-95.065741
Asunción Ixtaltepec	7.40	3	2	5049	8.9	86.0	0.4	1.0	1.5	0.1	0.4	1.3	0.4	94.9	0.4	4.7	0.072	0.505	16.510254	-95.065805
Ixtepec	16.00	1	1	4222	7.4	84.2	1.1	6.8	0.1	0.3	0.1	0.0	0.0	91.6	1.1	7.3	0.069	0.501	16.535969	-95.079412
Ixtepec	16.00	1	2	4191	8.3	82.5	1.2	7.5	0.1	0.3	0.1	0.0	0.0	90.8	1.2	8.0	0.073	0.501	16.535919	-95.079529

OAXACA

8 CARR: La Granja - Temascal

CLAVE: 00275

RUTA: MEX-145

AÑO: 2021

LUGAR	ESTACION				CLASIFICACION VEHICULAR EN PORCIENTO												COORDENADAS			
	KM	TE	SC	TDPA	M	A	B	C2	C3	T3S2	T3S3	T3S2R4	OTROS	A	B	C	K'	D	LATITUD	LONGITUD
T. C. La Tinaja - Santa Cruz	0.00	3	0	4037	20.4	66.0	0.8	5.4	2.4	3.2	1.1	0.2	0.5	86.4	0.8	12.8	0.073	0.515	18.352780	-96.261871
Lim. Edos. Term. Ver. Ppia. Oax.	5.00																			
Temascal	23.00	1	0	3923	27.1	63.4	0.1	6.1	0.4	2.4	0.2	0.1	0.2	90.5	0.1	9.4	0.085	0.504	18.254654	-96.393383

9 CARR: Las Cruces - Pinotepa Nacional

CLAVE: 00073

RUTA: MEX-200

AÑO: 2021

LUGAR	ESTACION				CLASIFICACION VEHICULAR EN PORCIENTO												COORDENADAS			
	KM	TE	SC	TDPA	M	A	B	C2	C3	T3S2	T3S3	T3S2R4	OTROS	A	B	C	K'	D	LATITUD	LONGITUD
T. C. Chilpancingo - Acapulco	0.00	3	1	19166	8.0	86.9	0.3	2.0	0.7	1.2	0.4	0.3	0.2	94.9	0.3	4.8	0.062	0.515	16.885457	-99.831506
T. C. Chilpancingo - Acapulco	0.00	3	2	18049	8.0	86.9	0.3	2.0	0.7	1.2	0.4	0.3	0.2	94.9	0.3	4.8	0.062	0.515	16.885551	-99.831504
T. Der. Puerto Marqués	4.62	1	1	20400	8.6	86.9	0.2	2.3	0.9	0.7	0.1	0.2	0.1	95.5	0.2	4.3	0.079	0.529	16.865764	-99.810584
T. Der. Puerto Marqués	4.62	1	2	22903	8.2	86.8	0.3	2.2	1.1	0.8	0.1	0.3	0.2	95.0	0.3	4.7	0.076	0.529	16.865776	-99.810475
T. Der. Puerto Marqués	4.62	3	0	14038	6.8	85.0	0.8	4.3	1.4	0.7	0.7	0.2	0.1	91.8	0.8	7.4	0.067	0.503	16.852394	-99.799367
X. C. Puerto Marqués - La Venta (Cuota)	11.70	1	1	3756	5.2	84.6	1.3	5.4	1.0	1.2	0.8	0.3	0.2	89.8	1.3	8.9	0.079	0.510	16.830881	-99.764457
X. C. Puerto Marqués - La Venta (Cuota)	11.70	1	2	3605	5.0	84.4	1.2	5.5	1.3	1.2	0.8	0.5	0.1	89.4	1.2	9.4	0.078	0.510	16.831028	-99.764548
X. C. Puerto Marqués - La Venta (Cuota)	11.70	3	1	4627	7.4	80.3	1.2	5.9	1.9	1.5	1.1	0.4	0.3	87.7	1.2	11.1	0.081	0.501	16.830245	-99.753121
X. C. Puerto Marqués - La Venta (Cuota)	11.70	3	2	4614	7.4	80.6	1.0	5.9	1.5	1.3	1.4	0.5	0.4	88.0	1.0	11.0	0.080	0.501	16.830357	-99.753102
San Marcos	58.90	1	0	6070	8.8	77.5	1.8	6.5	1.5	2.1	1.0	0.6	0.2	86.3	1.8	11.9	0.086	0.502	16.779732	-99.410876
San Marcos	58.90	3	0	4757	4.9	80.2	1.3	6.8	1.9	2.4	1.3	0.3	0.9	85.1	1.3	13.6	0.089	0.506	16.791419	-99.365277
Nexpa	84.96	3	0	5013	4.3	80.9	1.8	6.0	2.0	2.2	1.0	1.2	0.6	85.2	1.8	13.0	0.083	0.506	16.782193	-99.205362
Cruz Grande	97.00	3	0	5063	4.6	81.4	1.4	6.3	1.8	2.4	1.2	0.7	0.2	86.0	1.4	12.6	0.078	0.505	16.701646	-99.102924
T. Izq. Copala (1º Acceso)	117.50	1	0	6377	3.3	83.5	1.8	7.8	1.1	1.4	0.7	0.2	0.2	86.8	1.8	11.4	0.066	0.511	16.609163	-98.989462
T. Izq. Copala (1º Acceso)	117.50	3	0	6307	3.8	83.0	1.6	8.2	0.8	1.3	0.8	0.3	0.2	86.8	1.6	11.6	0.069	0.513	16.603394	-98.966097
T. Der. Playa Ventura	124.00	1	0	3685	3.4	78.4	2.9	6.3	2.4	3.4	1.5	1.3	0.4	81.8	2.9	15.3	0.084	0.503	16.593802	-98.925749
T. Der. Playa Ventura	124.00	3	0	3296	3.1	79.6	3.1	6.7	1.9	2.9	1.3	1.0	0.4	82.7	3.1	14.2	0.068	0.504	16.586461	-98.902433
Marquelia	136.80	1	0	5551	7.0	79.3	2.7	5.7	1.9	1.9	0.9	0.3	0.3	86.3	2.7	11.0	0.066	0.509	16.580144	-98.835531
Marquelia	136.80	3	0	3149	2.4	82.4	2.8	6.4	2.0	2.5	1.1	0.2	0.2	84.8	2.8	12.4	0.080	0.506	16.581803	-98.796566
Juchitán	158.00	3	0	4379	3.6	80.6	2.9	6.4	1.9	2.6	1.2	0.5	0.3	84.2	2.9	12.9	0.085	0.502	16.640207	-98.598320
T. Izq. Ometepec	175.88	1	0	4731	3.3	79.5	2.2	8.6	2.3	1.8	0.9	1.0	0.4	82.8	2.2	15.0	0.068	0.516	16.655216	-98.503314
T. Izq. Ometepec	175.88	3	0	3013	4.9	80.5	2.4	6.6	1.8	2.2	1.1	0.2	0.3	85.4	2.4	12.2	0.076	0.518	16.648658	-98.495482
Cuajinicuilapa	200.60	1	0	2870	5.1	80.5	2.1	5.6	1.9	2.9	1.2	0.4	0.3	85.6	2.1	12.3	0.078	0.506	16.475724	-98.430457
Cuajinicuilapa	200.60	3	0	2240	3.5	82.8	1.7	7.5	1.4	1.6	0.6	0.4	0.5	86.3	1.7	12.0	0.063	0.515	16.462404	-98.393877
Lim. Edos. Term. Gro. Ppia. Oax.	207.80																			
T. Izq. San Pedro Orizaba	215.00	3	0	2048	3.9	76.6	3.1	7.7	3.1	3.8	1.6	0.1	0.1	80.5	3.1	16.4	0.083	0.501	16.443095	-98.343548
T. Izq. Tlaxiaco	245.47	1	0	3262	7.2	76.1	1.9	6.9	1.9	3.8	1.1	0.5	0.6	83.3	1.9	14.8	0.082	0.502	16.379283	-98.094111

OAXACA

9 CARR: Las Cruces - Pinotepa Nacional

CLAVE: 00073

RUTA: MEX-200

AÑO: 2021

LUGAR	ESTACION				CLASIFICACION VEHICULAR EN PORCIENTO													COORDENADAS			
	KM	TE	SC	TDPA	M	A	B	C2	C3	T3S2	T3S3	T3S2R4	OTROS	A	B	C	K'	D	LATITUD	LONGITUD	
T. Izq. Tlaxiaco	245.47	3	0	6452	6.8	79.9	1.5	4.7	1.3	3.0	1.5	0.4	0.9	86.7	1.5	11.8	0.080	0.506	16.362485	-98.083431	
Pinotepa Nacional	252.50																				

10 CARR: Libramiento de Pochutla

CLAVE:

RUTA: MEX-200

AÑO: 2021

LUGAR	ESTACION				CLASIFICACION VEHICULAR EN PORCIENTO													COORDENADAS		
	KM	TE	SC	TDPA	M	A	B	C2	C3	T3S2	T3S3	T3S2R4	OTROS	A	B	C	K'	D	LATITUD	LONGITUD
T. C. Santiago Pinotepa Nacional - Salina Cruz	0.00	3	0	1206	21.3	65.0	0.9	10.5	1.5	0.4	0.3	0.0	0.1	86.3	0.9	12.8	0.102	0.529	15.735309	-96.480872
Pio Macaya	2.40	1	0	1226	23.5	60.7	1.4	10.9	1.6	1.3	0.4	0.1	0.1	84.2	1.4	14.4	0.122	0.508	15.748153	-96.477404
Pio Macaya	2.40	3	0	961	23.7	61.2	1.3	10.6	1.5	1.2	0.3	0.1	0.1	84.9	1.3	13.8	0.124	0.508	15.755823	-96.475618
T. C. Oaxaca - Puerto Ángel	5.20	1	0	1047	20.9	69.9	0.8	5.2	1.3	1.3	0.3	0.1	0.2	90.8	0.8	8.4	0.102	0.513	15.762478	-96.466251

11 CARR: Libramiento de San Pedro Tapanatepec

CLAVE:

RUTA: MEX-200

AÑO: 2021

LUGAR	ESTACION				CLASIFICACION VEHICULAR EN PORCIENTO													COORDENADAS			
	KM	TE	SC	TDPA	M	A	B	C2	C3	T3S2	T3S3	T3S2R4	OTROS	A	B	C	K'	D	LATITUD	LONGITUD	
T. C. Ent. La Ventosa - San Pedro Tapanatepec	0.00																				
T. C. Tapanatepec - Tuxtla Gutiérrez	3.35	1	0	2624	3.5	68.8	3.3	6.4	3.0	7.4	3.3	3.4	0.9	72.3	3.3	24.4	0.073	0.500	16.377599	-94.184893	

12 CARR: Libramiento de Santa María del Tule

CLAVE:

RUTA: MEX-190

AÑO: 2021

LUGAR	ESTACION				CLASIFICACION VEHICULAR EN PORCIENTO													COORDENADAS		
	KM	TE	SC	TDPA	M	A	B	C2	C3	T3S2	T3S3	T3S2R4	OTROS	A	B	C	K'	D	LATITUD	LONGITUD
T. C. Oaxaca - Tehuantepec (Poniente)	0.00	3	0	19865	3.6	85.5	1.0	4.6	1.0	2.7	0.6	0.5	0.5	89.1	1.0	9.9	0.069	0.502	17.046943	-96.652906
T. C. Oaxaca - Tehuantepec (Oriente)	5.80	1	0	17920	4.1	87.3	0.9	3.6	0.8	1.9	0.6	0.5	0.3	91.4	0.9	7.7	0.077	0.511	17.036658	-96.625970

13 CARR: Oaxaca - Puerto Ángel

CLAVE: 20091

RUTA: MEX-175

AÑO: 2021

LUGAR	ESTACION				CLASIFICACION VEHICULAR EN PORCIENTO													COORDENADAS		
	KM	TE	SC	TDPA	M	A	B	C2	C3	T3S2	T3S3	T3S2R4	OTROS	A	B	C	K'	D	LATITUD	LONGITUD
Oaxaca	0.00	3	1	33101	8.0	84.6	0.3	4.8	0.5	0.6	1.0	0.1	0.1	92.6	0.3	7.1	0.062	0.524	17.039152	-96.717975
Oaxaca	0.00	3	2	36752	7.9	84.7	0.4	4.6	0.5	0.6	1.0	0.1	0.2	92.6	0.4	7.0	0.064	0.524	17.039200	-96.717867
T. Der. Aeropuerto	10.46	1	1	23692	8.0	88.0	0.4	2.5	0.4	0.2	0.1	0.3	0.1	96.0	0.4	3.6	0.084	0.509	17.007216	-96.712917
T. Der. Aeropuerto	10.46	1	2	22819	7.1	88.8	0.4	2.6	0.4	0.2	0.1	0.3	0.1	95.9	0.4	3.7	0.078	0.509	17.007216	-96.712817
T. Der. Puerto Escondido	19.07	1	1	16520	9.5	85.2	0.5	3.8	0.5	0.3	0.1	0.1	0.0	94.7	0.5	4.8	0.071	0.506	16.933863	-96.704417

OAXACA

13 CARR: Oaxaca - Puerto Ángel

CLAVE: 20091

RUTA: MEX-175

AÑO: 2021

LUGAR	ESTACION				CLASIFICACION VEHICULAR EN PORCIENTO													COORDENADAS		
	KM	TE	SC	TDPA	M	A	B	C2	C3	T3S2	T3S3	T3S2R4	OTROS	A	B	C	K'	D	LATITUD	LONGITUD
T. Der. Puerto Escondido	19.07	1	2	16129	9.4	85.3	0.5	3.8	0.5	0.3	0.1	0.1	0.0	94.7	0.5	4.8	0.072	0.506	16.933874	-96.704284
T. Der. Puerto Escondido	19.07	3	0	18940	10.2	73.3	0.5	6.4	0.8	6.6	1.1	0.7	0.4	83.5	0.5	16.0	0.073	0.506	16.927012	-96.702453
Ocotlán	35.67	3	0	7374	10.9	86.0	0.3	1.8	0.4	0.2	0.0	0.2	0.2	96.9	0.3	2.8	0.095	0.515	16.767339	-96.676312
Ejutla de Crespo	64.04	1	0	5973	7.8	80.4	0.4	6.9	1.3	2.3	0.4	0.1	0.4	88.2	0.4	11.4	0.075	0.504	16.605919	-96.738126
Ejutla de Crespo	64.04	3	0	4491	2.2	82.6	0.4	12.1	2.1	0.4	0.2	0.0	0.0	84.8	0.4	14.8	0.077	0.514	16.516276	-96.736540
Miahuatlán de Porfirio Díaz	100.64	3	0	4292	1.9	87.2	0.7	8.5	1.3	0.2	0.2	0.0	0.0	89.1	0.7	10.2	0.068	0.501	16.286667	-96.583910
San Miguel Suchixtepec	144.00	1	0	1770	1.9	81.9	1.1	12.2	1.4	1.3	0.2	0.0	0.0	83.8	1.1	15.1	0.064	0.523	16.103136	-96.471899
Candelaria Loxicha	195.00	1	0	1646	2.4	85.2	1.1	9.4	1.0	0.7	0.2	0.0	0.0	87.6	1.1	11.3	0.059	0.503	15.930879	-96.481485
San Pedro Pochutla	238.00	1	0	4651	7.6	87.0	0.3	4.4	0.4	0.1	0.2	0.0	0.0	94.6	0.3	5.1	0.071	0.503	15.764537	-96.463677
Puerto Ángel	245.40	1	0	3608	13.0	83.1	0.1	3.0	0.1	0.1	0.6	0.0	0.0	96.1	0.1	3.8	0.084	0.516	15.676164	-96.481851

14 CARR: Oaxaca - Tehuantepec

CLAVE: 20057

RUTA: MEX-190

AÑO: 2021

LUGAR	ESTACION				CLASIFICACION VEHICULAR EN PORCIENTO													COORDENADAS		
	KM	TE	SC	TDPA	M	A	B	C2	C3	T3S2	T3S3	T3S2R4	OTROS	A	B	C	K'	D	LATITUD	LONGITUD
Oaxaca	0.00	3	1	28193	8.8	85.6	0.8	3.3	0.5	0.3	0.2	0.3	0.2	94.4	0.8	4.8	0.081	0.505	17.066714	-96.684203
Oaxaca	0.00	3	2	27542	8.7	85.1	0.8	3.8	0.6	0.3	0.2	0.3	0.2	93.8	0.8	5.4	0.078	0.505	17.066885	-96.684149
T. Izq. Guelatao	8.69	3	1	19246	9.0	85.6	0.7	3.3	0.6	0.4	0.2	0.1	0.1	94.6	0.7	4.7	0.077	0.500	17.063978	-96.675063
T. Izq. Guelatao	8.69	3	2	19211	8.9	85.8	0.6	3.3	0.6	0.4	0.2	0.1	0.1	94.7	0.6	4.7	0.068	0.500	17.064110	-96.674870
Libramiento Santa María el Tule	12.00	1	1	18488	6.8	89.2	0.6	2.4	0.5	0.2	0.0	0.3	0.0	96.0	0.6	3.4	0.071	0.509	17.062735	-96.670246
Libramiento Santa María el Tule	12.00	1	2	19199	6.9	89.0	0.7	2.3	0.6	0.2	0.0	0.3	0.0	95.9	0.7	3.4	0.063	0.509	17.062578	-96.670298
Santa María El Tule	13.90	1	1	8025	6.0	89.4	0.4	2.7	0.3	0.5	0.4	0.2	0.1	95.4	0.4	4.2	0.077	0.517	17.048840	-96.641971
Santa María El Tule	13.90	1	2	7509	6.0	88.9	0.5	3.0	0.3	0.6	0.3	0.3	0.1	94.9	0.5	4.6	0.094	0.517	17.048958	-96.641913
Santa María El Tule	13.90	3	0	5387	11.0	81.7	1.3	4.3	0.5	1.2	0.0	0.0	0.0	92.7	1.3	6.0	0.083	0.514	17.042983	-96.628517
T. Izq. Teotitlán del Valle	26.50	1	0	15394	5.9	86.4	0.8	4.4	1.0	0.6	0.4	0.3	0.2	92.3	0.8	6.9	0.070	0.504	16.997169	-96.529219
T. Izq. Teotitlán del Valle	26.50	3	0	14416	6.3	85.7	1.2	4.7	0.8	0.7	0.3	0.2	0.1	92.0	1.2	6.8	0.071	0.507	16.993436	-96.523565
T. Der. Tlacolula	33.64	1	0	16154	7.8	82.8	1.0	6.4	0.7	0.5	0.4	0.3	0.1	90.6	1.0	8.4	0.071	0.510	16.970397	-96.489043
T. Der. Tlacolula	33.64	3	1	4882	3.5	85.0	1.8	5.9	1.5	0.9	0.7	0.3	0.4	88.5	1.8	9.7	0.076	0.504	16.946952	-96.457555
T. Der. Tlacolula	33.64	3	2	4956	3.6	84.7	1.8	5.9	1.5	0.9	0.7	0.4	0.5	88.3	1.8	9.9	0.077	0.504	16.947032	-96.457519
T. Izq. Villa de Mitla	42.66	1	0	9231	5.4	83.6	1.4	5.8	1.4	1.1	0.8	0.3	0.2	89.0	1.4	9.6	0.072	0.502	16.921643	-96.407075
T. Izq. Villa de Mitla	42.66	3	0	4952	7.0	78.8	2.4	8.9	1.4	0.8	0.4	0.2	0.1	85.8	2.4	11.8	0.089	0.502	16.912476	-96.397793
San Pedro Totolapan	81.00	1	0	3377	4.8	75.9	4.4	7.4	2.1	2.3	1.6	1.0	0.5	80.7	4.4	14.9	0.084	0.514	16.672512	-96.306984
T. Izq. Nejapa de Madero	127.00	1	0	2382	3.8	74.8	3.6	6.1	7.0	2.8	1.1	0.6	0.2	78.6	3.6	17.8	0.066	0.504	16.621381	-96.037467
La Reforma	184.62	1	0	2015	4.5	73.2	5.5	8.5	2.3	2.5	1.7	1.6	0.2	77.7	5.5	16.8	0.079	0.501	16.399503	-95.767459
La Reforma	184.62	3	0	2040	3.1	74.4	6.3	7.5	2.4	2.5	2.1	1.5	0.2	77.5	6.3	16.2	0.068	0.503	16.398500	-95.760825

OAXACA

14 CARR: Oaxaca - Tehuantepec

CLAVE: 20057

RUTA: MEX-190

AÑO: 2021

LUGAR	ESTACION				CLASIFICACION VEHICULAR EN PORCIENTO										COORDENADAS					
	KM	TE	SC	TDPA	M	A	B	C2	C3	T3S2	T3S3	T3S2R4	OTROS	A	B	C	K'	D	LATITUD	LONGITUD
T. Der. Magdalena Tequisistlán	206.66	1	0	2992	13.4	71.4	2.2	10.3	0.6	0.9	0.6	0.3	0.3	84.8	2.2	13.0	0.062	0.525	16.415804	-95.599387
T. Izq. Jalapa de Márquez	224.60	3	0	3787	2.8	78.5	3.5	10.0	1.4	1.9	1.0	0.8	0.1	81.3	3.5	15.2	0.088	0.529	16.417800	-95.418246
X. C. La Ventosa - Salina Cruz (Cuota)	246.18	1	0	3965	5.7	76.1	3.5	9.9	1.3	1.8	0.9	0.7	0.1	81.8	3.5	14.7	0.070	0.505	16.334023	-95.283337
X. C. La Ventosa - Salina Cruz (Cuota)	246.18	3	0	5905	4.5	79.2	2.6	7.1	1.1	2.9	0.7	1.7	0.2	83.7	2.6	13.7	0.074	0.514	16.331373	-95.272401
Tehuantepec	250.60	1	0	7282	3.4	79.8	1.8	6.1	1.0	3.7	0.8	2.9	0.5	83.2	1.8	15.0	0.082	0.507	16.326049	-95.250490

15 CARR: Puebla - Huajuapán de León

CLAVE: 00049

RUTA: MEX-190

AÑO: 2021

LUGAR	ESTACION				CLASIFICACION VEHICULAR EN PORCIENTO										COORDENADAS					
	KM	TE	SC	TDPA	M	A	B	C2	C3	T3S2	T3S3	T3S2R4	OTROS	A	B	C	K'	D	LATITUD	LONGITUD
Puebla	0.00	3	1	30071	8.2	86.4	1.5	1.4	2.1	0.1	0.1	0.1	0.1	94.6	1.5	3.9	0.076	0.505	19.034251	-98.260605
Puebla	0.00	3	2	29451	7.4	87.1	1.5	1.3	2.3	0.1	0.1	0.1	0.1	94.5	1.5	4.0	0.072	0.505	19.034124	-98.260549
T. Izq. Santa María Acuyah	8.68	1	1	15484	3.1	89.6	0.5	3.8	1.2	0.9	0.5	0.3	0.1	92.7	0.5	6.8	0.097	0.529	19.025235	-98.291251
T. Izq. Santa María Acuyah	8.68	1	2	17358	2.4	93.4	0.3	1.4	1.0	0.8	0.4	0.2	0.1	95.8	0.3	3.9	0.116	0.529	19.025153	-98.291194
T. Izq. Santa María Acuyah	8.68	3	1	14126	3.7	89.9	0.7	2.3	1.3	1.1	0.5	0.4	0.1	93.6	0.7	5.7	0.098	0.519	19.023252	-98.302282
T. Izq. Santa María Acuyah	8.68	3	2	13089	4.7	86.9	0.7	3.2	1.8	1.4	0.6	0.5	0.2	91.6	0.7	7.7	0.095	0.519	19.023222	-98.301503
Chipilo	13.00	1	1	11149	5.8	87.4	0.8	2.8	1.3	0.9	0.3	0.5	0.2	93.2	0.8	6.0	0.104	0.512	19.011656	-98.321371
Chipilo	13.00	1	2	10637	6.3	85.4	1.2	3.3	1.6	1.1	0.5	0.4	0.2	91.7	1.2	7.1	0.123	0.512	19.011908	-98.321094
T. Der. Santa Isabel Cholula	17.28	1	0	15837	14.6	79.1	0.6	2.4	1.5	0.9	0.4	0.3	0.2	93.7	0.6	5.7	0.084	0.511	18.986434	-98.361759
T. Der. Santa Isabel Cholula	17.28	3	0	14603	6.4	86.7	1.0	2.5	1.5	0.9	0.4	0.4	0.2	93.1	1.0	5.9	0.096	0.508	18.978453	-98.370756
Atlixco	29.88	1	0	24508	5.3	87.6	1.2	2.5	1.5	1.0	0.3	0.4	0.2	92.9	1.2	5.9	0.063	0.520	18.930540	-98.407201
Atlixco	29.88	3	1	8216	4.5	81.9	1.2	8.0	1.4	1.1	0.7	1.0	0.2	86.4	1.2	12.4	0.080	0.530	18.867212	-98.440107
Atlixco	29.88	3	2	7281	4.5	82.0	1.2	7.9	1.4	1.2	0.7	0.9	0.2	86.5	1.2	12.3	0.086	0.530	18.867193	-98.440012
Tepeojuma	51.90	1	1	5094	6.4	84.9	1.6	3.0	1.5	1.0	0.6	0.8	0.2	91.3	1.6	7.1	0.097	0.503	18.739864	-98.448569
Tepeojuma	51.90	1	2	5041	6.3	84.6	1.7	3.1	1.5	1.1	0.6	0.9	0.2	90.9	1.7	7.4	0.091	0.503	18.739872	-98.448454
Izúcar de Matamoros	67.00	1	0	10887	7.0	87.2	1.0	2.7	0.8	0.5	0.4	0.2	0.2	94.2	1.0	4.8	0.074	0.504	18.631774	-98.469123
T. Der. Cuautla	70.00	3	0	10191	20.3	68.7	2.5	4.5	1.0	1.1	0.6	0.4	0.9	89.0	2.5	8.5	0.076	0.508	18.582701	-98.452082
Tehuizingo	113.30	1	0	5913	16.0	76.7	2.0	2.4	0.8	0.8	0.5	0.4	0.4	92.7	2.0	5.3	0.081	0.513	18.336736	-98.281487
Acatlán de Osorio	154.20	1	0	8265	9.6	85.9	0.8	2.2	0.5	0.5	0.3	0.1	0.1	95.5	0.8	3.7	0.068	0.505	18.181956	-98.058770
Chila	192.30	3	0	2209	4.4	84.2	3.5	4.1	2.1	1.0	0.4	0.1	0.2	88.6	3.5	7.9	0.076	0.505	17.966684	-97.864159
Lim. Edos. Term. Pue. Ppia. Oax.	200.30																			
T. Izq. Las Palmas	202.10	1	0	2177	4.1	85.8	3.6	3.1	1.7	1.1	0.3	0.2	0.1	89.9	3.6	6.5	0.082	0.508	17.885037	-97.839943
Huajuapán de León	219.30	1	0	3469	6.8	84.7	2.4	2.7	1.6	0.9	0.4	0.3	0.2	91.5	2.4	6.1	0.077	0.517	17.841608	-97.793151

OAXACA

16 CARR: Ramal a Asunción Ixtaltepec

CLAVE: 20624

RUTA: MEX-185

AÑO: 2021

LUGAR	ESTACION				CLASIFICACION VEHICULAR EN PORCIENTO													COORDENADAS		
	KM	TE	SC	TDPA	M	A	B	C2	C3	T3S2	T3S3	T3S2R4	OTROS	A	B	C	K'	D	LATITUD	LONGITUD
T. C. Coatzacoalcos - Salina Cruz	0.00	3	0	2987	14.6	75.6	0.7	4.8	0.6	2.3	0.4	0.3	0.7	90.2	0.7	9.1	0.078	0.519	16.443083	-95.034299
Asunción Ixtaltepec	9.70	1	0	3723	11.0	78.7	2.9	4.3	0.5	1.6	0.4	0.1	0.5	89.7	2.9	7.4	0.078	0.517	16.492795	-95.064095

17 CARR: Ramal a Monte Albán

CLAVE:

RUTA: MEX

AÑO: 2021

LUGAR	ESTACION				CLASIFICACION VEHICULAR EN PORCIENTO													COORDENADAS		
	KM	TE	SC	TDPA	M	A	B	C2	C3	T3S2	T3S3	T3S2R4	OTROS	A	B	C	K'	D	LATITUD	LONGITUD
T. C. Oaxaca - Tehuantepec	0.00																			
Chimalpopoca	1.80	3	0	16144	8.0	81.7	0.3	4.8	0.6	1.7	0.9	1.2	0.8	89.7	0.3	10.0	0.061	0.504	17.073300	-96.760353
T. Der. San Pedro Ixtlahuaca	2.75	3	0	2294	14.4	79.4	0.6	4.2	0.2	1.0	0.1	0.0	0.1	93.8	0.6	5.6	0.089	0.519	17.071020	-96.765585
Monte Albán	8.00																			

18 CARR: Ramal a Refinería Pemex (Refinería del Pacifico)

CLAVE:

RUTA: MEX

AÑO: 2021

LUGAR	ESTACION				CLASIFICACION VEHICULAR EN PORCIENTO													COORDENADAS		
	KM	TE	SC	TDPA	M	A	B	C2	C3	T3S2	T3S3	T3S2R4	OTROS	A	B	C	K'	D	LATITUD	LONGITUD
T. C. Coatzacoalcos - Salina Cruz	0.00	3	1	4930	4.6	84.1	0.6	7.3	1.4	0.7	0.8	0.4	0.1	88.7	0.6	10.7	0.080	0.529	16.220983	-95.202649
T. C. Coatzacoalcos - Salina Cruz	0.00	3	2	5543	4.8	85.6	0.6	5.0	1.7	1.1	0.7	0.4	0.1	90.4	0.6	9.0	0.089	0.529	16.221086	-95.202618
Refinería de Pemex	3.00																			

19 CARR: San Pablo Villa de Mitla - T. C. (Tuxtepec - Palomares)

CLAVE: 00106

RUTA: MEX-179

AÑO: 2021

LUGAR	ESTACION				CLASIFICACION VEHICULAR EN PORCIENTO													COORDENADAS		
	KM	TE	SC	TDPA	M	A	B	C2	C3	T3S2	T3S3	T3S2R4	OTROS	A	B	C	K'	D	LATITUD	LONGITUD
T. C. Oaxaca - Tehuantepec	0.00	3	0	4148	2.3	85.7	0.7	8.7	0.4	1.7	0.3	0.0	0.2	88.0	0.7	11.3	0.083	0.503	16.918078	-96.392167
San Pedro y San Pablo Ayutla	55.00	1	0	1613	2.0	88.5	0.2	5.3	1.0	2.2	0.5	0.1	0.2	90.5	0.2	9.3	0.098	0.516	17.016889	-96.082267
T. Der. Zacatepec	90.00	1	0	477	1.8	88.3	0.4	8.1	0.8	0.5	0.0	0.0	0.1	90.1	0.4	9.5	0.095	0.501	17.148104	-96.034289
Lim. Edos. Term. Oax. Ppia. Ver.	217.70																			
T. C. Tuxtepec - Ent. Palomares	238.70	1	0	1088	7.7	70.4	4.8	5.2	3.7	2.4	1.3	0.2	4.3	78.1	4.8	17.1	0.091	0.506	17.691365	-95.735284

20 CARR: Santiago Pinotepa Nacional - Salina Cruz

CLAVE: 20074

RUTA: MEX-200

AÑO: 2021

LUGAR	ESTACION				CLASIFICACION VEHICULAR EN PORCIENTO													COORDENADAS		
	KM	TE	SC	TDPA	M	A	B	C2	C3	T3S2	T3S3	T3S2R4	OTROS	A	B	C	K'	D	LATITUD	LONGITUD
Santiago Pinotepa Nacional	0.00	3	0	4539	10.5	77.8	1.3	4.9	1.3	2.9	0.8	0.1	0.4	88.3	1.3	10.4	0.085	0.504	16.329098	-98.022598

OAXACA

20 CARR: Santiago Pinotepa Nacional - Salina Cruz

CLAVE: 20074

RUTA: MEX-200

AÑO: 2021

LUGAR	ESTACION				CLASIFICACION VEHICULAR EN PORCIENTO														COORDENADAS	
	KM	TE	SC	TDPA	M	A	B	C2	C3	T3S2	T3S3	T3S2R4	OTROS	A	B	C	K'	D	LATITUD	LONGITUD
San Andrés Huaxpaltepec	18.07	3	0	3831	10.6	79.6	0.9	2.2	2.1	1.3	1.1	2.0	0.2	90.2	0.9	8.9	0.075	0.502	16.324492	-97.905633
San José del Progreso	59.51	1	0	3216	8.6	84.0	0.4	2.2	1.9	1.3	0.7	0.6	0.3	92.6	0.4	7.0	0.073	0.508	16.106103	-97.706736
T. Izq. Tututepec	65.85	3	0	5786	13.5	79.6	1.5	1.8	1.5	1.0	0.9	0.1	0.1	93.1	1.5	5.4	0.077	0.500	16.076450	-97.628699
Río Grande	91.00	1	0	3713	11.7	77.6	1.2	4.5	1.1	1.4	1.4	0.4	0.7	89.3	1.2	9.5	0.082	0.502	16.011728	-97.457327
Río Grande	91.00	3	0	2460	19.4	72.1	1.0	5.0	1.0	0.9	0.5	0.1	0.0	91.5	1.0	7.5	0.096	0.508	15.986344	-97.413061
San Isidro Llano Grande	110.50	1	0	2286	9.1	79.0	0.7	5.3	2.2	1.9	1.0	0.7	0.1	88.1	0.7	11.2	0.080	0.502	15.949322	-97.288739
T. Izq. Bajos de Chila	131.94	1	0	5040	10.4	78.0	0.8	4.4	1.5	2.3	1.0	1.2	0.4	88.4	0.8	10.8	0.066	0.509	15.915929	-97.125317
T. Izq. Aeropuerto	137.40	1	0	6423	16.2	73.5	1.1	4.3	1.1	1.3	1.1	0.9	0.5	89.7	1.1	9.2	0.076	0.504	15.873192	-97.095154
Puerto Escondido	141.54	1	1	6517	15.2	76.8	0.5	5.4	0.6	0.8	0.5	0.1	0.1	92.0	0.5	7.5	0.077	0.501	15.869057	-97.084238
Puerto Escondido	141.54	1	2	6494	10.2	81.7	0.5	5.1	0.4	1.3	0.6	0.0	0.2	91.9	0.5	7.6	0.073	0.501	15.869158	-97.084200
Puerto Escondido	141.54	3	1	8148	31.1	59.6	0.9	4.1	0.8	1.5	0.9	0.5	0.6	90.7	0.9	8.4	0.068	0.536	15.853361	-97.053276
Puerto Escondido	141.54	3	2	9426	7.1	82.4	0.9	4.8	1.0	1.6	1.0	0.6	0.6	89.5	0.9	9.6	0.070	0.536	15.853420	-97.053210
T. Izq. Oaxaca (Cuota)	151.76	1	1	2773	17.7	72.9	0.6	5.9	0.9	1.1	0.7	0.1	0.1	90.6	0.6	8.8	0.098	0.534	15.811002	-96.993221
T. Izq. Oaxaca (Cuota)	151.76	1	2	2424	14.0	77.3	0.6	5.8	0.7	0.9	0.5	0.1	0.1	91.3	0.6	8.1	0.094	0.534	15.811119	-96.993247
T. Izq. Oaxaca (Cuota)	151.76	3	1	2178	14.2	75.8	1.2	5.2	1.5	1.1	0.8	0.1	0.1	90.0	1.2	8.8	0.094	0.528	15.805610	-96.974434
T. Izq. Oaxaca (Cuota)	151.76	3	2	2190	14.2	75.8	1.1	5.3	1.6	1.0	0.7	0.2	0.1	90.0	1.1	8.9	0.092	0.528	15.805748	-96.974405
T. Izq. Valdeflores Colotepec	167.00	1	1	1849	15.7	72.8	1.4	5.6	1.6	1.4	1.1	0.3	0.1	88.5	1.4	10.1	0.101	0.501	15.768328	-96.862229
T. Izq. Valdeflores Colotepec	167.00	1	2	1841	13.4	74.3	1.5	6.1	1.6	1.5	1.1	0.3	0.2	87.7	1.5	10.8	0.093	0.501	15.768459	-96.861258
T. Izq. Valdeflores Colotepec	167.00	3	1	1468	14.4	72.8	1.9	5.9	2.1	1.4	0.9	0.4	0.2	87.2	1.9	10.9	0.099	0.503	15.766645	-96.846419
T. Izq. Valdeflores Colotepec	167.00	3	2	1450	15.1	72.1	1.6	6.1	1.9	1.5	1.0	0.5	0.2	87.2	1.6	11.2	0.109	0.503	15.766766	-96.846421
T. Izq. Oaxaca	170.70	1	1	1625	13.6	73.5	1.5	7.0	1.4	1.8	1.2	0.0	0.0	87.1	1.5	11.4	0.094	0.505	15.759654	-96.825823
T. Izq. Oaxaca	170.70	1	2	1596	13.2	73.3	1.3	6.9	1.5	2.3	1.4	0.1	0.0	86.5	1.3	12.2	0.102	0.505	15.759730	-96.825766
T. Izq. Oaxaca	170.70	3	1	1657	15.0	71.5	2.1	7.8	0.9	1.5	1.0	0.1	0.1	86.5	2.1	11.4	0.124	0.504	15.751054	-96.816069
T. Izq. Oaxaca	170.70	3	2	1685	14.4	73.1	1.5	7.2	1.1	1.5	1.1	0.1	0.0	87.5	1.5	11.0	0.112	0.504	15.751124	-96.815983
San Isidro del Palmar	195.00	1	1	1631	10.4	78.5	1.1	5.7	1.1	1.6	0.9	0.3	0.4	88.9	1.1	10.0	0.095	0.523	15.723255	-96.620463
San Isidro del Palmar	195.00	1	2	1788	11.4	78.8	1.2	5.4	0.7	1.3	0.7	0.2	0.3	90.2	1.2	8.6	0.100	0.523	15.723354	-96.620455
T. Der. Mazunte	198.87	1	1	2367	12.9	76.1	1.3	6.4	1.0	1.2	0.8	0.1	0.2	89.0	1.3	9.7	0.102	0.512	15.716116	-96.586938
T. Der. Mazunte	198.87	1	2	2487	13.7	76.1	1.4	5.7	0.9	1.1	0.7	0.2	0.2	89.8	1.4	8.8	0.103	0.512	15.716218	-96.586941
T. Der. Mazunte	198.87	3	1	3150	13.7	77.3	1.3	4.6	0.7	1.2	0.8	0.2	0.2	91.0	1.3	7.7	0.096	0.505	15.716594	-96.581261
T. Der. Mazunte	198.87	3	2	3093	14.3	75.8	1.3	5.6	0.6	1.3	0.8	0.1	0.2	90.1	1.3	8.6	0.111	0.505	15.716702	-96.581280
T. Izq. Sta. María Tonameca	202.93	3	1	3165	13.9	76.9	1.1	4.8	0.5	1.4	0.7	0.4	0.3	90.8	1.1	8.1	0.088	0.514	15.729873	-96.537494
T. Izq. Sta. María Tonameca	202.93	3	2	2995	12.8	75.9	1.4	5.2	0.7	2.0	0.9	0.6	0.5	88.7	1.4	9.9	0.087	0.514	15.729979	-96.537540
T. Libramiento de Pochutla	209.15	1	0	6899	14.3	76.2	0.8	5.0	0.5	1.8	0.8	0.1	0.5	90.5	0.8	8.7	0.074	0.500	15.731797	-96.485254
X. C. Oaxaca - Puerto Ángel	209.95	1	0	7340	13.7	77.1	1.4	4.9	0.6	1.2	0.8	0.1	0.2	90.8	1.4	7.8	0.072	0.519	15.730610	-96.475637
X. C. Oaxaca - Puerto Ángel	209.95	3	0	5359	15.8	72.6	1.2	5.4	0.8	2.7	1.1	0.2	0.2	88.4	1.2	10.4	0.077	0.501	15.729373	-96.471917

OAXACA

20 CARR: Santiago Pinotepa Nacional - Salina Cruz

CLAVE: 20074

RUTA: MEX-200

AÑO: 2021

LUGAR	ESTACION				CLASIFICACION VEHICULAR EN PORCIENTO										COORDENADAS					
	KM	TE	SC	TDPA	M	A	B	C2	C3	T3S2	T3S3	T3S2R4	OTROS	A	B	C	K'	D	LATITUD	LONGITUD
T. Der. Cuatunulco	226.00	1	0	3351	7.0	79.8	1.6	5.7	1.0	2.2	1.3	0.6	0.8	86.8	1.6	11.6	0.089	0.501	15.733146	-96.350935
T. Der. Cuatunulco	226.00	3	0	2803	10.4	75.0	1.8	6.5	1.7	1.9	1.6	0.5	0.6	85.4	1.8	12.8	0.080	0.512	15.734896	-96.339274
T. C. El Zapote - Copalita	236.00	1	0	5156	11.5	76.7	1.3	5.9	1.1	1.5	0.9	0.5	0.6	88.2	1.3	10.5	0.069	0.510	15.760621	-96.274911
T. C. El Zapote - Copalita	236.00	3	0	8339	11.3	77.5	0.8	6.5	0.9	1.2	0.8	0.5	0.5	88.8	0.8	10.4	0.078	0.503	15.763743	-96.269566
T. Izq. Aeropuerto	237.68	3	0	8682	9.9	81.0	0.8	6.8	0.5	0.6	0.4	0.0	0.0	90.9	0.8	8.3	0.075	0.505	15.770137	-96.252695
T. Der. Santa Cruz Huatulco	250.00	1	0	7293	6.2	80.6	1.3	7.8	1.2	1.0	0.7	0.6	0.6	86.8	1.3	11.9	0.066	0.515	15.780185	-96.165198
T. Der. Santa Cruz Huatulco	250.00	3	0	3284	5.1	79.5	1.3	7.9	1.6	2.3	1.1	0.7	0.5	84.6	1.3	14.1	0.085	0.512	15.783865	-96.152552
T. Der. Tangolunda	254.50	1	0	2968	12.3	72.7	1.6	7.4	1.3	3.1	1.3	0.2	0.1	85.0	1.6	13.4	0.080	0.505	15.790211	-96.129042
T. Der. Tangolunda	263.00	1	0	1822	11.0	74.4	1.6	8.9	1.2	1.5	1.1	0.0	0.3	85.4	1.6	13.0	0.092	0.509	15.818476	-96.068624
Barra de Copalita	263.70	1	0	2316	14.9	68.5	4.1	5.1	1.4	2.9	2.1	0.5	0.5	83.4	4.1	12.5	0.090	0.506	15.819551	-96.067631
El Coyul	300.30	3	0	1763	5.1	80.7	2.2	7.1	1.3	2.4	1.0	0.1	0.1	85.8	2.2	12.0	0.090	0.525	15.921711	-95.793210
T. Der. Río Seco	307.00	3	0	1806	5.3	77.3	2.7	6.6	1.1	4.2	2.1	0.2	0.5	82.6	2.7	14.7	0.090	0.511	15.942624	-95.753666
Sta. Ma. Huamelula	316.00	1	0	1861	5.8	74.6	3.0	8.1	1.7	4.1	2.2	0.2	0.3	80.4	3.0	16.6	0.098	0.502	15.982086	-95.716227
Santiago Astata	320.00	1	0	1958	4.6	81.7	2.3	6.1	1.4	2.6	1.1	0.1	0.1	86.3	2.3	11.4	0.090	0.548	15.990254	-95.676606
T. Der. Concepción Bamba	352.10	1	0	1632	3.6	72.6	4.6	8.4	2.5	4.2	2.7	0.6	0.8	76.2	4.6	19.2	0.104	0.501	16.019409	-95.431148
T. C. La Ventosa - Salina Cruz (Cuota)	380.00	1	0	2860	2.3	81.2	2.0	8.8	1.3	2.0	1.4	0.5	0.5	83.5	2.0	14.5	0.094	0.502	16.146102	-95.289957
T. C. La Ventosa - Salina Cruz (Cuota)	380.00	3	0	2675	3.5	84.9	1.2	6.2	1.2	1.3	1.0	0.4	0.3	88.4	1.2	10.4	0.099	0.509	16.156439	-95.277400
Salina Cruz	394.00																			

21 CARR: Tapanatepec - Talismán

CLAVE: 00075

RUTA: MEX-200

AÑO: 2021

LUGAR	ESTACION				CLASIFICACION VEHICULAR EN PORCIENTO										COORDENADAS					
	KM	TE	SC	TDPA	M	A	B	C2	C3	T3S2	T3S3	T3S2R4	OTROS	A	B	C	K'	D	LATITUD	LONGITUD
Tapanatepec	0.00	3	0	5441	6.2	76.3	1.3	4.3	3.3	5.0	1.3	2.1	0.2	82.5	1.3	16.2	0.085	0.526	16.342362	-94.190383
Lim. Edos. Term. Oax. Ppia. Chis.	25.90																			
T. Der. Emiliano Zapata	26.20	1	0	3937	4.0	81.0	1.5	2.2	1.5	3.2	3.1	2.7	0.8	85.0	1.5	13.5	0.068	0.501	16.217197	-94.051821
T. Der. Emiliano Zapata	26.20	3	0	3936	6.9	65.4	2.7	5.5	2.0	9.7	2.0	5.1	0.7	72.3	2.7	25.0	0.067	0.522	16.214682	-94.039431
Arriaga	45.00	1	0	5164	3.0	77.9	2.7	4.8	1.9	2.2	2.7	4.2	0.6	80.9	2.7	16.4	0.082	0.524	16.221869	-93.936462
Arriaga	45.00	3	1	4094	16.8	73.6	1.9	5.7	0.5	0.6	0.6	0.2	0.1	90.4	1.9	7.7	0.077	0.513	16.240870	-93.885716
Arriaga	45.00	3	2	3879	16.1	74.3	1.8	6.1	0.4	0.6	0.4	0.2	0.1	90.4	1.8	7.8	0.073	0.513	16.240961	-93.885679
X. C. Arriaga- Ocozocoautla (Cuota)	47.00	3	1	4343	8.3	75.4	2.3	6.2	1.2	3.2	1.1	1.7	0.6	83.7	2.3	14.0	0.080	0.508	16.232872	-93.876623
X. C. Arriaga- Ocozocoautla (Cuota)	47.00	3	2	4491	8.3	76.4	2.3	6.1	1.0	2.8	1.0	1.5	0.6	84.7	2.3	13.0	0.078	0.508	16.232255	-93.874946
T. Der. Libramiento de Arriaga	49.50	1	1	3979	5.3	75.4	3.0	7.9	1.4	3.8	1.1	2.0	0.1	80.7	3.0	16.3	0.073	0.513	16.224569	-93.868999
T. Der. Libramiento de Arriaga	49.50	1	2	3775	5.5	76.7	2.6	7.5	1.1	3.4	1.0	2.1	0.1	82.2	2.6	15.2	0.080	0.513	16.224633	-93.868887
T. Der. Libramiento de Arriaga	49.50	3	1	4259	5.1	71.9	2.7	6.8	1.5	7.1	1.7	2.8	0.4	77.0	2.7	20.3	0.080	0.527	16.208902	-93.855973

OAXACA

21 CARR: Tapanatepec - Talismán

CLAVE: 00075

RUTA: MEX-200

AÑO: 2021

LUGAR	ESTACION				CLASIFICACION VEHICULAR EN PORCIENTO														COORDENADAS	
	KM	TE	SC	TDPA	M	A	B	C2	C3	T3S2	T3S3	T3S2R4	OTROS	A	B	C	K'	D	LATITUD	LONGITUD
T. Der. Libramiento de Arriaga	49.50	3	2	3823	5.0	73.0	2.6	6.5	1.3	6.9	1.5	2.7	0.5	78.0	2.6	19.4	0.081	0.527	16.208975	-93.855879
Tonalá	68.80	1	1	4782	6.0	73.2	2.4	5.7	1.6	6.7	1.4	2.5	0.5	79.2	2.4	18.4	0.074	0.501	16.117874	-93.790674
Tonalá	68.80	1	2	4766	6.1	75.0	2.2	5.3	1.3	5.9	1.2	2.5	0.5	81.1	2.2	16.7	0.073	0.501	16.117938	-93.790572
T. Der. Puerto Arista	73.00	1	1	3200	6.0	73.1	2.4	5.7	1.5	6.6	1.7	2.4	0.6	79.1	2.4	18.5	0.089	0.534	16.059601	-93.741289
T. Der. Puerto Arista	73.00	1	2	3135	6.8	73.4	2.3	5.2	1.4	6.3	1.6	2.4	0.6	80.2	2.3	17.5	0.093	0.534	16.059655	-93.741252
T. Der. Puerto Arista	73.00	3	1	3307	6.3	66.3	3.0	6.3	4.1	7.4	2.0	4.0	0.6	72.6	3.0	24.4	0.065	0.520	16.055459	-93.733907
T. Der. Puerto Arista	73.00	3	2	3054	6.0	66.2	2.9	6.9	3.4	7.9	2.2	3.7	0.8	72.2	2.9	24.9	0.070	0.520	16.055586	-93.733842
T. Der. Tres Picos	100.40	1	1	3023	0.7	72.5	9.7	13.0	1.0	0.6	0.7	0.8	1.0	73.2	9.7	17.1	0.116	0.507	15.917173	-93.546232
T. Der. Tres Picos	100.40	1	2	3112	0.8	73.2	9.8	12.9	1.1	0.4	0.4	0.4	1.0	74.0	9.8	16.2	0.115	0.507	15.917463	-93.546065
T. Der. Tres Picos	100.40	3	1	3321	0.7	72.7	9.7	13.0	1.0	0.6	0.6	0.7	1.0	73.4	9.7	16.9	0.116	0.507	15.907064	-93.525428
T. Der. Tres Picos	100.40	3	2	3420	0.8	73.2	9.8	13.0	1.0	0.4	0.4	0.4	1.0	74.0	9.8	16.2	0.115	0.507	15.907208	-93.525391
T. Der. Los Patos	114.75	1	1	2486	4.3	63.6	3.8	8.4	2.4	11.0	1.6	4.2	0.7	67.9	3.8	28.3	0.087	0.510	15.841012	-93.437696
T. Der. Los Patos	114.75	1	2	2384	4.0	64.0	3.8	8.3	2.6	10.7	1.8	4.1	0.7	68.0	3.8	28.2	0.123	0.510	15.840968	-93.437135
T. Der. Los Patos	114.75	3	1	2424	4.4	63.0	3.9	8.4	2.5	10.9	1.8	4.3	0.8	67.4	3.9	28.7	0.072	0.510	15.808907	-93.406589
T. Der. Los Patos	114.75	3	2	2331	4.2	63.1	3.9	8.4	2.7	10.6	2.0	4.2	0.9	67.3	3.9	28.8	0.103	0.510	15.809315	-93.405647
T. Der. San Isidro	125.00	1	1	3507	5.5	66.5	4.0	6.7	2.6	7.6	2.3	3.8	1.0	72.0	4.0	24.0	0.098	0.533	15.778030	-93.360540
T. Der. San Isidro	125.00	1	2	3076	6.0	68.5	3.6	6.0	2.5	6.7	2.3	3.4	1.0	74.5	3.6	21.9	0.083	0.533	15.778948	-93.359942
T. Der. San Isidro	125.00	3	1	3248	5.4	66.8	3.7	6.7	2.9	7.5	2.5	3.6	0.9	72.2	3.7	24.1	0.094	0.514	15.773210	-93.346945
T. Der. San Isidro	125.00	3	2	3068	6.2	68.3	3.7	6.3	2.4	6.6	2.3	3.3	0.9	74.5	3.7	21.8	0.085	0.514	15.773382	-93.346796
Pijijapan	144.45	1	1	4997	7.0	62.3	3.7	7.8	2.6	10.0	1.8	4.3	0.5	69.3	3.7	27.0	0.101	0.506	15.698302	-93.211907
Pijijapan	144.45	1	2	4871	7.2	61.1	3.6	8.3	2.5	10.4	1.7	4.5	0.7	68.3	3.6	28.1	0.096	0.506	15.698908	-93.211544
Valdivia	180.39	1	1	4521	6.6	61.9	3.8	7.9	2.6	10.5	1.8	4.3	0.6	68.5	3.8	27.7	0.074	0.516	15.511105	-92.956150
Valdivia	180.39	1	2	4506	5.9	62.8	3.8	8.3	2.5	10.6	1.6	3.8	0.7	68.7	3.8	27.5	0.069	0.516	15.511421	-92.955980
Valdivia	180.39	3	1	5132	11.0	73.2	2.0	3.8	1.3	5.2	1.2	1.7	0.6	84.2	2.0	13.8	0.079	0.537	15.499816	-92.940673
Valdivia	180.39	3	2	4422	11.2	72.2	2.1	3.7	1.5	5.0	1.4	2.0	0.9	83.4	2.1	14.5	0.093	0.537	15.499961	-92.940580
T. Der. Mapastepec	188.85	3	1	4075	11.9	66.5	2.7	5.2	1.7	6.9	1.9	2.6	0.6	78.4	2.7	18.9	0.078	0.504	15.453927	-92.879276
T. Der. Mapastepec	188.85	3	2	4143	12.4	66.3	2.8	5.1	1.1	6.7	2.3	2.4	0.9	78.7	2.8	18.5	0.080	0.504	15.454343	-92.878940
T. Der. Estación Soconusco	213.30	1	1	3740	9.5	66.2	2.8	6.4	1.6	7.8	2.0	2.9	0.8	75.7	2.8	21.5	0.076	0.507	15.341436	-92.715415
T. Der. Estación Soconusco	213.30	1	2	3847	9.3	68.4	2.4	5.9	1.7	7.3	1.7	2.4	0.9	77.7	2.4	19.9	0.083	0.507	15.350575	-92.694011
T. Der. Estación Soconusco	213.30	3	1	3925	11.2	66.0	3.0	5.4	1.9	7.5	1.7	2.8	0.5	77.2	3.0	19.8	0.077	0.513	15.336094	-92.708948
T. Der. Estación Soconusco	213.30	3	2	4129	11.1	66.4	2.6	5.8	2.0	7.6	1.2	2.8	0.5	77.5	2.6	19.9	0.084	0.513	15.349161	-92.691041
Villa Comaltitlán	233.00	1	1	4054	8.4	65.9	3.5	7.7	1.9	7.2	1.9	2.7	0.8	74.3	3.5	22.2	0.080	0.505	15.237109	-92.587042
Villa Comaltitlán	233.00	1	2	3973	8.4	65.9	3.5	7.9	1.8	7.8	1.3	2.6	0.8	74.3	3.5	22.2	0.083	0.505	15.237339	-92.586708
T. Libramiento de Huixtla Oeste	245.00																			
Huixtla	250.50	1	1	4135	8.5	67.3	2.6	7.2	1.9	6.7	2.4	2.6	0.8	75.8	2.6	21.6	0.074	0.570	15.159252	-92.511155

OAXACA

21 CARR: Tapanatepec - Talismán

CLAVE: 00075

RUTA: MEX-200

AÑO: 2021

LUGAR	ESTACION				CLASIFICACION VEHICULAR EN PORCIENTO														COORDENADAS	
	KM	TE	SC	TDPA	M	A	B	C2	C3	T3S2	T3S3	T3S2R4	OTROS	A	B	C	K'	D	LATITUD	LONGITUD
Huixtla	250.50	1	2	4575	8.4	68.9	2.5	7.2	1.5	6.1	1.9	2.6	0.9	77.3	2.5	20.2	0.076	0.570	15.159381	-92.511126
Huixtla	250.50	3	1	8579	12.1	75.3	1.5	5.0	1.1	2.8	0.8	1.0	0.4	87.4	1.5	11.1	0.093	0.516	15.133065	-92.445236
Huixtla	250.50	3	2	8056	11.8	74.5	1.8	5.5	1.2	3.3	0.6	1.1	0.2	86.3	1.8	11.9	0.083	0.516	15.133119	-92.445152
T. Libramiento de Huixtla Este	251.80																			
T. Izq. Hamburgo	262.70	3	1	8221	4.7	85.5	0.7	2.0	1.9	2.9	1.1	1.0	0.2	90.2	0.7	9.1	0.087	0.520	15.103547	-92.430861
T. Izq. Hamburgo	262.70	3	2	7591	4.7	85.2	0.7	2.0	2.0	3.0	1.2	1.0	0.2	89.9	0.7	9.4	0.079	0.520	15.103556	-92.430768
T. Izq. Huehuetán	273.70	1	1	6885	9.0	78.0	0.7	2.2	2.6	4.2	1.3	1.8	0.2	87.0	0.7	12.3	0.075	0.500	15.017525	-92.402960
T. Izq. Huehuetán	273.70	1	2	6891	8.9	77.8	0.7	2.2	2.6	4.3	1.4	1.9	0.2	86.7	0.7	12.6	0.075	0.500	15.017525	-92.402867
T. Izq. Huehuetán	273.70	3	1	7515	4.2	82.4	0.5	5.9	0.5	3.4	1.3	1.1	0.7	86.6	0.5	12.9	0.096	0.502	14.992472	-92.402397
T. Izq. Huehuetán	273.70	3	2	7447	4.1	82.8	0.5	5.8	0.4	3.2	1.3	1.2	0.7	86.9	0.5	12.6	0.100	0.502	14.992471	-92.402323
Tapachula	292.25	1	1	9164	3.3	83.9	0.9	5.7	0.9	2.9	1.2	0.8	0.4	87.2	0.9	11.9	0.085	0.514	14.911628	-92.336424
Tapachula	292.25	1	2	9707	2.8	83.4	0.8	6.7	0.6	2.7	1.7	0.8	0.5	86.2	0.8	13.0	0.080	0.514	14.911691	-92.336386
T. Der. Cd. Hidalgo	302.75	1	1	11110	6.4	84.8	0.8	3.7	1.1	2.1	0.4	0.5	0.2	91.2	0.8	8.0	0.086	0.516	14.913147	-92.195575
T. Der. Cd. Hidalgo	302.75	1	2	10405	6.1	82.1	0.9	6.4	1.1	2.2	0.4	0.6	0.2	88.2	0.9	10.9	0.088	0.516	14.913210	-92.195612
Tuxtla Chico	307.00	1	0	13433	6.9	88.2	0.3	4.2	0.1	0.1	0.2	0.0	0.0	95.1	0.3	4.6	0.086	0.516	14.931847	-92.163181
Talismán	310.77	1	0	2523	36.9	56.6	0.9	2.3	0.2	2.6	0.2	0.1	0.2	93.5	0.9	5.6	0.090	0.522	14.962505	-92.149723

22 CARR: Tapanatepec - Tuxtla Gutiérrez

CLAVE: 00060

RUTA: MEX-190

AÑO: 2021

LUGAR	ESTACION				CLASIFICACION VEHICULAR EN PORCIENTO														COORDENADAS	
	KM	TE	SC	TDPA	M	A	B	C2	C3	T3S2	T3S3	T3S2R4	OTROS	A	B	C	K'	D	LATITUD	LONGITUD
Tapanatepec	0.00	3	0	2333	11.4	73.6	1.7	9.0	1.3	2.2	0.5	0.1	0.2	85.0	1.7	13.3	0.114	0.549	16.371087	-94.184822
Libramiento de San Pedro Tapanatepec	0.75	3	0	1002	9.0	69.4	2.9	9.9	2.0	2.7	2.6	0.8	0.7	78.4	2.9	18.7	0.119	0.536	16.372388	-94.175921
Lim. Edos. Term. Oax. Ppia. Chis.	17.90																			
Rizo de Oro	26.60	1	0	954	4.2	70.7	4.4	10.2	3.1	2.7	3.2	0.7	0.8	74.9	4.4	20.7	0.094	0.505	16.475831	-94.085363
T. Der. Arriaga	56.80	1	0	2072	8.5	78.1	1.0	8.0	1.1	1.4	1.7	0.1	0.1	86.6	1.0	12.4	0.098	0.513	16.570143	-93.847858
T. Der. Arriaga	56.80	3	0	3595	7.8	79.1	0.8	4.2	2.8	2.7	1.8	0.5	0.3	86.9	0.8	12.3	0.084	0.500	16.573560	-93.842456
Cintalapa	75.60	1	0	4530	9.8	81.4	1.1	2.9	1.0	2.5	0.9	0.1	0.3	91.2	1.1	7.7	0.101	0.508	16.653502	-93.754481
T. Der. Jiquipilas	82.00	1	0	7248	9.2	80.2	2.0	3.8	1.7	1.5	0.7	0.4	0.5	89.4	2.0	8.6	0.071	0.501	16.687873	-93.667171
T. Der. Jiquipilas	82.00	3	0	5983	5.7	79.0	3.0	5.2	2.5	2.2	1.3	0.5	0.6	84.7	3.0	12.3	0.080	0.502	16.688179	-93.662200
T. C. Arriaga - Ocozocoautla (Cuota)	96.20	1	0	4286	2.9	80.3	1.5	8.1	2.0	2.7	1.3	0.5	0.7	83.2	1.5	15.3	0.081	0.527	16.686119	-93.545900
Ocozocoautla	123.29	1	0	4327	11.7	76.2	0.4	6.7	1.7	2.2	0.7	0.2	0.2	87.9	0.4	11.7	0.094	0.506	16.772052	-93.391192
Ocozocoautla	123.29	3	0	5083	10.9	80.1	0.8	4.8	1.0	0.6	0.6	0.7	0.5	91.0	0.8	8.2	0.087	0.501	16.757893	-93.362334
T. Izq. Aeropuerto	132.70	1	0	4455	5.9	78.2	0.8	11.1	0.6	1.6	1.1	0.4	0.3	84.1	0.8	15.1	0.085	0.507	16.752969	-93.340105
T. Izq. Aeropuerto	132.70	3	1	6827	1.8	84.0	3.1	4.7	1.9	3.3	0.8	0.3	0.1	85.8	3.1	11.1	0.093	0.506	16.758969	-93.325331

OAXACA

22 CARR : Tapanatepec - Tuxtla Gutiérrez

CLAVE: 00060

RUTA: MEX-190

AÑO: 2021

LUGAR	ESTACION				CLASIFICACION VEHICULAR EN PORCIENTO										COORDENADAS					
	KM	TE	SC	TDPA	M	A	B	C2	C3	T3S2	T3S3	T3S2R4	OTROS	A	B	C	K'	D	LATITUD	LONGITUD
T. Izq. Aeropuerto	132.70	3	2	6655	2.2	83.7	3.0	4.7	1.9	3.3	0.8	0.3	0.1	85.9	3.0	11.1	0.087	0.506	16.759045	-93.325367
T. Izq. Berriozábal (1º Acceso)	136.40	1	1	8141	3.8	72.0	3.2	9.0	2.6	4.1	2.1	2.9	0.3	75.8	3.2	21.0	0.067	0.507	16.767808	-93.292679
T. Izq. Berriozábal (1º Acceso)	136.40	1	2	8373	3.8	72.2	3.2	9.0	2.6	4.1	2.0	2.9	0.2	76.0	3.2	20.8	0.078	0.507	16.767895	-93.292684
T. Izq. Berriozábal (1º Acceso)	136.40	3	1	9758	3.7	77.7	2.7	8.7	1.6	2.7	0.9	1.8	0.2	81.4	2.7	15.9	0.071	0.503	16.768949	-93.280300
T. Izq. Berriozábal (1º Acceso)	136.40	3	2	9878	3.6	78.1	2.7	8.7	1.7	2.5	0.7	1.8	0.2	81.7	2.7	15.6	0.075	0.503	16.769043	-93.280317
T. Izq. San Fernando	151.70	1	1	15662	3.0	85.4	0.8	5.6	1.5	1.5	0.8	1.1	0.3	88.4	0.8	10.8	0.075	0.507	16.770876	-93.197688
T. Izq. San Fernando	151.70	1	2	16078	3.0	84.7	1.1	6.7	0.9	1.8	0.7	0.9	0.2	87.7	1.1	11.2	0.093	0.507	16.770942	-93.197651
Tuxtla Gutiérrez	159.00	1	1	12753	2.3	86.1	0.9	6.6	0.9	1.6	0.8	0.5	0.3	88.4	0.9	10.7	0.084	0.505	16.767735	-93.193050
Tuxtla Gutiérrez	159.00	1	2	12505	2.2	86.2	0.9	6.5	1.0	1.4	1.0	0.5	0.3	88.4	0.9	10.7	0.093	0.505	16.767834	-93.193003

23 CARR : Tehuacán - Huajuapán de León

CLAVE: 00211

RUTA: MEX-125

AÑO: 2021

LUGAR	ESTACION				CLASIFICACION VEHICULAR EN PORCIENTO										COORDENADAS					
	KM	TE	SC	TDPA	M	A	B	C2	C3	T3S2	T3S3	T3S2R4	OTROS	A	B	C	K'	D	LATITUD	LONGITUD
Tehuacán	0.00	3	1	8655	11.0	78.5	0.7	5.5	1.2	1.5	1.0	0.3	0.3	89.5	0.7	9.8	0.080	0.506	18.436413	-97.402058
Tehuacán	0.00	3	2	8444	10.9	78.7	0.6	5.4	1.3	1.5	1.0	0.3	0.3	89.6	0.6	9.8	0.083	0.506	18.436349	-97.402020
Zapotitlán Salinas	28.00	1	0	2793	5.1	73.8	1.3	12.1	2.4	3.0	1.1	0.7	0.5	78.9	1.3	19.8	0.077	0.502	18.334008	-97.460472
Lim. Edos. Term. Pue. Ppia. Oax.	55.80																			
Santiago Chazumba	63.02	1	0	1428	2.9	76.3	0.3	5.3	4.3	4.2	2.3	2.5	1.9	79.2	0.3	20.5	0.071	0.507	18.200804	-97.673344
Santiago Chazumba	63.02	3	0	2286	6.9	73.1	1.4	9.1	2.3	3.9	2.2	0.7	0.4	80.0	1.4	18.6	0.117	0.510	18.181360	-97.681225
T. Izq. Santa María Camotlán	103.13	1	0	2292	3.0	76.1	1.6	10.1	2.3	4.0	1.9	0.6	0.4	79.1	1.6	19.3	0.096	0.531	17.906098	-97.688207
T. C. Huajuapán de León - Oaxaca	119.40	1	0	9347	5.0	84.5	0.4	3.5	0.8	4.2	0.9	0.3	0.4	89.5	0.4	10.1	0.074	0.503	17.821285	-97.755573

24 CARR : Tuxtepec - Ent. Palomares

CLAVE: 00180

RUTA: MEX-147

AÑO: 2021

LUGAR	ESTACION				CLASIFICACION VEHICULAR EN PORCIENTO										COORDENADAS					
	KM	TE	SC	TDPA	M	A	B	C2	C3	T3S2	T3S3	T3S2R4	OTROS	A	B	C	K'	D	LATITUD	LONGITUD
T. C. Tuxtepec - Oaxaca	0.00	3	0	4691	9.7	72.0	1.6	9.4	2.8	2.8	1.0	0.3	0.4	81.7	1.6	16.7	0.074	0.512	18.038111	-96.161214
X. C. El Rodeo - Reforma	15.20	3	0	2726	8.3	75.1	1.9	8.1	2.9	2.8	0.6	0.1	0.2	83.4	1.9	14.7	0.081	0.512	17.950271	-96.069556
Lim. Edos. Term. Oax. Ppia. Ver.	40.00																			
X. C. Playa Vicente - El Tomate	48.16	1	0	2130	4.0	74.5	4.9	4.8	3.2	2.9	1.8	1.5	2.4	78.5	4.9	16.6	0.079	0.513	17.783645	-95.833235
X. C. Playa Vicente - El Tomate	48.16	3	0	3027	2.8	82.1	3.4	3.4	1.4	2.6	1.7	0.7	1.9	84.9	3.4	11.7	0.076	0.518	17.781605	-95.827625
T. Der. Xochiapa	65.00	3	0	1770	5.1	75.9	4.3	4.2	2.5	2.3	2.4	0.7	2.6	81.0	4.3	14.7	0.080	0.500	17.699724	-95.727835
T. Izq. San Juan Evangelista	81.20	1	0	1571	9.7	67.2	5.4	5.6	3.1	3.6	2.5	1.7	1.2	76.9	5.4	17.7	0.084	0.518	17.617256	-95.638547
Lim. Edos. Term. Ver. Ppia. Oax.	87.00																			

OAXACA

24 CARR: Tuxtepec - Ent. Palomares

CLAVE: 00180

RUTA: MEX-147

AÑO: 2021

LUGAR	ESTACION				CLASIFICACION VEHICULAR EN PORCIENTO										COORDENADAS					
	KM	TE	SC	TDPA	M	A	B	C2	C3	T3S2	T3S3	T3S2R4	OTROS	A	B	C	K'	D	LATITUD	LONGITUD
María Lombardo de Caso	110.50	1	0	3527	12.5	77.6	0.4	7.9	0.9	0.4	0.2	0.1	0.0	90.1	0.4	9.5	0.079	0.504	17.453931	-95.436251
T. C. Coatzacoalcos - Salina Cruz	175.00	1	0	2032	13.2	78.7	0.5	5.6	0.6	0.7	0.5	0.1	0.1	91.9	0.5	7.6	0.091	0.509	17.138120	-95.075376

25 CARR: Tuxtepec - T. C. (Oaxaca - Tehuantepec)

CLAVE: 20090

RUTA: MEX-175

AÑO: 2021

LUGAR	ESTACION				CLASIFICACION VEHICULAR EN PORCIENTO										COORDENADAS					
	KM	TE	SC	TDPA	M	A	B	C2	C3	T3S2	T3S3	T3S2R4	OTROS	A	B	C	K'	D	LATITUD	LONGITUD
Tuxtepec	0.00	3	1	7925	10.2	83.2	0.6	4.2	0.7	0.4	0.1	0.5	0.1	93.4	0.6	6.0	0.077	0.519	18.051668	-96.154832
Tuxtepec	0.00	3	2	7341	9.7	82.8	0.7	4.4	0.8	0.5	0.1	0.8	0.2	92.5	0.7	6.8	0.079	0.519	18.051630	-96.154773
T. Izq. Palomares	5.75	3	0	5614	11.0	83.2	0.8	3.4	0.9	0.4	0.1	0.1	0.1	94.2	0.8	5.0	0.083	0.512	18.034310	-96.164688
San José Chiltepec	17.93	3	0	3827	14.4	70.2	0.2	7.7	6.0	0.7	0.1	0.6	0.1	84.6	0.2	15.2	0.068	0.503	17.943334	-96.173112
Valle Nacional	47.07	1	0	3688	7.6	82.3	0.7	6.4	0.8	1.9	0.1	0.0	0.2	89.9	0.7	9.4	0.067	0.530	17.779146	-96.293171
Valle Nacional	47.07	3	0	2926	8.3	84.9	0.6	4.1	0.4	1.4	0.2	0.0	0.1	93.2	0.6	6.2	0.067	0.500	17.767337	-96.311027
La Esperanza	79.85	3	0	568	1.2	83.4	3.0	11.0	0.9	0.5	0.0	0.0	0.0	84.6	3.0	12.4	0.078	0.500	17.626883	-96.367717
Puerta del Sol	125.00	3	0	661	1.2	82.1	1.8	13.0	1.3	0.5	0.1	0.0	0.0	83.3	1.8	14.9	0.097	0.504	17.530451	-96.512266
T. Der. Ixtepeji	181.39	3	0	1962	2.7	85.8	1.0	7.6	1.5	1.0	0.3	0.0	0.1	88.5	1.0	10.5	0.095	0.515	17.238015	-96.564069
T. Izq. Yuvila	193.67	1	0	2250	2.5	86.3	0.9	7.2	1.1	1.3	0.5	0.0	0.2	88.8	0.9	10.3	0.093	0.502	17.176167	-96.605632
T. C. Oaxaca - Tehuantepec	212.70	1	1	6645	9.6	87.0	0.3	1.8	0.7	0.3	0.1	0.1	0.1	96.6	0.3	3.1	0.089	0.506	17.067543	-96.677174
T. C. Oaxaca - Tehuantepec	212.70	1	2	6499	9.6	86.8	0.4	1.9	0.8	0.2	0.1	0.1	0.1	96.4	0.4	3.2	0.101	0.506	17.067491	-96.677096

26 CARR: Yucudaa - Santiago Pinotepa Nacional

CLAVE: 20030

RUTA: MEX-125

AÑO: 2021

LUGAR	ESTACION				CLASIFICACION VEHICULAR EN PORCIENTO										COORDENADAS					
	KM	TE	SC	TDPA	M	A	B	C2	C3	T3S2	T3S3	T3S2R4	OTROS	A	B	C	K'	D	LATITUD	LONGITUD
T. C. Huajuapán de León - Oaxaca	0.00	3	0	3086	1.7	74.1	2.4	15.2	1.8	2.4	1.4	0.4	0.6	75.8	2.4	21.8	0.070	0.507	17.564692	-97.426443
Yolomécatl	24.40	3	0	2642	2.7	75.2	2.4	12.5	2.5	3.1	1.2	0.1	0.3	77.9	2.4	19.7	0.061	0.501	17.459542	-97.574930
Tlaxiaco	57.00	3	0	3855	3.9	85.9	0.3	5.2	0.9	2.8	0.5	0.2	0.3	89.8	0.3	9.9	0.077	0.501	17.236353	-97.699717
T. Der. Santiago Juxcatlán	104.00	1	0	843	3.4	78.1	2.0	10.1	2.8	2.5	0.5	0.1	0.5	81.5	2.0	16.5	0.072	0.501	17.152060	-97.889873
Putla de Guerrero	145.00	1	0	3027	13.2	73.3	0.8	8.0	1.5	2.3	0.4	0.1	0.4	86.5	0.8	12.7	0.064	0.502	17.040733	-97.906184
Cacahuatpec	229.00	1	0	1433	6.8	78.9	1.5	7.8	2.1	1.4	1.2	0.1	0.2	85.7	1.5	12.8	0.069	0.507	16.625824	-98.141486
T. C. Las Cruces - Pinotepa Nacional	268.00	1	0	3895	9.2	82.0	0.7	4.7	0.6	2.0	0.6	0.0	0.2	91.2	0.7	8.1	0.069	0.501	16.380408	-98.091133

OAXACA

27 CARR : Cuacnopalan - Oaxaca (Cuota)

CLAVE: 00109

RUTA : MEX-135D

AÑO : 2021

LUGAR	ESTACION				CLASIFICACION VEHICULAR EN PORCIENTO										COORDENADAS					
	KM	TE	SC	TDPA	M	A	B	C2	C3	T3S2	T3S3	T3S2R4	OTROS	A	B	C	K'	D	LATITUD	LONGITUD
T. C. Puebla - Córdoba (Cuota)	0.00	3	0	11431	0.5	68.7	6.0	9.8	2.5	6.8	2.0	2.7	1.0	69.2	6.0	24.8	0.096	0.501	18.816804	-97.491107
T. Der. Cuacnopalan	1.80	3	0	10995	0.5	70.8	5.3	9.4	2.8	5.8	2.2	2.4	0.8	71.3	5.3	23.4	0.080	0.571	18.813071	-97.490805
Plaza de Cobro Tehuacán	40.00	2	0	10688	0.6	74.0	3.0	5.9	5.4	6.2	1.2	2.9	0.8	74.6	3.0	22.4	0.083	0.500	18.487088	-97.456196
Plaza de Cobro Tehuacán	40.00	3	0	6118	1.1	67.5	7.9	10.0	3.3	4.9	2.6	2.0	0.7	68.6	7.9	23.5	0.084	0.513	18.471056	-97.449715
X. C. Tehuacán - Huajuapán de León	48.00	3	0	6294	1.1	66.1	7.2	11.0	3.5	5.2	2.9	2.3	0.7	67.2	7.2	25.6	0.065	0.509	18.421989	-97.412184
T. Izq. San Gabriel Chilac	61.00	3	0	5682	2.8	76.1	7.0	7.7	2.6	2.0	1.2	0.2	0.4	78.9	7.0	14.1	0.096	0.502	18.323253	-97.367434
Plaza de Cobro Miahuatlán	71.42	2	0	5116	0.8	70.3	4.3	5.0	7.1	6.3	1.5	3.9	0.8	71.1	4.3	24.6	0.083	0.500	18.264632	-97.315617
Lim. Edos. Term. Pue. Ppia. Oax.	83.50																			
Plaza de Cobro Coixtlahuaca	141.30	2	0	4267	0.8	68.6	4.4	5.0	7.5	6.9	1.3	4.6	0.9	69.4	4.4	26.2	0.083	0.500	17.726021	-97.353781
T. Izq. Asunción Nochistlán	175.50	1	0	4097	2.7	69.7	8.2	4.9	3.0	5.1	2.3	3.1	1.0	72.4	8.2	19.4	0.090	0.513	17.467872	-97.250246
T. Izq. Asunción Nochistlán	175.50	3	0	5798	2.5	63.1	9.1	6.3	4.6	7.2	2.1	4.1	1.0	65.6	9.1	25.3	0.067	0.507	17.457117	-97.242600
Plaza de Cobro Huitzo	220.00	2	0	6198	0.9	78.7	2.8	4.2	4.8	4.4	0.9	2.8	0.5	79.6	2.8	17.6	0.083	0.500	17.275031	-96.915296
Plaza de Cobro Huitzo	220.00	3	1	3689	1.4	69.9	4.2	11.8	3.2	5.4	1.1	2.5	0.5	71.3	4.2	24.5	0.085	0.515	17.272133	-96.911983
Plaza de Cobro Huitzo	220.00	3	2	3472	1.5	69.2	4.4	12.0	3.3	5.1	1.0	3.0	0.5	70.7	4.4	24.9	0.070	0.515	17.272183	-96.911883
T. C. Huajuapán de León - Oaxaca	242.70	1	1	4028	1.8	70.2	4.1	11.5	3.4	5.3	1.1	2.3	0.3	72.0	4.1	23.9	0.076	0.522	17.147167	-96.785883
T. C. Huajuapán de León - Oaxaca	242.70	1	2	3694	2.0	69.0	4.4	12.1	3.3	5.0	1.0	2.8	0.4	71.0	4.4	24.6	0.079	0.522	17.147269	-96.785897

28 CARR : Mitla - Tehuantepec (Cuota)

CLAVE:

RUTA : MEX-190D

AÑO : 2021

LUGAR	ESTACION				CLASIFICACION VEHICULAR EN PORCIENTO										COORDENADAS					
	KM	TE	SC	TDPA	M	A	B	C2	C3	T3S2	T3S3	T3S2R4	OTROS	A	B	C	K'	D	LATITUD	LONGITUD
Ent. C. Oaxaca - Tehuantepec	43.00	3	0	1454	2.5	86.8	0.5	7.9	0.7	0.6	0.7	0.2	0.1	89.3	0.5	10.2	0.091	0.505	16.913816	-96.394461
Ent. Mitla	50.90	1	0	1581	2.7	86.9	0.6	7.6	0.9	0.6	0.7	0.0	0.0	89.6	0.6	9.8	0.090	0.506	16.919067	-96.332683
Ent. Mitla	50.90	3	0	1625	2.4	89.6	0.9	2.7	3.1	0.6	0.5	0.1	0.1	92.0	0.9	7.1	0.079	0.502	16.927621	-96.322503
Ent. Hierve el Agua	62.10	1	0	1708	0.8	87.4	0.6	9.2	0.8	0.7	0.3	0.1	0.1	88.2	0.6	11.2	0.107	0.520	16.925150	-96.258467
Ent. Hierve el Agua	62.10	3	0	1569	2.3	85.0	0.9	8.9	1.6	0.7	0.4	0.1	0.1	87.3	0.9	11.8	0.105	0.501	16.922867	-96.254483
Ent. Sta. María Albarradas	71.00	1	0	1506	3.9	85.8	0.6	6.6	1.7	0.6	0.4	0.3	0.1	89.7	0.6	9.7	0.119	0.531	16.954706	-96.201439

29 CARR : Salina Cruz - La Ventosa (Cuota)

CLAVE: 00275

RUTA : MEX-185D

AÑO : 2021

LUGAR	ESTACION				CLASIFICACION VEHICULAR EN PORCIENTO										COORDENADAS					
	KM	TE	SC	TDPA	M	A	B	C2	C3	T3S2	T3S3	T3S2R4	OTROS	A	B	C	K'	D	LATITUD	LONGITUD
T. C. Santiago Pinotepa Nacional - Salina Cruz	0.00																			
Plaza de Cobro Tehuantepec	1.89	2	0	998	2.5	77.6	1.3	4.2	4.4	4.7	2.5	2.5	0.3	80.1	1.3	18.6	0.082	0.500	16.162185	-95.289280
X. C. Oaxaca - Tehuantepec	23.19	1	0	1166	10.0	68.2	4.0	9.8	0.9	5.1	1.7	0.2	0.1	78.2	4.0	17.8	0.084	0.513	16.329150	-95.279593

OAXACA

29 CARR: Salina Cruz - La Ventosa (Cuota)

CLAVE: 00275

RUTA: MEX-185D

AÑO: 2021

LUGAR	ESTACION				CLASIFICACION VEHICULAR EN PORCIENTO														COORDENADAS	
	KM	TE	SC	TDPA	M	A	B	C2	C3	T3S2	T3S3	T3S2R4	OTROS	A	B	C	K'	D	LATITUD	LONGITUD
X. C. Oaxaca - Tehuantepec	23.19	3	0	3110	10.0	68.2	4.0	9.8	0.9	5.1	1.7	0.2	0.1	78.2	4.0	17.8	0.095	0.513	16.339758	-95.275762
T. Izq. Oaxaca (Cuota)	34.00	3	0	2272	2.7	72.0	4.1	4.7	2.5	5.4	2.9	4.8	0.9	74.7	4.1	21.2	0.070	0.513	16.433095	-95.217162
Plaza de Cobro Ixtepec	47.49	2	0	1380	0.7	62.7	0.9	4.9	5.9	7.5	5.0	11.4	1.0	63.4	0.9	35.7	0.082	0.500	16.561479	-95.134267
T. C. Coatzacoalcos - Salina Cruz	75.39	1	0	1926	1.5	66.0	2.7	8.1	3.2	5.8	4.8	7.3	0.6	67.5	2.7	29.8	0.078	0.500	16.586530	-94.953775

30 CARR: Cd. Ixtepec - Guevea de Humboldt

CLAVE: 00301

RUTA: OAX

AÑO: 2021

LUGAR	ESTACION				CLASIFICACION VEHICULAR EN PORCIENTO														COORDENADAS	
	KM	TE	SC	TDPA	M	A	B	C2	C3	T3S2	T3S3	T3S2R4	OTROS	A	B	C	K'	D	LATITUD	LONGITUD
Ciudad Ixtepec	0.00																			
T. C. La Ventosa - Salina Cruz (Cuota)	4.00	1	1	2172	6.8	86.9	0.3	5.1	0.3	0.3	0.2	0.0	0.1	93.7	0.3	6.0	0.087	0.503	16.560447	-95.125623
T. C. La Ventosa - Salina Cruz (Cuota)	4.00	1	2	2139	6.2	87.1	0.3	5.7	0.3	0.3	0.1	0.0	0.0	93.3	0.3	6.4	0.098	0.503	16.560322	-95.125663
T. C. La Ventosa - Salina Cruz (Cuota)	4.00	3	0	2429	8.7	84.3	0.2	5.7	0.3	0.4	0.1	0.3	0.0	93.0	0.2	6.8	0.090	0.502	16.564058	-95.141154
Guevea de Humboldt	57.00																			

31 CARR: El Zapote - Copalita

CLAVE: 00109

RUTA: OAX

AÑO: 2021

LUGAR	ESTACION				CLASIFICACION VEHICULAR EN PORCIENTO														COORDENADAS	
	KM	TE	SC	TDPA	M	A	B	C2	C3	T3S2	T3S3	T3S2R4	OTROS	A	B	C	K'	D	LATITUD	LONGITUD
T. C. Santiago Pinotepa Nacional - Salina Cruz	0.00	3	1	2399	11.4	79.0	0.4	8.4	0.6	0.1	0.1	0.0	0.0	90.4	0.4	9.2	0.085	0.509	15.768331	-96.272230
T. C. Santiago Pinotepa Nacional - Salina Cruz	0.00	3	2	2539	11.7	78.1	0.5	8.8	0.5	0.1	0.1	0.0	0.2	89.8	0.5	9.7	0.084	0.509	15.768345	-96.272339
Copalita	43.04																			

32 CARR: Huajuapán de León - El Carrizal

CLAVE: 00109

RUTA: OAX

AÑO: 2021

LUGAR	ESTACION				CLASIFICACION VEHICULAR EN PORCIENTO														COORDENADAS	
	KM	TE	SC	TDPA	M	A	B	C2	C3	T3S2	T3S3	T3S2R4	OTROS	A	B	C	K'	D	LATITUD	LONGITUD
Huajuapán de León	0.00	3	0	2258	3.1	85.0	0.9	5.3	1.4	2.3	0.9	0.6	0.5	88.1	0.9	11.0	0.072	0.502	17.777062	-97.789695
San Miguel Tlacotepec	83.60	1	0	1644	2.2	85.2	1.3	5.9	1.6	2.1	0.9	0.4	0.4	87.4	1.3	11.3	0.082	0.505	17.461306	-98.004753
Santiago Juxtlahuaca	100.00	1	0	6841	8.9	81.9	0.8	3.2	0.9	2.2	0.6	0.8	0.7	90.8	0.8	8.4	0.105	0.502	17.352647	-98.014662
Putla	130.00	1	0	750	3.0	84.4	1.0	8.1	1.7	1.6	0.2	0.0	0.0	87.4	1.0	11.6	0.092	0.502	17.154621	-97.893767
El Carrizal	131.30																			

OAXACA

33 CARR : Loma Bonita - Mixtán

CLAVE: 20043

RUTA: OAX

AÑO: 2021

LUGAR	ESTACION				CLASIFICACION VEHICULAR EN PORCIENTO													COORDENADAS		
	KM	TE	SC	TDPA	M	A	B	C2	C3	T3S2	T3S3	T3S2R4	OTROS	A	B	C	K'	D	LATITUD	LONGITUD
Loma Bonita	0.00																			
X. C. Cd. Alemán - Sayula	1.00	1	1	5188	19.7	76.3	0.5	2.1	0.8	0.3	0.1	0.1	0.1	96.0	0.5	3.5	0.074	0.504	18.099200	-95.877808
X. C. Cd. Alemán - Sayula	1.00	1	2	5098	22.8	73.1	0.5	2.1	0.8	0.3	0.2	0.1	0.1	95.9	0.5	3.6	0.076	0.504	18.099224	-95.877721
X. C. Cd. Alemán - Sayula	1.00	3	0	2300	24.9	61.0	0.8	11.5	0.7	0.2	0.5	0.1	0.3	85.9	0.8	13.3	0.078	0.516	18.094857	-95.876395
T. Izq. Aeropuerto	12.00	3	0	711	16.6	67.4	0.8	13.2	1.2	0.5	0.3	0.0	0.0	84.0	0.8	15.2	0.082	0.501	18.014565	-95.869117
Mixtán	27.00																			

34 CARR : Ramal a Reforma de Pineda

CLAVE: 20010

RUTA: OAX

AÑO: 2021

LUGAR	ESTACION				CLASIFICACION VEHICULAR EN PORCIENTO													COORDENADAS		
	KM	TE	SC	TDPA	M	A	B	C2	C3	T3S2	T3S3	T3S2R4	OTROS	A	B	C	K'	D	LATITUD	LONGITUD
T. C. La Ventosa - San Pedro Tapanatepec	0.00	3	0	1617	7.5	74.5	5.1	6.6	2.0	1.1	1.0	1.0	1.2	82.0	5.1	12.9	0.089	0.507	16.492344	-94.427631
Reforma de Pineda	12.00																			

35 CARR : Ramal a Unión Hidalgo

CLAVE: 20044

RUTA: OAX

AÑO: 2021

LUGAR	ESTACION				CLASIFICACION VEHICULAR EN PORCIENTO													COORDENADAS		
	KM	TE	SC	TDPA	M	A	B	C2	C3	T3S2	T3S3	T3S2R4	OTROS	A	B	C	K'	D	LATITUD	LONGITUD
T. C. La Ventosa - San Pedro Tapanatepec	0.00	3	1	1566	10.7	85.0	0.6	2.2	0.4	0.7	0.3	0.0	0.1	95.7	0.6	3.7	0.081	0.538	16.574031	-94.816400
T. C. La Ventosa - San Pedro Tapanatepec	0.00	3	2	1371	11.8	84.1	0.2	2.5	0.5	0.5	0.3	0.0	0.1	95.9	0.2	3.9	0.091	0.538	16.574028	-94.816335
Unión Hidalgo	12.00	1	0	1317	16.4	74.1	1.2	5.1	1.1	1.1	0.4	0.1	0.5	90.5	1.2	8.3	0.099	0.501	16.489426	-94.832432

36 CARR : San Antonio - Puerto Ángel

CLAVE:

RUTA: OAX

AÑO: 2021

LUGAR	ESTACION				CLASIFICACION VEHICULAR EN PORCIENTO													COORDENADAS		
	KM	TE	SC	TDPA	M	A	B	C2	C3	T3S2	T3S3	T3S2R4	OTROS	A	B	C	K'	D	LATITUD	LONGITUD
T. C. Santiago Pinotepa Nacional - Salina Cruz	0.00	3	0	2573	17.9	78.0	0.1	3.8	0.1	0.0	0.1	0.0	0.0	95.9	0.1	4.0	0.099	0.502	15.713434	-96.582116
Mazunte	7.30	1	0	2048	28.7	65.8	0.2	4.7	0.1	0.2	0.1	0.1	0.1	94.5	0.2	5.3	0.082	0.502	15.669460	-96.557807
Mazunte	7.30	3	0	1870	29.0	65.8	0.0	5.0	0.1	0.0	0.1	0.0	0.0	94.8	0.0	5.2	0.090	0.502	15.666979	-96.540331
Puerto Ángel	15.90																			

OAXACA

37 CARR: T. C. (Oaxaca - Puerto Ángel) - Puerto Escondido

CLAVE: 20009

RUTA: MEX-OAX-161

AÑO: 2021

LUGAR	ESTACION				CLASIFICACION VEHICULAR EN PORCIENTO													COORDENADAS		
	KM	TE	SC	TDPA	M	A	B	C2	C3	T3S2	T3S3	T3S2R4	OTROS	A	B	C	K'	D	LATITUD	LONGITUD
T. C. Oaxaca - Puerto Ángel	0.00	3	1	7880	4.1	86.6	0.5	6.5	0.9	0.8	0.4	0.1	0.1	90.7	0.5	8.8	0.111	0.506	16.920386	-96.712520
T. C. Oaxaca - Puerto Ángel	0.00	3	2	8079	4.0	87.0	0.5	6.4	0.9	0.7	0.3	0.1	0.1	91.0	0.5	8.5	0.093	0.506	16.920308	-96.712444
T. Izq. San Pablo Huixtepec	16.80	1	0	8655	11.8	79.5	0.8	4.2	1.4	0.7	0.5	0.7	0.4	91.3	0.8	7.9	0.083	0.527	16.841022	-96.788229
T. Izq. San Pablo Huixtepec	16.80	3	0	7290	11.2	77.8	0.8	7.3	1.6	0.5	0.4	0.2	0.2	89.0	0.8	10.2	0.077	0.504	16.828235	-96.788878
T. Der. El Trapiche	30.00	1	0	4414	2.8	81.2	1.1	7.9	3.2	2.4	0.7	0.2	0.5	84.0	1.1	14.9	0.074	0.508	16.761346	-96.856377
T. Der. El Trapiche	30.00	3	0	4811	4.3	84.4	0.5	4.7	2.4	2.4	0.8	0.2	0.3	88.7	0.5	10.8	0.069	0.502	16.759937	-96.859744
T. Der. Cofradía San Pedro	53.00	3	0	1956	3.1	76.2	2.5	11.8	2.2	2.5	1.2	0.2	0.3	79.3	2.5	18.2	0.079	0.506	16.598534	-96.889845
Sola de Vega	78.40	3	0	1812	5.4	76.1	3.1	10.6	2.2	1.7	0.6	0.1	0.2	81.5	3.1	15.4	0.077	0.503	16.509418	-96.983755
T. Der. Yalotepec	134.50	1	0	1277	1.9	75.5	3.2	11.7	3.8	2.1	1.2	0.2	0.4	77.4	3.2	19.4	0.075	0.533	16.348117	-97.094688
San Gabriel Mixtepec	208.00	1	0	1658	15.3	74.0	0.8	6.1	1.4	1.4	0.2	0.6	0.2	89.3	0.8	9.9	0.084	0.511	16.093693	-97.075083
Puerto Escondido	248.00	1	0	4855	14.5	76.6	0.3	5.1	0.3	2.4	0.4	0.1	0.3	91.1	0.3	8.6	0.074	0.500	15.894062	-97.076854

38 CARR: Tehuacán - Huitzo

CLAVE: 00211

RUTA: PUE-MEX-135

AÑO: 2021

LUGAR	ESTACION				CLASIFICACION VEHICULAR EN PORCIENTO													COORDENADAS		
	KM	TE	SC	TDPA	M	A	B	C2	C3	T3S2	T3S3	T3S2R4	OTROS	A	B	C	K'	D	LATITUD	LONGITUD
Tehuacán	0.00	3	0	9191	3.9	87.4	1.3	7.0	0.3	0.1	0.0	0.0	0.0	91.3	1.3	7.4	0.079	0.540	18.453504	-97.370871
T. Der. San Gabriel Chilac	14.40	1	0	7404	14.4	76.6	0.4	4.5	0.9	1.7	0.7	0.4	0.4	91.0	0.4	8.6	0.082	0.511	18.410414	-97.331144
San Sebastián Zinacatepec	23.00	3	0	6210	8.8	74.3	1.3	8.8	2.0	3.1	1.0	0.3	0.4	83.1	1.3	15.6	0.077	0.590	18.321774	-97.226510
Lim. Edos. Term. Pue. Ppia. Oax.	60.90																			
Teotitlán del Camino	63.15	3	0	2673	9.2	84.4	0.3	4.3	0.4	0.8	0.2	0.4	0.0	93.6	0.3	6.1	0.068	0.504	18.118224	-97.073755
Santa María Tecomavaca	88.34	1	0	1233	5.5	85.9	0.7	5.5	0.8	0.9	0.2	0.5	0.0	91.4	0.7	7.9	0.090	0.521	17.955420	-97.025378
Santa María Tecomavaca	88.34	3	0	1042	7.9	83.8	0.7	5.2	0.8	0.6	0.3	0.7	0.0	91.7	0.7	7.6	0.075	0.502	17.948688	-97.021636
T. Izq. Cuicatlán	118.80	1	0	1434	7.1	84.5	0.6	6.0	0.5	0.7	0.2	0.4	0.0	91.6	0.6	7.8	0.079	0.519	17.793761	-96.959491
T. Izq. Nacaltepec	169.84	1	0	720	8.3	84.1	0.4	5.4	0.7	0.5	0.1	0.5	0.0	92.4	0.4	7.2	0.091	0.520	17.505697	-96.933072
T. C. Huajuapán de León - Oaxaca	202.70	1	0	7007	12.3	82.5	0.7	2.1	0.7	0.4	0.6	0.6	0.1	94.8	0.7	4.5	0.081	0.504	17.287437	-96.903674

39 CARR: Teotitlán de Flores Magón - Tuxtepec

CLAVE: 00108

RUTA: OAX-PUE-MEX-182

AÑO: 2021

LUGAR	ESTACION				CLASIFICACION VEHICULAR EN PORCIENTO													COORDENADAS		
	KM	TE	SC	TDPA	M	A	B	C2	C3	T3S2	T3S3	T3S2R4	OTROS	A	B	C	K'	D	LATITUD	LONGITUD
Teotitlán del Camino	0.00	3	0	1029	1.9	79.6	3.8	9.3	2.8	1.6	0.8	0.0	0.2	81.5	3.8	14.7	0.075	0.503	18.131115	-97.064044
Lim. Edos. Term. Oax. Ppia. Pue.	2.00																			
Lim. Edos. Term. Pue. Ppia. Oax.	10.00																			
Huautla	65.00	1	0	1728	4.1	85.1	0.4	6.7	1.0	1.3	0.3	0.9	0.2	89.2	0.4	10.4	0.065	0.509	18.125501	-96.846186

OAXACA

39 CARR: Teotitlán de Flores Magón - Tuxtepec

CLAVE: 00108

RUTA: OAX-PUE-MEX-182

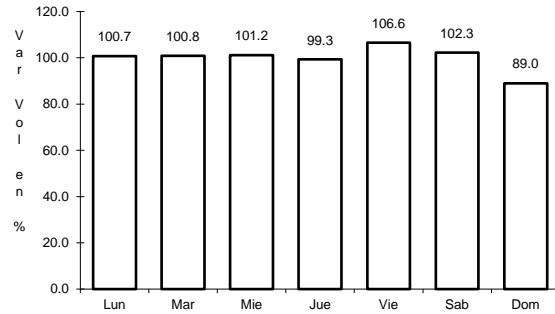
AÑO: 2021

LUGAR	ESTACION				CLASIFICACION VEHICULAR EN PORCIENTO													COORDENADAS		
	KM	TE	SC	TDPA	M	A	B	C2	C3	T3S2	T3S3	T3S2R4	OTROS	A	B	C	K'	D	LATITUD	LONGITUD
San Felipe Jalapa de Díaz	140.00	3	0	4252	3.3	86.4	0.4	6.3	1.0	1.3	0.3	0.9	0.1	89.7	0.4	9.9	0.076	0.508	18.081867	-96.522525
Tuxtepec	185.00	1	0	5446	2.6	82.8	1.6	8.1	1.4	1.7	1.0	0.6	0.2	85.4	1.6	13.0	0.086	0.502	18.089835	-96.171752

1 CARR: Acceso al Puerto Salina Cruz

CLAVE:

ruta: MEX-090

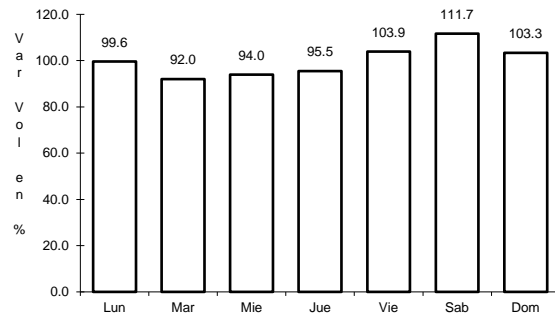


Km: 0.00 Tipo: 3 Sent: 0

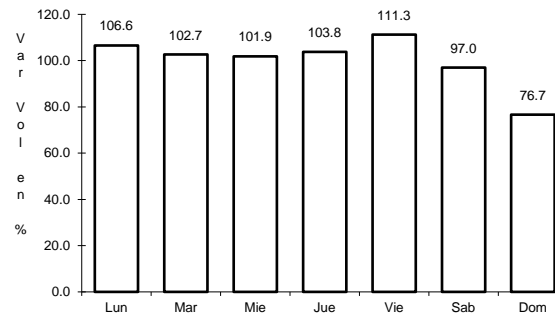
2 CARR: Buenavista - Tuxtepec

CLAVE: 00624

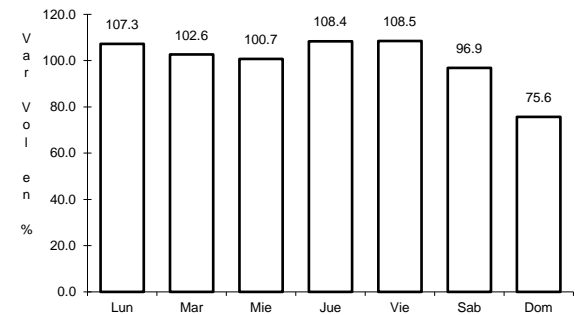
ruta: MEX-175



Km: 0.00 Tipo: 3 Sent: 0



Km: 121.25 Tipo: 1 Sent: 1

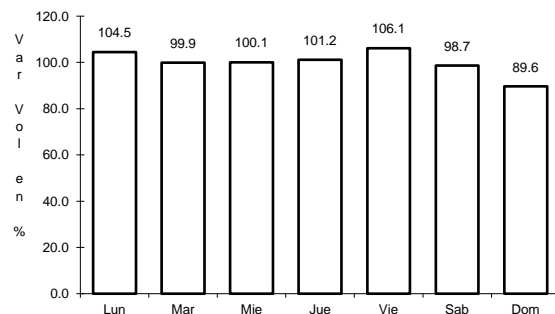


Km: 121.25 Tipo: 1 Sent: 2

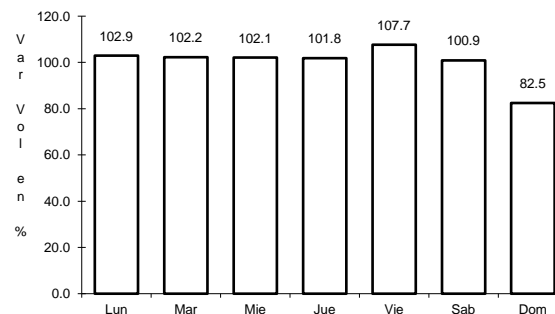
3 CARR: Cd. Alemán - Sayula

CLAVE: 00301

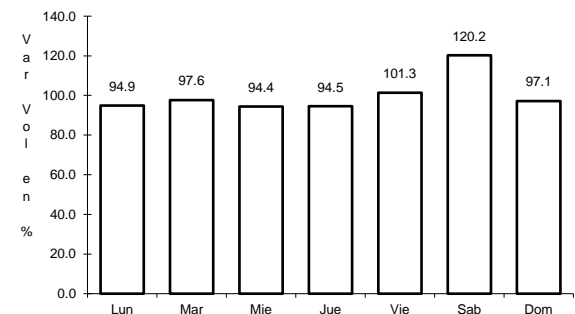
ruta: MEX-145



Km: 0.00 Tipo: 3 Sent: 0



Km: 71.40 Tipo: 1 Sent: 0

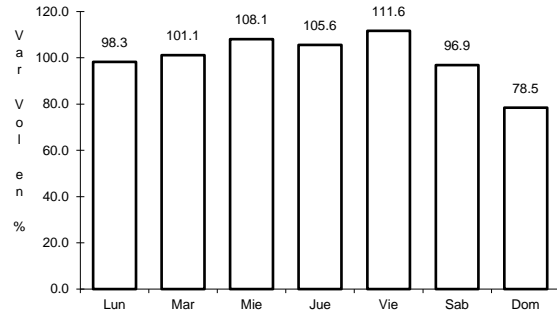


Km: 136.40 Tipo: 1 Sent: 0

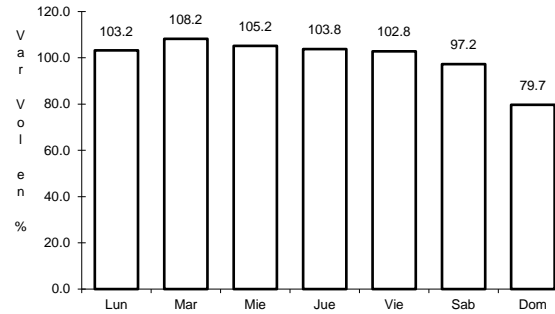
4 CARR: Coatzacoalcos - Salina Cruz

CLAVE: 00147

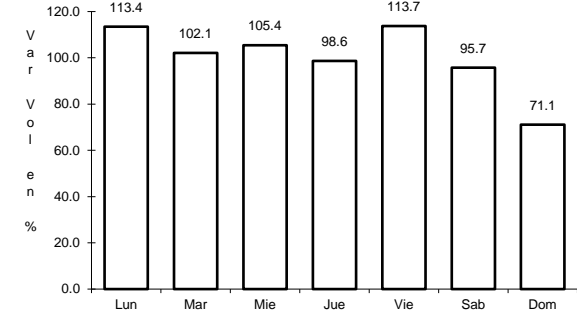
RUTA: MEX-185



Km: 0.00 Tipo: 3 Sent: 1



Km: 0.00 Tipo: 3 Sent: 2

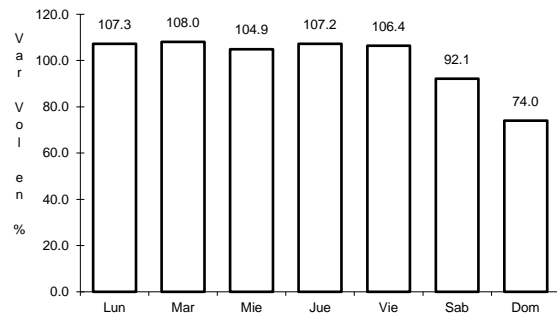


Km: 255.55 Tipo: 1 Sent: 0

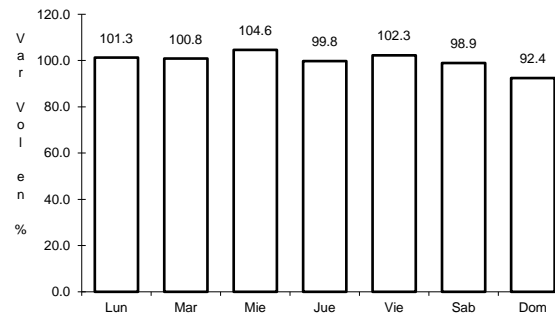
5 CARR: Ent. La Ventosa - San Pedro Tapanatepec

CLAVE: 20059

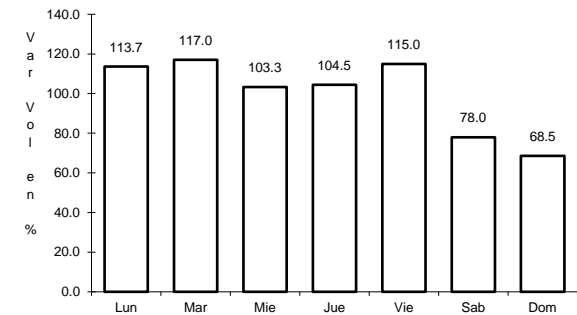
RUTA: MEX-190



Km: 0.00 Tipo: 3 Sent: 0



Km: 38.01 Tipo: 3 Sent: 0

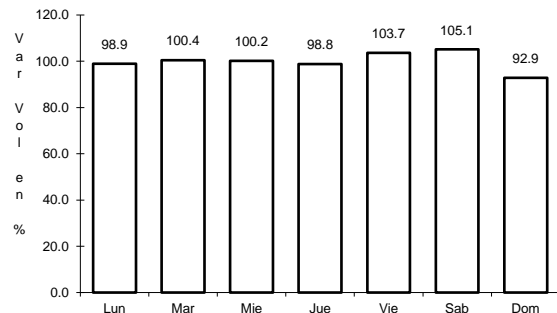


Km: 91.80 Tipo: 1 Sent: 0

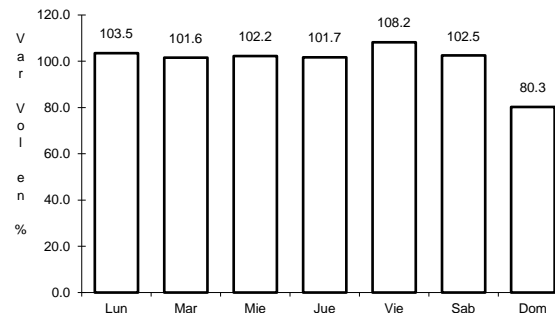
6 CARR: Huajuapán de León - Oaxaca

CLAVE: 20056

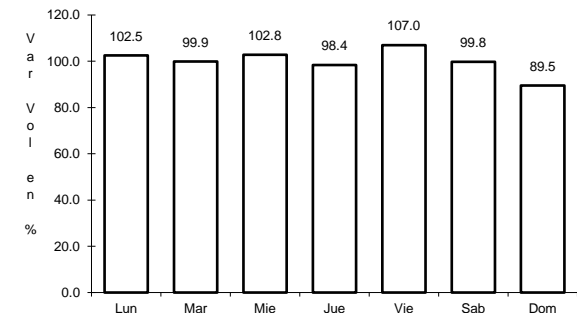
RUTA: MEX-190



Km: 1.35 Tipo: 1 Sent: 0



Km: 190.60 Tipo: 1 Sent: 1

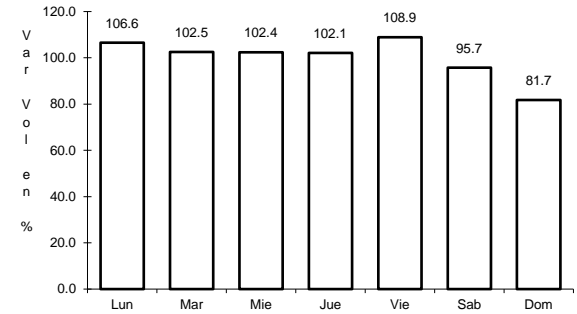
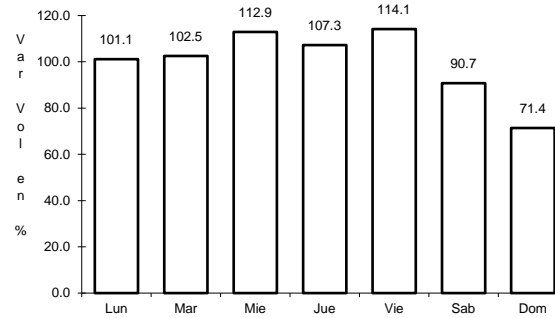
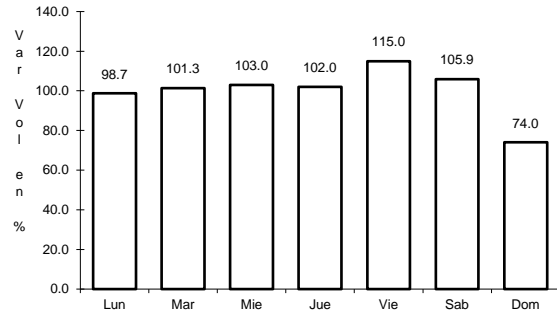


Km: 190.60 Tipo: 1 Sent: 2

7 CARR: Juchitán - Ixtepec

CLAVE: 20359

RUTA: MEX-185



Km: 0.15 Tipo: 3 Sent: 1

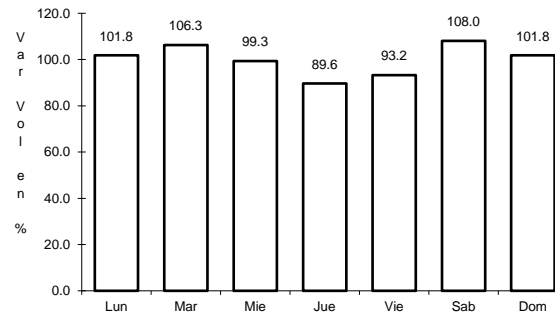
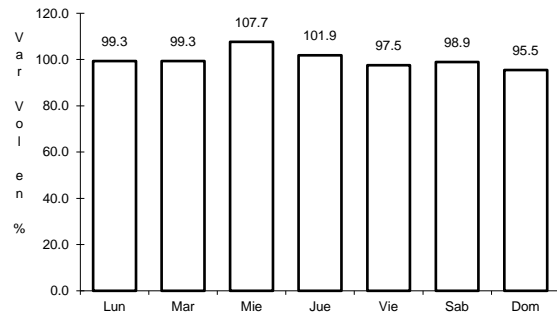
Km: 0.15 Tipo: 3 Sent: 2

Km: 16.00 Tipo: 1 Sent: 1

8 CARR: La Granja - Temascal

CLAVE: 00275

RUTA: MEX-145



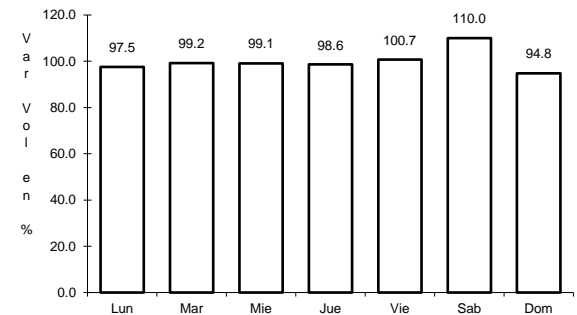
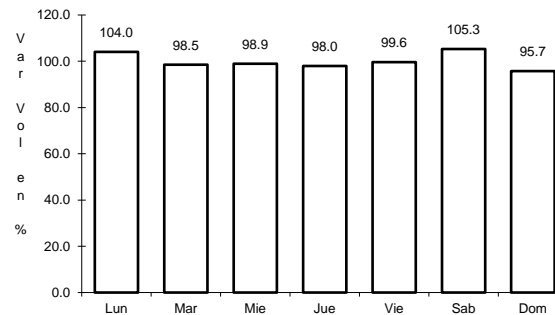
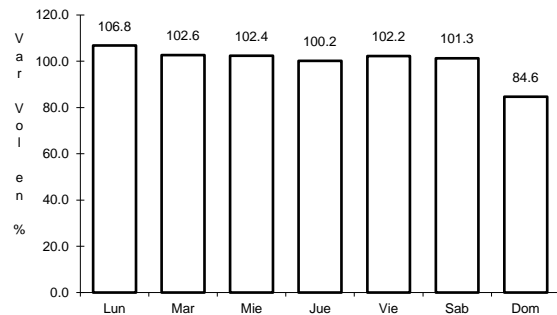
Km: 0.00 Tipo: 3 Sent: 0

Km: 23.00 Tipo: 1 Sent: 0

9 CARR: Las Cruces - Pinotepa Nacional

CLAVE: 00073

RUTA: MEX-200



Km: 0.00 Tipo: 3 Sent: 1

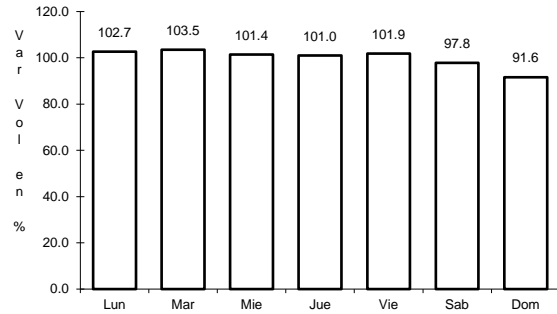
Km: 0.00 Tipo: 3 Sent: 2

Km: 245.47 Tipo: 3 Sent: 0

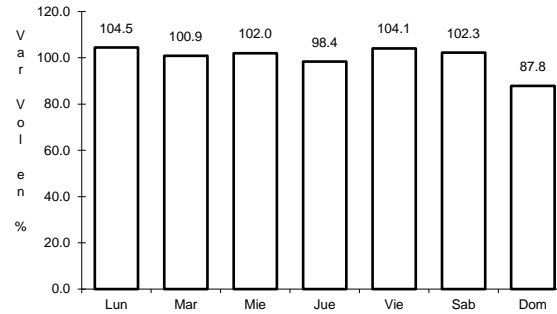
10 CARR: Libramiento de Pochutla

CLAVE:

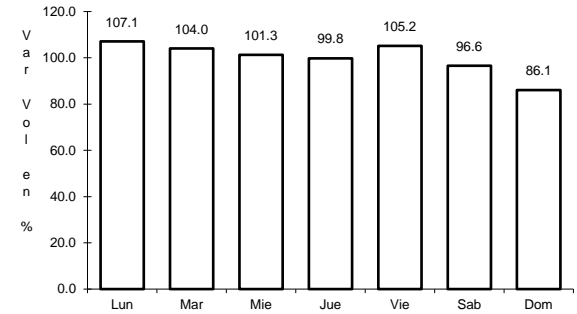
RUTA: MEX-200



Km: 0.00 Tipo: 3 Sent: 0



Km: 2.40 Tipo: 1 Sent: 0

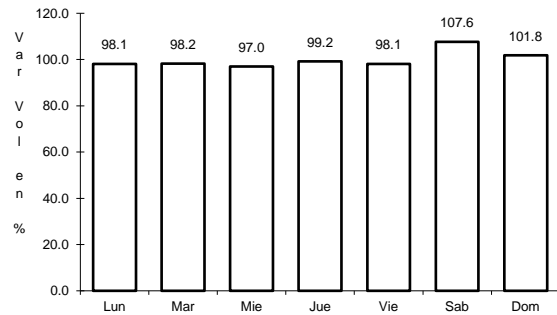


Km: 5.20 Tipo: 1 Sent: 0

11 CARR: Libramiento de San Pedro Tapanatepec

CLAVE:

RUTA: MEX-200

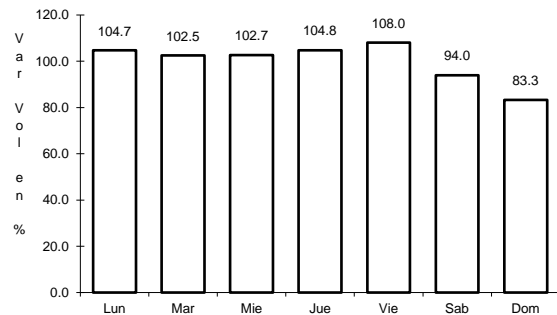


Km: 3.35 Tipo: 1 Sent: 0

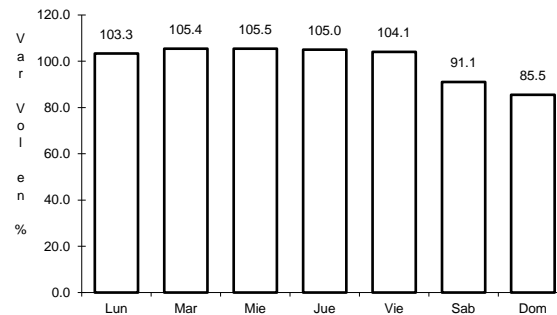
12 CARR: Libramiento de Santa María del Tule

CLAVE:

RUTA: MEX-190



Km: 0.00 Tipo: 3 Sent: 0

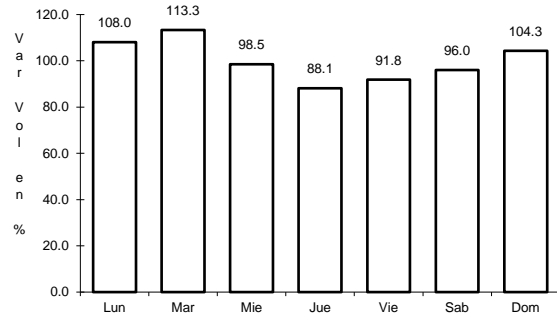


Km: 5.80 Tipo: 1 Sent: 0

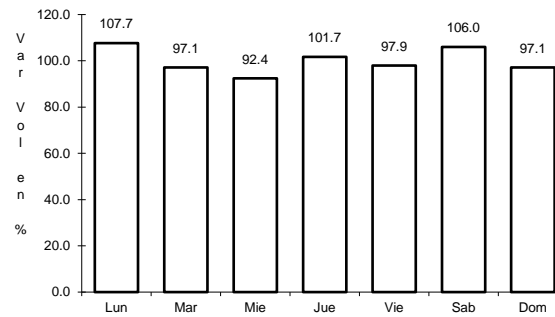
13 CARR: Oaxaca - Puerto Ángel

CLAVE: 20091

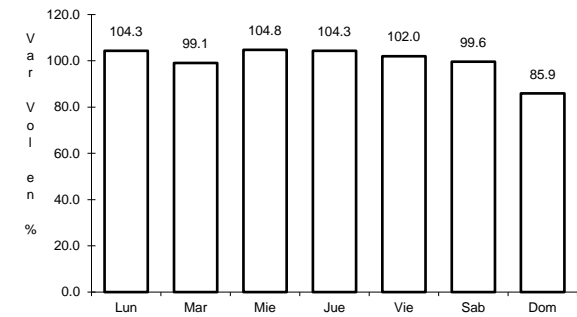
RUTA: MEX-175



Km: 0.00 Tipo: 3 Sent: 1



Km: 0.00 Tipo: 3 Sent: 2

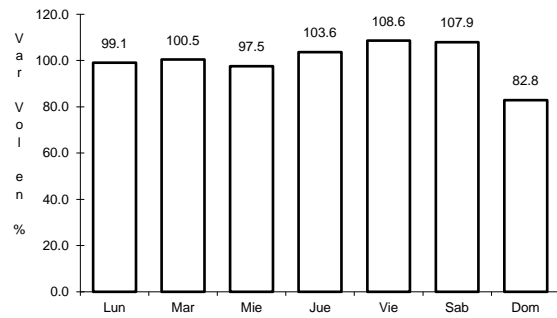


Km: 245.40 Tipo: 1 Sent: 0

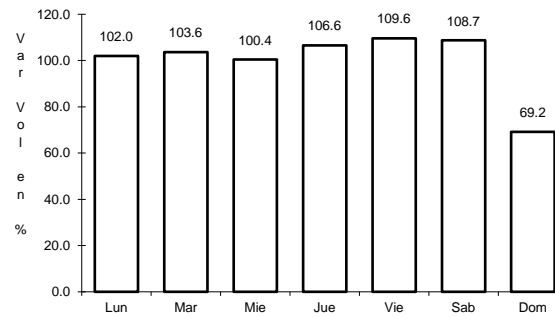
14 CARR: Oaxaca - Tehuantepec

CLAVE: 20057

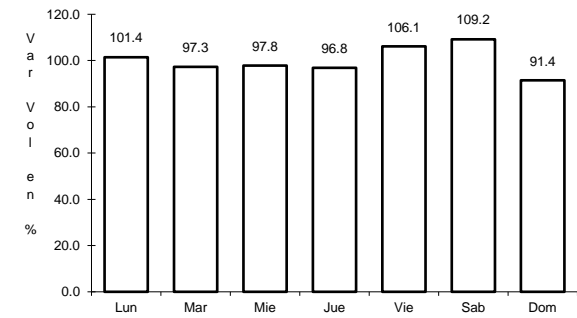
RUTA: MEX-190



Km: 0.00 Tipo: 3 Sent: 1



Km: 0.00 Tipo: 3 Sent: 2

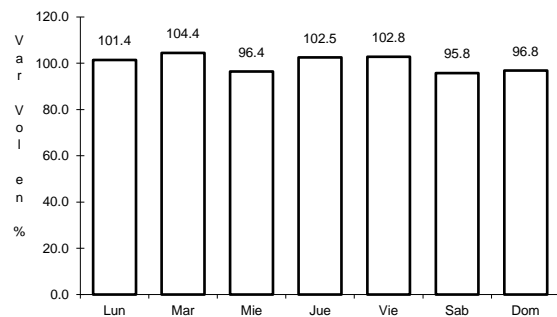


Km: 250.60 Tipo: 1 Sent: 0

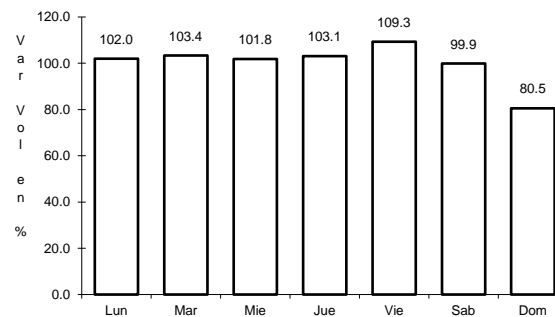
15 CARR: Puebla - Huajuapán de León

CLAVE: 00049

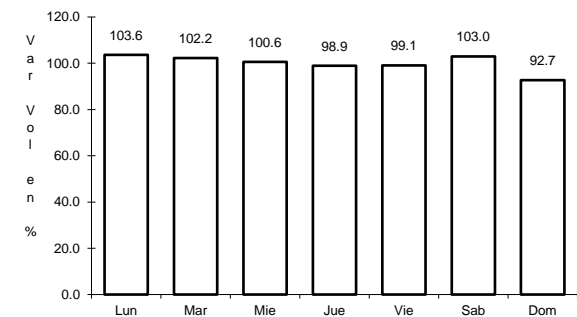
RUTA: MEX-190



Km: 0.00 Tipo: 3 Sent: 1



Km: 0.00 Tipo: 3 Sent: 2

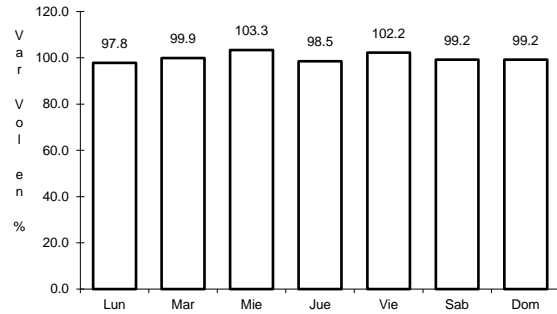


Km: 219.30 Tipo: 1 Sent: 0

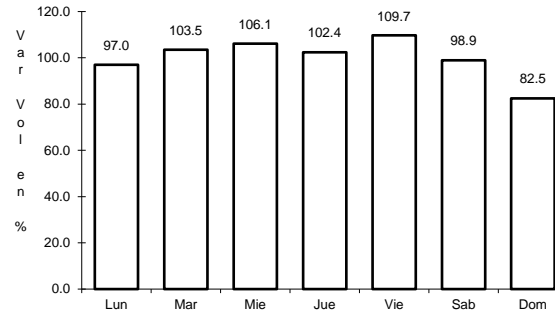
16 CARR: Ramal a Asunción Ixtaltepec

CLAVE: 20624

RUTA: MEX-185



Km: 0.00 Tipo: 3 Sent: 0

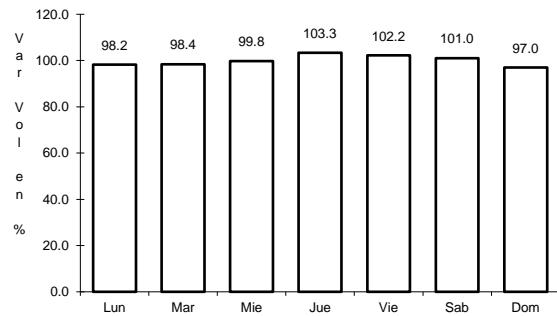


Km: 9.70 Tipo: 1 Sent: 0

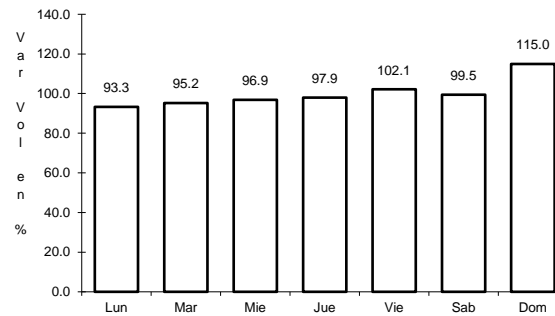
17 CARR: Ramal a Monte Albán

CLAVE:

RUTA: MEX



Km: 1.80 Tipo: 3 Sent: 0

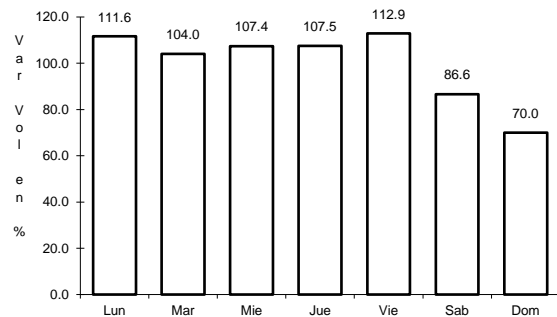


Km: 2.75 Tipo: 3 Sent: 0

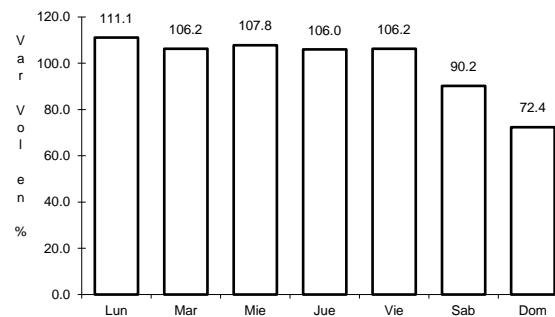
18 CARR: Ramal a Refinería Pemex (Refinería del Pacifico)

CLAVE:

RUTA: MEX



Km: 0.00 Tipo: 3 Sent: 1

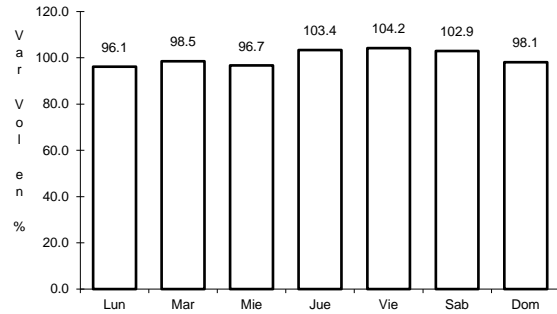


Km: 0.00 Tipo: 3 Sent: 2

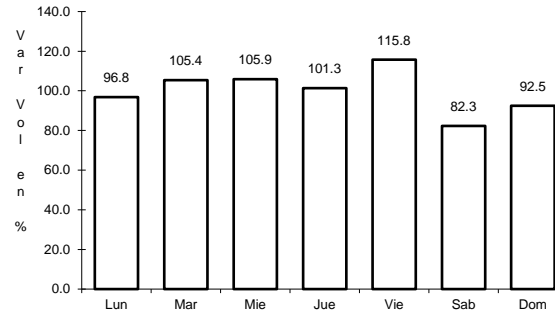
19 CARR: San Pablo Villa de Mitla - T. C. (Tuxtepec - Palomares)

CLAVE: 00106

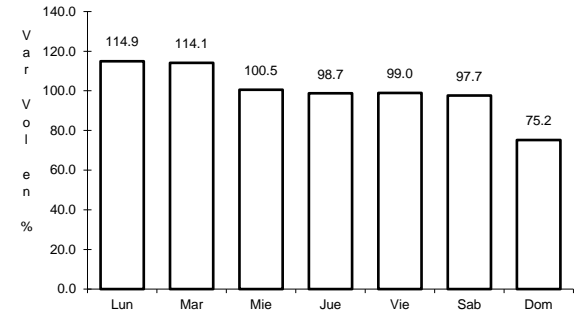
RUTA: MEX-179



Km: 0.00 Tipo: 3 Sent: 0



Km: 90.00 Tipo: 1 Sent: 0

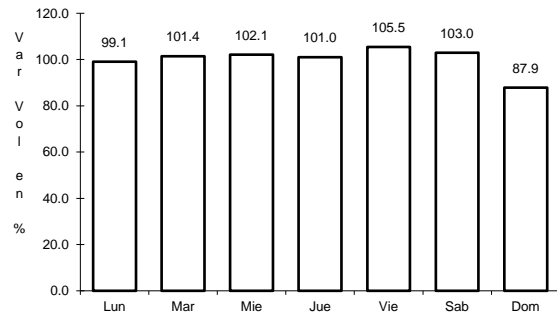


Km: 238.70 Tipo: 1 Sent: 0

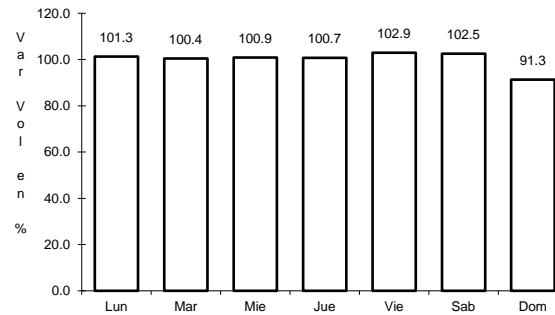
20 CARR: Santiago Pinotepa Nacional - Salina Cruz

CLAVE: 20074

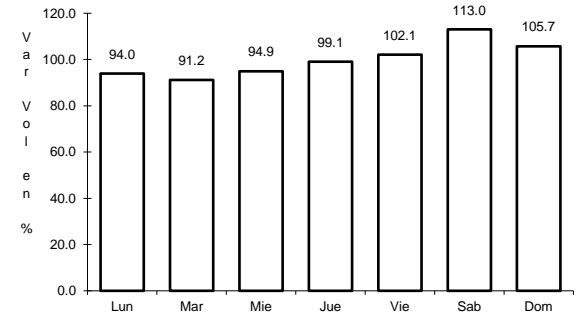
RUTA: MEX-200



Km: 0.00 Tipo: 3 Sent: 0



Km: 209.15 Tipo: 1 Sent: 0

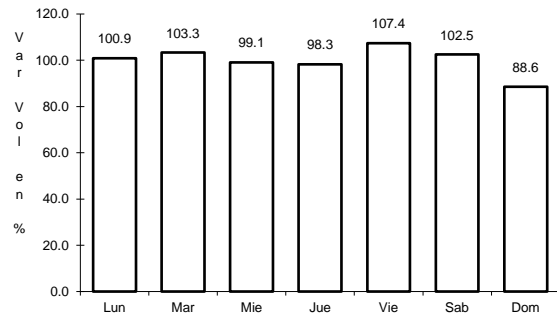


Km: 380.00 Tipo: 3 Sent: 0

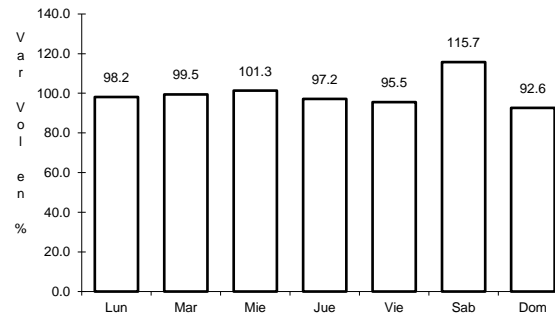
21 CARR: Tapanatepec - Talismán

CLAVE: 00075

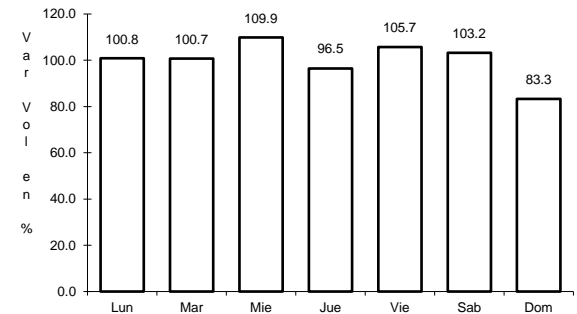
RUTA: MEX-200



Km: 0.00 Tipo: 3 Sent: 0



Km: 45.00 Tipo: 1 Sent: 0

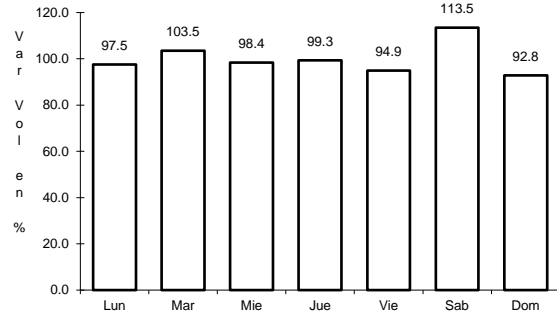


Km: 310.77 Tipo: 1 Sent: 0

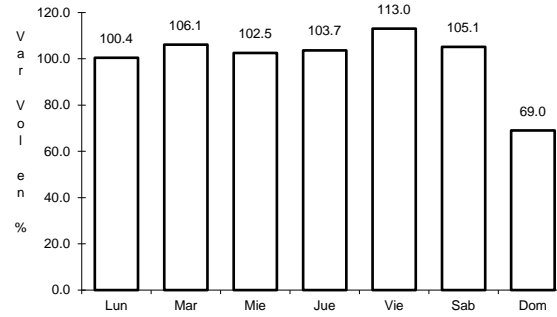
22 CARR: Tapanatepec - Tuxtla Gutiérrez

CLAVE: 00060

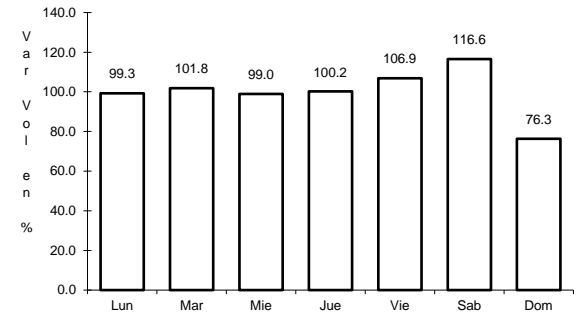
RUTA: MEX-190



Km: 0.00 Tipo: 3 Sent: 0



Km: 159.00 Tipo: 1 Sent: 1

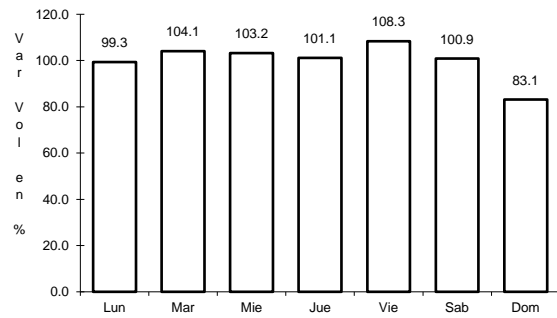


Km: 159.00 Tipo: 1 Sent: 2

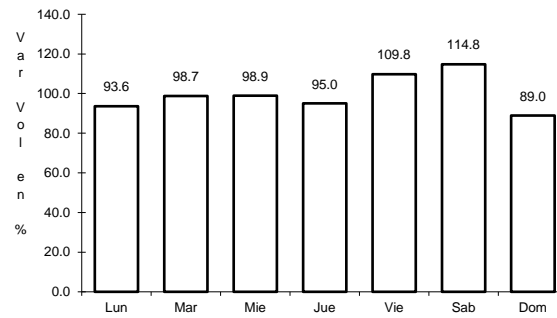
23 CARR: Tehuacán - Huajuapán de León

CLAVE: 00211

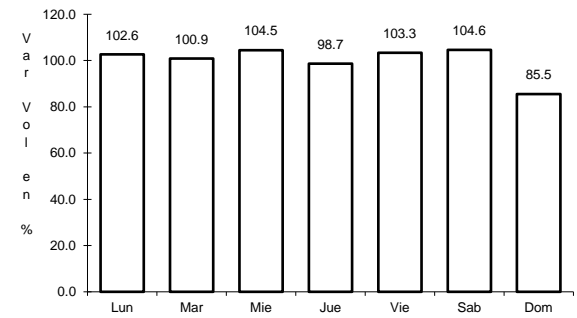
RUTA: MEX-125



Km: 0.00 Tipo: 3 Sent: 1



Km: 0.00 Tipo: 3 Sent: 2

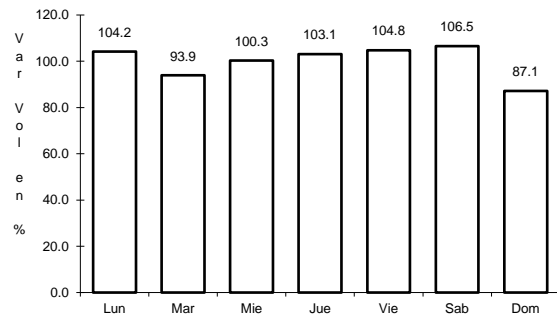


Km: 119.40 Tipo: 1 Sent: 0

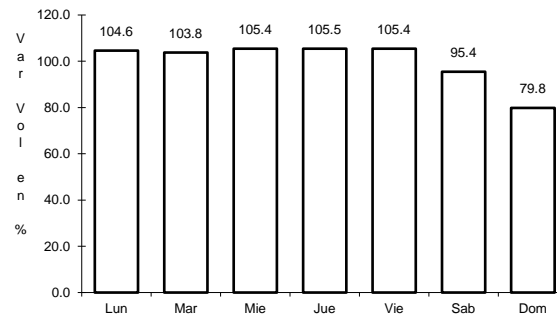
24 CARR: Tuxtepec - Ent. Palomares

CLAVE: 00180

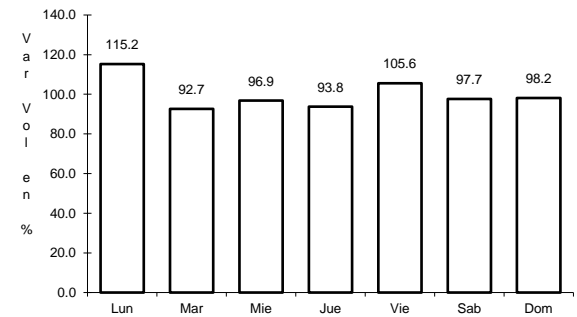
RUTA: MEX-147



Km: 0.00 Tipo: 3 Sent: 0



Km: 81.20 Tipo: 1 Sent: 0

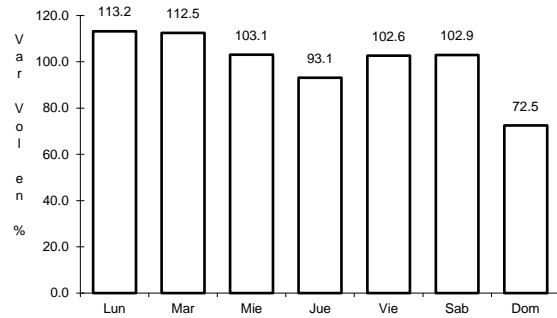


Km: 175.00 Tipo: 1 Sent: 0

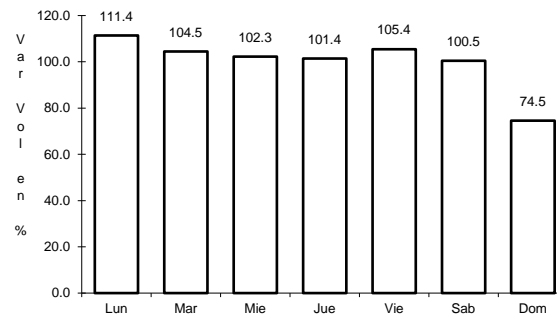
25 CARR: Tuxtepec - T. C. (Oaxaca - Tehuantepec)

CLAVE: 20090

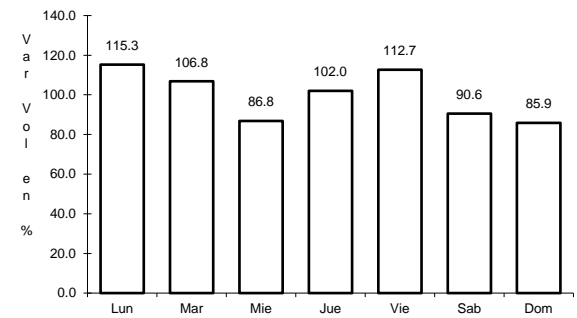
RUTA: MEX-175



Km: 0.00 Tipo: 3 Sent: 1



Km: 0.00 Tipo: 3 Sent: 2

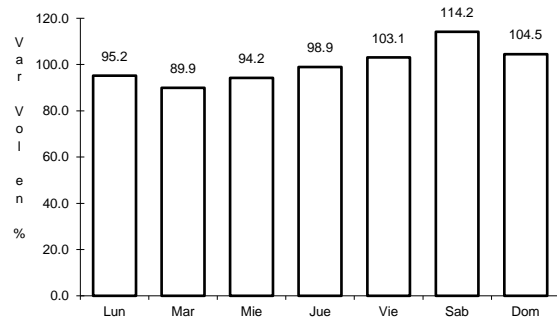


Km: 125.00 Tipo: 3 Sent: 0

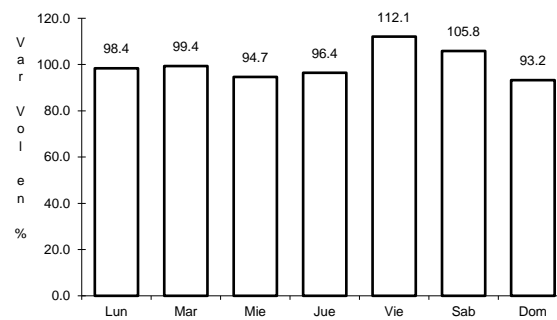
26 CARR: Yucudaa - Santiago Pinotepa Nacional

CLAVE: 20030

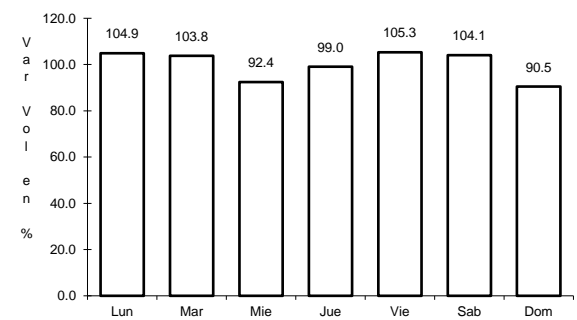
RUTA: MEX-125



Km: 0.00 Tipo: 3 Sent: 0



Km: 104.00 Tipo: 1 Sent: 0

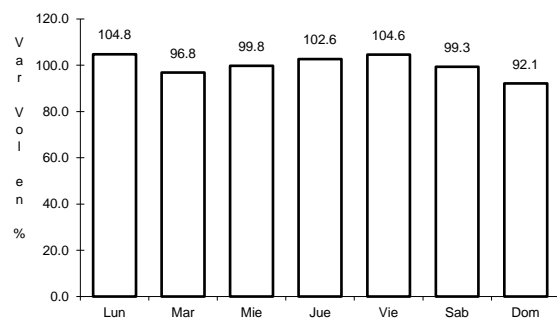


Km: 268.00 Tipo: 1 Sent: 0

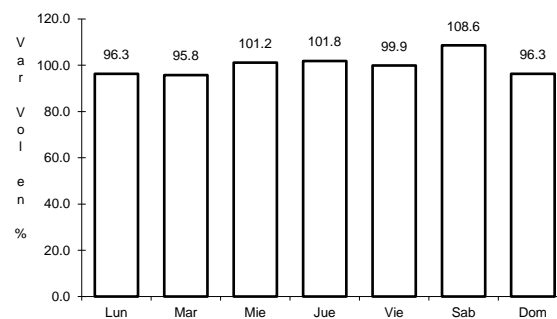
27 CARR: Cuacnopalan - Oaxaca (Cuota)

CLAVE: 00109

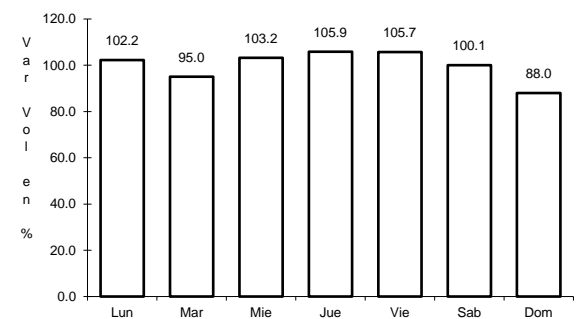
RUTA: MEX-135D



Km: 0.00 Tipo: 3 Sent: 0



Km: 242.70 Tipo: 1 Sent: 1

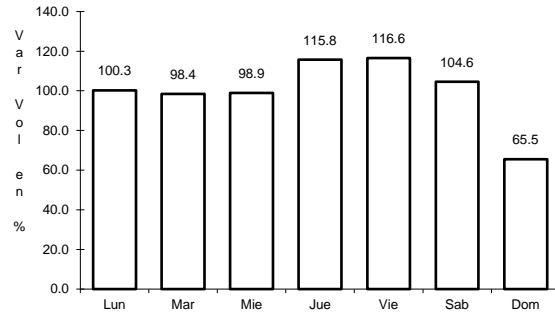


Km: 242.70 Tipo: 1 Sent: 2

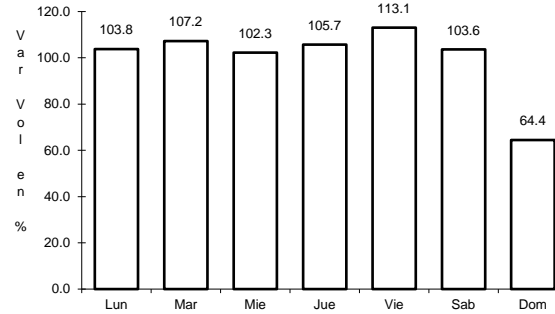
28 CARR: Mitla - Tehuantepec (Cuota)

CLAVE:

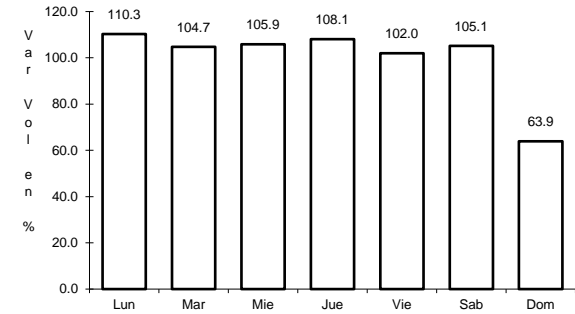
RUTA: MEX-190D



Km: 43.00 Tipo: 3 Sent: 0



Km: 50.90 Tipo: 3 Sent: 0

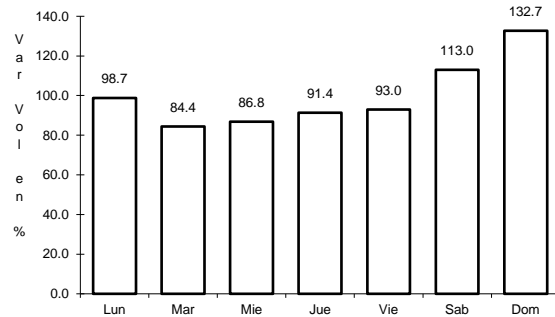


Km: 71.00 Tipo: 1 Sent: 0

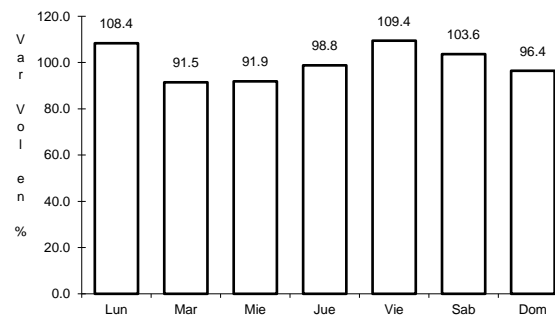
29 CARR: Salina Cruz - La Ventosa (Cuota)

CLAVE: 00275

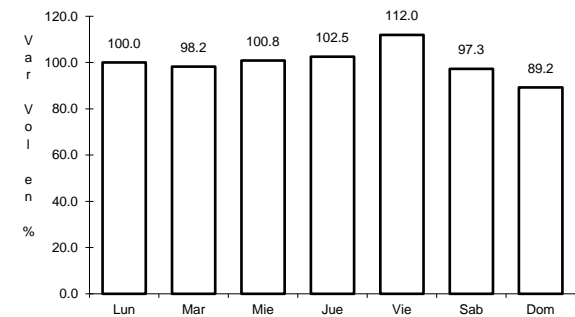
RUTA: MEX-185D



Km: 23.19 Tipo: 1 Sent: 0



Km: 34.00 Tipo: 3 Sent: 0

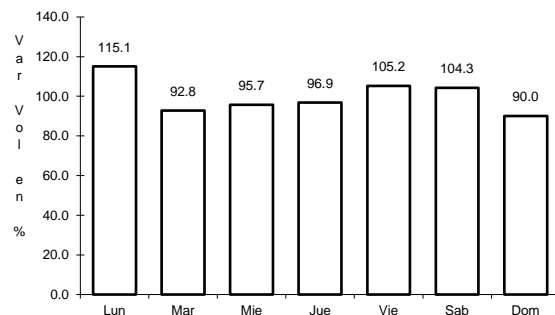


Km: 75.39 Tipo: 1 Sent: 0

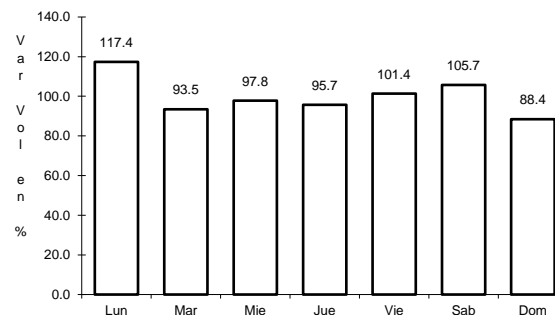
30 CARR: Cd. Ixtepec - Guevea de Humboldt

CLAVE: 00301

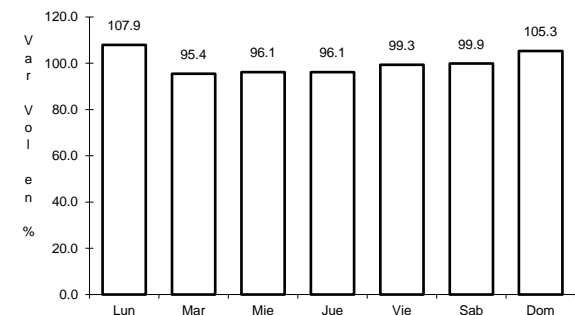
RUTA: OAX



Km: 4.00 Tipo: 1 Sent: 1



Km: 4.00 Tipo: 1 Sent: 2

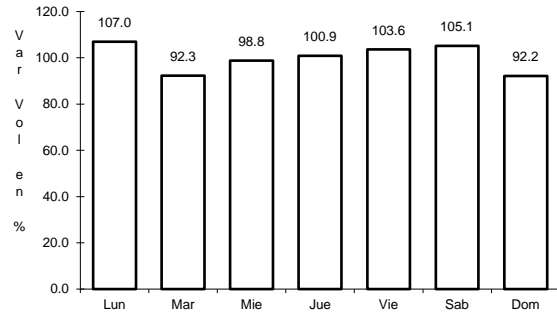


Km: 4.00 Tipo: 3 Sent: 0

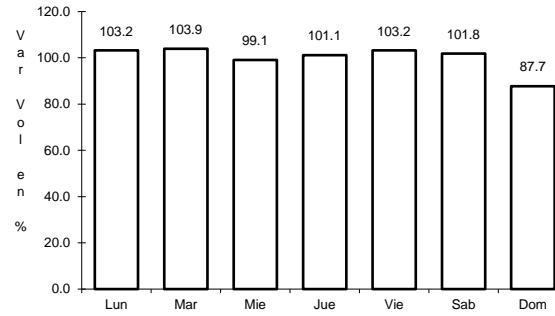
31 CARR: El Zapote - Copalita

CLAVE: 00109

RUTA: OAX



Km: 0.00 Tipo: 3 Sent: 1

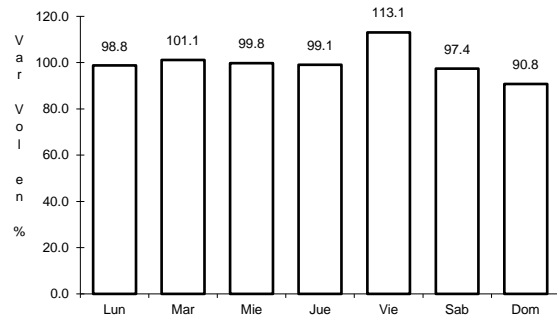


Km: 0.00 Tipo: 3 Sent: 2

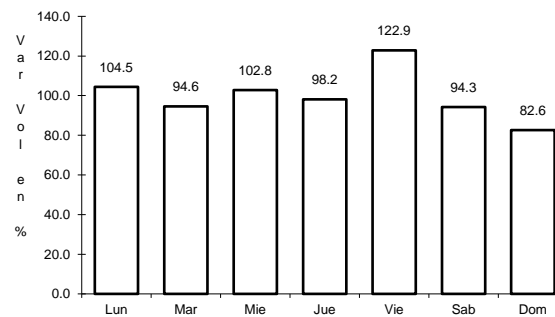
32 CARR: Huajuapán de León - El Carrizal

CLAVE: 00109

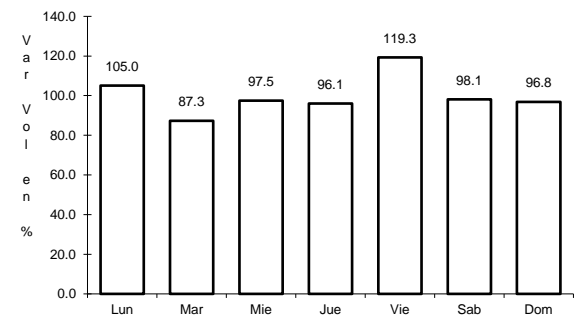
RUTA: OAX



Km: 0.00 Tipo: 3 Sent: 0



Km: 83.60 Tipo: 1 Sent: 0

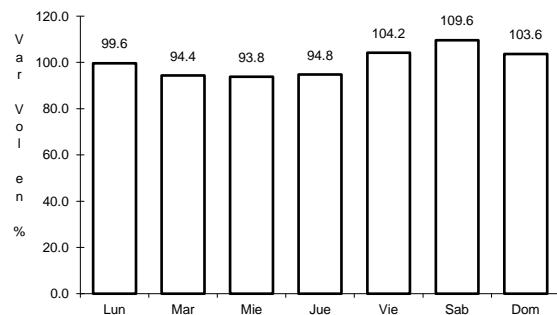


Km: 130.00 Tipo: 1 Sent: 0

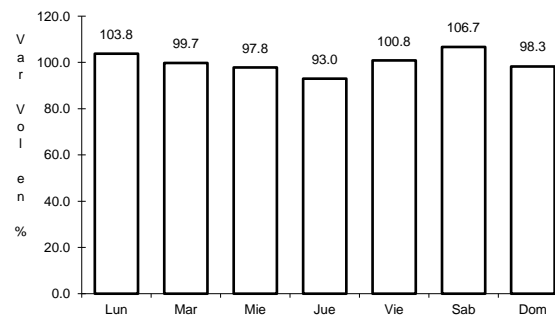
33 CARR: Loma Bonita - Mixtán

CLAVE: 20043

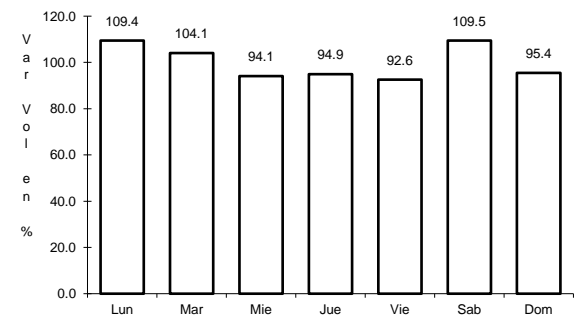
RUTA: OAX



Km: 1.00 Tipo: 1 Sent: 1



Km: 1.00 Tipo: 1 Sent: 2

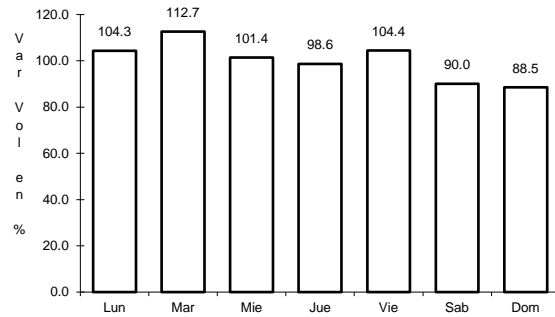


Km: 12.00 Tipo: 3 Sent: 0

34 CARR: Ramal a Reforma de Pineda

CLAVE: 20010

RUTA: OAX

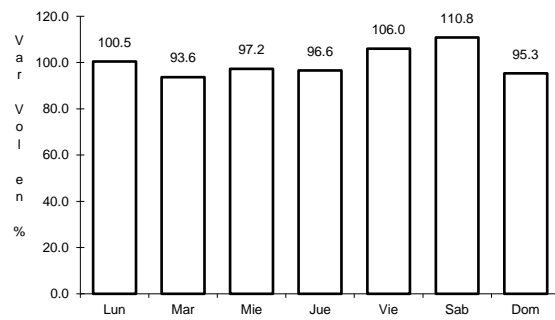


Km: 0.00 Tipo: 3 Sent: 0

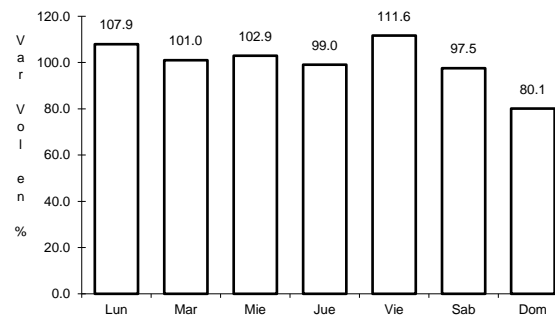
35 CARR: Ramal a Unión Hidalgo

CLAVE: 20044

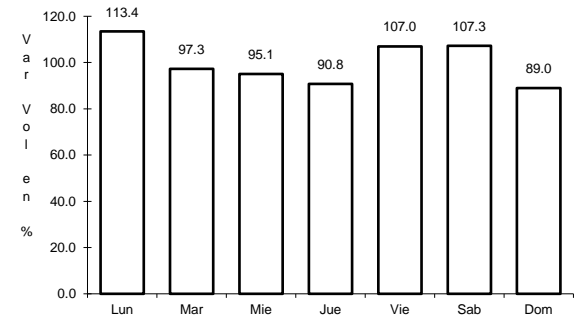
RUTA: OAX



Km: 0.00 Tipo: 3 Sent: 1



Km: 0.00 Tipo: 3 Sent: 2

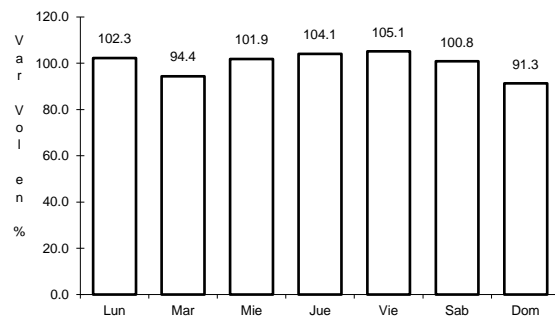


Km: 12.00 Tipo: 1 Sent: 0

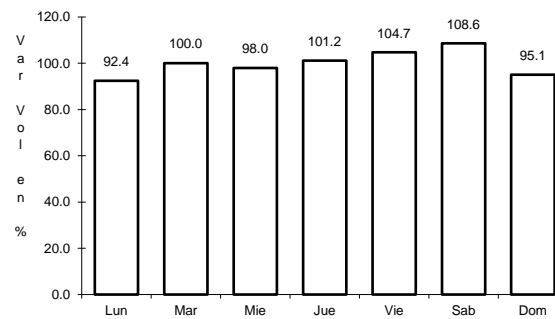
36 CARR: San Antonio - Puerto Angel

CLAVE:

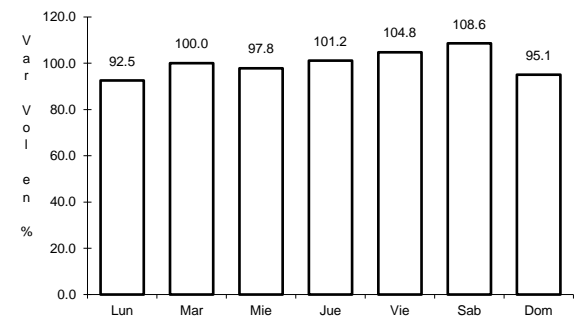
RUTA: OAX



Km: 0.00 Tipo: 3 Sent: 0



Km: 7.30 Tipo: 1 Sent: 0

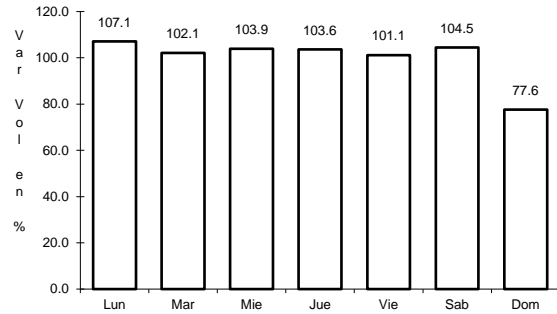


Km: 7.30 Tipo: 3 Sent: 0

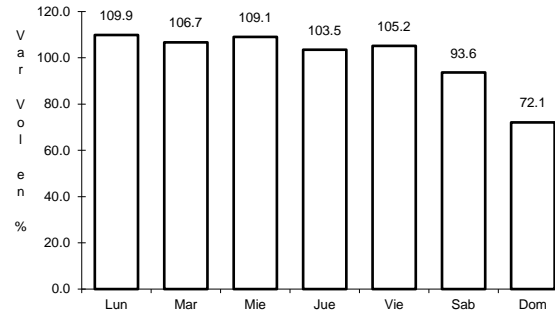
37 CARR: T. C. (Oaxaca - Puerto Ángel) - Puerto Escondido

CLAVE: 20009

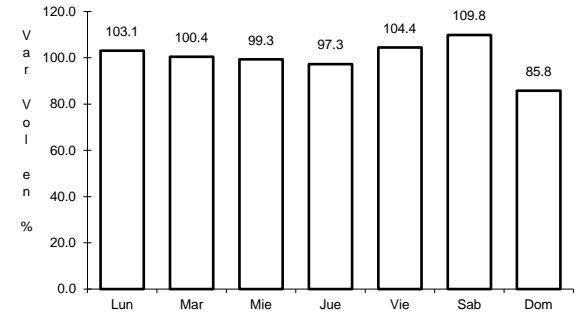
RUTA: MEX-OAX-161



Km: 0.00 Tipo: 3 Sent: 1



Km: 0.00 Tipo: 3 Sent: 2

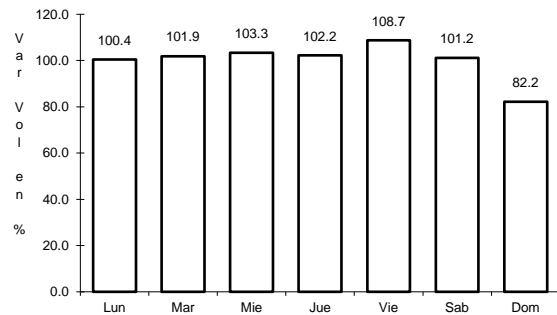


Km: 248.00 Tipo: 1 Sent: 0

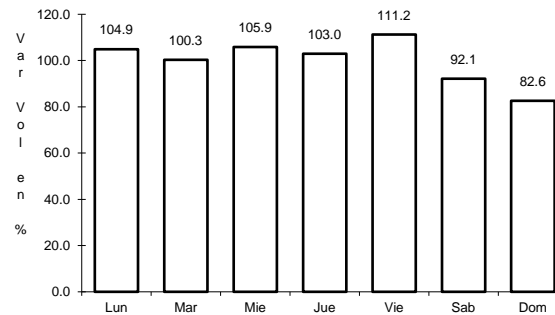
38 CARR: Tehuacán - Huitzo

CLAVE: 00211

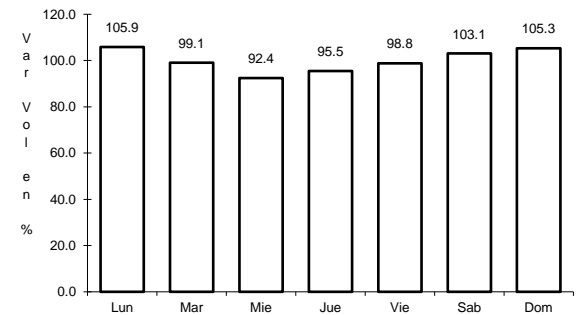
RUTA: PUE-MEX-135



Km: 0.00 Tipo: 3 Sent: 0



Km: 118.80 Tipo: 1 Sent: 0

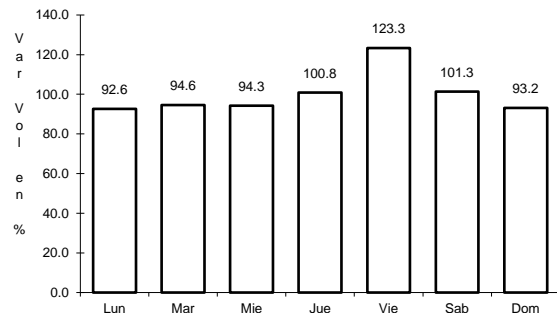


Km: 202.70 Tipo: 1 Sent: 0

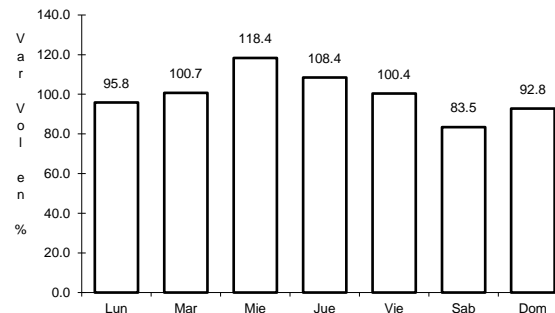
39 CARR: Teotitlán de Flores Magón - Tuxtepec

CLAVE: 00108

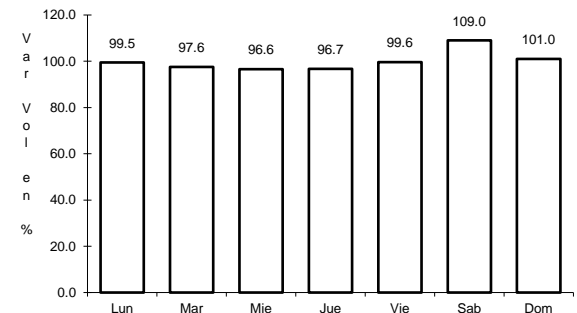
RUTA: OAX-PUE-MEX-182



Km: 0.00 Tipo: 3 Sent: 0



Km: 65.00 Tipo: 1 Sent: 0



Km: 185.00 Tipo: 1 Sent: 0

