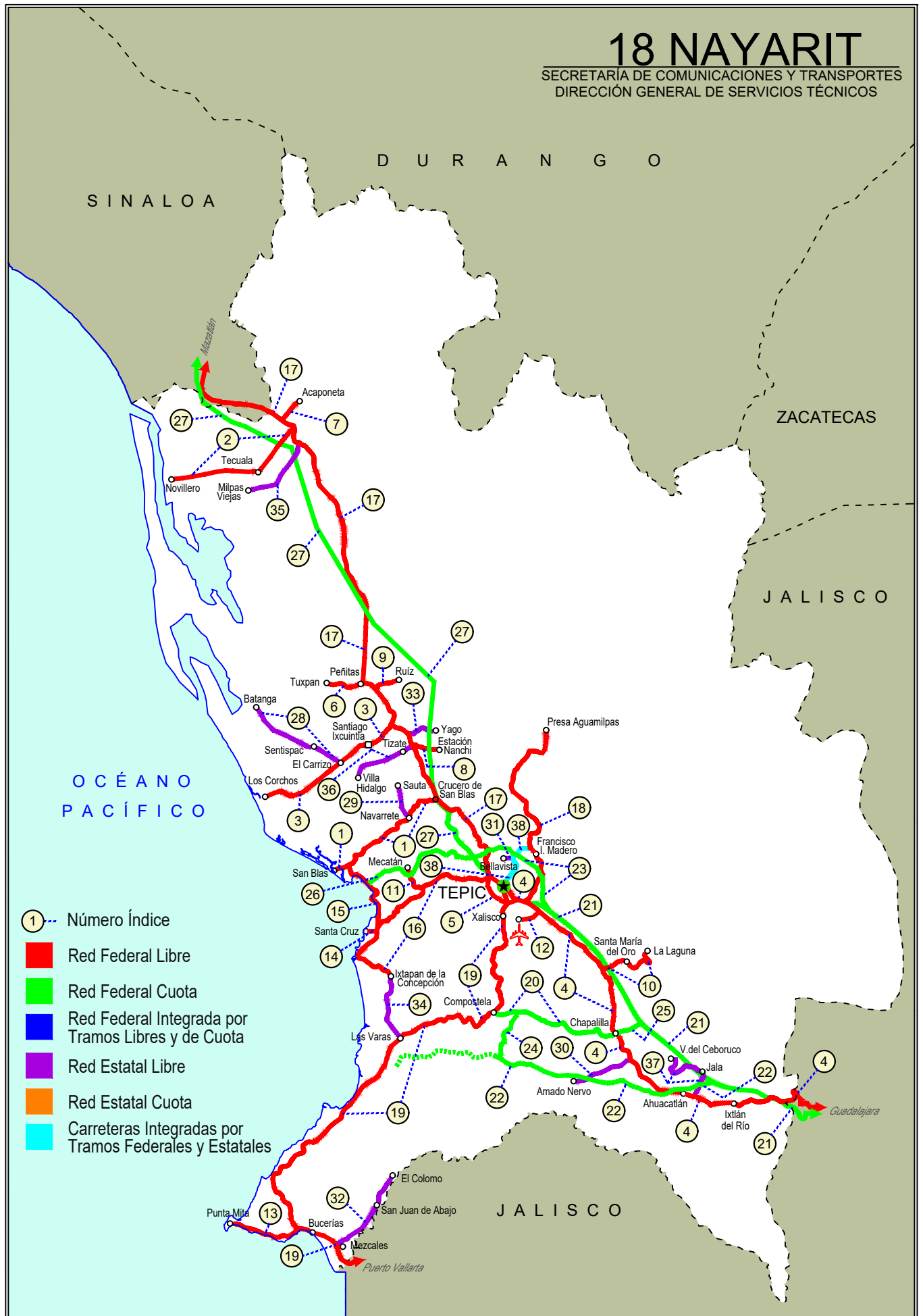


NAYARIT

NO. INDICE CARRETERA		RUTA
	---RED FEDERAL LIBRE---	
1	Crucero de San Blas - San Blas	MEX-015
2	Ent. Acaponeta - El Novillero	MEX-015
3	Ent. Santiago Ixcuintla - Playa Los Corchos	MEX-015
4	Guadalajara - Tepic	MEX-015
5	Libramiento de Tepic	MEX-015
6	Peñitas - Tuxpan	MEX-015
7	Ramal a Acaponeta	MEX-015
8	Ramal a Estación Nanchi	MEX-015
9	Ramal a Estación Ruíz	MEX-015
10	Ramal a La Laguna de Santa María	MEX-015
11	Ramal a Mecatán	MEX-015
12	Ramal a Nuevo Aeropuerto de Tepic	MEX-015
13	Ramal a Punta Mita	MEX-200
14	Ramal a Santa Cruz	MEX-015
15	Santa Cruz - San Blas	MEX-015
16	Tepic - Ixtapan de La Concepción	MEX-015
17	Tepic - Mazatlán	MEX-015
18	Tepic - Presa Aguamilpa	MEX-015
19	Tepic - Puerto Vallarta	MEX-200
	---RED FEDERAL DE CUOTA---	
20	Chapalilla - Compostela (Cuota)	MEX-068D
21	Guadalajara - Tepic (Cuota)	MEX-015D
22	Jala - Puerto Vallarta (Cuota)	MEX-070D
23	Libramiento de Tepic (Cuota)	MEX-015D
24	Ramal a Compostela (Cuota)	MEX-200D
25	Ramal a Tequepexpan	MEX-015D
26	Tepic - San Blas (Cuota)	MEX-D
27	Tepic - Villa Unión (cuota)	MEX-015D
	---RED ESTATAL LIBRE---	
28	El Carrizo - La Batanga	NAY-078
29	Navarrete - Sauta	NAY-013
30	Ramal a Amado Nervo	NAY
31	Ramal a Bellavista	NAY-059
32	Ramal a El Colomo	NAY
33	Ramal a Estación Yago	NAY
34	Ramal a Ixtapan de La Concepción	NAY
35	Ramal a Milpas Viejas	NAY
36	Ramal a Villa Hidalgo	NAY
37	Ramal a Volcán del Ceboruco	NAY
	---CARRETERAS INTEGRADAS POR TRAMOS FEDERALES Y ESTATALES---	
38	Tepic - Francisco I. Madero	NAY-MEX

18 NAYARIT

SECRETARÍA DE COMUNICACIONES Y TRANSPORTES
DIRECCIÓN GENERAL DE SERVICIOS TÉCNICOS



NAYARIT

1 CARR: Crucero de San Blas - San Blas

CLAVE: 18229

RUTA: MEX-015

AÑO: 2021

LUGAR	ESTACION				CLASIFICACION VEHICULAR EN PORCIENTO													COORDENADAS		
	KM	TE	SC	TDPA	M	A	B	C2	C3	T3S2	T3S3	T3S2R4	OTROS	A	B	C	K'	D	LATITUD	LONGITUD
T. C. Tepic - Mazatlán	0.00	3	0	1204	7.5	78.5	1.0	9.6	3.1	0.2	0.1	0.0	0.0	86.0	1.0	13.0	0.097	0.511	21.691437	-105.055036
Navarrete	11.00	3	0	1550	19.9	68.0	1.0	9.8	1.2	0.1	0.0	0.0	0.0	87.9	1.0	11.1	0.093	0.522	21.646453	-105.124834
San Blas	36.00	1	0	4929	24.0	67.4	1.0	5.2	1.1	0.5	0.1	0.5	0.2	91.4	1.0	7.6	0.109	0.509	21.544663	-105.269645

2 CARR: Ent. Acaponeta - El Novillero

CLAVE: 18023

RUTA: MEX-015

AÑO: 2021

LUGAR	ESTACION				CLASIFICACION VEHICULAR EN PORCIENTO													COORDENADAS		
	KM	TE	SC	TDPA	M	A	B	C2	C3	T3S2	T3S3	T3S2R4	OTROS	A	B	C	K'	D	LATITUD	LONGITUD
T. C. Tepic - Mazatlán	0.00	3	0	4309	18.2	63.7	2.4	14.3	0.7	0.2	0.2	0.2	0.1	81.9	2.4	15.7	0.085	0.501	22.486296	-105.385453
Tecuala	13.00	1	0	5032	24.9	64.0	3.2	6.1	1.2	0.4	0.1	0.1	0.0	88.9	3.2	7.9	0.087	0.516	22.424231	-105.440368
Tecuala	13.00	3	0	5668	24.7	72.9	0.4	1.2	0.3	0.2	0.1	0.1	0.1	97.6	0.4	2.0	0.099	0.513	22.399452	-105.487097
El Novillero	36.00	1	0	1830	17.2	76.1	0.6	5.6	0.5	0.0	0.0	0.0	0.0	93.3	0.6	6.1	0.092	0.601	22.382445	-105.659705

3 CARR: Ent. Santiago Ixcuintla - Playa Los Corchos

CLAVE: 18016

RUTA: MEX-015

AÑO: 2021

LUGAR	ESTACION				CLASIFICACION VEHICULAR EN PORCIENTO													COORDENADAS		
	KM	TE	SC	TDPA	M	A	B	C2	C3	T3S2	T3S3	T3S2R4	OTROS	A	B	C	K'	D	LATITUD	LONGITUD
T. C. Tepic - Mazatlán	0.00	3	1	3174	7.3	81.3	1.2	8.2	1.2	0.5	0.2	0.1	0.0	88.6	1.2	10.2	0.067	0.511	21.846799	-105.159622
T. C. Tepic - Mazatlán	0.00	3	2	2988	5.1	83.9	1.2	7.5	1.4	0.5	0.2	0.1	0.1	89.0	1.2	9.8	0.075	0.511	21.846602	-105.159740
Santiago Ixcuintla	8.00	1	1	4894	15.1	79.5	0.5	3.2	1.0	0.4	0.2	0.1	0.0	94.6	0.5	4.9	0.065	0.502	21.822775	-105.183939
Santiago Ixcuintla	8.00	1	2	4928	14.9	79.9	0.6	2.8	1.1	0.5	0.2	0.0	0.0	94.8	0.6	4.6	0.059	0.502	21.822672	-105.183873
Santiago Ixcuintla	8.00	3	0	7195	18.8	77.8	0.5	1.2	0.8	0.4	0.2	0.2	0.1	96.6	0.5	2.9	0.088	0.502	21.809038	-105.223029
T. Der. Mexcaltitán	17.00	1	0	4502	20.1	76.0	0.3	2.0	0.8	0.3	0.2	0.2	0.1	96.1	0.3	3.6	0.095	0.502	21.773079	-105.271549
T. Der. Mexcaltitán	17.00	3	0	4276	15.2	76.0	0.4	7.2	1.0	0.1	0.1	0.0	0.0	91.2	0.4	8.4	0.109	0.505	21.770342	-105.275348
Playa Los Corchos	39.00	1	0	1265	18.8	74.3	0.1	6.5	0.3	0.0	0.0	0.0	0.0	93.1	0.1	6.8	0.225	0.508	21.697498	-105.449069

4 CARR: Guadalajara - Tepic

CLAVE: 00031

RUTA: MEX-015

AÑO: 2021

LUGAR	ESTACION				CLASIFICACION VEHICULAR EN PORCIENTO													COORDENADAS		
	KM	TE	SC	TDPA	M	A	B	C2	C3	T3S2	T3S3	T3S2R4	OTROS	A	B	C	K'	D	LATITUD	LONGITUD
Guadalajara	0.00																			
T. Der. Base Aérea No. 2	8.30	3	1	40973	2.1	78.6	2.5	8.1	1.9	4.2	1.3	0.7	0.6	80.7	2.5	16.8	0.066	0.510	20.712554	-103.469394
T. Der. Base Aérea No. 2	8.30	3	2	42890	2.2	78.5	2.5	8.1	1.8	4.2	1.3	0.8	0.6	80.7	2.5	16.8	0.064	0.510	20.712448	-103.469540
T. Izq. La Primavera	20.50	1	1	23514	3.8	78.6	2.5	7.8	1.6	3.7	1.1	0.7	0.2	82.4	2.5	15.1	0.064	0.519	20.727794	-103.550641
T. Izq. La Primavera	20.50	1	2	21835	3.4	77.7	2.8	8.3	1.8	3.8	1.3	0.7	0.2	81.1	2.8	16.1	0.071	0.519	20.727657	-103.550690

NAYARIT

4 CARR: Guadalajara - Tepic

CLAVE: 00031

RUTA: MEX-015

AÑO: 2021

LUGAR	ESTACION				CLASIFICACION VEHICULAR EN PORCIENTO										COORDENADAS					
	KM	TE	SC	TDPA	M	A	B	C2	C3	T3S2	T3S3	T3S2R4	OTROS	A	B	C	K'	D	LATITUD	LONGITUD
T. C. Guadalajara - Tepic (Cuota)	22.75																			
El Arenal	36.20	1	1	7818	1.4	78.6	2.1	10.4	2.6	3.2	1.3	0.2	0.2	80.0	2.1	17.9	0.086	0.504	20.770087	-103.682289
El Arenal	36.20	1	2	7703	1.4	78.1	2.1	10.2	2.9	3.5	1.4	0.2	0.2	79.5	2.1	18.4	0.082	0.504	20.770031	-103.682349
Tequila	57.50	3	0	7649	2.4	80.8	1.0	10.5	1.7	1.9	0.8	0.5	0.4	83.2	1.0	15.8	0.068	0.508	20.895581	-103.836434
Magdalena	76.80	3	0	5256	6.0	76.6	1.9	11.0	1.5	1.7	0.4	0.3	0.6	82.6	1.9	15.5	0.075	0.570	20.926109	-103.998003
Lim. Edos. Term. Jal. Ppia. Nay.	123.09																			
Ixtlán del Río	138.84	1	0	3805	5.3	80.8	1.6	5.3	2.2	3.4	0.9	0.3	0.2	86.1	1.6	12.3	0.084	0.535	21.032966	-104.349194
Ixtlán del Río	138.84	3	0	9385	2.3	90.2	1.3	3.4	1.4	0.7	0.4	0.2	0.1	92.5	1.3	6.2	0.090	0.501	21.037198	-104.391722
Ahuacatlán	152.00	1	1	3795	5.7	81.4	3.0	4.0	2.3	2.2	1.0	0.2	0.2	87.1	3.0	9.9	0.077	0.542	21.053448	-104.474531
Ahuacatlán	152.00	1	2	4493	5.2	81.6	3.0	4.0	2.4	2.2	1.2	0.2	0.2	86.8	3.0	10.2	0.078	0.542	21.053363	-104.474588
Ahuacatlán	152.00	3	1	3401	10.1	76.7	2.8	3.9	2.4	2.5	1.1	0.3	0.2	86.8	2.8	10.4	0.073	0.544	21.058797	-104.493506
Ahuacatlán	152.00	3	2	4064	6.8	79.9	2.9	3.9	2.3	2.6	1.2	0.2	0.2	86.7	2.9	10.4	0.071	0.544	21.058691	-104.493513
X. C. Jala - Puerto Vallarta (Cuota)	154.65	3	0	4751	5.7	75.9	2.9	4.6	4.1	4.3	2.1	0.3	0.1	81.6	2.9	15.5	0.096	0.511	21.061383	-104.517680
T. Izq. Amado Nervo	167.32	1	0	4497	5.3	73.5	4.6	5.6	2.7	6.0	2.0	0.2	0.1	78.8	4.6	16.6	0.078	0.523	21.128703	-104.601261
Tequepexpan	174.70																			
T. Izq. Compostela	175.50	1	0	5383	1.2	69.1	5.4	8.7	4.9	7.6	2.9	0.1	0.1	70.3	5.4	24.3	0.086	0.517	21.187013	-104.633252
T. Izq. Compostela	175.50	3	0	4620	2.4	65.1	3.5	10.4	7.2	8.4	2.7	0.1	0.2	67.5	3.5	29.0	0.064	0.516	21.197523	-104.645526
T. Der. Santa María del Oro	196.00	1	0	4467	2.1	67.4	3.1	8.7	6.6	8.7	2.9	0.1	0.4	69.5	3.1	27.4	0.078	0.530	21.324575	-104.669875
T. Der. Santa María del Oro	196.00	3	0	5851	2.4	70.9	3.3	9.6	5.8	5.8	1.9	0.1	0.2	73.3	3.3	23.4	0.085	0.507	21.331235	-104.674891
T. Izq. Aeropuerto de Tepic	215.68	1	0	10645	9.6	75.7	2.9	4.8	2.7	2.5	1.1	0.6	0.1	85.3	2.9	11.8	0.075	0.532	21.446689	-104.811411
San Cayetano	215.90	3	1	8848	5.8	86.1	1.0	2.3	2.1	1.8	0.7	0.2	0.0	91.9	1.0	7.1	0.077	0.528	21.455501	-104.822103
San Cayetano	215.90	3	2	7901	5.8	86.1	1.0	2.2	2.2	1.8	0.6	0.3	0.0	91.9	1.0	7.1	0.085	0.528	21.455546	-104.822305
T. Izq. Libramiento de Tepic (Central)	219.10	1	1	14789	4.5	80.9	2.7	4.8	2.2	3.3	0.7	0.7	0.2	85.4	2.7	11.9	0.072	0.546	21.467753	-104.840669
T. Izq. Libramiento de Tepic (Lateral)	219.10	1	1	4502	18.7	70.2	1.6	2.9	3.3	1.6	0.9	0.7	0.1	88.9	1.6	9.5	0.081	0.521	21.467834	-104.840601
T. Izq. Libramiento de Tepic (Lateral)	219.10	1	2	4130	18.2	70.8	1.6	2.9	3.2	1.5	0.9	0.8	0.1	89.0	1.6	9.4	0.072	0.521	21.467591	-104.840678
T. Izq. Libramiento de Tepic (Central)	219.10	1	2	13530	4.5	80.8	2.8	4.8	2.3	3.3	0.7	0.6	0.2	85.3	2.8	11.9	0.066	0.546	21.467690	-104.840678
T. Izq. Libramiento de Tepic	219.10	3	1	18955	5.1	86.6	1.3	3.1	1.7	1.1	0.8	0.3	0.0	91.7	1.3	7.0	0.062	0.532	21.470208	-104.847664
T. Izq. Libramiento de Tepic	219.10	3	2	21587	5.1	86.5	1.3	3.1	1.7	1.1	0.8	0.4	0.0	91.6	1.3	7.1	0.069	0.532	21.470209	-104.847944
Tepic (Lateral)	224.80	1	1	9740	11.5	76.1	1.9	4.5	2.1	2.3	1.0	0.5	0.1	87.6	1.9	10.5	0.080	0.549	21.472174	-104.853067
Tepic (Central)	224.80	1	1	23424	5.4	81.4	1.6	4.9	1.7	2.3	1.8	0.8	0.1	86.8	1.6	11.6	0.086	0.513	21.472083	-104.853096
Tepic (Central)	224.80	1	2	24747	5.4	81.5	1.5	4.9	1.7	2.3	1.8	0.8	0.1	86.9	1.5	11.6	0.080	0.513	21.472102	-104.853367
Tepic (Lateral)	224.80	1	2	10404	11.5	76.0	1.9	4.5	2.1	2.4	1.0	0.5	0.1	87.5	1.9	10.6	0.076	0.549	21.472020	-104.853405

NAYARIT

5 CARR: Libramiento de Tepic

CLAVE: 18232

RUTA: MEX-015

AÑO: 2021

LUGAR	ESTACION				CLASIFICACION VEHICULAR EN PORCIENTO										COORDENADAS					
	KM	TE	SC	TDPA	M	A	B	C2	C3	T3S2	T3S3	T3S2R4	OTROS	A	B	C	K'	D	LATITUD	LONGITUD
T. C. Guadalajara - Tepic	0.00																			
X. C. Tepic - Puerto Vallarta	5.00	1	1	30556	11.3	79.5	1.7	2.8	1.7	2.3	0.5	0.2	0.0	90.8	1.7	7.5	0.077	0.519	21.467363	-104.882763
X. C. Tepic - Puerto Vallarta	5.00	1	2	33280	10.2	80.2	1.4	3.1	1.8	2.6	0.5	0.2	0.0	90.4	1.4	8.2	0.064	0.519	21.467101	-104.882898
T. C. Tepic - Mazatlán	18.80	1	1	16623	4.6	79.9	2.4	6.3	2.2	3.0	0.8	0.6	0.2	84.5	2.4	13.1	0.077	0.506	21.517551	-104.925053
T. C. Tepic - Mazatlán	18.80	1	2	16999	3.4	79.3	2.8	7.1	2.2	3.4	1.0	0.6	0.2	82.7	2.8	14.5	0.093	0.506	21.517768	-104.925313

6 CARR: Peñitas - Tuxpan

CLAVE: 18019

RUTA: MEX-015

AÑO: 2021

LUGAR	ESTACION				CLASIFICACION VEHICULAR EN PORCIENTO										COORDENADAS					
	KM	TE	SC	TDPA	M	A	B	C2	C3	T3S2	T3S3	T3S2R4	OTROS	A	B	C	K'	D	LATITUD	LONGITUD
Peñitas	0.00	3	0	7092	11.7	80.8	1.2	5.4	0.4	0.3	0.1	0.1	0.0	92.5	1.2	6.3	0.073	0.510	21.941161	-105.229365
Tuxpan	9.00	1	0	7418	14.0	78.4	1.2	5.3	0.5	0.3	0.2	0.1	0.0	92.4	1.2	6.4	0.072	0.504	21.942175	-105.280430

7 CARR: Ramal a Acaponeta

CLAVE: 18038

RUTA: MEX-015

AÑO: 2021

LUGAR	ESTACION				CLASIFICACION VEHICULAR EN PORCIENTO										COORDENADAS					
	KM	TE	SC	TDPA	M	A	B	C2	C3	T3S2	T3S3	T3S2R4	OTROS	A	B	C	K'	D	LATITUD	LONGITUD
T. C. Tepic - Mazatlán	0.00	3	1	6716	26.0	65.1	1.7	4.4	0.9	0.7	0.4	0.4	0.4	91.1	1.7	7.2	0.077	0.505	22.489551	-105.380888
T. C. Tepic - Mazatlán	0.00	3	2	6843	23.8	67.9	1.4	4.4	0.9	0.6	0.2	0.5	0.3	91.7	1.4	6.9	0.079	0.505	22.489634	-105.380855
Acaponeta	3.00																			

8 CARR: Ramal a Estación Nanchi

CLAVE: 18068

RUTA: MEX-015

AÑO: 2021

LUGAR	ESTACION				CLASIFICACION VEHICULAR EN PORCIENTO										COORDENADAS					
	KM	TE	SC	TDPA	M	A	B	C2	C3	T3S2	T3S3	T3S2R4	OTROS	A	B	C	K'	D	LATITUD	LONGITUD
T. C. Tepic - Mazatlán	0.00	3	0	1055	17.6	71.5	0.6	8.6	1.1	0.5	0.1	0.0	0.0	89.1	0.6	10.3	0.078	0.503	21.810464	-105.098404
Estación Nanchi	5.00																			

9 CARR: Ramal a Estación Ruíz

CLAVE: 18026

RUTA: MEX-015

AÑO: 2021

LUGAR	ESTACION				CLASIFICACION VEHICULAR EN PORCIENTO										COORDENADAS					
	KM	TE	SC	TDPA	M	A	B	C2	C3	T3S2	T3S3	T3S2R4	OTROS	A	B	C	K'	D	LATITUD	LONGITUD
T. C. Tepic - Mazatlán	0.00	3	0	5032	9.0	78.6	0.5	9.8	1.8	0.2	0.1	0.0	0.0	87.6	0.5	11.9	0.081	0.502	21.935088	-105.190116
Estación Ruíz	5.50	1	0	5337	27.8	62.9	1.4	5.0	1.4	0.5	0.1	0.8	0.1	90.7	1.4	7.9	0.063	0.500	21.943113	-105.168600

NAYARIT

10 CARR: Ramal a La Laguna de Santa María

CLAVE: 18005

RUTA: MEX-015

AÑO: 2021

LUGAR	ESTACION				CLASIFICACION VEHICULAR EN PORCIENTO										COORDENADAS					
	KM	TE	SC	TDPA	M	A	B	C2	C3	T3S2	T3S3	T3S2R4	OTROS	A	B	C	K'	D	LATITUD	LONGITUD
T. C. Guadalajara - Tepic	0.00	3	0	3610	2.8	79.2	1.5	11.0	4.0	0.8	0.4	0.1	0.2	82.0	1.5	16.5	0.079	0.507	21.326981	-104.668461
Santa María del Oro	11.50	1	1	2224	7.0	82.7	0.3	8.1	1.0	0.3	0.2	0.1	0.3	89.7	0.3	10.0	0.102	0.512	21.326052	-104.595612
Santa María del Oro	11.50	1	2	2085	7.3	81.9	0.3	8.6	1.0	0.3	0.2	0.1	0.3	89.2	0.3	10.5	0.090	0.512	21.326121	-104.595653
Laguna de Santa María	20.00	1	0	907	9.3	83.6	0.2	6.2	0.3	0.3	0.1	0.0	0.0	92.9	0.2	6.9	0.274	0.509	21.359469	-104.570845

11 CARR: Ramal a Mecatán

CLAVE: 18010

RUTA: MEX-015

AÑO: 2021

LUGAR	ESTACION				CLASIFICACION VEHICULAR EN PORCIENTO										COORDENADAS					
	KM	TE	SC	TDPA	M	A	B	C2	C3	T3S2	T3S3	T3S2R4	OTROS	A	B	C	K'	D	LATITUD	LONGITUD
T. C. (Tepic - Mazatlán) - Ixtapan de La Concepción	0.00	3	0	1217	7.2	80.2	0.1	10.2	1.2	1.0	0.1	0.0	0.0	87.4	0.1	12.5	0.054	0.507	21.500233	-105.084815
Mecatán	9.00																			

12 CARR: Ramal a Nuevo Aeropuerto de Tepic

CLAVE: 18012

RUTA: MEX-015

AÑO: 2021

LUGAR	ESTACION				CLASIFICACION VEHICULAR EN PORCIENTO										COORDENADAS					
	KM	TE	SC	TDPA	M	A	B	C2	C3	T3S2	T3S3	T3S2R4	OTROS	A	B	C	K'	D	LATITUD	LONGITUD
T. C. Guadalajara - Tepic	0.00	3	0	5008	11.5	82.8	1.0	3.3	0.9	0.5	0.0	0.0	0.0	94.3	1.0	4.7	0.093	0.521	21.444557	-104.820128
Aeropuerto de Tepic	5.00																			

13 CARR: Ramal a Punta Mita

CLAVE: 18020

RUTA: MEX-200

AÑO: 2021

LUGAR	ESTACION				CLASIFICACION VEHICULAR EN PORCIENTO										COORDENADAS					
	KM	TE	SC	TDPA	M	A	B	C2	C3	T3S2	T3S3	T3S2R4	OTROS	A	B	C	K'	D	LATITUD	LONGITUD
T. C. Tepic - Puerto Vallarta	0.00	3	0	18481	7.0	86.6	0.6	4.2	1.0	0.3	0.2	0.1	0.0	93.6	0.6	5.8	0.084	0.504	20.759098	-105.375070
San Ignacio	9.00	3	0	7593	5.5	85.4	0.9	5.7	1.7	0.3	0.3	0.2	0.0	90.9	0.9	8.2	0.111	0.508	20.756763	-105.455056
Punta Mita	18.00																			

14 CARR: Ramal a Santa Cruz

CLAVE: 18030

RUTA: MEX-015

AÑO: 2021

LUGAR	ESTACION				CLASIFICACION VEHICULAR EN PORCIENTO										COORDENADAS					
	KM	TE	SC	TDPA	M	A	B	C2	C3	T3S2	T3S3	T3S2R4	OTROS	A	B	C	K'	D	LATITUD	LONGITUD
T. C. Tepic - Ixtapan de La Concepción	0.00																			
Santa Cruz	1.30	1	0	2773	18.7	72.9	0.1	8.2	0.1	0.0	0.0	0.0	0.0	91.6	0.1	8.3	0.104	0.550	21.433296	-105.190660

NAYARIT

15 CARR: Santa Cruz - San Blas

CLAVE: 18230

RUTA: MEX-015

AÑO: 2021

LUGAR	ESTACION				CLASIFICACION VEHICULAR EN PORCIENTO										COORDENADAS					
	KM	TE	SC	TDPA	M	A	B	C2	C3	T3S2	T3S3	T3S2R4	OTROS	A	B	C	K'	D	LATITUD	LONGITUD
Santa Cruz	0.00	3	0	3959	9.6	76.6	0.5	12.6	0.4	0.3	0.0	0.0	0.0	86.2	0.5	13.3	0.068	0.526	21.435997	-105.186722
Playa Los Cocos	3.90	1	0	4560	14.5	76.7	0.5	7.0	0.4	0.6	0.2	0.1	0.0	91.2	0.5	8.3	0.098	0.503	21.462400	-105.187867
Aticama	5.00	3	0	4609	15.1	77.1	0.3	6.4	0.5	0.4	0.2	0.0	0.0	92.2	0.3	7.5	0.132	0.504	21.487929	-105.191316
T. C. Crucero San Blas - San Blas	17.00	1	0	5475	14.9	77.6	0.3	6.3	0.4	0.3	0.2	0.0	0.0	92.5	0.3	7.2	0.158	0.527	21.537388	-105.249163

16 CARR: Tepic - Ixtapan de La Concepción

CLAVE: 18028

RUTA: MEX-015

AÑO: 2021

LUGAR	ESTACION				CLASIFICACION VEHICULAR EN PORCIENTO										COORDENADAS					
	KM	TE	SC	TDPA	M	A	B	C2	C3	T3S2	T3S3	T3S2R4	OTROS	A	B	C	K'	D	LATITUD	LONGITUD
T. C. Tepic - Mazatlán	0.00	3	0	13852	6.8	84.7	0.2	6.7	0.6	0.6	0.2	0.1	0.1	91.5	0.2	8.3	0.073	0.516	21.518317	-104.938748
T. Der. Mecatán	19.00	1	0	1168	5.5	83.2	0.3	8.2	1.8	0.6	0.2	0.0	0.2	88.7	0.3	11.0	0.087	0.508	21.500951	-105.081686
T. Der. Mecatán	19.00	3	0	2631	7.4	80.2	0.3	10.4	1.2	0.4	0.1	0.0	0.0	87.6	0.3	12.1	0.062	0.505	21.497772	-105.082896
Jalcocotán	27.00	1	0	2756	10.1	78.7	0.2	8.8	0.9	1.0	0.2	0.0	0.1	88.8	0.2	11.0	0.057	0.514	21.484147	-105.090289
T. Der. Santa Cruz	50.00	3	0	3267	18.5	68.4	0.5	8.7	0.7	2.4	0.4	0.1	0.3	86.9	0.5	12.6	0.085	0.501	21.423483	-105.183771
Ixtapan de La Concepción	77.42	1	0	1883	16.3	74.1	0.7	7.1	0.7	0.7	0.3	0.0	0.1	90.4	0.7	8.9	0.091	0.502	21.313050	-105.155196

17 CARR: Tepic - Mazatlán

CLAVE: 00499

RUTA: MEX-015

AÑO: 2021

LUGAR	ESTACION				CLASIFICACION VEHICULAR EN PORCIENTO										COORDENADAS					
	KM	TE	SC	TDPA	M	A	B	C2	C3	T3S2	T3S3	T3S2R4	OTROS	A	B	C	K'	D	LATITUD	LONGITUD
Tepic (Baja)	0.00	3	1	10204	8.2	82.8	0.3	6.4	0.1	0.6	1.2	0.2	0.2	91.0	0.3	8.7	0.067	0.518	21.511951	-104.905754
Tepic (Alta)	0.00	3	1	13566	2.1	90.0	0.4	5.4	0.1	1.0	0.7	0.1	0.2	92.1	0.4	7.5	0.069	0.509	21.511868	-104.905808
Tepic (Baja)	0.00	3	2	9488	8.2	82.8	0.3	6.4	0.1	0.6	1.2	0.2	0.2	91.0	0.3	8.7	0.067	0.518	21.511762	-104.905910
Tepic (Alta)	0.00	3	2	14070	2.1	90.0	0.4	5.4	0.1	1.0	0.7	0.1	0.2	92.1	0.4	7.5	0.073	0.509	21.511835	-104.905852
T. Izq. Libramiento de Tepic (Baja)	2.56	1	1	9143	10.0	79.1	2.6	6.9	0.6	0.3	0.1	0.3	0.1	89.1	2.6	8.3	0.079	0.523	21.521202	-104.921860
T. Izq. Libramiento de Tepic (Alta)	2.56	1	1	10017	2.8	96.1	0.1	0.4	0.2	0.1	0.1	0.1	0.1	98.9	0.1	1.0	0.089	0.528	21.521115	-104.921876
T. Izq. Libramiento de Tepic (Baja)	2.56	1	2	10040	9.1	80.5	2.6	6.3	0.6	0.4	0.1	0.3	0.1	89.6	2.6	7.8	0.089	0.523	21.520948	-104.921925
T. Izq. Libramiento de Tepic (Alta)	2.56	1	2	11205	3.1	95.7	0.1	0.4	0.3	0.1	0.1	0.1	0.1	98.8	0.1	1.1	0.084	0.528	21.521043	-104.921908
T. Izq. Aut. Tepic - Ent. San Blas (Cuota)	3.70	3	0	7713	7.4	84.1	0.3	2.4	2.3	1.9	1.3	0.3	0.0	91.5	0.3	8.2	0.089	0.512	21.538665	-104.934118
Los Otates	19.80	3	0	4143	2.2	79.0	4.2	8.1	1.3	3.6	0.7	0.3	0.6	81.2	4.2	14.6	0.063	0.506	21.639693	-104.972559
T. Izq. Jumatán	28.52	1	0	4546	2.7	82.8	0.5	2.7	3.2	4.6	3.2	0.3	0.0	85.5	0.5	14.0	0.069	0.521	21.669475	-105.020501
T. Izq. Jumatán	28.52	3	1	7551	4.6	68.3	4.4	3.7	2.6	11.8	1.8	2.3	0.5	72.9	4.4	22.7	0.074	0.518	21.668040	-105.029855
T. Izq. Jumatán	28.52	3	2	8107	4.6	68.1	4.4	3.7	2.7	11.8	1.9	2.3	0.5	72.7	4.4	22.9	0.096	0.518	21.667951	-105.029858
T. Izq. San Blas	33.54	1	1	7756	5.5	63.9	7.6	5.0	2.5	10.4	1.7	2.7	0.7	69.4	7.6	23.0	0.083	0.502	21.679319	-105.042446
T. Izq. San Blas	33.54	1	2	7809	5.5	65.0	6.9	4.3	2.5	10.6	1.9	2.7	0.6	70.5	6.9	22.6	0.089	0.502	21.679376	-105.042888

NAYARIT

17 CARR: Tepic - Mazatlán

CLAVE: 00499

RUTA: MEX-015

AÑO: 2021

LUGAR	ESTACION				CLASIFICACION VEHICULAR EN PORCIENTO													COORDENADAS		
	KM	TE	SC	TDPA	M	A	B	C2	C3	T3S2	T3S3	T3S2R4	OTROS	A	B	C	K'	D	LATITUD	LONGITUD
T. Izq. San Blas	33.54	3	1	7630	4.5	63.5	6.5	6.0	3.3	11.3	1.7	2.6	0.6	68.0	6.5	25.5	0.084	0.506	21.704612	-105.055298
T. Izq. San Blas	33.54	3	2	7452	4.6	65.8	6.4	4.1	3.2	11.4	1.5	2.4	0.6	70.4	6.4	23.2	0.089	0.506	21.704557	-105.055424
T. Izq. Villa Hidalgo	48.12	1	0	7806	2.8	75.9	2.3	6.7	3.2	5.5	2.4	0.7	0.5	78.7	2.3	19.0	0.070	0.501	21.806690	-105.102593
T. Izq. Villa Hidalgo	48.12	3	0	7374	10.3	71.3	4.7	3.6	2.5	5.5	1.9	0.2	0.0	81.6	4.7	13.7	0.067	0.513	21.811819	-105.106970
T. Izq. Santiago Ixcuintla	56.42	1	0	8543	5.8	72.4	6.7	6.3	1.1	5.9	1.6	0.2	0.0	78.2	6.7	15.1	0.068	0.523	21.852405	-105.150173
T. Izq. Santiago Ixcuintla	56.42	3	0	6171	3.5	79.9	2.7	3.6	2.5	5.5	1.7	0.5	0.1	83.4	2.7	13.9	0.083	0.514	21.859085	-105.156026
T. Izq. Tuxpan	70.60	1	0	7629	6.7	74.2	3.7	3.9	3.0	5.6	1.7	1.1	0.1	80.9	3.7	15.4	0.077	0.530	21.944124	-105.216092
T. Izq. Tuxpan	70.60	3	0	7926	6.8	78.4	3.7	3.5	2.2	2.6	2.6	0.1	0.1	85.2	3.7	11.1	0.058	0.510	21.962195	-105.221698
T. Der. Rosamorada	90.70	3	0	4754	11.7	62.9	7.0	2.9	2.3	9.5	3.1	0.5	0.1	74.6	7.0	18.4	0.070	0.504	22.124664	-105.219625
Tierra Generosa	110.40	1	0	3416	3.3	73.6	5.7	4.8	3.1	5.5	0.9	2.5	0.6	76.9	5.7	17.4	0.091	0.502	22.294048	-105.273224
T. Der. Acaponeta	136.52	1	0	8565	9.4	69.6	3.7	7.0	2.6	4.4	1.9	1.1	0.3	79.0	3.7	17.3	0.068	0.522	22.482949	-105.384502
T. Der. Acaponeta	136.52	3	0	5107	11.4	63.6	5.1	3.4	2.6	9.7	3.4	0.6	0.2	75.0	5.1	19.9	0.069	0.510	22.494007	-105.384299
Lim. Edos. Term. Nay. Ppia. Sin.	144.60																			
T. Der. Villa Unión (Cuota)	193.60	1	1	3655	5.6	51.4	9.5	6.0	2.0	18.1	2.8	3.8	0.8	57.0	9.5	33.5	0.083	0.518	22.802637	-105.718052
T. Der. Villa Unión (Cuota)	193.60	1	2	3406	4.7	49.2	10.9	6.9	2.2	18.5	2.8	4.1	0.7	53.9	10.9	35.2	0.085	0.518	22.802538	-105.718100
Escuinapa de Hidalgo	200.00	1	0	4584	13.7	64.4	4.1	4.8	3.5	6.8	2.0	0.6	0.1	78.1	4.1	17.8	0.084	0.514	22.832432	-105.759951
Escuinapa de Hidalgo	200.00	3	0	5324	7.9	66.3	5.6	6.1	4.2	7.0	2.5	0.3	0.1	74.2	5.6	20.2	0.084	0.512	22.846773	-105.791972
Rosario	221.71	1	0	7737	13.8	70.3	3.9	3.3	2.7	4.5	1.4	0.1	0.0	84.1	3.9	12.0	0.093	0.505	22.997057	-105.851661
Rosario	221.71	3	0	5220	5.8	72.2	2.1	7.7	2.3	7.1	2.1	0.2	0.5	78.0	2.1	19.9	0.095	0.512	23.003150	-105.868349
X. C. Durango - Mazatlán (Cuota)	265.20	1	0	5083	4.8	77.6	3.3	3.7	1.7	6.2	2.2	0.4	0.1	82.4	3.3	14.3	0.061	0.522	23.189980	-106.175826
T. Der. Durango	267.99	1	0	4766	8.8	77.0	2.6	3.3	2.3	3.9	1.0	0.7	0.4	85.8	2.6	11.6	0.063	0.531	23.189407	-106.205033
T. Der. Durango	267.99	3	1	9381	8.6	75.3	2.7	3.1	2.5	4.2	1.0	2.1	0.5	83.9	2.7	13.4	0.079	0.530	23.189323	-106.210054
T. Der. Durango	267.99	3	2	8328	8.4	74.2	2.8	3.6	2.9	4.4	1.1	2.1	0.5	82.6	2.8	14.6	0.074	0.530	23.189233	-106.210044
Villa Unión	269.52	3	1	10889	11.9	74.0	2.1	4.8	1.8	3.3	0.8	0.9	0.4	85.9	2.1	12.0	0.075	0.506	23.190421	-106.222267
Villa Unión	269.52	3	2	10611	11.5	73.4	2.4	4.9	2.0	3.7	0.8	0.9	0.4	84.9	2.4	12.7	0.073	0.506	23.190285	-106.222315
T. Der. Libramiento de Mazatlán	288.87	1	1	21689	5.1	82.5	1.2	6.7	1.7	1.6	0.4	0.6	0.2	87.6	1.2	11.2	0.073	0.504	23.225188	-106.383056
T. Der. Libramiento de Mazatlán	288.87	1	2	22023	5.1	82.1	1.3	6.9	1.7	1.7	0.4	0.6	0.2	87.2	1.3	11.5	0.072	0.504	23.225124	-106.383114
Mazatlán	292.00																			

18 CARR: Tepic - Presa Aguamilpa

CLAVE: 18029

RUTA: MEX-015

AÑO: 2021

LUGAR	ESTACION				CLASIFICACION VEHICULAR EN PORCIENTO													COORDENADAS		
	KM	TE	SC	TDPA	M	A	B	C2	C3	T3S2	T3S3	T3S2R4	OTROS	A	B	C	K'	D	LATITUD	LONGITUD
T. C. Guadalajara - Tepic	0.00	3	1	15355	6.3	82.2	0.5	7.9	0.8	1.0	0.4	0.8	0.1	88.5	0.5	11.0	0.087	0.532	21.475286	-104.847649
T. C. Guadalajara - Tepic	0.00	3	2	13529	6.4	82.0	0.5	8.0	0.8	1.0	0.4	0.8	0.1	88.4	0.5	11.1	0.083	0.532	21.475313	-104.847755

NAYARIT

18 CARR: Tepic - Presa Aguamilpa

CLAVE: 18029

RUTA: MEX-015

AÑO: 2021

LUGAR	ESTACION				CLASIFICACION VEHICULAR EN PORCIENTO										COORDENADAS					
	KM	TE	SC	TDPA	M	A	B	C2	C3	T3S2	T3S3	T3S2R4	OTROS	A	B	C	K'	D	LATITUD	LONGITUD
X. C. Tepic - Fco. I. Madero	17.50	3	0	2312	6.5	64.6	4.0	8.0	13.2	1.9	1.4	0.2	0.2	71.1	4.0	24.9	0.085	0.522	21.593964	-104.842188
Presa Aguamilpa	54.00	1	0	308	5.4	84.4	0.9	8.2	1.1	0.0	0.0	0.0	0.0	89.8	0.9	9.3	0.106	0.510	21.813195	-104.836096

19 CARR: Tepic - Puerto Vallarta

CLAVE: 00068

RUTA: MEX-200

AÑO: 2021

LUGAR	ESTACION				CLASIFICACION VEHICULAR EN PORCIENTO										COORDENADAS					
	KM	TE	SC	TDPA	M	A	B	C2	C3	T3S2	T3S3	T3S2R4	OTROS	A	B	C	K'	D	LATITUD	LONGITUD
Tepic	0.00	3	1	20808	11.6	84.2	0.2	2.6	0.6	0.3	0.1	0.3	0.1	95.8	0.2	4.0	0.082	0.521	21.491411	-104.895577
Tepic	0.00	3	2	22612	10.8	84.6	0.2	3.0	0.6	0.3	0.1	0.3	0.1	95.4	0.2	4.4	0.083	0.521	21.491466	-104.895460
Limite de Zona Urbana Tepic	1.80	3	1	20723	5.4	85.5	0.6	5.9	0.9	0.9	0.5	0.2	0.1	90.9	0.6	8.5	0.076	0.510	21.474232	-104.890049
Limite de Zona Urbana Tepic	1.80	3	2	21559	5.3	85.0	0.7	6.2	1.0	1.0	0.5	0.2	0.1	90.3	0.7	9.0	0.082	0.510	21.474250	-104.889918
X. C. Libramiento De Tepic (Baja)	3.90	3	1	10334	32.3	58.5	0.8	5.5	1.1	0.8	0.2	0.5	0.3	90.8	0.8	8.4	0.080	0.543	21.464685	-104.889714
X. C. Libramiento De Tepic (Alta)	3.90	3	1	16326	2.0	97.0	0.0	0.2	0.3	0.1	0.0	0.3	0.1	99.0	0.0	1.0	0.072	0.515	21.464630	-104.889628
X. C. Libramiento De Tepic (Alta)	3.90	3	2	17366	1.9	97.1	0.0	0.2	0.3	0.1	0.0	0.3	0.1	99.0	0.0	1.0	0.070	0.515	21.464594	-104.889560
X. C. Libramiento De Tepic (Baja)	3.90	3	2	8701	31.9	58.7	0.8	5.4	1.1	0.9	0.2	0.6	0.4	90.6	0.8	8.6	0.074	0.543	21.464540	-104.889473
Jalisco	7.15	3	0	13883	6.8	86.3	0.9	3.5	1.1	0.8	0.4	0.2	0.0	93.1	0.9	6.0	0.068	0.504	21.432074	-104.899476
T. Izq. Emiliano Zapata	18.40	3	0	5766	3.2	88.4	1.2	3.0	1.6	1.2	0.3	0.8	0.3	91.6	1.2	7.2	0.085	0.514	21.357797	-104.919261
T. Izq. Compostela (1° Acceso)	35.80	1	0	5766	3.2	88.4	1.2	3.0	1.6	1.2	0.3	0.8	0.3	91.6	1.2	7.2	0.085	0.514	21.255942	-104.901543
T. Izq. Compostela (1° Acceso)	35.80	3	0	4795	3.3	81.4	1.8	9.5	1.5	1.5	0.7	0.3	0.0	84.7	1.8	13.5	0.099	0.505	21.245364	-104.905896
Las Varas	71.30	1	0	14162	1.3	85.5	4.1	3.7	1.9	2.0	1.2	0.3	0.0	86.8	4.1	9.1	0.078	0.505	21.188441	-105.121419
Las Varas	71.30	3	0	15866	5.8	83.0	3.7	3.3	1.1	2.0	0.6	0.3	0.2	88.8	3.7	7.5	0.115	0.511	21.172129	-105.147655
T. Izq. Altavista	81.50	1	0	11440	5.9	70.6	5.0	14.6	1.0	1.7	0.5	0.4	0.3	76.5	5.0	18.5	0.123	0.501	21.110758	-105.178514
T. Der. Rincón de Guayabitos	94.50	1	1	11441	9.9	80.6	2.8	3.5	1.1	1.0	0.5	0.5	0.1	90.5	2.8	6.7	0.084	0.518	21.028811	-105.258649
T. Der. Rincón de Guayabitos	94.50	1	2	12302	9.9	82.6	2.1	2.5	1.0	1.1	0.2	0.5	0.1	92.5	2.1	5.4	0.098	0.518	21.028775	-105.258601
T. Der. Rincón de Guayabitos	94.50	3	0	12719	2.8	80.7	4.7	7.0	1.3	2.0	1.0	0.3	0.2	83.5	4.7	11.8	0.095	0.529	21.015817	-105.270819
T. Der. Lo de Marcos	107.61	1	1	5925	4.8	82.8	4.1	4.1	1.2	1.9	0.8	0.3	0.0	87.6	4.1	8.3	0.118	0.520	20.952310	-105.343884
T. Der. Lo de Marcos	107.61	1	2	5472	4.7	83.0	4.0	4.1	1.3	1.8	0.7	0.3	0.1	87.7	4.0	8.3	0.112	0.520	20.952274	-105.343875
T. Der. Lo de Marcos	107.61	3	0	10557	1.9	84.4	4.0	4.3	1.5	2.6	0.9	0.1	0.3	86.3	4.0	9.7	0.100	0.503	20.945988	-105.355556
T. Der. Sayulita	122.91	1	0	12000	4.3	77.8	4.2	8.5	1.2	2.6	0.9	0.2	0.3	82.1	4.2	13.7	0.089	0.513	20.865798	-105.426178
T. Der. Sayulita	122.91	3	0	13166	5.1	83.4	2.8	4.0	1.5	2.0	0.7	0.3	0.2	88.5	2.8	8.7	0.101	0.506	20.860389	-105.424827
T. Der. Cruz de Juanacastle	137.30	3	1	15852	4.9	85.6	2.2	4.3	1.4	0.8	0.6	0.1	0.1	90.5	2.2	7.3	0.113	0.503	20.763823	-105.362554
T. Der. Cruz de Juanacastle	137.30	3	2	16034	4.9	85.5	2.2	4.3	1.4	0.8	0.6	0.1	0.2	90.4	2.2	7.4	0.110	0.503	20.763950	-105.362526
Bucerías	140.81	3	1	21749	3.3	88.0	1.8	4.1	0.8	1.0	0.8	0.1	0.1	91.3	1.8	6.9	0.083	0.546	20.749119	-105.318544
Bucerías	140.81	3	2	18116	3.0	86.8	2.0	4.9	1.0	1.2	0.9	0.1	0.1	89.8	2.0	8.2	0.079	0.546	20.749227	-105.318515
Lim. Edos. Term. Nay. Ppia. Jal.	152.60																			

NAYARIT

19 CARR : Tepic - Puerto Vallarta

CLAVE: 00068

RUTA : MEX-200

AÑO : 2021

LUGAR	ESTACION				CLASIFICACION VEHICULAR EN PORCIENTO										COORDENADAS					
	KM	TE	SC	TDPA	M	A	B	C2	C3	T3S2	T3S3	T3S2R4	OTROS	A	B	C	K'	D	LATITUD	LONGITUD
T. Der. Aeropuerto Díaz Ordáz	158.37	1	1	29886	7.6	81.3	2.7	5.7	1.0	0.8	0.4	0.3	0.2	88.9	2.7	8.4	0.083	0.502	20.682957	-105.241803
T. Der. Aeropuerto Díaz Ordáz	158.37	1	2	30087	7.7	80.4	2.5	5.8	1.5	1.1	0.5	0.3	0.2	88.1	2.5	9.4	0.073	0.502	20.682884	-105.241706
T. Der. Aeropuerto Díaz Ordáz (Alta)	158.37	3	1	17993	5.2	92.8	0.2	0.8	0.4	0.3	0.2	0.1	0.0	98.0	0.2	1.8	0.087	0.524	20.669962	-105.249156
T. Der. Aeropuerto Díaz Ordáz (Baja)	158.37	3	1	12678	5.9	83.4	3.4	5.5	0.8	0.4	0.3	0.2	0.1	89.3	3.4	7.3	0.099	0.505	20.669934	-105.249242
T. Der. Aeropuerto Díaz Ordáz (Alta)	158.37	3	2	19771	5.3	92.6	0.2	0.9	0.4	0.3	0.2	0.1	0.0	97.9	0.2	1.9	0.084	0.524	20.669998	-105.249079
T. Der. Aeropuerto Díaz Ordáz (Baja)	158.37	3	2	12940	5.4	82.4	4.2	5.8	1.0	0.6	0.3	0.2	0.1	87.8	4.2	8.0	0.091	0.505	20.670043	-105.248964
Puerto Vallarta	166.88																			

20 CARR : Chapalilla - Compostela (Cuota)

CLAVE: 18004

RUTA : MEX-068D

AÑO : 2021

LUGAR	ESTACION				CLASIFICACION VEHICULAR EN PORCIENTO										COORDENADAS					
	KM	TE	SC	TDPA	M	A	B	C2	C3	T3S2	T3S3	T3S2R4	OTROS	A	B	C	K'	D	LATITUD	LONGITUD
T. C. Guadalajara - Tepic	0.00	3	0	4178	2.5	75.6	4.0	7.0	3.8	5.0	1.5	0.4	0.2	78.1	4.0	17.9	0.104	0.506	21.190378	-104.643052
T. C. Ramal a Compostela (Cuota)	30.00	1	0	2754	4.4	76.3	4.4	5.6	3.3	3.4	1.5	0.3	0.8	80.7	4.4	14.9	0.096	0.505	21.233253	-104.862432
Plaza de Cobro Compostela	31.50	2	0	6223	1.3	82.6	5.8	3.0	2.6	3.0	1.0	0.5	0.2	83.9	5.8	10.3	0.114	0.500	21.229532	-104.887408
T. Der. Compostela	33.00	1	0	6773	1.8	81.6	6.1	4.4	1.5	2.6	1.0	0.6	0.4	83.4	6.1	10.5	0.135	0.501	21.228129	-104.899056
T. C. Tepic - Puerto Vallarta	35.60	1	0	5587	2.1	81.9	5.2	4.6	1.6	2.8	1.0	0.6	0.2	84.0	5.2	10.8	0.175	0.524	21.230941	-104.918742

21 CARR : Guadalajara - Tepic (Cuota)

CLAVE: 00033

RUTA : MEX-015D

AÑO : 2021

LUGAR	ESTACION				CLASIFICACION VEHICULAR EN PORCIENTO										COORDENADAS					
	KM	TE	SC	TDPA	M	A	B	C2	C3	T3S2	T3S3	T3S2R4	OTROS	A	B	C	K'	D	LATITUD	LONGITUD
T. C. Guadalajara - Tepic (Libre)	0.00	3	1	5852	7.1	73.9	5.7	3.7	2.6	4.5	0.8	1.5	0.2	81.0	5.7	13.3	0.059	0.535	20.739640	-103.583268
T. C. Guadalajara - Tepic (Libre)	0.00	3	2	6112	6.0	74.7	6.0	3.9	2.6	4.1	1.0	1.5	0.2	80.7	6.0	13.3	0.096	0.535	20.739593	-103.583339
Plaza de Cobro Arenal	10.96	2	1	5197	0.7	71.4	6.6	3.3	4.1	9.7	1.5	1.8	0.9	72.1	6.6	21.3	0.092	0.500	20.778775	-103.662396
Plaza de Cobro Arenal	10.96	2	2	5197	0.7	71.4	6.6	3.3	4.1	9.7	1.5	1.8	0.9	72.1	6.6	21.3	0.092	0.500	20.778775	-103.662396
T. Izq. Libramiento Sur de Guadalajara (Cuota)	16.44	3	1	7583	5.2	64.7	10.0	6.2	2.0	7.5	1.5	2.4	0.5	69.9	10.0	20.1	0.082	0.522	20.796743	-103.721814
T. Izq. Libramiento Sur de Guadalajara (Cuota)	16.44	3	2	6951	5.5	67.2	7.8	5.5	2.2	7.7	1.5	2.1	0.5	72.7	7.8	19.5	0.136	0.522	20.796647	-103.721853
T. Der. Magdalena	45.00	1	1	6683	2.7	64.0	8.3	4.1	2.6	12.7	2.0	2.9	0.7	66.7	8.3	25.0	0.081	0.528	20.900776	-103.958695
T. Der. Magdalena	45.00	1	2	5964	3.0	58.9	10.9	6.1	2.4	13.4	2.0	2.6	0.7	61.9	10.9	27.2	0.190	0.528	20.900703	-103.958730
T. Der. Magdalena	45.00	3	1	6221	3.8	63.5	6.0	3.9	4.5	12.7	1.9	3.0	0.7	67.3	6.0	26.7	0.086	0.504	20.902088	-103.975895
T. Der. Magdalena	45.00	3	2	6333	3.6	65.7	5.6	3.8	4.1	12.0	1.7	2.8	0.7	69.3	5.6	25.1	0.218	0.504	20.901925	-103.975856
Plaza de Cobro Plan de Barrancas	69.34	2	1	6442	0.5	62.4	5.8	3.8	5.1	15.0	2.4	3.6	1.4	62.9	5.8	31.3	0.092	0.500	21.005434	-104.144062
Plaza de Cobro Plan de Barrancas	69.34	2	2	6442	0.5	62.4	5.8	3.8	5.1	15.0	2.4	3.6	1.4	62.9	5.8	31.3	0.092	0.500	21.005434	-104.144062
Lim. Edos. Term. Jal. Ppia. Nay.	84.60																			

NAYARIT

21 CARR: Guadalajara - Tepic (Cuota)

CLAVE: 00033

RUTA: MEX-015D

AÑO: 2021

LUGAR	ESTACION				CLASIFICACION VEHICULAR EN PORCIENTO													COORDENADAS		
	KM	TE	SC	TDPA	M	A	B	C2	C3	T3S2	T3S3	T3S2R4	OTROS	A	B	C	K'	D	LATITUD	LONGITUD
T. Izq. Compostela (Cuota)	106.00	1	1	6523	6.5	63.9	7.3	4.5	2.5	9.4	2.4	2.8	0.7	70.4	7.3	22.3	0.082	0.507	21.071901	-104.419739
T. Izq. Compostela (Cuota)	106.00	1	2	6720	6.2	67.3	5.5	3.8	3.0	8.8	1.8	2.9	0.7	73.5	5.5	21.0	0.220	0.507	21.071884	-104.419803
T. Izq. Compostela (Cuota)	106.00	3	1	5032	4.6	57.6	8.7	4.8	3.4	15.0	2.1	3.1	0.7	62.2	8.7	29.1	0.076	0.507	21.085916	-104.433132
T. Izq. Compostela (Cuota)	106.00	3	2	5178	4.0	60.6	7.7	4.3	3.0	14.7	2.3	2.7	0.7	64.6	7.7	27.7	0.184	0.507	21.085850	-104.433190
T. Der. Jala	107.00	3	1	4604	2.8	58.9	7.9	4.0	3.0	16.8	2.1	3.8	0.7	61.7	7.9	30.4	0.067	0.511	21.094046	-104.444581
T. Der. Jala	107.00	3	2	4399	2.4	58.5	6.4	4.5	4.8	16.7	2.1	3.7	0.9	60.9	6.4	32.7	0.091	0.511	21.093977	-104.444622
Plaza de Cobro Santa Ma. del Oro	145.32	3	1	4921	2.3	72.3	2.6	4.7	1.7	8.9	4.2	2.4	0.9	74.6	2.6	22.8	0.070	0.518	21.334117	-104.668743
Plaza de Cobro Santa Ma. del Oro	145.32	3	2	4584	2.3	72.6	2.6	4.5	1.6	8.9	4.2	2.5	0.8	74.9	2.6	22.5	0.101	0.518	21.334067	-104.668831
T. Der. Libramiento de Tepic (Cuota)	163.00	1	1	4414	1.4	72.9	1.2	2.1	0.6	12.0	5.8	3.2	0.8	74.3	1.2	24.5	0.091	0.530	21.430638	-104.786315
T. Der. Libramiento de Tepic (Cuota)	163.00	1	2	3918	1.4	72.0	2.8	3.6	1.2	9.8	5.2	3.0	1.0	73.4	2.8	23.8	0.115	0.530	21.430582	-104.786364
T. C. Guadalajara - Tepic (Libre)	168.62																			

22 CARR: Jala - Puerto Vallarta (Cuota)

CLAVE:

RUTA: MEX-070D

AÑO: 2021

LUGAR	ESTACION				CLASIFICACION VEHICULAR EN PORCIENTO													COORDENADAS		
	KM	TE	SC	TDPA	M	A	B	C2	C3	T3S2	T3S3	T3S2R4	OTROS	A	B	C	K'	D	LATITUD	LONGITUD
T. C. Guadalajara - Tepic (Cuota)	0.00	3	1	1510	0.9	77.5	10.2	4.5	1.2	3.5	1.7	0.4	0.1	78.4	10.2	11.4	0.160	0.512	21.079211	-104.431505
T. C. Guadalajara - Tepic (Cuota)	0.00	3	2	1442	1.0	78.4	10.0	4.5	1.1	2.9	1.5	0.4	0.2	79.4	10.0	10.6	0.184	0.512	21.079133	-104.431490
Plaza de Cobro Amado Nervo	32.00	2	1	2029	0.7	86.2	5.4	2.3	1.6	2.4	0.7	0.5	0.2	86.9	5.4	7.7	0.090	0.500	21.089054	-104.717268
Plaza de Cobro Amado Nervo	32.00	2	2	2029	0.7	86.2	5.4	2.3	1.6	2.4	0.7	0.5	0.2	86.9	5.4	7.7	0.090	0.500	21.089054	-104.717268
Ramal a Compostela	54.30																			

23 CARR: Libramiento de Tepic (Cuota)

CLAVE:

RUTA: MEX-015D

AÑO: 2021

LUGAR	ESTACION				CLASIFICACION VEHICULAR EN PORCIENTO													COORDENADAS		
	KM	TE	SC	TDPA	M	A	B	C2	C3	T3S2	T3S3	T3S2R4	OTROS	A	B	C	K'	D	LATITUD	LONGITUD
T. C. Guadalajara - Tepic	0.00																			
T. C. Guadalajara - Tepic (Cuota)	0.70	3	0	3351	6.6	52.5	6.2	10.3	2.8	13.2	2.5	4.5	1.4	59.1	6.2	34.7	0.061	0.524	21.452171	-104.801356
Plaza de Cobro La Cantera	7.70	2	0	2999	0.5	33.7	1.4	3.6	6.0	38.4	3.4	10.1	2.9	34.2	1.4	64.4	0.090	0.500	21.498477	-104.813387
T. C. Tepic - Villa Unión (Cuota)	29.47	1	0	4237	2.6	50.5	6.9	4.0	2.2	25.9	1.8	5.2	0.9	53.1	6.9	40.0	0.067	0.548	21.566047	-104.958347

NAYARIT

24 CARR: Ramal a Compostela (Cuota)

CLAVE:

RUTA: MEX-200D

AÑO: 2021

LUGAR	ESTACION				CLASIFICACION VEHICULAR EN PORCIENTO													COORDENADAS			
	KM	TE	SC	TDPA	M	A	B	C2	C3	T3S2	T3S3	T3S2R4	OTROS	A	B	C	K'	D	LATITUD	LONGITUD	
T. C. Jala - Compostela (Cuota)	0.00																				
T. C. Chapalilla - Compostela (Cuota)	12.90	1	0	2707	1.3	80.6	8.7	5.1	1.2	1.9	0.9	0.3	0.0	81.9	8.7	9.4	0.119	0.508	21.227101	-104.874772	

25 CARR: Ramal a Tequepexpan

CLAVE: 00068

RUTA: MEX-015D

AÑO: 2021

LUGAR	ESTACION				CLASIFICACION VEHICULAR EN PORCIENTO													COORDENADAS		
	KM	TE	SC	TDPA	M	A	B	C2	C3	T3S2	T3S3	T3S2R4	OTROS	A	B	C	K'	D	LATITUD	LONGITUD
Chapalilla	0.00	3	0	904	2.5	68.0	6.3	7.4	3.8	7.4	1.7	2.5	0.4	70.5	6.3	23.2	0.096	0.502	21.181045	-104.628220
T. C. Guadalajara - Tepic (Cuota)	9.40	1	0	949	2.5	69.7	6.0	7.0	3.5	7.1	1.5	2.3	0.4	72.2	6.0	21.8	0.087	0.511	21.209675	-104.594284

26 CARR: Tepic - San Blas (Cuota)

CLAVE:

RUTA: MEX-D

AÑO: 2021

LUGAR	ESTACION				CLASIFICACION VEHICULAR EN PORCIENTO													COORDENADAS		
	KM	TE	SC	TDPA	M	A	B	C2	C3	T3S2	T3S3	T3S2R4	OTROS	A	B	C	K'	D	LATITUD	LONGITUD
T. C Tepic - Villa Unión (Cuota)	0.00	3	0	4542	4.6	90.8	0.6	1.3	1.2	0.9	0.3	0.2	0.1	95.4	0.6	4.0	0.146	0.501	21.558540	-104.980693
El Camalote (T. C. Sta. Cruz - San Blas)	31.00	1	0	3304	3.4	93.4	0.3	1.0	1.0	0.8	0.1	0.0	0.0	96.8	0.3	2.9	0.175	0.505	21.513137	-105.192740

27 CARR: Tepic - Villa Unión (cuota)

CLAVE: 00500

RUTA: MEX-015D

AÑO: 2021

LUGAR	ESTACION				CLASIFICACION VEHICULAR EN PORCIENTO													COORDENADAS			
	KM	TE	SC	TDPA	M	A	B	C2	C3	T3S2	T3S3	T3S2R4	OTROS	A	B	C	K'	D	LATITUD	LONGITUD	
Tepic	0.00																				
Lib. de Tepic (Cuota)	6.60																				
Plaza de Cobro Trapichillo	8.65	1	1	7035	1.5	75.9	3.9	8.6	1.7	6.0	1.3	0.9	0.2	77.4	3.9	18.7	0.137	0.518	21.554137	-104.959465	
Plaza de Cobro Trapichillo	8.65	1	2	6539	1.6	75.7	3.9	8.7	1.7	6.0	1.3	0.9	0.2	77.3	3.9	18.8	0.157	0.518	21.554109	-104.959533	
Plaza de Cobro Trapichillo	8.65	2	1	6333	1.1	66.9	4.6	3.4	4.5	13.5	1.6	3.3	1.1	68.0	4.6	27.4	0.098	0.500	21.571789	-104.987394	
Plaza de Cobro Trapichillo	8.65	2	2	6333	1.1	66.9	4.6	3.4	4.5	13.5	1.6	3.3	1.1	68.0	4.6	27.4	0.098	0.500	21.571789	-104.987394	
T. C. Tepic - Mazatlán	21.00	1	1	4655	5.2	74.2	1.8	8.6	1.4	5.5	2.4	0.4	0.5	79.4	1.8	18.8	0.075	0.515	21.663962	-105.027417	
T. C. Tepic - Mazatlán	21.00	1	2	4944	4.8	75.3	1.6	8.3	1.3	5.6	2.3	0.4	0.4	80.1	1.6	18.3	0.070	0.515	21.663974	-105.027502	
T. C. Tepic - Mazatlán (Crucero de San Blas)	24.50	3	0	6452	0.6	61.6	7.7	7.4	2.7	11.7	1.8	5.8	0.7	62.2	7.7	30.1	0.082	0.505	21.714575	-105.060526	
Est. Ruíz	54.90	1	0	5872	3.1	45.9	8.8	7.3	3.1	23.2	3.0	4.8	0.8	49.0	8.8	42.2	0.064	0.538	21.946258	-105.111272	
Est. Ruíz	54.90	3	0	6334	3.4	44.2	11.7	7.2	1.5	22.4	3.1	6.1	0.4	47.6	11.7	40.7	0.061	0.504	21.963286	-105.123870	
Rosamorada	73.50	1	0	6211	6.5	43.6	11.1	6.4	1.6	21.9	2.4	6.1	0.4	50.1	11.1	38.8	0.090	0.502	22.084719	-105.210970	
Rosamorada	73.50	3	0	6098	4.5	47.7	7.4	4.5	3.2	23.3	2.5	6.4	0.5	52.2	7.4	40.4	0.068	0.538	22.092339	-105.220603	
Acaponeta	120.20	1	0	5638	6.4	38.9	9.7	7.1	3.8	23.8	3.2	6.5	0.6	45.3	9.7	45.0	0.073	0.501	22.448236	-105.419113	

NAYARIT

27 CARR: Tepic - Villa Unión (cuota)

CLAVE: 00500

RUTA: MEX-015D

AÑO: 2021

LUGAR	ESTACION				CLASIFICACION VEHICULAR EN PORCIENTO														COORDENADAS	
	KM	TE	SC	TDPA	M	A	B	C2	C3	T3S2	T3S3	T3S2R4	OTROS	A	B	C	K'	D	LATITUD	LONGITUD
Plaza de Cobro Acaponeta	120.20	2	0	4353	0.5	41.5	4.9	3.8	4.8	30.4	2.4	9.2	2.5	42.0	4.9	53.1	0.081	0.500	22.454065	-105.418726
Acaponeta	120.20	3	0	4170	3.1	42.5	9.5	5.9	3.6	23.6	2.9	8.1	0.8	45.6	9.5	44.9	0.079	0.509	22.458468	-105.430562
Lim. Edos. Term. Nay. Ppia. Sin.	132.80																			
Escuinapa de Hidalgo	208.60	1	1	2409	4.8	41.7	8.8	6.6	4.2	21.9	3.3	7.9	0.8	46.5	8.8	44.7	0.080	0.506	22.841561	-105.739746
Escuinapa de Hidalgo	208.60	1	2	2352	5.2	42.0	9.0	6.9	4.5	20.8	3.3	7.5	0.8	47.2	9.0	43.8	0.077	0.506	22.841543	-105.739785
Escuinapa de Hidalgo	208.60	3	0	4251	4.7	37.6	10.2	4.5	2.3	29.4	2.9	7.6	0.8	42.3	10.2	47.5	0.072	0.514	22.859151	-105.754560
Rosario	220.68	1	0	4793	6.2	40.3	8.3	5.4	4.1	23.9	3.5	7.4	0.9	46.5	8.3	45.2	0.069	0.525	22.977177	-105.868982
Plaza de Cobro Rosario	220.68	2	0	5041	0.5	42.2	5.1	3.7	4.6	30.3	2.8	8.5	2.3	42.7	5.1	52.2	0.081	0.500	22.984690	-105.878103
Rosario	220.68	3	1	2693	4.2	49.0	11.6	6.0	2.3	17.8	1.6	6.7	0.8	53.2	11.6	35.2	0.073	0.503	22.993188	-105.887720
Rosario	220.68	3	2	2731	4.0	49.6	11.7	6.0	2.0	17.8	1.4	6.7	0.8	53.6	11.7	34.7	0.070	0.503	22.993133	-105.887768
X. C. Durango - Villa Unión (Cuota)	240.90	1	0	6200	1.5	50.4	6.7	7.1	2.1	21.8	3.4	6.2	0.8	51.9	6.7	41.4	0.068	0.505	23.185945	-106.174276
X. C. Durango - Villa Unión (Cuota)	240.90	3	1	3990	8.5	47.7	8.9	5.5	2.7	16.5	2.7	6.6	0.9	56.2	8.9	34.9	0.073	0.512	23.194971	-106.191844
X. C. Durango - Villa Unión (Cuota)	240.90	3	2	4190	8.4	47.8	9.0	5.6	2.8	16.4	2.7	6.5	0.8	56.2	9.0	34.8	0.094	0.512	23.194798	-106.192058

28 CARR: El Carrizo - La Batanga

CLAVE: 18107

RUTA: NAY-078

AÑO: 2021

LUGAR	ESTACION				CLASIFICACION VEHICULAR EN PORCIENTO														COORDENADAS	
	KM	TE	SC	TDPA	M	A	B	C2	C3	T3S2	T3S3	T3S2R4	OTROS	A	B	C	K'	D	LATITUD	LONGITUD
T. C. Ent. Santiago Ixcuintla - Playa Los Corchos	0.00	3	0	3166	21.0	71.0	0.4	6.7	0.7	0.1	0.1	0.0	0.0	92.0	0.4	7.6	0.092	0.503	21.774748	-105.277360
Sentispac	9.00	1	0	2602	25.5	67.4	0.3	6.0	0.7	0.1	0.0	0.0	0.0	92.9	0.3	6.8	0.079	0.504	21.809083	-105.341078
La Batanga	25.00	1	0	213	3.9	91.6	0.4	3.6	0.2	0.0	0.0	0.0	0.3	95.5	0.4	4.1	0.121	0.506	21.883672	-105.459748

29 CARR: Navarrete - Sauta

CLAVE: 18013

RUTA: NAY-013

AÑO: 2021

LUGAR	ESTACION				CLASIFICACION VEHICULAR EN PORCIENTO														COORDENADAS	
	KM	TE	SC	TDPA	M	A	B	C2	C3	T3S2	T3S3	T3S2R4	OTROS	A	B	C	K'	D	LATITUD	LONGITUD
T. C. Crucero San Blas - San Blas	0.00	3	0	1313	28.9	64.6	0.6	4.9	0.9	0.1	0.0	0.0	0.0	93.5	0.6	5.9	0.083	0.504	21.655471	-105.119635
Sauta	7.00	1	0	3066	44.6	49.0	0.6	5.0	0.7	0.1	0.0	0.0	0.0	93.6	0.6	5.8	0.057	0.502	21.709516	-105.136664

30 CARR: Ramal a Amado Nervo

CLAVE: 18011

RUTA: NAY

AÑO: 2021

LUGAR	ESTACION				CLASIFICACION VEHICULAR EN PORCIENTO														COORDENADAS	
	KM	TE	SC	TDPA	M	A	B	C2	C3	T3S2	T3S3	T3S2R4	OTROS	A	B	C	K'	D	LATITUD	LONGITUD
T. C. Guadalajara - Tepic	0.00	3	0	1216	4.9	77.5	0.2	11.7	4.5	0.9	0.2	0.0	0.1	82.4	0.2	17.4	0.083	0.503	21.128005	-104.609760
Amado Nervo	15.00																			

NAYARIT

31 CARR: Ramal a Bellavista

CLAVE: 18059

RUTA: NAY-059

AÑO: 2021

LUGAR	ESTACION				CLASIFICACION VEHICULAR EN PORCIENTO														COORDENADAS	
	KM	TE	SC	TDPA	M	A	B	C2	C3	T3S2	T3S3	T3S2R4	OTROS	A	B	C	K'	D	LATITUD	LONGITUD
T. C. Tepic - Francisco I. Madero	0.00	3	0	2807	8.1	81.3	0.3	9.1	1.2	0.0	0.0	0.0	0.0	89.4	0.3	10.3	0.073	0.505	21.565022	-104.878675
Bellavista	1.30																			

32 CARR: Ramal a El Colomo

CLAVE: 18014

RUTA: NAY

AÑO: 2021

LUGAR	ESTACION				CLASIFICACION VEHICULAR EN PORCIENTO														COORDENADAS	
	KM	TE	SC	TDPA	M	A	B	C2	C3	T3S2	T3S3	T3S2R4	OTROS	A	B	C	K'	D	LATITUD	LONGITUD
T. C. Tepic - Puerto Vallarta	0.00																			
San Vicente	3.00	1	1	17972	7.4	84.0	0.7	4.9	0.7	0.7	1.1	0.2	0.3	91.4	0.7	7.9	0.082	0.525	20.742789	-105.256786
San Vicente	3.00	1	2	16250	8.1	82.9	1.1	4.6	0.7	0.9	1.2	0.1	0.4	91.0	1.1	7.9	0.080	0.525	20.742816	-105.256863
El Colomo	21.00																			

33 CARR: Ramal a Estación Yago

CLAVE: 18224

RUTA: NAY

AÑO: 2021

LUGAR	ESTACION				CLASIFICACION VEHICULAR EN PORCIENTO														COORDENADAS	
	KM	TE	SC	TDPA	M	A	B	C2	C3	T3S2	T3S3	T3S2R4	OTROS	A	B	C	K'	D	LATITUD	LONGITUD
T. C. Tepic - Mazatlán	0.00	3	0	2379	10.3	77.5	1.4	6.7	2.7	0.8	0.1	0.2	0.3	87.8	1.4	10.8	0.079	0.515	21.833033	-105.104171
Estacion Yago	7.00																			

34 CARR: Ramal a Ixtapan de La Concepción

CLAVE: 18233

RUTA: NAY

AÑO: 2021

LUGAR	ESTACION				CLASIFICACION VEHICULAR EN PORCIENTO														COORDENADAS	
	KM	TE	SC	TDPA	M	A	B	C2	C3	T3S2	T3S3	T3S2R4	OTROS	A	B	C	K'	D	LATITUD	LONGITUD
T. C. Tepic - Puerto Vallarta (Las Varas)	0.00	3	0	5228	14.3	74.2	0.8	8.3	1.0	0.8	0.6	0.0	0.0	88.5	0.8	10.7	0.075	0.502	21.188865	-105.145369
Ixtapan de La Concepción	20.00	1	0	2195	12.9	71.3	0.6	12.7	1.3	0.6	0.4	0.0	0.2	84.2	0.6	15.2	0.109	0.500	21.300411	-105.157340

35 CARR: Ramal a Milpas Viejas

CLAVE: 18007

RUTA: NAY

AÑO: 2021

LUGAR	ESTACION				CLASIFICACION VEHICULAR EN PORCIENTO														COORDENADAS	
	KM	TE	SC	TDPA	M	A	B	C2	C3	T3S2	T3S3	T3S2R4	OTROS	A	B	C	K'	D	LATITUD	LONGITUD
T. C. Tepic - Mazatlán	0.00	3	0	1998	13.9	75.2	0.4	9.1	0.7	0.4	0.3	0.0	0.0	89.1	0.4	10.5	0.082	0.525	22.453731	-105.360916
Milpas Viejas	17.00																			

NAYARIT

36 CARR: Ramal a Villa Hidalgo

CLAVE: 18031

RUTA: NAY

AÑO: 2021

LUGAR	ESTACION				CLASIFICACION VEHICULAR EN PORCIENTO										COORDENADAS					
	KM	TE	SC	TDPA	M	A	B	C2	C3	T3S2	T3S3	T3S2R4	OTROS	A	B	C	K'	D	LATITUD	LONGITUD
T. C. Tepic - Mazatlán	0.00	3	0	3349	14.7	66.8	2.0	12.8	2.0	1.1	0.6	0.0	0.0	81.5	2.0	16.5	0.071	0.539	21.804551	-105.112893
Villa Hidalgo	16.00	1	0	4870	28.6	64.7	1.6	2.8	1.0	0.8	0.2	0.2	0.1	93.3	1.6	5.1	0.090	0.504	21.754832	-105.227704

37 CARR: Ramal a Volcán del Ceboruco

CLAVE: 18003

RUTA: NAY

AÑO: 2021

LUGAR	ESTACION				CLASIFICACION VEHICULAR EN PORCIENTO										COORDENADAS					
	KM	TE	SC	TDPA	M	A	B	C2	C3	T3S2	T3S3	T3S2R4	OTROS	A	B	C	K'	D	LATITUD	LONGITUD
T. C. Guadalajara - Tepic	0.00	3	0	4712	10.1	66.1	2.7	13.4	2.3	2.3	1.0	1.5	0.6	76.2	2.7	21.1	0.082	0.504	21.052449	-104.459203
Volcán Ceboruco	25.00																			

38 CARR: Tepic - Francisco I. Madero

CLAVE: 18009

RUTA: NAY-MEX

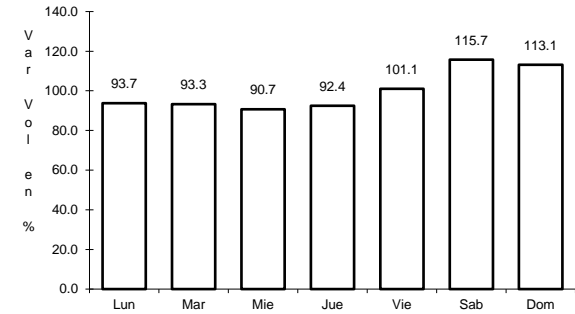
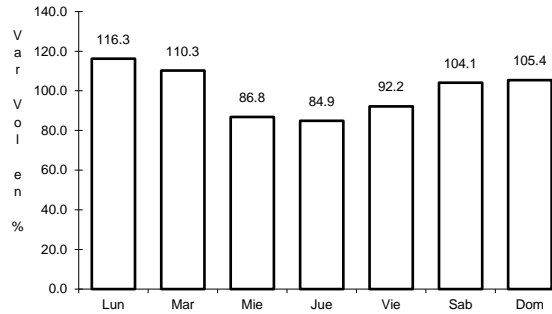
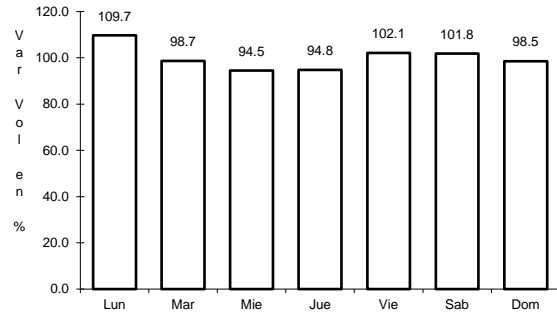
AÑO: 2021

LUGAR	ESTACION				CLASIFICACION VEHICULAR EN PORCIENTO										COORDENADAS					
	KM	TE	SC	TDPA	M	A	B	C2	C3	T3S2	T3S3	T3S2R4	OTROS	A	B	C	K'	D	LATITUD	LONGITUD
Tepic	0.00	3	0	7627	7.1	86.8	0.6	1.8	1.7	0.7	0.5	0.5	0.3	93.9	0.6	5.5	0.103	0.520	21.544321	-104.864238
Bellavista	9.00	3	0	4751	8.4	82.7	0.5	5.8	2.0	0.2	0.2	0.1	0.1	91.1	0.5	8.4	0.077	0.500	21.569822	-104.871176
Francisco I. Madero	16.00																			

1 CARR: Crucero de San Blas - San Blas

CLAVE: 18229

RUTA: MEX-015



Km: 0.00 Tipo: 3 Sent: 0

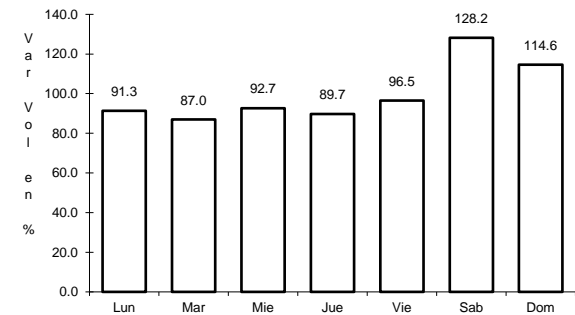
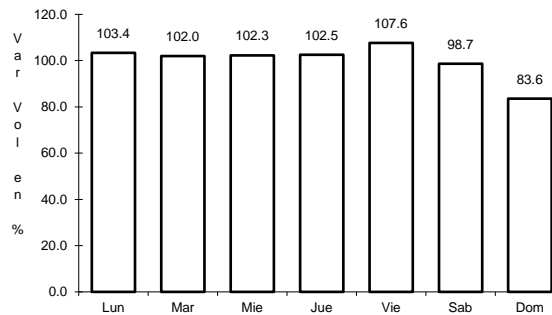
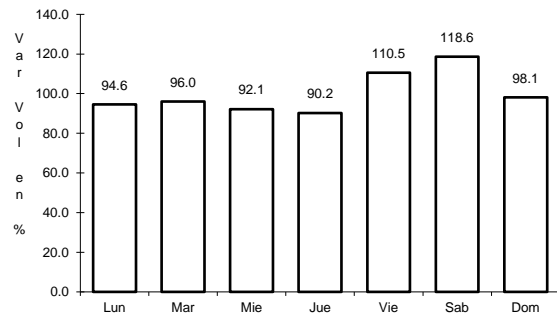
Km: 11.00 Tipo: 3 Sent: 0

Km: 36.00 Tipo: 1 Sent: 0

2 CARR: Ent. Acaponeta - El Novillero

CLAVE: 18023

RUTA: MEX-015



Km: 0.00 Tipo: 3 Sent: 0

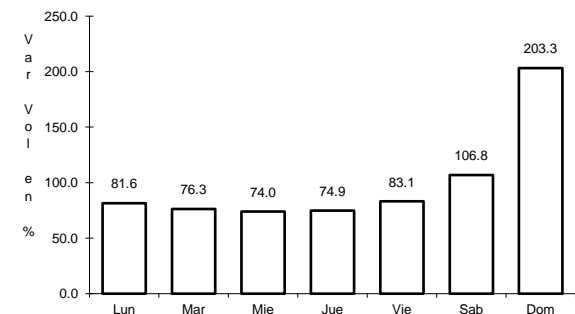
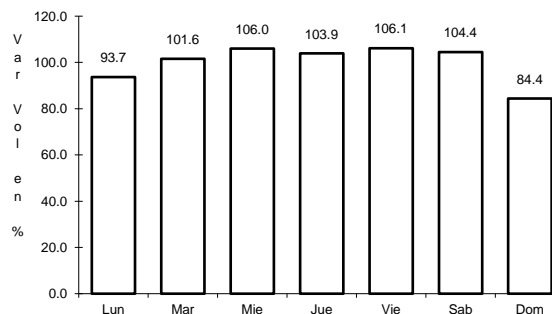
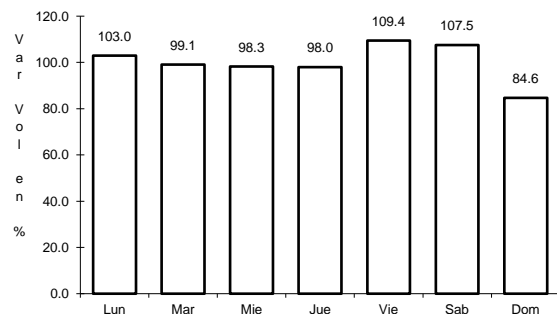
Km: 13.00 Tipo: 1 Sent: 0

Km: 36.00 Tipo: 1 Sent: 0

3 CARR: Ent. Santiago Ixcuintla - Playa Los Corchos

CLAVE: 18016

RUTA: MEX-015



Km: 0.00 Tipo: 3 Sent: 1

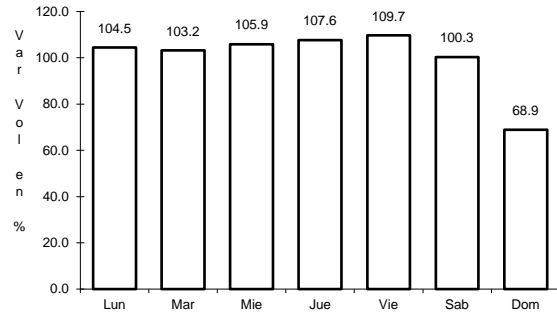
Km: 0.00 Tipo: 3 Sent: 2

Km: 39.00 Tipo: 1 Sent: 0

4 CARR: Guadalajara - Tepic

CLAVE: 00031

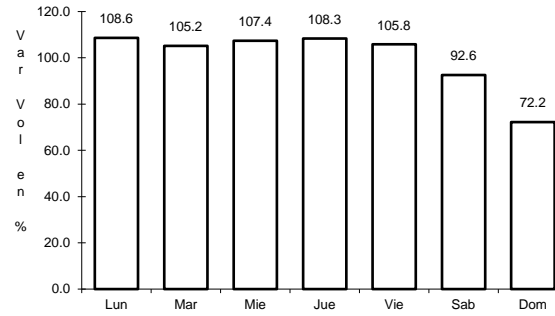
RUTA: MEX-015



Km: 8.30

Tipo: 3

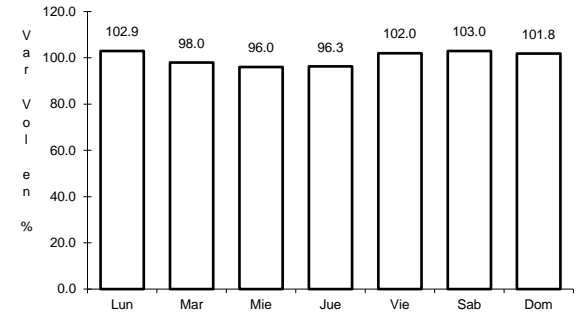
Sent: 1



Km: 8.30

Tipo: 3

Sent: 2



Km: 138.84

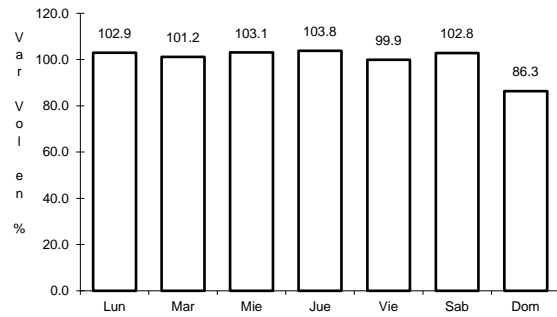
Tipo: 1

Sent: 0

5 CARR: Libramiento de Tepic

CLAVE: 18232

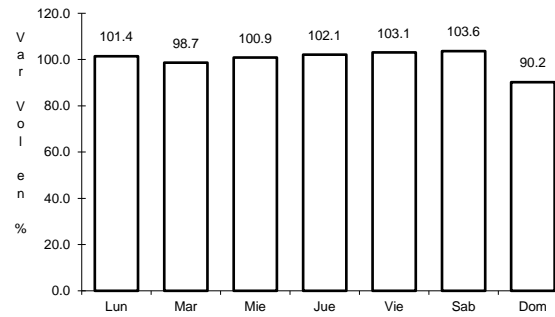
RUTA: MEX-015



Km: 5.00

Tipo: 1

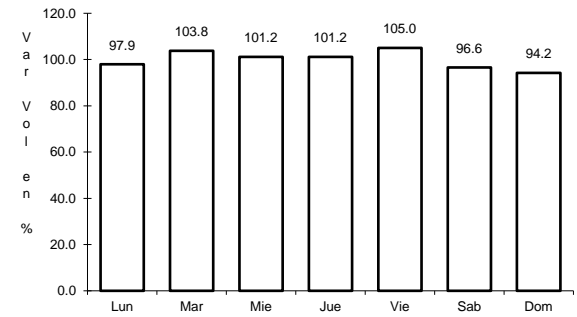
Sent: 1



Km: 5.00

Tipo: 1

Sent: 2



Km: 18.80

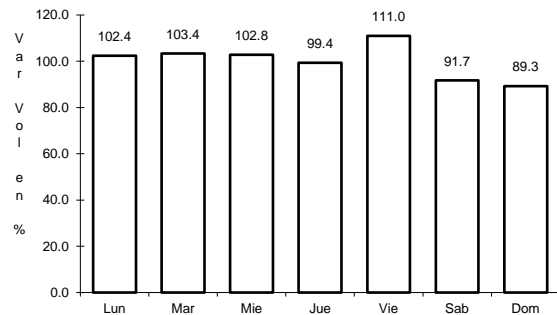
Tipo: 1

Sent: 1

6 CARR: Peñitas - Tuxpan

CLAVE: 18019

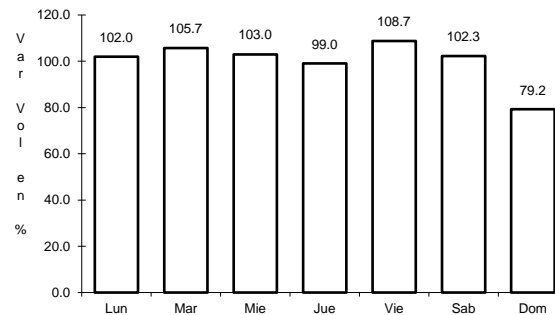
RUTA: MEX-015



Km: 0.00

Tipo: 3

Sent: 0



Km: 9.00

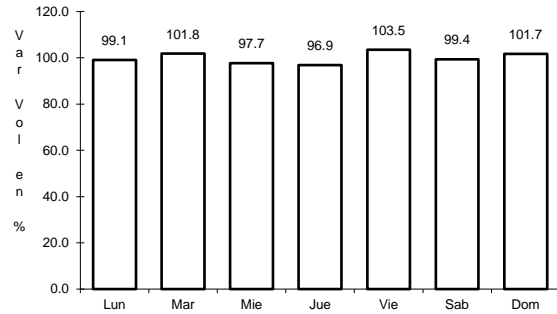
Tipo: 1

Sent: 0

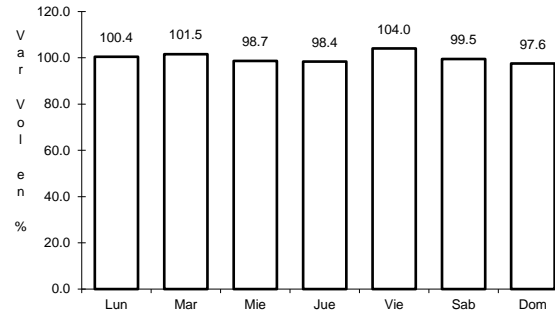
7 CARR: Ramal a Acaponeta

CLAVE: 18038

RUTA: MEX-015



Km: 0.00 Tipo: 3 Sent: 1

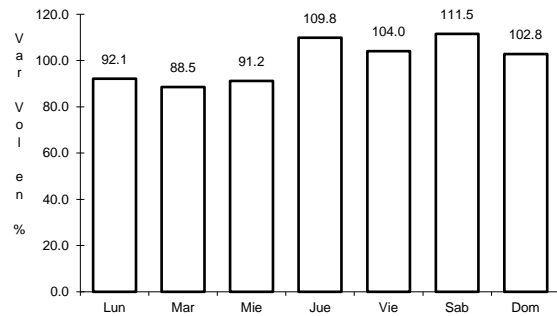


Km: 0.00 Tipo: 3 Sent: 2

8 CARR: Ramal a Estación Nanchi

CLAVE: 18068

RUTA: MEX-015

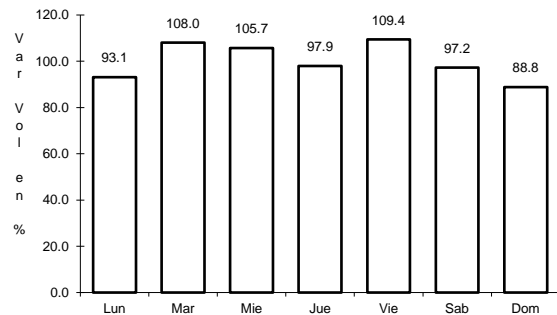


Km: 0.00 Tipo: 3 Sent: 0

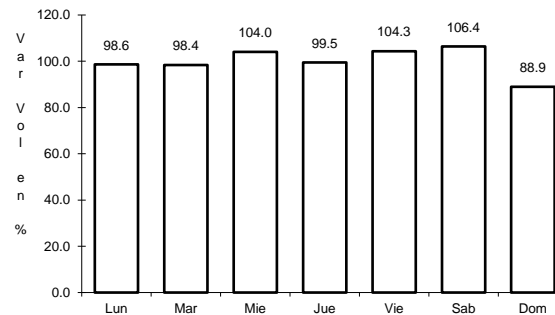
9 CARR: Ramal a Estación Ruíz

CLAVE: 18026

RUTA: MEX-015



Km: 0.00 Tipo: 3 Sent: 0

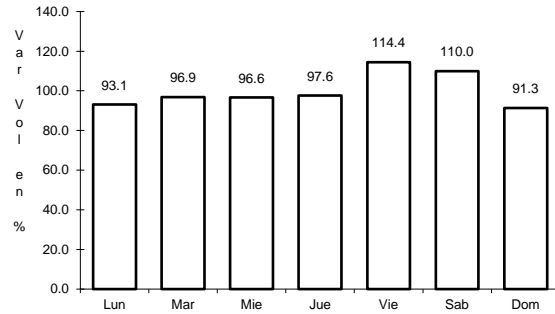


Km: 5.50 Tipo: 1 Sent: 0

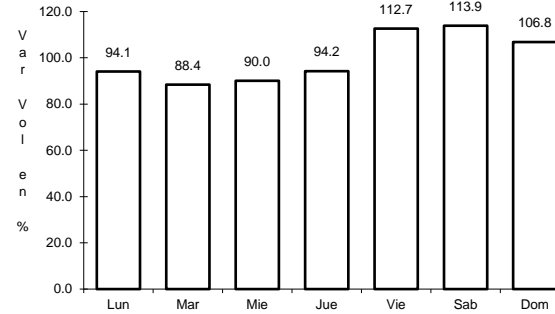
10 CARR: Ramal a La Laguna de Santa María

CLAVE: 18005

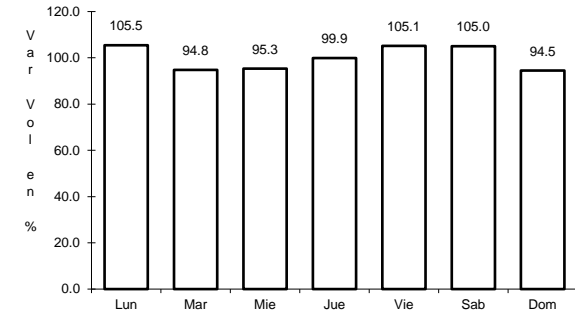
RUTA: MEX-015



Km: 0.00 Tipo: 3 Sent: 0



Km: 11.50 Tipo: 1 Sent: 1

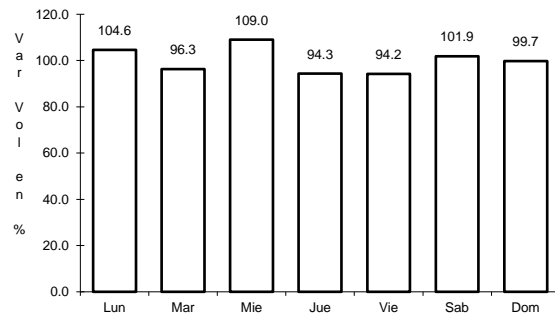


Km: 11.50 Tipo: 1 Sent: 2

11 CARR: Ramal a Mecatán

CLAVE: 18010

RUTA: MEX-015

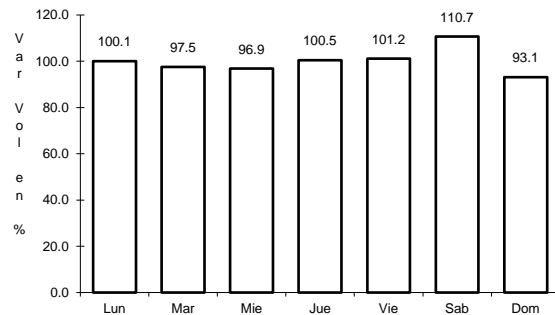


Km: 0.00 Tipo: 3 Sent: 0

12 CARR: Ramal a Nuevo Aeropuerto de Tepic

CLAVE: 18012

RUTA: MEX-015

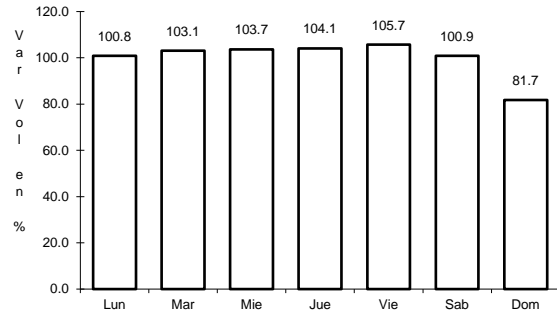


Km: 0.00 Tipo: 3 Sent: 0

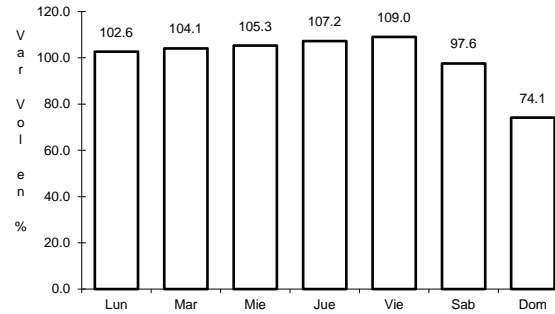
13 CARR: Ramal a Punta Mita

CLAVE: 18020

RUTA: MEX-200



Km: 0.00 Tipo: 3 Sent: 0

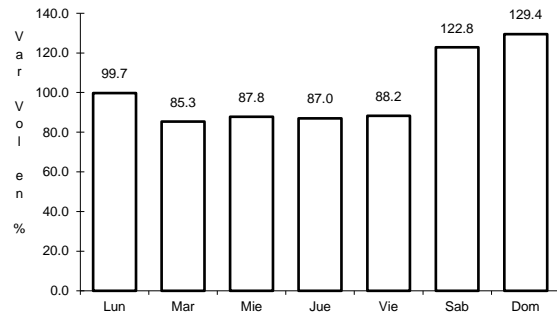


Km: 9.00 Tipo: 3 Sent: 0

14 CARR: Ramal a Santa Cruz

CLAVE: 18030

RUTA: MEX-015

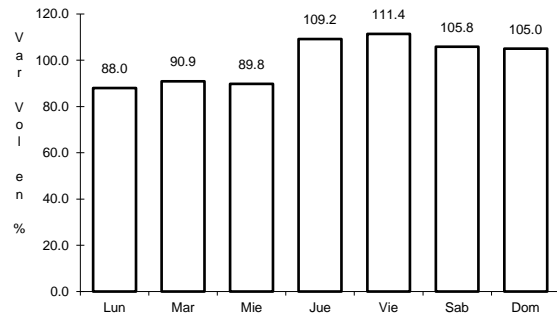


Km: 1.30 Tipo: 1 Sent: 0

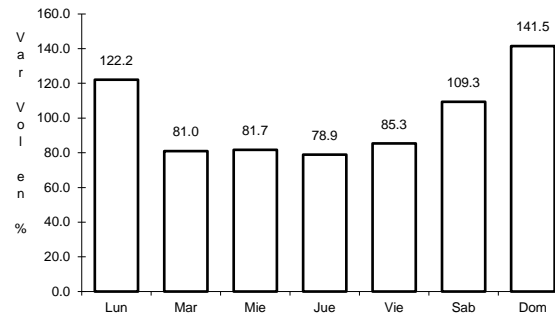
15 CARR: Santa Cruz - San Blas

CLAVE: 18230

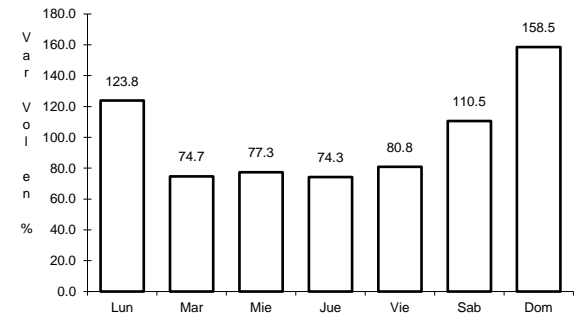
RUTA: MEX-015



Km: 0.00 Tipo: 3 Sent: 0



Km: 5.00 Tipo: 3 Sent: 0

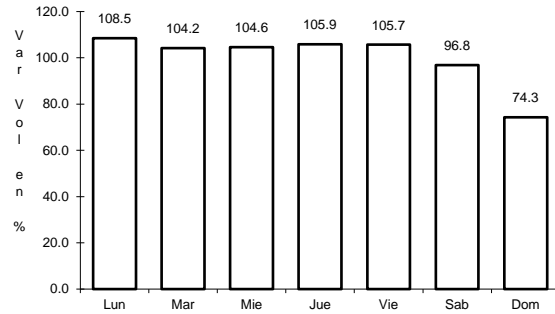


Km: 17.00 Tipo: 1 Sent: 0

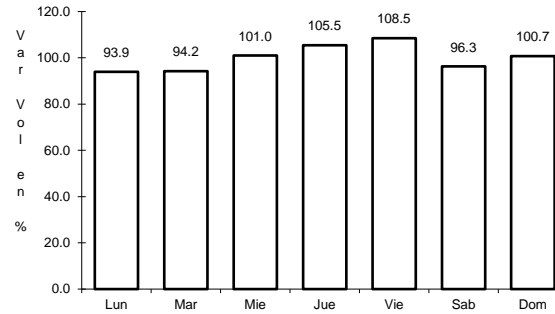
16 CARR: Tepic - Ixtapan de La Concepción

CLAVE: 18028

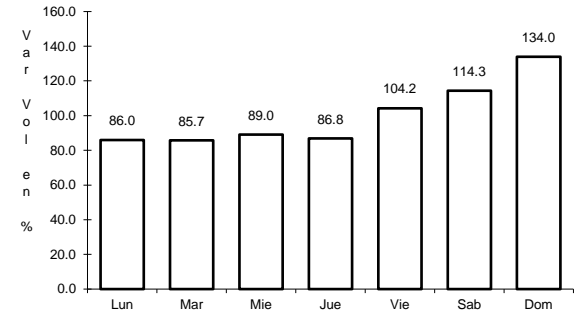
RUTA: MEX-015



Km: 0.00 Tipo: 3 Sent: 0



Km: 27.00 Tipo: 1 Sent: 0

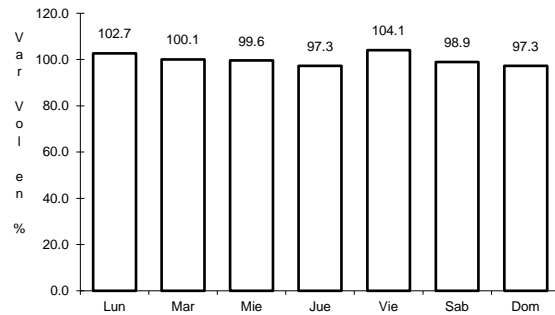


Km: 77.42 Tipo: 1 Sent: 0

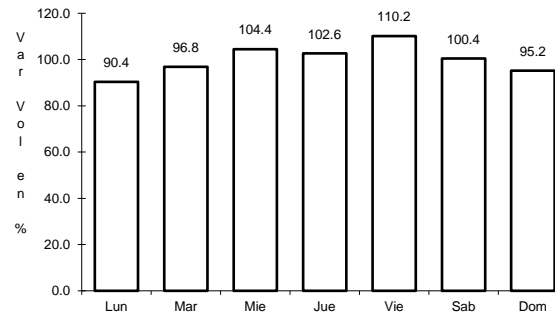
17 CARR: Tepic - Mazatlán

CLAVE: 00499

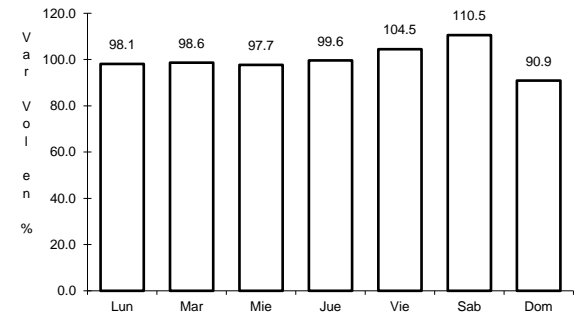
RUTA: MEX-015



Km: 0.00 Tipo: 3 Sent: 1



Km: 136.52 Tipo: 1 Sent: 0

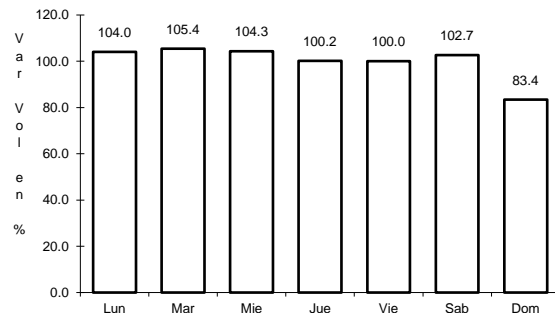


Km: 267.99 Tipo: 1 Sent: 0

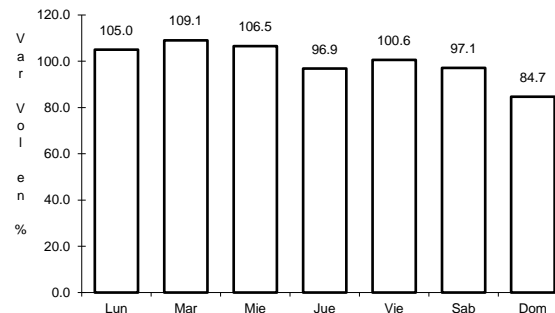
18 CARR: Tepic - Presa Aguamilpa

CLAVE: 18029

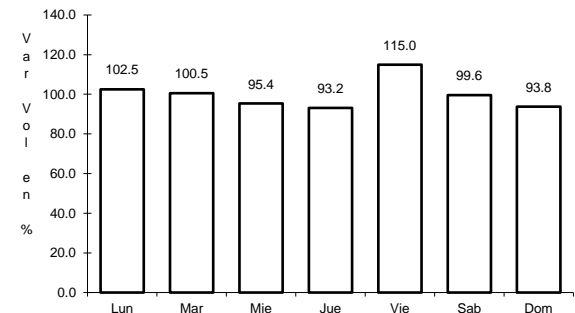
RUTA: MEX-015



Km: 0.00 Tipo: 3 Sent: 1



Km: 0.00 Tipo: 3 Sent: 2

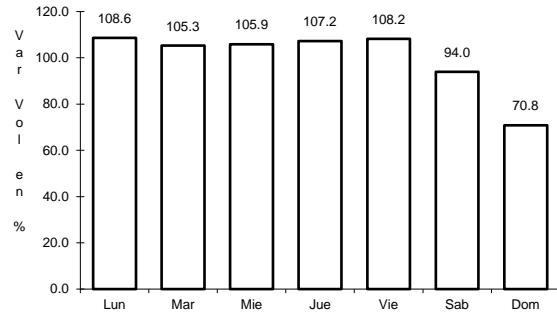


Km: 54.00 Tipo: 1 Sent: 0

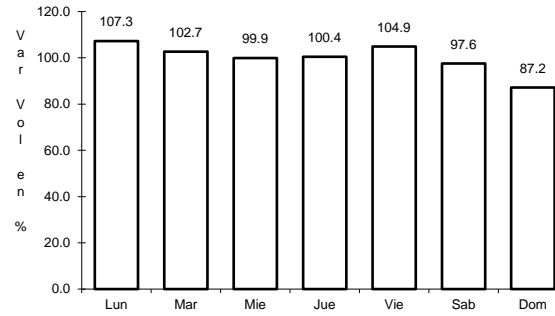
19 CARR: Tepic - Puerto Vallarta

CLAVE: 00068

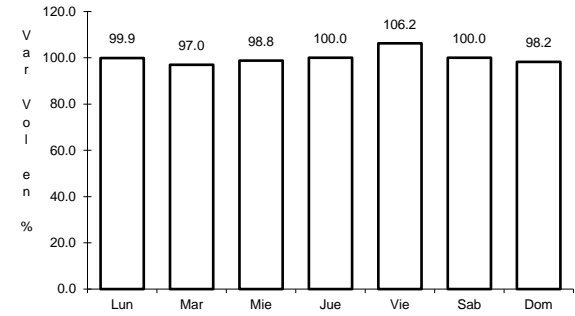
RUTA: MEX-200



Km: 0.00 Tipo: 3 Sent: 1



Km: 71.30 Tipo: 1 Sent: 0

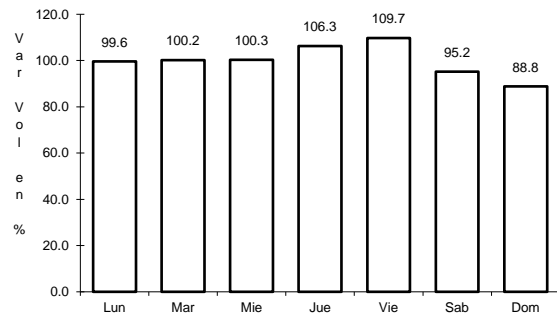


Km: 122.91 Tipo: 3 Sent: 0

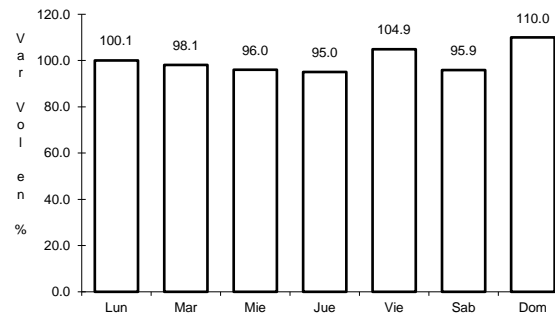
20 CARR: Chapalilla - Compostela (Cuota)

CLAVE: 18004

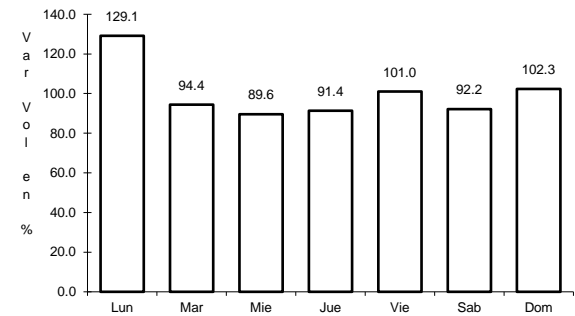
RUTA: MEX-068D



Km: 0.00 Tipo: 3 Sent: 0



Km: 33.00 Tipo: 1 Sent: 0

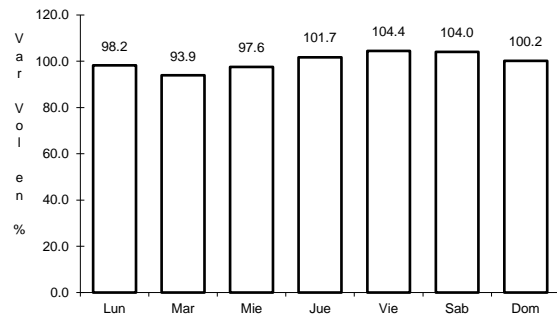


Km: 35.60 Tipo: 1 Sent: 0

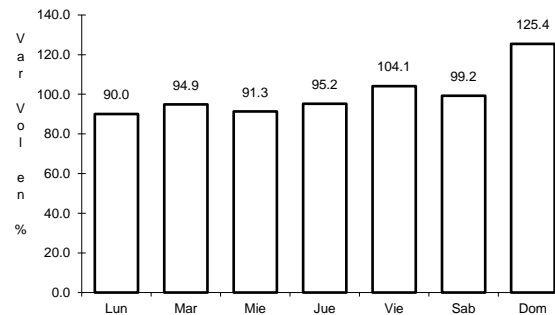
21 CARR: Guadalajara - Tepic (Cuota)

CLAVE: 00033

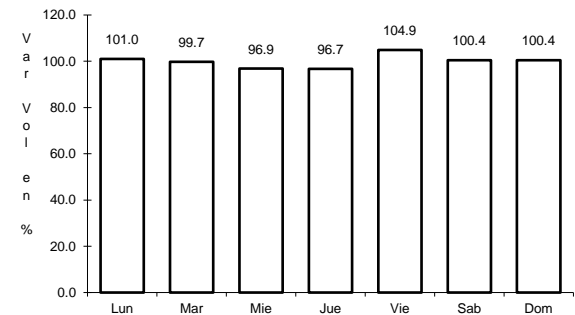
RUTA: MEX-015D



Km: 0.00 Tipo: 3 Sent: 1



Km: 0.00 Tipo: 3 Sent: 2

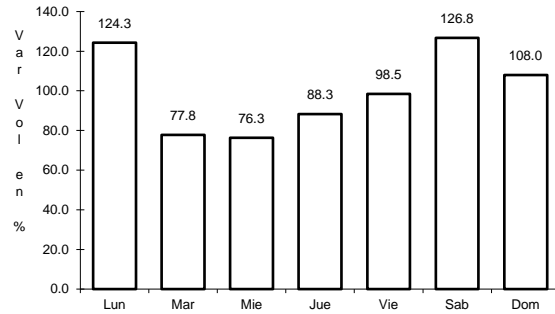


Km: 145.32 Tipo: 3 Sent: 1

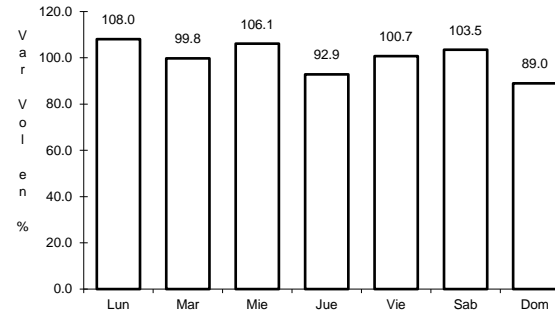
22 CARR: Jala - Puerto Vallarta (Cuota)

CLAVE:

RUTA: MEX-070D



Km: 0.00 Tipo: 3 Sent: 1

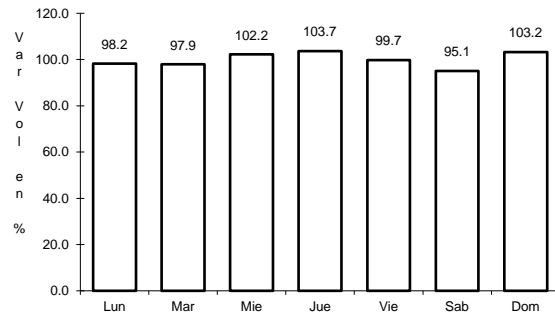


Km: 0.00 Tipo: 3 Sent: 2

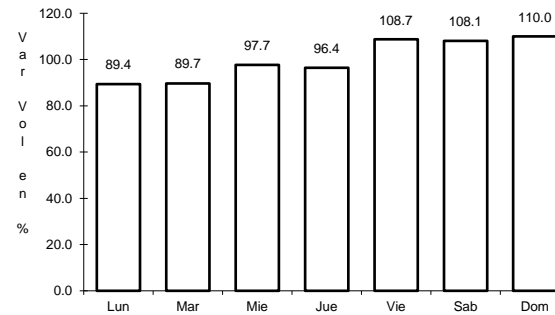
23 CARR: Libramiento de Tepic (Cuota)

CLAVE:

RUTA: MEX-015D



Km: 0.70 Tipo: 3 Sent: 0

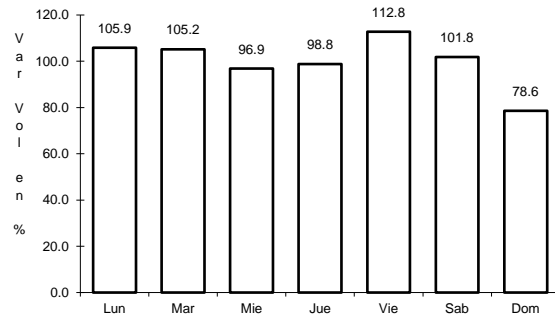


Km: 29.47 Tipo: 1 Sent: 0

24 CARR: Ramal a Compostela (Cuota)

CLAVE:

RUTA: MEX-200D

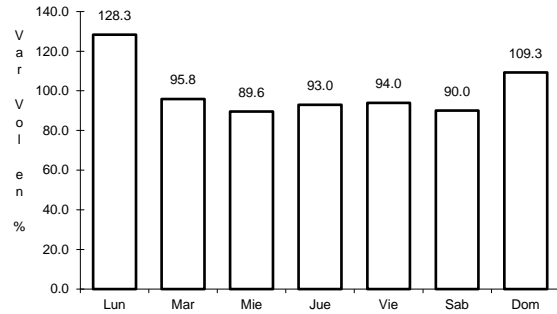


Km: 12.90 Tipo: 1 Sent: 0

25 CARR: Ramal a Tequexpan

CLAVE: 00068

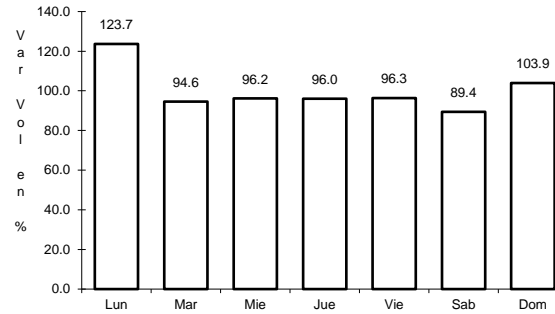
RUTA: MEX-015D



Km: 0.00

Tipo: 3

Sent: 0



Km: 9.40

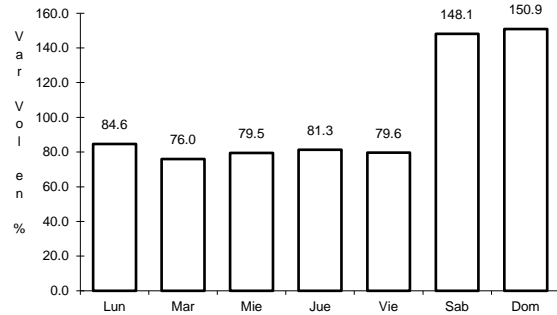
Tipo: 1

Sent: 0

26 CARR: Tepic - San Blas (Cuota)

CLAVE:

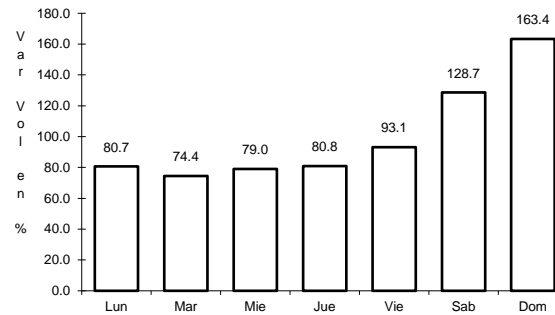
RUTA: MEX-D



Km: 0.00

Tipo: 3

Sent: 0



Km: 31.00

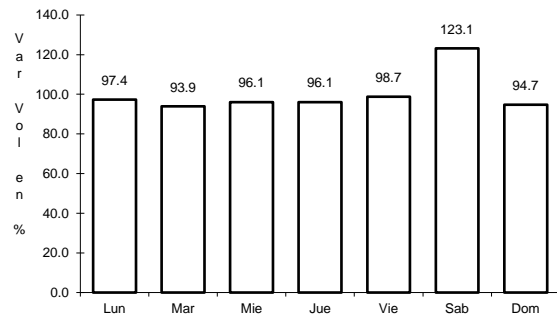
Tipo: 1

Sent: 0

27 CARR: Tepic - Villa Unión (cuota)

CLAVE: 00500

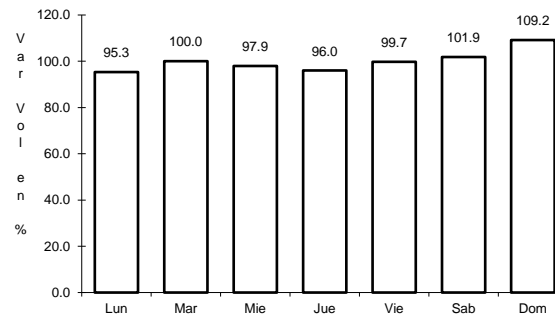
RUTA: MEX-015D



Km: 8.65

Tipo: 1

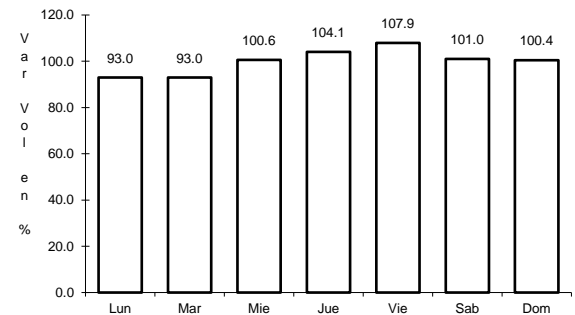
Sent: 1



Km: 8.65

Tipo: 1

Sent: 2



Km: 240.90

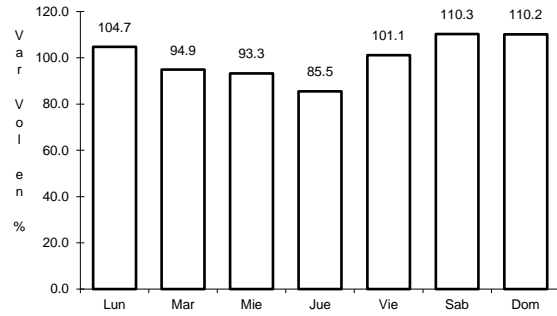
Tipo: 1

Sent: 0

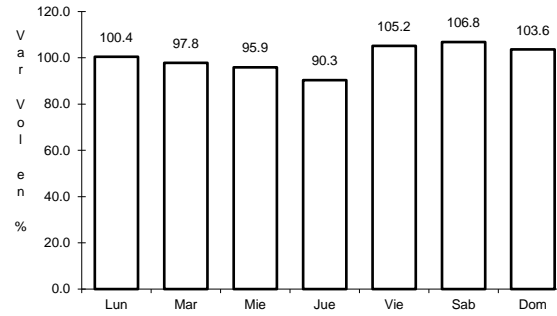
28 CARR: El Carrizo - La Batanga

CLAVE: 18107

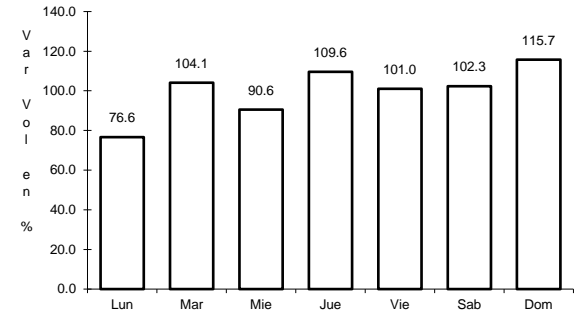
ruta: NAY-078



Km: 0.00 Tipo: 3 Sent: 0



Km: 9.00 Tipo: 1 Sent: 0

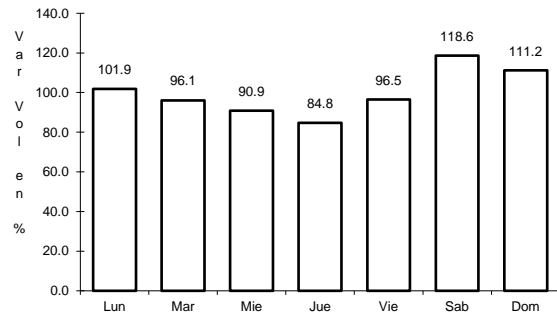


Km: 25.00 Tipo: 1 Sent: 0

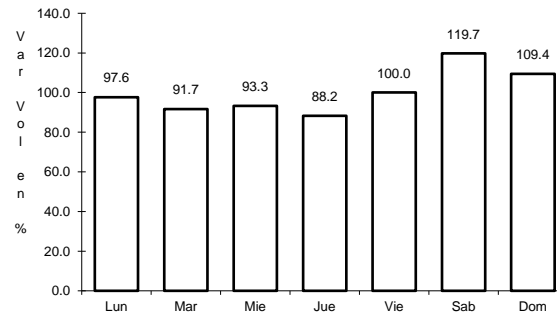
29 CARR: Navarrete - Sauta

CLAVE: 18013

ruta: NAY-013



Km: 0.00 Tipo: 3 Sent: 0

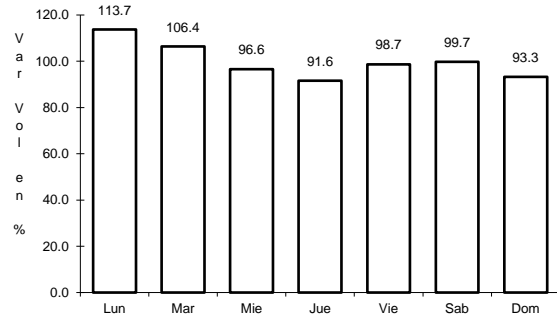


Km: 7.00 Tipo: 1 Sent: 0

30 CARR: Ramal a Amado Nervo

CLAVE: 18011

ruta: NAY

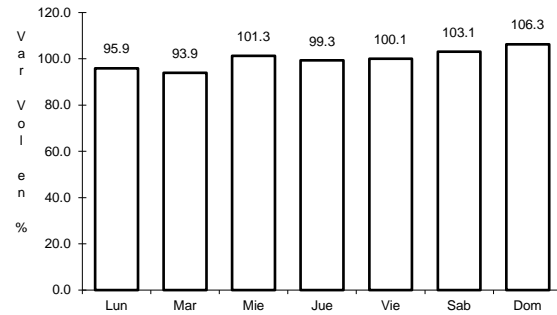


Km: 0.00 Tipo: 3 Sent: 0

31 CARR: Ramal a Bellavista

CLAVE: 18059

RUTA: NAY-059



Km: 0.00

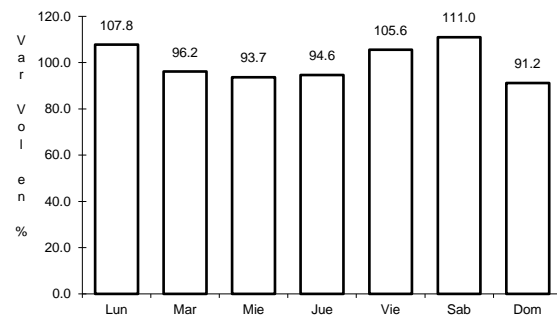
Tipo: 3

Sent: 0

32 CARR: Ramal a El Colomo

CLAVE: 18014

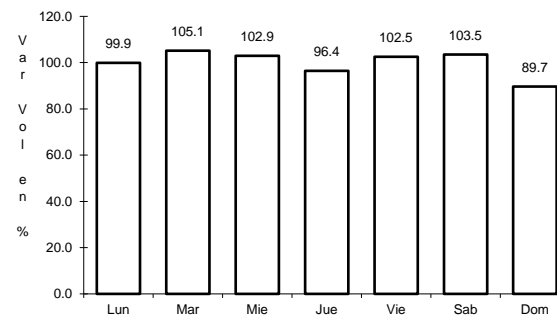
RUTA: NAY



Km: 3.00

Tipo: 1

Sent: 1



Km: 3.00

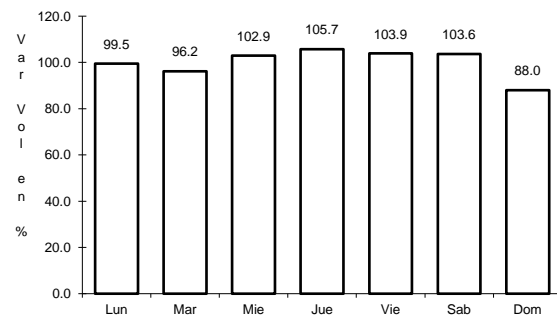
Tipo: 1

Sent: 2

33 CARR: Ramal a Estación Yago

CLAVE: 18224

RUTA: NAY



Km: 0.00

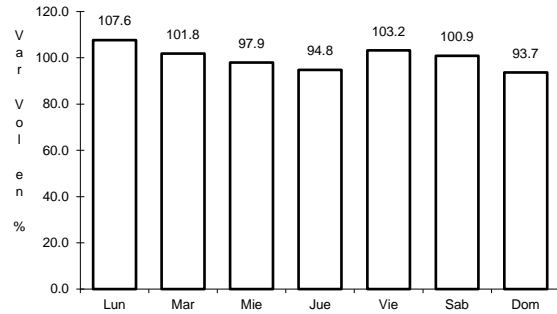
Tipo: 3

Sent: 0

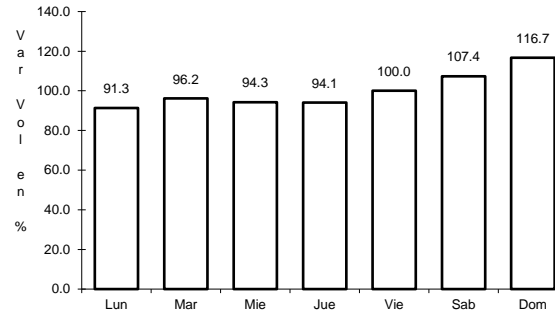
34 CARR: Ramal a Ixtapán de La Concepción

CLAVE: 18233

RUTA: NAY



Km: 0.00 Tipo: 3 Sent: 0

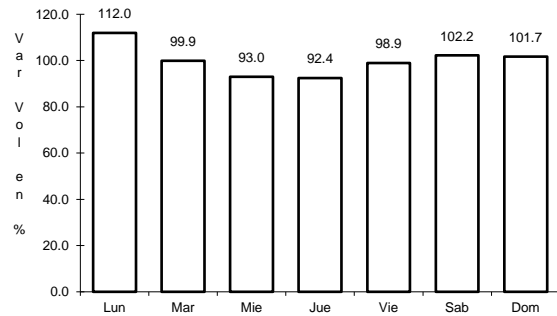


Km: 20.00 Tipo: 1 Sent: 0

35 CARR: Ramal a Milpas Viejas

CLAVE: 18007

RUTA: NAY

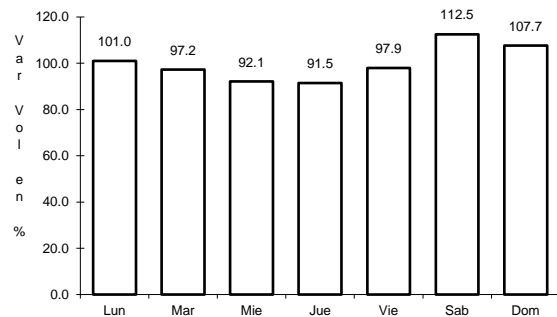


Km: 0.00 Tipo: 3 Sent: 0

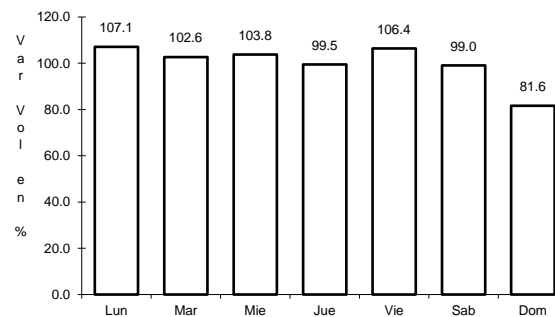
36 CARR: Ramal a Villa Hidalgo

CLAVE: 18031

RUTA: NAY



Km: 0.00 Tipo: 3 Sent: 0

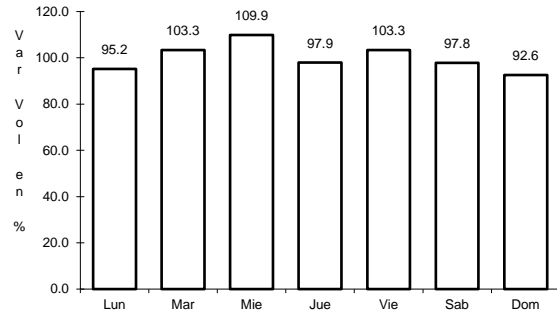


Km: 16.00 Tipo: 1 Sent: 0

37 CARR: Ramal a Volcán del Ceboruco

CLAVE: 18003

RUTA: NAY



Km: 0.00

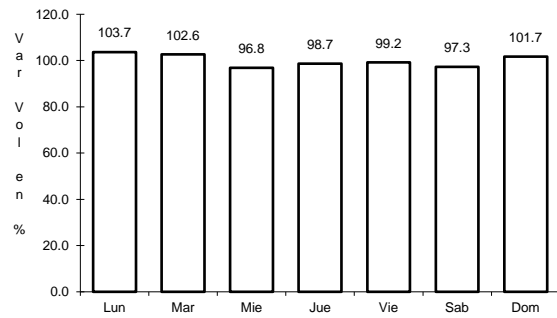
Tipo: 3

Sent: 0

38 CARR: Tepic - Francisco I. Madero

CLAVE: 18009

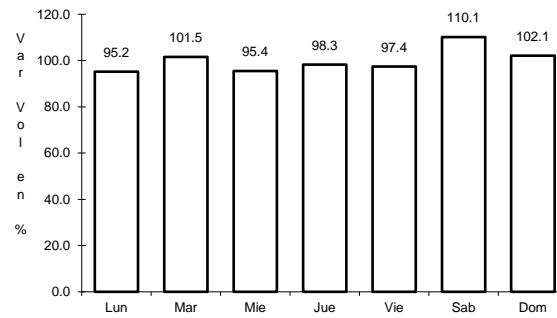
RUTA: NAY-MEX



Km: 0.00

Tipo: 3

Sent: 0



Km: 9.00

Tipo: 3

Sent: 0

