

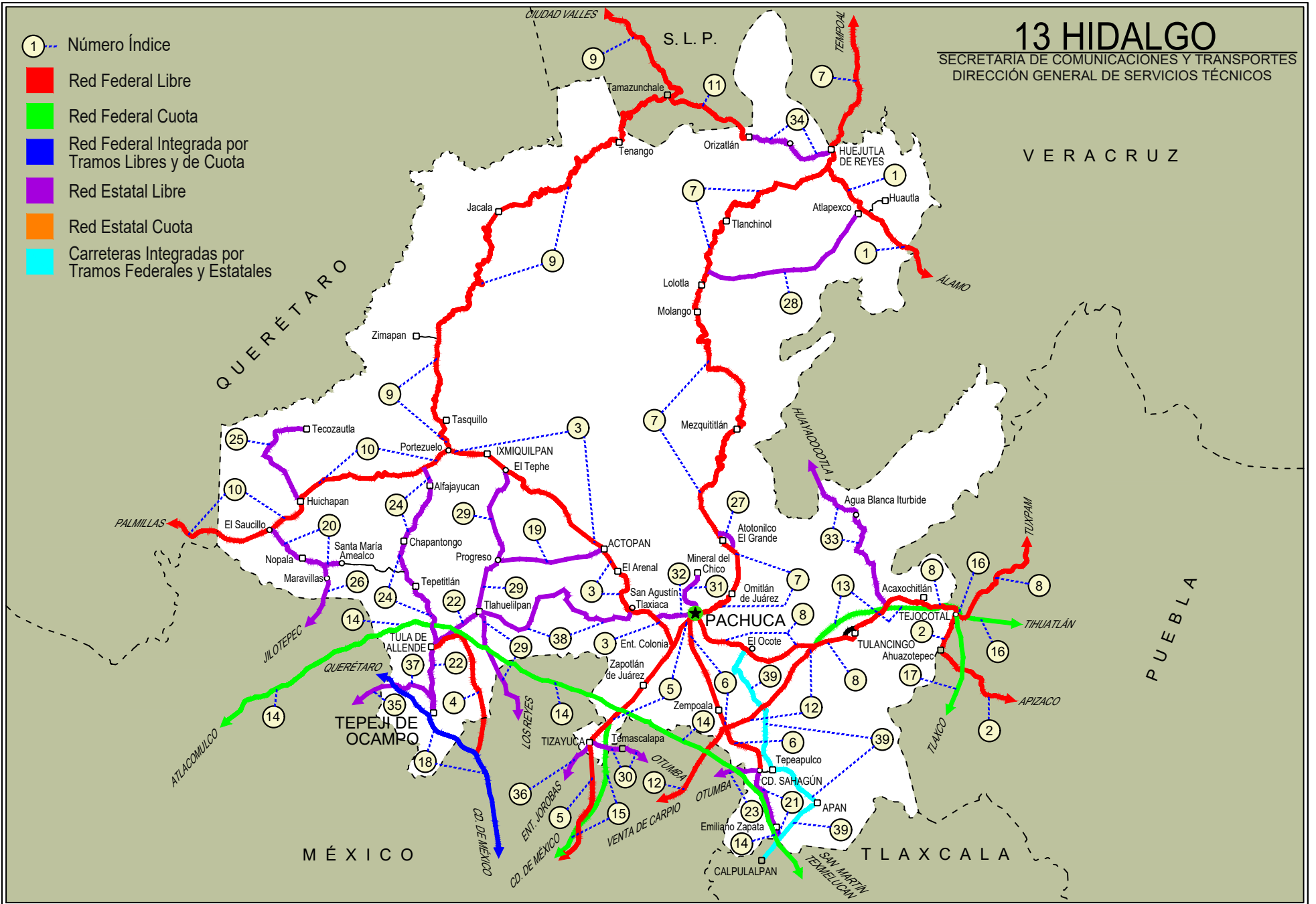
HIDALGO

NO. INDICE CARRETERA		RUTA
	---RED FEDERAL LIBRE---	
1	Álamo - Huejutla de Reyes	MEX-127
2	Apizaco - Tejocotal	MEX-119
3	Ent. Colonia - Portezuelo	MEX-085
4	Ent. Jorobas - Tula	MEX-087
5	México - Pachuca (Libre)	MEX-085
6	Pachuca - Cd. Sahagún	MEX
7	Pachuca - Tempoal	MEX-105
8	Pachuca - Tuxpam	MEX-130
9	Portezuelo - Cd. Valles	MEX-085
10	Portezuelo - Palmillas	MEX-045
11	Tamazunchale - San Felipe Orizatlán	MEX-085
12	Venta de Carpio - T. C. (Pachuca - Tuxpam)	MEX-132
	---RED FEDERAL DE CUOTA---	
13	Ent. Tulancingo - Venta Grande (Cuota)	MEX-132D
14	Libramiento Norte de la Ciudad de México (Cuota)	MEX-M40D
15	México - Pachuca (Cuota)	MEX-085D
16	Tejocotal - Nuevo Necaxa (Cuota)	MEX-132D
17	Tlaxco - Tejocotal (Cuota)	MEX-119D
	---RED FEDERAL INTEGRADA POR TRAMOS LIBRES Y DE CUOTA---	
18	México - Querétaro (Cuota)	MEX-057-MEX-057D
	---RED ESTATAL LIBRE---	
19	Actopan - Progreso	HGO
20	El Saucillo - Amealco	HGO-103
21	Ent. Emiliano Zapata - Cd. Sahagún	HGO
22	Ent. Tepeji del Río - Tlahuelilpan	HGO-017
23	Ent. Tolman - Cd. Sahagún	EM-009-HGO
24	Francisco I. Madero - Tula de Allende	HGO
25	Huichapan - Tecozautla	HGO-030
26	Jilotepec - Maravillas	EM-HGO
27	Libramiento de Atotonilco El Grande	HGO
28	Lolotla - Atlapexco	HGO
29	Los Reyes - El Tephé	EM-HGO
30	Otumba - Tizayuca	EM-HGO
31	Ramal a El Chico	HGO
32	Ramal a Pachuca	HGO
33	San Alejo - Huayacocotla	HGO-051-VER-113
34	San Felipe Orizatlán - Huejutla de Reyes	HGO
35	Santo Domingo - T. C. (México - Querétaro)	EM-011-HGO
36	T. C. (Los Reyes - El Tephé) - Tizayuca	EM-HGO
37	Tepeji del Río - T.C. (México - Querétaro)	HGO
38	Tlahuelilpan - San Agustín Tlaxiaca	HGO
	---CARRETERAS INTEGRADAS POR TRAMOS FEDERALES Y ESTATALES---	
39	Calpulalpan - El Ocote	MEX-HGO

13 HIDALGO

SECRETARÍA DE COMUNICACIONES Y TRANSPORTES
DIRECCIÓN GENERAL DE SERVICIOS TÉCNICOS

- ① - Número Índice
- Red Federal Libre
- Red Federal Cuota
- Red Federal Integrada por Tramos Libres y de Cuota
- Red Estatal Libre
- Red Estatal Cuota
- Carreteras Integradas por Tramos Federales y Estatales



HIDALGO

1 CARR: Álamo - Huejutla de Reyes

CLAVE: 00116

RUTA: MEX-127

AÑO: 2021

LUGAR	ESTACION				CLASIFICACION VEHICULAR EN PORCIENTO													COORDENADAS		
	KM	TE	SC	TDPA	M	A	B	C2	C3	T3S2	T3S3	T3S2R4	OTROS	A	B	C	K'	D	LATITUD	LONGITUD
T. C. Tihuatlán - Potrero del Llano	0.00	3	0	4276	13.8	70.9	0.2	8.3	1.5	4.0	0.8	0.1	0.4	84.7	0.2	15.1	0.069	0.503	20.941782	-97.705289
Benito Juárez	73.00	1	0	1950	7.1	86.4	0.2	3.5	0.4	1.9	0.3	0.0	0.2	93.5	0.2	6.3	0.104	0.504	20.882639	-98.198480
T. Der. Chicontepec de Tejada	78.00	3	0	1035	5.8	85.5	0.3	6.3	0.5	1.2	0.4	0.0	0.0	91.3	0.3	8.4	0.110	0.507	20.923803	-98.221750
Lim. Edos. Term. Ver. Ppia. Hgo.	78.70																			
T. C. Pachuca - Tempoal (Huejutla de Reyes)	110.00																			

2 CARR: Apizaco - Tejocotal

CLAVE: 00430

RUTA: MEX-119

AÑO: 2021

LUGAR	ESTACION				CLASIFICACION VEHICULAR EN PORCIENTO													COORDENADAS		
	KM	TE	SC	TDPA	M	A	B	C2	C3	T3S2	T3S3	T3S2R4	OTROS	A	B	C	K'	D	LATITUD	LONGITUD
Apizaco	0.00	3	1	11200	1.5	86.9	1.3	7.1	0.9	1.4	0.4	0.4	0.1	88.4	1.3	10.3	0.083	0.501	19.437569	-98.131282
Apizaco	0.00	3	2	11138	1.9	84.1	1.3	8.9	1.2	1.5	0.6	0.4	0.1	86.0	1.3	12.7	0.087	0.501	19.437362	-98.131464
T. Der. Tetla	6.60	3	0	18370	0.4	83.9	1.5	9.0	1.5	2.2	0.7	0.5	0.3	84.3	1.5	14.2	0.070	0.503	19.471984	-98.112328
T. Izq. Atlangatepec	12.15	1	0	14092	1.1	85.1	2.3	6.8	1.2	2.0	0.5	0.5	0.5	86.2	2.3	11.5	0.086	0.503	19.505750	-98.117002
Tlaxco	23.91	1	1	4559	0.8	90.8	0.4	2.9	0.5	3.3	1.0	0.1	0.2	91.6	0.4	8.0	0.110	0.501	19.598046	-98.125688
Tlaxco	23.91	1	2	4570	1.2	90.0	0.5	2.9	0.7	3.3	1.0	0.2	0.2	91.2	0.5	8.3	0.102	0.501	19.598064	-98.125762
Tlaxco	23.91	3	0	6368	4.4	85.2	0.7	6.9	1.0	0.8	0.7	0.2	0.1	89.6	0.7	9.7	0.094	0.513	19.626480	-98.124621
Lim. Edos. Term. Tlax. Ppia. Pue.	34.45																			
T. Der. Tetela de Ocampo	52.20	1	0	6609	6.0	82.5	1.1	8.8	0.5	0.5	0.3	0.1	0.2	88.5	1.1	10.4	0.101	0.507	19.800589	-98.026692
Zacatlán	71.25	1	0	10636	6.8	84.8	0.6	4.7	0.7	1.6	0.5	0.1	0.2	91.6	0.6	7.8	0.086	0.531	19.918560	-97.959350
Lim. Edos. Term. Pue. Ppia. Hgo.	110.45																			
T. C. Pachuca - Tuxpam	113.15	1	0	7333	2.1	82.5	1.6	9.8	1.2	1.1	0.8	0.7	0.2	84.6	1.6	13.8	0.090	0.509	20.118541	-98.130535

3 CARR: Ent. Colonia - Portezuelo

CLAVE: 13257

RUTA: MEX-085

AÑO: 2021

LUGAR	ESTACION				CLASIFICACION VEHICULAR EN PORCIENTO													COORDENADAS		
	KM	TE	SC	TDPA	M	A	B	C2	C3	T3S2	T3S3	T3S2R4	OTROS	A	B	C	K'	D	LATITUD	LONGITUD
Ent. Colonia	0.00	3	1	29520	5.9	84.3	1.5	2.8	1.6	1.6	0.8	1.0	0.5	90.2	1.5	8.3	0.066	0.510	20.061697	-98.787215
Ent. Colonia	0.00	3	2	28738	6.0	84.3	1.4	2.8	1.7	1.5	0.8	1.0	0.5	90.3	1.4	8.3	0.065	0.510	20.061643	-98.787387
T. Der. Pachuca	8.34	3	1	18278	3.6	89.7	0.8	2.5	1.2	1.3	0.6	0.2	0.1	93.3	0.8	5.9	0.077	0.511	20.127383	-98.837028
T. Der. Pachuca	8.34	3	2	17525	3.6	89.9	0.8	2.5	1.2	1.3	0.5	0.1	0.1	93.5	0.8	5.7	0.102	0.511	20.127311	-98.837114
T. Der. San Agustín Tlaxiaca	15.36	3	1	10041	2.6	87.4	2.2	3.6	1.7	1.4	0.7	0.3	0.1	90.0	2.2	7.8	0.097	0.502	20.141830	-98.891811
T. Der. San Agustín Tlaxiaca	15.36	3	2	10132	2.6	87.3	2.2	3.6	1.6	1.5	0.8	0.3	0.1	89.9	2.2	7.9	0.101	0.502	20.141794	-98.892040
Actopan	34.13	1	1	13944	5.3	87.7	1.3	2.4	1.4	1.0	0.5	0.3	0.1	93.0	1.3	5.7	0.094	0.502	20.249963	-98.932516
Actopan	34.13	1	2	13855	5.2	87.6	1.2	2.7	1.4	1.0	0.6	0.2	0.1	92.8	1.2	6.0	0.111	0.502	20.249908	-98.932602

HIDALGO

3 CARR: Ent. Colonia - Portezuelo

CLAVE: 13257

RUTA: MEX-085

AÑO: 2021

LUGAR	ESTACION				CLASIFICACION VEHICULAR EN PORCIENTO														COORDENADAS	
	KM	TE	SC	TDPA	M	A	B	C2	C3	T3S2	T3S3	T3S2R4	OTROS	A	B	C	K'	D	LATITUD	LONGITUD
Actopan	34.13	3	1	9327	5.2	86.2	1.6	3.2	1.2	1.5	0.7	0.3	0.1	91.4	1.6	7.0	0.077	0.515	20.290584	-98.975827
Actopan	34.13	3	2	8795	5.1	86.3	1.6	3.2	0.9	1.5	0.8	0.5	0.1	91.4	1.6	7.0	0.092	0.515	20.290520	-98.975874
T. Izq. Tula	68.20	1	1	7727	5.5	84.6	2.3	2.4	1.3	1.9	1.2	0.4	0.4	90.1	2.3	7.6	0.083	0.505	20.439589	-99.164315
T. Izq. Tula	68.20	1	2	7876	6.1	83.2	2.2	2.9	1.8	2.2	0.8	0.3	0.5	89.3	2.2	8.5	0.115	0.505	20.439489	-99.164344
Ixmiquilpan	75.20	1	1	13295	6.7	85.7	1.2	2.6	1.3	1.2	0.6	0.6	0.1	92.4	1.2	6.4	0.083	0.503	20.463485	-99.195128
Ixmiquilpan	75.20	1	2	13113	7.1	86.7	0.8	1.8	1.5	0.9	0.4	0.6	0.2	93.8	0.8	5.4	0.084	0.503	20.463412	-99.195204
Ixmiquilpan	75.20	3	1	8606	8.9	81.3	1.3	2.9	1.4	1.8	1.3	0.5	0.6	90.2	1.3	8.5	0.086	0.502	20.479645	-99.248972
Ixmiquilpan	75.20	3	2	8520	7.7	82.7	1.3	3.1	1.2	2.2	0.9	0.3	0.6	90.4	1.3	8.3	0.086	0.502	20.479546	-99.248991
Portezuelo	82.00																			

4 CARR: Ent. Jorobas - Tula

CLAVE: 00159

RUTA: MEX-087

AÑO: 2021

LUGAR	ESTACION				CLASIFICACION VEHICULAR EN PORCIENTO														COORDENADAS	
	KM	TE	SC	TDPA	M	A	B	C2	C3	T3S2	T3S3	T3S2R4	OTROS	A	B	C	K'	D	LATITUD	LONGITUD
T. C. México - Querétaro (Cuota)	0.00	3	1	16661	3.6	77.6	2.4	7.6	2.0	3.4	1.8	1.1	0.5	81.2	2.4	16.4	0.083	0.506	19.834404	-99.243559
T. C. México - Querétaro (Cuota)	0.00	3	2	16290	3.8	76.4	2.6	8.0	2.0	3.7	2.0	1.0	0.5	80.2	2.6	17.2	0.078	0.506	19.834442	-99.243632
Lim. Edos. Term. Méx. Ppia. Hgo.	5.90																			
T. Der. Atotonilco	21.50	1	1	8604	1.4	83.5	1.3	6.0	2.1	3.8	1.1	0.6	0.2	84.9	1.3	13.8	0.068	0.532	20.015635	-99.247428
T. Der. Atotonilco	21.50	1	2	7560	1.7	82.3	1.1	5.1	2.7	3.8	2.3	0.8	0.2	84.0	1.1	14.9	0.072	0.532	20.015616	-99.247547
Tula de Allende	37.70	1	1	13490	6.5	70.6	2.9	4.5	3.5	4.8	2.9	3.4	0.9	77.1	2.9	20.0	0.062	0.501	20.059656	-99.288860
Tula de Allende	37.70	1	2	13572	6.7	71.1	3.0	4.5	3.1	4.7	2.7	3.3	0.9	77.8	3.0	19.2	0.075	0.501	20.059512	-99.288822

5 CARR: México - Pachuca (Libre)

CLAVE: 00431

RUTA: MEX-085

AÑO: 2021

LUGAR	ESTACION				CLASIFICACION VEHICULAR EN PORCIENTO														COORDENADAS	
	KM	TE	SC	TDPA	M	A	B	C2	C3	T3S2	T3S3	T3S2R4	OTROS	A	B	C	K'	D	LATITUD	LONGITUD
México	0.00																			
Lim. Edos. Term. CDMX Ppia. Méx.	9.89																			
T. Der. Pirámides	26.93	1	1	15063	5.0	86.2	0.4	4.2	0.4	1.9	1.3	0.4	0.2	91.2	0.4	8.4	0.065	0.507	19.616779	-99.011673
T. Der. Pirámides	26.93	1	2	15516	4.9	85.6	0.5	4.6	0.3	2.2	1.4	0.3	0.2	90.5	0.5	9.0	0.056	0.507	19.616878	-99.011730
Venta de Carpio	27.00	3	1	30466	3.7	88.4	0.6	4.2	0.8	1.1	0.9	0.1	0.2	92.1	0.6	7.3	0.071	0.507	19.625816	-99.002966
Venta de Carpio	27.00	3	2	29576	3.7	87.3	0.7	5.0	0.8	1.2	1.0	0.1	0.2	91.0	0.7	8.3	0.059	0.507	19.625898	-99.003157
T. Der. Aut. México - Pachuca (Cuota)	37.52	1	1	33883	5.5	89.4	0.3	2.3	1.0	0.8	0.3	0.3	0.1	94.9	0.3	4.8	0.063	0.501	19.704311	-98.978367
T. Der. Aut. México - Pachuca (Cuota)	37.52	1	2	34003	4.9	90.3	0.3	2.1	1.0	0.8	0.2	0.3	0.1	95.2	0.3	4.5	0.062	0.501	19.703706	-98.978766
T. Izq. Zumpango	44.68	1	1	18410	8.7	76.9	1.9	6.3	2.7	1.4	0.7	0.8	0.6	85.6	1.9	12.5	0.066	0.502	19.760670	-98.973603

HIDALGO

5 CARR: México - Pachuca (Libre)

CLAVE: 00431

RUTA: MEX-085

AÑO: 2021

LUGAR	ESTACION				CLASIFICACION VEHICULAR EN PORCIENTO										COORDENADAS					
	KM	TE	SC	TDPA	M	A	B	C2	C3	T3S2	T3S3	T3S2R4	OTROS	A	B	C	K'	D	LATITUD	LONGITUD
T. Izq. Zumpango	44.68	1	2	18566	9.6	74.5	2.0	7.1	2.9	1.5	0.9	0.9	0.6	84.1	2.0	13.9	0.068	0.502	19.760680	-98.973705
T. Izq. Zumpango	44.68	3	1	10671	8.8	75.9	2.0	6.5	2.7	1.4	0.8	1.1	0.8	84.7	2.0	13.3	0.064	0.504	19.768509	-98.973285
T. Izq. Zumpango	44.68	3	2	10521	9.6	74.0	2.0	6.9	3.1	1.6	0.8	1.1	0.9	83.6	2.0	14.4	0.061	0.504	19.768516	-98.973331
Lim. Edos. Term. Méx. Ppia. Hgo.	49.30																			
Tizayuca	52.50	1	1	9928	8.9	80.8	2.0	5.9	0.9	1.2	0.2	0.1	0.0	89.7	2.0	8.3	0.085	0.512	19.816373	-98.975679
Tizayuca	52.50	1	2	10396	8.9	80.7	1.9	5.9	1.0	1.2	0.3	0.1	0.0	89.6	1.9	8.5	0.081	0.512	19.816365	-98.975810
Tizayuca	52.50	3	1	15201	4.2	83.6	5.4	4.1	1.5	0.8	0.2	0.2	0.0	87.8	5.4	6.8	0.080	0.506	19.861717	-98.964777
Tizayuca	52.50	3	2	15560	3.8	84.0	5.3	4.5	1.4	0.7	0.3	0.0	0.0	87.8	5.3	6.9	0.065	0.506	19.861780	-98.964853
T. C. México - Tizayuca (Cuota)	61.00	1	1	7444	4.1	84.0	3.2	5.0	2.2	1.1	0.3	0.1	0.0	88.1	3.2	8.7	0.097	0.500	19.886590	-98.939431
T. C. México - Tizayuca (Cuota)	61.00	1	2	7447	6.4	81.9	3.1	6.1	1.4	0.7	0.3	0.1	0.0	88.3	3.1	8.6	0.085	0.500	19.886681	-98.939529
T. C. México - Tizayuca (Cuota)	61.00	3	1	25128	0.6	86.2	2.9	6.1	1.4	1.7	0.7	0.3	0.1	86.8	2.9	10.3	0.079	0.509	19.899011	-98.927730
T. C. México - Tizayuca (Cuota)	61.00	3	2	24204	0.6	86.3	2.9	6.1	1.4	1.6	0.7	0.3	0.1	86.9	2.9	10.2	0.063	0.509	19.899141	-98.927837
X. C. Arco Norte de La Ciudad de México	64.20	1	1	26717	0.5	88.7	2.1	4.8	1.3	1.6	0.5	0.4	0.1	89.2	2.1	8.7	0.071	0.525	19.918838	-98.905246
X. C. Arco Norte de La Ciudad de México	64.20	1	2	27286	0.5	86.7	2.4	5.7	1.6	2.1	0.5	0.4	0.1	87.2	2.4	10.4	0.081	0.525	19.919021	-98.905426
X. C. Arco Norte de La Ciudad de México	64.20	3	1	26529	1.1	86.1	3.8	5.6	0.8	1.6	0.5	0.3	0.2	87.2	3.8	9.0	0.061	0.517	19.929312	-98.893031
X. C. Arco Norte de La Ciudad de México	64.20	3	2	24812	1.2	84.5	4.3	6.4	0.9	1.6	0.6	0.3	0.2	85.7	4.3	10.0	0.071	0.517	19.929510	-98.893198
Ent. Colonia	83.97	1	1	44534	1.9	90.3	1.7	2.7	0.9	1.2	0.5	0.7	0.1	92.2	1.7	6.1	0.060	0.509	20.043345	-98.792933
Ent. Colonia	83.97	1	2	42841	1.8	91.7	1.7	2.5	0.6	0.8	0.3	0.4	0.2	93.5	1.7	4.8	0.060	0.509	20.043507	-98.793208
X. C. Libramiento de Pachuca	86.50	1	1	33517	3.1	93.5	0.6	1.3	0.6	0.3	0.2	0.3	0.1	96.6	0.6	2.8	0.063	0.522	20.097778	-98.765895
X. C. Libramiento de Pachuca	86.50	1	2	37113	3.1	93.5	0.5	1.3	0.6	0.3	0.2	0.3	0.2	96.6	0.5	2.9	0.077	0.522	20.097949	-98.766065
Pachuca	94.00																			

6 CARR: Pachuca - Cd. Sahagún

CLAVE: 13088

RUTA: MEX

AÑO: 2021

LUGAR	ESTACION				CLASIFICACION VEHICULAR EN PORCIENTO										COORDENADAS					
	KM	TE	SC	TDPA	M	A	B	C2	C3	T3S2	T3S3	T3S2R4	OTROS	A	B	C	K'	D	LATITUD	LONGITUD
Pachuca	0.00	3	1	26374	5.1	90.1	0.6	1.6	1.0	0.9	0.3	0.3	0.1	95.2	0.6	4.2	0.084	0.521	20.071558	-98.744577
Pachuca	0.00	3	2	30533	5.1	90.1	0.6	1.6	1.0	0.9	0.3	0.3	0.1	95.2	0.6	4.2	0.078	0.521	20.071558	-98.744407
T. Der. Palma Gorda	11.00	1	1	32281	5.1	90.1	0.6	1.6	1.0	0.9	0.3	0.3	0.1	95.2	0.6	4.2	0.069	0.503	20.046774	-98.736704
T. Der. Palma Gorda	11.00	1	2	32727	5.1	90.1	0.6	1.6	1.0	0.9	0.3	0.3	0.1	95.2	0.6	4.2	0.077	0.503	20.046823	-98.736541
X. C. Venta de Carpio - Tulancingo	29.40	1	1	9344	2.0	87.8	1.0	5.1	1.3	1.6	0.8	0.2	0.2	89.8	1.0	9.2	0.077	0.502	19.884841	-98.666591
X. C. Venta de Carpio - Tulancingo	29.40	1	2	9283	2.1	87.8	1.1	4.9	1.4	1.8	0.6	0.2	0.1	89.9	1.1	9.0	0.101	0.502	19.884884	-98.666440
X. C. Venta de Carpio - Tulancingo	29.40	3	1	6628	1.4	88.6	1.5	4.0	1.6	1.6	0.7	0.4	0.2	90.0	1.5	8.5	0.091	0.514	19.871437	-98.661609
X. C. Venta de Carpio - Tulancingo	29.40	3	2	7009	1.0	90.0	1.4	3.9	1.5	1.3	0.3	0.3	0.3	91.0	1.4	7.6	0.078	0.514	19.871467	-98.661524
T. Izq. Tepeapulco	40.00	1	1	5984	1.4	88.4	1.0	4.2	1.7	1.7	1.1	0.3	0.2	89.8	1.0	9.2	0.076	0.523	19.827294	-98.595971

HIDALGO

6 CARR: Pachuca - Cd. Sahagún

CLAVE: 13088

RUTA: MEX

AÑO: 2021

LUGAR	ESTACION				CLASIFICACION VEHICULAR EN PORCIENTO													COORDENADAS		
	KM	TE	SC	TDPA	M	A	B	C2	C3	T3S2	T3S3	T3S2R4	OTROS	A	B	C	K'	D	LATITUD	LONGITUD
T. Izq. Tepeapulco	40.00	1	2	6562	1.6	87.5	1.0	4.8	1.6	1.9	1.2	0.2	0.2	89.1	1.0	9.9	0.084	0.523	19.827405	-98.595921
T. Izq. Tepeapulco	40.00	3	1	5514	1.3	89.4	1.6	3.4	1.2	1.8	0.8	0.3	0.2	90.7	1.6	7.7	0.082	0.508	19.816438	-98.585567
T. Izq. Tepeapulco	40.00	3	2	5691	1.9	87.1	1.6	3.4	1.7	2.3	1.2	0.6	0.2	89.0	1.6	9.4	0.097	0.508	19.816458	-98.585456
Cd. Sahagún	44.70																			

7 CARR: Pachuca - Tempoal

CLAVE: 00113

RUTA: MEX-105

AÑO: 2021

LUGAR	ESTACION				CLASIFICACION VEHICULAR EN PORCIENTO													COORDENADAS		
	KM	TE	SC	TDPA	M	A	B	C2	C3	T3S2	T3S3	T3S2R4	OTROS	A	B	C	K'	D	LATITUD	LONGITUD
Pachuca	0.00	3	0	4210	3.0	94.5	0.8	1.6	0.1	0.0	0.0	0.0	0.0	97.5	0.8	1.7	0.109	0.525	20.130669	-98.713487
T. Der. Omítlán de Juárez (1º Acceso)	18.20	1	0	14442	0.7	90.6	1.2	3.7	1.3	0.9	0.8	0.5	0.3	91.3	1.2	7.5	0.106	0.509	20.160546	-98.654390
T. Der a Huasca	22.20																			
T. Libramiento de Atotonilco El Grande	30.25																			
Atotonilco El Grande	33.85	3	1	5481	2.3	92.1	1.3	2.0	1.1	0.6	0.5	0.1	0.0	94.4	1.3	4.3	0.097	0.503	20.301653	-98.681040
Atotonilco El Grande	33.85	3	2	5425	2.5	91.1	1.3	2.3	1.3	0.9	0.5	0.1	0.0	93.6	1.3	5.1	0.098	0.503	20.301590	-98.681165
T. Libramiento de Atotonilco El Grande	35.45																			
Cerro Colorado	48.15																			
T. Izq. Metztlán	63.70	1	0	5221	1.3	85.2	2.0	7.7	1.4	1.1	0.9	0.4	0.0	86.5	2.0	11.5	0.088	0.502	20.467563	-98.674140
T. Izq. Metztlán	63.70	3	0	4797	0.4	85.9	1.5	6.8	1.3	2.6	0.7	0.1	0.7	86.3	1.5	12.2	0.083	0.502	20.474485	-98.668464
Metzquitlán	75.00	1	0	5275	2.6	89.5	2.0	2.2	1.3	1.1	0.8	0.2	0.3	92.1	2.0	5.9	0.079	0.503	20.527355	-98.646840
T. Izq. Zacualtipán	96.50	1	0	8113	2.6	87.2	1.3	6.2	0.9	0.8	0.7	0.2	0.1	89.8	1.3	8.9	0.086	0.502	20.638475	-98.631542
T. Izq. Zacualtipán	96.50	3	0	5641	3.3	84.9	2.0	6.3	1.3	0.9	0.8	0.2	0.3	88.2	2.0	9.8	0.080	0.502	20.663458	-98.671094
X. C. Molango - Xochicoatlán	129.80	1	0	3754	1.7	84.2	2.1	5.8	1.5	2.7	1.2	0.2	0.6	85.9	2.1	12.0	0.076	0.514	20.787121	-98.721284
X. C. Molango - Xochicoatlán	129.80	3	0	3403	2.1	86.1	2.0	4.8	1.1	2.4	0.9	0.1	0.5	88.2	2.0	9.8	0.086	0.512	20.794921	-98.726837
T. Izq. Tepehuacán de Guerrero	157.70	1	0	2434	1.7	83.0	2.7	5.5	2.5	2.7	1.2	0.2	0.5	84.7	2.7	12.6	0.069	0.514	20.964992	-98.686666
Tehuacán	199.20	1	0	2474	4.7	81.1	2.0	5.2	2.0	2.5	1.5	0.3	0.7	85.8	2.0	12.2	0.078	0.504	21.057411	-98.510052
T. Izq. Huejutla (1º Acceso)	214.60	1	1	5399	3.5	85.0	1.0	3.1	1.4	3.5	1.4	0.7	0.4	88.5	1.0	10.5	0.078	0.503	21.122217	-98.419049
T. Izq. Huejutla (1º Acceso)	214.60	1	2	5344	3.5	83.5	0.9	3.8	1.3	3.9	1.5	0.7	0.9	87.0	0.9	12.1	0.077	0.503	21.122253	-98.419117
T. Izq. Huejutla (1º Acceso)	214.60	3	0	11345	5.8	84.5	1.0	4.7	1.0	0.9	0.7	0.5	0.9	90.3	1.0	8.7	0.077	0.506	21.129678	-98.408167
Lim. Edos. Term. Hgo. Ppia. Ver.	217.20																			
T. C. Alazán - Canoas	260.68	1	0	2340	3.8	78.4	1.6	8.5	1.9	2.5	1.9	0.9	0.5	82.2	1.6	16.2	0.082	0.539	21.491690	-98.357684

HIDALGO

8 CARR: Pachuca - Tuxpam

CLAVE: 00608

RUTA: MEX-130

AÑO: 2021

LUGAR	ESTACION				CLASIFICACION VEHICULAR EN PORCIENTO													COORDENADAS		
	KM	TE	SC	TDPA	M	A	B	C2	C3	T3S2	T3S3	T3S2R4	OTROS	A	B	C	K'	D	LATITUD	LONGITUD
Pachuca	0.00																			
X. C. Libramiento de Pachuca	2.60	3	1	30777	2.4	94.5	0.5	1.8	0.3	0.2	0.1	0.1	0.1	96.9	0.5	2.6	0.070	0.532	20.086898	-98.713250
X. C. Libramiento de Pachuca	2.60	3	2	25351	2.4	94.3	0.3	2.1	0.3	0.2	0.1	0.2	0.1	96.7	0.3	3.0	0.078	0.532	20.086951	-98.713085
T. Izq. Pachuquilla (1° Acceso)	7.00	1	1	20400	2.1	90.6	0.4	4.9	0.7	0.5	0.3	0.3	0.2	92.7	0.4	6.9	0.073	0.502	20.077860	-98.709722
T. Izq. Pachuquilla (1° Acceso)	7.00	1	2	20246	2.1	90.7	0.5	5.0	0.6	0.4	0.3	0.2	0.2	92.8	0.5	6.7	0.083	0.502	20.077938	-98.709601
T. Izq. Pachuquilla (2° Acceso)	10.50	1	1	10676	1.3	87.9	1.0	7.1	1.0	0.7	0.4	0.3	0.3	89.2	1.0	9.8	0.103	0.500	20.066855	-98.670609
T. Izq. Pachuquilla (2° Acceso)	10.50	1	2	10688	1.2	88.1	0.9	7.2	1.1	0.6	0.3	0.3	0.3	89.3	0.9	9.8	0.084	0.500	20.066959	-98.670618
T. Der. Cd. Sahagún	16.59	1	1	10671	1.6	90.0	0.8	5.5	1.0	0.4	0.2	0.3	0.2	91.6	0.8	7.6	0.090	0.539	20.056932	-98.626104
T. Der. Cd. Sahagún	16.59	1	2	9134	1.6	90.0	0.7	5.7	0.9	0.5	0.2	0.2	0.2	91.6	0.7	7.7	0.083	0.539	20.056953	-98.626017
T. Der. Cd. Sahagún	16.59	3	1	8576	1.6	89.6	1.0	5.3	0.9	0.4	0.5	0.4	0.3	91.2	1.0	7.8	0.092	0.502	20.044024	-98.609071
T. Der. Cd. Sahagún	16.59	3	2	8496	1.6	89.6	0.9	5.4	0.9	0.5	0.4	0.4	0.3	91.2	0.9	7.9	0.079	0.502	20.044142	-98.608925
T. C. Venta de Carpio - Tulancingo	36.45	1	1	9668	1.2	86.3	1.2	7.1	2.0	0.7	0.5	0.6	0.4	87.5	1.2	11.3	0.082	0.513	20.056388	-98.465609
T. C. Venta de Carpio - Tulancingo	36.45	1	2	10178	1.3	86.2	0.9	7.3	2.0	0.7	0.6	0.6	0.4	87.5	0.9	11.6	0.084	0.513	20.056544	-98.465595
T. C. Venta de Carpio - Tulancingo	36.45	3	1	15226	1.7	88.0	1.0	5.7	2.0	0.8	0.4	0.2	0.2	89.7	1.0	9.3	0.074	0.508	20.062906	-98.439668
T. C. Venta de Carpio - Tulancingo	36.45	3	2	15723	1.7	88.1	1.0	6.0	1.6	0.7	0.5	0.2	0.2	89.8	1.0	9.2	0.069	0.508	20.063021	-98.439727
T. Izq. Libramiento de Tulancingo	59.33	3	1	8164	2.0	86.4	0.6	7.6	1.4	0.5	0.7	0.4	0.4	88.4	0.6	11.0	0.093	0.511	20.151560	-98.285170
T. Izq. Libramiento de Tulancingo	59.33	3	2	7803	2.0	86.7	0.8	7.2	1.4	0.6	0.6	0.4	0.3	88.7	0.8	10.5	0.108	0.511	20.151581	-98.285219
T. Izq. Huayacocotla	60.16	3	0	13848	2.1	85.4	3.4	5.3	1.0	0.9	0.6	0.8	0.5	87.5	3.4	9.1	0.094	0.518	20.157559	-98.278767
T. Izq. Honey	63.00	3	0	10144	1.4	87.9	0.6	6.8	1.2	0.6	0.5	0.5	0.5	89.3	0.6	10.1	0.089	0.505	20.161445	-98.259428
Lim. Edos. Term. Hgo. Ppia. Pue.	83.18																			
T. Der. Huauchinango (1° Acceso)	94.00	1	0	5082	3.2	84.2	1.3	9.6	0.6	0.4	0.4	0.2	0.1	87.4	1.3	11.3	0.079	0.510	20.168917	-98.074409
T. Der. Huauchinango (2° Acceso)	100.00	3	0	7917	4.6	86.9	1.5	4.2	1.4	0.7	0.3	0.3	0.1	91.5	1.5	7.0	0.082	0.504	20.192599	-98.036111
Villa Ávila Camacho	141.75	1	0	2958	5.5	78.1	3.2	8.4	2.0	1.2	0.5	0.4	0.7	83.6	3.2	13.2	0.082	0.502	20.379961	-97.885269
Villa Ávila Camacho	141.75	3	0	4986	1.1	88.5	4.3	3.5	1.3	0.3	0.2	0.2	0.6	89.6	4.3	6.1	0.089	0.501	20.395503	-97.872062
Piedras Negras	158.70	1	0	4728	1.3	79.1	4.2	10.4	1.4	1.1	0.9	0.6	1.0	80.4	4.2	15.4	0.067	0.507	20.440083	-97.761300
T. Izq. Venustiano Carranza	174.10	3	0	4610	3.5	73.2	2.9	16.5	1.5	1.4	0.6	0.2	0.2	76.7	2.9	20.4	0.077	0.508	20.481546	-97.638454
Lim. Edos. Term. Pue. Ppia. Ver.	180.00																			
T. Der. Poza Rica	197.00	1	0	17488	8.1	71.3	2.7	4.1	1.8	5.4	3.1	2.5	1.0	79.4	2.7	17.9	0.064	0.508	20.524899	-97.490868
T. Der. Poza Rica	197.00	3	0	16941	5.5	80.9	3.1	4.6	1.7	1.6	1.2	1.0	0.4	86.4	3.1	10.5	0.066	0.505	20.561084	-97.477037
Tihuatlán	217.00	1	0	12552	6.3	76.1	3.8	4.8	1.7	2.8	2.2	1.8	0.5	82.4	3.8	13.8	0.070	0.523	20.697176	-97.526890
Tihuatlán	217.00	3	0	3152	3.4	78.1	0.4	12.1	1.0	2.7	1.6	0.4	0.3	81.5	0.4	18.1	0.067	0.508	20.721419	-97.526800
T. C. Tihuatlán - Tuxpam (Cuota)	232.50	1	0	2063	8.1	75.1	1.0	8.6	1.4	3.2	1.9	0.4	0.3	83.2	1.0	15.8	0.087	0.500	20.806270	-97.477905

HIDALGO

9 CARR:Portezuelo - Cd. Valles

CLAVE: 00023

RUTA: MEX-085

AÑO: 2021

LUGAR	ESTACION				CLASIFICACION VEHICULAR EN PORCIENTO													COORDENADAS		
	KM	TE	SC	TDPA	M	A	B	C2	C3	T3S2	T3S3	T3S2R4	OTROS	A	B	C	K'	D	LATITUD	LONGITUD
Portezuelo	0.00	3	0	5693	4.8	88.5	1.1	2.5	1.1	0.9	0.7	0.3	0.1	93.3	1.1	5.6	0.076	0.501	20.488287	-99.298554
T. Der. Tasquillo (2° Acceso)	10.50	1	0	4731	3.2	83.7	0.8	6.6	1.2	2.5	1.3	0.1	0.6	86.9	0.8	12.3	0.080	0.520	20.542083	-99.318208
T. Izq. Zimapán (1° Acceso)	32.00	1	0	5619	6.2	87.5	1.1	2.2	1.2	0.8	0.6	0.2	0.2	93.7	1.1	5.2	0.077	0.501	20.703592	-99.335081
T. Izq. Zimapán (1° Acceso)	32.00	3	0	2397	1.7	86.1	1.2	6.6	1.5	1.7	1.0	0.0	0.2	87.8	1.2	11.0	0.073	0.521	20.705958	-99.336162
La Estancia	41.00	3	0	2183	1.1	86.3	1.2	7.3	1.3	1.5	0.9	0.1	0.3	87.4	1.2	11.4	0.084	0.513	20.777718	-99.309947
Trancas	51.00	3	0	1527	0.5	83.2	1.6	9.4	1.7	1.7	1.5	0.0	0.4	83.7	1.6	14.7	0.088	0.507	20.806012	-99.259159
Jacala	98.60	3	0	2422	1.8	84.3	1.0	9.8	0.9	1.5	0.4	0.0	0.3	86.1	1.0	12.9	0.083	0.505	21.007494	-99.185213
Zacate Grande	143.10	1	0	1076	2.9	84.5	2.0	6.8	1.8	1.1	0.7	0.0	0.2	87.4	2.0	10.6	0.081	0.501	21.111392	-99.002014
T. Izq. Pisaflares	154.00	3	0	2068	4.1	86.6	1.2	5.3	1.2	1.2	0.3	0.0	0.1	90.7	1.2	8.1	0.087	0.508	21.153940	-98.945291
Lim. Edos. Term. Hgo. Ppia. S. L. P.	168.63																			
Tamazunchale	192.80	1	0	6120	11.8	79.5	1.6	2.3	2.6	0.8	0.2	0.9	0.3	91.3	1.6	7.1	0.080	0.510	21.260465	-98.801280
T. Izq. Xilitla	228.75	1	0	6266	4.3	82.2	2.4	1.6	3.8	2.0	1.5	1.7	0.5	86.5	2.4	11.1	0.096	0.517	21.441157	-98.924188
T. Izq. Xilitla	228.75	3	0	5286	6.0	76.5	1.7	9.4	2.1	3.1	0.7	0.1	0.4	82.5	1.7	15.8	0.097	0.500	21.447601	-98.930126
T. Izq. Aquismón	252.50	1	0	5532	9.4	79.2	2.0	4.9	2.3	1.1	0.6	0.5	0.0	88.6	2.0	9.4	0.085	0.515	21.622095	-98.987338
Agua Hedionda	265.00	1	0	5337	7.2	79.5	2.3	5.2	3.0	1.2	0.9	0.5	0.2	86.7	2.3	11.0	0.081	0.503	21.723625	-98.963388
X. C. Rayón - Ent. Tamuín (Cuota)	286.41	1	0	7952	8.3	78.4	1.6	4.7	3.7	1.7	0.7	0.6	0.3	86.7	1.6	11.7	0.081	0.505	21.884275	-98.947260
Cd. Valles	300.00	1	1	6164	4.7	81.2	2.2	5.7	1.4	3.4	0.6	0.4	0.4	85.9	2.2	11.9	0.085	0.511	21.959062	-98.998677
Cd. Valles	300.00	1	2	5898	4.7	79.8	2.2	6.7	1.5	3.5	0.7	0.5	0.4	84.5	2.2	13.3	0.082	0.511	21.959138	-98.998812

10 CARR:Portezuelo - Palmillas

CLAVE: 00194

RUTA: MEX-045

AÑO: 2021

LUGAR	ESTACION				CLASIFICACION VEHICULAR EN PORCIENTO													COORDENADAS		
	KM	TE	SC	TDPA	M	A	B	C2	C3	T3S2	T3S3	T3S2R4	OTROS	A	B	C	K'	D	LATITUD	LONGITUD
Portezuelo	0.00	3	1	4229	2.0	72.9	2.8	9.8	2.2	6.1	2.8	1.0	0.4	74.9	2.8	22.3	0.083	0.515	20.484418	-99.314609
Portezuelo	0.00	3	2	3975	2.0	70.8	3.5	9.5	2.7	6.8	3.1	1.1	0.5	72.8	3.5	23.7	0.075	0.515	20.484319	-99.314561
Jonacapa	29.41	3	0	5511	2.4	75.6	3.4	7.3	2.0	4.8	2.7	1.5	0.3	78.0	3.4	18.6	0.096	0.504	20.435161	-99.536860
Huichapan	45.10	1	1	4852	2.7	71.8	3.4	5.5	2.8	6.2	3.1	3.8	0.7	74.5	3.4	22.1	0.083	0.511	20.398454	-99.632014
Huichapan	45.10	1	2	4645	2.8	71.9	3.4	5.5	2.7	6.2	3.0	3.8	0.7	74.7	3.4	21.9	0.071	0.511	20.398382	-99.631937
T. Izq. Nopala	56.15	1	0	8507	2.8	76.3	2.8	4.1	2.6	5.0	3.1	2.4	0.9	79.1	2.8	18.1	0.110	0.523	20.316107	-99.715012
T. Izq. Nopala	56.15	3	0	6755	2.8	75.1	2.9	5.1	2.1	5.3	3.3	2.5	0.9	77.9	2.9	19.2	0.101	0.501	20.312560	-99.718214
Lim. Edos. Term. Hgo. Ppia. Qro.	71.40																			
Palmillas	80.00	1	1	4911	1.2	78.7	2.1	9.7	1.9	2.1	2.3	1.5	0.5	79.9	2.1	18.0	0.080	0.507	20.324490	-99.930467
Palmillas	80.00	1	2	4772	1.1	78.9	2.1	9.5	2.1	2.2	2.2	1.4	0.5	80.0	2.1	17.9	0.088	0.507	20.324453	-99.930553

HIDALGO

11 CARR: Tamazunchale - San Felipe Orizatlán

CLAVE: 00609

RUTA: MEX-085

AÑO: 2021

LUGAR	ESTACION				CLASIFICACION VEHICULAR EN PORCIENTO										COORDENADAS					
	KM	TE	SC	TDPA	M	A	B	C2	C3	T3S2	T3S3	T3S2R4	OTROS	A	B	C	K'	D	LATITUD	LONGITUD
T. C. Portezuelo - Cd. Valles	0.00	3	0	10964	22.9	66.7	0.4	7.2	0.6	0.5	1.3	0.3	0.1	89.6	0.4	10.0	0.091	0.517	21.250466	-98.766029
Lim. Edos. Term. S. L. P. Ppia. Hgo.	18.50																			
San Felipe Orizatlán	27.10	1	0	2738	17.3	71.3	0.9	7.1	0.8	1.8	0.6	0.0	0.2	88.6	0.9	10.5	0.083	0.505	21.170689	-98.617899

12 CARR: Venta de Carpio - T. C. (Pachuca - Tuxpam)

CLAVE: 00455

RUTA: MEX-132

AÑO: 2021

LUGAR	ESTACION				CLASIFICACION VEHICULAR EN PORCIENTO										COORDENADAS					
	KM	TE	SC	TDPA	M	A	B	C2	C3	T3S2	T3S3	T3S2R4	OTROS	A	B	C	K'	D	LATITUD	LONGITUD
T. C. México - Pachuca (Libre)	0.00																			
T. Der. Texcoco	6.42	3	1	12553	4.2	89.5	0.4	2.3	1.3	1.6	0.3	0.2	0.2	93.7	0.4	5.9	0.069	0.514	19.610698	-98.946061
T. Der. Texcoco	6.42	3	2	13263	4.4	89.1	0.6	2.3	1.3	1.6	0.3	0.2	0.2	93.5	0.6	5.9	0.066	0.514	19.610780	-98.946052
Tepexpan	7.57	3	1	10533	6.2	88.2	0.4	1.8	1.4	1.4	0.3	0.2	0.1	94.4	0.4	5.2	0.081	0.503	19.620482	-98.934881
Tepexpan	7.57	3	2	10665	7.1	85.9	0.5	2.3	1.9	1.5	0.3	0.4	0.1	93.0	0.5	6.5	0.076	0.503	19.620500	-98.934976
Acolman	12.42	1	0	14250	7.5	86.5	0.5	1.6	1.0	1.3	0.4	0.9	0.3	94.0	0.5	5.5	0.078	0.517	19.632729	-98.917755
Teotihuacán	20.70	3	0	22383	5.1	87.4	0.2	4.1	1.4	0.6	0.8	0.1	0.3	92.5	0.2	7.3	0.087	0.520	19.681704	-98.863310
T. Der. Otumba	31.79	1	0	13751	4.5	88.6	0.7	2.8	1.1	0.7	0.5	0.4	0.7	93.1	0.7	6.2	0.072	0.506	19.717644	-98.803082
T. Der. Otumba	31.79	3	0	7416	12.4	72.1	2.5	8.1	1.9	1.2	0.5	0.7	0.6	84.5	2.5	13.0	0.074	0.552	19.722632	-98.788386
Ent. Santiago Tolman	34.09																			
X. C. Tizayuca - Otumba	37.85	1	1	13064	1.7	82.3	2.6	3.1	2.1	4.8	1.2	1.7	0.5	84.0	2.6	13.4	0.093	0.502	19.744575	-98.763490
X. C. Tizayuca - Otumba	37.85	1	2	13182	1.5	79.5	3.5	4.0	2.6	5.1	1.8	1.5	0.5	81.0	3.5	15.5	0.125	0.502	19.744653	-98.763577
X. C. Tizayuca - Otumba	37.85	3	1	11201	1.5	81.7	2.9	3.3	2.1	5.1	1.3	1.6	0.5	83.2	2.9	13.9	0.104	0.504	19.758999	-98.750899
X. C. Tizayuca - Otumba	37.85	3	2	11018	1.4	79.4	3.6	4.3	2.5	5.1	1.5	1.7	0.5	80.8	3.6	15.6	0.159	0.504	19.759050	-98.751014
X. C. Arco Norte de La Ciudad de México	48.00	1	1	10916	1.3	76.3	3.6	7.5	2.2	5.6	1.3	1.7	0.5	77.6	3.6	18.8	0.097	0.500	19.827772	-98.705574
X. C. Arco Norte de La Ciudad de México	48.00	1	2	10917	1.2	76.4	3.5	7.3	2.2	5.4	1.7	1.8	0.5	77.6	3.5	18.9	0.150	0.500	19.827848	-98.705698
X. C. Arco Norte de La Ciudad de México	48.00	3	1	10754	0.9	79.3	3.7	5.1	2.3	5.1	1.3	1.8	0.5	80.2	3.7	16.1	0.098	0.512	19.839839	-98.693074
X. C. Arco Norte de La Ciudad de México	48.00	3	2	11274	1.0	78.6	3.4	5.4	2.5	4.8	2.0	1.8	0.5	79.6	3.4	17.0	0.147	0.512	19.838619	-98.694633
Lim. Edos. Term. Méx. Ppia. Hgo.	51.00																			
X. C. Pachuca - Cd. Sahagún	54.00	3	1	9679	1.2	79.5	2.7	7.0	3.0	3.2	2.0	1.2	0.2	80.7	2.7	16.6	0.087	0.514	19.880527	-98.659958
X. C. Pachuca - Cd. Sahagún	54.00	3	2	10055	1.1	78.0	3.1	7.2	3.6	3.3	2.1	1.3	0.3	79.1	3.1	17.8	0.094	0.514	19.880621	-98.660044
X. C. Calpulalpan - El Ocote	64.17	1	1	9497	0.8	81.2	2.0	6.5	3.0	3.1	1.6	1.4	0.4	82.0	2.0	16.0	0.076	0.501	19.916027	-98.587713
X. C. Calpulalpan - El Ocote	64.17	1	2	9543	1.0	79.3	2.2	7.4	3.3	3.2	1.6	1.6	0.4	80.3	2.2	17.5	0.091	0.501	19.916114	-98.587797
X. C. Calpulalpan - El Ocote	64.17	3	1	8903	1.0	77.1	2.4	8.4	3.8	3.7	1.8	1.4	0.4	78.1	2.4	19.5	0.114	0.505	19.925629	-98.576318
X. C. Calpulalpan - El Ocote	64.17	3	2	8726	2.9	73.5	2.9	9.0	3.9	3.9	2.0	1.5	0.4	76.4	2.9	20.7	0.077	0.505	19.925729	-98.576388
T. C. Pachuca - Tuxpam	84.08	1	1	11459	0.7	81.9	3.3	5.3	2.6	2.9	1.5	1.1	0.7	82.6	3.3	14.1	0.079	0.538	20.052023	-98.459851
T. C. Pachuca - Tuxpam	84.08	1	2	10821	0.7	80.4	3.6	5.9	2.8	3.2	1.6	1.1	0.7	81.1	3.6	15.3	0.078	0.538	20.052114	-98.459933

HIDALGO

13 CARR: Ent. Tulancingo - Venta Grande (Cuota)

CLAVE: 00026

RUTA: MEX-132D

AÑO: 2021

LUGAR	ESTACION				CLASIFICACION VEHICULAR EN PORCIENTO													COORDENADAS		
	KM	TE	SC	TDPA	M	A	B	C2	C3	T3S2	T3S3	T3S2R4	OTROS	A	B	C	K'	D	LATITUD	LONGITUD
T. C. Pachuca - Tuxpam	0.00																			
T. Izq. Acatlán	7.80	1	0	16835	1.2	72.0	5.1	10.0	2.7	4.8	1.7	1.7	0.8	73.2	5.1	21.7	0.104	0.524	20.105425	-98.406285
T. Izq. Acatlán	7.80	3	0	14600	1.4	71.8	5.8	9.4	2.8	4.5	1.9	1.6	0.8	73.2	5.8	21.0	0.110	0.522	20.111244	-98.392501
Plaza de Cobro San Alejo (Tejocotal)	21.80	1	0	13968	1.3	75.4	5.6	9.7	2.8	2.7	1.2	0.7	0.6	76.7	5.6	17.7	0.110	0.536	20.149656	-98.297494
Plaza de Cobro San Alejo (Tejocotal)	21.80	2	0	8881	0.8	72.2	4.2	3.5	4.5	5.9	2.4	5.4	1.1	73.0	4.2	22.8	0.115	0.500	20.147472	-98.285748
T. C. Tlaxco - Tejocotal (Cuota)	39.60	1	0	11402	1.2	71.9	5.9	10.0	2.4	4.3	1.7	2.0	0.6	73.1	5.9	21.0	0.114	0.506	20.142021	-98.145670

14 CARR: Libramiento Norte de la Ciudad de México (Cuota)

CLAVE: 0902

RUTA: MEX-M40D

AÑO: 2021

LUGAR	ESTACION				CLASIFICACION VEHICULAR EN PORCIENTO													COORDENADAS		
	KM	TE	SC	TDPA	M	A	B	C2	C3	T3S2	T3S3	T3S2R4	OTROS	A	B	C	K'	D	LATITUD	LONGITUD
T. C. Toluca - Palmillas	0.00																			
X. C. Toluca - Palmillas	12.90	1	1	4168	3.3	59.8	5.5	4.5	3.6	13.8	2.3	6.5	0.7	63.1	5.5	31.4	0.086	0.520	19.918207	-99.850286
X. C. Toluca - Palmillas	12.90	1	2	4515	2.3	60.8	5.1	3.8	3.1	15.7	2.4	6.1	0.7	63.1	5.1	31.8	0.075	0.520	19.919599	-99.850067
X. C. Toluca - Palmillas	12.90	3	1	3750	2.1	60.1	5.6	4.7	3.5	14.5	2.7	6.3	0.5	62.2	5.6	32.2	0.098	0.507	19.922898	-99.836922
X. C. Toluca - Palmillas	12.90	3	2	3851	1.8	61.9	5.2	4.7	3.5	13.2	2.5	6.8	0.4	63.7	5.2	31.1	0.080	0.507	19.923150	-99.836884
C. P. Jilotepec	48.70	1	1	4371	2.4	54.3	7.2	8.0	3.2	17.4	1.8	5.0	0.7	56.7	7.2	36.1	0.075	0.502	19.960321	-99.546390
C. P. Jilotepec	48.70	1	2	4405	2.5	54.5	7.2	7.9	3.2	16.0	2.4	5.5	0.8	57.0	7.2	35.8	0.076	0.502	19.960458	-99.546511
C. P. Jilotepec	48.70	3	1	5682	2.6	58.1	6.3	6.9	3.2	16.3	1.6	4.3	0.7	60.7	6.3	33.0	0.085	0.507	19.978290	-99.525498
C. P. Jilotepec	48.70	3	2	5524	2.4	52.1	7.7	8.3	3.3	17.7	2.2	5.5	0.8	54.5	7.7	37.8	0.079	0.507	19.978461	-99.525499
X. C. México - Querétaro	54.00	3	1	8778	1.8	51.0	5.9	6.2	4.3	19.3	3.7	6.9	0.9	52.8	5.9	41.3	0.071	0.530	20.003672	-99.482658
X. C. México - Querétaro	54.00	3	2	7782	1.8	52.8	8.0	4.8	3.9	19.1	2.9	5.8	0.9	54.6	8.0	37.4	0.073	0.530	20.003736	-99.482706
Plaza de Cobro Querétaro	55.00	3	1	8755	0.3	54.2	1.6	4.6	5.9	18.8	4.2	8.1	2.3	54.5	1.6	43.9	0.067	0.500	19.998714	-99.487788
Plaza de Cobro Querétaro	55.00	3	2	8755	0.3	54.2	1.6	4.6	5.9	18.8	4.2	8.1	2.3	54.5	1.6	43.9	0.067	0.500	19.998714	-99.487788
Lim. Edos. Term. Méx. Ppia. Hgo.	60.72																			
X. C. Ent. Tepeji del Río - Tlahuelilpan	79.00	1	1	8268	2.2	57.3	5.3	5.7	3.4	15.7	3.7	5.8	0.9	59.5	5.3	35.2	0.083	0.510	20.087991	-99.317512
X. C. Ent. Tepeji del Río - Tlahuelilpan	79.00	1	2	7943	2.1	54.0	5.7	6.3	3.7	17.2	4.3	5.8	0.9	56.1	5.7	38.2	0.083	0.510	20.088072	-99.317540
X. C. Ent. Tepeji del Río - Tlahuelilpan	79.00	3	1	9419	2.1	57.8	6.2	3.8	2.9	16.4	4.0	5.9	0.9	59.9	6.2	33.9	0.092	0.508	20.092699	-99.268556
X. C. Ent. Tepeji del Río - Tlahuelilpan	79.00	3	2	9713	2.3	57.4	6.2	3.9	3.2	17.0	4.0	5.1	0.9	59.7	6.2	34.1	0.083	0.508	20.092834	-99.268461
X. C. Los Reyes - El Tephé	86.40	1	1	9409	2.4	60.2	3.9	5.7	3.0	14.7	3.9	5.4	0.8	62.6	3.9	33.5	0.096	0.503	20.071976	-99.231231
X. C. Los Reyes - El Tephé	86.40	1	2	9311	2.3	59.2	3.8	6.3	3.2	15.3	3.8	5.3	0.8	61.5	3.8	34.7	0.073	0.503	20.072103	-99.231126
X. C. Los Reyes - El Tephé	86.40	3	1	8714	2.2	58.0	3.5	6.3	3.2	16.1	3.7	6.2	0.8	60.2	3.5	36.3	0.094	0.508	20.062809	-99.205903
X. C. Los Reyes - El Tephé	86.40	3	2	9008	2.3	57.7	3.6	6.2	3.3	16.0	3.8	6.3	0.8	60.0	3.6	36.4	0.078	0.508	20.062944	-99.205865
Lim. Edos. Term. Hgo. Ppia. Méx.	95.75																			
X. C. (Los Reyes - El Tephé) - Tianguistongo	108.60	1	1	9194	4.7	53.7	4.5	6.5	3.3	16.8	3.6	6.2	0.7	58.4	4.5	37.1	0.097	0.517	19.958434	-99.067627

HIDALGO

14 CARR: Libramiento Norte de la Ciudad de México (Cuota)

CLAVE: 0902

RUTA: MEX-M40D

AÑO: 2021

LUGAR	ESTACION				CLASIFICACION VEHICULAR EN PORCIENTO														COORDENADAS	
	KM	TE	SC	TDPA	M	A	B	C2	C3	T3S2	T3S3	T3S2R4	OTROS	A	B	C	K'	D	LATITUD	LONGITUD
X. C. (Los Reyes - El Tephé) - Tianguistongo	108.60	1	2	8580	4.7	52.3	5.8	6.5	3.1	17.0	3.7	6.2	0.7	57.0	5.8	37.2	0.076	0.517	19.958569	-99.067589
X. C. (Los Reyes - El Tephé) - Tianguistongo	108.60	3	1	9617	2.7	56.8	5.6	6.0	3.1	15.8	3.4	5.8	0.8	59.5	5.6	34.9	0.096	0.503	19.960016	-99.032113
X. C. (Los Reyes - El Tephé) - Tianguistongo	108.60	3	2	9491	2.6	56.8	5.8	5.7	3.1	15.8	3.5	5.9	0.8	59.4	5.8	34.8	0.082	0.503	19.960151	-99.032189
Lim. Edos. Term. Méx. Ppia. Hgo.	115.89																			
X. C. México - Pachuca	127.30	1	1	9265	2.3	58.9	5.7	5.5	3.0	15.1	3.4	5.4	0.7	61.2	5.7	33.1	0.094	0.513	19.932621	-98.903879
X. C. México - Pachuca	127.30	1	2	9773	2.3	58.8	5.7	5.2	2.9	15.0	3.5	5.9	0.7	61.1	5.7	33.2	0.080	0.513	19.932765	-98.903851
X. C. México - Pachuca	127.30	3	1	8151	3.4	52.1	5.3	7.4	3.5	16.0	4.0	7.6	0.7	55.5	5.3	39.2	0.084	0.501	19.926686	-98.878762
X. C. México - Pachuca	127.30	3	2	8177	3.4	51.4	5.4	7.5	3.4	16.4	4.4	7.4	0.7	54.8	5.4	39.8	0.080	0.501	19.926840	-98.878714
Lim. Edos. Term. Hgo. Ppia. Méx.	143.98																			
X. C. Venta de Carpio - T. C. (Pachuca - Tulancingo)	151.11	1	1	8658	1.2	52.9	5.2	7.8	3.3	17.3	3.8	7.7	0.8	54.1	5.2	40.7	0.069	0.507	19.837706	-98.705365
X. C. Venta de Carpio - T. C. (Pachuca - Tulancingo)	151.11	1	2	8888	1.2	52.8	5.5	7.6	3.0	17.7	3.9	7.4	0.9	54.0	5.5	40.5	0.077	0.507	19.837816	-98.705261
X. C. Venta de Carpio - T. C. (Pachuca - Tulancingo)	151.11	3	1	7253	1.2	49.9	5.5	7.4	4.2	19.1	3.9	7.9	0.9	51.1	5.5	43.4	0.067	0.510	19.826824	-98.691750
X. C. Venta de Carpio - T. C. (Pachuca - Tulancingo)	151.11	3	2	7564	1.1	49.2	5.6	7.8	4.4	18.6	4.4	8.0	0.9	50.3	5.6	44.1	0.077	0.510	19.826936	-98.691621
X. C. Ent. Tolman - Cd. Sahagún	162.55	1	1	8573	1.1	56.0	5.0	7.2	3.4	15.9	3.6	7.1	0.7	57.1	5.0	37.9	0.070	0.512	19.760837	-98.632011
X. C. Ent. Tolman - Cd. Sahagún	162.55	1	2	8981	0.9	54.2	5.2	7.8	3.8	15.4	3.9	7.9	0.9	55.1	5.2	39.7	0.076	0.512	19.760893	-98.631866
X. C. Ent. Tolman - Cd. Sahagún	162.55	3	1	10051	1.5	53.4	6.7	7.5	3.4	17.0	3.6	6.0	0.9	54.9	6.7	38.4	0.072	0.523	19.749248	-98.625628
X. C. Ent. Tolman - Cd. Sahagún	162.55	3	2	9185	1.8	52.0	6.9	7.7	3.5	17.4	3.7	6.2	0.8	53.8	6.9	39.3	0.069	0.523	19.749325	-98.625464
Lim. Edos. Term. Méx. Ppia. Hgo.	166.53																			
X. C. Calpulallpan - El Ocote	180.39	1	1	9857	0.5	51.5	6.5	10.2	3.2	17.8	3.6	6.1	0.6	52.0	6.5	41.5	0.081	0.523	19.624894	-98.552633
X. C. Calpulallpan - El Ocote	180.39	1	2	8981	1.0	51.4	6.1	10.5	3.2	17.2	3.6	6.1	0.9	52.4	6.1	41.5	0.075	0.523	19.624994	-98.552520
X. C. Calpulallpan - El Ocote	180.39	3	1	7997	0.4	49.8	5.4	7.9	4.3	18.8	4.9	8.2	0.3	50.2	5.4	44.4	0.080	0.516	19.613440	-98.542838
X. C. Calpulallpan - El Ocote	180.39	3	2	8525	0.7	49.5	5.6	7.9	4.2	19.2	4.5	8.1	0.3	50.2	5.6	44.2	0.077	0.516	19.613583	-98.542728
Lim. Edos. Term. Hgo. Ppia. Tlax.	180.98																			
X. C. Los Reyes - Zacatepec	196.70	1	1	8627	3.0	63.6	4.9	3.7	3.0	13.7	3.0	4.4	0.7	66.6	4.9	28.5	0.078	0.538	19.520184	-98.472891
X. C. Los Reyes - Zacatepec	196.70	1	2	8033	3.0	63.7	4.9	3.7	3.0	13.6	3.0	4.4	0.7	66.7	4.9	28.4	0.087	0.538	19.520227	-98.472809
X. C. Los Reyes - Zacatepec	196.70	3	1	8426	2.4	58.6	5.3	4.9	2.5	15.2	5.4	5.0	0.7	61.0	5.3	33.7	0.084	0.547	19.508278	-98.467092
X. C. Los Reyes - Zacatepec	196.70	3	2	8378	2.3	59.2	5.2	4.8	2.5	15.1	5.3	5.0	0.6	61.5	5.2	33.3	0.082	0.547	19.508313	-98.466999
X. C. San Martín Texmelucan - Tlaxcala - El Molinito	220.95	1	1	7916	2.9	64.8	4.8	3.7	2.6	12.6	3.1	4.7	0.8	67.7	4.8	27.5	0.079	0.503	19.408900	-98.425578
X. C. San Martín Texmelucan - Tlaxcala - El Molinito	220.95	1	2	7827	2.9	59.0	5.6	4.1	3.1	15.8	3.0	5.6	0.9	61.9	5.6	32.5	0.076	0.503	19.408964	-98.425504
X. C. San Martín Texmelucan - Tlaxcala - El Molinito	220.95	3	1	9692	3.4	65.2	5.5	5.2	2.3	11.4	2.3	3.8	0.9	68.6	5.5	25.9	0.066	0.512	19.288129	-98.410753
X. C. San Martín Texmelucan - Tlaxcala - El Molinito	220.95	3	2	9246	3.4	65.2	5.6	5.2	2.3	11.4	2.3	3.7	0.9	68.6	5.6	25.8	0.077	0.512	19.288140	-98.410617
Plaza de Cobro San Martín Texmelucan	222.00	1	1	7546	0.3	51.8	1.6	5.4	5.8	21.3	3.7	8.2	1.9	52.1	1.6	46.3	0.067	0.500	19.301809	-98.409588
Plaza de Cobro San Martín Texmelucan	222.00	1	2	7546	0.3	51.8	1.6	5.4	5.8	21.3	3.7	8.2	1.9	52.1	1.6	46.3	0.067	0.500	19.301809	-98.409588
T. C. San Martín Texmelucan - Ocotoxco (Cuota)	222.44																			
T. C. México - Puebla (Cuota)	226.73	1	1	8893	0.9	67.8	4.8	4.1	4.3	10.2	2.1	4.9	0.9	68.7	4.8	26.5	0.077	0.514	19.270094	-98.419977

HIDALGO

14 CARR : Libramiento Norte de la Ciudad de México (Cuota)

CLAVE: 0902

RUTA : MEX-M40D

AÑO : 2021

LUGAR	ESTACION				CLASIFICACION VEHICULAR EN PORCIENTO														COORDENADAS	
	KM	TE	SC	TDPA	M	A	B	C2	C3	T3S2	T3S3	T3S2R4	OTROS	A	B	C	K'	D	LATITUD	LONGITUD
T. C. México - Puebla (Cuota)	226.73	1	2	9406	1.2	67.4	4.8	4.1	4.3	10.2	2.2	4.9	0.9	68.6	4.8	26.6	0.068	0.514	19.270030	-98.419873

15 CARR : México - Pachuca (Cuota)

CLAVE: 00432

RUTA : MEX-085D

AÑO : 2021

LUGAR	ESTACION				CLASIFICACION VEHICULAR EN PORCIENTO														COORDENADAS	
	KM	TE	SC	TDPA	M	A	B	C2	C3	T3S2	T3S3	T3S2R4	OTROS	A	B	C	K'	D	LATITUD	LONGITUD
T. C. México - Pachuca (Libre)	0.00																			
Lim. Edos. Term. CDMX Ppia. Méx.	9.86																			
Plaza de Cobro Ojo de Agua	25.00	2	1	32478	1.5	88.3	3.9	2.6	1.5	1.6	0.2	0.3	0.1	89.8	3.9	6.3	0.081	0.500	19.618737	-99.029315
Plaza de Cobro Ojo de Agua	25.00	2	2	32478	1.5	88.3	3.9	2.6	1.5	1.6	0.2	0.3	0.1	89.8	3.9	6.3	0.081	0.500	19.618737	-99.029315
Plaza de Cobro Ojo de Agua	25.00	3	1	36493	3.4	86.0	2.0	4.9	1.1	1.5	0.2	0.7	0.2	89.4	2.0	8.6	0.071	0.507	19.628065	-99.024588
Plaza de Cobro Ojo de Agua	25.00	3	2	35385	3.4	85.9	1.9	5.0	1.1	1.5	0.3	0.7	0.2	89.3	1.9	8.8	0.067	0.507	19.628137	-99.024731
T. Izq. Tecámac	35.62	3	1	31601	1.9	86.9	2.5	3.1	2.8	2.0	0.4	0.3	0.1	88.8	2.5	8.7	0.085	0.506	19.707960	-98.966545
T. Izq. Tecámac	35.62	3	2	32454	1.8	87.2	2.1	3.5	2.8	1.9	0.3	0.3	0.1	89.0	2.1	8.9	0.095	0.506	19.708041	-98.966678
Lim. Edos. Term. Méx. Ppia. Hgo.	49.60																			
X. C. Otumba - Tizayuca	53.45	1	1	26342	1.8	89.5	2.2	2.6	1.1	2.1	0.3	0.3	0.1	91.3	2.2	6.5	0.094	0.503	19.823380	-98.948338
X. C. Otumba - Tizayuca	53.45	1	2	25981	1.8	89.4	2.1	2.7	1.2	2.0	0.4	0.3	0.1	91.2	2.1	6.7	0.105	0.503	19.823362	-98.948425
T. C. México - Pachuca (Libre)	60.50	1	1	22043	3.0	89.0	2.2	1.9	1.1	1.9	0.4	0.4	0.1	92.0	2.2	5.8	0.087	0.507	19.884820	-98.937400
T. C. México - Pachuca (Libre)	60.50	1	2	21413	3.0	89.1	2.2	1.9	1.1	1.8	0.4	0.4	0.1	92.1	2.2	5.7	0.109	0.507	19.884835	-98.937484

16 CARR : Tejocotal - Nuevo Necaxa (Cuota)

CLAVE: 00211

RUTA : MEX-132D

AÑO : 2021

LUGAR	ESTACION				CLASIFICACION VEHICULAR EN PORCIENTO														COORDENADAS	
	KM	TE	SC	TDPA	M	A	B	C2	C3	T3S2	T3S3	T3S2R4	OTROS	A	B	C	K'	D	LATITUD	LONGITUD
T. C. Tlaxco - Tejocotal (Cuota)	0.00	3	0	10489	2.5	73.1	5.0	8.5	3.5	3.6	1.4	1.9	0.5	75.6	5.0	19.4	0.084	0.529	20.136350	-98.117025
Lim. Edos. Term. Hgo. Ppia. Pue.	2.10																			
Plaza de Cobro Nuevo Necaxa	17.00	1	1	3886	0.4	74.3	5.3	7.8	2.8	4.8	2.1	2.3	0.2	74.7	5.3	20.0	0.080	0.517	20.168513	-98.026462
Plaza de Cobro Nuevo Necaxa	17.00	1	2	3633	0.7	71.7	5.6	8.6	2.9	5.2	2.4	2.6	0.3	72.4	5.6	22.0	0.089	0.517	20.168309	-98.026403
Plaza de Cobro Nuevo Necaxa	17.00	2	0	1663	0.6	81.0	0.7	4.8	5.1	3.2	2.3	1.5	0.8	81.6	0.7	17.7	0.092	0.500	20.186559	-98.029829
T. C. Pachuca - Tuxpam	18.70																			

HIDALGO

17 CARR: Tlaxco - Tejocotal (Cuota)

CLAVE: 00209

RUTA: MEX-119D

AÑO: 2021

LUGAR	ESTACION				CLASIFICACION VEHICULAR EN PORCIENTO														COORDENADAS	
	KM	TE	SC	TDPA	M	A	B	C2	C3	T3S2	T3S3	T3S2R4	OTROS	A	B	C	K'	D	LATITUD	LONGITUD
T.C. Apan - Tlaxco	23.00	3	0	4453	2.6	82.7	2.7	7.4	1.8	1.1	0.5	0.6	0.6	85.3	2.7	12.0	0.131	0.513	19.607573	-98.156698
Lim. Edos. Term. Tlax. Ppia. Pue.	30.70																			
Ent. Chignahuapan	56.20	3	0	3024	1.4	79.3	2.3	11.7	1.9	1.5	0.8	0.8	0.3	80.7	2.3	17.0	0.111	0.507	19.870982	-98.061030
Lim. Edos. Term. Pue. Ppia. Hgo.	84.80																			
T. C. Apizaco - Tejocotal	85.60																			

18 CARR: México - Querétaro (Cuota)

CLAVE: 00411

RUTA: MEX-057-MEX-057D

AÑO: 2021

LUGAR	ESTACION				CLASIFICACION VEHICULAR EN PORCIENTO														COORDENADAS	
	KM	TE	SC	TDPA	M	A	B	C2	C3	T3S2	T3S3	T3S2R4	OTROS	A	B	C	K'	D	LATITUD	LONGITUD
México	0.00																			
Lim. Edos. Term. CDMX Ppia. Méx.	11.30																			
Lechería	29.41																			
Plaza de Cobro Tepetzotlán	43.01	2	1	29448	0.6	72.3	3.9	5.0	3.7	10.9	0.7	2.2	0.7	72.9	3.9	23.2	0.077	0.500	19.715361	-99.207448
Plaza de Cobro Tepetzotlán	43.01	2	2	29448	0.6	72.3	3.9	5.0	3.7	10.9	0.7	2.2	0.7	72.9	3.9	23.2	0.077	0.500	19.715361	-99.207448
Ent. Jorobas	56.18	1	1	33848	1.1	68.8	4.2	7.8	2.7	10.6	1.8	2.2	0.8	69.9	4.2	25.9	0.075	0.507	19.811473	-99.238527
Ent. Jorobas	56.18	1	2	34915	1.2	65.5	4.8	8.5	3.0	11.6	1.9	2.5	1.0	66.7	4.8	28.5	0.068	0.507	19.811392	-99.238706
Ent. Jorobas	56.18	3	1	41148	1.4	62.4	4.7	8.5	3.2	14.0	2.0	2.9	0.9	63.8	4.7	31.5	0.067	0.504	19.829257	-99.257767
Ent. Jorobas	56.18	3	2	41847	1.3	58.9	5.1	8.9	3.4	16.1	2.0	3.3	1.0	60.2	5.1	34.7	0.073	0.504	19.837399	-99.274233
Lim. Edos. Term. Méx. Ppia. Hgo.	59.85																			
T. Der. Tepeji del Río	69.36	1	1	35444	4.4	69.6	4.8	7.3	2.3	7.3	1.1	2.6	0.6	74.0	4.8	21.2	0.072	0.505	19.863541	-99.316164
T. Der. Tepeji del Río	69.36	1	2	36331	4.4	68.9	4.7	7.0	2.6	7.6	1.3	2.9	0.6	73.3	4.7	22.0	0.070	0.505	19.874082	-99.340051
T. Der. Tepeji del Río	69.36	3	1	33020	4.6	67.6	4.8	5.7	2.5	9.9	1.2	3.1	0.6	72.2	4.8	23.0	0.065	0.536	19.920871	-99.370337
T. Der. Tepeji del Río	69.36	3	2	34856	4.7	68.1	4.5	5.7	2.6	9.5	1.3	3.0	0.6	72.8	4.5	22.7	0.053	0.536	19.920782	-99.370517
T. Izq. Jilotepec	83.75	1	1	33353	4.9	66.8	5.3	5.2	2.7	9.4	1.4	3.6	0.7	71.7	5.3	23.0	0.070	0.504	19.972292	-99.434135
T. Izq. Jilotepec	83.75	1	2	32771	4.5	63.6	6.0	5.6	2.9	11.0	1.6	4.0	0.8	68.1	6.0	25.9	0.061	0.504	19.975527	-99.437307
T. Izq. Jilotepec	83.75	3	1	31514	4.2	65.2	5.4	5.7	2.9	11.2	1.2	3.5	0.7	69.4	5.4	25.2	0.070	0.509	19.989658	-99.458342
T. Izq. Jilotepec	83.75	3	2	30270	4.6	64.3	5.6	5.6	2.9	11.5	1.4	3.4	0.7	68.9	5.6	25.5	0.063	0.509	19.985707	-99.444701
Lim. Edos. Term. Hgo. Ppia. Méx.	86.00																			
X. C. Libramiento Norte de La Ciudad de México (Cuota)	89.44	3	1	37444	4.4	64.1	5.6	5.2	2.5	12.2	1.8	3.4	0.8	68.5	5.6	25.9	0.056	0.526	20.005053	-99.500723
X. C. Libramiento Norte de La Ciudad de México (Cuota)	89.44	3	2	33416	5.0	61.1	5.9	5.8	2.8	13.0	1.9	3.5	1.0	66.1	5.9	28.0	0.084	0.526	20.003159	-99.498138
T. Der. Palos Altos	97.80	1	1	38588	5.0	60.3	5.5	5.1	2.9	14.2	1.9	4.2	0.9	65.3	5.5	29.2	0.068	0.507	20.032912	-99.552469
T. Der. Palos Altos	97.80	1	2	37430	5.2	60.0	5.4	5.0	2.8	14.3	2.1	4.3	0.9	65.2	5.4	29.4	0.069	0.507	20.032491	-99.552222
X. C. Jilotepec - Maravillas	107.00	1	1	33825	5.1	60.9	5.4	4.9	2.7	14.0	1.7	4.4	0.9	66.0	5.4	28.6	0.067	0.505	20.076833	-99.614807
X. C. Jilotepec - Maravillas	107.00	1	2	34588	5.2	62.5	5.3	4.7	2.6	13.1	1.9	3.8	0.9	67.7	5.3	27.0	0.079	0.505	20.075436	-99.613585

HIDALGO

18 CARR: México - Querétaro (Cuota)

CLAVE: 00411

RUTA: MEX-057-MEX-057D

AÑO: 2021

LUGAR	ESTACION				CLASIFICACION VEHICULAR EN PORCIENTO														COORDENADAS	
	KM	TE	SC	TDPA	M	A	B	C2	C3	T3S2	T3S3	T3S2R4	OTROS	A	B	C	K'	D	LATITUD	LONGITUD
X. C. Jilotepec - Maravillas	107.00	3	1	34860	5.2	58.6	5.6	5.3	3.5	14.3	2.1	4.5	0.9	63.8	5.6	30.6	0.061	0.511	20.082420	-99.635815
X. C. Jilotepec - Maravillas	107.00	3	2	33242	5.5	58.4	5.6	5.2	3.3	14.5	2.2	4.4	0.9	63.9	5.6	30.5	0.069	0.511	20.082462	-99.633896
T. Izq. Aculco	114.80	1	1	33187	5.2	58.1	6.0	5.2	3.6	14.2	2.2	4.5	1.0	63.3	6.0	30.7	0.059	0.509	20.097580	-99.692891
T. Izq. Aculco	114.80	1	2	31847	5.5	57.4	6.0	5.1	3.4	14.7	2.1	4.8	1.0	62.9	6.0	31.1	0.078	0.509	20.091274	-99.686640
T. Izq. Aculco	114.80	3	1	31578	6.5	50.6	7.8	7.7	3.2	15.8	2.8	4.7	0.9	57.1	7.8	35.1	0.058	0.526	20.104740	-99.698615
T. Izq. Aculco	114.80	3	2	31903	6.4	53.0	7.7	7.4	3.0	14.7	2.4	4.5	0.9	59.4	7.7	32.9	0.053	0.526	20.110151	-99.708365
T. Izq. Encinillas	121.70	1	1	32188	7.7	58.1	7.2	5.4	2.1	12.8	1.8	4.0	0.9	65.8	7.2	27.0	0.057	0.512	20.147366	-99.735868
T. Izq. Encinillas	121.70	1	2	33903	7.4	58.3	7.0	5.2	2.5	12.7	1.8	4.2	0.9	65.7	7.0	27.3	0.065	0.512	20.145467	-99.734492
Polotitlán	133.00	1	1	34141	8.6	55.2	7.5	5.8	1.7	14.1	1.8	4.4	0.9	63.8	7.5	28.7	0.055	0.526	20.218615	-99.801684
Polotitlán	133.00	1	2	30530	8.9	53.6	7.4	6.2	1.9	15.1	1.9	4.1	0.9	62.5	7.4	30.1	0.071	0.526	20.220110	-99.803888
Lim. Edos. Term. Méx. Ppia. Qro.	145.50																			
Plaza de Cobro Palmillas	145.80	2	1	20352	0.4	60.7	2.5	6.0	4.9	18.1	1.7	4.2	1.5	61.1	2.5	36.4	0.077	0.500	20.296112	-99.929069
Plaza de Cobro Palmillas	145.80	2	2	20352	0.4	60.7	2.5	6.0	4.9	18.1	1.7	4.2	1.5	61.1	2.5	36.4	0.077	0.500	20.296112	-99.929069
T. Izq. Toluca	148.50	1	1	32055	8.2	53.2	7.3	5.7	2.9	14.3	2.4	5.1	0.9	61.4	7.3	31.3	0.057	0.500	20.287387	-99.913294
T. Izq. Toluca	148.50	1	2	32003	7.9	53.9	7.5	5.4	3.0	13.8	2.5	5.0	1.0	61.8	7.5	30.7	0.072	0.500	20.286313	-99.912280
T. Izq. Toluca	148.50	3	1	36349	8.5	56.9	6.0	5.0	3.3	13.7	1.8	3.8	1.0	65.4	6.0	28.6	0.056	0.511	20.307825	-99.934122
T. Izq. Toluca	148.50	3	2	38140	8.3	59.4	5.8	5.2	3.7	11.4	1.6	3.6	1.0	67.7	5.8	26.5	0.066	0.511	20.319927	-99.934116
T. Der. Portezuelo	151.53	3	1	39942	7.2	62.4	4.7	5.5	4.2	10.2	1.2	3.6	1.0	69.6	4.7	25.7	0.060	0.520	20.336783	-99.941289
T. Der. Portezuelo	151.53	3	2	43762	7.0	63.3	4.6	6.0	4.0	9.2	1.3	3.6	1.0	70.3	4.6	25.1	0.067	0.520	20.337817	-99.942648
T. Der. Poniente San Juan del Río	164.10	3	1	45911	7.3	67.2	4.4	4.6	1.8	8.1	1.4	4.2	1.0	74.5	4.4	21.1	0.064	0.510	20.373898	-99.994540
T. Der. Poniente San Juan del Río	164.10	3	2	43946	7.0	68.7	4.0	4.2	1.8	7.9	1.4	4.0	1.0	75.7	4.0	20.3	0.070	0.510	20.372670	-99.992190
La Estancia	169.40	1	1	48402	6.3	72.9	3.5	3.8	1.7	7.7	1.0	2.2	0.9	79.2	3.5	17.3	0.060	0.516	20.421299	-100.049589
La Estancia	169.40	1	2	45128	6.6	72.8	3.3	3.9	1.8	7.3	1.3	2.1	0.9	79.4	3.3	17.3	0.071	0.516	20.424475	-100.053476
T. Izq. Acámbaro	170.45	3	1	50975	5.4	69.8	3.9	5.1	1.8	9.6	1.3	2.3	0.8	75.2	3.9	20.9	0.061	0.528	20.447311	-100.078603
T. Izq. Acámbaro	170.45	3	2	44958	5.6	70.0	3.5	5.4	1.8	9.0	1.3	2.6	0.8	75.6	3.5	20.9	0.066	0.528	20.449086	-100.081337
T. Der. Libramiento Nororiente de Querétaro (Cuota)	192.50	1	1	47573	4.8	73.2	4.2	3.7	1.9	7.9	1.4	2.1	0.8	78.0	4.2	17.8	0.073	0.528	20.552519	-100.215411
T. Der. Libramiento Nororiente de Querétaro (Cuota)	192.50	1	2	41896	5.1	73.1	4.0	4.1	1.7	7.7	1.2	2.3	0.8	78.2	4.0	17.8	0.079	0.528	20.551709	-100.214703
T. Der. Libramiento Nororiente de Querétaro (Cuota)	192.50	3	1	65162	5.8	73.3	3.1	4.6	2.7	5.9	1.2	2.7	0.7	79.1	3.1	17.8	0.056	0.507	20.562668	-100.237157
T. Der. Libramiento Nororiente de Querétaro (Cuota)	192.50	3	2	63170	5.1	76.0	2.8	4.4	2.3	5.3	0.9	2.5	0.7	81.1	2.8	16.1	0.065	0.507	20.561698	-100.234939
T. Der. Libramiento de Querétaro a San Luis Potosí	207.00	1	1	72836	7.0	77.7	1.4	3.6	2.5	4.3	0.7	1.9	0.9	84.7	1.4	13.9	0.067	0.520	20.573135	-100.323050
T. Der. Libramiento de Querétaro a San Luis Potosí	207.00	1	2	66289	6.2	79.2	1.3	2.6	2.7	4.5	0.6	2.0	0.9	85.4	1.3	13.3	0.076	0.520	20.574433	-100.330934
T. Der. Libramiento de Querétaro a San Luis Potosí	207.00	3	1	82724	6.6	78.6	1.5	4.3	2.7	3.7	1.2	0.5	0.9	85.2	1.5	13.3	0.059	0.541	20.578213	-100.380710
T. Der. Libramiento de Querétaro a San Luis Potosí	207.00	3	2	85186	5.7	79.0	1.6	4.6	2.6	3.8	1.3	0.5	0.9	84.7	1.6	13.7	0.065	0.541	20.578502	-100.378521
Querétaro	211.60																			

HIDALGO

19 CARR: Actopan - Progreso

CLAVE: 13038

RUTA: HGO

AÑO: 2021

LUGAR	ESTACION				CLASIFICACION VEHICULAR EN PORCIENTO													COORDENADAS		
	KM	TE	SC	TDPA	M	A	B	C2	C3	T3S2	T3S3	T3S2R4	OTROS	A	B	C	K'	D	LATITUD	LONGITUD
Actopan	0.00	3	1	9042	2.8	92.0	0.8	3.0	0.8	0.3	0.2	0.1	0.0	94.8	0.8	4.4	0.092	0.501	20.266109	-98.955778
Actopan	0.00	3	2	8993	2.8	91.9	0.9	2.9	0.9	0.3	0.2	0.1	0.0	94.7	0.9	4.4	0.087	0.501	20.266055	-98.955740
Progreso	23.90	1	1	7718	3.8	91.6	0.7	2.2	0.5	0.4	0.3	0.3	0.2	95.4	0.7	3.9	0.082	0.503	20.245333	-99.175523
Progreso	23.90	1	2	7628	3.8	91.3	0.8	2.2	0.5	0.5	0.3	0.3	0.3	95.1	0.8	4.1	0.097	0.503	20.245207	-99.175503

20 CARR: El Saucillo - Amealco

CLAVE: 13103

RUTA: HGO-103

AÑO: 2021

LUGAR	ESTACION				CLASIFICACION VEHICULAR EN PORCIENTO													COORDENADAS		
	KM	TE	SC	TDPA	M	A	B	C2	C3	T3S2	T3S3	T3S2R4	OTROS	A	B	C	K'	D	LATITUD	LONGITUD
T. C. Portezuelo - Palmillas	0.00	3	0	4355	1.7	81.9	3.3	8.5	1.8	1.3	0.8	0.3	0.4	83.6	3.3	13.1	0.092	0.516	20.312810	-99.715166
Nopala	11.00	1	1	2223	2.1	83.2	2.7	6.9	1.5	1.5	1.2	0.4	0.5	85.3	2.7	12.0	0.092	0.503	20.254138	-99.653147
Nopala	11.00	1	2	2240	2.0	82.7	2.7	7.0	1.5	1.7	1.4	0.5	0.5	84.7	2.7	12.6	0.088	0.503	20.254233	-99.653138
Nopala	11.00	3	0	4790	1.1	81.4	2.7	7.7	1.8	2.6	1.5	0.5	0.7	82.5	2.7	14.8	0.101	0.504	20.245630	-99.636255
Amealco	21.40	1	0	2460	1.5	83.6	2.1	6.2	1.4	1.9	1.8	0.7	0.8	85.1	2.1	12.8	0.084	0.506	20.239152	-99.561158

21 CARR: Ent. Emiliano Zapata - Cd. Sahagún

CLAVE: 13255

RUTA: HGO

AÑO: 2021

LUGAR	ESTACION				CLASIFICACION VEHICULAR EN PORCIENTO													COORDENADAS		
	KM	TE	SC	TDPA	M	A	B	C2	C3	T3S2	T3S3	T3S2R4	OTROS	A	B	C	K'	D	LATITUD	LONGITUD
T. C. Calpulalpan - El Ocote	0.00																			
Emiliano Zapata	2.70	1	1	4043	1.2	76.3	1.8	7.3	3.1	5.6	2.5	1.4	0.8	77.5	1.8	20.7	0.070	0.514	19.642369	-98.537786
Emiliano Zapata	2.70	1	2	3766	1.8	73.9	1.9	8.0	3.2	6.1	2.8	1.5	0.8	75.7	1.9	22.4	0.075	0.514	19.642273	-98.537936
T. Izq. Otumba	14.00	1	1	5210	2.9	83.6	2.0	3.8	2.4	3.5	1.0	0.7	0.1	86.5	2.0	11.5	0.092	0.504	19.742672	-98.582268
T. Izq. Otumba	14.00	1	2	5129	3.0	82.8	2.5	3.4	2.2	4.1	1.3	0.6	0.1	85.8	2.5	11.7	0.100	0.504	19.742601	-98.582319
Cd. Sahagún	17.98	1	1	7311	5.4	85.3	2.2	3.2	1.4	1.2	0.5	0.6	0.2	90.7	2.2	7.1	0.111	0.501	19.757110	-98.588284
Cd. Sahagún	17.98	1	2	7278	4.6	85.5	2.1	4.0	1.4	1.3	0.5	0.5	0.1	90.1	2.1	7.8	0.109	0.501	19.757129	-98.588369

22 CARR: Ent. Tepeji del Río - Tlahuelilpan

CLAVE: 13017

RUTA: HGO-017

AÑO: 2021

LUGAR	ESTACION				CLASIFICACION VEHICULAR EN PORCIENTO													COORDENADAS		
	KM	TE	SC	TDPA	M	A	B	C2	C3	T3S2	T3S3	T3S2R4	OTROS	A	B	C	K'	D	LATITUD	LONGITUD
T. C. México - Querétaro (Cuota)	0.00																			
T. Izq. Tepeji del Río	3.00	3	1	6669	6.5	80.9	1.6	6.3	1.3	0.8	1.3	0.8	0.5	87.4	1.6	11.0	0.062	0.558	19.940913	-99.339202
T. Izq. Tepeji del Río	3.00	3	2	6474	5.8	81.8	1.6	6.5	1.3	0.7	1.3	0.6	0.4	87.6	1.6	10.8	0.063	0.558	19.940902	-99.339283
Tula de Allende	18.00	1	0	16257	6.0	81.6	1.2	5.6	0.8	2.8	1.1	0.6	0.3	87.6	1.2	11.2	0.080	0.504	20.046922	-99.340341

HIDALGO

22 CARR: Ent. Tepeji del Río - Tlahuelilpan

CLAVE: 13017

RUTA: HGO-017

AÑO: 2021

LUGAR	ESTACION				CLASIFICACION VEHICULAR EN PORCIENTO													COORDENADAS		
	KM	TE	SC	TDPA	M	A	B	C2	C3	T3S2	T3S3	T3S2R4	OTROS	A	B	C	K'	D	LATITUD	LONGITUD
X. C. Arco Norte de La Ciudad de México	19.40	1	1	12447	6.4	78.9	1.7	3.4	2.0	3.3	1.5	2.3	0.5	85.3	1.7	13.0	0.074	0.524	20.097152	-99.286595
X. C. Arco Norte de La Ciudad de México	19.40	1	2	11301	6.4	78.4	1.6	3.6	2.1	3.3	1.4	2.5	0.7	84.8	1.6	13.6	0.074	0.524	20.097270	-99.286672
Tlahuelilpan	32.00	1	1	7036	5.2	86.3	1.0	3.5	1.8	1.0	0.7	0.2	0.3	91.5	1.0	7.5	0.080	0.513	20.127599	-99.242401
Tlahuelilpan	32.00	1	2	6686	5.4	84.4	1.4	4.0	2.0	1.1	0.9	0.4	0.4	89.8	1.4	8.8	0.073	0.513	20.127708	-99.242459

23 CARR: Ent. Tolman - Cd. Sahagún

CLAVE: 00119

RUTA: EM-009-HGO

AÑO: 2021

LUGAR	ESTACION				CLASIFICACION VEHICULAR EN PORCIENTO													COORDENADAS		
	KM	TE	SC	TDPA	M	A	B	C2	C3	T3S2	T3S3	T3S2R4	OTROS	A	B	C	K'	D	LATITUD	LONGITUD
T. C. Venta de Carpio - Tulancingo	0.00	3	0	14659	4.2	90.2	0.7	2.2	0.8	1.0	0.5	0.3	0.1	94.4	0.7	4.9	0.078	0.517	19.714530	-98.791133
Otumba	5.00	3	0	6229	6.0	84.3	0.9	4.6	1.3	1.5	1.1	0.2	0.1	90.3	0.9	8.8	0.097	0.503	19.710657	-98.743009
T. Der. Jaltepec	21.00	3	0	4192	1.8	79.5	1.7	12.7	1.7	1.5	0.9	0.1	0.1	81.3	1.7	17.0	0.061	0.507	19.749521	-98.653630
Lim. Edos. Term. Méx. Ppia. Hgo.	25.00																			
Cd. Sahagún	32.00	1	0	7234	3.0	83.9	2.1	6.5	1.2	1.4	0.9	0.8	0.2	86.9	2.1	11.0	0.073	0.506	19.752238	-98.604182

24 CARR: Francisco I. Madero - Tula de Allende

CLAVE: 13043

RUTA: HGO

AÑO: 2021

LUGAR	ESTACION				CLASIFICACION VEHICULAR EN PORCIENTO													COORDENADAS		
	KM	TE	SC	TDPA	M	A	B	C2	C3	T3S2	T3S3	T3S2R4	OTROS	A	B	C	K'	D	LATITUD	LONGITUD
T. C. Portezuelo - Palmillas	0.00	3	0	4392	3.7	81.9	2.1	7.1	0.8	3.3	0.5	0.1	0.5	85.6	2.1	12.3	0.076	0.509	20.444022	-99.361590
Gral. Pedro María Anaya	38.20	1	0	4723	12.0	82.6	0.3	2.2	0.9	0.8	0.8	0.2	0.2	94.6	0.3	5.1	0.082	0.507	20.158734	-99.361309
T. C. (México - Querétaro) - Tlahuelilpan de Ocampo	52.70	1	0	8795	7.0	87.2	0.5	1.9	1.7	0.9	0.4	0.3	0.1	94.2	0.5	5.3	0.076	0.503	20.068086	-99.330985

25 CARR: Huichapan - Tecozautla

CLAVE: 13030

RUTA: HGO-030

AÑO: 2021

LUGAR	ESTACION				CLASIFICACION VEHICULAR EN PORCIENTO													COORDENADAS		
	KM	TE	SC	TDPA	M	A	B	C2	C3	T3S2	T3S3	T3S2R4	OTROS	A	B	C	K'	D	LATITUD	LONGITUD
Huichapan	0.00	3	0	6007	4.0	87.4	1.3	3.3	1.5	1.1	1.0	0.4	0.0	91.4	1.3	7.3	0.082	0.509	20.383839	-99.659916
Tecozautla	30.85																			

26 CARR: Jilotepec - Maravillas

CLAVE: 00015

RUTA: EM-HGO

AÑO: 2021

LUGAR	ESTACION				CLASIFICACION VEHICULAR EN PORCIENTO													COORDENADAS		
	KM	TE	SC	TDPA	M	A	B	C2	C3	T3S2	T3S3	T3S2R4	OTROS	A	B	C	K'	D	LATITUD	LONGITUD
Jilotepec	0.00	3	0	8609	7.6	85.8	0.6	3.2	0.8	0.6	0.5	0.5	0.4	93.4	0.6	6.0	0.094	0.509	19.954263	-99.551967

HIDALGO

26 CARR: Jilotepec - Maravillas

CLAVE: 00015

RUTA: EM-HGO

AÑO: 2021

LUGAR	ESTACION				CLASIFICACION VEHICULAR EN PORCIENTO													COORDENADAS		
	KM	TE	SC	TDPA	M	A	B	C2	C3	T3S2	T3S3	T3S2R4	OTROS	A	B	C	K'	D	LATITUD	LONGITUD
X. C. México - Querétaro (Cuota)	21.30	1	0	3324	2.0	83.8	2.5	8.3	1.1	1.0	0.8	0.3	0.2	85.8	2.5	11.7	0.088	0.515	20.080054	-99.632334
X. C. México - Querétaro (Cuota)	21.30	3	0	4119	2.3	83.7	2.0	9.9	1.0	0.4	0.4	0.1	0.2	86.0	2.0	12.0	0.088	0.536	20.093925	-99.626566
Acazuchitlán	29.00	1	0	2885	1.8	82.6	1.7	10.1	0.9	1.5	0.5	0.5	0.4	84.4	1.7	13.9	0.096	0.504	20.139067	-99.602601
Lim. Edos. Term. Méx. Ppia. Hgo.	29.30																			
Maravillas	36.40	1	0	1881	1.9	82.8	3.3	8.1	1.3	1.4	0.5	0.4	0.3	84.7	3.3	12.0	0.117	0.501	20.199578	-99.585367
T. C. El Saucillo - Amealco	40.00	1	0	3226	1.7	80.0	4.6	10.3	0.8	1.5	0.5	0.3	0.3	81.7	4.6	13.7	0.109	0.530	20.231682	-99.594556

27 CARR: Libramiento de Atotonilco El Grande

CLAVE: 13238

RUTA: HGO

AÑO: 2021

LUGAR	ESTACION				CLASIFICACION VEHICULAR EN PORCIENTO													COORDENADAS		
	KM	TE	SC	TDPA	M	A	B	C2	C3	T3S2	T3S3	T3S2R4	OTROS	A	B	C	K'	D	LATITUD	LONGITUD
T. C. Pachuca - Tempoal (1er. Acceso)	0.00	3	1	3745	0.7	85.7	1.5	7.3	1.9	1.4	1.4	0.0	0.1	86.4	1.5	12.1	0.090	0.524	20.273212	-98.646844
T. C. Pachuca - Tempoal (1er. Acceso)	0.00	3	2	4202	0.7	85.6	1.3	8.1	1.7	1.2	1.3	0.0	0.1	86.3	1.3	12.4	0.072	0.524	20.273188	-98.646949
T. C. Pachuca - Tempoal (2do. Acceso)	6.30	1	1	4188	1.3	85.3	1.6	8.6	1.6	0.8	0.8	0.0	0.0	86.6	1.6	11.8	0.083	0.506	20.295648	-98.666627
T. C. Pachuca - Tempoal (2do. Acceso)	6.30	1	2	4068	0.9	85.6	1.6	8.6	1.5	0.9	0.8	0.0	0.1	86.5	1.6	11.9	0.075	0.506	20.295509	-98.666754

28 CARR: Lolotla - Atlapexco

CLAVE: 13238

RUTA: HGO

AÑO: 2021

LUGAR	ESTACION				CLASIFICACION VEHICULAR EN PORCIENTO													COORDENADAS		
	KM	TE	SC	TDPA	M	A	B	C2	C3	T3S2	T3S3	T3S2R4	OTROS	A	B	C	K'	D	LATITUD	LONGITUD
T. C. Pachuca - Tempoal	0.00	3	0	1194	4.7	89.2	0.9	3.4	0.2	1.2	0.4	0.0	0.0	93.9	0.9	5.2	0.097	0.507	20.875606	-98.703187
Atlapexco	68.00	1	0	3147	11.2	83.4	0.2	2.5	0.3	2.0	0.2	0.1	0.1	94.6	0.2	5.2	0.088	0.502	21.015317	-98.352110
T. C. Álamo - Huejutla de Reyes	69.80																			

29 CARR: Los Reyes - El Tephé

CLAVE: 00021

RUTA: EM-HGO

AÑO: 2021

LUGAR	ESTACION				CLASIFICACION VEHICULAR EN PORCIENTO													COORDENADAS		
	KM	TE	SC	TDPA	M	A	B	C2	C3	T3S2	T3S3	T3S2R4	OTROS	A	B	C	K'	D	LATITUD	LONGITUD
T. C. México - Pachuca (Libre)	0.00																			
Los Reyes	1.35	3	1	9643	2.6	94.1	0.1	1.9	0.7	0.3	0.1	0.1	0.1	96.7	0.1	3.2	0.075	0.530	19.769708	-98.996587
Los Reyes	1.35	3	2	8564	2.5	92.7	0.3	2.6	0.7	0.6	0.2	0.1	0.3	95.2	0.3	4.5	0.074	0.530	19.769658	-98.996607
Zumpango	15.35	1	1	13630	7.2	85.8	1.4	2.7	1.6	0.8	0.2	0.2	0.1	93.0	1.4	5.6	0.080	0.511	19.791285	-99.068854
Zumpango	15.35	1	2	13037	6.8	86.5	2.0	2.5	1.0	0.9	0.1	0.1	0.1	93.3	2.0	4.7	0.076	0.511	19.791364	-99.069886
Zumpango	15.35	3	0	18852	8.2	82.8	0.6	3.2	2.4	1.3	0.6	0.7	0.2	91.0	0.6	8.4	0.066	0.513	19.820614	-99.115168
Tequixquiac	29.00	1	0	11036	9.7	79.8	0.9	4.1	2.5	1.1	0.9	0.6	0.4	89.5	0.9	9.6	0.062	0.507	19.884362	-99.137927

HIDALGO

29 CARR: Los Reyes - El Tephé

CLAVE: 00021

RUTA: EM-HGO

AÑO: 2021

LUGAR	ESTACION				CLASIFICACION VEHICULAR EN PORCIENTO													COORDENADAS		
	KM	TE	SC	TDPA	M	A	B	C2	C3	T3S2	T3S3	T3S2R4	OTROS	A	B	C	K'	D	LATITUD	LONGITUD
Apaxco	39.00	3	1	4921	1.1	77.9	2.4	12.7	2.4	2.1	1.0	0.2	0.2	79.0	2.4	18.6	0.066	0.519	19.983587	-99.179243
Apaxco	39.00	3	2	4547	1.4	75.2	2.7	14.3	2.6	2.3	1.1	0.2	0.2	76.6	2.7	20.7	0.068	0.519	19.983587	-99.179331
Lim. Edos. Term. Méx. Ppia. Hgo.	40.00																			
T. Izq. Atotonilco (1° Acceso)	42.00	1	0	8119	9.7	72.6	1.0	4.3	4.1	3.2	3.7	1.0	0.4	82.3	1.0	16.7	0.085	0.500	19.990187	-99.184530
X. C. Arco Norte de La Ciudad de México	50.00	3	1	6076	10.3	79.5	1.7	3.7	2.0	1.0	0.6	0.8	0.4	89.8	1.7	8.5	0.077	0.529	20.069406	-99.220544
X. C. Arco Norte de La Ciudad de México	50.00	3	2	6826	7.7	84.0	1.2	3.1	1.1	1.1	0.8	0.6	0.4	91.7	1.2	7.1	0.074	0.529	20.069406	-99.220659
Tlaxcoapan	52.00	3	1	4770	12.6	81.2	1.1	3.5	0.7	0.5	0.2	0.1	0.1	93.8	1.1	5.1	0.086	0.503	20.103355	-99.221596
Tlaxcoapan	52.00	3	2	4770	12.6	81.2	1.1	3.5	0.7	0.5	0.2	0.1	0.1	93.8	1.1	5.1	0.086	0.503	20.103346	-99.221682
Tlahuelilpan	60.00	3	1	9577	8.6	80.9	1.3	5.9	1.4	1.0	0.6	0.2	0.1	89.5	1.3	9.2	0.073	0.505	20.149994	-99.234159
Tlahuelilpan	60.00	3	2	9370	8.4	81.2	1.3	5.8	1.4	1.0	0.6	0.2	0.1	89.6	1.3	9.1	0.073	0.505	20.150012	-99.234254
Progreso	72.00	1	1	11246	6.9	86.9	0.9	2.8	0.9	0.8	0.4	0.2	0.2	93.8	0.9	5.3	0.070	0.516	20.236592	-99.195906
Progreso	72.00	1	2	10544	6.9	86.7	0.8	2.8	0.9	0.8	0.5	0.3	0.3	93.6	0.8	5.6	0.074	0.516	20.236655	-99.195935
El Tephé	97.00	1	0	7223	4.5	85.7	0.9	5.6	1.2	1.0	0.8	0.2	0.1	90.2	0.9	8.9	0.096	0.501	20.437123	-99.172729

30 CARR: Otumba - Tizayuca

CLAVE: 00012

RUTA: EM-HGO

AÑO: 2021

LUGAR	ESTACION				CLASIFICACION VEHICULAR EN PORCIENTO													COORDENADAS		
	KM	TE	SC	TDPA	M	A	B	C2	C3	T3S2	T3S3	T3S2R4	OTROS	A	B	C	K'	D	LATITUD	LONGITUD
Otumba	0.00	3	0	4676	5.0	88.2	0.1	3.1	0.1	2.9	0.2	0.0	0.4	93.2	0.1	6.7	0.091	0.505	19.713499	-98.758058
X. C. Venta de Carpio - Tulancingo	6.00	3	1	2421	2.0	85.6	0.3	6.8	1.2	3.2	0.9	0.0	0.0	87.6	0.3	12.1	0.151	0.503	19.755464	-98.756624
X. C. Venta de Carpio - Tulancingo	6.00	3	2	2462	2.1	86.9	0.2	5.6	1.1	1.3	2.8	0.0	0.0	89.0	0.2	10.8	0.118	0.503	19.757719	-98.758130
Temascalapa	26.50	3	1	3335	3.7	88.4	0.2	6.0	1.2	0.3	0.1	0.0	0.1	92.1	0.2	7.7	0.074	0.507	19.830370	-98.916493
Temascalapa	26.50	3	2	3453	3.0	88.8	0.2	6.3	1.2	0.3	0.1	0.0	0.1	91.8	0.2	8.0	0.082	0.507	19.830243	-98.916520
Lim. Edos. Term. Méx. Ppia. Hgo.	29.00																			
Tizayuca	37.10	1	1	6895	4.9	88.3	0.9	3.0	0.8	1.0	0.4	0.3	0.4	93.2	0.9	5.9	0.074	0.501	19.839556	-98.969239
Tizayuca	37.10	1	2	6871	4.8	87.9	0.9	3.2	0.9	1.2	0.4	0.3	0.4	92.7	0.9	6.4	0.066	0.501	19.839458	-98.969277

31 CARR: Ramal a El Chico

CLAVE: 13256

RUTA: HGO

AÑO: 2021

LUGAR	ESTACION				CLASIFICACION VEHICULAR EN PORCIENTO													COORDENADAS		
	KM	TE	SC	TDPA	M	A	B	C2	C3	T3S2	T3S3	T3S2R4	OTROS	A	B	C	K'	D	LATITUD	LONGITUD
T. C. Pachuca - Tempoal	0.00	3	0	2806	2.1	90.5	0.2	2.8	0.3	2.2	0.7	0.4	0.8	92.6	0.2	7.2	0.091	0.501	20.140132	-98.723839
Mineral El Chico	21.00	1	0	1266	2.3	91.2	0.2	5.5	0.3	0.4	0.1	0.0	0.0	93.5	0.2	6.3	0.154	0.515	20.210390	-98.728893

HIDALGO

32 CARR: Ramal a Pachuca

CLAVE: 13254

RUTA: HGO

AÑO: 2021

LUGAR	ESTACION				CLASIFICACION VEHICULAR EN PORCIENTO														COORDENADAS	
	KM	TE	SC	TDPA	M	A	B	C2	C3	T3S2	T3S3	T3S2R4	OTROS	A	B	C	K'	D	LATITUD	LONGITUD
T. C. Colonia - Portezuelo	0.00	3	1	15578	1.1	93.7	0.7	3.5	0.5	0.2	0.1	0.1	0.1	94.8	0.7	4.5	0.082	0.506	20.123142	-98.815391
T. C. Colonia - Portezuelo	0.00	3	2	15963	1.1	93.7	0.7	3.5	0.5	0.2	0.1	0.1	0.1	94.8	0.7	4.5	0.087	0.506	20.123242	-98.815458
Pachuca	10.00																			

33 CARR: San Alejo - Huayacocotla

CLAVE: 00132

RUTA: HGO-051-VER-113

AÑO: 2021

LUGAR	ESTACION				CLASIFICACION VEHICULAR EN PORCIENTO														COORDENADAS	
	KM	TE	SC	TDPA	M	A	B	C2	C3	T3S2	T3S3	T3S2R4	OTROS	A	B	C	K'	D	LATITUD	LONGITUD
T. C. Pachuca - Tuxpam	0.00	3	0	5793	5.1	78.1	1.3	9.5	1.5	2.9	0.7	0.5	0.4	83.2	1.3	15.5	0.094	0.503	20.154268	-98.291757
Metepec	11.80	3	0	3224	4.0	79.2	3.8	11.4	0.9	0.3	0.2	0.1	0.1	83.2	3.8	13.0	0.087	0.502	20.244086	-98.331492
Agua Blanca	29.48	3	0	3871	2.3	87.6	1.1	6.6	1.0	0.9	0.2	0.2	0.1	89.9	1.1	9.0	0.094	0.520	20.353956	-98.360991
Lim. Edos. Term. Hgo. Ppia. Ver.	36.48																			
Huayacocotla	66.00	1	0	3603	6.0	82.5	0.9	5.9	0.6	3.1	0.2	0.3	0.5	88.5	0.9	10.6	0.079	0.509	20.527369	-98.492954

34 CARR: San Felipe Orizatlán - Huejutla de Reyes

CLAVE: 13258

RUTA: HGO

AÑO: 2021

LUGAR	ESTACION				CLASIFICACION VEHICULAR EN PORCIENTO														COORDENADAS	
	KM	TE	SC	TDPA	M	A	B	C2	C3	T3S2	T3S3	T3S2R4	OTROS	A	B	C	K'	D	LATITUD	LONGITUD
San Felipe Orizatlán	0.00	3	0	3903	12.2	75.8	0.8	6.3	1.3	2.7	0.5	0.0	0.4	88.0	0.8	11.2	0.075	0.501	21.171910	-98.591286
Huejutla de Reyes	25.00	1	0	3016	11.2	84.1	0.1	2.1	0.0	2.2	0.1	0.0	0.2	95.3	0.1	4.6	0.079	0.513	21.125623	-98.468241

35 CARR: Santo Domingo - T. C. (México - Querétaro)

CLAVE: 00433

RUTA: EM-011-HGO

AÑO: 2021

LUGAR	ESTACION				CLASIFICACION VEHICULAR EN PORCIENTO														COORDENADAS	
	KM	TE	SC	TDPA	M	A	B	C2	C3	T3S2	T3S3	T3S2R4	OTROS	A	B	C	K'	D	LATITUD	LONGITUD
T. C. Toluca - Palmillas	0.00	3	0	8251	2.3	90.2	1.1	3.8	0.9	0.9	0.6	0.1	0.1	92.5	1.1	6.4	0.095	0.506	19.624834	-99.771193
X. C. Los Reyes - Ixtlahuaca	6.11	3	0	8069	4.3	86.6	0.6	4.5	1.3	1.3	0.9	0.2	0.3	90.9	0.6	8.5	0.096	0.523	19.657428	-99.725806
X. C. Villa del Carbón - Atlacomulco	23.94	3	1	2612	0.9	77.9	2.9	6.1	2.2	5.1	2.1	1.8	1.0	78.8	2.9	18.3	0.086	0.504	19.786397	-99.702074
X. C. Villa del Carbón - Atlacomulco	23.94	3	2	2630	1.4	74.8	3.0	7.2	2.3	6.0	2.2	2.0	1.1	76.2	3.0	20.8	0.070	0.504	19.786283	-99.702177
T. Der. Chapa de Mota	42.70	1	1	5487	1.8	94.2	0.4	0.7	1.0	0.7	0.6	0.3	0.3	96.0	0.4	3.6	0.105	0.501	19.921618	-99.589940
T. Der. Chapa de Mota	42.70	1	2	5462	1.9	93.9	0.4	0.8	1.2	0.6	0.6	0.3	0.3	95.8	0.4	3.8	0.103	0.501	19.921720	-99.589997
Lim. Edos. Term. Méx. Ppia. Hgo.	63.34																			
T. C. México - Querétaro (Cuota)	65.84	1	1	4769	0.6	82.9	1.7	7.6	1.8	3.1	1.2	0.6	0.5	83.5	1.7	14.8	0.099	0.515	19.971050	-99.451372
T. C. México - Querétaro (Cuota)	65.84	1	2	4432	0.6	81.4	1.8	8.2	1.9	3.6	1.4	0.6	0.5	82.0	1.8	16.2	0.090	0.515	19.971090	-99.451450

HIDALGO

36 CARR: T. C. (Los Reyes - El Tephé) - Tizayuca

CLAVE: 00014

RUTA: EM-HGO

AÑO: 2021

LUGAR	ESTACION				CLASIFICACION VEHICULAR EN PORCIENTO													COORDENADAS		
	KM	TE	SC	TDPA	M	A	B	C2	C3	T3S2	T3S3	T3S2R4	OTROS	A	B	C	K'	D	LATITUD	LONGITUD
T. C. Los Reyes - El Tephé	0.00	3	0	6600	11.2	80.0	0.9	2.6	1.9	1.5	0.5	1.0	0.4	91.2	0.9	7.9	0.089	0.515	19.783515	-99.026151
Lim. Edos. Term. Méx. Ppia. Hgo.	6.50																			
Tizayuca	8.00	1	0	9517	10.3	76.0	0.5	4.4	0.4	6.5	1.2	0.3	0.4	86.3	0.5	13.2	0.094	0.559	19.827168	-98.989063

37 CARR: Tepeji del Río - T.C. (México - Querétaro)

CLAVE: 13104

RUTA: HGO

AÑO: 2021

LUGAR	ESTACION				CLASIFICACION VEHICULAR EN PORCIENTO													COORDENADAS		
	KM	TE	SC	TDPA	M	A	B	C2	C3	T3S2	T3S3	T3S2R4	OTROS	A	B	C	K'	D	LATITUD	LONGITUD
T. C. Ent. Tepeji del Río - Tlahuelilpan de Ocampo	0.00	3	0	6188	5.7	82.5	0.6	6.8	0.8	2.2	0.9	0.5	0.0	88.2	0.6	11.2	0.090	0.507	19.943307	-99.341360
T. C. México - Querétaro	12.40	1	0	3725	3.3	73.1	3.0	15.4	1.1	1.7	1.1	0.7	0.6	76.4	3.0	20.6	0.085	0.505	19.977517	-99.435726

38 CARR: Tlahuelilpan - San Agustín Tlaxiaca

CLAVE: 13435

RUTA: HGO

AÑO: 2021

LUGAR	ESTACION				CLASIFICACION VEHICULAR EN PORCIENTO													COORDENADAS		
	KM	TE	SC	TDPA	M	A	B	C2	C3	T3S2	T3S3	T3S2R4	OTROS	A	B	C	K'	D	LATITUD	LONGITUD
Tlahuelilpan	0.00	3	0	3201	11.6	83.3	0.2	4.6	0.3	0.0	0.0	0.0	0.0	94.9	0.2	4.9	0.076	0.504	20.137179	-99.225824
Ignacio Zaragoza	25.50	3	0	3702	1.8	88.0	1.8	7.4	0.8	0.1	0.1	0.0	0.0	89.8	1.8	8.4	0.090	0.508	20.130906	-98.995636
T. C. (La Colonia - Portezuelo)	48.00	1	0	5963	3.4	92.2	0.4	2.7	0.8	0.3	0.1	0.1	0.0	95.6	0.4	4.0	0.087	0.501	20.118991	-98.901671

39 CARR: Calpulalpan - El Ocote

CLAVE: 00054

RUTA: MEX-HGO

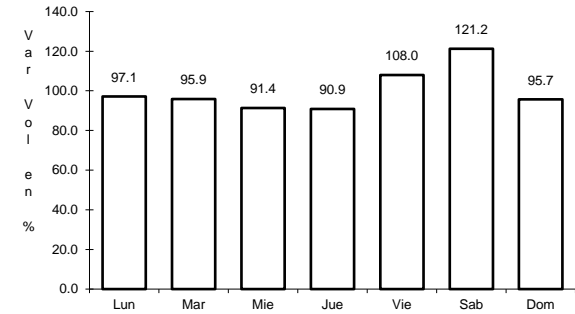
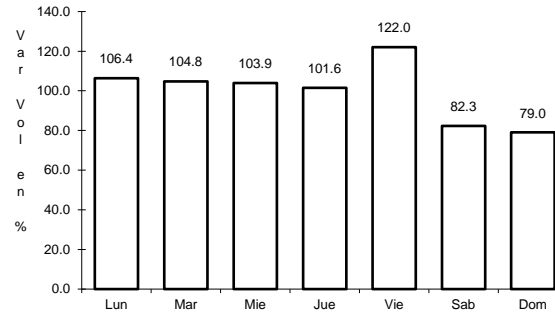
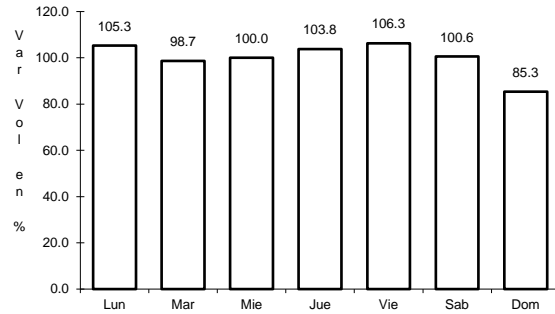
AÑO: 2021

LUGAR	ESTACION				CLASIFICACION VEHICULAR EN PORCIENTO													COORDENADAS		
	KM	TE	SC	TDPA	M	A	B	C2	C3	T3S2	T3S3	T3S2R4	OTROS	A	B	C	K'	D	LATITUD	LONGITUD
Calpulalpan	0.00	3	0	8333	2.4	81.8	2.6	4.1	1.7	4.5	1.3	1.2	0.4	84.2	2.6	13.2	0.072	0.507	19.612979	-98.556167
X. C. Arco Norte de La Ciudad de México	4.00	3	1	4159	3.0	77.2	2.2	6.6	2.4	6.5	1.0	0.5	0.6	80.2	2.2	17.6	0.094	0.522	19.627443	-98.541502
X. C. Arco Norte de La Ciudad de México	4.00	3	2	3801	2.9	77.4	2.3	6.4	2.4	6.5	1.0	0.6	0.5	80.3	2.3	17.4	0.089	0.522	19.627508	-98.541599
Lim. Edos. Term. Tlax. Ppia. Hgo.	5.00																			
Apan	19.58	3	1	4491	3.3	91.2	0.6	2.5	0.7	0.5	0.3	0.4	0.5	94.5	0.6	4.9	0.080	0.507	19.726271	-98.468025
Apan	19.58	3	2	4620	3.2	91.3	0.5	2.5	0.8	0.6	0.3	0.3	0.5	94.5	0.5	5.0	0.083	0.507	19.726184	-98.468092
Tepeapulco	34.92	3	0	4126	1.2	85.1	0.6	8.2	1.4	2.5	0.5	0.2	0.3	86.3	0.6	13.1	0.098	0.505	19.799324	-98.561133
X. C. Venta de Carpio - Tulancingo	51.18	1	1	1520	1.1	83.5	0.8	10.9	2.7	0.6	0.4	0.0	0.0	84.6	0.8	14.6	0.078	0.511	19.919197	-98.577548
X. C. Venta de Carpio - Tulancingo	51.18	1	2	1446	1.2	81.2	1.0	12.6	3.0	0.6	0.4	0.0	0.0	82.4	1.0	16.6	0.085	0.511	19.918554	-98.576793
X. C. Venta de Carpio - Tulancingo	51.18	3	0	1997	2.9	83.2	0.7	10.2	1.2	1.2	0.4	0.0	0.2	86.1	0.7	13.2	0.083	0.524	19.927829	-98.582997
El Ocote	70.44	1	1	1717	1.4	90.3	0.3	5.4	1.1	0.9	0.5	0.0	0.1	91.7	0.3	8.0	0.091	0.503	20.041240	-98.621506
El Ocote	70.44	1	2	1737	0.7	90.4	0.3	5.9	1.3	1.0	0.4	0.0	0.0	91.1	0.3	8.6	0.097	0.503	20.041239	-98.621503

1 CARR: Álamo - Huejutla de Reyes

CLAVE: 00116

RUTA: MEX-127



Km: 0.00 Tipo: 3 Sent: 0

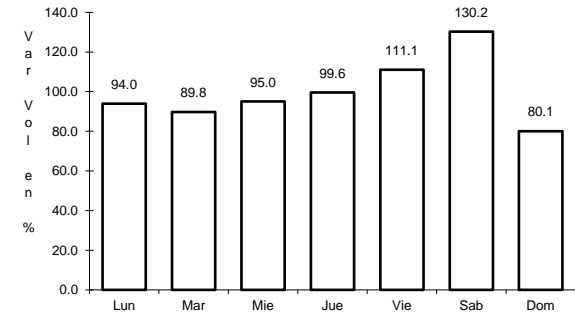
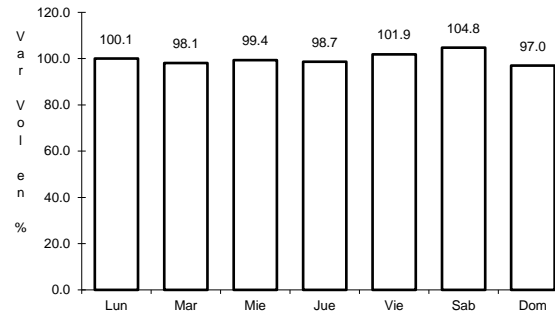
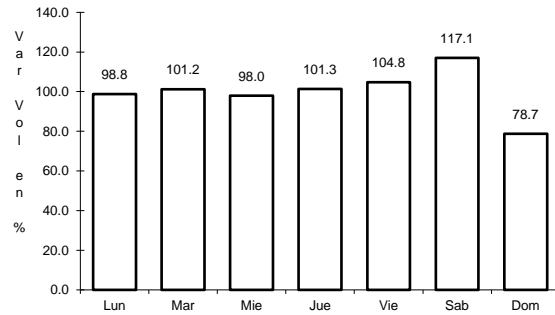
Km: 73.00 Tipo: 1 Sent: 0

Km: 78.00 Tipo: 3 Sent: 0

2 CARR: Apizaco - Tejocotal

CLAVE: 00430

RUTA: MEX-119



Km: 0.00 Tipo: 3 Sent: 1

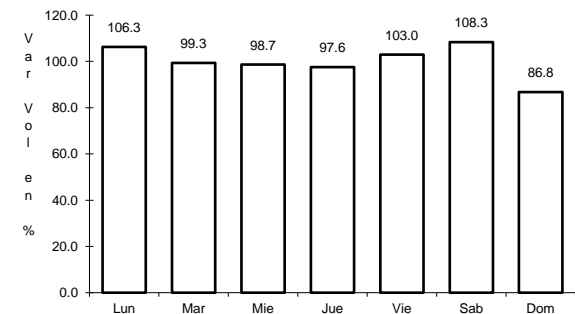
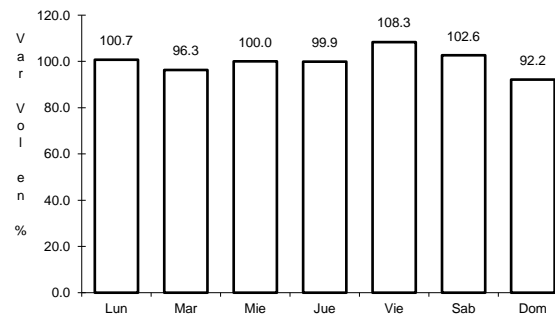
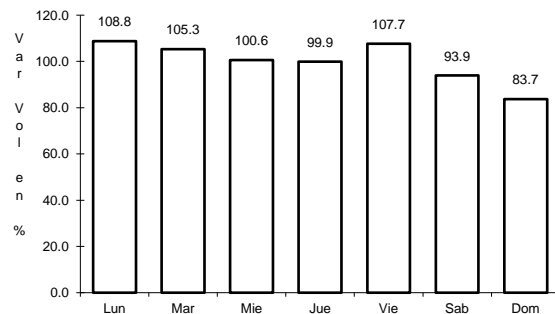
Km: 0.00 Tipo: 3 Sent: 2

Km: 113.15 Tipo: 1 Sent: 0

3 CARR: Ent. Colonia - Portezuelo

CLAVE: 13257

RUTA: MEX-085



Km: 0.00 Tipo: 3 Sent: 1

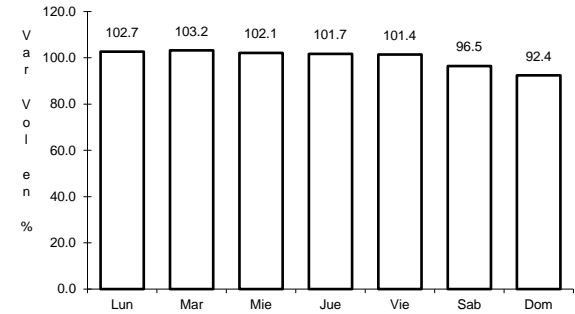
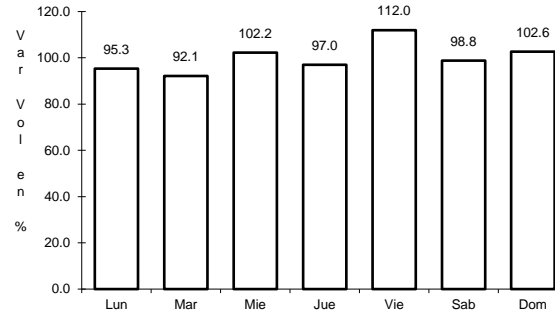
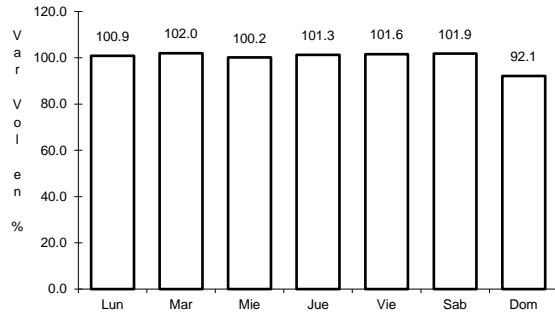
Km: 0.00 Tipo: 3 Sent: 2

Km: 75.20 Tipo: 3 Sent: 1

4 CARR: Ent. Jorobas - Tula

CLAVE: 00159

RUTA: MEX-087



Km: 0.00

Tipo: 3

Sent: 1

Km: 0.00

Tipo: 3

Sent: 2

Km: 37.70

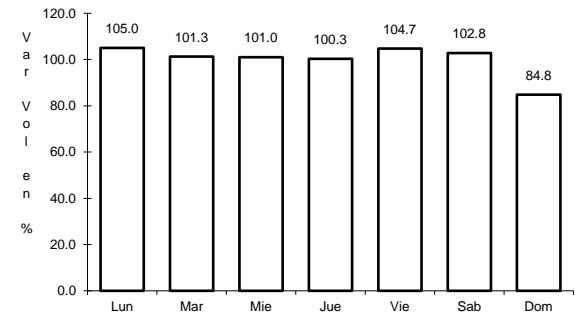
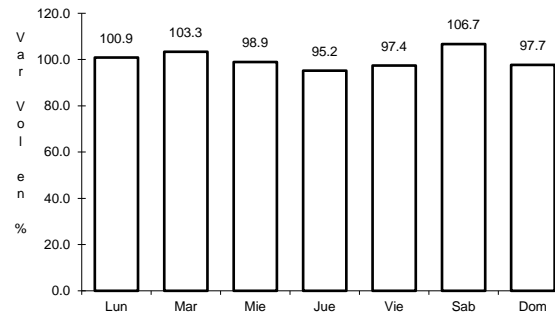
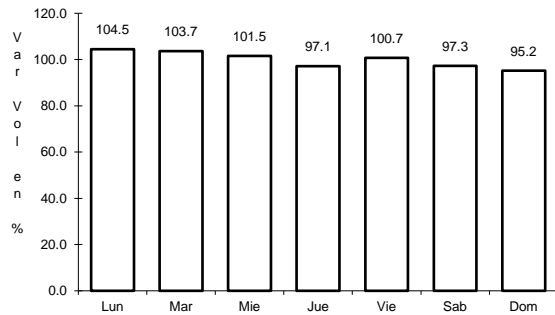
Tipo: 1

Sent: 1

5 CARR: México - Pachuca (Libre)

CLAVE: 00431

RUTA: MEX-085



Km: 26.93

Tipo: 1

Sent: 1

Km: 26.93

Tipo: 1

Sent: 2

Km: 86.50

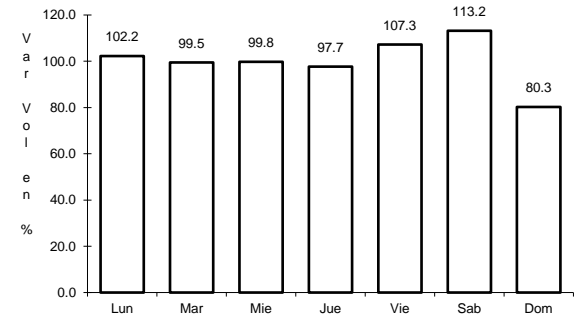
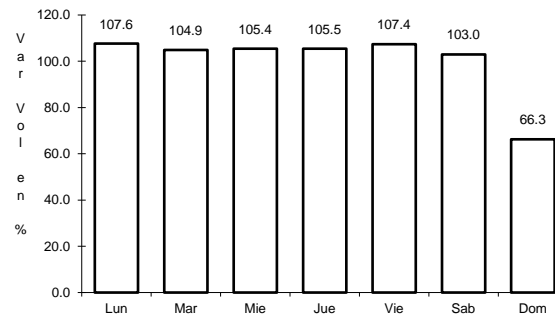
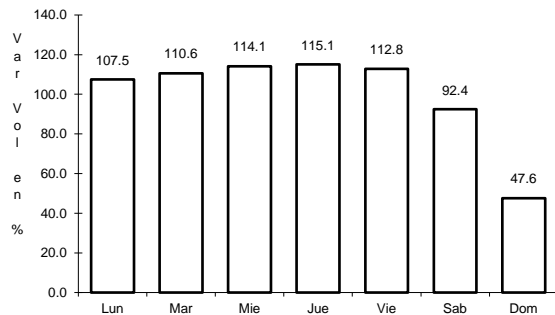
Tipo: 1

Sent: 1

6 CARR: Pachuca - Cd. Sahagún

CLAVE: 13088

RUTA: MEX



Km: 0.00

Tipo: 3

Sent: 1

Km: 0.00

Tipo: 3

Sent: 2

Km: 40.00

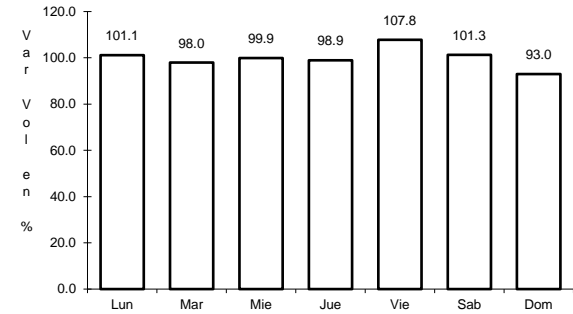
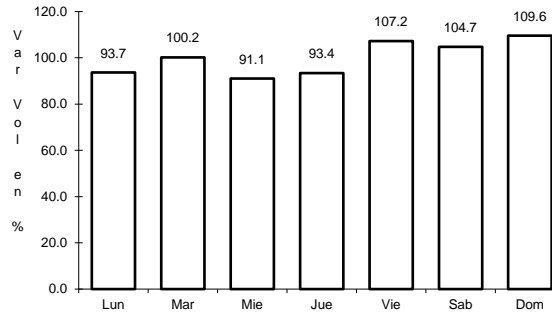
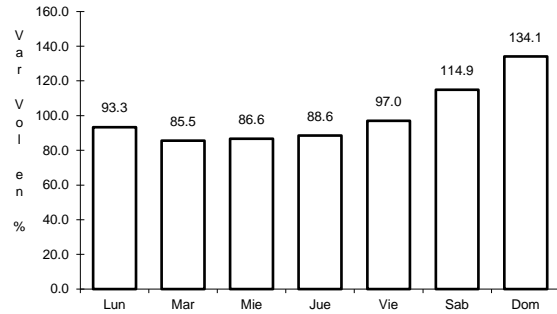
Tipo: 3

Sent: 1

7 CARR: Pachuca - Tempoal

CLAVE: 00113

RUTA: MEX-105



Km: 0.00 Tipo: 3 Sent: 0

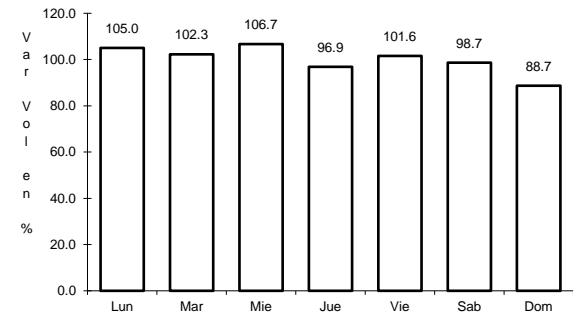
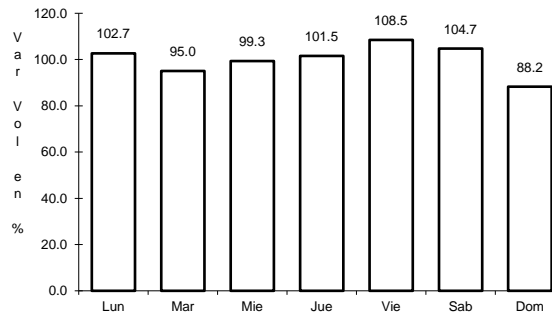
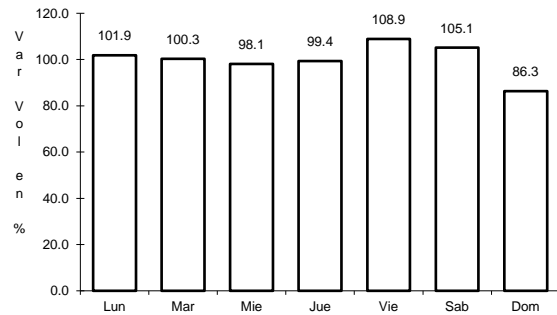
Km: 129.80 Tipo: 1 Sent: 0

Km: 260.68 Tipo: 1 Sent: 0

8 CARR: Pachuca - Tuxpam

CLAVE: 00608

RUTA: MEX-130



Km: 2.60 Tipo: 3 Sent: 1

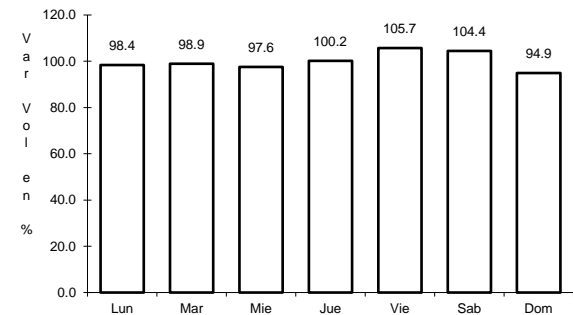
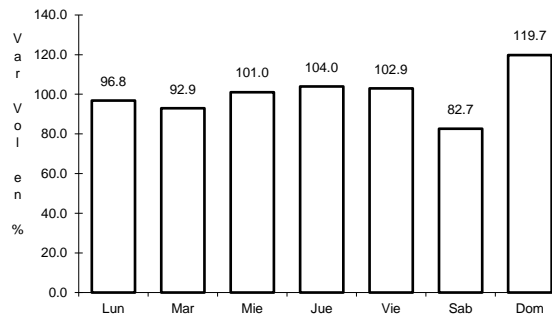
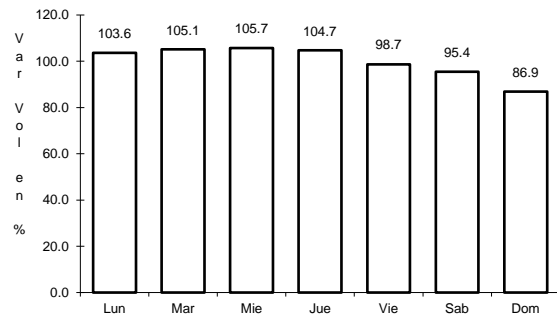
Km: 2.60 Tipo: 3 Sent: 2

Km: 232.50 Tipo: 1 Sent: 0

9 CARR: Portezuelo - Cd. Valles

CLAVE: 00023

RUTA: MEX-085



Km: 0.00 Tipo: 3 Sent: 0

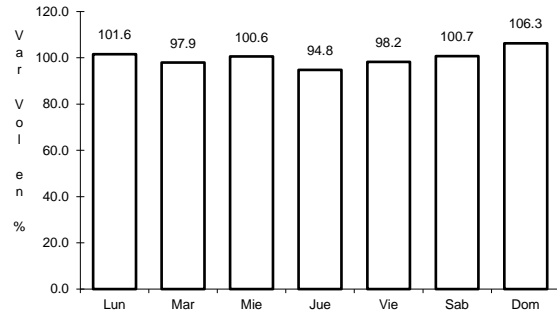
Km: 154.00 Tipo: 3 Sent: 0

Km: 286.41 Tipo: 1 Sent: 0

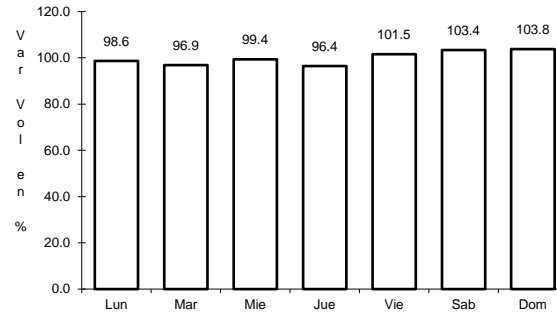
10 CARR: Portezuelo - Palmillas

CLAVE: 00194

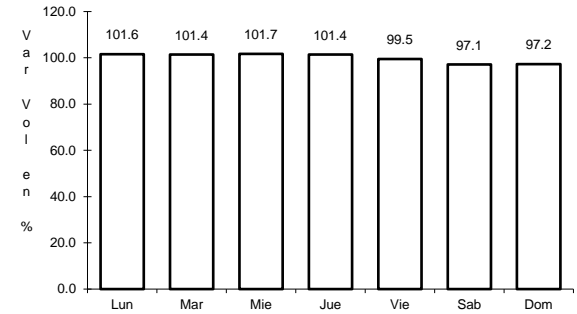
RUTA: MEX-045



Km: 0.00 Tipo: 3 Sent: 1



Km: 0.00 Tipo: 3 Sent: 2

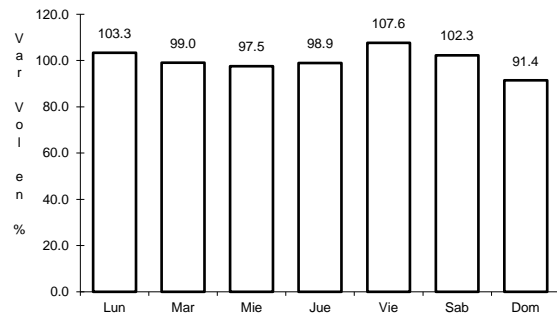


Km: 80.00 Tipo: 1 Sent: 1

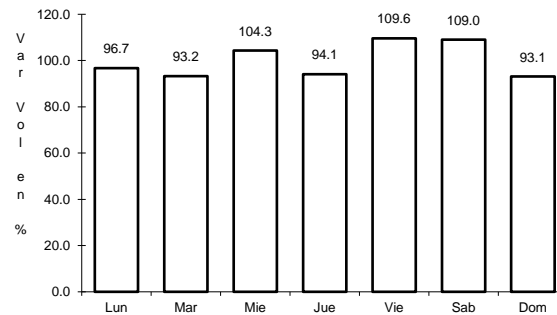
11 CARR: Tamazunchale - San Felipe Orizatlán

CLAVE: 00609

RUTA: MEX-085



Km: 0.00 Tipo: 3 Sent: 0

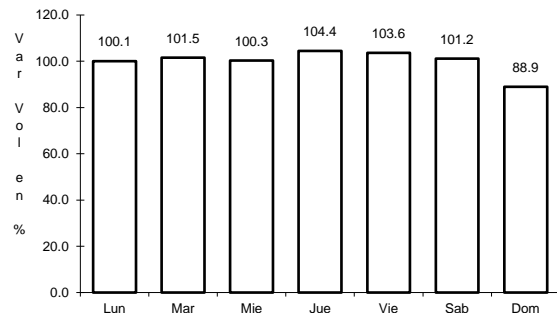


Km: 27.10 Tipo: 1 Sent: 0

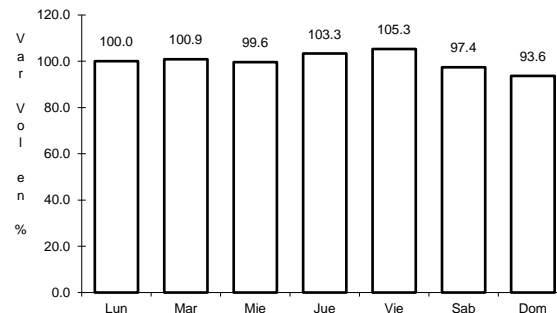
12 CARR: Venta de Carpio - T. C. (Pachuca - Tuxpam)

CLAVE: 00455

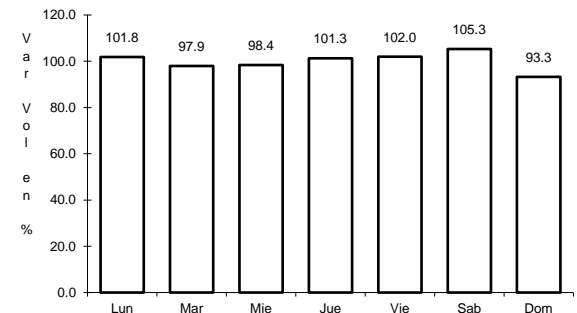
RUTA: MEX-132



Km: 6.42 Tipo: 3 Sent: 1



Km: 6.42 Tipo: 3 Sent: 2

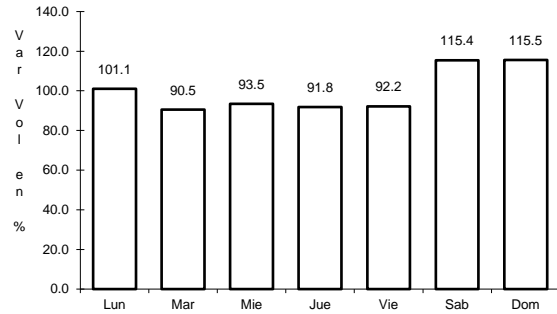


Km: 31.79 Tipo: 3 Sent: 0

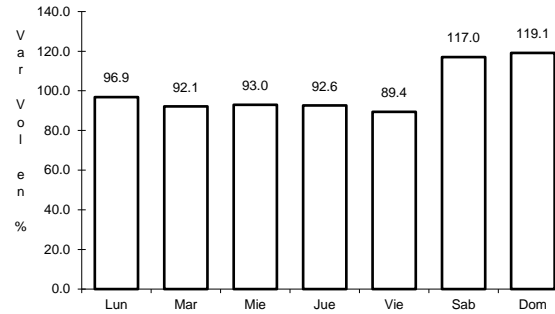
13 CARR: Ent. Tulancingo - Venta Grande (Cuota)

CLAVE: 00026

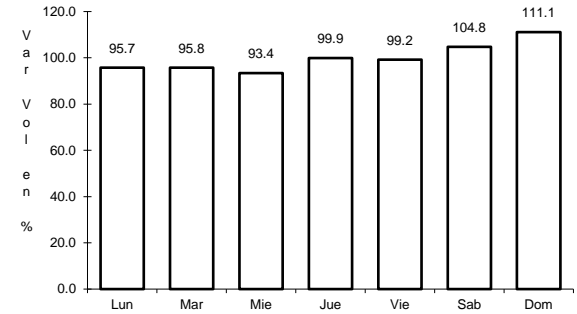
RUTA: MEX-132D



Km: 7.80 Tipo: 1 Sent: 0



Km: 21.80 Tipo: 1 Sent: 0

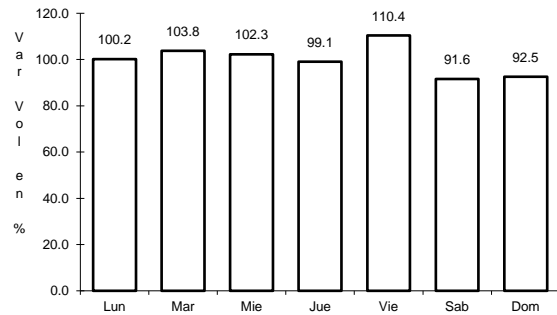


Km: 39.60 Tipo: 1 Sent: 0

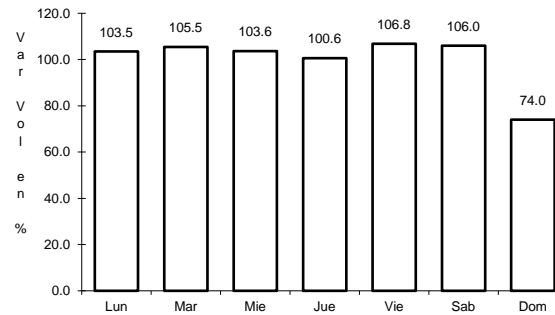
14 CARR: Libramiento Norte de la Ciudad de México (Cuota)

CLAVE: 0902

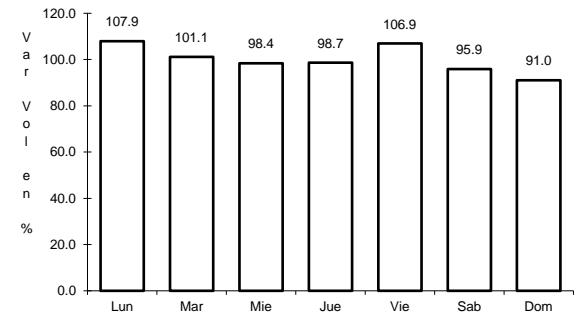
RUTA: MEX-M40D



Km: 12.90 Tipo: 1 Sent: 1



Km: 12.90 Tipo: 1 Sent: 2

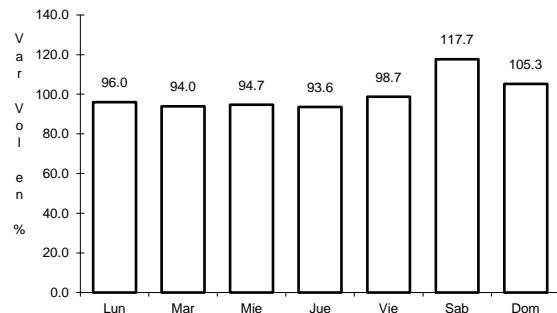


Km: 226.73 Tipo: 1 Sent: 1

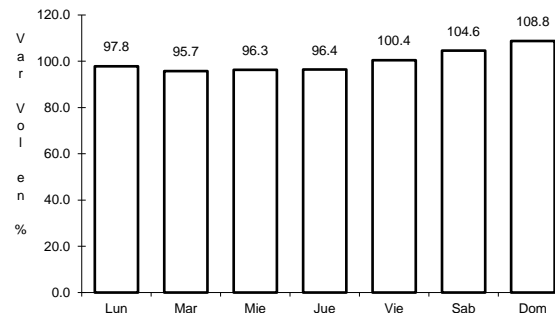
15 CARR: México - Pachuca (Cuota)

CLAVE: 00432

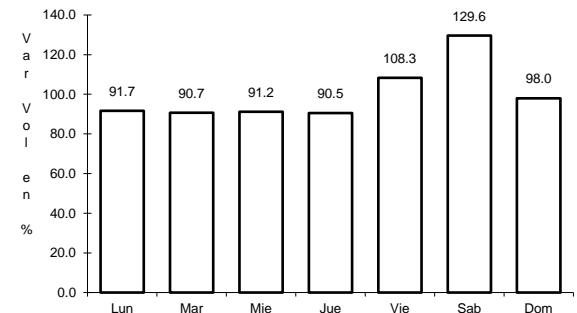
RUTA: MEX-085D



Km: 25.00 Tipo: 3 Sent: 1



Km: 25.00 Tipo: 3 Sent: 2

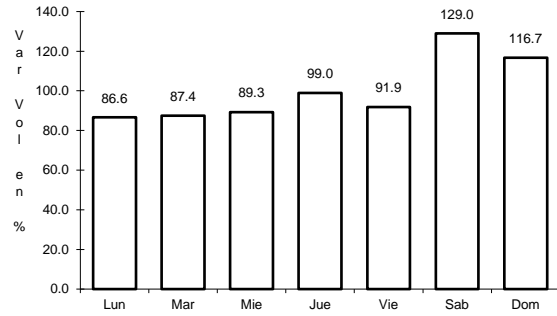


Km: 60.50 Tipo: 1 Sent: 1

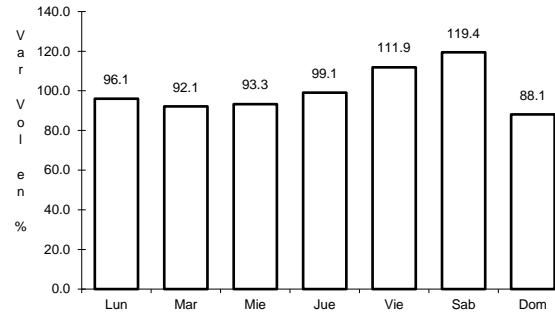
16 CARR: Tejocotal - Nuevo Necaxa (Cuota)

CLAVE: 00211

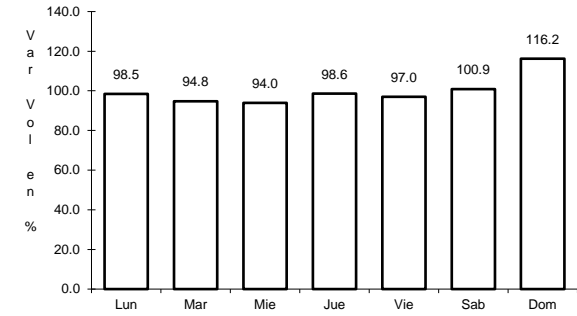
RUTA: MEX-132D



Km: 0.00 Tipo: 3 Sent: 0



Km: 17.00 Tipo: 1 Sent: 1

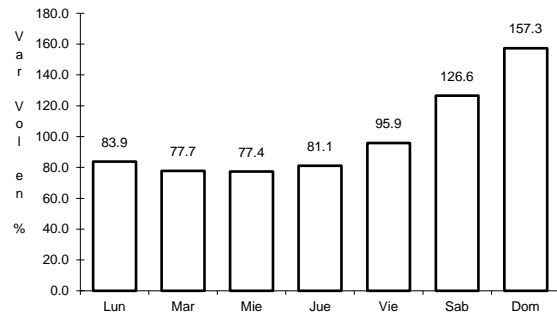


Km: 17.00 Tipo: 1 Sent: 2

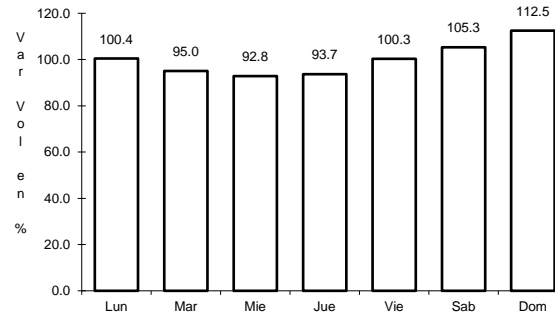
17 CARR: Tlaxco - Tejocotal (Cuota)

CLAVE: 00209

RUTA: MEX-119D



Km: 23.00 Tipo: 3 Sent: 0

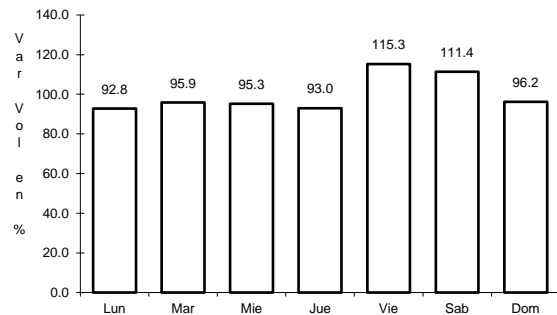


Km: 56.20 Tipo: 3 Sent: 0

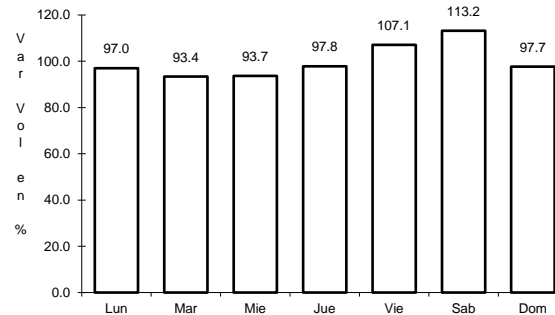
18 CARR: México - Querétaro (Cuota)

CLAVE: 00411

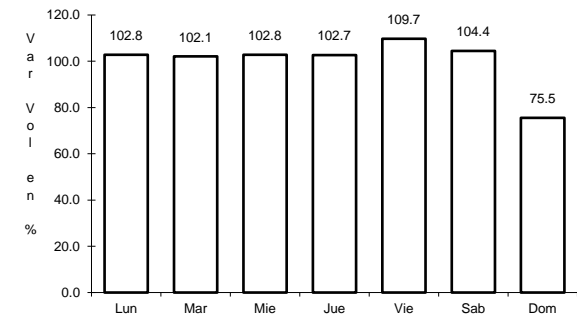
RUTA: MEX-057-MEX-057D



Km: 56.18 Tipo: 1 Sent: 1



Km: 56.18 Tipo: 1 Sent: 2

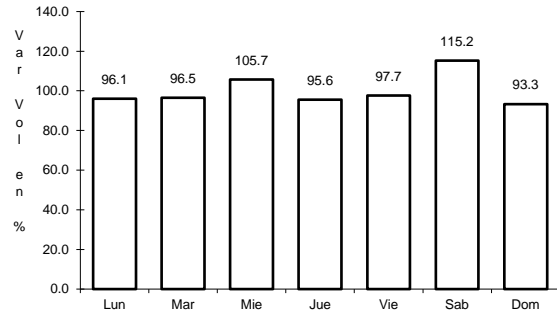


Km: 207.00 Tipo: 3 Sent: 1

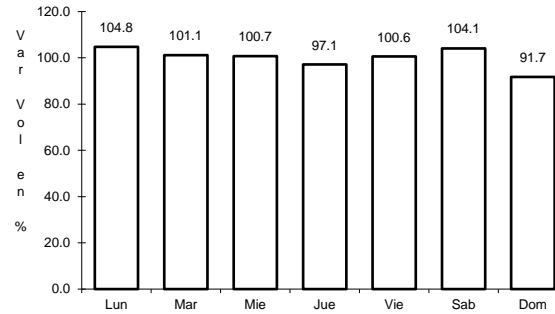
19 CARR: Actopan - Progreso

CLAVE: 13038

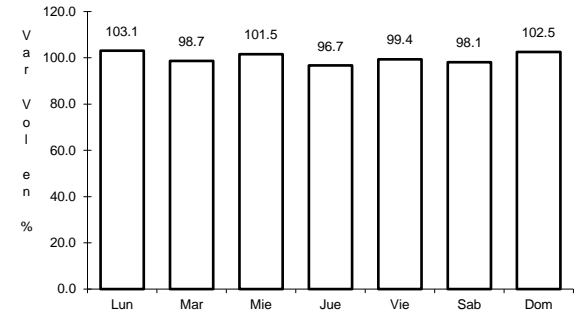
RUTA: HGO



Km: 0.00 Tipo: 3 Sent: 1



Km: 0.00 Tipo: 3 Sent: 2

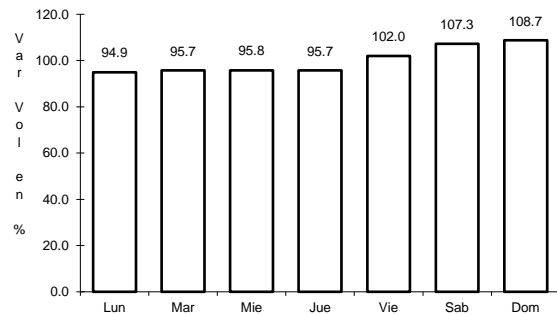


Km: 23.90 Tipo: 1 Sent: 1

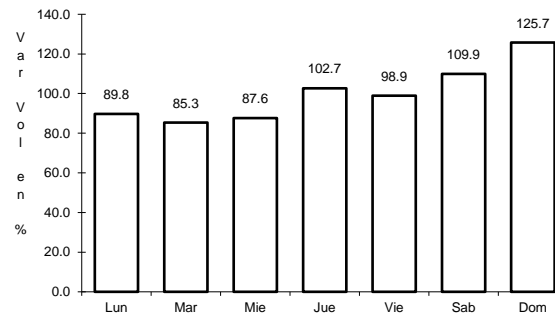
20 CARR: El Saucillo - Amealco

CLAVE: 13103

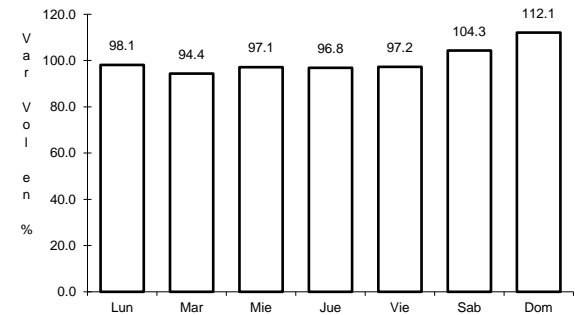
RUTA: HGO-103



Km: 0.00 Tipo: 3 Sent: 0



Km: 11.00 Tipo: 3 Sent: 0

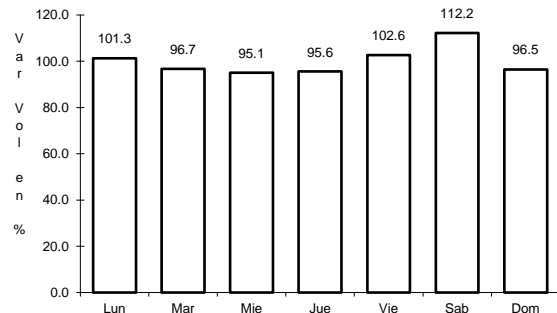


Km: 21.40 Tipo: 1 Sent: 0

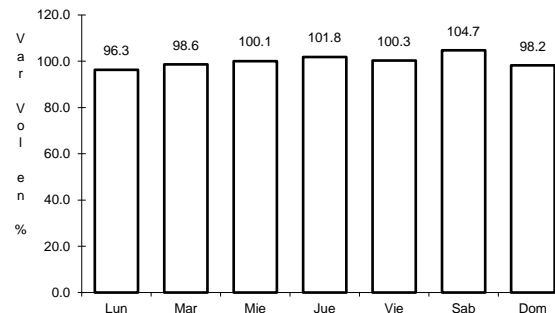
21 CARR: Ent. Emiliano Zapata - Cd. Sahagún

CLAVE: 13255

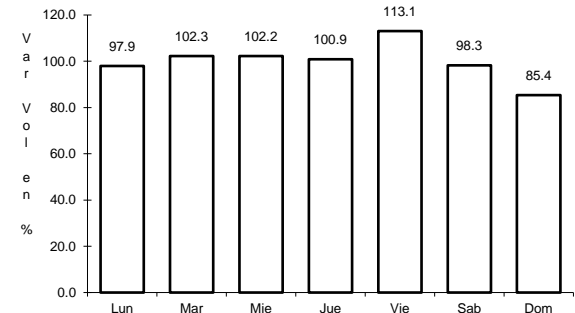
RUTA: HGO



Km: 2.70 Tipo: 1 Sent: 1



Km: 2.70 Tipo: 1 Sent: 2

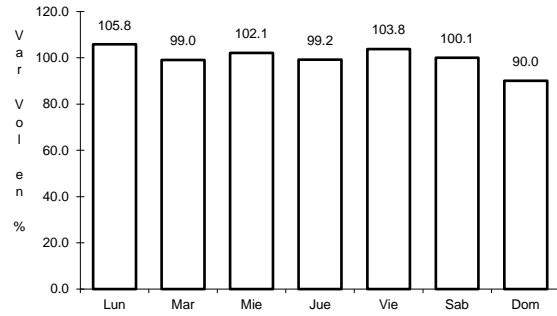


Km: 17.98 Tipo: 1 Sent: 1

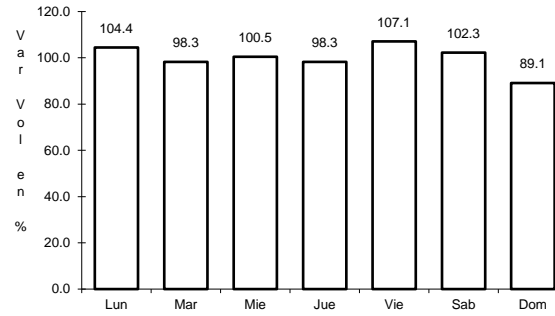
22 CARR: Ent. Tepeji del Río - Tlahuelilpan

CLAVE: 13017

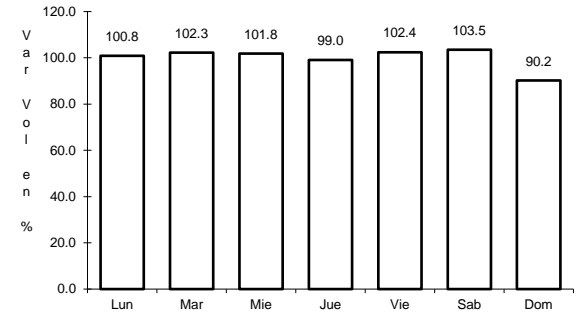
RUTA: HGO-017



Km: 3.00 Tipo: 3 Sent: 1



Km: 3.00 Tipo: 3 Sent: 2

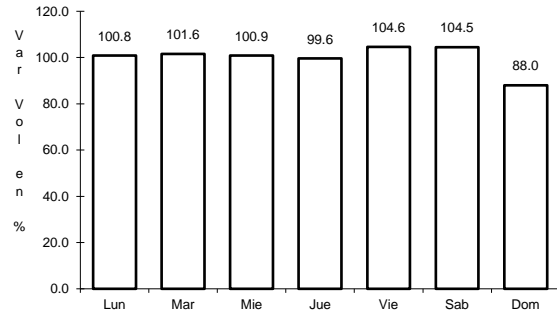


Km: 18.00 Tipo: 1 Sent: 0

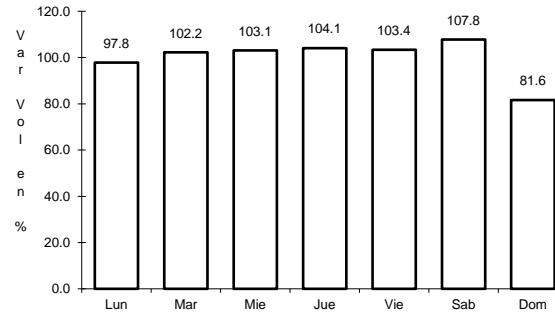
23 CARR: Ent. Tolman - Cd. Sahagún

CLAVE: 00119

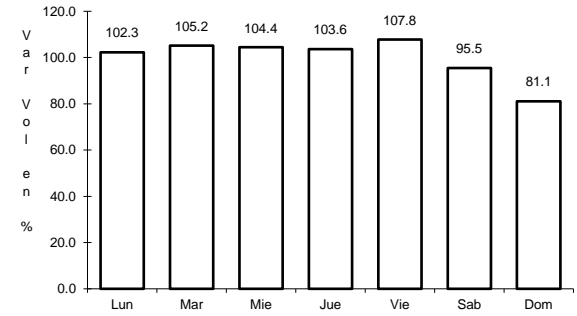
RUTA: EM-009-HGO



Km: 0.00 Tipo: 3 Sent: 0



Km: 21.00 Tipo: 3 Sent: 0

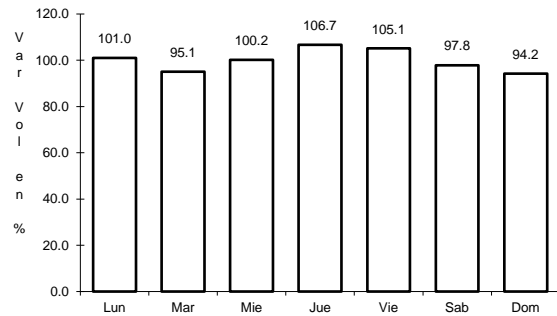


Km: 32.00 Tipo: 1 Sent: 0

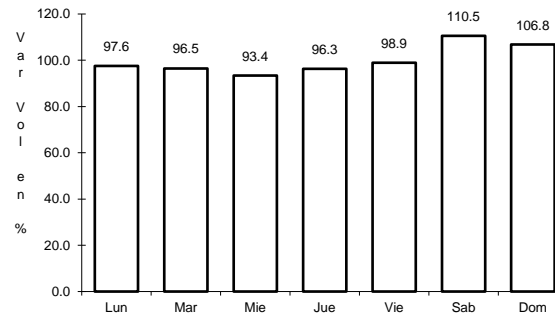
24 CARR: Francisco I. Madero - Tula de Allende

CLAVE: 13043

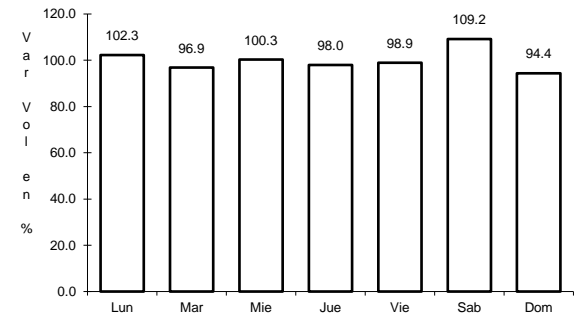
RUTA: HGO



Km: 0.00 Tipo: 3 Sent: 0



Km: 38.20 Tipo: 1 Sent: 0

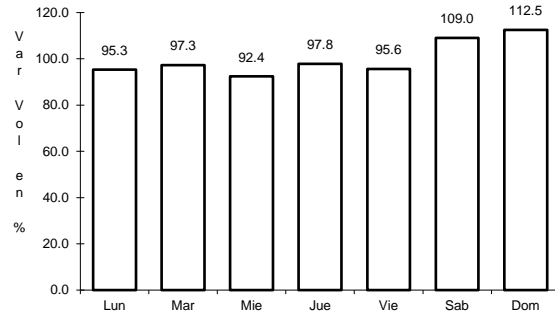


Km: 52.70 Tipo: 1 Sent: 0

25 CARR: Huichapan - Tecozautla

CLAVE: 13030

ruta: HGO-030



Km: 0.00

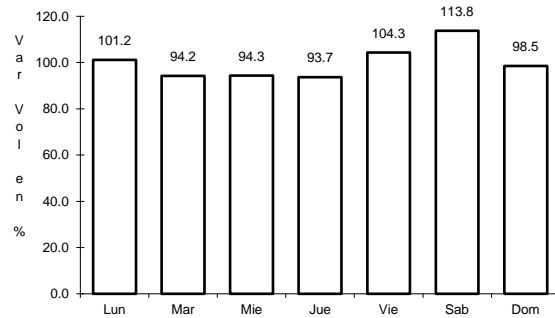
Tipo: 3

Sent: 0

26 CARR: Jilotepec - Maravillas

CLAVE: 00015

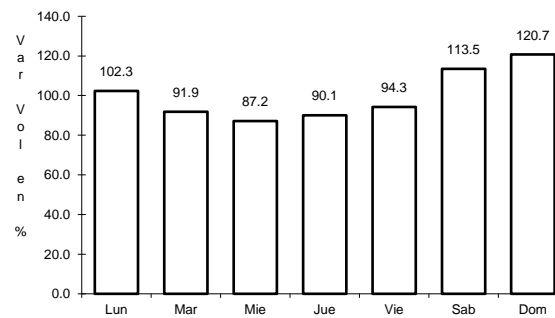
ruta: EM-HGO



Km: 0.00

Tipo: 3

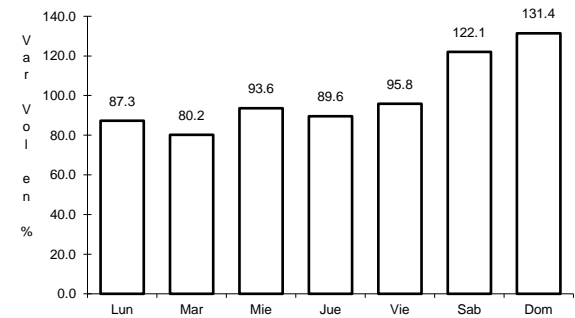
Sent: 0



Km: 21.30

Tipo: 1

Sent: 0



Km: 40.00

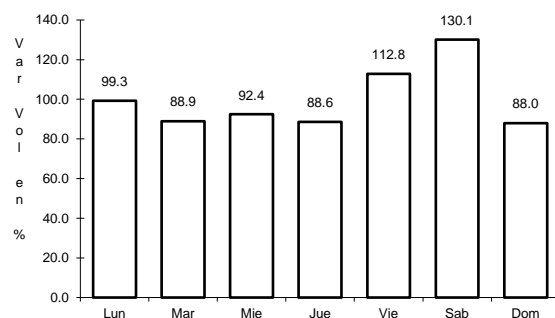
Tipo: 1

Sent: 0

27 CARR: Libramiento de Atotonilco El Grande

CLAVE: 13238

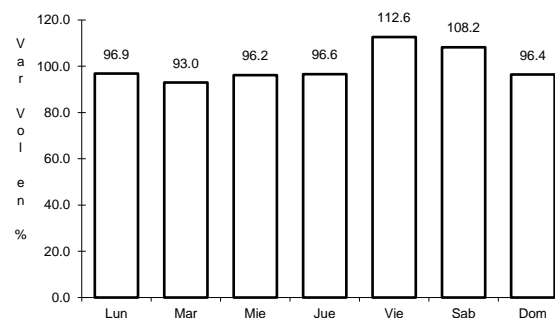
ruta: HGO



Km: 0.00

Tipo: 3

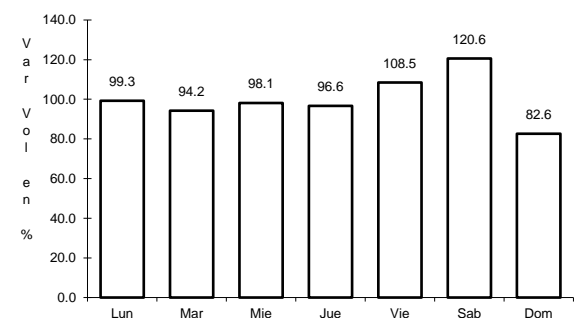
Sent: 1



Km: 0.00

Tipo: 3

Sent: 2



Km: 6.30

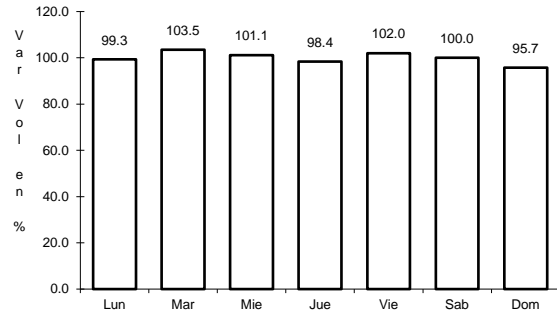
Tipo: 1

Sent: 1

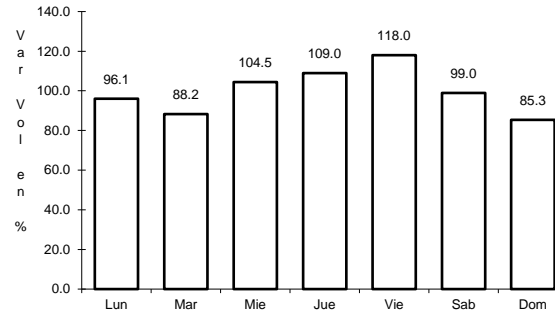
28 CARR: Lolotla - Atlapexco

CLAVE: 13238

RUTA: HGO



Km: 0.00 Tipo: 3 Sent: 0

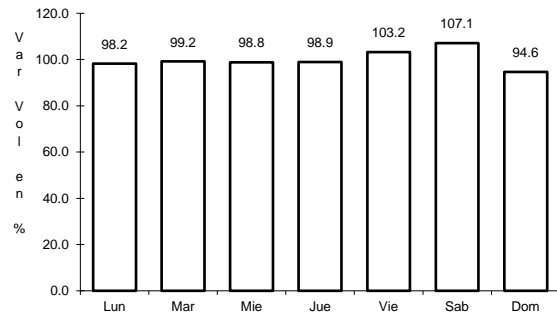


Km: 68.00 Tipo: 1 Sent: 0

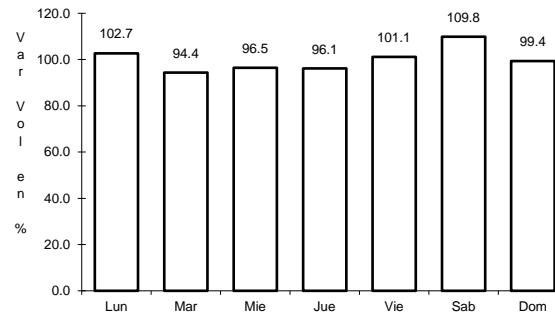
29 CARR: Los Reyes - El Tephé

CLAVE: 00021

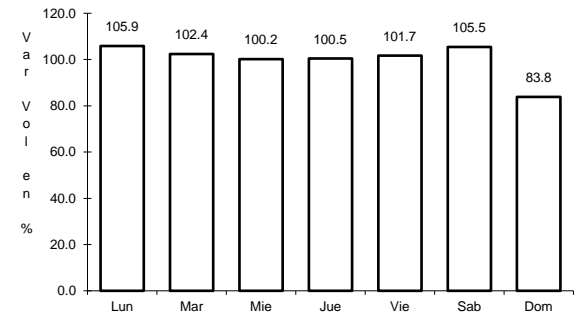
RUTA: EM-HGO



Km: 1.35 Tipo: 3 Sent: 1



Km: 1.35 Tipo: 3 Sent: 2

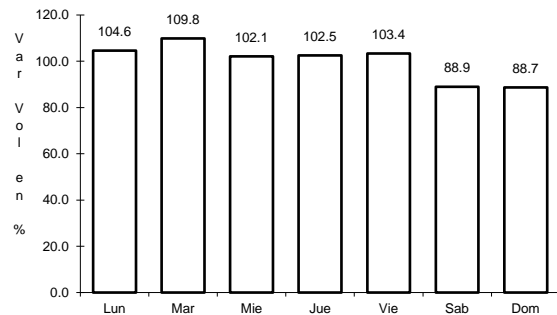


Km: 42.00 Tipo: 1 Sent: 0

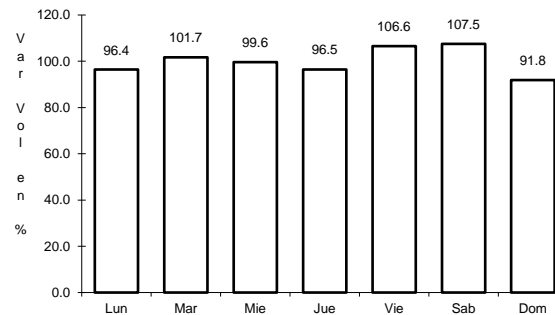
30 CARR: Otumba - Tizayuca

CLAVE: 00012

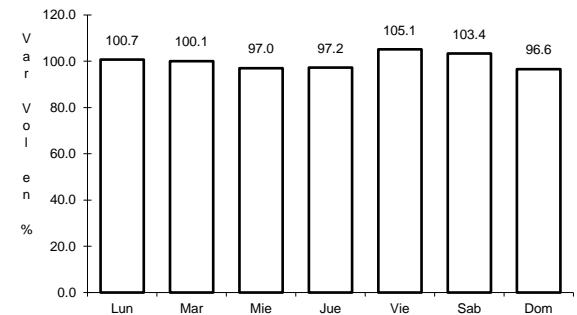
RUTA: EM-HGO



Km: 0.00 Tipo: 3 Sent: 0



Km: 37.10 Tipo: 1 Sent: 1

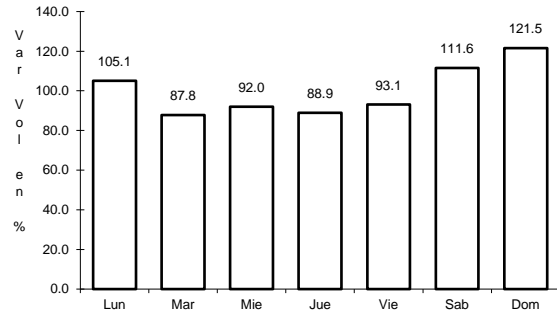


Km: 37.10 Tipo: 1 Sent: 2

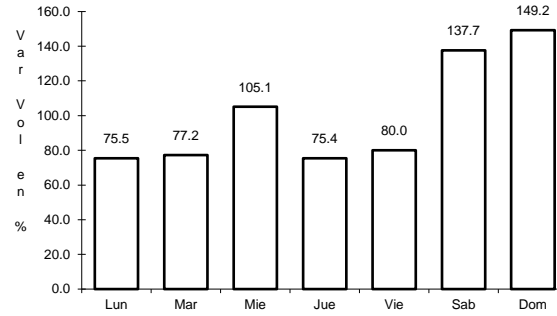
31 CARR: Ramal a El Chico

CLAVE: 13256

RUTA: HGO



Km: 0.00 Tipo: 3 Sent: 0

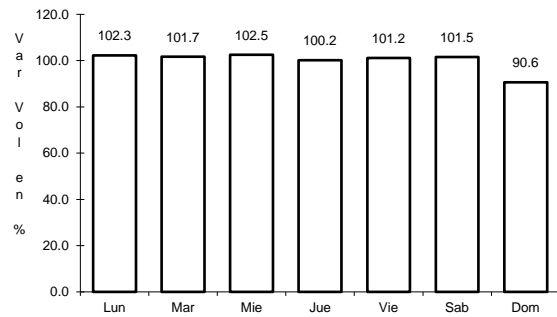


Km: 21.00 Tipo: 1 Sent: 0

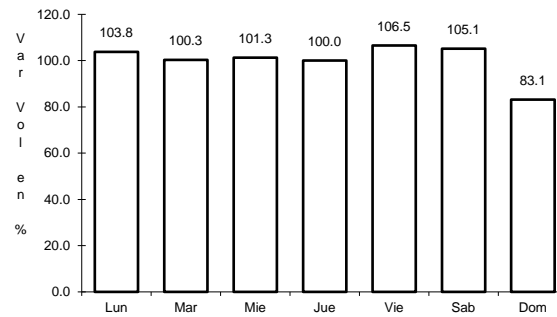
32 CARR: Ramal a Pachuca

CLAVE: 13254

RUTA: HGO



Km: 0.00 Tipo: 3 Sent: 1

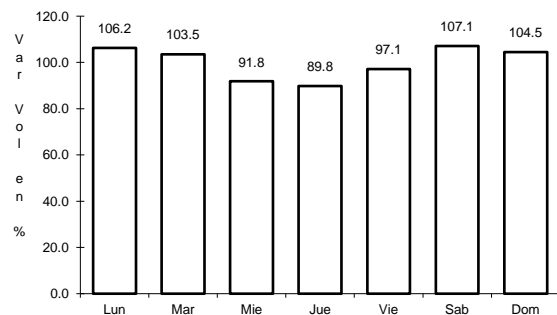


Km: 0.00 Tipo: 3 Sent: 2

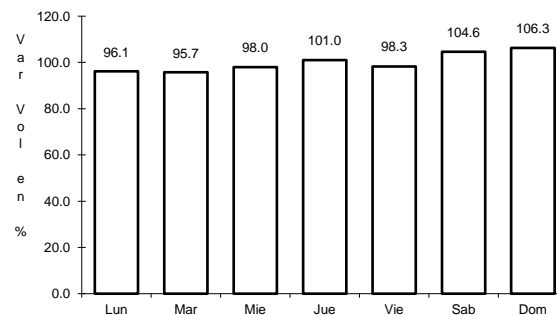
33 CARR: San Alejo - Huayacocotla

CLAVE: 00132

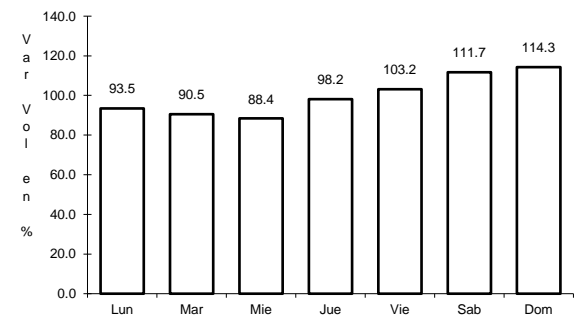
RUTA: HGO-051-VER-113



Km: 0.00 Tipo: 3 Sent: 0



Km: 29.48 Tipo: 3 Sent: 0

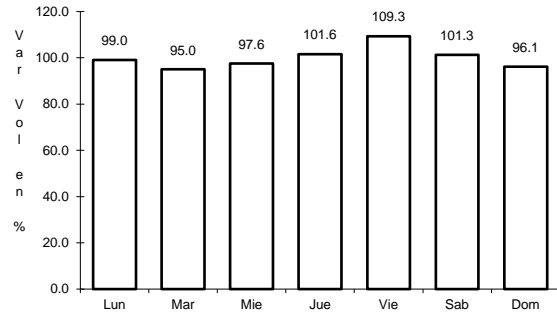


Km: 66.00 Tipo: 1 Sent: 0

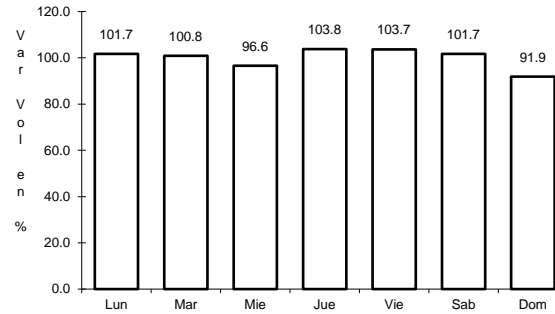
34 CARR: San Felipe Orizatlán - Huejutla de Reyes

CLAVE: 13258

RUTA: HGO



Km: 0.00 Tipo: 3 Sent: 0

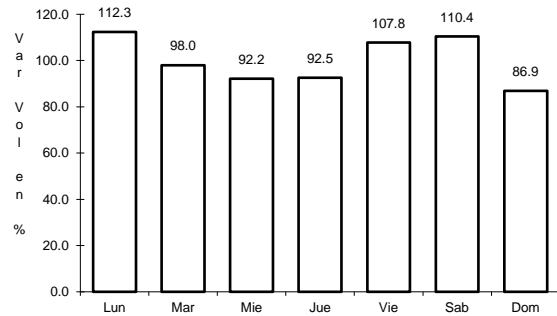


Km: 25.00 Tipo: 1 Sent: 0

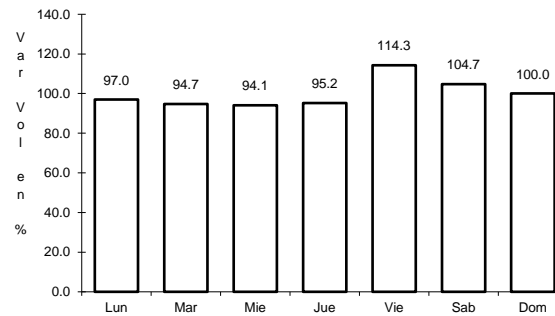
35 CARR: Santo Domingo - T. C. (México - Querétaro)

CLAVE: 00433

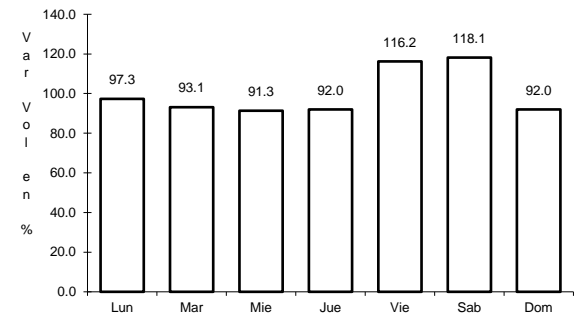
RUTA: EM-011-HGO



Km: 0.00 Tipo: 3 Sent: 0



Km: 65.84 Tipo: 1 Sent: 1

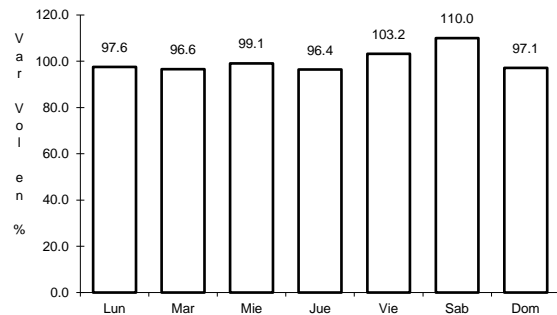


Km: 65.84 Tipo: 1 Sent: 2

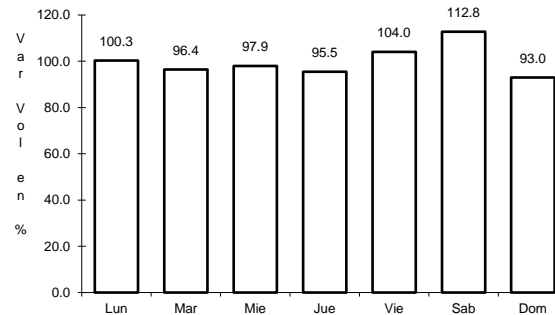
36 CARR: T. C. (Los Reyes - El Tephé) - Tizayuca

CLAVE: 00014

RUTA: EM-HGO



Km: 0.00 Tipo: 3 Sent: 0

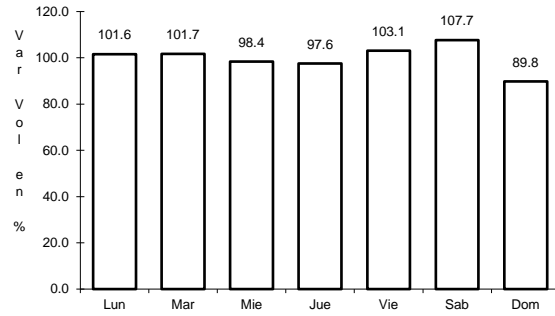


Km: 8.00 Tipo: 1 Sent: 0

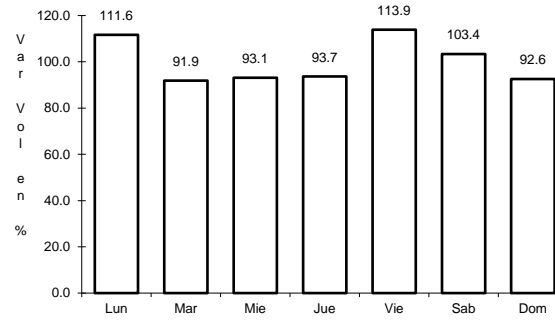
37 CARR: Tepeji del Rfo - T.C. (México - Querétaro)

CLAVE: 13104

RUTA: HGO



Km: 0.00 Tipo: 3 Sent: 0

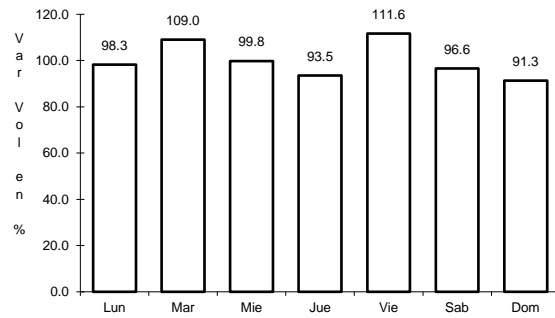


Km: 12.40 Tipo: 1 Sent: 0

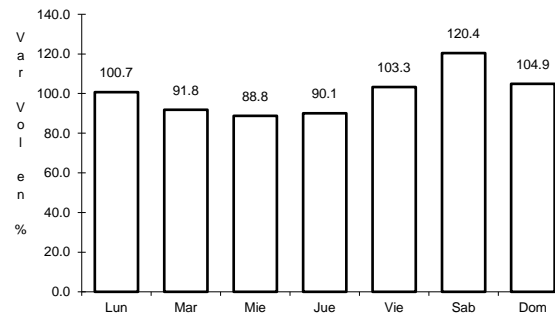
38 CARR: Tlahuelilpan - San Agustín Tlaxiaca

CLAVE: 13435

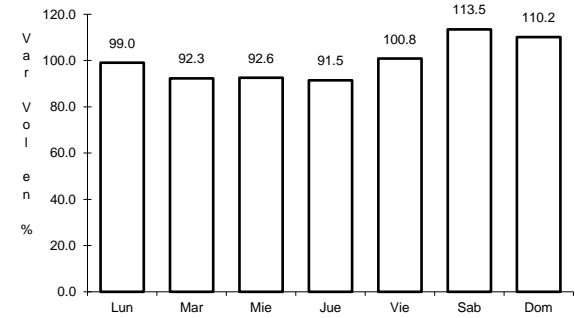
RUTA: HGO



Km: 0.00 Tipo: 3 Sent: 0



Km: 25.50 Tipo: 3 Sent: 0

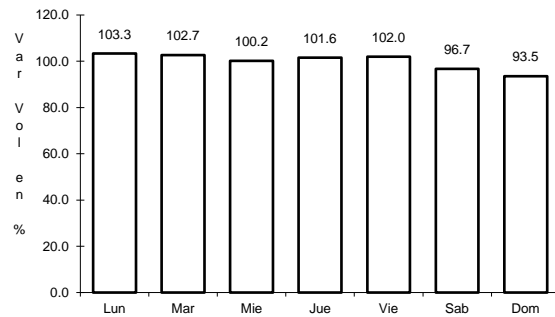


Km: 48.00 Tipo: 1 Sent: 0

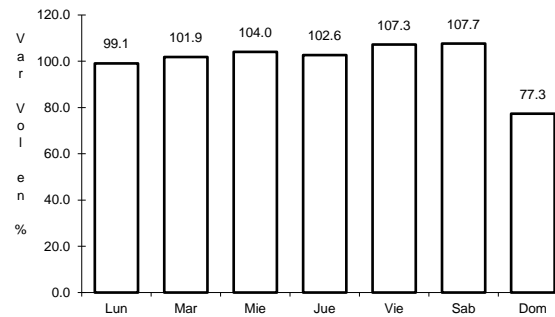
39 CARR: Calpulalpan - El Ocote

CLAVE: 00054

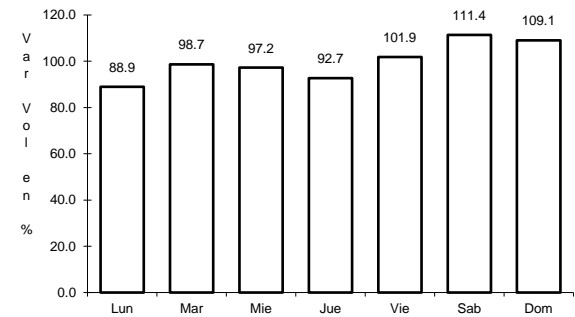
RUTA: MEX-HGO



Km: 0.00 Tipo: 3 Sent: 0



Km: 34.92 Tipo: 3 Sent: 0



Km: 70.44 Tipo: 1 Sent: 1

