

DURANGO

---RED FEDERAL LIBRE---

1 Bermejillo - El Palmito	MEX-030
2 Durango - Ent. La Zarca	MEX-045
3 Durango - Mezquital	MEX-023
4 Durango - Torreón	MEX-040
5 Durango - Villa Unión	MEX-040
6 Ent. La Chicharrona - Cuencamé	MEX-049
7 Ent. La Zarca - Hidalgo del Parral	MEX-045
8 Ent. Los Herrera - Topia	MEX-036
9 Gómez Palacio - Jiménez	MEX-049
10 Gómez Palacio - La Unión	MEX-040
11 Gómez Palacio - Tlahualillo	MEX-040
12 Gregorio García - Francisco I. Madero	MEX-040
13 Guadalupe Aguilera - Tepehuanes	MEX-023
14 Hidalgo del Parral - Guadalupe y Calvo	MEX-024
15 Libramiento Cuencamé	MEX
16 Libramiento Oriente de Durango	MEX-045
17 Libramiento Sur de Durango	MEX-045
18 Pedriceña - Ent. Rodeo	MEX-034
19 Ramal a Otinapa	MEX
20 Ramal a Santa Clara	MEX-049
21 Ramal a Villa Juárez	MEX-040
22 Ramal Distribuidor Presa Peña del Águila	MEX-045
23 Zacatecas - Durango	MEX-045

---RED FEDERAL DE CUOTA---

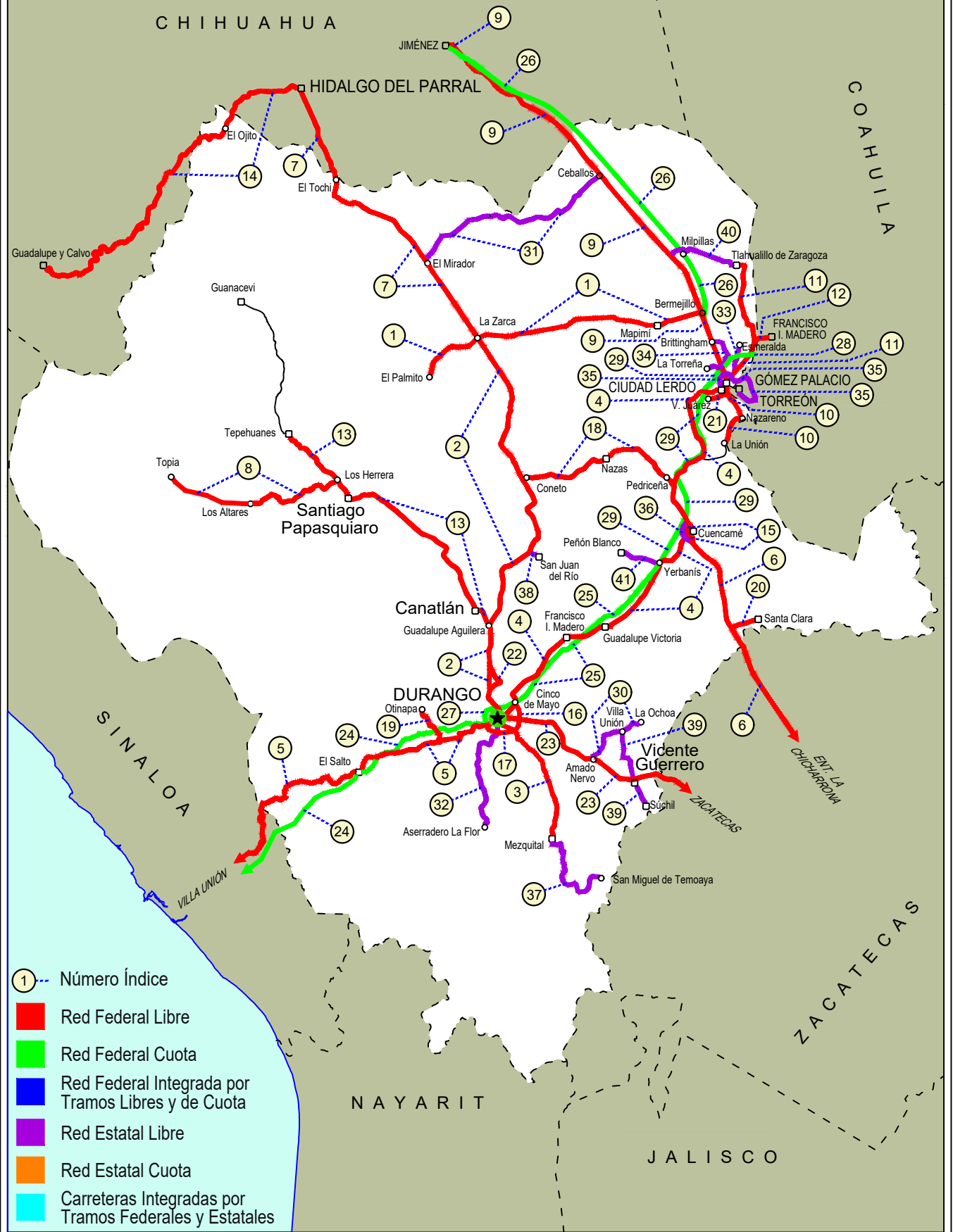
24 Durango - Mazatlán (Cuota)	MEX-040D
25 Durango - Yerbanís (Cuota)	MEX-040D
26 Gómez Palacio - Corralitos (Cuota)	MEX-049D
27 Libramiento de Durango (Cuota)	MEX-040D
28 Libramiento Norte de Torreón (Cuota)	MEX-040D
29 Yerbanís - Gómez Palicio (Cuota)	MEX-040D

---RED ESTATAL LIBRE---

30 Amado Nervo - La Ochoa	DGO-542
31 Ceballos - El Mirador	DGO-044
32 Durango - Aserradero La Flor	DGO-115
33 Jabonoso - Esmeralda	DGO-363
34 La Torreña - Brittingham	DGO-325
35 Libramiento de Torreón	COA
36 Libramiento Exterior Cuencamé	DGO
37 Mezquital - San Miguel de Temoaya	DGO
38 Ramal a San Juan del Río	DGO-290
39 Súchil - Villa Unión	DGO-241
40 Tlahualillo de Zaragoza - T.C. Gómez Palacio - Jiménez	DGO
41 Yerbanís - Peñón Blanco	DGO-316

10 DURANGO

SECRETARÍA DE COMUNICACIONES Y TRANSPORTES
DIRECCIÓN GENERAL DE SERVICIOS TÉCNICOS



DURANGO

1 CARR: Bermejillo - El Palmito

CLAVE: 10105

RUTA: MEX-030

AÑO: 2021

LUGAR	ESTACION				CLASIFICACION VEHICULAR EN PORCIENTO													COORDENADAS		
	KM	TE	SC	TDPA	M	A	B	C2	C3	T3S2	T3S3	T3S2R4	OTROS	A	B	C	K'	D	LATITUD	LONGITUD
Bermejillo	0.00	3	0	2133	1.3	72.3	1.2	15.6	3.2	4.7	1.2	0.3	0.2	73.6	1.2	25.2	0.089	0.502	25.892221	-103.632024
Santo Domingo	86.00	1	0	441	0.7	70.5	1.4	14.8	5.9	3.6	2.7	0.0	0.4	71.2	1.4	27.4	0.088	0.504	25.815527	-104.434163
Santo Domingo	86.00	3	0	307	0.6	63.1	2.3	23.3	5.1	3.4	1.8	0.0	0.4	63.7	2.3	34.0	0.089	0.507	25.813488	-104.448272
Ent. La Zarca	120.00	1	0	625	1.3	65.2	1.5	22.7	4.5	2.9	1.7	0.0	0.2	66.5	1.5	32.0	0.083	0.516	25.784101	-104.759910
Ent. La Zarca	120.00	3	0	171	0.9	70.6	1.2	23.8	2.8	0.7	0.0	0.0	0.0	71.5	1.2	27.3	0.115	0.507	25.781525	-104.766045
El Palmito	160.00	1	0	274	0.3	66.0	1.2	30.5	1.9	0.1	0.0	0.0	0.0	66.3	1.2	32.5	0.076	0.504	25.615344	-105.003325

2 CARR: Durango - Ent. La Zarca

CLAVE: 10016

RUTA: MEX-045

AÑO: 2021

LUGAR	ESTACION				CLASIFICACION VEHICULAR EN PORCIENTO													COORDENADAS		
	KM	TE	SC	TDPA	M	A	B	C2	C3	T3S2	T3S3	T3S2R4	OTROS	A	B	C	K'	D	LATITUD	LONGITUD
Durango	0.00	3	1	19104	7.1	80.0	2.4	3.5	4.2	1.0	0.3	1.1	0.4	87.1	2.4	10.5	0.069	0.528	24.041577	-104.658011
Durango	0.00	3	2	18470	7.1	79.9	2.4	3.5	4.2	1.0	0.3	1.1	0.5	87.0	2.4	10.6	0.077	0.528	24.041577	-104.658129
Caseta Fiscal Zona Industrial	5.30	1	1	9685	2.5	85.1	1.1	8.1	1.6	0.9	0.5	0.1	0.1	87.6	1.1	11.3	0.096	0.519	24.048297	-104.658180
Caseta Fiscal Zona Industrial	5.30	1	2	8975	2.1	84.3	1.3	8.8	1.8	0.9	0.5	0.2	0.1	86.4	1.3	12.3	0.093	0.519	24.048316	-104.658288
Caseta Fiscal Zona Industrial	5.30	3	1	8226	2.8	89.0	1.2	2.7	1.9	1.2	0.6	0.5	0.1	91.8	1.2	7.0	0.091	0.509	24.058671	-104.656304
Caseta Fiscal Zona Industrial	5.30	3	2	7934	6.2	85.0	1.4	3.4	1.6	1.1	0.7	0.5	0.1	91.2	1.4	7.4	0.094	0.509	24.058717	-104.656422
X. Periférico de Durango	6.20	3	1	5776	2.7	83.2	1.7	8.7	1.4	1.3	0.6	0.3	0.1	85.9	1.7	12.4	0.087	0.500	24.079580	-104.668299
X. Periférico de Durango	6.20	3	2	5782	1.8	83.3	1.6	9.5	1.4	1.3	0.8	0.2	0.1	85.1	1.6	13.3	0.089	0.500	24.079562	-104.668417
T. Der. San José del Molino	28.00																			
T. Izq. Canatlán	55.25	1	0	5354	0.7	84.5	2.6	7.7	1.0	1.7	0.9	0.7	0.2	85.2	2.6	12.2	0.099	0.509	24.431210	-104.698835
T. Izq. Canatlán	55.25	3	0	2527	1.9	76.0	2.3	15.4	1.7	1.7	0.8	0.1	0.1	77.9	2.3	19.8	0.078	0.516	24.445688	-104.699147
T. Der. San Juan del Río	105.81	1	0	2130	1.9	75.0	2.9	14.8	2.1	2.1	1.0	0.1	0.1	76.9	2.9	20.2	0.078	0.508	24.791116	-104.505818
T. Der. San Juan del Río	105.81	3	0	2089	1.3	69.5	2.9	20.4	2.7	2.0	1.0	0.2	0.0	70.8	2.9	26.3	0.073	0.509	24.801234	-104.498446
T. Der. Nazas	155.50	3	0	2633	1.7	75.4	2.2	17.7	1.3	1.0	0.6	0.0	0.1	77.1	2.2	20.7	0.087	0.504	25.131012	-104.540556
T. Der. Rodeo	160.70	1	0	3692	1.4	78.2	2.6	13.9	1.4	1.4	0.9	0.1	0.1	79.6	2.6	17.8	0.068	0.503	25.157925	-104.550659
T. Izq. Abasolo	178.00	3	0	1249	1.6	75.5	3.7	14.0	1.4	2.4	1.3	0.1	0.0	77.1	3.7	19.2	0.087	0.529	25.310010	-104.640070
Ent. La Zarca	239.50	1	0	812	1.7	65.8	5.4	17.2	2.7	4.6	1.9	0.3	0.4	67.5	5.4	27.1	0.073	0.537	25.771692	-104.755359

3 CARR: Durango - Mezquital

CLAVE: 10423

RUTA: MEX-023

AÑO: 2021

LUGAR	ESTACION				CLASIFICACION VEHICULAR EN PORCIENTO													COORDENADAS		
	KM	TE	SC	TDPA	M	A	B	C2	C3	T3S2	T3S3	T3S2R4	OTROS	A	B	C	K'	D	LATITUD	LONGITUD
Durango	0.00	3	1	7932	8.2	82.3	1.5	6.0	1.1	0.3	0.1	0.3	0.2	90.5	1.5	8.0	0.133	0.503	23.993416	-104.629943
Durango	0.00	3	2	7830	4.7	88.9	0.7	3.4	1.1	0.6	0.3	0.1	0.2	93.6	0.7	5.7	0.162	0.503	23.993524	-104.629893

DURANGO

3 CARR: Durango - Mezquital

CLAVE: 10423

RUTA: MEX-023

AÑO: 2021

LUGAR	ESTACION				CLASIFICACION VEHICULAR EN PORCIENTO										COORDENADAS					
	KM	TE	SC	TDPA	M	A	B	C2	C3	T3S2	T3S3	T3S2R4	OTROS	A	B	C	K'	D	LATITUD	LONGITUD
Gabino Santillán	8.00	3	1	4098	5.3	80.8	0.5	9.9	2.2	0.6	0.5	0.1	0.1	86.1	0.5	13.4	0.091	0.506	23.980584	-104.591687
Gabino Santillán	8.00	3	2	4088	3.6	80.2	0.5	12.1	2.2	0.6	0.6	0.1	0.1	83.8	0.5	15.7	0.098	0.506	23.980723	-104.591700
T. Izq. Monte Morelos	13.00	3	0	4277	6.4	72.9	0.6	16.4	2.7	0.8	0.2	0.0	0.0	79.3	0.6	20.1	0.102	0.506	23.947670	-104.562639
Pino Suarez	24.20	3	0	2682	3.2	73.3	0.5	21.4	1.2	0.3	0.1	0.0	0.0	76.5	0.5	23.0	0.099	0.505	23.872050	-104.481150
Mezquital	82.00	1	1	1459	5.8	75.1	0.4	17.5	1.0	0.1	0.1	0.0	0.0	80.9	0.4	18.7	0.082	0.501	23.485459	-104.385715
Mezquital	82.00	1	2	1458	6.1	71.4	0.4	20.7	1.1	0.2	0.0	0.0	0.1	77.5	0.4	22.1	0.082	0.501	23.485431	-104.385612

4 CARR: Durango - Torreón

CLAVE: 10085

RUTA: MEX-040

AÑO: 2021

LUGAR	ESTACION				CLASIFICACION VEHICULAR EN PORCIENTO										COORDENADAS					
	KM	TE	SC	TDPA	M	A	B	C2	C3	T3S2	T3S3	T3S2R4	OTROS	A	B	C	K'	D	LATITUD	LONGITUD
Durango	0.00	3	1	9843	4.1	89.0	1.2	2.7	1.1	1.1	0.4	0.3	0.1	93.1	1.2	5.7	0.075	0.503	24.077161	-104.590589
Durango	0.00	3	2	9718	3.9	89.4	1.1	2.2	1.5	1.1	0.3	0.4	0.1	93.3	1.1	5.6	0.076	0.503	24.077260	-104.590707
T. Der. Cd. de Los Niños	7.70	3	1	8767	4.2	88.2	1.4	3.2	1.1	1.2	0.4	0.3	0.0	92.4	1.4	6.2	0.078	0.504	24.082144	-104.586304
T. Der. Cd. de Los Niños	7.70	3	2	8634	3.9	89.3	1.3	2.3	1.3	1.2	0.2	0.4	0.1	93.2	1.3	5.5	0.074	0.504	24.082225	-104.586421
X. Periférico de Durango	9.00	1	1	9233	4.1	88.6	1.3	3.1	1.1	1.3	0.2	0.3	0.0	92.7	1.3	6.0	0.079	0.504	24.086821	-104.582304
X. Periférico de Durango	9.00	1	2	9079	4.0	90.0	1.2	2.3	1.1	1.2	0.1	0.1	0.0	94.0	1.2	4.8	0.074	0.504	24.086920	-104.582422
T. Der. Aeropuerto	9.42	1	1	7622	4.3	86.4	1.5	3.1	1.7	1.8	0.6	0.5	0.1	90.7	1.5	7.8	0.084	0.505	24.091515	-104.578294
T. Der. Aeropuerto	9.42	1	2	7482	3.9	88.2	1.1	2.9	1.5	1.3	0.4	0.6	0.1	92.1	1.1	6.8	0.084	0.505	24.091597	-104.578402
T. Der. Aeropuerto	9.42	3	1	4330	9.5	76.8	1.6	3.7	5.0	1.8	0.9	0.6	0.1	86.3	1.6	12.1	0.089	0.503	24.099547	-104.575700
T. Der. Aeropuerto	9.42	3	2	4283	9.0	77.6	1.3	3.6	5.2	1.7	0.7	0.7	0.2	86.6	1.3	12.1	0.081	0.503	24.099590	-104.575801
La Calera	10.85	3	0	5160	3.6	80.9	1.6	5.3	1.4	4.2	2.2	0.7	0.1	84.5	1.6	13.9	0.078	0.511	24.112117	-104.571831
Abraham González	27.10	3	0	3874	2.2	79.6	2.9	3.4	2.4	5.2	3.4	0.7	0.2	81.8	2.9	15.3	0.078	0.504	24.205829	-104.516364
Francisco I. Madero	56.30	1	0	4048	3.0	77.6	3.1	3.4	2.0	6.0	3.6	1.1	0.2	80.6	3.1	16.3	0.082	0.505	24.392962	-104.330078
Francisco I. Madero	56.30	3	0	4357	4.5	71.6	2.7	9.8	2.6	4.2	2.4	1.9	0.3	76.1	2.7	21.2	0.072	0.503	24.405102	-104.300654
Guadalupe Victoria	77.50	1	0	5502	5.0	72.9	3.2	8.9	2.5	4.0	2.4	0.6	0.5	77.9	3.2	18.9	0.084	0.506	24.446800	-104.139537
Guadalupe Victoria	77.50	3	0	5913	2.8	79.4	4.0	7.4	1.0	2.8	1.7	0.8	0.1	82.2	4.0	13.8	0.097	0.516	24.465693	-104.081165
T. Der. Ignacio Allende	90.13	1	0	4463	1.8	80.5	2.4	4.0	1.3	5.5	3.3	1.0	0.2	82.3	2.4	15.3	0.083	0.522	24.495554	-104.027230
T. Der. Ignacio Allende	90.13	3	0	3257	2.0	76.3	3.9	3.4	1.2	7.0	4.4	1.6	0.2	78.3	3.9	17.8	0.081	0.508	24.505520	-104.012665
T. Izq. Peñón Blanco	120.90	1	0	2403	3.1	67.1	2.8	4.7	2.7	10.9	6.3	2.1	0.3	70.2	2.8	27.0	0.074	0.511	24.732760	-103.843544
T. Izq. Peñón Blanco	120.90	3	0	1986	2.6	65.1	4.3	5.2	2.5	10.6	6.7	2.6	0.4	67.7	4.3	28.0	0.070	0.504	24.746209	-103.835796
Cuencamé	144.30	1	0	2003	5.9	81.1	4.2	3.8	1.7	1.2	0.9	1.0	0.2	87.0	4.2	8.8	0.075	0.571	24.860729	-103.702221
Cuencamé	144.30	3	1	4907	2.5	52.1	5.1	10.5	4.3	15.2	4.2	5.1	1.0	54.6	5.1	40.3	0.078	0.507	24.878638	-103.698987
Cuencamé	144.30	3	2	5053	2.7	50.0	5.2	11.4	4.6	15.8	4.1	5.0	1.2	52.7	5.2	42.1	0.070	0.507	24.878627	-103.699124
T. C. Libramiento Exterior Cuencamé	148.70	1	0	2234	8.5	72.8	2.1	10.1	2.5	2.1	1.7	0.1	0.1	81.3	2.1	16.6	0.085	0.539	24.888990	-103.700887

DURANGO

4 CARR: Durango - Torreón

CLAVE: 10085

RUTA: MEX-040

AÑO: 2021

LUGAR	ESTACION				CLASIFICACION VEHICULAR EN PORCIENTO												COORDENADAS			
	KM	TE	SC	TDPA	M	A	B	C2	C3	T3S2	T3S3	T3S2R4	OTROS	A	B	C	K'	D	LATITUD	LONGITUD
X. C. Yerbanís - Gómez Palicio (Cuota)	155.80																			
T. Izq. Nazas	171.61	1	0	4024	2.4	60.0	4.8	5.3	3.8	14.4	6.1	2.5	0.7	62.4	4.8	32.8	0.081	0.502	25.085370	-103.771380
T. Izq. Nazas	171.61	3	0	5819	3.2	58.1	3.9	5.9	6.7	12.6	4.4	4.3	0.9	61.3	3.9	34.8	0.078	0.504	25.091129	-103.769984
T. Der. Villa Juárez	194.40	3	0	6006	3.8	53.8	6.0	6.9	3.2	15.9	6.4	3.2	0.8	57.6	6.0	36.4	0.085	0.510	25.226578	-103.627143
León Guzmán	229.58	3	0	9158	7.3	71.0	2.3	5.4	2.2	7.1	2.8	1.5	0.4	78.3	2.3	19.4	0.068	0.511	25.508680	-103.650476
Cd. Lerdo	244.80	1	1	6015	4.2	70.7	3.1	5.1	3.2	6.9	3.3	2.8	0.7	74.9	3.1	22.0	0.101	0.513	25.511912	-103.541989
Cd. Lerdo	244.80	1	2	6338	4.3	70.9	3.3	5.0	3.3	6.6	3.3	2.6	0.7	75.2	3.3	21.5	0.092	0.513	25.512002	-103.542018
T. Izq. Gómez Palacio	248.90	3	1	20571	6.3	89.1	0.5	2.3	0.7	0.3	0.1	0.6	0.1	95.4	0.5	4.1	0.107	0.511	25.550690	-103.480820
T. Izq. Gómez Palacio	248.90	3	2	19647	6.2	88.9	0.6	2.4	0.7	0.3	0.1	0.7	0.1	95.1	0.6	4.3	0.119	0.511	25.550816	-103.480778
Lim. Edos. Term. Dgo. Ppia. Coah.	251.00																			
Torreón	255.80	1	1	21619	4.9	89.6	1.2	3.7	0.2	0.1	0.0	0.2	0.1	94.5	1.2	4.3	0.075	0.507	25.548141	-103.471815
Torreón	255.80	1	2	21013	4.8	89.0	1.5	4.0	0.3	0.2	0.0	0.1	0.1	93.8	1.5	4.7	0.085	0.507	25.545643	-103.468642

5 CARR: Durango - Villa Unión

CLAVE: 0083

RUTA: MEX-040

AÑO: 2021

LUGAR	ESTACION				CLASIFICACION VEHICULAR EN PORCIENTO												COORDENADAS			
	KM	TE	SC	TDPA	M	A	B	C2	C3	T3S2	T3S3	T3S2R4	OTROS	A	B	C	K'	D	LATITUD	LONGITUD
Durango	0.00	3	0	3954	4.8	80.2	1.9	3.1	2.9	4.0	2.8	0.2	0.1	85.0	1.9	13.1	0.099	0.520	23.995200	-104.732390
T. Der. Pino	22.86	3	0	2165	4.8	80.3	1.9	3.1	2.9	4.0	2.8	0.2	0.0	85.1	1.9	13.0	0.121	0.520	23.966761	-104.821285
T. Izq. Estación Navíos	58.42	3	0	1927	3.0	78.6	2.7	3.5	3.2	5.1	3.7	0.1	0.1	81.6	2.7	15.7	0.102	0.504	23.895427	-105.053619
Llano Grande	77.23	1	0	2142	5.3	76.4	2.7	3.8	2.8	5.3	3.3	0.2	0.2	81.7	2.7	15.6	0.096	0.511	23.866711	-105.198977
El Salto	99.76	1	0	2018	5.1	86.3	1.5	2.8	2.2	1.1	0.6	0.3	0.1	91.4	1.5	7.1	0.244	0.510	23.805500	-105.338393
El Salto	99.76	3	0	1969	6.9	71.4	3.7	14.7	1.7	0.6	0.3	0.6	0.1	78.3	3.7	18.0	0.098	0.504	23.784340	-105.375804
Las Adjuntas	119.00	1	0	1084	5.5	74.9	3.0	12.1	1.6	1.5	1.2	0.1	0.1	80.4	3.0	16.6	0.109	0.509	23.725503	-105.491697
La Ciudad	145.50	1	0	967	7.6	71.9	1.3	18.7	0.3	0.1	0.1	0.0	0.0	79.5	1.3	19.2	0.150	0.600	23.731525	-105.676641
La Ciudad	145.50	3	0	444	12.1	60.9	2.3	17.7	2.8	2.9	1.3	0.0	0.0	73.0	2.3	24.7	0.198	0.522	23.727131	-105.691854
Lim. Edos. Term. Dgo. Ppia. Sin.	198.50																			
Concordia	273.50	1	0	1701	12.9	62.6	1.6	18.4	0.7	2.4	1.4	0.0	0.0	75.5	1.6	22.9	0.133	0.505	23.293056	-106.051626
T. C. Tepic - Mazatlán	294.40	1	0	3818	4.4	73.2	6.4	10.5	1.7	2.9	0.8	0.0	0.1	77.6	6.4	16.0	0.081	0.512	23.204559	-106.198329

6 CARR: Ent. La Chicharrona - Cuencamé

CLAVE: 00152

RUTA: MEX-049

AÑO: 2021

LUGAR	ESTACION				CLASIFICACION VEHICULAR EN PORCIENTO												COORDENADAS			
	KM	TE	SC	TDPA	M	A	B	C2	C3	T3S2	T3S3	T3S2R4	OTROS	A	B	C	K'	D	LATITUD	LONGITUD
Ent. La Chicharrona	0.00	3	1	4917	1.9	55.0	5.0	10.9	4.1	13.7	3.2	5.2	1.0	56.9	5.0	38.1	0.085	0.525	23.307669	-102.958748

DURANGO

6 CARR: Ent. La Chicharrona - Cuencamé

CLAVE: 00152

RUTA: MEX-049

AÑO: 2021

LUGAR	ESTACION				CLASIFICACION VEHICULAR EN PORCIENTO														COORDENADAS	
	KM	TE	SC	TDPA	M	A	B	C2	C3	T3S2	T3S3	T3S2R4	OTROS	A	B	C	K'	D	LATITUD	LONGITUD
Ent. La Chicharrona	0.00	3	2	5442	1.8	53.6	4.1	11.6	3.0	17.0	4.5	3.5	0.9	55.4	4.1	40.5	0.082	0.525	23.308030	-102.958950
T. Der. Cañitas de Felipe Pescador	25.86	1	1	4193	1.7	55.7	4.8	10.9	4.2	14.1	4.3	3.4	0.9	57.4	4.8	37.8	0.079	0.531	23.506155	-102.959490
T. Der. Cañitas de Felipe Pescador	25.86	1	2	3697	2.2	53.6	4.9	12.8	3.2	14.6	3.4	4.3	1.0	55.8	4.9	39.3	0.082	0.531	23.506158	-102.959696
T. Libramiento de Río Grande Sur	57.00																			
Río Grande	60.00	1	0	8138	1.1	55.4	4.9	9.5	2.9	14.4	5.4	5.6	0.8	56.5	4.9	38.6	0.079	0.507	23.794212	-103.017126
Río Grande	60.00	3	0	7022	2.0	51.6	6.0	16.2	2.2	14.4	4.1	2.7	0.8	53.6	6.0	40.4	0.076	0.549	23.882680	-103.100390
T. Libramiento de Río Grande Norte	67.40																			
T. Der. Nieves	78.00	3	0	7294	1.2	46.7	6.7	12.0	4.4	17.4	5.6	5.1	0.9	47.9	6.7	45.4	0.075	0.504	23.924365	-103.160416
X. C. Juan Aldama - Miguel Auza	124.50	1	0	7249	1.2	47.1	6.4	18.0	3.0	14.9	3.6	4.8	1.0	48.3	6.4	45.3	0.082	0.545	24.265864	-103.397505
X. C. Juan Aldama - Miguel Auza	124.50	3	0	6649	1.1	49.5	6.0	10.9	3.2	15.9	6.4	6.0	1.0	50.6	6.0	43.4	0.089	0.524	24.286914	-103.406265
Lim. Edos. Term. Zac. Ppia. Dgo.	134.30																			
T. Der. Santa Clara	144.00	1	0	5676	2.6	40.1	7.3	8.1	3.7	22.2	5.8	8.7	1.5	42.7	7.3	50.0	0.063	0.502	24.426331	-103.480002
T. Der. Santa Clara	144.00	3	0	4897	4.3	41.5	6.8	7.2	3.7	21.6	5.3	8.3	1.3	45.8	6.8	47.4	0.067	0.505	24.443555	-103.491247
T. C. Libramiento Exterior Cuencamé	196.10	1	0	5534	11.5	54.7	4.3	17.1	3.2	5.7	1.7	0.9	0.9	66.2	4.3	29.5	0.070	0.542	24.832961	-103.686452
Cuencamé	199.10	1	0	1321	6.6	73.3	2.2	13.0	2.4	1.3	0.9	0.2	0.1	79.9	2.2	17.9	0.072	0.501	24.852403	-103.692788

7 CARR: Ent. La Zarca - Hidalgo del Parral

CLAVE: 00488

RUTA: MEX-045

AÑO: 2021

LUGAR	ESTACION				CLASIFICACION VEHICULAR EN PORCIENTO														COORDENADAS	
	KM	TE	SC	TDPA	M	A	B	C2	C3	T3S2	T3S3	T3S2R4	OTROS	A	B	C	K'	D	LATITUD	LONGITUD
Ent. La Zarca	0.00	3	0	1080	1.1	66.0	5.1	14.2	3.5	6.7	2.9	0.3	0.2	67.1	5.1	27.8	0.084	0.503	25.786679	-104.766324
T. Der. Ceballos	47.85	1	0	754	1.8	72.7	4.6	15.2	1.9	2.0	1.6	0.1	0.1	74.5	4.6	20.9	0.163	0.516	26.138411	-105.027678
T. Der. Ceballos	47.85	3	0	1308	0.9	77.2	3.3	13.0	2.0	2.4	1.1	0.1	0.0	78.1	3.3	18.6	0.111	0.549	26.143030	-105.031093
T. Izq. Canutillo	92.35	3	0	1180	1.9	73.0	4.0	15.5	2.1	2.1	1.3	0.1	0.0	74.9	4.0	21.1	0.108	0.510	26.389613	-105.353795
Las Nieves	97.60	3	0	1703	1.2	73.1	3.5	15.8	2.1	2.3	1.7	0.1	0.2	74.3	3.5	22.2	0.073	0.515	26.400077	-105.405370
T. Izq. Ocampo	109.22	3	0	1311	0.9	71.3	4.4	15.9	2.5	2.7	1.7	0.3	0.3	72.2	4.4	23.4	0.095	0.517	26.442502	-105.494201
Lim. Edos. Term. Dgo. Ppia. Chih.	122.89																			
Matamoros	148.00	1	0	1252	1.1	72.5	4.0	16.5	2.1	2.2	1.3	0.2	0.1	73.6	4.0	22.4	0.112	0.516	26.750980	-105.581003
Hidalgo del Parral	171.00	1	0	3708	1.5	78.8	1.8	14.3	1.5	1.1	0.9	0.1	0.0	80.3	1.8	17.9	0.085	0.524	26.917849	-105.640715

8 CARR: Ent. Los Herrera - Topia

CLAVE: 10090

RUTA: MEX-036

AÑO: 2021

LUGAR	ESTACION				CLASIFICACION VEHICULAR EN PORCIENTO														COORDENADAS	
	KM	TE	SC	TDPA	M	A	B	C2	C3	T3S2	T3S3	T3S2R4	OTROS	A	B	C	K'	D	LATITUD	LONGITUD
T. C. Guadalupe Aguilera - Tepehuanes	0.00	3	0	591	1.2	52.0	1.9	26.3	7.1	7.0	4.4	0.0	0.1	53.2	1.9	44.9	0.086	0.501	25.120684	-105.484094

DURANGO

8 CARR: Ent. Los Herrera - Topia

CLAVE: 10090

RUTA: MEX-036

AÑO: 2021

LUGAR	ESTACION				CLASIFICACION VEHICULAR EN PORCIENTO														COORDENADAS	
	KM	TE	SC	TDPA	M	A	B	C2	C3	T3S2	T3S3	T3S2R4	OTROS	A	B	C	K'	D	LATITUD	LONGITUD
Los Altares	80.00	1	0	460	4.4	55.5	1.7	26.1	5.8	3.9	2.4	0.0	0.2	59.9	1.7	38.4	0.103	0.541	25.016500	-105.902000
Topia	229.00																			

9 CARR: Gómez Palacio - Jiménez

CLAVE: 00006

RUTA: MEX-049

AÑO: 2021

LUGAR	ESTACION				CLASIFICACION VEHICULAR EN PORCIENTO														COORDENADAS	
	KM	TE	SC	TDPA	M	A	B	C2	C3	T3S2	T3S3	T3S2R4	OTROS	A	B	C	K'	D	LATITUD	LONGITUD
Gómez Palacio	0.00	3	1	14896	8.9	72.5	3.9	3.4	1.9	5.4	1.2	2.2	0.6	81.4	3.9	14.7	0.078	0.528	25.611811	-103.512290
Gómez Palacio	0.00	3	2	15572	8.8	73.1	4.3	4.3	1.8	4.1	1.2	1.9	0.5	81.9	4.3	13.8	0.084	0.528	25.611759	-103.512450
X. C. La Torreña - Brittingham	10.96	1	1	10695	8.5	63.3	4.6	4.8	2.4	8.5	3.3	3.6	1.0	71.8	4.6	23.6	0.069	0.506	25.638029	-103.522911
X. C. La Torreña - Brittingham	10.96	1	2	10449	8.5	65.5	3.3	4.9	2.4	7.7	2.8	3.9	1.0	74.0	3.3	22.7	0.071	0.506	25.637994	-103.523031
T. Izq. Dinamita	26.27	1	1	6362	3.9	63.0	3.9	4.8	2.4	14.7	3.1	3.4	0.8	66.9	3.9	29.2	0.073	0.508	25.751470	-103.568048
T. Izq. Dinamita	26.27	1	2	6162	3.9	63.2	3.7	4.9	2.4	14.4	3.2	3.4	0.9	67.1	3.7	29.2	0.079	0.508	25.751400	-103.568238
T. C. Gómez Palacio - Corralitos (Cuota)	37.92	1	1	5257	3.5	56.7	4.3	5.1	2.3	18.3	4.3	4.5	1.0	60.2	4.3	35.5	0.073	0.506	25.863335	-103.611148
T. C. Gómez Palacio - Corralitos (Cuota)	37.92	1	2	5393	3.5	56.8	4.2	5.0	2.3	18.4	4.3	4.5	1.0	60.3	4.2	35.5	0.066	0.506	25.861622	-103.610539
Bermejillo	39.30	1	1	3856	10.7	66.3	4.6	6.1	1.7	6.7	1.8	1.8	0.3	77.0	4.6	18.4	0.077	0.508	25.879388	-103.618815
Bermejillo	39.30	1	2	3735	10.7	66.3	4.7	6.2	1.6	6.7	1.7	1.8	0.3	77.0	4.7	18.3	0.079	0.508	25.879833	-103.619119
T. Izq. Ent. La Zarca	40.89	3	0	3077	6.9	64.5	3.2	9.1	2.0	8.7	2.2	2.6	0.8	71.4	3.2	25.4	0.076	0.515	25.903070	-103.628352
Yermo	107.95	1	0	2075	7.3	41.4	4.1	10.1	2.4	23.4	7.3	3.4	0.6	48.7	4.1	47.2	0.066	0.501	26.383746	-103.999071
Yermo	107.95	3	0	2075	4.0	43.3	5.1	4.9	2.5	28.8	8.8	2.3	0.3	47.3	5.1	47.6	0.064	0.501	26.396078	-104.010564
Ceballos	127.20	1	0	1979	2.8	41.7	5.0	5.6	2.9	29.6	9.4	2.6	0.4	44.5	5.0	50.5	0.064	0.501	26.515478	-104.119223
Ceballos	127.20	3	0	2203	5.3	45.8	4.2	4.9	2.6	25.9	7.6	3.3	0.4	51.1	4.2	44.7	0.065	0.520	26.536672	-104.139076
Lim. Edos. Term. Dgo. Ppia. Chih.	146.15																			
Estación Escalón	160.89	3	0	2203	8.3	44.6	3.1	8.8	3.4	21.2	7.4	2.8	0.4	52.9	3.1	44.0	0.054	0.531	26.761117	-104.346605
Jiménez	223.00	1	1	3359	5.5	45.5	7.9	4.6	2.3	23.3	4.7	5.2	1.0	51.0	7.9	41.1	0.110	0.536	27.117714	-104.890994
Jiménez	223.00	1	2	3885	5.5	45.6	7.8	4.7	2.3	23.1	4.8	5.2	1.0	51.1	7.8	41.1	0.087	0.536	27.117616	-104.891048

10 CARR: Gómez Palacio - La Unión

CLAVE: 10009

RUTA: MEX-040

AÑO: 2021

LUGAR	ESTACION				CLASIFICACION VEHICULAR EN PORCIENTO														COORDENADAS	
	KM	TE	SC	TDPA	M	A	B	C2	C3	T3S2	T3S3	T3S2R4	OTROS	A	B	C	K'	D	LATITUD	LONGITUD
Gómez Palacio	0.00	3	0	5396	8.8	84.1	0.9	3.2	1.4	0.6	0.3	0.4	0.3	92.9	0.9	6.2	0.092	0.501	25.530196	-103.494790
X. C. Torreón - Villa Juárez	4.30	3	0	5784	15.0	74.5	1.4	5.4	1.9	0.9	0.2	0.6	0.1	89.5	1.4	9.1	0.087	0.506	25.517378	-103.487150
Nazareno	20.90	1	0	2831	6.0	76.5	1.0	14.1	1.6	0.4	0.2	0.1	0.1	82.5	1.0	16.5	0.046	0.543	25.421328	-103.428712
Nazareno	20.90	3	0	1973	3.8	58.5	4.1	5.8	1.8	6.8	6.9	2.9	9.4	62.3	4.1	33.6	0.059	0.513	25.398272	-103.440302

DURANGO

10 CARR : Gómez Palacio - La Unión

CLAVE: 10009

RUTA: MEX-040

AÑO: 2021

LUGAR	ESTACION				CLASIFICACION VEHICULAR EN PORCIENTO														COORDENADAS	
	KM	TE	SC	TDPA	M	A	B	C2	C3	T3S2	T3S3	T3S2R4	OTROS	A	B	C	K'	D	LATITUD	LONGITUD
La Unión	42.20	1	0	575	9.0	36.8	7.0	10.2	4.1	8.2	2.5	0.8	21.4	45.8	7.0	47.2	0.073	0.501	25.292609	-103.511062

11 CARR : Gómez Palacio - Tlahualillo

CLAVE: 10005

RUTA: MEX-040

AÑO: 2021

LUGAR	ESTACION				CLASIFICACION VEHICULAR EN PORCIENTO														COORDENADAS	
	KM	TE	SC	TDPA	M	A	B	C2	C3	T3S2	T3S3	T3S2R4	OTROS	A	B	C	K'	D	LATITUD	LONGITUD
T. C. Gómez Palacio - Jiménez	0.00																			
T. Izq. Esmeralda	5.60	1	0	15936	8.4	82.4	1.1	2.9	2.0	1.2	0.5	1.2	0.3	90.8	1.1	8.1	0.083	0.508	25.607652	-103.464527
T. Izq. Esmeralda	5.60	3	1	5287	9.5	80.3	1.0	3.7	2.0	1.7	0.5	1.0	0.3	89.8	1.0	9.2	0.087	0.503	25.619586	-103.452415
T. Izq. Esmeralda	5.60	3	2	5348	9.5	78.9	1.0	3.7	2.3	2.2	0.7	1.3	0.4	88.4	1.0	10.6	0.092	0.503	25.619631	-103.452464
Gregorio García	26.00	3	0	5840	5.1	73.6	0.7	12.4	3.6	2.1	0.7	1.5	0.3	78.7	0.7	20.6	0.094	0.503	25.748607	-103.351977
T. Izq. Esmeralda	31.44	1	0	6784	10.1	71.2	0.2	11.2	2.6	2.4	0.9	1.1	0.3	81.3	0.2	18.5	0.088	0.526	25.757467	-103.352334
San Francisco	48.90	1	0	2481	8.8	74.5	0.7	10.3	3.9	1.2	0.3	0.2	0.1	83.3	0.7	16.0	0.085	0.504	25.928929	-103.416751
San Francisco	48.90	3	0	1733	4.9	71.7	1.3	6.0	3.9	2.3	1.6	1.1	7.2	76.6	1.3	22.1	0.060	0.510	25.951780	-103.423694
Tlahualillo	72.90	1	0	2340	6.4	77.1	0.7	13.0	1.1	0.8	0.2	0.4	0.3	83.5	0.7	15.8	0.071	0.500	26.109587	-103.423854

12 CARR : Gregorio García - Francisco I. Madero

CLAVE: 00110

RUTA: MEX-040

AÑO: 2021

LUGAR	ESTACION				CLASIFICACION VEHICULAR EN PORCIENTO														COORDENADAS	
	KM	TE	SC	TDPA	M	A	B	C2	C3	T3S2	T3S3	T3S2R4	OTROS	A	B	C	K'	D	LATITUD	LONGITUD
T. C. Gómez Palacio - Tlahualillo	0.00																			
Lim. Edos. Term. Dgo. Ppia. Coah.	3.60																			
Francisco I. Madero	9.60	1	0	6886	7.5	81.0	0.7	4.5	2.6	1.9	0.8	0.6	0.4	88.5	0.7	10.8	0.104	0.532	25.772359	-103.294838

13 CARR : Guadalupe Aguilera - Tepehuanes

CLAVE: 10220

RUTA: MEX-023

AÑO: 2021

LUGAR	ESTACION				CLASIFICACION VEHICULAR EN PORCIENTO														COORDENADAS	
	KM	TE	SC	TDPA	M	A	B	C2	C3	T3S2	T3S3	T3S2R4	OTROS	A	B	C	K'	D	LATITUD	LONGITUD
Guadalupe Aguilera	0.00	3	1	3142	2.8	88.1	1.6	2.6	1.6	1.7	1.1	0.3	0.2	90.9	1.6	7.5	0.093	0.521	24.467485	-104.714606
Guadalupe Aguilera	0.00	3	2	2884	3.0	87.2	1.6	2.9	1.4	1.7	1.4	0.5	0.3	90.2	1.6	8.2	0.095	0.521	24.467452	-104.714665
Canatlán	14.00	3	0	2974	1.1	73.6	3.0	13.9	1.7	3.3	2.8	0.3	0.3	74.7	3.0	22.3	0.082	0.505	24.540503	-104.776317
La Soledad	45.80	3	0	2917	1.2	72.9	3.8	14.2	2.6	2.6	2.3	0.3	0.1	74.1	3.8	22.1	0.077	0.508	24.773190	-104.933162
T. Der. Coneto de Comonfort	51.60	1	0	3084	2.1	70.5	3.3	18.1	2.2	1.8	1.4	0.3	0.3	72.6	3.3	24.1	0.079	0.502	24.803040	-104.924401
José María Morelos	90.20	1	0	2523	0.8	71.6	3.2	16.6	2.4	2.7	2.3	0.3	0.1	72.4	3.2	24.4	0.079	0.503	25.007606	-105.202167
Santiago Papasquiaro	117.00	3	0	4385	2.0	72.6	1.1	16.9	3.8	2.1	1.3	0.1	0.1	74.6	1.1	24.3	0.076	0.505	25.078328	-105.431245

DURANGO

13 CARR: Guadalupe Aguilera - Tepehuanes

CLAVE: 10220

RUTA: MEX-023

AÑO: 2021

LUGAR	ESTACION				CLASIFICACION VEHICULAR EN PORCIENTO										COORDENADAS					
	KM	TE	SC	TDPA	M	A	B	C2	C3	T3S2	T3S3	T3S2R4	OTROS	A	B	C	K'	D	LATITUD	LONGITUD
Las Herreras	133.00	3	0	1206	1.3	76.6	2.6	13.8	3.7	1.0	1.0	0.0	0.0	77.9	2.6	19.5	0.090	0.500	25.159250	-105.508740
Tepehuanes	169.00	1	0	1601	2.2	71.6	2.6	19.9	2.4	0.7	0.5	0.0	0.1	73.8	2.6	23.6	0.085	0.503	25.322299	-105.714496

14 CARR: Hidalgo del Parral - Guadalupe y Calvo

CLAVE: 00802

RUTA: MEX-024

AÑO: 2021

LUGAR	ESTACION				CLASIFICACION VEHICULAR EN PORCIENTO										COORDENADAS					
	KM	TE	SC	TDPA	M	A	B	C2	C3	T3S2	T3S3	T3S2R4	OTROS	A	B	C	K'	D	LATITUD	LONGITUD
T. C. Hidalgo del Parral - Santa Bárbara	0.00	3	0	2803	1.6	71.4	1.2	17.3	4.2	2.3	1.7	0.0	0.3	73.0	1.2	25.8	0.073	0.505	26.915490	-105.764759
T. Der. Guacho chic	35.00	1	0	845	1.3	58.1	2.1	21.8	8.6	4.3	2.1	0.0	1.7	59.4	2.1	38.5	0.075	0.503	26.815930	-106.014939
T. Der. Guacho chic	35.00	3	0	919	2.3	64.8	1.4	22.2	4.9	2.0	1.2	0.0	1.2	67.1	1.4	31.5	0.099	0.515	26.808360	-106.016697
Lim. Edos. Term. Chih. Ppia. Dgo	38.00																			
Lim. Edos. Term. Dgo. Ppia. Chih.	57.00																			
El Vergel	110.00	1	0	907	1.6	66.7	1.4	22.2	4.7	1.8	0.9	0.0	0.7	68.3	1.4	30.3	0.090	0.525	26.523002	-106.357298
Puerto Sabinas	212.00	1	0	663	1.7	67.1	1.3	21.8	4.8	1.7	0.9	0.0	0.7	68.8	1.3	29.9	0.126	0.514	26.451285	-106.386575
Guadalupe y Calvo	234.00																			

15 CARR: Libramiento Cuencamé

CLAVE: 10006

RUTA: MEX

AÑO: 2021

LUGAR	ESTACION				CLASIFICACION VEHICULAR EN PORCIENTO										COORDENADAS					
	KM	TE	SC	TDPA	M	A	B	C2	C3	T3S2	T3S3	T3S2R4	OTROS	A	B	C	K'	D	LATITUD	LONGITUD
T. C. La Chicharrona - Cuencamé	0.00	3	1	942	1.9	70.4	3.0	15.8	2.2	3.6	2.0	0.6	0.5	72.3	3.0	24.7	0.082	0.549	24.863805	-103.699745
T. C. La Chicharrona - Cuencamé	0.00	3	2	958	0.9	76.2	2.4	12.9	1.7	3.1	1.7	0.6	0.5	77.1	2.4	20.5	0.096	0.549	24.863791	-103.699827
T. C. Durango - Torreón	2.60	1	1	768	3.5	65.0	4.1	14.8	4.5	3.8	3.5	0.6	0.2	68.5	4.1	27.4	0.111	0.516	24.880653	-103.700558
T. C. Durango - Torreón	2.60	1	2	720	3.3	64.0	4.0	17.1	4.4	3.2	3.2	0.6	0.2	67.3	4.0	28.7	0.083	0.516	24.880712	-103.700642

16 CARR: Libramiento Oriente de Durango

CLAVE:

RUTA: MEX-045

AÑO: 2021

LUGAR	ESTACION				CLASIFICACION VEHICULAR EN PORCIENTO										COORDENADAS					
	KM	TE	SC	TDPA	M	A	B	C2	C3	T3S2	T3S3	T3S2R4	OTROS	A	B	C	K'	D	LATITUD	LONGITUD
T. C. Zacatecas - Durango	0.00	3	1	2440	4.7	74.4	3.1	4.0	3.0	5.6	2.8	2.0	0.4	79.1	3.1	17.8	0.104	0.519	24.023854	-104.519181
T. C. Zacatecas - Durango	0.00	3	2	2632	4.5	75.3	2.8	4.0	2.9	5.6	2.7	1.9	0.3	79.8	2.8	17.4	0.096	0.519	24.023845	-104.519279
T. C. Durango - Ent. La Zarca	10.50	1	1	3000	3.5	77.9	3.0	4.3	2.0	5.0	1.9	2.0	0.4	81.4	3.0	15.6	0.071	0.515	24.086097	-104.562502
T. C. Durango - Ent. La Zarca	10.50	1	2	3180	3.7	76.3	2.9	4.8	2.3	5.0	2.2	2.2	0.6	80.0	2.9	17.1	0.076	0.515	24.085872	-104.562798

DURANGO

17 CARR: Libramiento Sur de Durango

CLAVE:

RUTA: MEX-045

AÑO: 2021

LUGAR	ESTACION				CLASIFICACION VEHICULAR EN PORCIENTO														COORDENADAS	
	KM	TE	SC	TDPA	M	A	B	C2	C3	T3S2	T3S3	T3S2R4	OTROS	A	B	C	K'	D	LATITUD	LONGITUD
T. C. Zacatecas - Durango	0.00	3	0	3311	5.9	77.9	2.2	4.3	2.8	3.3	2.3	1.1	0.2	83.8	2.2	14.0	0.086	0.501	24.007708	-104.529171
T. C. Durango - Mezquital	8.45	1	0	3115	3.6	79.4	2.0	4.2	2.9	4.3	2.1	1.2	0.3	83.0	2.0	15.0	0.091	0.502	23.971026	-104.568190
T. C. Durango - Mezquital	8.45	3	0	1399	7.1	77.7	1.2	5.4	6.6	1.2	0.6	0.1	0.1	84.8	1.2	14.0	0.106	0.503	23.965952	-104.578478
T. C. Durango - Aserradero La Flor	19.50	1	0	883	7.8	70.4	3.4	6.5	3.9	3.7	1.9	2.1	0.3	78.2	3.4	18.4	0.116	0.506	23.952590	-104.661866
T. C. Durango - Aserradero La Flor	19.50	3	0	1239	9.4	72.5	2.8	4.8	4.1	3.2	1.1	1.9	0.2	81.9	2.8	15.3	0.105	0.514	23.952600	-104.669893
T. C. Durango - Villa Unión	27.70	1	0	1798	3.8	83.9	1.6	2.8	3.1	2.7	0.9	1.0	0.2	87.7	1.6	10.7	0.102	0.503	23.989992	-104.718883

18 CARR: Pedriceña - Ent. Rodeo

CLAVE: 10002

RUTA: MEX-034

AÑO: 2021

LUGAR	ESTACION				CLASIFICACION VEHICULAR EN PORCIENTO														COORDENADAS	
	KM	TE	SC	TDPA	M	A	B	C2	C3	T3S2	T3S3	T3S2R4	OTROS	A	B	C	K'	D	LATITUD	LONGITUD
T. C. Cuencamé - Torreón	0.00	3	0	2663	1.9	77.2	0.9	14.8	2.4	1.4	0.9	0.2	0.3	79.1	0.9	20.0	0.076	0.505	25.092878	-103.775212
Nazas	45.00	1	0	2489	4.7	73.9	0.8	16.9	2.0	0.9	0.6	0.1	0.1	78.6	0.8	20.6	0.081	0.512	25.237266	-104.097641
Nazas	45.00	3	0	1010	5.6	72.5	0.6	16.8	2.4	1.1	1.0	0.0	0.0	78.1	0.6	21.3	0.092	0.521	25.217434	-104.125804
T. C. (Durango - Ent. La Zarca)-Ent. Rodeo	98.00	1	0	702	2.6	73.0	0.9	19.8	2.1	0.9	0.6	0.0	0.1	75.6	0.9	23.5	0.091	0.502	25.129505	-104.536706

19 CARR: Ramal a Otinapa

CLAVE: 10002

RUTA: MEX

AÑO: 2021

LUGAR	ESTACION				CLASIFICACION VEHICULAR EN PORCIENTO														COORDENADAS	
	KM	TE	SC	TDPA	M	A	B	C2	C3	T3S2	T3S3	T3S2R4	OTROS	A	B	C	K'	D	LATITUD	LONGITUD
T. C. Durango - Villa Unión	0.00	3	0	249	3.3	67.5	3.4	18.0	2.9	1.5	1.0	0.6	1.8	70.8	3.4	25.8	0.131	0.516	23.928167	-104.941117
Otinapa	19.65																			

20 CARR: Ramal a Santa Clara

CLAVE: 10287

RUTA: MEX-049

AÑO: 2021

LUGAR	ESTACION				CLASIFICACION VEHICULAR EN PORCIENTO														COORDENADAS	
	KM	TE	SC	TDPA	M	A	B	C2	C3	T3S2	T3S3	T3S2R4	OTROS	A	B	C	K'	D	LATITUD	LONGITUD
T. C. Ent. La Chicharrona - Cuencamé	0.00	3	0	932	2.0	72.3	2.4	16.2	1.5	2.4	1.3	1.5	0.4	74.3	2.4	23.3	0.094	0.509	24.442489	-103.482478
Santa Clara	14.00																			

21 CARR: Ramal a Villa Juárez

CLAVE: 10287

RUTA: MEX-040

AÑO: 2021

LUGAR	ESTACION				CLASIFICACION VEHICULAR EN PORCIENTO														COORDENADAS	
	KM	TE	SC	TDPA	M	A	B	C2	C3	T3S2	T3S3	T3S2R4	OTROS	A	B	C	K'	D	LATITUD	LONGITUD
T. C. Gómez Palacio - La Unión	0.00	3	1	2590	8.0	81.9	0.4	8.7	0.6	0.2	0.2	0.0	0.0	89.9	0.4	9.7	0.123	0.510	25.517868	-103.494170

DURANGO

21 CARR: Ramal a Villa Juárez

CLAVE: 10287

RUTA: MEX-040

AÑO: 2021

LUGAR	ESTACION				CLASIFICACION VEHICULAR EN PORCIENTO														COORDENADAS	
	KM	TE	SC	TDPA	M	A	B	C2	C3	T3S2	T3S3	T3S2R4	OTROS	A	B	C	K'	D	LATITUD	LONGITUD
T. C. Gómez Palacio - La Unión	0.00	3	2	2467	6.9	83.1	0.3	8.8	0.6	0.2	0.1	0.0	0.0	90.0	0.3	9.7	0.111	0.510	25.517758	-103.494095
Villa Juárez	13.00																			

22 CARR: Ramal Distribuidor Presa Peña del Águila

CLAVE: 10016

RUTA: MEX-045

AÑO: 2021

LUGAR	ESTACION				CLASIFICACION VEHICULAR EN PORCIENTO														COORDENADAS	
	KM	TE	SC	TDPA	M	A	B	C2	C3	T3S2	T3S3	T3S2R4	OTROS	A	B	C	K'	D	LATITUD	LONGITUD
T. C. Durango - Ent. La Zarca Sur	0.00																			
T. Der. San José del Molino	10.50	1	0	587	8.2	65.3	4.7	19.0	1.3	0.9	0.3	0.3	0.0	73.5	4.7	21.8	0.129	0.503	24.207397	-104.662494
T. C. Durango - Ent. La Zarca Norte	19.00																			

23 CARR: Zacatecas - Durango

CLAVE: 00544

RUTA: MEX-045

AÑO: 2021

LUGAR	ESTACION				CLASIFICACION VEHICULAR EN PORCIENTO														COORDENADAS	
	KM	TE	SC	TDPA	M	A	B	C2	C3	T3S2	T3S3	T3S2R4	OTROS	A	B	C	K'	D	LATITUD	LONGITUD
Zacatecas	0.00																			
T. Izq. Guadalajara	6.40	3	1	13880	0.7	81.6	2.8	7.7	4.0	1.9	0.6	0.3	0.4	82.3	2.8	14.9	0.077	0.534	22.783800	-102.626960
T. Izq. Guadalajara	6.40	3	2	15929	0.7	80.3	3.3	8.0	4.1	2.7	0.3	0.3	0.3	81.0	3.3	15.7	0.086	0.534	22.787932	-102.627049
T. Der. Saltillo (T. Morelos)	15.00	3	1	12253	1.6	74.8	2.6	7.9	2.4	5.5	2.2	2.2	0.8	76.4	2.6	21.0	0.103	0.524	22.870644	-102.632823
T. Der. Saltillo (T. Morelos)	15.00	3	2	13502	1.6	74.7	2.7	7.9	2.4	5.5	2.2	2.2	0.8	76.3	2.7	21.0	0.084	0.524	22.870436	-102.651886
T. Libramiento de Víctor Rosales	26.20																			
Víctor Rosales	28.00	1	1	13785	0.6	77.4	2.3	6.4	2.8	5.3	2.2	2.4	0.6	78.0	2.3	19.7	0.080	0.558	22.919402	-102.676076
Víctor Rosales	28.00	1	2	13120	0.6	75.1	3.2	6.8	1.8	6.1	3.0	2.7	0.7	75.7	3.2	21.1	0.092	0.558	22.923293	-102.679896
T. Der. Facultad de Veterinaria	32.30	1	1	7796	1.2	66.3	4.2	9.7	2.9	10.1	2.0	2.9	0.7	67.5	4.2	28.3	0.112	0.503	22.971740	-102.719860
T. Der. Facultad de Veterinaria	32.30	1	2	7688	1.5	64.9	4.5	9.9	2.5	10.5	2.3	3.2	0.7	66.4	4.5	29.1	0.096	0.503	22.967376	-102.716763
Gral. Enrique Estrada	34.60	3	1	9929	1.0	73.4	3.3	7.9	1.6	7.3	1.6	3.2	0.7	74.4	3.3	22.3	0.074	0.502	23.012037	-102.751612
Gral. Enrique Estrada	34.60	3	2	9830	0.9	70.4	3.7	8.7	1.9	8.2	1.8	3.7	0.7	71.3	3.7	25.0	0.080	0.502	23.011910	-102.751855
T. Libramiento de Víctor Rosales	35.90																			
T. Libramiento de Fresnillo Sur	49.30																			
Fresnillo	58.50	1	1	7979	0.9	81.9	2.8	7.5	2.5	2.3	1.2	0.3	0.6	82.8	2.8	14.4	0.098	0.519	23.162313	-102.853432
Fresnillo	58.50	1	2	8616	1.0	81.3	2.8	7.7	2.6	2.4	1.3	0.3	0.6	82.3	2.8	14.9	0.089	0.519	23.162269	-102.853532
T. Libramiento de Fresnillo Norte	66.70																			
Ent. La Chicharrona	74.30	1	1	8352	1.4	61.2	4.9	10.8	3.4	11.0	4.0	2.5	0.8	62.6	4.9	32.5	0.104	0.544	23.291959	-102.953905
Ent. La Chicharrona	74.30	1	2	6989	1.4	61.2	4.8	10.8	3.4	11.0	4.0	2.5	0.9	62.6	4.8	32.6	0.095	0.544	23.291510	-102.953920
Ent. La Chicharrona	74.30	3	0	6180	1.4	65.3	4.1	19.4	2.8	3.2	2.1	1.2	0.5	66.7	4.1	29.2	0.083	0.508	23.307801	-102.964749

DURANGO

23 CARR: Zacatecas - Durango

CLAVE: 00544

RUTA: MEX-045

AÑO: 2021

LUGAR	ESTACION				CLASIFICACION VEHICULAR EN PORCIENTO														COORDENADAS	
	KM	TE	SC	TDPA	M	A	B	C2	C3	T3S2	T3S3	T3S2R4	OTROS	A	B	C	K'	D	LATITUD	LONGITUD
T. Der. Sain Alto	121.00	3	0	4069	1.8	66.4	4.3	14.1	2.9	5.1	2.9	1.6	0.9	68.2	4.3	27.5	0.087	0.505	23.581034	-103.273992
T. Izq. Sombrerete (2° Acceso)	161.50	3	0	6522	1.7	72.5	3.9	11.4	2.5	4.1	2.7	0.8	0.4	74.2	3.9	21.9	0.084	0.555	23.650690	-103.652370
T. C. Libramiento de Sombrerete	165.00	3	0	5687	2.3	71.2	5.1	12.9	1.9	3.3	1.3	1.3	0.7	73.5	5.1	21.4	0.081	0.534	23.682372	-103.698408
Lim. Edos. Term. Zac. Ppia. Dgo.	190.08																			
X. C. SÚchil - Villa Unión	206.98	1	0	3205	2.6	68.3	6.0	7.8	2.2	6.9	3.1	2.6	0.5	70.9	6.0	23.1	0.093	0.502	23.750529	-103.961996
X. C. SÚchil - Villa Unión	206.98	3	0	6427	5.6	74.4	3.3	8.9	1.4	3.2	1.6	1.4	0.2	80.0	3.3	16.7	0.093	0.537	23.744181	-104.000575
T. Izq. Graceros	210.00	1	0	5564	6.8	71.2	4.7	8.0	1.4	4.1	1.7	1.7	0.4	78.0	4.7	17.3	0.079	0.515	23.747641	-104.032005
Amado Nervo	231.51	1	0	5090	8.6	66.8	5.6	9.8	1.6	3.9	1.7	1.6	0.4	75.4	5.6	19.0	0.071	0.503	23.838410	-104.178309
Amado Nervo	231.51	3	0	5744	3.6	78.0	3.7	7.6	1.7	2.5	1.5	1.2	0.2	81.6	3.7	14.7	0.085	0.522	23.844575	-104.199981
Nombre de Dios	236.80	1	0	2593	6.0	77.3	1.9	14.1	0.5	0.1	0.1	0.0	0.0	83.3	1.9	14.8	0.120	0.536	23.843712	-104.225468
Nombre de Dios	236.80	3	0	4020	3.8	78.1	1.5	15.9	0.3	0.2	0.0	0.1	0.1	81.9	1.5	16.6	0.109	0.517	23.852913	-104.250483
T. Der. Constanacia	240.60	3	0	6469	1.6	83.5	2.5	8.5	1.2	1.4	0.7	0.4	0.2	85.1	2.5	12.4	0.121	0.500	23.872187	-104.269210
T. Der. Tuitán	250.80	3	0	5341	2.5	74.8	4.3	11.4	1.6	3.2	0.5	1.3	0.4	77.3	4.3	18.4	0.101	0.528	23.923137	-104.337211
T. Der. Independencia y Libertad	261.70	1	0	5740	2.4	74.8	3.4	12.0	2.0	2.9	1.4	0.9	0.2	77.2	3.4	19.4	0.097	0.504	23.994475	-104.374784
T. Der. Independencia y Libertad	261.70	3	1	3318	2.2	78.0	5.1	8.7	1.1	2.0	1.3	1.3	0.3	80.2	5.1	14.7	0.099	0.510	24.011993	-104.403055
T. Der. Independencia y Libertad	261.70	3	2	3457	2.3	77.2	3.9	9.5	1.8	1.8	1.5	1.6	0.4	79.5	3.9	16.6	0.110	0.510	24.011893	-104.403075
T. Izq. Parras de La Fuente	276.60	1	1	3813	0.6	82.2	2.6	7.6	1.8	2.5	1.4	1.1	0.2	82.8	2.6	14.6	0.100	0.512	24.019126	-104.506524
T. Izq. Parras de La Fuente	276.60	1	2	4004	0.6	83.4	2.0	7.5	1.2	2.7	1.5	1.0	0.1	84.0	2.0	14.0	0.109	0.512	24.019036	-104.506593
T. Izq. Parras de La Fuente	276.60	3	1	3930	2.8	86.0	3.0	3.6	1.5	1.8	0.6	0.6	0.1	88.8	3.0	8.2	0.115	0.512	24.021182	-104.525700
T. Izq. Parras de La Fuente	276.60	3	2	4116	2.8	86.1	3.0	3.6	1.5	1.8	0.6	0.5	0.1	88.9	3.0	8.1	0.109	0.512	24.021078	-104.525702
Durango	287.30	1	1	5638	5.1	82.1	3.4	3.9	1.8	1.5	1.0	0.8	0.4	87.2	3.4	9.4	0.087	0.507	24.026320	-104.574269
Durango	287.30	1	2	5477	5.2	83.1	2.4	3.9	1.9	1.5	0.7	0.8	0.5	88.3	2.4	9.3	0.107	0.507	24.026211	-104.574289

24 CARR: Durango - Mazatlán (Cuota)

CLAVE: 00084

RUTA: MEX-040D

AÑO: 2021

LUGAR	ESTACION				CLASIFICACION VEHICULAR EN PORCIENTO														COORDENADAS	
	KM	TE	SC	TDPA	M	A	B	C2	C3	T3S2	T3S3	T3S2R4	OTROS	A	B	C	K'	D	LATITUD	LONGITUD
Libramiento de Durango	21.30	3	0	2954	2.1	64.6	5.7	5.2	2.7	10.6	2.4	6.4	0.3	66.7	5.7	27.6	0.122	0.512	24.005794	-104.731847
Plaza de Cobro Durango	22.20	2	0	4022	0.8	70.2	2.9	2.6	2.9	10.5	1.6	7.3	1.2	71.0	2.9	26.1	0.108	0.500	24.005080	-104.734540
Ent. Otinapa	44.50	1	0	2609	2.5	64.0	5.7	5.3	2.2	10.3	2.1	7.0	0.9	66.5	5.7	27.8	0.117	0.509	23.982298	-104.940457
Plaza de Cobro Llano Grande	73.80	2	0	3590	0.8	67.5	3.0	2.8	3.0	11.7	1.7	8.3	1.2	68.3	3.0	28.7	0.108	0.500	23.864514	-105.233202
T. Der. El Salto	104.20	1	0	2112	4.9	53.1	8.1	7.5	2.4	15.5	2.4	5.6	0.5	58.0	8.1	33.9	0.092	0.523	23.755439	-105.422842
T. Der. El Salto	104.20	3	0	3274	4.3	54.9	5.6	8.9	2.6	13.0	3.3	7.1	0.3	59.2	5.6	35.2	0.092	0.525	23.759996	-105.432053
T. Der. La Campana	111.00	3	0	2738	4.1	56.9	6.4	6.7	3.1	9.9	3.6	9.0	0.3	61.0	6.4	32.6	0.080	0.512	23.721703	-105.488220
Lim. Edos. Term. Dgo. Ppia. Sin.	157.40																			

DURANGO

24 CARR: Durango - Mazatlán (Cuota)

CLAVE: 00084

RUTA: MEX-040D

AÑO: 2021

LUGAR	ESTACION				CLASIFICACION VEHICULAR EN PORCIENTO										COORDENADAS					
	KM	TE	SC	TDPA	M	A	B	C2	C3	T3S2	T3S3	T3S2R4	OTROS	A	B	C	K'	D	LATITUD	LONGITUD
Entronque Santa Lucia	172.20	3	0	2976	4.4	61.3	6.3	5.4	2.8	8.1	3.8	7.5	0.4	65.7	6.3	28.0	0.095	0.530	23.451952	-105.842552
Concordia	213.70	1	0	2593	4.5	60.6	5.9	4.9	2.7	10.0	3.5	7.3	0.6	65.1	5.9	29.0	0.087	0.504	23.261305	-106.047883
Concordia	213.70	3	0	1993	4.0	55.7	11.5	11.6	4.5	6.3	3.1	2.4	0.9	59.7	11.5	28.8	0.109	0.531	23.251193	-106.059681
Villa Unión	229.70	1	0	2254	5.0	57.1	10.8	10.4	4.7	6.1	2.9	2.2	0.8	62.1	10.8	27.1	0.165	0.531	23.203392	-106.160055

25 CARR: Durango - Yerbanis (Cuota)

CLAVE: 10003

RUTA: MEX-040D

AÑO: 2021

LUGAR	ESTACION				CLASIFICACION VEHICULAR EN PORCIENTO										COORDENADAS					
	KM	TE	SC	TDPA	M	A	B	C2	C3	T3S2	T3S3	T3S2R4	OTROS	A	B	C	K'	D	LATITUD	LONGITUD
T. C. Durango - Torreón	0.00																			
T. Der. Aeropuerto	5.30	1	1	4326	1.1	77.2	2.8	9.4	1.1	4.3	1.5	2.3	0.3	78.3	2.8	18.9	0.092	0.505	24.122192	-104.542058
T. Der. Aeropuerto	5.30	1	2	4234	0.8	76.0	2.6	9.8	1.1	5.1	1.6	2.6	0.4	76.8	2.6	20.6	0.098	0.505	24.122310	-104.542176
Plaza de Cobro Durango	5.50	2	1	1767	0.4	68.3	3.7	3.3	2.4	10.3	2.2	8.0	1.4	68.7	3.7	27.6	0.117	0.500	24.131646	-104.534037
Plaza de Cobro Durango	5.50	2	2	1767	0.4	68.3	3.7	3.3	2.4	10.3	2.2	8.0	1.4	68.7	3.7	27.6	0.117	0.500	24.131646	-104.534037
Plaza de Cobro Yerbanis	112.19	2	1	1450	0.5	64.4	4.1	3.5	2.6	11.9	2.3	9.2	1.5	64.9	4.1	31.0	0.117	0.500	24.730819	-103.861843
Plaza de Cobro Yerbanis	112.19	2	2	1450	0.5	64.4	4.1	3.5	2.6	11.9	2.3	9.2	1.5	64.9	4.1	31.0	0.117	0.500	24.730819	-103.861843
Ent. Yerbanis	118.00																			

26 CARR: Gómez Palacio - Corralitos (Cuota)

CLAVE: 00016

RUTA: MEX-049D

AÑO: 2021

LUGAR	ESTACION				CLASIFICACION VEHICULAR EN PORCIENTO										COORDENADAS					
	KM	TE	SC	TDPA	M	A	B	C2	C3	T3S2	T3S3	T3S2R4	OTROS	A	B	C	K'	D	LATITUD	LONGITUD
T. C. Gómez Palacio - Jiménez (Libre)	38.00																			
T. Izq. Bermejillo	40.10	1	1	2215	2.2	46.8	7.0	4.5	1.9	27.2	2.7	7.6	0.1	49.0	7.0	44.0	0.076	0.506	25.883707	-103.610720
T. Izq. Bermejillo	40.10	1	2	2268	2.3	46.3	7.1	4.7	1.8	27.1	2.9	7.6	0.2	48.6	7.1	44.3	0.079	0.506	25.883727	-103.610890
T. Izq. Bermejillo	40.10	3	1	1778	3.3	50.9	7.1	5.0	1.5	21.6	4.4	6.0	0.2	54.2	7.1	38.7	0.075	0.516	25.895432	-103.611321
T. Izq. Bermejillo	40.10	3	2	1897	3.1	50.5	7.3	5.3	1.4	21.7	4.6	6.0	0.1	53.6	7.3	39.1	0.076	0.516	25.895435	-103.611621
Plaza de Cobro Bermejillo	44.16	2	1	2248	0.2	37.7	8.7	2.5	1.6	30.1	5.7	10.3	3.2	37.9	8.7	53.4	0.079	0.500	25.923705	-103.622079
Plaza de Cobro Bermejillo	44.16	2	2	2248	0.2	37.7	8.7	2.5	1.6	30.1	5.7	10.3	3.2	37.9	8.7	53.4	0.079	0.500	25.923705	-103.622079
Plaza de Cobro Ceballos	128.80	2	1	2211	0.2	37.2	5.1	2.5	5.3	30.6	5.6	10.5	3.0	37.4	5.1	57.5	0.079	0.500	26.586801	-104.057535
Plaza de Cobro Ceballos	128.80	2	2	2211	0.2	37.2	5.1	2.5	5.3	30.6	5.6	10.5	3.0	37.4	5.1	57.5	0.079	0.500	26.586801	-104.057535
Lim. Edos. Term. Dgo. Ppia. Chih.	158.00																			
T. C. Gómez Palacio - Jiménez	188.46	3	1	2797	1.3	45.9	8.5	5.6	2.6	25.2	3.7	6.3	0.9	47.2	8.5	44.3	0.090	0.551	26.909264	-104.562176
T. C. Gómez Palacio - Jiménez	188.46	3	2	2528	1.5	45.8	8.5	5.6	2.6	25.2	3.7	6.3	0.8	47.3	8.5	44.2	0.084	0.551	26.908426	-104.562613
T. C. Gómez Palacio - Jiménez (Libre)	226.50	1	1	2683	2.1	40.3	7.7	10.6	2.4	23.9	4.6	7.5	0.9	42.4	7.7	49.9	0.094	0.506	27.097384	-104.862953

DURANGO

26 CARR : Gómez Palacio - Corralitos (Cuota)

CLAVE: 00016

RUTA: MEX-049D

AÑO: 2021

LUGAR	ESTACION				CLASIFICACION VEHICULAR EN PORCIENTO														COORDENADAS	
	KM	TE	SC	TDPA	M	A	B	C2	C3	T3S2	T3S3	T3S2R4	OTROS	A	B	C	K'	D	LATITUD	LONGITUD
T. C. Gómez Palacio - Jiménez (Libre)	226.50	1	2	2615	2.7	42.2	9.4	11.8	2.4	20.5	3.4	6.8	0.8	44.9	9.4	45.7	0.076	0.506	27.096139	-104.861655

27 CARR : Libramiento de Durango (Cuota)

CLAVE: 10006

RUTA: MEX-040D

AÑO: 2021

LUGAR	ESTACION				CLASIFICACION VEHICULAR EN PORCIENTO														COORDENADAS	
	KM	TE	SC	TDPA	M	A	B	C2	C3	T3S2	T3S3	T3S2R4	OTROS	A	B	C	K'	D	LATITUD	LONGITUD
T. C. Durango - Torreón	0.00	3	0	5235	2.4	69.0	3.2	4.8	3.5	9.0	3.6	4.4	0.1	71.4	3.2	25.4	0.070	0.505	24.092856	-104.586377
T. C. Durango - Villa Unión (Cuota)	21.60	1	0	4182	2.7	67.8	4.9	10.0	2.7	4.4	2.6	4.4	0.5	70.5	4.9	24.6	0.104	0.514	24.018142	-104.727042

28 CARR : Libramiento Norte de Torreón (Cuota)

CLAVE:

RUTA: MEX-040D

AÑO: 2021

LUGAR	ESTACION				CLASIFICACION VEHICULAR EN PORCIENTO														COORDENADAS	
	KM	TE	SC	TDPA	M	A	B	C2	C3	T3S2	T3S3	T3S2R4	OTROS	A	B	C	K'	D	LATITUD	LONGITUD
X. C. Gómez Palacio - Jiménez	0.00	3	0	2973	4.8	51.0	2.4	9.0	2.9	16.0	5.3	7.5	1.1	55.8	2.4	41.8	0.071	0.507	25.633269	-103.505790
Lim. Edos. Term. Dgo. Ppia. Coah.	15.60																			
X. C. La Cuchilla - Torreón	17.36	1	0	3603	3.9	38.6	6.2	4.9	2.2	25.2	5.7	12.3	1.0	42.5	6.2	51.3	0.071	0.508	25.657812	-103.384953
X. C. La Cuchilla - Torreón	17.36	3	0	3239	3.7	37.0	5.4	4.5	1.8	28.1	5.7	12.9	0.9	40.7	5.4	53.9	0.070	0.504	25.647895	-103.354678
X. C. Torreón - Saltillo	40.70	1	0	2980	5.0	33.2	6.9	5.9	2.5	27.8	6.0	11.7	1.0	38.2	6.9	54.9	0.058	0.515	25.547384	-103.226185

29 CARR : Yerbanis - Gómez Palicio (Cuota)

CLAVE: 10003

RUTA: MEX-040D

AÑO: 2021

LUGAR	ESTACION				CLASIFICACION VEHICULAR EN PORCIENTO														COORDENADAS	
	KM	TE	SC	TDPA	M	A	B	C2	C3	T3S2	T3S3	T3S2R4	OTROS	A	B	C	K'	D	LATITUD	LONGITUD
Ent. Yerbanis	118.00																			
Plaza de Cobro Cuencamé	143.22	2	1	1472	0.5	65.5	4.5	3.4	2.5	11.2	2.3	8.6	1.5	66.0	4.5	29.5	0.089	0.500	24.981714	-103.735206
Plaza de Cobro Cuencamé	143.22	2	2	1472	0.5	65.5	4.5	3.4	2.5	11.2	2.3	8.6	1.5	66.0	4.5	29.5	0.089	0.500	24.981714	-103.735206
X. C. Cuencamé - Torreón	180.00	1	1	2906	2.2	52.7	8.6	4.4	2.2	18.8	2.9	7.2	1.0	54.9	8.6	36.5	0.111	0.507	25.129019	-103.752971
X. C. Cuencamé - Torreón	180.00	1	2	2830	2.2	51.0	8.7	4.1	2.2	17.7	3.5	9.6	1.0	53.2	8.7	38.1	0.097	0.507	25.128984	-103.753051
X. C. Cuencamé - Torreón	180.00	3	1	2954	2.4	51.5	7.3	3.9	2.2	19.4	4.0	8.3	1.0	53.9	7.3	38.8	0.114	0.517	25.146149	-103.753065
X. C. Cuencamé - Torreón	180.00	3	2	3166	2.4	54.1	8.2	4.7	2.3	16.2	3.1	8.0	1.0	56.5	8.2	35.3	0.095	0.517	25.146213	-103.753104
Plaza de Cobro León Guzmán	212.71	1	1	2987	2.3	55.5	7.5	4.2	2.2	16.2	3.3	7.8	1.0	57.8	7.5	34.7	0.116	0.502	25.510984	-103.639963
Plaza de Cobro León Guzmán	212.71	1	2	3014	2.5	53.5	8.0	4.1	2.5	16.9	3.6	7.9	1.0	56.0	8.0	36.0	0.099	0.502	25.510985	-103.640043
Plaza de Cobro León Guzmán	212.71	2	1	2342	0.3	47.0	4.3	3.5	3.5	24.5	4.0	10.7	2.2	47.3	4.3	48.4	0.089	0.500	25.520645	-103.639471
Plaza de Cobro León Guzmán	212.71	2	2	2342	0.3	47.0	4.3	3.5	3.5	24.5	4.0	10.7	2.2	47.3	4.3	48.4	0.089	0.500	25.520645	-103.639471
Plaza de Cobro León Guzmán	212.71	3	1	2330	2.6	63.2	20.9	5.6	1.5	3.9	0.6	0.7	1.0	65.8	20.9	13.3	0.091	0.518	25.537975	-103.638345

DURANGO

29 CARR: Yerbanis - Gómez Palicio (Cuota)

CLAVE: 10003

RUTA: MEX-040D

AÑO: 2021

LUGAR	ESTACION				CLASIFICACION VEHICULAR EN PORCIENTO										COORDENADAS					
	KM	TE	SC	TDPA	M	A	B	C2	C3	T3S2	T3S3	T3S2R4	OTROS	A	B	C	K'	D	LATITUD	LONGITUD
Plaza de Cobro León Guzmán	212.71	3	2	2506	2.5	69.7	15.5	5.4	1.4	3.2	0.8	0.5	1.0	72.2	15.5	12.3	0.092	0.518	25.537986	-103.638634
T. C. Gómez Palacio - Jiménez	220.00																			

30 CARR: Amado Nervo - La Ochoa

CLAVE: 10012

RUTA: DGO-542

AÑO: 2021

LUGAR	ESTACION				CLASIFICACION VEHICULAR EN PORCIENTO										COORDENADAS					
	KM	TE	SC	TDPA	M	A	B	C2	C3	T3S2	T3S3	T3S2R4	OTROS	A	B	C	K'	D	LATITUD	LONGITUD
Amado Nervo	0.00	3	0	2507	7.0	78.1	1.4	12.2	1.0	0.2	0.1	0.0	0.0	85.1	1.4	13.5	0.059	0.503	23.853590	-104.172612
Villa Unión	25.00	1	0	4120	8.6	80.0	0.7	9.6	0.3	0.3	0.3	0.1	0.1	88.6	0.7	10.7	0.090	0.521	23.959015	-104.055405
La Ochoa	42.00	1	0	501	10.9	70.1	0.8	17.4	0.8	0.0	0.0	0.0	0.0	81.0	0.8	18.2	0.108	0.504	24.019847	-103.926169

31 CARR: Ceballos - El Mirador

CLAVE: 10417

RUTA: DGO-044

AÑO: 2021

LUGAR	ESTACION				CLASIFICACION VEHICULAR EN PORCIENTO										COORDENADAS					
	KM	TE	SC	TDPA	M	A	B	C2	C3	T3S2	T3S3	T3S2R4	OTROS	A	B	C	K'	D	LATITUD	LONGITUD
Ceballos	0.00	3	0	666	3.5	70.3	0.7	20.3	2.4	1.7	0.3	0.5	0.3	73.8	0.7	25.5	0.086	0.552	26.528371	-104.136422
T. C. Ent. La Zarca - Hidalgo del Parral	113.50	1	0	227	0.4	73.9	0.1	21.4	3.9	0.3	0.0	0.0	0.0	74.3	0.1	25.6	0.095	0.511	26.141937	-105.027985

32 CARR: Durango - Aserradero La Flor

CLAVE: 10422

RUTA: DGO-115

AÑO: 2021

LUGAR	ESTACION				CLASIFICACION VEHICULAR EN PORCIENTO										COORDENADAS					
	KM	TE	SC	TDPA	M	A	B	C2	C3	T3S2	T3S3	T3S2R4	OTROS	A	B	C	K'	D	LATITUD	LONGITUD
Durango	0.00	3	1	9648	6.1	89.3	0.5	2.8	0.4	0.3	0.1	0.3	0.2	95.4	0.5	4.1	0.108	0.502	23.984590	-104.664532
Durango	0.00	3	2	9562	6.1	88.9	0.6	3.2	0.4	0.3	0.1	0.2	0.2	95.0	0.6	4.4	0.094	0.502	23.984598	-104.664444
T. Der. Presa Guadalupe Victoria	4.00	3	1	6131	15.6	77.4	1.1	5.1	0.2	0.2	0.1	0.2	0.1	93.0	1.1	5.9	0.098	0.500	23.975702	-104.664663
T. Der. Presa Guadalupe Victoria	4.00	3	2	6127	15.8	76.9	1.2	5.2	0.3	0.2	0.1	0.2	0.1	92.7	1.2	6.1	0.084	0.500	23.975684	-104.664585
Periférico Sur de Durango	8.00	3	0	500	14.9	58.5	1.1	20.1	3.0	1.8	0.4	0.0	0.2	73.4	1.1	25.5	0.112	0.522	23.948662	-104.672474
La Casita	39.00	1	0	158	5.0	42.0	3.8	33.4	9.9	4.9	0.8	0.0	0.2	47.0	3.8	49.2	0.106	0.539	23.754075	-104.756946
Aserradero La Flor	72.00																			

33 CARR: Jabonoso - Esmeralda

CLAVE: 10004

RUTA: DGO-363

AÑO: 2021

LUGAR	ESTACION				CLASIFICACION VEHICULAR EN PORCIENTO										COORDENADAS					
	KM	TE	SC	TDPA	M	A	B	C2	C3	T3S2	T3S3	T3S2R4	OTROS	A	B	C	K'	D	LATITUD	LONGITUD
Jabonoso	0.00	3	0	3485	12.7	69.9	0.5	8.8	1.9	1.6	0.9	0.9	2.8	82.6	0.5	16.9	0.074	0.500	25.644389	-103.457103

DURANGO

33 CARR: Jabonoso - Esmeralda

CLAVE: 10004

RUTA: DGO-363

AÑO: 2021

LUGAR	ESTACION				CLASIFICACION VEHICULAR EN PORCIENTO													COORDENADAS		
	KM	TE	SC	TDPA	M	A	B	C2	C3	T3S2	T3S3	T3S2R4	OTROS	A	B	C	K'	D	LATITUD	LONGITUD
T. Izq. Chimal	10.00	3	0	4870	19.9	66.7	0.4	7.6	1.4	0.8	0.6	0.4	2.2	86.6	0.4	13.0	0.061	0.520	25.699488	-103.442294
Esmeralda	16.30	1	0	2648	20.2	70.9	0.6	1.9	1.7	0.9	0.7	0.5	2.6	91.1	0.6	8.3	0.075	0.530	25.731254	-103.433509

34 CARR: La Torreña - Brittingham

CLAVE: 10010

RUTA: DGO-325

AÑO: 2021

LUGAR	ESTACION				CLASIFICACION VEHICULAR EN PORCIENTO													COORDENADAS		
	KM	TE	SC	TDPA	M	A	B	C2	C3	T3S2	T3S3	T3S2R4	OTROS	A	B	C	K'	D	LATITUD	LONGITUD
La Torreña	0.00	3	0	2292	22.1	55.5	1.5	3.9	2.7	4.2	3.0	1.2	5.9	77.6	1.5	20.9	0.079	0.506	25.639072	-103.579965
X. C. Gómez Palacio - Jiménez	7.00	1	0	4191	12.1	71.9	1.3	3.0	1.0	2.8	2.0	1.0	4.9	84.0	1.3	14.7	0.062	0.529	25.638485	-103.535293
X. C. Gómez Palacio - Jiménez	7.00	3	0	2473	4.4	79.9	3.4	3.7	1.5	1.8	1.3	2.1	1.9	84.3	3.4	12.3	0.070	0.513	25.641277	-103.519961
Chimal	16.00	1	0	2699	26.6	57.0	1.0	3.6	2.0	2.2	1.2	1.0	5.4	83.6	1.0	15.4	0.063	0.506	25.691127	-103.490212
Chimal	16.00	3	0	1500	14.5	56.4	1.5	2.1	3.1	3.5	4.2	1.7	13.0	70.9	1.5	27.6	0.061	0.525	25.697341	-103.490754
Brittingham	33.00	1	0	1600	7.1	69.8	1.3	7.4	1.3	2.0	1.3	2.0	7.8	76.9	1.3	21.8	0.064	0.525	25.775072	-103.571512

35 CARR: Libramiento de Torreón

CLAVE: 05516

RUTA: COA

AÑO: 2021

LUGAR	ESTACION				CLASIFICACION VEHICULAR EN PORCIENTO													COORDENADAS		
	KM	TE	SC	TDPA	M	A	B	C2	C3	T3S2	T3S3	T3S2R4	OTROS	A	B	C	K'	D	LATITUD	LONGITUD
X. C. Saltillo - Torreón	0.00	3	1	42749	2.1	87.4	1.4	3.8	1.7	2.1	1.0	0.5	0.0	89.5	1.4	9.1	0.066	0.511	25.539240	-103.370594
X. C. Saltillo - Torreón	0.00	3	2	40720	2.2	86.8	1.5	4.1	1.7	2.3	0.8	0.5	0.1	89.0	1.5	9.5	0.067	0.511	25.539245	-103.371002
T. C. La Cuchilla - Torreón (Alta)	7.30	1	1	15564	1.2	85.7	1.1	5.2	2.0	3.1	0.9	0.6	0.2	86.9	1.1	12.0	0.086	0.537	25.581557	-103.401080
T. C. La Cuchilla - Torreón (Baja)	7.30	1	1	31840	1.3	81.8	0.8	4.1	0.9	4.7	3.5	2.0	0.9	83.1	0.8	16.1	0.090	0.520	25.581719	-103.400988
T. C. La Cuchilla - Torreón (Alta)	7.30	1	2	18075	1.3	85.4	1.1	5.2	2.1	3.1	0.9	0.7	0.2	86.7	1.1	12.2	0.078	0.537	25.581485	-103.401111
T. C. La Cuchilla - Torreón (Baja)	7.30	1	2	29201	1.3	81.7	0.9	4.1	0.9	4.7	3.5	2.0	0.9	83.0	0.9	16.1	0.092	0.520	25.581297	-103.401203
Lim. Edos. Term. Coah. Ppia. Dgo.	11.80																			
T. C. Durango - Torreón	28.60																			

36 CARR: Libramiento Exterior Cuencamé

CLAVE: 10006

RUTA: DGO

AÑO: 2021

LUGAR	ESTACION				CLASIFICACION VEHICULAR EN PORCIENTO													COORDENADAS		
	KM	TE	SC	TDPA	M	A	B	C2	C3	T3S2	T3S3	T3S2R4	OTROS	A	B	C	K'	D	LATITUD	LONGITUD
Ent. La Chicharrona - Cuencamé	0.00	3	0	4814	3.4	35.3	6.7	7.7	5.0	25.2	5.8	9.5	1.4	38.7	6.7	54.6	0.059	0.502	24.842223	-103.694013
T. C. Durango - Torreón	7.65	1	0	5350	5.1	39.6	7.5	5.1	3.4	24.8	6.3	7.9	0.3	44.7	7.5	47.8	0.067	0.504	24.894506	-103.707006
T. C. Durango - Torreón	8.40																			

DURANGO

37 CARR: Mezquital - San Miguel de Temoaya

CLAVE: 10006

RUTA: DGO

AÑO: 2021

LUGAR	ESTACION				CLASIFICACION VEHICULAR EN PORCIENTO										COORDENADAS					
	KM	TE	SC	TDPA	M	A	B	C2	C3	T3S2	T3S3	T3S2R4	OTROS	A	B	C	K'	D	LATITUD	LONGITUD
T. C. Durango - Mezquital	0.00	3	0	384	3.3	58.9	0.4	33.6	2.3	0.9	0.6	0.0	0.0	62.2	0.4	37.4	0.111	0.514	23.497677	-104.390992
San Miguel de Temoaya	48.00	1	0	233	2.8	54.7	0.7	37.7	2.8	0.6	0.7	0.0	0.0	57.5	0.7	41.8	0.122	0.508	23.304255	-104.507684

38 CARR: Ramal a San Juan del Río

CLAVE: 10001

RUTA: DGO-290

AÑO: 2021

LUGAR	ESTACION				CLASIFICACION VEHICULAR EN PORCIENTO										COORDENADAS					
	KM	TE	SC	TDPA	M	A	B	C2	C3	T3S2	T3S3	T3S2R4	OTROS	A	B	C	K'	D	LATITUD	LONGITUD
T. C. Durango - Ent. La Zarca	0.00	3	0	3617	1.0	80.0	4.3	10.3	1.8	0.9	0.5	0.4	0.8	81.0	4.3	14.7	0.079	0.523	24.797483	-104.498874
San Juan del Río	5.00	1	1	2255	2.1	79.0	3.3	7.8	2.1	1.6	1.5	0.6	2.0	81.1	3.3	15.6	0.083	0.506	24.785666	-104.473650
San Juan del Río	5.00	1	2	2151	1.9	76.5	3.5	8.4	1.8	2.4	2.0	0.4	3.1	78.4	3.5	18.1	0.084	0.506	24.785784	-104.473601

39 CARR: Súchil - Villa Unión

CLAVE: 10419

RUTA: DGO-241

AÑO: 2021

LUGAR	ESTACION				CLASIFICACION VEHICULAR EN PORCIENTO										COORDENADAS					
	KM	TE	SC	TDPA	M	A	B	C2	C3	T3S2	T3S3	T3S2R4	OTROS	A	B	C	K'	D	LATITUD	LONGITUD
Súchil	0.00	3	1	1456	4.1	80.3	1.2	13.4	0.6	0.2	0.2	0.0	0.0	84.4	1.2	14.4	0.098	0.513	23.629802	-103.924097
Súchil	0.00	3	2	1365	4.3	78.3	1.4	14.7	0.7	0.3	0.3	0.0	0.0	82.6	1.4	16.0	0.088	0.513	23.629744	-103.924154
Vicente Guerrero	13.40	1	0	2285	2.6	79.7	1.7	14.7	0.9	0.3	0.1	0.0	0.0	82.3	1.7	16.0	0.081	0.504	23.711340	-103.970087
X. C. Zacatecas - Durango	14.50	1	1	4869	3.8	82.6	1.5	10.8	0.7	0.2	0.2	0.1	0.1	86.4	1.5	12.1	0.084	0.502	23.741350	-103.984713
X. C. Zacatecas - Durango	14.50	1	2	4902	3.7	82.5	1.6	10.8	0.8	0.2	0.2	0.1	0.1	86.2	1.6	12.2	0.080	0.502	23.741323	-103.984791
X. C. Zacatecas - Durango	14.50	3	0	2879	4.3	82.6	0.9	10.8	0.9	0.4	0.1	0.0	0.0	86.9	0.9	12.2	0.078	0.501	23.746691	-103.987675
Villa Unión	41.40	1	0	2184	6.1	78.8	0.8	12.7	0.9	0.4	0.2	0.1	0.0	84.9	0.8	14.3	0.089	0.513	23.959840	-104.049574

40 CARR: Tlahualillo de Zaragoza - T.C. Gómez Palacio - Jiménez

CLAVE: 10419

RUTA: DGO

AÑO: 2021

LUGAR	ESTACION				CLASIFICACION VEHICULAR EN PORCIENTO										COORDENADAS					
	KM	TE	SC	TDPA	M	A	B	C2	C3	T3S2	T3S3	T3S2R4	OTROS	A	B	C	K'	D	LATITUD	LONGITUD
Tlahualillo	0.00	3	0	770	10.6	71.3	0.8	12.7	1.2	1.3	1.0	0.9	0.2	81.9	0.8	17.3	0.107	0.520	26.119662	-103.448744
T. C. Gómez Palacio - Jiménez	37.00	1	0	75	6.3	55.0	4.4	16.5	3.9	6.8	3.3	1.6	2.2	61.3	4.4	34.3	0.121	0.545	26.155783	-103.776346

41 CARR: Yerbanis - Peñón Blanco

CLAVE: 10032

RUTA: DGO-316

AÑO: 2021

LUGAR	ESTACION				CLASIFICACION VEHICULAR EN PORCIENTO										COORDENADAS					
	KM	TE	SC	TDPA	M	A	B	C2	C3	T3S2	T3S3	T3S2R4	OTROS	A	B	C	K'	D	LATITUD	LONGITUD
Yerbanis	0.00	3	0	1237	3.3	61.0	8.2	13.2	6.9	3.1	2.2	0.8	1.3	64.3	8.2	27.5	0.079	0.501	24.735731	-103.847920

DURANGO

41 CARR: Yerbanís - Peñón Blanco

CLAVE: 10032

RUTA: DGO-316

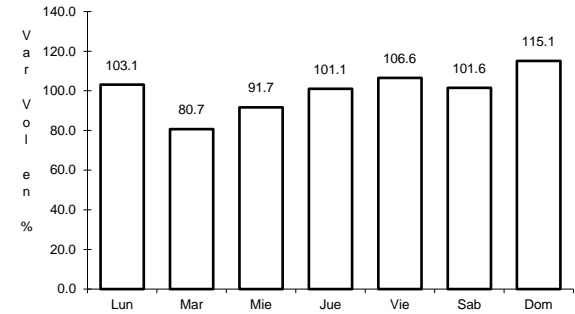
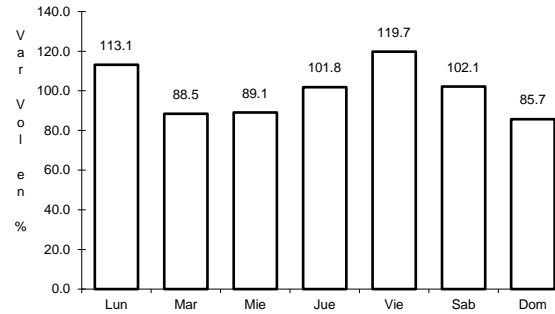
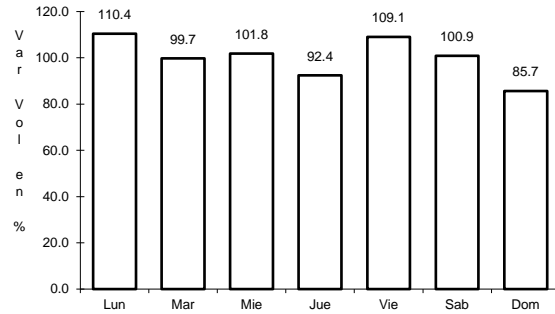
AÑO: 2021

L U G A R	E S T A C I O N				C L A S I F I C A C I O N V E H I C U L A R E N P O R C I E N T O														C O O R D E N A D A S	
	KM	TE	SC	TDPA	M	A	B	C2	C3	T3S2	T3S3	T3S2R4	OTROS	A	B	C	K'	D	LATITUD	LONGITUD
Peñón Blanco	22.00	1	0	988	1.5	73.5	6.7	12.5	3.5	0.5	0.1	0.3	1.4	75.0	6.7	18.3	0.084	0.507	24.784010	-104.014463

1 CARR: Bermejillo - El Palmito

CLAVE: 10105

RUTA: MEX-030



Km: 0.00 Tipo: 3 Sent: 0

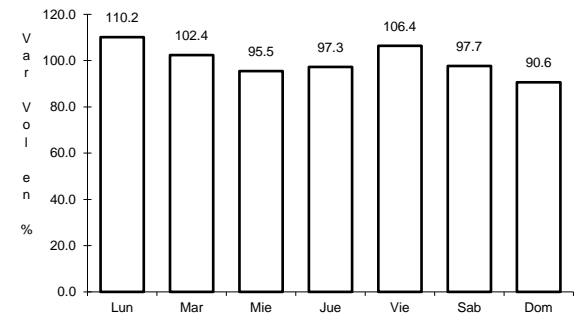
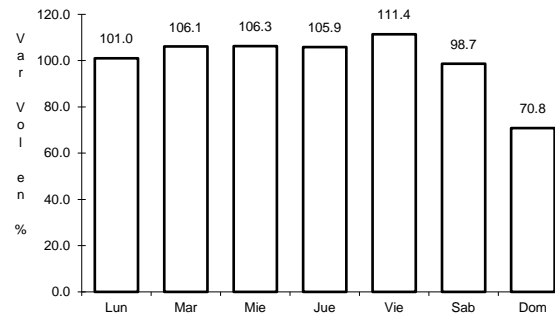
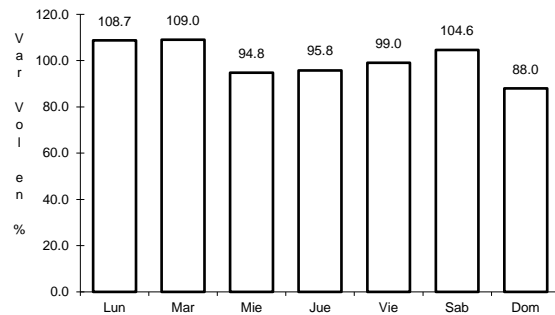
Km: 86.00 Tipo: 1 Sent: 0

Km: 160.00 Tipo: 1 Sent: 0

2 CARR: Durango - Ent. La Zarca

CLAVE: 10016

RUTA: MEX-045



Km: 0.00 Tipo: 3 Sent: 1

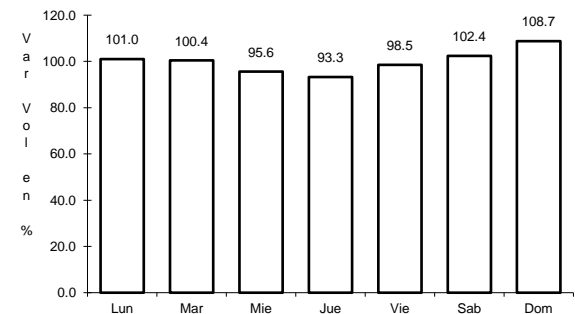
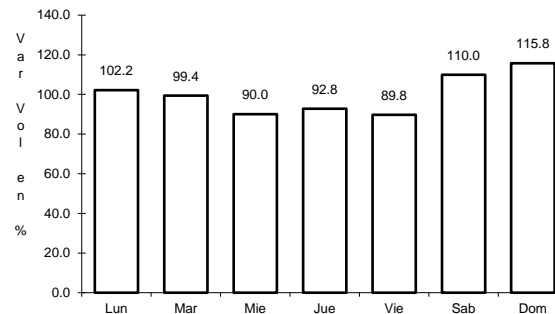
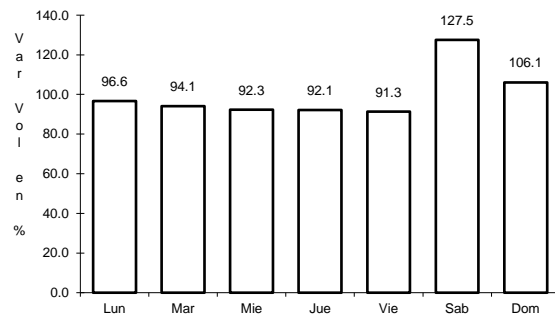
Km: 0.00 Tipo: 3 Sent: 2

Km: 239.50 Tipo: 1 Sent: 0

3 CARR: Durango - Mezquital

CLAVE: 10423

RUTA: MEX-023



Km: 0.00 Tipo: 3 Sent: 1

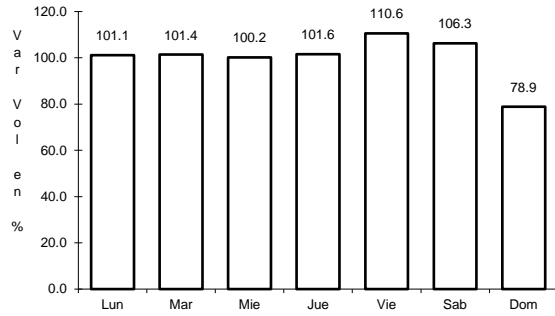
Km: 0.00 Tipo: 3 Sent: 2

Km: 13.00 Tipo: 3 Sent: 0

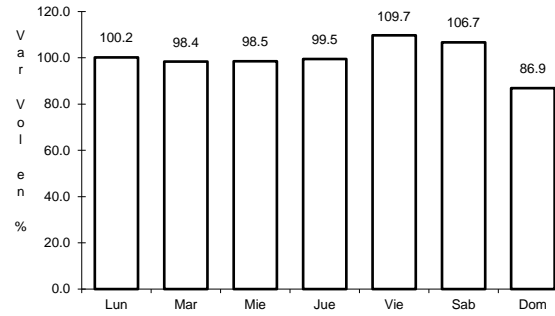
4 CARR: Durango - Torreón

CLAVE: 10085

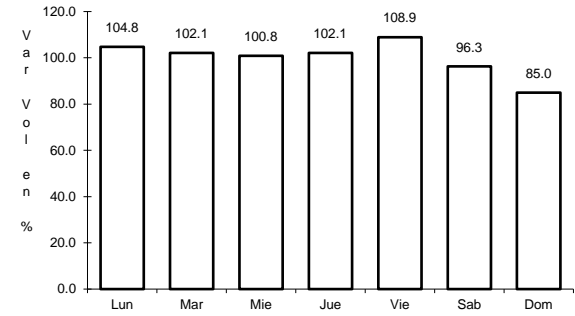
RUTA: MEX-040



Km: 0.00 Tipo: 3 Sent: 1



Km: 0.00 Tipo: 3 Sent: 2

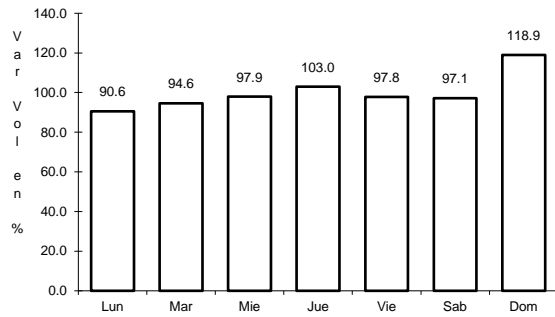


Km: 120.90 Tipo: 1 Sent: 0

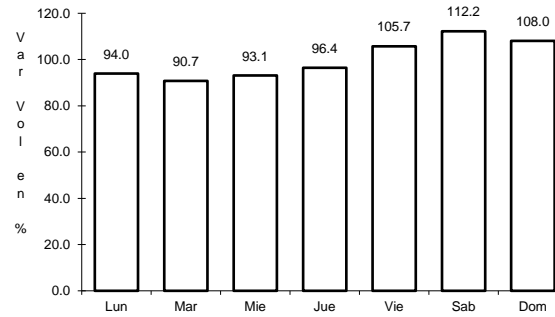
5 CARR: Durango - Villa Unión

CLAVE: 0083

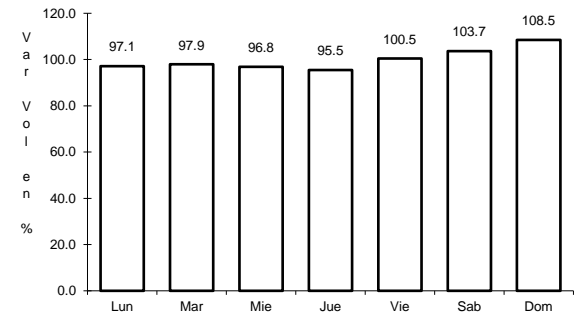
RUTA: MEX-040



Km: 0.00 Tipo: 3 Sent: 0



Km: 145.50 Tipo: 1 Sent: 0

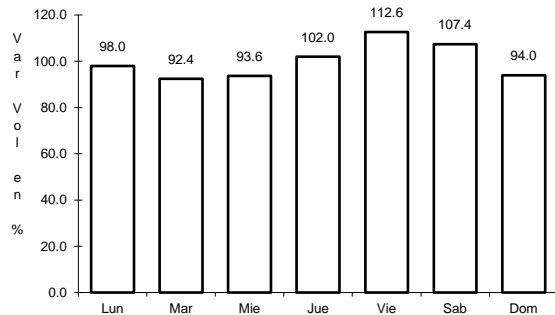


Km: 294.40 Tipo: 1 Sent: 0

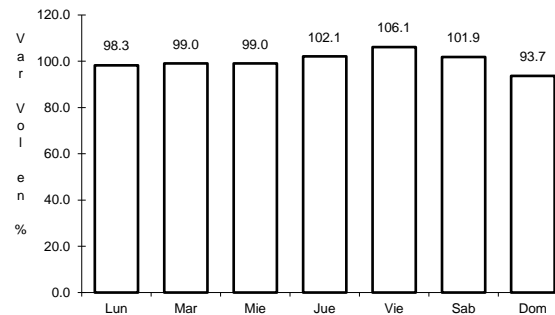
6 CARR: Ent. La Chicharrona - Cuencamé

CLAVE: 00152

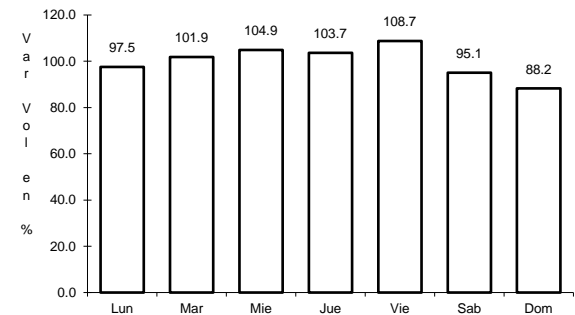
RUTA: MEX-049



Km: 0.00 Tipo: 3 Sent: 1



Km: 0.00 Tipo: 3 Sent: 2

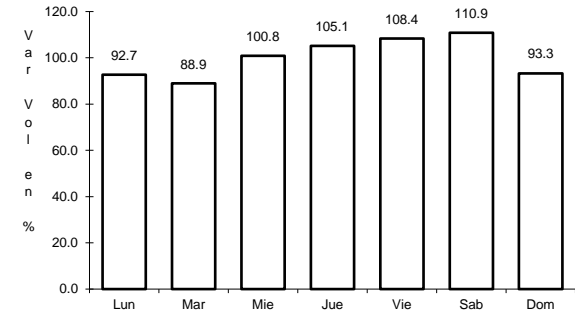
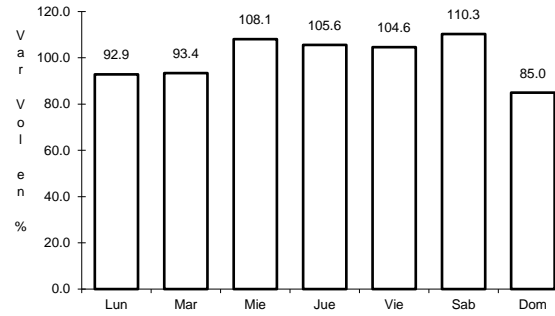
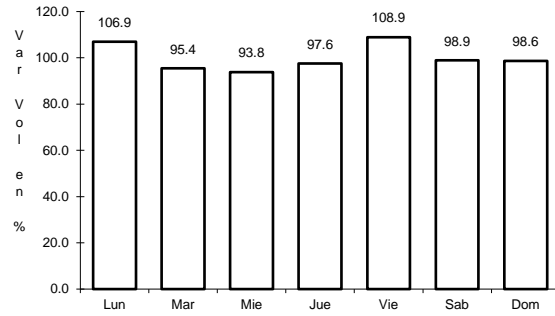


Km: 124.50 Tipo: 1 Sent: 0

7 CARR: Ent. La Zarca - Hidalgo del Parral

CLAVE: 00488

RUTA: MEX-045



Km: 0.00 Tipo: 3 Sent: 0

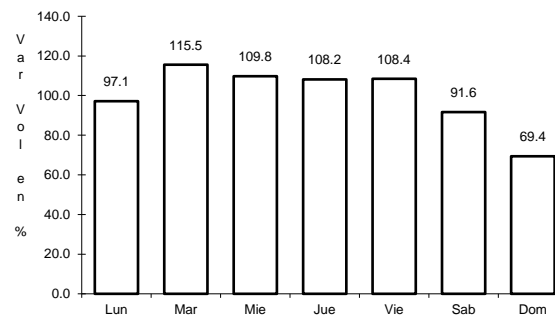
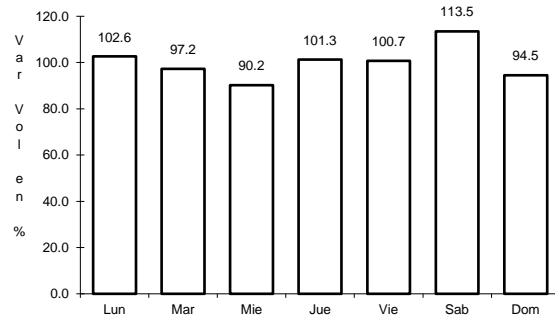
Km: 92.35 Tipo: 3 Sent: 0

Km: 171.00 Tipo: 1 Sent: 0

8 CARR: Ent. Los Herrera - Topia

CLAVE: 10090

RUTA: MEX-036



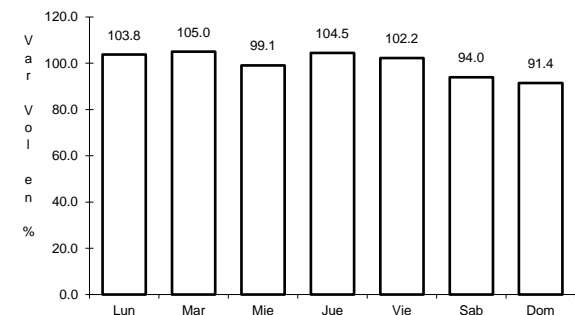
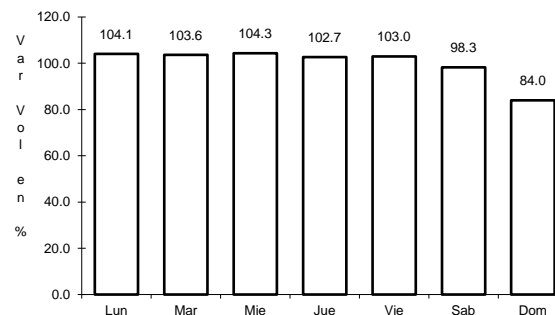
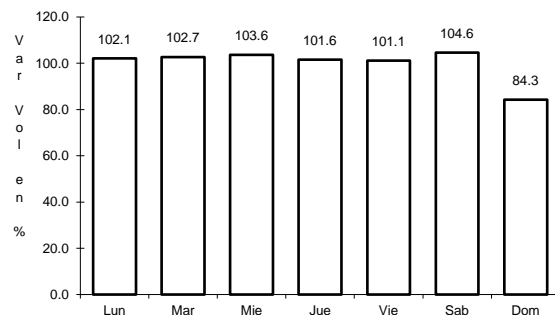
Km: 0.00 Tipo: 3 Sent: 0

Km: 80.00 Tipo: 1 Sent: 0

9 CARR: Gómez Palacio - Jiménez

CLAVE: 00006

RUTA: MEX-049



Km: 0.00 Tipo: 3 Sent: 1

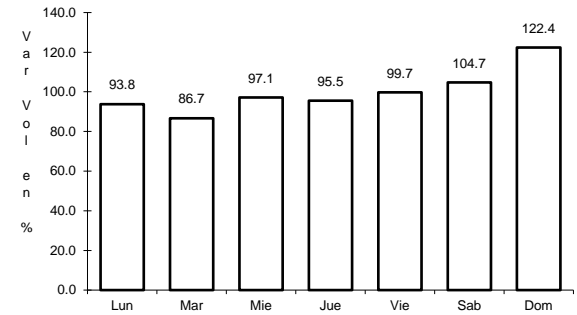
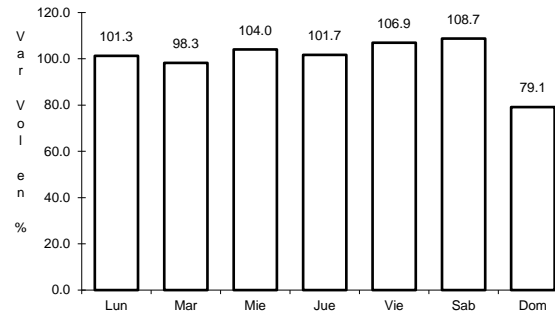
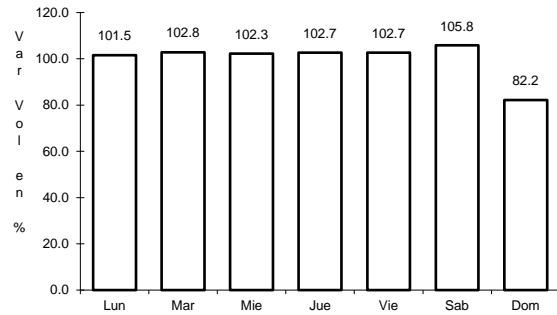
Km: 0.00 Tipo: 3 Sent: 2

Km: 107.95 Tipo: 1 Sent: 0

10 CARR: Gómez Palacio - La Unión

CLAVE: 10009

RUTA: MEX-040



Km: 0.00 Tipo: 3 Sent: 0

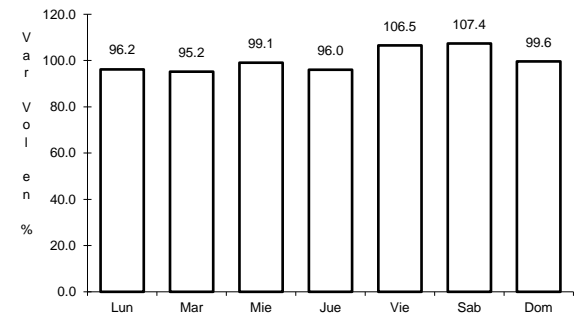
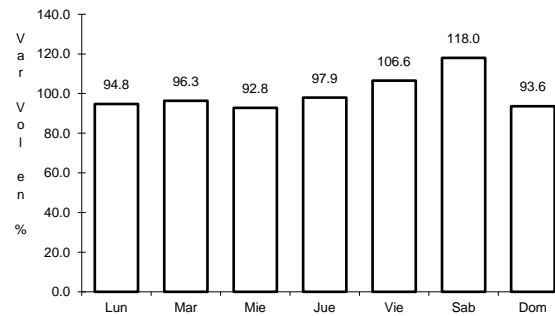
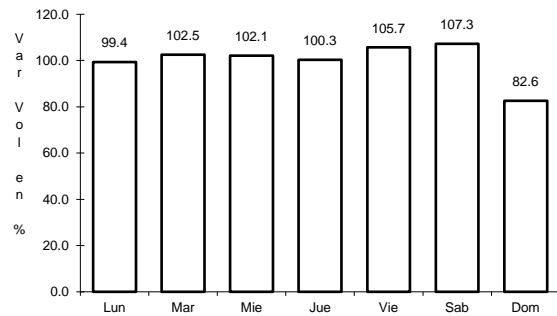
Km: 20.90 Tipo: 1 Sent: 0

Km: 42.20 Tipo: 1 Sent: 0

11 CARR: Gómez Palacio - Tlahualillo

CLAVE: 10005

RUTA: MEX-040



Km: 5.60 Tipo: 1 Sent: 0

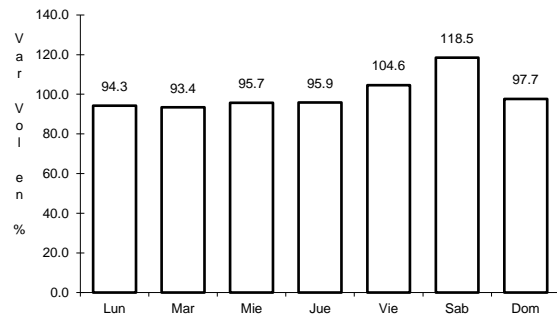
Km: 31.44 Tipo: 1 Sent: 0

Km: 72.90 Tipo: 1 Sent: 0

12 CARR: Gregorio García - Francisco I. Madero

CLAVE: 00110

RUTA: MEX-040

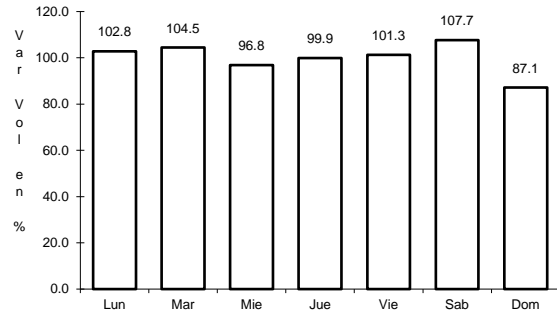


Km: 9.60 Tipo: 1 Sent: 0

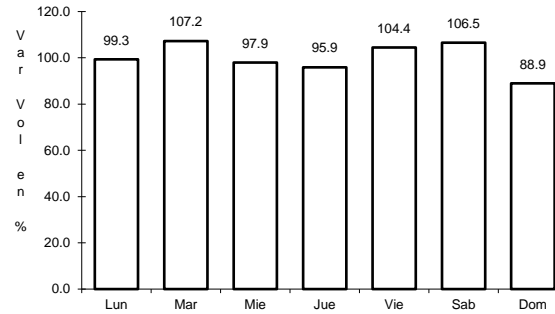
13 CARR: Guadalupe Aguilera - Tepehuanes

CLAVE: 10220

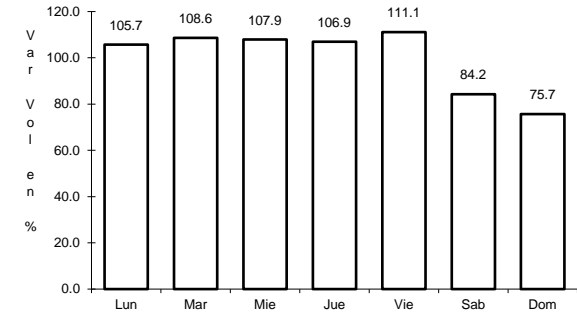
ruta: MEX-023



Km: 0.00 Tipo: 3 Sent: 1



Km: 0.00 Tipo: 3 Sent: 2

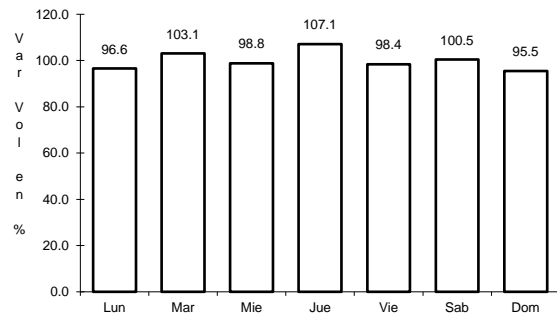


Km: 169.00 Tipo: 1 Sent: 0

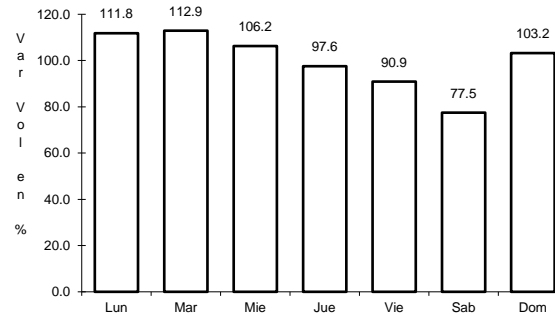
14 CARR: Hidalgo del Parral - Guadalupe y Calvo

CLAVE: 00802

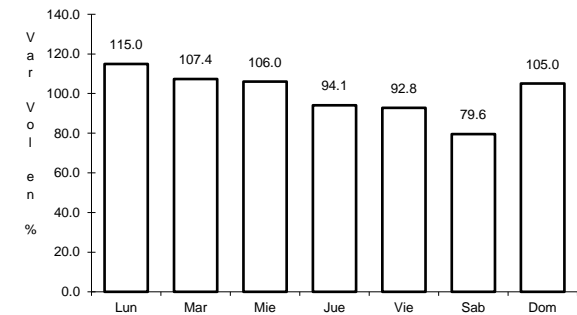
ruta: MEX-024



Km: 0.00 Tipo: 3 Sent: 0



Km: 110.00 Tipo: 1 Sent: 0

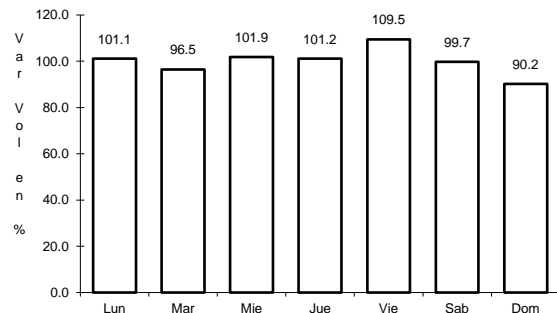


Km: 212.00 Tipo: 1 Sent: 0

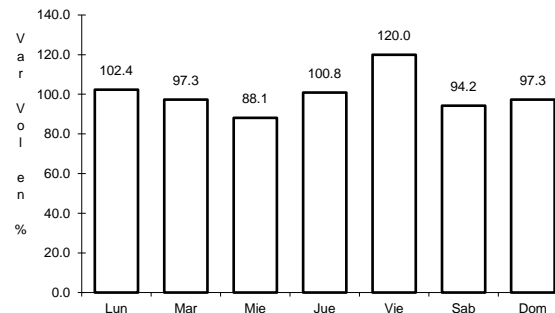
15 CARR: Libramiento Cuencamé

CLAVE: 10006

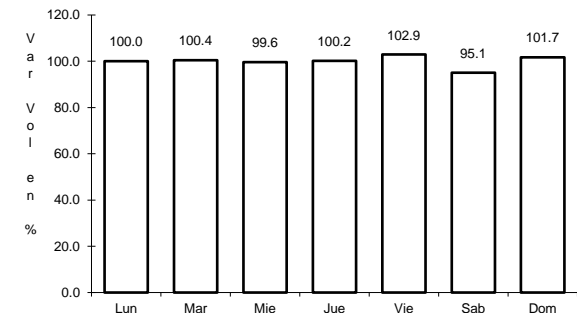
ruta: MEX



Km: 0.00 Tipo: 3 Sent: 1



Km: 0.00 Tipo: 3 Sent: 2

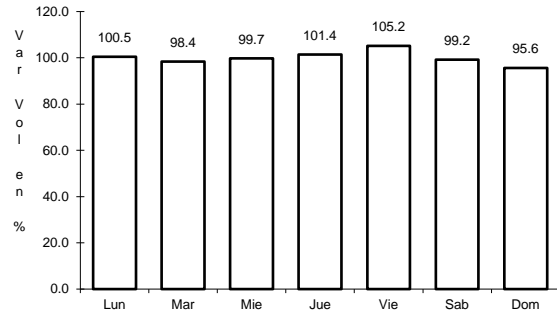


Km: 2.60 Tipo: 1 Sent: 1

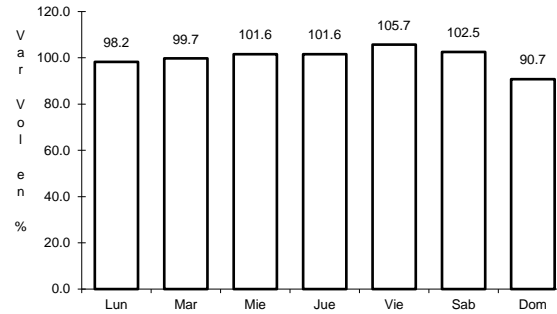
16 CARR: Libramiento Oriente de Durango

CLAVE:

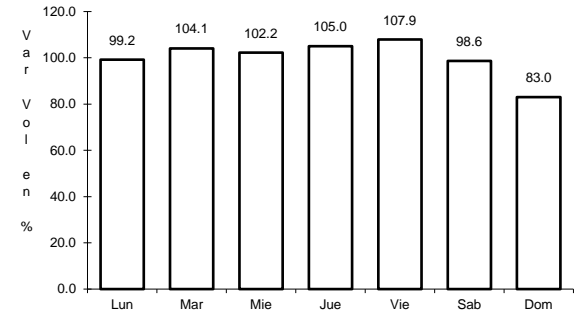
RUTA: MEX-045



Km: 0.00 Tipo: 3 Sent: 1



Km: 0.00 Tipo: 3 Sent: 2

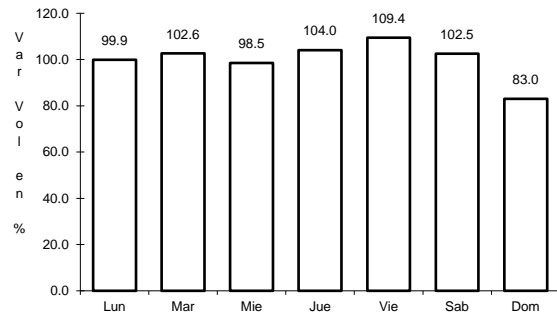


Km: 10.50 Tipo: 1 Sent: 1

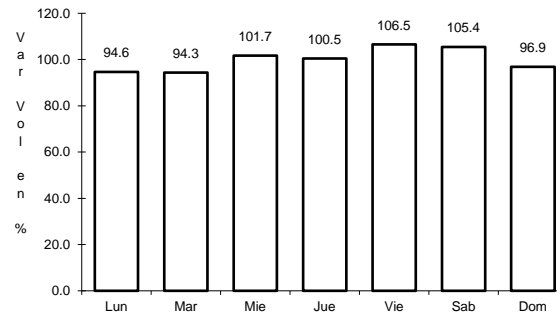
17 CARR: Libramiento Sur de Durango

CLAVE:

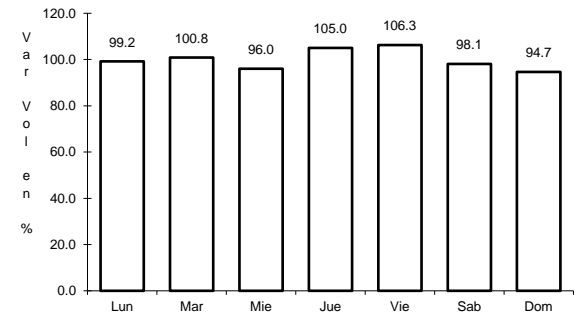
RUTA: MEX-045



Km: 0.00 Tipo: 3 Sent: 0



Km: 19.50 Tipo: 1 Sent: 0

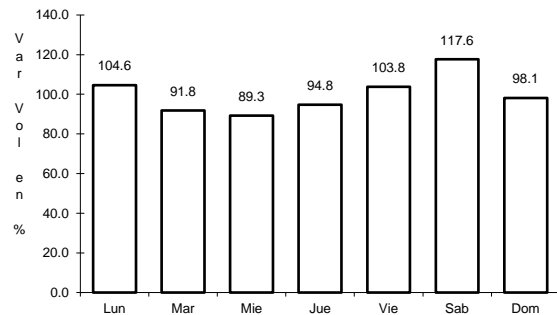


Km: 27.70 Tipo: 1 Sent: 0

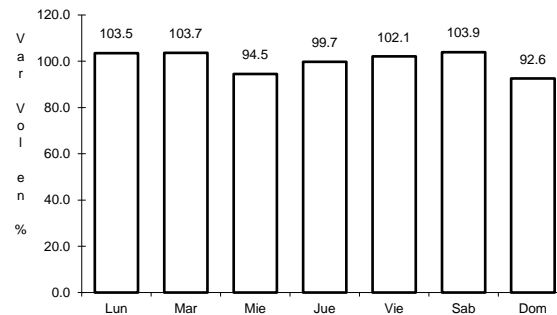
18 CARR: Pedriceña - Ent. Rodeo

CLAVE: 10002

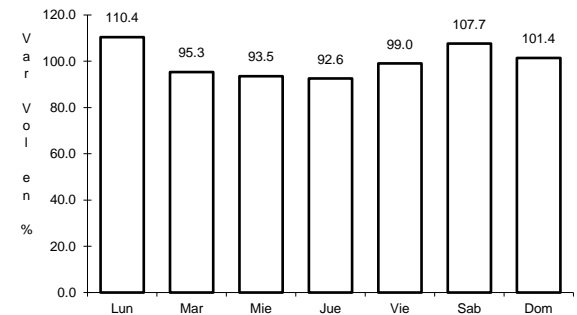
RUTA: MEX-034



Km: 0.00 Tipo: 3 Sent: 0



Km: 45.00 Tipo: 1 Sent: 0

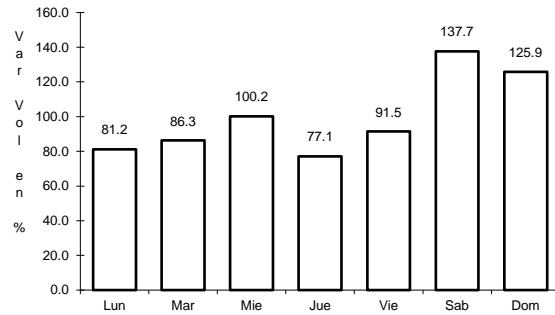


Km: 98.00 Tipo: 1 Sent: 0

19 CARR: Ramal a Otinapa

CLAVE: 10002

RUTA: MEX



Km: 0.00

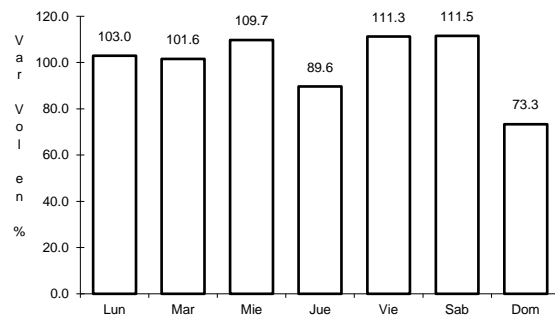
Tipo: 3

Sent: 0

20 CARR: Ramal a Santa Clara

CLAVE: 10287

RUTA: MEX-049



Km: 0.00

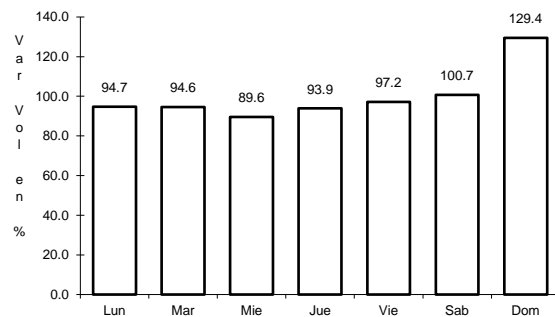
Tipo: 3

Sent: 0

21 CARR: Ramal a Villa Juárez

CLAVE: 10287

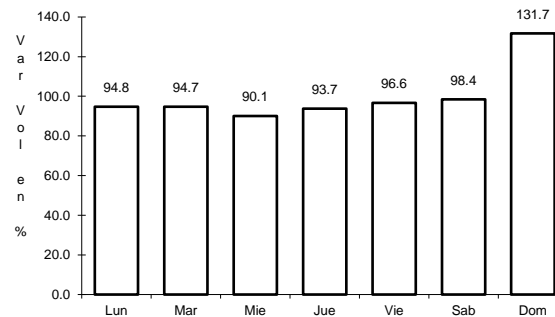
RUTA: MEX-040



Km: 0.00

Tipo: 3

Sent: 1



Km: 0.00

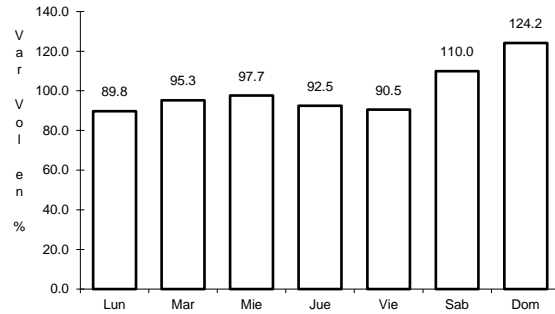
Tipo: 3

Sent: 2

22 CARR: Ramal Distribuidor Presa Peña del Águila

CLAVE: 10016

RUTA: MEX-045



Km: 10.50

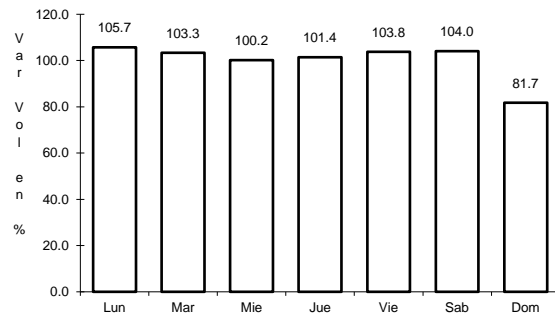
Tipo: 1

Sent: 0

23 CARR: Zacatecas - Durango

CLAVE: 00544

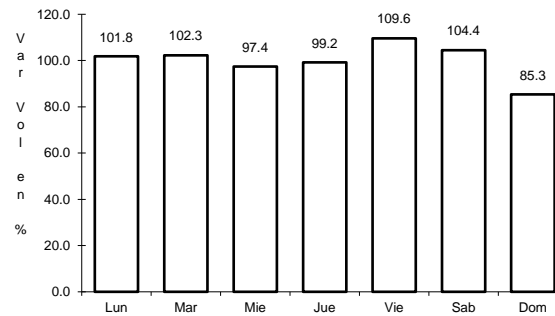
RUTA: MEX-045



Km: 6.40

Tipo: 3

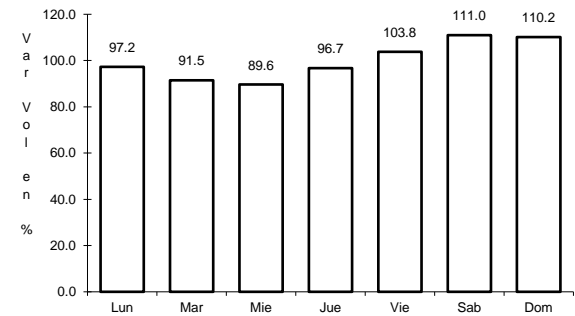
Sent: 1



Km: 6.40

Tipo: 3

Sent: 2



Km: 261.70

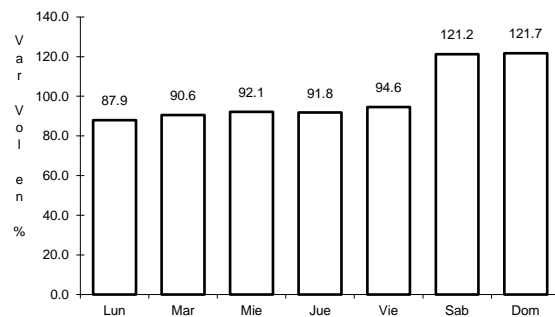
Tipo: 1

Sent: 0

24 CARR: Durango - Mazatlán (Cuota)

CLAVE: 00084

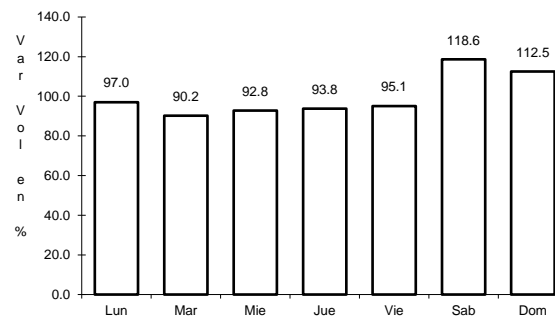
RUTA: MEX-040D



Km: 21.30

Tipo: 3

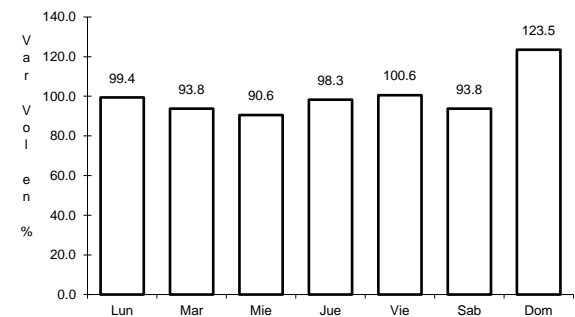
Sent: 0



Km: 111.00

Tipo: 3

Sent: 0



Km: 229.70

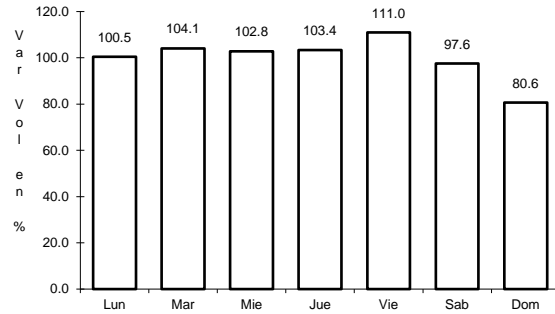
Tipo: 1

Sent: 0

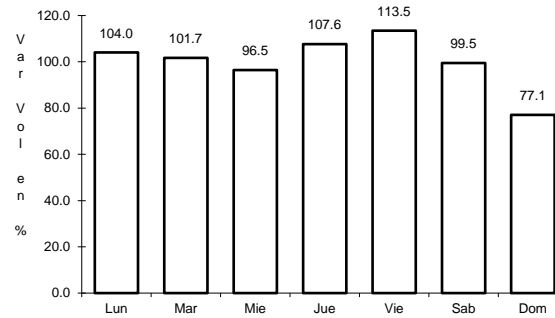
25 CARR: Durango - Yerbanís (Cuota)

CLAVE: 10003

RUTA: MEX-040D



Km: 5.30 Tipo: 1 Sent: 1

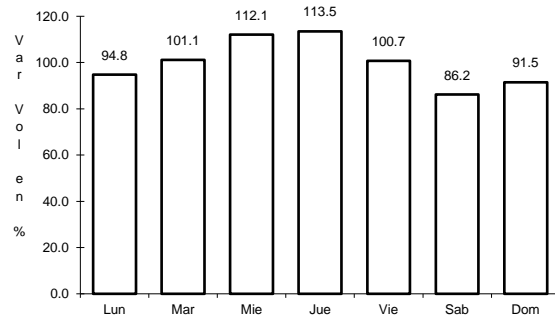


Km: 5.30 Tipo: 1 Sent: 2

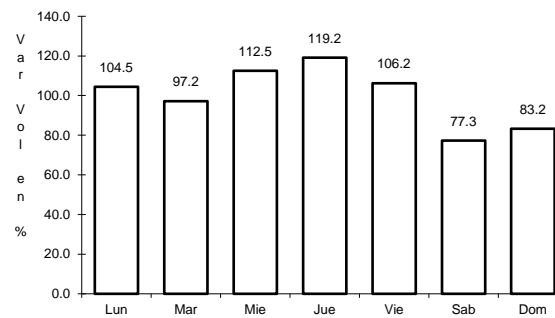
26 CARR: Gómez Palacio - Corralitos (Cuota)

CLAVE: 00016

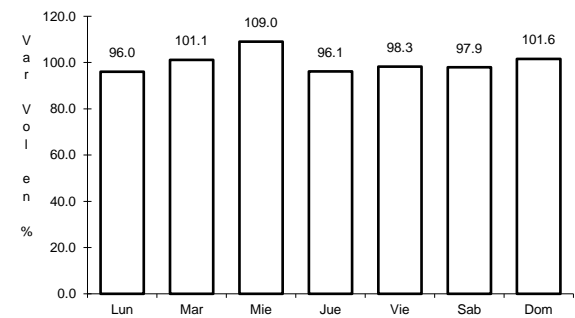
RUTA: MEX-049D



Km: 40.10 Tipo: 1 Sent: 1



Km: 40.10 Tipo: 1 Sent: 2

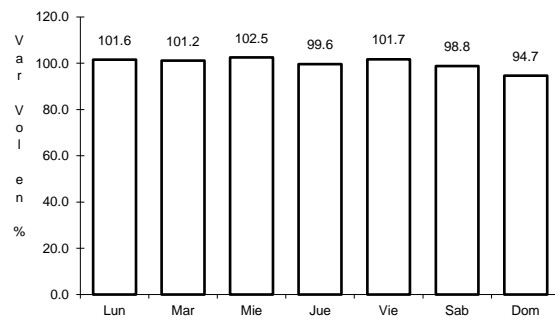


Km: 226.50 Tipo: 1 Sent: 1

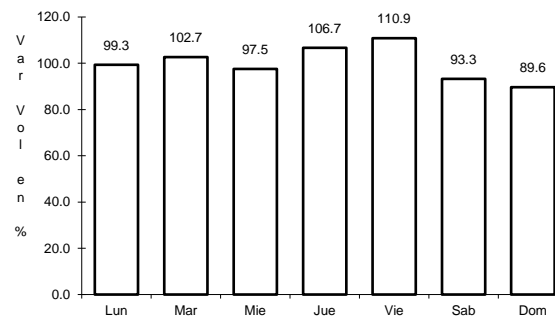
27 CARR: Libramiento de Durango (Cuota)

CLAVE: 10006

RUTA: MEX-040D



Km: 0.00 Tipo: 3 Sent: 0

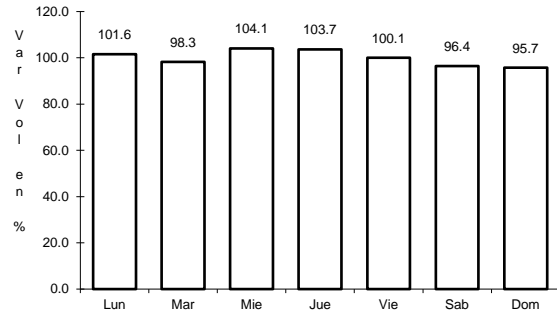


Km: 21.60 Tipo: 1 Sent: 0

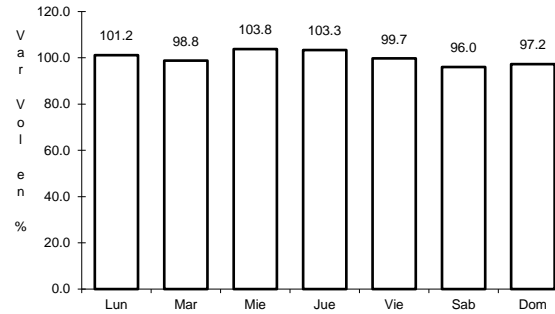
28 CARR: Libramiento Norte de Torreón (Cuota)

CLAVE:

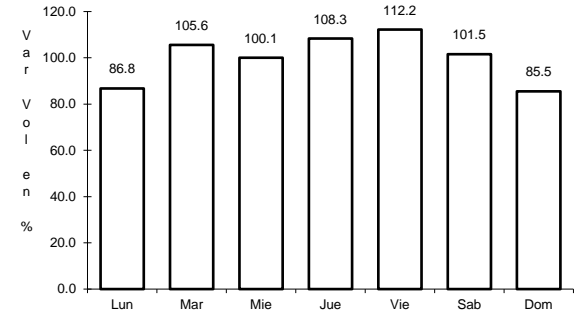
RUTA: MEX-040D



Km: 0.00 Tipo: 3 Sent: 0



Km: 17.36 Tipo: 1 Sent: 0

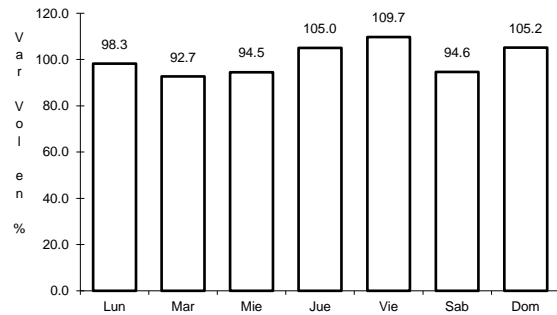


Km: 40.70 Tipo: 1 Sent: 0

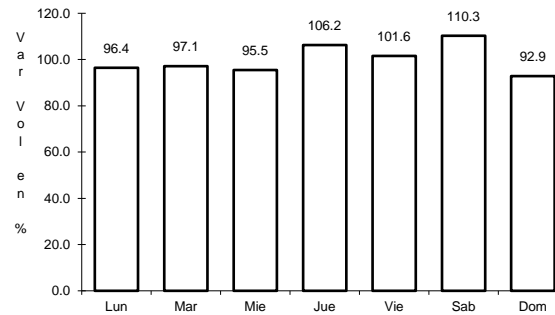
29 CARR: Yerbanís - Gómez Palicio (Cuota)

CLAVE: 10003

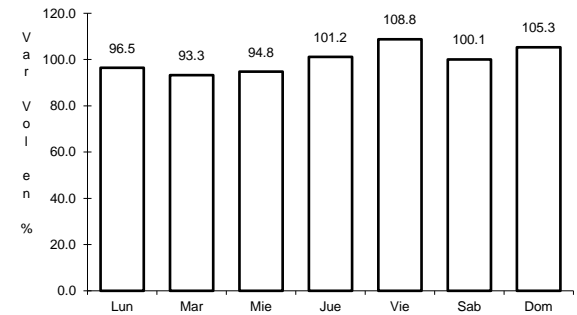
RUTA: MEX-040D



Km: 180.00 Tipo: 1 Sent: 1



Km: 180.00 Tipo: 1 Sent: 2

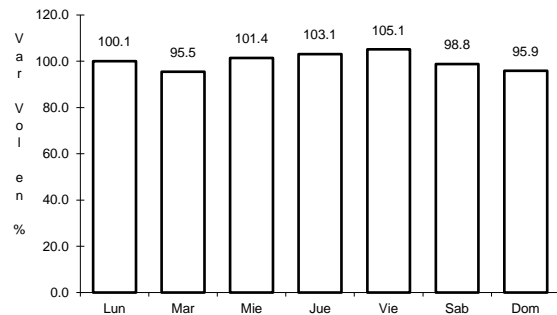


Km: 212.71 Tipo: 3 Sent: 1

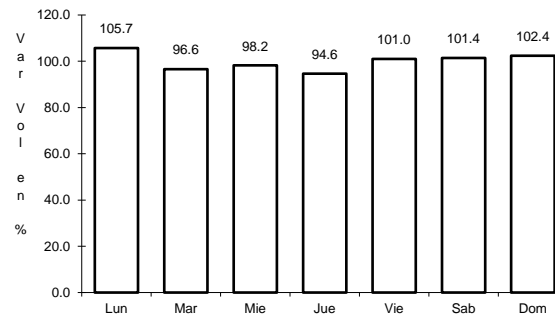
30 CARR: Amado Nervo - La Ochoa

CLAVE: 10012

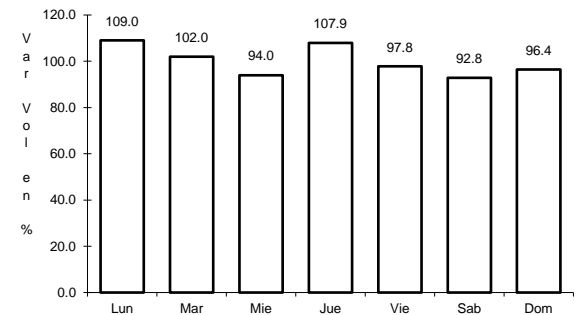
RUTA: DGO-542



Km: 0.00 Tipo: 3 Sent: 0



Km: 25.00 Tipo: 1 Sent: 0

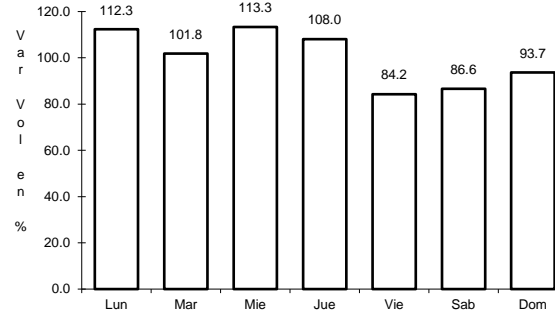
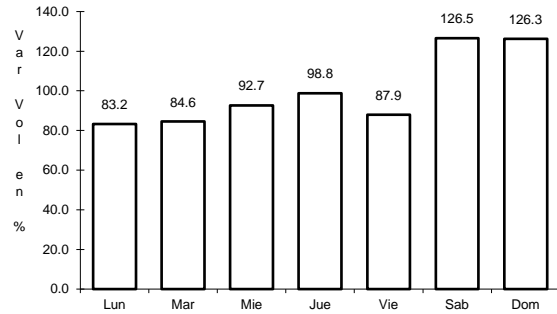


Km: 42.00 Tipo: 1 Sent: 0

31 CARR: Ceballos - El Mirador

CLAVE: 10417

RUTA: DGO-044



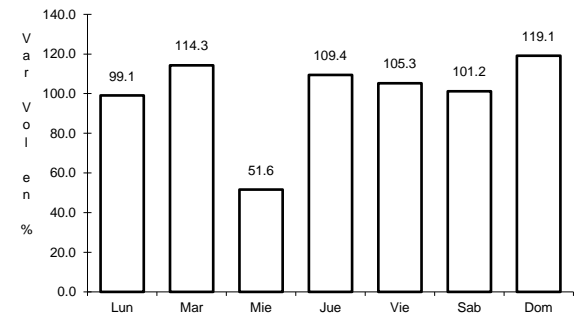
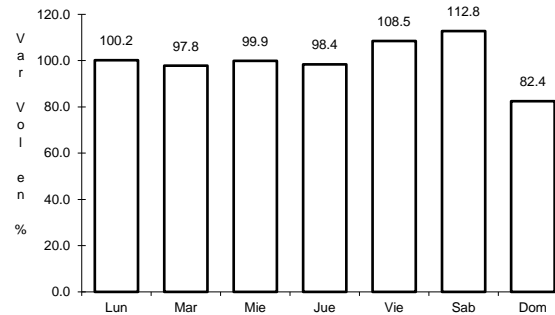
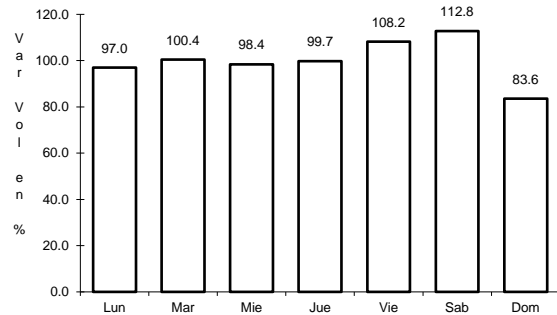
Km: 0.00 Tipo: 3 Sent: 0

Km: 113.50 Tipo: 1 Sent: 0

32 CARR: Durango - Aserradero La Flor

CLAVE: 10422

RUTA: DGO-115



Km: 0.00 Tipo: 3 Sent: 1

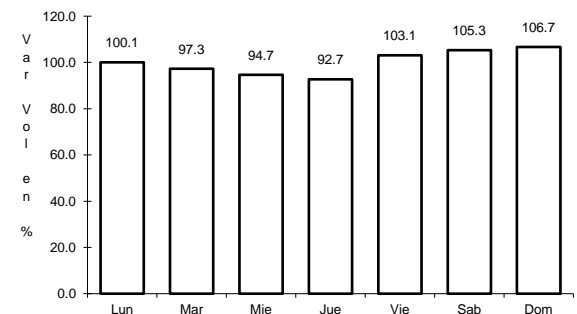
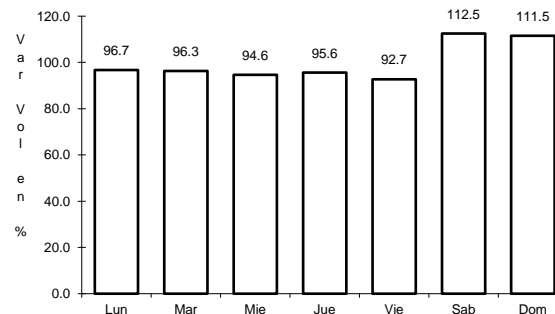
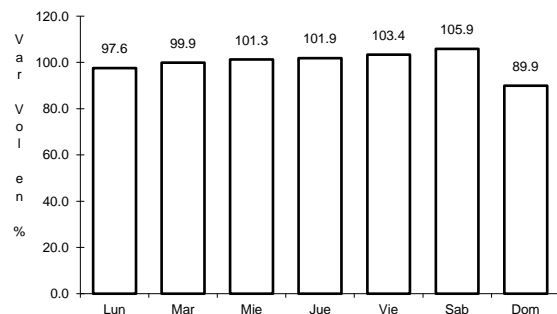
Km: 0.00 Tipo: 3 Sent: 2

Km: 39.00 Tipo: 1 Sent: 0

33 CARR: Jabonoso - Esmeralda

CLAVE: 10004

RUTA: DGO-363



Km: 0.00 Tipo: 3 Sent: 0

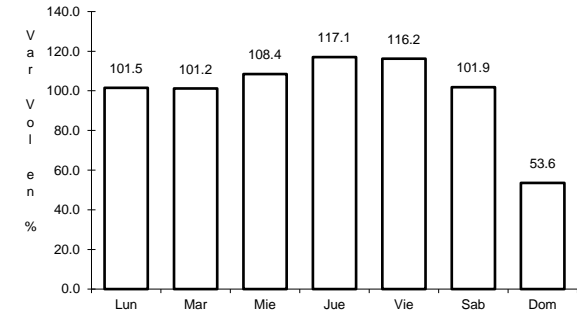
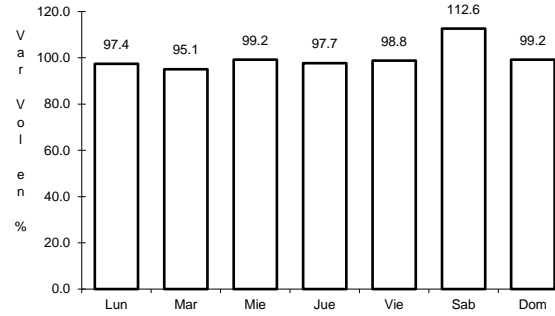
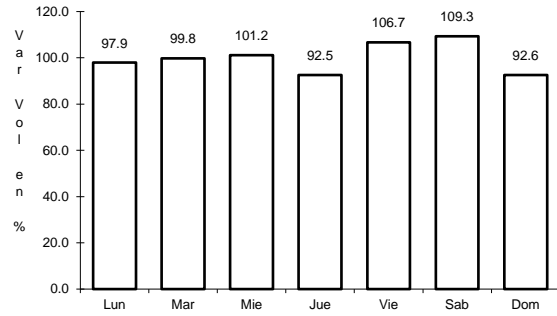
Km: 10.00 Tipo: 3 Sent: 0

Km: 16.30 Tipo: 1 Sent: 0

34 CARR: La Torreña - Brittingham

CLAVE: 10010

RUTA: DGO-325



Km: 0.00 Tipo: 3 Sent: 0

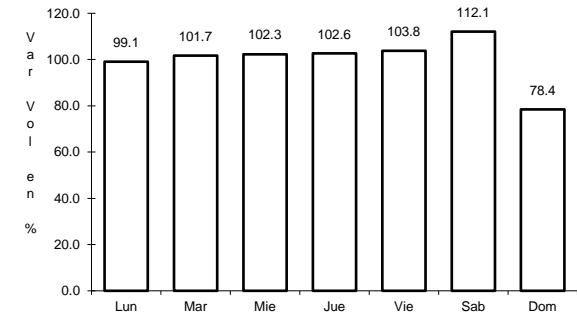
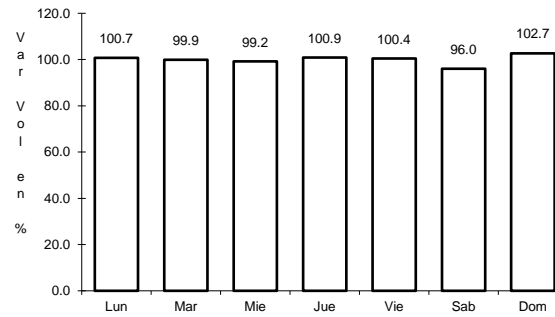
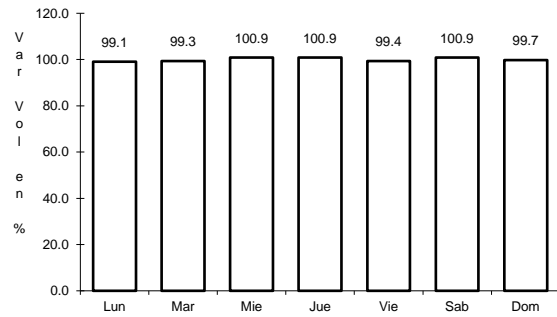
Km: 16.00 Tipo: 1 Sent: 0

Km: 33.00 Tipo: 1 Sent: 0

35 CARR: Libramiento de Torreón

CLAVE: 05516

RUTA: COA



Km: 0.00 Tipo: 3 Sent: 1

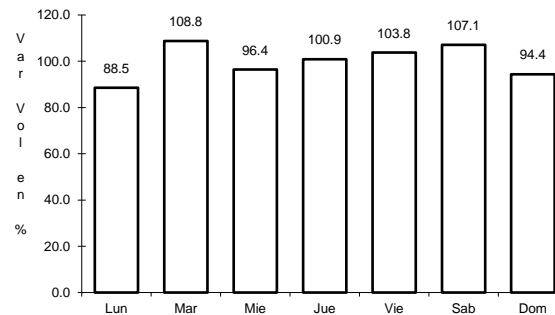
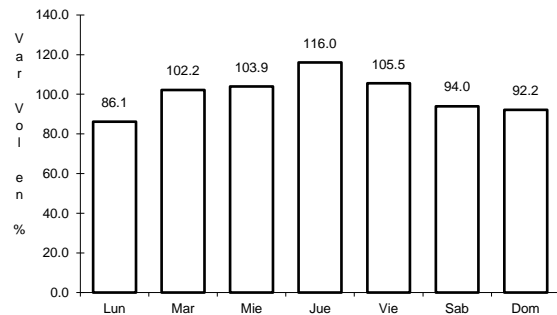
Km: 0.00 Tipo: 3 Sent: 2

Km: 7.30 Tipo: 1 Sent: 1

36 CARR: Libramiento Exterior Cuencamé

CLAVE: 10006

RUTA: DGO



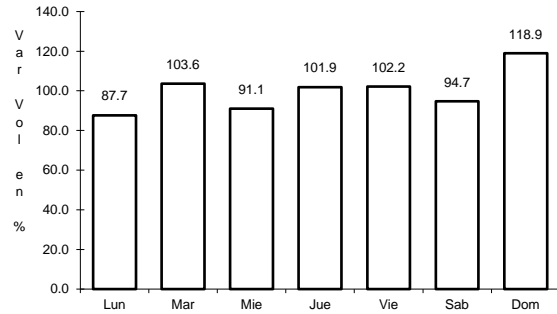
Km: 0.00 Tipo: 3 Sent: 0

Km: 7.65 Tipo: 1 Sent: 0

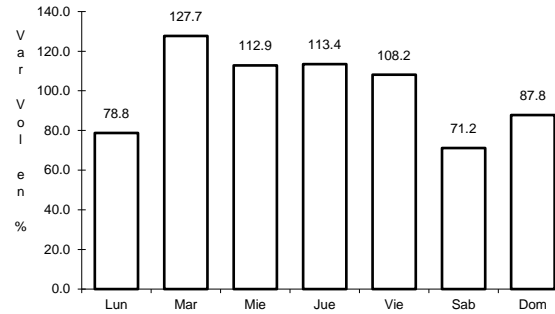
37 CARR: Mezquital - San Miguel de Temoaya

CLAVE: 10006

RUTA: DGO



Km: 0.00 Tipo: 3 Sent: 0

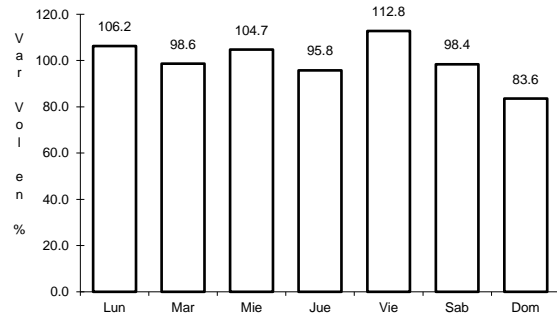


Km: 48.00 Tipo: 1 Sent: 0

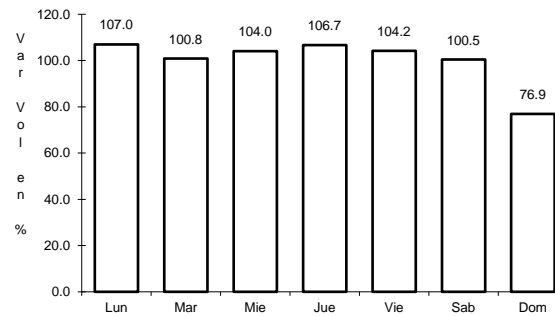
38 CARR: Ramal a San Juan del Río

CLAVE: 10001

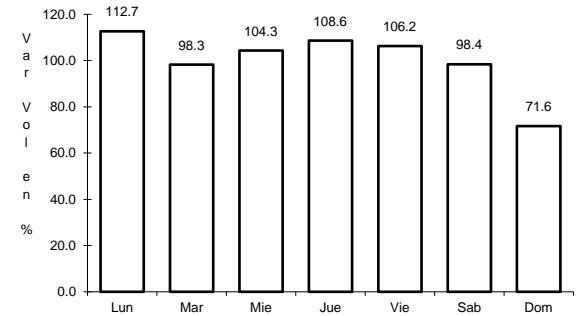
RUTA: DGO-290



Km: 0.00 Tipo: 3 Sent: 0



Km: 5.00 Tipo: 1 Sent: 1

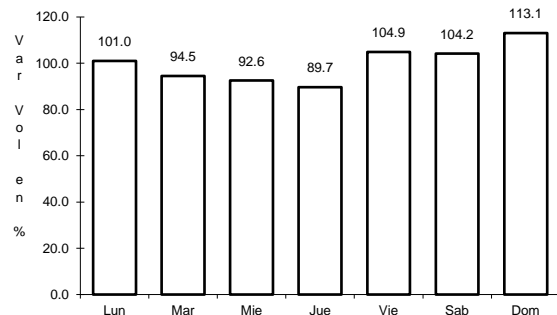


Km: 5.00 Tipo: 1 Sent: 2

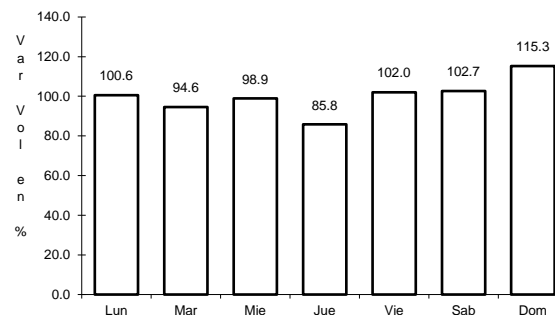
39 CARR: Súchil - Villa Unión

CLAVE: 10419

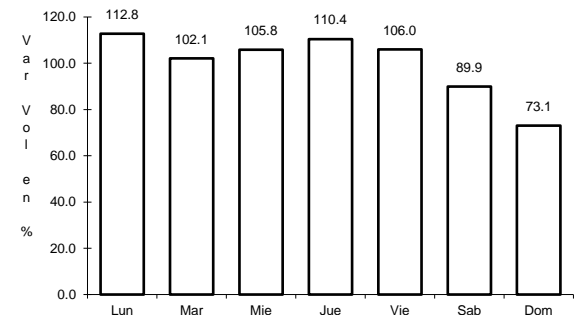
RUTA: DGO-241



Km: 0.00 Tipo: 3 Sent: 1



Km: 0.00 Tipo: 3 Sent: 2

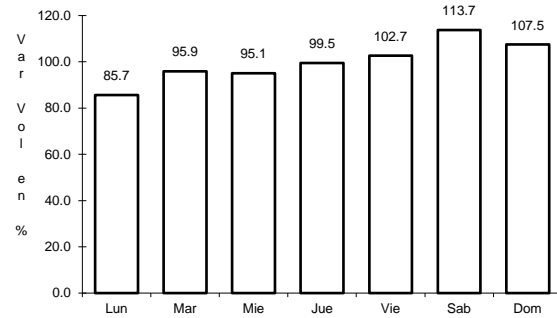


Km: 41.40 Tipo: 1 Sent: 0

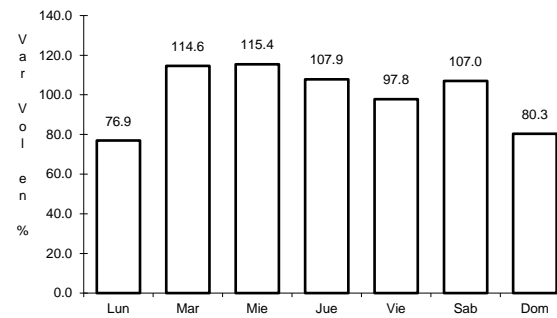
40 CARR: Tlahualillo de Zaragoza - T.C. Gómez Palacio - Jiménez

CLAVE: 10419

RUTA: DGO



Km: 0.00 Tipo: 3 Sent: 0

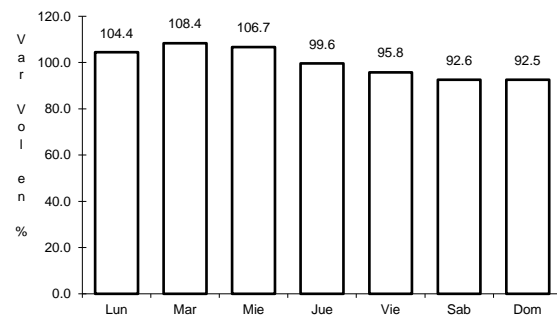


Km: 37.00 Tipo: 1 Sent: 0

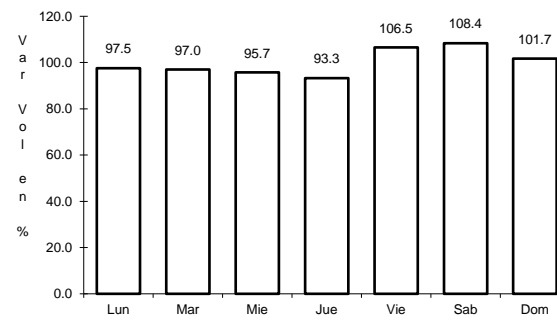
41 CARR: Yerbanís - Peñón Blanco

CLAVE: 10032

RUTA: DGO-316



Km: 0.00 Tipo: 3 Sent: 0



Km: 22.00 Tipo: 1 Sent: 0