

CIUDAD DE MEXICO

NO. INDICE CARRETERA		RUTA
	---RED FEDERAL LIBRE---	
1	México - Cuernavaca (Libre)	MEX-095
2	México - Pachuca (Libre)	MEX-085
3	México - Puebla (Libre)	MEX-150
4	México - Toluca	MEX-015
5	San Gregorio - Oaxtepec	MEX-113
	---RED FEDERAL DE CUOTA---	
6	México - Cuernavaca (Cuota)	MEX-095D
7	México - Pachuca (Cuota)	MEX-085D
8	México - Puebla (Cuota)	MEX-150D
9	México - Toluca (Cuota)	MEX-015D
	---RED FEDERAL INTEGRADA POR TRAMOS LIBRES Y DE CUOTA---	
10	México - Querétaro (Cuota)	MEX-057-MEX-057D
	---RED ESTATAL LIBRE---	
11	Chalco - Mixquic	EM-CDMX
12	Chalco - Tláhuac	EM-CDMX
13	T. C. (México - Mixquic) - San Pablo Atlazalpan	EM-106-CDMX
14	Xalatlaco - El Ajusco	EM-CDMX
	---RED ESTATAL DE CUOTA---	
15	La Venta - Chamapa (Cuota)	EM-D

09 CIUDAD DE MÉXICO

SECRETARÍA DE COMUNICACIONES Y TRANSPORTES
DIRECCIÓN GENERAL DE SERVICIOS TÉCNICOS

H I D A L G O

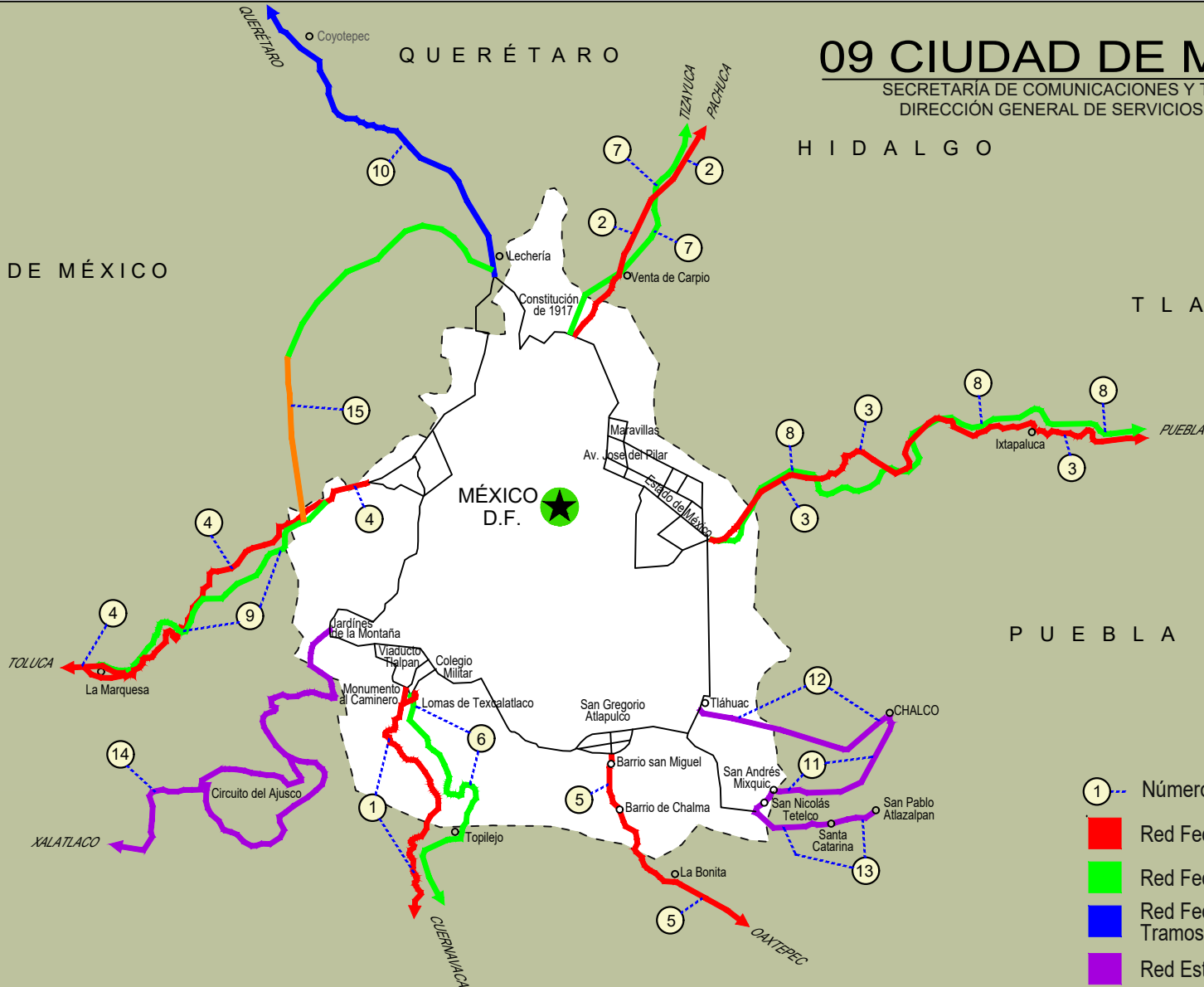
T L A X C A L A

P U E B L A

M O R E L O S

EDO. DE MÉXICO

Q U E R É T A R O



- ① Número Índice
- Red Federal Libre
- Red Federal Cuota
- Red Federal Integrada por Tramos Libres y de Cuota
- Red Estatal Libre
- Red Estatal Cuota
- Carreteras Integradas por Tramos Federales y Estatales

CIUDAD DE MEXICO

1 CARR: México - Cuernavaca (Libre)

CLAVE: 00040

RUTA: MEX-095

AÑO: 2021

LUGAR	ESTACION				CLASIFICACION VEHICULAR EN PORCIENTO										COORDENADAS					
	KM	TE	SC	TDPA	M	A	B	C2	C3	T3S2	T3S3	T3S2R4	OTROS	A	B	C	K'	D	LATITUD	LONGITUD
México	0.00																			
T., Izq. San Miguel Xicalco	25.50	1	0	25669	4.9	83.7	2.3	5.1	2.0	1.3	0.4	0.1	0.2	88.6	2.3	9.1	0.065	0.516	19.236046	-99.158435
T., Izq. San Miguel Xicalco	25.50	3	0	28743	4.0	89.2	0.4	4.5	1.1	0.3	0.3	0.1	0.1	93.2	0.4	6.4	0.064	0.505	19.228085	-99.153931
T. Izq. San Miguel Topilejo	28.78	1	1	11251	5.3	86.1	0.8	4.0	2.2	0.8	0.3	0.2	0.3	91.4	0.8	7.8	0.082	0.505	19.213853	-99.151663
T. Izq. San Miguel Topilejo	28.78	1	2	11457	5.2	86.7	0.8	4.0	1.8	0.8	0.3	0.2	0.2	91.9	0.8	7.3	0.098	0.505	19.213817	-99.151653
T. Izq. San Miguel Topilejo	28.78	3	0	9275	3.9	90.1	0.8	3.7	0.6	0.5	0.1	0.1	0.2	94.0	0.8	5.2	0.127	0.513	19.205127	-99.156582
Parres El Guarda	39.50	1	0	8418	3.6	90.4	0.6	3.6	0.9	0.5	0.2	0.1	0.1	94.0	0.6	5.4	0.117	0.511	19.139802	-99.170043
Parres El Guarda	39.50	3	0	7000	3.3	91.7	0.5	3.1	0.8	0.3	0.1	0.1	0.1	95.0	0.5	4.5	0.114	0.526	19.127807	-99.181450
Lim. Edos. Term. CDMX Ppia. Mor.	45.44																			
T. Der. Zempoala	51.40	1	0	8973	3.3	89.6	1.2	3.7	1.0	0.7	0.2	0.2	0.1	92.9	1.2	5.9	0.104	0.516	19.056802	-99.242762
T. Der. Zempoala	51.40	3	0	5310	2.4	91.5	0.7	3.9	0.7	0.4	0.1	0.2	0.1	93.9	0.7	5.4	0.104	0.509	19.042055	-99.233122
T. Izq. Coajomulco	57.12	3	0	6124	4.5	90.0	0.7	3.0	0.6	0.4	0.3	0.3	0.2	94.5	0.7	4.8	0.098	0.521	19.027158	-99.207026
T. Der. Huitzilac	64.20	1	0	7753	5.5	90.0	0.8	3.0	0.3	0.2	0.0	0.1	0.1	95.5	0.8	3.7	0.102	0.506	19.002660	-99.257466
T. Der. Huitzilac	64.20	3	0	13611	4.4	90.0	0.9	2.8	0.6	0.5	0.3	0.4	0.1	94.4	0.9	4.7	0.082	0.512	19.000664	-99.257747
T. Izq. Tepoztlán	71.36	1	0	25612	3.9	90.2	1.6	3.2	0.3	0.3	0.2	0.2	0.1	94.1	1.6	4.3	0.065	0.512	18.970762	-99.249549
T. Izq. Tepoztlán	71.36	3	1	18480	3.5	90.2	1.4	3.6	0.6	0.2	0.2	0.2	0.1	93.7	1.4	4.9	0.080	0.502	18.959699	-99.246096
T. Izq. Tepoztlán	71.36	3	2	18616	3.8	89.5	1.3	4.2	0.5	0.3	0.2	0.2	0.0	93.3	1.3	5.4	0.072	0.502	18.959704	-99.246041
Cuernavaca	75.42																			

2 CARR: México - Pachuca (Libre)

CLAVE: 00431

RUTA: MEX-085

AÑO: 2021

LUGAR	ESTACION				CLASIFICACION VEHICULAR EN PORCIENTO										COORDENADAS					
	KM	TE	SC	TDPA	M	A	B	C2	C3	T3S2	T3S3	T3S2R4	OTROS	A	B	C	K'	D	LATITUD	LONGITUD
México	0.00																			
Lim. Edos. Term. CDMX Ppia. Méx.	9.89																			
T. Der. Pirámides	26.93	1	1	15063	5.0	86.2	0.4	4.2	0.4	1.9	1.3	0.4	0.2	91.2	0.4	8.4	0.065	0.507	19.616779	-99.011673
T. Der. Pirámides	26.93	1	2	15516	4.9	85.6	0.5	4.6	0.3	2.2	1.4	0.3	0.2	90.5	0.5	9.0	0.056	0.507	19.616878	-99.011730
Venta de Carpio	27.00	3	1	30466	3.7	88.4	0.6	4.2	0.8	1.1	0.9	0.1	0.2	92.1	0.6	7.3	0.071	0.507	19.625816	-99.002966
Venta de Carpio	27.00	3	2	29576	3.7	87.3	0.7	5.0	0.8	1.2	1.0	0.1	0.2	91.0	0.7	8.3	0.059	0.507	19.625898	-99.003157
T. Der. Aut. México - Pachuca (Cuota)	37.52	1	1	33883	5.5	89.4	0.3	2.3	1.0	0.8	0.3	0.3	0.1	94.9	0.3	4.8	0.063	0.501	19.704311	-98.978367
T. Der. Aut. México - Pachuca (Cuota)	37.52	1	2	34003	4.9	90.3	0.3	2.1	1.0	0.8	0.2	0.3	0.1	95.2	0.3	4.5	0.062	0.501	19.703706	-98.978766
T. Izq. Zumpango	44.68	1	1	18410	8.7	76.9	1.9	6.3	2.7	1.4	0.7	0.8	0.6	85.6	1.9	12.5	0.066	0.502	19.760670	-98.973603
T. Izq. Zumpango	44.68	1	2	18566	9.6	74.5	2.0	7.1	2.9	1.5	0.9	0.9	0.6	84.1	2.0	13.9	0.068	0.502	19.760680	-98.973705
T. Izq. Zumpango	44.68	3	1	10671	8.8	75.9	2.0	6.5	2.7	1.4	0.8	1.1	0.8	84.7	2.0	13.3	0.064	0.504	19.768509	-98.973285
T. Izq. Zumpango	44.68	3	2	10521	9.6	74.0	2.0	6.9	3.1	1.6	0.8	1.1	0.9	83.6	2.0	14.4	0.061	0.504	19.768516	-98.973331

CIUDAD DE MEXICO

2 CARR: México - Pachuca (Libre)

CLAVE: 00431

RUTA: MEX-085

AÑO: 2021

LUGAR	ESTACION				CLASIFICACION VEHICULAR EN PORCIENTO										COORDENADAS					
	KM	TE	SC	TDPA	M	A	B	C2	C3	T3S2	T3S3	T3S2R4	OTROS	A	B	C	K'	D	LATITUD	LONGITUD
Lim. Edos. Term. Méx. Ppia. Hgo.	49.30																			
Tizayuca	52.50	1	1	9928	8.9	80.8	2.0	5.9	0.9	1.2	0.2	0.1	0.0	89.7	2.0	8.3	0.085	0.512	19.816373	-98.975679
Tizayuca	52.50	1	2	10396	8.9	80.7	1.9	5.9	1.0	1.2	0.3	0.1	0.0	89.6	1.9	8.5	0.081	0.512	19.816365	-98.975810
Tizayuca	52.50	3	1	15201	4.2	83.6	5.4	4.1	1.5	0.8	0.2	0.2	0.0	87.8	5.4	6.8	0.080	0.506	19.861717	-98.964777
Tizayuca	52.50	3	2	15560	3.8	84.0	5.3	4.5	1.4	0.7	0.3	0.0	0.0	87.8	5.3	6.9	0.065	0.506	19.861780	-98.964853
T. C. México - Tizayuca (Cuota)	61.00	1	1	7444	4.1	84.0	3.2	5.0	2.2	1.1	0.3	0.1	0.0	88.1	3.2	8.7	0.097	0.500	19.886590	-98.939431
T. C. México - Tizayuca (Cuota)	61.00	1	2	7447	6.4	81.9	3.1	6.1	1.4	0.7	0.3	0.1	0.0	88.3	3.1	8.6	0.085	0.500	19.886681	-98.939529
T. C. México - Tizayuca (Cuota)	61.00	3	1	25128	0.6	86.2	2.9	6.1	1.4	1.7	0.7	0.3	0.1	86.8	2.9	10.3	0.079	0.509	19.899011	-98.927730
T. C. México - Tizayuca (Cuota)	61.00	3	2	24204	0.6	86.3	2.9	6.1	1.4	1.6	0.7	0.3	0.1	86.9	2.9	10.2	0.063	0.509	19.899141	-98.927837
X. C. Arco Norte de La Ciudad de México	64.20	1	1	26717	0.5	88.7	2.1	4.8	1.3	1.6	0.5	0.4	0.1	89.2	2.1	8.7	0.071	0.525	19.918838	-98.905246
X. C. Arco Norte de La Ciudad de México	64.20	1	2	27286	0.5	86.7	2.4	5.7	1.6	2.1	0.5	0.4	0.1	87.2	2.4	10.4	0.081	0.525	19.919021	-98.905426
X. C. Arco Norte de La Ciudad de México	64.20	3	1	26529	1.1	86.1	3.8	5.6	0.8	1.6	0.5	0.3	0.2	87.2	3.8	9.0	0.061	0.517	19.929312	-98.893031
X. C. Arco Norte de La Ciudad de México	64.20	3	2	24812	1.2	84.5	4.3	6.4	0.9	1.6	0.6	0.3	0.2	85.7	4.3	10.0	0.071	0.517	19.929510	-98.893198
Ent. Colonia	83.97	1	1	44534	1.9	90.3	1.7	2.7	0.9	1.2	0.5	0.7	0.1	92.2	1.7	6.1	0.060	0.509	20.043345	-98.792933
Ent. Colonia	83.97	1	2	42841	1.8	91.7	1.7	2.5	0.6	0.8	0.3	0.4	0.2	93.5	1.7	4.8	0.060	0.509	20.043507	-98.793208
X. C. Libramiento de Pachuca	86.50	1	1	33517	3.1	93.5	0.6	1.3	0.6	0.3	0.2	0.3	0.1	96.6	0.6	2.8	0.063	0.522	20.097778	-98.765895
X. C. Libramiento de Pachuca	86.50	1	2	37113	3.1	93.5	0.5	1.3	0.6	0.3	0.2	0.3	0.2	96.6	0.5	2.9	0.077	0.522	20.097949	-98.766065
Pachuca	94.00																			

3 CARR: México - Puebla (Libre)

CLAVE: 00449

RUTA: MEX-150

AÑO: 2021

LUGAR	ESTACION				CLASIFICACION VEHICULAR EN PORCIENTO										COORDENADAS					
	KM	TE	SC	TDPA	M	A	B	C2	C3	T3S2	T3S3	T3S2R4	OTROS	A	B	C	K'	D	LATITUD	LONGITUD
México	0.00																			
Lim. Edos. Term. CDMX Ppia. Méx.	18.66																			
T. Der. Chalco	28.85	1	1	37561	3.3	89.1	0.9	3.1	1.6	0.9	0.2	0.8	0.1	92.4	0.9	6.7	0.056	0.514	19.311014	-98.903921
T. Der. Chalco	28.85	1	2	39946	3.5	89.0	0.9	3.1	1.5	0.9	0.2	0.8	0.1	92.5	0.9	6.6	0.053	0.514	19.311190	-98.903928
T. Der. Chalco (Lateral)	28.85	3	1	8331	5.5	91.0	0.4	1.3	1.0	0.4	0.2	0.1	0.1	96.5	0.4	3.1	0.076	0.519	19.312621	-98.894133
T. Der. Chalco (Central)	28.85	3	1	22898	4.1	90.8	0.2	3.1	0.4	0.5	0.7	0.1	0.1	94.9	0.2	4.9	0.064	0.516	19.312693	-98.894154
T. Der. Chalco (Central)	28.85	3	2	21512	4.1	90.8	0.2	3.1	0.4	0.5	0.7	0.1	0.1	94.9	0.2	4.9	0.060	0.516	19.312744	-98.894170
T. Der. Chalco (Lateral)	28.85	3	2	9006	5.5	91.3	0.3	1.3	0.9	0.3	0.2	0.1	0.1	96.8	0.3	2.9	0.062	0.519	19.312820	-98.894185
Ixtapaluca	31.06	3	1	23693	8.6	88.4	0.3	1.3	0.6	0.3	0.1	0.3	0.1	97.0	0.3	2.7	0.063	0.503	19.315790	-98.874703
Ixtapaluca	31.06	3	2	23389	8.6	88.4	0.3	1.3	0.6	0.3	0.1	0.3	0.1	97.0	0.3	2.7	0.060	0.503	19.315920	-98.874727
T. Der. C. México - Puebla (Cuota) (Río Frío)	62.06	1	0	3163	5.1	77.1	2.5	4.5	4.9	5.2	0.7	0.0	0.0	82.2	2.5	15.3	0.086	0.528	19.349775	-98.670670
T. Der. C. México - Puebla (Cuota) (Río Frío)	62.06	3	0	1058	3.2	79.5	1.9	5.3	3.9	5.3	0.7	0.2	0.0	82.7	1.9	15.4	0.107	0.510	19.352861	-98.662895

CIUDAD DE MEXICO

3 CARR : México - Puebla (Libre)

CLAVE: 00449

RUTA : MEX-150

AÑO : 2021

LUGAR	ESTACION				CLASIFICACION VEHICULAR EN PORCIENTO										COORDENADAS					
	KM	TE	SC	TDPA	M	A	B	C2	C3	T3S2	T3S3	T3S2R4	OTROS	A	B	C	K'	D	LATITUD	LONGITUD
Lim. Edos. Term. Méx. Ppia. Pue.	62.98																			
San Martín Texmelucan	70.00	1	0	13719	14.2	76.1	0.9	5.5	0.6	0.9	0.2	1.5	0.1	90.3	0.9	8.8	0.078	0.517	19.301409	-98.452638
X. C. México - Puebla (Cuota)	74.10	3	1	9374	6.5	81.1	1.0	6.4	0.8	2.1	1.2	0.4	0.5	87.6	1.0	11.4	0.080	0.509	19.254523	-98.428481
X. C. México - Puebla (Cuota)	74.10	3	2	9711	5.8	80.8	1.1	6.9	0.8	2.4	1.3	0.4	0.5	86.6	1.1	12.3	0.088	0.509	19.254522	-98.428358
Huejotzingo	88.00	1	1	6258	3.6	81.1	4.0	9.8	0.7	0.5	0.1	0.1	0.1	84.7	4.0	11.3	0.082	0.512	19.176433	-98.414883
Huejotzingo	88.00	1	2	5957	4.3	79.7	4.0	10.4	0.7	0.6	0.1	0.1	0.1	84.0	4.0	12.0	0.088	0.512	19.176480	-98.414818
Huejotzingo	88.00	3	1	6187	5.9	84.8	0.9	5.6	0.9	1.2	0.5	0.1	0.1	90.7	0.9	8.4	0.099	0.513	19.145902	-98.388119
Huejotzingo	88.00	3	2	5868	5.8	83.7	1.0	6.4	1.0	1.4	0.5	0.1	0.1	89.5	1.0	9.5	0.099	0.513	19.145992	-98.388100
T. Izq. Aeropuerto	92.80	1	1	6180	6.2	82.1	3.9	3.7	1.5	1.5	0.5	0.4	0.2	88.3	3.9	7.8	0.080	0.505	19.135987	-98.376945
T. Izq. Aeropuerto	92.80	1	2	6064	6.2	81.1	4.2	3.9	1.7	1.8	0.5	0.4	0.2	87.3	4.2	8.5	0.089	0.505	19.136068	-98.376878
T. Der. Cholula	101.00	1	1	13187	6.5	83.8	1.1	5.6	1.5	0.9	0.3	0.1	0.2	90.3	1.1	8.6	0.083	0.508	19.076601	-98.322457
T. Der. Cholula	101.00	1	2	12774	6.1	83.5	1.2	5.9	1.7	1.0	0.3	0.1	0.2	89.6	1.2	9.2	0.091	0.508	19.076673	-98.322409
T. Der. Cholula	101.00	3	1	19060	3.9	87.0	1.2	4.8	1.2	0.9	0.4	0.3	0.3	90.9	1.2	7.9	0.073	0.507	19.070233	-98.312750
T. Der. Cholula	101.00	3	2	19591	4.0	86.0	1.2	5.5	1.4	0.9	0.4	0.3	0.3	90.0	1.2	8.8	0.067	0.507	19.070330	-98.312702
Puebla	131.00																			

4 CARR : México - Toluca

CLAVE: 00447

RUTA : MEX-015

AÑO : 2021

LUGAR	ESTACION				CLASIFICACION VEHICULAR EN PORCIENTO										COORDENADAS					
	KM	TE	SC	TDPA	M	A	B	C2	C3	T3S2	T3S3	T3S2R4	OTROS	A	B	C	K'	D	LATITUD	LONGITUD
México	0.00																			
Ent. Constituyentes y Reforma	12.84	3	1	41099	3.2	88.9	1.9	2.6	0.3	2.0	0.7	0.3	0.1	92.1	1.9	6.0	0.058	0.507	19.386135	-99.247522
Ent. Constituyentes y Reforma	12.84	3	2	42250	3.2	89.0	1.8	2.6	0.3	2.0	0.7	0.3	0.1	92.2	1.8	6.0	0.055	0.507	19.385040	-99.248615
T. Der. Cuajimalpa (1° Acceso)	20.56	1	1	38502	3.3	88.6	2.0	2.6	0.3	2.1	0.7	0.3	0.1	91.9	2.0	6.1	0.062	0.504	19.364457	-99.277636
T. Der. Cuajimalpa (1° Acceso)	20.56	1	2	39251	3.6	88.1	2.0	2.6	0.3	2.2	0.8	0.3	0.1	91.7	2.0	6.3	0.058	0.504	19.364384	-99.277607
T. Izq. Desierto de Los Leones	23.96	1	1	38913	1.7	90.6	1.6	1.8	1.3	2.0	0.5	0.3	0.2	92.3	1.6	6.1	0.083	0.509	19.338818	-99.311285
T. Izq. Desierto de Los Leones	23.96	1	2	40416	2.3	90.0	1.6	1.8	1.3	2.0	0.5	0.3	0.2	92.3	1.6	6.1	0.081	0.509	19.338954	-99.311181
Lim. Edos. Term. CDMX Ppia. Méx.	33.44																			
T. Der. Huixquilucan	33.98	1	1	29735	1.7	90.3	1.4	4.0	1.0	0.9	0.5	0.1	0.1	92.0	1.4	6.6	0.069	0.532	19.295856	-99.359727
T. Der. Huixquilucan	33.98	1	2	24517	1.7	90.2	1.4	4.0	1.0	1.0	0.5	0.1	0.1	91.9	1.4	6.7	0.086	0.532	19.295784	-99.359698
T. C. Constituyentes - La Marquesa (Cuota)	35.28																			
T. C. La Marquesa - Lerma (Cuota)	36.98																			
X. C. Amomolulco - Stgo. Tianguistenco	47.26	1	1	57310	1.6	89.1	2.4	2.2	1.0	2.1	0.3	0.8	0.5	90.7	2.4	6.9	0.060	0.521	19.282564	-99.477482
X. C. Amomolulco - Stgo. Tianguistenco	47.26	1	2	52228	1.6	89.1	2.4	2.2	1.0	2.1	0.3	0.8	0.5	90.7	2.4	6.9	0.065	0.521	19.281794	-99.484732
T. Der. Lerma - Izq. San Pedro Tultepec	51.71	1	1	75929	2.9	88.5	1.8	2.2	1.1	2.0	0.3	1.1	0.1	91.4	1.8	6.8	0.066	0.508	19.283855	-99.504848

CIUDAD DE MEXICO

4 CARR: México - Toluca

CLAVE: 00447

RUTA: MEX-015

AÑO: 2021

LUGAR	ESTACION				CLASIFICACION VEHICULAR EN PORCIENTO										COORDENADAS					
	KM	TE	SC	TDPA	M	A	B	C2	C3	T3S2	T3S3	T3S2R4	OTROS	A	B	C	K'	D	LATITUD	LONGITUD
T. Der. Lerma - Izq. San Pedro Tultepec	51.71	1	2	73228	2.9	88.5	1.8	2.2	1.1	2.0	0.3	1.1	0.1	91.4	1.8	6.8	0.068	0.508	19.280281	-99.503105
T. Izq. San Mateo Atenco (Alta)	52.00	3	1	68365	17.5	82.5	0.0	0.0	0.0	0.0	0.0	0.0	0.0	100.0	0.0	0.0	0.065	0.507	19.285882	-99.535357
T. Izq. San Mateo Atenco (Baja)	52.00	3	1	18543	12.8	64.7	4.4	7.9	2.0	4.2	2.5	0.8	0.7	77.5	4.4	18.1	0.067	0.527	19.286316	-99.535273
T. Izq. San Mateo Atenco (Baja)	52.00	3	2	16644	12.8	64.7	4.4	7.9	2.0	4.2	2.5	0.8	0.7	77.5	4.4	18.1	0.066	0.527	19.285284	-99.535869
T. Izq. San Mateo Atenco (Alta)	52.00	3	2	73080	17.5	82.5	0.0	0.0	0.0	0.0	0.0	0.0	0.0	100.0	0.0	0.0	0.064	0.507	19.285556	-99.535841
X. C. Libramiento de Toluca (Alta)	62.20	1	1	83469	3.9	96.1	0.0	0.0	0.0	0.0	0.0	0.0	0.0	100.0	0.0	0.0	0.058	0.513	19.288073	-99.619907
X. C. Libramiento de Toluca (Baja)	62.20	1	1	13128	3.0	79.3	3.5	8.6	2.4	2.0	0.3	0.7	0.2	82.3	3.5	14.2	0.084	0.518	19.288420	-99.618985
X. C. Libramiento de Toluca (Baja)	62.20	1	2	12229	3.1	79.6	3.6	8.4	2.2	1.9	0.3	0.7	0.2	82.7	3.6	13.7	0.081	0.518	19.287564	-99.623521
X. C. Libramiento de Toluca (Alta)	62.20	1	2	78546	4.0	96.0	0.0	0.0	0.0	0.0	0.0	0.0	0.0	100.0	0.0	0.0	0.058	0.513	19.287683	-99.617678
Toluca	66.00																			

5 CARR: San Gregorio - Oaxtepec

CLAVE: 00901

RUTA: MEX-113

AÑO: 2021

LUGAR	ESTACION				CLASIFICACION VEHICULAR EN PORCIENTO										COORDENADAS					
	KM	TE	SC	TDPA	M	A	B	C2	C3	T3S2	T3S3	T3S2R4	OTROS	A	B	C	K'	D	LATITUD	LONGITUD
San Gregorio	0.00	3	0	18823	7.6	86.9	0.6	3.1	0.4	0.3	0.2	0.8	0.1	94.5	0.6	4.9	0.066	0.512	19.238245	-99.054815
X. C. Milpa Alta - San Lorenzo Tlacoyucan	9.00	3	0	7712	2.9	85.1	2.3	6.5	1.1	0.5	0.7	0.4	0.5	88.0	2.3	9.7	0.100	0.518	19.180899	-99.029771
Lim. Edos. Term. CDMX Ppia. Méx.	18.80																			
Lim. Edos. Term. Méx. Ppia. Mor.	28.50																			
T. Der. San Felipe Neri	33.80	1	0	4289	2.3	86.7	1.3	7.9	1.1	0.4	0.3	0.0	0.0	89.0	1.3	9.7	0.127	0.505	19.045426	-98.935634
T. Der. Tlalnepantla	40.50	3	0	4928	5.4	85.5	0.3	8.1	0.3	0.1	0.1	0.1	0.1	90.9	0.3	8.8	0.098	0.501	19.004326	-98.990278
Tlayacapan	48.50	3	0	12141	8.4	86.6	0.4	3.6	0.5	0.2	0.1	0.1	0.1	95.0	0.4	4.6	0.082	0.513	18.938293	-98.973103
T. Der. Yautepec	53.00	1	0	11794	7.2	87.1	0.3	3.1	0.2	1.1	0.7	0.2	0.1	94.3	0.3	5.4	0.086	0.502	18.925095	-98.968021
T. Der. Yautepec	53.00	3	1	7466	12.6	80.3	0.4	5.8	0.4	0.2	0.1	0.1	0.1	92.9	0.4	6.7	0.079	0.514	18.916038	-98.970117
T. Der. Yautepec	53.00	3	2	7881	12.6	80.6	0.4	5.2	0.4	0.2	0.2	0.2	0.2	93.2	0.4	6.4	0.081	0.514	18.916015	-98.970071
Oaxtepec	56.00																			

6 CARR: México - Cuernavaca (Cuota)

CLAVE: 00041

RUTA: MEX-095D

AÑO: 2021

LUGAR	ESTACION				CLASIFICACION VEHICULAR EN PORCIENTO										COORDENADAS					
	KM	TE	SC	TDPA	M	A	B	C2	C3	T3S2	T3S3	T3S2R4	OTROS	A	B	C	K'	D	LATITUD	LONGITUD
México	0.00																			
T. C. México - Cuernavaca (Libre)	18.65	3	1	27223	0.7	88.6	2.8	3.3	1.1	1.9	0.4	0.6	0.6	89.3	2.8	7.9	0.079	0.507	19.264989	-99.165565
T. C. México - Cuernavaca (Libre)	18.65	3	2	28100	0.8	89.6	2.3	3.0	1.1	1.8	0.4	0.5	0.5	90.4	2.3	7.3	0.088	0.507	19.264928	-99.165389
Plaza de Cobro Tlalpan	23.36	2	1	14722	1.9	85.7	3.2	2.5	1.9	2.8	0.7	0.9	0.4	87.6	3.2	9.2	0.145	0.500	19.242519	-99.148716

CIUDAD DE MEXICO

6 CARR: México - Cuernavaca (Cuota)

CLAVE: 00041

RUTA: MEX-095D

AÑO: 2021

LUGAR	ESTACION				CLASIFICACION VEHICULAR EN PORCIENTO													COORDENADAS		
	KM	TE	SC	TDPA	M	A	B	C2	C3	T3S2	T3S3	T3S2R4	OTROS	A	B	C	K'	D	LATITUD	LONGITUD
Plaza de Cobro Tlalpan	23.36	2	2	14722	1.9	85.7	3.2	2.5	1.9	2.8	0.7	0.9	0.4	87.6	3.2	9.2	0.145	0.500	19.242519	-99.148716
Lim. Edos. Term. CDMX Ppia. Mor.	47.09																			
Tres Mariás	53.00	1	1	18723	5.5	80.4	6.0	2.9	1.0	2.4	0.4	1.0	0.4	85.9	6.0	8.1	0.139	0.511	19.077392	-99.233565
Tres Mariás	53.00	1	2	19541	5.5	79.6	6.5	3.2	1.0	2.4	0.4	1.0	0.4	85.1	6.5	8.4	0.114	0.511	19.077370	-99.233476
Tres Mariás	53.00	3	1	20535	4.4	84.2	3.3	2.5	1.1	2.7	0.6	0.7	0.5	88.6	3.3	8.1	0.150	0.586	19.043076	-99.233314
Tres Mariás	53.00	3	2	20333	4.7	82.5	4.8	2.6	1.0	2.7	0.6	0.6	0.5	87.2	4.8	8.0	0.190	0.586	19.043161	-99.233243
T. Izq. Cuautla	70.50	1	1	17691	0.9	87.0	3.5	2.4	1.5	2.5	0.9	0.7	0.6	87.9	3.5	8.6	0.126	0.512	19.014454	-99.155728
T. Izq. Cuautla	70.50	1	2	18544	0.9	86.7	3.6	2.3	1.6	2.7	0.8	0.8	0.6	87.6	3.6	8.8	0.110	0.512	19.014361	-99.155726
T. Izq. A Glorieta La Paloma	79.26	1	1	17284	0.9	83.7	5.1	4.5	1.2	2.6	0.8	0.8	0.4	84.6	5.1	10.3	0.095	0.517	18.982268	-99.219458
T. Izq. A Glorieta La Paloma	79.26	1	2	16146	0.9	83.5	5.1	4.6	1.2	2.6	0.9	0.9	0.3	84.4	5.1	10.5	0.084	0.517	18.982165	-99.219458
Libramiento de Cuernavaca	80.50	1	1	19816	2.2	83.8	2.8	5.5	1.2	2.3	1.3	0.5	0.4	86.0	2.8	11.2	0.076	0.504	18.967199	-99.236665
Libramiento de Cuernavaca	80.50	1	2	19510	2.4	81.5	3.2	6.1	1.4	2.8	1.5	0.6	0.5	83.9	3.2	12.9	0.074	0.504	18.967264	-99.236551

7 CARR: México - Pachuca (Cuota)

CLAVE: 00432

RUTA: MEX-085D

AÑO: 2021

LUGAR	ESTACION				CLASIFICACION VEHICULAR EN PORCIENTO													COORDENADAS		
	KM	TE	SC	TDPA	M	A	B	C2	C3	T3S2	T3S3	T3S2R4	OTROS	A	B	C	K'	D	LATITUD	LONGITUD
T. C. México - Pachuca (Libre)	0.00																			
Lim. Edos. Term. CDMX Ppia. Méx.	9.86																			
Plaza de Cobro Ojo de Agua	25.00	2	1	32478	1.5	88.3	3.9	2.6	1.5	1.6	0.2	0.3	0.1	89.8	3.9	6.3	0.081	0.500	19.618737	-99.029315
Plaza de Cobro Ojo de Agua	25.00	2	2	32478	1.5	88.3	3.9	2.6	1.5	1.6	0.2	0.3	0.1	89.8	3.9	6.3	0.081	0.500	19.618737	-99.029315
Plaza de Cobro Ojo de Agua	25.00	3	1	36493	3.4	86.0	2.0	4.9	1.1	1.5	0.2	0.7	0.2	89.4	2.0	8.6	0.071	0.507	19.628065	-99.024588
Plaza de Cobro Ojo de Agua	25.00	3	2	35385	3.4	85.9	1.9	5.0	1.1	1.5	0.3	0.7	0.2	89.3	1.9	8.8	0.067	0.507	19.628137	-99.024731
T. Izq. Tecámac	35.62	3	1	31601	1.9	86.9	2.5	3.1	2.8	2.0	0.4	0.3	0.1	88.8	2.5	8.7	0.085	0.506	19.707960	-98.966545
T. Izq. Tecámac	35.62	3	2	32454	1.8	87.2	2.1	3.5	2.8	1.9	0.3	0.3	0.1	89.0	2.1	8.9	0.095	0.506	19.708041	-98.966678
Lim. Edos. Term. Méx. Ppia. Hgo.	49.60																			
X. C. Otumba - Tizayuca	53.45	1	1	26342	1.8	89.5	2.2	2.6	1.1	2.1	0.3	0.3	0.1	91.3	2.2	6.5	0.094	0.503	19.823380	-98.948338
X. C. Otumba - Tizayuca	53.45	1	2	25981	1.8	89.4	2.1	2.7	1.2	2.0	0.4	0.3	0.1	91.2	2.1	6.7	0.105	0.503	19.823362	-98.948425
T. C. México - Pachuca (Libre)	60.50	1	1	22043	3.0	89.0	2.2	1.9	1.1	1.9	0.4	0.4	0.1	92.0	2.2	5.8	0.087	0.507	19.884820	-98.937400
T. C. México - Pachuca (Libre)	60.50	1	2	21413	3.0	89.1	2.2	1.9	1.1	1.8	0.4	0.4	0.1	92.1	2.2	5.7	0.109	0.507	19.884835	-98.937484

CIUDAD DE MEXICO

8 CARR: México - Puebla (Cuota)

CLAVE: 00450

RUTA: MEX-150D

AÑO: 2021

LUGAR	ESTACION				CLASIFICACION VEHICULAR EN PORCIENTO										COORDENADAS					
	KM	TE	SC	TDPA	M	A	B	C2	C3	T3S2	T3S3	T3S2R4	OTROS	A	B	C	K'	D	LATITUD	LONGITUD
México	0.00																			
Ent Concordía (T. Izq. Los Reyes) Lateral	17.00	3	1	21458	4.7	79.9	2.8	7.6	1.6	2.1	0.6	0.4	0.3	84.6	2.8	12.6	0.077	0.546	19.351790	-98.987870
Ent Concordía (T. Izq. Los Reyes) Central	17.00	3	1	80794	2.3	89.9	1.3	3.6	0.7	1.2	0.6	0.2	0.2	92.2	1.3	6.5	0.057	0.501	19.351898	-98.987755
Ent Concordía (T. Izq. Los Reyes) Lateral	17.00	3	2	25815	4.0	78.9	3.3	8.7	1.3	2.3	0.5	0.6	0.4	82.9	3.3	13.8	0.068	0.546	19.352657	-98.988222
Ent Concordía (T. Izq. Los Reyes) Central	17.00	3	2	80623	2.3	90.0	1.3	3.6	0.6	1.1	0.7	0.2	0.2	92.3	1.3	6.4	0.054	0.501	19.352585	-98.988308
Lim. Edos. Term. CDMX Ppia. Méx.	17.51																			
Av. Las Torres (Eje 6) Central	19.27	1	1	82756	2.3	90.5	1.2	3.0	0.8	1.2	0.6	0.2	0.2	92.8	1.2	6.0	0.053	0.500	19.346774	-98.982424
Av. Las Torres (Eje 6) Lateral	19.27	1	1	25187	4.3	85.4	1.2	6.8	0.8	0.9	0.2	0.3	0.1	89.7	1.2	9.1	0.066	0.501	19.346693	-98.982522
Av. Las Torres (Eje 6) Central	19.27	1	2	82845	2.3	90.0	1.3	3.6	0.6	1.1	0.7	0.2	0.2	92.3	1.3	6.4	0.050	0.500	19.346629	-98.982062
Av. Las Torres (Eje 6) Lateral	19.27	1	2	25276	4.0	74.4	5.8	12.1	1.0	1.7	0.4	0.4	0.2	78.4	5.8	15.8	0.078	0.501	19.346701	-98.981986
Av. Las Torres (Eje 6) Central	19.27	3	1	73415	3.4	89.2	1.3	3.4	0.6	1.0	0.7	0.2	0.2	92.6	1.3	6.1	0.060	0.508	19.339832	-98.976455
Av. Las Torres (Eje 6) Lateral	19.27	3	1	29092	3.9	76.5	2.3	12.9	1.0	1.4	0.6	1.0	0.4	80.4	2.3	17.3	0.064	0.529	19.339769	-98.976570
Av. Las Torres (Eje 6) Central	19.27	3	2	76136	3.4	88.2	1.3	4.0	0.9	1.1	0.7	0.2	0.2	91.6	1.3	7.1	0.054	0.508	19.341043	-98.977026
Av. Las Torres (Eje 6) Lateral	19.27	3	2	24341	3.5	74.0	3.1	14.4	1.4	2.1	0.9	0.3	0.3	77.5	3.1	19.4	0.060	0.529	19.341107	-98.976922
Eje 10 Sur (Lateral)	22.80	1	1	28165	4.8	85.7	1.0	6.2	0.7	0.6	0.5	0.2	0.3	90.5	1.0	8.5	0.064	0.515	19.329401	-98.965518
Eje 10 Sur (Central)	22.80	1	1	73973	2.5	88.5	1.5	3.9	0.9	1.3	0.6	0.5	0.3	91.0	1.5	7.5	0.052	0.500	19.329510	-98.965442
Eje 10 Sur (Central)	22.80	1	2	74005	2.3	89.5	1.4	3.8	0.7	1.2	0.7	0.2	0.2	91.8	1.4	6.8	0.051	0.500	19.329799	-98.965547
Eje 10 Sur (Lateral)	22.80	1	2	26574	3.6	79.3	2.2	11.6	0.9	1.2	0.6	0.3	0.3	82.9	2.2	14.9	0.062	0.515	19.329898	-98.965471
Eje 10 Sur (Central)	22.80	3	1	47347	2.7	87.4	2.2	3.4	1.1	1.7	0.3	0.3	0.9	90.1	2.2	7.7	0.064	0.536	19.313817	-98.946969
Eje 10 Sur (Lateral)	22.80	3	1	34378	3.5	85.2	1.3	7.4	0.7	0.8	0.6	0.2	0.3	88.7	1.3	10.0	0.064	0.503	19.313726	-98.947035
Eje 10 Sur (Central)	22.80	3	2	40335	2.6	86.4	2.6	3.9	1.1	1.9	0.4	0.3	0.8	89.0	2.6	8.4	0.065	0.536	19.315344	-98.948367
Eje 10 Sur (Lateral)	22.80	3	2	34802	2.6	76.8	4.2	14.3	0.6	0.5	0.5	0.2	0.3	79.4	4.2	16.4	0.062	0.503	19.315435	-98.948291
X. C. Santa Bárbara - Izúcar de Matamoros (Central)	32.14	1	1	39770	1.9	86.8	2.5	4.1	1.4	2.4	0.4	0.4	0.1	88.7	2.5	8.8	0.058	0.500	19.292265	-98.892133
X. C. Santa Bárbara - Izúcar de Matamoros (Lateral)	32.14	1	1	9728	3.3	85.9	1.4	6.2	1.0	1.6	0.3	0.2	0.1	89.2	1.4	9.4	0.065	0.688	19.292175	-98.892124
X. C. Santa Bárbara - Izúcar de Matamoros (Lateral)	32.14	1	2	21410	2.2	89.5	1.0	4.1	1.1	1.6	0.3	0.1	0.1	91.7	1.0	7.3	0.068	0.688	19.292563	-98.891962
X. C. Santa Bárbara - Izúcar de Matamoros (Central)	32.14	1	2	39732	1.9	86.8	2.5	4.5	1.2	2.3	0.4	0.3	0.1	88.7	2.5	8.8	0.063	0.500	19.292428	-98.891952
X. C. Santa Bárbara - Izúcar de Matamoros (Lateral)	32.14	3	1	1802	2.2	73.5	5.0	6.3	2.1	5.7	0.9	3.7	0.6	75.7	5.0	19.3	0.062	0.525	19.294595	-98.876276
X. C. Santa Bárbara - Izúcar de Matamoros (Central)	32.14	3	1	13454	0.6	78.8	5.4	5.9	2.6	5.3	0.5	0.7	0.2	79.4	5.4	15.2	0.063	0.500	19.294759	-98.876347
X. C. Santa Bárbara - Izúcar de Matamoros (Central)	32.14	3	2	13466	0.5	78.5	5.4	5.8	2.3	5.9	0.6	0.7	0.3	79.0	5.4	15.6	0.061	0.500	19.295029	-98.875760
X. C. Santa Bárbara - Izúcar de Matamoros (Lateral)	32.14	3	2	1627	2.2	69.3	6.8	7.1	2.1	6.6	1.1	4.1	0.7	71.5	6.8	21.7	0.079	0.525	19.295156	-98.875808
Plaza de Cobro San Marcos	33.30	2	1	15474	0.6	75.5	3.9	5.3	3.8	7.1	0.6	2.8	0.4	76.1	3.9	20.0	0.068	0.500	19.296272	-98.870712
Plaza de Cobro San Marcos	33.30	2	2	15474	0.6	75.5	3.9	5.3	3.8	7.1	0.6	2.8	0.4	76.1	3.9	20.0	0.068	0.500	19.296272	-98.870712
T. Izq. Río Frío	63.79	3	1	15565	1.2	77.1	6.0	5.2	2.4	5.0	0.9	1.8	0.4	78.3	6.0	15.7	0.076	0.524	19.350757	-98.658948
T. Izq. Río Frío	63.79	3	2	17162	1.1	76.8	5.6	5.0	2.6	5.4	0.9	2.1	0.5	77.9	5.6	16.5	0.086	0.524	19.351183	-98.659461
Lim. Edos. Term. Méx. Ppia. Pue.	65.46																			

CIUDAD DE MEXICO

8 CARR : México - Puebla (Cuota)

CLAVE: 00450

RUTA : MEX-150D

AÑO : 2021

LUGAR	ESTACION				CLASIFICACION VEHICULAR EN PORCIENTO														COORDENADAS	
	KM	TE	SC	TDPA	M	A	B	C2	C3	T3S2	T3S3	T3S2R4	OTROS	A	B	C	K'	D	LATITUD	LONGITUD
T. Izq. Tlaxcala	90.61	1	1	21170	0.9	80.3	5.1	5.2	2.0	3.8	0.7	1.6	0.4	81.2	5.1	13.7	0.076	0.505	19.274013	-98.436303
T. Izq. Tlaxcala	90.61	1	2	21591	1.0	78.4	5.5	5.6	2.1	4.4	0.8	1.8	0.4	79.4	5.5	15.1	0.086	0.505	19.274139	-98.436236
T. Izq. Tlaxcala	90.61	3	1	24762	0.7	69.4	5.7	8.8	2.6	7.6	1.6	3.3	0.3	70.1	5.7	24.2	0.063	0.502	19.261881	-98.417560
T. Izq. Tlaxcala	90.61	3	2	24959	0.9	65.9	6.4	9.6	2.9	8.6	1.6	3.8	0.3	66.8	6.4	26.8	0.072	0.502	19.261962	-98.417484
Plaza de Cobro San Martín Texmelucan	91.17	2	1	23685	0.7	69.7	3.6	4.9	4.5	10.4	1.3	4.2	0.7	70.4	3.6	26.0	0.068	0.500	19.241190	-98.385786
Plaza de Cobro San Martín Texmelucan	91.17	2	2	23685	0.7	69.7	3.6	4.9	4.5	10.4	1.3	4.2	0.7	70.4	3.6	26.0	0.068	0.500	19.241190	-98.385786
Lim. Edos. Term. Pue. Ppia. Tlax.	99.11																			
T. Der. Aeropuerto Internacional De Puebla	101.10	3	1	35053	2.3	73.0	4.1	5.2	2.0	9.5	2.5	0.6	0.8	75.3	4.1	20.6	0.063	0.541	19.209137	-98.349417
T. Der. Aeropuerto Internacional De Puebla	101.10	3	2	29236	2.3	70.8	5.0	6.0	2.0	9.5	3.0	0.6	0.8	73.1	5.0	21.9	0.076	0.541	19.209209	-98.349350
X. C. Xoxtla - Huactzinco	107.98	1	1	35361	3.4	71.6	3.0	5.4	3.8	8.9	3.0	0.2	0.7	75.0	3.0	22.0	0.074	0.502	19.182804	-98.317410
X. C. Xoxtla - Huactzinco	107.98	1	2	35721	3.2	71.7	3.0	5.4	3.8	8.9	3.0	0.2	0.8	74.9	3.0	22.1	0.074	0.502	19.182903	-98.317334
X. C. Xoxtla - Huactzinco	107.98	3	1	40851	5.3	68.1	6.0	5.0	2.4	8.3	1.2	3.0	0.7	73.4	6.0	20.6	0.065	0.514	19.164701	-98.297704
X. C. Xoxtla - Huactzinco	107.98	3	2	43540	5.1	67.8	6.0	5.0	2.4	8.3	1.3	3.3	0.8	72.9	6.0	21.1	0.069	0.514	19.164773	-98.297609
Lim. Edos. Term. Tlax. Ppia. Pue.	108.00																			
Anillo Periferico Poniente de Puebla (Lateral)	114.00	3	1	27166	2.3	83.5	1.9	4.0	1.0	3.5	1.9	0.9	1.0	85.8	1.9	12.3	0.087	0.501	19.126811	-98.263693
Anillo Periferico Poniente de Puebla (Central)	114.00	3	1	29963	2.0	72.3	5.7	5.4	3.3	7.1	0.8	2.9	0.5	74.3	5.7	20.0	0.086	0.515	19.126865	-98.263617
Anillo Periferico Poniente de Puebla (Central)	114.00	3	2	32065	2.1	69.3	6.4	5.8	3.6	8.1	0.9	3.2	0.6	71.4	6.4	22.2	0.069	0.515	19.126584	-98.263209
Anillo Periferico Poniente de Puebla (Lateral)	114.00	3	2	27024	2.5	82.0	2.2	4.5	1.0	3.8	1.9	1.1	1.0	84.5	2.2	13.3	0.070	0.501	19.126628	-98.263114
Boulevard Hermanos Serdán	120.46	3	1	65355	4.2	81.7	3.3	4.3	1.4	2.6	0.4	1.7	0.4	85.9	3.3	10.8	0.066	0.518	19.089340	-98.216626
Boulevard Hermanos Serdán	120.46	3	2	60150	4.5	81.4	3.3	4.3	1.4	2.6	0.4	1.7	0.4	85.9	3.3	10.8	0.063	0.518	19.089430	-98.216616
X. C. Puebla - Tlaxcala (Lateral)	123.00	3	1	32743	3.3	83.9	3.1	5.9	1.5	1.5	0.2	0.5	0.1	87.2	3.1	9.7	0.065	0.510	19.085943	-98.200159
X. C. Puebla - Tlaxcala (Central)	123.00	3	1	47810	1.4	84.0	1.9	3.2	3.0	4.1	1.0	1.1	0.3	85.4	1.9	12.7	0.066	0.526	19.086061	-98.200140
X. C. Puebla - Tlaxcala (Central)	123.00	3	2	47402	1.6	82.5	1.9	3.7	3.1	4.6	1.0	1.3	0.3	84.1	1.9	14.0	0.068	0.526	19.086059	-98.199598
X. C. Puebla - Tlaxcala (Lateral)	123.00	3	2	31299	3.3	83.9	3.1	5.9	1.5	1.5	0.2	0.5	0.1	87.2	3.1	9.7	0.083	0.510	19.086167	-98.199607
T. C. Puebla - Tlaxcala	124.90																			

9 CARR : México - Toluca (Cuota)

CLAVE: 00446

RUTA : MEX-015D

AÑO : 2021

LUGAR	ESTACION				CLASIFICACION VEHICULAR EN PORCIENTO														COORDENADAS	
	KM	TE	SC	TDPA	M	A	B	C2	C3	T3S2	T3S3	T3S2R4	OTROS	A	B	C	K'	D	LATITUD	LONGITUD
T. C. México - Toluca (Libre) (Puente Conafrut)	0.00	3	1	31049	0.4	88.2	3.4	4.5	0.5	1.2	0.8	0.6	0.4	88.6	3.4	8.0	0.066	0.503	19.380346	-99.251493
T. C. México - Toluca (Libre) (Puente Conafrut)	0.00	3	2	30637	0.5	86.8	3.7	5.2	0.5	1.2	1.1	0.6	0.4	87.3	3.7	9.0	0.104	0.503	19.381188	-99.250123
Plaza de Cobro Santa Fe	3.50	1	1	34386	0.4	90.1	2.7	3.8	0.5	1.3	0.8	0.3	0.1	90.5	2.7	6.8	0.066	0.506	19.368784	-99.266483
Plaza de Cobro Santa Fe	3.50	1	2	33560	0.5	90.1	2.5	3.7	0.5	1.4	0.9	0.3	0.1	90.6	2.5	6.9	0.101	0.506	19.368712	-99.266349
Plaza de Cobro Santa Fe	3.50	3	1	23050	0.5	88.1	3.2	4.5	0.5	1.4	1.2	0.4	0.2	88.6	3.2	8.2	0.073	0.524	19.356169	-99.277841

CIUDAD DE MEXICO

9 CARR: México - Toluca (Cuota)

CLAVE: 00446

RUTA: MEX-015D

AÑO: 2021

LUGAR	ESTACION				CLASIFICACION VEHICULAR EN PORCIENTO										COORDENADAS					
	KM	TE	SC	TDPA	M	A	B	C2	C3	T3S2	T3S3	T3S2R4	OTROS	A	B	C	K'	D	LATITUD	LONGITUD
Plaza de Cobro Santa Fe	3.50	3	2	25374	0.5	88.1	3.2	4.5	0.5	1.4	1.2	0.4	0.2	88.6	3.2	8.2	0.093	0.524	19.356052	-99.277698
Plaza de Cobro La Venta	10.00	1	1	25716	1.0	90.1	2.7	2.5	0.7	1.3	1.1	0.4	0.2	91.1	2.7	6.2	0.085	0.530	19.334750	-99.306698
Plaza de Cobro La Venta	10.00	1	2	27496	1.0	90.2	2.7	2.5	0.7	1.2	1.0	0.5	0.2	91.2	2.7	6.1	0.070	0.530	19.334623	-99.306736
Plaza de Cobro La Venta	10.00	2	1	19327	0.8	91.7	2.3	2.4	0.9	1.2	0.1	0.5	0.1	92.5	2.3	5.2	0.089	0.500	19.332816	-99.314301
Plaza de Cobro La Venta	10.00	2	2	19327	0.8	91.7	2.3	2.4	0.9	1.2	0.1	0.5	0.1	92.5	2.3	5.2	0.089	0.500	19.332816	-99.314301
Plaza de Cobro La Venta	10.00	3	1	36234	2.8	85.0	2.7	3.2	1.0	3.5	0.4	1.1	0.3	87.8	2.7	9.5	0.087	0.544	19.318057	-99.322726
Plaza de Cobro La Venta	10.00	3	2	36377	3.6	84.2	2.6	3.2	1.1	3.5	0.4	1.1	0.3	87.8	2.6	9.6	0.075	0.544	19.323252	-99.318929
Lim. Edos. Term. CDMX Ppia. Méx.	18.66																			
T. C. México - Toluca (Libre) (La Marquesa)	19.20	1	1	35326	3.4	85.9	2.8	2.9	0.9	2.5	0.5	0.8	0.3	89.3	2.8	7.9	0.079	0.514	19.300823	-99.366067
T. C. México - Toluca (Libre) (La Marquesa)	19.20	1	2	33126	3.4	84.1	3.2	3.5	1.0	3.0	0.5	1.0	0.3	87.5	3.2	9.3	0.080	0.514	19.299248	-99.362885

10 CARR: México - Querétaro (Cuota)

CLAVE: 00411

RUTA: MEX-057-MEX-057D

AÑO: 2021

LUGAR	ESTACION				CLASIFICACION VEHICULAR EN PORCIENTO										COORDENADAS					
	KM	TE	SC	TDPA	M	A	B	C2	C3	T3S2	T3S3	T3S2R4	OTROS	A	B	C	K'	D	LATITUD	LONGITUD
México	0.00																			
Lim. Edos. Term. CDMX Ppia. Méx.	11.30																			
Lechería	29.41																			
Plaza de Cobro Tepetzotlán	43.01	2	1	29448	0.6	72.3	3.9	5.0	3.7	10.9	0.7	2.2	0.7	72.9	3.9	23.2	0.077	0.500	19.715361	-99.207448
Plaza de Cobro Tepetzotlán	43.01	2	2	29448	0.6	72.3	3.9	5.0	3.7	10.9	0.7	2.2	0.7	72.9	3.9	23.2	0.077	0.500	19.715361	-99.207448
Ent. Jorobas	56.18	1	1	33848	1.1	68.8	4.2	7.8	2.7	10.6	1.8	2.2	0.8	69.9	4.2	25.9	0.075	0.507	19.811473	-99.238527
Ent. Jorobas	56.18	1	2	34915	1.2	65.5	4.8	8.5	3.0	11.6	1.9	2.5	1.0	66.7	4.8	28.5	0.068	0.507	19.811392	-99.238706
Ent. Jorobas	56.18	3	1	41148	1.4	62.4	4.7	8.5	3.2	14.0	2.0	2.9	0.9	63.8	4.7	31.5	0.067	0.504	19.829257	-99.257767
Ent. Jorobas	56.18	3	2	41847	1.3	58.9	5.1	8.9	3.4	16.1	2.0	3.3	1.0	60.2	5.1	34.7	0.073	0.504	19.837399	-99.274233
Lim. Edos. Term. Méx. Ppia. Hgo.	59.85																			
T. Der. Tepeji del Río	69.36	1	1	35444	4.4	69.6	4.8	7.3	2.3	7.3	1.1	2.6	0.6	74.0	4.8	21.2	0.072	0.505	19.863541	-99.316164
T. Der. Tepeji del Río	69.36	1	2	36331	4.4	68.9	4.7	7.0	2.6	7.6	1.3	2.9	0.6	73.3	4.7	22.0	0.070	0.505	19.874082	-99.340051
T. Der. Tepeji del Río	69.36	3	1	33020	4.6	67.6	4.8	5.7	2.5	9.9	1.2	3.1	0.6	72.2	4.8	23.0	0.065	0.536	19.920871	-99.370337
T. Der. Tepeji del Río	69.36	3	2	34856	4.7	68.1	4.5	5.7	2.6	9.5	1.3	3.0	0.6	72.8	4.5	22.7	0.053	0.536	19.920782	-99.370517
T. Izq. Jilotepec	83.75	1	1	33353	4.9	66.8	5.3	5.2	2.7	9.4	1.4	3.6	0.7	71.7	5.3	23.0	0.070	0.504	19.972292	-99.434135
T. Izq. Jilotepec	83.75	1	2	32771	4.5	63.6	6.0	5.6	2.9	11.0	1.6	4.0	0.8	68.1	6.0	25.9	0.061	0.504	19.975527	-99.437307
T. Izq. Jilotepec	83.75	3	1	31514	4.2	65.2	5.4	5.7	2.9	11.2	1.2	3.5	0.7	69.4	5.4	25.2	0.070	0.509	19.989658	-99.458342
T. Izq. Jilotepec	83.75	3	2	30270	4.6	64.3	5.6	5.6	2.9	11.5	1.4	3.4	0.7	68.9	5.6	25.5	0.063	0.509	19.985707	-99.444701
Lim. Edos. Term. Hgo. Ppia. Méx.	86.00																			
X. C. Libramiento Norte de La Ciudad de México (Cuota)	89.44	3	1	37444	4.4	64.1	5.6	5.2	2.5	12.2	1.8	3.4	0.8	68.5	5.6	25.9	0.056	0.526	20.005053	-99.500723

CIUDAD DE MEXICO

10 CARR: México - Querétaro (Cuota)

CLAVE: 00411

RUTA: MEX-057-MEX-057D

AÑO: 2021

LUGAR	ESTACION				CLASIFICACION VEHICULAR EN PORCIENTO														COORDENADAS	
	KM	TE	SC	TDPA	M	A	B	C2	C3	T3S2	T3S3	T3S2R4	OTROS	A	B	C	K'	D	LATITUD	LONGITUD
X. C. Libramiento Norte de La Ciudad de México (Cuota)	89.44	3	2	33416	5.0	61.1	5.9	5.8	2.8	13.0	1.9	3.5	1.0	66.1	5.9	28.0	0.084	0.526	20.003159	-99.498138
T. Der. Palos Altos	97.80	1	1	38588	5.0	60.3	5.5	5.1	2.9	14.2	1.9	4.2	0.9	65.3	5.5	29.2	0.068	0.507	20.032912	-99.552469
T. Der. Palos Altos	97.80	1	2	37430	5.2	60.0	5.4	5.0	2.8	14.3	2.1	4.3	0.9	65.2	5.4	29.4	0.069	0.507	20.032491	-99.552222
X. C. Jilotepec - Maravillas	107.00	1	1	33825	5.1	60.9	5.4	4.9	2.7	14.0	1.7	4.4	0.9	66.0	5.4	28.6	0.067	0.505	20.076833	-99.614807
X. C. Jilotepec - Maravillas	107.00	1	2	34588	5.2	62.5	5.3	4.7	2.6	13.1	1.9	3.8	0.9	67.7	5.3	27.0	0.079	0.505	20.075436	-99.613585
X. C. Jilotepec - Maravillas	107.00	3	1	34860	5.2	58.6	5.6	5.3	3.5	14.3	2.1	4.5	0.9	63.8	5.6	30.6	0.061	0.511	20.082420	-99.635815
X. C. Jilotepec - Maravillas	107.00	3	2	33242	5.5	58.4	5.6	5.2	3.3	14.5	2.2	4.4	0.9	63.9	5.6	30.5	0.069	0.511	20.082462	-99.633896
T. Izq. Aculco	114.80	1	1	33187	5.2	58.1	6.0	5.2	3.6	14.2	2.2	4.5	1.0	63.3	6.0	30.7	0.059	0.509	20.097580	-99.692891
T. Izq. Aculco	114.80	1	2	31847	5.5	57.4	6.0	5.1	3.4	14.7	2.1	4.8	1.0	62.9	6.0	31.1	0.078	0.509	20.091274	-99.686640
T. Izq. Aculco	114.80	3	1	31578	6.5	50.6	7.8	7.7	3.2	15.8	2.8	4.7	0.9	57.1	7.8	35.1	0.058	0.526	20.104740	-99.698615
T. Izq. Aculco	114.80	3	2	31903	6.4	53.0	7.7	7.4	3.0	14.7	2.4	4.5	0.9	59.4	7.7	32.9	0.053	0.526	20.110151	-99.708365
T. Izq. Encinillas	121.70	1	1	32188	7.7	58.1	7.2	5.4	2.1	12.8	1.8	4.0	0.9	65.8	7.2	27.0	0.057	0.512	20.147366	-99.735868
T. Izq. Encinillas	121.70	1	2	33903	7.4	58.3	7.0	5.2	2.5	12.7	1.8	4.2	0.9	65.7	7.0	27.3	0.065	0.512	20.145467	-99.734492
Polotitlán	133.00	1	1	34141	8.6	55.2	7.5	5.8	1.7	14.1	1.8	4.4	0.9	63.8	7.5	28.7	0.055	0.526	20.218615	-99.801684
Polotitlán	133.00	1	2	30530	8.9	53.6	7.4	6.2	1.9	15.1	1.9	4.1	0.9	62.5	7.4	30.1	0.071	0.526	20.220110	-99.803888
Lim. Edos. Term. Méx. Ppia. Qro.	145.50																			
Plaza de Cobro Palmillas	145.80	2	1	20352	0.4	60.7	2.5	6.0	4.9	18.1	1.7	4.2	1.5	61.1	2.5	36.4	0.077	0.500	20.296112	-99.929069
Plaza de Cobro Palmillas	145.80	2	2	20352	0.4	60.7	2.5	6.0	4.9	18.1	1.7	4.2	1.5	61.1	2.5	36.4	0.077	0.500	20.296112	-99.929069
T. Izq. Toluca	148.50	1	1	32055	8.2	53.2	7.3	5.7	2.9	14.3	2.4	5.1	0.9	61.4	7.3	31.3	0.057	0.500	20.287387	-99.913294
T. Izq. Toluca	148.50	1	2	32003	7.9	53.9	7.5	5.4	3.0	13.8	2.5	5.0	1.0	61.8	7.5	30.7	0.072	0.500	20.286313	-99.912280
T. Izq. Toluca	148.50	3	1	36349	8.5	56.9	6.0	5.0	3.3	13.7	1.8	3.8	1.0	65.4	6.0	28.6	0.056	0.511	20.307825	-99.934122
T. Izq. Toluca	148.50	3	2	38140	8.3	59.4	5.8	5.2	3.7	11.4	1.6	3.6	1.0	67.7	5.8	26.5	0.066	0.511	20.319927	-99.934116
T. Der. Portezuelo	151.53	3	1	39942	7.2	62.4	4.7	5.5	4.2	10.2	1.2	3.6	1.0	69.6	4.7	25.7	0.060	0.520	20.336783	-99.941289
T. Der. Portezuelo	151.53	3	2	43762	7.0	63.3	4.6	6.0	4.0	9.2	1.3	3.6	1.0	70.3	4.6	25.1	0.067	0.520	20.337817	-99.942648
T. Der. Poniente San Juan del Río	164.10	3	1	45911	7.3	67.2	4.4	4.6	1.8	8.1	1.4	4.2	1.0	74.5	4.4	21.1	0.064	0.510	20.373898	-99.994540
T. Der. Poniente San Juan del Río	164.10	3	2	43946	7.0	68.7	4.0	4.2	1.8	7.9	1.4	4.0	1.0	75.7	4.0	20.3	0.070	0.510	20.372670	-99.992190
La Estancia	169.40	1	1	48402	6.3	72.9	3.5	3.8	1.7	7.7	1.0	2.2	0.9	79.2	3.5	17.3	0.060	0.516	20.421299	-100.049589
La Estancia	169.40	1	2	45128	6.6	72.8	3.3	3.9	1.8	7.3	1.3	2.1	0.9	79.4	3.3	17.3	0.071	0.516	20.424475	-100.053476
T. Izq. Acámbaro	170.45	3	1	50975	5.4	69.8	3.9	5.1	1.8	9.6	1.3	2.3	0.8	75.2	3.9	20.9	0.061	0.528	20.447311	-100.078603
T. Izq. Acámbaro	170.45	3	2	44958	5.6	70.0	3.5	5.4	1.8	9.0	1.3	2.6	0.8	75.6	3.5	20.9	0.066	0.528	20.449086	-100.081337
T. Der. Libramiento Nororiente de Querétaro (Cuota)	192.50	1	1	47573	4.8	73.2	4.2	3.7	1.9	7.9	1.4	2.1	0.8	78.0	4.2	17.8	0.073	0.528	20.552519	-100.215411
T. Der. Libramiento Nororiente de Querétaro (Cuota)	192.50	1	2	41896	5.1	73.1	4.0	4.1	1.7	7.7	1.2	2.3	0.8	78.2	4.0	17.8	0.079	0.528	20.551709	-100.214703
T. Der. Libramiento Nororiente de Querétaro (Cuota)	192.50	3	1	65162	5.8	73.3	3.1	4.6	2.7	5.9	1.2	2.7	0.7	79.1	3.1	17.8	0.056	0.507	20.562668	-100.237157
T. Der. Libramiento Nororiente de Querétaro (Cuota)	192.50	3	2	63170	5.1	76.0	2.8	4.4	2.3	5.3	0.9	2.5	0.7	81.1	2.8	16.1	0.065	0.507	20.561698	-100.234939
T. Der. Libramiento de Querétaro a San Luis Potosí	207.00	1	1	72836	7.0	77.7	1.4	3.6	2.5	4.3	0.7	1.9	0.9	84.7	1.4	13.9	0.067	0.520	20.573135	-100.323050

CIUDAD DE MEXICO

10 CARR: México - Querétaro (Cuota)

CLAVE: 00411

RUTA: MEX-057-MEX-057D

AÑO: 2021

LUGAR	ESTACION				CLASIFICACION VEHICULAR EN PORCIENTO													COORDENADAS		
	KM	TE	SC	TDPA	M	A	B	C2	C3	T3S2	T3S3	T3S2R4	OTROS	A	B	C	K'	D	LATITUD	LONGITUD
T. Der. Libramiento de Querétaro a San Luis Potosí	207.00	1	2	66289	6.2	79.2	1.3	2.6	2.7	4.5	0.6	2.0	0.9	85.4	1.3	13.3	0.076	0.520	20.574433	-100.330934
T. Der. Libramiento de Querétaro a San Luis Potosí	207.00	3	1	82724	6.6	78.6	1.5	4.3	2.7	3.7	1.2	0.5	0.9	85.2	1.5	13.3	0.059	0.541	20.578213	-100.380710
T. Der. Libramiento de Querétaro a San Luis Potosí	207.00	3	2	85186	5.7	79.0	1.6	4.6	2.6	3.8	1.3	0.5	0.9	84.7	1.6	13.7	0.065	0.541	20.578502	-100.378521
Querétaro	211.60																			

11 CARR: Chalco - Mixquic

CLAVE: 00171

RUTA: EM-CDMX

AÑO: 2021

LUGAR	ESTACION				CLASIFICACION VEHICULAR EN PORCIENTO													COORDENADAS		
	KM	TE	SC	TDPA	M	A	B	C2	C3	T3S2	T3S3	T3S2R4	OTROS	A	B	C	K'	D	LATITUD	LONGITUD
Chalco	0.00	3	1	13977	6.1	89.2	0.6	2.3	0.7	0.6	0.2	0.2	0.1	95.3	0.6	4.1	0.072	0.523	19.240164	-98.909276
Chalco	0.00	3	2	15307	6.2	88.7	0.6	2.7	0.7	0.6	0.2	0.2	0.1	94.9	0.6	4.5	0.080	0.523	19.240136	-98.909203
Lim. Edos. Term. Méx. Ppia. CDMX	8.00																			
Mixquic	10.00	1	0	7697	9.5	86.1	0.4	2.4	0.7	0.3	0.1	0.4	0.1	95.6	0.4	4.0	0.072	0.534	19.224835	-98.945775

12 CARR: Chalco - Tláhuac

CLAVE: 00170

RUTA: EM-CDMX

AÑO: 2021

LUGAR	ESTACION				CLASIFICACION VEHICULAR EN PORCIENTO													COORDENADAS		
	KM	TE	SC	TDPA	M	A	B	C2	C3	T3S2	T3S3	T3S2R4	OTROS	A	B	C	K'	D	LATITUD	LONGITUD
Chalco	0.00	3	1	10632	3.6	90.8	0.6	3.9	0.7	0.2	0.1	0.1	0.0	94.4	0.6	5.0	0.076	0.507	19.248651	-98.920842
Chalco	0.00	3	2	10355	3.2	90.6	0.7	4.2	0.7	0.3	0.2	0.1	0.0	93.8	0.7	5.5	0.068	0.507	19.251204	-98.917738
Lim. Edos. Term. Méx. Ppia. CDMX	7.50																			
Tláhuac	12.00	1	1	10913	9.0	78.3	1.1	6.6	3.0	0.8	0.4	0.5	0.3	87.3	1.1	11.6	0.072	0.510	19.264281	-98.992349
Tláhuac	12.00	1	2	11365	9.0	78.5	1.1	6.6	2.8	0.8	0.4	0.5	0.3	87.5	1.1	11.4	0.071	0.510	19.264236	-98.992368

13 CARR: T. C. (México - Mixquic) - San Pablo Atlazalpan

CLAVE: 00044

RUTA: EM-106-CDMX

AÑO: 2021

LUGAR	ESTACION				CLASIFICACION VEHICULAR EN PORCIENTO													COORDENADAS		
	KM	TE	SC	TDPA	M	A	B	C2	C3	T3S2	T3S3	T3S2R4	OTROS	A	B	C	K'	D	LATITUD	LONGITUD
T. C. México - Mixquic	0.00	3	0	9062	15.3	76.5	0.7	3.4	2.6	0.7	0.3	0.4	0.1	91.8	0.7	7.5	0.076	0.563	19.212787	-98.972469
Lim. Edos. Term. CDMX Ppia. Méx.	2.00																			
San Pablo Atlazalpan	7.00																			

CIUDAD DE MEXICO

14 CARR: Xalatlaco - El Ajusco

CLAVE: 00017

RUTA: EM-CDMX

AÑO: 2021

LUGAR	ESTACION				CLASIFICACION VEHICULAR EN PORCIENTO													COORDENADAS		
	KM	TE	SC	TDPA	M	A	B	C2	C3	T3S2	T3S3	T3S2R4	OTROS	A	B	C	K'	D	LATITUD	LONGITUD
T. C. Ent. Cruz de La Misión - San Nicolás Coatepec	0.00	3	0	2170	2.3	86.6	0.3	9.8	0.3	0.4	0.2	0.0	0.1	88.9	0.3	10.8	0.087	0.523	19.162670	-99.406093
Lim. Edos. Term. Méx. Ppia. CDMX	17.70																			
T. C. Circuito del Ajusco	27.60	1	0	772	2.5	86.2	0.5	9.2	0.9	0.4	0.2	0.0	0.1	88.7	0.5	10.8	0.105	0.508	19.202546	-99.282358

15 CARR: La Venta - Chamapa (Cuota)

CLAVE: 15014

RUTA: EM-D

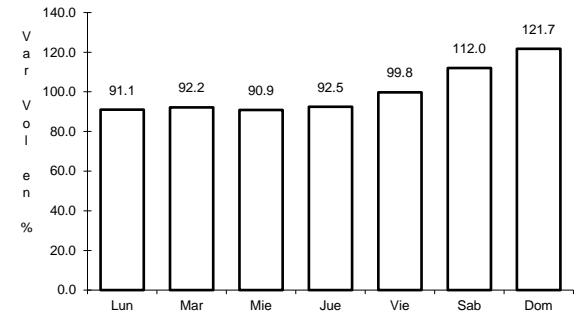
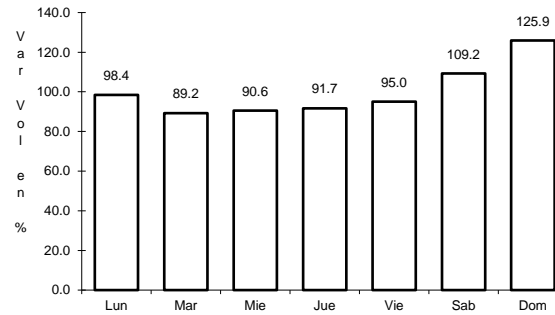
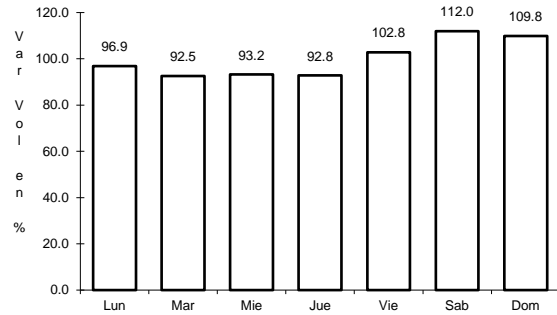
AÑO: 2021

LUGAR	ESTACION				CLASIFICACION VEHICULAR EN PORCIENTO													COORDENADAS		
	KM	TE	SC	TDPA	M	A	B	C2	C3	T3S2	T3S3	T3S2R4	OTROS	A	B	C	K'	D	LATITUD	LONGITUD
T. C. México - Toluca	0.00																			
Plaza de Cobro La Venta	0.10	2	1	12915	0.6	86.9	0.4	4.3	2.4	4.1	0.3	0.7	0.3	87.5	0.4	12.1	0.090	0.500	19.348946	-99.306623
Plaza de Cobro La Venta	0.10	2	2	12915	0.6	86.9	0.4	4.3	2.4	4.1	0.3	0.7	0.3	87.5	0.4	12.1	0.090	0.500	19.348946	-99.306623
Plaza de Cobro La Venta	0.10	3	1	13416	2.3	77.5	1.8	6.5	2.1	6.4	1.2	1.7	0.5	79.8	1.8	18.4	0.073	0.519	19.354942	-99.304708
Plaza de Cobro La Venta	0.10	3	2	12449	2.7	74.6	1.8	6.4	2.9	8.0	0.9	2.0	0.7	77.3	1.8	20.9	0.077	0.519	19.354978	-99.304803
Lim. Edos. Term. CDMX Tab. Ppia. Méx.	2.70																			
T. Der. Interlomas	5.60	3	1	18676	4.1	76.9	2.5	5.3	2.7	5.4	0.8	1.5	0.8	81.0	2.5	16.5	0.086	0.524	19.399373	-99.296838
T. Der. Interlomas	5.60	3	2	19007	3.7	80.1	2.5	4.3	2.6	4.4	0.6	1.2	0.6	83.8	2.5	13.7	0.087	0.524	19.399355	-99.296933
X. C. Naucalpan - Toluca	11.10	1	1	24568	5.7	79.5	2.3	4.9	2.1	3.1	0.8	1.1	0.5	85.2	2.3	12.5	0.078	0.533	19.423638	-99.296701
X. C. Naucalpan - Toluca	11.10	1	2	25885	5.8	78.2	2.4	5.1	3.0	3.6	0.5	1.0	0.4	84.0	2.4	13.6	0.091	0.533	19.429116	-99.295720

1 CARR: México - Cuernavaca (Libre)

CLAVE: 00040

RUTA: MEX-095



Km: 28.78 Tipo: 1 Sent: 1

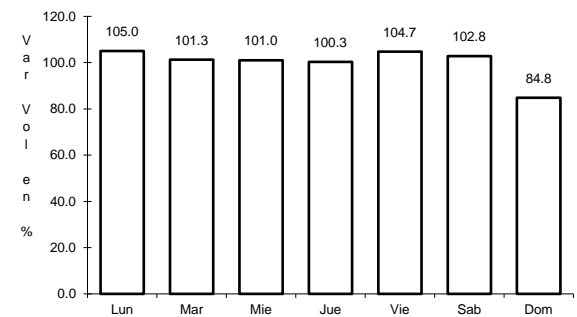
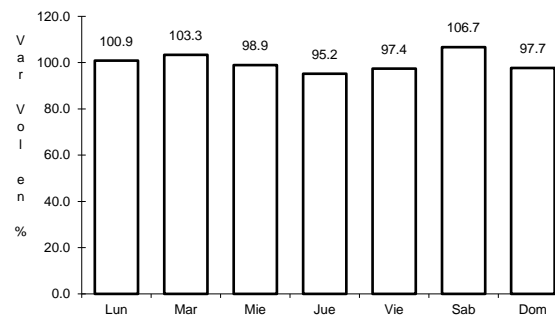
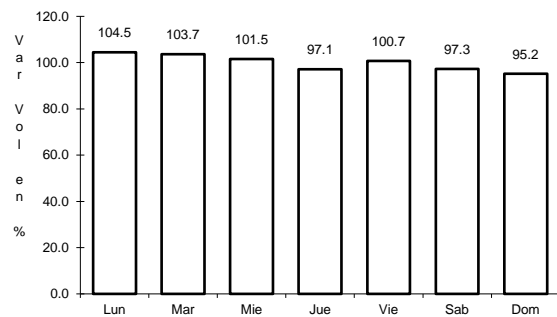
Km: 28.78 Tipo: 1 Sent: 2

Km: 51.40 Tipo: 3 Sent: 0

2 CARR: México - Pachuca (Libre)

CLAVE: 00431

RUTA: MEX-085



Km: 26.93 Tipo: 1 Sent: 1

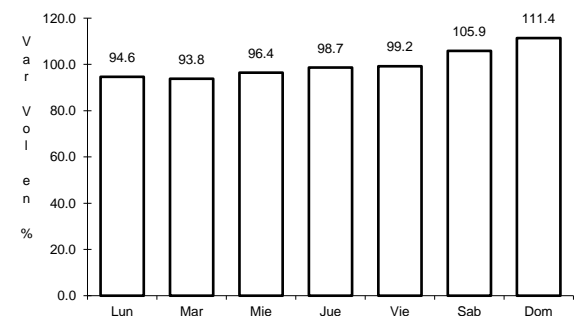
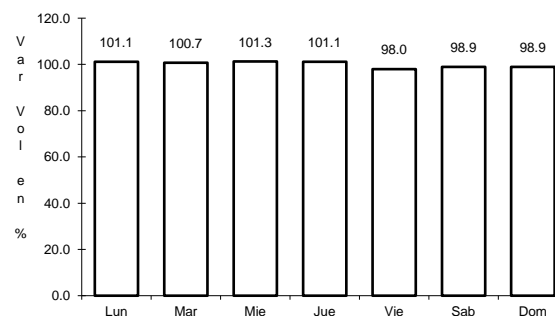
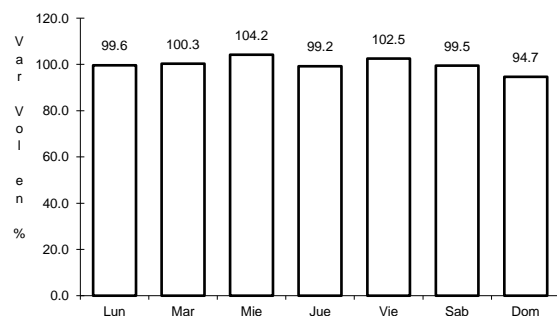
Km: 26.93 Tipo: 1 Sent: 2

Km: 86.50 Tipo: 1 Sent: 1

3 CARR: México - Puebla (Libre)

CLAVE: 00449

RUTA: MEX-150



Km: 28.85 Tipo: 1 Sent: 1

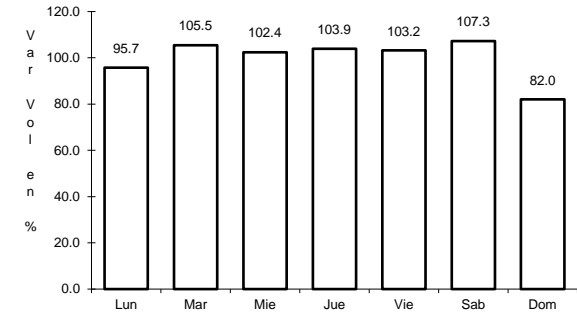
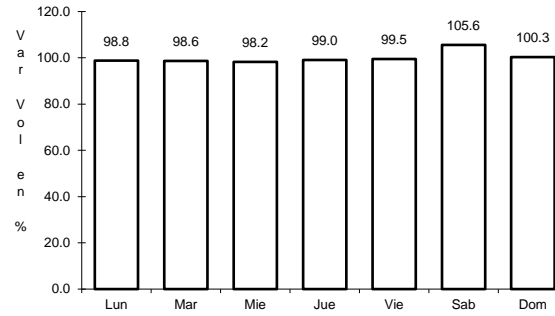
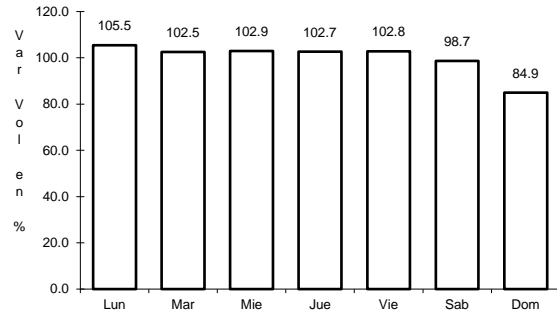
Km: 28.85 Tipo: 1 Sent: 2

Km: 62.06 Tipo: 1 Sent: 0

4 CARR: México - Toluca

CLAVE: 00447

RUTA: MEX-015



Km: 12.84 Tipo: 3 Sent: 1

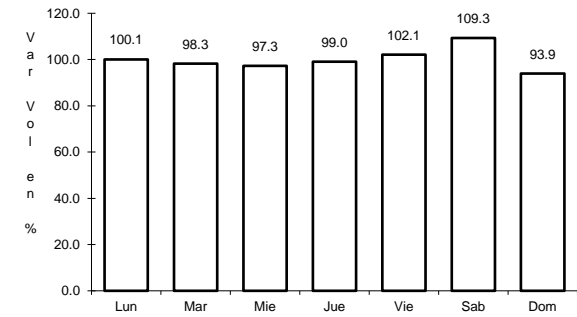
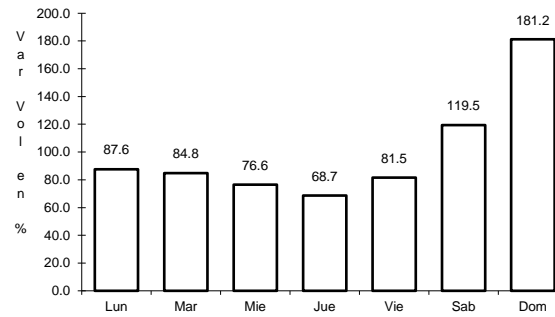
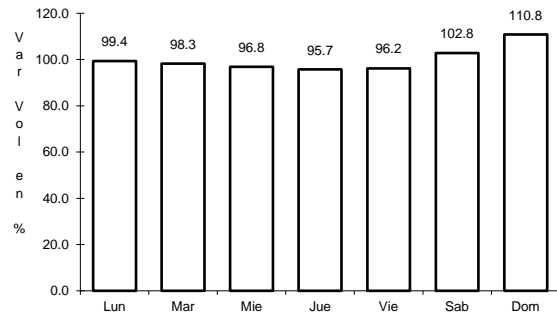
Km: 12.84 Tipo: 3 Sent: 2

Km: 51.71 Tipo: 1 Sent: 1

5 CARR: San Gregorio - Oaxtepec

CLAVE: 00901

RUTA: MEX-113



Km: 0.00 Tipo: 3 Sent: 0

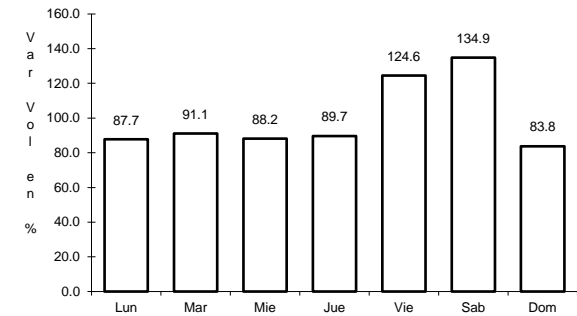
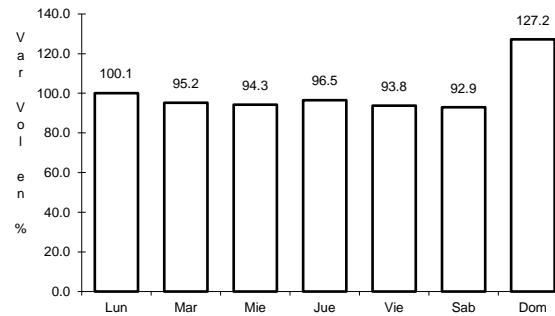
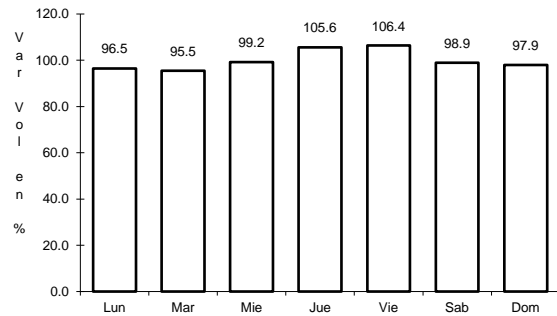
Km: 33.80 Tipo: 1 Sent: 0

Km: 53.00 Tipo: 3 Sent: 1

6 CARR: México - Cuernavaca (Cuota)

CLAVE: 00041

RUTA: MEX-095D



Km: 18.65 Tipo: 3 Sent: 1

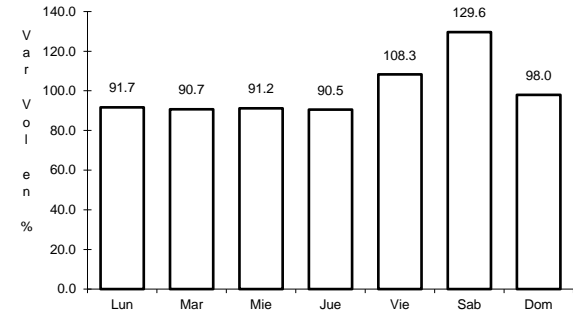
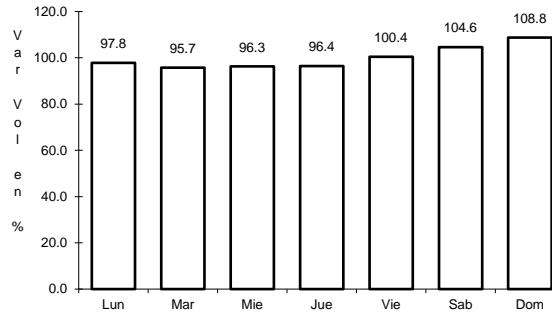
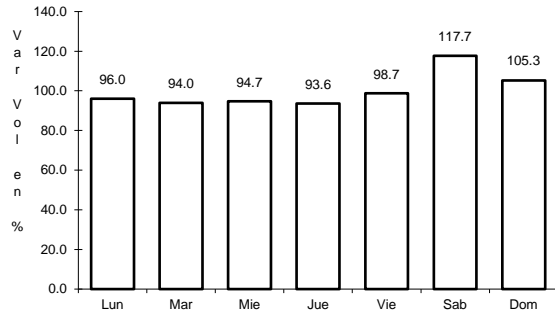
Km: 18.65 Tipo: 3 Sent: 2

Km: 70.50 Tipo: 1 Sent: 1

7 CARR: México - Pachuca (Cuota)

CLAVE: 00432

RUTA: MEX-085D



Km: 25.00

Tipo: 3

Sent: 1

Km: 25.00

Tipo: 3

Sent: 2

Km: 60.50

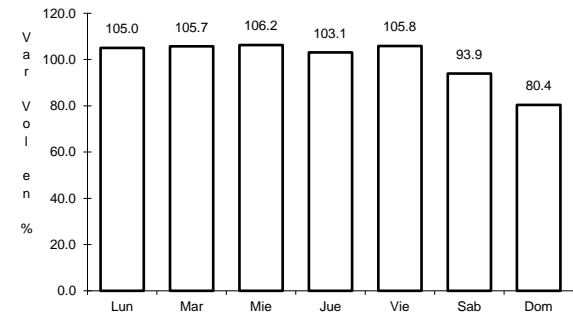
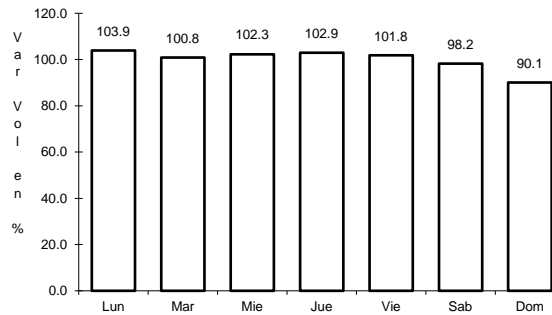
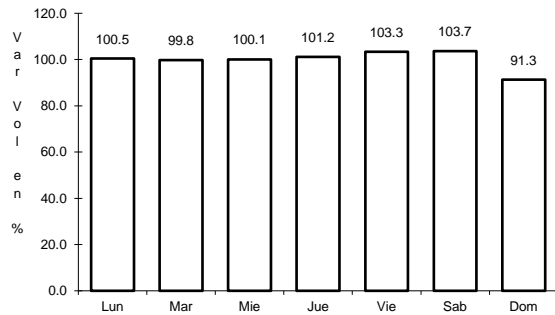
Tipo: 1

Sent: 1

8 CARR: México - Puebla (Cuota)

CLAVE: 00450

RUTA: MEX-150D



Km: 17.00

Tipo: 3

Sent: 1

Km: 17.00

Tipo: 3

Sent: 2

Km: 120.46

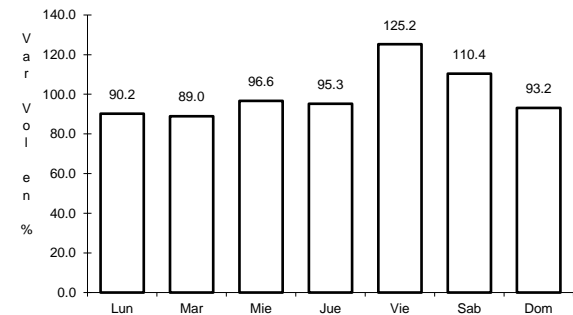
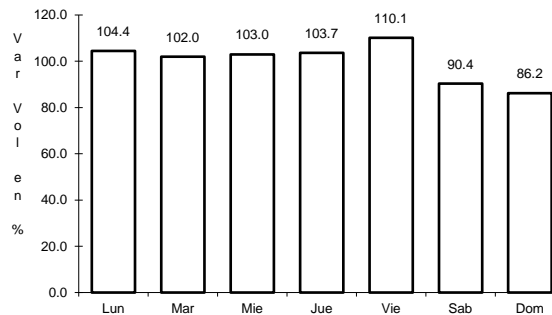
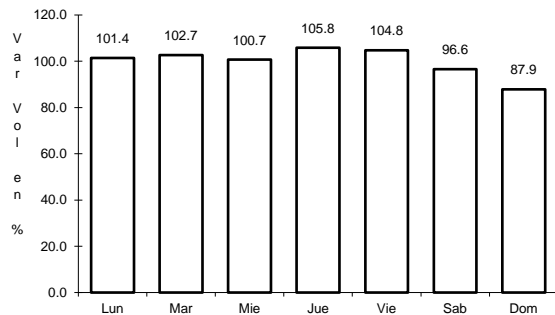
Tipo: 3

Sent: 1

9 CARR: México - Toluca (Cuota)

CLAVE: 00446

RUTA: MEX-015D



Km: 0.00

Tipo: 3

Sent: 1

Km: 0.00

Tipo: 3

Sent: 2

Km: 19.20

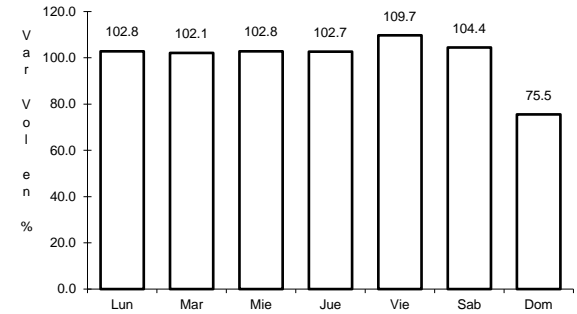
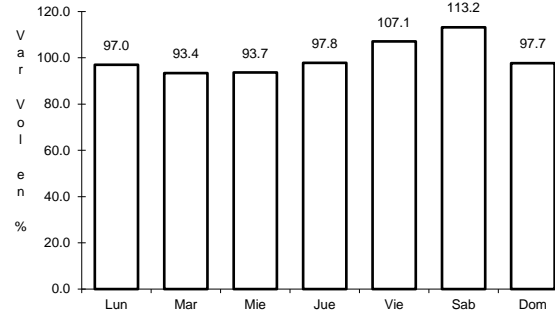
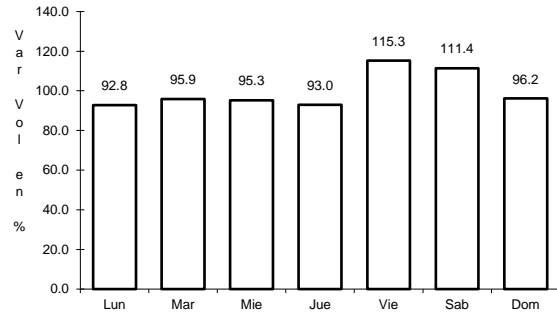
Tipo: 1

Sent: 1

10 CARR: México - Querétaro (Cuota)

CLAVE: 00411

RUTA: MEX-057-MEX-057D



Km: 56.18

Tipo: 1

Sent: 1

Km: 56.18

Tipo: 1

Sent: 2

Km: 207.00

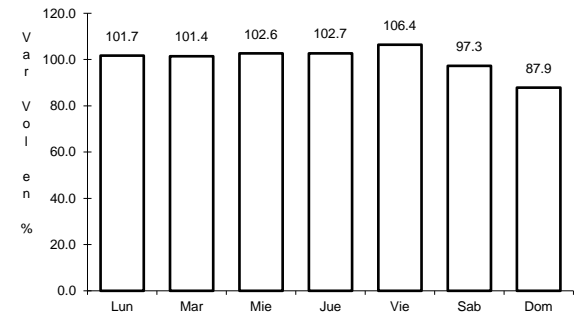
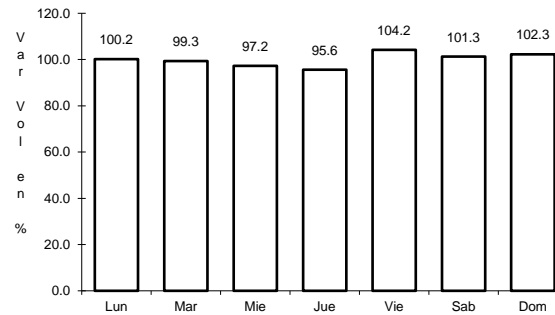
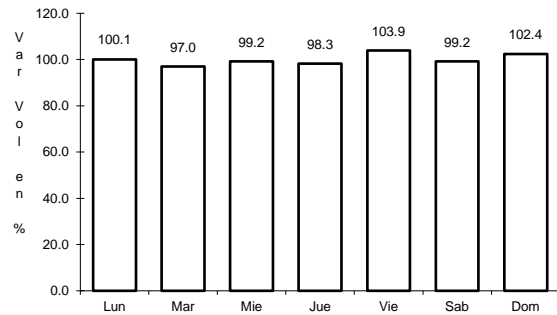
Tipo: 3

Sent: 1

11 CARR: Chalco - Mixquic

CLAVE: 00171

RUTA: EM-CDMX



Km: 0.00

Tipo: 3

Sent: 1

Km: 0.00

Tipo: 3

Sent: 2

Km: 10.00

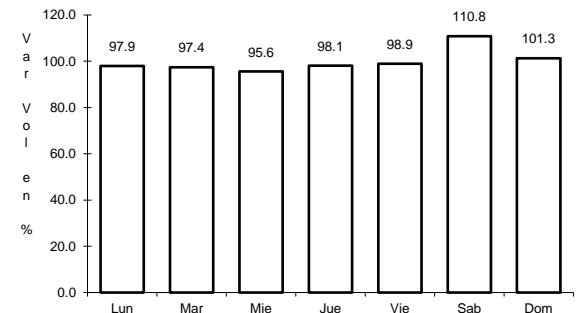
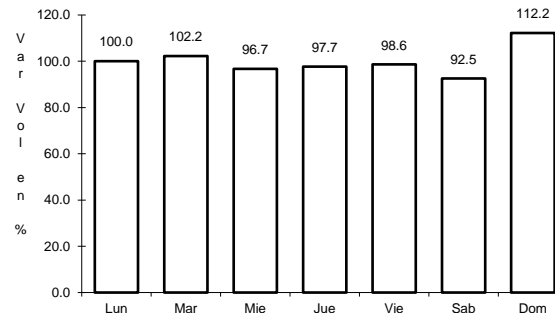
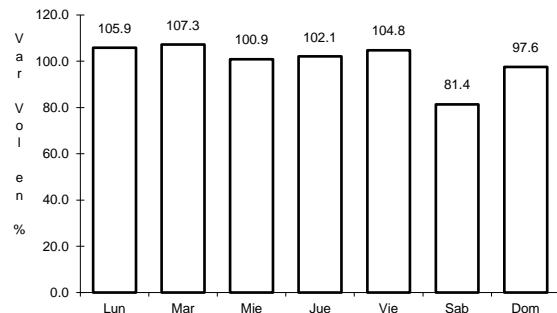
Tipo: 1

Sent: 0

12 CARR: Chalco - Tláhuac

CLAVE: 00170

RUTA: EM-CDMX



Km: 0.00

Tipo: 3

Sent: 1

Km: 0.00

Tipo: 3

Sent: 2

Km: 12.00

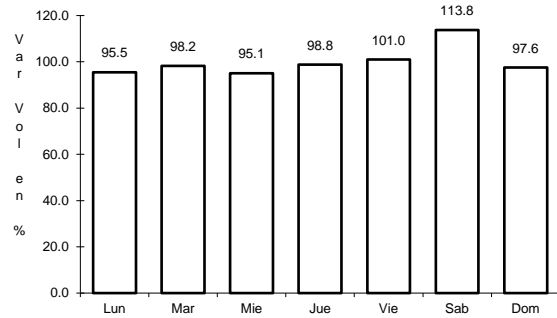
Tipo: 1

Sent: 1

13 CARR: T. C. (México - Mixquic) - San Pablo Atlazalpan

CLAVE: 00044

RUTA: EM-106-CDMX



Km: 0.00

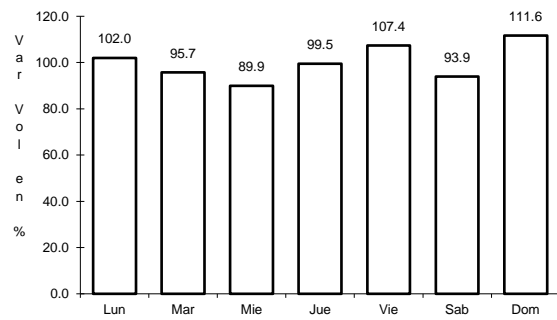
Tipo: 3

Sent: 0

14 CARR: Xalatlaco - El Ajusco

CLAVE: 00017

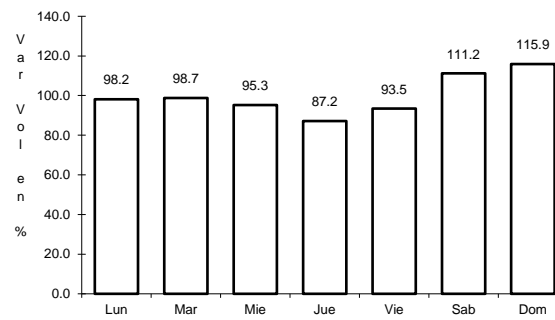
RUTA: EM-CDMX



Km: 0.00

Tipo: 3

Sent: 0



Km: 27.60

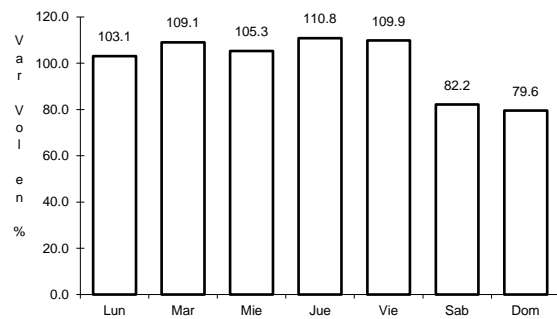
Tipo: 1

Sent: 0

15 CARR: La Venta - Chamapa (Cuota)

CLAVE: 15014

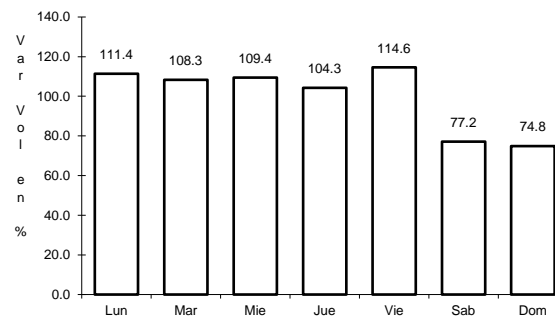
RUTA: EM-D



Km: 0.10

Tipo: 3

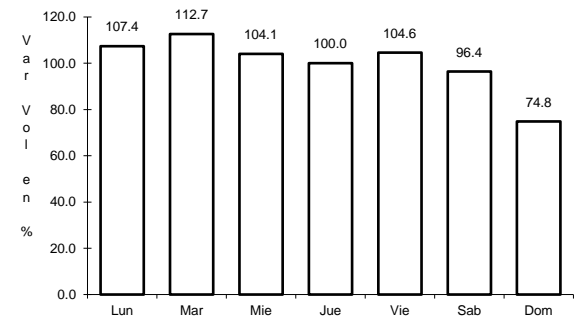
Sent: 1



Km: 0.10

Tipo: 3

Sent: 2



Km: 11.10

Tipo: 1

Sent: 1