

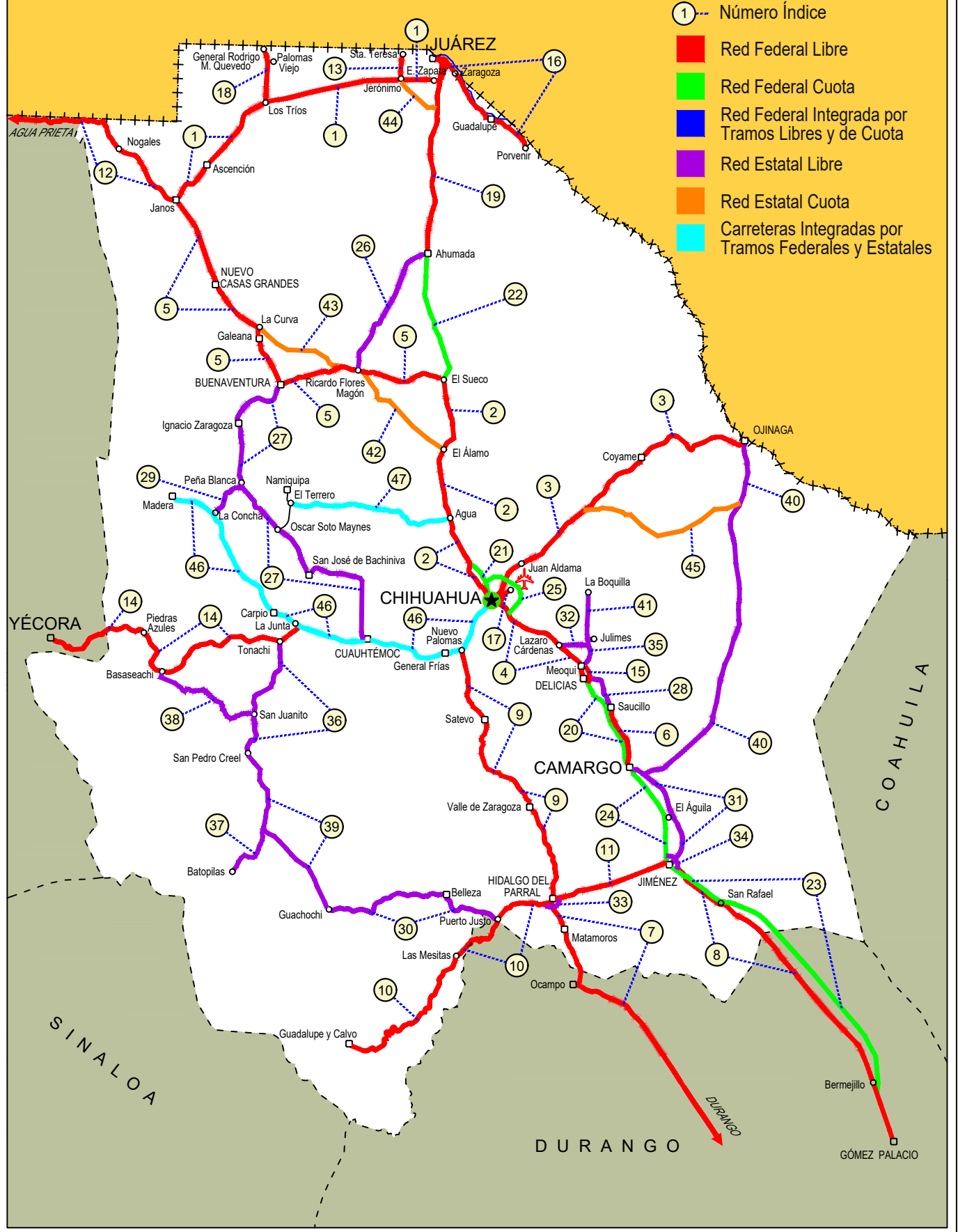
CHIHUAHUA

NO. INDICE CARRETERA	RUTA
---RED FEDERAL LIBRE---	
1 Cd. Juárez - Janos	MEX-002
2 Chihuahua - El Sueco	MEX-045
3 Chihuahua - Ojinaga	MEX-016
4 Delicias - Chihuahua (Libre)	MEX-045
5 El Sueco - Janos	MEX-010
6 Ent. Ciudad Camargo - Saucillo	MEX-045
7 Ent. La Zarca - Hidalgo del Parral	MEX-045
8 Gómez Palacio - Jiménez	MEX-049
9 Hidalgo del Parral - Ent. Nuevo Palomas (Vía Corta)	MEX-024
10 Hidalgo del Parral - Guadalupe y Calvo	MEX-024
11 Hidalgo del Parral - Jiménez	MEX-045
12 Janos - Agua Prieta	MEX-002
13 Jerónimo - Sta. Teresa	MEX-002
14 La Junta - Yécora	MEX-016
15 Libramiento de Delicias - Mecoqui	MEX-045
16 Porvenir - Cd. Juárez	MEX-002
17 Ramal a Aeropuerto de Chihuahua	MEX-016
18 Ramal a Palomas	MEX-002
19 Villa Ahumada - Cd. Juárez (Libre)	MEX-045
---RED FEDERAL DE CUOTA---	
20 Camargo - Delicias (Cuota)	MEX-045D
21 Chihuahua - Sacramento (Cuota)	MEX-045D
22 El Sueco - Villa Ahumada (Cuota)	MEX-045D
23 Gómez Palacio - Corralitos (Cuota)	MEX-049D
24 Jiménez - Camargo (Cuota)	MEX-045D
25 Libramiento Oriente Chihuahua (Cuota)	MEX-045D
---RED ESTATAL LIBRE---	
26 Ahumada - Ricardo Flores Magón	CHIH
27 Cuauhtémoc - Buenaventura	CHIH
28 Delicias - Saucillo	CHIH-007
29 Ent. Peña Blanca - Ent. La Concha	CHIH
30 Ent. Puerto Justo - Ent. Guachochic	CHIH
31 Jiménez - Camargo	CHIH-049
32 Lázaro Cárdenas - Ent. Colonia San José	CHIH-004
33 Libramiento de Hidalgo del Parral	CHIH
34 Libramiento de Jiménez	CHIH
35 Mecoqui - Julimes	CHIH-005
36 Ramal a San Pedro Creel	CHIH-025
37 Samachique - Batopilas	CHIH
38 San Juanito - Ent. Basaseachi	CHIH
39 San Pedro Creel - Guachochi	CHIH-025
40 T. C. (Jiménez - Camargo) - Ojinaga	CHIH-018
41 T. Julimes - La Boquilla	CHIH-018
---RED ESTATAL DE CUOTA---	
42 Ent. El Álamo - Ent. Ricardo Flores Magón (Cuota)	CHIH-D
43 Ricardo Flores Magón - Galeana (Cuota)	CHIH-D
44 Samalayuca - San Jerónimo (Cuota)	CHIH-D
45 T. C. (Chihuahua - Ojinaga) - La Mula (Cuota)	CHIH-D
---CARRETERAS INTEGRADAS POR TRAMOS FEDERALES Y ESTATALES---	
46 Chihuahua - Madera	CHIH-D-MEX-001-CHIH
47 Ent. Agua Caliente - El Terrero	CHIH-MEX

08 CHIHUAHUA

SECRETARÍA DE COMUNICACIONES Y TRANSPORTES
DIRECCIÓN GENERAL DE SERVICIOS TÉCNICOS

ESTADOS UNIDOS DE AMERICA



CHIHUAHUA

1 CARR: Cd. Juárez - Janos

CLAVE: 08041

RUTA: MEX-002

AÑO: 2021

LUGAR	ESTACION				CLASIFICACION VEHICULAR EN PORCIENTO													COORDENADAS		
	KM	TE	SC	TDPA	M	A	B	C2	C3	T3S2	T3S3	T3S2R4	OTROS	A	B	C	K'	D	LATITUD	LONGITUD
T. C. El Sueco - Cd. Juárez	0.00	3	1	6551	1.0	74.7	4.1	12.6	2.0	4.1	0.5	0.6	0.4	75.7	4.1	20.2	0.100	0.518	31.605616	-106.487376
T. C. El Sueco - Cd. Juárez	0.00	3	2	6107	0.9	74.0	4.4	13.5	2.0	4.0	0.4	0.5	0.3	74.9	4.4	20.7	0.101	0.518	31.605517	-106.487348
T. C. Jerónimo - Sta. Teresa	22.40																			
T. Der. Palomas	112.00	1	0	1825	2.6	64.7	3.5	11.2	3.6	8.8	2.4	2.7	0.5	67.3	3.5	29.2	0.089	0.510	31.473526	-107.601917
Ascención	170.95	1	0	2608	0.8	63.0	3.2	17.3	1.6	9.4	2.1	2.0	0.6	63.8	3.2	33.0	0.094	0.509	31.104829	-107.987148
Janos	205.00	1	0	3169	1.5	67.4	1.9	18.1	2.4	5.8	1.3	1.4	0.2	68.9	1.9	29.2	0.086	0.524	30.900213	-108.179880

2 CARR: Chihuahua - El Sueco

CLAVE: 08419

RUTA: MEX-045

AÑO: 2021

LUGAR	ESTACION				CLASIFICACION VEHICULAR EN PORCIENTO													COORDENADAS		
	KM	TE	SC	TDPA	M	A	B	C2	C3	T3S2	T3S3	T3S2R4	OTROS	A	B	C	K'	D	LATITUD	LONGITUD
Chihuahua	0.00																			
T. C. Chihuahua - Sacramento (Cuota)	16.70																			
San Cristóbal	24.00	1	0	3353	2.5	71.8	1.7	4.1	2.9	13.2	2.8	0.6	0.4	74.3	1.7	24.0	0.122	0.538	28.799664	-106.217285
T. C. Chihuahua - Sacramento (Cuota)	32.00	1	0	3961	2.8	72.7	3.2	4.1	1.6	12.4	2.5	0.6	0.1	75.5	3.2	21.3	0.106	0.523	28.853353	-106.214003
T. C. Chihuahua - Sacramento (Cuota)	32.00	3	1	6580	3.8	63.8	3.7	11.1	1.0	12.3	1.8	2.0	0.5	67.6	3.7	28.7	0.088	0.509	28.872968	-106.230684
T. C. Chihuahua - Sacramento (Cuota)	32.00	3	2	6809	3.1	62.0	4.3	12.6	1.1	12.4	1.9	2.1	0.5	65.1	4.3	30.6	0.072	0.509	28.872916	-106.230796
T. Der. El Sauz	55.38	3	1	4446	5.5	50.3	4.2	9.5	2.2	20.9	3.1	3.5	0.8	55.8	4.2	40.0	0.065	0.527	29.053051	-106.329722
T. Der. El Sauz	55.38	3	2	4960	5.9	53.1	5.0	8.3	2.2	18.9	3.1	2.9	0.6	59.0	5.0	36.0	0.069	0.527	29.052577	-106.329887
Ent. El Sueco	155.87	1	1	3405	3.1	66.2	4.7	3.7	2.1	15.6	1.9	2.1	0.6	69.3	4.7	26.0	0.093	0.512	29.863359	-106.392297
Ent. El Sueco	155.87	1	2	3249	4.6	64.7	5.1	4.5	2.1	14.5	1.8	2.2	0.5	69.3	5.1	25.6	0.087	0.512	29.863869	-106.392655

3 CARR: Chihuahua - Ojinaga

CLAVE: 08042

RUTA: MEX-016

AÑO: 2021

LUGAR	ESTACION				CLASIFICACION VEHICULAR EN PORCIENTO													COORDENADAS		
	KM	TE	SC	TDPA	M	A	B	C2	C3	T3S2	T3S3	T3S2R4	OTROS	A	B	C	K'	D	LATITUD	LONGITUD
Chihuahua	0.00																			
T. Der. Aeropuerto	6.50	1	1	18861	1.6	81.6	3.2	6.6	2.3	2.7	1.4	0.4	0.2	83.2	3.2	13.6	0.091	0.501	28.686399	-106.015270
T. Der. Aeropuerto	6.50	1	2	18935	1.7	81.2	2.8	7.1	2.0	2.9	1.7	0.4	0.2	82.9	2.8	14.3	0.076	0.501	28.686470	-106.015403
T. Der. Aeropuerto	6.50	3	1	9480	1.5	81.3	1.7	10.5	1.6	1.7	1.0	0.4	0.3	82.8	1.7	15.5	0.104	0.502	28.692274	-106.011795
T. Der. Aeropuerto	6.50	3	2	9405	1.7	82.1	1.9	8.9	1.6	1.9	1.2	0.4	0.3	83.8	1.9	14.3	0.099	0.502	28.692327	-106.011908
Aldama	26.80	1	1	5470	1.5	79.0	2.5	12.8	1.3	1.6	1.0	0.2	0.1	80.5	2.5	17.0	0.102	0.525	28.816873	-105.928737
Aldama	26.80	1	2	4940	2.4	78.5	2.9	11.7	1.5	1.6	1.0	0.2	0.2	80.9	2.9	16.2	0.094	0.525	28.816971	-105.928819
Aldama	26.80	3	0	1713	0.7	79.1	1.6	16.1	0.8	0.8	0.8	0.0	0.1	79.8	1.6	18.6	0.096	0.509	28.851796	-105.871456
El Morrión	84.00	3	0	1403	0.5	76.5	1.9	17.8	1.5	0.9	0.8	0.0	0.1	77.0	1.9	21.1	0.088	0.512	29.064304	-105.604265

CHIHUAHUA

3 CARR: Chihuahua - Ojinaga

CLAVE: 08042

RUTA: MEX-016

AÑO: 2021

LUGAR	ESTACION				CLASIFICACION VEHICULAR EN PORCIENTO										COORDENADAS					
	KM	TE	SC	TDPA	M	A	B	C2	C3	T3S2	T3S3	T3S2R4	OTROS	A	B	C	K'	D	LATITUD	LONGITUD
Coyame	141.00	1	0	312	0.7	75.2	0.9	19.1	1.9	1.3	0.7	0.0	0.2	75.9	0.9	23.2	0.094	0.542	29.446817	-105.097967
Ojinaga	224.00	1	0	2412	0.9	71.8	0.5	24.1	1.9	0.4	0.3	0.0	0.1	72.7	0.5	26.8	0.091	0.505	29.539382	-104.446064

4 CARR: Delicias - Chihuahua (Libre)

CLAVE: 08418

RUTA: MEX-045

AÑO: 2021

LUGAR	ESTACION				CLASIFICACION VEHICULAR EN PORCIENTO										COORDENADAS					
	KM	TE	SC	TDPA	M	A	B	C2	C3	T3S2	T3S3	T3S2R4	OTROS	A	B	C	K'	D	LATITUD	LONGITUD
Delicias	138.00																			
T. C. Libramiento de Delicias - Meoqui	150.10	3	1	8158	1.1	83.9	3.0	1.9	1.1	7.3	0.9	0.3	0.5	85.0	3.0	12.0	0.091	0.504	28.293528	-105.502328
T. C. Libramiento de Delicias - Meoqui	150.10	3	2	8300	1.2	81.8	3.5	2.3	1.2	8.2	1.0	0.3	0.5	83.0	3.5	13.5	0.080	0.504	28.293303	-105.502194
T. Der. Lazáro Cárdenas	166.87	1	1	8219	8.6	69.3	5.2	5.1	1.4	7.1	1.4	1.5	0.4	77.9	5.2	16.9	0.092	0.528	28.376371	-105.615474
T. Der. Lazáro Cárdenas	166.87	1	2	9205	8.2	71.8	4.5	3.9	1.6	7.4	1.5	0.7	0.4	80.0	4.5	15.5	0.086	0.528	28.376271	-105.615565
T. Der. Lazáro Cárdenas	166.87	3	1	7767	8.8	69.4	2.7	4.0	1.4	10.9	1.4	0.9	0.5	78.2	2.7	19.1	0.088	0.510	28.391082	-105.635545
T. Der. Lazáro Cárdenas	166.87	3	2	8085	8.2	68.5	2.8	4.6	1.6	11.4	1.5	0.9	0.5	76.7	2.8	20.5	0.085	0.510	28.391000	-105.635748
T. C. Libramiento Oriente Chihuahua (Cuota)	208.40	1	1	8230	1.2	70.4	5.3	4.9	1.8	13.6	2.1	0.4	0.3	71.6	5.3	23.1	0.087	0.520	28.569929	-105.955954
T. C. Libramiento Oriente Chihuahua (Cuota)	208.40	1	2	7592	1.2	70.2	5.2	4.9	1.8	13.7	2.1	0.5	0.4	71.4	5.2	23.4	0.084	0.520	28.569882	-105.956178
T. Der. Aquiles Serdán	210.00	1	1	8558	2.4	80.0	4.1	3.9	1.6	6.3	1.3	0.2	0.2	82.4	4.1	13.5	0.112	0.537	28.585453	-105.959908
T. Der. Aquiles Serdán	210.00	1	2	8124	3.1	77.4	4.3	4.5	2.0	6.8	1.4	0.3	0.2	80.5	4.3	15.2	0.107	0.537	28.585560	-105.960104
Chihuahua	222.56																			

5 CARR: El Sueco - Janos

CLAVE: 08037

RUTA: MEX-010

AÑO: 2021

LUGAR	ESTACION				CLASIFICACION VEHICULAR EN PORCIENTO										COORDENADAS					
	KM	TE	SC	TDPA	M	A	B	C2	C3	T3S2	T3S3	T3S2R4	OTROS	A	B	C	K'	D	LATITUD	LONGITUD
El Sueco	0.00	3	0	266	19.4	34.6	9.7	10.6	3.5	16.1	3.1	3.0	0.0	54.0	9.7	36.3	0.078	0.503	29.893549	-106.401417
Ricardo Flores Magón	59.00	3	0	4699	1.4	58.1	3.7	13.5	1.5	13.8	2.5	2.3	3.2	59.5	3.7	36.8	0.066	0.507	29.946164	-106.977778
T. C. Ricardo Flores Magón - Galeana (Cuota)	68.90																			
Buenaventura	114.00	1	0	1323	6.8	72.7	5.4	6.4	1.6	3.2	1.9	1.1	0.9	79.5	5.4	15.1	0.076	0.521	29.853679	-107.444386
Buenaventura	114.00	3	0	4817	2.2	75.9	1.3	17.5	1.1	0.7	0.7	0.5	0.1	78.1	1.3	20.6	0.062	0.512	29.867134	-107.478475
T. C. Ricardo Flores Magón - Galeana (Cuota)	154.90																			
Nuevo Casas Grandes	195.00	3	0	7039	3.5	64.6	1.6	17.1	2.9	6.3	1.8	1.6	0.6	68.1	1.6	30.3	0.092	0.513	30.456284	-107.915599
Janos	257.00	1	0	5344	3.3	58.5	2.0	16.9	2.2	11.1	1.9	2.0	2.1	61.8	2.0	36.2	0.064	0.502	30.885009	-108.185118

CHIHUAHUA

6 CARR: Ent. Ciudad Camargo - Saucillo

CLAVE: 08417

RUTA: MEX-045

AÑO: 2021

LUGAR	ESTACION				CLASIFICACION VEHICULAR EN PORCIENTO												COORDENADAS			
	KM	TE	SC	TDPA	M	A	B	C2	C3	T3S2	T3S3	T3S2R4	OTROS	A	B	C	K'	D	LATITUD	LONGITUD
Camargo	0.00	3	0	3786	2.2	80.6	1.4	3.6	1.0	8.7	1.7	0.6	0.2	82.8	1.4	15.8	0.080	0.510	27.726512	-105.191347
T. Der. La Cruz	20.92	3	0	2704	2.4	78.7	2.0	3.7	1.3	9.3	1.6	0.7	0.3	81.1	2.0	16.9	0.088	0.512	27.871477	-105.215301
Saucillo	42.52	1	0	4249	2.7	90.8	0.5	2.6	1.0	1.5	0.5	0.2	0.2	93.5	0.5	6.0	0.078	0.528	28.018629	-105.290318

7 CARR: Ent. La Zarca - Hidalgo del Parral

CLAVE: 00488

RUTA: MEX-045

AÑO: 2021

LUGAR	ESTACION				CLASIFICACION VEHICULAR EN PORCIENTO												COORDENADAS			
	KM	TE	SC	TDPA	M	A	B	C2	C3	T3S2	T3S3	T3S2R4	OTROS	A	B	C	K'	D	LATITUD	LONGITUD
Ent. La Zarca	0.00	3	0	1080	1.1	66.0	5.1	14.2	3.5	6.7	2.9	0.3	0.2	67.1	5.1	27.8	0.084	0.503	25.786679	-104.766324
T. Der. Ceballos	47.85	1	0	754	1.8	72.7	4.6	15.2	1.9	2.0	1.6	0.1	0.1	74.5	4.6	20.9	0.163	0.516	26.138411	-105.027678
T. Der. Ceballos	47.85	3	0	1308	0.9	77.2	3.3	13.0	2.0	2.4	1.1	0.1	0.0	78.1	3.3	18.6	0.111	0.549	26.143030	-105.031093
T. Izq. Canutillo	92.35	3	0	1180	1.9	73.0	4.0	15.5	2.1	2.1	1.3	0.1	0.0	74.9	4.0	21.1	0.108	0.510	26.389613	-105.353795
Las Nieves	97.60	3	0	1703	1.2	73.1	3.5	15.8	2.1	2.3	1.7	0.1	0.2	74.3	3.5	22.2	0.073	0.515	26.400077	-105.405370
T. Izq. Ocampo	109.22	3	0	1311	0.9	71.3	4.4	15.9	2.5	2.7	1.7	0.3	0.3	72.2	4.4	23.4	0.095	0.517	26.442502	-105.494201
Lim. Edos. Term. Dgo. Ppia. Chih.	122.89																			
Matamoros	148.00	1	0	1252	1.1	72.5	4.0	16.5	2.1	2.2	1.3	0.2	0.1	73.6	4.0	22.4	0.112	0.516	26.750980	-105.581003
Hidalgo del Parral	171.00	1	0	3708	1.5	78.8	1.8	14.3	1.5	1.1	0.9	0.1	0.0	80.3	1.8	17.9	0.085	0.524	26.917849	-105.640715

8 CARR: Gómez Palacio - Jiménez

CLAVE: 00006

RUTA: MEX-049

AÑO: 2021

LUGAR	ESTACION				CLASIFICACION VEHICULAR EN PORCIENTO												COORDENADAS			
	KM	TE	SC	TDPA	M	A	B	C2	C3	T3S2	T3S3	T3S2R4	OTROS	A	B	C	K'	D	LATITUD	LONGITUD
Gómez Palacio	0.00	3	1	14896	8.9	72.5	3.9	3.4	1.9	5.4	1.2	2.2	0.6	81.4	3.9	14.7	0.078	0.528	25.611811	-103.512290
Gómez Palacio	0.00	3	2	15572	8.8	73.1	4.3	4.3	1.8	4.1	1.2	1.9	0.5	81.9	4.3	13.8	0.084	0.528	25.611759	-103.512450
X. C. La Torreña - Brittingham	10.96	1	1	10695	8.5	63.3	4.6	4.8	2.4	8.5	3.3	3.6	1.0	71.8	4.6	23.6	0.069	0.506	25.638029	-103.522911
X. C. La Torreña - Brittingham	10.96	1	2	10449	8.5	65.5	3.3	4.9	2.4	7.7	2.8	3.9	1.0	74.0	3.3	22.7	0.071	0.506	25.637994	-103.523031
T. Izq. Dinamita	26.27	1	1	6362	3.9	63.0	3.9	4.8	2.4	14.7	3.1	3.4	0.8	66.9	3.9	29.2	0.073	0.508	25.751470	-103.568048
T. Izq. Dinamita	26.27	1	2	6162	3.9	63.2	3.7	4.9	2.4	14.4	3.2	3.4	0.9	67.1	3.7	29.2	0.079	0.508	25.751400	-103.568238
T. C. Gómez Palacio - Corralitos (Cuota)	37.92	1	1	5257	3.5	56.7	4.3	5.1	2.3	18.3	4.3	4.5	1.0	60.2	4.3	35.5	0.073	0.506	25.863335	-103.611148
T. C. Gómez Palacio - Corralitos (Cuota)	37.92	1	2	5393	3.5	56.8	4.2	5.0	2.3	18.4	4.3	4.5	1.0	60.3	4.2	35.5	0.066	0.506	25.861622	-103.610539
Bermejillo	39.30	1	1	3856	10.7	66.3	4.6	6.1	1.7	6.7	1.8	1.8	0.3	77.0	4.6	18.4	0.077	0.508	25.879388	-103.618815
Bermejillo	39.30	1	2	3735	10.7	66.3	4.7	6.2	1.6	6.7	1.7	1.8	0.3	77.0	4.7	18.3	0.079	0.508	25.879833	-103.619119
T. Izq. Ent. La Zarca	40.89	3	0	3077	6.9	64.5	3.2	9.1	2.0	8.7	2.2	2.6	0.8	71.4	3.2	25.4	0.076	0.515	25.903070	-103.628352
Yermo	107.95	1	0	2075	7.3	41.4	4.1	10.1	2.4	23.4	7.3	3.4	0.6	48.7	4.1	47.2	0.066	0.501	26.383746	-103.999071
Yermo	107.95	3	0	2075	4.0	43.3	5.1	4.9	2.5	28.8	8.8	2.3	0.3	47.3	5.1	47.6	0.064	0.501	26.396078	-104.010564

CHIHUAHUA

8 CARR: Gómez Palacio - Jiménez

CLAVE: 00006

RUTA: MEX-049

AÑO: 2021

LUGAR	ESTACION				CLASIFICACION VEHICULAR EN PORCIENTO													COORDENADAS		
	KM	TE	SC	TDPA	M	A	B	C2	C3	T3S2	T3S3	T3S2R4	OTROS	A	B	C	K'	D	LATITUD	LONGITUD
Ceballos	127.20	1	0	1979	2.8	41.7	5.0	5.6	2.9	29.6	9.4	2.6	0.4	44.5	5.0	50.5	0.064	0.501	26.515478	-104.119223
Ceballos	127.20	3	0	2203	5.3	45.8	4.2	4.9	2.6	25.9	7.6	3.3	0.4	51.1	4.2	44.7	0.065	0.520	26.536672	-104.139076
Lim. Edos. Term. Dgo. Ppia. Chih.	146.15																			
Estación Escalón	160.89	3	0	2203	8.3	44.6	3.1	8.8	3.4	21.2	7.4	2.8	0.4	52.9	3.1	44.0	0.054	0.531	26.761117	-104.346605
Jiménez	223.00	1	1	3359	5.5	45.5	7.9	4.6	2.3	23.3	4.7	5.2	1.0	51.0	7.9	41.1	0.110	0.536	27.117714	-104.890994
Jiménez	223.00	1	2	3885	5.5	45.6	7.8	4.7	2.3	23.1	4.8	5.2	1.0	51.1	7.8	41.1	0.087	0.536	27.117616	-104.891048

9 CARR: Hidalgo del Parral - Ent. Nuevo Palomas (Vía Corta)

CLAVE: 08811

RUTA: MEX-024

AÑO: 2021

LUGAR	ESTACION				CLASIFICACION VEHICULAR EN PORCIENTO													COORDENADAS		
	KM	TE	SC	TDPA	M	A	B	C2	C3	T3S2	T3S3	T3S2R4	OTROS	A	B	C	K'	D	LATITUD	LONGITUD
Hidalgo del Parral	0.00	3	0	4734	1.7	83.4	1.8	3.4	2.1	3.7	2.2	1.3	0.4	85.1	1.8	13.1	0.108	0.512	26.982571	-105.663869
Valle Zaragoza	66.00	1	0	3566	3.2	82.5	2.5	2.9	2.1	3.4	2.4	0.8	0.2	85.7	2.5	11.8	0.123	0.524	27.440930	-105.806751
Satevo	126.00	3	0	4084	1.7	84.6	2.6	3.0	1.3	3.7	2.0	0.9	0.2	86.3	2.6	11.1	0.143	0.507	27.980503	-106.127141
T. C. Chihuahua - Madera	182.40	1	0	4328	0.8	72.8	1.4	15.6	1.2	4.5	2.4	0.6	0.7	73.6	1.4	25.0	0.141	0.519	28.354435	-106.261962

10 CARR: Hidalgo del Parral - Guadalupe y Calvo

CLAVE: 00802

RUTA: MEX-024

AÑO: 2021

LUGAR	ESTACION				CLASIFICACION VEHICULAR EN PORCIENTO													COORDENADAS		
	KM	TE	SC	TDPA	M	A	B	C2	C3	T3S2	T3S3	T3S2R4	OTROS	A	B	C	K'	D	LATITUD	LONGITUD
T. C. Hidalgo del Parral - Santa Bárbara	0.00	3	0	2803	1.6	71.4	1.2	17.3	4.2	2.3	1.7	0.0	0.3	73.0	1.2	25.8	0.073	0.505	26.915490	-105.764759
T. Der. Guachoic	35.00	1	0	845	1.3	58.1	2.1	21.8	8.6	4.3	2.1	0.0	1.7	59.4	2.1	38.5	0.075	0.503	26.815930	-106.014939
T. Der. Guachoic	35.00	3	0	919	2.3	64.8	1.4	22.2	4.9	2.0	1.2	0.0	1.2	67.1	1.4	31.5	0.099	0.515	26.808360	-106.016697
Lim. Edos. Term. Chih. Ppia. Dgo	38.00																			
Lim. Edos. Term. Dgo. Ppia. Chih.	57.00																			
El Vergel	110.00	1	0	907	1.6	66.7	1.4	22.2	4.7	1.8	0.9	0.0	0.7	68.3	1.4	30.3	0.090	0.525	26.523002	-106.357298
Puerto Sabiná	212.00	1	0	663	1.7	67.1	1.3	21.8	4.8	1.7	0.9	0.0	0.7	68.8	1.3	29.9	0.126	0.514	26.451285	-106.386575
Guadalupe y Calvo	234.00																			

11 CARR: Hidalgo del Parral - Jiménez

CLAVE: 08444

RUTA: MEX-045

AÑO: 2021

LUGAR	ESTACION				CLASIFICACION VEHICULAR EN PORCIENTO													COORDENADAS		
	KM	TE	SC	TDPA	M	A	B	C2	C3	T3S2	T3S3	T3S2R4	OTROS	A	B	C	K'	D	LATITUD	LONGITUD
Hidalgo del Parral	0.00	3	1	4288	1.7	72.2	1.9	13.3	3.1	2.6	3.9	0.8	0.5	73.9	1.9	24.2	0.108	0.500	26.934247	-105.634666
Hidalgo del Parral	0.00	3	2	4297	1.5	72.3	1.9	13.4	3.1	2.6	3.9	0.8	0.5	73.8	1.9	24.3	0.091	0.500	26.934358	-105.634695

CHIHUAHUA

11 CARR: Hidalgo del Parral - Jiménez

CLAVE: 08444

RUTA: MEX-045

AÑO: 2021

LUGAR	ESTACION				CLASIFICACION VEHICULAR EN PORCIENTO														COORDENADAS	
	KM	TE	SC	TDPA	M	A	B	C2	C3	T3S2	T3S3	T3S2R4	OTROS	A	B	C	K'	D	LATITUD	LONGITUD
Jiménez	76.63	1	1	2600	2.9	67.9	2.1	15.0	2.2	4.3	3.9	1.1	0.6	70.8	2.1	27.1	0.095	0.507	27.141858	-104.938607
Jiménez	76.63	1	2	2677	3.0	67.8	1.9	14.9	2.3	4.5	3.9	1.1	0.6	70.8	1.9	27.3	0.092	0.507	27.141989	-104.938669

12 CARR: Janos - Agua Prieta

CLAVE: 00220

RUTA: MEX-002

AÑO: 2021

LUGAR	ESTACION				CLASIFICACION VEHICULAR EN PORCIENTO														COORDENADAS	
	KM	TE	SC	TDPA	M	A	B	C2	C3	T3S2	T3S3	T3S2R4	OTROS	A	B	C	K'	D	LATITUD	LONGITUD
T. C. Cd. Juárez - Janos	0.00	3	0	4249	3.0	53.2	3.3	14.5	2.5	13.8	3.4	5.4	0.9	56.2	3.3	40.5	0.135	0.510	30.889934	-108.219911
Los Mimbres	56.00	3	0	2959	1.9	47.9	4.2	20.8	3.7	13.6	3.5	3.6	0.8	49.8	4.2	46.0	0.076	0.507	31.246219	-108.583272
Lim. Edos. Term. Chih. Ppia. Son.	78.00																			
Rancho Guadalupe	116.00																			
Agua Prieta	160.00	1	0	2940	4.7	45.8	3.3	11.5	2.8	19.2	5.6	6.3	0.8	50.5	3.3	46.2	0.107	0.504	31.323061	-109.506443

13 CARR: Jerónimo - Sta. Teresa

CLAVE: 08043

RUTA: MEX-002

AÑO: 2021

LUGAR	ESTACION				CLASIFICACION VEHICULAR EN PORCIENTO														COORDENADAS	
	KM	TE	SC	TDPA	M	A	B	C2	C3	T3S2	T3S3	T3S2R4	OTROS	A	B	C	K'	D	LATITUD	LONGITUD
X. C. Cd. Juárez - Janos	0.00	3	0	2583	1.4	60.6	6.3	14.5	2.9	12.0	1.6	0.4	0.3	62.0	6.3	31.7	0.122	0.528	31.614510	-106.684653
El Mirador	20.00																			

14 CARR: La Junta - Yécora

CLAVE: 00065

RUTA: MEX-016

AÑO: 2021

LUGAR	ESTACION				CLASIFICACION VEHICULAR EN PORCIENTO														COORDENADAS	
	KM	TE	SC	TDPA	M	A	B	C2	C3	T3S2	T3S3	T3S2R4	OTROS	A	B	C	K'	D	LATITUD	LONGITUD
T. C. Chihuahua - Madera	0.00	3	0	2941	1.9	74.7	3.5	15.2	1.3	2.2	0.8	0.3	0.1	76.6	3.5	19.9	0.115	0.513	28.463766	-107.329542
T. Izq. San Juanito	16.00	1	0	2355	2.7	70.5	2.3	17.9	1.6	2.4	1.1	1.1	0.4	73.2	2.3	24.5	0.136	0.505	28.388875	-107.439690
T. Izq. San Juanito	16.00	3	0	1186	1.4	65.3	1.3	20.2	3.5	5.0	2.2	0.3	0.8	66.7	1.3	32.0	0.102	0.515	28.390588	-107.453372
Tomochi	70.00	3	0	1283	1.8	67.4	1.6	19.9	2.1	5.0	1.6	0.1	0.5	69.2	1.6	29.2	0.085	0.501	28.358196	-107.859711
Lim. Edos. Term. Chih. Ppia. Son.	190.00																			
Yécora	253.00	1	0	307	1.6	59.8	2.6	22.6	3.4	7.9	2.0	0.0	0.1	61.4	2.6	36.0	0.140	0.501	28.370281	-108.914220

CHIHUAHUA

15 CARR: Libramiento de Delicias - Meoqui

CLAVE: 08813

RUTA: MEX-045

AÑO: 2021

LUGAR	ESTACION				CLASIFICACION VEHICULAR EN PORCIENTO										COORDENADAS					
	KM	TE	SC	TDPA	M	A	B	C2	C3	T3S2	T3S3	T3S2R4	OTROS	A	B	C	K'	D	LATITUD	LONGITUD
T. C. Jiménez - Chihuahua (Sur)	0.00	3	1	12823	3.5	79.5	1.3	7.8	1.1	4.4	1.2	0.7	0.5	83.0	1.3	15.7	0.097	0.501	28.190138	-105.452257
T. C. Jiménez - Chihuahua (Sur)	0.00	3	2	12773	4.6	77.9	1.3	8.1	1.1	4.5	1.3	0.7	0.5	82.5	1.3	16.2	0.086	0.501	28.190133	-105.452467
T. Izq. Delicias	4.95	1	1	8920	3.1	74.2	3.7	4.1	1.3	9.1	1.8	2.1	0.6	77.3	3.7	19.0	0.106	0.507	28.225818	-105.458675
T. Izq. Delicias	4.95	1	2	9173	3.4	74.2	3.6	3.5	1.8	9.6	1.6	1.8	0.5	77.6	3.6	18.8	0.095	0.507	28.225763	-105.458869
T. Izq. Delicias	4.95	3	1	9682	2.3	77.6	3.8	2.5	1.4	9.3	1.2	1.5	0.4	79.9	3.8	16.3	0.110	0.513	28.234517	-105.461283
T. Izq. Delicias	4.95	3	2	10210	1.9	78.5	3.6	2.6	1.3	9.4	1.1	1.3	0.3	80.4	3.6	16.0	0.094	0.513	28.234483	-105.461600
T. C. Jiménez - Chihuahua (Norte)	13.60	1	1	9927	2.2	73.4	4.2	3.8	1.5	11.0	1.4	2.0	0.5	75.6	4.2	20.2	0.103	0.502	28.290130	-105.488494
T. C. Jiménez - Chihuahua (Norte)	13.60	1	2	10013	2.1	71.6	4.4	3.7	1.8	11.9	1.6	2.3	0.6	73.7	4.4	21.9	0.082	0.502	28.289949	-105.488483

16 CARR: Porvenir - Cd. Juárez

CLAVE: 08169

RUTA: MEX-002

AÑO: 2021

LUGAR	ESTACION				CLASIFICACION VEHICULAR EN PORCIENTO										COORDENADAS					
	KM	TE	SC	TDPA	M	A	B	C2	C3	T3S2	T3S3	T3S2R4	OTROS	A	B	C	K'	D	LATITUD	LONGITUD
Porvenir	0.00																			
T. Der. Puente Porvenir	1.67	3	0	1344	0.3	78.6	6.0	13.3	0.5	0.7	0.2	0.0	0.4	78.9	6.0	15.1	0.083	0.507	31.256518	-105.879624
Guadalupe	30.54	1	0	2137	0.6	78.2	4.4	15.6	0.5	0.5	0.1	0.1	0.0	78.8	4.4	16.8	0.085	0.502	31.387251	-106.093319
San Isidro	55.93	1	0	4566	0.7	70.3	7.3	18.0	0.8	2.2	0.4	0.1	0.2	71.0	7.3	21.7	0.072	0.553	31.541409	-106.272987
Zaragoza	70.32	1	1	21018	1.2	84.8	3.9	6.6	1.0	1.4	0.8	0.1	0.2	86.0	3.9	10.1	0.077	0.506	31.641809	-106.342945
Zaragoza	70.32	1	2	20558	1.0	82.9	4.4	7.6	1.2	1.6	1.0	0.1	0.2	83.9	4.4	11.7	0.081	0.506	31.641702	-106.343025
Cd. Juárez	81.43																			

17 CARR: Ramal a Aeropuerto de Chihuahua

CLAVE: 08421

RUTA: MEX-016

AÑO: 2021

LUGAR	ESTACION				CLASIFICACION VEHICULAR EN PORCIENTO										COORDENADAS					
	KM	TE	SC	TDPA	M	A	B	C2	C3	T3S2	T3S3	T3S2R4	OTROS	A	B	C	K'	D	LATITUD	LONGITUD
T. C. Chihuahua - Ojinaga	0.00	3	1	11085	3.2	93.1	0.9	1.8	0.5	0.3	0.1	0.1	0.0	96.3	0.9	2.8	0.099	0.507	28.679671	-105.993886
T. C. Chihuahua - Ojinaga	0.00	3	2	11408	3.0	93.0	0.9	1.8	0.7	0.5	0.1	0.0	0.0	96.0	0.9	3.1	0.106	0.507	28.679689	-105.993988
Aeropuerto	5.00																			

18 CARR: Ramal a Palomas

CLAVE: 08019

RUTA: MEX-002

AÑO: 2021

LUGAR	ESTACION				CLASIFICACION VEHICULAR EN PORCIENTO										COORDENADAS					
	KM	TE	SC	TDPA	M	A	B	C2	C3	T3S2	T3S3	T3S2R4	OTROS	A	B	C	K'	D	LATITUD	LONGITUD
T. C. Cd. Juárez - Janos	0.00	3	0	1860	1.7	71.6	1.4	21.9	2.0	1.0	0.3	0.0	0.1	73.3	1.4	25.3	0.101	0.512	31.478927	-107.614438
T. Izq. Guadalupe Victoria	4.50	3	0	1352	2.7	82.8	1.0	7.4	0.8	5.1	0.1	0.1	0.0	85.5	1.0	13.5	0.109	0.525	31.518724	-107.613271

CHIHUAHUA

18 CARR: Ramal a Palomas

CLAVE: 08019

RUTA: MEX-002

AÑO: 2021

LUGAR	ESTACION	CLASIFICACION VEHICULAR EN PORCIENTO														COORDENADAS						
		KM	TE	SC	TDPA	M	A	B	C2	C3	T3S2	T3S3	T3S2R4	OTROS	A	B	C	K'	D	LATITUD	LONGITUD	
Palomas	34.10																					

19 CARR: Villa Ahumada - Cd. Juárez (Libre)

CLAVE: 08420

RUTA: MEX-045

AÑO: 2021

LUGAR	ESTACION	CLASIFICACION VEHICULAR EN PORCIENTO														COORDENADAS					
		KM	TE	SC	TDPA	M	A	B	C2	C3	T3S2	T3S3	T3S2R4	OTROS	A	B	C	K'	D	LATITUD	LONGITUD
Villa Ahumada	83.63	3	1	3858	1.8	69.2	4.8	2.8	1.1	15.7	1.7	2.3	0.6	71.0	4.8	24.2	0.112	0.501	30.640627	-106.514398	
Villa Ahumada	83.63	3	2	3842	1.8	68.4	5.5	3.0	1.0	15.7	1.4	2.5	0.7	70.2	5.5	24.3	0.096	0.501	30.640612	-106.514685	
Samalayuca	167.65	3	1	5106	2.2	67.8	5.3	9.3	1.3	9.7	1.8	1.9	0.7	70.0	5.3	24.7	0.151	0.534	31.372822	-106.466364	
Samalayuca	167.65	3	2	5856	2.5	70.0	6.5	10.2	0.8	7.2	1.0	1.4	0.4	72.5	6.5	21.0	0.108	0.534	31.372883	-106.466893	
T. Izq. Janos	197.92	1	1	7340	0.9	72.9	2.0	9.8	3.3	7.6	1.5	1.3	0.7	73.8	2.0	24.2	0.122	0.523	31.600948	-106.454535	
T. Izq. Janos	197.92	1	2	8049	1.3	74.0	1.9	11.4	3.5	5.1	1.3	0.9	0.6	75.3	1.9	22.8	0.122	0.523	31.601192	-106.454567	
T. Der. Antiguo Aeropuerto	201.35	1	1	21739	1.0	83.8	2.3	6.3	0.9	2.2	2.0	0.6	0.9	84.8	2.3	12.9	0.091	0.504	31.633948	-106.439550	
T. Der. Antiguo Aeropuerto	201.35	1	2	22128	1.0	83.6	2.4	6.3	1.0	2.2	2.0	0.6	0.9	84.6	2.4	13.0	0.091	0.504	31.634033	-106.439743	
Cd. Juárez	219.00																				

20 CARR: Camargo - Delicias (Cuota)

CLAVE: 08418

RUTA: MEX-045D

AÑO: 2021

LUGAR	ESTACION	CLASIFICACION VEHICULAR EN PORCIENTO														COORDENADAS					
		KM	TE	SC	TDPA	M	A	B	C2	C3	T3S2	T3S3	T3S2R4	OTROS	A	B	C	K'	D	LATITUD	LONGITUD
Camargo	68.98																				
T. C. Ent. Ciudad Camargo - Saucillo	72.00	1	1	4783	2.4	62.4	3.3	10.4	2.4	13.0	2.5	2.8	0.8	64.8	3.3	31.9	0.109	0.509	27.713923	-105.188342	
T. C. Ent. Ciudad Camargo - Saucillo	72.00	1	2	4967	2.9	62.6	3.7	11.6	2.2	11.6	2.2	2.4	0.8	65.5	3.7	30.8	0.081	0.509	27.713842	-105.188441	
Plaza de Cobro Altavista	73.20	2	1	2743	0.0	56.1	4.5	5.2	3.2	21.2	2.8	5.4	1.6	56.1	4.5	39.4	0.088	0.500	27.730871	-105.197567	
Plaza de Cobro Altavista	73.20	2	2	2743	0.0	56.1	4.5	5.2	3.2	21.2	2.8	5.4	1.6	56.1	4.5	39.4	0.088	0.500	27.730871	-105.197567	
Saucillo	111.50	3	1	4226	1.0	58.3	4.3	8.9	1.7	18.3	3.1	3.6	0.8	59.3	4.3	36.4	0.096	0.518	28.035974	-105.325048	
Saucillo	111.50	3	2	3934	1.0	55.4	4.3	10.3	1.5	20.0	3.2	3.5	0.8	56.4	4.3	39.3	0.089	0.518	28.035947	-105.325180	
Plaza de Cobro Saucillo	116.30	2	1	3383	0.0	57.6	4.1	5.1	3.1	21.2	2.8	4.6	1.5	57.6	4.1	38.3	0.088	0.500	28.046417	-105.329309	
Plaza de Cobro Saucillo	116.30	2	2	3383	0.0	57.6	4.1	5.1	3.1	21.2	2.8	4.6	1.5	57.6	4.1	38.3	0.088	0.500	28.046417	-105.329309	
Delicias	138.00	1	1	8725	1.4	70.0	2.9	9.6	1.4	9.2	2.8	2.1	0.6	71.4	2.9	25.7	0.091	0.512	28.178550	-105.446126	
Delicias	138.00	1	2	9142	1.4	70.6	2.8	9.5	1.4	9.0	2.6	2.1	0.6	72.0	2.8	25.2	0.093	0.512	28.178639	-105.446381	

CHIHUAHUA

21 CARR: Chihuahua - Sacramento (Cuota)

CLAVE: 08015

RUTA: MEX-045D

AÑO: 2021

LUGAR	ESTACION				CLASIFICACION VEHICULAR EN PORCIENTO										COORDENADAS					
	KM	TE	SC	TDPA	M	A	B	C2	C3	T3S2	T3S3	T3S2R4	OTROS	A	B	C	K'	D	LATITUD	LONGITUD
T. C. Chihuahua - El Sueco	18.12	3	1	6919	0.7	87.6	0.8	3.7	1.9	4.4	0.3	0.5	0.1	88.3	0.8	10.9	0.092	0.515	28.769414	-106.170572
T. C. Chihuahua - El Sueco	18.12	3	2	6505	0.7	87.4	0.7	2.9	1.9	5.3	0.4	0.6	0.1	88.1	0.7	11.2	0.093	0.515	28.771557	-106.171159
Francisco Villa	20.00	3	1	7258	1.2	84.9	1.3	1.5	2.7	6.3	0.3	1.2	0.6	86.1	1.3	12.6	0.091	0.527	28.785281	-106.173648
Francisco Villa	20.00	3	2	6523	1.3	81.9	3.0	2.8	2.0	7.1	0.7	0.7	0.5	83.2	3.0	13.8	0.094	0.527	28.785289	-106.173822
T. C. Libramiento Oriente Chihuahua (Cuota)	21.17	3	1	5853	13.4	63.3	5.6	6.4	1.3	6.1	0.7	2.4	0.8	76.7	5.6	17.7	0.085	0.505	28.807374	-106.177922
T. C. Libramiento Oriente Chihuahua (Cuota)	21.17	3	2	5975	13.4	63.3	5.6	6.4	1.3	6.1	0.6	2.6	0.7	76.7	5.6	17.7	0.090	0.505	28.807345	-106.178107
T. C. (Chihuahua - El Sueco)	31.30																			

22 CARR: El Sueco - Villa Ahumada (Cuota)

CLAVE: 08420

RUTA: MEX-045D

AÑO: 2021

LUGAR	ESTACION				CLASIFICACION VEHICULAR EN PORCIENTO										COORDENADAS					
	KM	TE	SC	TDPA	M	A	B	C2	C3	T3S2	T3S3	T3S2R4	OTROS	A	B	C	K'	D	LATITUD	LONGITUD
Ent. El Sueco	0.00	3	1	3633	1.3	65.3	4.6	5.3	1.2	17.6	1.6	2.5	0.6	66.6	4.6	28.8	0.097	0.515	29.899842	-106.394908
Ent. El Sueco	0.00	3	2	3866	1.3	67.6	3.1	5.7	1.9	15.9	1.6	2.3	0.6	68.9	3.1	28.0	0.118	0.515	29.899865	-106.395381
Plaza de Cobro Villa Ahumada	82.00	2	1	2790	0.0	71.1	5.3	3.2	1.7	14.9	1.0	1.9	0.9	71.1	5.3	23.6	0.103	0.500	30.437059	-106.521897
Plaza de Cobro Villa Ahumada	82.00	2	2	2790	0.0	71.1	5.3	3.2	1.7	14.9	1.0	1.9	0.9	71.1	5.3	23.6	0.103	0.500	30.437059	-106.521897
Villa Ahumada	83.63																			

23 CARR: Gómez Palacio - Corralitos (Cuota)

CLAVE: 00016

RUTA: MEX-049D

AÑO: 2021

LUGAR	ESTACION				CLASIFICACION VEHICULAR EN PORCIENTO										COORDENADAS					
	KM	TE	SC	TDPA	M	A	B	C2	C3	T3S2	T3S3	T3S2R4	OTROS	A	B	C	K'	D	LATITUD	LONGITUD
T. C. Gómez Palacio - Jiménez (Libre)	38.00																			
T. Izq. Bermejillo	40.10	1	1	2215	2.2	46.8	7.0	4.5	1.9	27.2	2.7	7.6	0.1	49.0	7.0	44.0	0.076	0.506	25.883707	-103.610720
T. Izq. Bermejillo	40.10	1	2	2268	2.3	46.3	7.1	4.7	1.8	27.1	2.9	7.6	0.2	48.6	7.1	44.3	0.079	0.506	25.883727	-103.610890
T. Izq. Bermejillo	40.10	3	1	1778	3.3	50.9	7.1	5.0	1.5	21.6	4.4	6.0	0.2	54.2	7.1	38.7	0.075	0.516	25.895432	-103.611321
T. Izq. Bermejillo	40.10	3	2	1897	3.1	50.5	7.3	5.3	1.4	21.7	4.6	6.0	0.1	53.6	7.3	39.1	0.076	0.516	25.895435	-103.611621
Plaza de Cobro Bermejillo	44.16	2	1	2248	0.2	37.7	8.7	2.5	1.6	30.1	5.7	10.3	3.2	37.9	8.7	53.4	0.079	0.500	25.923705	-103.622079
Plaza de Cobro Bermejillo	44.16	2	2	2248	0.2	37.7	8.7	2.5	1.6	30.1	5.7	10.3	3.2	37.9	8.7	53.4	0.079	0.500	25.923705	-103.622079
Plaza de Cobro Ceballos	128.80	2	1	2211	0.2	37.2	5.1	2.5	5.3	30.6	5.6	10.5	3.0	37.4	5.1	57.5	0.079	0.500	26.586801	-104.057535
Plaza de Cobro Ceballos	128.80	2	2	2211	0.2	37.2	5.1	2.5	5.3	30.6	5.6	10.5	3.0	37.4	5.1	57.5	0.079	0.500	26.586801	-104.057535
Lim. Edos. Term. Dgo. Ppia. Chih.	158.00																			
T. C. Gómez Palacio - Jiménez	188.46	3	1	2797	1.3	45.9	8.5	5.6	2.6	25.2	3.7	6.3	0.9	47.2	8.5	44.3	0.090	0.551	26.909264	-104.562176
T. C. Gómez Palacio - Jiménez	188.46	3	2	2528	1.5	45.8	8.5	5.6	2.6	25.2	3.7	6.3	0.8	47.3	8.5	44.2	0.084	0.551	26.908426	-104.562613
T. C. Gómez Palacio - Jiménez (Libre)	226.50	1	1	2683	2.1	40.3	7.7	10.6	2.4	23.9	4.6	7.5	0.9	42.4	7.7	49.9	0.094	0.506	27.097384	-104.862953

CHIHUAHUA

23 CARR : Gómez Palacio - Corralitos (Cuota)

CLAVE: 00016

RUTA: MEX-049D

AÑO: 2021

LUGAR	ESTACION				CLASIFICACION VEHICULAR EN PORCIENTO														COORDENADAS	
	KM	TE	SC	TDPA	M	A	B	C2	C3	T3S2	T3S3	T3S2R4	OTROS	A	B	C	K'	D	LATITUD	LONGITUD
T. C. Gómez Palacio - Jiménez (Libre)	226.50	1	2	2615	2.7	42.2	9.4	11.8	2.4	20.5	3.4	6.8	0.8	44.9	9.4	45.7	0.076	0.506	27.096139	-104.861655

24 CARR : Jiménez - Camargo (Cuota)

CLAVE: 08418

RUTA: MEX-045D

AÑO: 2021

LUGAR	ESTACION				CLASIFICACION VEHICULAR EN PORCIENTO														COORDENADAS	
	KM	TE	SC	TDPA	M	A	B	C2	C3	T3S2	T3S3	T3S2R4	OTROS	A	B	C	K'	D	LATITUD	LONGITUD
Jiménez	0.00	3	1	3553	6.0	51.8	7.6	7.0	2.5	17.3	2.3	4.7	0.8	57.8	7.6	34.6	0.072	0.508	27.151831	-104.930229
Jiménez	0.00	3	2	3447	6.0	52.5	7.5	6.2	2.5	17.5	2.2	4.7	0.9	58.5	7.5	34.0	0.079	0.508	27.151804	-104.930350
Plaza de Cobro Camargo	11.00	2	1	2345	0.0	45.8	6.4	4.9	3.4	27.9	3.5	6.3	1.8	45.8	6.4	47.8	0.085	0.500	27.244960	-104.933154
Plaza de Cobro Camargo	11.00	2	2	2345	0.0	45.8	6.4	4.9	3.4	27.9	3.5	6.3	1.8	45.8	6.4	47.8	0.085	0.500	27.244960	-104.933154
Camargo	68.98	1	1	3547	5.9	48.0	6.1	4.3	2.6	23.1	3.5	5.6	0.9	53.9	6.1	40.0	0.082	0.519	27.653180	-105.147391
Camargo	68.98	1	2	3826	5.9	50.1	6.4	4.2	2.1	22.2	3.0	5.2	0.9	56.0	6.4	37.6	0.071	0.519	27.652765	-105.147299

25 CARR : Libramiento Oriente Chihuahua (Cuota)

CLAVE:

RUTA: MEX-045D

AÑO: 2021

LUGAR	ESTACION				CLASIFICACION VEHICULAR EN PORCIENTO														COORDENADAS	
	KM	TE	SC	TDPA	M	A	B	C2	C3	T3S2	T3S3	T3S2R4	OTROS	A	B	C	K'	D	LATITUD	LONGITUD
T. C. Delicias - Chihuahua	0.00	3	0	3568	4.8	50.7	6.4	4.8	1.9	20.3	3.0	7.2	0.9	55.5	6.4	38.1	0.090	0.514	28.586371	-105.951286
Plaza de Cobro Jiménez	3.00	2	0	3844	0.4	50.9	1.5	3.6	2.5	26.1	5.1	9.1	0.8	51.3	1.5	47.2	0.090	0.500	28.603444	-105.951440
T. C. Chihuahua - Ojinaga	22.00	1	0	4650	3.1	62.8	4.3	3.2	1.8	16.8	2.7	4.5	0.8	65.9	4.3	29.8	0.093	0.501	28.736756	-105.980642
T. C. Chihuahua - Ojinaga	22.00	3	0	3747	5.3	64.5	8.8	4.7	2.5	6.7	1.9	5.0	0.6	69.8	8.8	21.4	0.075	0.515	28.743669	-105.995576
Plaza de Cobro Sacramento	38.30	2	0	3179	0.2	44.8	1.9	3.6	2.8	30.1	5.5	10.2	0.9	45.0	1.9	53.1	0.090	0.500	28.790516	-106.139354
T. C. Chihuahua - Sacramento (Cuota)	42.20																			

26 CARR : Ahumada - Ricardo Flores Magón

CLAVE: 08804

RUTA: CHIH

AÑO: 2021

LUGAR	ESTACION				CLASIFICACION VEHICULAR EN PORCIENTO														COORDENADAS	
	KM	TE	SC	TDPA	M	A	B	C2	C3	T3S2	T3S3	T3S2R4	OTROS	A	B	C	K'	D	LATITUD	LONGITUD
Ahumada	0.00	3	0	1667	1.5	62.4	4.6	20.0	2.1	5.6	1.5	2.2	0.1	63.9	4.6	31.5	0.077	0.517	30.616005	-106.528700
Ricardo Flores Magón	96.00	1	0	2066	4.6	69.4	3.2	13.3	2.1	4.9	2.1	0.4	0.0	74.0	3.2	22.8	0.072	0.517	29.958128	-106.952045

CHIHUAHUA

27 CARR: Cuauhtémoc - Buenaventura

CLAVE: 08015

RUTA: CHIH

AÑO: 2021

LUGAR	ESTACION				CLASIFICACION VEHICULAR EN PORCIENTO										COORDENADAS					
	KM	TE	SC	TDPA	M	A	B	C2	C3	T3S2	T3S3	T3S2R4	OTROS	A	B	C	K'	D	LATITUD	LONGITUD
T. C. Chihuahua - Madera	0.00	3	1	11242	2.3	79.2	0.8	14.0	0.8	1.3	1.0	0.3	0.3	81.5	0.8	17.7	0.076	0.508	28.406372	-106.895727
T. C. Chihuahua - Madera	0.00	3	2	11618	2.2	80.0	0.8	13.6	0.8	1.2	1.0	0.2	0.2	82.2	0.8	17.0	0.087	0.508	28.406358	-106.895915
Álvaro Obregón	42.00	3	1	3396	0.3	73.0	1.2	17.8	2.3	3.2	1.3	0.8	0.1	73.3	1.2	25.5	0.076	0.517	28.752796	-106.918033
Álvaro Obregón	42.00	3	2	3296	0.8	74.6	1.2	15.1	2.4	3.6	1.5	0.5	0.3	75.4	1.2	23.4	0.075	0.517	28.752639	-106.918063
Bachiniva	77.50	1	0	2962	1.5	75.6	1.3	17.6	2.1	1.0	0.6	0.2	0.1	77.1	1.3	21.6	0.086	0.501	28.772028	-107.249199
T. Der. Namiquipa	112.06	3	0	3256	0.8	76.6	0.8	16.6	2.4	1.2	1.0	0.5	0.1	77.4	0.8	21.8	0.076	0.506	29.026818	-107.451662
T. Izq. Madera	150.50	3	0	1158	0.7	74.7	2.1	16.3	3.9	1.4	0.9	0.0	0.0	75.4	2.1	22.5	0.095	0.504	29.267689	-107.708993
Buenaventura	253.30	1	0	766	1.8	67.4	2.1	21.5	3.1	2.7	1.3	0.0	0.1	69.2	2.1	28.7	0.082	0.514	29.840134	-107.484563

28 CARR: Delicias - Saucillo

CLAVE: 08007

RUTA: CHIH-007

AÑO: 2021

LUGAR	ESTACION				CLASIFICACION VEHICULAR EN PORCIENTO										COORDENADAS					
	KM	TE	SC	TDPA	M	A	B	C2	C3	T3S2	T3S3	T3S2R4	OTROS	A	B	C	K'	D	LATITUD	LONGITUD
Delicias	0.00	3	0	3711	13.0	72.6	1.0	10.4	1.6	0.9	0.3	0.1	0.1	85.6	1.0	13.4	0.097	0.504	28.195003	-105.426253
Las Varas	17.00	1	0	1497	5.3	75.8	1.0	16.4	1.1	0.3	0.1	0.0	0.0	81.1	1.0	17.9	0.105	0.500	28.165796	-105.340922
Saucillo	33.00	1	0	5099	3.5	79.1	1.5	15.5	0.2	0.1	0.1	0.0	0.0	82.6	1.5	15.9	0.064	0.550	28.047044	-105.300254

29 CARR: Ent. Peña Blanca - Ent. La Concha

CLAVE: 08493

RUTA: CHIH

AÑO: 2021

LUGAR	ESTACION				CLASIFICACION VEHICULAR EN PORCIENTO										COORDENADAS					
	KM	TE	SC	TDPA	M	A	B	C2	C3	T3S2	T3S3	T3S2R4	OTROS	A	B	C	K'	D	LATITUD	LONGITUD
T. C. Cuauhtémoc - Buenaventura	0.00	3	0	782	1.4	73.7	1.4	17.7	2.8	1.9	1.1	0.0	0.0	75.1	1.4	23.5	0.082	0.508	29.262757	-107.710875
T. C. Chihuahua - Madera	17.00	1	0	360	1.8	65.6	1.1	19.8	3.2	3.9	3.8	0.2	0.6	67.4	1.1	31.5	0.090	0.509	29.122060	-107.905937

30 CARR: Ent. Puerto Justo - Ent. Guacho chic

CLAVE: 08044

RUTA: CHIH

AÑO: 2021

LUGAR	ESTACION				CLASIFICACION VEHICULAR EN PORCIENTO										COORDENADAS					
	KM	TE	SC	TDPA	M	A	B	C2	C3	T3S2	T3S3	T3S2R4	OTROS	A	B	C	K'	D	LATITUD	LONGITUD
T. C. Hidalgo del Parral - Pto. Sabinal	0.00	3	0	184	6.1	72.0	0.9	19.2	0.9	0.4	0.2	0.0	0.3	78.1	0.9	21.0	0.167	0.536	26.813640	-106.017080
Guacho chic	130.00																			

CHIHUAHUA

31 CARR: Jiménez - Camargo

CLAVE: 08021

RUTA: CHIH-049

AÑO: 2021

LUGAR	ESTACION				CLASIFICACION VEHICULAR EN PORCIENTO														COORDENADAS	
	KM	TE	SC	TDPA	M	A	B	C2	C3	T3S2	T3S3	T3S2R4	OTROS	A	B	C	K'	D	LATITUD	LONGITUD
Jiménez	0.00	3	0	2898	1.8	73.5	1.5	14.9	2.5	4.3	1.2	0.2	0.1	75.3	1.5	23.2	0.128	0.505	27.156942	-104.888467
T. Der. Ojinaga	65.80	3	0	2154	0.9	61.9	1.8	20.5	3.5	8.9	2.1	0.2	0.2	62.8	1.8	35.4	0.069	0.507	27.650470	-105.081287
T. C. Jiménez - Chihuahua (Cuota)	78.20	1	0	2459	1.4	62.0	1.8	21.1	4.0	7.6	1.7	0.2	0.2	63.4	1.8	34.8	0.069	0.503	27.678951	-105.139760

32 CARR: Lázaro Cárdenas - Ent. Colonia San José

CLAVE: 08004

RUTA: CHIH-004

AÑO: 2021

LUGAR	ESTACION				CLASIFICACION VEHICULAR EN PORCIENTO														COORDENADAS	
	KM	TE	SC	TDPA	M	A	B	C2	C3	T3S2	T3S3	T3S2R4	OTROS	A	B	C	K'	D	LATITUD	LONGITUD
T. C. Jiménez - Chihuahua	0.00	3	1	2761	3.3	81.2	1.5	11.0	0.4	0.4	0.5	0.9	0.8	84.5	1.5	14.0	0.102	0.568	28.387495	-105.628611
T. C. Jiménez - Chihuahua	0.00	3	2	3626	2.6	84.3	1.7	8.5	0.5	0.4	0.5	0.8	0.7	86.9	1.7	11.4	0.090	0.568	28.387609	-105.628596
T. C. Meoqui - Julimes	16.00	1	0	2022	1.7	82.8	2.1	11.2	1.0	0.9	0.2	0.0	0.1	84.5	2.1	13.4	0.150	0.504	28.387741	-105.449941

33 CARR: Libramiento de Hidalgo del Parral

CLAVE: 08221

RUTA: CHIH

AÑO: 2021

LUGAR	ESTACION				CLASIFICACION VEHICULAR EN PORCIENTO														COORDENADAS	
	KM	TE	SC	TDPA	M	A	B	C2	C3	T3S2	T3S3	T3S2R4	OTROS	A	B	C	K'	D	LATITUD	LONGITUD
T. C. Hidalgo del Parral - Santa Bárbara	0.00																			
T. C. Ent. La Zarca - Hidalgo del Parral	8.00	3	1	4304	2.4	86.9	0.8	7.8	0.8	0.7	0.4	0.1	0.1	89.3	0.8	9.9	0.091	0.500	26.923190	-105.643622
T. C. Ent. La Zarca - Hidalgo del Parral	8.00	3	2	4173	2.5	85.7	1.0	8.5	0.9	0.8	0.4	0.1	0.1	88.2	1.0	10.8	0.085	0.500	26.923263	-105.643759
T. C. Hidalgo del Parral - Jiménez	10.00																			

34 CARR: Libramiento de Jiménez

CLAVE: 08047

RUTA: CHIH

AÑO: 2021

LUGAR	ESTACION				CLASIFICACION VEHICULAR EN PORCIENTO														COORDENADAS	
	KM	TE	SC	TDPA	M	A	B	C2	C3	T3S2	T3S3	T3S2R4	OTROS	A	B	C	K'	D	LATITUD	LONGITUD
T. C. Gómez Palacio - Jiménez	0.00	3	1	6228	6.1	62.3	2.1	9.3	3.4	7.4	3.6	4.9	0.9	68.4	2.1	29.5	0.077	0.524	27.133483	-104.909359
T. C. Gómez Palacio - Jiménez	0.00	3	2	5658	6.0	62.4	2.2	9.3	3.4	7.4	3.6	4.9	0.8	68.4	2.2	29.4	0.065	0.524	27.133372	-104.909477
T. C. Jiménez - Chihuahua (Cuota)	3.40	1	1	4445	1.8	56.0	5.4	11.7	1.5	14.7	3.8	4.2	0.9	57.8	5.4	36.8	0.074	0.505	27.141525	-104.922472
T. C. Jiménez - Chihuahua (Cuota)	3.40	1	2	4322	0.4	60.1	4.6	8.1	1.9	16.0	3.4	4.6	0.9	60.5	4.6	34.9	0.074	0.505	27.141413	-104.922506

35 CARR: Meoqui - Julimes

CLAVE: 08005

RUTA: CHIH-005

AÑO: 2021

LUGAR	ESTACION				CLASIFICACION VEHICULAR EN PORCIENTO														COORDENADAS	
	KM	TE	SC	TDPA	M	A	B	C2	C3	T3S2	T3S3	T3S2R4	OTROS	A	B	C	K'	D	LATITUD	LONGITUD
Meoqui	0.00	3	0	6941	4.3	79.3	0.9	13.4	1.1	0.5	0.4	0.0	0.1	83.6	0.9	15.5	0.087	0.505	28.283864	-105.462839

CHIHUAHUA

35 CARR: Meoqui - Julimes

CLAVE: 08005

RUTA: CHIH-005

AÑO: 2021

LUGAR	ESTACION				CLASIFICACION VEHICULAR EN PORCIENTO										COORDENADAS					
	KM	TE	SC	TDPA	M	A	B	C2	C3	T3S2	T3S3	T3S2R4	OTROS	A	B	C	K'	D	LATITUD	LONGITUD
Loreto	8.00	3	0	4220	3.8	79.5	1.0	13.7	1.0	0.6	0.3	0.0	0.1	83.3	1.0	15.7	0.090	0.523	28.322859	-105.433158
Regina	15.40	3	0	3355	3.4	81.3	1.4	12.7	0.8	0.3	0.1	0.0	0.0	84.7	1.4	13.9	0.144	0.506	28.421346	-105.454334
Julimes	23.00	1	0	3894	4.3	80.3	1.6	12.1	1.1	0.4	0.2	0.0	0.0	84.6	1.6	13.8	0.085	0.527	28.427466	-105.441449

36 CARR: Ramal a San Pedro Creel

CLAVE: 08812

RUTA: CHIH-025

AÑO: 2021

LUGAR	ESTACION				CLASIFICACION VEHICULAR EN PORCIENTO										COORDENADAS					
	KM	TE	SC	TDPA	M	A	B	C2	C3	T3S2	T3S3	T3S2R4	OTROS	A	B	C	K'	D	LATITUD	LONGITUD
T. C. La Junta - Yepachi	0.00	3	0	2427	1.0	73.1	2.7	17.6	2.1	2.0	1.1	0.1	0.3	74.1	2.7	23.2	0.097	0.502	28.384541	-107.441704
San Juanito	58.00	3	0	2057	1.0	75.1	2.7	14.7	1.9	2.7	1.4	0.0	0.5	76.1	2.7	21.2	0.086	0.536	27.962116	-107.608627
San Pedro Creel	85.00	1	0	1555	1.5	76.6	3.1	13.0	2.6	1.6	1.1	0.2	0.3	78.1	3.1	18.8	0.093	0.543	27.768227	-107.638170

37 CARR: Samachique - Batopilas

CLAVE:

RUTA: CHIH

AÑO: 2021

LUGAR	ESTACION				CLASIFICACION VEHICULAR EN PORCIENTO										COORDENADAS					
	KM	TE	SC	TDPA	M	A	B	C2	C3	T3S2	T3S3	T3S2R4	OTROS	A	B	C	K'	D	LATITUD	LONGITUD
Samachique	0.00	3	0	75	4.7	71.9	1.2	19.8	1.8	0.6	0.0	0.0	0.0	76.6	1.2	22.2	0.176	0.508	27.286860	-107.530495
Batopilas	61.00																			

38 CARR: San Juanito - Ent. Basaseachi

CLAVE: 08045

RUTA: CHIH

AÑO: 2021

LUGAR	ESTACION				CLASIFICACION VEHICULAR EN PORCIENTO										COORDENADAS					
	KM	TE	SC	TDPA	M	A	B	C2	C3	T3S2	T3S3	T3S2R4	OTROS	A	B	C	K'	D	LATITUD	LONGITUD
San Juanito	0.00	3	0	683	1.4	64.3	1.0	31.0	1.6	0.1	0.4	0.0	0.2	65.7	1.0	33.3	0.135	0.510	27.972424	-107.616701
T. C. La Junta - Yécora	84.00	1	0	533	2.5	67.6	1.4	22.9	4.1	0.6	0.6	0.0	0.3	70.1	1.4	28.5	0.098	0.507	28.189619	-108.172703

39 CARR: San Pedro Creel - Guachochi

CLAVE:

RUTA: CHIH-025

AÑO: 2021

LUGAR	ESTACION				CLASIFICACION VEHICULAR EN PORCIENTO										COORDENADAS					
	KM	TE	SC	TDPA	M	A	B	C2	C3	T3S2	T3S3	T3S2R4	OTROS	A	B	C	K'	D	LATITUD	LONGITUD
San Pedro Creel	90.30																			
Samachique	164.30	1	0	137	3.0	65.5	0.5	30.1	0.5	0.0	0.4	0.0	0.0	68.5	0.5	31.0	0.193	0.507	27.298831	-107.526823
Samachique	164.30	3	0	154	0.4	64.9	0.0	32.9	0.2	0.2	1.4	0.0	0.0	65.3	0.0	34.7	0.132	0.513	27.295740	-107.523214
Guachochi	246.00																			

CHIHUAHUA

40 CARR: T. C. (Jiménez - Camargo) - Ojinaga

CLAVE: 08009

RUTA: CHIH-018

AÑO: 2021

LUGAR	ESTACION				CLASIFICACION VEHICULAR EN PORCIENTO													COORDENADAS		
	KM	TE	SC	TDPA	M	A	B	C2	C3	T3S2	T3S3	T3S2R4	OTROS	A	B	C	K'	D	LATITUD	LONGITUD
T. C. Jimenez - Camargo	0.00	3	1	480	0.6	67.8	0.9	18.5	1.1	6.7	3.0	1.1	0.3	68.4	0.9	30.7	0.094	0.517	27.658202	-105.059070
T. C. Jimenez - Camargo	0.00	3	2	444	1.1	62.5	0.9	22.1	1.0	7.1	3.4	1.6	0.3	63.6	0.9	35.5	0.119	0.517	27.658168	-105.059161
T. Der. La Perla	97.00	3	0	521	1.4	54.1	1.7	21.8	2.9	9.6	5.2	2.3	1.0	55.5	1.7	42.8	0.085	0.506	28.307869	-104.573235
T. Der. Majjoma	174.20	3	0	370	0.8	61.2	1.5	28.7	3.4	2.7	1.6	0.0	0.1	62.0	1.5	36.5	0.098	0.503	28.956836	-104.487243
T. Der. Manuel Benavides	218.00	3	0	1871	0.5	67.8	1.6	24.0	2.8	2.1	0.8	0.2	0.2	68.3	1.6	30.1	0.088	0.508	29.325767	-104.396102
Ojinaga	247.00	1	0	2181	0.4	71.3	1.3	23.1	2.3	1.2	0.2	0.1	0.1	71.7	1.3	27.0	0.164	0.503	29.517218	-104.422589

41 CARR: T. Julimes - La Boquilla

CLAVE: 08009

RUTA: CHIH-018

AÑO: 2021

LUGAR	ESTACION				CLASIFICACION VEHICULAR EN PORCIENTO													COORDENADAS		
	KM	TE	SC	TDPA	M	A	B	C2	C3	T3S2	T3S3	T3S2R4	OTROS	A	B	C	K'	D	LATITUD	LONGITUD
T. C. Meoqui - Julimes	0.00	3	0	1379	6.4	74.7	2.1	14.1	1.9	0.6	0.2	0.0	0.0	81.1	2.1	16.8	0.090	0.501	28.427533	-105.456236
La Boquilla	7.50																			

42 CARR: Ent. El Álamo - Ent. Ricardo Flores Magón (Cuota)

CLAVE: 08046

RUTA: CHIH-D

AÑO: 2021

LUGAR	ESTACION				CLASIFICACION VEHICULAR EN PORCIENTO													COORDENADAS		
	KM	TE	SC	TDPA	M	A	B	C2	C3	T3S2	T3S3	T3S2R4	OTROS	A	B	C	K'	D	LATITUD	LONGITUD
T. C. Chihuahua - El Sueco	0.00	3	0	1933	1.5	60.5	4.3	12.1	3.4	11.0	3.0	3.8	0.4	62.0	4.3	33.7	0.105	0.513	29.487527	-106.411634
T. C. El Sueco - Janos	75.00																			

43 CARR: Ricardo Flores Magón - Galeana (Cuota)

CLAVE: 08019

RUTA: CHIH-D

AÑO: 2021

LUGAR	ESTACION				CLASIFICACION VEHICULAR EN PORCIENTO													COORDENADAS		
	KM	TE	SC	TDPA	M	A	B	C2	C3	T3S2	T3S3	T3S2R4	OTROS	A	B	C	K'	D	LATITUD	LONGITUD
T. C. El Sueco - Janos	0.00	3	0	2359	2.4	50.4	5.1	5.3	2.3	23.0	4.8	5.7	1.0	52.8	5.1	42.1	0.081	0.507	29.969435	-107.070360
Galeana	58.00	1	0	2316	2.3	57.9	3.5	3.4	1.8	20.2	5.1	4.9	0.9	60.2	3.5	36.3	0.090	0.502	30.175378	-107.618356

44 CARR: Samalayuca - San Jerónimo (Cuota)

CLAVE: 08019

RUTA: CHIH-D

AÑO: 2021

LUGAR	ESTACION				CLASIFICACION VEHICULAR EN PORCIENTO													COORDENADAS		
	KM	TE	SC	TDPA	M	A	B	C2	C3	T3S2	T3S3	T3S2R4	OTROS	A	B	C	K'	D	LATITUD	LONGITUD
T. C. El Sueco - Cd. Juárez	0.00	3	0	1175	2.8	82.2	0.3	1.8	0.4	11.0	0.8	0.4	0.3	85.0	0.3	14.7	0.100	0.515	31.453376	-106.478336
San Jerónimo	28.10																			

CHIHUAHUA

45 CARR: T. C. (Chihuahua - Ojinaga) - La Mula (Cuota)

CLAVE: 08170

RUTA: CHIH-D

AÑO: 2021

LUGAR	ESTACION				CLASIFICACION VEHICULAR EN PORCIENTO										COORDENADAS					
	KM	TE	SC	TDPA	M	A	B	C2	C3	T3S2	T3S3	T3S2R4	OTROS	A	B	C	K'	D	LATITUD	LONGITUD
T. C. Chihuahua - Ojinaga	0.00	3	0	1320	4.9	59.4	2.5	24.0	1.6	4.1	2.1	0.8	0.6	64.3	2.5	33.2	0.091	0.502	29.145956	-105.483121
La Mula	110.00	1	0	1250	2.6	66.1	2.5	23.3	0.5	3.4	1.4	0.2	0.0	68.7	2.5	28.8	0.104	0.519	29.179898	-104.475057

46 CARR: Chihuahua - Madera

CLAVE: 08038

RUTA: CHIH-D-MEX-001-CHIH

AÑO: 2021

LUGAR	ESTACION				CLASIFICACION VEHICULAR EN PORCIENTO										COORDENADAS					
	KM	TE	SC	TDPA	M	A	B	C2	C3	T3S2	T3S3	T3S2R4	OTROS	A	B	C	K'	D	LATITUD	LONGITUD
Chihuahua	0.00																			
T. Der. Presa Chihuahua	10.50	1	1	10604	1.0	80.0	2.9	10.1	1.3	3.4	0.8	0.4	0.1	81.0	2.9	16.1	0.131	0.524	28.568566	-106.142792
T. Der. Presa Chihuahua	10.50	1	2	9645	1.6	76.9	3.2	12.9	1.4	2.8	0.7	0.4	0.1	78.5	3.2	18.3	0.097	0.524	28.568485	-106.142740
T. Der. Presa Chihuahua	10.50	3	1	7154	1.1	75.4	2.7	13.9	1.4	3.5	1.4	0.4	0.2	76.5	2.7	20.8	0.116	0.530	28.565401	-106.146674
T. Der. Presa Chihuahua	10.50	3	2	8079	1.0	73.7	2.8	14.6	1.6	4.1	1.6	0.4	0.2	74.7	2.8	22.5	0.092	0.530	28.565348	-106.146591
T. Izq. Hidalgo del Parral (Vía Corta)	36.20	1	1	6218	0.7	77.7	2.7	11.7	1.3	3.6	1.5	0.5	0.3	78.4	2.7	18.9	0.131	0.502	28.364793	-106.258003
T. Izq. Hidalgo del Parral (Vía Corta)	36.20	1	2	6260	0.8	77.3	2.9	11.9	1.1	3.5	1.5	0.6	0.4	78.1	2.9	19.0	0.217	0.502	28.364721	-106.257906
T. Izq. Hidalgo del Parral (Vía Corta)	36.20	3	1	5077	0.7	79.0	2.6	10.8	1.2	3.3	1.5	0.6	0.3	79.7	2.6	17.7	0.114	0.501	28.358798	-106.271198
T. Izq. Hidalgo del Parral (Vía Corta)	36.20	3	2	5105	0.8	75.3	3.0	12.8	1.3	4.0	1.8	0.6	0.4	76.1	3.0	20.9	0.209	0.501	28.358737	-106.271252
Cuahtémoc	103.50	1	1	4963	3.3	78.1	1.3	13.8	1.0	1.8	0.6	0.1	0.0	81.4	1.3	17.3	0.105	0.518	28.401583	-106.828798
Cuahtémoc	103.50	1	2	5343	3.6	77.9	1.2	13.6	1.0	1.7	0.7	0.3	0.0	81.5	1.2	17.3	0.093	0.518	28.401470	-106.828838
Cuahtémoc	103.50	3	1	9705	1.2	81.1	1.4	13.7	1.0	0.5	0.8	0.2	0.1	82.3	1.4	16.3	0.084	0.515	28.402344	-106.892732
Cuahtémoc	103.50	3	2	10311	1.4	80.9	1.6	13.0	1.2	0.6	0.9	0.3	0.1	82.3	1.6	16.1	0.111	0.515	28.402218	-106.892701
T. Der. Álvaro Obregón	107.10	3	1	5985	1.1	84.6	1.2	7.6	2.0	1.6	1.3	0.4	0.2	85.7	1.2	13.1	0.112	0.505	28.399142	-106.925849
T. Der. Álvaro Obregón	107.10	3	2	5875	1.1	84.7	1.2	7.5	2.0	1.6	1.3	0.4	0.2	85.8	1.2	13.0	0.137	0.505	28.399073	-106.925850
T. Izq. Yepachi	150.80	1	1	3207	1.6	83.9	2.5	9.7	0.4	1.3	0.3	0.2	0.1	85.5	2.5	12.0	0.101	0.514	28.467725	-107.289254
T. Izq. Yepachi	150.80	1	2	3031	1.5	83.8	2.5	9.7	0.7	1.1	0.4	0.2	0.1	85.3	2.5	12.2	0.119	0.514	28.467596	-107.289307
Guerrero	169.80	3	0	2676	1.3	75.4	1.4	17.7	2.1	1.2	0.9	0.0	0.0	76.7	1.4	21.9	0.082	0.504	28.554100	-107.497953
T. Der. Peña Blanca	261.30	1	0	1019	1.1	70.9	2.1	18.7	2.2	2.0	2.7	0.0	0.3	72.0	2.1	25.9	0.080	0.510	29.117478	-107.901800
T. Der. Peña Blanca	261.30	3	0	1134	0.7	74.4	1.8	15.3	2.8	2.2	2.5	0.2	0.1	75.1	1.8	23.1	0.072	0.513	29.120051	-107.908084
Madera	279.00																			

47 CARR: Ent. Agua Caliente - El Terrero

CLAVE: 08170

RUTA: CHIH-MEX

AÑO: 2021

LUGAR	ESTACION				CLASIFICACION VEHICULAR EN PORCIENTO										COORDENADAS					
	KM	TE	SC	TDPA	M	A	B	C2	C3	T3S2	T3S3	T3S2R4	OTROS	A	B	C	K'	D	LATITUD	LONGITUD
T. C. Chihuahua - El Sueco	0.00	3	0	700	1.3	63.5	1.0	21.3	5.9	4.8	1.9	0.1	0.2	64.8	1.0	34.2	0.076	0.516	29.095947	-106.344171
Nuevas Delicias	22.00	1	0	740	1.1	62.1	0.7	24.6	4.8	4.6	1.7	0.1	0.3	63.2	0.7	36.1	0.094	0.501	29.088637	-106.467929

CHIHUAHUA

47 CARR: Ent. Agua Caliente - El Terrero

CLAVE: 08170

RUTA: CHIH-MEX

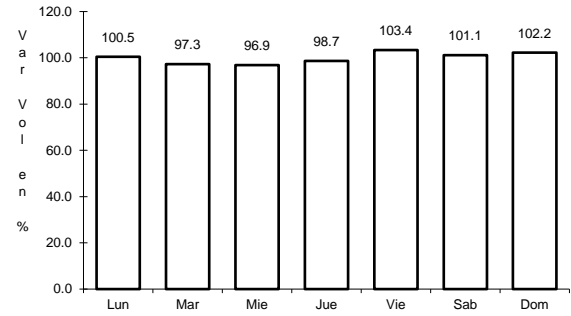
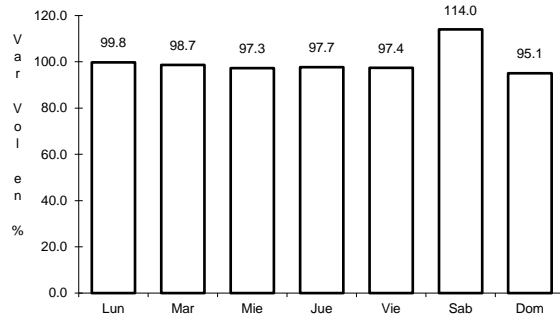
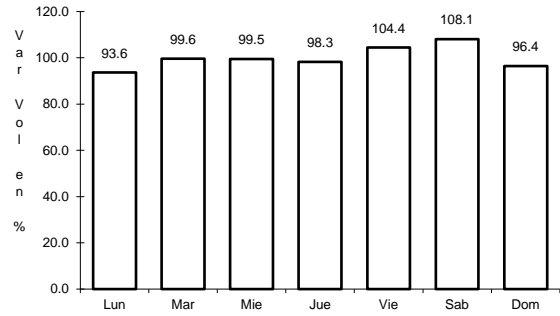
AÑO: 2021

L U G A R	E S T A C I O N				C L A S I F I C A C I O N V E H I C U L A R E N P O R C I E N T O													C O O R D E N A D A S		
	KM	TE	SC	TDPA	M	A	B	C2	C3	T3S2	T3S3	T3S2R4	OTROS	A	B	C	K'	D	LATITUD	LONGITUD
El Terrero	120.00	1	0	1302	1.0	77.6	0.7	16.9	2.2	0.9	0.6	0.0	0.1	78.6	0.7	20.7	0.089	0.501	29.177241	-107.373521

1 CARR: Cd. Juárez - Janos

CLAVE: 08041

RUTA: MEX-002



Km: 0.00 Tipo: 3 Sent: 1

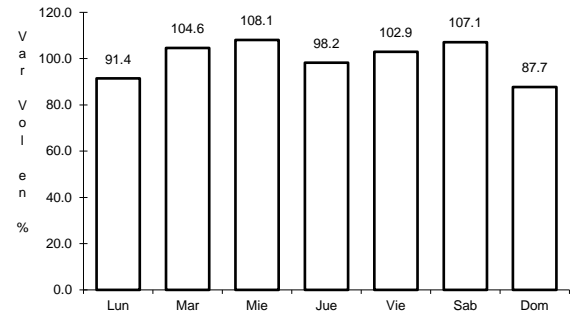
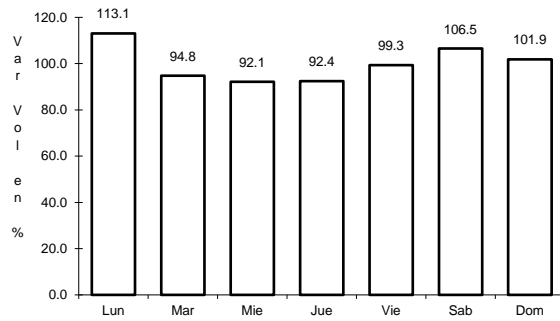
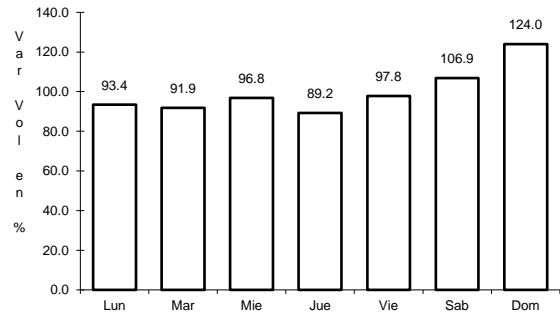
Km: 0.00 Tipo: 3 Sent: 2

Km: 205.00 Tipo: 1 Sent: 0

2 CARR: Chihuahua - El Sueco

CLAVE: 08419

RUTA: MEX-045



Km: 24.00 Tipo: 1 Sent: 0

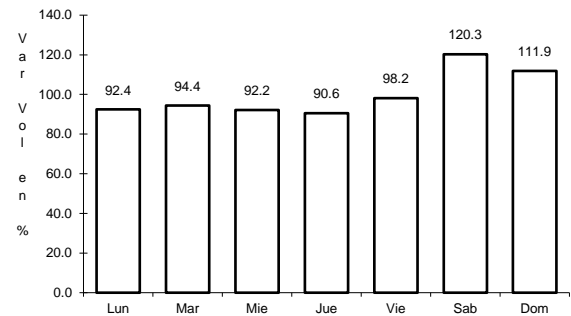
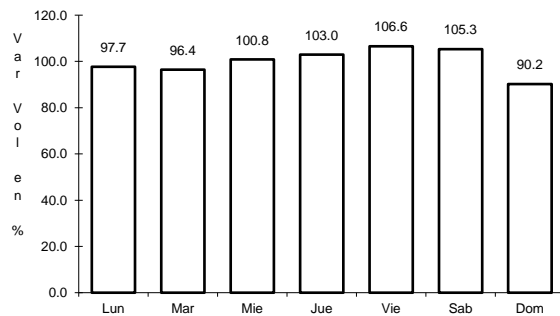
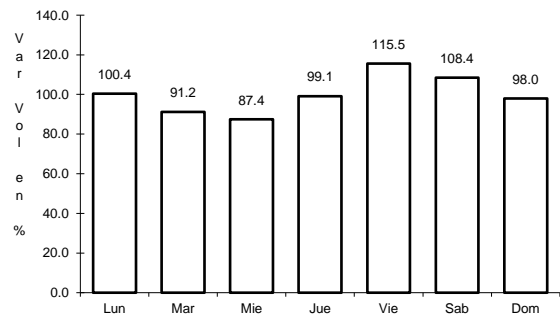
Km: 155.87 Tipo: 1 Sent: 1

Km: 155.87 Tipo: 1 Sent: 2

3 CARR: Chihuahua - Ojinaga

CLAVE: 08042

RUTA: MEX-016



Km: 6.50 Tipo: 1 Sent: 1

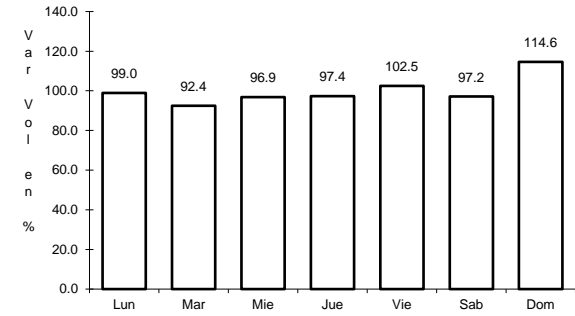
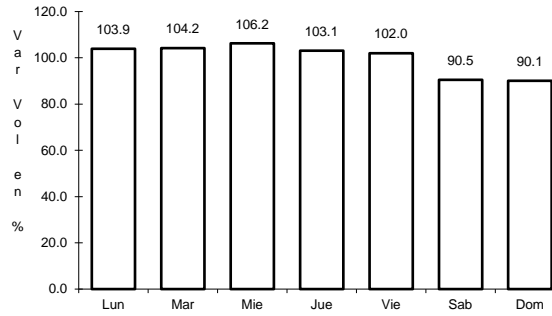
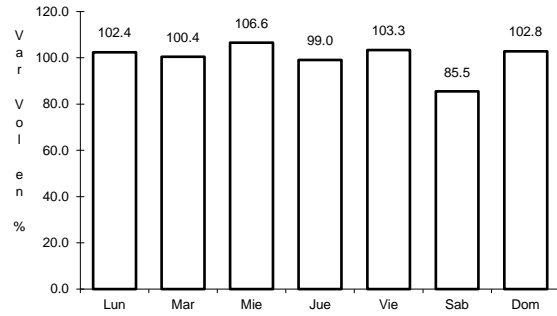
Km: 6.50 Tipo: 1 Sent: 2

Km: 224.00 Tipo: 1 Sent: 0

4 CARR: Delicias - Chihuahua (Libre)

CLAVE: 08418

RUTA: MEX-045



Km: 150.10 Tipo: 3 Sent: 1

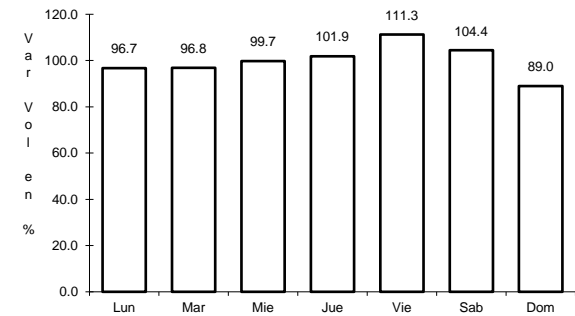
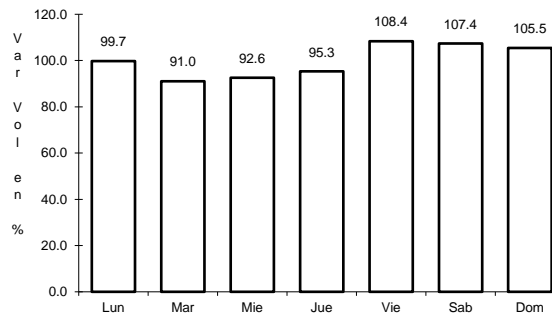
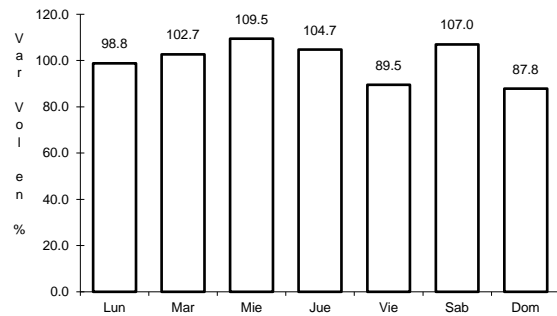
Km: 150.10 Tipo: 3 Sent: 2

Km: 210.00 Tipo: 1 Sent: 1

5 CARR: El Sueco - Janos

CLAVE: 08037

RUTA: MEX-010



Km: 0.00 Tipo: 3 Sent: 0

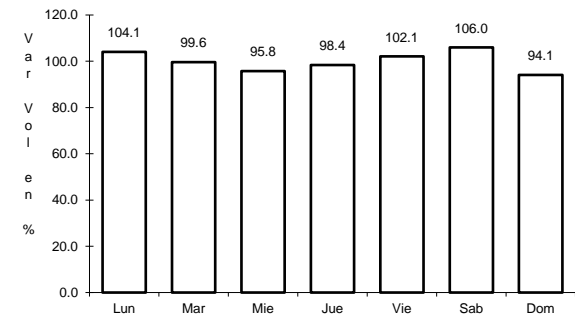
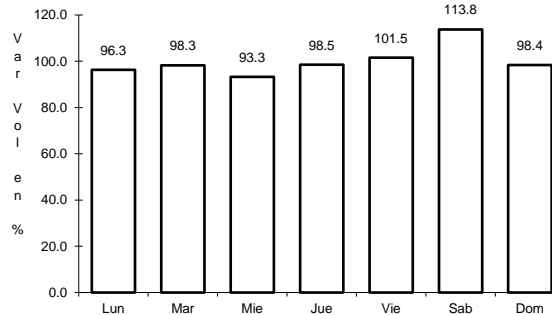
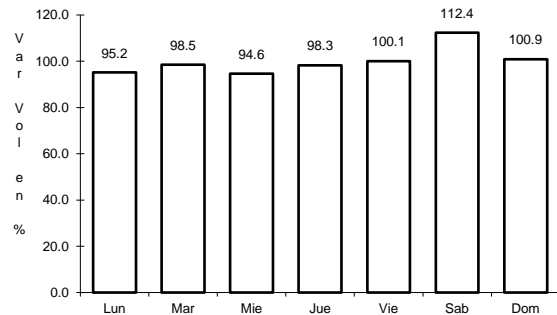
Km: 114.00 Tipo: 1 Sent: 0

Km: 257.00 Tipo: 1 Sent: 0

6 CARR: Ent. Ciudad Camargo - Saucillo

CLAVE: 08417

RUTA: MEX-045



Km: 0.00 Tipo: 3 Sent: 0

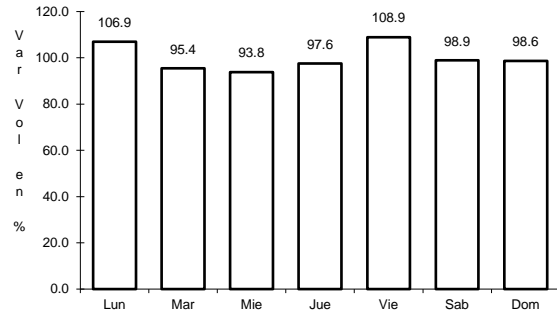
Km: 20.92 Tipo: 3 Sent: 0

Km: 42.52 Tipo: 1 Sent: 0

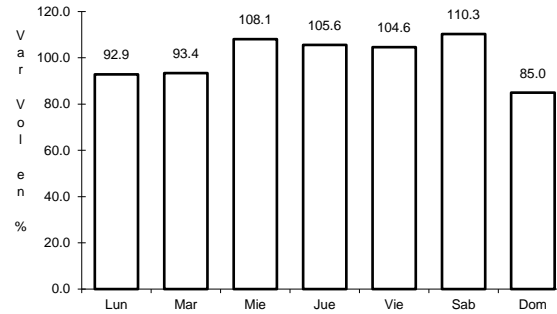
7 CARR: Ent. La Zarca - Hidalgo del Parral

CLAVE: 00488

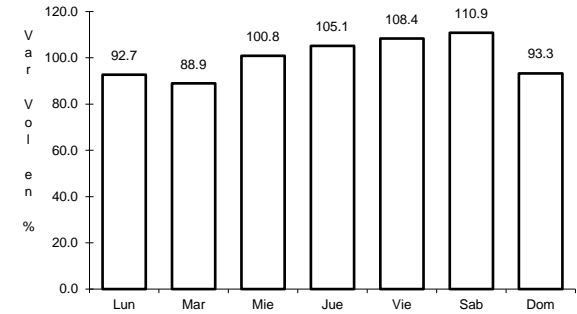
RUTA: MEX-045



Km: 0.00 Tipo: 3 Sent: 0



Km: 92.35 Tipo: 3 Sent: 0

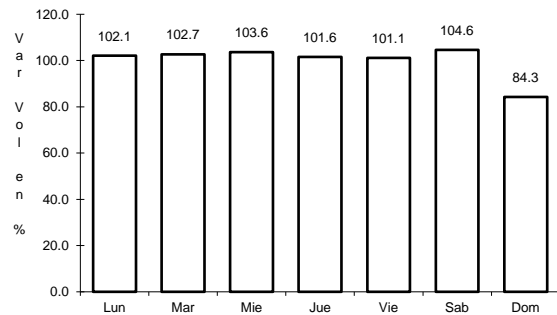


Km: 171.00 Tipo: 1 Sent: 0

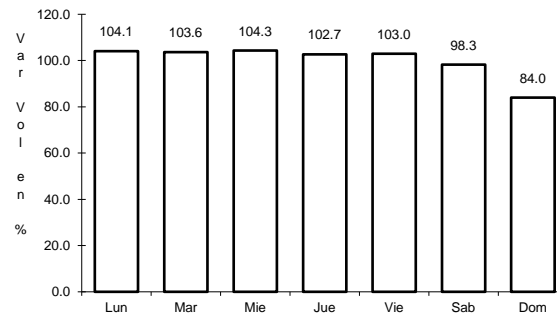
8 CARR: Gómez Palacio - Jiménez

CLAVE: 00006

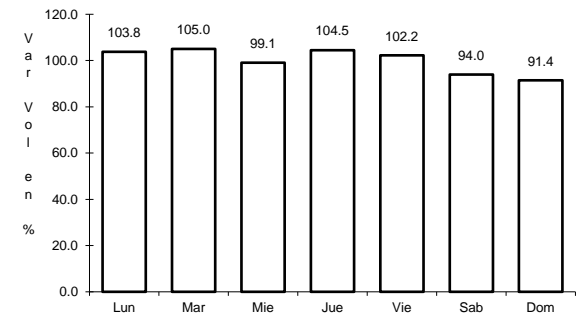
RUTA: MEX-049



Km: 0.00 Tipo: 3 Sent: 1



Km: 0.00 Tipo: 3 Sent: 2

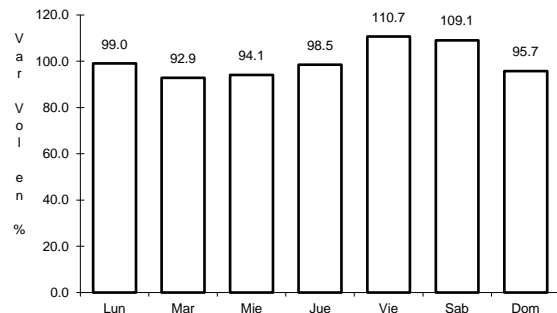


Km: 107.95 Tipo: 1 Sent: 0

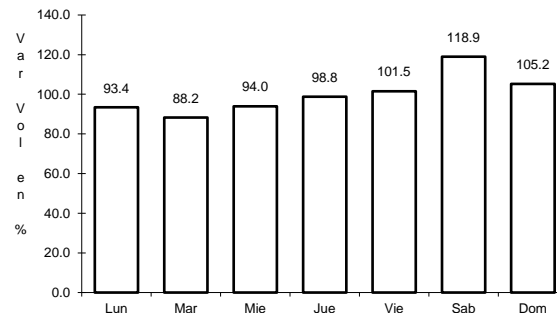
9 CARR: Hidalgo del Parral - Ent. Nuevo Palomas (Vía Corta)

CLAVE: 08811

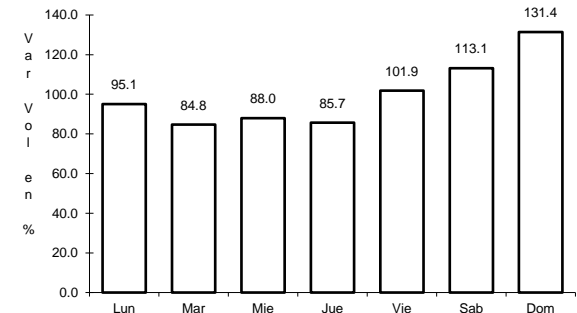
RUTA: MEX-024



Km: 0.00 Tipo: 3 Sent: 0



Km: 66.00 Tipo: 1 Sent: 0

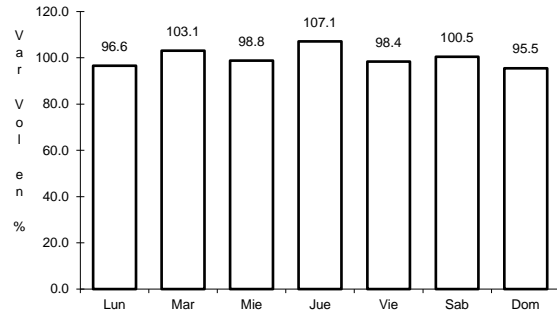


Km: 182.40 Tipo: 1 Sent: 0

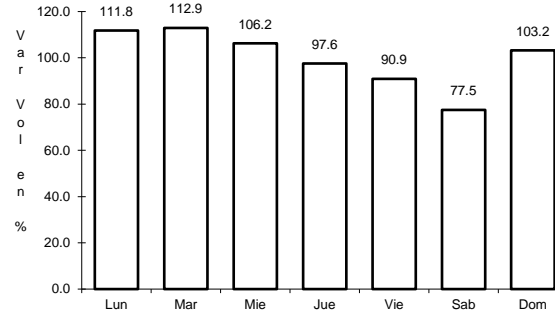
10 CARR: Hidalgo del Parral - Guadalupe y Calvo

CLAVE: 00802

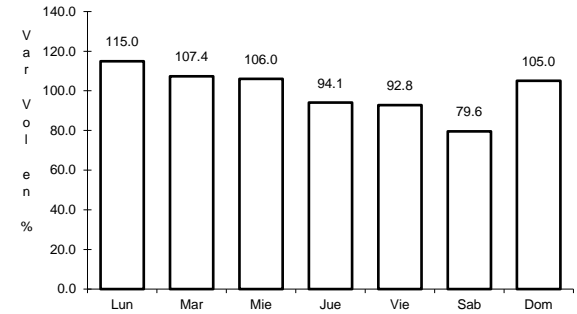
ruta: MEX-024



Km: 0.00 Tipo: 3 Sent: 0



Km: 110.00 Tipo: 1 Sent: 0

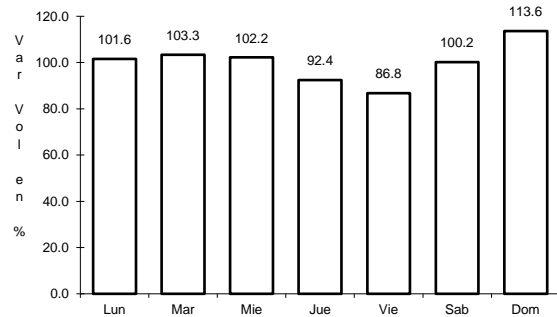


Km: 212.00 Tipo: 1 Sent: 0

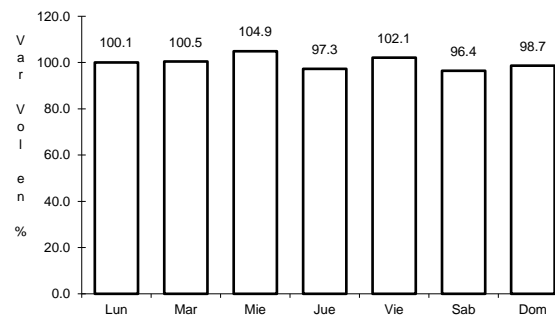
11 CARR: Hidalgo del Parral - Jiménez

CLAVE: 08444

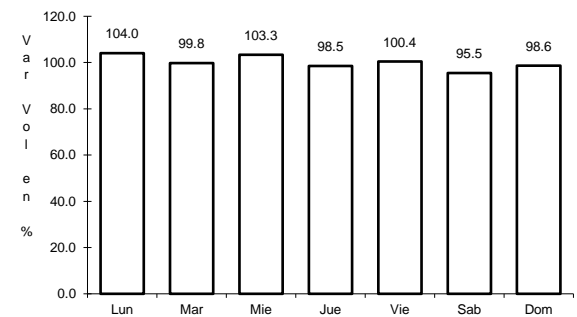
ruta: MEX-045



Km: 0.00 Tipo: 3 Sent: 1



Km: 0.00 Tipo: 3 Sent: 2

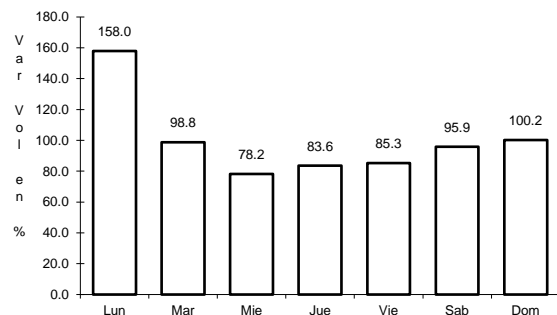


Km: 76.63 Tipo: 1 Sent: 1

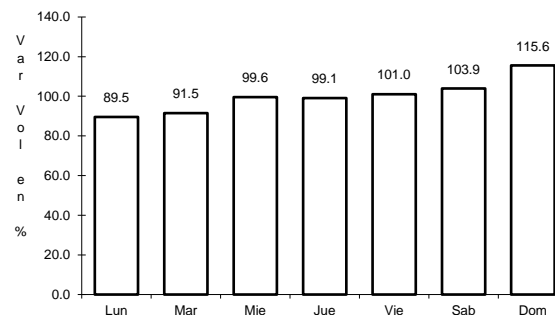
12 CARR: Janos - Agua Prieta

CLAVE: 00220

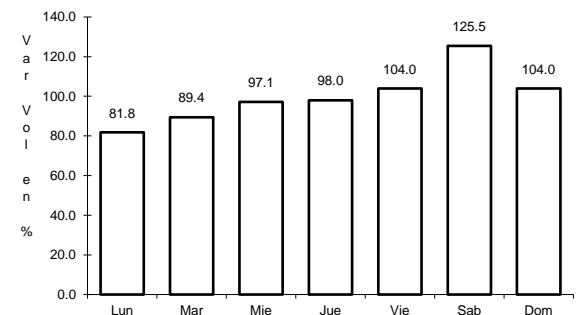
ruta: MEX-002



Km: 0.00 Tipo: 3 Sent: 0



Km: 56.00 Tipo: 3 Sent: 0

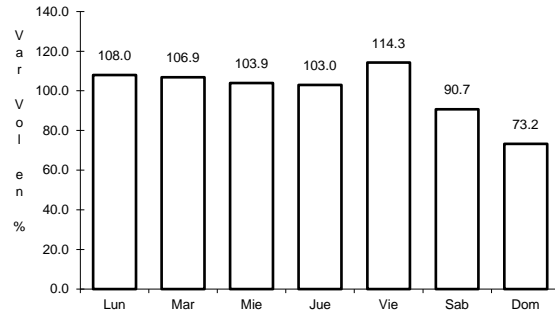


Km: 160.00 Tipo: 1 Sent: 0

13 CARR: Jerónimo - Sta. Teresa

CLAVE: 08043

RUTA: MEX-002



Km: 0.00

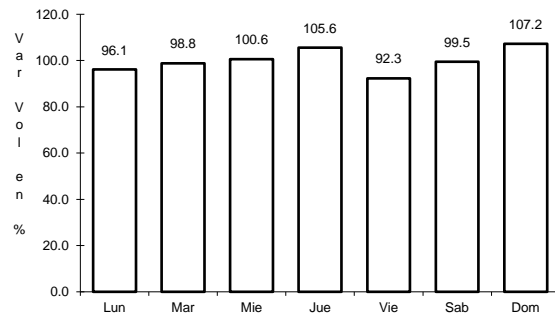
Tipo: 3

Sent: 0

14 CARR: La Junta - Yécora

CLAVE: 00065

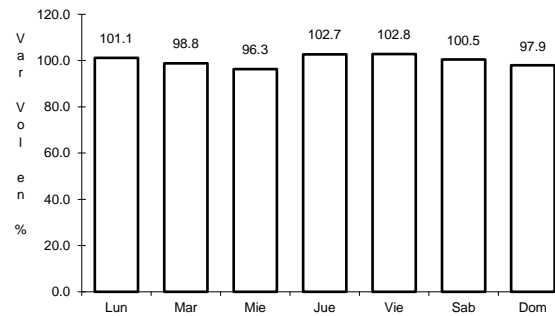
RUTA: MEX-016



Km: 0.00

Tipo: 3

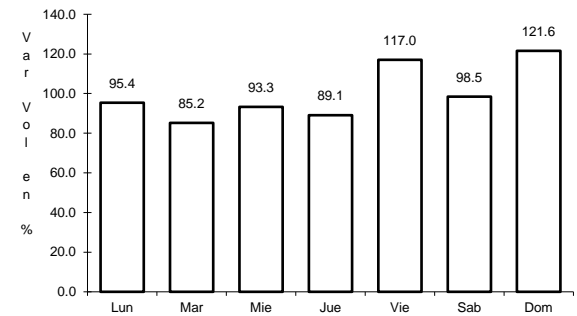
Sent: 0



Km: 70.00

Tipo: 3

Sent: 0



Km: 253.00

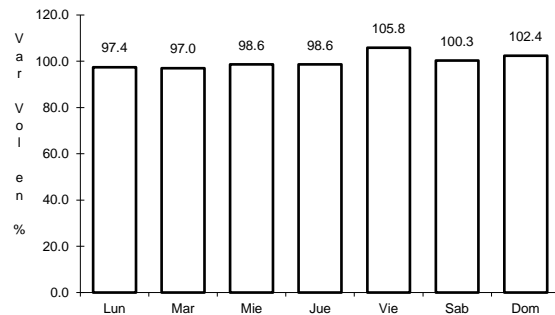
Tipo: 1

Sent: 0

15 CARR: Libramiento de Delicias - Meoqui

CLAVE: 08813

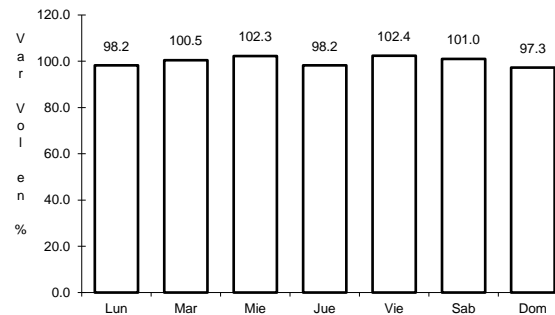
RUTA: MEX-045



Km: 0.00

Tipo: 3

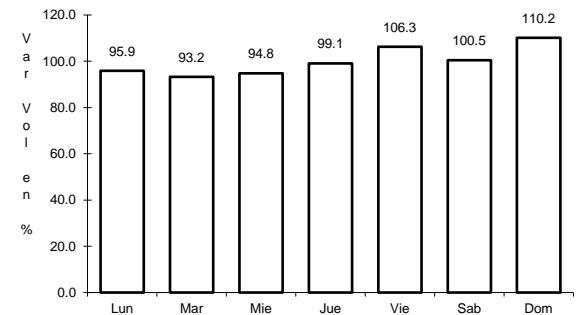
Sent: 1



Km: 0.00

Tipo: 3

Sent: 2



Km: 13.60

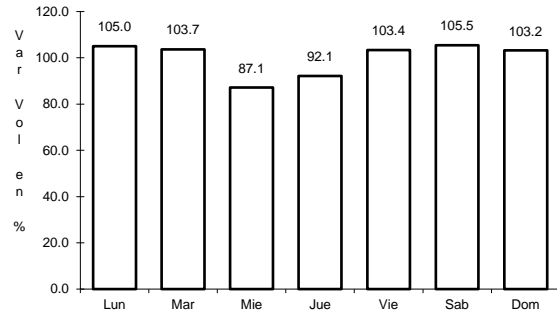
Tipo: 1

Sent: 1

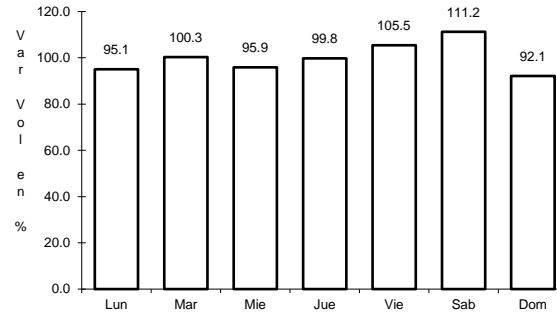
16 CARR: Porvenir - Cd. Juárez

CLAVE: 08169

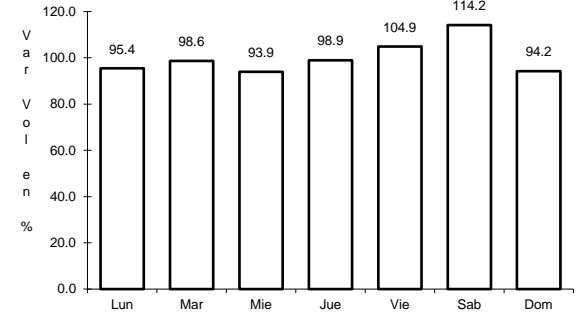
RUTA: MEX-002



Km: 1.67 Tipo: 3 Sent: 0



Km: 70.32 Tipo: 1 Sent: 1

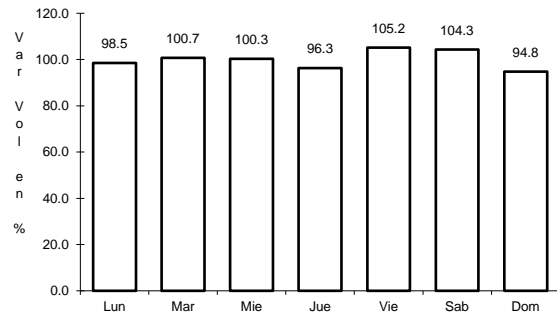


Km: 70.32 Tipo: 1 Sent: 2

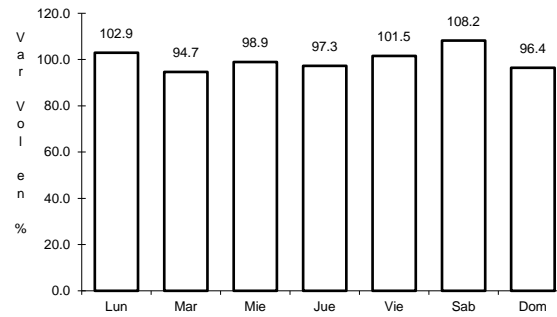
17 CARR: Ramal a Aeropuerto de Chihuahua

CLAVE: 08421

RUTA: MEX-016



Km: 0.00 Tipo: 3 Sent: 1

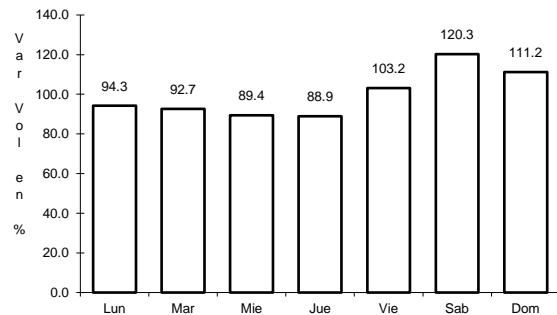


Km: 0.00 Tipo: 3 Sent: 2

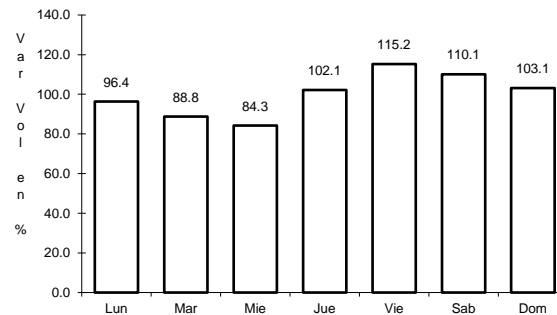
18 CARR: Ramal a Palomas

CLAVE: 08019

RUTA: MEX-002



Km: 0.00 Tipo: 3 Sent: 0

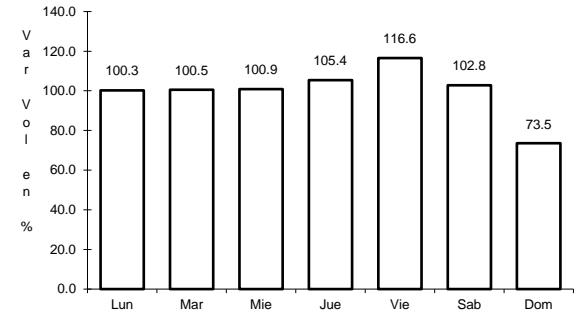
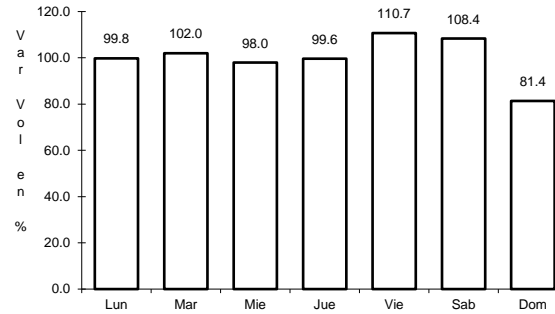
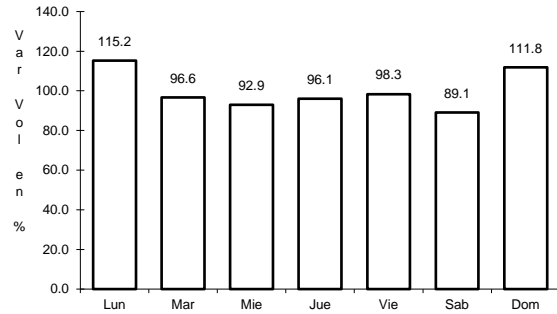


Km: 4.50 Tipo: 3 Sent: 0

19 CARR: Villa Ahumada - Cd. Juárez (Libre)

CLAVE: 08420

RUTA: MEX-045



Km: 83.63

Tipo: 3

Sent: 1

Km: 83.63

Tipo: 3

Sent: 2

Km: 201.35

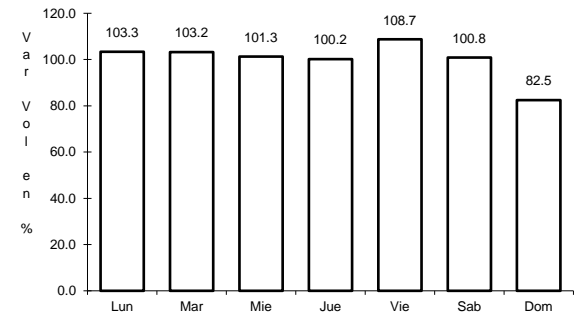
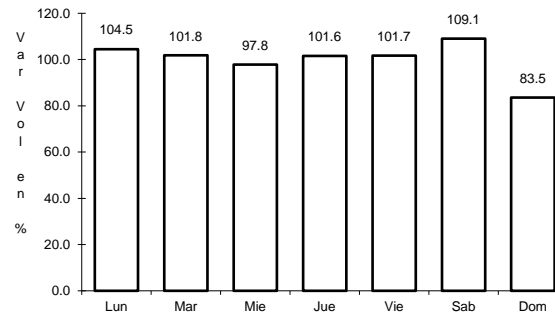
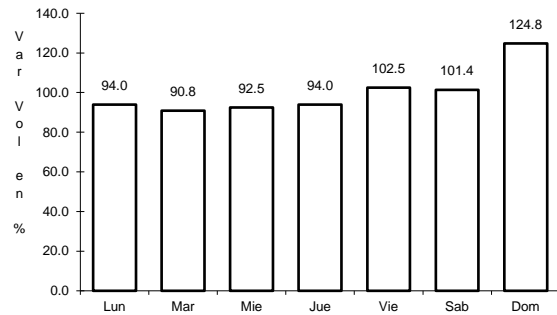
Tipo: 1

Sent: 1

20 CARR: Camargo - Delicias (Cuota)

CLAVE: 08418

RUTA: MEX-045D



Km: 72.00

Tipo: 1

Sent: 1

Km: 72.00

Tipo: 1

Sent: 2

Km: 138.00

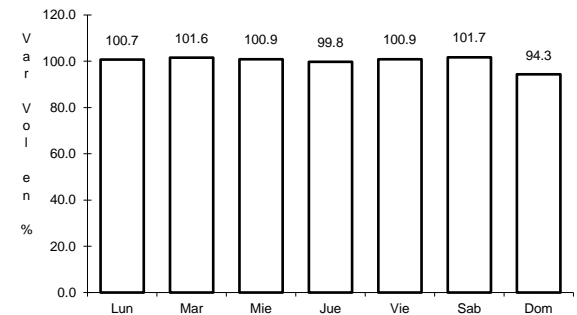
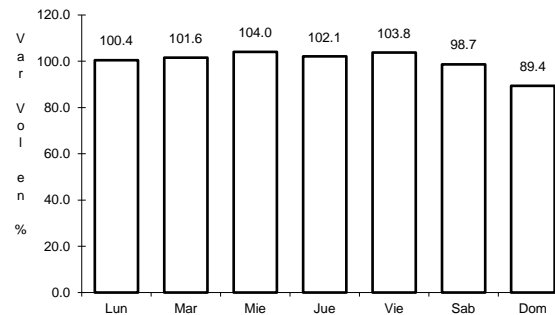
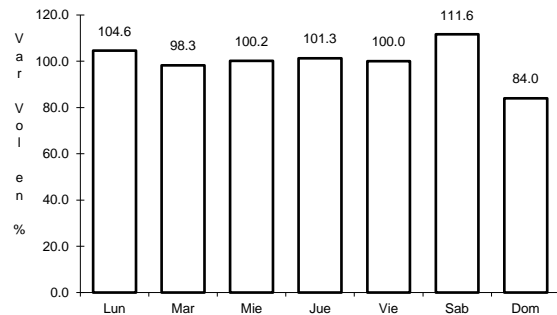
Tipo: 1

Sent: 1

21 CARR: Chihuahua - Sacramento (Cuota)

CLAVE: 08015

RUTA: MEX-045D



Km: 18.12

Tipo: 3

Sent: 1

Km: 18.12

Tipo: 3

Sent: 2

Km: 21.17

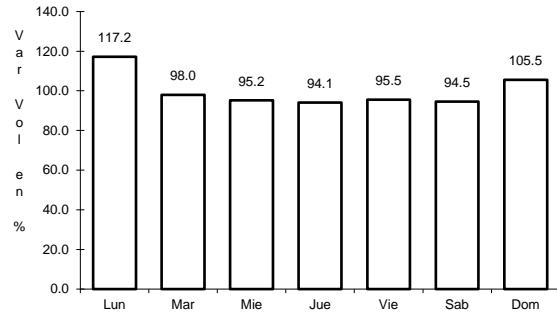
Tipo: 3

Sent: 1

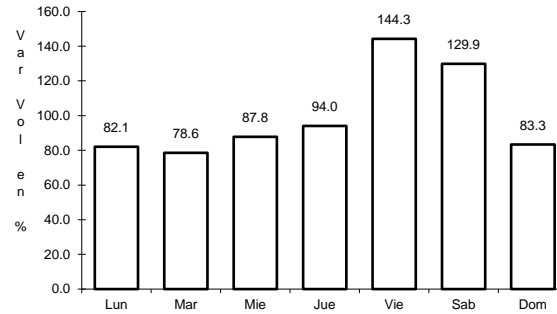
22 CARR: El Sueco - Villa Ahumada (Cuota)

CLAVE: 08420

RUTA: MEX-045D



Km: 0.00 Tipo: 3 Sent: 1

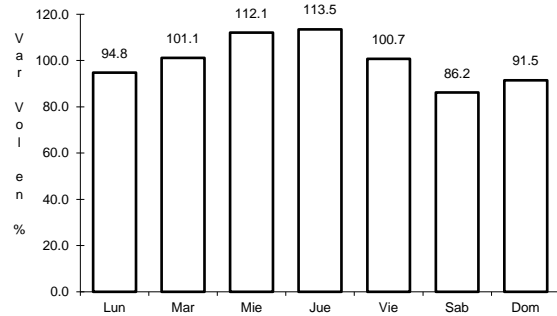


Km: 0.00 Tipo: 3 Sent: 2

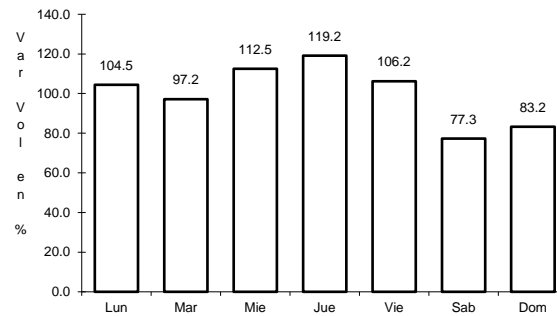
23 CARR: Gómez Palacio - Corralitos (Cuota)

CLAVE: 00016

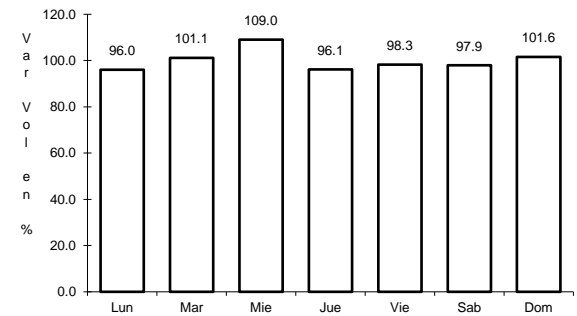
RUTA: MEX-049D



Km: 40.10 Tipo: 1 Sent: 1



Km: 40.10 Tipo: 1 Sent: 2

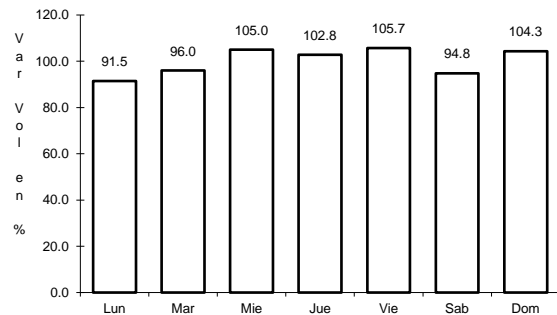


Km: 226.50 Tipo: 1 Sent: 1

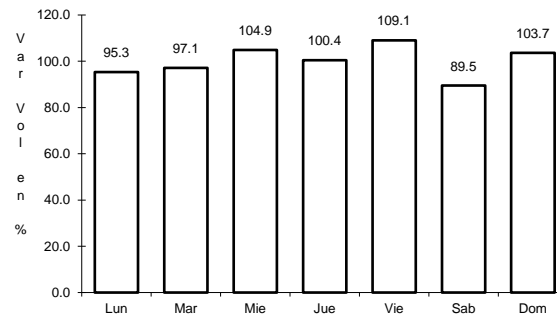
24 CARR: Jiménez - Camargo (Cuota)

CLAVE: 08418

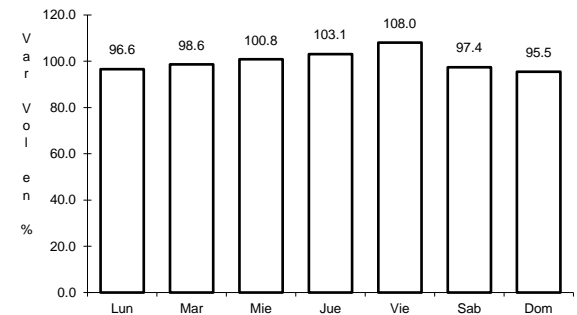
RUTA: MEX-045D



Km: 0.00 Tipo: 3 Sent: 1



Km: 0.00 Tipo: 3 Sent: 2

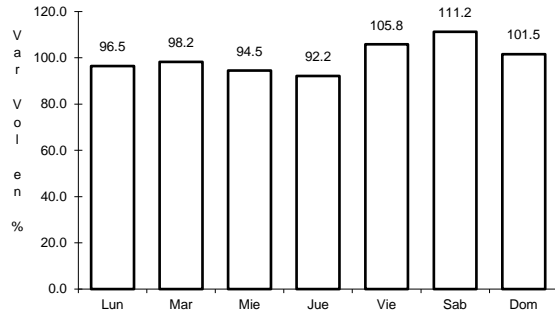


Km: 68.98 Tipo: 1 Sent: 1

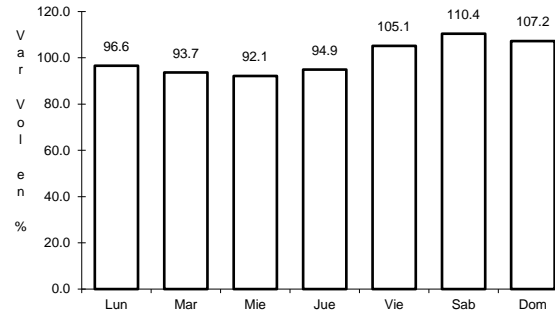
25 CARR: Libramiento Oriente Chihuahua (Cuota)

CLAVE:

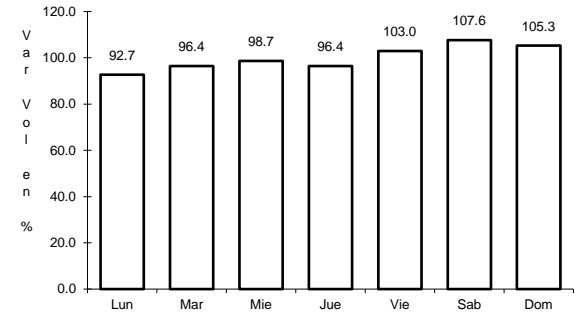
RUTA: MEX-045D



Km: 0.00 Tipo: 3 Sent: 0



Km: 22.00 Tipo: 1 Sent: 0

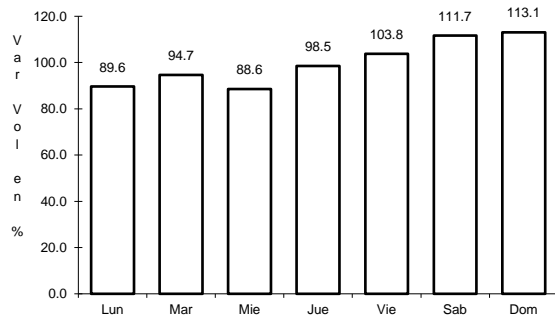


Km: 22.00 Tipo: 3 Sent: 0

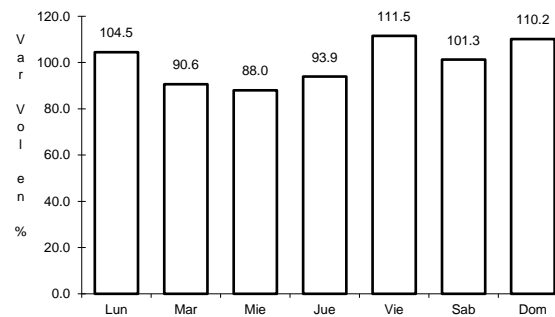
26 CARR: Ahumada - Ricardo Flores Magón

CLAVE: 08804

RUTA: CHIH



Km: 0.00 Tipo: 3 Sent: 0

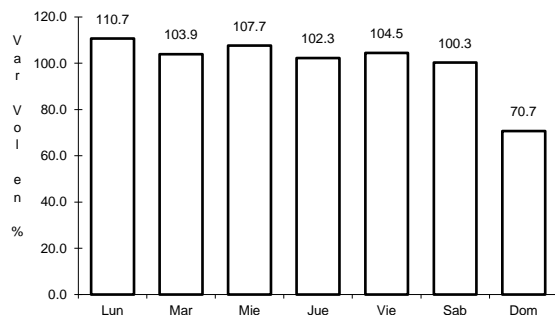


Km: 96.00 Tipo: 1 Sent: 0

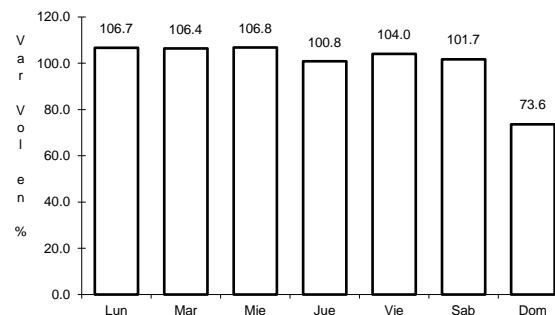
27 CARR: Cuauhtémoc - Buenaventura

CLAVE: 08015

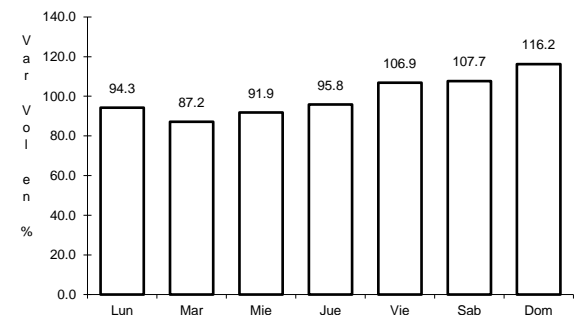
RUTA: CHIH



Km: 0.00 Tipo: 3 Sent: 1



Km: 0.00 Tipo: 3 Sent: 2

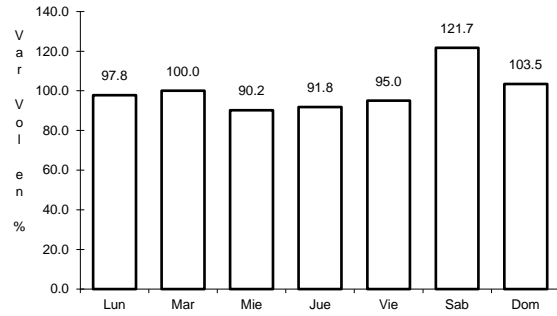


Km: 253.30 Tipo: 1 Sent: 0

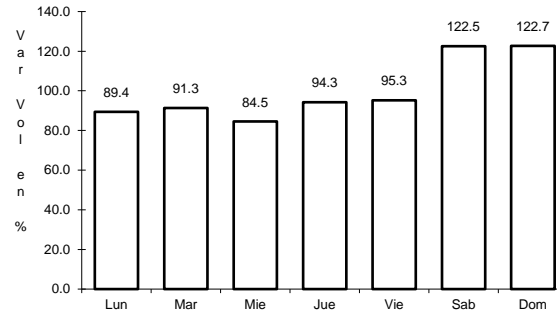
28 CARR: Delicias - Saucillo

CLAVE: 08007

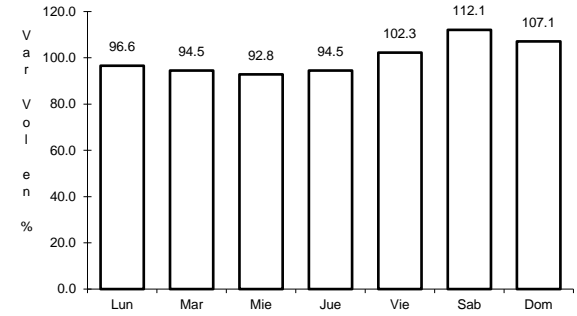
RUTA: CHIH-007



Km: 0.00 Tipo: 3 Sent: 0



Km: 17.00 Tipo: 1 Sent: 0

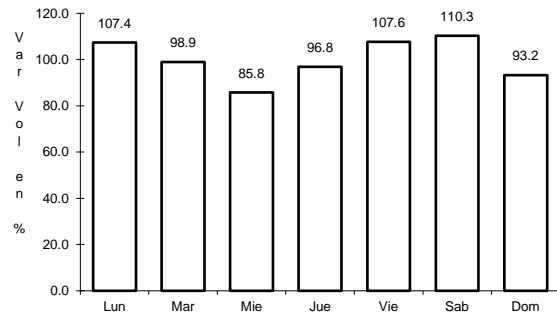


Km: 33.00 Tipo: 1 Sent: 0

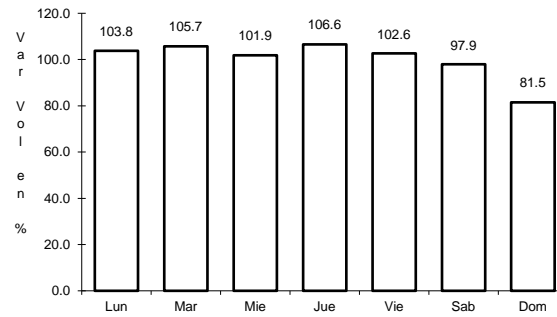
29 CARR: Ent. Peña Blanca - Ent. La Concha

CLAVE: 08493

RUTA: CHIH



Km: 0.00 Tipo: 3 Sent: 0

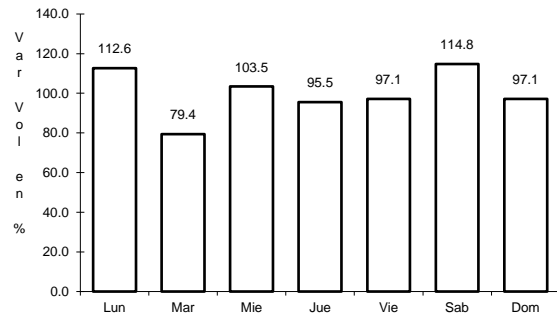


Km: 17.00 Tipo: 1 Sent: 0

30 CARR: Ent. Puerto Justo - Ent. Guachoic

CLAVE: 08044

RUTA: CHIH

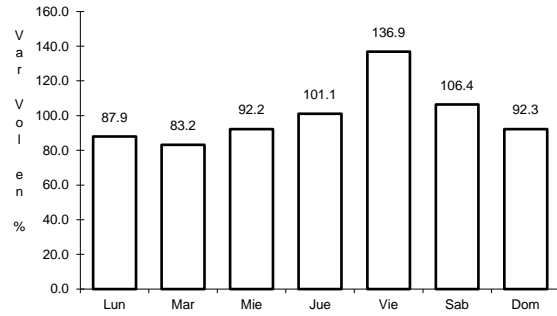


Km: 0.00 Tipo: 3 Sent: 0

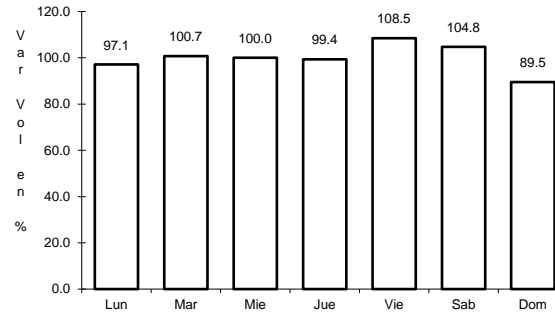
31 CARR: Jiménez - Camargo

CLAVE: 08021

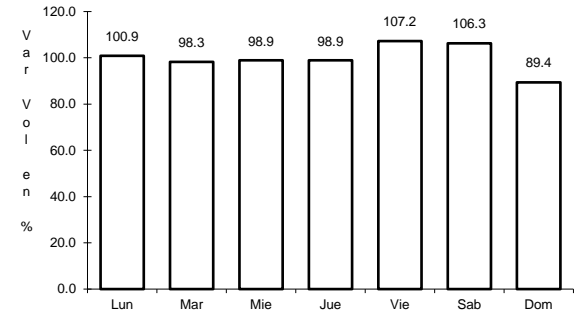
RUTA: CHIH-049



Km: 0.00 Tipo: 3 Sent: 0



Km: 65.80 Tipo: 3 Sent: 0

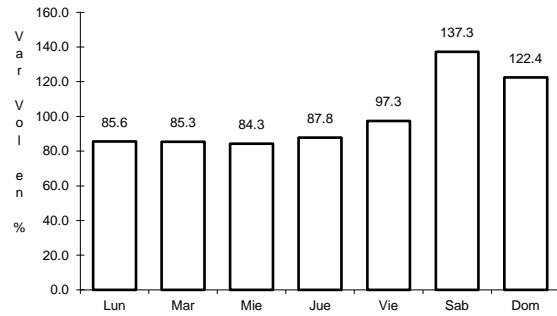


Km: 78.20 Tipo: 1 Sent: 0

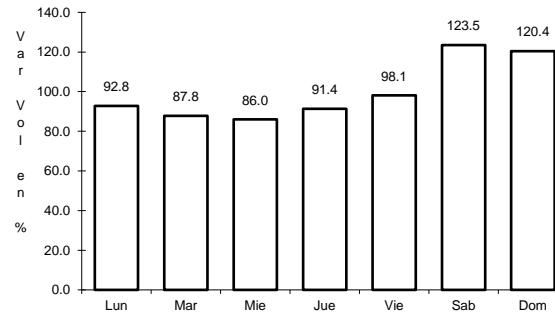
32 CARR: Lázaro Cárdenas - Ent. Colonia San José

CLAVE: 08004

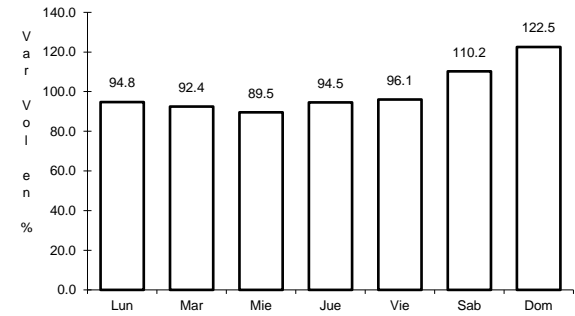
RUTA: CHIH-004



Km: 0.00 Tipo: 3 Sent: 1



Km: 0.00 Tipo: 3 Sent: 2

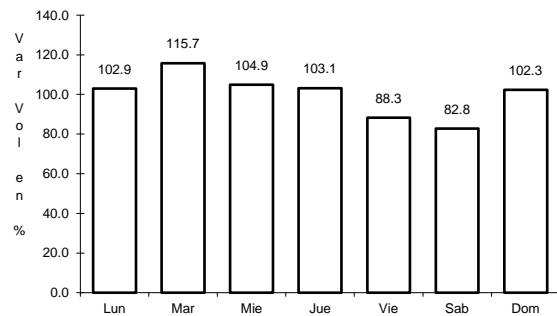


Km: 16.00 Tipo: 1 Sent: 0

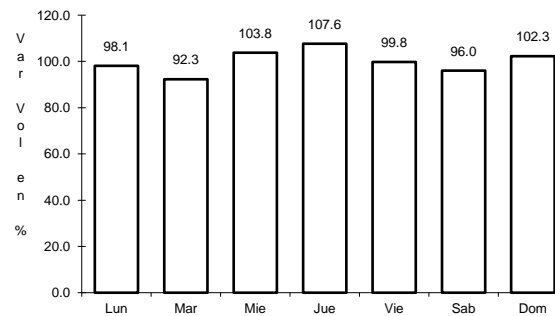
33 CARR: Libramiento de Hidalgo del Parral

CLAVE: 08221

RUTA: CHIH



Km: 8.00 Tipo: 3 Sent: 1

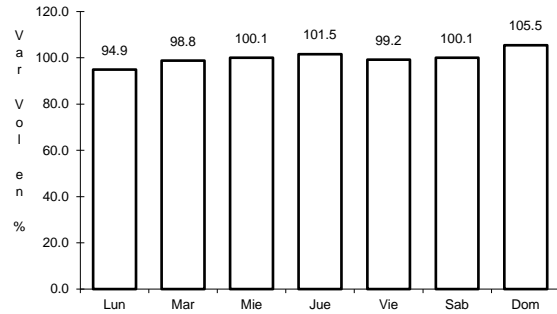


Km: 8.00 Tipo: 3 Sent: 2

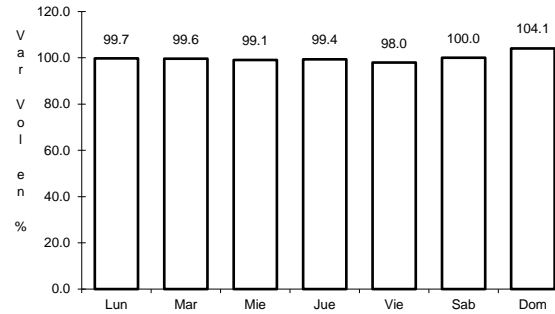
34 CARR: Libramiento de Jiménez

CLAVE: 08047

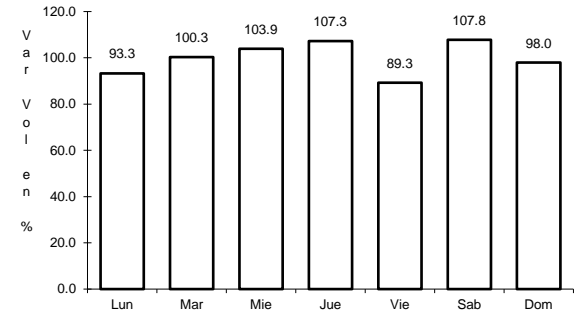
RUTA: CHIH



Km: 0.00 Tipo: 3 Sent: 1



Km: 0.00 Tipo: 3 Sent: 2

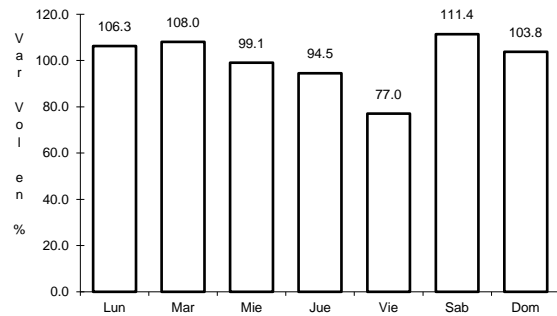


Km: 3.40 Tipo: 1 Sent: 1

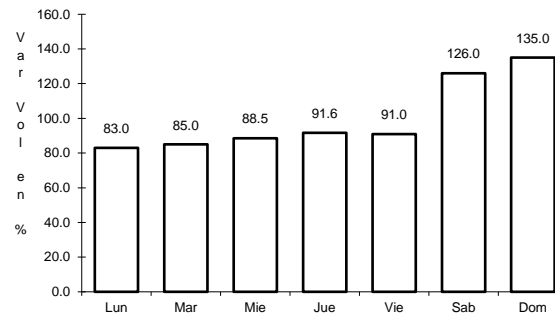
35 CARR: Meoqui - Julimes

CLAVE: 08005

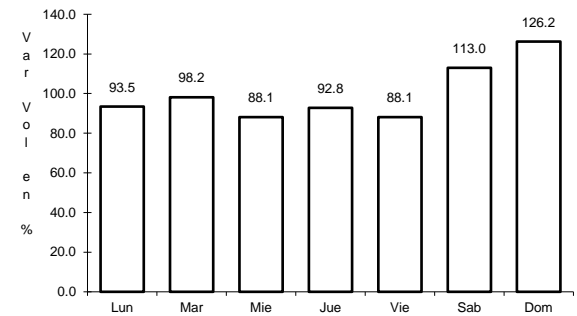
RUTA: CHIH-005



Km: 0.00 Tipo: 3 Sent: 0



Km: 15.40 Tipo: 3 Sent: 0

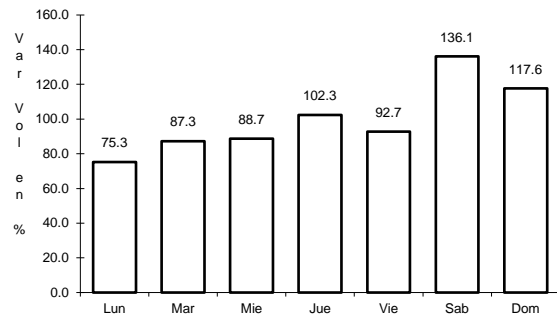


Km: 23.00 Tipo: 1 Sent: 0

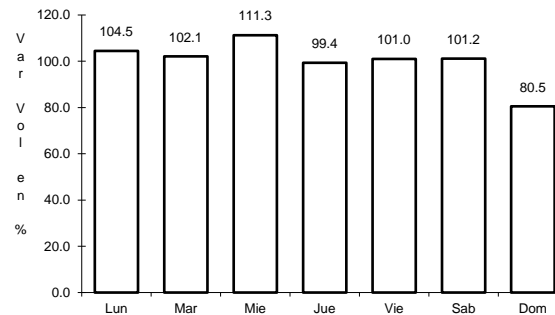
36 CARR: Ramal a San Pedro Creel

CLAVE: 08812

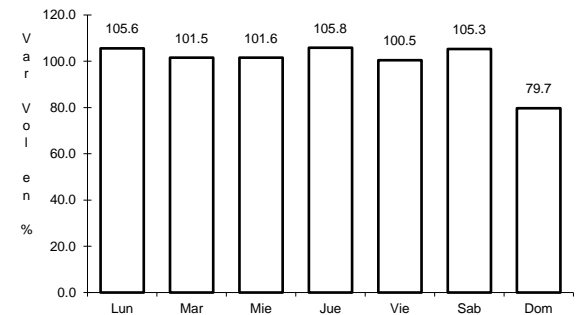
RUTA: CHIH-025



Km: 0.00 Tipo: 3 Sent: 0



Km: 58.00 Tipo: 3 Sent: 0

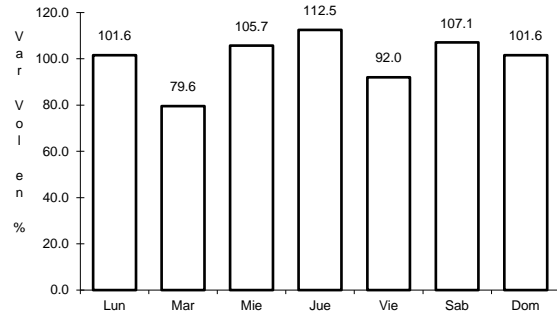


Km: 85.00 Tipo: 1 Sent: 0

37 CARR: Samachique - Batopilas

CLAVE:

RUTA: CHIH



Km: 0.00

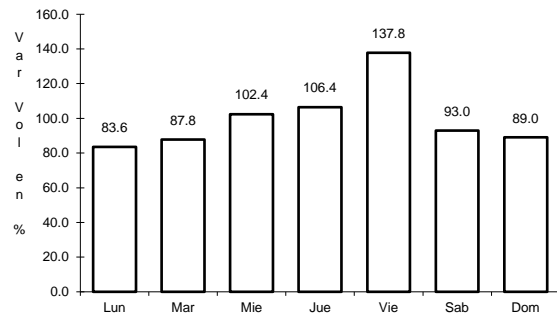
Tipo: 3

Sent: 0

38 CARR: San Juanito - Ent. Basaseachi

CLAVE: 08045

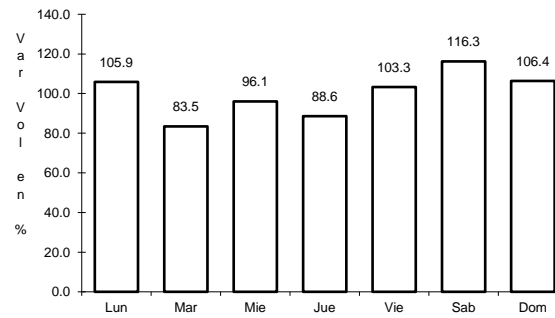
RUTA: CHIH



Km: 0.00

Tipo: 3

Sent: 0



Km: 84.00

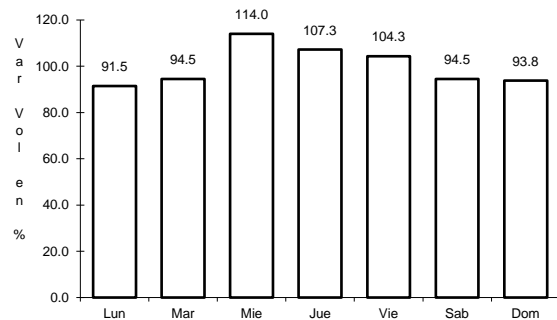
Tipo: 1

Sent: 0

39 CARR: San Pedro Creel - Guachochi

CLAVE:

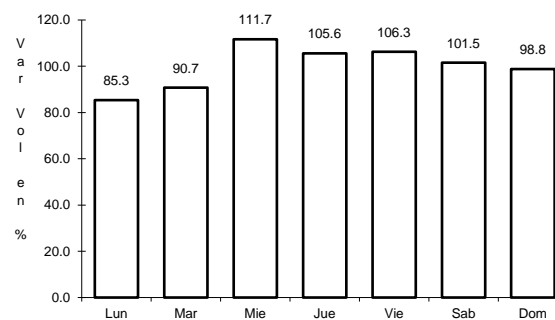
RUTA: CHIH-025



Km: 164.30

Tipo: 1

Sent: 0



Km: 164.30

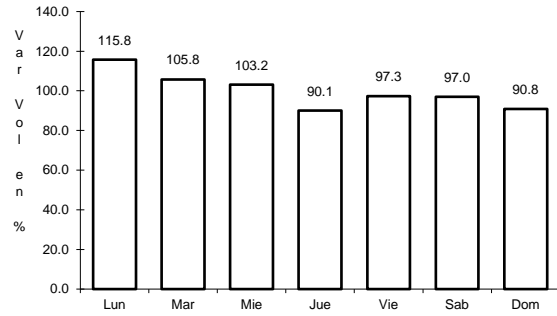
Tipo: 3

Sent: 0

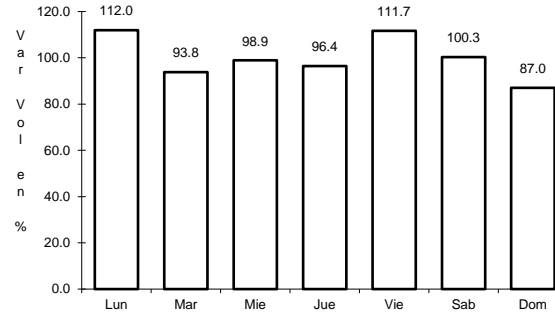
40 CARR: T. C. (Jiménez - Camargo) - Ojinaga

CLAVE: 08009

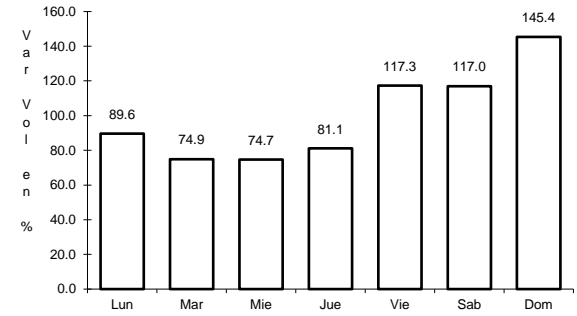
RUTA: CHIH-018



Km: 0.00 Tipo: 3 Sent: 1



Km: 97.00 Tipo: 3 Sent: 0

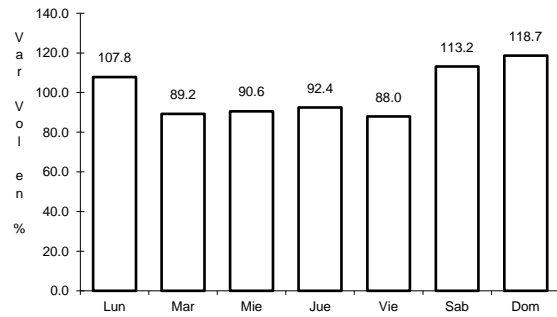


Km: 247.00 Tipo: 1 Sent: 0

41 CARR: T. Julimes - La Boquilla

CLAVE: 08009

RUTA: CHIH-018

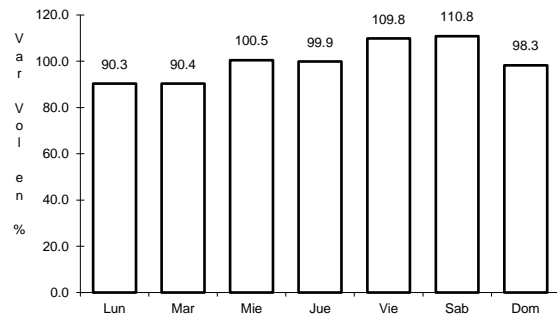


Km: 0.00 Tipo: 3 Sent: 0

42 CARR: Ent. El Álamo - Ent. Ricardo Flores Magón (Cuota)

CLAVE: 08046

RUTA: CHIH-D

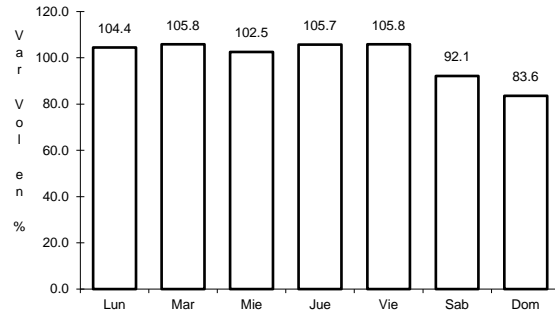


Km: 0.00 Tipo: 3 Sent: 0

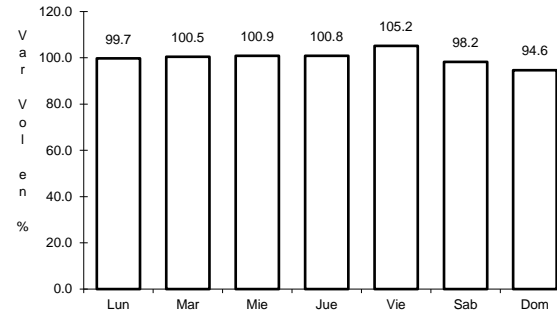
43 CARR: Ricardo Flores Magón - Galeana (Cuota)

CLAVE: 08019

RUTA: CHIH-D



Km: 0.00 Tipo: 3 Sent: 0

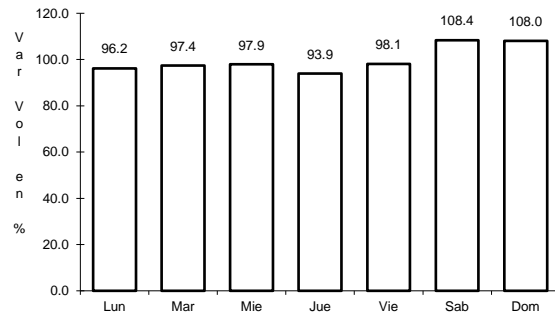


Km: 58.00 Tipo: 1 Sent: 0

44 CARR: Samalayuca - San Jerónimo (Cuota)

CLAVE: 08019

RUTA: CHIH-D

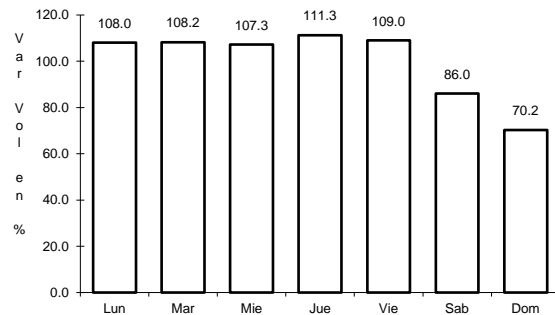


Km: 0.00 Tipo: 3 Sent: 0

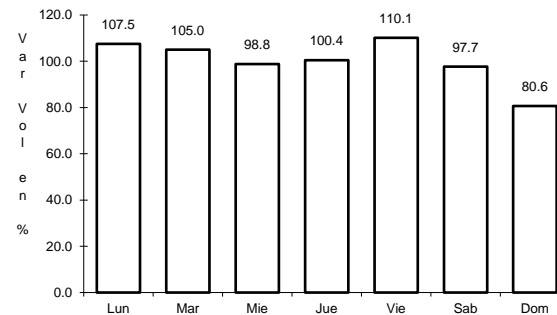
45 CARR: T. C. (Chihuahua - Ojinaga) - La Mula (Cuota)

CLAVE: 08170

RUTA: CHIH-D



Km: 0.00 Tipo: 3 Sent: 0

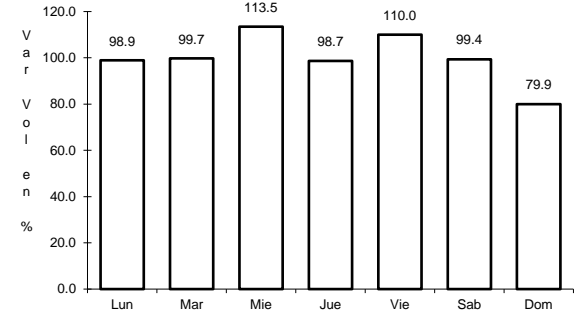
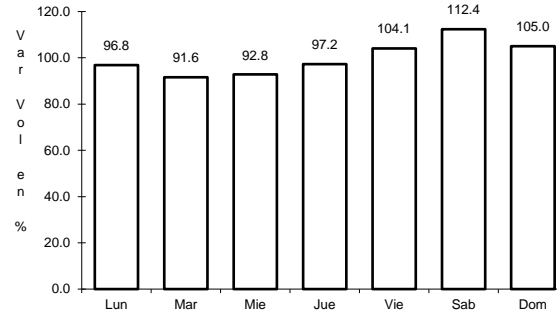
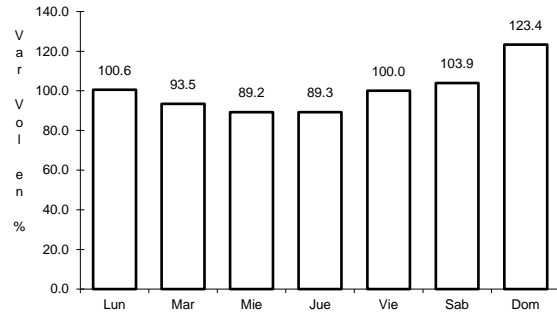


Km: 110.00 Tipo: 1 Sent: 0

46 CARR: Chihuahua - Madera

CLAVE: 08038

RUTA: CHIH-D-MEX-001-CHIH



Km: 10.50 Tipo: 1 Sent: 1

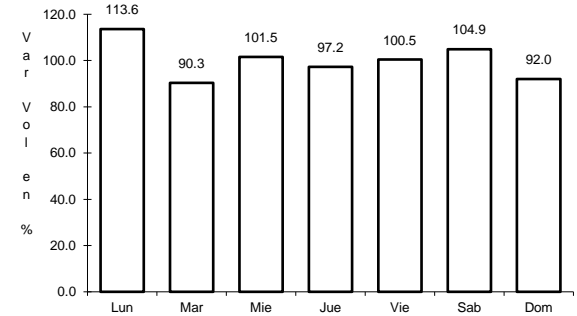
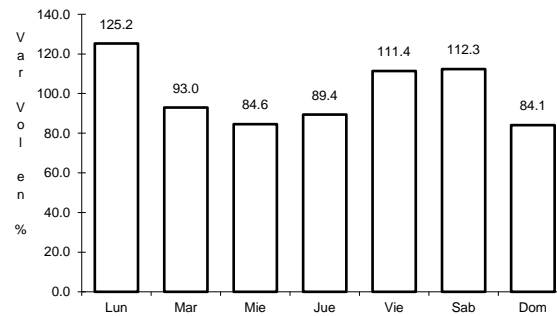
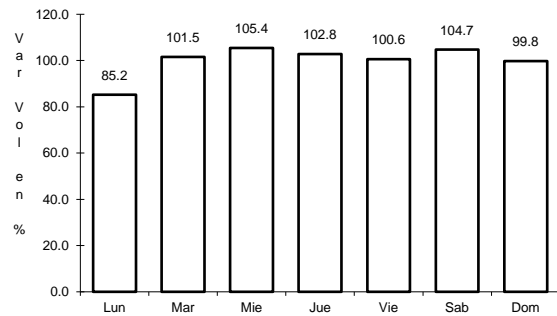
Km: 10.50 Tipo: 1 Sent: 2

Km: 261.30 Tipo: 3 Sent: 0

47 CARR: Ent. Agua Caliente - El Terrero

CLAVE: 08170

RUTA: CHIH-MEX



Km: 0.00 Tipo: 3 Sent: 0

Km: 22.00 Tipo: 1 Sent: 0

Km: 120.00 Tipo: 1 Sent: 0