

COLIMA

## ---RED FEDERAL LIBRE---

1 Cd. Guzmán - Colima	MEX-054
2 Colima - Ent. Tecomán	MEX-110
3 Ent. Playa Azul - Manzanillo	MEX-200
4 Jiquilpan - Colima	MEX-110
5 Libramiento Campos - Alameda	MEX
6 Libramiento de Colima	MEX-054
7 Libramiento de Manzanillo (Libre)	MEX-200
8 Libramiento de Manzanillo Norte	MEX-200
9 Manzanillo - Puerto Vallarta	MEX-200
10 Minatitlán - Ent. Pez Vela	MEX-098
11 Paso por La Salada	MEX-110
12 Paso por Los Asmoles	MEX-110
13 Ramal a Cerro de Los Juanes	MEX-098
14 Ramal a Cerro de Ortega	MEX-200
15 Ramal a Cuyutlán	MEX-200
16 Tecomán - Boca de Pascuales	MEX-200

## ---RED FEDERAL DE CUOTA---

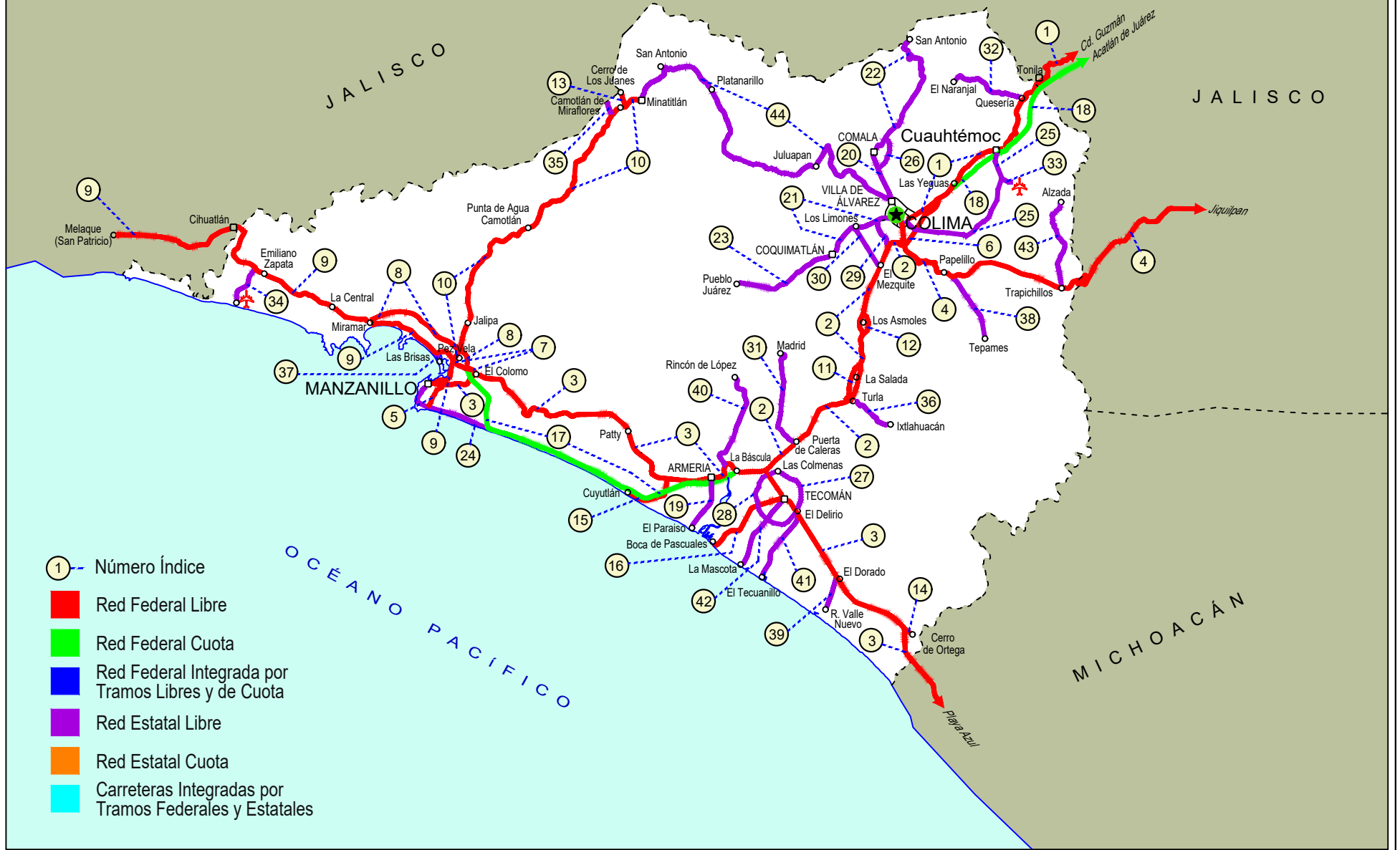
17 Armería - Manzanillo (Cuota)	MEX-200D
18 Guadalajara - Colima (Cuota)	MEX-054D

## ---RED ESTATAL LIBRE---

19 Armería - Playa El Paraíso	COL
20 Colima - Comala	COL-016
21 Colima - Coquimatlán	COL-034
22 Comala - San Antonio	COL-016
23 Coquimatlán - Pueblo Juárez	COL-034
24 Costera Laguna de Cuyutlán	COL
25 Cuauhtémoc - Colima	COL-019
26 Libramiento de Comala	COL-016
27 Libramiento de Tecomán	COL
28 Libramiento Poniente Arco Sur de Tecomán	COL
29 Libramiento Poniente de Colima	COL
30 Los Limones - Loma de Juárez	COL
31 Puerta de Caleras - Madrid	COL-014
32 Quesería - El Naranjal	COL-001
33 Ramal a Aeropuerto de Colima	COL
34 Ramal a Aeropuerto Manzanillo	COL
35 Ramal a Camotlán de Miraflores	COL
36 Ramal a Ixtlahuacán	COL-005
37 Ramal a Las Brisas	COL
38 Ramal a Los Tepames	COL-004
39 Ramal a Rancho Valle Nuevo	COL
40 Ramal a Rincón de López	COL
41 Ramal a Tecuanillo	COL-009
42 Tecomán - La Mascota	COL
43 Trapichillos - Estación Alzada	COL-003
44 Villa de Álvarez - Minatitlán	COL

# 06 COLIMA

SECRETARÍA DE COMUNICACIONES Y TRANSPORTES  
DIRECCIÓN GENERAL DE SERVICIOS TÉCNICOS





COLIMA

1 CARR: Cd. Guzmán - Colima

CLAVE: 00117

RUTA: MEX-054

AÑO: 2021

LUGAR	ESTACION				CLASIFICACION VEHICULAR EN PORCIENTO										COORDENADAS					
	KM	TE	SC	TDPA	M	A	B	C2	C3	T3S2	T3S3	T3S2R4	OTROS	A	B	C	K'	D	LATITUD	LONGITUD
Cd. Guzmán	0.00	3	1	10994	4.2	87.2	0.9	3.4	1.0	0.9	0.9	0.9	0.6	91.4	0.9	7.7	0.074	0.513	19.676222	-103.475928
Cd. Guzmán	0.00	3	2	10421	4.6	86.1	0.9	3.6	1.1	1.0	1.0	1.0	0.7	90.7	0.9	8.4	0.078	0.513	19.676179	-103.475821
T. Izq. Zapotiltic	4.35	3	0	5151	2.8	87.2	1.3	3.1	2.5	1.4	0.9	0.4	0.4	90.0	1.3	8.7	0.088	0.500	19.646043	-103.471687
T. Der. Tepozal y Nevado de Colima	15.50	1	0	4768	2.4	89.3	0.8	3.5	1.8	1.1	0.6	0.2	0.3	91.7	0.8	7.5	0.089	0.514	19.570768	-103.444572
Atenquique	23.10	1	0	3058	4.9	78.7	2.6	3.0	2.7	5.8	1.5	0.4	0.4	83.6	2.6	13.8	0.082	0.522	19.529774	-103.434952
Atenquique	23.10	3	0	2563	6.0	80.0	1.7	2.7	3.0	4.5	0.9	0.5	0.7	86.0	1.7	12.3	0.078	0.538	19.525756	-103.439971
Lim. Edos. Term. Jal. Ppia. Col.	53.80																			
T. Der. Quesería	56.90	1	0	3447	6.8	81.0	1.8	4.5	2.4	1.9	1.0	0.4	0.2	87.8	1.8	10.4	0.084	0.514	19.393312	-103.561749
Cuahtémoc	65.40	1	0	3973	7.8	87.1	0.8	3.1	0.6	0.3	0.1	0.1	0.1	94.9	0.8	4.3	0.096	0.504	19.333608	-103.590712
Cuahtémoc	65.40	3	0	4943	6.5	86.4	1.1	3.3	1.2	0.6	0.4	0.3	0.2	92.9	1.1	6.0	0.080	0.513	19.324196	-103.609790
T. C. Guadalajara - Colima (Cuota)	72.40	3	1	14051	2.4	77.2	3.5	3.0	1.7	5.7	1.6	4.5	0.4	79.6	3.5	16.9	0.091	0.508	19.286540	-103.656201
T. C. Guadalajara - Colima (Cuota)	72.40	3	2	13611	2.3	76.9	3.6	3.0	1.7	5.8	1.7	4.6	0.4	79.2	3.6	17.2	0.091	0.508	19.286423	-103.656145
El Trapiche	73.60	3	1	15480	1.9	79.4	1.9	3.4	1.7	4.5	3.1	3.3	0.8	81.3	1.9	16.8	0.081	0.535	19.282537	-103.662257
El Trapiche	73.60	3	2	13478	1.9	78.5	1.8	3.6	1.9	4.6	3.4	3.5	0.8	80.4	1.8	17.8	0.080	0.535	19.282419	-103.662173
T. Izq. Libramiento de Colima	77.10	1	1	18913	1.9	80.0	1.7	3.2	1.7	4.1	3.0	3.5	0.9	81.9	1.7	16.4	0.089	0.542	19.268320	-103.676625
T. Izq. Libramiento de Colima	77.10	1	2	15986	2.2	78.7	1.7	3.4	1.8	4.5	3.3	3.5	0.9	80.9	1.7	17.4	0.086	0.542	19.268112	-103.676503
Colima	80.60																			

2 CARR: Colima - Ent. Tecomán

CLAVE: 06119

RUTA: MEX-110

AÑO: 2021

LUGAR	ESTACION				CLASIFICACION VEHICULAR EN PORCIENTO										COORDENADAS					
	KM	TE	SC	TDPA	M	A	B	C2	C3	T3S2	T3S3	T3S2R4	OTROS	A	B	C	K'	D	LATITUD	LONGITUD
T. C. Jiquilpan - Colima	0.00	3	1	17245	2.9	78.2	3.3	3.2	1.7	4.9	2.2	2.8	0.8	81.1	3.3	15.6	0.075	0.524	19.215110	-103.734197
T. C. Jiquilpan - Colima	0.00	3	2	15659	3.5	77.7	3.2	3.2	1.7	4.8	2.4	2.7	0.8	81.2	3.2	15.6	0.064	0.524	19.214796	-103.733230
T. Izq. Libramiento Poniente de Colima	2.00	3	1	12770	3.7	75.8	3.8	3.8	1.7	5.3	2.2	2.9	0.8	79.5	3.8	16.7	0.065	0.503	19.204522	-103.743647
T. Izq. Libramiento Poniente de Colima	2.00	3	2	12902	3.4	76.2	3.7	3.8	1.6	5.3	2.2	2.9	0.9	79.6	3.7	16.7	0.077	0.503	19.204458	-103.743467
T. Izq. Los Asmoles	13.00	3	1	11267	3.0	73.3	3.2	4.6	2.0	5.8	2.2	5.0	0.9	76.3	3.2	20.5	0.069	0.501	19.108445	-103.775971
T. Izq. Los Asmoles	13.00	3	2	11231	2.6	73.4	3.1	4.6	2.0	6.0	2.3	5.1	0.9	76.0	3.1	20.9	0.082	0.501	19.108444	-103.775866
T. Der. Caleras	34.55	1	1	11469	4.3	71.1	4.1	4.6	2.0	5.7	2.1	5.3	0.8	75.4	4.1	20.5	0.077	0.500	18.981479	-103.853450
T. Der. Caleras	34.55	1	2	11460	4.3	71.1	4.1	4.6	1.9	5.7	2.2	5.3	0.8	75.4	4.1	20.5	0.081	0.500	18.981425	-103.853393
T. C. Ent. Playa Azul - Manzanillo	40.10	1	1	12437	3.3	72.1	4.1	4.2	1.9	5.8	2.1	5.5	1.0	75.4	4.1	20.5	0.082	0.502	18.963746	-103.874856
T. C. Ent. Playa Azul - Manzanillo	40.10	1	2	12360	3.6	71.8	4.1	4.2	1.9	5.8	2.2	5.4	1.0	75.4	4.1	20.5	0.080	0.502	18.963601	-103.874895

COLIMA

3 CARR: Ent. Playa Azul - Manzanillo

CLAVE: 00495

RUTA: MEX-200

AÑO: 2021

LUGAR	ESTACION				CLASIFICACION VEHICULAR EN PORCIENTO										COORDENADAS					
	KM	TE	SC	TDPA	M	A	B	C2	C3	T3S2	T3S3	T3S2R4	OTROS	A	B	C	K'	D	LATITUD	LONGITUD
T. C. Carapan - Playa Azul	0.00	3	0	4041	6.8	80.1	1.7	7.0	1.8	1.1	0.3	0.9	0.3	86.9	1.7	11.4	0.082	0.501	18.019778	-102.340798
Caleta de Campos	50.24	1	0	2980	11.3	77.8	0.8	7.5	0.9	0.9	0.4	0.3	0.1	89.1	0.8	10.1	0.087	0.505	18.077137	-102.745586
Caleta de Campos	50.24	3	0	1652	13.2	75.1	0.8	6.3	1.8	1.8	0.6	0.4	0.0	88.3	0.8	10.9	0.091	0.500	18.080560	-102.768404
Tizupan	106.60	1	0	562	18.6	60.9	3.2	8.2	3.3	3.3	1.9	0.6	0.0	79.5	3.2	17.3	0.116	0.503	18.227072	-103.126990
Maruata	149.75	1	0	533	26.4	58.4	1.9	5.1	2.5	2.8	2.1	0.5	0.3	84.8	1.9	13.3	0.111	0.516	18.273370	-103.342259
Maruata	149.75	3	0	1009	18.3	62.5	2.1	8.7	3.2	2.9	1.9	0.4	0.0	80.8	2.1	17.1	0.123	0.503	18.278023	-103.352251
T. Der. Aquila	190.10	1	0	1109	13.1	73.2	1.6	6.9	1.6	2.1	1.2	0.3	0.0	86.3	1.6	12.1	0.085	0.505	18.560790	-103.611757
T. Der. Aquila	190.10	3	0	2314	12.2	74.8	1.4	5.4	1.8	3.0	1.2	0.2	0.0	87.0	1.4	11.6	0.071	0.515	18.566460	-103.623469
Lim. Edos. Term. Mich. Ppia. Col.	229.60																			
Cerro de Ortega	233.20	1	0	5370	16.9	65.1	2.0	3.6	1.4	4.8	5.1	0.6	0.5	82.0	2.0	16.0	0.106	0.523	18.734408	-103.723767
El Balcón	242.95	1	0	5815	10.6	68.2	1.9	4.0	1.7	5.5	7.0	0.6	0.5	78.8	1.9	19.3	0.088	0.516	18.783558	-103.772485
El Balcón	242.95	3	0	5942	10.0	69.2	2.3	3.7	1.7	5.5	6.4	0.5	0.7	79.2	2.3	18.5	0.081	0.517	18.786741	-103.781398
Cofradía de Morelos	252.45	1	0	8375	11.7	73.9	0.9	5.1	2.0	2.6	3.1	0.3	0.4	85.6	0.9	13.5	0.096	0.526	18.859208	-103.834408
Cofradía de Morelos	252.45	3	1	4321	12.2	73.6	1.0	7.1	1.6	2.1	1.8	0.3	0.3	85.8	1.0	13.2	0.107	0.502	18.879223	-103.847322
Cofradía de Morelos	252.45	3	2	4351	11.7	73.7	1.1	7.5	1.8	1.9	1.6	0.3	0.4	85.4	1.1	13.5	0.125	0.502	18.879196	-103.847379
Tecomán	258.15																			
T. C. Colima - Ent. Tecomán	263.75	1	1	5809	17.4	65.5	1.4	7.5	2.5	2.2	2.5	0.6	0.4	82.9	1.4	15.7	0.099	0.527	18.895780	-103.858089
T. C. Colima - Ent. Tecomán	263.75	1	2	6480	14.7	69.6	1.4	7.0	1.9	2.1	2.4	0.5	0.4	84.3	1.4	14.3	0.101	0.527	18.895736	-103.858146
T. C. Colima - Ent. Tecomán	263.75	3	1	11362	6.1	74.0	2.6	2.9	2.6	5.1	1.6	4.6	0.5	80.1	2.6	17.3	0.090	0.561	18.944638	-103.910340
T. C. Colima - Ent. Tecomán	263.75	3	2	10667	6.1	73.9	2.6	2.9	2.6	5.1	1.7	4.6	0.5	80.0	2.6	17.4	0.095	0.561	18.944584	-103.910350
T. Der. Rincón de López	269.70	1	0	5319	10.0	66.9	2.2	5.2	2.3	10.1	2.5	0.7	0.1	76.9	2.2	20.9	0.082	0.533	18.945557	-103.936421
Armería	272.80	1	0	5284	20.5	56.3	3.4	4.7	3.0	9.1	2.3	0.6	0.1	76.8	3.4	19.8	0.080	0.504	18.940949	-103.947552
T. Izq. Cuyutlán	278.70	1	0	3528	16.8	47.4	4.1	5.7	3.7	15.3	5.7	1.2	0.1	64.2	4.1	31.7	0.070	0.519	18.935546	-104.018666
Santa Rita	292.50	1	0	3629	16.9	50.2	3.7	5.5	3.6	13.6	4.9	1.5	0.1	67.1	3.7	29.2	0.062	0.507	18.994940	-104.068582
Santa Rita	292.50	3	0	4498	17.5	49.9	3.1	5.7	3.4	13.7	5.1	1.5	0.1	67.4	3.1	29.5	0.062	0.503	19.013364	-104.099101
Las Nuevas Juntas	309.60	1	0	4637	15.1	46.7	3.6	5.0	4.8	15.8	7.0	1.9	0.1	61.8	3.6	34.6	0.059	0.519	19.040453	-104.215335
T. Der. Libramiento de Manzanillo (Libre)	312.65	1	0	10330	12.1	60.1	1.6	4.6	4.0	8.8	3.2	5.2	0.4	72.2	1.6	26.2	0.067	0.510	19.055514	-104.235915
T. Der. Libramiento de Manzanillo (Libre)	312.65	3	0	5237	26.4	63.3	1.4	4.2	2.4	0.9	0.2	1.1	0.1	89.7	1.4	8.9	0.070	0.508	19.055643	-104.242976
Manzanillo	321.12	1	0	8043	16.5	71.8	0.8	7.7	1.3	0.7	0.5	0.4	0.3	88.3	0.8	10.9	0.089	0.508	19.049422	-104.292194

4 CARR: Jiquilpan - Colima

CLAVE: 00156

RUTA: MEX-110

AÑO: 2021

LUGAR	ESTACION				CLASIFICACION VEHICULAR EN PORCIENTO										COORDENADAS					
	KM	TE	SC	TDPA	M	A	B	C2	C3	T3S2	T3S3	T3S2R4	OTROS	A	B	C	K'	D	LATITUD	LONGITUD
Jiquilpan	0.00	3	0	5589	4.0	85.4	1.3	3.3	1.8	2.7	0.6	0.8	0.1	89.4	1.3	9.3	0.077	0.504	19.994641	-102.744442

COLIMA

4 CARR: Jiquilpan - Colima

CLAVE: 00156

RUTA: MEX-110

AÑO: 2021

LUGAR	ESTACION				CLASIFICACION VEHICULAR EN PORCIENTO										COORDENADAS					
	KM	TE	SC	TDPA	M	A	B	C2	C3	T3S2	T3S3	T3S2R4	OTROS	A	B	C	K'	D	LATITUD	LONGITUD
San José de Gracia	37.93	1	0	4474	6.2	88.7	0.6	1.8	1.1	0.9	0.2	0.2	0.3	94.9	0.6	4.5	0.086	0.502	20.001192	-103.013248
Lim. Edos. Term. Mich. Ppia. Jal.	41.00																			
Mazamitla	48.65	1	0	4669	6.7	85.9	0.7	2.8	1.6	1.8	0.1	0.1	0.3	92.6	0.7	6.7	0.077	0.505	19.940443	-103.008698
Mazamitla	48.65	3	0	4673	6.0	83.2	1.2	3.6	2.1	2.5	0.7	0.5	0.2	89.2	1.2	9.6	0.112	0.508	19.923814	-103.054412
Villa de Contla	84.25	3	0	4547	6.4	83.4	1.0	3.1	2.2	2.4	0.8	0.6	0.1	89.8	1.0	9.2	0.082	0.505	19.746320	-103.185379
T. Izq. Tamazula de Gordiano (2º Acceso)	96.70	3	0	8531	6.6	84.1	1.2	3.1	1.7	2.3	0.5	0.4	0.1	90.7	1.2	8.1	0.080	0.504	19.683146	-103.262691
T. Der. Cd. Guzmán	108.50	1	0	6260	3.4	85.1	1.4	3.2	2.8	3.0	0.8	0.1	0.2	88.5	1.4	10.1	0.084	0.506	19.647055	-103.335738
T. Der. Cd. Guzmán	108.50	3	0	4026	3.8	83.0	1.0	3.2	5.5	1.8	1.2	0.3	0.2	86.8	1.0	12.2	0.066	0.518	19.642252	-103.335065
T. Der. Cerca Lisa	110.00	1	0	1480	6.1	83.1	0.6	3.0	6.2	0.3	0.3	0.1	0.3	89.2	0.6	10.2	0.101	0.505	19.630708	-103.331115
Tecalitlán	132.00	3	0	2973	3.4	79.2	2.9	12.7	1.4	0.2	0.1	0.0	0.1	82.6	2.9	14.5	0.068	0.502	19.462309	-103.318842
T. Der. Atenquique	137.67	3	0	1701	5.3	78.2	4.2	7.8	1.6	1.6	0.9	0.2	0.2	83.5	4.2	12.3	0.084	0.507	19.455899	-103.349721
Pihuamo	168.19	3	0	2698	6.0	78.9	1.8	8.8	3.5	0.4	0.3	0.0	0.3	84.9	1.8	13.3	0.083	0.509	19.247112	-103.397269
Lim. Edos. Term. Jal. Ppia. Col.	189.60																			
T. Der. Estación Alzada	198.60	3	0	1603	5.7	78.1	0.6	8.9	1.5	2.6	2.4	0.1	0.1	83.8	0.6	15.6	0.078	0.506	19.163408	-103.535012
T. Izq. Los Tepames	214.20	1	0	2189	5.9	78.6	0.9	8.6	1.0	2.6	1.8	0.3	0.3	84.5	0.9	14.6	0.094	0.511	19.175618	-103.655896
T. Izq. Los Tepames	214.20	3	0	2977	6.3	77.9	0.9	8.8	0.9	2.7	1.9	0.3	0.3	84.2	0.9	14.9	0.085	0.510	19.175955	-103.664879
X. C. Libramiento de Colima	220.00	1	0	8842	7.5	78.8	0.3	6.0	1.1	4.8	1.3	0.1	0.1	86.3	0.3	13.4	0.068	0.503	19.210702	-103.721305
Colima	222.00	1	1	9520	10.7	82.7	0.6	5.2	0.4	0.2	0.2	0.0	0.0	93.4	0.6	6.0	0.086	0.516	19.217193	-103.721911
Colima	222.00	1	2	8944	5.0	88.2	0.5	5.4	0.5	0.2	0.2	0.0	0.0	93.2	0.5	6.3	0.085	0.516	19.217185	-103.722044

5 CARR: Libramiento Campos - Alameda

CLAVE:

RUTA: MEX

AÑO: 2021

LUGAR	ESTACION				CLASIFICACION VEHICULAR EN PORCIENTO										COORDENADAS					
	KM	TE	SC	TDPA	M	A	B	C2	C3	T3S2	T3S3	T3S2R4	OTROS	A	B	C	K'	D	LATITUD	LONGITUD
T. C. Costera Laguna de Cuyutlán	0.00	3	0	1605	11.6	76.3	0.6	7.5	0.5	1.7	0.4	1.4	0.0	87.9	0.6	11.5	0.127	0.511	19.026353	-104.315804
T. C. Playa Azul - Manzanillo	5.00	1	0	1727	11.5	76.2	0.5	7.5	0.6	1.8	0.4	1.5	0.0	87.7	0.5	11.8	0.124	0.502	19.047295	-104.301539

6 CARR: Libramiento de Colima

CLAVE: 06573

RUTA: MEX-054

AÑO: 2021

LUGAR	ESTACION				CLASIFICACION VEHICULAR EN PORCIENTO										COORDENADAS					
	KM	TE	SC	TDPA	M	A	B	C2	C3	T3S2	T3S3	T3S2R4	OTROS	A	B	C	K'	D	LATITUD	LONGITUD
T. C. Cd. Guzmán - Colima	0.00	3	1	9037	3.5	65.6	4.4	8.4	2.1	7.4	2.3	5.8	0.5	69.1	4.4	26.5	0.089	0.511	19.261480	-103.682807
T. C. Cd. Guzmán - Colima	0.00	3	2	9437	3.5	65.6	4.4	8.4	2.1	7.4	2.3	5.8	0.5	69.1	4.4	26.5	0.087	0.511	19.259316	-103.683481
T. C. Colima - Ent. Tecomán	9.00	1	1	19934	2.4	80.1	3.0	3.3	1.4	4.5	1.5	3.2	0.6	82.5	3.0	14.5	0.065	0.522	19.228832	-103.707781
T. C. Colima - Ent. Tecomán	9.00	1	2	18228	3.4	79.7	2.5	2.9	1.7	4.0	1.3	4.0	0.5	83.1	2.5	14.4	0.073	0.522	19.228813	-103.707667

COLIMA

7 CARR: Libramiento de Manzanillo (Libre)

CLAVE: 06574

RUTA: MEX-200

AÑO: 2021

LUGAR	ESTACION				CLASIFICACION VEHICULAR EN PORCIENTO													COORDENADAS		
	KM	TE	SC	TDPA	M	A	B	C2	C3	T3S2	T3S3	T3S2R4	OTROS	A	B	C	K'	D	LATITUD	LONGITUD
T. C. Ent. Playa Azul - Manzanillo	0.00	3	0	9868	9.1	57.1	3.9	5.1	4.1	11.0	3.2	6.0	0.5	66.2	3.9	29.9	0.081	0.501	19.058066	-104.245588
T. C. Manzanillo - Puerto Vallarta	6.30	1	1	7190	9.6	65.0	2.7	4.8	3.0	5.5	2.2	6.6	0.6	74.6	2.7	22.7	0.071	0.522	19.072281	-104.279427
T. C. Manzanillo - Puerto Vallarta	6.30	1	2	6597	9.8	64.7	2.7	5.0	2.8	5.3	2.4	6.7	0.6	74.5	2.7	22.8	0.087	0.522	19.071909	-104.278963

8 CARR: Libramiento de Manzanillo Norte

CLAVE: 06122

RUTA: MEX-200

AÑO: 2021

LUGAR	ESTACION				CLASIFICACION VEHICULAR EN PORCIENTO													COORDENADAS		
	KM	TE	SC	TDPA	M	A	B	C2	C3	T3S2	T3S3	T3S2R4	OTROS	A	B	C	K'	D	LATITUD	LONGITUD
T. C. Armería - Manzanillo (Cuota)	0.00	3	0	16305	10.8	70.7	1.9	2.7	1.9	4.9	1.2	5.0	0.9	81.5	1.9	16.6	0.083	0.529	19.084817	-104.268461
T. C. Minatitlán - Ent. Pez Vela	3.00	3	0	18683	9.9	81.9	0.8	2.1	1.4	2.1	0.7	0.8	0.3	91.8	0.8	7.4	0.109	0.500	19.096113	-104.277328
T. Izq. Manzanillo	6.60	3	0	24081	18.3	76.3	0.7	1.7	1.1	0.8	0.4	0.5	0.2	94.6	0.7	4.7	0.077	0.538	19.114344	-104.308974
T. Der. Chandiablo	12.00	1	1	6911	12.1	76.1	0.8	2.3	4.9	1.8	1.0	0.8	0.2	88.2	0.8	11.0	0.080	0.528	19.136572	-104.337606
T. Der. Chandiablo	12.00	1	2	6184	12.1	76.6	0.6	2.4	4.9	1.8	0.9	0.5	0.2	88.7	0.6	10.7	0.093	0.528	19.136536	-104.337635
T. C. Manzanillo - Puerto Vallarta	19.00	1	0	5314	6.3	78.9	2.7	4.5	2.7	2.4	1.8	0.4	0.3	85.2	2.7	12.1	0.087	0.515	19.127132	-104.396432

9 CARR: Manzanillo - Puerto Vallarta

CLAVE: 00070

RUTA: MEX-200

AÑO: 2021

LUGAR	ESTACION				CLASIFICACION VEHICULAR EN PORCIENTO													COORDENADAS		
	KM	TE	SC	TDPA	M	A	B	C2	C3	T3S2	T3S3	T3S2R4	OTROS	A	B	C	K'	D	LATITUD	LONGITUD
Manzanillo	0.00	3	1	15542	17.9	75.3	1.1	4.3	0.6	0.2	0.0	0.5	0.1	93.2	1.1	5.7	0.076	0.502	19.056110	-104.294732
Manzanillo	0.00	3	2	15422	15.1	76.9	1.8	4.7	0.7	0.2	0.0	0.5	0.1	92.0	1.8	6.2	0.081	0.502	19.056218	-104.294779
T. Der. Minatitlán	4.50	1	1	17811	14.2	81.2	0.2	3.6	0.4	0.1	0.0	0.2	0.1	95.4	0.2	4.4	0.076	0.539	19.064404	-104.289479
T. Der. Minatitlán	4.50	1	2	18309	13.5	81.0	0.4	3.9	0.5	0.2	0.0	0.4	0.1	94.5	0.4	5.1	0.074	0.539	19.064431	-104.289593
Santiago	13.80	1	1	12060	17.2	76.9	0.7	1.8	1.8	0.5	0.1	0.7	0.3	94.1	0.7	5.2	0.091	0.511	19.115565	-104.348890
Santiago	13.80	1	2	12590	16.7	77.9	0.6	1.8	1.7	0.4	0.1	0.6	0.2	94.6	0.6	4.8	0.082	0.511	19.115484	-104.348909
Santiago	13.80	3	1	6783	13.9	83.1	0.3	2.0	0.3	0.1	0.1	0.1	0.1	97.0	0.3	2.7	0.092	0.502	19.120534	-104.377003
Santiago	13.80	3	2	6849	13.9	83.3	0.4	1.7	0.4	0.0	0.1	0.1	0.1	97.2	0.4	2.4	0.098	0.502	19.120435	-104.377156
T. Der. Libramiento de Manzanillo Norte	19.00	3	0	7654	7.8	79.8	1.9	5.2	2.0	1.5	1.2	0.4	0.2	87.6	1.9	10.5	0.077	0.509	19.136472	-104.429050
San Juan de Cuatro Vientos	35.65	3	0	6509	2.5	82.4	2.1	11.1	0.6	0.4	0.4	0.3	0.2	84.9	2.1	13.0	0.084	0.502	19.195211	-104.548006
T. Izq. Aeropuerto Manzanillo	37.35	3	0	5370	8.6	77.7	3.0	3.1	2.8	2.3	1.8	0.4	0.3	86.3	3.0	10.7	0.077	0.514	19.195638	-104.552504
Lim. Edos. Term. Col. Ppia. Jal.	43.44																			
Cihuatlán	44.70	1	0	8483	18.1	74.6	1.3	1.8	1.7	1.4	0.7	0.3	0.1	92.7	1.3	6.0	0.078	0.501	19.234270	-104.550403
Cihuatlán	44.70	3	0	9383	16.3	76.2	1.6	2.4	1.4	1.2	0.5	0.3	0.1	92.5	1.6	5.9	0.080	0.500	19.228375	-104.584715
T. Izq. San Francisco	50.97	3	0	8555	16.2	76.4	1.6	2.2	1.3	1.4	0.5	0.3	0.1	92.6	1.6	5.8	0.089	0.500	19.216793	-104.624577
Melaque	61.00	1	0	14570	17.7	73.1	1.5	5.3	1.0	0.6	0.3	0.3	0.2	90.8	1.5	7.7	0.076	0.500	19.228678	-104.692557



COLIMA

9 CARR: Manzanillo - Puerto Vallarta

CLAVE: 00070

RUTA: MEX-200

AÑO: 2021

LUGAR	ESTACION				CLASIFICACION VEHICULAR EN PORCIENTO										COORDENADAS					
	KM	TE	SC	TDPA	M	A	B	C2	C3	T3S2	T3S3	T3S2R4	OTROS	A	B	C	K'	D	LATITUD	LONGITUD
Melaque	61.00	3	0	7685	18.3	71.1	1.8	5.6	1.1	1.0	0.7	0.3	0.1	89.4	1.8	8.8	0.072	0.507	19.240068	-104.712671
T. Izq. La Manzanilla	75.90	1	0	3129	6.2	82.6	1.7	5.8	1.3	1.2	0.8	0.3	0.1	88.8	1.7	9.5	0.084	0.504	19.291446	-104.775940
T. Izq. La Manzanilla	75.90	3	0	2907	6.4	82.0	1.7	5.7	1.4	1.3	0.9	0.4	0.2	88.4	1.7	9.9	0.075	0.504	19.301260	-104.782932
T. Izq. Boca de Iguanas	78.85	3	0	2564	6.7	80.6	2.1	5.6	1.6	1.8	1.0	0.5	0.1	87.3	2.1	10.6	0.073	0.501	19.321673	-104.813958
T. Izq. Tenacatita	89.60	3	0	2602	6.6	80.8	2.2	5.5	1.7	1.6	1.2	0.3	0.1	87.4	2.2	10.4	0.071	0.503	19.347458	-104.880519
T. Der. Villa Purificación	133.30	1	0	2717	6.2	81.5	2.1	5.1	1.7	1.8	1.0	0.5	0.1	87.7	2.1	10.2	0.074	0.516	19.585892	-105.091577
T. Der. Villa Purificación	133.30	3	0	2972	6.6	81.7	1.9	5.2	1.6	1.7	0.8	0.4	0.1	88.3	1.9	9.8	0.074	0.516	19.589877	-105.095916
T. Der. Tomatlán	177.50	1	0	2244	6.1	83.1	1.4	5.3	1.0	1.6	1.0	0.2	0.3	89.2	1.4	9.4	0.080	0.509	19.871179	-105.330708
T. Der. Tomatlán	177.50	3	0	2451	6.1	83.9	1.4	5.0	0.9	1.5	0.9	0.2	0.1	90.0	1.4	8.6	0.078	0.508	19.876167	-105.335638
T. Izq. El Tuito	231.71	3	0	3277	6.4	83.8	1.3	5.3	0.7	1.2	0.8	0.3	0.2	90.2	1.3	8.5	0.088	0.510	20.332374	-105.315354
Puerto Vallarta	275.84	1	0	10481	5.5	85.4	2.5	3.7	0.4	0.8	0.5	0.9	0.3	90.9	2.5	6.6	0.101	0.530	20.583468	-105.243401

10 CARR: Minatitlán - Ent. Pez Vela

CLAVE: 06015

RUTA: MEX-098

AÑO: 2021

LUGAR	ESTACION				CLASIFICACION VEHICULAR EN PORCIENTO										COORDENADAS					
	KM	TE	SC	TDPA	M	A	B	C2	C3	T3S2	T3S3	T3S2R4	OTROS	A	B	C	K'	D	LATITUD	LONGITUD
Minatitlán	0.00																			
T. Der. Jalipa	49.50	1	0	2269	12.5	76.7	0.4	7.7	1.3	0.3	0.1	0.9	0.1	89.2	0.4	10.4	0.082	0.506	19.132886	-104.264366
T. Der. Jalipa	49.50	3	1	3913	11.6	67.1	0.7	5.5	3.6	4.0	0.8	6.2	0.5	78.7	0.7	20.6	0.077	0.513	19.113153	-104.261071
T. Der. Jalipa	49.50	3	2	4165	11.7	67.5	0.7	5.1	3.8	4.3	0.7	5.4	0.8	79.2	0.7	20.1	0.085	0.513	19.113204	-104.260955
T. C. Manzanillo - Puerto Vallarta	58.50	1	1	11072	21.5	46.2	2.4	3.9	3.6	5.9	2.4	13.4	0.7	67.7	2.4	29.9	0.061	0.523	19.089090	-104.279459
T. C. Manzanillo - Puerto Vallarta	58.50	1	2	10115	19.5	47.3	2.3	3.5	3.4	7.7	2.3	13.2	0.8	66.8	2.3	30.9	0.072	0.523	19.088981	-104.279307

11 CARR: Paso por La Salada

CLAVE: 06121

RUTA: MEX-110

AÑO: 2021

LUGAR	ESTACION				CLASIFICACION VEHICULAR EN PORCIENTO										COORDENADAS					
	KM	TE	SC	TDPA	M	A	B	C2	C3	T3S2	T3S3	T3S2R4	OTROS	A	B	C	K'	D	LATITUD	LONGITUD
La Salada	4.80	3	0	46	0.0	80.7	2.2	16.9	0.2	0.0	0.0	0.0	0.0	80.7	2.2	17.1	0.239	0.559	19.053103	-103.785965
T. C. Ramal a Ixtlahuacán	8.00																			

12 CARR: Paso por Los Asmoles

CLAVE: 06120

RUTA: MEX-110

AÑO: 2021

LUGAR	ESTACION				CLASIFICACION VEHICULAR EN PORCIENTO										COORDENADAS					
	KM	TE	SC	TDPA	M	A	B	C2	C3	T3S2	T3S3	T3S2R4	OTROS	A	B	C	K'	D	LATITUD	LONGITUD
T. C. Colima - Ent. Tecomán	0.00																			

COLIMA

12 CARR: Paso por Los Asmoles

CLAVE: 06120

RUTA: MEX-110

AÑO: 2021

LUGAR	ESTACION				CLASIFICACION VEHICULAR EN PORCIENTO										COORDENADAS					
	KM	TE	SC	TDPA	M	A	B	C2	C3	T3S2	T3S3	T3S2R4	OTROS	A	B	C	K'	D	LATITUD	LONGITUD
Los Asmoles	1.80	3	0	2061	2.9	89.6	0.2	5.1	0.8	1.1	0.2	0.0	0.1	92.5	0.2	7.3	0.088	0.514	19.121802	-103.771968
T. C. Colima - Ent. Tecmán	2.90																			

13 CARR: Ramal a Cerro de Los Juanes

CLAVE: 06009

RUTA: MEX-098

AÑO: 2021

LUGAR	ESTACION				CLASIFICACION VEHICULAR EN PORCIENTO										COORDENADAS					
	KM	TE	SC	TDPA	M	A	B	C2	C3	T3S2	T3S3	T3S2R4	OTROS	A	B	C	K'	D	LATITUD	LONGITUD
T. C. Minatitlán - Ent. Pez Vela	0.00	3	0	891	2.3	72.5	2.4	21.0	0.9	0.6	0.2	0.0	0.1	74.8	2.4	22.8	0.069	0.515	19.377630	-104.092007
Cerro de Los Juanes	3.30																			

14 CARR: Ramal a Cerro de Ortega

CLAVE: 06009

RUTA: MEX-200

AÑO: 2021

LUGAR	ESTACION				CLASIFICACION VEHICULAR EN PORCIENTO										COORDENADAS					
	KM	TE	SC	TDPA	M	A	B	C2	C3	T3S2	T3S3	T3S2R4	OTROS	A	B	C	K'	D	LATITUD	LONGITUD
T. C. Ent. Playa Azul - Manzanillo	0.00	3	0	2789	36.4	54.8	1.0	7.5	0.1	0.2	0.0	0.0	0.0	91.2	1.0	7.8	0.083	0.572	18.754342	-103.722330
Cerro de Ortega	1.00																			

15 CARR: Ramal a Cuyutlán

CLAVE: 06225

RUTA: MEX-200

AÑO: 2021

LUGAR	ESTACION				CLASIFICACION VEHICULAR EN PORCIENTO										COORDENADAS					
	KM	TE	SC	TDPA	M	A	B	C2	C3	T3S2	T3S3	T3S2R4	OTROS	A	B	C	K'	D	LATITUD	LONGITUD
T. C. Ent. Playa Azul - Manzanillo	0.00	3	0	1103	8.8	81.2	0.3	9.1	0.4	0.1	0.1	0.0	0.0	90.0	0.3	9.7	0.090	0.514	18.934556	-104.019591
Cuyutlán	7.00	1	0	1285	5.2	85.2	0.5	8.8	0.3	0.0	0.0	0.0	0.0	90.4	0.5	9.1	0.081	0.544	18.911931	-104.055505

16 CARR: Tecmán - Boca de Pascuales

CLAVE: 06226

RUTA: MEX-200

AÑO: 2021

LUGAR	ESTACION				CLASIFICACION VEHICULAR EN PORCIENTO										COORDENADAS					
	KM	TE	SC	TDPA	M	A	B	C2	C3	T3S2	T3S3	T3S2R4	OTROS	A	B	C	K'	D	LATITUD	LONGITUD
Tecmán	0.00	3	0	3655	14.3	78.1	0.5	6.5	0.6	0.0	0.0	0.0	0.0	92.4	0.5	7.1	0.145	0.555	18.895657	-103.916705
Boca de Pascuales	12.00																			

COLIMA

17 CARR: Armeria - Manzanillo (Cuota)

CLAVE: 06585

RUTA: MEX-200D

AÑO: 2021

LUGAR	ESTACION				CLASIFICACION VEHICULAR EN PORCIENTO										COORDENADAS					
	KM	TE	SC	TDPA	M	A	B	C2	C3	T3S2	T3S3	T3S2R4	OTROS	A	B	C	K'	D	LATITUD	LONGITUD
T. C. Ent. Playa Azul - Manzanillo	0.00	3	1	7735	6.1	74.8	2.3	1.8	3.6	4.0	1.3	5.4	0.7	80.9	2.3	16.8	0.076	0.505	18.934080	-103.945724
T. C. Ent. Playa Azul - Manzanillo	0.00	3	2	7580	6.4	74.6	2.3	1.7	3.7	4.0	1.3	5.4	0.6	81.0	2.3	16.7	0.078	0.505	18.933953	-103.945687
T. Izq. Playa Paraíso	3.50	3	1	5316	4.1	71.9	3.7	2.5	1.3	5.2	2.3	7.9	1.1	76.0	3.7	20.3	0.093	0.514	18.927229	-103.972935
T. Izq. Playa Paraíso	3.50	3	2	5032	3.9	71.6	3.6	2.3	1.1	5.6	2.3	8.6	1.0	75.5	3.6	20.9	0.095	0.514	18.927157	-103.972926
T. Izq. Cuyutlán	17.58	3	1	5193	4.1	64.6	6.7	6.3	1.2	5.3	2.8	8.9	0.1	68.7	6.7	24.6	0.099	0.529	18.929914	-104.085381
T. Izq. Cuyutlán	17.58	3	2	4626	4.7	64.8	6.2	6.1	1.2	5.1	2.9	8.8	0.2	69.5	6.2	24.3	0.092	0.529	18.929842	-104.085429
Plaza de Cobro Cuyutlán	18.00	2	1	4990	0.0	69.1	1.7	2.1	1.8	6.3	3.0	13.8	2.2	69.1	1.7	29.2	0.096	0.500	18.927852	-104.081512
Plaza de Cobro Cuyutlán	18.00	2	2	4990	0.0	69.1	1.7	2.1	1.8	6.3	3.0	13.8	2.2	69.1	1.7	29.2	0.096	0.500	18.927852	-104.081512
T. C. Ent. Playa Azul - Manzanillo	44.00	1	1	6258	6.5	64.9	4.1	3.6	1.9	5.5	2.8	9.6	1.1	71.4	4.1	24.5	0.069	0.511	19.044110	-104.260581
T. C. Ent. Playa Azul - Manzanillo	44.00	1	2	5984	5.8	66.4	3.6	3.3	1.7	5.8	2.6	9.8	1.0	72.2	3.6	24.2	0.086	0.511	19.044065	-104.260647
T. C. Ent. Playa Azul - Manzanillo	44.00	3	1	6002	7.3	65.6	3.9	3.0	1.8	5.0	2.3	10.2	0.9	72.9	3.9	23.2	0.089	0.540	19.053107	-104.268619
T. C. Ent. Playa Azul - Manzanillo	44.00	3	2	5111	7.8	63.8	3.2	2.6	1.7	6.8	2.2	10.9	1.0	71.6	3.2	25.2	0.087	0.540	19.053107	-104.268685
T. C. Libramiento de Manzanillo (Libre)	46.00																			

18 CARR: Guadalajara - Colima (Cuota)

CLAVE: 00118

RUTA: MEX-054D

AÑO: 2021

LUGAR	ESTACION				CLASIFICACION VEHICULAR EN PORCIENTO										COORDENADAS					
	KM	TE	SC	TDPA	M	A	B	C2	C3	T3S2	T3S3	T3S2R4	OTROS	A	B	C	K'	D	LATITUD	LONGITUD
T. C. Ent. Santa Cruz - Melaque	0.00																			
Plaza de Cobro Acatlán	0.20	2	1	7135	0.4	67.9	4.9	3.5	1.0	3.8	0.5	0.0	18.0	68.3	4.9	26.8	0.084	0.500	20.373443	-103.576317
Plaza de Cobro Acatlán	0.20	2	2	7135	0.4	67.9	4.9	3.5	1.0	3.8	0.5	0.0	18.0	68.3	4.9	26.8	0.084	0.500	20.373443	-103.576317
Plaza de Cobro Acatlán	0.20	3	1	6223	0.7	67.8	3.8	7.1	3.5	5.8	2.5	8.3	0.5	68.5	3.8	27.7	0.095	0.527	20.417589	-103.556656
Plaza de Cobro Acatlán	0.20	3	2	6928	0.8	69.0	3.8	7.2	2.8	6.4	2.4	7.1	0.5	69.8	3.8	26.4	0.128	0.527	20.417576	-103.556563
T. Izq. San Marcos	10.80	1	1	6328	1.1	70.0	3.8	6.7	2.8	5.9	2.6	6.6	0.5	71.1	3.8	25.1	0.096	0.503	20.346572	-103.574110
T. Izq. San Marcos	10.80	1	2	6409	0.9	66.6	4.1	8.0	3.2	6.4	2.8	7.5	0.5	67.5	4.1	28.4	0.123	0.503	20.346610	-103.573909
T. Izq. Teocuitatlán de Corona	36.12	3	1	7617	1.0	73.6	4.0	3.6	3.0	5.9	2.6	5.8	0.5	74.6	4.0	21.4	0.062	0.512	20.123425	-103.509130
T. Izq. Teocuitatlán de Corona	36.12	3	2	7978	1.1	72.0	4.0	4.0	2.9	6.2	2.9	6.4	0.5	73.1	4.0	22.9	0.094	0.512	20.123350	-103.508771
T. Der. Usmajac	67.80	1	1	8688	1.0	71.6	3.8	4.1	2.9	6.1	3.0	6.9	0.6	72.6	3.8	23.6	0.066	0.504	19.893856	-103.522479
T. Der. Usmajac	67.80	1	2	8845	1.0	69.9	4.1	4.3	3.4	6.4	3.2	7.1	0.6	70.9	4.1	25.0	0.112	0.504	19.894514	-103.522883
T. Izq. Cd. Guzmán	86.70	1	1	8335	1.2	71.2	4.0	4.3	3.2	5.8	3.8	6.3	0.2	72.4	4.0	23.6	0.075	0.516	19.707898	-103.500843
T. Izq. Cd. Guzmán	86.70	1	2	8904	1.3	72.3	4.1	4.3	3.2	5.5	3.1	6.0	0.2	73.6	4.1	22.3	0.083	0.516	19.707914	-103.500743
T. Izq. Cd. Guzmán	86.70	3	1	9497	1.1	74.7	3.1	3.8	2.9	4.5	2.5	7.0	0.4	75.8	3.1	21.1	0.066	0.509	19.691824	-103.494010
T. Izq. Cd. Guzmán	86.70	3	2	9841	1.0	73.9	3.6	3.6	3.0	4.7	2.7	7.1	0.4	74.9	3.6	21.5	0.079	0.509	19.691862	-103.493925
T. Izq. Cd. Tuxpan	107.27	1	0	11046	3.5	74.1	0.7	3.5	1.5	8.2	4.1	3.9	0.5	77.6	0.7	21.7	0.072	0.524	19.540156	-103.425221
Plaza de Cobro San Marcos	126.60	2	1	6071	0.4	58.9	5.4	4.5	1.2	5.1	0.6	0.1	23.8	59.3	5.4	35.3	0.084	0.500	19.433745	-103.494491

COLIMA

18 CARR: Guadalajara - Colima (Cuota)

CLAVE: 00118

RUTA: MEX-054D

AÑO: 2021

LUGAR	ESTACION				CLASIFICACION VEHICULAR EN PORCIENTO														COORDENADAS	
	KM	TE	SC	TDPA	M	A	B	C2	C3	T3S2	T3S3	T3S2R4	OTROS	A	B	C	K'	D	LATITUD	LONGITUD
Plaza de Cobro San Marcos	126.60	2	2	6071	0.4	58.9	5.4	4.5	1.2	5.1	0.6	0.1	23.8	59.3	5.4	35.3	0.084	0.500	19.433745	-103.494491
Lim. Edos. Term. Jal. Ppia. Col.	129.50																			
X. C. Cuauhtémoc - Colima	140.70	1	1	9492	1.1	72.8	3.9	3.6	2.2	5.8	2.7	7.8	0.1	73.9	3.9	22.2	0.072	0.509	19.315085	-103.597628
X. C. Cuauhtémoc - Colima	140.70	1	2	9145	1.0	73.1	3.9	3.6	2.1	5.7	2.7	7.8	0.1	74.1	3.9	22.0	0.079	0.509	19.314958	-103.597553
X. C. Cuauhtémoc - Colima	140.70	3	1	8528	1.2	72.6	3.4	3.7	2.2	6.4	2.1	7.9	0.5	73.8	3.4	22.8	0.089	0.501	19.310623	-103.605994
X. C. Cuauhtémoc - Colima	140.70	3	2	8480	1.2	72.2	3.5	3.9	2.2	6.4	2.2	7.9	0.5	73.4	3.5	23.1	0.083	0.501	19.310496	-103.605938
T. C. Cd. Guzmán - Colima	146.10																			

19 CARR: Armería - Playa El Paraiso

CLAVE: 06580

RUTA: COL

AÑO: 2021

LUGAR	ESTACION				CLASIFICACION VEHICULAR EN PORCIENTO														COORDENADAS	
	KM	TE	SC	TDPA	M	A	B	C2	C3	T3S2	T3S3	T3S2R4	OTROS	A	B	C	K'	D	LATITUD	LONGITUD
T. C. Ent. Playa Azul - Manzanillo	0.00	3	0	3102	14.1	77.8	0.2	6.6	0.7	0.2	0.4	0.0	0.0	91.9	0.2	7.9	0.120	0.521	18.925436	-103.963934
Playa Paraiso	7.50	1	0	1480	12.7	82.0	0.1	5.1	0.1	0.0	0.0	0.0	0.0	94.7	0.1	5.2	0.242	0.506	18.877399	-103.990298

20 CARR: Colima - Comala

CLAVE: 06016

RUTA: COL-016

AÑO: 2021

LUGAR	ESTACION				CLASIFICACION VEHICULAR EN PORCIENTO														COORDENADAS	
	KM	TE	SC	TDPA	M	A	B	C2	C3	T3S2	T3S3	T3S2R4	OTROS	A	B	C	K'	D	LATITUD	LONGITUD
Colima	0.00																			
Villa Álvarez	3.00	3	1	14945	8.4	88.4	0.6	1.9	0.3	0.1	0.1	0.1	0.1	96.8	0.6	2.6	0.088	0.507	19.287198	-103.746110
Villa Álvarez	3.00	3	2	14509	8.7	88.1	0.6	1.9	0.3	0.1	0.1	0.1	0.1	96.8	0.6	2.6	0.077	0.507	19.287153	-103.746177
Comala	10.00																			

21 CARR: Colima - Coquimatlán

CLAVE: 06034

RUTA: COL-034

AÑO: 2021

LUGAR	ESTACION				CLASIFICACION VEHICULAR EN PORCIENTO														COORDENADAS	
	KM	TE	SC	TDPA	M	A	B	C2	C3	T3S2	T3S3	T3S2R4	OTROS	A	B	C	K'	D	LATITUD	LONGITUD
Colima	0.00																			
T. Der. Villa Álvarez	3.00	3	1	15247	9.5	87.1	0.5	1.6	0.4	0.3	0.3	0.2	0.1	96.6	0.5	2.9	0.070	0.513	19.241893	-103.754037
T. Der. Villa Álvarez	3.00	3	2	14477	9.5	87.1	0.5	1.6	0.4	0.3	0.3	0.2	0.1	96.6	0.5	2.9	0.072	0.513	19.241811	-103.754009
Coquimatlán	11.00	1	1	7859	10.8	83.9	0.9	3.6	0.5	0.1	0.1	0.0	0.1	94.7	0.9	4.4	0.079	0.505	19.217232	-103.802514
Coquimatlán	11.00	1	2	7697	10.3	83.6	0.8	4.2	0.6	0.2	0.2	0.0	0.1	93.9	0.8	5.3	0.069	0.505	19.217797	-103.801864

COLIMA

22 CARR: Comala - San Antonio

CLAVE: 06030

RUTA: COL-016

AÑO: 2021

LUGAR	ESTACION				CLASIFICACION VEHICULAR EN PORCIENTO										COORDENADAS					
	KM	TE	SC	TDPA	M	A	B	C2	C3	T3S2	T3S3	T3S2R4	OTROS	A	B	C	K'	D	LATITUD	LONGITUD
Comala	0.00	3	1	1571	4.3	88.8	0.4	6.2	0.3	0.0	0.0	0.0	0.0	93.1	0.4	6.5	0.116	0.510	19.335948	-103.746476
Comala	0.00	3	2	1628	4.3	88.0	0.4	7.0	0.3	0.0	0.0	0.0	0.0	92.3	0.4	7.3	0.123	0.510	19.335929	-103.746534
Suchitlán	10.00	1	0	5137	4.4	88.0	0.5	5.7	0.5	0.4	0.4	0.0	0.1	92.4	0.5	7.1	0.117	0.508	19.368769	-103.722369
San Antonio	20.50																			

23 CARR: Coquimatlán - Pueblo Juárez

CLAVE: 06029

RUTA: COL-034

AÑO: 2021

LUGAR	ESTACION				CLASIFICACION VEHICULAR EN PORCIENTO										COORDENADAS					
	KM	TE	SC	TDPA	M	A	B	C2	C3	T3S2	T3S3	T3S2R4	OTROS	A	B	C	K'	D	LATITUD	LONGITUD
Coquimatlán	0.00	3	0	3482	7.9	80.6	1.2	6.9	1.2	1.6	0.3	0.0	0.3	88.5	1.2	10.3	0.083	0.516	19.198279	-103.817639
Pueblo Juárez	16.00																			

24 CARR: Costera Laguna de Cuyutlán

CLAVE: 06010

RUTA: COL

AÑO: 2021

LUGAR	ESTACION				CLASIFICACION VEHICULAR EN PORCIENTO										COORDENADAS					
	KM	TE	SC	TDPA	M	A	B	C2	C3	T3S2	T3S3	T3S2R4	OTROS	A	B	C	K'	D	LATITUD	LONGITUD
T. C. Armería - Manzanillo (Cuota)	0.00	3	0	398	13.4	70.2	0.5	6.1	0.1	5.9	0.5	2.7	0.6	83.6	0.5	15.9	0.089	0.534	19.018623	-104.301640
Manzanillo	13.00	1	0	2070	17.4	74.0	0.8	7.8	0.0	0.0	0.0	0.0	0.0	91.4	0.8	7.8	0.075	0.516	19.034172	-104.330470

25 CARR: Cuauhtémoc - Colima

CLAVE: 06019

RUTA: COL-019

AÑO: 2021

LUGAR	ESTACION				CLASIFICACION VEHICULAR EN PORCIENTO										COORDENADAS					
	KM	TE	SC	TDPA	M	A	B	C2	C3	T3S2	T3S3	T3S2R4	OTROS	A	B	C	K'	D	LATITUD	LONGITUD
Cuauhtémoc	0.00	3	0	5225	3.8	91.8	0.6	1.9	0.8	0.6	0.1	0.3	0.1	95.6	0.6	3.8	0.082	0.508	19.315233	-103.603870
X. C. Libramiento de Colima	19.50	1	1	12005	8.8	86.4	0.3	3.1	0.7	0.2	0.2	0.2	0.1	95.2	0.3	4.5	0.072	0.513	19.236347	-103.700997
X. C. Libramiento de Colima	19.50	1	2	12665	8.8	86.4	0.3	3.0	0.7	0.3	0.2	0.2	0.1	95.2	0.3	4.5	0.082	0.513	19.236166	-103.701027
Colima	22.40																			

26 CARR: Libramiento de Comala

CLAVE:

RUTA: COL-016

AÑO: 2021

LUGAR	ESTACION				CLASIFICACION VEHICULAR EN PORCIENTO										COORDENADAS					
	KM	TE	SC	TDPA	M	A	B	C2	C3	T3S2	T3S3	T3S2R4	OTROS	A	B	C	K'	D	LATITUD	LONGITUD
T. C. Colima - Comala	0.00	3	0	4687	5.5	86.1	0.3	3.7	0.4	2.7	0.5	0.3	0.5	91.6	0.3	8.1	0.097	0.508	19.293233	-103.747181
T. C. Comala - San Antonio	7.10	1	0	3375	4.4	88.5	0.2	4.0	0.5	1.8	0.3	0.1	0.2	92.9	0.2	6.9	0.103	0.509	19.342944	-103.740560

COLIMA

27 CARR : Libramiento de Tecmán

CLAVE: 06122

RUTA: COL

AÑO : 2021

LUGAR	ESTACION				CLASIFICACION VEHICULAR EN PORCIENTO													COORDENADAS		
	KM	TE	SC	TDPA	M	A	B	C2	C3	T3S2	T3S3	T3S2R4	OTROS	A	B	C	K'	D	LATITUD	LONGITUD
T. C. Ent. Playa Azul - Manzanillo (Sur)	0.00	3	1	2413	4.5	72.6	1.2	8.3	2.7	3.6	3.5	0.6	3.0	77.1	1.2	21.7	0.088	0.529	18.899848	-103.858238
T. C. Ent. Playa Azul - Manzanillo (Sur)	0.00	3	2	2125	4.6	71.6	1.3	8.3	3.0	3.7	3.8	0.6	3.1	76.2	1.3	22.5	0.084	0.529	18.899879	-103.858397
T. C. Ent. Playa Azul - Manzanillo (Norte)	7.90	1	1	3204	3.9	80.6	0.8	6.5	2.4	2.5	2.4	0.3	0.6	84.5	0.8	14.7	0.070	0.511	18.942485	-103.890354
T. C. Ent. Playa Azul - Manzanillo (Norte)	7.90	1	2	3010	5.3	77.7	0.8	7.1	2.7	3.0	2.6	0.2	0.6	83.0	0.8	16.2	0.067	0.511	18.942362	-103.890238

28 CARR : Libramiento Poniente Arco Sur de Tecmán

CLAVE:

RUTA: COL

AÑO : 2021

LUGAR	ESTACION				CLASIFICACION VEHICULAR EN PORCIENTO													COORDENADAS		
	KM	TE	SC	TDPA	M	A	B	C2	C3	T3S2	T3S3	T3S2R4	OTROS	A	B	C	K'	D	LATITUD	LONGITUD
Ent. C. Playa Azul - Manzanillo	0.00	3	0	3046	3.0	84.8	1.7	3.3	2.6	3.0	1.1	0.3	0.2	87.8	1.7	10.5	0.093	0.519	18.939797	-103.896714
X. C. Tecmán - Boca de Pascuales	4.60	3	0	2943	4.1	74.5	1.9	9.1	3.0	4.7	1.7	0.5	0.5	78.6	1.9	19.5	0.085	0.522	18.899550	-103.904834
X. C. Tecmán - La Mascota	6.90	3	0	2409	4.3	70.6	2.5	10.0	4.8	4.7	2.2	0.6	0.3	74.9	2.5	22.6	0.122	0.538	18.887922	-103.886502
Ent. C. Playa Azul - Manzanillo	11.17																			

29 CARR : Libramiento Poniente de Colima

CLAVE: 06122

RUTA: COL

AÑO : 2021

LUGAR	ESTACION				CLASIFICACION VEHICULAR EN PORCIENTO													COORDENADAS		
	KM	TE	SC	TDPA	M	A	B	C2	C3	T3S2	T3S3	T3S2R4	OTROS	A	B	C	K'	D	LATITUD	LONGITUD
T. C. Colima - Ent. Tecmán	0.00	3	1	11031	8.9	85.1	0.7	2.3	1.3	1.0	0.3	0.3	0.1	94.0	0.7	5.3	0.084	0.505	19.219688	-103.749496
T. C. Colima - Ent. Tecmán	0.00	3	2	10822	8.9	85.1	0.7	2.3	1.3	1.0	0.3	0.3	0.1	94.0	0.7	5.3	0.096	0.505	19.219169	-103.748881
T. C. Colima - Coquimatlán	6.00																			

30 CARR : Los Limones - Loma de Juárez

CLAVE: 06122

RUTA: COL

AÑO : 2021

LUGAR	ESTACION				CLASIFICACION VEHICULAR EN PORCIENTO													COORDENADAS		
	KM	TE	SC	TDPA	M	A	B	C2	C3	T3S2	T3S3	T3S2R4	OTROS	A	B	C	K'	D	LATITUD	LONGITUD
Los Limones	0.00																			
T. C. Colima - Ent. Tecmán	5.77	1	0	1932	3.9	85.1	0.8	7.5	1.0	0.7	0.7	0.3	0.0	89.0	0.8	10.2	0.084	0.504	19.199368	-103.758471

31 CARR : Puerta de Caleras - Madrid

CLAVE: 06014

RUTA: COL-014

AÑO : 2021

LUGAR	ESTACION				CLASIFICACION VEHICULAR EN PORCIENTO													COORDENADAS		
	KM	TE	SC	TDPA	M	A	B	C2	C3	T3S2	T3S3	T3S2R4	OTROS	A	B	C	K'	D	LATITUD	LONGITUD
T. C. Colima - Ent. Tecmán	0.00	3	0	3072	12.9	70.3	1.9	7.5	3.0	2.0	2.3	0.0	0.1	83.2	1.9	14.9	0.068	0.510	18.979554	-103.862416
Madrid	14.00																			

COLIMA

32 CARR: Quesería - El Naranjal

CLAVE: 06001

RUTA: COL-001

AÑO: 2021

LUGAR	ESTACION				CLASIFICACION VEHICULAR EN PORCIENTO										COORDENADAS					
	KM	TE	SC	TDPA	M	A	B	C2	C3	T3S2	T3S3	T3S2R4	OTROS	A	B	C	K'	D	LATITUD	LONGITUD
Quesería	0.00	3	0	1467	4.4	67.2	2.4	11.4	13.4	0.8	0.4	0.0	0.0	71.6	2.4	26.0	0.088	0.503	19.391995	-103.590115
El Naranjal	10.00	1	0	660	7.2	56.7	3.3	11.3	20.0	1.0	0.5	0.0	0.0	63.9	3.3	32.8	0.079	0.502	19.412110	-103.651791

33 CARR: Ramal a Aeropuerto de Colima

CLAVE: 06224

RUTA: COL

AÑO: 2021

LUGAR	ESTACION				CLASIFICACION VEHICULAR EN PORCIENTO										COORDENADAS					
	KM	TE	SC	TDPA	M	A	B	C2	C3	T3S2	T3S3	T3S2R4	OTROS	A	B	C	K'	D	LATITUD	LONGITUD
T. C. Cuauhtémoc - Colima	0.00	3	0	1217	2.0	90.8	0.6	6.2	0.2	0.0	0.0	0.1	0.1	92.8	0.6	6.6	0.080	0.502	19.287554	-103.591317
Aeropuerto de Colima	1.00																			

34 CARR: Ramal a Aeropuerto Manzanillo

CLAVE: 06582

RUTA: COL

AÑO: 2021

LUGAR	ESTACION				CLASIFICACION VEHICULAR EN PORCIENTO										COORDENADAS					
	KM	TE	SC	TDPA	M	A	B	C2	C3	T3S2	T3S3	T3S2R4	OTROS	A	B	C	K'	D	LATITUD	LONGITUD
T. C. Manzanillo - Puerto Vallarta	0.00	3	0	1106	11.0	77.2	0.3	9.8	0.5	0.6	0.2	0.2	0.2	88.2	0.3	11.5	0.111	0.516	19.189808	-104.550655
Aeropuerto Manzanillo	5.50	1	0	1041	4.1	90.6	0.3	4.0	0.6	0.2	0.1	0.1	0.0	94.7	0.3	5.0	0.168	0.505	19.151282	-104.560320

35 CARR: Ramal a Camotlán de Miraflores

CLAVE: 06009

RUTA: COL

AÑO: 2021

LUGAR	ESTACION				CLASIFICACION VEHICULAR EN PORCIENTO										COORDENADAS					
	KM	TE	SC	TDPA	M	A	B	C2	C3	T3S2	T3S3	T3S2R4	OTROS	A	B	C	K'	D	LATITUD	LONGITUD
T. C. Minatitlán - Ent. Pez Vela	0.00	3	0	1996	19.5	70.6	0.4	8.8	0.1	0.2	0.3	0.0	0.1	90.1	0.4	9.5	0.079	0.505	19.217150	-104.233295
Camotlán de Miraflores	1.00																			

36 CARR: Ramal a Ixtlahuacán

CLAVE: 06577

RUTA: COL-005

AÑO: 2021

LUGAR	ESTACION				CLASIFICACION VEHICULAR EN PORCIENTO										COORDENADAS					
	KM	TE	SC	TDPA	M	A	B	C2	C3	T3S2	T3S3	T3S2R4	OTROS	A	B	C	K'	D	LATITUD	LONGITUD
T. C. Colima - Ent. Tecomán	0.00	3	0	744	4.4	81.6	0.9	7.9	2.5	0.7	1.8	0.1	0.1	86.0	0.9	13.1	0.087	0.520	19.025993	-103.790942
Ixtlahuacán	8.50																			

COLIMA

37 CARR: Ramal a Las Brisas

CLAVE: 06571

RUTA: COL

AÑO: 2021

LUGAR	ESTACION				CLASIFICACION VEHICULAR EN PORCIENTO													COORDENADAS		
	KM	TE	SC	TDPA	M	A	B	C2	C3	T3S2	T3S3	T3S2R4	OTROS	A	B	C	K'	D	LATITUD	LONGITUD
T. C. Manzanillo - Puerto Vallarta (Central)	0.00	3	0	6012	8.7	89.8	0.1	1.2	0.1	0.0	0.0	0.1	0.0	98.5	0.1	1.4	0.072	0.641	19.082464	-104.307205
T. C. Manzanillo - Puerto Vallarta (Lateral)	0.00	3	1	6790	11.0	82.4	0.4	4.5	0.9	0.4	0.0	0.3	0.1	93.4	0.4	6.2	0.072	0.584	19.082518	-104.307129
T. C. Manzanillo - Puerto Vallarta (Lateral)	0.00	3	2	4840	16.0	71.7	0.3	6.9	3.5	0.6	0.2	0.7	0.1	87.7	0.3	12.0	0.068	0.584	19.082428	-104.307272
Las Brisas	2.30																			

38 CARR: Ramal a Los Tepames

CLAVE: 06004

RUTA: COL-004

AÑO: 2021

LUGAR	ESTACION				CLASIFICACION VEHICULAR EN PORCIENTO													COORDENADAS		
	KM	TE	SC	TDPA	M	A	B	C2	C3	T3S2	T3S3	T3S2R4	OTROS	A	B	C	K'	D	LATITUD	LONGITUD
T. C. Jiquilpan - Colima	0.00	3	0	1542	4.0	84.7	0.8	8.0	0.9	1.3	0.3	0.0	0.0	88.7	0.8	10.5	0.076	0.510	19.171979	-103.659464
Los Tepames	9.50																			

39 CARR: Ramal a Rancho Valle Nuevo

CLAVE: 06583

RUTA: COL

AÑO: 2021

LUGAR	ESTACION				CLASIFICACION VEHICULAR EN PORCIENTO													COORDENADAS		
	KM	TE	SC	TDPA	M	A	B	C2	C3	T3S2	T3S3	T3S2R4	OTROS	A	B	C	K'	D	LATITUD	LONGITUD
T. C. Ent. Playa Azul - Manzanillo	0.00	3	0	776	8.4	74.7	0.9	13.6	1.4	0.7	0.1	0.1	0.1	83.1	0.9	16.0	0.111	0.547	18.817720	-103.808903
Rancho Valle Nuevo	4.00																			

40 CARR: Ramal a Rincón de López

CLAVE: 06578

RUTA: COL

AÑO: 2021

LUGAR	ESTACION				CLASIFICACION VEHICULAR EN PORCIENTO													COORDENADAS		
	KM	TE	SC	TDPA	M	A	B	C2	C3	T3S2	T3S3	T3S2R4	OTROS	A	B	C	K'	D	LATITUD	LONGITUD
T. C. Ent. Playa Azul - Manzanillo	0.00	3	0	4177	15.1	72.8	0.7	7.2	0.8	2.1	0.7	0.2	0.4	87.9	0.7	11.4	0.079	0.525	18.951491	-103.947588
Rincón de López	14.00																			

41 CARR: Ramal a Tecuanillo

CLAVE: 06009

RUTA: COL-009

AÑO: 2021

LUGAR	ESTACION				CLASIFICACION VEHICULAR EN PORCIENTO													COORDENADAS		
	KM	TE	SC	TDPA	M	A	B	C2	C3	T3S2	T3S3	T3S2R4	OTROS	A	B	C	K'	D	LATITUD	LONGITUD
T. C. Ent. Playa Azul - Manzanillo	0.00	3	0	2154	10.1	74.3	1.1	11.7	0.7	1.8	0.2	0.0	0.1	84.4	1.1	14.5	0.092	0.530	18.890137	-103.855478
Tecuanillo	10.00																			



COLIMA

42 CARR: Tecomán - La Mascota

CLAVE: 06572

RUTA: COL

AÑO: 2021

LUGAR	ESTACION				CLASIFICACION VEHICULAR EN PORCIENTO														COORDENADAS	
	KM	TE	SC	TDPA	M	A	B	C2	C3	T3S2	T3S3	T3S2R4	OTROS	A	B	C	K'	D	LATITUD	LONGITUD
Tecomán	0.00	3	0	3015	11.3	74.8	0.8	8.6	1.3	2.7	0.2	0.1	0.2	86.1	0.8	13.1	0.103	0.553	18.892209	-103.890391
X. Libramiento Poniente Arco Sur de Tecomán	2.70	3	0	2133	14.1	75.3	0.5	8.1	0.8	1.1	0.0	0.0	0.1	89.4	0.5	10.1	0.169	0.520	18.886419	-103.894180
La Mascota	11.00																			

43 CARR: Trapichillos - Estación Alzada

CLAVE: 06003

RUTA: COL-003

AÑO: 2021

LUGAR	ESTACION				CLASIFICACION VEHICULAR EN PORCIENTO														COORDENADAS	
	KM	TE	SC	TDPA	M	A	B	C2	C3	T3S2	T3S3	T3S2R4	OTROS	A	B	C	K'	D	LATITUD	LONGITUD
T. C. Jiquilpan - Colima	0.00	3	0	401	3.2	73.5	1.1	8.5	7.9	2.9	1.9	0.1	0.9	76.7	1.1	22.2	0.106	0.507	19.163291	-103.525020
Estación Alzada	12.50	1	0	485	5.1	64.3	1.8	12.9	10.6	2.9	1.7	0.5	0.2	69.4	1.8	28.8	0.091	0.502	19.250988	-103.531506

44 CARR: Villa de Álvarez - Minatitlán

CLAVE: 06040

RUTA: COL

AÑO: 2021

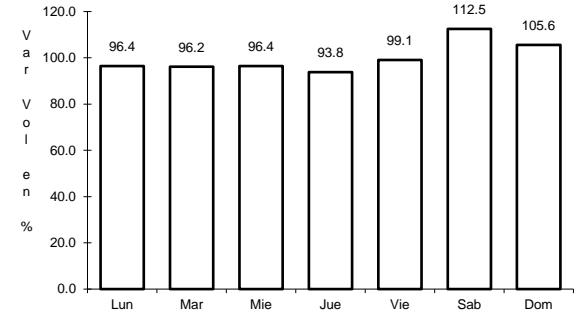
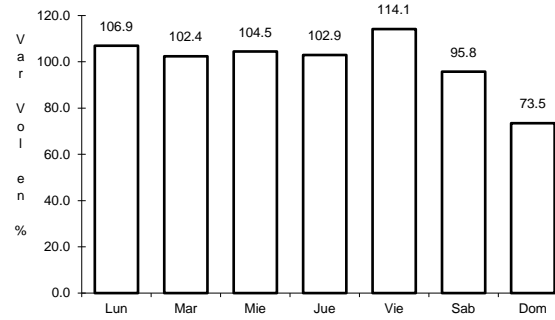
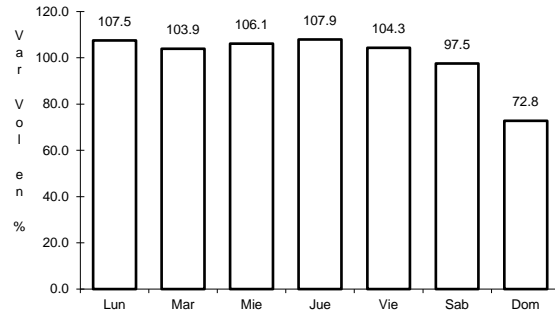
LUGAR	ESTACION				CLASIFICACION VEHICULAR EN PORCIENTO														COORDENADAS	
	KM	TE	SC	TDPA	M	A	B	C2	C3	T3S2	T3S3	T3S2R4	OTROS	A	B	C	K'	D	LATITUD	LONGITUD
T. C. Colima - Comala	0.00	3	0	11661	11.8	80.1	1.0	4.1	1.6	0.7	0.5	0.2	0.0	91.9	1.0	7.1	0.068	0.503	19.283004	-103.777858
T. C. Minatitlán - Ent. Pez Vela	55.00																			



1 CARR: Cd. Guzmán - Colima

CLAVE: 00117

RUTA: MEX-054



Km: 0.00                      Tipo: 3                      Sent: 1

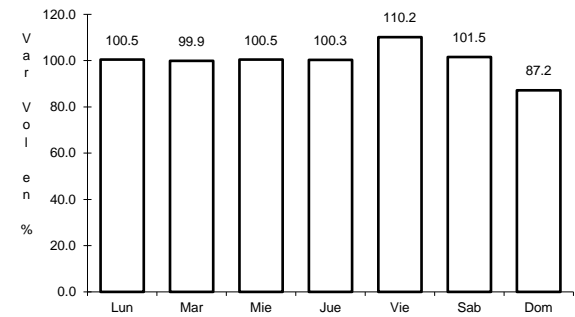
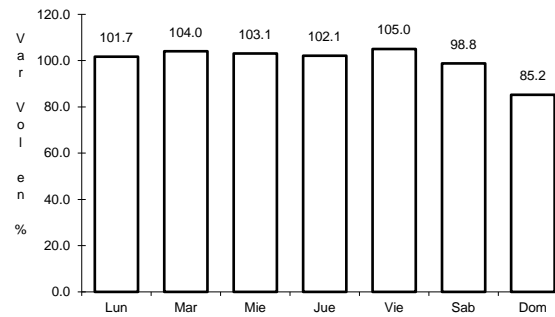
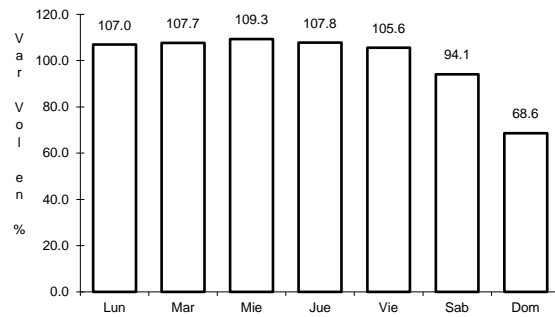
Km: 0.00                      Tipo: 3                      Sent: 2

Km: 56.90                      Tipo: 1                      Sent: 0

2 CARR: Colima - Ent. Tecomán

CLAVE: 06119

RUTA: MEX-110



Km: 0.00                      Tipo: 3                      Sent: 1

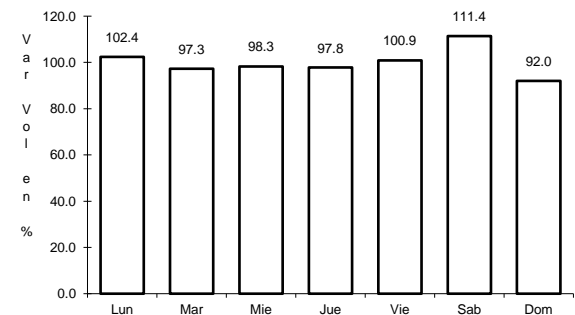
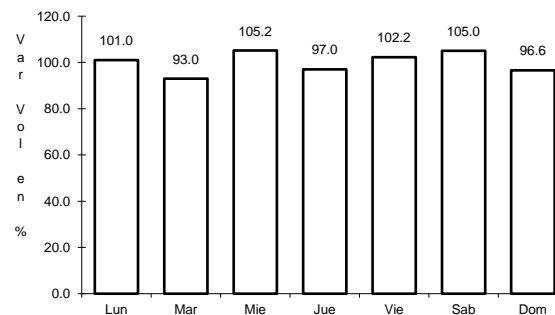
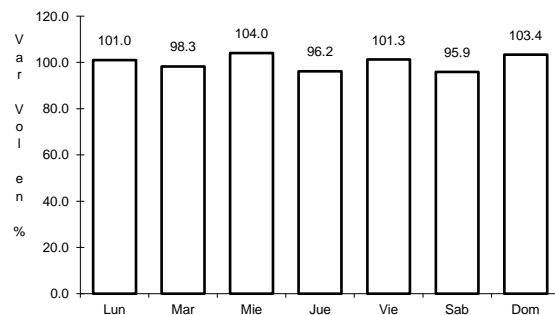
Km: 0.00                      Tipo: 3                      Sent: 2

Km: 40.10                      Tipo: 1                      Sent: 1

3 CARR: Ent. Playa Azul - Manzanillo

CLAVE: 00495

RUTA: MEX-200



Km: 0.00                      Tipo: 3                      Sent: 0

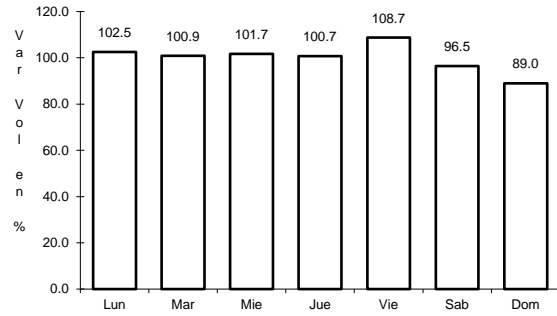
Km: 190.10                      Tipo: 3                      Sent: 0

Km: 321.12                      Tipo: 1                      Sent: 0

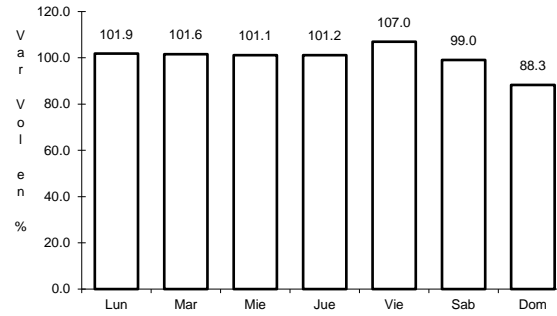
4 CARR: Jiquilpan - Colima

CLAVE: 00156

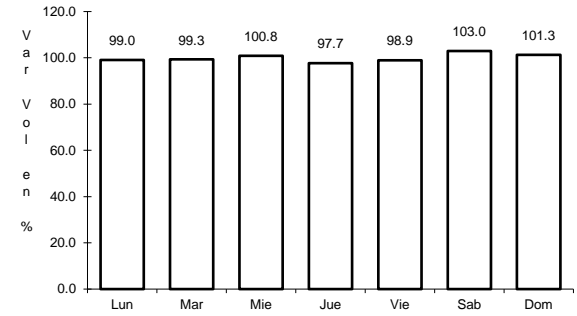
RUTA: MEX-110



Km: 0.00                      Tipo: 3                      Sent: 0



Km: 108.50                      Tipo: 1                      Sent: 0

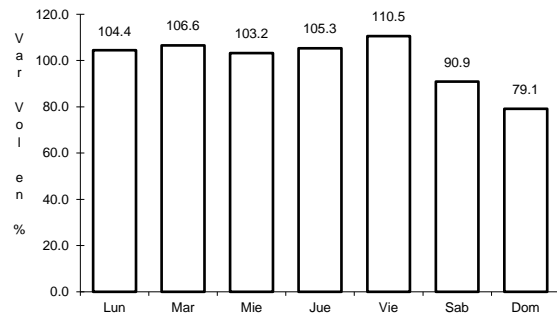


Km: 220.00                      Tipo: 1                      Sent: 0

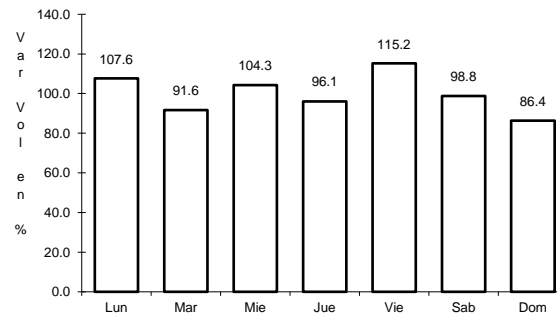
5 CARR: Libramiento Campos - Alameda

CLAVE:

RUTA: MEX



Km: 0.00                      Tipo: 3                      Sent: 0

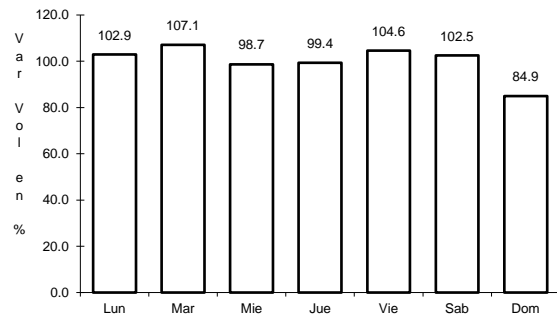


Km: 5.00                      Tipo: 1                      Sent: 0

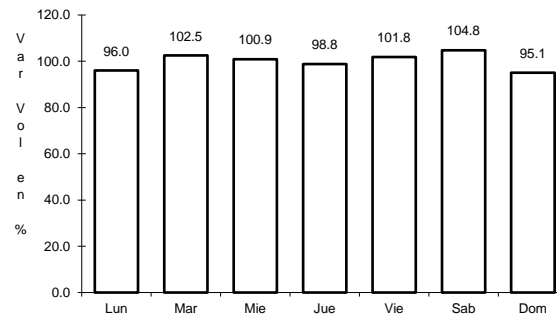
6 CARR: Libramiento de Colima

CLAVE: 06573

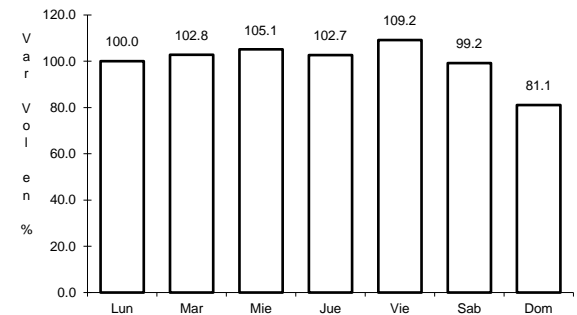
RUTA: MEX-054



Km: 0.00                      Tipo: 3                      Sent: 1



Km: 0.00                      Tipo: 3                      Sent: 2

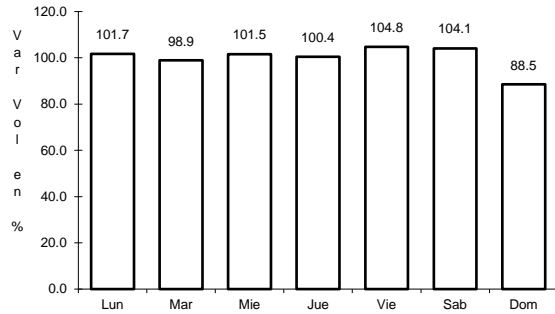


Km: 9.00                      Tipo: 1                      Sent: 1

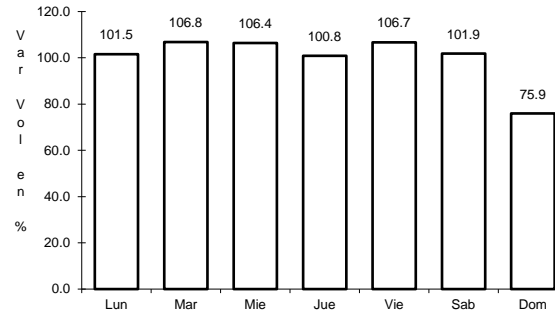
7 CARR: Libramiento de Manzanillo (Libre)

CLAVE: 06574

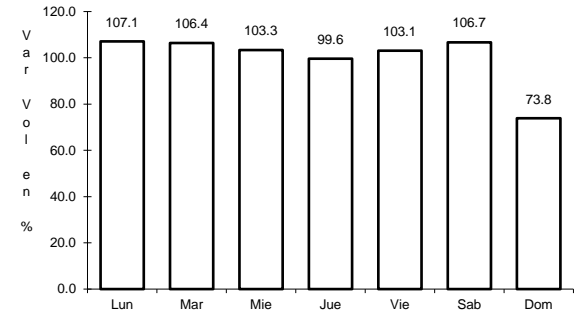
RUTA: MEX-200



Km: 0.00                      Tipo: 3                      Sent: 0



Km: 6.30                      Tipo: 1                      Sent: 1

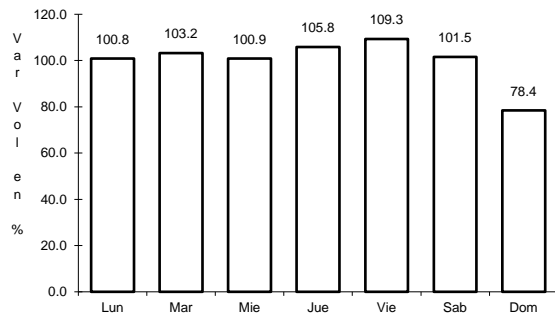


Km: 6.30                      Tipo: 1                      Sent: 2

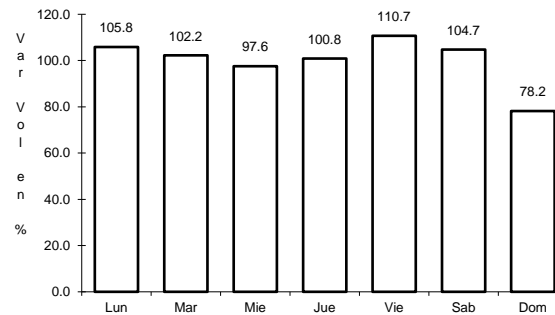
8 CARR: Libramiento de Manzanillo Norte

CLAVE: 06122

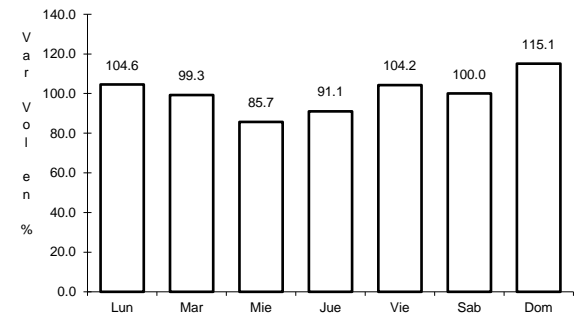
RUTA: MEX-200



Km: 0.00                      Tipo: 3                      Sent: 0



Km: 6.60                      Tipo: 3                      Sent: 0

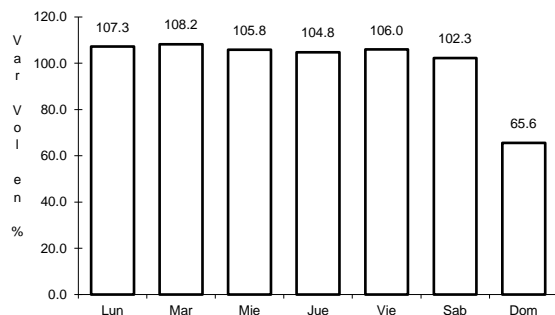


Km: 19.00                      Tipo: 1                      Sent: 0

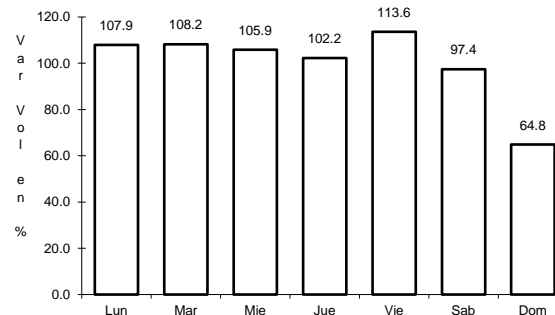
9 CARR: Manzanillo - Puerto Vallarta

CLAVE: 00070

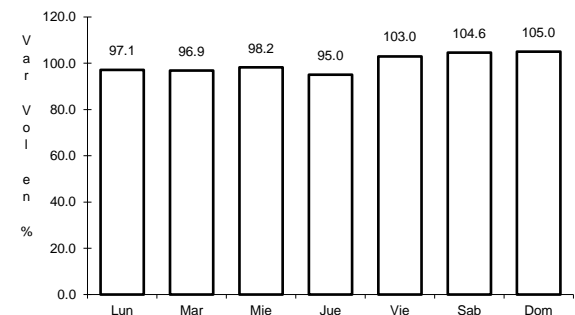
RUTA: MEX-200



Km: 0.00                      Tipo: 3                      Sent: 1



Km: 0.00                      Tipo: 3                      Sent: 2

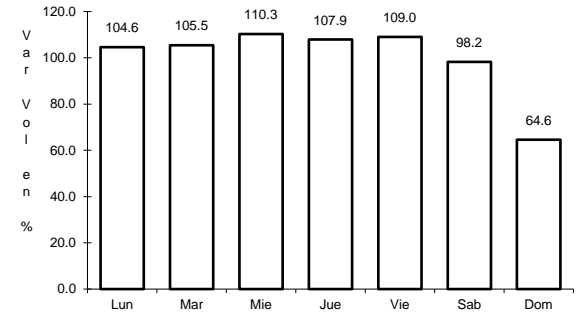
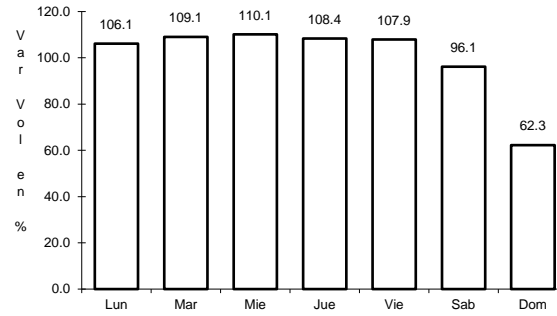
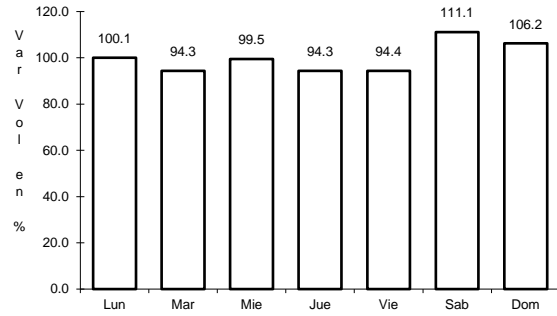


Km: 275.84                      Tipo: 1                      Sent: 0

10 CARR: Minatitlán - Ent. Pez Vela

CLAVE: 06015

RUTA: MEX-098



Km: 49.50                      Tipo: 1                      Sent: 0

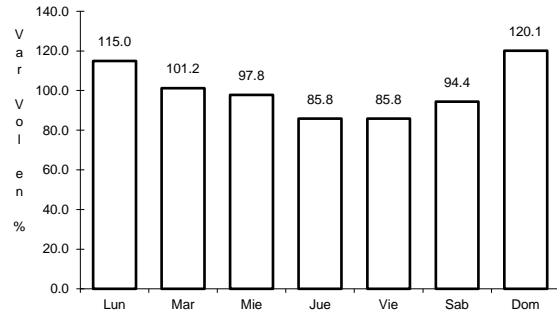
Km: 58.50                      Tipo: 1                      Sent: 1

Km: 58.50                      Tipo: 1                      Sent: 2

11 CARR: Paso por La Salada

CLAVE: 06121

RUTA: MEX-110

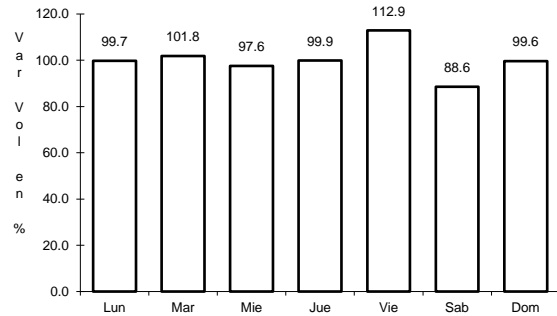


Km: 4.80                      Tipo: 3                      Sent: 0

12 CARR: Paso por Los Asmoles

CLAVE: 06120

RUTA: MEX-110

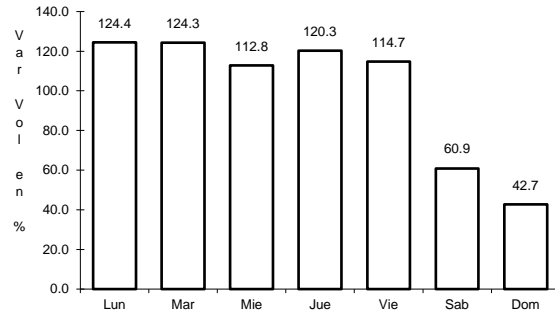


Km: 1.80                      Tipo: 3                      Sent: 0

13 CARR: Ramal a Cerro de Los Juanes

CLAVE: 06009

RUTA: MEX-098



Km: 0.00

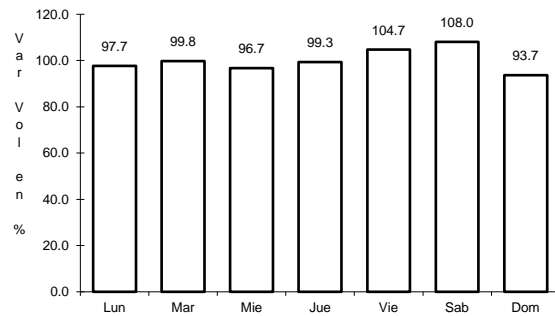
Tipo: 3

Sent: 0

14 CARR: Ramal a Cerro de Ortega

CLAVE: 06009

RUTA: MEX-200



Km: 0.00

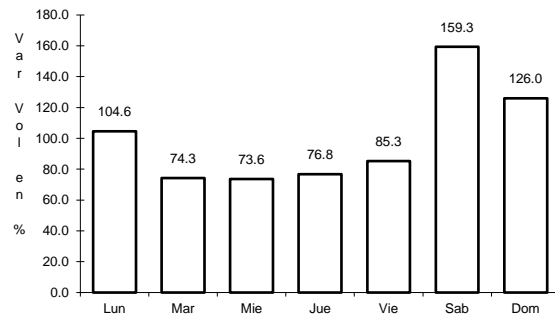
Tipo: 3

Sent: 0

15 CARR: Ramal a Cuyutlán

CLAVE: 06225

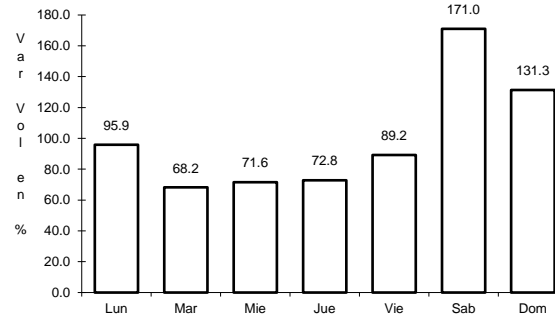
RUTA: MEX-200



Km: 0.00

Tipo: 3

Sent: 0



Km: 7.00

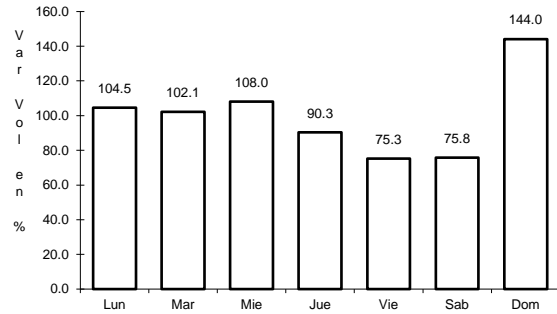
Tipo: 1

Sent: 0

16 CARR: Tecomán - Boca de Pascuales

CLAVE: 06226

RUTA: MEX-200

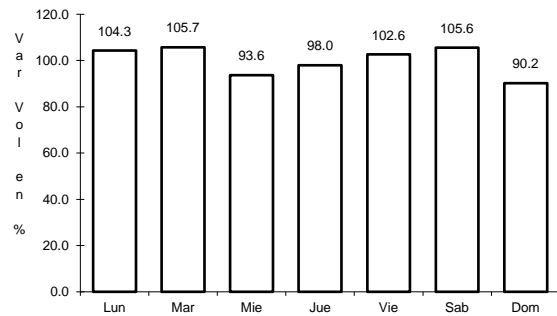


Km: 0.00                      Tipo: 3                      Sent: 0

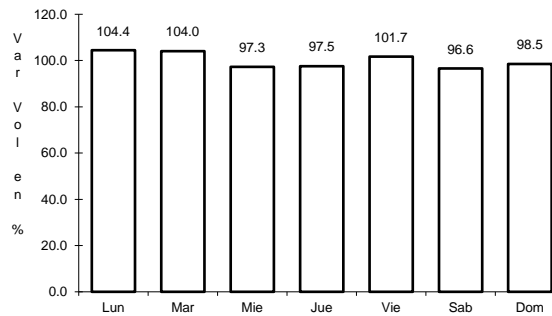
17 CARR: Armería - Manzanillo (Cuota)

CLAVE: 06585

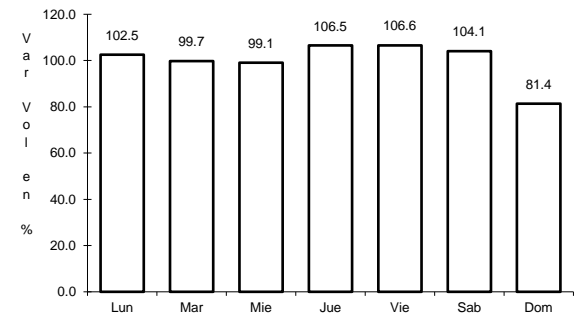
RUTA: MEX-200D



Km: 0.00                      Tipo: 3                      Sent: 1



Km: 0.00                      Tipo: 3                      Sent: 2

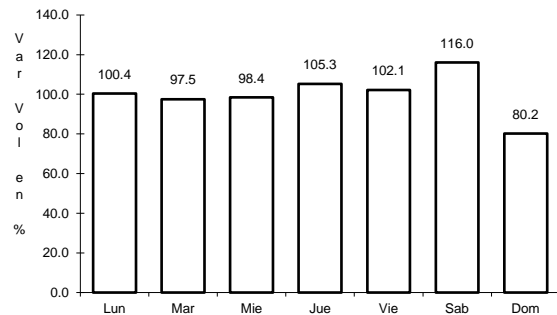


Km: 44.00                      Tipo: 3                      Sent: 1

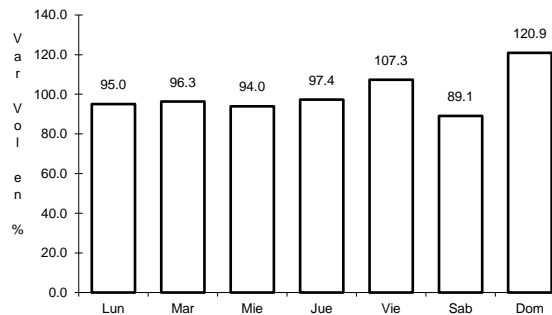
18 CARR: Guadalajara - Colima (Cuota)

CLAVE: 00118

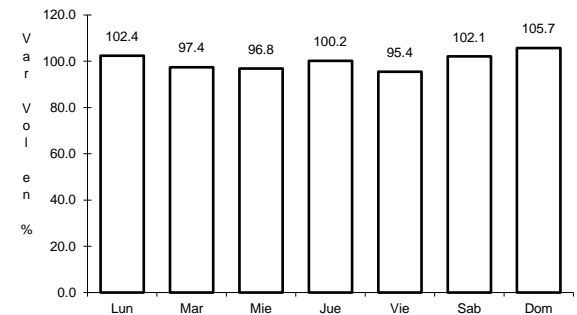
RUTA: MEX-054D



Km: 0.20                      Tipo: 3                      Sent: 1



Km: 0.20                      Tipo: 3                      Sent: 2



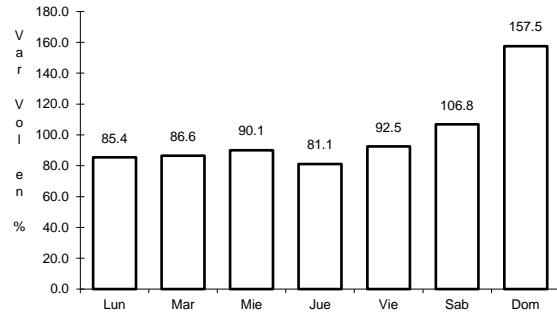
Km: 107.27                      Tipo: 1                      Sent: 0



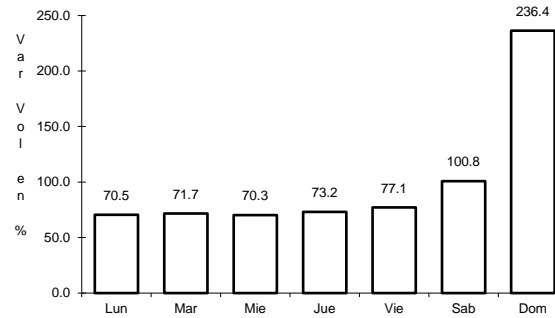
19 CARR: Armería - Playa El Paraíso

CLAVE: 06580

RUTA: COL



Km: 0.00                      Tipo: 3                      Sent: 0

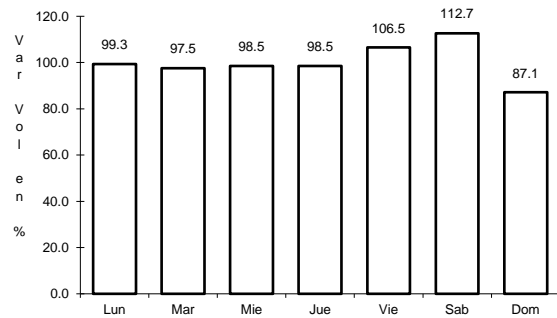


Km: 7.50                      Tipo: 1                      Sent: 0

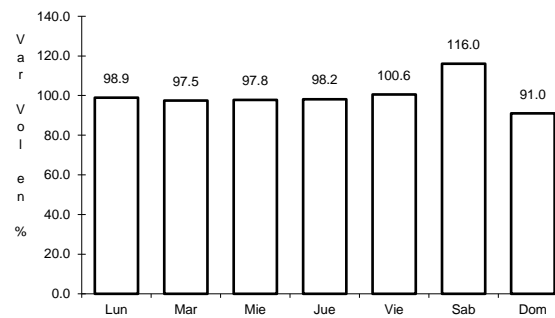
20 CARR: Colima - Comala

CLAVE: 06016

RUTA: COL-016



Km: 3.00                      Tipo: 3                      Sent: 1

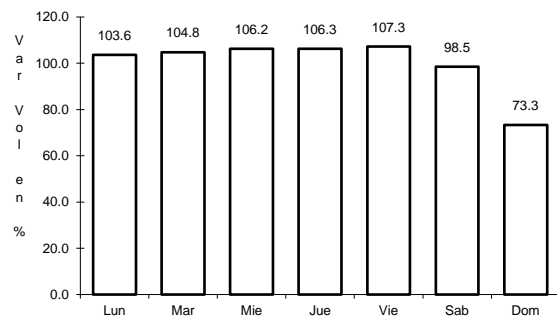


Km: 3.00                      Tipo: 3                      Sent: 2

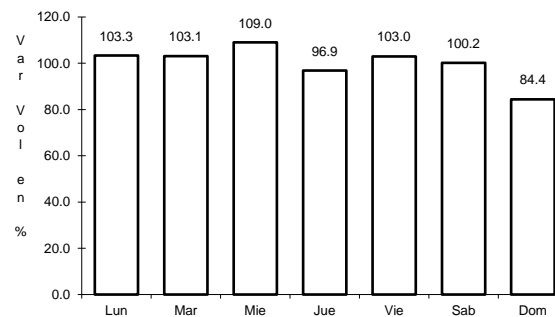
21 CARR: Colima - Coquimatlán

CLAVE: 06034

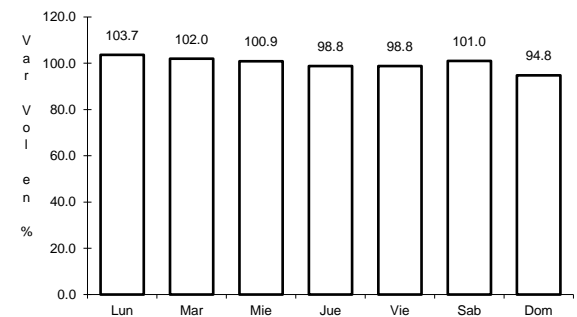
RUTA: COL-034



Km: 3.00                      Tipo: 3                      Sent: 1



Km: 3.00                      Tipo: 3                      Sent: 2

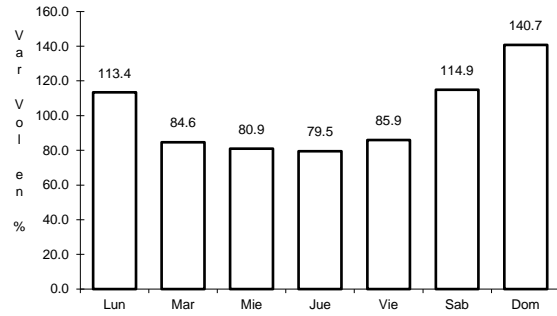


Km: 11.00                      Tipo: 1                      Sent: 1

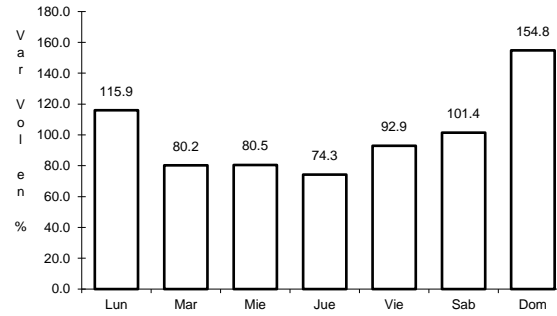
22 CARR: Comala - San Antonio

CLAVE: 06030

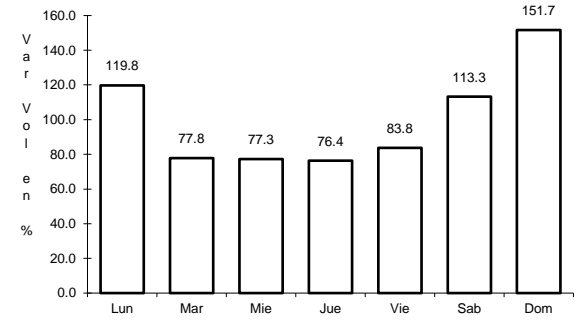
RUTA: COL-016



Km: 0.00                      Tipo: 3                      Sent: 1



Km: 0.00                      Tipo: 3                      Sent: 2

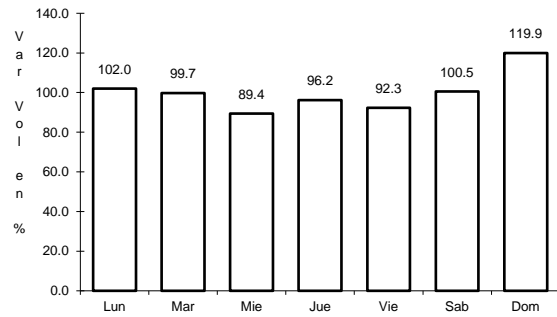


Km: 10.00                      Tipo: 1                      Sent: 0

23 CARR: Coquimatlán - Pueblo Juárez

CLAVE: 06029

RUTA: COL-034

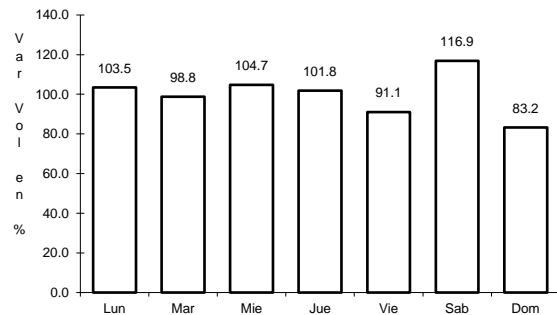


Km: 0.00                      Tipo: 3                      Sent: 0

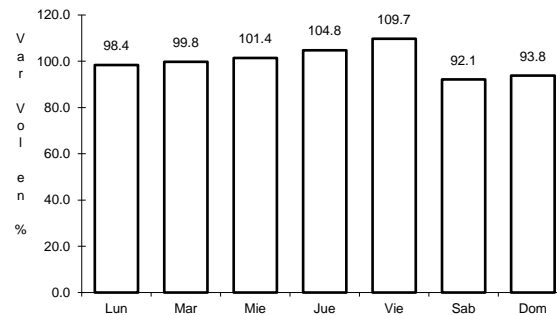
24 CARR: Costera Laguna de Cuytlán

CLAVE: 06010

RUTA: COL



Km: 0.00                      Tipo: 3                      Sent: 0

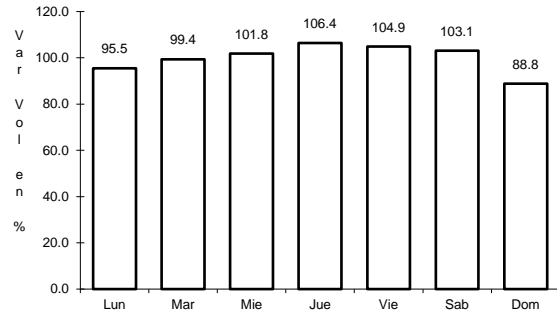


Km: 13.00                      Tipo: 1                      Sent: 0

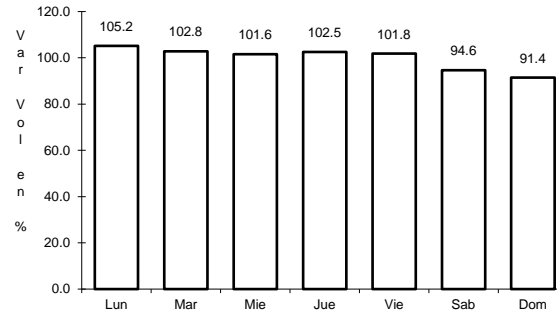
25 CARR: Cuauhtémoc - Colima

CLAVE: 06019

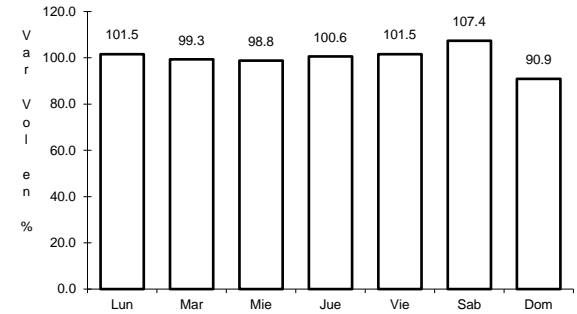
RUTA: COL-019



Km: 0.00                      Tipo: 3                      Sent: 0



Km: 19.50                      Tipo: 1                      Sent: 1

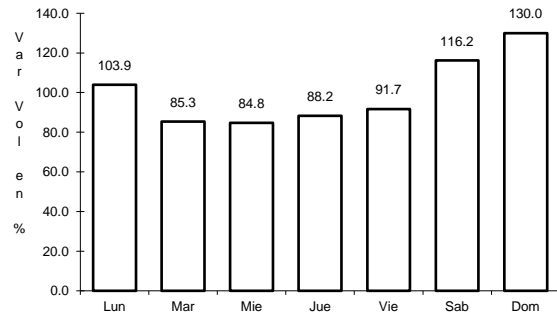


Km: 19.50                      Tipo: 1                      Sent: 2

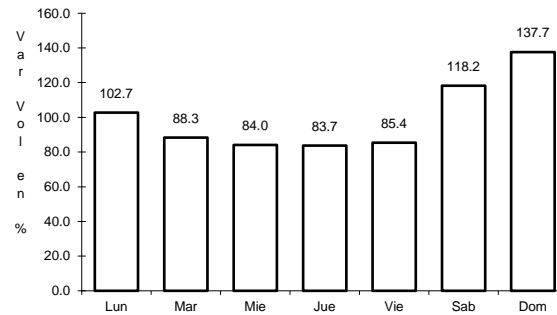
26 CARR: Libramiento de Comala

CLAVE:

RUTA: COL-016



Km: 0.00                      Tipo: 3                      Sent: 0

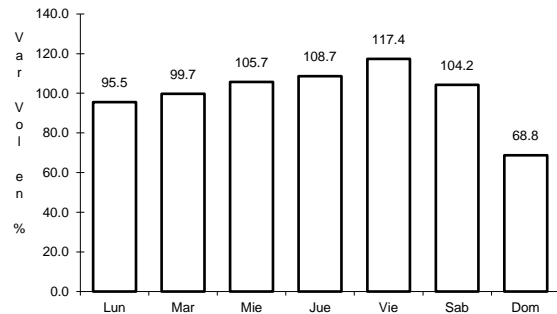


Km: 7.10                      Tipo: 1                      Sent: 0

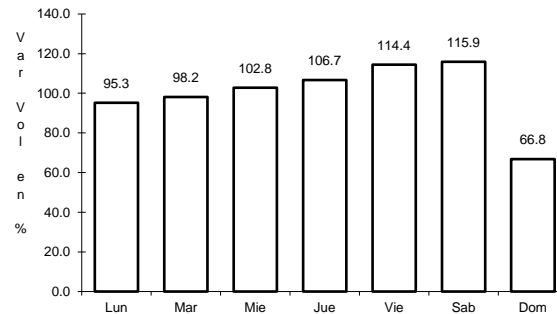
27 CARR: Libramiento de Tecomán

CLAVE: 06122

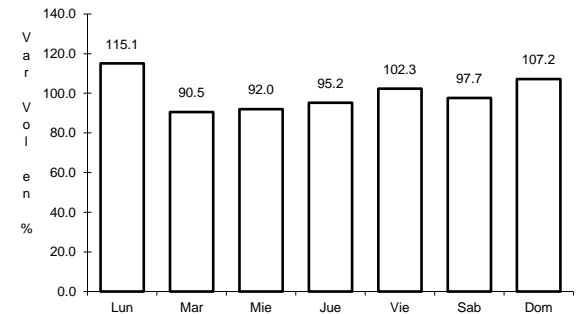
RUTA: COL



Km: 0.00                      Tipo: 3                      Sent: 1



Km: 0.00                      Tipo: 3                      Sent: 2

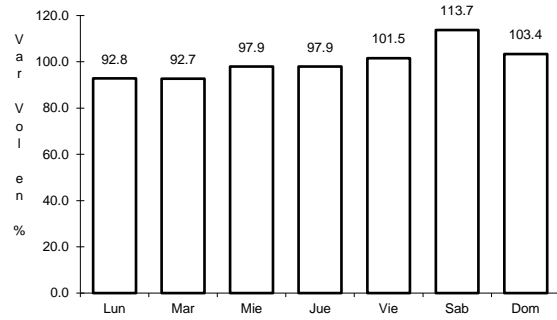


Km: 7.90                      Tipo: 1                      Sent: 1

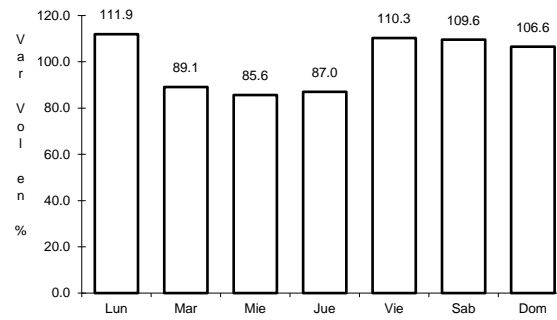
28 CARR: Libramiento Poniente Arco Sur de Tecomán

CLAVE:

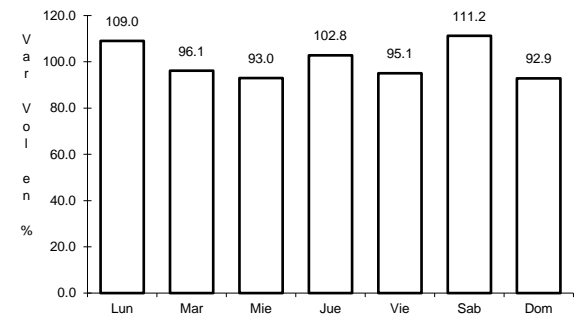
RUTA: COL



Km: 0.00                      Tipo: 3                      Sent: 0



Km: 4.60                      Tipo: 3                      Sent: 0

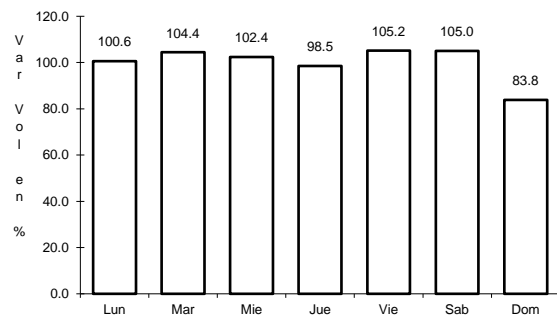


Km: 6.90                      Tipo: 3                      Sent: 0

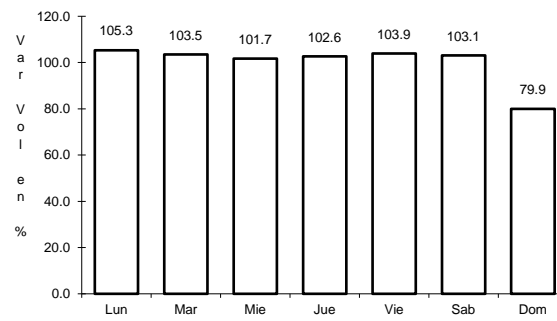
29 CARR: Libramiento Poniente de Colima

CLAVE: 06122

RUTA: COL



Km: 0.00                      Tipo: 3                      Sent: 1

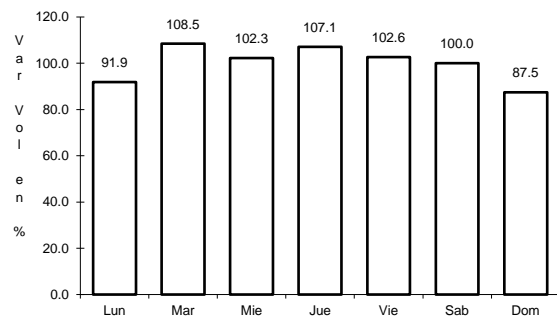


Km: 0.00                      Tipo: 3                      Sent: 2

30 CARR: Los Limones - Loma de Juárez

CLAVE: 06122

RUTA: COL

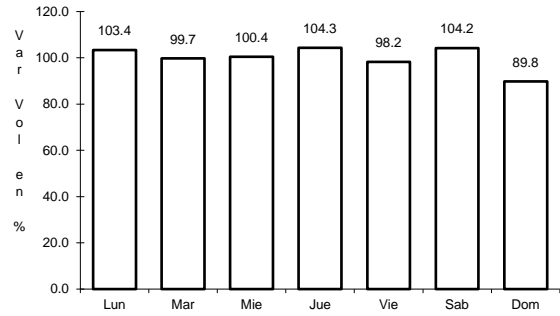


Km: 5.77                      Tipo: 1                      Sent: 0

31 CARR: Puerta de Caleras - Madrid

CLAVE: 06014

RUTA: COL-014

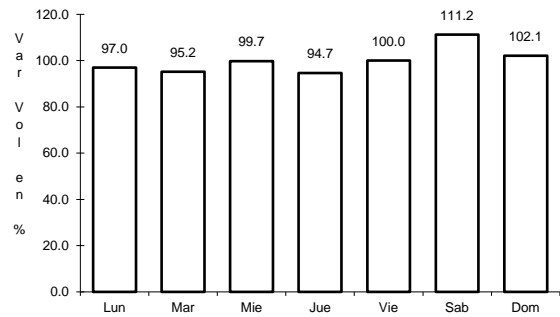


Km: 0.00                      Tipo: 3                      Sent: 0

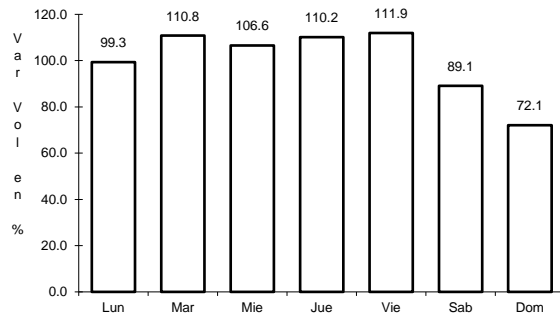
32 CARR: Quesería - El Naranjal

CLAVE: 06001

RUTA: COL-001



Km: 0.00                      Tipo: 3                      Sent: 0

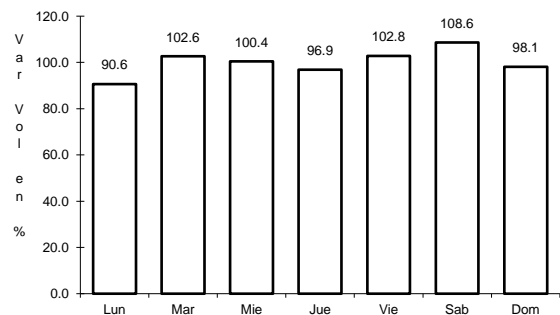


Km: 10.00                      Tipo: 1                      Sent: 0

33 CARR: Ramal a Aeropuerto de Colima

CLAVE: 06224

RUTA: COL

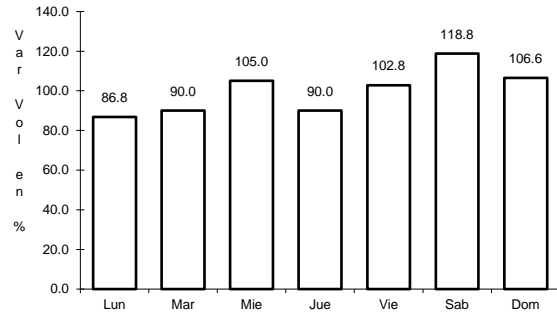


Km: 0.00                      Tipo: 3                      Sent: 0

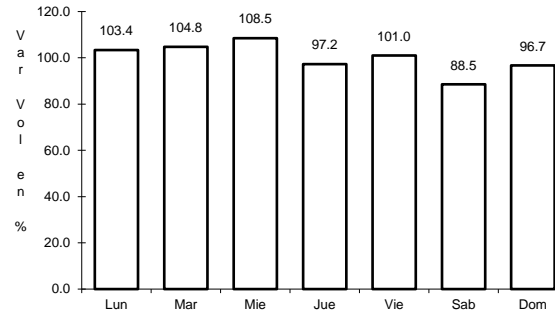
34 CARR: Ramal a Aeropuerto Manzanillo

CLAVE: 06582

RUTA: COL



Km: 0.00                      Tipo: 3                      Sent: 0

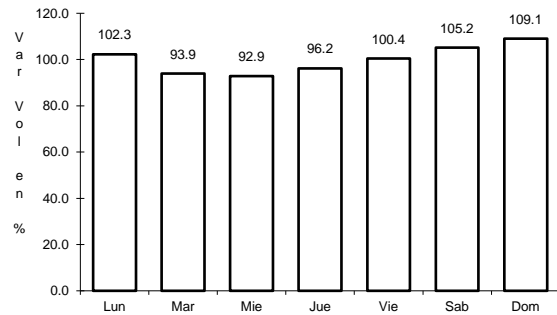


Km: 5.50                      Tipo: 1                      Sent: 0

35 CARR: Ramal a Camotlán de Miraflores

CLAVE: 06009

RUTA: COL

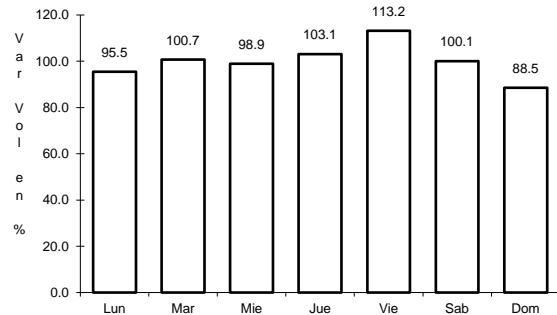


Km: 0.00                      Tipo: 3                      Sent: 0

36 CARR: Ramal a Ixtlahuacán

CLAVE: 06577

RUTA: COL-005

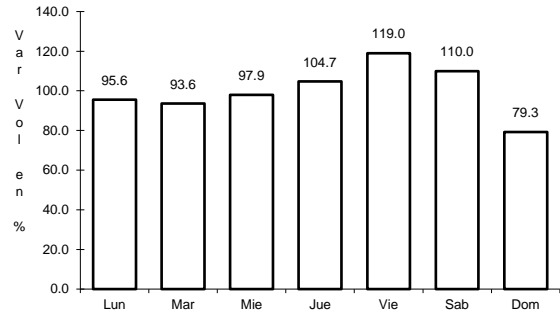


Km: 0.00                      Tipo: 3                      Sent: 0

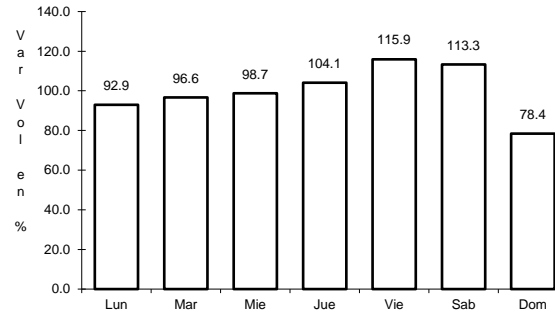
37 CARR: Ramal a Las Brisas

CLAVE: 06571

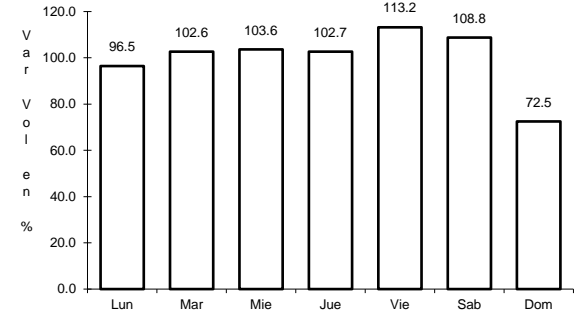
RUTA: COL



Km: 0.00                      Tipo: 3                      Sent: 0



Km: 0.00                      Tipo: 3                      Sent: 1

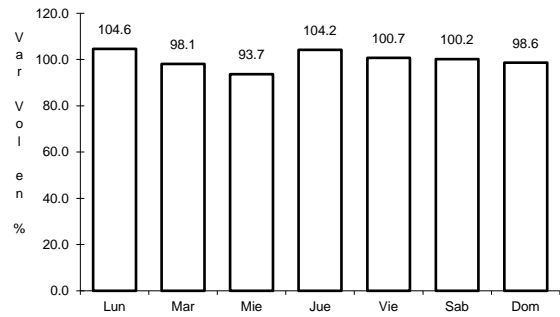


Km: 0.00                      Tipo: 3                      Sent: 2

38 CARR: Ramal a Los Tepames

CLAVE: 06004

RUTA: COL-004

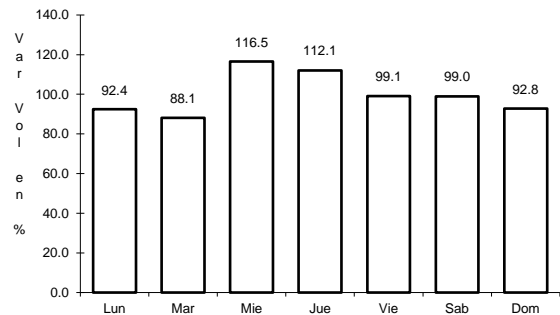


Km: 0.00                      Tipo: 3                      Sent: 0

39 CARR: Ramal a Rancho Valle Nuevo

CLAVE: 06583

RUTA: COL

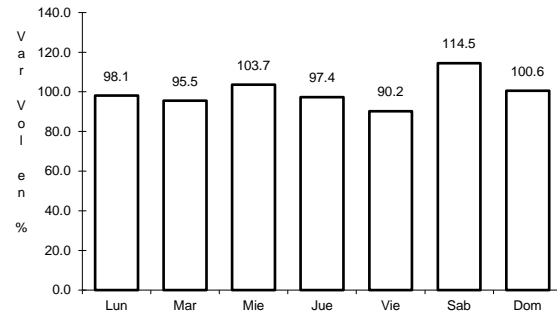


Km: 0.00                      Tipo: 3                      Sent: 0

40 CARR: Ramal a Rincón de López

CLAVE: 06578

RUTA: COL



Km: 0.00

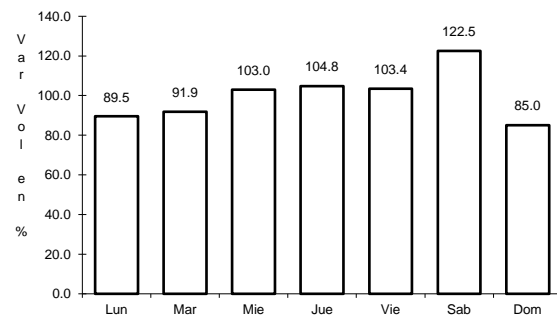
Tipo: 3

Sent: 0

41 CARR: Ramal a Tecuanillo

CLAVE: 06009

RUTA: COL-009



Km: 0.00

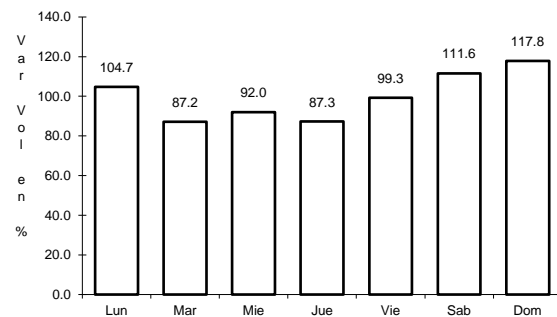
Tipo: 3

Sent: 0

42 CARR: Tecomán - La Mascota

CLAVE: 06572

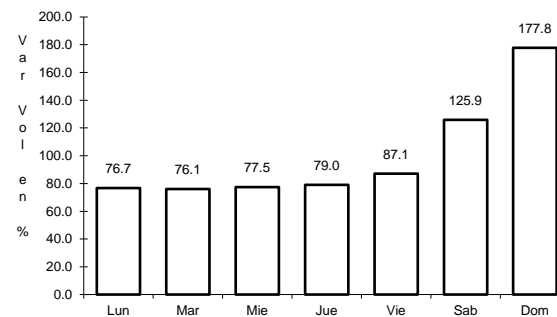
RUTA: COL



Km: 0.00

Tipo: 3

Sent: 0



Km: 2.70

Tipo: 3

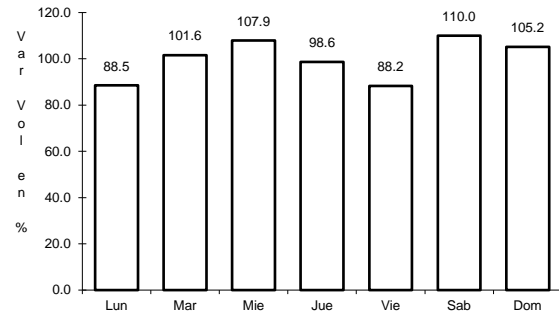
Sent: 0



43 CARR: Trapichillos - Estación Alzada

CLAVE: 06003

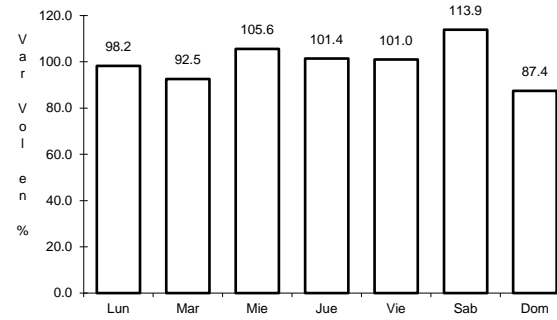
RUTA: COL-003



Km: 0.00

Tipo: 3

Sent: 0



Km: 12.50

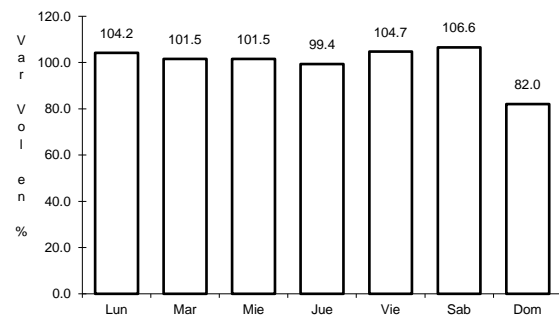
Tipo: 1

Sent: 0

44 CARR: Villa de Álvarez - Minatitlán

CLAVE: 06040

RUTA: COL



Km: 0.00

Tipo: 3

Sent: 0

