

COAHUILA

---RED FEDERAL LIBRE---

1 Cd. Acuña - Presa de La Amistad	MEX-002
2 Durango - Torreón	MEX-040
3 Ent. Bella Unión - Saltillo	MEX-057
4 Ent. La Cuchilla - San Pedro de las Colonias	MEX
5 Ent. Morelos - Saltillo	MEX-054
6 Gregorio García - Francisco I. Madero	MEX-040
7 Libramiento Allende - Nava	MEX-057
8 Monclova - Piedras Negras	MEX-057
9 Monclova - San Pedro de Las Colonias	MEX-030
10 Monterrey - Castaños	MEX-053
11 Morelos - Cd. Acuña	MEX-029
12 Nueva Rosita - Boquillas del Carmen	MEX-053
13 Ojo Caliente - Santa Cruz	MEX-057
14 Piedras Negras - Cd. Acuña	MEX-002
15 Piedras Negras - Nuevo Laredo	MEX-002
16 Puerto México - La Encantada	MEX-057
17 Saltillo - Monclova	MEX-057
18 Saltillo - Monterrey	MEX-040
19 Saltillo - Torreón	MEX-040
20 Torreón - San Pedro de las Colonias	MEX-030

---RED FEDERAL DE CUOTA---

21 Libramiento Norponiente de Saltillo (Cuota)	MEX-S30
22 Libramiento Norte de Torreón (Cuota)	MEX-040D
23 Libramiento Oriente de Saltillo (Cuota)	MEX-057D
24 Nueva Rosita - Ent. Allende (Cuota)	MEX-057D
25 Puerto México - La Carbonera (Cuota)	MEX-057D
26 Saltillo - Monterrey (Cuota)	MEX-040D
27 Torreón - Saltillo (Cuota)	MEX-040D

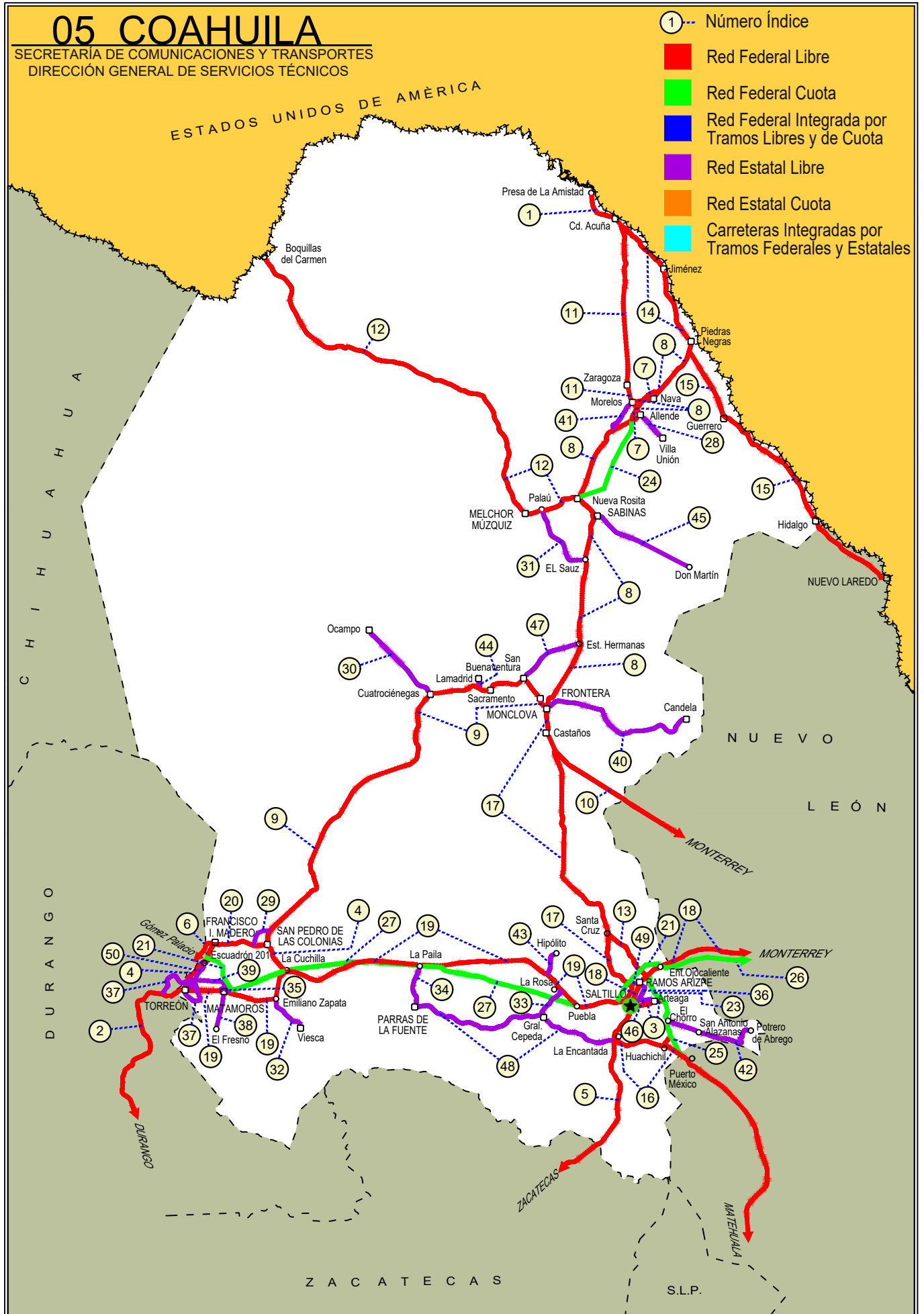
---RED ESTATAL LIBRE---

28 Allende - Villa Unión	COA-015
29 Corredor Libramiento de San Pedro	COA-087
30 Cuatro Ciénegas - Ocampo	COA-048
31 El Sauz - Palau	COA-022
32 Emiliano Zapata - Viesca	COA-082
33 Ent. La Rosa - General Cepeda	COA-034
34 Ent. Paila - Parras de La Fuente	COA-102
35 Libramiento de Matamoros	COA
36 Libramiento de Saltillo J.L.P.	COA
37 Libramiento de Torreón	COA
38 Matamoros - El Fresno	COA-078
39 Matamoros - La Unión	COA-070
40 Monclova - Estación Candela	COA-030-NL
41 Morelos - Ent. Las Corrientes	COA-010
42 Puerto de Flores - El Hondable	COA-112
43 Ramal a Hipólito	COA-114
44 Ramal a Lamadrid	COA-042
45 Sabinas - Don Martín	COA-025
46 Saltillo - Arteaga	COA-106
47 San Buenaventura - Estación Hermanas	COA-034
48 T. C. (Ent. Morelos - Saltillo) - Parras de La Fuente	COA-105
49 T. C. (Saltillo - Monclova) - Ramos Arizpe	COA
50 Torreón - Escuadrón 201	COA-011

05 COAHUILA

SECRETARÍA DE COMUNICACIONES Y TRANSPORTES
DIRECCIÓN GENERAL DE SERVICIOS TÉCNICOS

- ① --- Número Índice
- Red Federal Libre
- Red Federal Cuota
- Red Federal Integrada por Tramos Libres y de Cuota
- Red Estatal Libre
- Red Estatal Cuota
- Carreteras Integradas por Tramos Federales y Estatales



COAHUILA

1 CARR: Cd. Acuña - Presa de La Amistad

CLAVE: 05085

RUTA: MEX-002

AÑO: 2021

LUGAR	ESTACION				CLASIFICACION VEHICULAR EN PORCIENTO										COORDENADAS					
	KM	TE	SC	TDPA	M	A	B	C2	C3	T3S2	T3S3	T3S2R4	OTROS	A	B	C	K'	D	LATITUD	LONGITUD
Cd. Acuña	0.00	3	1	12089	0.9	92.3	2.9	2.3	0.6	0.9	0.1	0.0	0.0	93.2	2.9	3.9	0.094	0.520	29.333924	-100.964587
Cd. Acuña	0.00	3	2	11171	1.0	89.9	2.3	5.0	0.7	1.0	0.0	0.1	0.0	90.9	2.3	6.8	0.098	0.520	29.333824	-100.964627
T. Izq. Santa Eulalia	10.60	1	1	4166	1.6	81.2	4.1	8.6	1.6	1.6	1.3	0.0	0.0	82.8	4.1	13.1	0.125	0.503	29.342727	-101.001747
T. Izq. Santa Eulalia	10.60	1	2	4201	1.3	79.4	4.6	10.1	1.8	1.6	1.2	0.0	0.0	80.7	4.6	14.7	0.130	0.503	29.342610	-101.001777
Presa de La Amistad	23.00	1	0	469	3.4	73.5	4.7	14.8	3.6	0.0	0.0	0.0	0.0	76.9	4.7	18.4	0.168	0.506	29.444007	-101.074453

2 CARR: Durango - Torreón

CLAVE: 10085

RUTA: MEX-040

AÑO: 2021

LUGAR	ESTACION				CLASIFICACION VEHICULAR EN PORCIENTO										COORDENADAS					
	KM	TE	SC	TDPA	M	A	B	C2	C3	T3S2	T3S3	T3S2R4	OTROS	A	B	C	K'	D	LATITUD	LONGITUD
Durango	0.00	3	1	9843	4.1	89.0	1.2	2.7	1.1	1.1	0.4	0.3	0.1	93.1	1.2	5.7	0.075	0.503	24.077161	-104.590589
Durango	0.00	3	2	9718	3.9	89.4	1.1	2.2	1.5	1.1	0.3	0.4	0.1	93.3	1.1	5.6	0.076	0.503	24.077260	-104.590707
T. Der. Cd. de Los Niños	7.70	3	1	8767	4.2	88.2	1.4	3.2	1.1	1.2	0.4	0.3	0.0	92.4	1.4	6.2	0.078	0.504	24.082144	-104.586304
T. Der. Cd. de Los Niños	7.70	3	2	8634	3.9	89.3	1.3	2.3	1.3	1.2	0.2	0.4	0.1	93.2	1.3	5.5	0.074	0.504	24.082225	-104.586421
X. Periférico de Durango	9.00	1	1	9233	4.1	88.6	1.3	3.1	1.1	1.3	0.2	0.3	0.0	92.7	1.3	6.0	0.079	0.504	24.086821	-104.582304
X. Periférico de Durango	9.00	1	2	9079	4.0	90.0	1.2	2.3	1.1	1.2	0.1	0.1	0.0	94.0	1.2	4.8	0.074	0.504	24.086920	-104.582422
T. Der. Aeropuerto	9.42	1	1	7622	4.3	86.4	1.5	3.1	1.7	1.8	0.6	0.5	0.1	90.7	1.5	7.8	0.084	0.505	24.091515	-104.578294
T. Der. Aeropuerto	9.42	1	2	7482	3.9	88.2	1.1	2.9	1.5	1.3	0.4	0.6	0.1	92.1	1.1	6.8	0.084	0.505	24.091597	-104.578402
T. Der. Aeropuerto	9.42	3	1	4330	9.5	76.8	1.6	3.7	5.0	1.8	0.9	0.6	0.1	86.3	1.6	12.1	0.089	0.503	24.099547	-104.575700
T. Der. Aeropuerto	9.42	3	2	4283	9.0	77.6	1.3	3.6	5.2	1.7	0.7	0.7	0.2	86.6	1.3	12.1	0.081	0.503	24.099590	-104.575801
La Calera	10.85	3	0	5160	3.6	80.9	1.6	5.3	1.4	4.2	2.2	0.7	0.1	84.5	1.6	13.9	0.078	0.511	24.112117	-104.571831
Abraham González	27.10	3	0	3874	2.2	79.6	2.9	3.4	2.4	5.2	3.4	0.7	0.2	81.8	2.9	15.3	0.078	0.504	24.205829	-104.516364
Francisco I. Madero	56.30	1	0	4048	3.0	77.6	3.1	3.4	2.0	6.0	3.6	1.1	0.2	80.6	3.1	16.3	0.082	0.505	24.392962	-104.330078
Francisco I. Madero	56.30	3	0	4357	4.5	71.6	2.7	9.8	2.6	4.2	2.4	1.9	0.3	76.1	2.7	21.2	0.072	0.503	24.405102	-104.300654
Guadalupe Victoria	77.50	1	0	5502	5.0	72.9	3.2	8.9	2.5	4.0	2.4	0.6	0.5	77.9	3.2	18.9	0.084	0.506	24.446800	-104.139537
Guadalupe Victoria	77.50	3	0	5913	2.8	79.4	4.0	7.4	1.0	2.8	1.7	0.8	0.1	82.2	4.0	13.8	0.097	0.516	24.465693	-104.081165
T. Der. Ignacio Allende	90.13	1	0	4463	1.8	80.5	2.4	4.0	1.3	5.5	3.3	1.0	0.2	82.3	2.4	15.3	0.083	0.522	24.495554	-104.027230
T. Der. Ignacio Allende	90.13	3	0	3257	2.0	76.3	3.9	3.4	1.2	7.0	4.4	1.6	0.2	78.3	3.9	17.8	0.081	0.508	24.505520	-104.012665
T. Izq. Peñón Blanco	120.90	1	0	2403	3.1	67.1	2.8	4.7	2.7	10.9	6.3	2.1	0.3	70.2	2.8	27.0	0.074	0.511	24.732760	-103.843544
T. Izq. Peñón Blanco	120.90	3	0	1986	2.6	65.1	4.3	5.2	2.5	10.6	6.7	2.6	0.4	67.7	4.3	28.0	0.070	0.504	24.746209	-103.835796
Cuencamé	144.30	1	0	2003	5.9	81.1	4.2	3.8	1.7	1.2	0.9	1.0	0.2	87.0	4.2	8.8	0.075	0.571	24.860729	-103.702221
Cuencamé	144.30	3	1	4907	2.5	52.1	5.1	10.5	4.3	15.2	4.2	5.1	1.0	54.6	5.1	40.3	0.078	0.507	24.878638	-103.698987
Cuencamé	144.30	3	2	5053	2.7	50.0	5.2	11.4	4.6	15.8	4.1	5.0	1.2	52.7	5.2	42.1	0.070	0.507	24.878627	-103.699124
T. C. Libramiento Exterior Cuencamé	148.70	1	0	2234	8.5	72.8	2.1	10.1	2.5	2.1	1.7	0.1	0.1	81.3	2.1	16.6	0.085	0.539	24.888990	-103.700887
X. C. Yerbanis - Gómez Palicio (Cuota)	155.80																			

COAHUILA

2 CARR: Durango - Torreón

CLAVE: 10085

RUTA: MEX-040

AÑO: 2021

LUGAR	ESTACION				CLASIFICACION VEHICULAR EN PORCIENTO													COORDENADAS		
	KM	TE	SC	TDPA	M	A	B	C2	C3	T3S2	T3S3	T3S2R4	OTROS	A	B	C	K'	D	LATITUD	LONGITUD
T. Izq. Nazas	171.61	1	0	4024	2.4	60.0	4.8	5.3	3.8	14.4	6.1	2.5	0.7	62.4	4.8	32.8	0.081	0.502	25.085370	-103.771380
T. Izq. Nazas	171.61	3	0	5819	3.2	58.1	3.9	5.9	6.7	12.6	4.4	4.3	0.9	61.3	3.9	34.8	0.078	0.504	25.091129	-103.769984
T. Der. Villa Juárez	194.40	3	0	6006	3.8	53.8	6.0	6.9	3.2	15.9	6.4	3.2	0.8	57.6	6.0	36.4	0.085	0.510	25.226578	-103.627143
León Guzmán	229.58	3	0	9158	7.3	71.0	2.3	5.4	2.2	7.1	2.8	1.5	0.4	78.3	2.3	19.4	0.068	0.511	25.508680	-103.650476
Cd. Lerdo	244.80	1	1	6015	4.2	70.7	3.1	5.1	3.2	6.9	3.3	2.8	0.7	74.9	3.1	22.0	0.101	0.513	25.511912	-103.541989
Cd. Lerdo	244.80	1	2	6338	4.3	70.9	3.3	5.0	3.3	6.6	3.3	2.6	0.7	75.2	3.3	21.5	0.092	0.513	25.512002	-103.542018
T. Izq. Gómez Palacio	248.90	3	1	20571	6.3	89.1	0.5	2.3	0.7	0.3	0.1	0.6	0.1	95.4	0.5	4.1	0.107	0.511	25.550690	-103.480820
T. Izq. Gómez Palacio	248.90	3	2	19647	6.2	88.9	0.6	2.4	0.7	0.3	0.1	0.7	0.1	95.1	0.6	4.3	0.119	0.511	25.550816	-103.480778
Lim. Edos. Term. Dgo. Ppia. Coah.	251.00																			
Torreón	255.80	1	1	21619	4.9	89.6	1.2	3.7	0.2	0.1	0.0	0.2	0.1	94.5	1.2	4.3	0.075	0.507	25.548141	-103.471815
Torreón	255.80	1	2	21013	4.8	89.0	1.5	4.0	0.3	0.2	0.0	0.1	0.1	93.8	1.5	4.7	0.085	0.507	25.545643	-103.468642

3 CARR: Ent. Bella Unión - Saltillo

CLAVE: 05003

RUTA: MEX-057

AÑO: 2021

LUGAR	ESTACION				CLASIFICACION VEHICULAR EN PORCIENTO													COORDENADAS		
	KM	TE	SC	TDPA	M	A	B	C2	C3	T3S2	T3S3	T3S2R4	OTROS	A	B	C	K'	D	LATITUD	LONGITUD
T. C. Ent. Puerto México - Ent. Ojo Caliente (Cuota)	0.00																			
T. Der. Arteaga	4.61	1	1	5630	2.6	74.1	1.1	12.7	1.8	6.1	0.7	0.6	0.3	76.7	1.1	22.2	0.166	0.505	25.445054	-100.838158
T. Der. Arteaga	4.61	1	2	5737	3.5	74.6	1.0	11.8	1.6	5.8	0.7	0.5	0.5	78.1	1.0	20.9	0.138	0.505	25.444845	-100.838207
Saltillo	17.00	1	1	25810	0.8	86.1	0.3	10.5	1.2	0.5	0.4	0.1	0.1	86.9	0.3	12.8	0.089	0.502	25.436609	-100.907272
Saltillo	17.00	1	2	25553	0.8	86.6	0.3	10.0	1.2	0.5	0.4	0.1	0.1	87.4	0.3	12.3	0.084	0.502	25.436511	-100.907253

4 CARR: Ent. La Cuchilla - San Pedro de las Colonias

CLAVE: 05021

RUTA: MEX

AÑO: 2021

LUGAR	ESTACION				CLASIFICACION VEHICULAR EN PORCIENTO													COORDENADAS		
	KM	TE	SC	TDPA	M	A	B	C2	C3	T3S2	T3S3	T3S2R4	OTROS	A	B	C	K'	D	LATITUD	LONGITUD
La Cuchilla	0.00	3	0	1133	7.7	75.8	4.8	3.5	1.6	3.8	1.2	1.0	0.6	83.5	4.8	11.7	0.092	0.502	25.626871	-102.882332
T. Der. Mayran	3.30	3	0	1469	10.1	75.7	4.0	3.8	1.6	3.0	0.8	0.6	0.4	85.8	4.0	10.2	0.097	0.507	25.652240	-102.910174
T. Izq. San Patricio	9.07	3	0	1958	12.9	70.5	2.9	4.5	3.1	2.5	2.1	1.3	0.2	83.4	2.9	13.7	0.084	0.506	25.683089	-102.938450
San Pedro de Las Colonias	18.70	1	1	2528	12.7	74.4	1.2	2.6	3.6	3.2	1.4	0.7	0.2	87.1	1.2	11.7	0.095	0.500	25.745715	-102.968851
San Pedro de Las Colonias	18.70	1	2	2531	12.8	73.4	1.2	2.9	3.7	3.4	1.5	0.9	0.2	86.2	1.2	12.6	0.095	0.500	25.745672	-102.968942

COAHUILA

5 CARR: Ent. Morelos - Saltillo

CLAVE: 00149

RUTA: MEX-054

AÑO: 2021

LUGAR	ESTACION				CLASIFICACION VEHICULAR EN PORCIENTO														COORDENADAS	
	KM	TE	SC	TDPA	M	A	B	C2	C3	T3S2	T3S3	T3S2R4	OTROS	A	B	C	K'	D	LATITUD	LONGITUD
T. C. Zacatecas - Durango	0.00	3	1	4366	1.6	72.5	3.8	9.7	2.9	5.5	1.6	1.7	0.7	74.1	3.8	22.1	0.074	0.506	22.869020	-102.619545
T. C. Zacatecas - Durango	0.00	3	2	4475	1.4	70.5	3.4	9.4	2.5	7.0	2.1	2.9	0.8	71.9	3.4	24.7	0.082	0.506	22.869062	-102.619630
T. Der. Sta. Mónica	11.00	1	1	4136	1.5	56.6	6.2	16.2	1.8	15.2	0.7	1.3	0.5	58.1	6.2	35.7	0.084	0.510	22.937476	-102.570165
T. Der. Sta. Mónica	11.00	1	2	4308	1.7	55.9	7.4	19.4	1.4	12.0	0.6	1.2	0.4	57.6	7.4	35.0	0.085	0.510	22.937523	-102.570233
T. Der. Sta. Mónica	11.00	3	1	3434	1.9	54.3	5.9	19.4	2.5	13.0	0.8	1.5	0.7	56.2	5.9	37.9	0.075	0.512	22.950459	-102.559183
T. Der. Sta. Mónica	11.00	3	2	3598	1.9	49.5	6.3	23.4	2.6	12.7	0.9	2.0	0.7	51.4	6.3	42.3	0.080	0.512	22.950521	-102.559248
T. Izq. Villa de Cos	53.90	1	1	3445	1.5	48.6	6.8	20.5	2.0	16.9	0.8	2.1	0.8	50.1	6.8	43.1	0.076	0.504	23.261382	-102.335855
T. Izq. Villa de Cos	53.90	1	2	3391	1.9	47.3	6.8	22.8	2.0	15.4	0.8	2.3	0.7	49.2	6.8	44.0	0.072	0.504	23.261433	-102.335927
T. Izq. Villa de Cos	53.90	3	1	2972	2.1	47.5	6.9	20.7	2.1	16.4	1.1	2.4	0.8	49.6	6.9	43.5	0.086	0.503	23.279309	-102.322878
T. Izq. Villa de Cos	53.90	3	2	2936	2.1	49.1	6.7	19.7	1.9	16.1	1.1	2.5	0.8	51.2	6.7	42.1	0.088	0.503	23.279409	-102.323016
T. Der. Illescas	58.41	3	1	2415	3.0	53.6	6.6	22.5	2.8	7.0	2.2	1.6	0.7	56.6	6.6	36.8	0.076	0.549	23.291441	-102.314087
T. Der. Illescas	58.41	3	2	2941	1.4	43.4	10.1	29.6	1.1	10.5	1.2	1.9	0.8	44.8	10.1	45.1	0.077	0.549	23.291543	-102.314225
Sierra Vieja	85.50	3	1	2015	2.6	46.2	10.5	20.2	2.9	11.3	1.8	3.7	0.8	48.8	10.5	40.7	0.078	0.524	23.505420	-102.121925
Sierra Vieja	85.50	3	2	2219	2.1	44.7	9.0	22.9	2.7	12.5	1.4	3.9	0.8	46.8	9.0	44.2	0.075	0.524	23.505503	-102.122002
T. Der. Majoma	144.50	3	1	2050	1.6	44.1	6.7	25.1	3.3	10.4	3.0	4.8	1.0	45.7	6.7	47.6	0.085	0.528	23.879996	-101.734358
T. Der. Majoma	144.50	3	2	2296	1.5	38.7	7.0	27.3	3.9	12.8	2.9	5.2	0.7	40.2	7.0	52.8	0.081	0.528	23.880055	-101.734475
T. Der. San Tiburcio	185.25	1	1	2215	2.4	51.4	5.4	16.7	1.9	11.4	2.3	7.8	0.7	53.8	5.4	40.8	0.075	0.501	24.155156	-101.497407
T. Der. San Tiburcio	185.25	1	2	2205	2.2	43.3	6.0	19.4	3.7	15.0	3.8	5.8	0.8	45.5	6.0	48.5	0.075	0.501	24.155234	-101.497552
T. Der. San Tiburcio	185.25	3	1	2545	2.5	51.5	5.5	18.6	3.2	11.2	2.5	4.3	0.7	54.0	5.5	40.5	0.085	0.519	24.162714	-101.491991
T. Der. San Tiburcio	185.25	3	2	2742	2.0	50.6	5.9	15.6	3.5	13.9	2.8	4.7	1.0	52.6	5.9	41.5	0.084	0.519	24.162792	-101.492129
T. Izq. Concepción del Oro	240.00	1	1	3015	2.1	44.8	5.2	27.0	2.8	12.0	1.8	3.4	0.9	46.9	5.2	47.9	0.068	0.551	24.611796	-101.369209
T. Izq. Concepción del Oro	240.00	1	2	3141	2.6	42.7	3.9	24.8	2.6	15.7	2.9	4.0	0.8	45.3	3.9	50.8	0.069	0.551	24.611678	-101.369286
T. Izq. Concepción del Oro	240.00	3	1	3092	1.9	57.6	5.6	13.3	3.5	12.1	1.7	3.7	0.6	59.5	5.6	34.9	0.087	0.530	24.647120	-101.343695
T. Izq. Concepción del Oro	240.00	3	2	2739	1.9	49.8	6.0	13.0	3.2	19.7	2.0	3.7	0.7	51.7	6.0	42.3	0.066	0.530	24.647549	-101.346624
Lim. Edos. Term. Zac. Ppia. Coah.	266.50																			
Agua Nueva	322.00	1	0	6585	2.4	63.9	5.5	7.3	1.5	12.8	2.2	4.3	0.1	66.3	5.5	28.2	0.079	0.502	25.179285	-101.094653
T. Der. La Trinidad	333.00	3	1	9432	0.7	80.2	7.5	7.2	1.5	2.4	0.3	0.1	0.1	80.9	7.5	11.6	0.115	0.500	25.282260	-101.087336
T. Der. La Trinidad	333.00	3	2	9450	0.8	80.7	7.4	7.0	1.4	2.1	0.4	0.1	0.1	81.5	7.4	11.1	0.135	0.500	25.282288	-101.087414
X. C. Libramiento de Saltillo	348.00	1	1	21989	3.6	85.4	2.0	5.3	1.4	1.2	0.1	0.8	0.2	89.0	2.0	9.0	0.084	0.506	25.365114	-101.016600
X. C. Libramiento de Saltillo	348.00	1	2	21465	3.9	84.2	2.3	5.8	1.1	1.4	0.2	0.9	0.2	88.1	2.3	9.6	0.070	0.506	25.367251	-101.015817
Saltillo	354.00	1	1	17203	3.1	88.4	1.7	5.2	0.5	0.5	0.3	0.2	0.1	91.5	1.7	6.8	0.079	0.500	25.387812	-101.006254
Saltillo	354.00	1	2	17195	3.5	88.7	1.6	4.6	0.5	0.5	0.3	0.2	0.1	92.2	1.6	6.2	0.068	0.500	25.386562	-101.007033

COAHUILA

6 CARR: Gregorio García - Francisco I. Madero

CLAVE: 00110

RUTA: MEX-040

AÑO: 2021

LUGAR	ESTACION				CLASIFICACION VEHICULAR EN PORCIENTO														COORDENADAS		
	KM	TE	SC	TDPA	M	A	B	C2	C3	T3S2	T3S3	T3S2R4	OTROS	A	B	C	K'	D	LATITUD	LONGITUD	
T. C. Gómez Palacio - Tlahualillo	0.00																				
Lim. Edos. Term. Dgo. Ppia. Coah.	3.60																				
Francisco I. Madero	9.60	1	0	6886	7.5	81.0	0.7	4.5	2.6	1.9	0.8	0.6	0.4	88.5	0.7	10.8	0.104	0.532	25.772359	-103.294838	

7 CARR: Libramiento Allende - Nava

CLAVE: 05518

RUTA: MEX-057

AÑO: 2021

LUGAR	ESTACION				CLASIFICACION VEHICULAR EN PORCIENTO														COORDENADAS	
	KM	TE	SC	TDPA	M	A	B	C2	C3	T3S2	T3S3	T3S2R4	OTROS	A	B	C	K'	D	LATITUD	LONGITUD
T. C. Monclova - Piedras Negras	0.00	3	1	5081	0.9	65.8	1.4	17.2	1.7	8.1	1.9	2.4	0.6	66.7	1.4	31.9	0.088	0.508	28.327414	-100.885925
T. C. Monclova - Piedras Negras	0.00	3	2	5246	0.9	64.2	1.7	16.9	1.6	9.6	1.7	2.7	0.7	65.1	1.7	33.2	0.120	0.508	28.327435	-100.886009
X. Der. Allende - Izq. Morelos	6.06	3	1	5318	0.8	66.3	3.4	16.2	1.3	7.0	2.1	2.3	0.6	67.1	3.4	29.5	0.072	0.515	28.376747	-100.859435
X. Der. Allende - Izq. Morelos	6.06	3	2	5642	1.0	66.6	2.7	16.2	1.1	7.2	2.3	2.4	0.5	67.6	2.7	29.7	0.083	0.515	28.376826	-100.859493
T. C. Monclova - Piedras Negras	18.55	1	1	4777	1.1	65.3	1.5	17.4	1.9	7.8	2.1	2.3	0.6	66.4	1.5	32.1	0.080	0.524	28.431891	-100.778628
T. C. Monclova - Piedras Negras	18.55	1	2	5268	1.0	68.1	1.8	15.8	1.2	7.2	2.2	2.2	0.5	69.1	1.8	29.1	0.087	0.524	28.431987	-100.778696

8 CARR: Monclova - Piedras Negras

CLAVE: 05407

RUTA: MEX-057

AÑO: 2021

LUGAR	ESTACION				CLASIFICACION VEHICULAR EN PORCIENTO														COORDENADAS	
	KM	TE	SC	TDPA	M	A	B	C2	C3	T3S2	T3S3	T3S2R4	OTROS	A	B	C	K'	D	LATITUD	LONGITUD
Monclova	0.00	3	1	10470	1.2	94.3	0.2	1.7	1.7	0.3	0.1	0.4	0.1	95.5	0.2	4.3	0.070	0.510	26.954728	-101.411267
Monclova	0.00	3	2	10061	1.2	95.5	0.3	1.6	0.9	0.2	0.1	0.2	0.0	96.7	0.3	3.0	0.083	0.510	26.954752	-101.411419
T. Der. Libramiento de Monclova	10.80	3	1	5131	1.6	77.6	2.8	3.9	1.8	8.2	1.2	2.3	0.6	79.2	2.8	18.0	0.086	0.519	26.978415	-101.375503
T. Der. Libramiento de Monclova	10.80	3	2	4761	1.6	76.7	2.9	3.8	1.9	8.9	1.2	2.4	0.6	78.3	2.9	18.8	0.094	0.519	26.978493	-101.375659
T. Der. Progreso	61.50	1	1	3893	5.5	66.9	8.0	8.4	1.1	6.6	1.0	2.1	0.4	72.4	8.0	19.6	0.081	0.524	27.385163	-101.215266
T. Der. Progreso	61.50	1	2	3533	5.5	66.6	8.2	8.3	1.1	6.6	1.2	2.1	0.4	72.1	8.2	19.7	0.082	0.524	27.385188	-101.215448
T. Izq. Palau	88.50	1	1	3130	2.1	74.1	1.0	3.4	3.8	9.1	1.8	3.8	0.9	76.2	1.0	22.8	0.098	0.524	27.636153	-101.182386
T. Izq. Palau	88.50	1	2	3445	2.7	74.4	0.7	3.2	4.6	7.6	2.0	3.9	0.9	77.1	0.7	22.2	0.104	0.524	27.636132	-101.182538
T. Izq. Palau	88.50	3	1	3474	2.2	73.2	1.3	4.5	3.5	9.2	1.8	3.4	0.9	75.4	1.3	23.3	0.095	0.520	27.643700	-101.184502
T. Izq. Palau	88.50	3	2	3766	3.1	73.4	0.9	4.3	4.5	7.8	2.0	3.2	0.8	76.5	0.9	22.6	0.102	0.520	27.643671	-101.184623
T. Der. Sabinas (2º Acceso)	115.00	1	1	5839	2.6	81.6	0.9	4.9	2.6	3.6	1.0	2.2	0.6	84.2	0.9	14.9	0.103	0.531	27.867742	-101.135092
T. Der. Sabinas (2º Acceso)	115.00	1	2	6614	2.5	81.6	1.0	4.8	2.6	3.6	1.0	2.2	0.7	84.1	1.0	14.9	0.084	0.531	27.867777	-101.135215
Agujita	118.85	1	1	12177	1.4	86.5	2.0	3.6	1.5	3.0	0.5	1.2	0.3	87.9	2.0	10.1	0.080	0.513	27.886436	-101.148103
Agujita	118.85	1	2	11554	1.4	85.4	2.3	3.7	1.7	3.5	0.5	1.2	0.3	86.8	2.3	10.9	0.090	0.513	27.886381	-101.148173
Agujita	118.85	3	0	21197	1.3	82.0	2.0	4.0	3.1	3.3	1.2	2.3	0.8	83.3	2.0	14.7	0.085	0.511	27.903875	-101.167981
T. Izq. Nueva Rosita (1º Acceso)	126.30	3	0	5268	2.8	52.0	2.5	17.0	1.5	10.8	10.5	2.1	0.8	54.8	2.5	42.7	0.073	0.513	27.953952	-101.202079

COAHUILA

8 CARR: Monclova - Piedras Negras

CLAVE: 05407

RUTA: MEX-057

AÑO: 2021

LUGAR	ESTACION				CLASIFICACION VEHICULAR EN PORCIENTO										COORDENADAS					
	KM	TE	SC	TDPA	M	A	B	C2	C3	T3S2	T3S3	T3S2R4	OTROS	A	B	C	K'	D	LATITUD	LONGITUD
T. Izq. Libramiento de Allende	182.00	1	0	4946	1.5	71.1	2.7	5.0	2.2	13.4	2.0	1.8	0.3	72.6	2.7	24.7	0.069	0.516	28.312196	-100.911007
Allende	187.20	3	1	5183	1.3	91.6	1.9	3.8	0.8	0.3	0.1	0.1	0.1	92.9	1.9	5.2	0.064	0.501	28.365595	-100.861156
Allende	187.20	3	2	5198	1.4	90.4	2.1	4.5	1.0	0.3	0.1	0.1	0.1	91.8	2.1	6.1	0.073	0.501	28.365549	-100.861237
Nava	206.85	1	1	2442	2.0	93.3	2.7	0.5	1.1	0.3	0.1	0.0	0.0	95.3	2.7	2.0	0.090	0.518	28.421440	-100.784314
Nava	206.85	1	2	2627	0.9	94.6	3.1	0.5	0.6	0.2	0.1	0.0	0.0	95.5	3.1	1.4	0.073	0.518	28.421630	-100.784334
Nava	206.85	3	1	8850	0.8	90.9	1.7	3.8	1.0	1.2	0.2	0.3	0.1	91.7	1.7	6.6	0.069	0.535	28.437630	-100.761340
Nava	206.85	3	2	7694	0.8	90.9	1.7	3.9	1.0	1.1	0.2	0.3	0.1	91.7	1.7	6.6	0.090	0.535	28.437737	-100.761441
T. Der. Guerrero	240.28	1	1	8795	3.7	75.3	1.8	11.8	2.5	3.4	0.6	0.7	0.2	79.0	1.8	19.2	0.093	0.503	28.639943	-100.559513
T. Der. Guerrero	240.28	1	2	8678	4.3	74.2	1.9	12.1	2.9	3.0	0.5	0.8	0.3	78.5	1.9	19.6	0.105	0.503	28.640009	-100.559633
Piedras Negras	248.00																			

9 CARR: Monclova - San Pedro de Las Colonias

CLAVE: 05062

RUTA: MEX-030

AÑO: 2021

LUGAR	ESTACION				CLASIFICACION VEHICULAR EN PORCIENTO										COORDENADAS					
	KM	TE	SC	TDPA	M	A	B	C2	C3	T3S2	T3S3	T3S2R4	OTROS	A	B	C	K'	D	LATITUD	LONGITUD
Monclova	0.00																			
Frontera	2.00	3	1	9124	1.2	89.7	0.6	7.2	0.4	0.7	0.1	0.0	0.1	90.9	0.6	8.5	0.091	0.507	26.961192	-101.463287
Frontera	2.00	3	2	8884	1.1	91.4	1.0	5.3	0.7	0.3	0.1	0.0	0.1	92.5	1.0	6.5	0.071	0.507	26.961136	-101.463366
8 de Enero	11.00	3	1	7900	1.2	82.9	2.6	9.8	1.2	1.1	0.7	0.5	0.0	84.1	2.6	13.3	0.119	0.503	27.005866	-101.498734
8 de Enero	11.00	3	2	7806	1.2	82.7	2.6	9.9	1.2	1.2	0.7	0.4	0.1	83.9	2.6	13.5	0.090	0.503	27.005810	-101.498813
Nadadores	27.00	3	1	2280	1.4	89.6	1.8	2.3	2.4	1.3	0.7	0.1	0.4	91.0	1.8	7.2	0.154	0.517	27.033349	-101.612588
Nadadores	27.00	3	2	2437	1.6	89.5	1.8	2.2	2.4	1.4	0.7	0.1	0.3	91.1	1.8	7.1	0.170	0.517	27.033268	-101.612617
Sacramento	45.27	1	1	1920	3.4	85.0	3.1	2.6	1.6	2.5	1.3	0.2	0.3	88.4	3.1	8.5	0.094	0.530	27.011002	-101.719627
Sacramento	45.27	1	2	2163	2.3	86.8	3.5	2.3	1.3	2.4	1.0	0.2	0.2	89.1	3.5	7.4	0.132	0.530	27.010995	-101.719516
T. Der. La Madrid	51.00	3	1	1353	2.1	84.9	2.7	3.4	1.7	3.4	1.2	0.2	0.4	87.0	2.7	10.3	0.092	0.523	27.019368	-101.800017
T. Der. La Madrid	51.00	3	2	1483	2.0	85.1	2.8	3.1	1.5	3.7	1.3	0.1	0.4	87.1	2.8	10.1	0.136	0.523	27.019295	-101.800055
Cuatro Ciénegas	80.15	3	0	1178	1.0	68.6	3.4	10.3	3.1	7.1	2.9	2.9	0.7	69.6	3.4	27.0	0.121	0.512	26.975072	-102.073536
San Pedro de Las Colonias	267.00	1	1	963	5.3	62.1	2.9	11.2	3.6	8.0	2.7	3.0	1.2	67.4	2.9	29.7	0.088	0.505	25.776745	-102.979019
San Pedro de Las Colonias	267.00	1	2	924	5.6	63.3	3.2	10.3	3.8	7.5	2.1	3.0	1.2	68.9	3.2	27.9	0.080	0.505	25.776791	-102.978850

10 CARR: Monterrey - Castaños

CLAVE: 00128

RUTA: MEX-053

AÑO: 2021

LUGAR	ESTACION				CLASIFICACION VEHICULAR EN PORCIENTO										COORDENADAS					
	KM	TE	SC	TDPA	M	A	B	C2	C3	T3S2	T3S3	T3S2R4	OTROS	A	B	C	K'	D	LATITUD	LONGITUD
T. C. Monterrey - Nuevo Laredo	0.00	3	0	20613	4.8	77.2	1.3	8.7	2.5	2.7	1.4	1.0	0.4	82.0	1.3	16.7	0.068	0.516	25.810359	-100.284448

COAHUILA

10 CARR: Monterrey - Castaños

CLAVE: 00128

RUTA: MEX-053

AÑO: 2021

LUGAR	ESTACION				CLASIFICACION VEHICULAR EN PORCIENTO										COORDENADAS					
	KM	TE	SC	TDPA	M	A	B	C2	C3	T3S2	T3S3	T3S2R4	OTROS	A	B	C	K'	D	LATITUD	LONGITUD
X. C. Libramiento Noroeste de Monterrey	3.46	3	1	16530	4.4	73.2	2.3	8.5	3.1	4.9	1.5	1.6	0.5	77.6	2.3	20.1	0.088	0.505	25.831597	-100.307444
X. C. Libramiento Noroeste de Monterrey	3.46	3	2	16224	4.4	73.2	2.3	8.5	3.1	4.9	1.5	1.6	0.5	77.6	2.3	20.1	0.084	0.505	25.831533	-100.307513
T. Der. Villa del Carmen	13.80	1	1	8454	2.8	76.9	1.4	6.7	2.2	5.5	2.2	1.8	0.5	79.7	1.4	18.9	0.089	0.505	25.896395	-100.351937
T. Der. Villa del Carmen	13.80	1	2	8301	2.5	77.3	1.7	6.4	2.3	5.3	2.1	1.9	0.5	79.8	1.7	18.5	0.075	0.505	25.896363	-100.351990
T. Izq. Hidalgo	24.78	1	0	13801	3.6	76.1	2.0	6.5	1.7	4.7	2.3	2.5	0.6	79.7	2.0	18.3	0.074	0.505	25.953864	-100.422721
T. Izq. Hidalgo	24.78	3	0	9488	3.8	74.4	1.7	6.2	2.6	4.7	2.7	3.1	0.8	78.2	1.7	20.1	0.081	0.513	25.983010	-100.452152
T. Izq. Mina	34.75	1	0	8060	3.1	71.9	1.9	7.1	2.3	6.7	2.7	3.6	0.7	75.0	1.9	23.1	0.072	0.503	26.000326	-100.508798
T. Izq. Espinazo	91.90	1	0	4402	5.1	56.2	7.6	8.2	2.7	10.5	5.6	3.6	0.5	61.3	7.6	31.1	0.081	0.555	26.361747	-100.877230
T. Izq. Espinazo	91.90	3	0	4166	4.5	49.3	7.4	9.4	3.2	14.2	6.6	4.7	0.7	53.8	7.4	38.8	0.087	0.525	26.363549	-100.880235
Lim. Edos. Term. N. L. Ppia. Coah.	115.90																			
T. C. Saltillo - Monclova	155.90	1	1	2264	2.3	64.2	4.1	4.7	2.3	12.3	6.8	3.1	0.2	66.5	4.1	29.4	0.080	0.502	26.691572	-101.382177
T. C. Saltillo - Monclova	155.90	1	2	2244	2.0	62.0	3.7	4.3	2.4	13.5	8.4	3.4	0.3	64.0	3.7	32.3	0.101	0.502	26.691549	-101.382212

11 CARR: Morelos - Cd. Acuña

CLAVE: 05029

RUTA: MEX-029

AÑO: 2021

LUGAR	ESTACION				CLASIFICACION VEHICULAR EN PORCIENTO										COORDENADAS					
	KM	TE	SC	TDPA	M	A	B	C2	C3	T3S2	T3S3	T3S2R4	OTROS	A	B	C	K'	D	LATITUD	LONGITUD
Morelos	0.00	3	1	2750	1.5	85.4	1.7	5.3	1.1	2.9	0.7	0.5	0.9	86.9	1.7	11.4	0.107	0.519	28.417489	-100.890276
Morelos	0.00	3	2	2961	1.1	85.3	2.1	4.8	1.1	2.9	1.0	0.7	1.0	86.4	2.1	11.5	0.088	0.519	28.417461	-100.890337
T. Izq. El Remolino	40.10	1	0	1835	1.4	78.2	2.3	5.9	1.6	7.3	1.2	1.2	0.9	79.6	2.3	18.1	0.094	0.536	28.718317	-100.912047
T. Izq. El Remolino	40.10	3	0	1506	1.4	76.9	2.1	6.0	1.8	8.2	1.3	1.3	1.0	78.3	2.1	19.6	0.093	0.549	28.723793	-100.912242
San Carlos	73.84	1	0	1843	0.8	77.8	1.9	6.9	1.7	7.6	1.1	1.2	1.0	78.6	1.9	19.5	0.088	0.523	29.017330	-100.904916
T. Der. Piedras Negras	104.50	3	1	6865	2.1	82.7	4.5	4.8	1.9	2.1	0.5	0.4	1.0	84.8	4.5	10.7	0.078	0.504	29.296395	-100.914512
T. Der. Piedras Negras	104.50	3	2	6979	2.1	83.3	3.7	4.9	1.9	2.3	0.4	0.4	1.0	85.4	3.7	10.9	0.083	0.504	29.296340	-100.914583
Cd. Acuña	109.10	1	1	8092	1.4	92.5	1.2	3.7	0.6	0.3	0.1	0.1	0.1	93.9	1.2	4.9	0.088	0.517	29.303823	-100.922505
Cd. Acuña	109.10	1	2	8659	1.4	92.3	1.5	3.5	0.6	0.4	0.1	0.1	0.1	93.7	1.5	4.8	0.097	0.517	29.303759	-100.922565

12 CARR: Nueva Rosita - Boquillas del Carmen

CLAVE: 05028

RUTA: MEX-053

AÑO: 2021

LUGAR	ESTACION				CLASIFICACION VEHICULAR EN PORCIENTO										COORDENADAS					
	KM	TE	SC	TDPA	M	A	B	C2	C3	T3S2	T3S3	T3S2R4	OTROS	A	B	C	K'	D	LATITUD	LONGITUD
Nueva Rosita	0.00	3	1	3801	1.8	73.6	2.4	16.3	1.2	2.1	1.7	0.5	0.4	75.4	2.4	22.2	0.093	0.503	27.947683	-101.243281
Nueva Rosita	0.00	3	2	3735	2.3	74.0	2.3	16.0	1.3	1.8	1.4	0.4	0.5	76.3	2.3	21.4	0.095	0.503	27.947565	-101.243370
T. Der. Santa María	14.00	3	1	2692	1.2	74.3	2.0	14.3	1.8	2.6	2.7	0.4	0.7	75.5	2.0	22.5	0.069	0.508	27.911066	-101.325406
T. Der. Santa María	14.00	3	2	2814	1.1	71.8	2.2	15.9	1.9	3.0	2.8	0.4	0.9	72.9	2.2	24.9	0.078	0.508	27.910875	-101.325517

COAHUILA

12 CARR: Nueva Rosita - Boquillas del Carmen

CLAVE: 05028

RUTA: MEX-053

AÑO: 2021

LUGAR	ESTACION				CLASIFICACION VEHICULAR EN PORCIENTO													COORDENADAS		
	KM	TE	SC	TDPA	M	A	B	C2	C3	T3S2	T3S3	T3S2R4	OTROS	A	B	C	K'	D	LATITUD	LONGITUD
Palau	25.00	1	1	3743	1.3	77.0	1.9	12.4	2.5	2.5	1.6	0.2	0.6	78.3	1.9	19.8	0.070	0.502	27.887552	-101.412210
Palau	25.00	1	2	3763	1.2	75.4	1.9	13.7	2.6	2.8	1.6	0.2	0.6	76.6	1.9	21.5	0.066	0.502	27.887411	-101.412361
Palau	25.00	3	1	3732	0.9	86.8	2.7	8.4	1.0	0.1	0.1	0.0	0.0	87.7	2.7	9.6	0.077	0.532	27.887420	-101.431799
Palau	25.00	3	2	4245	0.8	89.3	2.3	6.4	1.0	0.1	0.1	0.0	0.0	90.1	2.3	7.6	0.070	0.532	27.887289	-101.431710
Melchor Múzquiz	35.00	3	0	2655	1.7	78.1	0.1	15.3	1.7	1.9	0.6	0.3	0.3	79.8	0.1	20.1	0.091	0.507	27.895362	-101.531789
Boquillas del Carmen	250.00																			

13 CARR: Ojo Caliente - Santa Cruz

CLAVE: 05007

RUTA: MEX-057

AÑO: 2021

LUGAR	ESTACION				CLASIFICACION VEHICULAR EN PORCIENTO													COORDENADAS		
	KM	TE	SC	TDPA	M	A	B	C2	C3	T3S2	T3S3	T3S2R4	OTROS	A	B	C	K'	D	LATITUD	LONGITUD
T. C. Saltillo - Monterrey	0.00	3	0	6730	3.1	62.6	2.2	9.1	2.1	13.5	3.4	3.4	0.6	65.7	2.2	32.1	0.082	0.519	25.600498	-100.895169
T. C. Saltillo - Monclova	34.00	1	0	4484	1.4	74.1	2.5	5.1	0.9	8.5	2.9	3.7	0.9	75.5	2.5	22.0	0.103	0.507	25.782742	-101.102514

14 CARR: Piedras Negras - Cd. Acuña

CLAVE: 05061

RUTA: MEX-002

AÑO: 2021

LUGAR	ESTACION				CLASIFICACION VEHICULAR EN PORCIENTO													COORDENADAS		
	KM	TE	SC	TDPA	M	A	B	C2	C3	T3S2	T3S3	T3S2R4	OTROS	A	B	C	K'	D	LATITUD	LONGITUD
Piedras Negras	0.00	3	1	3284	2.3	74.8	3.6	12.2	3.1	1.7	1.1	0.2	1.0	77.1	3.6	19.3	0.092	0.503	28.730226	-100.574786
Piedras Negras	0.00	3	2	3251	2.5	75.0	2.9	12.6	3.1	1.5	1.2	0.2	1.0	77.5	2.9	19.6	0.097	0.503	28.730131	-100.574931
T. C. Morelos - Cd. Acuña	83.30	1	0	4564	1.6	72.4	3.4	18.0	2.1	2.0	0.3	0.1	0.1	74.0	3.4	22.6	0.087	0.523	29.291671	-100.910899

15 CARR: Piedras Negras - Nuevo Laredo

CLAVE: 00503

RUTA: MEX-002

AÑO: 2021

LUGAR	ESTACION				CLASIFICACION VEHICULAR EN PORCIENTO													COORDENADAS		
	KM	TE	SC	TDPA	M	A	B	C2	C3	T3S2	T3S3	T3S2R4	OTROS	A	B	C	K'	D	LATITUD	LONGITUD
T. C. Monclova - Piedras Negras	0.00	3	1	5115	3.1	85.7	1.0	3.4	2.9	3.0	0.4	0.4	0.1	88.8	1.0	10.2	0.093	0.505	28.639239	-100.551776
T. C. Monclova - Piedras Negras	0.00	3	2	5007	2.5	86.6	1.3	3.3	2.7	2.9	0.3	0.3	0.1	89.1	1.3	9.6	0.085	0.505	28.639317	-100.551633
El Saucito	16.90	3	0	1251	1.0	64.5	1.4	16.9	3.9	7.2	1.1	3.7	0.3	65.5	1.4	33.1	0.085	0.509	28.501932	-100.467292
T. Der. Villa Unión	37.00	1	0	1299	4.3	64.7	1.8	21.5	2.4	2.6	0.9	1.0	0.8	69.0	1.8	29.2	0.097	0.500	28.342533	-100.391433
T. Der. Villa Unión	37.00	3	0	1123	3.4	54.5	2.9	15.7	3.8	10.4	1.4	7.4	0.5	57.9	2.9	39.2	0.075	0.500	28.335778	-100.389381
Guerrero	42.00	3	0	926	3.4	57.4	3.4	15.4	2.3	11.7	1.6	4.5	0.3	60.8	3.4	35.8	0.082	0.542	28.306766	-100.362101
Lim. Edos. Term. Coah. Ppia. N. L.	124.40																			
T. C. Monclova - Colombia	134.00	3	0	2799	1.8	63.4	1.6	8.6	3.9	16.6	1.4	2.3	0.4	65.2	1.6	33.2	0.089	0.509	27.688508	-99.778120
Lim. Edos. Term. N. L. Ppia. Tamps.	138.20																			

COAHUILA

15 CARR: Piedras Negras - Nuevo Laredo

CLAVE: 00503

RUTA: MEX-002

AÑO: 2021

LUGAR	ESTACION				CLASIFICACION VEHICULAR EN PORCIENTO													COORDENADAS		
	KM	TE	SC	TDPA	M	A	B	C2	C3	T3S2	T3S3	T3S2R4	OTROS	A	B	C	K'	D	LATITUD	LONGITUD
T. Der. Libramiento de Nuevo Laredo	157.70	1	1	4431	7.9	46.5	1.3	5.5	13.1	22.3	1.2	1.4	0.8	54.4	1.3	44.3	0.115	0.513	27.571793	-99.597503
T. Der. Libramiento de Nuevo Laredo	157.70	1	2	4659	7.6	46.3	1.5	5.9	12.9	22.3	1.4	1.2	0.9	53.9	1.5	44.6	0.115	0.513	27.571910	-99.597493
Nuevo Laredo	175.00	1	1	9777	0.9	45.4	1.4	4.9	14.8	30.5	0.7	0.7	0.7	46.3	1.4	52.3	0.116	0.530	27.556088	-99.583130
Nuevo Laredo	175.00	1	2	8684	4.0	41.7	1.5	4.9	15.0	30.8	0.5	0.8	0.8	45.7	1.5	52.8	0.115	0.530	27.556150	-99.582986

16 CARR: Puerto México - La Encantada

CLAVE: 05002

RUTA: MEX-057

AÑO: 2021

LUGAR	ESTACION				CLASIFICACION VEHICULAR EN PORCIENTO													COORDENADAS		
	KM	TE	SC	TDPA	M	A	B	C2	C3	T3S2	T3S3	T3S2R4	OTROS	A	B	C	K'	D	LATITUD	LONGITUD
T. C. Aut. Puerto México - Ojo Caliente	0.00	3	0	1649	1.4	66.9	8.8	4.7	2.8	13.2	0.4	1.8	0.0	68.3	8.8	22.9	0.127	0.507	25.230403	-100.825491
Lim. Edos. Term. N. L. Ppia. Coah.	3.50																			
T. C. Ent. Morelos - Saltillo	41.00	1	0	2020	2.6	74.6	6.2	3.6	1.6	9.8	1.0	0.6	0.0	77.2	6.2	16.6	0.134	0.514	25.260564	-101.085517

17 CARR: Saltillo - Monclova

CLAVE: 05406

RUTA: MEX-057

AÑO: 2021

LUGAR	ESTACION				CLASIFICACION VEHICULAR EN PORCIENTO													COORDENADAS		
	KM	TE	SC	TDPA	M	A	B	C2	C3	T3S2	T3S3	T3S2R4	OTROS	A	B	C	K'	D	LATITUD	LONGITUD
Saltillo	0.00																			
T. Der. Ramos Arizpe	13.00	1	0	6240	2.6	70.4	2.0	12.2	4.0	6.2	1.1	0.8	0.7	73.0	2.0	25.0	0.093	0.522	25.527118	-101.002281
T. Der. Ramos Arizpe	13.00	3	0	2735	2.5	75.9	0.7	16.4	1.8	1.8	0.6	0.2	0.1	78.4	0.7	20.9	0.125	0.524	25.528981	-101.005192
T. C. Ojo Caliente - Santa Cruz	49.60	1	0	384	1.5	82.0	1.4	7.5	1.2	4.8	1.2	0.4	0.0	83.5	1.4	15.1	0.086	0.507	25.783490	-101.111952
T. C. Ojo Caliente - Santa Cruz	49.60	3	0	4420	1.9	71.0	2.9	5.2	0.9	10.7	2.9	3.5	1.0	72.9	2.9	24.2	0.097	0.512	25.797487	-101.116092
T. Der. Paredón	64.00	1	0	4572	2.0	68.6	3.0	8.7	1.4	7.4	2.6	5.3	1.0	70.6	3.0	26.4	0.091	0.515	25.900066	-101.147097
T. Der. Paredón	64.00	3	0	4802	1.7	72.4	3.7	8.1	1.5	6.1	2.2	3.5	0.8	74.1	3.7	22.2	0.093	0.521	25.918532	-101.156090
T. Izq. Hipólito	78.00	1	0	4349	1.8	72.4	3.3	6.0	1.3	6.2	3.4	4.6	1.0	74.2	3.3	22.5	0.075	0.502	25.967199	-101.256014
T. Izq. Hipólito	78.00	3	0	4168	2.7	69.3	3.9	5.8	1.2	7.8	3.1	5.2	1.0	72.0	3.9	24.1	0.084	0.520	25.977033	-101.267078
T. Der. Monterrey	165.50	1	0	4095	2.5	69.1	3.1	6.3	1.5	7.4	3.5	5.6	1.0	71.6	3.1	25.3	0.081	0.531	26.675060	-101.383359
T. Der. Monterrey	165.50	3	1	4583	2.8	68.3	3.2	5.0	1.5	9.9	3.8	4.4	1.1	71.1	3.2	25.7	0.101	0.503	26.711171	-101.393478
T. Der. Monterrey	165.50	3	2	4522	2.0	66.0	4.0	6.5	1.5	10.2	5.1	3.7	1.0	68.0	4.0	28.0	0.100	0.503	26.711107	-101.393687
T. Der. Libramiento de Castaños (1º Acceso)	175.20	1	1	7194	4.0	77.1	2.6	3.0	1.7	5.0	2.8	2.9	0.9	81.1	2.6	16.3	0.090	0.551	26.772871	-101.414229
T. Der. Libramiento de Castaños (1º Acceso)	175.20	1	2	8839	3.4	76.2	3.4	3.4	2.2	5.5	2.4	2.6	0.9	79.6	3.4	17.0	0.081	0.551	26.771497	-101.413876
T. Der. Libramiento de Castaños (2º Acceso)	177.10	3	1	10543	4.0	80.3	2.0	2.9	2.0	4.1	2.2	2.0	0.5	84.3	2.0	13.7	0.085	0.504	26.807086	-101.420204
T. Der. Libramiento de Castaños (2º Acceso)	177.10	3	2	10385	3.9	79.7	2.0	3.8	2.0	4.0	2.2	1.9	0.5	83.6	2.0	14.4	0.090	0.504	26.807171	-101.420434
T. Izq. Libramiento Lic. Carlos Salinas De Gortari	184.10	1	1	11237	3.8	82.6	2.3	2.9	1.9	3.0	1.7	1.4	0.4	86.4	2.3	11.3	0.074	0.503	26.830945	-101.422169
T. Izq. Libramiento Lic. Carlos Salinas De Gortari	184.10	1	2	11121	3.9	79.2	2.1	3.6	2.1	4.5	2.2	1.9	0.5	83.1	2.1	14.8	0.076	0.503	26.830869	-101.422344

COAHUILA

17 CARR: Saltillo - Monclova

CLAVE: 05406

RUTA: MEX-057

AÑO: 2021

LUGAR	ESTACION				CLASIFICACION VEHICULAR EN PORCIENTO										COORDENADAS					
	KM	TE	SC	TDPA	M	A	B	C2	C3	T3S2	T3S3	T3S2R4	OTROS	A	B	C	K'	D	LATITUD	LONGITUD
T. Izq. Libramiento Lic. Carlos Salinas De Gortari	184.10	3	1	27015	3.8	79.0	2.1	3.7	2.1	4.3	2.3	2.1	0.6	82.8	2.1	15.1	0.078	0.508	26.863473	-101.427185
T. Izq. Libramiento Lic. Carlos Salinas De Gortari	184.10	3	2	28018	3.9	79.0	2.1	3.7	2.1	4.3	2.3	2.1	0.5	82.9	2.1	15.0	0.088	0.508	26.863466	-101.427389
Monclova	192.00	1	1	27460	3.9	80.1	2.0	3.4	1.9	4.2	2.1	1.9	0.5	84.0	2.0	14.0	0.078	0.516	26.880778	-101.425684
Monclova	192.00	1	2	29386	4.0	79.7	2.2	3.6	2.0	4.0	2.1	2.0	0.4	83.7	2.2	14.1	0.105	0.516	26.880831	-101.425819

18 CARR: Saltillo - Monterrey

CLAVE: 00087

RUTA: MEX-040

AÑO: 2021

LUGAR	ESTACION				CLASIFICACION VEHICULAR EN PORCIENTO										COORDENADAS					
	KM	TE	SC	TDPA	M	A	B	C2	C3	T3S2	T3S3	T3S2R4	OTROS	A	B	C	K'	D	LATITUD	LONGITUD
T. C. Saltillo - Arteaga	0.00																			
T. Izq. Zinacamex	4.25	3	1	58100	0.5	87.0	0.7	5.8	0.8	1.7	2.9	0.5	0.1	87.5	0.7	11.8	0.067	0.512	25.483453	-100.971769
T. Izq. Zinacamex	4.25	3	2	54922	0.5	86.4	0.7	6.1	0.8	1.9	3.0	0.5	0.1	86.9	0.7	12.4	0.071	0.512	25.483572	-100.971969
Ramos Arizpe	11.30	1	1	45573	0.7	87.1	0.8	7.7	0.8	1.5	1.0	0.1	0.3	87.8	0.8	11.4	0.099	0.513	25.516065	-100.957381
Ramos Arizpe	11.30	1	2	43061	0.9	86.1	1.0	6.8	0.9	2.0	1.7	0.2	0.4	87.0	1.0	12.0	0.088	0.513	25.516160	-100.957602
T. Der. Aeropuerto	13.00	3	1	28404	0.7	85.0	1.1	7.7	0.9	2.2	1.5	0.4	0.5	85.7	1.1	13.2	0.088	0.508	25.555263	-100.926513
T. Der. Aeropuerto	13.00	3	2	29366	0.5	84.2	1.2	8.0	1.0	2.5	1.7	0.4	0.5	84.7	1.2	14.1	0.097	0.508	25.555998	-100.925876
T. Der. Libramiento J.L.P.	16.00	3	1	32805	1.0	82.4	1.1	8.7	1.2	3.0	1.7	0.5	0.4	83.4	1.1	15.5	0.103	0.522	25.567429	-100.912823
T. Der. Libramiento J.L.P.	16.00	3	2	29784	0.7	80.7	1.3	9.7	1.3	3.4	2.0	0.5	0.4	81.4	1.3	17.3	0.112	0.522	25.567541	-100.912947
Ojo Caliente	26.30	1	1	22611	0.9	60.0	2.8	6.9	2.2	21.0	3.0	2.4	0.8	60.9	2.8	36.3	0.065	0.543	25.610721	-100.844077
Ojo Caliente	26.30	1	2	22175	0.9	56.2	3.4	7.4	2.4	22.6	3.7	2.6	0.8	57.1	3.4	39.5	0.076	0.543	25.612987	-100.845963
Lim. Edos. Term. Coah. Ppia. N. L.	33.00																			
T. Izq. Libramiento Noroeste de Monterrey	54.00	1	1	19841	11.5	36.6	3.3	6.8	2.7	29.6	4.2	4.3	1.0	48.1	3.3	48.6	0.058	0.538	25.698308	-100.562651
T. Izq. Libramiento Noroeste de Monterrey	54.00	1	2	18777	11.2	38.0	3.3	6.7	2.6	29.0	4.1	4.2	0.9	49.2	3.3	47.5	0.073	0.538	25.698673	-100.562638
T. Der. Santa Catarina (1º Acceso)	62.46	1	1	36138	6.3	76.0	1.5	8.1	1.0	2.7	1.4	2.7	0.3	82.3	1.5	16.2	0.059	0.526	25.686931	-100.494148
T. Der. Santa Catarina (1º Acceso)	62.46	1	2	40580	5.9	76.6	1.8	7.7	0.9	2.9	1.2	2.7	0.3	82.5	1.8	15.7	0.059	0.526	25.687109	-100.494095
Ppia. Monterrey	79.20	1	1	72850	4.9	82.1	1.2	5.5	1.5	1.9	1.8	0.5	0.6	87.0	1.2	11.8	0.062	0.514	25.674389	-100.426253
Ppia. Monterrey	79.20	1	2	77745	5.1	81.8	1.1	5.9	1.4	2.1	1.7	0.4	0.5	86.9	1.1	12.0	0.054	0.514	25.674541	-100.426259

19 CARR: Saltillo - Torreón

CLAVE: 05086

RUTA: MEX-040

AÑO: 2021

LUGAR	ESTACION				CLASIFICACION VEHICULAR EN PORCIENTO										COORDENADAS					
	KM	TE	SC	TDPA	M	A	B	C2	C3	T3S2	T3S3	T3S2R4	OTROS	A	B	C	K'	D	LATITUD	LONGITUD
Saltillo	0.00																			
T. Der. Monclova	6.10	3	1	6164	1.0	64.0	3.8	9.4	2.4	12.1	3.3	3.3	0.7	65.0	3.8	31.2	0.062	0.501	25.452935	-101.081033
T. Der. Monclova	6.10	3	2	6141	0.9	64.1	3.8	9.0	2.5	12.1	3.4	3.4	0.8	65.0	3.8	31.2	0.060	0.501	25.452834	-101.081011

COAHUILA

19 CARR: Saltillo - Torreón

CLAVE: 05086

RUTA: MEX-040

AÑO: 2021

LUGAR	ESTACION				CLASIFICACION VEHICULAR EN PORCIENTO										COORDENADAS						
	KM	TE	SC	TDPA	M	A	B	C2	C3	T3S2	T3S3	T3S2R4	OTROS	A	B	C	K'	D	LATITUD	LONGITUD	
T. C. Torreón - Saltillo (Cuota)	33.80																				
T. Izq. General Cepeda	44.14	1	0	4029	0.8	65.0	2.6	15.6	3.0	9.1	2.4	1.4	0.1	65.8	2.6	31.6	0.086	0.522	25.505419	-101.375539	
T. Izq. General Cepeda	44.14	3	0	3324	0.5	47.5	6.2	13.9	3.3	17.4	6.6	3.5	1.1	48.0	6.2	45.8	0.081	0.522	25.512203	-101.382106	
T. Der. Estación Marte	91.20	1	0	2135	0.8	56.1	4.9	13.6	4.2	14.2	4.2	1.8	0.2	56.9	4.9	38.2	0.084	0.532	25.658893	-101.761927	
T. C. Torreón - Saltillo (Cuota)	118.10																				
Ent. Paila	127.90	1	1	4779	2.6	58.0	5.4	5.8	1.7	18.4	3.4	4.0	0.7	60.6	5.4	34.0	0.085	0.536	25.649383	-102.135415	
Ent. Paila	127.90	1	2	4141	1.3	58.2	5.6	6.1	1.9	17.9	3.6	4.6	0.8	59.5	5.6	34.9	0.087	0.536	25.649175	-102.135422	
T. Der. San Pedro de Las Colonias (La Cuchilla)	204.58	1	1	3675	1.9	55.5	5.5	6.5	2.2	17.4	3.9	6.3	0.8	57.4	5.5	37.1	0.076	0.518	25.631657	-102.868176	
T. Der. San Pedro de Las Colonias (La Cuchilla)	204.58	1	2	3949	1.8	57.3	4.9	6.5	2.4	15.9	4.1	6.4	0.7	59.1	4.9	36.0	0.068	0.518	25.625311	-102.865463	
Emiliano Zapata	221.68	1	0	1050	1.3	58.1	4.8	9.4	3.6	17.5	3.9	1.4	0.0	59.4	4.8	35.8	0.085	0.507	25.516939	-102.941416	
Emiliano Zapata	221.68	3	0	2089	1.3	58.2	3.4	18.1	3.7	10.9	3.1	1.2	0.1	59.5	3.4	37.1	0.061	0.501	25.489069	-102.954026	
T. Der. Libramiento de Matamoros (1° Acceso)	246.80	1	0	7023	5.0	65.7	1.7	17.5	2.6	4.5	1.4	0.7	0.9	70.7	1.7	27.6	0.087	0.508	25.526243	-103.212033	
T. Der. Libramiento de Matamoros (1° Acceso)	246.80	3	1	4524	4.2	76.7	0.8	13.9	1.6	1.1	0.8	0.4	0.5	80.9	0.8	18.3	0.082	0.509	25.527825	-103.218265	
T. Der. Libramiento de Matamoros (1° Acceso)	246.80	3	2	4778	4.3	74.8	0.9	15.3	1.7	1.2	0.9	0.4	0.5	79.1	0.9	20.0	0.085	0.509	25.527728	-103.218403	
Matamoros	252.80	3	1	10034	6.0	88.8	0.8	3.5	0.3	0.1	0.2	0.2	0.1	94.8	0.8	4.4	0.078	0.547	25.534582	-103.246324	
Matamoros	252.80	3	2	12097	7.2	87.3	0.9	3.6	0.3	0.2	0.2	0.2	0.1	94.5	0.9	4.6	0.082	0.547	25.534503	-103.246331	
T. Der. Libramiento de Matamoros (2° Acceso)	253.12	3	1	13117	5.4	77.8	2.7	4.9	2.2	4.6	1.0	1.1	0.3	83.2	2.7	14.1	0.090	0.501	25.535181	-103.267102	
T. Der. Libramiento de Matamoros (2° Acceso)	253.12	3	2	13168	4.5	77.6	3.2	5.3	2.0	5.0	1.0	1.1	0.3	82.1	3.2	14.7	0.092	0.501	25.535099	-103.267082	
T. Der. Libramiento de Torreón	264.50	3	1	40954	2.0	93.5	0.8	2.3	0.4	0.3	0.1	0.4	0.2	95.5	0.8	3.7	0.065	0.506	25.535243	-103.389614	
T. Der. Libramiento de Torreón	264.50	3	2	39846	2.0	93.6	0.6	2.4	0.5	0.3	0.1	0.3	0.2	95.6	0.6	3.8	0.078	0.506	25.535099	-103.389616	
Torreón	291.00																				

20 CARR: Torreón - San Pedro de las Colonias

CLAVE: 05021

RUTA: MEX-030

AÑO: 2021

LUGAR	ESTACION				CLASIFICACION VEHICULAR EN PORCIENTO										COORDENADAS						
	KM	TE	SC	TDPA	M	A	B	C2	C3	T3S2	T3S3	T3S2R4	OTROS	A	B	C	K'	D	LATITUD	LONGITUD	
Torreón	0.00	3	1	29193	1.9	92.9	0.3	4.4	0.2	0.1	0.2	0.0	0.0	94.8	0.3	4.9	0.096	0.548	25.578603	-103.414199	
Torreón	0.00	3	2	28824	2.2	92.7	0.2	4.4	0.1	0.2	0.2	0.0	0.0	94.9	0.2	4.9	0.098	0.548	25.578677	-103.414298	
Libramiento de Torreón	1.50																				
Libramiento Norte de Torreón (Cuota)	10.00																				
Escuadrón 201	13.25	1	1	9567	4.2	82.1	4.3	5.2	1.2	1.7	0.7	0.5	0.1	86.3	4.3	9.4	0.080	0.500	25.670371	-103.351969	
Escuadrón 201	13.25	1	2	9551	3.7	81.1	3.9	7.2	1.0	1.5	0.9	0.6	0.1	84.8	3.9	11.3	0.076	0.500	25.670444	-103.352028	
T. Der. Fco. I. Madero	25.30	1	1	8179	2.0	83.0	1.1	9.4	1.6	1.5	0.8	0.4	0.2	85.0	1.1	13.9	0.090	0.523	25.747330	-103.299831	
T. Der. Fco. I. Madero	25.30	1	2	7465	2.0	81.9	1.4	10.6	1.6	1.3	0.7	0.3	0.2	83.9	1.4	14.7	0.088	0.523	25.747269	-103.300051	
T. Der. Fco. I. Madero	25.30	3	1	7580	0.9	81.0	1.9	11.1	1.8	2.0	0.8	0.4	0.1	81.9	1.9	16.2	0.077	0.503	25.760848	-103.250639	

COAHUILA

20 CARR: Torreón - San Pedro de las Colonias

CLAVE: 05021

RUTA: MEX-030

AÑO: 2021

LUGAR	ESTACION				CLASIFICACION VEHICULAR EN PORCIENTO													COORDENADAS		
	KM	TE	SC	TDPA	M	A	B	C2	C3	T3S2	T3S3	T3S2R4	OTROS	A	B	C	K'	D	LATITUD	LONGITUD
T. Der. Fco. I. Madero	25.30	3	2	7478	0.5	81.7	1.2	11.7	1.6	2.0	0.8	0.4	0.1	82.2	1.2	16.6	0.080	0.503	25.760993	-103.250677
T. Der. Guadalupe Victoria	32.00	1	1	6434	3.6	85.5	1.9	4.8	1.4	1.5	0.6	0.5	0.2	89.1	1.9	9.0	0.084	0.524	25.763477	-103.232835
T. Der. Guadalupe Victoria	32.00	1	2	5850	3.5	85.5	1.9	4.9	1.4	1.5	0.6	0.5	0.2	89.0	1.9	9.1	0.086	0.524	25.763736	-103.233360
T. Der. Colón	35.00	1	1	5696	4.4	84.9	1.8	4.6	1.4	1.7	0.6	0.5	0.1	89.3	1.8	8.9	0.084	0.500	25.759089	-103.202545
T. Der. Colón	35.00	1	2	5692	4.6	85.0	1.7	4.5	1.5	1.5	0.6	0.5	0.1	89.6	1.7	8.7	0.087	0.500	25.759169	-103.202493
T. Izq. San Lorenzo	38.60	1	1	4509	3.2	85.3	2.9	4.0	1.4	1.8	0.6	0.6	0.2	88.5	2.9	8.6	0.077	0.511	25.761870	-103.167182
T. Izq. San Lorenzo	38.60	1	2	4718	3.2	85.4	2.9	4.0	1.4	1.8	0.6	0.6	0.1	88.6	2.9	8.5	0.088	0.511	25.762014	-103.167160
Urquizo	41.20	1	1	5209	6.0	83.9	2.3	4.3	1.1	1.5	0.5	0.3	0.1	89.9	2.3	7.8	0.077	0.505	25.766926	-103.147245
Urquizo	41.20	1	2	5320	8.3	81.7	2.2	5.5	0.8	0.9	0.2	0.3	0.1	90.0	2.2	7.8	0.085	0.505	25.766999	-103.147294
Urquizo	41.20	3	1	5265	4.2	86.4	2.2	3.7	1.0	1.5	0.5	0.4	0.1	90.6	2.2	7.2	0.103	0.523	25.768350	-103.090817
Urquizo	41.20	3	2	4811	5.0	86.2	2.3	3.1	1.0	1.4	0.5	0.4	0.1	91.2	2.3	6.5	0.086	0.523	25.768417	-103.090785
San Pedro de Las Colonias	55.00	1	1	6923	4.2	88.2	1.5	3.4	0.9	1.0	0.3	0.4	0.1	92.4	1.5	6.1	0.095	0.527	25.757533	-103.005517
San Pedro de Las Colonias	55.00	1	2	6224	4.2	88.4	1.3	3.4	0.9	1.0	0.3	0.4	0.1	92.6	1.3	6.1	0.081	0.527	25.757623	-103.005510

21 CARR: Libramiento Norponiente de Saltillo (Cuota)

CLAVE: 05022

RUTA: MEX-S30

AÑO: 2021

LUGAR	ESTACION				CLASIFICACION VEHICULAR EN PORCIENTO													COORDENADAS		
	KM	TE	SC	TDPA	M	A	B	C2	C3	T3S2	T3S3	T3S2R4	OTROS	A	B	C	K'	D	LATITUD	LONGITUD
T. C. Ent. Morelos - Saltillo	0.00	3	0	5034	2.5	37.1	4.3	7.0	3.6	32.9	3.9	7.8	0.9	39.6	4.3	56.1	0.072	0.504	25.289180	-101.091220
X. C. Saltillo - Torreón	22.44	1	0	5433	2.5	39.1	4.5	7.2	3.1	31.5	4.2	6.9	1.0	41.6	4.5	53.9	0.083	0.505	25.445204	-101.067782
X. C. Saltillo - Torreón	22.44	3	0	8837	4.3	38.1	1.9	6.9	6.0	29.9	3.5	8.0	1.4	42.4	1.9	55.7	0.069	0.522	25.459177	-101.059742
X. C. Saltillo - Monclova	32.44	1	0	9616	1.6	38.9	3.3	8.4	3.6	31.2	3.9	8.3	0.8	40.5	3.3	56.2	0.062	0.503	25.516545	-101.001157
X. C. Saltillo - Monclova	32.44	3	0	10134	1.6	38.6	5.9	8.8	2.6	27.7	4.4	9.6	0.8	40.2	5.9	53.9	0.066	0.504	25.532726	-100.982574
Ojo Caliente	46.21	1	0	9073	1.3	52.2	3.9	6.2	2.8	17.9	4.1	10.8	0.8	53.5	3.9	42.6	0.063	0.513	25.608776	-100.918310

22 CARR: Libramiento Norte de Torreón (Cuota)

CLAVE:

RUTA: MEX-040D

AÑO: 2021

LUGAR	ESTACION				CLASIFICACION VEHICULAR EN PORCIENTO													COORDENADAS		
	KM	TE	SC	TDPA	M	A	B	C2	C3	T3S2	T3S3	T3S2R4	OTROS	A	B	C	K'	D	LATITUD	LONGITUD
X. C. Gómez Palacio - Jiménez	0.00	3	0	2973	4.8	51.0	2.4	9.0	2.9	16.0	5.3	7.5	1.1	55.8	2.4	41.8	0.071	0.507	25.633269	-103.505790
Lim. Edos. Term. Dgo. Ppia. Coah.	15.60																			
X. C. La Cuchilla - Torreón	17.36	1	0	3603	3.9	38.6	6.2	4.9	2.2	25.2	5.7	12.3	1.0	42.5	6.2	51.3	0.071	0.508	25.657812	-103.384953
X. C. La Cuchilla - Torreón	17.36	3	0	3239	3.7	37.0	5.4	4.5	1.8	28.1	5.7	12.9	0.9	40.7	5.4	53.9	0.070	0.504	25.647895	-103.354678
X. C. Torreón - Saltillo	40.70	1	0	2980	5.0	33.2	6.9	5.9	2.5	27.8	6.0	11.7	1.0	38.2	6.9	54.9	0.058	0.515	25.547384	-103.226185

COAHUILA

23 CARR: Libramiento Oriente de Saltillo (Cuota)

CLAVE: 00115

RUTA: MEX-057D

AÑO: 2021

LUGAR	ESTACION				CLASIFICACION VEHICULAR EN PORCIENTO														COORDENADAS	
	KM	TE	SC	TDPA	M	A	B	C2	C3	T3S2	T3S3	T3S2R4	OTROS	A	B	C	K'	D	LATITUD	LONGITUD
Ent. La Carbonera	0.00																			
Plaza de Cobro Carbonera	12.30	2	1	7919	0.3	34.3	4.0	4.1	2.2	43.8	3.7	6.6	1.0	34.6	4.0	61.4	0.072	0.500	25.510948	-100.868249
Plaza de Cobro Carbonera	12.30	2	2	7919	0.3	34.3	4.0	4.1	2.2	43.8	3.7	6.6	1.0	34.6	4.0	61.4	0.072	0.500	25.510948	-100.868249
Plaza de Cobro Carbonera	12.30	3	1	9440	4.4	35.7	5.2	4.4	2.0	39.7	2.9	4.7	1.0	40.1	5.2	54.7	0.074	0.516	25.518458	-100.865928
Plaza de Cobro Carbonera	12.30	3	2	10070	4.4	35.8	5.2	4.4	2.0	39.7	2.9	4.7	0.9	40.2	5.2	54.6	0.060	0.516	25.518540	-100.866233
T. C. Saltillo - Monterrey	21.00																			

24 CARR: Nueva Rosita - Ent. Allende (Cuota)

CLAVE: 05502

RUTA: MEX-057D

AÑO: 2021

LUGAR	ESTACION				CLASIFICACION VEHICULAR EN PORCIENTO														COORDENADAS	
	KM	TE	SC	TDPA	M	A	B	C2	C3	T3S2	T3S3	T3S2R4	OTROS	A	B	C	K'	D	LATITUD	LONGITUD
T. C. Monclova - Piedras Negras	0.00	3	1	1750	1.3	72.3	5.0	5.4	3.7	5.1	1.5	4.7	1.0	73.6	5.0	21.4	0.108	0.523	27.937739	-101.193713
T. C. Monclova - Piedras Negras	0.00	3	2	1916	1.0	71.2	4.9	5.7	3.7	5.5	1.3	5.7	1.0	72.2	4.9	22.9	0.101	0.523	27.937774	-101.193795
Allende	52.20																			
T. C. Monclova - Piedras Negras	54.00	1	1	1651	0.7	67.5	3.6	17.5	1.1	4.5	0.9	3.7	0.5	68.2	3.6	28.2	0.074	0.548	28.313926	-100.903591
T. C. Monclova - Piedras Negras	54.00	1	2	2006	0.7	65.1	3.4	18.3	1.5	5.7	1.3	3.3	0.7	65.8	3.4	30.8	0.079	0.548	28.314007	-100.903673

25 CARR: Puerto México - La Carbonera (Cuota)

CLAVE: 00115

RUTA: MEX-057D

AÑO: 2021

LUGAR	ESTACION				CLASIFICACION VEHICULAR EN PORCIENTO														COORDENADAS	
	KM	TE	SC	TDPA	M	A	B	C2	C3	T3S2	T3S3	T3S2R4	OTROS	A	B	C	K'	D	LATITUD	LONGITUD
Ent. Puerto México	202.00																			
Plaza de Cobro Los Chorros	203.64	2	1	7480	0.1	33.0	4.6	2.9	1.7	46.3	3.3	7.0	1.1	33.1	4.6	62.3	0.076	0.500	25.186696	-100.731988
Plaza de Cobro Los Chorros	203.64	2	2	7480	0.1	33.0	4.6	2.9	1.7	46.3	3.3	7.0	1.1	33.1	4.6	62.3	0.076	0.500	25.186696	-100.731988
Lim. Edos. Term. N. L. Ppia. Coah.	204.07																			
Lim. Edos. Term. Coah. Ppia. N. L.	204.50																			
Lim. Edos. Term. N. L. Ppia. Coah.	205.76																			
T. Der. San Antonio de Las Alazanas	224.94	1	1	8156	7.8	37.8	5.8	6.3	2.6	29.3	2.9	5.7	1.8	45.6	5.8	48.6	0.069	0.514	25.344431	-100.794541
T. Der. San Antonio de Las Alazanas	224.94	1	2	8641	6.6	37.5	6.1	6.6	2.7	29.2	3.6	6.1	1.6	44.1	6.1	49.8	0.077	0.514	25.344428	-100.794645
T. Der. San Antonio de Las Alazanas	224.94	3	1	9506	6.4	40.6	5.5	7.5	2.8	28.8	3.2	4.1	1.1	47.0	5.5	47.5	0.079	0.500	25.351841	-100.794326
T. Der. San Antonio de Las Alazanas	224.94	3	2	9518	5.2	40.7	5.8	6.8	1.9	29.9	3.6	4.8	1.3	45.9	5.8	48.3	0.077	0.500	25.351846	-100.794421
Los Lirios	228.30	3	1	11496	2.7	44.8	3.3	11.8	2.4	27.4	2.8	3.8	1.0	47.5	3.3	49.2	0.101	0.504	25.407193	-100.800698
Los Lirios	228.30	3	2	11294	1.6	45.6	4.5	10.8	2.5	26.2	3.7	4.0	1.1	47.2	4.5	48.3	0.098	0.504	25.407209	-100.800811
Ent. La Carbonera	235.60																			

COAHUILA

26 CARR : Saltillo - Monterrey (Cuota)

CLAVE: 00087

RUTA: MEX-040D

AÑO: 2021

LUGAR	ESTACION				CLASIFICACION VEHICULAR EN PORCIENTO														COORDENADAS	
	KM	TE	SC	TDPA	M	A	B	C2	C3	T3S2	T3S3	T3S2R4	OTROS	A	B	C	K'	D	LATITUD	LONGITUD
Ojo Caliente	46.21	3	1	4263	2.8	48.3	5.3	7.4	2.2	22.1	2.7	8.5	0.7	51.1	5.3	43.6	0.077	0.505	25.617474	-100.906133
Ojo Caliente	46.21	3	2	4348	2.0	44.5	5.9	7.8	2.4	24.1	3.0	9.6	0.7	46.5	5.9	47.6	0.069	0.505	25.617550	-100.906195
Lim. Edos. Term. Coah. Ppia. N. L.	61.08																			
T. Izq. Anillo Periférico de Monterrey (Cuota)	82.00	1	1	8847	3.9	52.0	5.7	7.6	1.5	18.8	1.9	8.1	0.5	55.9	5.7	38.4	0.078	0.520	25.697347	-100.595733
T. Izq. Anillo Periférico de Monterrey (Cuota)	82.00	1	2	8161	5.3	48.9	6.9	7.2	1.2	17.7	2.5	9.7	0.6	54.2	6.9	38.9	0.070	0.520	25.697418	-100.595722
T. Izq. Anillo Periférico de Monterrey (Cuota)	82.00	3	1	4887	0.5	96.5	1.3	1.3	0.1	0.2	0.0	0.0	0.1	97.0	1.3	1.7	0.134	0.512	25.675352	-100.504656
T. Izq. Anillo Periférico de Monterrey (Cuota)	82.00	3	2	5133	0.3	96.8	1.4	1.3	0.1	0.1	0.0	0.0	0.0	97.1	1.4	1.5	0.107	0.512	25.675429	-100.504625
Morones Prieto	96.10																			

27 CARR : Torreón - Saltillo (Cuota)

CLAVE:

RUTA: MEX-040D

AÑO: 2021

LUGAR	ESTACION				CLASIFICACION VEHICULAR EN PORCIENTO														COORDENADAS	
	KM	TE	SC	TDPA	M	A	B	C2	C3	T3S2	T3S3	T3S2R4	OTROS	A	B	C	K'	D	LATITUD	LONGITUD
Matamoros	0.00																			
Plaza de Cobro La Cuchilla	37.00	2	1	3452	0.2	45.8	5.3	2.6	1.4	25.0	5.6	11.6	2.5	46.0	5.3	48.7	0.091	0.500	25.627052	-102.878352
Plaza de Cobro La Cuchilla	37.00	2	2	3452	0.2	45.8	5.3	2.6	1.4	25.0	5.6	11.6	2.5	46.0	5.3	48.7	0.091	0.500	25.627052	-102.878352
T. C. Saltillo - Torreón (Libre)	128.60																			
Plaza de Cobro Plan de Ayala	205.00	2	1	3565	0.3	49.3	6.1	2.0	1.2	23.1	4.8	11.0	2.2	49.6	6.1	44.3	0.091	0.500	25.444203	-101.303908
Plaza de Cobro Plan de Ayala	205.00	2	2	3565	0.3	49.3	6.1	2.0	1.2	23.1	4.8	11.0	2.2	49.6	6.1	44.3	0.091	0.500	25.444203	-101.303908
T. C. Saltillo - Torreón (Libre)	206.80																			

28 CARR : Allende - Villa Unión

CLAVE: 05001

RUTA: COA-015

AÑO: 2021

LUGAR	ESTACION				CLASIFICACION VEHICULAR EN PORCIENTO														COORDENADAS	
	KM	TE	SC	TDPA	M	A	B	C2	C3	T3S2	T3S3	T3S2R4	OTROS	A	B	C	K'	D	LATITUD	LONGITUD
Allende	0.00	3	0	2140	1.6	72.6	2.7	21.0	0.3	1.6	0.1	0.0	0.1	74.2	2.7	23.1	0.100	0.501	28.335581	-100.838214
Villa Unión	19.00																			

29 CARR : Corredor Libramiento de San Pedro

CLAVE: 05023

RUTA: COA-087

AÑO: 2021

LUGAR	ESTACION				CLASIFICACION VEHICULAR EN PORCIENTO														COORDENADAS	
	KM	TE	SC	TDPA	M	A	B	C2	C3	T3S2	T3S3	T3S2R4	OTROS	A	B	C	K'	D	LATITUD	LONGITUD
T. C. Monclova - San Pedro de las Colonias	0.00	3	0	2900	14.4	61.6	1.4	10.3	2.5	5.6	1.6	2.2	0.4	76.0	1.4	22.6	0.093	0.545	25.774570	-102.982533
T. C. La Cuchilla - Torreón	3.60	1	0	4569	12.6	68.2	1.3	8.9	1.4	4.4	1.4	1.6	0.2	80.8	1.3	17.9	0.095	0.533	25.759314	-103.000062

COAHUILA

30 CARR: Cuatro Ciénegas - Ocampo

CLAVE: 05026

RUTA: COA-048

AÑO: 2021

LUGAR	ESTACION				CLASIFICACION VEHICULAR EN PORCIENTO														COORDENADAS	
	KM	TE	SC	TDPA	M	A	B	C2	C3	T3S2	T3S3	T3S2R4	OTROS	A	B	C	K'	D	LATITUD	LONGITUD
Cuatro Ciénegas	0.00	3	0	1238	2.8	73.6	0.4	20.3	0.4	1.8	0.4	0.2	0.1	76.4	0.4	23.2	0.076	0.508	27.000376	-102.072756
Ocampo	50.00																			

31 CARR: El Sauz - Palau

CLAVE: 05060

RUTA: COA-022

AÑO: 2021

LUGAR	ESTACION				CLASIFICACION VEHICULAR EN PORCIENTO														COORDENADAS	
	KM	TE	SC	TDPA	M	A	B	C2	C3	T3S2	T3S3	T3S2R4	OTROS	A	B	C	K'	D	LATITUD	LONGITUD
El Sauz	0.00	3	1	1292	0.6	69.6	5.4	13.8	1.9	3.8	2.6	1.9	0.4	70.2	5.4	24.4	0.093	0.504	27.640574	-101.188878
El Sauz	0.00	3	2	1269	0.3	66.6	5.9	15.6	2.1	4.5	2.7	2.0	0.3	66.9	5.9	27.2	0.106	0.504	27.640463	-101.188888
Minas de Barroterán	31.00	3	1	1240	1.7	68.6	3.9	15.1	2.1	4.4	2.2	1.5	0.5	70.3	3.9	25.8	0.104	0.506	27.665357	-101.289876
Minas de Barroterán	31.00	3	2	1277	1.5	65.4	4.2	16.9	2.2	5.0	2.5	1.6	0.7	66.9	4.2	28.9	0.081	0.506	27.665520	-101.290060
Palau	42.50	1	1	1119	1.7	68.6	0.7	15.1	2.5	5.6	4.4	1.0	0.4	70.3	0.7	29.0	0.094	0.518	27.874936	-101.415470
Palau	42.50	1	2	1219	1.7	66.1	0.6	16.7	2.8	5.9	4.8	1.1	0.3	67.8	0.6	31.6	0.096	0.518	27.874963	-101.415613

32 CARR: Emiliano Zapata - Viesca

CLAVE: 05521

RUTA: COA-082

AÑO: 2021

LUGAR	ESTACION				CLASIFICACION VEHICULAR EN PORCIENTO														COORDENADAS	
	KM	TE	SC	TDPA	M	A	B	C2	C3	T3S2	T3S3	T3S2R4	OTROS	A	B	C	K'	D	LATITUD	LONGITUD
Emiliano Zapata	0.00	3	0	796	2.2	79.0	0.9	16.1	1.1	0.6	0.1	0.0	0.0	81.2	0.9	17.9	0.089	0.501	25.478749	-102.943375
Viesca	24.00																			

33 CARR: Ent. La Rosa - General Cepeda

CLAVE: 05034

RUTA: COA-034

AÑO: 2021

LUGAR	ESTACION				CLASIFICACION VEHICULAR EN PORCIENTO														COORDENADAS	
	KM	TE	SC	TDPA	M	A	B	C2	C3	T3S2	T3S3	T3S2R4	OTROS	A	B	C	K'	D	LATITUD	LONGITUD
T. C. Saltillo - Torreón	0.00	3	0	1357	0.8	79.5	0.3	17.2	0.8	1.1	0.2	0.0	0.1	80.3	0.3	19.4	0.115	0.501	25.506696	-101.379366
Gral. Cepeda	21.00	1	0	1346	1.8	71.3	0.5	24.2	0.8	1.1	0.2	0.0	0.1	73.1	0.5	26.4	0.099	0.507	25.387443	-101.476439

34 CARR: Ent. Paila - Parras de La Fuente

CLAVE: 05014

RUTA: COA-102

AÑO: 2021

LUGAR	ESTACION				CLASIFICACION VEHICULAR EN PORCIENTO														COORDENADAS	
	KM	TE	SC	TDPA	M	A	B	C2	C3	T3S2	T3S3	T3S2R4	OTROS	A	B	C	K'	D	LATITUD	LONGITUD
Ent. Paila	0.00	3	0	2602	2.1	77.6	2.6	11.1	1.8	2.9	0.7	0.7	0.5	79.7	2.6	17.7	0.070	0.511	25.643859	-102.148784
Parras de La Fuente	20.05	1	1	2531	6.8	79.5	1.1	9.3	0.8	1.5	0.4	0.3	0.3	86.3	1.1	12.6	0.095	0.523	25.468770	-102.173846
Parras de La Fuente	20.05	1	2	2271	6.9	79.9	1.1	9.0	0.8	1.6	0.3	0.3	0.1	86.8	1.1	12.1	0.112	0.523	25.468791	-102.173725

COAHUILA

35 CARR: Libramiento de Matamoros

CLAVE: 05032

RUTA: COA

AÑO: 2021

LUGAR	ESTACION				CLASIFICACION VEHICULAR EN PORCIENTO													COORDENADAS		
	KM	TE	SC	TDPA	M	A	B	C2	C3	T3S2	T3S3	T3S2R4	OTROS	A	B	C	K'	D	LATITUD	LONGITUD
T. C. Saltillo - Torreón	0.00	3	0	9497	4.4	79.7	1.1	6.7	3.4	3.2	1.1	0.3	0.1	84.1	1.1	14.8	0.103	0.509	25.533088	-103.219769
X. C. Matamoros - La Unión	3.70	3	1	7690	6.4	68.9	1.9	8.1	3.1	6.9	1.6	2.4	0.7	75.3	1.9	22.8	0.081	0.510	25.538569	-103.225837
X. C. Matamoros - La Unión	3.70	3	2	7400	7.0	65.4	2.3	9.7	3.3	7.4	1.7	2.5	0.7	72.4	2.3	25.3	0.080	0.510	25.538334	-103.225781
T. C. Saltillo - Torreón	5.32	1	1	9039	7.1	71.5	1.7	7.6	2.7	6.0	1.2	1.8	0.4	78.6	1.7	19.7	0.081	0.518	25.536706	-103.245059
T. C. Saltillo - Torreón	5.32	1	2	8396	7.0	69.4	2.0	8.2	2.9	6.5	1.5	2.0	0.5	76.4	2.0	21.6	0.084	0.518	25.536573	-103.245270

36 CARR: Libramiento de Saltillo J.L.P.

CLAVE: 05031

RUTA: COA

AÑO: 2021

LUGAR	ESTACION				CLASIFICACION VEHICULAR EN PORCIENTO													COORDENADAS		
	KM	TE	SC	TDPA	M	A	B	C2	C3	T3S2	T3S3	T3S2R4	OTROS	A	B	C	K'	D	LATITUD	LONGITUD
T. C. Ent. Bella Unión - Saltillo	0.00																			
X. C. Saltillo - Arteaga	2.50	3	1	15567	0.8	78.3	1.7	7.9	3.7	6.0	0.8	0.6	0.2	79.1	1.7	19.2	0.131	0.513	25.448406	-100.892066
X. C. Saltillo - Arteaga	2.50	3	2	14934	0.8	78.0	1.8	8.0	3.8	5.9	0.8	0.7	0.2	78.8	1.8	19.4	0.127	0.513	25.448025	-100.892074
T. C. Saltillo - Monterrey	18.00	1	1	9980	1.0	69.9	1.0	8.4	5.4	10.0	0.9	2.7	0.7	70.9	1.0	28.1	0.156	0.505	25.554099	-100.921639
T. C. Saltillo - Monterrey	18.00	1	2	10176	1.0	69.6	1.0	8.3	5.5	10.3	1.0	2.6	0.7	70.6	1.0	28.4	0.129	0.505	25.554142	-100.921900

37 CARR: Libramiento de Torreón

CLAVE: 05516

RUTA: COA

AÑO: 2021

LUGAR	ESTACION				CLASIFICACION VEHICULAR EN PORCIENTO													COORDENADAS		
	KM	TE	SC	TDPA	M	A	B	C2	C3	T3S2	T3S3	T3S2R4	OTROS	A	B	C	K'	D	LATITUD	LONGITUD
X. C. Saltillo - Torreón	0.00	3	1	42749	2.1	87.4	1.4	3.8	1.7	2.1	1.0	0.5	0.0	89.5	1.4	9.1	0.066	0.511	25.539240	-103.370594
X. C. Saltillo - Torreón	0.00	3	2	40720	2.2	86.8	1.5	4.1	1.7	2.3	0.8	0.5	0.1	89.0	1.5	9.5	0.067	0.511	25.539245	-103.371002
T. C. La Cuchilla - Torreón (Alta)	7.30	1	1	15564	1.2	85.7	1.1	5.2	2.0	3.1	0.9	0.6	0.2	86.9	1.1	12.0	0.086	0.537	25.581557	-103.401080
T. C. La Cuchilla - Torreón (Baja)	7.30	1	1	31840	1.3	81.8	0.8	4.1	0.9	4.7	3.5	2.0	0.9	83.1	0.8	16.1	0.090	0.520	25.581719	-103.400988
T. C. La Cuchilla - Torreón (Baja)	7.30	1	2	29201	1.3	81.7	0.9	4.1	0.9	4.7	3.5	2.0	0.9	83.0	0.9	16.1	0.092	0.520	25.581297	-103.401203
T. C. La Cuchilla - Torreón (Alta)	7.30	1	2	18075	1.3	85.4	1.1	5.2	2.1	3.1	0.9	0.7	0.2	86.7	1.1	12.2	0.078	0.537	25.581485	-103.401111
Lim. Edos. Term. Coah. Ppia. Dgo.	11.80																			
T. C. Durango - Torreón	28.60																			

38 CARR: Matamoros - El Fresno

CLAVE: 05023

RUTA: COA-078

AÑO: 2021

LUGAR	ESTACION				CLASIFICACION VEHICULAR EN PORCIENTO													COORDENADAS		
	KM	TE	SC	TDPA	M	A	B	C2	C3	T3S2	T3S3	T3S2R4	OTROS	A	B	C	K'	D	LATITUD	LONGITUD
Matamoros	0.00	3	0	3441	11.4	63.2	0.9	17.8	2.3	2.7	1.1	0.3	0.3	74.6	0.9	24.5	0.089	0.505	25.499996	-103.224732
El Fresno	12.60	1	0	1187	12.9	58.2	5.9	15.0	3.9	3.6	0.5	0.0	0.0	71.1	5.9	23.0	0.098	0.510	25.426373	-103.227814

COAHUILA

39 CARR: Matamoros - La Unión

CLAVE: 05023

RUTA: COA-070

AÑO: 2021

LUGAR	ESTACION				CLASIFICACION VEHICULAR EN PORCIENTO										COORDENADAS					
	KM	TE	SC	TDPA	M	A	B	C2	C3	T3S2	T3S3	T3S2R4	OTROS	A	B	C	K'	D	LATITUD	LONGITUD
X. C. Libramiento de Matamoros	1.00	3	1	1853	4.3	71.4	2.1	14.0	2.9	2.5	1.2	0.9	0.7	75.7	2.1	22.2	0.084	0.517	25.542761	-103.222486
X. C. Libramiento de Matamoros	1.00	3	2	1677	4.9	70.7	2.1	14.2	2.7	2.5	1.3	0.9	0.7	75.6	2.1	22.3	0.077	0.517	25.542763	-103.222656
La Partida	14.09	1	0	3580	7.7	68.7	0.9	11.7	4.8	4.1	1.4	0.4	0.3	76.4	0.9	22.7	0.085	0.517	25.586426	-103.297424
La Partida	14.09	3	0	5949	5.0	78.6	1.9	9.0	1.9	1.4	0.4	1.3	0.5	83.6	1.9	14.5	0.073	0.515	25.594461	-103.314473
X. C. Antigua Carretera a San Pedro	22.00	1	1	8007	1.3	87.9	0.3	6.1	1.9	1.1	0.5	0.6	0.3	89.2	0.3	10.5	0.103	0.507	25.598308	-103.374354
X. C. Antigua Carretera a San Pedro	22.00	1	2	7787	1.3	88.0	0.3	6.2	1.8	1.1	0.4	0.6	0.3	89.3	0.3	10.4	0.097	0.507	25.598199	-103.374335
La Unión	25.00	1	1	11295	1.7	90.2	0.3	5.1	1.3	0.8	0.2	0.2	0.2	91.9	0.3	7.8	0.094	0.503	25.597580	-103.392693
La Unión	25.00	1	2	11432	1.7	90.1	0.3	5.0	1.3	0.9	0.2	0.2	0.3	91.8	0.3	7.9	0.098	0.503	25.597499	-103.392694

40 CARR: Monclova - Estación Candela

CLAVE: 00501

RUTA: COA-030-NL

AÑO: 2021

LUGAR	ESTACION				CLASIFICACION VEHICULAR EN PORCIENTO										COORDENADAS					
	KM	TE	SC	TDPA	M	A	B	C2	C3	T3S2	T3S3	T3S2R4	OTROS	A	B	C	K'	D	LATITUD	LONGITUD
T. C. Monclova - Piedras Negras	0.00																			
T. Izq. Libramiento de Monclova	5.10	1	1	2490	3.4	78.0	0.8	14.9	1.2	1.2	0.4	0.0	0.1	81.4	0.8	17.8	0.091	0.503	26.928200	-101.389114
T. Izq. Libramiento de Monclova	5.10	1	2	2542	3.1	76.0	0.9	16.9	1.2	1.3	0.4	0.0	0.2	79.1	0.9	20.0	0.100	0.503	26.928274	-101.389197
Lim. Edos. Term. Coah. Ppia. N. L.	118.00																			
T. C. Monterrey - Colombia	125.50	1	0	566	0.2	69.1	2.6	17.6	1.1	8.3	0.3	0.7	0.1	69.3	2.6	28.1	0.170	0.523	26.837960	-100.494268

41 CARR: Morelos - Ent. Las Corrientes

CLAVE: 05500

RUTA: COA-010

AÑO: 2021

LUGAR	ESTACION				CLASIFICACION VEHICULAR EN PORCIENTO										COORDENADAS					
	KM	TE	SC	TDPA	M	A	B	C2	C3	T3S2	T3S3	T3S2R4	OTROS	A	B	C	K'	D	LATITUD	LONGITUD
T. C. Morelos - Cd. Acuña	0.00	3	0	1571	1.9	76.2	0.4	19.6	0.4	1.3	0.1	0.0	0.1	78.1	0.4	21.5	0.098	0.507	28.401889	-100.894970
Los Álamos	9.20	1	0	943	3.2	66.4	0.9	28.3	0.3	0.8	0.1	0.0	0.0	69.6	0.9	29.5	0.103	0.501	28.355808	-100.941894
T. C. Monclova - Piedras Negras	20.00																			

42 CARR: Puerto de Flores - El Hondable

CLAVE: 05512

RUTA: COA-112

AÑO: 2021

LUGAR	ESTACION				CLASIFICACION VEHICULAR EN PORCIENTO										COORDENADAS					
	KM	TE	SC	TDPA	M	A	B	C2	C3	T3S2	T3S3	T3S2R4	OTROS	A	B	C	K'	D	LATITUD	LONGITUD
T. C. Aut. Puerto México - Ojo Caliente	0.00	3	0	2322	1.0	76.6	0.8	18.3	1.0	1.4	0.5	0.2	0.2	77.6	0.8	21.6	0.080	0.504	25.340535	-100.777376
San Antonio de Las Alazanas	24.00	1	0	1886	7.2	74.8	1.1	14.6	0.6	1.2	0.2	0.1	0.2	82.0	1.1	16.9	0.112	0.504	25.278625	-100.601178
El Hondable	50.50																			

COAHUILA

43 CARR: Ramal a Hipólito

CLAVE: 05509

RUTA: COA-114

AÑO: 2021

LUGAR	ESTACION				CLASIFICACION VEHICULAR EN PORCIENTO													COORDENADAS		
	KM	TE	SC	TDPA	M	A	B	C2	C3	T3S2	T3S3	T3S2R4	OTROS	A	B	C	K'	D	LATITUD	LONGITUD
T. C. Saltillo - Torreón	0.00	3	0	1282	0.3	70.7	0.3	15.8	1.9	4.9	3.5	2.1	0.5	71.0	0.3	28.7	0.085	0.514	25.595393	-101.451931
Hipólito	13.00																			

44 CARR: Ramal a Lamadrid

CLAVE: 05522

RUTA: COA-042

AÑO: 2021

LUGAR	ESTACION				CLASIFICACION VEHICULAR EN PORCIENTO													COORDENADAS		
	KM	TE	SC	TDPA	M	A	B	C2	C3	T3S2	T3S3	T3S2R4	OTROS	A	B	C	K'	D	LATITUD	LONGITUD
T. C. Monclova - San Pedro de las Colonias	0.00	3	0	1232	0.4	76.5	3.8	17.5	0.8	0.9	0.1	0.0	0.0	76.9	3.8	19.3	0.090	0.515	27.016740	-101.791830
Lamadrid	4.00																			

45 CARR: Sabinas - Don Martín

CLAVE: 05501

RUTA: COA-025

AÑO: 2021

LUGAR	ESTACION				CLASIFICACION VEHICULAR EN PORCIENTO													COORDENADAS		
	KM	TE	SC	TDPA	M	A	B	C2	C3	T3S2	T3S3	T3S2R4	OTROS	A	B	C	K'	D	LATITUD	LONGITUD
Sabinas	0.00	3	0	2022	4.9	71.5	0.2	21.0	0.5	1.5	0.1	0.2	0.1	76.4	0.2	23.4	0.086	0.503	27.849705	-101.097007
T. Izq. La Mezquitosa	3.00	3	0	1049	1.8	62.8	0.4	31.8	0.8	1.3	0.4	0.6	0.1	64.6	0.4	35.0	0.102	0.522	27.827043	-101.067379
Juárez	53.00	3	0	411	0.8	67.4	0.5	27.4	2.5	1.1	0.1	0.2	0.0	68.2	0.5	31.3	0.128	0.515	27.619325	-100.704668
Don Martín	66.00	1	0	370	0.6	76.2	0.5	18.0	3.2	1.2	0.1	0.2	0.0	76.8	0.5	22.7	0.109	0.503	27.543438	-100.626477

46 CARR: Saltillo - Arteaga

CLAVE: 05008

RUTA: COA-106

AÑO: 2021

LUGAR	ESTACION				CLASIFICACION VEHICULAR EN PORCIENTO													COORDENADAS		
	KM	TE	SC	TDPA	M	A	B	C2	C3	T3S2	T3S3	T3S2R4	OTROS	A	B	C	K'	D	LATITUD	LONGITUD
Saltillo	0.00	3	1	11140	1.1	92.5	0.5	3.2	1.1	0.6	0.4	0.4	0.2	93.6	0.5	5.9	0.093	0.506	25.442214	-100.952873
Saltillo	0.00	3	2	11402	1.1	92.5	0.5	3.1	1.0	0.7	0.5	0.4	0.2	93.6	0.5	5.9	0.093	0.506	25.442235	-100.953608
X. C. Libramiento de Matehuala - Monterrey	9.00	1	1	6367	1.3	87.4	1.1	4.3	2.3	2.1	0.8	0.2	0.5	88.7	1.1	10.2	0.139	0.515	25.444449	-100.897759
X. C. Libramiento de Matehuala - Monterrey	9.00	1	2	6751	1.3	87.2	1.2	4.3	2.5	2.1	0.8	0.2	0.4	88.5	1.2	10.3	0.117	0.515	25.444548	-100.897772
X. C. Libramiento de Matehuala - Monterrey	9.00	3	1	3133	1.3	80.7	0.6	13.8	1.8	1.2	0.4	0.1	0.1	82.0	0.6	17.4	0.159	0.518	25.449523	-100.885380
X. C. Libramiento de Matehuala - Monterrey	9.00	3	2	2837	1.4	78.1	0.6	16.0	2.0	1.3	0.4	0.1	0.1	79.5	0.6	19.9	0.210	0.518	25.449601	-100.885487
Arteaga	12.00	1	1	3616	1.4	81.6	1.0	13.3	1.2	0.9	0.4	0.1	0.1	83.0	1.0	16.0	0.177	0.531	25.448693	-100.869933
Arteaga	12.00	1	2	3055	2.1	79.7	0.9	14.5	1.2	1.0	0.4	0.1	0.1	81.8	0.9	17.3	0.092	0.531	25.448805	-100.869983
T. C. Ent. Bella Unión - Saltillo	18.00																			

COAHUILA

47 CARR: San Buenaventura - Estación Hermanas

CLAVE: 05004

RUTA: COA-034

AÑO: 2021

LUGAR	ESTACION				CLASIFICACION VEHICULAR EN PORCIENTO										COORDENADAS					
	KM	TE	SC	TDPA	M	A	B	C2	C3	T3S2	T3S3	T3S2R4	OTROS	A	B	C	K'	D	LATITUD	LONGITUD
San Buenaventura	0.00	3	0	2026	2.2	79.6	0.6	13.9	1.5	1.5	0.4	0.2	0.1	81.8	0.6	17.6	0.083	0.514	27.078857	-101.531432
T. Izq. Santa Gertrudis	2.48	1	0	1902	1.3	81.0	2.1	13.2	1.0	1.0	0.3	0.0	0.1	82.3	2.1	15.6	0.082	0.508	27.089103	-101.514067
Abasolo	15.71	1	0	948	1.5	80.5	2.0	13.3	1.5	1.0	0.2	0.0	0.0	82.0	2.0	16.0	0.096	0.510	27.174662	-101.431091
Los Rodríguez	31.00	3	0	558	1.6	75.2	6.2	14.3	1.6	0.8	0.3	0.0	0.0	76.8	6.2	17.0	0.101	0.511	27.199719	-101.349809
Estación Hermanas	50.00	1	0	508	2.1	72.7	3.5	19.0	2.0	0.6	0.1	0.0	0.0	74.8	3.5	21.7	0.126	0.511	27.221115	-101.240797

48 CARR: T. C. (Ent. Morelos - Saltillo) - Parras de La Fuente

CLAVE: 05510

RUTA: COA-105

AÑO: 2021

LUGAR	ESTACION				CLASIFICACION VEHICULAR EN PORCIENTO										COORDENADAS					
	KM	TE	SC	TDPA	M	A	B	C2	C3	T3S2	T3S3	T3S2R4	OTROS	A	B	C	K'	D	LATITUD	LONGITUD
T. C. Morelos - Saltillo	0.00	3	1	6669	4.6	62.0	2.7	13.2	3.3	10.9	2.2	0.7	0.4	66.6	2.7	30.7	0.130	0.526	25.261654	-101.099514
T. C. Morelos - Saltillo	0.00	3	2	7395	4.4	62.5	2.8	13.0	3.2	10.8	2.1	0.7	0.5	66.9	2.8	30.3	0.122	0.526	25.261547	-101.099491
Gral. Cepeda	40.00	1	0	1575	2.1	68.3	2.0	26.2	0.6	0.8	0.0	0.0	0.0	70.4	2.0	27.6	0.122	0.508	25.365548	-101.480641
Gral. Cepeda	40.00	3	0	920	1.4	68.5	0.9	27.9	0.3	1.0	0.0	0.0	0.0	69.9	0.9	29.2	0.098	0.511	25.385227	-101.494250
Parras de La Fuente	102.00	1	0	2699	6.6	66.9	5.3	13.1	5.3	2.6	0.2	0.0	0.0	73.5	5.3	21.2	0.093	0.516	25.443677	-102.157231

49 CARR: T. C. (Saltillo - Monclova) - Ramos Arizpe

CLAVE: 05508

RUTA: COA

AÑO: 2021

LUGAR	ESTACION				CLASIFICACION VEHICULAR EN PORCIENTO										COORDENADAS					
	KM	TE	SC	TDPA	M	A	B	C2	C3	T3S2	T3S3	T3S2R4	OTROS	A	B	C	K'	D	LATITUD	LONGITUD
T. C. Saltillo - Monclova	0.00	3	0	5373	1.7	65.9	1.6	11.3	3.2	12.5	2.1	1.3	0.4	67.6	1.6	30.8	0.079	0.503	25.529095	-101.002984
Ramos Arizpe	12.00																			

50 CARR: Torreón - Escuadrón 201

CLAVE: 05022

RUTA: COA-011

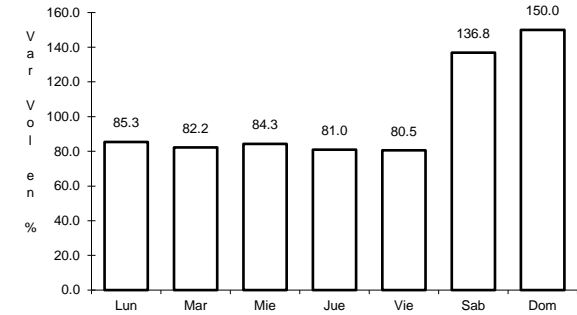
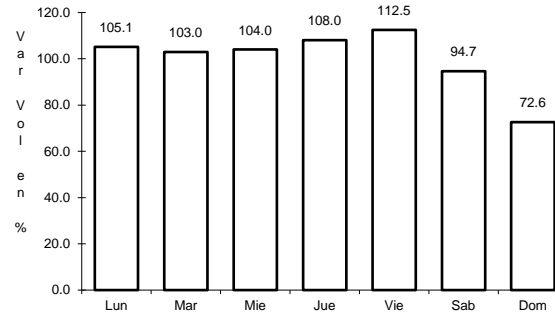
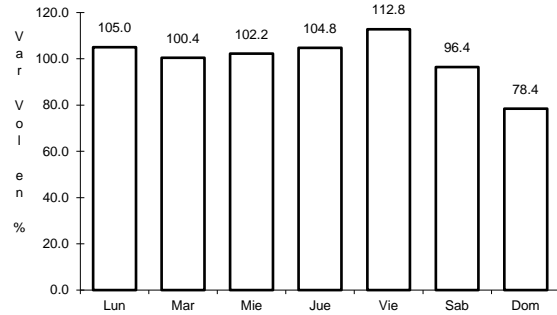
AÑO: 2021

LUGAR	ESTACION				CLASIFICACION VEHICULAR EN PORCIENTO										COORDENADAS					
	KM	TE	SC	TDPA	M	A	B	C2	C3	T3S2	T3S3	T3S2R4	OTROS	A	B	C	K'	D	LATITUD	LONGITUD
Torreón	0.00	3	1	19313	4.2	86.2	0.3	4.4	0.8	2.1	1.2	0.4	0.4	90.4	0.3	9.3	0.078	0.583	25.581876	-103.389040
Torreón	0.00	3	2	18383	4.5	85.1	0.4	4.7	0.9	2.2	1.4	0.4	0.4	89.6	0.4	10.0	0.092	0.583	25.581950	-103.389149
El Aguila	11.35	1	0	3055	9.1	76.5	0.5	10.1	1.9	1.7	0.1	0.0	0.1	85.6	0.5	13.9	0.068	0.515	25.626010	-103.367005
Escuadrón 201	17.06	1	0	1103	7.3	70.0	0.3	18.0	1.3	1.7	0.5	0.2	0.7	77.3	0.3	22.4	0.093	0.515	25.669521	-103.348016

1 CARR: Cd. Acuña - Presa de La Amistad

CLAVE: 05085

RUTA: MEX-002



Km: 0.00 Tipo: 3 Sent: 1

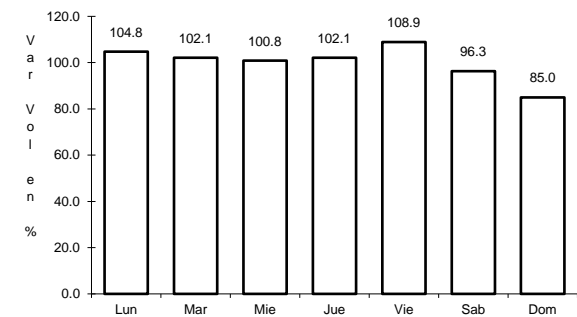
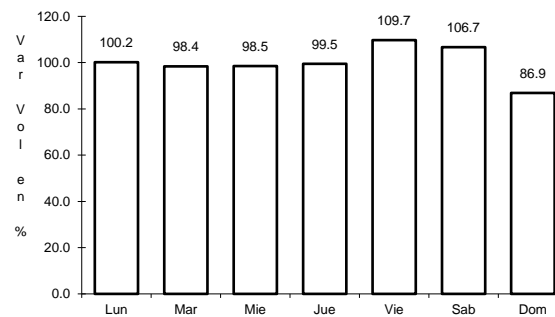
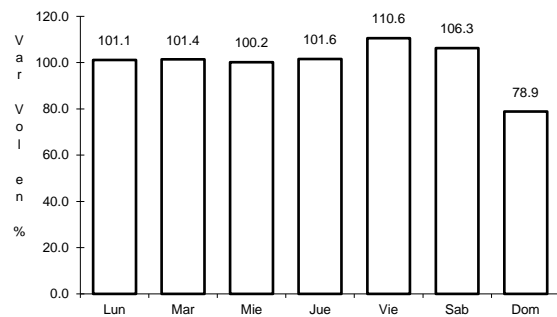
Km: 0.00 Tipo: 3 Sent: 2

Km: 23.00 Tipo: 1 Sent: 0

2 CARR: Durango - Torreón

CLAVE: 10085

RUTA: MEX-040



Km: 0.00 Tipo: 3 Sent: 1

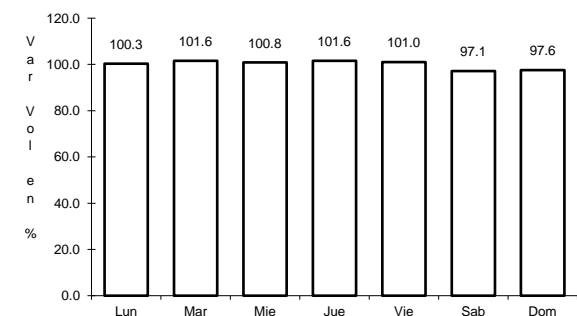
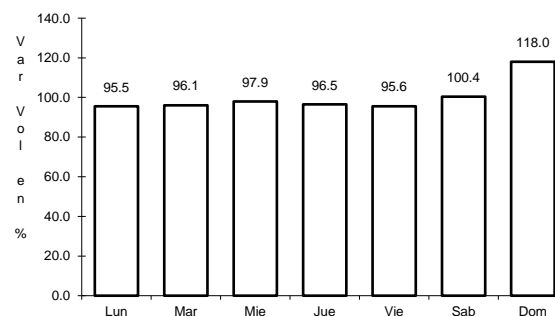
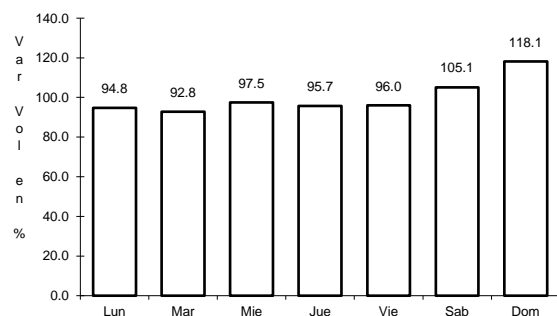
Km: 0.00 Tipo: 3 Sent: 2

Km: 120.90 Tipo: 1 Sent: 0

3 CARR: Ent. Bella Unión - Saltillo

CLAVE: 05003

RUTA: MEX-057



Km: 4.61 Tipo: 1 Sent: 1

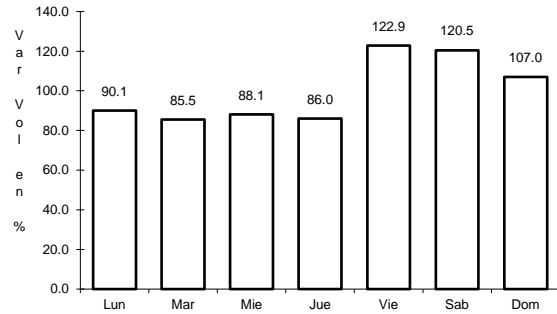
Km: 4.61 Tipo: 1 Sent: 2

Km: 17.00 Tipo: 1 Sent: 1

4 CARR: Ent. La Cuchilla - San Pedro de las Colonias

CLAVE: 05021

RUTA: MEX



Km: 0.00

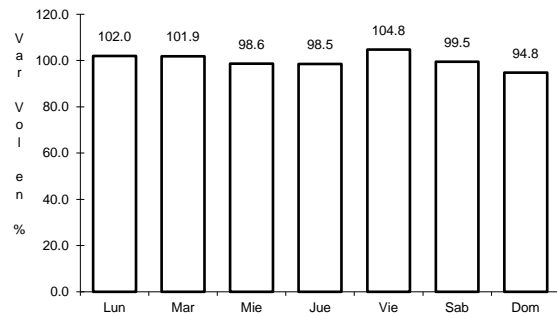
Tipo: 3

Sent: 0

5 CARR: Ent. Morelos - Saltillo

CLAVE: 00149

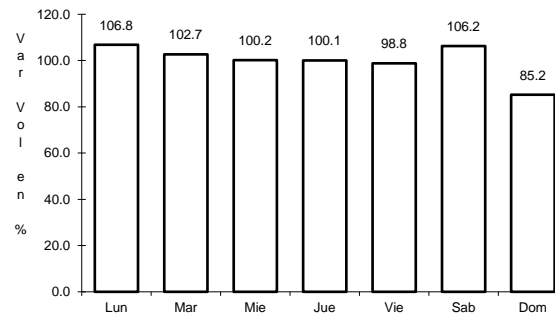
RUTA: MEX-054



Km: 0.00

Tipo: 3

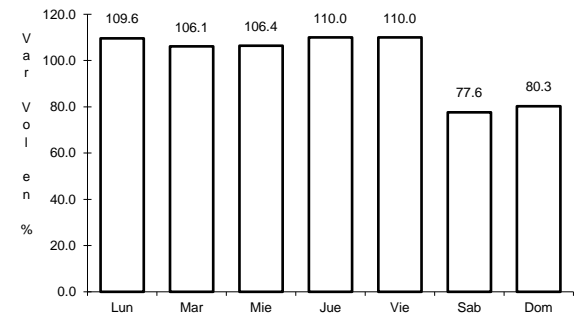
Sent: 1



Km: 0.00

Tipo: 3

Sent: 2



Km: 333.00

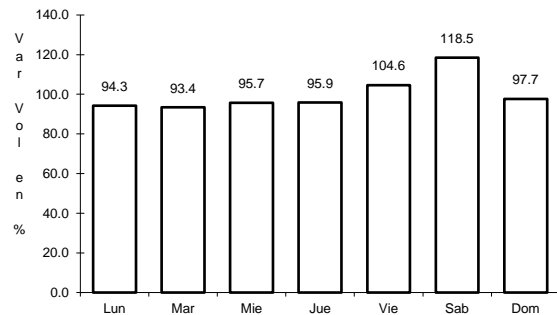
Tipo: 3

Sent: 1

6 CARR: Gregorio García - Francisco I. Madero

CLAVE: 00110

RUTA: MEX-040



Km: 9.60

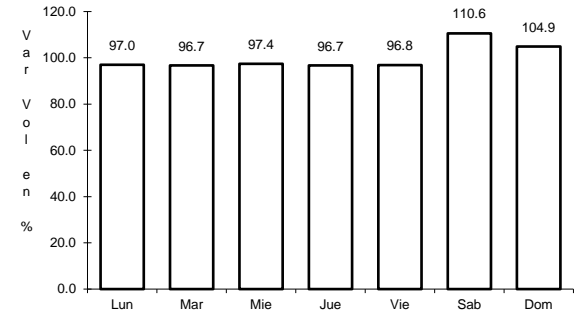
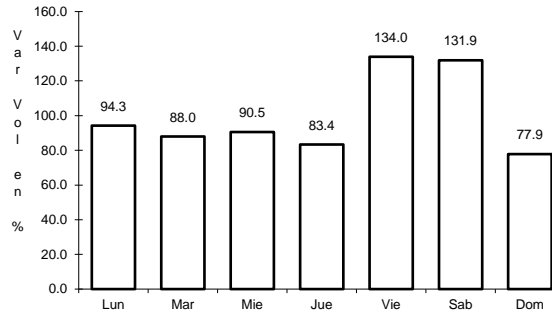
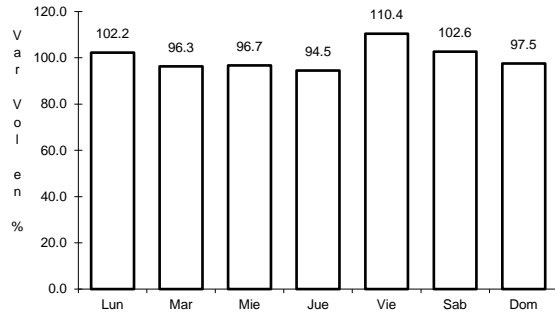
Tipo: 1

Sent: 0

7 CARR: Libramiento Allende - Nava

CLAVE: 05518

RUTA: MEX-057



Km: 0.00 Tipo: 3 Sent: 1

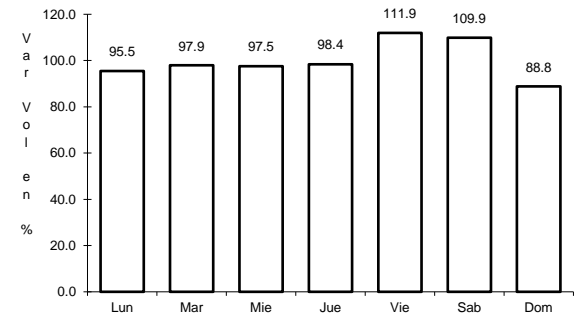
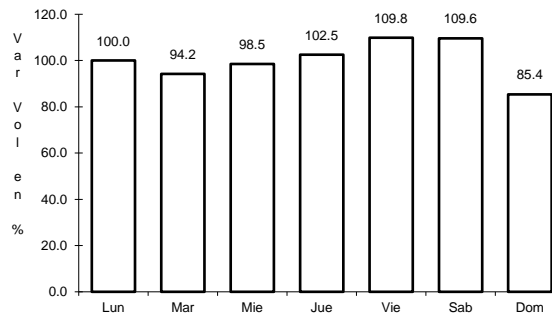
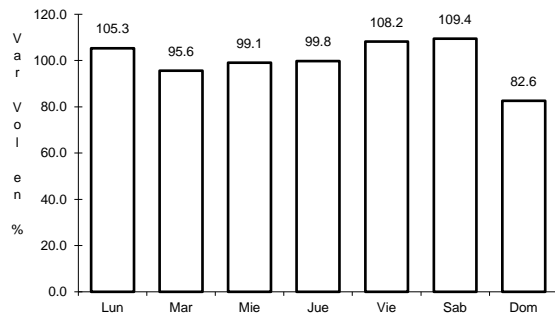
Km: 0.00 Tipo: 3 Sent: 2

Km: 18.55 Tipo: 1 Sent: 1

8 CARR: Monclova - Piedras Negras

CLAVE: 05407

RUTA: MEX-057



Km: 0.00 Tipo: 3 Sent: 1

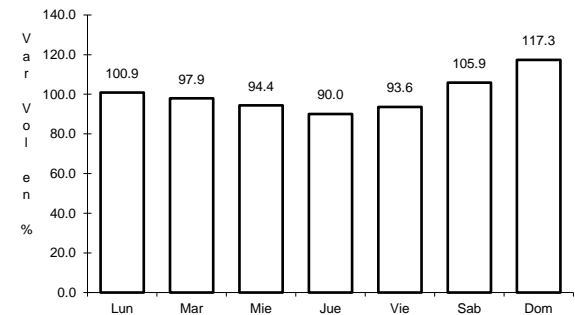
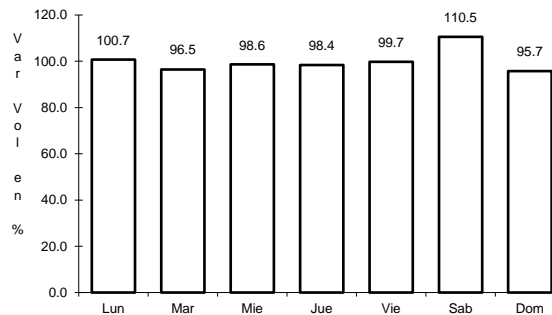
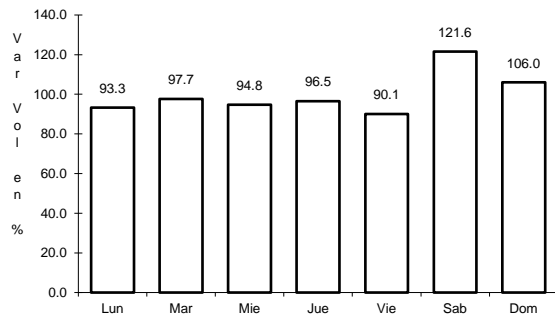
Km: 0.00 Tipo: 3 Sent: 2

Km: 182.00 Tipo: 1 Sent: 0

9 CARR: Monclova - San Pedro de Las Colonias

CLAVE: 05062

RUTA: MEX-030



Km: 2.00 Tipo: 3 Sent: 1

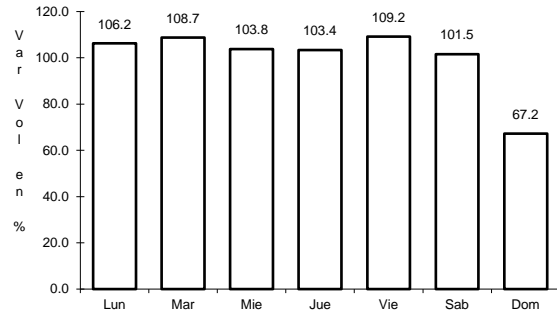
Km: 2.00 Tipo: 3 Sent: 2

Km: 80.15 Tipo: 3 Sent: 0

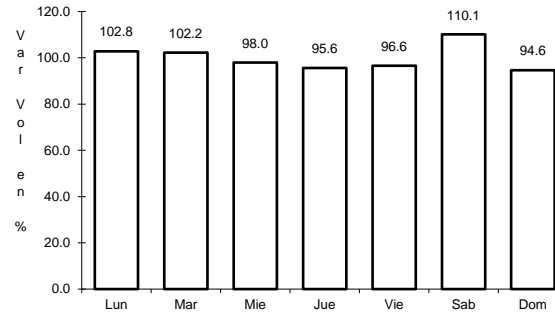
10 CARR: Monterrey - Castaños

CLAVE: 00128

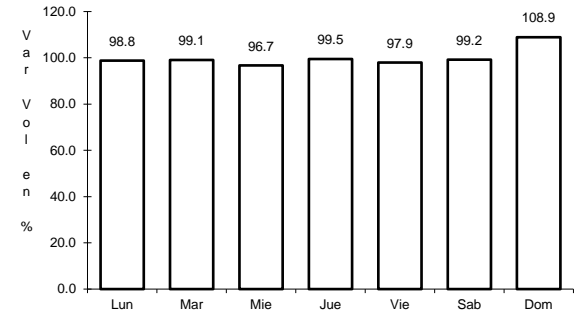
RUTA: MEX-053



Km: 0.00 Tipo: 3 Sent: 0



Km: 155.90 Tipo: 1 Sent: 1

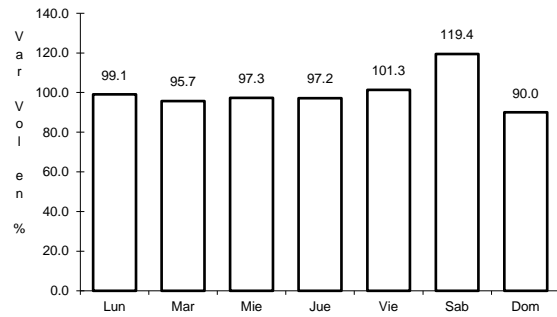


Km: 155.90 Tipo: 1 Sent: 2

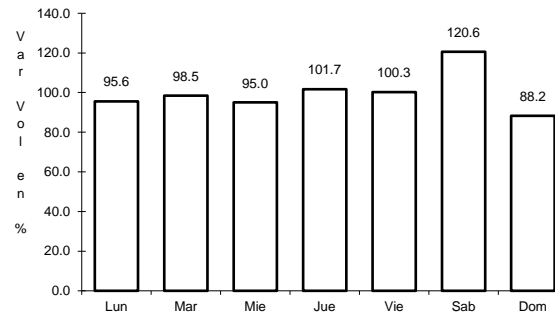
11 CARR: Morelos - Cd. Acuña

CLAVE: 05029

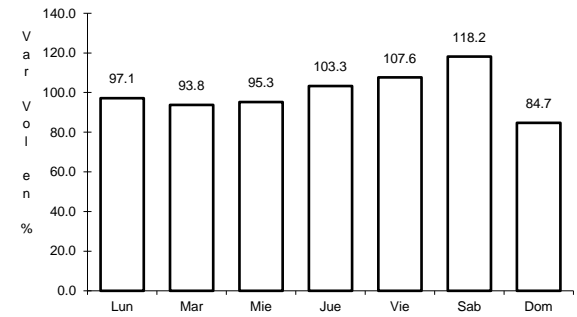
RUTA: MEX-029



Km: 0.00 Tipo: 3 Sent: 1



Km: 0.00 Tipo: 3 Sent: 2

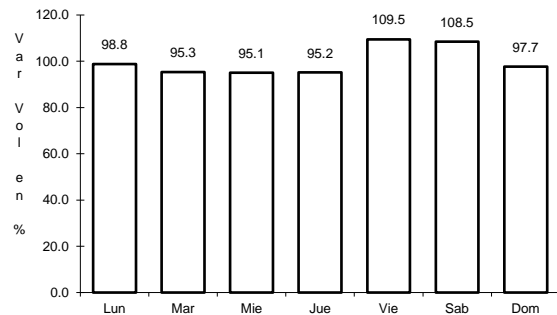


Km: 73.84 Tipo: 1 Sent: 0

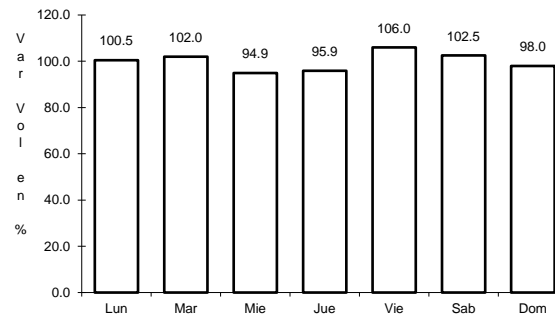
12 CARR: Nueva Rosita - Boquillas del Carmen

CLAVE: 05028

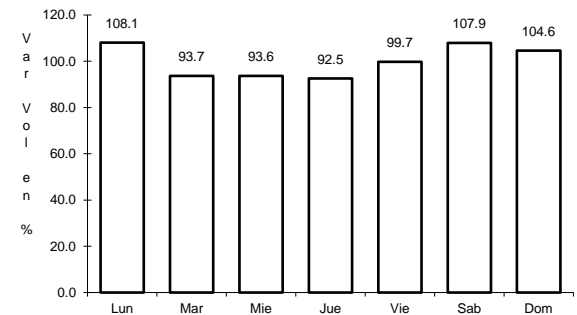
RUTA: MEX-053



Km: 0.00 Tipo: 3 Sent: 1



Km: 0.00 Tipo: 3 Sent: 2

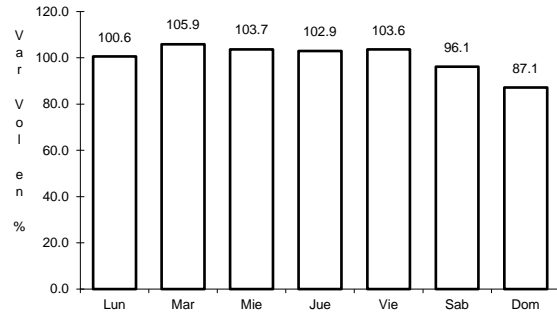


Km: 35.00 Tipo: 3 Sent: 0

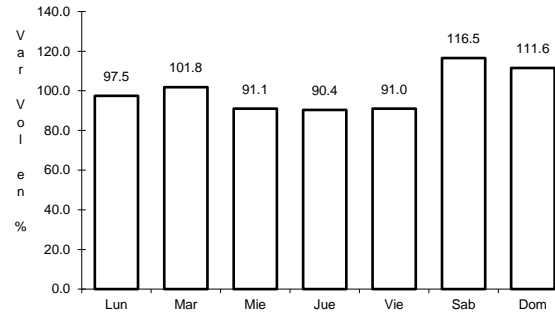
13 CARR: Ojo Caliente - Santa Cruz

CLAVE: 05007

RUTA: MEX-057



Km: 0.00 Tipo: 3 Sent: 0

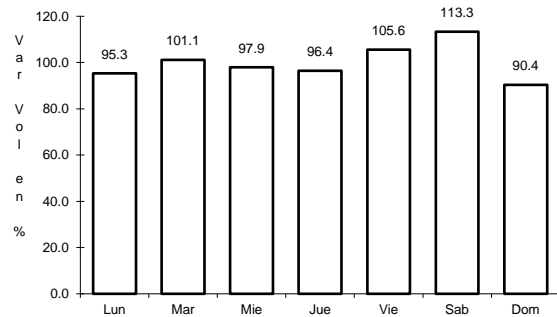


Km: 34.00 Tipo: 1 Sent: 0

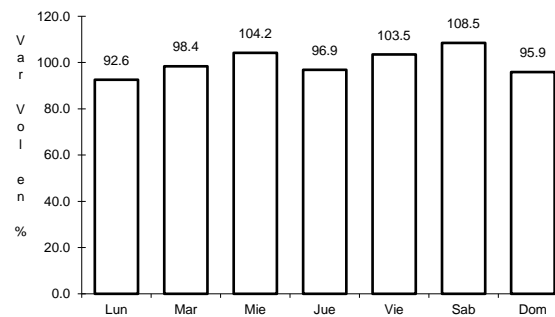
14 CARR: Piedras Negras - Cd. Acuña

CLAVE: 05061

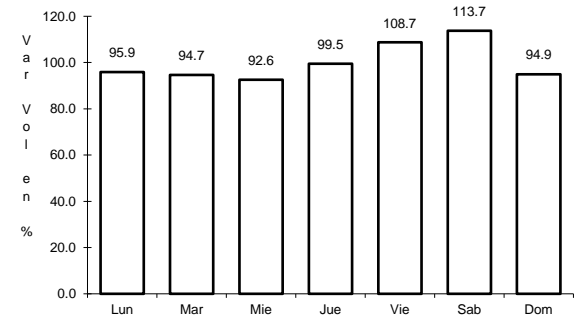
RUTA: MEX-002



Km: 0.00 Tipo: 3 Sent: 1



Km: 0.00 Tipo: 3 Sent: 2

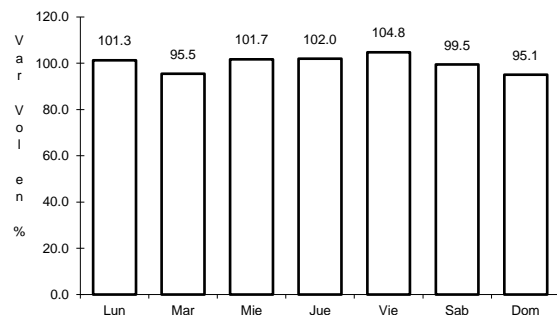


Km: 83.30 Tipo: 1 Sent: 0

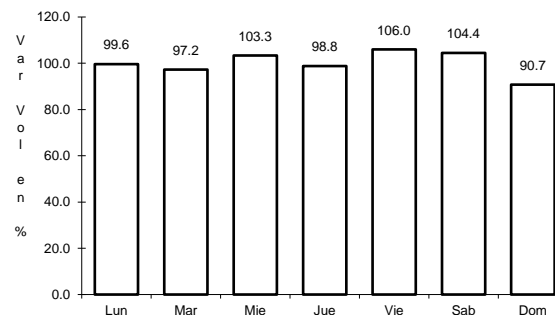
15 CARR: Piedras Negras - Nuevo Laredo

CLAVE: 00503

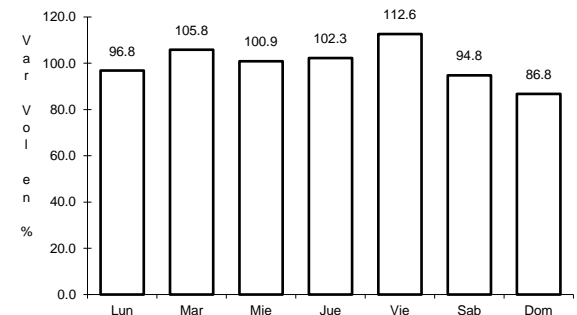
RUTA: MEX-002



Km: 0.00 Tipo: 3 Sent: 1



Km: 0.00 Tipo: 3 Sent: 2

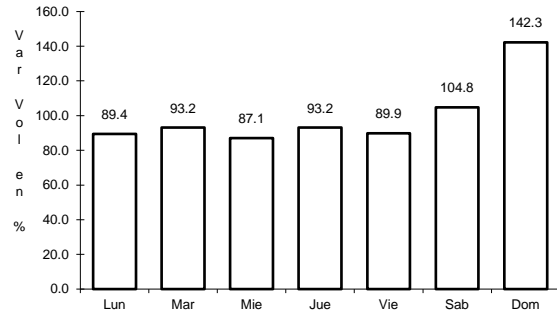


Km: 134.00 Tipo: 3 Sent: 0

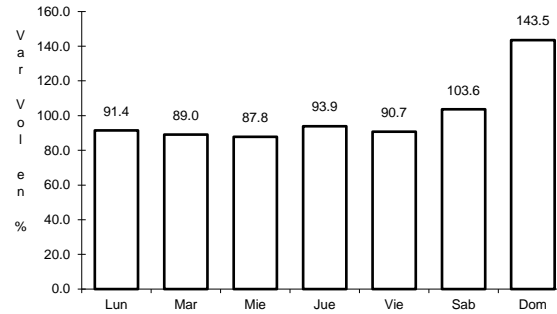
16 CARR: Puerto México - La Encantada

CLAVE: 05002

RUTA: MEX-057



Km: 0.00 Tipo: 3 Sent: 0

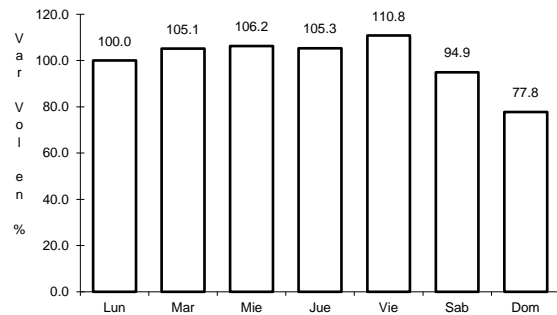


Km: 41.00 Tipo: 1 Sent: 0

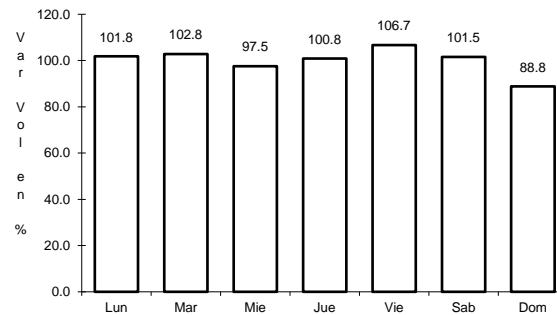
17 CARR: Saltillo - Monclova

CLAVE: 05406

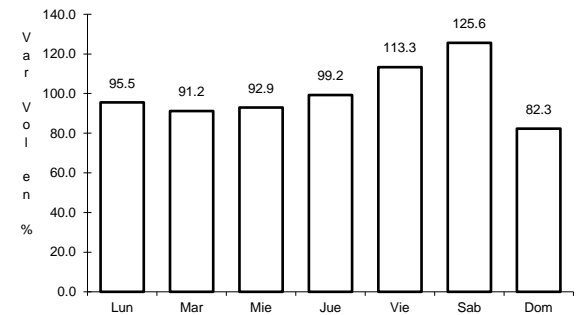
RUTA: MEX-057



Km: 13.00 Tipo: 1 Sent: 0



Km: 192.00 Tipo: 1 Sent: 1

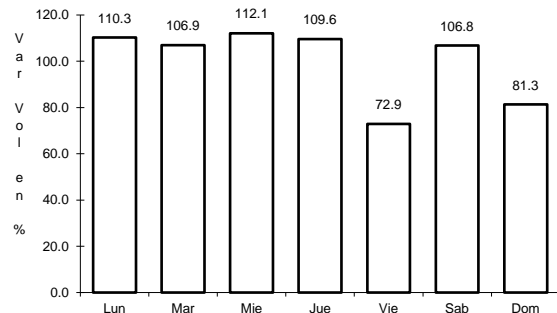


Km: 192.00 Tipo: 1 Sent: 2

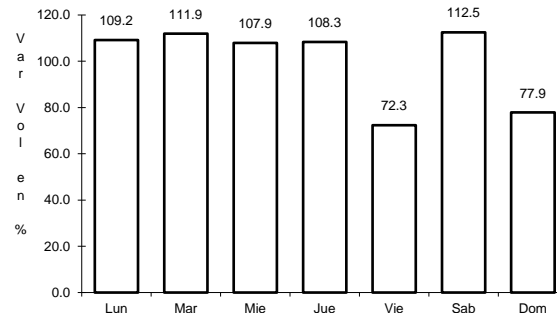
18 CARR: Saltillo - Monterrey

CLAVE: 00087

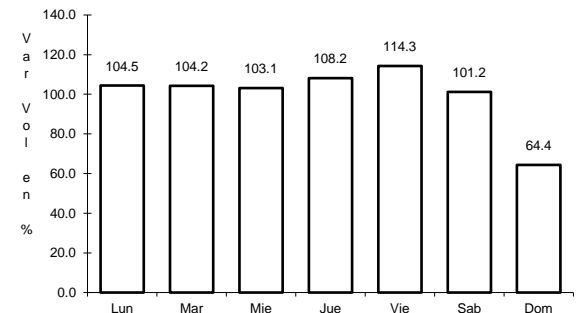
RUTA: MEX-040



Km: 4.25 Tipo: 3 Sent: 1



Km: 4.25 Tipo: 3 Sent: 2

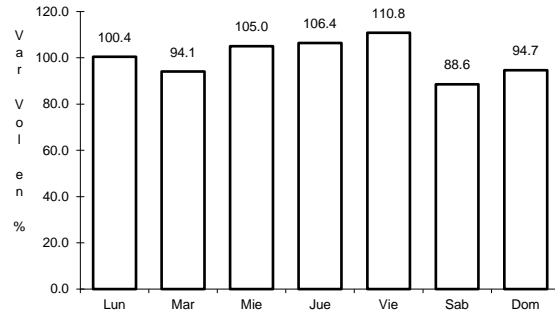


Km: 79.20 Tipo: 1 Sent: 1

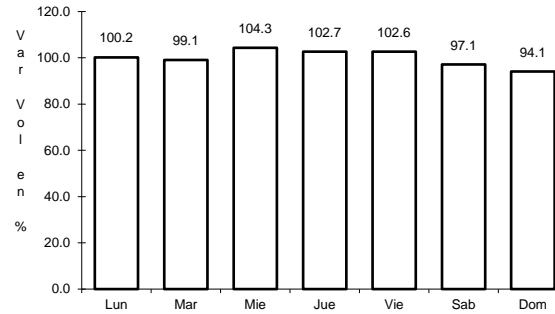
19 CARR: Saltillo - Torreón

CLAVE: 05086

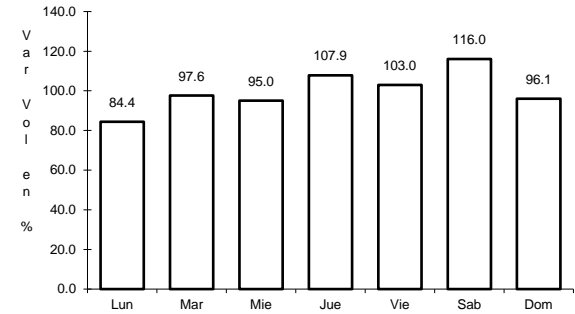
RUTA: MEX-040



Km: 6.10 Tipo: 3 Sent: 1



Km: 6.10 Tipo: 3 Sent: 2

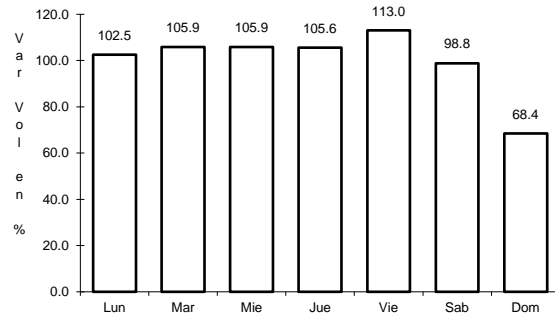


Km: 91.20 Tipo: 1 Sent: 0

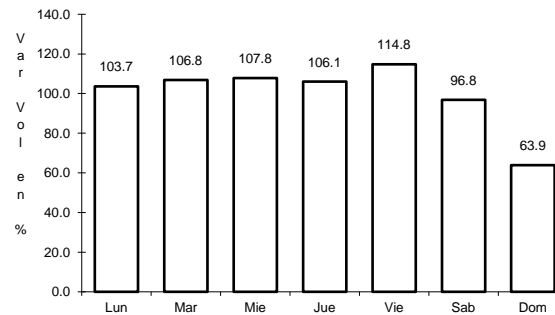
20 CARR: Torreón - San Pedro de las Colonias

CLAVE: 05021

RUTA: MEX-030



Km: 0.00 Tipo: 3 Sent: 1

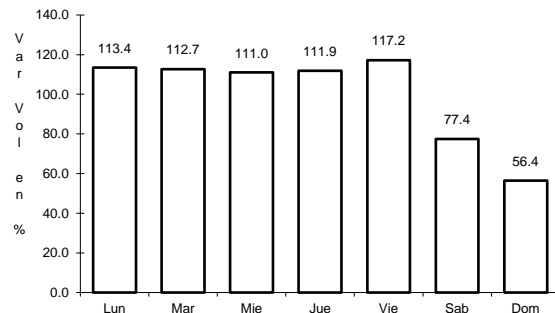


Km: 0.00 Tipo: 3 Sent: 2

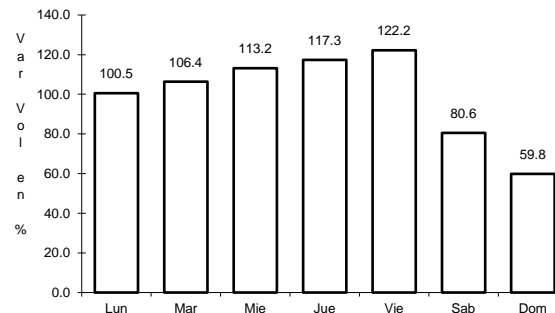
21 CARR: Libramiento Norponiente de Saltillo (Cuota)

CLAVE: 05022

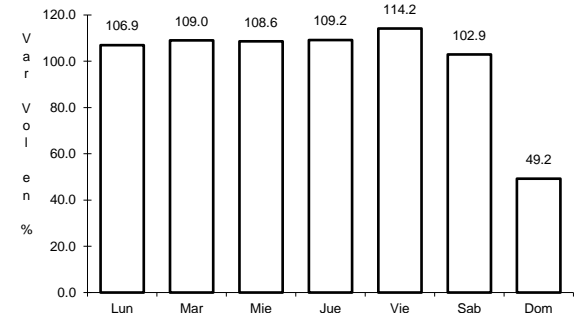
RUTA: MEX-S30



Km: 0.00 Tipo: 3 Sent: 0



Km: 22.44 Tipo: 3 Sent: 0

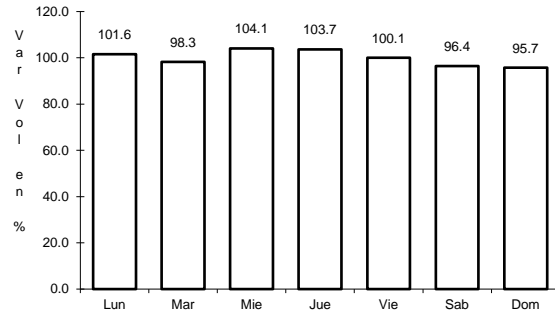


Km: 46.21 Tipo: 1 Sent: 0

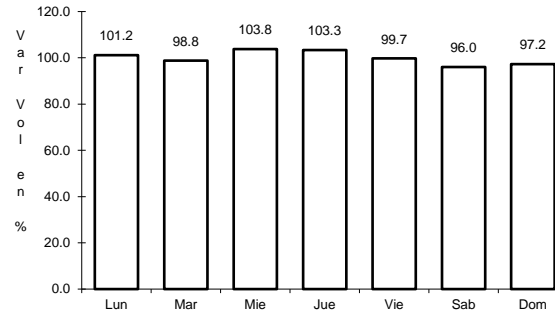
22 CARR: Libramiento Norte de Torreón (Cuota)

CLAVE:

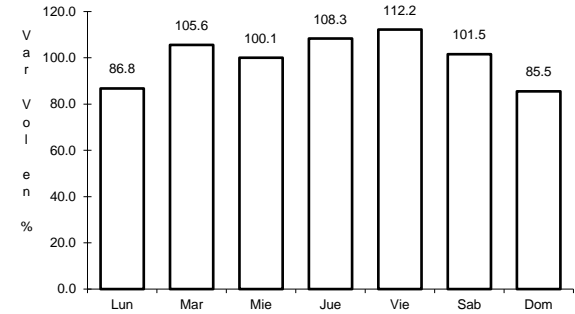
RUTA: MEX-040D



Km: 0.00 Tipo: 3 Sent: 0



Km: 17.36 Tipo: 1 Sent: 0

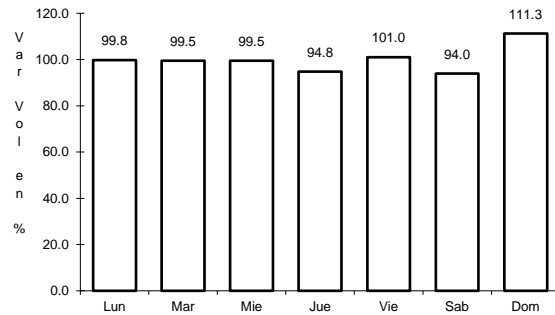


Km: 40.70 Tipo: 1 Sent: 0

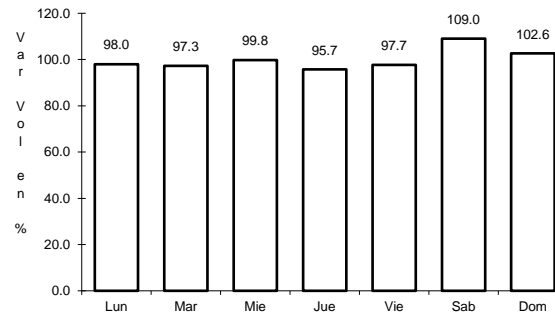
23 CARR: Libramiento Oriente de Saltillo (Cuota)

CLAVE: 00115

RUTA: MEX-057D



Km: 12.30 Tipo: 3 Sent: 1

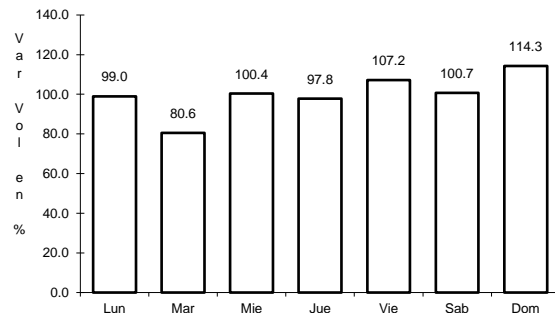


Km: 12.30 Tipo: 3 Sent: 2

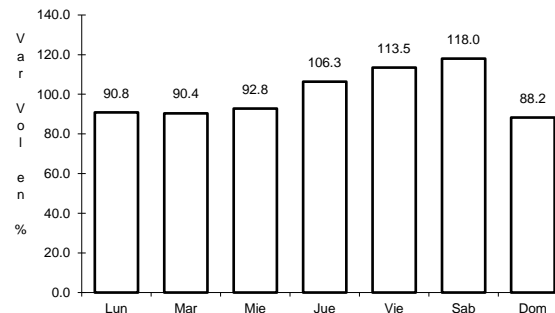
24 CARR: Nueva Rosita - Ent. Allende (Cuota)

CLAVE: 05502

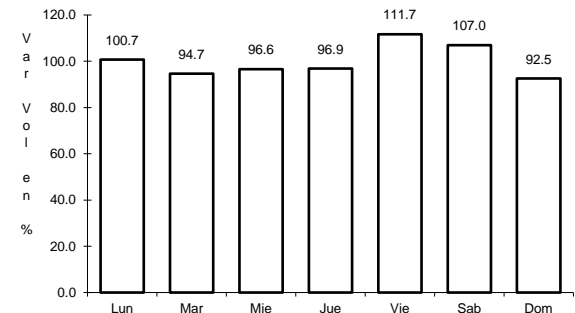
RUTA: MEX-057D



Km: 0.00 Tipo: 3 Sent: 1



Km: 0.00 Tipo: 3 Sent: 2

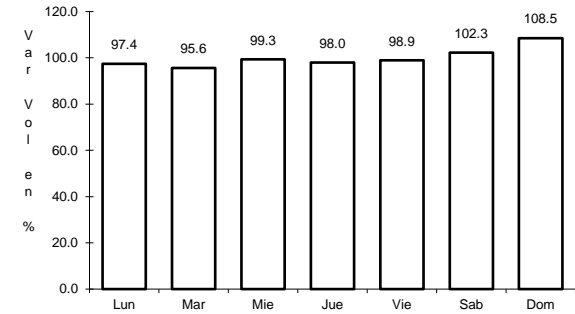
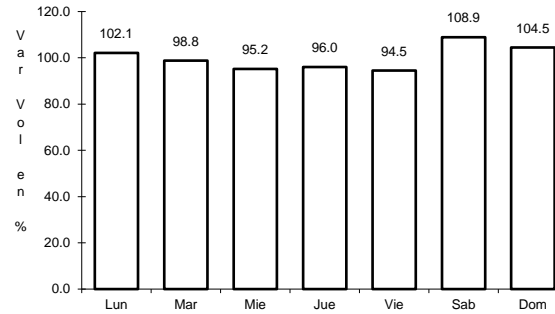
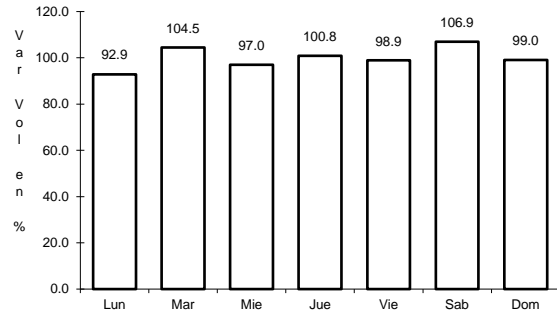


Km: 54.00 Tipo: 1 Sent: 1

25 CARR: Puerto México - La Carbonera (Cuota)

CLAVE: 00115

RUTA: MEX-057D



Km: 224.94 Tipo: 1 Sent: 1

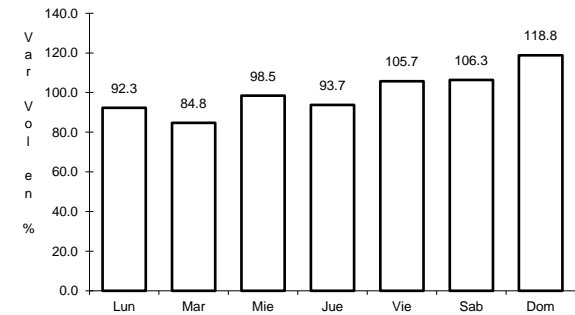
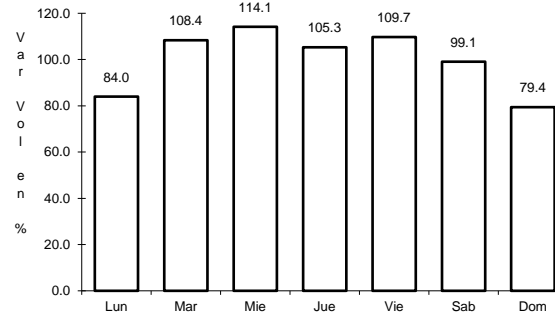
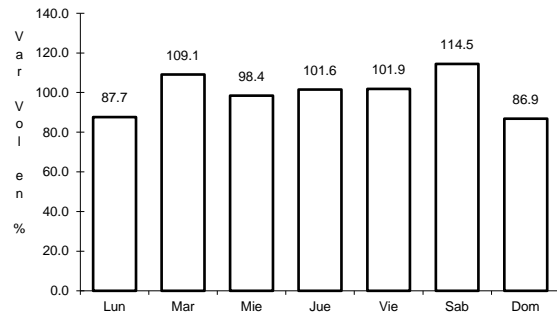
Km: 224.94 Tipo: 1 Sent: 2

Km: 228.30 Tipo: 3 Sent: 1

26 CARR: Saltillo - Monterrey (Cuota)

CLAVE: 00087

RUTA: MEX-040D



Km: 46.21 Tipo: 3 Sent: 1

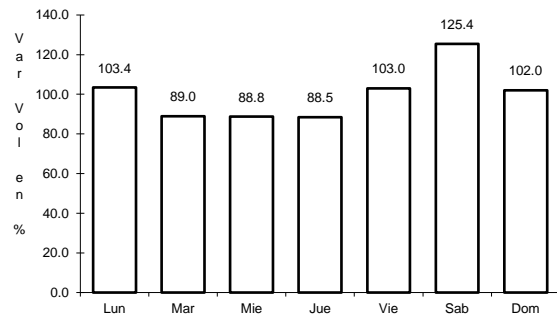
Km: 46.21 Tipo: 3 Sent: 2

Km: 82.00 Tipo: 3 Sent: 1

28 CARR: Allende - Villa Unión

CLAVE: 05001

RUTA: COA-015

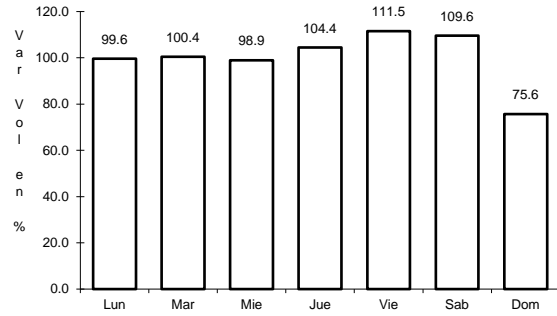


Km: 0.00 Tipo: 3 Sent: 0

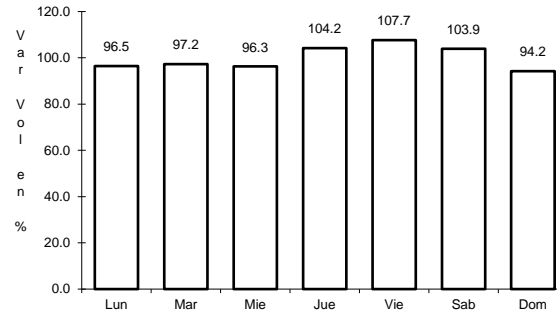
29 CARR: Corredor Libramiento de San Pedro

CLAVE: 05023

RUTA: COA-087



Km: 0.00 Tipo: 3 Sent: 0

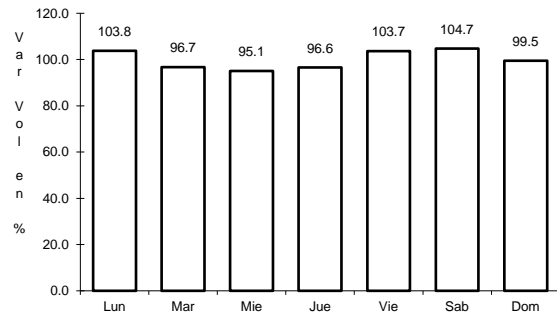


Km: 3.60 Tipo: 1 Sent: 0

30 CARR: Cuatro Ciénegas - Ocampo

CLAVE: 05026

RUTA: COA-048

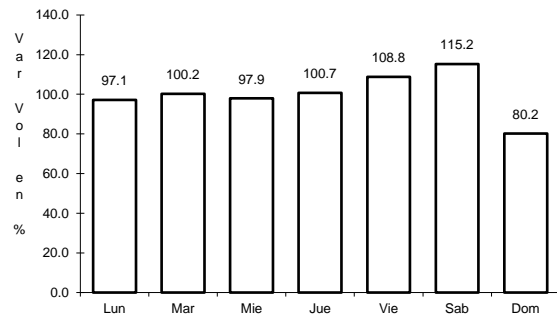


Km: 0.00 Tipo: 3 Sent: 0

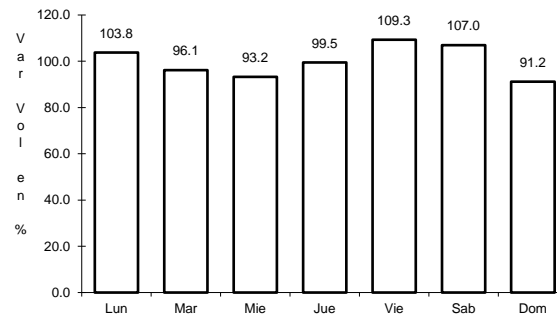
31 CARR: El Sauz - Palau

CLAVE: 05060

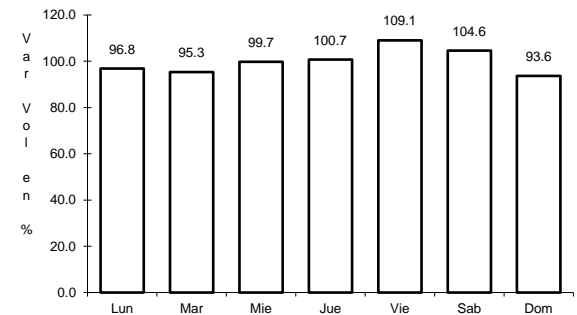
RUTA: COA-022



Km: 0.00 Tipo: 3 Sent: 1



Km: 0.00 Tipo: 3 Sent: 2

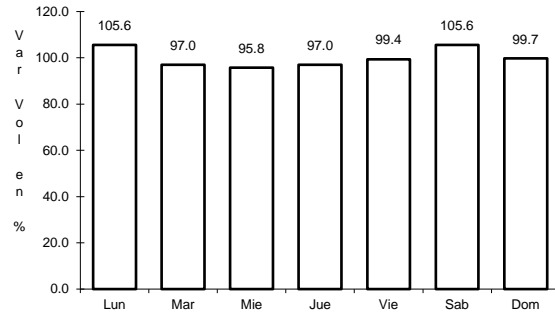


Km: 42.50 Tipo: 1 Sent: 1

32 CARR: Emiliano Zapata - Viesca

CLAVE: 05521

RUTA: COA-082



Km: 0.00

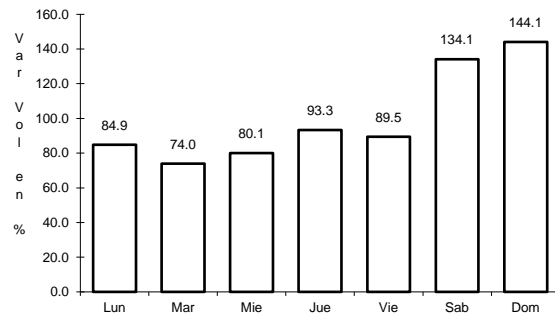
Tipo: 3

Sent: 0

33 CARR: Ent. La Rosa - General Cepeda

CLAVE: 05034

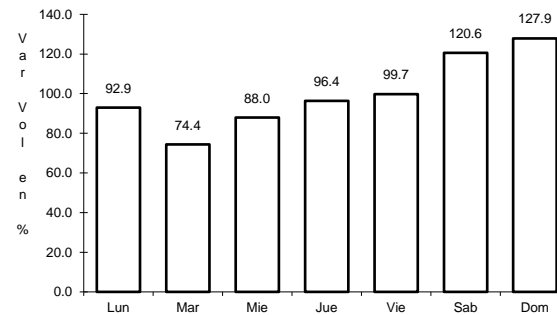
RUTA: COA-034



Km: 0.00

Tipo: 3

Sent: 0



Km: 21.00

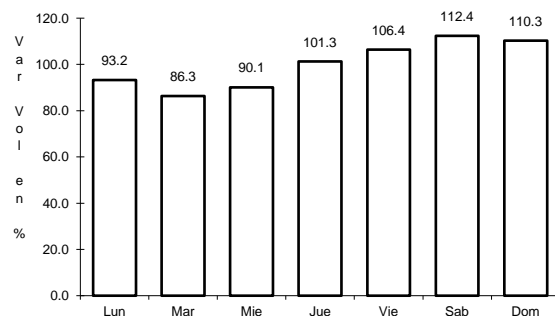
Tipo: 1

Sent: 0

34 CARR: Ent. Paila - Parras de La Fuente

CLAVE: 05014

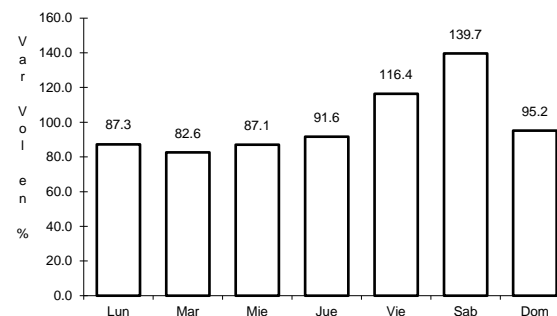
RUTA: COA-102



Km: 0.00

Tipo: 3

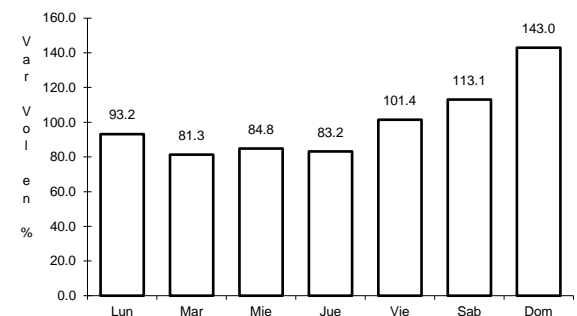
Sent: 0



Km: 20.05

Tipo: 1

Sent: 1



Km: 20.05

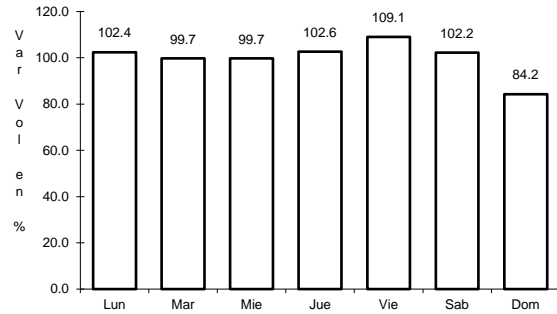
Tipo: 1

Sent: 2

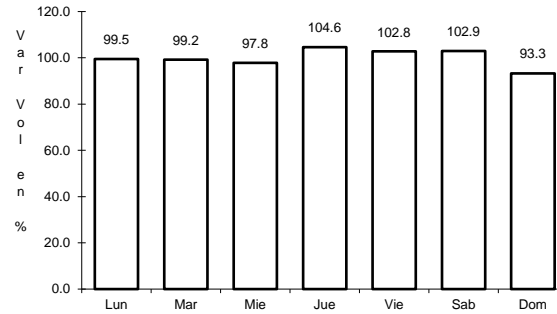
35 CARR: Libramiento de Matamoros

CLAVE: 05032

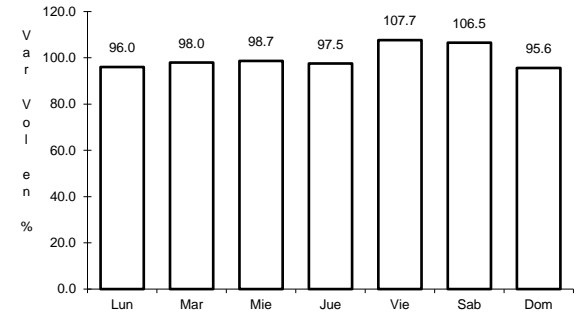
RUTA: COA



Km: 0.00 Tipo: 3 Sent: 0



Km: 5.32 Tipo: 1 Sent: 1

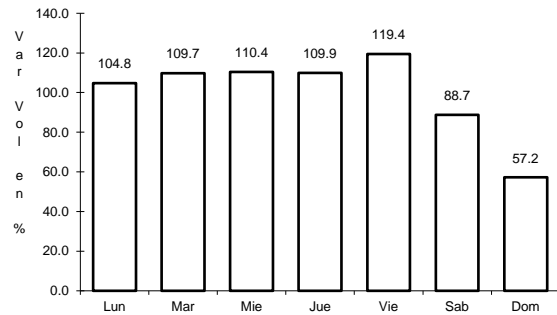


Km: 5.32 Tipo: 1 Sent: 2

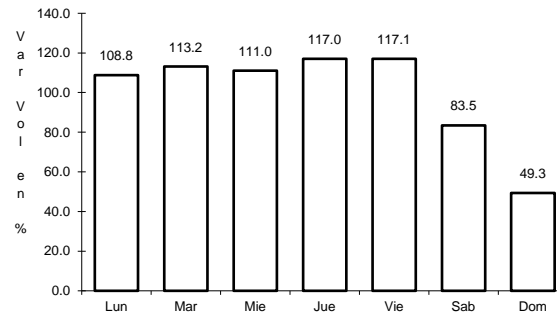
36 CARR: Libramiento de Saltillo J.L.P.

CLAVE: 05031

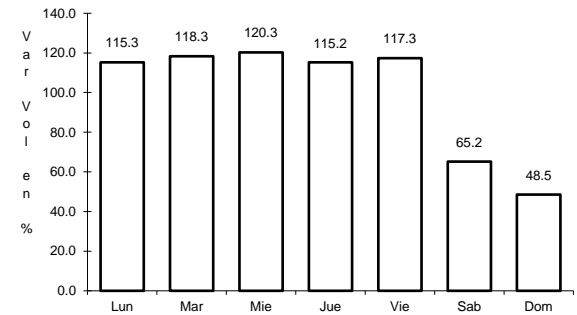
RUTA: COA



Km: 2.50 Tipo: 3 Sent: 1



Km: 2.50 Tipo: 3 Sent: 2

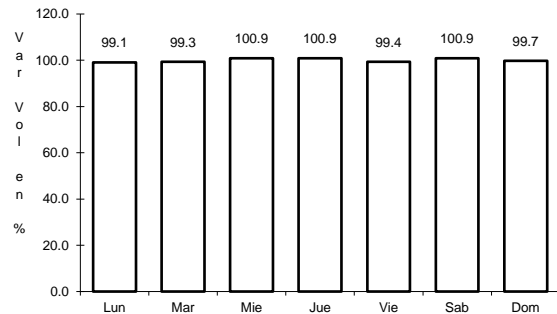


Km: 18.00 Tipo: 1 Sent: 1

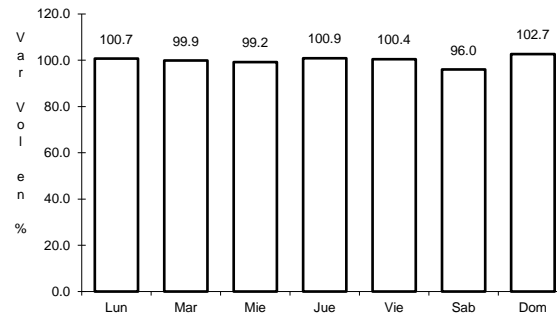
37 CARR: Libramiento de Torreón

CLAVE: 05516

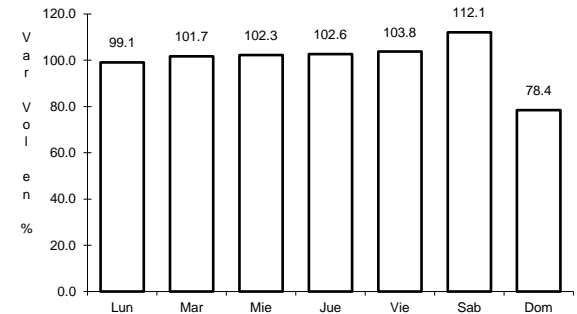
RUTA: COA



Km: 0.00 Tipo: 3 Sent: 1



Km: 0.00 Tipo: 3 Sent: 2

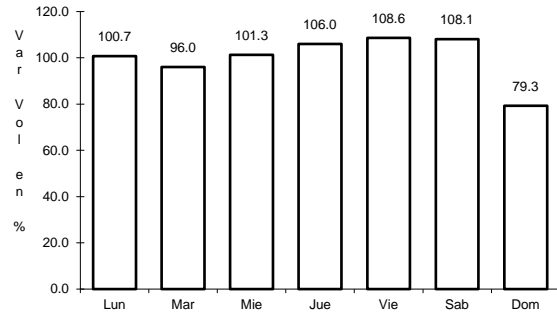


Km: 7.30 Tipo: 1 Sent: 1

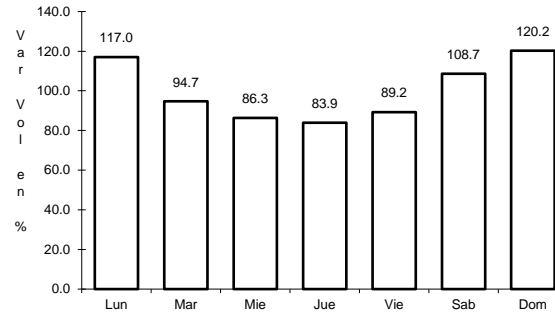
38 CARR: Matamoros - El Fresno

CLAVE: 05023

RUTA: COA-078



Km: 0.00 Tipo: 3 Sent: 0

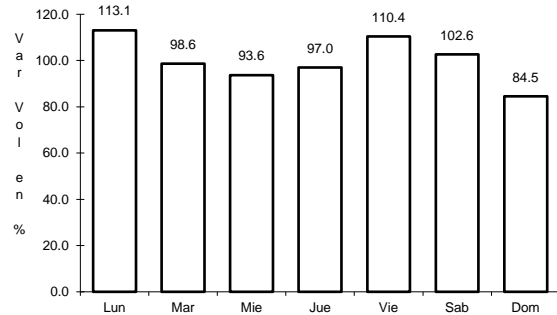


Km: 12.60 Tipo: 1 Sent: 0

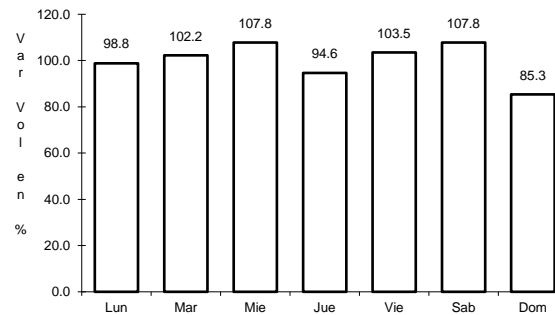
39 CARR: Matamoros - La Unión

CLAVE: 05023

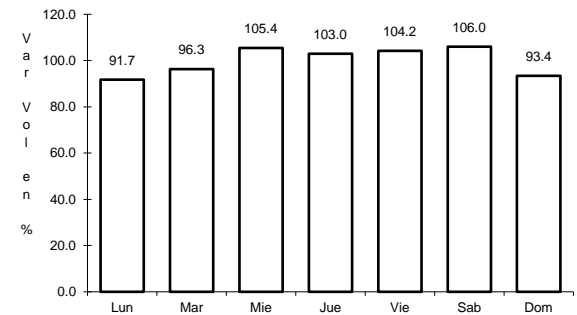
RUTA: COA-070



Km: 1.00 Tipo: 3 Sent: 1



Km: 1.00 Tipo: 3 Sent: 2

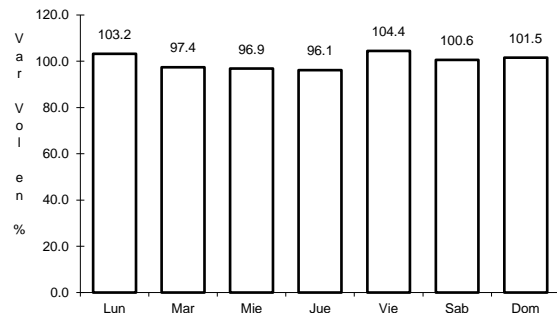


Km: 14.09 Tipo: 1 Sent: 0

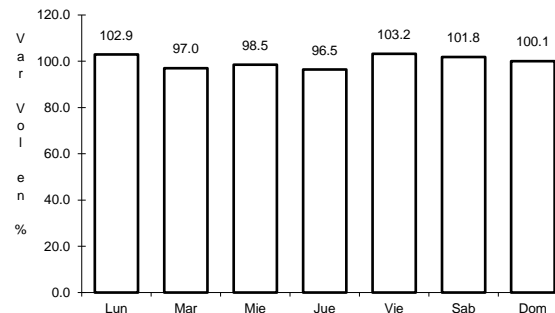
40 CARR: Monclova - Estación Candela

CLAVE: 00501

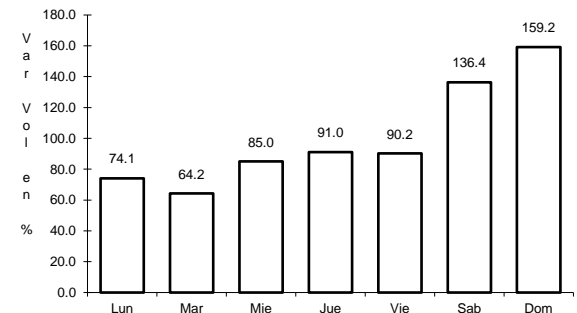
RUTA: COA-030-NL



Km: 5.10 Tipo: 1 Sent: 1



Km: 5.10 Tipo: 1 Sent: 2

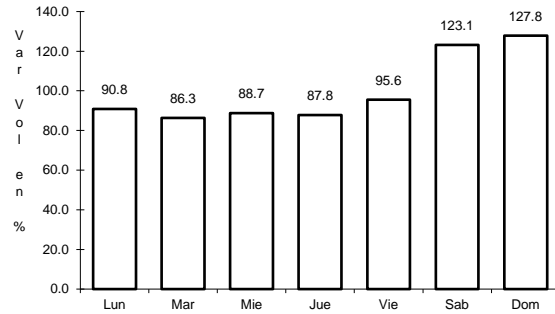


Km: 125.50 Tipo: 1 Sent: 0

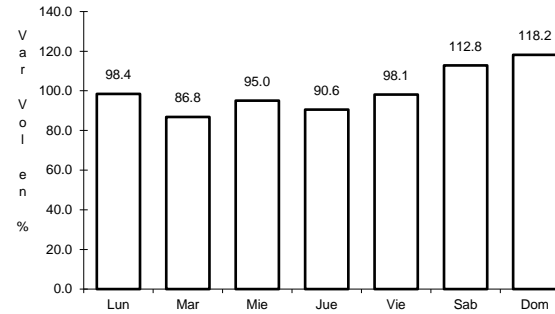
41 CARR: Morelos - Ent. Las Corrientes

CLAVE: 05500

RUTA: COA-010



Km: 0.00 Tipo: 3 Sent: 0

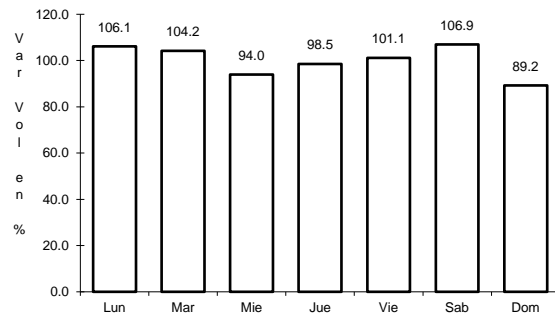


Km: 9.20 Tipo: 1 Sent: 0

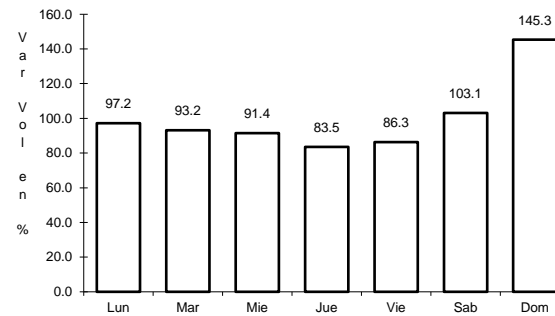
42 CARR: Puerto de Flores - El Hondable

CLAVE: 05512

RUTA: COA-112



Km: 0.00 Tipo: 3 Sent: 0

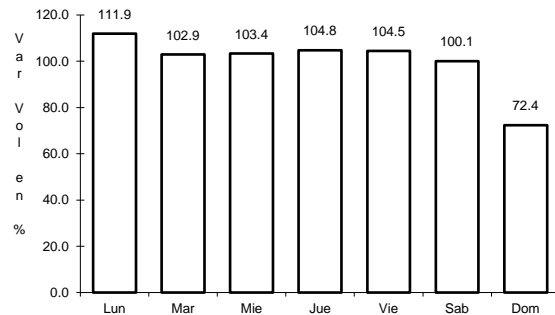


Km: 24.00 Tipo: 1 Sent: 0

43 CARR: Ramal a Hipólito

CLAVE: 05509

RUTA: COA-114

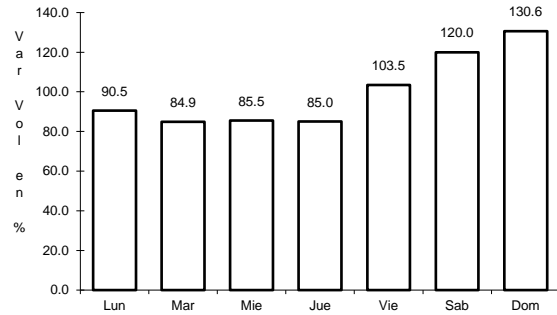


Km: 0.00 Tipo: 3 Sent: 0

44 CARR: Ramal a Lamadrid

CLAVE: 05522

RUTA: COA-042

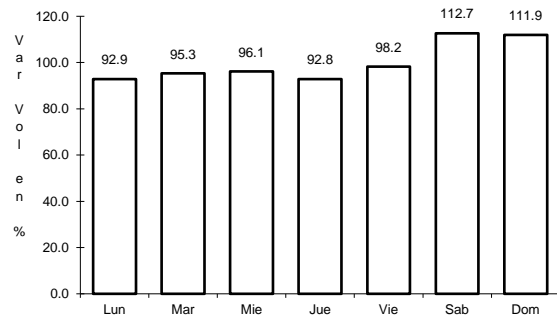


Km: 0.00 Tipo: 3 Sent: 0

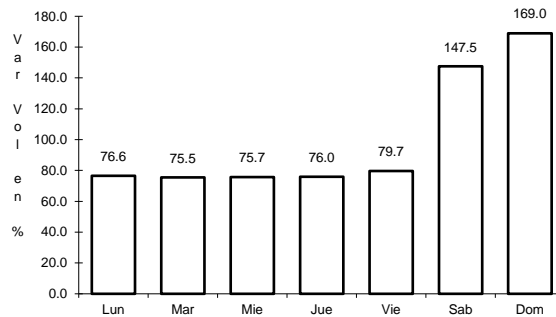
45 CARR: Sabinas - Don Martín

CLAVE: 05501

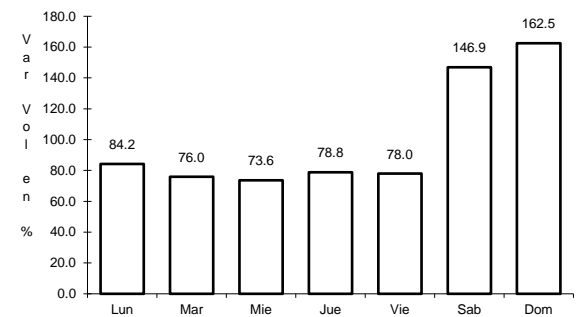
RUTA: COA-025



Km: 0.00 Tipo: 3 Sent: 0



Km: 53.00 Tipo: 3 Sent: 0

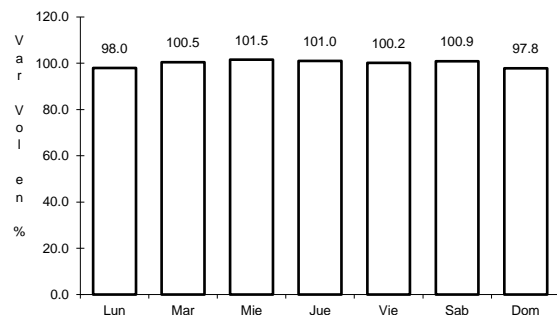


Km: 66.00 Tipo: 1 Sent: 0

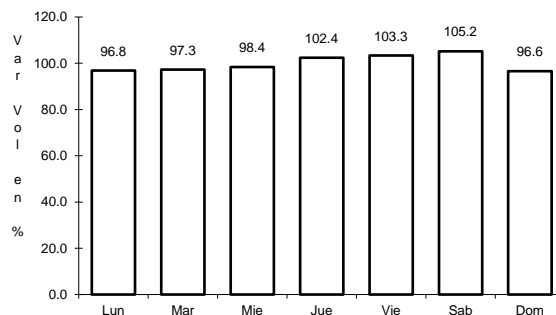
46 CARR: Saltillo - Arteaga

CLAVE: 05008

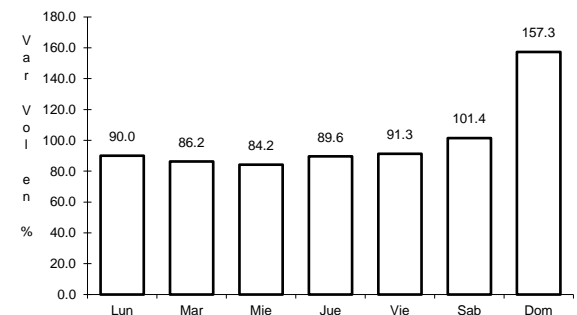
RUTA: COA-106



Km: 0.00 Tipo: 3 Sent: 1



Km: 0.00 Tipo: 3 Sent: 2

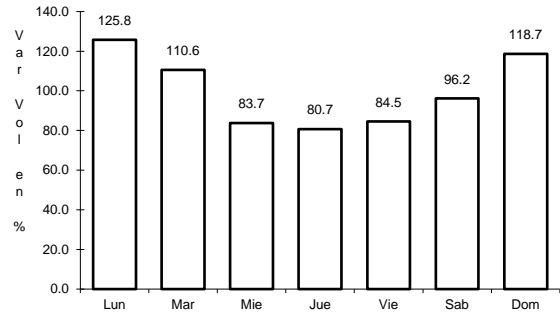


Km: 12.00 Tipo: 1 Sent: 1

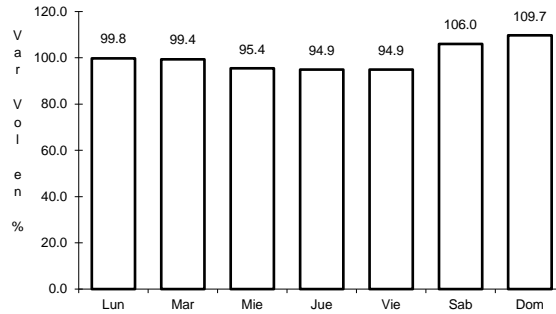
47 CARR: San Buenaventura - Estación Hermanas

CLAVE: 05004

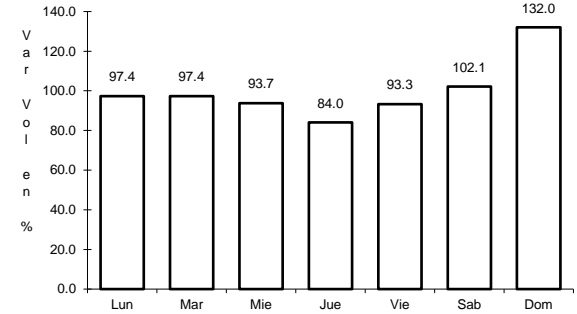
RUTA: COA-034



Km: 0.00 Tipo: 3 Sent: 0



Km: 15.71 Tipo: 1 Sent: 0

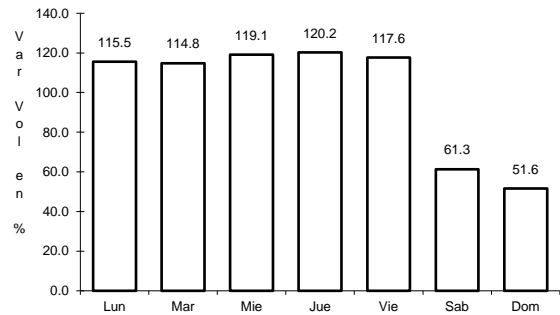


Km: 50.00 Tipo: 1 Sent: 0

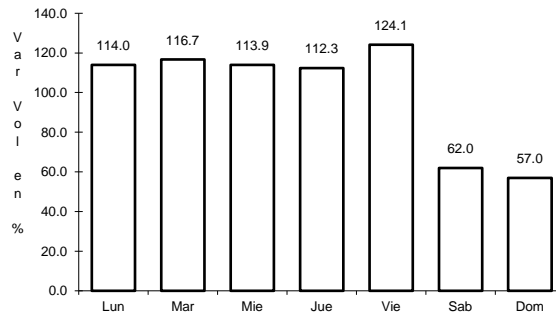
48 CARR: T. C. (Ent. Morelos - Saltillo) - Parras de La Fuente

CLAVE: 05510

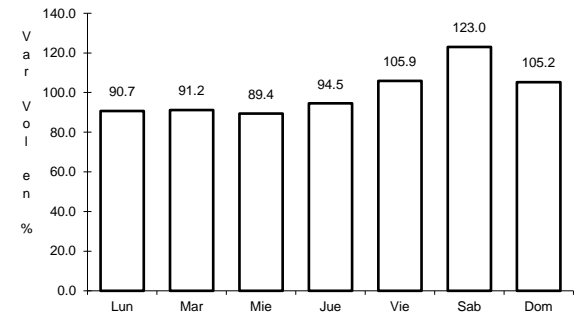
RUTA: COA-105



Km: 0.00 Tipo: 3 Sent: 1



Km: 0.00 Tipo: 3 Sent: 2

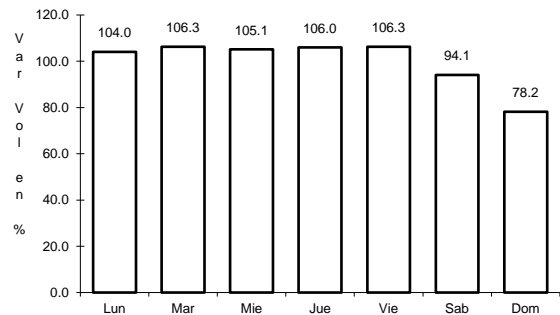


Km: 102.00 Tipo: 1 Sent: 0

49 CARR: T. C. (Saltillo - Monclova) - Ramos Arizpe

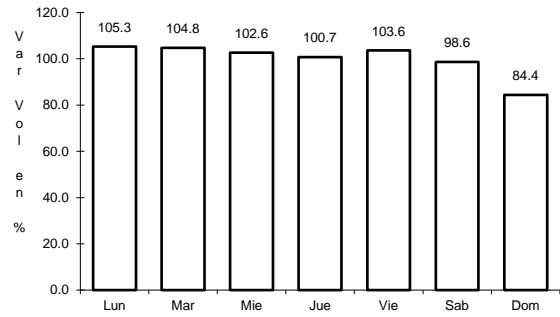
CLAVE: 05508

RUTA: COA



Km: 0.00 Tipo: 3 Sent: 0

50 CARR: Torreón - Escuadrón 201

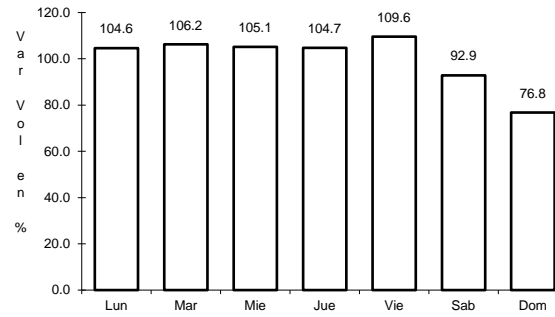


Km: 0.00

Tipo: 3

Sent: 1

CLAVE: 05022

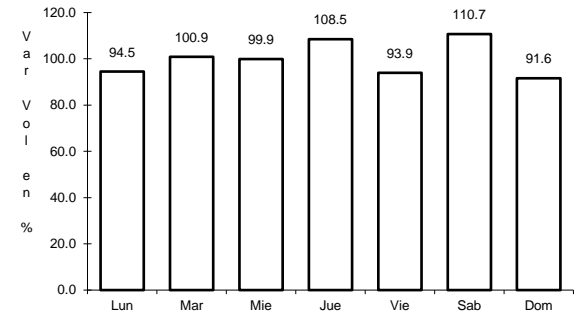


Km: 0.00

Tipo: 3

Sent: 2

RUTA: COA-011



Km: 17.06

Tipo: 1

Sent: 0

