

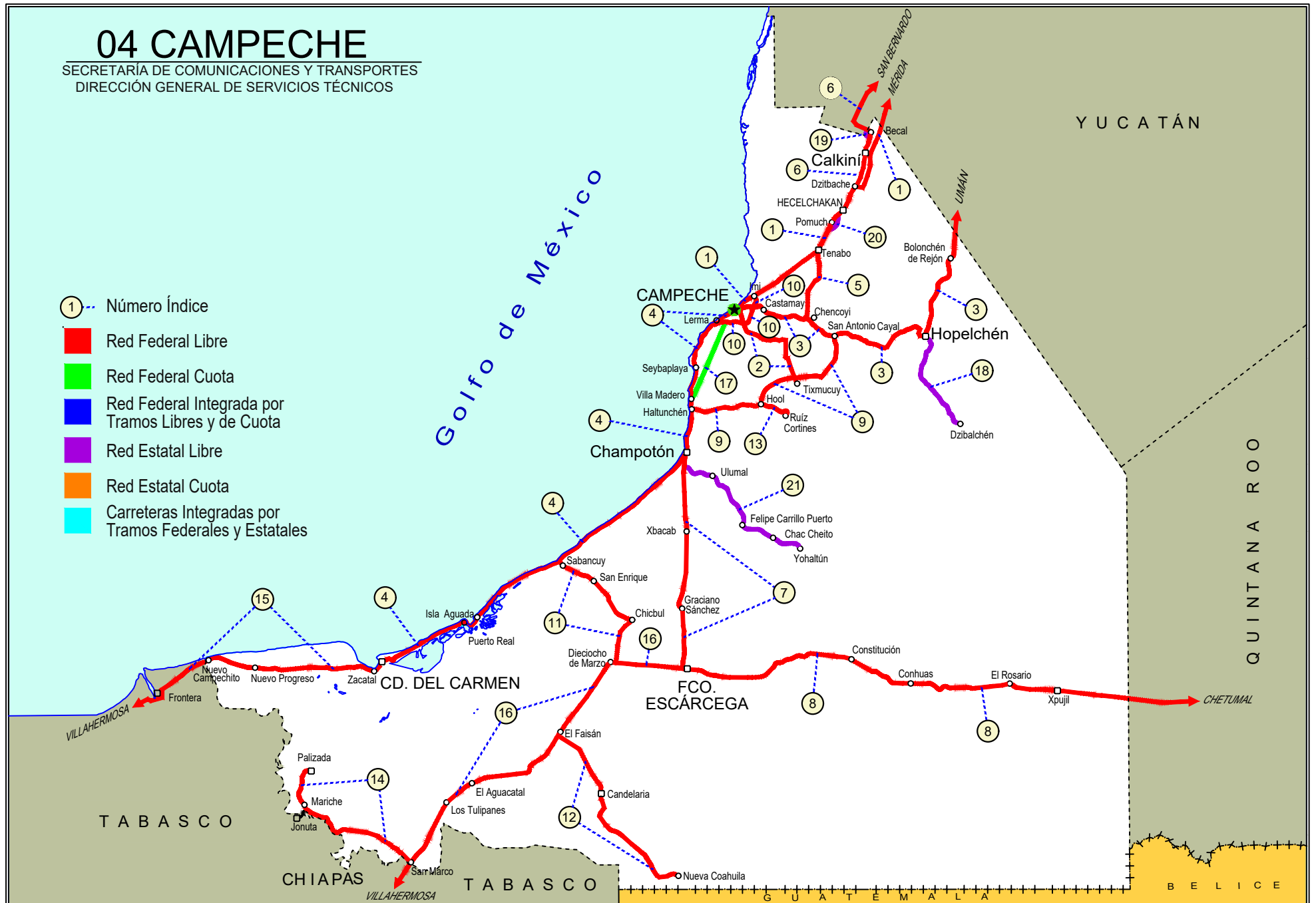
CAMPECHE

NO. INDICE CARRETERA	RUTA
---RED FEDERAL LIBRE---	
1 Campeche - Mérida	MEX-180
2 Campeche - Tixmucuy	MEX-180
3 Campeche - Umán	MEX-261
4 Cd. del Carmen - Campeche	MEX-180
5 Chencoyi - Tenabo	MEX-180
6 Dzitbalché - Ent. San Bernardo	MEX-180
7 Francisco Escárcega - Champotón	MEX-201
8 Francisco Escárcega - Chetumal	MEX-186
9 Haltunchén - San Antonio Cayal	MEX-180
10 Periférico Pablo García y Montilla (Libramiento de Campeche)	MEX-202
11 Presidente Díaz Ordaz - Sabancuy	MEX-186
12 Ramal a Nuevo Coahuila	MEX-186
13 Ramal a Ruíz Cortines	MEX-180
14 San Marcos - Palizada	MEX-186
15 Villahermosa - Cd. del Carmen	MEX-180
16 Villahermosa - Francisco Escárcega	MEX-186
---RED FEDERAL DE CUOTA---	
17 Champotón - Campeche (Cuota)	MEX-180D
---RED ESTATAL LIBRE---	
18 Hopelchén - Dzibalchén	CAM-261
19 Libramiento de Becal	CAM
20 Libramiento de Pomuch	CAM
21 T. C. (Francisco Escárcega - Champotón) - Yohaitún	CAM

04 CAMPECHE

SECRETARÍA DE COMUNICACIONES Y TRANSPORTES
DIRECCIÓN GENERAL DE SERVICIOS TÉCNICOS

- ① --- Número Índice
- Red Federal Libre
- Red Federal Cuota
- Red Federal Integrada por Tramos Libres y de Cuota
- Red Estatal Libre
- Red Estatal Cuota
- Carreteras Integradas por Tramos Federales y Estatales



CAMPECHE

1 CARR: Campeche - Mérida

CLAVE: 00066

RUTA: MEX-180

AÑO: 2021

LUGAR	ESTACION				CLASIFICACION VEHICULAR EN PORCIENTO														COORDENADAS	
	KM	TE	SC	TDPA	M	A	B	C2	C3	T3S2	T3S3	T3S2R4	OTROS	A	B	C	K'	D	LATITUD	LONGITUD
Campeche	0.00	3	1	6179	11.8	79.0	0.7	6.6	0.7	0.5	0.2	0.3	0.2	90.8	0.7	8.5	0.068	0.533	19.890389	-90.467885
Campeche	0.00	3	2	5859	11.9	78.9	0.7	6.6	0.7	0.5	0.2	0.3	0.2	90.8	0.7	8.5	0.070	0.533	19.890457	-90.467961
T. Der. Periférico Pablo García y Montilla (Libramiento De Campeche)	7.00	3	1	5523	5.2	74.3	2.5	6.5	1.4	5.2	1.1	3.5	0.3	79.5	2.5	18.0	0.082	0.508	19.896933	-90.454579
T. Der. Periférico Pablo García y Montilla (Libramiento De Campeche)	7.00	3	2	5710	4.6	74.9	2.8	6.1	1.4	5.4	0.9	3.6	0.3	79.5	2.8	17.7	0.077	0.508	19.897121	-90.454698
Tenabo	40.00	1	1	5155	1.8	74.7	2.8	4.3	2.4	7.6	1.7	4.4	0.3	76.5	2.8	20.7	0.093	0.503	20.027452	-90.243047
Tenabo	40.00	1	2	5099	1.7	75.0	2.6	4.5	2.5	7.5	1.7	4.3	0.2	76.7	2.6	20.7	0.085	0.503	20.027529	-90.243111
Tenabo	40.00	3	1	4961	2.0	75.5	3.3	3.7	1.2	6.1	3.4	4.2	0.6	77.5	3.3	19.2	0.094	0.529	20.055770	-90.213674
Tenabo	40.00	3	2	4421	2.4	74.9	3.3	3.6	1.3	6.1	3.6	4.2	0.6	77.3	3.3	19.4	0.089	0.529	20.055762	-90.213805
T. Libramiento de Pomuch	46.30																			
T. Der. Libramiento de Pomuch (2º Acceso)	50.00	3	1	5171	5.1	73.2	2.4	5.0	1.2	7.0	1.8	3.6	0.7	78.3	2.4	19.3	0.096	0.502	20.150972	-90.161959
T. Der. Libramiento de Pomuch (2º Acceso)	50.00	3	2	5217	5.5	72.6	2.4	5.1	1.1	7.1	1.8	3.6	0.8	78.1	2.4	19.5	0.078	0.502	20.151042	-90.162068
Poc Boc	64.60	3	1	4901	4.4	66.8	2.8	8.5	2.1	8.5	1.4	5.0	0.5	71.2	2.8	26.0	0.088	0.523	20.261564	-90.085519
Poc Boc	64.60	3	2	4466	4.3	66.2	2.8	9.2	2.2	8.5	1.4	4.9	0.5	70.5	2.8	26.7	0.075	0.523	20.261620	-90.085624
Calkiní	79.76	3	1	4283	4.5	67.0	3.6	6.0	2.2	9.3	1.5	5.4	0.5	71.5	3.6	24.9	0.093	0.515	20.376350	-90.039148
Calkiní	79.76	3	2	4544	4.6	66.8	3.6	6.1	2.2	9.3	1.6	5.3	0.5	71.4	3.6	25.0	0.082	0.515	20.376357	-90.039236
Lim. Edos. Term. Camp. Ppia. Yuc.	96.96																			
T. Der. Maxcanú	104.61	1	1	3949	2.5	70.3	5.1	4.2	1.8	9.5	1.7	4.5	0.4	72.8	5.1	22.1	0.092	0.525	20.569847	-89.977181
T. Der. Maxcanú	104.61	1	2	3568	2.5	70.2	5.0	4.2	1.9	9.5	1.7	4.5	0.5	72.7	5.0	22.3	0.087	0.525	20.569879	-89.977318
T. Der. Maxcanú	104.61	3	1	3668	1.9	71.4	4.3	3.1	2.1	10.0	1.7	5.0	0.5	73.3	4.3	22.4	0.082	0.523	20.597463	-89.970250
T. Der. Maxcanú	104.61	3	2	3345	1.9	70.9	4.0	2.7	2.1	11.7	1.3	4.8	0.6	72.8	4.0	23.2	0.091	0.523	20.597494	-89.970442
Kopomá	124.29	3	1	6079	3.3	75.9	3.0	3.7	1.9	7.2	1.1	3.3	0.6	79.2	3.0	17.8	0.083	0.532	20.666616	-89.888000
Kopomá	124.29	3	2	5343	3.9	75.0	3.1	3.9	2.0	7.1	1.1	3.3	0.6	78.9	3.1	18.0	0.101	0.532	20.666664	-89.888112
T. Der. Libramiento de Chocholá (1º Acceso)	137.89	1	1	4632	4.2	73.4	3.6	4.0	2.5	7.0	1.3	3.5	0.5	77.6	3.6	18.8	0.089	0.539	20.733141	-89.839536
T. Der. Libramiento de Chocholá (1º Acceso)	137.89	1	2	5426	3.4	75.4	3.4	3.7	2.3	6.7	1.1	3.3	0.7	78.8	3.4	17.8	0.095	0.539	20.733221	-89.839651
T. Izq. Umán	146.99	3	1	6417	4.0	73.8	2.3	4.8	2.1	7.6	1.7	3.1	0.6	77.8	2.3	19.9	0.082	0.536	20.802148	-89.804985
T. Izq. Umán	146.99	3	2	5554	4.0	73.8	2.4	4.8	2.0	7.7	1.7	3.1	0.5	77.8	2.4	19.8	0.095	0.536	20.802266	-89.805122
X. C. Campeche - Umán	160.49	1	1	5597	2.5	73.7	2.6	6.5	2.7	6.4	1.5	3.6	0.5	76.2	2.6	21.2	0.109	0.524	20.836247	-89.754751
X. C. Campeche - Umán	160.49	1	2	5093	2.0	71.0	2.6	6.3	3.0	8.4	1.9	4.2	0.6	73.0	2.6	24.4	0.113	0.524	20.836433	-89.754789
T. C. Periférico de Mérida	171.21																			
T. C. Periférico de Mérida	171.21	1	1	6546	2.8	73.7	2.9	3.4	4.2	7.0	2.6	2.6	0.8	76.5	2.9	20.6	0.127	0.511	20.900084	-89.680220
T. C. Periférico de Mérida	171.21	1	2	6846	3.2	74.4	2.8	3.4	3.8	7.0	2.3	2.5	0.6	77.6	2.8	19.6	0.131	0.511	20.900238	-89.680324

CAMPECHE

2 CARR : Campeche - Tixmucuy

CLAVE: 04575

RUTA: MEX-180

AÑO: 2021

LUGAR	ESTACION				CLASIFICACION VEHICULAR EN PORCIENTO													COORDENADAS		
	KM	TE	SC	TDPA	M	A	B	C2	C3	T3S2	T3S3	T3S2R4	OTROS	A	B	C	K'	D	LATITUD	LONGITUD
Campeche	0.00	3	1	7054	11.9	76.8	0.6	3.8	0.8	3.4	1.7	0.3	0.7	88.7	0.6	10.7	0.079	0.529	19.810281	-90.506076
Campeche	0.00	3	2	6272	11.6	76.8	0.6	3.9	0.8	3.4	1.8	0.4	0.7	88.4	0.6	11.0	0.066	0.529	19.810338	-90.505905
T. Der. Periférico Pablo García y Montilla (Libramiento De Campeche)	4.00	3	1	3118	20.8	72.3	0.1	5.8	0.5	0.4	0.1	0.0	0.0	93.1	0.1	6.8	0.080	0.504	19.787315	-90.500180
T. Der. Periférico Pablo García y Montilla (Libramiento De Campeche)	4.00	3	2	3188	22.5	71.4	0.1	4.7	0.4	0.6	0.2	0.0	0.1	93.9	0.1	6.0	0.083	0.504	19.787340	-90.499893
X. C. Haltunchén - Cayal	39.00	1	0	1477	6.9	80.5	0.8	8.7	1.3	1.2	0.3	0.3	0.0	87.4	0.8	11.8	0.085	0.505	19.605297	-90.319446
Tixmucuy	42.00	1	0	477	20.1	69.1	1.1	7.7	0.8	0.6	0.3	0.3	0.0	89.2	1.1	9.7	0.103	0.501	19.586007	-90.317773

3 CARR : Campeche - Umán

CLAVE: 00164

RUTA: MEX-261

AÑO: 2021

LUGAR	ESTACION				CLASIFICACION VEHICULAR EN PORCIENTO													COORDENADAS		
	KM	TE	SC	TDPA	M	A	B	C2	C3	T3S2	T3S3	T3S2R4	OTROS	A	B	C	K'	D	LATITUD	LONGITUD
Campeche	0.00																			
T. Der. Periférico Pablo García y Montilla (Libramiento De Campeche)	7.00	1	0	4871	9.2	80.8	5.1	0.6	3.1	0.5	0.1	0.3	0.3	90.0	5.1	4.9	0.092	0.505	19.849788	-90.470670
T. Der. Periférico Pablo García y Montilla (Libramiento De Campeche)	7.00	3	0	2552	10.5	78.0	0.5	8.6	0.7	1.3	0.3	0.0	0.1	88.5	0.5	11.0	0.088	0.500	19.848260	-90.452929
T. Izq. Tenabo	30.88	1	0	1557	8.6	74.3	0.7	14.0	1.0	1.1	0.3	0.0	0.0	82.9	0.7	16.4	0.082	0.506	19.804851	-90.278678
T. Izq. Tenabo	30.88	3	0	1558	7.9	75.8	1.0	10.8	1.5	2.1	0.5	0.3	0.1	83.7	1.0	15.3	0.085	0.506	19.804540	-90.273120
T. Der. Edzna	44.51	1	0	1512	11.7	72.7	1.2	10.9	1.0	1.8	0.4	0.3	0.0	84.4	1.2	14.4	0.089	0.501	19.743581	-90.178529
T. Der. Edzna	44.51	3	0	1523	15.1	67.2	1.6	11.5	1.5	2.2	0.7	0.2	0.0	82.3	1.6	16.1	0.084	0.504	19.745363	-90.170622
Hopelchén	84.88	1	0	2038	11.4	75.1	0.4	11.0	0.5	1.3	0.2	0.0	0.1	86.5	0.4	13.1	0.088	0.504	19.754162	-89.854618
Bolonchén de Rejón	117.88	3	0	997	18.5	64.1	1.0	10.3	1.7	1.7	0.7	1.9	0.1	82.6	1.0	16.4	0.102	0.512	20.012876	-89.733975
Lim. Edos. Term. Camp. Ppia. Yuc.	126.88																			
T. Der. Sayil	140.88	1	0	516	6.3	70.2	1.8	12.0	2.8	3.0	1.3	2.6	0.0	76.5	1.8	21.7	0.110	0.515	20.208285	-89.670474
Santa Elena	158.88	1	0	992	29.6	54.9	1.4	7.3	1.6	2.6	0.9	1.6	0.1	84.5	1.4	14.1	0.128	0.516	20.319131	-89.643332
T. Izq. Ruinas de Uxmal	172.48	1	0	681	16.3	65.8	1.1	8.7	1.9	2.2	0.7	3.2	0.1	82.1	1.1	16.8	0.107	0.501	20.361859	-89.763592
Muna	187.43	1	0	1301	21.2	66.0	0.9	7.7	0.9	1.5	0.4	1.3	0.1	87.2	0.9	11.9	0.099	0.559	20.460464	-89.725412
Muna	187.43	3	0	3891	5.0	79.1	0.5	10.4	1.3	2.2	0.5	0.8	0.2	84.1	0.5	15.4	0.095	0.526	20.511426	-89.709203
Xtepén	225.38	1	0	4468	2.4	79.2	0.7	9.4	1.5	2.6	3.2	0.8	0.2	81.6	0.7	17.7	0.094	0.508	20.803088	-89.733863
Umán	230.83	1	0	3433	13.3	65.4	1.2	9.2	3.6	5.5	0.9	0.4	0.5	78.7	1.2	20.1	0.078	0.501	20.865777	-89.745956

4 CARR : Cd. del Carmen - Campeche

CLAVE: 04065

RUTA: MEX-180

AÑO: 2021

LUGAR	ESTACION				CLASIFICACION VEHICULAR EN PORCIENTO													COORDENADAS		
	KM	TE	SC	TDPA	M	A	B	C2	C3	T3S2	T3S3	T3S2R4	OTROS	A	B	C	K'	D	LATITUD	LONGITUD
Cd. del Carmen	0.00	3	1	11902	6.1	82.0	1.7	4.7	1.0	2.3	0.6	1.0	0.6	88.1	1.7	10.2	0.089	0.509	18.659095	-91.774642
Cd. del Carmen	0.00	3	2	11482	6.3	80.7	1.5	5.4	1.3	2.3	0.8	1.1	0.6	87.0	1.5	11.5	0.097	0.509	18.659204	-91.774689

CAMPECHE

4 CARR: Cd. del Carmen - Campeche

CLAVE: 04065

RUTA: MEX-180

AÑO: 2021

LUGAR	ESTACION				CLASIFICACION VEHICULAR EN PORCIENTO														COORDENADAS	
	KM	TE	SC	TDPA	M	A	B	C2	C3	T3S2	T3S3	T3S2R4	OTROS	A	B	C	K'	D	LATITUD	LONGITUD
La Palma	26.70	1	0	5386	2.8	67.4	4.8	6.9	1.8	9.0	1.5	5.1	0.7	70.2	4.8	25.0	0.116	0.505	18.730072	-91.642295
Isla Aguada	37.75	3	0	5217	3.4	67.8	4.4	6.4	1.9	8.7	1.6	5.0	0.8	71.2	4.4	24.4	0.081	0.508	18.796920	-91.483677
T. Der. Sabancuy	78.05	3	0	4071	1.1	64.0	4.7	5.9	1.9	13.2	2.0	6.7	0.5	65.1	4.7	30.2	0.083	0.505	18.991639	-91.187948
Champotón	141.80	1	0	4762	6.6	66.4	4.8	3.5	1.9	9.6	1.5	5.0	0.7	73.0	4.8	22.2	0.093	0.527	19.321793	-90.746461
Champotón	141.80	3	1	5219	4.5	73.2	2.7	4.9	1.7	6.9	1.9	3.6	0.6	77.7	2.7	19.6	0.082	0.513	19.374857	-90.721587
Champotón	141.80	3	2	4963	4.9	71.7	2.9	5.0	1.4	7.5	2.0	4.0	0.6	76.6	2.9	20.5	0.078	0.513	19.374837	-90.721750
Haltunchén	161.81																			
T. Der. Libramiento de Seybaplaya (1° Acceso)	175.71	1	0	3306	11.3	76.0	0.7	6.7	3.0	1.8	0.3	0.1	0.1	87.3	0.7	12.0	0.081	0.509	19.622298	-90.685454
T. Der. Libramiento de Seybaplaya (1° Acceso)	175.71	3	1	629	20.3	70.9	0.4	7.9	0.2	0.3	0.0	0.0	0.0	91.2	0.4	8.4	0.134	0.517	19.625888	-90.685155
T. Der. Libramiento de Seybaplaya (1° Acceso)	175.71	3	2	580	22.3	68.5	0.4	8.3	0.2	0.3	0.0	0.0	0.0	90.8	0.4	8.8	0.090	0.517	19.625893	-90.685269
T. Der. Libramiento de Seybaplaya (2do. Acceso)	179.00	3	0	2279	14.1	77.5	0.2	4.7	0.9	1.4	0.7	0.3	0.2	91.6	0.2	8.2	0.092	0.512	19.656137	-90.687286
T. Der. Periférico Pablo García y Montilla (Libramiento De Campeche)	195.70	1	0	2709	7.1	81.4	0.6	6.8	1.2	1.8	0.6	0.1	0.4	88.5	0.6	10.9	0.083	0.518	19.786619	-90.625339
Lerma	199.51	1	1	1429	15.3	73.9	0.2	9.6	0.1	0.2	0.5	0.1	0.1	89.2	0.2	10.6	0.115	0.516	19.792201	-90.618846
Lerma	199.51	1	2	1306	14.0	82.8	0.2	2.0	0.2	0.2	0.6	0.0	0.0	96.8	0.2	3.0	0.087	0.516	19.792228	-90.618976
Campeche	203.18																			

5 CARR: Chencoyi - Tenabo

CLAVE: 04576

RUTA: MEX-180

AÑO: 2021

LUGAR	ESTACION				CLASIFICACION VEHICULAR EN PORCIENTO														COORDENADAS	
	KM	TE	SC	TDPA	M	A	B	C2	C3	T3S2	T3S3	T3S2R4	OTROS	A	B	C	K'	D	LATITUD	LONGITUD
T. C. Campeche - Umán	0.00																			
Tenabo	28.00	1	0	920	16.2	75.8	0.9	3.6	0.4	1.8	0.8	0.5	0.0	92.0	0.9	7.1	0.088	0.523	20.025929	-90.226676

6 CARR: Dzitbalché - Ent. San Bernardo

CLAVE: 00162

RUTA: MEX-180

AÑO: 2021

LUGAR	ESTACION				CLASIFICACION VEHICULAR EN PORCIENTO														COORDENADAS	
	KM	TE	SC	TDPA	M	A	B	C2	C3	T3S2	T3S3	T3S2R4	OTROS	A	B	C	K'	D	LATITUD	LONGITUD
T. C. Campeche - Mérida	0.00																			
T. Izq. Libramiento de Becal (1° Acceso)	12.33	1	0	3264	18.9	72.3	0.9	4.7	0.4	2.1	0.3	0.1	0.3	91.2	0.9	7.9	0.079	0.507	20.418770	-90.033980
T. Izq. Libramiento de Becal (2° Acceso)	15.41	3	0	1668	13.1	75.8	1.7	7.0	0.7	1.5	0.1	0.0	0.1	88.9	1.7	9.4	0.077	0.508	20.449620	-90.038830
Lim. Edos. Term. Camp. Ppia. Yuc.	15.80																			
Halachó	21.08	1	0	2056	19.6	69.0	1.3	7.6	0.7	1.6	0.1	0.0	0.1	88.6	1.3	10.1	0.073	0.507	20.469168	-90.066364
T. Izq. Libramiento de Maxcanú (1° Acceso)	35.60	1	0	2481	23.9	63.8	1.0	8.3	0.9	1.6	0.3	0.1	0.1	87.7	1.0	11.3	0.089	0.500	20.577412	-90.034878
T. Der. Muna	40.36	3	0	3436	7.3	71.5	1.2	16.8	0.8	1.9	0.3	0.1	0.1	78.8	1.2	20.0	0.094	0.502	20.601740	-89.975526
Ent. San Bernardo	41.53																			

CAMPECHE

7 CARR: Francisco Escárcega - Champotón

CLAVE: 04103

RUTA: MEX-201

AÑO: 2021

LUGAR	ESTACION				CLASIFICACION VEHICULAR EN PORCIENTO														COORDENADAS	
	KM	TE	SC	TDPA	M	A	B	C2	C3	T3S2	T3S3	T3S2R4	OTROS	A	B	C	K'	D	LATITUD	LONGITUD
Francisco Escárcega	0.00	3	0	5473	13.2	67.3	1.2	5.3	1.5	6.2	1.3	3.4	0.6	80.5	1.2	18.3	0.066	0.552	18.622169	-90.742087
T. Izq. Ley Federal de La Reforma Agraria	51.40	1	0	3088	4.4	68.8	2.0	6.8	1.7	8.1	1.9	5.9	0.4	73.2	2.0	24.8	0.072	0.515	19.051246	-90.725107
T. Der. Ulumal y Patzajol	77.00	1	0	4084	5.3	70.5	2.3	6.4	2.6	5.7	1.6	4.9	0.7	75.8	2.3	21.9	0.069	0.516	19.291383	-90.732704
Champotón	81.40	1	0	5398	5.1	74.8	1.2	5.8	1.4	5.9	1.4	3.8	0.6	79.9	1.2	18.9	0.082	0.514	19.309640	-90.730202

8 CARR: Francisco Escárcega - Chetumal

CLAVE: 00093

RUTA: MEX-186

AÑO: 2021

LUGAR	ESTACION				CLASIFICACION VEHICULAR EN PORCIENTO														COORDENADAS	
	KM	TE	SC	TDPA	M	A	B	C2	C3	T3S2	T3S3	T3S2R4	OTROS	A	B	C	K'	D	LATITUD	LONGITUD
Francisco Escárcega	0.00	3	0	3520	6.4	75.0	2.6	4.7	0.8	6.1	1.0	3.0	0.4	81.4	2.6	16.0	0.078	0.532	18.604186	-90.718879
Adolfo López Mateos	41.50	1	0	2944	7.9	65.1	5.4	7.6	1.5	5.4	1.2	5.2	0.7	73.0	5.4	21.6	0.082	0.523	18.642542	-90.315701
T. Der. Silvituc	55.70	1	0	2959	4.6	73.6	3.0	6.2	2.1	4.1	2.0	3.8	0.6	78.2	3.0	18.8	0.083	0.523	18.651235	-90.276028
T. Der. Silvituc	55.70	3	0	2297	4.7	71.1	2.9	6.9	2.6	4.7	2.2	4.0	0.9	75.8	2.9	21.3	0.064	0.502	18.649378	-90.261279
Conhuás	100.00	1	0	1823	1.9	68.4	6.3	6.4	1.3	6.9	2.4	5.7	0.7	70.3	6.3	23.4	0.074	0.514	18.540392	-89.917802
Xpujil	155.73	1	0	2710	3.5	72.2	3.4	7.1	0.8	6.7	1.7	4.3	0.3	75.7	3.4	20.9	0.073	0.535	18.509475	-89.412432
Lim. Edos. Term. Camp. Ppia. Qroo.	179.90																			
Nicolás Bravo	206.01	1	0	2991	4.7	70.4	4.4	7.0	1.3	6.0	1.0	4.6	0.6	75.1	4.4	20.5	0.070	0.500	18.458448	-88.940955
Nicolás Bravo	206.01	3	0	3386	3.3	71.3	3.5	9.3	1.3	5.4	1.2	4.0	0.7	74.6	3.5	21.9	0.075	0.508	18.459071	-88.920896
T. Izq. Morocoy	214.90	1	0	2937	3.6	73.7	3.9	6.6	1.3	5.7	1.2	3.8	0.2	77.3	3.9	18.8	0.074	0.510	18.478537	-88.825477
T. Izq. Morocoy	214.90	3	0	2723	4.1	69.8	4.7	7.0	1.6	6.6	1.9	3.8	0.5	73.9	4.7	21.4	0.073	0.504	18.479206	-88.803783
T. Der. Unión	247.50	1	0	4799	6.6	75.4	2.5	5.9	1.3	4.7	0.8	2.3	0.5	82.0	2.5	15.5	0.065	0.516	18.503818	-88.535253
T. Der. Unión	247.50	3	0	7366	9.6	79.6	1.4	4.0	0.9	2.0	0.6	1.5	0.4	89.2	1.4	9.4	0.074	0.507	18.508732	-88.504488
T. Izq. Fpe. Carrillo Puerto	255.15	1	0	5515	8.9	77.1	1.8	4.7	2.4	2.6	0.9	1.3	0.3	86.0	1.8	12.2	0.077	0.507	18.523837	-88.473448
T. Der. Subteniente López	268.57	1	1	8780	4.1	88.1	1.0	4.6	0.7	0.7	0.3	0.3	0.2	92.2	1.0	6.8	0.090	0.501	18.516634	-88.377969
T. Der. Subteniente López	268.57	1	2	8829	4.1	87.2	1.1	5.2	0.8	0.8	0.3	0.3	0.2	91.3	1.1	7.6	0.078	0.501	18.516804	-88.378217
T. Izq. Av. Insurgentes	270.00	1	1	12104	7.5	88.5	0.7	1.4	0.9	0.5	0.1	0.2	0.2	96.0	0.7	3.3	0.089	0.514	18.513307	-88.363126
T. Izq. Av. Insurgentes	270.00	1	2	12796	7.6	87.8	0.7	1.7	0.9	0.6	0.2	0.2	0.3	95.4	0.7	3.9	0.082	0.514	18.513444	-88.363108
T. Izq. Av. Insurgentes	270.00	3	1	4631	4.6	92.0	0.5	1.2	0.6	0.3	0.2	0.2	0.4	96.6	0.5	2.9	0.076	0.513	18.510176	-88.353279
T. Izq. Av. Insurgentes	270.00	3	2	4392	5.0	91.6	0.6	1.2	0.5	0.3	0.2	0.2	0.4	96.6	0.6	2.8	0.091	0.513	18.510275	-88.353246
Chetumal	277.36	1	1	8163	10.7	87.1	0.2	0.8	0.6	0.2	0.0	0.1	0.3	97.8	0.2	2.0	0.080	0.537	18.501559	-88.320691
Chetumal	277.36	1	2	7032	11.0	86.2	0.3	1.4	0.6	0.2	0.0	0.1	0.2	97.2	0.3	2.5	0.080	0.537	18.501665	-88.320665

CAMPECHE

9 CARR: Haltunchén - San Antonio Cayal

CLAVE: 04009

RUTA: MEX-180

AÑO: 2021

LUGAR	ESTACION				CLASIFICACION VEHICULAR EN PORCIENTO										COORDENADAS					
	KM	TE	SC	TDPA	M	A	B	C2	C3	T3S2	T3S3	T3S2R4	OTROS	A	B	C	K'	D	LATITUD	LONGITUD
T. C. Cd. del Carmen - Campeche	0.00	3	0	1335	17.7	71.0	0.8	6.0	0.9	1.9	0.4	1.3	0.0	88.7	0.8	10.5	0.099	0.500	19.499075	-90.700016
Sihochac	14.00	3	0	1320	26.6	62.7	0.4	6.5	0.7	1.8	0.6	0.6	0.1	89.3	0.4	10.3	0.087	0.505	19.502072	-90.569289
X. C. China - Tixmucuy	47.10	1	0	576	8.5	76.0	0.8	7.7	2.2	2.0	1.1	1.7	0.0	84.5	0.8	14.7	0.095	0.507	19.603440	-90.321290
Edzna	59.00	1	0	1190	8.0	74.8	1.1	9.5	3.0	1.4	0.7	1.5	0.0	82.8	1.1	16.1	0.086	0.504	19.604264	-90.226943
T. Der. Pichucalco	60.00	3	0	623	18.9	62.8	1.2	9.7	2.4	2.7	0.9	1.4	0.0	81.7	1.2	17.1	0.099	0.504	19.608857	-90.220508
San Antonio Cayal	79.00	1	0	504	21.1	59.1	1.5	9.2	2.6	2.7	1.2	2.6	0.0	80.2	1.5	18.3	0.121	0.509	19.740258	-90.174023

10 CARR: Periférico Pablo García y Montilla (Libramiento de Campeche)

CLAVE: 04573

RUTA: MEX-202

AÑO: 2021

LUGAR	ESTACION				CLASIFICACION VEHICULAR EN PORCIENTO										COORDENADAS					
	KM	TE	SC	TDPA	M	A	B	C2	C3	T3S2	T3S3	T3S2R4	OTROS	A	B	C	K'	D	LATITUD	LONGITUD
Ent. Lerma	0.00	3	1	2595	9.2	84.5	0.2	2.6	0.7	1.4	1.2	0.1	0.1	93.7	0.2	6.1	0.108	0.531	19.798125	-90.582383
Ent. Lerma	0.00	3	2	2937	8.9	85.0	0.2	2.5	0.7	1.2	1.3	0.1	0.1	93.9	0.2	5.9	0.129	0.531	19.798221	-90.582400
T. Izq. Av. Escenica	5.00	3	1	2383	9.5	82.2	0.7	5.2	1.1	0.4	0.4	0.4	0.1	91.7	0.7	7.6	0.097	0.528	19.798646	-90.565955
T. Izq. Av. Escenica	5.00	3	2	2663	9.9	81.9	0.6	5.1	1.1	0.5	0.4	0.4	0.1	91.8	0.6	7.6	0.120	0.528	19.798761	-90.565933
X. C. Champotón - Campeche (Cuota)	10.00	3	1	5304	7.0	77.0	0.7	1.9	2.1	6.3	1.1	3.6	0.3	84.0	0.7	15.3	0.088	0.537	19.797180	-90.521306
X. C. Champotón - Campeche (Cuota)	10.00	3	2	6154	8.1	75.9	0.7	1.9	2.1	6.3	1.2	3.5	0.3	84.0	0.7	15.3	0.111	0.537	19.797318	-90.521288
X. C. Campeche - Umán	21.00	1	1	5417	3.8	68.7	6.4	6.0	1.6	7.1	2.0	3.5	0.9	72.5	6.4	21.1	0.090	0.510	19.844933	-90.470290
X. C. Campeche - Umán	21.00	1	2	5201	4.1	67.5	6.5	6.2	1.8	7.0	2.0	4.0	0.9	71.6	6.5	21.9	0.068	0.510	19.844970	-90.470418
T. C. Campeche - Mérida	26.00	1	1	4814	5.4	69.5	2.1	8.7	1.6	6.1	2.4	3.6	0.6	74.9	2.1	23.0	0.066	0.539	19.881225	-90.461962
T. C. Campeche - Mérida	26.00	1	2	5630	4.1	70.2	2.2	8.7	1.5	6.0	2.5	3.5	1.3	74.3	2.2	23.5	0.066	0.539	19.881159	-90.462048

11 CARR: Presidente Díaz Ordaz - Sabancuy

CLAVE: 04570

RUTA: MEX-186

AÑO: 2021

LUGAR	ESTACION				CLASIFICACION VEHICULAR EN PORCIENTO										COORDENADAS					
	KM	TE	SC	TDPA	M	A	B	C2	C3	T3S2	T3S3	T3S2R4	OTROS	A	B	C	K'	D	LATITUD	LONGITUD
T. C. Villahermosa - Francisco Escárcega	0.00	3	0	1326	10.3	74.7	0.8	9.5	1.7	1.6	0.5	0.7	0.2	85.0	0.8	14.2	0.072	0.505	18.631276	-90.982815
Chicbul	18.00	1	0	1441	18.4	67.1	1.0	10.0	1.2	1.3	0.5	0.5	0.0	85.5	1.0	13.5	0.084	0.510	18.766989	-90.935216
T. C. Cd. del Carmen - Campeche	57.00	1	0	1639	7.5	77.1	2.9	9.5	0.5	1.5	0.4	0.5	0.1	84.6	2.9	12.5	0.079	0.505	18.987808	-91.188824

12 CARR: Ramal a Nuevo Coahuila

CLAVE: 04015

RUTA: MEX-186

AÑO: 2021

LUGAR	ESTACION				CLASIFICACION VEHICULAR EN PORCIENTO										COORDENADAS					
	KM	TE	SC	TDPA	M	A	B	C2	C3	T3S2	T3S3	T3S2R4	OTROS	A	B	C	K'	D	LATITUD	LONGITUD
T. C. Villahermosa - Francisco Escárcega	0.00	3	0	942	8.6	75.2	1.3	10.4	1.2	1.8	0.7	0.8	0.0	83.8	1.3	14.9	0.073	0.510	18.376054	-91.193610

CAMPECHE

12 CARR: Ramal a Nuevo Coahuila

CLAVE: 04015

RUTA: MEX-186

AÑO: 2021

LUGAR	ESTACION				CLASIFICACION VEHICULAR EN PORCIENTO													COORDENADAS		
	KM	TE	SC	TDPA	M	A	B	C2	C3	T3S2	T3S3	T3S2R4	OTROS	A	B	C	K'	D	LATITUD	LONGITUD
Candelaria	28.00	3	0	2618	7.8	87.2	0.4	2.7	0.6	0.7	0.2	0.3	0.1	95.0	0.4	4.6	0.074	0.518	18.176726	-91.053198
Reforma	44.50	3	0	1390	13.7	75.9	0.6	7.1	1.3	0.8	0.4	0.2	0.0	89.6	0.6	9.8	0.093	0.514	18.074044	-91.026046
T. Izq. Pedro Baranda	54.80	1	0	810	10.9	77.1	1.1	9.0	0.8	0.5	0.3	0.3	0.0	88.0	1.1	10.9	0.102	0.506	17.972209	-90.909901
T. Izq. Pedro Baranda	54.80	3	0	736	10.3	79.9	0.5	6.0	2.0	0.9	0.1	0.3	0.0	90.2	0.5	9.3	0.092	0.506	17.965402	-90.902620
Nuevo Coahuila	70.00	1	0	780	32.1	58.5	1.3	5.8	1.3	0.4	0.1	0.1	0.4	90.6	1.3	8.1	0.101	0.510	17.894363	-90.784623

13 CARR: Ramal a Ruíz Cortines

CLAVE: 04101

RUTA: MEX-180

AÑO: 2021

LUGAR	ESTACION				CLASIFICACION VEHICULAR EN PORCIENTO													COORDENADAS		
	KM	TE	SC	TDPA	M	A	B	C2	C3	T3S2	T3S3	T3S2R4	OTROS	A	B	C	K'	D	LATITUD	LONGITUD
Hool	0.00																			
T. Der. Hool	1.00	3	0	316	35.4	56.8	0.4	6.0	0.7	0.6	0.1	0.0	0.0	92.2	0.4	7.4	0.116	0.506	19.512253	-90.439729
Ruiz Cortines	12.00																			

14 CARR: San Marcos - Palizada

CLAVE: 00490

RUTA: MEX-186

AÑO: 2021

LUGAR	ESTACION				CLASIFICACION VEHICULAR EN PORCIENTO													COORDENADAS		
	KM	TE	SC	TDPA	M	A	B	C2	C3	T3S2	T3S3	T3S2R4	OTROS	A	B	C	K'	D	LATITUD	LONGITUD
T. C. Villahermosa - Francisco Escárcega	0.00	3	0	808	12.1	73.5	1.0	8.8	3.2	1.0	0.4	0.0	0.0	85.6	1.0	13.4	0.113	0.502	17.942432	-91.735246
Lim. Edos. Term. Tab. Ppia. Camp.	1.50																			
T. Izq. Jonuta	46.20	1	0	710	6.9	83.2	0.4	7.3	1.0	0.8	0.3	0.0	0.1	90.1	0.4	9.5	0.082	0.508	18.123922	-92.103330
T. Izq. Jonuta	46.20	3	0	858	12.0	80.0	0.4	7.0	0.5	0.1	0.0	0.0	0.0	92.0	0.4	7.6	0.089	0.500	18.130592	-92.113370
Palizada	68.00																			

15 CARR: Villahermosa - Cd. del Carmen

CLAVE: 00064

RUTA: MEX-180

AÑO: 2021

LUGAR	ESTACION				CLASIFICACION VEHICULAR EN PORCIENTO													COORDENADAS		
	KM	TE	SC	TDPA	M	A	B	C2	C3	T3S2	T3S3	T3S2R4	OTROS	A	B	C	K'	D	LATITUD	LONGITUD
Villahermosa	0.00																			
T. Izq. Cd. Industrial	4.30	3	1	31370	3.2	87.0	0.6	3.8	0.8	2.6	1.0	0.9	0.1	90.2	0.6	9.2	0.071	0.517	18.037254	-92.901512
T. Izq. Cd. Industrial	4.30	3	2	29193	3.0	86.9	0.5	4.4	0.9	2.3	1.2	0.7	0.1	89.9	0.5	9.6	0.096	0.517	18.037263	-92.901607
Macultepec	18.60	1	1	12971	8.7	79.9	1.1	3.1	1.0	3.7	1.1	1.2	0.2	88.6	1.1	10.3	0.090	0.511	18.139793	-92.865096
Macultepec	18.60	1	2	12434	7.9	78.3	1.6	4.0	1.1	4.1	1.2	1.5	0.3	86.2	1.6	12.2	0.081	0.511	18.139802	-92.865191
Macultepec	18.60	3	1	5879	1.6	76.7	2.6	6.4	1.5	6.5	1.7	2.7	0.3	78.3	2.6	19.1	0.083	0.507	18.165738	-92.858855
Macultepec	18.60	3	2	5712	1.6	78.5	2.1	6.8	1.2	5.7	1.5	2.2	0.4	80.1	2.1	17.8	0.096	0.507	18.165756	-92.858949

CAMPECHE

15 CARR: Villahermosa - Cd. del Carmen

CLAVE: 00064

RUTA: MEX-180

AÑO: 2021

LUGAR	ESTACION				CLASIFICACION VEHICULAR EN PORCIENTO													COORDENADAS		
	KM	TE	SC	TDPA	M	A	B	C2	C3	T3S2	T3S3	T3S2R4	OTROS	A	B	C	K'	D	LATITUD	LONGITUD
El Espino	33.20	1	0	8530	1.7	72.6	2.4	7.4	2.4	7.6	1.7	3.6	0.6	74.3	2.4	23.3	0.088	0.503	18.208586	-92.822343
El Espino	33.20	3	0	8523	1.8	72.5	3.8	8.4	1.2	6.4	2.5	2.8	0.6	74.3	3.8	21.9	0.089	0.512	18.260284	-92.831098
T. Izq. El Bellote	49.67	3	0	8969	1.3	79.6	2.4	6.7	1.8	4.3	0.9	2.7	0.3	80.9	2.4	16.7	0.084	0.503	18.396053	-92.798417
Frontera	74.59	1	0	9875	9.3	73.0	2.1	5.0	1.1	5.4	1.9	2.1	0.1	82.3	2.1	15.6	0.080	0.505	18.512390	-92.648860
Frontera	74.59	3	0	6272	8.8	61.5	5.9	8.0	1.7	8.5	1.3	3.6	0.7	70.3	5.9	23.8	0.074	0.520	18.542436	-92.631657
T. Izq. Escolleras	78.00	3	0	5906	3.4	70.8	3.0	6.4	1.3	8.7	2.1	3.8	0.5	74.2	3.0	22.8	0.076	0.515	18.562051	-92.601887
Puente San Pedro	96.50	3	0	4517	4.3	66.8	8.6	8.5	1.6	5.9	1.8	1.6	0.9	71.1	8.6	20.3	0.074	0.511	18.641510	-92.462619
Lim. Edos. Term. Tab. Ppia. Camp.	99.75																			
Nuevo Campechito	100.00	3	0	4646	1.9	62.8	5.3	7.6	1.5	12.1	3.4	4.9	0.5	64.7	5.3	30.0	0.085	0.529	18.642435	-92.457572
Nuevo Progreso	116.57	1	0	4784	2.6	64.4	4.6	7.4	1.6	11.4	2.3	5.0	0.7	67.0	4.6	28.4	0.086	0.501	18.627280	-92.331709
Puente Zacatal	162.41	1	0	5175	4.5	68.7	5.1	8.6	2.2	4.6	1.6	3.9	0.8	73.2	5.1	21.7	0.094	0.505	18.615852	-91.872311
Puente Zacatal	162.41	2	0	5894	1.9	67.4	3.5	4.8	3.6	10.8	1.8	5.5	0.7	69.3	3.5	27.2	0.077	0.500	18.641814	-92.460301
Cd. del Carmen	167.50																			

16 CARR: Villahermosa - Francisco Escárcega

CLAVE: 00092

RUTA: MEX-186

AÑO: 2021

LUGAR	ESTACION				CLASIFICACION VEHICULAR EN PORCIENTO													COORDENADAS		
	KM	TE	SC	TDPA	M	A	B	C2	C3	T3S2	T3S3	T3S2R4	OTROS	A	B	C	K'	D	LATITUD	LONGITUD
Villahermosa	0.00	3	1	15639	3.6	82.9	0.9	5.8	1.1	3.2	0.9	1.4	0.2	86.5	0.9	12.6	0.071	0.500	18.001013	-92.890726
Villahermosa	0.00	3	2	15629	3.7	80.9	1.3	6.8	1.3	2.9	1.3	1.7	0.1	84.6	1.3	14.1	0.069	0.500	18.001154	-92.890695
T. Izq. Aeropuerto (Alta)	12.00	1	1	14378	1.3	83.4	1.3	6.7	1.2	3.1	1.2	1.5	0.3	84.7	1.3	14.0	0.072	0.524	17.985044	-92.829626
T. Izq. Aeropuerto (Baja)	12.00	1	1	2179	12.6	74.2	1.1	5.9	1.6	2.9	0.9	0.6	0.2	86.8	1.1	12.1	0.078	0.530	17.984985	-92.829685
T. Izq. Aeropuerto (Baja)	12.00	1	2	1932	12.4	74.1	1.3	5.9	1.4	2.8	1.1	0.6	0.4	86.5	1.3	12.2	0.081	0.530	17.985168	-92.829513
T. Izq. Aeropuerto (Alta)	12.00	1	2	14170	1.8	82.5	1.2	5.9	1.5	3.6	1.4	1.7	0.4	84.3	1.2	14.5	0.079	0.524	17.985102	-92.829573
Puente Grijalva	17.60	2	1	7203	3.3	79.9	2.7	3.3	2.1	4.2	1.6	2.5	0.4	83.2	2.7	14.1	0.079	0.500	17.947602	-92.785235
Puente Grijalva	17.60	2	2	7203	3.3	79.9	2.7	3.3	2.1	4.2	1.6	2.5	0.4	83.2	2.7	14.1	0.079	0.500	17.947602	-92.785235
X. C. Cacaos - La Granja	32.46	1	1	7651	1.0	81.3	1.4	6.6	1.1	3.9	2.7	1.7	0.3	82.3	1.4	16.3	0.087	0.508	17.832821	-92.719607
X. C. Cacaos - La Granja	32.46	1	2	7896	1.0	80.2	1.5	7.3	1.1	4.2	2.6	1.8	0.3	81.2	1.5	17.3	0.082	0.508	17.832867	-92.719530
X. C. Cacaos - La Granja	32.46	3	1	6361	1.5	78.8	1.2	5.2	1.4	7.5	2.1	1.6	0.7	80.3	1.2	18.5	0.081	0.512	17.817753	-92.711092
X. C. Cacaos - La Granja	32.46	3	2	6671	1.2	80.4	1.1	5.0	0.9	7.0	2.1	1.6	0.7	81.6	1.1	17.3	0.085	0.512	17.817780	-92.710996
X. C. Jalapa - Jonuta	40.00	3	1	6687	1.2	81.4	1.3	5.6	1.2	4.6	2.8	1.3	0.6	82.6	1.3	16.1	0.078	0.511	17.774606	-92.673299
X. C. Jalapa - Jonuta	40.00	3	2	6391	1.3	78.3	1.8	6.5	1.7	4.4	2.7	2.7	0.6	79.6	1.8	18.6	0.073	0.511	17.774677	-92.673244
T. Izq. Macuspana	46.20	1	1	6653	3.6	77.0	1.8	6.5	1.8	4.6	1.9	2.5	0.3	80.6	1.8	17.6	0.076	0.506	17.744224	-92.634276
T. Izq. Macuspana	46.20	1	2	6816	4.7	72.6	2.1	7.9	1.8	5.0	2.7	3.0	0.2	77.3	2.1	20.6	0.077	0.506	17.744288	-92.634215
T. Izq. Macuspana	46.20	3	1	6167	3.6	76.8	1.3	4.6	2.1	6.0	2.1	2.9	0.6	80.4	1.3	18.3	0.069	0.510	17.734467	-92.621872

CAMPECHE

16 CARR : Villahermosa - Francisco Escárcega

CLAVE: 00092

RUTA : MEX-186

AÑO : 2021

LUGAR	ESTACION				CLASIFICACION VEHICULAR EN PORCIENTO													COORDENADAS		
	KM	TE	SC	TDPA	M	A	B	C2	C3	T3S2	T3S3	T3S2R4	OTROS	A	B	C	K'	D	LATITUD	LONGITUD
T. Izq. Macuspana	46.20	3	2	5917	2.9	74.8	1.5	6.8	2.1	5.3	3.1	2.8	0.7	77.7	1.5	20.8	0.076	0.510	17.734540	-92.621815
X. C. Estación Macuspana - Vernet	54.30	1	0	10917	4.7	72.0	1.4	6.5	2.5	6.8	2.1	3.4	0.6	76.7	1.4	21.9	0.078	0.527	17.712801	-92.583568
T. Der. Chivalito (Est. Pino Suárez)	70.00	1	0	8813	6.6	67.9	2.0	7.5	2.1	6.7	2.7	3.7	0.8	74.5	2.0	23.5	0.072	0.501	17.670455	-92.446222
T. Der. Chivalito (Est. Pino Suárez)	70.00	3	1	3960	4.2	65.8	3.1	7.7	2.8	8.1	2.3	5.0	1.0	70.0	3.1	26.9	0.076	0.530	17.666829	-92.434630
T. Der. Chivalito (Est. Pino Suárez)	70.00	3	2	3510	4.2	66.0	3.1	7.7	2.8	8.1	2.2	5.0	0.9	70.2	3.1	26.7	0.083	0.530	17.666879	-92.434619
T. Der. Estación Zopo	71.00	1	0	7666	4.0	66.9	3.2	9.1	2.8	5.9	2.3	4.9	0.9	70.9	3.2	25.9	0.069	0.505	17.670128	-92.418568
T. Der. Estación Zopo	71.00	3	1	3728	5.7	61.9	3.6	9.3	2.9	7.7	2.6	5.7	0.6	67.6	3.6	28.8	0.080	0.503	17.676038	-92.409336
T. Der. Estación Zopo	71.00	3	2	3767	5.7	62.1	3.5	9.3	2.9	7.7	2.6	5.7	0.5	67.8	3.5	28.7	0.089	0.503	17.676088	-92.409381
Lim. Edos. Term. Tab. Ppia. Chis.	76.90																			
T. Izq. Bonanza	88.00	1	0	7290	6.5	66.4	2.7	6.9	2.6	6.8	2.7	4.8	0.6	72.9	2.7	24.4	0.077	0.509	17.698132	-92.268740
T. Izq. Jonuta	101.00	1	0	5916	3.5	66.2	2.6	7.9	2.8	8.9	2.6	5.0	0.5	69.7	2.6	27.7	0.078	0.520	17.697896	-92.134431
T. Izq. Jonuta	101.00	3	0	7095	4.2	69.2	2.4	7.7	2.8	6.1	2.6	4.4	0.6	73.4	2.4	24.2	0.074	0.515	17.697576	-92.122490
X. C. Catazajá - Palenque	114.00	1	0	7453	5.2	69.0	2.4	8.5	2.1	5.7	2.8	3.4	0.9	74.2	2.4	23.4	0.078	0.504	17.706848	-92.027044
X. C. Catazajá - Palenque	114.00	3	0	6878	2.3	65.1	3.0	8.2	3.7	10.0	1.8	5.3	0.6	67.4	3.0	29.6	0.076	0.505	17.717682	-91.993024
T. Der. Emiliano Zapata	134.70	1	0	6328	3.8	65.7	3.2	8.0	3.1	8.5	2.3	4.8	0.6	69.5	3.2	27.3	0.069	0.507	17.770559	-91.837571
T. Der. Emiliano Zapata	134.70	3	0	4460	3.5	67.3	2.9	8.0	3.1	8.2	2.1	4.5	0.4	70.8	2.9	26.3	0.068	0.500	17.785189	-91.822191
Lim. Edos. Term. Chis. Ppia. Tab.	140.70																			
Puente Usumacinta	145.20	2	0	4377	7.0	62.8	2.9	3.8	4.8	9.4	2.0	6.5	0.8	69.8	2.9	27.3	0.079	0.500	17.859905	-91.783654
T. Izq. Palizada	154.05	1	0	4053	5.9	62.3	2.9	6.4	3.3	9.6	2.9	6.1	0.6	68.2	2.9	28.9	0.071	0.512	17.937159	-91.737797
T. Izq. Palizada	154.05	3	0	3301	4.5	57.1	4.4	7.5	3.3	11.7	3.0	7.7	0.8	61.6	4.4	34.0	0.069	0.509	17.944729	-91.731350
Lim. Edos. Term. Tab. Ppia. Camp.	154.60																			
T. Der. Candelaria	233.40	1	0	3472	5.1	60.0	3.7	5.3	2.3	12.0	2.5	8.3	0.8	65.1	3.7	31.2	0.070	0.525	18.369693	-91.203879
T. Der. Felipe Ángeles	253.00	1	0	3508	6.7	62.4	3.8	6.9	1.6	9.4	2.6	6.0	0.6	69.1	3.8	27.1	0.081	0.515	18.503419	-91.106926
T. Izq. Sabancuy	274.10	1	0	4382	5.2	65.0	3.3	6.4	2.1	8.8	2.5	6.0	0.7	70.2	3.3	26.5	0.088	0.508	18.629633	-90.987940
Francisco Escárcega	297.04	1	0	7669	12.6	68.1	2.0	5.1	1.1	5.4	1.4	3.8	0.5	80.7	2.0	17.3	0.076	0.504	18.609992	-90.776070

17 CARR : Champotón - Campeche (Cuota)

CLAVE: 04014

RUTA : MEX-180D

AÑO : 2021

LUGAR	ESTACION				CLASIFICACION VEHICULAR EN PORCIENTO													COORDENADAS		
	KM	TE	SC	TDPA	M	A	B	C2	C3	T3S2	T3S3	T3S2R4	OTROS	A	B	C	K'	D	LATITUD	LONGITUD
T. C. Cd. del Carmen - Campeche	160.00	3	1	3032	2.5	69.2	3.8	3.4	2.2	11.4	1.7	5.3	0.5	71.7	3.8	24.5	0.075	0.505	19.512982	-90.699054
T. C. Cd. del Carmen - Campeche	160.00	3	2	3098	2.3	67.2	4.4	3.5	2.6	11.8	2.0	5.7	0.5	69.5	4.4	26.1	0.082	0.505	19.513172	-90.699242
Plaza de Cobro Seybaplaya	174.80	2	1	3353	1.0	66.5	1.9	4.3	4.0	12.1	1.7	7.5	1.0	67.5	1.9	30.6	0.088	0.500	19.636235	-90.671582
Plaza de Cobro Seybaplaya	174.80	2	2	3353	1.0	66.5	1.9	4.3	4.0	12.1	1.7	7.5	1.0	67.5	1.9	30.6	0.088	0.500	19.636235	-90.671582
T. Der. Periferico Pablo García y Montilla (Libramiento De Campeche)	199.80	1	1	3305	2.0	69.8	3.7	6.9	2.0	8.1	1.6	5.1	0.8	71.8	3.7	24.5	0.090	0.525	19.791242	-90.535500

CAMPECHE

17 CARR : Champotón - Campeche (Cuota)

CLAVE: 04014

RUTA: MEX-180D

AÑO: 2021

LUGAR	ESTACION				CLASIFICACION VEHICULAR EN PORCIENTO														COORDENADAS	
	KM	TE	SC	TDPA	M	A	B	C2	C3	T3S2	T3S3	T3S2R4	OTROS	A	B	C	K'	D	LATITUD	LONGITUD
T. Der. Periférico Pablo García y Montilla (Libramiento De Campeche)	199.80	1	2	3651	1.8	66.9	4.2	7.6	2.0	9.2	1.7	5.8	0.8	68.7	4.2	27.1	0.086	0.525	19.791311	-90.535586

18 CARR : Hopelchén - Dzibalchén

CLAVE: 04572

RUTA: CAM-261

AÑO: 2021

LUGAR	ESTACION				CLASIFICACION VEHICULAR EN PORCIENTO														COORDENADAS	
	KM	TE	SC	TDPA	M	A	B	C2	C3	T3S2	T3S3	T3S2R4	OTROS	A	B	C	K'	D	LATITUD	LONGITUD
Hopelchén	0.00	3	0	1374	9.2	72.9	0.7	14.7	0.7	0.9	0.0	0.9	0.0	82.1	0.7	17.2	0.085	0.500	19.729613	-89.835170
Dzibalchén	41.00																			

19 CARR : Libramiento de Becal

CLAVE: 04010

RUTA: CAM

AÑO: 2021

LUGAR	ESTACION				CLASIFICACION VEHICULAR EN PORCIENTO														COORDENADAS	
	KM	TE	SC	TDPA	M	A	B	C2	C3	T3S2	T3S3	T3S2R4	OTROS	A	B	C	K'	D	LATITUD	LONGITUD
T. C. Dzitbalché - Ent. San Bernardo (1º Acceso)	0.00																			
T. C. Campeche - Mérida (2º Acceso)	2.30	1	0	1574	17.3	76.0	2.3	2.3	1.0	1.1	0.0	0.0	0.0	93.3	2.3	4.4	0.079	0.524	20.441289	-90.034438

20 CARR : Libramiento de Pomuch

CLAVE: 04579

RUTA: CAM

AÑO: 2021

LUGAR	ESTACION				CLASIFICACION VEHICULAR EN PORCIENTO														COORDENADAS	
	KM	TE	SC	TDPA	M	A	B	C2	C3	T3S2	T3S3	T3S2R4	OTROS	A	B	C	K'	D	LATITUD	LONGITUD
T. C. Campeche - Mérida (1º Acceso)	0.00	3	1	4261	1.3	75.0	3.8	5.5	1.6	6.2	1.8	4.7	0.1	76.3	3.8	19.9	0.101	0.510	20.122156	-90.177450
T. C. Campeche - Mérida (1º Acceso)	0.00	3	2	4137	1.6	71.7	4.2	6.0	1.9	7.0	2.0	5.3	0.3	73.3	4.2	22.5	0.082	0.510	20.122370	-90.177503
T. C. Campeche - Mérida (2º Acceso)	4.10																			

21 CARR : T. C. (Francisco Escárcega - Champotón) - Yohaltún

CLAVE: 04581

RUTA: CAM

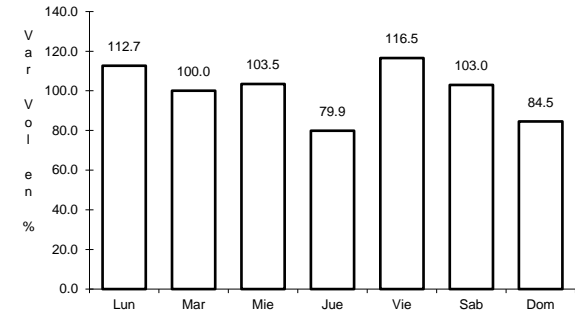
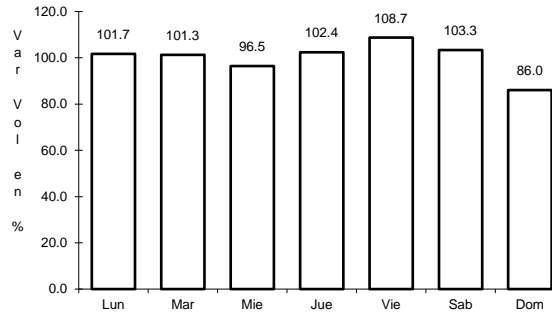
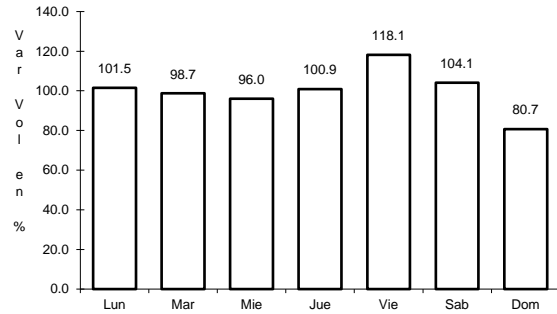
AÑO: 2021

LUGAR	ESTACION				CLASIFICACION VEHICULAR EN PORCIENTO														COORDENADAS	
	KM	TE	SC	TDPA	M	A	B	C2	C3	T3S2	T3S3	T3S2R4	OTROS	A	B	C	K'	D	LATITUD	LONGITUD
T. C. Francisco Escárcega - Champotón	0.00	3	0	1420	19.1	68.4	0.8	7.9	1.2	1.9	0.5	0.2	0.0	87.5	0.8	11.7	0.086	0.508	19.291195	-90.710604
Felipe Carrillo Puerto	36.50	1	0	776	24.7	66.5	1.3	5.6	0.5	0.6	0.3	0.5	0.0	91.2	1.3	7.5	0.071	0.517	19.106089	-90.516174
Felipe Carrillo Puerto	36.50	3	0	749	35.4	58.1	0.7	2.7	1.4	0.9	0.8	0.0	0.0	93.5	0.7	5.8	0.085	0.515	19.092017	-90.517939
Yohaltún	70.60																			

1 CARR: Campeche - Mérida

CLAVE: 00066

RUTA: MEX-180



Km: 0.00 Tipo: 3 Sent: 1

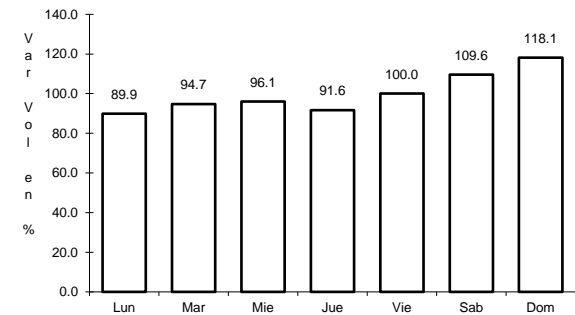
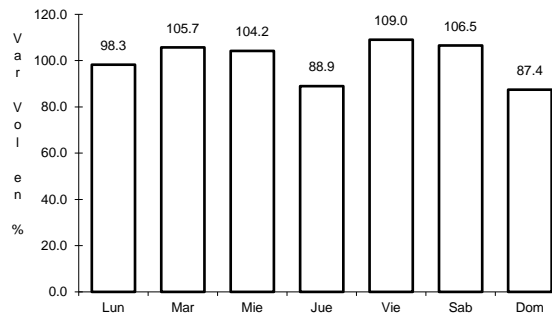
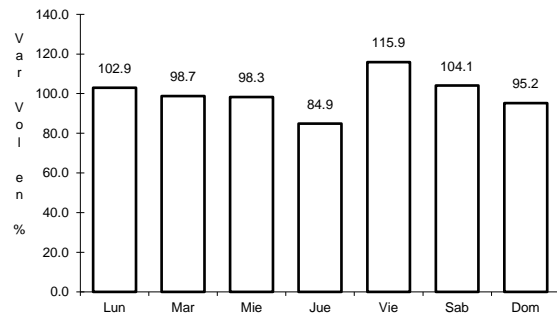
Km: 0.00 Tipo: 3 Sent: 2

Km: 171.21 Tipo: 1 Sent: 1

2 CARR: Campeche - Tixmucuy

CLAVE: 04575

RUTA: MEX-180



Km: 0.00 Tipo: 3 Sent: 1

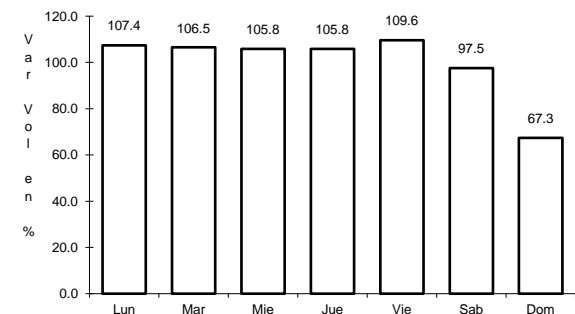
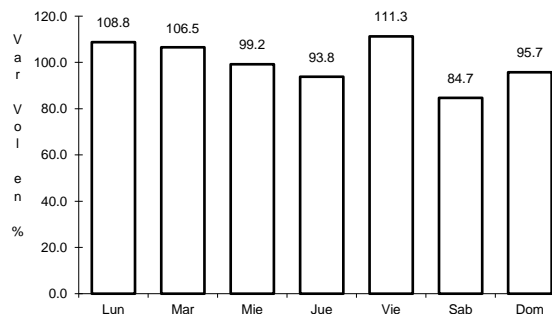
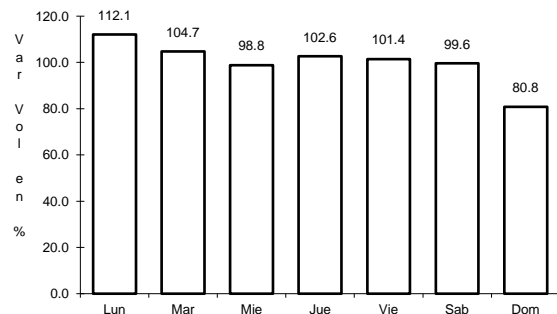
Km: 0.00 Tipo: 3 Sent: 2

Km: 42.00 Tipo: 1 Sent: 0

3 CARR: Campeche - Umán

CLAVE: 00164

RUTA: MEX-261



Km: 7.00 Tipo: 1 Sent: 0

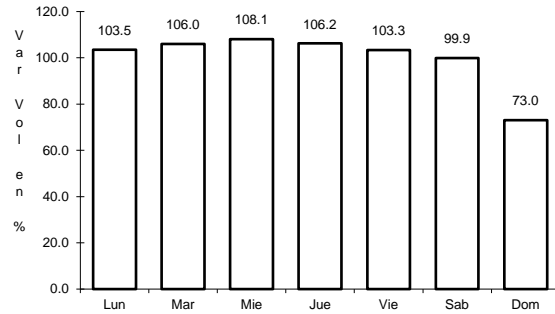
Km: 117.88 Tipo: 3 Sent: 0

Km: 230.83 Tipo: 1 Sent: 0

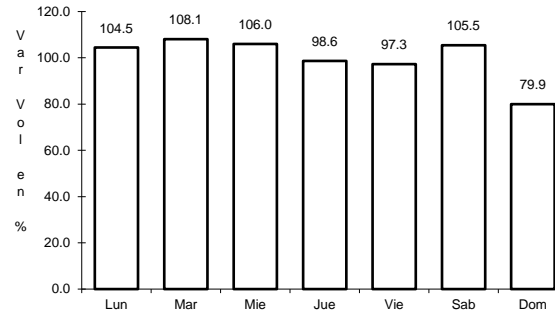
4 CARR: Cd. del Carmen - Campeche

CLAVE: 04065

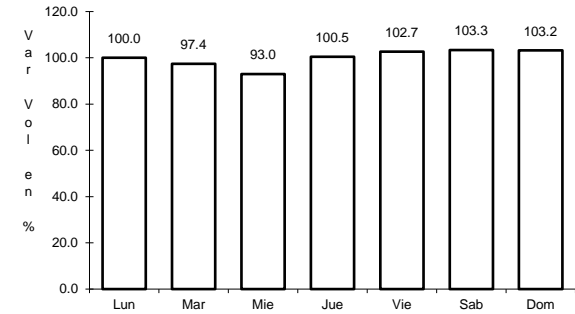
RUTA: MEX-180



Km: 0.00 Tipo: 3 Sent: 1



Km: 0.00 Tipo: 3 Sent: 2

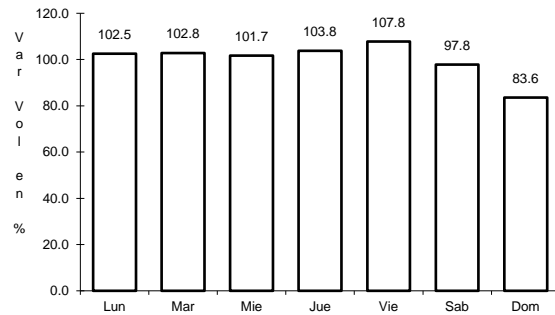


Km: 141.80 Tipo: 1 Sent: 0

5 CARR: Chencoyi - Tenabo

CLAVE: 04576

RUTA: MEX-180

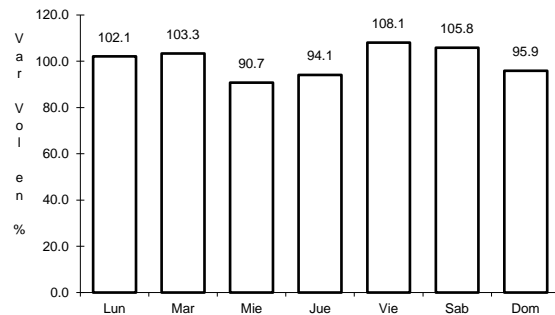


Km: 28.00 Tipo: 1 Sent: 0

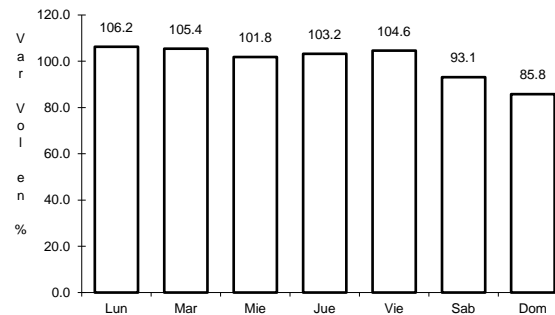
6 CARR: Dzitbalché - Ent. San Bernardo

CLAVE: 00162

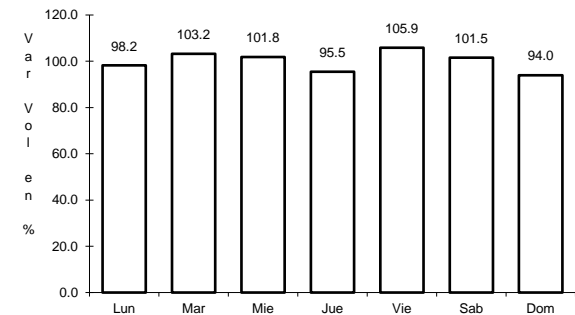
RUTA: MEX-180



Km: 12.33 Tipo: 1 Sent: 0



Km: 21.08 Tipo: 1 Sent: 0

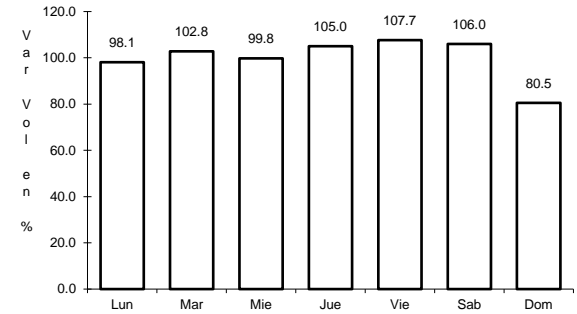
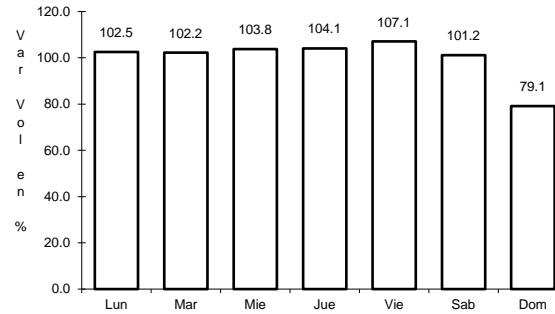
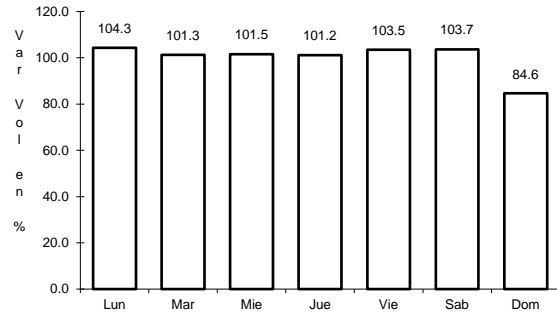


Km: 40.36 Tipo: 3 Sent: 0

7 CARR: Francisco Escárcega - Champotón

CLAVE: 04103

RUTA: MEX-201



Km: 0.00 Tipo: 3 Sent: 0

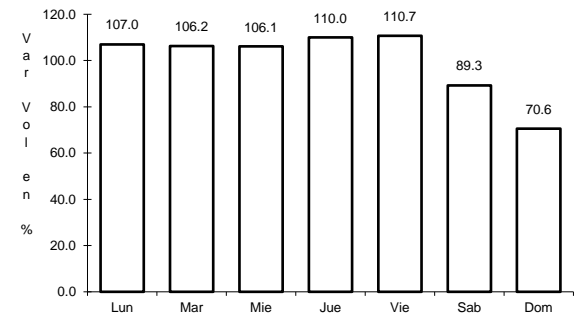
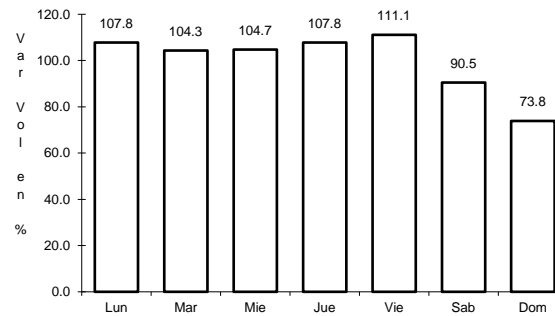
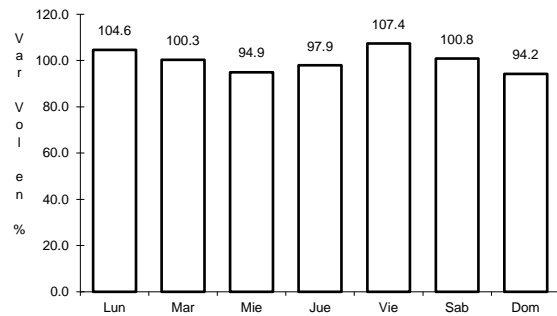
Km: 51.40 Tipo: 1 Sent: 0

Km: 81.40 Tipo: 1 Sent: 0

8 CARR: Francisco Escárcega - Chetumal

CLAVE: 00093

RUTA: MEX-186



Km: 0.00 Tipo: 3 Sent: 0

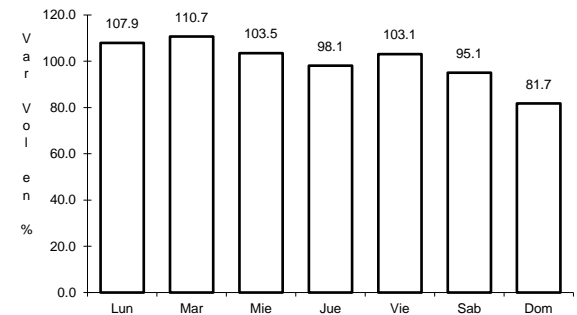
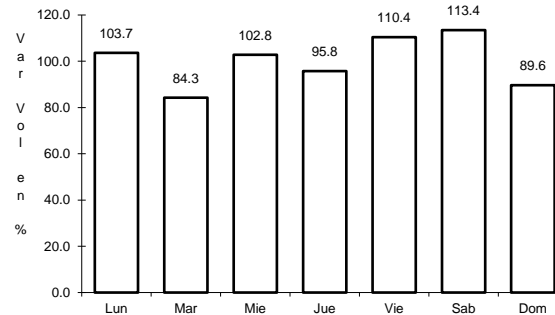
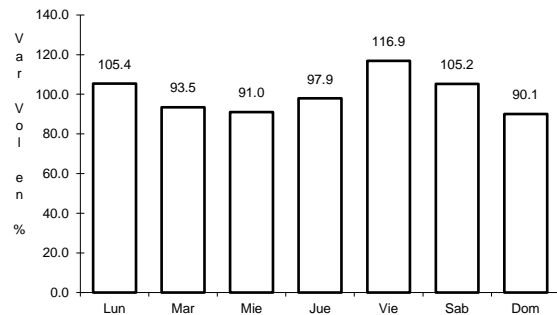
Km: 277.36 Tipo: 1 Sent: 1

Km: 277.36 Tipo: 1 Sent: 2

9 CARR: Haltunchén - San Antonio Cayal

CLAVE: 04009

RUTA: MEX-180



Km: 0.00 Tipo: 3 Sent: 0

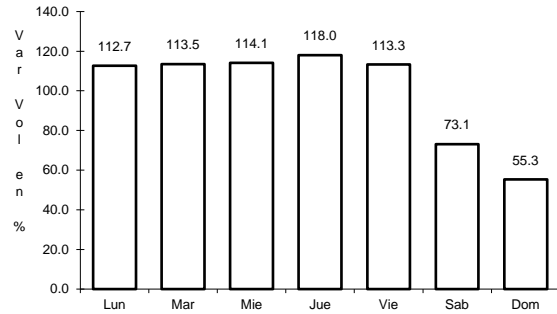
Km: 47.10 Tipo: 1 Sent: 0

Km: 79.00 Tipo: 1 Sent: 0

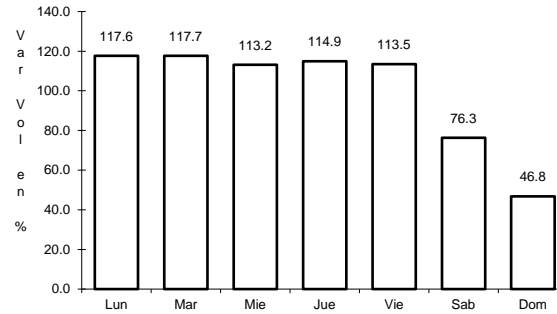
10 CARR: Periférico Pablo García y Montilla (Libramiento de Campeche)

CLAVE: 04573

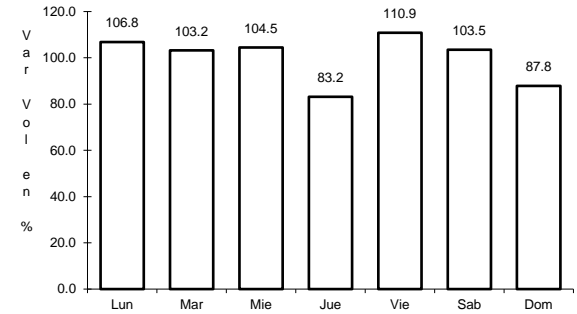
RUTA: MEX-202



Km: 0.00 Tipo: 3 Sent: 1



Km: 0.00 Tipo: 3 Sent: 2

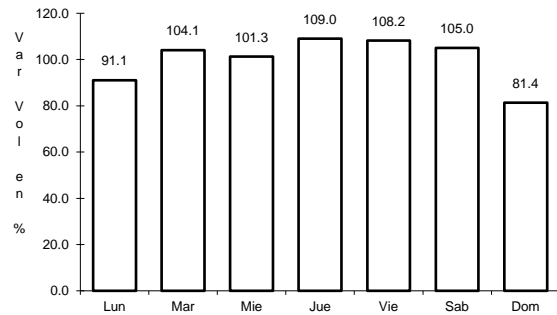


Km: 26.00 Tipo: 1 Sent: 1

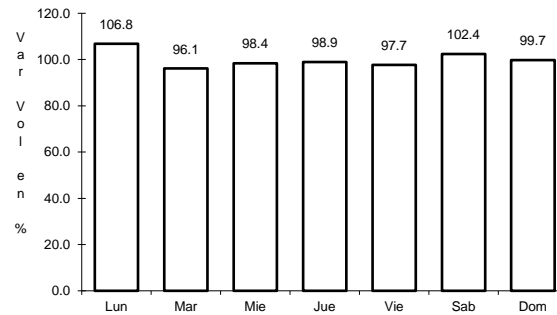
11 CARR: Presidente Díaz Ordaz - Sabancuy

CLAVE: 04570

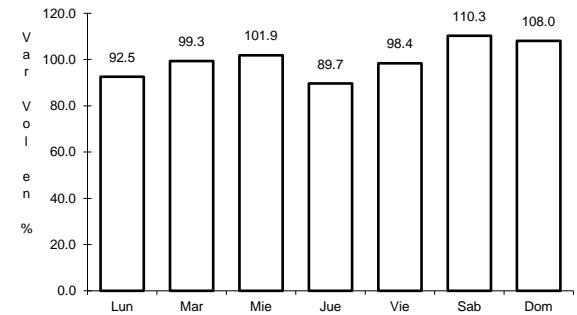
RUTA: MEX-186



Km: 0.00 Tipo: 3 Sent: 0



Km: 18.00 Tipo: 1 Sent: 0

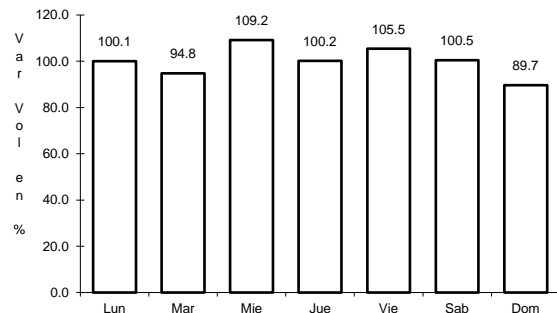


Km: 57.00 Tipo: 1 Sent: 0

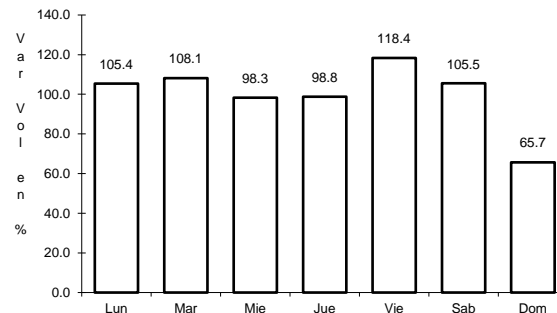
12 CARR: Ramal a Nuevo Coahuila

CLAVE: 04015

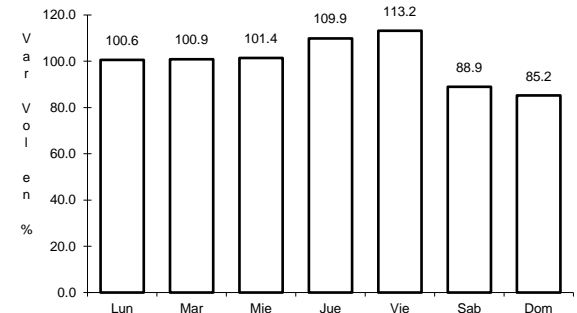
RUTA: MEX-186



Km: 0.00 Tipo: 3 Sent: 0



Km: 44.50 Tipo: 3 Sent: 0

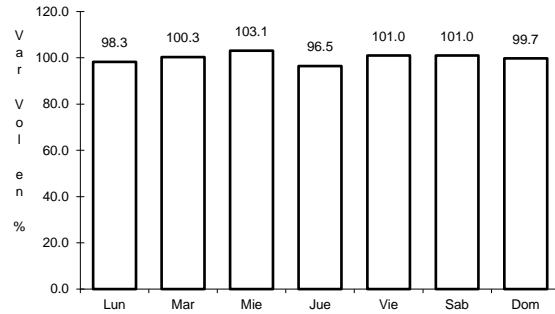


Km: 70.00 Tipo: 1 Sent: 0

13 CARR: Ramal a Ruíz Cortines

CLAVE: 04101

ruta: MEX-180



Km: 1.00

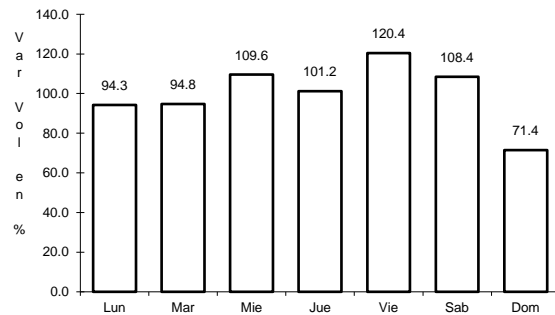
Tipo: 3

Sent: 0

14 CARR: San Marcos - Palizada

CLAVE: 00490

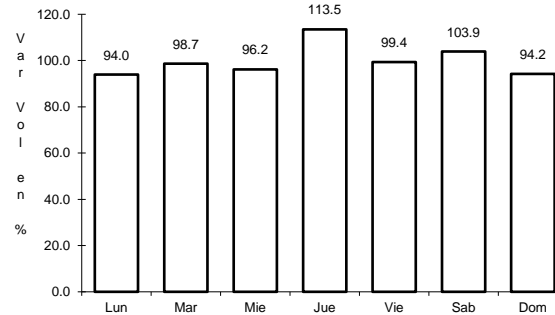
ruta: MEX-186



Km: 0.00

Tipo: 3

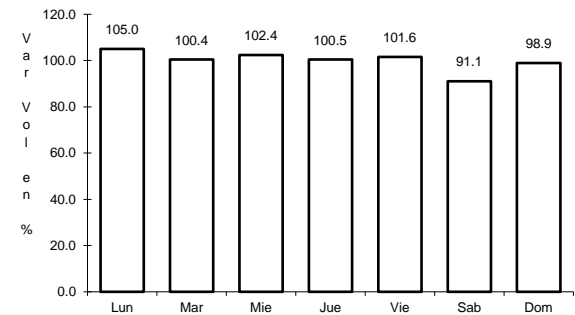
Sent: 0



Km: 46.20

Tipo: 1

Sent: 0



Km: 46.20

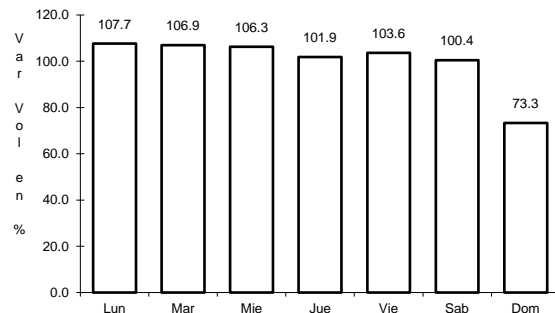
Tipo: 3

Sent: 0

15 CARR: Villahermosa - Cd. del Carmen

CLAVE: 00064

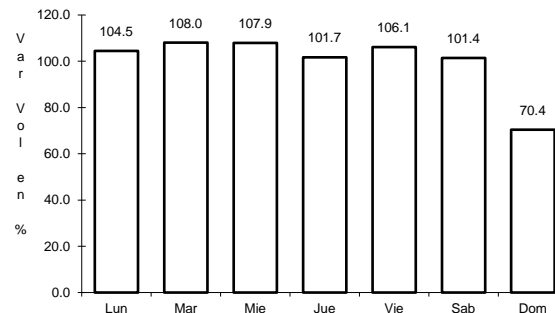
ruta: MEX-180



Km: 4.30

Tipo: 3

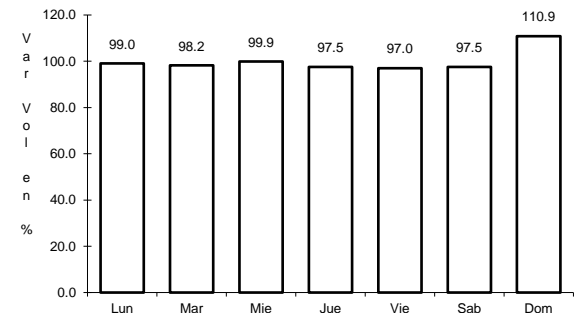
Sent: 1



Km: 4.30

Tipo: 3

Sent: 2



Km: 162.41

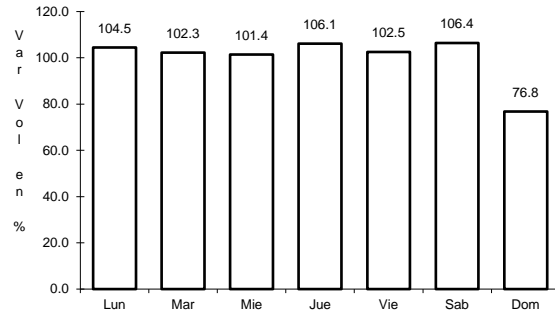
Tipo: 1

Sent: 0

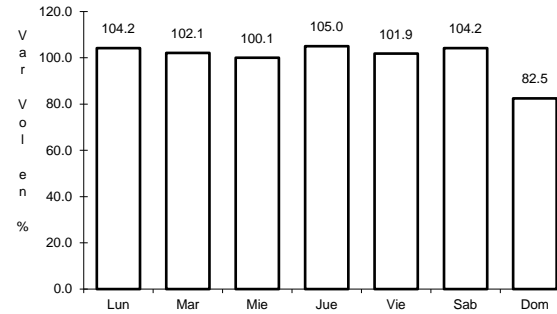
16 CARR: Villahermosa - Francisco Escárcega

CLAVE: 00092

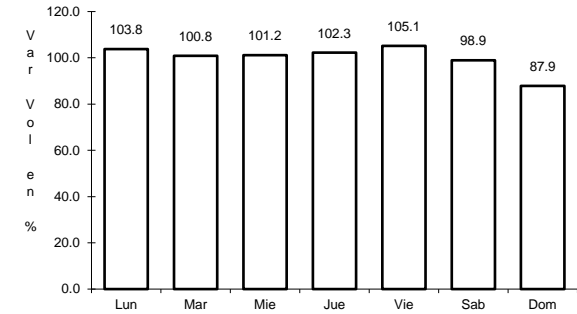
RUTA: MEX-186



Km: 0.00 Tipo: 3 Sent: 1



Km: 0.00 Tipo: 3 Sent: 2

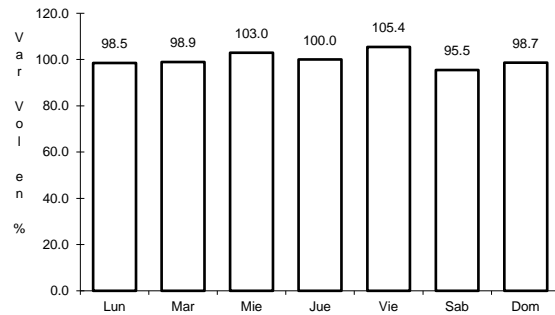


Km: 297.04 Tipo: 1 Sent: 0

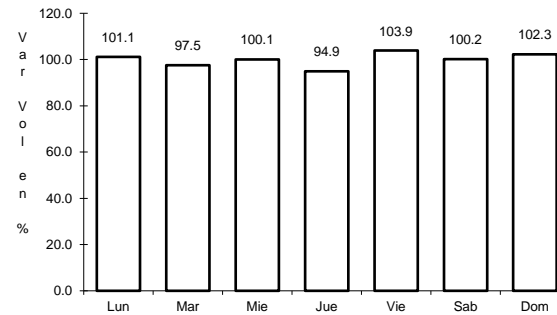
17 CARR: Champotón - Campeche (Cuota)

CLAVE: 04014

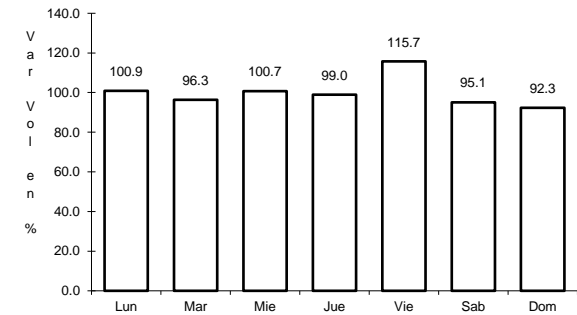
RUTA: MEX-180D



Km: 160.00 Tipo: 3 Sent: 1



Km: 160.00 Tipo: 3 Sent: 2

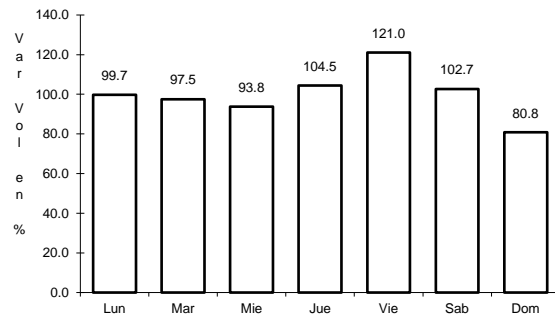


Km: 199.80 Tipo: 1 Sent: 1

18 CARR: Hopelchén - Dzibalchén

CLAVE: 04572

RUTA: CAM-261

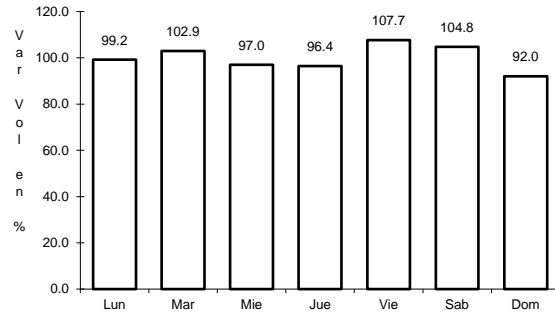


Km: 0.00 Tipo: 3 Sent: 0

19 CARR: Libramiento de Becal

CLAVE: 04010

RUTA: CAM

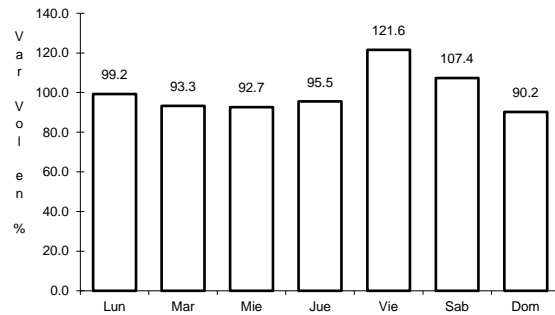


Km: 2.30 Tipo: 1 Sent: 0

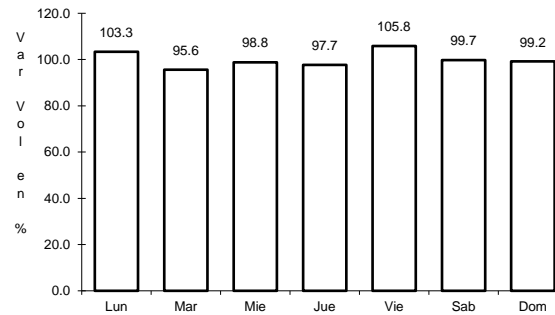
20 CARR: Libramiento de Pomuch

CLAVE: 04579

RUTA: CAM



Km: 0.00 Tipo: 3 Sent: 1

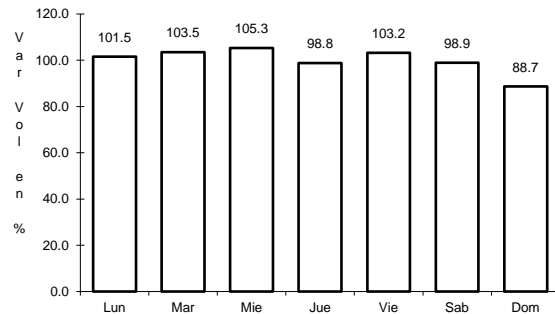


Km: 0.00 Tipo: 3 Sent: 2

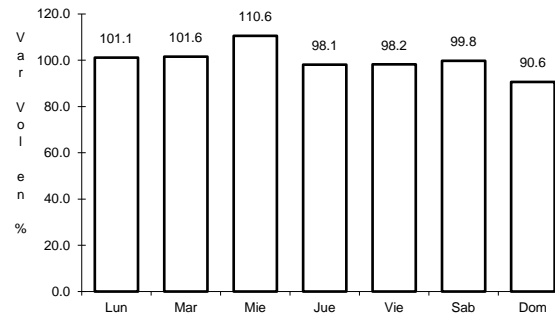
21 CARR: T. C. (Francisco Escárcega - Champotón) - Yohaltún

CLAVE: 04581

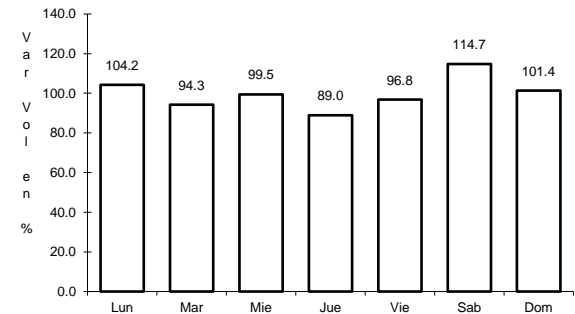
RUTA: CAM



Km: 0.00 Tipo: 3 Sent: 0



Km: 36.50 Tipo: 1 Sent: 0



Km: 36.50 Tipo: 3 Sent: 0

