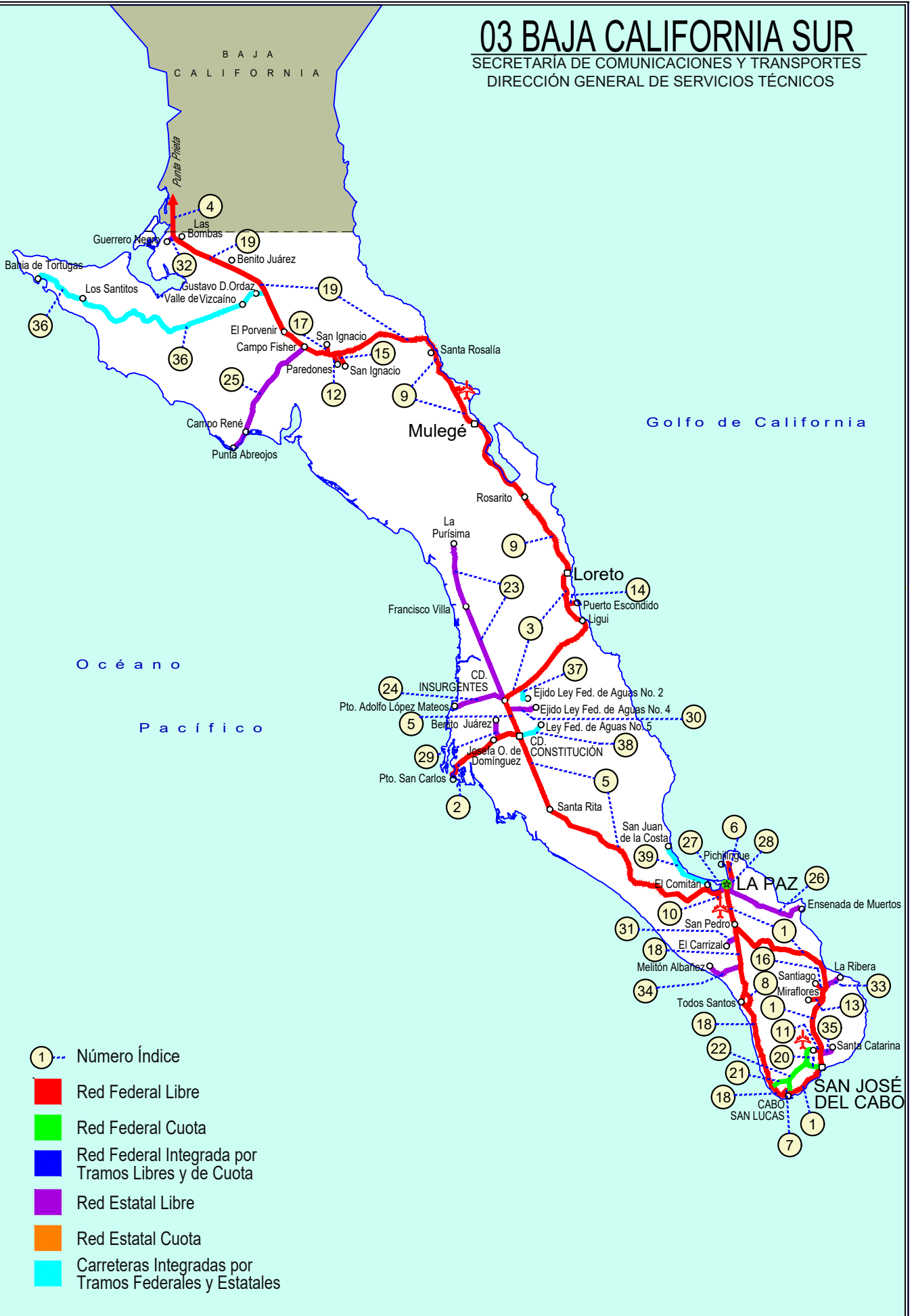


BAJA CALIFORNIA SUR

NO. INDICE CARRETERA	RUTA
---RED FEDERAL LIBRE---	
1 Cabo San Lucas - La Paz	MEX-001
2 Cd. Constitución - Puerto San Carlos	MEX-001
3 Cd. Insurgentes - Loreto	MEX-001
4 Ent. Punta Prieta - Guerrero Negro	MEX-001
5 La Paz - Cd. Insurgentes	MEX-001
6 La Paz - Pichilingue	MEX-011
7 Libramiento de Cabo San Lucas	MEX-001
8 Libramiento de Todos Santos	MEX-019
9 Loreto - Santa Rosalía	MEX-001
10 Ramal a Aeropuerto de La Paz	MEX-001
11 Ramal a Aeropuerto de Los Cabos	MEX-001
12 Ramal a Los Paredones	MEX-001
13 Ramal a Miraflores	MEX-001
14 Ramal a Puerto Escondido	MEX-001
15 Ramal a San Ignacio	MEX-001
16 Ramal a Santiago	MEX-001
17 Ramal Aeropista San Ignacio	MEX-001
18 San Pedro - Cabo San Lucas	MEX-019
19 Santa Rosalía - Guerrero Negro	MEX-001
---RED FEDERAL DE CUOTA---	
20 Libramiento San José del Cabo - Aeropuerto Los Cabos (Cuota)	MEX-001D
21 Ramal a El Mangle (Cuota)	MEX-001D
22 San José del Cabo - Libramiento de Cabo San Lucas - (Cuota)	MEX-001D
---RED ESTATAL LIBRE---	
23 Cd. Insurgentes - La Purísima	BCS-001
24 Cd. Insurgentes - Pto. Adolfo López Mateos	BCS
25 Ent. Campo Fisher - Punta Abreojos	BCS
26 La Paz - Ensenada de Muertos	BCS-246
27 Libramiento de La Paz	BCS
28 Libramiento Norte de La Paz	BCS
29 Ramal a Benito Juárez	BCS
30 Ramal a Ejido Ley Federal de Aguas Número Cuatro	BCS
31 Ramal a El Carrizal	BCS
32 Ramal a Guerrero Negro	BCS
33 Ramal a La Ribera	BCS
34 Ramal a Melitón Albáñez	BCS
35 Ramal a Santa Catarina	BCS
---CARRETERAS INTEGRADAS POR TRAMOS FEDERALES Y ESTATALES---	
36 Ramal a Bahía de Tortugas	MEX-001-BCS
37 Ramal a Ejido Ley Federal de Aguas Número Dos	BCS-MEX-001
38 Ramal a Ley Federal de Aguas Número Cinco	BCS-MEX-001
39 Ramal a San Juan de La Costa	BCS-163-MEX-001

03 BAJA CALIFORNIA SUR

SECRETARÍA DE COMUNICACIONES Y TRANSPORTES
DIRECCIÓN GENERAL DE SERVICIOS TÉCNICOS



BAJA CALIFORNIA SUR

1 CARR: Cabo San Lucas - La Paz

CLAVE: 03102

RUTA: MEX-001

AÑO: 2021

LUGAR	ESTACION				CLASIFICACION VEHICULAR EN PORCIENTO										COORDENADAS					
	KM	TE	SC	TDPA	M	A	B	C2	C3	T3S2	T3S3	T3S2R4	OTROS	A	B	C	K'	D	LATITUD	LONGITUD
Cabo San Lucas	0.00	3	1	31713	4.0	87.4	1.0	5.1	1.6	0.4	0.2	0.2	0.1	91.4	1.0	7.6	0.071	0.501	22.901590	-109.895724
Cabo San Lucas	0.00	3	2	31942	4.0	87.4	1.0	5.1	1.6	0.4	0.2	0.2	0.1	91.4	1.0	7.6	0.102	0.501	22.901716	-109.895774
El Tule	13.00	3	1	15559	6.1	86.2	1.5	4.1	1.3	0.3	0.2	0.1	0.2	92.3	1.5	6.2	0.118	0.505	22.954216	-109.809492
El Tule	13.00	3	2	15271	6.1	86.2	1.5	4.1	1.3	0.3	0.2	0.1	0.2	92.3	1.5	6.2	0.111	0.505	22.954285	-109.809599
San José del Cabo	31.00	1	1	19983	3.1	90.7	0.8	2.9	1.4	0.3	0.2	0.4	0.2	93.8	0.8	5.4	0.115	0.502	23.037315	-109.709087
San José del Cabo	31.00	1	2	21333	3.1	90.7	0.8	2.9	1.4	0.3	0.2	0.4	0.2	93.8	0.8	5.4	0.142	0.502	23.037432	-109.709158
San José del Cabo	31.00	3	1	26243	4.6	88.0	1.2	4.1	1.1	0.4	0.2	0.3	0.1	92.6	1.2	6.2	0.067	0.521	23.066140	-109.703437
San José del Cabo	31.00	3	2	24134	4.6	88.0	1.2	4.1	1.1	0.4	0.2	0.3	0.1	92.6	1.2	6.2	0.076	0.521	23.066089	-109.703550
T. Der. Santa Catarina	41.00	1	1	13840	0.9	84.5	1.1	11.7	1.1	0.2	0.2	0.1	0.2	85.4	1.1	13.5	0.091	0.508	23.126323	-109.711132
T. Der. Santa Catarina	41.00	1	2	14288	0.9	84.7	1.0	11.7	1.1	0.2	0.2	0.1	0.1	85.6	1.0	13.4	0.101	0.508	23.126338	-109.711266
T. Izq. Aeropuerto	43.46	1	1	11303	0.2	88.1	1.4	8.7	0.8	0.2	0.2	0.3	0.1	88.3	1.4	10.3	0.073	0.506	23.153364	-109.708488
T. Izq. Aeropuerto	43.46	1	2	11028	0.2	88.0	1.5	8.7	0.8	0.2	0.2	0.3	0.1	88.2	1.5	10.3	0.081	0.506	23.153387	-109.708625
Santa Anita	46.00	1	0	8831	1.2	87.4	3.7	5.0	1.7	0.4	0.4	0.1	0.1	88.6	3.7	7.7	0.088	0.522	23.171462	-109.704649
Santa Anita	46.00	3	0	4565	2.0	86.4	1.0	7.8	1.0	0.9	0.7	0.2	0.0	88.4	1.0	10.6	0.104	0.500	23.187860	-109.707720
T. Izq. Miraflores	71.50	3	0	2474	1.1	82.8	1.1	12.4	1.2	0.5	0.5	0.4	0.0	83.9	1.1	15.0	0.132	0.532	23.371190	-109.751950
T. Izq. Santiago	84.00	3	0	2480	1.1	82.7	1.1	12.1	1.3	0.9	0.4	0.4	0.0	83.8	1.1	15.1	0.130	0.545	23.477870	-109.694430
La Cueva	95.20	3	0	2434	1.2	82.5	1.4	12.6	1.5	0.7	0.1	0.0	0.0	83.7	1.4	14.9	0.092	0.517	23.547620	-109.675070
T. Der. Bahía de Las Palmas	110.00	3	0	1759	2.2	83.2	1.0	9.7	2.3	1.0	0.6	0.0	0.0	85.4	1.0	13.6	0.103	0.510	23.682910	-109.720540
San Bartolo	128.50	1	0	1518	2.6	83.8	0.6	10.2	2.0	0.8	0.0	0.0	0.0	86.4	0.6	13.0	0.107	0.513	23.739020	-109.837610
San Antonio	156.00	3	0	1334	1.9	85.5	0.9	9.8	0.9	0.4	0.2	0.2	0.2	87.4	0.9	11.7	0.109	0.543	23.809760	-110.059240
El Triunfo	162.80	1	0	1450	2.4	85.5	1.0	8.9	1.1	0.4	0.3	0.2	0.2	87.9	1.0	11.1	0.100	0.510	23.806640	-110.101600
El Triunfo	162.80	3	0	1449	2.8	87.5	0.8	7.7	0.3	0.5	0.2	0.1	0.1	90.3	0.8	8.9	0.128	0.519	23.796430	-110.111290
T. Izq. Todos Santos	184.40	1	0	1632	2.1	85.8	1.0	9.3	0.7	0.7	0.2	0.1	0.1	87.9	1.0	11.1	0.135	0.508	23.883000	-110.248260
T. Izq. Todos Santos	184.40	3	1	3969	1.5	84.0	1.5	6.9	1.4	3.0	0.8	0.7	0.2	85.5	1.5	13.0	0.108	0.508	23.889687	-110.256984
T. Izq. Todos Santos	184.40	3	2	4103	1.6	82.6	1.8	7.3	1.4	3.3	0.9	0.9	0.2	84.2	1.8	14.0	0.098	0.508	23.889670	-110.257159
San Pedro	191.00	1	1	4073	1.2	84.4	1.9	6.5	1.3	2.5	0.9	1.0	0.3	85.6	1.9	12.5	0.109	0.501	23.917453	-110.261268
San Pedro	191.00	1	2	4053	1.4	82.6	2.1	7.1	1.6	2.9	0.9	1.1	0.3	84.0	2.1	13.9	0.089	0.501	23.917441	-110.261432
San Pedro	191.00	3	1	5073	0.9	85.5	1.4	6.6	1.4	2.5	0.8	0.7	0.2	86.4	1.4	12.2	0.106	0.543	23.938758	-110.274943
San Pedro	191.00	3	2	4276	0.9	83.8	1.6	7.2	1.6	2.7	1.1	0.8	0.3	84.7	1.6	13.7	0.078	0.543	23.938666	-110.275033
Limite Zona Urbana de La Paz	211.00	1	1	6440	1.4	86.8	1.2	6.7	1.1	1.6	0.5	0.5	0.2	88.2	1.2	10.6	0.108	0.501	24.031185	-110.297480
Limite Zona Urbana de La Paz	211.00	1	2	6476	1.4	86.0	1.1	7.4	1.3	1.6	0.5	0.5	0.2	87.4	1.1	11.5	0.094	0.501	24.031168	-110.297547
La Paz	213.00																			

BAJA CALIFORNIA SUR

2 CARR: Cd. Constitución - Puerto San Carlos

CLAVE: 03231

RUTA: MEX-001

AÑO: 2021

LUGAR	ESTACION				CLASIFICACION VEHICULAR EN PORCIENTO													COORDENADAS		
	KM	TE	SC	TDPA	M	A	B	C2	C3	T3S2	T3S3	T3S2R4	OTROS	A	B	C	K'	D	LATITUD	LONGITUD
Cd. Constitución	0.00	3	0	2564	1.0	83.7	1.2	11.9	1.1	0.9	0.1	0.0	0.1	84.7	1.2	14.1	0.092	0.505	25.039681	-111.690270
T. Der. Benito Juárez	10.00	1	0	1932	0.5	84.7	0.8	10.8	1.9	1.0	0.3	0.0	0.0	85.2	0.8	14.0	0.075	0.501	25.040399	-111.758284
T. Der. Benito Juárez	10.00	3	0	1350	0.8	80.2	1.0	14.4	2.0	1.2	0.3	0.0	0.1	81.0	1.0	18.0	0.089	0.510	25.031996	-111.777608
Puerto San Carlos	57.70																			

3 CARR: Cd. Insurgentes - Loreto

CLAVE: 03092

RUTA: MEX-001

AÑO: 2021

LUGAR	ESTACION				CLASIFICACION VEHICULAR EN PORCIENTO													COORDENADAS		
	KM	TE	SC	TDPA	M	A	B	C2	C3	T3S2	T3S3	T3S2R4	OTROS	A	B	C	K'	D	LATITUD	LONGITUD
Cd. Insurgentes	0.00	3	0	3199	2.5	83.8	2.4	9.0	0.6	1.4	0.1	0.1	0.1	86.3	2.4	11.3	0.085	0.520	25.260685	-111.764227
T. Der. Ley Federal de Aguas Número Dos	13.46	3	0	1632	6.1	76.0	2.7	5.5	1.8	5.5	1.4	0.8	0.2	82.1	2.7	15.2	0.089	0.548	25.317216	-111.658254
T. Izq. Ley Federal de Aguas Número Uno	16.50	3	0	1205	1.3	79.4	3.0	3.5	1.4	8.4	1.7	1.1	0.2	80.7	3.0	16.3	0.093	0.530	25.334189	-111.632497
T. Der. Puerto Agua Verde	65.00	1	0	1124	1.3	78.5	3.0	3.6	1.4	9.3	1.6	1.1	0.2	79.8	3.0	17.2	0.093	0.539	25.607808	-111.316849
T. Der. Puerto Agua Verde	65.00	3	0	1127	1.4	78.7	3.1	3.7	1.3	8.5	1.8	1.4	0.1	80.1	3.1	16.8	0.099	0.543	25.610666	-111.311864
El Ligüi	84.50	1	0	1633	1.1	81.8	3.4	3.7	2.1	6.0	1.0	0.8	0.1	82.9	3.4	13.7	0.113	0.519	25.731945	-111.268571
T. Der. Puerto Escondido	95.40	1	0	1653	5.8	77.1	3.4	6.0	2.3	3.8	0.7	0.7	0.2	82.9	3.4	13.7	0.088	0.502	25.800021	-111.327140
T. Der. Puerto Escondido	95.40	3	0	2316	0.9	83.4	3.0	3.5	2.0	5.5	1.0	0.6	0.1	84.3	3.0	12.7	0.080	0.524	25.806343	-111.329557
Nopoló	109.50	1	0	2348	1.6	85.7	2.2	3.4	1.5	4.2	0.8	0.5	0.1	87.3	2.2	10.5	0.098	0.531	25.924809	-111.362804
T. Der. Aeropuerto de Loreto	117.30	1	0	3809	2.1	83.9	2.4	5.6	1.5	3.3	0.8	0.3	0.1	86.0	2.4	11.6	0.076	0.514	25.977407	-111.367370
T. Der. Loreto	120.00	1	0	4112	2.9	87.7	1.4	2.8	1.5	2.5	0.6	0.5	0.1	90.6	1.4	8.0	0.101	0.513	26.000908	-111.366496

4 CARR: Ent. Punta Prieta - Guerrero Negro

CLAVE: 00321

RUTA: MEX-001

AÑO: 2021

LUGAR	ESTACION				CLASIFICACION VEHICULAR EN PORCIENTO													COORDENADAS		
	KM	TE	SC	TDPA	M	A	B	C2	C3	T3S2	T3S3	T3S2R4	OTROS	A	B	C	K'	D	LATITUD	LONGITUD
Parador Punta Prieta	0.00	3	0	810	3.1	50.5	12.2	22.9	3.0	5.3	2.3	0.7	0.0	53.6	12.2	34.2	0.094	0.511	28.913991	-114.150906
Rosarito	50.60	3	0	1026	0.6	58.3	5.0	12.3	4.5	15.5	3.0	0.8	0.0	58.9	5.0	36.1	0.072	0.520	28.632406	-114.021421
Tanatán	70.10	3	0	909	6.4	60.3	2.4	8.8	3.1	15.5	2.7	0.8	0.0	66.7	2.4	30.9	0.077	0.543	28.506121	-114.020640
Tampico	105.00	1	0	1073	0.9	66.3	4.5	9.5	3.6	11.7	2.8	0.7	0.0	67.2	4.5	28.3	0.083	0.542	28.193169	-114.001652
Lim. Edos. Term. B.C. Ppia. B.C.S. (Paralelo 28)	128.56																			
Ent. Guerrero Negro	130.00	1	0	1765	2.9	76.7	2.3	7.6	1.0	7.8	1.2	0.5	0.0	79.6	2.3	18.1	0.091	0.530	27.974647	-114.013572

BAJA CALIFORNIA SUR

5 CARR : La Paz - Cd. Insurgentes

CLAVE: 03101

RUTA: MEX-001

AÑO: 2021

LUGAR	ESTACION				CLASIFICACION VEHICULAR EN PORCIENTO													COORDENADAS		
	KM	TE	SC	TDPA	M	A	B	C2	C3	T3S2	T3S3	T3S2R4	OTROS	A	B	C	K'	D	LATITUD	LONGITUD
La Paz	0.00	3	1	15912	6.5	88.2	0.5	2.0	1.3	0.8	0.2	0.3	0.2	94.7	0.5	4.8	0.098	0.548	24.121375	-110.336926
La Paz	0.00	3	2	13120	6.9	88.2	0.6	1.8	1.1	0.7	0.3	0.2	0.2	95.1	0.6	4.3	0.085	0.548	24.121402	-110.336723
T. Izq. Aeropuerto	8.90	1	1	11939	4.8	91.3	0.5	1.6	0.7	0.7	0.2	0.1	0.1	96.1	0.5	3.4	0.085	0.502	24.108679	-110.359702
T. Izq. Aeropuerto	8.90	1	2	12045	4.6	91.2	0.6	1.7	0.9	0.6	0.2	0.1	0.1	95.8	0.6	3.6	0.097	0.502	24.108530	-110.359590
T. Izq. Aeropuerto	8.90	3	1	9566	3.4	91.9	0.6	1.7	1.1	0.9	0.3	0.1	0.0	95.3	0.6	4.1	0.084	0.525	24.104723	-110.368899
T. Izq. Aeropuerto	8.90	3	2	8658	4.3	89.7	0.8	2.0	1.6	1.1	0.3	0.2	0.0	94.0	0.8	5.2	0.080	0.525	24.104607	-110.368865
El Centenario	13.50	3	1	4883	3.4	90.9	0.7	2.0	0.9	1.3	0.4	0.4	0.0	94.3	0.7	5.0	0.085	0.531	24.106420	-110.414836
El Centenario	13.50	3	2	4316	4.4	89.4	0.8	2.1	1.1	1.4	0.4	0.4	0.0	93.8	0.8	5.4	0.079	0.531	24.106364	-110.414947
T. Der. San Juan de La Costa	17.00	1	1	2840	3.2	85.6	1.5	4.8	0.9	2.5	0.8	0.7	0.0	88.8	1.5	9.7	0.074	0.503	24.118196	-110.432196
T. Der. San Juan de La Costa	17.00	1	2	2808	3.3	84.8	1.6	5.3	1.1	2.6	0.8	0.5	0.0	88.1	1.6	10.3	0.113	0.503	24.118196	-110.432196
T. Der. San Juan de La Costa	17.00	3	0	2857	1.5	82.3	2.7	3.6	1.7	5.2	1.6	1.3	0.1	83.8	2.7	13.5	0.078	0.511	24.119927	-110.442581
T. Der. Alfredo V. Bonfil	24.00	3	0	2569	1.8	81.4	2.8	4.2	1.7	5.1	1.7	1.2	0.1	83.2	2.8	14.0	0.085	0.530	24.089741	-110.520847
T. Izq. El Conejo	79.60	1	0	2277	1.9	81.0	2.6	3.7	1.4	6.4	1.6	1.3	0.1	82.9	2.6	14.5	0.090	0.506	24.179026	-110.940666
T. Izq. El Conejo	79.60	3	0	2002	2.2	81.9	2.3	4.3	1.3	5.5	1.3	1.1	0.1	84.1	2.3	13.6	0.103	0.513	24.186106	-110.945532
El Ciento Veintiocho	118.20	1	0	2347	1.6	79.8	2.4	5.3	1.4	6.3	1.8	1.3	0.1	81.4	2.4	16.2	0.094	0.526	24.465520	-111.216550
Santa Rita	156.70	1	0	2222	1.9	78.6	2.9	4.9	1.5	6.6	2.2	1.4	0.0	80.5	2.9	16.6	0.098	0.514	24.584670	-111.457760
Santa Rita	156.70	3	0	2136	1.6	83.0	0.6	2.9	2.1	2.8	3.5	2.7	0.8	84.6	0.6	14.8	0.088	0.523	24.597162	-111.472938
Cd. Constitución	213.00	1	0	4526	3.2	79.4	1.5	10.5	1.6	2.5	0.7	0.3	0.3	82.6	1.5	15.9	0.079	0.511	25.006692	-111.661367
Cd. Constitución	213.00	3	1	4922	1.8	84.9	0.8	8.1	0.9	2.4	0.7	0.1	0.3	86.7	0.8	12.5	0.094	0.512	25.045282	-111.679140
Cd. Constitución	213.00	3	2	4700	0.6	85.7	0.9	8.1	0.8	2.6	0.8	0.1	0.4	86.3	0.9	12.8	0.115	0.512	25.045236	-111.679279
T. Der. Ley Federal de Aguas Número Cuatro	229.00	1	1	2396	0.4	91.2	0.9	2.7	0.3	1.7	1.1	0.8	0.9	91.6	0.9	7.5	0.081	0.551	25.195105	-111.748408
T. Der. Ley Federal de Aguas Número Cuatro	229.00	1	2	2340	0.4	89.6	1.0	3.5	0.4	1.8	1.4	1.0	0.9	90.0	1.0	9.0	0.093	0.551	25.195074	-111.748480
Cd. Insurgentes	236.50	1	1	2754	0.7	91.5	0.7	2.6	0.7	1.6	0.9	0.6	0.7	92.2	0.7	7.1	0.081	0.529	25.235906	-111.767291
Cd. Insurgentes	236.50	1	2	2452	1.0	89.6	0.9	3.0	0.8	2.4	0.9	0.7	0.7	90.6	0.9	8.5	0.073	0.529	25.235878	-111.767358

6 CARR : La Paz - Pichilingue

CLAVE: 03230

RUTA: MEX-011

AÑO: 2021

LUGAR	ESTACION				CLASIFICACION VEHICULAR EN PORCIENTO													COORDENADAS		
	KM	TE	SC	TDPA	M	A	B	C2	C3	T3S2	T3S3	T3S2R4	OTROS	A	B	C	K'	D	LATITUD	LONGITUD
La Paz	0.00	3	1	7920	11.9	79.4	0.6	6.8	1.0	0.2	0.0	0.1	0.0	91.3	0.6	8.1	0.086	0.505	24.178089	-110.303155
La Paz	0.00	3	2	7763	12.0	80.2	0.5	6.2	0.8	0.2	0.0	0.1	0.0	92.2	0.5	7.3	0.138	0.505	24.178159	-110.303308
Escuela Técnica Pesquera	9.30	3	0	1830	2.2	79.0	0.5	6.6	5.1	2.5	2.6	1.4	0.1	81.2	0.5	18.3	0.190	0.520	24.229948	-110.308675
Pichilingue	17.00	1	0	3405	1.9	80.5	0.8	4.3	3.2	6.7	1.2	1.2	0.2	82.4	0.8	16.8	0.179	0.504	24.270362	-110.319686

BAJA CALIFORNIA SUR

7 CARR : Libramiento de Cabo San Lucas

CLAVE: 03100

RUTA: MEX-001

AÑO: 2021

LUGAR	ESTACION				CLASIFICACION VEHICULAR EN PORCIENTO										COORDENADAS					
	KM	TE	SC	TDPA	M	A	B	C2	C3	T3S2	T3S3	T3S2R4	OTROS	A	B	C	K'	D	LATITUD	LONGITUD
T. C. San Pedro - Cabo San Lucas	0.00	3	1	20533	2.8	88.3	0.7	5.4	1.5	0.4	0.3	0.4	0.2	91.1	0.7	8.2	0.063	0.506	22.898849	-109.924036
T. C. San Pedro - Cabo San Lucas	0.00	3	2	20081	2.9	87.9	0.7	5.6	1.6	0.4	0.3	0.4	0.2	90.8	0.7	8.5	0.066	0.506	22.898933	-109.924108
T. C. Cabo San Lucas - La Paz	3.00	1	1	25564	5.0	88.1	0.7	2.8	1.2	0.8	0.2	0.9	0.3	93.1	0.7	6.2	0.068	0.521	22.900226	-109.910433
T. C. Cabo San Lucas - La Paz	3.00	1	2	27821	4.8	88.7	0.7	2.5	1.2	0.7	0.2	0.9	0.3	93.5	0.7	5.8	0.077	0.521	22.900342	-109.910379

8 CARR : Libramiento de Todos Santos

CLAVE:

RUTA: MEX-019

AÑO: 2021

LUGAR	ESTACION				CLASIFICACION VEHICULAR EN PORCIENTO										COORDENADAS					
	KM	TE	SC	TDPA	M	A	B	C2	C3	T3S2	T3S3	T3S2R4	OTROS	A	B	C	K'	D	LATITUD	LONGITUD
T. C. San Pedro - Cabo San Lucas Norte	0.00	3	0	4262	1.3	84.2	2.2	3.2	1.3	4.8	1.3	1.4	0.3	85.5	2.2	12.3	0.100	0.509	23.474490	-110.212026
T. C. San Pedro - Cabo San Lucas Sur	7.50																			

9 CARR : Loreto - Santa Rosalía

CLAVE: 03393

RUTA: MEX-001

AÑO: 2021

LUGAR	ESTACION				CLASIFICACION VEHICULAR EN PORCIENTO										COORDENADAS					
	KM	TE	SC	TDPA	M	A	B	C2	C3	T3S2	T3S3	T3S2R4	OTROS	A	B	C	K'	D	LATITUD	LONGITUD
Loreto	0.00	3	0	1479	1.8	76.2	2.4	6.7	1.8	8.5	1.6	1.0	0.0	78.0	2.4	19.6	0.079	0.531	26.037854	-111.364110
Rosarito	63.00	1	0	931	1.8	78.4	3.2	3.7	1.3	8.0	2.1	1.5	0.0	80.2	3.2	16.6	0.081	0.548	26.433721	-111.637095
Rosarito	63.00	3	0	923	1.9	77.8	3.5	3.8	1.3	7.9	2.3	1.5	0.0	79.7	3.5	16.8	0.092	0.548	26.462489	-111.657642
Mulegé	135.00	1	0	2632	1.5	84.0	2.8	4.6	1.4	4.6	0.6	0.5	0.0	85.5	2.8	11.7	0.089	0.535	26.889186	-111.979261
Mulegé	135.00	3	0	1330	2.4	77.3	3.6	4.1	1.1	8.8	1.6	1.1	0.0	79.7	3.6	16.7	0.077	0.541	26.892690	-111.997978
T. Izq. Santa Águeda	189.00	1	0	2294	2.0	84.5	2.1	3.5	1.2	4.8	1.1	0.8	0.0	86.5	2.1	11.4	0.084	0.525	27.269275	-112.243462
T. Izq. Santa Águeda	189.00	3	0	2206	0.9	87.2	1.8	2.9	0.9	4.8	0.9	0.6	0.0	88.1	1.8	10.1	0.083	0.522	27.281166	-112.244472
Santa Rosalía	197.00	1	0	3883	0.9	86.8	2.4	2.9	1.3	4.4	0.7	0.6	0.0	87.7	2.4	9.9	0.079	0.515	27.319935	-112.244489

10 CARR : Ramal a Aeropuerto de La Paz

CLAVE: 03396

RUTA: MEX-001

AÑO: 2021

LUGAR	ESTACION				CLASIFICACION VEHICULAR EN PORCIENTO										COORDENADAS					
	KM	TE	SC	TDPA	M	A	B	C2	C3	T3S2	T3S3	T3S2R4	OTROS	A	B	C	K'	D	LATITUD	LONGITUD
T. C. La Paz - Cd. Insurgentes	0.00	3	1	2901	5.2	87.0	0.7	6.0	0.6	0.2	0.1	0.1	0.1	92.2	0.7	7.1	0.146	0.516	24.099260	-110.367210
T. C. La Paz - Cd. Insurgentes	0.00	3	2	3091	5.2	87.3	0.6	5.7	0.8	0.1	0.1	0.1	0.1	92.5	0.6	6.9	0.111	0.516	24.099280	-110.367010
Aeropuerto	3.44																			

BAJA CALIFORNIA SUR

11 CARR: Ramal a Aeropuerto de Los Cabos

CLAVE: 03394

RUTA: MEX-001

AÑO: 2021

LUGAR	ESTACION				CLASIFICACION VEHICULAR EN PORCIENTO														COORDENADAS	
	KM	TE	SC	TDPA	M	A	B	C2	C3	T3S2	T3S3	T3S2R4	OTROS	A	B	C	K'	D	LATITUD	LONGITUD
T. C. Cabo San Lucas - La Paz	0.00	3	0	11842	1.5	83.2	0.5	13.8	0.4	0.2	0.2	0.1	0.1	84.7	0.5	14.8	0.103	0.505	23.160025	-109.712320
Aeropuerto Los Cabos	1.00																			

12 CARR: Ramal a Los Paredones

CLAVE: 03407

RUTA: MEX-001

AÑO: 2021

LUGAR	ESTACION				CLASIFICACION VEHICULAR EN PORCIENTO														COORDENADAS	
	KM	TE	SC	TDPA	M	A	B	C2	C3	T3S2	T3S3	T3S2R4	OTROS	A	B	C	K'	D	LATITUD	LONGITUD
T. C. Cd. Santa Rosalía - Guerrero Negro	0.00	3	0	958	3.7	85.2	0.7	8.9	0.4	1.1	0.0	0.0	0.0	88.9	0.7	10.4	0.081	0.500	27.300943	-112.899651
Paredones	1.40																			

13 CARR: Ramal a Miraflores

CLAVE: 03407

RUTA: MEX-001

AÑO: 2021

LUGAR	ESTACION				CLASIFICACION VEHICULAR EN PORCIENTO														COORDENADAS	
	KM	TE	SC	TDPA	M	A	B	C2	C3	T3S2	T3S3	T3S2R4	OTROS	A	B	C	K'	D	LATITUD	LONGITUD
T. C. Cabo San Lucas - La Paz	0.00	3	1	1160	1.6	90.8	1.1	5.5	0.7	0.0	0.0	0.0	0.3	92.4	1.1	6.5	0.099	0.501	23.371170	-109.755100
T. C. Cabo San Lucas - La Paz	0.00	3	2	1163	1.5	90.2	1.1	6.1	0.8	0.0	0.0	0.0	0.3	91.7	1.1	7.2	0.089	0.501	23.371050	-109.755130
Miraflores	2.20																			

14 CARR: Ramal a Puerto Escondido

CLAVE: 03407

RUTA: MEX-001

AÑO: 2021

LUGAR	ESTACION				CLASIFICACION VEHICULAR EN PORCIENTO														COORDENADAS	
	KM	TE	SC	TDPA	M	A	B	C2	C3	T3S2	T3S3	T3S2R4	OTROS	A	B	C	K'	D	LATITUD	LONGITUD
T. C. Cd. Insurgentes - Loreto	0.00	3	0	266	1.6	75.3	0.2	21.5	1.3	0.0	0.1	0.0	0.0	76.9	0.2	22.9	0.124	0.502	25.803242	-111.325935
Puerto Escondido	2.50																			

15 CARR: Ramal a San Ignacio

CLAVE: 03413

RUTA: MEX-001

AÑO: 2021

LUGAR	ESTACION				CLASIFICACION VEHICULAR EN PORCIENTO														COORDENADAS	
	KM	TE	SC	TDPA	M	A	B	C2	C3	T3S2	T3S3	T3S2R4	OTROS	A	B	C	K'	D	LATITUD	LONGITUD
T. C. Santa Rosalía - Guerrero Negro	0.00	3	0	1454	1.9	89.4	0.4	7.4	0.5	0.1	0.1	0.0	0.2	91.3	0.4	8.3	0.072	0.504	27.300216	-112.893975
San Ignacio	2.70																			

BAJA CALIFORNIA SUR

16 CARR: Ramal a Santiago

CLAVE: 03051

RUTA: MEX-001

AÑO: 2021

LUGAR	ESTACION				CLASIFICACION VEHICULAR EN PORCIENTO														COORDENADAS	
	KM	TE	SC	TDPA	M	A	B	C2	C3	T3S2	T3S3	T3S2R4	OTROS	A	B	C	K'	D	LATITUD	LONGITUD
T. C. Cabo San Lucas - La Paz	0.00	3	1	687	1.7	90.5	1.1	6.5	0.2	0.0	0.0	0.0	0.0	92.2	1.1	6.7	0.074	0.512	23.479565	-109.707022
T. C. Cabo San Lucas - La Paz	0.00	3	2	644	0.3	90.6	1.0	7.8	0.3	0.0	0.0	0.0	0.0	90.9	1.0	8.1	0.078	0.512	23.479501	-109.707039
Santiago	2.30																			

17 CARR: Ramal Aeropista San Ignacio

CLAVE: 03053

RUTA: MEX-001

AÑO: 2021

LUGAR	ESTACION				CLASIFICACION VEHICULAR EN PORCIENTO														COORDENADAS	
	KM	TE	SC	TDPA	M	A	B	C2	C3	T3S2	T3S3	T3S2R4	OTROS	A	B	C	K'	D	LATITUD	LONGITUD
T.C. Cd. Santa Rosalia - Guerrero Negro	0.00	3	0	2	0.0	100.0	0.0	0.0	0.0	0.0	0.0	0.0	0.0	100.0	0.0	0.0	1.000	0.500	27.290907	-112.938099
Aeropista San Ignacio	1.00																			

18 CARR: San Pedro - Cabo San Lucas

CLAVE: 03003

RUTA: MEX-019

AÑO: 2021

LUGAR	ESTACION				CLASIFICACION VEHICULAR EN PORCIENTO														COORDENADAS	
	KM	TE	SC	TDPA	M	A	B	C2	C3	T3S2	T3S3	T3S2R4	OTROS	A	B	C	K'	D	LATITUD	LONGITUD
T. C. Cabo San Lucas - La Paz	0.00	3	1	3246	1.6	88.1	1.4	2.3	1.4	3.2	1.3	0.6	0.1	89.7	1.4	8.9	0.099	0.505	23.878608	-110.254318
T. C. Cabo San Lucas - La Paz	0.00	3	2	3185	1.6	87.4	1.4	2.4	1.4	3.4	1.5	0.8	0.1	89.0	1.4	9.6	0.111	0.505	23.878591	-110.254182
T. Der. Melitón Albáñez	16.00	1	1	2888	1.9	85.6	1.7	2.6	1.6	3.4	1.1	1.4	0.7	87.5	1.7	10.8	0.117	0.505	23.655890	-110.224188
T. Der. Melitón Albáñez	16.00	1	2	2832	2.1	85.4	1.7	2.6	1.4	3.4	1.1	1.5	0.8	87.5	1.7	10.8	0.162	0.505	23.655875	-110.224057
T. Der. Melitón Albáñez	16.00	3	1	2855	1.5	85.3	2.3	2.9	1.4	3.9	0.9	1.0	0.8	86.8	2.3	10.9	0.078	0.515	23.643295	-110.226756
T. Der. Melitón Albáñez	16.00	3	2	3029	2.9	83.7	2.3	3.0	1.5	3.9	0.9	1.0	0.8	86.6	2.3	11.1	0.095	0.515	23.643244	-110.226602
Todos Santos	52.00	1	0	3524	3.7	90.2	1.4	2.7	1.3	0.4	0.3	0.0	0.0	93.9	1.4	4.7	0.114	0.524	23.468749	-110.216443
Todos Santos	52.00	3	0	5173	5.9	89.2	1.0	1.2	1.6	0.6	0.5	0.0	0.0	95.1	1.0	3.9	0.104	0.527	23.435479	-110.218108
El Pescadero	62.00	1	1	4460	1.2	89.9	1.2	2.5	1.3	2.3	0.6	0.7	0.3	91.1	1.2	7.7	0.093	0.506	23.381352	-110.182664
El Pescadero	62.00	1	2	4352	1.1	90.0	1.2	2.6	1.2	2.3	0.6	0.7	0.3	91.1	1.2	7.7	0.123	0.506	23.381426	-110.182521
El Pescadero	62.00	3	1	3984	1.7	87.6	1.6	2.9	1.8	2.2	0.7	1.0	0.5	89.3	1.6	9.1	0.097	0.502	23.349124	-110.162037
El Pescadero	62.00	3	2	3954	1.6	87.8	1.6	3.0	1.7	2.3	0.7	0.9	0.4	89.4	1.6	9.0	0.108	0.502	23.349132	-110.161904
Migriño	102.50	1	1	2805	1.1	85.7	2.0	2.8	1.8	3.3	1.3	1.4	0.6	86.8	2.0	11.2	0.172	0.503	23.050112	-110.094215
Migriño	102.50	1	2	2772	1.2	85.8	1.9	2.8	1.8	3.3	1.2	1.4	0.6	87.0	1.9	11.1	0.130	0.503	23.050099	-110.094050
Cabo San Lucas	131.00	1	1	7482	4.9	86.1	0.5	3.6	3.3	1.1	0.3	0.1	0.1	91.0	0.5	8.5	0.098	0.506	22.923369	-109.977283
Cabo San Lucas	131.00	1	2	7655	5.2	85.6	0.5	3.6	3.4	1.1	0.3	0.2	0.1	90.8	0.5	8.7	0.079	0.506	22.923457	-109.977200

BAJA CALIFORNIA SUR

19 CARR: Santa Rosalía - Guerrero Negro

CLAVE: 03095

RUTA: MEX-001

AÑO: 2021

LUGAR	ESTACION				CLASIFICACION VEHICULAR EN PORCIENTO													COORDENADAS		
	KM	TE	SC	TDPA	M	A	B	C2	C3	T3S2	T3S3	T3S2R4	OTROS	A	B	C	K'	D	LATITUD	LONGITUD
Santa Rosalía	0.00	3	0	3042	7.5	79.0	3.4	4.0	1.4	3.5	0.5	0.7	0.0	86.5	3.4	10.1	0.102	0.524	27.357014	-112.273091
Cuesta Infiernillo	12.00	1	0	1104	5.1	77.4	3.6	3.9	1.8	5.7	1.4	0.9	0.2	82.5	3.6	13.9	0.086	0.542	27.388934	-112.347902
Cuesta Infiernillo	12.00	3	0	1224	2.5	70.9	3.1	12.7	2.0	5.8	2.0	1.0	0.0	73.4	3.1	23.5	0.096	0.504	27.386662	-112.355695
T. Izq. San Ignacio	73.60	1	0	1384	2.8	71.7	2.0	11.0	1.3	8.5	1.5	1.1	0.1	74.5	2.0	23.5	0.090	0.502	27.299945	-112.872462
T. Izq. San Ignacio	73.60	3	0	1917	5.8	81.1	1.5	2.3	3.5	3.8	1.0	0.9	0.1	86.9	1.5	11.6	0.092	0.558	27.301947	-112.897050
T. Izq. Punta Abreojos	95.70	1	0	1102	2.9	75.7	2.5	3.5	2.0	9.5	2.1	1.5	0.3	78.6	2.5	18.9	0.083	0.537	27.328038	-113.116087
T. Izq. Punta Abreojos	95.70	3	0	1089	2.1	74.1	3.0	5.7	1.8	10.3	1.8	1.0	0.2	76.2	3.0	20.8	0.087	0.549	27.330613	-113.117290
Los Ángeles	117.90	1	0	1439	1.5	79.4	3.1	3.1	1.6	9.1	1.6	0.6	0.0	80.9	3.1	16.0	0.089	0.531	27.464492	-113.284609
Los Ángeles	117.90	3	0	1529	1.9	80.1	3.1	3.1	1.1	8.6	1.4	0.6	0.1	82.0	3.1	14.9	0.082	0.515	27.491420	-113.299691
T. Izq. Vizcaíno	144.00	1	0	3145	4.1	73.7	2.6	9.8	2.2	5.9	1.0	0.5	0.2	77.8	2.6	19.6	0.079	0.542	27.631650	-113.377315
T. Izq. Vizcaíno	144.00	3	0	1896	3.0	77.3	4.1	4.2	1.7	8.0	0.9	0.6	0.2	80.3	4.1	15.6	0.068	0.523	27.660316	-113.391140
T. Der. El Arco	189.00	1	0	1213	1.7	74.3	3.7	5.1	1.4	11.5	1.3	0.8	0.2	76.0	3.7	20.3	0.087	0.535	27.850202	-113.760573
T. Der. El Arco	189.00	3	0	1352	9.8	68.2	4.6	6.7	2.0	6.7	1.1	0.7	0.2	78.0	4.6	17.4	0.085	0.506	27.855193	-113.773511
Ent. Guerrero Negro	216.85	1	0	1729	1.8	80.5	2.3	4.4	1.1	8.2	1.1	0.5	0.1	82.3	2.3	15.4	0.071	0.524	27.962238	-114.004493

20 CARR: Libramiento San José del Cabo - Aeropuerto Los Cabos (Cuota)

CLAVE: 03392

RUTA: MEX-001D

AÑO: 2021

LUGAR	ESTACION				CLASIFICACION VEHICULAR EN PORCIENTO													COORDENADAS			
	KM	TE	SC	TDPA	M	A	B	C2	C3	T3S2	T3S3	T3S2R4	OTROS	A	B	C	K'	D	LATITUD	LONGITUD	
Aeropuerto de Los Cabos	100.00																				
Plaza de Cobro Aeropuerto los Cabos	105.10	2	0	6010	0.1	97.9	0.7	0.4	0.2	0.3	0.1	0.3	0.0	98.0	0.7	1.3	0.102	0.500	23.150467	-109.740500	
Plaza de Cobro Los Cabos	118.20	2	0	4868	0.2	98.4	0.8	0.4	0.1	0.1	0.0	0.0	0.0	98.6	0.8	0.6	0.102	0.500	23.049876	-109.719565	
T. C. Cabo San Lucas - La Paz	120.20	1	0	16223	1.8	95.5	0.3	1.8	0.2	0.1	0.1	0.1	0.1	97.3	0.3	2.4	0.129	0.521	23.048989	-109.714078	

21 CARR: Ramal a El Mangle (Cuota)

CLAVE:

RUTA: MEX-001D

AÑO: 2021

LUGAR	ESTACION				CLASIFICACION VEHICULAR EN PORCIENTO													COORDENADAS			
	KM	TE	SC	TDPA	M	A	B	C2	C3	T3S2	T3S3	T3S2R4	OTROS	A	B	C	K'	D	LATITUD	LONGITUD	
T. C. Libramiento Cabo San Lucas - San José del Cabo (Cuota)	0.00																				
T. C. San Pedro - Cabo San Lucas	11.20	1	0	1461	1.2	87.6	1.7	2.5	1.6	1.5	1.7	1.6	0.6	88.8	1.7	9.5	0.133	0.517	22.949662	-109.982121	

BAJA CALIFORNIA SUR

22 CARR: San José del Cabo - Libramiento de Cabo San Lucas - (Cuota)

CLAVE:

RUTA: MEX-001D

AÑO: 2021

LUGAR	ESTACION				CLASIFICACION VEHICULAR EN PORCIENTO										COORDENADAS					
	KM	TE	SC	TDPA	M	A	B	C2	C3	T3S2	T3S3	T3S2R4	OTROS	A	B	C	K'	D	LATITUD	LONGITUD
T. C. Libramiento San José del Cabo	0.00	3	0	2746	1.2	90.9	1.1	3.9	0.7	0.8	0.5	0.6	0.3	92.1	1.1	6.8	0.148	0.512	23.063673	-109.752225
Cabo San Lucas	27.48	1	0	1606	1.7	94.9	0.6	1.9	0.4	0.1	0.1	0.2	0.1	96.6	0.6	2.8	0.163	0.527	22.913320	-109.915986

23 CARR: Cd. Insurgentes - La Purísima

CLAVE: 03005

RUTA: BCS-001

AÑO: 2021

LUGAR	ESTACION				CLASIFICACION VEHICULAR EN PORCIENTO										COORDENADAS					
	KM	TE	SC	TDPA	M	A	B	C2	C3	T3S2	T3S3	T3S2R4	OTROS	A	B	C	K'	D	LATITUD	LONGITUD
Cd. Insurgentes	0.00	3	0	2545	1.0	80.0	0.8	13.7	1.9	2.4	0.1	0.1	0.0	81.0	0.8	18.2	0.077	0.507	25.270859	-111.783538
Ignacio Zaragoza	18.00	1	0	1330	0.7	79.4	0.7	15.0	2.0	2.0	0.1	0.1	0.0	80.1	0.7	19.2	0.074	0.509	25.389045	-111.838227
Ignacio Zaragoza	18.00	3	1	1003	0.3	85.6	0.5	10.3	1.6	1.3	0.2	0.1	0.1	85.9	0.5	13.6	0.081	0.546	25.402044	-111.844168
Ignacio Zaragoza	18.00	3	2	796	0.6	83.5	0.5	12.4	1.6	1.1	0.2	0.1	0.0	84.1	0.5	15.4	0.081	0.546	25.401982	-111.844333
T. Izq. Santo Domingo	28.70	1	0	694	0.9	87.9	0.5	8.9	1.5	0.2	0.1	0.0	0.0	88.8	0.5	10.7	0.080	0.511	25.493633	-111.886766
Francisco Villa	64.00	3	0	288	3.5	81.5	0.6	12.5	1.4	0.3	0.2	0.0	0.0	85.0	0.6	14.4	0.150	0.516	25.802489	-112.029940
La Purísima	107.00	1	0	302	1.8	83.9	0.8	10.9	2.4	0.1	0.1	0.0	0.0	85.7	0.8	13.5	0.103	0.509	26.175814	-112.091660

24 CARR: Cd. Insurgentes - Pto. Adolfo López Mateos

CLAVE: 03404

RUTA: BCS

AÑO: 2021

LUGAR	ESTACION				CLASIFICACION VEHICULAR EN PORCIENTO										COORDENADAS					
	KM	TE	SC	TDPA	M	A	B	C2	C3	T3S2	T3S3	T3S2R4	OTROS	A	B	C	K'	D	LATITUD	LONGITUD
T. C. Cd. Insurgentes - La Purísima	0.00	3	0	665	1.2	80.4	1.6	13.1	2.0	1.6	0.1	0.0	0.0	81.6	1.6	16.8	0.093	0.501	25.275365	-111.806501
Puerto Adolfo López Mateos	35.50	1	0	537	1.2	82.9	1.1	11.2	2.3	1.2	0.1	0.0	0.0	84.1	1.1	14.8	0.104	0.508	25.195961	-112.087923

25 CARR: Ent. Campo Fisher - Punta Abreojos

CLAVE: 03411

RUTA: BCS

AÑO: 2021

LUGAR	ESTACION				CLASIFICACION VEHICULAR EN PORCIENTO										COORDENADAS					
	KM	TE	SC	TDPA	M	A	B	C2	C3	T3S2	T3S3	T3S2R4	OTROS	A	B	C	K'	D	LATITUD	LONGITUD
T. C. Santa Rosalía - Paralelo 28	0.00	3	0	232	2.1	85.2	0.8	7.3	2.2	1.8	0.1	0.4	0.1	87.3	0.8	11.9	0.095	0.542	27.326466	-113.118000
Punta Abreojos	88.00																			

26 CARR: La Paz - Ensenada de Muertos

CLAVE: 03103

RUTA: BCS-246

AÑO: 2021

LUGAR	ESTACION				CLASIFICACION VEHICULAR EN PORCIENTO										COORDENADAS					
	KM	TE	SC	TDPA	M	A	B	C2	C3	T3S2	T3S3	T3S2R4	OTROS	A	B	C	K'	D	LATITUD	LONGITUD
La Paz	0.00	3	0	3662	1.3	84.9	0.2	11.3	1.5	0.5	0.2	0.0	0.1	86.2	0.2	13.6	0.085	0.508	24.117769	-110.293606
T. Izq. El Sargento	45.00	1	0	1293	0.7	87.2	0.3	10.1	1.3	0.3	0.1	0.0	0.0	87.9	0.3	11.8	0.106	0.501	23.982756	-109.995028

BAJA CALIFORNIA SUR

26 CARR: La Paz - Ensenada de Muertos

CLAVE: 03103

RUTA: BCS-246

AÑO: 2021

LUGAR	ESTACION				CLASIFICACION VEHICULAR EN PORCIENTO										COORDENADAS					
	KM	TE	SC	TDPA	M	A	B	C2	C3	T3S2	T3S3	T3S2R4	OTROS	A	B	C	K'	D	LATITUD	LONGITUD
T. Izq. El Sargento	45.00	3	0	1321	0.9	87.2	0.4	9.1	1.6	0.6	0.1	0.0	0.1	88.1	0.4	11.5	0.097	0.535	23.981656	-109.991817
Ensenada de Muertos	57.50	1	0	425	3.4	84.6	0.4	10.2	0.9	0.1	0.4	0.0	0.0	88.0	0.4	11.6	0.152	0.504	24.007616	-109.854039

27 CARR: Libramiento de La Paz

CLAVE: 03004

RUTA: BCS

AÑO: 2021

LUGAR	ESTACION				CLASIFICACION VEHICULAR EN PORCIENTO										COORDENADAS					
	KM	TE	SC	TDPA	M	A	B	C2	C3	T3S2	T3S3	T3S2R4	OTROS	A	B	C	K'	D	LATITUD	LONGITUD
T. C. Cabo San Lucas - La Paz	0.00	3	0	11634	3.2	91.2	0.6	1.5	1.4	1.4	0.4	0.3	0.0	94.4	0.6	5.0	0.074	0.539	24.107612	-110.314775
T. C. La Paz - Cd. Insurgentes	10.00																			

28 CARR: Libramiento Norte de La Paz

CLAVE: 03006

RUTA: BCS

AÑO: 2021

LUGAR	ESTACION				CLASIFICACION VEHICULAR EN PORCIENTO										COORDENADAS					
	KM	TE	SC	TDPA	M	A	B	C2	C3	T3S2	T3S3	T3S2R4	OTROS	A	B	C	K'	D	LATITUD	LONGITUD
T. C. La Paz - Pichilingue	0.00	3	0	3893	2.5	68.8	1.1	8.3	6.4	8.0	2.2	2.0	0.7	71.3	1.1	27.6	0.129	0.549	24.230754	-110.297510
T. C. La Paz - Ensenada de Muertos	18.80	1	0	4154	2.3	67.6	1.0	9.8	8.0	6.9	2.2	2.0	0.2	69.9	1.0	29.1	0.083	0.507	24.123211	-110.291555
T. C. La Paz - Ensenada de Muertos	18.80	3	0	8072	5.5	75.7	2.3	4.3	3.8	3.5	1.9	2.1	0.9	81.2	2.3	16.5	0.091	0.583	24.120815	-110.296208
T. C. Cabo San Lucas - La Paz	20.70	1	0	10582	4.4	81.7	1.1	3.3	3.2	2.6	1.3	1.5	0.9	86.1	1.1	12.8	0.091	0.585	24.113836	-110.308795

29 CARR: Ramal a Benito Juárez

CLAVE: 03405

RUTA: BCS

AÑO: 2021

LUGAR	ESTACION				CLASIFICACION VEHICULAR EN PORCIENTO										COORDENADAS					
	KM	TE	SC	TDPA	M	A	B	C2	C3	T3S2	T3S3	T3S2R4	OTROS	A	B	C	K'	D	LATITUD	LONGITUD
T. C. Cd. Constitución - Puerto San Carlos	0.00	3	0	685	1.3	84.6	0.7	10.1	2.6	0.6	0.1	0.0	0.0	85.9	0.7	13.4	0.095	0.513	25.037659	-111.770030
Benito Juárez	11.50	1	0	720	1.5	83.5	0.8	11.7	2.0	0.4	0.1	0.0	0.0	85.0	0.8	14.2	0.097	0.505	25.108021	-111.821291

30 CARR: Ramal a Ejido Ley Federal de Aguas Número Cuatro

CLAVE: 03007

RUTA: BCS

AÑO: 2021

LUGAR	ESTACION				CLASIFICACION VEHICULAR EN PORCIENTO										COORDENADAS					
	KM	TE	SC	TDPA	M	A	B	C2	C3	T3S2	T3S3	T3S2R4	OTROS	A	B	C	K'	D	LATITUD	LONGITUD
T. C. La Paz - Cd. Insurgentes	0.00	3	0	626	1.6	74.4	2.6	13.6	4.1	3.4	0.3	0.0	0.0	76.0	2.6	21.4	0.096	0.506	25.198613	-111.749017
Ejido Ley Federal de Aguas Número Cuatro	19.20																			

BAJA CALIFORNIA SUR

31 CARR: Ramal a El Carrizal

CLAVE: 03050

RUTA: BCS

AÑO: 2021

LUGAR	ESTACION				CLASIFICACION VEHICULAR EN PORCIENTO														COORDENADAS	
	KM	TE	SC	TDPA	M	A	B	C2	C3	T3S2	T3S3	T3S2R4	OTROS	A	B	C	K'	D	LATITUD	LONGITUD
T. C. San Pedro - Cabo San Lucas Carrizal	0.00	3	0	436	1.0	86.1	2.8	8.2	1.3	0.6	0.0	0.0	0.0	87.1	2.8	10.1	0.081	0.508	23.829548	-110.257170
	10.00																			

32 CARR: Ramal a Guerrero Negro

CLAVE: 03395

RUTA: BCS

AÑO: 2021

LUGAR	ESTACION				CLASIFICACION VEHICULAR EN PORCIENTO														COORDENADAS	
	KM	TE	SC	TDPA	M	A	B	C2	C3	T3S2	T3S3	T3S2R4	OTROS	A	B	C	K'	D	LATITUD	LONGITUD
T. C. Santa Rosalía - Guerrero Negro Guerrero Negro	0.00	3	0	2636	1.0	84.9	1.7	10.0	0.9	1.1	0.3	0.1	0.0	85.9	1.7	12.4	0.069	0.515	27.967491	-114.019507
	4.50																			

33 CARR: Ramal a La Ribera

CLAVE: 03406

RUTA: BCS

AÑO: 2021

LUGAR	ESTACION				CLASIFICACION VEHICULAR EN PORCIENTO														COORDENADAS	
	KM	TE	SC	TDPA	M	A	B	C2	C3	T3S2	T3S3	T3S2R4	OTROS	A	B	C	K'	D	LATITUD	LONGITUD
T. C. Cabo San Lucas - La Paz La Ribera	0.00	3	0	1621	0.7	92.2	0.5	4.2	1.8	0.2	0.4	0.0	0.0	92.9	0.5	6.6	0.087	0.524	23.543042	-109.664148
	12.00																			

34 CARR: Ramal a Melitón Albáñez

CLAVE: 03407

RUTA: BCS

AÑO: 2021

LUGAR	ESTACION				CLASIFICACION VEHICULAR EN PORCIENTO														COORDENADAS	
	KM	TE	SC	TDPA	M	A	B	C2	C3	T3S2	T3S3	T3S2R4	OTROS	A	B	C	K'	D	LATITUD	LONGITUD
T. C. San Pedro - Cabo San Lucas Melitón Albáñez	0.00	3	0	540	1.4	84.2	2.0	9.2	1.4	1.8	0.0	0.0	0.0	85.6	2.0	12.4	0.088	0.511	23.653122	-110.226390
	23.50																			

35 CARR: Ramal a Santa Catarina

CLAVE: 03052

RUTA: BCS

AÑO: 2021

LUGAR	ESTACION				CLASIFICACION VEHICULAR EN PORCIENTO														COORDENADAS	
	KM	TE	SC	TDPA	M	A	B	C2	C3	T3S2	T3S3	T3S2R4	OTROS	A	B	C	K'	D	LATITUD	LONGITUD
T. C. Cabo San Lucas - La Paz Santa Catarina	0.00	3	0	1855	2.1	82.2	1.2	10.3	4.2	0.0	0.0	0.0	0.0	84.3	1.2	14.5	0.069	0.504	23.134787	-109.706089
	1.00																			

BAJA CALIFORNIA SUR

36 CARR: Ramal a Bahía de Tortugas

CLAVE: 03397

RUTA: MEX-001-BCS

AÑO: 2021

LUGAR	ESTACION				CLASIFICACION VEHICULAR EN PORCIENTO										COORDENADAS					
	KM	TE	SC	TDPA	M	A	B	C2	C3	T3S2	T3S3	T3S2R4	OTROS	A	B	C	K'	D	LATITUD	LONGITUD
T. C. Santa Rosalía - Guerrero Negro	0.00	3	0	5055	1.2	89.5	4.4	3.1	0.9	0.7	0.1	0.0	0.1	90.7	4.4	4.9	0.070	0.501	27.641750	-113.403640
Vizcaíno	6.00	3	0	1443	1.0	73.9	6.5	14.9	1.3	2.0	0.4	0.0	0.0	74.9	6.5	18.6	0.074	0.512	27.642503	-113.453718
Bahía de Tortugas	198.00																			

37 CARR: Ramal a Ejido Ley Federal de Aguas Número Dos

CLAVE: 03050

RUTA: BCS-MEX-001

AÑO: 2021

LUGAR	ESTACION				CLASIFICACION VEHICULAR EN PORCIENTO										COORDENADAS					
	KM	TE	SC	TDPA	M	A	B	C2	C3	T3S2	T3S3	T3S2R4	OTROS	A	B	C	K'	D	LATITUD	LONGITUD
T. C. Cd. Insurgentes - Loreto	0.00	3	0	126	2.1	87.2	0.8	8.3	0.8	0.8	0.0	0.0	0.0	89.3	0.8	9.9	0.119	0.516	25.297240	-111.649728
T. Ramal a Ley Federal de Aguas No 3	5.40																			
Ejido Ley Federal de Aguas Número Dos	10.00																			

38 CARR: Ramal a Ley Federal de Aguas Número Cinco

CLAVE: 03407

RUTA: BCS-MEX-001

AÑO: 2021

LUGAR	ESTACION				CLASIFICACION VEHICULAR EN PORCIENTO										COORDENADAS					
	KM	TE	SC	TDPA	M	A	B	C2	C3	T3S2	T3S3	T3S2R4	OTROS	A	B	C	K'	D	LATITUD	LONGITUD
Cd. Constitución	0.00	3	1	1506	2.3	82.2	0.9	11.0	1.6	0.9	0.8	0.2	0.1	84.5	0.9	14.6	0.087	0.543	25.034665	-111.631735
Cd. Constitución	0.00	3	2	1269	2.6	82.2	0.7	10.6	1.7	0.8	1.2	0.1	0.1	84.8	0.7	14.5	0.119	0.543	25.034759	-111.631773
Ramal a el Quemado	7.35																			
Ley Federal de Aguas Número Cinco	17.50																			

39 CARR: Ramal a San Juan de La Costa

CLAVE: 03403

RUTA: BCS-163-MEX-001

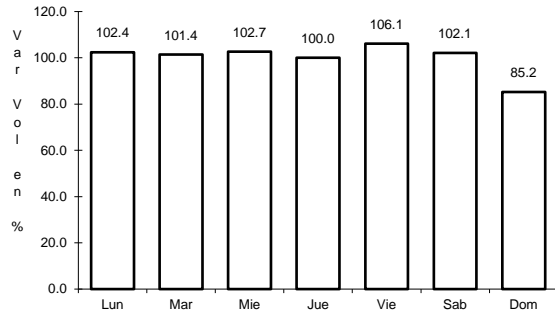
AÑO: 2021

LUGAR	ESTACION				CLASIFICACION VEHICULAR EN PORCIENTO										COORDENADAS					
	KM	TE	SC	TDPA	M	A	B	C2	C3	T3S2	T3S3	T3S2R4	OTROS	A	B	C	K'	D	LATITUD	LONGITUD
T. C. La Paz - Cd. Insurgentes	0.00	3	0	804	1.1	77.2	1.2	18.2	1.6	0.6	0.1	0.0	0.0	78.3	1.2	20.5	0.124	0.511	24.123727	-110.442314
Puerto Cajete	23.00	3	0	489	1.1	67.1	1.9	26.6	2.3	0.9	0.1	0.0	0.0	68.2	1.9	29.9	0.108	0.505	24.254217	-110.611540
San Juan de La Costa	40.70	1	0	472	0.6	65.3	2.1	27.2	3.1	1.0	0.4	0.0	0.3	65.9	2.1	32.0	0.084	0.508	24.364158	-110.685671

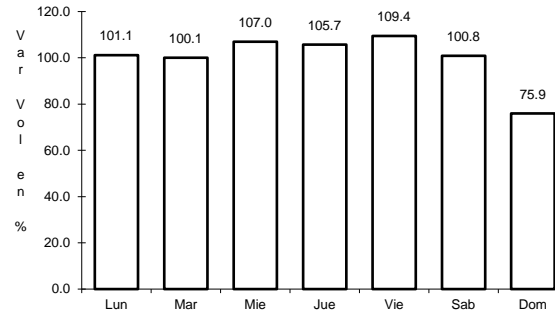
1 CARR: Cabo San Lucas - La Paz

CLAVE: 03102

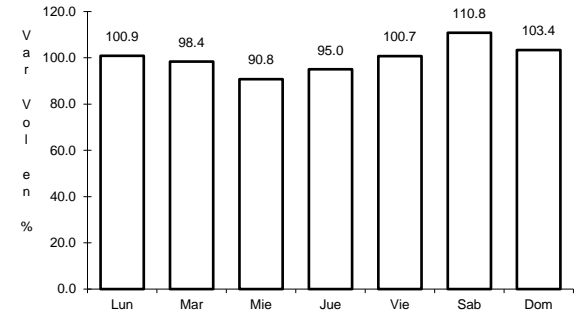
RUTA: MEX-001



Km: 0.00 Tipo: 3 Sent: 1



Km: 0.00 Tipo: 3 Sent: 2

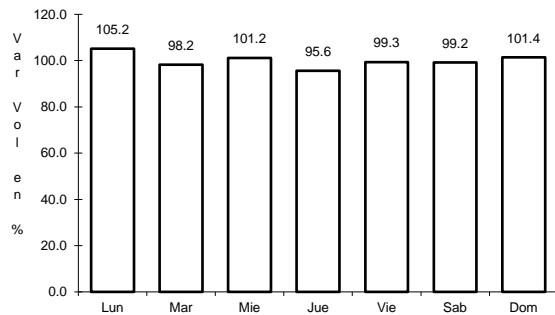


Km: 110.00 Tipo: 3 Sent: 0

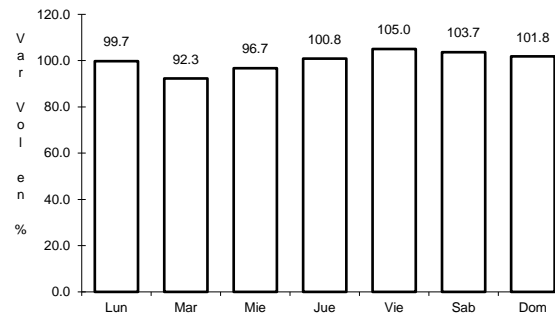
2 CARR: Cd. Constitución - Puerto San Carlos

CLAVE: 03231

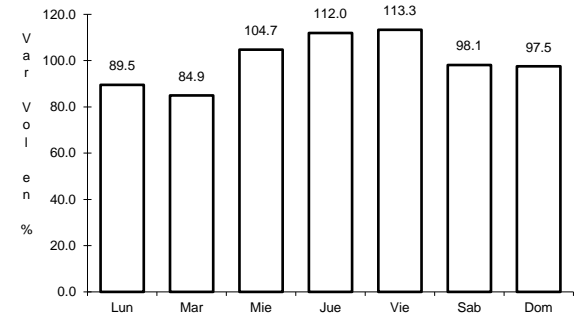
RUTA: MEX-001



Km: 0.00 Tipo: 3 Sent: 0



Km: 10.00 Tipo: 1 Sent: 0

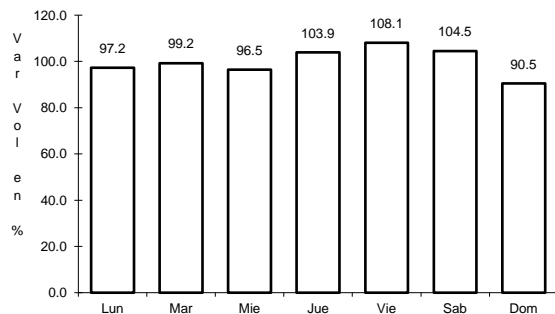


Km: 10.00 Tipo: 3 Sent: 0

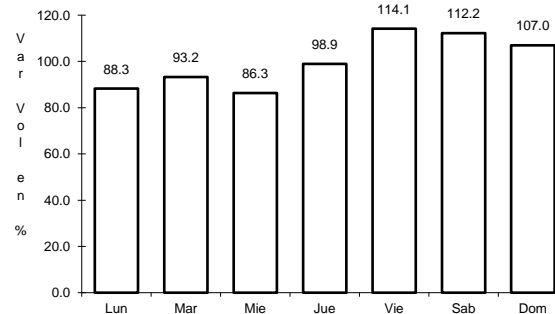
3 CARR: Cd. Insurgentes - Loreto

CLAVE: 03092

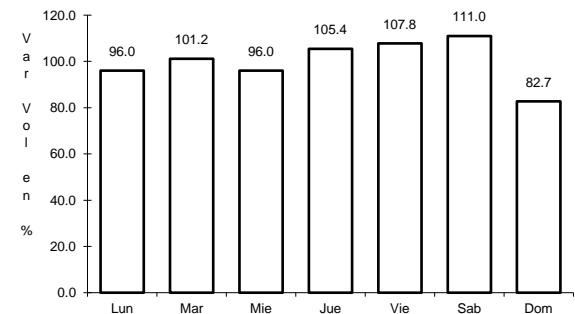
RUTA: MEX-001



Km: 0.00 Tipo: 3 Sent: 0



Km: 65.00 Tipo: 1 Sent: 0

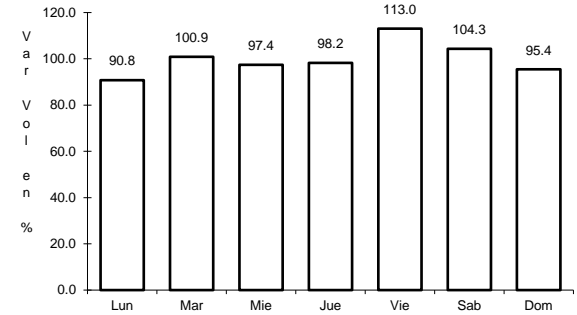
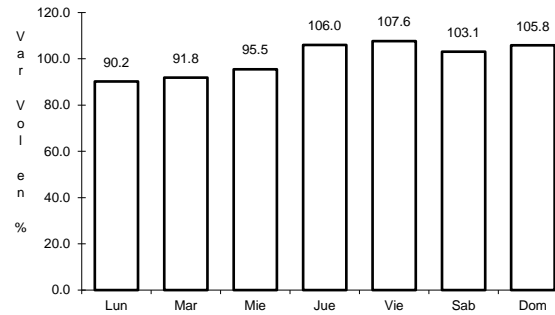
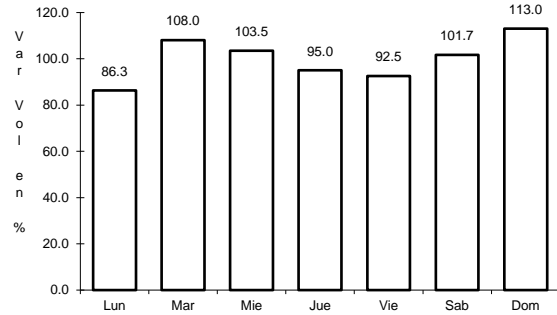


Km: 117.30 Tipo: 1 Sent: 0

4 CARR: Ent. Punta Prieta - Guerrero Negro

CLAVE: 00321

RUTA: MEX-001



Km: 0.00 Tipo: 3 Sent: 0

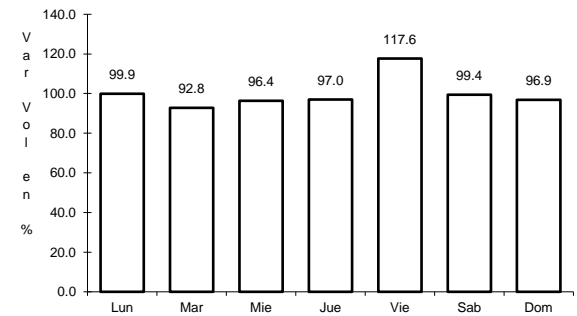
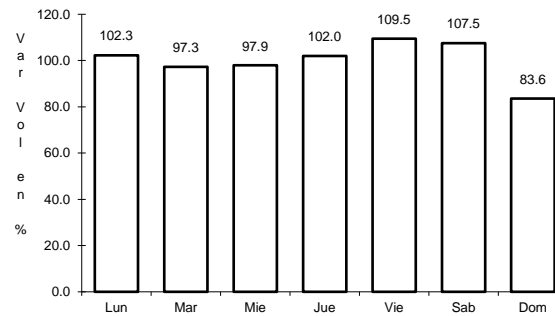
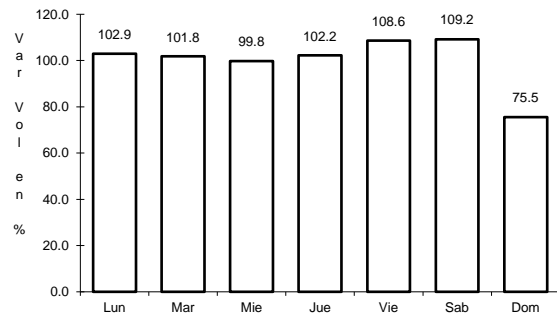
Km: 70.10 Tipo: 3 Sent: 0

Km: 130.00 Tipo: 1 Sent: 0

5 CARR: La Paz - Cd. Insurgentes

CLAVE: 03101

RUTA: MEX-001



Km: 0.00 Tipo: 3 Sent: 1

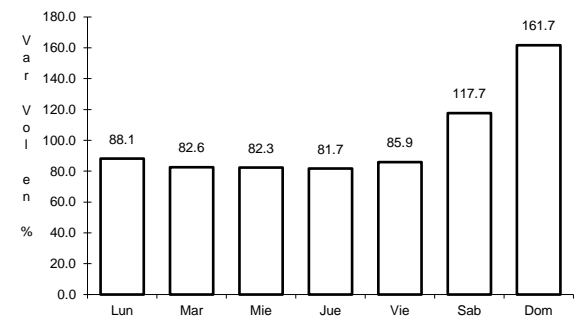
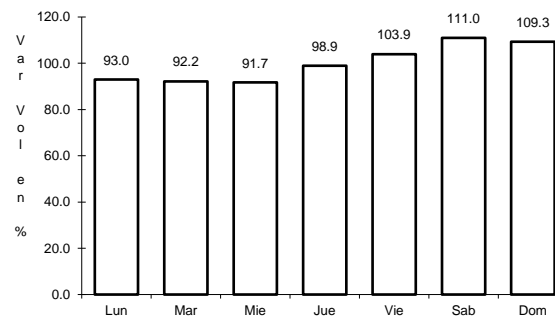
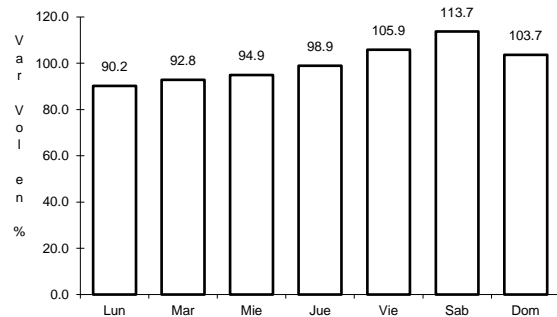
Km: 0.00 Tipo: 3 Sent: 2

Km: 118.20 Tipo: 1 Sent: 0

6 CARR: La Paz - Pichilingue

CLAVE: 03230

RUTA: MEX-011



Km: 0.00 Tipo: 3 Sent: 1

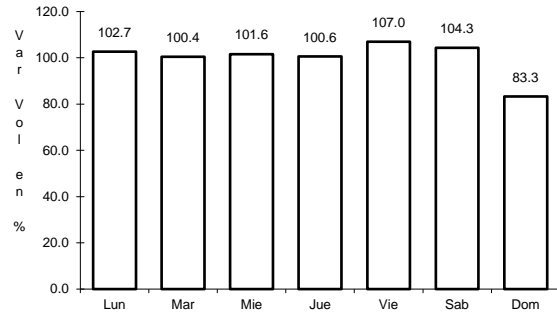
Km: 0.00 Tipo: 3 Sent: 2

Km: 17.00 Tipo: 1 Sent: 0

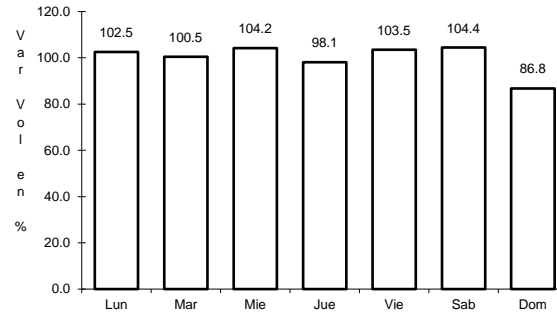
7 CARR: Libramiento de Cabo San Lucas

CLAVE: 03100

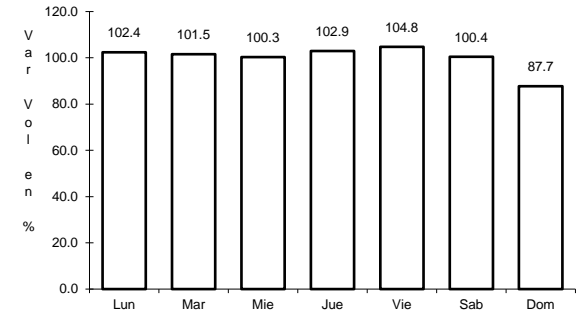
RUTA: MEX-001



Km: 0.00 Tipo: 3 Sent: 1



Km: 0.00 Tipo: 3 Sent: 2

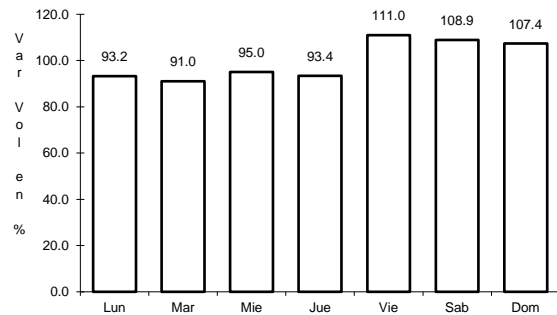


Km: 3.00 Tipo: 1 Sent: 1

8 CARR: Libramiento de Todos Santos

CLAVE:

RUTA: MEX-019

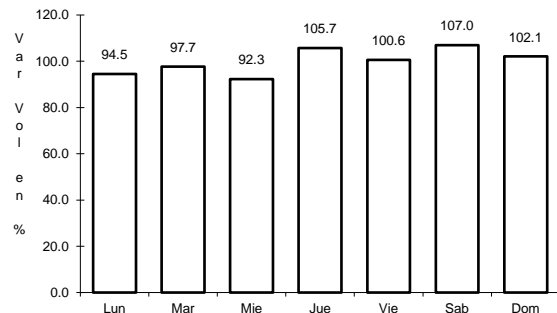


Km: 0.00 Tipo: 3 Sent: 0

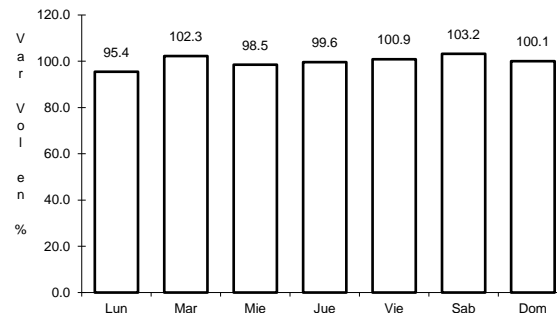
9 CARR: Loreto - Santa Rosalía

CLAVE: 03393

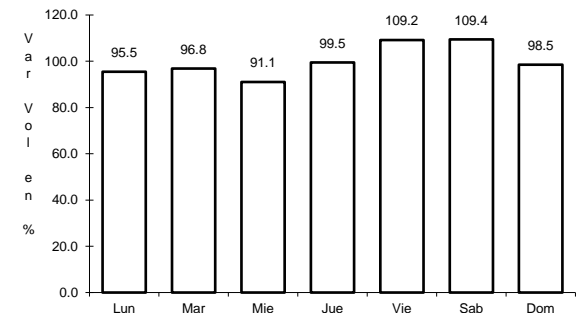
RUTA: MEX-001



Km: 0.00 Tipo: 3 Sent: 0



Km: 135.00 Tipo: 1 Sent: 0

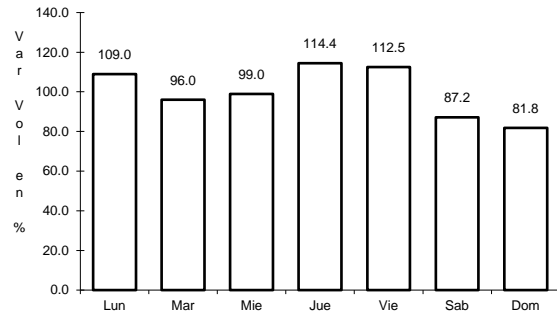


Km: 197.00 Tipo: 1 Sent: 0

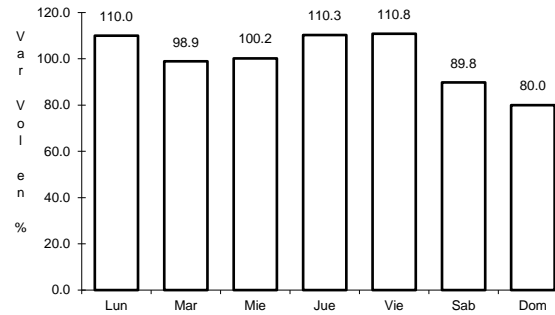
10 CARR: Ramal a Aeropuerto de La Paz

CLAVE: 03396

RUTA: MEX-001



Km: 0.00 Tipo: 3 Sent: 1

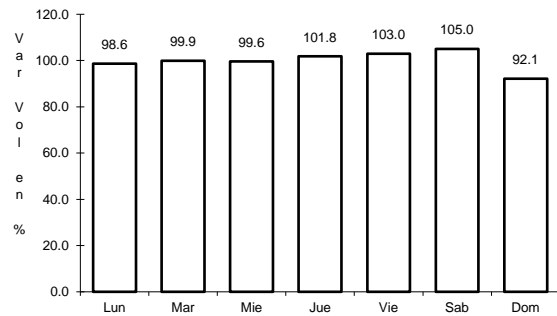


Km: 0.00 Tipo: 3 Sent: 2

11 CARR: Ramal a Aeropuerto de Los Cabos

CLAVE: 03394

RUTA: MEX-001

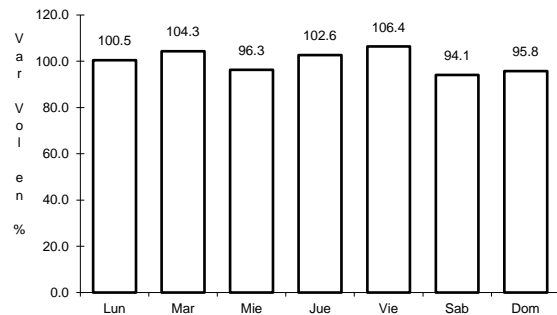


Km: 0.00 Tipo: 3 Sent: 0

12 CARR: Ramal a Los Paredones

CLAVE: 03407

RUTA: MEX-001

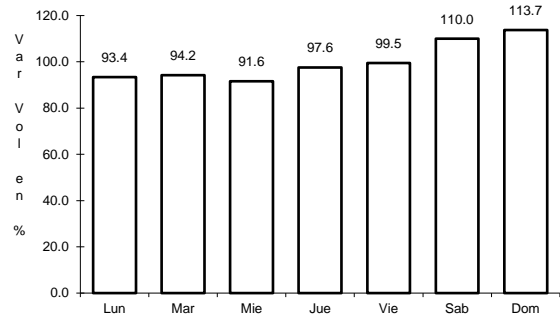


Km: 0.00 Tipo: 3 Sent: 0

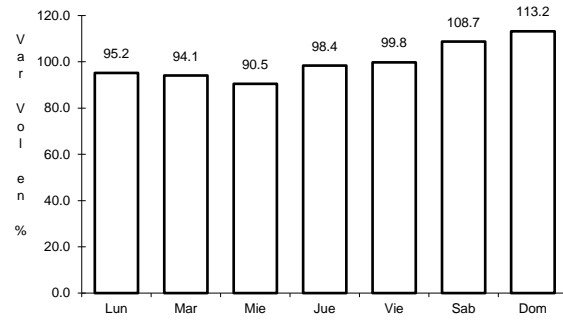
13 CARR: Ramal a Miraflores

CLAVE: 03407

RUTA: MEX-001



Km: 0.00 Tipo: 3 Sent: 1

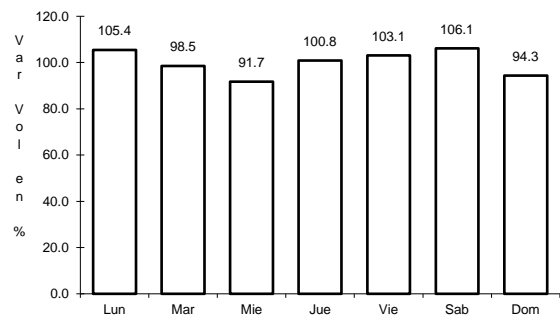


Km: 0.00 Tipo: 3 Sent: 2

14 CARR: Ramal a Puerto Escondido

CLAVE: 03407

RUTA: MEX-001

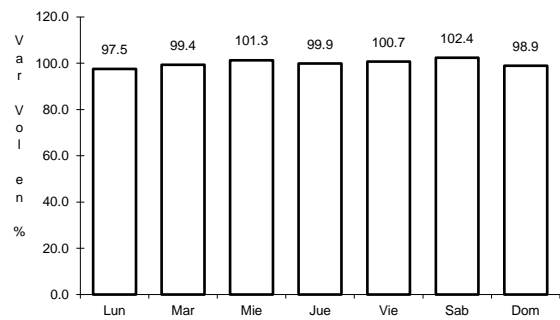


Km: 0.00 Tipo: 3 Sent: 0

15 CARR: Ramal a San Ignacio

CLAVE: 03413

RUTA: MEX-001

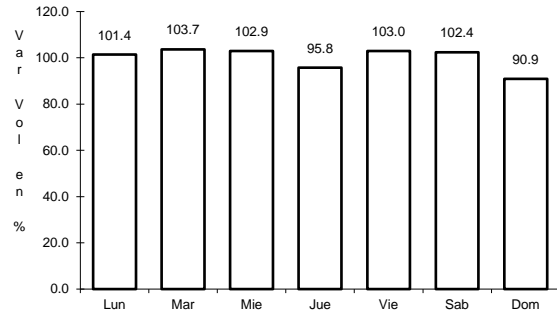


Km: 0.00 Tipo: 3 Sent: 0

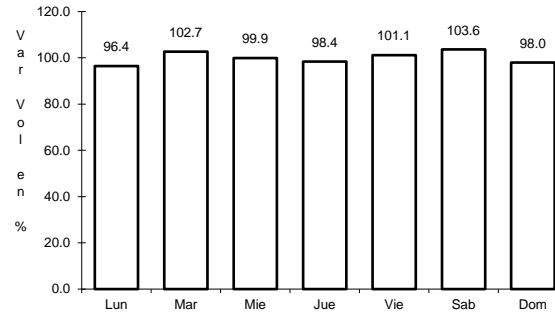
16 CARR: Ramal a Santiago

CLAVE: 03051

RUTA: MEX-001



Km: 0.00 Tipo: 3 Sent: 1

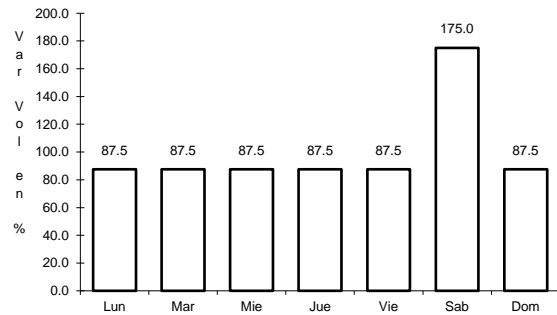


Km: 0.00 Tipo: 3 Sent: 2

17 CARR: Ramal Aeropista San Ignacio

CLAVE: 03053

RUTA: MEX-001

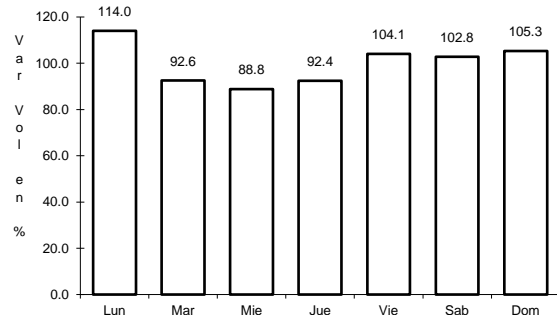


Km: 0.00 Tipo: 3 Sent: 0

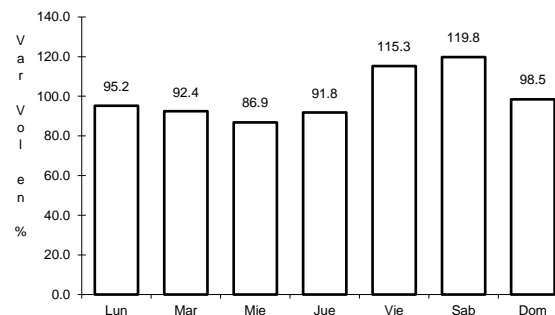
18 CARR: San Pedro - Cabo San Lucas

CLAVE: 03003

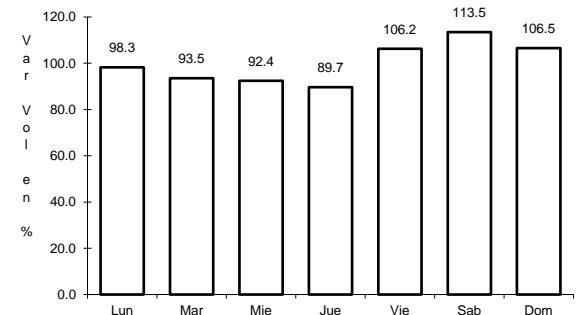
RUTA: MEX-019



Km: 0.00 Tipo: 3 Sent: 1



Km: 0.00 Tipo: 3 Sent: 2

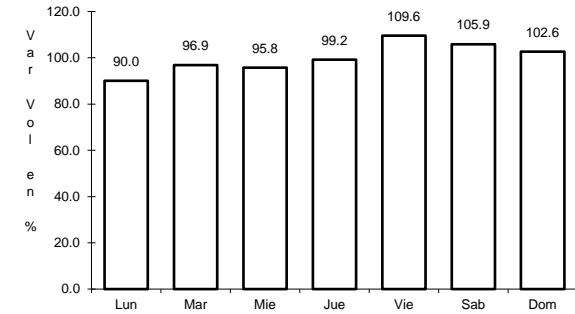
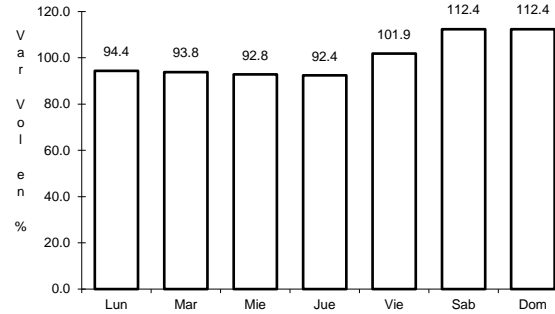
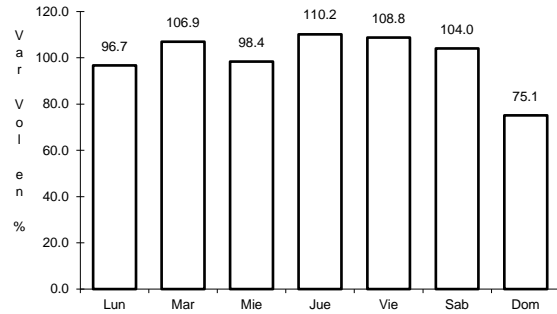


Km: 52.00 Tipo: 1 Sent: 0

19 CARR: Santa Rosalía - Guerrero Negro

CLAVE: 03095

RUTA: MEX-001



Km: 0.00 Tipo: 3 Sent: 0

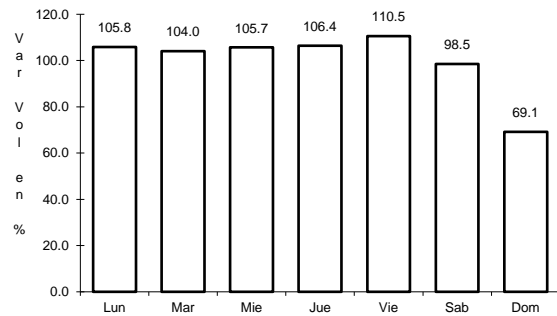
Km: 117.90 Tipo: 1 Sent: 0

Km: 216.85 Tipo: 1 Sent: 0

20 CARR: Libramiento San José del Cabo - Aeropuerto Los Cabos (Cuota)

CLAVE: 03392

RUTA: MEX-001D

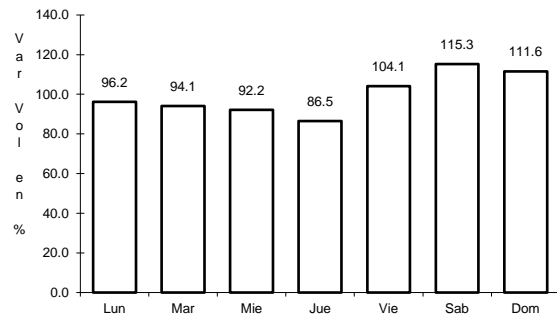


Km: 120.20 Tipo: 1 Sent: 0

21 CARR: Ramal a El Mangle (Cuota)

CLAVE:

RUTA: MEX-001D

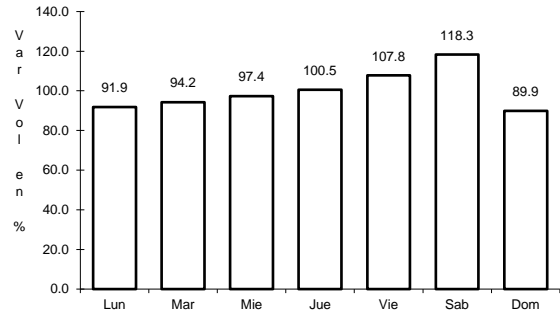


Km: 11.20 Tipo: 1 Sent: 0

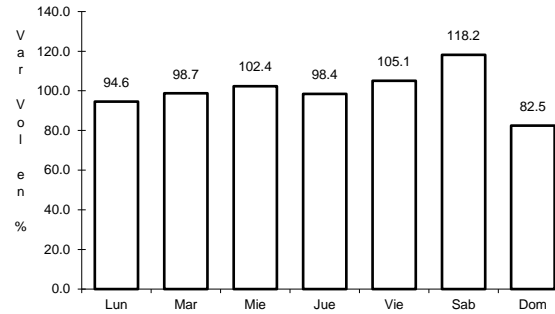
22 CARR: San José del Cabo - Libramiento de Cabo San Lucas - (Cuota)

CLAVE:

RUTA: MEX-001D



Km: 0.00 Tipo: 3 Sent: 0

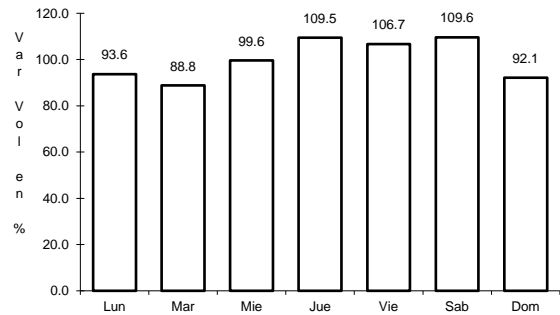


Km: 27.48 Tipo: 1 Sent: 0

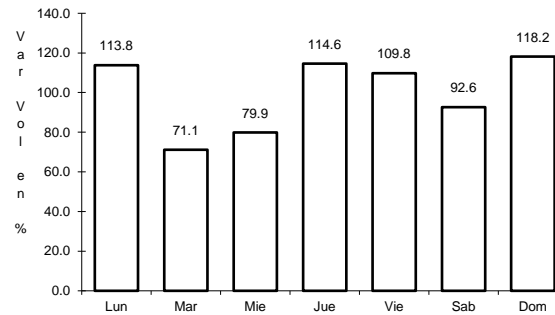
23 CARR: Cd. Insurgentes - La Purísima

CLAVE: 03005

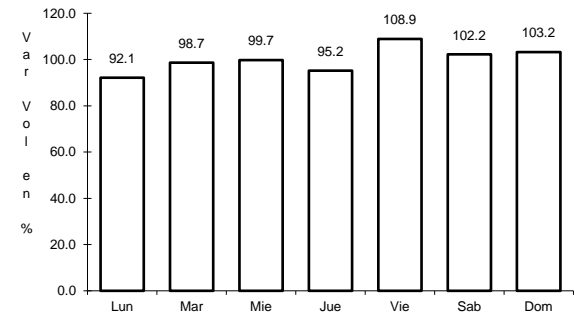
RUTA: BCS-001



Km: 0.00 Tipo: 3 Sent: 0



Km: 64.00 Tipo: 3 Sent: 0

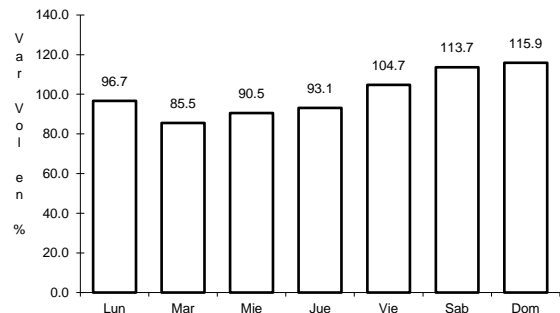


Km: 107.00 Tipo: 1 Sent: 0

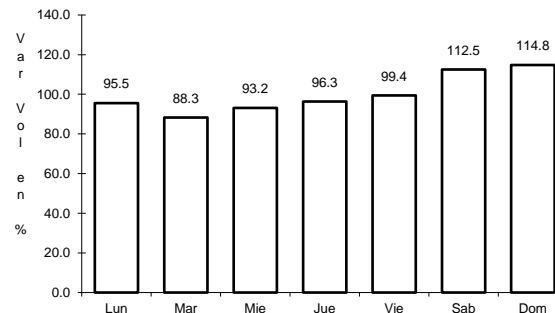
24 CARR: Cd. Insurgentes - Pto. Adolfo López Mateos

CLAVE: 03404

RUTA: BCS



Km: 0.00 Tipo: 3 Sent: 0

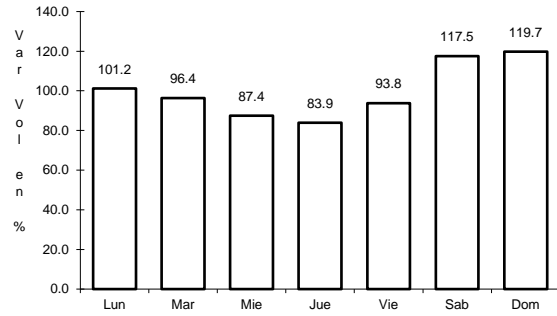


Km: 35.50 Tipo: 1 Sent: 0

25 CARR: Ent. Campo Fisher - Punta Abreojos

CLAVE: 03411

RUTA: BCS



Km: 0.00

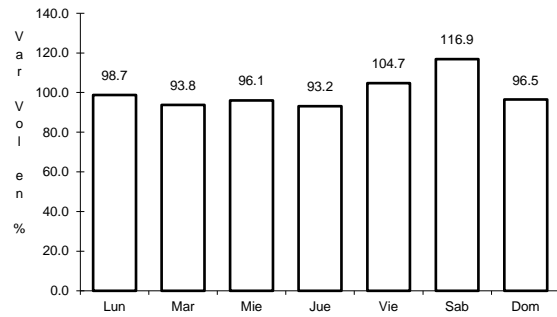
Tipo: 3

Sent: 0

26 CARR: La Paz - Ensenada de Muertos

CLAVE: 03103

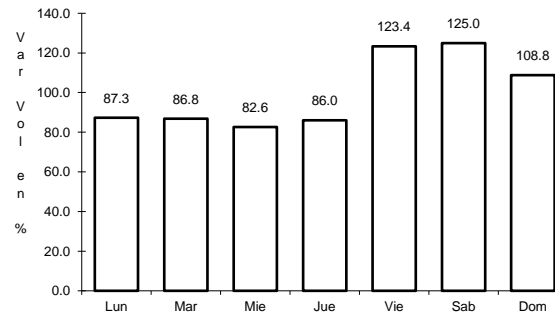
RUTA: BCS-246



Km: 0.00

Tipo: 3

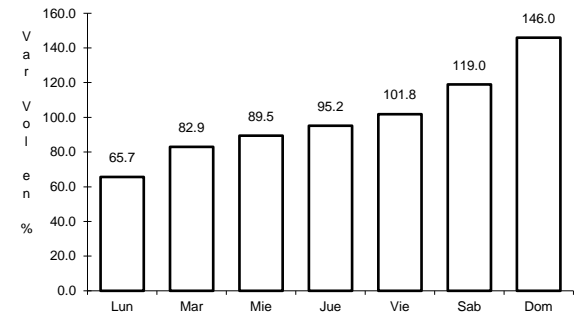
Sent: 0



Km: 45.00

Tipo: 1

Sent: 0



Km: 57.50

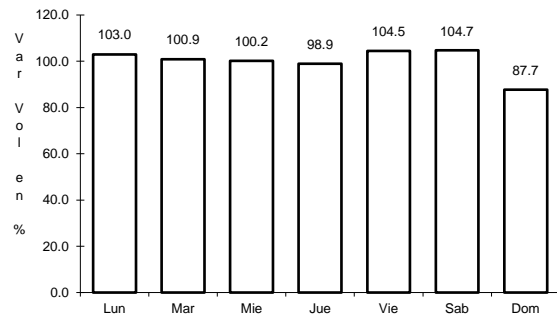
Tipo: 1

Sent: 0

27 CARR: Libramiento de La Paz

CLAVE: 03004

RUTA: BCS



Km: 0.00

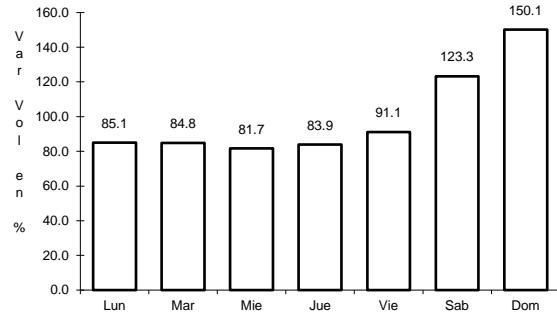
Tipo: 3

Sent: 0

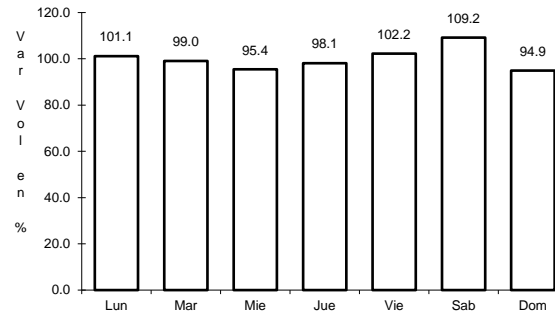
28 CARR: Libramiento Norte de La Paz

CLAVE: 03006

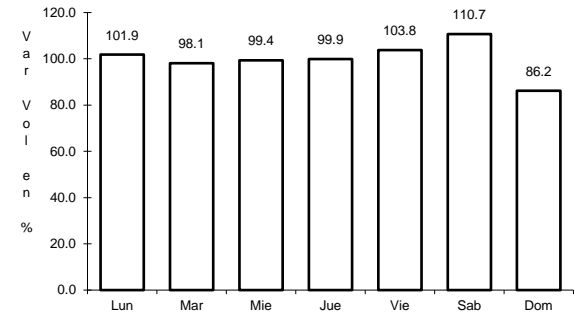
RUTA: BCS



Km: 0.00 Tipo: 3 Sent: 0



Km: 18.80 Tipo: 1 Sent: 0

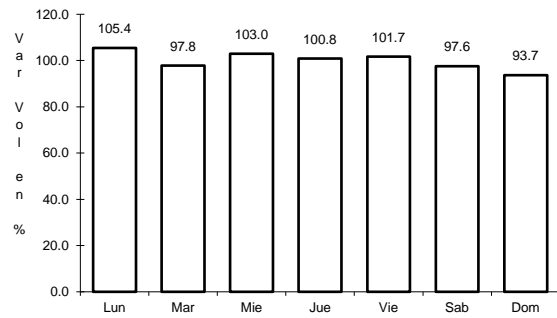


Km: 20.70 Tipo: 1 Sent: 0

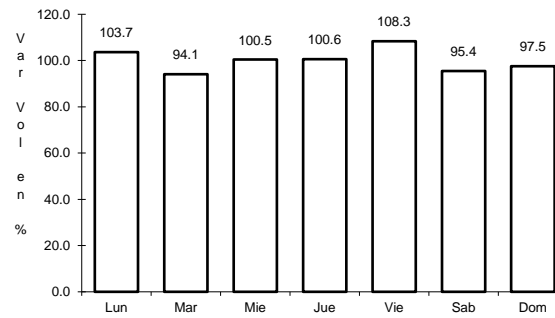
29 CARR: Ramal a Benito Juárez

CLAVE: 03405

RUTA: BCS



Km: 0.00 Tipo: 3 Sent: 0

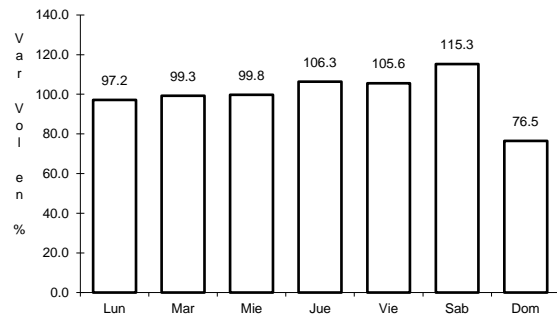


Km: 11.50 Tipo: 1 Sent: 0

30 CARR: Ramal a Ejido Ley Federal de Aguas Número Cuatro

CLAVE: 03007

RUTA: BCS

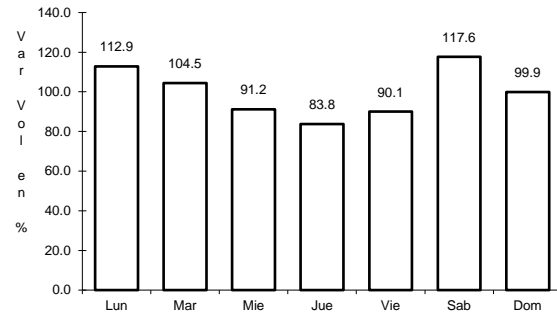


Km: 0.00 Tipo: 3 Sent: 0

31 CARR: Ramal a El Carrizal

CLAVE: 03050

RUTA: BCS



Km: 0.00

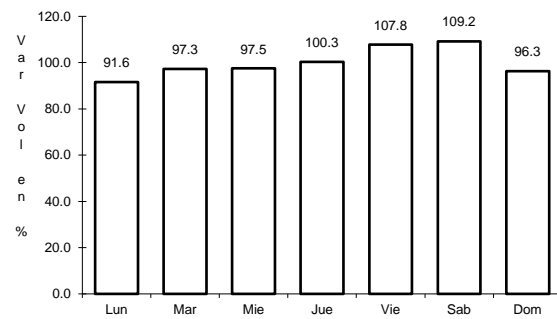
Tipo: 3

Sent: 0

32 CARR: Ramal a Guerrero Negro

CLAVE: 03395

RUTA: BCS



Km: 0.00

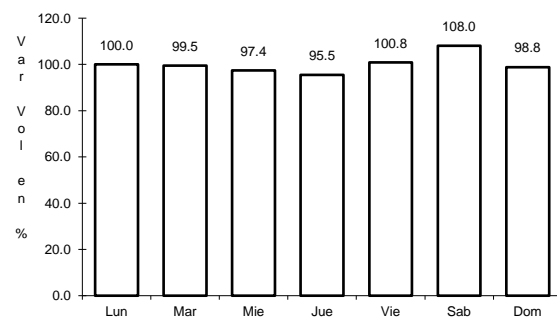
Tipo: 3

Sent: 0

33 CARR: Ramal a La Ribera

CLAVE: 03406

RUTA: BCS



Km: 0.00

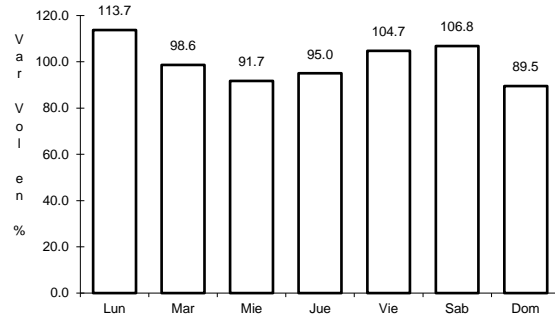
Tipo: 3

Sent: 0

34 CARR: Ramal a Melitón Albáñez

CLAVE: 03407

RUTA: BCS



Km: 0.00

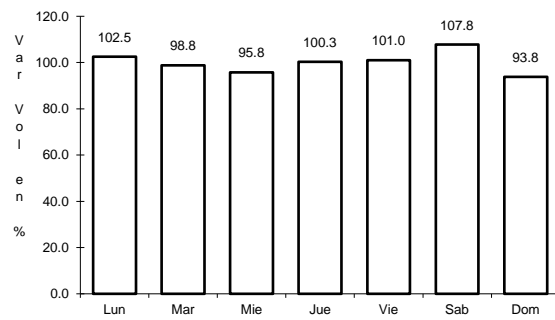
Tipo: 3

Sent: 0

35 CARR: Ramal a Santa Catarina

CLAVE: 03052

RUTA: BCS



Km: 0.00

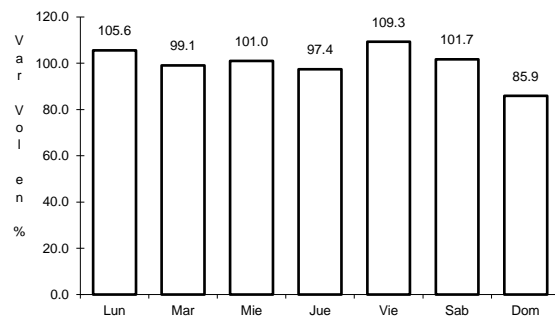
Tipo: 3

Sent: 0

36 CARR: Ramal a Bahía de Tortugas

CLAVE: 03397

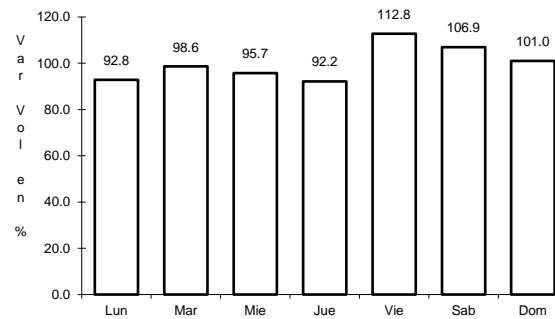
RUTA: MEX-001-BCS



Km: 0.00

Tipo: 3

Sent: 0



Km: 6.00

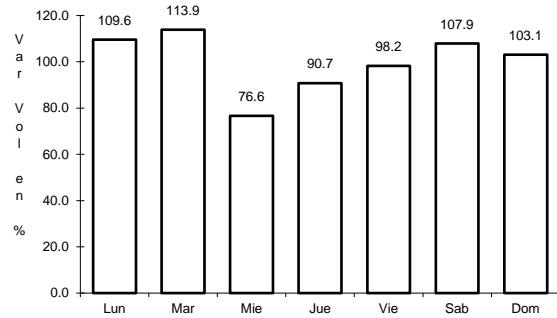
Tipo: 3

Sent: 0

37 CARR: Ramal a Ejido Ley Federal de Aguas Número Dos

CLAVE: 03050

RUTA: BCS-MEX-001

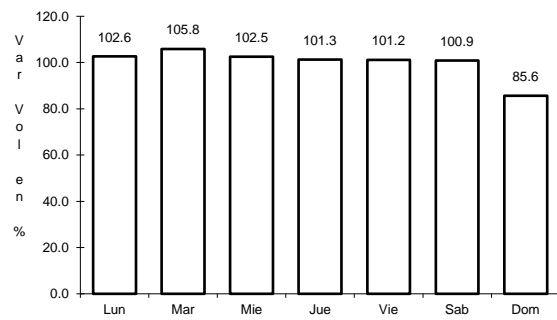


Km: 0.00 Tipo: 3 Sent: 0

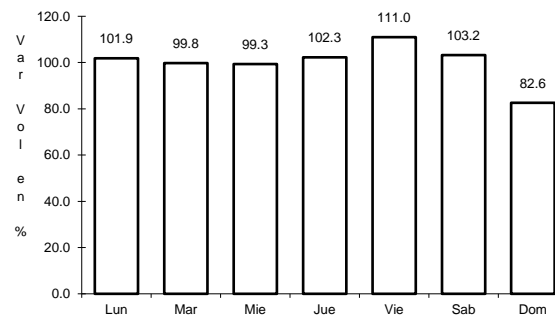
38 CARR: Ramal a Ley Federal de Aguas Número Cinco

CLAVE: 03407

RUTA: BCS-MEX-001



Km: 0.00 Tipo: 3 Sent: 1

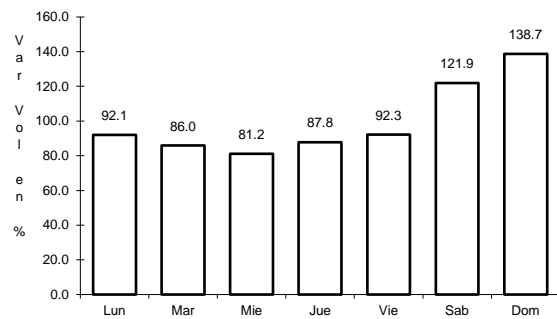


Km: 0.00 Tipo: 3 Sent: 2

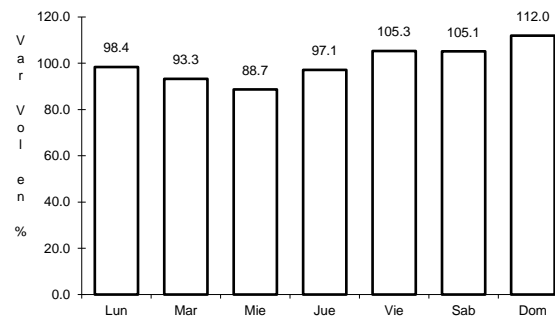
39 CARR: Ramal a San Juan de La Costa

CLAVE: 03403

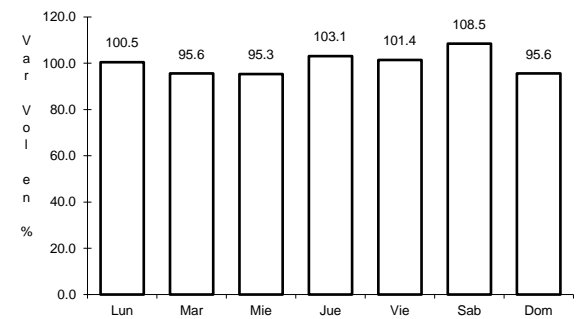
RUTA: BCS-163-MEX-001



Km: 0.00 Tipo: 3 Sent: 0



Km: 23.00 Tipo: 3 Sent: 0



Km: 40.70 Tipo: 1 Sent: 0

