

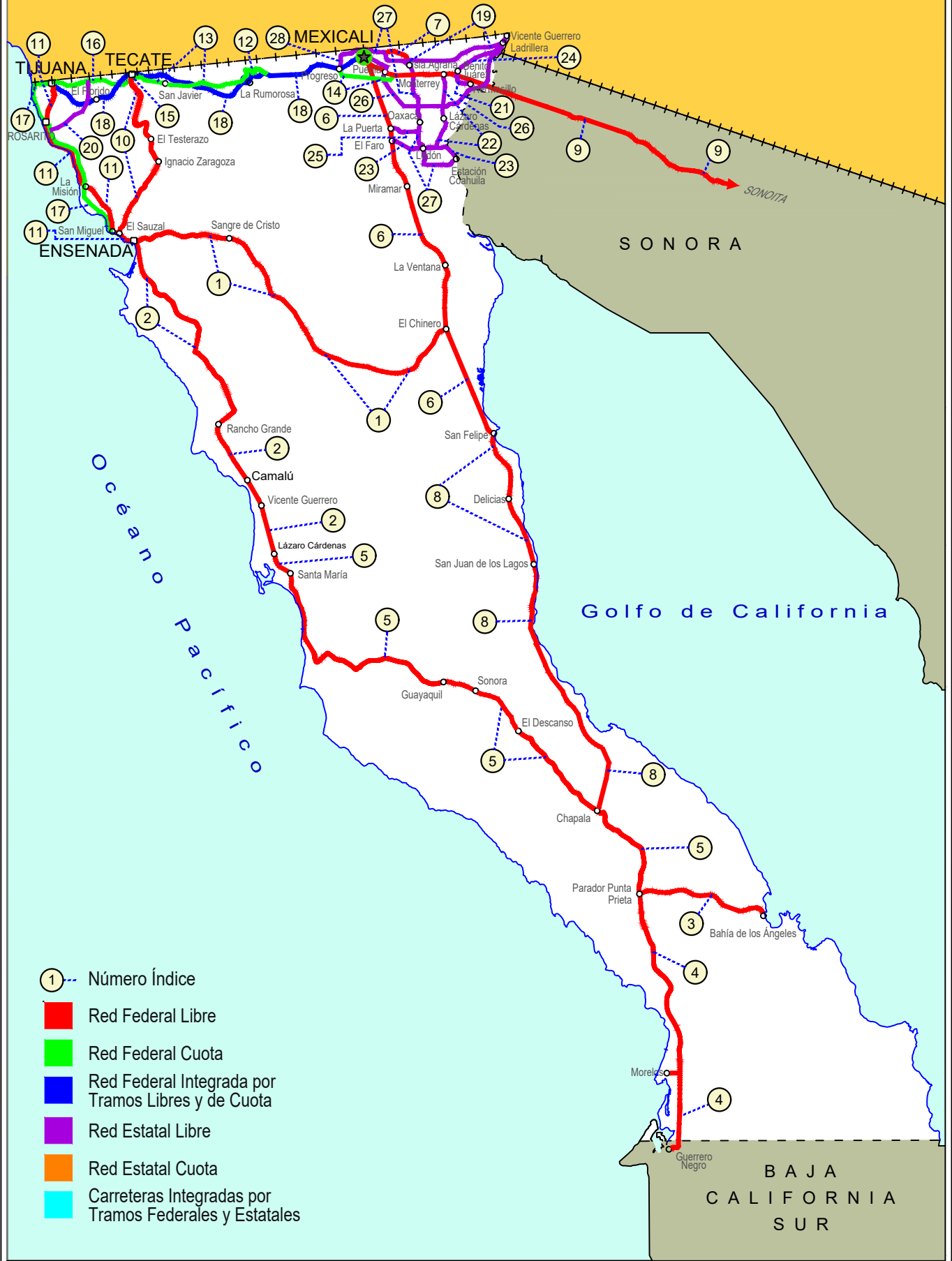
BAJA CALIFORNIA

| NO. INDICE CARRETERA | | RUTA |
|----------------------|--|--------------|
| | ---RED FEDERAL LIBRE--- | |
| 1 | Ensenada - El Chinero | MEX-003 |
| 2 | Ensenada - Lázaro Cárdenas | MEX-001 |
| 3 | Ent. Punta Prieta - Bahía de Los Ángeles | MEX-001 |
| 4 | Ent. Punta Prieta - Guerrero Negro | MEX-001 |
| 5 | Lázaro Cárdenas - Ent. Punta Prieta | MEX-001 |
| 6 | Mexicali - San Felipe | MEX-005 |
| 7 | Ramal a Aeropuerto de Mexicali | MEX-002 |
| 8 | San Felipe - Chapala | MEX-005 |
| 9 | Sonoita - Mexicali | MEX-002 |
| 10 | Tecate - El Sauzal | MEX-003 |
| 11 | Tijuana - Ensenada (Libre) | MEX-001 |
| | ---RED FEDERAL DE CUOTA--- | |
| 12 | El Centinela - La Rumorosa (Cuota) | MEX-002D |
| 13 | La Rumorosa - Tecate (Cuota) | MEX-002D |
| 14 | Libramiento de Mexicali (Cuota) | MEX-002D |
| 15 | Libramiento de Tecate (Cuota) | MEX-002D |
| 16 | Tecate - Tijuana (Cuota) | MEX-002D |
| 17 | Tijuana - Ensenada (Cuota) | MEX-001D |
| | ---RED FEDERAL INTEGRADA POR TRAMOS LIBRES Y DE CUOTA--- | |
| 18 | Mexicali - Tijuana | MEX-002D-MEX |
| | ---RED ESTATAL LIBRE--- | |
| 19 | Algodones - Ent. Islas Agrarias Grupo B | BC-008 |
| 20 | Corredor Tijuana 2000 | BC |
| 21 | Ejido Benito Juárez - Ejido Chiapas | BC-061 |
| 22 | Ejido Monterrey - Mazón | BC-003 |
| 23 | El Faro - Estación Coahuila | BC-004 |
| 24 | Ent. Santa Rosa - Ent. Pachuca | BC-006 |
| 25 | La Puerta - T. C. (Mexicali - Estación Coahuila) | BC-010 |
| 26 | Mexicali - Algodones | BC-002 |
| 27 | Mexicali - Estación Coahuila | BC-001 |
| 28 | Mexicali - Progreso | BC-005 |

02 BAJA CALIFORNIA

SECRETARÍA DE COMUNICACIONES Y TRANSPORTES
DIRECCIÓN GENERAL DE SERVICIOS TÉCNICOS

ESTADOS UNIDOS DE NORTE AMÉRICA



BAJA CALIFORNIA

1 CARR: Ensenada - El Chinero

CLAVE: 02009

RUTA: MEX-003

AÑO: 2021

| LUGAR | ESTACION | | | | CLASIFICACION VEHICULAR EN PORCIENTO | | | | | | | | | | COORDENADAS | | | | | |
|----------------------------|----------|----|----|------|--------------------------------------|------|-----|------|-----|------|------|--------|-------|------|-------------|------|-------|-------|-----------|-------------|
| | KM | TE | SC | TDPA | M | A | B | C2 | C3 | T3S2 | T3S3 | T3S2R4 | OTROS | A | B | C | K' | D | LATITUD | LONGITUD |
| Ensenada | 0.00 | 3 | 0 | 9982 | 4.6 | 81.3 | 0.8 | 10.0 | 1.0 | 1.2 | 0.8 | 0.1 | 0.2 | 85.9 | 0.8 | 13.3 | 0.104 | 0.515 | 31.874927 | -116.565391 |
| El Tule | 12.40 | 1 | 0 | 3075 | 1.3 | 76.8 | 1.1 | 14.5 | 1.5 | 2.9 | 1.8 | 0.0 | 0.1 | 78.1 | 1.1 | 20.8 | 0.084 | 0.501 | 31.887882 | -116.504756 |
| El Tule | 12.40 | 3 | 0 | 2781 | 2.1 | 76.1 | 1.3 | 15.1 | 1.4 | 2.1 | 1.8 | 0.0 | 0.1 | 78.2 | 1.3 | 20.5 | 0.088 | 0.503 | 31.888868 | -116.496388 |
| Ojos Negros | 38.50 | 1 | 0 | 2304 | 1.5 | 73.4 | 1.5 | 16.1 | 1.9 | 3.4 | 2.1 | 0.0 | 0.1 | 74.9 | 1.5 | 23.6 | 0.082 | 0.518 | 31.888645 | -116.281121 |
| San Salvador | 60.50 | 1 | 0 | 992 | 2.1 | 75.2 | 1.5 | 13.8 | 2.3 | 3.2 | 1.5 | 0.0 | 0.4 | 77.3 | 1.5 | 21.2 | 0.077 | 0.500 | 31.838157 | -116.066686 |
| Héroes de La Independencia | 93.00 | 3 | 0 | 1169 | 0.7 | 77.9 | 1.4 | 11.9 | 1.8 | 5.1 | 0.9 | 0.0 | 0.3 | 78.6 | 1.4 | 20.0 | 0.077 | 0.510 | 31.601453 | -115.874323 |
| Leyes de Reforma | 103.00 | 3 | 0 | 1153 | 0.9 | 75.3 | 1.6 | 14.2 | 1.9 | 4.9 | 1.0 | 0.0 | 0.2 | 76.2 | 1.6 | 22.2 | 0.079 | 0.504 | 31.524636 | -115.809703 |
| Lázaro Cárdenas | 122.00 | 3 | 0 | 1101 | 1.1 | 75.7 | 2.2 | 11.7 | 1.6 | 6.3 | 1.0 | 0.0 | 0.4 | 76.8 | 2.2 | 21.0 | 0.088 | 0.504 | 31.377875 | -115.682687 |
| Francisco R. Serrano | 137.50 | 3 | 0 | 740 | 1.3 | 72.8 | 2.0 | 12.8 | 1.6 | 7.8 | 1.1 | 0.0 | 0.6 | 74.1 | 2.0 | 23.9 | 0.109 | 0.504 | 31.327749 | -115.530881 |
| El Chinero | 196.00 | 1 | 0 | 546 | 1.1 | 70.9 | 2.4 | 11.3 | 2.4 | 9.4 | 1.9 | 0.0 | 0.6 | 72.0 | 2.4 | 25.6 | 0.111 | 0.507 | 31.428458 | -115.057727 |

2 CARR: Ensenada - Lázaro Cárdenas

CLAVE: 02098

RUTA: MEX-001

AÑO: 2021

| LUGAR | ESTACION | | | | CLASIFICACION VEHICULAR EN PORCIENTO | | | | | | | | | | COORDENADAS | | | | | |
|--|----------|----|----|-------|--------------------------------------|-------|-----|------|-----|------|------|--------|-------|-------|-------------|------|-------|-------|-----------|-------------|
| | KM | TE | SC | TDPA | M | A | B | C2 | C3 | T3S2 | T3S3 | T3S2R4 | OTROS | A | B | C | K' | D | LATITUD | LONGITUD |
| Ensenada | 0.00 | 3 | 1 | 26802 | 7.0 | 81.8 | 1.0 | 3.4 | 1.3 | 1.7 | 0.6 | 2.8 | 0.4 | 88.8 | 1.0 | 10.2 | 0.062 | 0.516 | 31.817588 | -116.598209 |
| Ensenada | 0.00 | 3 | 2 | 28610 | 7.0 | 82.0 | 1.1 | 3.8 | 1.0 | 1.6 | 0.4 | 2.7 | 0.4 | 89.0 | 1.1 | 9.9 | 0.066 | 0.516 | 31.817189 | -116.597973 |
| T. Der. Aeropuerto | 13.50 | 3 | 1 | 24856 | 7.7 | 82.6 | 0.8 | 4.1 | 1.5 | 1.6 | 0.3 | 1.1 | 0.3 | 90.3 | 0.8 | 8.9 | 0.083 | 0.501 | 31.792688 | -116.593288 |
| T. Der. Aeropuerto | 13.50 | 3 | 2 | 24748 | 7.8 | 81.3 | 0.9 | 4.8 | 1.7 | 1.7 | 0.3 | 1.2 | 0.3 | 89.1 | 0.9 | 10.0 | 0.072 | 0.501 | 31.792712 | -116.593112 |
| T. Der. La Bufadora | 21.16 | 1 | 1 | 15215 | 3.8 | 89.0 | 0.8 | 2.9 | 0.8 | 1.8 | 0.4 | 0.3 | 0.2 | 92.8 | 0.8 | 6.4 | 0.087 | 0.528 | 31.731273 | -116.580037 |
| T. Der. La Bufadora | 21.16 | 1 | 2 | 17039 | 3.6 | 88.4 | 1.0 | 3.1 | 0.9 | 2.0 | 0.4 | 0.4 | 0.2 | 92.0 | 1.0 | 7.0 | 0.086 | 0.528 | 31.731350 | -116.579877 |
| T. Der. La Bufadora | 21.16 | 3 | 0 | 20463 | 2.4 | 78.8 | 2.2 | 12.1 | 0.7 | 3.1 | 0.3 | 0.3 | 0.1 | 81.2 | 2.2 | 16.6 | 0.072 | 0.511 | 31.700717 | -116.553897 |
| Cañón Buenavista | 30.40 | 1 | 0 | 11182 | 6.2 | 81.8 | 1.6 | 5.1 | 0.7 | 3.8 | 0.4 | 0.3 | 0.1 | 88.0 | 1.6 | 10.4 | 0.107 | 0.501 | 31.677322 | -116.523884 |
| Cañón Buenavista | 30.40 | 3 | 0 | 6986 | 2.5 | 85.0 | 1.5 | 4.4 | 0.6 | 4.9 | 0.6 | 0.5 | 0.0 | 87.5 | 1.5 | 11.0 | 0.122 | 0.500 | 31.666191 | -116.518668 |
| Santo Tomás | 52.00 | 1 | 0 | 5520 | 0.0 | 100.0 | 0.0 | 0.0 | 0.0 | 0.0 | 0.0 | 0.0 | 0.0 | 100.0 | 0.0 | 0.0 | 0.091 | 0.500 | 31.563799 | -116.415767 |
| Misión San Vicente | 90.00 | 1 | 0 | 4352 | 9.8 | 62.3 | 4.0 | 12.3 | 0.9 | 9.3 | 0.7 | 0.4 | 0.3 | 72.1 | 4.0 | 23.9 | 0.091 | 0.520 | 31.330694 | -116.251815 |
| El Salado | 104.50 | 1 | 0 | 3933 | 5.3 | 74.1 | 4.8 | 5.8 | 0.8 | 7.7 | 0.7 | 0.5 | 0.3 | 79.4 | 4.8 | 15.8 | 0.097 | 0.541 | 31.227188 | -116.166686 |
| Punta Colonet | 128.00 | 1 | 0 | 5542 | 1.3 | 80.9 | 3.7 | 4.4 | 0.8 | 7.6 | 0.8 | 0.5 | 0.0 | 82.2 | 3.7 | 14.1 | 0.100 | 0.507 | 31.080448 | -116.204243 |
| Punta Colonet | 128.00 | 3 | 0 | 5392 | 2.3 | 77.0 | 4.7 | 6.5 | 0.7 | 7.6 | 0.7 | 0.5 | 0.0 | 79.3 | 4.7 | 16.0 | 0.085 | 0.511 | 31.054157 | -116.209264 |
| Camalú | 159.00 | 1 | 0 | 7784 | 2.7 | 81.7 | 3.9 | 3.8 | 1.7 | 4.9 | 0.7 | 0.5 | 0.1 | 84.4 | 3.9 | 11.7 | 0.081 | 0.503 | 30.849713 | -116.069586 |
| Colonia Vicente Guerrero (Lazáro Cárdenas) | 172.40 | 3 | 0 | 14607 | 1.2 | 88.5 | 3.6 | 3.2 | 0.6 | 2.1 | 0.3 | 0.4 | 0.1 | 89.7 | 3.6 | 6.7 | 0.086 | 0.501 | 30.698849 | -115.984650 |
| San Quintín | 193.00 | 1 | 0 | 12797 | 0.5 | 90.4 | 3.2 | 2.8 | 0.5 | 2.3 | 0.2 | 0.1 | 0.0 | 90.9 | 3.2 | 5.9 | 0.081 | 0.506 | 30.594113 | -115.952345 |
| San Quintín | 193.00 | 3 | 1 | 11792 | 1.1 | 91.1 | 0.9 | 5.8 | 0.2 | 0.6 | 0.2 | 0.0 | 0.1 | 92.2 | 0.9 | 6.9 | 0.102 | 0.544 | 30.531960 | -115.933085 |
| San Quintín | 193.00 | 3 | 2 | 11235 | 1.2 | 90.6 | 1.1 | 6.0 | 0.2 | 0.6 | 0.2 | 0.0 | 0.1 | 91.8 | 1.1 | 7.1 | 0.097 | 0.544 | 30.532007 | -115.932933 |
| Lázaro Cárdenas | 196.00 | | | | | | | | | | | | | | | | | | | |

BAJA CALIFORNIA

3 CARR: Ent. Punta Prieta - Bahía de Los Ángeles

CLAVE: 02322

RUTA: MEX-001

AÑO: 2021

| LUGAR | ESTACION | | | | CLASIFICACION VEHICULAR EN PORCIENTO | | | | | | | | | | COORDENADAS | | | | | |
|----------------------|----------|----|----|------|--------------------------------------|------|-----|------|-----|------|------|--------|-------|------|-------------|------|-------|-------|-----------|-------------|
| | KM | TE | SC | TDPA | M | A | B | C2 | C3 | T3S2 | T3S3 | T3S2R4 | OTROS | A | B | C | K' | D | LATITUD | LONGITUD |
| Parador Punta Prieta | 0.00 | 3 | 0 | 175 | 2.5 | 60.3 | 3.1 | 29.2 | 3.9 | 0.9 | 0.0 | 0.0 | 0.1 | 62.8 | 3.1 | 34.1 | 0.136 | 0.503 | 29.045566 | -114.149013 |
| Bahía de Los Ángeles | 68.00 | 1 | 0 | 258 | 3.4 | 68.4 | 0.7 | 23.8 | 2.7 | 0.8 | 0.1 | 0.0 | 0.1 | 71.8 | 0.7 | 27.5 | 0.104 | 0.524 | 28.963636 | -113.567524 |

4 CARR: Ent. Punta Prieta - Guerrero Negro

CLAVE: 00321

RUTA: MEX-001

AÑO: 2021

| LUGAR | ESTACION | | | | CLASIFICACION VEHICULAR EN PORCIENTO | | | | | | | | | | COORDENADAS | | | | | |
|--|----------|----|----|------|--------------------------------------|------|------|------|-----|------|------|--------|-------|------|-------------|------|-------|-------|-----------|-------------|
| | KM | TE | SC | TDPA | M | A | B | C2 | C3 | T3S2 | T3S3 | T3S2R4 | OTROS | A | B | C | K' | D | LATITUD | LONGITUD |
| Parador Punta Prieta | 0.00 | 3 | 0 | 810 | 3.1 | 50.5 | 12.2 | 22.9 | 3.0 | 5.3 | 2.3 | 0.7 | 0.0 | 53.6 | 12.2 | 34.2 | 0.094 | 0.511 | 28.913991 | -114.150906 |
| Rosarito | 50.60 | 3 | 0 | 1026 | 0.6 | 58.3 | 5.0 | 12.3 | 4.5 | 15.5 | 3.0 | 0.8 | 0.0 | 58.9 | 5.0 | 36.1 | 0.072 | 0.520 | 28.632406 | -114.021421 |
| Tanatán | 70.10 | 3 | 0 | 909 | 6.4 | 60.3 | 2.4 | 8.8 | 3.1 | 15.5 | 2.7 | 0.8 | 0.0 | 66.7 | 2.4 | 30.9 | 0.077 | 0.543 | 28.506121 | -114.020640 |
| Tampico | 105.00 | 1 | 0 | 1073 | 0.9 | 66.3 | 4.5 | 9.5 | 3.6 | 11.7 | 2.8 | 0.7 | 0.0 | 67.2 | 4.5 | 28.3 | 0.083 | 0.542 | 28.193169 | -114.001652 |
| Lim. Edos. Term. B.C. Ppia. B.C.S. (Paralelo 28) | 128.56 | | | | | | | | | | | | | | | | | | | |
| Ent. Guerrero Negro | 130.00 | 1 | 0 | 1765 | 2.9 | 76.7 | 2.3 | 7.6 | 1.0 | 7.8 | 1.2 | 0.5 | 0.0 | 79.6 | 2.3 | 18.1 | 0.091 | 0.530 | 27.974647 | -114.013572 |

5 CARR: Lázaro Cárdenas - Ent. Punta Prieta

CLAVE: 02319

RUTA: MEX-001

AÑO: 2021

| LUGAR | ESTACION | | | | CLASIFICACION VEHICULAR EN PORCIENTO | | | | | | | | | | COORDENADAS | | | | | |
|-------------------------------------|----------|----|----|-------|--------------------------------------|------|-----|------|-----|------|------|--------|-------|------|-------------|------|-------|-------|-----------|-------------|
| | KM | TE | SC | TDPA | M | A | B | C2 | C3 | T3S2 | T3S3 | T3S2R4 | OTROS | A | B | C | K' | D | LATITUD | LONGITUD |
| Lázaro Cárdenas | 0.00 | 3 | 0 | 10982 | 2.7 | 87.5 | 2.4 | 6.5 | 0.3 | 0.4 | 0.1 | 0.0 | 0.1 | 90.2 | 2.4 | 7.4 | 0.070 | 0.518 | 30.506405 | -115.925099 |
| T. Der. Ramal a Venustiano Carranza | 14.50 | 1 | 0 | 2569 | 2.7 | 72.5 | 3.6 | 14.5 | 1.2 | 4.7 | 0.4 | 0.3 | 0.1 | 75.2 | 3.6 | 21.2 | 0.087 | 0.522 | 30.396676 | -115.871827 |
| Rosario de Arriba | 53.70 | 1 | 0 | 1273 | 3.5 | 71.3 | 3.5 | 14.6 | 1.1 | 5.1 | 0.6 | 0.3 | 0.0 | 74.8 | 3.5 | 21.7 | 0.075 | 0.514 | 30.066910 | -115.731524 |
| Rosario de Arriba | 53.70 | 3 | 0 | 2078 | 3.2 | 75.6 | 1.5 | 14.4 | 1.0 | 3.7 | 0.3 | 0.2 | 0.1 | 78.8 | 1.5 | 19.7 | 0.091 | 0.520 | 30.075357 | -115.703132 |
| T. Der. Emiliano Zapata | 80.00 | 3 | 0 | 601 | 1.4 | 67.0 | 3.5 | 5.4 | 0.9 | 18.8 | 2.1 | 0.9 | 0.0 | 68.4 | 3.5 | 28.1 | 0.083 | 0.553 | 30.027761 | -115.531945 |
| San Agustín | 140.00 | 1 | 0 | 532 | 2.0 | 64.3 | 3.8 | 5.0 | 0.8 | 20.2 | 2.4 | 1.5 | 0.0 | 66.3 | 3.8 | 29.9 | 0.094 | 0.565 | 29.922004 | -114.980193 |
| San Agustín | 140.00 | 3 | 0 | 550 | 1.4 | 66.0 | 4.0 | 4.5 | 0.7 | 20.0 | 2.4 | 1.0 | 0.0 | 67.4 | 4.0 | 28.6 | 0.089 | 0.564 | 29.921382 | -114.970563 |
| San Luis | 173.00 | 1 | 0 | 530 | 2.7 | 62.2 | 4.2 | 4.9 | 1.0 | 20.5 | 3.1 | 1.4 | 0.0 | 64.9 | 4.2 | 30.9 | 0.077 | 0.553 | 29.738535 | -114.730801 |
| Rancho Chapala | 222.80 | 1 | 0 | 418 | 2.6 | 62.5 | 4.3 | 4.6 | 0.9 | 20.9 | 2.9 | 1.3 | 0.0 | 65.1 | 4.3 | 30.6 | 0.110 | 0.569 | 29.387154 | -114.384154 |
| Parador Punta Prieta | 275.66 | 1 | 0 | 648 | 2.7 | 66.9 | 2.7 | 4.8 | 0.7 | 18.9 | 2.0 | 1.3 | 0.0 | 69.6 | 2.7 | 27.7 | 0.071 | 0.532 | 29.048172 | -114.153188 |

6 CARR: Mexicali - San Felipe

CLAVE: 02096

RUTA: MEX-005

AÑO: 2021

| LUGAR | ESTACION | | | | CLASIFICACION VEHICULAR EN PORCIENTO | | | | | | | | | | COORDENADAS | | | | | |
|----------|----------|----|----|-------|--------------------------------------|------|-----|-----|-----|------|------|--------|-------|------|-------------|-----|-------|-------|-----------|-------------|
| | KM | TE | SC | TDPA | M | A | B | C2 | C3 | T3S2 | T3S3 | T3S2R4 | OTROS | A | B | C | K' | D | LATITUD | LONGITUD |
| Mexicali | 0.00 | 3 | 1 | 11792 | 1.3 | 89.5 | 1.6 | 3.0 | 1.6 | 1.9 | 0.2 | 0.8 | 0.1 | 90.8 | 1.6 | 7.6 | 0.076 | 0.511 | 32.555616 | -115.417864 |
| Mexicali | 0.00 | 3 | 2 | 12335 | 1.4 | 89.6 | 1.5 | 3.0 | 1.5 | 1.9 | 0.2 | 0.8 | 0.1 | 91.0 | 1.5 | 7.5 | 0.086 | 0.511 | 32.555677 | -115.417693 |

BAJA CALIFORNIA

6 CARR : Mexicali - San Felipe

CLAVE: 02096

RUTA: MEX-005

AÑO: 2021

| LUGAR | ESTACION | | | | CLASIFICACION VEHICULAR EN PORCIENTO | | | | | | | | | | COORDENADAS | | | | | |
|---------------------------|----------|----|----|------|--------------------------------------|------|-----|------|-----|------|------|--------|-------|------|-------------|------|-------|-------|-----------|-------------|
| | KM | TE | SC | TDPA | M | A | B | C2 | C3 | T3S2 | T3S3 | T3S2R4 | OTROS | A | B | C | K' | D | LATITUD | LONGITUD |
| La Puerta | 32.00 | 1 | 1 | 3838 | 1.1 | 90.2 | 1.5 | 2.7 | 1.0 | 1.8 | 1.4 | 0.2 | 0.1 | 91.3 | 1.5 | 7.2 | 0.107 | 0.502 | 32.339023 | -115.331549 |
| La Puerta | 32.00 | 1 | 2 | 3872 | 1.0 | 90.1 | 1.7 | 2.7 | 1.0 | 1.9 | 1.3 | 0.2 | 0.1 | 91.1 | 1.7 | 7.2 | 0.148 | 0.502 | 32.339197 | -115.331436 |
| T. Izq. Estación Coahuila | 39.00 | 1 | 1 | 2858 | 1.0 | 89.6 | 1.5 | 3.1 | 1.0 | 2.3 | 1.2 | 0.2 | 0.1 | 90.6 | 1.5 | 7.9 | 0.112 | 0.503 | 32.280383 | -115.322516 |
| T. Izq. Estación Coahuila | 39.00 | 1 | 2 | 2893 | 1.1 | 89.6 | 1.4 | 3.0 | 1.0 | 2.4 | 1.2 | 0.2 | 0.1 | 90.7 | 1.4 | 7.9 | 0.156 | 0.503 | 32.280391 | -115.322421 |
| T. Izq. Estación Coahuila | 39.00 | 3 | 0 | 3276 | 1.1 | 75.5 | 0.8 | 14.0 | 1.5 | 2.7 | 1.4 | 2.0 | 1.0 | 76.6 | 0.8 | 22.6 | 0.109 | 0.504 | 32.267459 | -115.321480 |
| El Chinero | 141.00 | 1 | 0 | 1860 | 0.5 | 74.2 | 1.4 | 17.3 | 1.6 | 3.5 | 0.9 | 0.2 | 0.4 | 74.7 | 1.4 | 23.9 | 0.135 | 0.535 | 31.440721 | -115.053330 |
| El Chinero | 141.00 | 3 | 0 | 2203 | 1.7 | 90.3 | 0.9 | 3.0 | 0.4 | 2.9 | 0.5 | 0.2 | 0.1 | 92.0 | 0.9 | 7.1 | 0.115 | 0.502 | 31.424019 | -115.045429 |
| San Felipe | 189.60 | 1 | 1 | 3222 | 1.6 | 92.8 | 0.5 | 3.2 | 0.5 | 1.0 | 0.2 | 0.1 | 0.1 | 94.4 | 0.5 | 5.1 | 0.083 | 0.505 | 31.033767 | -114.862302 |
| San Felipe | 189.60 | 1 | 2 | 3293 | 1.6 | 93.0 | 0.5 | 3.1 | 0.4 | 1.0 | 0.2 | 0.1 | 0.1 | 94.6 | 0.5 | 4.9 | 0.089 | 0.505 | 31.033846 | -114.862175 |

7 CARR : Ramal a Aeropuerto de Mexicali

CLAVE: 02321

RUTA: MEX-002

AÑO: 2021

| LUGAR | ESTACION | | | | CLASIFICACION VEHICULAR EN PORCIENTO | | | | | | | | | | COORDENADAS | | | | | |
|--|----------|----|----|-------|--------------------------------------|------|-----|-----|-----|------|------|--------|-------|------|-------------|------|-------|-------|-----------|-------------|
| | KM | TE | SC | TDPA | M | A | B | C2 | C3 | T3S2 | T3S3 | T3S2R4 | OTROS | A | B | C | K' | D | LATITUD | LONGITUD |
| T. C. Mexicali - Estación Coahuila | 0.00 | 3 | 0 | 11823 | 0.8 | 85.0 | 1.1 | 8.2 | 1.8 | 2.8 | 0.3 | 0.0 | 0.0 | 85.8 | 1.1 | 13.1 | 0.082 | 0.508 | 32.650465 | -115.340577 |
| Aeropuerto | 10.00 | 1 | 0 | 6920 | 0.7 | 88.9 | 0.5 | 9.0 | 0.1 | 0.4 | 0.1 | 0.2 | 0.1 | 89.6 | 0.5 | 9.9 | 0.087 | 0.502 | 32.630325 | -115.258367 |
| T. C. Algodones - Islas Agrarias Grupo B | 12.10 | | | | | | | | | | | | | | | | | | | |

8 CARR : San Felipe - Chapala

CLAVE: 02503

RUTA: MEX-005

AÑO: 2021

| LUGAR | ESTACION | | | | CLASIFICACION VEHICULAR EN PORCIENTO | | | | | | | | | | COORDENADAS | | | | | |
|--|----------|----|----|------|--------------------------------------|------|-----|------|-----|------|------|--------|-------|------|-------------|------|-------|-------|-----------|-------------|
| | KM | TE | SC | TDPA | M | A | B | C2 | C3 | T3S2 | T3S3 | T3S2R4 | OTROS | A | B | C | K' | D | LATITUD | LONGITUD |
| San Felipe | 0.00 | 3 | 1 | 2194 | 1.3 | 79.9 | 1.9 | 13.3 | 1.6 | 0.9 | 1.1 | 0.0 | 0.0 | 81.2 | 1.9 | 16.9 | 0.093 | 0.506 | 30.997803 | -114.836396 |
| San Felipe | 0.00 | 3 | 2 | 2259 | 1.5 | 79.3 | 1.3 | 15.4 | 1.4 | 0.7 | 0.4 | 0.0 | 0.0 | 80.8 | 1.3 | 17.9 | 0.102 | 0.506 | 30.997807 | -114.836327 |
| Playa Curbina | 75.46 | 3 | 0 | 404 | 6.3 | 63.2 | 4.6 | 18.1 | 5.0 | 1.7 | 1.1 | 0.0 | 0.0 | 69.5 | 4.6 | 25.9 | 0.120 | 0.525 | 30.355901 | -114.643878 |
| T. C. Lazaro Cárdenas - Parador Punta Prieta | 213.00 | | | | | | | | | | | | | | | | | | | |

9 CARR : Sonoita - Mexicali

CLAVE: 00081

RUTA: MEX-002

AÑO: 2021

| LUGAR | ESTACION | | | | CLASIFICACION VEHICULAR EN PORCIENTO | | | | | | | | | | COORDENADAS | | | | | |
|-----------------------|----------|----|----|------|--------------------------------------|------|-----|-----|-----|------|------|--------|-------|------|-------------|------|-------|-------|-----------|-------------|
| | KM | TE | SC | TDPA | M | A | B | C2 | C3 | T3S2 | T3S3 | T3S2R4 | OTROS | A | B | C | K' | D | LATITUD | LONGITUD |
| Sonoita | 0.00 | 3 | 0 | 4234 | 2.8 | 54.7 | 8.2 | 5.4 | 1.0 | 16.2 | 1.9 | 6.8 | 3.0 | 57.5 | 8.2 | 34.3 | 0.068 | 0.519 | 31.886646 | -112.858452 |
| Los Vidrios | 58.75 | 3 | 0 | 4324 | 2.6 | 47.2 | 5.7 | 3.7 | 2.0 | 25.6 | 3.6 | 6.6 | 3.0 | 49.8 | 5.7 | 44.5 | 0.052 | 0.515 | 32.028183 | -113.425480 |
| San Luis Río Colorado | 191.80 | 1 | 0 | 4330 | 2.8 | 44.4 | 7.7 | 3.3 | 1.8 | 26.5 | 2.8 | 6.7 | 4.0 | 47.2 | 7.7 | 45.1 | 0.066 | 0.511 | 32.453593 | -114.683454 |
| San Luis Río Colorado | 191.80 | 3 | 1 | 9845 | 0.7 | 86.5 | 2.0 | 1.4 | 0.6 | 6.2 | 0.7 | 1.5 | 0.4 | 87.2 | 2.0 | 10.8 | 0.094 | 0.507 | 32.486969 | -114.792693 |

BAJA CALIFORNIA

9 CARR: Sonoita - Mexicali

CLAVE: 00081

RUTA: MEX-002

AÑO: 2021

| LUGAR | ESTACION | | | | CLASIFICACION VEHICULAR EN PORCIENTO | | | | | | | | | | | | | | COORDENADAS | |
|---|----------|----|----|-------|--------------------------------------|------|-----|-----|-----|------|------|--------|-------|------|-----|------|-------|-------|-------------|-------------|
| | KM | TE | SC | TDPA | M | A | B | C2 | C3 | T3S2 | T3S3 | T3S2R4 | OTROS | A | B | C | K' | D | LATITUD | LONGITUD |
| San Luis Río Colorado | 191.80 | 3 | 2 | 10110 | 0.7 | 86.3 | 2.1 | 1.6 | 0.7 | 6.0 | 0.7 | 1.5 | 0.4 | 87.0 | 2.1 | 10.9 | 0.099 | 0.507 | 32.486833 | -114.792742 |
| Lim. Edos. Term. Son. Ppia. B.C. | 203.69 | | | | | | | | | | | | | | | | | | | |
| X. C. Mexicali - Algodones | 206.78 | 1 | 1 | 11350 | 0.6 | 83.6 | 2.2 | 4.0 | 0.5 | 6.6 | 0.6 | 1.5 | 0.4 | 84.2 | 2.2 | 13.6 | 0.082 | 0.515 | 32.497694 | -114.828613 |
| X. C. Mexicali - Algodones | 206.78 | 1 | 2 | 12071 | 0.6 | 83.1 | 2.4 | 3.9 | 0.5 | 6.7 | 0.7 | 1.6 | 0.5 | 83.7 | 2.4 | 13.9 | 0.088 | 0.515 | 32.497653 | -114.828768 |
| X. C. Mexicali - Algodones | 206.78 | 3 | 1 | 9597 | 0.7 | 79.8 | 2.4 | 6.9 | 0.7 | 6.7 | 0.8 | 1.6 | 0.4 | 80.5 | 2.4 | 17.1 | 0.095 | 0.521 | 32.510405 | -114.871114 |
| X. C. Mexicali - Algodones | 206.78 | 3 | 2 | 8834 | 0.8 | 80.1 | 2.2 | 6.9 | 0.7 | 6.6 | 0.8 | 1.5 | 0.4 | 80.9 | 2.2 | 16.9 | 0.078 | 0.521 | 32.510329 | -114.871145 |
| T. Izq. Ejido Hermosillo | 214.80 | 3 | 1 | 7595 | 0.9 | 79.2 | 3.3 | 4.3 | 1.2 | 7.5 | 1.0 | 2.1 | 0.5 | 80.1 | 3.3 | 16.6 | 0.092 | 0.503 | 32.527596 | -114.928987 |
| T. Izq. Ejido Hermosillo | 214.80 | 3 | 2 | 7508 | 0.9 | 79.6 | 3.2 | 4.2 | 1.1 | 7.6 | 0.9 | 1.9 | 0.6 | 80.5 | 3.2 | 16.3 | 0.080 | 0.503 | 32.527517 | -114.929023 |
| T. Izq. Ejido Tehuantepec | 223.83 | 3 | 1 | 9899 | 1.0 | 83.2 | 2.5 | 2.6 | 0.9 | 6.6 | 0.9 | 1.8 | 0.5 | 84.2 | 2.5 | 13.3 | 0.087 | 0.504 | 32.555273 | -115.032828 |
| T. Izq. Ejido Tehuantepec | 223.83 | 3 | 2 | 9737 | 1.0 | 84.1 | 2.5 | 2.5 | 0.9 | 6.5 | 0.7 | 1.5 | 0.3 | 85.1 | 2.5 | 12.4 | 0.085 | 0.504 | 32.555185 | -115.032786 |
| Ejido Monterrey | 228.63 | 3 | 1 | 12295 | 1.3 | 83.9 | 2.2 | 2.7 | 0.9 | 6.4 | 0.7 | 1.5 | 0.4 | 85.2 | 2.2 | 12.6 | 0.074 | 0.505 | 32.551997 | -115.087504 |
| Ejido Monterrey | 228.63 | 3 | 2 | 12062 | 1.3 | 83.9 | 2.3 | 2.7 | 0.9 | 6.4 | 0.7 | 1.4 | 0.4 | 85.2 | 2.3 | 12.5 | 0.079 | 0.505 | 32.551907 | -115.087495 |
| X. C. Mexicali - Estación Coahuila | 242.17 | 1 | 1 | 9930 | 1.4 | 83.6 | 2.6 | 3.2 | 0.7 | 6.0 | 0.7 | 1.4 | 0.4 | 85.0 | 2.6 | 12.4 | 0.095 | 0.518 | 32.552848 | -115.203241 |
| X. C. Mexicali - Estación Coahuila | 242.17 | 1 | 2 | 10676 | 1.4 | 83.6 | 2.6 | 3.2 | 0.8 | 6.0 | 0.7 | 1.4 | 0.3 | 85.0 | 2.6 | 12.4 | 0.098 | 0.518 | 32.552758 | -115.203221 |
| T. Izq. Libramiento de Mexicali (Cuota) | 249.32 | 1 | 1 | 11074 | 1.8 | 83.9 | 2.0 | 2.3 | 1.2 | 5.6 | 0.9 | 1.7 | 0.6 | 85.7 | 2.0 | 12.3 | 0.097 | 0.518 | 32.554583 | -115.284450 |
| T. Izq. Libramiento de Mexicali (Cuota) | 249.32 | 1 | 2 | 10303 | 1.9 | 83.9 | 1.9 | 2.2 | 1.2 | 5.7 | 0.8 | 1.8 | 0.6 | 85.8 | 1.9 | 12.3 | 0.102 | 0.518 | 32.554501 | -115.284480 |
| X. C. Mexicali - Algodones | 256.47 | 1 | 1 | 13515 | 0.8 | 90.5 | 1.4 | 2.2 | 0.9 | 2.7 | 0.4 | 0.7 | 0.4 | 91.3 | 1.4 | 7.3 | 0.073 | 0.513 | 32.565159 | -115.325708 |
| X. C. Mexicali - Algodones | 256.47 | 1 | 2 | 12818 | 1.1 | 90.4 | 1.4 | 2.0 | 0.9 | 2.6 | 0.5 | 0.6 | 0.5 | 91.5 | 1.4 | 7.1 | 0.072 | 0.513 | 32.565046 | -115.325749 |
| T. C. Mexicali - San Felipe | 265.12 | | | | | | | | | | | | | | | | | | | |

10 CARR: Tecate - El Sauzal

CLAVE: 02097

RUTA: MEX-003

AÑO: 2021

| LUGAR | ESTACION | | | | CLASIFICACION VEHICULAR EN PORCIENTO | | | | | | | | | | | | | | COORDENADAS | |
|-----------------------------|----------|----|----|-------|--------------------------------------|------|-----|-----|-----|------|------|--------|-------|------|-----|------|-------|-------|-------------|-------------|
| | KM | TE | SC | TDPA | M | A | B | C2 | C3 | T3S2 | T3S3 | T3S2R4 | OTROS | A | B | C | K' | D | LATITUD | LONGITUD |
| Tecate | 0.00 | 3 | 0 | 10935 | 1.8 | 89.4 | 1.3 | 2.9 | 0.6 | 2.3 | 0.6 | 0.9 | 0.2 | 91.2 | 1.3 | 7.5 | 0.118 | 0.502 | 32.539220 | -116.627247 |
| T. Der. Valle de Las Palmas | 27.80 | 1 | 0 | 4666 | 1.5 | 82.8 | 1.7 | 5.7 | 0.7 | 4.7 | 1.5 | 1.2 | 0.2 | 84.3 | 1.7 | 14.0 | 0.170 | 0.504 | 32.382539 | -116.613986 |
| El Tezterazo | 48.80 | 3 | 0 | 4538 | 1.6 | 88.0 | 1.3 | 2.0 | 0.8 | 3.7 | 0.8 | 1.5 | 0.3 | 89.6 | 1.3 | 9.1 | 0.151 | 0.543 | 32.288016 | -116.530123 |
| T. Izq. San Marcos | 63.50 | 1 | 0 | 4009 | 2.0 | 84.9 | 2.0 | 3.0 | 1.2 | 3.7 | 1.0 | 1.7 | 0.5 | 86.9 | 2.0 | 11.1 | 0.172 | 0.532 | 32.195836 | -116.488641 |
| El Porvenir Guadalupe | 74.80 | 3 | 0 | 6076 | 1.4 | 87.0 | 1.5 | 3.4 | 1.0 | 3.2 | 0.7 | 1.4 | 0.4 | 88.4 | 1.5 | 10.1 | 0.154 | 0.526 | 32.091541 | -116.562784 |
| Las Palmas | 85.00 | 1 | 0 | 7783 | 1.7 | 87.4 | 1.0 | 4.3 | 1.0 | 2.4 | 0.7 | 1.0 | 0.5 | 89.1 | 1.0 | 9.9 | 0.127 | 0.534 | 32.028982 | -116.614962 |
| San Antonio de Las Minas | 93.90 | 1 | 1 | 4971 | 8.2 | 85.2 | 1.1 | 2.0 | 0.8 | 1.1 | 0.4 | 0.9 | 0.3 | 93.4 | 1.1 | 5.5 | 0.136 | 0.537 | 31.985611 | -116.646088 |
| San Antonio de Las Minas | 93.90 | 1 | 2 | 5770 | 4.9 | 89.2 | 1.0 | 2.2 | 0.8 | 0.9 | 0.3 | 0.5 | 0.2 | 94.1 | 1.0 | 4.9 | 0.169 | 0.537 | 31.985556 | -116.645980 |
| El Sauzal | 104.53 | 1 | 1 | 5329 | 1.3 | 85.4 | 1.4 | 6.7 | 1.2 | 2.3 | 0.4 | 1.0 | 0.3 | 86.7 | 1.4 | 11.9 | 0.129 | 0.502 | 31.910313 | -116.694267 |
| El Sauzal | 104.53 | 1 | 2 | 5362 | 1.4 | 84.8 | 1.6 | 6.7 | 1.4 | 1.9 | 0.5 | 0.8 | 0.9 | 86.2 | 1.6 | 12.2 | 0.137 | 0.502 | 31.910224 | -116.694148 |

BAJA CALIFORNIA

11 CARR: Tijuana - Ensenada (Libre)

CLAVE: 02099

RUTA: MEX-001

AÑO: 2021

| LUGAR | ESTACION | | | | CLASIFICACION VEHICULAR EN PORCIENTO | | | | | | | | | | | | COORDENADAS | | | |
|------------------------------------|----------|----|----|-------|--------------------------------------|------|-----|------|-----|------|------|--------|-------|------|-----|------|-------------|-------|-----------|-------------|
| | KM | TE | SC | TDPA | M | A | B | C2 | C3 | T3S2 | T3S3 | T3S2R4 | OTROS | A | B | C | K' | D | LATITUD | LONGITUD |
| Tijuana | 0.00 | | | | | | | | | | | | | | | | | | | |
| X. C. Tijuana - San Miguel (Cuota) | 22.00 | 1 | 1 | 33376 | 1.0 | 90.6 | 1.8 | 3.8 | 0.7 | 0.8 | 0.1 | 1.0 | 0.2 | 91.6 | 1.8 | 6.6 | 0.073 | 0.537 | 32.382124 | -117.057367 |
| X. C. Tijuana - San Miguel (Cuota) | 22.00 | 1 | 2 | 28414 | 1.0 | 90.6 | 1.8 | 3.8 | 0.7 | 0.8 | 0.1 | 1.0 | 0.2 | 91.6 | 1.8 | 6.6 | 0.071 | 0.537 | 32.382124 | -117.057239 |
| Rosarito | 25.94 | 1 | 1 | 12992 | 1.5 | 91.9 | 0.1 | 4.3 | 0.2 | 1.0 | 0.7 | 0.1 | 0.2 | 93.4 | 0.1 | 6.5 | 0.085 | 0.575 | 32.367977 | -117.060462 |
| Rosarito | 25.94 | 1 | 2 | 17577 | 1.5 | 91.8 | 0.1 | 4.3 | 0.2 | 1.0 | 0.8 | 0.1 | 0.2 | 93.3 | 0.1 | 6.6 | 0.077 | 0.575 | 32.367968 | -117.060334 |
| Rosarito | 25.94 | 3 | 1 | 10861 | 1.1 | 91.7 | 0.4 | 4.7 | 0.4 | 0.7 | 0.5 | 0.3 | 0.2 | 92.8 | 0.4 | 6.8 | 0.116 | 0.534 | 32.336881 | -117.054638 |
| Rosarito | 25.94 | 3 | 2 | 11297 | 1.1 | 91.6 | 0.5 | 4.7 | 0.4 | 0.7 | 0.5 | 0.3 | 0.2 | 92.7 | 0.5 | 6.8 | 0.116 | 0.534 | 32.336922 | -117.054494 |
| Complejo la Paloma | 28.64 | | | | | | | | | | | | | | | | | | | |
| T. Izq. Aut. Tijuana - San Miguel | 46.12 | 1 | 1 | 6432 | 1.8 | 94.7 | 0.4 | 1.7 | 0.7 | 0.3 | 0.2 | 0.1 | 0.1 | 96.5 | 0.4 | 3.1 | 0.133 | 0.566 | 32.229543 | -116.921481 |
| T. Izq. Aut. Tijuana - San Miguel | 46.12 | 1 | 2 | 5907 | 1.9 | 94.6 | 0.4 | 1.7 | 0.7 | 0.3 | 0.2 | 0.1 | 0.1 | 96.5 | 0.4 | 3.1 | 0.133 | 0.566 | 32.229588 | -116.921375 |
| Población Plaza Santa María | 56.98 | 1 | 0 | 2223 | 4.0 | 92.1 | 0.5 | 1.8 | 0.5 | 0.3 | 0.3 | 0.3 | 0.2 | 96.1 | 0.5 | 3.4 | 0.199 | 0.514 | 32.144178 | -116.892055 |
| La Misión | 64.98 | 1 | 0 | 4299 | 2.9 | 92.9 | 0.7 | 2.1 | 0.8 | 0.3 | 0.1 | 0.1 | 0.1 | 95.8 | 0.7 | 3.5 | 0.144 | 0.503 | 32.093082 | -116.858277 |
| T. Izq. Colonia Guadalupe | 82.90 | 1 | 0 | 2542 | 2.4 | 92.1 | 1.2 | 2.7 | 0.6 | 0.3 | 0.2 | 0.3 | 0.2 | 94.5 | 1.2 | 4.3 | 0.186 | 0.501 | 31.989735 | -116.746544 |
| Ent. San Miguel | 95.80 | 1 | 0 | 1930 | 3.1 | 80.4 | 2.1 | 14.1 | 0.3 | 0.0 | 0.0 | 0.0 | 0.0 | 83.5 | 2.1 | 14.4 | 0.130 | 0.516 | 31.913196 | -116.730750 |
| El Sauzal | 102.00 | 1 | 1 | 11366 | 1.6 | 86.5 | 1.4 | 2.1 | 1.2 | 5.0 | 0.5 | 1.3 | 0.4 | 88.1 | 1.4 | 10.5 | 0.114 | 0.518 | 31.900009 | -116.708220 |
| El Sauzal | 102.00 | 1 | 2 | 10559 | 1.6 | 86.5 | 1.4 | 2.1 | 1.2 | 5.1 | 0.5 | 1.2 | 0.4 | 88.1 | 1.4 | 10.5 | 0.127 | 0.518 | 31.900084 | -116.708196 |
| El Sauzal | 102.00 | 3 | 1 | 26094 | 3.3 | 84.2 | 1.8 | 4.7 | 1.0 | 3.0 | 0.5 | 1.0 | 0.5 | 87.5 | 1.8 | 10.7 | 0.092 | 0.531 | 31.868568 | -116.674194 |
| El Sauzal | 102.00 | 3 | 2 | 23671 | 3.3 | 84.1 | 1.9 | 4.7 | 1.0 | 3.0 | 0.5 | 1.0 | 0.5 | 87.4 | 1.9 | 10.7 | 0.100 | 0.531 | 31.868645 | -116.674116 |
| Ensenada | 110.00 | | | | | | | | | | | | | | | | | | | |

12 CARR: El Centinela - La Rumorosa (Cuota)

CLAVE: 02011

RUTA: MEX-002D

AÑO: 2021

| LUGAR | ESTACION | | | | CLASIFICACION VEHICULAR EN PORCIENTO | | | | | | | | | | | | COORDENADAS | | | |
|-------------------|----------|----|----|------|--------------------------------------|------|-----|-----|-----|------|------|--------|-------|------|-----|------|-------------|-------|-----------|-------------|
| | KM | TE | SC | TDPA | M | A | B | C2 | C3 | T3S2 | T3S3 | T3S2R4 | OTROS | A | B | C | K' | D | LATITUD | LONGITUD |
| Ent. El Centinela | 20.30 | | | | | | | | | | | | | | | | | | | |
| Laguna Salada | 25.00 | 1 | 1 | 5798 | 2.1 | 77.0 | 5.6 | 5.4 | 1.1 | 5.0 | 1.1 | 2.2 | 0.5 | 79.1 | 5.6 | 15.3 | 0.084 | 0.500 | 32.576712 | -115.741841 |
| Laguna Salada | 25.00 | 1 | 2 | 5797 | 2.2 | 75.4 | 5.0 | 5.7 | 1.3 | 5.4 | 1.5 | 2.8 | 0.7 | 77.6 | 5.0 | 17.4 | 0.073 | 0.500 | 32.576631 | -115.741831 |
| La Rumorosa | 67.60 | 1 | 1 | 2787 | 4.9 | 72.2 | 4.9 | 5.9 | 1.4 | 6.5 | 1.5 | 2.1 | 0.6 | 77.1 | 4.9 | 18.0 | 0.157 | 0.548 | 32.550973 | -116.043392 |
| La Rumorosa | 67.60 | 1 | 2 | 3381 | 4.3 | 75.8 | 3.9 | 5.5 | 1.2 | 5.1 | 1.4 | 2.1 | 0.7 | 80.1 | 3.9 | 16.0 | 0.185 | 0.548 | 32.550928 | -116.043350 |

13 CARR: La Rumorosa - Tecate (Cuota)

CLAVE: 02011

RUTA: MEX-002D

AÑO: 2021

| LUGAR | ESTACION | | | | CLASIFICACION VEHICULAR EN PORCIENTO | | | | | | | | | | | | COORDENADAS | | | |
|-------------|----------|----|----|------|--------------------------------------|------|-----|-----|-----|------|------|--------|-------|------|-----|------|-------------|-------|-----------|-------------|
| | KM | TE | SC | TDPA | M | A | B | C2 | C3 | T3S2 | T3S3 | T3S2R4 | OTROS | A | B | C | K' | D | LATITUD | LONGITUD |
| La Rumorosa | 62.00 | 3 | 1 | 4395 | 1.8 | 75.8 | 4.0 | 2.6 | 1.2 | 10.0 | 0.7 | 3.1 | 0.8 | 77.6 | 4.0 | 18.4 | 0.111 | 0.514 | 32.549509 | -116.065827 |

BAJA CALIFORNIA

13 CARR: La Rumorosa - Tecate (Cuota)

CLAVE: 02011

RUTA: MEX-002D

AÑO: 2021

| LUGAR | ESTACION | | | | CLASIFICACION VEHICULAR EN PORCIENTO | | | | | | | | | | | | | | COORDENADAS | |
|----------------------------------|----------|----|----|------|--------------------------------------|------|-----|-----|-----|------|------|--------|-------|------|-----|------|-------|-------|-------------|-------------|
| | KM | TE | SC | TDPA | M | A | B | C2 | C3 | T3S2 | T3S3 | T3S2R4 | OTROS | A | B | C | K' | D | LATITUD | LONGITUD |
| La Rumorosa | 62.00 | 3 | 2 | 4157 | 2.0 | 75.7 | 4.1 | 2.4 | 1.2 | 10.0 | 0.7 | 3.1 | 0.8 | 77.7 | 4.1 | 18.2 | 0.142 | 0.514 | 32.549446 | -116.065774 |
| Plaza de Cobro El Hongo | 92.00 | 1 | 1 | 4204 | 6.5 | 69.8 | 4.2 | 2.6 | 1.2 | 10.2 | 1.0 | 3.6 | 0.9 | 76.3 | 4.2 | 19.5 | 0.111 | 0.507 | 32.520110 | -116.310152 |
| Plaza de Cobro El Hongo | 92.00 | 1 | 2 | 4326 | 6.5 | 69.8 | 4.1 | 2.7 | 1.1 | 10.3 | 1.1 | 3.5 | 0.9 | 76.3 | 4.1 | 19.6 | 0.139 | 0.507 | 32.520038 | -116.310174 |
| Plaza de Cobro El Hongo | 92.00 | 2 | 1 | 4444 | 0.4 | 73.1 | 3.0 | 3.1 | 1.4 | 13.0 | 0.7 | 4.5 | 0.8 | 73.5 | 3.0 | 23.5 | 0.087 | 0.500 | 32.521843 | -116.320010 |
| Plaza de Cobro El Hongo | 92.00 | 2 | 2 | 4444 | 0.4 | 73.1 | 3.0 | 3.1 | 1.4 | 13.0 | 0.7 | 4.5 | 0.8 | 73.5 | 3.0 | 23.5 | 0.087 | 0.500 | 32.521843 | -116.320010 |
| Plaza de Cobro El Hongo | 92.00 | 3 | 1 | 4909 | 1.6 | 74.9 | 2.3 | 6.6 | 0.7 | 8.5 | 2.3 | 2.1 | 1.0 | 76.5 | 2.3 | 21.2 | 0.131 | 0.504 | 32.523794 | -116.330908 |
| Plaza de Cobro El Hongo | 92.00 | 3 | 2 | 4978 | 1.6 | 74.7 | 2.4 | 6.6 | 0.7 | 8.5 | 2.4 | 2.2 | 0.9 | 76.3 | 2.4 | 21.3 | 0.145 | 0.504 | 32.523710 | -116.330914 |
| T. C. Mexicali - Tijuana (Libre) | 117.00 | | | | | | | | | | | | | | | | | | | |

14 CARR: Libramiento de Mexicali (Cuota)

CLAVE: 02319

RUTA: MEX-002D

AÑO: 2021

| LUGAR | ESTACION | | | | CLASIFICACION VEHICULAR EN PORCIENTO | | | | | | | | | | | | | | COORDENADAS | |
|--------------------------|----------|----|----|------|--------------------------------------|------|-----|-----|-----|------|------|--------|-------|------|-----|------|-------|-------|-------------|-------------|
| | KM | TE | SC | TDPA | M | A | B | C2 | C3 | T3S2 | T3S3 | T3S2R4 | OTROS | A | B | C | K' | D | LATITUD | LONGITUD |
| T. C. Sonoyta - Mexicali | 0.00 | 3 | 0 | 4306 | 2.0 | 58.8 | 3.9 | 4.8 | 2.2 | 18.8 | 2.1 | 6.6 | 0.8 | 60.8 | 3.9 | 35.3 | 0.096 | 0.511 | 32.550581 | -115.308254 |
| T. C. Mexicali - Tijuana | 40.60 | 1 | 0 | 2910 | 4.9 | 52.6 | 3.2 | 7.5 | 2.3 | 18.8 | 2.7 | 7.4 | 0.6 | 57.5 | 3.2 | 39.3 | 0.095 | 0.524 | 32.585990 | -115.666301 |

15 CARR: Libramiento de Tecate (Cuota)

CLAVE: 02082

RUTA: MEX-002D

AÑO: 2021

| LUGAR | ESTACION | | | | CLASIFICACION VEHICULAR EN PORCIENTO | | | | | | | | | | | | | | COORDENADAS | |
|---|----------|----|----|------|--------------------------------------|------|-----|-----|-----|------|------|--------|-------|------|-----|------|-------|-------|-------------|-------------|
| | KM | TE | SC | TDPA | M | A | B | C2 | C3 | T3S2 | T3S3 | T3S2R4 | OTROS | A | B | C | K' | D | LATITUD | LONGITUD |
| T. Der. Mexicali (1er. Acceso) | 118.00 | 3 | 1 | 5294 | 2.9 | 77.2 | 2.8 | 2.5 | 1.2 | 7.4 | 1.9 | 2.7 | 1.4 | 80.1 | 2.8 | 17.1 | 0.096 | 0.514 | 32.556658 | -116.584046 |
| T. Der. Mexicali (1er. Acceso) | 118.00 | 3 | 2 | 5597 | 2.8 | 76.9 | 3.5 | 2.9 | 1.0 | 7.9 | 1.5 | 2.4 | 1.1 | 79.7 | 3.5 | 16.8 | 0.112 | 0.514 | 32.556504 | -116.584025 |
| X. C. Tecate - El Sauzal | 122.85 | 3 | 1 | 4455 | 4.4 | 69.2 | 3.7 | 3.8 | 1.4 | 11.2 | 1.6 | 2.9 | 1.8 | 73.6 | 3.7 | 22.7 | 0.108 | 0.535 | 32.551151 | -116.625952 |
| X. C. Tecate - El Sauzal | 122.85 | 3 | 2 | 5136 | 4.1 | 74.2 | 3.5 | 2.6 | 1.6 | 8.4 | 1.2 | 3.1 | 1.3 | 78.3 | 3.5 | 18.2 | 0.113 | 0.535 | 32.550998 | -116.625984 |
| T. C. Mexicali - Tijuana (Libre) Poniente | 130.60 | | | | | | | | | | | | | | | | | | | |

16 CARR: Tecate - Tijuana (Cuota)

CLAVE: 02011

RUTA: MEX-002D

AÑO: 2021

| LUGAR | ESTACION | | | | CLASIFICACION VEHICULAR EN PORCIENTO | | | | | | | | | | | | | | COORDENADAS | |
|----------------------------------|----------|----|----|------|--------------------------------------|------|-----|-----|-----|------|------|--------|-------|------|-----|------|-------|-------|-------------|-------------|
| | KM | TE | SC | TDPA | M | A | B | C2 | C3 | T3S2 | T3S3 | T3S2R4 | OTROS | A | B | C | K' | D | LATITUD | LONGITUD |
| T. C. Mexicali - Tijuana (Libre) | 130.60 | | | | | | | | | | | | | | | | | | | |
| Plaza de Cobro Tijuana | 147.60 | 1 | 1 | 4490 | 3.0 | 75.2 | 3.5 | 2.7 | 1.3 | 10.9 | 0.7 | 2.5 | 0.2 | 78.2 | 3.5 | 18.3 | 0.139 | 0.510 | 32.549432 | -116.847595 |
| Plaza de Cobro Tijuana | 147.60 | 1 | 2 | 4319 | 3.0 | 75.3 | 3.5 | 2.7 | 1.3 | 10.9 | 0.6 | 2.5 | 0.2 | 78.3 | 3.5 | 18.2 | 0.133 | 0.510 | 32.549378 | -116.847531 |
| Plaza de Cobro Tijuana | 147.60 | 2 | 1 | 5116 | 0.5 | 76.9 | 1.5 | 3.8 | 1.4 | 11.7 | 0.7 | 2.9 | 0.6 | 77.4 | 1.5 | 21.1 | 0.091 | 0.500 | 32.545717 | -116.852059 |
| Plaza de Cobro Tijuana | 147.60 | 2 | 2 | 5116 | 0.5 | 76.9 | 1.5 | 3.8 | 1.4 | 11.7 | 0.7 | 2.9 | 0.6 | 77.4 | 1.5 | 21.1 | 0.091 | 0.500 | 32.545717 | -116.852059 |

BAJA CALIFORNIA

16 CARR: Tecate - Tijuana (Cuota)

CLAVE: 02011

RUTA: MEX-002D

AÑO: 2021

| LUGAR | ESTACION | | | | CLASIFICACION VEHICULAR EN PORCIENTO | | | | | | | | | | COORDENADAS | | | | | |
|-------------------------------------|----------|----|----|-------|--------------------------------------|------|-----|-----|-----|------|------|--------|-------|------|-------------|------|-------|-------|-----------|-------------|
| | KM | TE | SC | TDPA | M | A | B | C2 | C3 | T3S2 | T3S3 | T3S2R4 | OTROS | A | B | C | K' | D | LATITUD | LONGITUD |
| Plaza de Cobro Tijuana | 147.60 | 3 | 1 | 23479 | 1.0 | 82.5 | 3.5 | 5.4 | 1.7 | 5.2 | 0.2 | 0.4 | 0.1 | 83.5 | 3.5 | 13.0 | 0.119 | 0.541 | 32.542354 | -116.858161 |
| Plaza de Cobro Tijuana | 147.60 | 3 | 2 | 21571 | 1.1 | 82.0 | 3.8 | 4.9 | 1.3 | 6.1 | 0.4 | 0.3 | 0.1 | 83.1 | 3.8 | 13.1 | 0.098 | 0.541 | 32.542264 | -116.858172 |
| Termina Autopista Principia Tijuana | 148.15 | | | | | | | | | | | | | | | | | | | |

17 CARR: Tijuana - Ensenada (Cuota)

CLAVE: 02100

RUTA: MEX-001D

AÑO: 2021

| LUGAR | ESTACION | | | | CLASIFICACION VEHICULAR EN PORCIENTO | | | | | | | | | | COORDENADAS | | | | | |
|----------------------------------|----------|----|----|-------|--------------------------------------|------|-----|-----|-----|------|------|--------|-------|------|-------------|-----|-------|-------|-----------|-------------|
| | KM | TE | SC | TDPA | M | A | B | C2 | C3 | T3S2 | T3S3 | T3S2R4 | OTROS | A | B | C | K' | D | LATITUD | LONGITUD |
| Tijuana | 0.00 | | | | | | | | | | | | | | | | | | | |
| T. Der. Playas de Tijuana | 7.50 | 3 | 1 | 10074 | 0.5 | 95.5 | 0.3 | 3.0 | 0.3 | 0.2 | 0.1 | 0.1 | 0.0 | 96.0 | 0.3 | 3.7 | 0.159 | 0.696 | 32.528910 | -117.108307 |
| T. Der. Playas de Tijuana | 7.50 | 3 | 2 | 8354 | 1.5 | 96.3 | 0.3 | 1.0 | 0.3 | 0.3 | 0.1 | 0.1 | 0.1 | 97.8 | 0.3 | 1.9 | 0.147 | 0.696 | 32.528919 | -117.108222 |
| Plaza de Cobro Playas de Tijuana | 9.70 | 2 | 1 | 9258 | 1.0 | 97.6 | 0.3 | 0.5 | 0.3 | 0.3 | 0.0 | 0.0 | 0.0 | 98.6 | 0.3 | 1.1 | 0.100 | 0.500 | 32.514051 | -117.109566 |
| Plaza de Cobro Playas de Tijuana | 9.70 | 2 | 2 | 9258 | 1.0 | 97.6 | 0.3 | 0.5 | 0.3 | 0.3 | 0.0 | 0.0 | 0.0 | 98.6 | 0.3 | 1.1 | 0.100 | 0.500 | 32.514051 | -117.109566 |
| T. Izq. La Joya | 14.50 | 3 | 1 | 9552 | 0.9 | 97.3 | 0.3 | 0.8 | 0.3 | 0.2 | 0.1 | 0.1 | 0.0 | 98.2 | 0.3 | 1.5 | 0.173 | 0.720 | 32.481394 | -117.120723 |
| T. Izq. La Joya | 14.50 | 3 | 2 | 7062 | 1.2 | 96.9 | 0.2 | 0.5 | 0.7 | 0.1 | 0.2 | 0.1 | 0.1 | 98.1 | 0.2 | 1.7 | 0.150 | 0.720 | 32.481403 | -117.120638 |
| San Antonio Norte | 17.80 | 1 | 1 | 9960 | 1.2 | 96.8 | 0.2 | 0.7 | 0.7 | 0.2 | 0.0 | 0.1 | 0.1 | 98.0 | 0.2 | 1.8 | 0.167 | 0.515 | 32.459010 | -117.113724 |
| San Antonio Norte | 17.80 | 1 | 2 | 9362 | 0.9 | 96.7 | 0.3 | 0.8 | 0.8 | 0.2 | 0.1 | 0.1 | 0.1 | 97.6 | 0.3 | 2.1 | 0.124 | 0.515 | 32.459049 | -117.113633 |
| San Antonio del Mar | 19.30 | 1 | 1 | 10014 | 0.9 | 97.0 | 0.2 | 0.9 | 0.6 | 0.2 | 0.0 | 0.1 | 0.1 | 97.9 | 0.2 | 1.9 | 0.168 | 0.547 | 32.450354 | -117.108000 |
| San Antonio del Mar | 19.30 | 1 | 2 | 8286 | 0.8 | 97.2 | 0.2 | 0.6 | 0.7 | 0.2 | 0.1 | 0.1 | 0.1 | 98.0 | 0.2 | 1.8 | 0.120 | 0.547 | 32.450409 | -117.107936 |
| Brisas del Mar | 22.00 | 1 | 1 | 9911 | 0.8 | 96.3 | 0.3 | 1.4 | 0.5 | 0.3 | 0.1 | 0.1 | 0.2 | 97.1 | 0.3 | 2.6 | 0.168 | 0.528 | 32.428090 | -117.097135 |
| Brisas del Mar | 22.00 | 1 | 2 | 8865 | 0.9 | 95.7 | 0.3 | 1.5 | 0.7 | 0.3 | 0.1 | 0.2 | 0.3 | 96.6 | 0.3 | 3.1 | 0.112 | 0.528 | 32.428099 | -117.097050 |
| Baja Malibu | 22.50 | 3 | 1 | 8410 | 1.1 | 95.0 | 0.3 | 1.9 | 0.8 | 0.4 | 0.2 | 0.1 | 0.2 | 96.1 | 0.3 | 3.6 | 0.106 | 0.509 | 32.416662 | -117.094070 |
| Baja Malibu | 22.50 | 3 | 2 | 8100 | 1.1 | 94.9 | 0.3 | 1.8 | 0.9 | 0.4 | 0.2 | 0.2 | 0.2 | 96.0 | 0.3 | 3.7 | 0.106 | 0.509 | 32.416690 | -117.093985 |
| T. Izq. Rancho del Mar | 24.60 | 1 | 1 | 12452 | 0.8 | 96.3 | 0.3 | 1.1 | 0.4 | 0.4 | 0.3 | 0.2 | 0.2 | 97.1 | 0.3 | 2.6 | 0.150 | 0.509 | 32.405145 | -117.090889 |
| T. Izq. Rancho del Mar | 24.60 | 1 | 2 | 12924 | 0.8 | 96.3 | 0.3 | 1.1 | 0.4 | 0.4 | 0.3 | 0.2 | 0.2 | 97.1 | 0.3 | 2.6 | 0.121 | 0.509 | 32.405163 | -117.090815 |
| T. Izq. Rancho del Mar | 24.60 | 3 | 1 | 9197 | 2.1 | 95.5 | 0.3 | 1.3 | 0.6 | 0.2 | 0.0 | 0.0 | 0.0 | 97.6 | 0.3 | 2.1 | 0.131 | 0.506 | 32.394926 | -117.086892 |
| T. Izq. Rancho del Mar | 24.60 | 3 | 2 | 9403 | 2.3 | 96.0 | 0.3 | 0.9 | 0.3 | 0.2 | 0.0 | 0.0 | 0.0 | 98.3 | 0.3 | 1.4 | 0.119 | 0.506 | 32.394963 | -117.086817 |
| X. C. Tijuana - Ensenada | 29.50 | 1 | 1 | 10748 | 2.1 | 94.3 | 0.5 | 2.2 | 0.5 | 0.3 | 0.0 | 0.1 | 0.0 | 96.4 | 0.5 | 3.1 | 0.140 | 0.527 | 32.380897 | -117.057834 |
| X. C. Tijuana - Ensenada | 29.50 | 1 | 2 | 9643 | 2.3 | 93.7 | 0.6 | 2.5 | 0.6 | 0.2 | 0.0 | 0.1 | 0.0 | 96.0 | 0.6 | 3.4 | 0.115 | 0.527 | 32.380906 | -117.057749 |
| X. C. Tijuana - Ensenada | 29.50 | 3 | 1 | 19490 | 4.2 | 90.4 | 0.9 | 2.4 | 0.7 | 1.0 | 0.1 | 0.2 | 0.1 | 94.6 | 0.9 | 4.5 | 0.087 | 0.645 | 32.370802 | -117.057838 |
| X. C. Tijuana - Ensenada | 29.50 | 3 | 2 | 20661 | 2.2 | 92.3 | 0.9 | 2.6 | 0.7 | 0.9 | 0.1 | 0.2 | 0.1 | 94.5 | 0.9 | 4.6 | 0.090 | 0.645 | 32.370811 | -117.057753 |
| T. Izq. Rosarito | 30.60 | 3 | 1 | 21323 | 0.9 | 95.2 | 0.6 | 1.4 | 0.8 | 0.8 | 0.1 | 0.1 | 0.1 | 96.1 | 0.6 | 3.3 | 0.103 | 0.570 | 32.360988 | -117.056025 |
| T. Izq. Rosarito | 30.60 | 3 | 2 | 20136 | 1.3 | 93.6 | 0.8 | 1.9 | 1.0 | 1.0 | 0.2 | 0.1 | 0.1 | 94.9 | 0.8 | 4.3 | 0.118 | 0.570 | 32.361006 | -117.055940 |
| Plaza de Cobro Rosarito | 35.43 | 2 | 1 | 7157 | 0.7 | 93.0 | 1.0 | 1.6 | 0.5 | 2.4 | 0.2 | 0.5 | 0.1 | 93.7 | 1.0 | 5.3 | 0.100 | 0.500 | 32.311096 | -117.044403 |
| Plaza de Cobro Rosarito | 35.43 | 2 | 2 | 7157 | 0.7 | 93.0 | 1.0 | 1.6 | 0.5 | 2.4 | 0.2 | 0.5 | 0.1 | 93.7 | 1.0 | 5.3 | 0.100 | 0.500 | 32.311096 | -117.044403 |

BAJA CALIFORNIA

17 CARR: Tijuana - Ensenada (Cuota)

CLAVE: 02100

RUTA: MEX-001D

AÑO: 2021

| LUGAR | ESTACION | | | | CLASIFICACION VEHICULAR EN PORCIENTO | | | | | | | | | | | | | | COORDENADAS | |
|----------------------------------|----------|----|----|------|--------------------------------------|------|-----|-----|-----|------|------|--------|-------|------|-----|------|-------|-------|-------------|-------------|
| | KM | TE | SC | TDPA | M | A | B | C2 | C3 | T3S2 | T3S3 | T3S2R4 | OTROS | A | B | C | K' | D | LATITUD | LONGITUD |
| T. Izq. Corredor Tijuana 2000 | 40.00 | 3 | 1 | 6894 | 2.1 | 85.7 | 2.3 | 1.8 | 1.0 | 5.1 | 0.5 | 1.2 | 0.3 | 87.8 | 2.3 | 9.9 | 0.177 | 0.532 | 32.280445 | -117.028619 |
| T. Izq. Corredor Tijuana 2000 | 40.00 | 3 | 2 | 7040 | 1.9 | 86.9 | 2.2 | 1.7 | 0.9 | 4.8 | 0.5 | 0.9 | 0.2 | 88.8 | 2.2 | 9.0 | 0.177 | 0.532 | 32.280472 | -117.028545 |
| T. Der. Puerto Nuevo | 49.27 | 3 | 1 | 8334 | 2.2 | 85.9 | 1.9 | 2.6 | 0.7 | 5.2 | 0.4 | 0.8 | 0.3 | 88.1 | 1.9 | 10.0 | 0.143 | 0.514 | 32.250070 | -116.943258 |
| T. Der. Puerto Nuevo | 49.27 | 3 | 2 | 7894 | 2.4 | 84.5 | 2.1 | 2.8 | 0.9 | 5.4 | 0.6 | 1.0 | 0.3 | 86.9 | 2.1 | 11.0 | 0.138 | 0.514 | 32.250368 | -116.943629 |
| T. Der. Cantamar | 53.00 | 3 | 1 | 8127 | 0.8 | 88.1 | 1.6 | 2.3 | 0.5 | 5.4 | 0.2 | 0.8 | 0.3 | 88.9 | 1.6 | 9.5 | 0.163 | 0.502 | 32.224173 | -116.916858 |
| T. Der. Cantamar | 53.00 | 3 | 2 | 8058 | 0.7 | 88.3 | 1.5 | 2.3 | 0.7 | 5.1 | 0.3 | 0.8 | 0.3 | 89.0 | 1.5 | 9.5 | 0.177 | 0.502 | 32.224272 | -116.916710 |
| T. Izq. El Descanso | 55.40 | 3 | 1 | 6944 | 2.1 | 87.4 | 0.9 | 1.8 | 0.9 | 5.0 | 0.6 | 1.0 | 0.3 | 89.5 | 0.9 | 9.6 | 0.165 | 0.518 | 32.203996 | -116.910160 |
| T. Izq. El Descanso | 55.40 | 3 | 2 | 7449 | 2.3 | 86.5 | 1.3 | 2.0 | 1.2 | 4.9 | 0.8 | 0.8 | 0.2 | 88.8 | 1.3 | 9.9 | 0.165 | 0.518 | 32.203951 | -116.910001 |
| T. Der. Campo López | 58.30 | 1 | 1 | 7338 | 2.0 | 83.8 | 2.1 | 3.8 | 0.8 | 5.6 | 0.5 | 1.1 | 0.3 | 85.8 | 2.1 | 12.1 | 0.162 | 0.508 | 32.188659 | -116.910356 |
| T. Der. Campo López | 58.30 | 1 | 2 | 7566 | 1.8 | 83.1 | 2.3 | 4.0 | 0.9 | 5.8 | 0.6 | 1.2 | 0.3 | 84.9 | 2.3 | 12.8 | 0.186 | 0.508 | 32.188677 | -116.910186 |
| T. Der. La Misión | 66.44 | 3 | 1 | 9766 | 0.5 | 81.7 | 1.2 | 8.2 | 0.9 | 5.7 | 0.6 | 1.0 | 0.2 | 82.2 | 1.2 | 16.6 | 0.123 | 0.549 | 32.119064 | -116.884145 |
| T. Der. La Misión | 66.44 | 3 | 2 | 8007 | 0.4 | 81.7 | 1.2 | 8.7 | 0.8 | 5.3 | 0.7 | 1.0 | 0.2 | 82.1 | 1.2 | 16.7 | 0.151 | 0.549 | 32.119073 | -116.883986 |
| T. Der. La Salina | 72.85 | 1 | 1 | 7081 | 0.7 | 86.0 | 0.9 | 4.2 | 0.6 | 5.6 | 0.8 | 0.9 | 0.3 | 86.7 | 0.9 | 12.4 | 0.156 | 0.544 | 32.062916 | -116.877541 |
| T. Der. La Salina | 72.85 | 1 | 2 | 5940 | 0.6 | 86.0 | 1.1 | 4.4 | 0.7 | 5.3 | 0.5 | 1.1 | 0.3 | 86.6 | 1.1 | 12.3 | 0.253 | 0.544 | 32.062924 | -116.877372 |
| T. Der. La Salina | 72.85 | 3 | 1 | 6473 | 2.3 | 82.5 | 1.2 | 7.3 | 0.8 | 3.8 | 1.3 | 0.6 | 0.2 | 84.8 | 1.2 | 14.0 | 0.163 | 0.524 | 32.054327 | -116.877277 |
| T. Der. La Salina | 72.85 | 3 | 2 | 5891 | 2.8 | 85.8 | 0.8 | 5.7 | 0.7 | 2.5 | 1.0 | 0.5 | 0.2 | 88.6 | 0.8 | 10.6 | 0.182 | 0.524 | 32.054345 | -116.877108 |
| T. Der. Baja Mar | 77.60 | 3 | 1 | 5955 | 1.2 | 83.7 | 0.9 | 7.5 | 0.8 | 3.6 | 1.3 | 0.7 | 0.3 | 84.9 | 0.9 | 14.2 | 0.180 | 0.514 | 32.018534 | -116.857290 |
| T. Der. Baja Mar | 77.60 | 3 | 2 | 6294 | 1.2 | 84.1 | 1.1 | 7.6 | 0.6 | 3.1 | 1.4 | 0.6 | 0.3 | 85.3 | 1.1 | 13.6 | 0.185 | 0.514 | 32.018760 | -116.857279 |
| Plaza de Cobro Ensenada | 98.60 | 2 | 1 | 7759 | 0.5 | 86.0 | 1.1 | 2.7 | 0.9 | 6.7 | 0.4 | 1.5 | 0.2 | 86.5 | 1.1 | 12.4 | 0.100 | 0.500 | 31.903097 | -116.732777 |
| Plaza de Cobro Ensenada | 98.60 | 2 | 2 | 7759 | 0.5 | 86.0 | 1.1 | 2.7 | 0.9 | 6.7 | 0.4 | 1.5 | 0.2 | 86.5 | 1.1 | 12.4 | 0.100 | 0.500 | 31.903097 | -116.732777 |
| T. C. Tijuana - Ensenada (Libre) | 98.80 | | | | | | | | | | | | | | | | | | | |

18 CARR: Mexicali - Tijuana

CLAVE: 02082

RUTA: MEX-002D-MEX

AÑO: 2021

| LUGAR | ESTACION | | | | CLASIFICACION VEHICULAR EN PORCIENTO | | | | | | | | | | | | | | COORDENADAS | |
|--------------------------------|----------|----|----|------|--------------------------------------|------|-----|------|-----|------|------|--------|-------|------|-----|------|-------|-------|-------------|-------------|
| | KM | TE | SC | TDPA | M | A | B | C2 | C3 | T3S2 | T3S3 | T3S2R4 | OTROS | A | B | C | K' | D | LATITUD | LONGITUD |
| Mexicali | 0.00 | | | | | | | | | | | | | | | | | | | |
| Colonia Progreso | 7.80 | 3 | 1 | 5948 | 2.0 | 83.4 | 2.7 | 2.7 | 2.0 | 4.9 | 0.7 | 1.2 | 0.4 | 85.4 | 2.7 | 11.9 | 0.112 | 0.513 | 32.583887 | -115.590935 |
| Colonia Progreso | 7.80 | 3 | 2 | 6254 | 1.8 | 83.0 | 2.7 | 2.8 | 2.2 | 5.1 | 0.8 | 1.2 | 0.4 | 84.8 | 2.7 | 12.5 | 0.163 | 0.513 | 32.583743 | -115.591001 |
| La Rumorosa | 66.80 | | | | | | | | | | | | | | | | | | | |
| T. Der. Estación de Microondas | 69.62 | 3 | 0 | 3412 | 1.9 | 76.4 | 1.4 | 8.3 | 1.4 | 7.6 | 2.0 | 0.7 | 0.3 | 78.3 | 1.4 | 20.3 | 0.125 | 0.513 | 32.510038 | -116.090827 |
| Agua Hechicera | 87.00 | 1 | 0 | 2936 | 2.3 | 73.5 | 1.9 | 6.1 | 1.4 | 10.5 | 3.3 | 0.6 | 0.4 | 75.8 | 1.9 | 22.3 | 0.093 | 0.520 | 32.495893 | -116.221233 |
| El Encinal | 112.15 | 1 | 0 | 5701 | 1.4 | 78.8 | 1.0 | 10.7 | 1.0 | 5.7 | 1.1 | 0.1 | 0.2 | 80.2 | 1.0 | 18.8 | 0.116 | 0.514 | 32.555624 | -116.436761 |
| Tecate | 132.00 | 1 | 1 | 6567 | 1.5 | 84.9 | 1.4 | 8.0 | 0.6 | 2.2 | 0.7 | 0.3 | 0.4 | 86.4 | 1.4 | 12.2 | 0.088 | 0.533 | 32.563989 | -116.580422 |
| Tecate | 132.00 | 1 | 2 | 7502 | 1.3 | 84.9 | 1.6 | 8.6 | 0.5 | 2.1 | 0.4 | 0.3 | 0.3 | 86.2 | 1.6 | 12.2 | 0.085 | 0.533 | 32.563917 | -116.580465 |

BAJA CALIFORNIA

18 CARR: Mexicali - Tijuana

CLAVE: 02082

RUTA: MEX-002D-MEX

AÑO: 2021

| LUGAR | ESTACION | | | | CLASIFICACION VEHICULAR EN PORCIENTO | | | | | | | | | | COORDENADAS | | | | | |
|-----------------------------|----------|----|----|-------|--------------------------------------|------|-----|-----|-----|------|------|--------|-------|------|-------------|-----|-------|-------|-----------|-------------|
| | KM | TE | SC | TDPA | M | A | B | C2 | C3 | T3S2 | T3S3 | T3S2R4 | OTROS | A | B | C | K' | D | LATITUD | LONGITUD |
| Tecate | 132.00 | 3 | 1 | 11955 | 0.6 | 88.0 | 2.6 | 6.0 | 0.8 | 1.2 | 0.3 | 0.3 | 0.2 | 88.6 | 2.6 | 8.8 | 0.072 | 0.523 | 32.546856 | -116.673897 |
| Tecate | 132.00 | 3 | 2 | 10902 | 0.6 | 88.0 | 2.6 | 6.0 | 0.7 | 1.3 | 0.3 | 0.3 | 0.2 | 88.6 | 2.6 | 8.8 | 0.085 | 0.523 | 32.546774 | -116.673823 |
| Presa Abelardo L. Rodríguez | 165.00 | 3 | 0 | 7161 | 1.0 | 92.5 | 0.8 | 1.0 | 3.4 | 0.5 | 0.3 | 0.4 | 0.1 | 93.5 | 0.8 | 5.7 | 0.082 | 0.514 | 32.455196 | -116.915008 |
| Tijuana | 182.60 | | | | | | | | | | | | | | | | | | | |

19 CARR: Algodones - Ent. Islas Agrarias Grupo B

CLAVE: 02006

RUTA: BC-008

AÑO: 2021

| LUGAR | ESTACION | | | | CLASIFICACION VEHICULAR EN PORCIENTO | | | | | | | | | | COORDENADAS | | | | | |
|-------------------------------|----------|----|----|------|--------------------------------------|------|-----|------|-----|------|------|--------|-------|------|-------------|------|-------|-------|-----------|-------------|
| | KM | TE | SC | TDPA | M | A | B | C2 | C3 | T3S2 | T3S3 | T3S2R4 | OTROS | A | B | C | K' | D | LATITUD | LONGITUD |
| Algodones | 0.00 | 3 | 0 | 4456 | 0.5 | 90.4 | 0.3 | 8.4 | 0.4 | 0.0 | 0.0 | 0.0 | 0.0 | 90.9 | 0.3 | 8.8 | 0.089 | 0.509 | 32.703412 | -114.741869 |
| T. Izq. Cd. Morelos | 14.00 | 1 | 0 | 4009 | 0.3 | 88.5 | 0.2 | 10.1 | 0.6 | 0.2 | 0.1 | 0.0 | 0.0 | 88.8 | 0.2 | 11.0 | 0.089 | 0.513 | 32.665950 | -114.839504 |
| Mérida | 20.30 | 3 | 0 | 2018 | 0.5 | 87.4 | 0.7 | 9.4 | 0.7 | 0.9 | 0.4 | 0.0 | 0.0 | 87.9 | 0.7 | 11.4 | 0.090 | 0.503 | 32.664548 | -114.925075 |
| T. Izq. Ejido Lazáro Cárdenas | 31.50 | 1 | 0 | 2943 | 0.4 | 88.3 | 0.4 | 9.5 | 0.5 | 0.6 | 0.3 | 0.0 | 0.0 | 88.7 | 0.4 | 10.9 | 0.080 | 0.501 | 32.614525 | -115.015386 |
| Islas Agrarias Grupo B | 55.50 | 1 | 0 | 4860 | 1.5 | 84.5 | 1.6 | 8.7 | 1.0 | 2.2 | 0.3 | 0.1 | 0.1 | 86.0 | 1.6 | 12.4 | 0.084 | 0.515 | 32.615525 | -115.264340 |

20 CARR: Corredor Tijuana 2000

CLAVE: 02006

RUTA: BC

AÑO: 2021

| LUGAR | ESTACION | | | | CLASIFICACION VEHICULAR EN PORCIENTO | | | | | | | | | | COORDENADAS | | | | | |
|------------------------------------|----------|----|----|-------|--------------------------------------|------|-----|-----|-----|------|------|--------|-------|------|-------------|------|-------|-------|-----------|-------------|
| | KM | TE | SC | TDPA | M | A | B | C2 | C3 | T3S2 | T3S3 | T3S2R4 | OTROS | A | B | C | K' | D | LATITUD | LONGITUD |
| T. C. Mexicali - Tijuana (Cuota) | 0.00 | 3 | 1 | 21309 | 1.5 | 82.8 | 4.1 | 4.7 | 1.6 | 4.2 | 0.3 | 0.5 | 0.3 | 84.3 | 4.1 | 11.6 | 0.120 | 0.521 | 32.538924 | -116.856516 |
| T. C. Mexicali - Tijuana (Cuota) | 0.00 | 3 | 2 | 23201 | 1.5 | 82.8 | 4.1 | 4.6 | 1.7 | 4.2 | 0.3 | 0.5 | 0.3 | 84.3 | 4.1 | 11.6 | 0.101 | 0.521 | 32.538816 | -116.856271 |
| T. C. Mexicali - Tijuana | 11.00 | 1 | 1 | 40449 | 1.0 | 87.1 | 2.6 | 4.0 | 1.2 | 2.8 | 0.3 | 0.8 | 0.2 | 88.1 | 2.6 | 9.3 | 0.082 | 0.503 | 32.467763 | -116.846572 |
| T. C. Mexicali - Tijuana | 11.00 | 1 | 2 | 41064 | 0.9 | 86.4 | 2.8 | 4.5 | 1.2 | 2.8 | 0.4 | 0.8 | 0.2 | 87.3 | 2.8 | 9.9 | 0.079 | 0.503 | 32.467772 | -116.846232 |
| T. C. Tijuana - San Miguel (Cuota) | 40.00 | 1 | 1 | 6066 | 0.4 | 81.3 | 1.0 | 8.1 | 2.1 | 5.1 | 0.7 | 1.1 | 0.2 | 81.7 | 1.0 | 17.3 | 0.147 | 0.519 | 32.288791 | -117.022148 |
| T. C. Tijuana - San Miguel (Cuota) | 40.00 | 1 | 2 | 5510 | 0.3 | 85.4 | 0.4 | 3.5 | 1.9 | 6.5 | 0.6 | 1.2 | 0.2 | 85.7 | 0.4 | 13.9 | 0.220 | 0.519 | 32.288611 | -117.022091 |

21 CARR: Ejido Benito Juárez - Ejido Chiapas

CLAVE: 02501

RUTA: BC-061

AÑO: 2021

| LUGAR | ESTACION | | | | CLASIFICACION VEHICULAR EN PORCIENTO | | | | | | | | | | COORDENADAS | | | | | |
|---------------------|----------|----|----|------|--------------------------------------|------|-----|------|-----|------|------|--------|-------|------|-------------|------|-------|-------|-----------|-------------|
| | KM | TE | SC | TDPA | M | A | B | C2 | C3 | T3S2 | T3S3 | T3S2R4 | OTROS | A | B | C | K' | D | LATITUD | LONGITUD |
| Ejido Benito Juárez | 0.00 | 3 | 0 | 4226 | 0.9 | 89.1 | 0.4 | 9.0 | 0.3 | 0.2 | 0.1 | 0.0 | 0.0 | 90.0 | 0.4 | 9.6 | 0.108 | 0.503 | 32.559143 | -114.993040 |
| Ejido México | 7.00 | 1 | 0 | 1450 | 0.8 | 85.8 | 0.6 | 11.5 | 0.6 | 0.5 | 0.2 | 0.0 | 0.0 | 86.6 | 0.6 | 12.8 | 0.089 | 0.519 | 32.519729 | -114.979755 |
| Ejido Chiapas | 10.56 | 1 | 0 | 1337 | 1.0 | 85.4 | 1.0 | 11.7 | 0.7 | 0.2 | 0.0 | 0.0 | 0.0 | 86.4 | 1.0 | 12.6 | 0.094 | 0.501 | 32.499739 | -114.965205 |

BAJA CALIFORNIA

22 CARR: Ejido Monterrey - Mazón

CLAVE: 02004

RUTA: BC-003

AÑO: 2021

| LUGAR | ESTACION | | | | CLASIFICACION VEHICULAR EN PORCIENTO | | | | | | | | | | | | | COORDENADAS | | |
|----------------------------|----------|----|----|-------|--------------------------------------|------|-----|-----|-----|------|------|--------|-------|------|-----|------|-------|-------------|-----------|-------------|
| | KM | TE | SC | TDPA | M | A | B | C2 | C3 | T3S2 | T3S3 | T3S2R4 | OTROS | A | B | C | K' | D | LATITUD | LONGITUD |
| T. C. Sonoita - Mexicali | 0.00 | 3 | 0 | 6017 | 6.2 | 76.1 | 2.8 | 9.1 | 1.1 | 2.4 | 0.5 | 1.2 | 0.6 | 82.3 | 2.8 | 14.9 | 0.102 | 0.516 | 32.543094 | -115.076384 |
| X. C. Mexicali - Algodones | 15.16 | 1 | 0 | 5509 | 1.1 | 89.4 | 2.1 | 3.7 | 0.9 | 2.0 | 0.3 | 0.3 | 0.2 | 90.5 | 2.1 | 7.4 | 0.082 | 0.503 | 32.422203 | -115.067449 |
| X. C. Mexicali - Algodones | 15.16 | 3 | 0 | 8348 | 1.1 | 90.6 | 1.3 | 3.4 | 0.8 | 2.1 | 0.5 | 0.1 | 0.1 | 91.7 | 1.3 | 7.0 | 0.097 | 0.501 | 32.412905 | -115.067012 |
| Guadalupe Victoria | 30.47 | 1 | 0 | 12103 | 1.0 | 94.8 | 0.8 | 2.0 | 0.5 | 0.7 | 0.1 | 0.1 | 0.0 | 95.8 | 0.8 | 3.4 | 0.096 | 0.503 | 32.295048 | -115.088970 |
| Mazón | 35.00 | 1 | 0 | 8517 | 1.2 | 94.2 | 1.0 | 2.1 | 0.6 | 0.8 | 0.1 | 0.0 | 0.0 | 95.4 | 1.0 | 3.6 | 0.076 | 0.505 | 32.244007 | -115.111042 |

23 CARR: El Faro - Estación Coahuila

CLAVE: 02013

RUTA: BC-004

AÑO: 2021

| LUGAR | ESTACION | | | | CLASIFICACION VEHICULAR EN PORCIENTO | | | | | | | | | | | | | COORDENADAS | | |
|---------------------------------------|----------|----|----|------|--------------------------------------|------|-----|------|-----|------|------|--------|-------|------|-----|------|-------|-------------|-----------|-------------|
| | KM | TE | SC | TDPA | M | A | B | C2 | C3 | T3S2 | T3S3 | T3S2R4 | OTROS | A | B | C | K' | D | LATITUD | LONGITUD |
| T. C. Mexicali - San Felipe | 0.00 | 3 | 0 | 2975 | 0.7 | 80.2 | 1.3 | 12.6 | 1.2 | 2.3 | 1.4 | 0.0 | 0.3 | 80.9 | 1.3 | 17.8 | 0.099 | 0.522 | 32.273415 | -115.317566 |
| X. C. Mexicali - Estación Coahuila | 16.30 | 1 | 0 | 3490 | 0.7 | 80.5 | 1.2 | 12.7 | 1.1 | 2.3 | 1.3 | 0.0 | 0.2 | 81.2 | 1.2 | 17.6 | 0.085 | 0.518 | 32.239540 | -115.179565 |
| X. C. Mexicali - Estación Coahuila | 16.30 | 3 | 0 | 8615 | 1.6 | 92.1 | 1.4 | 2.4 | 0.5 | 1.1 | 0.4 | 0.1 | 0.4 | 93.7 | 1.4 | 4.9 | 0.077 | 0.502 | 32.239414 | -115.158532 |
| T. Izq. Carr. Ejido Monterrey - Mazón | 26.70 | 3 | 0 | 5642 | 2.1 | 89.6 | 1.2 | 3.4 | 1.5 | 1.0 | 0.7 | 0.4 | 0.1 | 91.7 | 1.2 | 7.1 | 0.080 | 0.503 | 32.239456 | -115.099304 |
| Francisco Murguía | 30.00 | 3 | 0 | 4490 | 0.9 | 83.0 | 1.1 | 10.7 | 0.9 | 2.5 | 0.7 | 0.0 | 0.2 | 83.9 | 1.1 | 15.0 | 0.111 | 0.513 | 32.239734 | -115.063225 |
| Estación Coahuila | 34.50 | 1 | 0 | 6549 | 1.3 | 92.4 | 0.9 | 2.3 | 1.5 | 0.8 | 0.3 | 0.4 | 0.1 | 93.7 | 0.9 | 5.4 | 0.077 | 0.522 | 32.201420 | -115.004373 |

24 CARR: Ent. Santa Rosa - Ent. Pachuca

CLAVE: 02015

RUTA: BC-006

AÑO: 2021

| LUGAR | ESTACION | | | | CLASIFICACION VEHICULAR EN PORCIENTO | | | | | | | | | | | | | COORDENADAS | | |
|----------------------------|----------|----|----|------|--------------------------------------|------|-----|-----|-----|------|------|--------|-------|------|-----|------|-------|-------------|-----------|-------------|
| | KM | TE | SC | TDPA | M | A | B | C2 | C3 | T3S2 | T3S3 | T3S2R4 | OTROS | A | B | C | K' | D | LATITUD | LONGITUD |
| T. C. Sonoita - Mexicali | 0.00 | 3 | 0 | 7056 | 0.7 | 93.7 | 0.8 | 2.9 | 0.5 | 1.0 | 0.2 | 0.2 | 0.0 | 94.4 | 0.8 | 4.8 | 0.072 | 0.500 | 32.559279 | -115.019032 |
| Paredones | 10.90 | 3 | 0 | 6572 | 0.9 | 93.9 | 1.2 | 2.7 | 0.5 | 0.6 | 0.1 | 0.1 | 0.0 | 94.8 | 1.2 | 4.0 | 0.072 | 0.504 | 32.613970 | -114.915021 |
| Cd. Morelos | 18.00 | 3 | 0 | 2196 | 0.7 | 86.4 | 0.9 | 9.7 | 0.3 | 1.9 | 0.1 | 0.0 | 0.0 | 87.1 | 0.9 | 12.0 | 0.074 | 0.515 | 32.647800 | -114.802733 |
| T. C. Mexicali - Algodones | 23.22 | | | | | | | | | | | | | | | | | | | |

25 CARR: La Puerta - T. C. (Mexicali - Estación Coahuila)

CLAVE: 02502

RUTA: BC-010

AÑO: 2021

| LUGAR | ESTACION | | | | CLASIFICACION VEHICULAR EN PORCIENTO | | | | | | | | | | | | | COORDENADAS | | |
|------------------------------------|----------|----|----|------|--------------------------------------|------|-----|-----|-----|------|------|--------|-------|------|-----|------|-------|-------------|-----------|-------------|
| | KM | TE | SC | TDPA | M | A | B | C2 | C3 | T3S2 | T3S3 | T3S2R4 | OTROS | A | B | C | K' | D | LATITUD | LONGITUD |
| T. C. Mexicali - San Felipe | 0.00 | | | | | | | | | | | | | | | | | | | |
| Zakamoto | 4.60 | 1 | 0 | 2656 | 0.7 | 88.4 | 1.5 | 8.0 | 0.5 | 0.6 | 0.2 | 0.0 | 0.1 | 89.1 | 1.5 | 9.4 | 0.083 | 0.504 | 32.328301 | -115.301228 |
| Nayarit | 9.00 | 3 | 0 | 3748 | 0.7 | 88.4 | 0.3 | 9.0 | 0.6 | 0.7 | 0.2 | 0.0 | 0.1 | 89.1 | 0.3 | 10.6 | 0.071 | 0.501 | 32.313197 | -115.216892 |
| T. C. Mexicali - Estación Coahuila | 15.00 | | | | | | | | | | | | | | | | | | | |

BAJA CALIFORNIA

26 CARR: Mexicali - Algodones

CLAVE: 02012

RUTA: BC-002

AÑO: 2021

| LUGAR | ESTACION | | | | CLASIFICACION VEHICULAR EN PORCIENTO | | | | | | | | | | | | | COORDENADAS | | | |
|------------------------------------|----------|----|----|------|--------------------------------------|------|-----|------|-----|------|------|--------|-------|------|-----|------|-------|-------------|-----------|-------------|--|
| | KM | TE | SC | TDPA | M | A | B | C2 | C3 | T3S2 | T3S3 | T3S2R4 | OTROS | A | B | C | K' | D | LATITUD | LONGITUD | |
| T. C. Mexicali - San Felipe | 0.00 | | | | | | | | | | | | | | | | | | | | |
| Ejido Puebla | 12.00 | 3 | 0 | 8701 | 1.7 | 87.2 | 1.2 | 3.0 | 1.8 | 2.1 | 1.6 | 0.8 | 0.6 | 88.9 | 1.2 | 9.9 | 0.084 | 0.510 | 32.550504 | -115.362450 | |
| T. C. Geotérmica - Estación Delta | 31.50 | 1 | 0 | 5759 | 2.5 | 91.1 | 1.5 | 2.8 | 0.5 | 0.7 | 0.5 | 0.1 | 0.3 | 93.6 | 1.5 | 4.9 | 0.079 | 0.508 | 32.426328 | -115.263759 | |
| X. C. Mexicali - Estación Coahuila | 37.70 | 1 | 0 | 3825 | 0.9 | 85.2 | 1.5 | 9.4 | 0.7 | 1.2 | 0.6 | 0.0 | 0.5 | 86.1 | 1.5 | 12.4 | 0.075 | 0.502 | 32.419123 | -115.200151 | |
| X. C. Mexicali - Estación Coahuila | 37.70 | 3 | 0 | 5467 | 2.1 | 91.8 | 1.5 | 2.9 | 0.4 | 0.6 | 0.5 | 0.1 | 0.1 | 93.9 | 1.5 | 4.6 | 0.111 | 0.503 | 32.419002 | -115.172377 | |
| X. C. Ejido Monterrey - Mazón | 49.65 | 1 | 0 | 5793 | 2.4 | 88.9 | 3.0 | 3.3 | 0.5 | 0.9 | 0.3 | 0.5 | 0.2 | 91.3 | 3.0 | 5.7 | 0.097 | 0.503 | 32.418490 | -115.070514 | |
| X. C. Ejido Monterrey - Mazón | 49.65 | 3 | 0 | 2113 | 1.0 | 78.4 | 0.6 | 16.8 | 0.8 | 1.4 | 0.8 | 0.0 | 0.2 | 79.4 | 0.6 | 20.0 | 0.081 | 0.511 | 32.418451 | -115.063751 | |
| T. Izq. Tres de Marzo | 60.50 | 1 | 0 | 1157 | 1.3 | 80.0 | 1.0 | 15.0 | 1.0 | 1.0 | 0.7 | 0.0 | 0.0 | 81.3 | 1.0 | 17.7 | 0.061 | 0.503 | 32.465554 | -114.947142 | |
| X. C. Sonoita - Mexicali | 72.00 | 1 | 0 | 1678 | 1.5 | 82.6 | 1.2 | 12.5 | 0.8 | 1.0 | 0.4 | 0.0 | 0.0 | 84.1 | 1.2 | 14.7 | 0.091 | 0.507 | 32.504051 | -114.849067 | |
| X. C. Sonoita - Mexicali | 72.00 | 3 | 0 | 4223 | 0.6 | 90.3 | 0.3 | 7.6 | 0.7 | 0.4 | 0.1 | 0.0 | 0.0 | 90.9 | 0.3 | 8.8 | 0.084 | 0.517 | 32.513081 | -114.841766 | |
| Pachuca | 83.00 | 1 | 0 | 4316 | 0.7 | 88.9 | 0.3 | 9.3 | 0.4 | 0.3 | 0.1 | 0.0 | 0.0 | 89.6 | 0.3 | 10.1 | 0.083 | 0.512 | 32.586109 | -114.830861 | |
| Algodones | 94.46 | 1 | 0 | 4056 | 0.8 | 90.1 | 0.6 | 8.3 | 0.2 | 0.0 | 0.0 | 0.0 | 0.0 | 90.9 | 0.6 | 8.5 | 0.084 | 0.526 | 32.701557 | -114.731863 | |

27 CARR: Mexicali - Estación Coahuila

CLAVE: 02016

RUTA: BC-001

AÑO: 2021

| LUGAR | ESTACION | | | | CLASIFICACION VEHICULAR EN PORCIENTO | | | | | | | | | | | | | COORDENADAS | | |
|-----------------------------------|----------|----|----|-------|--------------------------------------|------|-----|------|-----|------|------|--------|-------|------|-----|------|-------|-------------|-----------|-------------|
| | KM | TE | SC | TDPA | M | A | B | C2 | C3 | T3S2 | T3S3 | T3S2R4 | OTROS | A | B | C | K' | D | LATITUD | LONGITUD |
| Mexicali | 0.00 | 3 | 1 | 18841 | 1.0 | 92.3 | 0.4 | 4.9 | 0.5 | 0.5 | 0.4 | 0.0 | 0.0 | 93.3 | 0.4 | 6.3 | 0.073 | 0.504 | 32.652967 | -115.390435 |
| Mexicali | 0.00 | 3 | 2 | 19182 | 1.2 | 91.8 | 0.4 | 5.3 | 0.6 | 0.5 | 0.2 | 0.0 | 0.0 | 93.0 | 0.4 | 6.6 | 0.085 | 0.504 | 32.653115 | -115.390444 |
| T. Izq. Aeropuerto | 11.30 | 1 | 1 | 13446 | 1.0 | 85.7 | 0.4 | 6.6 | 1.7 | 3.5 | 0.5 | 0.2 | 0.4 | 86.7 | 0.4 | 12.9 | 0.083 | 0.517 | 32.652894 | -115.371984 |
| T. Izq. Aeropuerto | 11.30 | 1 | 2 | 12560 | 1.0 | 85.5 | 0.5 | 6.6 | 1.7 | 3.6 | 0.5 | 0.2 | 0.4 | 86.5 | 0.5 | 13.0 | 0.083 | 0.517 | 32.653053 | -115.371972 |
| Islas Agrarias Grupo a | 14.10 | 1 | 0 | 11812 | 1.2 | 93.6 | 0.7 | 1.3 | 1.1 | 1.6 | 0.2 | 0.2 | 0.1 | 94.8 | 0.7 | 4.5 | 0.100 | 0.500 | 32.614129 | -115.342190 |
| X. C. Sonoita - Mexicali | 30.79 | 1 | 0 | 2883 | 0.7 | 77.1 | 1.4 | 16.4 | 0.7 | 2.4 | 1.2 | 0.0 | 0.1 | 77.8 | 1.4 | 20.8 | 0.069 | 0.509 | 32.556678 | -115.214980 |
| X. C. Sonoita - Mexicali | 30.79 | 3 | 0 | 5953 | 1.3 | 91.9 | 1.2 | 2.5 | 0.7 | 2.1 | 0.3 | 0.0 | 0.0 | 93.2 | 1.2 | 5.6 | 0.084 | 0.502 | 32.550014 | -115.215096 |
| Ejido Nuevo León | 46.83 | 1 | 0 | 5986 | 1.9 | 89.3 | 1.9 | 2.9 | 0.9 | 1.6 | 0.5 | 0.6 | 0.4 | 91.2 | 1.9 | 6.9 | 0.075 | 0.504 | 32.421248 | -115.192536 |
| Ejido Nuevo León | 46.83 | 3 | 0 | 5667 | 2.3 | 80.8 | 3.9 | 6.0 | 2.7 | 2.1 | 0.4 | 0.7 | 1.1 | 83.1 | 3.9 | 13.0 | 0.077 | 1.012 | 32.398014 | -115.194608 |
| T. Der. La Puerta | 60.26 | 1 | 0 | 2905 | 0.7 | 87.6 | 0.8 | 8.7 | 0.7 | 0.7 | 0.7 | 0.0 | 0.1 | 88.3 | 0.8 | 10.9 | 0.078 | 0.508 | 32.314796 | -115.189544 |
| X. C. El Faro - Estación Coahuila | 71.30 | 1 | 0 | 2278 | 1.3 | 85.3 | 1.5 | 8.1 | 0.6 | 1.5 | 1.5 | 0.0 | 0.2 | 86.6 | 1.5 | 11.9 | 0.070 | 0.517 | 32.243085 | -115.167498 |
| T. Der. Leona Vicario | 80.50 | 1 | 0 | 479 | 1.5 | 79.9 | 4.3 | 12.1 | 1.0 | 0.5 | 0.4 | 0.0 | 0.3 | 81.4 | 4.3 | 14.3 | 0.107 | 0.514 | 32.214771 | -115.167464 |
| Estación Coahuila | 96.65 | 1 | 0 | 1145 | 1.3 | 87.2 | 0.6 | 9.5 | 0.5 | 0.5 | 0.2 | 0.2 | 0.0 | 88.5 | 0.6 | 10.9 | 0.080 | 0.525 | 32.185688 | -115.012628 |

BAJA CALIFORNIA

28 CARR: Mexicali - Progreso

CLAVE: 02507

RUTA: BC-005

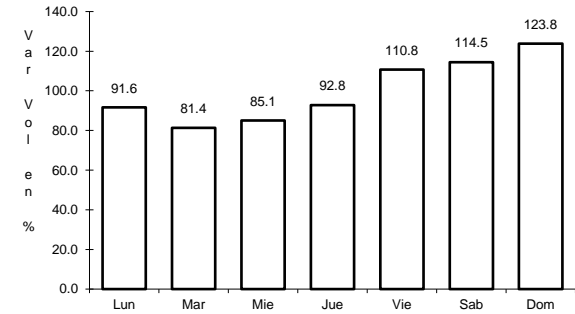
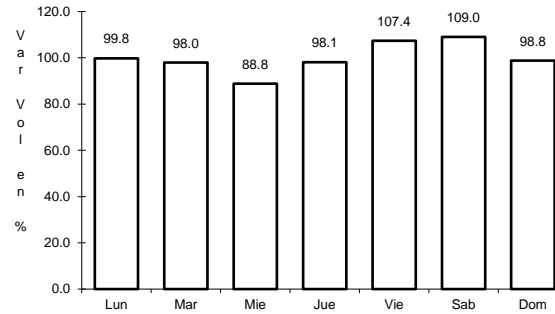
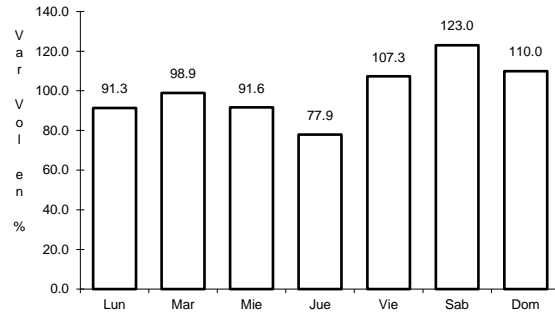
AÑO: 2021

| L U G A R | E S T A C I O N | | | | C L A S I F I C A C I O N V E H I C U L A R E N P O R C I E N T O | | | | | | | | | | C O O R D E N A D A S | | | | | |
|--------------------------|-----------------|----|----|------|---|------|-----|-----|-----|------|------|--------|-------|------|-----------------------|-----|-------|-------|-----------|-------------|
| | KM | TE | SC | TDPA | M | A | B | C2 | C3 | T3S2 | T3S3 | T3S2R4 | OTROS | A | B | C | K' | D | LATITUD | LONGITUD |
| T. C. Mexicali - Tijuana | 0.00 | | | | | | | | | | | | | | | | | | | |
| Progreso | 15.30 | 1 | 0 | 7295 | 3.2 | 87.7 | 1.9 | 5.5 | 0.8 | 0.7 | 0.2 | 0.0 | 0.0 | 90.9 | 1.9 | 7.2 | 0.105 | 0.504 | 32.602003 | -115.573741 |

1 CARR: Ensenada - El Chinero

CLAVE: 02009

RUTA: MEX-003



Km: 0.00 Tipo: 3 Sent: 0

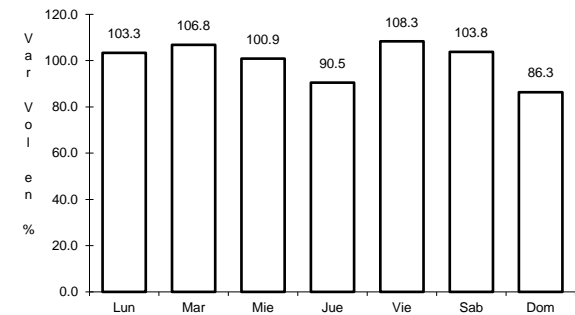
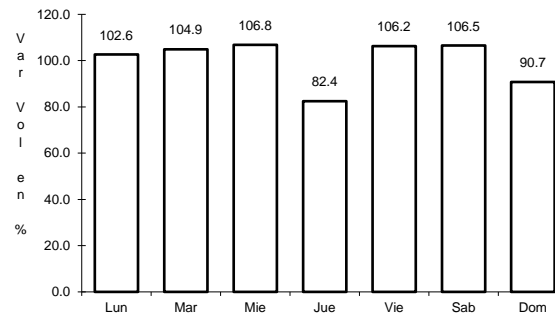
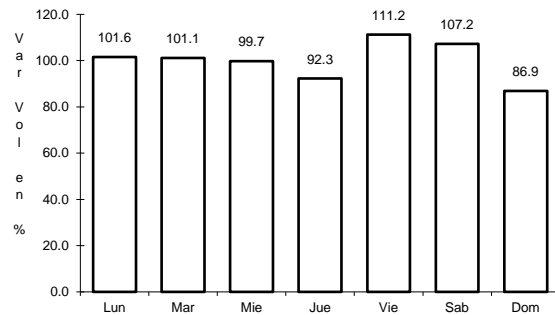
Km: 93.00 Tipo: 3 Sent: 0

Km: 196.00 Tipo: 1 Sent: 0

2 CARR: Ensenada - Lázaro Cárdenas

CLAVE: 02098

RUTA: MEX-001



Km: 0.00 Tipo: 3 Sent: 1

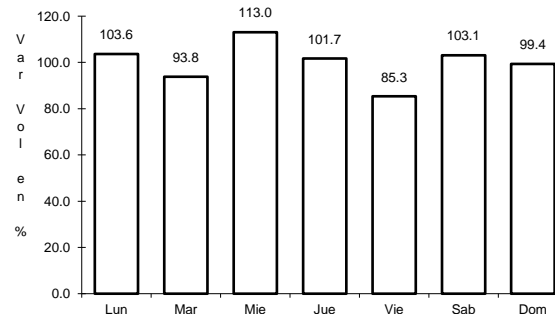
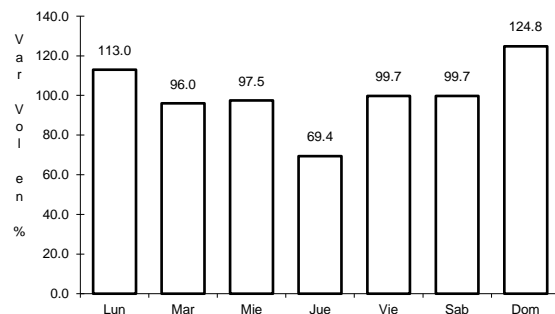
Km: 0.00 Tipo: 3 Sent: 2

Km: 193.00 Tipo: 1 Sent: 0

3 CARR: Ent. Punta Prieta - Bahía de Los Ángeles

CLAVE: 02322

RUTA: MEX-001



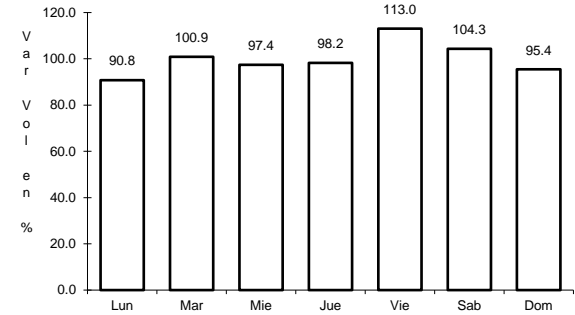
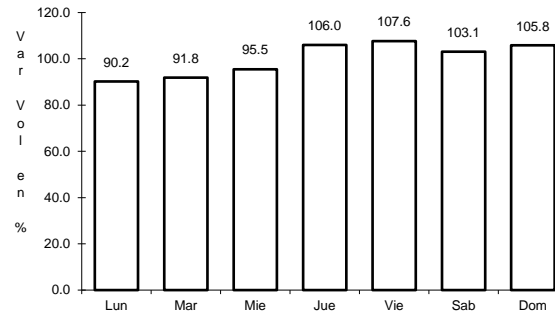
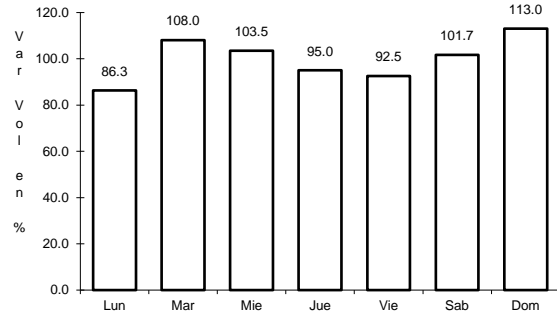
Km: 0.00 Tipo: 3 Sent: 0

Km: 68.00 Tipo: 1 Sent: 0

4 CARR: Ent. Punta Prieta - Guerrero Negro

CLAVE: 00321

RUTA: MEX-001



Km: 0.00 Tipo: 3 Sent: 0

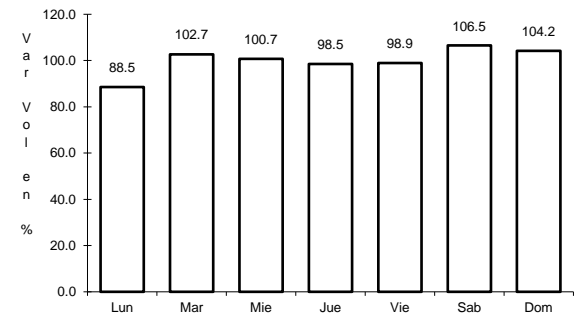
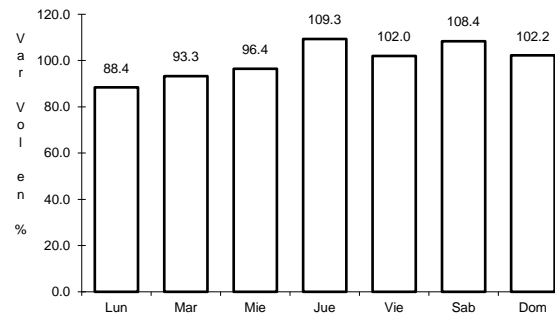
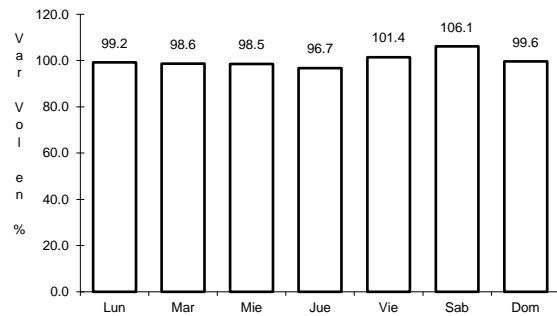
Km: 70.10 Tipo: 3 Sent: 0

Km: 130.00 Tipo: 1 Sent: 0

5 CARR: Lázaro Cárdenas - Ent. Punta Prieta

CLAVE: 02319

RUTA: MEX-001



Km: 0.00 Tipo: 3 Sent: 0

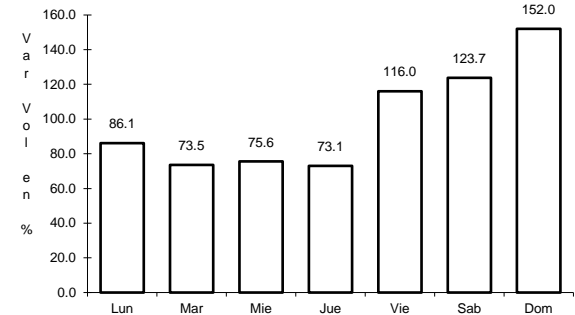
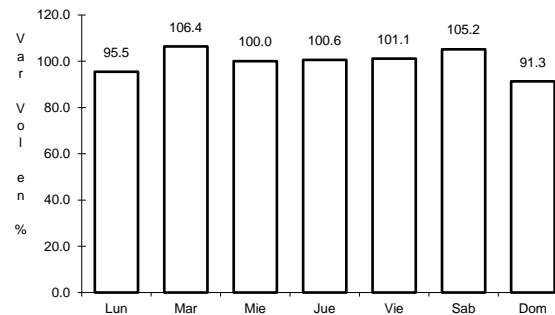
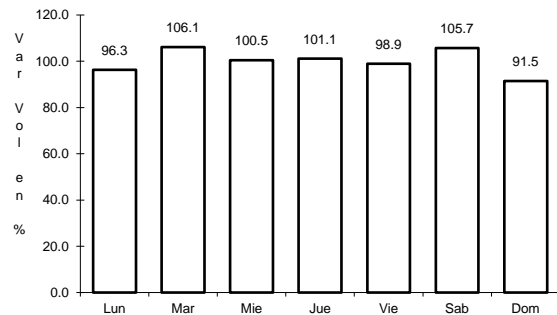
Km: 140.00 Tipo: 1 Sent: 0

Km: 275.66 Tipo: 1 Sent: 0

6 CARR: Mexicali - San Felipe

CLAVE: 02096

RUTA: MEX-005



Km: 0.00 Tipo: 3 Sent: 1

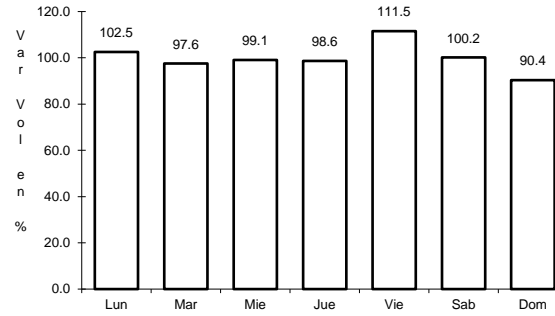
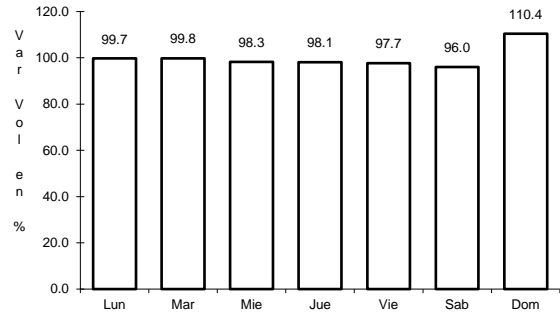
Km: 0.00 Tipo: 3 Sent: 2

Km: 141.00 Tipo: 1 Sent: 0

7 CARR: Ramal a Aeropuerto de Mexicali

CLAVE: 02321

RUTA: MEX-002



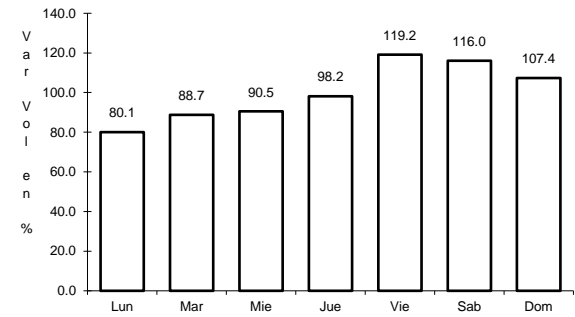
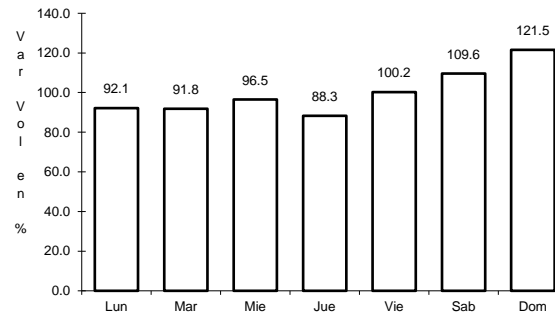
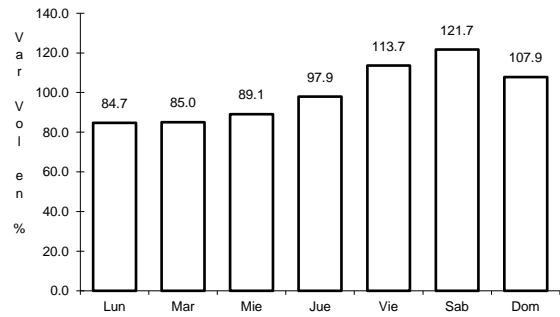
Km: 0.00 Tipo: 3 Sent: 0

Km: 10.00 Tipo: 1 Sent: 0

8 CARR: San Felipe - Chapala

CLAVE: 02503

RUTA: MEX-005



Km: 0.00 Tipo: 3 Sent: 1

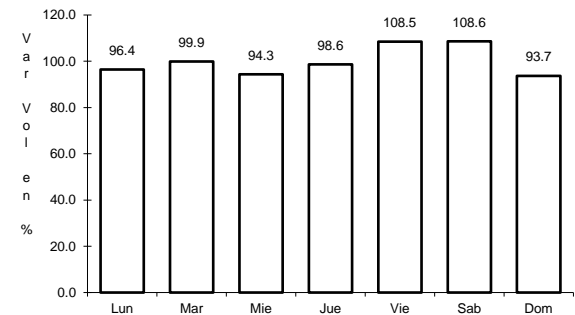
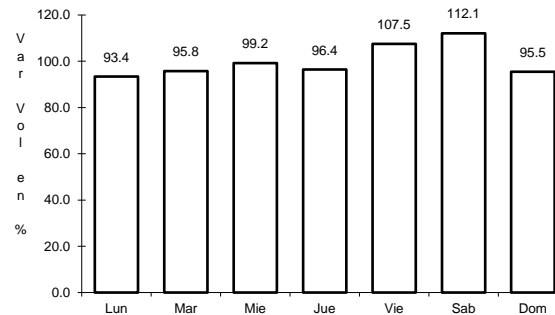
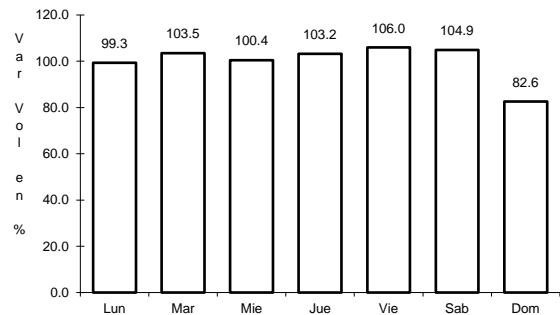
Km: 0.00 Tipo: 3 Sent: 2

Km: 75.46 Tipo: 3 Sent: 0

9 CARR: Sonoita - Mexicali

CLAVE: 00081

RUTA: MEX-002



Km: 0.00 Tipo: 3 Sent: 0

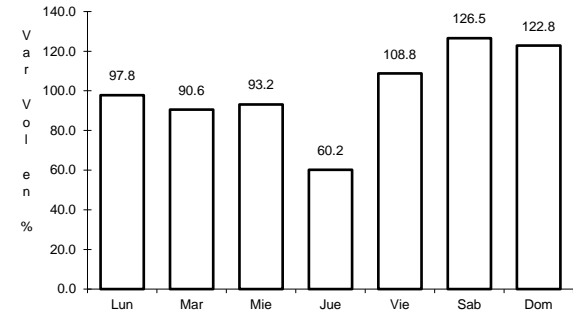
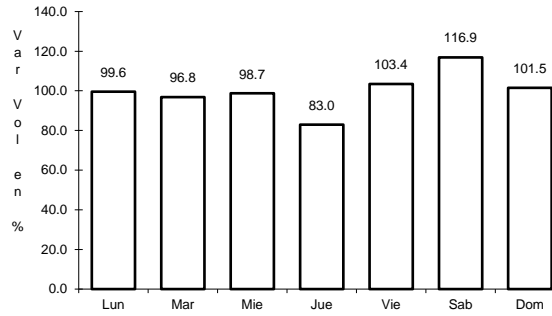
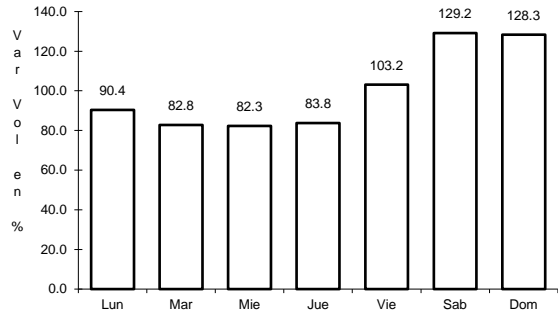
Km: 256.47 Tipo: 1 Sent: 1

Km: 256.47 Tipo: 1 Sent: 2

10 CARR: Tecate - El Sauzal

CLAVE: 02097

RUTA: MEX-003



Km: 0.00 Tipo: 3 Sent: 0

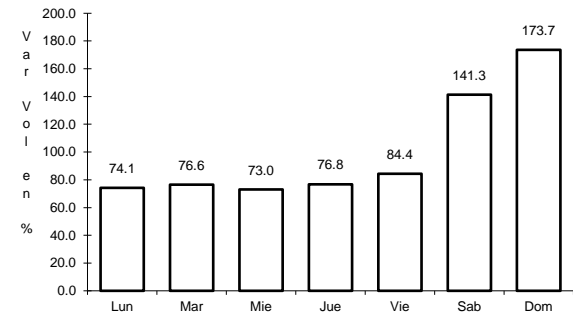
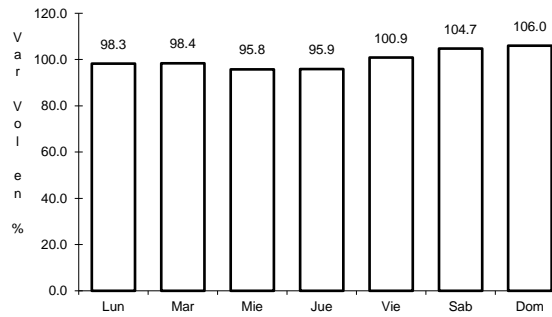
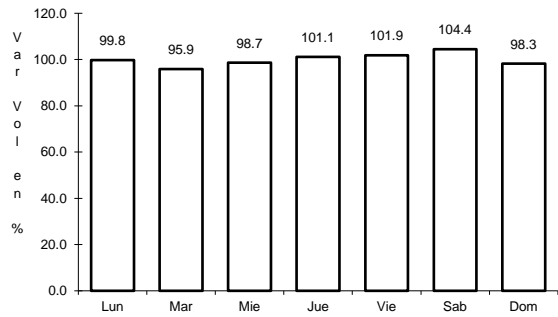
Km: 104.53 Tipo: 1 Sent: 1

Km: 104.53 Tipo: 1 Sent: 2

11 CARR: Tijuana - Ensenada (Libre)

CLAVE: 02099

RUTA: MEX-001



Km: 22.00 Tipo: 1 Sent: 1

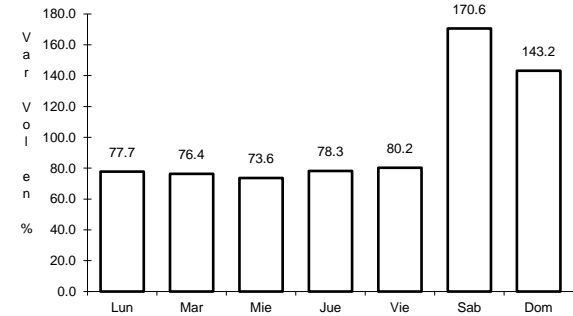
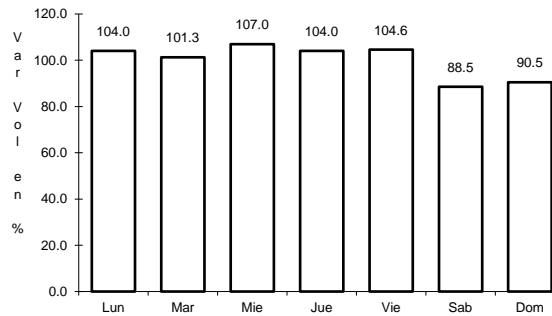
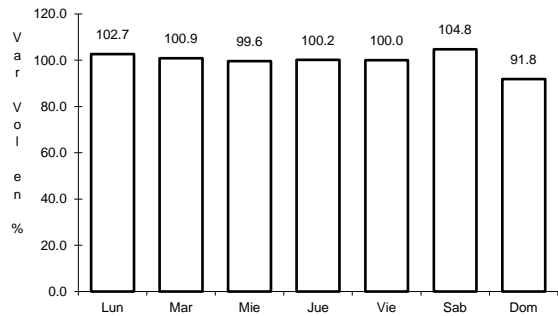
Km: 22.00 Tipo: 1 Sent: 2

Km: 56.98 Tipo: 1 Sent: 0

12 CARR: El Centinela - La Rumorosa (Cuota)

CLAVE: 02011

RUTA: MEX-002D



Km: 25.00 Tipo: 1 Sent: 1

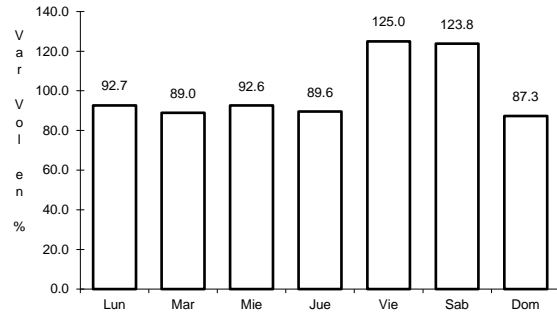
Km: 25.00 Tipo: 1 Sent: 2

Km: 67.60 Tipo: 1 Sent: 1

13 CARR: La Rumorosa - Tecate (Cuota)

CLAVE: 02011

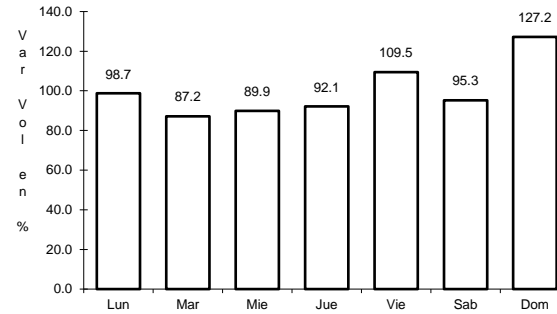
RUTA: MEX-002D



Km: 62.00

Tipo: 3

Sent: 1



Km: 62.00

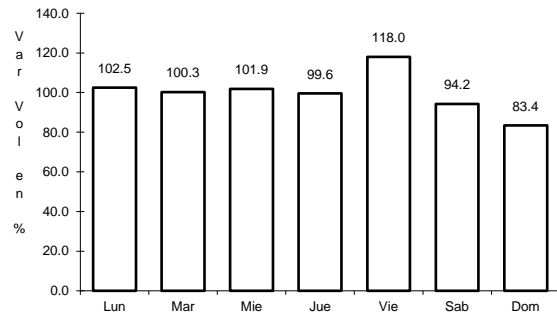
Tipo: 3

Sent: 2

14 CARR: Libramiento de Mexicali (Cuota)

CLAVE: 02319

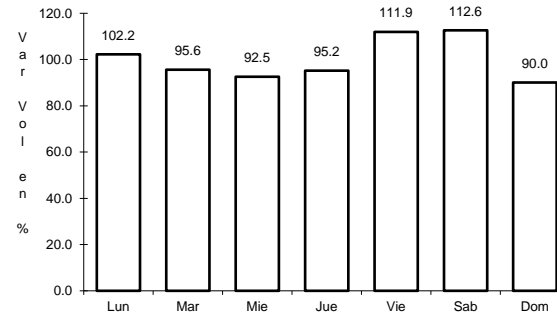
RUTA: MEX-002D



Km: 0.00

Tipo: 3

Sent: 0



Km: 40.60

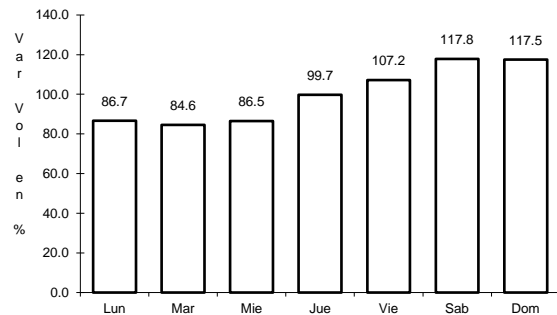
Tipo: 1

Sent: 0

15 CARR: Libramiento de Tecate (Cuota)

CLAVE: 02082

RUTA: MEX-002D



Km: 122.85

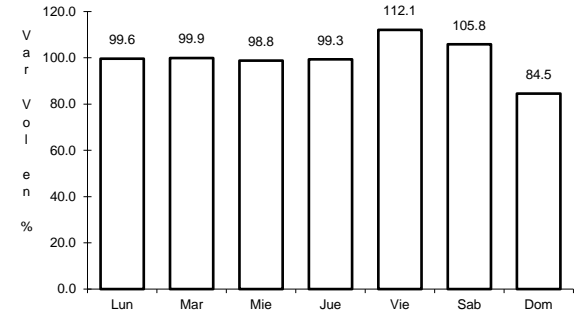
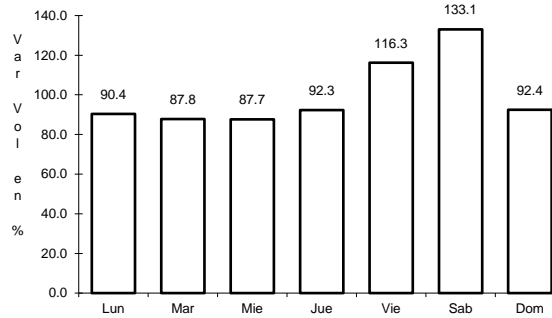
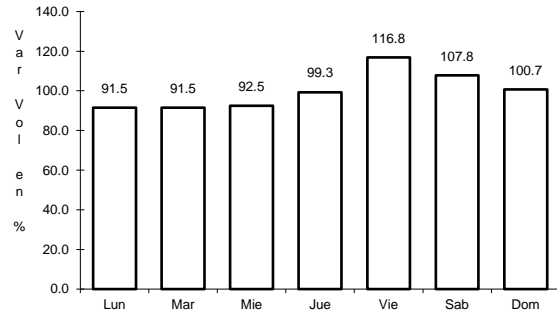
Tipo: 3

Sent: 1

16 CARR: Tecate - Tijuana (Cuota)

CLAVE: 02011

RUTA: MEX-002D



Km: 147.60

Tipo: 1

Sent: 1

Km: 147.60

Tipo: 1

Sent: 2

Km: 147.60

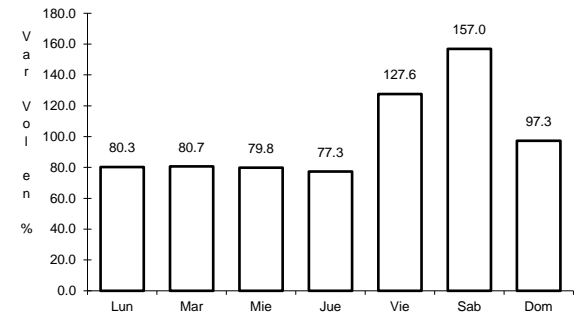
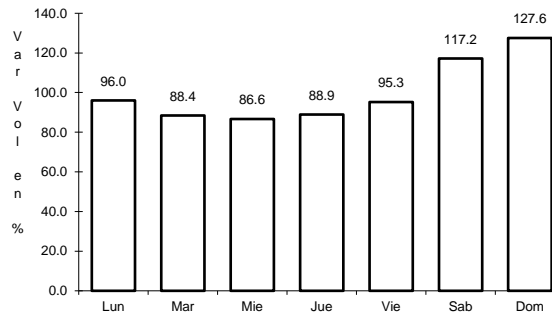
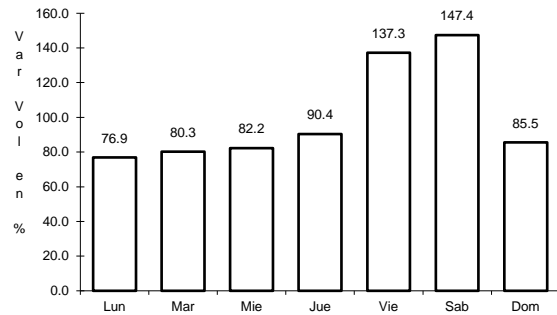
Tipo: 3

Sent: 1

17 CARR: Tijuana - Ensenada (Cuota)

CLAVE: 02100

RUTA: MEX-001D



Km: 7.50

Tipo: 3

Sent: 1

Km: 7.50

Tipo: 3

Sent: 2

Km: 77.60

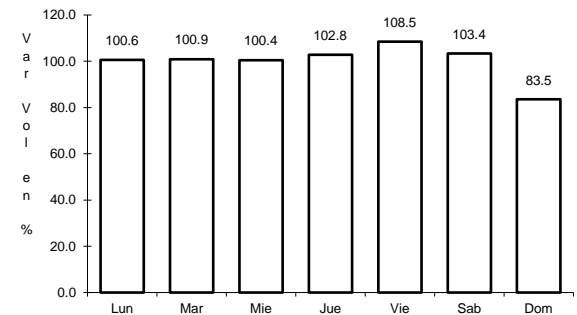
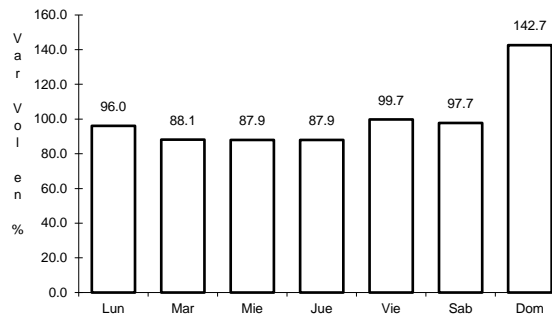
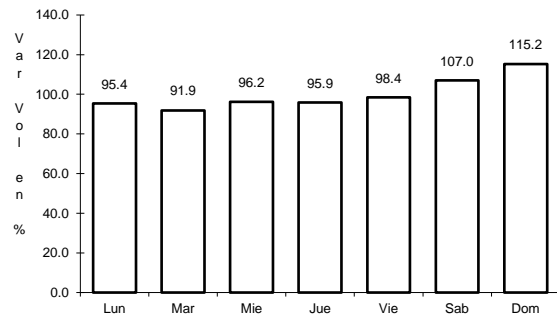
Tipo: 3

Sent: 1

18 CARR: Mexicali - Tijuana

CLAVE: 02082

RUTA: MEX-002D-MEX



Km: 7.80

Tipo: 3

Sent: 1

Km: 7.80

Tipo: 3

Sent: 2

Km: 165.00

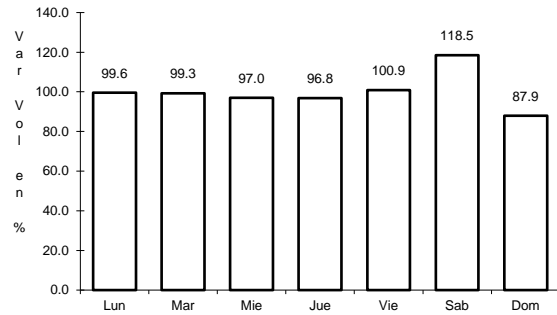
Tipo: 3

Sent: 0

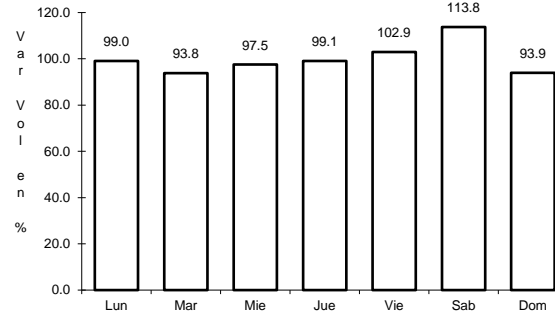
19 CARR: Algodones - Ent. Islas Agrarias Grupo B

CLAVE: 02006

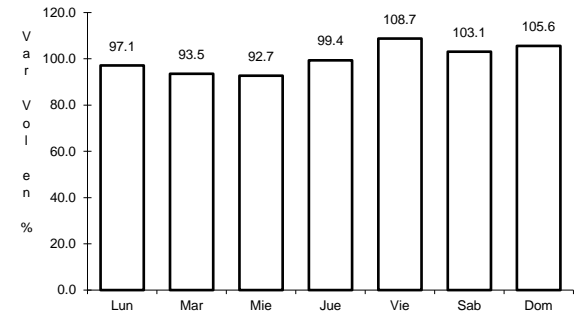
RUTA: BC-008



Km: 0.00 Tipo: 3 Sent: 0



Km: 31.50 Tipo: 1 Sent: 0

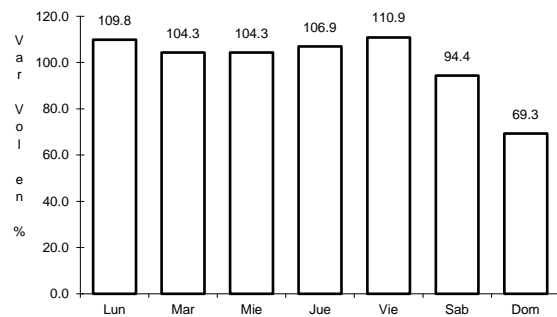


Km: 55.50 Tipo: 1 Sent: 0

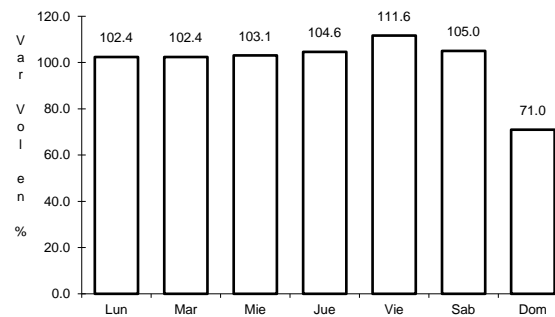
20 CARR: Corredor Tijuana 2000

CLAVE: 02006

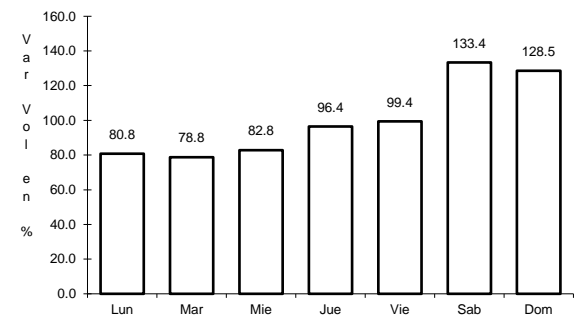
RUTA: BC



Km: 0.00 Tipo: 3 Sent: 1



Km: 0.00 Tipo: 3 Sent: 2

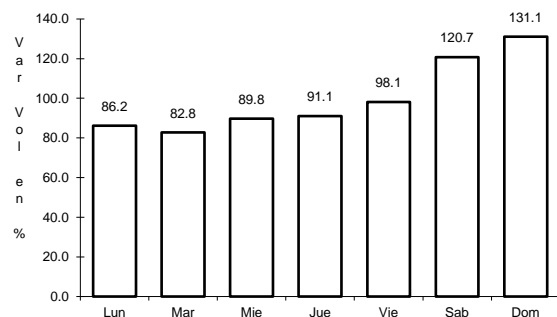


Km: 40.00 Tipo: 1 Sent: 1

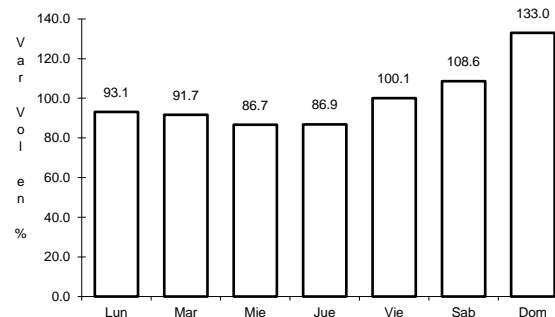
21 CARR: Ejido Benito Juárez - Ejido Chiapas

CLAVE: 02501

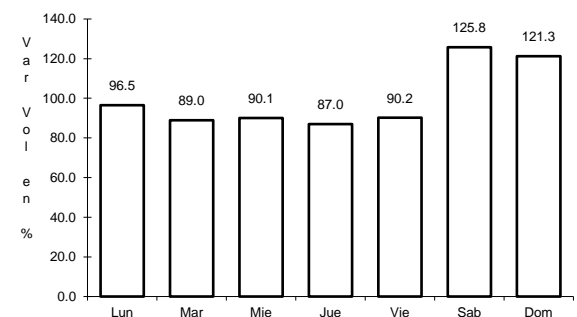
RUTA: BC-061



Km: 0.00 Tipo: 3 Sent: 0



Km: 7.00 Tipo: 1 Sent: 0

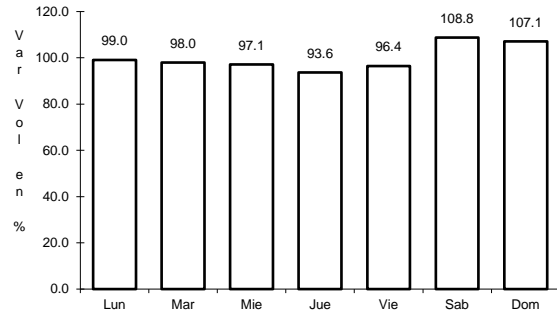


Km: 10.56 Tipo: 1 Sent: 0

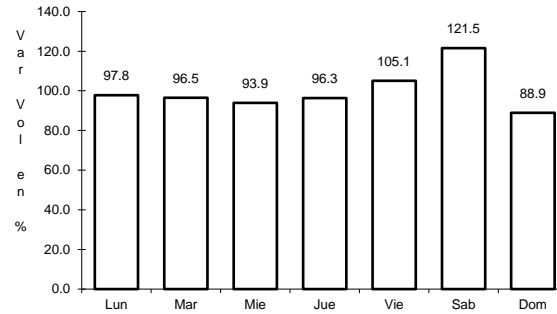
22 CARR: Ejido Monterrey - Mazón

CLAVE: 02004

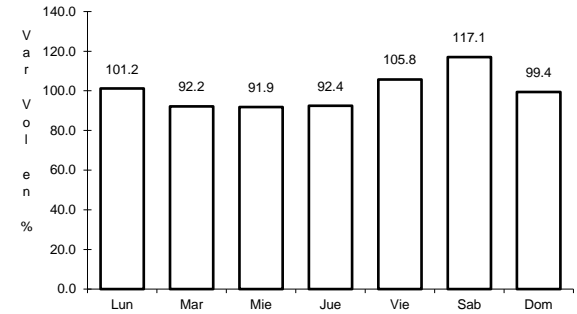
RUTA: BC-003



Km: 0.00 Tipo: 3 Sent: 0



Km: 15.16 Tipo: 3 Sent: 0

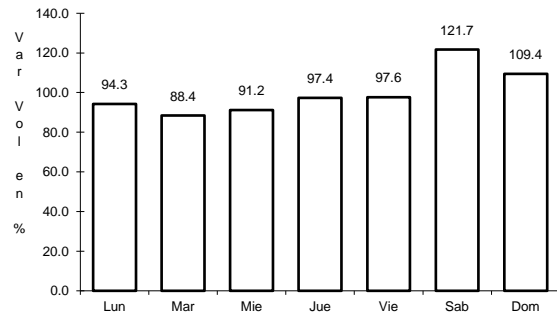


Km: 35.00 Tipo: 1 Sent: 0

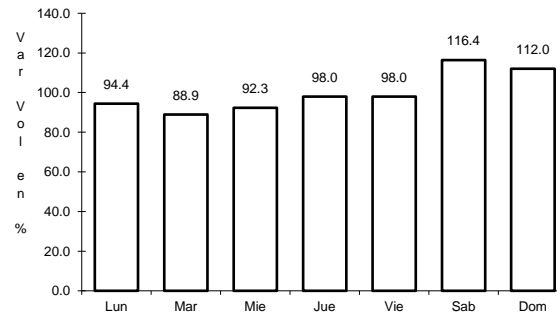
23 CARR: El Faro - Estación Coahuila

CLAVE: 02013

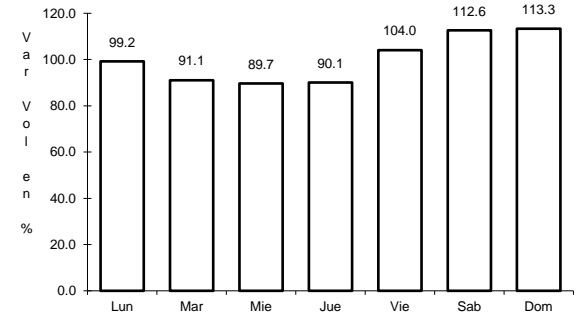
RUTA: BC-004



Km: 0.00 Tipo: 3 Sent: 0



Km: 16.30 Tipo: 1 Sent: 0

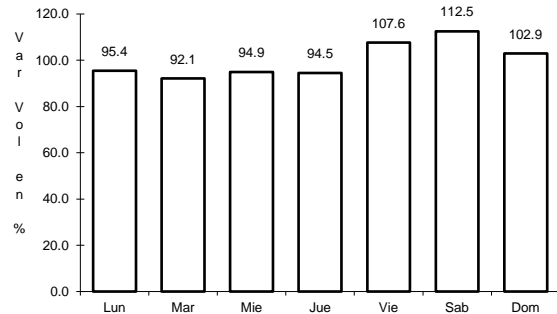


Km: 34.50 Tipo: 1 Sent: 0

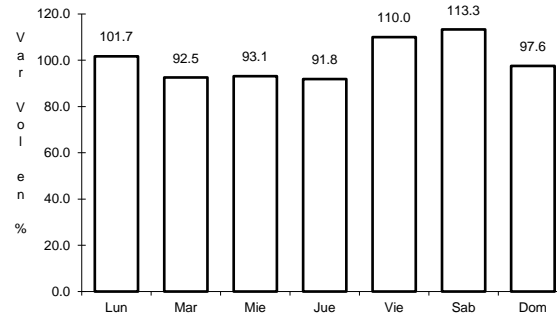
24 CARR: Ent. Santa Rosa - Ent. Pachuca

CLAVE: 02015

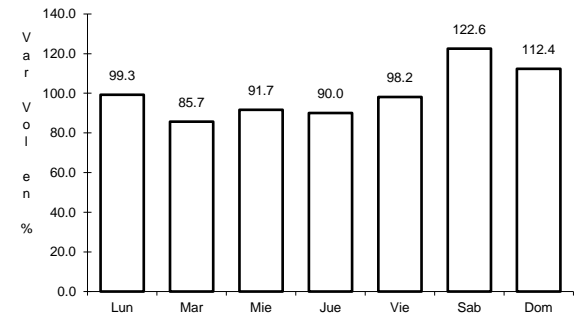
RUTA: BC-006



Km: 0.00 Tipo: 3 Sent: 0



Km: 10.90 Tipo: 3 Sent: 0

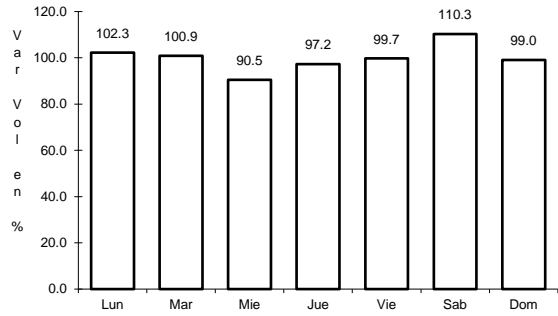


Km: 18.00 Tipo: 3 Sent: 0

25 CARR: La Puerta - T. C. (Mexicali - Estación Coahuila)

CLAVE: 02502

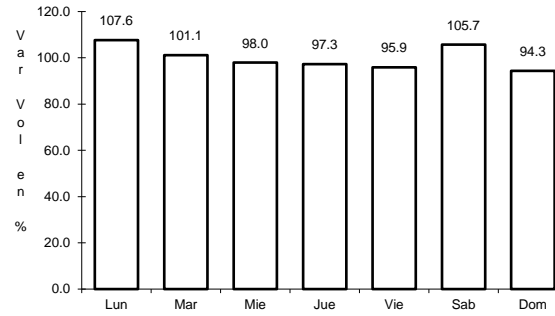
RUTA: BC-010



Km: 4.60

Tipo: 1

Sent: 0



Km: 9.00

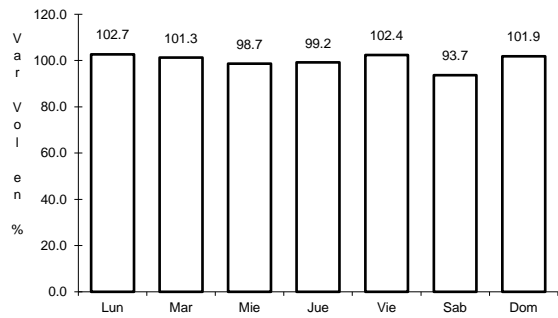
Tipo: 3

Sent: 0

26 CARR: Mexicali - Algodones

CLAVE: 02012

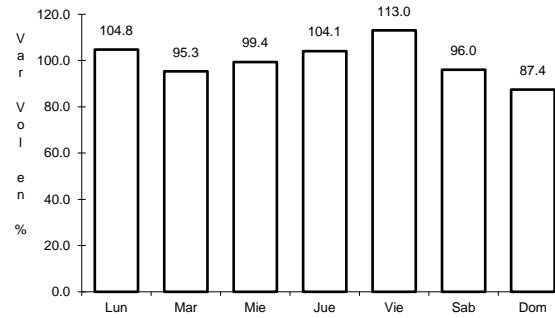
RUTA: BC-002



Km: 12.00

Tipo: 3

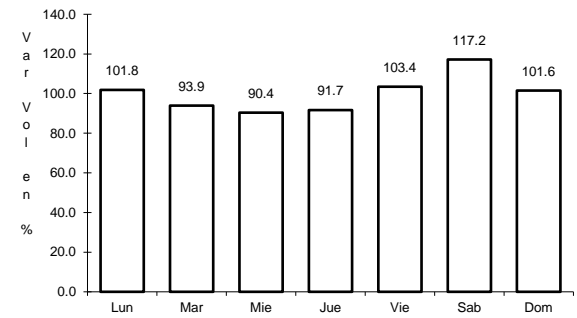
Sent: 0



Km: 49.65

Tipo: 1

Sent: 0



Km: 94.46

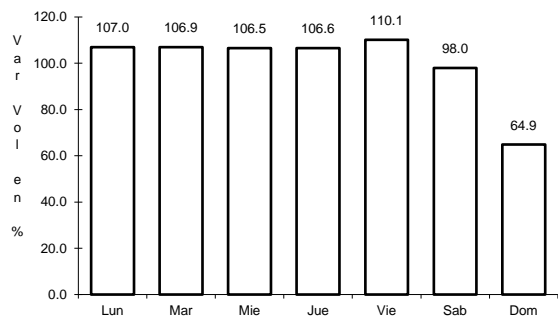
Tipo: 1

Sent: 0

27 CARR: Mexicali - Estación Coahuila

CLAVE: 02016

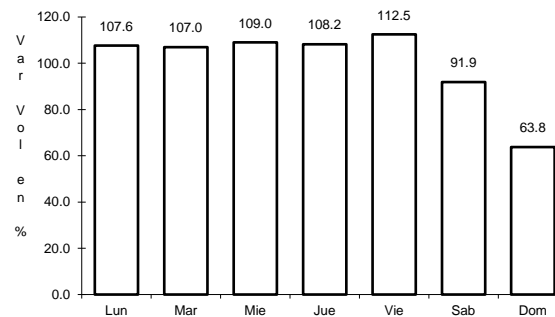
RUTA: BC-001



Km: 0.00

Tipo: 3

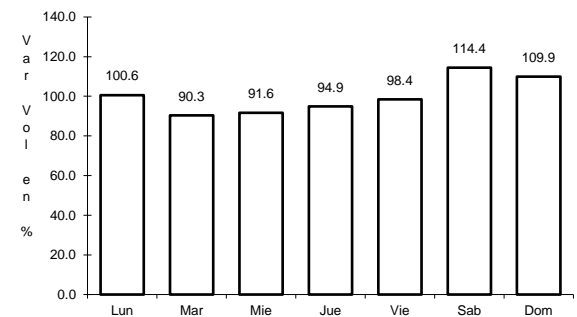
Sent: 1



Km: 0.00

Tipo: 3

Sent: 2



Km: 96.65

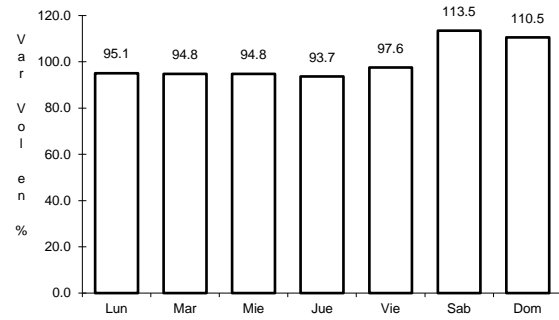
Tipo: 1

Sent: 0

28 CARR: Mexicali - Progreso

CLAVE: 02507

RUTA: BC-005



Km: 15.30

Tipo: 1

Sent: 0