

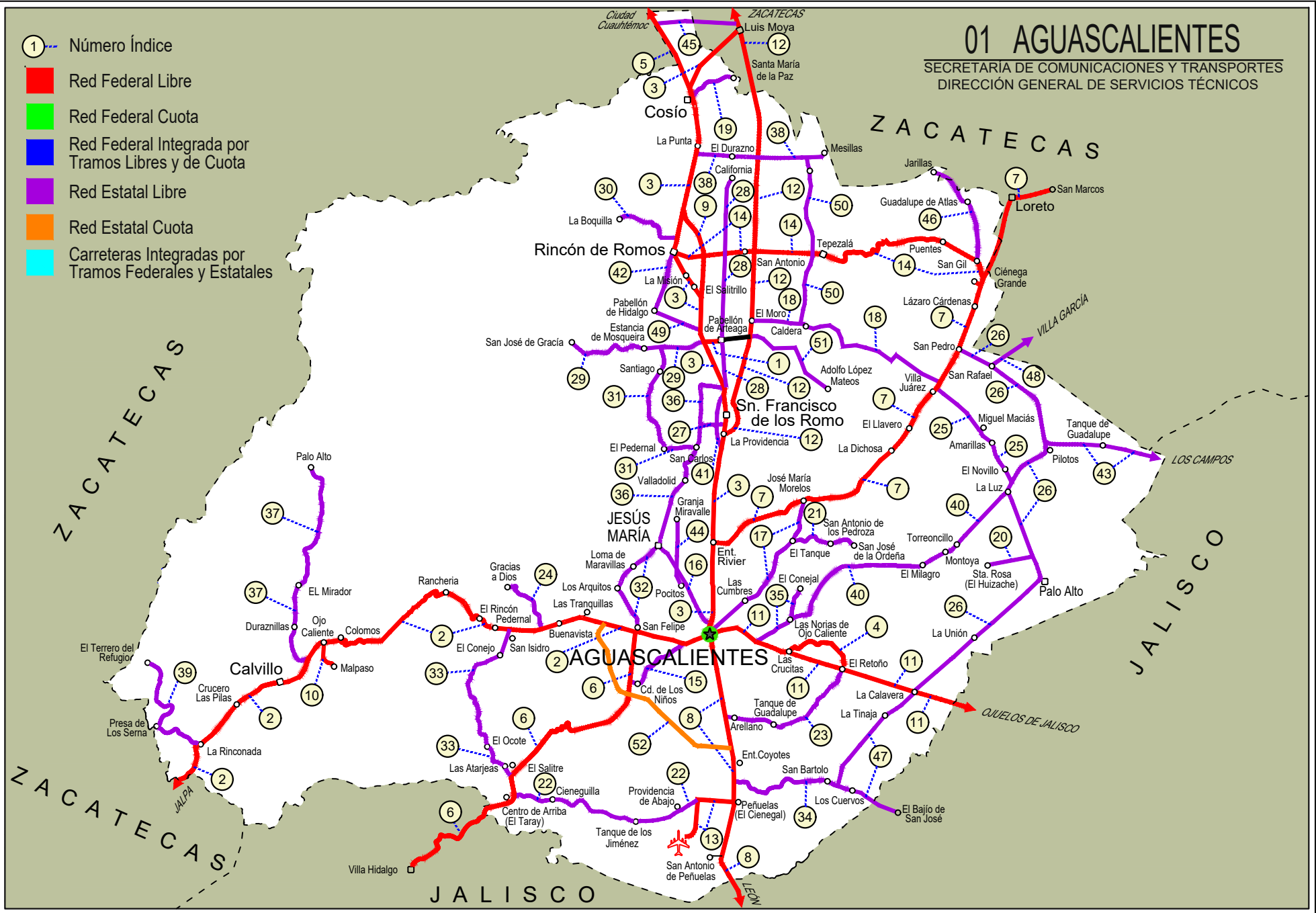
AGUASCALIENTES

NO. INDICE CARRETERA	RUTA
---RED FEDERAL LIBRE---	
1 Acceso a Pabellón de Arteaga	MEX-045
2 Aguascalientes - Jalpa	MEX-070
3 Aguascalientes - Zacatecas	MEX-045
4 El Retoño - Ent. Asturias	MEX-070
5 Ent. Cosío - Ent. Cuauhtémoc	MEX-045
6 Ent. Penitenciaría - Villa Hidalgo	MEX-071
7 Ent. Rivier - San Marcos	MEX-066
8 León - Aguascalientes	MEX-045
9 Libramiento Rincón de Romos	MEX-045
10 Ojo Caliente - Malpaso	MEX-070
11 Ojuelos - Aguascalientes	MEX-070
12 Providencia - Luis Moya	MEX-071
13 Ramal a Aeropuerto de Aguascalientes	MEX-045
14 Rincón de Romos - Ciénega Grande	MEX-039
---RED ESTATAL LIBRE---	
15 Aguascalientes - Ent. Cd. de Los Niños	AGS
16 Aguascalientes - Jesús María	AGS-095
17 Aguascalientes - José María Morelos	AGS
18 Carboneras - Villa Juárez	AGS-004
19 Cosío - Santa María de La Paz	AGS
20 Crucero Ojo de Agua de Crucitas - Santa Rosa	AGS
21 El Tanque - San José de La Ordeña	AGS
22 El Taray - T. C.(Ramal Aeropuerto de Aguascalientes)	AGS-002
23 Ent. Arellano - El Retoño	AGS
24 Ent. Buenavista - Gracias a Dios	AGS
25 Ent. El Novillo - Villa Juárez	AGS-005
26 Ent. La Calavera - Ent. San Pedro	AGS-043
27 Ent. La Chirida - San Francisco de Los Romo	AGS
28 Ent. Pabellón de Arteaga - California	AGS
29 Ent. Pabellón de Arteaga - San José de Gracia	AGS-019
30 Ent. Rincón de Romos - La Boquilla	AGS
31 Ent. San Carlos - Ent. El Milagro	AGS-010
32 Ent. San Felipe - Jesús María	AGS
33 Ent. San Isidro - Ent. El Salitre	AGS-016
34 Est. Coyotes - Ent. San Bartolo	AGS-069
35 Fracc. Ojo Caliente - El Conejal	AGS-079
36 Jesús María - Palomas	AGS-018
37 La Panadera - Palo Alto	AGS-017
38 La Punta - Mesillas	AGS-026
39 La Rinconada - El Terrero del Refugio	AGS-007
40 Las Norias de Ojo Caliente - La Luz	AGS-068
41 Libramiento San Francisco de Los Romo	AGS
42 Pabellón de Hidalgo - Rincón de Romos	AGS
43 Pilotos - Los Campos	AGS-030
44 Pocitos - Granja Miravalle	AGS-053
45 Ramal a San Pedro Piedra Gorda	ZAC-AGS
46 San Gil - Jarillas	AGS-012-ZAC
47 San Isidro El Grande - Bajío de San José	AGS-036
48 San Rafael - Villa García	AGS-ZAC
49 Santa Rosa - Pabellón de Hidalgo	AGS
50 T. Caldera - Ent. Ojo de Agua de Los Montes	AGS
51 Viñedos de California - Adolfo López Mateos	AGS
---RED ESTATAL DE CUOTA---	
52 Libramiento Surponiente de Aguascalientes (Cuota)	MEX-A40

01 AGUASCALIENTES

SECRETARÍA DE COMUNICACIONES Y TRANSPORTES
DIRECCIÓN GENERAL DE SERVICIOS TÉCNICOS

- ① Número Índice
- Red Federal Libre
- Red Federal Cuota
- Red Federal Integrada por Tramos Libres y de Cuota
- Red Estatal Libre
- Red Estatal Cuota
- Carreteras Integradas por Tramos Federales y Estatales



AGUASCALIENTES

1 CARR: Acceso a Pabellón de Arteaga

CLAVE: 01113

RUTA: MEX-045

AÑO: 2021

LUGAR	ESTACION				CLASIFICACION VEHICULAR EN PORCIENTO										COORDENADAS					
	KM	TE	SC	TDPA	M	A	B	C2	C3	T3S2	T3S3	T3S2R4	OTROS	A	B	C	K'	D	LATITUD	LONGITUD
T. C. Aguascalientes - Zacatecas (Alta)	0.00	3	1	6431	2.0	93.8	0.7	2.3	0.5	0.2	0.1	0.3	0.1	95.8	0.7	3.5	0.071	0.516	22.146678	-102.289739
T. C. Aguascalientes - Zacatecas (Baja)	0.00	3	1	719	3.1	83.9	4.1	6.4	1.5	0.4	0.2	0.4	0.0	87.0	4.1	8.9	0.083	0.539	22.146597	-102.289730
T. C. Aguascalientes - Zacatecas (Baja)	0.00	3	2	841	3.2	83.6	4.3	6.4	1.7	0.3	0.3	0.2	0.0	86.8	4.3	8.9	0.088	0.539	22.146850	-102.289745
T. C. Aguascalientes - Zacatecas (Alta)	0.00	3	2	6866	2.6	93.2	1.0	2.0	0.5	0.2	0.1	0.3	0.1	95.8	1.0	3.2	0.068	0.516	22.146759	-102.289737
Pabellón de Arteaga	1.80	1	1	6073	2.5	91.1	0.4	2.9	1.5	0.8	0.3	0.2	0.3	93.6	0.4	6.0	0.064	0.503	22.147120	-102.283771
Pabellón de Arteaga	1.80	1	2	6009	1.9	92.3	0.5	2.1	1.4	0.8	0.2	0.4	0.4	94.2	0.5	5.3	0.065	0.503	22.147192	-102.283769
T. C. Providencia - Luis Moya	4.64																			

2 CARR: Aguascalientes - Jalpa

CLAVE: 00095

RUTA: MEX-070

AÑO: 2021

LUGAR	ESTACION				CLASIFICACION VEHICULAR EN PORCIENTO										COORDENADAS					
	KM	TE	SC	TDPA	M	A	B	C2	C3	T3S2	T3S3	T3S2R4	OTROS	A	B	C	K'	D	LATITUD	LONGITUD
Aguascalientes	0.00	3	1	11191	2.8	91.9	0.9	3.2	0.6	0.3	0.1	0.1	0.1	94.7	0.9	4.4	0.107	0.514	21.874158	-102.335317
Aguascalientes	0.00	3	2	10588	2.8	90.8	0.8	4.1	0.9	0.3	0.1	0.1	0.1	93.6	0.8	5.6	0.094	0.514	21.874023	-102.335349
T. Der. Jesús María	7.30	1	1	8178	1.3	87.7	0.5	8.6	1.0	0.6	0.3	0.0	0.0	89.0	0.5	10.5	0.088	0.504	21.880154	-102.357791
T. Der. Jesús María	7.30	1	2	8311	1.3	87.2	0.5	8.9	1.2	0.6	0.3	0.0	0.0	88.5	0.5	11.0	0.086	0.504	21.880011	-102.357871
T. Izq. Villa Hidalgo	7.80	3	1	5663	2.0	92.3	0.8	2.3	1.1	0.9	0.4	0.2	0.0	94.3	0.8	4.9	0.144	0.518	21.884344	-102.373645
T. Izq. Villa Hidalgo	7.80	3	2	6094	1.7	93.3	0.6	2.1	1.0	0.8	0.3	0.2	0.0	95.0	0.6	4.4	0.114	0.518	21.884209	-102.373695
Libramiento Poniente de Aguascalientes	11.00	1	1	5982	1.8	92.8	0.9	2.4	0.8	0.8	0.3	0.1	0.1	94.6	0.9	4.5	0.148	0.510	21.889593	-102.393214
Libramiento Poniente de Aguascalientes	11.00	1	2	5748	1.4	93.6	0.6	2.4	0.9	0.7	0.3	0.1	0.0	95.0	0.6	4.4	0.111	0.510	21.889486	-102.393274
Libramiento Poniente de Aguascalientes	11.00	3	1	5913	2.3	91.0	0.7	4.3	0.5	0.6	0.4	0.1	0.1	93.3	0.7	6.0	0.158	0.515	21.892261	-102.403226
Libramiento Poniente de Aguascalientes	11.00	3	2	5562	2.3	90.8	0.8	4.4	0.5	0.6	0.4	0.1	0.1	93.1	0.8	6.1	0.115	0.515	21.892162	-102.403266
T. Der. Gracias a Dios	20.00	3	0	8705	1.5	92.3	1.0	2.9	0.8	1.0	0.4	0.1	0.0	93.8	1.0	5.2	0.093	0.500	21.886541	-102.475995
T. Izq. El Salitre	23.17	3	0	7516	2.1	91.6	1.5	2.5	0.9	0.9	0.3	0.1	0.1	93.7	1.5	4.8	0.095	0.507	21.889313	-102.497896
T. Izq. Malpaso	45.10	1	0	7199	2.2	91.7	0.7	2.4	1.2	1.0	0.4	0.3	0.1	93.9	0.7	5.4	0.094	0.509	21.879543	-102.646554
T. Der. Presa La Codorniz	49.30	3	1	10159	4.9	91.4	0.5	1.8	0.8	0.4	0.1	0.1	0.0	96.3	0.5	3.2	0.083	0.516	21.864321	-102.691977
T. Der. Presa La Codorniz	49.30	3	2	9547	4.1	92.2	0.5	1.9	0.7	0.5	0.1	0.0	0.0	96.3	0.5	3.2	0.088	0.516	21.864211	-102.691862
Calvillo	52.30	3	1	5143	4.0	92.0	0.6	2.0	0.7	0.4	0.2	0.1	0.0	96.0	0.6	3.4	0.094	0.502	21.835231	-102.746352
Calvillo	52.30	3	2	5192	3.9	92.4	0.4	1.9	0.8	0.4	0.1	0.1	0.0	96.3	0.4	3.3	0.081	0.502	21.835086	-102.746286
T. Der. Jaltiche de Abajo	63.80	3	0	2468	1.8	89.3	1.3	4.0	1.7	1.2	0.5	0.1	0.1	91.1	1.3	7.6	0.098	0.502	21.771303	-102.804234
Lim. Edos. Term. Ags. Ppia. Zac.	65.66																			
T. C. Guadalajara - Zacatecas	90.66	1	0	4295	3.1	70.0	0.7	18.7	4.4	1.4	0.8	0.8	0.1	73.1	0.7	26.2	0.079	0.504	21.653056	-102.963019

AGUASCALIENTES

3 CARR: Aguascalientes - Zacatecas

CLAVE: 00524

RUTA: MEX-045

AÑO: 2021

LUGAR	ESTACION				CLASIFICACION VEHICULAR EN PORCIENTO										COORDENADAS					
	KM	TE	SC	TDPA	M	A	B	C2	C3	T3S2	T3S3	T3S2R4	OTROS	A	B	C	K'	D	LATITUD	LONGITUD
Aguascalientes	0.00																			
T. Izq. Pocitos	6.00	1	1	53787	4.8	87.3	1.0	4.1	0.5	0.9	0.4	0.3	0.7	92.1	1.0	6.9	0.068	0.518	21.919748	-102.291726
T. Izq. Pocitos	6.00	1	2	49539	5.5	86.3	1.4	3.9	0.8	0.9	0.4	0.3	0.5	91.8	1.4	6.8	0.068	0.518	21.919752	-102.291939
T. Der. Loreto	9.83	3	1	26562	3.5	85.2	1.7	2.9	1.3	2.9	0.6	1.5	0.4	88.7	1.7	9.6	0.090	0.512	21.972854	-102.289315
T. Der. Loreto	9.83	3	2	27913	3.3	86.2	1.7	3.2	1.3	2.7	0.7	0.7	0.2	89.5	1.7	8.8	0.082	0.512	21.972853	-102.289574
Santa Fé	16.00	1	1	30227	3.0	81.3	2.7	3.9	1.6	4.7	0.9	1.5	0.4	84.3	2.7	13.0	0.091	0.515	22.013192	-102.286747
Santa Fé	16.00	1	2	28370	3.3	80.9	2.2	2.9	1.6	5.0	1.4	2.3	0.4	84.2	2.2	13.6	0.077	0.515	22.013217	-102.286948
Santa Fé	16.00	3	1	23407	1.6	81.8	3.2	3.1	1.7	5.4	1.1	1.7	0.4	83.4	3.2	13.4	0.103	0.518	22.026385	-102.283478
Santa Fé	16.00	3	2	26654	1.9	79.8	2.5	4.2	2.1	5.4	1.9	1.8	0.4	81.7	2.5	15.8	0.083	0.518	22.026423	-102.283662
La Concepción	18.00	3	1	25648	3.0	77.3	2.8	4.8	3.3	5.1	1.2	1.9	0.6	80.3	2.8	16.9	0.088	0.503	22.039311	-102.280546
La Concepción	18.00	3	2	23868	2.4	77.9	2.6	5.1	2.4	5.2	1.7	2.1	0.6	80.3	2.6	17.1	0.099	0.503	22.039357	-102.280734
T. Libramiento de San Francisco de los Romo Sur	18.80																			
San Francisco de Los Romo	22.73	1	1	6627	2.8	91.3	0.8	2.8	1.2	0.5	0.3	0.2	0.1	94.1	0.8	5.1	0.093	0.500	22.065392	-102.275313
San Francisco de Los Romo	22.73	1	2	6628	2.8	91.3	0.7	2.9	1.2	0.6	0.2	0.2	0.1	94.1	0.7	5.2	0.083	0.500	22.065413	-102.275448
T. Izq. Libramiento San Francisco de Los Romo	24.80	3	1	16802	1.5	80.3	3.6	3.7	2.4	4.8	1.3	1.9	0.5	81.8	3.6	14.6	0.084	0.517	22.096190	-102.274092
T. Izq. Libramiento San Francisco de Los Romo	24.80	3	2	17979	1.8	80.7	3.1	3.5	2.6	4.6	1.2	2.0	0.5	82.5	3.1	14.4	0.074	0.517	22.096192	-102.274208
T. Der. Estación Pabellón	31.00	1	1	14664	1.4	79.2	3.2	3.7	1.9	7.1	1.2	2.0	0.3	80.6	3.2	16.2	0.080	0.520	22.131700	-102.286353
T. Der. Estación Pabellón	31.00	1	2	15877	1.5	79.3	2.8	3.4	1.6	7.3	1.4	2.3	0.4	80.8	2.8	16.4	0.070	0.520	22.131657	-102.286480
T. Der. Estación Pabellón	31.00	3	1	12667	1.9	77.8	3.2	3.8	1.6	7.4	1.2	2.4	0.7	79.7	3.2	17.1	0.091	0.502	22.152148	-102.295157
T. Der. Estación Pabellón	31.00	3	2	12591	2.0	77.2	3.4	3.7	1.4	7.3	1.9	2.5	0.6	79.2	3.4	17.4	0.074	0.502	22.152114	-102.295294
T. Der. Libramiento Rincón de Romos	35.50	1	1	12319	1.8	78.3	3.3	3.6	1.5	7.4	1.4	2.2	0.5	80.1	3.3	16.6	0.113	0.517	22.174559	-102.295485
T. Der. Libramiento Rincón de Romos	35.50	1	2	11522	2.1	78.0	3.4	3.8	1.6	7.2	1.5	2.0	0.4	80.1	3.4	16.5	0.089	0.517	22.174579	-102.295610
T. Der. Libramiento Rincón de Romos	35.50	3	1	5128	4.2	88.1	1.7	4.6	0.7	0.3	0.2	0.1	0.1	92.3	1.7	6.0	0.094	0.505	22.199183	-102.302991
T. Der. Libramiento Rincón de Romos	35.50	3	2	5227	3.9	88.5	1.2	5.1	0.6	0.4	0.1	0.1	0.1	92.4	1.2	6.4	0.089	0.505	22.199113	-102.303109
Rincón de Romos	40.90	3	0	5731	2.6	88.8	0.6	4.8	0.2	2.6	0.2	0.1	0.1	91.4	0.6	8.0	0.091	0.509	22.237413	-102.317696
T. Libramiento Rincón de Romos Norte	46.00																			
La Punta	51.00	1	1	8501	3.1	69.5	4.8	4.7	2.0	9.2	2.3	3.8	0.6	72.6	4.8	22.6	0.073	0.503	22.314379	-102.296571
La Punta	51.00	1	2	8398	2.1	71.4	4.1	4.5	1.7	9.4	2.7	3.6	0.5	73.5	4.1	22.4	0.085	0.503	22.314390	-102.296678
La Punta	51.00	3	1	8295	5.6	66.6	4.5	3.9	2.4	9.8	3.0	3.6	0.6	72.2	4.5	23.3	0.075	0.502	22.334687	-102.292580
La Punta	51.00	3	2	8233	6.0	66.0	4.8	3.8	2.3	10.1	2.9	3.4	0.7	72.0	4.8	23.2	0.080	0.502	22.334688	-102.292687
Cosío	56.00	3	1	8291	5.6	69.1	4.0	3.3	1.9	9.2	2.7	3.7	0.5	74.7	4.0	21.3	0.098	0.537	22.370695	-102.297979
Cosío	56.00	3	2	7158	5.0	67.1	4.5	3.6	2.2	9.9	3.0	4.2	0.5	72.1	4.5	23.4	0.095	0.537	22.370669	-102.298067
Ent. Cosío	57.30																			
Lim. Edos. Term. Ags. Ppia. Zac.	62.67																			
Luis Moya	65.80	1	0	3323	1.3	77.8	0.9	11.0	4.1	3.4	1.4	0.1	0.0	79.1	0.9	20.0	0.113	0.528	22.424440	-102.256131

AGUASCALIENTES

3 CARR: Aguascalientes - Zacatecas

CLAVE: 00524

RUTA: MEX-045

AÑO: 2021

LUGAR	ESTACION				CLASIFICACION VEHICULAR EN PORCIENTO													COORDENADAS		
	KM	TE	SC	TDPA	M	A	B	C2	C3	T3S2	T3S3	T3S2R4	OTROS	A	B	C	K'	D	LATITUD	LONGITUD
Luis Moya	65.80	3	1	3195	1.5	81.2	3.1	8.1	1.9	1.7	1.8	0.7	0.0	82.7	3.1	14.2	0.090	0.529	22.449269	-102.254895
Luis Moya	65.80	3	2	3595	1.3	81.3	2.2	10.0	1.5	1.9	1.0	0.8	0.0	82.6	2.2	15.2	0.083	0.529	22.449235	-102.254992
T. Der. San Luis Potosi	100.00	1	0	6044	1.2	81.0	2.5	12.0	1.3	1.2	0.3	0.4	0.1	82.2	2.5	15.3	0.079	0.515	22.700791	-102.317452
T. Der. San Luis Potosi	100.00	3	1	5816	1.6	67.0	3.5	10.0	7.6	5.1	3.4	1.4	0.4	68.6	3.5	27.9	0.095	0.503	22.727360	-102.336110
T. Der. San Luis Potosi	100.00	3	2	5890	1.8	68.8	2.3	7.1	6.8	6.8	3.8	2.1	0.5	70.6	2.3	27.1	0.087	0.503	22.729700	-102.337890
T. Izq. Aguascalientes (Cuota)	113.50	1	1	10136	1.5	75.8	2.2	10.9	2.3	4.0	1.8	1.2	0.3	77.3	2.2	20.5	0.107	0.517	22.751344	-102.437951
T. Izq. Aguascalientes (Cuota)	113.50	1	2	10852	1.5	76.4	2.3	10.4	2.2	4.1	1.5	1.3	0.3	77.9	2.3	19.8	0.105	0.517	22.751156	-102.439785
T. Izq. Libramiento De Guadalupe Y Zacatecas	118.20	1	1	24637	2.1	82.7	1.7	8.3	2.0	2.3	0.4	0.4	0.1	84.8	1.7	13.5	0.079	0.522	22.750775	-102.488507
T. Izq. Libramiento De Guadalupe Y Zacatecas	118.20	1	2	22548	2.0	81.1	1.9	9.7	1.6	2.9	0.3	0.4	0.1	83.1	1.9	15.0	0.079	0.522	22.750667	-102.488509
Zacatecas	119.82																			

4 CARR: El Retoño - Ent. Asturias

CLAVE: 01124

RUTA: MEX-070

AÑO: 2021

LUGAR	ESTACION				CLASIFICACION VEHICULAR EN PORCIENTO													COORDENADAS		
	KM	TE	SC	TDPA	M	A	B	C2	C3	T3S2	T3S3	T3S2R4	OTROS	A	B	C	K'	D	LATITUD	LONGITUD
El Retoño	0.00	3	0	890	7.1	73.0	1.5	8.3	5.9	2.0	1.0	1.1	0.1	80.1	1.5	18.4	0.078	0.515	21.845594	-102.166316
Ent. Asturias	8.98	1	0	1325	6.4	79.3	0.7	9.7	2.0	1.0	0.2	0.6	0.1	85.7	0.7	13.6	0.085	0.504	21.863833	-102.208167

5 CARR: Ent. Cosio - Ent. Cuauhtémoc

CLAVE: 00579

RUTA: MEX-045

AÑO: 2021

LUGAR	ESTACION				CLASIFICACION VEHICULAR EN PORCIENTO													COORDENADAS		
	KM	TE	SC	TDPA	M	A	B	C2	C3	T3S2	T3S3	T3S2R4	OTROS	A	B	C	K'	D	LATITUD	LONGITUD
T. C. Aguascalientes - Zacatecas	57.20	3	0	10516	0.9	62.3	5.7	5.2	2.6	14.2	2.8	5.4	0.9	63.2	5.7	31.1	0.097	0.500	22.392973	-102.306042
Lim. Edos. Term. Ags. Ppia. Zac.	64.00																			
T. C. Ent. Cuauhtémoc - Ent. Osiris Cuota	70.40	1	0	11270	1.0	64.4	5.4	7.1	3.3	12.8	1.2	4.0	0.8	65.4	5.4	29.2	0.077	0.509	22.479105	-102.352692

6 CARR: Ent. Penitenciaria - Villa Hidalgo

CLAVE: 00120

RUTA: MEX-071

AÑO: 2021

LUGAR	ESTACION				CLASIFICACION VEHICULAR EN PORCIENTO													COORDENADAS		
	KM	TE	SC	TDPA	M	A	B	C2	C3	T3S2	T3S3	T3S2R4	OTROS	A	B	C	K'	D	LATITUD	LONGITUD
T. C. Aguascalientes - Jalpa	0.00	3	1	8242	4.0	66.2	2.7	5.7	4.0	9.4	2.5	4.6	0.9	70.2	2.7	27.1	0.068	0.515	21.870334	-102.370893
T. C. Aguascalientes - Jalpa	0.00	3	2	8741	4.1	66.9	2.7	5.5	4.3	9.5	2.5	3.6	0.9	71.0	2.7	26.3	0.071	0.515	21.870304	-102.370720
T. Izq. El Niágara	9.20	3	0	4674	1.1	85.3	1.3	8.6	1.1	1.6	0.6	0.2	0.2	86.4	1.3	12.3	0.092	0.510	21.803510	-102.392352
El Taray	27.00	3	0	4068	0.8	87.0	1.2	9.6	0.8	0.3	0.3	0.0	0.0	87.8	1.2	11.0	0.106	0.521	21.725220	-102.515012
Lim. Edos. Term. Ags. Ppia. Jal.	29.58																			

AGUASCALIENTES

6 CARR : Ent. Penitenciaria - Villa Hidalgo

CLAVE: 00120

RUTA: MEX-071

AÑO: 2021

LUGAR	ESTACION				CLASIFICACION VEHICULAR EN PORCIENTO													COORDENADAS		
	KM	TE	SC	TDPA	M	A	B	C2	C3	T3S2	T3S3	T3S2R4	OTROS	A	B	C	K'	D	LATITUD	LONGITUD
Villa Hidalgo	41.80	1	0	4275	1.7	86.8	0.8	9.0	1.1	0.3	0.3	0.0	0.0	88.5	0.8	10.7	0.109	0.538	21.691520	-102.568120

7 CARR : Ent. Rivier - San Marcos

CLAVE: 00285

RUTA: MEX-066

AÑO: 2021

LUGAR	ESTACION				CLASIFICACION VEHICULAR EN PORCIENTO													COORDENADAS		
	KM	TE	SC	TDPA	M	A	B	C2	C3	T3S2	T3S3	T3S2R4	OTROS	A	B	C	K'	D	LATITUD	LONGITUD
T. C. Aguascalientes - Zacatecas	0.00	3	1	8127	3.2	88.8	1.3	2.7	1.8	1.3	0.3	0.4	0.2	92.0	1.3	6.7	0.094	0.511	21.962404	-102.288024
T. C. Aguascalientes - Zacatecas	0.00	3	2	7787	3.1	88.3	1.4	2.9	1.9	1.5	0.3	0.4	0.2	91.4	1.4	7.2	0.082	0.511	21.962531	-102.288012
T. Izq. El Tepetate	10.50	3	0	10484	4.4	86.5	2.8	3.5	1.4	1.0	0.2	0.2	0.0	90.9	2.8	6.3	0.114	0.512	21.999682	-102.193373
T. Der. Jilotepec	23.60	3	0	9500	4.4	85.2	3.3	4.8	1.2	0.8	0.1	0.2	0.0	89.6	3.3	7.1	0.124	0.534	22.057966	-102.097134
Villa Juárez	30.00	3	0	10829	4.3	86.1	1.7	5.2	1.7	0.8	0.1	0.1	0.0	90.4	1.7	7.9	0.114	0.511	22.109061	-102.058215
Ciénega Grande	41.50	1	0	9147	5.2	85.0	1.7	5.1	1.9	0.7	0.2	0.2	0.0	90.2	1.7	8.1	0.090	0.505	22.186093	-102.020803
Ciénega Grande	41.50	3	0	7664	2.1	93.8	1.0	1.1	0.8	0.8	0.1	0.3	0.0	95.9	1.0	3.1	0.093	0.510	22.204973	-102.012331
Lim. Edos. Term. Ags. Ppia. Zac.	45.75																			
San Marcos	55.34	1	0	9157	11.5	80.3	1.3	2.8	1.4	1.0	0.7	0.8	0.2	91.8	1.3	6.9	0.089	0.503	22.276745	-101.956066

8 CARR : León - Aguascalientes

CLAVE: 00167

RUTA: MEX-045

AÑO: 2021

LUGAR	ESTACION				CLASIFICACION VEHICULAR EN PORCIENTO													COORDENADAS		
	KM	TE	SC	TDPA	M	A	B	C2	C3	T3S2	T3S3	T3S2R4	OTROS	A	B	C	K'	D	LATITUD	LONGITUD
León	0.00																			
T. Der. Libramiento de León	11.00	1	1	13268	2.7	83.9	1.5	8.6	1.8	1.0	0.5	0.0	0.0	86.6	1.5	11.9	0.102	0.541	21.165500	-101.727905
T. Der. Libramiento de León	11.00	1	2	15609	2.6	85.2	1.0	8.0	1.8	0.9	0.5	0.0	0.0	87.8	1.0	11.2	0.099	0.541	21.165464	-101.727975
T. Der. Libramiento de León	11.00	3	1	11485	1.7	89.3	0.8	4.9	1.4	1.5	0.4	0.0	0.0	91.0	0.8	8.2	0.105	0.513	21.174923	-101.737714
T. Der. Libramiento de León	11.00	3	2	12119	1.7	89.8	0.7	4.2	1.8	1.4	0.4	0.0	0.0	91.5	0.7	7.8	0.109	0.513	21.174854	-101.737818
T. Izq. Centro de León	12.00	3	1	10436	0.3	92.3	0.5	4.6	0.9	1.2	0.2	0.0	0.0	92.6	0.5	6.9	0.098	0.528	21.198912	-101.753434
T. Izq. Centro de León	12.00	3	2	9332	0.3	92.2	0.5	4.5	1.0	1.3	0.2	0.0	0.0	92.5	0.5	7.0	0.113	0.528	21.201755	-101.757417
Lim. Edos. Term. Gto. Ppia. Jal.	17.88																			
X. C. San Luis Potosí - Lagos de Moreno	44.18	1	1	9510	10.1	75.2	2.3	6.6	1.9	2.6	0.4	0.7	0.2	85.3	2.3	12.4	0.082	0.506	21.367316	-101.900501
X. C. San Luis Potosí - Lagos de Moreno	44.18	1	2	9724	9.9	77.2	2.1	5.6	2.0	2.3	0.5	0.3	0.1	87.1	2.1	10.8	0.086	0.506	21.367287	-101.900597
T. Izq. Libramiento Lagos de Moreno	48.70	1	0	8190	2.1	87.9	1.7	4.0	2.9	0.8	0.3	0.2	0.1	90.0	1.7	8.3	0.094	0.521	21.368183	-101.958318
T. Izq. Libramiento Lagos de Moreno	48.70	3	0	8077	6.2	78.6	3.2	4.7	2.7	3.1	0.9	0.5	0.1	84.8	3.2	12.0	0.097	0.508	21.374373	-101.964600
T. Der. El Destierro	80.80	1	0	4866	2.4	79.5	1.7	8.4	2.9	3.3	1.2	0.3	0.3	81.9	1.7	16.4	0.083	0.522	21.499552	-102.192558
Encarnación de Díaz	88.20	1	0	7146	2.1	79.4	2.0	11.2	2.0	2.2	0.8	0.2	0.1	81.5	2.0	16.5	0.070	0.522	21.501572	-102.206929
T. Izq. Libramiento de Encarnación de Díaz	89.18	1	1	1706	7.2	86.9	0.4	4.9	0.3	0.2	0.1	0.0	0.0	94.1	0.4	5.5	0.111	0.503	21.533219	-102.239995

AGUASCALIENTES

8 CARR: León - Aguascalientes

CLAVE: 00167

RUTA: MEX-045

AÑO: 2021

LUGAR	ESTACION				CLASIFICACION VEHICULAR EN PORCIENTO										COORDENADAS					
	KM	TE	SC	TDPA	M	A	B	C2	C3	T3S2	T3S3	T3S2R4	OTROS	A	B	C	K'	D	LATITUD	LONGITUD
T. Izq. Libramiento de Encarnación de Díaz	89.18	1	2	1685	6.8	86.8	0.4	5.2	0.3	0.2	0.2	0.0	0.1	93.6	0.4	6.0	0.084	0.503	21.533242	-102.240062
T. Izq. Libramiento de Encarnación de Díaz	89.18	3	0	10826	5.2	69.8	3.3	9.8	3.2	5.5	2.1	0.7	0.4	75.0	3.3	21.7	0.078	0.518	21.551033	-102.243936
T. C. León - Aguascalientes (Cuota)	99.44	3	1	13212	3.5	61.8	5.2	5.3	3.8	12.4	2.8	4.4	0.8	65.3	5.2	29.5	0.067	0.507	21.627363	-102.275606
T. C. León - Aguascalientes (Cuota)	99.44	3	2	12842	3.5	61.9	5.3	5.3	3.8	12.4	2.7	4.4	0.7	65.4	5.3	29.3	0.072	0.507	21.627379	-102.275681
Lim. Edos. Term. Jal. Ppia. Ags.	103.30																			
T. Izq. Aeropuerto de Aguascalientes	110.15	1	1	13919	2.2	69.4	4.3	6.1	2.8	8.6	2.5	3.5	0.6	71.6	4.3	24.1	0.072	0.504	21.715059	-102.277869
T. Izq. Aeropuerto de Aguascalientes	110.15	1	2	14162	2.3	66.1	4.7	6.3	3.3	10.0	2.7	3.8	0.8	68.4	4.7	26.9	0.066	0.504	21.715088	-102.277947
T. Izq. Aeropuerto de Aguascalientes	110.15	3	1	18906	1.9	75.6	4.0	5.4	2.3	6.1	1.8	2.2	0.7	77.5	4.0	18.5	0.091	0.507	21.733774	-102.276821
T. Izq. Aeropuerto de Aguascalientes	110.15	3	2	19472	1.9	74.6	3.8	5.6	2.4	6.7	2.0	2.3	0.7	76.5	3.8	19.7	0.068	0.507	21.733766	-102.276917
Libramiento Poniente de Aguascalientes	116.50	1	1	24304	3.1	71.5	3.5	5.2	2.7	8.3	1.4	3.9	0.4	74.6	3.5	21.9	0.094	0.502	21.760391	-102.277111
Libramiento Poniente de Aguascalientes	116.50	1	2	24095	3.3	70.8	3.9	5.3	2.9	8.1	1.6	3.8	0.3	74.1	3.9	22.0	0.103	0.502	21.760385	-102.277275
Libramiento Poniente de Aguascalientes	116.50	3	1	19604	1.4	75.9	4.1	7.1	1.7	5.6	1.8	2.1	0.3	77.3	4.1	18.6	0.074	0.509	21.778922	-102.279670
Libramiento Poniente de Aguascalientes	116.50	3	2	20321	1.4	75.9	4.1	7.1	1.7	5.6	1.8	2.1	0.3	77.3	4.1	18.6	0.078	0.509	21.778915	-102.279815
T. Der. Estación Arellano (Lateral)	118.40	3	1	8477	3.0	78.2	2.6	5.3	3.1	3.7	2.2	1.4	0.5	81.2	2.6	16.2	0.102	0.526	21.802265	-102.283434
T. Der. Estación Arellano (Central)	118.40	3	1	17812	3.9	77.1	3.2	5.7	1.7	4.0	1.8	2.1	0.5	81.0	3.2	15.8	0.098	0.534	21.802620	-102.283621
T. Der. Estación Arellano (Central)	118.40	3	2	20384	3.9	77.7	3.1	5.8	1.7	3.8	1.6	1.9	0.5	81.6	3.1	15.3	0.086	0.534	21.802595	-102.283757
T. Der. Estación Arellano (Lateral)	118.40	3	2	6367	3.0	78.0	2.6	5.3	3.1	3.8	2.3	1.4	0.5	81.0	2.6	16.4	0.101	0.526	21.802743	-102.283918
Aguascalientes	129.18	1	1	25580	1.5	79.8	3.1	7.5	1.4	2.5	1.7	2.3	0.2	81.3	3.1	15.6	0.106	0.530	21.823522	-102.287142
Aguascalientes	129.18	1	2	30780	1.5	79.2	3.0	8.3	1.6	2.6	1.6	2.0	0.2	80.7	3.0	16.3	0.093	0.530	21.823498	-102.287278

9 CARR: Libramiento Rincón de Romos

CLAVE: 00167

RUTA: MEX-045

AÑO: 2021

LUGAR	ESTACION				CLASIFICACION VEHICULAR EN PORCIENTO										COORDENADAS					
	KM	TE	SC	TDPA	M	A	B	C2	C3	T3S2	T3S3	T3S2R4	OTROS	A	B	C	K'	D	LATITUD	LONGITUD
T. C. Aguascalientes - Zacatecas (Sur)	0.00	3	0	16102	4.9	59.1	8.0	5.3	1.9	12.6	2.7	4.5	1.0	64.0	8.0	28.0	0.067	0.512	22.203410	-102.294418
T. C. Aguascalientes - Zacatecas (Norte)	10.00	1	0	14025	1.2	63.2	5.9	6.1	2.6	12.3	2.7	5.0	1.0	64.4	5.9	29.7	0.076	0.513	22.261757	-102.306775

10 CARR: Ojo Caliente - Malpaso

CLAVE: 01123

RUTA: MEX-070

AÑO: 2021

LUGAR	ESTACION				CLASIFICACION VEHICULAR EN PORCIENTO										COORDENADAS					
	KM	TE	SC	TDPA	M	A	B	C2	C3	T3S2	T3S3	T3S2R4	OTROS	A	B	C	K'	D	LATITUD	LONGITUD
T. C. Aguascalientes - Jalpa	0.00	3	0	4313	1.4	90.4	0.3	7.2	0.2	0.1	0.2	0.1	0.1	91.8	0.3	7.9	0.084	0.600	21.880316	-102.670820
Malpaso	3.10	1	0	2499	4.7	87.7	0.0	6.4	0.1	1.1	0.0	0.0	0.0	92.4	0.0	7.6	0.101	0.514	21.862024	-102.670437

AGUASCALIENTES

11 CARR: Ojuelos - Aguascalientes

CLAVE: 00094

RUTA: MEX-070

AÑO: 2021

LUGAR	ESTACION				CLASIFICACION VEHICULAR EN PORCIENTO													COORDENADAS		
	KM	TE	SC	TDPA	M	A	B	C2	C3	T3S2	T3S3	T3S2R4	OTROS	A	B	C	K'	D	LATITUD	LONGITUD
Ojuelos	0.00	3	0	5028	1.9	78.2	3.1	6.1	2.4	5.4	1.4	1.1	0.4	80.1	3.1	16.8	0.083	0.509	21.874882	-101.603143
Matancillas	6.92	3	0	4546	1.3	76.6	4.1	7.2	1.6	6.4	1.7	0.7	0.4	77.9	4.1	18.0	0.085	0.507	21.881904	-101.658238
Vergel	40.70	3	0	5172	1.9	76.9	3.2	6.3	2.7	5.8	1.6	1.0	0.6	78.8	3.2	18.0	0.075	0.522	21.771330	-101.949076
Lim. Edos. Term. Jal. Ppia. Ags.	57.20																			
T. Der. Palo Alto	60.80	1	0	7211	1.2	84.6	2.4	4.3	2.0	3.8	1.0	0.6	0.1	85.8	2.4	11.8	0.086	0.511	21.817836	-102.091051
San Isidro	61.00	3	0	9603	4.2	83.3	2.0	4.4	1.8	2.8	0.8	0.6	0.1	87.5	2.0	10.5	0.076	0.505	21.824181	-102.110280
El Retoño	68.00	1	0	9193	3.6	84.3	1.6	4.3	1.9	2.8	0.8	0.6	0.1	87.9	1.6	10.5	0.085	0.504	21.839927	-102.158345
T. C. El Retoño - Asturias	78.00	1	1	8643	1.7	89.3	1.7	3.3	1.0	1.5	0.5	0.6	0.4	91.0	1.7	7.3	0.078	0.513	21.858311	-102.214229
T. C. El Retoño - Asturias	78.00	1	2	9102	2.0	88.9	1.7	3.3	1.1	1.6	0.5	0.6	0.3	90.9	1.7	7.4	0.086	0.513	21.858190	-102.214291
T. C. El Retoño - Asturias	78.00	3	1	8937	1.7	88.5	1.0	4.5	1.2	1.5	0.5	0.8	0.3	90.2	1.0	8.8	0.090	0.518	21.861529	-102.225722
T. C. El Retoño - Asturias	78.00	3	2	9600	1.7	89.0	1.0	4.3	1.1	1.5	0.4	0.8	0.2	90.7	1.0	8.3	0.070	0.518	21.861385	-102.225765
Salto del Ojo Caliente (Lateral)	81.51	1	1	3921	6.9	84.8	1.3	4.0	1.4	0.8	0.4	0.2	0.2	91.7	1.3	7.0	0.070	0.571	21.866225	-102.239423
Salto del Ojo Caliente (Central)	81.51	1	1	19594	6.1	87.3	1.3	2.5	1.1	0.9	0.3	0.3	0.2	93.4	1.3	5.3	0.064	0.510	21.866217	-102.239799
Salto del Ojo Caliente (Lateral)	81.51	1	2	4341	6.3	83.9	1.1	5.0	1.4	1.3	0.6	0.3	0.1	90.2	1.1	8.7	0.075	0.571	21.866022	-102.240130
Salto del Ojo Caliente (Central)	81.51	1	2	18842	6.9	86.4	1.1	2.5	1.2	1.0	0.3	0.3	0.3	93.3	1.1	5.6	0.080	0.510	21.866114	-102.239980

12 CARR: Providencia - Luis Moya

CLAVE: 00112

RUTA: MEX-071

AÑO: 2021

LUGAR	ESTACION				CLASIFICACION VEHICULAR EN PORCIENTO													COORDENADAS		
	KM	TE	SC	TDPA	M	A	B	C2	C3	T3S2	T3S3	T3S2R4	OTROS	A	B	C	K'	D	LATITUD	LONGITUD
T. C. Aguascalientes - Zacatecas	0.00	3	0	5139	4.6	77.7	1.2	5.5	2.5	2.8	2.4	2.6	0.7	82.3	1.2	16.5	0.077	0.531	22.060777	-102.274103
T. Izq. Pabellón de Arteaga	12.10	1	0	6250	2.8	80.3	2.2	4.5	2.1	1.9	2.4	3.0	0.8	83.1	2.2	14.7	0.077	0.539	22.144710	-102.251472
T. Der. Villa Juárez	14.90	3	0	7031	3.8	85.0	1.7	3.1	1.3	1.3	1.1	2.2	0.5	88.8	1.7	9.5	0.078	0.507	22.175688	-102.245462
X. C. Rincón de Romos - Ciénega Grande	21.22	3	0	5988	4.3	85.2	2.0	3.1	1.9	1.0	1.1	1.2	0.2	89.5	2.0	8.5	0.076	0.511	22.230765	-102.241419
X. C. La Punta - Mesillas	30.35	3	0	3324	2.8	77.9	1.4	11.0	1.9	1.9	2.1	0.9	0.1	80.7	1.4	17.9	0.085	0.509	22.318089	-102.233706
San Jacinto	34.25	3	0	2303	5.9	73.3	0.4	11.0	2.2	3.2	1.8	1.9	0.3	79.2	0.4	20.4	0.073	0.520	22.353070	-102.232531
Lim. Edos. Term. Ags. Ppia. Zac.	37.50																			
Luis Moya	43.52	1	0	4700	2.6	74.3	0.5	16.1	1.1	2.9	1.4	0.8	0.3	76.9	0.5	22.6	0.078	0.522	22.423516	-102.246328

13 CARR: Ramal a Aeropuerto de Aguascalientes

CLAVE: 01116

RUTA: MEX-045

AÑO: 2021

LUGAR	ESTACION				CLASIFICACION VEHICULAR EN PORCIENTO													COORDENADAS		
	KM	TE	SC	TDPA	M	A	B	C2	C3	T3S2	T3S3	T3S2R4	OTROS	A	B	C	K'	D	LATITUD	LONGITUD
T. C. León - Aguascalientes	0.00																			
Aeropuerto	6.13	1	1	2137	2.0	96.4	0.2	1.0	0.1	0.1	0.1	0.1	0.0	98.4	0.2	1.4	0.075	0.502	21.712200	-102.310653

AGUASCALIENTES

13 CARR : Ramal a Aeropuerto de Aguascalientes

CLAVE: 01116

RUTA: MEX-045

AÑO: 2021

LUGAR	ESTACION				CLASIFICACION VEHICULAR EN PORCIENTO													COORDENADAS		
	KM	TE	SC	TDPA	M	A	B	C2	C3	T3S2	T3S3	T3S2R4	OTROS	A	B	C	K'	D	LATITUD	LONGITUD
Aeropuerto	6.13	1	2	2120	2.2	96.1	0.2	1.0	0.2	0.1	0.1	0.1	0.0	98.3	0.2	1.5	0.094	0.502	21.712181	-102.310547

14 CARR : Rincón de Romos - Ciénega Grande

CLAVE: 01002

RUTA: MEX-039

AÑO: 2021

LUGAR	ESTACION				CLASIFICACION VEHICULAR EN PORCIENTO													COORDENADAS		
	KM	TE	SC	TDPA	M	A	B	C2	C3	T3S2	T3S3	T3S2R4	OTROS	A	B	C	K'	D	LATITUD	LONGITUD
Rincón de Romos	0.00	3	0	7775	4.1	92.1	0.6	1.8	0.6	0.3	0.2	0.2	0.1	96.2	0.6	3.2	0.088	0.523	22.224112	-102.302194
X. C. Providencia - Luis Moya	8.00	3	0	3043	3.0	83.6	0.4	8.2	2.0	1.4	1.0	0.1	0.3	86.6	0.4	13.0	0.076	0.503	22.227007	-102.237449
Tepezala	15.00	3	0	1540	4.4	79.8	1.8	9.6	1.6	1.4	1.0	0.0	0.4	84.2	1.8	14.0	0.088	0.502	22.217978	-102.161003
Asientos	27.70	3	0	1842	6.3	79.5	1.2	11.5	0.4	0.8	0.2	0.0	0.1	85.8	1.2	13.0	0.086	0.517	22.233213	-102.072171
Ciénega Grande	36.70	1	0	3886	7.8	72.9	1.7	13.8	1.1	2.1	0.4	0.1	0.1	80.7	1.7	17.6	0.080	0.501	22.199599	-102.019148

15 CARR : Aguascalientes - Ent. Cd. de Los Niños

CLAVE: 01130

RUTA: AGS

AÑO: 2021

LUGAR	ESTACION				CLASIFICACION VEHICULAR EN PORCIENTO													COORDENADAS		
	KM	TE	SC	TDPA	M	A	B	C2	C3	T3S2	T3S3	T3S2R4	OTROS	A	B	C	K'	D	LATITUD	LONGITUD
T. C. Aguascalientes - Jalpa	0.00	3	1	15004	4.3	89.5	0.3	1.8	0.2	0.9	2.9	0.0	0.1	93.8	0.3	5.9	0.096	0.525	21.862183	-102.337841
T. C. Aguascalientes - Jalpa	0.00	3	2	16613	4.3	89.5	0.3	1.8	0.2	0.9	2.9	0.0	0.1	93.8	0.3	5.9	0.094	0.525	21.862137	-102.337746
T. C. Ent. Penitenciaría - Villa Hidalgo	8.00	1	0	1178	2.8	89.4	0.0	4.2	2.2	1.1	0.2	0.1	0.0	92.2	0.0	7.8	0.115	0.528	21.837285	-102.374348

16 CARR : Aguascalientes - Jesús María

CLAVE: 01112

RUTA: AGS-095

AÑO: 2021

LUGAR	ESTACION				CLASIFICACION VEHICULAR EN PORCIENTO													COORDENADAS		
	KM	TE	SC	TDPA	M	A	B	C2	C3	T3S2	T3S3	T3S2R4	OTROS	A	B	C	K'	D	LATITUD	LONGITUD
T. C. Aguascalientes - Zacatecas	0.00																			
Pocitos	3.30	3	1	23527	4.3	90.9	0.1	3.5	0.2	0.4	0.4	0.1	0.1	95.2	0.1	4.7	0.093	0.509	21.920544	-102.315443
Pocitos	3.30	3	2	22590	4.1	90.9	0.1	3.8	0.2	0.5	0.3	0.1	0.0	95.0	0.1	4.9	0.092	0.509	21.920483	-102.315599
T. Der. Maravillas	7.00	3	1	12488	9.5	85.8	0.3	3.6	0.4	0.2	0.2	0.0	0.0	95.3	0.3	4.4	0.078	0.521	21.940298	-102.326123
T. Der. Maravillas	7.00	3	2	13599	9.9	85.2	0.3	3.8	0.4	0.2	0.2	0.0	0.0	95.1	0.3	4.6	0.076	0.521	21.940246	-102.326259
Jesús María	8.10	1	1	10812	9.6	86.3	0.4	3.3	0.2	0.1	0.1	0.0	0.0	95.9	0.4	3.7	0.086	0.501	21.949057	-102.332355
Jesús María	8.10	1	2	10770	10.1	85.1	0.3	3.8	0.3	0.2	0.2	0.0	0.0	95.2	0.3	4.5	0.082	0.501	21.948969	-102.332483

AGUASCALIENTES

17 CARR : Aguascalientes - José María Morelos

CLAVE: 01131

RUTA: AGS

AÑO: 2021

LUGAR	ESTACION				CLASIFICACION VEHICULAR EN PORCIENTO										COORDENADAS					
	KM	TE	SC	TDPA	M	A	B	C2	C3	T3S2	T3S3	T3S2R4	OTROS	A	B	C	K'	D	LATITUD	LONGITUD
Las Cumbres (Av. Siglo XXI)	0.00	3	0	5132	3.4	80.6	0.7	10.0	2.6	1.9	0.4	0.2	0.2	84.0	0.7	15.3	0.074	0.521	21.932043	-102.230867
T. Der. San Jose de La Ordeña	8.00	3	0	3422	1.6	78.5	1.2	14.4	2.3	1.4	0.3	0.2	0.1	80.1	1.2	18.7	0.078	0.525	21.960438	-102.215006
José María Morelos	12.60																			

18 CARR : Carboneras - Villa Juárez

CLAVE: 01111

RUTA: AGS-004

AÑO: 2021

LUGAR	ESTACION				CLASIFICACION VEHICULAR EN PORCIENTO										COORDENADAS					
	KM	TE	SC	TDPA	M	A	B	C2	C3	T3S2	T3S3	T3S2R4	OTROS	A	B	C	K'	D	LATITUD	LONGITUD
Carboneras	0.00	3	0	1826	3.5	83.5	0.4	10.5	0.7	1.2	0.2	0.0	0.0	87.0	0.4	12.6	0.064	0.514	22.173523	-102.235507
Clavellinas	14.00	1	0	1548	3.6	81.1	0.6	10.9	1.9	1.3	0.5	0.0	0.1	84.7	0.6	14.7	0.078	0.518	22.138869	-102.143512
Ent. Villa Juárez	23.10	1	0	3014	5.3	79.0	1.0	10.6	1.9	1.8	0.3	0.0	0.1	84.3	1.0	14.7	0.080	0.502	22.104958	-102.068341

19 CARR : Cosío - Santa María de La Paz

CLAVE: 01132

RUTA: AGS

AÑO: 2021

LUGAR	ESTACION				CLASIFICACION VEHICULAR EN PORCIENTO										COORDENADAS					
	KM	TE	SC	TDPA	M	A	B	C2	C3	T3S2	T3S3	T3S2R4	OTROS	A	B	C	K'	D	LATITUD	LONGITUD
T. C. Aguascalientes - Zacatecas	0.00	3	0	1537	14.0	73.0	1.8	10.2	0.1	0.8	0.1	0.0	0.0	87.0	1.8	11.2	0.080	0.505	22.374331	-102.294396
Santa María de La Paz	5.60																			

20 CARR : Crucero Ojo de Agua de Crucitas - Santa Rosa

CLAVE: 01140

RUTA: AGS

AÑO: 2021

LUGAR	ESTACION				CLASIFICACION VEHICULAR EN PORCIENTO										COORDENADAS					
	KM	TE	SC	TDPA	M	A	B	C2	C3	T3S2	T3S3	T3S2R4	OTROS	A	B	C	K'	D	LATITUD	LONGITUD
T. C. Ent. La Calavera - Ent. San Pedro	0.00	3	0	963	8.6	79.7	0.1	9.1	1.2	0.9	0.4	0.0	0.0	88.3	0.1	11.6	0.100	0.525	21.939410	-101.978968
Santa Rosa	5.00																			

21 CARR : El Tanque - San José de La Ordeña

CLAVE: 01143

RUTA: AGS

AÑO: 2021

LUGAR	ESTACION				CLASIFICACION VEHICULAR EN PORCIENTO										COORDENADAS					
	KM	TE	SC	TDPA	M	A	B	C2	C3	T3S2	T3S3	T3S2R4	OTROS	A	B	C	K'	D	LATITUD	LONGITUD
T. C. Aguascalientes - José María Morelos	0.00	3	0	1629	8.1	75.3	0.3	12.4	2.0	1.3	0.4	0.1	0.1	83.4	0.3	16.3	0.081	0.511	21.960912	-102.211324
San José de La Ordeña	8.50																			

AGUASCALIENTES

22 CARR: El Taray - T. C. (Ramal Aeropuerto de Aguascalientes)

CLAVE: 01121

RUTA: AGS-002

AÑO: 2021

LUGAR	ESTACION				CLASIFICACION VEHICULAR EN PORCIENTO													COORDENADAS		
	KM	TE	SC	TDPA	M	A	B	C2	C3	T3S2	T3S3	T3S2R4	OTROS	A	B	C	K'	D	LATITUD	LONGITUD
T. C. Ent. Penitenciaria - Villa Hidalgo	0.00	3	0	785	1.7	83.7	0.5	13.3	0.7	0.1	0.0	0.0	0.0	85.4	0.5	14.1	0.087	0.566	21.733684	-102.483573
T. C. Ramal Aeropuerto de Aguascalientes	22.00	1	1	854	2.6	74.6	1.4	19.3	1.7	0.3	0.1	0.0	0.0	77.2	1.4	21.4	0.102	0.547	21.722696	-102.318951
T. C. Ramal Aeropuerto de Aguascalientes	22.00	1	2	1035	4.7	76.8	1.4	14.2	2.0	0.6	0.2	0.1	0.0	81.5	1.4	17.1	0.090	0.547	21.722558	-102.318890

23 CARR: Ent. Arellano - El Retoño

CLAVE: 01121

RUTA: AGS

AÑO: 2021

LUGAR	ESTACION				CLASIFICACION VEHICULAR EN PORCIENTO													COORDENADAS		
	KM	TE	SC	TDPA	M	A	B	C2	C3	T3S2	T3S3	T3S2R4	OTROS	A	B	C	K'	D	LATITUD	LONGITUD
T. C. León - Aguascalientes	0.00	3	0	6248	6.8	68.9	1.8	8.5	4.7	6.0	1.6	1.2	0.5	75.7	1.8	22.5	0.082	0.545	21.798720	-102.266073
T. Izq. Villa Jesús Terán (Calvillito)	12.20	1	0	2199	6.5	68.5	5.9	7.5	3.6	3.4	3.2	1.3	0.1	75.0	5.9	19.1	0.082	0.501	21.808429	-102.195553
T. Izq. Villa Jesús Terán (Calvillito)	12.20	3	0	1754	7.4	67.4	6.9	6.0	3.3	3.3	3.2	2.4	0.1	74.8	6.9	18.3	0.079	0.507	21.825748	-102.179255
T. C. Ojuelos - Aguascalientes	15.92	1	0	1681	5.9	69.5	5.7	7.5	3.8	3.5	2.8	1.1	0.2	75.4	5.7	18.9	0.091	0.506	21.835268	-102.164743

24 CARR: Ent. Buenavista - Gracias a Dios

CLAVE: 01138

RUTA: AGS

AÑO: 2021

LUGAR	ESTACION				CLASIFICACION VEHICULAR EN PORCIENTO													COORDENADAS			
	KM	TE	SC	TDPA	M	A	B	C2	C3	T3S2	T3S3	T3S2R4	OTROS	A	B	C	K'	D	LATITUD	LONGITUD	
T. C. Aguascalientes - Jalpa	0.00	3	0	1172	2.0	86.0	0.6	10.0	0.4	1.0	0.0	0.0	0.0	88.0	0.6	11.4	0.099	0.526	21.890859	-102.462354	
Gracias a Dios	6.30																				

25 CARR: Ent. El Novillo - Villa Juárez

CLAVE: 01103

RUTA: AGS-005

AÑO: 2021

LUGAR	ESTACION				CLASIFICACION VEHICULAR EN PORCIENTO													COORDENADAS			
	KM	TE	SC	TDPA	M	A	B	C2	C3	T3S2	T3S3	T3S2R4	OTROS	A	B	C	K'	D	LATITUD	LONGITUD	
T. C. Ent. La Calavera - Ent. San Pedro	0.00																				
Villa Juárez	12.60	1	0	2361	5.6	77.3	0.9	11.9	1.6	2.0	0.4	0.1	0.2	82.9	0.9	16.2	0.076	0.517	22.090877	-102.058077	

26 CARR: Ent. La Calavera - Ent. San Pedro

CLAVE: 01102

RUTA: AGS-043

AÑO: 2021

LUGAR	ESTACION				CLASIFICACION VEHICULAR EN PORCIENTO													COORDENADAS		
	KM	TE	SC	TDPA	M	A	B	C2	C3	T3S2	T3S3	T3S2R4	OTROS	A	B	C	K'	D	LATITUD	LONGITUD
T. C. Ojuelos - Aguascalientes	0.00	3	0	4027	4.9	77.1	3.9	4.7	3.0	2.1	3.3	0.9	0.1	82.0	3.9	14.1	0.066	0.501	21.824954	-102.089370
T. Der. Palo Alto	15.00	1	0	4269	3.5	82.1	0.8	8.6	2.1	2.3	0.4	0.1	0.1	85.6	0.8	13.6	0.079	0.504	21.912821	-101.977675
T. Der. Palo Alto	15.00	3	0	2965	5.2	74.5	2.0	12.4	3.0	1.9	0.6	0.3	0.1	79.7	2.0	18.3	0.072	0.510	21.927734	-101.972109
T. Izq. Ent. El Novillo - Villa Juárez	28.10	1	0	2384	3.3	77.6	1.6	12.1	3.0	1.7	0.5	0.2	0.0	80.9	1.6	17.5	0.103	0.505	22.008804	-101.995458

AGUASCALIENTES

26 CARR: Ent. La Calavera - Ent. San Pedro

CLAVE: 01102

RUTA: AGS-043

AÑO: 2021

LUGAR	ESTACION				CLASIFICACION VEHICULAR EN PORCIENTO													COORDENADAS		
	KM	TE	SC	TDPA	M	A	B	C2	C3	T3S2	T3S3	T3S2R4	OTROS	A	B	C	K'	D	LATITUD	LONGITUD
T. Izq. Ent. El Novillo - Villa Juárez	28.10	3	0	2575	4.4	78.6	1.7	11.4	1.8	1.6	0.2	0.3	0.0	83.0	1.7	15.3	0.076	0.516	22.012510	-101.993097
Pilotos	33.50	3	0	3058	5.6	80.4	1.4	8.9	1.4	1.7	0.5	0.1	0.0	86.0	1.4	12.6	0.068	0.506	22.038614	-101.960886
T. C. Rivier - San Marcos	47.60	1	0	3166	3.7	81.8	1.3	10.0	1.2	1.5	0.4	0.1	0.0	85.5	1.3	13.2	0.084	0.501	22.136214	-102.041035

27 CARR: Ent. La Chirida - San Francisco de Los Romo

CLAVE: 01016

RUTA: AGS

AÑO: 2021

LUGAR	ESTACION				CLASIFICACION VEHICULAR EN PORCIENTO													COORDENADAS		
	KM	TE	SC	TDPA	M	A	B	C2	C3	T3S2	T3S3	T3S2R4	OTROS	A	B	C	K'	D	LATITUD	LONGITUD
T. C. Jesús María - Palomas	0.00																			
San Francisco de Los Romo	1.50	1	0	5105	10.8	74.6	0.3	8.6	1.8	2.7	0.7	0.2	0.3	85.4	0.3	14.3	0.082	0.526	22.067957	-102.282197

28 CARR: Ent. Pabellón de Arteaga - California

CLAVE: 01137

RUTA: AGS

AÑO: 2021

LUGAR	ESTACION				CLASIFICACION VEHICULAR EN PORCIENTO													COORDENADAS		
	KM	TE	SC	TDPA	M	A	B	C2	C3	T3S2	T3S3	T3S2R4	OTROS	A	B	C	K'	D	LATITUD	LONGITUD
T. C. Aguascalientes - Zacatecas	0.00	3	1	3520	3.5	91.3	0.9	3.0	0.5	0.3	0.2	0.1	0.2	94.8	0.9	4.3	0.088	0.559	22.108840	-102.274236
T. C. Aguascalientes - Zacatecas	0.00	3	2	2777	3.3	90.7	2.0	2.4	0.5	0.4	0.2	0.2	0.3	94.0	2.0	4.0	0.088	0.559	22.108833	-102.274352
Pabellón de Arteaga	5.60	3	0	3018	7.5	84.0	0.3	5.7	0.5	1.6	0.2	0.1	0.1	91.5	0.3	8.2	0.111	0.516	22.154220	-102.275625
X. C. Rincón de Romos - Ciénega Grande	13.30	1	0	2486	9.5	78.7	0.5	8.1	0.8	1.7	0.3	0.1	0.3	88.2	0.5	11.3	0.093	0.511	22.222947	-102.278427
X. C. Rincón de Romos - Ciénega Grande	13.30	3	0	1417	13.6	75.8	0.5	7.2	1.0	1.4	0.4	0.0	0.1	89.4	0.5	10.1	0.095	0.508	22.231627	-102.278418
Ejido California	20.50	1	0	1012	16.2	71.3	0.4	8.9	1.3	1.1	0.7	0.0	0.1	87.5	0.4	12.1	0.129	0.512	22.276946	-102.260141

29 CARR: Ent. Pabellón de Arteaga - San José de Gracia

CLAVE: 01031

RUTA: AGS-019

AÑO: 2021

LUGAR	ESTACION				CLASIFICACION VEHICULAR EN PORCIENTO													COORDENADAS		
	KM	TE	SC	TDPA	M	A	B	C2	C3	T3S2	T3S3	T3S2R4	OTROS	A	B	C	K'	D	LATITUD	LONGITUD
T. C. Aguascalientes - Zacatecas	0.00	3	1	3655	0.2	87.8	0.4	9.4	1.7	0.2	0.3	0.0	0.0	88.0	0.4	11.6	0.106	0.560	22.146196	-102.297519
T. C. Aguascalientes - Zacatecas	0.00	3	2	2747	0.2	86.9	0.7	9.9	1.8	0.2	0.3	0.0	0.0	87.1	0.7	12.2	0.070	0.560	22.146094	-102.297467
T. Der. La Cieneguita	10.00	1	1	2371	2.7	87.1	0.9	8.1	1.0	0.1	0.1	0.0	0.0	89.8	0.9	9.3	0.135	0.511	22.140517	-102.380815
T. Der. La Cieneguita	10.00	1	2	2302	3.6	87.0	1.4	6.9	1.1	0.0	0.0	0.0	0.0	90.6	1.4	8.0	0.110	0.511	22.140398	-102.380838
San José de Gracia	13.80	1	1	2089	5.1	83.7	1.2	8.7	1.1	0.1	0.1	0.0	0.0	88.8	1.2	10.0	0.121	0.506	22.144605	-102.404510
San José de Gracia	13.80	1	2	2051	4.8	84.9	1.3	7.9	1.0	0.1	0.0	0.0	0.0	89.7	1.3	9.0	0.083	0.506	22.144559	-102.404631

AGUASCALIENTES

30 CARR: Ent. Rincón de Romos - La Boquilla

CLAVE: 01139

RUTA: AGS

AÑO: 2021

LUGAR	ESTACION				CLASIFICACION VEHICULAR EN PORCIENTO														COORDENADAS	
	KM	TE	SC	TDPA	M	A	B	C2	C3	T3S2	T3S3	T3S2R4	OTROS	A	B	C	K'	D	LATITUD	LONGITUD
T. C. Aguascalientes - Zacatecas	0.00	3	0	2236	16.2	71.6	0.6	9.3	0.7	1.3	0.1	0.1	0.1	87.8	0.6	11.6	0.078	0.511	22.243271	-102.320692
La Boquilla	6.90																			

31 CARR: Ent. San Carlos - Ent. El Milagro

CLAVE: 01141

RUTA: AGS-010

AÑO: 2021

LUGAR	ESTACION				CLASIFICACION VEHICULAR EN PORCIENTO														COORDENADAS	
	KM	TE	SC	TDPA	M	A	B	C2	C3	T3S2	T3S3	T3S2R4	OTROS	A	B	C	K'	D	LATITUD	LONGITUD
T. C. Jesús María - Palomas	0.00	3	0	2127	7.5	78.8	0.1	8.0	2.1	1.5	1.8	0.1	0.1	86.3	0.1	13.6	0.087	0.512	22.048409	-102.303429
T. C. (T. C-(Ags. - Zac.)- San José de Gracia)	13.60	1	0	1623	8.4	75.7	0.2	9.6	4.1	0.6	1.1	0.1	0.2	84.1	0.2	15.7	0.100	0.522	22.142621	-102.336064

32 CARR: Ent. San Felipe - Jesús María

CLAVE: 01144

RUTA: AGS

AÑO: 2021

LUGAR	ESTACION				CLASIFICACION VEHICULAR EN PORCIENTO														COORDENADAS	
	KM	TE	SC	TDPA	M	A	B	C2	C3	T3S2	T3S3	T3S2R4	OTROS	A	B	C	K'	D	LATITUD	LONGITUD
T. C. Aguascalientes - Jalpa	0.00	3	0	1153	7.3	76.5	0.5	13.0	1.2	0.9	0.4	0.1	0.1	83.8	0.5	15.7	0.081	0.522	21.896406	-102.368312
Jesús María	12.70	1	0	1186	11.1	78.2	0.7	7.0	1.0	1.2	0.4	0.2	0.2	89.3	0.7	10.0	0.090	0.526	21.948920	-102.362511

33 CARR: Ent. San Isidro - Ent. El Salitre

CLAVE: 01142

RUTA: AGS-016

AÑO: 2021

LUGAR	ESTACION				CLASIFICACION VEHICULAR EN PORCIENTO														COORDENADAS	
	KM	TE	SC	TDPA	M	A	B	C2	C3	T3S2	T3S3	T3S2R4	OTROS	A	B	C	K'	D	LATITUD	LONGITUD
T. C. Aguascalientes - Jalpa	0.00	3	0	1640	1.9	84.7	0.4	10.8	1.5	0.6	0.1	0.0	0.0	86.6	0.4	13.0	0.085	0.509	21.887044	-102.492512
T. C. Ent. Penitenciaría - Villa Hidalgo	20.40	1	0	501	1.6	87.5	0.4	8.8	1.3	0.4	0.0	0.0	0.0	89.1	0.4	10.5	0.088	0.510	21.757866	-102.491965

34 CARR: Est. Coyotes - Ent. San Bartolo

CLAVE: 01134

RUTA: AGS-069

AÑO: 2021

LUGAR	ESTACION				CLASIFICACION VEHICULAR EN PORCIENTO														COORDENADAS	
	KM	TE	SC	TDPA	M	A	B	C2	C3	T3S2	T3S3	T3S2R4	OTROS	A	B	C	K'	D	LATITUD	LONGITUD
T. C. León - Aguascalientes	0.00	3	0	2727	4.9	61.1	1.6	9.9	16.1	2.3	1.6	2.3	0.2	66.0	1.6	32.4	0.067	0.520	21.751630	-102.263771
T. C. San Isidro El Grande - Bajío de San José	13.10																			

AGUASCALIENTES

35 CARR: Fracc. Ojo Caliente - El Conejal

CLAVE: 01129

RUTA: AGS-079

AÑO: 2021

LUGAR	ESTACION				CLASIFICACION VEHICULAR EN PORCIENTO										COORDENADAS					
	KM	TE	SC	TDPA	M	A	B	C2	C3	T3S2	T3S3	T3S2R4	OTROS	A	B	C	K'	D	LATITUD	LONGITUD
Fracc. Ojo Caliente	0.00																			
Las Norias de Ojo Caliente	3.50	1	1	6105	6.2	89.3	1.0	1.8	0.9	0.4	0.2	0.1	0.1	95.5	1.0	3.5	0.107	0.581	21.884526	-102.223653
Las Norias de Ojo Caliente	3.50	1	2	6512	6.4	89.6	1.1	1.7	0.8	0.2	0.1	0.1	0.0	96.0	1.1	2.9	0.120	0.581	21.884694	-102.223720
Las Norias de Ojo Caliente	3.50	3	0	2387	10.8	75.6	0.4	9.1	2.4	1.4	0.2	0.0	0.1	86.4	0.4	13.2	0.077	0.503	21.899564	-102.214025
El Conejal	7.50																			

36 CARR: Jesús María - Palomas

CLAVE: 01018

RUTA: AGS-018

AÑO: 2021

LUGAR	ESTACION				CLASIFICACION VEHICULAR EN PORCIENTO										COORDENADAS					
	KM	TE	SC	TDPA	M	A	B	C2	C3	T3S2	T3S3	T3S2R4	OTROS	A	B	C	K'	D	LATITUD	LONGITUD
Jesús María	0.00	3	1	9258	8.1	80.2	0.1	3.6	1.3	3.0	1.7	1.4	0.6	88.3	0.1	11.6	0.102	0.508	21.980375	-102.337461
Jesús María	0.00	3	2	9570	9.2	78.0	0.1	3.9	1.4	3.3	1.9	1.5	0.7	87.2	0.1	12.7	0.108	0.508	21.980434	-102.337613
Valladolid	7.30	3	0	4831	6.6	82.0	0.3	8.6	1.6	0.5	0.3	0.0	0.1	88.6	0.3	11.1	0.074	0.548	22.028585	-102.314180
Palomas	21.70	1	0	1790	6.6	75.6	1.3	10.8	2.9	1.3	1.5	0.0	0.0	82.2	1.3	16.5	0.080	0.501	22.104216	-102.279313

37 CARR: La Panadera - Palo Alto

CLAVE: 01105

RUTA: AGS-017

AÑO: 2021

LUGAR	ESTACION				CLASIFICACION VEHICULAR EN PORCIENTO										COORDENADAS					
	KM	TE	SC	TDPA	M	A	B	C2	C3	T3S2	T3S3	T3S2R4	OTROS	A	B	C	K'	D	LATITUD	LONGITUD
T. C. Aguascalientes - Jalpa	0.00	3	0	4749	2.4	86.2	0.2	7.3	0.5	2.5	0.4	0.2	0.3	88.6	0.2	11.2	0.105	0.516	21.870749	-102.702368
T. Izq. La Ordeña	8.40	3	0	2570	0.9	89.1	0.1	8.7	0.5	0.3	0.4	0.0	0.0	90.0	0.1	9.9	0.090	0.501	21.923333	-102.701374
La Labor	12.80	3	0	1857	2.1	85.5	0.1	11.6	0.7	0.0	0.0	0.0	0.0	87.6	0.1	12.3	0.076	0.512	21.966963	-102.689333
Palo Alto	23.30	1	0	258	1.3	89.9	0.1	8.5	0.1	0.1	0.0	0.0	0.0	91.2	0.1	8.7	0.098	0.512	22.038421	-102.681267

38 CARR: La Punta - Mesillas

CLAVE: 01104

RUTA: AGS-026

AÑO: 2021

LUGAR	ESTACION				CLASIFICACION VEHICULAR EN PORCIENTO										COORDENADAS					
	KM	TE	SC	TDPA	M	A	B	C2	C3	T3S2	T3S3	T3S2R4	OTROS	A	B	C	K'	D	LATITUD	LONGITUD
T. C. Aguascalientes - Zacatecas	0.00	3	0	1660	5.6	81.3	1.0	9.2	1.3	1.1	0.5	0.0	0.0	86.9	1.0	12.1	0.085	0.510	22.316848	-102.277056
X. C. Providencia - Luis Moya	6.50	3	0	2194	6.1	82.5	0.6	8.1	1.1	1.2	0.4	0.0	0.0	88.6	0.6	10.8	0.072	0.500	22.313454	-102.230978
Mesillas	13.50	1	0	1085	9.7	78.6	0.8	9.3	0.8	0.8	0.0	0.0	0.0	88.3	0.8	10.9	0.098	0.501	22.312705	-102.173886

AGUASCALIENTES

39 CARR : La Rinconada - El Terrero del Refugio

CLAVE: 01133

RUTA: AGS-007

AÑO: 2021

LUGAR	ESTACION				CLASIFICACION VEHICULAR EN PORCIENTO													COORDENADAS		
	KM	TE	SC	TDPA	M	A	B	C2	C3	T3S2	T3S3	T3S2R4	OTROS	A	B	C	K'	D	LATITUD	LONGITUD
T. C. Aguascalientes - Jalpa	0.00	3	0	1720	3.2	86.6	0.2	8.0	0.7	1.2	0.1	0.0	0.0	89.8	0.2	10.0	0.118	0.510	21.790726	-102.800080
El Terrero del Refugio	15.00																			

40 CARR : Las Norias de Ojo Caliente - La Luz

CLAVE: 01122

RUTA: AGS-068

AÑO: 2021

LUGAR	ESTACION				CLASIFICACION VEHICULAR EN PORCIENTO													COORDENADAS		
	KM	TE	SC	TDPA	M	A	B	C2	C3	T3S2	T3S3	T3S2R4	OTROS	A	B	C	K'	D	LATITUD	LONGITUD
Las Norias de Ojo Caliente	0.00	3	0	4557	7.9	79.5	0.7	8.9	1.0	1.6	0.2	0.0	0.2	87.4	0.7	11.9	0.092	0.515	21.894023	-102.202659
T. Der. Sandoval	10.50	3	0	2425	3.3	85.6	1.0	7.7	1.0	1.0	0.2	0.1	0.1	88.9	1.0	10.1	0.086	0.507	21.914849	-102.119630
La Luz	27.60	1	0	1549	7.5	80.3	0.8	9.3	0.8	0.9	0.3	0.0	0.1	87.8	0.8	11.4	0.089	0.509	21.998744	-101.999316

41 CARR : Libramiento San Francisco de Los Romo

CLAVE: 01137

RUTA: AGS

AÑO: 2021

LUGAR	ESTACION				CLASIFICACION VEHICULAR EN PORCIENTO													COORDENADAS		
	KM	TE	SC	TDPA	M	A	B	C2	C3	T3S2	T3S3	T3S2R4	OTROS	A	B	C	K'	D	LATITUD	LONGITUD
T. C. Aguascalientes - Zacatecas (Sur)	0.00	3	1	15913	1.2	79.0	2.7	4.2	2.1	6.7	1.2	2.3	0.6	80.2	2.7	17.1	0.083	0.507	22.057643	-102.279930
T. C. Aguascalientes - Zacatecas (Sur)	0.00	3	2	15501	1.2	77.8	3.0	4.7	2.5	6.0	1.8	2.5	0.5	79.0	3.0	18.0	0.068	0.507	22.057651	-102.280093
T. C. Aguascalientes - Zacatecas (Norte)	5.50	1	1	15030	1.3	78.9	4.1	4.1	1.4	6.5	1.1	2.1	0.5	80.2	4.1	15.7	0.087	0.512	22.083114	-102.276513
T. C. Aguascalientes - Zacatecas (Norte)	5.50	1	2	14332	1.0	79.0	3.3	3.6	1.4	7.2	1.9	2.1	0.5	80.0	3.3	16.7	0.080	0.512	22.083153	-102.276628

42 CARR : Pabellón de Hidalgo - Rincón de Romos

CLAVE: 01136

RUTA: AGS

AÑO: 2021

LUGAR	ESTACION				CLASIFICACION VEHICULAR EN PORCIENTO													COORDENADAS		
	KM	TE	SC	TDPA	M	A	B	C2	C3	T3S2	T3S3	T3S2R4	OTROS	A	B	C	K'	D	LATITUD	LONGITUD
Pabellón de Hidalgo	0.00	3	0	2731	12.6	80.5	0.3	5.2	0.3	1.0	0.0	0.0	0.1	93.1	0.3	6.6	0.088	0.509	22.186264	-102.338307
Rincón de Romos	6.70																			

43 CARR : Pilotos - Los Campos

CLAVE: 00007

RUTA: AGS-030

AÑO: 2021

LUGAR	ESTACION				CLASIFICACION VEHICULAR EN PORCIENTO													COORDENADAS		
	KM	TE	SC	TDPA	M	A	B	C2	C3	T3S2	T3S3	T3S2R4	OTROS	A	B	C	K'	D	LATITUD	LONGITUD
T. C. Ent. La Calavera - Ent. San Pedro	0.00	3	0	2159	5.2	81.8	0.2	11.3	0.5	0.8	0.1	0.0	0.1	87.0	0.2	12.8	0.078	0.512	22.042702	-101.959053
Lim. Edos. Term. Ags. Ppia. Jal.	10.50																			
Los Campos	12.00																			

AGUASCALIENTES

44 CARR: Pocitos - Granja Miravalle

CLAVE: 01109

RUTA: AGS-053

AÑO: 2021

LUGAR	ESTACION				CLASIFICACION VEHICULAR EN PORCIENTO										COORDENADAS					
	KM	TE	SC	TDPA	M	A	B	C2	C3	T3S2	T3S3	T3S2R4	OTROS	A	B	C	K'	D	LATITUD	LONGITUD
T. C. Aguascalientes - Jesús María	0.00																			
Maravillas	1.50	3	1	4749	8.5	84.1	0.4	5.5	0.7	0.4	0.1	0.2	0.1	92.6	0.4	7.0	0.102	0.508	21.953145	-102.322805
Maravillas	1.50	3	2	4593	8.9	83.4	0.3	5.3	1.3	0.4	0.1	0.2	0.1	92.3	0.3	7.4	0.095	0.508	21.953156	-102.322950
Granja Miravalle	5.70	1	0	3944	8.0	81.7	0.5	8.5	0.6	0.3	0.2	0.0	0.2	89.7	0.5	9.8	0.071	0.523	21.978828	-102.315889

45 CARR: Ramal a San Pedro Piedra Gorda

CLAVE: 00553

RUTA: ZAC-AGS

AÑO: 2021

LUGAR	ESTACION				CLASIFICACION VEHICULAR EN PORCIENTO										COORDENADAS					
	KM	TE	SC	TDPA	M	A	B	C2	C3	T3S2	T3S3	T3S2R4	OTROS	A	B	C	K'	D	LATITUD	LONGITUD
T. C. Aguascalientes - Zacatecas	0.00	3	0	1463	3.7	81.6	1.4	11.4	1.0	0.8	0.1	0.0	0.0	85.3	1.4	13.3	0.089	0.503	22.465462	-102.262553
Lim. Edos. Term. Zac. Ppia. Ags.	5.00																			
Lim. Edos. Term. Ags. Ppia. Zac.	8.00																			
San Pedro Piedra Gorda	9.00	1	0	2291	9.2	77.4	0.6	10.2	0.6	1.7	0.2	0.0	0.1	86.6	0.6	12.8	0.081	0.507	22.452371	-102.338412

46 CARR: San Gil - Jarillas

CLAVE: 00527

RUTA: AGS-012-ZAC

AÑO: 2021

LUGAR	ESTACION				CLASIFICACION VEHICULAR EN PORCIENTO										COORDENADAS					
	KM	TE	SC	TDPA	M	A	B	C2	C3	T3S2	T3S3	T3S2R4	OTROS	A	B	C	K'	D	LATITUD	LONGITUD
T. C. Rincón de Romos - Ciénega Grande	0.00	3	0	2795	6.0	71.6	3.1	14.3	2.3	1.5	1.1	0.0	0.1	77.6	3.1	19.3	0.066	0.501	22.216006	-102.022253
Guadalupe de Atlas	5.40	1	0	2466	7.8	63.8	3.7	16.4	3.8	2.3	2.2	0.0	0.0	71.6	3.7	24.7	0.074	0.505	22.258278	-102.026524
Lim. Edos. Term. Ags. Ppia. Zac.	10.00																			
Lim. Edos. Term. Zac. Ppia. Ags.	11.30																			
Jarillas	12.00																			

47 CARR: San Isidro El Grande - Bajío de San José

CLAVE: 00526

RUTA: AGS-036

AÑO: 2021

LUGAR	ESTACION				CLASIFICACION VEHICULAR EN PORCIENTO										COORDENADAS					
	KM	TE	SC	TDPA	M	A	B	C2	C3	T3S2	T3S3	T3S2R4	OTROS	A	B	C	K'	D	LATITUD	LONGITUD
T. C. Ojuelos - Aguascalientes	0.00	3	0	1230	9.1	67.1	1.6	13.5	4.7	1.8	1.2	0.7	0.3	76.2	1.6	22.2	0.101	0.510	21.816035	-102.107747
Ent. San Bartolo	11.50	3	0	1977	4.7	78.2	0.8	9.9	4.1	1.3	0.8	0.1	0.1	82.9	0.8	16.3	0.100	0.501	21.743400	-102.173253
Lim. Edos. Term. Ags. Ppia. Jal.	17.50																			
Bajío de San José	22.50																			

AGUASCALIENTES

48 CARR: San Rafael - Villa García

CLAVE: 00525

RUTA: AGS-ZAC

AÑO: 2021

LUGAR	ESTACION				CLASIFICACION VEHICULAR EN PORCIENTO													COORDENADAS		
	KM	TE	SC	TDPA	M	A	B	C2	C3	T3S2	T3S3	T3S2R4	OTROS	A	B	C	K'	D	LATITUD	LONGITUD
T. C. Ent. La Calavera - Ent. San Pedro	0.00	3	0	2270	8.1	80.8	0.5	8.1	0.7	1.3	0.2	0.1	0.2	88.9	0.5	10.6	0.079	0.500	22.116417	-102.011400
Lim. Edos. Term. Ags. Ppia. Zac.	3.00																			
Villa García	10.00	1	0	3328	9.9	79.4	0.5	7.0	0.3	2.4	0.3	0.0	0.2	89.3	0.5	10.2	0.075	0.515	22.135234	-101.970175

49 CARR: Santa Rosa - Pabellón de Hidalgo

CLAVE: 01135

RUTA: AGS

AÑO: 2021

LUGAR	ESTACION				CLASIFICACION VEHICULAR EN PORCIENTO													COORDENADAS		
	KM	TE	SC	TDPA	M	A	B	C2	C3	T3S2	T3S3	T3S2R4	OTROS	A	B	C	K'	D	LATITUD	LONGITUD
T. C. Aguascalientes - Zacatecas	0.00	3	0	2836	2.9	84.9	0.4	8.5	1.7	1.3	0.2	0.0	0.1	87.8	0.4	11.8	0.088	0.511	22.159792	-102.304215
Pabellón de Hidalgo	5.10																			

50 CARR: T. Caldera - Ent. Ojo de Agua de Los Montes

CLAVE: 01137

RUTA: AGS

AÑO: 2021

LUGAR	ESTACION				CLASIFICACION VEHICULAR EN PORCIENTO													COORDENADAS		
	KM	TE	SC	TDPA	M	A	B	C2	C3	T3S2	T3S3	T3S2R4	OTROS	A	B	C	K'	D	LATITUD	LONGITUD
T. C. Carboneras - Villa Juárez	0.00	3	0	315	11.0	71.6	2.0	11.0	3.5	0.6	0.2	0.1	0.0	82.6	2.0	15.4	0.122	0.504	22.166180	-102.190802
Arroyo Hondo Acceso 1	3.60	1	0	330	11.4	71.3	1.9	11.1	3.4	0.6	0.2	0.1	0.0	82.7	1.9	15.4	0.112	0.502	22.185060	-102.189544
Arroyo Hondo Acceso 2	4.90	3	0	1326	4.0	78.3	1.8	8.1	3.1	1.5	2.5	0.5	0.2	82.3	1.8	15.9	0.099	0.517	22.194445	-102.195408
X. C. Rincón de Romos - Ciénega Grande	8.60	1	0	1253	4.1	83.0	0.5	7.1	1.3	1.4	2.3	0.3	0.0	87.1	0.5	12.4	0.103	0.508	22.221343	-102.183965
X. C. Rincón de Romos - Ciénega Grande	8.60	3	0	820	6.1	71.0	0.5	7.8	2.7	2.7	7.9	1.1	0.2	77.1	0.5	22.4	0.076	0.503	22.228011	-102.183275
T. C. La Punta - Mesillas	19.00	1	0	813	7.2	82.6	0.5	8.0	0.7	0.7	0.2	0.0	0.1	89.8	0.5	9.7	0.092	0.515	22.303785	-102.195074

51 CARR: Viñedos de California - Adolfo López Mateos

CLAVE: 01137

RUTA: AGS

AÑO: 2021

LUGAR	ESTACION				CLASIFICACION VEHICULAR EN PORCIENTO													COORDENADAS		
	KM	TE	SC	TDPA	M	A	B	C2	C3	T3S2	T3S3	T3S2R4	OTROS	A	B	C	K'	D	LATITUD	LONGITUD
T. C. Providencia - Luis Moya	0.00	3	0	3068	5.2	83.0	0.4	8.1	0.9	1.4	0.8	0.0	0.2	88.2	0.4	11.4	0.077	0.508	22.150154	-102.244488
Adolfo López Mateos	5.00																			

52 CARR: Libramiento Surponiente de Aguascalientes (Cuota)

CLAVE: 00167

RUTA: MEX-A40

AÑO: 2021

LUGAR	ESTACION				CLASIFICACION VEHICULAR EN PORCIENTO													COORDENADAS		
	KM	TE	SC	TDPA	M	A	B	C2	C3	T3S2	T3S3	T3S2R4	OTROS	A	B	C	K'	D	LATITUD	LONGITUD
T. C. León - Aguascalientes	0.00	3	0	7442	3.2	56.8	4.3	5.1	3.8	15.4	4.0	6.7	0.7	60.0	4.3	35.7	0.117	0.506	21.772517	-102.286005
T. Der. Aguascalientes	8.34	3	0	6180	4.1	54.3	4.7	4.6	4.4	13.1	4.4	9.9	0.5	58.4	4.7	36.9	0.080	0.514	21.813059	-102.352103

AGUASCALIENTES

52 CARR: Libramiento Surponiente de Aguascalientes (Cuota)

CLAVE: 00167

RUTA: MEX-A40

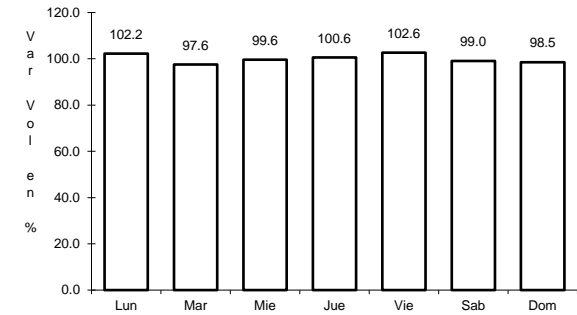
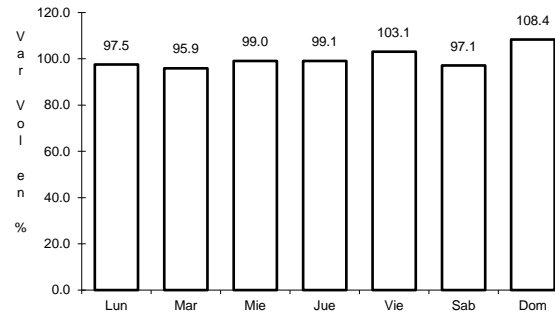
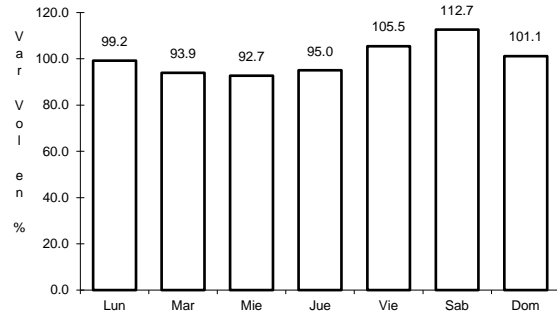
AÑO: 2021

L U G A R	E S T A C I O N				C L A S I F I C A C I O N V E H I C U L A R E N P O R C I E N T O														C O O R D E N A D A S	
	KM	TE	SC	TDPA	M	A	B	C2	C3	T3S2	T3S3	T3S2R4	OTROS	A	B	C	K'	D	LATITUD	LONGITUD
T. C. Aguascalientes - Jalpa	21.00	1	0	1137	2.4	82.8	2.3	4.7	3.5	3.2	0.9	0.1	0.1	85.2	2.3	12.5	0.085	0.513	21.884211	-102.403991

1 CARR: Acceso a Pabellón de Arteaga

CLAVE: 01113

RUTA: MEX-045



Km: 0.00 Tipo: 3 Sent: 1

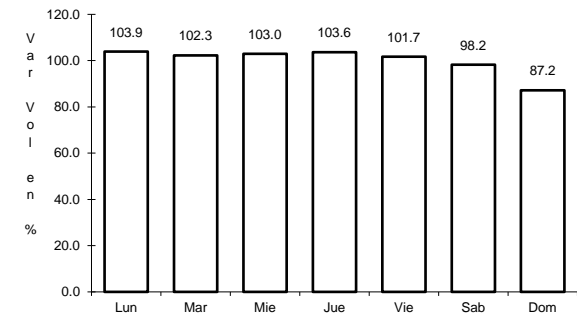
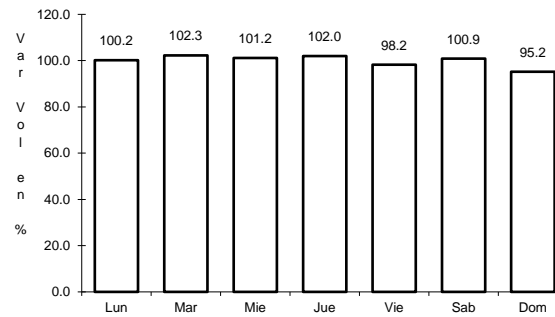
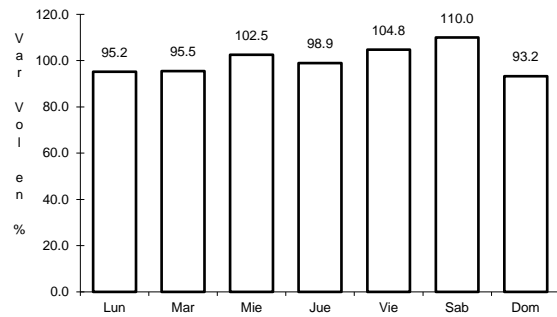
Km: 1.80 Tipo: 1 Sent: 1

Km: 1.80 Tipo: 1 Sent: 2

2 CARR: Aguascalientes - Jalpa

CLAVE: 00095

RUTA: MEX-070



Km: 0.00 Tipo: 3 Sent: 1

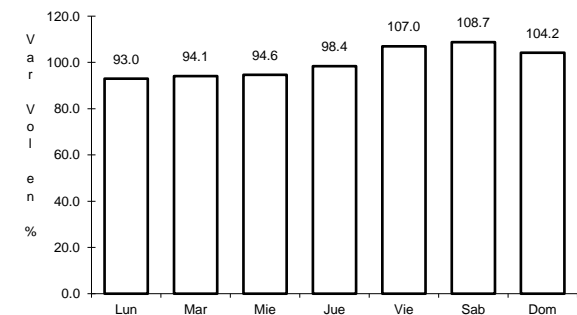
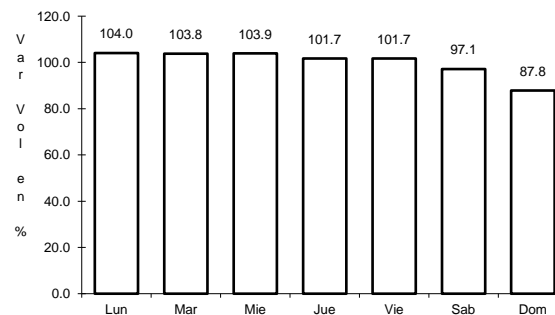
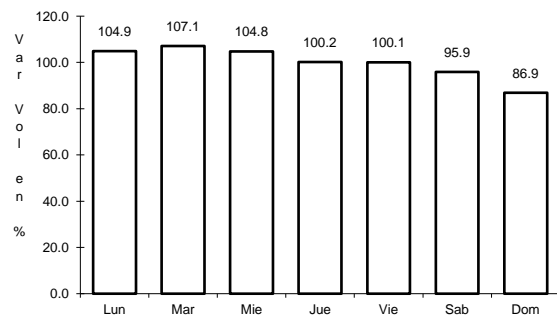
Km: 0.00 Tipo: 3 Sent: 2

Km: 90.66 Tipo: 1 Sent: 0

3 CARR: Aguascalientes - Zacatecas

CLAVE: 00524

RUTA: MEX-045



Km: 6.00 Tipo: 1 Sent: 1

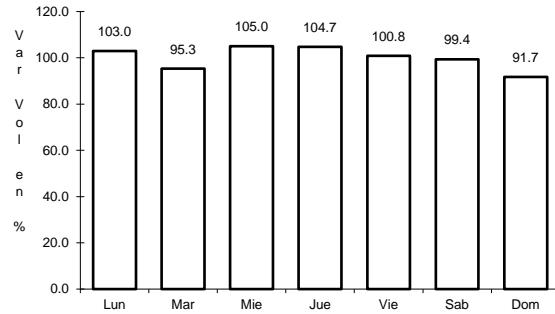
Km: 6.00 Tipo: 1 Sent: 2

Km: 40.90 Tipo: 3 Sent: 0

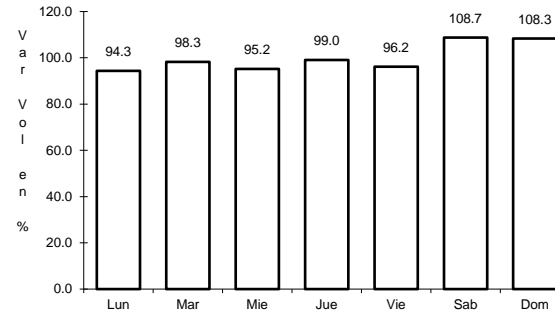
4 CARR: El Retoño - Ent. Asturias

CLAVE: 01124

RUTA: MEX-070



Km: 0.00 Tipo: 3 Sent: 0

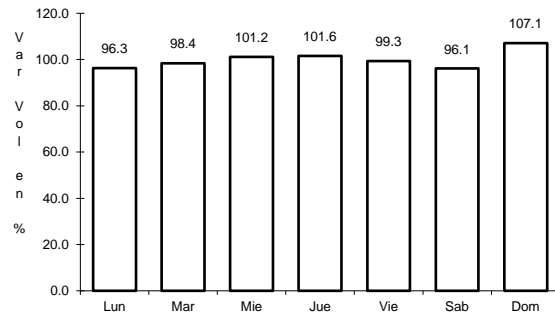


Km: 8.98 Tipo: 1 Sent: 0

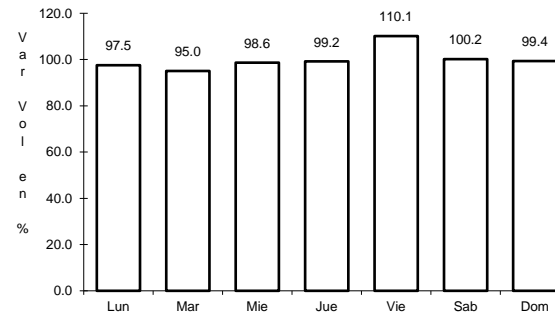
5 CARR: Ent. Cosío - Ent. Cuauhtémoc

CLAVE: 00579

RUTA: MEX-045



Km: 57.20 Tipo: 3 Sent: 0

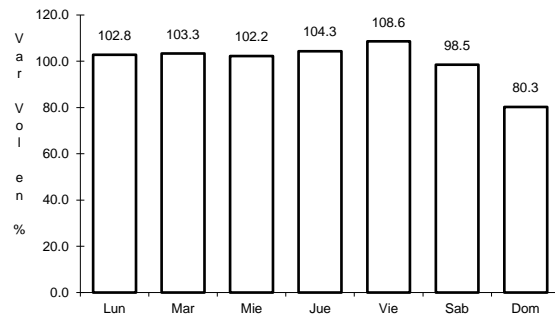


Km: 70.40 Tipo: 1 Sent: 0

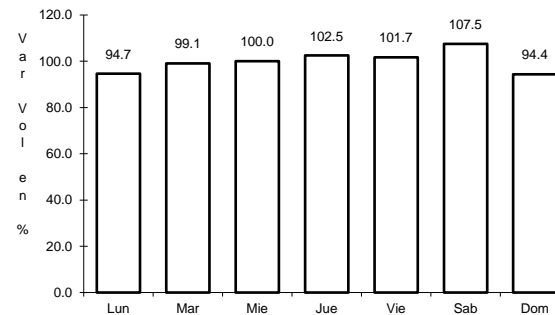
6 CARR: Ent. Penitenciaría - Villa Hidalgo

CLAVE: 00120

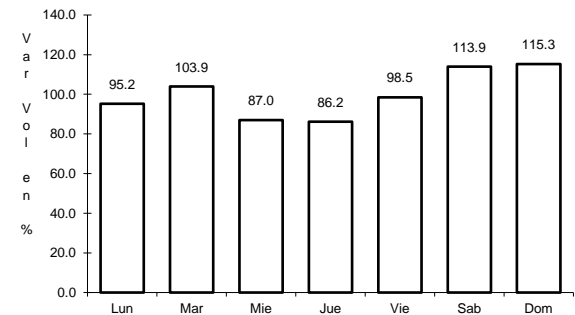
RUTA: MEX-071



Km: 0.00 Tipo: 3 Sent: 1



Km: 0.00 Tipo: 3 Sent: 2

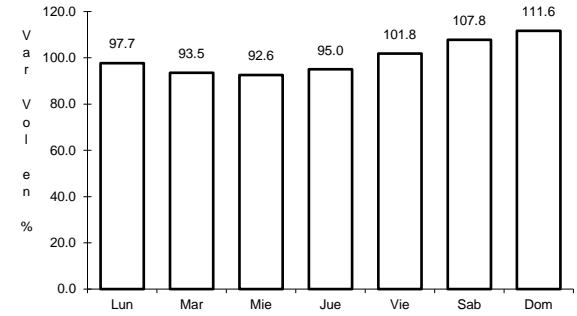
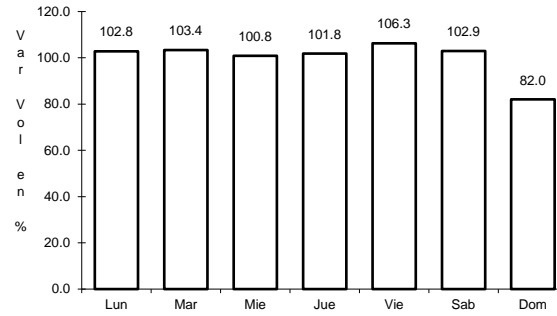
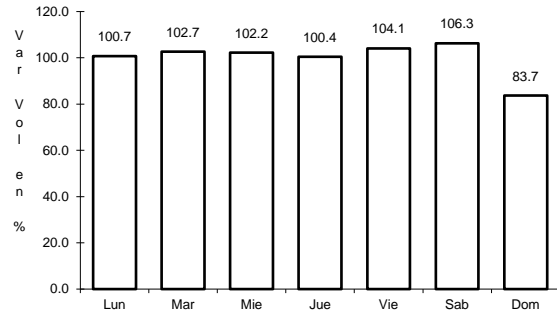


Km: 41.80 Tipo: 1 Sent: 0

7 CARR: Ent. Rivier - San Marcos

CLAVE: 00285

RUTA: MEX-066



Km: 0.00 Tipo: 3 Sent: 1

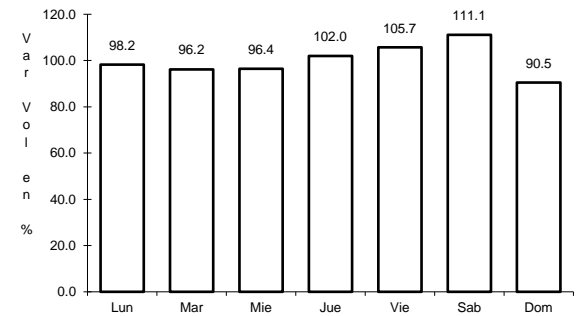
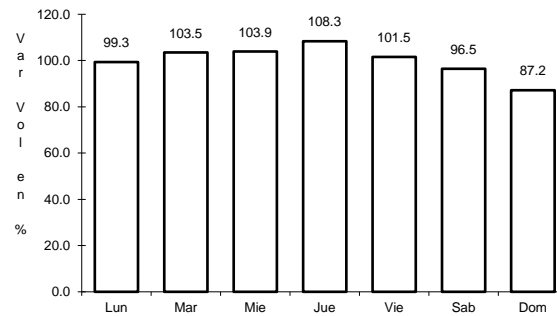
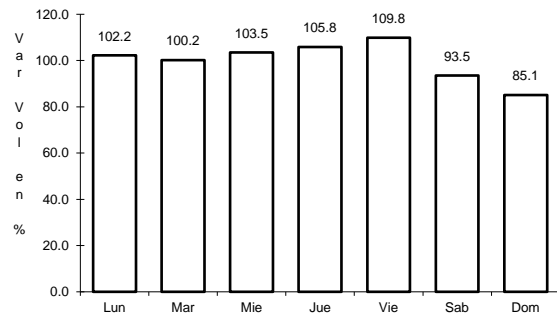
Km: 0.00 Tipo: 3 Sent: 2

Km: 55.34 Tipo: 1 Sent: 0

8 CARR: León - Aguascalientes

CLAVE: 00167

RUTA: MEX-045



Km: 11.00 Tipo: 1 Sent: 1

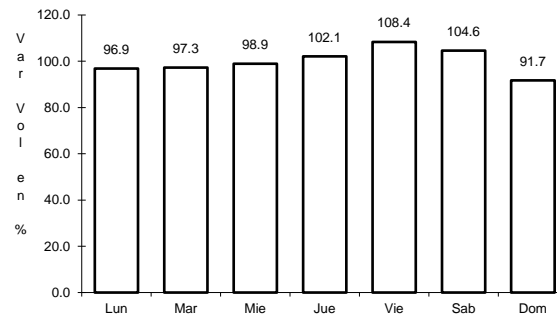
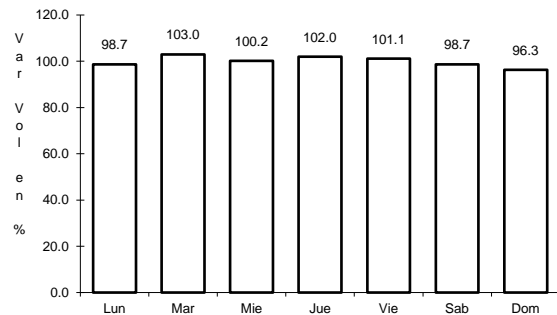
Km: 11.00 Tipo: 1 Sent: 2

Km: 89.18 Tipo: 3 Sent: 0

9 CARR: Libramiento Rincón de Romos

CLAVE: 00167

RUTA: MEX-045



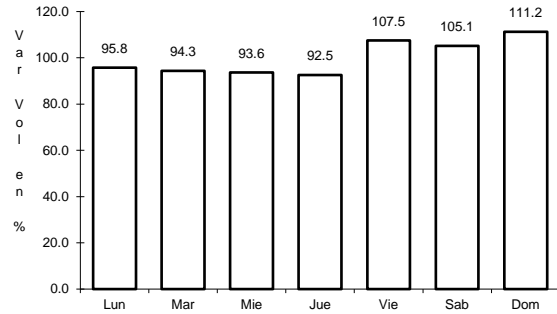
Km: 0.00 Tipo: 3 Sent: 0

Km: 10.00 Tipo: 1 Sent: 0

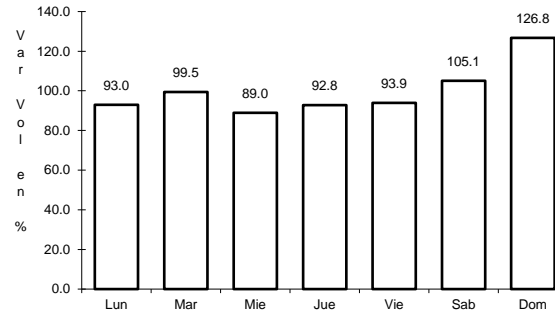
10 CARR: Ojo Caliente - Malpaso

CLAVE: 01123

RUTA: MEX-070



Km: 0.00 Tipo: 3 Sent: 0

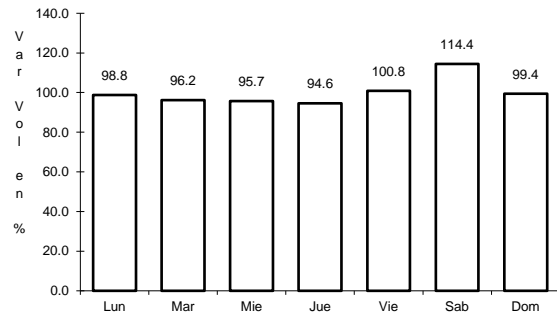


Km: 3.10 Tipo: 1 Sent: 0

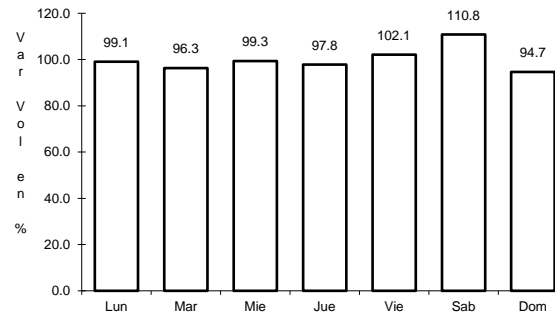
11 CARR: Ojuelos - Aguascalientes

CLAVE: 00094

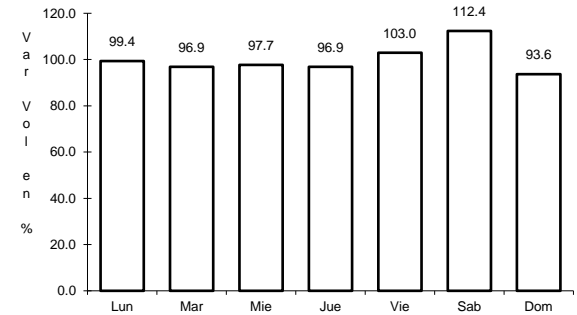
RUTA: MEX-070



Km: 0.00 Tipo: 3 Sent: 0



Km: 81.51 Tipo: 1 Sent: 1

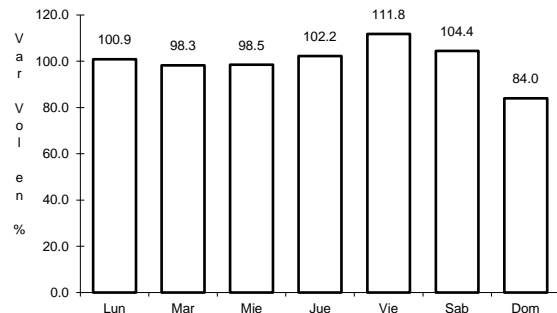


Km: 81.51 Tipo: 1 Sent: 2

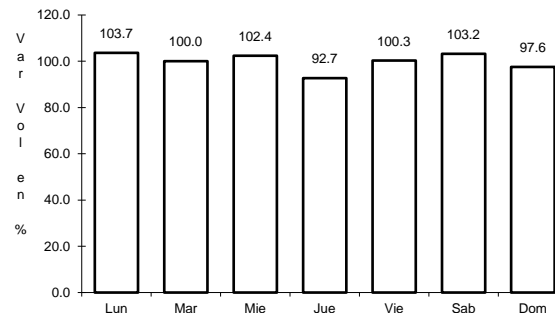
12 CARR: Providencia - Luis Moya

CLAVE: 00112

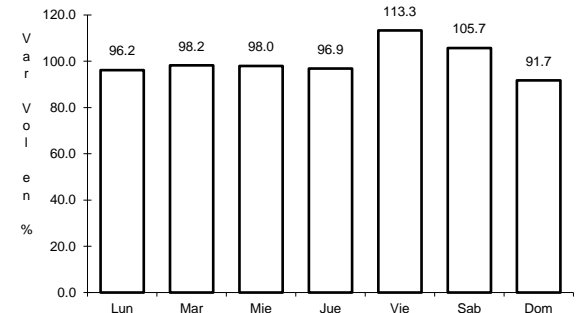
RUTA: MEX-071



Km: 0.00 Tipo: 3 Sent: 0



Km: 21.22 Tipo: 3 Sent: 0

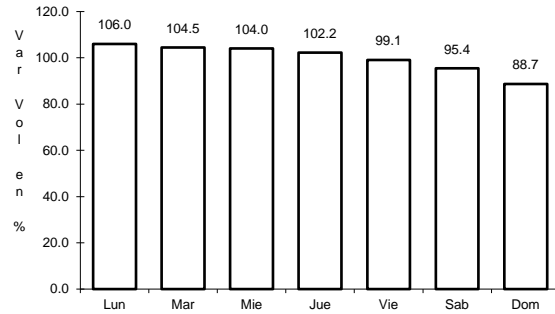


Km: 43.52 Tipo: 1 Sent: 0

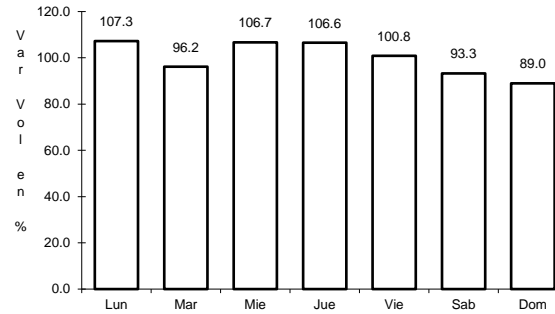
13 CARR: Ramal a Aeropuerto de Aguascalientes

CLAVE: 01116

ruta: MEX-045



Km: 6.13 Tipo: 1 Sent: 1

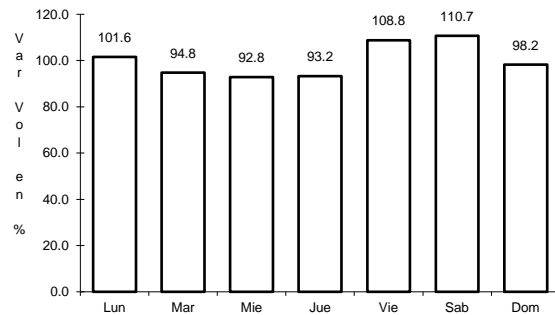


Km: 6.13 Tipo: 1 Sent: 2

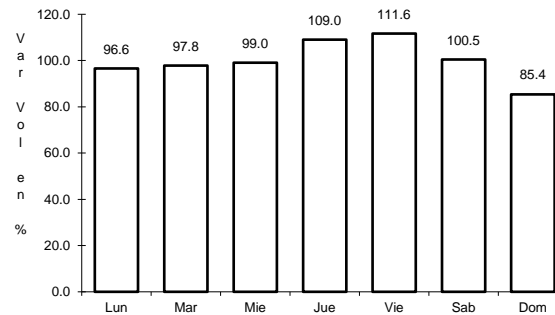
14 CARR: Rincón de Romos - Ciénega Grande

CLAVE: 01002

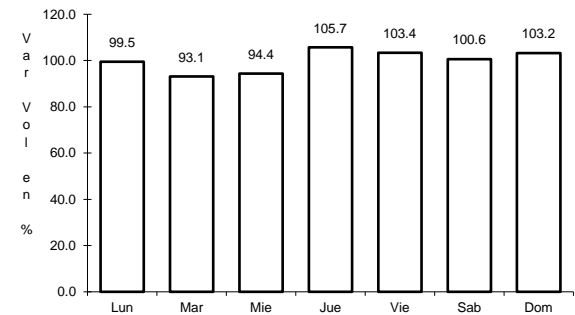
ruta: MEX-039



Km: 0.00 Tipo: 3 Sent: 0



Km: 15.00 Tipo: 3 Sent: 0

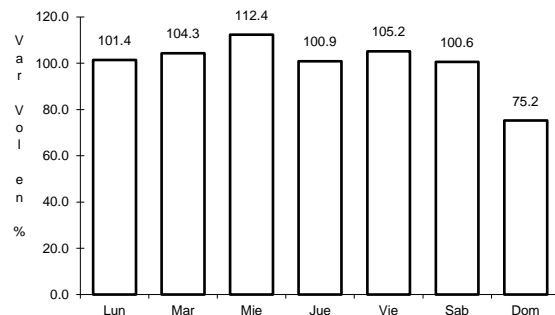


Km: 36.70 Tipo: 1 Sent: 0

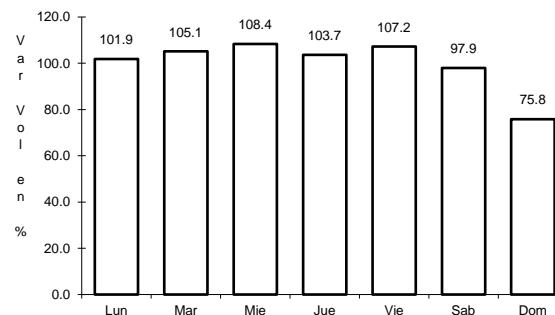
15 CARR: Aguascalientes - Ent. Cd. de Los Niños

CLAVE: 01130

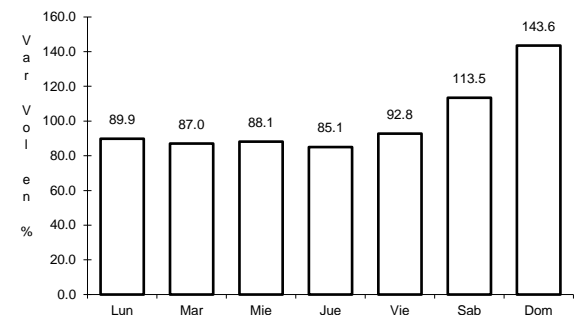
ruta: AGS



Km: 0.00 Tipo: 3 Sent: 1



Km: 0.00 Tipo: 3 Sent: 2

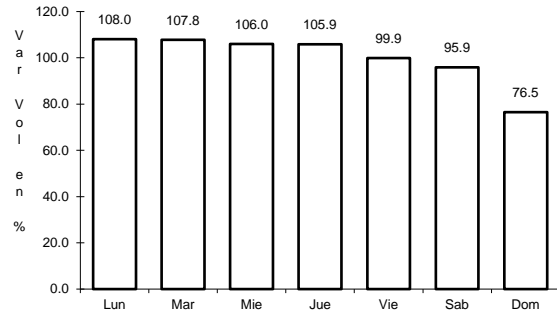


Km: 8.00 Tipo: 1 Sent: 0

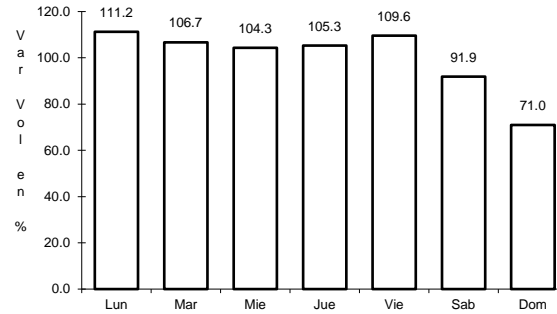
16 CARR: Aguascalientes - Jesús María

CLAVE: 01112

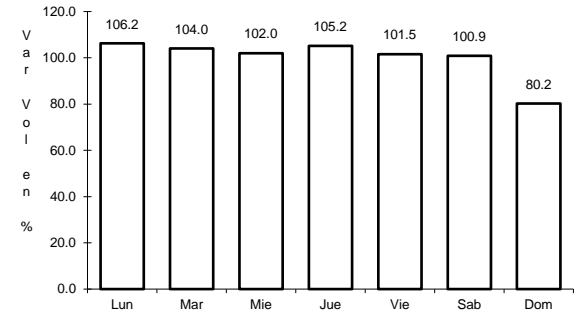
RUTA: AGS-095



Km: 3.30 Tipo: 3 Sent: 1



Km: 3.30 Tipo: 3 Sent: 2

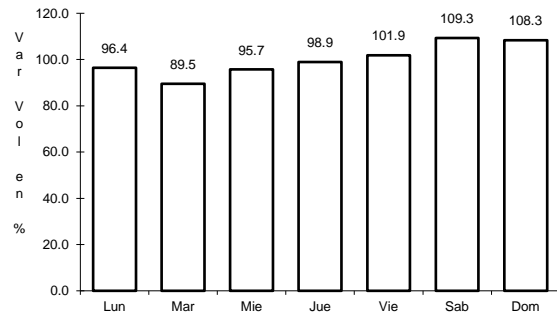


Km: 8.10 Tipo: 1 Sent: 1

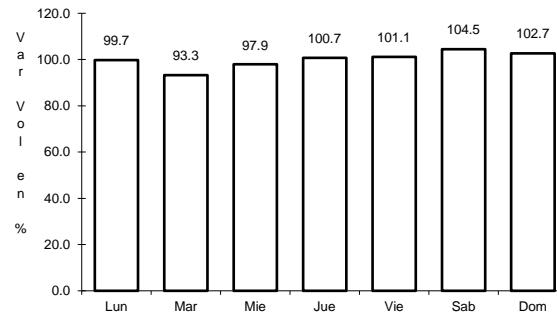
17 CARR: Aguascalientes - José María Morelos

CLAVE: 01131

RUTA: AGS



Km: 0.00 Tipo: 3 Sent: 0

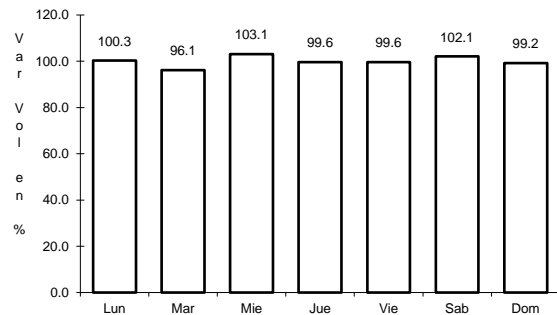


Km: 8.00 Tipo: 3 Sent: 0

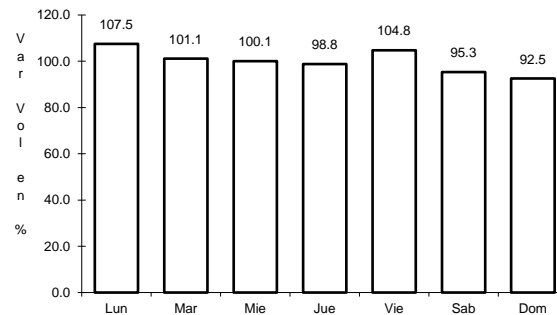
18 CARR: Carboneras - Villa Juárez

CLAVE: 01111

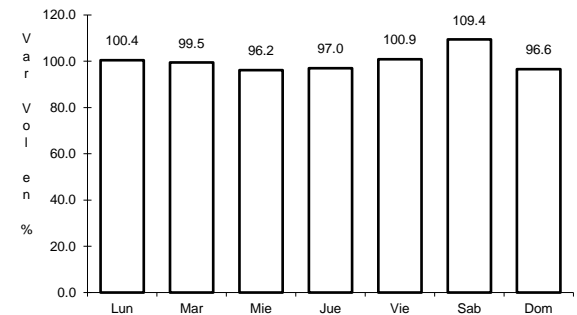
RUTA: AGS-004



Km: 0.00 Tipo: 3 Sent: 0



Km: 14.00 Tipo: 1 Sent: 0

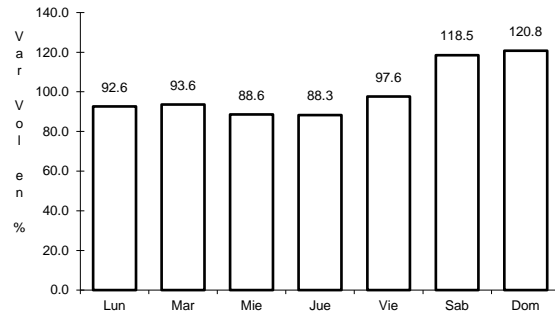


Km: 23.10 Tipo: 1 Sent: 0

19 CARR: Cosío - Santa María de La Paz

CLAVE: 01132

RUTA: AGS



Km: 0.00

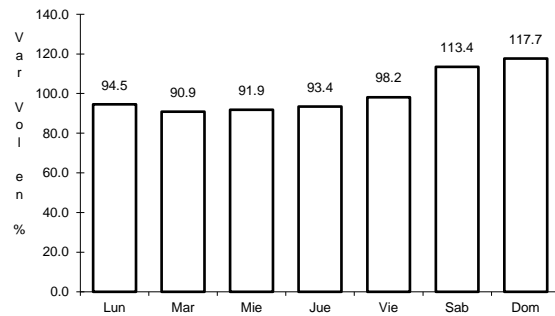
Tipo: 3

Sent: 0

20 CARR: Crucero Ojo de Agua de Crucitas - Santa Rosa

CLAVE: 01140

RUTA: AGS



Km: 0.00

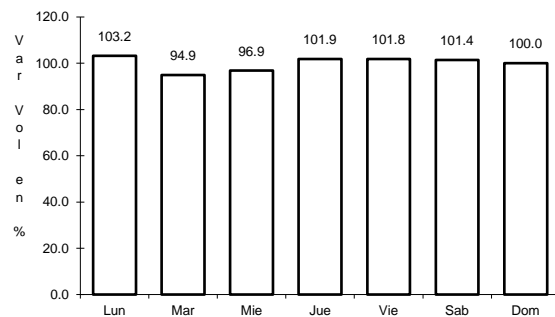
Tipo: 3

Sent: 0

21 CARR: El Tanque - San José de La Ordeña

CLAVE: 01143

RUTA: AGS



Km: 0.00

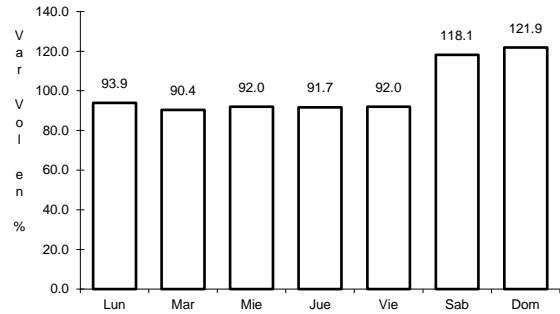
Tipo: 3

Sent: 0

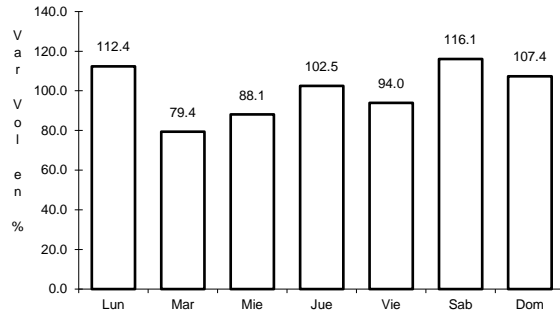
22 CARR: El Taray - T. C.(Ramal Aeropuerto de Aguascalientes)

CLAVE: 01121

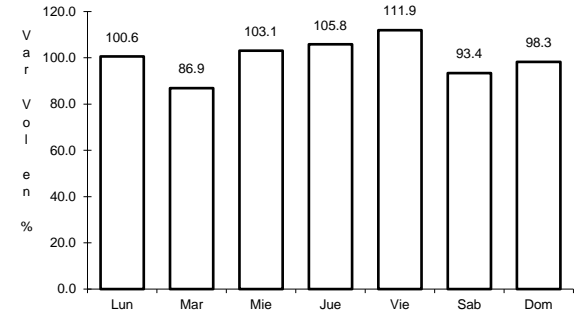
RUTA: AGS-002



Km: 0.00 Tipo: 3 Sent: 0



Km: 22.00 Tipo: 1 Sent: 1

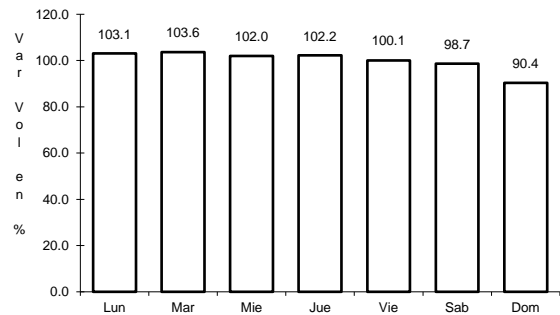


Km: 22.00 Tipo: 1 Sent: 2

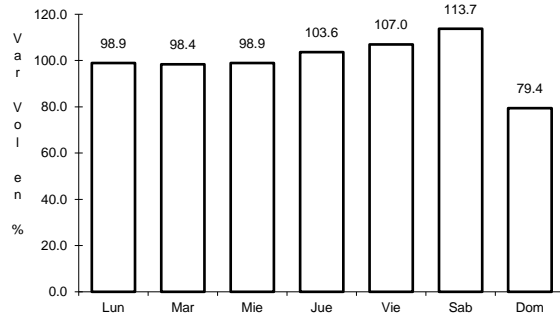
23 CARR: Ent. Arellano - El Retoño

CLAVE: 01121

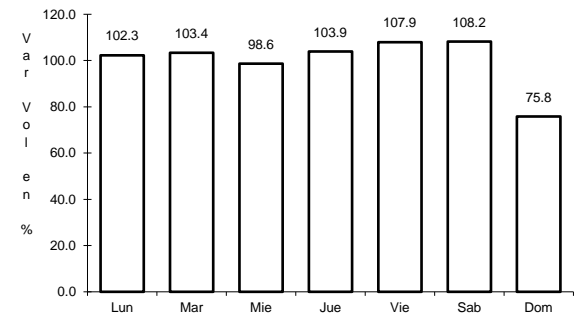
RUTA: AGS



Km: 0.00 Tipo: 3 Sent: 0



Km: 12.20 Tipo: 1 Sent: 0

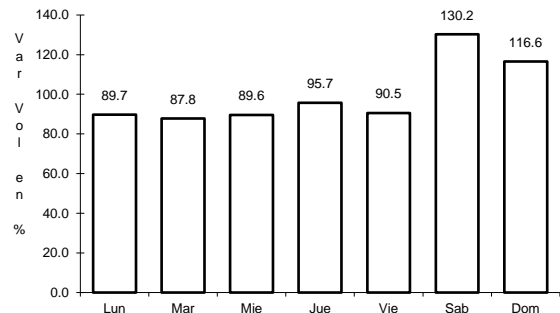


Km: 15.92 Tipo: 1 Sent: 0

24 CARR: Ent. Buenavista - Gracias a Dios

CLAVE: 01138

RUTA: AGS

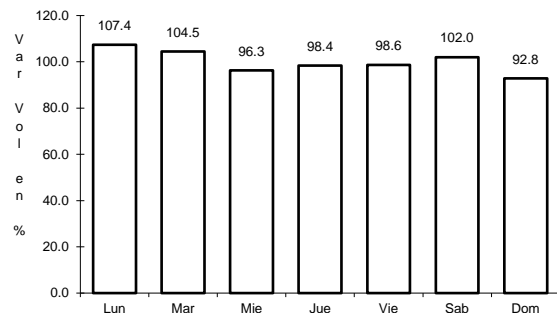


Km: 0.00 Tipo: 3 Sent: 0

25 CARR: Ent. El Novillo - Villa Juárez

CLAVE: 01103

RUTA: AGS-005



Km: 12.60

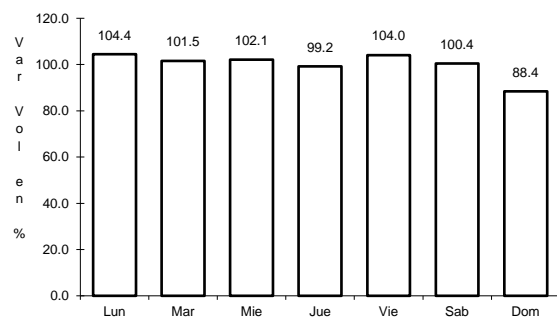
Tipo: 1

Sent: 0

26 CARR: Ent. La Calavera - Ent. San Pedro

CLAVE: 01102

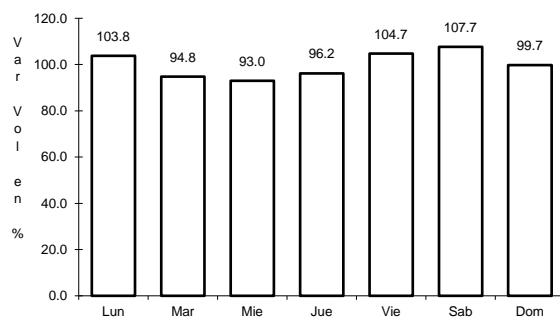
RUTA: AGS-043



Km: 0.00

Tipo: 3

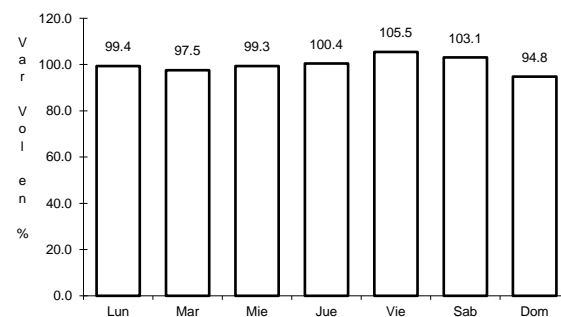
Sent: 0



Km: 28.10

Tipo: 1

Sent: 0



Km: 47.60

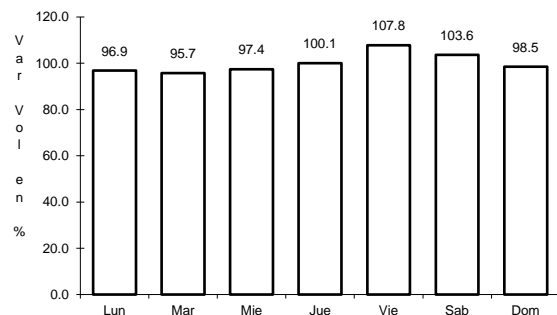
Tipo: 1

Sent: 0

27 CARR: Ent. La Chirida - San Francisco de Los Romo

CLAVE: 01016

RUTA: AGS



Km: 1.50

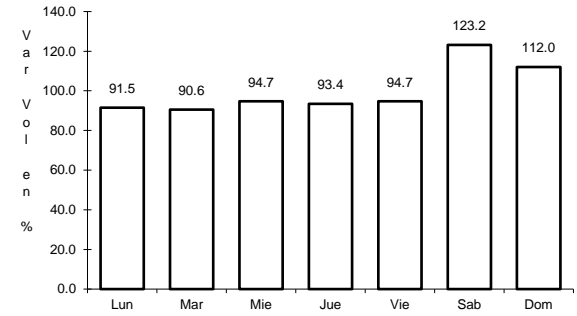
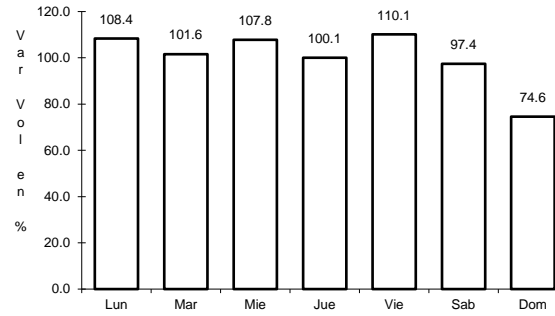
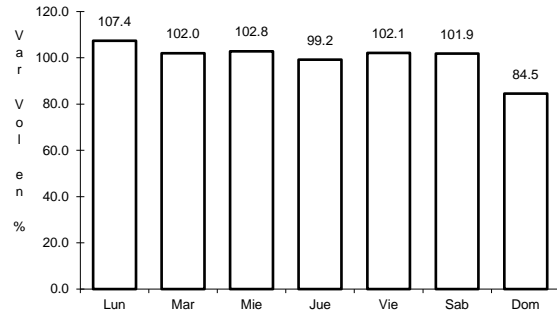
Tipo: 1

Sent: 0

28 CARR: Ent. Pabellón de Arteaga - California

CLAVE: 01137

RUTA: AGS



Km: 0.00 Tipo: 3 Sent: 1

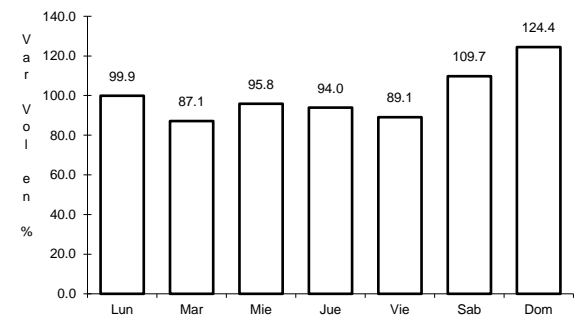
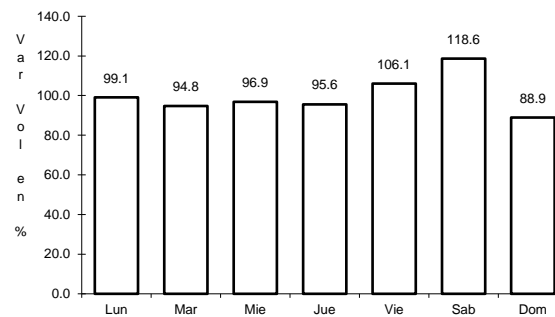
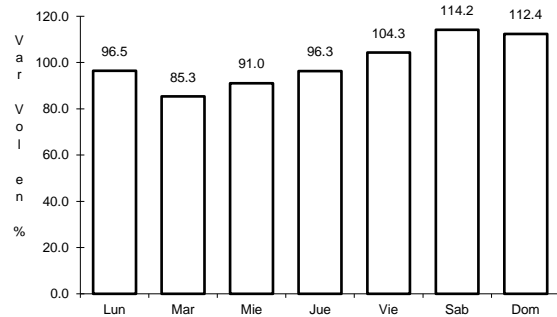
Km: 13.30 Tipo: 1 Sent: 0

Km: 20.50 Tipo: 1 Sent: 0

29 CARR: Ent. Pabellón de Arteaga - San José de Gracia

CLAVE: 01031

RUTA: AGS-019



Km: 0.00 Tipo: 3 Sent: 1

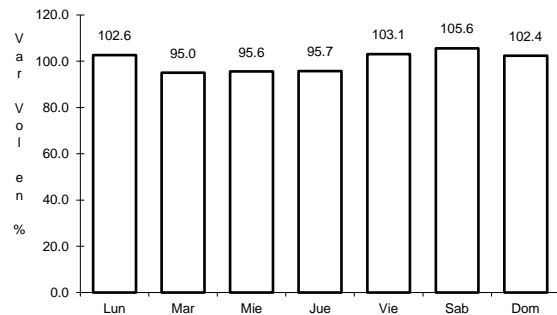
Km: 0.00 Tipo: 3 Sent: 2

Km: 13.80 Tipo: 1 Sent: 1

30 CARR: Ent. Rincón de Romos - La Boquilla

CLAVE: 01139

RUTA: AGS

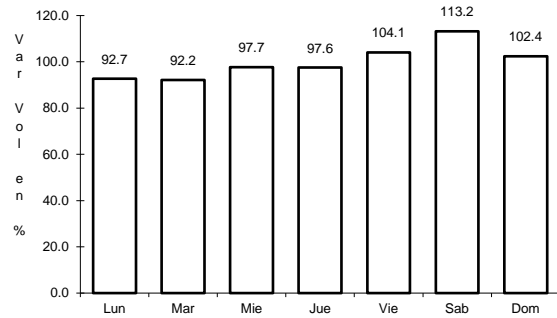


Km: 0.00 Tipo: 3 Sent: 0

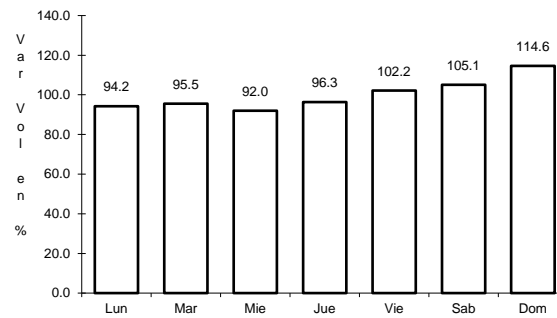
31 CARR: Ent. San Carlos - Ent. El Milagro

CLAVE: 01141

RUTA: AGS-010



Km: 0.00 Tipo: 3 Sent: 0

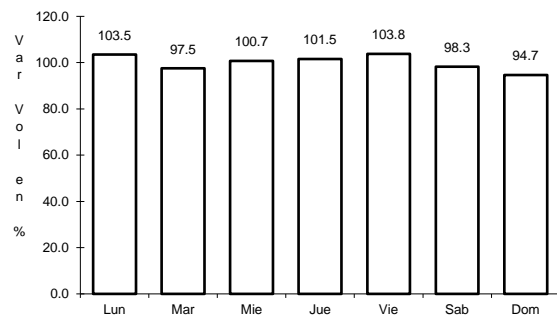


Km: 13.60 Tipo: 1 Sent: 0

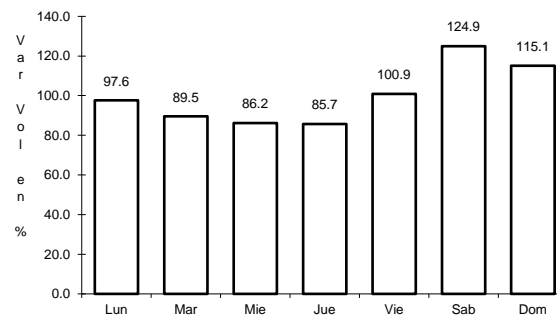
32 CARR: Ent. San Felipe - Jesús María

CLAVE: 01144

RUTA: AGS



Km: 0.00 Tipo: 3 Sent: 0

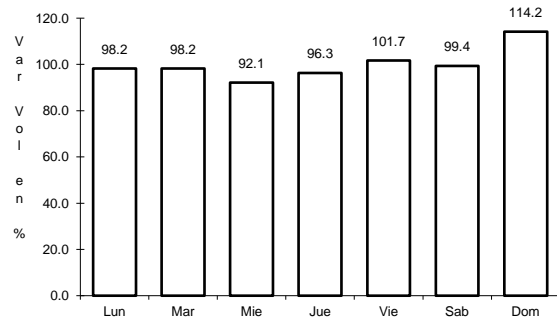


Km: 12.70 Tipo: 1 Sent: 0

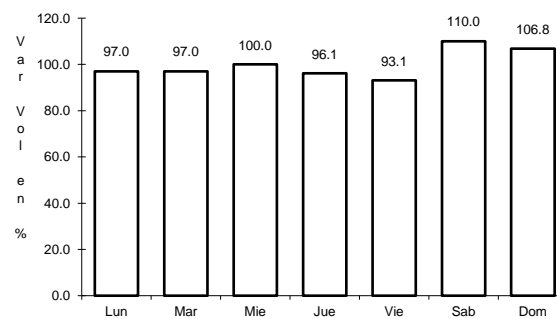
33 CARR: Ent. San Isidro - Ent. El Salitre

CLAVE: 01142

RUTA: AGS-016



Km: 0.00 Tipo: 3 Sent: 0

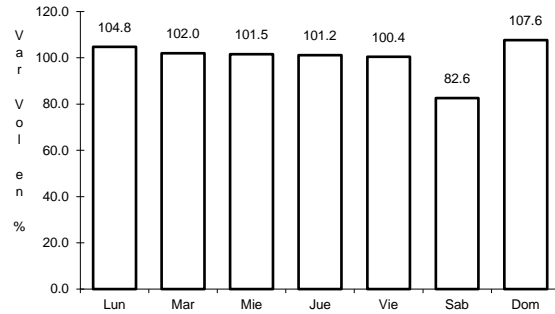


Km: 20.40 Tipo: 1 Sent: 0

34 CARR: Est. Coyotes - Ent. San Bartolo

CLAVE: 01134

ruta: AGS-069



Km: 0.00

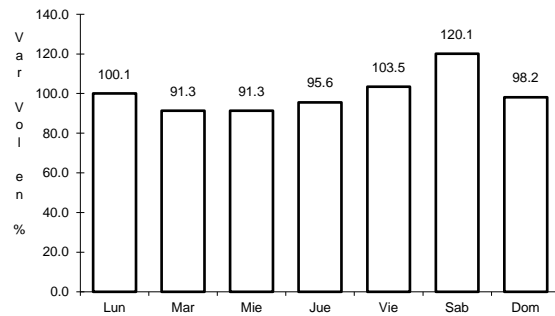
Tipo: 3

Sent: 0

35 CARR: Fracc. Ojo Caliente - El Conejal

CLAVE: 01129

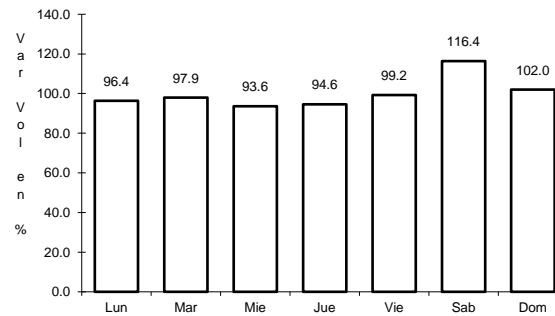
ruta: AGS-079



Km: 3.50

Tipo: 1

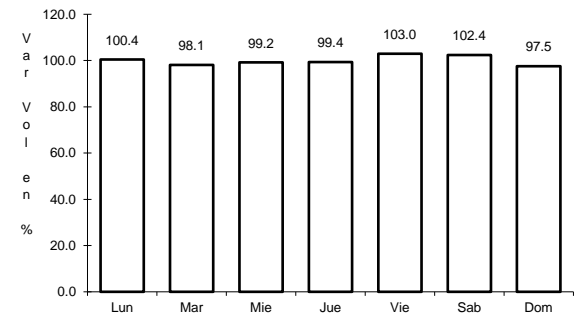
Sent: 1



Km: 3.50

Tipo: 1

Sent: 2



Km: 3.50

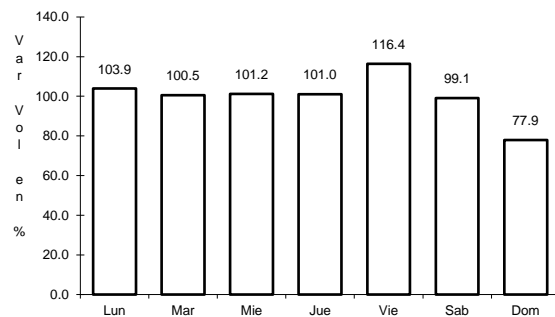
Tipo: 3

Sent: 0

36 CARR: Jesús María - Palomas

CLAVE: 01018

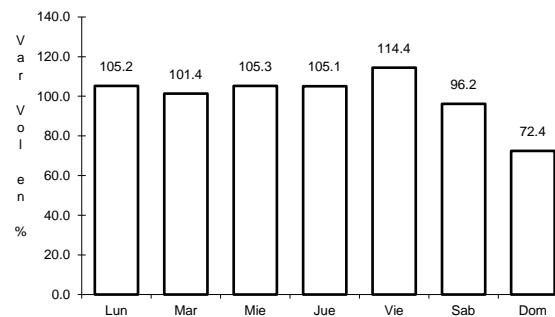
ruta: AGS-018



Km: 0.00

Tipo: 3

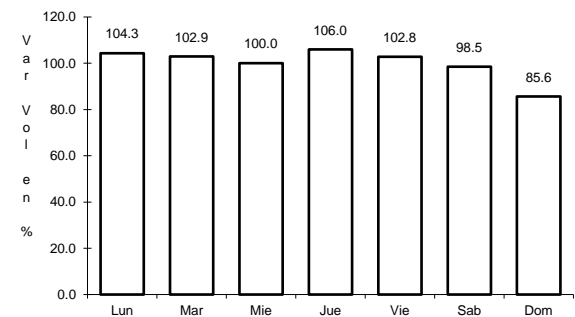
Sent: 1



Km: 0.00

Tipo: 3

Sent: 2



Km: 21.70

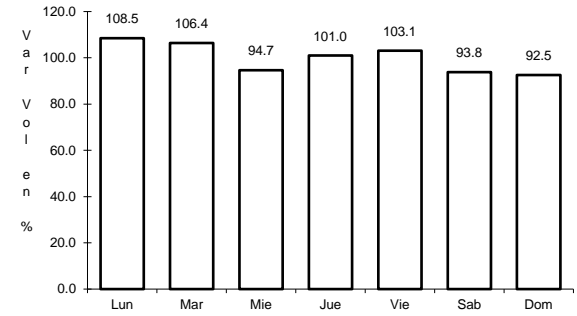
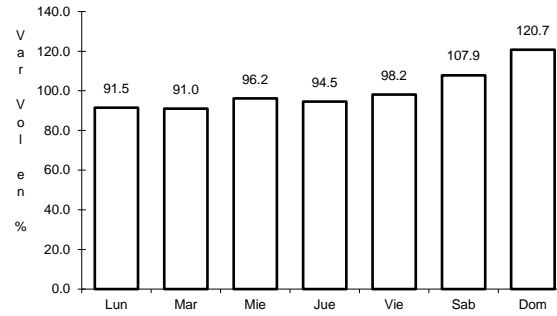
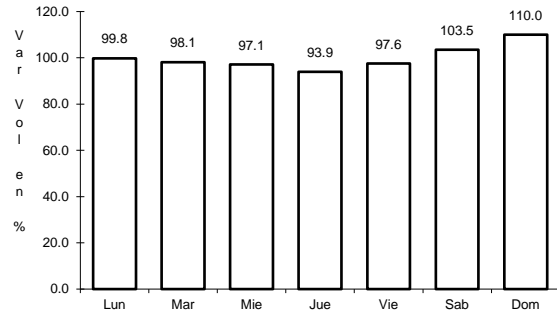
Tipo: 1

Sent: 0

37 CARR: La Panadera - Palo Alto

CLAVE: 01105

RUTA: AGS-017



Km: 0.00 Tipo: 3 Sent: 0

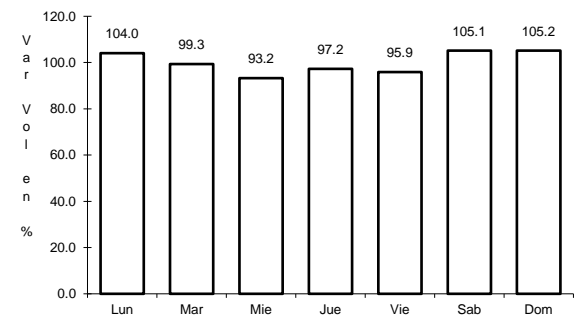
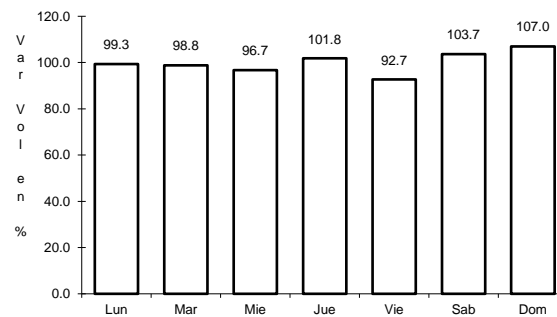
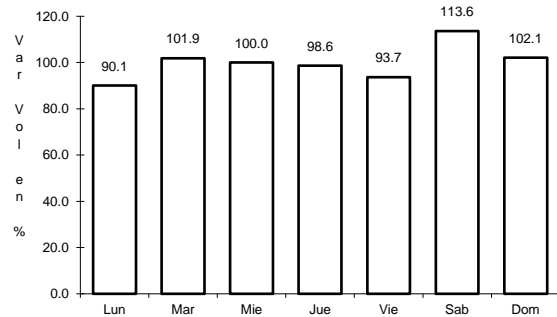
Km: 12.80 Tipo: 3 Sent: 0

Km: 23.30 Tipo: 1 Sent: 0

38 CARR: La Punta - Mesillas

CLAVE: 01104

RUTA: AGS-026



Km: 0.00 Tipo: 3 Sent: 0

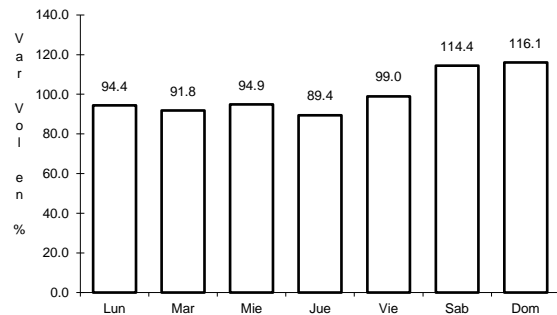
Km: 6.50 Tipo: 3 Sent: 0

Km: 13.50 Tipo: 1 Sent: 0

39 CARR: La Rinconada - El Terrero del Refugio

CLAVE: 01133

RUTA: AGS-007

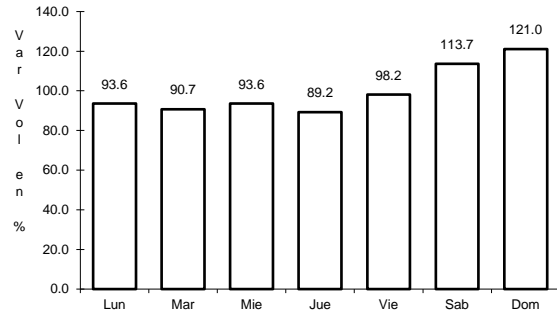


Km: 0.00 Tipo: 3 Sent: 0

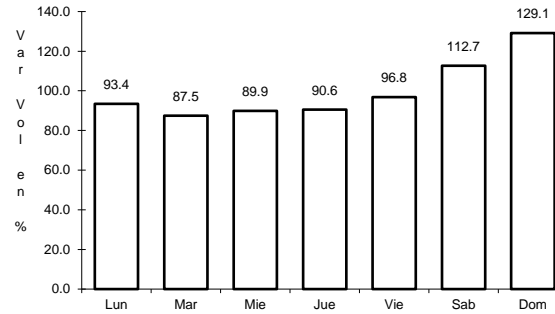
40 CARR: Las Norias de Ojo Caliente - La Luz

CLAVE: 01122

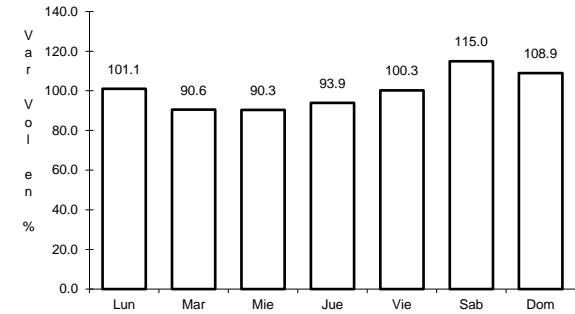
RUTA: AGS-068



Km: 0.00 Tipo: 3 Sent: 0



Km: 10.50 Tipo: 3 Sent: 0

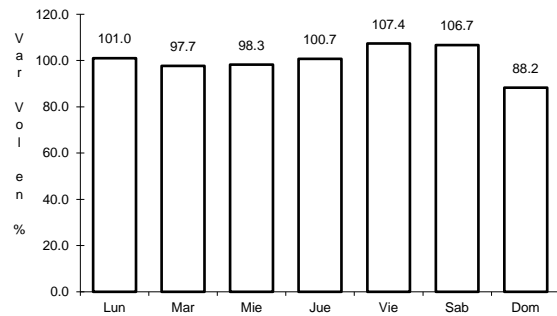


Km: 27.60 Tipo: 1 Sent: 0

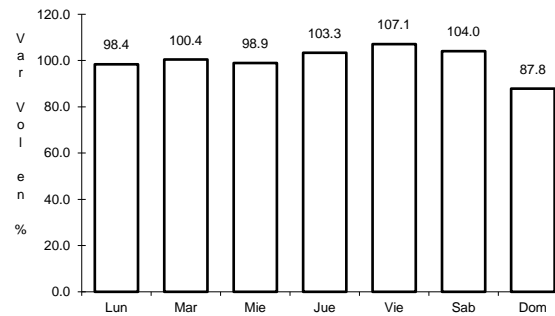
41 CARR: Libramiento San Francisco de Los Romo

CLAVE: 01137

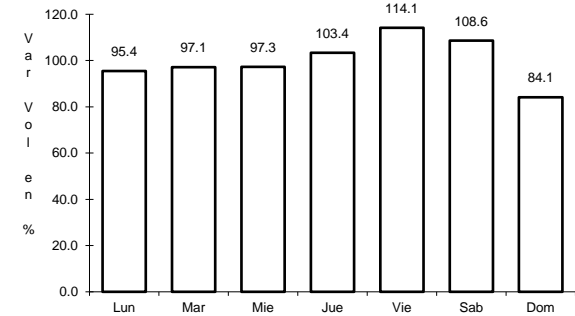
RUTA: AGS



Km: 0.00 Tipo: 3 Sent: 1



Km: 0.00 Tipo: 3 Sent: 2

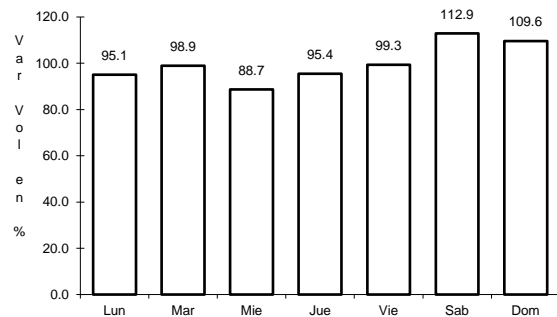


Km: 5.50 Tipo: 1 Sent: 1

42 CARR: Pabellón de Hidalgo - Rincón de Romos

CLAVE: 01136

RUTA: AGS

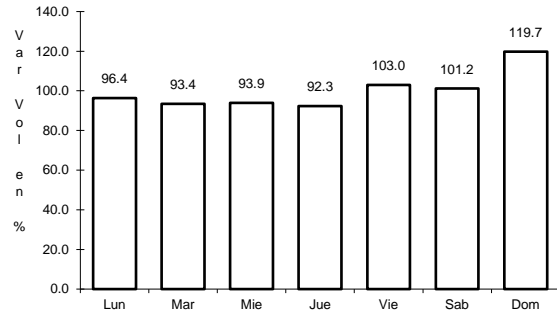


Km: 0.00 Tipo: 3 Sent: 0

43 CARR: Pilotos - Los Campos

CLAVE: 00007

RUTA: AGS-030

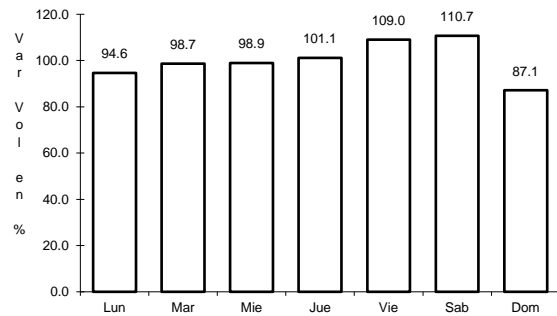


Km: 0.00 Tipo: 3 Sent: 0

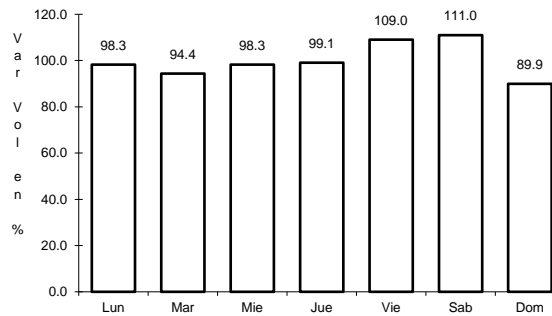
44 CARR: Pocitos - Granja Miravalle

CLAVE: 01109

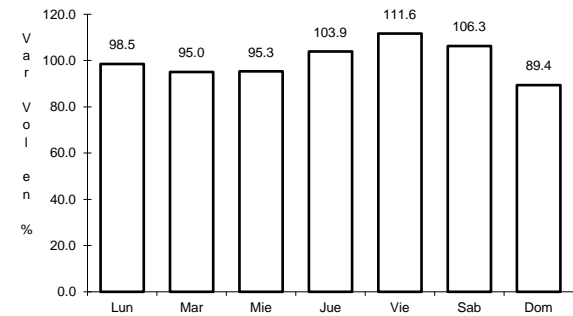
RUTA: AGS-053



Km: 1.50 Tipo: 3 Sent: 1



Km: 1.50 Tipo: 3 Sent: 2

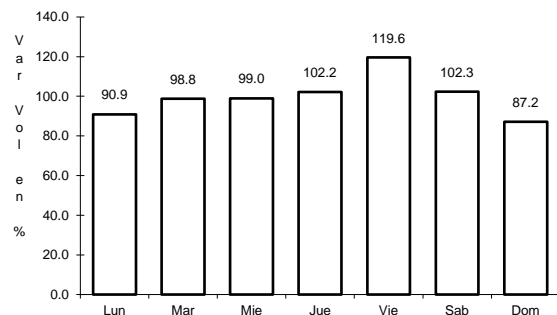


Km: 5.70 Tipo: 1 Sent: 0

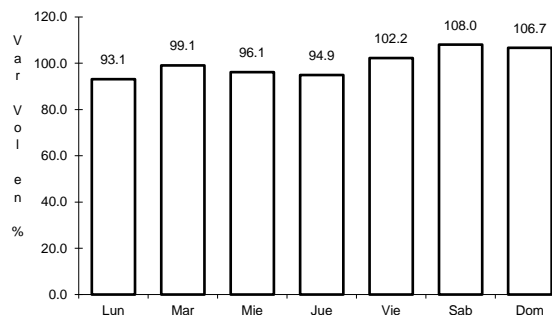
45 CARR: Ramal a San Pedro Piedra Gorda

CLAVE: 00553

RUTA: ZAC-AGS



Km: 0.00 Tipo: 3 Sent: 0

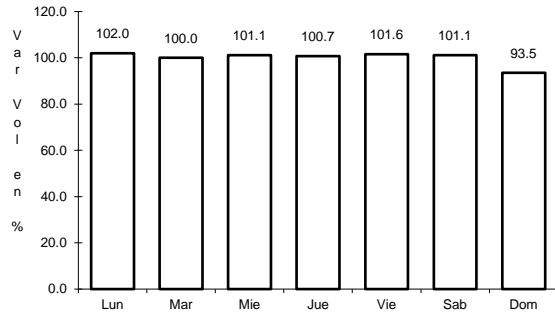


Km: 9.00 Tipo: 1 Sent: 0

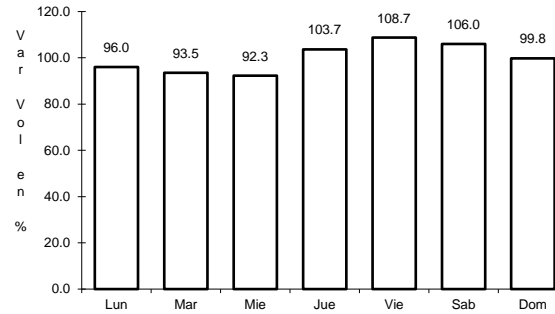
46 CARR: San Gil - Jarillas

CLAVE: 00527

RUTA: AGS-012-ZAC



Km: 0.00 Tipo: 3 Sent: 0

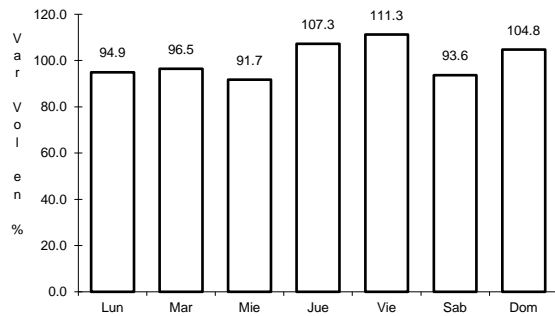


Km: 5.40 Tipo: 1 Sent: 0

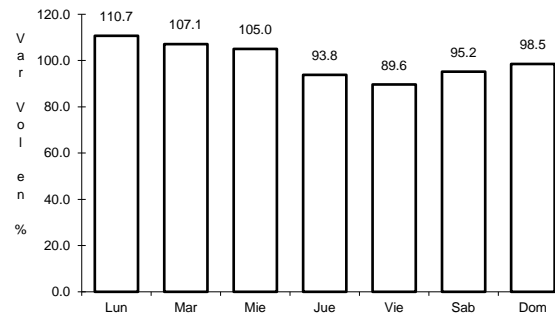
47 CARR: San Isidro El Grande - Bajío de San José

CLAVE: 00526

RUTA: AGS-036



Km: 0.00 Tipo: 3 Sent: 0

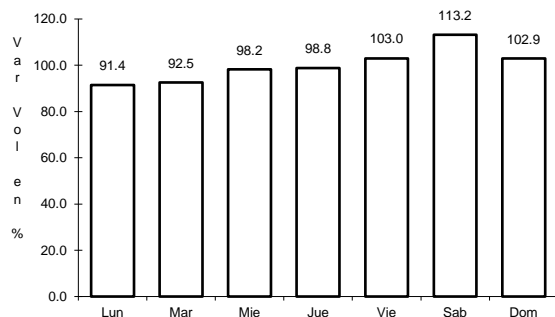


Km: 11.50 Tipo: 3 Sent: 0

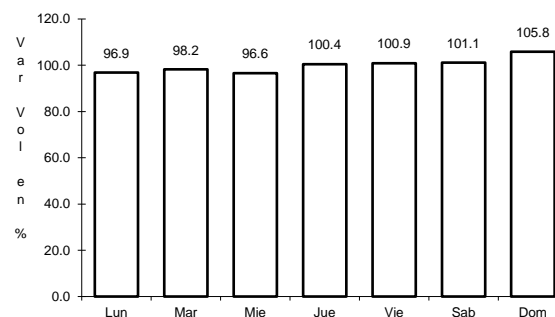
48 CARR: San Rafael - Villa García

CLAVE: 00525

RUTA: AGS-ZAC



Km: 0.00 Tipo: 3 Sent: 0

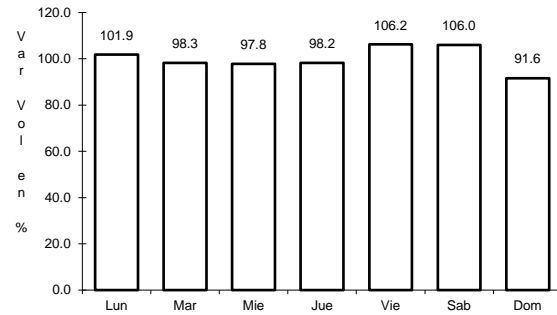


Km: 10.00 Tipo: 1 Sent: 0

49 CARR: Santa Rosa - Pabellón de Hidalgo

CLAVE: 01135

RUTA: AGS



Km: 0.00

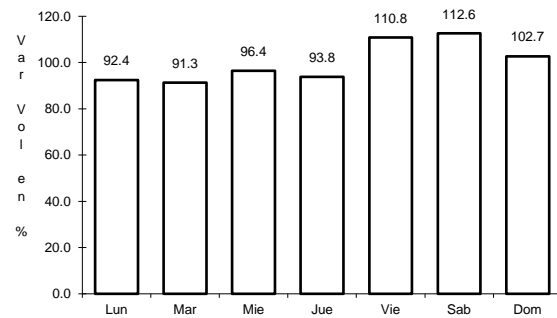
Tipo: 3

Sent: 0

50 CARR: T. Caldera - Ent. Ojo de Agua de Los Montes

CLAVE: 01137

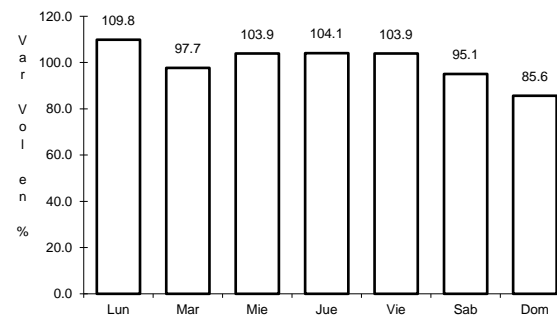
RUTA: AGS



Km: 0.00

Tipo: 3

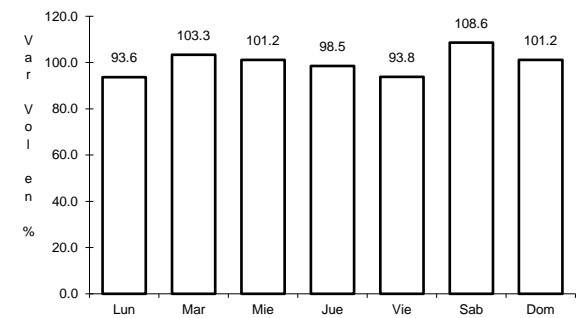
Sent: 0



Km: 8.60

Tipo: 1

Sent: 0



Km: 19.00

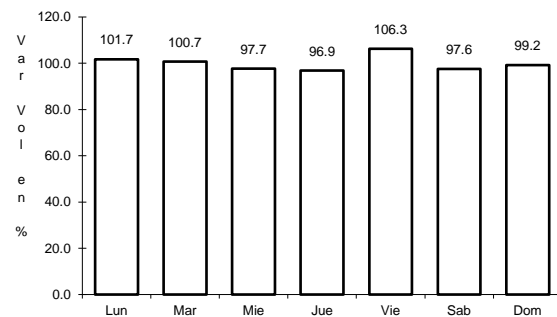
Tipo: 1

Sent: 0

51 CARR: Viñedos de California - Adolfo López Mateos

CLAVE: 01137

RUTA: AGS



Km: 0.00

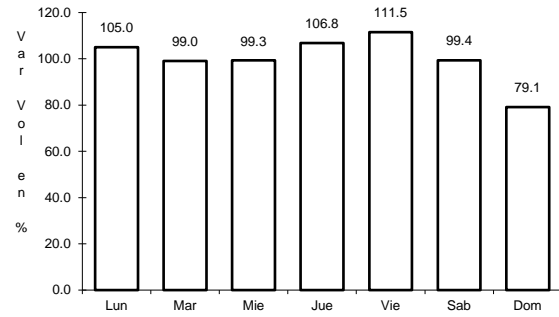
Tipo: 3

Sent: 0

52 CARR: Libramiento Surponiente de Aguascalientes (Cuota)

CLAVE: 00167

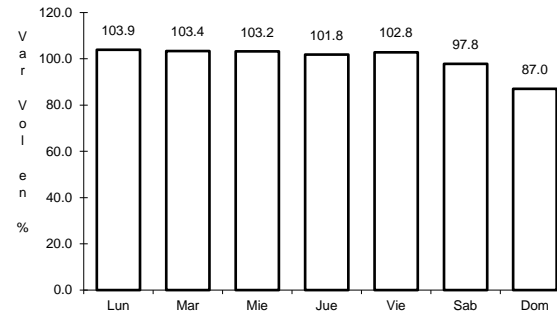
RUTA: MEX-A40



Km: 0.00

Tipo: 3

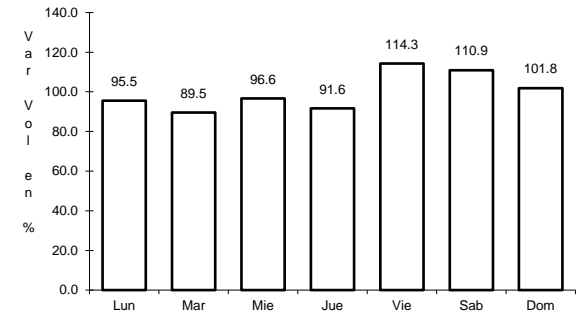
Sent: 0



Km: 8.34

Tipo: 3

Sent: 0



Km: 21.00

Tipo: 1

Sent: 0