

ZACATECAS

---RED FEDERAL LIBRE---

1 Aguascalientes - Jalpa	MEX-070
2 Aguascalientes - Zacatecas	MEX-045
3 Blvd. Guadalupe - Zacatecas - La Escondida	MEX-045
4 Carbonera - T. C. (Ent. Morelos - Saltillo)	MEX-062
5 Ent. Cosío - Ent. Cuauhtémoc	MEX-045
6 Ent. La Chicharrona - Cuencamé	MEX-049
7 Ent. Morelos - Ent. Noria de Gringos	MEX-045
8 Ent. Morelos - Saltillo	MEX-054
9 Ent. Rivier - San Marcos	MEX-066
10 Ent. Tesistán - Ent. Malpaso	MEX-023
11 Fresnillo - Valparaíso	MEX-044
12 Guadalajara - Zacatecas	MEX-054
13 Jerez - Fresnillo	MEX-023
14 Libramiento de Guadalupe - Zacatecas	MEX-045
15 Libramiento de Río Grande	MEX-049
16 Libramiento de Sombrerete	MEX-045
17 Providencia - Luis Moya	MEX-071
18 Ramal a Aeropuerto Zacatecas	MEX-045
19 Ramal a Concepción del Oro	MEX-054
20 Ramal a Francisco Murguía (Nieves)	MEX-049
21 Ramal a Gral. Pánfilo Natera	MEX-049
22 Ramal a Ruinas de Chicomostoc	MEX-045
23 Ramal a San Martín	MEX-045
24 Ramal a Villa de Cos	MEX-054
25 San Luis Potosí - Ent. Arcinas	MEX-049
26 San Luis Potosí - Lagos de Moreno	MEX-070-080
27 Zacatecas - Durango	MEX-045

---RED FEDERAL DE CUOTA---

28 Ent. Cuauhtémoc - Ent. Osiris (Cuota)	MEX-045D
29 Libramiento de Fresnillo (Cuota)	MEX-045D
30 Libramiento de Víctor Rosales (Cuota)	MEX-045D

---RED ESTATAL LIBRE---

31 Calera de Víctor Rosales - Santiagoullo	ZAC-016
32 Cieneguillas - Zacatecas	ZAC
33 Corral de Piedras - Tlaltenango	ZAC
34 Ent. Ojo Caliente - Ent. Ojuelos de Jalisco	ZAC
35 Fresnillo - Ent. Bañón	ZAC
36 Fresnillo - Plateros	ZAC-022
37 Guadalupe - Ent. Cuauhtémoc	ZAC-118
38 Ramal a Loreto	ZAC
39 Ramal a Nochistlán	ZAC
40 Ramal a San Pedro Piedra Gorda	ZAC-AGS
41 San Gil - Jarillas	AGS-012-ZAC
42 San Rafael - Villa García	AGS-ZAC
43 Santa Mónica - Pozo de Gamboa	ZAC
44 Sombrerete - González Ortega	ZAC

---RED ESTATAL DE CUOTA---

45 Libramiento Noreste de Zacatecas (Cuota)	ZAC-D
---	-------

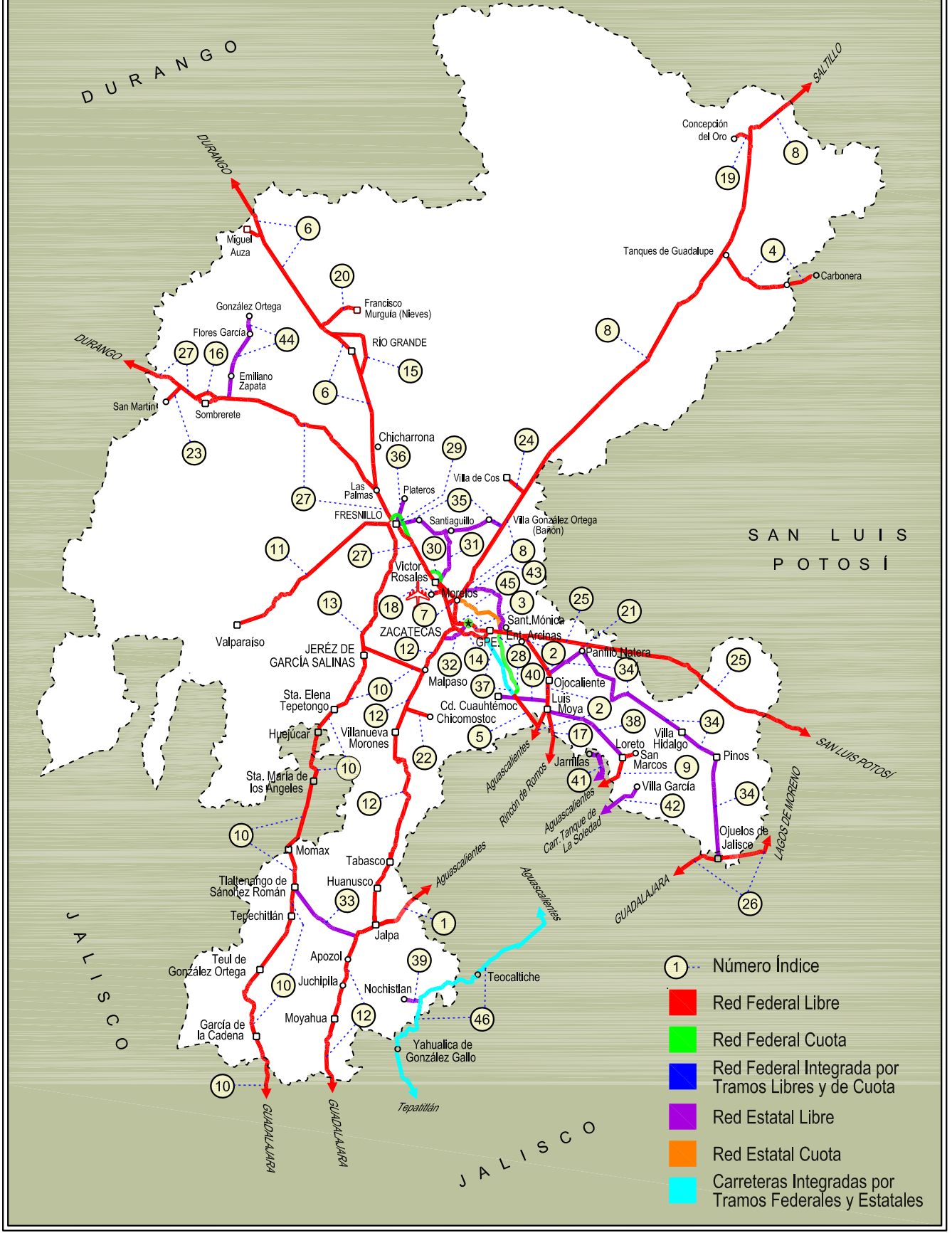
---CARRETERAS INTEGRADAS POR TRAMOS FEDERALES Y ESTATALES---

46 Tepatitlán - Jaralillo	MEX-JAL-ZAC
---------------------------	-------------

32 ZACATECAS

SECRETARÍA DE COMUNICACIONES Y TRANSPORTES
DIRECCIÓN GENERAL DE SERVICIOS TÉCNICOS

COAHUILA



ZACATECAS

1 CARR: Aguascalientes - Jalpa

CLAVE: 00095

RUTA: MEX-070

AÑO: 2020

LUGAR	ESTACION				CLASIFICACION VEHICULAR EN PORCIENTO										COORDENADAS					
	KM	TE	SC	TDPA	M	A	B	C2	C3	T3S2	T3S3	T3S2R4	OTROS	A	B	C	K'	D	LATITUD	LONGITUD
Aguascalientes	0.00	3	1	9465	3.8	85.3	0.5	8.7	1.0	0.4	0.1	0.1	0.1	89.1	0.5	10.4	0.093	0.503	21.871617	-102.318900
Aguascalientes	0.00	3	2	9371	4.1	86.0	0.6	7.5	1.0	0.4	0.2	0.1	0.1	90.1	0.6	9.3	0.096	0.503	21.871463	-102.318852
T. Der. Jesús María	7.30	1	1	8258	3.1	87.2	0.6	7.4	0.8	0.5	0.2	0.1	0.1	90.3	0.6	9.1	0.106	0.511	21.881925	-102.364523
T. Der. Jesús María	7.30	1	2	7897	3.5	86.5	0.6	7.8	0.8	0.4	0.2	0.1	0.1	90.0	0.6	9.4	0.088	0.511	21.881797	-102.364567
T. Izq. Villa Hidalgo	7.80	3	1	5594	1.7	86.3	0.9	8.6	1.4	0.7	0.2	0.1	0.1	88.0	0.9	11.1	0.159	0.512	21.882853	-102.368067
T. Izq. Villa Hidalgo	7.80	3	2	5866	1.7	85.8	1.1	8.8	1.5	0.7	0.2	0.1	0.1	87.5	1.1	11.4	0.162	0.512	21.882720	-102.368094
Libramiento Poniente de Aguascalientes	11.00	1	1	5823	2.1	86.7	0.8	8.5	1.0	0.5	0.2	0.1	0.1	88.8	0.8	10.4	0.134	0.517	21.890489	-102.396624
Libramiento Poniente de Aguascalientes	11.00	1	2	5433	2.3	86.0	1.2	8.6	1.0	0.5	0.2	0.1	0.1	88.3	1.2	10.5	0.134	0.517	21.890390	-102.396674
Libramiento Poniente de Aguascalientes	11.00	3	1	5253	2.2	88.0	0.4	5.2	2.4	1.4	0.2	0.1	0.1	90.2	0.4	9.4	0.154	0.508	21.891718	-102.401174
Libramiento Poniente de Aguascalientes	11.00	3	2	5085	2.3	87.6	0.3	5.6	2.4	1.4	0.2	0.1	0.1	89.9	0.3	9.8	0.186	0.508	21.891611	-102.401215
T. Der. Gracias a Dios	20.00	3	0	7722	2.7	84.7	0.4	7.0	0.9	3.0	1.1	0.1	0.1	87.4	0.4	12.2	0.103	0.510	21.887896	-102.461999
T. Izq. El Salitre	23.17	3	0	7859	2.2	85.0	0.5	6.9	1.0	3.0	1.2	0.1	0.1	87.2	0.5	12.3	0.111	0.505	21.888599	-102.492399
T. Izq. Malpaso	45.10	1	0	7293	2.4	84.7	0.9	7.6	0.9	2.5	0.7	0.2	0.1	87.1	0.9	12.0	0.107	0.516	21.881903	-102.669734
T. Der. Presa La Codorniz	49.30	3	1	8929	4.4	87.2	0.4	6.9	0.6	0.4	0.1	0.0	0.0	91.6	0.4	8.0	0.096	0.516	21.865532	-102.691019
T. Der. Presa La Codorniz	49.30	3	2	9503	4.3	87.9	0.4	6.3	0.6	0.4	0.1	0.0	0.0	92.2	0.4	7.4	0.087	0.516	21.865437	-102.690888
Calvillo	52.30	3	1	4383	8.5	82.0	0.5	6.7	1.0	0.8	0.3	0.1	0.1	90.5	0.5	9.0	0.108	0.510	21.845966	-102.718812
Calvillo	52.30	3	2	4566	8.7	81.9	0.4	6.7	1.0	0.8	0.3	0.1	0.1	90.6	0.4	9.0	0.096	0.510	21.845908	-102.718800
T. Der. Jaltiche de Abajo	63.80	3	0	2351	2.6	85.1	1.1	7.2	1.7	1.2	0.4	0.4	0.3	87.7	1.1	11.2	0.105	0.505	21.776949	-102.802260
Lim. Edos. Term. Ags. Ppia. Zac.	65.66																			
T. C. Guadalajara - Zacatecas	90.66	1	0	4017	3.9	66.4	0.7	19.9	5.6	1.5	0.6	0.7	0.7	70.3	0.7	29.0	0.098	0.500	21.648747	-102.970412

2 CARR: Aguascalientes - Zacatecas

CLAVE: 00524

RUTA: MEX-045

AÑO: 2020

LUGAR	ESTACION				CLASIFICACION VEHICULAR EN PORCIENTO										COORDENADAS					
	KM	TE	SC	TDPA	M	A	B	C2	C3	T3S2	T3S3	T3S2R4	OTROS	A	B	C	K'	D	LATITUD	LONGITUD
Aguascalientes	0.00																			
T. Izq. Pocitos	6.00	1	1	17903	3.7	88.5	1.4	3.9	0.6	1.0	0.4	0.2	0.3	92.2	1.4	6.4	0.075	0.507	21.925285	-102.291409
T. Izq. Pocitos	6.00	1	2	17387	3.8	87.9	1.5	4.2	0.6	1.1	0.4	0.2	0.3	91.7	1.5	6.8	0.073	0.507	21.925310	-102.291688
T. Der. Loreto	9.83	3	1	25941	3.8	86.7	1.3	4.2	0.6	2.5	0.4	0.2	0.3	90.5	1.3	8.2	0.061	0.505	21.962343	-102.289822
T. Der. Loreto	9.83	3	2	26454	3.9	86.4	1.4	4.1	0.6	2.7	0.4	0.2	0.3	90.3	1.4	8.3	0.065	0.505	21.962354	-102.289940
Santa Fé	16.00	1	1	27280	3.5	82.5	1.2	5.5	0.8	3.1	1.6	1.5	0.3	86.0	1.2	12.8	0.082	0.510	22.021369	-102.284741
Santa Fé	16.00	1	2	26160	3.6	83.3	1.4	5.5	0.8	3.2	0.4	1.5	0.3	86.9	1.4	11.7	0.085	0.510	22.021543	-102.285467
Santa Fé	16.00	3	1	22207	3.4	80.0	1.2	6.7	2.0	3.5	1.4	1.5	0.3	83.4	1.2	15.4	0.082	0.509	22.021822	-102.284594
Santa Fé	16.00	3	2	23043	3.5	80.0	1.4	6.2	2.0	3.5	1.6	1.5	0.3	83.5	1.4	15.1	0.083	0.509	22.021966	-102.285317
La Concepción	18.00	3	1	22429	3.4	79.0	1.7	6.6	2.0	3.5	1.4	2.1	0.3	82.4	1.7	15.9	0.082	0.509	22.033474	-102.281709

ZACATECAS

2 CARR: Aguascalientes - Zacatecas

CLAVE: 00524

RUTA: MEX-045

AÑO: 2020

LUGAR	ESTACION				CLASIFICACION VEHICULAR EN PORCIENTO										COORDENADAS					
	KM	TE	SC	TDPA	M	A	B	C2	C3	T3S2	T3S3	T3S2R4	OTROS	A	B	C	K'	D	LATITUD	LONGITUD
La Concepción	18.00	3	2	23263	3.5	79.1	1.7	6.2	2.0	3.5	1.6	2.1	0.3	82.6	1.7	15.7	0.083	0.509	22.033501	-102.281821
T. Libramiento de San Francisco de los Romo Sur	18.80																			
San Francisco de Los Romo	22.73	1	1	6501	4.0	83.4	1.3	9.4	0.6	0.7	0.4	0.1	0.1	87.4	1.3	11.3	0.098	0.502	22.075871	-102.273150
San Francisco de Los Romo	22.73	1	2	6542	3.8	84.0	1.3	9.0	0.6	0.7	0.4	0.1	0.1	87.8	1.3	10.9	0.107	0.502	22.075889	-102.273260
T. Izq. Libramiento San Francisco de Los Romo	24.80	3	1	14934	3.3	77.0	2.9	6.0	1.9	5.2	1.4	2.0	0.3	80.3	2.9	16.8	0.097	0.507	22.092201	-102.273805
T. Izq. Libramiento San Francisco de Los Romo	24.80	3	2	15355	3.3	76.7	2.7	6.2	2.1	4.9	1.6	2.2	0.3	80.0	2.7	17.3	0.096	0.507	22.092190	-102.273927
T. Der. Estación Pabellón	31.00	1	1	13352	3.3	76.6	2.6	6.8	2.0	5.2	1.3	1.9	0.3	79.9	2.6	17.5	0.078	0.504	22.146152	-102.292584
T. Der. Estación Pabellón	31.00	1	2	13547	3.2	76.3	2.8	6.5	2.0	5.0	1.6	2.3	0.3	79.5	2.8	17.7	0.085	0.504	22.146114	-102.292692
T. Der. Estación Pabellón	31.00	3	1	11312	3.3	76.9	2.6	6.1	2.1	5.2	1.5	2.0	0.3	80.2	2.6	17.2	0.077	0.506	22.146127	-102.292562
T. Der. Estación Pabellón	31.00	3	2	11609	3.2	75.4	2.8	6.8	2.1	5.4	1.7	2.3	0.3	78.6	2.8	18.6	0.082	0.506	22.146080	-102.292667
T. Der. Libramiento Rincón de Romos	35.50	1	1	10409	3.1	75.2	2.6	8.7	1.9	5.0	1.3	1.9	0.3	78.3	2.6	19.1	0.076	0.500	22.186570	-102.295111
T. Der. Libramiento Rincón de Romos	35.50	1	2	10400	3.1	74.2	2.9	8.2	2.1	5.4	1.7	2.1	0.3	77.3	2.9	19.8	0.081	0.500	22.186572	-102.295034
T. Der. Libramiento Rincón de Romos	35.50	3	1	4514	3.3	80.6	2.7	4.2	1.4	3.2	1.7	2.1	0.8	83.9	2.7	13.4	0.072	0.520	22.186997	-102.295022
T. Der. Libramiento Rincón de Romos	35.50	3	2	4893	3.1	82.6	2.7	3.4	1.2	2.3	1.7	2.3	0.7	85.7	2.7	11.6	0.079	0.520	22.186998	-102.295086
Rincón de Romos	40.90	3	0	5248	2.7	85.5	0.5	7.8	0.4	2.6	0.3	0.0	0.2	88.2	0.5	11.3	0.092	0.510	22.230058	-102.321064
T. Libramiento Rincón de Romos Norte	46.00																			
La Punta	51.00	1	1	8769	3.1	67.3	3.7	8.5	2.0	8.6	2.1	3.8	0.9	70.4	3.7	25.9	0.085	0.512	22.320076	-102.294996
La Punta	51.00	1	2	8359	3.2	63.5	4.2	9.3	2.2	9.6	2.5	4.5	1.0	66.7	4.2	29.1	0.080	0.512	22.320097	-102.295091
La Punta	51.00	3	1	8084	3.1	66.5	3.8	7.7	2.1	8.8	3.2	3.8	1.0	69.6	3.8	26.6	0.085	0.505	22.324469	-102.293821
La Punta	51.00	3	2	7923	3.3	64.5	4.0	7.9	2.2	9.5	3.4	4.2	1.0	67.8	4.0	28.2	0.083	0.505	22.324491	-102.293897
Cosío	56.00	3	1	7050	3.3	66.9	3.8	7.1	2.6	8.7	3.0	3.7	0.9	70.2	3.8	26.0	0.090	0.502	22.367004	-102.296905
Cosío	56.00	3	2	7093	3.4	64.9	3.9	7.8	2.4	9.4	3.6	3.7	0.9	68.3	3.9	27.8	0.088	0.502	22.366984	-102.296988
Ent. Cosío	57.30																			
Lim. Edos. Term. Ags. Ppia. Zac.	62.67																			
Luis Moya	65.80	1	0	3339	0.4	78.6	0.2	11.2	3.7	4.5	1.2	0.2	0.0	79.0	0.2	20.8	0.103	0.501	22.429789	-102.248470
Luis Moya	65.80	3	1	2915	1.3	81.9	2.2	10.6	1.1	1.5	0.5	0.7	0.2	83.2	2.2	14.6	0.102	0.501	22.433820	-102.248615
Luis Moya	65.80	3	2	2923	1.3	81.7	2.2	10.7	1.1	1.5	0.5	0.7	0.3	83.0	2.2	14.8	0.090	0.501	22.433807	-102.248650
T. Der. San Luis Potosí	100.00	1	0	5694	1.0	79.7	2.6	13.3	1.5	1.2	0.4	0.3	0.0	80.7	2.6	16.7	0.107	0.505	22.719438	-102.330519
T. Der. San Luis Potosí	100.00	3	1	4517	0.9	69.6	3.8	8.3	2.3	7.9	2.4	4.0	0.8	70.5	3.8	25.7	0.115	0.502	22.719476	-102.330554
T. Der. San Luis Potosí	100.00	3	2	4480	0.8	66.8	4.1	9.3	2.5	8.4	2.7	4.5	0.9	67.6	4.1	28.3	0.126	0.502	22.719399	-102.330682
T. Izq. Aguascalientes (Cuota)	113.50	1	1	9443	1.5	76.7	2.0	10.3	1.9	4.7	1.2	1.3	0.4	78.2	2.0	19.8	0.109	0.507	22.751221	-102.452915
T. Izq. Aguascalientes (Cuota)	113.50	1	2	9171	1.5	76.7	2.8	10.2	1.7	4.9	0.8	1.1	0.3	78.2	2.8	19.0	0.095	0.507	22.751068	-102.452935
T. Izq. Libramiento De Guadalupe Y Zacatecas	118.20	1	1	17761	1.8	81.3	2.2	9.6	1.9	2.4	0.4	0.3	0.1	83.1	2.2	14.7	0.104	0.510	22.750863	-102.496602
T. Izq. Libramiento De Guadalupe Y Zacatecas	118.20	1	2	17077	1.9	81.0	2.3	9.7	1.9	2.4	0.4	0.3	0.1	82.9	2.3	14.8	0.111	0.510	22.750739	-102.496606
Zacatecas	119.82																			

ZACATECAS

3 CARR: Blvd. Guadalupe - Zacatecas - La Escondida

CLAVE: 00544

RUTA: MEX-045

AÑO: 2020

LUGAR	ESTACION				CLASIFICACION VEHICULAR EN PORCIENTO										COORDENADAS					
	KM	TE	SC	TDPA	M	A	B	C2	C3	T3S2	T3S3	T3S2R4	OTROS	A	B	C	K'	D	LATITUD	LONGITUD
T. Izq. Lib. Guadalupe - Zacatecas (Alta)	0.00	3	1	26769	1.8	93.4	0.2	3.9	0.3	0.1	0.3	0.0	0.0	95.2	0.2	4.6	0.106	0.514	22.751867	-102.499572
T. Izq. Lib. Guadalupe - Zacatecas (Baja)	0.00	3	1	2792	8.1	73.9	1.8	14.2	1.0	0.6	0.1	0.3	0.0	82.0	1.8	16.2	0.111	0.520	22.751884	-102.499563
T. Izq. Lib. Guadalupe - Zacatecas (Alta)	0.00	3	2	25177	1.8	93.4	0.2	3.9	0.3	0.1	0.3	0.0	0.0	95.2	0.2	4.6	0.102	0.514	22.751753	-102.499638
T. Izq. Lib. Guadalupe - Zacatecas (Baja)	0.00	3	2	2579	8.4	73.5	1.8	14.3	0.9	0.7	0.1	0.3	0.0	81.9	1.8	16.3	0.126	0.520	22.751725	-102.499651
X. Av. Universidad	7.70	1	1	42780	1.7	92.6	0.1	4.8	0.1	0.4	0.3	0.0	0.0	94.3	0.1	5.6	0.107	0.505	22.767112	-102.563010
X. Av. Universidad	7.70	1	2	41736	1.8	92.2	0.2	5.0	0.1	0.4	0.3	0.0	0.0	94.0	0.2	5.8	0.107	0.505	22.766979	-102.563135
T. C. Zacatecas - Durango (Baja)	14.50	1	1	7724	1.0	86.8	5.8	5.4	0.1	0.3	0.2	0.2	0.2	87.8	5.8	6.4	0.143	0.900	22.775055	-102.621584
T. C. Zacatecas - Durango (Alta)	14.50	1	1	17378	3.9	88.6	1.8	4.2	0.3	0.4	0.0	0.7	0.1	92.5	1.8	5.7	0.084	0.522	22.774985	-102.621549
T. C. Zacatecas - Durango (Baja)	14.50	1	2	861	1.1	88.0	5.7	5.2	0.0	0.0	0.0	0.0	0.0	89.1	5.7	5.2	0.129	0.900	22.774878	-102.621493
T. C. Zacatecas - Durango (Alta)	14.50	1	2	15894	3.3	89.3	1.8	4.2	0.3	0.4	0.0	0.6	0.1	92.6	1.8	5.6	0.101	0.522	22.774908	-102.621512

4 CARR: Carbonera - T. C. (Ent. Morelos - Saltillo)

CLAVE: 00218

RUTA: MEX-062

AÑO: 2020

LUGAR	ESTACION				CLASIFICACION VEHICULAR EN PORCIENTO										COORDENADAS					
	KM	TE	SC	TDPA	M	A	B	C2	C3	T3S2	T3S3	T3S2R4	OTROS	A	B	C	K'	D	LATITUD	LONGITUD
Carbonera	0.00	3	0	2600	9.6	73.1	1.4	9.7	2.2	2.2	0.7	1.0	0.1	82.7	1.4	15.9	0.102	0.505	23.696858	-100.618394
Cedral	18.00	1	0	3612	6.9	75.1	0.9	12.3	1.3	2.4	0.4	0.5	0.2	82.0	0.9	17.1	0.088	0.512	23.808708	-100.710130
Cedral	18.00	3	0	3290	9.6	74.6	0.7	9.2	1.7	2.6	0.8	0.6	0.2	84.2	0.7	15.1	0.083	0.510	23.827402	-100.733993
Lim. Edos. Term. S. L. P. Ppia. Zac.	79.20																			
T. C. Ent. Morelos - Saltillo	112.00	1	0	1128	2.0	78.1	1.2	14.8	1.8	1.8	0.2	0.1	0.0	80.1	1.2	18.7	0.098	0.538	24.158111	-101.495128

5 CARR: Ent. Cosío - Ent. Cuauhtémoc

CLAVE: 00579

RUTA: MEX-045

AÑO: 2020

LUGAR	ESTACION				CLASIFICACION VEHICULAR EN PORCIENTO										COORDENADAS					
	KM	TE	SC	TDPA	M	A	B	C2	C3	T3S2	T3S3	T3S2R4	OTROS	A	B	C	K'	D	LATITUD	LONGITUD
T. C. Aguascalientes - Zacatecas	57.20	3	0	7896	0.9	56.4	5.6	8.3	2.8	15.1	3.9	6.1	0.9	57.3	5.6	37.1	0.063	0.506	22.388176	-102.303179
Lim. Edos. Term. Ags. Ppia. Zac.	64.00																			
T. C. Ent. Cuauhtémoc - Ent. Osiris Cuota	70.00	1	0	10587	0.6	60.2	5.5	7.8	3.4	12.7	3.5	5.7	0.6	60.8	5.5	33.7	0.078	0.501	22.481444	-102.354129
T. C. Ent. Cuauhtémoc - Ent. Osiris (Cuota)	70.40																			

6 CARR: Ent. La Chicharrona - Cuencamé

CLAVE: 00152

RUTA: MEX-049

AÑO: 2020

LUGAR	ESTACION				CLASIFICACION VEHICULAR EN PORCIENTO										COORDENADAS					
	KM	TE	SC	TDPA	M	A	B	C2	C3	T3S2	T3S3	T3S2R4	OTROS	A	B	C	K'	D	LATITUD	LONGITUD
Ent. La Chicharrona	0.00	3	1	4466	0.5	58.0	4.2	10.0	2.8	15.3	3.8	4.7	0.7	58.5	4.2	37.3	0.082	0.525	23.300373	-102.959613

ZACATECAS

6 CARR: Ent. La Chicharrona - Cuencamé

CLAVE: 00152

RUTA: MEX-049

AÑO: 2020

LUGAR	ESTACION				CLASIFICACION VEHICULAR EN PORCIENTO														COORDENADAS	
	KM	TE	SC	TDPA	M	A	B	C2	C3	T3S2	T3S3	T3S2R4	OTROS	A	B	C	K'	D	LATITUD	LONGITUD
Ent. La Chicharrona	0.00	3	2	4935	0.6	55.2	4.6	11.1	3.1	15.2	4.2	5.2	0.8	55.8	4.6	39.6	0.091	0.525	23.300373	-102.959596
T. Der. Cañitas de Felipe Pescador	25.86	1	1	3919	0.5	56.3	4.7	10.0	2.9	15.0	4.8	5.0	0.8	56.8	4.7	38.5	0.085	0.518	23.532357	-102.959584
T. Der. Cañitas de Felipe Pescador	25.86	1	2	4210	0.5	56.2	4.8	10.0	3.0	15.0	4.6	5.1	0.8	56.7	4.8	38.5	0.083	0.518	23.532171	-102.959774
T. Libramiento de Río Grande Sur	57.00																			
Río Grande	60.00	1	0	7297	0.8	54.4	5.0	9.5	2.9	16.7	4.3	5.8	0.6	55.2	5.0	39.8	0.078	0.518	23.819343	-103.030502
Río Grande	60.00	3	0	6609	2.1	51.5	5.1	12.6	2.4	15.6	4.9	5.2	0.6	53.6	5.1	41.3	0.082	0.506	23.821339	-103.041282
T. Libramiento de Río Grande Norte	67.40																			
T. Der. Nieves	78.00	3	0	7533	0.7	51.1	6.0	10.4	2.7	17.3	5.6	5.6	0.6	51.8	6.0	42.2	0.078	0.507	23.920930	-103.157910
X. C. Juan Aldama - Miguel Auza	124.50	1	0	7008	1.0	53.5	5.4	10.5	3.0	16.7	3.9	5.3	0.7	54.5	5.4	40.1	0.083	0.516	24.281917	-103.404120
X. C. Juan Aldama - Miguel Auza	124.50	3	0	5422	1.2	52.3	5.9	10.3	2.9	16.0	4.9	5.8	0.7	53.5	5.9	40.6	0.080	0.516	24.281906	-103.404117
Lim. Edos. Term. Zac. Ppia. Dgo.	134.30																			
T. Der. Santa Clara	144.00	1	0	4761	2.8	39.9	6.6	9.0	3.5	22.8	5.4	8.7	1.3	42.7	6.6	50.7	0.075	0.505	24.439219	-103.488374
T. Der. Santa Clara	144.00	3	0	4350	3.1	39.6	6.8	8.9	4.0	21.6	5.6	8.8	1.6	42.7	6.8	50.5	0.069	0.502	24.439226	-103.488376
T. C. Libramiento Exterior Cuencamé	196.10	1	0	4626	2.7	42.1	7.0	7.7	3.7	21.2	5.8	9.4	0.4	44.8	7.0	48.2	0.067	0.500	24.836117	-103.689068
Cuencamé	199.10	1	0	1289	5.8	65.4	7.0	9.2	4.3	2.8	2.7	2.3	0.5	71.2	7.0	21.8	0.078	0.500	24.870498	-103.698672

7 CARR: Ent. Morelos - Ent. Noria de Gringos

CLAVE: 00544

RUTA: MEX-045

AÑO: 2020

LUGAR	ESTACION				CLASIFICACION VEHICULAR EN PORCIENTO														COORDENADAS	
	KM	TE	SC	TDPA	M	A	B	C2	C3	T3S2	T3S3	T3S2R4	OTROS	A	B	C	K'	D	LATITUD	LONGITUD
Ent. Morelos	0.00																			
T. Der. Lib. Noreste de Zacatecas	0.50	1	1	4192	1.6	78.3	3.5	3.4	2.0	5.7	2.4	2.5	0.6	79.9	3.5	16.6	0.093	0.669	22.860789	-102.629826
T. Der. Lib. Noreste de Zacatecas	0.50	1	2	2073	2.0	76.3	3.9	3.7	2.0	5.9	2.6	2.8	0.8	78.3	3.9	17.8	0.126	0.669	22.860713	-102.629793
T. Der. Lib. Noreste de Zacatecas	0.50	3	0	7542	1.8	76.5	3.4	3.4	2.0	4.0	3.1	5.3	0.5	78.3	3.4	18.3	0.082	0.503	22.860709	-102.629931
Ent. Noria de Gringos	2.20																			

8 CARR: Ent. Morelos - Saltillo

CLAVE: 00149

RUTA: MEX-054

AÑO: 2020

LUGAR	ESTACION				CLASIFICACION VEHICULAR EN PORCIENTO														COORDENADAS	
	KM	TE	SC	TDPA	M	A	B	C2	C3	T3S2	T3S3	T3S2R4	OTROS	A	B	C	K'	D	LATITUD	LONGITUD
T. C. Zacatecas - Durango	0.00	3	1	3740	0.9	72.5	3.9	10.2	2.1	6.0	1.6	2.1	0.7	73.4	3.9	22.7	0.091	0.513	22.862221	-102.625375
T. C. Zacatecas - Durango	0.00	3	2	3946	0.7	70.6	4.0	10.9	2.3	6.7	1.7	2.4	0.7	71.3	4.0	24.7	0.106	0.513	22.863282	-102.626248
T. Der. Sta. Mónica	11.00	1	1	3738	0.5	56.3	6.1	18.4	0.8	16.1	0.6	0.9	0.3	56.8	6.1	37.1	0.086	0.517	22.944604	-102.564854
T. Der. Sta. Mónica	11.00	1	2	3494	2.1	47.1	8.3	28.8	0.8	11.6	0.6	0.5	0.2	49.2	8.3	42.5	0.100	0.517	22.944659	-102.564918
T. Der. Sta. Mónica	11.00	3	1	3357	0.5	55.6	6.8	21.1	0.8	13.4	0.7	0.8	0.3	56.1	6.8	37.1	0.087	0.520	22.944610	-102.564850

ZACATECAS

8 CARR: Ent. Morelos - Saltillo

CLAVE: 00149

RUTA: MEX-054

AÑO: 2020

LUGAR	ESTACION				CLASIFICACION VEHICULAR EN PORCIENTO												COORDENADAS			
	KM	TE	SC	TDPA	M	A	B	C2	C3	T3S2	T3S3	T3S2R4	OTROS	A	B	C	K'	D	LATITUD	LONGITUD
T. Der. Sta. Mónica	11.00	3	2	3102	1.4	50.2	6.8	25.1	0.9	13.7	0.8	0.8	0.3	51.6	6.8	41.6	0.097	0.520	22.944667	-102.564914
T. Izq. Villa de Cos	53.90	1	1	2947	1.6	44.7	8.5	24.0	1.2	17.5	0.8	1.4	0.3	46.3	8.5	45.2	0.081	0.514	23.269331	-102.330036
T. Izq. Villa de Cos	53.90	1	2	3119	1.2	42.1	9.5	24.0	1.3	19.6	1.0	0.9	0.4	43.3	9.5	47.2	0.109	0.514	23.269430	-102.330083
T. Izq. Villa de Cos	53.90	3	1	3130	1.8	49.2	8.3	23.9	1.8	10.6	2.2	1.5	0.7	51.0	8.3	40.7	0.099	0.521	23.269337	-102.330033
T. Izq. Villa de Cos	53.90	3	2	2873	1.8	53.7	8.9	19.5	2.1	9.6	1.7	2.1	0.6	55.5	8.9	35.6	0.097	0.521	23.269433	-102.330081
T. Der. Illescas	58.41	3	1	2567	2.1	48.2	7.3	24.0	1.8	11.0	2.2	2.7	0.7	50.3	7.3	42.4	0.093	0.508	23.286993	-102.317306
T. Der. Illescas	58.41	3	2	2655	1.5	37.1	10.2	32.0	1.5	13.2	1.0	2.9	0.6	38.6	10.2	51.2	0.091	0.508	23.287079	-102.317445
Sierra Vieja	85.50	3	1	2260	2.0	47.6	9.8	23.3	1.6	11.2	1.3	2.4	0.8	49.6	9.8	40.6	0.096	0.519	23.495908	-102.132891
Sierra Vieja	85.50	3	2	2441	1.7	38.2	10.3	29.7	1.2	15.6	1.1	1.5	0.7	39.9	10.3	49.8	0.088	0.519	23.495985	-102.133008
T. Der. Majoma	144.50	3	1	2038	2.0	43.5	7.3	24.9	2.3	9.7	3.5	6.0	0.8	45.5	7.3	47.2	0.087	0.517	23.877176	-101.736276
T. Der. Majoma	144.50	3	2	2180	2.6	36.0	8.3	29.7	2.3	10.0	3.9	6.4	0.8	38.6	8.3	53.1	0.078	0.517	23.877099	-101.736101
T. Der. San Tiburcio	185.25	1	1	2281	1.0	50.2	6.0	19.1	2.9	11.0	2.9	6.1	0.8	51.2	6.0	42.8	0.089	0.525	24.158298	-101.495110
T. Der. San Tiburcio	185.25	1	2	2061	1.3	46.9	6.1	20.6	2.9	11.9	3.1	6.2	1.0	48.2	6.1	45.7	0.089	0.525	24.158409	-101.495298
T. Der. San Tiburcio	185.25	3	1	2606	1.2	51.9	6.8	15.6	2.3	13.0	3.5	5.0	0.7	53.1	6.8	40.1	0.079	0.524	24.158308	-101.495109
T. Der. San Tiburcio	185.25	3	2	2370	2.5	47.2	7.4	16.4	2.3	14.3	4.0	5.2	0.7	49.7	7.4	42.9	0.085	0.524	24.158411	-101.495292
T. Izq. Concepción del Oro	240.00	1	1	2290	2.5	41.9	5.3	30.8	1.3	14.8	1.6	1.2	0.6	44.4	5.3	50.3	0.092	0.543	24.619837	-101.384827
T. Izq. Concepción del Oro	240.00	1	2	1930	2.9	40.7	5.8	27.2	1.4	17.6	2.3	1.6	0.5	43.6	5.8	50.6	0.076	0.543	24.619765	-101.384855
T. Izq. Concepción del Oro	240.00	3	1	2677	0.4	57.1	4.0	15.7	1.3	15.4	1.8	3.6	0.7	57.5	4.0	38.5	0.090	0.500	24.619888	-101.384597
T. Izq. Concepción del Oro	240.00	3	2	2680	0.3	56.9	4.6	11.5	1.5	18.1	2.2	4.2	0.7	57.2	4.6	38.2	0.081	0.500	24.619822	-101.384730
Lim. Edos. Term. Zac. Ppia. Coah.	266.50																			
Agua Nueva	322.00	1	0	5166	3.7	62.1	4.0	3.9	2.3	17.2	2.6	3.6	0.6	65.8	4.0	30.2	0.083	0.528	25.188540	-101.092811
T. Der. La Trinidad	333.00	3	1	7844	0.8	78.7	9.2	6.5	1.1	2.3	0.4	0.6	0.4	79.5	9.2	11.3	0.125	0.528	25.276245	-101.090944
T. Der. La Trinidad	333.00	3	2	8771	0.7	81.0	8.1	5.5	1.2	2.2	0.3	0.6	0.4	81.7	8.1	10.2	0.107	0.528	25.276245	-101.090944
X. C. Libramiento de Saltillo	348.00	1	1	16935	1.9	86.9	1.3	6.0	0.8	2.0	0.7	0.2	0.2	88.8	1.3	9.9	0.095	0.514	25.375536	-101.011827
X. C. Libramiento de Saltillo	348.00	1	2	16043	2.1	86.0	1.6	6.2	0.9	2.1	0.7	0.2	0.2	88.1	1.6	10.3	0.105	0.514	25.375576	-101.011991
Saltillo	354.00	1	1	14809	1.7	90.6	0.7	5.5	0.5	0.5	0.2	0.1	0.2	92.3	0.7	7.0	0.089	0.503	25.423944	-100.989679
Saltillo	354.00	1	2	14972	1.8	90.7	0.9	5.2	0.4	0.5	0.2	0.1	0.2	92.5	0.9	6.6	0.092	0.503	25.423949	-100.989683

9 CARR: Ent. Rivier - San Marcos

CLAVE: 00285

RUTA: MEX-066

AÑO: 2020

LUGAR	ESTACION				CLASIFICACION VEHICULAR EN PORCIENTO												COORDENADAS			
	KM	TE	SC	TDPA	M	A	B	C2	C3	T3S2	T3S3	T3S2R4	OTROS	A	B	C	K'	D	LATITUD	LONGITUD
T. C. Aguascalientes - Zacatecas	0.00	3	1	7336	3.1	85.8	0.5	6.1	1.9	1.0	0.8	0.4	0.4	88.9	0.5	10.6	0.080	0.502	21.962625	-102.289575
T. C. Aguascalientes - Zacatecas	0.00	3	2	7387	3.1	86.0	0.5	6.1	1.8	1.0	0.9	0.3	0.3	89.1	0.5	10.4	0.076	0.502	21.962776	-102.289567
T. Izq. El Tepetate	10.50	3	0	9015	7.1	80.3	1.8	5.5	2.4	0.8	0.4	0.6	1.1	87.4	1.8	10.8	0.084	0.515	21.998657	-102.200314

ZACATECAS

9 CARR: Ent. Rivier - San Marcos

CLAVE: 00285

RUTA: MEX-066

AÑO: 2020

LUGAR	ESTACION				CLASIFICACION VEHICULAR EN PORCIENTO										COORDENADAS					
	KM	TE	SC	TDPA	M	A	B	C2	C3	T3S2	T3S3	T3S2R4	OTROS	A	B	C	K'	D	LATITUD	LONGITUD
T. Der. Jilotepec	23.60	3	0	8003	5.5	79.2	1.6	10.6	0.9	0.9	0.3	0.4	0.6	84.7	1.6	13.7	0.099	0.518	22.051017	-102.102449
Villa Juárez	30.00	3	0	8581	6.3	77.6	1.4	11.3	1.3	0.9	0.3	0.3	0.6	83.9	1.4	14.7	0.092	0.509	22.095898	-102.067902
Ciénega Grande	41.50	1	0	7323	6.1	81.4	2.5	7.4	1.4	0.7	0.1	0.0	0.4	87.5	2.5	10.0	0.084	0.503	22.193771	-102.018592
Ciénega Grande	41.50	3	0	5662	1.8	84.4	1.7	6.5	1.7	1.1	1.2	0.3	1.3	86.2	1.7	12.1	0.087	0.508	22.194120	-102.018478
Lim. Edos. Term. Ags. Ppia. Zac.	45.75																			
San Marcos	55.34	1	0	7765	12.7	79.2	1.2	2.5	1.5	1.0	0.7	0.7	0.5	91.9	1.2	6.9	0.146	0.540	22.277996	-101.953065

10 CARR: Ent. Tesistán - Ent. Malpaso

CLAVE: 00584

RUTA: MEX-023

AÑO: 2020

LUGAR	ESTACION				CLASIFICACION VEHICULAR EN PORCIENTO										COORDENADAS					
	KM	TE	SC	TDPA	M	A	B	C2	C3	T3S2	T3S3	T3S2R4	OTROS	A	B	C	K'	D	LATITUD	LONGITUD
T. C. Guadalajara - Tesistán	0.00	3	1	16401	2.6	83.1	0.3	6.2	0.6	4.9	1.9	0.1	0.3	85.7	0.3	14.0	0.117	0.510	20.785207	-103.461946
T. C. Guadalajara - Tesistán	0.00	3	2	17093	2.6	83.1	0.3	6.2	0.6	4.9	1.9	0.1	0.3	85.7	0.3	14.0	0.123	0.510	20.785247	-103.462083
Lim. Edos. Term. Jal. Ppia. Zac.	42.00																			
García de La Cadena	54.00	1	0	1481	3.0	80.9	1.6	8.4	1.8	2.4	1.7	0.0	0.2	83.9	1.6	14.5	0.095	0.511	21.208753	-103.459349
Tlaltenango de Sánchez Román	147.50	3	0	6140	3.4	80.9	1.2	9.3	1.4	2.1	1.0	0.1	0.6	84.3	1.2	14.5	0.121	0.509	21.788668	-103.299106
Momax	165.00	3	0	3111	3.3	82.5	1.9	6.3	1.6	1.6	1.5	1.2	0.1	85.8	1.9	12.3	0.100	0.502	21.923588	-103.310958
Lim. Edos. Term. Zac. Ppia. Jal.	171.80																			
Colotlán	175.00	1	0	3415	2.0	83.2	1.6	9.2	0.7	2.1	0.6	0.3	0.3	85.2	1.6	13.2	0.083	0.514	22.111348	-103.262318
Lim. Edos. Term. Jal. Ppia. Zac.	209.90																			
Lim. Edos. Term. Zac. Ppia. Jal.	214.80																			
Lim. Edos. Term. Jal. Ppia. Zac.	223.95																			
Tepetongo	235.00	3	0	4279	3.2	82.3	0.9	9.4	0.8	1.5	1.0	0.8	0.1	85.5	0.9	13.6	0.110	0.507	22.458282	-103.150068
Jerez de García Salinas	249.00	1	1	3389	3.5	86.0	0.5	6.7	0.7	0.7	0.7	0.9	0.3	89.5	0.5	10.0	0.108	0.512	22.643259	-102.993933
Jerez de García Salinas	249.00	1	2	3558	3.3	86.8	0.6	6.4	0.8	0.4	0.6	0.9	0.2	90.1	0.6	9.3	0.121	0.512	22.643260	-102.993936
T. C. Guadalajara - Zacatecas	275.00	1	1	3451	1.7	87.3	1.6	6.5	0.8	1.4	0.5	0.1	0.1	89.0	1.6	9.4	0.123	0.515	22.615633	-102.778294
T. C. Guadalajara - Zacatecas	275.00	1	2	3667	1.7	87.3	1.5	6.5	0.9	1.4	0.5	0.1	0.1	89.0	1.5	9.5	0.118	0.515	22.615634	-102.778294

11 CARR: Fresnillo - Valparaíso

CLAVE: 32547

RUTA: MEX-044

AÑO: 2020

LUGAR	ESTACION				CLASIFICACION VEHICULAR EN PORCIENTO										COORDENADAS					
	KM	TE	SC	TDPA	M	A	B	C2	C3	T3S2	T3S3	T3S2R4	OTROS	A	B	C	K'	D	LATITUD	LONGITUD
Fresnillo	0.00	3	0	7195	2.6	75.3	1.7	12.2	2.5	3.6	1.0	0.4	0.7	77.9	1.7	20.4	0.107	0.503	23.172850	-102.881954
T. Izq. Guanajuato	24.50	1	0	2376	1.0	83.9	1.1	11.2	1.2	1.1	0.5	0.0	0.0	84.9	1.1	14.0	0.120	0.502	23.096837	-103.092138
T. Izq. Sombretillo	45.00	3	0	1563	1.1	79.9	2.8	13.6	1.5	1.0	0.1	0.0	0.0	81.0	2.8	16.2	0.114	0.503	23.001489	-103.208414

ZACATECAS

11 CARR: Fresnillo - Valparaíso

CLAVE: 32547

RUTA: MEX-044

AÑO: 2020

LUGAR	ESTACION				CLASIFICACION VEHICULAR EN PORCIENTO										COORDENADAS					
	KM	TE	SC	TDPA	M	A	B	C2	C3	T3S2	T3S3	T3S2R4	OTROS	A	B	C	K'	D	LATITUD	LONGITUD
T. Izq. San José de Llanetes	55.00	3	0	1583	1.6	74.4	3.5	13.3	2.6	3.1	1.5	0.0	0.0	76.0	3.5	20.5	0.107	0.502	22.927208	-103.293258
T. Izq. Lobatos	71.00	3	0	1794	1.1	84.0	1.1	10.8	1.3	1.2	0.5	0.0	0.0	85.1	1.1	13.8	0.111	0.502	22.838076	-103.408915
Valparaíso	90.00	1	0	2510	1.1	82.8	1.3	11.7	1.3	1.2	0.6	0.0	0.0	83.9	1.3	14.8	0.091	0.500	22.778275	-103.562674

12 CARR: Guadalajara - Zacatecas

CLAVE: 00150

RUTA: MEX-054

AÑO: 2020

LUGAR	ESTACION				CLASIFICACION VEHICULAR EN PORCIENTO										COORDENADAS					
	KM	TE	SC	TDPA	M	A	B	C2	C3	T3S2	T3S3	T3S2R4	OTROS	A	B	C	K'	D	LATITUD	LONGITUD
Guadalajara	0.00																			
X. Periférico de Guadalajara	6.19	3	1	2797	3.8	79.0	1.2	12.6	1.4	1.2	0.7	0.0	0.1	82.8	1.2	16.0	0.184	0.519	20.729404	-103.344148
X. Periférico de Guadalajara	6.19	3	2	3017	3.8	79.1	1.2	12.5	1.4	1.2	0.7	0.0	0.1	82.9	1.2	15.9	0.206	0.519	20.729404	-103.344144
T. Der. Ixtlahuacán del Río	49.46	3	0	4710	2.6	78.9	1.3	11.7	1.5	3.1	0.5	0.1	0.3	81.5	1.3	17.2	0.084	0.527	20.864054	-103.244679
Lim. Edos. Term. Jal. Ppia. Zac.	76.49																			
T. Izq. Moyahua	106.43	1	0	2674	2.6	76.8	4.1	6.1	4.3	2.5	3.6	0.0	0.0	79.4	4.1	16.5	0.093	0.505	21.261463	-103.159248
Apozol	129.28	1	0	4778	2.5	83.2	1.3	7.2	1.1	3.3	0.8	0.5	0.1	85.7	1.3	13.0	0.089	0.504	21.466405	-103.091021
Jalpa	159.39	1	0	4877	2.5	83.8	1.3	7.3	1.1	2.4	0.9	0.6	0.1	86.3	1.3	12.4	0.087	0.504	21.627476	-102.982136
Tabasco	189.40	1	0	2849	2.5	79.8	1.3	11.1	1.2	2.5	0.9	0.6	0.1	82.3	1.3	16.4	0.086	0.501	21.864898	-102.916278
Tabasco	189.40	3	0	4106	2.6	85.2	1.3	7.2	1.1	2.5	0.0	0.0	0.1	87.8	1.3	10.9	0.086	0.502	21.865455	-102.909572
Villanueva	255.70	3	0	4716	1.8	85.0	2.6	4.0	1.6	2.5	1.0	0.8	0.7	86.8	2.6	10.6	0.085	0.502	22.354099	-102.885066
T. Izq. Jerez de García Salinas	289.13	1	1	1897	1.2	87.2	2.7	3.3	2.0	2.7	0.9	0.0	0.0	88.4	2.7	8.9	0.106	0.540	22.610481	-102.759263
T. Izq. Jerez de García Salinas	289.13	1	2	2230	1.1	87.3	2.7	3.3	2.0	2.7	0.9	0.0	0.0	88.4	2.7	8.9	0.103	0.540	22.610521	-102.759339
T. Izq. Jerez de García Salinas	289.13	3	1	5347	1.5	88.8	2.4	2.7	1.4	1.9	0.7	0.3	0.3	90.3	2.4	7.3	0.102	0.541	22.620012	-102.753942
T. Izq. Jerez de García Salinas	289.13	3	2	6297	1.4	88.9	2.5	2.6	1.4	1.8	0.8	0.3	0.3	90.3	2.5	7.2	0.104	0.541	22.620052	-102.754016
T. C. Zacatecas - Durango	311.83	1	1	8573	3.9	84.9	1.0	6.7	1.0	1.1	0.9	0.2	0.3	88.8	1.0	10.2	0.105	0.546	22.774539	-102.624847
T. C. Zacatecas - Durango	311.83	1	2	10291	3.8	85.2	1.0	6.7	0.9	1.0	0.9	0.2	0.3	89.0	1.0	10.0	0.109	0.546	22.774604	-102.624881

13 CARR: Jerez - Fresnillo

CLAVE: 32542

RUTA: MEX-023

AÑO: 2020

LUGAR	ESTACION				CLASIFICACION VEHICULAR EN PORCIENTO										COORDENADAS					
	KM	TE	SC	TDPA	M	A	B	C2	C3	T3S2	T3S3	T3S2R4	OTROS	A	B	C	K'	D	LATITUD	LONGITUD
Jerez	0.00	3	0	1731	2.9	85.4	1.4	6.9	1.2	1.4	0.6	0.1	0.1	88.3	1.4	10.3	0.108	0.509	22.681299	-103.016808
T. C. Ent. Fresnillo - Valparaíso	60.00	1	0	4697	2.5	83.3	1.2	5.8	2.3	2.1	1.2	0.8	0.8	85.8	1.2	13.0	0.099	0.505	23.172373	-102.894305

ZACATECAS

14 CARR: Libramiento de Guadalupe - Zacatecas

CLAVE: 32582

RUTA: MEX-045

AÑO: 2020

LUGAR	ESTACION				CLASIFICACION VEHICULAR EN PORCIENTO														COORDENADAS	
	KM	TE	SC	TDPA	M	A	B	C2	C3	T3S2	T3S3	T3S2R4	OTROS	A	B	C	K'	D	LATITUD	LONGITUD
T. C. Aguascalientes - Zacatecas (Baja)	0.00	3	1	4979	5.1	81.5	0.9	9.6	1.0	0.8	0.6	0.3	0.2	86.6	0.9	12.5	0.106	0.504	22.742223	-102.500339
T. C. Aguascalientes - Zacatecas (Alta)	0.00	3	1	12250	1.0	80.6	2.5	5.7	2.2	3.8	2.3	1.3	0.6	81.6	2.5	15.9	0.094	0.506	22.742042	-102.500289
T. C. Aguascalientes - Zacatecas (Alta)	0.00	3	2	11951	1.0	79.7	2.8	5.5	2.4	3.9	2.6	1.4	0.7	80.7	2.8	16.5	0.092	0.506	22.741963	-102.500270
T. C. Aguascalientes - Zacatecas (Baja)	0.00	3	2	5061	5.1	82.2	0.9	8.8	1.0	0.9	0.6	0.3	0.2	87.3	0.9	11.8	0.090	0.504	22.741840	-102.500256
X. C. Cieneguillas - Zacatecas (Alta)	13.00	3	1	15494	10.6	72.3	2.5	2.8	2.5	4.1	1.3	3.2	0.7	82.9	2.5	14.6	0.126	0.503	22.756218	-102.593803
X. C. Cieneguillas - Zacatecas (Alta)	13.00	3	2	15314	10.8	71.9	2.5	2.9	2.5	4.1	1.4	3.2	0.7	82.7	2.5	14.8	0.107	0.503	22.756161	-102.593879
T. C. Zacatecas - Durango	17.50	1	1	11644	0.9	81.8	2.3	5.5	1.7	4.2	1.4	1.7	0.5	82.7	2.3	15.0	0.098	0.509	22.774510	-102.622278
T. C. Zacatecas - Durango	17.50	1	2	11249	1.0	80.7	2.4	5.9	1.8	4.3	1.4	2.0	0.5	81.7	2.4	15.9	0.121	0.509	22.774280	-102.622398

15 CARR: Libramiento de Río Grande

CLAVE:

RUTA: MEX-049

AÑO: 2020

LUGAR	ESTACION				CLASIFICACION VEHICULAR EN PORCIENTO														COORDENADAS	
	KM	TE	SC	TDPA	M	A	B	C2	C3	T3S2	T3S3	T3S2R4	OTROS	A	B	C	K'	D	LATITUD	LONGITUD
T. C. La Chicharrona - Cuernamé (Sur)	55.90	3	0	6912	3.1	64.1	3.8	7.9	2.6	10.7	3.1	4.0	0.7	67.2	3.8	29.0	0.076	0.524	23.796843	-103.017742
T. C. La Chicharrona - Cuernamé (Norte)	68.59	1	0	6001	3.0	63.9	3.6	8.1	2.7	10.8	3.2	4.0	0.7	66.9	3.6	29.5	0.077	0.508	23.866096	-103.079308

16 CARR: Libramiento de Sombrerete

CLAVE:

RUTA: MEX-045

AÑO: 2020

LUGAR	ESTACION				CLASIFICACION VEHICULAR EN PORCIENTO														COORDENADAS	
	KM	TE	SC	TDPA	M	A	B	C2	C3	T3S2	T3S3	T3S2R4	OTROS	A	B	C	K'	D	LATITUD	LONGITUD
T. C. Zacatecas - Durango Oriente	158.00																			
T. C. Zacatecas - Durango Poniente	163.50	1	0	2075	3.0	71.8	3.3	6.1	3.2	11.5	0.6	0.2	0.3	74.8	3.3	21.9	0.083	0.506	23.655175	-103.653319

17 CARR: Providencia - Luis Moya

CLAVE: 00112

RUTA: MEX-071

AÑO: 2020

LUGAR	ESTACION				CLASIFICACION VEHICULAR EN PORCIENTO														COORDENADAS	
	KM	TE	SC	TDPA	M	A	B	C2	C3	T3S2	T3S3	T3S2R4	OTROS	A	B	C	K'	D	LATITUD	LONGITUD
T. C. Aguascalientes - Zacatecas	0.00	3	0	4759	3.7	76.3	0.9	8.2	2.8	2.9	2.4	2.1	0.7	80.0	0.9	19.1	0.082	0.516	22.060925	-102.275719
T. Izq. Pabellón de Arteaga	12.10	1	0	5237	3.0	77.2	1.0	8.0	1.5	2.6	2.9	3.3	0.5	80.2	1.0	18.8	0.080	0.500	22.149653	-102.248249
T. Der. Villa Juárez	14.90	3	0	6187	3.3	76.8	0.6	9.5	1.5	3.4	2.3	2.4	0.2	80.1	0.6	19.3	0.087	0.502	22.174878	-102.245494
X. C. Rincón de Romos - Ciénega Grande	21.22	3	0	4912	3.3	77.9	2.0	9.7	1.3	2.9	1.6	1.0	0.3	81.2	2.0	16.8	0.085	0.516	22.227546	-102.241664
X. C. La Punta - Mesillas	30.35	3	0	2911	7.3	73.2	1.5	9.8	2.0	2.7	2.0	1.0	0.5	80.5	1.5	18.0	0.100	0.502	22.313702	-102.234065
San Jacinto	34.25	3	0	1790	6.9	71.5	0.4	10.4	2.9	4.5	0.8	2.1	0.5	78.4	0.4	21.2	0.094	0.506	22.348244	-102.231485
Lim. Edos. Term. Ags. Ppia. Zac.	37.50																			
Luis Moya	43.52	1	0	4199	2.3	86.1	1.0	3.9	2.2	1.4	1.5	1.1	0.5	88.4	1.0	10.6	0.097	0.507	22.429854	-102.247870

ZACATECAS

18 CARR: Ramal a Aeropuerto Zacatecas

CLAVE: 32546

RUTA: MEX-045

AÑO: 2020

LUGAR	ESTACION				CLASIFICACION VEHICULAR EN PORCIENTO													COORDENADAS		
	KM	TE	SC	TDPA	M	A	B	C2	C3	T3S2	T3S3	T3S2R4	OTROS	A	B	C	K'	D	LATITUD	LONGITUD
T. C. Zacatecas - Durango	0.00	3	1	1943	2.0	81.9	2.1	10.5	1.9	0.9	0.3	0.4	0.0	83.9	2.1	14.0	0.142	0.523	22.913469	-102.671630
T. C. Zacatecas - Durango Aeropuerto	0.00	3	2	2134	2.2	82.0	2.0	10.8	1.8	0.6	0.3	0.3	0.0	84.2	2.0	13.8	0.172	0.523	22.913482	-102.671635
	1.95																			

19 CARR: Ramal a Concepción del Oro

CLAVE: 32565

RUTA: MEX-054

AÑO: 2020

LUGAR	ESTACION				CLASIFICACION VEHICULAR EN PORCIENTO													COORDENADAS		
	KM	TE	SC	TDPA	M	A	B	C2	C3	T3S2	T3S3	T3S2R4	OTROS	A	B	C	K'	D	LATITUD	LONGITUD
T. C. Ent. Morelos - Saltillo	0.00	3	0	4749	7.7	64.9	2.7	7.5	9.7	5.8	1.6	0.1	0.0	72.6	2.7	24.7	0.083	0.506	24.619836	-101.384835
Concepción del Oro	3.20																			

20 CARR: Ramal a Francisco Murguía (Nieves)

CLAVE: 32541

RUTA: MEX-049

AÑO: 2020

LUGAR	ESTACION				CLASIFICACION VEHICULAR EN PORCIENTO													COORDENADAS		
	KM	TE	SC	TDPA	M	A	B	C2	C3	T3S2	T3S3	T3S2R4	OTROS	A	B	C	K'	D	LATITUD	LONGITUD
T. C. Ent. La Chicharrona - Cuencamé	0.00	3	0	1485	2.3	76.0	1.0	5.7	1.7	13.1	0.1	0.1	0.0	78.3	1.0	20.7	0.099	0.521	23.920925	-103.157951
Francisco Murguía (Nieves)	17.40																			

21 CARR: Ramal a Gral. Pánfilo Natera

CLAVE: 32559

RUTA: MEX-049

AÑO: 2020

LUGAR	ESTACION				CLASIFICACION VEHICULAR EN PORCIENTO													COORDENADAS		
	KM	TE	SC	TDPA	M	A	B	C2	C3	T3S2	T3S3	T3S2R4	OTROS	A	B	C	K'	D	LATITUD	LONGITUD
T. C. San Luis Potosí - Ent. Arcinas	0.00	3	1	2289	7.6	76.9	1.7	12.6	0.7	0.3	0.1	0.0	0.1	84.5	1.7	13.8	0.104	0.505	22.680340	-102.106347
T. C. San Luis Potosí - Ent. Arcinas Gral. Pánfilo Natera	0.00	3	2	2244	7.5	76.8	1.7	12.6	0.8	0.4	0.1	0.0	0.1	84.3	1.7	14.0	0.118	0.505	22.680340	-102.106347
	1.50																			

22 CARR: Ramal a Ruinas de Chicomostoc

CLAVE: 00544

RUTA: MEX-045

AÑO: 2020

LUGAR	ESTACION				CLASIFICACION VEHICULAR EN PORCIENTO													COORDENADAS		
	KM	TE	SC	TDPA	M	A	B	C2	C3	T3S2	T3S3	T3S2R4	OTROS	A	B	C	K'	D	LATITUD	LONGITUD
T. C. Guadalajara - Zacatecas	0.00	3	0	67	8.0	83.6	2.5	4.5	1.4	0.0	0.0	0.0	0.0	91.6	2.5	5.9	0.179	0.512	22.463924	-102.840397
Ruinas de Chicomostoc	2.20																			

ZACATECAS

23 CARR: Ramal a San Martín

CLAVE: 00544

RUTA: MEX-045

AÑO: 2020

LUGAR	ESTACION				CLASIFICACION VEHICULAR EN PORCIENTO													COORDENADAS		
	KM	TE	SC	TDPA	M	A	B	C2	C3	T3S2	T3S3	T3S2R4	OTROS	A	B	C	K'	D	LATITUD	LONGITUD
T. C. Zacatecas - Durango	0.00	3	0	1372	2.5	80.8	0.2	12.3	1.7	1.4	0.6	0.2	0.3	83.3	0.2	16.5	0.101	0.528	23.694715	-103.715237
San Martín	4.00																			

24 CARR: Ramal a Villa de Cos

CLAVE: 32564

RUTA: MEX-054

AÑO: 2020

LUGAR	ESTACION				CLASIFICACION VEHICULAR EN PORCIENTO													COORDENADAS		
	KM	TE	SC	TDPA	M	A	B	C2	C3	T3S2	T3S3	T3S2R4	OTROS	A	B	C	K'	D	LATITUD	LONGITUD
T. C. Ent. Morelos - Saltillo	0.00	3	1	1602	3.4	89.9	0.6	3.7	0.9	0.9	0.4	0.0	0.2	93.3	0.6	6.1	0.104	0.503	23.269760	-102.329799
T. C. Ent. Morelos - Saltillo	0.00	3	2	1582	3.3	90.5	0.5	3.5	0.9	0.8	0.3	0.0	0.2	93.8	0.5	5.7	0.095	0.503	23.269760	-102.329799
Villa de Cos	3.30	1	1	2320	4.2	77.5	0.7	15.8	0.4	0.9	0.3	0.0	0.2	81.7	0.7	17.6	0.106	0.501	23.293802	-102.346493
Villa de Cos	3.30	1	2	2325	4.0	80.3	0.5	13.5	0.4	0.8	0.3	0.0	0.2	84.3	0.5	15.2	0.098	0.501	23.293803	-102.346494

25 CARR: San Luis Potosí - Ent. Arcinas

CLAVE: 00134

RUTA: MEX-049

AÑO: 2020

LUGAR	ESTACION				CLASIFICACION VEHICULAR EN PORCIENTO													COORDENADAS		
	KM	TE	SC	TDPA	M	A	B	C2	C3	T3S2	T3S3	T3S2R4	OTROS	A	B	C	K'	D	LATITUD	LONGITUD
T. C. San Luis Potosí - Matehuala	0.00																			
T. Izq. Periférico de San Luis Potosí	9.35	3	1	9250	5.5	77.8	1.5	9.6	1.2	2.0	1.0	1.2	0.2	83.3	1.5	15.2	0.129	0.502	22.198364	-101.019135
T. Izq. Periférico de San Luis Potosí	9.35	3	2	9328	5.5	77.9	1.5	9.6	1.2	2.0	1.0	1.1	0.2	83.4	1.5	15.1	0.101	0.502	22.198293	-101.019186
Mexquitic	22.50	1	1	6768	5.2	72.1	3.0	7.7	1.6	4.8	2.1	2.6	0.9	77.3	3.0	19.7	0.107	0.512	22.264417	-101.111442
Mexquitic	22.50	1	2	7093	5.5	71.6	3.9	8.2	1.4	3.8	1.9	2.8	0.9	77.1	3.9	19.0	0.120	0.512	22.264420	-101.111492
Mexquitic	22.50	3	1	5247	4.6	76.1	2.0	4.0	1.0	5.8	2.0	3.5	1.0	80.7	2.0	17.3	0.116	0.559	22.252537	-101.111801
Mexquitic	22.50	3	2	6648	2.5	80.9	2.6	2.6	1.2	5.8	2.2	1.5	0.7	83.4	2.6	14.0	0.110	0.559	22.252447	-101.111816
T. Der. Charcas	30.90	1	1	6154	2.9	64.0	3.0	12.3	1.5	9.1	2.5	4.0	0.7	66.9	3.0	30.1	0.101	0.504	22.313966	-101.163466
T. Der. Charcas	30.90	1	2	6067	2.5	67.6	2.9	9.4	1.3	9.3	2.5	3.7	0.8	70.1	2.9	27.0	0.096	0.504	22.313876	-101.163564
T. Der. Charcas	30.90	3	1	4271	2.6	66.2	1.3	4.7	3.0	12.9	2.9	5.6	0.8	68.8	1.3	29.9	0.096	0.507	22.313921	-101.163419
T. Der. Charcas	30.90	3	2	4392	2.7	65.9	1.6	6.0	2.0	12.7	3.2	5.0	0.9	68.6	1.6	29.8	0.079	0.507	22.313833	-101.163507
Lim. Edos. Term. S. L. P. Ppia. Zac.	55.13																			
Lim. Edos. Term. Zac. Ppia. S. L. P.	89.30																			
T. Der. Salinas	99.00	1	1	3298	1.2	62.2	4.6	9.6	3.0	10.9	2.8	5.3	0.4	63.4	4.6	32.0	0.085	0.515	22.608331	-101.718037
T. Der. Salinas	99.00	1	2	3499	2.0	55.6	5.5	11.1	3.3	12.3	3.4	6.3	0.5	57.6	5.5	36.9	0.092	0.515	22.608250	-101.718071
T. Der. Salinas	99.00	3	1	3584	5.2	53.9	2.9	10.2	2.9	14.1	3.3	6.4	1.1	59.1	2.9	38.0	0.093	0.515	22.608801	-101.719112
T. Der. Salinas	99.00	3	2	3808	4.2	51.6	3.4	12.9	2.7	15.1	3.1	6.4	0.6	55.8	3.4	40.8	0.077	0.515	22.608713	-101.719151
Lim. Edos. Term. S. L. P. Ppia. Zac.	122.47																			
T. Izq. Pánfilo Natera	139.00	1	1	2920	1.4	54.2	4.9	9.6	3.5	14.4	3.5	7.7	0.8	55.6	4.9	39.5	0.082	0.536	22.680531	-102.105962

ZACATECAS

25 CARR: San Luis Potosí - Ent. Arcinas

CLAVE: 00134

RUTA: MEX-049

AÑO: 2020

LUGAR	ESTACION				CLASIFICACION VEHICULAR EN PORCIENTO													COORDENADAS		
	KM	TE	SC	TDPA	M	A	B	C2	C3	T3S2	T3S3	T3S2R4	OTROS	A	B	C	K'	D	LATITUD	LONGITUD
T. Izq. Pánfilo Natera	139.00	1	2	3370	1.4	54.7	4.9	9.4	3.5	14.4	3.4	7.6	0.7	56.1	4.9	39.0	0.081	0.536	22.680438	-102.105983
Ent. Arcinas	162.98	1	1	4004	1.4	62.7	4.2	7.5	2.8	11.3	3.4	6.0	0.7	64.1	4.2	31.7	0.108	0.515	22.720802	-102.329563
Ent. Arcinas	162.98	1	2	4257	1.4	59.9	4.8	7.7	3.4	11.8	3.8	6.4	0.8	61.3	4.8	33.9	0.089	0.515	22.720614	-102.329602

26 CARR: San Luis Potosí - Lagos de Moreno

CLAVE: 00133

RUTA: MEX-070-080

AÑO: 2020

LUGAR	ESTACION				CLASIFICACION VEHICULAR EN PORCIENTO													COORDENADAS		
	KM	TE	SC	TDPA	M	A	B	C2	C3	T3S2	T3S3	T3S2R4	OTROS	A	B	C	K'	D	LATITUD	LONGITUD
San Luis Potosí	0.00	3	1	14285	1.6	93.2	0.1	2.9	0.1	0.6	1.3	0.1	0.1	94.8	0.1	5.1	0.107	0.511	22.134467	-100.958410
San Luis Potosí	0.00	3	2	14937	1.7	92.5	0.1	3.5	0.1	0.6	1.3	0.1	0.1	94.2	0.1	5.7	0.099	0.511	22.134383	-100.958336
X. Periférico de San Luis Potosí	8.41	3	0	8157	2.0	79.3	0.9	6.9	2.3	5.4	1.7	0.8	0.7	81.3	0.9	17.8	0.088	0.508	22.131610	-101.034410
El Tepetate	41.90	1	0	7449	0.8	65.9	2.5	8.4	3.2	10.3	3.9	4.5	0.5	66.7	2.5	30.8	0.084	0.511	22.014770	-101.239491
El Tepetate	41.90	3	0	7125	1.0	67.4	2.7	8.2	2.9	9.3	3.6	4.0	0.9	68.4	2.7	28.9	0.089	0.515	22.014490	-101.239817
Villa de Arriaga	61.90	3	0	3895	2.4	63.9	3.3	9.4	3.2	10.7	3.9	2.5	0.7	66.3	3.3	30.4	0.084	0.501	21.911011	-101.383686
Lim. Edos. Term. S. L. P. Ppia. Zac.	70.23																			
Lim. Edos. Term. Zac. Ppia. Jal.	82.94																			
Ojuelos de Jalisco	83.20	1	0	5623	3.8	70.7	2.5	8.6	1.9	8.4	2.4	1.4	0.3	74.5	2.5	23.0	0.084	0.502	21.867938	-101.589853
Ojuelos de Jalisco	83.20	3	0	3235	3.3	56.2	3.6	7.6	3.0	14.1	5.3	6.8	0.1	59.5	3.6	36.9	0.087	0.514	21.861600	-101.593134
X. C. Lagos de Moreno - San Luis Potosí (Cuota)	140.00	1	0	3430	5.1	68.9	2.8	11.9	3.1	4.1	2.9	0.9	0.3	74.0	2.8	23.2	0.078	0.502	21.445392	-101.812913
X. C. León - Aguascalientes	146.90	1	1	5293	9.8	54.3	3.6	10.1	3.2	10.9	2.7	5.2	0.2	64.1	3.6	32.3	0.111	0.513	21.372336	-101.901277
X. C. León - Aguascalientes	146.90	1	2	5573	8.6	55.5	3.5	9.4	3.7	12.3	1.7	5.1	0.2	64.1	3.5	32.4	0.093	0.513	21.372169	-101.901215
Lagos de Moreno	150.00																			

27 CARR: Zacatecas - Durango

CLAVE: 00544

RUTA: MEX-045

AÑO: 2020

LUGAR	ESTACION				CLASIFICACION VEHICULAR EN PORCIENTO													COORDENADAS		
	KM	TE	SC	TDPA	M	A	B	C2	C3	T3S2	T3S3	T3S2R4	OTROS	A	B	C	K'	D	LATITUD	LONGITUD
Zacatecas	0.00																			
T. Izq. Guadalajara	6.40	3	1	13903	2.8	81.4	2.6	2.5	8.3	1.9	0.4	0.1	0.0	84.2	2.6	13.2	0.089	0.526	22.774985	-102.623434
T. Izq. Guadalajara	6.40	3	2	12538	3.9	78.2	3.1	2.7	8.8	2.9	0.3	0.1	0.0	82.1	3.1	14.8	0.094	0.526	22.774590	-102.623564
T. Der. Saltillo (T. Morelos)	15.00	3	1	11595	1.1	78.8	2.9	6.7	0.9	4.7	2.0	2.1	0.8	79.9	2.9	17.2	0.082	0.505	22.865353	-102.628087
T. Der. Saltillo (T. Morelos)	15.00	3	2	11344	1.2	75.7	3.2	8.0	1.0	5.4	2.2	2.3	1.0	76.9	3.2	19.9	0.091	0.505	22.855751	-102.645824
T. Libramiento de Víctor Rosales	26.20																			
Víctor Rosales	28.00	1	1	11349	0.7	75.4	2.2	6.4	1.5	7.0	2.8	3.3	0.7	76.1	2.2	21.7	0.093	0.511	22.946003	-102.699768
Víctor Rosales	28.00	1	2	10841	0.7	75.7	2.2	6.3	1.4	6.9	2.8	3.2	0.8	76.4	2.2	21.4	0.083	0.511	22.946006	-102.699752

ZACATECAS

27 CARR: Zacatecas - Durango

CLAVE: 00544

RUTA: MEX-045

AÑO: 2020

LUGAR	ESTACION				CLASIFICACION VEHICULAR EN PORCIENTO													COORDENADAS		
	KM	TE	SC	TDPA	M	A	B	C2	C3	T3S2	T3S3	T3S2R4	OTROS	A	B	C	K'	D	LATITUD	LONGITUD
T. Der. Facultad de Veterinaria	32.30	1	1	6563	1.4	70.8	4.1	6.7	1.8	9.2	2.4	2.7	0.9	72.2	4.1	23.7	0.081	0.507	22.975931	-102.723100
T. Der. Facultad de Veterinaria	32.30	1	2	6747	1.2	67.8	4.7	7.3	2.0	10.3	2.7	3.1	0.9	69.0	4.7	26.3	0.106	0.507	22.975936	-102.723098
Gral. Enrique Estrada	34.60	3	1	9008	0.7	74.3	3.1	7.7	2.0	7.2	2.1	2.3	0.6	75.0	3.1	21.9	0.085	0.501	22.997625	-102.741791
Gral. Enrique Estrada	34.60	3	2	9059	0.8	70.8	3.6	9.0	2.2	7.9	2.4	2.5	0.8	71.6	3.6	24.8	0.081	0.501	22.997660	-102.741750
T. Libramiento de Víctor Rosales	35.90																			
T. Libramiento de Fresnillo Sur	49.30																			
Fresnillo	58.50	1	1	8051	0.9	82.9	2.8	7.8	1.7	2.0	1.0	0.4	0.5	83.8	2.8	13.4	0.084	0.507	23.167237	-102.856186
Fresnillo	58.50	1	2	7839	1.0	81.1	3.1	8.7	1.9	2.3	1.1	0.3	0.5	82.1	3.1	14.8	0.090	0.507	23.167209	-102.856261
T. Libramiento de Fresnillo Norte	66.70																			
Ent. La Chicharrona	74.30	1	1	6251	0.8	62.1	5.1	11.9	2.5	10.4	2.7	3.8	0.7	62.9	5.1	32.0	0.080	0.513	23.298339	-102.958140
Ent. La Chicharrona	74.30	1	2	5931	0.8	60.4	5.6	13.2	2.3	10.7	2.8	3.6	0.6	61.2	5.6	33.2	0.068	0.513	23.296742	-102.958799
Ent. La Chicharrona	74.30	3	0	5853	1.7	65.0	3.7	21.2	2.1	3.3	1.8	1.0	0.2	66.7	3.7	29.6	0.085	0.502	23.300366	-102.959615
T. Der. Sain Alto	121.00	3	0	3860	1.7	68.3	5.0	14.1	2.5	4.5	2.1	1.2	0.6	70.0	5.0	25.0	0.083	0.505	23.578100	-103.272556
T. Izq. Sombrerete (2° Acceso)	161.50	3	0	6173	1.5	72.8	3.4	11.9	1.8	5.3	1.6	1.0	0.7	74.3	3.4	22.3	0.080	0.505	23.638445	-103.642515
T. C. Libramiento de Sombrerete	165.00	3	0	5020	2.6	72.7	3.6	14.1	1.8	2.5	1.3	0.9	0.5	75.3	3.6	21.1	0.082	0.501	23.655185	-103.653302
Lim. Edos. Term. Zac. Ppia. Dgo.	190.08																			
X. C. Súchil - Villa Unión	206.98	1	0	2985	2.8	68.5	5.9	7.6	2.2	6.9	3.0	2.6	0.5	71.3	5.9	22.8	0.088	0.503	23.742899	-103.986842
X. C. Súchil - Villa Unión	206.98	3	0	6564	5.6	74.3	3.3	9.1	1.4	3.2	1.5	1.4	0.2	79.9	3.3	16.8	0.089	0.511	23.742899	-103.986846
T. Izq. Graceros	210.00	1	0	5087	6.8	71.1	4.7	8.1	1.4	4.1	1.7	1.7	0.4	77.9	4.7	17.4	0.086	0.515	23.748187	-104.041378
Amado Nervo	231.51	1	0	4677	8.6	66.9	5.7	9.8	1.5	4.0	1.6	1.6	0.3	75.5	5.7	18.8	0.086	0.520	23.842907	-104.189009
Amado Nervo	231.51	3	0	5430	3.6	75.9	4.8	6.6	1.7	4.1	1.6	1.5	0.2	79.5	4.8	15.7	0.087	0.532	23.842908	-104.189002
Nombre de Dios	236.80	1	0	2463	8.6	78.6	4.6	6.8	0.7	0.4	0.1	0.1	0.1	87.2	4.6	8.2	0.098	0.506	23.847300	-104.244701
Nombre de Dios	236.80	3	0	3661	3.0	81.9	2.2	11.8	0.8	0.2	0.1	0.0	0.0	84.9	2.2	12.9	0.113	0.526	23.847306	-104.244705
T. Der. Constanacia	240.60	3	0	5718	2.4	75.5	3.7	12.7	1.8	2.1	1.0	0.5	0.3	77.9	3.7	18.4	0.103	0.501	23.870134	-104.264140
T. Der. Tuitán	250.80	3	0	4428	2.6	73.5	4.1	12.8	2.0	2.6	1.3	0.8	0.3	76.1	4.1	19.8	0.095	0.512	23.920865	-104.337305
T. Der. Independencia y Libertad	261.70	1	0	6118	2.4	74.6	3.4	12.0	2.0	2.9	1.4	1.0	0.3	77.0	3.4	19.6	0.092	0.509	23.999319	-104.378821
T. Der. Independencia y Libertad	261.70	3	1	2713	8.0	72.6	4.0	8.1	1.9	2.5	1.7	0.9	0.3	80.6	4.0	15.4	0.110	0.506	23.999334	-104.378793
T. Der. Independencia y Libertad	261.70	3	2	2783	8.1	72.2	4.0	8.0	2.0	2.8	1.8	0.8	0.3	80.3	4.0	15.7	0.103	0.506	23.999292	-104.378897
T. Izq. Parras de La Fuente	276.60	1	1	3141	6.6	75.4	2.8	7.9	1.9	2.7	1.5	1.0	0.2	82.0	2.8	15.2	0.108	0.501	24.020599	-104.519785
T. Izq. Parras de La Fuente	276.60	1	2	3133	6.7	75.2	3.0	7.8	1.8	2.6	1.5	1.2	0.2	81.9	3.0	15.1	0.117	0.501	24.020474	-104.519840
T. Izq. Parras de La Fuente	276.60	3	1	3107	8.7	71.9	2.5	11.5	1.5	2.1	0.8	0.8	0.2	80.6	2.5	16.9	0.097	0.511	24.020601	-104.519784
T. Izq. Parras de La Fuente	276.60	3	2	2977	8.8	71.9	2.5	11.4	1.4	2.1	1.0	0.7	0.2	80.7	2.5	16.8	0.120	0.511	24.020473	-104.519845
Durango	287.30	1	1	4492	3.0	79.0	1.7	12.6	1.3	1.2	0.5	0.5	0.2	82.0	1.7	16.3	0.100	0.506	24.031204	-104.619796
Durango	287.30	1	2	4392	3.1	79.0	1.7	12.5	1.3	1.2	0.5	0.5	0.2	82.1	1.7	16.2	0.105	0.506	24.031039	-104.620036

ZACATECAS

28 CARR: Ent. Cuauhtémoc - Ent. Osiris (Cuota)

CLAVE: 32558

RUTA: MEX-045D

AÑO: 2020

LUGAR	ESTACION				CLASIFICACION VEHICULAR EN PORCIENTO												COORDENADAS			
	KM	TE	SC	TDPA	M	A	B	C2	C3	T3S2	T3S3	T3S2R4	OTROS	A	B	C	K'	D	LATITUD	LONGITUD
T. C. Ent. Cosío - Ent. Cuauhtémoc	70.40	3	0	7611	0.8	56.1	6.2	6.4	2.7	15.5	3.7	7.7	0.9	56.9	6.2	36.9	0.098	0.501	22.485434	-102.356566
Plaza de Cobro Zacatecas	97.80	2	0	7538	0.3	49.6	7.1	5.0	5.4	18.1	3.8	9.3	1.4	49.9	7.1	43.0	0.067	0.500	22.710742	-102.448827
T. C. Aguascalientes - Zacatecas	103.40	1	0	7791	2.7	60.5	9.2	8.4	2.3	13.1	0.8	2.3	0.7	63.2	9.2	27.6	0.101	0.521	22.747985	-102.454582

29 CARR: Libramiento de Fresnillo (Cuota)

CLAVE: 32581

RUTA: MEX-045D

AÑO: 2020

LUGAR	ESTACION				CLASIFICACION VEHICULAR EN PORCIENTO												COORDENADAS			
	KM	TE	SC	TDPA	M	A	B	C2	C3	T3S2	T3S3	T3S2R4	OTROS	A	B	C	K'	D	LATITUD	LONGITUD
T. C. Zacatecas - Durango	49.80	3	1	3098	0.9	49.1	5.0	8.2	2.4	21.0	3.7	9.1	0.6	50.0	5.0	45.0	0.083	0.512	23.115307	-102.806208
T. C. Zacatecas - Durango	49.80	3	2	3244	0.8	50.1	4.9	8.0	2.3	20.8	3.5	9.0	0.6	50.9	4.9	44.2	0.088	0.512	23.115530	-102.806598
Plaza de Cobro Morfín Chávez	57.05	2	1	3017	0.3	51.5	2.6	4.2	4.2	22.1	4.3	0.0	10.8	51.8	2.6	45.6	0.088	0.500	23.177904	-102.828678
Plaza de Cobro Morfín Chávez	57.05	2	2	3017	0.3	51.5	2.6	4.2	4.2	22.1	4.3	0.0	10.8	51.8	2.6	45.6	0.088	0.500	23.177904	-102.828678
T. Der. Plateros	61.70	1	1	3275	1.1	53.2	4.6	7.1	2.7	19.6	3.8	7.0	0.9	54.3	4.6	41.1	0.075	0.501	23.209579	-102.852729
T. Der. Plateros	61.70	1	2	3262	1.0	53.5	4.6	7.2	2.7	19.6	3.7	6.9	0.8	54.5	4.6	40.9	0.097	0.501	23.209816	-102.852611
T. Der. Plateros	61.70	3	1	3085	0.9	49.7	4.2	6.9	2.5	21.1	4.9	8.9	0.9	50.6	4.2	45.2	0.080	0.505	23.209579	-102.852729
T. Der. Plateros	61.70	3	2	3019	0.8	49.9	4.1	6.9	2.5	21.1	5.0	8.7	1.0	50.7	4.1	45.2	0.088	0.505	23.209816	-102.852607
T. C. Zacatecas - Durango	69.85	1	1	3021	0.8	50.5	5.1	8.5	2.2	19.8	4.3	8.0	0.8	51.3	5.1	43.6	0.075	0.503	23.240320	-102.917464
T. C. Zacatecas - Durango	69.85	1	2	3062	0.9	50.6	5.0	8.5	2.2	19.8	4.2	8.0	0.8	51.5	5.0	43.5	0.083	0.503	23.239355	-102.917038

30 CARR: Libramiento de Víctor Rosales (Cuota)

CLAVE: 32015

RUTA: MEX-045D

AÑO: 2020

LUGAR	ESTACION				CLASIFICACION VEHICULAR EN PORCIENTO												COORDENADAS			
	KM	TE	SC	TDPA	M	A	B	C2	C3	T3S2	T3S3	T3S2R4	OTROS	A	B	C	K'	D	LATITUD	LONGITUD
T. C. Zacatecas - Durango	0.00	3	1	6299	1.0	71.9	4.0	8.8	1.1	7.7	1.9	3.4	0.2	72.9	4.0	23.1	0.080	0.529	22.934537	-102.688377
T. C. Zacatecas - Durango	0.00	3	2	7088	0.9	74.2	3.2	8.5	1.2	6.7	2.0	2.9	0.4	75.1	3.2	21.7	0.086	0.529	22.934555	-102.688381
Plaza de Cobro Calera Víctor Rosales	0.50	2	1	7170	0.3	69.6	2.7	3.4	3.7	11.6	2.6	0.0	6.1	69.9	2.7	27.4	0.085	0.500	22.941860	-102.689827
Plaza de Cobro Calera Víctor Rosales	0.50	2	2	7170	0.3	69.6	2.7	3.4	3.7	11.6	2.6	0.0	6.1	69.9	2.7	27.4	0.085	0.500	22.941860	-102.689827
T. C. Calera de Víctor Rosales - Santiagoullo	2.50	3	1	8049	1.2	67.5	4.5	9.2	3.6	8.0	2.7	3.1	0.2	68.7	4.5	26.8	0.084	0.504	22.952641	-102.692061
T. C. Calera de Víctor Rosales - Santiagoullo	2.50	3	2	8163	1.3	68.1	4.0	9.4	3.6	7.7	2.5	3.1	0.3	69.4	4.0	26.6	0.077	0.504	22.952563	-102.692228
T. C. Zacatecas - Durango	12.20	1	1	7414	0.5	69.1	4.1	7.0	2.3	10.7	2.5	3.1	0.7	69.6	4.1	26.3	0.088	0.507	23.006708	-102.747545
T. C. Zacatecas - Durango	12.20	1	2	7636	0.5	66.7	4.7	7.8	2.5	10.9	2.7	3.3	0.9	67.2	4.7	28.1	0.091	0.507	23.006519	-102.747634

ZACATECAS

31 CARR: Calera de Víctor Rosales - Santiagoullo

CLAVE: 32016

RUTA: ZAC-016

AÑO: 2020

LUGAR	ESTACION				CLASIFICACION VEHICULAR EN PORCIENTO													COORDENADAS		
	KM	TE	SC	TDPA	M	A	B	C2	C3	T3S2	T3S3	T3S2R4	OTROS	A	B	C	K'	D	LATITUD	LONGITUD
Calera de Víctor Rosales	0.00	3	0	2940	9.4	65.9	2.1	15.3	2.3	3.1	1.2	0.3	0.4	75.3	2.1	22.6	0.081	0.504	22.952773	-102.691979
T. C. Fresnillo - Ent. Bañón	23.60																			

32 CARR: Cieneguillas - Zacatecas

CLAVE: 32579

RUTA: ZAC

AÑO: 2020

LUGAR	ESTACION				CLASIFICACION VEHICULAR EN PORCIENTO													COORDENADAS		
	KM	TE	SC	TDPA	M	A	B	C2	C3	T3S2	T3S3	T3S2R4	OTROS	A	B	C	K'	D	LATITUD	LONGITUD
T. C. Guadalajara - Zacatecas	0.00	3	0	2467	2.1	77.5	1.1	12.6	2.0	1.3	1.2	1.2	1.0	79.6	1.1	19.3	0.086	0.504	22.760916	-102.654521
X. C. Libramiento de Guadalupe - Zacatecas	7.70	3	1	10236	3.6	78.1	2.3	9.8	2.9	2.3	0.7	0.2	0.1	81.7	2.3	16.0	0.093	0.509	22.755980	-102.592892
X. C. Libramiento de Guadalupe - Zacatecas	7.70	3	2	9867	3.5	77.0	2.7	9.8	3.2	2.8	0.6	0.2	0.2	80.5	2.7	16.8	0.093	0.509	22.756075	-102.592937
Zacatecas	9.33																			

33 CARR: Corral de Piedras - Tlaltenango

CLAVE: 32579

RUTA: ZAC

AÑO: 2020

LUGAR	ESTACION				CLASIFICACION VEHICULAR EN PORCIENTO													COORDENADAS		
	KM	TE	SC	TDPA	M	A	B	C2	C3	T3S2	T3S3	T3S2R4	OTROS	A	B	C	K'	D	LATITUD	LONGITUD
T. C. Guadalajara - Zacatecas	0.00	3	0	505	0.0	85.9	0.8	11.2	1.1	0.8	0.2	0.0	0.0	85.9	0.8	13.3	0.115	0.508	21.618736	-103.047987
Tlaltenango	57.10	1	0	1326	0.1	90.9	0.5	6.8	0.4	1.0	0.2	0.0	0.1	91.0	0.5	8.5	0.110	0.511	21.772118	-103.296060

34 CARR: Ent. Ojo Caliente - Ent. Ojuelos de Jalisco

CLAVE: 00126

RUTA: ZAC

AÑO: 2020

LUGAR	ESTACION				CLASIFICACION VEHICULAR EN PORCIENTO													COORDENADAS		
	KM	TE	SC	TDPA	M	A	B	C2	C3	T3S2	T3S3	T3S2R4	OTROS	A	B	C	K'	D	LATITUD	LONGITUD
T. C. Aguascalientes - Zacatecas	0.00	3	0	2587	3.4	74.2	0.9	18.8	1.0	1.2	0.3	0.0	0.2	77.6	0.9	21.5	0.105	0.502	22.600402	-102.248158
Gral. Pánfilo Natera	16.00	3	0	1530	4.2	82.7	0.4	10.5	0.6	1.3	0.3	0.0	0.0	86.9	0.4	12.7	0.105	0.502	22.662705	-102.111264
Lim. Edos. Term. Zac. Ppia. Jal.	134.00																			
T. C. San Luis Potosí - Lagos de Moreno	137.00																			

35 CARR: Fresnillo - Ent. Bañón

CLAVE: 32070

RUTA: ZAC

AÑO: 2020

LUGAR	ESTACION				CLASIFICACION VEHICULAR EN PORCIENTO													COORDENADAS		
	KM	TE	SC	TDPA	M	A	B	C2	C3	T3S2	T3S3	T3S2R4	OTROS	A	B	C	K'	D	LATITUD	LONGITUD
T. C. Zacatecas - Durango	0.00																			
X. Lib. Fresnillo (Cuota)	2.40	3	1	4565	4.4	82.5	0.9	9.5	0.8	0.9	0.5	0.3	0.2	86.9	0.9	12.2	0.120	0.508	23.176332	-102.827842
X. Lib. Fresnillo (Cuota)	2.40	3	2	4426	4.4	82.8	0.9	9.4	0.8	0.8	0.5	0.2	0.2	87.2	0.9	11.9	0.102	0.508	23.176332	-102.827842

ZACATECAS

35 CARR: Fresnillo - Ent. Bañón

CLAVE: 32070

RUTA: ZAC

AÑO: 2020

LUGAR	ESTACION				CLASIFICACION VEHICULAR EN PORCIENTO													COORDENADAS		
	KM	TE	SC	TDPA	M	A	B	C2	C3	T3S2	T3S3	T3S2R4	OTROS	A	B	C	K'	D	LATITUD	LONGITUD
T. Der. Víctor Rosales	23.80	1	0	2073	6.6	71.5	1.2	10.8	5.2	2.5	1.4	0.4	0.4	78.1	1.2	20.7	0.101	0.505	23.143850	-102.655080
T. Der. Víctor Rosales	23.80	3	0	1528	3.2	68.2	3.3	16.7	2.7	3.2	1.3	0.6	0.8	71.4	3.3	25.3	0.107	0.509	23.143823	-102.655091
González Ortega Bañón	45.80	1	0	1361	5.5	66.2	2.7	15.7	4.8	3.2	0.8	0.6	0.5	71.7	2.7	25.6	0.121	0.503	23.179671	-102.471934
T. C. Ent. Morelos - Saltillo	49.00	1	0	2143	6.7	67.1	2.6	15.9	2.7	2.9	1.1	0.5	0.5	73.8	2.6	23.6	0.098	0.500	23.152499	-102.414891

36 CARR: Fresnillo - Plateros

CLAVE: 32022

RUTA: ZAC-022

AÑO: 2020

LUGAR	ESTACION				CLASIFICACION VEHICULAR EN PORCIENTO													COORDENADAS		
	KM	TE	SC	TDPA	M	A	B	C2	C3	T3S2	T3S3	T3S2R4	OTROS	A	B	C	K'	D	LATITUD	LONGITUD
Fresnillo (Central)	0.00	3	1	4094	5.6	81.9	0.9	9.8	0.6	0.7	0.3	0.1	0.1	87.5	0.9	11.6	0.101	0.514	23.177168	-102.866934
Fresnillo (Lateral)	0.00	3	1	152	24.3	69.0	1.5	4.3	0.3	0.5	0.0	0.1	0.0	93.3	1.5	5.2	0.132	0.517	23.177168	-102.866936
Fresnillo (Lateral)	0.00	3	2	163	24.2	70.3	0.7	4.0	0.2	0.6	0.0	0.0	0.0	94.5	0.7	4.8	0.166	0.517	23.177168	-102.866936
Fresnillo (Central)	0.00	3	2	4330	5.8	81.9	0.8	9.9	0.6	0.5	0.3	0.1	0.1	87.7	0.8	11.5	0.110	0.514	23.177169	-102.866936
Plateros	4.90																			

37 CARR: Guadalupe - Ent. Cuauhtémoc

CLAVE: 00579

RUTA: ZAC-118

AÑO: 2020

LUGAR	ESTACION				CLASIFICACION VEHICULAR EN PORCIENTO													COORDENADAS		
	KM	TE	SC	TDPA	M	A	B	C2	C3	T3S2	T3S3	T3S2R4	OTROS	A	B	C	K'	D	LATITUD	LONGITUD
T. C. Libramiento de Guadalupe - Zacatecas (Alta)	0.00	3	1	6275	2.4	91.3	0.2	4.3	0.7	0.5	0.3	0.2	0.1	93.7	0.2	6.1	0.106	0.523	22.741106	-102.497061
T. C. Libramiento de Guadalupe - Zacatecas (Baja)	0.00	3	1	2649	2.4	85.3	0.2	10.9	0.5	0.2	0.2	0.0	0.3	87.7	0.2	12.1	0.095	0.574	22.741110	-102.497029
T. C. Libramiento de Guadalupe - Zacatecas (Alta)	0.00	3	2	7890	2.4	91.2	0.2	4.3	0.7	0.6	0.3	0.2	0.1	93.6	0.2	6.2	0.084	0.523	22.741097	-102.497167
T. C. Libramiento de Guadalupe - Zacatecas (Baja)	0.00	3	2	1966	2.5	84.8	0.2	10.9	0.7	0.3	0.3	0.0	0.3	87.3	0.2	12.5	0.088	0.574	22.741087	-102.497280
La Cieneguita	3.00																			
T. C. Ent. Cuauhtémoc - Ent. Osiris Cuota	39.31	3	0	1044	1.1	88.1	0.8	8.4	0.6	0.9	0.1	0.0	0.0	89.2	0.8	10.0	0.114	0.506	22.484071	-102.355696

38 CARR: Ramal a Loreto

CLAVE: 32067

RUTA: ZAC

AÑO: 2020

LUGAR	ESTACION				CLASIFICACION VEHICULAR EN PORCIENTO													COORDENADAS		
	KM	TE	SC	TDPA	M	A	B	C2	C3	T3S2	T3S3	T3S2R4	OTROS	A	B	C	K'	D	LATITUD	LONGITUD
T. C. Providencia - Luis Moya	0.00	3	0	1805	4.3	70.8	2.5	9.0	6.3	2.2	2.6	1.6	0.7	75.1	2.5	22.4	0.087	0.502	22.390645	-102.239793
Loreto	32.30																			

ZACATECAS

39 CARR: Ramal a Nochistlán

CLAVE: 32545

RUTA: ZAC

AÑO: 2020

LUGAR	ESTACION				CLASIFICACION VEHICULAR EN PORCIENTO										COORDENADAS					
	KM	TE	SC	TDPA	M	A	B	C2	C3	T3S2	T3S3	T3S2R4	OTROS	A	B	C	K'	D	LATITUD	LONGITUD
T. C. Tepatitlán - Jaralillo	0.00	3	1	2308	8.0	80.7	1.8	7.8	1.2	0.2	0.1	0.1	0.1	88.7	1.8	9.5	0.111	0.510	21.354177	-102.788306
T. C. Tepatitlán - Jaralillo	0.00	3	2	2219	8.0	79.8	2.0	8.4	1.2	0.3	0.1	0.1	0.1	87.8	2.0	10.2	0.105	0.510	21.354178	-102.788309
Nochistlán	5.70	1	1	2816	7.9	78.6	1.8	10.4	0.9	0.2	0.1	0.0	0.1	86.5	1.8	11.7	0.109	0.507	21.363078	-102.842669
Nochistlán	5.70	1	2	2736	7.8	78.6	1.9	10.4	0.9	0.2	0.1	0.0	0.1	86.4	1.9	11.7	0.104	0.507	21.363079	-102.842671

40 CARR: Ramal a San Pedro Piedra Gorda

CLAVE: 00553

RUTA: ZAC-AGS

AÑO: 2020

LUGAR	ESTACION				CLASIFICACION VEHICULAR EN PORCIENTO										COORDENADAS					
	KM	TE	SC	TDPA	M	A	B	C2	C3	T3S2	T3S3	T3S2R4	OTROS	A	B	C	K'	D	LATITUD	LONGITUD
T. C. Aguascalientes - Zacatecas	0.00	3	0	1414	3.2	82.6	1.0	11.4	0.9	0.7	0.2	0.0	0.0	85.8	1.0	13.2	0.125	0.528	22.465645	-102.261776
Lim. Edos. Term. Zac. Ppia. Ags.	5.00																			
Lim. Edos. Term. Ags. Ppia. Zac.	8.00																			
San Pedro Piedra Gorda	9.00	1	0	2207	5.7	80.6	0.6	10.6	0.5	1.7	0.2	0.0	0.1	86.3	0.6	13.1	0.105	0.516	22.452032	-102.340341

41 CARR: San Gil - Jarillas

CLAVE: 00527

RUTA: AGS-012-ZAC

AÑO: 2020

LUGAR	ESTACION				CLASIFICACION VEHICULAR EN PORCIENTO										COORDENADAS					
	KM	TE	SC	TDPA	M	A	B	C2	C3	T3S2	T3S3	T3S2R4	OTROS	A	B	C	K'	D	LATITUD	LONGITUD
T. C. Rincón de Romos - Ciénega Grande	0.00	3	0	2401	8.2	71.3	1.4	14.2	2.0	2.1	0.7	0.0	0.1	79.5	1.4	19.1	0.083	0.501	22.211883	-102.023233
Guadalupe de Atlas	5.40	1	0	1983	14.5	61.8	2.9	17.2	1.4	1.5	0.5	0.1	0.1	76.3	2.9	20.8	0.085	0.505	22.267690	-102.028769
Lim. Edos. Term. Ags. Ppia. Zac.	10.00																			
Lim. Edos. Term. Zac. Ppia. Ags.	11.30																			
Jarillas	12.00																			

42 CARR: San Rafael - Villa García

CLAVE: 00525

RUTA: AGS-ZAC

AÑO: 2020

LUGAR	ESTACION				CLASIFICACION VEHICULAR EN PORCIENTO										COORDENADAS					
	KM	TE	SC	TDPA	M	A	B	C2	C3	T3S2	T3S3	T3S2R4	OTROS	A	B	C	K'	D	LATITUD	LONGITUD
T. C. Ent. La Calavera - Ent. San Pedro	0.00	3	0	1811	8.2	79.5	0.5	8.9	0.9	1.4	0.3	0.1	0.2	87.7	0.5	11.8	0.092	0.500	22.115857	-102.012412
Lim. Edos. Term. Ags. Ppia. Zac.	3.00																			
Villa García	10.00	1	0	2727	9.8	79.3	0.5	7.2	0.3	2.4	0.3	0.0	0.2	89.1	0.5	10.4	0.119	0.510	22.160726	-101.955117

ZACATECAS

43 CARR: Santa Mónica - Pozo de Gamboa

CLAVE: 32568

RUTA: ZAC

AÑO: 2020

LUGAR	ESTACION				CLASIFICACION VEHICULAR EN PORCIENTO														COORDENADAS	
	KM	TE	SC	TDPA	M	A	B	C2	C3	T3S2	T3S3	T3S2R4	OTROS	A	B	C	K'	D	LATITUD	LONGITUD
T. C. Aguascalientes - Zacatecas	0.00	3	0	6390	3.7	76.2	2.4	10.1	3.0	2.8	0.9	0.5	0.4	79.9	2.4	17.7	0.095	0.517	22.754239	-102.421648
Tacoaleche	7.60	3	0	3399	3.5	76.5	1.1	13.0	2.5	1.6	1.4	0.2	0.2	80.0	1.1	18.9	0.103	0.524	22.817842	-102.397304
Pozo de Gamboa	34.50																			

44 CARR: Sombrerete - González Ortega

CLAVE: 32568

RUTA: ZAC

AÑO: 2020

LUGAR	ESTACION				CLASIFICACION VEHICULAR EN PORCIENTO														COORDENADAS	
	KM	TE	SC	TDPA	M	A	B	C2	C3	T3S2	T3S3	T3S2R4	OTROS	A	B	C	K'	D	LATITUD	LONGITUD
T. C. Zacatecas - Durango	0.00	3	0	1075	3.2	78.4	2.6	12.4	1.7	1.1	0.4	0.1	0.1	81.6	2.6	15.8	0.112	0.507	23.656694	-103.543845
González Ortega	38.70	1	0	781	3.1	78.3	2.1	12.9	2.1	0.8	0.4	0.2	0.1	81.4	2.1	16.5	0.134	0.512	23.957863	-103.444075

45 CARR: Libramiento Noreste de Zacatecas (Cuota)

CLAVE: 32582

RUTA: ZAC-D

AÑO: 2020

LUGAR	ESTACION				CLASIFICACION VEHICULAR EN PORCIENTO														COORDENADAS	
	KM	TE	SC	TDPA	M	A	B	C2	C3	T3S2	T3S3	T3S2R4	OTROS	A	B	C	K'	D	LATITUD	LONGITUD
T. C. Aguascalientes - Zacatecas	0.00	3	0	5366	1.0	39.9	5.4	7.2	4.5	24.1	5.6	11.4	0.9	40.9	5.4	53.7	0.069	0.510	22.751604	-102.456342
T. C. Ent. Morelos - Saltillo	21.00	1	0	4710	1.1	44.7	7.0	11.8	5.1	14.6	4.3	10.7	0.7	45.8	7.0	47.2	0.079	0.520	22.861747	-102.625099

46 CARR: Tepatitlán - Jaralillo

CLAVE: 00146

RUTA: MEX-JAL-ZAC

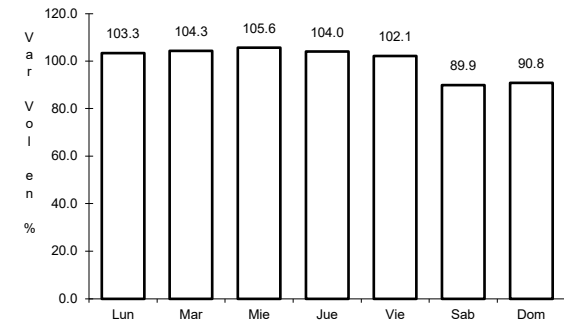
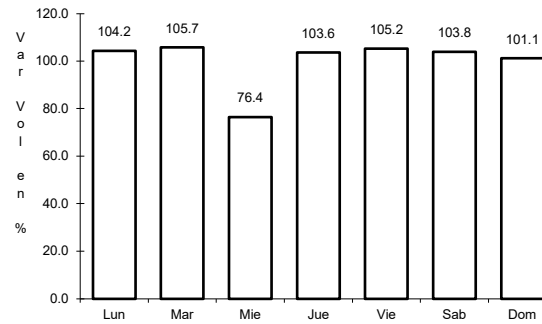
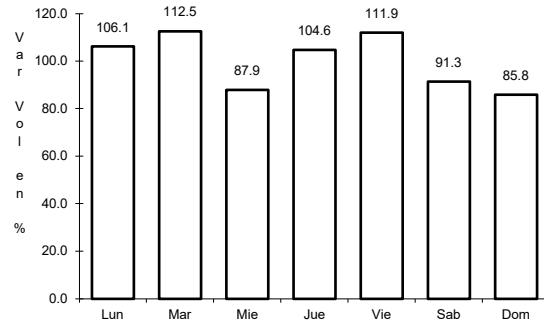
AÑO: 2020

LUGAR	ESTACION				CLASIFICACION VEHICULAR EN PORCIENTO														COORDENADAS	
	KM	TE	SC	TDPA	M	A	B	C2	C3	T3S2	T3S3	T3S2R4	OTROS	A	B	C	K'	D	LATITUD	LONGITUD
T. C. Lagos de Moreno - Guadalajara	0.00	3	0	8041	4.3	73.8	2.0	11.6	3.0	3.4	1.3	0.5	0.1	78.1	2.0	19.9	0.087	0.518	20.783552	-102.786765
T. Izq. Mezcala	22.40	3	0	1357	2.5	80.8	2.0	11.2	2.4	0.6	0.4	0.0	0.1	83.3	2.0	14.7	0.099	0.500	20.960602	-102.815583
Yahualica de González Gallo	57.40	3	1	1297	7.5	86.5	0.9	3.6	0.9	0.3	0.2	0.1	0.0	94.0	0.9	5.1	0.097	0.507	21.189101	-102.885554
Yahualica de González Gallo	57.40	3	2	1334	6.1	88.0	0.8	3.6	0.9	0.3	0.2	0.1	0.0	94.1	0.8	5.1	0.095	0.507	21.189101	-102.885549
T. Der. Mexicacán	72.45	3	0	900	2.2	82.5	1.1	11.8	1.5	0.8	0.1	0.0	0.0	84.7	1.1	14.2	0.098	0.502	21.251026	-102.804739
Lim. Edos. Term. Jal. Ppia. Zac.	83.50																			
Lim. Edos. Term. Zac. Ppia. Jal.	106.00																			
Teocaltiche	111.00	1	0	2859	3.7	87.4	2.1	4.1	0.9	1.2	0.5	0.1	0.0	91.1	2.1	6.8	0.085	0.505	21.434314	-102.575436
Teocaltiche	111.00	3	0	2592	4.5	81.6	1.3	9.3	1.3	1.2	0.7	0.1	0.0	86.1	1.3	12.6	0.093	0.502	21.446123	-102.572876
T. C. León - Aguascalientes	157.00	1	0	2176	3.4	80.9	1.5	7.1	2.4	3.0	1.2	0.2	0.3	84.3	1.5	14.2	0.088	0.501	21.643812	-102.277626

1 CARR: Aguascalientes - Jalpa

CLAVE: 00095

ruta: MEX-070



Km: 0.00 Tipo: 3 Sent: 1

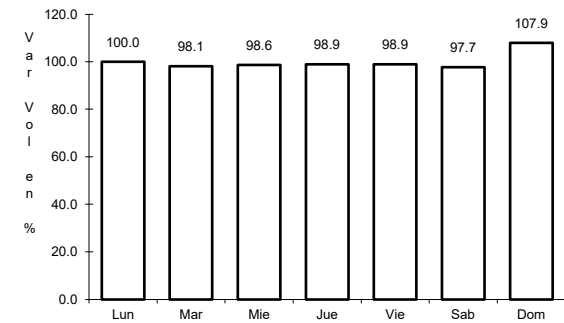
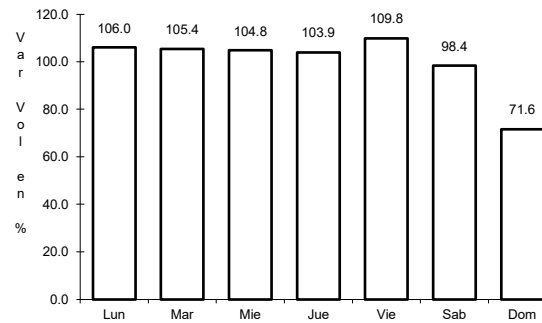
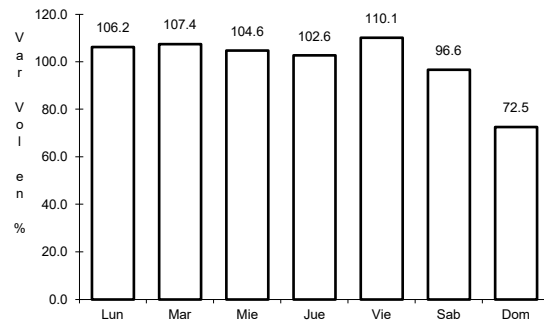
Km: 0.00 Tipo: 3 Sent: 2

Km: 90.66 Tipo: 1 Sent: 0

2 CARR: Aguascalientes - Zacatecas

CLAVE: 00524

ruta: MEX-045



Km: 6.00 Tipo: 1 Sent: 1

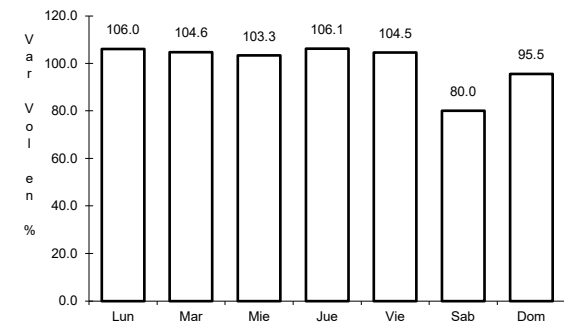
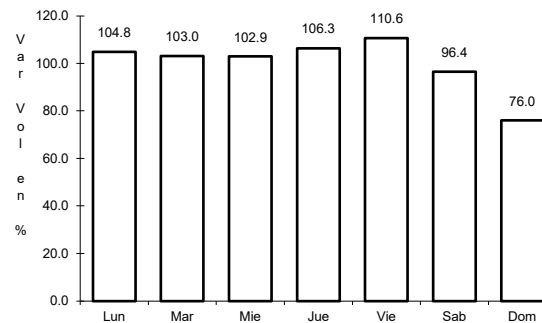
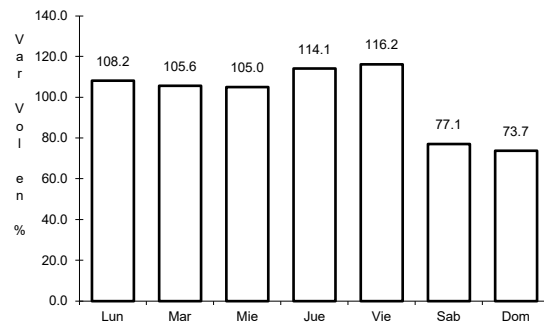
Km: 6.00 Tipo: 1 Sent: 2

Km: 40.90 Tipo: 3 Sent: 0

3 CARR: Blvd. Guadalupe - Zacatecas - La Escondida

CLAVE: 00544

ruta: MEX-045



Km: 7.70 Tipo: 1 Sent: 1

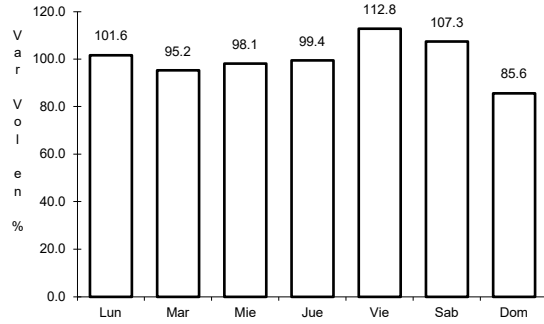
Km: 7.70 Tipo: 1 Sent: 2

Km: 14.50 Tipo: 1 Sent: 1

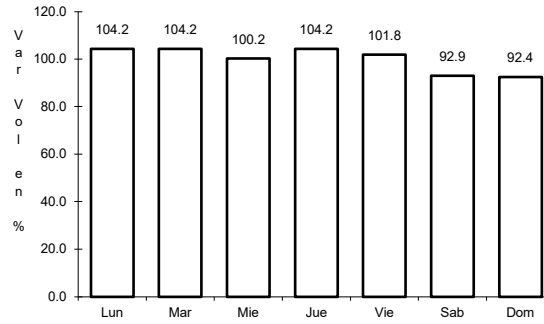
4 CARR: Carbonera - T. C. (Ent. Morelos - Saltillo)

CLAVE: 00218

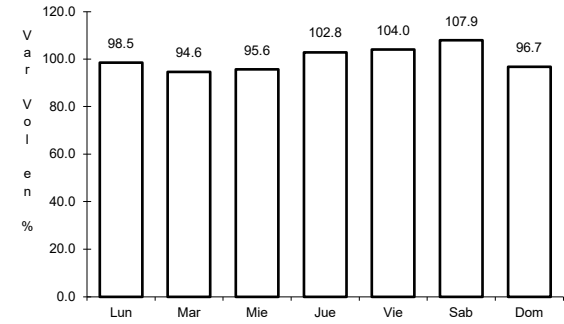
ruta: MEX-062



Km: 0.00 Tipo: 3 Sent: 0



Km: 18.00 Tipo: 1 Sent: 0

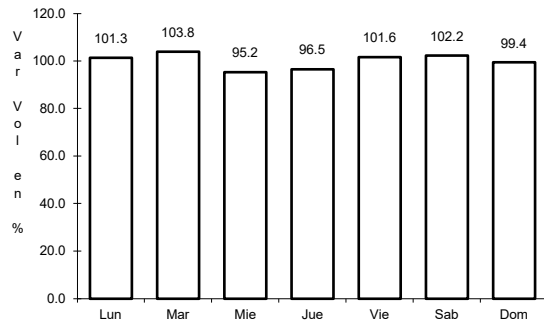


Km: 112.00 Tipo: 1 Sent: 0

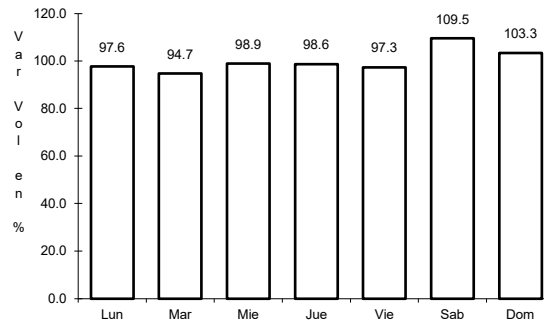
5 CARR: Ent. Cosío - Ent. Cuauhtémoc

CLAVE: 00579

ruta: MEX-045



Km: 57.20 Tipo: 3 Sent: 0

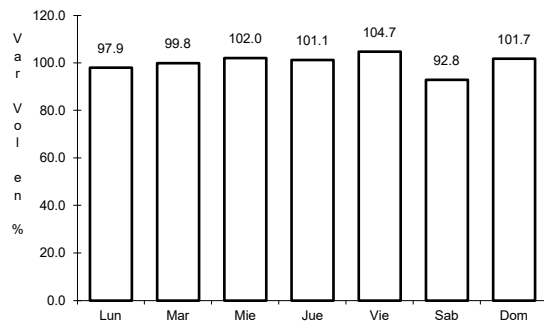


Km: 70.00 Tipo: 1 Sent: 0

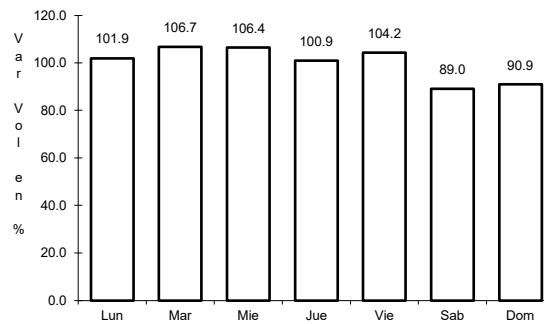
6 CARR: Ent. La Chicharrona - Cuencamé

CLAVE: 00152

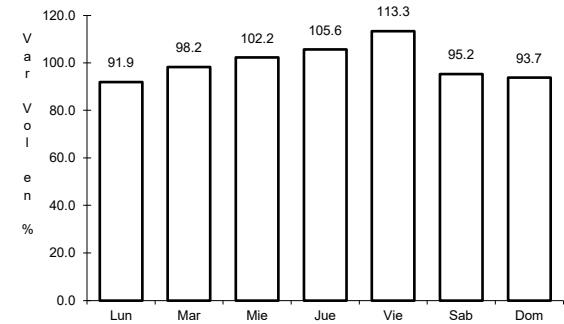
ruta: MEX-049



Km: 0.00 Tipo: 3 Sent: 1



Km: 0.00 Tipo: 3 Sent: 2

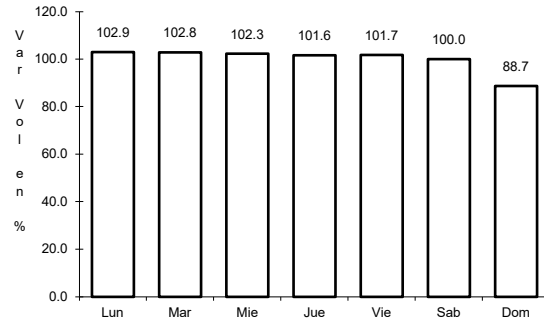


Km: 124.50 Tipo: 1 Sent: 0

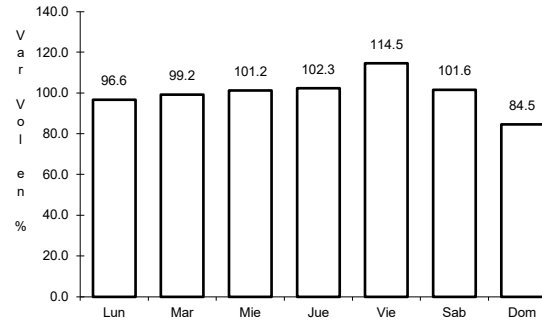
7 CARR: Ent. Morelos - Ent. Noria de Gringos

CLAVE: 00544

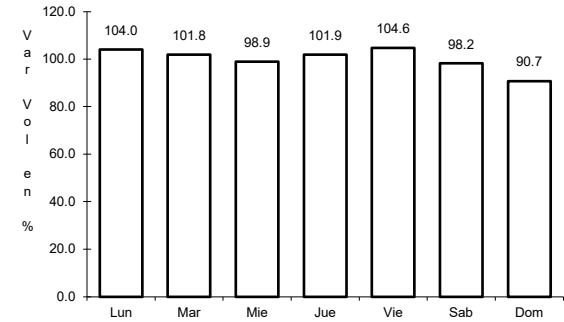
RUTA: MEX-045



Km: 0.50 Tipo: 1 Sent: 1



Km: 0.50 Tipo: 1 Sent: 2

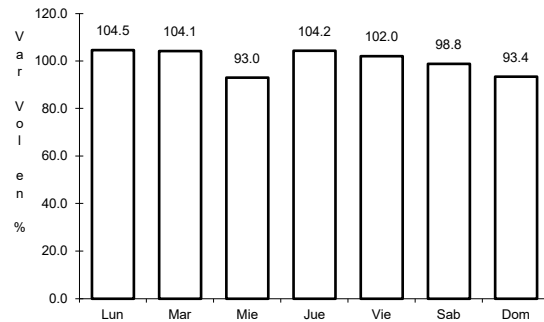


Km: 0.50 Tipo: 3 Sent: 0

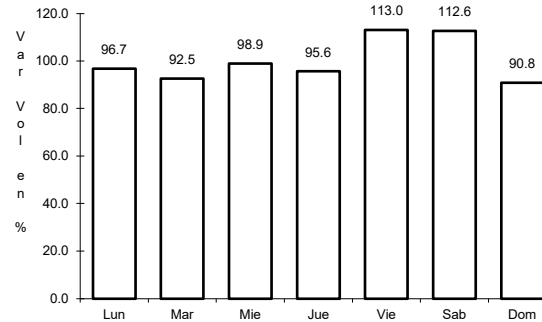
8 CARR: Ent. Morelos - Saltillo

CLAVE: 00149

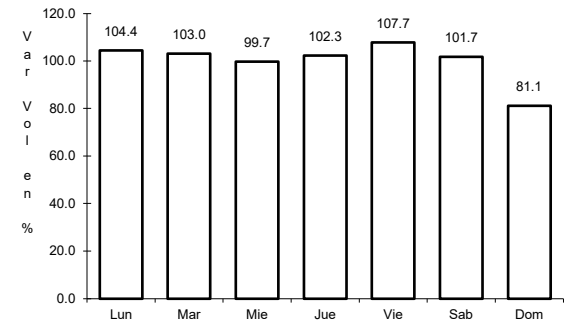
RUTA: MEX-054



Km: 0.00 Tipo: 3 Sent: 1



Km: 0.00 Tipo: 3 Sent: 2

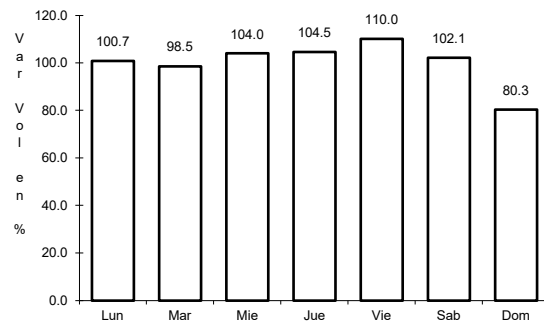


Km: 333.00 Tipo: 3 Sent: 1

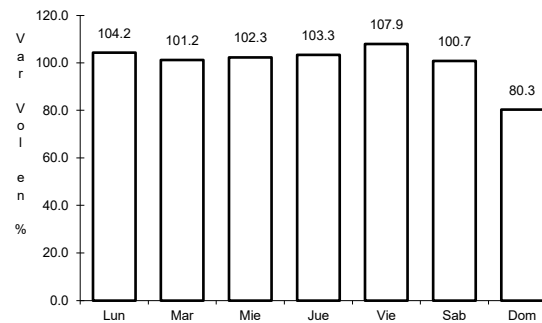
9 CARR: Ent. Rivier - San Marcos

CLAVE: 00285

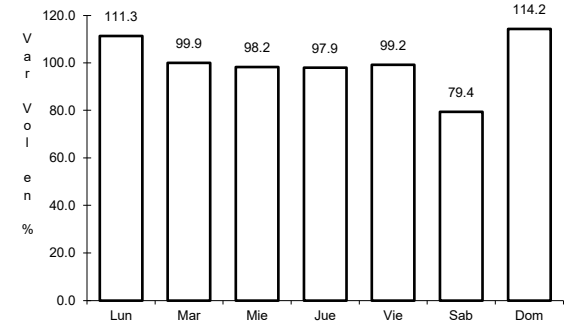
RUTA: MEX-066



Km: 0.00 Tipo: 3 Sent: 1



Km: 0.00 Tipo: 3 Sent: 2

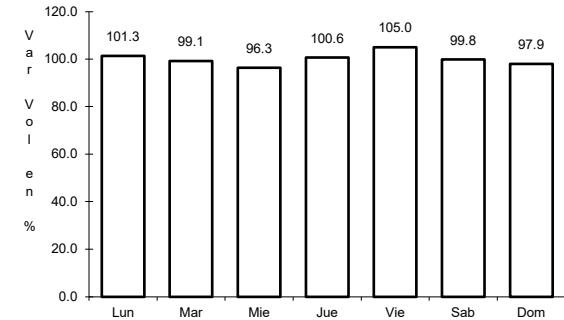
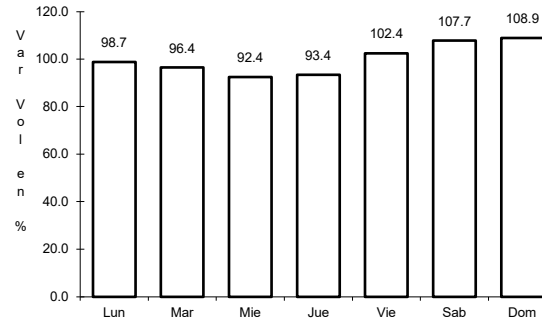
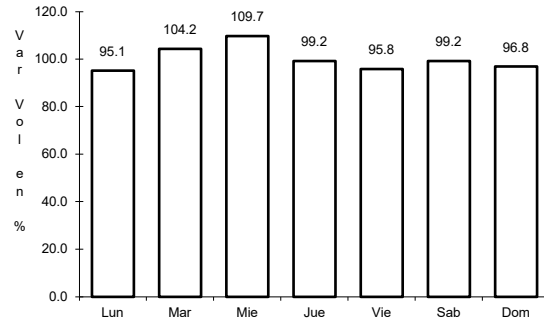


Km: 55.34 Tipo: 1 Sent: 0

10 CARR: Ent. Tesistán - Ent. Malpaso

CLAVE: 00584

ruta: MEX-023



Km: 54.00 Tipo: 1 Sent: 0

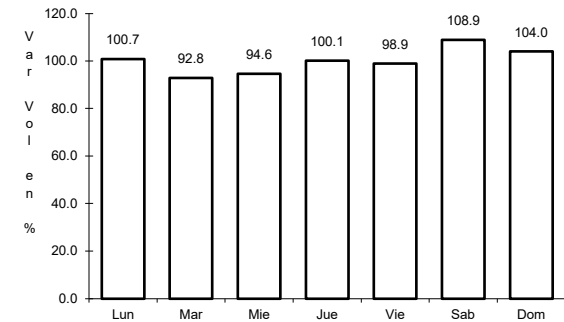
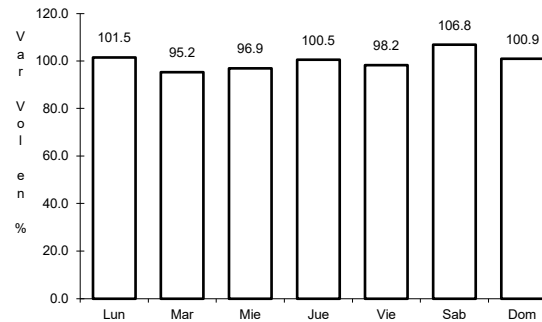
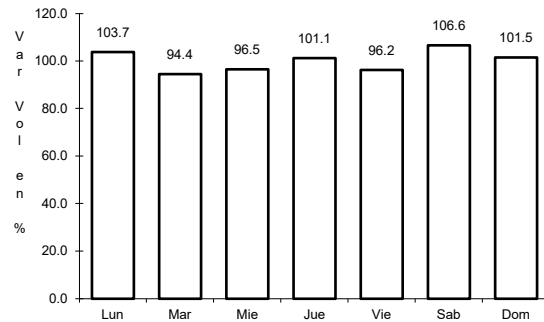
Km: 275.00 Tipo: 1 Sent: 1

Km: 275.00 Tipo: 1 Sent: 2

11 CARR: Fresnillo - Valparaíso

CLAVE: 32547

ruta: MEX-044



Km: 0.00 Tipo: 3 Sent: 0

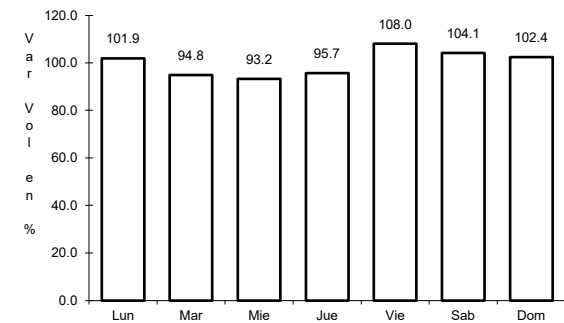
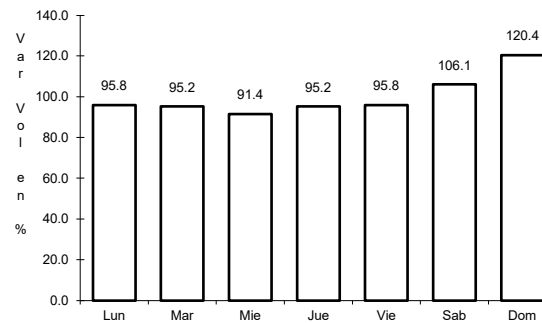
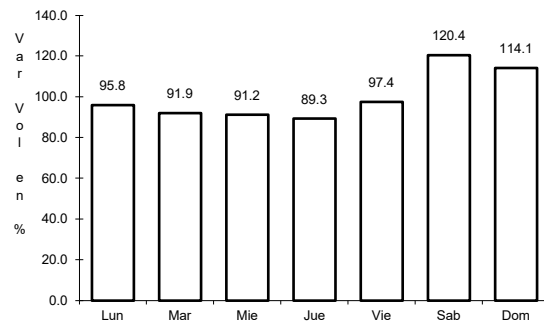
Km: 45.00 Tipo: 3 Sent: 0

Km: 90.00 Tipo: 1 Sent: 0

12 CARR: Guadalajara - Zacatecas

CLAVE: 00150

ruta: MEX-054



Km: 6.19 Tipo: 3 Sent: 1

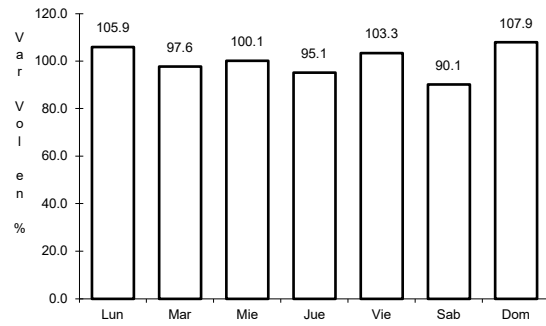
Km: 6.19 Tipo: 3 Sent: 2

Km: 159.39 Tipo: 1 Sent: 0

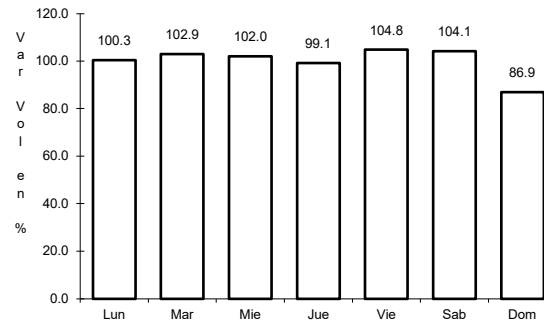
13 CARR: Jerez - Fresnillo

CLAVE: 32542

ruta: MEX-023



Km: 0.00 Tipo: 3 Sent: 0

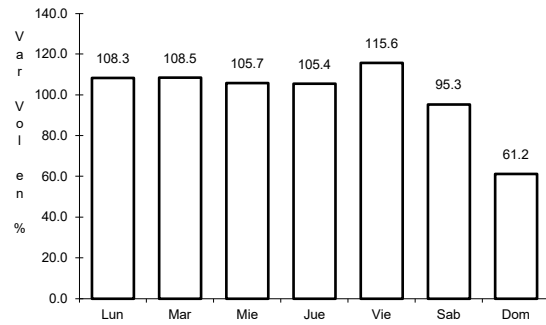


Km: 60.00 Tipo: 1 Sent: 0

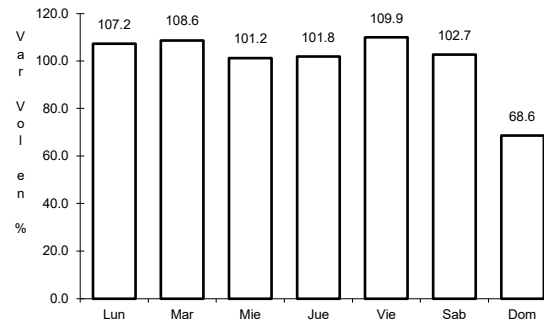
14 CARR: Libramiento de Guadalupe - Zacatecas

CLAVE: 32582

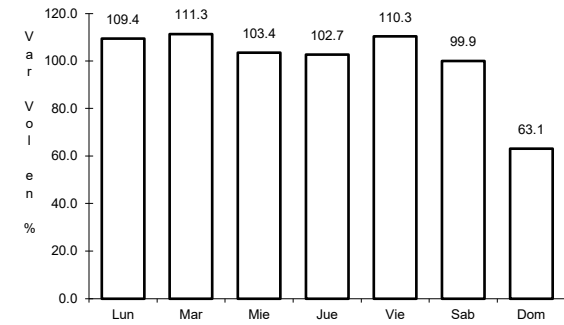
ruta: MEX-045



Km: 13.00 Tipo: 3 Sent: 1



Km: 13.00 Tipo: 3 Sent: 2

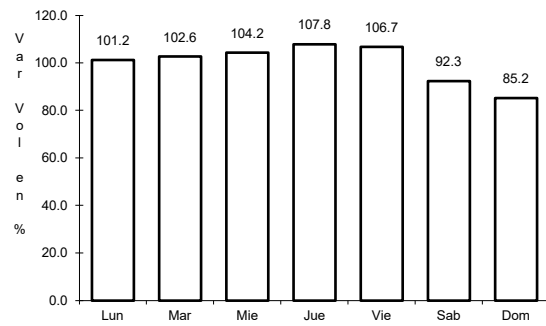


Km: 17.50 Tipo: 1 Sent: 1

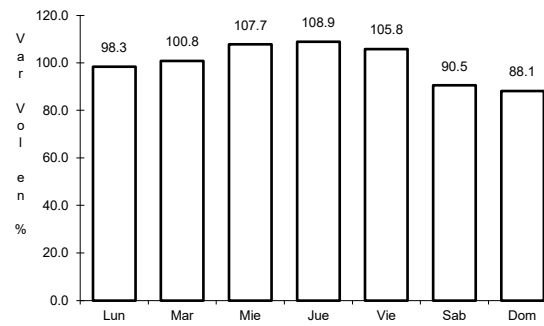
15 CARR: Libramiento de Río Grande

CLAVE:

ruta: MEX-049



Km: 55.90 Tipo: 3 Sent: 0

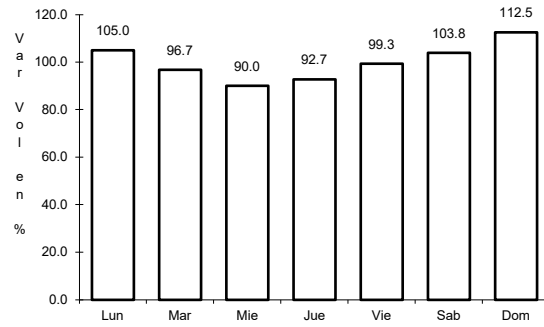


Km: 68.59 Tipo: 1 Sent: 0

16 CARR: Libramiento de Sombrerete

CLAVE:

RUTA: MEX-045



Km: 163.50

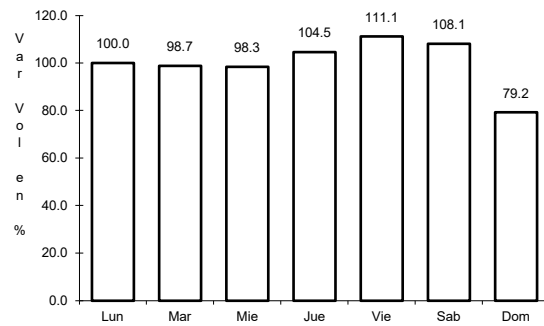
Tipo: 1

Sent: 0

17 CARR: Providencia - Luis Moya

CLAVE: 00112

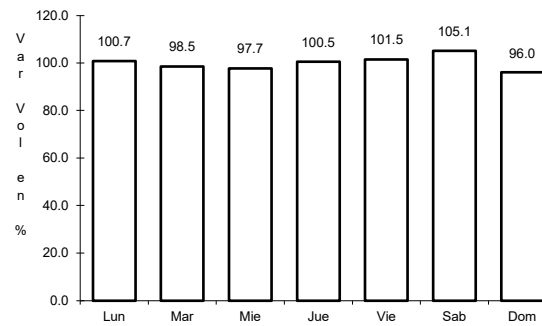
RUTA: MEX-071



Km: 0.00

Tipo: 3

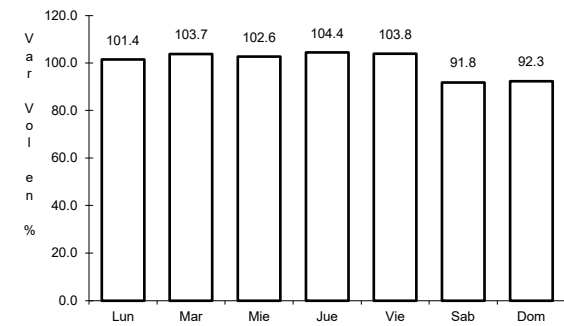
Sent: 0



Km: 21.22

Tipo: 3

Sent: 0



Km: 43.52

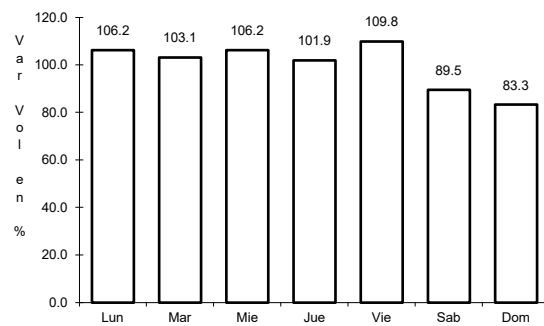
Tipo: 1

Sent: 0

18 CARR: Ramal a Aeropuerto Zacatecas

CLAVE: 32546

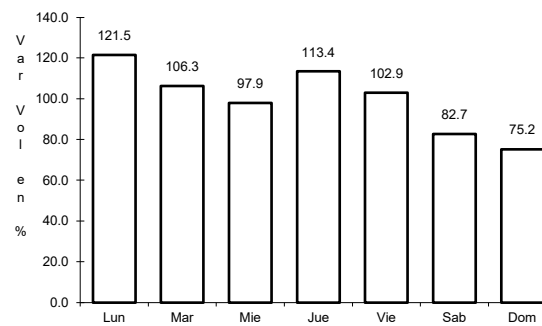
RUTA: MEX-045



Km: 0.00

Tipo: 3

Sent: 1



Km: 0.00

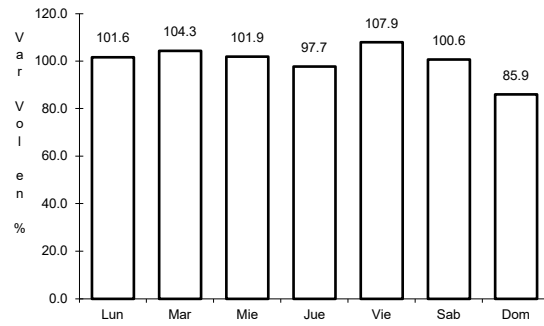
Tipo: 3

Sent: 2

19 CARR: Ramal a Concepción del Oro

CLAVE: 32565

RUTA: MEX-054



Km: 0.00

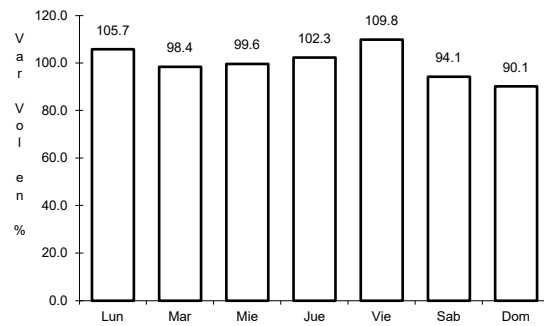
Tipo: 3

Sent: 0

20 CARR: Ramal a Francisco Murguía (Nieves)

CLAVE: 32541

RUTA: MEX-049



Km: 0.00

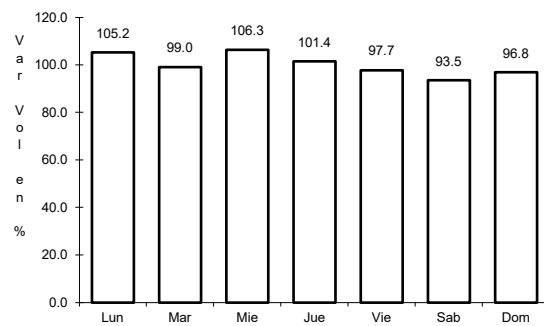
Tipo: 3

Sent: 0

21 CARR: Ramal a Gral. Pánfilo Natera

CLAVE: 32559

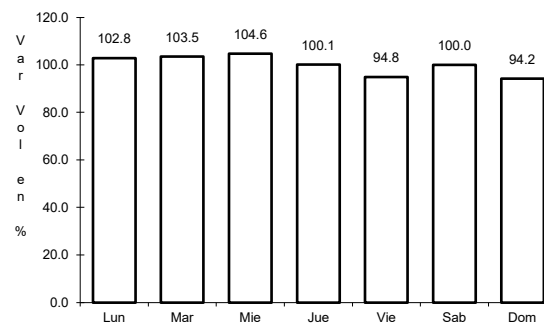
RUTA: MEX-049



Km: 0.00

Tipo: 3

Sent: 1



Km: 0.00

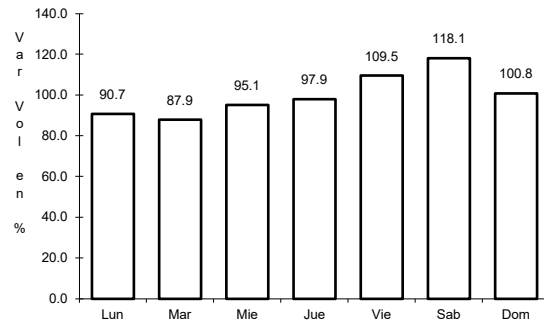
Tipo: 3

Sent: 2

22 CARR: Ramal a Ruinas de Chicomostoc

CLAVE: 00544

ruta: MEX-045



Km: 0.00

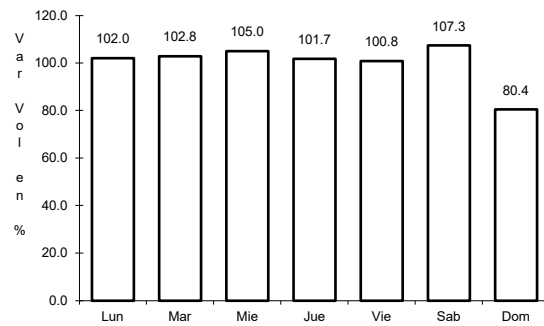
Tipo: 3

Sent: 0

23 CARR: Ramal a San Martín

CLAVE: 00544

ruta: MEX-045



Km: 0.00

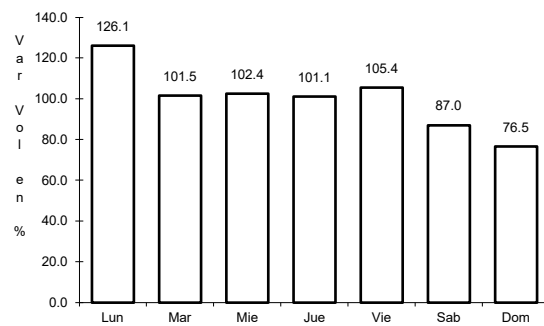
Tipo: 3

Sent: 0

24 CARR: Ramal a Villa de Cos

CLAVE: 32564

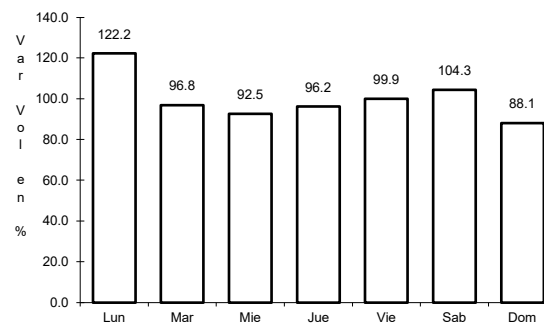
ruta: MEX-054



Km: 0.00

Tipo: 3

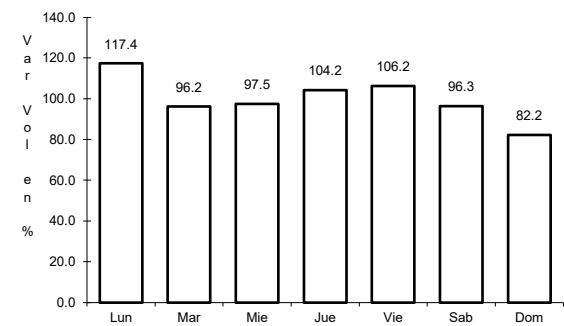
Sent: 1



Km: 0.00

Tipo: 3

Sent: 2



Km: 3.30

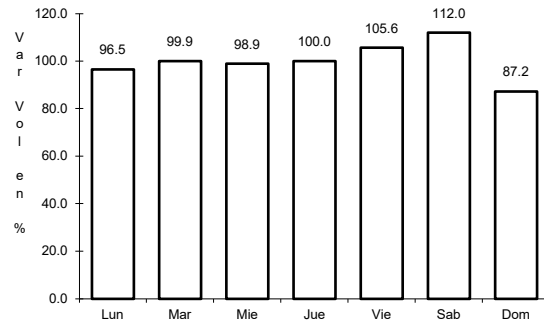
Tipo: 1

Sent: 1

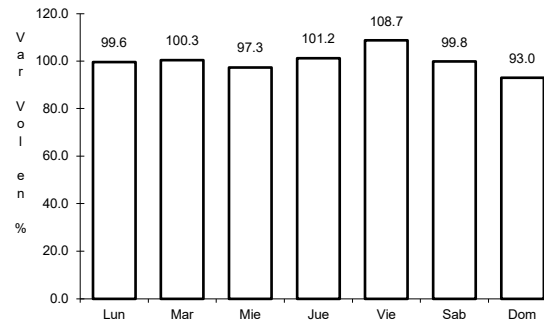
25 CARR: San Luis Potosí - Ent. Arcinas

CLAVE: 00134

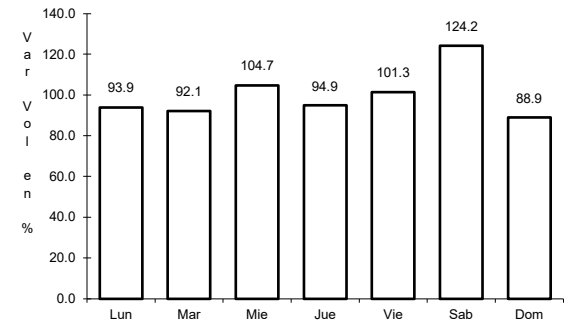
ruta: MEX-049



Km: 9.35 Tipo: 3 Sent: 1



Km: 9.35 Tipo: 3 Sent: 2

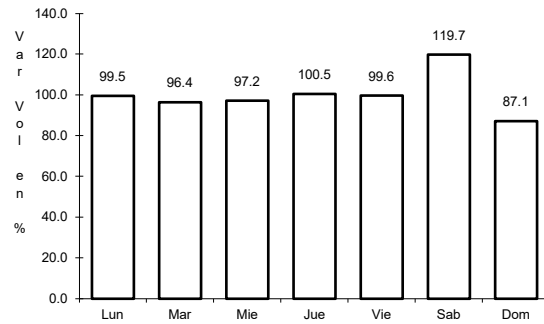


Km: 162.98 Tipo: 1 Sent: 1

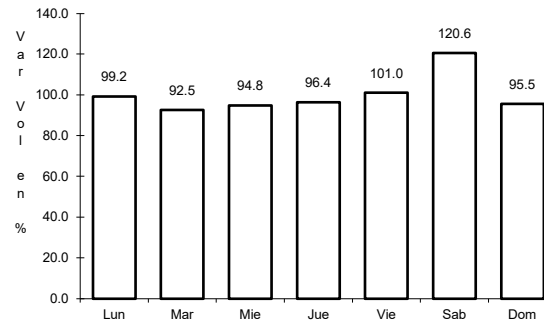
26 CARR: San Luis Potosí - Lagos de Moreno

CLAVE: 00133

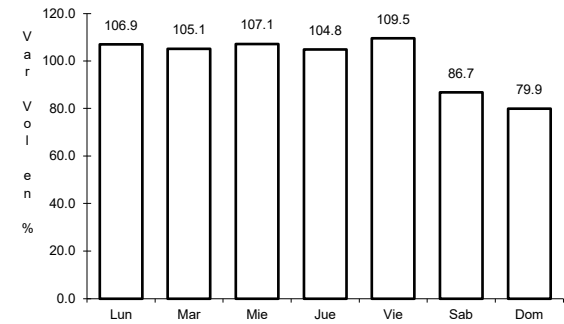
ruta: MEX-070-080



Km: 0.00 Tipo: 3 Sent: 1



Km: 0.00 Tipo: 3 Sent: 2

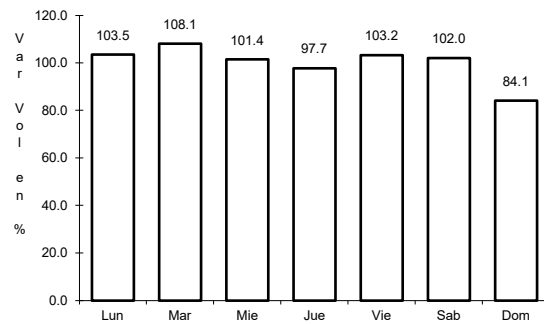


Km: 61.90 Tipo: 3 Sent: 0

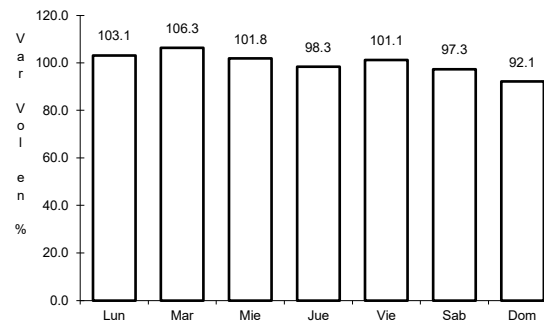
27 CARR: Zacatecas - Durango

CLAVE: 00544

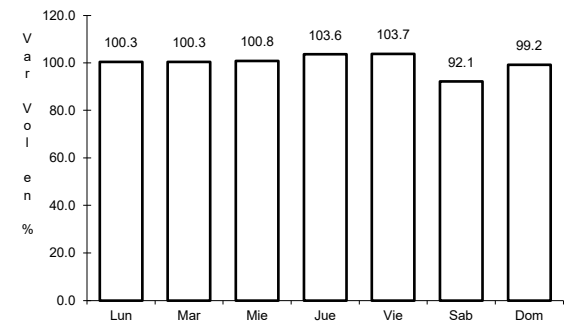
ruta: MEX-045



Km: 6.40 Tipo: 3 Sent: 1



Km: 6.40 Tipo: 3 Sent: 2

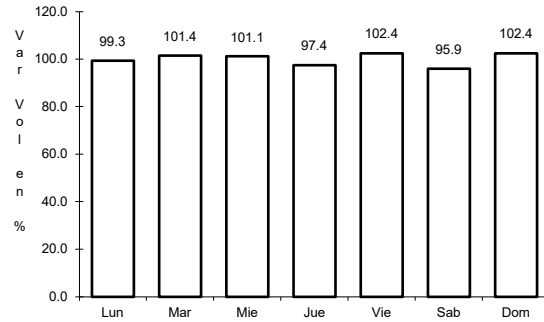


Km: 261.70 Tipo: 1 Sent: 0

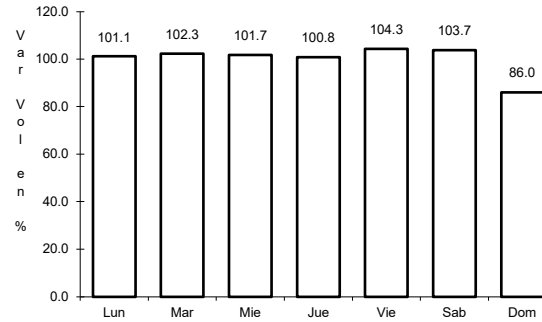
28 CARR: Ent. Cuauhtémoc - Ent. Osiris (Cuota)

CLAVE: 32558

RUTA: MEX-045D



Km: 70.40 Tipo: 3 Sent: 0

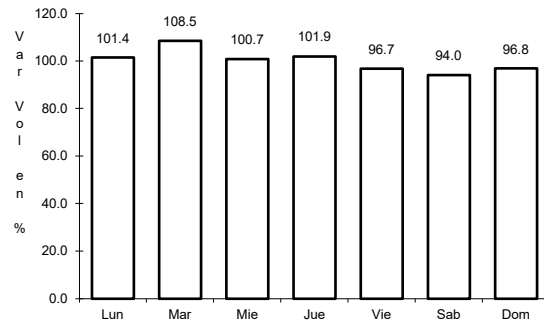


Km: 103.40 Tipo: 1 Sent: 0

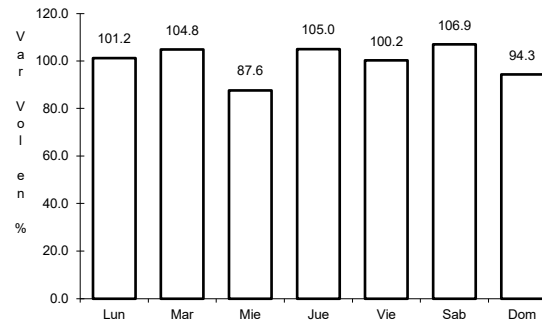
29 CARR: Libramiento de Fresnillo (Cuota)

CLAVE: 32581

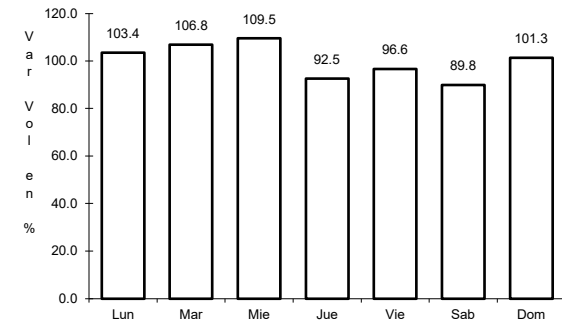
RUTA: MEX-045D



Km: 49.80 Tipo: 3 Sent: 1



Km: 49.80 Tipo: 3 Sent: 2

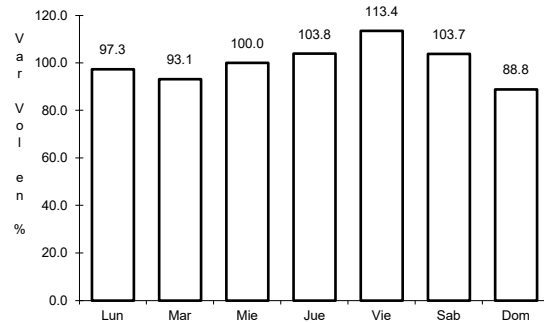


Km: 69.85 Tipo: 1 Sent: 1

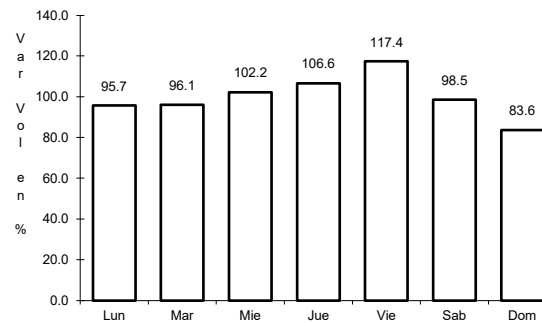
30 CARR: Libramiento de Víctor Rosales (Cuota)

CLAVE: 32015

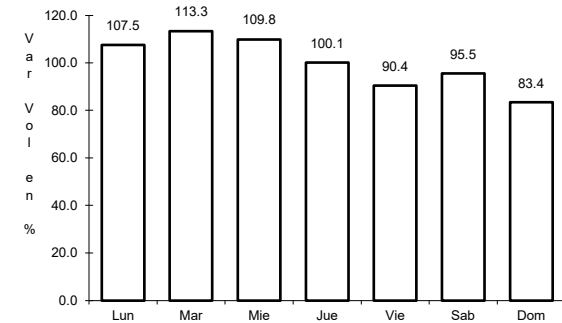
RUTA: MEX-045D



Km: 0.00 Tipo: 3 Sent: 1



Km: 0.00 Tipo: 3 Sent: 2

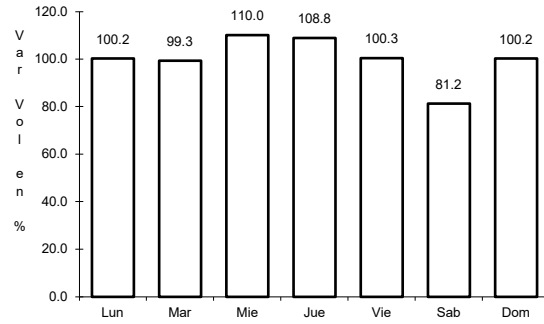


Km: 12.20 Tipo: 1 Sent: 1

31 CARR: Calera de Víctor Rosales - Santiaguillo

CLAVE: 32016

RUTA: ZAC-016



Km: 0.00

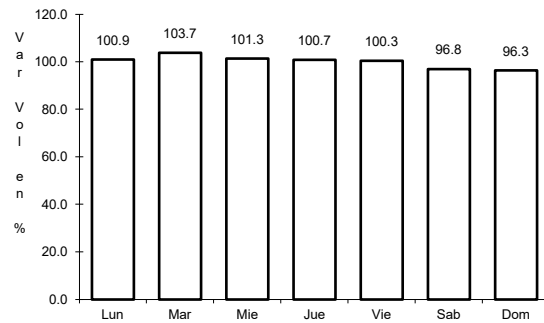
Tipo: 3

Sent: 0

32 CARR: Cieneguillas - Zacatecas

CLAVE: 32579

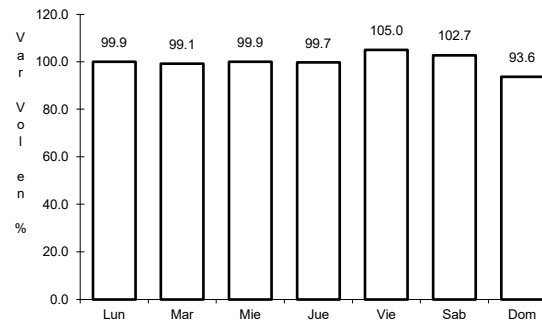
RUTA: ZAC



Km: 0.00

Tipo: 3

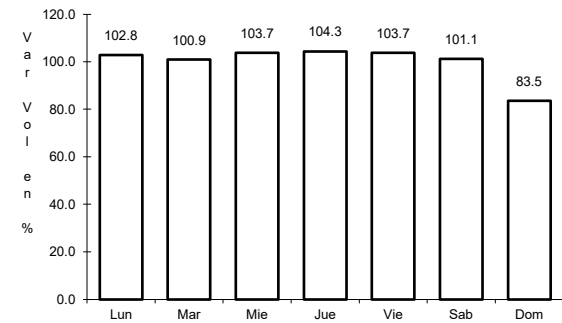
Sent: 0



Km: 7.70

Tipo: 3

Sent: 1



Km: 7.70

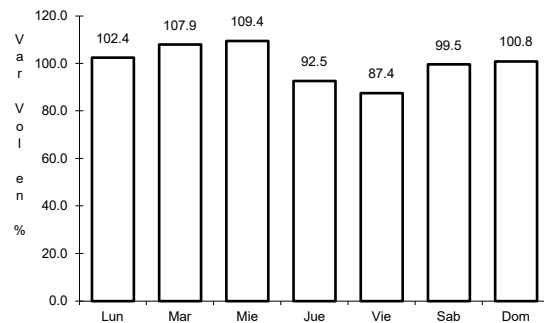
Tipo: 3

Sent: 2

33 CARR: Corral de Piedras - Tlaltenango

CLAVE: 32579

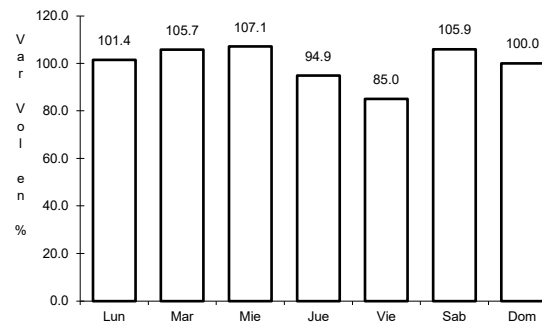
RUTA: ZAC



Km: 0.00

Tipo: 3

Sent: 0



Km: 57.10

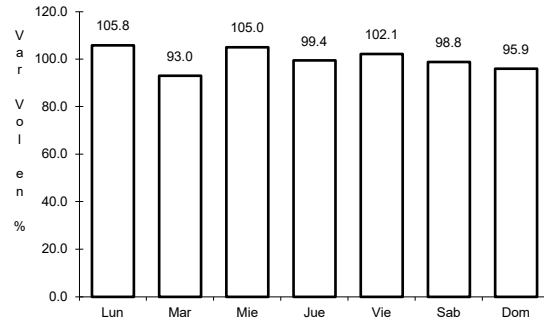
Tipo: 1

Sent: 0

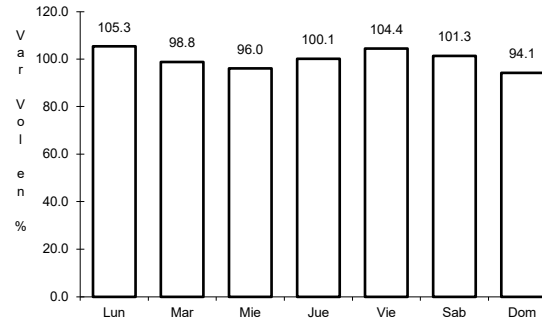
34 CARR: Ent. Ojo Caliente - Ent. Ojuelos de Jalisco

CLAVE: 00126

ruta: ZAC



Km: 0.00 Tipo: 3 Sent: 0

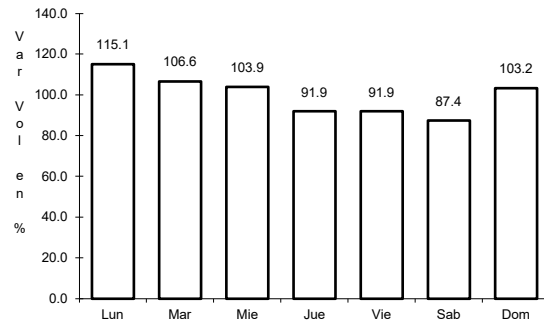


Km: 16.00 Tipo: 3 Sent: 0

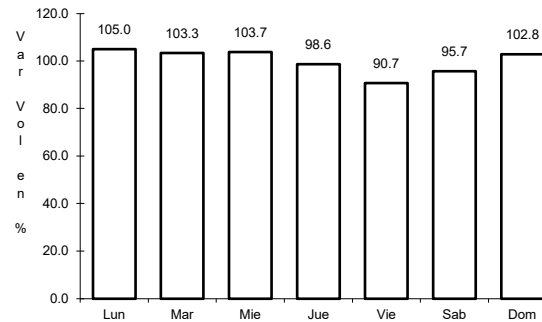
35 CARR: Fresnillo - Ent. Bañón

CLAVE: 32070

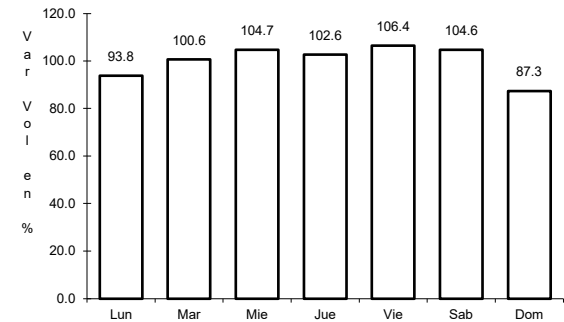
ruta: ZAC



Km: 2.40 Tipo: 3 Sent: 1



Km: 2.40 Tipo: 3 Sent: 2

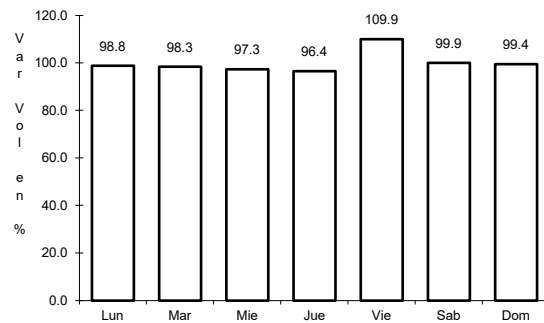


Km: 49.00 Tipo: 1 Sent: 0

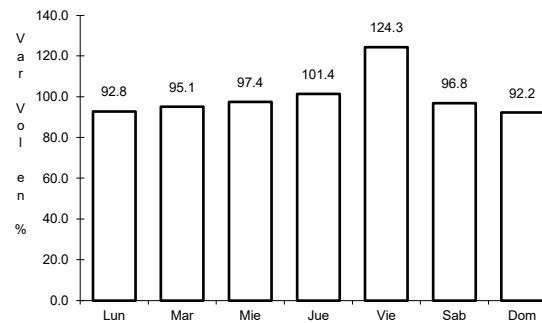
36 CARR: Fresnillo - Plateros

CLAVE: 32022

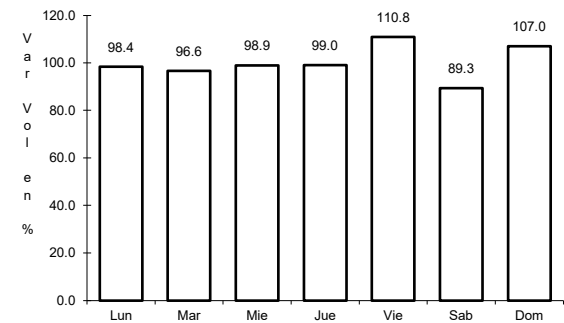
ruta: ZAC-022



Km: 0.00 Tipo: 3 Sent: 1



Km: 0.00 Tipo: 3 Sent: 1

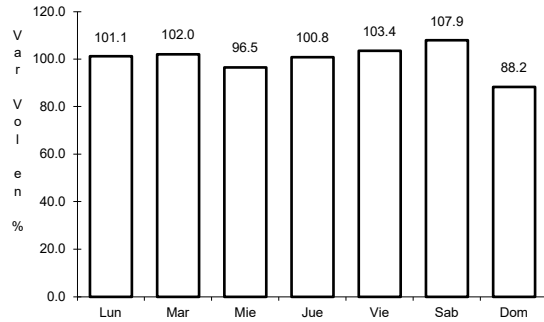


Km: 0.00 Tipo: 3 Sent: 2

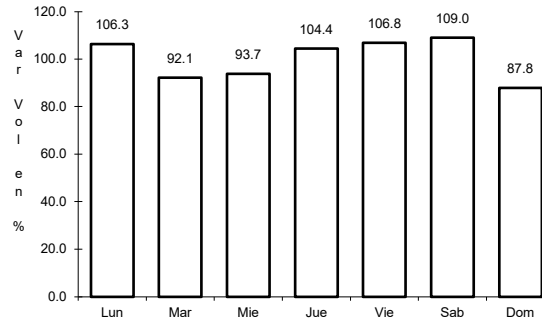
37 CARR: Guadalupe - Ent. Cuauhtémoc

CLAVE: 00579

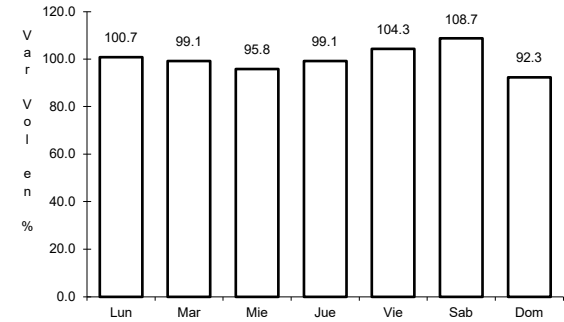
RUTA: ZAC-118



Km: 0.00 Tipo: 3 Sent: 1



Km: 0.00 Tipo: 3 Sent: 2

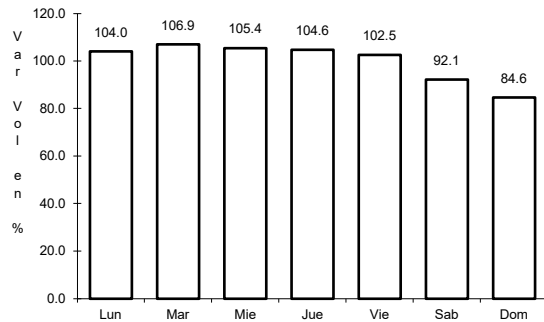


Km: 39.31 Tipo: 3 Sent: 0

38 CARR: Ramal a Loreto

CLAVE: 32067

RUTA: ZAC

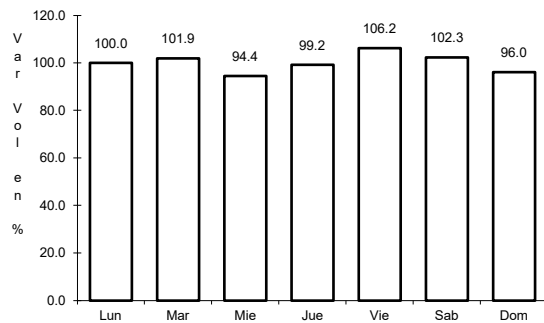


Km: 0.00 Tipo: 3 Sent: 0

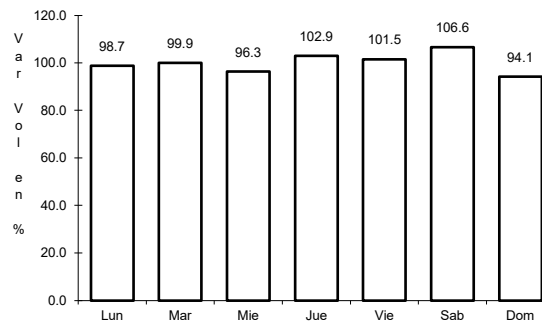
39 CARR: Ramal a Nochistlán

CLAVE: 32545

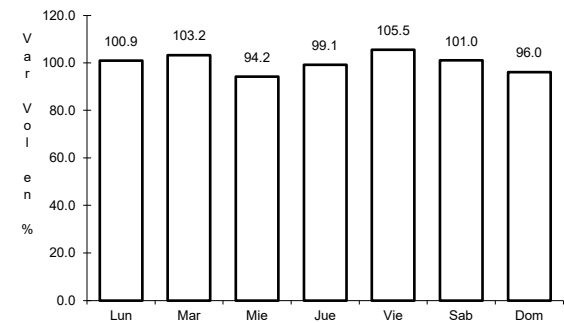
RUTA: ZAC



Km: 0.00 Tipo: 3 Sent: 1



Km: 0.00 Tipo: 3 Sent: 2

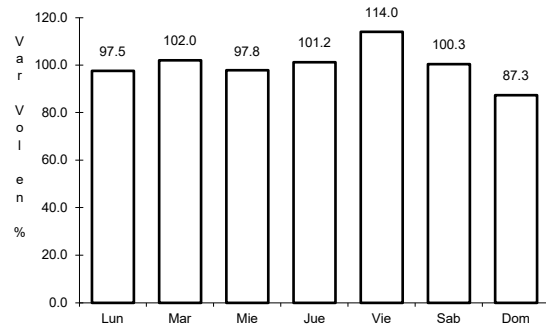


Km: 5.70 Tipo: 1 Sent: 1

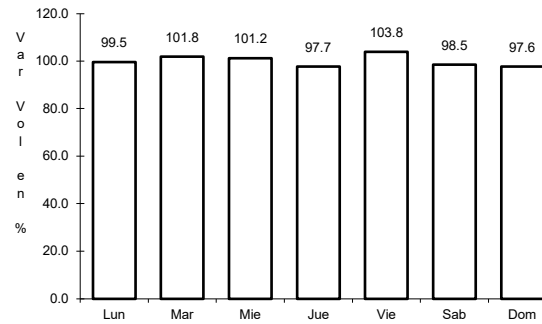
40 CARR: Ramal a San Pedro Piedra Gorda

CLAVE: 00553

RUTA: ZAC-AGS



Km: 0.00 Tipo: 3 Sent: 0

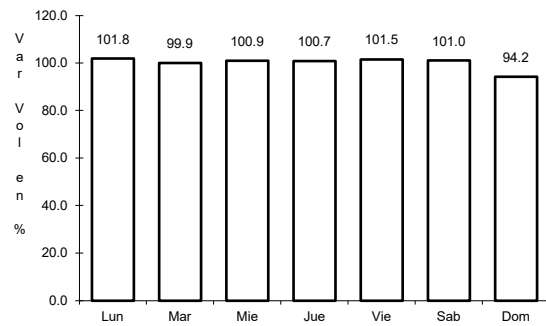


Km: 9.00 Tipo: 1 Sent: 0

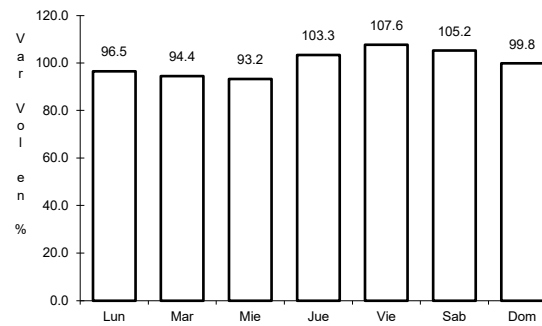
41 CARR: San Gil - Jarillas

CLAVE: 00527

RUTA: AGS-012-ZAC



Km: 0.00 Tipo: 3 Sent: 0

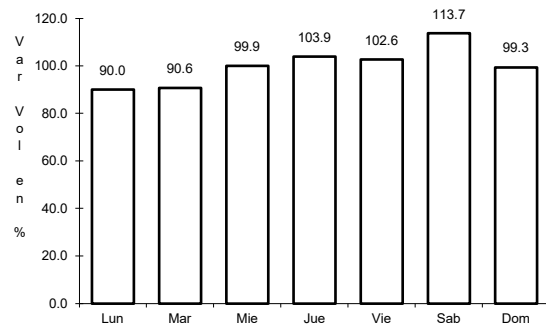


Km: 5.40 Tipo: 1 Sent: 0

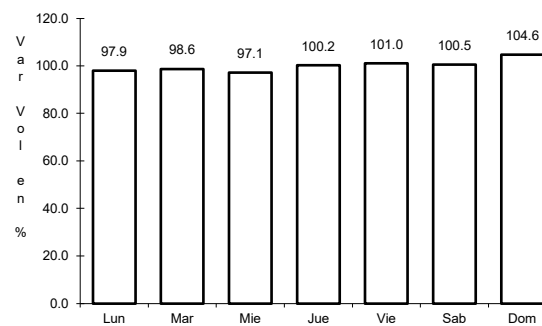
42 CARR: San Rafael - Villa García

CLAVE: 00525

RUTA: AGS-ZAC



Km: 0.00 Tipo: 3 Sent: 0

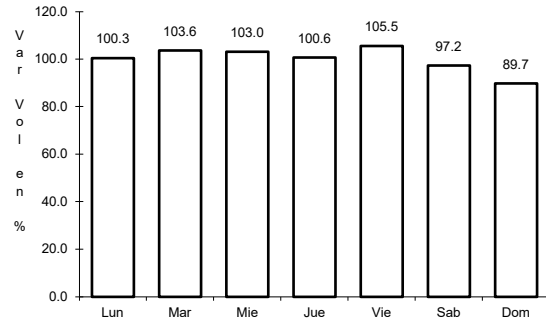


Km: 10.00 Tipo: 1 Sent: 0

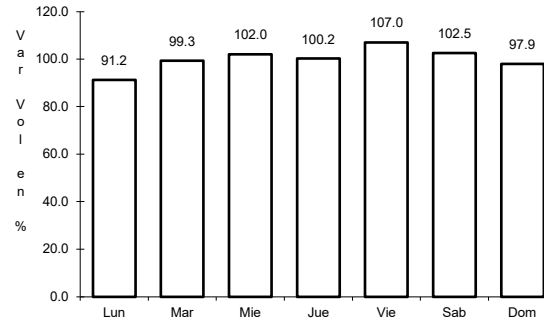
43 CARR: Santa Mónica - Pozo de Gamboa

CLAVE: 32568

RUTA: ZAC



Km: 0.00 Tipo: 3 Sent: 0

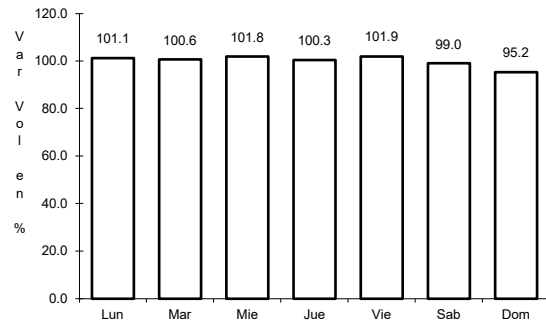


Km: 7.60 Tipo: 3 Sent: 0

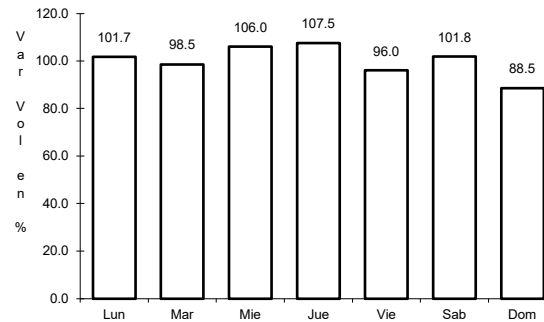
44 CARR: Sombrerete - González Ortega

CLAVE: 32568

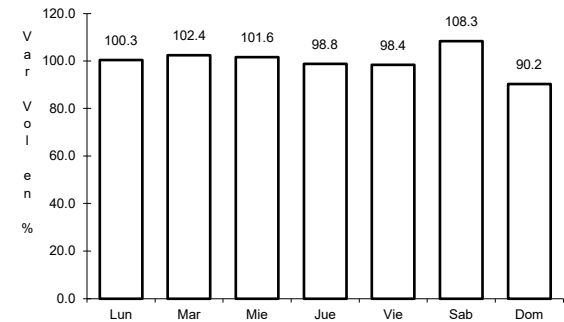
RUTA: ZAC



Km: 0.00 Tipo: 3 Sent: 0



Km: 38.70 Tipo: 1 Sent: 0

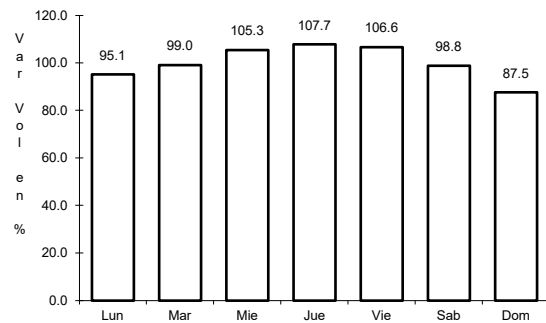


Km: 157.00 Tipo: 1 Sent: 0

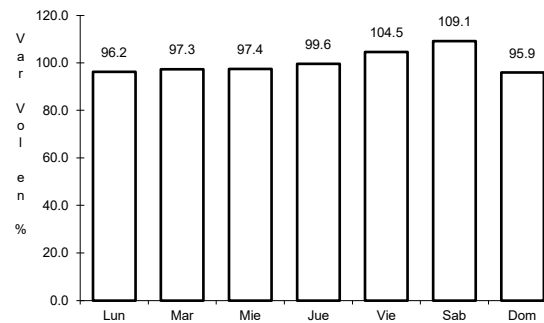
45 CARR: Libramiento Noreste de Zacatecas (Cuota)

CLAVE: 32582

RUTA: ZAC-D

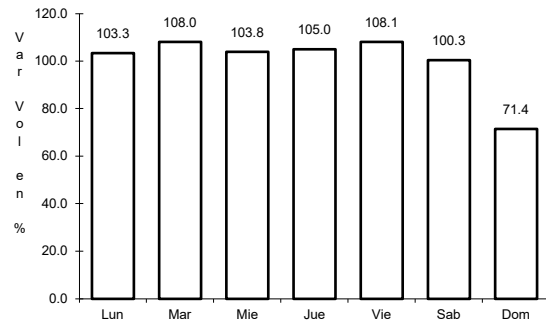


Km: 0.00 Tipo: 3 Sent: 0



Km: 21.00 Tipo: 1 Sent: 0

46 CARR: Tepatlán - Jaralillo

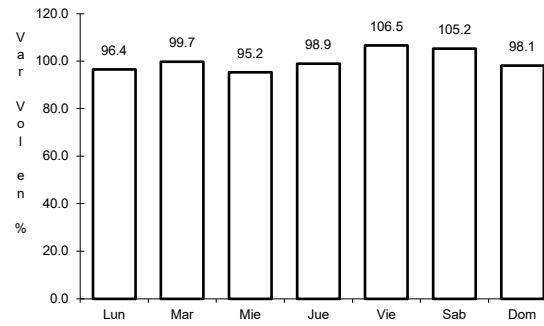


Km: 0.00

Tipo: 3

Sent: 0

CLAVE: 00146

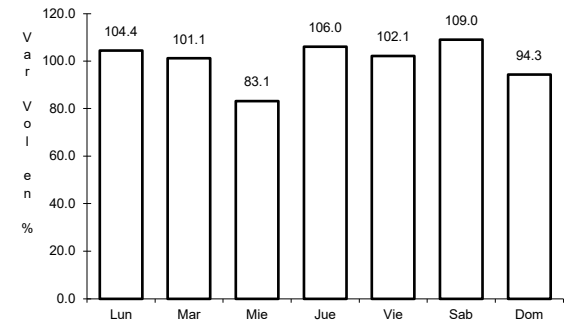


Km: 72.45

Tipo: 3

Sent: 0

RUTA: MEX-JAL-ZAC



Km: 157.00

Tipo: 1

Sent: 0