

YUCATAN

---RED FEDERAL LIBRE---

1 Campeche - Mérida	MEX-180
2 Campeche - Umán	MEX-261
3 Cansahcab - Tizimin	MEX-176
4 Conkal - Puerto Chicxulub	MEX-176
5 Dzitbalché - Ent. San Bernardo	MEX-180
6 Ent. Poxilá - Mérida	MEX-180
7 Hunucmá - Sisal	MEX-281
8 Libramiento Conkal - Mococho - Baca	MEX-176
9 Libramiento de Conkal	MEX
10 Libramiento de Progreso	MEX-261
11 Libramiento de Tahmek - Hoctun - Xocchel	MEX-180
12 Mérida - Celestún	MEX-281
13 Mérida - Dzilam de Bravo	MEX-176
14 Mérida - Progreso	MEX-261
15 Mérida - Puerto Juárez	MEX-180
16 Mérida - Tekanto	MEX-180
17 Mérida - Tetiz	MEX-281
18 Muna - Felipe Carrillo Puerto	MEX-184
19 Ramal a Panabá	MEX-295
20 Teya -Peto	MEX-184
21 Tzucacab - Santa Rosa	MEX
22 Valladolid - Felipe Carrillo Puerto	MEX-295
23 Valladolid - Río Lagartos	MEX-295

---RED FEDERAL DE CUOTA---

24 Mérida - Cancún (Cuota)	MEX-180D
----------------------------	----------

---RED ESTATAL LIBRE---

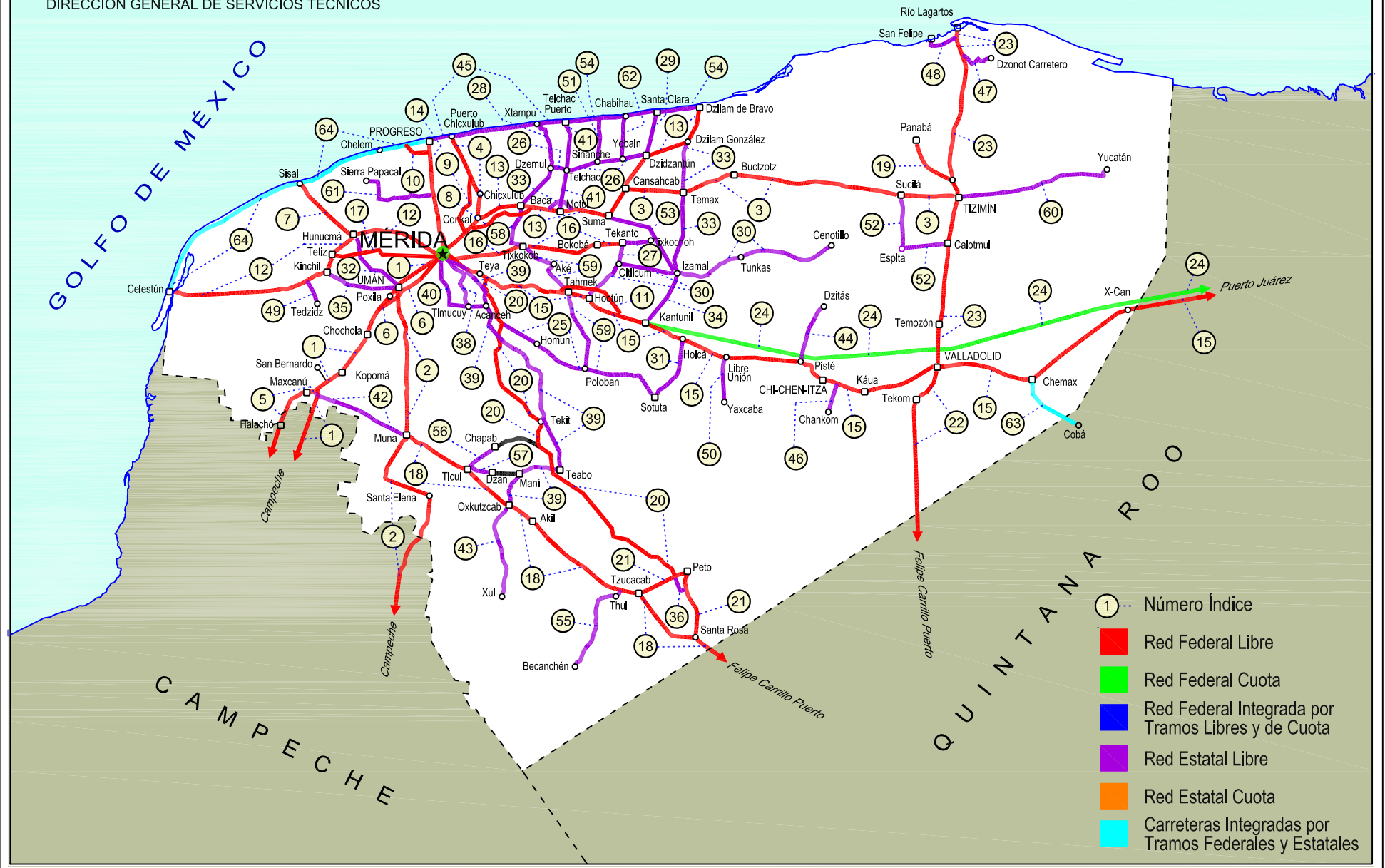
25 Acanceh - Estación Polabán	YUC
26 Baca - Dzidzantún	YUC
27 Citilcum - Tixkochoh	YUC
28 Dzemul - Xtampú	YUC
29 Dzidzantún - Santa Clara	YUC
30 Hoctún - Cenotillo	YUC-011
31 Holcá - Sotuta	YUC
32 Hunucmá - Umán	YUC
33 Izamal - Dzilam González	YUC
34 Kantunil - Izamal	YUC
35 Kinchil - Umán	YUC
36 Libramiento de Peto	YUC-018
37 Libramiento Norte de Motul	YUC
38 Mérida - Acanceh	YUC
39 Mérida - Oxkutzcab	YUC-018
40 Mérida - Timucuy	YUC
41 Motul - Puerto Telchac	YUC-172
42 Muna - Maxcanú	YUC
43 Oxkutzcab - Xul	YUC-031
44 Piste - Dzitás	YUC-013
45 Progreso - Telchac Puerto	YUC-027
46 Ramal a Chankom	YUC
47 Ramal a Dzonot Carretero	YUC
48 Ramal a San Felipe	YUC
49 Ramal a Tedzidz	YUC
50 Ramal a Yaxcabá	YUC-289
51 Sinanché - Xitibcanul	YUC
52 Sucilá - Calotmul	YUC
53 Suma - Izamal	YUC-081
54 Telchac Puerto - Dzilam de Bravo	YUC
55 Thul - Becanchén	YUC-281
56 Ticul - Chapab	YUC
57 Ticul - Dzan	YUC
58 Tixkokob - Baca	YUC
59 Tixkokob - Sotuta	YUC
60 Tizimin - Yucatán	YUC
61 Yaxché - Sierra Papacal	YUC
62 Yobain - Chabihau	YUC

---CARRETERAS INTEGRADAS POR TRAMOS FEDERALES Y ESTATALES---

63 Chemax - Cobá	YUC-MEX-180
64 Progreso - Celestún	MEX-YUC

31 YUCATÁN

SECRETARÍA DE COMUNICACIONES Y TRANSPORTES
DIRECCIÓN GENERAL DE SERVICIOS TÉCNICOS



YUCATAN

1 CARR: Campeche - Mérida

CLAVE: 00066

RUTA: MEX-180

AÑO: 2020

LUGAR	ESTACION				CLASIFICACION VEHICULAR EN PORCIENTO														COORDENADAS	
	KM	TE	SC	TDPA	M	A	B	C2	C3	T3S2	T3S3	T3S2R4	OTROS	A	B	C	K'	D	LATITUD	LONGITUD
Campeche	0.00	3	1	6577	7.6	84.7	0.4	5.2	0.6	0.6	0.8	0.0	0.1	92.3	0.4	7.3	0.093	0.516	19.858423	-90.521517
Campeche	0.00	3	2	6172	7.6	84.6	0.4	5.3	0.6	0.6	0.8	0.0	0.1	92.2	0.4	7.4	0.081	0.516	19.858420	-90.521523
T. Der. Periférico Pablo García y Montilla (Libramiento De Campeche)	7.00	3	1	5342	5.8	72.3	3.2	6.3	1.6	5.5	1.1	3.6	0.6	78.1	3.2	18.7	0.072	0.508	19.890625	-90.463951
T. Der. Periférico Pablo García y Montilla (Libramiento De Campeche)	7.00	3	2	5510	5.8	72.0	3.2	6.2	1.6	5.7	1.2	3.7	0.6	77.8	3.2	19.0	0.083	0.508	19.890627	-90.463954
Tenabo	40.00	1	1	5261	1.7	74.8	3.4	5.7	1.6	6.3	1.2	4.7	0.6	76.5	3.4	20.1	0.092	0.505	20.030460	-90.226568
Tenabo	40.00	1	2	5149	1.7	74.8	3.4	5.6	1.7	6.3	1.3	4.7	0.5	76.5	3.4	20.1	0.088	0.505	20.030457	-90.226569
Tenabo	40.00	3	1	4471	2.4	74.2	3.3	5.7	1.7	6.6	1.3	4.2	0.6	76.6	3.3	20.1	0.087	0.518	20.038727	-90.216777
Tenabo	40.00	3	2	4164	2.5	72.9	3.6	6.1	1.7	6.6	1.3	4.6	0.7	75.4	3.6	21.0	0.090	0.518	20.038725	-90.216794
T. Libramiento de Pomuch	46.30																			
T. Der. Libramiento de Pomuch (2º Acceso)	50.00	3	1	4395	2.1	76.3	3.3	5.3	1.3	5.8	1.5	3.8	0.6	78.4	3.3	18.3	0.118	0.503	20.147240	-90.165113
T. Der. Libramiento de Pomuch (2º Acceso)	50.00	3	2	4442	2.1	76.2	3.1	5.3	1.4	5.8	1.6	3.8	0.7	78.3	3.1	18.6	0.106	0.503	20.147262	-90.165165
Poc Boc	64.60	3	1	4438	2.9	72.2	4.3	6.5	1.5	6.4	1.4	4.0	0.8	75.1	4.3	20.6	0.109	0.507	20.250767	-90.093614
Poc Boc	64.60	3	2	4565	3.1	72.1	4.2	6.6	1.5	6.3	1.4	4.0	0.8	75.2	4.2	20.6	0.095	0.507	20.250767	-90.093614
Calkiní	79.76	3	1	4313	2.7	73.3	4.7	4.6	1.7	6.6	1.4	4.3	0.7	76.0	4.7	19.3	0.107	0.504	20.366313	-90.040204
Calkiní	79.76	3	2	4384	2.6	73.4	4.8	4.7	1.8	6.5	1.4	4.2	0.6	76.0	4.8	19.2	0.082	0.504	20.366313	-90.040288
Lim. Edos. Term. Camp. Ppia. Yuc.	96.96																			
T. Der. Maxcanú	104.61	1	1	3478	2.4	71.4	5.0	4.8	2.2	7.1	1.4	4.9	0.8	73.8	5.0	21.2	0.119	0.504	20.585852	-89.972817
T. Der. Maxcanú	104.61	1	2	3422	2.8	69.2	5.2	5.4	2.3	8.0	1.5	4.8	0.8	72.0	5.2	22.8	0.090	0.504	20.585855	-89.972818
T. Der. Maxcanú	104.61	3	1	2989	2.2	67.7	4.8	6.0	2.4	9.0	1.7	5.3	0.9	69.9	4.8	25.3	0.093	0.520	20.585908	-89.972797
T. Der. Maxcanú	104.61	3	2	3234	2.3	67.8	4.6	5.8	2.3	9.2	1.8	5.2	1.0	70.1	4.6	25.3	0.104	0.520	20.585911	-89.972803
Kopomá	124.29	3	1	5478	1.3	77.3	2.7	6.4	1.6	5.3	1.6	3.1	0.7	78.6	2.7	18.7	0.091	0.507	20.648689	-89.899435
Kopomá	124.29	3	2	5334	1.4	74.5	2.8	7.1	1.9	6.1	1.6	4.0	0.6	75.9	2.8	21.3	0.127	0.507	20.648683	-89.899419
T. Der. Libramiento de Chocholá (1º Acceso)	137.89	1	1	4704	1.7	75.1	2.7	7.0	1.5	6.2	1.4	3.9	0.5	76.8	2.7	20.5	0.108	0.507	20.738381	-89.836493
T. Der. Libramiento de Chocholá (1º Acceso)	137.89	1	2	4829	1.7	74.2	2.6	7.0	1.5	7.2	1.4	3.7	0.7	75.9	2.6	21.5	0.104	0.507	20.738446	-89.836594
T. Izq. Umán	146.99	3	1	5471	1.5	75.3	3.2	7.0	1.6	5.6	1.5	3.8	0.5	76.8	3.2	20.0	0.120	0.518	20.793375	-89.814189
T. Izq. Umán	146.99	3	2	5870	1.5	75.3	3.2	7.0	1.6	5.6	1.5	3.8	0.5	76.8	3.2	20.0	0.105	0.518	20.793379	-89.814187
X. C. Campeche - Umán	160.49	1	1	5876	2.0	74.4	2.5	5.9	2.4	6.1	2.2	3.7	0.8	76.4	2.5	21.1	0.092	0.526	20.841124	-89.742578
X. C. Campeche - Umán	160.49	1	2	5305	1.6	74.0	2.5	5.5	2.7	6.8	2.3	3.7	0.9	75.6	2.5	21.9	0.117	0.526	20.841132	-89.742584
T. C. Periférico de Mérida	171.21																			
T. C. Periférico de Mérida	171.21	1	1	5390	1.9	71.1	2.3	6.5	4.5	6.8	2.7	3.6	0.6	73.0	2.3	24.7	0.094	0.527	20.902356	-89.675418
T. C. Periférico de Mérida	171.21	1	2	5996	1.8	72.4	2.2	6.5	4.2	6.4	2.5	3.4	0.6	74.2	2.2	23.6	0.091	0.527	20.902525	-89.675507

YUCATAN

2 CARR: Campeche - Umán

CLAVE: 00164

RUTA: MEX-261

AÑO: 2020

LUGAR	ESTACION				CLASIFICACION VEHICULAR EN PORCIENTO										COORDENADAS					
	KM	TE	SC	TDPA	M	A	B	C2	C3	T3S2	T3S3	T3S2R4	OTROS	A	B	C	K'	D	LATITUD	LONGITUD
Campeche	0.00																			
T. Der. Periférico Pablo García y Montilla (Libramiento De Campeche)	7.00	1	0	3716	9.7	79.3	0.3	6.2	0.6	3.1	0.5	0.0	0.3	89.0	0.3	10.7	0.087	0.503	19.850622	-90.468705
T. Der. Periférico Pablo García y Montilla (Libramiento De Campeche)	7.00	3	0	2050	10.5	77.6	0.5	8.6	0.8	1.4	0.4	0.0	0.2	88.1	0.5	11.4	0.112	0.500	19.850505	-90.468238
T. Izq. Tenabo	30.88	1	0	1410	8.6	73.7	0.8	13.9	1.0	1.0	0.4	0.3	0.3	82.3	0.8	16.9	0.093	0.507	19.804693	-90.274427
T. Izq. Tenabo	30.88	3	0	1507	7.0	70.9	1.8	10.0	2.4	2.8	1.9	1.6	1.6	77.9	1.8	20.3	0.096	0.509	19.804689	-90.274425
T. Der. Edzna	44.51	1	0	1428	10.7	65.5	2.5	10.5	2.1	3.1	2.0	2.0	1.6	76.2	2.5	21.3	0.100	0.509	19.744257	-90.173914
T. Der. Edzna	44.51	3	0	1587	14.5	61.4	2.6	11.4	2.5	2.8	1.4	1.8	1.6	75.9	2.6	21.5	0.098	0.506	19.744258	-90.173911
Hopelchén	84.88	1	0	1948	11.5	74.5	0.4	11.3	0.6	1.4	0.3	0.0	0.0	86.0	0.4	13.6	0.084	0.504	19.744580	-89.845202
Bolonchén de Rejón	117.88	3	0	965	18.9	63.2	1.0	10.4	1.9	1.8	0.7	2.0	0.1	82.1	1.0	16.9	0.102	0.507	20.005293	-89.746138
Lim. Edos. Term. Camp. Ppia. Yuc.	126.88																			
T. Der. Sayil	140.88	1	0	446	6.9	69.0	2.4	13.2	2.5	1.9	1.6	2.5	0.0	75.9	2.4	21.7	0.103	0.501	20.212971	-89.665499
Santa Elena	158.88	1	0	863	33.6	52.0	1.4	8.5	1.2	1.5	0.4	1.3	0.1	85.6	1.4	13.0	0.141	0.502	20.324081	-89.645313
T. Izq. Ruinas de Uxmal	172.48	1	0	604	16.4	63.8	1.1	8.9	2.4	2.6	0.9	3.8	0.1	80.2	1.1	18.7	0.134	0.501	20.363274	-89.768320
Muna	187.43	1	0	1255	21.2	66.5	0.8	7.3	0.9	1.4	0.4	1.4	0.1	87.7	0.8	11.5	0.101	0.544	20.484448	-89.713814
Muna	187.43	3	0	4311	4.8	76.8	0.8	12.5	1.6	2.0	0.6	0.8	0.1	81.6	0.8	17.6	0.072	0.519	20.484447	-89.713819
Xtepén	225.38	1	0	3693	2.5	79.5	0.7	9.2	1.5	2.5	3.0	0.8	0.3	82.0	0.7	17.3	0.100	0.505	20.822258	-89.742516
Umán	230.83	1	0	3220	13.0	66.8	1.2	8.8	3.3	5.2	1.1	0.4	0.2	79.8	1.2	19.0	0.104	0.507	20.878563	-89.746767

3 CARR: Cansahcab - Tizimin

CLAVE: 31014

RUTA: MEX-176

AÑO: 2020

LUGAR	ESTACION				CLASIFICACION VEHICULAR EN PORCIENTO										COORDENADAS					
	KM	TE	SC	TDPA	M	A	B	C2	C3	T3S2	T3S3	T3S2R4	OTROS	A	B	C	K'	D	LATITUD	LONGITUD
Cansahcab	0.00	3	0	3116	7.3	72.1	1.3	7.2	3.2	4.3	1.4	2.8	0.4	79.4	1.3	19.3	0.070	0.500	21.158021	-89.102078
Temax	16.73	3	0	3012	4.7	76.9	1.4	6.9	3.3	2.9	1.4	2.3	0.2	81.6	1.4	17.0	0.072	0.503	21.151620	-88.937162
Buctzotz	32.92	3	0	2677	4.2	79.4	1.7	7.4	2.3	2.1	1.3	1.4	0.2	83.6	1.7	14.7	0.071	0.531	21.202194	-88.794146
Tizimin	99.14	1	0	3411	6.2	77.0	1.4	6.6	2.0	3.8	1.0	1.7	0.3	83.2	1.4	15.4	0.069	0.508	21.143452	-88.152760

4 CARR: Conkal - Puerto Chicxulub

CLAVE: 31004

RUTA: MEX-176

AÑO: 2020

LUGAR	ESTACION				CLASIFICACION VEHICULAR EN PORCIENTO										COORDENADAS					
	KM	TE	SC	TDPA	M	A	B	C2	C3	T3S2	T3S3	T3S2R4	OTROS	A	B	C	K'	D	LATITUD	LONGITUD
Conkal	0.00	3	0	2558	28.8	59.7	0.4	5.2	2.0	2.8	0.3	0.4	0.4	88.5	0.4	11.1	0.090	0.504	21.075184	-89.521006
Puerto Chicxulub	27.00	1	0	2858	3.9	85.5	0.9	5.3	1.7	2.2	0.3	0.2	0.0	89.4	0.9	9.7	0.098	0.503	21.291942	-89.605566

YUCATAN

5 CARR: Dzitbalché - Ent. San Bernardo

CLAVE: 00162

RUTA: MEX-180

AÑO: 2020

LUGAR	ESTACION				CLASIFICACION VEHICULAR EN PORCIENTO										COORDENADAS					
	KM	TE	SC	TDPA	M	A	B	C2	C3	T3S2	T3S3	T3S2R4	OTROS	A	B	C	K'	D	LATITUD	LONGITUD
T. C. Campeche - Mérida	0.00																			
T. Izq. Libramiento de Becal (1º Acceso)	12.33	1	0	3284	19.8	72.0	0.9	4.5	0.4	2.0	0.2	0.1	0.1	91.8	0.9	7.3	0.081	0.503	20.426627	-90.031032
T. Izq. Libramiento de Becal (2º Acceso)	15.41	3	0	1195	16.0	72.0	1.0	7.7	1.0	2.0	0.1	0.1	0.1	88.0	1.0	11.0	0.078	0.524	20.448433	-90.037269
Lim. Edos. Term. Camp. Ppia. Yuc.	15.80																			
Halachó	21.08	1	0	1266	18.6	70.0	1.0	7.3	0.8	2.0	0.3	0.0	0.0	88.6	1.0	10.4	0.077	0.504	20.477204	-90.081101
T. Izq. Libramiento de Maxcanú (1º Acceso)	35.60	1	0	1946	25.3	62.4	0.9	7.9	0.9	2.1	0.3	0.1	0.1	87.7	0.9	11.4	0.094	0.508	20.585135	-90.017498
T. Der. Muna	40.36	3	0	2654	7.0	72.8	1.1	15.5	0.9	2.1	0.3	0.2	0.1	79.8	1.1	19.1	0.105	0.502	20.600478	-89.977268
Ent. San Bernardo	41.53																			

6 CARR: Ent. Poxilá - Mérida

CLAVE: 31003

RUTA: MEX-180

AÑO: 2020

LUGAR	ESTACION				CLASIFICACION VEHICULAR EN PORCIENTO										COORDENADAS					
	KM	TE	SC	TDPA	M	A	B	C2	C3	T3S2	T3S3	T3S2R4	OTROS	A	B	C	K'	D	LATITUD	LONGITUD
T. C. Campeche - Mérida	0.00																			
Umán	9.46	1	0	3322	12.0	65.5	1.6	11.8	3.4	4.9	0.4	0.2	0.2	77.5	1.6	20.9	0.106	0.526	20.878853	-89.749382
X. Periférico de Mérida	16.37	1	1	16333	7.9	77.9	0.6	6.5	2.5	3.0	0.7	0.6	0.3	85.8	0.6	13.6	0.090	0.508	20.924625	-89.688463
X. Periférico de Mérida	16.37	1	2	15799	8.4	77.1	0.7	6.5	2.6	3.0	0.8	0.6	0.3	85.5	0.7	13.8	0.088	0.508	20.924716	-89.688527
Mérida	25.70	1	1	16322	5.7	80.7	0.9	7.3	1.8	1.8	1.1	0.5	0.2	86.4	0.9	12.7	0.096	0.506	20.955914	-89.636005
Mérida	25.70	1	2	15950	5.6	80.7	1.0	7.3	1.8	1.7	1.2	0.5	0.2	86.3	1.0	12.7	0.084	0.506	20.955971	-89.636025

7 CARR: Hunucmá - Sisal

CLAVE: 31021

RUTA: MEX-281

AÑO: 2020

LUGAR	ESTACION				CLASIFICACION VEHICULAR EN PORCIENTO										COORDENADAS					
	KM	TE	SC	TDPA	M	A	B	C2	C3	T3S2	T3S3	T3S2R4	OTROS	A	B	C	K'	D	LATITUD	LONGITUD
Hunucmá	0.00	3	0	1418	8.4	80.0	0.6	8.7	0.8	1.1	0.1	0.2	0.1	88.4	0.6	11.0	0.127	0.505	21.016331	-89.877250
Sisal	23.20	1	0	1095	10.5	78.6	0.4	8.3	1.0	1.0	0.2	0.0	0.0	89.1	0.4	10.5	0.143	0.501	21.164821	-90.031508

8 CARR: Libramiento Conkal - Mococho - Baca

CLAVE:

RUTA: MEX-176

AÑO: 2020

LUGAR	ESTACION				CLASIFICACION VEHICULAR EN PORCIENTO										COORDENADAS					
	KM	TE	SC	TDPA	M	A	B	C2	C3	T3S2	T3S3	T3S2R4	OTROS	A	B	C	K'	D	LATITUD	LONGITUD
T. C. Mérida - Dzilam de Bravo (Oeste)	4.40	3	1	6996	4.6	85.5	0.6	5.0	1.5	1.2	0.9	0.5	0.2	90.1	0.6	9.3	0.104	0.503	21.052344	-89.534489
T. C. Mérida - Dzilam de Bravo (Oeste)	4.40	3	2	6907	4.5	84.4	0.8	5.6	1.7	1.3	0.8	0.6	0.3	88.9	0.8	10.3	0.108	0.503	21.052537	-89.534551
X. C. Conkal - Yaxkukul	8.74	3	1	6157	5.6	86.5	0.9	3.1	1.5	1.3	0.4	0.6	0.1	92.1	0.9	7.0	0.112	0.502	21.063910	-89.498364
X. C. Conkal - Yaxkukul	8.74	3	2	6113	5.7	85.8	1.3	2.9	1.4	1.6	0.4	0.8	0.1	91.5	1.3	7.2	0.107	0.502	21.063978	-89.498523

YUCATAN

8 CARR: Libramiento Conkal - Mococho - Baca

CLAVE:

RUTA: MEX-176

AÑO: 2020

LUGAR	ESTACION				CLASIFICACION VEHICULAR EN PORCIENTO													COORDENADAS		
	KM	TE	SC	TDPA	M	A	B	C2	C3	T3S2	T3S3	T3S2R4	OTROS	A	B	C	K'	D	LATITUD	LONGITUD
X. C. Tixkokob - Baca	20.86	1	1	5447	5.2	87.5	1.2	2.4	1.4	1.3	0.3	0.6	0.1	92.7	1.2	6.1	0.122	0.503	21.099086	-89.398289
X. C. Tixkokob - Baca	20.86	1	2	5521	5.4	86.7	1.3	2.7	1.5	1.3	0.4	0.6	0.1	92.1	1.3	6.6	0.104	0.503	21.099274	-89.398265
T. C. Mérida - Dzilam de Bravo (Este)	24.41	1	1	4966	8.0	83.6	1.7	3.0	1.3	1.2	0.3	0.7	0.2	91.6	1.7	6.7	0.119	0.507	21.104561	-89.367509
T. C. Mérida - Dzilam de Bravo (Este)	24.41	1	2	4832	7.3	83.8	1.6	2.7	1.5	1.6	0.4	0.9	0.2	91.1	1.6	7.3	0.107	0.507	21.104652	-89.367522

9 CARR: Libramiento de Conkal

CLAVE:

RUTA: MEX

AÑO: 2020

LUGAR	ESTACION				CLASIFICACION VEHICULAR EN PORCIENTO													COORDENADAS		
	KM	TE	SC	TDPA	M	A	B	C2	C3	T3S2	T3S3	T3S2R4	OTROS	A	B	C	K'	D	LATITUD	LONGITUD
T. C. Mérida - Dzilam de Bravo	0.00	3	0	8230	6.3	84.0	0.9	5.1	1.3	0.8	0.6	0.6	0.4	90.3	0.9	8.8	0.084	0.535	21.046732	-89.542677
X. C. Conkal - Chablekal	4.80																			
T. C. Conkal - Puerto Chicxulub	14.00	1	0	1261	5.7	77.5	2.2	5.3	2.1	2.1	2.2	2.3	0.6	83.2	2.2	14.6	0.090	0.535	21.159922	-89.530214

10 CARR: Libramiento de Progreso

CLAVE: 31631

RUTA: MEX-261

AÑO: 2020

LUGAR	ESTACION				CLASIFICACION VEHICULAR EN PORCIENTO													COORDENADAS		
	KM	TE	SC	TDPA	M	A	B	C2	C3	T3S2	T3S3	T3S2R4	OTROS	A	B	C	K'	D	LATITUD	LONGITUD
T. C. Mérida - Progreso	0.00	3	0	2600	6.1	83.5	0.4	6.2	1.8	1.6	0.4	0.0	0.0	89.6	0.4	10.0	0.096	0.515	21.258409	-89.662514
Yucalpetén	6.50	1	0	2073	3.9	90.0	0.2	4.4	0.5	0.9	0.1	0.0	0.0	93.9	0.2	5.9	0.100	0.516	21.276860	-89.711908

11 CARR: Libramiento de Tahmek - Hoctun - Xocchel

CLAVE:

RUTA: MEX-180

AÑO: 2020

LUGAR	ESTACION				CLASIFICACION VEHICULAR EN PORCIENTO													COORDENADAS		
	KM	TE	SC	TDPA	M	A	B	C2	C3	T3S2	T3S3	T3S2R4	OTROS	A	B	C	K'	D	LATITUD	LONGITUD
Tahmek	0.00	3	1	4048	1.6	80.6	2.2	6.9	1.8	3.0	0.9	2.5	0.5	82.2	2.2	15.6	0.090	0.509	20.883720	-89.250593
Tahmek	0.00	3	2	3899	1.7	80.3	2.3	7.0	1.7	3.0	0.9	2.6	0.5	82.0	2.3	15.7	0.101	0.509	20.883843	-89.250609
X. C. Hoctún - Cenotillo	6.30	3	1	3421	1.7	80.5	2.4	6.6	1.7	3.0	0.9	2.5	0.7	82.2	2.4	15.4	0.083	0.513	20.873619	-89.192336
X. C. Hoctún - Cenotillo	6.30	3	2	3247	1.7	80.4	2.4	6.6	1.9	3.0	1.0	2.3	0.7	82.1	2.4	15.5	0.081	0.513	20.873686	-89.192258
T. C. Mérida - Puerto Juárez	14.00																			

12 CARR: Mérida - Celestún

CLAVE: 31025

RUTA: MEX-281

AÑO: 2020

LUGAR	ESTACION				CLASIFICACION VEHICULAR EN PORCIENTO													COORDENADAS		
	KM	TE	SC	TDPA	M	A	B	C2	C3	T3S2	T3S3	T3S2R4	OTROS	A	B	C	K'	D	LATITUD	LONGITUD
Mérida	0.00	3	1	18690	6.5	84.7	0.3	6.9	0.4	0.3	0.4	0.3	0.2	91.2	0.3	8.5	0.083	0.503	20.975395	-89.640520

YUCATAN

12 CARR: Mérida - Celestún

CLAVE: 31025

RUTA: MEX-281

AÑO: 2020

LUGAR	ESTACION				CLASIFICACION VEHICULAR EN PORCIENTO										COORDENADAS					
	KM	TE	SC	TDPA	M	A	B	C2	C3	T3S2	T3S3	T3S2R4	OTROS	A	B	C	K'	D	LATITUD	LONGITUD
Mérida	0.00	3	2	18885	6.2	84.6	0.4	7.1	0.4	0.3	0.5	0.3	0.2	90.8	0.4	8.8	0.082	0.503	20.975295	-89.640581
X. Periférico de Mérida	5.10	1	1	35583	3.8	89.8	0.4	4.3	0.2	0.6	0.7	0.1	0.1	93.6	0.4	6.0	0.078	0.517	20.995283	-89.672598
X. Periférico de Mérida	5.10	1	2	32920	4.3	89.0	0.4	4.6	0.2	0.6	0.7	0.1	0.1	93.3	0.4	6.3	0.080	0.517	20.995124	-89.672717
X. Periférico de Mérida	5.10	3	1	25829	6.0	88.9	0.3	3.6	0.2	0.4	0.5	0.0	0.1	94.9	0.3	4.8	0.098	0.521	20.996007	-89.673865
X. Periférico de Mérida	5.10	3	2	23620	5.3	89.3	0.4	3.7	0.2	0.4	0.6	0.0	0.1	94.6	0.4	5.0	0.106	0.521	20.995880	-89.673968
Ucú	14.80	1	0	3656	15.8	71.8	0.8	9.3	0.5	1.6	0.1	0.0	0.1	87.6	0.8	11.6	0.070	0.504	21.031446	-89.744539
Hunucmá	26.00	1	0	2238	15.7	66.8	1.1	13.3	0.6	1.8	0.4	0.1	0.2	82.5	1.1	16.4	0.093	0.504	21.017128	-89.874288
Hunucmá	26.00	3	0	1973	30.9	55.4	1.0	10.2	0.3	2.0	0.1	0.0	0.1	86.3	1.0	12.7	0.091	0.507	21.016332	-89.877249
Kinchil	40.00	3	0	1961	12.3	71.0	1.3	8.3	2.9	3.4	0.6	0.1	0.1	83.3	1.3	15.4	0.092	0.504	20.913438	-89.948222
T. Izq. San Mateo	67.00	1	0	974	2.1	89.2	0.8	6.7	0.8	0.2	0.1	0.1	0.0	91.3	0.8	7.9	0.120	0.503	20.859616	-90.190270
Celestún	89.00	1	0	1023	12.9	78.0	1.8	5.9	0.9	0.3	0.2	0.0	0.0	90.9	1.8	7.3	0.121	0.506	20.860086	-90.396505

13 CARR: Mérida - Dzilam de Bravo

CLAVE: 31001

RUTA: MEX-176

AÑO: 2020

LUGAR	ESTACION				CLASIFICACION VEHICULAR EN PORCIENTO										COORDENADAS					
	KM	TE	SC	TDPA	M	A	B	C2	C3	T3S2	T3S3	T3S2R4	OTROS	A	B	C	K'	D	LATITUD	LONGITUD
Mérida	0.00																			
X. Periférico de Mérida	5.90	1	1	9539	3.7	90.2	0.2	2.8	0.2	1.0	1.5	0.2	0.2	93.9	0.2	5.9	0.086	0.517	21.021105	-89.566789
X. Periférico de Mérida	5.90	1	2	10211	3.7	90.1	0.3	2.8	0.2	1.0	1.5	0.2	0.2	93.8	0.3	5.9	0.076	0.517	21.021213	-89.566909
X. Periférico de Mérida	5.90	3	1	16629	4.9	78.1	1.1	12.3	1.1	1.0	0.8	0.4	0.3	83.0	1.1	15.9	0.080	0.527	21.022238	-89.565653
X. Periférico de Mérida	5.90	3	2	18492	4.9	78.1	1.1	12.3	1.1	1.0	0.8	0.4	0.3	83.0	1.1	15.9	0.106	0.527	21.022362	-89.565797
Conkal	18.00	1	1	11182	6.3	83.6	0.5	5.8	0.9	1.6	0.7	0.3	0.3	89.9	0.5	9.6	0.089	0.523	21.075186	-89.520998
Conkal	18.00	1	2	10191	6.3	83.7	0.5	5.7	0.9	1.6	0.7	0.3	0.3	90.0	0.5	9.5	0.084	0.523	21.075188	-89.521016
Baca	34.40	1	0	1822	35.9	53.9	0.5	6.8	0.6	1.5	0.5	0.1	0.2	89.8	0.5	9.7	0.104	0.506	21.108625	-89.399359
Motul	44.00	1	1	5034	9.0	79.6	0.7	6.9	1.3	1.1	0.6	0.7	0.1	88.6	0.7	10.7	0.122	0.519	21.096079	-89.282997
Motul	44.00	1	2	4659	8.9	79.7	0.7	6.9	1.2	1.1	0.7	0.7	0.1	88.6	0.7	10.7	0.125	0.519	21.096136	-89.283000
Motul	44.00	3	0	4144	4.3	81.9	1.0	7.2	1.7	2.3	0.7	0.8	0.1	86.2	1.0	12.8	0.072	0.504	21.114659	-89.276162
Cansahcab	68.00	3	0	1596	14.9	77.6	0.2	5.7	0.7	0.8	0.0	0.0	0.1	92.5	0.2	7.3	0.092	0.517	21.158010	-89.102106
Dzidzantún	80.00	1	0	1792	19.0	73.6	0.3	6.1	0.8	0.2	0.0	0.0	0.0	92.6	0.3	7.1	0.092	0.511	21.246527	-89.046594
Dzilam de Bravo	105.00	1	0	2488	37.8	53.7	0.3	5.2	0.3	2.1	0.3	0.1	0.2	91.5	0.3	8.2	0.083	0.507	21.392893	-88.891655

YUCATAN

14 CARR: Mérida - Progreso

CLAVE: 31091

RUTA: MEX-261

AÑO: 2020

LUGAR	ESTACION				CLASIFICACION VEHICULAR EN PORCIENTO												COORDENADAS			
	KM	TE	SC	TDPA	M	A	B	C2	C3	T3S2	T3S3	T3S2R4	OTROS	A	B	C	K'	D	LATITUD	LONGITUD
T. C. Mérida - Dzilam de Bravo	0.00																			
Periférico Mérida	5.40	1	1	22030	2.2	91.1	0.3	2.5	0.7	1.4	0.9	0.6	0.3	93.3	0.3	6.4	0.084	0.550	21.046718	-89.629700
Periférico Mérida	5.40	1	2	21657	2.2	91.1	0.3	2.5	0.7	1.4	0.9	0.6	0.3	93.3	0.3	6.4	0.079	0.550	21.046708	-89.629815
T. Izq. Dzityá	10.40	1	1	32598	2.3	90.4	0.3	2.3	0.4	1.7	1.4	0.6	0.6	92.7	0.3	7.0	0.086	0.534	21.059598	-89.632109
T. Izq. Dzityá	10.40	1	2	28079	2.3	90.2	0.3	2.3	0.5	1.8	1.4	0.6	0.6	92.5	0.3	7.2	0.080	0.534	21.059595	-89.632104
T. Izq. Dzityá	10.40	3	1	26915	2.4	91.1	0.3	2.5	0.6	1.3	0.9	0.6	0.3	93.5	0.3	6.2	0.086	0.540	21.059627	-89.632073
T. Izq. Dzityá	10.40	3	2	21447	2.4	91.0	0.3	2.5	0.7	1.3	0.9	0.6	0.3	93.4	0.3	6.3	0.081	0.540	21.059625	-89.632071
Progreso	35.04	1	1	11484	8.0	80.2	0.5	4.9	1.6	2.4	0.6	1.7	0.1	88.2	0.5	11.3	0.090	0.507	21.282130	-89.662993
Progreso	35.04	1	2	11828	8.0	80.2	0.5	4.8	1.6	2.4	0.7	1.7	0.1	88.2	0.5	11.3	0.112	0.507	21.282131	-89.662993

15 CARR: Mérida - Puerto Juárez

CLAVE: 00067

RUTA: MEX-180

AÑO: 2020

LUGAR	ESTACION				CLASIFICACION VEHICULAR EN PORCIENTO												COORDENADAS			
	KM	TE	SC	TDPA	M	A	B	C2	C3	T3S2	T3S3	T3S2R4	OTROS	A	B	C	K'	D	LATITUD	LONGITUD
Mérida	0.00																			
X. Periférico de Mérida	5.60	1	1	10114	10.3	82.1	0.5	3.6	0.3	1.8	0.9	0.1	0.4	92.4	0.5	7.1	0.090	0.527	20.955738	-89.568343
X. Periférico de Mérida	5.60	1	2	11252	9.5	82.6	0.5	3.7	0.3	1.9	1.0	0.1	0.4	92.1	0.5	7.4	0.079	0.527	20.955991	-89.568273
X. Periférico de Mérida	5.60	3	1	15404	5.8	81.8	1.1	4.3	1.0	2.4	2.1	1.1	0.4	87.6	1.1	11.3	0.096	0.512	20.955270	-89.567112
X. Periférico de Mérida	5.60	3	2	14704	5.6	80.6	1.3	4.3	1.1	2.9	2.5	1.2	0.5	86.2	1.3	12.5	0.093	0.512	20.955551	-89.566967
Teya	13.00	1	1	10320	5.5	76.0	1.7	9.2	2.2	2.5	0.8	2.0	0.1	81.5	1.7	16.8	0.094	0.514	20.934158	-89.524034
Teya	13.00	1	2	9776	5.5	76.0	1.7	9.2	2.2	2.5	0.8	2.0	0.1	81.5	1.7	16.8	0.102	0.514	20.934316	-89.524001
T. Der. Seyé	28.79	1	1	5734	2.7	80.4	2.2	6.4	2.0	2.9	1.0	2.1	0.3	83.1	2.2	14.7	0.104	0.508	20.891552	-89.377225
T. Der. Seyé	28.79	1	2	5914	2.5	79.1	2.9	7.3	1.8	3.0	0.6	2.5	0.3	81.6	2.9	15.5	0.112	0.508	20.891568	-89.377228
T. Der. Seyé	28.79	3	1	5146	1.3	81.0	2.2	6.4	2.0	3.4	1.1	2.2	0.4	82.3	2.2	15.5	0.100	0.513	20.891571	-89.377018
T. Der. Seyé	28.79	3	2	5413	1.9	79.7	2.8	6.5	2.0	3.3	0.8	2.7	0.3	81.6	2.8	15.6	0.113	0.513	20.891696	-89.377034
Tahmek	42.00	1	1	5705	1.6	80.5	2.4	6.6	1.9	3.1	1.1	2.4	0.4	82.1	2.4	15.5	0.094	0.503	20.875274	-89.255534
Tahmek	42.00	1	2	5629	1.7	80.5	2.5	6.5	1.7	3.2	1.0	2.5	0.4	82.2	2.5	15.3	0.106	0.503	20.875290	-89.255524
T. Izq. Hochtún (1º Acceso)	46.65	1	0	1985	6.4	79.0	1.8	9.1	1.2	1.6	0.4	0.3	0.2	85.4	1.8	12.8	0.093	0.508	20.865258	-89.209274
T. Izq. Hochtún (2º Acceso)	48.62	1	0	1011	13.4	74.2	1.4	6.6	1.4	2.1	0.5	0.4	0.0	87.6	1.4	11.0	0.100	0.501	20.855931	-89.196870
T. Izq. Hochtún (2º Acceso)	48.62	3	0	1747	20.8	67.7	1.5	6.5	0.9	1.7	0.5	0.3	0.1	88.5	1.5	10.0	0.105	0.501	20.855829	-89.196823
T. Libramiento de Xocchel	55.72																			
Kantunil	67.28	1	1	3163	1.6	78.4	2.7	6.8	2.4	4.2	1.0	2.4	0.5	80.0	2.7	17.3	0.083	0.506	20.796771	-89.035091
Kantunil	67.28	1	2	3084	1.7	78.1	2.9	6.7	2.6	4.2	1.0	2.4	0.4	79.8	2.9	17.3	0.102	0.506	20.796772	-89.035093
Kantunil	67.28	3	0	2588	5.1	73.8	3.7	8.5	3.7	2.9	1.2	1.0	0.1	78.9	3.7	17.4	0.092	0.509	20.796766	-89.035052
Libre Unión	92.91	1	0	2156	2.6	77.3	3.2	9.1	3.8	2.0	1.0	0.9	0.1	79.9	3.2	16.9	0.097	0.511	20.707439	-88.810110

YUCATAN

15 CARR: Mérida - Puerto Juárez

CLAVE: 00067

RUTA: MEX-180

AÑO: 2020

LUGAR	ESTACION				CLASIFICACION VEHICULAR EN PORCIENTO													COORDENADAS		
	KM	TE	SC	TDPA	M	A	B	C2	C3	T3S2	T3S3	T3S2R4	OTROS	A	B	C	K'	D	LATITUD	LONGITUD
Libre Unión	92.91	3	0	2199	4.7	73.8	3.6	9.2	4.0	2.7	1.2	0.7	0.1	78.5	3.6	17.9	0.087	0.516	20.707436	-88.810080
Piste	116.30	3	0	5312	16.8	68.1	2.0	4.9	1.4	4.6	1.1	0.5	0.6	84.9	2.0	13.1	0.117	0.574	20.698426	-88.588370
1er. Acceso a Zona Arqueológica de Chichen-Itzá	117.90	3	0	4267	12.5	71.1	2.7	7.5	1.8	2.8	1.0	0.5	0.1	83.6	2.7	13.7	0.102	0.529	20.688719	-88.576996
2do. Acceso a Zona Arqueológica de Chichen-Itzá	121.10	3	0	4058	9.9	74.9	2.5	6.5	2.2	2.6	1.0	0.3	0.1	84.8	2.5	12.7	0.090	0.502	20.671321	-88.560231
T. Der. Chankom	127.00	1	0	3551	6.1	75.9	3.0	8.7	2.6	2.5	0.8	0.3	0.1	82.0	3.0	15.0	0.095	0.502	20.642124	-88.488761
T. Der. Chankom	127.00	3	0	3500	7.3	73.5	3.4	8.8	2.6	2.6	1.1	0.5	0.2	80.8	3.4	15.8	0.084	0.518	20.642047	-88.488606
Kaua	137.47	3	0	3717	4.0	80.5	3.4	6.7	2.6	1.5	0.7	0.5	0.1	84.5	3.4	12.1	0.100	0.503	20.621913	-88.414286
X. C. Periférico de Valladolid	157.12	1	0	4933	6.5	79.7	3.1	6.2	2.2	1.1	0.6	0.5	0.1	86.2	3.1	10.7	0.084	0.515	20.678825	-88.239975
Valladolid	160.68	1	0	5015	18.5	72.2	1.3	4.1	0.4	2.8	0.3	0.2	0.2	90.7	1.3	8.0	0.086	0.509	20.689660	-88.202273
Valladolid	160.68	3	0	5952	14.2	77.3	0.6	3.6	0.4	2.9	0.4	0.3	0.3	91.5	0.6	7.9	0.103	0.538	20.689328	-88.191041
X. C. Periférico de Valladolid	165.60	3	0	7289	10.8	79.7	1.8	2.7	1.8	1.3	0.5	1.1	0.3	90.5	1.8	7.7	0.103	0.504	20.695888	-88.158078
T. Der. Coba	187.80	1	0	5769	4.2	86.8	1.6	3.6	1.4	1.2	0.3	0.7	0.2	91.0	1.6	7.4	0.092	0.507	20.658495	-87.955110
T. Der. Chemax	189.79	1	0	4418	9.3	82.3	1.2	2.4	1.9	0.9	0.6	0.8	0.6	91.6	1.2	7.2	0.094	0.511	20.659902	-87.938105
T. Der. Chemax	189.79	3	0	3130	6.5	76.7	4.4	5.9	2.0	1.5	0.8	1.3	0.9	83.2	4.4	12.4	0.092	0.509	20.659910	-87.938131
X-Can	225.00	3	0	2512	5.9	82.4	2.3	3.3	1.9	1.7	1.1	1.0	0.4	88.3	2.3	9.4	0.092	0.506	20.856249	-87.668002
Lim. Edos. Term. Yuc. Ppia. Q. R.	230.40																			
Nuevo X-Can	231.90	3	0	2629	6.1	82.3	2.3	3.5	1.9	1.8	0.4	0.9	0.8	88.4	2.3	9.3	0.089	0.505	20.869951	-87.600904
Zaragoza	239.00	1	0	3891	6.1	84.4	1.7	2.5	1.8	1.2	0.8	0.8	0.7	90.5	1.7	7.8	0.074	0.507	20.882659	-87.525363
Zaragoza	239.00	3	0	2671	4.9	83.1	2.0	3.7	1.9	1.4	1.0	1.0	1.0	88.0	2.0	10.0	0.079	0.506	20.882932	-87.523498
Vicente Guerrero	261.00	1	0	3243	6.9	81.1	2.7	3.4	1.6	1.4	1.1	0.9	0.9	88.0	2.7	9.3	0.072	0.508	20.943388	-87.325305
Leona Vicario	275.50	1	0	4684	5.5	83.8	1.4	3.7	1.6	1.4	0.6	1.1	0.9	89.3	1.4	9.3	0.073	0.505	20.987981	-87.203790
Leona Vicario	275.50	3	0	6059	8.5	83.9	1.3	2.6	1.1	0.8	0.5	0.8	0.5	92.4	1.3	6.3	0.080	0.505	20.988011	-87.203709
T. Der. Aeropuerto	302.50	1	0	7754	6.2	83.5	1.5	3.6	1.9	1.1	0.8	0.7	0.7	89.7	1.5	8.8	0.076	0.503	21.099764	-86.976216
T. Der. Aeropuerto	302.50	3	1	4825	4.7	83.0	1.9	3.4	2.2	2.1	0.8	1.4	0.5	87.7	1.9	10.4	0.092	0.501	21.097574	-86.975513
T. Der. Aeropuerto	302.50	3	2	4849	4.7	82.9	1.9	3.5	2.2	2.1	0.7	1.5	0.5	87.6	1.9	10.5	0.093	0.501	21.097927	-86.975702
T. Der. Alfredo V. Bonfil	310.00	1	1	27830	5.5	84.9	0.8	2.2	1.2	1.7	0.6	2.5	0.6	90.4	0.8	8.8	0.083	0.508	21.140444	-86.894560
T. Der. Alfredo V. Bonfil	310.00	1	2	26852	5.5	84.9	0.8	2.2	1.2	1.7	0.6	2.5	0.6	90.4	0.8	8.8	0.084	0.508	21.140404	-86.894542
Puerto Juárez	321.41																			

16 CARR: Mérida - Tekanto

CLAVE: 31587

RUTA: MEX-180

AÑO: 2020

LUGAR	ESTACION				CLASIFICACION VEHICULAR EN PORCIENTO													COORDENADAS		
	KM	TE	SC	TDPA	M	A	B	C2	C3	T3S2	T3S3	T3S2R4	OTROS	A	B	C	K'	D	LATITUD	LONGITUD
T. C. Mérida - Puerto Juárez	0.00																			
X. Periférico de Mérida	5.70	1	0	10866	11.5	80.1	0.1	6.6	0.3	0.3	1.0	0.0	0.1	91.6	0.1	8.3	0.072	0.501	20.961952	-89.567090

YUCATAN

16 CARR: Mérida - Tekanto

CLAVE: 31587

RUTA: MEX-180

AÑO: 2020

LUGAR	ESTACION				CLASIFICACION VEHICULAR EN PORCIENTO										COORDENADAS					
	KM	TE	SC	TDPA	M	A	B	C2	C3	T3S2	T3S3	T3S2R4	OTROS	A	B	C	K'	D	LATITUD	LONGITUD
T. Der. Tixpéhual	13.25	1	0	6936	8.9	81.1	0.7	3.9	1.4	2.8	0.5	0.2	0.5	90.0	0.7	9.3	0.073	0.503	20.976838	-89.460369
T. Der. Tixpéhual	13.25	3	0	3482	7.1	83.5	0.4	5.8	0.7	2.1	0.2	0.0	0.2	90.6	0.4	9.0	0.071	0.515	20.976893	-89.460294
Tixkokob	21.00	1	0	3739	5.8	85.3	0.5	5.3	0.9	1.9	0.3	0.0	0.0	91.1	0.5	8.4	0.068	0.503	21.006931	-89.415604
Tixkokob	21.00	3	0	2932	32.9	58.3	0.4	7.8	0.5	0.1	0.0	0.0	0.0	91.2	0.4	8.4	0.075	0.529	21.002471	-89.393431
Cacalchén	38.00	1	0	1522	16.6	64.0	2.0	16.1	1.1	0.2	0.0	0.0	0.0	80.6	2.0	17.4	0.080	0.509	20.983088	-89.227354
Tekanto	51.00	1	0	982	48.8	36.8	0.4	13.3	0.5	0.1	0.0	0.0	0.1	85.6	0.4	14.0	0.094	0.510	21.011165	-89.106462

17 CARR: Mérida - Tetz

CLAVE: 31610

RUTA: MEX-281

AÑO: 2020

LUGAR	ESTACION				CLASIFICACION VEHICULAR EN PORCIENTO										COORDENADAS					
	KM	TE	SC	TDPA	M	A	B	C2	C3	T3S2	T3S3	T3S2R4	OTROS	A	B	C	K'	D	LATITUD	LONGITUD
Anillo Periferico Lic. Manuel Berzunza	0.00	3	0	19466	7.8	86.3	0.8	3.3	1.1	0.4	0.2	0.1	0.0	94.1	0.8	5.1	0.134	0.524	20.977406	-89.687998
X. C. Hunucmá - Umán	17.98	1	0	3790	12.6	70.9	1.3	11.1	1.9	1.4	0.3	0.4	0.1	83.5	1.3	15.2	0.132	0.514	20.980141	-89.853874
X. C. Hunucmá - Umán	17.98	3	0	2015	7.3	79.0	1.1	8.5	1.5	1.7	0.6	0.1	0.2	86.3	1.1	12.6	0.091	0.500	20.980137	-89.853874
X. C. Mérida - Celestún	24.40	1	0	2116	7.4	79.1	1.0	8.4	1.5	1.8	0.5	0.1	0.2	86.5	1.0	12.5	0.107	0.500	20.982740	-89.911455

18 CARR: Muna - Felipe Carrillo Puerto

CLAVE: 00148

RUTA: MEX-184

AÑO: 2020

LUGAR	ESTACION				CLASIFICACION VEHICULAR EN PORCIENTO										COORDENADAS					
	KM	TE	SC	TDPA	M	A	B	C2	C3	T3S2	T3S3	T3S2R4	OTROS	A	B	C	K'	D	LATITUD	LONGITUD
Muna	0.00	3	0	3440	8.7	73.7	1.3	10.0	1.5	2.4	1.0	0.8	0.6	82.4	1.3	16.3	0.088	0.500	20.484445	-89.713817
Ticul	19.10	1	0	2658	8.7	73.1	1.3	10.0	1.6	2.6	1.2	0.9	0.6	81.8	1.3	16.9	0.065	0.514	20.397130	-89.542176
Ticul	19.10	3	0	5626	40.6	49.3	0.9	4.6	0.6	2.2	0.7	0.4	0.7	89.9	0.9	9.2	0.111	0.507	20.388806	-89.531554
Oxkutzcab	40.50	3	0	4850	34.6	54.4	0.8	4.8	0.8	2.6	0.9	0.5	0.6	89.0	0.8	10.2	0.098	0.510	20.301984	-89.414872
Tekax	53.90	3	0	2786	28.4	61.8	0.8	4.8	0.9	2.4	0.3	0.3	0.3	90.2	0.8	9.0	0.100	0.515	20.201788	-89.288073
Tzucacab	86.60	1	0	1505	22.6	60.2	1.9	8.7	1.9	2.6	0.7	0.7	0.7	82.8	1.9	15.3	0.071	0.501	20.072123	-89.050090
Tzucacab	86.60	3	0	1412	26.8	62.5	0.8	6.8	0.9	0.8	0.6	0.7	0.1	89.3	0.8	9.9	0.066	0.507	20.071923	-89.043423
Santa Rosa	109.60	3	0	1769	4.0	75.7	2.1	7.8	2.9	2.6	1.7	2.8	0.4	79.7	2.1	18.2	0.090	0.503	19.952250	-88.883119
Lim. Edos. Term. Yuc. Ppia. Q. R.	117.00																			
Dziuche	118.00	1	0	2290	5.3	72.5	3.3	9.4	2.5	2.2	1.0	3.5	0.3	77.8	3.3	18.9	0.094	0.508	19.899235	-88.810588
Dziuche	118.00	3	0	2284	6.0	75.9	2.6	7.2	2.4	1.8	0.9	2.9	0.3	81.9	2.6	15.5	0.106	0.509	19.899231	-88.810591
José María Morelos	138.60	1	0	3339	9.2	78.0	1.9	6.2	1.8	0.8	0.7	1.2	0.2	87.2	1.9	10.9	0.089	0.512	19.749906	-88.710194
José María Morelos	138.60	3	0	2733	9.4	74.0	2.1	7.8	2.0	1.9	0.8	1.6	0.4	83.4	2.1	14.5	0.085	0.524	19.749904	-88.710178
Polyuc	161.94	1	0	1994	2.6	78.3	2.9	7.9	2.1	2.1	1.8	2.2	0.1	80.9	2.9	16.2	0.089	0.514	19.609658	-88.569671
Polyuc	161.94	3	0	1368	3.2	80.0	1.7	8.3	2.3	2.4	0.4	1.6	0.1	83.2	1.7	15.1	0.100	0.516	19.609496	-88.560908

YUCATAN

18 CARR: Muna - Felipe Carrillo Puerto

CLAVE: 00148

RUTA: MEX-184

AÑO: 2020

LUGAR	ESTACION				CLASIFICACION VEHICULAR EN PORCIENTO													COORDENADAS		
	KM	TE	SC	TDPA	M	A	B	C2	C3	T3S2	T3S3	T3S2R4	OTROS	A	B	C	K'	D	LATITUD	LONGITUD
T. Der. Dzulá	178.11	3	0	1385	3.2	81.4	1.8	8.6	2.5	0.4	0.4	1.7	0.0	84.6	1.8	13.6	0.099	0.516	19.643732	-88.411520
Felipe Carrillo Puerto	216.97	1	0	5705	19.9	70.9	0.6	3.4	0.5	3.7	0.5	0.1	0.4	90.8	0.6	8.6	0.093	0.500	19.580789	-88.045703

19 CARR: Ramal a Panabá

CLAVE: 31609

RUTA: MEX-295

AÑO: 2020

LUGAR	ESTACION				CLASIFICACION VEHICULAR EN PORCIENTO													COORDENADAS		
	KM	TE	SC	TDPA	M	A	B	C2	C3	T3S2	T3S3	T3S2R4	OTROS	A	B	C	K'	D	LATITUD	LONGITUD
T. C. Valladolid - Río Lagartos	0.00	3	0	1351	29.2	67.4	0.4	2.3	0.5	0.1	0.0	0.1	0.0	96.6	0.4	3.0	0.110	0.501	21.193789	-88.168357
Panabá	18.00	1	0	1362	22.1	67.2	0.7	6.8	0.5	1.0	0.6	0.6	0.5	89.3	0.7	10.0	0.109	0.512	21.295712	-88.270405

20 CARR: Teya -Peto

CLAVE: 31042

RUTA: MEX-184

AÑO: 2020

LUGAR	ESTACION				CLASIFICACION VEHICULAR EN PORCIENTO													COORDENADAS		
	KM	TE	SC	TDPA	M	A	B	C2	C3	T3S2	T3S3	T3S2R4	OTROS	A	B	C	K'	D	LATITUD	LONGITUD
T. C. Mérida - Puerto Juárez	0.00																			
San Antonio Tehuizt	3.80	3	1	4142	4.8	81.1	0.3	7.5	2.3	2.1	0.7	0.9	0.3	85.9	0.3	13.8	0.134	0.517	20.891555	-89.510866
San Antonio Tehuizt	3.80	3	2	3862	4.7	81.1	0.3	7.5	2.4	2.1	0.6	0.9	0.4	85.8	0.3	13.9	0.128	0.517	20.891568	-89.510848
T. Izq. Acanceh	13.70	1	1	3459	5.3	81.2	1.3	6.1	2.2	2.1	0.8	0.9	0.1	86.5	1.3	12.2	0.136	0.510	20.812496	-89.472746
T. Izq. Acanceh	13.70	1	2	3327	5.3	79.6	1.4	6.3	2.7	2.8	0.7	1.1	0.1	84.9	1.4	13.7	0.106	0.510	20.812500	-89.472728
Tecoh	22.00	3	1	3296	6.8	79.5	1.3	6.5	2.3	1.5	0.8	1.2	0.1	86.3	1.3	12.4	0.140	0.507	20.741751	-89.473567
Tecoh	22.00	3	2	3212	6.2	79.8	1.4	6.5	2.2	1.8	0.7	1.3	0.1	86.0	1.4	12.6	0.105	0.507	20.741756	-89.473566
T. Der. Zona Arq. de Mayapan	37.65	1	1	2500	1.9	81.3	1.9	6.3	2.8	3.0	1.0	1.7	0.1	83.2	1.9	14.9	0.128	0.506	20.632645	-89.458488
T. Der. Zona Arq. de Mayapan	37.65	1	2	2561	1.8	81.6	1.9	6.5	2.7	3.0	1.0	1.4	0.1	83.4	1.9	14.7	0.099	0.506	20.632644	-89.458488
T. Izq. Teabo	69.05	1	1	1998	2.3	79.2	2.5	6.3	3.4	3.3	1.1	1.8	0.1	81.5	2.5	16.0	0.139	0.513	20.403559	-89.306104
T. Izq. Teabo	69.05	1	2	1897	2.2	79.4	2.5	6.6	3.2	3.2	1.1	1.7	0.1	81.6	2.5	15.9	0.113	0.513	20.403557	-89.306104
T. Izq. Tixmehuac	97.10	1	0	1830	4.6	75.4	3.1	6.2	3.0	4.0	1.4	2.1	0.2	80.0	3.1	16.9	0.102	0.512	20.226323	-89.126521
T. Izq. Tixmehuac	97.10	3	0	1635	3.5	76.8	3.1	6.6	2.8	3.4	1.4	2.2	0.2	80.3	3.1	16.6	0.111	0.501	20.226290	-89.126480
Peto	120.70	1	0	2520	5.8	77.4	2.3	5.2	2.3	3.1	1.3	2.2	0.4	83.2	2.3	14.5	0.074	0.510	20.119052	-88.947505

21 CARR: Tzucacab - Santa Rosa

CLAVE: 31017

RUTA: MEX

AÑO: 2020

LUGAR	ESTACION				CLASIFICACION VEHICULAR EN PORCIENTO													COORDENADAS		
	KM	TE	SC	TDPA	M	A	B	C2	C3	T3S2	T3S3	T3S2R4	OTROS	A	B	C	K'	D	LATITUD	LONGITUD
Tzucacab	0.00	3	0	1752	19.8	68.2	0.7	8.7	1.0	1.2	0.4	0.0	0.0	88.0	0.7	11.3	0.095	0.509	20.071845	-89.044261
T. C. Teya -Peto	11.30																			

YUCATAN

21 CARR: Tzucacab - Santa Rosa

CLAVE: 31017

RUTA: MEX

AÑO: 2020

LUGAR	ESTACION				CLASIFICACION VEHICULAR EN PORCIENTO													COORDENADAS		
	KM	TE	SC	TDPA	M	A	B	C2	C3	T3S2	T3S3	T3S2R4	OTROS	A	B	C	K'	D	LATITUD	LONGITUD
Peto	16.00	3	0	1997	5.7	75.6	2.3	8.4	2.0	2.2	1.2	2.5	0.1	81.3	2.3	16.4	0.100	0.509	20.126155	-88.922959
Santa Rosa	34.50	1	0	1702	5.6	74.2	3.0	8.9	2.4	2.4	1.2	2.2	0.1	79.8	3.0	17.2	0.093	0.525	19.952576	-88.882953

22 CARR: Valladolid - Felipe Carrillo Puerto

CLAVE: 00010

RUTA: MEX-295

AÑO: 2020

LUGAR	ESTACION				CLASIFICACION VEHICULAR EN PORCIENTO													COORDENADAS		
	KM	TE	SC	TDPA	M	A	B	C2	C3	T3S2	T3S3	T3S2R4	OTROS	A	B	C	K'	D	LATITUD	LONGITUD
Valladolid	0.00	3	0	4497	24.1	71.6	0.3	1.7	0.2	1.0	0.4	0.2	0.5	95.7	0.3	4.0	0.103	0.511	20.689593	-88.201062
Chichmilá	6.90	3	0	1959	19.2	77.9	0.3	1.1	0.6	0.3	0.0	0.2	0.4	97.1	0.3	2.6	0.094	0.506	20.631911	-88.216686
Tekom	12.05	3	0	1429	23.1	73.1	0.7	1.8	0.6	0.3	0.1	0.3	0.0	96.2	0.7	3.1	0.106	0.544	20.601556	-88.264437
Tixcacalcupul	19.80	3	0	823	17.2	78.4	0.7	1.7	0.8	0.3	0.1	0.4	0.4	95.6	0.7	3.7	0.102	0.503	20.535933	-88.270187
Lim. Edos. Term. Yuc. Ppia. Q. R.	46.00																			
Tepich	51.40	1	0	770	16.5	74.0	0.6	6.8	0.7	0.9	0.2	0.3	0.0	90.5	0.6	8.9	0.101	0.502	20.242245	-88.256048
Tihosuco	65.00	1	0	842	16.3	78.9	1.3	1.3	1.0	0.2	0.2	0.7	0.1	95.2	1.3	3.5	0.107	0.501	20.194502	-88.375242
Tihosuco	65.00	3	0	865	9.9	77.9	1.1	8.6	1.0	0.5	0.4	0.4	0.2	87.8	1.1	11.1	0.110	0.501	20.194500	-88.375228
T. Izq. San Felipe Berriozábal	99.00	1	0	516	7.1	80.8	0.9	8.5	1.2	0.7	0.2	0.3	0.3	87.9	0.9	11.2	0.116	0.507	19.962163	-88.241126
T. Izq. San Felipe Berriozábal	99.00	3	0	588	12.0	81.4	1.0	1.9	1.6	1.1	0.4	0.6	0.0	93.4	1.0	5.6	0.114	0.502	19.962164	-88.241126
Señor	116.50	1	0	873	11.7	77.8	1.4	7.3	0.7	0.6	0.3	0.2	0.0	89.5	1.4	9.1	0.123	0.512	19.842887	-88.137601
Señor	116.50	3	0	1358	13.9	70.5	2.5	6.4	1.7	1.5	1.6	1.7	0.2	84.4	2.5	13.1	0.138	0.520	19.842882	-88.137598
Felipe Carrillo Puerto	147.70	1	0	1514	17.3	76.9	1.2	3.3	0.5	0.5	0.1	0.2	0.0	94.2	1.2	4.6	0.101	0.508	19.580778	-88.045710

23 CARR: Valladolid - Río Lagartos

CLAVE: 31035

RUTA: MEX-295

AÑO: 2020

LUGAR	ESTACION				CLASIFICACION VEHICULAR EN PORCIENTO													COORDENADAS		
	KM	TE	SC	TDPA	M	A	B	C2	C3	T3S2	T3S3	T3S2R4	OTROS	A	B	C	K'	D	LATITUD	LONGITUD
Valladolid	0.00	3	1	4318	15.8	75.6	1.3	2.8	1.7	1.2	0.4	1.0	0.2	91.4	1.3	7.3	0.111	0.508	20.689661	-88.202276
Valladolid	0.00	3	2	4185	19.9	71.5	1.1	2.5	1.7	1.3	0.4	1.3	0.3	91.4	1.1	7.5	0.085	0.508	20.689661	-88.202279
Temozón	12.70	3	0	3460	21.4	72.5	0.7	2.0	1.0	1.1	0.1	0.9	0.3	93.9	0.7	5.4	0.095	0.503	20.801462	-88.200941
Tizimín	51.80	1	0	3147	25.9	60.3	1.5	2.4	3.7	2.5	1.2	1.7	0.8	86.2	1.5	12.3	0.088	0.511	21.127263	-88.155062
Tizimín	51.80	3	0	3452	22.4	64.9	0.7	6.5	1.3	1.3	1.0	1.3	0.6	87.3	0.7	12.0	0.134	0.504	21.153481	-88.150637
T. Der. Dzonot Carretero	79.90	1	0	1440	13.5	66.7	2.0	6.2	2.4	2.8	1.8	2.8	1.8	80.2	2.0	17.8	0.128	0.501	21.380406	-88.142664
Río Lagartos	103.90																			

YUCATAN

24 CARR: Mérida - Cancún (Cuota)

CLAVE: 00071

RUTA: MEX-180D

AÑO: 2020

LUGAR	ESTACION				CLASIFICACION VEHICULAR EN PORCIENTO													COORDENADAS		
	KM	TE	SC	TDPA	M	A	B	C2	C3	T3S2	T3S3	T3S2R4	OTROS	A	B	C	K'	D	LATITUD	LONGITUD
T. C. Mérida - Puerto Juárez	0.00																			
Plaza de Cobro Piste	51.00	1	1	1801	0.6	77.9	3.9	6.3	1.2	2.9	1.1	5.7	0.4	78.5	3.9	17.6	0.087	0.506	20.728842	-88.583241
Plaza de Cobro Piste	51.00	1	2	1760	0.7	75.5	3.9	6.9	1.4	3.4	1.2	6.6	0.4	76.2	3.9	19.9	0.101	0.506	20.728931	-88.583216
Plaza de Cobro X-Can	155.00	1	1	1537	2.5	76.8	4.8	5.5	1.1	2.7	1.5	4.6	0.5	79.3	4.8	15.9	0.094	0.517	20.876970	-87.635830
Plaza de Cobro X-Can	155.00	1	2	1644	2.6	76.5	4.9	5.5	1.2	2.9	1.1	4.8	0.5	79.1	4.9	16.0	0.085	0.517	20.876883	-87.635832
Lim. Edos. Term. Yuc. Ppia. Q. R.	160.00																			
T. C. Mérida - Puerto Juárez	292.00	1	1	1526	6.7	70.3	6.0	6.3	1.2	2.9	1.5	4.5	0.6	77.0	6.0	17.0	0.106	0.509	21.097356	-86.976027
T. C. Mérida - Puerto Juárez	292.00	1	2	1472	6.3	70.4	6.3	6.5	1.7	2.7	1.3	4.4	0.4	76.7	6.3	17.0	0.089	0.509	21.097633	-86.976166
T. C. Reforma Agraria - Puerto Juárez	308.10	1	0	13804	5.1	85.4	1.8	3.5	1.5	1.5	0.2	0.8	0.2	90.5	1.8	7.7	0.117	0.519	21.018792	-86.856880

25 CARR: Acanceh - Estación Polabán

CLAVE: 31615

RUTA: YUC

AÑO: 2020

LUGAR	ESTACION				CLASIFICACION VEHICULAR EN PORCIENTO													COORDENADAS		
	KM	TE	SC	TDPA	M	A	B	C2	C3	T3S2	T3S3	T3S2R4	OTROS	A	B	C	K'	D	LATITUD	LONGITUD
Acanceh	0.00	3	0	2049	22.6	67.8	0.6	7.1	0.8	0.8	0.2	0.1	0.0	90.4	0.6	9.0	0.093	0.516	20.813156	-89.452922
Homún	20.00	3	0	860	25.4	67.8	0.4	5.3	0.3	0.7	0.1	0.0	0.0	93.2	0.4	6.4	0.076	0.511	20.738259	-89.283347
Estación Polabán	24.40	1	0	568	24.2	67.0	0.6	7.5	0.5	0.2	0.0	0.0	0.0	91.2	0.6	8.2	0.116	0.505	20.726755	-89.223686

26 CARR: Baca - Dzidzantún

CLAVE: 31591

RUTA: YUC

AÑO: 2020

LUGAR	ESTACION				CLASIFICACION VEHICULAR EN PORCIENTO													COORDENADAS		
	KM	TE	SC	TDPA	M	A	B	C2	C3	T3S2	T3S3	T3S2R4	OTROS	A	B	C	K'	D	LATITUD	LONGITUD
Baca	0.00	3	0	2716	11.1	81.5	0.5	4.9	0.8	0.8	0.3	0.1	0.0	92.6	0.5	6.9	0.084	0.500	21.108601	-89.399181
Dzemul	15.00	1	0	325	13.4	79.2	0.6	5.0	1.6	0.1	0.1	0.0	0.0	92.6	0.6	6.8	0.098	0.519	21.208735	-89.321247
Dzemul	15.00	3	0	1985	23.5	71.9	0.2	3.4	0.3	0.6	0.1	0.0	0.0	95.4	0.2	4.4	0.095	0.516	21.209524	-89.309475
Pueblo Telchac	19.10	3	0	1335	25.5	70.4	0.1	3.6	0.2	0.1	0.0	0.1	0.0	95.9	0.1	4.0	0.094	0.503	21.203673	-89.272530
Sinanché	29.10	3	0	716	38.1	52.3	0.6	7.4	1.2	0.4	0.0	0.0	0.0	90.4	0.6	9.0	0.088	0.505	21.225456	-89.185098
Dzidzantún	43.00	1	0	948	30.5	63.0	0.2	4.8	0.4	0.9	0.1	0.0	0.1	93.5	0.2	6.3	0.108	0.505	21.246812	-89.042117

27 CARR: Citilcum - Tixkochoh

CLAVE: 31064

RUTA: YUC

AÑO: 2020

LUGAR	ESTACION				CLASIFICACION VEHICULAR EN PORCIENTO													COORDENADAS		
	KM	TE	SC	TDPA	M	A	B	C2	C3	T3S2	T3S3	T3S2R4	OTROS	A	B	C	K'	D	LATITUD	LONGITUD
Citilcum	0.00	3	0	909	7.4	85.6	0.5	5.0	0.3	0.9	0.3	0.0	0.0	93.0	0.5	6.5	0.103	0.526	20.951872	-89.118221
Tekanto	7.00	1	0	633	8.4	87.2	0.6	1.7	0.4	1.3	0.4	0.0	0.0	95.6	0.6	3.8	0.111	0.505	21.010858	-89.104878

YUCATAN

27 CARR: Citilcum - Tixkochoh

CLAVE: 31064

RUTA: YUC

AÑO: 2020

LUGAR	ESTACION				CLASIFICACION VEHICULAR EN PORCIENTO														COORDENADAS	
	KM	TE	SC	TDPA	M	A	B	C2	C3	T3S2	T3S3	T3S2R4	OTROS	A	B	C	K'	D	LATITUD	LONGITUD
Tixkochoh	10.00	1	0	713	7.0	88.6	0.6	2.4	0.5	0.9	0.0	0.0	0.0	95.6	0.6	3.8	0.104	0.513	21.013947	-89.080784

28 CARR: Dzemul - Xtampú

CLAVE: 31608

RUTA: YUC

AÑO: 2020

LUGAR	ESTACION				CLASIFICACION VEHICULAR EN PORCIENTO														COORDENADAS	
	KM	TE	SC	TDPA	M	A	B	C2	C3	T3S2	T3S3	T3S2R4	OTROS	A	B	C	K'	D	LATITUD	LONGITUD
Dzemul	0.00	3	0	443	0.9	78.7	0.2	20.0	0.2	0.0	0.0	0.0	0.0	79.6	0.2	20.2	0.113	0.515	21.208732	-89.321243
Xtampú	10.00	1	0	696	21.5	57.2	0.2	20.9	0.2	0.0	0.0	0.0	0.0	78.7	0.2	21.1	0.111	0.502	21.333201	-89.348546

29 CARR: Dzidzantún - Santa Clara

CLAVE: 31592

RUTA: YUC

AÑO: 2020

LUGAR	ESTACION				CLASIFICACION VEHICULAR EN PORCIENTO														COORDENADAS	
	KM	TE	SC	TDPA	M	A	B	C2	C3	T3S2	T3S3	T3S2R4	OTROS	A	B	C	K'	D	LATITUD	LONGITUD
Dzidzantún	0.00	3	0	1050	6.8	87.1	0.0	5.0	0.3	0.3	0.3	0.2	0.0	93.9	0.0	6.1	0.090	0.510	21.246812	-89.042117
Santa Clara	14.00	1	0	792	34.6	59.3	0.2	5.0	0.0	0.8	0.1	0.0	0.0	93.9	0.2	5.9	0.112	0.501	21.372904	-89.014067

30 CARR: Hoctún - Cenotillo

CLAVE: 31011

RUTA: YUC-011

AÑO: 2020

LUGAR	ESTACION				CLASIFICACION VEHICULAR EN PORCIENTO														COORDENADAS	
	KM	TE	SC	TDPA	M	A	B	C2	C3	T3S2	T3S3	T3S2R4	OTROS	A	B	C	K'	D	LATITUD	LONGITUD
Hoctún	0.00	3	0	3106	3.1	83.6	2.2	5.5	1.1	1.8	0.9	1.0	0.8	86.7	2.2	11.1	0.082	0.544	20.870353	-89.200174
Citilcum	13.20	3	0	1709	34.8	57.9	0.4	5.0	0.6	1.1	0.2	0.0	0.0	92.7	0.4	6.9	0.103	0.516	20.951871	-89.118220
Izamal	24.00	3	0	1977	31.4	60.1	0.4	5.6	0.6	1.5	0.2	0.2	0.0	91.5	0.4	8.1	0.084	0.506	20.932417	-89.014384
Tunkás	55.20	3	0	550	38.8	50.8	1.7	6.3	1.8	0.6	0.0	0.0	0.0	89.6	1.7	8.7	0.107	0.533	20.906111	-88.750874
Cenotillo	70.90	1	0	429	41.8	47.2	1.4	7.7	1.2	0.7	0.0	0.0	0.0	89.0	1.4	9.6	0.098	0.507	20.966062	-88.606556

31 CARR: Holcá - Sotuta

CLAVE: 31626

RUTA: YUC

AÑO: 2020

LUGAR	ESTACION				CLASIFICACION VEHICULAR EN PORCIENTO														COORDENADAS	
	KM	TE	SC	TDPA	M	A	B	C2	C3	T3S2	T3S3	T3S2R4	OTROS	A	B	C	K'	D	LATITUD	LONGITUD
T. C. Mérida - Puerto Juárez	0.00	3	0	869	20.6	70.8	1.0	5.3	1.5	0.5	0.2	0.1	0.0	91.4	1.0	7.6	0.093	0.530	20.756498	-88.929547
Tibolón	10.00	3	0	749	20.1	70.1	1.1	5.7	1.9	0.7	0.3	0.1	0.0	90.2	1.1	8.7	0.093	0.505	20.667551	-88.945453
Sotuta	20.00	1	0	709	23.0	67.6	1.4	5.5	1.4	0.6	0.2	0.3	0.0	90.6	1.4	8.0	0.111	0.504	20.596684	-89.006143

YUCATAN

32 CARR: Hunucmá - Umán

CLAVE: 31610

RUTA: YUC

AÑO: 2020

LUGAR	ESTACION				CLASIFICACION VEHICULAR EN PORCIENTO													COORDENADAS		
	KM	TE	SC	TDPA	M	A	B	C2	C3	T3S2	T3S3	T3S2R4	OTROS	A	B	C	K'	D	LATITUD	LONGITUD
Hunucmá	0.00	3	0	3813	18.3	69.2	0.7	9.4	0.5	1.1	0.4	0.2	0.2	87.5	0.7	11.8	0.110	0.525	21.015644	-89.874654
X. C. Mérida - Tetiz	4.87	1	0	3592	18.1	69.3	0.8	8.2	0.9	1.9	0.4	0.1	0.3	87.4	0.8	11.8	0.111	0.525	20.980136	-89.853875
X. C. Mérida - Tetiz	4.87	3	0	962	30.0	60.4	0.6	7.1	0.5	1.1	0.3	0.0	0.0	90.4	0.6	9.0	0.097	0.513	20.980137	-89.853876
Hacienda Dzibikak	16.16	1	0	1072	28.8	64.1	0.2	4.1	1.2	0.9	0.4	0.3	0.0	92.9	0.2	6.9	0.110	0.509	20.901442	-89.792611
Hacienda Dzibikak	16.16	3	0	1868	31.4	62.6	0.2	3.4	1.4	0.6	0.1	0.3	0.0	94.0	0.2	5.8	0.106	0.508	20.901437	-89.792607
Umán	22.00	1	0	3044	35.7	56.3	0.3	3.5	0.6	2.4	0.6	0.2	0.4	92.0	0.3	7.7	0.130	0.515	20.886679	-89.751644

33 CARR: Izamal - Dzilam González

CLAVE: 31605

RUTA: YUC

AÑO: 2020

LUGAR	ESTACION				CLASIFICACION VEHICULAR EN PORCIENTO													COORDENADAS		
	KM	TE	SC	TDPA	M	A	B	C2	C3	T3S2	T3S3	T3S2R4	OTROS	A	B	C	K'	D	LATITUD	LONGITUD
Izamal	0.00	3	0	1641	43.7	50.4	0.8	3.9	0.4	0.7	0.1	0.0	0.0	94.1	0.8	5.1	0.098	0.501	20.936348	-89.014659
Temax	30.00	1	0	827	18.7	72.6	0.8	6.5	0.4	0.9	0.1	0.0	0.0	91.3	0.8	7.9	0.115	0.500	21.145991	-88.937903
Dzilam González	43.00	1	0	1028	32.6	61.1	0.6	4.4	0.4	0.8	0.1	0.0	0.0	93.7	0.6	5.7	0.078	0.503	21.280172	-88.928850

34 CARR: Kantunil - Izamal

CLAVE: 31012

RUTA: YUC

AÑO: 2020

LUGAR	ESTACION				CLASIFICACION VEHICULAR EN PORCIENTO													COORDENADAS		
	KM	TE	SC	TDPA	M	A	B	C2	C3	T3S2	T3S3	T3S2R4	OTROS	A	B	C	K'	D	LATITUD	LONGITUD
Kantunil	0.00	3	0	993	19.5	70.7	0.8	6.7	0.8	1.1	0.4	0.0	0.0	90.2	0.8	9.0	0.118	0.501	20.796791	-89.035123
Izamal	17.80	1	0	1933	31.2	64.0	0.5	2.6	0.3	1.3	0.0	0.0	0.1	95.2	0.5	4.3	0.089	0.506	20.932416	-89.014386

35 CARR: Kinchil - Umán

CLAVE: 31009

RUTA: YUC

AÑO: 2020

LUGAR	ESTACION				CLASIFICACION VEHICULAR EN PORCIENTO													COORDENADAS		
	KM	TE	SC	TDPA	M	A	B	C2	C3	T3S2	T3S3	T3S2R4	OTROS	A	B	C	K'	D	LATITUD	LONGITUD
Kinchil	0.00	3	0	1624	31.3	58.4	1.1	6.1	0.9	2.0	0.2	0.0	0.0	89.7	1.1	9.2	0.103	0.508	20.913443	-89.948220
Umán	26.00																			

36 CARR: Libramiento de Peto

CLAVE:

RUTA: YUC-018

AÑO: 2020

LUGAR	ESTACION				CLASIFICACION VEHICULAR EN PORCIENTO													COORDENADAS		
	KM	TE	SC	TDPA	M	A	B	C2	C3	T3S2	T3S3	T3S2R4	OTROS	A	B	C	K'	D	LATITUD	LONGITUD
T. C. Teya - Peto	0.00	3	0	1351	3.4	72.3	4.1	8.0	3.2	3.2	1.9	3.8	0.1	75.7	4.1	20.2	0.095	0.502	20.118661	-88.947339
T. C. Tzucacab - Santa Rosa	5.60																			

YUCATAN

37 CARR: Libramiento Norte de Motul

CLAVE: 31610

RUTA: YUC

AÑO: 2020

LUGAR	ESTACION				CLASIFICACION VEHICULAR EN PORCIENTO													COORDENADAS		
	KM	TE	SC	TDPA	M	A	B	C2	C3	T3S2	T3S3	T3S2R4	OTROS	A	B	C	K'	D	LATITUD	LONGITUD
T. C. Mérida - Dzilam de Bravo Poniente	0.00	3	0	6270	10.4	74.1	1.5	6.2	2.1	2.6	0.9	1.4	0.8	84.5	1.5	14.0	0.078	0.525	21.097464	-89.304777
X. C. Motul - Puerto Telchac	3.16	1	0	6510	5.0	80.0	1.2	6.9	1.8	2.7	0.9	1.0	0.5	85.0	1.2	13.8	0.070	0.521	21.114476	-89.281556
X. C. Motul - Puerto Telchac	3.16	3	0	5731	8.8	73.8	1.4	8.0	2.0	2.8	1.2	1.5	0.5	82.6	1.4	16.0	0.083	0.504	21.114472	-89.281204
X. C. Libramiento Suma de Hidalgo	3.70	3	0	1247	27.7	65.5	0.9	4.8	0.8	0.3	0.0	0.0	0.0	93.2	0.9	5.9	0.096	0.538	21.114662	-89.276162
T. C. Mérida - Dzilam de Bravo Oriente	6.53	1	0	746	25.0	65.5	1.1	6.8	0.9	0.7	0.0	0.0	0.0	90.5	1.1	8.4	0.080	0.542	21.096798	-89.260653

38 CARR: Mérida - Acanceh

CLAVE: 31023

RUTA: YUC

AÑO: 2020

LUGAR	ESTACION				CLASIFICACION VEHICULAR EN PORCIENTO													COORDENADAS		
	KM	TE	SC	TDPA	M	A	B	C2	C3	T3S2	T3S3	T3S2R4	OTROS	A	B	C	K'	D	LATITUD	LONGITUD
Mérida	0.00	3	0	8695	0.6	88.2	0.1	5.2	1.9	1.1	0.9	1.6	0.4	88.8	0.1	11.1	0.080	0.505	20.937028	-89.584918
T. Der. Uxec Tamán	11.00	1	0	422	33.5	61.4	0.6	3.7	0.6	0.1	0.1	0.0	0.0	94.9	0.6	4.5	0.092	0.520	20.867600	-89.531102
T. Der. Uxec Tamán	11.00	3	0	306	23.3	66.0	0.7	8.5	0.6	0.9	0.0	0.0	0.0	89.3	0.7	10.0	0.111	0.504	20.867601	-89.531105
Timucuy	20.00	3	0	1011	33.9	58.0	0.4	5.5	0.9	0.9	0.4	0.0	0.0	91.9	0.4	7.7	0.109	0.503	20.811876	-89.513376
Acanceh	26.00	1	0	969	35.0	57.2	0.7	4.3	0.5	1.8	0.4	0.0	0.1	92.2	0.7	7.1	0.105	0.523	20.813951	-89.463257

39 CARR: Mérida - Oxkutzcab

CLAVE: 31018

RUTA: YUC-018

AÑO: 2020

LUGAR	ESTACION				CLASIFICACION VEHICULAR EN PORCIENTO													COORDENADAS		
	KM	TE	SC	TDPA	M	A	B	C2	C3	T3S2	T3S3	T3S2R4	OTROS	A	B	C	K'	D	LATITUD	LONGITUD
Mérida	0.00	3	1	7924	11.2	79.6	0.3	7.0	0.2	0.9	0.7	0.0	0.1	90.8	0.3	8.9	0.099	0.518	20.949833	-89.592248
Mérida	0.00	3	2	8528	11.0	79.0	0.3	7.7	0.2	0.9	0.8	0.0	0.1	90.0	0.3	9.7	0.107	0.518	20.949956	-89.592206
Kanasín	5.97	1	1	8776	23.5	68.3	0.3	6.0	0.4	0.7	0.6	0.1	0.1	91.8	0.3	7.9	0.084	0.526	20.938006	-89.563713
Kanasín	5.97	1	2	7919	23.3	67.7	0.3	6.8	0.4	0.7	0.6	0.1	0.1	91.0	0.3	8.7	0.092	0.526	20.938045	-89.563705
Acanceh	20.39	1	0	4727	28.8	58.9	0.8	4.5	0.8	3.7	1.1	0.6	0.8	87.7	0.8	11.5	0.116	0.520	20.815166	-89.461971
Acanceh	20.39	3	1	3290	7.8	75.7	1.5	7.6	2.6	1.9	1.0	1.2	0.7	83.5	1.5	15.0	0.086	0.510	20.812464	-89.472679
Acanceh	20.39	3	2	3424	7.8	75.8	1.4	7.7	2.6	2.0	1.0	1.1	0.6	83.6	1.4	15.0	0.084	0.510	20.812464	-89.472683
T. Der. Tecoh	26.64	3	1	2648	7.8	74.8	1.6	7.5	2.7	2.1	1.3	1.5	0.7	82.6	1.6	15.8	0.091	0.510	20.763106	-89.468737
T. Der. Tecoh	26.64	3	2	2760	7.6	75.3	1.4	7.6	2.7	2.1	1.1	1.3	0.9	82.9	1.4	15.7	0.096	0.510	20.763106	-89.468737
Tekit	61.70	1	0	202	25.9	66.4	0.8	5.6	1.1	0.2	0.0	0.0	0.0	92.3	0.8	6.9	0.129	0.517	20.534813	-89.333768
Tekit	61.70	3	1	2377	7.7	74.8	1.6	7.7	2.7	2.1	1.4	1.2	0.8	82.5	1.6	15.9	0.095	0.511	20.520777	-89.343302
Tekit	61.70	3	2	2481	7.7	75.3	1.3	7.6	2.6	2.2	1.1	1.3	0.9	83.0	1.3	15.7	0.096	0.511	20.520777	-89.343302
Maní	98.20	1	0	3028	12.4	74.8	1.0	7.3	1.9	1.8	0.2	0.5	0.1	87.2	1.0	11.8	0.078	0.500	20.392311	-89.390114
Maní	98.20	3	0	1635	34.4	57.0	0.5	6.7	0.2	1.0	0.1	0.0	0.1	91.4	0.5	8.1	0.089	0.508	20.392308	-89.390114
Oxkutzcab	109.30	1	0	1718	29.9	62.5	0.3	5.7	0.3	1.2	0.0	0.0	0.1	92.4	0.3	7.3	0.081	0.506	20.304186	-89.419262

YUCATAN

40 CARR: Mérida - Timucuy

CLAVE: 31024

RUTA: YUC

AÑO: 2020

LUGAR	ESTACION				CLASIFICACION VEHICULAR EN PORCIENTO										COORDENADAS					
	KM	TE	SC	TDPA	M	A	B	C2	C3	T3S2	T3S3	T3S2R4	OTROS	A	B	C	K'	D	LATITUD	LONGITUD
Mérida	0.00	3	0	5166	18.0	70.5	0.6	5.3	0.5	4.5	0.5	0.1	0.0	88.5	0.6	10.9	0.090	0.509	20.922046	-89.605586
Tekik de Regil	15.10	1	0	1662	13.7	74.1	0.6	9.9	0.7	0.8	0.2	0.0	0.0	87.8	0.6	11.6	0.070	0.515	20.816414	-89.560365
Tekik de Regil	15.10	3	0	952	18.9	66.0	0.5	12.8	0.4	0.9	0.5	0.0	0.0	84.9	0.5	14.6	0.092	0.502	20.816411	-89.560362
Timucuy	18.65	1	0	917	18.1	68.3	0.3	11.5	0.4	1.0	0.3	0.0	0.1	86.4	0.3	13.3	0.087	0.525	20.811878	-89.513373

41 CARR: Motul - Puerto Telchac

CLAVE: 31006

RUTA: YUC-172

AÑO: 2020

LUGAR	ESTACION				CLASIFICACION VEHICULAR EN PORCIENTO										COORDENADAS					
	KM	TE	SC	TDPA	M	A	B	C2	C3	T3S2	T3S3	T3S2R4	OTROS	A	B	C	K'	D	LATITUD	LONGITUD
Motul	0.00	3	0	3718	25.4	68.8	0.4	2.3	1.0	1.3	0.2	0.1	0.5	94.2	0.4	5.4	0.089	0.507	21.096108	-89.282884
Pueblo Telchac	12.00	3	0	2298	27.9	65.7	0.4	4.9	0.3	0.6	0.2	0.0	0.0	93.6	0.4	6.0	0.111	0.502	21.203672	-89.272525
Puerto Telchac	28.00																			

42 CARR: Muna - Maxcanú

CLAVE: 31053

RUTA: YUC

AÑO: 2020

LUGAR	ESTACION				CLASIFICACION VEHICULAR EN PORCIENTO										COORDENADAS					
	KM	TE	SC	TDPA	M	A	B	C2	C3	T3S2	T3S3	T3S2R4	OTROS	A	B	C	K'	D	LATITUD	LONGITUD
Muna	0.00	3	0	981	18.6	71.8	1.4	4.8	1.0	1.6	0.5	0.3	0.0	90.4	1.4	8.2	0.098	0.513	20.484449	-89.713816
Opichén	17.00	3	0	1326	32.9	58.1	1.4	4.6	0.8	1.5	0.4	0.3	0.0	91.0	1.4	7.6	0.094	0.512	20.551046	-89.857213
T. C. Campeche - Mérida	31.00	1	0	1067	32.9	57.3	1.5	4.8	1.1	1.6	0.5	0.3	0.0	90.2	1.5	8.3	0.098	0.513	20.585671	-89.973001

43 CARR: Oxkutzcab - Xul

CLAVE: 31051

RUTA: YUC-031

AÑO: 2020

LUGAR	ESTACION				CLASIFICACION VEHICULAR EN PORCIENTO										COORDENADAS					
	KM	TE	SC	TDPA	M	A	B	C2	C3	T3S2	T3S3	T3S2R4	OTROS	A	B	C	K'	D	LATITUD	LONGITUD
Oxkutzcab	0.00	3	0	2631	36.9	55.9	0.1	4.5	0.1	1.6	0.9	0.0	0.0	92.8	0.1	7.1	0.091	0.503	20.302007	-89.414852
Emiliano Zapata	10.00	3	0	1218	50.6	42.2	0.3	5.5	0.1	1.0	0.3	0.0	0.0	92.8	0.3	6.9	0.101	0.510	20.225972	-89.468134
Xul	25.00	1	0	790	44.3	47.2	0.4	6.6	0.2	1.1	0.2	0.0	0.0	91.5	0.4	8.1	0.099	0.507	20.102873	-89.461231

44 CARR: Piste - Dzitás

CLAVE: 31013

RUTA: YUC-013

AÑO: 2020

LUGAR	ESTACION				CLASIFICACION VEHICULAR EN PORCIENTO										COORDENADAS					
	KM	TE	SC	TDPA	M	A	B	C2	C3	T3S2	T3S3	T3S2R4	OTROS	A	B	C	K'	D	LATITUD	LONGITUD
Piste	0.00	3	0	1976	8.6	83.7	1.4	3.9	0.5	1.3	0.3	0.2	0.1	92.3	1.4	6.3	0.115	0.516	20.698473	-88.588420
Dzitás	18.00	1	0	595	8.7	87.9	0.4	2.0	0.4	0.2	0.3	0.1	0.0	96.6	0.4	3.0	0.116	0.514	20.840338	-88.532362

YUCATAN

45 CARR: Progreso - Telchac Puerto

CLAVE: 31616

RUTA: YUC-027

AÑO: 2020

LUGAR	ESTACION				CLASIFICACION VEHICULAR EN PORCIENTO										COORDENADAS					
	KM	TE	SC	TDPA	M	A	B	C2	C3	T3S2	T3S3	T3S2R4	OTROS	A	B	C	K'	D	LATITUD	LONGITUD
Progreso	0.00	3	1	4862	6.5	88.3	0.2	2.7	0.6	1.0	0.6	0.0	0.1	94.8	0.2	5.0	0.094	0.519	21.275872	-89.660714
Progreso	0.00	3	2	5253	6.6	88.2	0.2	2.7	0.6	1.0	0.5	0.0	0.2	94.8	0.2	5.0	0.103	0.519	21.276032	-89.660737
Chicxulub Puerto	6.00	1	1	3772	3.4	92.8	0.2	2.1	0.6	0.6	0.3	0.0	0.0	96.2	0.2	3.6	0.101	0.509	21.288965	-89.603170
Chicxulub Puerto	6.00	1	2	3645	4.1	91.7	0.1	2.5	0.7	0.6	0.3	0.0	0.0	95.8	0.1	4.1	0.104	0.509	21.288990	-89.603178
Chicxulub Puerto	6.00	3	0	8810	2.6	90.1	0.6	3.2	0.7	1.8	0.6	0.1	0.3	92.7	0.6	6.7	0.087	0.507	21.294652	-89.599422
Xtampú	20.00	1	0	1223	14.5	77.3	0.6	4.7	1.1	1.2	0.5	0.1	0.0	91.8	0.6	7.6	0.128	0.510	21.333195	-89.348545
Xtampú	20.00	3	0	1503	7.2	85.7	0.5	4.0	1.3	0.9	0.3	0.1	0.0	92.9	0.5	6.6	0.134	0.511	21.333198	-89.348546
Telchac Puerto	33.00	1	0	2092	10.2	82.4	0.4	4.0	0.9	1.5	0.4	0.1	0.1	92.6	0.4	7.0	0.114	0.517	21.341753	-89.272623

46 CARR: Ramal a Chankom

CLAVE: 31049

RUTA: YUC

AÑO: 2020

LUGAR	ESTACION				CLASIFICACION VEHICULAR EN PORCIENTO										COORDENADAS					
	KM	TE	SC	TDPA	M	A	B	C2	C3	T3S2	T3S3	T3S2R4	OTROS	A	B	C	K'	D	LATITUD	LONGITUD
T. C. Mérida - Puerto Juárez	0.00	3	0	395	24.2	70.6	0.4	4.1	0.5	0.2	0.0	0.0	0.0	94.8	0.4	4.8	0.104	0.500	20.642099	-88.488551
Chankom	9.00	1	0	419	5.7	84.9	1.0	7.4	1.0	0.0	0.0	0.0	0.0	90.6	1.0	8.4	0.119	0.504	20.568365	-88.512380

47 CARR: Ramal a Dzonot Carretero

CLAVE: 31614

RUTA: YUC

AÑO: 2020

LUGAR	ESTACION				CLASIFICACION VEHICULAR EN PORCIENTO										COORDENADAS					
	KM	TE	SC	TDPA	M	A	B	C2	C3	T3S2	T3S3	T3S2R4	OTROS	A	B	C	K'	D	LATITUD	LONGITUD
T. C. Valladolid - Río Lagartos	0.00	3	0	634	39.3	55.7	1.2	2.4	0.3	0.4	0.1	0.1	0.5	95.0	1.2	3.8	0.134	0.539	21.380400	-88.142672
Dzonot Carretero	35.00																			

48 CARR: Ramal a San Felipe

CLAVE: 31628

RUTA: YUC

AÑO: 2020

LUGAR	ESTACION				CLASIFICACION VEHICULAR EN PORCIENTO										COORDENADAS					
	KM	TE	SC	TDPA	M	A	B	C2	C3	T3S2	T3S3	T3S2R4	OTROS	A	B	C	K'	D	LATITUD	LONGITUD
T. C. Valladolid - Río Lagartos	0.00	3	0	456	26.8	69.3	0.7	1.7	1.3	0.1	0.0	0.1	0.0	96.1	0.7	3.2	0.107	0.502	21.572293	-88.160008
San Felipe	7.20	1	0	528	26.6	69.7	1.1	1.7	0.6	0.2	0.1	0.0	0.0	96.3	1.1	2.6	0.106	0.500	21.553759	-88.234992

49 CARR: Ramal a Tedzidz

CLAVE: 31600

RUTA: YUC

AÑO: 2020

LUGAR	ESTACION				CLASIFICACION VEHICULAR EN PORCIENTO										COORDENADAS					
	KM	TE	SC	TDPA	M	A	B	C2	C3	T3S2	T3S3	T3S2R4	OTROS	A	B	C	K'	D	LATITUD	LONGITUD
T. C. Mérida - Celestún	0.00																			

YUCATAN

49 CARR: Ramal a Tedzidz

CLAVE: 31600

RUTA: YUC

AÑO: 2020

LUGAR	ESTACION				CLASIFICACION VEHICULAR EN PORCIENTO														COORDENADAS	
	KM	TE	SC	TDPA	M	A	B	C2	C3	T3S2	T3S3	T3S2R4	OTROS	A	B	C	K'	D	LATITUD	LONGITUD
Tedzidz	6.00	1	0	111	45.3	48.9	0.9	4.0	0.1	0.6	0.0	0.2	0.0	94.2	0.9	4.9	0.153	0.501	20.834917	-89.976324

50 CARR: Ramal a Yaxcabá

CLAVE: 31111

RUTA: YUC-289

AÑO: 2020

LUGAR	ESTACION				CLASIFICACION VEHICULAR EN PORCIENTO														COORDENADAS	
	KM	TE	SC	TDPA	M	A	B	C2	C3	T3S2	T3S3	T3S2R4	OTROS	A	B	C	K'	D	LATITUD	LONGITUD
T. C. Mérida - Puerto Juárez	0.00	3	0	550	20.8	71.2	0.5	2.8	1.2	1.9	0.4	1.2	0.0	92.0	0.5	7.5	0.102	0.525	20.707456	-88.810071
Yaxcabá	18.00	1	0	459	21.9	66.8	0.5	5.1	1.5	2.0	0.6	1.6	0.0	88.7	0.5	10.8	0.118	0.539	20.547515	-88.827756

51 CARR: Sinanché - Xitibcanul

CLAVE: 31619

RUTA: YUC

AÑO: 2020

LUGAR	ESTACION				CLASIFICACION VEHICULAR EN PORCIENTO														COORDENADAS	
	KM	TE	SC	TDPA	M	A	B	C2	C3	T3S2	T3S3	T3S2R4	OTROS	A	B	C	K'	D	LATITUD	LONGITUD
Sinanché	0.00	3	0	581	43.2	51.3	0.3	4.1	0.3	0.5	0.3	0.0	0.0	94.5	0.3	5.2	0.086	0.520	21.225459	-89.185095
Xitibcanul	7.00	1	0	381	44.1	49.5	0.2	4.7	1.2	0.3	0.0	0.0	0.0	93.6	0.2	6.2	0.147	0.511	21.352373	-89.171675

52 CARR: Sucilá - Calotmul

CLAVE: 31617

RUTA: YUC

AÑO: 2020

LUGAR	ESTACION				CLASIFICACION VEHICULAR EN PORCIENTO														COORDENADAS		
	KM	TE	SC	TDPA	M	A	B	C2	C3	T3S2	T3S3	T3S2R4	OTROS	A	B	C	K'	D	LATITUD	LONGITUD	
Sucilá	0.00																				
X. C. Cansahcab - Tizimin	2.00	3	0	878	17.3	75.7	1.0	5.3	0.7	0.0	0.0	0.0	0.0	93.0	1.0	6.0	0.082	0.500	21.150254	-88.316127	
Calotmul	30.20	1	0	733	34.5	61.2	0.7	2.6	0.7	0.1	0.2	0.0	0.0	95.7	0.7	3.6	0.111	0.502	21.018553	-88.178641	

53 CARR: Suma - Izamal

CLAVE: 31081

RUTA: YUC-081

AÑO: 2020

LUGAR	ESTACION				CLASIFICACION VEHICULAR EN PORCIENTO														COORDENADAS	
	KM	TE	SC	TDPA	M	A	B	C2	C3	T3S2	T3S3	T3S2R4	OTROS	A	B	C	K'	D	LATITUD	LONGITUD
Suma	0.00	3	0	604	26.4	63.3	1.2	8.2	0.3	0.6	0.0	0.0	0.0	89.7	1.2	9.1	0.123	0.500	21.086306	-89.147913
Izamal	22.00	1	0	907	32.2	58.9	0.3	7.2	0.6	0.8	0.0	0.0	0.0	91.1	0.3	8.6	0.095	0.508	20.941088	-89.018836

YUCATAN

54 CARR: Telchac Puerto - Dzilam de Bravo

CLAVE: 31042

RUTA: YUC

AÑO: 2020

LUGAR	ESTACION				CLASIFICACION VEHICULAR EN PORCIENTO										COORDENADAS					
	KM	TE	SC	TDPA	M	A	B	C2	C3	T3S2	T3S3	T3S2R4	OTROS	A	B	C	K'	D	LATITUD	LONGITUD
Telchac Puerto	0.00	3	0	1314	25.2	61.9	5.7	5.2	1.9	0.0	0.0	0.0	0.1	87.1	5.7	7.2	0.111	0.501	21.341888	-89.263611
T. Der. Sinanché	8.00	1	0	1094	24.6	61.5	5.5	6.3	1.7	0.4	0.0	0.0	0.0	86.1	5.5	8.4	0.129	0.503	21.352376	-89.171676
T. Der. Sinanché	8.00	3	0	926	24.3	56.4	9.2	7.4	2.7	0.0	0.0	0.0	0.0	80.7	9.2	10.1	0.125	0.505	21.352374	-89.171680
Chabihau	15.00	1	0	635	26.8	63.2	2.6	5.7	1.4	0.2	0.1	0.0	0.0	90.0	2.6	7.4	0.142	0.501	21.356466	-89.117280
Chabihau	15.00	3	0	437	26.6	62.6	5.0	5.7	0.0	0.0	0.1	0.0	0.0	89.2	5.0	5.8	0.133	0.502	21.356466	-89.117280
Santa Clara	26.00	1	0	418	26.5	60.0	7.1	5.4	0.8	0.0	0.0	0.0	0.2	86.5	7.1	6.4	0.127	0.508	21.373209	-89.012747
Santa Clara	26.00	3	0	337	26.8	57.2	8.1	7.9	0.0	0.0	0.0	0.0	0.0	84.0	8.1	7.9	0.116	0.501	21.373209	-89.012747
Dzilam de Bravo	39.00	1	0	306	26.9	63.6	1.3	7.2	0.8	0.0	0.2	0.0	0.0	90.5	1.3	8.2	0.105	0.505	21.392892	-88.891655

55 CARR: Thul - Becanchén

CLAVE: 31104

RUTA: YUC-281

AÑO: 2020

LUGAR	ESTACION				CLASIFICACION VEHICULAR EN PORCIENTO										COORDENADAS					
	KM	TE	SC	TDPA	M	A	B	C2	C3	T3S2	T3S3	T3S2R4	OTROS	A	B	C	K'	D	LATITUD	LONGITUD
T. C. Muna - Felipe Carrillo Puerto	0.00	3	0	212	32.1	56.1	3.7	5.8	0.7	1.0	0.6	0.0	0.0	88.2	3.7	8.1	0.132	0.549	20.088159	-89.098960
Becanchén	32.00																			

56 CARR: Ticul - Chapab

CLAVE: 31623

RUTA: YUC

AÑO: 2020

LUGAR	ESTACION				CLASIFICACION VEHICULAR EN PORCIENTO										COORDENADAS					
	KM	TE	SC	TDPA	M	A	B	C2	C3	T3S2	T3S3	T3S2R4	OTROS	A	B	C	K'	D	LATITUD	LONGITUD
Ticul	0.00	3	0	1722	7.9	86.3	0.8	3.5	0.6	0.4	0.2	0.2	0.1	94.2	0.8	5.0	0.116	0.522	20.405829	-89.534058
Chapab	8.00	1	0	1611	4.9	89.3	0.7	3.1	0.6	1.2	0.1	0.0	0.1	94.2	0.7	5.1	0.099	0.504	20.457314	-89.457661

57 CARR: Ticul - Dzan

CLAVE: 31621

RUTA: YUC

AÑO: 2020

LUGAR	ESTACION				CLASIFICACION VEHICULAR EN PORCIENTO										COORDENADAS					
	KM	TE	SC	TDPA	M	A	B	C2	C3	T3S2	T3S3	T3S2R4	OTROS	A	B	C	K'	D	LATITUD	LONGITUD
Ticul	0.00																			
T. Izq. Libramiento de Ticul	2.50	3	0	2951	42.6	52.5	0.2	2.4	0.3	1.6	0.2	0.1	0.1	95.1	0.2	4.7	0.098	0.508	20.397538	-89.532812
Dzan	7.00	1	0	3361	43.6	51.6	0.2	2.3	0.2	1.8	0.3	0.0	0.0	95.2	0.2	4.6	0.100	0.504	20.388863	-89.468808

YUCATAN

58 CARR: Tixkokob - Baca

CLAVE: 31010

RUTA: YUC

AÑO: 2020

LUGAR	ESTACION				CLASIFICACION VEHICULAR EN PORCIENTO										COORDENADAS					
	KM	TE	SC	TDPA	M	A	B	C2	C3	T3S2	T3S3	T3S2R4	OTROS	A	B	C	K'	D	LATITUD	LONGITUD
Tixkokob	0.00	3	0	3473	51.7	42.2	0.3	2.3	0.9	2.4	0.2	0.0	0.0	93.9	0.3	5.8	0.087	0.503	21.003418	-89.395962
Baca	15.00	1	0	2209	52.9	40.9	0.3	3.0	0.6	1.9	0.3	0.0	0.1	93.8	0.3	5.9	0.086	0.502	21.108434	-89.398382

59 CARR: Tixkokob - Sotuta

CLAVE: 31106

RUTA: YUC

AÑO: 2020

LUGAR	ESTACION				CLASIFICACION VEHICULAR EN PORCIENTO										COORDENADAS					
	KM	TE	SC	TDPA	M	A	B	C2	C3	T3S2	T3S3	T3S2R4	OTROS	A	B	C	K'	D	LATITUD	LONGITUD
Tixkokob	0.00	3	0	2100	52.8	43.7	0.3	2.6	0.1	0.2	0.1	0.1	0.1	96.5	0.3	3.2	0.103	0.509	21.001287	-89.383391
Tahmek	24.00	3	0	1580	27.7	64.2	0.4	5.2	0.9	1.4	0.2	0.0	0.0	91.9	0.4	7.7	0.090	0.521	20.874901	-89.255527
Hocabá	31.00	3	0	584	26.7	64.1	2.0	5.3	1.8	0.1	0.0	0.0	0.0	90.8	2.0	7.2	0.123	0.515	20.814274	-89.244942
Huhí	43.00	1	0	548	34.5	53.7	2.5	8.1	0.4	0.5	0.3	0.0	0.0	88.2	2.5	9.3	0.117	0.526	20.724831	-89.162189
Sotuta	65.00	1	0	148	47.0	44.3	0.0	8.6	0.0	0.0	0.1	0.0	0.0	91.3	0.0	8.7	0.149	0.525	20.596204	-89.006788

60 CARR: Tizimín - Yucatán

CLAVE: 31588

RUTA: YUC

AÑO: 2020

LUGAR	ESTACION				CLASIFICACION VEHICULAR EN PORCIENTO										COORDENADAS					
	KM	TE	SC	TDPA	M	A	B	C2	C3	T3S2	T3S3	T3S2R4	OTROS	A	B	C	K'	D	LATITUD	LONGITUD
Tizimín	0.00	3	0	3450	26.5	66.2	1.2	2.3	1.5	0.7	0.9	0.4	0.3	92.7	1.2	6.1	0.091	0.513	21.147311	-88.132134
T. Der. Buenaventura	30.00	3	0	1656	9.8	80.5	2.0	3.1	2.2	0.8	0.4	0.7	0.5	90.3	2.0	7.7	0.105	0.513	21.179427	-87.924463
Yucatán	46.50	1	0	1775	10.9	79.9	2.0	3.2	1.5	0.8	0.5	0.7	0.5	90.8	2.0	7.2	0.103	0.505	21.205208	-87.722198

61 CARR: Yaxché - Sierra Papacal

CLAVE: 31620

RUTA: YUC

AÑO: 2020

LUGAR	ESTACION				CLASIFICACION VEHICULAR EN PORCIENTO										COORDENADAS					
	KM	TE	SC	TDPA	M	A	B	C2	C3	T3S2	T3S3	T3S2R4	OTROS	A	B	C	K'	D	LATITUD	LONGITUD
T. C. Mérida - Progreso	0.00	3	0	4035	13.8	77.9	0.9	5.6	0.5	0.5	0.3	0.3	0.2	91.7	0.9	7.4	0.093	0.510	21.105600	-89.639553
Sierra Papacal	12.00	1	0	2984	19.4	69.8	0.8	8.2	0.7	0.8	0.3	0.0	0.0	89.2	0.8	10.0	0.084	0.509	21.122465	-89.727516

62 CARR: Yobaín - Chabihau

CLAVE: 31610

RUTA: YUC

AÑO: 2020

LUGAR	ESTACION				CLASIFICACION VEHICULAR EN PORCIENTO										COORDENADAS					
	KM	TE	SC	TDPA	M	A	B	C2	C3	T3S2	T3S3	T3S2R4	OTROS	A	B	C	K'	D	LATITUD	LONGITUD
T. C. Baca - Dzidzantún	0.00	3	0	608	41.0	56.8	0.2	1.4	0.1	0.4	0.1	0.0	0.0	97.8	0.2	2.0	0.099	0.505	21.233487	-89.116626
Chabihau	12.00	1	0	380	40.8	56.2	0.2	1.8	0.1	0.8	0.1	0.0	0.0	97.0	0.2	2.8	0.105	0.502	21.356466	-89.117280

YUCATAN

63 CARR: Chemax - Cobá

CLAVE:

RUTA: YUC-MEX-180

AÑO: 2020

LUGAR	ESTACION				CLASIFICACION VEHICULAR EN PORCIENTO													COORDENADAS		
	KM	TE	SC	TDPA	M	A	B	C2	C3	T3S2	T3S3	T3S2R4	OTROS	A	B	C	K'	D	LATITUD	LONGITUD
Chemax	0.00	3	0	3874	3.8	84.3	1.7	4.0	1.7	1.6	0.8	1.3	0.8	88.1	1.7	10.2	0.105	0.508	20.658083	-87.954906
Lim. Edos. Term. Yucatán Ppia. Q Roo.	25.00																			
Cobá	30.90	1	0	3570	2.3	83.7	2.6	4.2	2.0	2.0	0.9	1.6	0.7	86.0	2.6	11.4	0.131	0.507	20.508231	-87.718814

64 CARR: Progreso - Celestún

CLAVE: 31040

RUTA: MEX-YUC

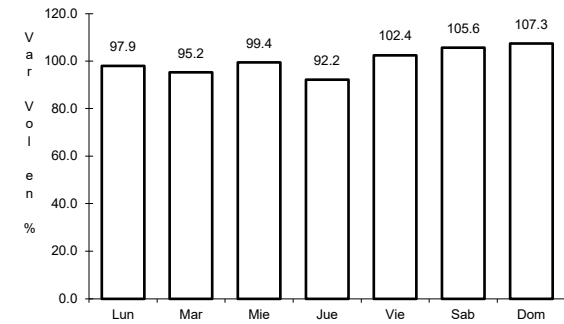
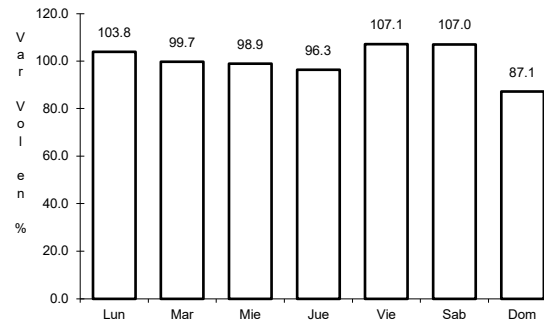
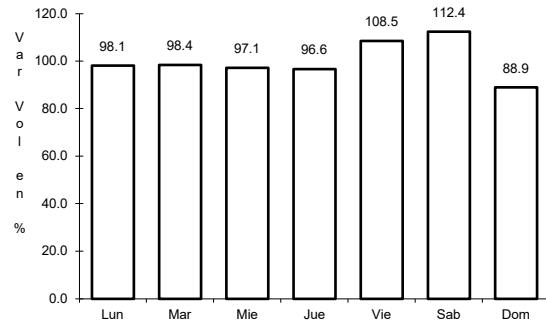
AÑO: 2020

LUGAR	ESTACION				CLASIFICACION VEHICULAR EN PORCIENTO													COORDENADAS		
	KM	TE	SC	TDPA	M	A	B	C2	C3	T3S2	T3S3	T3S2R4	OTROS	A	B	C	K'	D	LATITUD	LONGITUD
T. C. Mérida - Progreso	0.00	3	1	4426	19.5	73.7	0.2	6.0	0.4	0.2	0.0	0.0	0.0	93.2	0.2	6.6	0.102	0.502	21.275935	-89.662133
T. C. Mérida - Progreso	0.00	3	2	4388	17.8	75.7	0.2	5.8	0.4	0.1	0.0	0.0	0.0	93.5	0.2	6.3	0.089	0.502	21.275932	-89.662133
Yucalpetén	6.00	3	0	7671	6.2	86.7	0.2	3.5	0.2	3.1	0.1	0.0	0.0	92.9	0.2	6.9	0.126	0.501	21.277289	-89.710058
Celestún	80.00																			

1 CARR: Campeche - Mérida

CLAVE: 00066

RUTA: MEX-180



Km: 0.00 Tipo: 3 Sent: 1

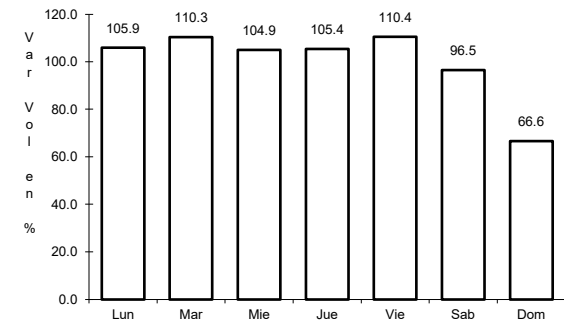
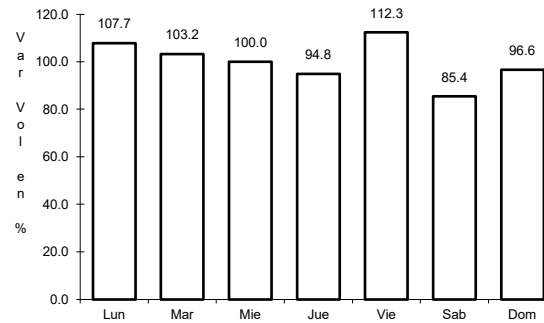
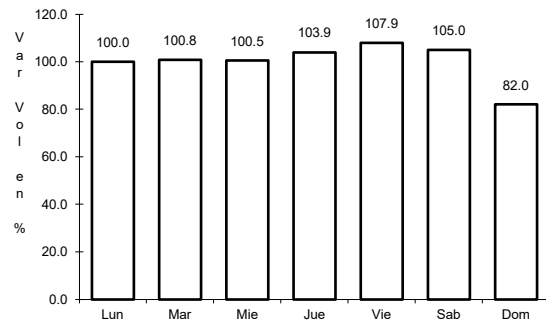
Km: 0.00 Tipo: 3 Sent: 2

Km: 171.21 Tipo: 1 Sent: 1

2 CARR: Campeche - Umán

CLAVE: 00164

RUTA: MEX-261



Km: 7.00 Tipo: 1 Sent: 0

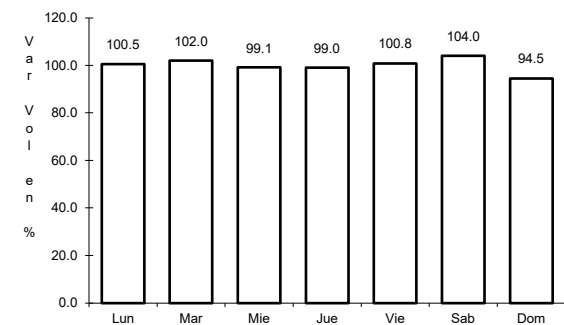
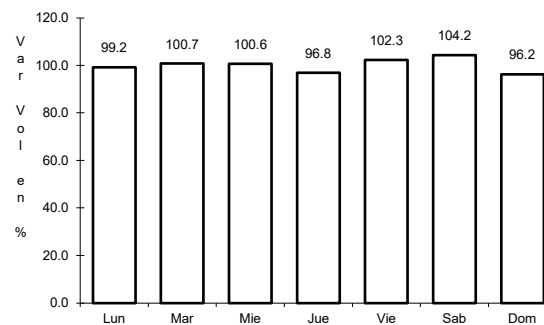
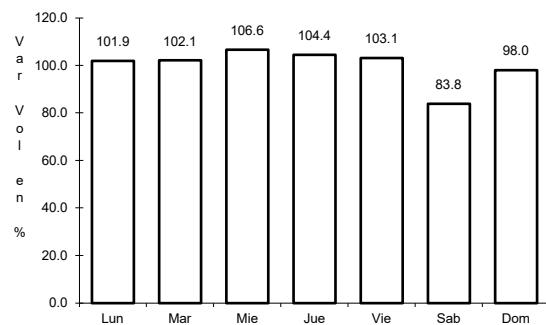
Km: 117.88 Tipo: 3 Sent: 0

Km: 230.83 Tipo: 1 Sent: 0

3 CARR: Cansahcab - Tizimin

CLAVE: 31014

RUTA: MEX-176



Km: 0.00 Tipo: 3 Sent: 0

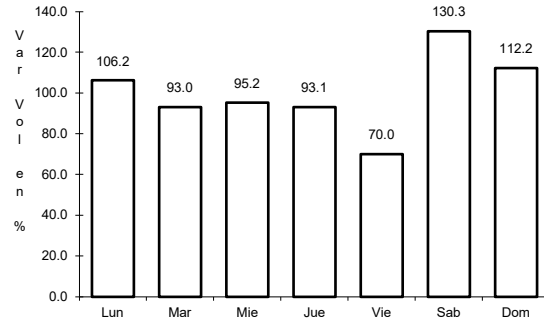
Km: 32.92 Tipo: 3 Sent: 0

Km: 99.14 Tipo: 1 Sent: 0

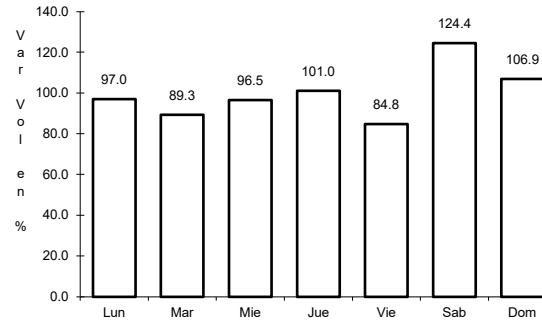
4 CARR: Conkal - Puerto Chicxulub

CLAVE: 31004

RUTA: MEX-176



Km: 0.00 Tipo: 3 Sent: 0

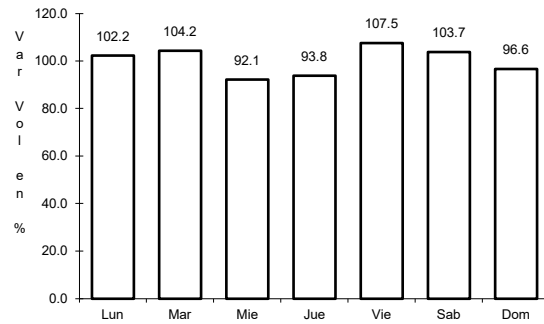


Km: 27.00 Tipo: 1 Sent: 0

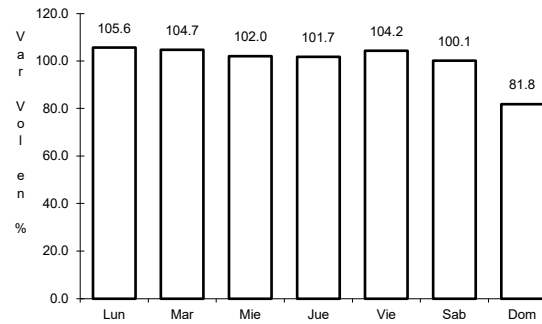
5 CARR: Dzitbalché - Ent. San Bernardo

CLAVE: 00162

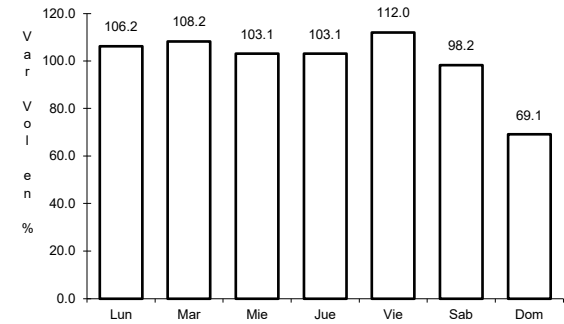
RUTA: MEX-180



Km: 12.33 Tipo: 1 Sent: 0



Km: 21.08 Tipo: 1 Sent: 0

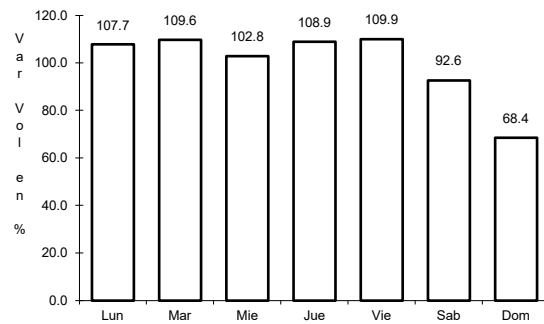


Km: 40.36 Tipo: 3 Sent: 0

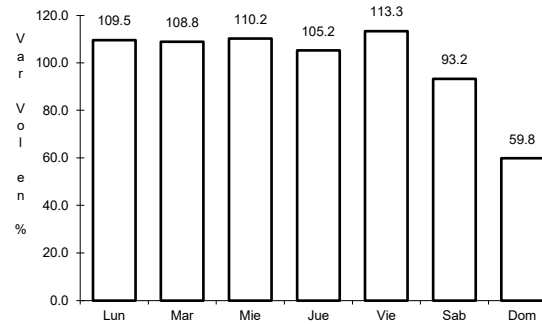
6 CARR: Ent. Poxilá - Mérida

CLAVE: 31003

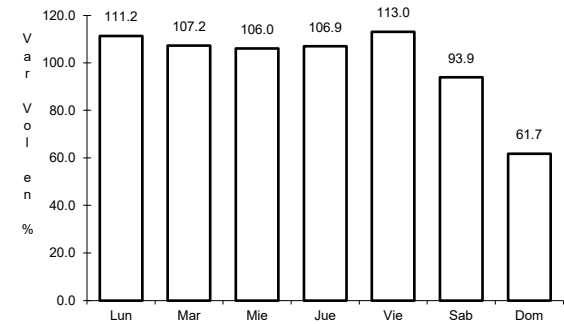
RUTA: MEX-180



Km: 9.46 Tipo: 1 Sent: 0



Km: 25.70 Tipo: 1 Sent: 1

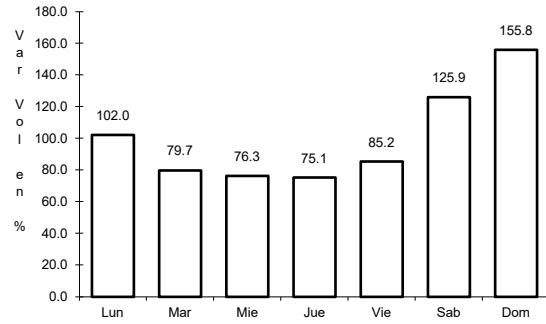


Km: 25.70 Tipo: 1 Sent: 2

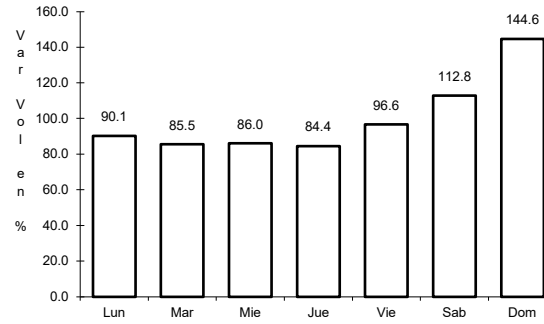
7 CARR: Hunucmá - Sisal

CLAVE: 31021

RUTA: MEX-281



Km: 0.00 Tipo: 3 Sent: 0

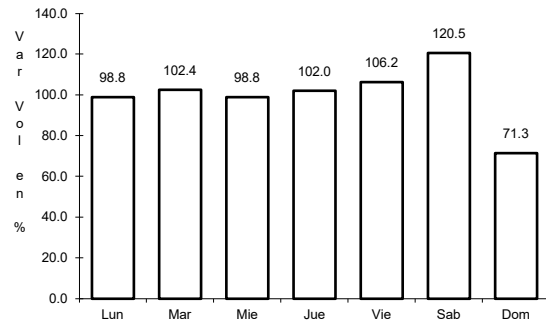


Km: 23.20 Tipo: 1 Sent: 0

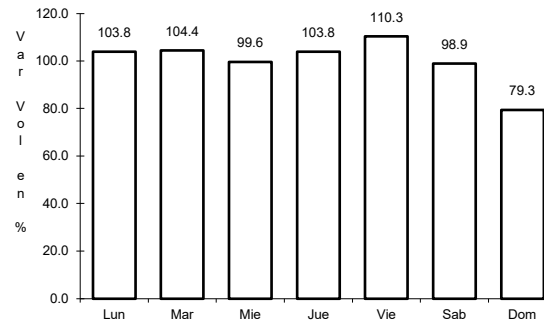
8 CARR: Libramiento Conkal - Mococho - Baca

CLAVE:

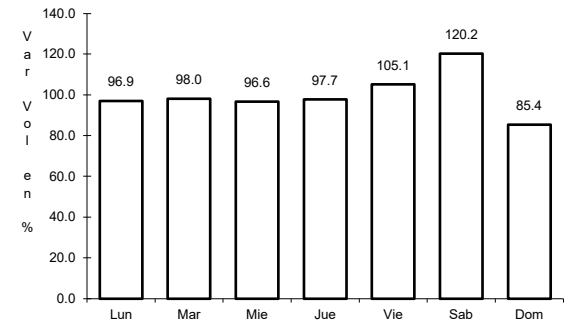
RUTA: MEX-176



Km: 4.40 Tipo: 3 Sent: 1



Km: 4.40 Tipo: 3 Sent: 2

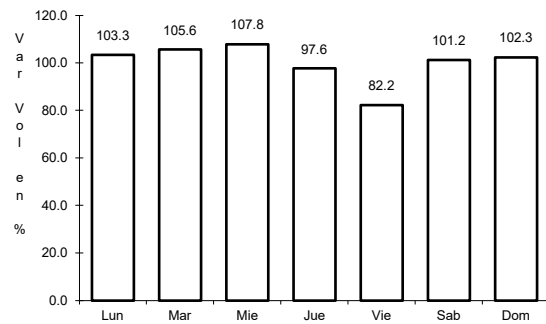


Km: 24.41 Tipo: 1 Sent: 1

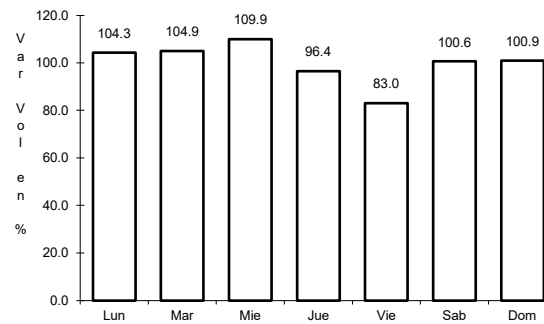
9 CARR: Libramiento de Conkal

CLAVE:

RUTA: MEX



Km: 0.00 Tipo: 3 Sent: 0

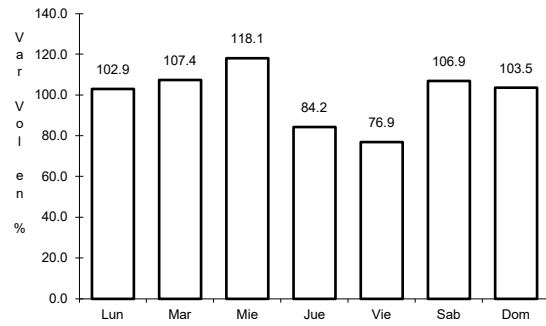


Km: 14.00 Tipo: 1 Sent: 0

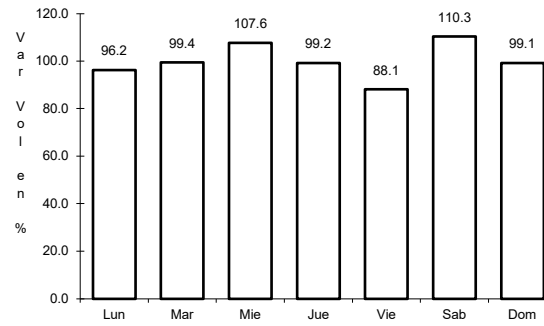
10 CARR: Libramiento de Progreso

CLAVE: 31631

ruta: MEX-261



Km: 0.00 Tipo: 3 Sent: 0

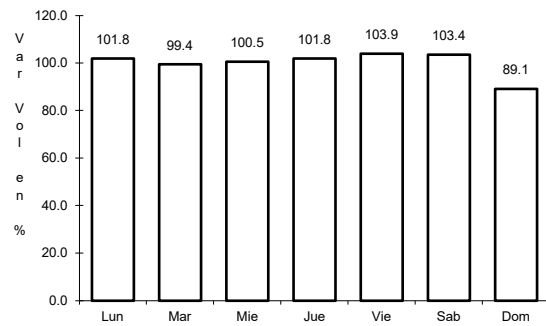


Km: 6.50 Tipo: 1 Sent: 0

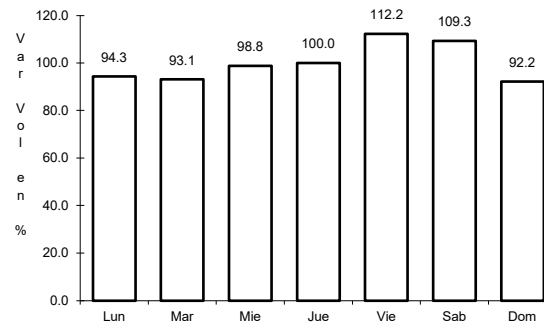
11 CARR: Libramiento de Tahmek - Hoctun - Xocchel

CLAVE:

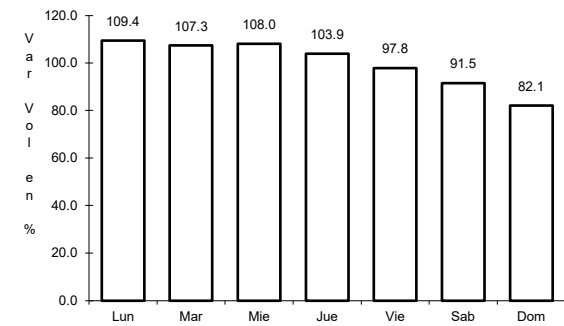
ruta: MEX-180



Km: 0.00 Tipo: 3 Sent: 1



Km: 0.00 Tipo: 3 Sent: 2

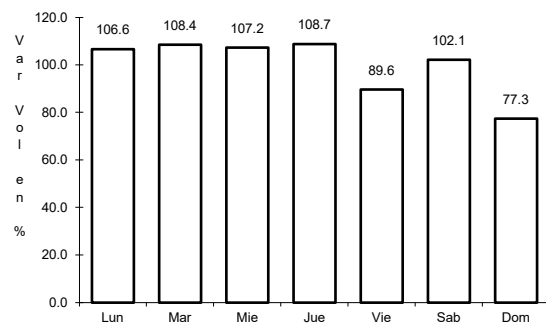


Km: 6.30 Tipo: 3 Sent: 1

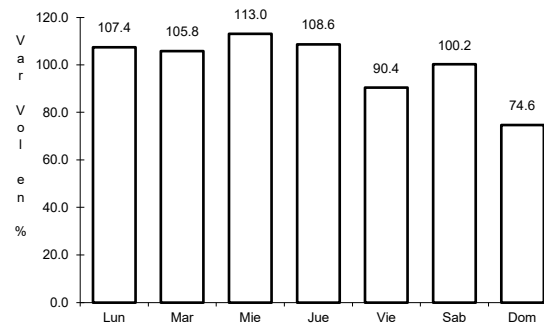
12 CARR: Mérida - Celestún

CLAVE: 31025

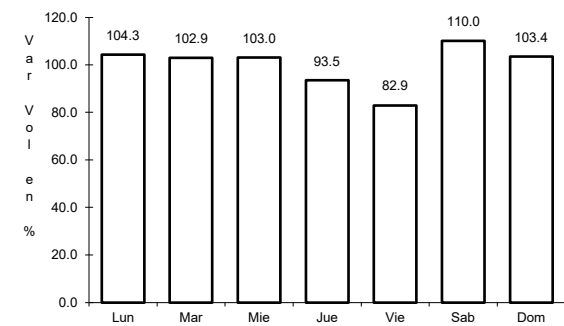
ruta: MEX-281



Km: 0.00 Tipo: 3 Sent: 1



Km: 0.00 Tipo: 3 Sent: 2

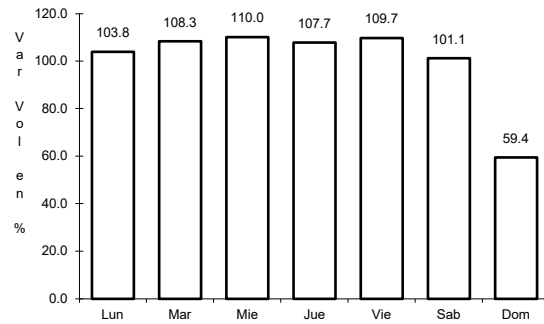


Km: 40.00 Tipo: 3 Sent: 0

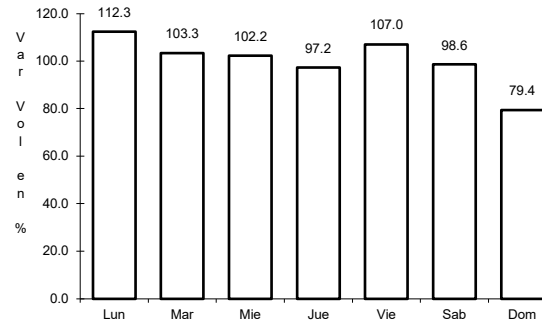
13 CARR: Mérida - Dzilam de Bravo

CLAVE: 31001

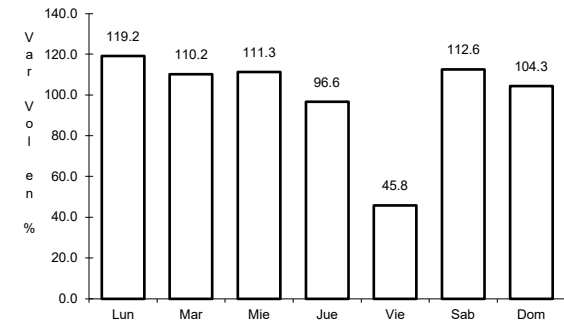
RUTA: MEX-176



Km: 5.90 Tipo: 1 Sent: 1



Km: 5.90 Tipo: 1 Sent: 2

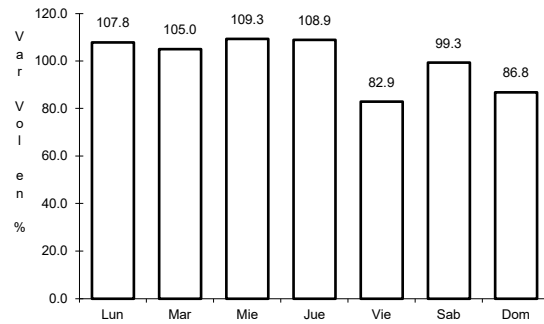


Km: 105.00 Tipo: 1 Sent: 0

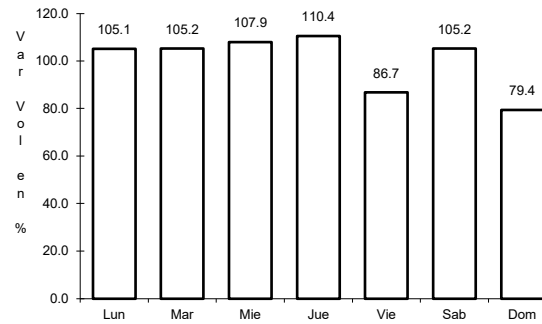
14 CARR: Mérida - Progreso

CLAVE: 31091

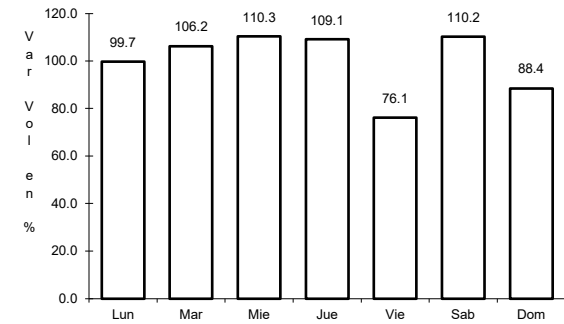
RUTA: MEX-261



Km: 5.40 Tipo: 1 Sent: 1



Km: 5.40 Tipo: 1 Sent: 2

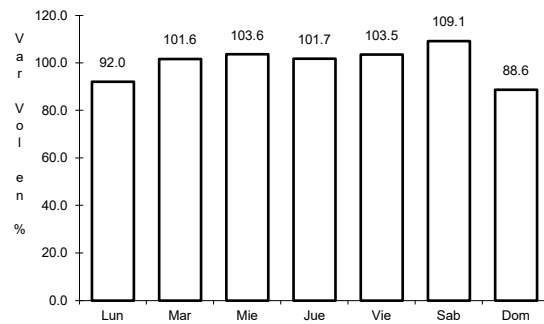


Km: 35.04 Tipo: 1 Sent: 1

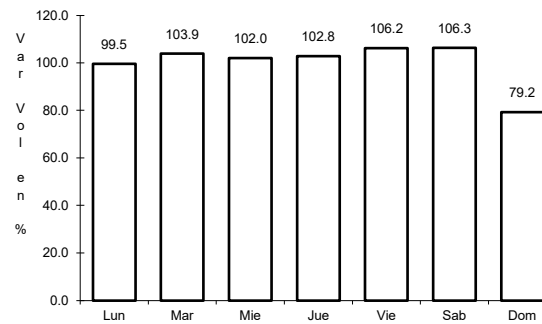
15 CARR: Mérida - Puerto Juárez

CLAVE: 00067

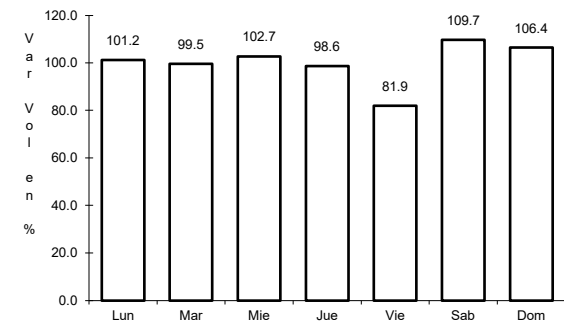
RUTA: MEX-180



Km: 5.60 Tipo: 1 Sent: 1



Km: 5.60 Tipo: 1 Sent: 2

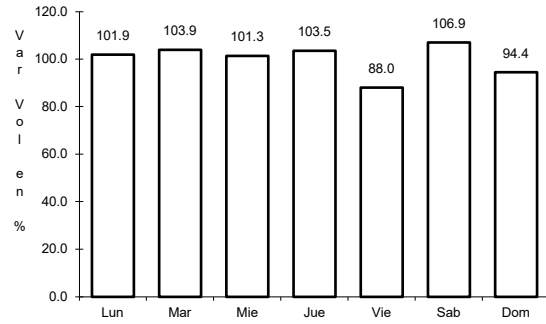


Km: 302.50 Tipo: 1 Sent: 0

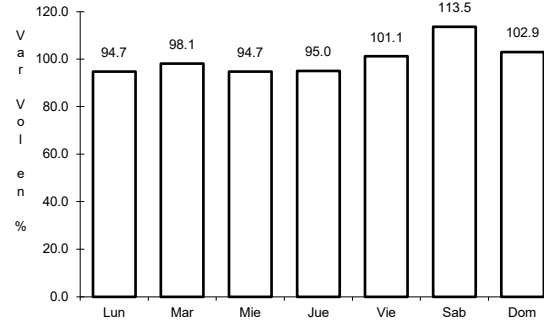
16 CARR: Mérida - Tekanto

CLAVE: 31587

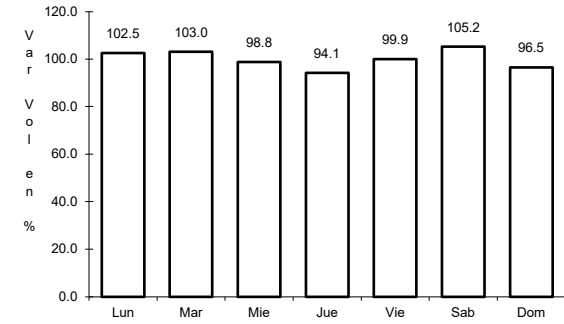
ruta: MEX-180



Km: 5.70 Tipo: 1 Sent: 0



Km: 21.00 Tipo: 1 Sent: 0

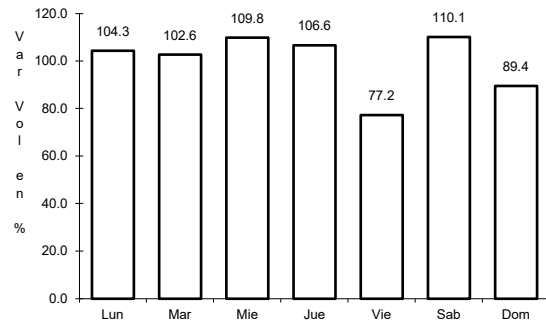


Km: 51.00 Tipo: 1 Sent: 0

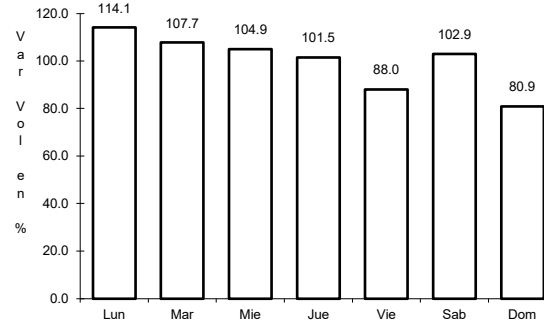
17 CARR: Mérida - Tetz

CLAVE: 31610

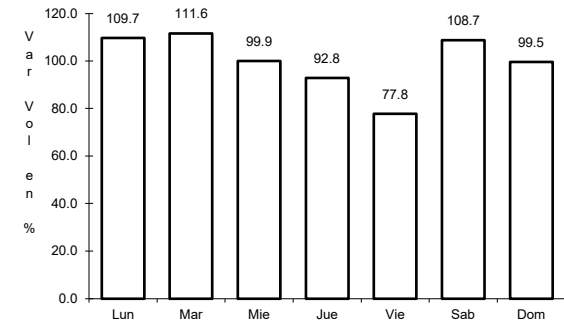
ruta: MEX-281



Km: 0.00 Tipo: 3 Sent: 0



Km: 17.98 Tipo: 1 Sent: 0

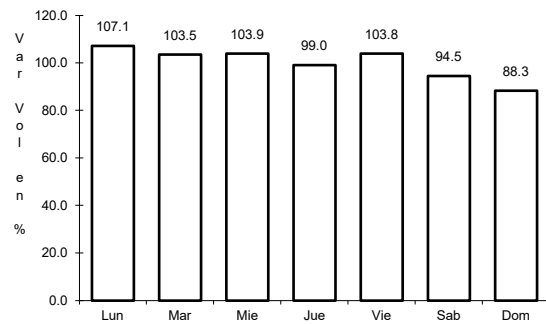


Km: 24.40 Tipo: 1 Sent: 0

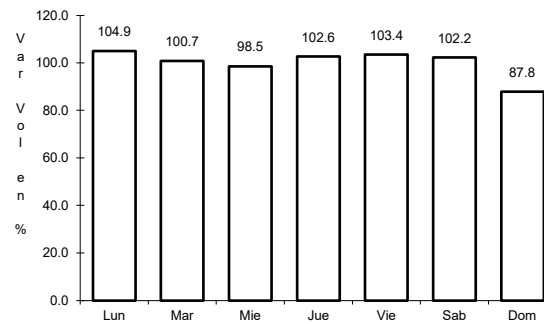
18 CARR: Muna - Felipe Carrillo Puerto

CLAVE: 00148

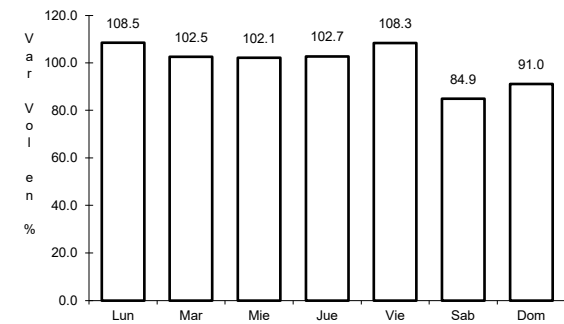
ruta: MEX-184



Km: 0.00 Tipo: 3 Sent: 0



Km: 109.60 Tipo: 3 Sent: 0

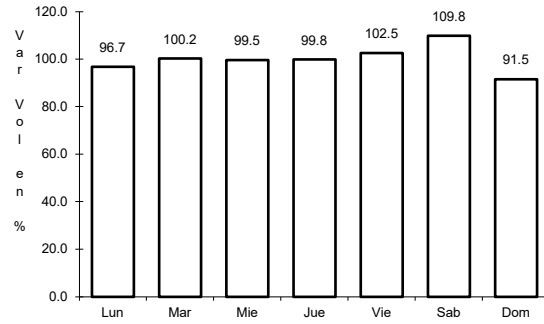


Km: 216.97 Tipo: 1 Sent: 0

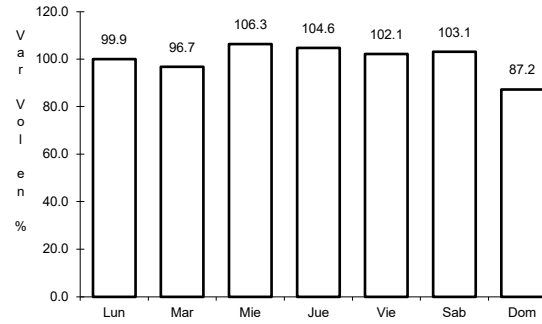
19 CARR: Ramal a Panabá

CLAVE: 31609

ruta: MEX-295



Km: 0.00 Tipo: 3 Sent: 0

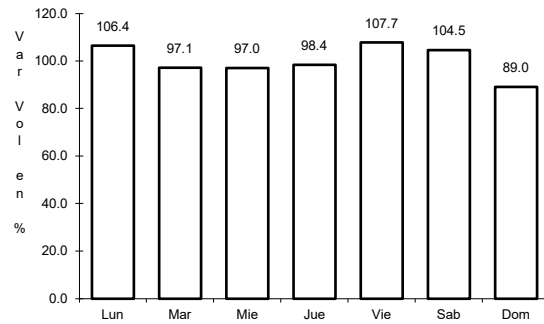


Km: 18.00 Tipo: 1 Sent: 0

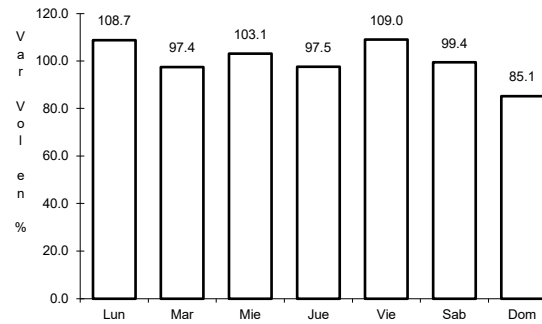
20 CARR: Teya -Peto

CLAVE: 31042

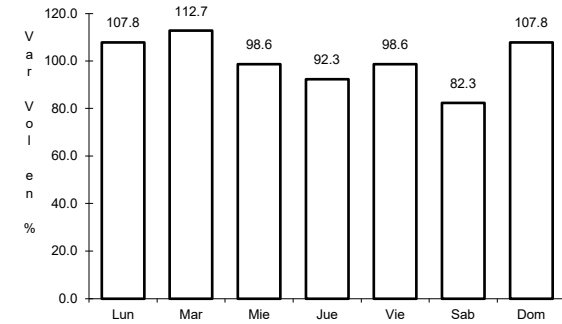
ruta: MEX-184



Km: 3.80 Tipo: 3 Sent: 1



Km: 3.80 Tipo: 3 Sent: 2

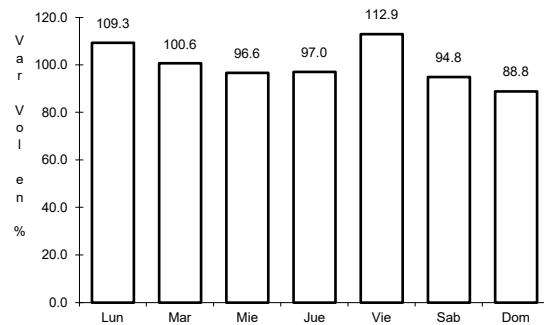


Km: 120.70 Tipo: 1 Sent: 0

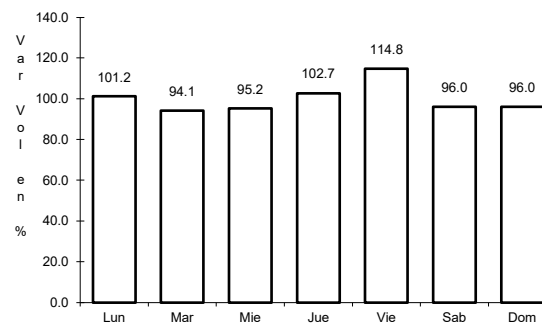
21 CARR: Tzucacab - Santa Rosa

CLAVE: 31017

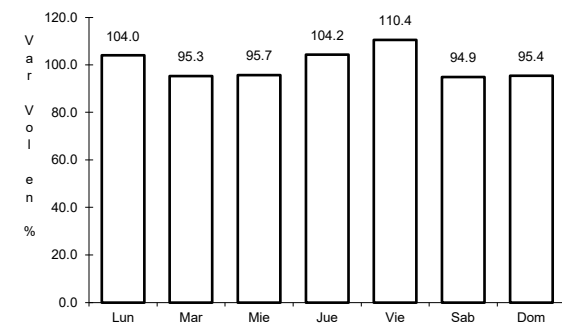
ruta: MEX



Km: 0.00 Tipo: 3 Sent: 0



Km: 16.00 Tipo: 3 Sent: 0

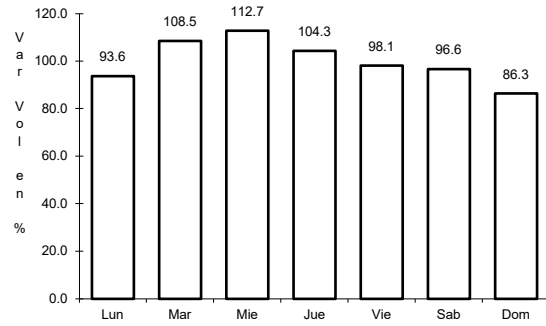


Km: 34.50 Tipo: 1 Sent: 0

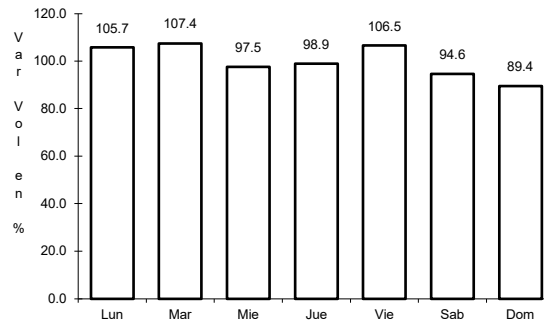
22 CARR: Valladolid - Felipe Carrillo Puerto

CLAVE: 00010

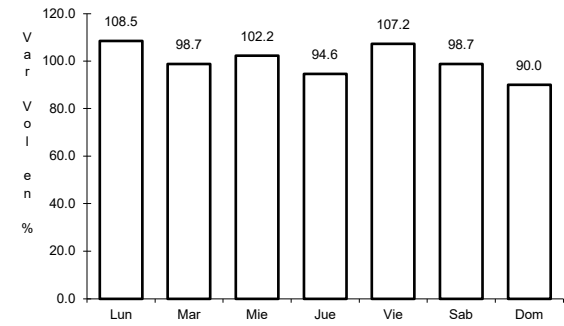
RUTA: MEX-295



Km: 0.00 Tipo: 3 Sent: 0



Km: 99.00 Tipo: 1 Sent: 0

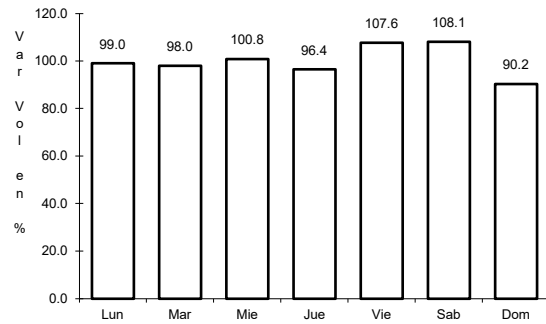


Km: 147.70 Tipo: 1 Sent: 0

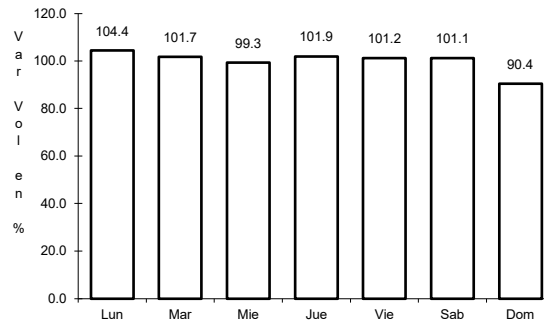
23 CARR: Valladolid - Río Lagartos

CLAVE: 31035

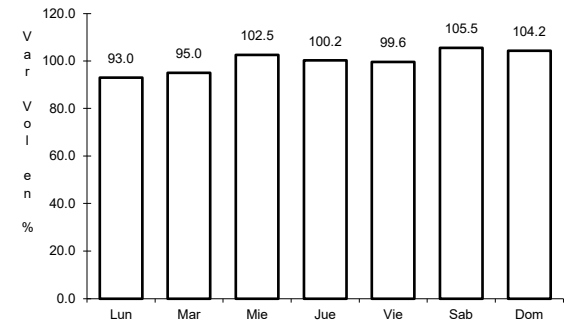
RUTA: MEX-295



Km: 0.00 Tipo: 3 Sent: 1



Km: 0.00 Tipo: 3 Sent: 2

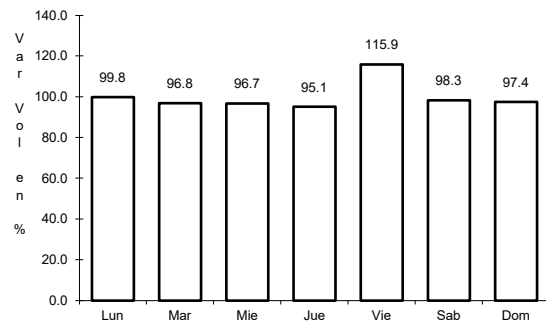


Km: 79.90 Tipo: 1 Sent: 0

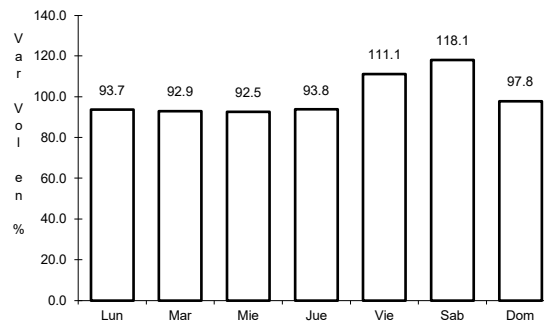
24 CARR: Mérida - Cancún (Cuota)

CLAVE: 00071

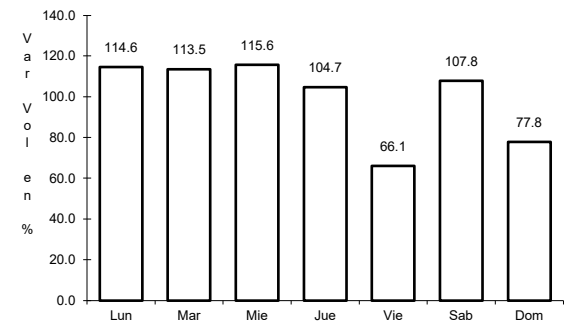
RUTA: MEX-180D



Km: 51.00 Tipo: 1 Sent: 1



Km: 51.00 Tipo: 1 Sent: 2

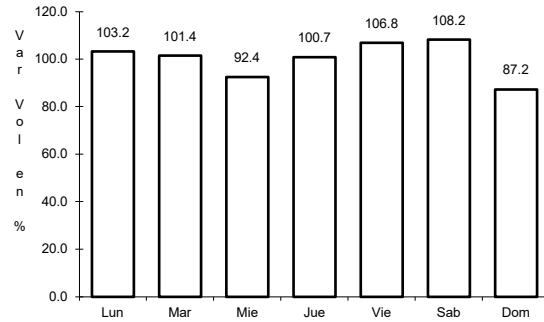


Km: 308.10 Tipo: 1 Sent: 0

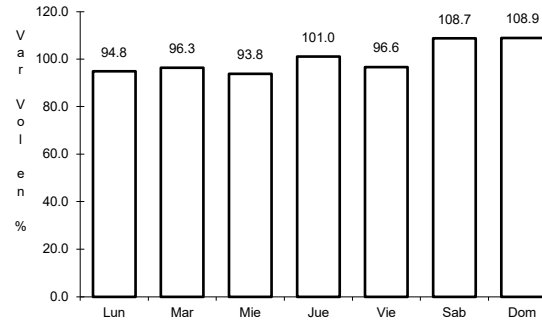
25 CARR: Acanceh - Estación Polabán

CLAVE: 31615

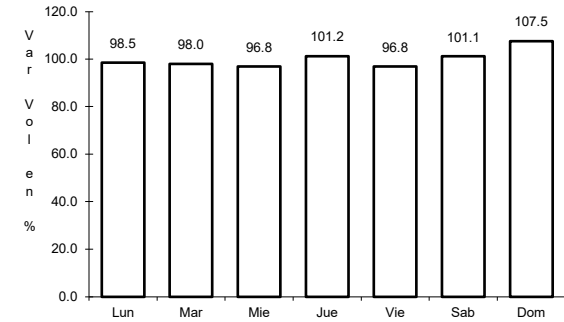
RUTA: YUC



Km: 0.00 Tipo: 3 Sent: 0



Km: 20.00 Tipo: 3 Sent: 0

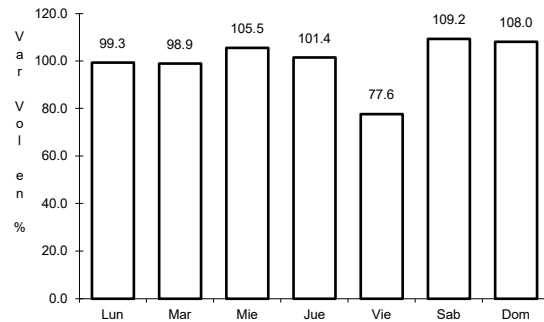


Km: 24.40 Tipo: 1 Sent: 0

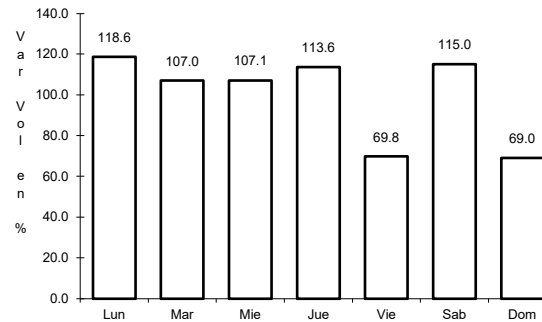
26 CARR: Baca - Dzidzantún

CLAVE: 31591

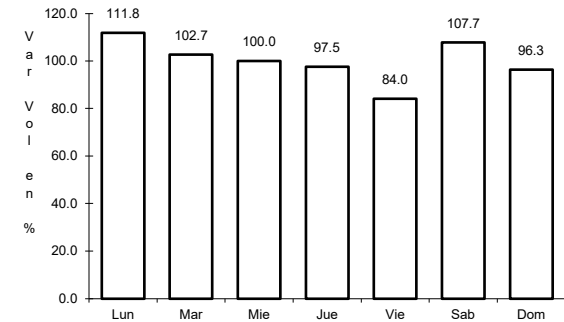
RUTA: YUC



Km: 0.00 Tipo: 3 Sent: 0



Km: 19.10 Tipo: 3 Sent: 0

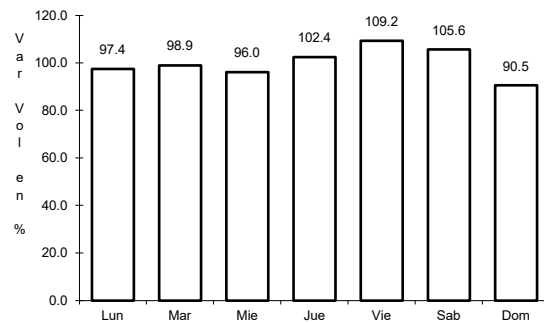


Km: 43.00 Tipo: 1 Sent: 0

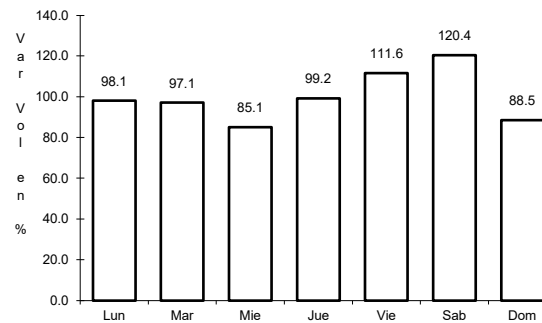
27 CARR: Citilcum - Tixkochoh

CLAVE: 31064

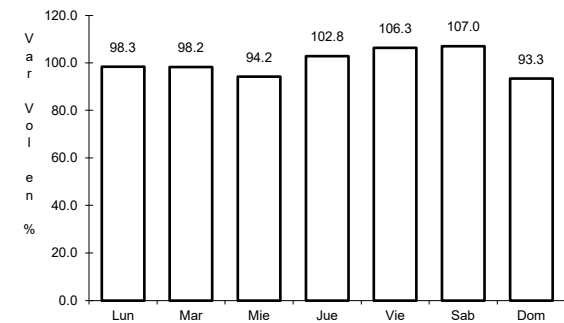
RUTA: YUC



Km: 0.00 Tipo: 3 Sent: 0



Km: 7.00 Tipo: 1 Sent: 0

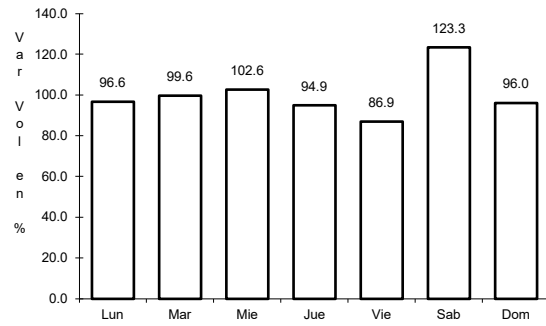


Km: 10.00 Tipo: 1 Sent: 0

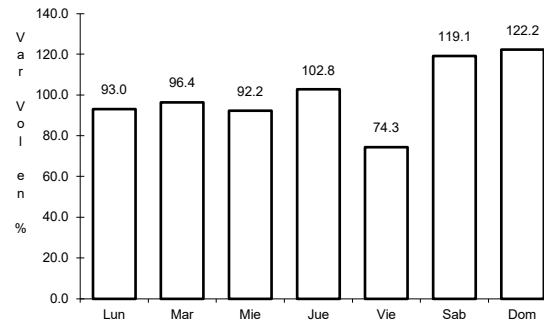
28 CARR: Dzemul - Xtampú

CLAVE: 31608

RUTA: YUC



Km: 0.00 Tipo: 3 Sent: 0

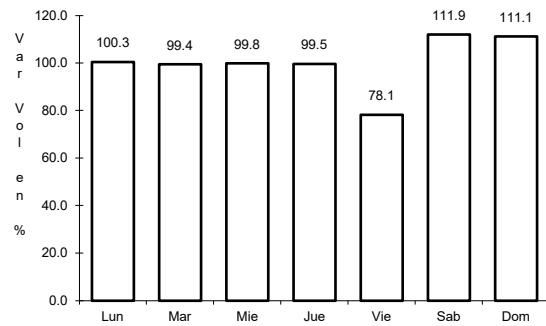


Km: 10.00 Tipo: 1 Sent: 0

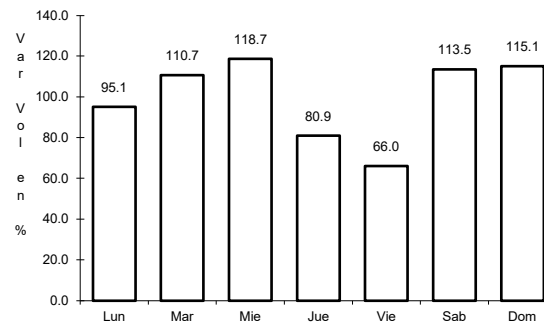
29 CARR: Dzidzantún - Santa Clara

CLAVE: 31592

RUTA: YUC



Km: 0.00 Tipo: 3 Sent: 0

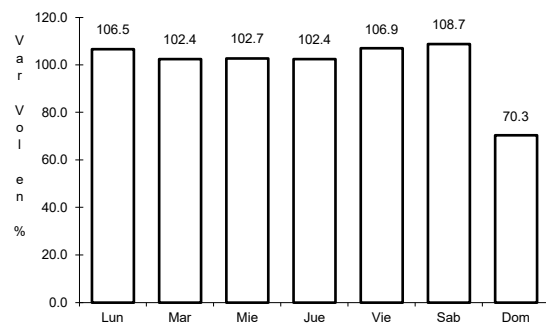


Km: 14.00 Tipo: 1 Sent: 0

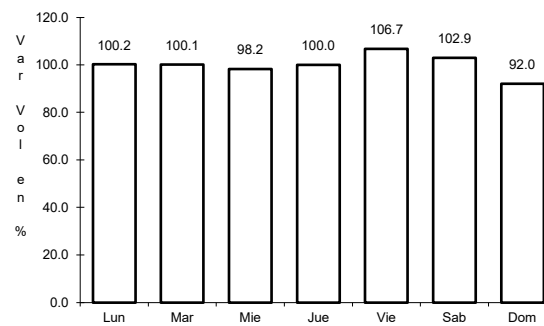
30 CARR: Hochtún - Cenotillo

CLAVE: 31011

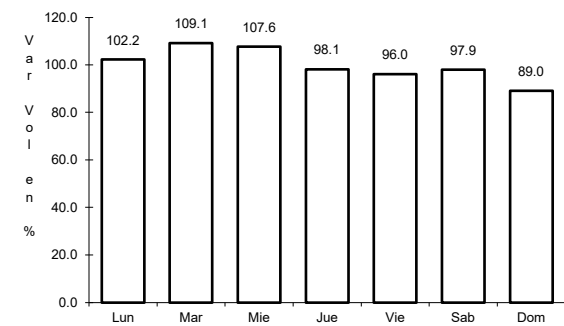
RUTA: YUC-011



Km: 0.00 Tipo: 3 Sent: 0



Km: 24.00 Tipo: 3 Sent: 0

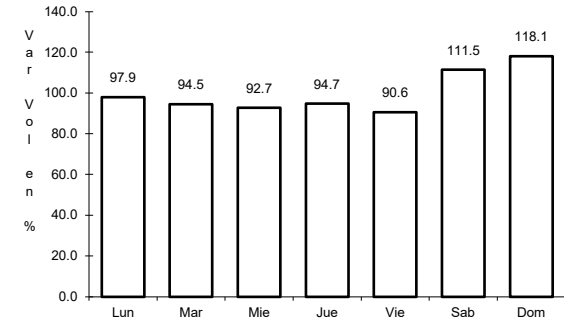
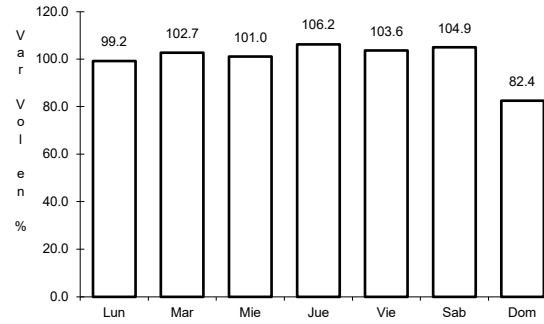
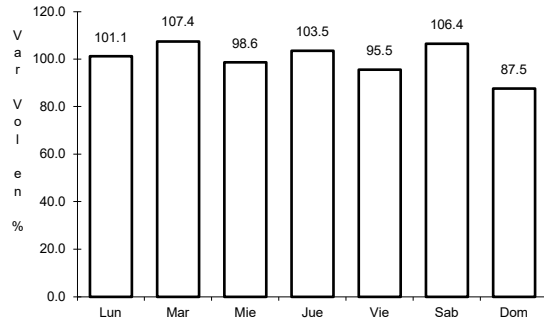


Km: 70.90 Tipo: 1 Sent: 0

31 CARR: Holcá - Sotuta

CLAVE: 31626

RUTA: YUC



Km: 0.00 Tipo: 3 Sent: 0

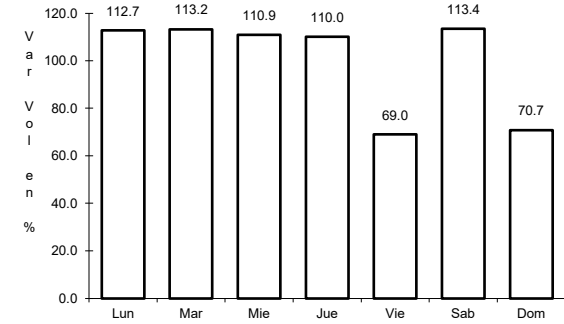
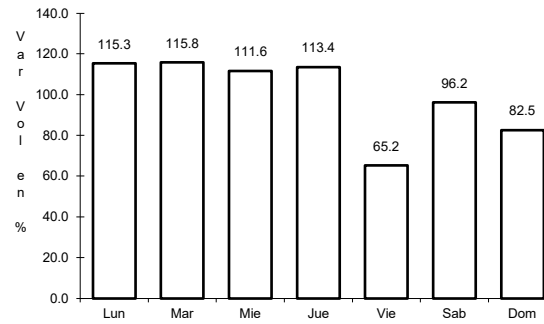
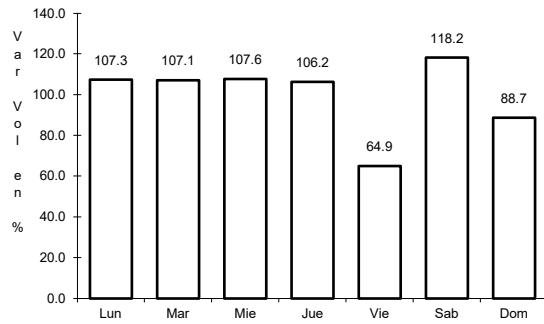
Km: 10.00 Tipo: 3 Sent: 0

Km: 20.00 Tipo: 1 Sent: 0

32 CARR: Hunucmá - Umán

CLAVE: 31610

RUTA: YUC



Km: 0.00 Tipo: 3 Sent: 0

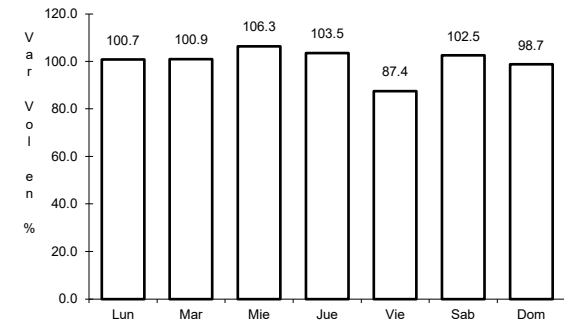
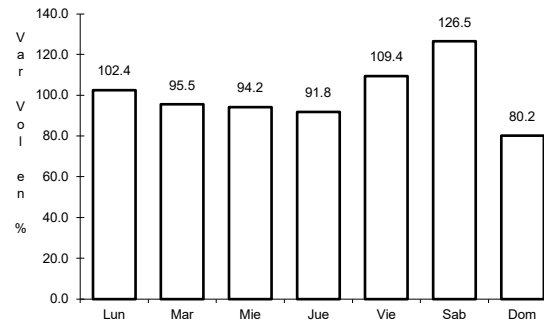
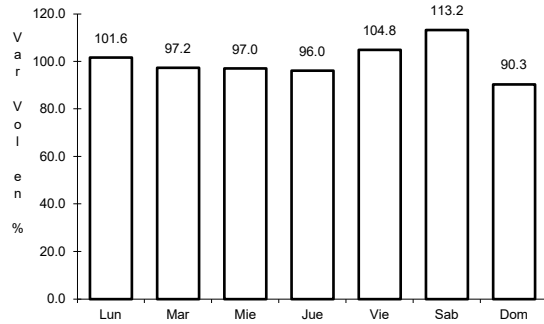
Km: 16.16 Tipo: 1 Sent: 0

Km: 22.00 Tipo: 1 Sent: 0

33 CARR: Izamal - Dzilam González

CLAVE: 31605

RUTA: YUC



Km: 0.00 Tipo: 3 Sent: 0

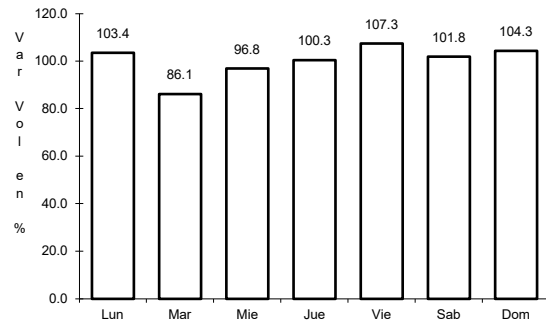
Km: 30.00 Tipo: 1 Sent: 0

Km: 43.00 Tipo: 1 Sent: 0

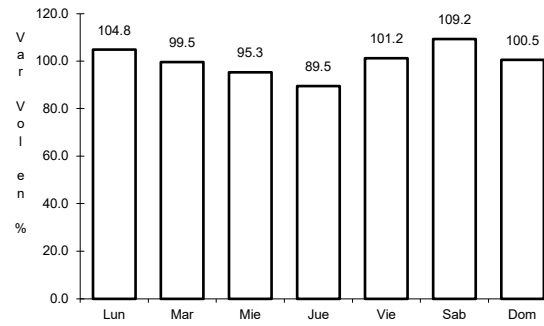
34 CARR: Kantunil - Izamal

CLAVE: 31012

RUTA: YUC



Km: 0.00 Tipo: 3 Sent: 0

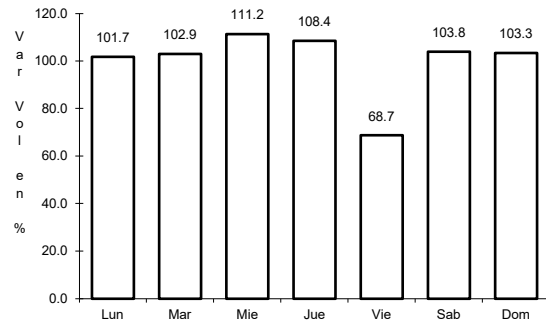


Km: 17.80 Tipo: 1 Sent: 0

35 CARR: Kinchil - Umán

CLAVE: 31009

RUTA: YUC

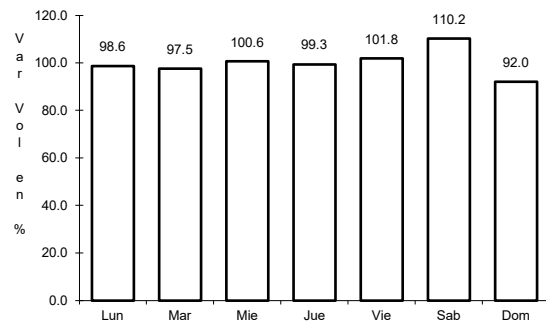


Km: 0.00 Tipo: 3 Sent: 0

36 CARR: Libramiento de Peto

CLAVE:

RUTA: YUC-018

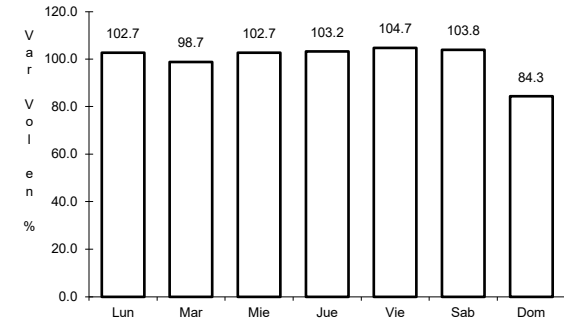
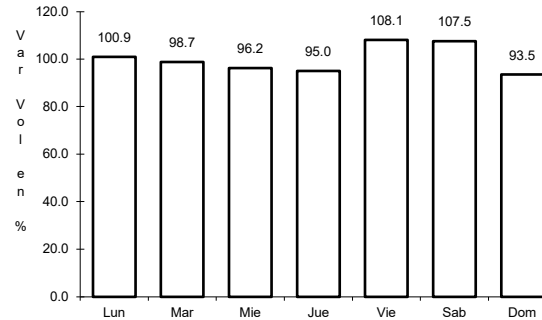
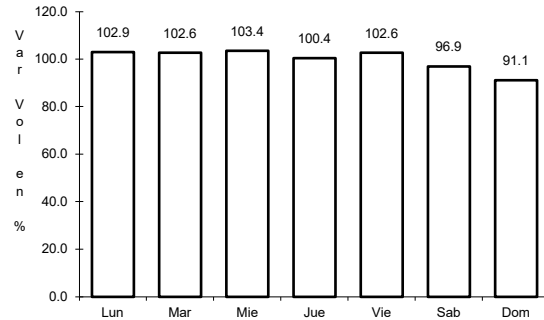


Km: 0.00 Tipo: 3 Sent: 0

37 CARR: Libramiento Norte de Motul

CLAVE: 31610

ruta: YUC



Km: 0.00 Tipo: 3 Sent: 0

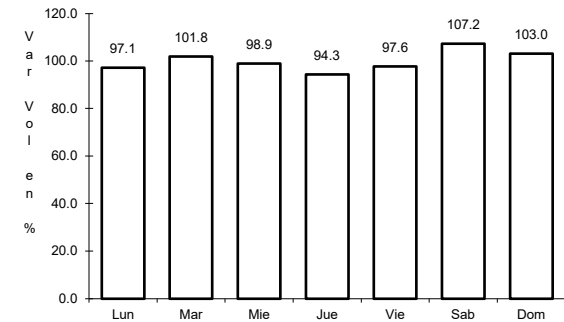
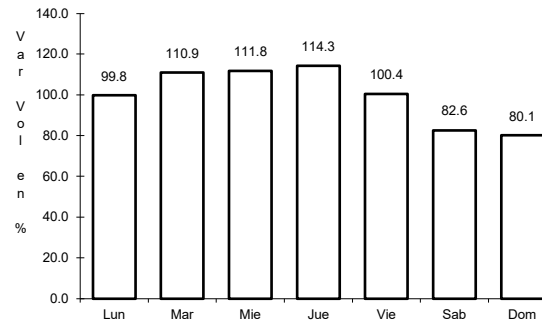
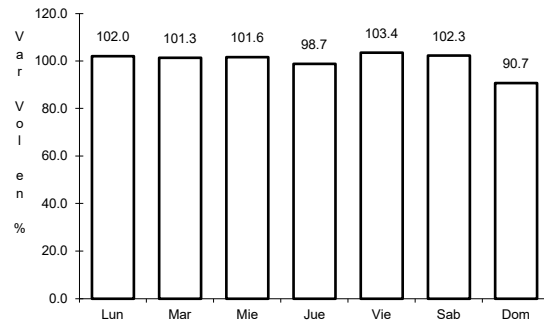
Km: 3.16 Tipo: 3 Sent: 0

Km: 6.53 Tipo: 1 Sent: 0

38 CARR: Mérida - Acanceh

CLAVE: 31023

ruta: YUC



Km: 0.00 Tipo: 3 Sent: 0

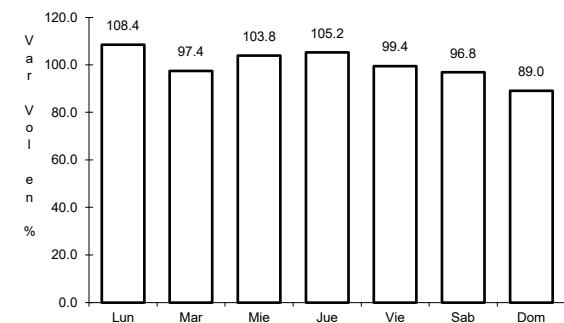
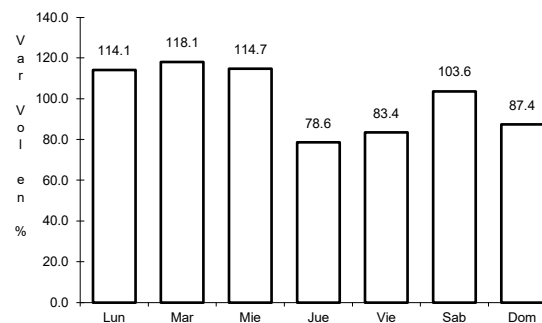
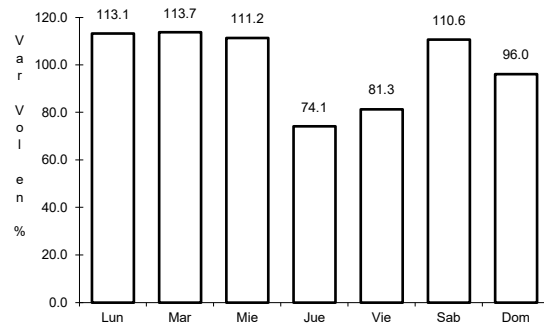
Km: 11.00 Tipo: 3 Sent: 0

Km: 26.00 Tipo: 1 Sent: 0

39 CARR: Mérida - Oxkutzcab

CLAVE: 31018

ruta: YUC-018



Km: 0.00 Tipo: 3 Sent: 1

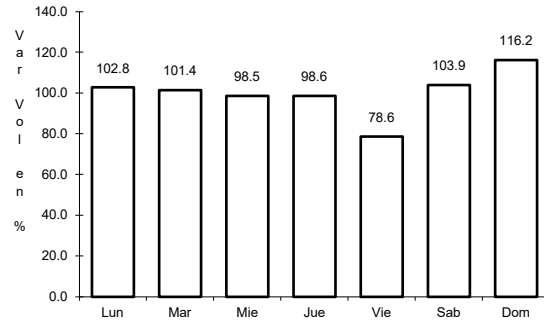
Km: 0.00 Tipo: 3 Sent: 2

Km: 109.30 Tipo: 1 Sent: 0

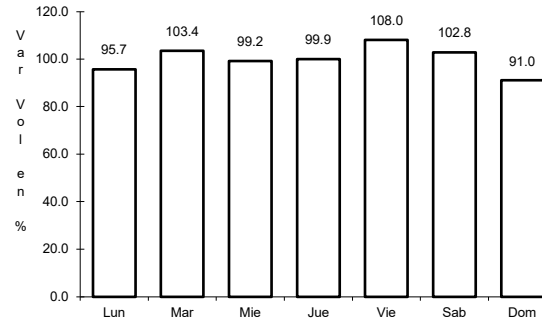
40 CARR: Mérida - Timucuy

CLAVE: 31024

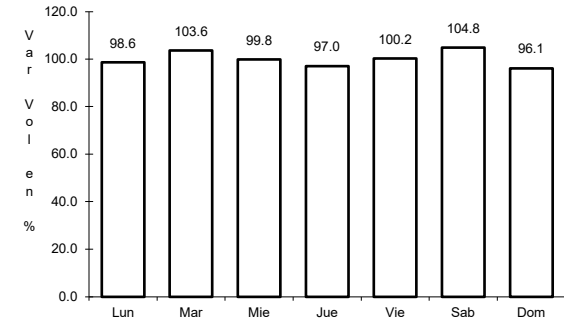
RUTA: YUC



Km: 0.00 Tipo: 3 Sent: 0



Km: 15.10 Tipo: 1 Sent: 0

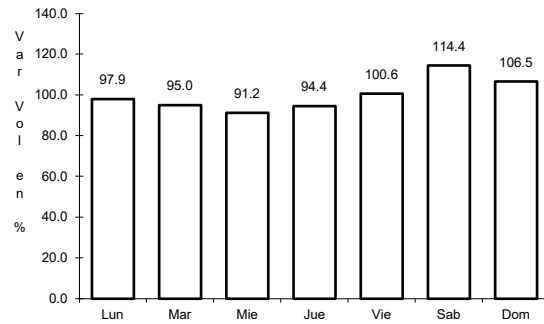


Km: 18.65 Tipo: 1 Sent: 0

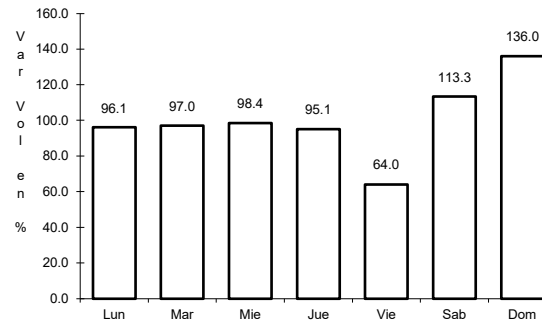
41 CARR: Motul - Puerto Telchac

CLAVE: 31006

RUTA: YUC-172



Km: 0.00 Tipo: 3 Sent: 0

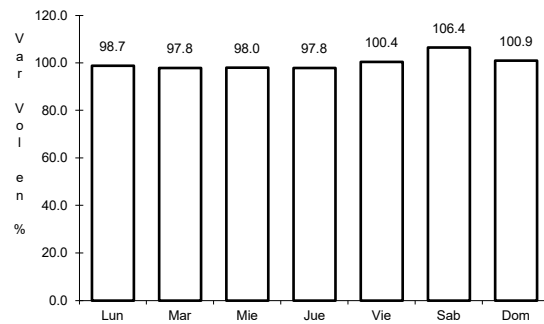


Km: 12.00 Tipo: 3 Sent: 0

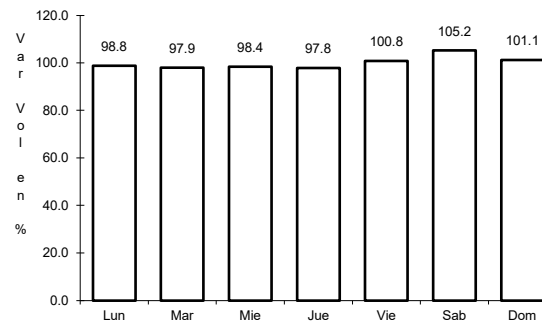
42 CARR: Muna - Maxcanú

CLAVE: 31053

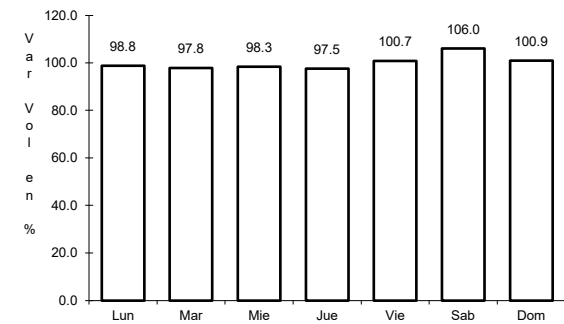
RUTA: YUC



Km: 0.00 Tipo: 3 Sent: 0



Km: 17.00 Tipo: 3 Sent: 0

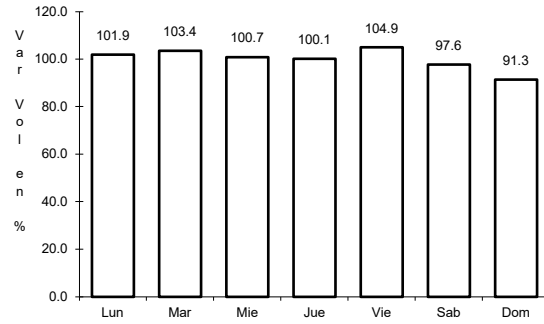


Km: 31.00 Tipo: 1 Sent: 0

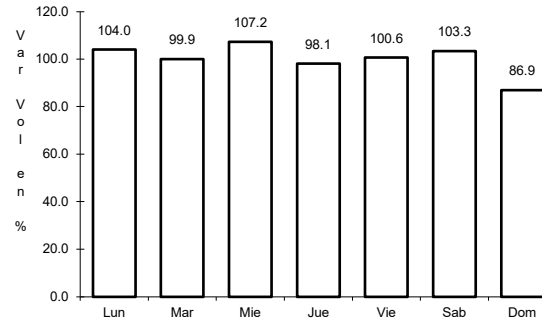
43 CARR: Oxlutzcab - Xul

CLAVE: 31051

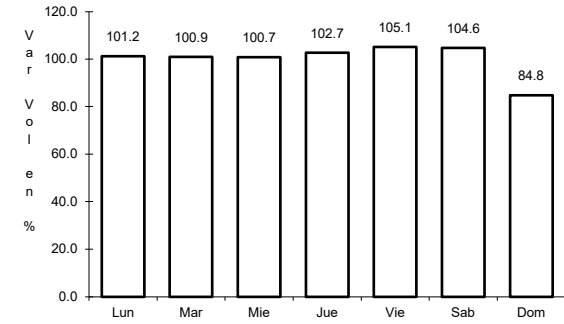
RUTA: YUC-031



Km: 0.00 Tipo: 3 Sent: 0



Km: 10.00 Tipo: 3 Sent: 0

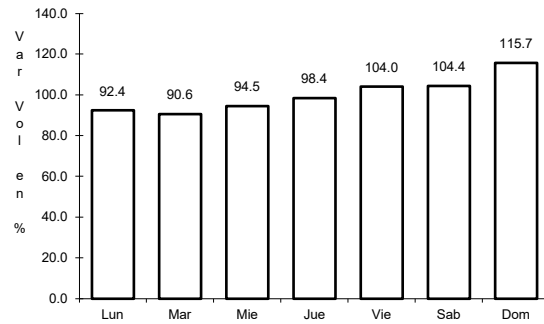


Km: 25.00 Tipo: 1 Sent: 0

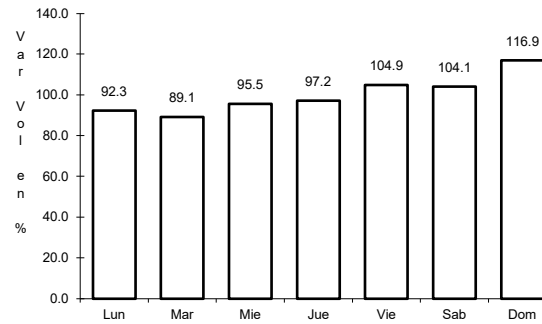
44 CARR: Piste - Dzitás

CLAVE: 31013

RUTA: YUC-013



Km: 0.00 Tipo: 3 Sent: 0

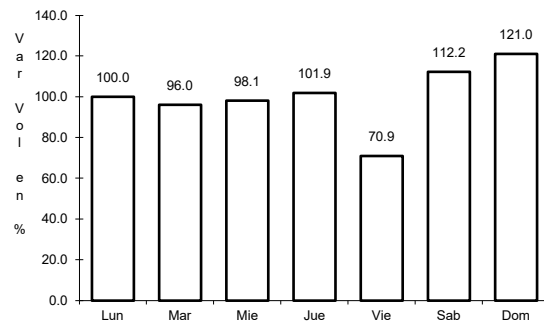


Km: 18.00 Tipo: 1 Sent: 0

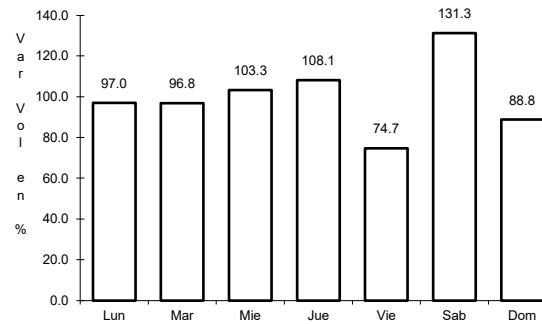
45 CARR: Progreso - Telchac Puerto

CLAVE: 31616

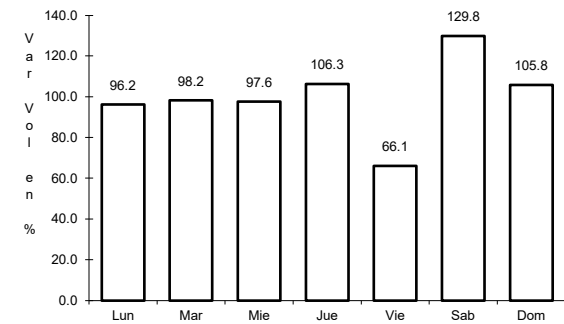
RUTA: YUC-027



Km: 0.00 Tipo: 3 Sent: 1



Km: 0.00 Tipo: 3 Sent: 2

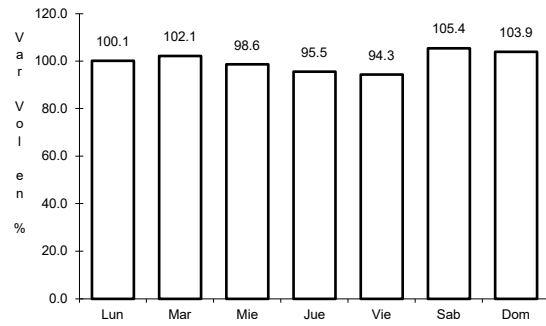


Km: 33.00 Tipo: 1 Sent: 0

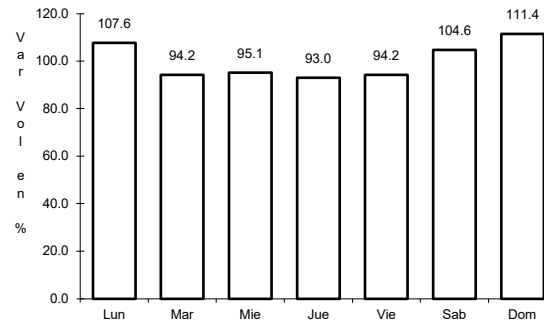
46 CARR: Ramal a Chankom

CLAVE: 31049

RUTA: YUC



Km: 0.00 Tipo: 3 Sent: 0

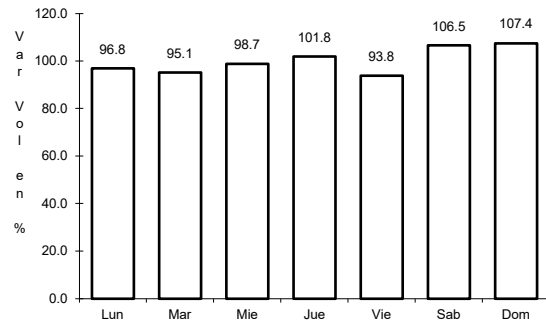


Km: 9.00 Tipo: 1 Sent: 0

47 CARR: Ramal a Dzonot Carretero

CLAVE: 31614

RUTA: YUC

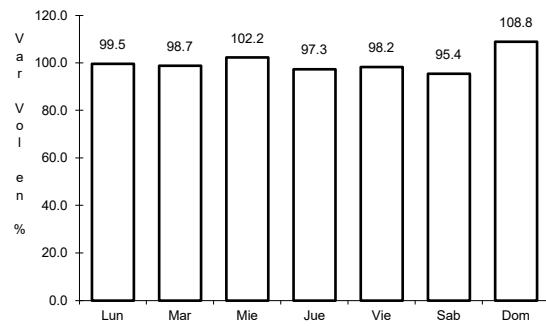


Km: 0.00 Tipo: 3 Sent: 0

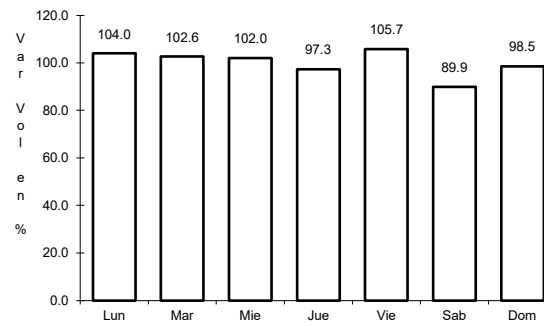
48 CARR: Ramal a San Felipe

CLAVE: 31628

RUTA: YUC



Km: 0.00 Tipo: 3 Sent: 0

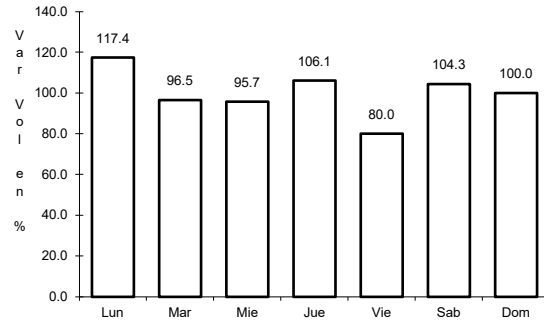


Km: 7.20 Tipo: 1 Sent: 0

49 CARR: Ramal a Tedzidz

CLAVE: 31600

RUTA: YUC



Km: 6.00

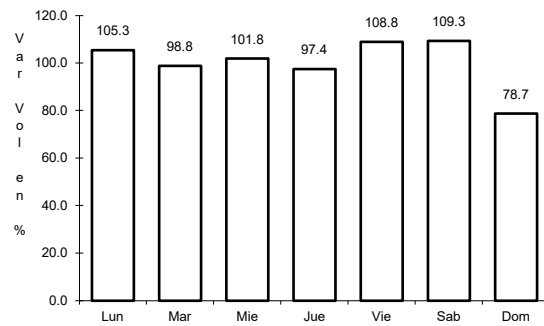
Tipo: 1

Sent: 0

50 CARR: Ramal a Yaxcabá

CLAVE: 31111

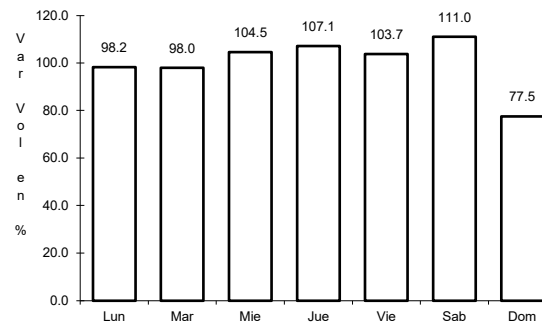
RUTA: YUC-289



Km: 0.00

Tipo: 3

Sent: 0



Km: 18.00

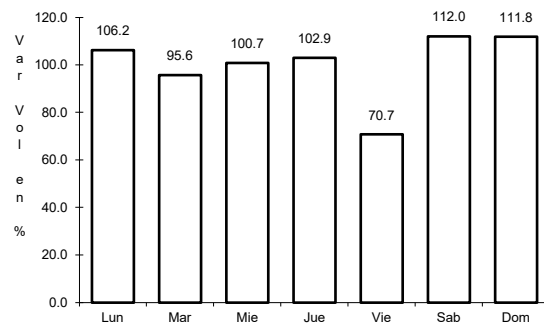
Tipo: 1

Sent: 0

51 CARR: Sinanché - Xitibcanul

CLAVE: 31619

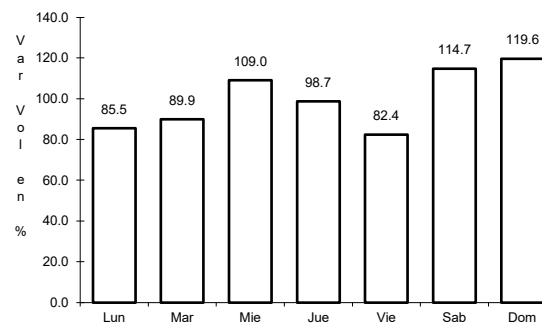
RUTA: YUC



Km: 0.00

Tipo: 3

Sent: 0



Km: 7.00

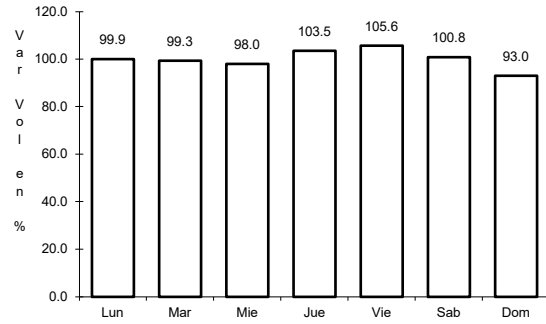
Tipo: 1

Sent: 0

52 CARR: Sucilá - Calotmul

CLAVE: 31617

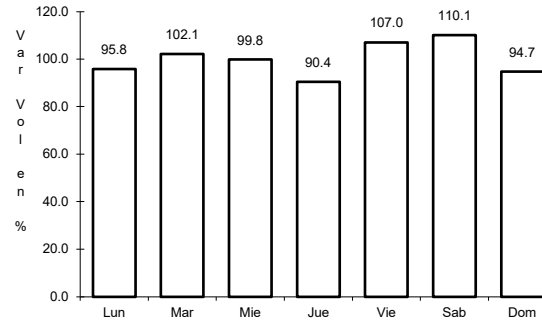
ruta: YUC



Km: 2.00

Tipo: 3

Sent: 0



Km: 30.20

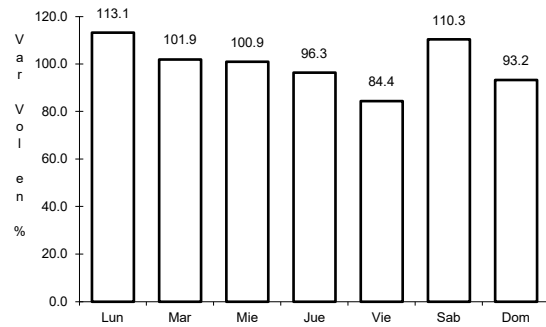
Tipo: 1

Sent: 0

53 CARR: Suma - Izamal

CLAVE: 31081

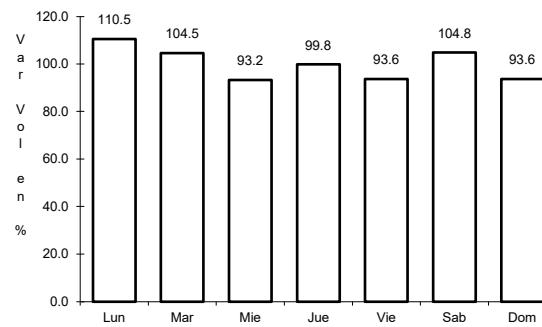
ruta: YUC-081



Km: 0.00

Tipo: 3

Sent: 0



Km: 22.00

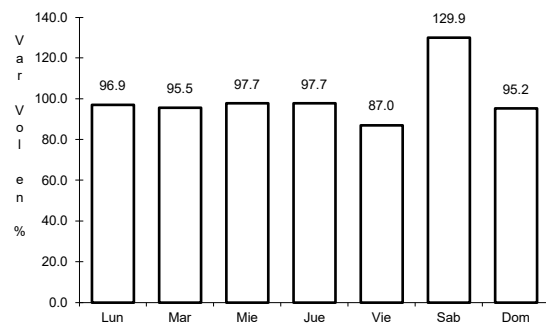
Tipo: 1

Sent: 0

54 CARR: Telchac Puerto - Dzilam de Bravo

CLAVE: 31042

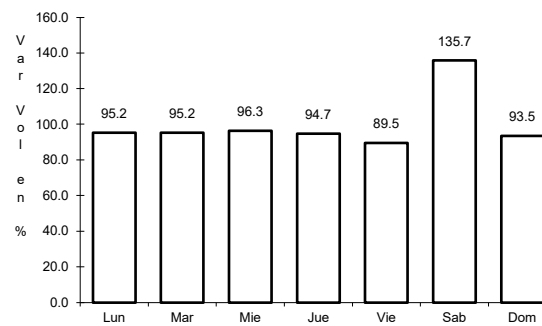
ruta: YUC



Km: 0.00

Tipo: 3

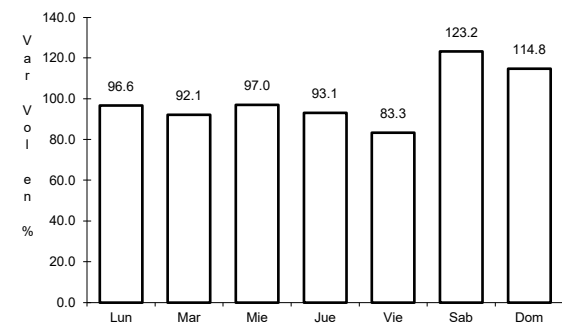
Sent: 0



Km: 26.00

Tipo: 1

Sent: 0



Km: 39.00

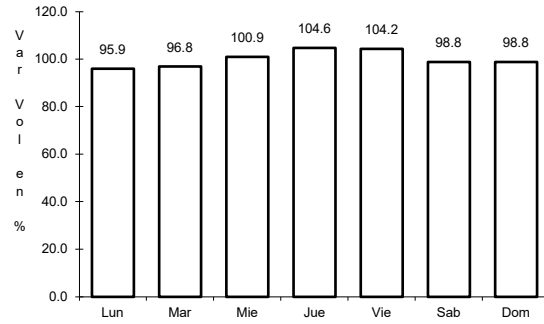
Tipo: 1

Sent: 0

55 CARR: Thul - Becanchén

CLAVE: 31104

RUTA: YUC-281



Km: 0.00

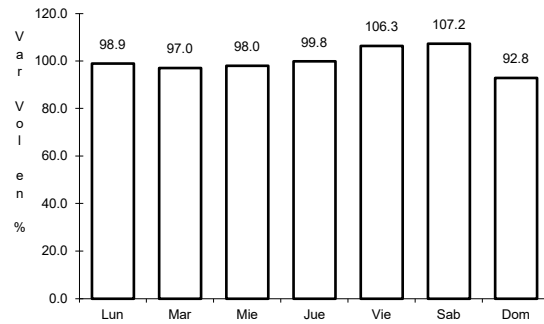
Tipo: 3

Sent: 0

56 CARR: Ticul - Chapab

CLAVE: 31623

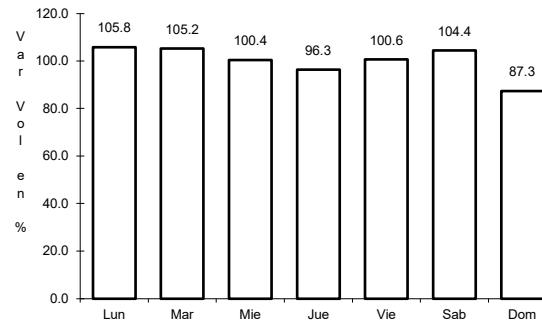
RUTA: YUC



Km: 0.00

Tipo: 3

Sent: 0



Km: 8.00

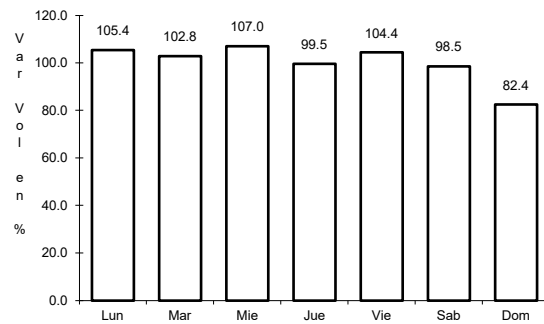
Tipo: 1

Sent: 0

57 CARR: Ticul - Dzan

CLAVE: 31621

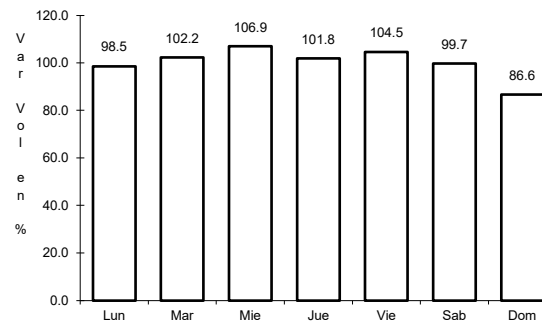
RUTA: YUC



Km: 2.50

Tipo: 3

Sent: 0



Km: 7.00

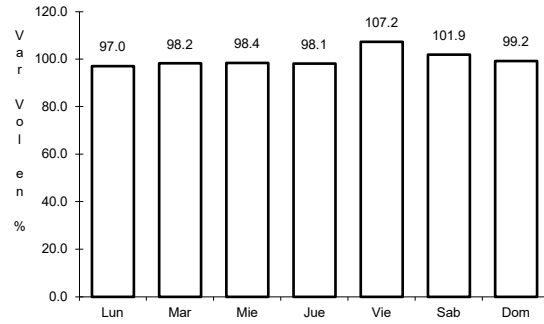
Tipo: 1

Sent: 0

58 CARR: Tixkokob - Baca

CLAVE: 31010

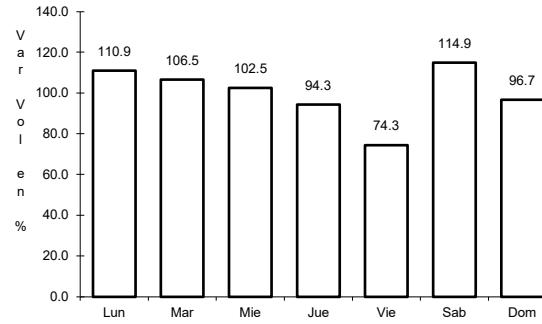
RUTA: YUC



Km: 0.00

Tipo: 3

Sent: 0



Km: 15.00

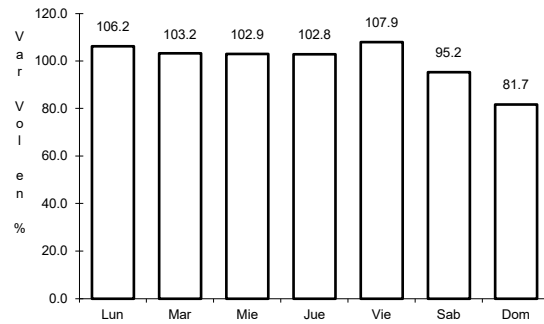
Tipo: 1

Sent: 0

59 CARR: Tixkokob - Sotuta

CLAVE: 31106

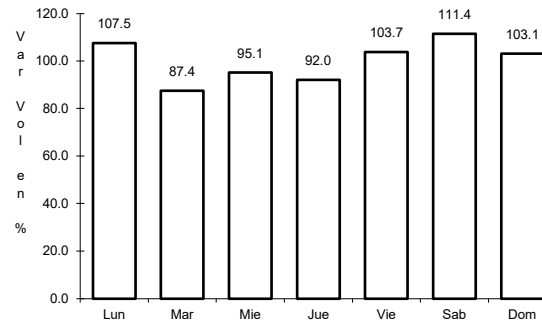
RUTA: YUC



Km: 0.00

Tipo: 3

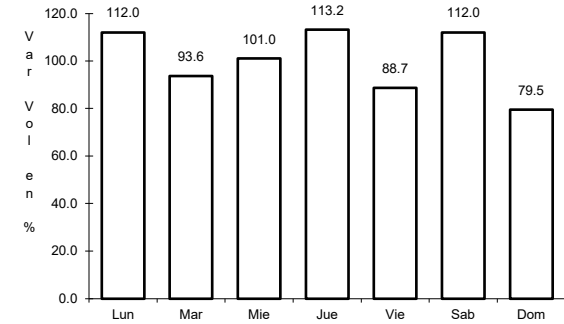
Sent: 0



Km: 31.00

Tipo: 3

Sent: 0



Km: 65.00

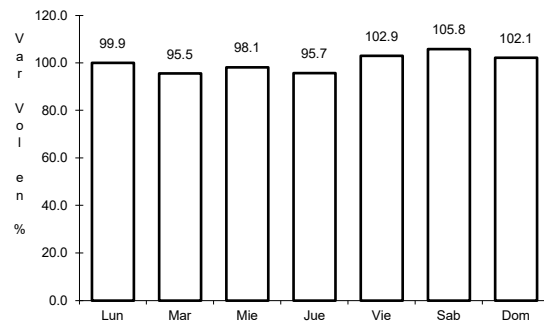
Tipo: 1

Sent: 0

60 CARR: Tizimín - Yucatán

CLAVE: 31588

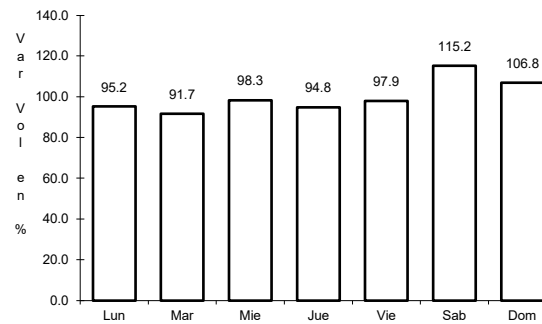
RUTA: YUC



Km: 0.00

Tipo: 3

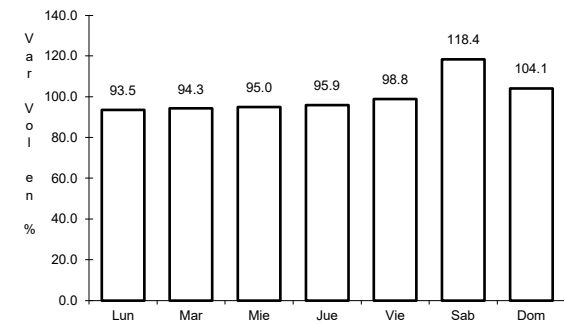
Sent: 0



Km: 30.00

Tipo: 3

Sent: 0



Km: 46.50

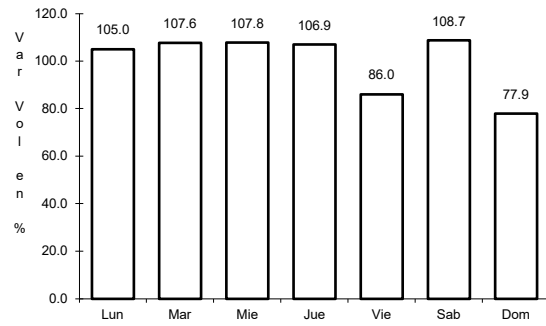
Tipo: 1

Sent: 0

61 CARR: Yaxché - Sierra Papacal

CLAVE: 31620

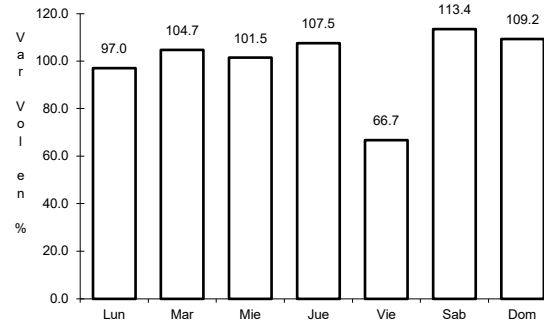
RUTA: YUC



Km: 0.00

Tipo: 3

Sent: 0



Km: 12.00

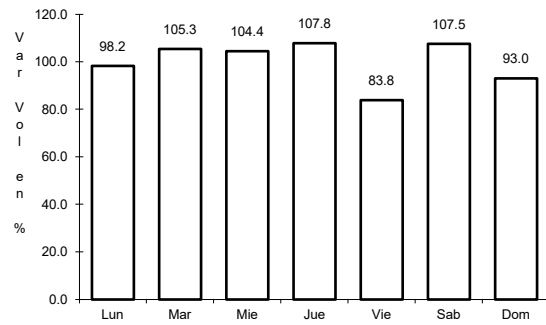
Tipo: 1

Sent: 0

62 CARR: Yobain - Chabihau

CLAVE: 31610

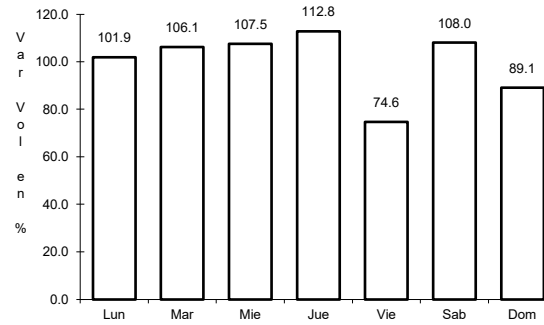
RUTA: YUC



Km: 0.00

Tipo: 3

Sent: 0



Km: 12.00

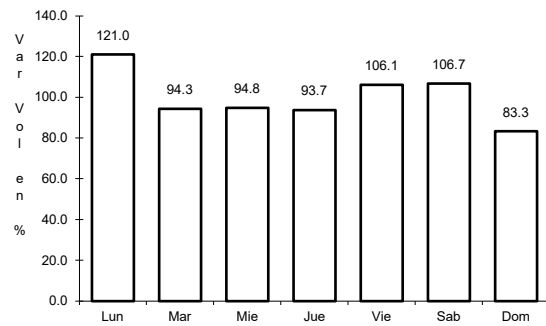
Tipo: 1

Sent: 0

63 CARR: Chemax - Cobá

CLAVE:

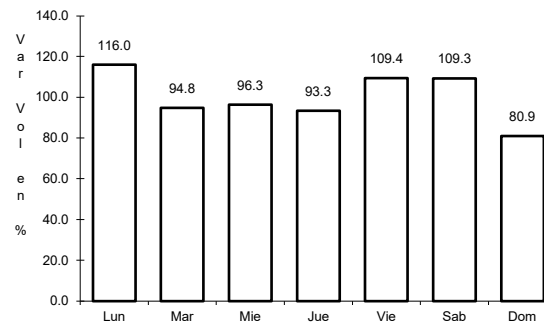
RUTA: YUC-MEX-180



Km: 0.00

Tipo: 3

Sent: 0

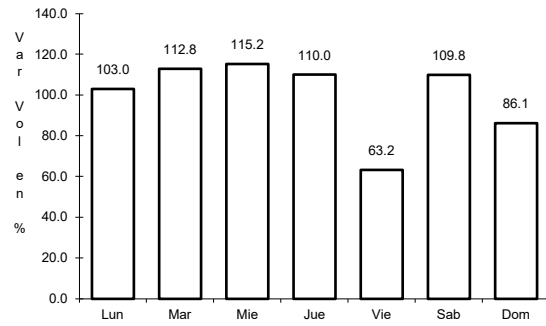


Km: 30.90

Tipo: 1

Sent: 0

64 CARR: Progreso - Celestún

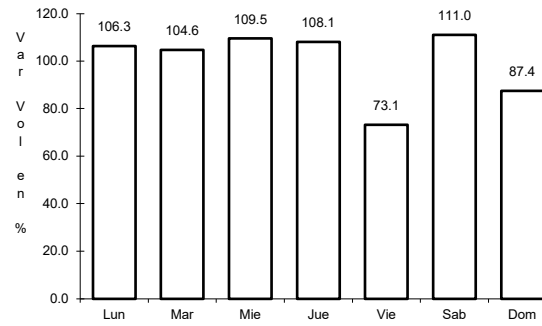


Km: 0.00

Tipo: 3

Sent: 1

CLAVE: 31040

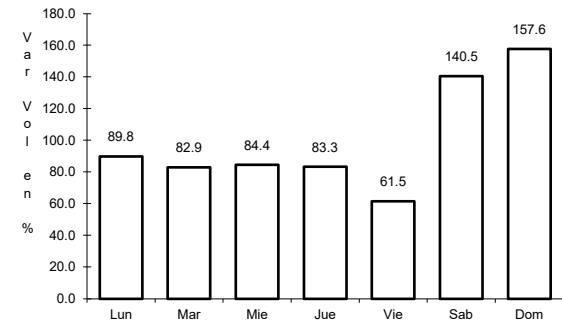


Km: 0.00

Tipo: 3

Sent: 2

RUTA: MEX-YUC



Km: 6.00

Tipo: 3

Sent: 0