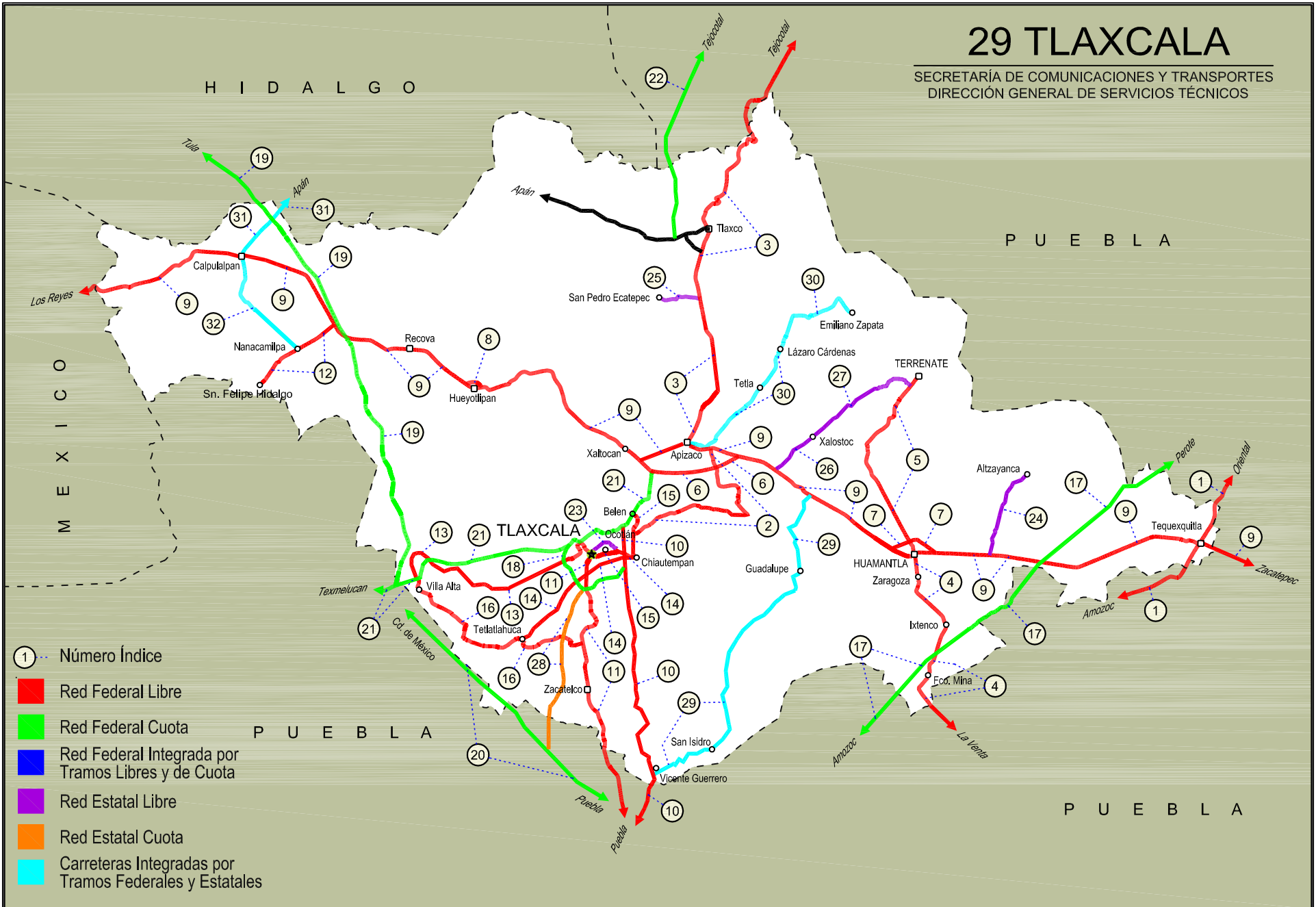


TLAXCALA

NO. INDICE CARRETERA	RUTA
---RED FEDERAL LIBRE---	
1 Amozoc - Teziutlán	MEX-129
2 Apizaco - San Pablo Apetatitlán	MEX-119
3 Apizaco - Tejocotal	MEX-119
4 Huamantla - La Venta	MEX-136
5 Huamantla - Terrenate	MEX-136
6 Libramiento de Apizaco	MEX-136
7 Libramiento Huamantla	MEX-136
8 Libramiento Hueyotlipán	MEX-136
9 Los Reyes - Zacatepec	MEX-136
10 Puebla - Belem	MEX-121
11 Puebla - Tlaxcala	MEX-119
12 Ramal a San Felipe de Hidalgo	MEX-136
13 San Martín Texmelucan - Tlaxcala	MEX-117
14 Tetlatlahuca - Santa Ana Chiautempan	MEX-119
15 Tlaxcala - Belem	MEX-119
16 Villa Alta - T. C. (Puebla - Tlaxcala)	MEX-119
---RED FEDERAL DE CUOTA---	
17 Amozoc - Perote (Cuota)	MEX-140D
18 Libramiento de Tlaxcala (Cuota)	MEX-117D
19 Libramiento Norte de la Ciudad de México (Cuota)	MEX-M40D
20 México - Puebla (Cuota)	MEX-150D
21 San Martín Texmelucan - Tlaxcala - El Molinito (Cuota)	MEX-117D
22 Tlaxco - Tejocotal (Cuota)	MEX-119D
---RED ESTATAL LIBRE---	
23 Libramiento de Ocotlán	TLAX
24 Ramal a Alzayanca de Hidalgo	TLAX
25 Ramal a San Pedro Ecatepec	TLAX
26 Ramal a Xalostoc	TLAX
27 Xalostoc - Terrenate	TLAX
---RED ESTATAL DE CUOTA---	
28 Puebla - Tlaxcala (Cuota)	PUE-D
---CARRETERAS INTEGRADAS POR TRAMOS FEDERALES Y ESTATALES---	
29 Acocotla - Vicente Guerrero	MEX-TLAX
30 Apizaco - Emiliano Zapata	TLAX-MEX-136
31 Calpulalpan - El Ocote	MEX-HGO
32 Calpulalpan - Nanacamilpa	TLAX-MEX-136

29 TLAXCALA

SECRETARÍA DE COMUNICACIONES Y TRANSPORTES
DIRECCIÓN GENERAL DE SERVICIOS TÉCNICOS



TLAXCALA

1 CARR: Amozoc - Teziutlán

CLAVE: 00210

RUTA: MEX-129

AÑO: 2020

LUGAR	ESTACION				CLASIFICACION VEHICULAR EN PORCIENTO										COORDENADAS					
	KM	TE	SC	TDPA	M	A	B	C2	C3	T3S2	T3S3	T3S2R4	OTROS	A	B	C	K'	D	LATITUD	LONGITUD
Amozoc	0.00																			
X. C. Puebla - Córdoba (Cuota)	1.40	3	0	11360	1.8	71.8	2.2	11.8	2.7	4.9	3.7	0.6	0.5	73.6	2.2	24.2	0.078	0.512	19.049239	-98.030550
Acajete	12.00	3	0	7476	2.6	70.7	1.7	14.2	2.4	6.2	1.5	0.6	0.1	73.3	1.7	25.0	0.085	0.514	19.106895	-97.954147
Rafael Lara Grajales	35.50	1	0	4022	1.5	73.8	3.0	7.6	5.3	5.0	2.0	0.9	0.9	75.3	3.0	21.7	0.089	0.512	19.231997	-97.799252
Rafael Lara Grajales	35.50	3	0	8072	2.5	78.3	4.0	6.3	2.0	4.8	1.2	0.6	0.3	80.8	4.0	15.2	0.079	0.505	19.232013	-97.799301
Lim. Edos. Term. Pue. Ppia. Tlax.	50.54																			
X. C. Los Reyes - Zacatepec	56.31	1	0	3538	2.3	79.7	3.4	7.4	2.2	2.7	1.6	0.5	0.2	82.0	3.4	14.6	0.099	0.540	19.323610	-97.648221
Lim. Edos. Term. Tlax. Ppia. Pue.	60.22																			
Oriental	62.62	1	0	4312	4.3	84.6	2.1	6.1	1.3	0.7	0.6	0.2	0.1	88.9	2.1	9.0	0.098	0.507	19.376371	-97.618655
Oriental	62.62	3	0	6422	4.2	82.3	1.2	5.6	1.7	3.6	1.0	0.2	0.2	86.5	1.2	12.3	0.081	0.525	19.376371	-97.618656
X. C. Amozoc - Perote (Cuota)	69.00	1	1	3110	6.9	80.9	1.7	5.7	2.0	1.1	1.2	0.4	0.1	87.8	1.7	10.5	0.095	0.501	19.417864	-97.641290
X. C. Amozoc - Perote (Cuota)	69.00	1	2	3120	6.7	80.2	1.8	5.9	2.1	1.3	1.3	0.5	0.2	86.9	1.8	11.3	0.094	0.501	19.417883	-97.641329
X. C. Amozoc - Perote (Cuota)	69.00	3	0	7515	3.2	85.2	2.0	4.6	1.7	1.9	1.0	0.2	0.2	88.4	2.0	9.6	0.096	0.503	19.417774	-97.641440
Libres	76.35	3	0	8050	3.4	78.9	2.2	7.5	2.0	3.9	1.3	0.4	0.4	82.3	2.2	15.5	0.086	0.529	19.467220	-97.684476
San Miguel Tenextatiloyán	106.70	1	0	3690	2.6	79.7	2.5	7.7	1.8	3.7	1.1	0.6	0.3	82.3	2.5	15.2	0.097	0.501	19.710194	-97.593665
T. Izq. Zacapoaxtla	114.80	1	0	6967	2.0	84.9	1.6	4.6	1.2	3.5	1.0	0.4	0.8	86.9	1.6	11.5	0.084	0.506	19.762725	-97.566470
T. Izq. Zacapoaxtla	114.80	3	0	8053	2.1	84.0	1.4	4.8	0.6	4.8	0.8	0.5	1.0	86.1	1.4	12.5	0.084	0.506	19.762728	-97.566475
Zaragoza	116.80	3	0	6613	2.3	83.7	2.4	5.3	1.0	3.5	0.7	0.4	0.7	86.0	2.4	11.6	0.099	0.514	19.770970	-97.554746
Teziutlán	157.80	1	0	11874	2.9	79.3	1.2	8.5	0.6	5.3	0.8	0.4	1.0	82.2	1.2	16.6	0.088	0.506	19.811716	-97.359718

2 CARR: Apizaco - San Pablo Apetatitlán

CLAVE: 29035

RUTA: MEX-119

AÑO: 2020

LUGAR	ESTACION				CLASIFICACION VEHICULAR EN PORCIENTO										COORDENADAS					
	KM	TE	SC	TDPA	M	A	B	C2	C3	T3S2	T3S3	T3S2R4	OTROS	A	B	C	K'	D	LATITUD	LONGITUD
T. C. Los Reyes - Zacatepec	0.00	3	0	5075	9.7	78.6	1.2	3.9	1.1	3.5	0.7	0.3	1.0	88.3	1.2	10.5	0.091	0.503	19.413248	-98.119092
T. Der. Tecnológico	0.55	3	0	8164	5.9	84.6	0.6	2.2	0.6	4.6	0.4	0.3	0.8	90.5	0.6	8.9	0.087	0.504	19.406063	-98.117647
Cuaxomulco	9.10	3	0	2557	7.9	78.0	1.9	4.3	1.5	2.1	1.7	1.3	1.3	85.9	1.9	12.2	0.086	0.501	19.354777	-98.102528
Santa Cruz Tlaxcala	14.50	3	0	4735	6.8	85.2	0.5	2.4	0.6	2.9	0.7	0.4	0.5	92.0	0.5	7.5	0.100	0.501	19.354209	-98.152593
T. Izq. Contla	18.90	1	0	9220	3.5	90.2	0.5	2.4	0.2	0.5	1.3	1.0	0.4	93.7	0.5	5.8	0.081	0.503	19.338895	-98.185088
San Pablo Apetatitlán	20.00	1	0	12034	3.5	89.4	0.4	2.7	0.3	0.6	1.4	1.3	0.4	92.9	0.4	6.7	0.084	0.526	19.334672	-98.193574

TLAXCALA

3 CARR: Apizaco - Tejocotal

CLAVE: 00430

RUTA: MEX-119

AÑO: 2020

LUGAR	ESTACION				CLASIFICACION VEHICULAR EN PORCIENTO													COORDENADAS		
	KM	TE	SC	TDPA	M	A	B	C2	C3	T3S2	T3S3	T3S2R4	OTROS	A	B	C	K'	D	LATITUD	LONGITUD
Apizaco	0.00	3	1	9921	1.1	86.8	1.1	5.0	1.2	2.2	1.4	0.6	0.6	87.9	1.1	11.0	0.106	0.512	19.418299	-98.145428
Apizaco	0.00	3	2	9451	1.1	86.8	1.1	5.0	1.2	2.2	1.4	0.6	0.6	87.9	1.1	11.0	0.096	0.512	19.418299	-98.145428
T. Der. Tetla	6.60	3	0	17579	1.0	83.3	2.4	7.3	1.3	2.6	1.0	0.7	0.4	84.3	2.4	13.3	0.091	0.515	19.464976	-98.112991
T. Izq. Atlangatepec	12.15	1	0	11806	1.1	84.7	2.3	6.6	1.2	1.9	1.4	0.4	0.4	85.8	2.3	11.9	0.108	0.511	19.514052	-98.118125
Tlaxco	23.91	1	1	3849	1.9	82.5	1.0	8.5	0.9	3.4	0.9	0.4	0.5	84.4	1.0	14.6	0.096	0.500	19.614139	-98.119084
Tlaxco	23.91	1	2	3857	1.8	82.9	1.0	8.3	0.9	3.4	0.9	0.3	0.5	84.7	1.0	14.3	0.092	0.500	19.614139	-98.119084
Tlaxco	23.91	3	0	6004	2.4	81.4	1.1	8.5	1.1	3.5	1.2	0.4	0.4	83.8	1.1	15.1	0.113	0.505	19.614142	-98.119087
Lim. Edos. Term. Tlax. Ppia. Pue.	34.45																			
T. Der. Tetela de Ocampo	52.20	1	0	6117	2.5	79.8	0.9	7.9	1.2	5.0	1.3	0.6	0.8	82.3	0.9	16.8	0.107	0.514	19.803995	-98.024779
Zacatlán	71.25	1	0	10830	7.0	83.0	1.0	4.1	0.5	2.7	1.2	0.1	0.4	90.0	1.0	9.0	0.113	0.507	19.931507	-97.961484
Lim. Edos. Term. Pue. Ppia. Hgo.	110.45																			
T. C. Pachuca - Tuxpam	113.15	1	0	6649	1.8	83.2	1.5	9.8	1.0	1.1	0.8	0.6	0.2	85.0	1.5	13.5	0.100	0.502	20.126931	-98.127367

4 CARR: Huamantla - La Venta

CLAVE: 29564

RUTA: MEX-136

AÑO: 2020

LUGAR	ESTACION				CLASIFICACION VEHICULAR EN PORCIENTO													COORDENADAS		
	KM	TE	SC	TDPA	M	A	B	C2	C3	T3S2	T3S3	T3S2R4	OTROS	A	B	C	K'	D	LATITUD	LONGITUD
Huamantla	0.00	3	1	4253	2.6	86.7	0.8	6.4	1.2	1.0	0.8	0.3	0.2	89.3	0.8	9.9	0.095	0.507	19.313030	-97.922228
Huamantla	0.00	3	2	4376	2.6	86.9	0.7	6.5	1.1	1.0	0.7	0.3	0.2	89.5	0.7	9.8	0.088	0.507	19.313028	-97.922244
Ignacio Zaragoza	2.30	3	0	5719	3.6	86.7	0.7	4.4	0.9	2.1	1.1	0.3	0.2	90.3	0.7	9.0	0.086	0.504	19.291464	-97.919320
Ixtenco	8.00	1	0	5082	3.0	88.5	0.5	4.3	0.6	1.9	0.7	0.2	0.3	91.5	0.5	8.0	0.083	0.509	19.251700	-97.894338
Ixtenco	8.00	3	0	3811	2.8	86.5	1.1	5.2	1.1	2.1	0.7	0.3	0.2	89.3	1.1	9.6	0.094	0.501	19.251653	-97.894278
X. C. Amozoc - Perote (Cuota)	11.40	1	0	4039	3.1	84.9	1.6	5.9	1.2	2.6	0.4	0.3	0.0	88.0	1.6	10.4	0.107	0.532	19.224476	-97.902934
Zitlaltepec	13.60	1	0	2986	3.9	86.2	0.9	5.5	1.1	1.7	0.5	0.2	0.0	90.1	0.9	9.0	0.096	0.503	19.206811	-97.910326
Zitlaltepec	13.60	3	0	3066	4.5	79.9	1.6	8.8	1.2	2.7	0.5	0.6	0.2	84.4	1.6	14.0	0.089	0.510	19.206811	-97.910325
T. C. Amozoc - Teziutlán	17.60	1	0	2559	3.6	83.9	0.8	6.0	1.5	3.0	1.0	0.2	0.0	87.5	0.8	11.7	0.091	0.504	19.175659	-97.908684

5 CARR: Huamantla - Terrenate

CLAVE: 29036

RUTA: MEX-136

AÑO: 2020

LUGAR	ESTACION				CLASIFICACION VEHICULAR EN PORCIENTO													COORDENADAS		
	KM	TE	SC	TDPA	M	A	B	C2	C3	T3S2	T3S3	T3S2R4	OTROS	A	B	C	K'	D	LATITUD	LONGITUD
Huamantla	0.00	3	0	3332	4.3	81.6	1.4	4.5	2.3	2.9	1.7	0.9	0.4	85.9	1.4	12.7	0.113	0.521	19.323283	-97.921587
T. Izq. Xicoténcatl	12.50	1	0	827	6.2	84.4	0.2	7.2	1.0	0.7	0.3	0.0	0.0	90.6	0.2	9.2	0.128	0.509	19.414827	-97.969246
Terrenate	21.00	1	0	1101	6.9	83.2	0.1	7.2	0.9	1.0	0.3	0.1	0.3	90.1	0.1	9.8	0.100	0.508	19.471509	-97.923952

TLAXCALA

6 CARR: Libramiento de Apizaco

CLAVE: 29567

RUTA: MEX-136

AÑO: 2020

LUGAR	ESTACION				CLASIFICACION VEHICULAR EN PORCIENTO													COORDENADAS		
	KM	TE	SC	TDPA	M	A	B	C2	C3	T3S2	T3S3	T3S2R4	OTROS	A	B	C	K'	D	LATITUD	LONGITUD
T. C. Los Reyes - Zacatepec	0.00																			
T. Der. Amaxac de Guerrero	6.00	1	1	11088	0.9	75.5	2.8	6.0	2.5	6.5	2.5	2.5	0.8	76.4	2.8	20.8	0.086	0.512	19.382026	-98.131070
T. Der. Amaxac de Guerrero	6.00	1	2	11637	0.8	75.5	2.8	6.0	2.5	6.5	2.5	2.5	0.9	76.3	2.8	20.9	0.080	0.512	19.382179	-98.131153
T. Der. Amaxac de Guerrero	6.00	3	1	9565	14.2	63.0	2.8	3.7	2.9	7.6	2.5	2.6	0.7	77.2	2.8	20.0	0.080	0.515	19.382048	-98.131000
T. Der. Amaxac de Guerrero	6.00	3	2	10172	14.8	61.4	3.7	3.7	3.0	7.2	3.4	2.2	0.6	76.2	3.7	20.1	0.075	0.515	19.382213	-98.131052
T. C. Los Reyes - Zacatepec	10.40																			

7 CARR: Libramiento Huamantla

CLAVE: 29567

RUTA: MEX-136

AÑO: 2020

LUGAR	ESTACION				CLASIFICACION VEHICULAR EN PORCIENTO													COORDENADAS		
	KM	TE	SC	TDPA	M	A	B	C2	C3	T3S2	T3S3	T3S2R4	OTROS	A	B	C	K'	D	LATITUD	LONGITUD
T. C. Los Reyes - Zacatepec (Poniente)	0.00	3	1	6453	1.8	70.0	3.9	5.4	3.2	8.0	4.1	3.1	0.5	71.8	3.9	24.3	0.097	0.513	19.317063	-97.939186
T. C. Los Reyes - Zacatepec (Poniente)	0.00	3	2	6802	1.7	69.9	3.8	5.6	3.4	7.4	4.3	3.4	0.5	71.6	3.8	24.6	0.085	0.513	19.317075	-97.939202
T. C. Los Reyes - Zacatepec (Oriente)	4.60	1	1	6433	2.0	67.4	4.1	5.4	3.7	9.1	4.5	3.2	0.6	69.4	4.1	26.5	0.097	0.512	19.316769	-97.907871
T. C. Los Reyes - Zacatepec (Oriente)	4.60	1	2	6739	2.0	66.6	4.3	5.4	3.6	9.4	4.7	3.4	0.6	68.6	4.3	27.1	0.080	0.512	19.316791	-97.907850

8 CARR: Libramiento Hueyotlipan

CLAVE: 29567

RUTA: MEX-136

AÑO: 2020

LUGAR	ESTACION				CLASIFICACION VEHICULAR EN PORCIENTO													COORDENADAS		
	KM	TE	SC	TDPA	M	A	B	C2	C3	T3S2	T3S3	T3S2R4	OTROS	A	B	C	K'	D	LATITUD	LONGITUD
T. C. Los Reyes - Zacatepec (Poniente)	0.00	3	1	7178	0.7	65.9	3.5	6.3	4.2	11.7	3.7	3.7	0.3	66.6	3.5	29.9	0.092	0.515	19.475374	-98.358617
T. C. Los Reyes - Zacatepec (Poniente)	0.00	3	2	7617	0.6	66.5	3.4	6.2	4.2	11.5	3.6	3.7	0.3	67.1	3.4	29.5	0.116	0.515	19.475389	-98.358631
T. C. Los Reyes - Zacatepec (Oriente)	2.70	1	1	7664	1.5	60.4	3.7	6.8	5.2	13.9	4.2	3.9	0.4	61.9	3.7	34.4	0.090	0.513	19.471095	-98.337240
T. C. Los Reyes - Zacatepec (Oriente)	2.70	1	2	8077	1.4	60.9	3.7	6.7	5.1	13.8	4.1	3.9	0.4	62.3	3.7	34.0	0.110	0.513	19.471124	-98.337208

9 CARR: Los Reyes - Zacatepec

CLAVE: 00052

RUTA: MEX-136

AÑO: 2020

LUGAR	ESTACION				CLASIFICACION VEHICULAR EN PORCIENTO													COORDENADAS		
	KM	TE	SC	TDPA	M	A	B	C2	C3	T3S2	T3S3	T3S2R4	OTROS	A	B	C	K'	D	LATITUD	LONGITUD
T. C. México - Puebla (Libre)	0.00																			
T. Izq. La Magdalena	3.35	3	1	29798	3.1	82.4	0.5	9.6	1.1	1.6	1.3	0.1	0.3	85.5	0.5	14.0	0.062	0.536	19.367995	-98.947987
T. Izq. La Magdalena	3.35	3	2	34877	3.2	82.1	0.5	9.7	1.2	1.6	1.3	0.1	0.3	85.3	0.5	14.2	0.063	0.536	19.367984	-98.947996
T. Izq. Chimalhuacán	8.45	1	1	34043	3.8	86.0	0.4	5.0	1.1	1.6	1.6	0.1	0.4	89.8	0.4	9.8	0.065	0.510	19.416417	-98.917603
T. Izq. Chimalhuacán	8.45	1	2	35584	3.8	86.0	0.4	5.0	1.1	1.6	1.6	0.1	0.4	89.8	0.4	9.8	0.065	0.510	19.416404	-98.917602
T. C. San Bernardino - Tepexpan	17.00	1	1	28718	2.8	87.6	0.7	5.1	1.0	1.5	0.8	0.2	0.3	90.4	0.7	8.9	0.094	0.505	19.476689	-98.890893

TLAXCALA

9 CARR: Los Reyes - Zacatepec

CLAVE: 00052

RUTA: MEX-136

AÑO: 2020

LUGAR	ESTACION				CLASIFICACION VEHICULAR EN PORCIENTO													COORDENADAS		
	KM	TE	SC	TDPA	M	A	B	C2	C3	T3S2	T3S3	T3S2R4	OTROS	A	B	C	K'	D	LATITUD	LONGITUD
T. C. San Bernardino - Tepexpan	17.00	1	2	29355	2.8	87.6	0.7	5.1	1.0	1.5	0.8	0.2	0.3	90.4	0.7	8.9	0.070	0.505	19.476706	-98.890920
T. C. San Bernardino - Tepexpan	17.00	3	1	12398	4.3	86.7	0.7	6.9	0.6	0.4	0.2	0.1	0.1	91.0	0.7	8.3	0.079	0.519	19.477344	-98.890624
T. C. San Bernardino - Tepexpan	17.00	3	2	11478	4.3	86.7	0.7	6.9	0.6	0.4	0.2	0.1	0.1	91.0	0.7	8.3	0.077	0.519	19.477336	-98.890629
Texcoco	23.02	3	1	19071	3.8	77.3	2.0	7.3	2.5	4.2	1.9	0.6	0.4	81.1	2.0	16.9	0.080	0.508	19.522913	-98.881321
Texcoco	23.02	3	2	18488	3.1	76.5	2.2	7.7	2.9	4.7	2.0	0.6	0.3	79.6	2.2	18.2	0.076	0.508	19.522955	-98.881332
T. Izq. Tepetlaoxtoc	30.03	1	1	15036	3.8	77.2	1.9	7.5	2.5	4.3	1.9	0.6	0.3	81.0	1.9	17.1	0.088	0.503	19.549980	-98.816166
T. Izq. Tepetlaoxtoc	30.03	1	2	14863	3.7	75.7	2.2	8.1	2.7	4.7	2.0	0.6	0.3	79.4	2.2	18.4	0.086	0.503	19.550041	-98.816204
T. Der. San Jerónimo Amanalco	31.42	3	1	7333	3.8	76.3	2.2	4.9	2.6	7.1	2.1	0.7	0.3	80.1	2.2	17.7	0.102	0.513	19.552272	-98.797837
T. Der. San Jerónimo Amanalco	31.42	3	2	6974	3.9	74.0	2.5	5.1	3.0	8.2	2.3	0.7	0.3	77.9	2.5	19.6	0.101	0.513	19.552380	-98.797808
T. Der. Totolapan	42.00	3	1	6187	3.9	75.4	2.3	4.9	2.7	7.1	2.6	0.8	0.3	79.3	2.3	18.4	0.108	0.515	19.555168	-98.736297
T. Der. Totolapan	42.00	3	2	5829	3.8	73.3	2.7	5.4	3.1	8.2	2.6	0.6	0.3	77.1	2.7	20.2	0.105	0.515	19.555166	-98.736298
Lim. Edos. Term. Méx. Ppia. Tlax.	43.15																			
T. C. Calpulalpan - El Ocote	58.15																			
Calpulalpan	59.58	1	1	6511	0.7	69.3	3.7	6.5	3.2	10.3	3.1	2.9	0.3	70.0	3.7	26.3	0.091	0.504	19.585679	-98.566105
Calpulalpan	59.58	1	2	6614	0.7	67.5	4.0	6.7	3.6	10.9	3.3	3.0	0.3	68.2	4.0	27.8	0.111	0.504	19.585676	-98.566108
Calpulalpan	59.58	3	0	16163	1.1	74.4	3.6	7.9	2.4	7.9	1.6	0.9	0.2	75.5	3.6	20.9	0.095	0.511	19.591749	-98.561468
T. Der. Nanacamilpa	71.76	3	0	12696	0.9	71.9	5.5	7.9	2.6	8.2	1.4	1.3	0.3	72.8	5.5	21.7	0.092	0.500	19.528129	-98.481231
X. C. Arco Norte de La Ciudad de México	73.80	3	1	7312	0.9	72.7	3.0	6.7	2.3	8.1	3.2	2.7	0.4	73.6	3.0	23.4	0.091	0.507	19.513749	-98.465264
X. C. Arco Norte de La Ciudad de México	73.80	3	2	7521	1.2	68.9	3.6	7.7	2.7	9.1	3.6	2.8	0.4	70.1	3.6	26.3	0.112	0.507	19.513790	-98.465267
T. Libramiento Hueyotlipan Oeste	86.84																			
Hueyotlipan	88.21	1	1	7926	0.9	71.8	3.2	7.1	2.4	8.3	3.3	2.6	0.4	72.7	3.2	24.1	0.087	0.517	19.469086	-98.345928
Hueyotlipan	88.21	1	2	7398	1.2	69.3	3.4	7.4	2.6	9.1	3.7	2.9	0.4	70.5	3.4	26.1	0.092	0.517	19.469040	-98.345939
Hueyotlipan	88.21	3	1	8039	0.6	73.4	4.3	8.1	1.7	7.5	1.9	1.8	0.7	74.0	4.3	21.7	0.078	0.515	19.469181	-98.346799
Hueyotlipan	88.21	3	2	8529	0.7	70.9	4.9	8.6	1.9	8.3	2.0	2.0	0.7	71.6	4.9	23.5	0.116	0.515	19.469196	-98.346817
T. Libramiento HueyotlipanEste	89.51																			
Xaltocan	108.10	1	1	8540	0.6	72.9	4.6	8.2	1.6	7.7	1.8	1.9	0.7	73.5	4.6	21.9	0.079	0.514	19.421715	-98.211840
Xaltocan	108.10	1	2	9035	0.7	71.3	4.9	8.5	1.9	8.2	1.9	1.9	0.7	72.0	4.9	23.1	0.111	0.514	19.421800	-98.211746
T. Libramiento de Apizaco Oeste	113.10																			
Apizaco	117.74	1	1	14903	1.8	84.5	1.2	7.8	0.8	1.4	1.9	0.2	0.4	86.3	1.2	12.5	0.109	0.537	19.418107	-98.145623
Apizaco	117.74	1	2	17283	1.8	84.5	1.2	7.8	0.8	1.4	1.9	0.2	0.4	86.3	1.2	12.5	0.079	0.537	19.418142	-98.145658
Apizaco	117.74	3	0	16633	1.9	89.3	0.9	5.7	0.4	0.8	0.6	0.3	0.1	91.2	0.9	7.9	0.079	0.525	19.415761	-98.139957
T. Der. Cuaxomulco	119.85	3	1	14941	1.7	90.9	0.5	4.0	0.5	1.0	1.0	0.1	0.3	92.6	0.5	6.9	0.088	0.504	19.413252	-98.118951
T. Der. Cuaxomulco	119.85	3	2	14679	1.9	90.3	0.5	4.2	0.5	1.1	1.1	0.1	0.3	92.2	0.5	7.3	0.091	0.504	19.413322	-98.118954
T. Libramiento de Apizaco Este	122.45																			
T. Der. Libramiento de Apizaco	122.70	3	1	13741	2.2	79.5	2.5	5.7	1.9	4.5	1.6	1.2	0.9	81.7	2.5	15.8	0.098	0.503	19.405806	-98.091815

TLAXCALA

9 CARR: Los Reyes - Zacatepec

CLAVE: 00052

RUTA: MEX-136

AÑO: 2020

LUGAR	ESTACION				CLASIFICACION VEHICULAR EN PORCIENTO														COORDENADAS	
	KM	TE	SC	TDPA	M	A	B	C2	C3	T3S2	T3S3	T3S2R4	OTROS	A	B	C	K'	D	LATITUD	LONGITUD
T. Der. Libramiento de Apizaco	122.70	3	2	13913	2.6	78.9	2.2	5.9	2.1	4.3	2.0	1.2	0.8	81.5	2.2	16.3	0.102	0.503	19.405892	-98.091788
T. Izq. Xalostoc	126.67	3	1	10463	2.1	74.8	3.2	8.3	1.7	5.5	1.9	1.8	0.7	76.9	3.2	19.9	0.098	0.513	19.394839	-98.060452
T. Izq. Xalostoc	126.67	3	2	11030	2.1	74.3	3.7	8.4	1.8	4.8	2.4	1.8	0.7	76.4	3.7	19.9	0.104	0.513	19.394916	-98.060399
T. Izq. Libramiento de Huamantla	141.70	1	1	10272	2.4	73.4	3.1	8.3	2.2	5.7	2.0	1.9	1.0	75.8	3.1	21.1	0.092	0.506	19.318969	-97.943420
T. Izq. Libramiento de Huamantla	141.70	1	2	10533	2.4	73.5	3.3	8.6	2.2	5.5	2.0	1.6	0.9	75.9	3.3	20.8	0.106	0.506	19.319031	-97.943371
Huamantla	143.02	3	1	8895	2.2	73.7	3.6	7.8	2.2	5.2	2.4	2.2	0.7	75.9	3.6	20.5	0.090	0.504	19.316449	-97.922515
Huamantla	143.02	3	2	9022	2.2	73.2	3.5	7.2	2.6	5.2	3.3	2.2	0.6	75.4	3.5	21.1	0.116	0.504	19.316450	-97.922516
T. Libramiento de Huamantla Este	144.42																			
X. C. Amozoc - Perote (Cuota)	156.76	1	1	7730	1.5	67.6	4.0	7.3	3.4	9.4	4.3	1.7	0.8	69.1	4.0	26.9	0.093	0.520	19.307538	-97.805117
X. C. Amozoc - Perote (Cuota)	156.76	1	2	7129	1.5	67.4	4.1	7.3	3.4	9.5	4.3	1.7	0.8	68.9	4.1	27.0	0.101	0.520	19.307614	-97.805103
X. C. Amozoc - Perote (Cuota)	156.76	3	0	11105	3.4	63.8	4.3	6.7	3.8	9.7	5.0	2.4	0.9	67.2	4.3	28.5	0.095	0.510	19.307099	-97.802131
T. Der. Cuapiaxtla	159.40	1	0	8750	1.4	60.4	2.7	10.2	4.0	13.0	4.5	2.9	0.9	61.8	2.7	35.5	0.096	0.508	19.302855	-97.776199
X. C. Amozoc - Teziutlán	173.47	1	0	6706	1.1	60.9	3.4	8.8	3.7	12.7	5.1	3.4	0.9	62.0	3.4	34.6	0.089	0.501	19.323772	-97.648443
X. C. Amozoc - Teziutlán	173.47	3	0	4454	0.7	51.9	3.2	6.5	7.5	17.2	9.4	2.8	0.8	52.6	3.2	44.2	0.088	0.501	19.323541	-97.648048
Lim. Edos. Term. Tlax. Ppia. Pue.	177.57																			
Zacatepec	187.67	1	0	4912	0.7	51.7	3.2	6.4	7.8	16.9	9.8	2.7	0.8	52.4	3.2	44.4	0.094	0.500	19.267604	-97.532476

10 CARR: Puebla - Belem

CLAVE: 00055

RUTA: MEX-121

AÑO: 2020

LUGAR	ESTACION				CLASIFICACION VEHICULAR EN PORCIENTO														COORDENADAS	
	KM	TE	SC	TDPA	M	A	B	C2	C3	T3S2	T3S3	T3S2R4	OTROS	A	B	C	K'	D	LATITUD	LONGITUD
T. C. Puebla - Tlaxcala	0.00																			
X. C. Puebla - Córdoba (Cuota)	4.00	3	1	25442	1.3	84.5	1.7	8.8	0.8	1.4	1.0	0.3	0.2	85.8	1.7	12.5	0.073	0.504	19.086470	-98.186433
X. C. Puebla - Córdoba (Cuota)	4.00	3	2	25807	1.6	82.8	2.0	9.6	0.8	1.6	1.1	0.3	0.2	84.4	2.0	13.6	0.087	0.504	19.086553	-98.186601
Lim. Edos. Term. Pue. Ppia. Tlax.	6.60																			
Lim. Edos. Term. Tlax. Ppia. Pue.	9.77																			
Lim. Edos. Term. Pue. Ppia. Tlax.	10.25																			
T. Izq. Zacatelco	16.70	1	1	12126	2.2	88.1	1.0	4.2	1.6	1.9	0.6	0.3	0.1	90.3	1.0	8.7	0.092	0.504	19.208703	-98.196804
T. Izq. Zacatelco	16.70	1	2	12313	2.2	88.1	0.9	4.1	1.7	1.8	0.8	0.3	0.1	90.3	0.9	8.8	0.076	0.504	19.208696	-98.196840
X. C. Tlaxcala - Belem	28.80	1	1	22320	1.6	88.0	0.6	4.2	0.7	2.3	1.8	0.4	0.4	89.6	0.6	9.8	0.074	0.512	19.317409	-98.203302
X. C. Tlaxcala - Belem	28.80	1	2	21285	1.6	87.9	0.6	4.2	0.7	2.3	1.9	0.4	0.4	89.5	0.6	9.9	0.075	0.512	19.317441	-98.203361
T. C. San Martín Texmelucan - Ocotoxco (Cuota)	34.90																			

TLAXCALA

11 CARR: Puebla - Tlaxcala

CLAVE: 00475

RUTA: MEX-119

AÑO: 2020

LUGAR	ESTACION				CLASIFICACION VEHICULAR EN PORCIENTO										COORDENADAS					
	KM	TE	SC	TDPA	M	A	B	C2	C3	T3S2	T3S3	T3S2R4	OTROS	A	B	C	K'	D	LATITUD	LONGITUD
Puebla	0.00																			
X. C. Puebla - Córdoba (Cuota) Central	5.41	3	1	9547	2.0	84.9	0.7	4.8	1.6	2.3	2.5	0.5	0.7	86.9	0.7	12.4	0.081	0.513	19.088665	-98.205923
X. C. Puebla - Córdoba (Cuota) Lateral	5.41	3	1	2881	3.4	78.6	1.4	13.2	0.8	1.0	0.8	0.3	0.5	82.0	1.4	16.6	0.089	0.508	19.088641	-98.205770
X. C. Puebla - Córdoba (Cuota) Lateral	5.41	3	2	2971	3.3	79.0	1.2	13.0	0.8	1.0	0.9	0.4	0.4	82.3	1.2	16.5	0.082	0.508	19.088699	-98.206165
X. C. Puebla - Córdoba (Cuota) Central	5.41	3	2	10053	2.0	84.9	0.7	4.7	1.6	2.3	2.6	0.5	0.7	86.9	0.7	12.4	0.082	0.513	19.088653	-98.206012
Lim. Edos. Term. Pue. Ppia. Tlax.	11.83																			
Panzacola	13.14	3	1	10238	5.6	89.3	0.6	2.6	0.6	0.6	0.3	0.2	0.2	94.9	0.6	4.5	0.087	0.500	19.150878	-98.223628
Panzacola	13.14	3	2	10245	8.0	87.2	0.6	2.4	0.6	0.5	0.3	0.2	0.2	95.2	0.6	4.2	0.082	0.500	19.150885	-98.223747
San Toribio Xicohtzinco	16.10	3	1	10509	4.2	87.2	0.7	6.4	0.4	0.4	0.2	0.2	0.3	91.4	0.7	7.9	0.083	0.537	19.179399	-98.236226
San Toribio Xicohtzinco	16.10	3	2	9057	4.3	87.5	0.6	6.3	0.4	0.3	0.2	0.2	0.2	91.8	0.6	7.6	0.080	0.537	19.179376	-98.236268
Zacatelco	20.78	1	1	8710	6.5	89.5	0.6	2.7	0.3	0.3	0.1	0.0	0.0	96.0	0.6	3.4	0.083	0.503	19.214916	-98.241582
Zacatelco	20.78	1	2	8621	8.0	88.4	0.5	2.5	0.2	0.3	0.1	0.0	0.0	96.4	0.5	3.1	0.085	0.503	19.214926	-98.241536
T. Izq. San Martín Texmelucan	22.99	1	1	9336	6.5	90.2	0.6	1.7	0.5	0.2	0.1	0.1	0.1	96.7	0.6	2.7	0.083	0.502	19.234832	-98.243208
T. Izq. San Martín Texmelucan	22.99	1	2	9428	6.4	90.5	0.5	1.7	0.5	0.2	0.1	0.1	0.0	96.9	0.5	2.6	0.087	0.502	19.234810	-98.243310
T. Der. Tepeyanco (2° Acceso)	24.97	3	1	8424	10.8	86.9	0.4	1.0	0.3	0.3	0.1	0.1	0.1	97.7	0.4	1.9	0.084	0.505	19.249463	-98.237422
T. Der. Tepeyanco (2° Acceso)	24.97	3	2	8601	9.5	88.2	0.4	1.0	0.3	0.3	0.1	0.1	0.1	97.7	0.4	1.9	0.083	0.505	19.249546	-98.237437
T. Der. Ocotlán (Alta)	32.45	1	1	5322	1.4	95.0	0.2	2.0	0.2	0.8	0.3	0.0	0.1	96.4	0.2	3.4	0.088	0.521	19.304369	-98.240938
T. Der. Ocotlán (Baja)	32.45	1	1	5674	1.3	95.5	0.1	1.9	0.1	0.7	0.3	0.0	0.1	96.8	0.1	3.1	0.088	0.537	19.304373	-98.240878
T. Der. Ocotlán (Baja)	32.45	1	2	4891	1.2	95.6	0.1	2.1	0.1	0.3	0.5	0.0	0.1	96.8	0.1	3.1	0.085	0.537	19.304365	-98.241136
T. Der. Ocotlán (Alta)	32.45	1	2	4893	1.2	95.3	0.1	2.1	0.1	0.7	0.4	0.0	0.1	96.5	0.1	3.4	0.085	0.521	19.304370	-98.241077
Tlaxcala	33.22	1	1	8900	4.2	93.5	0.5	0.6	0.3	0.4	0.2	0.2	0.1	97.7	0.5	1.8	0.087	0.544	19.314217	-98.239164
Tlaxcala	33.22	1	2	7471	4.2	93.7	0.5	0.4	0.3	0.4	0.3	0.1	0.1	97.9	0.5	1.6	0.090	0.544	19.314224	-98.239174

12 CARR: Ramal a San Felipe de Hidalgo

CLAVE: 29565

RUTA: MEX-136

AÑO: 2020

LUGAR	ESTACION				CLASIFICACION VEHICULAR EN PORCIENTO										COORDENADAS					
	KM	TE	SC	TDPA	M	A	B	C2	C3	T3S2	T3S3	T3S2R4	OTROS	A	B	C	K'	D	LATITUD	LONGITUD
T. C. Los Reyes - Zacatepec	0.00	3	0	3346	2.5	85.8	0.8	7.1	1.5	1.9	0.2	0.1	0.1	88.3	0.8	10.9	0.086	0.510	19.528088	-98.481191
San Felipe de Hidalgo	10.50	1	0	1692	4.0	87.5	0.9	5.4	0.4	1.2	0.6	0.0	0.0	91.5	0.9	7.6	0.089	0.506	19.469012	-98.557253

13 CARR: San Martín Texmelucan - Tlaxcala

CLAVE: 00158

RUTA: MEX-117

AÑO: 2020

LUGAR	ESTACION				CLASIFICACION VEHICULAR EN PORCIENTO										COORDENADAS					
	KM	TE	SC	TDPA	M	A	B	C2	C3	T3S2	T3S3	T3S2R4	OTROS	A	B	C	K'	D	LATITUD	LONGITUD
San Martín Texmelucan	0.00	3	1	8451	7.2	83.5	0.6	4.5	0.5	1.3	1.7	0.3	0.4	90.7	0.6	8.7	0.093	0.518	19.286551	-98.426961

TLAXCALA

13 CARR: San Martín Texmelucan - Tlaxcala

CLAVE: 00158

RUTA: MEX-117

AÑO: 2020

LUGAR	ESTACION				CLASIFICACION VEHICULAR EN PORCIENTO										COORDENADAS					
	KM	TE	SC	TDPA	M	A	B	C2	C3	T3S2	T3S3	T3S2R4	OTROS	A	B	C	K'	D	LATITUD	LONGITUD
San Martín Texmelucan	0.00	3	2	7856	7.0	84.1	0.5	4.4	0.5	1.1	1.7	0.3	0.4	91.1	0.5	8.4	0.090	0.518	19.286657	-98.427002
X. C. San Martín Texmelucan - Ocotoxco (Cuota)	1.65	3	0	17940	7.7	83.5	0.7	6.1	0.6	0.5	0.8	0.0	0.1	91.2	0.7	8.1	0.089	0.501	19.288736	-98.420662
Lim. Edos. Term. Pue. Ppia. Tlax.	2.84																			
T. Der. Tepetitla	3.45	3	1	6086	5.7	87.5	0.5	4.4	0.6	0.5	0.6	0.1	0.1	93.2	0.5	6.3	0.089	0.510	19.293432	-98.405750
T. Der. Tepetitla	3.45	3	2	5856	5.7	87.5	0.4	4.4	0.6	0.6	0.6	0.1	0.1	93.2	0.4	6.4	0.094	0.510	19.293497	-98.405775
San Diego Xocoyucan	7.21	3	0	6386	7.1	82.9	0.7	2.6	0.7	4.8	0.8	0.1	0.3	90.0	0.7	9.3	0.083	0.504	19.307812	-98.371036
T. Der. Panotla	19.72	1	0	6216	3.7	84.9	0.8	4.0	0.8	4.8	0.7	0.2	0.1	88.6	0.8	10.6	0.088	0.539	19.319328	-98.274638
T. Der. Panotla	19.72	3	0	6372	4.6	85.6	0.6	3.3	0.6	3.9	0.7	0.4	0.3	90.2	0.6	9.2	0.097	0.524	19.319160	-98.272279
Totolac	21.38	1	0	6742	5.5	83.3	0.4	3.2	0.4	5.3	0.8	0.5	0.6	88.8	0.4	10.8	0.094	0.541	19.323093	-98.259340
Totolac	21.38	3	0	10437	3.4	82.4	0.3	2.7	0.5	7.7	1.2	0.7	1.1	85.8	0.3	13.9	0.088	0.529	19.329944	-98.251257
Tlaxcala	24.81	1	0	12263	2.8	92.5	0.3	2.4	0.3	0.4	0.7	0.3	0.3	95.3	0.3	4.4	0.093	0.524	19.326209	-98.243751

14 CARR: Tetlatlahuca - Santa Ana Chiautempan

CLAVE: 00158

RUTA: MEX-119

AÑO: 2020

LUGAR	ESTACION				CLASIFICACION VEHICULAR EN PORCIENTO										COORDENADAS					
	KM	TE	SC	TDPA	M	A	B	C2	C3	T3S2	T3S3	T3S2R4	OTROS	A	B	C	K'	D	LATITUD	LONGITUD
Tetlatlahuca	0.00																			
San Bartolomé Tenango	2.39	1	0	4610	8.9	87.1	0.5	1.6	0.8	0.3	0.2	0.5	0.1	96.0	0.5	3.5	0.089	0.508	19.251943	-98.291836
San Damián Texoloc	5.50	1	0	4517	8.9	87.5	0.4	1.6	0.7	0.2	0.2	0.4	0.1	96.4	0.4	3.2	0.087	0.515	19.278479	-98.283882
San Damián Texoloc	5.50	3	0	6976	4.0	88.7	0.2	3.6	0.4	2.7	0.2	0.1	0.1	92.7	0.2	7.1	0.084	0.507	19.278449	-98.283944
T. Izq. Cuauhtelulpan	9.63	1	0	9437	3.3	93.4	0.1	1.0	1.1	0.3	0.1	0.1	0.6	96.7	0.1	3.2	0.089	0.511	19.290182	-98.250559
T. Izq. Cuauhtelulpan	9.63	3	0	15488	3.1	93.6	0.4	0.9	0.7	0.3	0.1	0.5	0.4	96.7	0.4	2.9	0.100	0.504	19.290198	-98.250550
T. Der. Puebla	9.94	1	0	11465	2.2	94.9	0.5	1.4	0.3	0.1	0.0	0.1	0.5	97.1	0.5	2.4	0.083	0.505	19.303872	-98.241249
Santa Ana Chiautempan	16.00																			

15 CARR: Tlaxcala - Belem

CLAVE: 29389

RUTA: MEX-119

AÑO: 2020

LUGAR	ESTACION				CLASIFICACION VEHICULAR EN PORCIENTO										COORDENADAS					
	KM	TE	SC	TDPA	M	A	B	C2	C3	T3S2	T3S3	T3S2R4	OTROS	A	B	C	K'	D	LATITUD	LONGITUD
Tlaxcala	0.00																			
T. Der. Ocotlán	3.91	1	1	11818	2.2	93.6	0.3	2.1	0.2	0.3	1.1	0.0	0.2	95.8	0.3	3.9	0.096	0.500	19.323966	-98.214276
T. Der. Ocotlán	3.91	1	2	11811	2.2	93.7	0.3	2.1	0.2	0.2	1.1	0.0	0.2	95.9	0.3	3.8	0.086	0.500	19.324094	-98.214214
X. C. Puebla - Belem	4.55	1	1	12990	2.7	93.8	0.1	2.2	0.2	0.5	0.4	0.0	0.1	96.5	0.1	3.4	0.091	0.505	19.317656	-98.203594
X. C. Puebla - Belem	4.55	1	2	12721	2.7	93.6	0.1	2.2	0.3	0.5	0.5	0.0	0.1	96.3	0.1	3.6	0.087	0.505	19.317716	-98.203564
Santa Ana Chiautempan	5.82	1	1	9508	2.7	93.7	0.1	2.0	0.2	0.7	0.5	0.0	0.1	96.4	0.1	3.5	0.096	0.507	19.314085	-98.192812

TLAXCALA

15 CARR: Tlaxcala - Belem

CLAVE: 29389

RUTA: MEX-119

AÑO: 2020

LUGAR	ESTACION				CLASIFICACION VEHICULAR EN PORCIENTO										COORDENADAS					
	KM	TE	SC	TDPA	M	A	B	C2	C3	T3S2	T3S3	T3S2R4	OTROS	A	B	C	K'	D	LATITUD	LONGITUD
Santa Ana Chiautempan	5.82	1	2	9231	2.7	93.4	0.1	2.1	0.3	0.7	0.6	0.0	0.1	96.1	0.1	3.8	0.093	0.507	19.314098	-98.192812
T. Der. Ixcotla	7.19	3	1	8058	3.5	94.2	0.1	1.7	0.1	0.2	0.2	0.0	0.0	97.7	0.1	2.2	0.081	0.501	19.325639	-98.193969
T. Der. Ixcotla	7.19	3	2	8105	3.6	94.1	0.1	1.7	0.1	0.2	0.2	0.0	0.0	97.7	0.1	2.2	0.092	0.501	19.325670	-98.194095
Belem	10.06	1	0	4853	3.5	93.1	0.1	2.7	0.1	0.2	0.3	0.0	0.0	96.6	0.1	3.3	0.083	0.505	19.346003	-98.189051

16 CARR: Villa Alta - T. C. (Puebla - Tlaxcala)

CLAVE: 29566

RUTA: MEX-119

AÑO: 2020

LUGAR	ESTACION				CLASIFICACION VEHICULAR EN PORCIENTO										COORDENADAS					
	KM	TE	SC	TDPA	M	A	B	C2	C3	T3S2	T3S3	T3S2R4	OTROS	A	B	C	K'	D	LATITUD	LONGITUD
T. C. San Martín Texmelucan - Tlaxcala	0.00	3	0	7419	13.6	77.7	0.3	5.8	0.4	1.1	0.8	0.1	0.2	91.3	0.3	8.4	0.087	0.513	19.293355	-98.405753
Nativitas	10.50	3	0	8683	5.6	82.2	0.3	6.4	0.1	4.0	0.7	0.2	0.5	87.8	0.3	11.9	0.080	0.506	19.235071	-98.313300
T. C. Puebla - Tlaxcala	22.05	1	0	7724	2.9	81.9	0.4	8.6	0.2	4.2	0.7	0.2	0.9	84.8	0.4	14.8	0.077	0.507	19.234980	-98.243629

17 CARR: Amozoc - Perote (Cuota)

CLAVE: 00030

RUTA: MEX-140D

AÑO: 2020

LUGAR	ESTACION				CLASIFICACION VEHICULAR EN PORCIENTO										COORDENADAS					
	KM	TE	SC	TDPA	M	A	B	C2	C3	T3S2	T3S3	T3S2R4	OTROS	A	B	C	K'	D	LATITUD	LONGITUD
T. C. Puebla - Córdoba (Cuota)	0.00	3	0	9974	1.5	68.4	8.3	8.1	1.9	6.8	1.4	2.6	1.0	69.9	8.3	21.8	0.097	0.508	19.058852	-98.073039
Plaza de Cobro Amozoc	0.68	2	0	9691	0.5	74.2	4.5	4.4	4.0	7.4	1.0	3.0	1.0	74.7	4.5	20.8	0.085	0.500	19.063641	-98.069094
Lim. Edos. Term. Pue. Ppia. Tlax.	20.08																			
X. C. Huamantla - La Venta	25.80	3	0	8795	1.5	69.0	8.3	7.8	1.9	6.3	1.4	2.7	1.1	70.5	8.3	21.2	0.095	0.513	19.224450	-97.902874
Lim. Edos. Term. Tlax. Ppia. Pue.	30.50																			
Lim. Edos. Term. Pue. Ppia. Tlax.	31.26																			
Lim. Edos. Term. Tlax. Ppia. Pue.	31.67																			
Lim. Edos. Term. Pue. Ppia. Tlax.	38.93																			
Plaza de Cobro Cuapiaxtla	40.34	2	0	5468	0.5	75.9	2.8	4.3	4.2	6.4	1.1	3.4	1.4	76.4	2.8	20.8	0.085	0.500	19.310369	-97.797544
Lim. Edos. Term. Tlax. Ppia. Pue.	54.50																			
T. Der. Oriental	61.45	1	0	10367	1.0	69.7	11.5	8.0	1.6	3.4	1.5	2.3	1.0	70.7	11.5	17.8	0.101	0.519	19.417792	-97.641415
T. Der. Oriental	61.45	3	1	4522	1.8	71.7	7.3	7.4	2.2	3.9	1.7	3.2	0.8	73.5	7.3	19.2	0.092	0.515	19.417792	-97.641412
T. Der. Oriental	61.45	3	2	4796	1.9	70.0	7.4	8.5	2.3	3.8	1.7	3.4	1.0	71.9	7.4	20.7	0.111	0.515	19.417791	-97.641414
T. Izq. Teziutlán	62.70	3	0	6488	4.8	62.5	10.5	5.8	2.5	6.6	2.0	3.6	1.7	67.3	10.5	22.2	0.095	0.533	19.423691	-97.633638
Lim. Edos. Term. Pue. Ppia. Ver.	90.36																			
T. C. Lib. de Perote	105.00																			

TLAXCALA

18 CARR: Libramiento de Tlaxcala (Cuota)

CLAVE:

RUTA: MEX-117D

AÑO: 2020

LUGAR	ESTACION				CLASIFICACION VEHICULAR EN PORCIENTO												COORDENADAS			
	KM	TE	SC	TDPA	M	A	B	C2	C3	T3S2	T3S3	T3S2R4	OTROS	A	B	C	K'	D	LATITUD	LONGITUD
T. C. San Martín Texmelucan - Ocotoxco (Cuota)	0.00	3	1	6987	1.3	91.3	0.7	3.9	0.5	1.0	0.7	0.5	0.1	92.6	0.7	6.7	0.089	0.508	19.322003	-98.253172
T. C. San Martín Texmelucan - Ocotoxco (Cuota)	0.00	3	2	6764	1.4	90.4	0.8	4.6	0.5	1.0	0.7	0.5	0.1	91.8	0.8	7.4	0.088	0.508	19.321977	-98.253078
X. C. Puebla - Tlaxcala	6.50	1	1	8032	1.3	91.4	0.6	4.1	0.5	0.9	0.6	0.5	0.1	92.7	0.6	6.7	0.088	0.501	19.284207	-98.240166
X. C. Puebla - Tlaxcala	6.50	1	2	7989	1.3	90.4	0.6	4.7	0.5	1.1	0.8	0.5	0.1	91.7	0.6	7.7	0.090	0.501	19.284300	-98.240189
X. C. Puebla - Tlaxcala	6.50	3	1	9379	1.8	91.9	0.4	2.8	0.8	1.3	0.6	0.2	0.2	93.7	0.4	5.9	0.085	0.504	19.284238	-98.240036
X. C. Puebla - Tlaxcala	6.50	3	2	9222	1.8	92.0	0.4	2.7	0.8	1.3	0.6	0.2	0.2	93.8	0.4	5.8	0.095	0.504	19.284318	-98.240060
T. C. Puebla - Belén Atzizimitlán	11.00	1	1	8045	1.7	90.3	0.5	4.3	0.8	1.1	0.9	0.2	0.2	92.0	0.5	7.5	0.084	0.509	19.302966	-98.200877
T. C. Puebla - Belén Atzizimitlán	11.00	1	2	7775	1.7	90.2	0.5	4.4	0.8	1.0	0.9	0.3	0.2	91.9	0.5	7.6	0.090	0.509	19.303046	-98.200908

19 CARR: Libramiento Norte de la Ciudad de México (Cuota)

CLAVE: 0902

RUTA: MEX-M40D

AÑO: 2020

LUGAR	ESTACION				CLASIFICACION VEHICULAR EN PORCIENTO												COORDENADAS			
	KM	TE	SC	TDPA	M	A	B	C2	C3	T3S2	T3S3	T3S2R4	OTROS	A	B	C	K'	D	LATITUD	LONGITUD
T. C. Toluca - Palmillas	0.00																			
X. C. Toluca - Palmillas	12.90	1	1	3749	2.6	56.7	10.3	5.6	4.1	12.7	2.3	4.6	1.1	59.3	10.3	30.4	0.093	0.509	19.924835	-99.842015
X. C. Toluca - Palmillas	12.90	1	2	3887	2.6	56.8	10.3	5.5	4.1	12.8	2.2	4.6	1.1	59.4	10.3	30.3	0.103	0.509	19.925054	-99.841996
X. C. Toluca - Palmillas	12.90	3	1	3923	1.8	58.8	9.6	5.1	3.0	13.4	2.1	5.1	1.1	60.6	9.6	29.8	0.097	0.513	19.924834	-99.842010
X. C. Toluca - Palmillas	12.90	3	2	4141	1.7	58.9	9.6	5.4	3.0	13.4	2.0	4.9	1.1	60.6	9.6	29.8	0.104	0.513	19.925054	-99.841993
C. P. Jilotepec	48.70	1	1	3867	1.3	61.2	7.3	6.2	3.1	13.1	1.3	5.2	1.3	62.5	7.3	30.2	0.101	0.515	19.977034	-99.533186
C. P. Jilotepec	48.70	1	2	4114	1.4	61.4	7.2	6.1	3.2	13.2	1.3	5.0	1.2	62.8	7.2	30.0	0.103	0.515	19.977020	-99.533015
C. P. Jilotepec	48.70	3	1	4940	1.5	62.0	7.1	6.1	2.7	13.1	2.4	4.3	0.8	63.5	7.1	29.4	0.088	0.502	19.977014	-99.533015
C. P. Jilotepec	48.70	3	2	4900	1.5	61.8	7.1	6.2	2.7	13.1	2.4	4.2	1.0	63.3	7.1	29.6	0.091	0.502	19.977045	-99.533187
X. C. México - Querétaro	54.00	3	1	7308	1.0	53.6	7.6	5.9	3.1	17.2	3.7	6.4	1.5	54.6	7.6	37.8	0.090	0.507	20.001331	-99.486014
X. C. México - Querétaro	54.00	3	2	7107	1.0	53.4	7.6	5.9	3.2	17.2	3.6	6.5	1.6	54.4	7.6	38.0	0.083	0.507	20.001414	-99.486059
Plaza de Cobro Querétaro	55.00	3	1	7372	0.3	52.1	1.5	4.9	6.7	19.5	4.5	8.2	2.3	52.4	1.5	46.1	0.067	0.500	19.998714	-99.487788
Plaza de Cobro Querétaro	55.00	3	2	7372	0.3	52.1	1.5	4.9	6.7	19.5	4.5	8.2	2.3	52.4	1.5	46.1	0.067	0.500	19.998714	-99.487788
Lim. Edos. Term. Méx. Ppia. Hgo.	60.72																			
X. C. Ent. Tepeji del Río - Tlahuelilpan	79.00	1	1	6797	2.0	51.8	6.9	6.4	4.8	17.4	4.3	5.5	0.9	53.8	6.9	39.3	0.078	0.513	20.099095	-99.283469
X. C. Ent. Tepeji del Río - Tlahuelilpan	79.00	1	2	6451	2.0	52.2	6.9	6.3	4.9	17.3	4.2	5.4	0.8	54.2	6.9	38.9	0.080	0.513	20.099195	-99.283333
X. C. Ent. Tepeji del Río - Tlahuelilpan	79.00	3	1	8958	1.5	60.8	6.1	3.7	3.1	15.2	3.6	5.2	0.8	62.3	6.1	31.6	0.073	0.513	20.099094	-99.283459
X. C. Ent. Tepeji del Río - Tlahuelilpan	79.00	3	2	8492	1.5	60.7	6.0	3.8	3.1	15.1	3.7	5.2	0.9	62.2	6.0	31.8	0.091	0.513	20.099194	-99.283327
X. C. Los Reyes - El Tephé	86.40	1	1	8656	1.2	59.9	4.8	7.4	3.2	13.5	3.6	5.6	0.8	61.1	4.8	34.1	0.071	0.517	20.066622	-99.220743
X. C. Los Reyes - El Tephé	86.40	1	2	8084	1.3	59.8	4.8	7.3	3.1	13.5	3.7	5.7	0.8	61.1	4.8	34.1	0.075	0.517	20.066775	-99.220704
X. C. Los Reyes - El Tephé	86.40	3	1	7863	1.3	58.9	3.7	6.4	3.6	15.1	3.9	6.2	0.9	60.2	3.7	36.1	0.079	0.502	20.066623	-99.220747
X. C. Los Reyes - El Tephé	86.40	3	2	7924	1.4	58.8	3.8	6.3	3.6	15.1	3.9	6.2	0.9	60.2	3.8	36.0	0.078	0.502	20.066776	-99.220706

TLAXCALA

19 CARR: Libramiento Norte de la Ciudad de México (Cuota)

CLAVE: 0902

RUTA: MEX-M40D

AÑO: 2020

LUGAR	ESTACION				CLASIFICACION VEHICULAR EN PORCIENTO										COORDENADAS					
	KM	TE	SC	TDPA	M	A	B	C2	C3	T3S2	T3S3	T3S2R4	OTROS	A	B	C	K'	D	LATITUD	LONGITUD
Lim. Edos. Term. Hgo. Ppia. Méx.	95.75																			
X. C. (Los Reyes - El Tephé) - Tianguistongo	108.60	1	1	8056	1.2	56.4	5.6	6.6	3.3	16.4	3.5	6.1	0.9	57.6	5.6	36.8	0.080	0.502	19.955898	-99.054281
X. C. (Los Reyes - El Tephé) - Tianguistongo	108.60	1	2	8000	1.3	56.3	5.5	6.6	3.3	16.4	3.6	6.1	0.9	57.6	5.5	36.9	0.081	0.502	19.956052	-99.054247
X. C. (Los Reyes - El Tephé) - Tianguistongo	108.60	3	1	8670	1.2	58.6	5.4	6.1	3.2	15.2	3.5	6.0	0.8	59.8	5.4	34.8	0.080	0.502	19.955900	-99.054272
X. C. (Los Reyes - El Tephé) - Tianguistongo	108.60	3	2	8608	1.2	58.6	5.4	6.1	3.2	15.2	3.5	6.0	0.8	59.8	5.4	34.8	0.081	0.502	19.956048	-99.054238
Lim. Edos. Term. Méx. Ppia. Hgo.	115.89																			
X. C. México - Pachuca	127.30	1	1	8172	1.5	59.6	6.8	5.5	2.5	14.3	3.3	5.8	0.7	61.1	6.8	32.1	0.078	0.506	19.930009	-98.892865
X. C. México - Pachuca	127.30	1	2	8357	1.5	59.6	6.8	5.5	2.5	14.3	3.3	5.8	0.7	61.1	6.8	32.1	0.079	0.506	19.930178	-98.892736
X. C. México - Pachuca	127.30	3	1	7054	0.9	55.6	5.1	7.5	3.1	15.5	4.3	7.3	0.7	56.5	5.1	38.4	0.079	0.502	19.929674	-98.890614
X. C. México - Pachuca	127.30	3	2	7106	0.9	55.7	5.1	7.5	3.1	15.5	4.2	7.4	0.6	56.6	5.1	38.3	0.079	0.502	19.929465	-98.890693
Lim. Edos. Term. Hgo. Ppia. Méx.	143.98																			
X. C. Venta de Carpio - T. C. (Pachuca - Tulancingo)	151.11	1	1	6933	1.2	52.8	5.5	7.6	3.0	17.7	3.9	7.4	0.9	54.0	5.5	40.5	0.081	0.502	19.835143	-98.702118
X. C. Venta de Carpio - T. C. (Pachuca - Tulancingo)	151.11	1	2	6877	1.2	52.9	5.4	7.6	3.0	17.7	3.9	7.4	0.9	54.1	5.4	40.5	0.080	0.502	19.835237	-98.702060
X. C. Venta de Carpio - T. C. (Pachuca - Tulancingo)	151.11	3	1	5857	1.8	48.2	5.8	7.3	4.3	19.7	4.1	7.9	0.9	50.0	5.8	44.2	0.083	0.502	19.832061	-98.698306
X. C. Venta de Carpio - T. C. (Pachuca - Tulancingo)	151.11	3	2	5804	1.7	48.3	5.8	7.4	4.3	19.7	4.0	7.9	0.9	50.0	5.8	44.2	0.080	0.502	19.832117	-98.698257
X. C. Ent. Tolman - Cd. Sahagún	162.55	1	1	7422	0.9	52.1	5.2	7.7	3.7	17.9	3.9	7.8	0.8	53.0	5.2	41.8	0.080	0.502	19.757668	-98.630059
X. C. Ent. Tolman - Cd. Sahagún	162.55	1	2	7468	0.9	51.7	5.2	7.8	3.7	18.1	3.9	7.9	0.8	52.6	5.2	42.2	0.091	0.502	19.757711	-98.629954
X. C. Ent. Tolman - Cd. Sahagún	162.55	3	1	8229	1.3	52.2	6.6	7.8	3.2	17.4	3.7	6.8	1.0	53.5	6.6	39.9	0.088	0.504	19.754559	-98.628419
X. C. Ent. Tolman - Cd. Sahagún	162.55	3	2	8376	1.3	52.1	6.7	7.8	3.3	17.4	3.7	6.8	0.9	53.4	6.7	39.9	0.090	0.504	19.754730	-98.628261
Lim. Edos. Term. Méx. Ppia. Hgo.	166.53																			
X. C. Calpulallpan - El Ocote	180.39	1	1	7959	1.3	53.3	6.2	7.8	3.6	15.9	3.7	7.4	0.8	54.6	6.2	39.2	0.077	0.503	19.622009	-98.550207
X. C. Calpulallpan - El Ocote	180.39	1	2	7878	1.3	53.2	6.2	7.8	3.6	15.9	3.7	7.5	0.8	54.5	6.2	39.3	0.081	0.503	19.622109	-98.550047
X. C. Calpulallpan - El Ocote	180.39	3	1	6692	0.9	52.4	5.2	7.0	3.5	18.2	4.0	7.8	1.0	53.3	5.2	41.5	0.088	0.500	19.618348	-98.547057
X. C. Calpulallpan - El Ocote	180.39	3	2	6679	0.9	52.5	5.1	6.9	3.6	18.2	3.9	7.8	1.1	53.4	5.1	41.5	0.085	0.500	19.618434	-98.546922
Lim. Edos. Term. Hgo. Ppia. Tlax.	180.98																			
X. C. Los Reyes - Zacatepec	196.70	1	1	7316	3.1	59.7	5.7	3.9	3.5	14.8	3.0	5.5	0.8	62.8	5.7	31.5	0.092	0.510	19.518428	-98.471389
X. C. Los Reyes - Zacatepec	196.70	1	2	7607	2.9	60.7	5.5	3.7	3.3	15.4	2.7	5.0	0.8	63.6	5.5	30.9	0.086	0.510	19.518441	-98.471315
X. C. Los Reyes - Zacatepec	196.70	3	1	7624	2.2	60.6	5.6	4.8	2.7	14.7	3.2	5.5	0.7	62.8	5.6	31.6	0.080	0.501	19.511123	-98.467769
X. C. Los Reyes - Zacatepec	196.70	3	2	7647	2.2	60.3	5.7	4.8	2.8	14.8	3.2	5.4	0.8	62.5	5.7	31.8	0.076	0.501	19.511119	-98.467774
X. C. San Martín Texmelucan - Tlaxcala - El Molinito	220.95	1	1	7199	2.6	62.7	5.5	3.8	3.0	13.8	2.9	4.8	0.9	65.3	5.5	29.2	0.089	0.506	19.297032	-98.410167
X. C. San Martín Texmelucan - Tlaxcala - El Molinito	220.95	1	2	7019	2.8	62.1	5.3	4.1	3.1	13.9	2.9	4.9	0.9	64.9	5.3	29.8	0.087	0.506	19.297031	-98.410180
X. C. San Martín Texmelucan - Tlaxcala - El Molinito	220.95	3	1	8731	3.2	64.2	6.3	5.3	2.0	12.0	1.9	4.2	0.9	67.4	6.3	26.3	0.085	0.504	19.295927	-98.410349
X. C. San Martín Texmelucan - Tlaxcala - El Molinito	220.95	3	2	8589	3.3	63.7	6.1	5.0	2.4	12.3	2.1	4.2	0.9	67.0	6.1	26.9	0.093	0.504	19.295922	-98.410271
Plaza de Cobro San Martín Texmelucan	222.00	1	1	6468	0.3	50.3	1.7	5.9	6.4	21.8	3.6	8.3	1.7	50.6	1.7	47.7	0.067	0.500	19.301809	-98.409588
Plaza de Cobro San Martín Texmelucan	222.00	1	2	6468	0.3	50.3	1.7	5.9	6.4	21.8	3.6	8.3	1.7	50.6	1.7	47.7	0.067	0.500	19.301809	-98.409588

TLAXCALA

19 CARR: Libramiento Norte de la Ciudad de México (Cuota)

CLAVE: 0902

RUTA: MEX-M40D

AÑO: 2020

LUGAR	ESTACION				CLASIFICACION VEHICULAR EN PORCIENTO										COORDENADAS					
	KM	TE	SC	TDPA	M	A	B	C2	C3	T3S2	T3S3	T3S2R4	OTROS	A	B	C	K'	D	LATITUD	LONGITUD
T. C. San Martín Texmelucan - Ocotoco (Cuota)	222.44																			
T. C. México - Puebla (Cuota)	226.73	1	1	7694	2.0	65.8	6.6	4.1	2.7	11.9	1.9	4.2	0.8	67.8	6.6	25.6	0.096	0.517	19.268604	-98.421737
T. C. México - Puebla (Cuota)	226.73	1	2	8223	2.0	66.0	6.6	4.4	2.4	11.6	2.0	4.2	0.8	68.0	6.6	25.4	0.091	0.517	19.268605	-98.421763

20 CARR: México - Puebla (Cuota)

CLAVE: 00450

RUTA: MEX-150D

AÑO: 2020

LUGAR	ESTACION				CLASIFICACION VEHICULAR EN PORCIENTO										COORDENADAS					
	KM	TE	SC	TDPA	M	A	B	C2	C3	T3S2	T3S3	T3S2R4	OTROS	A	B	C	K'	D	LATITUD	LONGITUD
México	0.00																			
Ent Concordía (T. Izq. Los Reyes) Central	17.00	3	1	74105	2.5	89.9	1.3	3.6	0.7	1.1	0.7	0.1	0.1	92.4	1.3	6.3	0.077	0.502	19.357639	-98.994168
Ent Concordía (T. Izq. Los Reyes) Lateral	17.00	3	1	8921	7.3	74.9	0.6	14.6	1.4	0.8	0.3	0.1	0.0	82.2	0.6	17.2	0.091	0.719	19.357493	-98.994253
Ent Concordía (T. Izq. Los Reyes) Lateral	17.00	3	2	22857	4.9	75.2	2.9	12.3	1.4	2.3	0.6	0.2	0.2	80.1	2.9	17.0	0.076	0.719	19.357753	-98.993961
Ent Concordía (T. Izq. Los Reyes) Central	17.00	3	2	72825	2.0	90.9	1.2	3.6	0.5	1.1	0.5	0.1	0.1	92.9	1.2	5.9	0.074	0.502	19.357712	-98.994093
Lim. Edos. Term. CDMX Ppia. Méx.	17.51																			
Av. Las Torres (Eje 6) Central	19.27	1	1	73845	2.5	88.7	1.2	4.5	0.8	1.2	0.9	0.1	0.1	91.2	1.2	7.6	0.075	0.505	19.346204	-98.981754
Av. Las Torres (Eje 6) Lateral	19.27	1	1	20314	2.2	84.3	2.1	9.2	0.9	0.6	0.5	0.1	0.1	86.5	2.1	11.4	0.078	0.500	19.346102	-98.981926
Av. Las Torres (Eje 6) Lateral	19.27	1	2	20323	5.2	73.1	3.2	13.8	1.4	2.4	0.4	0.3	0.2	78.3	3.2	18.5	0.078	0.500	19.346356	-98.981575
Av. Las Torres (Eje 6) Central	19.27	1	2	75596	2.7	90.9	0.7	3.9	0.6	0.6	0.4	0.1	0.1	93.6	0.7	5.7	0.073	0.505	19.346265	-98.981677
Av. Las Torres (Eje 6) Lateral	19.27	3	1	23158	3.7	82.7	1.3	8.7	0.8	1.6	0.8	0.1	0.3	86.4	1.3	12.3	0.073	0.545	19.344917	-98.980678
Av. Las Torres (Eje 6) Central	19.27	3	1	74676	2.6	89.1	1.1	4.5	0.8	1.1	0.6	0.1	0.1	91.7	1.1	7.2	0.077	0.505	19.345031	-98.980558
Av. Las Torres (Eje 6) Lateral	19.27	3	2	19318	3.1	66.1	4.7	20.1	1.8	2.7	0.9	0.3	0.3	69.2	4.7	26.1	0.064	0.545	19.345131	-98.980284
Av. Las Torres (Eje 6) Central	19.27	3	2	76195	2.6	89.5	0.9	4.4	0.7	1.0	0.7	0.1	0.1	92.1	0.9	7.0	0.073	0.505	19.345107	-98.980456
Eje 10 Sur (Lateral)	22.80	1	1	25566	3.9	81.9	1.9	10.7	0.6	0.4	0.4	0.1	0.1	85.8	1.9	12.3	0.080	0.542	19.323288	-98.958314
Eje 10 Sur (Central)	22.80	1	1	68459	2.7	88.9	1.2	4.7	0.7	1.0	0.6	0.1	0.1	91.6	1.2	7.2	0.086	0.505	19.323343	-98.958209
Eje 10 Sur (Lateral)	22.80	1	2	20317	3.6	74.3	3.1	13.8	1.4	2.3	1.0	0.2	0.3	77.9	3.1	19.0	0.071	0.542	19.323464	-98.957857
Eje 10 Sur (Central)	22.80	1	2	70050	2.6	89.0	1.1	4.6	0.7	1.2	0.6	0.1	0.1	91.6	1.1	7.3	0.081	0.505	19.323454	-98.958013
Eje 10 Sur (Lateral)	22.80	3	1	26636	3.3	82.7	2.3	9.6	0.7	0.8	0.4	0.1	0.1	86.0	2.3	11.7	0.082	0.603	19.322361	-98.957772
Eje 10 Sur (Central)	22.80	3	1	33772	1.3	89.4	1.7	4.2	1.0	1.7	0.4	0.2	0.1	90.7	1.7	7.6	0.082	0.506	19.322758	-98.957635
Eje 10 Sur (Lateral)	22.80	3	2	42202	3.6	85.6	0.9	7.6	0.5	0.7	0.8	0.1	0.2	89.2	0.9	9.9	0.082	0.603	19.323081	-98.957313
Eje 10 Sur (Central)	22.80	3	2	34708	1.3	89.4	1.7	4.1	1.0	1.7	0.5	0.2	0.1	90.7	1.7	7.6	0.081	0.506	19.322984	-98.957414
X. C. Santa Bárbara - Izúcar de Matamoros (Central)	32.14	1	1	33337	1.8	86.0	2.5	5.0	1.2	2.5	0.5	0.4	0.1	87.8	2.5	9.7	0.104	0.504	19.292985	-98.883216
X. C. Santa Bárbara - Izúcar de Matamoros (Lateral)	32.14	1	1	9084	1.9	84.6	0.8	9.8	0.9	1.1	0.5	0.2	0.2	86.5	0.8	12.7	0.079	0.660	19.292828	-98.883188
X. C. Santa Bárbara - Izúcar de Matamoros (Central)	32.14	1	2	35976	1.4	87.4	2.1	5.0	1.4	2.0	0.3	0.3	0.1	88.8	2.1	9.1	0.077	0.504	19.293102	-98.883242
X. C. Santa Bárbara - Izúcar de Matamoros (Lateral)	32.14	1	2	17645	1.8	88.8	0.8	6.0	0.9	1.3	0.2	0.1	0.1	90.6	0.8	8.6	0.082	0.660	19.293400	-98.883286
X. C. Santa Bárbara - Izúcar de Matamoros (Lateral)	32.14	3	1	1304	5.9	68.4	4.8	9.1	1.8	4.6	0.8	4.2	0.4	74.3	4.8	20.9	0.086	0.507	19.293553	-98.879999

TLAXCALA

20 CARR: México - Puebla (Cuota)

CLAVE: 00450

RUTA: MEX-150D

AÑO: 2020

LUGAR	ESTACION				CLASIFICACION VEHICULAR EN PORCIENTO													COORDENADAS		
	KM	TE	SC	TDPA	M	A	B	C2	C3	T3S2	T3S3	T3S2R4	OTROS	A	B	C	K'	D	LATITUD	LONGITUD
X. C. Santa Bárbara - Izúcar de Matamoros (Central)	32.14	3	1	10557	0.5	79.2	5.0	6.4	2.1	5.4	0.5	0.8	0.1	79.7	5.0	15.3	0.095	0.510	19.293763	-98.880058
X. C. Santa Bárbara - Izúcar de Matamoros (Central)	32.14	3	2	10977	0.4	79.0	5.0	6.6	2.2	5.4	0.5	0.7	0.2	79.4	5.0	15.6	0.114	0.510	19.293892	-98.880082
X. C. Santa Bárbara - Izúcar de Matamoros (Lateral)	32.14	3	2	1268	1.7	73.5	5.6	7.2	1.5	3.7	1.5	4.3	1.0	75.2	5.6	19.2	0.105	0.507	19.294023	-98.880138
Plaza de Cobro San Marcos	33.30	2	1	13228	0.5	73.8	4.5	5.6	4.1	7.5	0.7	2.9	0.4	74.3	4.5	21.2	0.068	0.500	19.296272	-98.870712
Plaza de Cobro San Marcos	33.30	2	2	13228	0.5	73.8	4.5	5.6	4.1	7.5	0.7	2.9	0.4	74.3	4.5	21.2	0.068	0.500	19.296272	-98.870712
T. Izq. Río Frío	63.79	3	1	12579	0.9	77.3	6.4	5.6	2.3	4.7	0.9	1.6	0.3	78.2	6.4	15.4	0.086	0.510	19.351005	-98.666111
T. Izq. Río Frío	63.79	3	2	12089	0.9	77.3	6.3	5.6	2.3	4.7	0.9	1.6	0.4	78.2	6.3	15.5	0.102	0.510	19.351108	-98.666167
Lim. Edos. Term. Méx. Ppia. Pue.	65.46																			
T. Izq. Tlaxcala	90.61	1	1	20008	1.0	79.3	5.2	5.5	2.2	4.0	0.7	1.8	0.3	80.3	5.2	14.5	0.078	0.505	19.267618	-98.424992
T. Izq. Tlaxcala	90.61	1	2	20406	1.0	79.1	5.5	5.2	1.9	4.3	0.9	1.6	0.5	80.1	5.5	14.4	0.087	0.505	19.267720	-98.424899
T. Izq. Tlaxcala	90.61	3	1	24155	0.8	66.8	6.1	9.4	3.0	8.5	1.6	3.4	0.4	67.6	6.1	26.3	0.093	0.535	19.267067	-98.424447
T. Izq. Tlaxcala	90.61	3	2	21027	1.0	65.1	6.5	9.4	3.2	8.9	1.9	3.6	0.4	66.1	6.5	27.4	0.077	0.535	19.267173	-98.424339
Plaza de Cobro San Martín Texmelucan	91.17	2	1	20515	0.7	68.3	3.9	5.4	4.8	10.7	1.3	4.2	0.7	69.0	3.9	27.1	0.068	0.500	19.241190	-98.385786
Plaza de Cobro San Martín Texmelucan	91.17	2	2	20515	0.7	68.3	3.9	5.4	4.8	10.7	1.3	4.2	0.7	69.0	3.9	27.1	0.068	0.500	19.241190	-98.385786
Lim. Edos. Term. Pue. Ppia. Tlax.	99.11																			
T. Der. Aeropuerto Internacional De Puebla	101.10	3	1	29523	0.7	71.9	6.6	5.0	3.7	6.9	1.3	3.0	0.9	72.6	6.6	20.8	0.095	0.508	19.215966	-98.357730
T. Der. Aeropuerto Internacional De Puebla	101.10	3	2	28515	0.8	71.6	6.6	5.0	3.7	6.9	1.3	3.1	1.0	72.4	6.6	21.0	0.089	0.508	19.216034	-98.357664
X. C. Xoxtla - Huactzinco	107.98	1	1	31911	0.7	71.7	7.3	6.2	2.6	6.3	1.5	2.8	0.9	72.4	7.3	20.3	0.086	0.506	19.174812	-98.307690
X. C. Xoxtla - Huactzinco	107.98	1	2	32726	0.7	69.3	7.9	6.7	3.1	6.7	1.7	2.9	1.0	70.0	7.9	22.1	0.083	0.506	19.174900	-98.307604
X. C. Xoxtla - Huactzinco	107.98	3	1	41695	0.9	75.7	3.8	7.8	2.0	5.6	1.4	2.1	0.7	76.6	3.8	19.6	0.074	0.514	19.174705	-98.307555
X. C. Xoxtla - Huactzinco	107.98	3	2	39043	0.7	76.1	3.9	7.7	2.1	5.4	1.4	2.0	0.7	76.8	3.9	19.3	0.074	0.514	19.174795	-98.307473
Lim. Edos. Term. Tlax. Ppia. Pue.	108.00																			
Anillo Periferico Poniente de Puebla (Central)	114.00	3	1	23058	0.8	72.1	6.2	5.6	3.7	7.2	0.9	2.9	0.6	72.9	6.2	20.9	0.072	0.510	19.131843	-98.268661
Anillo Periferico Poniente de Puebla (Lateral)	114.00	3	1	29428	1.1	80.3	4.4	6.7	2.1	3.7	0.8	0.7	0.2	81.4	4.4	14.2	0.080	0.534	19.131705	-98.268833
Anillo Periferico Poniente de Puebla (Lateral)	114.00	3	2	25437	1.1	80.0	4.5	6.8	2.2	3.7	0.8	0.7	0.2	81.1	4.5	14.4	0.074	0.534	19.132164	-98.268328
Anillo Periferico Poniente de Puebla (Central)	114.00	3	2	25433	0.9	71.3	6.2	5.7	3.9	7.5	0.9	3.0	0.6	72.2	6.2	21.6	0.079	0.510	19.132048	-98.268445
Boulevard Hermanos Serdán	120.46	3	1	53539	0.7	79.5	4.9	6.1	3.4	3.3	0.5	1.4	0.2	80.2	4.9	14.9	0.074	0.522	19.095516	-98.227255
Boulevard Hermanos Serdán	120.46	3	2	48503	0.7	77.8	5.2	6.5	4.0	3.5	0.5	1.6	0.2	78.5	5.2	16.3	0.079	0.522	19.095587	-98.227202
X. C. Puebla - Tlaxcala (Lateral)	123.00	3	1	24237	0.7	84.6	7.6	3.6	1.6	1.1	0.5	0.1	0.2	85.3	7.6	7.1	0.082	0.547	19.086554	-98.203721
X. C. Puebla - Tlaxcala (Central)	123.00	3	1	51463	1.4	85.6	2.2	3.4	1.2	3.1	1.7	0.5	0.9	87.0	2.2	10.8	0.080	0.500	19.086699	-98.203698
X. C. Puebla - Tlaxcala (Central)	123.00	3	2	51469	1.4	84.6	2.5	3.6	1.2	3.3	2.0	0.6	0.8	86.0	2.5	11.5	0.090	0.500	19.086805	-98.203670
X. C. Puebla - Tlaxcala (Lateral)	123.00	3	2	20079	0.9	83.4	7.9	3.9	1.9	1.2	0.5	0.1	0.2	84.3	7.9	7.8	0.102	0.547	19.086939	-98.203625
T. C. Puebla - Tlaxcala	124.90																			

TLAXCALA

21 CARR : San Martín Texmelucan - Tlaxcala - El Molinito (Cuota)

CLAVE: 00212

RUTA: MEX-117D

AÑO : 2020

LUGAR	ESTACION				CLASIFICACION VEHICULAR EN PORCIENTO										COORDENADAS					
	KM	TE	SC	TDPA	M	A	B	C2	C3	T3S2	T3S3	T3S2R4	OTROS	A	B	C	K'	D	LATITUD	LONGITUD
T. C. México - Puebla (Cuota)	0.00																			
X. C. San Martín Texmelucan - Tlaxcala	1.80	1	1	2079	2.3	74.5	3.3	10.3	2.5	3.8	1.8	0.7	0.8	76.8	3.3	19.9	0.089	0.503	19.288986	-98.420925
X. C. San Martín Texmelucan - Tlaxcala	1.80	1	2	2101	2.6	81.6	2.1	7.3	1.6	2.4	1.4	0.6	0.4	84.2	2.1	13.7	0.090	0.503	19.288986	-98.420925
Lim. Edos. Term. Pue. Ppia. Tlax.	4.05																			
Plaza de Cobro San Martín Texmelucan	5.45	2	1	2129	0.8	77.7	4.8	5.2	2.6	4.8	1.5	2.0	0.6	78.5	4.8	16.7	0.088	0.500	19.301602	-98.404063
Plaza de Cobro San Martín Texmelucan	5.45	2	2	2129	0.8	77.7	4.8	5.2	2.6	4.8	1.5	2.0	0.6	78.5	4.8	16.7	0.088	0.500	19.301602	-98.404063
X. C. San Martín Texmelucan - Tlaxcala (Trébol)	24.75	1	1	14759	1.4	90.7	1.7	3.4	0.4	1.1	0.6	0.5	0.2	92.1	1.7	6.2	0.104	0.512	19.326267	-98.248466
X. C. San Martín Texmelucan - Tlaxcala (Trébol)	24.75	1	2	14061	1.5	90.3	1.8	3.6	0.4	1.1	0.6	0.5	0.2	91.8	1.8	6.4	0.103	0.512	19.326359	-98.248507
X. C. San Martín Texmelucan - Tlaxcala (Trébol)	24.75	3	1	13587	1.1	88.8	1.9	5.8	0.6	0.7	0.5	0.5	0.1	89.9	1.9	8.2	0.081	0.502	19.326715	-98.247435
X. C. San Martín Texmelucan - Tlaxcala (Trébol)	24.75	3	2	13458	1.2	87.6	2.1	6.3	0.6	0.9	0.5	0.7	0.1	88.8	2.1	9.1	0.073	0.502	19.326820	-98.247463
T. Izq. Tizatlán	29.00	3	1	13226	0.5	87.1	2.8	6.8	0.9	0.8	0.4	0.6	0.1	87.6	2.8	9.6	0.081	0.508	19.335734	-98.220453
T. Izq. Tizatlán	29.00	3	2	13629	0.6	85.9	3.1	7.5	0.9	0.9	0.4	0.6	0.1	86.5	3.1	10.4	0.085	0.508	19.335618	-98.220468
T. Der. San Pablo Apetatitlán	31.65	3	1	24407	0.8	88.0	1.2	6.3	0.8	1.4	1.0	0.4	0.1	88.8	1.2	10.0	0.081	0.514	19.344786	-98.198290
T. Der. San Pablo Apetatitlán	31.65	3	2	25787	0.8	87.4	1.3	6.3	1.0	1.5	1.2	0.4	0.1	88.2	1.3	10.5	0.073	0.514	19.344863	-98.198387
Ocotoxco	35.20	1	1	31276	1.1	86.6	1.4	7.0	1.0	1.6	0.8	0.4	0.1	87.7	1.4	10.9	0.073	0.515	19.385970	-98.177887
Ocotoxco	35.20	1	2	33405	1.1	85.7	1.6	7.4	1.2	1.7	0.8	0.4	0.1	86.8	1.6	11.6	0.078	0.515	19.386022	-98.178124

22 CARR : Tlaxco - Tejocotal (Cuota)

CLAVE: 00209

RUTA: MEX-119D

AÑO : 2020

LUGAR	ESTACION				CLASIFICACION VEHICULAR EN PORCIENTO										COORDENADAS					
	KM	TE	SC	TDPA	M	A	B	C2	C3	T3S2	T3S3	T3S2R4	OTROS	A	B	C	K'	D	LATITUD	LONGITUD
T.C. Apan - Tlaxco	23.00	3	0	4179	2.3	83.3	2.7	7.7	1.7	0.9	0.3	0.5	0.6	85.6	2.7	11.7	0.170	0.514	19.603947	-98.156475
Lim. Edos. Term. Tlax. Ppia. Pue.	30.70																			
Ent. Chignahuapan	56.20	3	0	3072	1.4	85.8	2.2	5.2	2.0	1.6	1.0	0.7	0.1	87.2	2.2	10.6	0.166	0.506	19.868314	-98.060881
Lim. Edos. Term. Pue. Ppia. Hgo.	84.80																			
T. C. Apizaco - Tejocotal	85.60																			

23 CARR : Libramiento de Ocotlán

CLAVE: 29567

RUTA: TLAX

AÑO : 2020

LUGAR	ESTACION				CLASIFICACION VEHICULAR EN PORCIENTO										COORDENADAS					
	KM	TE	SC	TDPA	M	A	B	C2	C3	T3S2	T3S3	T3S2R4	OTROS	A	B	C	K'	D	LATITUD	LONGITUD
T. C. Tlaxcala - Belem	0.00	3	1	11145	7.3	90.6	0.2	0.5	0.4	0.3	0.1	0.4	0.2	97.9	0.2	1.9	0.085	0.511	19.320756	-98.208951
T. C. Tlaxcala - Belem	0.00	3	2	10674	7.0	91.0	0.3	0.5	0.4	0.3	0.0	0.3	0.2	98.0	0.3	1.7	0.088	0.511	19.320750	-98.208938
T. Libramiento IPN	5.50																			

TLAXCALA

24 CARR: Ramal a Altzayanca de Hidalgo

CLAVE: 29562

RUTA: TLAX

AÑO: 2020

LUGAR	ESTACION				CLASIFICACION VEHICULAR EN PORCIENTO													COORDENADAS		
	KM	TE	SC	TDPA	M	A	B	C2	C3	T3S2	T3S3	T3S2R4	OTROS	A	B	C	K'	D	LATITUD	LONGITUD
T. C. Los Reyes - Zacatepec	0.00	3	0	2600	3.8	76.6	0.9	14.1	0.7	1.9	0.6	0.3	1.1	80.4	0.9	18.7	0.082	0.528	19.313309	-97.847839
Xicoténcatl	6.50	3	0	2108	3.8	84.6	0.3	8.5	0.3	1.9	0.3	0.0	0.3	88.4	0.3	11.3	0.089	0.508	19.354891	-97.832432
Altzayanca de Hidalgo	15.00	1	0	1840	8.3	79.6	0.4	9.0	0.4	1.7	0.2	0.2	0.2	87.9	0.4	11.7	0.094	0.501	19.430083	-97.796741

25 CARR: Ramal a San Pedro Ecatepec

CLAVE: 29561

RUTA: TLAX

AÑO: 2020

LUGAR	ESTACION				CLASIFICACION VEHICULAR EN PORCIENTO													COORDENADAS		
	KM	TE	SC	TDPA	M	A	B	C2	C3	T3S2	T3S3	T3S2R4	OTROS	A	B	C	K'	D	LATITUD	LONGITUD
T. C. Apizaco - Tejocotal	0.00	3	0	1573	4.5	84.1	0.1	8.9	0.6	1.3	0.2	0.1	0.2	88.6	0.1	11.3	0.100	0.521	19.513968	-98.118110
San Pedro Ecatepec	4.60	1	0	1708	6.2	82.5	0.1	8.5	0.9	1.4	0.4	0.0	0.0	88.7	0.1	11.2	0.103	0.500	19.519642	-98.155554

26 CARR: Ramal a Xalostoc

CLAVE: 29563

RUTA: TLAX

AÑO: 2020

LUGAR	ESTACION				CLASIFICACION VEHICULAR EN PORCIENTO													COORDENADAS		
	KM	TE	SC	TDPA	M	A	B	C2	C3	T3S2	T3S3	T3S2R4	OTROS	A	B	C	K'	D	LATITUD	LONGITUD
T. C. Los Reyes - Zacatepec	0.00	3	0	8993	1.8	84.4	0.5	4.1	0.6	6.4	0.8	0.4	1.0	86.2	0.5	13.3	0.095	0.517	19.394819	-98.059987
Xalostoc	2.50	1	0	9582	4.0	84.2	0.3	3.7	0.5	5.2	0.7	0.4	1.0	88.2	0.3	11.5	0.094	0.507	19.403400	-98.048571

27 CARR: Xalostoc - Terrenate

CLAVE: 29390

RUTA: TLAX

AÑO: 2020

LUGAR	ESTACION				CLASIFICACION VEHICULAR EN PORCIENTO													COORDENADAS		
	KM	TE	SC	TDPA	M	A	B	C2	C3	T3S2	T3S3	T3S2R4	OTROS	A	B	C	K'	D	LATITUD	LONGITUD
Xalostoc	0.00	3	0	3396	4.1	87.0	0.3	5.3	0.8	2.1	0.1	0.0	0.3	91.1	0.3	8.6	0.099	0.509	19.404123	-98.048146
San Francisco Teometitla	7.10	3	0	1604	1.5	87.0	0.4	9.6	0.4	0.9	0.1	0.0	0.1	88.5	0.4	11.1	0.091	0.502	19.447753	-97.995354
T. C. Huamantla - Terrenate	17.50	1	0	1795	4.6	75.7	0.2	17.7	0.8	0.8	0.1	0.0	0.1	80.3	0.2	19.5	0.105	0.501	19.465762	-97.928387

28 CARR: Puebla - Tlaxcala (Cuota)

CLAVE:

RUTA: PUE-D

AÑO: 2020

LUGAR	ESTACION				CLASIFICACION VEHICULAR EN PORCIENTO													COORDENADAS		
	KM	TE	SC	TDPA	M	A	B	C2	C3	T3S2	T3S3	T3S2R4	OTROS	A	B	C	K'	D	LATITUD	LONGITUD
Anillo Periferico Poniente de Puebla	0.00	3	0	8982	0.8	88.2	1.5	4.0	0.6	2.9	0.6	1.1	0.3	89.0	1.5	9.5	0.093	0.514	19.141751	-98.268603
Lim. Edos. Term. Pue. Ppia. Tlax	2.40																			
T Der. Zacatelco	8.00	1	0	9039	0.6	88.8	1.4	3.9	0.6	2.7	0.5	1.2	0.3	89.4	1.4	9.2	0.094	0.520	19.210835	-98.264464
T Der. Zacatelco	8.00	3	0	7777	1.1	87.6	2.0	2.6	0.9	1.6	1.1	2.2	0.9	88.7	2.0	9.3	0.098	0.525	19.210749	-98.264453
Lib. de Tlaxcala (Cuota)	17.80	1	0	8583	1.6	86.9	1.8	2.6	1.1	1.7	1.0	2.5	0.8	88.5	1.8	9.7	0.086	0.512	19.283653	-98.245986

TLAXCALA

29 CARR: Acocotla - Vicente Guerrero

CLAVE: 29560

RUTA: MEX-TLAX

AÑO: 2020

LUGAR	ESTACION				CLASIFICACION VEHICULAR EN PORCIENTO										COORDENADAS					
	KM	TE	SC	TDPA	M	A	B	C2	C3	T3S2	T3S3	T3S2R4	OTROS	A	B	C	K'	D	LATITUD	LONGITUD
T. C. Los Reyes - Zacatepec	0.00	3	0	1904	4.1	75.1	5.5	5.8	2.7	2.5	1.7	1.8	0.8	79.2	5.5	15.3	0.092	0.529	19.371590	-98.028288
Vicente Guerrero	35.60	1	0	2700	9.4	71.9	1.7	16.2	0.3	0.4	0.1	0.0	0.0	81.3	1.7	17.0	0.110	0.501	19.122106	-98.160327

30 CARR: Apizaco - Emiliano Zapata

CLAVE: 29033

RUTA: TLAX-MEX-136

AÑO: 2020

LUGAR	ESTACION				CLASIFICACION VEHICULAR EN PORCIENTO										COORDENADAS					
	KM	TE	SC	TDPA	M	A	B	C2	C3	T3S2	T3S3	T3S2R4	OTROS	A	B	C	K'	D	LATITUD	LONGITUD
Apizaco	0.00	3	0	6530	6.5	78.6	0.4	5.8	0.7	4.9	1.0	0.6	1.5	85.1	0.4	14.5	0.082	0.536	19.418493	-98.135648
Capula	16.00	1	0	2958	3.4	86.9	1.1	4.1	0.9	1.1	0.8	1.3	0.4	90.3	1.1	8.6	0.105	0.511	19.534437	-98.039879
Emiliano Zapata	37.00	1	0	1089	2.8	81.3	2.5	4.0	1.6	2.3	2.7	2.2	0.6	84.1	2.5	13.4	0.094	0.510	19.557105	-97.917522

31 CARR: Calpulalpan - El Ocote

CLAVE: 00054

RUTA: MEX-HGO

AÑO: 2020

LUGAR	ESTACION				CLASIFICACION VEHICULAR EN PORCIENTO										COORDENADAS					
	KM	TE	SC	TDPA	M	A	B	C2	C3	T3S2	T3S3	T3S2R4	OTROS	A	B	C	K'	D	LATITUD	LONGITUD
Calpulalpan	0.00	3	0	7686	1.1	75.8	1.8	7.7	2.1	7.3	1.7	1.6	0.9	76.9	1.8	21.3	0.082	0.508	19.592569	-98.575426
X. C. Arco Norte de La Ciudad de México	4.00	3	1	3516	1.9	79.1	1.9	7.2	2.1	5.7	1.3	0.4	0.4	81.0	1.9	17.1	0.098	0.538	19.621892	-98.546908
X. C. Arco Norte de La Ciudad de México	4.00	3	2	4091	2.0	79.5	2.0	6.3	2.4	6.2	0.9	0.3	0.4	81.5	2.0	16.5	0.086	0.538	19.621455	-98.546908
Lim. Edos. Term. Tlax. Ppia. Hgo.	5.00																			
Apan	19.58	3	1	3072	3.2	93.1	0.1	2.1	0.6	0.5	0.3	0.1	0.0	96.3	0.1	3.6	0.088	0.521	19.711813	-98.453937
Apan	19.58	3	2	3342	3.2	92.7	0.1	2.4	0.7	0.5	0.3	0.1	0.0	95.9	0.1	4.0	0.083	0.521	19.711814	-98.453938
Tepeapulco	34.92	3	0	4082	1.8	88.3	0.3	7.6	1.1	0.7	0.2	0.0	0.0	90.1	0.3	9.6	0.093	0.515	19.788662	-98.554580
X. C. Venta de Carpio - Tulancingo	51.18	1	1	1169	1.0	86.7	0.9	7.6	2.1	1.0	0.4	0.1	0.2	87.7	0.9	11.4	0.093	0.508	19.920975	-98.579480
X. C. Venta de Carpio - Tulancingo	51.18	1	2	1207	1.2	86.3	0.9	7.4	2.5	1.1	0.3	0.1	0.2	87.5	0.9	11.6	0.089	0.508	19.920975	-98.579480
X. C. Venta de Carpio - Tulancingo	51.18	3	0	1911	2.9	82.8	0.7	10.4	1.3	1.4	0.5	0.0	0.0	85.7	0.7	13.6	0.091	0.525	19.925052	-98.581514
El Ocote	70.44	1	1	1660	2.1	95.1	0.2	2.0	0.4	0.2	0.0	0.0	0.0	97.2	0.2	2.6	0.106	0.516	20.049413	-98.618252
El Ocote	70.44	1	2	1556	1.1	93.3	0.2	5.0	0.3	0.1	0.0	0.0	0.0	94.4	0.2	5.4	0.105	0.516	20.049413	-98.618252

32 CARR: Calpulalpan - Nanacamilpa

CLAVE: 29034

RUTA: TLAX-MEX-136

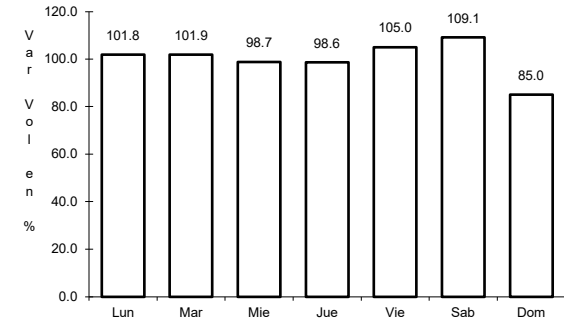
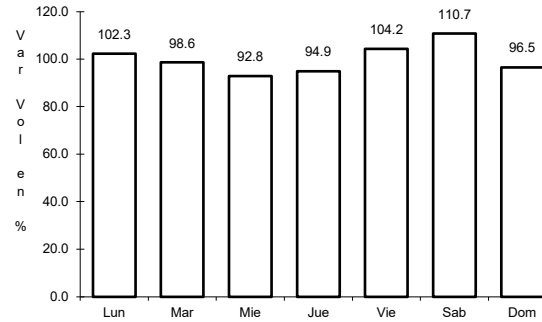
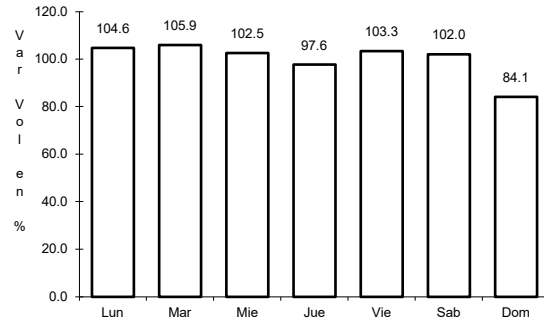
AÑO: 2020

LUGAR	ESTACION				CLASIFICACION VEHICULAR EN PORCIENTO										COORDENADAS					
	KM	TE	SC	TDPA	M	A	B	C2	C3	T3S2	T3S3	T3S2R4	OTROS	A	B	C	K'	D	LATITUD	LONGITUD
Calpulalpan	0.00	3	0	1791	5.3	83.8	0.3	7.2	0.8	1.6	0.3	0.2	0.5	89.1	0.3	10.6	0.097	0.520	19.579870	-98.568481
Mazapa	7.00																			
Nanacamilpa	15.50	1	0	1781	5.2	83.8	0.4	7.1	0.8	1.6	0.3	0.3	0.5	89.0	0.4	10.6	0.102	0.519	19.494548	-98.534228

1 CARR: Amozoc - Teziutlán

CLAVE: 00210

ruta: MEX-129



Km: 1.40 Tipo: 3 Sent: 0

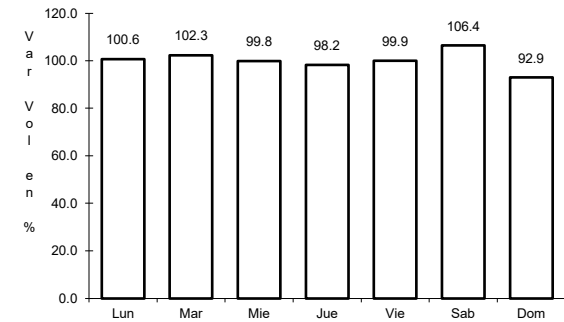
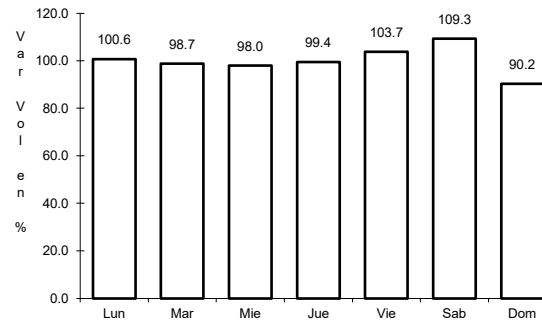
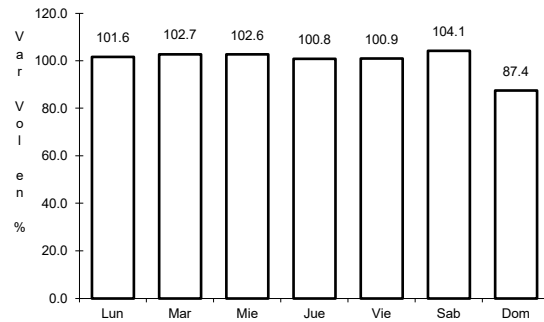
Km: 76.35 Tipo: 3 Sent: 0

Km: 157.80 Tipo: 1 Sent: 0

2 CARR: Apizaco - San Pablo Apetatitlán

CLAVE: 29035

ruta: MEX-119



Km: 0.00 Tipo: 3 Sent: 0

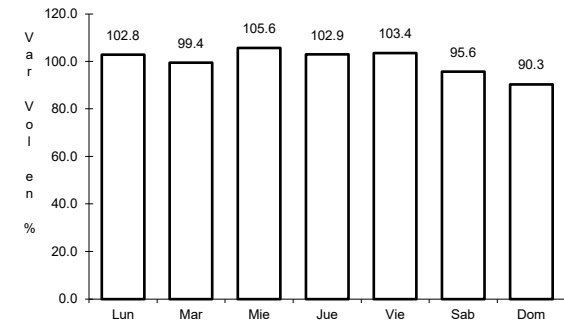
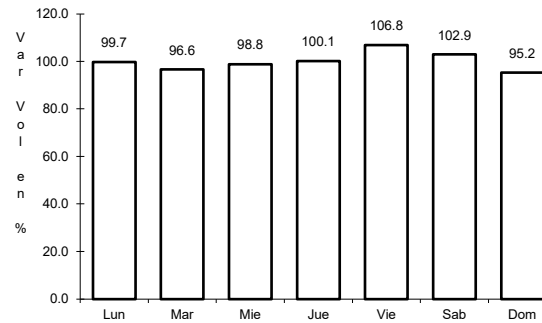
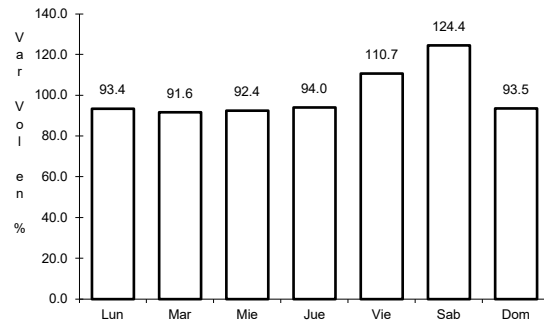
Km: 14.50 Tipo: 3 Sent: 0

Km: 20.00 Tipo: 1 Sent: 0

3 CARR: Apizaco - Tejocotal

CLAVE: 00430

ruta: MEX-119



Km: 0.00 Tipo: 3 Sent: 1

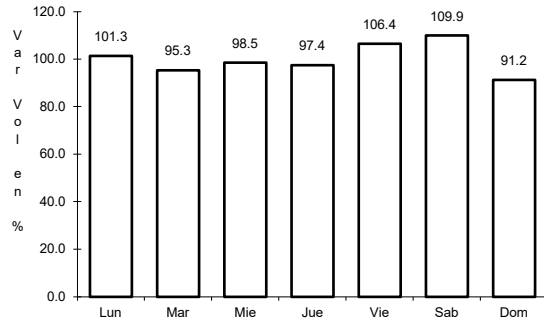
Km: 0.00 Tipo: 3 Sent: 2

Km: 113.15 Tipo: 1 Sent: 0

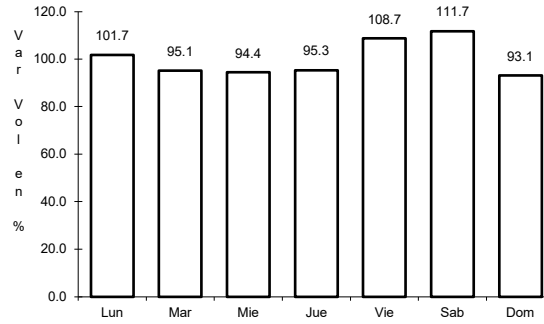
4 CARR: Huamantla - La Venta

CLAVE: 29564

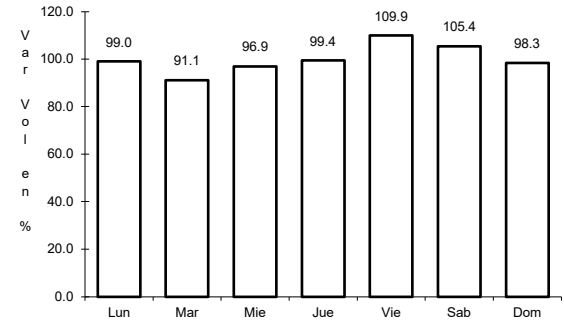
ruta: MEX-136



Km: 0.00 Tipo: 3 Sent: 1



Km: 0.00 Tipo: 3 Sent: 2

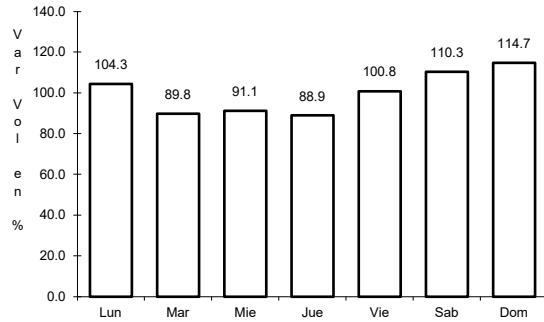


Km: 17.60 Tipo: 1 Sent: 0

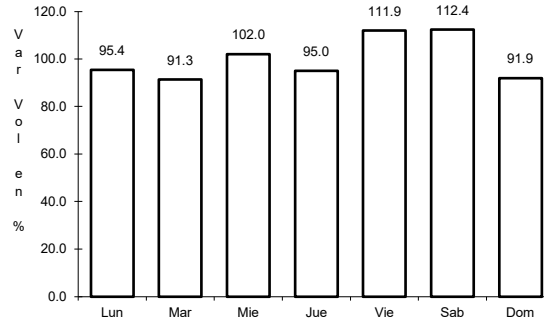
5 CARR: Huamantla - Terrenate

CLAVE: 29036

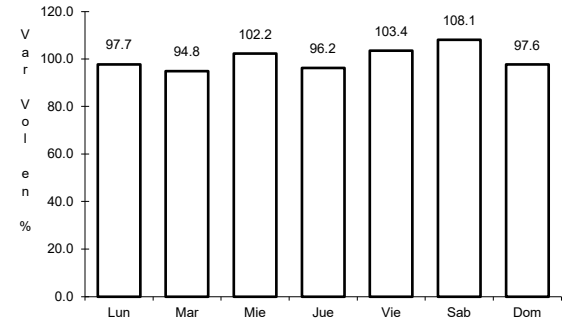
ruta: MEX-136



Km: 0.00 Tipo: 3 Sent: 0



Km: 12.50 Tipo: 1 Sent: 0

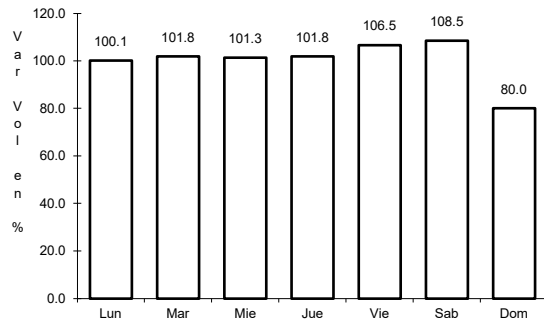


Km: 21.00 Tipo: 1 Sent: 0

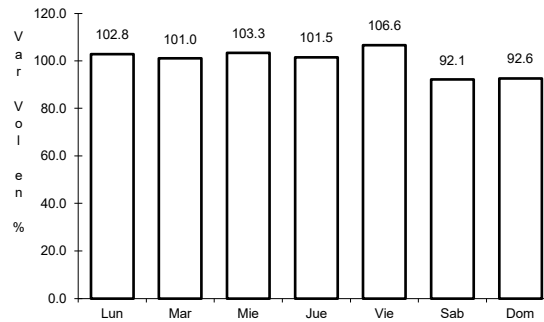
6 CARR: Libramiento de Apizaco

CLAVE: 29567

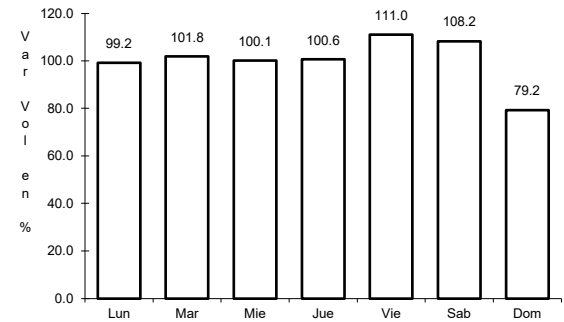
ruta: MEX-136



Km: 6.00 Tipo: 1 Sent: 1



Km: 6.00 Tipo: 1 Sent: 2

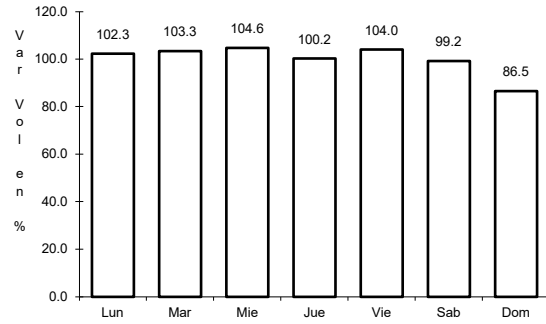


Km: 6.00 Tipo: 3 Sent: 1

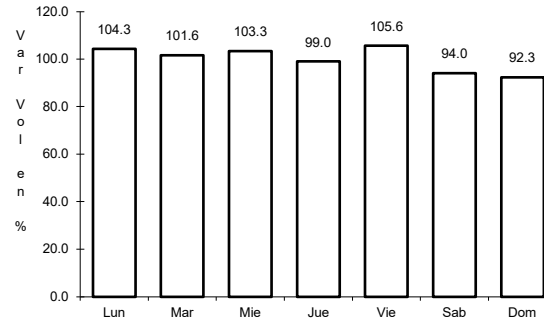
7 CARR: Libramiento Huamantla

CLAVE: 29567

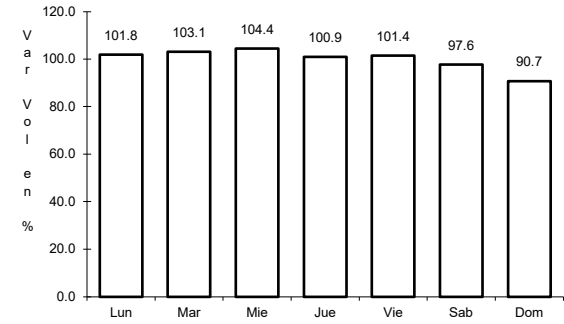
RUTA: MEX-136



Km: 0.00 Tipo: 3 Sent: 1



Km: 0.00 Tipo: 3 Sent: 2

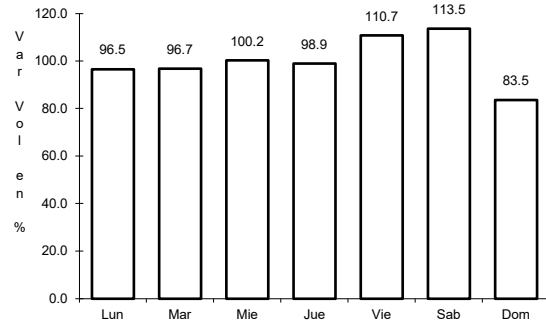


Km: 4.60 Tipo: 1 Sent: 1

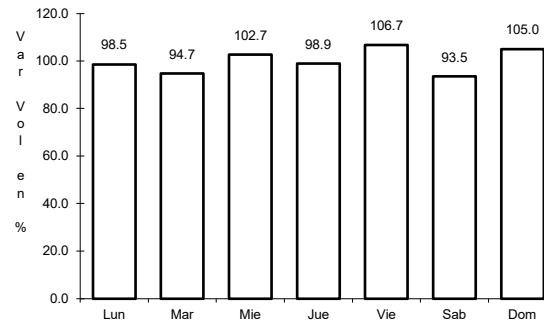
8 CARR: Libramiento Hueyotlipan

CLAVE: 29567

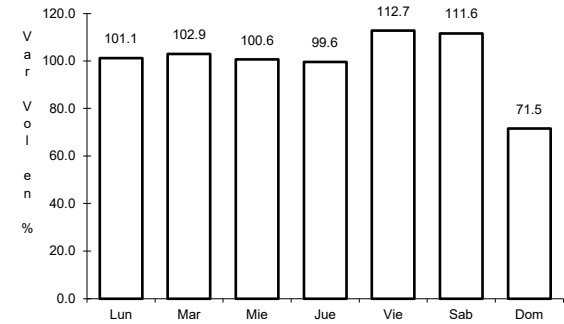
RUTA: MEX-136



Km: 0.00 Tipo: 3 Sent: 1



Km: 0.00 Tipo: 3 Sent: 2

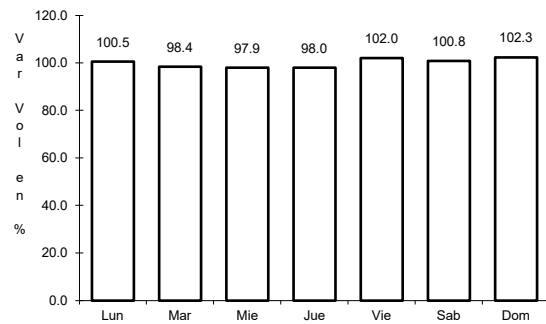


Km: 2.70 Tipo: 1 Sent: 1

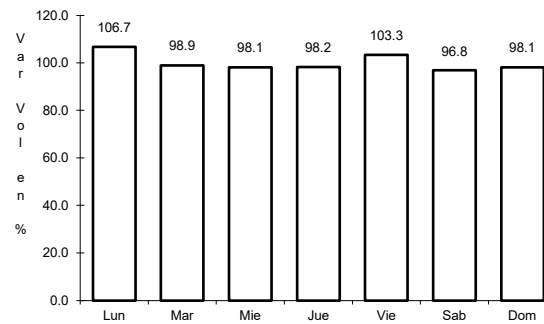
9 CARR: Los Reyes - Zacatepec

CLAVE: 00052

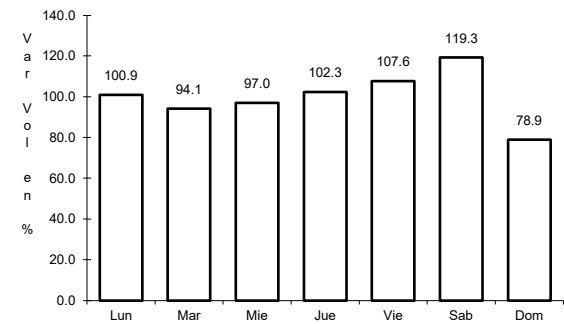
RUTA: MEX-136



Km: 3.35 Tipo: 3 Sent: 1



Km: 3.35 Tipo: 3 Sent: 2

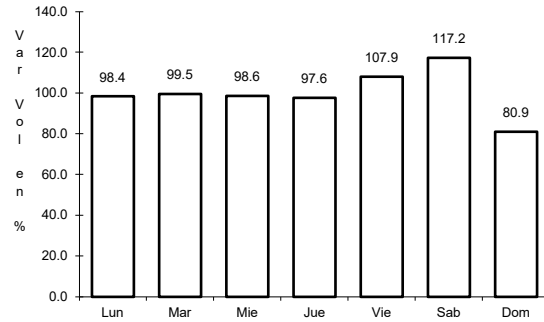


Km: 187.67 Tipo: 1 Sent: 0

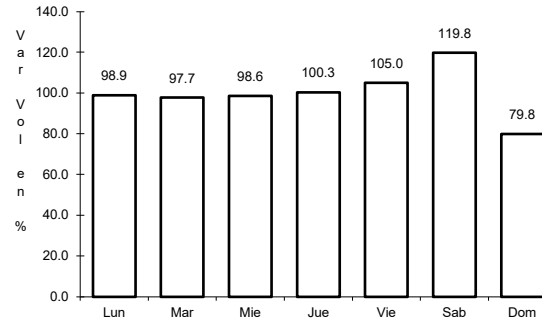
10 CARR: Puebla - Belem

CLAVE: 00055

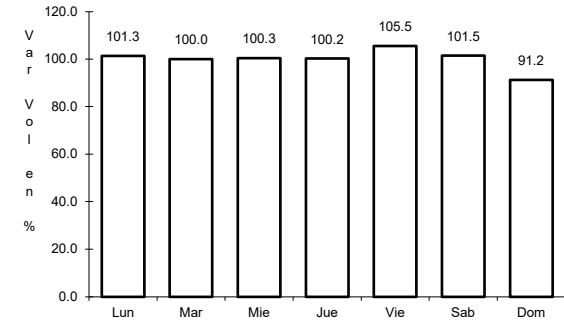
ruta: MEX-121



Km: 4.00 Tipo: 3 Sent: 1



Km: 4.00 Tipo: 3 Sent: 2

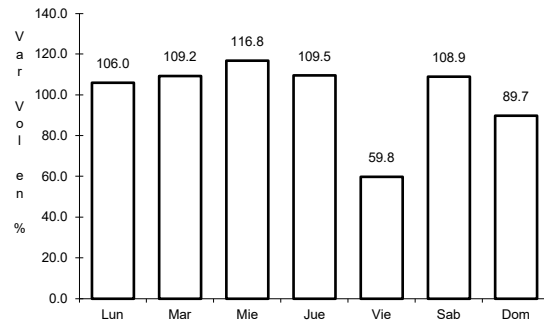


Km: 28.80 Tipo: 1 Sent: 1

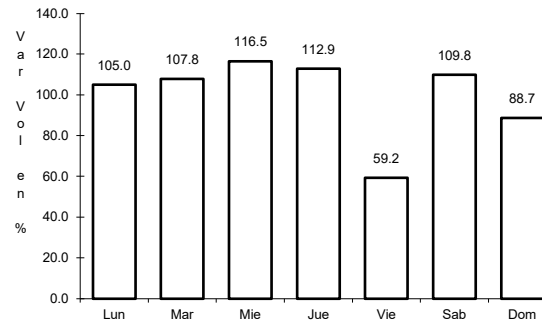
11 CARR: Puebla - Tlaxcala

CLAVE: 00475

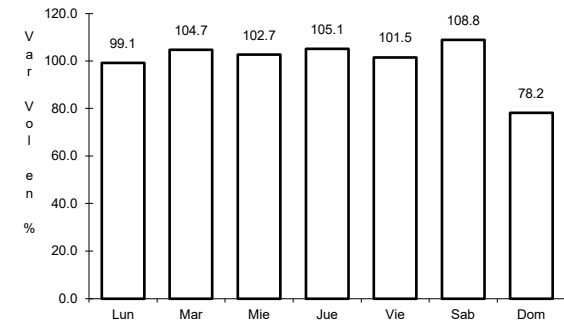
ruta: MEX-119



Km: 5.41 Tipo: 3 Sent: 1



Km: 5.41 Tipo: 3 Sent: 2

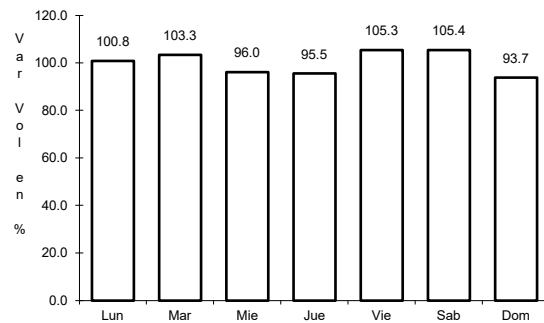


Km: 33.22 Tipo: 1 Sent: 1

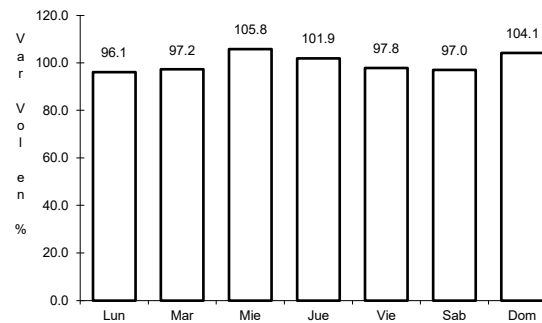
12 CARR: Ramal a San Felipe de Hidalgo

CLAVE: 29565

ruta: MEX-136



Km: 0.00 Tipo: 3 Sent: 0

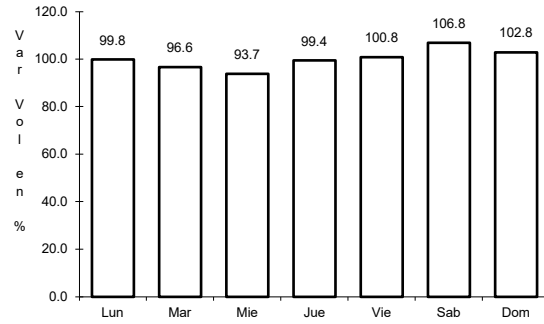


Km: 10.50 Tipo: 1 Sent: 0

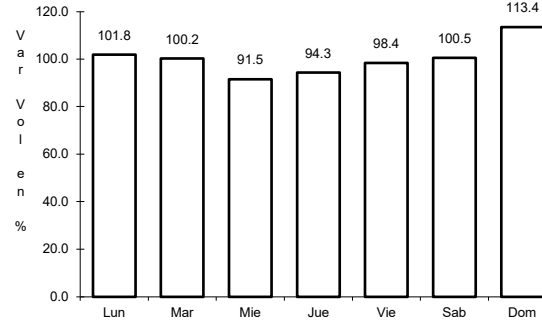
13 CARR: San Martín Texmelucan - Tlaxcala

CLAVE: 00158

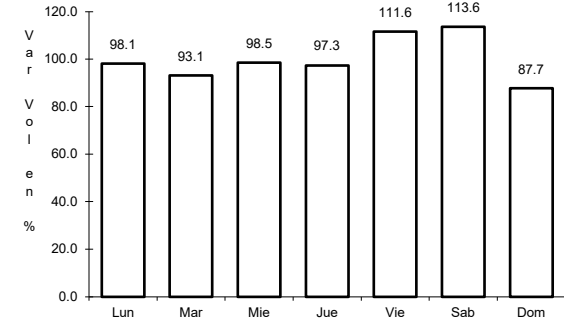
RUTA: MEX-117



Km: 0.00 Tipo: 3 Sent: 1



Km: 0.00 Tipo: 3 Sent: 2

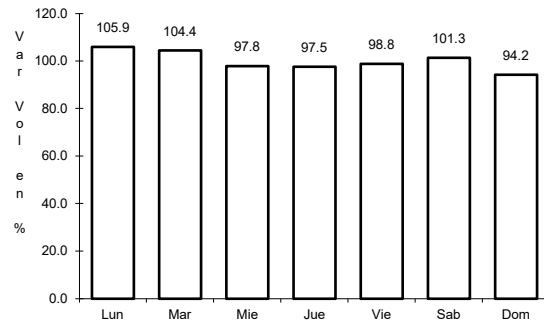


Km: 24.81 Tipo: 1 Sent: 0

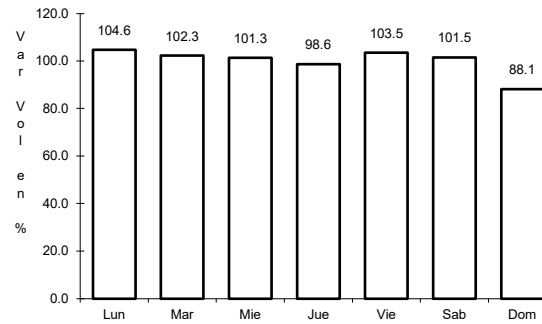
14 CARR: Tetlatlahuca - Santa Ana Chiautempan

CLAVE: 00158

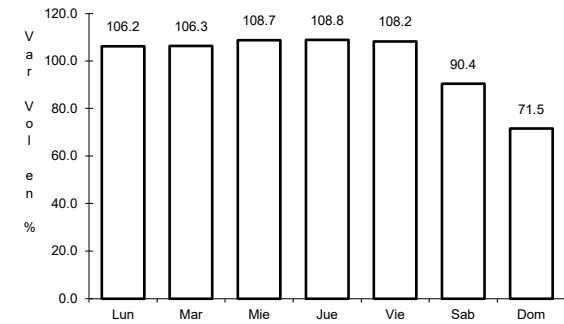
RUTA: MEX-119



Km: 2.39 Tipo: 1 Sent: 0



Km: 5.50 Tipo: 1 Sent: 0

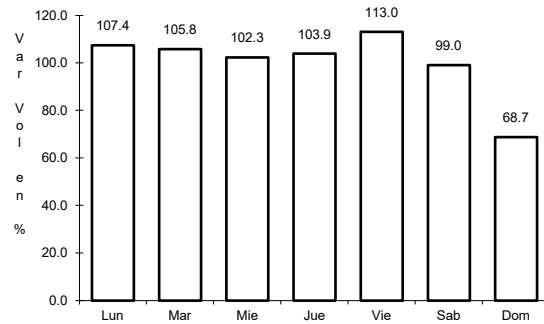


Km: 9.94 Tipo: 1 Sent: 0

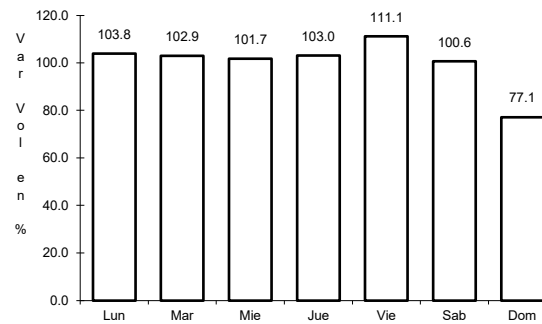
15 CARR: Tlaxcala - Belem

CLAVE: 29389

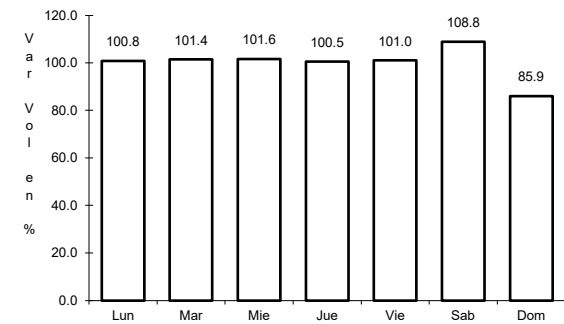
RUTA: MEX-119



Km: 3.91 Tipo: 1 Sent: 1



Km: 3.91 Tipo: 1 Sent: 2

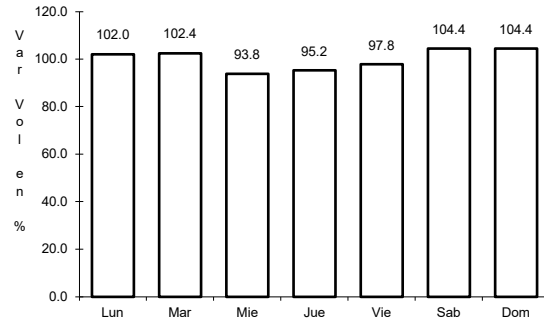


Km: 10.06 Tipo: 1 Sent: 0

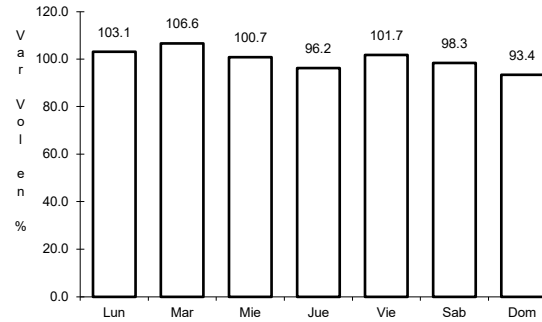
16 CARR: Villa Alta - T. C. (Puebla - Tlaxcala)

CLAVE: 29566

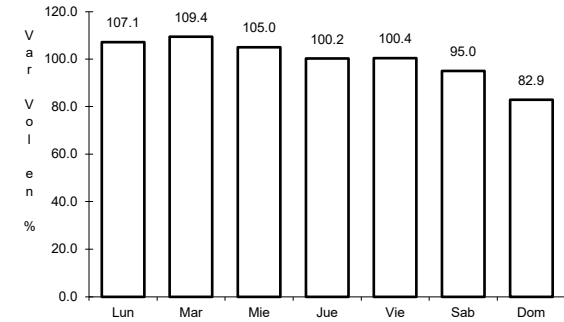
ruta: MEX-119



Km: 0.00 Tipo: 3 Sent: 0



Km: 10.50 Tipo: 3 Sent: 0

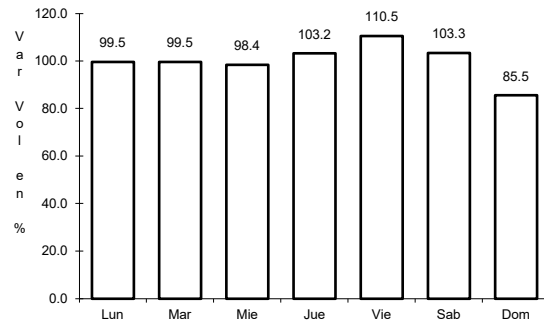


Km: 22.05 Tipo: 1 Sent: 0

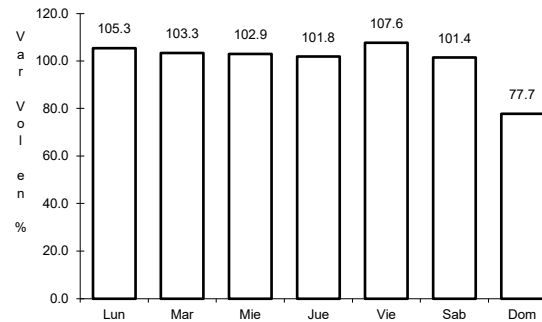
17 CARR: Amozoc - Perote (Cuota)

CLAVE: 00030

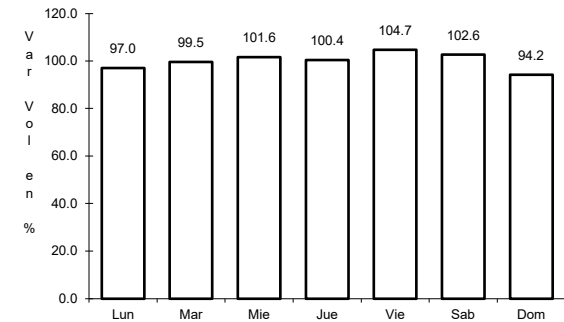
ruta: MEX-140D



Km: 0.00 Tipo: 3 Sent: 0



Km: 25.80 Tipo: 3 Sent: 0

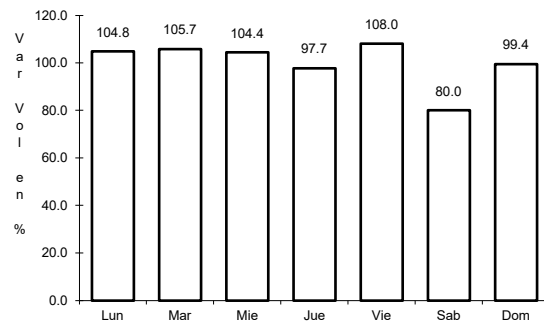


Km: 62.70 Tipo: 3 Sent: 0

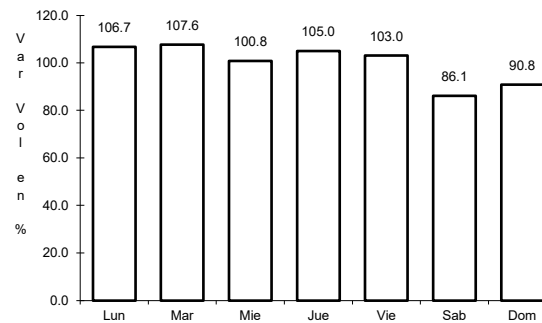
18 CARR: Libramiento de Tlaxcala (Cuota)

CLAVE:

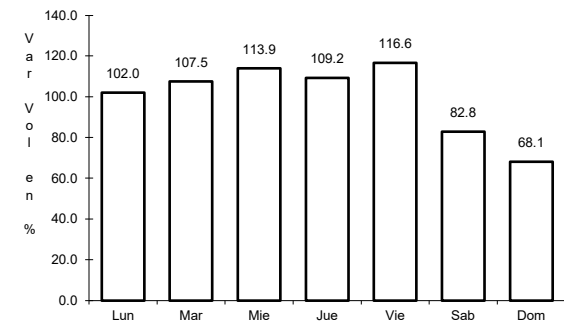
ruta: MEX-117D



Km: 0.00 Tipo: 3 Sent: 1



Km: 0.00 Tipo: 3 Sent: 2

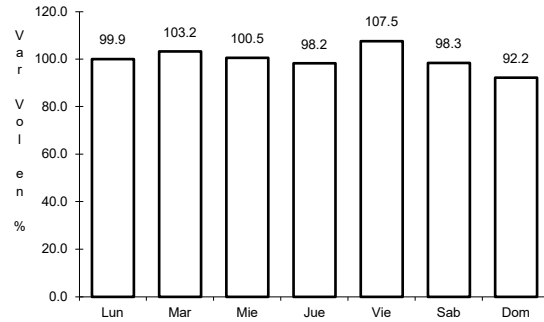


Km: 11.00 Tipo: 1 Sent: 1

19 CARR: Libramiento Norte de la Ciudad de México (Cuota)

CLAVE: 0902

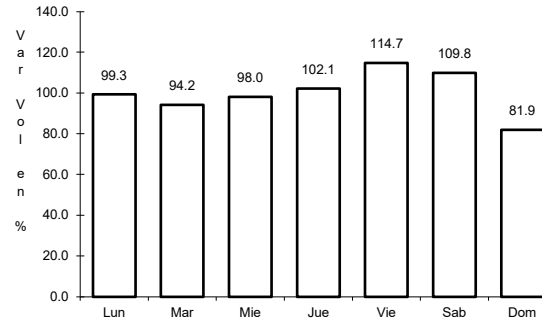
RUTA: MEX-M40D



Km: 12.90

Tipo: 1

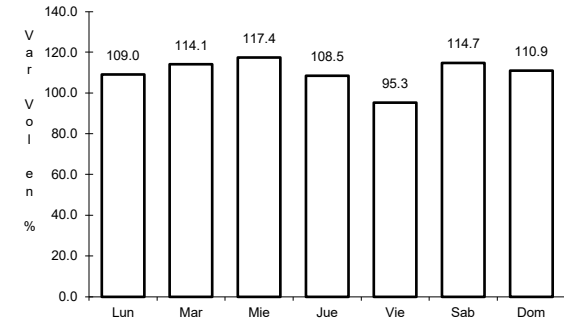
Sent: 1



Km: 12.90

Tipo: 1

Sent: 2



Km: 226.73

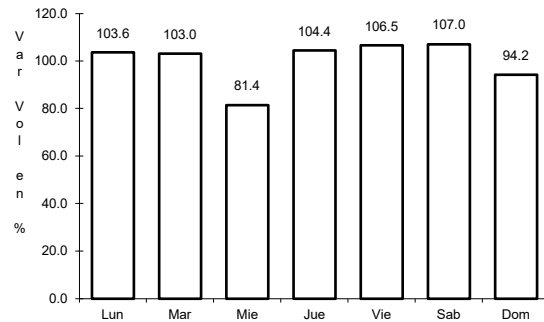
Tipo: 1

Sent: 1

20 CARR: México - Puebla (Cuota)

CLAVE: 00450

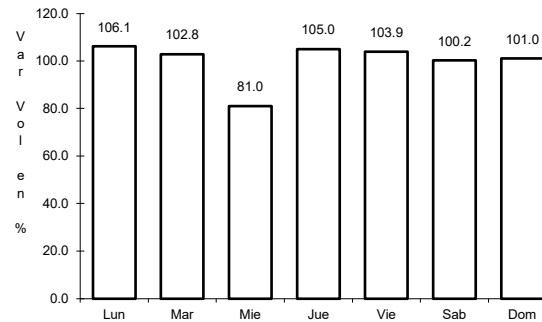
RUTA: MEX-150D



Km: 17.00

Tipo: 3

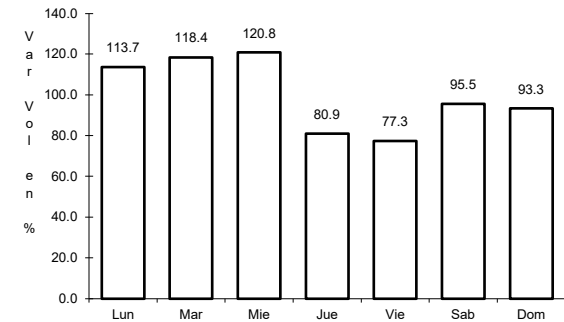
Sent: 1



Km: 17.00

Tipo: 3

Sent: 2



Km: 120.46

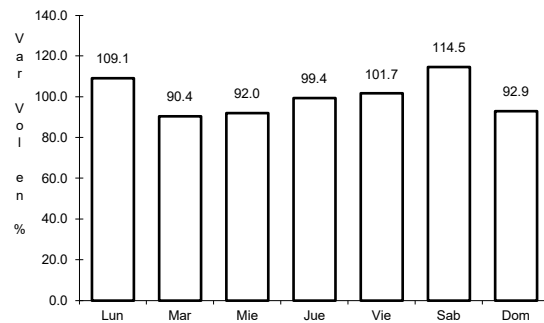
Tipo: 3

Sent: 1

21 CARR: San Martin Texmelucan - Tlaxcala - El Molinito (Cuota)

CLAVE: 00212

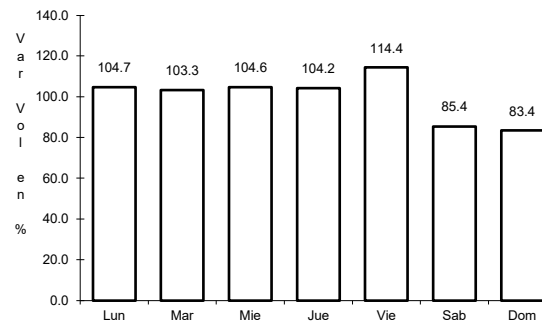
RUTA: MEX-117D



Km: 1.80

Tipo: 1

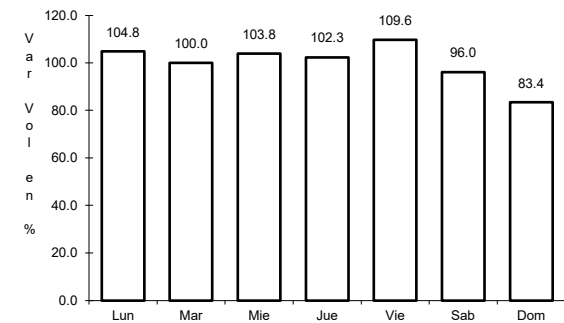
Sent: 1



Km: 35.20

Tipo: 1

Sent: 1



Km: 35.20

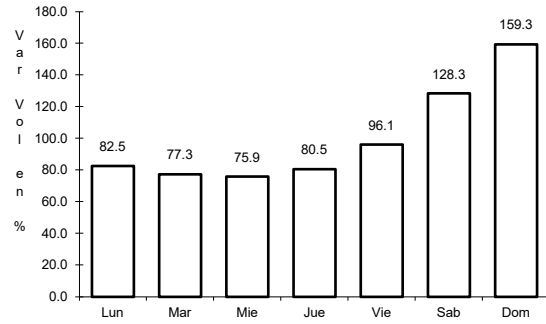
Tipo: 1

Sent: 2

22 CARR: Tlaxco - Tejocotal (Cuota)

CLAVE: 00209

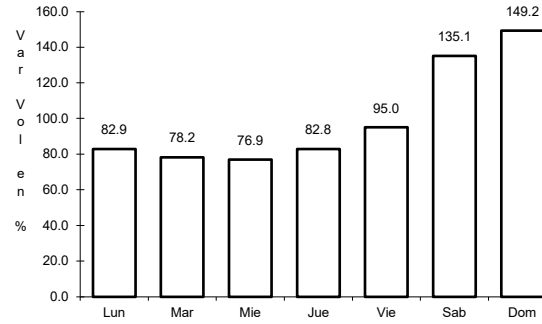
ruta: MEX-119D



Km: 23.00

Tipo: 3

Sent: 0



Km: 56.20

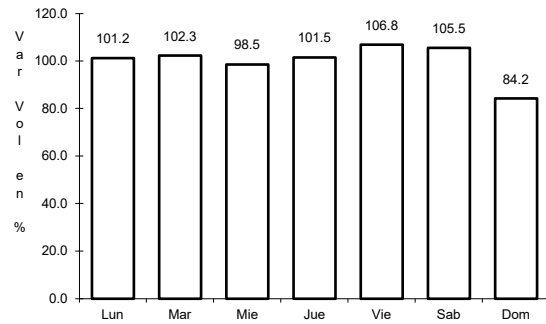
Tipo: 3

Sent: 0

23 CARR: Libramiento de Ocotlán

CLAVE: 29567

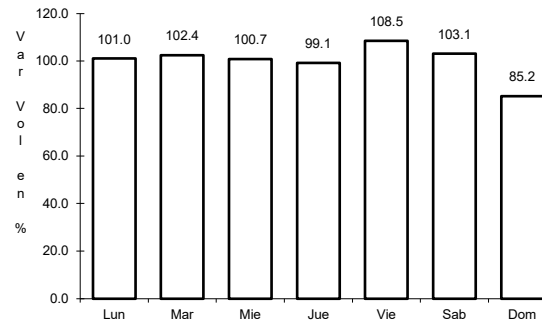
ruta: TLAX



Km: 0.00

Tipo: 3

Sent: 1



Km: 0.00

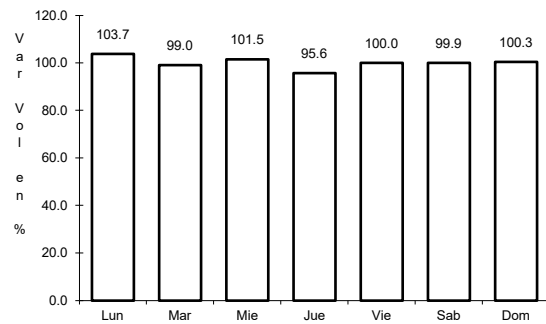
Tipo: 3

Sent: 2

24 CARR: Ramal a Altzayanca de Hidalgo

CLAVE: 29562

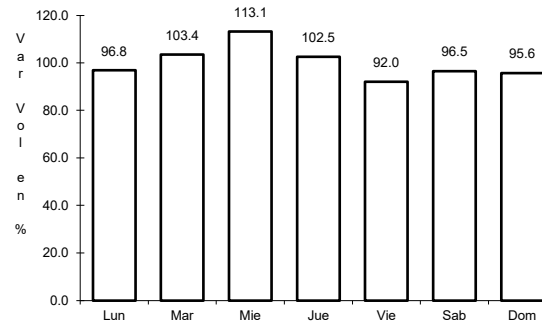
ruta: TLAX



Km: 0.00

Tipo: 3

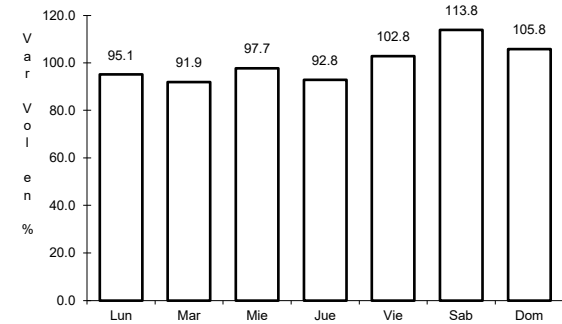
Sent: 0



Km: 6.50

Tipo: 3

Sent: 0



Km: 15.00

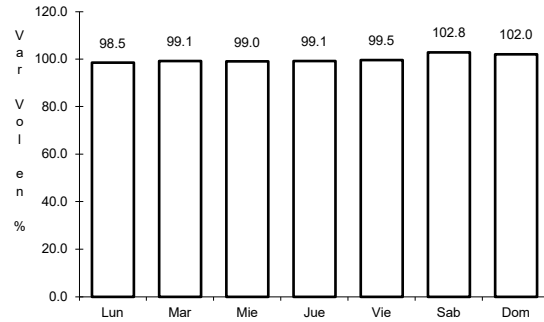
Tipo: 1

Sent: 0

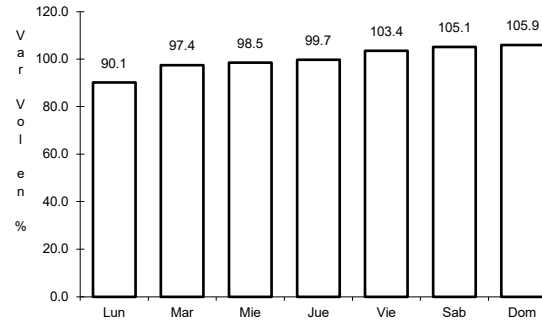
25 CARR: Ramal a San Pedro Ecatepec

CLAVE: 29561

RUTA: TLAX



Km: 0.00 Tipo: 3 Sent: 0

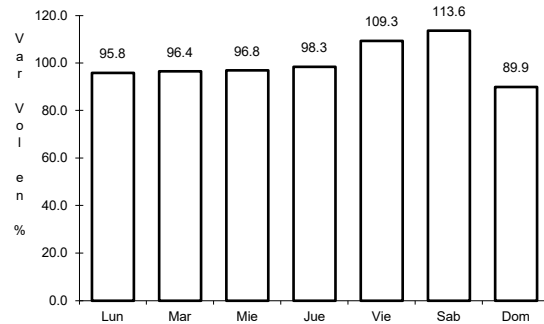


Km: 4.60 Tipo: 1 Sent: 0

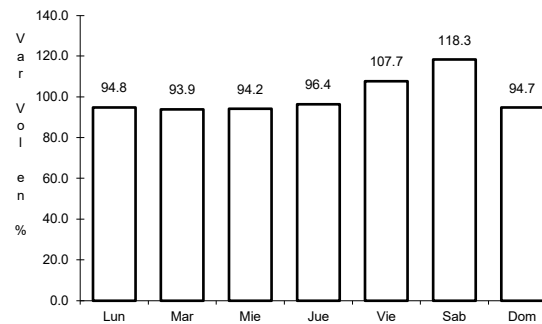
26 CARR: Ramal a Xalostoc

CLAVE: 29563

RUTA: TLAX



Km: 0.00 Tipo: 3 Sent: 0

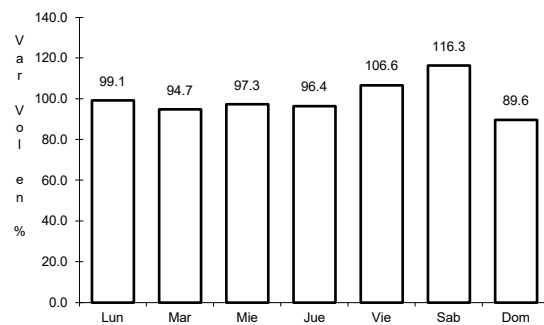


Km: 2.50 Tipo: 1 Sent: 0

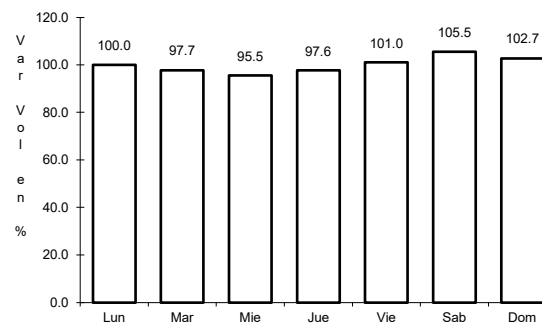
27 CARR: Xalostoc - Terrenate

CLAVE: 29390

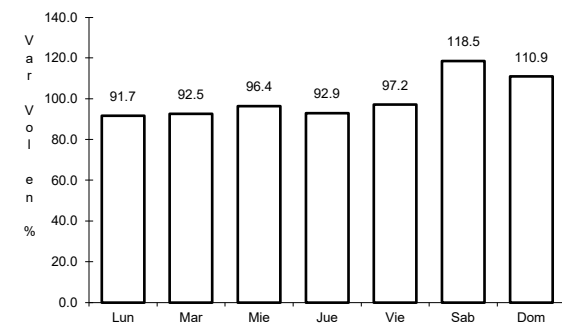
RUTA: TLAX



Km: 0.00 Tipo: 3 Sent: 0



Km: 7.10 Tipo: 3 Sent: 0

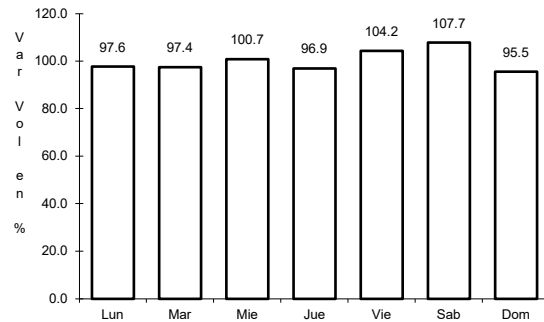


Km: 17.50 Tipo: 1 Sent: 0

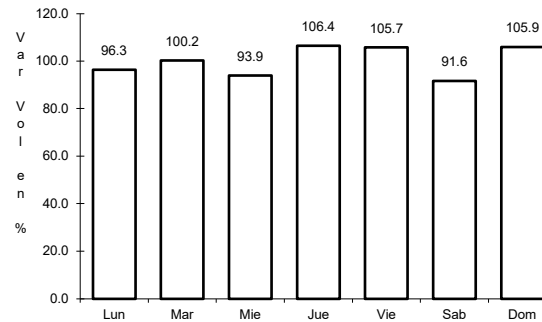
28 CARR: Puebla - Tlaxcala (Cuota)

CLAVE:

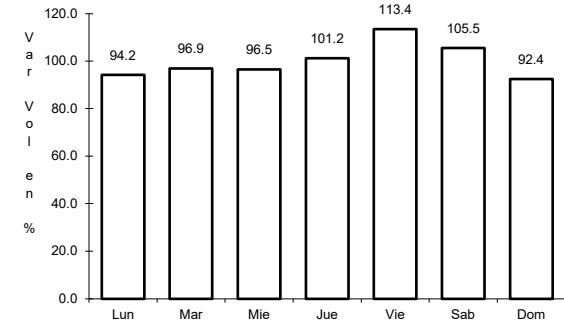
RUTA: PUE-D



Km: 0.00 Tipo: 3 Sent: 0



Km: 8.00 Tipo: 3 Sent: 0

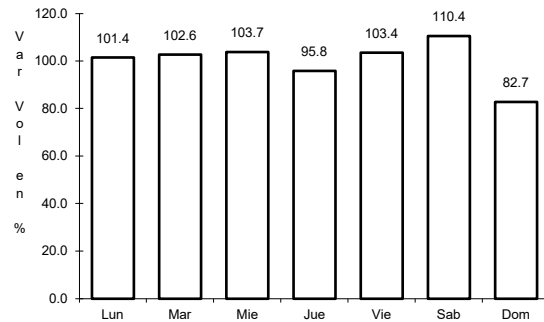


Km: 17.80 Tipo: 1 Sent: 0

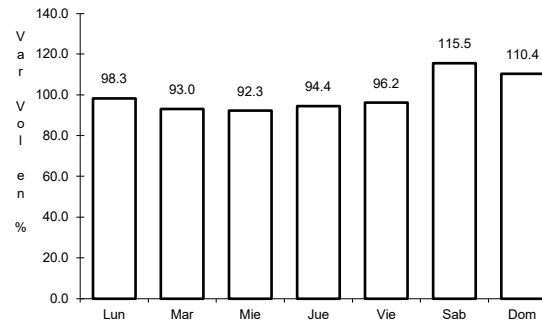
29 CARR: Acocotla - Vicente Guerrero

CLAVE: 29560

RUTA: MEX-TLAX



Km: 0.00 Tipo: 3 Sent: 0

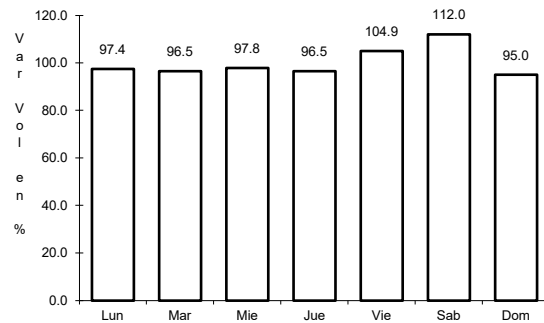


Km: 35.60 Tipo: 1 Sent: 0

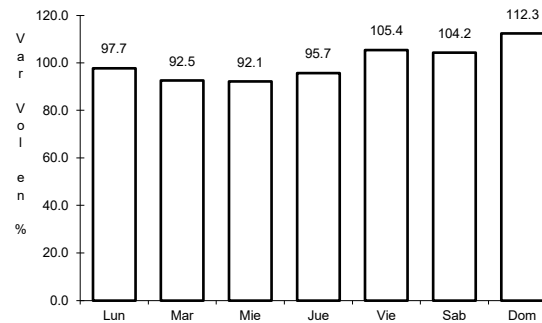
30 CARR: Apizaco - Emiliano Zapata

CLAVE: 29033

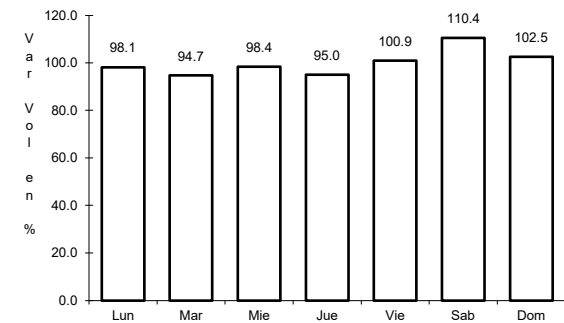
RUTA: TLAX-MEX-136



Km: 0.00 Tipo: 3 Sent: 0



Km: 16.00 Tipo: 1 Sent: 0

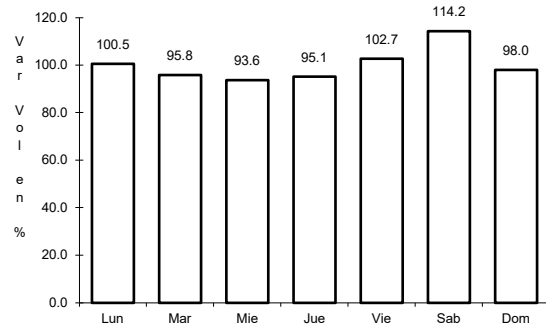


Km: 37.00 Tipo: 1 Sent: 0

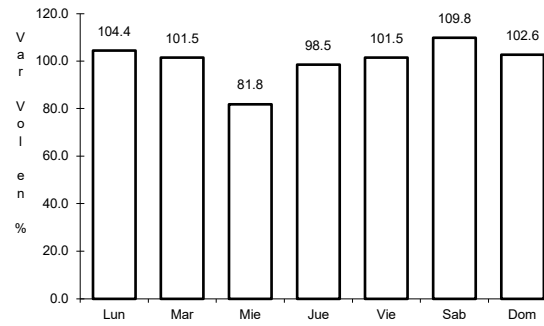
31 CARR: Calpulpan - El Ocote

CLAVE: 00054

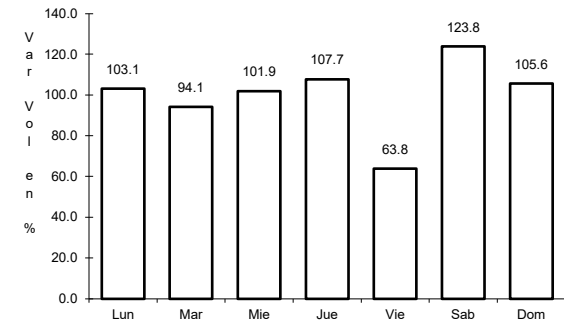
ruta: MEX-HGO



Km: 0.00 Tipo: 3 Sent: 0



Km: 34.92 Tipo: 3 Sent: 0

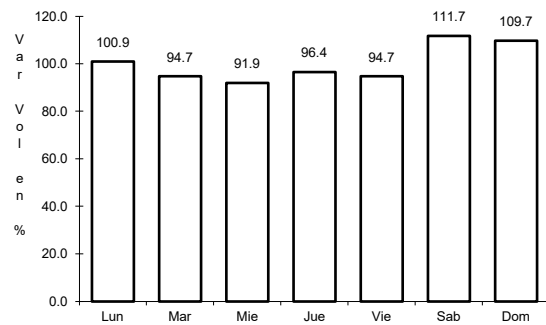


Km: 70.44 Tipo: 1 Sent: 1

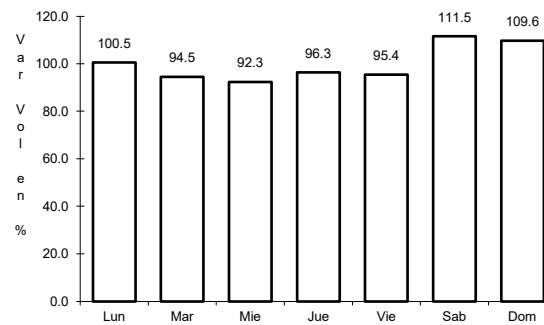
32 CARR: Calpulpan - Nanacamilpa

CLAVE: 29034

ruta: TLAX-MEX-136



Km: 0.00 Tipo: 3 Sent: 0



Km: 15.50 Tipo: 1 Sent: 0

