

TAMAULIPAS

---RED FEDERAL LIBRE---

1 Acceso a Puente Internacional Reynosa - Pharr	MEX-002
2 Altamira - T. C. (Petrocel -Puerto Industrial Altamira)	MEX-080
3 Antiguo Morelos - Ent. El Huizache	MEX-080
4 Cd. Valles - Cd. Victoria	MEX-085
5 Cd. Valles - Tampico	MEX-070
6 Cd. Victoria - Matamoros	MEX-101-180
7 Cd. Victoria - Soto La Marina	MEX-070
8 Ciudad Victoria - Monterrey	MEX-085
9 Corredor Internacional Reynosa	MEX
10 Ent. Tula - Cd. Victoria	MEX-101
11 Estación Manuel - T. C. (Cd. Victoria - Soto La Marina)	MEX-180
12 González - Llera de Canales	MEX-081
13 Ignacio Zaragoza - T. C. (Ciudad Victoria - Monterrey)	MEX-083
14 Las Urracas - T. C. (Matamoros - Reynosa)	MEX-097
15 Libramiento de Reynosa	MEX-REY-010
16 Libramiento de San Fernando	MEX-101-180
17 Libramiento de San Germán	MEX-101
18 Libramiento Estación Manuel - González	MEX-081
19 Libramiento General Francisco Villa	MEX-101-180
20 Matamoros - Playa Lauro Villar	MEX-002
21 Matamoros - Reynosa	MEX-002
22 Monterrey - Mier	MEX-054
23 Monterrey - Nuevo Laredo (Libre)	MEX-085
24 Monterrey - Reynosa (Libre)	MEX-040
25 Paras - Nueva Ciudad Guerrero	MEX-030
26 Petrocel - Puerto Industrial Altamira	MEX-080
27 Piedras Negras - Nuevo Laredo	MEX-002
28 Ramal a Puente Tampico	MEX-180
29 Ramal de Acceso a Puente Anzaldúas	MEX
30 Ramal de Acceso al Puente Internacional Laredo III	MEX
31 Reynosa - Nuevo Laredo	MEX-002
32 Soto La Marina - La Coma	MEX-180
33 Tampico - Cd. Mante	MEX-080
34 Túcpan - Tampico	MEX-180

---RED FEDERAL DE CUOTA---

35 Libramiento de Reynosa Sur II	MEX-040D
36 Libramiento Poniente de Tampico (Cuota)	MEX-070D
37 Matamoros - Reynosa (Cuota)	MEX-002D

---RED ESTATAL LIBRE---

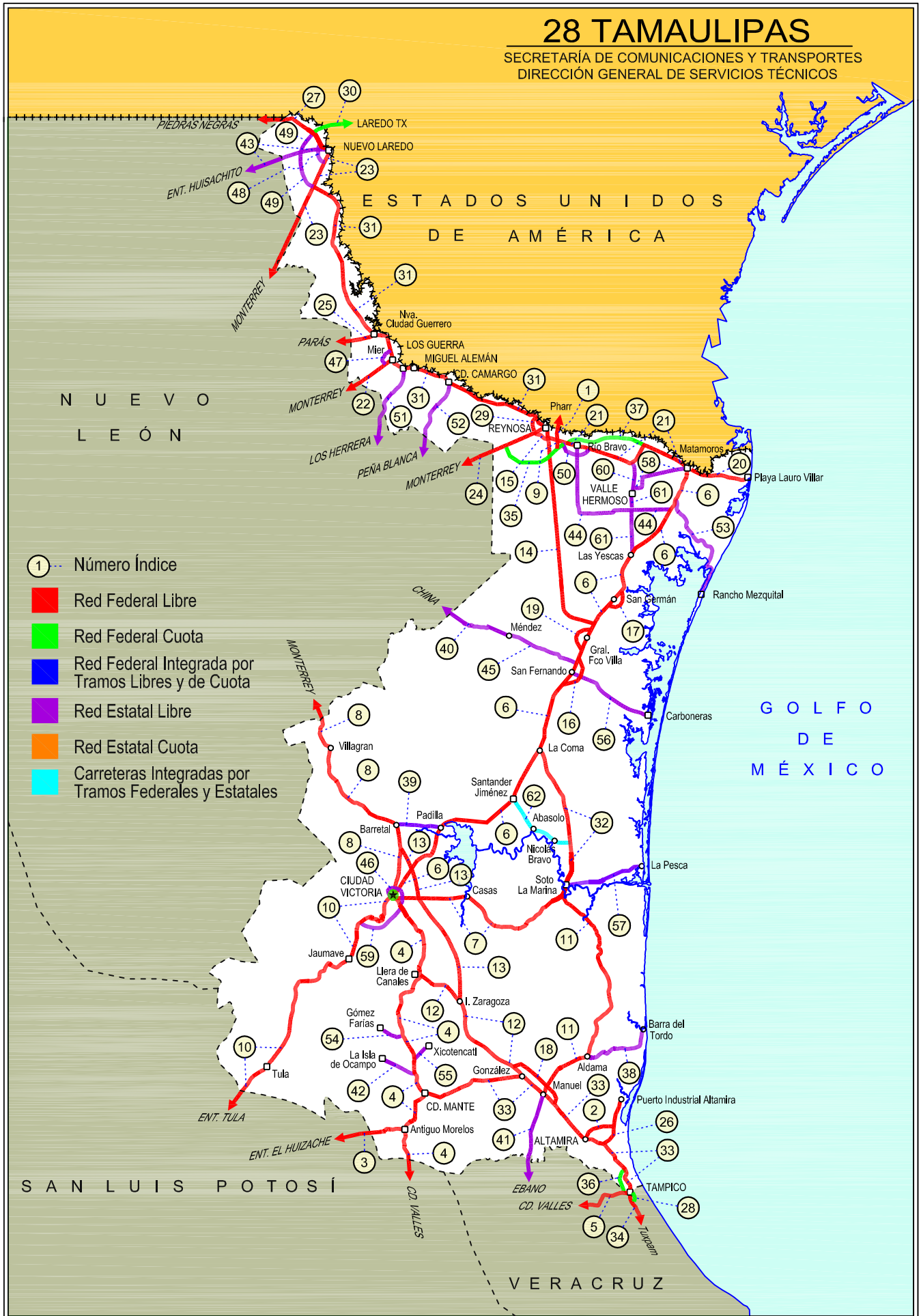
38 Aldama - Barra El Tordo	TAM
39 Barretal - Nueva Villa de Padilla	TAM-001
40 China - Méndez	NL-TAM
41 Ébano - Estación Manuel	SLP-TAM
42 El Limón - Ocampo	TAM-019
43 Ent. Huisachito - Nuevo Laredo	NL-001-TAM
44 Ent. Las Blancas - Río Bravo	TAM-003
45 La Joya - Méndez	TAM
46 Libramiento de Cd. Victoria	TAM
47 Libramiento de Mier	TAMPS
48 Libramiento de Nuevo Laredo	TAM
49 Libramiento de Nuevo Laredo II	TAM
50 Libramiento de Río Bravo	TAM
51 Los Guerra - Los Herrerias	TAM-NL
52 Peña Blanca - Cd. Camargo	NL-TAM
53 Potrero Nuevo - Rancho El Mezquital	TAM
54 Ramal a Gómez Farías	TAM-020
55 Ramal a Xicoténcatl	TAM
56 San Fernando - Carboneras	TAM
57 Soto La Marina - La Pesca	TAM-070
58 T. C. (Valle Hermoso - Empalme) - Matamoros	TAM-005
59 T. C. Libramiento Cd. Victoria - San Antonio	TAM-126
60 Valle Hermoso - Empalme	TAM-004
61 Valle Hermoso - Las Yescas	TAM

---CARRETERAS INTEGRADAS POR TRAMOS FEDERALES Y ESTATALES---

62 Santander Jiménez - Ent. El Ojito	MEX-107-TAM
--------------------------------------	-------------

28 TAMAULIPAS

SECRETARÍA DE COMUNICACIONES Y TRANSPORTES
DIRECCIÓN GENERAL DE SERVICIOS TÉCNICOS



TAMAULIPAS

1 CARR: Acceso a Puente Internacional Reynosa - Pharr

CLAVE:

RUTA: MEX-002

AÑO: 2020

LUGAR	ESTACION				CLASIFICACION VEHICULAR EN PORCIENTO										COORDENADAS					
	KM	TE	SC	TDPA	M	A	B	C2	C3	T3S2	T3S3	T3S2R4	OTROS	A	B	C	K'	D	LATITUD	LONGITUD
T. C. Matamoros - Reynosa	0.00	3	1	8855	0.5	69.2	0.3	18.9	5.5	4.0	1.3	0.2	0.1	69.7	0.3	30.0	0.161	0.502	26.015441	-98.208246
T. C. Matamoros - Reynosa	0.00	3	2	8768	0.5	69.1	0.3	19.0	5.5	4.0	1.3	0.2	0.1	69.6	0.3	30.1	0.113	0.502	26.015481	-98.208400
Puente Internacional Reynosa - Pharr	3.10																			

2 CARR: Altamira - T. C. (Petrocel -Puerto Industrial Altamira)

CLAVE:

RUTA: MEX-080

AÑO: 2020

LUGAR	ESTACION				CLASIFICACION VEHICULAR EN PORCIENTO										COORDENADAS					
	KM	TE	SC	TDPA	M	A	B	C2	C3	T3S2	T3S3	T3S2R4	OTROS	A	B	C	K'	D	LATITUD	LONGITUD
Altamira	0.00	3	1	10572	1.5	83.1	1.1	5.3	1.2	4.5	2.5	0.5	0.3	84.6	1.1	14.3	0.119	0.513	22.397590	-97.923917
Altamira	0.00	3	2	11152	1.4	83.0	1.2	5.9	1.2	4.3	2.3	0.4	0.3	84.4	1.2	14.4	0.126	0.513	22.397641	-97.923979
T. C. (Petrocel -Puerto Industrial Altamira)	3.10																			

3 CARR: Antigua Morelos - Ent. El Huizache

CLAVE: 00136

RUTA: MEX-080

AÑO: 2020

LUGAR	ESTACION				CLASIFICACION VEHICULAR EN PORCIENTO										COORDENADAS					
	KM	TE	SC	TDPA	M	A	B	C2	C3	T3S2	T3S3	T3S2R4	OTROS	A	B	C	K'	D	LATITUD	LONGITUD
Antigua Morelos	0.00	3	0	2173	7.6	83.5	2.9	3.3	1.5	0.7	0.4	0.1	0.0	91.1	2.9	6.0	0.096	0.502	22.553363	-99.078636
Nuevo Morelos	19.28	1	0	1106	6.8	82.7	1.3	4.5	1.8	1.7	0.6	0.5	0.1	89.5	1.3	9.2	0.097	0.503	22.535449	-99.217852
Lim. Edos. Term. Tamps. Ppia. S. L. P.	25.00																			
El Naranjo	32.00	1	0	4123	3.8	64.6	4.0	7.1	2.1	10.5	2.2	4.9	0.8	68.4	4.0	27.6	0.096	0.524	22.521383	-99.326265
El Naranjo	32.00	3	0	2283	7.9	81.4	0.9	7.6	0.6	1.3	0.2	0.0	0.1	89.3	0.9	9.8	0.094	0.515	22.521387	-99.326255
Cd. del Maíz	86.00	3	0	1287	2.6	67.0	2.8	18.8	2.8	2.9	1.9	0.5	0.7	69.6	2.8	27.6	0.089	0.522	22.400143	-99.607277
T. Der. Tula	141.21	3	0	2212	0.8	39.1	2.2	6.6	3.6	21.0	6.8	18.5	1.4	39.9	2.2	57.9	0.065	0.501	22.732685	-99.972412
T. C. San Luis Potosí - Matehuala (Ent. El Huizache)	198.83	1	0	2712	3.3	45.4	2.0	9.7	3.4	17.5	4.5	13.3	0.9	48.7	2.0	49.3	0.064	0.507	22.928742	-100.456726

4 CARR: Cd. Valles - Cd. Victoria

CLAVE: 00509

RUTA: MEX-085

AÑO: 2020

LUGAR	ESTACION				CLASIFICACION VEHICULAR EN PORCIENTO										COORDENADAS					
	KM	TE	SC	TDPA	M	A	B	C2	C3	T3S2	T3S3	T3S2R4	OTROS	A	B	C	K'	D	LATITUD	LONGITUD
Cd. Valles	0.00	3	0	10581	3.8	80.5	1.8	5.6	0.8	5.2	0.9	0.5	0.9	84.3	1.8	13.9	0.074	0.508	21.998363	-99.010575
Lim. Edos. Term. S. L. P. Ppia. Tamps.	50.40																			
Antigua Morelos	66.90	1	0	2248	10.5	76.5	2.4	4.1	3.4	1.4	1.1	0.5	0.1	87.0	2.4	10.6	0.086	0.511	22.553363	-99.078636
Antigua Morelos	66.90	3	0	3147	7.7	80.3	2.4	3.8	2.5	1.9	0.8	0.4	0.2	88.0	2.4	9.6	0.088	0.509	22.553346	-99.078604
Cd. Mante	98.00	1	0	6436	7.3	80.1	3.1	4.1	2.8	1.3	0.7	0.5	0.1	87.4	3.1	9.5	0.098	0.504	22.726046	-98.968519
T. Izq. Ocampo	110.00	3	0	3543	10.0	81.2	1.9	3.5	1.0	1.6	0.6	0.1	0.1	91.2	1.9	6.9	0.089	0.500	22.837327	-99.023814

TAMAULIPAS

4 CARR: Cd. Valles - Cd. Victoria

CLAVE: 00509

RUTA: MEX-085

AÑO: 2020

LUGAR	ESTACION				CLASIFICACION VEHICULAR EN PORCIENTO										COORDENADAS					
	KM	TE	SC	TDPA	M	A	B	C2	C3	T3S2	T3S3	T3S2R4	OTROS	A	B	C	K'	D	LATITUD	LONGITUD
T. Izq. Gómez Farías	132.84	3	0	1930	13.2	77.9	1.4	3.0	2.1	1.8	0.3	0.2	0.1	91.1	1.4	7.5	0.100	0.502	23.024760	-99.092728
T. Izq. Llera de Canales	170.00	3	0	3142	1.2	83.2	3.7	7.5	1.3	1.8	0.5	0.7	0.1	84.4	3.7	11.9	0.116	0.502	23.309435	-99.020692
T. Der. González	172.50	3	0	1815	0.8	85.1	4.2	6.0	0.7	1.6	0.8	0.8	0.0	85.9	4.2	9.9	0.125	0.508	23.317230	-98.998043
Cd. Victoria	232.00	1	0	2692	0.9	80.9	4.3	8.2	2.7	1.6	0.9	0.4	0.1	81.8	4.3	13.9	0.113	0.520	23.713546	-99.129107

5 CARR: Cd. Valles - Tampico

CLAVE: 00138

RUTA: MEX-070

AÑO: 2020

LUGAR	ESTACION				CLASIFICACION VEHICULAR EN PORCIENTO										COORDENADAS					
	KM	TE	SC	TDPA	M	A	B	C2	C3	T3S2	T3S3	T3S2R4	OTROS	A	B	C	K'	D	LATITUD	LONGITUD
Cd. Valles	0.00	3	0	7407	2.6	75.6	1.5	9.7	3.4	4.4	1.3	0.9	0.6	78.2	1.5	20.3	0.075	0.507	21.979796	-98.997814
T. Der. Santa Elena	15.25	3	0	5905	2.4	73.5	2.1	9.8	2.7	5.1	2.8	1.3	0.3	75.9	2.1	22.0	0.101	0.529	21.959213	-98.881327
Tamuín	29.60	1	0	5073	3.2	75.4	2.0	9.6	2.2	3.8	1.6	1.4	0.8	78.6	2.0	19.4	0.080	0.503	22.002150	-98.780366
T. C. Rayón - Ent. Tamuín (Cuota)	34.40	1	0	3426	6.8	68.7	2.7	10.9	3.6	3.0	1.8	1.6	0.9	75.5	2.7	21.8	0.095	0.501	22.005299	-98.731940
T. C. Rayón - Ent. Tamuín (Cuota)	34.40	3	1	1923	6.9	70.2	2.4	10.0	2.6	3.5	2.0	1.6	0.8	77.1	2.4	20.5	0.085	0.508	22.005348	-98.731972
T. C. Rayón - Ent. Tamuín (Cuota)	34.40	3	2	1984	6.4	69.0	2.5	11.1	2.9	3.7	2.0	1.7	0.7	75.4	2.5	22.1	0.090	0.508	22.005802	-98.732526
Ébano	79.00	1	0	8543	9.1	73.4	1.5	4.8	1.6	5.7	1.5	1.4	1.0	82.5	1.5	16.0	0.087	0.503	22.216529	-98.375814
Ébano	79.00	3	0	4419	6.3	68.9	3.0	8.7	3.0	4.5	2.0	3.0	0.6	75.2	3.0	21.8	0.095	0.505	22.216534	-98.375818
Lim. Edos. Term. S. L. P. Ppia. Ver.	83.57																			
T. Der. Pánuco	103.00	1	0	5150	6.2	70.4	2.4	7.9	1.8	6.3	1.9	2.2	0.9	76.6	2.4	21.0	0.075	0.511	22.157480	-98.151635
T. Der. Pánuco	103.00	3	0	7284	4.0	69.8	2.8	10.3	1.8	6.1	1.8	2.5	0.9	73.8	2.8	23.4	0.089	0.512	22.157474	-98.151644
T. C. Anáhuac - El Prieto	128.40	1	1	4598	4.1	73.5	2.3	10.8	2.4	2.8	1.3	2.2	0.6	77.6	2.3	20.1	0.091	0.503	22.215190	-97.946216
T. C. Anáhuac - El Prieto	128.40	1	2	4661	4.0	73.4	2.3	11.2	2.4	2.8	1.3	2.2	0.4	77.4	2.3	20.3	0.109	0.503	22.215206	-97.946225
T. C. Anáhuac - El Prieto	128.40	3	1	5670	3.9	70.6	2.0	10.7	2.2	5.0	2.3	2.6	0.7	74.5	2.0	23.5	0.094	0.503	22.215250	-97.946207
T. C. Anáhuac - El Prieto	128.40	3	2	5732	3.6	67.4	2.2	12.8	2.5	5.6	2.2	2.8	0.9	71.0	2.2	26.8	0.106	0.503	22.215246	-97.946110
Lim. Edos. Term. Ver. Ppia. Tamps.	133.81																			
Tampico	138.00	1	1	9899	2.0	71.2	1.6	12.2	2.3	4.9	2.3	2.8	0.7	73.2	1.6	25.2	0.108	0.510	22.226744	-97.871980
Tampico	138.00	1	2	9504	1.9	71.4	1.6	12.1	2.3	4.8	2.3	2.9	0.7	73.3	1.6	25.1	0.107	0.510	22.226802	-97.872002

6 CARR: Cd. Victoria - Matamoros

CLAVE: 28139

RUTA: MEX-101-180

AÑO: 2020

LUGAR	ESTACION				CLASIFICACION VEHICULAR EN PORCIENTO										COORDENADAS					
	KM	TE	SC	TDPA	M	A	B	C2	C3	T3S2	T3S3	T3S2R4	OTROS	A	B	C	K'	D	LATITUD	LONGITUD
Cd. Victoria	0.00																			
X. C. Libramiento de Cd. Victoria	5.00	3	1	7988	7.4	77.2	2.5	10.5	0.6	0.6	0.4	0.4	0.4	84.6	2.5	12.9	0.090	0.501	23.764754	-99.113667
X. C. Libramiento de Cd. Victoria	5.00	3	2	7957	6.8	76.4	2.9	11.3	0.7	0.7	0.4	0.4	0.4	83.2	2.9	13.9	0.105	0.501	23.764934	-99.113945

TAMAULIPAS

6 CARR: Cd. Victoria - Matamoros

CLAVE: 28139

RUTA: MEX-101-180

AÑO: 2020

LUGAR	ESTACION				CLASIFICACION VEHICULAR EN PORCIENTO														COORDENADAS	
	KM	TE	SC	TDPA	M	A	B	C2	C3	T3S2	T3S3	T3S2R4	OTROS	A	B	C	K'	D	LATITUD	LONGITUD
X. C. Ignacio Zaragoza - T. C. (Ciudad Victoria - Monterrey)	15.72	3	0	6230	2.8	62.9	3.3	6.5	1.3	12.0	3.2	7.1	0.9	65.7	3.3	31.0	0.081	0.505	23.850288	-99.054733
T. Izq. Barretal	46.50	1	0	5391	3.2	69.6	3.7	12.2	3.8	5.3	0.9	0.5	0.8	72.8	3.7	23.5	0.098	0.502	24.052676	-98.894847
T. Der. Las Juntas	80.05	1	0	3271	2.9	69.1	4.0	11.4	3.7	5.8	1.4	0.9	0.8	72.0	4.0	24.0	0.070	0.564	24.112628	-98.601582
Santander Jiménez	97.00	3	0	4968	8.3	77.9	0.9	7.7	1.1	2.3	0.5	0.7	0.6	86.2	0.9	12.9	0.085	0.502	24.216223	-98.482699
T. Der. Soto La Marina	129.00	3	1	2763	0.7	85.1	0.7	8.1	0.8	3.2	0.5	0.5	0.4	85.8	0.7	13.5	0.101	0.511	24.464704	-98.341340
T. Der. Soto La Marina	129.00	3	2	2891	0.7	85.3	0.6	8.4	0.8	2.9	0.3	0.6	0.4	86.0	0.6	13.4	0.100	0.511	24.464739	-98.341464
Las Norias	145.80	3	0	5922	0.8	85.4	0.8	7.7	1.2	2.4	0.6	0.7	0.4	86.2	0.8	13.0	0.067	0.500	24.620111	-98.295394
T. Libramiento de San Fernando Sur	162.60																			
San Fernando	175.00	3	0	3255	1.1	84.0	0.9	7.8	1.1	2.9	0.7	0.7	0.8	85.1	0.9	14.0	0.099	0.504	24.853033	-98.153500
T. Libramiento de San Fernando Norte	186.70																			
T. Libramiento General Francisco Villa Sur	193.60																			
T. Libramiento General Francisco Villa Norte	199.20																			
T. Izq. Reynosa	202.00	1	0	7135	3.6	76.2	2.6	10.3	3.0	2.8	0.8	0.3	0.4	79.8	2.6	17.6	0.102	0.501	25.073303	-98.067765
T. Izq. Reynosa	202.00	3	0	4347	3.5	75.0	2.5	10.8	2.8	3.2	1.0	0.6	0.6	78.5	2.5	19.0	0.109	0.517	25.073362	-98.067740
T. Der. Los Vergeles	220.00	1	0	4210	3.6	75.0	2.5	10.7	3.0	3.1	0.9	0.6	0.6	78.6	2.5	18.9	0.100	0.522	25.183491	-97.955347
T. Libramiento de San Germán Sur	223.60																			
T. Libramiento de San Germán Norte	226.90																			
Santa Teresa	233.00	1	0	4089	1.9	70.9	5.0	17.9	1.0	1.5	0.6	0.6	0.6	72.8	5.0	22.2	0.090	0.500	25.278497	-97.859320
T. Izq. Valle Hermoso	254.50	1	0	5899	1.4	83.3	1.7	7.1	1.6	2.7	0.7	1.0	0.5	84.7	1.7	13.6	0.085	0.525	25.449980	-97.815851
T. Izq. Valle Hermoso	254.50	3	0	2867	1.5	81.6	1.6	6.3	1.5	3.8	1.2	1.6	0.9	83.1	1.6	15.3	0.090	0.501	25.450010	-97.815857
T. Izq. Jarita	286.00	3	1	3158	7.3	75.5	2.8	11.7	0.6	0.8	0.4	0.5	0.4	82.8	2.8	14.4	0.098	0.525	25.665823	-97.601323
T. Izq. Jarita	286.00	3	2	3493	6.9	77.3	2.6	11.0	0.5	0.7	0.3	0.3	0.4	84.2	2.6	13.2	0.116	0.525	25.665855	-97.601392
Matamoros	312.00	1	1	6698	2.7	86.1	1.3	6.0	1.9	0.9	0.5	0.3	0.3	88.8	1.3	9.9	0.082	0.509	25.810524	-97.520046
Matamoros	312.00	1	2	6459	2.6	86.4	1.4	6.0	1.9	0.8	0.4	0.3	0.2	89.0	1.4	9.6	0.083	0.509	25.810545	-97.520212

7 CARR: Cd. Victoria - Soto La Marina

CLAVE: 28009

RUTA: MEX-070

AÑO: 2020

LUGAR	ESTACION				CLASIFICACION VEHICULAR EN PORCIENTO														COORDENADAS	
	KM	TE	SC	TDPA	M	A	B	C2	C3	T3S2	T3S3	T3S2R4	OTROS	A	B	C	K'	D	LATITUD	LONGITUD
Cd. Victoria	0.00	3	1	5322	4.3	79.4	1.8	9.9	1.2	1.4	1.0	0.7	0.3	83.7	1.8	14.5	0.141	0.508	23.719606	-99.129790
Cd. Victoria	0.00	3	2	5484	4.1	78.7	1.9	10.5	1.3	1.5	1.0	0.7	0.3	82.8	1.9	15.3	0.132	0.508	23.719775	-99.129809
Casas	40.00																			
Soto La Marina	116.80	1	0	4095	1.6	80.3	2.4	8.5	1.4	3.9	1.0	0.6	0.3	81.9	2.4	15.7	0.092	0.529	23.769647	-98.203534

TAMAULIPAS

8 CARR: Ciudad Victoria - Monterrey

CLAVE: 00462

RUTA: MEX-085

AÑO: 2020

LUGAR	ESTACION				CLASIFICACION VEHICULAR EN PORCIENTO										COORDENADAS					
	KM	TE	SC	TDPA	M	A	B	C2	C3	T3S2	T3S3	T3S2R4	OTROS	A	B	C	K'	D	LATITUD	LONGITUD
Cd. Victoria (Central)	0.00	3	1	7977	3.3	86.7	0.9	5.1	0.7	1.5	0.9	0.5	0.4	90.0	0.9	9.1	0.094	0.516	23.742894	-99.143421
Cd. Victoria (Lateral)	0.00	3	1	884	2.8	72.2	0.7	22.0	1.5	0.6	0.2	0.0	0.0	75.0	0.7	24.3	0.090	0.503	23.742896	-99.143419
Cd. Victoria (Lateral)	0.00	3	2	874	9.7	64.8	0.7	22.4	1.4	0.6	0.3	0.1	0.0	74.5	0.7	24.8	0.092	0.503	23.742907	-99.143488
Cd. Victoria (Central)	0.00	3	2	7468	3.3	86.5	0.9	5.2	0.8	1.5	0.9	0.5	0.4	89.8	0.9	9.3	0.092	0.516	23.742905	-99.143490
T. Der. Güemez	19.60	3	0	4660	1.6	83.1	2.7	8.2	1.4	1.7	0.5	0.6	0.2	84.7	2.7	12.6	0.107	0.509	23.912459	-99.113205
T. Izq. Santa Engracia	27.35	3	0	8302	0.7	62.3	5.0	9.1	3.2	7.8	2.9	8.0	1.0	63.0	5.0	32.0	0.104	0.505	23.981364	-99.110955
Barretal	39.00	3	0	6767	1.8	58.1	5.7	8.3	2.6	10.4	2.5	9.7	0.9	59.9	5.7	34.4	0.098	0.505	24.083184	-99.122766
T. Izq. Hidalgo y La Mesa	77.50	1	0	5914	1.1	54.9	6.5	8.1	2.4	10.9	3.7	11.3	1.1	56.0	6.5	37.5	0.103	0.503	24.253319	-99.432884
Villagrán	106.00	1	0	5961	0.9	56.2	6.7	9.0	2.7	11.1	3.7	8.6	1.1	57.1	6.7	36.2	0.101	0.504	24.473454	-99.493143
Villagrán	106.00	3	0	4407	1.4	53.8	6.4	9.7	2.9	11.1	4.3	9.3	1.1	55.2	6.4	38.4	0.102	0.504	24.473468	-99.493149
T. Izq. Villa Mainero	118.00	3	1	3137	1.2	52.5	6.2	10.4	3.4	11.3	4.1	10.0	0.9	53.7	6.2	40.1	0.094	0.512	24.564044	-99.548063
T. Izq. Villa Mainero	118.00	3	2	2987	1.2	52.3	6.3	10.4	3.3	11.3	4.1	10.1	1.0	53.5	6.3	40.2	0.093	0.512	24.564111	-99.548180
Lim. Edos. Term. Tamps. Ppia. N. L.	126.20																			
T. Libramiento de Linares Sur	152.50																			
Linares	154.00	1	0	6893	1.3	64.9	3.5	5.6	2.1	9.1	2.7	10.0	0.8	66.2	3.5	30.3	0.097	0.533	24.849673	-99.557516
Linares	154.00	3	1	5861	1.4	64.4	4.2	9.4	2.3	7.8	2.3	7.3	0.9	65.8	4.2	30.0	0.103	0.514	24.868227	-99.574168
Linares	154.00	3	2	6203	1.6	64.5	4.3	8.8	2.4	7.7	2.3	7.6	0.8	66.1	4.3	29.6	0.100	0.514	24.868177	-99.574206
T. Libramiento de Linares Norte	157.30																			
La Laja	171.00	3	1	5204	1.3	65.5	4.2	9.0	2.1	7.4	2.1	7.5	0.9	66.8	4.2	29.0	0.111	0.541	24.913313	-99.685509
La Laja	171.00	3	2	6124	1.2	65.4	4.2	9.2	2.2	7.6	2.2	7.1	0.9	66.6	4.2	29.2	0.106	0.541	24.913332	-99.685626
Montemorelos	205.00	3	1	10141	1.1	77.4	2.2	8.7	1.2	4.1	1.4	3.3	0.6	78.5	2.2	19.3	0.121	0.523	25.189713	-99.846343
Montemorelos	205.00	3	2	11138	1.0	78.3	2.0	8.4	1.2	4.0	1.3	3.2	0.6	79.3	2.0	18.7	0.104	0.523	25.189534	-99.846355
Allende	227.45	1	1	11700	1.2	76.9	2.4	8.7	1.4	4.0	1.6	3.2	0.6	78.1	2.4	19.5	0.125	0.506	25.278885	-100.022983
Allende	227.45	1	2	11997	1.1	77.0	2.4	8.7	1.4	4.1	1.5	3.2	0.6	78.1	2.4	19.5	0.104	0.506	25.279039	-100.022815
Allende	227.45	3	1	10714	1.0	80.4	2.4	8.1	1.9	3.1	1.1	1.6	0.4	81.4	2.4	16.2	0.094	0.506	25.279047	-100.022822
Allende	227.45	3	2	10460	1.0	80.7	2.4	8.1	1.8	3.0	1.1	1.6	0.3	81.7	2.4	15.9	0.095	0.506	25.278892	-100.022989
El Cercado	249.00	1	1	16163	1.2	85.3	1.5	6.4	1.3	2.1	0.8	1.2	0.2	86.5	1.5	12.0	0.103	0.518	25.399535	-100.130743
El Cercado	249.00	1	2	17398	1.3	85.0	1.5	6.5	1.3	2.2	0.8	1.2	0.2	86.3	1.5	12.2	0.092	0.518	25.399448	-100.130900
T. Der. Las Huertas	257.00	3	1	24651	1.0	87.2	1.0	6.7	0.9	1.5	0.7	0.8	0.2	88.2	1.0	10.8	0.089	0.506	25.451091	-100.162357
T. Der. Las Huertas	257.00	3	2	25237	1.0	86.0	1.1	7.5	0.9	1.8	0.7	0.8	0.2	87.0	1.1	11.9	0.101	0.506	25.451020	-100.162459
T. Izq. el Barro	266.00	3	1	34745	1.0	88.0	1.1	5.5	0.9	1.6	0.8	0.8	0.3	89.0	1.1	9.9	0.115	0.515	25.520624	-100.202857
T. Izq. el Barro	266.00	3	2	32560	1.0	87.7	1.2	5.6	1.0	1.6	0.8	0.8	0.3	88.7	1.2	10.1	0.137	0.515	25.520457	-100.203015
La Estanzuela	274.82	3	1	65633	0.6	88.4	0.6	5.2	0.6	1.5	1.9	0.6	0.6	89.0	0.6	10.4	0.085	0.513	25.578317	-100.248592
La Estanzuela	274.82	3	2	61885	0.5	88.0	0.5	5.6	0.7	1.6	2.1	0.5	0.5	88.5	0.5	11.0	0.089	0.513	25.578149	-100.248809
Monterrey (Baja)	287.00	1	1	14559	0.8	88.1	0.4	5.0	0.1	2.1	3.0	0.2	0.3	88.9	0.4	10.7	0.103	0.542	25.614237	-100.271032

TAMAULIPAS

8 CARR: Ciudad Victoria - Monterrey

CLAVE: 00462

RUTA: MEX-085

AÑO: 2020

LUGAR	ESTACION				CLASIFICACION VEHICULAR EN PORCIENTO													COORDENADAS		
	KM	TE	SC	TDPA	M	A	B	C2	C3	T3S2	T3S3	T3S2R4	OTROS	A	B	C	K'	D	LATITUD	LONGITUD
Monterrey (Alta)	287.00	1	1	53958	0.9	90.5	0.5	3.7	0.6	1.5	1.1	0.7	0.5	91.4	0.5	8.1	0.128	0.522	25.614238	-100.271051
Monterrey (Baja)	287.00	1	2	17195	0.8	87.7	0.4	5.0	0.1	2.1	3.3	0.3	0.3	88.5	0.4	11.1	0.101	0.542	25.614251	-100.271224
Monterrey (Alta)	287.00	1	2	59778	0.8	90.4	0.7	3.7	0.8	1.3	1.2	0.6	0.5	91.2	0.7	8.1	0.101	0.522	25.614251	-100.271207

9 CARR: Corredor Internacional Reynosa

CLAVE:

RUTA: MEX

AÑO: 2020

LUGAR	ESTACION				CLASIFICACION VEHICULAR EN PORCIENTO													COORDENADAS		
	KM	TE	SC	TDPA	M	A	B	C2	C3	T3S2	T3S3	T3S2R4	OTROS	A	B	C	K'	D	LATITUD	LONGITUD
T. C. Matamoros - Reynosa	0.00	3	0	1538	2.6	76.0	1.3	12.6	2.1	5.0	0.3	0.1	0.0	78.6	1.3	20.1	0.105	0.539	26.015264	-98.208317
T. Libramiento de Reynosa Sur II	7.48																			

10 CARR: Ent. Tula - Cd. Victoria

CLAVE: 00179

RUTA: MEX-101

AÑO: 2020

LUGAR	ESTACION				CLASIFICACION VEHICULAR EN PORCIENTO													COORDENADAS		
	KM	TE	SC	TDPA	M	A	B	C2	C3	T3S2	T3S3	T3S2R4	OTROS	A	B	C	K'	D	LATITUD	LONGITUD
T. C. Antiguo Morelos - El Huizache	0.00	3	0	3621	2.1	39.6	3.9	6.3	2.9	20.3	6.3	17.1	1.5	41.7	3.9	54.4	0.067	0.504	22.732722	-99.972380
Lim. Edos. Term. S. L. P. Ppia. Tamps.	2.40																			
T. Der. Tula (1º Acceso)	38.00	1	0	4952	1.4	42.4	3.8	11.9	3.0	18.1	5.0	13.4	1.0	43.8	3.8	52.4	0.061	0.515	22.986021	-99.734676
T. Der. Tula (2º Acceso)	41.95	3	0	4478	1.3	44.6	4.2	11.5	2.9	16.5	4.8	13.3	0.9	45.9	4.2	49.9	0.078	0.500	23.016840	-99.717038
Jaumave	112.68	1	0	4838	2.8	56.6	2.6	7.6	2.4	14.5	3.2	9.4	0.9	59.4	2.6	38.0	0.070	0.510	23.408229	-99.385130
Jaumave	112.68	3	0	4567	2.6	55.5	2.5	8.5	1.9	14.4	3.3	10.4	0.9	58.1	2.5	39.4	0.080	0.518	23.408235	-99.385123
T. Libramiento de Cd. Victoria	134.68																			
Cd. Victoria	180.00	1	1	4109	14.8	77.0	0.1	7.4	0.3	0.4	0.0	0.0	0.0	91.8	0.1	8.1	0.107	0.540	23.725233	-99.158995
Cd. Victoria	180.00	1	2	3494	14.8	77.0	0.1	7.5	0.3	0.3	0.0	0.0	0.0	91.8	0.1	8.1	0.128	0.540	23.725333	-99.159018

11 CARR: Estación Manuel - T. C. (Cd. Victoria - Soto La Marina)

CLAVE: 28294

RUTA: MEX-180

AÑO: 2020

LUGAR	ESTACION				CLASIFICACION VEHICULAR EN PORCIENTO													COORDENADAS		
	KM	TE	SC	TDPA	M	A	B	C2	C3	T3S2	T3S3	T3S2R4	OTROS	A	B	C	K'	D	LATITUD	LONGITUD
Estación Manuel	0.00	3	0	2589	0.9	73.8	4.6	12.7	2.8	4.0	0.3	0.7	0.2	74.7	4.6	20.7	0.090	0.505	22.732967	-98.314473
T. Der. Aldama	36.00	3	0	2613	3.3	74.1	3.2	12.8	1.0	3.9	1.0	0.5	0.2	77.4	3.2	19.4	0.086	0.512	22.922907	-98.081576
Esperanza	69.00	3	0	1413	2.0	72.0	3.2	13.8	2.0	4.8	0.9	1.1	0.2	74.0	3.2	22.8	0.092	0.511	23.173601	-97.951349
San José de Las Rusias	116.25	3	0	1605	0.9	67.8	6.3	15.8	1.5	4.8	2.2	0.5	0.2	68.7	6.3	25.0	0.105	0.503	23.550567	-98.037479
T. C. (Cd. Victoria - S. La Marina)	145.00	1	0	1900	2.2	77.8	3.0	8.3	1.7	4.3	1.3	0.9	0.5	80.0	3.0	17.0	0.096	0.538	23.733226	-98.219237

TAMAULIPAS

12 CARR: González - Llera de Canales

CLAVE: 28578

RUTA: MEX-081

AÑO: 2020

LUGAR	ESTACION				CLASIFICACION VEHICULAR EN PORCIENTO														COORDENADAS	
	KM	TE	SC	TDPA	M	A	B	C2	C3	T3S2	T3S3	T3S2R4	OTROS	A	B	C	K'	D	LATITUD	LONGITUD
González	0.00	3	0	5236	2.2	51.6	3.5	5.6	3.7	14.0	4.8	13.7	0.9	53.8	3.5	42.7	0.079	0.512	22.822902	-98.439981
Estación Ignacio Zaragoza	58.50	1	0	5328	2.2	52.2	3.7	5.4	3.8	13.7	4.8	13.3	0.9	54.4	3.7	41.9	0.093	0.506	23.190365	-98.774470
T. C. Cd. Valles - Cd. Victoria	89.00	1	0	1895	1.5	89.6	0.5	6.7	0.7	0.8	0.1	0.0	0.1	91.1	0.5	8.4	0.135	0.522	23.317179	-98.998030

13 CARR: Ignacio Zaragoza - T. C. (Ciudad Victoria - Monterrey)

CLAVE: 28625

RUTA: MEX-083

AÑO: 2020

LUGAR	ESTACION				CLASIFICACION VEHICULAR EN PORCIENTO														COORDENADAS	
	KM	TE	SC	TDPA	M	A	B	C2	C3	T3S2	T3S3	T3S2R4	OTROS	A	B	C	K'	D	LATITUD	LONGITUD
T. C. González - Llera de Canales	0.00	3	0	4929	10.3	39.8	9.3	4.5	3.0	15.1	4.2	12.9	0.9	50.1	9.3	40.6	0.095	0.500	23.199779	-98.785354
X. C. Cd. Victoria - Soto La Marina	63.45	3	0	4644	9.2	37.7	10.8	5.3	3.5	17.2	3.6	11.8	0.9	46.9	10.8	42.3	0.073	0.523	23.717541	-98.995428
X. C. Cd. Victoria - Matamoros	79.00	3	0	3385	8.5	36.5	10.6	4.7	3.2	17.2	4.2	14.3	0.8	45.0	10.6	44.4	0.088	0.503	23.850283	-99.054739
T. C. Ciudad Victoria - Monterrey	94.30	1	0	3293	10.2	37.8	9.9	4.3	2.9	16.0	4.1	13.9	0.9	48.0	9.9	42.1	0.089	0.502	23.959470	-99.105310

14 CARR: Las Urracas - T. C. (Matamoros - Reynosa)

CLAVE: 28029

RUTA: MEX-097

AÑO: 2020

LUGAR	ESTACION				CLASIFICACION VEHICULAR EN PORCIENTO														COORDENADAS	
	KM	TE	SC	TDPA	M	A	B	C2	C3	T3S2	T3S3	T3S2R4	OTROS	A	B	C	K'	D	LATITUD	LONGITUD
T. C. Cd. Victoria - Matamoros	0.00	3	0	4724	0.6	73.7	3.0	8.1	1.0	9.5	1.1	1.8	1.2	74.3	3.0	22.7	0.085	0.512	25.073278	-98.067802
La Nutria	41.00	1	0	4000	0.7	74.4	3.2	8.4	0.6	9.4	0.9	1.5	0.9	75.1	3.2	21.7	0.101	0.523	25.384342	-98.218680
Santo Domingo	91.50	1	0	5778	3.1	65.4	1.5	7.5	5.3	15.3	1.4	0.4	0.1	68.5	1.5	30.0	0.094	0.506	25.834017	-98.260093
T. C. Matamoros - Reynosa	113.25	1	1	5537	1.5	85.1	2.0	6.7	2.0	1.6	0.4	0.5	0.2	86.6	2.0	11.4	0.115	0.505	26.037026	-98.277667
T. C. Matamoros - Reynosa	113.25	1	2	5643	1.5	85.2	2.0	6.7	2.0	1.5	0.4	0.5	0.2	86.7	2.0	11.3	0.138	0.505	26.037077	-98.277827

15 CARR: Libramiento de Reynosa

CLAVE: 28008

RUTA: MEX-REY-010

AÑO: 2020

LUGAR	ESTACION				CLASIFICACION VEHICULAR EN PORCIENTO														COORDENADAS	
	KM	TE	SC	TDPA	M	A	B	C2	C3	T3S2	T3S3	T3S2R4	OTROS	A	B	C	K'	D	LATITUD	LONGITUD
T. C. Matamoros - Reynosa	0.00	3	1	35354	1.0	88.7	0.8	3.6	1.2	2.5	1.1	0.5	0.6	89.7	0.8	9.5	0.105	0.506	26.042005	-98.286477
T. C. Matamoros - Reynosa	0.00	3	2	36203	1.0	88.9	0.7	3.5	1.2	2.5	1.1	0.5	0.6	89.9	0.7	9.4	0.101	0.506	26.041440	-98.286285
T. C. Monterrey - Reynosa	10.00	1	1	33606	1.2	88.9	0.8	3.5	1.2	2.4	1.0	0.5	0.5	90.1	0.8	9.1	0.096	0.512	26.054763	-98.369968
T. C. Monterrey - Reynosa	10.00	1	2	31899	1.2	88.9	0.8	3.5	1.2	2.3	1.0	0.6	0.5	90.1	0.8	9.1	0.100	0.512	26.054688	-98.370160

TAMAULIPAS

16 CARR: Libramiento de San Fernando

CLAVE:

RUTA: MEX-101-180

AÑO: 2020

LUGAR	ESTACION				CLASIFICACION VEHICULAR EN PORCIENTO														COORDENADAS	
	KM	TE	SC	TDPA	M	A	B	C2	C3	T3S2	T3S3	T3S2R4	OTROS	A	B	C	K'	D	LATITUD	LONGITUD
T. C. Cd. Victoria - Matamoros	0.00	3	0	4805	3.1	69.2	3.7	13.2	3.4	5.1	0.5	1.6	0.2	72.3	3.7	24.0	0.094	0.504	24.775409	-98.223216
X C. San Fernando - Carboneras	14.39	1	0	4363	4.4	68.8	2.7	12.5	3.1	5.5	0.9	1.7	0.4	73.2	2.7	24.1	0.092	0.501	24.832384	-98.107836
X C. San Fernando - Carboneras	14.39	3	0	6104	2.8	72.1	2.9	12.8	2.3	4.8	0.5	1.5	0.3	74.9	2.9	22.2	0.090	0.507	24.832391	-98.107843
T. C. Cd. Victoria - Matamoros	26.46	1	0	6136	2.8	76.1	1.8	6.9	2.4	6.7	0.8	2.0	0.5	78.9	1.8	19.3	0.105	0.525	24.940097	-98.108025

17 CARR: Libramiento de San Germán

CLAVE:

RUTA: MEX-101

AÑO: 2020

LUGAR	ESTACION				CLASIFICACION VEHICULAR EN PORCIENTO														COORDENADAS	
	KM	TE	SC	TDPA	M	A	B	C2	C3	T3S2	T3S3	T3S2R4	OTROS	A	B	C	K'	D	LATITUD	LONGITUD
T. C. Cd. Victoria - Matamoros Sur	0.00	3	0	3637	0.2	71.1	3.2	10.2	0.7	6.1	2.8	4.7	1.0	71.3	3.2	25.5	0.098	0.525	25.207194	-97.931061
T. C. Cd. Victoria - Matamoros Norte	4.50																			

18 CARR: Libramiento Estación Manuel - González

CLAVE: 28002

RUTA: MEX-081

AÑO: 2020

LUGAR	ESTACION				CLASIFICACION VEHICULAR EN PORCIENTO														COORDENADAS	
	KM	TE	SC	TDPA	M	A	B	C2	C3	T3S2	T3S3	T3S2R4	OTROS	A	B	C	K'	D	LATITUD	LONGITUD
T. C. Tampico - Cd. Mante (Sur)	0.00	3	0	4245	0.9	52.6	4.8	6.4	3.5	11.3	7.2	12.4	0.9	53.5	4.8	41.7	0.080	0.505	22.707498	-98.288094
T. C. Tampico - Cd. Mante (Norte)	24.80	1	0	4445	5.7	48.7	4.8	6.6	3.5	11.5	6.8	11.5	0.9	54.4	4.8	40.8	0.071	0.512	22.842387	-98.444764

19 CARR: Libramiento General Francisco Villa

CLAVE:

RUTA: MEX-101-180

AÑO: 2020

LUGAR	ESTACION				CLASIFICACION VEHICULAR EN PORCIENTO														COORDENADAS	
	KM	TE	SC	TDPA	M	A	B	C2	C3	T3S2	T3S3	T3S2R4	OTROS	A	B	C	K'	D	LATITUD	LONGITUD
T. C. Cd. Victoria - Matamoros (Sur)	0.00	3	0	6469	2.9	64.3	3.7	8.8	2.8	8.8	1.9	6.2	0.6	67.2	3.7	29.1	0.074	0.503	25.001628	-98.084068
T. C. Cd. Victoria - Matamoros (Norte)	6.40	1	0	6089	5.1	69.1	4.1	9.8	2.8	5.7	0.8	1.9	0.7	74.2	4.1	21.7	0.093	0.548	25.048617	-98.071304

20 CARR: Matamoros - Playa Lauro Villar

CLAVE: 28078

RUTA: MEX-002

AÑO: 2020

LUGAR	ESTACION				CLASIFICACION VEHICULAR EN PORCIENTO														COORDENADAS	
	KM	TE	SC	TDPA	M	A	B	C2	C3	T3S2	T3S3	T3S2R4	OTROS	A	B	C	K'	D	LATITUD	LONGITUD
Matamoros	0.00	3	1	12406	1.2	85.0	1.8	4.8	2.0	2.8	2.2	0.1	0.1	86.2	1.8	12.0	0.090	0.511	25.863764	-97.479594
Matamoros	0.00	3	2	11853	1.2	85.0	1.7	4.8	2.0	2.9	2.2	0.1	0.1	86.2	1.7	12.1	0.083	0.511	25.863861	-97.479518
Playa Lauro Villar	37.00																			

TAMAULIPAS

21 CARR: Matamoros - Reynosa

CLAVE: 28077

RUTA: MEX-002

AÑO: 2020

LUGAR	ESTACION				CLASIFICACION VEHICULAR EN PORCIENTO													COORDENADAS		
	KM	TE	SC	TDPA	M	A	B	C2	C3	T3S2	T3S3	T3S2R4	OTROS	A	B	C	K'	D	LATITUD	LONGITUD
Matamoros	0.00	3	0	11679	1.3	79.9	3.7	7.8	2.3	3.6	0.6	0.6	0.2	81.2	3.7	15.1	0.098	0.502	25.889520	-97.529221
T. C. Matamoros - Reynosa (Cuota)	26.50																			
Empalme	38.00	1	0	3963	3.5	76.5	2.1	11.2	2.7	2.8	1.0	0.1	0.1	80.0	2.1	17.9	0.099	0.512	25.901957	-97.806320
T. Der. Nuevo Progreso	57.00	1	0	3690	1.4	79.7	1.9	12.6	1.9	2.1	0.3	0.1	0.0	81.1	1.9	17.0	0.104	0.519	25.949696	-97.969883
Río Bravo	67.00	1	0	5949	2.3	81.9	1.5	8.1	2.2	2.1	0.7	0.8	0.4	84.2	1.5	14.3	0.100	0.509	25.984956	-98.089188
Río Bravo	67.00	3	1	10196	1.1	89.3	2.2	5.6	1.1	0.2	0.2	0.2	0.1	90.4	2.2	7.4	0.149	0.501	25.985203	-98.089627
Río Bravo	67.00	3	2	10160	1.1	89.3	2.2	5.6	1.1	0.2	0.2	0.2	0.1	90.4	2.2	7.4	0.144	0.501	25.985037	-98.089653
T. Izq. Aeropuerto	85.65	3	1	34195	2.6	75.3	4.2	12.0	2.2	1.7	1.8	0.1	0.1	77.9	4.2	17.9	0.108	0.511	26.019815	-98.225974
T. Izq. Aeropuerto	85.65	3	2	32609	2.6	75.4	4.2	12.0	2.2	1.7	1.8	0.1	0.0	78.0	4.2	17.8	0.120	0.511	26.019594	-98.226017
Reynosa	98.00	1	1	40460	0.4	78.5	1.8	12.0	1.5	2.5	1.9	0.8	0.6	78.9	1.8	19.3	0.111	0.507	26.041564	-98.285839
Reynosa	98.00	1	2	39234	0.4	78.5	1.8	12.0	1.5	2.4	1.9	0.9	0.6	78.9	1.8	19.3	0.113	0.507	26.041333	-98.286155

22 CARR: Monterrey - Mier

CLAVE: 00127

RUTA: MEX-054

AÑO: 2020

LUGAR	ESTACION				CLASIFICACION VEHICULAR EN PORCIENTO													COORDENADAS		
	KM	TE	SC	TDPA	M	A	B	C2	C3	T3S2	T3S3	T3S2R4	OTROS	A	B	C	K'	D	LATITUD	LONGITUD
Monterrey	0.00																			
Apodaca	19.12	1	1	75811	3.6	85.4	1.4	3.4	1.3	1.4	2.1	0.6	0.8	89.0	1.4	9.6	0.079	0.513	25.776255	-100.185968
Apodaca	19.12	1	2	80598	3.6	85.4	1.4	3.4	1.3	1.4	2.1	0.6	0.8	89.0	1.4	9.6	0.081	0.513	25.776379	-100.186022
X. C. Libramiento Noroeste de Monterrey	21.30	3	1	52923	3.7	85.0	1.2	4.0	1.2	2.4	1.4	0.8	0.3	88.7	1.2	10.1	0.080	0.504	25.783174	-100.164836
X. C. Libramiento Noroeste de Monterrey	21.30	3	2	51860	4.0	84.9	1.3	3.7	1.3	2.4	1.3	0.8	0.3	88.9	1.3	9.8	0.075	0.504	25.783299	-100.164920
X. C. Zacatecas - Pesquería	28.15	1	1	15194	2.1	82.2	1.1	7.4	2.4	2.2	1.5	0.8	0.3	84.3	1.1	14.6	0.108	0.510	25.801374	-100.100716
X. C. Zacatecas - Pesquería	28.15	1	2	15816	1.9	82.1	1.1	7.9	2.3	2.2	1.4	0.8	0.3	84.0	1.1	14.9	0.081	0.510	25.801417	-100.100832
X. C. Zacatecas - Pesquería	28.15	3	0	9144	4.1	74.4	1.4	10.0	2.6	3.9	1.2	2.0	0.4	78.5	1.4	20.1	0.078	0.522	25.801413	-100.100771
X. C. Hacienda Guadalupe - Higuera	38.10	1	0	7101	4.0	74.8	1.7	8.8	2.4	4.0	1.4	2.3	0.6	78.8	1.7	19.5	0.083	0.501	25.856047	-100.023435
X. C. Hacienda Guadalupe - Higuera	38.10	3	0	3849	3.4	73.4	1.6	10.5	1.3	3.6	1.1	4.7	0.4	76.8	1.6	21.6	0.093	0.531	25.856049	-100.023428
Dr. González	47.60	1	0	1402	1.9	82.8	1.7	8.4	1.7	1.9	0.5	0.6	0.5	84.7	1.7	13.6	0.101	0.528	25.858464	-99.942165
Dr. González	47.60	3	0	348	6.9	75.9	4.9	9.0	1.6	0.6	0.4	0.6	0.1	82.8	4.9	12.3	0.109	0.522	25.858469	-99.942161
T. Der. Empalme Los Ramones	74.10	1	0	2355	2.9	69.2	1.6	9.9	1.5	3.0	1.3	10.3	0.3	72.1	1.6	26.3	0.092	0.511	25.927759	-99.718703
Cerralvo	95.95	1	0	3303	3.0	69.4	1.1	9.6	1.4	4.1	1.2	9.9	0.3	72.4	1.1	26.5	0.094	0.511	26.086787	-99.619260
Gral. Treviño	115.80	3	0	1800	2.3	64.9	1.7	9.0	1.8	5.4	1.6	12.8	0.5	67.2	1.7	31.1	0.108	0.507	26.223550	-99.479442
Lim. Edos. Term. N. L. Ppia. Tamps.	131.80																			
Mier	156.21	1	0	1737	2.0	76.6	12.3	1.3	2.5	5.1	0.2	0.0	0.0	78.6	12.3	9.1	0.120	0.518	26.429969	-99.155706

TAMAULIPAS

23 CARR: Monterrey - Nuevo Laredo (Libre)

CLAVE: 00463

RUTA: MEX-085

AÑO: 2020

LUGAR	ESTACION				CLASIFICACION VEHICULAR EN PORCIENTO										COORDENADAS					
	KM	TE	SC	TDPA	M	A	B	C2	C3	T3S2	T3S3	T3S2R4	OTROS	A	B	C	K'	D	LATITUD	LONGITUD
Monterrey	0.00																			
T. Izq. Gral. Escobedo (Lateral)	12.10	3	1	16193	2.3	75.5	1.5	17.1	1.0	1.0	0.9	0.3	0.4	77.8	1.5	20.7	0.078	0.500	25.780772	-100.285930
T. Izq. Gral. Escobedo (Central)	12.10	3	1	40328	0.8	85.9	0.7	3.6	0.8	2.9	3.6	0.7	1.0	86.7	0.7	12.6	0.077	0.500	25.780797	-100.286031
T. Izq. Gral. Escobedo (Central)	12.10	3	2	40338	0.8	85.7	0.8	3.6	0.8	2.9	3.6	0.7	1.1	86.5	0.8	12.7	0.096	0.500	25.780797	-100.286031
T. Izq. Gral. Escobedo (Lateral)	12.10	3	2	16197	2.3	75.7	1.5	17.0	1.0	0.9	0.9	0.3	0.4	78.0	1.5	20.5	0.099	0.500	25.780816	-100.286215
X. C. Libramiento Noroeste de Monterrey (Lateral)	16.00	1	1	5212	1.9	68.9	0.9	21.9	1.7	3.2	0.8	0.4	0.3	70.8	0.9	28.3	0.081	0.522	25.831394	-100.257412
X. C. Libramiento Noroeste de Monterrey (Central)	16.00	1	1	29395	1.2	84.4	0.7	4.5	1.2	2.4	4.3	0.6	0.7	85.6	0.7	13.7	0.083	0.515	25.831394	-100.257325
X. C. Libramiento Noroeste de Monterrey (Central)	16.00	1	2	27508	1.2	84.3	0.7	4.5	1.3	2.4	4.3	0.6	0.7	85.5	0.7	13.8	0.095	0.515	25.831394	-100.257325
X. C. Libramiento Noroeste de Monterrey (Lateral)	16.00	1	2	4774	1.9	68.9	1.0	21.7	1.8	3.3	0.7	0.4	0.3	70.8	1.0	28.2	0.135	0.522	25.831392	-100.257505
X. C. Libramiento Noroeste de Monterrey	16.00	3	1	42915	4.1	68.3	2.3	6.4	3.8	9.3	3.3	1.6	0.9	72.4	2.3	25.3	0.094	0.502	25.831553	-100.257231
X. C. Libramiento Noroeste de Monterrey	16.00	3	2	43363	4.0	68.4	2.3	6.3	3.2	9.7	3.6	1.7	0.8	72.4	2.3	25.3	0.084	0.502	25.831559	-100.257449
X. C. Santa Rosa - Salinas Victoria	20.19	3	1	32478	3.3	70.6	1.9	7.7	2.7	9.3	2.1	1.6	0.8	73.9	1.9	24.2	0.094	0.507	25.852269	-100.242709
X. C. Santa Rosa - Salinas Victoria	20.19	3	2	31535	3.2	70.7	1.9	7.7	2.7	9.3	2.1	1.6	0.8	73.9	1.9	24.2	0.089	0.507	25.852396	-100.242866
T. C. Monterrey - Nuevo Laredo (Cuota)	23.99																			
Ciénega de Flores	32.00	1	0	20919	1.6	76.1	1.0	11.5	1.3	7.0	0.8	0.4	0.3	77.7	1.0	21.3	0.080	0.512	25.953934	-100.166695
T. Der. Agualeguas	78.23	3	0	6110	1.0	47.4	2.5	13.3	2.8	28.8	1.7	1.4	1.1	48.4	2.5	49.1	0.083	0.502	26.329864	-100.109641
Sabinas Hidalgo	98.90	3	0	5705	1.5	50.8	2.6	12.9	2.1	26.5	1.3	1.6	0.7	52.3	2.6	45.1	0.072	0.514	26.506738	-100.175119
Vallecillos	124.40	3	0	3729	3.2	38.1	2.6	13.8	3.0	35.4	1.7	1.5	0.7	41.3	2.6	56.1	0.078	0.542	26.659717	-99.985638
T. Izq. Anáhuac	156.80	1	0	3935	2.3	43.6	2.8	9.3	3.5	34.7	1.7	1.3	0.8	45.9	2.8	51.3	0.068	0.508	26.900314	-99.812235
T. Izq. Anáhuac	156.80	3	1	7182	0.3	29.6	4.4	8.5	2.9	49.8	1.8	1.8	0.9	29.9	4.4	65.7	0.083	0.512	26.900008	-99.811409
T. Izq. Anáhuac	156.80	3	2	6851	0.3	29.6	4.4	8.5	2.9	49.8	1.9	1.7	0.9	29.9	4.4	65.7	0.074	0.512	26.900113	-99.811722
Lim. Edos. Term. N. L. Ppia. Tamps.	184.56																			
T. Der. Mier	205.90	1	1	8944	1.3	37.0	4.1	8.6	3.4	41.3	1.7	1.8	0.8	38.3	4.1	57.6	0.089	0.510	27.302893	-99.597376
T. Der. Mier	205.90	1	2	9298	1.2	37.2	4.1	8.6	3.3	41.3	1.7	1.8	0.8	38.4	4.1	57.5	0.071	0.510	27.302950	-99.597497
T. Der. Mier	205.90	3	1	9499	1.1	42.3	3.5	9.7	5.9	34.2	1.3	1.3	0.7	43.4	3.5	53.1	0.086	0.514	27.303152	-99.597226
T. Der. Mier	205.90	3	2	8973	1.1	42.3	3.5	9.7	5.8	34.2	1.4	1.3	0.7	43.4	3.5	53.1	0.079	0.514	27.303219	-99.597345
Nuevo Laredo	228.00	1	1	9678	1.1	67.6	2.2	8.4	3.2	14.2	1.3	1.2	0.8	68.7	2.2	29.1	0.091	0.514	27.451314	-99.517805
Nuevo Laredo	228.00	1	2	9165	1.1	67.7	2.2	8.4	3.1	14.2	1.3	1.2	0.8	68.8	2.2	29.0	0.088	0.514	27.451415	-99.518050

24 CARR: Monterrey - Reynosa (Libre)

CLAVE: 00088

RUTA: MEX-040

AÑO: 2020

LUGAR	ESTACION				CLASIFICACION VEHICULAR EN PORCIENTO										COORDENADAS					
	KM	TE	SC	TDPA	M	A	B	C2	C3	T3S2	T3S3	T3S2R4	OTROS	A	B	C	K'	D	LATITUD	LONGITUD
T. C. Monterrey - Mier	0.00																			
Villa Juárez	19.10	1	1	24631	2.2	87.0	0.3	7.3	0.6	0.8	1.3	0.2	0.3	89.2	0.3	10.5	0.087	0.510	25.645319	-100.095643

TAMAULIPAS

24 CARR: Monterrey - Reynosa (Libre)

CLAVE: 00088

RUTA: MEX-040

AÑO: 2020

LUGAR	ESTACION				CLASIFICACION VEHICULAR EN PORCIENTO										COORDENADAS					
	KM	TE	SC	TDPA	M	A	B	C2	C3	T3S2	T3S3	T3S2R4	OTROS	A	B	C	K'	D	LATITUD	LONGITUD
Villa Juárez	19.10	1	2	22325	1.8	86.3	0.3	8.3	0.6	0.8	1.4	0.2	0.3	88.1	0.3	11.6	0.076	0.510	25.645371	-100.095606
Villa Juárez	19.10	3	1	11127	1.2	84.8	0.7	9.2	1.2	1.2	1.3	0.2	0.2	86.0	0.7	13.3	0.079	0.504	25.645315	-100.095635
Villa Juárez	19.10	3	2	11286	1.2	84.6	0.8	9.3	1.2	1.2	1.3	0.2	0.2	85.8	0.8	13.4	0.100	0.504	25.645365	-100.095594
Puente Cadereyta	30.50	2	1	2458	1.3	71.2	0.4	4.1	3.7	11.1	2.3	5.1	0.8	72.5	0.4	27.1	0.091	0.500	25.601114	-100.005696
Puente Cadereyta	30.50	2	2	2458	1.3	71.2	0.4	4.1	3.7	11.1	2.3	5.1	0.8	72.5	0.4	27.1	0.091	0.500	25.601114	-100.005696
Refinería de Cadereyta	33.00	3	0	4597	3.8	75.1	2.0	7.4	1.9	5.4	2.0	1.6	0.8	78.9	2.0	19.1	0.077	0.502	25.596269	-99.937874
T. Izq. Los Ramones	68.78	3	0	2527	1.4	73.1	2.4	8.9	2.0	8.7	2.6	0.5	0.4	74.5	2.4	23.1	0.104	0.517	25.617153	-99.632414
China	114.10																			
Gral. Bravo	125.00	1	0	4196	1.1	80.3	2.2	5.4	1.2	5.4	1.9	1.6	0.9	81.4	2.2	16.4	0.083	0.507	25.792803	-99.180410
T. C. Cadereyta - Reynosa (Cuota)	178.00																			
Lim. Edos. Term. N. L. Ppia. Tamps.	192.00																			
T. Izq. Díaz Ordáz	192.55	1	1	4943	2.1	61.5	3.4	8.3	2.1	15.6	2.3	4.4	0.3	63.6	3.4	33.0	0.124	0.500	25.971222	-98.584314
T. Izq. Díaz Ordáz	192.55	1	2	4953	2.0	61.4	3.5	8.3	2.2	15.7	2.3	4.3	0.3	63.4	3.5	33.1	0.107	0.500	25.971723	-98.584409
T. Der. Libramiento de Reynosa Sur II	206.33	1	1	5032	2.0	61.6	3.5	8.2	2.1	15.6	2.4	4.3	0.3	63.6	3.5	32.9	0.104	0.502	26.020178	-98.457833
T. Der. Libramiento de Reynosa Sur II	206.33	1	2	4986	1.9	61.5	3.5	8.3	2.2	15.7	2.3	4.3	0.3	63.4	3.5	33.1	0.130	0.502	26.020684	-98.458001
Reynosa	225.00	1	1	17912	1.4	81.7	2.2	7.2	1.3	4.1	0.7	1.2	0.2	83.1	2.2	14.7	0.090	0.504	26.054682	-98.370154
Reynosa	225.00	1	2	18206	1.3	82.1	2.1	7.1	1.3	4.0	0.7	1.2	0.2	83.4	2.1	14.5	0.088	0.504	26.054892	-98.370489

25 CARR: Paras - Nueva Ciudad Guerrero

CLAVE: 00476

RUTA: MEX-030

AÑO: 2020

LUGAR	ESTACION				CLASIFICACION VEHICULAR EN PORCIENTO										COORDENADAS					
	KM	TE	SC	TDPA	M	A	B	C2	C3	T3S2	T3S3	T3S2R4	OTROS	A	B	C	K'	D	LATITUD	LONGITUD
Paras	0.00	3	0	342	0.6	73.9	1.3	15.4	1.0	2.3	2.0	3.5	0.0	74.5	1.3	24.2	0.076	0.502	26.502340	-99.523667
Lim. Edos. Term. N. L. Ppia. Tamps.	13.10																			
T. C. Reynosa - (T. C. Monterrey - Nuevo Laredo)	32.00	1	0	279	0.0	76.7	0.6	14.1	0.9	1.5	1.3	4.9	0.0	76.7	0.6	22.7	0.190	0.523	26.557341	-99.243138

26 CARR: Petrocel - Puerto Industrial Altamira

CLAVE:

RUTA: MEX-080

AÑO: 2020

LUGAR	ESTACION				CLASIFICACION VEHICULAR EN PORCIENTO										COORDENADAS					
	KM	TE	SC	TDPA	M	A	B	C2	C3	T3S2	T3S3	T3S2R4	OTROS	A	B	C	K'	D	LATITUD	LONGITUD
Petrocel	0.00	3	1	12713	2.8	89.9	0.7	4.1	0.4	0.9	0.7	0.3	0.2	92.7	0.7	6.6	0.106	0.543	22.374605	-97.903350
Petrocel	0.00	3	2	10715	2.7	90.0	0.7	4.1	0.4	0.9	0.7	0.3	0.2	92.7	0.7	6.6	0.123	0.543	22.374686	-97.903460
T. Izq. Altamira	3.80	3	1	8515	3.0	90.0	0.4	3.8	0.4	0.8	0.8	0.5	0.3	93.0	0.4	6.6	0.132	0.509	22.405050	-97.890014
T. Izq. Altamira	3.80	3	2	8814	3.1	88.8	0.5	4.4	0.6	1.0	0.8	0.5	0.3	91.9	0.5	7.6	0.125	0.509	22.405057	-97.890243
Puerto Industrial Altamira	10.60																			

TAMAULIPAS

27 CARR: Piedras Negras - Nuevo Laredo

CLAVE: 00503

RUTA: MEX-002

AÑO: 2020

LUGAR	ESTACION				CLASIFICACION VEHICULAR EN PORCIENTO														COORDENADAS	
	KM	TE	SC	TDPA	M	A	B	C2	C3	T3S2	T3S3	T3S2R4	OTROS	A	B	C	K'	D	LATITUD	LONGITUD
T. C. Monclova - Piedras Negras	0.00	3	1	4318	1.4	69.9	1.1	13.7	3.1	8.3	1.0	0.8	0.7	71.3	1.1	27.6	0.091	0.511	28.646424	-100.556351
T. C. Monclova - Piedras Negras	0.00	3	2	4125	1.4	70.0	1.1	13.8	2.9	8.4	1.0	0.7	0.7	71.4	1.1	27.5	0.094	0.511	28.646586	-100.556267
El Saucito	16.90	3	0	1264	3.4	60.0	1.7	17.1	3.4	9.0	1.1	3.6	0.7	63.4	1.7	34.9	0.089	0.508	28.502795	-100.467866
T. Der. Villa Unión	37.00	1	0	1143	3.7	59.3	1.9	16.6	3.5	9.2	1.1	4.0	0.7	63.0	1.9	35.1	0.090	0.504	28.337758	-100.389948
T. Der. Villa Unión	37.00	3	0	1029	5.5	52.0	2.8	15.8	2.9	12.1	1.9	6.5	0.5	57.5	2.8	39.7	0.097	0.506	28.337744	-100.389953
Guerrero	42.00	3	0	876	5.8	53.9	3.0	14.7	3.1	12.1	1.5	5.5	0.4	59.7	3.0	37.3	0.106	0.505	28.308235	-100.367604
Lim. Edos. Term. Coah. Ppia. N. L.	124.40																			
T. C. Monclova - Colombia	134.00	3	0	2902	4.0	59.4	1.8	15.2	2.9	11.9	2.0	2.2	0.6	63.4	1.8	34.8	0.096	0.511	27.689444	-99.779863
Lim. Edos. Term. N. L. Ppia. Tamps.	138.20																			
T. Der. Libramiento de Nuevo Laredo	157.70	1	1	3984	9.5	44.8	1.3	7.7	10.8	22.5	1.2	1.2	1.0	54.3	1.3	44.4	0.097	0.511	27.567735	-99.589395
T. Der. Libramiento de Nuevo Laredo	157.70	1	2	4163	8.4	43.2	1.3	7.6	11.0	25.0	1.4	1.1	1.0	51.6	1.3	47.1	0.085	0.511	27.567799	-99.589281
Nuevo Laredo	175.00	1	1	7710	0.9	52.4	1.8	13.6	8.6	19.3	1.9	0.7	0.8	53.3	1.8	44.9	0.102	0.528	27.517954	-99.562402
Nuevo Laredo	175.00	1	2	6895	1.0	52.3	1.8	13.6	8.7	19.2	1.9	0.7	0.8	53.3	1.8	44.9	0.108	0.528	27.517992	-99.562332

28 CARR: Ramal a Puente Tampico

CLAVE: 28020

RUTA: MEX-180

AÑO: 2020

LUGAR	ESTACION				CLASIFICACION VEHICULAR EN PORCIENTO														COORDENADAS	
	KM	TE	SC	TDPA	M	A	B	C2	C3	T3S2	T3S3	T3S2R4	OTROS	A	B	C	K'	D	LATITUD	LONGITUD
T. C. Tuxpam - Tampico	186.00	3	1	3591	3.0	72.7	3.5	7.3	1.8	4.9	2.4	3.9	0.5	75.7	3.5	20.8	0.133	0.509	22.171009	-97.829270
T. C. Tuxpam - Tampico	186.00	3	2	3722	3.1	72.7	3.3	6.8	1.6	5.7	3.0	2.9	0.9	75.8	3.3	20.9	0.106	0.509	22.171018	-97.829274
Lim. Edos. Term. Ver. Ppia. Tamps.	193.12																			
Puente Tampico	193.12	1	1	3896	0.4	89.5	2.5	4.9	1.0	0.9	0.4	0.3	0.1	89.9	2.5	7.6	0.139	0.549	22.227600	-97.835702
Puente Tampico	193.12	1	2	4742	0.5	89.1	2.4	5.8	0.7	0.8	0.3	0.3	0.1	89.6	2.4	8.0	0.113	0.549	22.227511	-97.835760
Tampico	194.36																			

29 CARR: Ramal de Acceso a Puente Anzaldúas

CLAVE: 28619

RUTA: MEX

AÑO: 2020

LUGAR	ESTACION				CLASIFICACION VEHICULAR EN PORCIENTO														COORDENADAS	
	KM	TE	SC	TDPA	M	A	B	C2	C3	T3S2	T3S3	T3S2R4	OTROS	A	B	C	K'	D	LATITUD	LONGITUD
T. C. Monterrey - Reynosa	0.00	3	1	5737	1.8	82.1	0.8	9.2	1.3	1.8	1.2	1.2	0.6	83.9	0.8	15.3	0.110	0.503	26.054941	-98.370372
T. C. Monterrey - Reynosa	0.00	3	2	5807	1.7	82.1	0.8	9.3	1.3	1.8	1.2	1.2	0.6	83.8	0.8	15.4	0.107	0.503	26.054894	-98.370492
Puente Anzaldúas	6.20																			

TAMAULIPAS

30 CARR: Ramal de Acceso al Puente Internacional Laredo III

CLAVE:

RUTA: MEX

AÑO: 2020

LUGAR	ESTACION				CLASIFICACION VEHICULAR EN PORCIENTO													COORDENADAS			
	KM	TE	SC	TDPA	M	A	B	C2	C3	T3S2	T3S3	T3S2R4	OTROS	A	B	C	K'	D	LATITUD	LONGITUD	
T. C. Piedras Negras - Nuevo Laredo	0.00																				
Plaza de Cobro Puente Internacional Nuevo Laredo III	5.20	2	0	5251	0.0	2.6	0.0	7.6	18.5	70.7	0.3	0.0	0.3	2.6	0.0	97.4	0.090	0.500	27.595078	-99.541522	

31 CARR: Reynosa - Nuevo Laredo

CLAVE: 28076

RUTA: MEX-002

AÑO: 2020

LUGAR	ESTACION				CLASIFICACION VEHICULAR EN PORCIENTO													COORDENADAS		
	KM	TE	SC	TDPA	M	A	B	C2	C3	T3S2	T3S3	T3S2R4	OTROS	A	B	C	K'	D	LATITUD	LONGITUD
Reynosa	0.00	3	1	3540	0.9	82.8	2.8	8.5	0.9	1.4	0.7	1.9	0.1	83.7	2.8	13.5	0.081	0.508	26.142302	-98.344000
Reynosa	0.00	3	2	3659	0.8	82.7	2.8	8.7	0.9	1.4	0.8	1.8	0.1	83.5	2.8	13.7	0.090	0.508	26.142301	-98.344005
X. C. Los Dos Estados - Gustavo Díaz Ordáz	35.68	3	0	4661	1.2	79.3	1.5	8.6	1.2	3.3	1.1	3.2	0.6	80.5	1.5	18.0	0.088	0.528	26.211468	-98.590335
Cd. Camargo	63.40	3	0	3857	1.2	75.5	1.6	9.0	1.5	3.6	1.5	5.8	0.3	76.7	1.6	21.7	0.105	0.535	26.305365	-98.834815
Los Guerra	92.77	3	0	2695	1.5	73.0	1.7	8.5	1.3	4.6	1.6	7.4	0.4	74.5	1.7	23.8	0.115	0.515	26.392383	-99.079883
Mier	102.35	3	0	776	1.8	63.3	2.8	16.6	2.8	6.4	2.4	3.7	0.2	65.1	2.8	32.1	0.138	0.511	26.430735	-99.147869
T. Der. Nueva Cd. Guerrero (2º Acceso)	122.67	3	0	884	0.3	60.7	1.4	23.3	2.3	6.5	1.1	4.3	0.1	61.0	1.4	37.6	0.102	0.520	26.557365	-99.243112
T. C. Monterrey - Nuevo Laredo	221.08	1	0	648	2.4	59.5	1.7	20.5	3.3	4.8	0.7	6.8	0.3	61.9	1.7	36.4	0.111	0.521	27.302893	-99.597375

32 CARR: Soto La Marina - La Coma

CLAVE: 28052

RUTA: MEX-180

AÑO: 2020

LUGAR	ESTACION				CLASIFICACION VEHICULAR EN PORCIENTO													COORDENADAS		
	KM	TE	SC	TDPA	M	A	B	C2	C3	T3S2	T3S3	T3S2R4	OTROS	A	B	C	K'	D	LATITUD	LONGITUD
Soto La Marina	0.00	3	0	2329	4.4	69.7	3.7	12.6	1.9	4.4	1.2	1.3	0.8	74.1	3.7	22.2	0.103	0.506	23.769594	-98.203446
La Coma	86.00	1	0	875	4.5	77.7	4.0	10.4	0.8	1.4	0.7	0.3	0.2	82.2	4.0	13.8	0.096	0.517	24.464546	-98.341323

33 CARR: Tampico - Cd. Mante

CLAVE: 28163

RUTA: MEX-080

AÑO: 2020

LUGAR	ESTACION				CLASIFICACION VEHICULAR EN PORCIENTO													COORDENADAS			
	KM	TE	SC	TDPA	M	A	B	C2	C3	T3S2	T3S3	T3S2R4	OTROS	A	B	C	K'	D	LATITUD	LONGITUD	
Tampico	0.00																				
Cd. Madero	9.40																				
T. Der. Cyanaquim	14.79	1	1	32577	1.7	87.2	0.4	3.5	0.7	2.0	2.7	0.9	0.9	88.9	0.4	10.7	0.080	0.523	22.373581	-97.903955	
T. Der. Cyanaquim	14.79	1	2	29386	2.1	86.1	0.4	3.8	0.7	2.1	2.8	1.0	1.0	88.2	0.4	11.4	0.089	0.523	22.371682	-97.903750	
Altamira	24.00	1	1	28275	1.9	90.1	1.0	4.7	0.9	0.7	0.3	0.3	0.1	92.0	1.0	7.0	0.081	0.507	22.403368	-97.928025	
Altamira	24.00	1	2	29212	2.6	90.5	0.8	4.2	0.8	0.6	0.2	0.2	0.1	93.1	0.8	6.1	0.085	0.507	22.403316	-97.928200	
Altamira	24.00	3	1	8721	6.3	72.6	2.4	9.4	3.2	3.7	0.9	1.0	0.5	78.9	2.4	18.7	0.086	0.514	22.403365	-97.928022	
Altamira	24.00	3	2	8244	6.1	70.9	3.2	10.4	3.4	3.7	0.9	0.9	0.5	77.0	3.2	19.8	0.078	0.514	22.403310	-97.928193	

TAMAULIPAS

33 CARR: Tampico - Cd. Mante

CLAVE: 28163

RUTA: MEX-080

AÑO: 2020

LUGAR	ESTACION				CLASIFICACION VEHICULAR EN PORCIENTO												COORDENADAS			
	KM	TE	SC	TDPA	M	A	B	C2	C3	T3S2	T3S3	T3S2R4	OTROS	A	B	C	K'	D	LATITUD	LONGITUD
T. Der. Lomas del Real	33.00	3	1	7422	5.4	68.0	2.8	6.8	2.7	4.7	2.8	6.2	0.6	73.4	2.8	23.8	0.095	0.501	22.472033	-97.992259
T. Der. Lomas del Real	33.00	3	2	7439	4.8	64.7	3.3	7.7	3.0	5.7	3.0	7.2	0.6	69.5	3.3	27.2	0.092	0.501	22.471857	-97.992313
Cuauhtémoc	55.80	3	1	3285	0.6	54.3	4.6	6.1	3.5	11.8	4.9	13.4	0.8	54.9	4.6	40.5	0.080	0.506	22.551847	-98.147874
Cuauhtémoc	55.80	3	2	3363	0.4	52.8	5.5	6.2	3.5	12.2	5.1	13.6	0.7	53.2	5.5	41.3	0.089	0.506	22.551735	-98.147935
T. Libramiento Estación Manuel - González	73.72																			
Estación Manuel	78.12	1	1	3472	0.5	52.8	5.3	8.0	2.7	11.1	5.2	13.5	0.9	53.3	5.3	41.4	0.080	0.508	22.731642	-98.314633
Estación Manuel	78.12	1	2	3585	0.6	55.5	5.0	8.7	2.6	10.1	4.7	11.9	0.9	56.1	5.0	38.9	0.086	0.508	22.731556	-98.314667
González	96.00	3	0	2096	1.8	70.5	2.5	10.4	2.6	3.2	2.3	5.8	0.9	72.3	2.5	25.2	0.105	0.537	22.823567	-98.429860
Magiscatzín	122.50	3	0	1510	2.2	74.9	2.7	6.3	2.6	3.8	1.8	5.2	0.5	77.1	2.7	20.2	0.099	0.508	22.806016	-98.697857
Faja de Oro	143.00	3	0	1866	1.3	72.1	2.4	10.1	4.0	3.1	1.8	4.9	0.3	73.4	2.4	24.2	0.094	0.518	22.727540	-98.862191
T. C. Cd. Valles - Cd. Victoria	155.00	1	0	2957	1.4	77.5	1.8	10.9	1.7	3.0	1.0	2.4	0.3	78.9	1.8	19.3	0.099	0.543	22.726480	-98.966250

34 CARR: Tuxpam - Tampico

CLAVE: 00529

RUTA: MEX-180

AÑO: 2020

LUGAR	ESTACION				CLASIFICACION VEHICULAR EN PORCIENTO												COORDENADAS			
	KM	TE	SC	TDPA	M	A	B	C2	C3	T3S2	T3S3	T3S2R4	OTROS	A	B	C	K'	D	LATITUD	LONGITUD
Tuxpam	0.00	3	0	6098	4.7	75.2	3.7	11.2	0.7	2.4	0.7	0.7	0.7	79.9	3.7	16.4	0.076	0.506	20.953274	-97.410501
T. Izq. La Lajuela	28.70	1	0	2427	3.4	80.9	2.7	9.7	0.9	1.3	0.4	0.5	0.2	84.3	2.7	13.0	0.086	0.501	21.046481	-97.620125
T. Izq. Tempoal de Sánchez	45.20	1	0	3944	2.6	77.2	1.4	18.0	0.2	0.4	0.1	0.1	0.0	79.8	1.4	18.8	0.092	0.522	21.093719	-97.730986
T. Izq. Tempoal de Sánchez	45.20	3	0	5577	1.4	71.0	3.0	10.0	3.4	7.3	2.1	1.5	0.3	72.4	3.0	24.6	0.075	0.507	21.093706	-97.730987
Cerro Azul	56.66	1	0	8027	2.1	71.3	4.0	8.0	1.4	7.4	2.6	2.9	0.3	73.4	4.0	22.6	0.080	0.510	21.189767	-97.749349
T. Der. Zacamixtle	64.50	1	0	5457	2.1	70.4	4.2	8.3	1.4	7.2	3.1	3.0	0.3	72.5	4.2	23.3	0.085	0.513	21.250620	-97.733484
T. Der. Zacamixtle	64.50	3	0	5468	2.1	70.3	4.3	8.4	1.4	7.2	3.1	2.9	0.3	72.4	4.3	23.3	0.081	0.512	21.250620	-97.733496
T. Izq. Naranjos	78.60	1	0	5972	2.9	70.3	3.4	8.7	2.1	6.7	2.5	2.9	0.5	73.2	3.4	23.4	0.077	0.501	21.338259	-97.687253
T. Izq. Naranjos	78.60	3	0	8797	12.2	70.5	2.2	6.5	1.7	4.2	1.4	1.1	0.2	82.7	2.2	15.1	0.074	0.505	21.362132	-97.684758
T. Der. El Añoño	81.50	3	0	2494	4.3	82.6	0.6	5.2	1.9	2.8	1.6	0.6	0.4	86.9	0.6	12.5	0.083	0.503	21.372861	-97.684158
T. Der. Campo Mamey	94.39	3	0	4332	4.8	64.4	5.9	10.5	3.0	7.3	2.0	1.4	0.7	69.2	5.9	24.9	0.088	0.504	21.456841	-97.762543
T. Der. Ozuluama	124.42	1	0	4125	2.1	56.3	6.1	9.5	3.6	10.0	4.2	7.4	0.8	58.4	6.1	35.5	0.074	0.510	21.675958	-97.860258
T. Der. Ozuluama	124.42	3	0	6052	2.3	61.0	5.8	6.2	4.6	9.8	3.7	6.0	0.6	63.3	5.8	30.9	0.074	0.518	21.675969	-97.860254
Tampico Alto	177.80	1	0	5624	4.5	55.7	4.0	23.2	1.5	4.5	2.7	3.5	0.4	60.2	4.0	35.8	0.086	0.503	22.111508	-97.803312
Tampico Alto	177.80	3	0	5542	3.2	66.9	4.8	7.8	2.0	7.7	2.9	4.2	0.5	70.1	4.8	25.1	0.097	0.520	22.111512	-97.803313
Villa Cuauhtémoc	186.85	1	0	6064	1.8	65.9	5.0	8.1	2.5	8.2	3.4	4.5	0.6	67.7	5.0	27.3	0.095	0.513	22.186676	-97.835185
Villa Cuauhtémoc	186.85	3	1	5698	13.2	73.3	0.6	3.1	1.1	4.2	2.3	1.6	0.6	86.5	0.6	12.9	0.086	0.509	22.186670	-97.835162
Villa Cuauhtémoc	186.85	3	2	5496	13.3	72.9	0.7	3.1	1.2	4.3	2.4	1.6	0.5	86.2	0.7	13.1	0.099	0.509	22.186685	-97.835201
Lim. Edos. Term. Ver. Ppia. Tamps.	189.82																			

TAMAULIPAS

34 CARR: Túxpam - Tampico

CLAVE: 00529

RUTA: MEX-180

AÑO: 2020

LUGAR	ESTACION				CLASIFICACION VEHICULAR EN PORCIENTO													COORDENADAS		
	KM	TE	SC	TDPA	M	A	B	C2	C3	T3S2	T3S3	T3S2R4	OTROS	A	B	C	K'	D	LATITUD	LONGITUD
Tampico	191.43																			

35 CARR: Libramiento de Reynosa Sur II

CLAVE:

RUTA: MEX-040D

AÑO: 2020

LUGAR	ESTACION				CLASIFICACION VEHICULAR EN PORCIENTO													COORDENADAS		
	KM	TE	SC	TDPA	M	A	B	C2	C3	T3S2	T3S3	T3S2R4	OTROS	A	B	C	K'	D	LATITUD	LONGITUD
T. C. Matamoros - Reynosa	0.00	3	1	901	1.9	54.8	0.9	7.8	3.6	25.2	5.5	0.3	0.0	56.7	0.9	42.4	0.121	0.503	26.005171	-98.166371
T. C. Matamoros - Reynosa	0.00	3	2	911	1.8	55.0	0.9	7.8	3.5	25.1	5.7	0.2	0.0	56.8	0.9	42.3	0.125	0.503	26.005047	-98.165926
T. C. Las Urracas - T. C. (Matamoros - Reynosa)	13.70	1	0	3275	2.8	58.3	1.1	7.2	4.5	13.8	12.0	0.3	0.0	61.1	1.1	37.8	0.090	0.510	25.928985	-98.269179
T. C. Las Urracas - T. C. (Matamoros - Reynosa)	13.70	3	0	2229	2.3	58.2	1.3	7.3	4.4	14.6	11.6	0.3	0.0	60.5	1.3	38.2	0.108	0.523	25.928956	-98.269278
T. C. Monterrey - Reynosa	35.80	1	0	2401	3.1	42.2	2.2	8.9	5.9	24.9	12.5	0.3	0.0	45.3	2.2	52.5	0.091	0.501	26.020164	-98.457814

36 CARR: Libramiento Poniente de Tampico (Cuota)

CLAVE: 28051

RUTA: MEX-070D

AÑO: 2020

LUGAR	ESTACION				CLASIFICACION VEHICULAR EN PORCIENTO													COORDENADAS		
	KM	TE	SC	TDPA	M	A	B	C2	C3	T3S2	T3S3	T3S2R4	OTROS	A	B	C	K'	D	LATITUD	LONGITUD
T. C. Tampico - Cd. Mante	0.00	3	0	17673	1.5	73.6	0.9	5.9	2.9	8.4	2.8	3.3	0.7	75.1	0.9	24.0	0.080	0.535	22.338040	-97.874194
Plaza de Cobro Tampico	5.10	2	0	6174	1.4	52.2	1.3	7.4	6.6	14.0	4.4	11.5	1.2	53.6	1.3	45.1	0.074	0.500	22.275330	-97.893426
T. C. Cd. Valles - Tampico	14.20	1	0	7915	2.7	64.5	1.9	7.1	3.8	9.4	3.8	5.2	1.6	67.2	1.9	30.9	0.087	0.506	22.228130	-97.891888

37 CARR: Matamoros - Reynosa (Cuota)

CLAVE: 28079

RUTA: MEX-002D

AÑO: 2020

LUGAR	ESTACION				CLASIFICACION VEHICULAR EN PORCIENTO													COORDENADAS		
	KM	TE	SC	TDPA	M	A	B	C2	C3	T3S2	T3S3	T3S2R4	OTROS	A	B	C	K'	D	LATITUD	LONGITUD
T. C. Matamoros - Reynosa	0.00	3	1	1906	1.2	68.5	4.3	10.4	2.5	8.4	1.1	2.9	0.7	69.7	4.3	26.0	0.101	0.501	25.994705	-97.746211
T. C. Matamoros - Reynosa	0.00	3	2	1916	0.7	68.5	4.7	10.3	2.6	8.3	1.2	2.9	0.8	69.2	4.7	26.1	0.098	0.501	25.994362	-97.746415
Plaza de Cobro Nuevo Progreso	29.39	2	1	1559	0.2	64.5	2.9	5.3	5.0	14.7	1.7	4.4	1.3	64.7	2.9	32.4	0.101	0.500	26.036283	-97.954508
Plaza de Cobro Nuevo Progreso	29.39	2	2	1559	0.2	64.5	2.9	5.3	5.0	14.7	1.7	4.4	1.3	64.7	2.9	32.4	0.101	0.500	26.036283	-97.954508
T. C. Matamoros - Reynosa	44.60	1	1	3537	0.9	79.4	1.6	7.1	2.6	4.9	0.9	2.1	0.5	80.3	1.6	18.1	0.115	0.536	26.005213	-98.166229
T. C. Matamoros - Reynosa	44.60	1	2	4087	0.8	79.5	1.5	7.1	2.4	5.1	0.9	2.2	0.5	80.3	1.5	18.2	0.111	0.536	26.005095	-98.165743
T. Der. Puente Internacional Río Bravo Donna	62.98	3	1	3139	1.5	77.6	2.3	7.4	2.1	5.6	0.7	2.3	0.5	79.1	2.3	18.6	0.124	0.526	26.013707	-98.088968
T. Der. Puente Internacional Río Bravo Donna	62.98	3	2	3484	1.4	77.5	2.2	7.9	1.8	5.8	0.7	2.2	0.5	78.9	2.2	18.9	0.125	0.526	26.013372	-98.088983

TAMAULIPAS

38 CARR: Aldama - Barra El Tordo

CLAVE: 28620

RUTA: TAM

AÑO: 2020

LUGAR	ESTACION				CLASIFICACION VEHICULAR EN PORCIENTO													COORDENADAS		
	KM	TE	SC	TDPA	M	A	B	C2	C3	T3S2	T3S3	T3S2R4	OTROS	A	B	C	K'	D	LATITUD	LONGITUD
Aldama	0.00	3	0	1869	7.9	80.0	0.4	9.5	0.4	1.3	0.3	0.0	0.2	87.9	0.4	11.7	0.090	0.501	22.917392	-98.073459
Barra El Tordo	20.00																			

39 CARR: Barretal - Nueva Villa de Padilla

CLAVE: 28001

RUTA: TAM-001

AÑO: 2020

LUGAR	ESTACION				CLASIFICACION VEHICULAR EN PORCIENTO													COORDENADAS		
	KM	TE	SC	TDPA	M	A	B	C2	C3	T3S2	T3S3	T3S2R4	OTROS	A	B	C	K'	D	LATITUD	LONGITUD
Barretal	0.00	3	0	3181	2.7	82.8	0.8	7.9	1.3	2.7	1.2	0.3	0.3	85.5	0.8	13.7	0.100	0.506	24.083110	-99.122861
Nueva Villa de Padilla	24.50	1	0	1387	4.3	85.0	0.8	7.8	0.8	1.1	0.1	0.1	0.0	89.3	0.8	9.9	0.105	0.504	24.052846	-98.894734

40 CARR: China - Méndez

CLAVE: 00191

RUTA: NL-TAM

AÑO: 2020

LUGAR	ESTACION				CLASIFICACION VEHICULAR EN PORCIENTO													COORDENADAS		
	KM	TE	SC	TDPA	M	A	B	C2	C3	T3S2	T3S3	T3S2R4	OTROS	A	B	C	K'	D	LATITUD	LONGITUD
China	0.00	3	0	1363	0.5	73.2	1.9	18.7	1.3	1.8	1.6	1.0	0.0	73.7	1.9	24.4	0.090	0.506	25.707236	-99.234510
Lim. Edos. Term. N. L. Ppia. Tamps.	75.00																			
Méndez	100.00																			

41 CARR: Ébano - Estación Manuel

CLAVE: 24624

RUTA: SLP-TAM

AÑO: 2020

LUGAR	ESTACION				CLASIFICACION VEHICULAR EN PORCIENTO													COORDENADAS		
	KM	TE	SC	TDPA	M	A	B	C2	C3	T3S2	T3S3	T3S2R4	OTROS	A	B	C	K'	D	LATITUD	LONGITUD
Ébano	0.00	3	0	2501	19.6	65.8	0.2	9.6	1.1	2.1	0.7	0.7	0.2	85.4	0.2	14.4	0.086	0.509	22.216848	-98.375594
Lím. de Edos. Term. S. L. P. Ppia. Ver.	2.71																			
Lím. de Edos. Term. Ver. Ppia. S. L. P.	3.95																			
Lím. de Edos. Term. S. L. P. Ppia. Ver.	5.00																			
Lím. de Edos. Term. Ver. Ppia. Tamps.	25.00																			
Estación Manuel	65.60																			

42 CARR: El Limón - Ocampo

CLAVE: 28019

RUTA: TAM-019

AÑO: 2020

LUGAR	ESTACION				CLASIFICACION VEHICULAR EN PORCIENTO													COORDENADAS		
	KM	TE	SC	TDPA	M	A	B	C2	C3	T3S2	T3S3	T3S2R4	OTROS	A	B	C	K'	D	LATITUD	LONGITUD
T. C. Cd. Valles - Cd. Victoria	0.00	3	0	1753	6.9	80.0	1.1	5.2	1.7	2.3	0.8	1.8	0.2	86.9	1.1	12.0	0.083	0.508	22.837327	-99.023812
Ocampo	43.00	1	0	1411	1.7	85.4	0.1	8.1	1.8	1.5	1.3	0.0	0.1	87.1	0.1	12.8	0.099	0.504	22.843515	-99.330942

TAMAULIPAS

43 CARR: Ent. Huisachito - Nuevo Laredo

CLAVE: 00074

RUTA: NL-001-TAM

AÑO: 2020

LUGAR	ESTACION				CLASIFICACION VEHICULAR EN PORCIENTO														COORDENADAS	
	KM	TE	SC	TDPA	M	A	B	C2	C3	T3S2	T3S3	T3S2R4	OTROS	A	B	C	K'	D	LATITUD	LONGITUD
T. C. Monterrey - Colombia	0.00	3	0	1315	0.5	74.3	3.8	10.6	3.3	3.7	3.0	0.6	0.2	74.8	3.8	21.4	0.087	0.512	27.353341	-99.951052
Lim. Edos. Term. N. L. Ppia. Tamps.	19.00																			
X. C. Libramiento de Nuevo Laredo	47.00	1	0	2158	1.1	75.1	1.8	12.9	2.5	3.8	1.7	1.0	0.1	76.2	1.8	22.0	0.099	0.527	27.479650	-99.629539
Nuevo Laredo	51.00	1	0	8901	0.4	35.1	0.4	18.9	5.5	37.9	1.2	0.3	0.3	35.5	0.4	64.1	0.115	0.527	27.486972	-99.567465

44 CARR: Ent. Las Blancas - Río Bravo

CLAVE: 28003

RUTA: TAM-003

AÑO: 2020

LUGAR	ESTACION				CLASIFICACION VEHICULAR EN PORCIENTO														COORDENADAS	
	KM	TE	SC	TDPA	M	A	B	C2	C3	T3S2	T3S3	T3S2R4	OTROS	A	B	C	K'	D	LATITUD	LONGITUD
T. C. Cd. Victoria - Matamoros	0.00	3	0	3061	0.4	84.4	1.0	10.9	0.5	2.2	0.3	0.1	0.2	84.8	1.0	14.2	0.103	0.525	25.665866	-97.601354
Valle Hermoso	21.00	1	1	2483	0.8	85.7	1.1	9.1	0.6	1.2	0.5	0.5	0.5	86.5	1.1	12.4	0.124	0.500	25.666651	-97.815863
Valle Hermoso	21.00	1	2	2485	0.8	85.5	1.1	9.3	0.6	1.2	0.6	0.5	0.4	86.3	1.1	12.6	0.108	0.500	25.666651	-97.815863
Río Bravo	91.00	1	0	8080	1.0	80.3	1.2	7.0	0.9	6.5	1.2	0.8	1.1	81.3	1.2	17.5	0.105	0.505	25.982901	-98.118749

45 CARR: La Joya - Méndez

CLAVE: 28623

RUTA: TAM

AÑO: 2020

LUGAR	ESTACION				CLASIFICACION VEHICULAR EN PORCIENTO														COORDENADAS	
	KM	TE	SC	TDPA	M	A	B	C2	C3	T3S2	T3S3	T3S2R4	OTROS	A	B	C	K'	D	LATITUD	LONGITUD
T. C. Cd. Victoria - Matamoros	0.00	3	0	538	0.6	66.0	0.8	17.4	4.8	4.3	4.2	1.9	0.0	66.6	0.8	32.6	0.112	0.501	24.930069	-98.112557
Méndez	66.00																			

46 CARR: Libramiento de Cd. Victoria

CLAVE: 28282

RUTA: TAM

AÑO: 2020

LUGAR	ESTACION				CLASIFICACION VEHICULAR EN PORCIENTO														COORDENADAS	
	KM	TE	SC	TDPA	M	A	B	C2	C3	T3S2	T3S3	T3S2R4	OTROS	A	B	C	K'	D	LATITUD	LONGITUD
X. C. Ent. Tula - Cd. Victoria	0.00	3	1	5709	5.7	85.2	0.1	7.4	0.3	0.6	0.5	0.1	0.1	90.9	0.1	9.0	0.093	0.501	23.711966	-99.174982
X. C. Ent. Tula - Cd. Victoria	0.00	3	2	5676	7.7	83.2	0.1	7.7	0.2	0.5	0.4	0.1	0.1	90.9	0.1	9.0	0.113	0.501	23.711846	-99.175119
X. C. Cd. Victoria - Matamoros	13.40	1	1	10766	2.5	85.8	0.8	8.8	0.7	0.6	0.5	0.2	0.1	88.3	0.8	10.9	0.102	0.536	23.764393	-99.114283
X. C. Cd. Victoria - Matamoros	13.40	1	2	9310	3.5	87.3	0.8	6.3	0.8	0.5	0.4	0.3	0.1	90.8	0.8	8.4	0.103	0.536	23.764818	-99.113984
X. C. Cd. Victoria - Matamoros	13.40	3	1	9575	3.1	86.4	0.6	7.1	1.2	0.7	0.4	0.4	0.1	89.5	0.6	9.9	0.134	0.535	23.764262	-99.114061
X. C. Cd. Victoria - Matamoros	13.40	3	2	8334	3.4	86.0	0.7	7.1	1.4	0.6	0.3	0.4	0.1	89.4	0.7	9.9	0.118	0.535	23.764706	-99.113767
X. C. Cd. Victoria - Soto La Marina	19.70	1	1	4704	4.0	83.9	0.9	6.7	2.4	0.9	0.4	0.7	0.1	87.9	0.9	11.2	0.121	0.504	23.719164	-99.093794
X. C. Cd. Victoria - Soto La Marina	19.70	1	2	4635	3.0	85.5	0.9	7.2	1.7	0.8	0.4	0.5	0.0	88.5	0.9	10.6	0.123	0.504	23.719145	-99.093825
T. C. Cd. Valles - Cd. Victoria	25.90	1	1	1064	2.1	64.0	5.6	12.1	6.0	5.2	2.4	2.5	0.1	66.1	5.6	28.3	0.105	0.512	23.663631	-99.099437
T. C. Cd. Valles - Cd. Victoria	25.90	1	2	1014	1.7	64.0	5.5	11.9	6.8	5.0	2.5	2.4	0.2	65.7	5.5	28.8	0.147	0.512	23.663655	-99.099465

TAMAULIPAS

47 CARR: Libramiento de Mier

CLAVE: 28282

RUTA: TAMPS

AÑO: 2020

LUGAR	ESTACION				CLASIFICACION VEHICULAR EN PORCIENTO													COORDENADAS		
	KM	TE	SC	TDPA	M	A	B	C2	C3	T3S2	T3S3	T3S2R4	OTROS	A	B	C	K'	D	LATITUD	LONGITUD
T. C. Monterrey - Mier	0.00	3	0	558	3.2	64.8	2.3	12.6	4.6	5.6	1.4	5.0	0.5	68.0	2.3	29.7	0.134	0.523	26.427571	-99.163130
T. C. Reynosa - Nuevo Laredo	2.70																			

48 CARR: Libramiento de Nuevo Laredo

CLAVE: 28030

RUTA: TAM

AÑO: 2020

LUGAR	ESTACION				CLASIFICACION VEHICULAR EN PORCIENTO													COORDENADAS		
	KM	TE	SC	TDPA	M	A	B	C2	C3	T3S2	T3S3	T3S2R4	OTROS	A	B	C	K'	D	LATITUD	LONGITUD
T. C. Monterrey - Nuevo Laredo	0.00	3	1	16331	0.9	71.4	1.5	6.8	6.4	9.5	2.1	0.7	0.7	72.3	1.5	26.2	0.073	0.506	27.425708	-99.531894
T. C. Monterrey - Nuevo Laredo	0.00	3	2	15955	0.8	71.4	1.3	7.6	6.4	8.9	2.1	0.7	0.8	72.2	1.3	26.5	0.075	0.506	27.425544	-99.531969
T. C. Piedras Negras - Nuevo Laredo	18.00	1	1	3286	2.6	42.1	1.2	6.9	8.6	35.1	1.7	1.0	0.8	44.7	1.2	54.1	0.129	0.526	27.540579	-99.574820
T. C. Piedras Negras - Nuevo Laredo	18.00	1	2	2963	1.2	44.8	1.3	6.8	10.5	31.9	1.6	1.0	0.9	46.0	1.3	52.7	0.134	0.526	27.540579	-99.574820

49 CARR: Libramiento de Nuevo Laredo II

CLAVE: 28626

RUTA: TAM

AÑO: 2020

LUGAR	ESTACION				CLASIFICACION VEHICULAR EN PORCIENTO													COORDENADAS		
	KM	TE	SC	TDPA	M	A	B	C2	C3	T3S2	T3S3	T3S2R4	OTROS	A	B	C	K'	D	LATITUD	LONGITUD
T. C. Monterrey - Nuevo Laredo	0.00	3	0	6250	1.1	30.8	1.9	5.4	6.6	49.0	1.9	2.3	1.0	31.9	1.9	66.2	0.077	0.517	27.302957	-99.597498
T. C. Piedras Negras - Nuevo Laredo	32.20	1	1	4706	1.2	28.0	1.1	6.0	11.3	46.9	3.2	1.1	1.2	29.2	1.1	69.7	0.092	0.513	27.567674	-99.589234
T. C. Piedras Negras - Nuevo Laredo	32.20	1	2	4949	1.3	28.0	1.1	6.0	11.2	46.8	3.2	1.2	1.2	29.3	1.1	69.6	0.093	0.513	27.567674	-99.589234

50 CARR: Libramiento de Rio Bravo

CLAVE: 28002

RUTA: TAM

AÑO: 2020

LUGAR	ESTACION				CLASIFICACION VEHICULAR EN PORCIENTO													COORDENADAS		
	KM	TE	SC	TDPA	M	A	B	C2	C3	T3S2	T3S3	T3S2R4	OTROS	A	B	C	K'	D	LATITUD	LONGITUD
T. C. Matamoros - Reynosa (1° Acceso)	0.00	3	1	2461	2.0	74.3	1.8	9.9	2.9	4.9	1.7	2.1	0.4	76.3	1.8	21.9	0.082	0.506	25.972044	-98.046521
T. C. Matamoros - Reynosa (1° Acceso)	0.00	3	2	2525	1.8	74.6	1.8	10.5	2.9	4.3	1.9	1.9	0.3	76.4	1.8	21.8	0.080	0.506	25.972044	-98.046521
T. C. Matamoros - Reynosa (2° Acceso)	13.10	1	1	9628	1.3	80.1	1.4	9.2	1.4	3.3	1.2	1.4	0.7	81.4	1.4	17.2	0.094	0.514	25.996800	-98.131949
T. C. Matamoros - Reynosa (2° Acceso)	13.10	1	2	10162	1.3	80.9	1.2	9.3	1.2	3.1	1.2	1.2	0.6	82.2	1.2	16.6	0.103	0.514	25.996604	-98.132024

51 CARR: Los Guerra - Los Herreras

CLAVE: 19031

RUTA: TAM-NL

AÑO: 2020

LUGAR	ESTACION				CLASIFICACION VEHICULAR EN PORCIENTO													COORDENADAS		
	KM	TE	SC	TDPA	M	A	B	C2	C3	T3S2	T3S3	T3S2R4	OTROS	A	B	C	K'	D	LATITUD	LONGITUD
Los Guerra	0.00																			
Lim. Edos. Term. Tamps. Ppia. N. L.	46.00																			

TAMAULIPAS

51 CARR: Los Guerra - Los Herreras

CLAVE: 19031

RUTA: TAM-NL

AÑO: 2020

LUGAR	ESTACION				CLASIFICACION VEHICULAR EN PORCIENTO														COORDENADAS	
	KM	TE	SC	TDPA	M	A	B	C2	C3	T3S2	T3S3	T3S2R4	OTROS	A	B	C	K'	D	LATITUD	LONGITUD
Los Herreras	73.00	1	0	485	4.7	78.4	0.2	14.2	0.9	1.1	0.5	0.0	0.0	83.1	0.2	16.7	0.124	0.510	25.901306	-99.399710

52 CARR: Peña Blanca - Cd. Camargo

CLAVE: 00102

RUTA: NL-TAM

AÑO: 2020

LUGAR	ESTACION				CLASIFICACION VEHICULAR EN PORCIENTO														COORDENADAS	
	KM	TE	SC	TDPA	M	A	B	C2	C3	T3S2	T3S3	T3S2R4	OTROS	A	B	C	K'	D	LATITUD	LONGITUD
T. C. Monterrey - Reynosa	0.00	3	0	407	0.9	71.4	1.1	18.7	1.4	3.0	3.2	0.3	0.0	72.3	1.1	26.6	0.108	0.503	25.835238	-99.008422
Lim. Edos. Term. N. L. Ppia. Tamps.	30.00																			
Cd. Camargo	65.00	1	0	1955	1.0	84.3	0.7	10.8	1.0	1.8	0.2	0.0	0.2	85.3	0.7	14.0	0.109	0.510	26.305340	-98.834841

53 CARR: Potrero Nuevo - Rancho El Mezquital

CLAVE: 28615

RUTA: TAM

AÑO: 2020

LUGAR	ESTACION				CLASIFICACION VEHICULAR EN PORCIENTO														COORDENADAS	
	KM	TE	SC	TDPA	M	A	B	C2	C3	T3S2	T3S3	T3S2R4	OTROS	A	B	C	K'	D	LATITUD	LONGITUD
T. C. Cd. Victoria - Matamoros	0.00	3	0	1325	0.4	75.1	0.7	10.2	2.1	2.5	2.5	6.5	0.0	75.5	0.7	23.8	0.111	0.511	25.713557	-97.572728
Puerto El Mezquital	66.00																			

54 CARR: Ramal a Gómez Farías

CLAVE: 28020

RUTA: TAM-020

AÑO: 2020

LUGAR	ESTACION				CLASIFICACION VEHICULAR EN PORCIENTO														COORDENADAS	
	KM	TE	SC	TDPA	M	A	B	C2	C3	T3S2	T3S3	T3S2R4	OTROS	A	B	C	K'	D	LATITUD	LONGITUD
T. C. Cd. Valles - Cd. Victoria	0.00	3	0	1256	10.9	76.9	0.8	9.7	0.8	0.6	0.3	0.0	0.0	87.8	0.8	11.4	0.117	0.509	23.024666	-99.092768
Gómez Farías	11.00	1	0	649	20.3	71.0	1.0	5.8	0.7	0.9	0.3	0.0	0.0	91.3	1.0	7.7	0.122	0.513	23.036311	-99.150400

55 CARR: Ramal a Xicoténcatl

CLAVE: 28619

RUTA: TAM

AÑO: 2020

LUGAR	ESTACION				CLASIFICACION VEHICULAR EN PORCIENTO														COORDENADAS	
	KM	TE	SC	TDPA	M	A	B	C2	C3	T3S2	T3S3	T3S2R4	OTROS	A	B	C	K'	D	LATITUD	LONGITUD
T. C. Cd. Valles - Cd. Victoria	0.00	3	0	1302	2.2	83.9	0.3	5.8	5.4	0.9	1.0	0.2	0.3	86.1	0.3	13.6	0.098	0.500	22.928993	-99.027275
Xicoténcatl	13.00	1	0	3439	4.6	82.2	1.0	4.3	2.0	3.2	0.7	1.7	0.3	86.8	1.0	12.2	0.084	0.508	22.990328	-98.945354

TAMAULIPAS

56 CARR: San Fernando - Carboneras

CLAVE: 28618

RUTA: TAM

AÑO: 2020

LUGAR	ESTACION				CLASIFICACION VEHICULAR EN PORCIENTO														COORDENADAS	
	KM	TE	SC	TDPA	M	A	B	C2	C3	T3S2	T3S3	T3S2R4	OTROS	A	B	C	K'	D	LATITUD	LONGITUD
San Fernando	0.00	3	0	2846	1.6	72.2	0.6	17.4	1.3	3.6	1.5	1.1	0.7	73.8	0.6	25.6	0.111	0.542	24.846703	-98.145180
Carboneras	57.00																			

57 CARR: Soto La Marina - La Pesca

CLAVE: 28049

RUTA: TAM-070

AÑO: 2020

LUGAR	ESTACION				CLASIFICACION VEHICULAR EN PORCIENTO														COORDENADAS	
	KM	TE	SC	TDPA	M	A	B	C2	C3	T3S2	T3S3	T3S2R4	OTROS	A	B	C	K'	D	LATITUD	LONGITUD
T. C. Soto La Marina - La Coma	0.00	3	0	1355	1.0	87.9	0.8	7.1	1.6	1.1	0.2	0.3	0.0	88.9	0.8	10.3	0.103	0.516	23.772304	-98.202040
La Pesca	50.00																			

58 CARR: T. C. (Valle Hermoso - Empalme) - Matamoros

CLAVE: 28005

RUTA: TAM-005

AÑO: 2020

LUGAR	ESTACION				CLASIFICACION VEHICULAR EN PORCIENTO														COORDENADAS	
	KM	TE	SC	TDPA	M	A	B	C2	C3	T3S2	T3S3	T3S2R4	OTROS	A	B	C	K'	D	LATITUD	LONGITUD
T. C. Valle Hermoso - Empalme	0.00	3	0	3504	0.5	86.4	0.7	11.4	0.4	0.2	0.0	0.1	0.3	86.9	0.7	12.4	0.111	0.524	25.775013	-97.795674
Anáhuac	2.00	3	0	1462	1.9	87.7	0.3	8.8	0.8	0.1	0.1	0.1	0.2	89.6	0.3	10.1	0.111	0.505	25.774787	-97.775964
Matamoros	33.90	1	1	10439	1.8	91.3	1.0	2.6	1.0	0.8	0.3	0.9	0.3	93.1	1.0	5.9	0.097	0.515	25.875781	-97.524739
Matamoros	33.90	1	2	9814	1.9	91.2	0.9	2.6	1.1	0.8	0.3	0.9	0.3	93.1	0.9	6.0	0.100	0.515	25.875845	-97.524759

59 CARR: T. C. Libramiento Cd. Victoria - San Antonio

CLAVE:

RUTA: TAM-126

AÑO: 2020

LUGAR	ESTACION				CLASIFICACION VEHICULAR EN PORCIENTO														COORDENADAS	
	KM	TE	SC	TDPA	M	A	B	C2	C3	T3S2	T3S3	T3S2R4	OTROS	A	B	C	K'	D	LATITUD	LONGITUD
T. C. Libramiento Cd. Victoria	0.00	3	0	5117	2.7	49.3	2.5	8.1	3.1	15.7	5.5	12.6	0.5	52.0	2.5	45.5	0.072	0.508	23.669428	-99.099443
San Antonio	37.50	1	0	3818	3.9	48.2	2.8	8.3	3.2	15.1	5.5	12.5	0.5	52.1	2.8	45.1	0.085	0.529	23.590715	-99.330851

60 CARR: Valle Hermoso - Empalme

CLAVE: 28004

RUTA: TAM-004

AÑO: 2020

LUGAR	ESTACION				CLASIFICACION VEHICULAR EN PORCIENTO														COORDENADAS	
	KM	TE	SC	TDPA	M	A	B	C2	C3	T3S2	T3S3	T3S2R4	OTROS	A	B	C	K'	D	LATITUD	LONGITUD
Valle Hermoso	0.00	3	0	6343	1.5	88.4	1.3	6.1	1.3	0.9	0.2	0.3	0.0	89.9	1.3	8.8	0.102	0.503	25.674098	-97.815895
Empalme	28.38	1	0	3086	0.9	81.9	2.4	12.8	0.9	0.6	0.2	0.3	0.0	82.8	2.4	14.8	0.111	0.504	25.907897	-97.790458

TAMAULIPAS

61 CARR: Valle Hermoso - Las Yescas

CLAVE: 28614

RUTA: TAM

AÑO: 2020

LUGAR	ESTACION				CLASIFICACION VEHICULAR EN PORCIENTO													COORDENADAS		
	KM	TE	SC	TDPA	M	A	B	C2	C3	T3S2	T3S3	T3S2R4	OTROS	A	B	C	K'	D	LATITUD	LONGITUD
Valle Hermoso	0.00	3	0	4528	0.5	75.1	1.2	12.6	1.2	4.0	2.1	2.5	0.8	75.6	1.2	23.2	0.097	0.516	25.666627	-97.815911
T. C. Cd. Victoria - Matamoros	26.00	1	0	1719	0.6	80.0	1.3	9.7	3.2	3.6	0.5	1.0	0.1	80.6	1.3	18.1	0.102	0.501	25.449929	-97.815880

62 CARR: Santander Jiménez - Ent. El Ojito

CLAVE: 28579

RUTA: MEX-107-TAM

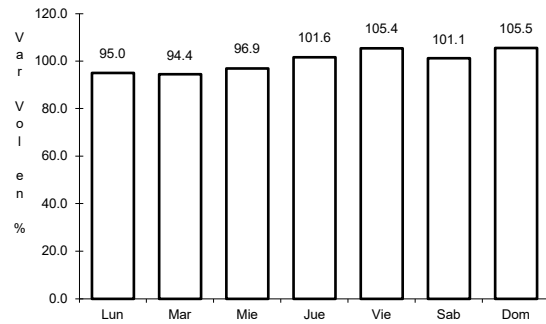
AÑO: 2020

LUGAR	ESTACION				CLASIFICACION VEHICULAR EN PORCIENTO													COORDENADAS		
	KM	TE	SC	TDPA	M	A	B	C2	C3	T3S2	T3S3	T3S2R4	OTROS	A	B	C	K'	D	LATITUD	LONGITUD
T. C. Cd. Victoria - Matamoros	0.00	3	0	1396	1.6	75.3	1.6	13.1	2.7	3.0	1.7	0.5	0.5	76.9	1.6	21.5	0.111	0.500	24.209187	-98.485675
Abasolo	20.00	1	0	2148	2.5	78.5	2.0	8.2	2.8	3.4	1.7	0.4	0.5	81.0	2.0	17.0	0.096	0.501	24.058874	-98.373334
T. C. Soto La Marina - La Coma	58.00	1	0	450	2.1	80.6	0.9	9.7	1.5	4.1	0.9	0.1	0.1	82.7	0.9	16.4	0.102	0.508	23.941620	-98.166480

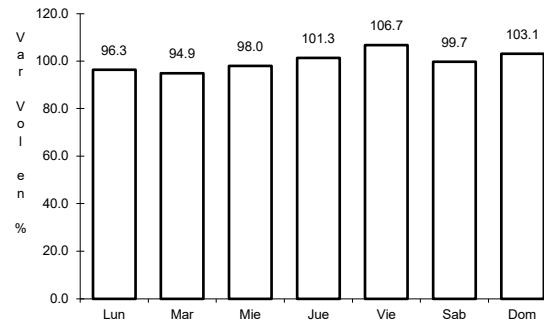
1 CARR: Acceso a Puente Internacional Reynosa - Pharr

CLAVE:

RUTA: MEX-002



Km: 0.00 Tipo: 3 Sent: 1

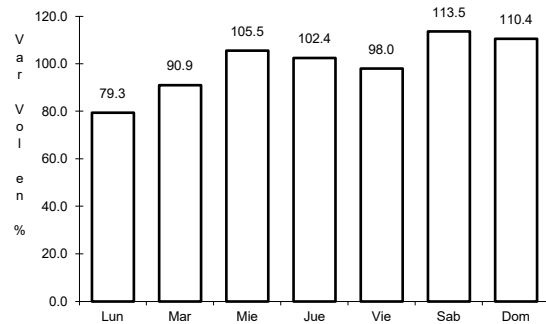


Km: 0.00 Tipo: 3 Sent: 2

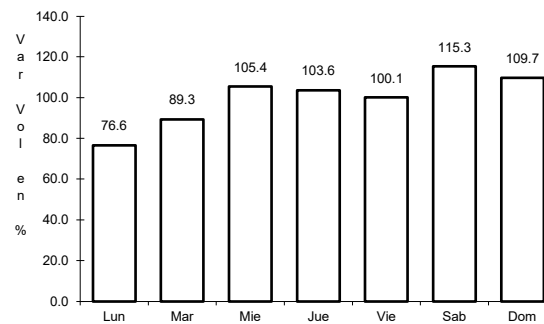
2 CARR: Altamira - T. C. (Petrocel -Puerto Industrial Altamira)

CLAVE:

RUTA: MEX-080



Km: 0.00 Tipo: 3 Sent: 1

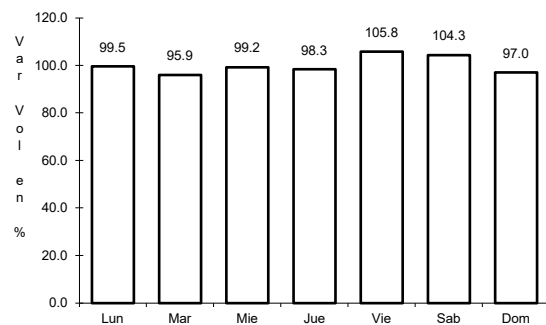


Km: 0.00 Tipo: 3 Sent: 2

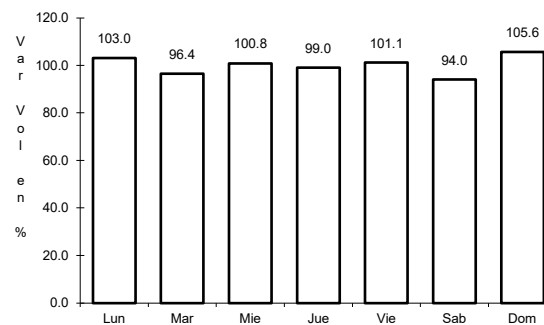
3 CARR: Antigua Morelos - Ent. El Huizache

CLAVE: 00136

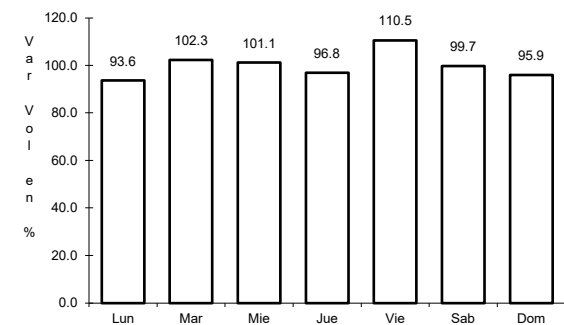
RUTA: MEX-080



Km: 0.00 Tipo: 3 Sent: 0



Km: 86.00 Tipo: 3 Sent: 0

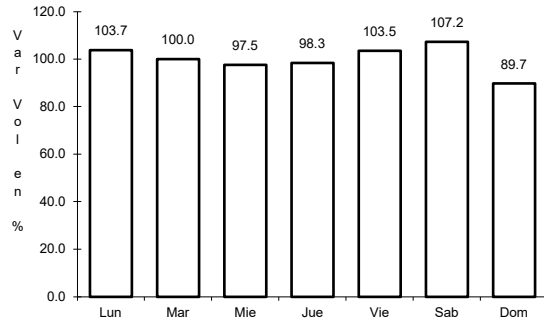


Km: 198.83 Tipo: 1 Sent: 0

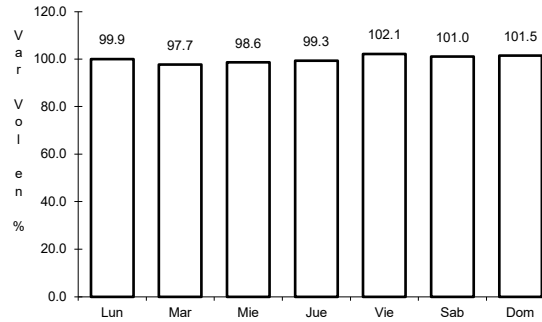
4 CARR: Cd. Valles - Cd. Victoria

CLAVE: 00509

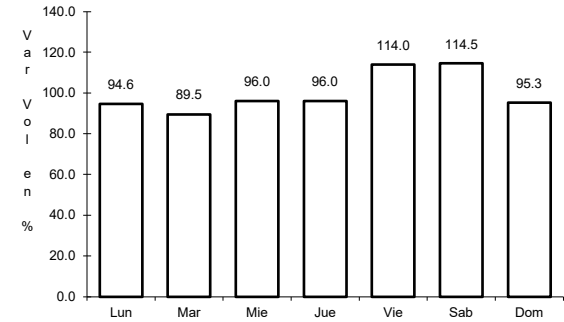
RUTA: MEX-085



Km: 0.00 Tipo: 3 Sent: 0



Km: 110.00 Tipo: 3 Sent: 0

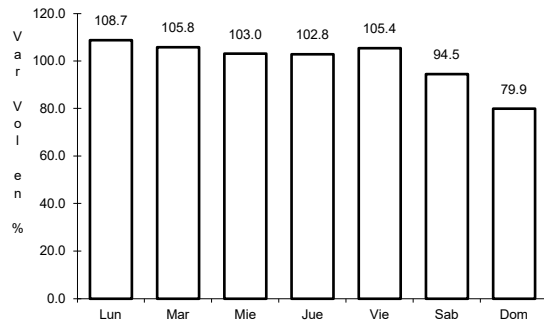


Km: 232.00 Tipo: 1 Sent: 0

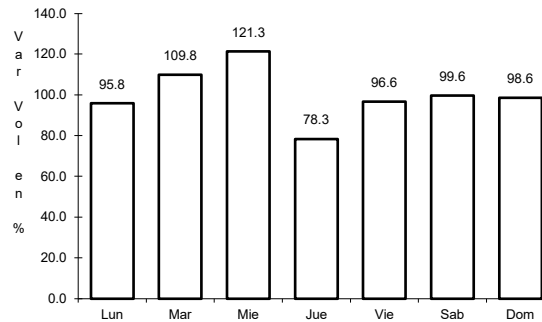
5 CARR: Cd. Valles - Tampico

CLAVE: 00138

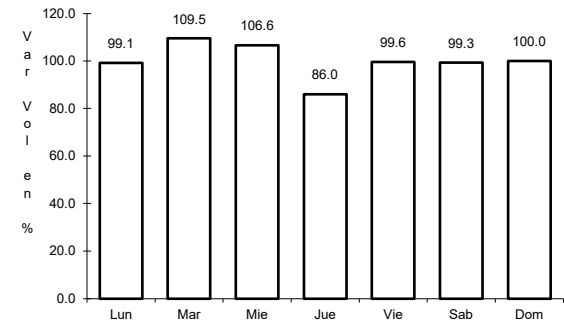
RUTA: MEX-070



Km: 0.00 Tipo: 3 Sent: 0



Km: 138.00 Tipo: 1 Sent: 1

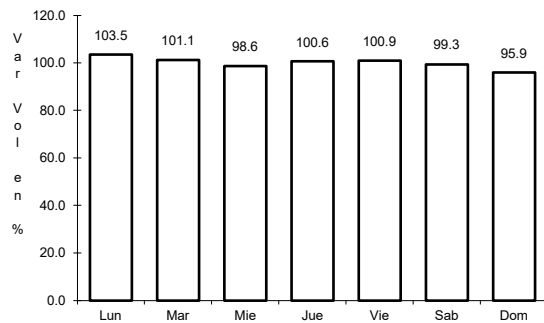


Km: 138.00 Tipo: 1 Sent: 2

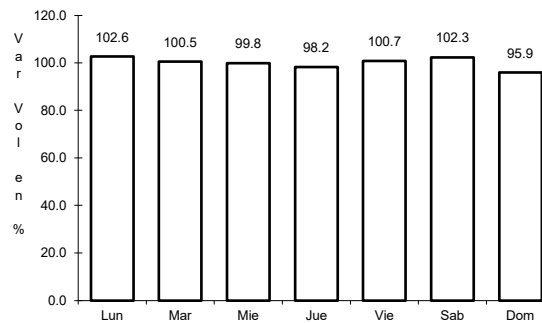
6 CARR: Cd. Victoria - Matamoros

CLAVE: 28139

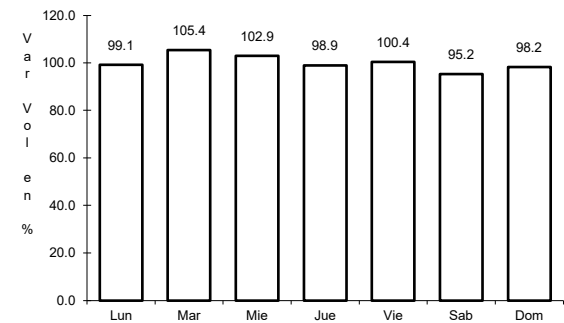
RUTA: MEX-101-180



Km: 5.00 Tipo: 3 Sent: 1



Km: 5.00 Tipo: 3 Sent: 2

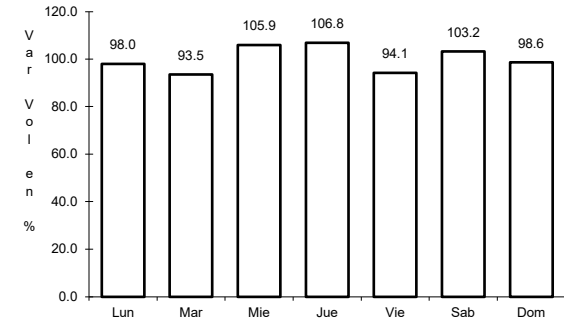
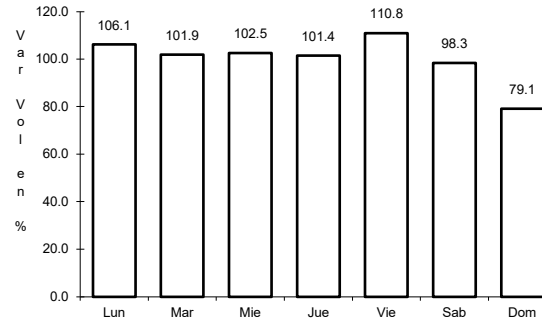
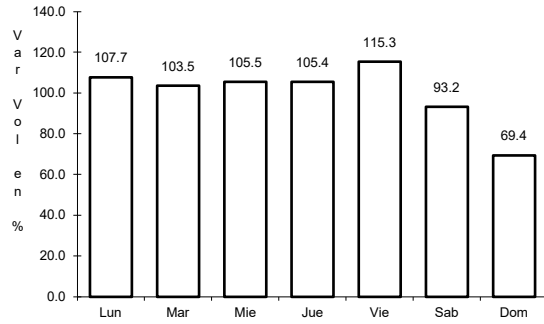


Km: 175.00 Tipo: 3 Sent: 0

7 CARR: Cd. Victoria - Soto La Marina

CLAVE: 28009

RUTA: MEX-070



Km: 0.00 Tipo: 3 Sent: 1

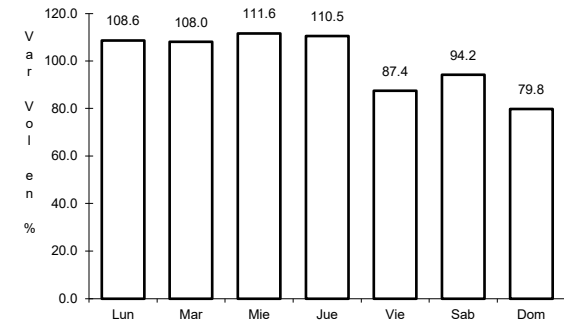
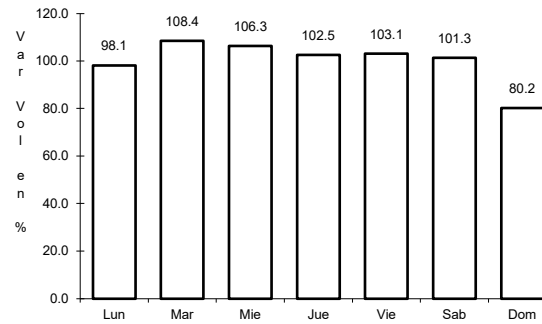
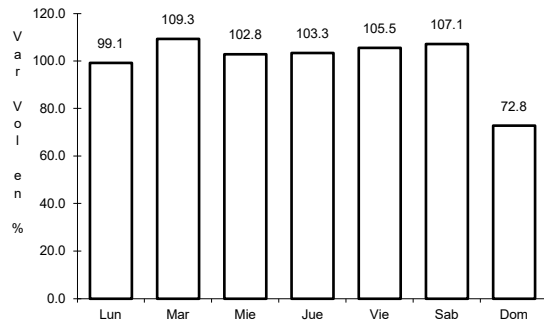
Km: 0.00 Tipo: 3 Sent: 2

Km: 116.80 Tipo: 1 Sent: 0

8 CARR: Ciudad Victoria - Monterrey

CLAVE: 00462

RUTA: MEX-085



Km: 0.00 Tipo: 3 Sent: 1

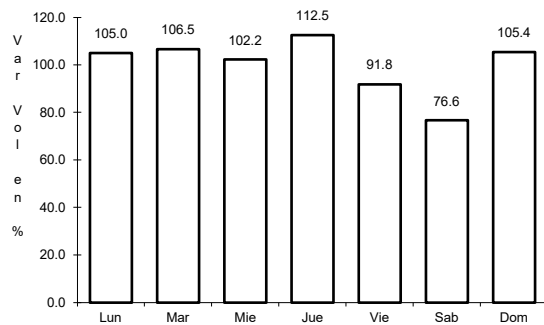
Km: 0.00 Tipo: 3 Sent: 2

Km: 154.00 Tipo: 1 Sent: 0

9 CARR: Corredor Internacional Reynosa

CLAVE:

RUTA: MEX

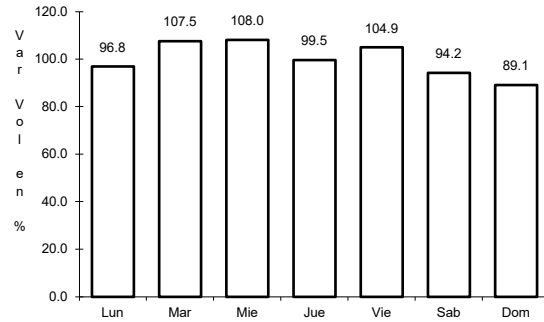


Km: 0.00 Tipo: 3 Sent: 0

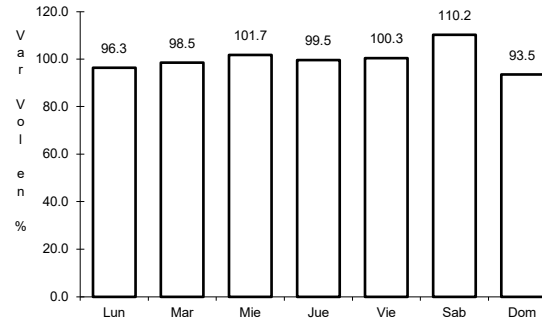
10 CARR: Ent. Tula - Cd. Victoria

CLAVE: 00179

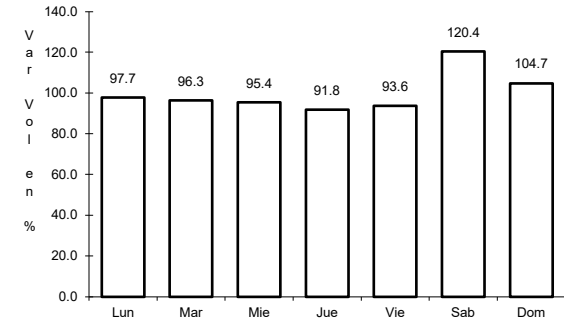
ruta: MEX-101



Km: 0.00 Tipo: 3 Sent: 0



Km: 180.00 Tipo: 1 Sent: 1

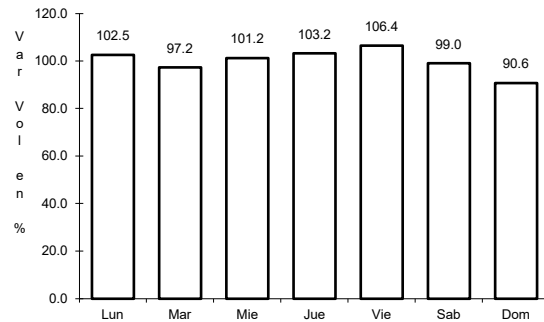


Km: 180.00 Tipo: 1 Sent: 2

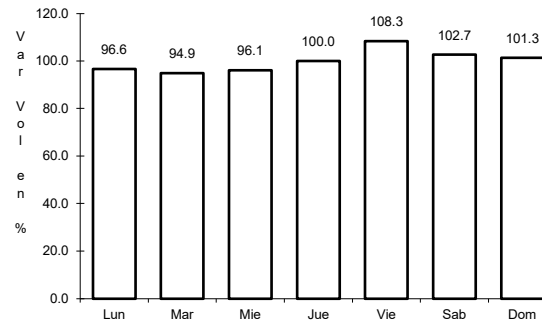
11 CARR: Estación Manuel - T. C. (Cd. Victoria - Soto La Marina)

CLAVE: 28294

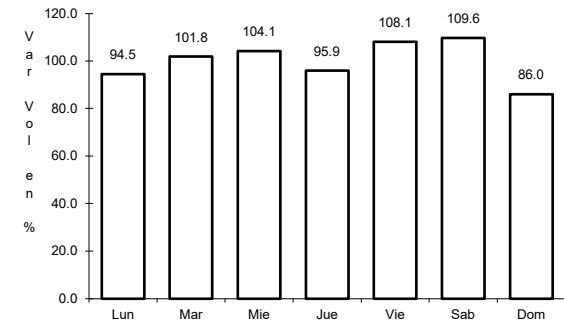
ruta: MEX-180



Km: 36.00 Tipo: 3 Sent: 0



Km: 69.00 Tipo: 3 Sent: 0

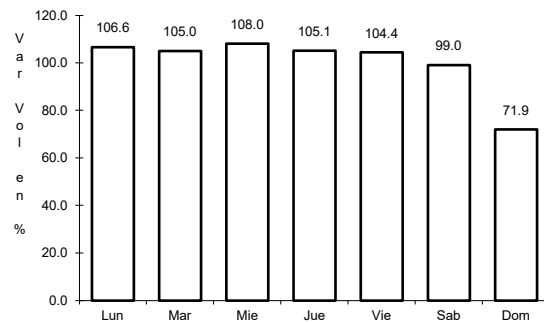


Km: 145.00 Tipo: 1 Sent: 0

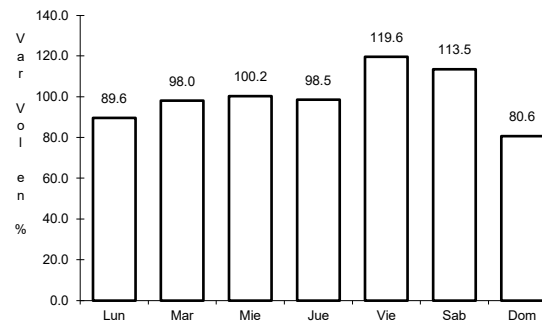
12 CARR: González - Llera de Canales

CLAVE: 28578

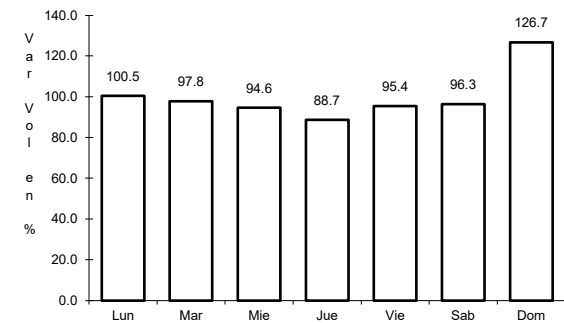
ruta: MEX-081



Km: 0.00 Tipo: 3 Sent: 0



Km: 58.50 Tipo: 1 Sent: 0

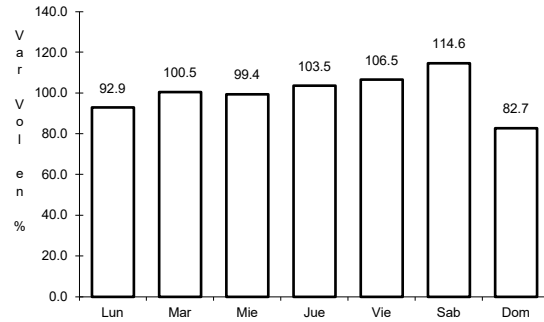


Km: 89.00 Tipo: 1 Sent: 0

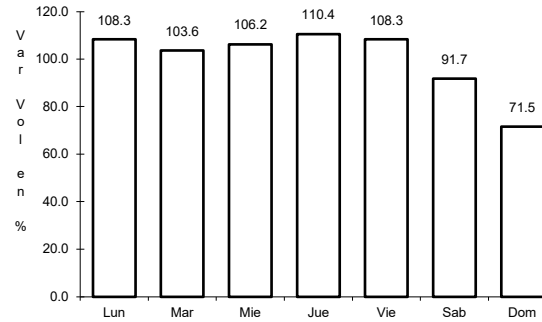
13 CARR: Ignacio Zaragoza - T. C. (Ciudad Victoria - Monterrey)

CLAVE: 28625

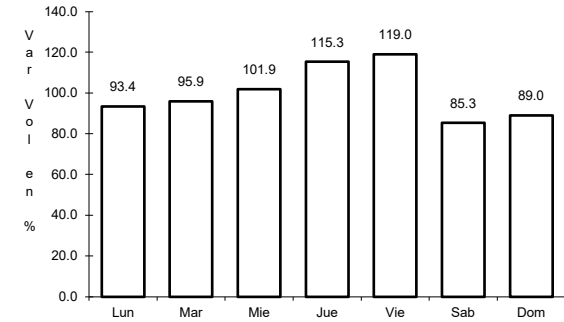
RUTA: MEX-083



Km: 0.00 Tipo: 3 Sent: 0



Km: 63.45 Tipo: 3 Sent: 0

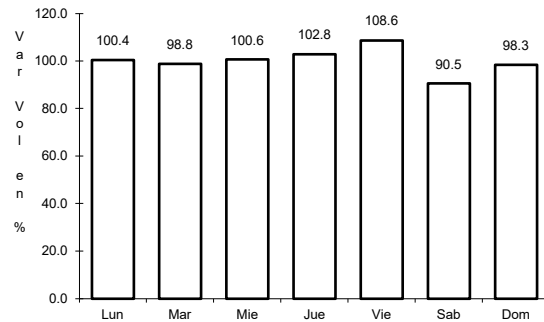


Km: 94.30 Tipo: 1 Sent: 0

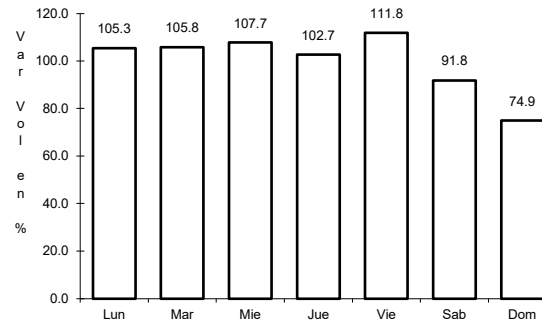
14 CARR: Las Urracas - T. C. (Matamoros - Reynosa)

CLAVE: 28029

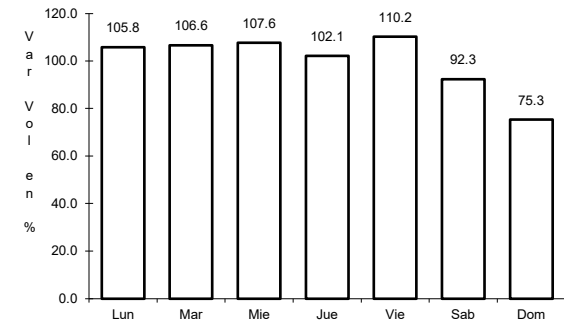
RUTA: MEX-097



Km: 0.00 Tipo: 3 Sent: 0



Km: 113.25 Tipo: 1 Sent: 1

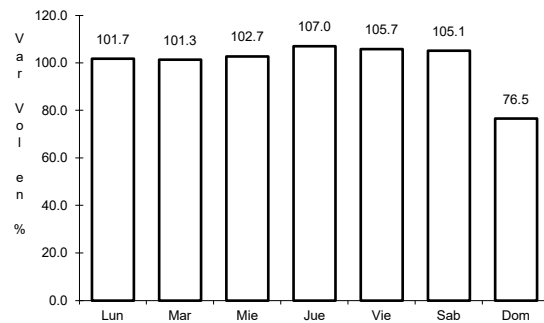


Km: 113.25 Tipo: 1 Sent: 2

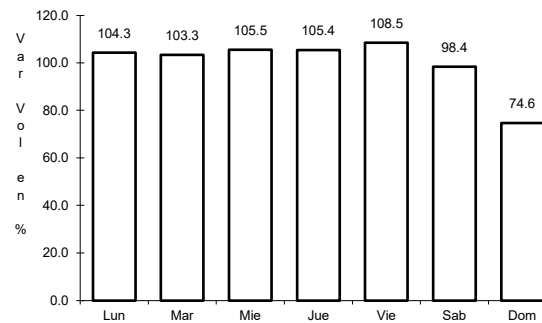
15 CARR: Libramiento de Reynosa

CLAVE: 28008

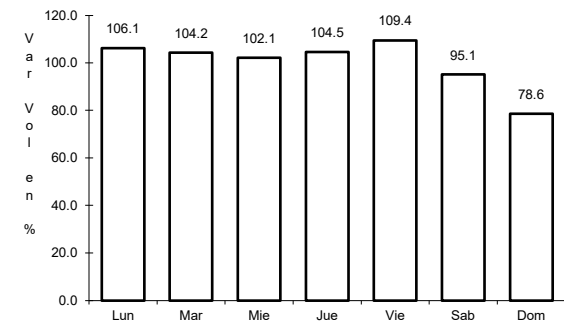
RUTA: MEX-REY-010



Km: 0.00 Tipo: 3 Sent: 1



Km: 0.00 Tipo: 3 Sent: 2

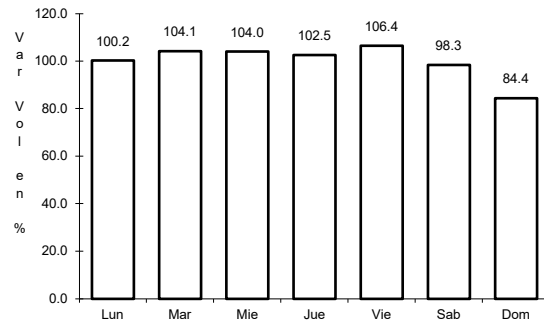


Km: 10.00 Tipo: 1 Sent: 1

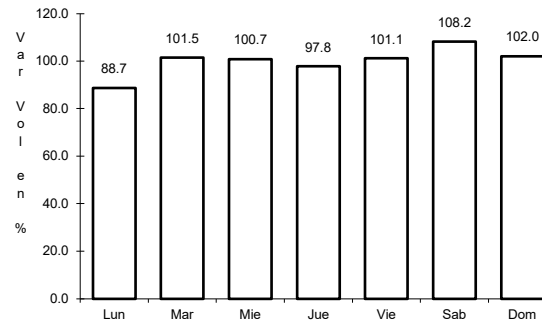
16 CARR: Libramiento de San Fernando

CLAVE:

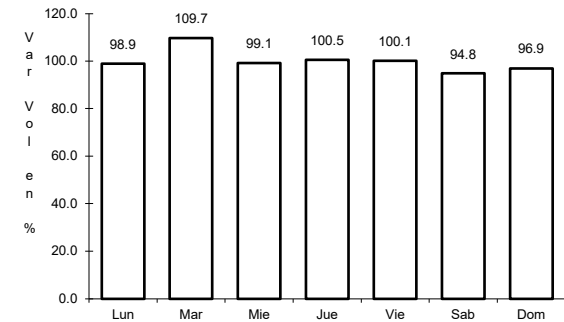
RUTA: MEX-101-180



Km: 0.00 Tipo: 3 Sent: 0



Km: 14.39 Tipo: 1 Sent: 0

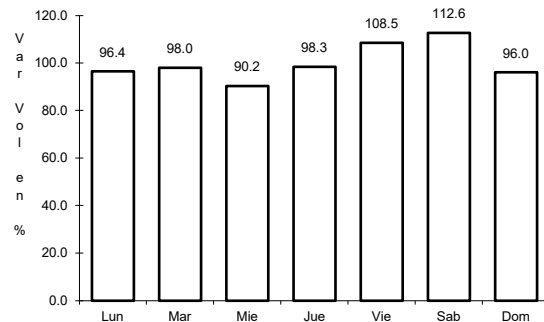


Km: 26.46 Tipo: 1 Sent: 0

17 CARR: Libramiento de San Germán

CLAVE:

RUTA: MEX-101

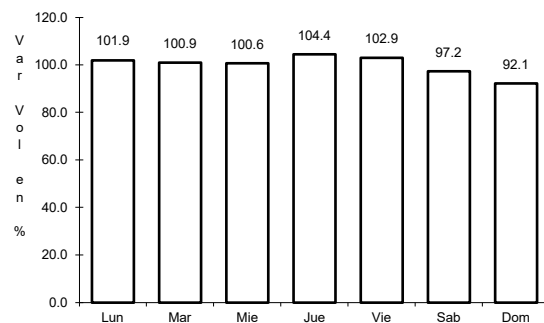


Km: 0.00 Tipo: 3 Sent: 0

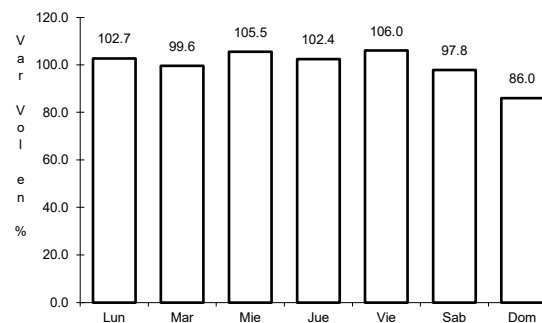
18 CARR: Libramiento Estación Manuel - González

CLAVE: 28002

RUTA: MEX-081



Km: 0.00 Tipo: 3 Sent: 0

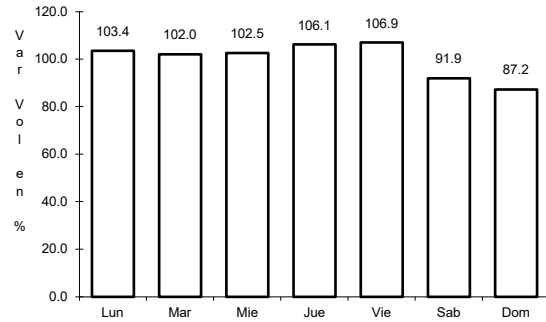


Km: 24.80 Tipo: 1 Sent: 0

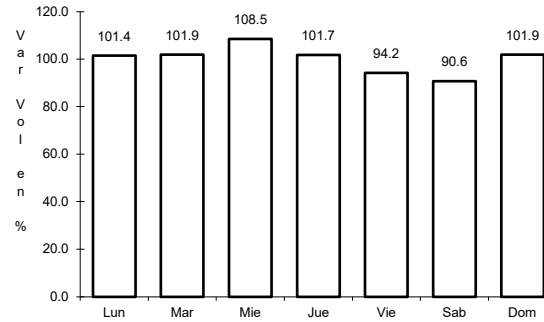
19 CARR: Libramiento General Francisco Villa

CLAVE:

ruta: MEX-101-180



Km: 0.00 Tipo: 3 Sent: 0

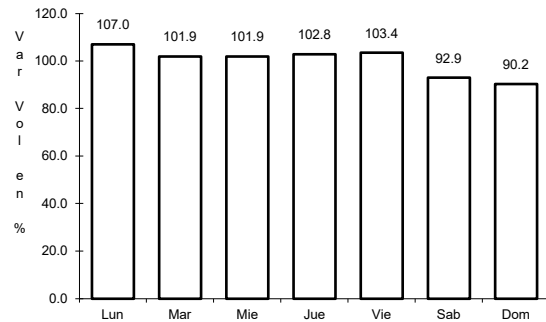


Km: 6.40 Tipo: 1 Sent: 0

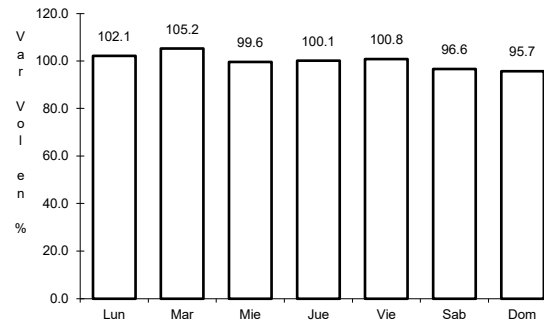
20 CARR: Matamoros - Playa Lauro Villar

CLAVE: 28078

ruta: MEX-002



Km: 0.00 Tipo: 3 Sent: 1

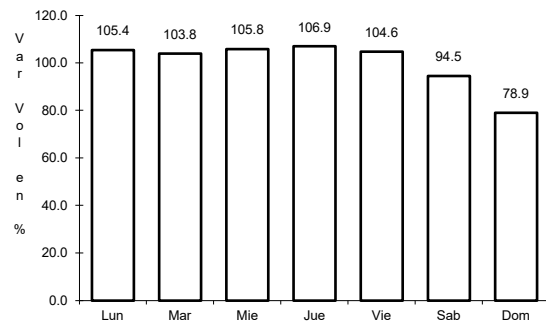


Km: 0.00 Tipo: 3 Sent: 2

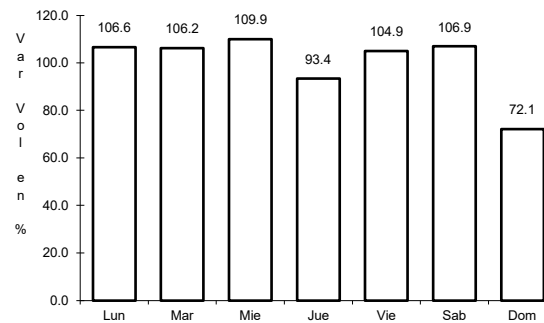
21 CARR: Matamoros - Reynosa

CLAVE: 28077

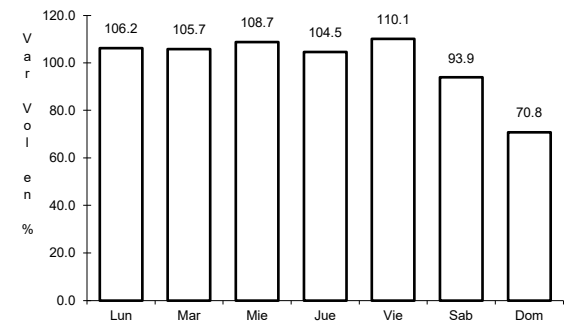
ruta: MEX-002



Km: 0.00 Tipo: 3 Sent: 0



Km: 98.00 Tipo: 1 Sent: 1

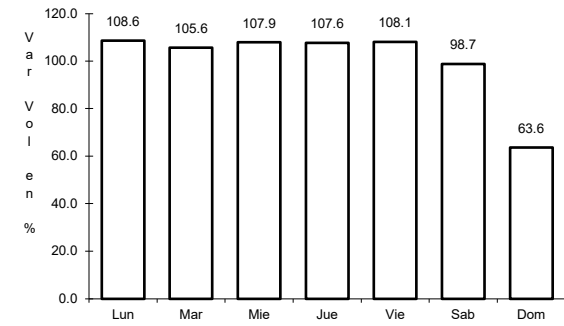
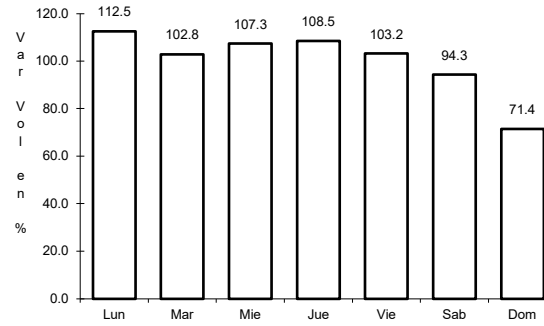
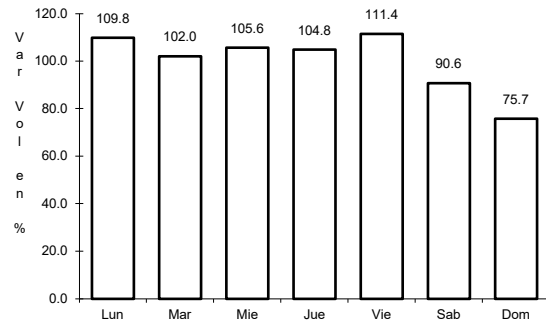


Km: 98.00 Tipo: 1 Sent: 2

22 CARR: Monterrey - Mier

CLAVE: 00127

ruta: MEX-054



Km: 19.12 Tipo: 1 Sent: 1

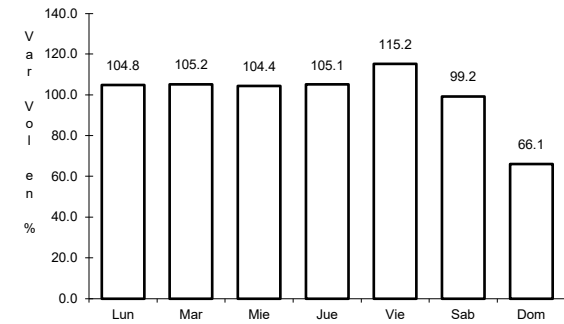
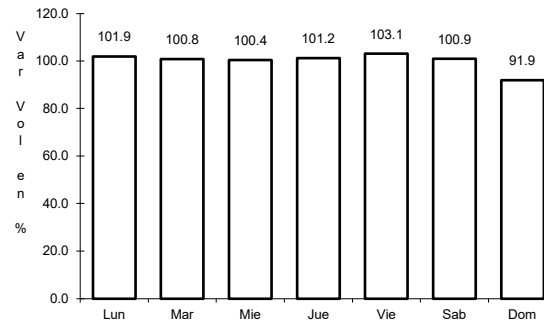
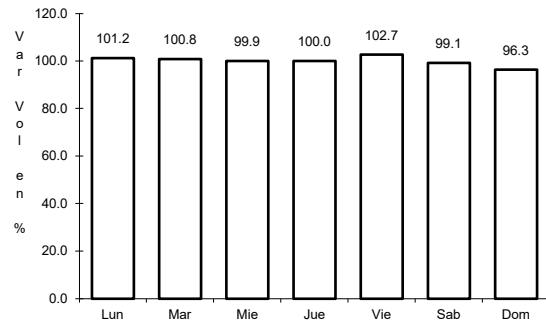
Km: 19.12 Tipo: 1 Sent: 2

Km: 156.21 Tipo: 1 Sent: 0

23 CARR: Monterrey - Nuevo Laredo (Libre)

CLAVE: 00463

ruta: MEX-085



Km: 12.10 Tipo: 3 Sent: 1

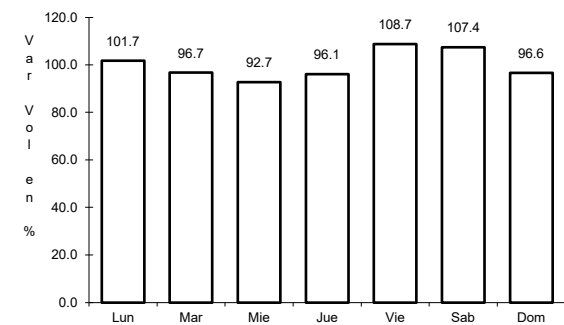
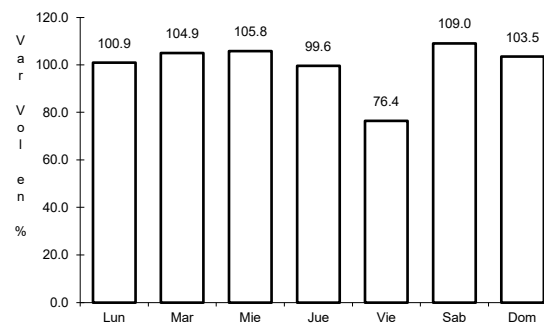
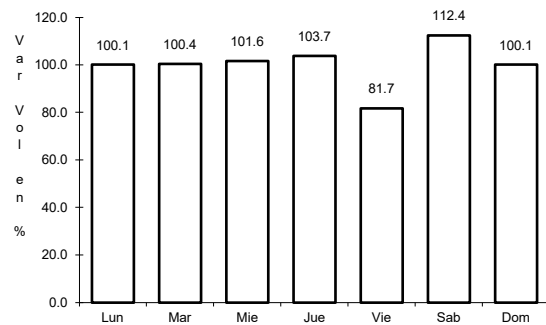
Km: 12.10 Tipo: 3 Sent: 2

Km: 124.40 Tipo: 3 Sent: 0

24 CARR: Monterrey - Reynosa (Libre)

CLAVE: 00088

ruta: MEX-040



Km: 19.10 Tipo: 1 Sent: 1

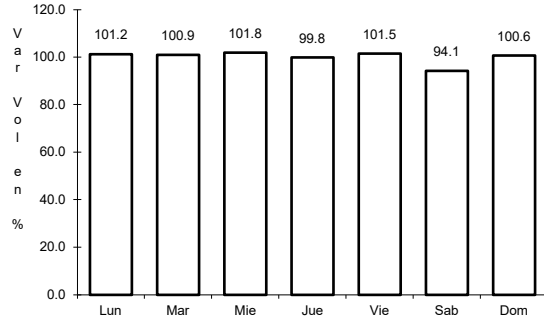
Km: 19.10 Tipo: 1 Sent: 2

Km: 125.00 Tipo: 1 Sent: 0

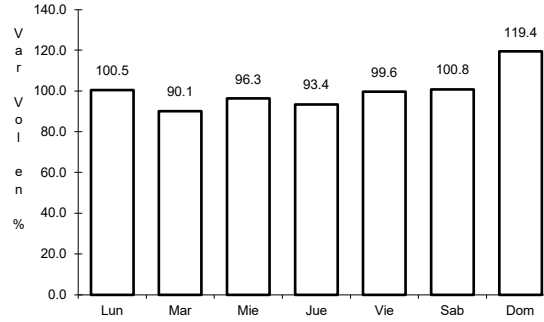
25 CARR: Paras - Nueva Ciudad Guerrero

CLAVE: 00476

ruta: MEX-030



Km: 0.00 Tipo: 3 Sent: 0

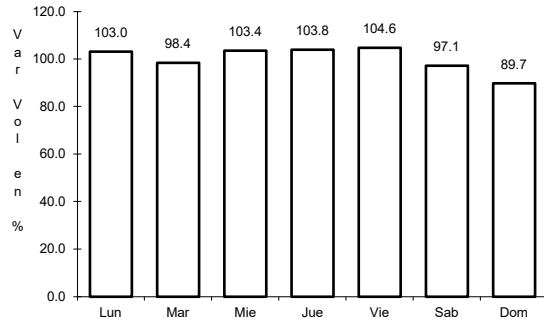


Km: 32.00 Tipo: 1 Sent: 0

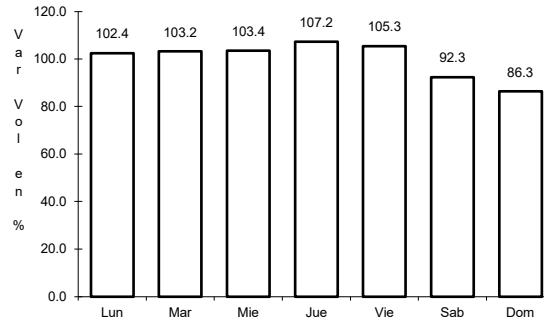
26 CARR: Petrocel - Puerto Industrial Altamira

CLAVE:

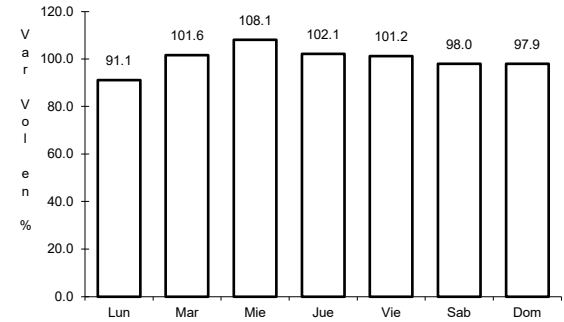
ruta: MEX-080



Km: 0.00 Tipo: 3 Sent: 1



Km: 0.00 Tipo: 3 Sent: 2

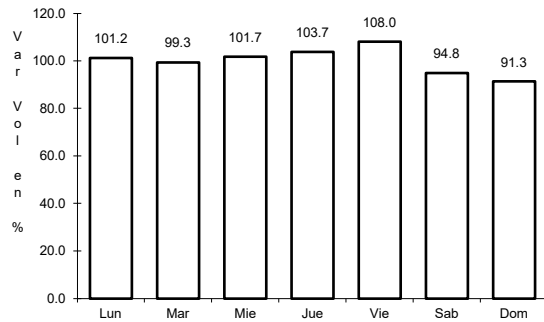


Km: 3.80 Tipo: 3 Sent: 1

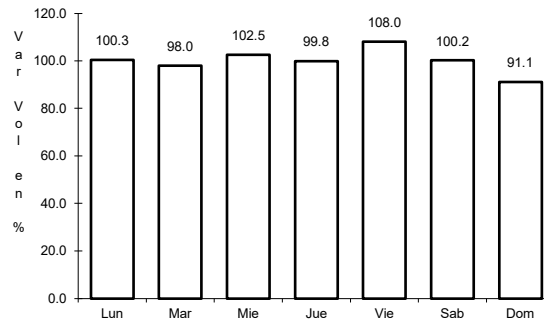
27 CARR: Piedras Negras - Nuevo Laredo

CLAVE: 00503

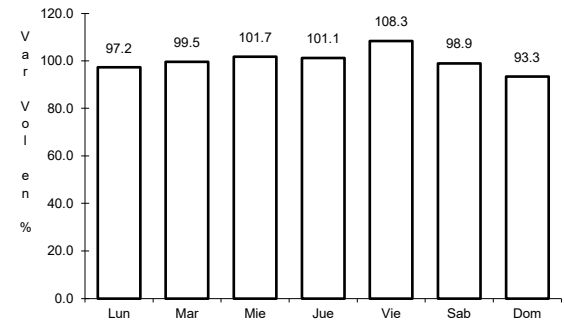
ruta: MEX-002



Km: 0.00 Tipo: 3 Sent: 1



Km: 0.00 Tipo: 3 Sent: 2

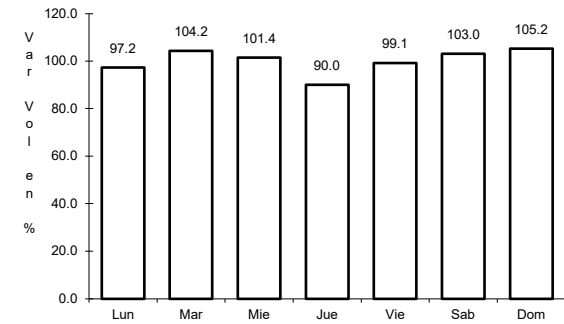
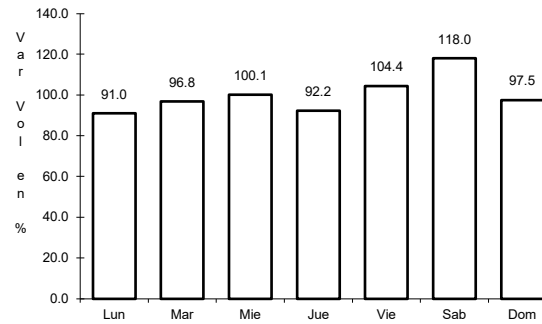
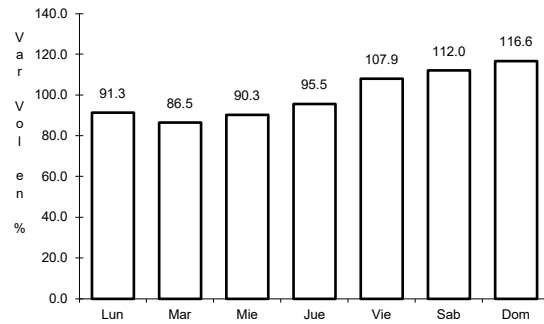


Km: 134.00 Tipo: 3 Sent: 0

28 CARR: Ramal a Puente Tampico

CLAVE: 28020

ruta: MEX-180



Km: 186.00 Tipo: 3 Sent: 1

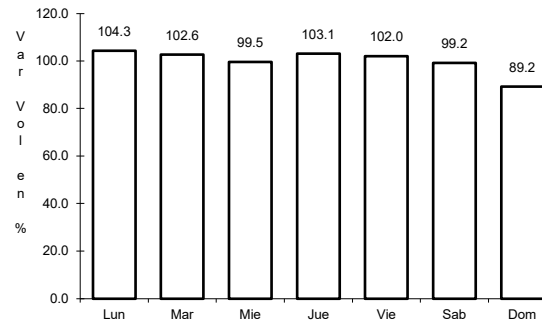
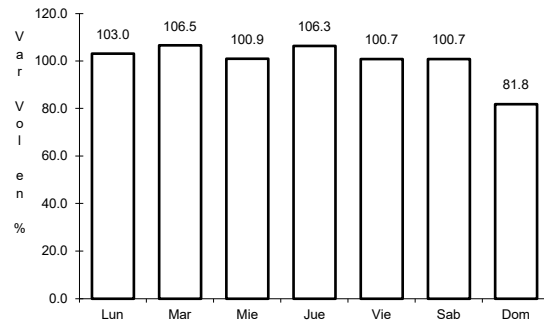
Km: 186.00 Tipo: 3 Sent: 2

Km: 193.12 Tipo: 1 Sent: 1

29 CARR: Ramal de Acceso a Puente Anzaldúas

CLAVE: 28619

ruta: MEX



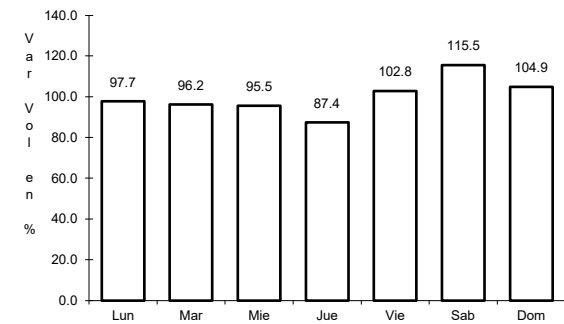
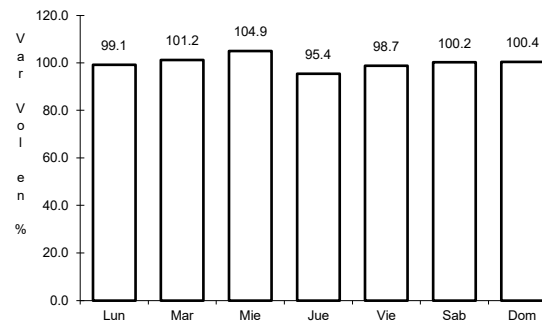
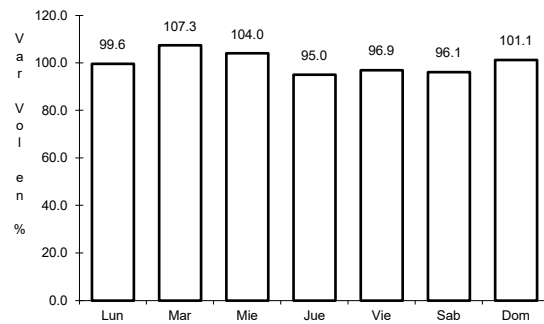
Km: 0.00 Tipo: 3 Sent: 1

Km: 0.00 Tipo: 3 Sent: 2

31 CARR: Reynosa - Nuevo Laredo

CLAVE: 28076

ruta: MEX-002



Km: 0.00 Tipo: 3 Sent: 1

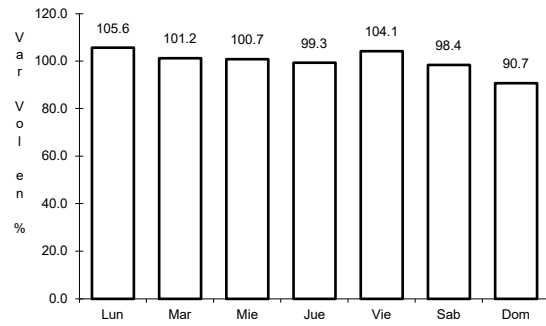
Km: 0.00 Tipo: 3 Sent: 2

Km: 221.08 Tipo: 1 Sent: 0

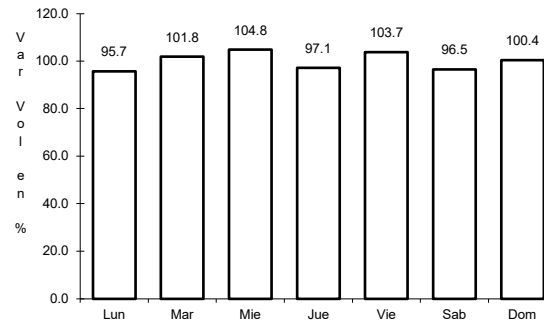
32 CARR: Soto La Marina - La Coma

CLAVE: 28052

ruta: MEX-180



Km: 0.00 Tipo: 3 Sent: 0

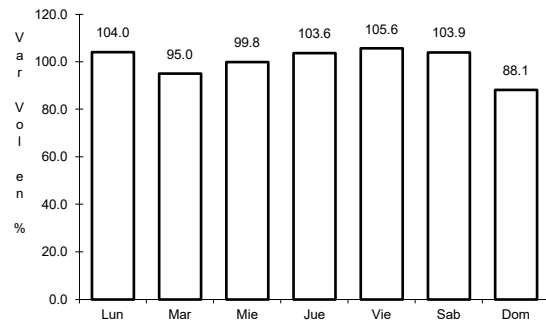


Km: 86.00 Tipo: 1 Sent: 0

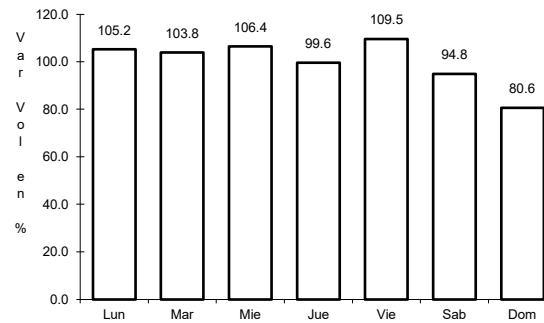
33 CARR: Tampico - Cd. Mante

CLAVE: 28163

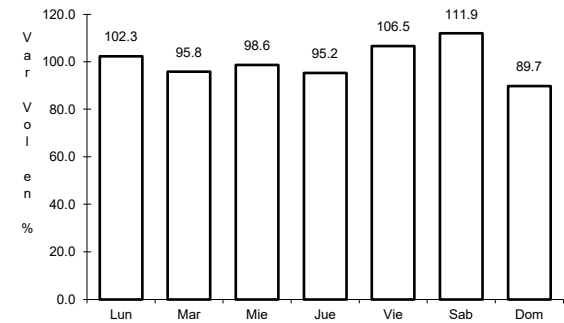
ruta: MEX-080



Km: 14.79 Tipo: 1 Sent: 1



Km: 14.79 Tipo: 1 Sent: 2

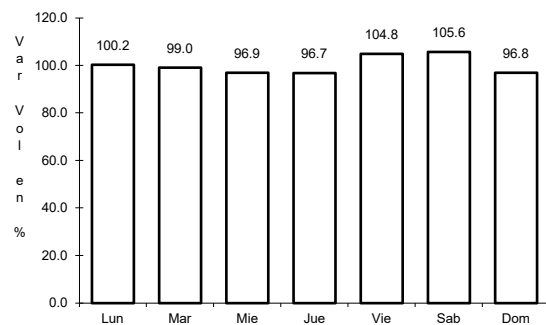


Km: 155.00 Tipo: 1 Sent: 0

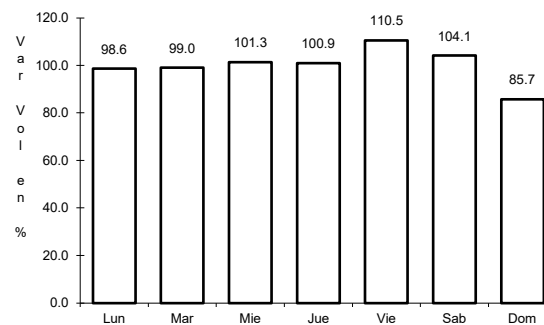
34 CARR: Tuxpam - Tampico

CLAVE: 00529

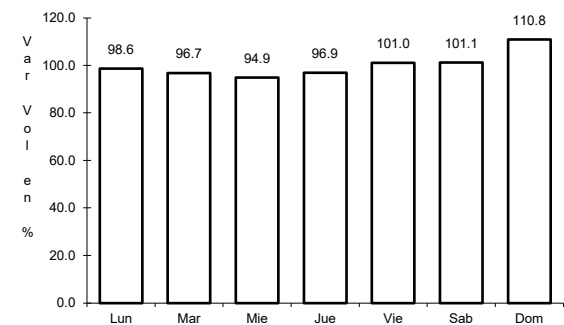
ruta: MEX-180



Km: 0.00 Tipo: 3 Sent: 0



Km: 78.60 Tipo: 1 Sent: 0

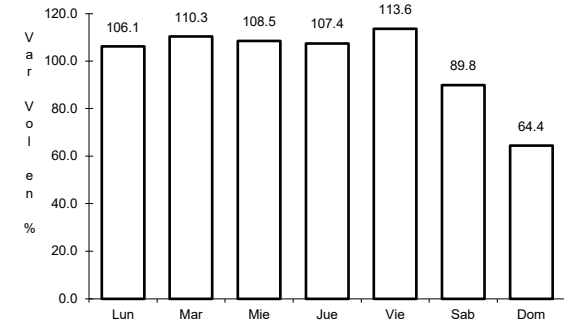
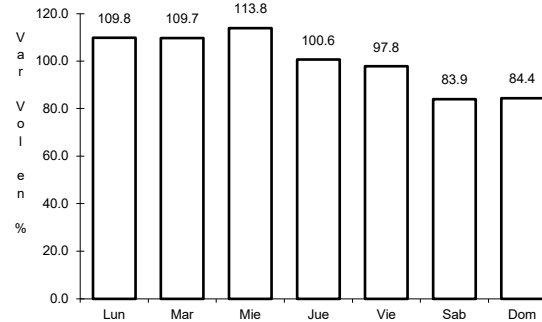
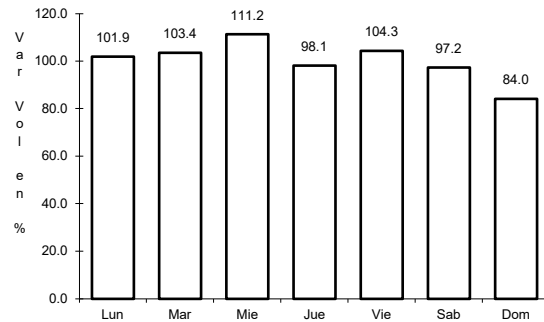


Km: 186.85 Tipo: 3 Sent: 1

35 CARR: Libramiento de Reynosa Sur II

CLAVE:

RUTA: MEX-040D



Km: 0.00 Tipo: 3 Sent: 1

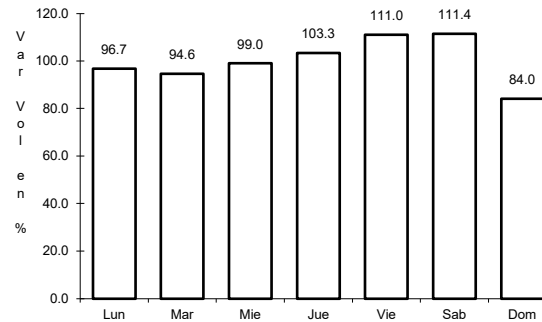
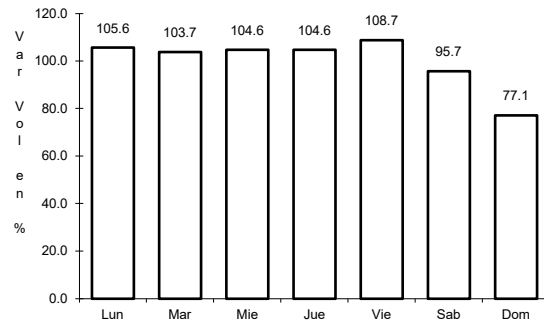
Km: 0.00 Tipo: 3 Sent: 2

Km: 35.80 Tipo: 1 Sent: 0

36 CARR: Libramiento Poniente de Tampico (Cuota)

CLAVE: 28051

RUTA: MEX-070D



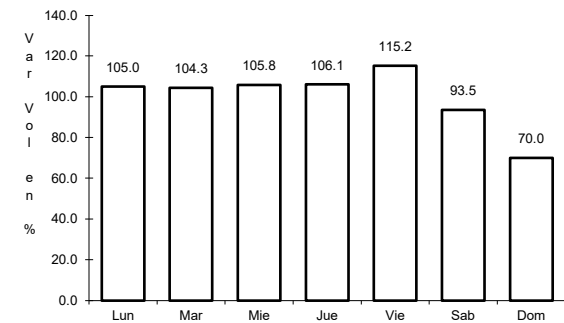
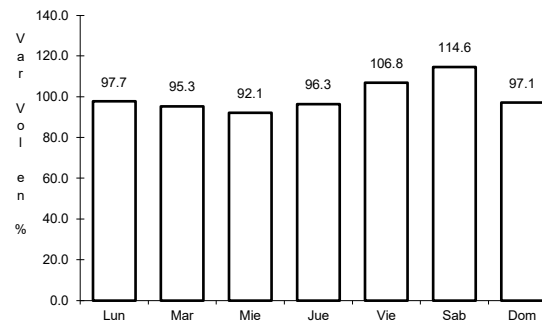
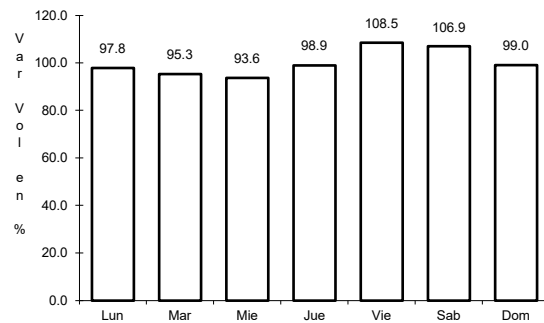
Km: 0.00 Tipo: 3 Sent: 0

Km: 14.20 Tipo: 1 Sent: 0

37 CARR: Matamoros - Reynosa (Cuota)

CLAVE: 28079

RUTA: MEX-002D



Km: 0.00 Tipo: 3 Sent: 1

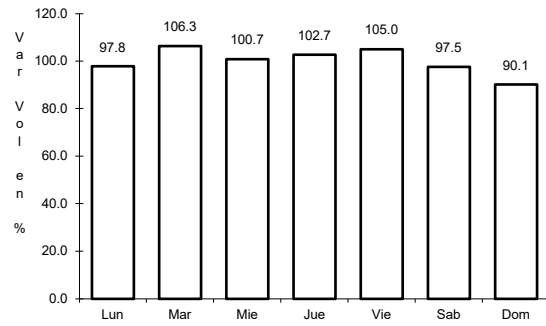
Km: 0.00 Tipo: 3 Sent: 2

Km: 62.98 Tipo: 3 Sent: 1

38 CARR: Aldama - Barra El Tordo

CLAVE: 28620

RUTA: TAM



Km: 0.00

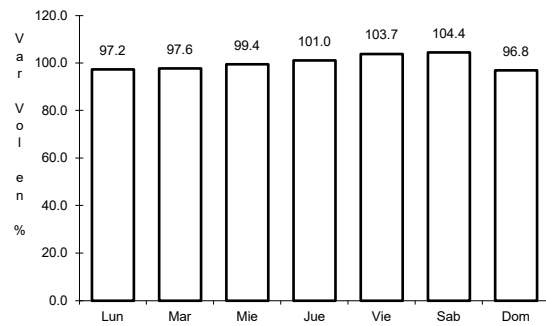
Tipo: 3

Sent: 0

39 CARR: Barretal - Nueva Villa de Padilla

CLAVE: 28001

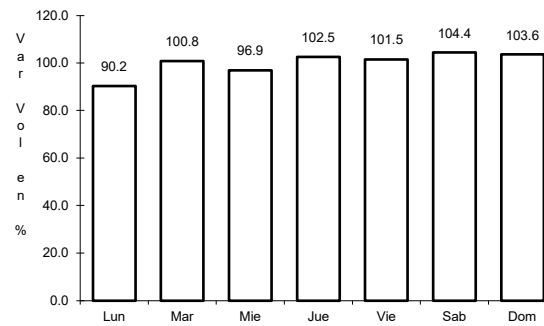
RUTA: TAM-001



Km: 0.00

Tipo: 3

Sent: 0



Km: 24.50

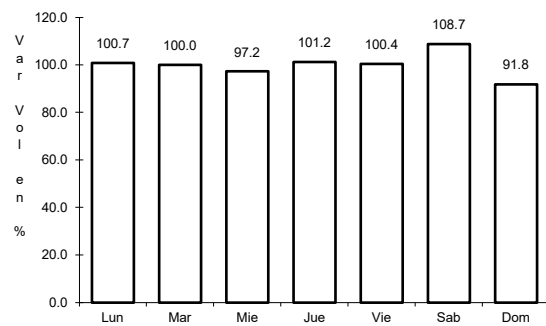
Tipo: 1

Sent: 0

40 CARR: China - Méndez

CLAVE: 00191

RUTA: NL-TAM



Km: 0.00

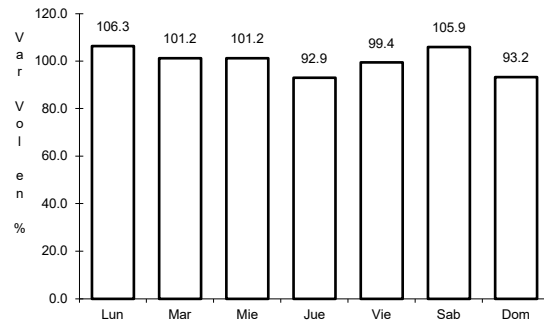
Tipo: 3

Sent: 0

41 CARR: Ébano - Estación Manuel

CLAVE: 24624

ruta: SLP-TAM



Km: 0.00

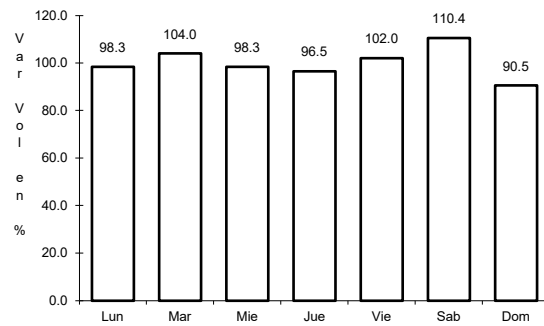
Tipo: 3

Sent: 0

42 CARR: El Limón - Ocampo

CLAVE: 28019

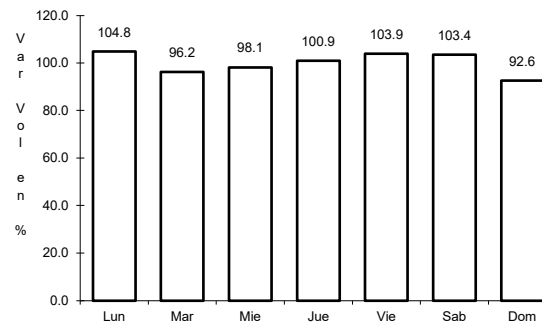
ruta: TAM-019



Km: 0.00

Tipo: 3

Sent: 0



Km: 43.00

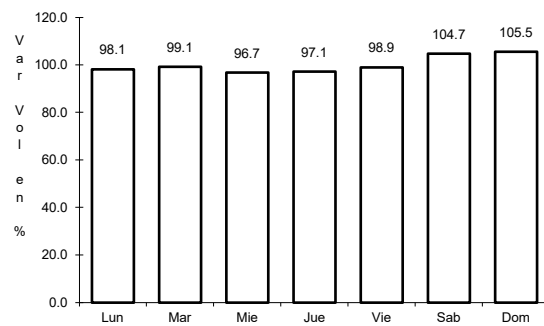
Tipo: 1

Sent: 0

43 CARR: Ent. Huisachito - Nuevo Laredo

CLAVE: 00074

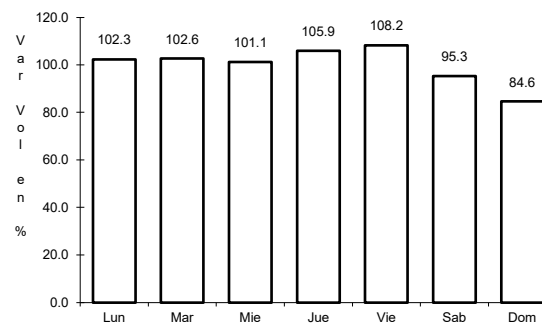
ruta: NL-001-TAM



Km: 0.00

Tipo: 3

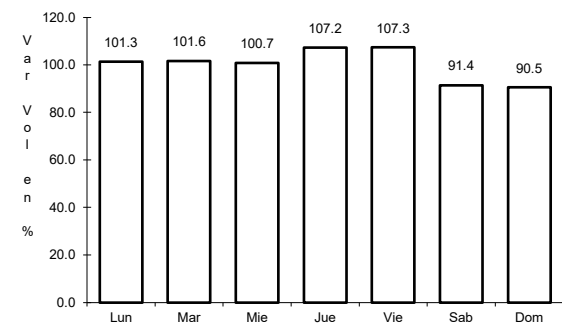
Sent: 0



Km: 47.00

Tipo: 1

Sent: 0



Km: 51.00

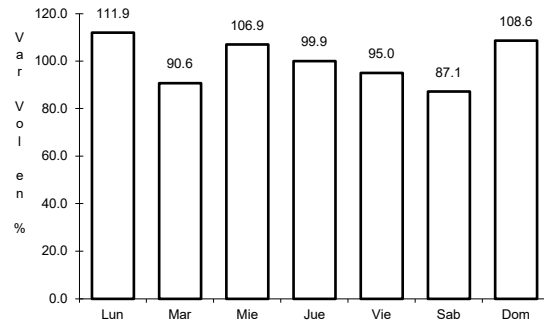
Tipo: 1

Sent: 0

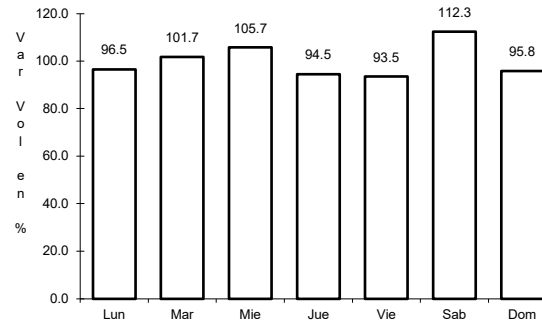
44 CARR: Ent. Las Blancas - Río Bravo

CLAVE: 28003

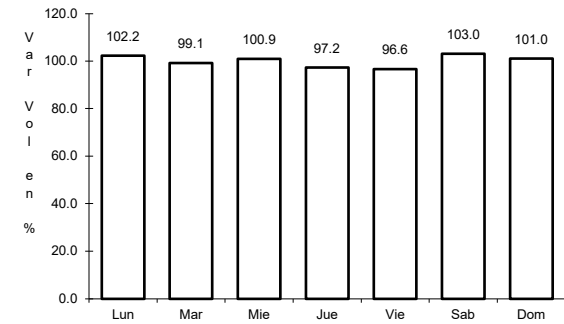
ruta: TAM-003



Km: 0.00 Tipo: 3 Sent: 0



Km: 21.00 Tipo: 1 Sent: 1

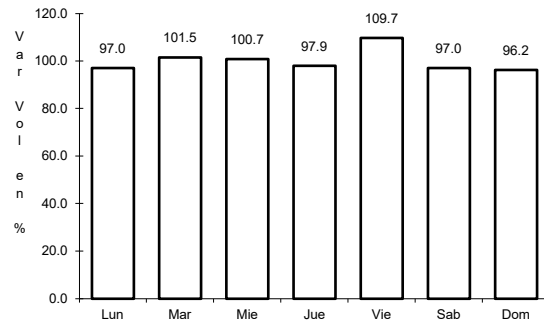


Km: 21.00 Tipo: 1 Sent: 2

45 CARR: La Joya - Méndez

CLAVE: 28623

ruta: TAM

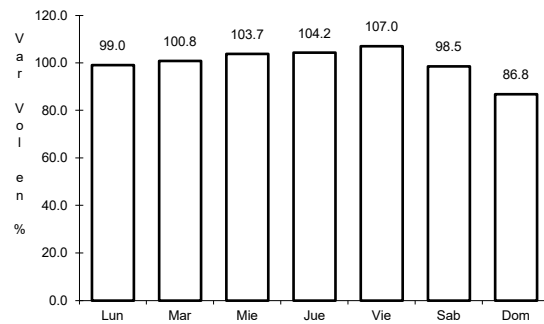


Km: 0.00 Tipo: 3 Sent: 0

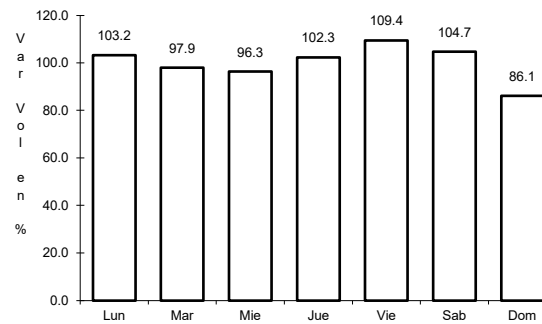
46 CARR: Libramiento de Cd. Victoria

CLAVE: 28282

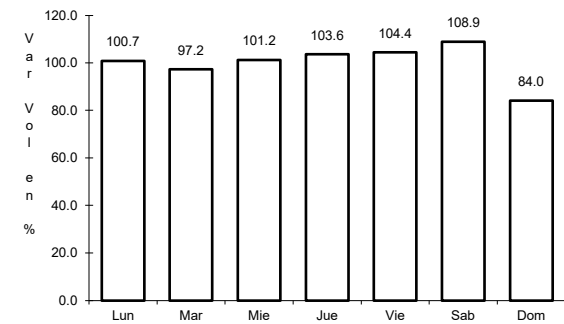
ruta: TAM



Km: 0.00 Tipo: 3 Sent: 1



Km: 0.00 Tipo: 3 Sent: 2

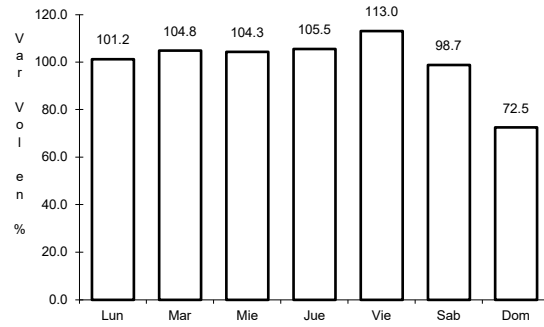


Km: 25.90 Tipo: 1 Sent: 1

47 CARR: Libramiento de Mier

CLAVE: 28282

ruta: TAMPS

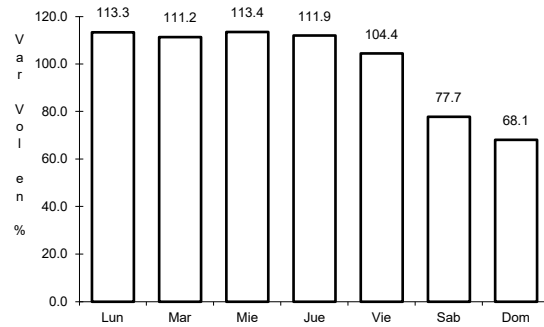


Km: 0.00 Tipo: 3 Sent: 0

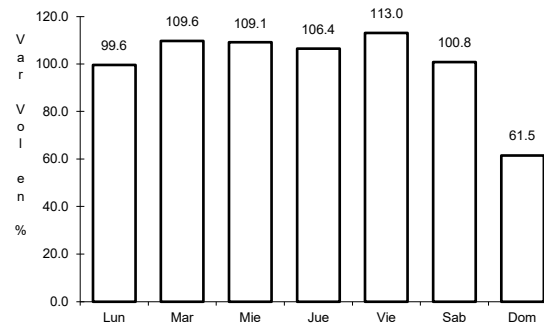
48 CARR: Libramiento de Nuevo Laredo

CLAVE: 28030

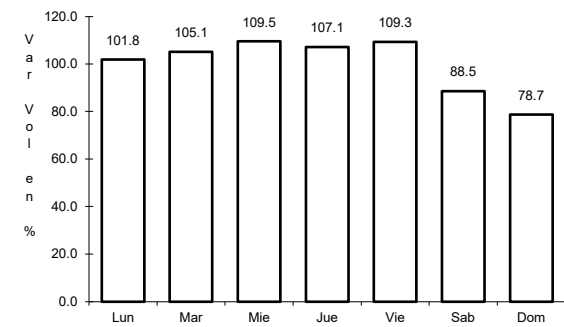
ruta: TAM



Km: 0.00 Tipo: 3 Sent: 1



Km: 0.00 Tipo: 3 Sent: 2

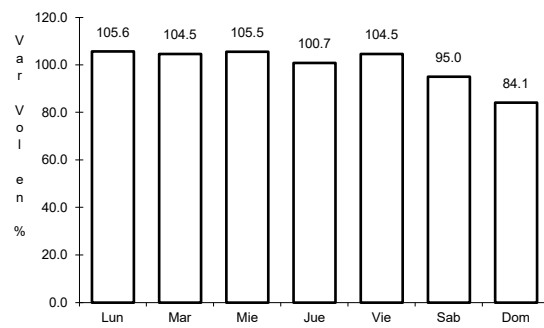


Km: 18.00 Tipo: 1 Sent: 1

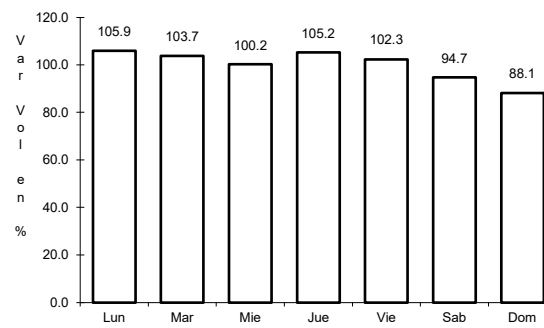
49 CARR: Libramiento de Nuevo Laredo II

CLAVE: 28626

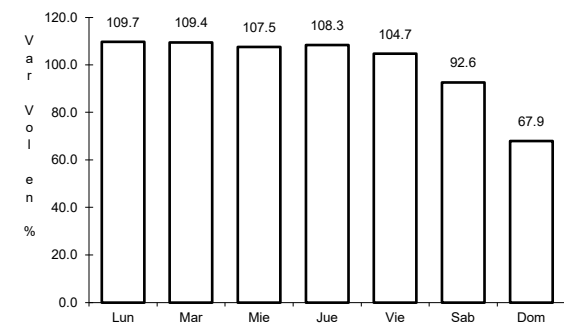
ruta: TAM



Km: 0.00 Tipo: 3 Sent: 0



Km: 32.20 Tipo: 1 Sent: 1

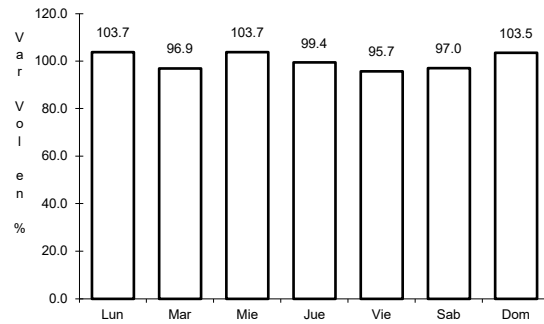


Km: 32.20 Tipo: 1 Sent: 2

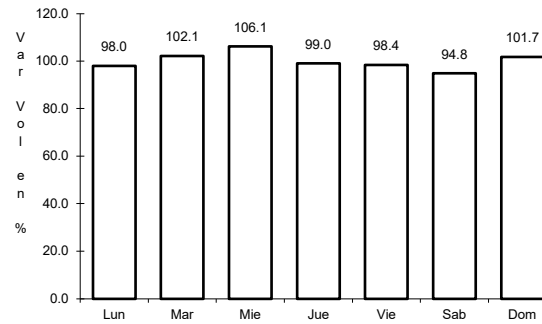
50 CARR: Libramiento de Río Bravo

CLAVE: 28002

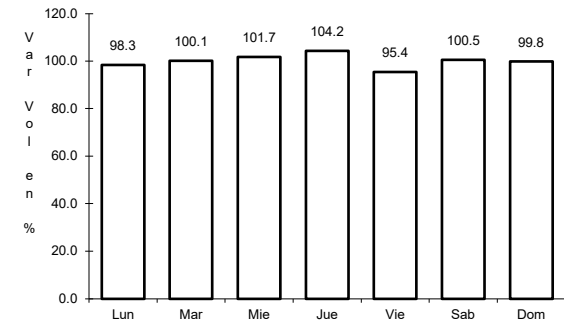
RUTA: TAM



Km: 0.00 Tipo: 3 Sent: 1



Km: 0.00 Tipo: 3 Sent: 2

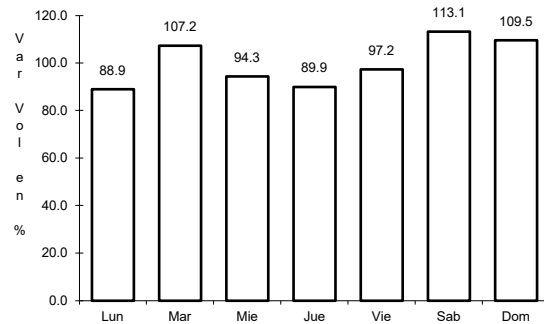


Km: 13.10 Tipo: 1 Sent: 1

51 CARR: Los Guerra - Los Herreras

CLAVE: 19031

RUTA: TAM-NL

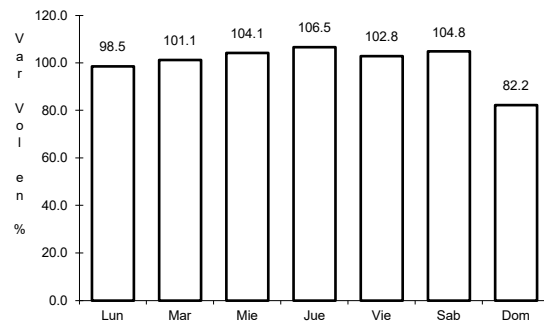


Km: 73.00 Tipo: 1 Sent: 0

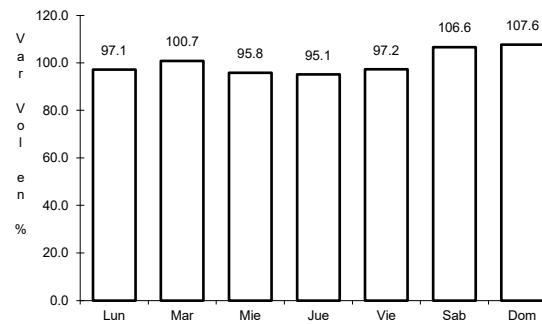
52 CARR: Peña Blanca - Cd. Camargo

CLAVE: 00102

RUTA: NL-TAM



Km: 0.00 Tipo: 3 Sent: 0

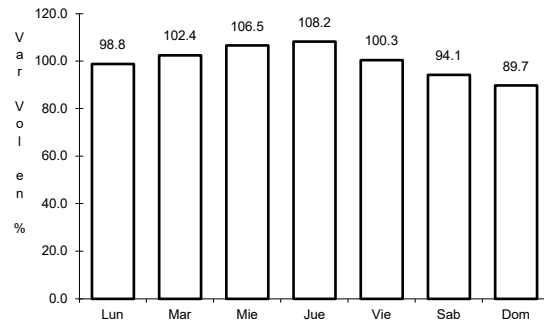


Km: 65.00 Tipo: 1 Sent: 0

53 CARR: Potrero Nuevo - Rancho El Mezquital

CLAVE: 28615

RUTA: TAM



Km: 0.00

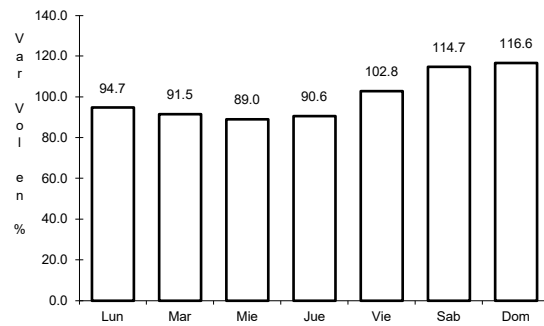
Tipo: 3

Sent: 0

54 CARR: Ramal a Gómez Farías

CLAVE: 28020

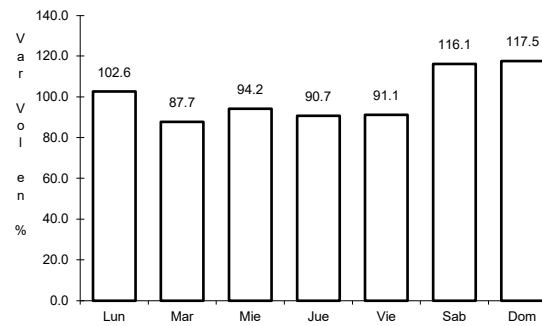
RUTA: TAM-020



Km: 0.00

Tipo: 3

Sent: 0



Km: 11.00

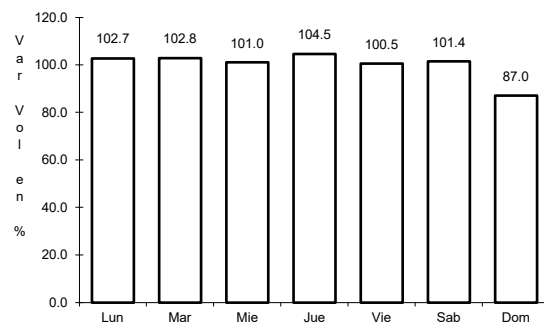
Tipo: 1

Sent: 0

55 CARR: Ramal a Xicoténcatl

CLAVE: 28619

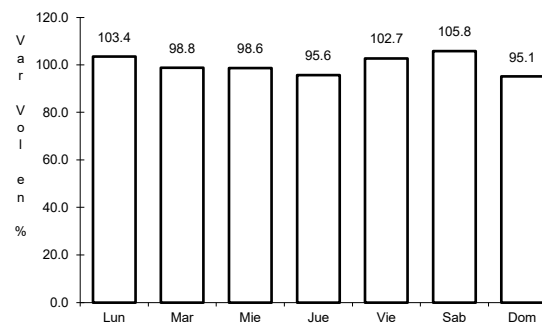
RUTA: TAM



Km: 0.00

Tipo: 3

Sent: 0



Km: 13.00

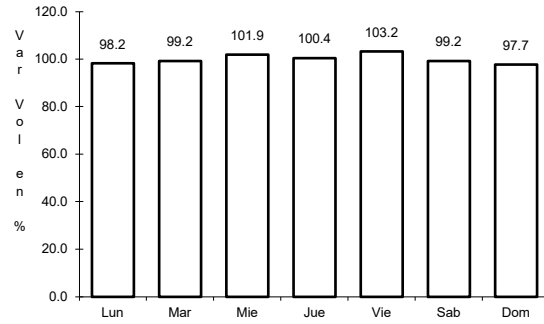
Tipo: 1

Sent: 0

56 CARR: San Fernando - Carboneras

CLAVE: 28618

RUTA: TAM



Km: 0.00

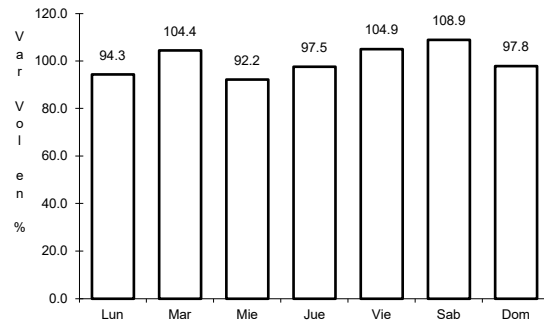
Tipo: 3

Sent: 0

57 CARR: Soto La Marina - La Pesca

CLAVE: 28049

RUTA: TAM-070



Km: 0.00

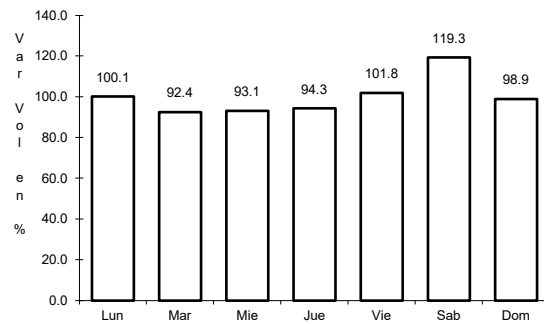
Tipo: 3

Sent: 0

58 CARR: T. C. (Valle Hermoso - Empalme) - Matamoros

CLAVE: 28005

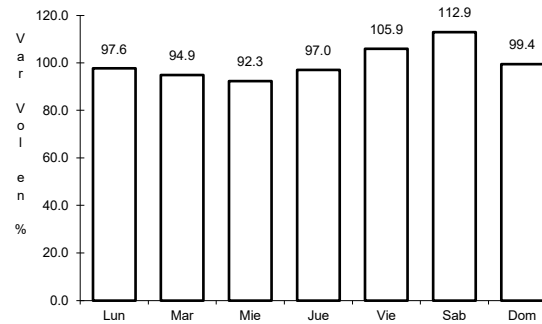
RUTA: TAM-005



Km: 0.00

Tipo: 3

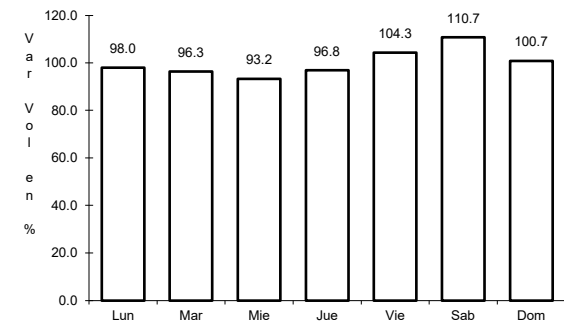
Sent: 0



Km: 33.90

Tipo: 1

Sent: 1



Km: 33.90

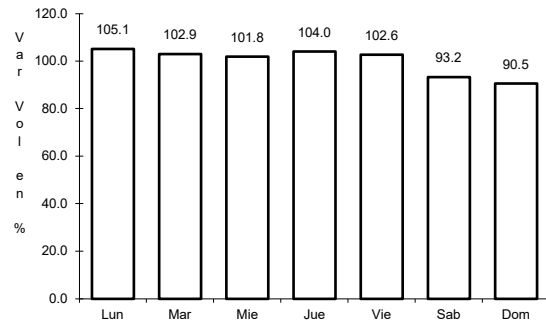
Tipo: 1

Sent: 2

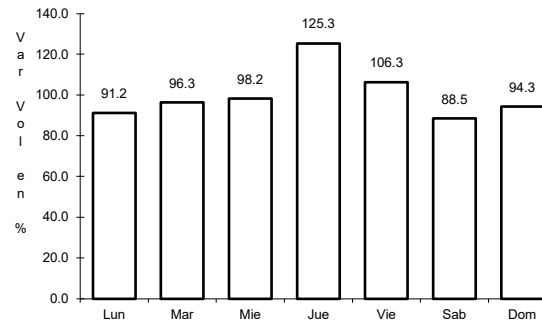
59 CARR: T. C. Libramiento Cd. Victoria - San Antonio

CLAVE:

RUTA: TAM-126



Km: 0.00 Tipo: 3 Sent: 0

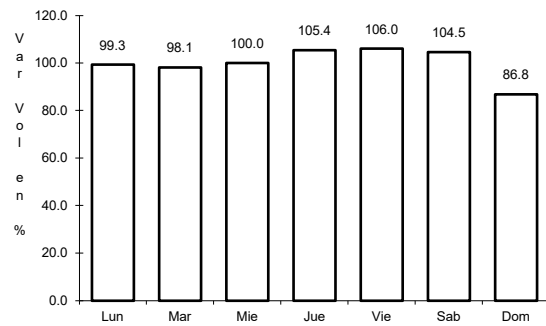


Km: 37.50 Tipo: 1 Sent: 0

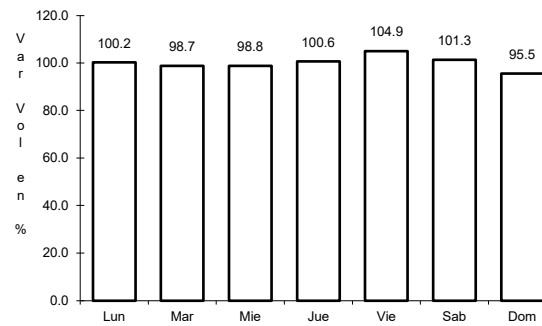
60 CARR: Valle Hermoso - Empalme

CLAVE: 28004

RUTA: TAM-004



Km: 0.00 Tipo: 3 Sent: 0

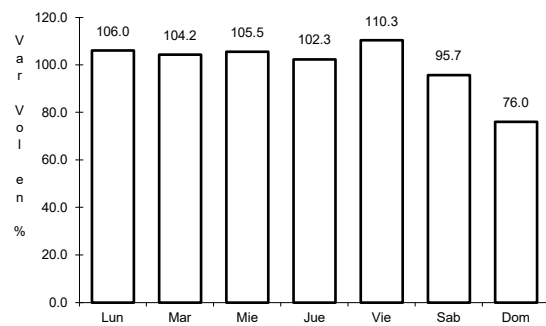


Km: 28.38 Tipo: 1 Sent: 0

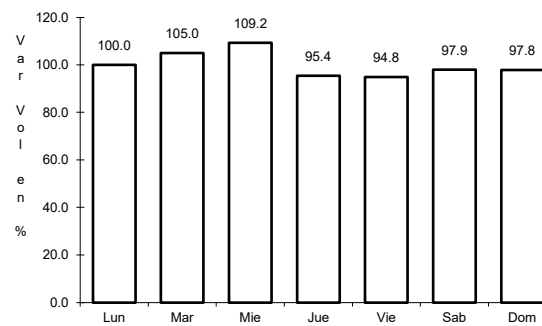
61 CARR: Valle Hermoso - Las Yescas

CLAVE: 28614

RUTA: TAM

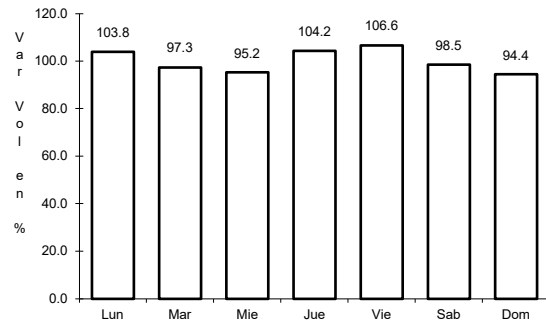


Km: 0.00 Tipo: 3 Sent: 0



Km: 26.00 Tipo: 1 Sent: 0

62 CARR: Santander Jiménez - Ent. El Ojito

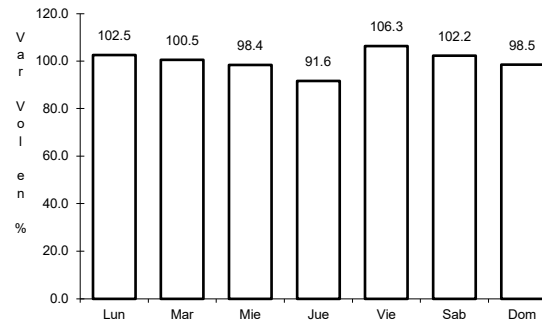


Km: 0.00

Tipo: 3

Sent: 0

CLAVE: 28579

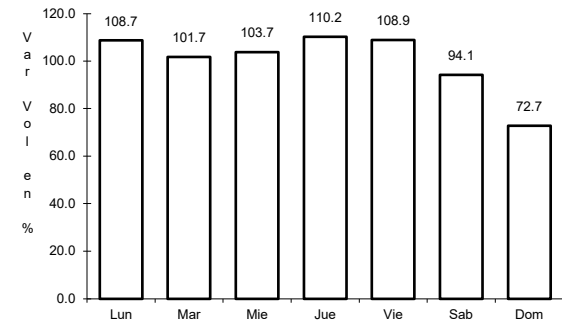


Km: 20.00

Tipo: 1

Sent: 0

RUTA: MEX-107-TAM



Km: 58.00

Tipo: 1

Sent: 0

