



TABASCO

## NO. INDICE CARRETERA

## RUTA

## ---RED FEDERAL LIBRE---

1 Coatzacoalcos - Villahermosa	MEX-180
2 El Suspiro - Tenosique	MEX-203
3 Malpaso - El Bellote	MEX-187
4 Tenosique - El Ceibo	MEX-203
5 Villahermosa - Cd. del Carmen	MEX-180
6 Villahermosa - Escopetazo	MEX-195
7 Villahermosa - Francisco Escárcega	MEX-186

## ---RED FEDERAL DE CUOTA---

8 Ent. Agua Dulce - Cárdenas (Cuota)	MEX-180D
9 Las Choapas - Ocozacoautla (Cuota)	MEX-187D
10 Libramiento de Villahermosa (Cuota)	MEX-180D

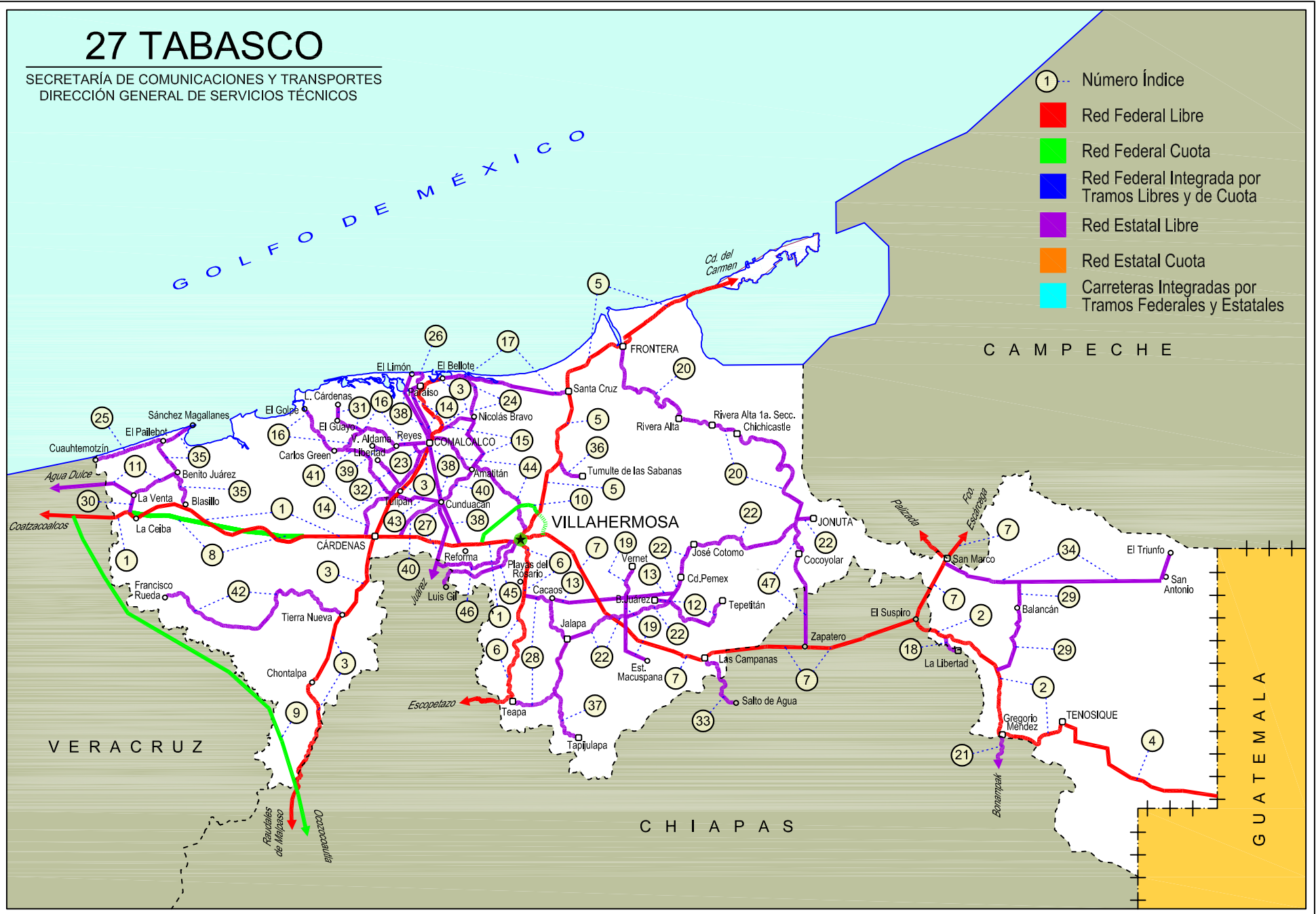
## ---RED ESTATAL LIBRE---

11 Benito Juárez - Agua Dulce	TAB-VER
12 Benito Juárez - Tepetitán	TAB
13 Cacaos - La Granja	TAB
14 Cárdenas - Paraíso	TAB
15 Chichicapa - Ent. La Libertad	TAB
16 Comalcalco - El Golpe	TAB
17 El Bellote - Santa Cruz	TAB
18 Ent. Emiliano Zapata - La Libertad	CHIS-TAB
19 Estación Macuspana - Vernet	TAB-041
20 Frontera - T. C. (Jalapa - Jonuta)	TAB
21 Gregorio Méndez Magaña - Reforma de Ocampo	CHIS
22 Jalapa - Jonuta	TAB
23 Libramiento Sur de Comalcalco	TAB
24 Nicolás Bravo - T. C. (El Bellote - Santa Cruz)	TAB
25 Pailebot - Cuauhtemotzin	TAB
26 Paraíso - El Limón	TAB
27 Paso de Cunduacán - Estación Juárez	TAB-CHIS
28 Playas del Rosario - Teapa	TAB-001
29 Ramal a Balancan	TAB
30 Ramal a La Venta	TAB
31 Ramal a Lázaro Cárdenas	TAB
32 Ramal a Libertad	TAB
33 Ramal a Salto del Agua	TAB-CHIS
34 Ramal a San Antonio	TAB
35 Ramal a Sánchez Magallanes	TAB
36 Ramal a Tamulte de Las Sabanas	TAB
37 Ramal a Tapijulapa	TAB
38 Reforma - Dos Bocas	TAB
39 Reyes Hernández - Villa Aldama	TAB
40 Samaria - Amatitán	TAB
41 T. C. (Cárdenas - Paraíso) - Carlos Green	TAB
42 Tierra Nueva - Francisco Rueda	TAB
43 Tulipán - Cunduacán	TAB
44 Villahermosa - Comalcalco	TAB
45 Villahermosa - Luis Gil Pérez	TAB
46 Villahermosa - T. C. (P. de Cunduacán - Estación Juárez)	TAB
47 Zapatero - T. C. (Jalapa - Jonuta)	CHIS-TAB

# 27 TABASCO

SECRETARÍA DE COMUNICACIONES Y TRANSPORTES  
DIRECCIÓN GENERAL DE SERVICIOS TÉCNICOS

- ① --- Número Índice
- Red Federal Libre
- Red Federal Cuota
- Red Federal Integrada por Tramos Libres y de Cuota
- Red Estatal Libre
- Red Estatal Cuota
- Carreteras Integradas por Tramos Federales y Estatales





TABASCO

1 CARR: Coatzacoalcos - Villahermosa

CLAVE: 00528

RUTA: MEX-180

AÑO: 2020

LUGAR	ESTACION				CLASIFICACION VEHICULAR EN PORCIENTO													COORDENADAS		
	KM	TE	SC	TDPA	M	A	B	C2	C3	T3S2	T3S3	T3S2R4	OTROS	A	B	C	K'	D	LATITUD	LONGITUD
Coatzacoalcos	0.00																			
Plaza de Cobro Pte. Coatzacoalcos	3.00	1	0	16098	2.5	83.7	1.0	7.4	1.8	1.3	1.2	1.0	0.1	86.2	1.0	12.8	0.075	0.508	18.115209	-94.410914
X. C. Pajaritos - Nanchital	6.53	1	0	16016	2.1	81.7	2.7	7.5	1.4	1.2	1.2	2.1	0.1	83.8	2.7	13.5	0.075	0.508	18.098472	-94.387419
X. C. Pajaritos - Nanchital	6.53	3	0	10171	3.2	75.7	2.3	6.8	2.9	3.4	2.4	3.2	0.1	78.9	2.3	18.8	0.091	0.510	18.098472	-94.387416
T. Der. Puente Antonio Dovalí Jaimes	14.60	1	0	7672	4.4	71.7	3.9	5.4	3.1	4.6	2.7	4.1	0.1	76.1	3.9	20.0	0.079	0.512	18.074928	-94.320707
T. Der. Puente Antonio Dovalí Jaimes	14.60	3	1	7365	2.9	66.6	4.5	5.8	3.2	8.8	2.8	4.7	0.7	69.5	4.5	26.0	0.072	0.503	18.072003	-94.313561
T. Der. Puente Antonio Dovalí Jaimes	14.60	3	2	7278	3.0	66.4	4.6	5.8	3.2	8.8	2.8	4.7	0.7	69.4	4.6	26.0	0.074	0.503	18.071842	-94.313654
T. Der. Ocozocoautla	22.20	3	1	5036	2.7	72.3	4.5	5.7	2.7	6.8	2.0	2.7	0.6	75.0	4.5	20.5	0.073	0.501	18.068135	-94.251925
T. Der. Ocozocoautla	22.20	3	2	5017	2.6	72.5	4.4	5.7	2.7	6.8	2.0	2.7	0.6	75.1	4.4	20.5	0.072	0.501	18.069049	-94.251810
T. Der. Las Choapas	36.00	3	1	6639	2.4	61.8	5.3	7.4	2.8	11.7	2.5	6.0	0.1	64.2	5.3	30.5	0.075	0.500	18.052692	-94.126608
T. Der. Las Choapas	36.00	3	2	6635	2.5	61.6	5.3	7.4	2.8	11.7	2.6	6.0	0.1	64.1	5.3	30.6	0.081	0.500	18.053019	-94.126590
Lim. Edos. Term. Ver. Ppia. Tab.	41.48																			
T. Izq. Villa La Venta	47.26	3	0	2046	10.9	68.3	2.2	7.8	2.1	5.5	2.2	0.9	0.1	79.2	2.2	18.6	0.075	0.722	18.061177	-94.042328
X. C. Agua Dulce - Cárdenas (Cuota)	51.80	3	0	3108	9.0	69.4	3.6	7.3	1.9	6.5	1.9	0.4	0.0	78.4	3.6	18.0	0.078	0.547	18.055181	-93.996820
T. Izq. Campo Magallanes	65.20	1	0	2639	6.3	68.0	2.4	8.5	2.2	9.0	2.2	1.3	0.1	74.3	2.4	23.3	0.079	0.537	18.073708	-93.877912
T. Izq. Campo Magallanes	65.20	3	0	3096	6.4	66.6	3.5	8.6	2.4	9.3	1.9	1.2	0.1	73.0	3.5	23.5	0.090	0.533	18.073667	-93.877778
X. C. Agua Dulce - Cárdenas (Cuota)	78.80	1	0	3632	9.9	65.9	2.6	8.4	1.9	8.8	1.6	0.8	0.1	75.8	2.6	21.6	0.085	0.526	18.031146	-93.814740
X. C. Agua Dulce - Cárdenas (Cuota)	78.80	3	0	3332	10.0	63.3	2.6	8.8	3.3	9.2	2.4	0.3	0.1	73.3	2.6	24.1	0.082	0.515	18.030841	-93.814636
Pico de Oro	88.50	1	0	3991	7.9	65.5	3.1	7.8	4.1	8.0	1.6	1.1	0.9	73.4	3.1	23.5	0.081	0.507	18.018511	-93.683435
Pico de Oro	88.50	3	0	4192	5.2	73.6	2.5	8.6	2.8	4.4	2.0	0.7	0.2	78.8	2.5	18.7	0.080	0.542	18.018524	-93.683458
X. C. Agua Dulce - Cárdenas (Cuota)	104.00	1	0	6823	2.4	75.9	1.3	10.3	2.3	6.1	1.2	0.4	0.1	78.3	1.3	20.4	0.087	0.502	17.997206	-93.549068
X. C. Agua Dulce - Cárdenas (Cuota)	104.00	3	1	10012	2.3	62.2	5.2	7.4	3.3	11.4	2.1	5.9	0.2	64.5	5.2	30.3	0.086	0.504	17.998676	-93.544160
X. C. Agua Dulce - Cárdenas (Cuota)	104.00	3	2	9842	2.3	62.3	5.2	7.4	3.3	11.3	2.1	5.9	0.2	64.6	5.2	30.2	0.078	0.504	17.998973	-93.544005
Cárdenas	122.10	1	1	12535	4.5	65.1	4.4	11.8	1.8	7.0	1.8	3.3	0.3	69.6	4.4	26.0	0.075	0.503	17.999110	-93.375217
Cárdenas	122.10	1	2	12677	4.5	65.3	4.1	11.8	1.8	7.0	1.8	3.4	0.3	69.8	4.1	26.1	0.081	0.503	17.999218	-93.375200
Cárdenas	122.10	3	1	13344	3.0	70.2	3.2	11.4	2.0	5.3	1.4	3.2	0.3	73.2	3.2	23.6	0.088	0.505	17.999096	-93.374754
Cárdenas	122.10	3	2	13096	3.0	70.1	3.2	11.5	2.0	5.3	1.4	3.2	0.3	73.1	3.2	23.7	0.077	0.505	17.999189	-93.374705
T. Izq. Samaria	132.50	3	1	13604	2.2	73.9	3.3	7.2	2.6	6.1	1.8	2.7	0.2	76.1	3.3	20.6	0.082	0.520	17.997010	-93.276306
T. Izq. Samaria	132.50	3	2	12550	2.1	74.1	3.3	7.1	2.6	6.1	1.8	2.7	0.2	76.2	3.3	20.5	0.075	0.520	18.000247	-93.274300
Cucuyulapa	134.80	1	1	11680	1.4	73.3	3.7	7.5	1.9	7.2	1.6	3.0	0.4	74.7	3.7	21.6	0.088	0.509	17.999004	-93.257741
Cucuyulapa	134.80	1	2	12087	1.4	73.4	3.7	7.6	1.8	7.2	1.6	2.9	0.4	74.8	3.7	21.5	0.075	0.509	17.999157	-93.257762
Cucuyulapa	134.80	3	1	12024	2.1	72.4	3.5	8.3	1.8	6.8	1.3	3.4	0.4	74.5	3.5	22.0	0.089	0.501	17.999002	-93.257557
Cucuyulapa	134.80	3	2	12082	2.2	72.3	3.5	8.3	1.8	6.8	1.3	3.4	0.4	74.5	3.5	22.0	0.074	0.501	17.999177	-93.257569
T. Der. La Reforma	148.80	1	1	16333	2.8	84.7	1.9	4.0	1.6	2.6	0.8	1.2	0.4	87.5	1.9	10.6	0.091	0.504	17.973978	-93.130636
T. Der. La Reforma	148.80	1	2	16088	2.8	84.7	1.9	4.0	1.6	2.6	0.8	1.2	0.4	87.5	1.9	10.6	0.093	0.504	17.974077	-93.130631

TABASCO

1 CARR: Coatzacoalcos - Villahermosa

CLAVE: 00528

RUTA: MEX-180

AÑO: 2020

LUGAR	ESTACION				CLASIFICACION VEHICULAR EN PORCIENTO										COORDENADAS					
	KM	TE	SC	TDPA	M	A	B	C2	C3	T3S2	T3S3	T3S2R4	OTROS	A	B	C	K'	D	LATITUD	LONGITUD
T. Der. La Reforma	148.80	3	1	23116	44.1	37.8	1.9	6.5	2.0	3.9	1.3	2.0	0.5	81.9	1.9	16.2	0.080	0.500	17.973975	-93.130400
T. Der. La Reforma	148.80	3	2	23152	9.2	72.6	1.9	7.1	1.7	4.1	0.8	2.1	0.5	81.8	1.9	16.3	0.081	0.500	17.974057	-93.130396
Villahermosa	171.15	1	1	21196	1.7	80.2	2.1	7.9	1.6	3.6	0.9	1.8	0.2	81.9	2.1	16.0	0.082	0.508	17.992298	-92.945270
Villahermosa	171.15	1	2	20538	1.7	80.0	2.3	7.9	1.6	3.6	0.9	1.8	0.2	81.7	2.3	16.0	0.083	0.508	17.992289	-92.945259

2 CARR: El Suspiro - Tenosique

CLAVE: 00276

RUTA: MEX-203

AÑO: 2020

LUGAR	ESTACION				CLASIFICACION VEHICULAR EN PORCIENTO										COORDENADAS					
	KM	TE	SC	TDPA	M	A	B	C2	C3	T3S2	T3S3	T3S2R4	OTROS	A	B	C	K'	D	LATITUD	LONGITUD
Ent. El Suspiro	0.00	3	0	4859	2.2	80.2	2.0	9.7	1.4	3.0	0.7	0.5	0.3	82.4	2.0	15.6	0.087	0.501	17.773591	-91.828682
Lim. Edos. Term. Chis. Ppia. Tab.	8.00																			
Emiliano Zapata	8.61	3	0	5560	5.9	80.5	1.8	7.2	1.4	2.3	0.4	0.1	0.4	86.4	1.8	11.8	0.086	0.503	17.742351	-91.765617
T. Der. La Libertad	12.10	3	0	3466	4.1	83.1	1.5	7.9	1.4	1.3	0.4	0.2	0.1	87.2	1.5	11.3	0.076	0.500	17.723972	-91.745538
T. Izq. Balancán	32.60	1	0	2842	4.0	82.6	1.9	8.8	1.4	0.8	0.4	0.1	0.0	86.6	1.9	11.5	0.089	0.504	17.632516	-91.601605
T. Izq. Balancán	32.60	3	0	2314	4.8	78.8	2.3	9.3	2.6	1.3	0.6	0.3	0.0	83.6	2.3	14.1	0.082	0.503	17.632515	-91.601602
Estación Zapata	53.00	1	0	1982	2.8	81.2	2.0	8.6	1.5	2.7	0.8	0.3	0.1	84.0	2.0	14.0	0.093	0.504	17.456871	-91.597452
Estación Zapata	53.00	3	0	2711	7.8	81.1	1.5	3.1	0.8	1.5	1.7	1.9	0.6	88.9	1.5	9.6	0.080	0.511	17.456872	-91.597451
Tenosique	75.30																			

3 CARR: Malpaso - El Bellote

CLAVE: 00137

RUTA: MEX-187

AÑO: 2020

LUGAR	ESTACION				CLASIFICACION VEHICULAR EN PORCIENTO										COORDENADAS					
	KM	TE	SC	TDPA	M	A	B	C2	C3	T3S2	T3S3	T3S2R4	OTROS	A	B	C	K'	D	LATITUD	LONGITUD
Presa Malpaso	0.00																			
Lim. Edos. Term. Chis. Ppia. Tab.	43.99																			
Lim. Edos. Term. Tab. Ppia. Chis.	44.59																			
Lim. Edos. Term. Chis. Ppia. Tab.	45.26																			
Lim. Edos. Term. Tab. Ppia. Chis.	45.63																			
Lim. Edos. Term. Chis. Ppia. Tab.	55.04																			
Macabil (La Estrella)	70.12	1	0	3324	10.4	75.0	2.0	9.2	1.2	1.7	0.4	0.0	0.1	85.4	2.0	12.6	0.097	0.504	17.626425	-93.499862
Estación Chontalpa	75.69	1	0	4982	11.0	75.0	1.8	8.0	0.8	2.7	0.4	0.1	0.2	86.0	1.8	12.2	0.087	0.512	17.664837	-93.479779
Estación Chontalpa	75.69	3	0	4930	10.3	70.7	1.5	12.0	1.3	2.9	0.6	0.4	0.3	81.0	1.5	17.5	0.081	0.503	17.666287	-93.479092
T. Izq. Francisco Rueda	90.49	1	0	5418	10.8	75.7	1.7	6.9	0.9	3.0	0.4	0.3	0.3	86.5	1.7	11.8	0.081	0.503	17.790528	-93.437390
T. Izq. Francisco Rueda	90.49	3	0	8631	11.5	74.4	0.9	7.8	0.9	3.0	0.5	0.6	0.4	85.9	0.9	13.2	0.085	0.500	17.790700	-93.437276
Huimanguillo	98.03	1	1	5827	17.7	73.5	0.6	5.6	0.6	0.9	0.7	0.2	0.2	91.2	0.6	8.2	0.093	0.509	17.822204	-93.398816

TABASCO

3 CARR: Malpaso - El Bellote

CLAVE: 00137

RUTA: MEX-187

AÑO: 2020

LUGAR	ESTACION				CLASIFICACION VEHICULAR EN PORCIENTO													COORDENADAS		
	KM	TE	SC	TDPA	M	A	B	C2	C3	T3S2	T3S3	T3S2R4	OTROS	A	B	C	K'	D	LATITUD	LONGITUD
Huimanguillo	98.03	1	2	6043	18.0	72.3	0.6	6.3	0.7	0.9	0.8	0.2	0.2	90.3	0.6	9.1	0.090	0.509	17.822383	-93.399078
Huimanguillo	98.03	3	1	5639	10.3	78.1	1.3	6.7	0.9	1.2	0.8	0.5	0.2	88.4	1.3	10.3	0.087	0.508	17.831491	-93.398113
Huimanguillo	98.03	3	2	5824	10.1	77.0	1.4	7.4	1.1	1.4	0.7	0.6	0.3	87.1	1.4	11.5	0.088	0.508	17.831498	-93.398199
Cárdenas	117.56	1	0	10951	7.6	81.4	1.2	6.2	0.8	1.8	0.6	0.2	0.2	89.0	1.2	9.8	0.066	0.504	17.988198	-93.379047
Cárdenas	117.56	3	0	13291	3.9	87.9	0.6	4.9	0.5	1.1	0.7	0.2	0.2	91.8	0.6	7.6	0.080	0.521	18.001669	-93.372927
Tulipán	134.70	3	0	7180	4.6	80.9	0.9	7.1	1.1	3.8	0.9	0.2	0.5	85.5	0.9	13.6	0.100	0.504	18.117312	-93.297403
T. Der. Cunduacán	141.70	1	0	5716	6.6	79.0	1.5	7.6	0.7	3.2	0.7	0.2	0.5	85.6	1.5	12.9	0.087	0.514	18.141331	-93.270597
T. Der. Cunduacán	141.70	3	0	5144	4.7	79.6	1.8	7.5	1.1	3.8	0.8	0.2	0.5	84.3	1.8	13.9	0.099	0.503	18.141400	-93.270545
T. Der. Jalpa	153.50	1	0	9060	9.2	77.9	1.3	8.5	1.2	1.0	0.7	0.1	0.1	87.1	1.3	11.6	0.097	0.507	18.246879	-93.212713
T. Der. Jalpa	153.50	3	1	8053	7.8	81.6	0.6	7.3	0.4	1.0	0.9	0.1	0.3	89.4	0.6	10.0	0.094	0.514	18.247078	-93.212779
T. Der. Jalpa	153.50	3	2	7605	7.7	81.8	0.6	7.2	0.4	1.0	0.9	0.1	0.3	89.5	0.6	9.9	0.104	0.514	18.247066	-93.212817
Paraíso	176.85	1	1	10341	5.3	83.0	0.5	6.8	1.1	1.6	1.1	0.5	0.1	88.3	0.5	11.2	0.114	0.502	18.393775	-93.210229
Paraíso	176.85	1	2	10269	5.9	82.3	0.5	6.9	1.1	1.7	1.1	0.5	0.0	88.2	0.5	11.3	0.089	0.502	18.393817	-93.210296
Paraíso	176.85	3	1	7624	5.9	89.1	0.2	4.0	0.3	0.3	0.2	0.0	0.0	95.0	0.2	4.8	0.090	0.513	18.400053	-93.206646
Paraíso	176.85	3	2	7236	5.7	88.6	0.3	4.5	0.3	0.3	0.2	0.0	0.1	94.3	0.3	5.4	0.090	0.513	18.400112	-93.206757
Ceiba	182.00	3	0	7824	8.4	83.5	0.5	4.6	1.3	0.9	0.6	0.1	0.1	91.9	0.5	7.6	0.090	0.504	18.413396	-93.177018
El Bellote	185.47																			

4 CARR: Tenosique - El Ceibo

CLAVE:

RUTA: MEX-203

AÑO: 2020

LUGAR	ESTACION				CLASIFICACION VEHICULAR EN PORCIENTO													COORDENADAS		
	KM	TE	SC	TDPA	M	A	B	C2	C3	T3S2	T3S3	T3S2R4	OTROS	A	B	C	K'	D	LATITUD	LONGITUD
Tenosique	0.00	3	0	886	11.1	83.6	1.0	3.3	0.5	0.3	0.2	0.0	0.0	94.7	1.0	4.3	0.122	0.501	17.462479	-91.399801
El Ceibo	58.00	1	0	1469	8.9	87.9	0.6	2.0	0.3	0.2	0.1	0.0	0.0	96.8	0.6	2.6	0.132	0.516	17.259941	-90.988911

5 CARR: Villahermosa - Cd. del Carmen

CLAVE: 00064

RUTA: MEX-180

AÑO: 2020

LUGAR	ESTACION				CLASIFICACION VEHICULAR EN PORCIENTO													COORDENADAS		
	KM	TE	SC	TDPA	M	A	B	C2	C3	T3S2	T3S3	T3S2R4	OTROS	A	B	C	K'	D	LATITUD	LONGITUD
Villahermosa	0.00																			
T. Izq. Cd. Industrial	4.30	3	1	30389	18.0	73.5	0.8	3.3	0.8	1.7	0.8	1.0	0.1	91.5	0.8	7.7	0.093	0.550	18.031605	-92.902747
T. Izq. Cd. Industrial	4.30	3	2	29768	18.0	73.1	0.9	3.3	0.8	1.7	0.9	1.2	0.1	91.1	0.9	8.0	0.087	0.550	18.031651	-92.902828
Macultepec	18.60	1	1	11760	14.0	76.2	1.4	2.9	0.6	2.8	1.0	0.4	0.7	90.2	1.4	8.4	0.092	0.532	18.148657	-92.862956
Macultepec	18.60	1	2	10358	5.3	84.6	1.5	2.8	0.6	3.3	1.0	0.4	0.5	89.9	1.5	8.6	0.081	0.532	18.148674	-92.863042
Macultepec	18.60	3	1	4923	1.9	78.0	3.5	6.1	2.0	4.7	1.0	2.5	0.3	79.9	3.5	16.6	0.078	0.519	18.148754	-92.862930

TABASCO

5 CARR: Villahermosa - Cd. del Carmen

CLAVE: 00064

RUTA: MEX-180

AÑO: 2020

LUGAR	ESTACION				CLASIFICACION VEHICULAR EN PORCIENTO													COORDENADAS		
	KM	TE	SC	TDPA	M	A	B	C2	C3	T3S2	T3S3	T3S2R4	OTROS	A	B	C	K'	D	LATITUD	LONGITUD
Macultepec	18.60	3	2	4569	2.0	77.3	3.7	6.3	2.2	4.6	1.1	2.3	0.5	79.3	3.7	17.0	0.083	0.519	18.148780	-92.863012
El Espino	33.20	1	0	7587	2.8	76.3	4.7	6.5	1.5	5.5	1.2	0.9	0.6	79.1	4.7	16.2	0.080	0.503	18.247531	-92.831689
El Espino	33.20	3	0	7736	3.1	72.3	4.9	6.6	2.5	5.9	1.2	3.0	0.5	75.4	4.9	19.7	0.075	0.522	18.247773	-92.831709
T. Izq. El Bellote	49.67	3	0	7628	6.2	74.1	2.4	6.8	1.9	4.3	1.1	2.8	0.4	80.3	2.4	17.3	0.092	0.528	18.389635	-92.797193
Frontera	74.59	1	0	8661	12.7	64.1	3.1	10.8	1.1	4.5	1.1	2.5	0.1	76.8	3.1	20.1	0.086	0.510	18.525575	-92.637233
Frontera	74.59	3	0	5488	8.8	61.8	5.8	7.7	1.6	8.7	1.3	3.7	0.6	70.6	5.8	23.6	0.075	0.520	18.526178	-92.636854
T. Izq. Escolleras	78.00	3	0	4501	3.9	68.5	5.5	7.7	1.3	7.0	1.6	3.9	0.6	72.4	5.5	22.1	0.079	0.509	18.558354	-92.607188
Puente San Pedro	96.50	3	0	4361	4.4	67.0	8.4	8.6	1.6	6.0	1.7	1.5	0.8	71.4	8.4	20.2	0.075	0.513	18.641043	-92.465082
Lim. Edos. Term. Tab. Ppia. Camp.	99.75																			
Nuevo Campechito	100.00	3	0	4324	1.9	62.6	8.3	7.7	2.2	9.8	2.4	4.7	0.4	64.5	8.3	27.2	0.086	0.533	18.641667	-92.461706
Nuevo Progreso	116.57	1	0	4165	2.3	71.8	3.3	8.7	2.8	8.1	1.2	1.4	0.4	74.1	3.3	22.6	0.077	0.505	18.622321	-92.293196
Puente Zacatal	162.41	1	0	4427	3.3	66.5	5.4	7.1	2.3	8.5	1.9	4.4	0.6	69.8	5.4	24.8	0.081	0.520	18.612226	-91.857302
Puente Zacatal	162.41	2	0	4708	1.8	65.8	4.0	5.5	3.8	11.2	1.9	5.3	0.7	67.6	4.0	28.4	0.077	0.500	18.641814	-92.460301
Cd. del Carmen	167.50																			

6 CARR: Villahermosa - Escopetazo

CLAVE: 00104

RUTA: MEX-195

AÑO: 2020

LUGAR	ESTACION				CLASIFICACION VEHICULAR EN PORCIENTO													COORDENADAS		
	KM	TE	SC	TDPA	M	A	B	C2	C3	T3S2	T3S3	T3S2R4	OTROS	A	B	C	K'	D	LATITUD	LONGITUD
Villahermosa	0.00	3	1	24045	3.0	90.5	0.5	4.5	0.4	0.7	0.3	0.1	0.0	93.5	0.5	6.0	0.114	0.511	17.970873	-92.923952
Villahermosa	0.00	3	2	26678	2.9	90.8	0.5	4.3	0.4	0.7	0.3	0.1	0.0	93.7	0.5	5.8	0.111	0.511	17.971026	-92.923818
Parrilla	10.00	1	1	19726	3.2	88.9	0.9	4.1	0.9	0.8	0.8	0.3	0.1	92.1	0.9	7.0	0.115	0.508	17.908233	-92.922360
Parrilla	10.00	1	2	20336	3.1	89.1	0.9	4.0	0.9	0.8	0.8	0.3	0.1	92.2	0.9	6.9	0.113	0.508	17.908222	-92.922272
Parrilla	10.00	3	1	21614	3.6	89.1	0.4	5.3	0.5	0.6	0.4	0.1	0.0	92.7	0.4	6.9	0.114	0.507	17.907286	-92.922669
Parrilla	10.00	3	2	22225	3.5	89.3	0.4	5.2	0.5	0.6	0.4	0.1	0.0	92.8	0.4	6.8	0.112	0.507	17.907260	-92.922585
T. Izq. Subte. García	20.00	3	1	7397	6.4	78.7	0.8	5.8	1.1	5.0	1.1	0.7	0.4	85.1	0.8	14.1	0.133	0.507	17.829774	-92.928656
T. Izq. Subte. García	20.00	3	2	7608	6.2	79.0	0.7	5.8	1.1	4.9	1.1	0.7	0.5	85.2	0.7	14.1	0.130	0.507	17.826621	-92.929049
La Arena	44.00	1	0	6604	5.6	72.3	1.4	9.7	1.7	6.0	1.4	1.1	0.8	77.9	1.4	20.7	0.081	0.505	17.652272	-92.963034
T. Izq. Teapa	54.80	1	0	9441	5.0	80.7	0.3	6.0	0.9	5.1	0.8	0.3	0.9	85.7	0.3	14.0	0.086	0.505	17.569842	-92.955754
T. Izq. Teapa	54.80	3	0	5297	7.4	79.8	0.9	7.7	0.6	2.6	0.6	0.2	0.2	87.2	0.9	11.9	0.090	0.509	17.569681	-92.955666
Lim. Edos. Term. Tab. Ppia. Chis.	61.42																			
Pichucalco	76.00	1	0	2423	8.3	77.9	1.0	9.9	1.0	1.2	0.6	0.0	0.1	86.2	1.0	12.8	0.074	0.502	17.514770	-93.114873
Pichucalco	76.00	3	0	3215	13.3	79.6	0.3	4.0	0.8	1.3	0.5	0.0	0.2	92.9	0.3	6.8	0.083	0.515	17.508674	-93.116903
Solusuchiapa	112.00	1	0	1502	6.7	82.9	0.6	5.2	1.5	1.7	1.0	0.1	0.3	89.6	0.6	9.8	0.094	0.502	17.427041	-93.031938
Solusuchiapa	112.00	3	0	1432	7.0	83.2	0.8	4.3	1.5	1.8	1.1	0.2	0.1	90.2	0.8	9.0	0.085	0.501	17.427067	-93.032821



TABASCO

6 CARR: Villahermosa - Escopetazo

CLAVE: 00104

RUTA: MEX-195

AÑO: 2020

LUGAR	ESTACION				CLASIFICACION VEHICULAR EN PORCIENTO													COORDENADAS		
	KM	TE	SC	TDPA	M	A	B	C2	C3	T3S2	T3S3	T3S2R4	OTROS	A	B	C	K'	D	LATITUD	LONGITUD
Rayón	146.00	1	0	2077	3.3	87.1	0.3	5.2	0.6	2.3	0.6	0.2	0.4	90.4	0.3	9.3	0.079	0.505	17.200529	-93.012369
Jitotol	197.79	1	0	1868	2.2	91.0	0.2	4.1	0.7	1.3	0.3	0.0	0.2	93.2	0.2	6.6	0.085	0.504	17.065246	-92.862256
Jitotol	197.79	3	0	2449	4.0	88.7	0.3	4.3	1.1	0.9	0.3	0.2	0.2	92.7	0.3	7.0	0.107	0.501	17.065271	-92.862278
Bochil	211.00	1	0	4526	3.7	88.3	0.4	3.8	1.2	1.5	0.5	0.3	0.3	92.0	0.4	7.6	0.099	0.512	16.994487	-92.889413
Soyaló	229.00	3	0	2515	2.9	89.3	0.5	3.9	1.3	1.4	0.4	0.2	0.1	92.2	0.5	7.3	0.091	0.503	16.887157	-92.921518
Ixtapa	247.00	1	0	3418	3.1	90.4	0.4	3.5	1.0	0.9	0.3	0.3	0.1	93.5	0.4	6.1	0.087	0.506	16.803739	-92.907153
Escopetazo	259.00	1	0	2548	1.6	90.8	0.9	3.3	1.5	1.2	0.4	0.2	0.1	92.4	0.9	6.7	0.114	0.501	16.759600	-92.944255

7 CARR: Villahermosa - Francisco Escárcega

CLAVE: 00092

RUTA: MEX-186

AÑO: 2020

LUGAR	ESTACION				CLASIFICACION VEHICULAR EN PORCIENTO													COORDENADAS		
	KM	TE	SC	TDPA	M	A	B	C2	C3	T3S2	T3S3	T3S2R4	OTROS	A	B	C	K'	D	LATITUD	LONGITUD
Villahermosa	0.00	3	1	14606	1.8	82.4	1.7	7.6	1.3	2.9	0.7	1.4	0.2	84.2	1.7	14.1	0.075	0.506	17.999546	-92.920444
Villahermosa	0.00	3	2	14236	1.8	81.2	1.8	7.9	1.4	3.2	0.9	1.6	0.2	83.0	1.8	15.2	0.075	0.506	17.999433	-92.920468
T. Izq. Aeropuerto (Alta)	12.00	1	1	15236	1.6	83.4	1.2	6.4	1.3	3.1	1.2	1.5	0.3	85.0	1.2	13.8	0.074	0.513	17.981572	-92.824727
T. Izq. Aeropuerto (Baja)	12.00	1	1	1368	10.7	77.0	1.0	5.8	1.5	2.6	0.6	0.6	0.2	87.7	1.0	11.3	0.078	0.514	17.981532	-92.824766
T. Izq. Aeropuerto (Baja)	12.00	1	2	1295	10.5	76.0	1.1	6.4	1.7	2.8	0.6	0.7	0.2	86.5	1.1	12.4	0.075	0.514	17.981678	-92.824625
T. Izq. Aeropuerto (Alta)	12.00	1	2	14471	2.1	81.0	1.4	7.4	1.4	3.5	1.3	1.6	0.3	83.1	1.4	15.5	0.084	0.513	17.981641	-92.824659
Puente Grijalva	17.60	2	1	6071	3.0	78.1	3.8	3.6	2.1	4.6	1.5	2.9	0.4	81.1	3.8	15.1	0.079	0.500	17.947602	-92.785235
Puente Grijalva	17.60	2	2	6071	3.0	78.1	3.8	3.6	2.1	4.6	1.5	2.9	0.4	81.1	3.8	15.1	0.079	0.500	17.947602	-92.785235
X. C. Cacaos - La Granja	32.46	1	1	7113	1.4	79.9	1.4	7.3	1.6	4.4	1.3	2.4	0.3	81.3	1.4	17.3	0.082	0.502	17.828063	-92.716991
X. C. Cacaos - La Granja	32.46	1	2	7169	1.8	76.5	1.6	8.7	1.9	4.9	1.5	2.8	0.3	78.3	1.6	20.1	0.086	0.502	17.828175	-92.716718
X. C. Cacaos - La Granja	32.46	3	1	5238	1.7	78.4	1.7	7.5	1.9	4.3	1.6	2.7	0.2	80.1	1.7	18.2	0.077	0.512	17.827977	-92.716775
X. C. Cacaos - La Granja	32.46	3	2	5492	1.4	77.5	1.8	7.9	2.1	4.5	1.7	2.9	0.2	78.9	1.8	19.3	0.102	0.512	17.827977	-92.716774
X. C. Jalapa - Jonuta	40.00	3	1	5429	2.5	77.7	2.0	6.7	1.8	4.8	1.5	2.8	0.2	80.2	2.0	17.8	0.078	0.515	17.781246	-92.681713
X. C. Jalapa - Jonuta	40.00	3	2	5762	2.4	75.3	2.4	7.6	1.9	5.4	1.7	3.1	0.2	77.7	2.4	19.9	0.096	0.515	17.781243	-92.681713
T. Izq. Macuspana	46.20	1	1	5483	1.3	75.5	2.6	8.0	2.3	5.4	1.6	2.9	0.4	76.8	2.6	20.6	0.079	0.510	17.739225	-92.627849
T. Izq. Macuspana	46.20	1	2	5711	2.0	73.6	2.6	8.7	2.6	5.5	1.7	3.0	0.3	75.6	2.6	21.8	0.078	0.510	17.739224	-92.627847
T. Izq. Macuspana	46.20	3	1	5427	4.5	69.9	2.4	8.1	3.5	6.2	1.9	3.2	0.3	74.4	2.4	23.2	0.070	0.509	17.739225	-92.627850
T. Izq. Macuspana	46.20	3	2	5240	4.2	67.8	2.5	9.2	3.7	6.4	2.1	3.7	0.4	72.0	2.5	25.5	0.079	0.509	17.739224	-92.627850
X. C. Estación Macuspana - Vernet	54.30	1	0	8810	3.3	69.5	3.0	9.8	2.7	6.5	1.9	2.9	0.4	72.8	3.0	24.2	0.085	0.521	17.708385	-92.569065
T. Der. Chivalito (Est. Pino Suárez)	70.00	1	0	8166	5.7	66.6	3.5	8.2	2.5	7.5	2.0	3.5	0.5	72.3	3.5	24.2	0.085	0.521	17.667544	-92.436768
T. Der. Chivalito (Est. Pino Suárez)	70.00	3	1	3034	2.9	70.0	3.2	7.2	2.5	6.0	2.1	5.6	0.5	72.9	3.2	23.9	0.082	0.509	17.667473	-92.436615
T. Der. Chivalito (Est. Pino Suárez)	70.00	3	2	3151	3.7	66.6	3.4	8.4	2.7	6.5	2.4	5.9	0.4	70.3	3.4	26.3	0.089	0.509	17.667479	-92.436615
T. Der. Estación Zopo	71.00	1	0	5843	3.4	72.6	3.0	7.3	2.6	5.7	2.0	3.0	0.4	76.0	3.0	21.0	0.079	0.511	17.672835	-92.414364

TABASCO

7 CARR: Villahermosa - Francisco Escárcega

CLAVE: 00092

RUTA: MEX-186

AÑO: 2020

LUGAR	ESTACION				CLASIFICACION VEHICULAR EN PORCIENTO													COORDENADAS		
	KM	TE	SC	TDPA	M	A	B	C2	C3	T3S2	T3S3	T3S2R4	OTROS	A	B	C	K'	D	LATITUD	LONGITUD
T. Der. Estación Zopo	71.00	3	1	3136	7.5	60.7	4.1	7.7	2.6	9.2	2.0	5.8	0.4	68.2	4.1	27.7	0.119	0.501	17.672806	-92.414361
T. Der. Estación Zopo	71.00	3	2	3145	7.5	58.7	4.1	8.2	2.6	9.6	2.4	6.4	0.5	66.2	4.1	29.7	0.131	0.501	17.672808	-92.414357
Lim. Edos. Term. Tab. Ppia. Chis.	76.90																			
T. Izq. Bonanza	88.00	1	0	5326	2.5	72.2	2.4	6.2	2.3	6.6	2.6	4.7	0.5	74.7	2.4	22.9	0.080	0.509	17.699881	-92.253351
T. Izq. Jonuta	101.00	1	0	5071	2.7	69.8	2.6	6.5	2.5	7.6	2.5	5.2	0.6	72.5	2.6	24.9	0.082	0.511	17.697744	-92.131987
T. Izq. Jonuta	101.00	3	0	5708	2.6	69.8	2.6	6.7	2.5	7.6	2.4	5.2	0.6	72.4	2.6	25.0	0.086	0.505	17.697746	-92.131838
X. C. Catazajá - Palenque	114.00	1	0	5621	4.1	68.0	2.5	7.0	2.4	8.3	2.1	5.1	0.5	72.1	2.5	25.4	0.094	0.504	17.711457	-92.013035
X. C. Catazajá - Palenque	114.00	3	0	7989	4.1	65.3	2.5	8.4	2.8	9.0	2.1	5.3	0.5	69.4	2.5	28.1	0.084	0.500	17.711519	-92.012811
T. Der. Emiliano Zapata	134.70	1	0	5950	5.0	65.3	2.4	9.1	2.7	8.1	1.9	5.0	0.5	70.3	2.4	27.3	0.080	0.501	17.773311	-91.829241
T. Der. Emiliano Zapata	134.70	3	0	4142	4.2	65.1	2.5	8.3	2.9	9.1	2.2	5.2	0.5	69.3	2.5	28.2	0.086	0.510	17.773442	-91.828937
Lim. Edos. Term. Chis. Ppia. Tab.	140.70																			
Puente Usumacinta	145.20	2	0	3382	6.1	60.1	3.6	4.4	4.2	11.0	1.8	8.0	0.8	66.2	3.6	30.2	0.079	0.500	17.859905	-91.783654
T. Izq. Palizada	154.05	1	0	3503	4.5	58.6	5.3	7.4	2.9	10.5	2.6	7.9	0.3	63.1	5.3	31.6	0.080	0.505	17.941417	-91.734218
T. Izq. Palizada	154.05	3	0	2927	4.5	59.1	5.1	7.5	2.9	10.2	2.6	7.8	0.3	63.6	5.1	31.3	0.081	0.506	17.941520	-91.734118
Lim. Edos. Term. Tab. Ppia. Camp.	154.60																			
T. Der. Candelaria	233.40	1	0	3514	5.2	57.0	4.6	6.6	2.1	12.1	2.5	9.0	0.9	62.2	4.6	33.2	0.071	0.509	18.378315	-91.198450
T. Der. Felipe Ángeles	253.00	1	0	3666	11.0	58.8	3.9	3.0	1.9	10.2	2.0	7.3	1.9	69.8	3.9	26.3	0.104	0.509	18.506513	-91.104469
T. Izq. Sabancuy	274.10	1	0	3633	10.8	59.5	3.9	3.1	1.7	10.0	2.0	7.1	1.9	70.3	3.9	25.8	0.103	0.504	18.629188	-90.983222
Francisco Escárcega	297.04	1	0	7034	13.5	64.7	2.4	2.8	1.6	7.1	1.2	5.3	1.4	78.2	2.4	19.4	0.084	0.526	18.606119	-90.740031

8 CARR: Ent. Agua Dulce - Cárdenas (Cuota)

CLAVE: 00010

RUTA: MEX-180D

AÑO: 2020

LUGAR	ESTACION				CLASIFICACION VEHICULAR EN PORCIENTO													COORDENADAS		
	KM	TE	SC	TDPA	M	A	B	C2	C3	T3S2	T3S3	T3S2R4	OTROS	A	B	C	K'	D	LATITUD	LONGITUD
Ent. La Ceiba	45.00																			
T. C. Coatzacoalcos - Villahermosa	69.50	1	1	4247	2.3	49.9	6.2	5.5	3.5	18.4	3.4	10.1	0.7	52.2	6.2	41.6	0.076	0.514	18.030541	-93.813134
T. C. Coatzacoalcos - Villahermosa	69.50	1	2	4010	2.4	50.0	6.2	5.6	3.6	18.2	3.4	9.9	0.7	52.4	6.2	41.4	0.083	0.514	18.030665	-93.813118
Plaza de Cobro La Venta	69.50	2	1	3831	0.3	56.9	2.1	4.9	5.1	16.3	3.1	10.0	1.3	57.2	2.1	40.7	0.081	0.500	18.030572	-93.812914
Plaza de Cobro La Venta	69.50	2	2	3831	0.3	56.9	2.1	4.9	5.1	16.3	3.1	10.0	1.3	57.2	2.1	40.7	0.081	0.500	18.030572	-93.812914
T. C. Coatzacoalcos - Villahermosa	69.50	3	1	4431	4.1	50.9	6.0	6.1	3.5	16.2	3.1	9.3	0.8	55.0	6.0	39.0	0.070	0.511	18.030449	-93.812869
T. C. Coatzacoalcos - Villahermosa	69.50	3	2	4247	4.2	50.8	6.0	6.1	3.4	16.2	3.2	9.3	0.8	55.0	6.0	39.0	0.092	0.511	18.030607	-93.812843
Ent. Chontalpa	99.11																			

TABASCO

9 CARR: Las Choapas - Ocozocoautla (Cuota)

CLAVE: 00077

RUTA: MEX-187D

AÑO: 2020

LUGAR	ESTACION				CLASIFICACION VEHICULAR EN PORCIENTO										COORDENADAS					
	KM	TE	SC	TDPA	M	A	B	C2	C3	T3S2	T3S3	T3S2R4	OTROS	A	B	C	K'	D	LATITUD	LONGITUD
T. C. Coatzacoalcos - Villahermosa	0.00	3	0	3145	1.4	50.5	6.2	6.9	5.3	15.0	4.4	9.6	0.7	51.9	6.2	41.9	0.076	0.518	18.065729	-94.247962
Plaza de Cobro Las Choapas	16.80	1	0	3836	1.7	46.8	7.7	6.9	6.6	16.0	2.9	10.5	0.9	48.5	7.7	43.8	0.078	0.508	17.944829	-94.172265
Plaza de Cobro Las Choapas	16.80	3	0	3317	1.6	40.4	10.5	7.5	5.1	18.2	3.7	12.1	0.9	42.0	10.5	47.5	0.074	0.510	17.944842	-94.172287
Lim. Edos. Term. Ver. Ppia. Tab.	96.68																			
Plaza de Cobro Malpasito	112.70	1	0	2655	1.7	40.4	9.9	8.2	5.1	18.5	3.6	11.3	1.3	42.1	9.9	48.0	0.080	0.510	17.349108	-93.586477
Plaza de Cobro Malpasito	112.70	2	0	2566	0.3	34.8	4.4	6.2	10.1	22.1	4.1	15.9	2.1	35.1	4.4	60.5	0.072	0.500	17.349070	-93.586472
Lim. Edos. Term. Tab. Ppia. Chis.	113.70																			
T. Izq. Malpaso	123.79	1	0	4270	1.6	57.8	7.9	12.8	3.8	7.5	2.8	4.9	0.9	59.4	7.9	32.7	0.080	0.509	17.258110	-93.567507
Plaza de Cobro Ocozocoautla	182.50	1	0	5143	1.5	62.2	6.4	11.6	3.2	7.7	1.8	4.4	1.2	63.7	6.4	29.9	0.076	0.510	16.863177	-93.406875
Plaza de Cobro Ocozocoautla	182.50	2	0	4037	0.4	54.3	3.6	7.2	7.1	13.5	2.4	10.1	1.4	54.7	3.6	41.7	0.072	0.500	16.863183	-93.406856
T. C. Tapanatepec - Tuxtla Gutiérrez	197.50	1	0	5691	1.3	61.2	6.1	8.2	3.4	10.7	2.1	6.0	1.0	62.5	6.1	31.4	0.076	0.512	16.769763	-93.316513

10 CARR: Libramiento de Villahermosa (Cuota)

CLAVE:

RUTA: MEX-180D

AÑO: 2020

LUGAR	ESTACION				CLASIFICACION VEHICULAR EN PORCIENTO										COORDENADAS					
	KM	TE	SC	TDPA	M	A	B	C2	C3	T3S2	T3S3	T3S2R4	OTROS	A	B	C	K'	D	LATITUD	LONGITUD
T. C. Coatzacoalcos - Villahermosa	0.00																			
Plaza de Cobro Nacajuca	16.00	2	1	2215	0.3	34.0	0.5	7.1	8.0	27.3	5.7	15.1	2.0	34.3	0.5	65.2	0.090	0.500	18.076079	-92.930568
Plaza de Cobro Nacajuca	16.00	2	2	2215	0.3	34.0	0.5	7.1	8.0	27.3	5.7	15.1	2.0	34.3	0.5	65.2	0.090	0.500	18.076079	-92.930568
T. C. Villahermosa - Cd. Del Carmen	21.70																			

11 CARR: Benito Juárez - Agua Dulce

CLAVE: 00202

RUTA: TAB-VER

AÑO: 2020

LUGAR	ESTACION				CLASIFICACION VEHICULAR EN PORCIENTO										COORDENADAS					
	KM	TE	SC	TDPA	M	A	B	C2	C3	T3S2	T3S3	T3S2R4	OTROS	A	B	C	K'	D	LATITUD	LONGITUD
Benito Juárez	0.00	3	0	1153	12.1	78.9	0.2	6.9	0.4	1.2	0.2	0.1	0.0	91.0	0.2	8.8	0.087	0.500	18.175552	-93.906950
La Venta	16.80	1	0	1279	12.0	81.3	0.2	4.9	0.4	0.9	0.2	0.1	0.0	93.3	0.2	6.5	0.087	0.501	18.106856	-94.041165
Lim. Edos. Term. Tab. Ppia. Ver.	23.78																			
Agua Dulce	33.00																			

12 CARR: Benito Juárez - Tepetitán

CLAVE: 27204

RUTA: TAB

AÑO: 2020

LUGAR	ESTACION				CLASIFICACION VEHICULAR EN PORCIENTO										COORDENADAS					
	KM	TE	SC	TDPA	M	A	B	C2	C3	T3S2	T3S3	T3S2R4	OTROS	A	B	C	K'	D	LATITUD	LONGITUD
Benito Juárez	0.00																			

TABASCO

12 CARR: Benito Juárez - Tepetitán

CLAVE: 27204

RUTA: TAB

AÑO: 2020

LUGAR	ESTACION				CLASIFICACION VEHICULAR EN PORCIENTO													COORDENADAS		
	KM	TE	SC	TDPA	M	A	B	C2	C3	T3S2	T3S3	T3S2R4	OTROS	A	B	C	K'	D	LATITUD	LONGITUD
X. C. Jalapa - Jonuta	1.50	3	0	2961	16.5	76.1	0.1	3.6	0.3	2.8	0.3	0.0	0.3	92.6	0.1	7.3	0.089	0.507	17.825584	-92.514858
Limbano Blandín	18.50	1	0	1106	40.7	52.3	0.3	3.1	0.4	2.5	0.5	0.1	0.1	93.0	0.3	6.7	0.102	0.508	17.756921	-92.410306
Limbano Blandín	18.50	3	0	914	25.4	66.9	0.3	5.3	0.7	1.2	0.2	0.0	0.0	92.3	0.3	7.4	0.100	0.502	17.756920	-92.410308
Tepetitán	20.00	1	0	901	26.8	62.8	3.2	5.9	0.3	0.8	0.1	0.1	0.0	89.6	3.2	7.2	0.082	0.507	17.820478	-92.372322

13 CARR: Cacaos - La Granja

CLAVE: 27002

RUTA: TAB

AÑO: 2020

LUGAR	ESTACION				CLASIFICACION VEHICULAR EN PORCIENTO													COORDENADAS		
	KM	TE	SC	TDPA	M	A	B	C2	C3	T3S2	T3S3	T3S2R4	OTROS	A	B	C	K'	D	LATITUD	LONGITUD
Cacaos	0.00	3	0	2294	11.4	81.5	0.6	3.9	0.2	1.7	0.5	0.1	0.1	92.9	0.6	6.5	0.082	0.500	17.826031	-92.858164
X. C. Villahermosa - Francisco Escárcega	16.00	3	0	3779	6.3	81.0	1.9	7.1	0.6	2.0	0.9	0.0	0.2	87.3	1.9	10.8	0.090	0.511	17.828168	-92.716719
T. C. Jalapa - Jonuta	39.00	1	0	5892	4.8	82.0	0.4	8.7	0.5	2.5	0.7	0.1	0.3	86.8	0.4	12.8	0.095	0.502	17.846174	-92.500695

14 CARR: Cárdenas - Paraíso

CLAVE: 27117

RUTA: TAB

AÑO: 2020

LUGAR	ESTACION				CLASIFICACION VEHICULAR EN PORCIENTO													COORDENADAS		
	KM	TE	SC	TDPA	M	A	B	C2	C3	T3S2	T3S3	T3S2R4	OTROS	A	B	C	K'	D	LATITUD	LONGITUD
T. C. Coatzacoalcos - Villahermosa	0.00	3	0	7052	14.2	72.6	0.5	2.3	0.4	5.5	2.0	0.7	1.8	86.8	0.5	12.7	0.084	0.511	17.999329	-93.385887
T. Izq. El Golpe	22.00	1	0	1404	29.6	60.1	1.9	3.1	1.6	2.1	1.5	0.0	0.1	89.7	1.9	8.4	0.085	0.518	18.113529	-93.306593
T. Izq. El Golpe	22.00	3	0	1680	27.6	62.5	1.8	3.0	1.5	1.7	1.3	0.1	0.5	90.1	1.8	8.1	0.076	0.502	18.113534	-93.306591
Comalcalco	37.00	3	0	3196	26.3	60.7	0.3	7.8	0.3	3.1	0.8	0.3	0.4	87.0	0.3	12.7	0.079	0.518	18.268678	-93.227286
Paraíso	52.00	1	0	5243	19.0	46.9	0.9	9.9	7.7	7.1	5.0	2.5	1.0	65.9	0.9	33.2	0.084	0.550	18.395564	-93.221030

15 CARR: Chichicapa - Ent. La Libertad

CLAVE: 27100

RUTA: TAB

AÑO: 2020

LUGAR	ESTACION				CLASIFICACION VEHICULAR EN PORCIENTO													COORDENADAS		
	KM	TE	SC	TDPA	M	A	B	C2	C3	T3S2	T3S3	T3S2R4	OTROS	A	B	C	K'	D	LATITUD	LONGITUD
Chichicapa	0.00	3	0	3152	22.8	69.8	0.5	3.9	0.8	1.5	0.2	0.4	0.1	92.6	0.5	6.9	0.104	0.501	18.261973	-93.182585
Nicolás Bravo	10.00	3	0	4218	23.8	68.1	1.0	3.4	0.9	2.0	0.2	0.5	0.1	91.9	1.0	7.1	0.097	0.515	18.290442	-93.156944
Ent. La Libertad	18.00	1	0	4062	19.6	69.6	0.7	5.1	1.2	2.3	0.9	0.4	0.2	89.2	0.7	10.1	0.086	0.501	18.319448	-93.172292

TABASCO

16 CARR: Comalcalco - El Golpe

CLAVE: 27102

RUTA: TAB

AÑO: 2020

LUGAR	ESTACION				CLASIFICACION VEHICULAR EN PORCIENTO													COORDENADAS		
	KM	TE	SC	TDPA	M	A	B	C2	C3	T3S2	T3S3	T3S2R4	OTROS	A	B	C	K'	D	LATITUD	LONGITUD
Comalcalco	0.00	3	0	18774	33.0	58.5	1.2	3.6	1.1	0.7	0.6	0.8	0.5	91.5	1.2	7.3	0.076	0.503	18.254781	-93.225173
Libramiento de Comalcalco	2.60	3	0	12292	29.7	60.9	1.2	4.2	1.3	0.7	0.6	0.9	0.5	90.6	1.2	8.2	0.073	0.511	18.251134	-93.240654
T. Izq. Villa Aldama	9.40	1	0	6278	26.5	64.0	1.3	4.2	1.4	0.8	0.6	0.7	0.5	90.5	1.3	8.2	0.089	0.504	18.255738	-93.309168
T. Izq. Villa Aldama	9.40	3	0	6181	23.0	66.6	1.5	4.2	1.8	0.9	0.6	0.7	0.7	89.6	1.5	8.9	0.088	0.515	18.257177	-93.310091
Tecolutilla	15.00	1	0	4451	19.7	66.9	1.4	6.1	2.3	1.2	0.7	0.8	0.9	86.6	1.4	12.0	0.077	0.507	18.282498	-93.334295
Tecolutilla	15.00	3	0	5200	19.5	68.1	1.4	5.4	2.1	1.0	0.8	0.8	0.9	87.6	1.4	11.0	0.075	0.512	18.282500	-93.334288
T. Der. Lazáro Cárdenas	20.00	3	0	2076	40.3	51.5	0.7	5.0	0.3	1.4	0.5	0.0	0.3	91.8	0.7	7.5	0.100	0.518	18.282617	-93.381792
Carlos Green	33.00	3	0	3354	52.2	41.3	0.3	2.4	0.3	2.0	0.7	0.4	0.4	93.5	0.3	6.2	0.097	0.521	18.231189	-93.453203
El Golpe	51.60	1	0	607	55.2	36.2	1.2	6.0	0.1	0.8	0.4	0.0	0.1	91.4	1.2	7.4	0.124	0.507	18.342888	-93.543170

17 CARR: El Bellote - Santa Cruz

CLAVE: 27105

RUTA: TAB

AÑO: 2020

LUGAR	ESTACION				CLASIFICACION VEHICULAR EN PORCIENTO													COORDENADAS		
	KM	TE	SC	TDPA	M	A	B	C2	C3	T3S2	T3S3	T3S2R4	OTROS	A	B	C	K'	D	LATITUD	LONGITUD
Bellote	0.00	3	0	5989	13.8	81.4	0.5	2.0	1.0	0.7	0.1	0.4	0.1	95.2	0.5	4.3	0.119	0.506	18.425129	-93.135034
T. Der. Chichicapa	8.00	3	0	3881	15.0	80.5	0.7	2.4	0.8	0.3	0.1	0.1	0.1	95.5	0.7	3.8	0.083	0.504	18.425862	-93.075997
Ignacio Allende	35.00	1	0	4318	12.3	82.2	0.6	2.4	1.1	0.8	0.3	0.2	0.1	94.5	0.6	4.9	0.085	0.508	18.382749	-92.843797
Ignacio Allende	35.00	3	0	3433	13.2	80.9	1.1	1.7	0.9	1.3	0.7	0.1	0.1	94.1	1.1	4.8	0.090	0.514	18.382742	-92.843797
Santa Cruz	40.00	1	0	3927	14.0	79.6	1.1	1.7	1.3	0.8	0.6	0.5	0.4	93.6	1.1	5.3	0.082	0.508	18.389628	-92.797229

18 CARR: Ent. Emiliano Zapata - La Libertad

CLAVE: 00062

RUTA: CHIS-TAB

AÑO: 2020

LUGAR	ESTACION				CLASIFICACION VEHICULAR EN PORCIENTO													COORDENADAS		
	KM	TE	SC	TDPA	M	A	B	C2	C3	T3S2	T3S3	T3S2R4	OTROS	A	B	C	K'	D	LATITUD	LONGITUD
T. C. El Suspiro - Tenosique	0.00	3	0	1759	8.6	85.7	0.3	4.5	0.6	0.2	0.1	0.0	0.0	94.3	0.3	5.4	0.085	0.506	17.723911	-91.745272
Lim. Edos. Term. Tab. Ppia. Chis.	8.00																			
La Libertad	10.00	1	0	1237	7.8	81.7	0.3	8.0	0.4	1.6	0.2	0.0	0.0	89.5	0.3	10.2	0.086	0.520	17.690435	-91.721123

19 CARR: Estación Macuspana - Vernet

CLAVE: 27091

RUTA: TAB-041

AÑO: 2020

LUGAR	ESTACION				CLASIFICACION VEHICULAR EN PORCIENTO													COORDENADAS		
	KM	TE	SC	TDPA	M	A	B	C2	C3	T3S2	T3S3	T3S2R4	OTROS	A	B	C	K'	D	LATITUD	LONGITUD
Estación Macuspana	0.00																			
X. C. Villahermosa - Francisco Escárcega	11.00	1	0	1920	24.6	59.3	0.2	9.6	3.6	1.4	0.8	0.3	0.2	83.9	0.2	15.9	0.089	0.503	17.708309	-92.568890
X. C. Villahermosa - Francisco Escárcega	11.00	3	0	1476	25.3	63.6	0.2	5.9	2.2	1.7	0.5	0.3	0.3	88.9	0.2	10.9	0.091	0.503	17.708313	-92.568895

TABASCO

19 CARR: Estación Macuspana - Vernet

CLAVE: 27091

RUTA: TAB-041

AÑO: 2020

LUGAR	ESTACION				CLASIFICACION VEHICULAR EN PORCIENTO													COORDENADAS		
	KM	TE	SC	TDPA	M	A	B	C2	C3	T3S2	T3S3	T3S2R4	OTROS	A	B	C	K'	D	LATITUD	LONGITUD
Belem	20.50	1	1	4778	17.0	78.3	0.3	2.2	0.2	1.0	0.5	0.1	0.4	95.3	0.3	4.4	0.088	0.501	17.780802	-92.613260
Belem	20.50	1	2	4806	16.9	78.4	0.2	2.2	0.3	1.0	0.5	0.1	0.4	95.3	0.2	4.5	0.095	0.501	17.780764	-92.613279
Belem	20.50	3	0	2634	12.2	79.8	0.4	4.7	0.5	1.7	0.5	0.1	0.1	92.0	0.4	7.6	0.078	0.514	17.786832	-92.614045
X. C. Cacaos - La Granja	25.50	3	0	1188	12.1	79.4	0.4	4.6	0.7	1.8	0.7	0.2	0.1	91.5	0.4	8.1	0.082	0.514	17.837475	-92.606431
Vernet	32.50	1	0	479	12.3	84.4	0.2	2.2	0.1	0.7	0.0	0.1	0.0	96.7	0.2	3.1	0.096	0.512	17.918440	-92.598978

20 CARR: Frontera - T. C. (Jalapa - Jonuta)

CLAVE: 27081

RUTA: TAB

AÑO: 2020

LUGAR	ESTACION				CLASIFICACION VEHICULAR EN PORCIENTO													COORDENADAS		
	KM	TE	SC	TDPA	M	A	B	C2	C3	T3S2	T3S3	T3S2R4	OTROS	A	B	C	K'	D	LATITUD	LONGITUD
Frontera	0.00																			
X. C. Villahermosa - Cd. del Carmen	1.00	3	0	1351	33.2	61.9	0.2	3.0	0.3	1.1	0.2	0.0	0.1	95.1	0.2	4.7	0.099	0.500	18.511838	-92.648681
T. C. Jalapa - Jonuta	123.00	1	0	373	4.6	86.1	0.0	8.6	0.4	0.1	0.2	0.0	0.0	90.7	0.0	9.3	0.110	0.524	18.101777	-92.165828

21 CARR: Gregorio Méndez Magaña - Reforma de Ocampo

CLAVE: 00103

RUTA: CHIS

AÑO: 2020

LUGAR	ESTACION				CLASIFICACION VEHICULAR EN PORCIENTO													COORDENADAS		
	KM	TE	SC	TDPA	M	A	B	C2	C3	T3S2	T3S3	T3S2R4	OTROS	A	B	C	K'	D	LATITUD	LONGITUD
Gregorio Méndez Magaña	0.00	3	0	638	29.8	58.9	0.5	6.6	2.4	0.4	0.9	0.5	0.0	88.7	0.5	10.8	0.100	0.518	17.454472	-91.596683
Lim. Edos. Term. Tab. Ppia. Chis.	3.00																			
T. C. Benemérito de Las Américas - Palenque	21.00	1	0	2200	16.1	75.3	0.6	5.0	2.0	0.3	0.4	0.2	0.1	91.4	0.6	8.0	0.079	0.501	17.320409	-91.694225
Reforma de Ocampo	22.00																			

22 CARR: Jalapa - Jonuta

CLAVE: 27107

RUTA: TAB

AÑO: 2020

LUGAR	ESTACION				CLASIFICACION VEHICULAR EN PORCIENTO													COORDENADAS		
	KM	TE	SC	TDPA	M	A	B	C2	C3	T3S2	T3S3	T3S2R4	OTROS	A	B	C	K'	D	LATITUD	LONGITUD
Jalapa	0.00	3	0	2941	21.0	71.4	0.2	3.8	0.6	2.4	0.3	0.1	0.2	92.4	0.2	7.4	0.089	0.516	17.721568	-92.806813
X. C. Villahermosa - Francisco Escárcega	15.00	1	0	2088	11.8	79.8	0.3	5.8	0.9	0.7	0.3	0.2	0.2	91.6	0.3	8.1	0.082	0.511	17.781404	-92.681948
X. C. Villahermosa - Francisco Escárcega	15.00	3	0	1449	15.5	74.8	0.3	5.0	1.4	2.0	0.5	0.3	0.2	90.3	0.3	9.4	0.097	0.503	17.781174	-92.681510
Belem	24.00	1	0	922	34.1	58.4	0.5	5.4	0.5	1.1	0.0	0.0	0.0	92.5	0.5	7.0	0.091	0.508	17.780790	-92.613304
T. Izq. Cacaos	39.00	1	0	4073	8.6	80.6	0.7	3.9	0.8	3.3	0.7	0.7	0.7	89.2	0.7	10.1	0.103	0.506	17.845697	-92.500655
Cd. PEMEX	43.00	1	1	5483	6.2	86.1	0.3	3.2	0.3	1.7	1.5	0.3	0.4	92.3	0.3	7.4	0.126	0.500	17.883961	-92.481934
Cd. PEMEX	43.00	1	2	5475	6.3	86.0	0.3	3.2	0.3	1.6	1.5	0.3	0.5	92.3	0.3	7.4	0.106	0.500	17.884011	-92.482056
Cd. PEMEX	43.00	3	0	3248	10.5	78.7	0.8	4.2	0.9	2.4	0.9	0.8	0.8	89.2	0.8	10.0	0.110	0.500	17.884467	-92.481893

TABASCO

22 CARR: Jalapa - Jonuta

CLAVE: 27107

RUTA: TAB

AÑO: 2020

LUGAR	ESTACION				CLASIFICACION VEHICULAR EN PORCIENTO														COORDENADAS	
	KM	TE	SC	TDPA	M	A	B	C2	C3	T3S2	T3S3	T3S2R4	OTROS	A	B	C	K'	D	LATITUD	LONGITUD
Jonuta	97.50	1	0	1980	9.3	84.6	0.3	4.4	0.9	0.3	0.2	0.0	0.0	93.9	0.3	5.8	0.091	0.505	18.093698	-92.142679

23 CARR: Libramiento Sur de Comalcalco

CLAVE:

RUTA: TAB

AÑO: 2020

LUGAR	ESTACION				CLASIFICACION VEHICULAR EN PORCIENTO														COORDENADAS	
	KM	TE	SC	TDPA	M	A	B	C2	C3	T3S2	T3S3	T3S2R4	OTROS	A	B	C	K'	D	LATITUD	LONGITUD
T. C. Malpaso - El Bellote	0.00	3	0	5057	7.9	77.3	0.7	10.6	2.2	0.8	0.4	0.0	0.1	85.2	0.7	14.1	0.105	0.509	18.227796	-93.212263
T. C. Comalcalco - El Golpe	4.40																			

24 CARR: Nicolás Bravo - T. C. (El Bellote - Santa Cruz)

CLAVE: 27010

RUTA: TAB

AÑO: 2020

LUGAR	ESTACION				CLASIFICACION VEHICULAR EN PORCIENTO														COORDENADAS	
	KM	TE	SC	TDPA	M	A	B	C2	C3	T3S2	T3S3	T3S2R4	OTROS	A	B	C	K'	D	LATITUD	LONGITUD
Nicolás Bravo	0.00	3	0	2095	23.9	68.6	0.1	3.7	0.1	2.1	1.1	0.1	0.3	92.5	0.1	7.4	0.085	0.515	18.290444	-93.156942
T. C. Bellote - Santa Cruz	22.00	1	0	804	17.6	78.9	0.1	2.4	0.0	0.9	0.0	0.0	0.1	96.5	0.1	3.4	0.101	0.526	18.425753	-93.076038

25 CARR: Pailebot - Cuauhtemotzin

CLAVE: 27112

RUTA: TAB

AÑO: 2020

LUGAR	ESTACION				CLASIFICACION VEHICULAR EN PORCIENTO														COORDENADAS	
	KM	TE	SC	TDPA	M	A	B	C2	C3	T3S2	T3S3	T3S2R4	OTROS	A	B	C	K'	D	LATITUD	LONGITUD
Pailebot	0.00	3	0	766	19.2	74.2	0.3	5.7	0.5	0.1	0.0	0.0	0.0	93.4	0.3	6.3	0.103	0.505	18.260872	-93.947919
Cuauhtemotzin	23.00	1	0	566	22.0	74.6	0.1	2.1	0.1	1.1	0.0	0.0	0.0	96.6	0.1	3.3	0.104	0.509	18.204911	-94.126603

26 CARR: Paraiso - El Limón

CLAVE: 27108

RUTA: TAB

AÑO: 2020

LUGAR	ESTACION				CLASIFICACION VEHICULAR EN PORCIENTO														COORDENADAS	
	KM	TE	SC	TDPA	M	A	B	C2	C3	T3S2	T3S3	T3S2R4	OTROS	A	B	C	K'	D	LATITUD	LONGITUD
Paraiso	0.00	3	0	6405	12.2	76.1	0.2	2.7	0.7	5.4	1.8	0.6	0.3	88.3	0.2	11.5	0.074	0.523	18.395559	-93.221030
Limón	6.00	1	0	5819	12.7	72.0	0.2	4.1	0.6	7.4	1.9	0.8	0.3	84.7	0.2	15.1	0.067	0.521	18.408503	-93.214632

27 CARR: Paso de Cunduacán - Estación Juárez

CLAVE: 00588

RUTA: TAB-CHIS

AÑO: 2020

LUGAR	ESTACION				CLASIFICACION VEHICULAR EN PORCIENTO														COORDENADAS	
	KM	TE	SC	TDPA	M	A	B	C2	C3	T3S2	T3S3	T3S2R4	OTROS	A	B	C	K'	D	LATITUD	LONGITUD
Paso de Cunduacán	0.00	3	0	9010	2.3	83.5	0.4	8.4	1.1	2.4	1.1	0.6	0.2	85.8	0.4	13.8	0.130	0.502	17.973574	-93.130331

TABASCO

27 CARR: Paso de Cunduacán - Estación Juárez

CLAVE: 00588

RUTA: TAB-CHIS

AÑO: 2020

LUGAR	ESTACION				CLASIFICACION VEHICULAR EN PORCIENTO										COORDENADAS					
	KM	TE	SC	TDPA	M	A	B	C2	C3	T3S2	T3S3	T3S2R4	OTROS	A	B	C	K'	D	LATITUD	LONGITUD
Lim. Edos. Term. Tab. Ppia. Chis.	9.00																			
Santa Teresa 2° Secc.	18.00	3	0	1913	8.3	81.9	0.6	6.4	1.1	1.3	0.4	0.0	0.0	90.2	0.6	9.2	0.084	0.529	17.771222	-93.170003
Estación Juárez	57.80	1	0	2025	8.3	81.8	0.3	6.4	0.9	1.8	0.4	0.0	0.1	90.1	0.3	9.6	0.074	0.508	17.601646	-93.183839

28 CARR: Playas del Rosario - Teapa

CLAVE: 27203

RUTA: TAB-001

AÑO: 2020

LUGAR	ESTACION				CLASIFICACION VEHICULAR EN PORCIENTO										COORDENADAS					
	KM	TE	SC	TDPA	M	A	B	C2	C3	T3S2	T3S3	T3S2R4	OTROS	A	B	C	K'	D	LATITUD	LONGITUD
T. C. Villahermosa - Escopetazo	0.00	3	1	4380	5.9	87.9	0.5	3.2	0.6	0.6	0.5	0.4	0.4	93.8	0.5	5.7	0.078	0.505	17.840901	-92.927324
T. C. Villahermosa - Escopetazo	0.00	3	2	4287	5.8	88.1	0.5	3.1	0.7	0.6	0.6	0.3	0.3	93.9	0.5	5.6	0.090	0.505	17.840895	-92.927322
Revolución Mexicana	1.20	3	0	6856	3.6	87.0	0.4	4.8	0.7	2.0	0.7	0.4	0.4	90.6	0.4	9.0	0.086	0.502	17.837995	-92.916676
Cacaos	7.00	1	0	6170	4.6	84.8	0.5	4.5	0.9	2.6	1.1	0.5	0.5	89.4	0.5	10.1	0.082	0.506	17.826009	-92.858128
Cacaos	7.00	3	0	4328	4.8	84.9	1.0	3.5	1.1	2.5	0.9	0.6	0.7	89.7	1.0	9.3	0.088	0.505	17.825974	-92.857964
Jalapa	23.00	1	0	4624	6.5	84.2	0.7	2.9	0.9	2.5	0.8	0.6	0.9	90.7	0.7	8.6	0.088	0.516	17.721587	-92.812337
Jalapa	23.00	3	0	4369	9.2	78.4	0.8	5.2	1.1	2.7	1.0	0.7	0.9	87.6	0.8	11.6	0.075	0.510	17.719864	-92.812242
T. Izq. Tacotalpa	39.00	1	0	4235	11.9	75.1	0.7	5.7	1.0	2.9	1.2	0.7	0.8	87.0	0.7	12.3	0.084	0.501	17.593295	-92.833162
T. Izq. Tacotalpa	39.00	3	1	3044	6.6	87.8	0.4	2.1	0.7	0.7	0.7	0.6	0.4	94.4	0.4	5.2	0.097	0.504	17.593297	-92.833167
T. Izq. Tacotalpa	39.00	3	2	2995	6.6	87.6	0.5	2.0	0.9	0.8	0.7	0.5	0.4	94.2	0.5	5.3	0.099	0.504	17.593296	-92.833163
Teapa	54.00	1	0	2461	10.5	78.2	1.1	4.4	1.0	2.1	1.2	1.1	0.4	88.7	1.1	10.2	0.109	0.504	17.548264	-92.947460

29 CARR: Ramal a Balancán

CLAVE: 27078

RUTA: TAB

AÑO: 2020

LUGAR	ESTACION				CLASIFICACION VEHICULAR EN PORCIENTO										COORDENADAS					
	KM	TE	SC	TDPA	M	A	B	C2	C3	T3S2	T3S3	T3S2R4	OTROS	A	B	C	K'	D	LATITUD	LONGITUD
T. C. El Suspiro - Tenosique	0.00	3	0	1566	3.6	84.9	1.7	7.9	0.9	0.6	0.4	0.0	0.0	88.5	1.7	9.8	0.137	0.511	17.632515	-91.601599
Balancán	24.00	1	0	2952	14.7	78.4	0.3	4.1	1.2	0.3	0.4	0.3	0.3	93.1	0.3	6.6	0.090	0.503	17.812330	-91.532723

30 CARR: Ramal a La Venta

CLAVE: 27078

RUTA: TAB

AÑO: 2020

LUGAR	ESTACION				CLASIFICACION VEHICULAR EN PORCIENTO										COORDENADAS					
	KM	TE	SC	TDPA	M	A	B	C2	C3	T3S2	T3S3	T3S2R4	OTROS	A	B	C	K'	D	LATITUD	LONGITUD
T. C. Coatzacoalcos - Villahermosa	0.00	3	0	4040	13.0	78.3	3.5	4.1	0.6	0.2	0.2	0.0	0.1	91.3	3.5	5.2	0.080	0.508	18.063482	-94.042064
La Venta	4.25																			



TABASCO

31 CARR: Ramal a Lázaro Cárdenas

CLAVE: 27208

RUTA: TAB

AÑO: 2020

LUGAR	ESTACION				CLASIFICACION VEHICULAR EN PORCIENTO										COORDENADAS					
	KM	TE	SC	TDPA	M	A	B	C2	C3	T3S2	T3S3	T3S2R4	OTROS	A	B	C	K'	D	LATITUD	LONGITUD
T. C. Comalcalco - El Golpe	0.00	3	0	1799	37.1	55.7	0.3	4.3	0.3	1.4	0.6	0.1	0.2	92.8	0.3	6.9	0.092	0.506	18.282829	-93.382012
Lázaro Cárdenas	14.00	1	0	1874	45.6	48.5	0.4	2.0	0.5	1.5	0.6	0.5	0.4	94.1	0.4	5.5	0.080	0.507	18.353590	-93.436710

32 CARR: Ramal a Libertad

CLAVE: 27205

RUTA: TAB

AÑO: 2020

LUGAR	ESTACION				CLASIFICACION VEHICULAR EN PORCIENTO										COORDENADAS					
	KM	TE	SC	TDPA	M	A	B	C2	C3	T3S2	T3S3	T3S2R4	OTROS	A	B	C	K'	D	LATITUD	LONGITUD
T. C. Cárdenas - Paraíso	0.00	3	0	2808	17.2	77.3	0.2	3.5	0.2	1.3	0.2	0.0	0.1	94.5	0.2	5.3	0.103	0.501	18.113532	-93.306589
Libertad	10.00	1	0	2181	29.3	63.9	0.4	2.8	0.5	2.7	0.2	0.1	0.1	93.2	0.4	6.4	0.100	0.501	18.180194	-93.368173

33 CARR: Ramal a Salto del Agua

CLAVE: 00069

RUTA: TAB-CHIS

AÑO: 2020

LUGAR	ESTACION				CLASIFICACION VEHICULAR EN PORCIENTO										COORDENADAS					
	KM	TE	SC	TDPA	M	A	B	C2	C3	T3S2	T3S3	T3S2R4	OTROS	A	B	C	K'	D	LATITUD	LONGITUD
T. C. Villahermosa - Francisco Escárcega	0.00	3	0	1327	6.3	69.8	1.4	4.5	4.5	4.9	3.7	4.6	0.3	76.1	1.4	22.5	0.087	0.502	17.667486	-92.436515
Lim. Edos. Term. Tab. Ppia. Chis.	12.00																			
Salto del Agua	17.00	1	0	1448	9.8	81.7	0.7	5.7	1.0	0.7	0.4	0.0	0.0	91.5	0.7	7.8	0.106	0.511	17.555926	-92.347969

34 CARR: Ramal a San Antonio

CLAVE: 27003

RUTA: TAB

AÑO: 2020

LUGAR	ESTACION				CLASIFICACION VEHICULAR EN PORCIENTO										COORDENADAS					
	KM	TE	SC	TDPA	M	A	B	C2	C3	T3S2	T3S3	T3S2R4	OTROS	A	B	C	K'	D	LATITUD	LONGITUD
T. C. Villahermosa - Francisco Escárcega	0.00	3	0	558	16.9	70.3	1.0	10.4	1.4	0.0	0.0	0.0	0.0	87.2	1.0	11.8	0.124	0.513	17.928643	-91.744077
T. Der. Balancán	24.00	1	0	1019	19.1	76.0	0.5	1.4	1.4	0.7	0.2	0.5	0.2	95.1	0.5	4.4	0.087	0.542	17.871983	-91.531368
T. Der. Balancán	24.00	3	0	1795	17.2	77.5	0.6	1.5	1.5	0.5	0.2	0.9	0.1	94.7	0.6	4.7	0.090	0.532	17.871977	-91.531369
El Triunfo	72.00																			

35 CARR: Ramal a Sánchez Magallanes

CLAVE: 27016

RUTA: TAB

AÑO: 2020

LUGAR	ESTACION				CLASIFICACION VEHICULAR EN PORCIENTO										COORDENADAS					
	KM	TE	SC	TDPA	M	A	B	C2	C3	T3S2	T3S3	T3S2R4	OTROS	A	B	C	K'	D	LATITUD	LONGITUD
T. C. Coatzacoalcos - Villahermosa	0.00	3	0	1441	24.4	63.9	0.9	6.8	0.9	2.1	0.3	0.6	0.1	88.3	0.9	10.8	0.088	0.501	18.073696	-93.877726
Campo Magallanes	13.00	1	0	1480	18.4	68.9	0.7	6.3	1.1	2.9	0.6	0.6	0.5	87.3	0.7	12.0	0.091	0.510	18.171246	-93.903386
Campo Magallanes	13.00	3	0	3360	31.5	57.0	0.3	5.3	0.6	3.7	1.1	0.2	0.3	88.5	0.3	11.2	0.087	0.502	18.171243	-93.903385
Sánchez Magallanes	33.00	1	0	1363	16.8	72.6	0.8	8.1	0.4	1.2	0.1	0.0	0.0	89.4	0.8	9.8	0.091	0.502	18.294986	-93.861654

TABASCO

36 CARR: Ramal a Tamulte de Las Sabanas

CLAVE: 27080

RUTA: TAB

AÑO: 2020

LUGAR	ESTACION				CLASIFICACION VEHICULAR EN PORCIENTO														COORDENADAS	
	KM	TE	SC	TDPA	M	A	B	C2	C3	T3S2	T3S3	T3S2R4	OTROS	A	B	C	K'	D	LATITUD	LONGITUD
T. C. Villahermosa - Cd. del Carmen	0.00	3	0	2864	3.6	90.0	0.5	3.2	0.3	1.8	0.2	0.0	0.4	93.6	0.5	5.9	0.079	0.503	18.200430	-92.825044
Tamulte de Las Sabanas	7.00																			

37 CARR: Ramal a Tapijulapa

CLAVE: 27200

RUTA: TAB

AÑO: 2020

LUGAR	ESTACION				CLASIFICACION VEHICULAR EN PORCIENTO														COORDENADAS	
	KM	TE	SC	TDPA	M	A	B	C2	C3	T3S2	T3S3	T3S2R4	OTROS	A	B	C	K'	D	LATITUD	LONGITUD
T. C. Playas del Rosario - Teapa	0.00	3	0	3729	11.0	77.9	1.3	3.5	1.0	2.5	1.2	0.8	0.8	88.9	1.3	9.8	0.094	0.525	17.577069	-92.837441
Tapijulapa	20.00	1	0	2025	9.8	78.0	1.3	4.8	1.2	2.1	1.2	1.1	0.5	87.8	1.3	10.9	0.109	0.512	17.456739	-92.781528

38 CARR: Reforma - Dos Bocas

CLAVE: 27200

RUTA: TAB

AÑO: 2020

LUGAR	ESTACION				CLASIFICACION VEHICULAR EN PORCIENTO														COORDENADAS	
	KM	TE	SC	TDPA	M	A	B	C2	C3	T3S2	T3S3	T3S2R4	OTROS	A	B	C	K'	D	LATITUD	LONGITUD
Reforma	0.00	3	1	9519	2.2	83.8	2.4	7.8	1.3	1.3	0.8	0.3	0.1	86.0	2.4	11.6	0.085	0.501	17.974215	-93.129330
Reforma	0.00	3	2	9557	2.3	82.2	2.7	8.6	1.4	1.5	0.9	0.3	0.1	84.5	2.7	12.8	0.103	0.501	17.974243	-93.129421
Paraiso	49.70																			
Dos Bocas	53.00	1	1	3628	8.7	73.4	0.7	11.3	0.9	2.0	2.1	0.5	0.4	82.1	0.7	17.2	0.127	0.503	18.431198	-93.195565
Dos Bocas	53.00	1	2	3675	8.7	73.3	0.6	11.4	1.0	2.0	2.2	0.4	0.4	82.0	0.6	17.4	0.122	0.503	18.431200	-93.195563

39 CARR: Reyes Hernández - Villa Aldama

CLAVE: 27119

RUTA: TAB

AÑO: 2020

LUGAR	ESTACION				CLASIFICACION VEHICULAR EN PORCIENTO														COORDENADAS	
	KM	TE	SC	TDPA	M	A	B	C2	C3	T3S2	T3S3	T3S2R4	OTROS	A	B	C	K'	D	LATITUD	LONGITUD
Reyes Hernández	0.00	3	0	4870	23.7	66.9	1.2	3.6	1.0	2.6	0.3	0.3	0.4	90.6	1.2	8.2	0.089	0.501	18.241856	-93.276035
T. C. (Cárdenas - Paraiso) - Carlos Green	9.00	1	0	4525	24.9	64.4	0.3	3.0	1.9	4.0	0.4	0.7	0.4	89.3	0.3	10.4	0.093	0.527	18.240930	-93.350217

40 CARR: Samaria - Amatitán

CLAVE: 27114

RUTA: TAB

AÑO: 2020

LUGAR	ESTACION				CLASIFICACION VEHICULAR EN PORCIENTO														COORDENADAS	
	KM	TE	SC	TDPA	M	A	B	C2	C3	T3S2	T3S3	T3S2R4	OTROS	A	B	C	K'	D	LATITUD	LONGITUD
T. C. Coatzacoalcos - Villahermosa	0.00	3	0	2166	7.8	81.8	0.4	6.6	0.1	2.3	0.4	0.1	0.5	89.6	0.4	10.0	0.098	0.511	18.000245	-93.274237
Cunduacán	17.00	1	0	6385	17.9	71.3	0.4	2.7	0.6	5.1	0.7	0.4	0.9	89.2	0.4	10.4	0.090	0.501	18.064295	-93.173631
Cunduacán	17.00	3	0	3906	23.6	71.0	0.2	1.4	0.1	2.4	0.9	0.2	0.2	94.6	0.2	5.2	0.081	0.502	18.068010	-93.175530
Amatitán	31.40	1	0	5331	19.0	70.5	0.2	2.8	1.7	4.3	0.8	0.2	0.5	89.5	0.2	10.3	0.089	0.504	18.176822	-93.082217

TABASCO

41 CARR: T. C. (Cárdenas - Paraíso) - Carlos Green

CLAVE: 27111

RUTA: TAB

AÑO: 2020

LUGAR	ESTACION				CLASIFICACION VEHICULAR EN PORCIENTO													COORDENADAS		
	KM	TE	SC	TDPA	M	A	B	C2	C3	T3S2	T3S3	T3S2R4	OTROS	A	B	C	K'	D	LATITUD	LONGITUD
T. C. Cárdenas - Paraíso	0.00	3	0	315	23.2	68.6	1.1	2.6	3.1	0.6	0.4	0.4	0.0	91.8	1.1	7.1	0.127	0.535	18.106678	-93.320181
T. Der. Reyes Hernández	21.50	3	0	1231	51.4	41.1	0.3	4.8	0.2	1.5	0.5	0.0	0.2	92.5	0.3	7.2	0.098	0.541	18.180058	-93.390426
Carlos Green	30.70	1	0	1523	54.8	38.9	0.6	3.7	1.5	0.3	0.1	0.1	0.0	93.7	0.6	5.7	0.118	0.512	18.231172	-93.450915

42 CARR: Tierra Nueva - Francisco Rueda

CLAVE: 27110

RUTA: TAB

AÑO: 2020

LUGAR	ESTACION				CLASIFICACION VEHICULAR EN PORCIENTO													COORDENADAS		
	KM	TE	SC	TDPA	M	A	B	C2	C3	T3S2	T3S3	T3S2R4	OTROS	A	B	C	K'	D	LATITUD	LONGITUD
Tierra Nueva	0.00	3	0	3105	28.2	62.8	0.4	3.8	0.6	2.0	0.4	1.5	0.3	91.0	0.4	8.6	0.085	0.504	17.790793	-93.437195
Ocuapan	14.00	3	0	1049	40.4	49.3	0.5	3.3	2.6	1.6	0.3	1.2	0.8	89.7	0.5	9.8	0.107	0.513	17.828251	-93.504969
T. Izq. Encomendadero	31.00	1	0	1285	34.1	55.7	0.3	6.1	1.7	0.9	0.5	0.6	0.1	89.8	0.3	9.9	0.102	0.507	17.793427	-93.628045
T. Izq. Encomendadero	31.00	3	0	1211	24.4	64.2	0.8	4.0	2.3	1.9	0.7	1.1	0.6	88.6	0.8	10.6	0.150	0.518	17.793425	-93.628046
Francisco Rueda	71.00	1	0	488	35.8	54.6	0.9	6.2	1.2	0.7	0.2	0.2	0.2	90.4	0.9	8.7	0.113	0.500	17.835752	-93.929517

43 CARR: Tulipán - Cunduacán

CLAVE: 27115

RUTA: TAB

AÑO: 2020

LUGAR	ESTACION				CLASIFICACION VEHICULAR EN PORCIENTO													COORDENADAS		
	KM	TE	SC	TDPA	M	A	B	C2	C3	T3S2	T3S3	T3S2R4	OTROS	A	B	C	K'	D	LATITUD	LONGITUD
T. C. Malpaso - El Bellote	0.00	3	0	4917	22.3	68.5	0.5	2.1	0.8	3.3	1.1	0.5	0.9	90.8	0.5	8.7	0.107	0.500	18.114904	-93.298949
T. Der. Mote	14.00	1	0	2765	17.0	75.3	1.1	2.3	1.0	1.4	0.9	0.7	0.3	92.3	1.1	6.6	0.088	0.506	18.059841	-93.210682
Cunduacán	15.00	1	0	3960	19.2	73.3	0.7	2.2	0.6	1.7	0.8	0.7	0.8	92.5	0.7	6.8	0.104	0.501	18.054046	-93.196685

44 CARR: Villahermosa - Comalcalco

CLAVE: 27021

RUTA: TAB

AÑO: 2020

LUGAR	ESTACION				CLASIFICACION VEHICULAR EN PORCIENTO													COORDENADAS		
	KM	TE	SC	TDPA	M	A	B	C2	C3	T3S2	T3S3	T3S2R4	OTROS	A	B	C	K'	D	LATITUD	LONGITUD
T. C. Villahermosa - Cd. del Carmen	0.00	3	1	10008	4.7	89.7	0.2	1.5	0.3	1.0	2.3	0.2	0.1	94.4	0.2	5.4	0.116	0.505	18.012239	-92.919955
T. C. Villahermosa - Cd. del Carmen	0.00	3	2	9798	4.8	89.7	0.2	1.5	0.2	1.0	2.3	0.2	0.1	94.5	0.2	5.3	0.107	0.505	18.012217	-92.920049
Saloya	13.00	1	0	16008	6.3	87.3	0.3	2.5	1.2	0.9	0.6	0.5	0.4	93.6	0.3	6.1	0.088	0.509	18.097521	-92.943602
Saloya	13.00	3	0	13072	6.3	84.3	0.4	3.9	1.1	2.5	0.9	0.4	0.2	90.6	0.4	9.0	0.086	0.507	18.097564	-92.943686
Nacajuca	21.00	1	0	11160	8.5	83.8	0.4	2.5	0.8	2.9	0.5	0.2	0.4	92.3	0.4	7.3	0.083	0.507	18.167932	-93.017595
Nacajuca	21.00	3	1	6813	6.3	87.8	0.2	2.7	0.5	1.6	0.6	0.1	0.2	94.1	0.2	5.7	0.077	0.500	18.169511	-93.021778
Nacajuca	21.00	3	2	6810	5.7	87.9	0.2	2.8	0.5	1.9	0.7	0.1	0.2	93.6	0.2	6.2	0.075	0.500	18.169468	-93.021807
Jalpa de Méndez	27.00	3	0	5952	12.9	79.5	0.2	2.3	0.8	2.5	0.8	0.6	0.4	92.4	0.2	7.4	0.091	0.508	18.177285	-93.082290
Cupilco	40.00	1	0	4605	20.1	74.2	0.3	2.2	0.9	1.3	0.6	0.3	0.1	94.3	0.3	5.4	0.084	0.508	18.239341	-93.127271

TABASCO

44 CARR: Villahermosa - Comalcalco

CLAVE: 27021

RUTA: TAB

AÑO: 2020

LUGAR	ESTACION				CLASIFICACION VEHICULAR EN PORCIENTO													COORDENADAS		
	KM	TE	SC	TDPA	M	A	B	C2	C3	T3S2	T3S3	T3S2R4	OTROS	A	B	C	K'	D	LATITUD	LONGITUD
Cupilco	40.00	3	0	5228	19.1	73.9	0.1	2.7	0.6	1.9	0.9	0.5	0.3	93.0	0.1	6.9	0.091	0.513	18.239259	-93.127252
Chichicapa	46.50	1	0	5411	14.7	78.3	0.1	3.1	0.3	2.1	1.0	0.1	0.3	93.0	0.1	6.9	0.086	0.517	18.261990	-93.182514
T. C. Malpaso - El Bellote	50.70	1	0	10542	11.1	73.1	0.8	6.6	1.1	5.0	1.3	0.9	0.1	84.2	0.8	15.0	0.082	0.538	18.247176	-93.212543

45 CARR: Villahermosa - Luis Gil Pérez

CLAVE: 27206

RUTA: TAB

AÑO: 2020

LUGAR	ESTACION				CLASIFICACION VEHICULAR EN PORCIENTO													COORDENADAS		
	KM	TE	SC	TDPA	M	A	B	C2	C3	T3S2	T3S3	T3S2R4	OTROS	A	B	C	K'	D	LATITUD	LONGITUD
Villahermosa	0.00	3	0	11213	9.7	80.6	0.1	3.2	0.3	5.3	0.4	0.1	0.3	90.3	0.1	9.6	0.094	0.533	17.965965	-92.961453
Luis Gil Pérez	22.00	1	0	4368	9.0	83.0	0.2	3.6	0.1	2.1	1.4	0.2	0.4	92.0	0.2	7.8	0.080	0.505	17.877888	-93.073328

46 CARR: Villahermosa - T. C. (P. de Cunduacán - Estación Juárez)

CLAVE: 27106

RUTA: TAB

AÑO: 2020

LUGAR	ESTACION				CLASIFICACION VEHICULAR EN PORCIENTO													COORDENADAS		
	KM	TE	SC	TDPA	M	A	B	C2	C3	T3S2	T3S3	T3S2R4	OTROS	A	B	C	K'	D	LATITUD	LONGITUD
Villahermosa	0.00	3	0	12956	3.8	87.6	0.2	4.5	0.3	2.1	0.9	0.2	0.4	91.4	0.2	8.4	0.089	0.518	17.971069	-92.970624
San Joaquín	4.00	3	0	5710	8.1	82.0	0.2	4.6	0.5	2.8	1.0	0.2	0.6	90.1	0.2	9.7	0.080	0.501	17.952324	-92.986042
T. Izq. Luis Gil Pérez	19.00	3	0	5033	15.4	74.8	0.2	3.8	0.1	3.5	1.2	0.2	0.8	90.2	0.2	9.6	0.080	0.511	17.894349	-93.064274
T. C. Paso de Cunduacán - Estación Juárez	25.20	1	0	4469	11.6	74.4	0.2	5.5	0.2	4.9	1.8	0.6	0.8	86.0	0.2	13.8	0.110	0.509	17.908810	-93.128281

47 CARR: Zapatero - T. C. (Jalapa - Jonuta)

CLAVE: 00061

RUTA: CHIS-TAB

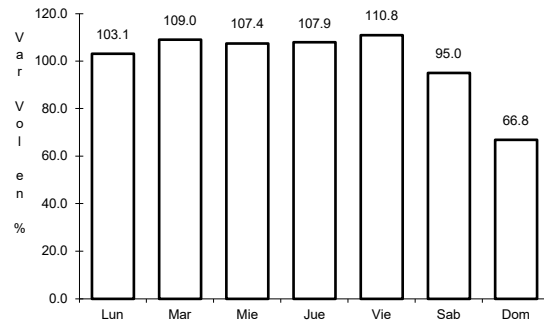
AÑO: 2020

LUGAR	ESTACION				CLASIFICACION VEHICULAR EN PORCIENTO													COORDENADAS		
	KM	TE	SC	TDPA	M	A	B	C2	C3	T3S2	T3S3	T3S2R4	OTROS	A	B	C	K'	D	LATITUD	LONGITUD
T. C. Villahermosa - Francisco Escárcega	0.00	3	0	1145	11.7	80.3	0.3	4.8	0.8	1.5	0.3	0.2	0.1	92.0	0.3	7.7	0.090	0.506	17.698082	-92.131913
Lim. Edos. Term. Chis. Ppia. Tab.	16.00																			
T. C. Jalapa - Jonuta	41.00	1	0	1122	11.0	83.9	0.3	4.0	0.3	0.4	0.1	0.0	0.0	94.9	0.3	4.8	0.102	0.542	18.032005	-92.157660

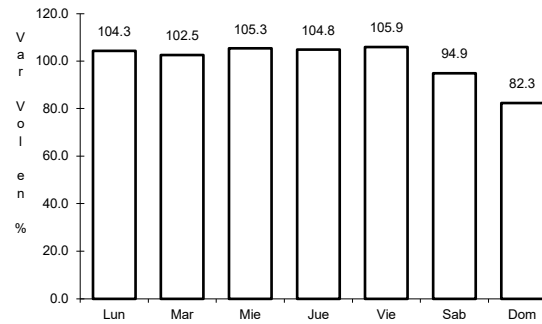
1 CARR: Coatzacoalcos - Villahermosa

CLAVE: 00528

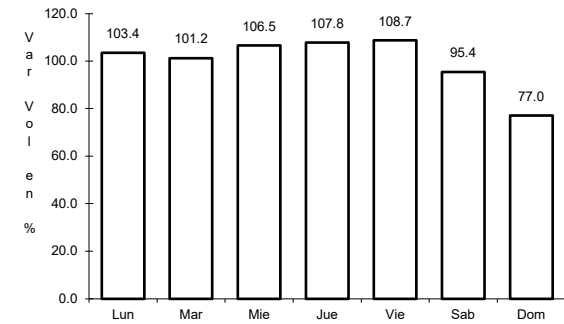
RUTA: MEX-180



Km: 3.00                      Tipo: 1                      Sent: 0



Km: 171.15                      Tipo: 1                      Sent: 1

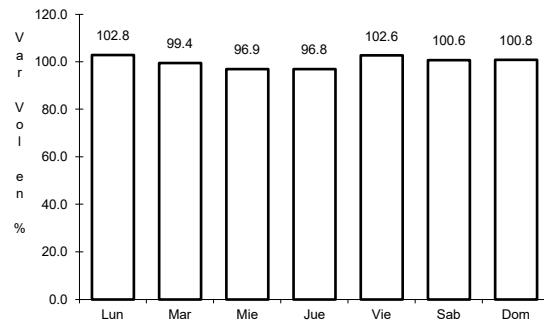


Km: 171.15                      Tipo: 1                      Sent: 2

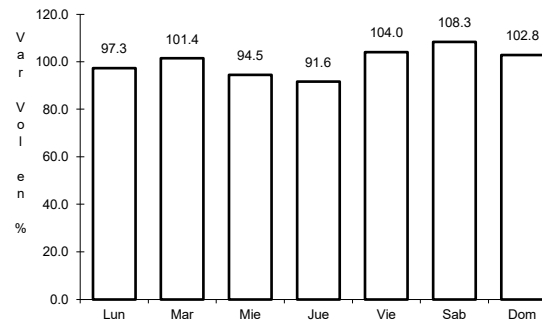
2 CARR: El Suspiro - Tenosique

CLAVE: 00276

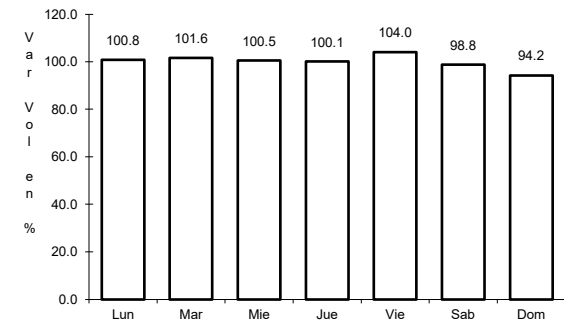
RUTA: MEX-203



Km: 0.00                      Tipo: 3                      Sent: 0



Km: 32.60                      Tipo: 1                      Sent: 0

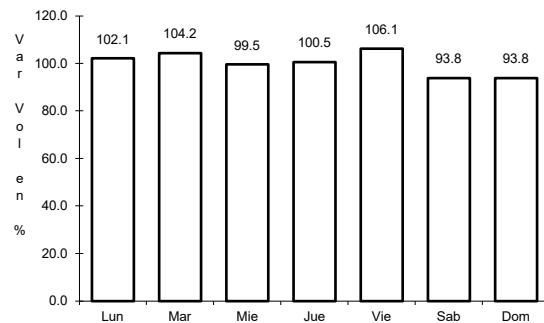


Km: 53.00                      Tipo: 3                      Sent: 0

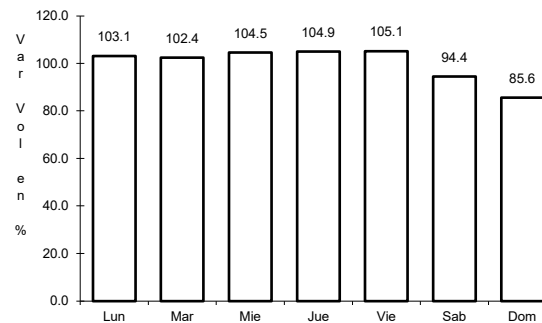
3 CARR: Malpaso - El Bellote

CLAVE: 00137

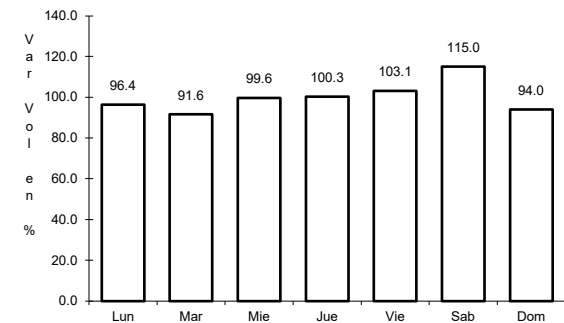
RUTA: MEX-187



Km: 70.12                      Tipo: 1                      Sent: 0



Km: 134.70                      Tipo: 3                      Sent: 0

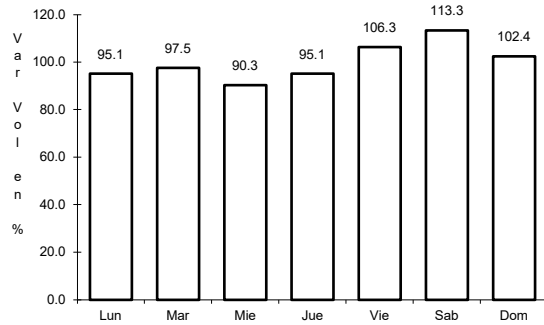


Km: 182.00                      Tipo: 3                      Sent: 0

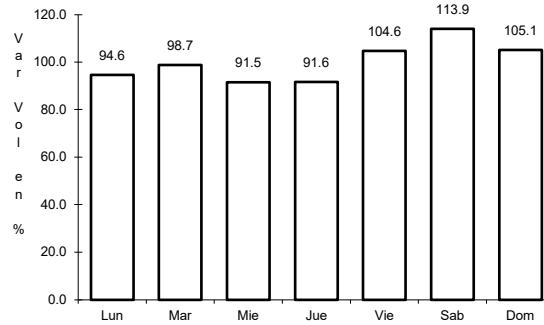
4 CARR: Tenosique - El Ceibo

CLAVE:

ruta: MEX-203



Km: 0.00                      Tipo: 3                      Sent: 0

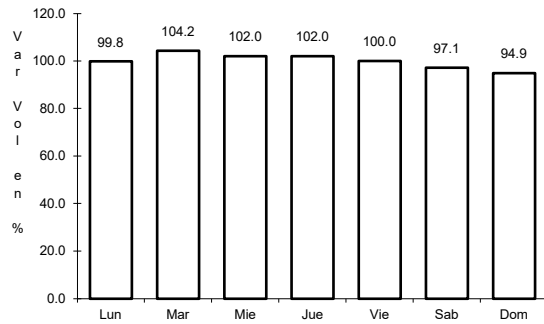


Km: 58.00                      Tipo: 1                      Sent: 0

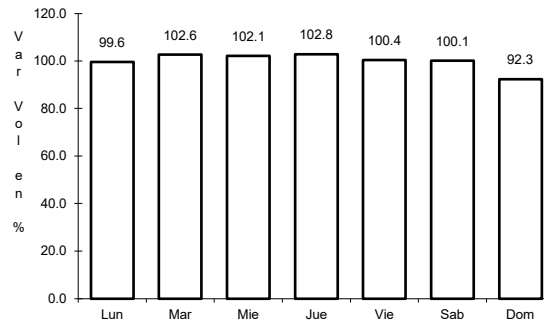
5 CARR: Villahermosa - Cd. del Carmen

CLAVE: 00064

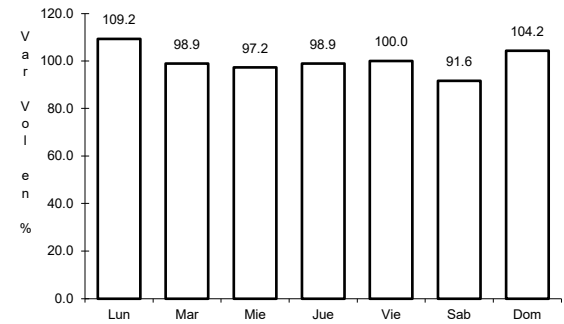
ruta: MEX-180



Km: 4.30                      Tipo: 3                      Sent: 1



Km: 4.30                      Tipo: 3                      Sent: 2

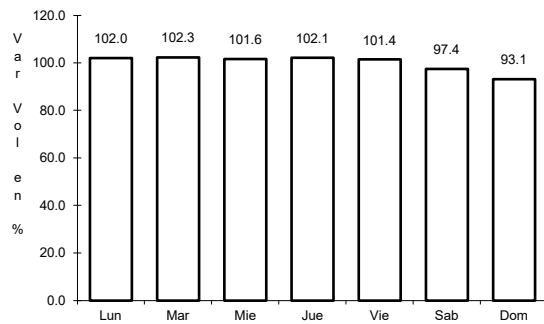


Km: 162.41                      Tipo: 1                      Sent: 0

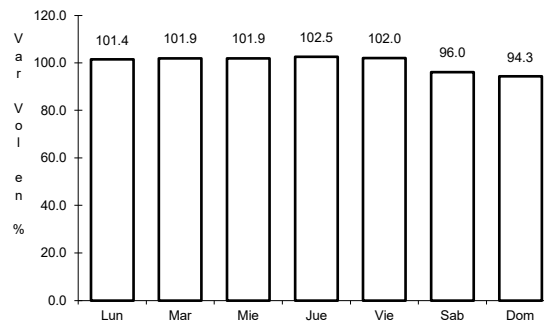
6 CARR: Villahermosa - Escopetazo

CLAVE: 00104

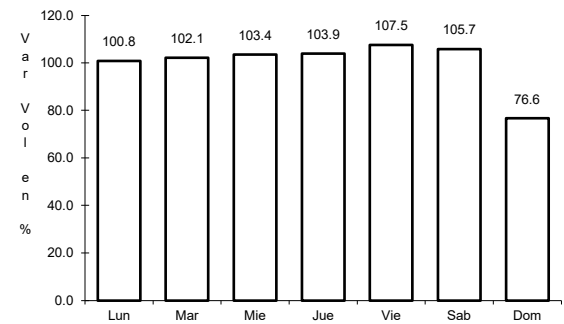
ruta: MEX-195



Km: 0.00                      Tipo: 3                      Sent: 1



Km: 0.00                      Tipo: 3                      Sent: 2

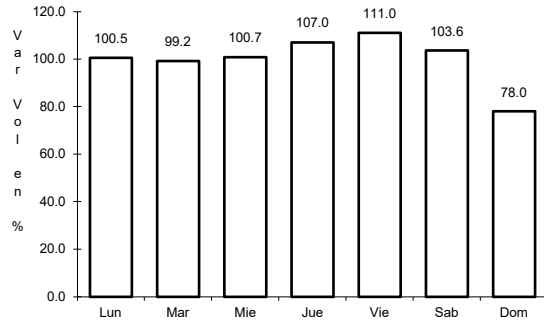


Km: 259.00                      Tipo: 1                      Sent: 0

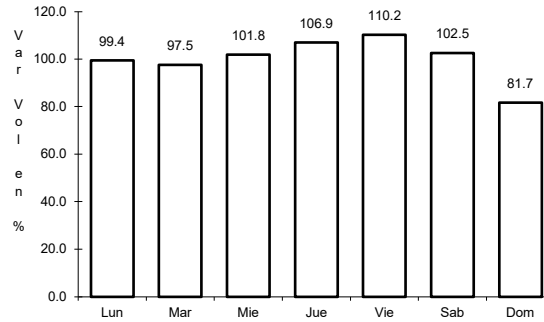
7 CARR: Villahermosa - Francisco Escárcega

CLAVE: 00092

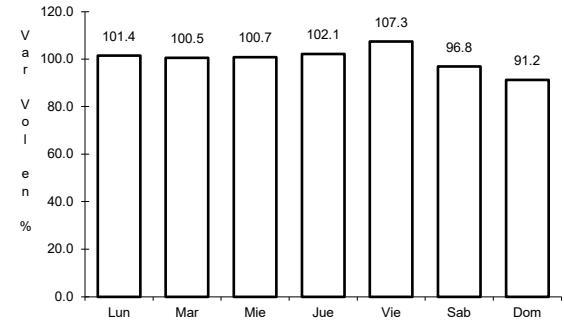
ruta: MEX-186



Km: 0.00                      Tipo: 3                      Sent: 1



Km: 0.00                      Tipo: 3                      Sent: 2

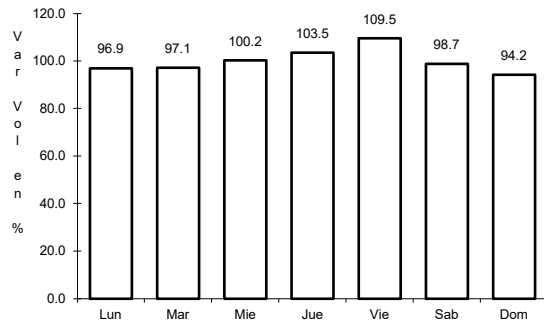


Km: 297.04                      Tipo: 1                      Sent: 0

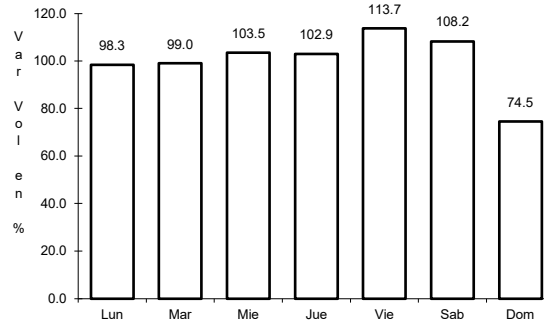
8 CARR: Ent. Agua Dulce - Cárdenas (Cuota)

CLAVE: 00010

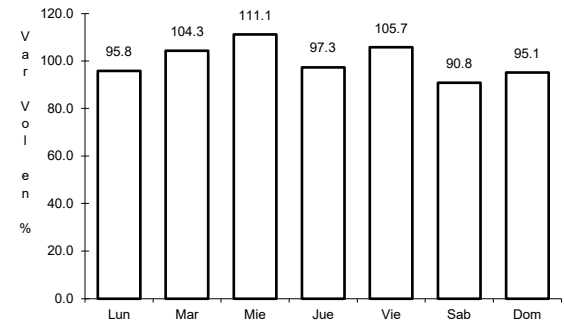
ruta: MEX-180D



Km: 69.50                      Tipo: 1                      Sent: 1



Km: 69.50                      Tipo: 1                      Sent: 2

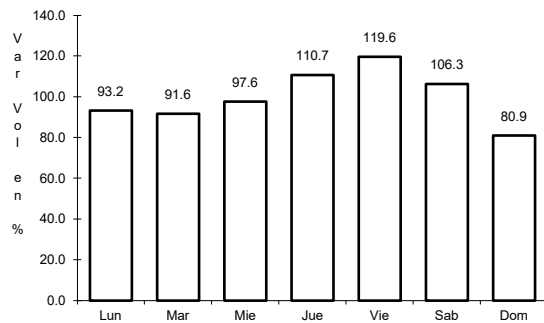


Km: 69.50                      Tipo: 3                      Sent: 1

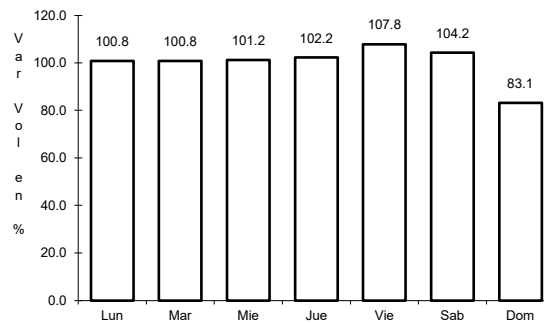
9 CARR: Las Choapas - Ocozocoautla (Cuota)

CLAVE: 00077

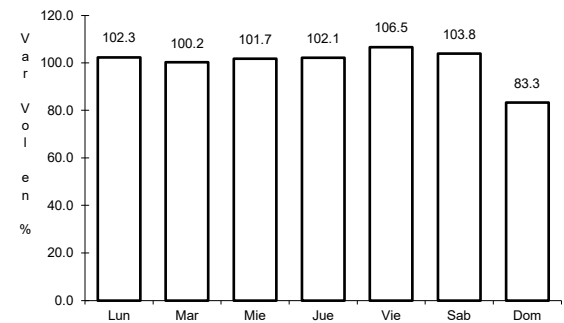
ruta: MEX-187D



Km: 0.00                      Tipo: 3                      Sent: 0



Km: 123.79                      Tipo: 1                      Sent: 0

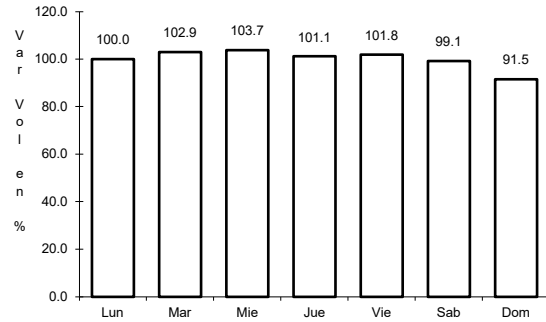


Km: 197.50                      Tipo: 1                      Sent: 0

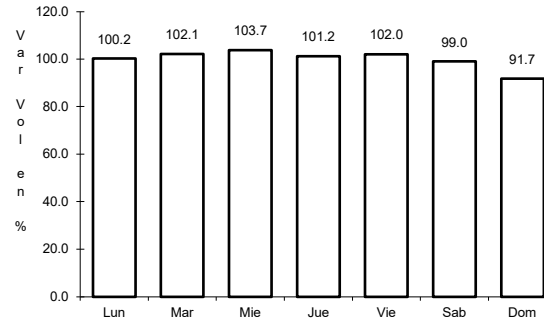
11 CARR: Benito Juárez - Agua Dulce

CLAVE: 00202

ruta: TAB-VER



Km: 0.00      Tipo: 3      Sent: 0

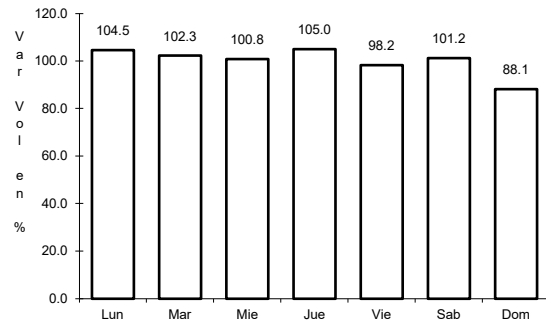


Km: 16.80      Tipo: 1      Sent: 0

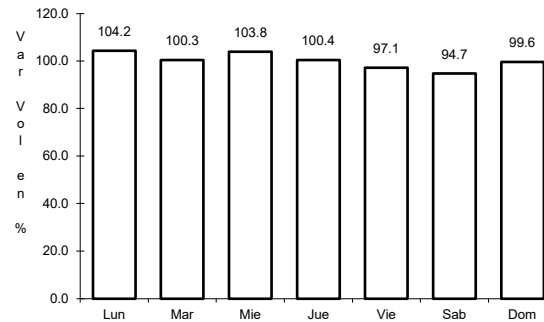
12 CARR: Benito Juárez - Tepetitán

CLAVE: 27204

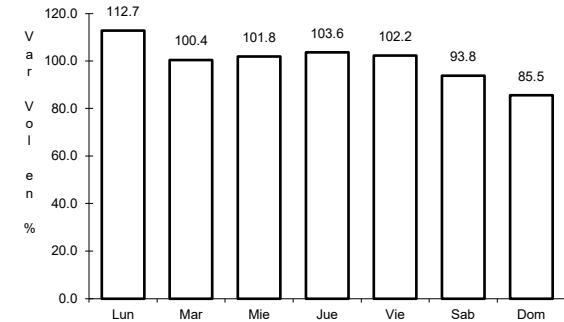
ruta: TAB



Km: 1.50      Tipo: 3      Sent: 0



Km: 18.50      Tipo: 1      Sent: 0

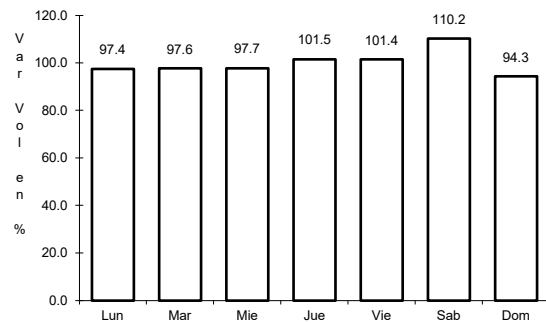


Km: 20.00      Tipo: 1      Sent: 0

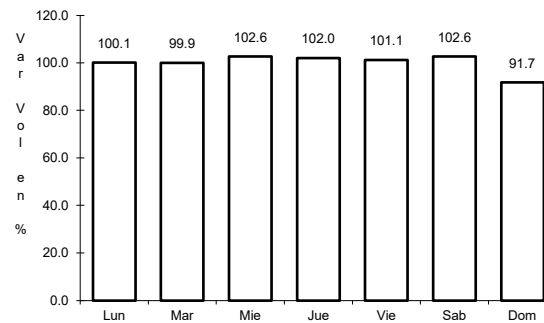
13 CARR: Cacaos - La Granja

CLAVE: 27002

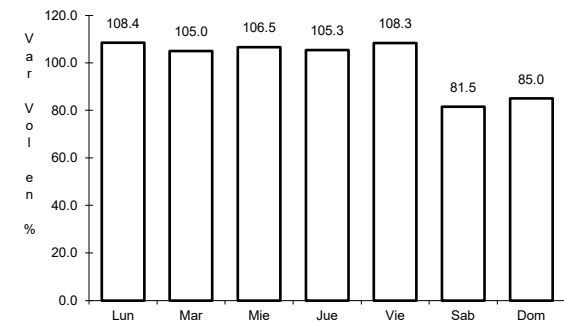
ruta: TAB



Km: 0.00      Tipo: 3      Sent: 0



Km: 16.00      Tipo: 3      Sent: 0



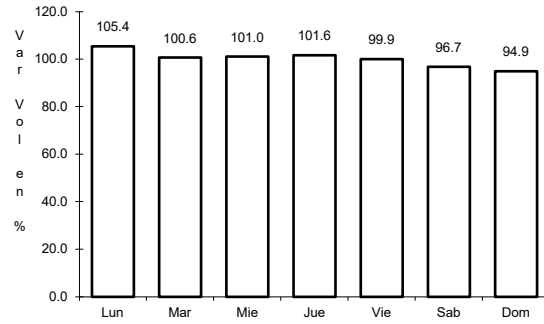
Km: 39.00      Tipo: 1      Sent: 0



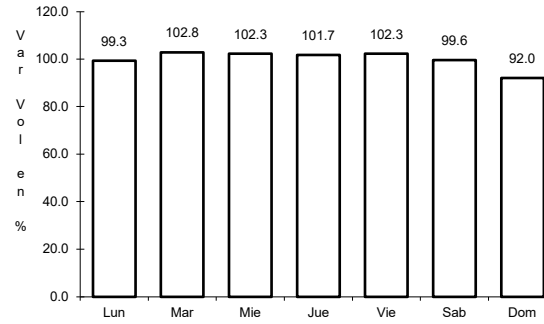
14 CARR: Cárdenas - Paraíso

CLAVE: 27117

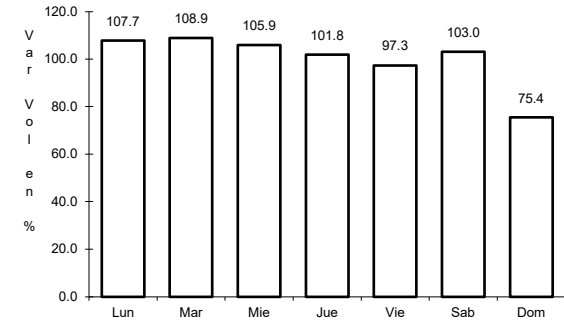
RUTA: TAB



Km: 0.00                      Tipo: 3                      Sent: 0



Km: 22.00                      Tipo: 1                      Sent: 0

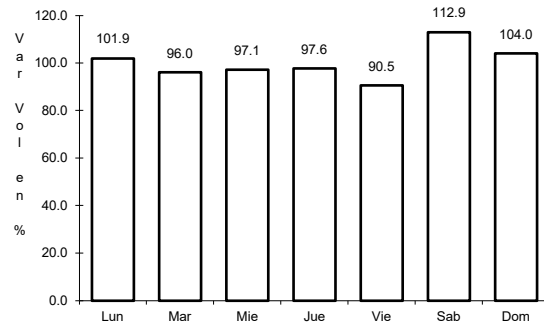


Km: 52.00                      Tipo: 1                      Sent: 0

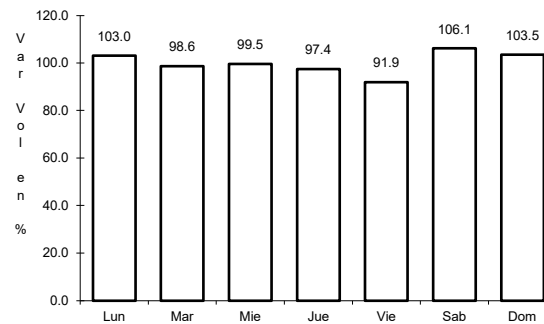
15 CARR: Chichicapa - Ent. La Libertad

CLAVE: 27100

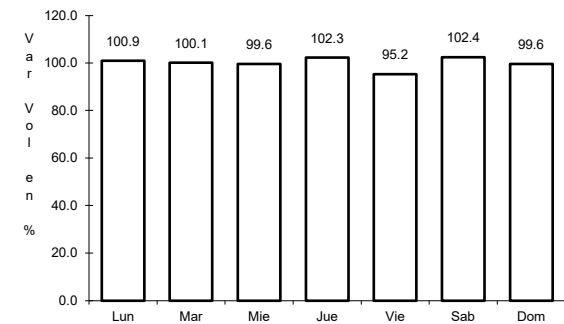
RUTA: TAB



Km: 0.00                      Tipo: 3                      Sent: 0



Km: 10.00                      Tipo: 3                      Sent: 0

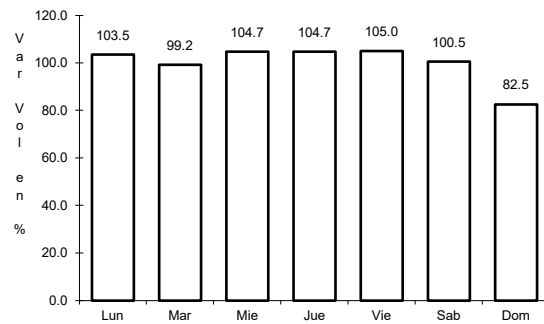


Km: 18.00                      Tipo: 1                      Sent: 0

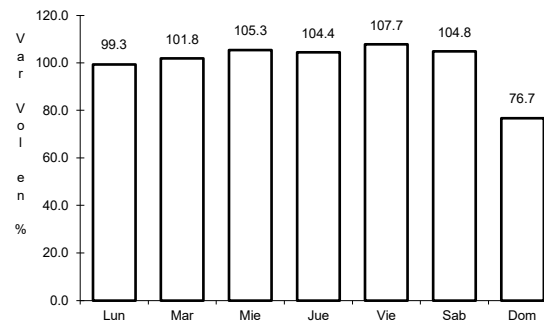
16 CARR: Comalcalco - El Golpe

CLAVE: 27102

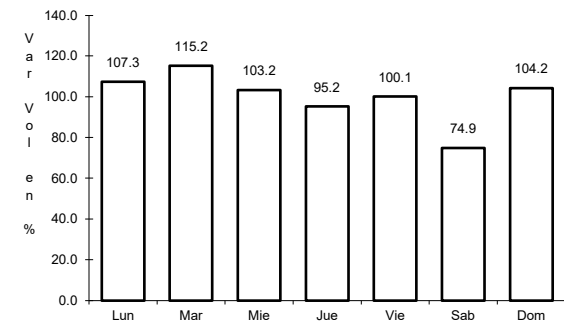
RUTA: TAB



Km: 0.00                      Tipo: 3                      Sent: 0



Km: 15.00                      Tipo: 1                      Sent: 0

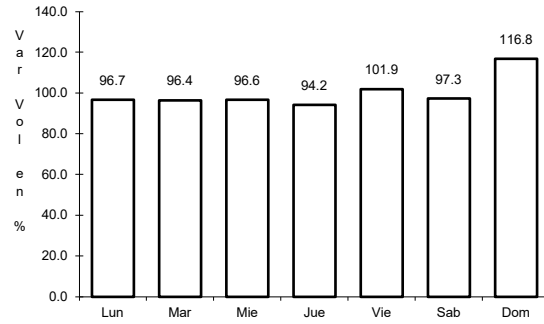


Km: 51.60                      Tipo: 1                      Sent: 0

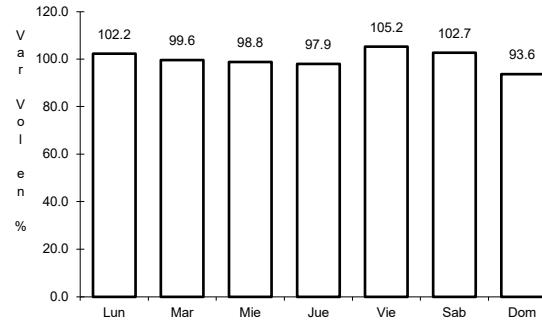
17 CARR: El Bellote - Santa Cruz

CLAVE: 27105

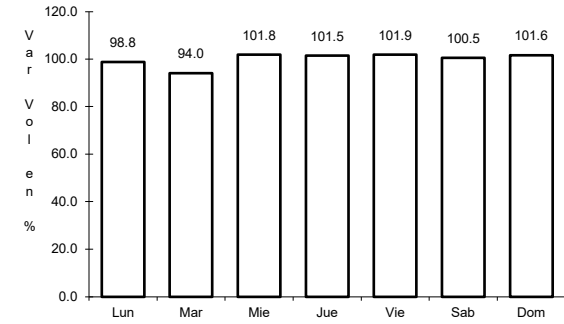
RUTA: TAB



Km: 0.00                      Tipo: 3                      Sent: 0



Km: 35.00                      Tipo: 1                      Sent: 0

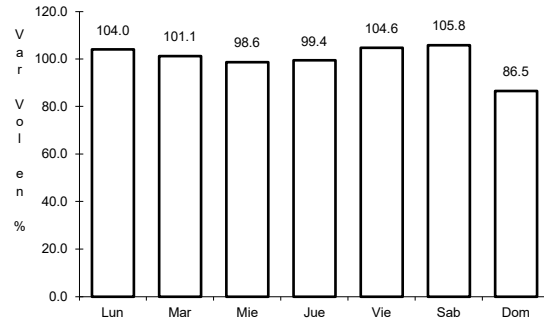


Km: 40.00                      Tipo: 1                      Sent: 0

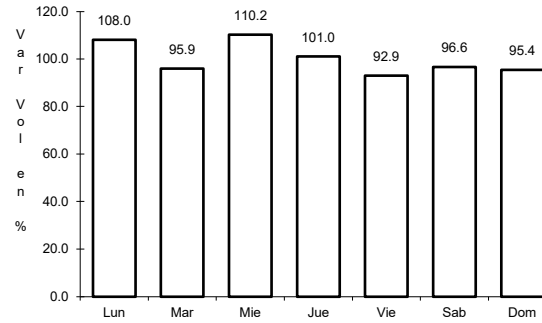
18 CARR: Ent. Emiliano Zapata - La Libertad

CLAVE: 00062

RUTA: CHIS-TAB



Km: 0.00                      Tipo: 3                      Sent: 0

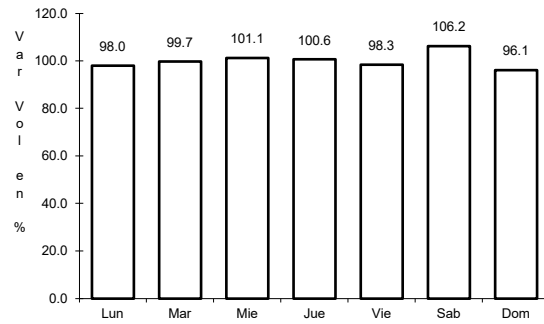


Km: 10.00                      Tipo: 1                      Sent: 0

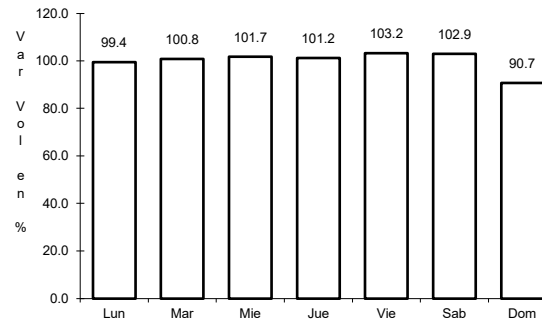
19 CARR: Estación Macuspana - Vernet

CLAVE: 27091

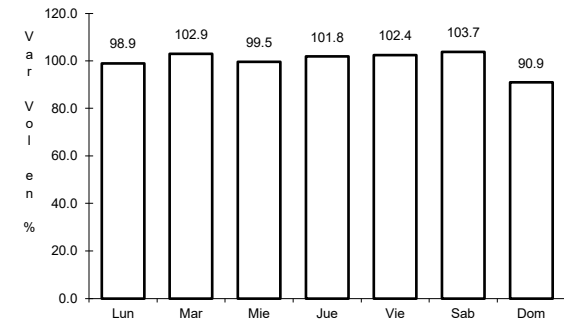
RUTA: TAB-041



Km: 11.00                      Tipo: 1                      Sent: 0



Km: 20.50                      Tipo: 3                      Sent: 0

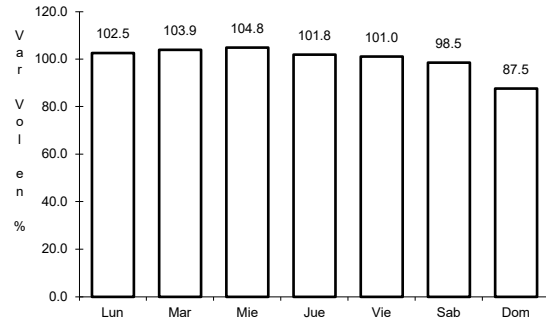


Km: 32.50                      Tipo: 1                      Sent: 0

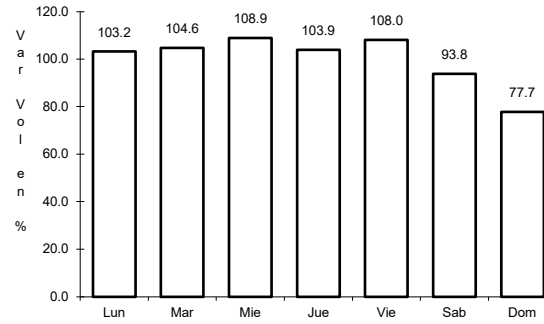
20 CARR: Frontera - T. C. (Jalapa - Jonuta)

CLAVE: 27081

RUTA: TAB



Km: 1.00                      Tipo: 3                      Sent: 0

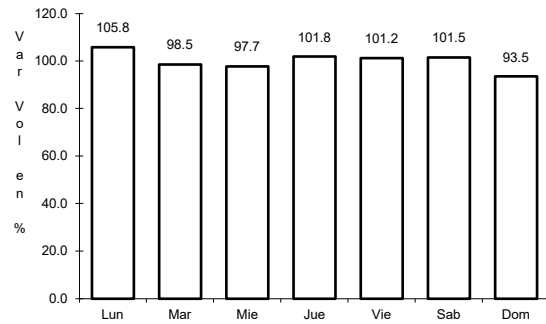


Km: 123.00                      Tipo: 1                      Sent: 0

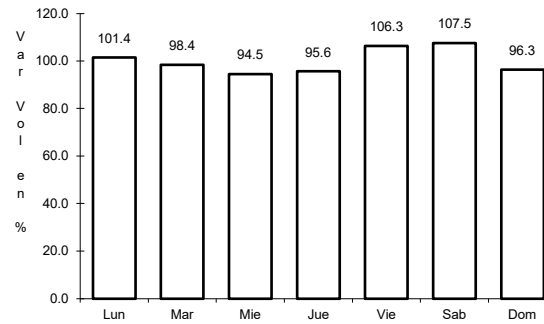
21 CARR: Gregorio Méndez Magaña - Reforma de Ocampo

CLAVE: 00103

RUTA: CHIS



Km: 0.00                      Tipo: 3                      Sent: 0

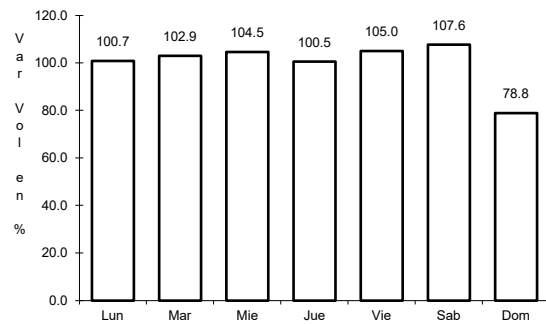


Km: 21.00                      Tipo: 1                      Sent: 0

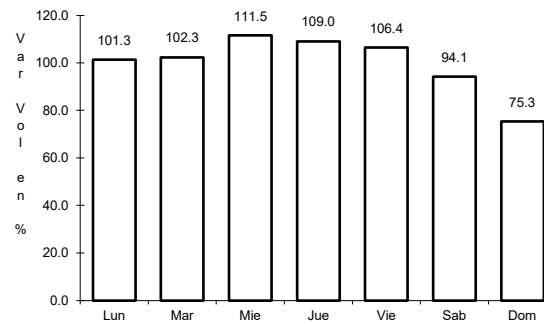
22 CARR: Jalapa - Jonuta

CLAVE: 27107

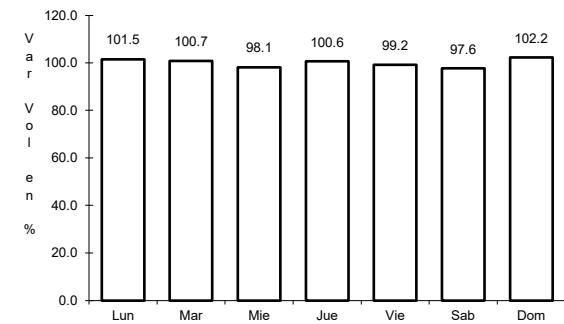
RUTA: TAB



Km: 0.00                      Tipo: 3                      Sent: 0



Km: 39.00                      Tipo: 1                      Sent: 0

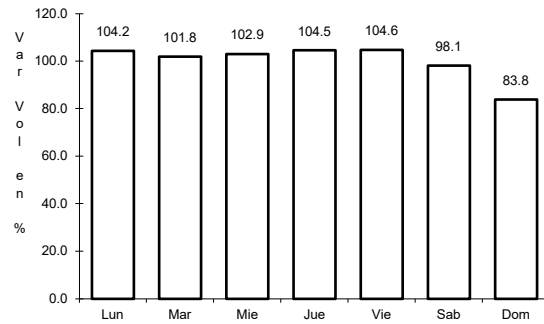


Km: 97.50                      Tipo: 1                      Sent: 0

23 CARR: Libramiento Sur de Comalcalco

CLAVE:

RUTA: TAB



Km: 0.00

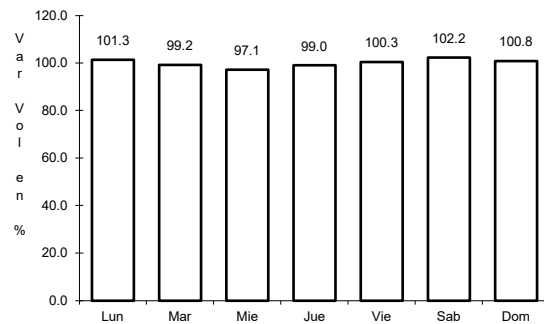
Tipo: 3

Sent: 0

24 CARR: Nicolás Bravo - T. C. (El Bellote - Santa Cruz)

CLAVE: 27010

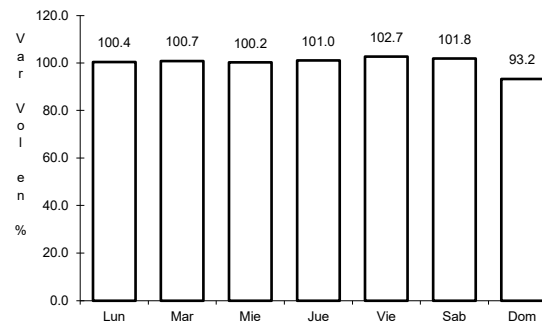
RUTA: TAB



Km: 0.00

Tipo: 3

Sent: 0



Km: 22.00

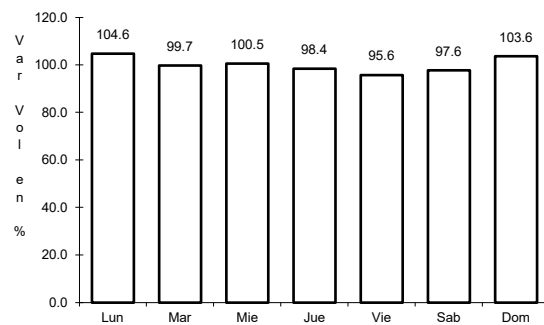
Tipo: 1

Sent: 0

25 CARR: Pailebot - Cuauhtemotzin

CLAVE: 27112

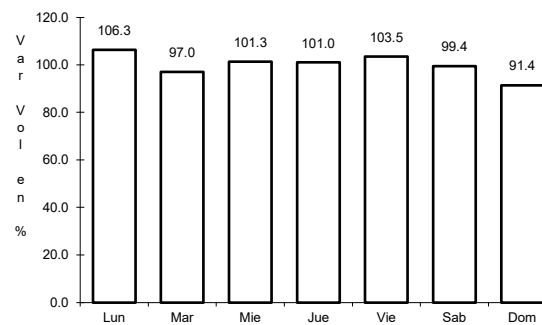
RUTA: TAB



Km: 0.00

Tipo: 3

Sent: 0



Km: 23.00

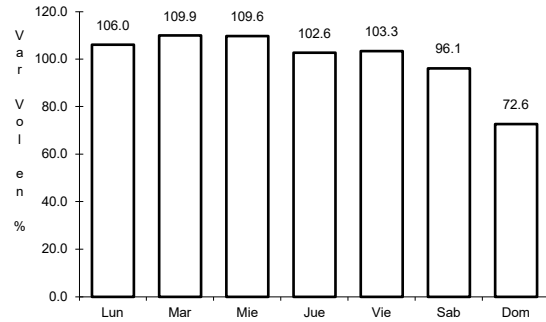
Tipo: 1

Sent: 0

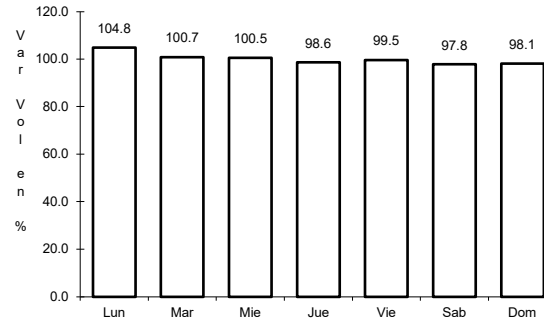
26 CARR: Paraíso - El Limón

CLAVE: 27108

RUTA: TAB



Km: 0.00                      Tipo: 3                      Sent: 0

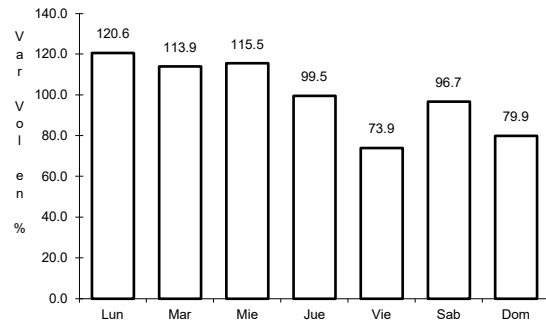


Km: 6.00                      Tipo: 1                      Sent: 0

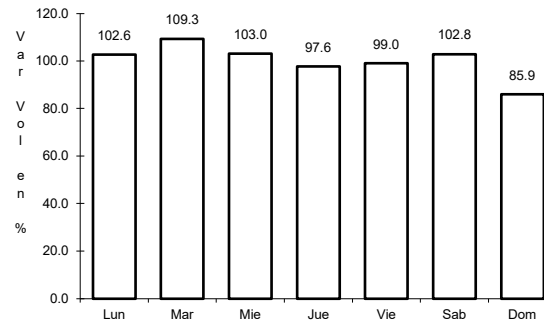
27 CARR: Paso de Cunduacán - Estación Juárez

CLAVE: 00588

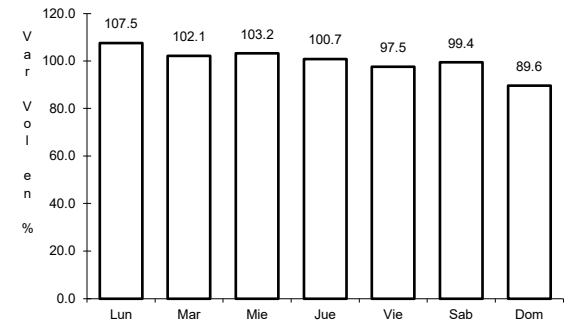
RUTA: TAB-CHIS



Km: 0.00                      Tipo: 3                      Sent: 0



Km: 18.00                      Tipo: 3                      Sent: 0

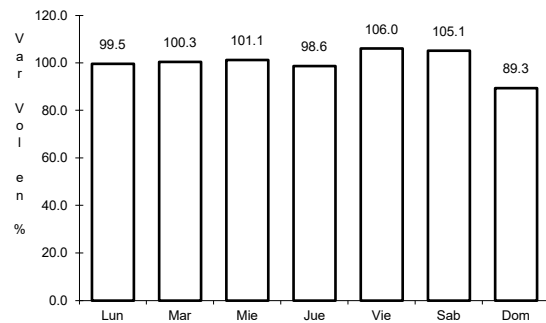


Km: 57.80                      Tipo: 1                      Sent: 0

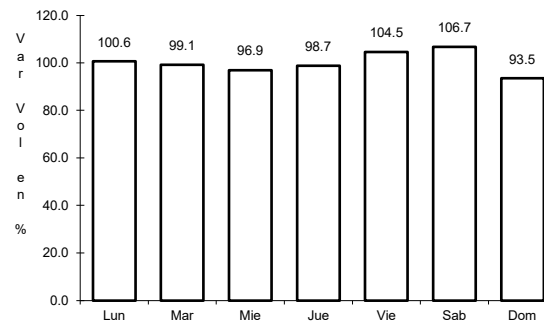
28 CARR: Playas del Rosario - Teapa

CLAVE: 27203

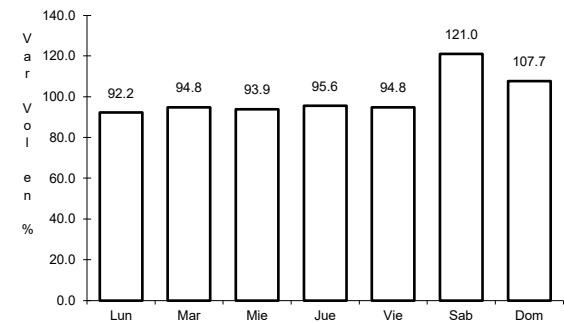
RUTA: TAB-001



Km: 0.00                      Tipo: 3                      Sent: 1



Km: 0.00                      Tipo: 3                      Sent: 2

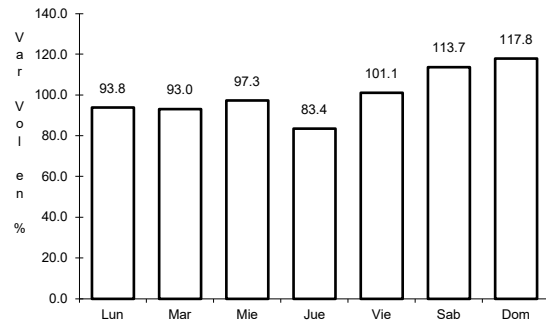


Km: 54.00                      Tipo: 1                      Sent: 0

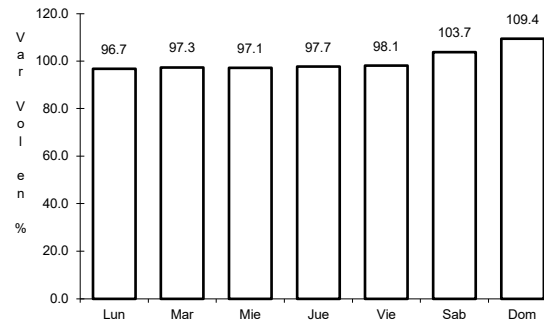
29 CARR: Ramal a Balancan

CLAVE: 27078

RUTA: TAB



Km: 0.00                      Tipo: 3                      Sent: 0

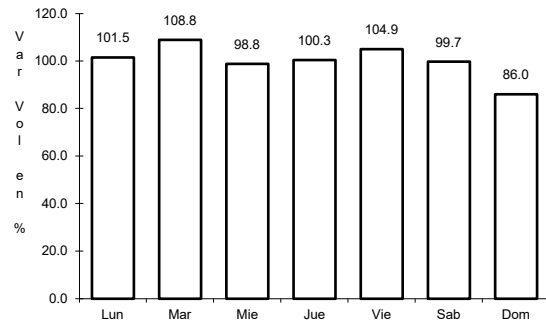


Km: 24.00                      Tipo: 1                      Sent: 0

30 CARR: Ramal a La Venta

CLAVE: 27078

RUTA: TAB

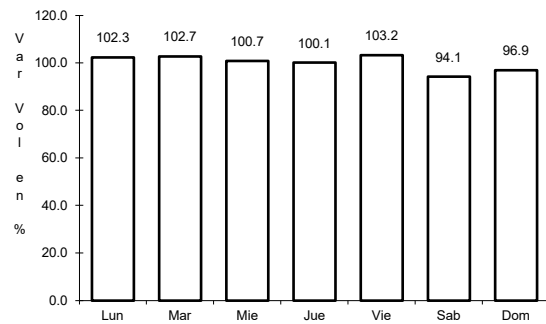


Km: 0.00                      Tipo: 3                      Sent: 0

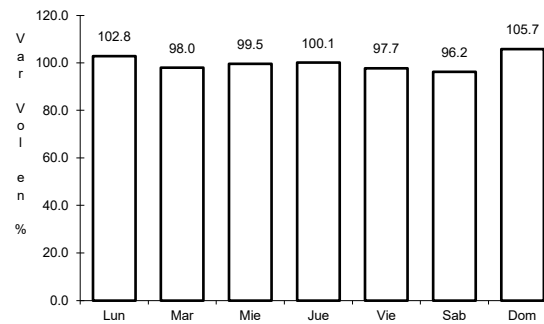
31 CARR: Ramal a Lázaro Cárdenas

CLAVE: 27208

RUTA: TAB



Km: 0.00                      Tipo: 3                      Sent: 0

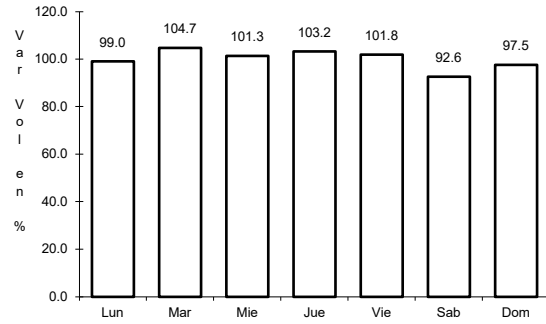


Km: 14.00                      Tipo: 1                      Sent: 0

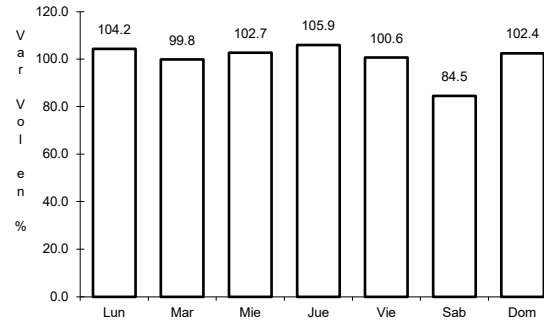
32 CARR: Ramal a Libertad

CLAVE: 27205

RUTA: TAB



Km: 0.00                      Tipo: 3                      Sent: 0

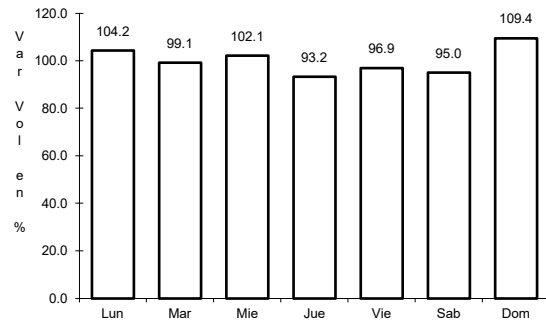


Km: 10.00                      Tipo: 1                      Sent: 0

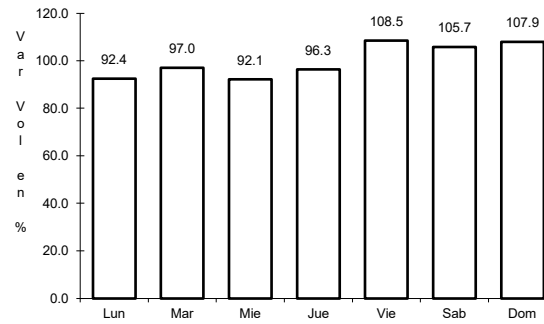
33 CARR: Ramal a Salto del Agua

CLAVE: 00069

RUTA: TAB-CHIS



Km: 0.00                      Tipo: 3                      Sent: 0

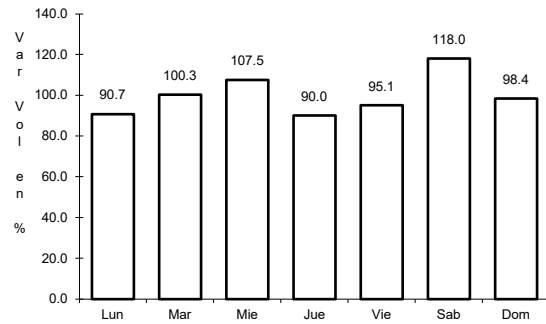


Km: 17.00                      Tipo: 1                      Sent: 0

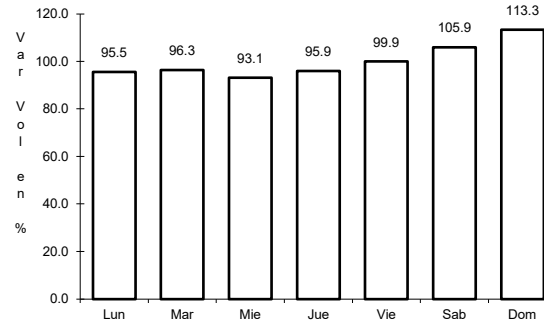
34 CARR: Ramal a San Antonio

CLAVE: 27003

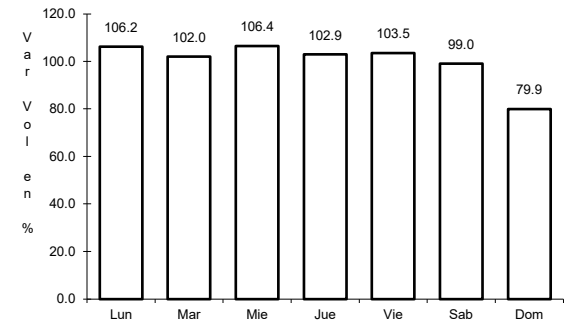
RUTA: TAB



Km: 0.00                      Tipo: 3                      Sent: 0



Km: 24.00                      Tipo: 1                      Sent: 0

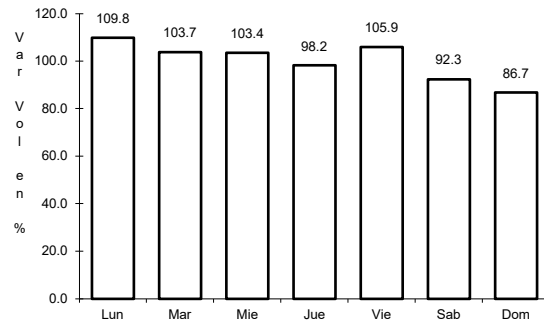


Km: 24.00                      Tipo: 3                      Sent: 0

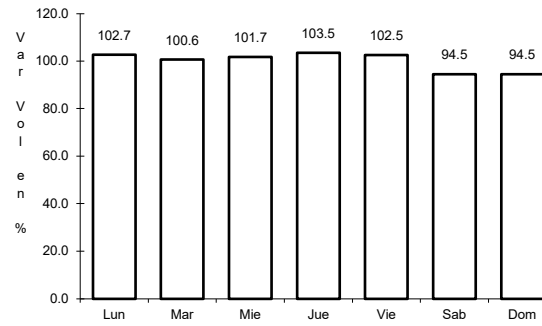
35 CARR: Ramal a Sánchez Magallanes

CLAVE: 27016

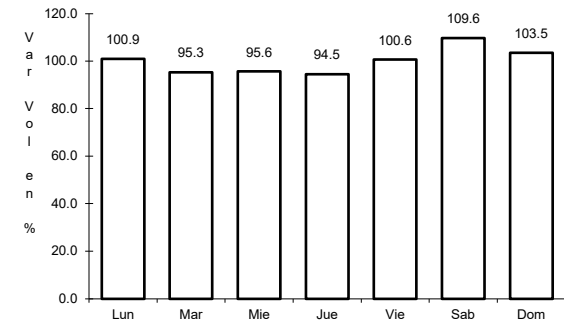
RUTA: TAB



Km: 0.00                      Tipo: 3                      Sent: 0



Km: 13.00                      Tipo: 1                      Sent: 0

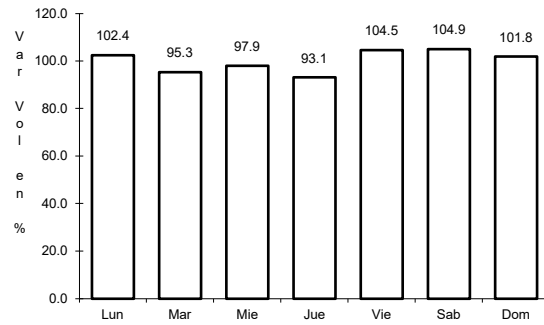


Km: 33.00                      Tipo: 1                      Sent: 0

36 CARR: Ramal a Tamulte de Las Sabanas

CLAVE: 27080

RUTA: TAB

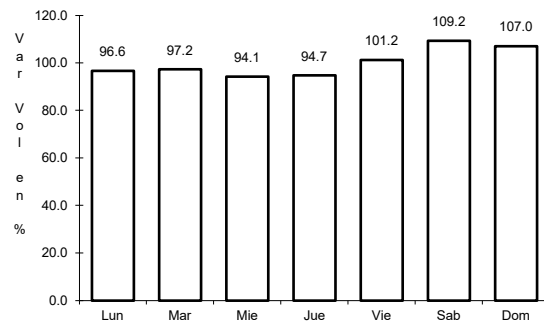


Km: 0.00                      Tipo: 3                      Sent: 0

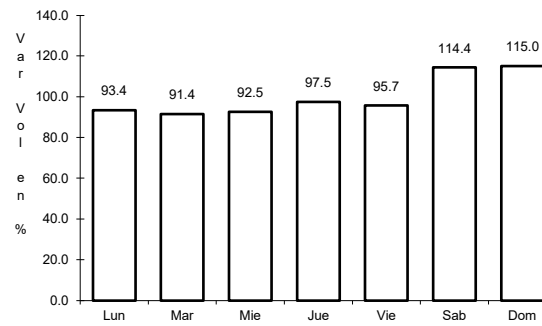
37 CARR: Ramal a Tapijulapa

CLAVE: 27200

RUTA: TAB



Km: 0.00                      Tipo: 3                      Sent: 0



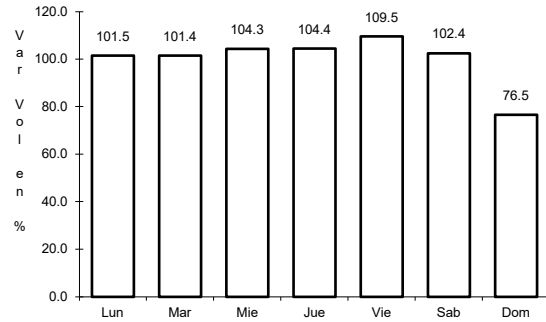
Km: 20.00                      Tipo: 1                      Sent: 0



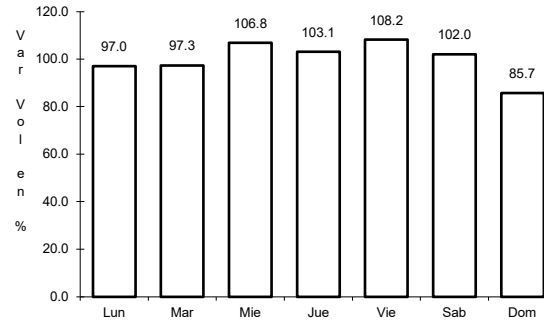
38 CARR: Reforma - Dos Bocas

CLAVE: 27200

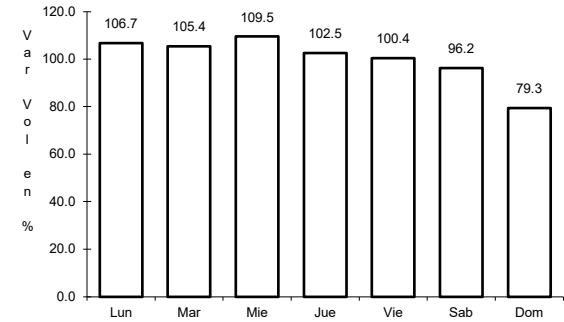
RUTA: TAB



Km: 0.00                      Tipo: 3                      Sent: 1



Km: 0.00                      Tipo: 3                      Sent: 2

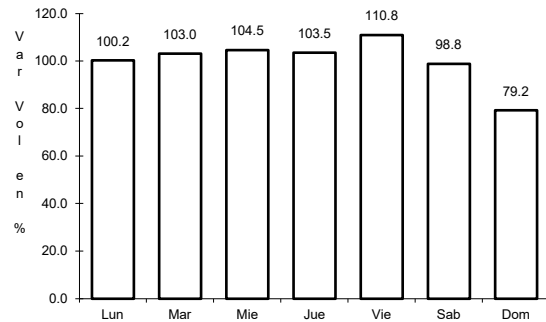


Km: 53.00                      Tipo: 1                      Sent: 1

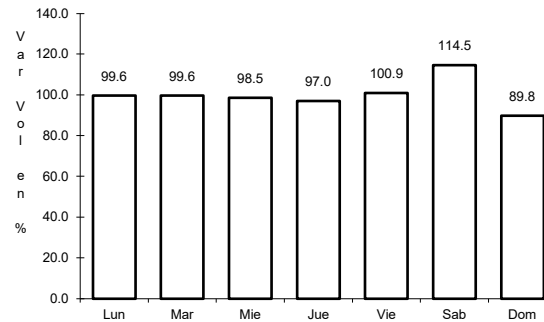
39 CARR: Reyes Hernández - Villa Aldama

CLAVE: 27119

RUTA: TAB



Km: 0.00                      Tipo: 3                      Sent: 0

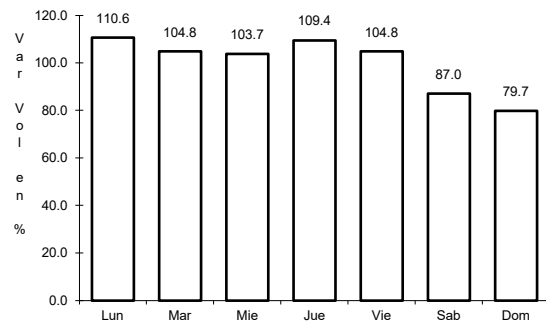


Km: 9.00                      Tipo: 1                      Sent: 0

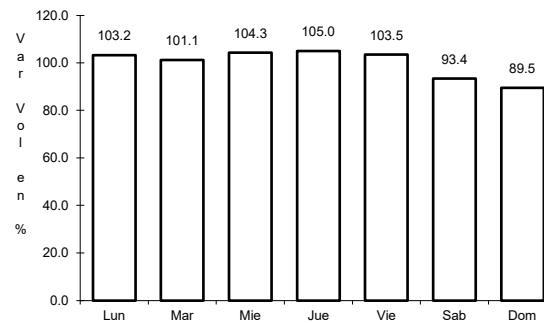
40 CARR: Samaria - Amatitán

CLAVE: 27114

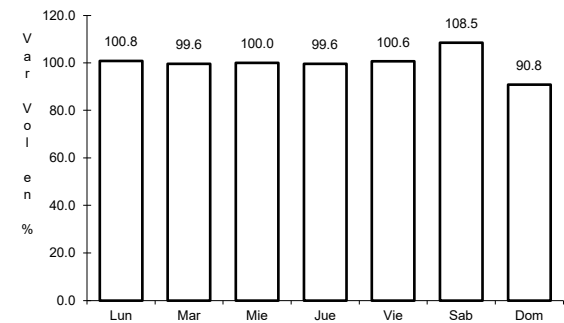
RUTA: TAB



Km: 0.00                      Tipo: 3                      Sent: 0



Km: 17.00                      Tipo: 1                      Sent: 0

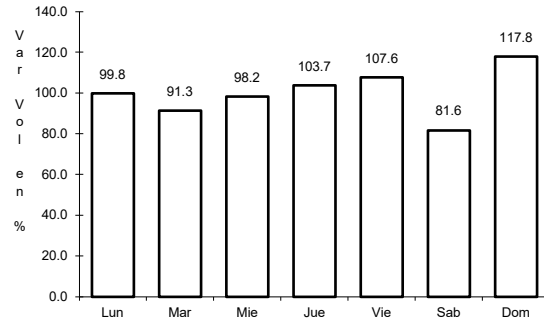


Km: 31.40                      Tipo: 1                      Sent: 0

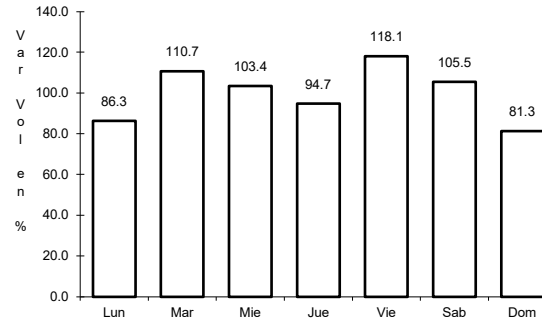
41 CARR: T. C. (Cárdenas - Paraíso) - Carlos Green

CLAVE: 27111

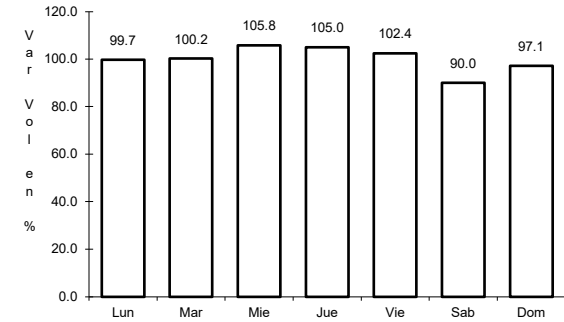
RUTA: TAB



Km: 0.00                      Tipo: 3                      Sent: 0



Km: 21.50                      Tipo: 3                      Sent: 0

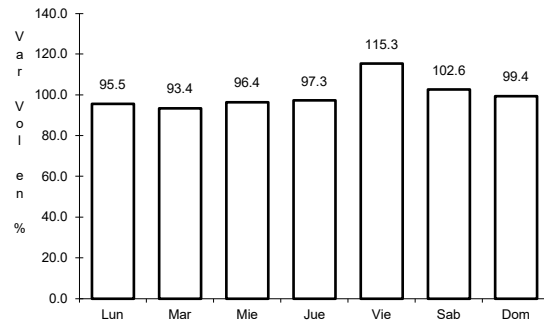


Km: 30.70                      Tipo: 1                      Sent: 0

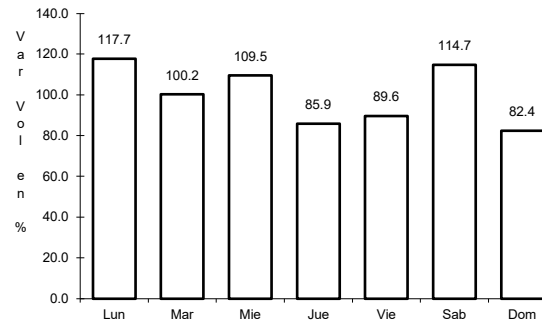
42 CARR: Tierra Nueva - Francisco Rueda

CLAVE: 27110

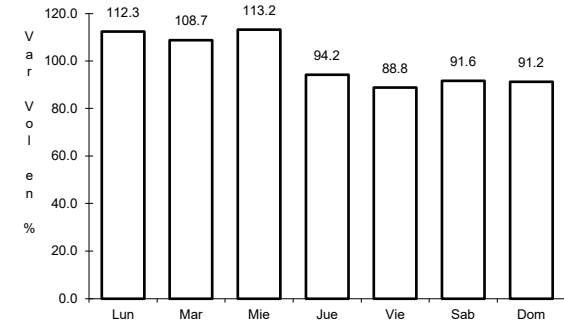
RUTA: TAB



Km: 0.00                      Tipo: 3                      Sent: 0



Km: 31.00                      Tipo: 1                      Sent: 0

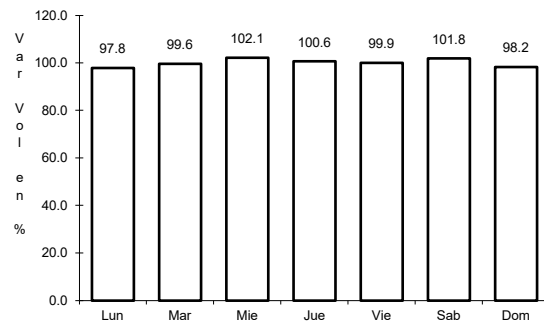


Km: 71.00                      Tipo: 1                      Sent: 0

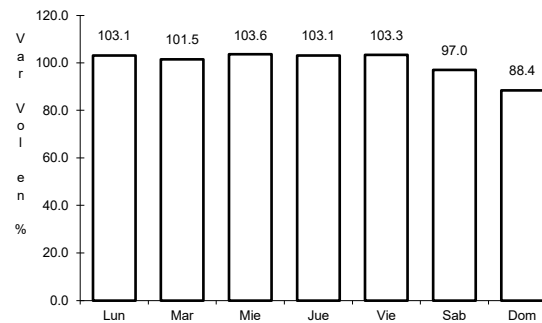
43 CARR: Tulipán - Cunduacán

CLAVE: 27115

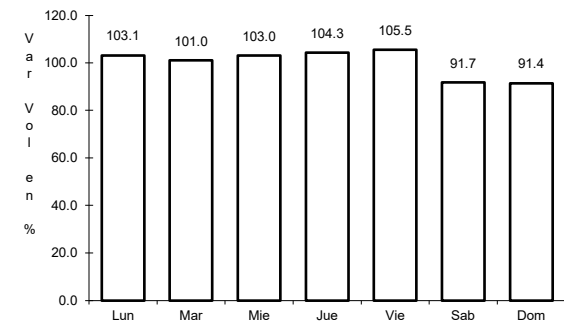
RUTA: TAB



Km: 0.00                      Tipo: 3                      Sent: 0



Km: 14.00                      Tipo: 1                      Sent: 0

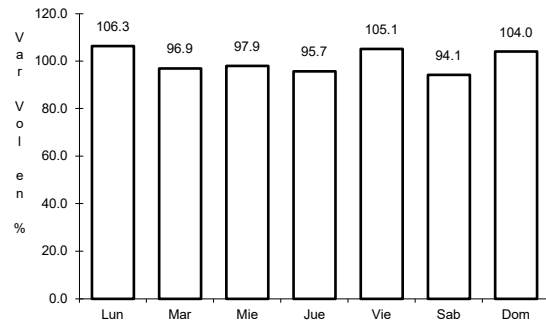


Km: 15.00                      Tipo: 1                      Sent: 0

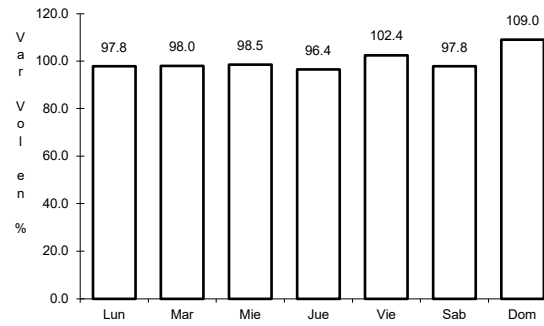
44 CARR: Villahermosa - Comalcalco

CLAVE: 27021

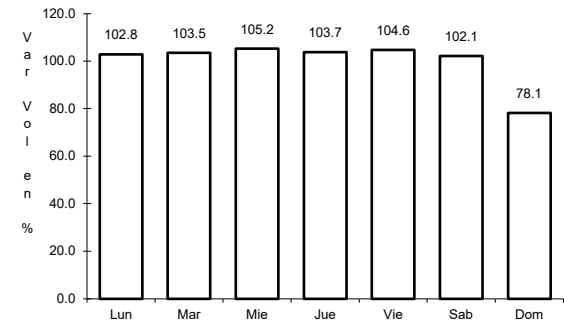
ruta: TAB



Km: 0.00                      Tipo: 3                      Sent: 1



Km: 0.00                      Tipo: 3                      Sent: 2

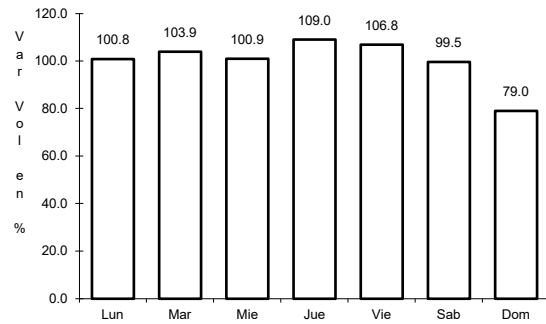


Km: 50.70                      Tipo: 1                      Sent: 0

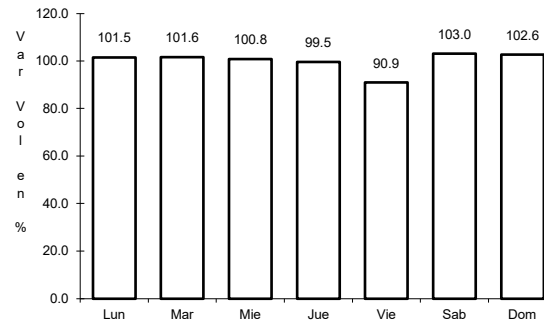
45 CARR: Villahermosa - Luis Gil Pérez

CLAVE: 27206

ruta: TAB



Km: 0.00                      Tipo: 3                      Sent: 0

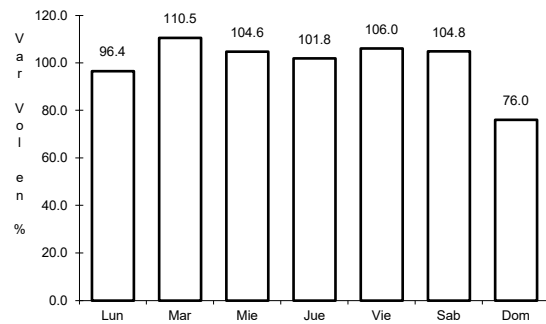


Km: 22.00                      Tipo: 1                      Sent: 0

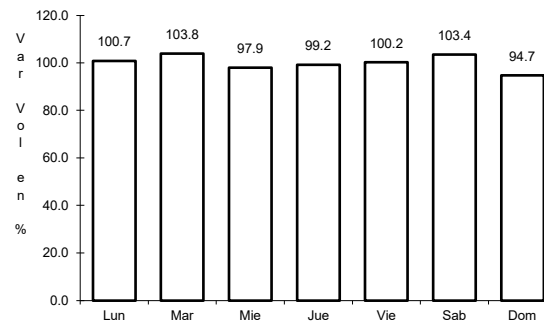
46 CARR: Villahermosa - T. C. (P. de Cunduacán - Estación Juárez)

CLAVE: 27106

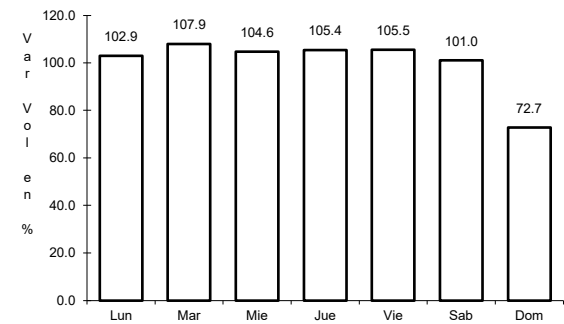
ruta: TAB



Km: 0.00                      Tipo: 3                      Sent: 0



Km: 19.00                      Tipo: 3                      Sent: 0

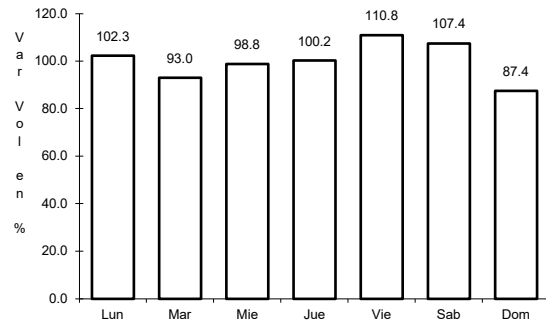


Km: 25.20                      Tipo: 1                      Sent: 0

47 CARR: Zapatero - T. C. (Jalapa - Jonuta)

CLAVE: 00061

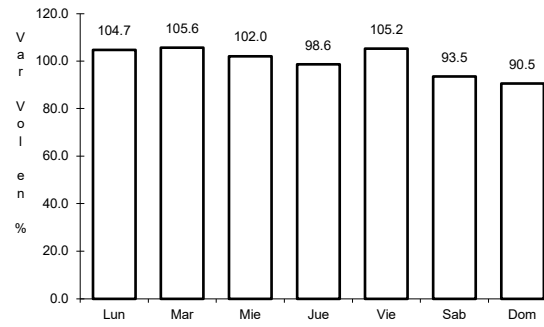
RUTA: CHIS-TAB



Km: 0.00

Tipo: 3

Sent: 0



Km: 41.00

Tipo: 1

Sent: 0