

SONORA

NO. INDICE CARRETERA

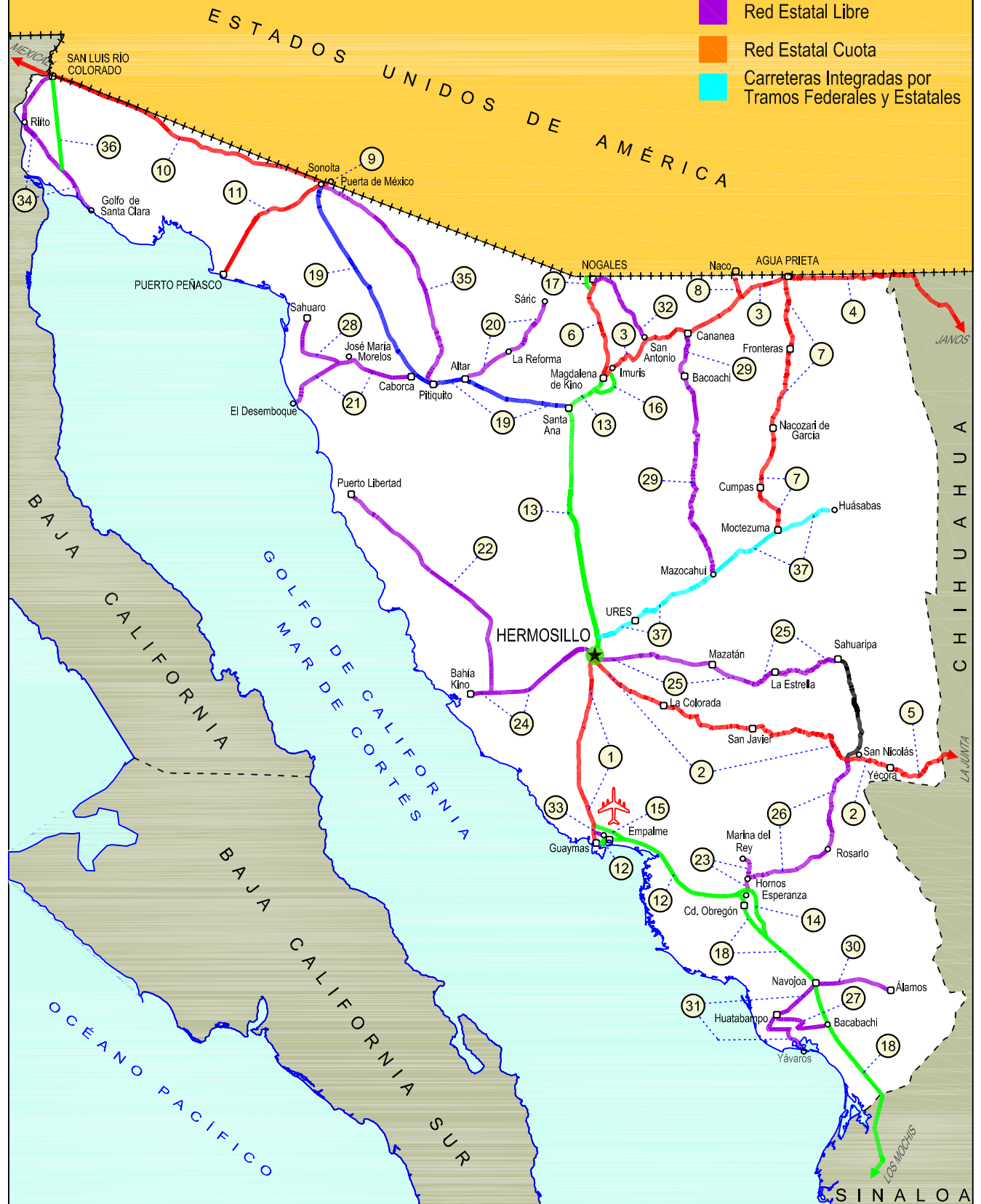
RUTA

NO. INDICE CARRETERA	RUTA
---RED FEDERAL LIBRE---	
1 Guaymas - Hermosillo	MEX-015
2 Hermosillo - Yécora	MEX-016
3 Imuris - Agua Prieta	MEX-002
4 Janos - Agua Prieta	MEX-002
5 La Junta - Yécora	MEX-016
6 Magdalena de Kino - Nogales	MEX-015
7 Moctezuma - Agua Prieta	MEX-017
8 Ramal a Naco	MEX-002
9 Ramal a Puerta de México	MEX-002
10 Sonoita - Mexicali	MEX-002
11 Sonoita - Puerto Peñasco	MEX-002
---RED FEDERAL DE CUOTA---	
12 Cd. Obregón - Guaymas (Cuota)	MEX-015D
13 Hermosillo - Magdalena de Kino (Cuota)	MEX-015D
14 Libramiento de Ciudad Obregón (Cuota)	MEX-015D
15 Libramiento de Empalme - Guaymas (Cuota)	MEX-015D
16 Libramiento de Magdalena de Kino (Cuota)	MEX-015D
17 Libramiento de Nogales (Cuota)	MEX-15D
18 Los Mochis - Cd. Obregón (Cuota)	MEX-015D
---RED FEDERAL INTEGRADA POR TRAMOS LIBRES Y DE CUOTA---	
19 Santa Ana - Sonoita	MEX-002D-MEX
---RED ESTATAL LIBRE---	
20 Altar - Sáric	SON-064
21 Caborca - El Desemboque	SON-037
22 Calle 36 Norte - Puerto de La Libertad	SON-029
23 Esperanza - Presa Álvaro Obregón	SON-117
24 Hermosillo - Bahía Kino	SON-100
25 Hermosillo - Sahuaripa	SON-020
26 Hornos - San Nicolás	SON-012
27 Huatabampo - Bacabachi	SON-176
28 La Alameda - El Sahuaro	SON-037
29 Mazocahui - Cananea	SON-118
30 Navojoa - Álamos	SON-013
31 Navojoa - Yavaros	SON-056
32 Nogales - San Antonio	SON
33 Ramal a Aeropuerto de Guaymas	SON
34 San Luis Río Colorado - Golfo de Santa Clara	SON-040
35 Sonoita - Pitiquito	SON
---RED ESTATAL DE CUOTA---	
36 San Luis Río Colorado - Golfo de Santa Clara (Cuota)	SON-D
---CARRETERAS INTEGRADAS POR TRAMOS FEDERALES Y ESTATALES---	
37 T. C. (Hermosillo - Nogales) - Huásabas	MEX-014-SON

26 SONORA

SECRETARÍA DE COMUNICACIONES Y TRANSPORTES
DIRECCIÓN GENERAL DE SERVICIOS TÉCNICOS

- ① --- Número Índice
- Red Federal Libre
- Red Federal Cuota
- Red Federal Integrada por Tramos Libres y de Cuota
- Red Estatal Libre
- Red Estatal Cuota
- Carreteras Integradas por Tramos Federales y Estatales



SONORA

1 CARR: Guaymas - Hermosillo

CLAVE: 26444

RUTA: MEX-015

AÑO: 2020

LUGAR	ESTACION				CLASIFICACION VEHICULAR EN PORCIENTO										COORDENADAS					
	KM	TE	SC	TDPA	M	A	B	C2	C3	T3S2	T3S3	T3S2R4	OTROS	A	B	C	K'	D	LATITUD	LONGITUD
T. Der. Libramiento de Guaymas	107.70	3	0	4776	1.8	74.5	4.0	10.9	1.6	4.5	1.6	0.9	0.2	76.3	4.0	19.7	0.082	0.503	27.952156	-110.749061
Empalme	115.02	1	0	5045	2.5	86.1	3.0	5.1	1.0	1.4	0.4	0.4	0.1	88.6	3.0	8.4	0.085	0.517	27.952094	-110.813455
Empalme	115.02	3	1	6825	3.0	88.2	2.7	3.0	0.8	1.0	1.0	0.3	0.0	91.2	2.7	6.1	0.096	0.506	27.952094	-110.813455
Empalme	115.02	3	2	7002	3.1	88.8	2.7	2.7	0.7	1.0	0.8	0.2	0.0	91.9	2.7	5.4	0.096	0.506	27.952091	-110.813452
T. Izq. San Carlos	133.00	1	1	5675	2.3	87.2	1.7	3.3	1.7	1.7	1.0	0.9	0.2	89.5	1.7	8.8	0.095	0.500	27.987523	-110.940823
T. Izq. San Carlos	133.00	1	2	5683	2.4	86.6	2.1	3.7	1.6	1.8	0.7	0.9	0.2	89.0	2.1	8.9	0.115	0.500	27.987538	-110.940989
T. Izq. San Carlos	133.00	3	1	3822	3.5	80.1	2.6	4.5	2.7	3.2	1.7	1.6	0.1	83.6	2.6	13.8	0.109	0.502	27.987531	-110.940826
T. Izq. San Carlos	133.00	3	2	3785	2.7	80.6	2.8	4.4	2.8	3.4	1.6	1.6	0.1	83.3	2.8	13.9	0.082	0.502	27.987545	-110.940990
T. Der Lib Empalme-Guaymas	139.40																			
T. Izq. Bahía Kino	171.30	1	1	4197	2.7	67.1	2.9	6.7	1.8	13.2	1.0	4.4	0.2	69.8	2.9	27.3	0.096	0.506	28.318481	-111.041778
T. Izq. Bahía Kino	171.30	1	2	4101	2.7	67.3	2.8	6.6	1.7	13.3	1.1	4.3	0.2	70.0	2.8	27.2	0.078	0.506	28.318493	-111.042152
T. Izq. Bahía Kino	171.30	3	1	4650	2.4	74.0	3.0	7.1	1.7	7.0	1.2	3.3	0.3	76.4	3.0	20.6	0.102	0.502	28.318482	-111.041777
T. Izq. Bahía Kino	171.30	3	2	4607	2.3	74.3	3.0	7.0	1.7	7.0	1.1	3.3	0.3	76.6	3.0	20.4	0.091	0.502	28.318496	-111.042149
Hermosillo	251.00	1	1	7128	2.5	73.8	2.7	7.0	1.9	6.9	1.4	3.4	0.4	76.3	2.7	21.0	0.102	0.510	29.037569	-110.958458
Hermosillo	251.00	1	2	7405	2.5	74.4	2.6	6.9	1.8	6.8	1.3	3.3	0.4	76.9	2.6	20.5	0.090	0.510	29.037613	-110.958580

2 CARR: Hermosillo - Yécora

CLAVE: 26251

RUTA: MEX-016

AÑO: 2020

LUGAR	ESTACION				CLASIFICACION VEHICULAR EN PORCIENTO										COORDENADAS					
	KM	TE	SC	TDPA	M	A	B	C2	C3	T3S2	T3S3	T3S2R4	OTROS	A	B	C	K'	D	LATITUD	LONGITUD
T. C. Cd. Obregón - Hermosillo	0.00																			
T. Izq. Sahuaripa	4.00	3	1	904	5.2	50.1	5.0	17.8	5.7	6.4	6.5	2.5	0.8	55.3	5.0	39.7	0.118	0.508	29.028468	-110.941044
T. Izq. Sahuaripa	4.00	3	2	934	5.0	52.1	6.0	16.9	5.8	5.7	5.6	2.1	0.8	57.1	6.0	36.9	0.120	0.508	29.028403	-110.941048
La Colorada	47.00	3	0	675	0.4	71.5	2.3	16.3	3.3	2.5	2.2	1.1	0.4	71.9	2.3	25.8	0.105	0.506	28.805420	-110.578852
Tecoripa	138.00	3	0	625	2.6	58.6	1.0	22.1	8.9	4.6	2.1	0.0	0.1	61.2	1.0	37.8	0.090	0.543	28.623524	-109.953062
Yécora	250.60																			

3 CARR: Imuris - Agua Prieta

CLAVE: 26079

RUTA: MEX-002

AÑO: 2020

LUGAR	ESTACION				CLASIFICACION VEHICULAR EN PORCIENTO										COORDENADAS					
	KM	TE	SC	TDPA	M	A	B	C2	C3	T3S2	T3S3	T3S2R4	OTROS	A	B	C	K'	D	LATITUD	LONGITUD
Imuris	0.00	3	0	3915	1.3	52.5	3.3	10.7	2.6	17.5	4.2	7.1	0.8	53.8	3.3	42.9	0.075	0.514	30.781229	-110.853463
T. Izq a Nogales	45.20																			
T. Der. Cananea	80.93	1	0	3725	3.0	54.1	3.4	12.9	2.5	15.3	3.2	4.5	1.1	57.1	3.4	39.5	0.075	0.509	30.994447	-110.280493
T. Der. Cananea	80.93	3	1	1865	0.8	62.9	2.6	10.5	2.0	12.8	3.3	4.8	0.3	63.7	2.6	33.7	0.079	0.508	30.992846	-110.280473

SONORA

3 CARR: Imuris - Agua Prieta

CLAVE: 26079

RUTA: MEX-002

AÑO: 2020

LUGAR	ESTACION				CLASIFICACION VEHICULAR EN PORCIENTO													COORDENADAS		
	KM	TE	SC	TDPA	M	A	B	C2	C3	T3S2	T3S3	T3S2R4	OTROS	A	B	C	K'	D	LATITUD	LONGITUD
T. Der. Cananea	80.93	3	2	1926	0.9	63.1	2.6	10.5	2.0	12.3	3.6	4.6	0.4	64.0	2.6	33.4	0.080	0.508	30.993000	-110.280274
Agua Prieta	164.67	1	1	2026	0.6	57.8	3.0	13.6	1.5	14.6	3.1	5.4	0.4	58.4	3.0	38.6	0.100	0.509	31.316317	-109.542584
Agua Prieta	164.67	1	2	2099	0.7	58.0	2.9	12.3	1.4	15.4	3.4	5.5	0.4	58.7	2.9	38.4	0.091	0.509	31.316507	-109.542619

4 CARR: Janos - Agua Prieta

CLAVE: 00220

RUTA: MEX-002

AÑO: 2020

LUGAR	ESTACION				CLASIFICACION VEHICULAR EN PORCIENTO													COORDENADAS		
	KM	TE	SC	TDPA	M	A	B	C2	C3	T3S2	T3S3	T3S2R4	OTROS	A	B	C	K'	D	LATITUD	LONGITUD
T. C. Cd. Juárez - Janos	0.00	3	0	3040	4.1	51.8	2.8	16.8	2.8	13.0	3.6	4.3	0.8	55.9	2.8	41.3	0.095	0.508	30.889533	-108.188625
Los Mimbres	56.00	3	0	2189	2.0	49.3	2.9	21.1	2.7	13.6	3.7	3.9	0.8	51.3	2.9	45.8	0.092	0.509	31.242228	-108.577608
Lim. Edos. Term. Chih. Ppia. Son.	78.00																			
Rancho Guadalupe	116.00																			
Agua Prieta	160.00	1	0	2449	4.7	45.7	3.3	11.8	2.9	18.7	5.8	6.2	0.9	50.4	3.3	46.3	0.132	0.514	31.316414	-109.542486

5 CARR: La Junta - Yécora

CLAVE: 00065

RUTA: MEX-016

AÑO: 2020

LUGAR	ESTACION				CLASIFICACION VEHICULAR EN PORCIENTO													COORDENADAS		
	KM	TE	SC	TDPA	M	A	B	C2	C3	T3S2	T3S3	T3S2R4	OTROS	A	B	C	K'	D	LATITUD	LONGITUD
T. C. Chihuahua - Madera	0.00	3	0	2572	1.9	72.4	2.6	15.9	2.1	3.0	1.6	0.3	0.2	74.3	2.6	23.1	0.084	0.506	28.476783	-107.314592
T. Izq. San Juanito	16.00	1	0	2056	1.6	66.9	2.5	21.8	2.4	2.9	1.3	0.1	0.5	68.5	2.5	29.0	0.099	0.512	28.389400	-107.440080
T. Izq. San Juanito	16.00	3	0	944	0.9	66.4	1.0	20.5	3.3	5.1	1.9	0.2	0.7	67.3	1.0	31.7	0.103	0.535	28.389407	-107.440089
Tomochi	70.00	3	0	1151	2.0	64.7	1.0	22.7	2.7	5.0	1.7	0.0	0.2	66.7	1.0	32.3	0.072	0.501	28.352827	-107.849092
Lim. Edos. Term. Chih. Ppia. Son.	190.00																			
Yécora	253.00	1	0	382	3.3	55.7	2.5	28.0	3.4	4.8	2.2	0.0	0.1	59.0	2.5	38.5	0.126	0.505	28.365972	-108.924866

6 CARR: Magdalena de Kino - Nogales

CLAVE: 26444

RUTA: MEX-015

AÑO: 2020

LUGAR	ESTACION				CLASIFICACION VEHICULAR EN PORCIENTO													COORDENADAS		
	KM	TE	SC	TDPA	M	A	B	C2	C3	T3S2	T3S3	T3S2R4	OTROS	A	B	C	K'	D	LATITUD	LONGITUD
Magdalena de Kino	181.30	3	1	3528	1.3	80.8	1.4	11.4	1.0	2.1	0.8	0.8	0.4	82.1	1.4	16.5	0.105	0.523	30.628842	-110.965260
Magdalena de Kino	181.30	3	2	3864	1.2	81.2	1.3	11.3	1.0	2.1	0.9	0.7	0.3	82.4	1.3	16.3	0.103	0.523	30.628842	-110.965263
T. Lib de Magdalena	188.40																			
Imuris	209.00	1	1	6696	1.2	63.9	2.3	11.5	1.9	9.5	1.8	7.2	0.7	65.1	2.3	32.6	0.096	0.512	30.783095	-110.852886
Imuris	209.00	1	2	7035	1.3	63.8	2.3	11.5	2.0	9.5	1.7	7.2	0.7	65.1	2.3	32.6	0.097	0.512	30.783106	-110.853060
T. Der. Agua Prieta	209.50	3	1	4878	1.4	74.0	2.6	7.6	1.8	7.0	1.0	3.9	0.7	75.4	2.6	22.0	0.092	0.524	30.783097	-110.852882

SONORA

6 CARR: Magdalena de Kino - Nogales

CLAVE: 26444

RUTA: MEX-015

AÑO: 2020

LUGAR	ESTACION				CLASIFICACION VEHICULAR EN PORCIENTO												COORDENADAS			
	KM	TE	SC	TDPA	M	A	B	C2	C3	T3S2	T3S3	T3S2R4	OTROS	A	B	C	K'	D	LATITUD	LONGITUD
T. Der. Agua Prieta	209.50	3	2	5376	1.3	74.3	2.5	7.6	1.8	7.0	1.1	3.8	0.6	75.6	2.5	21.9	0.094	0.524	30.783108	-110.853061
T. Izq. Sáric	255.90	1	1	9554	0.7	75.4	2.2	9.1	3.7	6.1	0.2	2.4	0.2	76.1	2.2	21.7	0.099	0.521	31.183567	-110.971630
T. Izq. Sáric	255.90	1	2	10372	0.7	75.3	2.3	9.1	3.6	6.1	0.3	2.4	0.2	76.0	2.3	21.7	0.102	0.521	31.183558	-110.971773
T. Izq. Sáric	255.90	3	1	9423	0.9	73.3	2.5	9.2	3.8	7.3	0.4	2.4	0.2	74.2	2.5	23.3	0.087	0.520	31.183569	-110.971633
T. Izq. Sáric	255.90	3	2	10217	0.9	73.2	2.5	9.2	3.8	7.3	0.5	2.3	0.3	74.1	2.5	23.4	0.090	0.520	31.183563	-110.971775
T. Izq. Libramiento de Nogales (Cuota)	261.00	3	1	13004	0.5	82.0	2.2	9.2	1.7	3.5	0.4	0.3	0.2	82.5	2.2	15.3	0.087	0.516	31.232765	-110.966764
T. Izq. Libramiento de Nogales (Cuota)	261.00	3	2	13838	0.5	82.1	2.2	9.2	1.7	3.5	0.4	0.2	0.2	82.6	2.2	15.2	0.087	0.516	31.232920	-110.966840
T. Izq. Periférico Luis Donaldo Colosio	267.00	1	1	21059	0.3	88.7	1.6	6.8	0.6	1.0	0.7	0.2	0.1	89.0	1.6	9.4	0.082	0.516	31.280057	-110.939988
T. Izq. Periférico Luis Donaldo Colosio	267.00	1	2	22422	0.3	88.7	1.6	6.8	0.6	1.0	0.8	0.1	0.1	89.0	1.6	9.4	0.080	0.516	31.280136	-110.940156
Nogales	272.70	1	1	16345	0.6	92.1	1.4	4.6	0.4	0.3	0.4	0.1	0.1	92.7	1.4	5.9	0.091	0.508	31.292941	-110.936773
Nogales	272.70	1	2	16887	0.6	92.1	1.4	4.6	0.4	0.3	0.4	0.1	0.1	92.7	1.4	5.9	0.076	0.508	31.292965	-110.936948

7 CARR: Moctezuma - Agua Prieta

CLAVE: 26027

RUTA: MEX-017

AÑO: 2020

LUGAR	ESTACION				CLASIFICACION VEHICULAR EN PORCIENTO												COORDENADAS			
	KM	TE	SC	TDPA	M	A	B	C2	C3	T3S2	T3S3	T3S2R4	OTROS	A	B	C	K'	D	LATITUD	LONGITUD
Moctezuma	0.00	3	0	1303	0.9	77.1	2.1	13.6	2.2	1.7	1.1	1.0	0.3	78.0	2.1	19.9	0.075	0.513	29.803662	-109.679599
Nacozeni de García	81.00	3	0	1249	1.0	74.1	4.2	14.5	2.5	2.3	0.7	0.6	0.1	75.1	4.2	20.7	0.073	0.528	30.378458	-109.696381
Turicachi	111.00	1	0	1350	1.2	74.6	2.0	12.8	2.5	2.4	1.7	2.2	0.6	75.8	2.0	22.2	0.069	0.510	30.661904	-109.595664
T. C. Imuris - Agua Prieta	197.60	1	0	3327	3.0	74.4	2.4	15.3	1.1	1.4	1.4	0.9	0.1	77.4	2.4	20.2	0.086	0.514	31.313061	-109.581461

8 CARR: Ramal a Naco

CLAVE: 26579

RUTA: MEX-002

AÑO: 2020

LUGAR	ESTACION				CLASIFICACION VEHICULAR EN PORCIENTO												COORDENADAS				
	KM	TE	SC	TDPA	M	A	B	C2	C3	T3S2	T3S3	T3S2R4	OTROS	A	B	C	K'	D	LATITUD	LONGITUD	
T. C. Imuris - Agua Prieta	0.00	3	0	1325	0.6	81.1	1.5	13.8	1.5	1.4	0.1	0.0	0.0	81.7	1.5	16.8	0.103	0.504	31.204169	-109.909005	
Naco	14.00																				

9 CARR: Ramal a Puerta de México

CLAVE: 26577

RUTA: MEX-002

AÑO: 2020

LUGAR	ESTACION				CLASIFICACION VEHICULAR EN PORCIENTO												COORDENADAS				
	KM	TE	SC	TDPA	M	A	B	C2	C3	T3S2	T3S3	T3S2R4	OTROS	A	B	C	K'	D	LATITUD	LONGITUD	
T. C. Sonoita - Mexicali	0.00	3	0	10976	1.2	88.6	0.3	9.3	0.3	0.2	0.1	0.0	0.0	89.8	0.3	9.9	0.099	0.506	31.866838	-112.845749	
Frontera E.U.A	3.30																				

SONORA

10 CARR: Sonoita - Mexicali

CLAVE: 00081

RUTA: MEX-002

AÑO: 2020

LUGAR	ESTACION				CLASIFICACION VEHICULAR EN PORCIENTO										COORDENADAS					
	KM	TE	SC	TDPA	M	A	B	C2	C3	T3S2	T3S3	T3S2R4	OTROS	A	B	C	K'	D	LATITUD	LONGITUD
Sonoita	0.00	3	0	3940	1.8	46.5	6.5	7.7	2.3	23.4	3.2	8.3	0.3	48.3	6.5	45.2	0.147	0.529	31.863376	-112.848148
Los Vidrios	58.75	3	0	3526	5.5	39.5	6.8	6.0	2.6	27.1	3.8	7.3	1.4	45.0	6.8	48.2	0.146	0.531	32.026690	-113.421672
San Luis Río Colorado	191.80	1	0	3739	4.4	47.8	6.7	7.5	2.5	20.4	3.1	6.9	0.7	52.2	6.7	41.1	0.171	0.538	32.473966	-114.749565
San Luis Río Colorado	191.80	3	1	9099	0.5	80.7	1.8	8.7	0.5	5.1	0.8	1.7	0.2	81.2	1.8	17.0	0.107	0.502	32.473967	-114.749564
San Luis Río Colorado	191.80	3	2	9030	0.5	80.7	1.8	8.7	0.5	5.1	0.8	1.7	0.2	81.2	1.8	17.0	0.098	0.502	32.473875	-114.749600
Lim. Edos. Term. Son. Ppia. B.C.	203.69																			
X. C. Mexicali - Algodones	206.78	1	1	10543	0.6	80.7	1.5	8.9	0.6	5.1	0.8	1.6	0.2	81.3	1.5	17.2	0.098	0.504	32.502481	-114.843922
X. C. Mexicali - Algodones	206.78	1	2	10709	0.5	80.7	1.5	8.9	0.6	5.1	0.8	1.6	0.3	81.2	1.5	17.3	0.089	0.504	32.502361	-114.843917
X. C. Mexicali - Algodones	206.78	3	1	7850	0.4	78.0	2.4	7.6	0.8	7.4	1.0	2.0	0.4	78.4	2.4	19.2	0.105	0.501	32.502484	-114.843931
X. C. Mexicali - Algodones	206.78	3	2	7882	0.4	78.1	2.3	7.7	0.8	7.4	0.9	2.0	0.4	78.5	2.3	19.2	0.095	0.501	32.502362	-114.843927
T. Izq. Ejido Hermosillo	214.80	3	1	7716	0.5	75.9	2.9	7.3	0.8	8.7	1.2	2.2	0.5	76.4	2.9	20.7	0.098	0.500	32.524468	-114.918329
T. Izq. Ejido Hermosillo	214.80	3	2	7705	0.3	77.0	2.4	8.2	0.8	7.9	1.0	2.0	0.4	77.3	2.4	20.3	0.090	0.500	32.524330	-114.918351
T. Izq. Ejido Tehuantepec	223.83	3	1	8533	0.7	78.8	2.8	6.0	0.9	7.8	0.9	1.6	0.5	79.5	2.8	17.7	0.092	0.515	32.555632	-115.023626
T. Izq. Ejido Tehuantepec	223.83	3	2	8035	0.8	78.2	3.0	6.3	1.0	8.0	0.6	1.7	0.4	79.0	3.0	18.0	0.096	0.515	32.555531	-115.023721
Ejido Monterrey	228.63	3	1	8936	1.0	78.9	3.5	4.8	1.1	7.4	1.1	1.6	0.6	79.9	3.5	16.6	0.092	0.514	32.551918	-115.074659
Ejido Monterrey	228.63	3	2	8447	1.2	77.9	3.6	5.8	1.2	7.2	0.7	1.8	0.6	79.1	3.6	17.3	0.092	0.514	32.551802	-115.074649
X. C. Mexicali - Estación Coahuila	242.17	1	1	9266	0.9	79.5	3.4	4.8	1.2	7.1	0.9	1.6	0.6	80.4	3.4	16.2	0.094	0.508	32.552923	-115.215028
X. C. Mexicali - Estación Coahuila	242.17	1	2	9556	1.2	77.3	3.6	5.6	1.3	7.7	1.0	1.7	0.6	78.5	3.6	17.9	0.093	0.508	32.552818	-115.215020
T. Izq. Libramiento de Mexicali (Cuota)	249.32	1	1	10427	0.5	77.5	1.9	9.3	0.9	6.4	1.1	2.0	0.4	78.0	1.9	20.1	0.109	0.501	32.556572	-115.293600
T. Izq. Libramiento de Mexicali (Cuota)	249.32	1	2	10466	0.5	77.6	1.9	9.3	0.9	6.4	1.1	2.0	0.3	78.1	1.9	20.0	0.120	0.501	32.556452	-115.293695
X. C. Mexicali - Algodones	256.47	1	1	11578	0.5	83.0	1.3	10.0	0.9	2.7	0.5	0.8	0.3	83.5	1.3	15.2	0.096	0.500	32.572865	-115.346501
X. C. Mexicali - Algodones	256.47	1	2	11582	0.5	82.9	1.3	10.1	0.9	2.7	0.5	0.8	0.3	83.4	1.3	15.3	0.107	0.500	32.572374	-115.346556
T. C. Mexicali - San Felipe	265.12																			

11 CARR: Sonoita - Puerto Peñasco

CLAVE: 26232

RUTA: MEX-002

AÑO: 2020

LUGAR	ESTACION				CLASIFICACION VEHICULAR EN PORCIENTO										COORDENADAS						
	KM	TE	SC	TDPA	M	A	B	C2	C3	T3S2	T3S3	T3S2R4	OTROS	A	B	C	K'	D	LATITUD	LONGITUD	
Sonoita	0.00	3	0	2020	6.1	68.5	5.6	17.9	0.4	0.7	0.1	0.6	0.1	74.6	5.6	19.8	0.130	0.513	31.863937	-112.847755	
Puerto Peñasco	100.40																				

SONORA

12 CARR: Cd. Obregón - Guaymas (Cuota)

CLAVE: 26444

RUTA: MEX-015D

AÑO: 2020

LUGAR	ESTACION				CLASIFICACION VEHICULAR EN PORCIENTO											COORDENADAS				
	KM	TE	SC	TDPA	M	A	B	C2	C3	T3S2	T3S3	T3S2R4	OTROS	A	B	C	K'	D	LATITUD	LONGITUD
Cd. Obregón	0.00																			
Esperanza	7.96	1	1	8967	5.7	79.2	1.9	3.2	2.3	4.8	1.1	1.0	0.8	84.9	1.9	13.2	0.095	0.529	27.580472	-109.926903
Esperanza	7.96	1	2	10064	6.4	79.0	2.1	2.8	2.2	4.6	0.8	1.1	1.0	85.4	2.1	12.5	0.113	0.529	27.580464	-109.927244
Esperanza	7.96	3	1	2977	4.1	58.1	5.4	8.1	2.1	13.2	2.2	5.9	0.9	62.2	5.4	32.4	0.086	0.531	27.580483	-109.926904
Esperanza	7.96	3	2	3365	3.5	58.5	5.9	8.0	1.8	13.1	1.9	6.5	0.8	62.0	5.9	32.1	0.073	0.531	27.580474	-109.927243
Plaza de Cobro Esperanza	10.70	2	1	2529	0.0	92.9	2.3	0.4	0.4	2.4	0.2	1.4	0.0	92.9	2.3	4.8	0.086	0.500	27.603754	-109.939057
Plaza de Cobro Esperanza	10.70	2	2	2529	0.0	92.9	2.3	0.4	0.4	2.4	0.2	1.4	0.0	92.9	2.3	4.8	0.086	0.500	27.603754	-109.939057
T. Der. Estación Corral	13.80	1	1	4048	2.5	55.5	6.1	9.0	2.1	14.4	2.1	7.3	1.0	58.0	6.1	35.9	0.069	0.522	27.619480	-109.960168
T. Der. Estación Corral	13.80	1	2	4428	2.4	55.2	6.3	9.2	2.1	14.4	2.2	7.2	1.0	57.6	6.3	36.1	0.081	0.522	27.619284	-109.960145
T. Der. Estación Corral	13.80	3	1	3843	3.4	57.9	6.6	8.3	2.2	12.9	1.8	6.3	0.6	61.3	6.6	32.1	0.068	0.506	27.619479	-109.960174
T. Der. Estación Corral	13.80	3	2	3941	2.6	59.6	6.6	8.2	2.2	12.5	1.7	6.1	0.5	62.2	6.6	31.2	0.092	0.506	27.619283	-109.960152
T. Izq. Bâcum	25.46	1	1	3856	2.6	58.0	6.2	8.2	1.8	13.8	1.8	7.2	0.4	60.6	6.2	33.2	0.077	0.525	27.598121	-110.081552
T. Izq. Bâcum	25.46	1	2	4255	3.5	53.9	7.0	8.6	1.7	15.5	1.9	7.4	0.5	57.4	7.0	35.6	0.080	0.525	27.597958	-110.081517
T. Izq. Bâcum	25.46	3	1	4404	3.1	68.3	4.2	7.0	1.6	9.4	2.3	3.5	0.6	71.4	4.2	24.4	0.070	0.530	27.598122	-110.081558
T. Izq. Bâcum	25.46	3	2	4970	3.2	66.5	4.5	7.4	1.6	10.1	2.0	4.1	0.6	69.7	4.5	25.8	0.093	0.530	27.597957	-110.081523
Vîcam	47.28	3	1	4679	3.2	69.9	4.1	6.5	1.5	9.2	1.2	3.9	0.5	73.1	4.1	22.8	0.070	0.525	27.641082	-110.296050
Vîcam	47.28	3	2	5169	3.1	67.7	4.6	7.6	1.6	9.6	1.2	4.1	0.5	70.8	4.6	24.6	0.091	0.525	27.640973	-110.296128
T. Izq. Pôtam	57.40	1	1	4312	4.0	62.0	4.9	7.8	2.3	11.3	3.1	3.9	0.7	66.0	4.9	29.1	0.070	0.537	27.699402	-110.367401
T. Izq. Pôtam	57.40	1	2	4992	4.0	65.5	4.9	8.1	2.0	8.9	2.5	3.5	0.6	69.5	4.9	25.6	0.083	0.537	27.699364	-110.367548
T. Izq. Pôtam	57.40	3	1	4073	4.3	66.4	4.5	6.3	2.0	10.3	1.5	3.9	0.8	70.7	4.5	24.8	0.071	0.537	27.699400	-110.367404
T. Izq. Pôtam	57.40	3	2	4719	4.0	65.8	4.9	7.3	2.1	9.9	1.3	4.0	0.7	69.8	4.9	25.3	0.089	0.537	27.699369	-110.367547
T. Der. Libramiento de Guaymas	107.70	1	1	5789	4.9	68.8	4.0	7.2	1.9	7.9	1.2	3.5	0.6	73.7	4.0	22.3	0.079	0.509	27.952132	-110.748805
T. Der. Libramiento de Guaymas	107.70	1	2	6013	4.6	69.4	4.3	7.1	1.5	8.3	1.1	3.3	0.4	74.0	4.3	21.7	0.082	0.509	27.951376	-110.747419

13 CARR: Hermosillo - Magdalena de Kino (Cuota)

CLAVE: 26444

RUTA: MEX-015D

AÑO: 2020

LUGAR	ESTACION				CLASIFICACION VEHICULAR EN PORCIENTO											COORDENADAS				
	KM	TE	SC	TDPA	M	A	B	C2	C3	T3S2	T3S3	T3S2R4	OTROS	A	B	C	K'	D	LATITUD	LONGITUD
Hermosillo	0.00	3	1	10357	0.8	84.9	1.4	6.9	1.1	2.6	0.9	0.9	0.5	85.7	1.4	12.9	0.101	0.501	29.097318	-110.930921
Hermosillo	0.00	3	2	10329	0.8	84.9	1.3	6.9	1.2	2.6	0.9	0.9	0.5	85.7	1.3	13.0	0.102	0.501	29.097460	-110.930922
T. Der. Ures	8.60	1	1	7999	0.8	79.7	1.9	9.8	1.3	4.2	0.7	1.3	0.3	80.5	1.9	17.6	0.106	0.508	29.165453	-110.909759
T. Der. Ures	8.60	1	2	8256	0.8	79.7	1.9	9.9	1.3	4.2	0.7	1.3	0.2	80.5	1.9	17.6	0.116	0.508	29.165293	-110.909923
T. Der. Ures	8.60	3	1	6404	1.0	75.5	2.7	9.4	1.6	6.3	0.9	2.3	0.3	76.5	2.7	20.8	0.107	0.507	29.165454	-110.909761
T. Der. Ures	8.60	3	2	6229	0.9	75.4	2.7	9.5	1.6	6.4	0.9	2.3	0.3	76.3	2.7	21.0	0.142	0.507	29.165294	-110.909925
Plaza de Cobro Hermosillo	15.20	2	1	4758	0.0	84.5	1.8	1.2	0.8	7.1	0.7	3.5	0.4	84.5	1.8	13.7	0.086	0.500	29.220685	-110.930258

SONORA

13 CARR: Hermosillo - Magdalena de Kino (Cuota)

CLAVE: 26444

RUTA: MEX-015D

AÑO: 2020

LUGAR	ESTACION				CLASIFICACION VEHICULAR EN PORCIENTO										COORDENADAS					
	KM	TE	SC	TDPA	M	A	B	C2	C3	T3S2	T3S3	T3S2R4	OTROS	A	B	C	K'	D	LATITUD	LONGITUD
Plaza de Cobro Hermosillo	15.20	2	2	4758	0.0	84.5	1.8	1.2	0.8	7.1	0.7	3.5	0.4	84.5	1.8	13.7	0.086	0.500	29.220685	-110.930258
T. Der. Pesqueira	32.39	3	1	4313	0.7	61.8	4.3	9.9	1.1	13.3	2.0	6.1	0.8	62.5	4.3	33.2	0.085	0.525	29.371554	-110.972196
T. Der. Pesqueira	32.39	3	2	4774	0.9	61.8	4.2	9.9	1.1	13.2	2.0	6.2	0.7	62.7	4.2	33.1	0.097	0.525	29.371527	-110.972374
T. Der. Carbó	68.90	1	1	4246	0.9	61.0	4.1	9.3	1.5	13.7	2.1	6.6	0.8	61.9	4.1	34.0	0.086	0.528	29.688254	-111.043247
T. Der. Carbó	68.90	1	2	4311	0.7	61.5	4.1	9.3	1.4	13.6	2.0	6.7	0.7	62.2	4.1	33.7	0.098	0.528	29.688257	-111.043641
T. Der. Carbó	68.90	3	1	4115	0.9	60.4	4.4	8.9	1.6	14.3	2.0	6.8	0.7	61.3	4.4	34.3	0.085	0.524	29.688263	-111.043247
T. Der. Carbó	68.90	3	2	4523	0.9	60.2	4.4	9.0	1.6	14.3	2.1	6.7	0.8	61.1	4.4	34.5	0.095	0.524	29.688266	-111.043639
T. Izq. Benjamín Hill	125.40	1	1	4149	0.9	60.8	3.7	9.1	1.8	13.6	1.9	7.6	0.6	61.7	3.7	34.6	0.084	0.528	30.172048	-111.097359
T. Izq. Benjamín Hill	125.40	1	2	4647	0.9	60.9	3.7	9.2	1.7	13.6	2.1	7.4	0.5	61.8	3.7	34.5	0.093	0.528	30.172039	-111.097533
T. Izq. Benjamín Hill	125.40	3	1	4156	0.8	60.8	3.6	8.6	1.6	15.0	1.9	7.2	0.5	61.6	3.6	34.8	0.082	0.525	30.172049	-111.097356
T. Izq. Benjamín Hill	125.40	3	2	4603	0.9	60.8	3.7	8.5	1.6	14.9	1.9	7.2	0.5	61.7	3.7	34.6	0.097	0.525	30.172046	-111.097534
Santa Ana	167.27	1	1	4626	1.4	68.2	3.0	9.1	1.6	9.8	1.9	4.1	0.9	69.6	3.0	27.4	0.093	0.514	30.544178	-111.113769
Santa Ana	167.27	1	2	4884	1.5	68.1	3.0	9.0	1.6	9.9	1.9	4.1	0.9	69.6	3.0	27.4	0.096	0.514	30.544387	-111.113967
Santa Ana	167.27	3	1	5895	1.3	70.8	3.8	7.8	1.4	8.8	1.3	3.8	1.0	72.1	3.8	24.1	0.082	0.518	30.544186	-111.113772
Santa Ana	167.27	3	2	6327	1.4	70.7	3.8	7.8	1.4	8.7	1.3	3.9	1.0	72.1	3.8	24.1	0.087	0.518	30.544392	-111.113965
T. Lib de Magdalena	178.00																			
Magdalena de Kino	181.30	1	1	2112	1.7	80.4	1.3	11.4	1.4	2.1	0.8	0.6	0.3	82.1	1.3	16.6	0.183	0.523	30.628837	-110.965266
Magdalena de Kino	181.30	1	2	2316	1.8	80.3	1.3	11.4	1.6	2.1	0.7	0.5	0.3	82.1	1.3	16.6	0.180	0.523	30.628840	-110.965265

14 CARR: Libramiento de Ciudad Obregón (Cuota)

CLAVE:

RUTA: MEX-015D

AÑO: 2020

LUGAR	ESTACION				CLASIFICACION VEHICULAR EN PORCIENTO										COORDENADAS					
	KM	TE	SC	TDPA	M	A	B	C2	C3	T3S2	T3S3	T3S2R4	OTROS	A	B	C	K'	D	LATITUD	LONGITUD
T. C. Los Mochis - Cd. Obregón (Cuota)	0.00																			
Plaza de Cobro Esperanza-Hornos	31.00	2	0	2164	0.1	38.9	2.0	3.4	3.5	33.1	2.5	14.4	2.1	39.0	2.0	59.0	0.090	0.500	27.604518	-109.898767
T. C. Cd. Obregón - Guaymas (Cuota)	35.00																			

15 CARR: Libramiento de Empalme - Guaymas (Cuota)

CLAVE: 26256

RUTA: MEX-015D

AÑO: 2020

LUGAR	ESTACION				CLASIFICACION VEHICULAR EN PORCIENTO										COORDENADAS					
	KM	TE	SC	TDPA	M	A	B	C2	C3	T3S2	T3S3	T3S2R4	OTROS	A	B	C	K'	D	LATITUD	LONGITUD
T. C. Cd. Obregón - Hermosillo (Sur)	0.00	3	1	3161	1.7	54.0	4.5	4.2	2.8	21.0	4.2	7.0	0.6	55.7	4.5	39.8	0.101	0.526	27.952139	-110.748808
T. C. Cd. Obregón - Hermosillo (Sur)	0.00	3	2	3514	1.3	51.2	4.7	4.7	3.1	21.8	4.6	8.0	0.6	52.5	4.7	42.8	0.078	0.526	27.952156	-110.749008
T. C. Cd. Obregón - Hermosillo (Norte)	21.50	1	1	3560	0.5	55.5	4.9	8.2	1.9	18.6	2.5	7.5	0.4	56.0	4.9	39.1	0.083	0.514	28.039189	-110.937713
T. C. Cd. Obregón - Hermosillo (Norte)	21.50	1	2	3762	0.4	50.0	5.5	9.7	2.3	20.2	2.8	8.7	0.4	50.4	5.5	44.1	0.086	0.514	28.038991	-110.937694

SONORA

16 CARR: Libramiento de Magdalena de Kino (Cuota)

CLAVE:

RUTA: MEX-015D

AÑO: 2020

LUGAR	ESTACION				CLASIFICACION VEHICULAR EN PORCIENTO													COORDENADAS		
	KM	TE	SC	TDPA	M	A	B	C2	C3	T3S2	T3S3	T3S2R4	OTROS	A	B	C	K'	D	LATITUD	LONGITUD
T. C. Hermosillo - Nogales (Sur)	181.30	3	1	3174	1.5	53.1	2.9	10.4	2.7	19.7	2.0	7.2	0.5	54.6	2.9	42.5	0.133	0.507	30.620830	-110.991060
T. C. Hermosillo - Nogales (Sur)	181.30	3	2	3092	0.9	53.8	2.9	10.3	2.9	19.1	2.2	7.4	0.5	54.7	2.9	42.4	0.135	0.507	30.620829	-110.991057
T. C. Hermosillo - Nogales (Norte)	193.00	1	1	3854	0.5	55.7	2.8	10.2	1.2	17.1	1.6	10.6	0.3	56.2	2.8	41.0	0.108	0.568	30.666503	-110.916164
T. C. Hermosillo - Nogales (Norte)	193.00	1	2	2928	0.5	55.0	2.9	10.2	1.2	17.5	1.7	10.6	0.4	55.5	2.9	41.6	0.108	0.568	30.666990	-110.916649

17 CARR: Libramiento de Nogales (Cuota)

CLAVE: 26100

RUTA: MEX-15D

AÑO: 2020

LUGAR	ESTACION				CLASIFICACION VEHICULAR EN PORCIENTO													COORDENADAS		
	KM	TE	SC	TDPA	M	A	B	C2	C3	T3S2	T3S3	T3S2R4	OTROS	A	B	C	K'	D	LATITUD	LONGITUD
T. C. Hermosillo - Nogales	0.00	3	1	2128	7.7	52.0	3.1	6.7	5.6	20.7	0.4	3.0	0.8	59.7	3.1	37.2	0.140	0.541	31.232743	-110.966822
T. C. Hermosillo - Nogales	0.00	3	2	2510	6.0	54.1	3.1	7.9	4.6	21.2	0.2	1.9	1.0	60.1	3.1	36.8	0.129	0.541	31.232629	-110.966897
Plaza de Cobro Nogales	4.50	2	1	700	0.1	63.7	0.6	2.4	1.2	31.8	0.0	0.0	0.2	63.8	0.6	35.6	0.184	0.500	31.247675	-110.972370
Plaza de Cobro Nogales	4.50	2	2	700	0.1	63.7	0.6	2.4	1.2	31.8	0.0	0.0	0.2	63.8	0.6	35.6	0.184	0.500	31.247675	-110.972370
Frontera E.U.A.	12.50	1	1	1517	6.1	47.4	2.2	7.0	3.1	32.4	0.4	1.2	0.2	53.5	2.2	44.3	0.172	0.535	31.332625	-110.965458
Frontera E.U.A.	12.50	1	2	1749	7.3	46.9	2.2	9.7	3.1	28.9	0.3	1.3	0.3	54.2	2.2	43.6	0.150	0.535	31.332631	-110.965298

18 CARR: Los Mochis - Cd. Obregón (Cuota)

CLAVE: 26444

RUTA: MEX-015D

AÑO: 2020

LUGAR	ESTACION				CLASIFICACION VEHICULAR EN PORCIENTO													COORDENADAS		
	KM	TE	SC	TDPA	M	A	B	C2	C3	T3S2	T3S3	T3S2R4	OTROS	A	B	C	K'	D	LATITUD	LONGITUD
T. C. Topolobampo - Choix	0.00	3	1	7732	3.1	69.3	3.5	9.3	2.2	7.4	1.5	3.2	0.5	72.4	3.5	24.1	0.084	0.504	25.827951	-108.968753
T. C. Topolobampo - Choix	0.00	3	2	7871	3.0	69.3	3.5	9.3	2.2	7.5	1.5	3.2	0.5	72.3	3.5	24.2	0.089	0.504	25.827849	-108.968842
T. Izq. Ahome	17.13	3	1	7399	3.0	68.4	3.6	9.5	2.1	7.9	1.5	3.5	0.5	71.4	3.6	25.0	0.082	0.505	25.942753	-109.052413
T. Izq. Ahome	17.13	3	2	7558	2.9	68.3	3.7	9.5	2.2	7.9	1.6	3.4	0.5	71.2	3.7	25.1	0.085	0.505	25.942711	-109.052616
T. Izq. Coahuibampo	19.00	1	1	6600	2.8	66.9	4.5	9.2	2.1	8.1	1.5	4.5	0.4	69.7	4.5	25.8	0.083	0.505	25.960132	-109.053114
T. Izq. Coahuibampo	19.00	1	2	6732	2.8	66.7	4.5	9.2	2.1	8.2	1.6	4.5	0.4	69.5	4.5	26.0	0.087	0.505	25.960172	-109.053315
T. Izq. Coahuibampo	19.00	3	1	4665	2.9	67.1	4.6	9.0	2.2	8.5	1.5	3.7	0.5	70.0	4.6	25.4	0.084	0.507	25.960130	-109.053118
T. Izq. Coahuibampo	19.00	3	2	4794	2.9	67.0	4.5	9.1	2.2	8.4	1.5	3.9	0.5	69.9	4.5	25.6	0.091	0.507	25.960177	-109.053311
Poblado Chico	50.00	3	1	4042	2.5	59.7	5.7	7.2	2.2	12.8	4.1	4.9	0.9	62.2	5.7	32.1	0.085	0.512	26.222070	-109.056041
Poblado Chico	50.00	3	2	4233	2.5	59.9	5.8	7.2	2.3	12.7	3.9	4.8	0.9	62.4	5.8	31.8	0.094	0.512	26.222110	-109.056258
T. Der. El Fuerte	54.80	1	1	4660	2.1	66.0	4.5	6.5	2.4	9.1	4.3	3.9	1.2	68.1	4.5	27.4	0.086	0.510	26.266583	-109.043383
T. Der. El Fuerte	54.80	1	2	4474	2.2	65.9	4.5	6.5	2.3	9.3	4.3	3.8	1.2	68.1	4.5	27.4	0.097	0.510	26.266629	-109.043629
T. Der. El Fuerte	54.80	3	1	4271	2.2	66.4	4.5	6.4	2.1	9.3	4.2	3.9	1.0	68.6	4.5	26.9	0.090	0.504	26.266589	-109.043379
T. Der. El Fuerte	54.80	3	2	4339	2.2	66.1	4.6	6.5	2.2	9.2	4.2	4.0	1.0	68.3	4.6	27.1	0.086	0.504	26.266638	-109.043629
Lim. Edos. Term. Sin. Ppia. Son.	69.80																			

SONORA

18 CARR: Los Mochis - Cd. Obregón (Cuota)

CLAVE: 26444

RUTA: MEX-015D

AÑO: 2020

LUGAR	ESTACION				CLASIFICACION VEHICULAR EN PORCIENTO										COORDENADAS					
	KM	TE	SC	TDPA	M	A	B	C2	C3	T3S2	T3S3	T3S2R4	OTROS	A	B	C	K'	D	LATITUD	LONGITUD
T. Izq. Huatabampo	128.50	1	1	3506	1.2	46.3	7.8	8.7	3.1	21.9	3.0	7.3	0.7	47.5	7.8	44.7	0.089	0.513	26.838762	-109.367135
T. Izq. Huatabampo	128.50	1	2	3688	1.3	46.1	7.8	8.7	3.2	22.0	3.1	7.3	0.5	47.4	7.8	44.8	0.110	0.513	26.838758	-109.367451
Plaza de Cobro Estacion Don (La Jaula)	129.90	2	1	3032	0.0	81.4	2.0	1.0	1.3	9.1	0.6	4.3	0.3	81.4	2.0	16.6	0.086	0.500	26.849735	-109.373267
Plaza de Cobro Estacion Don (La Jaula)	129.90	2	2	3032	0.0	81.4	2.0	1.0	1.3	9.1	0.6	4.3	0.3	81.4	2.0	16.6	0.086	0.500	26.849735	-109.373267
Navojoa	155.00	1	1	5490	3.2	64.2	4.3	10.6	2.2	10.0	1.6	3.6	0.3	67.4	4.3	28.3	0.085	0.501	27.081431	-109.444806
Navojoa	155.00	1	2	5461	2.7	61.6	4.4	11.0	2.4	11.8	1.8	4.0	0.3	64.3	4.4	31.3	0.083	0.501	27.081424	-109.444892
Navojoa	155.00	3	1	6420	15.5	71.5	3.5	7.3	0.8	0.7	0.2	0.4	0.1	87.0	3.5	9.5	0.087	0.506	27.081435	-109.444806
Navojoa	155.00	3	2	6280	13.9	71.0	3.9	8.9	0.9	0.7	0.2	0.4	0.1	84.9	3.9	11.2	0.095	0.506	27.081434	-109.444892
T. Izq. Villa Juárez	167.25	1	1	5486	3.2	63.7	4.2	10.2	2.4	10.9	1.5	3.6	0.3	66.9	4.2	28.9	0.085	0.503	27.154667	-109.506429
T. Izq. Villa Juárez	167.25	1	2	5552	2.6	61.1	4.6	11.7	2.4	11.6	1.8	3.8	0.4	63.7	4.6	31.7	0.087	0.503	27.154375	-109.506682
T. Izq. Villa Juárez	167.25	3	1	5128	3.2	64.3	4.3	10.5	2.2	10.3	1.5	3.4	0.3	67.5	4.3	28.2	0.088	0.508	27.154671	-109.506432
T. Izq. Villa Juárez	167.25	3	2	5286	2.7	61.6	4.4	11.2	2.5	11.5	1.8	4.0	0.3	64.3	4.4	31.3	0.085	0.508	27.154374	-109.506686
Plaza de Cobro Fundición	195.80	2	1	3892	0.0	84.5	2.1	1.0	1.0	7.2	0.4	3.5	0.3	84.5	2.1	13.4	0.086	0.500	27.320494	-109.719697
Plaza de Cobro Fundición	195.80	2	2	3892	0.0	84.5	2.1	1.0	1.0	7.2	0.4	3.5	0.3	84.5	2.1	13.4	0.086	0.500	27.320494	-109.719697
T. Der. Fundición	196.30	1	1	4597	1.1	67.7	4.5	5.7	2.4	12.3	1.7	4.1	0.5	68.8	4.5	26.7	0.095	0.511	27.330779	-109.732863
T. Der. Fundición	196.30	1	2	4795	0.8	63.3	5.1	6.5	2.8	14.7	1.8	4.6	0.4	64.1	5.1	30.8	0.086	0.511	27.329898	-109.733806
T. Der. Libramiento de Cd. Obregón (Cuota)	203.52	1	1	5742	1.1	66.9	4.4	6.0	2.5	13.0	1.6	4.1	0.4	68.0	4.4	27.6	0.094	0.546	27.372945	-109.787387
T. Der. Libramiento de Cd. Obregón (Cuota)	203.52	1	2	6909	0.8	65.8	4.7	6.3	2.6	13.4	1.7	4.3	0.4	66.6	4.7	28.7	0.088	0.546	27.372616	-109.787398
Cd. Obregón	222.70	1	1	10115	12.6	66.0	3.7	6.6	3.1	5.1	1.3	1.5	0.1	78.6	3.7	17.7	0.091	0.522	27.482407	-109.929964
Cd. Obregón	222.70	1	2	9246	12.0	65.7	3.8	7.0	3.3	5.6	1.4	1.1	0.1	77.7	3.8	18.5	0.100	0.522	27.482210	-109.930156

19 CARR: Santa Ana - Sonoita

CLAVE: 26080

RUTA: MEX-002D-MEX

AÑO: 2020

LUGAR	ESTACION				CLASIFICACION VEHICULAR EN PORCIENTO										COORDENADAS					
	KM	TE	SC	TDPA	M	A	B	C2	C3	T3S2	T3S3	T3S2R4	OTROS	A	B	C	K'	D	LATITUD	LONGITUD
Santa Ana	0.00	3	1	3538	3.7	61.5	6.3	3.6	1.5	15.2	1.9	4.7	1.6	65.2	6.3	28.5	0.092	0.504	30.544352	-111.114054
Santa Ana	0.00	3	2	3590	3.7	61.4	6.5	3.7	1.5	15.1	2.0	4.5	1.6	65.1	6.5	28.4	0.082	0.504	30.544352	-111.114054
El Ocuca	31.55	1	1	2082	4.1	67.8	3.5	11.2	2.4	6.8	1.5	2.2	0.5	71.9	3.5	24.6	0.081	0.508	30.585617	-111.435383
El Ocuca	31.55	1	2	2154	3.9	68.2	3.5	11.1	2.5	6.6	1.4	2.1	0.7	72.1	3.5	24.4	0.086	0.508	30.585452	-111.435493
El Ocuca	31.55	3	1	2062	4.1	67.2	3.6	11.2	2.6	6.8	1.6	2.2	0.7	71.3	3.6	25.1	0.079	0.506	30.585617	-111.435385
El Ocuca	31.55	3	2	2109	4.2	67.2	3.6	11.0	2.5	6.7	1.7	2.4	0.7	71.4	3.6	25.0	0.073	0.506	30.585451	-111.435496
Altar	72.80	1	1	3914	1.5	69.2	3.4	8.1	1.1	10.1	2.7	3.2	0.7	70.7	3.4	25.9	0.076	0.511	30.714289	-111.835552
Altar	72.80	1	2	3752	1.6	68.3	3.6	8.2	1.2	10.3	2.8	3.3	0.7	69.9	3.6	26.5	0.077	0.511	30.714211	-111.835637
Altar	72.80	3	1	3336	1.1	58.9	4.9	9.4	1.4	15.3	2.6	5.5	0.9	60.0	4.9	35.1	0.081	0.506	30.714288	-111.835554
Altar	72.80	3	2	3260	0.9	59.5	4.7	9.5	1.3	15.1	2.6	5.5	0.9	60.4	4.7	34.9	0.079	0.506	30.714211	-111.835641

SONORA

19 CARR: Santa Ana - Sonoita

CLAVE: 26080

RUTA: MEX-002D-MEX

AÑO: 2020

LUGAR	ESTACION				CLASIFICACION VEHICULAR EN PORCIENTO										COORDENADAS					
	KM	TE	SC	TDPA	M	A	B	C2	C3	T3S2	T3S3	T3S2R4	OTROS	A	B	C	K'	D	LATITUD	LONGITUD
T. Izq. Estación Pitiquito	94.28	1	1	3518	0.9	60.9	4.7	7.8	1.2	15.5	2.5	5.5	1.0	61.8	4.7	33.5	0.080	0.503	30.690212	-112.027519
T. Izq. Estación Pitiquito	94.28	1	2	3476	1.0	60.6	4.8	7.9	1.2	15.6	2.6	5.4	0.9	61.6	4.8	33.6	0.077	0.503	30.690096	-112.027470
Caborca	103.83	1	0	9853	1.3	70.6	3.2	9.8	1.0	9.2	1.4	3.2	0.3	71.9	3.2	24.9	0.109	0.501	30.716373	-112.142301
Cozón	180.30	1	0	2902	5.1	40.8	6.6	8.1	2.3	24.5	3.4	8.2	1.0	45.9	6.6	47.5	0.073	0.511	31.302338	-112.557873
Sonoita	253.70	1	0	2707	3.7	42.7	7.4	7.7	1.9	25.2	3.1	7.4	0.9	46.4	7.4	46.2	0.069	0.501	31.863314	-112.848068

20 CARR: Altar - Sáric

CLAVE: 26233

RUTA: SON-064

AÑO: 2020

LUGAR	ESTACION				CLASIFICACION VEHICULAR EN PORCIENTO										COORDENADAS					
	KM	TE	SC	TDPA	M	A	B	C2	C3	T3S2	T3S3	T3S2R4	OTROS	A	B	C	K'	D	LATITUD	LONGITUD
T. C. Santa Ana - Sonoita	0.00	3	0	976	0.8	84.8	0.2	12.4	1.1	0.7	0.0	0.0	0.0	85.6	0.2	14.2	0.111	0.527	30.715817	-111.838010
Sáric	68.00	1	0	422	0.8	72.3	0.5	25.2	1.2	0.0	0.0	0.0	0.0	73.1	0.5	26.4	0.135	0.522	31.098535	-111.390265

21 CARR: Caborca - El Desemboque

CLAVE: 26225

RUTA: SON-037

AÑO: 2020

LUGAR	ESTACION				CLASIFICACION VEHICULAR EN PORCIENTO										COORDENADAS					
	KM	TE	SC	TDPA	M	A	B	C2	C3	T3S2	T3S3	T3S2R4	OTROS	A	B	C	K'	D	LATITUD	LONGITUD
Caborca	0.00	3	1	3494	1.0	78.9	1.0	15.0	1.8	1.2	0.6	0.4	0.1	79.9	1.0	19.1	0.144	0.508	30.711176	-112.160009
Caborca	0.00	3	2	3386	1.0	78.5	1.0	15.0	1.9	1.4	0.7	0.4	0.1	79.5	1.0	19.5	0.130	0.508	30.711176	-112.160009
T. Der. Productora Nal. de Semillas	4.20	3	0	4329	2.0	81.0	1.2	12.7	1.3	1.0	0.4	0.3	0.1	83.0	1.2	15.8	0.098	0.502	30.705426	-112.198818
T. Izq. Ramal El Deseo	6.90	3	0	3309	1.2	76.5	1.4	16.2	1.9	1.5	0.7	0.4	0.2	77.7	1.4	20.9	0.104	0.504	30.703671	-112.207770
T. Der. El Sahuaro	61.20	3	0	1121	0.7	82.8	1.4	13.6	0.7	0.7	0.1	0.0	0.0	83.5	1.4	15.1	0.113	0.503	30.802727	-112.717236
El Desemboque	102.30																			

22 CARR: Calle 36 Norte - Puerto de La Libertad

CLAVE: 26117

RUTA: SON-029

AÑO: 2020

LUGAR	ESTACION				CLASIFICACION VEHICULAR EN PORCIENTO										COORDENADAS					
	KM	TE	SC	TDPA	M	A	B	C2	C3	T3S2	T3S3	T3S2R4	OTROS	A	B	C	K'	D	LATITUD	LONGITUD
T. C. Hermosillo - Bahía Kino	0.00	3	0	283	5.0	64.4	1.4	19.2	3.6	4.2	1.0	0.8	0.4	69.4	1.4	29.2	0.102	0.542	28.831493	-111.714301
Casas Grandes	45.00	3	0	339	3.9	61.6	1.7	23.8	2.9	4.5	0.7	0.9	0.0	65.5	1.7	32.8	0.109	0.502	29.179140	-111.712223
Puerto de La Libertad	156.00																			

SONORA

23 CARR: Esperanza - Presa Álvaro Obregón

CLAVE: 26242

RUTA: SON-117

AÑO: 2020

LUGAR	ESTACION				CLASIFICACION VEHICULAR EN PORCIENTO													COORDENADAS		
	KM	TE	SC	TDPA	M	A	B	C2	C3	T3S2	T3S3	T3S2R4	OTROS	A	B	C	K'	D	LATITUD	LONGITUD
Esperanza	0.00	3	0	3761	6.2	84.2	1.0	3.9	2.5	1.2	0.4	0.4	0.2	90.4	1.0	8.6	0.108	0.549	27.581591	-109.926761
T. Der. Los Hornos	17.00	3	0	883	7.0	85.2	0.5	4.6	1.6	0.3	0.3	0.3	0.2	92.2	0.5	7.3	0.246	0.503	27.719780	-109.898287
Presa Álvaro Obregón	32.00																			

24 CARR: Hermosillo - Bahía Kino

CLAVE: 26109

RUTA: SON-100

AÑO: 2020

LUGAR	ESTACION				CLASIFICACION VEHICULAR EN PORCIENTO													COORDENADAS		
	KM	TE	SC	TDPA	M	A	B	C2	C3	T3S2	T3S3	T3S2R4	OTROS	A	B	C	K'	D	LATITUD	LONGITUD
Hermosillo	0.00	3	1	25747	0.8	80.3	0.9	12.3	2.3	2.1	0.4	0.8	0.1	81.1	0.9	18.0	0.084	0.515	29.093943	-110.992428
Hermosillo	0.00	3	2	22770	0.9	77.8	0.9	14.1	2.7	2.2	0.4	0.9	0.1	78.7	0.9	20.4	0.094	0.515	29.093837	-110.992435
T. Der. Aeropuerto	11.00	1	1	11567	1.2	85.7	0.4	7.5	2.2	1.5	0.7	0.6	0.2	86.9	0.4	12.7	0.146	0.505	29.089170	-111.049852
T. Der. Aeropuerto	11.00	1	2	11329	1.2	84.6	0.4	8.1	2.5	1.7	0.7	0.6	0.2	85.8	0.4	13.8	0.122	0.505	29.089017	-111.049811
T. Der. Aeropuerto	11.00	3	1	8338	1.2	80.0	0.8	10.8	3.5	2.3	0.3	1.0	0.1	81.2	0.8	18.0	0.145	0.503	29.089166	-111.049862
T. Der. Aeropuerto	11.00	3	2	8448	1.0	79.3	1.0	11.1	3.8	2.4	0.3	1.0	0.1	80.3	1.0	18.7	0.117	0.503	29.089014	-111.049814
T. Izq. Calle 4 Sur	53.00	3	0	5846	1.6	77.3	1.3	12.9	3.2	1.8	0.8	0.7	0.4	78.9	1.3	19.8	0.117	0.519	28.839890	-111.390939
El Triunfo	55.50	1	0	5678	1.6	76.5	1.1	14.4	3.3	2.0	0.5	0.5	0.1	78.1	1.1	20.8	0.103	0.500	28.839760	-111.472745
T. Der. Calle 36	84.40	1	0	2777	0.7	83.1	0.6	12.2	1.8	1.0	0.3	0.2	0.1	83.8	0.6	15.6	0.142	0.502	28.831234	-111.713303
T. Der. Calle 36	84.40	3	0	2726	0.7	81.7	0.8	13.2	1.9	1.1	0.3	0.3	0.0	82.4	0.8	16.8	0.137	0.507	28.831247	-111.714913
Bahía Kino	106.50	1	0	2701	0.8	83.4	0.8	12.3	1.7	0.9	0.1	0.0	0.0	84.2	0.8	15.0	0.143	0.502	28.828449	-111.934097

25 CARR: Hermosillo - Sahuaripa

CLAVE: 26230

RUTA: SON-020

AÑO: 2020

LUGAR	ESTACION				CLASIFICACION VEHICULAR EN PORCIENTO													COORDENADAS		
	KM	TE	SC	TDPA	M	A	B	C2	C3	T3S2	T3S3	T3S2R4	OTROS	A	B	C	K'	D	LATITUD	LONGITUD
T. C. Libramiento de Hermosillo	0.00	3	1	1352	2.0	68.0	1.4	17.6	3.8	2.0	2.6	1.8	0.8	70.0	1.4	28.6	0.152	0.512	29.032378	-110.939236
T. C. Libramiento de Hermosillo	0.00	3	2	1290	1.3	68.9	1.6	17.9	2.9	2.3	2.4	1.9	0.8	70.2	1.6	28.2	0.129	0.512	29.032365	-110.939208
Mazatán	88.00	1	0	950	0.7	78.9	1.1	14.9	1.8	1.9	0.6	0.0	0.1	79.6	1.1	19.3	0.094	0.506	29.005208	-110.141996
Mazatán	88.00	3	0	619	1.0	80.8	0.6	15.0	1.9	0.4	0.3	0.0	0.0	81.8	0.6	17.6	0.102	0.511	29.005249	-110.141686
Sahuaripa	199.00																			

26 CARR: Hornos - San Nicolás

CLAVE: 26243

RUTA: SON-012

AÑO: 2020

LUGAR	ESTACION				CLASIFICACION VEHICULAR EN PORCIENTO													COORDENADAS		
	KM	TE	SC	TDPA	M	A	B	C2	C3	T3S2	T3S3	T3S2R4	OTROS	A	B	C	K'	D	LATITUD	LONGITUD
Hornos	0.00	3	0	1224	2.6	48.3	0.9	12.2	3.1	5.7	26.1	0.9	0.2	50.9	0.9	48.2	0.100	0.512	27.719481	-109.898297

SONORA

26 CARR: Hornos - San Nicolás

CLAVE: 26243

RUTA: SON-012

AÑO: 2020

LUGAR	ESTACION				CLASIFICACION VEHICULAR EN PORCIENTO														COORDENADAS	
	KM	TE	SC	TDPA	M	A	B	C2	C3	T3S2	T3S3	T3S2R4	OTROS	A	B	C	K'	D	LATITUD	LONGITUD
Rosario	58.00	1	0	1034	6.8	45.0	1.0	12.8	2.0	4.1	27.7	0.2	0.4	51.8	1.0	47.2	0.106	0.514	27.842062	-109.374788
San Nicolás	137.20																			

27 CARR: Huatabampo - Bacabachi

CLAVE: 26237

RUTA: SON-176

AÑO: 2020

LUGAR	ESTACION				CLASIFICACION VEHICULAR EN PORCIENTO														COORDENADAS	
	KM	TE	SC	TDPA	M	A	B	C2	C3	T3S2	T3S3	T3S2R4	OTROS	A	B	C	K'	D	LATITUD	LONGITUD
Huatabampo	0.00	3	0	1852	10.6	76.5	1.5	4.3	3.5	2.7	0.5	0.4	0.0	87.1	1.5	11.4	0.108	0.511	26.822154	-109.622197
T. C. Los Mochis - Cd. Obregón (Cuota)	29.00	1	0	834	16.6	66.8	1.9	4.1	4.3	4.1	1.3	0.5	0.4	83.4	1.9	14.7	0.106	0.519	26.838773	-109.367443

28 CARR: La Alameda - El Sahuaro

CLAVE: 26234

RUTA: SON-037

AÑO: 2020

LUGAR	ESTACION				CLASIFICACION VEHICULAR EN PORCIENTO														COORDENADAS	
	KM	TE	SC	TDPA	M	A	B	C2	C3	T3S2	T3S3	T3S2R4	OTROS	A	B	C	K'	D	LATITUD	LONGITUD
T. C. Caborca - El Desemboque	0.00	3	0	3097	1.5	71.9	2.6	17.6	3.4	1.6	0.5	0.7	0.2	73.4	2.6	24.0	0.108	0.505	30.803261	-112.717364
Estación El Sahuaro	47.00	1	0	1216	2.4	54.4	4.8	25.2	5.8	5.7	0.9	0.7	0.1	56.8	4.8	38.4	0.098	0.503	31.048389	-112.941851

29 CARR: Mazocahui - Cananea

CLAVE: 26118

RUTA: SON-118

AÑO: 2020

LUGAR	ESTACION				CLASIFICACION VEHICULAR EN PORCIENTO														COORDENADAS	
	KM	TE	SC	TDPA	M	A	B	C2	C3	T3S2	T3S3	T3S2R4	OTROS	A	B	C	K'	D	LATITUD	LONGITUD
T. C. Hermosillo - Moctezuma	0.00	3	0	1087	3.1	72.4	1.1	16.8	2.7	1.1	1.0	1.2	0.6	75.5	1.1	23.4	0.092	0.511	29.544215	-110.120396
Baviácora	15.20	3	0	1350	0.6	79.5	1.0	16.9	1.0	0.6	0.4	0.0	0.0	80.1	1.0	18.9	0.101	0.500	29.715190	-110.164132
Arizpe	98.00	1	0	326	5.1	70.9	1.5	18.3	2.2	1.1	0.8	0.1	0.0	76.0	1.5	22.5	0.117	0.507	30.336021	-110.170135
T. C. Imuris - Agua Prieta	204.00	1	0	2277	1.4	70.5	1.8	15.5	7.3	1.8	0.7	0.8	0.2	71.9	1.8	26.3	0.095	0.504	30.988898	-110.262975

30 CARR: Navojoa - Álamos

CLAVE: 26240

RUTA: SON-013

AÑO: 2020

LUGAR	ESTACION				CLASIFICACION VEHICULAR EN PORCIENTO														COORDENADAS	
	KM	TE	SC	TDPA	M	A	B	C2	C3	T3S2	T3S3	T3S2R4	OTROS	A	B	C	K'	D	LATITUD	LONGITUD
Navojoa	0.00	3	0	3899	7.1	72.0	1.2	14.8	3.0	0.7	0.3	0.8	0.1	79.1	1.2	19.7	0.090	0.531	27.073546	-109.436452
Álamos	52.80	1	0	2415	8.9	73.1	1.6	14.1	1.7	0.4	0.1	0.0	0.1	82.0	1.6	16.4	0.098	0.521	27.026615	-108.943050

SONORA

31 CARR: Navojoa - Yavaros

CLAVE: 26229

RUTA: SON-056

AÑO: 2020

LUGAR	ESTACION				CLASIFICACION VEHICULAR EN PORCIENTO										COORDENADAS					
	KM	TE	SC	TDPA	M	A	B	C2	C3	T3S2	T3S3	T3S2R4	OTROS	A	B	C	K'	D	LATITUD	LONGITUD
Navojoa	0.00	3	1	3782	9.8	80.9	2.2	3.3	1.6	1.0	0.7	0.3	0.2	90.7	2.2	7.1	0.095	0.505	27.049102	-109.454427
Navojoa	0.00	3	2	3862	9.4	81.5	2.3	3.2	1.5	1.0	0.7	0.3	0.1	90.9	2.3	6.8	0.104	0.505	27.049060	-109.454266
Yavaros	55.00	1	0	1447	14.7	78.1	2.3	3.2	0.8	0.7	0.2	0.0	0.0	92.8	2.3	4.9	0.153	0.500	26.702423	-109.534812

32 CARR: Nogales - San Antonio

CLAVE: 26110

RUTA: SON

AÑO: 2020

LUGAR	ESTACION				CLASIFICACION VEHICULAR EN PORCIENTO										COORDENADAS					
	KM	TE	SC	TDPA	M	A	B	C2	C3	T3S2	T3S3	T3S2R4	OTROS	A	B	C	K'	D	LATITUD	LONGITUD
Nogales	0.00																			
San Antonio	58.00	1	0	287	0.6	79.5	0.6	18.0	1.2	0.1	0.0	0.0	0.0	80.1	0.6	19.3	0.108	0.517	30.976686	-110.579040

33 CARR: Ramal a Aeropuerto de Guaymas

CLAVE: 26568

RUTA: SON

AÑO: 2020

LUGAR	ESTACION				CLASIFICACION VEHICULAR EN PORCIENTO										COORDENADAS					
	KM	TE	SC	TDPA	M	A	B	C2	C3	T3S2	T3S3	T3S2R4	OTROS	A	B	C	K'	D	LATITUD	LONGITUD
T. C. Cd. Obregón - Hermosillo	0.00	3	1	3955	2.8	82.7	1.0	8.0	1.4	1.7	0.8	1.1	0.5	85.5	1.0	13.5	0.086	0.525	27.950394	-110.933854
T. C. Cd. Obregón - Hermosillo	0.00	3	2	4375	2.9	82.4	1.0	7.9	1.3	1.8	0.9	1.2	0.6	85.3	1.0	13.7	0.075	0.525	27.950489	-110.933869
Aeropuerto de Guaymas	3.00	3	0	5594	2.0	79.9	1.3	8.5	1.3	2.0	1.8	2.2	1.0	81.9	1.3	16.8	0.108	0.514	27.972519	-110.918865

34 CARR: San Luis Río Colorado - Golfo de Santa Clara

CLAVE: 26226

RUTA: SON-040

AÑO: 2020

LUGAR	ESTACION				CLASIFICACION VEHICULAR EN PORCIENTO										COORDENADAS					
	KM	TE	SC	TDPA	M	A	B	C2	C3	T3S2	T3S3	T3S2R4	OTROS	A	B	C	K'	D	LATITUD	LONGITUD
San Luis Río Colorado	0.00	3	1	2506	0.9	81.6	0.5	13.6	0.8	1.6	0.8	0.2	0.0	82.5	0.5	17.0	0.085	0.511	32.469870	-114.786887
San Luis Río Colorado	0.00	3	2	2616	0.8	82.2	0.4	13.5	0.8	1.4	0.7	0.2	0.0	83.0	0.4	16.6	0.082	0.511	32.469869	-114.786884
T. Izq. Lagunitas	25.50	3	0	5797	0.8	81.0	1.7	11.4	1.0	3.2	0.6	0.2	0.1	81.8	1.7	16.5	0.102	0.504	32.321845	-114.947663
Golfo de Santa Clara	114.30	1	0	1380	1.4	79.0	1.2	14.4	1.5	1.4	0.5	0.5	0.1	80.4	1.2	18.4	0.123	0.512	31.687218	-114.499783

35 CARR: Sonoita - Pitiquito

CLAVE: 26022

RUTA: SON

AÑO: 2020

LUGAR	ESTACION				CLASIFICACION VEHICULAR EN PORCIENTO										COORDENADAS					
	KM	TE	SC	TDPA	M	A	B	C2	C3	T3S2	T3S3	T3S2R4	OTROS	A	B	C	K'	D	LATITUD	LONGITUD
Sonoita	0.00	3	0	940	2.9	82.2	0.1	13.5	1.0	0.3	0.0	0.0	0.0	85.1	0.1	14.8	0.104	0.505	31.861733	-112.849353
Pitiquito	170.00	1	0	585	2.1	58.2	2.1	22.3	2.4	11.9	0.4	0.6	0.0	60.3	2.1	37.6	0.111	0.502	30.721491	-112.094671

SONORA

36 CARR: San Luis Río Colorado - Golfo de Santa Clara (Cuota)

CLAVE:

RUTA: SON-D

AÑO: 2020

LUGAR	ESTACION				CLASIFICACION VEHICULAR EN PORCIENTO														COORDENADAS		
	KM	TE	SC	TDPA	M	A	B	C2	C3	T3S2	T3S3	T3S2R4	OTROS	A	B	C	K'	D	LATITUD	LONGITUD	
Libramiento de San Luis Río Colorado	0.00																				
Plaza de Cobro Estación Doctor	0.50	2	0	545	0.3	92.4	0.5	1.4	0.7	2.5	0.4	1.6	0.2	92.7	0.5	6.8	0.090	0.500	32.375135	-114.760664	
Golfo de Santa Clara	44.60																				

37 CARR: T. C. (Hermosillo - Nogales) - Huásabas

CLAVE: 26231

RUTA: MEX-014-SON

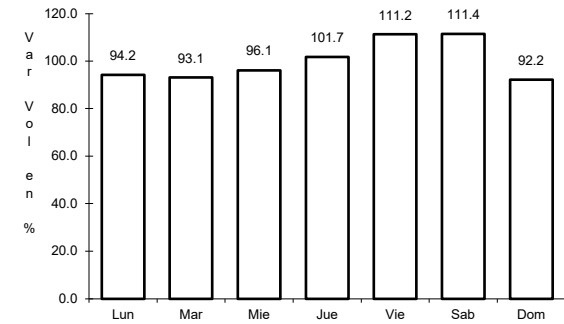
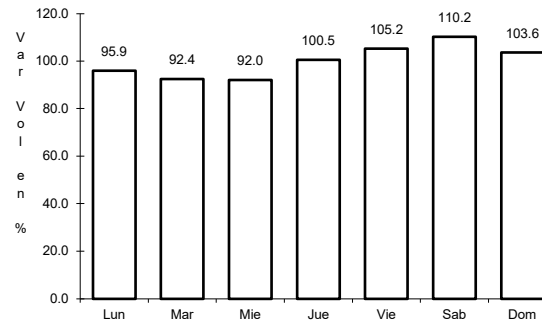
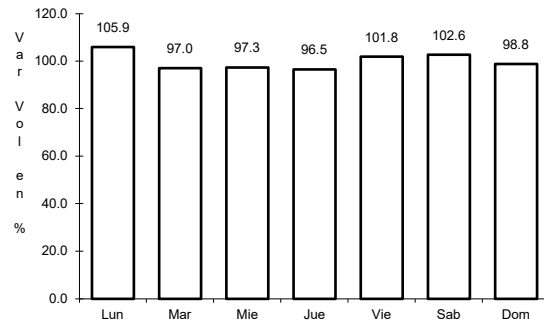
AÑO: 2020

LUGAR	ESTACION				CLASIFICACION VEHICULAR EN PORCIENTO														COORDENADAS	
	KM	TE	SC	TDPA	M	A	B	C2	C3	T3S2	T3S3	T3S2R4	OTROS	A	B	C	K'	D	LATITUD	LONGITUD
T. C. Hermosillo - Nogales	0.00	3	1	7495	0.7	83.9	1.2	11.4	1.1	1.0	0.3	0.4	0.0	84.6	1.2	14.2	0.159	0.503	29.165414	-110.909741
T. C. Hermosillo - Nogales	0.00	3	2	7581	0.7	83.9	1.1	11.5	1.1	1.0	0.3	0.4	0.0	84.6	1.1	14.3	0.200	0.503	29.165500	-110.909773
Ures	62.00	3	0	2368	3.2	84.3	1.0	7.3	1.0	1.1	0.9	0.6	0.6	87.5	1.0	11.5	0.097	0.503	29.429059	-110.380261
Mazocahui	97.50	3	0	815	3.5	63.7	3.0	15.8	4.3	4.6	2.9	1.4	0.8	67.2	3.0	29.8	0.093	0.518	29.544010	-110.119654
Moctezuma	165.00	1	0	1147	6.1	75.5	2.1	6.6	2.0	3.7	1.9	1.4	0.7	81.6	2.1	16.3	0.105	0.510	29.801932	-109.681953
Moctezuma	165.00	3	0	1349	3.8	69.5	2.2	17.7	2.6	2.1	2.1	0.0	0.0	73.3	2.2	24.5	0.113	0.522	29.801936	-109.677186
Huásabas	212.50	1	0	392	1.6	67.4	0.9	25.4	2.5	1.7	0.5	0.0	0.0	69.0	0.9	30.1	0.117	0.502	29.918835	-109.305000

1 CARR: Guaymas - Hermosillo

CLAVE: 26444

RUTA: MEX-015



Km: 107.70 Tipo: 3 Sent: 0

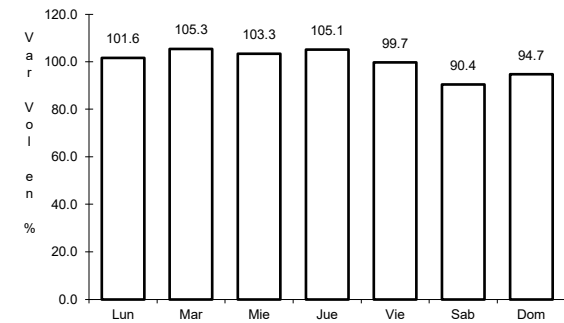
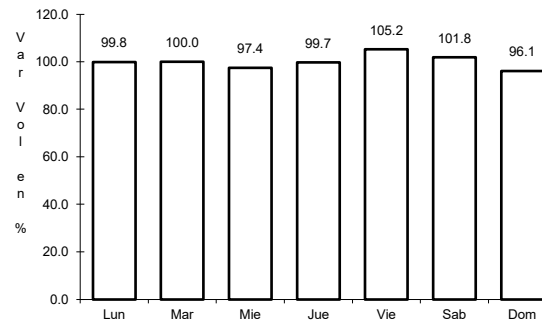
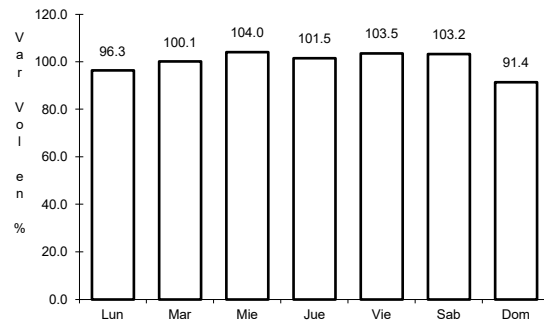
Km: 251.00 Tipo: 1 Sent: 1

Km: 251.00 Tipo: 1 Sent: 2

2 CARR: Hermosillo - Yécora

CLAVE: 26251

RUTA: MEX-016



Km: 4.00 Tipo: 3 Sent: 1

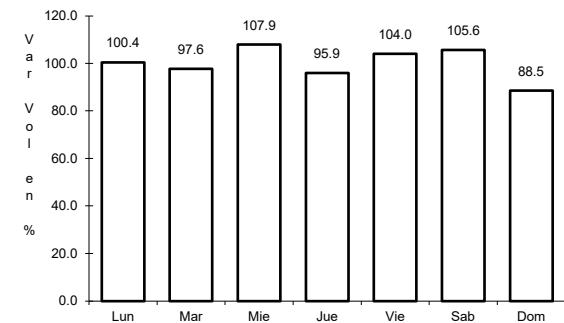
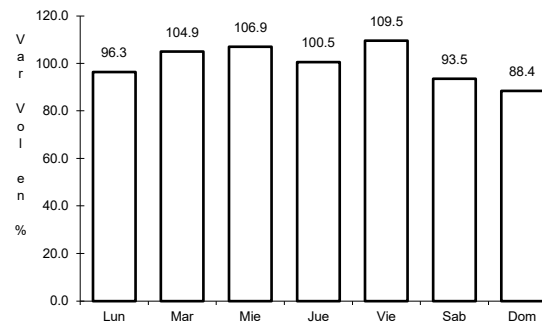
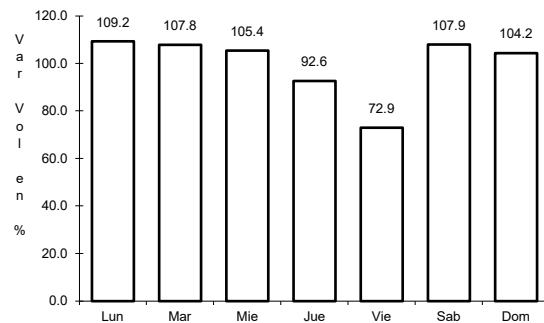
Km: 4.00 Tipo: 3 Sent: 2

Km: 138.00 Tipo: 3 Sent: 0

3 CARR: Imuris - Agua Prieta

CLAVE: 26079

RUTA: MEX-002



Km: 0.00 Tipo: 3 Sent: 0

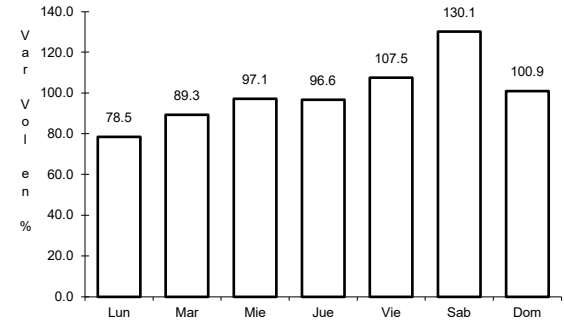
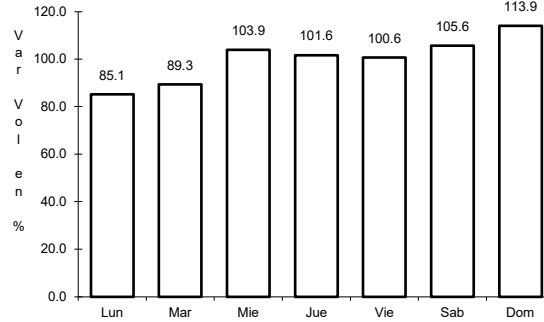
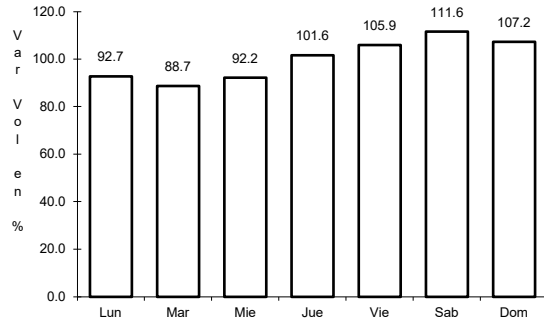
Km: 164.67 Tipo: 1 Sent: 1

Km: 164.67 Tipo: 1 Sent: 2

4 CARR: Janos - Agua Prieta

CLAVE: 00220

RUTA: MEX-002



Km: 0.00 Tipo: 3 Sent: 0

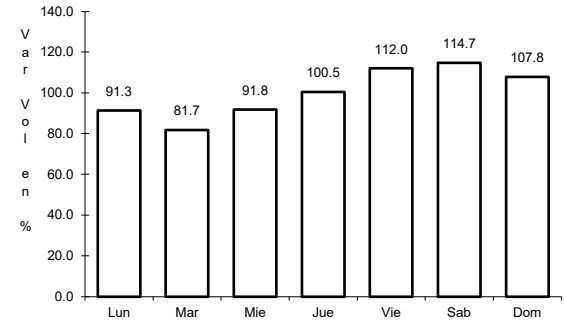
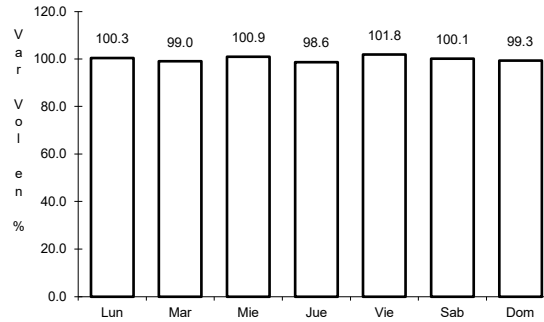
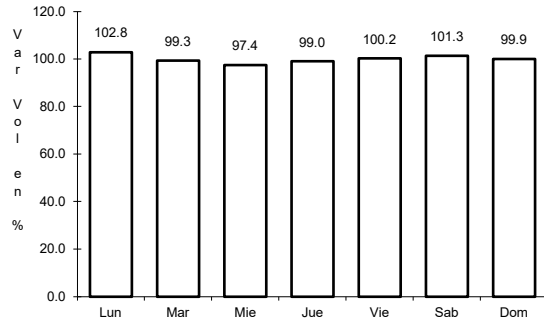
Km: 56.00 Tipo: 3 Sent: 0

Km: 160.00 Tipo: 1 Sent: 0

5 CARR: La Junta - Yécora

CLAVE: 00065

RUTA: MEX-016



Km: 0.00 Tipo: 3 Sent: 0

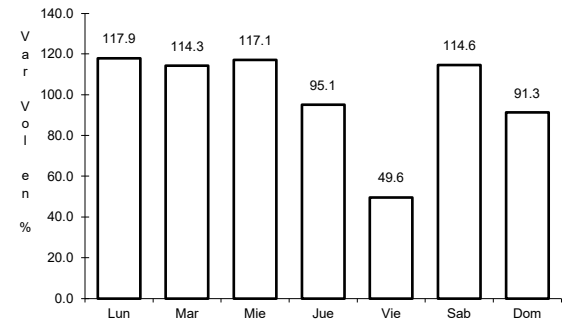
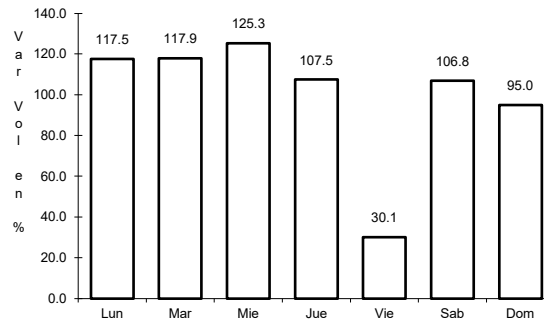
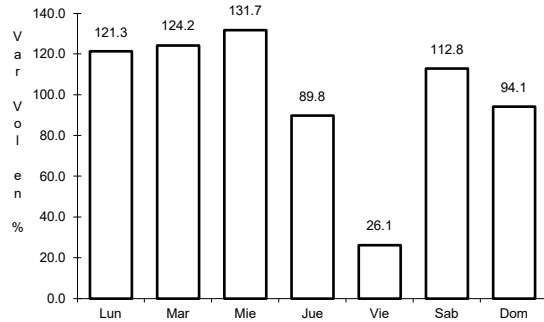
Km: 70.00 Tipo: 3 Sent: 0

Km: 253.00 Tipo: 1 Sent: 0

6 CARR: Magdalena de Kino - Nogales

CLAVE: 26444

RUTA: MEX-015



Km: 181.30 Tipo: 3 Sent: 1

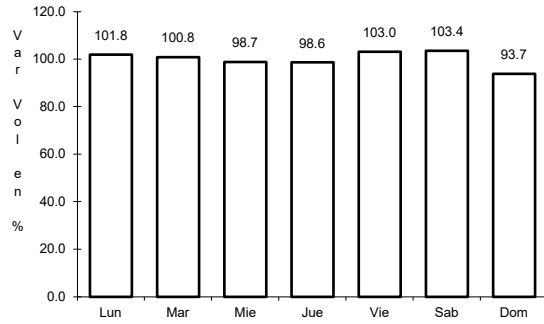
Km: 181.30 Tipo: 3 Sent: 2

Km: 272.70 Tipo: 1 Sent: 1

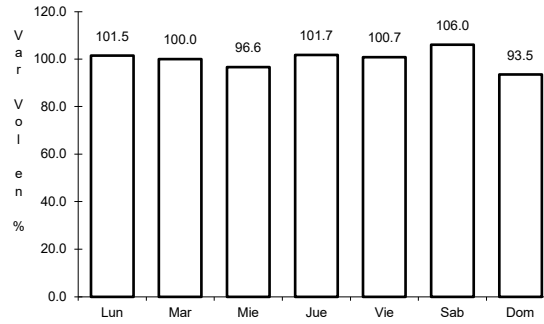
7 CARR: Moctezuma - Agua Prieta

CLAVE: 26027

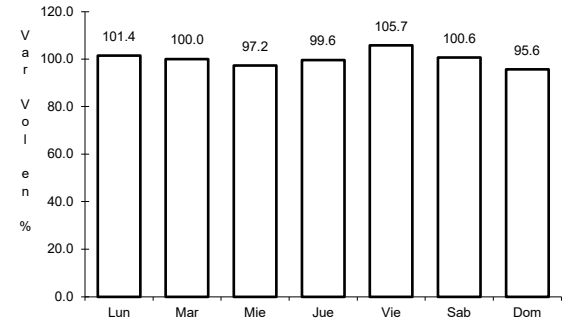
RUTA: MEX-017



Km: 0.00 Tipo: 3 Sent: 0



Km: 81.00 Tipo: 3 Sent: 0

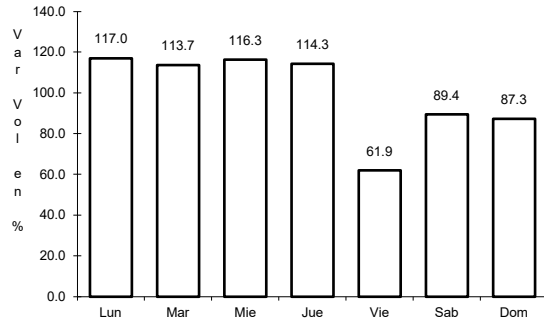


Km: 197.60 Tipo: 1 Sent: 0

8 CARR: Ramal a Naco

CLAVE: 26579

RUTA: MEX-002

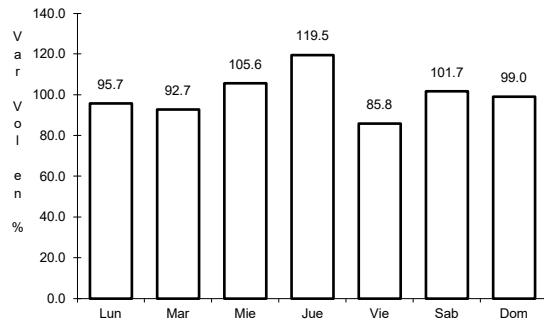


Km: 0.00 Tipo: 3 Sent: 0

9 CARR: Ramal a Puerta de México

CLAVE: 26577

RUTA: MEX-002

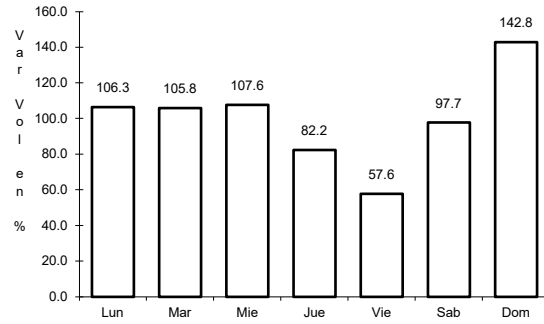


Km: 0.00 Tipo: 3 Sent: 0

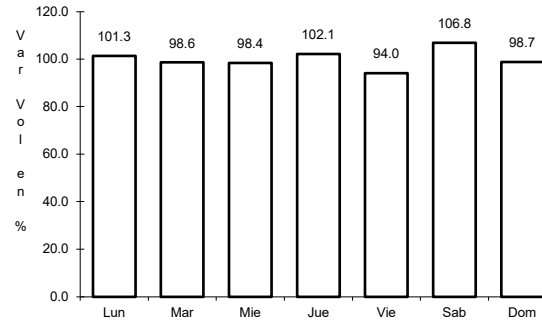
10 CARR: Sonoita - Mexicali

CLAVE: 00081

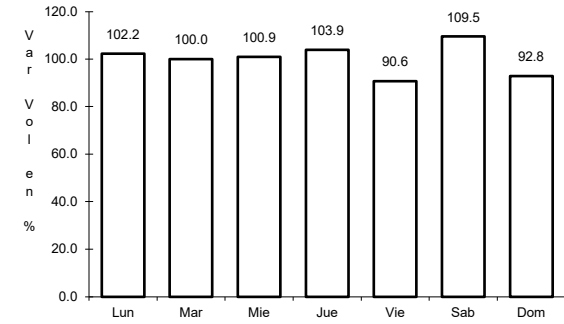
ruta: MEX-002



Km: 0.00 Tipo: 3 Sent: 0



Km: 256.47 Tipo: 1 Sent: 1

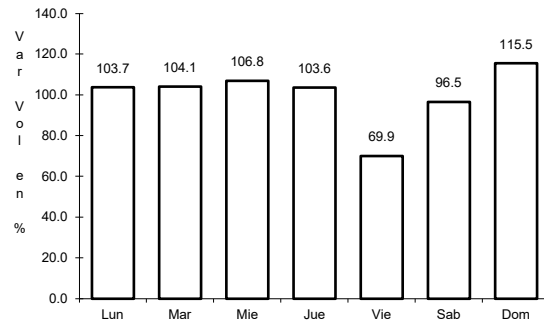


Km: 256.47 Tipo: 1 Sent: 2

11 CARR: Sonoita - Puerto Peñasco

CLAVE: 26232

ruta: MEX-002

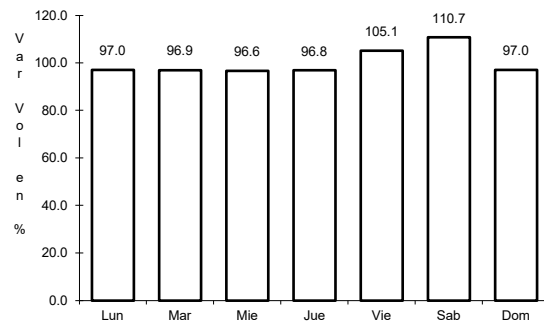


Km: 0.00 Tipo: 3 Sent: 0

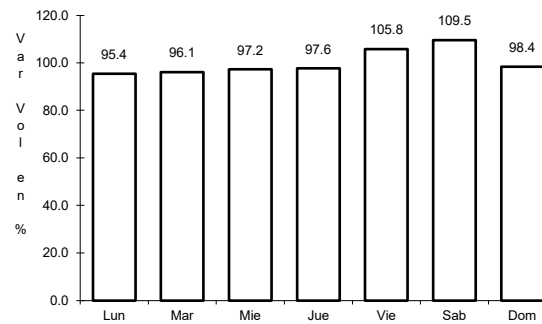
12 CARR: Cd. Obregón - Guaymas (Cuota)

CLAVE: 26444

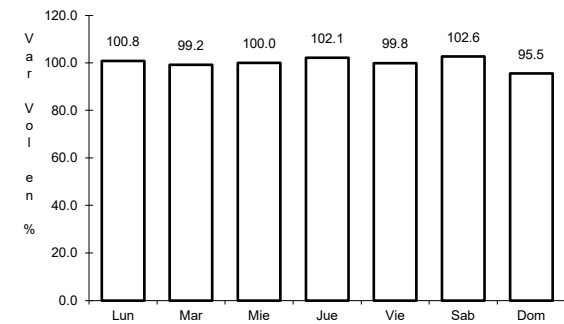
ruta: MEX-015D



Km: 7.96 Tipo: 1 Sent: 1



Km: 7.96 Tipo: 1 Sent: 2

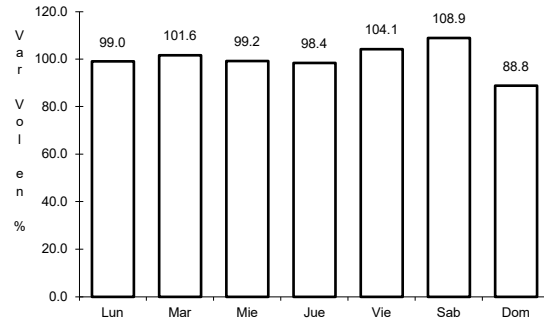


Km: 107.70 Tipo: 1 Sent: 1

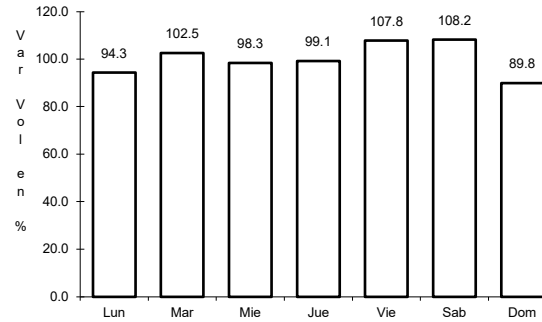
13 CARR: Hermosillo - Magdalena de Kino (Cuota)

CLAVE: 26444

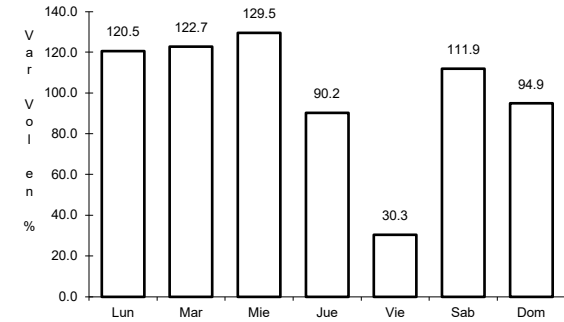
ruta: MEX-015D



Km: 0.00 Tipo: 3 Sent: 1



Km: 0.00 Tipo: 3 Sent: 2

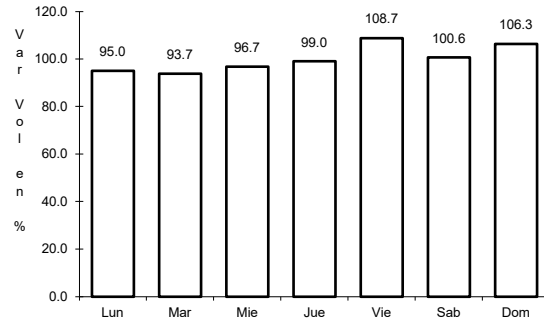


Km: 181.30 Tipo: 1 Sent: 1

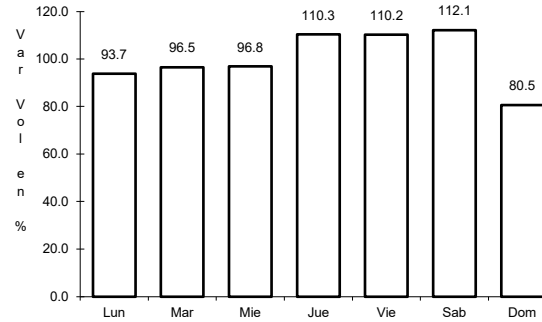
15 CARR: Libramiento de Empalme - Guaymas (Cuota)

CLAVE: 26256

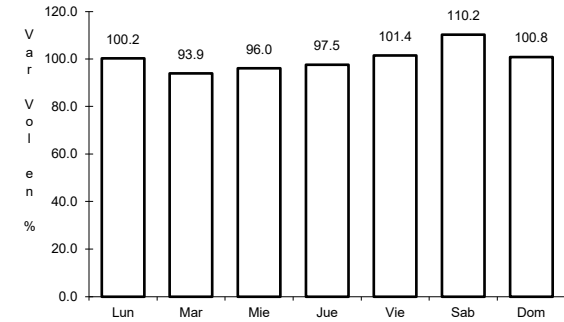
ruta: MEX-015D



Km: 0.00 Tipo: 3 Sent: 1



Km: 0.00 Tipo: 3 Sent: 2

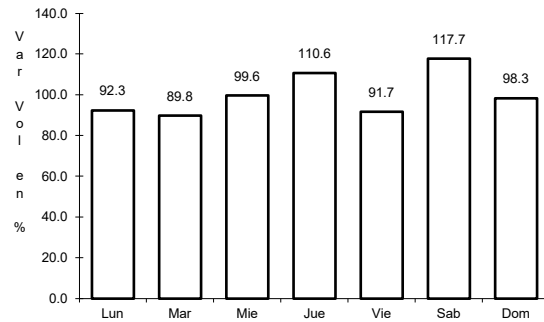


Km: 21.50 Tipo: 1 Sent: 1

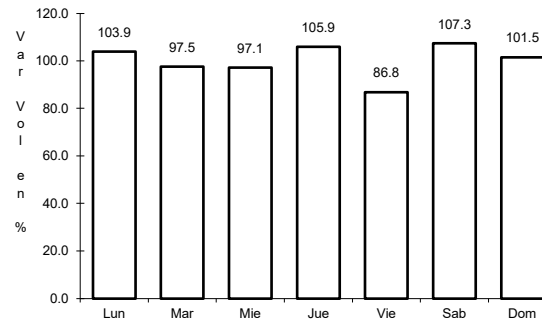
16 CARR: Libramiento de Magdalena de Kino (Cuota)

CLAVE:

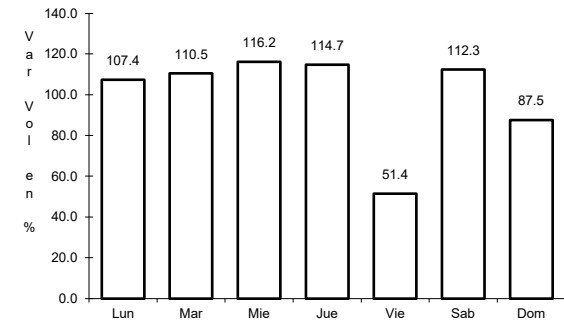
ruta: MEX-015D



Km: 181.30 Tipo: 3 Sent: 1



Km: 181.30 Tipo: 3 Sent: 2

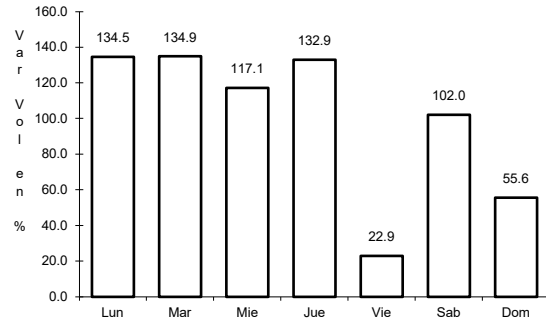


Km: 193.00 Tipo: 1 Sent: 1

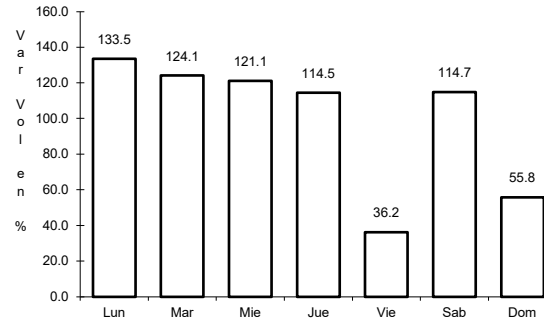
17 CARR: Libramiento de Nogales (Cuota)

CLAVE: 26100

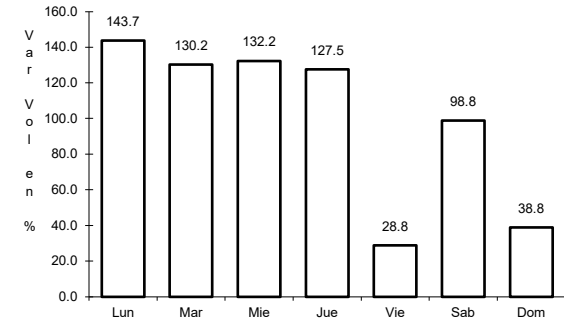
ruta: MEX-15D



Km: 0.00 Tipo: 3 Sent: 1



Km: 0.00 Tipo: 3 Sent: 2

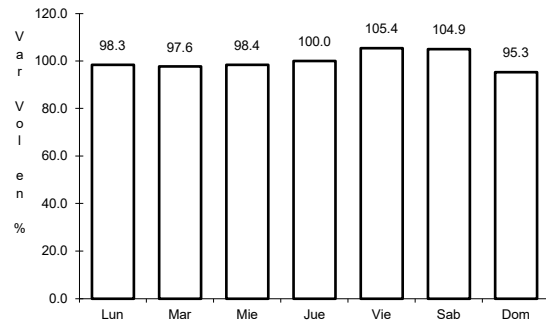


Km: 12.50 Tipo: 1 Sent: 1

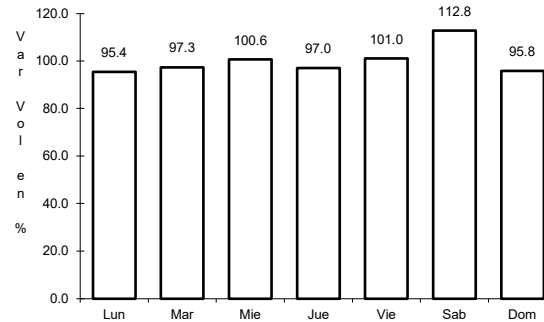
18 CARR: Los Mochis - Cd. Obregón (Cuota)

CLAVE: 26444

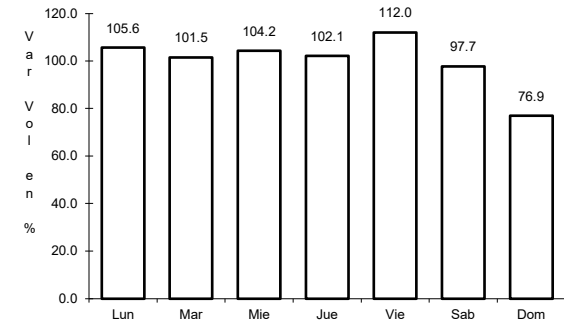
ruta: MEX-015D



Km: 0.00 Tipo: 3 Sent: 1



Km: 0.00 Tipo: 3 Sent: 2

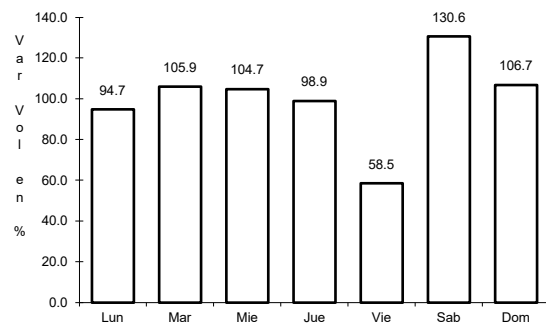


Km: 222.70 Tipo: 1 Sent: 1

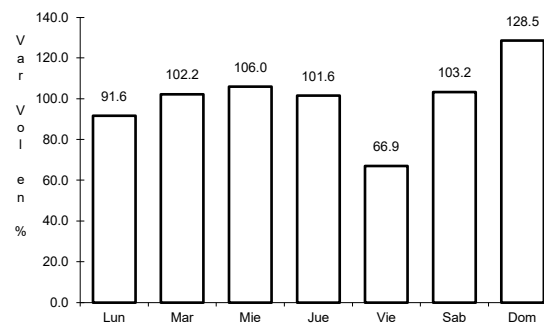
19 CARR: Santa Ana - Sonoita

CLAVE: 26080

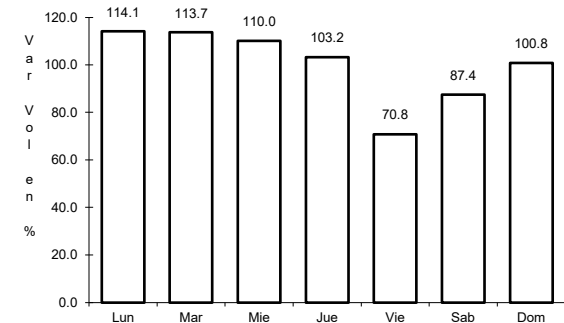
ruta: MEX-002D-MEX



Km: 0.00 Tipo: 3 Sent: 1



Km: 103.83 Tipo: 1 Sent: 0

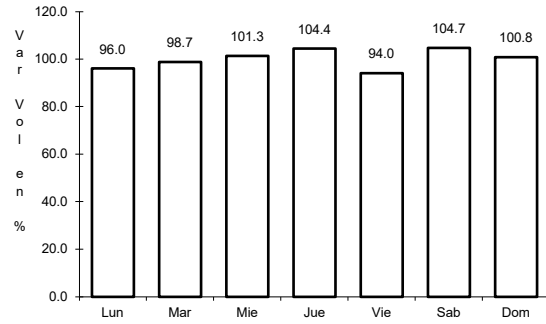


Km: 253.70 Tipo: 1 Sent: 0

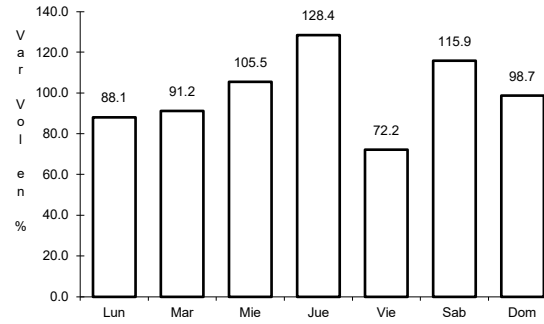
20 CARR: Altar - Sáric

CLAVE: 26233

ruta: SON-064



Km: 0.00 Tipo: 3 Sent: 0

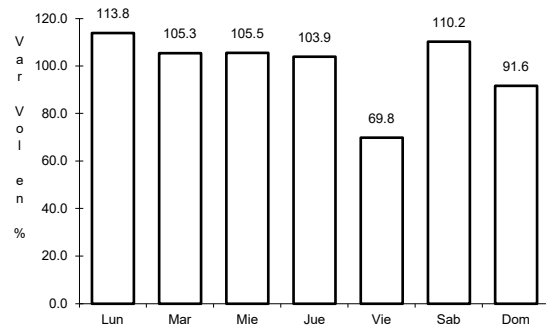


Km: 68.00 Tipo: 1 Sent: 0

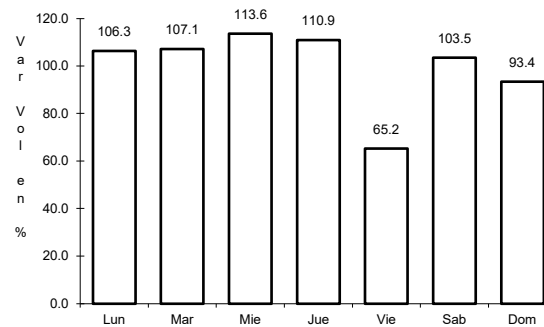
21 CARR: Caborca - El Desemboque

CLAVE: 26225

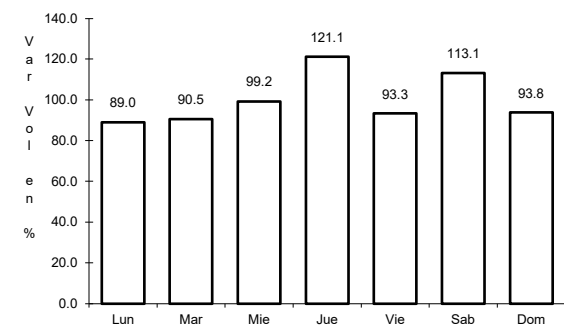
ruta: SON-037



Km: 0.00 Tipo: 3 Sent: 1



Km: 6.90 Tipo: 3 Sent: 0

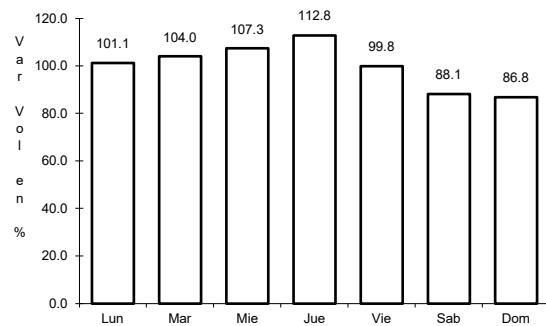


Km: 61.20 Tipo: 3 Sent: 0

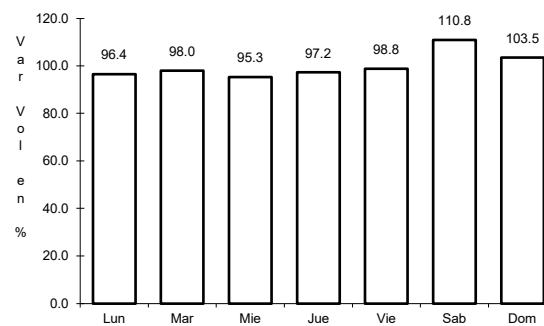
22 CARR: Calle 36 Norte - Puerto de La Libertad

CLAVE: 26117

ruta: SON-029



Km: 0.00 Tipo: 3 Sent: 0

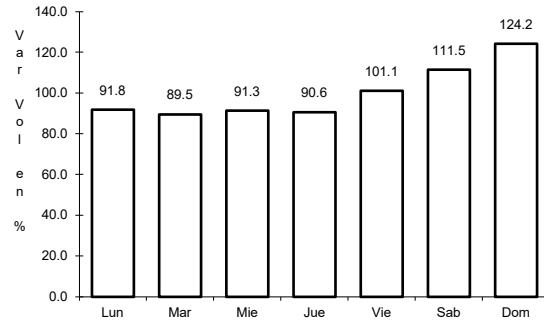


Km: 45.00 Tipo: 3 Sent: 0

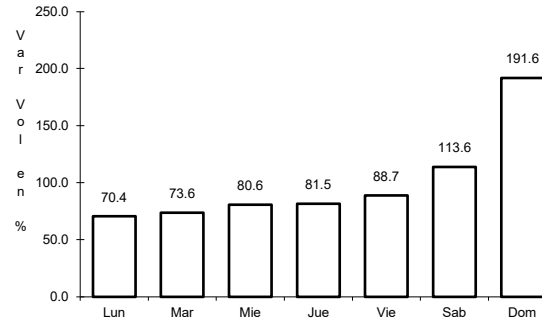
23 CARR: Esperanza - Presa Álvaro Obregón

CLAVE: 26242

ruta: SON-117



Km: 0.00 Tipo: 3 Sent: 0

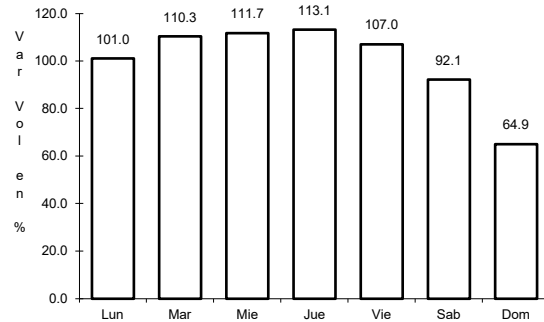


Km: 17.00 Tipo: 3 Sent: 0

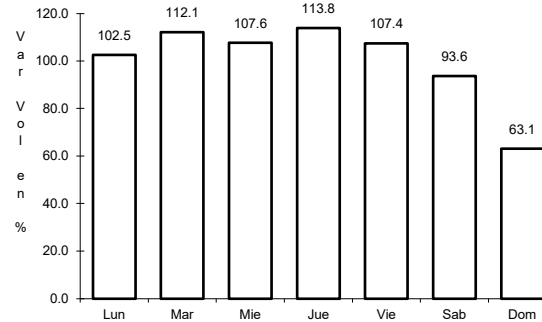
24 CARR: Hermosillo - Bahía Kino

CLAVE: 26109

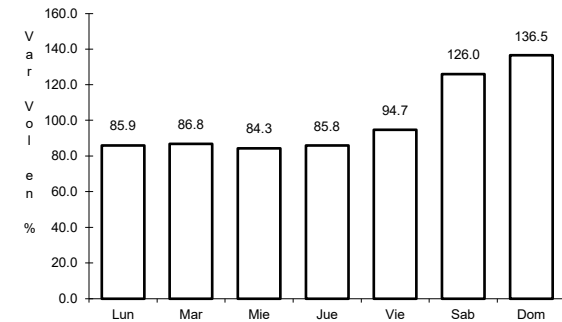
ruta: SON-100



Km: 0.00 Tipo: 3 Sent: 1



Km: 0.00 Tipo: 3 Sent: 2

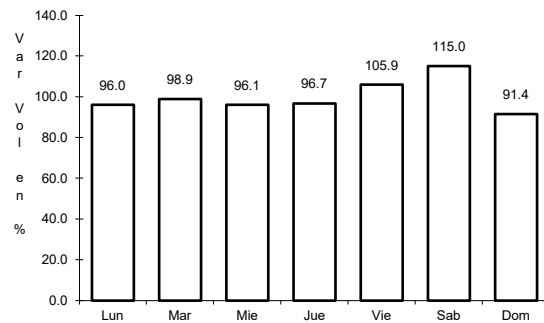


Km: 106.50 Tipo: 1 Sent: 0

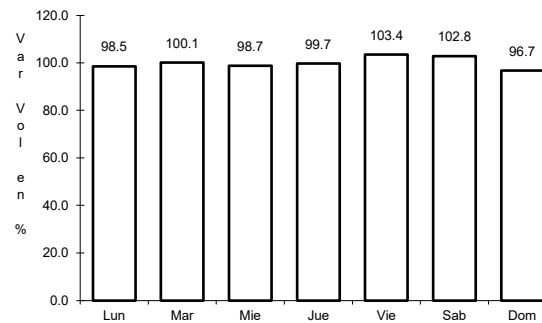
25 CARR: Hermosillo - Sahuaripa

CLAVE: 26230

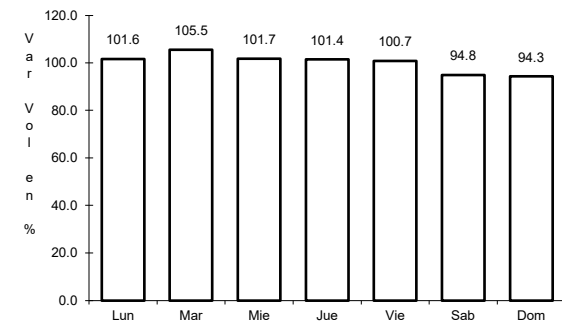
ruta: SON-020



Km: 0.00 Tipo: 3 Sent: 1



Km: 0.00 Tipo: 3 Sent: 2

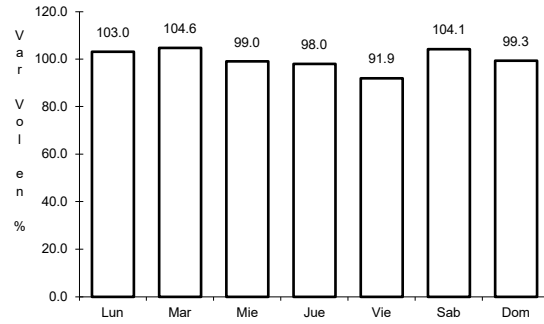


Km: 88.00 Tipo: 3 Sent: 0

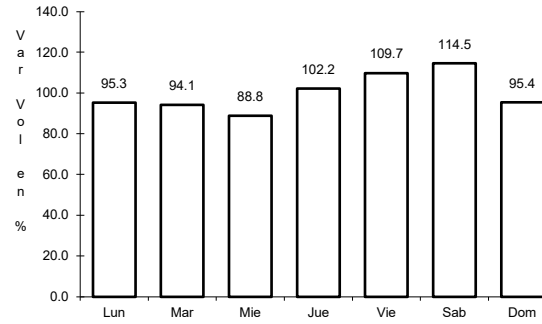
26 CARR: Hornos - San Nicolás

CLAVE: 26243

ruta: SON-012



Km: 0.00 Tipo: 3 Sent: 0

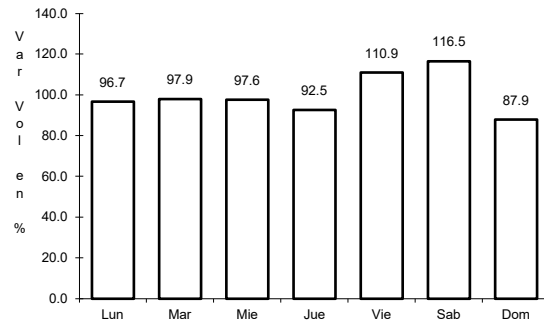


Km: 58.00 Tipo: 1 Sent: 0

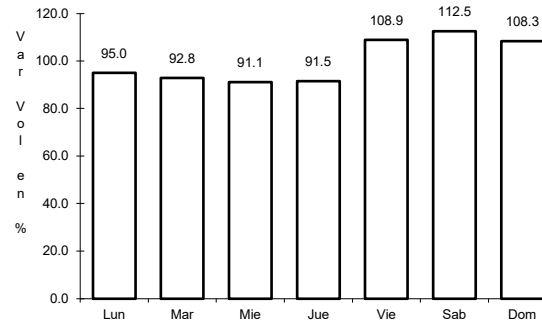
27 CARR: Huatabampo - Bacabachi

CLAVE: 26237

ruta: SON-176



Km: 0.00 Tipo: 3 Sent: 0

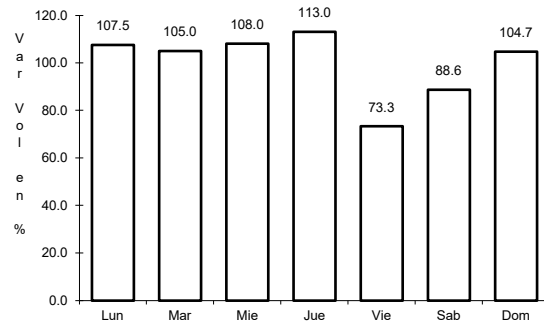


Km: 29.00 Tipo: 1 Sent: 0

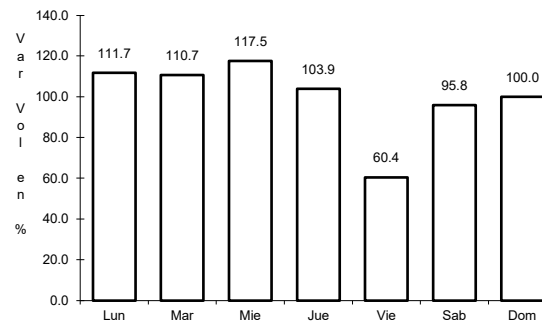
28 CARR: La Alameda - El Sahuaro

CLAVE: 26234

ruta: SON-037



Km: 0.00 Tipo: 3 Sent: 0

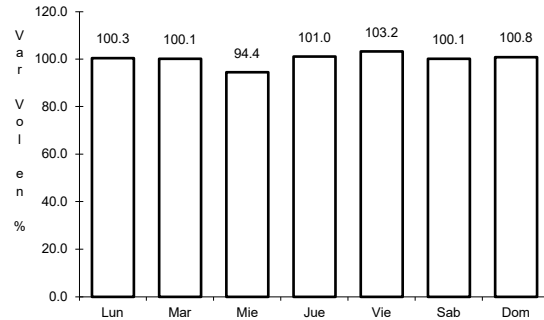


Km: 47.00 Tipo: 1 Sent: 0

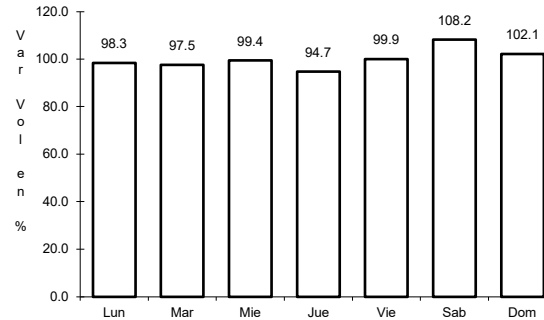
29 CARR: Mazocahui - Cananea

CLAVE: 26118

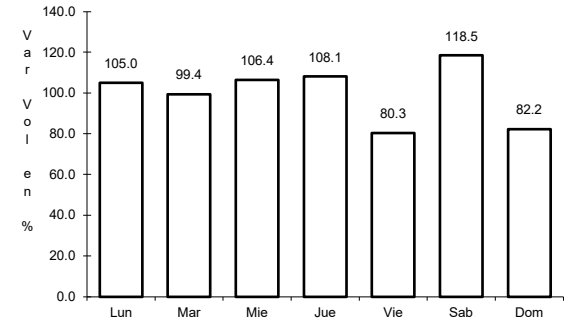
ruta: SON-118



Km: 0.00 Tipo: 3 Sent: 0



Km: 98.00 Tipo: 1 Sent: 0

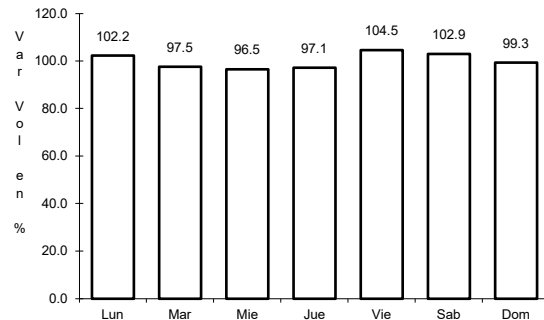


Km: 204.00 Tipo: 1 Sent: 0

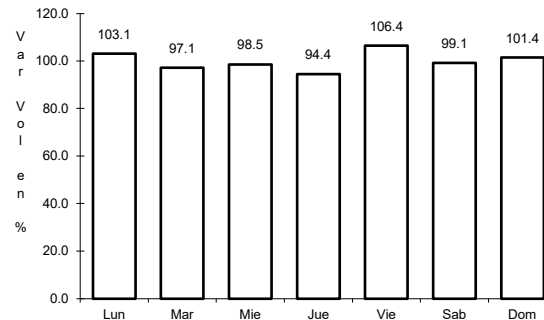
30 CARR: Navojoa - Álamos

CLAVE: 26240

ruta: SON-013



Km: 0.00 Tipo: 3 Sent: 0

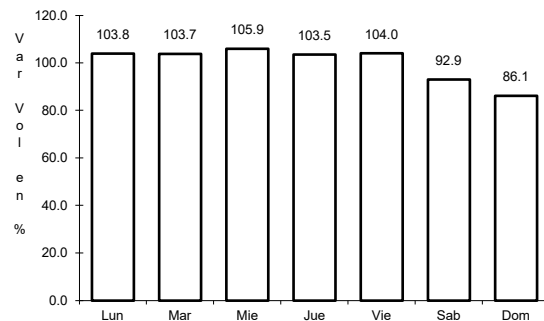


Km: 52.80 Tipo: 1 Sent: 0

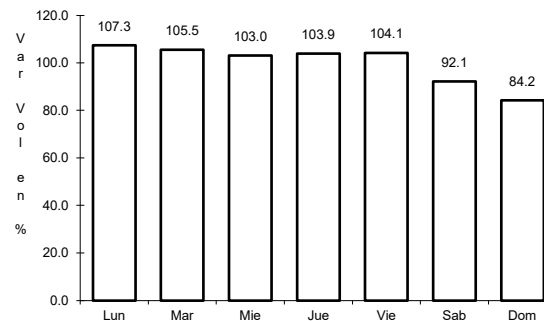
31 CARR: Navojoa - Yavaros

CLAVE: 26229

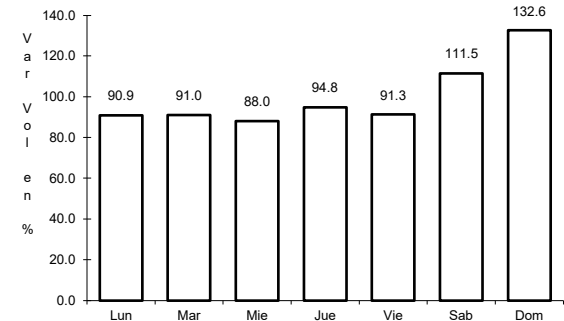
ruta: SON-056



Km: 0.00 Tipo: 3 Sent: 1



Km: 0.00 Tipo: 3 Sent: 2

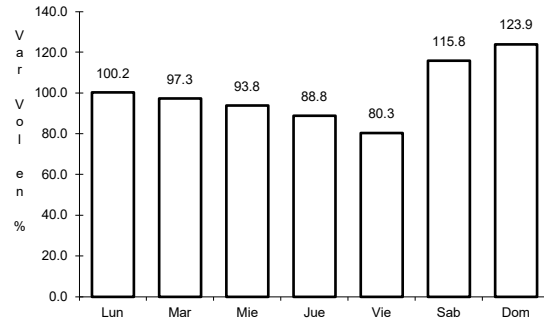


Km: 55.00 Tipo: 1 Sent: 0

32 CARR: Nogales - San Antonio

CLAVE: 26110

ruta: SON



Km: 58.00

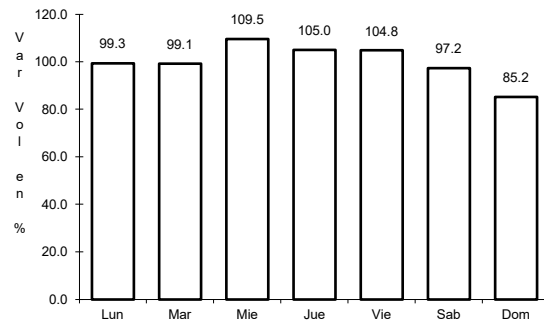
Tipo: 1

Sent: 0

33 CARR: Ramal a Aeropuerto de Guaymas

CLAVE: 26568

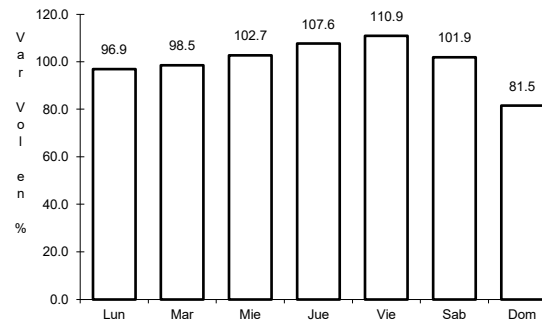
ruta: SON



Km: 0.00

Tipo: 3

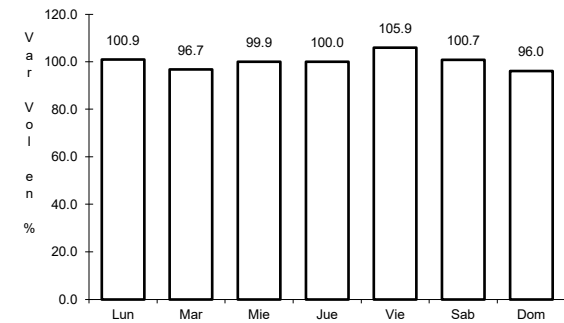
Sent: 1



Km: 0.00

Tipo: 3

Sent: 2



Km: 3.00

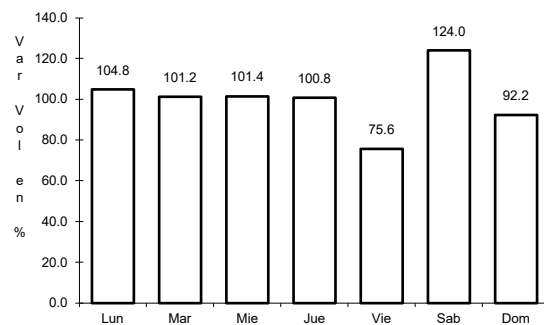
Tipo: 3

Sent: 0

34 CARR: San Luis Río Colorado - Golfo de Santa Clara

CLAVE: 26226

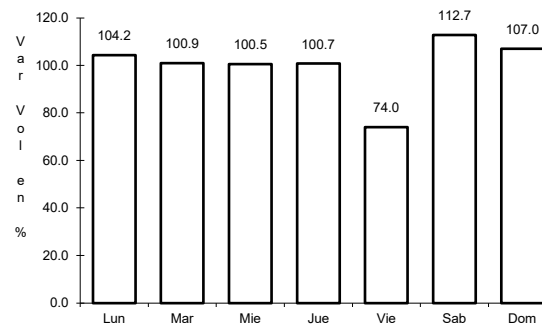
ruta: SON-040



Km: 0.00

Tipo: 3

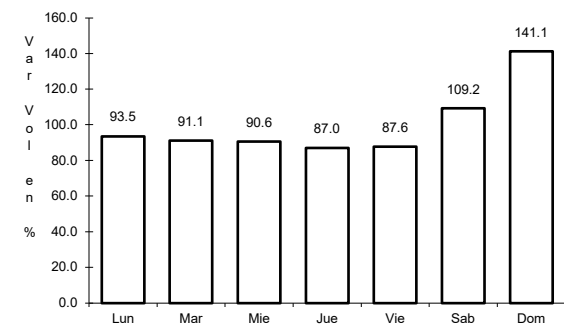
Sent: 1



Km: 0.00

Tipo: 3

Sent: 2



Km: 114.30

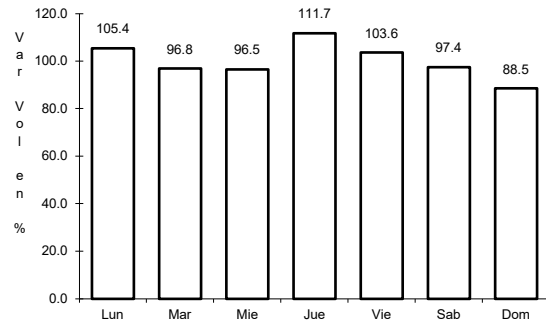
Tipo: 1

Sent: 0

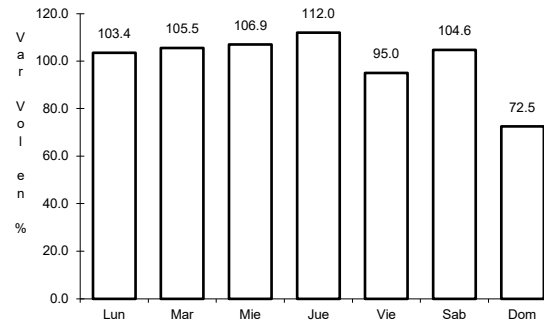
35 CARR: Sonoita - Pitiquito

CLAVE: 26022

RUTA: SON



Km: 0.00 Tipo: 3 Sent: 0

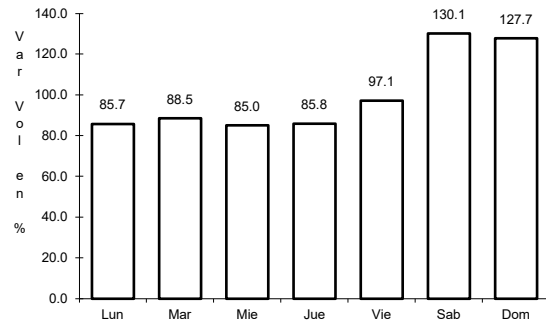


Km: 170.00 Tipo: 1 Sent: 0

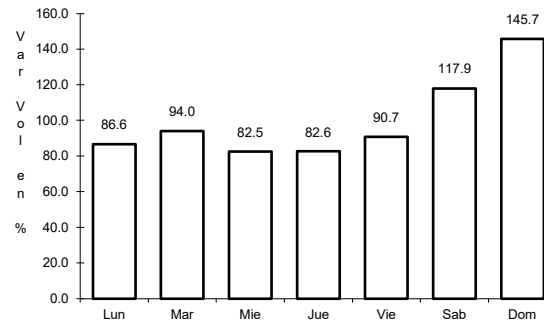
37 CARR: T. C. (Hermosillo - Nogales) - Huásabas

CLAVE: 26231

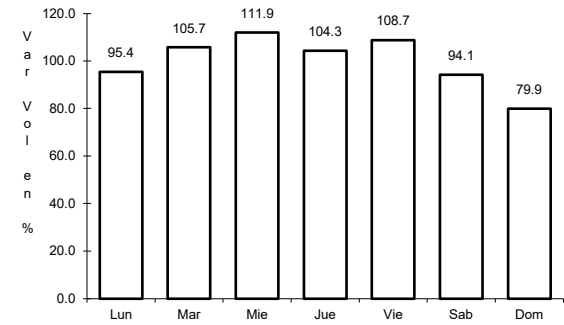
RUTA: MEX-014-SON



Km: 0.00 Tipo: 3 Sent: 1



Km: 0.00 Tipo: 3 Sent: 2



Km: 212.50 Tipo: 1 Sent: 0