

SINALOA

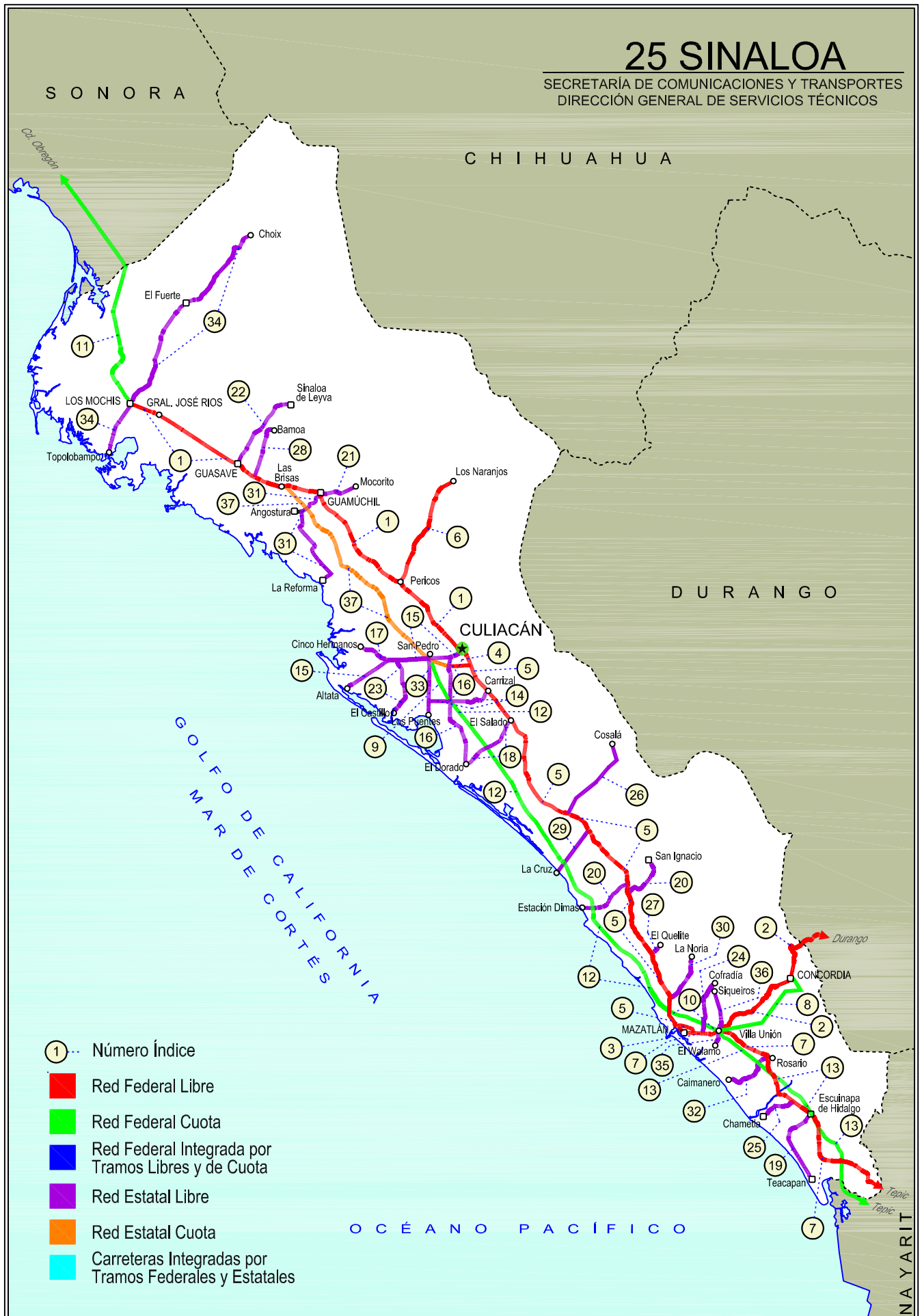
NO. INDICE CARRETERA

RUTA

NO. INDICE CARRETERA	RUTA
---RED FEDERAL LIBRE---	
1 Culiacán - Los Mochis	MEX-015
2 Durango - Villa Unión	MEX-040
3 Libramiento de Mazatlán	MEX
4 Libramiento Sur de Culiacán	MEX-015
5 Mazatlán - Culiacán	MEX-015
6 Pericos - Los Naranjos	MEX-024
7 Tepic - Mazatlán	MEX-015
--RED FEDERAL DE CUOTA--	
8 Durango - Mazatlán (Cuota)	MEX-040D
9 Libramiento de Culiacán (Cuota)	MEX-015D
10 Libramiento de Mazatlán (Cuota)	MEX-015D
11 Los Mochis - Cd. Obregón (Cuota)	MEX-015D
12 Mazatlán - Culiacán (Cuota)	MEX-015D
13 Tepic - Villa Unión (cuota)	MEX-015D
---RED ESTATAL LIBRE---	
14 Carrizal - Campo Aníbal	SIN-019
15 Culiacán - Altata	SIN-030
16 Culiacán - El Dorado	SIN-005
17 El Limoncito - Cinco Hermanos	SIN-016
18 El Salado - El Dorado	SIN-010
19 Escuinapa de Hidalgo - Teacapan	SIN-001
20 Estación Dimas - San Ignacio	SIN-006
21 Guamuchil - Mocorito	SIN-021
22 Guasave - Sinaloa de Leyva	SIN-023
23 Navolato - El Castillo	SIN-004
24 Pozole - Cofradía	SIN-080
25 Ramal a Chametla	SIN-002
26 Ramal a Cosalá	SIN-008
27 Ramal a El Quelite	SIN-060
28 Ramal a Estación Bamoá	SIN-022
29 Ramal a La Cruz	SIN
30 Ramal a La Noria	SIN
31 Ramal a La Reforma	SIN-004
32 Rosario - Caimanero	SIN-003
33 San Pedro - Campo Aníbal	SIN
34 Topolobampo - Choix	SIN-023
35 Villa Unión - El Walamo	SIN-081
36 Villa Unión - Siqueiros	SIN-063
---RED ESTATAL DE CUOTA---	
37 Culiacán - Las Brisas (Cuota)	SIN-001D

25 SINALOA

SECRETARÍA DE COMUNICACIONES Y TRANSPORTES
DIRECCIÓN GENERAL DE SERVICIOS TÉCNICOS



SINALOA

1 CARR: Culiacán - Los Mochis

CLAVE: 25502

RUTA: MEX-015

AÑO: 2020

LUGAR	ESTACION				CLASIFICACION VEHICULAR EN PORCIENTO										COORDENADAS					
	KM	TE	SC	TDPA	M	A	B	C2	C3	T3S2	T3S3	T3S2R4	OTROS	A	B	C	K'	D	LATITUD	LONGITUD
Culiacán	0.00																			
T. Der. Los Monzones	4.00	1	1	10136	1.8	84.6	1.4	5.6	2.0	2.4	1.0	0.7	0.5	86.4	1.4	12.2	0.099	0.509	24.832950	-107.431711
T. Der. Los Monzones	4.00	1	2	9763	1.8	84.4	1.4	5.7	2.0	2.4	1.0	0.7	0.6	86.2	1.4	12.4	0.090	0.509	24.832860	-107.431816
Plaza de Cobro Puente Culiacán	22.00	2	1	970	1.0	86.7	3.7	2.8	1.4	3.3	0.8	0.1	0.2	87.7	3.7	8.6	0.084	0.500	24.948949	-107.545695
Plaza de Cobro Puente Culiacán	22.00	2	2	970	1.0	86.7	3.7	2.8	1.4	3.3	0.8	0.1	0.2	87.7	3.7	8.6	0.084	0.500	24.948949	-107.545695
T. Der. Presa López Mateos	27.20	3	0	7219	2.2	81.2	1.9	5.8	2.3	2.8	1.4	1.3	1.1	83.4	1.9	14.7	0.118	0.504	24.991980	-107.565225
X. C. Pericos - Los Naranjos	43.60	3	0	4816	2.4	78.9	2.4	6.0	2.7	3.2	1.9	1.6	0.9	81.3	2.4	16.3	0.115	0.509	25.094209	-107.694825
Guamuchil	104.70	1	0	6981	2.6	81.2	2.6	6.1	1.7	3.4	0.9	0.8	0.7	83.8	2.6	13.6	0.110	0.503	25.461234	-108.077735
Guamuchil	104.70	3	1	6523	2.7	84.0	3.4	5.3	1.4	1.9	0.7	0.2	0.4	86.7	3.4	9.9	0.101	0.509	25.461235	-108.077743
Guamuchil	104.70	3	2	6282	2.8	84.0	3.4	5.3	1.3	1.9	0.7	0.2	0.4	86.8	3.4	9.8	0.082	0.509	25.460513	-108.078230
T. Izq. Aut. Culiacán - Las Brisas	121.20	1	0	5774	2.4	80.2	3.9	3.9	3.4	3.9	1.0	0.8	0.5	82.6	3.9	13.5	0.099	0.512	25.488540	-108.236739
T. Izq. Aut. Culiacán - Las Brisas	121.20	3	1	5858	1.6	67.5	5.7	5.8	2.1	12.3	1.9	2.7	0.4	69.1	5.7	25.2	0.101	0.501	25.488501	-108.236656
T. Izq. Aut. Culiacán - Las Brisas	121.20	3	2	5843	1.7	67.3	5.7	5.8	2.2	12.3	1.8	2.7	0.5	69.0	5.7	25.3	0.088	0.501	25.488409	-108.236663
T. Der. Estación Bamoa	133.17	3	1	6094	3.2	65.0	5.8	6.4	3.2	11.0	1.6	3.2	0.6	68.2	5.8	26.0	0.094	0.501	25.517073	-108.357003
T. Der. Estación Bamoa	133.17	3	2	6129	3.3	65.0	5.9	6.5	3.2	10.9	1.5	3.2	0.5	68.3	5.9	25.8	0.091	0.501	25.516965	-108.357084
Plaza de Cobro Puente Sinaloa	136.00	2	1	2112	0.3	57.7	7.5	4.0	3.7	17.6	1.7	6.6	0.9	58.0	7.5	34.5	0.084	0.500	25.512854	-108.347613
Plaza de Cobro Puente Sinaloa	136.00	2	2	2112	0.3	57.7	7.5	4.0	3.7	17.6	1.7	6.6	0.9	58.0	7.5	34.5	0.084	0.500	25.512854	-108.347613
Guasave	146.28	3	1	8382	2.1	75.8	3.5	5.2	2.3	6.5	1.3	2.8	0.5	77.9	3.5	18.6	0.093	0.526	25.579656	-108.463408
Guasave	146.28	3	2	7560	2.2	75.6	3.5	5.2	2.3	6.5	1.4	2.8	0.5	77.8	3.5	18.7	0.092	0.526	25.579537	-108.463417
T. Izq. Los Mochis (1º Acceso)	201.97	1	1	14280	1.7	69.8	3.5	9.4	3.5	7.5	1.4	2.9	0.3	71.5	3.5	25.0	0.086	0.530	25.813247	-108.959658
T. Izq. Los Mochis (1º Acceso)	201.97	1	2	12663	1.7	69.7	3.5	9.4	3.5	7.6	1.4	2.9	0.3	71.4	3.5	25.1	0.081	0.530	25.813214	-108.959768
T. Izq. Los Mochis (1º Acceso)	201.97	3	1	15483	2.9	77.9	2.4	6.8	3.0	4.7	0.9	1.3	0.1	80.8	2.4	16.8	0.086	0.527	25.813258	-108.959656
T. Izq. Los Mochis (1º Acceso)	201.97	3	2	13876	3.0	77.7	2.3	6.8	3.1	4.7	0.9	1.3	0.2	80.7	2.3	17.0	0.081	0.527	25.813215	-108.959770
T. C. Topolobampo - Choix	205.21																			

2 CARR: Durango - Villa Unión

CLAVE: 0083

RUTA: MEX-040

AÑO: 2020

LUGAR	ESTACION				CLASIFICACION VEHICULAR EN PORCIENTO										COORDENADAS					
	KM	TE	SC	TDPA	M	A	B	C2	C3	T3S2	T3S3	T3S2R4	OTROS	A	B	C	K'	D	LATITUD	LONGITUD
Durango	0.00	3	0	2880	1.2	75.5	2.0	14.1	3.7	2.1	1.2	0.1	0.1	76.7	2.0	21.3	0.079	0.500	24.010104	-104.692304
T. Der. Pino	22.86	3	0	2043	2.0	66.9	3.5	15.0	4.5	5.5	2.4	0.1	0.1	68.9	3.5	27.6	0.094	0.505	23.968012	-104.816652
T. Izq. Estación Navíos	58.42	3	0	1638	2.1	66.2	3.7	18.0	4.8	3.3	1.7	0.2	0.0	68.3	3.7	28.0	0.098	0.505	23.898120	-105.048670
Llano Grande	77.23	1	0	1759	3.6	66.8	2.8	12.4	6.4	4.5	3.0	0.4	0.1	70.4	2.8	26.8	0.085	0.509	23.866065	-105.206115
El Salto	99.76	1	0	1919	3.7	69.4	2.2	13.9	4.5	3.6	2.4	0.0	0.3	73.1	2.2	24.7	0.110	0.508	23.782016	-105.361043
El Salto	99.76	3	0	1646	3.8	73.5	1.4	16.5	2.0	1.6	1.0	0.1	0.1	77.3	1.4	21.3	0.113	0.507	23.781985	-105.361011

SINALOA

2 CARR: Durango - Villa Unión

CLAVE: 0083

RUTA: MEX-040

AÑO: 2020

LUGAR	ESTACION				CLASIFICACION VEHICULAR EN PORCIENTO										COORDENADAS					
	KM	TE	SC	TDPA	M	A	B	C2	C3	T3S2	T3S3	T3S2R4	OTROS	A	B	C	K'	D	LATITUD	LONGITUD
Las Adjuntas	119.00	1	0	1082	4.8	72.2	2.6	14.2	3.0	2.0	1.2	0.0	0.0	77.0	2.6	20.4	0.113	0.511	23.725423	-105.476899
La Ciudad	145.50	1	0	986	5.0	86.2	1.9	2.6	2.0	1.4	0.7	0.2	0.0	91.2	1.9	6.9	0.135	0.517	23.730236	-105.685011
La Ciudad	145.50	3	0	461	20.0	67.5	2.3	4.5	2.6	1.4	1.5	0.2	0.0	87.5	2.3	10.2	0.141	0.505	23.730199	-105.685026
Lim. Edos. Term. Dgo. Ppia. Sin.	198.50																			
Concordia	273.50	1	0	1526	4.1	77.6	2.8	9.6	1.1	2.8	1.1	0.9	0.0	81.7	2.8	15.5	0.113	0.502	23.286450	-106.064465
T. C. Tepic - Mazatlán	294.40	1	0	3162	4.5	70.6	5.9	10.9	3.0	3.6	1.4	0.0	0.1	75.1	5.9	19.0	0.084	0.504	23.189397	-106.209024

3 CARR: Libramiento de Mazatlán

CLAVE: 25604

RUTA: MEX

AÑO: 2020

LUGAR	ESTACION				CLASIFICACION VEHICULAR EN PORCIENTO										COORDENADAS					
	KM	TE	SC	TDPA	M	A	B	C2	C3	T3S2	T3S3	T3S2R4	OTROS	A	B	C	K'	D	LATITUD	LONGITUD
T. C. Tepic - Mazatlán	0.00	3	1	30601	5.4	81.2	1.7	8.1	1.4	1.4	0.4	0.3	0.1	86.6	1.7	11.7	0.082	0.507	23.231545	-106.389467
T. C. Tepic - Mazatlán	0.00	3	2	29607	6.3	79.3	1.7	8.8	1.6	1.5	0.4	0.3	0.1	85.6	1.7	12.7	0.087	0.507	23.231521	-106.389569
T. C. Mazatlán - Culiacán	5.40	1	1	26166	9.7	76.8	1.7	8.5	1.2	1.2	0.4	0.4	0.1	86.5	1.7	11.8	0.061	0.517	23.266348	-106.416427
T. C. Mazatlán - Culiacán	5.40	1	2	24463	9.8	77.3	1.7	8.0	1.2	1.2	0.3	0.4	0.1	87.1	1.7	11.2	0.067	0.517	23.266333	-106.416438

4 CARR: Libramiento Sur de Culiacán

CLAVE: 25500

RUTA: MEX-015

AÑO: 2020

LUGAR	ESTACION				CLASIFICACION VEHICULAR EN PORCIENTO										COORDENADAS					
	KM	TE	SC	TDPA	M	A	B	C2	C3	T3S2	T3S3	T3S2R4	OTROS	A	B	C	K'	D	LATITUD	LONGITUD
T. C. Mazatlán - Culiacán	0.00	3	1	14055	2.4	84.6	0.7	6.1	2.4	2.6	0.6	0.5	0.1	87.0	0.7	12.3	0.096	0.533	24.753818	-107.356902
T. C. Mazatlán - Culiacán	0.00	3	2	12310	2.4	84.6	0.7	6.0	2.4	2.6	0.6	0.5	0.2	87.0	0.7	12.3	0.095	0.533	24.753660	-107.356820
T. C. Culiacán - El Dorado	8.90	1	1	17293	2.6	83.6	0.7	4.9	3.7	3.2	0.6	0.6	0.1	86.2	0.7	13.1	0.107	0.533	24.745626	-107.451365
T. C. Culiacán - El Dorado	8.90	1	2	15180	2.6	83.6	0.7	4.9	3.7	3.2	0.6	0.6	0.1	86.2	0.7	13.1	0.110	0.533	24.745490	-107.451341

5 CARR: Mazatlán - Culiacán

CLAVE: 25501

RUTA: MEX-015

AÑO: 2020

LUGAR	ESTACION				CLASIFICACION VEHICULAR EN PORCIENTO										COORDENADAS					
	KM	TE	SC	TDPA	M	A	B	C2	C3	T3S2	T3S3	T3S2R4	OTROS	A	B	C	K'	D	LATITUD	LONGITUD
Mazatlán	0.00																			
T. Der. Libramiento de Mazatlán	0.82																			
T. Der. Libramiento de Mazatlán	6.40	1	1	23109	4.1	86.5	1.4	6.5	0.6	0.4	0.3	0.1	0.1	90.6	1.4	8.0	0.086	0.500	23.266355	-106.416401
T. Der. Libramiento de Mazatlán	6.40	1	2	23111	4.1	86.4	1.4	6.5	0.6	0.5	0.3	0.1	0.1	90.5	1.4	8.1	0.086	0.500	23.266368	-106.416442
T. Der. La Noria	10.92	1	0	5942	6.0	73.0	2.3	9.7	2.8	4.5	1.3	0.2	0.2	79.0	2.3	18.7	0.103	0.502	23.349773	-106.413733
T. Der. La Noria	10.92	3	0	4025	5.7	70.0	3.0	11.2	2.8	5.4	1.5	0.2	0.2	75.7	3.0	21.3	0.084	0.502	23.349778	-106.413734

SINALOA

5 CARR: Mazatlán - Culiacán

CLAVE: 25501

RUTA: MEX-015

AÑO: 2020

LUGAR	ESTACION				CLASIFICACION VEHICULAR EN PORCIENTO										COORDENADAS					
	KM	TE	SC	TDPA	M	A	B	C2	C3	T3S2	T3S3	T3S2R4	OTROS	A	B	C	K'	D	LATITUD	LONGITUD
T. Izq. Playa Los Cerritos	11.08	3	0	3710	5.4	70.9	3.2	9.5	3.0	6.0	1.4	0.3	0.3	76.3	3.2	20.5	0.094	0.508	23.359203	-106.417903
T. Der. El Quelite	33.00	1	0	2909	5.6	73.2	3.4	9.9	2.5	4.0	1.3	0.0	0.1	78.8	3.4	17.8	0.098	0.501	23.531709	-106.504214
T. Der. El Quelite	33.00	3	0	2335	4.7	67.3	7.0	9.8	2.0	7.9	1.3	0.0	0.0	72.0	7.0	21.0	0.077	0.515	23.531715	-106.504216
X. C. Estación Dimas - San Ignacio	66.77	1	0	2186	5.2	66.7	4.3	10.1	3.7	8.4	1.6	0.0	0.0	71.9	4.3	23.8	0.077	0.510	23.790541	-106.611903
X. C. Estación Dimas - San Ignacio	66.77	3	0	2886	5.5	82.1	2.5	4.1	2.8	2.6	0.4	0.0	0.0	87.6	2.5	9.9	0.073	0.506	23.790547	-106.611905
T. Izq. Estación Dimas	73.96	3	0	2479	5.1	66.5	3.6	9.4	4.1	9.4	1.9	0.0	0.0	71.6	3.6	24.8	0.098	0.521	23.839566	-106.613846
T. Der. Elota	91.92	3	0	2267	4.9	63.7	4.0	10.2	5.0	9.7	2.5	0.0	0.0	68.6	4.0	27.4	0.071	0.516	23.962064	-106.721117
T. Izq. La Cruz	105.21	3	0	3421	4.3	75.7	2.5	5.9	4.2	6.2	1.2	0.0	0.0	80.0	2.5	17.5	0.085	0.500	24.055252	-106.795793
El Salado	175.24	1	0	5901	5.0	76.3	2.5	9.4	1.8	3.9	0.8	0.1	0.2	81.3	2.5	16.2	0.096	0.503	24.508162	-107.161348
El Salado	175.24	3	0	6588	3.6	80.4	1.5	7.4	2.5	3.6	1.0	0.0	0.0	84.0	1.5	14.5	0.081	0.511	24.508175	-107.161349
T. Izq. Libramiento de Culiacán	210.40	1	1	8080	2.7	85.6	0.7	6.3	2.0	1.7	0.8	0.1	0.1	88.3	0.7	11.0	0.105	0.503	24.753686	-107.356675
T. Izq. Libramiento de Culiacán	210.40	1	2	8168	2.9	85.0	0.8	6.9	2.2	1.7	0.4	0.1	0.0	87.9	0.8	11.3	0.097	0.503	24.753667	-107.356769
Culiacán	215.30																			

6 CARR: Pericos - Los Naranjos

CLAVE: 25598

RUTA: MEX-024

AÑO: 2020

LUGAR	ESTACION				CLASIFICACION VEHICULAR EN PORCIENTO										COORDENADAS					
	KM	TE	SC	TDPA	M	A	B	C2	C3	T3S2	T3S3	T3S2R4	OTROS	A	B	C	K'	D	LATITUD	LONGITUD
Pericos	0.00	3	0	2742	12.6	74.6	0.9	9.1	1.9	0.5	0.1	0.2	0.1	87.2	0.9	11.9	0.105	0.512	25.091369	-107.684680
Badiraguato	37.50	1	0	2579	12.9	73.9	1.0	9.2	2.0	0.5	0.1	0.3	0.1	86.8	1.0	12.2	0.109	0.511	25.361320	-107.553320
Naranjos	66.00																			

7 CARR: Tepic - Mazatlán

CLAVE: 00499

RUTA: MEX-015

AÑO: 2020

LUGAR	ESTACION				CLASIFICACION VEHICULAR EN PORCIENTO										COORDENADAS					
	KM	TE	SC	TDPA	M	A	B	C2	C3	T3S2	T3S3	T3S2R4	OTROS	A	B	C	K'	D	LATITUD	LONGITUD
Tepic (Baja)	0.00	3	1	7772	2.4	87.6	0.2	7.3	0.2	0.5	1.1	0.3	0.4	90.0	0.2	9.8	0.074	0.508	21.511070	-104.904507
Tepic (Alta)	0.00	3	1	10494	2.5	91.9	0.2	0.9	0.1	1.3	2.5	0.4	0.2	94.4	0.2	5.4	0.069	0.513	21.511117	-104.904466
Tepic (Baja)	0.00	3	2	7522	2.4	87.3	0.2	7.4	0.2	0.6	1.1	0.4	0.4	89.7	0.2	10.1	0.077	0.508	21.511069	-104.904502
Tepic (Alta)	0.00	3	2	11073	2.5	92.0	0.2	0.9	0.1	1.3	2.5	0.3	0.2	94.5	0.2	5.3	0.078	0.513	21.511117	-104.904461
T. Izq. Libramiento de Tepic (Alta)	2.56	1	1	8494	4.6	92.8	0.1	2.0	0.2	0.1	0.0	0.1	0.1	97.4	0.1	2.5	0.075	0.531	21.522536	-104.926441
T. Izq. Libramiento de Tepic (Baja)	2.56	1	1	7393	9.5	80.0	0.8	8.2	1.1	0.2	0.1	0.1	0.0	89.5	0.8	9.7	0.098	0.548	21.522650	-104.926513
T. Izq. Libramiento de Tepic (Alta)	2.56	1	2	7503	5.3	92.3	0.0	2.1	0.2	0.0	0.0	0.1	0.0	97.6	0.0	2.4	0.078	0.531	21.522651	-104.926515
T. Izq. Libramiento de Tepic (Baja)	2.56	1	2	8980	6.4	82.5	1.0	8.6	1.0	0.3	0.1	0.1	0.0	88.9	1.0	10.1	0.079	0.548	21.522539	-104.926442
T. Izq. Aut. Tepic - Ent. San Blas (Cuota)	3.70	3	0	7545	6.7	76.0	1.9	8.6	2.3	3.0	1.0	0.2	0.3	82.7	1.9	15.4	0.147	0.509	21.530869	-104.931415

SINALOA

7 CARR: Tepic - Mazatlán

CLAVE: 00499

RUTA: MEX-015

AÑO: 2020

LUGAR	ESTACION				CLASIFICACION VEHICULAR EN PORCIENTO										COORDENADAS					
	KM	TE	SC	TDPA	M	A	B	C2	C3	T3S2	T3S3	T3S2R4	OTROS	A	B	C	K'	D	LATITUD	LONGITUD
Los Otates	19.80	3	0	3403	3.1	67.0	3.6	7.7	6.5	7.3	2.7	1.0	1.1	70.1	3.6	26.3	0.071	0.519	21.632053	-104.968237
T. Izq. Jumatán	28.52	1	0	3506	3.8	69.5	3.3	7.3	4.6	7.0	2.9	0.8	0.8	73.3	3.3	23.4	0.072	0.514	21.666712	-105.027173
T. Izq. Jumatán	28.52	3	1	5992	1.9	68.1	4.8	7.0	2.9	10.7	1.9	1.9	0.8	70.0	4.8	25.2	0.077	0.535	21.666807	-105.027157
T. Izq. Jumatán	28.52	3	2	6892	1.8	65.1	4.1	8.5	3.0	13.1	1.6	2.0	0.8	66.9	4.1	29.0	0.099	0.535	21.666761	-105.027301
T. Izq. San Blas	33.54	1	1	4577	2.3	55.2	5.5	9.7	2.7	16.7	3.4	3.7	0.8	57.5	5.5	37.0	0.102	0.529	21.690657	-105.048913
T. Izq. San Blas	33.54	1	2	4069	2.5	51.6	5.7	9.5	2.9	20.0	2.9	4.2	0.7	54.1	5.7	40.2	0.075	0.529	21.690512	-105.049733
T. Izq. San Blas	33.54	3	1	6138	2.5	64.8	4.9	7.5	1.6	12.3	2.5	3.2	0.7	67.3	4.9	27.8	0.083	0.505	21.694085	-105.050468
T. Izq. San Blas	33.54	3	2	6007	2.8	62.9	4.5	8.6	2.1	14.2	1.6	2.7	0.6	65.7	4.5	29.8	0.098	0.505	21.694073	-105.050632
T. Izq. Villa Hidalgo	48.12	1	0	6701	2.3	75.6	2.1	7.6	3.2	5.5	2.4	0.7	0.6	77.9	2.1	20.0	0.085	0.522	21.807763	-105.102995
T. Izq. Villa Hidalgo	48.12	3	0	6001	7.2	65.3	3.2	9.5	4.4	7.3	2.2	0.5	0.4	72.5	3.2	24.3	0.083	0.502	21.808284	-105.103185
T. Izq. Santiago Ixcuintla	56.42	1	0	6462	2.3	70.2	4.5	10.1	3.6	6.1	2.3	0.4	0.5	72.5	4.5	23.0	0.084	0.505	21.855524	-105.154527
T. Izq. Santiago Ixcuintla	56.42	3	0	5976	3.5	70.8	3.1	7.8	4.3	7.1	2.5	0.4	0.5	74.3	3.1	22.6	0.085	0.521	21.855525	-105.154539
T. Izq. Tuxpan	70.60	1	0	6627	4.8	69.0	3.5	10.4	3.2	6.1	2.1	0.4	0.5	73.8	3.5	22.7	0.088	0.519	21.945632	-105.220361
T. Izq. Tuxpan	70.60	3	0	6451	4.7	69.0	3.6	10.3	3.8	6.1	1.7	0.4	0.4	73.7	3.6	22.7	0.078	0.514	21.946369	-105.220648
T. Der. Rosamorada	90.70	3	0	5158	7.6	57.3	5.6	9.0	4.5	12.0	3.0	0.5	0.5	64.9	5.6	29.5	0.093	0.510	22.117895	-105.216921
Tierra Generosa	110.40	1	0	2635	3.0	49.9	7.0	9.6	7.1	17.1	4.1	1.1	1.1	52.9	7.0	40.1	0.086	0.519	22.297930	-105.275213
T. Der. Acaponeta	136.52	1	0	6845	6.7	69.8	2.8	9.9	2.3	6.1	1.6	0.4	0.4	76.5	2.8	20.7	0.078	0.505	22.489989	-105.383424
T. Der. Acaponeta	136.52	3	0	3584	5.0	61.3	4.3	9.4	4.6	11.0	2.8	0.8	0.8	66.3	4.3	29.4	0.078	0.502	22.489672	-105.383357
Lim. Edos. Term. Nay. Ppia. Sin.	144.60																			
T. Der. Villa Unión (Cuota)	193.60	1	1	3313	4.4	77.3	2.4	6.8	3.1	3.6	1.6	0.4	0.4	81.7	2.4	15.9	0.082	0.507	22.807719	-105.725065
T. Der. Villa Unión (Cuota)	193.60	1	2	3411	4.2	77.6	2.3	6.9	3.1	3.7	1.4	0.4	0.4	81.8	2.3	15.9	0.097	0.507	22.807740	-105.725402
Escuinapa de Hidalgo	200.00	1	0	3650	8.5	66.8	3.1	8.2	5.0	5.2	1.8	0.7	0.7	75.3	3.1	21.6	0.084	0.500	22.834927	-105.776093
Escuinapa de Hidalgo	200.00	3	0	4392	7.5	65.0	4.5	8.7	4.4	7.0	1.8	0.6	0.5	72.5	4.5	23.0	0.091	0.514	22.834735	-105.777437
Rosario	221.71	1	0	7249	10.2	79.9	2.4	2.9	1.9	1.5	0.6	0.0	0.6	90.1	2.4	7.5	0.099	0.513	23.000271	-105.861291
Rosario	221.71	3	0	3673	6.6	73.6	2.6	9.9	4.2	1.7	0.3	1.0	0.1	80.2	2.6	17.2	0.078	0.505	23.000269	-105.861296
X. C. Durango - Mazatlán (Cuota)	265.20	1	0	4151	5.7	74.9	2.9	8.4	2.7	3.8	1.0	0.3	0.3	80.6	2.9	16.5	0.087	0.502	23.189905	-106.179466
T. Der. Durango	267.99	1	0	5116	3.9	76.4	2.7	8.7	2.2	4.2	1.2	0.4	0.3	80.3	2.7	17.0	0.099	0.524	23.189328	-106.209046
T. Der. Durango	267.99	3	1	6692	12.3	70.2	2.6	7.1	2.4	3.3	0.9	0.7	0.5	82.5	2.6	14.9	0.106	0.515	23.189336	-106.209165
T. Der. Durango	267.99	3	2	6290	10.9	72.5	2.5	6.9	1.9	3.1	1.0	0.8	0.4	83.4	2.5	14.1	0.093	0.515	23.189216	-106.209178
Villa Unión	269.52	3	1	8396	9.8	73.9	2.5	7.8	1.8	2.5	0.7	0.8	0.2	83.7	2.5	13.8	0.092	0.521	23.189007	-106.218732
Villa Unión	269.52	3	2	9117	10.0	75.2	2.2	6.6	2.4	1.9	0.8	0.5	0.4	85.2	2.2	12.6	0.115	0.521	23.188928	-106.218803
T. Der. Libramiento de Mazatlán	288.87	1	1	18656	4.7	80.6	1.8	8.2	1.4	1.9	0.6	0.7	0.1	85.3	1.8	12.9	0.099	0.519	23.230886	-106.389061
T. Der. Libramiento de Mazatlán	288.87	1	2	20098	4.7	79.1	1.9	9.4	1.6	1.9	0.6	0.7	0.1	83.8	1.9	14.3	0.087	0.519	23.230805	-106.389175
Mazatlán	292.00																			

SINALOA

8 CARR: Durango - Mazatlán (Cuota)

CLAVE: 00084

RUTA: MEX-040D

AÑO: 2020

LUGAR	ESTACION				CLASIFICACION VEHICULAR EN PORCIENTO										COORDENADAS					
	KM	TE	SC	TDPA	M	A	B	C2	C3	T3S2	T3S3	T3S2R4	OTROS	A	B	C	K'	D	LATITUD	LONGITUD
Libramiento de Durango	20.50	3	0	2626	5.5	60.9	5.7	5.3	2.7	10.5	2.4	6.7	0.3	66.4	5.7	27.9	0.118	0.509	24.010010	-104.727533
Plaza de Cobro Durango	22.20	2	0	2965	0.8	67.9	2.6	2.9	3.1	11.9	1.9	7.8	1.1	68.7	2.6	28.7	0.108	0.500	24.005080	-104.734540
Ent. Otinapa	44.50	1	0	2315	2.5	63.8	5.7	5.3	2.2	10.2	2.0	7.0	1.3	66.3	5.7	28.0	0.114	0.511	23.980380	-104.954162
Plaza de Cobro Llano Grande	73.80	2	0	2588	0.8	63.9	2.7	3.3	3.4	13.7	2.0	9.1	1.1	64.7	2.7	32.6	0.108	0.500	23.864514	-105.233202
T. Der. El Salto	104.20	1	0	1683	3.9	54.6	6.1	6.7	2.7	13.6	3.3	8.8	0.3	58.5	6.1	35.4	0.095	0.506	23.759376	-105.428195
T. Der. El Salto	104.20	3	0	2649	3.8	53.3	6.3	6.7	2.8	14.5	3.5	8.8	0.3	57.1	6.3	36.6	0.090	0.507	23.759346	-105.428220
T. Der. La Campana	117.00	3	0	2159	4.0	58.3	5.9	6.3	2.7	10.2	3.3	9.1	0.2	62.3	5.9	31.8	0.102	0.501	23.725415	-105.476907
Lim. Edos. Term. Dgo. Ppia. Sin.	157.40																			
Entronque Santa Lucia	172.20	3	0	2288	4.4	59.1	5.5	4.4	2.0	12.7	3.3	8.2	0.4	63.5	5.5	31.0	0.103	0.503	23.455472	-105.843495
Concordia	188.35	1	0	2324	4.7	60.5	5.7	4.6	2.2	11.4	2.9	7.0	1.0	65.2	5.7	29.1	0.102	0.505	23.257482	-106.051412
Concordia	188.35	3	0	1694	4.1	57.3	12.4	10.2	4.1	6.7	2.9	1.7	0.6	61.4	12.4	26.2	0.115	0.503	23.257479	-106.051418
Villa Unión	208.35	1	0	1705	4.4	54.9	13.7	10.6	4.1	6.9	3.0	2.0	0.4	59.3	13.7	27.0	0.120	0.505	23.190681	-106.183691

9 CARR: Libramiento de Culiacán (Cuota)

CLAVE:

RUTA: MEX-015D

AÑO: 2020

LUGAR	ESTACION				CLASIFICACION VEHICULAR EN PORCIENTO										COORDENADAS					
	KM	TE	SC	TDPA	M	A	B	C2	C3	T3S2	T3S3	T3S2R4	OTROS	A	B	C	K'	D	LATITUD	LONGITUD
T. C. Mazatlán - Culiacán (Cuota)	181.80																			
Plaza de Cobro San Pedro	197.10	2	1	1555	0.2	37.1	2.3	3.5	5.8	33.8	4.4	10.8	2.1	37.3	2.3	60.4	0.101	0.500	24.693361	-107.525419
Plaza de Cobro San Pedro	197.10	2	2	1555	0.2	37.1	2.3	3.5	5.8	33.8	4.4	10.8	2.1	37.3	2.3	60.4	0.101	0.500	24.693361	-107.525419
T. C. Culiacán - Las Brisas (Cuota)	203.30	1	1	1440	3.6	39.8	6.0	6.8	3.4	27.7	4.7	7.5	0.5	43.4	6.0	50.6	0.095	0.500	24.747462	-107.566095
T. C. Culiacán - Las Brisas (Cuota)	203.30	1	2	1437	4.2	37.8	5.8	6.5	3.7	29.8	4.9	6.8	0.5	42.0	5.8	52.2	0.107	0.500	24.747432	-107.566237

10 CARR: Libramiento de Mazatlán (Cuota)

CLAVE:

RUTA: MEX-015D

AÑO: 2020

LUGAR	ESTACION				CLASIFICACION VEHICULAR EN PORCIENTO										COORDENADAS					
	KM	TE	SC	TDPA	M	A	B	C2	C3	T3S2	T3S3	T3S2R4	OTROS	A	B	C	K'	D	LATITUD	LONGITUD
Villa Unión (Ent. Caleritas)	0.00	3	1	2548	1.3	40.6	8.1	8.1	2.7	25.4	4.6	8.2	1.0	41.9	8.1	50.0	0.089	0.508	23.200555	-106.204333
Villa Unión (Ent. Caleritas)	0.00	3	2	2465	1.2	40.7	8.2	8.1	2.7	25.3	4.6	8.2	1.0	41.9	8.2	49.9	0.115	0.508	23.200389	-106.204553
Plaza de Cobro El Vainillo	6.00	2	1	2770	0.7	46.2	3.8	3.4	4.1	28.1	3.5	8.7	1.5	46.9	3.8	49.3	0.090	0.500	23.216186	-106.260339
Plaza de Cobro El Vainillo	6.00	2	2	2770	0.7	46.2	3.8	3.4	4.1	28.1	3.5	8.7	1.5	46.9	3.8	49.3	0.090	0.500	23.216186	-106.260339
T. Izq. Aeropuerto Internacional de Mazatlán	6.45	3	1	3046	2.9	43.2	8.3	7.8	2.9	24.5	3.3	6.2	0.9	46.1	8.3	45.6	0.082	0.502	23.218514	-106.264087
T. Izq. Aeropuerto Internacional de Mazatlán	6.45	3	2	3016	3.0	42.9	8.2	7.8	3.1	24.5	3.5	6.1	0.9	45.9	8.2	45.9	0.099	0.502	23.218394	-106.264125
T. C. Mazatlán - Culiacán	28.60	1	1	4232	5.4	59.3	4.7	3.5	2.8	17.2	1.6	4.5	1.0	64.7	4.7	30.6	0.083	0.501	23.308052	-106.402099
T. C. Mazatlán - Culiacán	28.60	1	2	4211	5.5	59.4	5.4	3.3	2.5	17.2	1.5	4.2	1.0	64.9	5.4	29.7	0.090	0.501	23.307933	-106.402097

SINALOA

10 CARR: Libramiento de Mazatlán (Cuota)

CLAVE:

RUTA: MEX-015D

AÑO: 2020

LUGAR	ESTACION				CLASIFICACION VEHICULAR EN PORCIENTO										COORDENADAS					
	KM	TE	SC	TDPA	M	A	B	C2	C3	T3S2	T3S3	T3S2R4	OTROS	A	B	C	K'	D	LATITUD	LONGITUD
T. C. Mazatlán - Culiacán	28.60	3	1	3479	5.4	59.2	5.2	3.4	2.6	17.2	1.5	4.4	1.1	64.6	5.2	30.2	0.085	0.512	23.308049	-106.402105
T. C. Mazatlán - Culiacán	28.60	3	2	3644	5.4	59.5	5.1	3.3	2.7	17.2	1.6	4.2	1.0	64.9	5.1	30.0	0.095	0.512	23.307931	-106.402106

11 CARR: Los Mochis - Cd. Obregón (Cuota)

CLAVE: 26444

RUTA: MEX-015D

AÑO: 2020

LUGAR	ESTACION				CLASIFICACION VEHICULAR EN PORCIENTO										COORDENADAS					
	KM	TE	SC	TDPA	M	A	B	C2	C3	T3S2	T3S3	T3S2R4	OTROS	A	B	C	K'	D	LATITUD	LONGITUD
T. C. Topolobampo - Choix	0.00	3	1	7732	3.1	69.3	3.5	9.3	2.2	7.4	1.5	3.2	0.5	72.4	3.5	24.1	0.084	0.504	25.827951	-108.968753
T. C. Topolobampo - Choix	0.00	3	2	7871	3.0	69.3	3.5	9.3	2.2	7.5	1.5	3.2	0.5	72.3	3.5	24.2	0.089	0.504	25.827849	-108.968842
T. Izq. Ahome	17.13	3	1	7399	3.0	68.4	3.6	9.5	2.1	7.9	1.5	3.5	0.5	71.4	3.6	25.0	0.082	0.505	25.942753	-109.052413
T. Izq. Ahome	17.13	3	2	7558	2.9	68.3	3.7	9.5	2.2	7.9	1.6	3.4	0.5	71.2	3.7	25.1	0.085	0.505	25.942711	-109.052616
T. Izq. Coahuilampo	19.00	1	1	6600	2.8	66.9	4.5	9.2	2.1	8.1	1.5	4.5	0.4	69.7	4.5	25.8	0.083	0.505	25.960132	-109.053114
T. Izq. Coahuilampo	19.00	1	2	6732	2.8	66.7	4.5	9.2	2.1	8.2	1.6	4.5	0.4	69.5	4.5	26.0	0.087	0.505	25.960172	-109.053315
T. Izq. Coahuilampo	19.00	3	1	4665	2.9	67.1	4.6	9.0	2.2	8.5	1.5	3.7	0.5	70.0	4.6	25.4	0.084	0.507	25.960130	-109.053118
T. Izq. Coahuilampo	19.00	3	2	4794	2.9	67.0	4.5	9.1	2.2	8.4	1.5	3.9	0.5	69.9	4.5	25.6	0.091	0.507	25.960177	-109.053311
Poblado Chico	50.00	3	1	4042	2.5	59.7	5.7	7.2	2.2	12.8	4.1	4.9	0.9	62.2	5.7	32.1	0.085	0.512	26.222070	-109.056041
Poblado Chico	50.00	3	2	4233	2.5	59.9	5.8	7.2	2.3	12.7	3.9	4.8	0.9	62.4	5.8	31.8	0.094	0.512	26.222110	-109.056258
T. Der. El Fuerte	54.80	1	1	4660	2.1	66.0	4.5	6.5	2.4	9.1	4.3	3.9	1.2	68.1	4.5	27.4	0.086	0.510	26.266583	-109.043383
T. Der. El Fuerte	54.80	1	2	4474	2.2	65.9	4.5	6.5	2.3	9.3	4.3	3.8	1.2	68.1	4.5	27.4	0.097	0.510	26.266629	-109.043629
T. Der. El Fuerte	54.80	3	1	4271	2.2	66.4	4.5	6.4	2.1	9.3	4.2	3.9	1.0	68.6	4.5	26.9	0.090	0.504	26.266589	-109.043379
T. Der. El Fuerte	54.80	3	2	4339	2.2	66.1	4.6	6.5	2.2	9.2	4.2	4.0	1.0	68.3	4.6	27.1	0.086	0.504	26.266638	-109.043629
Lim. Edos. Term. Sin. Ppia. Son.	69.80																			
T. Izq. Huatabampo	128.50	1	1	3506	1.2	46.3	7.8	8.7	3.1	21.9	3.0	7.3	0.7	47.5	7.8	44.7	0.089	0.513	26.838762	-109.367135
T. Izq. Huatabampo	128.50	1	2	3688	1.3	46.1	7.8	8.7	3.2	22.0	3.1	7.3	0.5	47.4	7.8	44.8	0.110	0.513	26.838758	-109.367451
Plaza de Cobro Estacion Don (La Jaula)	129.90	2	1	3032	0.0	81.4	2.0	1.0	1.3	9.1	0.6	4.3	0.3	81.4	2.0	16.6	0.086	0.500	26.849735	-109.373267
Plaza de Cobro Estacion Don (La Jaula)	129.90	2	2	3032	0.0	81.4	2.0	1.0	1.3	9.1	0.6	4.3	0.3	81.4	2.0	16.6	0.086	0.500	26.849735	-109.373267
Navojoa	155.00	1	1	5490	3.2	64.2	4.3	10.6	2.2	10.0	1.6	3.6	0.3	67.4	4.3	28.3	0.085	0.501	27.081431	-109.444806
Navojoa	155.00	1	2	5461	2.7	61.6	4.4	11.0	2.4	11.8	1.8	4.0	0.3	64.3	4.4	31.3	0.083	0.501	27.081424	-109.444892
Navojoa	155.00	3	1	6420	15.5	71.5	3.5	7.3	0.8	0.7	0.2	0.4	0.1	87.0	3.5	9.5	0.087	0.506	27.081435	-109.444806
Navojoa	155.00	3	2	6280	13.9	71.0	3.9	8.9	0.9	0.7	0.2	0.4	0.1	84.9	3.9	11.2	0.095	0.506	27.081434	-109.444892
T. Izq. Villa Juárez	167.25	1	1	5486	3.2	63.7	4.2	10.2	2.4	10.9	1.5	3.6	0.3	66.9	4.2	28.9	0.085	0.503	27.154667	-109.506429
T. Izq. Villa Juárez	167.25	1	2	5552	2.6	61.1	4.6	11.7	2.4	11.6	1.8	3.8	0.4	63.7	4.6	31.7	0.087	0.503	27.154375	-109.506682
T. Izq. Villa Juárez	167.25	3	1	5128	3.2	64.3	4.3	10.5	2.2	10.3	1.5	3.4	0.3	67.5	4.3	28.2	0.088	0.508	27.154671	-109.506432
T. Izq. Villa Juárez	167.25	3	2	5286	2.7	61.6	4.4	11.2	2.5	11.5	1.8	4.0	0.3	64.3	4.4	31.3	0.085	0.508	27.154374	-109.506686
Plaza de Cobro Fundición	195.80	2	1	3892	0.0	84.5	2.1	1.0	1.0	7.2	0.4	3.5	0.3	84.5	2.1	13.4	0.086	0.500	27.320494	-109.719697

SINALOA

11 CARR: Los Mochis - Cd. Obregón (Cuota)

CLAVE: 26444

RUTA: MEX-015D

AÑO: 2020

LUGAR	ESTACION				CLASIFICACION VEHICULAR EN PORCIENTO										COORDENADAS					
	KM	TE	SC	TDPA	M	A	B	C2	C3	T3S2	T3S3	T3S2R4	OTROS	A	B	C	K'	D	LATITUD	LONGITUD
Plaza de Cobro Fundición	195.80	2	2	3892	0.0	84.5	2.1	1.0	1.0	7.2	0.4	3.5	0.3	84.5	2.1	13.4	0.086	0.500	27.320494	-109.719697
T. Der. Fundición	196.30	1	1	4597	1.1	67.7	4.5	5.7	2.4	12.3	1.7	4.1	0.5	68.8	4.5	26.7	0.095	0.511	27.330779	-109.732863
T. Der. Fundición	196.30	1	2	4795	0.8	63.3	5.1	6.5	2.8	14.7	1.8	4.6	0.4	64.1	5.1	30.8	0.086	0.511	27.329898	-109.733806
T. Der. Libramiento de Cd. Obregón (Cuota)	203.52	1	1	5742	1.1	66.9	4.4	6.0	2.5	13.0	1.6	4.1	0.4	68.0	4.4	27.6	0.094	0.546	27.372945	-109.787387
T. Der. Libramiento de Cd. Obregón (Cuota)	203.52	1	2	6909	0.8	65.8	4.7	6.3	2.6	13.4	1.7	4.3	0.4	66.6	4.7	28.7	0.088	0.546	27.372616	-109.787398
Cd. Obregón	222.70	1	1	10115	12.6	66.0	3.7	6.6	3.1	5.1	1.3	1.5	0.1	78.6	3.7	17.7	0.091	0.522	27.482407	-109.929964
Cd. Obregón	222.70	1	2	9246	12.0	65.7	3.8	7.0	3.3	5.6	1.4	1.1	0.1	77.7	3.8	18.5	0.100	0.522	27.482210	-109.930156

12 CARR: Mazatlán - Culiacán (Cuota)

CLAVE: 25045

RUTA: MEX-015D

AÑO: 2020

LUGAR	ESTACION				CLASIFICACION VEHICULAR EN PORCIENTO										COORDENADAS					
	KM	TE	SC	TDPA	M	A	B	C2	C3	T3S2	T3S3	T3S2R4	OTROS	A	B	C	K'	D	LATITUD	LONGITUD
Ent. Venadillo	0.00	3	1	4103	2.9	49.2	7.0	7.4	3.8	19.9	3.1	6.2	0.5	52.1	7.0	40.9	0.104	0.501	23.290774	-106.406791
Ent. Venadillo	0.00	3	2	4118	2.6	45.4	8.0	8.0	4.1	21.6	3.5	6.3	0.5	48.0	8.0	44.0	0.121	0.501	23.290720	-106.406806
Plaza de Cobro Mármol	25.15	3	1	3923	1.7	45.7	8.5	6.7	2.4	23.8	3.7	6.9	0.6	47.4	8.5	44.1	0.113	0.501	23.471253	-106.569427
Plaza de Cobro Mármol	25.15	3	2	3946	1.9	42.2	9.5	7.3	2.6	24.3	4.2	7.3	0.7	44.1	9.5	46.4	0.093	0.501	23.471109	-106.569586
T. Der. La Cruz	89.37	1	1	4316	1.9	50.2	8.0	6.7	2.4	20.7	3.5	5.9	0.7	52.1	8.0	39.9	0.119	0.513	23.914354	-106.926785
T. Der. La Cruz	89.37	1	2	4095	1.7	46.1	8.7	7.4	2.6	22.9	3.5	6.3	0.8	47.8	8.7	43.5	0.098	0.513	23.914297	-106.926881
T. Der. Quila	153.39	1	1	3944	2.2	47.7	8.0	6.3	2.7	21.9	3.6	6.9	0.7	49.9	8.0	42.1	0.121	0.503	24.396505	-107.270246
T. Der. Quila	153.39	1	2	3894	1.5	45.8	8.5	7.2	3.2	22.0	4.2	6.9	0.7	47.3	8.5	44.2	0.108	0.503	24.396366	-107.270537
Plaza de Cobro Costa Rica	187.80	3	1	4848	2.5	47.7	8.6	6.8	2.6	20.5	3.6	6.7	1.0	50.2	8.6	41.2	0.098	0.507	24.570284	-107.430122
Plaza de Cobro Costa Rica	187.80	3	2	4978	2.3	41.2	9.0	8.0	3.0	24.2	4.0	7.2	1.1	43.5	9.0	47.5	0.073	0.507	24.570196	-107.430282
T. C. Culiacán - El Dorado	190.26																			

13 CARR: Tepic - Villa Unión (cuota)

CLAVE: 00500

RUTA: MEX-015D

AÑO: 2020

LUGAR	ESTACION				CLASIFICACION VEHICULAR EN PORCIENTO										COORDENADAS					
	KM	TE	SC	TDPA	M	A	B	C2	C3	T3S2	T3S3	T3S2R4	OTROS	A	B	C	K'	D	LATITUD	LONGITUD
Tepic	0.00																			
Lib. de Tepic (Cuota)	6.60																			
Plaza de Cobro Trapichillo	8.65	1	1	5782	1.4	75.9	3.9	9.3	1.6	5.6	1.1	1.1	0.1	77.3	3.9	18.8	0.126	0.514	21.571764	-104.987463
Plaza de Cobro Trapichillo	8.65	1	2	6122	1.4	76.0	3.9	9.1	1.6	5.6	1.1	1.2	0.1	77.4	3.9	18.7	0.173	0.514	21.571767	-104.987471
Plaza de Cobro Trapichillo	8.65	2	1	2748	0.5	98.6	0.2	0.3	0.2	0.2	0.0	0.0	0.0	99.1	0.2	0.7	0.098	0.500	21.571789	-104.987394
Plaza de Cobro Trapichillo	8.65	2	2	2748	0.5	98.6	0.2	0.3	0.2	0.2	0.0	0.0	0.0	99.1	0.2	0.7	0.098	0.500	21.571789	-104.987394
T. C. Tepic - Mazatlán	21.00	1	1	5107	2.0	62.0	5.6	8.5	2.0	13.7	2.1	3.5	0.6	64.0	5.6	30.4	0.079	0.514	21.666721	-105.027138

SINALOA

13 CARR: Tepic - Villa Unión (cuota)

CLAVE: 00500

RUTA: MEX-015D

AÑO: 2020

LUGAR	ESTACION				CLASIFICACION VEHICULAR EN PORCIENTO										COORDENADAS					
	KM	TE	SC	TDPA	M	A	B	C2	C3	T3S2	T3S3	T3S2R4	OTROS	A	B	C	K'	D	LATITUD	LONGITUD
T. C. Tepic - Mazatlán	21.00	1	2	4832	1.9	62.1	5.5	8.4	2.1	13.7	2.2	3.4	0.7	64.0	5.5	30.5	0.085	0.514	21.666679	-105.027228
T. C. Tepic - Mazatlán (Cruce de San Blas)	24.50	3	0	6456	0.7	61.4	7.9	7.3	2.6	11.7	1.7	5.9	0.8	62.1	7.9	30.0	0.082	0.505	21.710996	-105.058493
Est. Ruíz	54.90	1	0	6059	3.1	46.1	8.5	7.2	3.3	22.8	3.0	5.0	1.0	49.2	8.5	42.3	0.080	0.501	21.953819	-105.117694
Est. Ruíz	54.90	3	0	5786	3.2	45.2	8.6	7.2	3.1	22.8	3.1	6.0	0.8	48.4	8.6	43.0	0.072	0.506	21.953824	-105.117697
Rosamorada	73.50	1	0	6492	3.2	45.9	8.5	7.0	3.1	22.5	3.0	5.9	0.9	49.1	8.5	42.4	0.093	0.511	22.088675	-105.215902
Rosamorada	73.50	3	0	6171	5.1	42.3	9.1	7.7	3.5	22.2	3.4	5.6	1.1	47.4	9.1	43.5	0.081	0.514	22.088708	-105.215907
Acaponeta	120.20	1	0	5714	6.2	35.4	9.6	7.1	4.5	26.1	3.3	6.9	0.9	41.6	9.6	48.8	0.082	0.509	22.453872	-105.424656
Plaza de Cobro Acaponeta	120.20	2	0	4133	1.2	43.7	4.3	3.7	4.4	28.9	2.8	8.7	2.3	44.9	4.3	50.8	0.081	0.500	22.454065	-105.418726
Acaponeta	120.20	3	0	5191	1.4	51.3	9.9	6.8	4.4	14.6	2.7	8.0	0.9	52.7	9.9	37.4	0.089	0.507	22.453873	-105.424663
Lim. Edos. Term. Nay. Ppia. Sin.	132.80																			
Escuinapa de Hidalgo	208.60	1	1	2356	1.8	41.0	9.5	8.4	4.7	21.9	3.1	9.0	0.6	42.8	9.5	47.7	0.131	0.503	22.854246	-105.749735
Escuinapa de Hidalgo	208.60	1	2	2385	1.6	41.2	9.5	8.3	4.7	21.9	3.3	8.8	0.7	42.8	9.5	47.7	0.081	0.503	22.854199	-105.749832
Escuinapa de Hidalgo	208.60	3	0	4772	1.2	41.3	10.7	5.8	3.9	23.1	3.0	10.1	0.9	42.5	10.7	46.8	0.101	0.505	22.858022	-105.753539
Rosario	220.68	1	0	5236	1.3	41.5	11.0	5.8	3.9	22.9	2.9	9.8	0.9	42.8	11.0	46.2	0.100	0.521	22.982756	-105.875651
Plaza de Cobro Rosario	220.68	2	0	4445	0.3	50.2	4.5	3.3	4.2	26.4	2.1	7.1	1.9	50.5	4.5	45.0	0.081	0.500	22.984690	-105.878103
Rosario	220.68	3	1	2950	2.2	45.6	9.8	7.0	2.6	21.1	3.7	7.0	1.0	47.8	9.8	42.4	0.116	0.504	22.986706	-105.880428
Rosario	220.68	3	2	2995	2.3	45.9	9.7	6.9	2.5	21.1	3.8	6.9	0.9	48.2	9.7	42.1	0.078	0.504	22.986708	-105.880436
X. C. Durango - Villa Unión (Cuota)	240.90	1	0	6457	2.5	39.7	9.6	6.6	3.3	23.9	3.2	10.3	0.9	42.2	9.6	48.2	0.078	0.518	23.190664	-106.183686
X. C. Durango - Villa Unión (Cuota)	240.90	3	1	4078	3.5	45.0	9.4	7.4	3.4	19.0	4.0	7.1	1.2	48.5	9.4	42.1	0.079	0.510	23.190698	-106.183724
X. C. Durango - Villa Unión (Cuota)	240.90	3	2	4244	3.4	45.2	9.3	7.5	3.3	19.0	4.0	6.9	1.4	48.6	9.3	42.1	0.098	0.510	23.190698	-106.183723

14 CARR: Carrizal - Campo Anibal

CLAVE: 25585

RUTA: SIN-019

AÑO: 2020

LUGAR	ESTACION				CLASIFICACION VEHICULAR EN PORCIENTO										COORDENADAS					
	KM	TE	SC	TDPA	M	A	B	C2	C3	T3S2	T3S3	T3S2R4	OTROS	A	B	C	K'	D	LATITUD	LONGITUD
T. C. Mazatlán - Culiacán	0.00	3	0	1747	14.7	74.9	1.2	6.4	2.0	0.7	0.1	0.0	0.0	89.6	1.2	9.2	0.089	0.517	24.637142	-107.271910
X. C. Culiacán - El Dorado	29.20	1	0	9994	14.4	75.5	2.8	5.4	1.1	0.6	0.1	0.1	0.0	89.9	2.8	7.3	0.087	0.504	24.590365	-107.444399
X. C. Culiacán - El Dorado	29.20	3	0	1362	9.0	66.7	3.2	11.4	4.8	3.0	1.0	0.9	0.0	75.7	3.2	21.1	0.086	0.534	24.599373	-107.446595
T. C. San Pedro - Campo Anibal	32.00	1	0	1290	14.6	66.4	2.7	10.6	3.1	1.8	0.5	0.3	0.0	81.0	2.7	16.3	0.088	0.507	24.590248	-107.543400

15 CARR: Culiacán - Altata

CLAVE: 25013

RUTA: SIN-030

AÑO: 2020

LUGAR	ESTACION				CLASIFICACION VEHICULAR EN PORCIENTO										COORDENADAS					
	KM	TE	SC	TDPA	M	A	B	C2	C3	T3S2	T3S3	T3S2R4	OTROS	A	B	C	K'	D	LATITUD	LONGITUD
Culiacán	0.00																			

SINALOA

15 CARR: Culiacán - Altata

CLAVE: 25013

RUTA: SIN-030

AÑO: 2020

LUGAR	ESTACION				CLASIFICACION VEHICULAR EN PORCIENTO												COORDENADAS			
	KM	TE	SC	TDPA	M	A	B	C2	C3	T3S2	T3S3	T3S2R4	OTROS	A	B	C	K'	D	LATITUD	LONGITUD
T. Izq. El Dorado	6.20	1	1	9304	1.2	94.4	0.4	1.3	0.6	0.8	0.9	0.2	0.2	95.6	0.4	4.0	0.074	0.505	24.777219	-107.445214
T. Izq. El Dorado	6.20	1	2	9481	1.1	94.4	0.4	1.3	0.6	0.9	0.9	0.2	0.2	95.5	0.4	4.1	0.077	0.505	24.777129	-107.445185
T. Izq. El Dorado	6.20	3	1	28523	2.3	86.5	0.3	7.7	1.3	1.1	0.4	0.3	0.1	88.8	0.3	10.9	0.092	0.502	24.777217	-107.445214
T. Izq. El Dorado	6.20	3	2	28732	2.3	86.5	0.3	7.7	1.3	1.1	0.4	0.3	0.1	88.8	0.3	10.9	0.086	0.502	24.777128	-107.445190
T. Izq. Aeropuerto	8.70	3	1	24878	5.2	85.2	0.3	6.6	1.5	0.4	0.2	0.5	0.1	90.4	0.3	9.3	0.095	0.524	24.774965	-107.466406
T. Izq. Aeropuerto	8.70	3	2	21354	5.2	85.3	0.3	6.1	1.6	0.5	0.3	0.5	0.2	90.5	0.3	9.2	0.091	0.524	24.774830	-107.466410
Navolato	32.40	1	1	8506	2.9	86.3	0.5	6.7	1.3	1.2	0.5	0.4	0.2	89.2	0.5	10.3	0.088	0.543	24.755669	-107.692949
Navolato	32.40	1	2	7162	3.0	85.6	0.6	6.7	1.4	1.4	0.5	0.5	0.3	88.6	0.6	10.8	0.091	0.543	24.755586	-107.692931
Navolato	32.40	3	1	6551	11.5	79.4	0.8	5.9	1.2	0.4	0.2	0.4	0.2	90.9	0.8	8.3	0.091	0.536	24.755668	-107.692944
Navolato	32.40	3	2	7573	11.5	77.9	0.9	6.8	1.2	0.5	0.4	0.5	0.3	89.4	0.9	9.7	0.106	0.536	24.755584	-107.692938
T. Der. 5 Hermanos	38.20	3	1	4008	6.7	81.5	1.4	7.6	1.3	0.6	0.6	0.1	0.2	88.2	1.4	10.4	0.114	0.503	24.758000	-107.735851
T. Der. 5 Hermanos	38.20	3	2	3962	6.7	82.5	1.1	7.5	1.3	0.5	0.3	0.0	0.1	89.2	1.1	9.7	0.127	0.503	24.758011	-107.735832
Altata	67.00	1	1	2009	9.1	80.4	0.8	7.1	1.8	0.1	0.2	0.2	0.3	89.5	0.8	9.7	0.129	0.512	24.637228	-107.930641
Altata	67.00	1	2	1914	8.9	81.9	0.7	6.1	1.5	0.2	0.2	0.2	0.3	90.8	0.7	8.5	0.124	0.512	24.637227	-107.930638

16 CARR: Culiacán - El Dorado

CLAVE: 25044

RUTA: SIN-005

AÑO: 2020

LUGAR	ESTACION				CLASIFICACION VEHICULAR EN PORCIENTO												COORDENADAS			
	KM	TE	SC	TDPA	M	A	B	C2	C3	T3S2	T3S3	T3S2R4	OTROS	A	B	C	K'	D	LATITUD	LONGITUD
T. C. Culiacán - Altata	0.00	3	1	24519	2.3	83.8	2.7	5.2	1.7	2.2	1.4	0.6	0.1	86.1	2.7	11.2	0.094	0.562	24.777030	-107.445262
T. C. Culiacán - Altata	0.00	3	2	24871	2.7	83.4	2.7	5.1	1.9	2.2	1.4	0.5	0.1	86.1	2.7	11.2	0.102	0.562	24.777081	-107.445122
T. C. Libramiento Sur de Culiacán	3.60	3	1	20751	4.8	74.3	2.3	9.1	3.1	3.6	0.9	1.4	0.5	79.1	2.3	18.6	0.080	0.503	24.746315	-107.453964
T. C. Libramiento Sur de Culiacán	3.60	3	2	20963	4.8	74.4	2.2	9.1	3.0	3.8	0.8	1.4	0.5	79.2	2.2	18.6	0.091	0.503	24.745491	-107.451353
X. C. Carrizal - Campo Aníbal	21.35	1	1	8995	3.2	76.7	3.6	6.5	2.1	5.3	0.5	2.0	0.1	79.9	3.6	16.5	0.081	0.509	24.590372	-107.444541
X. C. Carrizal - Campo Aníbal	21.35	1	2	9309	3.2	76.7	3.7	6.5	2.1	5.3	0.5	1.9	0.1	79.9	3.7	16.4	0.086	0.509	24.590368	-107.444448
X. C. Carrizal - Campo Aníbal	21.35	3	0	7153	5.8	80.2	1.7	6.2	2.5	2.2	0.4	0.8	0.2	86.0	1.7	12.3	0.084	0.524	24.590366	-107.444474
El Dorado	55.00	1	1	3486	11.3	77.6	0.9	6.7	2.2	0.9	0.2	0.1	0.1	88.9	0.9	10.2	0.098	0.504	24.322641	-107.369664
El Dorado	55.00	1	2	3536	9.8	78.1	1.1	7.5	2.3	0.8	0.2	0.1	0.1	87.9	1.1	11.0	0.108	0.504	24.322645	-107.369620

17 CARR: El Limoncito - Cinco Hermanos

CLAVE: 25016

RUTA: SIN-016

AÑO: 2020

LUGAR	ESTACION				CLASIFICACION VEHICULAR EN PORCIENTO												COORDENADAS			
	KM	TE	SC	TDPA	M	A	B	C2	C3	T3S2	T3S3	T3S2R4	OTROS	A	B	C	K'	D	LATITUD	LONGITUD
T. C. Culiacán - Altata	0.00	3	0	2835	13.0	70.6	3.1	9.7	2.8	0.5	0.3	0.0	0.0	83.6	3.1	13.3	0.102	0.501	24.757860	-107.736276
Cinco Hermanos	16.00	1	0	806	27.6	51.3	4.3	9.7	5.4	0.9	0.8	0.0	0.0	78.9	4.3	16.8	0.138	0.502	24.809324	-107.857644

SINALOA

18 CARR: El Salado - El Dorado

CLAVE: 25010

RUTA: SIN-010

AÑO: 2020

LUGAR	ESTACION				CLASIFICACION VEHICULAR EN PORCIENTO										COORDENADAS					
	KM	TE	SC	TDPA	M	A	B	C2	C3	T3S2	T3S3	T3S2R4	OTROS	A	B	C	K'	D	LATITUD	LONGITUD
T. C. Mazatlán - Culiacán	0.00	3	0	2476	5.4	83.6	0.5	8.1	1.4	0.5	0.5	0.0	0.0	89.0	0.5	10.5	0.095	0.520	24.508750	-107.162138
El Dorado	31.00	1	0	3263	13.6	81.8	0.6	1.9	0.9	0.6	0.2	0.3	0.1	95.4	0.6	4.0	0.093	0.524	24.328049	-107.361254

19 CARR: Escuinapa de Hidalgo - Teacapan

CLAVE: 25001

RUTA: SIN-001

AÑO: 2020

LUGAR	ESTACION				CLASIFICACION VEHICULAR EN PORCIENTO										COORDENADAS					
	KM	TE	SC	TDPA	M	A	B	C2	C3	T3S2	T3S3	T3S2R4	OTROS	A	B	C	K'	D	LATITUD	LONGITUD
Escuinapa de Hidalgo	0.00	3	0	4199	11.4	74.1	10.2	2.7	0.9	0.3	0.2	0.1	0.1	85.5	10.2	4.3	0.108	0.501	22.830841	-105.778958
Teacapan	41.00	1	0	2059	7.7	84.5	5.7	1.3	0.7	0.1	0.0	0.0	0.0	92.2	5.7	2.1	0.131	0.531	22.539430	-105.738663

20 CARR: Estación Dimas - San Ignacio

CLAVE: 25007

RUTA: SIN-006

AÑO: 2020

LUGAR	ESTACION				CLASIFICACION VEHICULAR EN PORCIENTO										COORDENADAS					
	KM	TE	SC	TDPA	M	A	B	C2	C3	T3S2	T3S3	T3S2R4	OTROS	A	B	C	K'	D	LATITUD	LONGITUD
Dimas	0.00																			
X. C. Mazatlán - Culiacán	23.15	1	0	1000	7.3	82.5	0.6	6.9	1.7	0.9	0.1	0.0	0.0	89.8	0.6	9.6	0.100	0.515	23.839536	-106.613899
X. C. Mazatlán - Culiacán	23.15	3	0	1738	7.2	83.8	0.7	7.3	0.8	0.2	0.0	0.0	0.0	91.0	0.7	8.3	0.104	0.510	23.790622	-106.611468
San Ignacio	56.00	1	0	1468	11.9	79.0	0.5	7.9	0.5	0.2	0.0	0.0	0.0	90.9	0.5	8.6	0.101	0.504	23.937132	-106.431382

21 CARR: Guamuchil - Mocerito

CLAVE: 25021

RUTA: SIN-021

AÑO: 2020

LUGAR	ESTACION				CLASIFICACION VEHICULAR EN PORCIENTO										COORDENADAS					
	KM	TE	SC	TDPA	M	A	B	C2	C3	T3S2	T3S3	T3S2R4	OTROS	A	B	C	K'	D	LATITUD	LONGITUD
Guamuchil	0.00	3	0	5760	7.6	80.4	0.5	9.1	1.8	0.3	0.3	0.0	0.0	88.0	0.5	11.5	0.096	0.516	25.460352	-108.076006
Mocerito	17.00	1	1	3402	8.2	80.4	0.8	8.4	1.8	0.2	0.2	0.0	0.0	88.6	0.8	10.6	0.088	0.501	25.481339	-107.921392
Mocerito	17.00	1	2	3416	8.1	80.6	0.8	8.4	1.8	0.2	0.1	0.0	0.0	88.7	0.8	10.5	0.096	0.501	25.481339	-107.921392

22 CARR: Guasave - Sinaloa de Leyva

CLAVE: 25023

RUTA: SIN-023

AÑO: 2020

LUGAR	ESTACION				CLASIFICACION VEHICULAR EN PORCIENTO										COORDENADAS					
	KM	TE	SC	TDPA	M	A	B	C2	C3	T3S2	T3S3	T3S2R4	OTROS	A	B	C	K'	D	LATITUD	LONGITUD
Guasave	0.00																			
X. C. Culiacán - Los Mochis	1.15	3	1	5213	12.5	79.4	0.7	5.7	1.0	0.4	0.2	0.1	0.0	91.9	0.7	7.4	0.090	0.502	25.579827	-108.463264
X. C. Culiacán - Los Mochis	1.15	3	2	5246	11.7	79.9	0.7	6.0	1.1	0.4	0.1	0.1	0.0	91.6	0.7	7.7	0.081	0.502	25.579869	-108.463390
Sinaloa de Leyva	74.50	1	1	1551	10.7	82.3	0.3	5.5	0.8	0.3	0.1	0.0	0.0	93.0	0.3	6.7	0.099	0.509	25.828463	-108.224471

SINALOA

22 CARR: Guasave - Sinaloa de Leyva

CLAVE: 25023

RUTA: SIN-023

AÑO: 2020

LUGAR	ESTACION				CLASIFICACION VEHICULAR EN PORCIENTO														COORDENADAS	
	KM	TE	SC	TDPA	M	A	B	C2	C3	T3S2	T3S3	T3S2R4	OTROS	A	B	C	K'	D	LATITUD	LONGITUD
Sinaloa de Leyva	74.50	1	2	1494	11.1	81.5	0.4	5.7	1.1	0.1	0.1	0.0	0.0	92.6	0.4	7.0	0.092	0.509	25.828461	-108.224466

23 CARR: Navolato - El Castillo

CLAVE: 25004

RUTA: SIN-004

AÑO: 2020

LUGAR	ESTACION				CLASIFICACION VEHICULAR EN PORCIENTO														COORDENADAS	
	KM	TE	SC	TDPA	M	A	B	C2	C3	T3S2	T3S3	T3S2R4	OTROS	A	B	C	K'	D	LATITUD	LONGITUD
Navolato	0.00	3	0	6024	8.0	77.4	2.5	7.8	1.7	1.0	0.5	0.9	0.2	85.4	2.5	12.1	0.089	0.504	24.766200	-107.695440
El Castillo	29.00	1	0	1086	21.6	50.0	9.7	3.8	3.8	4.0	3.1	3.2	0.8	71.6	9.7	18.7	0.103	0.507	24.546752	-107.705422

24 CARR: Pozole - Cofradía

CLAVE: 25080

RUTA: SIN-080

AÑO: 2020

LUGAR	ESTACION				CLASIFICACION VEHICULAR EN PORCIENTO														COORDENADAS	
	KM	TE	SC	TDPA	M	A	B	C2	C3	T3S2	T3S3	T3S2R4	OTROS	A	B	C	K'	D	LATITUD	LONGITUD
T. C. Tepic - Mazatlán	0.00	3	0	2822	15.2	71.2	1.1	5.9	2.6	0.8	2.0	0.1	1.1	86.4	1.1	12.5	0.097	0.512	23.193935	-106.259792
Cofradía	9.10	1	0	805	14.8	73.6	1.5	8.3	1.4	0.1	0.2	0.0	0.1	88.4	1.5	10.1	0.099	0.507	23.325561	-106.255500

25 CARR: Ramal a Chametla

CLAVE: 25002

RUTA: SIN-002

AÑO: 2020

LUGAR	ESTACION				CLASIFICACION VEHICULAR EN PORCIENTO														COORDENADAS	
	KM	TE	SC	TDPA	M	A	B	C2	C3	T3S2	T3S3	T3S2R4	OTROS	A	B	C	K'	D	LATITUD	LONGITUD
T. C. Tepic - Mazatlán	0.00	3	0	1712	13.7	70.3	3.4	11.0	1.6	0.0	0.0	0.0	0.0	84.0	3.4	12.6	0.092	0.505	22.934005	-105.830965
Chametla	15.00	1	0	962	39.6	49.2	2.1	8.5	0.6	0.0	0.0	0.0	0.0	88.8	2.1	9.1	0.136	0.509	22.878999	-105.957275

26 CARR: Ramal a Cosalá

CLAVE: 25008

RUTA: SIN-008

AÑO: 2020

LUGAR	ESTACION				CLASIFICACION VEHICULAR EN PORCIENTO														COORDENADAS	
	KM	TE	SC	TDPA	M	A	B	C2	C3	T3S2	T3S3	T3S2R4	OTROS	A	B	C	K'	D	LATITUD	LONGITUD
T. C. Mazatlán - Culiacán	0.00	3	0	1561	8.7	69.2	2.8	8.4	4.2	2.3	1.5	2.2	0.7	77.9	2.8	19.3	0.087	0.500	24.067555	-106.805228
Cosalá	53.00	1	0	1507	16.8	65.0	3.1	8.0	3.8	1.9	0.8	0.0	0.6	81.8	3.1	15.1	0.097	0.508	24.411451	-106.693676

27 CARR: Ramal a El Quelite

CLAVE: 25060

RUTA: SIN-060

AÑO: 2020

LUGAR	ESTACION				CLASIFICACION VEHICULAR EN PORCIENTO														COORDENADAS	
	KM	TE	SC	TDPA	M	A	B	C2	C3	T3S2	T3S3	T3S2R4	OTROS	A	B	C	K'	D	LATITUD	LONGITUD
T. C. Mazatlán - Culiacán	0.00	3	0	1302	12.4	84.5	0.3	2.3	0.4	0.1	0.0	0.0	0.0	96.9	0.3	2.8	0.190	0.510	23.531832	-106.503855

SINALOA

27 CARR: Ramal a El Quelite

CLAVE: 25060

RUTA: SIN-060

AÑO: 2020

LUGAR	ESTACION				CLASIFICACION VEHICULAR EN PORCIENTO														COORDENADAS	
	KM	TE	SC	TDPA	M	A	B	C2	C3	T3S2	T3S3	T3S2R4	OTROS	A	B	C	K'	D	LATITUD	LONGITUD
El Quelite	6.00	1	0	1209	18.2	78.4	0.3	1.7	0.5	0.7	0.1	0.1	0.0	96.6	0.3	3.1	0.208	0.516	23.556936	-106.468281

28 CARR: Ramal a Estación Bamao

CLAVE: 25022

RUTA: SIN-022

AÑO: 2020

LUGAR	ESTACION				CLASIFICACION VEHICULAR EN PORCIENTO														COORDENADAS	
	KM	TE	SC	TDPA	M	A	B	C2	C3	T3S2	T3S3	T3S2R4	OTROS	A	B	C	K'	D	LATITUD	LONGITUD
T. C. Culiacán - Los Mochis	0.00	3	0	3169	8.9	77.9	1.6	6.0	2.8	1.3	0.9	0.4	0.2	86.8	1.6	11.6	0.085	0.501	25.517191	-108.356918
Estación Bamao	22.50	1	0	2123	11.5	75.1	1.9	6.8	2.4	1.3	0.7	0.3	0.0	86.6	1.9	11.5	0.097	0.510	25.701370	-108.315040

29 CARR: Ramal a La Cruz

CLAVE: 25043

RUTA: SIN

AÑO: 2020

LUGAR	ESTACION				CLASIFICACION VEHICULAR EN PORCIENTO														COORDENADAS	
	KM	TE	SC	TDPA	M	A	B	C2	C3	T3S2	T3S3	T3S2R4	OTROS	A	B	C	K'	D	LATITUD	LONGITUD
T. C. Mazatlán - Culiacán	0.00	3	0	2015	12.6	82.2	1.0	2.6	0.8	0.6	0.2	0.0	0.0	94.8	1.0	4.2	0.095	0.508	24.055267	-106.795899
La Cruz	18.00	1	0	3414	15.5	79.1	0.3	3.2	1.1	0.6	0.1	0.1	0.0	94.6	0.3	5.1	0.094	0.512	23.921661	-106.886208

30 CARR: Ramal a La Noria

CLAVE: 25592

RUTA: SIN

AÑO: 2020

LUGAR	ESTACION				CLASIFICACION VEHICULAR EN PORCIENTO														COORDENADAS	
	KM	TE	SC	TDPA	M	A	B	C2	C3	T3S2	T3S3	T3S2R4	OTROS	A	B	C	K'	D	LATITUD	LONGITUD
T. C. Mazatlán - Culiacán	0.00	3	0	1361	14.1	80.8	0.2	3.1	0.9	0.1	0.1	0.1	0.6	94.9	0.2	4.9	0.196	0.501	23.349811	-106.413342
La Noria	25.50	1	0	539	13.1	81.8	1.0	3.2	0.2	0.2	0.2	0.0	0.3	94.9	1.0	4.1	0.234	0.522	23.505817	-106.317996

31 CARR: Ramal a La Reforma

CLAVE: 25041

RUTA: SIN-004

AÑO: 2020

LUGAR	ESTACION				CLASIFICACION VEHICULAR EN PORCIENTO														COORDENADAS	
	KM	TE	SC	TDPA	M	A	B	C2	C3	T3S2	T3S3	T3S2R4	OTROS	A	B	C	K'	D	LATITUD	LONGITUD
T. C. Culiacán - Los Mochis	0.00	3	0	8333	5.8	80.9	1.5	9.9	1.3	0.3	0.1	0.1	0.1	86.7	1.5	11.8	0.095	0.505	25.449534	-108.071366
T. Der. La Angostura	14.00	3	0	2275	4.8	78.8	0.7	8.2	5.3	1.2	0.4	0.3	0.3	83.6	0.7	15.7	0.093	0.511	25.368525	-108.143225
La Reforma	60.00	1	0	3104	15.5	67.4	3.7	6.1	1.3	2.3	1.4	0.2	2.1	82.9	3.7	13.4	0.095	0.502	25.082399	-108.052611

SINALOA

32 CARR: Rosario - Caimanero

CLAVE: 25003

RUTA: SIN-003

AÑO: 2020

LUGAR	ESTACION				CLASIFICACION VEHICULAR EN PORCIENTO										COORDENADAS					
	KM	TE	SC	TDPA	M	A	B	C2	C3	T3S2	T3S3	T3S2R4	OTROS	A	B	C	K'	D	LATITUD	LONGITUD
Rosario	0.00	3	0	2651	12.3	72.8	1.6	9.3	1.8	0.9	0.9	0.2	0.2	85.1	1.6	13.3	0.101	0.508	22.993438	-105.861127
Caimanero	30.00	1	0	943	35.2	58.9	1.9	3.5	0.3	0.1	0.0	0.1	0.0	94.1	1.9	4.0	0.151	0.509	22.879233	-106.071034

33 CARR: San Pedro - Campo Anibal

CLAVE: 25600

RUTA: SIN

AÑO: 2020

LUGAR	ESTACION				CLASIFICACION VEHICULAR EN PORCIENTO										COORDENADAS					
	KM	TE	SC	TDPA	M	A	B	C2	C3	T3S2	T3S3	T3S2R4	OTROS	A	B	C	K'	D	LATITUD	LONGITUD
T. C. Culiacán - Altata	0.00	3	0	3605	2.9	81.5	2.2	7.4	2.8	1.4	0.8	0.2	0.2	84.4	2.2	13.4	0.082	0.521	24.769518	-107.547880
Campo Anibal	24.50	1	0	1153	17.5	62.3	3.7	13.9	0.7	1.8	0.1	0.0	0.0	79.8	3.7	16.5	0.126	0.503	24.553335	-107.543281
Los Puentes	26.50																			

34 CARR: Topolobampo - Choix

CLAVE: 25032

RUTA: SIN-023

AÑO: 2020

LUGAR	ESTACION				CLASIFICACION VEHICULAR EN PORCIENTO										COORDENADAS					
	KM	TE	SC	TDPA	M	A	B	C2	C3	T3S2	T3S3	T3S2R4	OTROS	A	B	C	K'	D	LATITUD	LONGITUD
Topolobampo	0.00	3	1	3791	3.0	80.3	1.4	6.2	5.1	2.2	0.9	0.7	0.2	83.3	1.4	15.3	0.120	0.502	25.606551	-109.057383
Topolobampo	0.00	3	2	3754	3.2	79.7	1.4	6.5	5.3	2.2	0.8	0.7	0.2	82.9	1.4	15.7	0.095	0.502	25.606554	-109.057383
Los Mochis	24.00	1	1	7039	3.0	80.5	1.4	6.1	5.0	2.2	1.0	0.6	0.2	83.5	1.4	15.1	0.101	0.547	25.767777	-108.992395
Los Mochis	24.00	1	2	8501	3.0	80.1	1.4	6.3	5.1	2.3	1.0	0.6	0.2	83.1	1.4	15.5	0.088	0.547	25.767815	-108.992465
X. C. Los Mochis - Cd. Obregón (Cuota)	29.00	1	1	8319	2.6	82.4	1.3	5.5	4.4	2.1	0.9	0.6	0.2	85.0	1.3	13.7	0.083	0.546	25.827761	-108.968770
X. C. Los Mochis - Cd. Obregón (Cuota)	29.00	1	2	10006	3.0	80.1	1.4	6.3	5.0	2.3	1.0	0.6	0.3	83.1	1.4	15.5	0.077	0.546	25.827930	-108.968907
X. C. Los Mochis - Cd. Obregón (Cuota)	29.00	3	1	6819	3.0	79.9	1.5	6.2	5.1	2.3	1.0	0.7	0.3	82.9	1.5	15.6	0.100	0.520	25.827770	-108.968765
X. C. Los Mochis - Cd. Obregón (Cuota)	29.00	3	2	7379	3.1	80.0	1.5	6.2	5.1	2.2	1.0	0.6	0.3	83.1	1.5	15.4	0.091	0.520	25.827937	-108.968903
San Blas	65.00	1	1	2656	5.5	78.6	3.3	8.3	1.6	1.0	0.6	0.5	0.6	84.1	3.3	12.6	0.110	0.540	26.078753	-108.754800
San Blas	65.00	1	2	3123	5.7	77.9	3.7	8.6	1.6	1.0	0.6	0.5	0.4	83.6	3.7	12.7	0.112	0.540	26.078745	-108.754803
San Blas	65.00	3	1	1982	7.8	76.7	2.9	8.2	1.5	1.0	0.7	0.6	0.6	84.5	2.9	12.6	0.136	0.500	26.078698	-108.754813
San Blas	65.00	3	2	1980	8.0	76.2	2.9	8.5	1.4	1.0	0.7	0.6	0.7	84.2	2.9	12.9	0.132	0.500	26.078699	-108.754812
El Fuerte	107.70	1	1	2239	7.6	75.5	3.2	8.4	1.6	1.2	1.1	0.8	0.6	83.1	3.2	13.7	0.116	0.502	26.407796	-108.618348
El Fuerte	107.70	1	2	2218	7.7	75.5	3.1	8.2	1.9	1.2	1.0	0.8	0.6	83.2	3.1	13.7	0.100	0.502	26.407795	-108.618347
El Fuerte	107.70	3	0	2791	7.5	76.6	3.1	7.8	1.6	1.4	1.4	0.5	0.1	84.1	3.1	12.8	0.100	0.521	26.413265	-108.614979
Choix	159.00	1	0	2505	4.7	86.1	2.0	3.7	1.5	0.7	0.5	0.7	0.1	90.8	2.0	7.2	0.091	0.530	26.707670	-108.329142

SINALOA

35 CARR: Villa Unión - El Walamo

CLAVE: 25081

RUTA: SIN-081

AÑO: 2020

LUGAR	ESTACION				CLASIFICACION VEHICULAR EN PORCIENTO													COORDENADAS		
	KM	TE	SC	TDPA	M	A	B	C2	C3	T3S2	T3S3	T3S2R4	OTROS	A	B	C	K'	D	LATITUD	LONGITUD
Villa Unión	0.00	3	0	3260	23.6	63.7	0.9	10.9	0.4	0.2	0.1	0.1	0.1	87.3	0.9	11.8	0.114	0.510	23.184950	-106.220825
El Walamo	7.00	1	0	3313	31.2	62.4	0.8	3.1	1.3	0.2	0.1	0.2	0.7	93.6	0.8	5.6	0.104	0.501	23.141560	-106.245197

36 CARR: Villa Unión - Siqueiros

CLAVE: 25063

RUTA: SIN-063

AÑO: 2020

LUGAR	ESTACION				CLASIFICACION VEHICULAR EN PORCIENTO													COORDENADAS		
	KM	TE	SC	TDPA	M	A	B	C2	C3	T3S2	T3S3	T3S2R4	OTROS	A	B	C	K'	D	LATITUD	LONGITUD
Villa Unión	0.00	3	0	2751	17.8	71.7	0.9	6.4	2.1	0.3	0.7	0.0	0.1	89.5	0.9	9.6	0.095	0.516	23.191481	-106.217010
Siqueiros	11.00	1	0	863	34.9	57.5	1.6	5.9	0.1	0.0	0.0	0.0	0.0	92.4	1.6	6.0	0.109	0.542	23.338652	-106.240753

37 CARR: Culiacán - Las Brisas (Cuota)

CLAVE: 25503

RUTA: SIN-001D

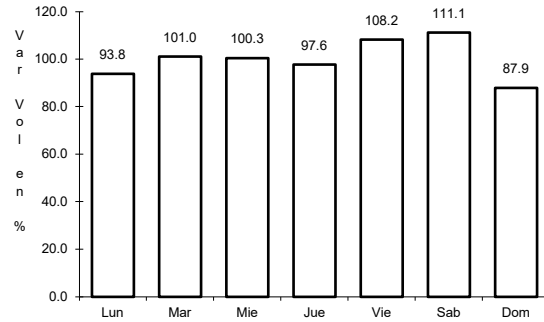
AÑO: 2020

LUGAR	ESTACION				CLASIFICACION VEHICULAR EN PORCIENTO													COORDENADAS		
	KM	TE	SC	TDPA	M	A	B	C2	C3	T3S2	T3S3	T3S2R4	OTROS	A	B	C	K'	D	LATITUD	LONGITUD
T. C. Culiacán - El Dorado	0.00																			
Plaza de Cobro Culiacán	1.50	3	1	3410	1.6	75.7	3.0	6.6	3.2	5.4	1.5	2.3	0.7	77.3	3.0	19.7	0.092	0.501	24.748919	-107.462150
Plaza de Cobro Culiacán	1.50	3	2	3399	3.1	75.9	2.5	6.4	2.7	5.1	1.4	2.2	0.7	79.0	2.5	18.5	0.098	0.501	24.748801	-107.462203
X. C. Culiacán - Altata	14.70	3	1	4277	1.8	57.1	6.6	8.0	3.1	14.1	3.3	5.2	0.8	58.9	6.6	34.5	0.097	0.503	24.766114	-107.583991
X. C. Culiacán - Altata	14.70	3	2	4228	1.9	57.0	6.5	8.0	3.1	14.1	3.3	5.3	0.8	58.9	6.5	34.6	0.094	0.503	24.766101	-107.584085
T. Der. Caimanero	44.79	1	1	3290	1.9	54.4	7.6	7.8	2.4	16.5	3.0	5.5	0.9	56.3	7.6	36.1	0.120	0.500	24.953870	-107.758670
T. Der. Caimanero	44.79	1	2	3292	1.9	54.4	7.6	7.8	2.4	16.5	3.0	5.5	0.9	56.3	7.6	36.1	0.110	0.500	24.953835	-107.758764
T. Der. Zapotillo	63.36	1	1	3499	1.1	55.2	6.6	7.3	3.2	15.7	4.5	5.7	0.7	56.3	6.6	37.1	0.111	0.505	25.072247	-107.878150
T. Der. Zapotillo	63.36	1	2	3567	1.1	55.7	6.6	7.2	3.1	15.5	4.5	5.6	0.7	56.8	6.6	36.6	0.118	0.505	25.072165	-107.878272
T. Der. Zapotillo	63.36	3	1	3434	1.0	56.0	6.5	6.6	3.0	15.8	5.0	5.5	0.6	57.0	6.5	36.5	0.094	0.505	25.072251	-107.878151
T. Der. Zapotillo	63.36	3	2	3508	1.0	56.1	6.5	6.6	2.9	15.8	5.0	5.5	0.6	57.1	6.5	36.4	0.094	0.505	25.072165	-107.878273
X. C. Ramal a La Reforma	110.00	1	1	3158	1.3	44.3	9.0	8.5	3.0	20.6	3.9	8.4	1.0	45.6	9.0	45.4	0.089	0.510	25.392922	-108.127708
X. C. Ramal a La Reforma	110.00	1	2	3287	1.3	44.7	9.0	8.3	3.0	20.5	3.9	8.3	1.0	46.0	9.0	45.0	0.087	0.510	25.392860	-108.127774
T. C. Culiacán - Los Mochis	125.70	1	1	3122	1.1	50.8	6.7	9.7	3.2	16.4	3.6	7.7	0.8	51.9	6.7	41.4	0.086	0.500	25.487920	-108.233186
T. C. Culiacán - Los Mochis	125.70	1	2	3120	1.2	50.7	6.8	9.7	3.2	16.5	3.4	7.7	0.8	51.9	6.8	41.3	0.085	0.500	25.487853	-108.233304

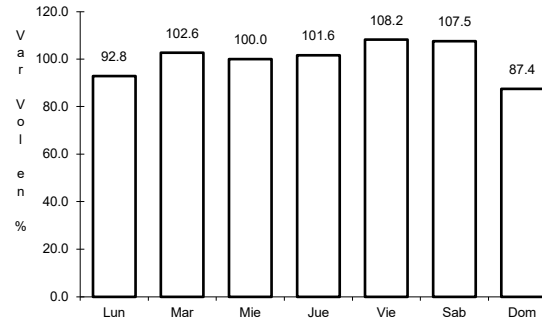
1 CARR: Culiacán - Los Mochis

CLAVE: 25502

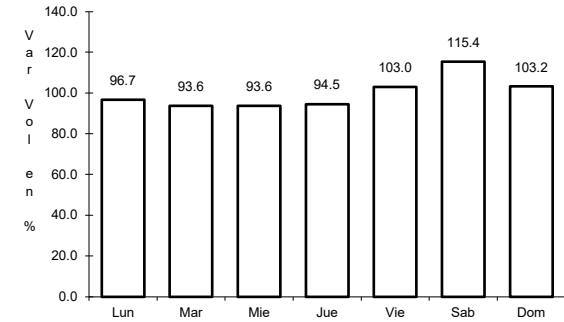
ruta: MEX-015



Km: 4.00 Tipo: 1 Sent: 1



Km: 4.00 Tipo: 1 Sent: 2

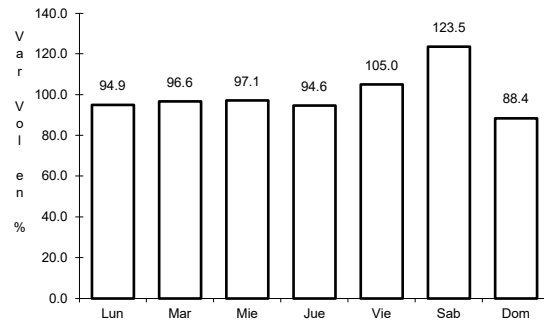


Km: 104.70 Tipo: 1 Sent: 0

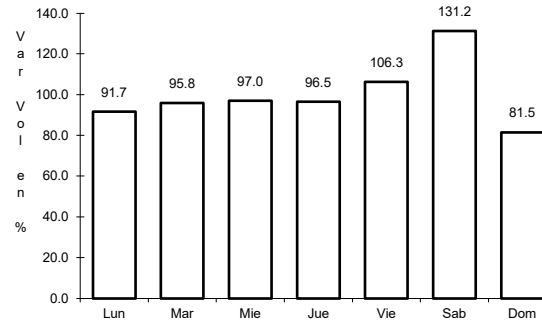
2 CARR: Durango - Villa Unión

CLAVE: 0083

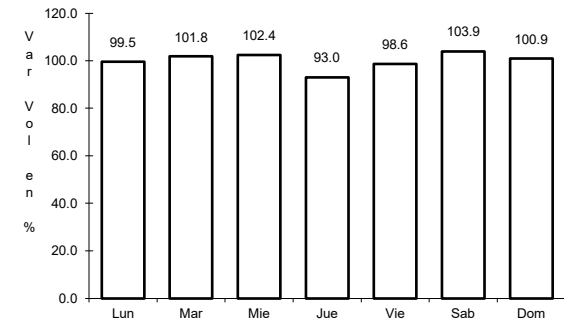
ruta: MEX-040



Km: 0.00 Tipo: 3 Sent: 0



Km: 145.50 Tipo: 1 Sent: 0

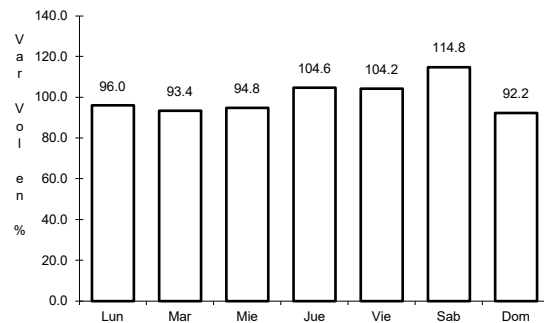


Km: 294.40 Tipo: 1 Sent: 0

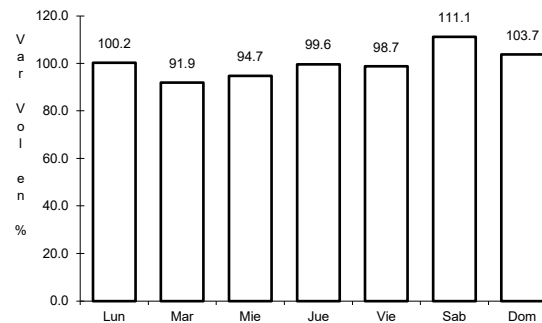
3 CARR: Libramiento de Mazatlán

CLAVE: 25604

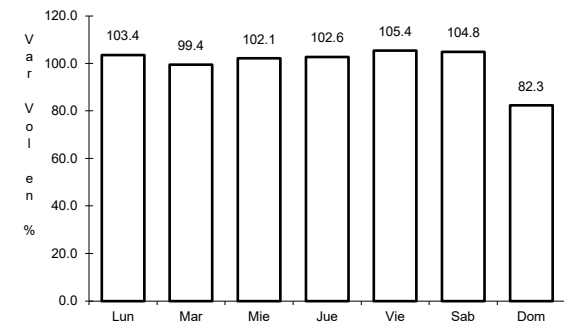
ruta: MEX



Km: 0.00 Tipo: 3 Sent: 1



Km: 0.00 Tipo: 3 Sent: 2

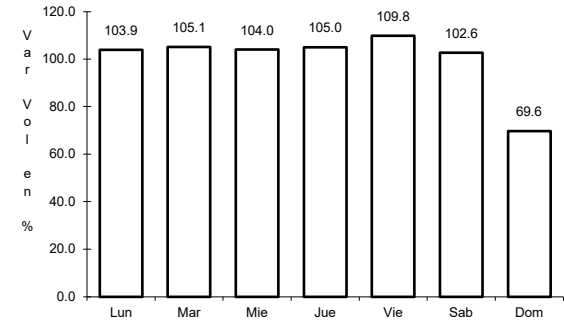
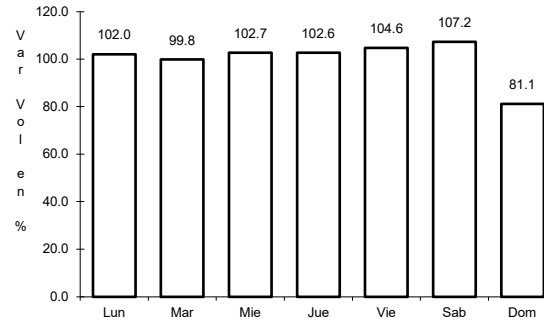
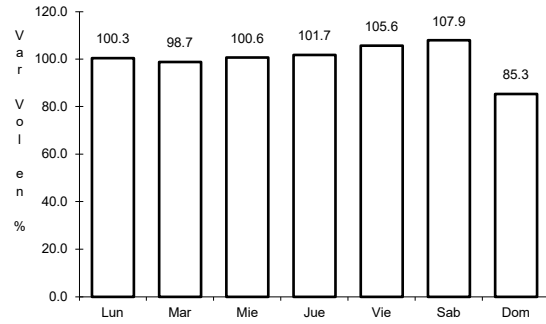


Km: 5.40 Tipo: 1 Sent: 1

4 CARR: Libramiento Sur de Culiacán

CLAVE: 25500

RUTA: MEX-015



Km: 0.00 Tipo: 3 Sent: 1

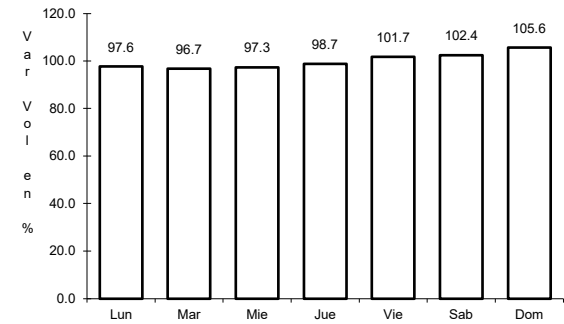
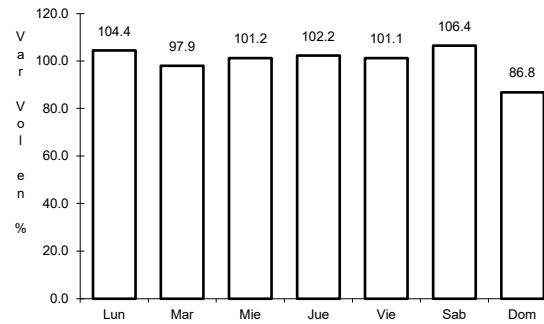
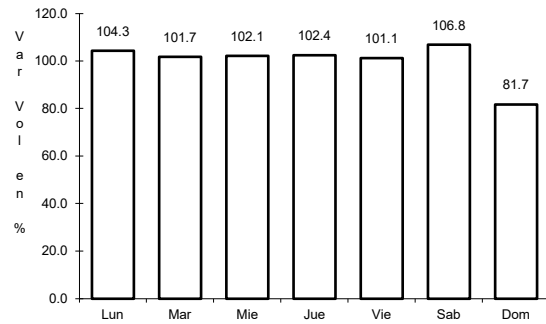
Km: 0.00 Tipo: 3 Sent: 2

Km: 8.90 Tipo: 1 Sent: 1

5 CARR: Mazatlán - Culiacán

CLAVE: 25501

RUTA: MEX-015



Km: 6.40 Tipo: 1 Sent: 1

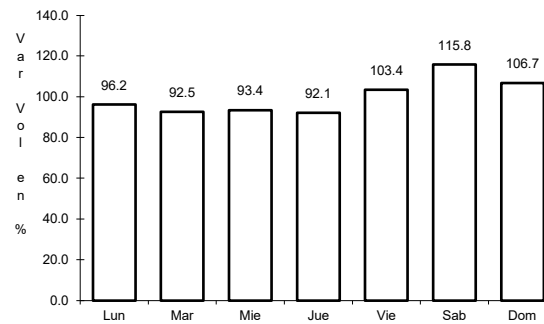
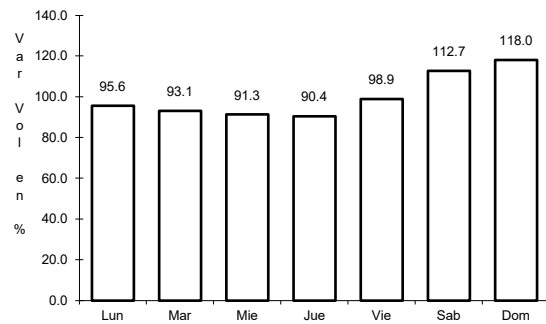
Km: 6.40 Tipo: 1 Sent: 2

Km: 105.21 Tipo: 3 Sent: 0

6 CARR: Pericos - Los Naranjos

CLAVE: 25598

RUTA: MEX-024



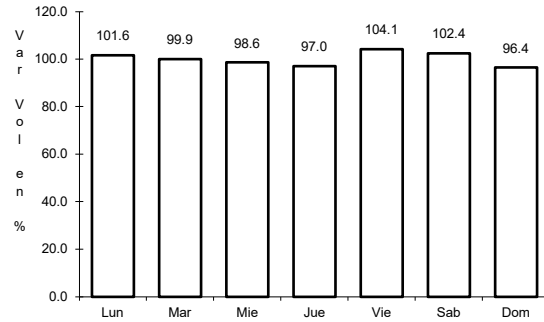
Km: 0.00 Tipo: 3 Sent: 0

Km: 37.50 Tipo: 1 Sent: 0

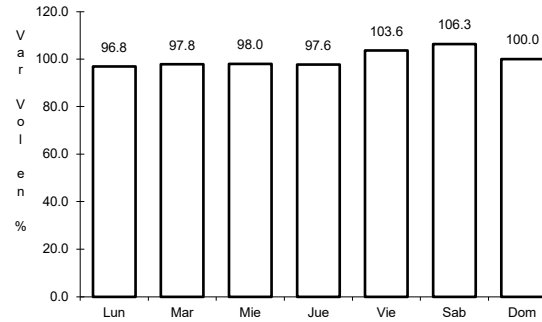
7 CARR: Tepic - Mazatlán

CLAVE: 00499

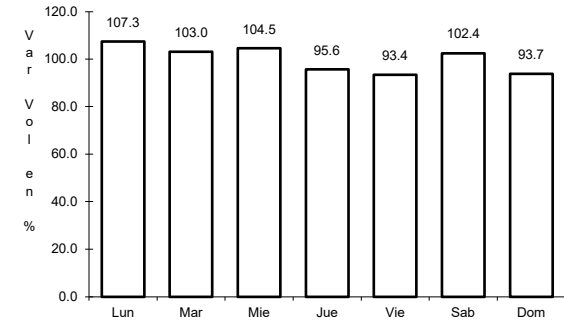
ruta: MEX-015



Km: 0.00 Tipo: 3 Sent: 1



Km: 136.52 Tipo: 1 Sent: 0

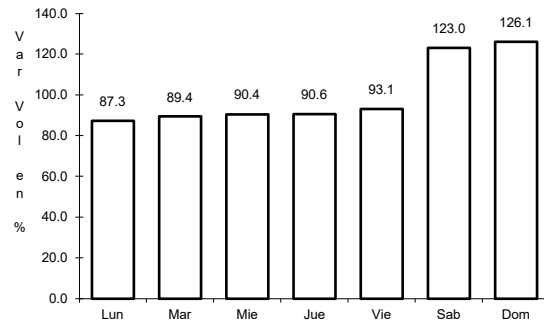


Km: 267.99 Tipo: 1 Sent: 0

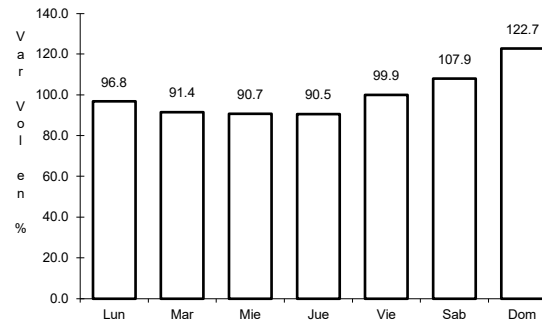
8 CARR: Durango - Mazatlán (Cuota)

CLAVE: 00084

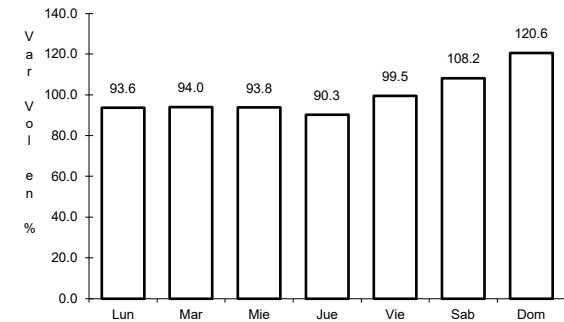
ruta: MEX-040D



Km: 20.50 Tipo: 3 Sent: 0



Km: 117.00 Tipo: 3 Sent: 0

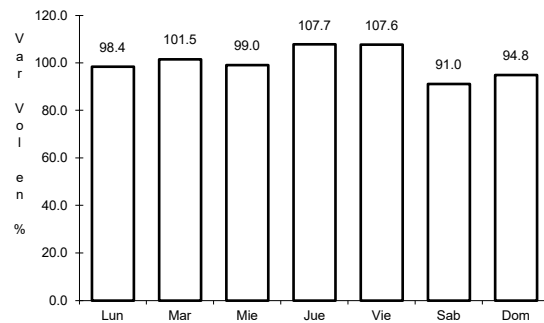


Km: 208.35 Tipo: 1 Sent: 0

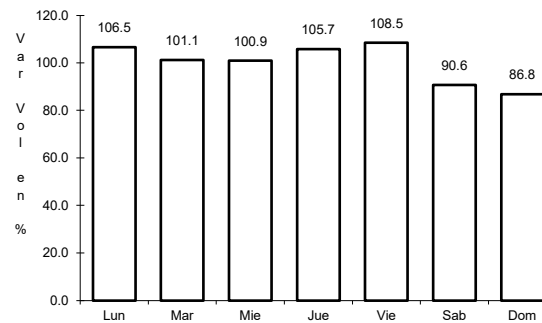
9 CARR: Libramiento de Culiacán (Cuota)

CLAVE:

ruta: MEX-015D



Km: 203.30 Tipo: 1 Sent: 1

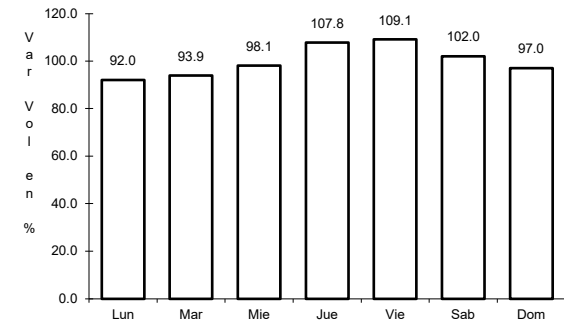
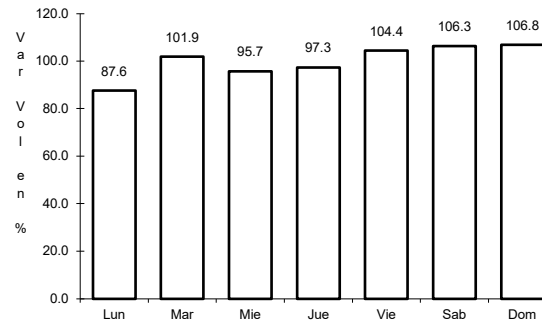
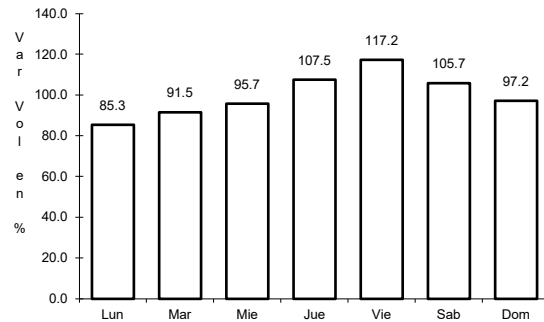


Km: 203.30 Tipo: 1 Sent: 2

10 CARR: Libramiento de Mazatlán (Cuota)

CLAVE:

ruta: MEX-015D



Km: 0.00 Tipo: 3 Sent: 1

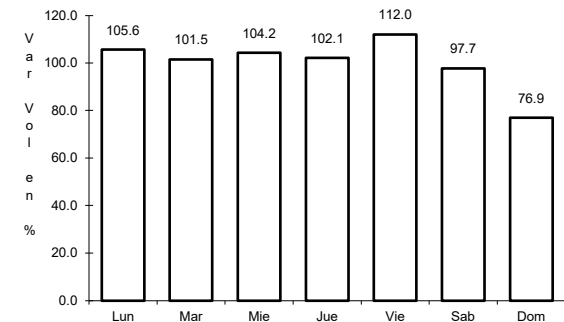
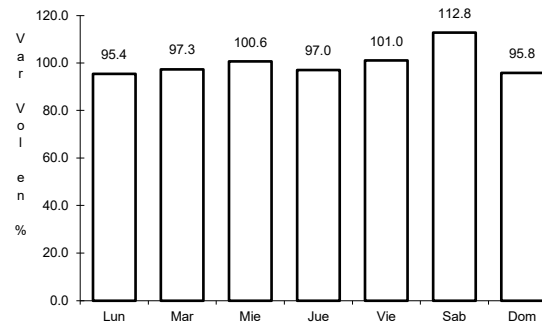
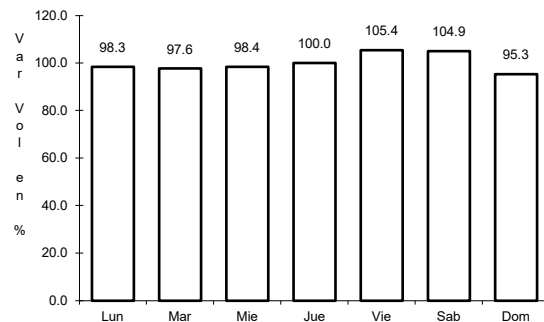
Km: 0.00 Tipo: 3 Sent: 2

Km: 28.60 Tipo: 3 Sent: 1

11 CARR: Los Mochis - Cd. Obregón (Cuota)

CLAVE: 26444

ruta: MEX-015D



Km: 0.00 Tipo: 3 Sent: 1

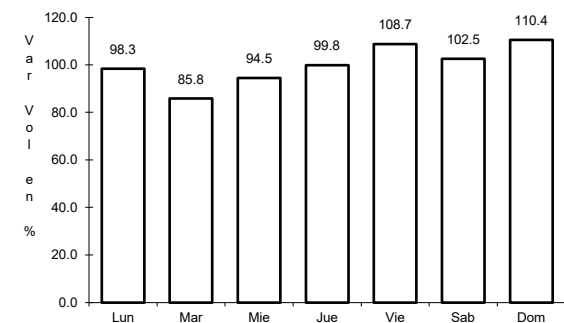
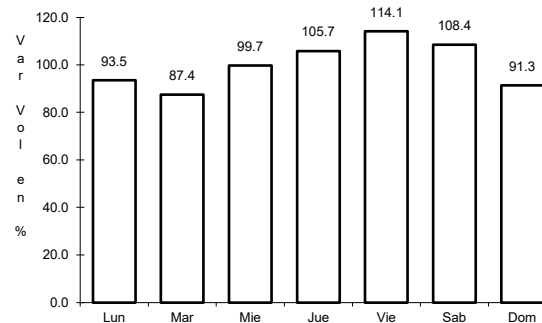
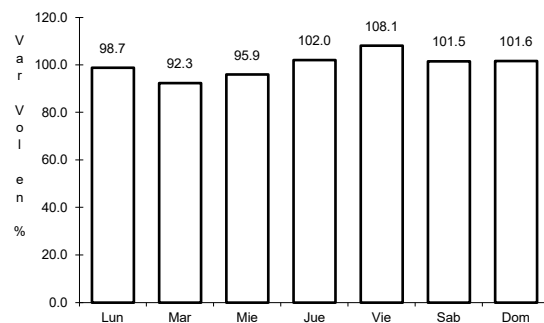
Km: 0.00 Tipo: 3 Sent: 2

Km: 222.70 Tipo: 1 Sent: 1

12 CARR: Mazatlán - Culiacán (Cuota)

CLAVE: 25045

ruta: MEX-015D



Km: 0.00 Tipo: 3 Sent: 1

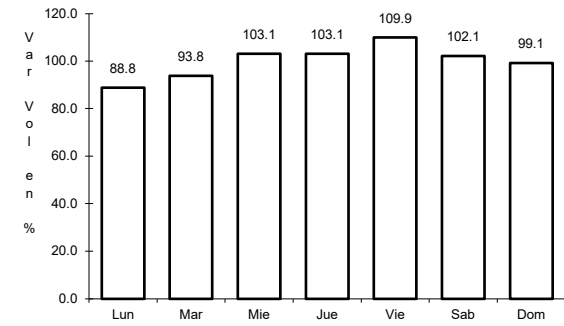
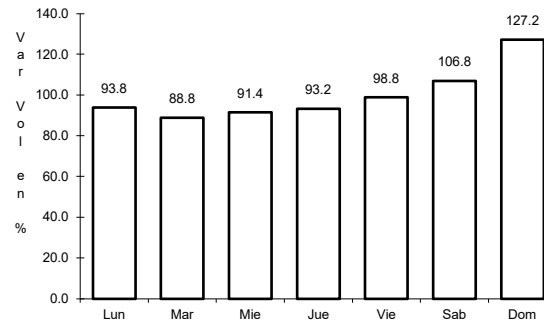
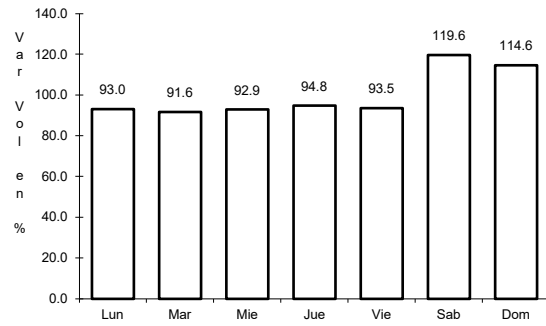
Km: 0.00 Tipo: 3 Sent: 2

Km: 187.80 Tipo: 3 Sent: 1

13 CARR: Tepic - Villa Unión (cuota)

CLAVE: 00500

RUTA: MEX-015D



Km: 8.65 Tipo: 1 Sent: 1

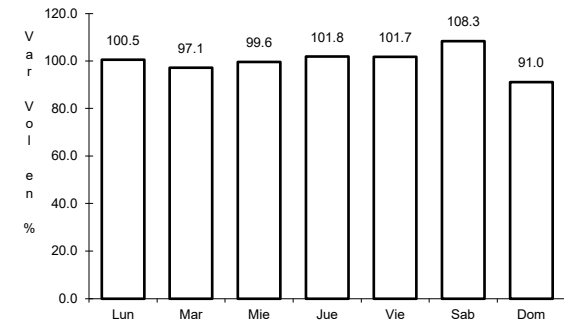
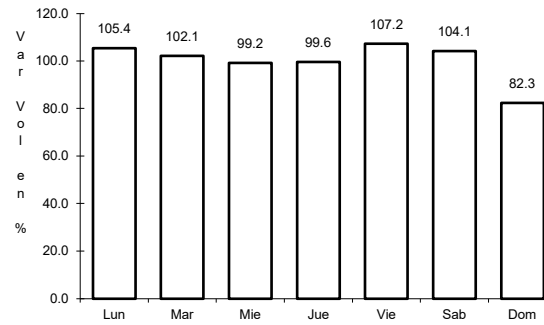
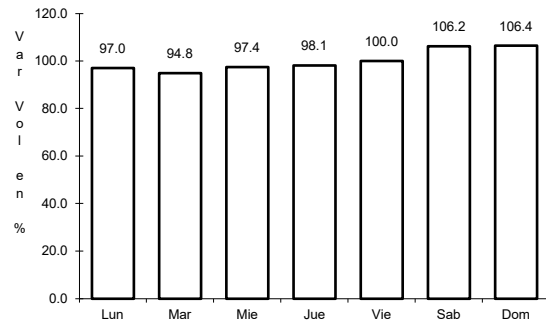
Km: 8.65 Tipo: 1 Sent: 2

Km: 240.90 Tipo: 1 Sent: 0

14 CARR: Carrizal - Campo Aníbal

CLAVE: 25585

RUTA: SIN-019



Km: 0.00 Tipo: 3 Sent: 0

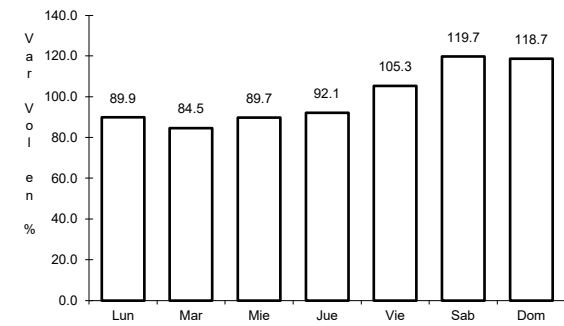
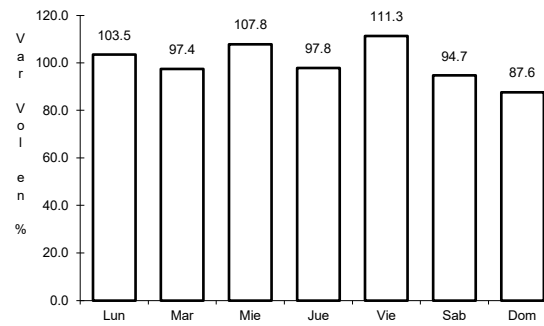
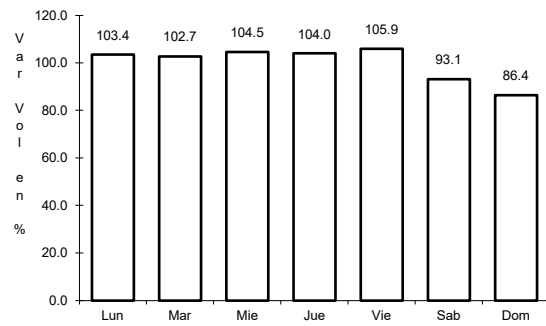
Km: 29.20 Tipo: 1 Sent: 0

Km: 32.00 Tipo: 1 Sent: 0

15 CARR: Culiacán - Altata

CLAVE: 25013

RUTA: SIN-030



Km: 6.20 Tipo: 1 Sent: 1

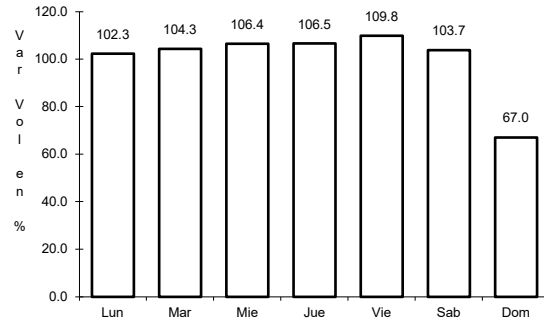
Km: 6.20 Tipo: 1 Sent: 2

Km: 67.00 Tipo: 1 Sent: 1

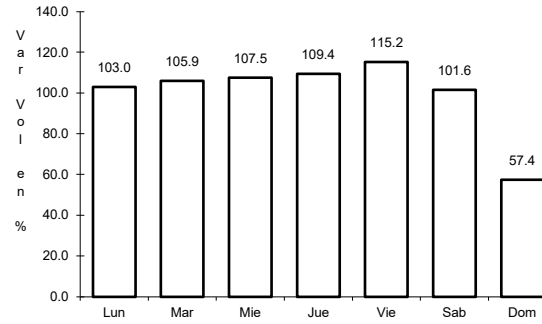
16 CARR: Culiacán - El Dorado

CLAVE: 25044

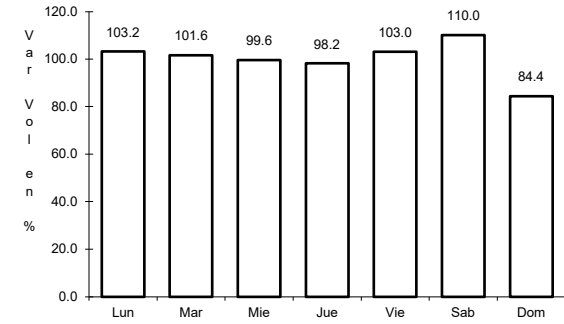
ruta: SIN-005



Km: 0.00 Tipo: 3 Sent: 1



Km: 0.00 Tipo: 3 Sent: 2

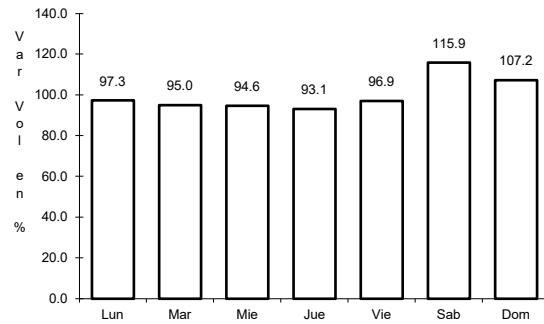


Km: 21.35 Tipo: 3 Sent: 0

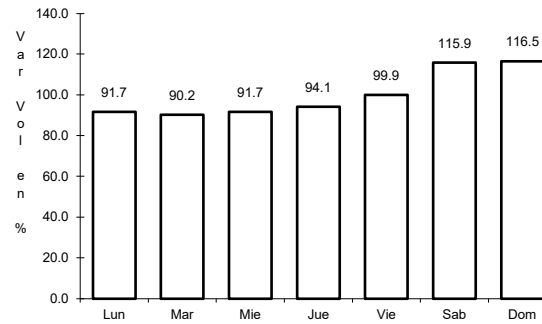
17 CARR: El Limoncito - Cinco Hermanos

CLAVE: 25016

ruta: SIN-016



Km: 0.00 Tipo: 3 Sent: 0

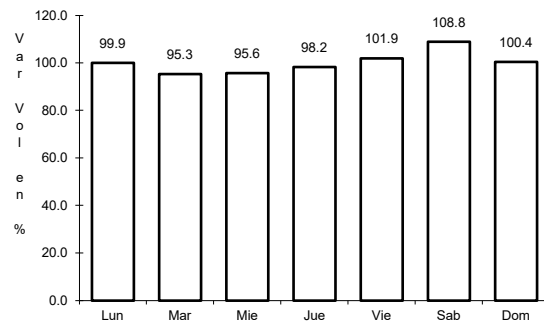


Km: 16.00 Tipo: 1 Sent: 0

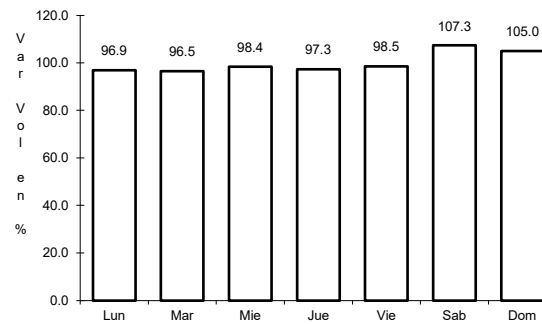
18 CARR: El Salado - El Dorado

CLAVE: 25010

ruta: SIN-010



Km: 0.00 Tipo: 3 Sent: 0

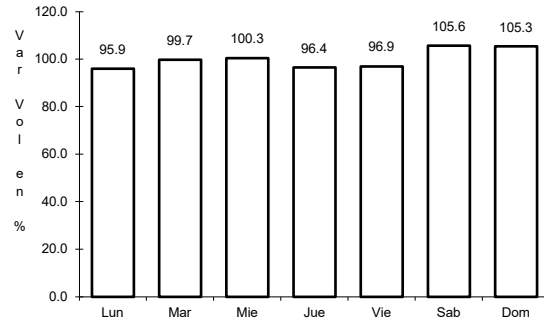


Km: 31.00 Tipo: 1 Sent: 0

19 CARR: Escuinapa de Hidalgo - Teacapan

CLAVE: 25001

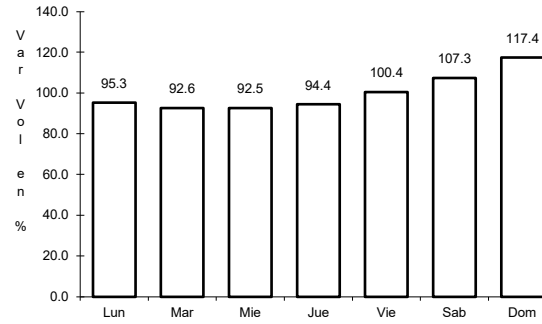
ruta: SIN-001



Km: 0.00

Tipo: 3

Sent: 0



Km: 41.00

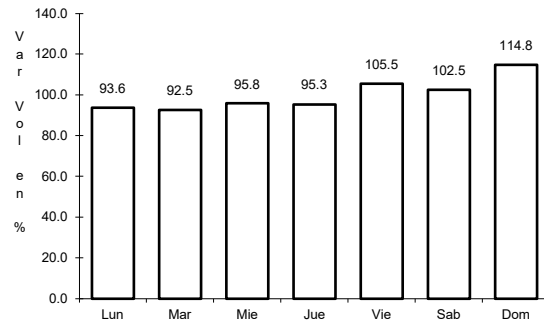
Tipo: 1

Sent: 0

20 CARR: Estación Dimas - San Ignacio

CLAVE: 25007

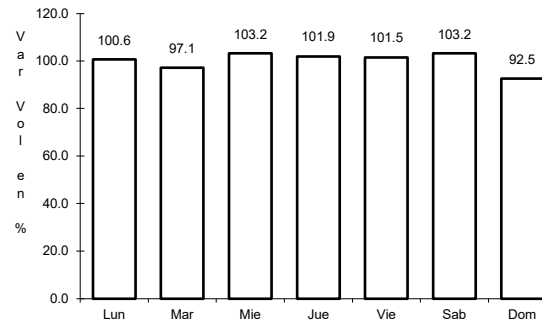
ruta: SIN-006



Km: 23.15

Tipo: 1

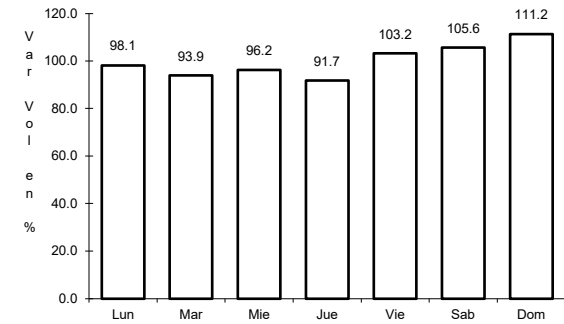
Sent: 0



Km: 23.15

Tipo: 3

Sent: 0



Km: 56.00

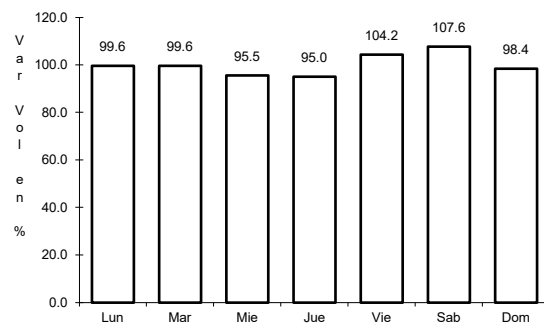
Tipo: 1

Sent: 0

21 CARR: Guamuchil - Mocerito

CLAVE: 25021

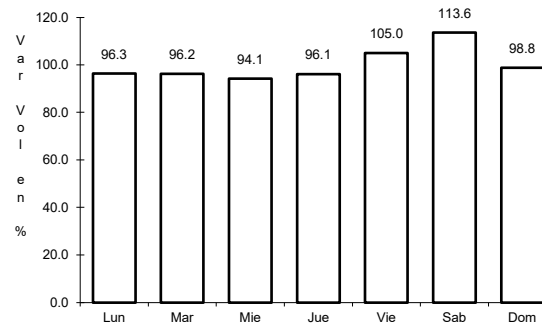
ruta: SIN-021



Km: 0.00

Tipo: 3

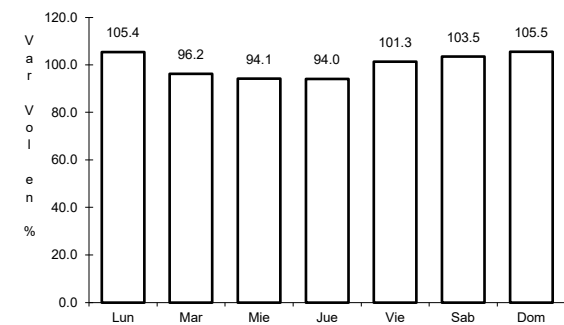
Sent: 0



Km: 17.00

Tipo: 1

Sent: 1



Km: 17.00

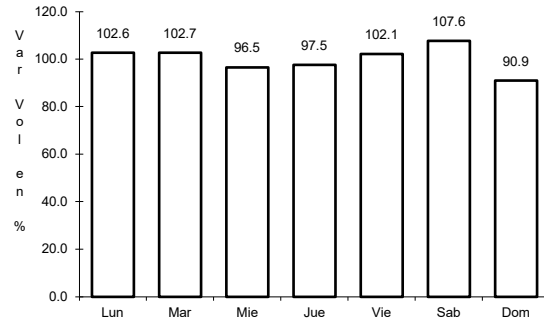
Tipo: 1

Sent: 2

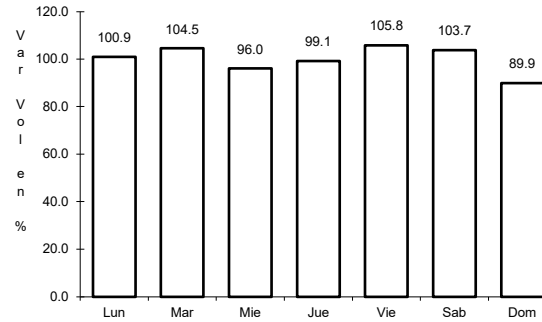
22 CARR: Guasave - Sinaloa de Leyva

CLAVE: 25023

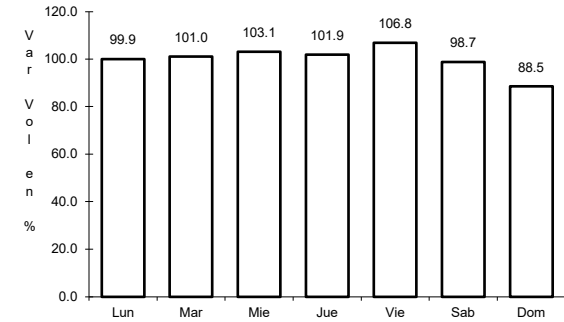
ruta: SIN-023



Km: 1.15 Tipo: 3 Sent: 1



Km: 1.15 Tipo: 3 Sent: 2

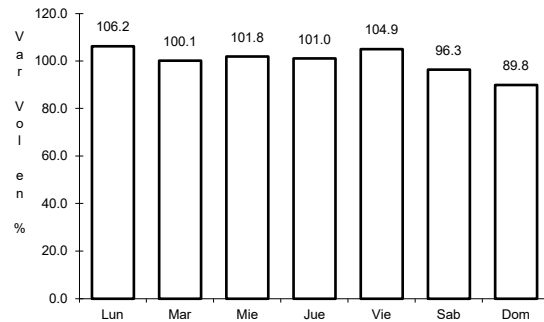


Km: 74.50 Tipo: 1 Sent: 1

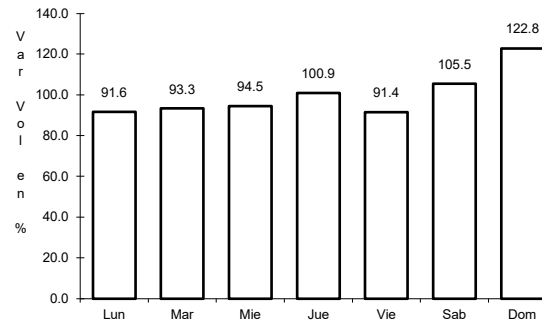
23 CARR: Navolato - El Castillo

CLAVE: 25004

ruta: SIN-004



Km: 0.00 Tipo: 3 Sent: 0

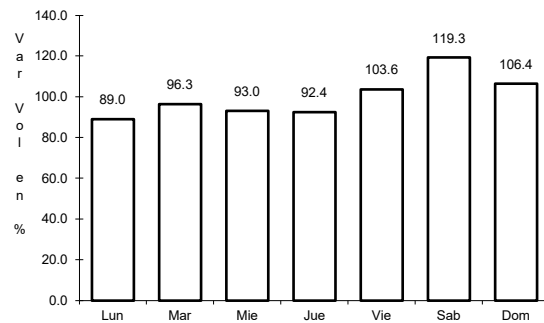


Km: 29.00 Tipo: 1 Sent: 0

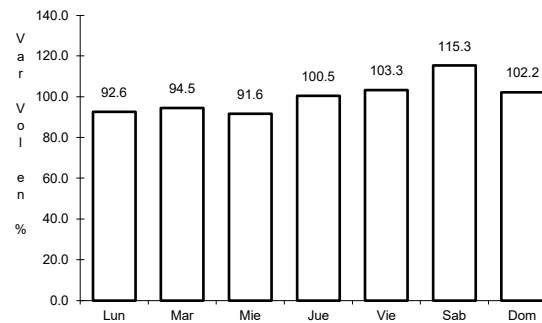
24 CARR: Pozole - Cofradía

CLAVE: 25080

ruta: SIN-080



Km: 0.00 Tipo: 3 Sent: 0

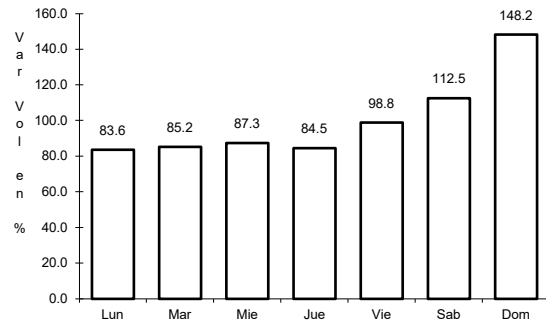


Km: 9.10 Tipo: 1 Sent: 0

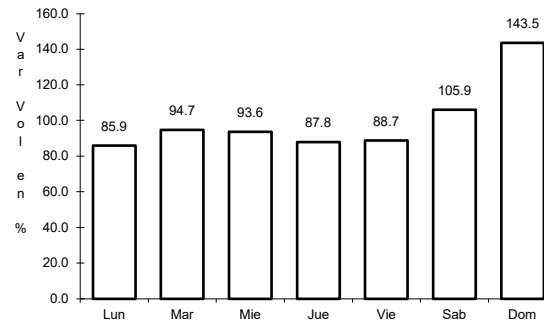
25 CARR: Ramal a Chametla

CLAVE: 25002

RUTA: SIN-002



Km: 0.00 Tipo: 3 Sent: 0

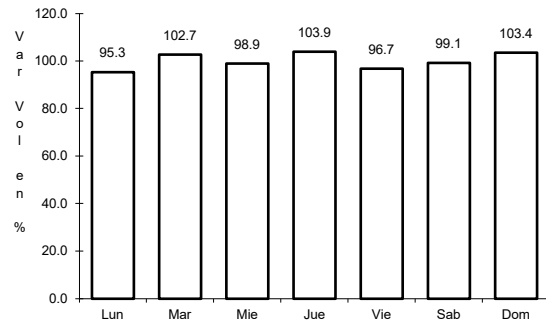


Km: 15.00 Tipo: 1 Sent: 0

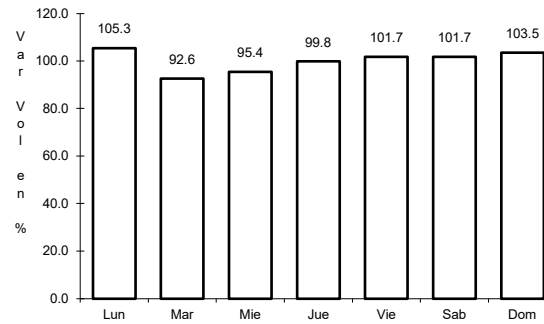
26 CARR: Ramal a Cosalá

CLAVE: 25008

RUTA: SIN-008



Km: 0.00 Tipo: 3 Sent: 0

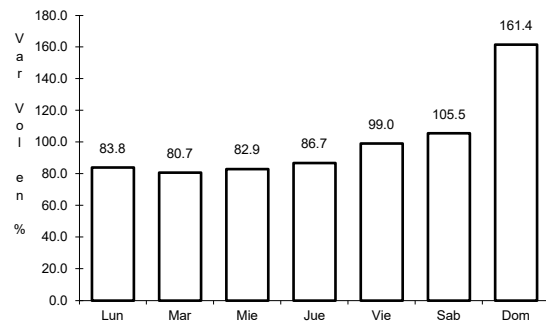


Km: 53.00 Tipo: 1 Sent: 0

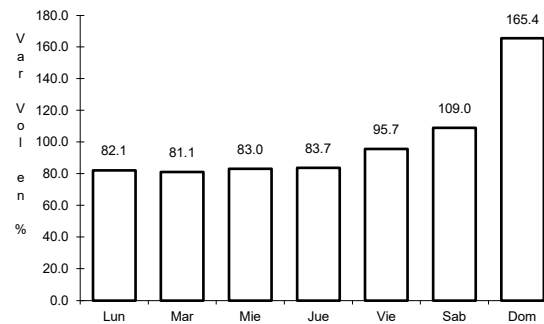
27 CARR: Ramal a El Quelite

CLAVE: 25060

RUTA: SIN-060



Km: 0.00 Tipo: 3 Sent: 0

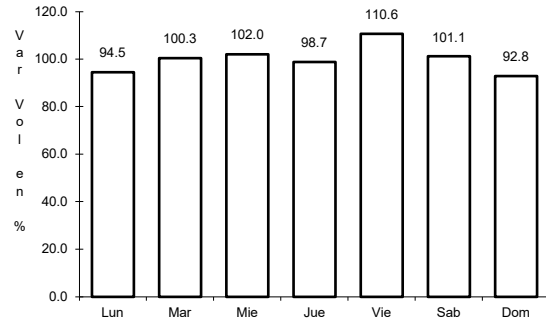


Km: 6.00 Tipo: 1 Sent: 0

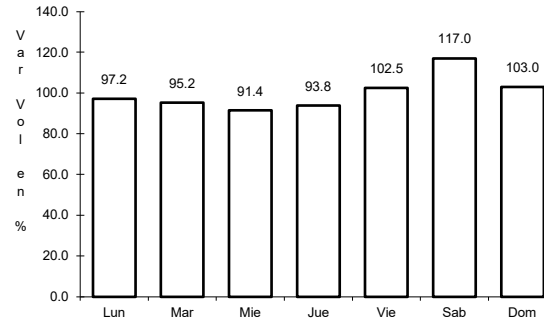
28 CARR: Ramal a Estación Bamoa

CLAVE: 25022

RUTA: SIN-022



Km: 0.00 Tipo: 3 Sent: 0

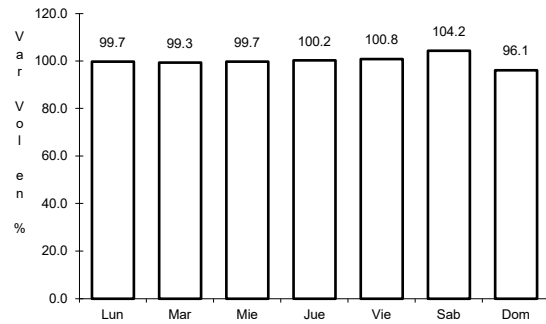


Km: 22.50 Tipo: 1 Sent: 0

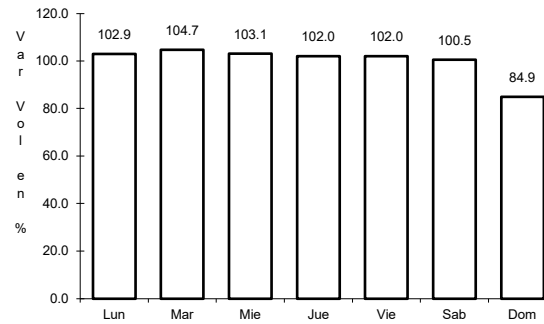
29 CARR: Ramal a La Cruz

CLAVE: 25043

RUTA: SIN



Km: 0.00 Tipo: 3 Sent: 0

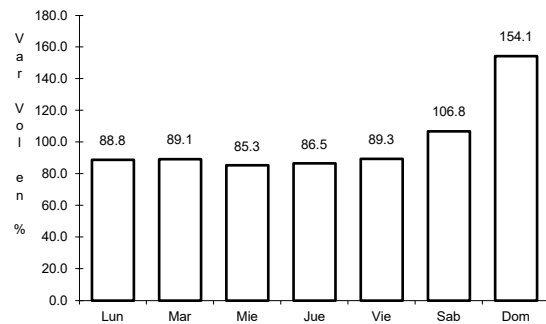


Km: 18.00 Tipo: 1 Sent: 0

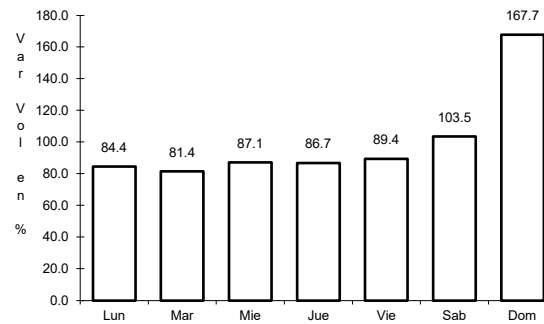
30 CARR: Ramal a La Noria

CLAVE: 25592

RUTA: SIN



Km: 0.00 Tipo: 3 Sent: 0

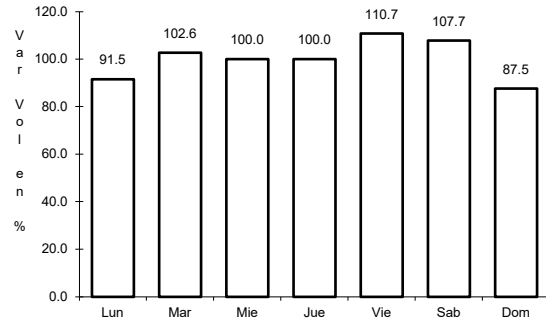


Km: 25.50 Tipo: 1 Sent: 0

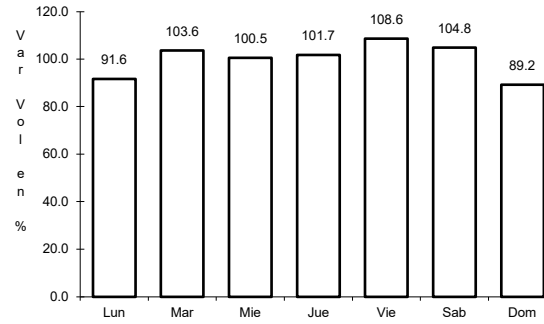
31 CARR: Ramal a La Reforma

CLAVE: 25041

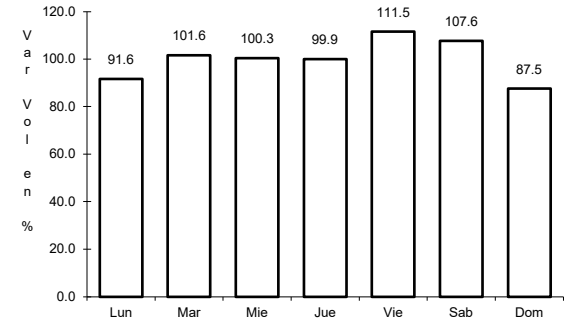
RUTA: SIN-004



Km: 0.00 Tipo: 3 Sent: 0



Km: 14.00 Tipo: 3 Sent: 0

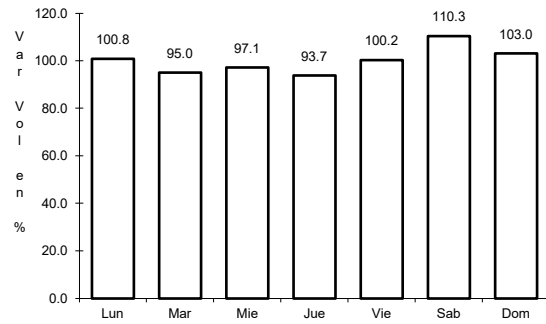


Km: 60.00 Tipo: 1 Sent: 0

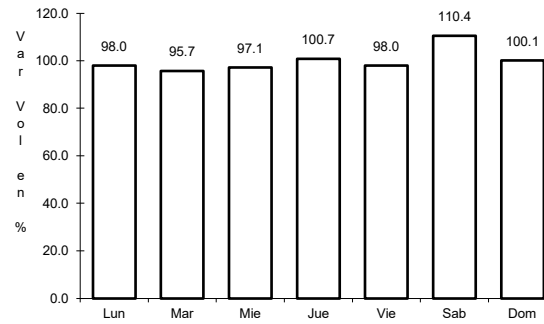
32 CARR: Rosario - Caimanero

CLAVE: 25003

RUTA: SIN-003



Km: 0.00 Tipo: 3 Sent: 0

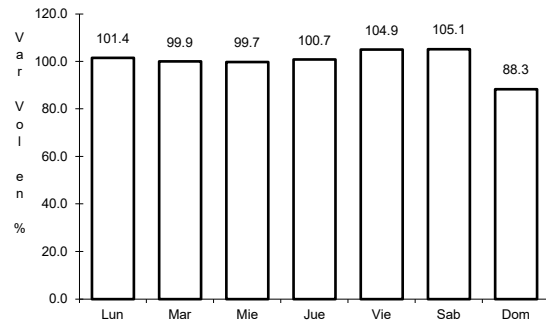


Km: 30.00 Tipo: 1 Sent: 0

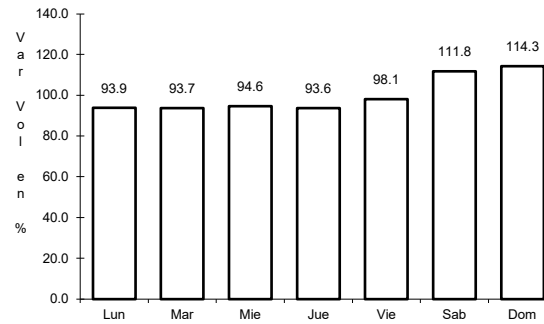
33 CARR: San Pedro - Campo Aníbal

CLAVE: 25600

RUTA: SIN



Km: 0.00 Tipo: 3 Sent: 0

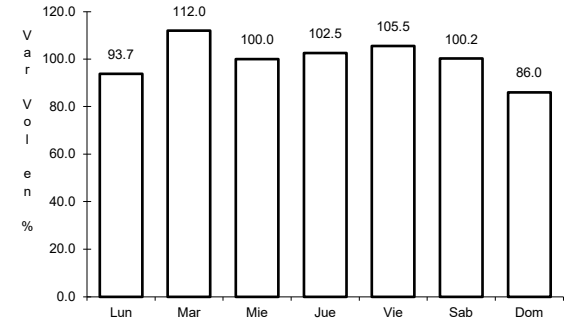
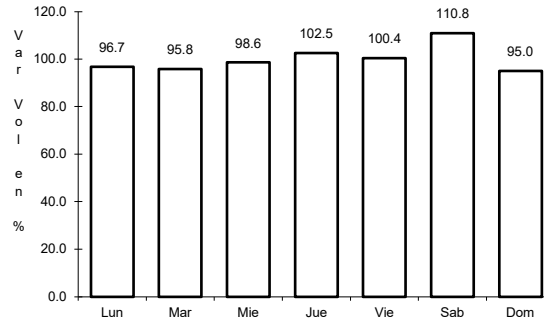
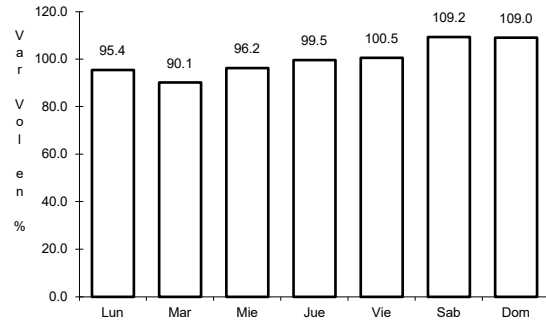


Km: 24.50 Tipo: 1 Sent: 0

34 CARR: Topolobampo - Choix

CLAVE: 25032

ruta: SIN-023



Km: 0.00 Tipo: 3 Sent: 1

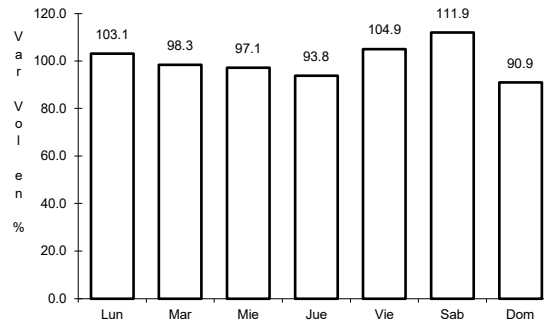
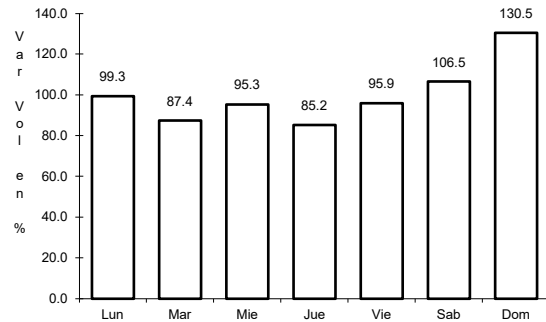
Km: 0.00 Tipo: 3 Sent: 2

Km: 159.00 Tipo: 1 Sent: 0

35 CARR: Villa Unión - El Walamo

CLAVE: 25081

ruta: SIN-081



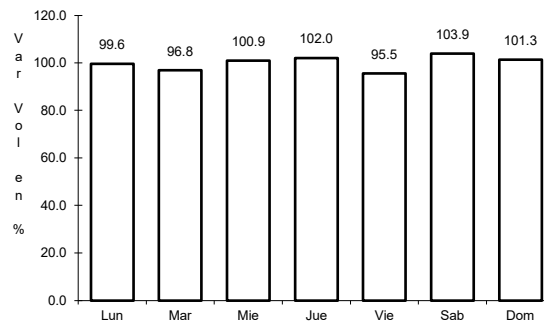
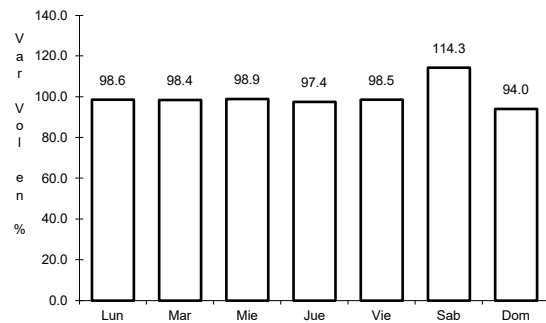
Km: 0.00 Tipo: 3 Sent: 0

Km: 7.00 Tipo: 1 Sent: 0

36 CARR: Villa Unión - Siqueiros

CLAVE: 25063

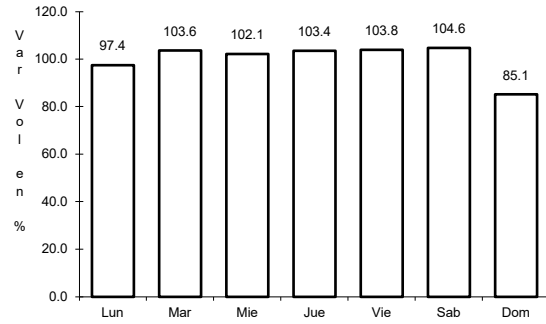
ruta: SIN-063



Km: 0.00 Tipo: 3 Sent: 0

Km: 11.00 Tipo: 1 Sent: 0

37 CARR: Culiacán - Las Brisas (Cuota)

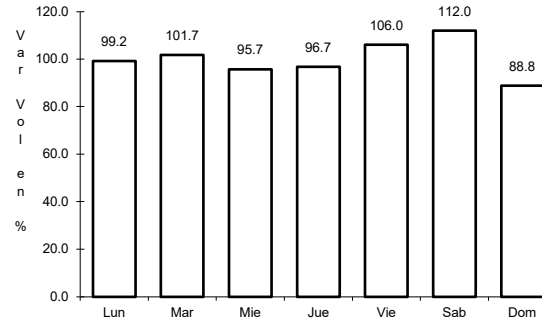


Km: 1.50

Tipo: 3

Sent: 1

CLAVE: 25503

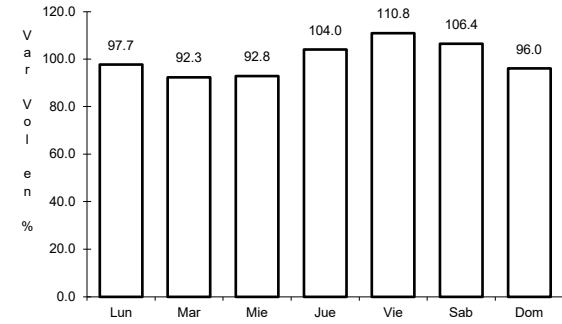


Km: 1.50

Tipo: 3

Sent: 2

RUTA: SIN-001D



Km: 125.70

Tipo: 1

Sent: 1

