



SAN LUIS POTOSI

---RED FEDERAL LIBRE---

1 Antiguo Morelos - Ent. El Huizache	MEX-080
2 Carbonera - T. C. (Ent. Morelos - Saltillo)	MEX-062
3 Cd. Valles - Cd. Victoria	MEX-085
4 Cd. Valles - San Luis Potosí	MEX-070
5 Cd. Valles - Tampico	MEX-070
6 El Clarín - Agua Buena	MEX-070
7 Ent. Aqualulco - Ent. La Bonita	MEX-063
8 Ent. de Zaragoza - San Felipe	MEX-037
9 Ent. Tula - Cd. Victoria	MEX-101
10 Jalpan de Serra - Rioverde	MEX-069
11 Libramiento de Cd. Valles	MEX-070
12 Libramiento de Villa de Reyes	MEX-037
13 Libramiento de Villa de Reyes (Poniente)	MEX-037
14 Libramiento Villa de Arriaga	MEX-080
15 Matehuala - Ent. Puerto México	MEX-057
16 Portezuelo - Cd. Valles	MEX-085
17 Querétaro - San Luis Potosí	MEX-057
18 Ramal a Aeropuerto de S. L. P.	MEX-057
19 Ramal a Ojo de Agua	MEX-062
20 Ramal a Rayón	MEX-070
21 San Juan del Río - Xilitla	MEX-120
22 San Luis Potosí - Ent. Arcinas	MEX-049
23 San Luis Potosí - Lagos de Moreno	MEX-070-080
24 San Luis Potosí - Matehuala	MEX-057
25 T. C. (Ent. El Huizache- Ant. Morelos)-El Salto	MEX-080
26 T. C. (Qro - S.L.P.) - Tierra Nueva	MEX-057
27 T. C. (S.L.P. - Matehuala) - Villa Hidalgo	MEX-057
28 Tamazunchale - San Felipe Orizatlán	MEX-085

---RED FEDERAL DE CUOTA---

29 Lagos de Moreno - Villa de Arriaga (Cuota)	MEX-080D
30 Libramiento de Matehuala (Cuota)	MEX-057D
31 Libramiento Norponiente de San Luis Potosí (Cuota)	MEX-057D
32 Libramiento Oriente de San Luis Potosí (Cuota)	MEX-057D
33 Rayón - Ent. Tamuín (Cuota)	MEX-070D

---RED ESTATAL LIBRE---

34 Charcas - Villa Santo Domingo	SLP-017
35 Ébano - Estación Manuel	SLP-TAM
36 Matehuala - La Paz	SLP-020
37 Matehuala - La Poza	SLP-029-NL-061
38 Periférico de San Luis Potosí	SLP-032
39 Ramal a Cerritos	SLP-007
40 Ramal a Pozo de Acuña	SLP-009
41 Rayón - Arroyo Seco	SLP-011
42 Santo Domingo - Cerro Gordo	SLP-022
43 Tamuín - Estación F.F.C.C. Tamuín	SLP-040
44 Tamuín - Xolol	SLP-014

---RED ESTATAL DE CUOTA---

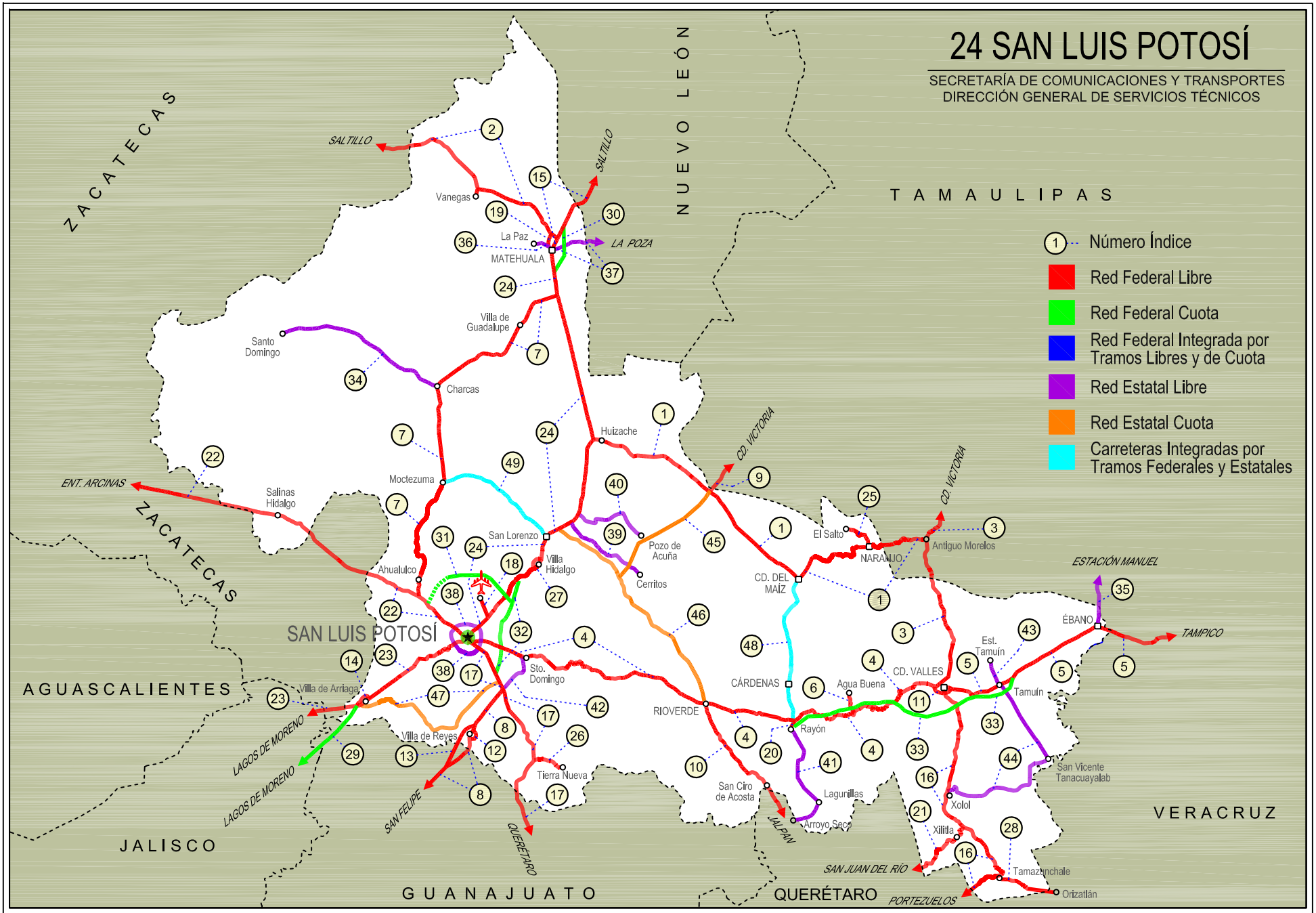
45 Cerritos - Ent. Tula (Cuota)	SLP-075D
46 Cerritos - Rioverde (Cuota)	SLP-D
47 San Luis Potosí - Villa de Arriaga (Cuota)	SLP-D

---CARRETERAS INTEGRADAS POR TRAMOS FEDERALES Y ESTATALES---

48 Rayón - Cd. del Maíz	MEX-070-SLP-005
49 San Lorenzo - Moctezuma	MEX-063-SLP-012

24 SAN LUIS POTOSÍ

SECRETARÍA DE COMUNICACIONES Y TRANSPORTES
DIRECCIÓN GENERAL DE SERVICIOS TÉCNICOS



SAN LUIS POTOSI

1 CARR: Antiguo Morelos - Ent. El Huizache

CLAVE: 00136

RUTA: MEX-080

AÑO: 2020

LUGAR	ESTACION				CLASIFICACION VEHICULAR EN PORCIENTO										COORDENADAS					
	KM	TE	SC	TDPA	M	A	B	C2	C3	T3S2	T3S3	T3S2R4	OTROS	A	B	C	K'	D	LATITUD	LONGITUD
Antiguo Morelos	0.00	3	0	2173	7.6	83.5	2.9	3.3	1.5	0.7	0.4	0.1	0.0	91.1	2.9	6.0	0.096	0.502	22.553363	-99.078636
Nuevo Morelos	19.28	1	0	1106	6.8	82.7	1.3	4.5	1.8	1.7	0.6	0.5	0.1	89.5	1.3	9.2	0.097	0.503	22.535449	-99.217852
Lim. Edos. Term. Tamps. Ppia. S. L. P.	25.00																			
El Naranjo	32.00	1	0	4123	3.8	64.6	4.0	7.1	2.1	10.5	2.2	4.9	0.8	68.4	4.0	27.6	0.096	0.524	22.521383	-99.326265
El Naranjo	32.00	3	0	2283	7.9	81.4	0.9	7.6	0.6	1.3	0.2	0.0	0.1	89.3	0.9	9.8	0.094	0.515	22.521387	-99.326255
Cd. del Maíz	86.00	3	0	1287	2.6	67.0	2.8	18.8	2.8	2.9	1.9	0.5	0.7	69.6	2.8	27.6	0.089	0.522	22.400143	-99.607277
T. Der. Tula	141.21	3	0	2212	0.8	39.1	2.2	6.6	3.6	21.0	6.8	18.5	1.4	39.9	2.2	57.9	0.065	0.501	22.732685	-99.972412
T. C. San Luis Potosí - Matehuala (Ent. El Huizache)	198.83	1	0	2712	3.3	45.4	2.0	9.7	3.4	17.5	4.5	13.3	0.9	48.7	2.0	49.3	0.064	0.507	22.928742	-100.456726

2 CARR: Carbonera - T. C. (Ent. Morelos - Saltillo)

CLAVE: 00218

RUTA: MEX-062

AÑO: 2020

LUGAR	ESTACION				CLASIFICACION VEHICULAR EN PORCIENTO										COORDENADAS					
	KM	TE	SC	TDPA	M	A	B	C2	C3	T3S2	T3S3	T3S2R4	OTROS	A	B	C	K'	D	LATITUD	LONGITUD
Carbonera	0.00	3	0	2600	9.6	73.1	1.4	9.7	2.2	2.2	0.7	1.0	0.1	82.7	1.4	15.9	0.102	0.505	23.696858	-100.618394
Cedral	18.00	1	0	3612	6.9	75.1	0.9	12.3	1.3	2.4	0.4	0.5	0.2	82.0	0.9	17.1	0.088	0.512	23.808708	-100.710130
Cedral	18.00	3	0	3290	9.6	74.6	0.7	9.2	1.7	2.6	0.8	0.6	0.2	84.2	0.7	15.1	0.083	0.510	23.827402	-100.733993
Lim. Edos. Term. S. L. P. Ppia. Zac.	79.20																			
T. C. Ent. Morelos - Saltillo	112.00	1	0	1128	2.0	78.1	1.2	14.8	1.8	1.8	0.2	0.1	0.0	80.1	1.2	18.7	0.098	0.538	24.158111	-101.495128

3 CARR: Cd. Valles - Cd. Victoria

CLAVE: 00509

RUTA: MEX-085

AÑO: 2020

LUGAR	ESTACION				CLASIFICACION VEHICULAR EN PORCIENTO										COORDENADAS					
	KM	TE	SC	TDPA	M	A	B	C2	C3	T3S2	T3S3	T3S2R4	OTROS	A	B	C	K'	D	LATITUD	LONGITUD
Cd. Valles	0.00	3	0	10581	3.8	80.5	1.8	5.6	0.8	5.2	0.9	0.5	0.9	84.3	1.8	13.9	0.074	0.508	21.998363	-99.010575
Lim. Edos. Term. S. L. P. Ppia. Tamps.	50.40																			
Antiguo Morelos	66.90	1	0	2248	10.5	76.5	2.4	4.1	3.4	1.4	1.1	0.5	0.1	87.0	2.4	10.6	0.086	0.511	22.553363	-99.078636
Antiguo Morelos	66.90	3	0	3147	7.7	80.3	2.4	3.8	2.5	1.9	0.8	0.4	0.2	88.0	2.4	9.6	0.088	0.509	22.553346	-99.078604
Cd. Mante	98.00	1	0	6436	7.3	80.1	3.1	4.1	2.8	1.3	0.7	0.5	0.1	87.4	3.1	9.5	0.098	0.504	22.726046	-98.968519
T. Izq. Ocampo	110.00	3	0	3543	10.0	81.2	1.9	3.5	1.0	1.6	0.6	0.1	0.1	91.2	1.9	6.9	0.089	0.500	22.837327	-99.023814
T. Izq. Gómez Farías	132.84	3	0	1930	13.2	77.9	1.4	3.0	2.1	1.8	0.3	0.2	0.1	91.1	1.4	7.5	0.100	0.502	23.024760	-99.092728
T. Izq. Llera de Canales	170.00	3	0	3142	1.2	83.2	3.7	7.5	1.3	1.8	0.5	0.7	0.1	84.4	3.7	11.9	0.116	0.502	23.309435	-99.020692
T. Der. González	172.50	3	0	1815	0.8	85.1	4.2	6.0	0.7	1.6	0.8	0.8	0.0	85.9	4.2	9.9	0.125	0.508	23.317230	-98.998043
Cd. Victoria	232.00	1	0	2692	0.9	80.9	4.3	8.2	2.7	1.6	0.9	0.4	0.1	81.8	4.3	13.9	0.113	0.520	23.713546	-99.129107

SAN LUIS POTOSI

4 CARR: Cd. Valles - San Luis Potosi

CLAVE: 24135

RUTA: MEX-070

AÑO: 2020

LUGAR	ESTACION				CLASIFICACION VEHICULAR EN PORCIENTO													COORDENADAS		
	KM	TE	SC	TDPA	M	A	B	C2	C3	T3S2	T3S3	T3S2R4	OTROS	A	B	C	K'	D	LATITUD	LONGITUD
Cd. Valles	0.00	3	1	4324	5.2	80.7	2.0	6.7	1.4	1.7	1.1	0.7	0.5	85.9	2.0	12.1	0.087	0.531	21.996645	-99.025812
Cd. Valles	0.00	3	2	3821	5.2	80.0	2.0	6.9	1.7	1.8	1.2	0.7	0.5	85.2	2.0	12.8	0.083	0.531	21.996505	-99.025684
X. C. Rayón - Ent. Tamuín (Cuota)	11.59	1	1	2138	5.7	79.1	1.8	7.0	1.5	2.2	1.3	0.8	0.6	84.8	1.8	13.4	0.087	0.507	22.002069	-99.115960
X. C. Rayón - Ent. Tamuín (Cuota)	11.59	1	2	2201	5.5	78.8	2.0	7.0	1.5	1.9	1.5	1.0	0.8	84.3	2.0	13.7	0.088	0.507	22.002134	-99.116023
T. Der. Damián Carmona	31.25	3	0	2023	4.2	77.5	1.9	10.9	2.2	2.5	0.6	0.1	0.1	81.7	1.9	16.4	0.089	0.507	21.925491	-99.227495
T. Der. Canoas	75.40	1	0	1707	2.8	82.9	0.6	6.6	1.5	2.7	1.6	0.6	0.7	85.7	0.6	13.7	0.084	0.507	21.879434	-99.502627
X. C. Cárdenas - Rayón	93.00	1	0	2786	3.1	77.4	0.5	12.9	1.7	3.0	1.1	0.2	0.1	80.5	0.5	19.0	0.088	0.502	21.851106	-99.627984
X. C. Cárdenas - Rayón	93.00	3	0	6415	0.8	77.1	3.2	8.4	1.8	5.0	1.7	1.3	0.7	77.9	3.2	18.9	0.088	0.510	21.851116	-99.627982
T. Der. Santa Rita	118.00	3	0	6754	0.8	76.6	3.4	8.5	1.7	5.1	1.7	1.3	0.9	77.4	3.4	19.2	0.081	0.537	21.897520	-99.844313
Río Verde	133.76	1	1	9600	7.2	79.9	1.2	6.5	1.0	1.3	2.3	0.3	0.3	87.1	1.2	11.7	0.094	0.551	21.923255	-99.993813
Río Verde	133.76	1	2	7807	7.2	79.7	1.2	6.5	1.0	1.3	2.4	0.3	0.4	86.9	1.2	11.9	0.096	0.551	21.923208	-99.993821
Río Verde	133.76	3	1	9215	0.8	89.8	0.6	7.3	0.9	0.3	0.3	0.0	0.0	90.6	0.6	8.8	0.091	0.501	21.923188	-99.993800
Río Verde	133.76	3	2	9179	0.8	89.6	0.7	7.3	0.9	0.4	0.3	0.0	0.0	90.4	0.7	8.9	0.091	0.501	21.923202	-99.993812
T. Der. La Reformita	145.90	1	0	4655	4.0	84.2	0.9	7.6	1.3	0.9	0.7	0.2	0.2	88.2	0.9	10.9	0.091	0.511	21.969083	-100.097038
T. Der. La Reformita	145.90	3	0	4090	3.1	76.5	1.6	13.5	2.8	1.5	0.7	0.2	0.1	79.6	1.6	18.8	0.108	0.507	21.969081	-100.097041
T. Izq. La Tapona	157.76	1	0	3371	2.4	82.9	1.5	9.4	1.8	1.2	0.6	0.1	0.1	85.3	1.5	13.2	0.120	0.511	22.021553	-100.190205
T. Izq. La Tapona	157.76	3	0	3438	1.9	84.8	1.2	9.6	1.3	0.7	0.2	0.1	0.2	86.7	1.2	12.1	0.117	0.519	22.021553	-100.190205
T. Der. Guaxcama	161.04	3	0	2852	6.6	77.4	1.2	12.6	1.0	0.4	0.3	0.3	0.2	84.0	1.2	14.8	0.095	0.510	22.040317	-100.271573
San Antonio	180.70	1	0	2956	2.2	81.3	1.4	13.1	0.9	0.5	0.4	0.1	0.1	83.5	1.4	15.1	0.099	0.509	22.018895	-100.374809
T. Izq. Puente Prieto	181.93	3	0	3095	2.4	82.1	1.6	8.5	2.1	2.0	1.1	0.1	0.1	84.5	1.6	13.9	0.099	0.504	22.018605	-100.386118
San Nicolás Tolentino	191.00	1	0	3061	2.5	81.8	1.6	8.4	2.2	1.7	1.6	0.1	0.1	84.3	1.6	14.1	0.101	0.521	22.048049	-100.457903
T. Der. San Martín de Abajo	199.60	1	0	2663	2.3	82.0	1.3	8.8	2.1	1.7	1.4	0.1	0.3	84.3	1.3	14.4	0.140	0.503	22.072515	-100.497878
T. Der. San Martín de Abajo	199.60	3	0	2840	2.2	83.1	1.1	7.9	1.9	1.5	1.7	0.2	0.4	85.3	1.1	13.6	0.082	0.506	22.072515	-100.497881
T. Izq. Zaragoza	239.50	1	0	4465	2.9	79.7	1.3	11.4	1.2	1.2	1.0	0.7	0.6	82.6	1.3	16.1	0.130	0.503	22.099442	-100.744988
T. Izq. Zaragoza	239.50	3	0	5986	2.7	80.5	1.3	11.5	1.5	1.4	0.8	0.1	0.2	83.2	1.3	15.5	0.095	0.517	22.099449	-100.744979
X. Lib. Ote. de San Luis Potosí	255.00	1	0	8295	2.4	82.1	0.9	10.3	1.2	1.4	0.9	0.3	0.5	84.5	0.9	14.6	0.076	0.502	22.127843	-100.824701
X. Periférico de San Luis Potosí	257.44	1	1	22168	1.8	84.4	0.9	9.8	1.1	1.2	0.6	0.1	0.1	86.2	0.9	12.9	0.095	0.525	22.154815	-100.914582
X. Periférico de San Luis Potosí	257.44	1	2	26112	1.8	84.4	0.9	9.8	1.2	1.2	0.6	0.0	0.1	86.2	0.9	12.9	0.092	0.525	22.154813	-100.914566
San Luis Potosí	261.94																			

5 CARR: Cd. Valles - Tampico

CLAVE: 00138

RUTA: MEX-070

AÑO: 2020

LUGAR	ESTACION				CLASIFICACION VEHICULAR EN PORCIENTO													COORDENADAS		
	KM	TE	SC	TDPA	M	A	B	C2	C3	T3S2	T3S3	T3S2R4	OTROS	A	B	C	K'	D	LATITUD	LONGITUD
Cd. Valles	0.00	3	0	7407	2.6	75.6	1.5	9.7	3.4	4.4	1.3	0.9	0.6	78.2	1.5	20.3	0.075	0.507	21.979796	-98.997814

SAN LUIS POTOSI

5 CARR: Cd. Valles - Tampico

CLAVE: 00138

RUTA: MEX-070

AÑO: 2020

LUGAR	ESTACION				CLASIFICACION VEHICULAR EN PORCIENTO										COORDENADAS					
	KM	TE	SC	TDPA	M	A	B	C2	C3	T3S2	T3S3	T3S2R4	OTROS	A	B	C	K'	D	LATITUD	LONGITUD
T. Der. Santa Elena	15.25	3	0	5905	2.4	73.5	2.1	9.8	2.7	5.1	2.8	1.3	0.3	75.9	2.1	22.0	0.101	0.529	21.959213	-98.881327
Tamuín	29.60	1	0	5073	3.2	75.4	2.0	9.6	2.2	3.8	1.6	1.4	0.8	78.6	2.0	19.4	0.080	0.503	22.002150	-98.780366
T. C. Rayón - Ent. Tamuín (Cuota)	34.40	1	0	3426	6.8	68.7	2.7	10.9	3.6	3.0	1.8	1.6	0.9	75.5	2.7	21.8	0.095	0.501	22.005299	-98.731940
T. C. Rayón - Ent. Tamuín (Cuota)	34.40	3	1	1923	6.9	70.2	2.4	10.0	2.6	3.5	2.0	1.6	0.8	77.1	2.4	20.5	0.085	0.508	22.005348	-98.731972
T. C. Rayón - Ent. Tamuín (Cuota)	34.40	3	2	1984	6.4	69.0	2.5	11.1	2.9	3.7	2.0	1.7	0.7	75.4	2.5	22.1	0.090	0.508	22.005802	-98.732526
Ébano	79.00	1	0	8543	9.1	73.4	1.5	4.8	1.6	5.7	1.5	1.4	1.0	82.5	1.5	16.0	0.087	0.503	22.216529	-98.375814
Ébano	79.00	3	0	4419	6.3	68.9	3.0	8.7	3.0	4.5	2.0	3.0	0.6	75.2	3.0	21.8	0.095	0.505	22.216534	-98.375818
Lim. Edos. Term. S. L. P. Ppia. Ver.	83.57																			
T. Der. Pánuco	103.00	1	0	5150	6.2	70.4	2.4	7.9	1.8	6.3	1.9	2.2	0.9	76.6	2.4	21.0	0.075	0.511	22.157480	-98.151635
T. Der. Pánuco	103.00	3	0	7284	4.0	69.8	2.8	10.3	1.8	6.1	1.8	2.5	0.9	73.8	2.8	23.4	0.089	0.512	22.157474	-98.151644
T. C. Anáhuac - El Prieto	128.40	1	1	4598	4.1	73.5	2.3	10.8	2.4	2.8	1.3	2.2	0.6	77.6	2.3	20.1	0.091	0.503	22.215190	-97.946216
T. C. Anáhuac - El Prieto	128.40	1	2	4661	4.0	73.4	2.3	11.2	2.4	2.8	1.3	2.2	0.4	77.4	2.3	20.3	0.109	0.503	22.215206	-97.946225
T. C. Anáhuac - El Prieto	128.40	3	1	5670	3.9	70.6	2.0	10.7	2.2	5.0	2.3	2.6	0.7	74.5	2.0	23.5	0.094	0.503	22.215250	-97.946207
T. C. Anáhuac - El Prieto	128.40	3	2	5732	3.6	67.4	2.2	12.8	2.5	5.6	2.2	2.8	0.9	71.0	2.2	26.8	0.106	0.503	22.215246	-97.946110
Lim. Edos. Term. Ver. Ppia. Tamps.	133.81																			
Tampico	138.00	1	1	9899	2.0	71.2	1.6	12.2	2.3	4.9	2.3	2.8	0.7	73.2	1.6	25.2	0.108	0.510	22.226744	-97.871980
Tampico	138.00	1	2	9504	1.9	71.4	1.6	12.1	2.3	4.8	2.3	2.9	0.7	73.3	1.6	25.1	0.107	0.510	22.226802	-97.872002

6 CARR: El Clarín - Agua Buena

CLAVE: 24283

RUTA: MEX-070

AÑO: 2020

LUGAR	ESTACION				CLASIFICACION VEHICULAR EN PORCIENTO										COORDENADAS					
	KM	TE	SC	TDPA	M	A	B	C2	C3	T3S2	T3S3	T3S2R4	OTROS	A	B	C	K'	D	LATITUD	LONGITUD
T. C. Cd. Valles - San Luis Potosí	0.00	3	0	1093	4.9	76.7	1.6	15.2	0.4	0.8	0.3	0.0	0.1	81.6	1.6	16.8	0.102	0.500	21.883559	-99.379449
Agua Buena	11.23	1	0	3611	14.5	73.1	1.3	8.6	0.1	2.0	0.3	0.0	0.1	87.6	1.3	11.1	0.089	0.504	21.956668	-99.392401

7 CARR: Ent. Ahualulco - Ent. La Bonita

CLAVE: 24258

RUTA: MEX-063

AÑO: 2020

LUGAR	ESTACION				CLASIFICACION VEHICULAR EN PORCIENTO										COORDENADAS					
	KM	TE	SC	TDPA	M	A	B	C2	C3	T3S2	T3S3	T3S2R4	OTROS	A	B	C	K'	D	LATITUD	LONGITUD
T. C. San Luis Potosí - Ent. Arcinas	0.00	3	0	5864	3.8	80.5	1.1	13.0	0.5	0.3	0.3	0.2	0.3	84.3	1.1	14.6	0.092	0.503	22.317397	-101.165094
Ahualulco	11.00	3	0	4816	5.0	75.1	1.3	15.2	0.7	1.9	0.4	0.1	0.3	80.1	1.3	18.6	0.085	0.501	22.400229	-101.165671
Moctezuma	59.00	1	0	2106	1.0	75.5	1.4	18.9	1.2	1.2	0.5	0.3	0.0	76.5	1.4	22.1	0.098	0.503	22.748836	-101.078101
Charcas	100.00	1	0	2646	12.0	68.7	2.7	14.3	1.0	0.5	0.3	0.3	0.2	80.7	2.7	16.6	0.081	0.501	23.128402	-101.111125
Charcas	100.00	3	0	1482	10.5	70.4	2.1	13.8	0.7	1.4	0.4	0.6	0.1	80.9	2.1	17.0	0.093	0.527	23.128403	-101.111127
T. C. San Luis Potosí - Matehuala	169.90	1	0	1257	7.3	66.2	1.9	21.6	1.7	1.0	0.3	0.0	0.0	73.5	1.9	24.6	0.095	0.512	23.483057	-100.614891

SAN LUIS POTOSI

8 CARR: Ent. de Zaragoza - San Felipe

CLAVE: 00240

RUTA: MEX-037

AÑO: 2020

LUGAR	ESTACION				CLASIFICACION VEHICULAR EN PORCIENTO													COORDENADAS		
	KM	TE	SC	TDPA	M	A	B	C2	C3	T3S2	T3S3	T3S2R4	OTROS	A	B	C	K'	D	LATITUD	LONGITUD
T. C. Querétaro - San Luis Potosí	0.00	3	0	9163	0.8	60.3	6.0	12.4	2.7	12.5	3.0	1.5	0.8	61.1	6.0	32.9	0.081	0.500	21.968730	-100.816398
Lim. Edos. Term. S. L. P. Ppia. Gto.	32.00																			
San Felipe	72.00	1	0	6592	4.2	51.0	4.5	12.1	2.7	20.8	2.3	1.8	0.6	55.2	4.5	40.3	0.079	0.501	21.477931	-101.209019

9 CARR: Ent. Tula - Cd. Victoria

CLAVE: 00179

RUTA: MEX-101

AÑO: 2020

LUGAR	ESTACION				CLASIFICACION VEHICULAR EN PORCIENTO													COORDENADAS		
	KM	TE	SC	TDPA	M	A	B	C2	C3	T3S2	T3S3	T3S2R4	OTROS	A	B	C	K'	D	LATITUD	LONGITUD
T. C. Antiguo Morelos - El Huizache	0.00	3	0	3621	2.1	39.6	3.9	6.3	2.9	20.3	6.3	17.1	1.5	41.7	3.9	54.4	0.067	0.504	22.732722	-99.972380
Lim. Edos. Term. S. L. P. Ppia. Tamps.	2.40																			
T. Der. Tula (1º Acceso)	38.00	1	0	4952	1.4	42.4	3.8	11.9	3.0	18.1	5.0	13.4	1.0	43.8	3.8	52.4	0.061	0.515	22.986021	-99.734676
T. Der. Tula (2º Acceso)	41.95	3	0	4478	1.3	44.6	4.2	11.5	2.9	16.5	4.8	13.3	0.9	45.9	4.2	49.9	0.078	0.500	23.016840	-99.717038
Jaumave	112.68	1	0	4838	2.8	56.6	2.6	7.6	2.4	14.5	3.2	9.4	0.9	59.4	2.6	38.0	0.070	0.510	23.408229	-99.385130
Jaumave	112.68	3	0	4567	2.6	55.5	2.5	8.5	1.9	14.4	3.3	10.4	0.9	58.1	2.5	39.4	0.080	0.518	23.408235	-99.385123
T. Libramiento de Cd. Victoria	134.68																			
Cd. Victoria	180.00	1	1	4109	14.8	77.0	0.1	7.4	0.3	0.4	0.0	0.0	0.0	91.8	0.1	8.1	0.107	0.540	23.725233	-99.158995
Cd. Victoria	180.00	1	2	3494	14.8	77.0	0.1	7.5	0.3	0.3	0.0	0.0	0.0	91.8	0.1	8.1	0.128	0.540	23.725333	-99.159018

10 CARR: Jalpan de Serra - Rioverde

CLAVE: 00265

RUTA: MEX-069

AÑO: 2020

LUGAR	ESTACION				CLASIFICACION VEHICULAR EN PORCIENTO													COORDENADAS		
	KM	TE	SC	TDPA	M	A	B	C2	C3	T3S2	T3S3	T3S2R4	OTROS	A	B	C	K'	D	LATITUD	LONGITUD
Jalpan de Serra	0.00	3	0	5288	2.5	85.5	0.2	8.1	0.4	3.0	0.2	0.0	0.1	88.0	0.2	11.8	0.095	0.500	21.231842	-99.479445
T. Izq. Conca	35.01	1	0	2472	4.2	84.2	0.4	9.1	0.6	1.2	0.2	0.0	0.1	88.4	0.4	11.2	0.101	0.513	21.450964	-99.632197
Arroyo Seco	48.60	1	0	1384	3.0	77.9	0.6	15.0	1.6	1.5	0.3	0.0	0.1	80.9	0.6	18.5	0.107	0.506	21.541570	-99.687730
Lim. Edos. Term. Qro. Ppia. S. L. P.	52.27																			
San Ciro de Acosta	69.42	1	0	1916	8.8	78.0	0.6	8.9	1.2	1.7	0.6	0.1	0.1	86.8	0.6	12.6	0.090	0.501	21.653829	-99.813863
San Ciro de Acosta	69.42	3	0	2119	4.7	80.4	0.4	11.0	0.8	2.0	0.4	0.2	0.1	85.1	0.4	14.5	0.081	0.505	21.653829	-99.813863
Rioverde	105.43	1	0	5878	3.0	77.8	0.2	14.9	0.6	2.6	0.5	0.1	0.3	80.8	0.2	19.0	0.093	0.513	21.923213	-99.993814

11 CARR: Libramiento de Cd. Valles

CLAVE: 24205

RUTA: MEX-070

AÑO: 2020

LUGAR	ESTACION				CLASIFICACION VEHICULAR EN PORCIENTO													COORDENADAS		
	KM	TE	SC	TDPA	M	A	B	C2	C3	T3S2	T3S3	T3S2R4	OTROS	A	B	C	K'	D	LATITUD	LONGITUD
T. C. Cd. Valles - San Luis Potosí	0.00	3	0	7875	2.0	76.5	3.6	8.8	2.4	4.1	1.1	0.8	0.7	78.5	3.6	17.9	0.085	0.519	21.988098	-99.038550

SAN LUIS POTOSI

11 CARR : Libramiento de Cd. Valles

CLAVE: 24205

RUTA: MEX-070

AÑO : 2020

LUGAR	ESTACION				CLASIFICACION VEHICULAR EN PORCIENTO														COORDENADAS	
	KM	TE	SC	TDPA	M	A	B	C2	C3	T3S2	T3S3	T3S2R4	OTROS	A	B	C	K'	D	LATITUD	LONGITUD
T. C. Cd. Valles - Tampico	11.54	1	0	2870	3.2	63.4	3.8	11.6	7.2	5.3	3.0	2.1	0.4	66.6	3.8	29.6	0.080	0.520	21.976298	-98.966690

12 CARR : Libramiento de Villa de Reyes

CLAVE: 24010

RUTA: MEX-037

AÑO : 2020

LUGAR	ESTACION				CLASIFICACION VEHICULAR EN PORCIENTO														COORDENADAS	
	KM	TE	SC	TDPA	M	A	B	C2	C3	T3S2	T3S3	T3S2R4	OTROS	A	B	C	K'	D	LATITUD	LONGITUD
T. C. Ent. Zaragoza - San Felipe	0.00	3	0	5218	4.3	70.5	1.4	16.5	1.3	4.6	0.8	0.4	0.2	74.8	1.4	23.8	0.081	0.523	21.799525	-100.943605
T. C. Villa de Reyes - Bledos	3.10																			

13 CARR : Libramiento de Villa de Reyes (Poniente)

CLAVE:

RUTA: MEX-037

AÑO : 2020

LUGAR	ESTACION				CLASIFICACION VEHICULAR EN PORCIENTO														COORDENADAS	
	KM	TE	SC	TDPA	M	A	B	C2	C3	T3S2	T3S3	T3S2R4	OTROS	A	B	C	K'	D	LATITUD	LONGITUD
T. C. Ent. Zaragoza - San Felipe Sur	125.60																			
Lim. Edos. Term. Gto. Ppia. S. L. P.	132.90																			
T. C. Ent. Zaragoza - San Felipe Norte	143.64	1	0	6971	2.3	60.3	1.6	9.4	2.2	20.4	1.9	1.2	0.7	62.6	1.6	35.8	0.083	0.506	21.822358	-100.933697

14 CARR : Libramiento Villa de Arriaga

CLAVE: 24009

RUTA: MEX-080

AÑO : 2020

LUGAR	ESTACION				CLASIFICACION VEHICULAR EN PORCIENTO														COORDENADAS	
	KM	TE	SC	TDPA	M	A	B	C2	C3	T3S2	T3S3	T3S2R4	OTROS	A	B	C	K'	D	LATITUD	LONGITUD
T. C. San Luis Potosí - Lagos de Moreno (Poniente)	0.00	3	0	5866	0.8	63.8	3.5	5.9	3.3	12.6	3.3	5.8	1.0	64.6	3.5	31.9	0.062	0.552	21.923718	-101.369631
T. C. San Luis Potosí - Lagos de Moreno (Oriente)	5.00																			

15 CARR : Matehuala - Ent. Puerto México

CLAVE: 00405

RUTA: MEX-057

AÑO : 2020

LUGAR	ESTACION				CLASIFICACION VEHICULAR EN PORCIENTO														COORDENADAS	
	KM	TE	SC	TDPA	M	A	B	C2	C3	T3S2	T3S3	T3S2R4	OTROS	A	B	C	K'	D	LATITUD	LONGITUD
Matehuala	0.00	3	1	6572	5.6	70.3	2.4	8.0	1.5	8.7	2.2	0.9	0.4	75.9	2.4	21.7	0.087	0.530	23.652600	-100.634814
Matehuala	0.00	3	2	7418	6.1	68.0	2.8	8.7	1.8	8.8	2.2	1.1	0.5	74.1	2.8	23.1	0.079	0.530	23.652523	-100.634941
T. Izq. Cedral	8.47	1	1	2526	12.4	53.1	3.1	14.5	3.0	10.3	2.4	1.1	0.1	65.5	3.1	31.4	0.080	0.516	23.696756	-100.618171
T. Izq. Cedral	8.47	1	2	2695	12.4	52.9	3.1	14.6	3.0	10.4	2.4	1.1	0.1	65.3	3.1	31.6	0.081	0.516	23.696897	-100.618457
T. Izq. Cedral	8.47	3	1	2403	5.1	55.3	4.7	10.3	1.9	17.1	3.2	1.9	0.5	60.4	4.7	34.9	0.085	0.502	23.696769	-100.618168
T. Izq. Cedral	8.47	3	2	2424	4.3	56.6	4.6	9.7	2.2	16.7	3.3	2.0	0.6	60.9	4.6	34.5	0.082	0.502	23.696883	-100.618461
T. Izq. Libramiento de Matehuala (Cuota)	9.30	3	1	6070	1.5	38.3	5.9	9.0	3.2	33.3	3.3	4.8	0.7	39.8	5.9	54.3	0.085	0.515	23.705201	-100.613343

SAN LUIS POTOSI

15 CARR: Matehuala - Ent. Puerto México

CLAVE: 00405

RUTA: MEX-057

AÑO: 2020

LUGAR	ESTACION				CLASIFICACION VEHICULAR EN PORCIENTO										COORDENADAS					
	KM	TE	SC	TDPA	M	A	B	C2	C3	T3S2	T3S3	T3S2R4	OTROS	A	B	C	K'	D	LATITUD	LONGITUD
T. Izq. Libramiento de Matehuala (Cuota)	9.30	3	2	5719	1.6	38.7	6.1	9.5	2.2	32.8	4.0	4.5	0.6	40.3	6.1	53.6	0.082	0.515	23.705788	-100.613992
Lim. Edos. Term. S. L. P. Ppia. N. L.	24.64																			
Santa Ana	59.65	1	1	7655	1.6	46.2	4.9	4.4	1.8	33.0	2.6	4.6	0.9	47.8	4.9	47.3	0.075	0.543	24.092022	-100.382178
Santa Ana	59.65	1	2	6444	1.6	44.8	5.4	4.4	2.0	34.0	2.8	4.3	0.7	46.4	5.4	48.2	0.078	0.543	24.092044	-100.382160
T. Der. Linares	128.99	1	1	7024	1.1	37.1	7.0	7.6	2.3	36.0	3.4	5.0	0.5	38.2	7.0	54.8	0.057	0.502	24.675246	-100.299339
T. Der. Linares	128.99	1	2	6962	1.1	36.9	7.0	7.7	2.3	36.0	3.5	5.0	0.5	38.0	7.0	55.0	0.058	0.502	24.675107	-100.299625
T. Der. Linares	128.99	3	1	8611	0.9	38.4	6.3	6.0	2.7	35.8	3.5	5.6	0.8	39.3	6.3	54.4	0.063	0.525	24.675267	-100.299354
T. Der. Linares	128.99	3	2	9513	0.9	40.8	6.1	5.3	2.9	34.8	3.3	5.0	0.9	41.7	6.1	52.2	0.064	0.525	24.675142	-100.299647
San Rafael	177.18	1	1	8640	0.8	36.9	5.3	7.6	2.5	37.4	3.7	5.4	0.4	37.7	5.3	57.0	0.084	0.515	25.026312	-100.550396
San Rafael	177.18	1	2	9193	0.8	36.9	5.3	7.6	2.5	37.4	3.7	5.4	0.4	37.7	5.3	57.0	0.084	0.515	25.026127	-100.550576
Ent. Puerto México	205.97																			

16 CARR: Portezuelo - Cd. Valles

CLAVE: 00023

RUTA: MEX-085

AÑO: 2020

LUGAR	ESTACION				CLASIFICACION VEHICULAR EN PORCIENTO										COORDENADAS					
	KM	TE	SC	TDPA	M	A	B	C2	C3	T3S2	T3S3	T3S2R4	OTROS	A	B	C	K'	D	LATITUD	LONGITUD
Portezuelo	0.00	3	0	5184	4.2	88.8	1.4	2.8	0.9	0.9	0.7	0.2	0.1	93.0	1.4	5.6	0.090	0.505	20.487283	-99.297336
T. Der. Tasquillo (2° Acceso)	10.50	1	0	4204	5.4	81.6	0.6	6.7	1.2	2.5	1.2	0.2	0.6	87.0	0.6	12.4	0.084	0.505	20.551959	-99.324920
T. Izq. Zimapán (1° Acceso)	32.00	1	0	5236	3.7	88.6	1.5	3.5	0.6	0.7	0.9	0.2	0.3	92.3	1.5	6.2	0.083	0.505	20.704879	-99.335960
T. Izq. Zimapán (1° Acceso)	32.00	3	0	2073	4.6	82.8	1.4	6.6	1.5	1.7	0.9	0.2	0.3	87.4	1.4	11.2	0.082	0.532	20.704911	-99.335984
La Estancia	41.00	3	0	1875	3.5	83.5	1.3	7.5	1.3	1.5	0.8	0.3	0.3	87.0	1.3	11.7	0.093	0.504	20.777212	-99.310842
Trancas	51.00	3	0	1468	3.6	79.2	1.9	9.2	1.8	1.7	1.7	0.4	0.5	82.8	1.9	15.3	0.087	0.505	20.799217	-99.266012
Jacala	98.60	3	0	2098	7.2	78.9	0.9	9.9	0.8	1.4	0.3	0.3	0.3	86.1	0.9	13.0	0.085	0.514	21.008342	-99.190025
Zacate Grande	143.10	1	0	859	3.7	83.5	2.8	7.0	1.3	1.0	0.7	0.0	0.0	87.2	2.8	10.0	0.084	0.508	21.117105	-99.002862
T. Izq. Pisaflores	154.00	3	0	1905	6.3	83.3	1.3	6.3	1.5	0.6	0.5	0.1	0.1	89.6	1.3	9.1	0.093	0.505	21.154376	-98.946166
Lim. Edos. Term. Hgo. Ppia. S. L. P.	168.63																			
Tamazunchale	192.80	1	0	4957	18.4	67.8	1.7	6.5	0.9	3.1	0.8	0.2	0.6	86.2	1.7	12.1	0.088	0.503	21.259463	-98.788169
T. Izq. Xilitla	228.75	1	0	4609	7.1	76.0	1.6	8.2	1.9	2.7	1.0	0.6	0.9	83.1	1.6	15.3	0.095	0.502	21.445243	-98.928029
T. Izq. Xilitla	228.75	3	0	4157	6.1	75.8	1.8	9.4	2.3	3.2	0.8	0.1	0.5	81.9	1.8	16.3	0.090	0.501	21.445211	-98.928041
T. Izq. Aquismón	252.50	1	0	4682	4.6	74.4	1.8	10.3	2.3	3.9	1.2	0.6	0.9	79.0	1.8	19.2	0.094	0.516	21.623451	-98.986848
Agua Hedionda	265.00	1	0	4329	3.5	77.8	1.8	8.9	2.9	3.2	1.1	0.3	0.5	81.3	1.8	16.9	0.094	0.511	21.731431	-98.964346
X. C. Rayón - Ent. Tamuín (Cuota)	286.41	1	0	6584	6.5	78.6	1.6	5.5	3.8	1.9	0.9	0.4	0.8	85.1	1.6	13.3	0.090	0.500	21.903621	-98.950223
Cd. Valles	300.00	1	1	4864	1.3	79.5	2.1	8.3	1.8	4.9	0.8	0.5	0.8	80.8	2.1	17.1	0.099	0.510	21.981449	-99.005618
Cd. Valles	300.00	1	2	5060	1.3	79.5	2.1	8.2	1.8	4.9	0.8	0.5	0.9	80.8	2.1	17.1	0.094	0.510	21.981449	-99.005618

SAN LUIS POTOSI

17 CARR: Querétaro - San Luis Potosi

CLAVE: 00165

RUTA: MEX-057

AÑO: 2020

LUGAR	ESTACION				CLASIFICACION VEHICULAR EN PORCIENTO										COORDENADAS					
	KM	TE	SC	TDPA	M	A	B	C2	C3	T3S2	T3S3	T3S2R4	OTROS	A	B	C	K'	D	LATITUD	LONGITUD
Querétaro	0.00																			
T. Der. Libramiento de Querétaro	6.28	3	1	41615	0.8	91.5	1.0	3.6	0.6	1.6	0.6	0.1	0.2	92.3	1.0	6.7	0.143	0.504	20.622134	-100.422605
T. Der. Libramiento de Querétaro	6.28	3	2	42418	0.9	90.5	1.1	4.0	0.7	1.8	0.7	0.1	0.2	91.4	1.1	7.5	0.116	0.504	20.622146	-100.422843
T. Izq. Juriquilla	15.63	3	1	29752	0.8	88.2	1.5	5.6	1.2	2.0	0.4	0.2	0.1	89.0	1.5	9.5	0.131	0.506	20.691730	-100.435909
T. Izq. Juriquilla	15.63	3	2	30534	0.9	87.2	1.7	5.9	1.4	2.2	0.4	0.2	0.1	88.1	1.7	10.2	0.112	0.506	20.691697	-100.436069
T. Izq. San Miguel de Allende	28.53	1	1	28753	0.3	79.5	1.7	10.5	1.8	4.1	1.0	0.9	0.2	79.8	1.7	18.5	0.139	0.510	20.816344	-100.448715
T. Izq. San Miguel de Allende	28.53	1	2	27581	0.4	77.2	1.9	12.0	2.0	4.3	1.1	0.9	0.2	77.6	1.9	20.5	0.105	0.510	20.816425	-100.449036
T. Izq. San Miguel de Allende	28.53	3	1	17263	0.5	44.8	3.4	8.8	3.0	29.9	2.4	6.9	0.3	45.3	3.4	51.3	0.084	0.500	20.819025	-100.448398
T. Izq. San Miguel de Allende	28.53	3	2	17232	0.4	39.3	3.8	10.5	3.3	32.2	2.6	7.6	0.3	39.7	3.8	56.5	0.090	0.500	20.819164	-100.448630
Lim. Edos. Term. Qro. Ppia. Gto.	36.70																			
X. C. San José Iturbide - El Arenal	46.83	1	1	14019	1.0	41.3	4.0	8.0	3.3	31.9	3.0	7.3	0.2	42.3	4.0	53.7	0.069	0.500	20.973784	-100.431333
X. C. San José Iturbide - El Arenal	46.83	1	2	14043	1.0	41.3	4.1	7.9	3.3	31.9	3.0	7.3	0.2	42.3	4.1	53.6	0.087	0.500	20.973835	-100.431149
X. C. San José Iturbide - El Arenal	46.83	3	1	14053	1.8	50.6	4.1	8.2	3.0	23.6	3.9	4.4	0.4	52.4	4.1	43.5	0.080	0.501	20.973920	-100.431199
X. C. San José Iturbide - El Arenal	46.83	3	2	14090	1.6	50.2	4.4	8.4	2.6	24.0	3.8	4.6	0.4	51.8	4.4	43.8	0.094	0.501	20.973866	-100.431342
X. C. Ent. San Miguel de Allende - Dr. Mora	61.93	1	1	15766	2.3	48.7	4.9	9.7	3.1	22.5	3.8	4.6	0.4	51.0	4.9	44.1	0.071	0.503	21.079867	-100.515794
X. C. Ent. San Miguel de Allende - Dr. Mora	61.93	1	2	15967	2.2	49.1	4.8	9.7	3.1	22.3	3.8	4.6	0.4	51.3	4.8	43.9	0.069	0.503	21.079769	-100.516008
X. C. San Luis de La Paz - Guanajuato	86.68	1	1	12129	2.3	46.9	5.1	9.1	2.8	25.3	3.7	4.5	0.3	49.2	5.1	45.7	0.066	0.504	21.286951	-100.592570
X. C. San Luis de La Paz - Guanajuato	86.68	1	2	11960	2.3	47.0	5.1	8.9	2.8	25.2	3.8	4.6	0.3	49.3	5.1	45.6	0.066	0.504	21.286946	-100.592774
T. Izq. San Diego de La Unión	119.07	1	1	9539	1.0	52.1	5.6	6.6	2.8	22.4	3.9	5.0	0.6	53.1	5.6	41.3	0.063	0.526	21.535695	-100.744266
T. Izq. San Diego de La Unión	119.07	1	2	8603	1.0	52.1	5.5	6.6	2.6	22.5	4.1	5.0	0.6	53.1	5.5	41.4	0.066	0.526	21.535585	-100.744463
T. Izq. San Diego de La Unión	119.07	3	1	11451	0.3	55.5	5.6	7.2	2.6	19.1	4.2	5.0	0.5	55.8	5.6	38.6	0.066	0.516	21.535713	-100.744281
T. Izq. San Diego de La Unión	119.07	3	2	12216	0.3	55.5	5.5	7.3	2.6	19.1	4.2	5.0	0.5	55.8	5.5	38.7	0.072	0.516	21.535603	-100.744475
Lim. Edos. Term. Gto. Ppia. S. L. P.	124.74																			
T. Der. Tierra Nueva	140.65	1	1	9825	1.6	49.2	5.4	9.0	2.5	22.7	3.8	4.8	1.0	50.8	5.4	43.8	0.067	0.505	21.694695	-100.685899
T. Der. Tierra Nueva	140.65	1	2	10043	1.6	48.4	5.5	9.1	2.5	23.1	3.9	4.9	1.0	50.0	5.5	44.5	0.072	0.505	21.694819	-100.686011
T. Der. Tierra Nueva	140.65	3	1	9599	1.7	52.3	5.0	8.4	2.4	20.8	3.7	4.7	1.0	54.0	5.0	41.0	0.060	0.501	21.694695	-100.685908
T. Der. Tierra Nueva	140.65	3	2	9644	1.5	48.4	5.8	8.9	2.6	23.1	3.9	4.8	1.0	49.9	5.8	44.3	0.065	0.501	21.694816	-100.686014
T. Izq. Santa María del Río	155.88	3	1	13086	1.7	50.7	5.3	8.2	2.3	22.4	3.7	4.7	1.0	52.4	5.3	42.3	0.075	0.514	21.811160	-100.727045
T. Izq. Santa María del Río	155.88	3	2	12377	1.5	45.6	6.0	9.6	2.6	24.5	4.0	5.1	1.1	47.1	6.0	46.9	0.071	0.514	21.811557	-100.730474
T. Izq. Villa de Reyes	176.35	1	1	11531	8.3	40.9	5.8	9.4	3.5	23.9	3.4	4.6	0.2	49.2	5.8	45.0	0.068	0.515	21.969231	-100.816031
T. Izq. Villa de Reyes	176.35	1	2	12225	7.9	40.3	5.8	9.5	3.5	24.8	3.4	4.6	0.2	48.2	5.8	46.0	0.067	0.515	21.969153	-100.816189
T. Izq. Villa de Reyes	176.35	3	1	23770	2.6	51.9	3.9	9.4	4.0	19.6	3.8	4.5	0.3	54.5	3.9	41.6	0.065	0.502	21.969222	-100.816022
T. Izq. Villa de Reyes	176.35	3	2	23974	2.6	52.1	3.9	9.3	3.9	19.6	3.8	4.5	0.3	54.7	3.9	41.4	0.071	0.502	21.969147	-100.816180
T. Izq. Villa de Arriaga (Cuota)	182.60	1	1	20096	0.8	67.2	2.5	7.7	2.8	13.5	2.2	2.7	0.6	68.0	2.5	29.5	0.099	0.507	22.018701	-100.842862
T. Izq. Villa de Arriaga (Cuota)	182.60	1	2	20683	0.8	64.7	2.8	8.6	2.9	14.2	2.3	3.1	0.6	65.5	2.8	31.7	0.115	0.507	22.018548	-100.842945

SAN LUIS POTOSI

17 CARR: Querétaro - San Luis Potosí

CLAVE: 00165

RUTA: MEX-057

AÑO: 2020

LUGAR	ESTACION				CLASIFICACION VEHICULAR EN PORCIENTO													COORDENADAS		
	KM	TE	SC	TDPA	M	A	B	C2	C3	T3S2	T3S3	T3S2R4	OTROS	A	B	C	K'	D	LATITUD	LONGITUD
X. C. Libramiento de San Luis Potosí	184.80	1	1	29400	0.7	66.3	2.6	8.1	2.9	14.1	2.2	2.7	0.4	67.0	2.6	30.4	0.104	0.501	22.037687	-100.853187
X. C. Libramiento de San Luis Potosí	184.80	1	2	29287	1.0	62.5	2.8	8.9	3.1	15.6	2.5	3.2	0.4	63.5	2.8	33.7	0.107	0.501	22.037562	-100.853291
X. Periférico de San Luis Potosí (Central)	197.50	1	1	41079	0.7	89.4	0.4	1.6	0.3	2.0	4.3	0.6	0.7	90.1	0.4	9.5	0.080	0.504	22.125976	-100.918974
X. Periférico de San Luis Potosí (Lateral)	197.50	1	1	15619	3.9	79.4	1.2	8.7	2.1	2.5	1.4	0.4	0.4	83.3	1.2	15.5	0.124	0.501	22.126081	-100.918897
X. Periférico de San Luis Potosí (Central)	197.50	1	2	41787	0.7	88.7	0.5	1.8	0.3	2.0	4.7	0.6	0.7	89.4	0.5	10.1	0.075	0.504	22.125842	-100.919096
X. Periférico de San Luis Potosí (Lateral)	197.50	1	2	15664	3.8	78.4	1.3	9.4	2.4	2.7	1.2	0.4	0.4	82.2	1.3	16.5	0.115	0.501	22.125719	-100.919190
San Luis Potosí	201.66																			

18 CARR: Ramal a Aeropuerto de S. L. P.

CLAVE: 24206

RUTA: MEX-057

AÑO: 2020

LUGAR	ESTACION				CLASIFICACION VEHICULAR EN PORCIENTO													COORDENADAS		
	KM	TE	SC	TDPA	M	A	B	C2	C3	T3S2	T3S3	T3S2R4	OTROS	A	B	C	K'	D	LATITUD	LONGITUD
T. C. San Luis Potosí - Matehuala	0.00	3	0	5890	3.8	82.9	0.6	6.9	1.4	2.8	0.4	1.1	0.1	86.7	0.6	12.7	0.081	0.507	22.221524	-100.911598
Aeropuerto de S. L. P.	6.00																			

19 CARR: Ramal a Ojo de Agua

CLAVE: 24023

RUTA: MEX-062

AÑO: 2020

LUGAR	ESTACION				CLASIFICACION VEHICULAR EN PORCIENTO													COORDENADAS		
	KM	TE	SC	TDPA	M	A	B	C2	C3	T3S2	T3S3	T3S2R4	OTROS	A	B	C	K'	D	LATITUD	LONGITUD
T. C. Ent. Carbonera - Ent. San Tiburcio	0.00	3	0	2281	9.7	76.6	0.3	11.2	0.3	1.5	0.2	0.1	0.1	86.3	0.3	13.4	0.097	0.508	23.720591	-100.650028
Ojo de Agua	6.23																			

20 CARR: Ramal a Rayón

CLAVE: 24626

RUTA: MEX-070

AÑO: 2020

LUGAR	ESTACION				CLASIFICACION VEHICULAR EN PORCIENTO													COORDENADAS		
	KM	TE	SC	TDPA	M	A	B	C2	C3	T3S2	T3S3	T3S2R4	OTROS	A	B	C	K'	D	LATITUD	LONGITUD
T. C. (Cd. Valles - San Luis Potosí)	0.00																			
Rayón	1.50	1	0	4161	5.2	76.8	1.5	11.9	1.1	2.8	0.7	0.0	0.0	82.0	1.5	16.5	0.084	0.502	21.844065	-99.638332

21 CARR: San Juan del Río - Xilitla

CLAVE: 00183

RUTA: MEX-120

AÑO: 2020

LUGAR	ESTACION				CLASIFICACION VEHICULAR EN PORCIENTO													COORDENADAS		
	KM	TE	SC	TDPA	M	A	B	C2	C3	T3S2	T3S3	T3S2R4	OTROS	A	B	C	K'	D	LATITUD	LONGITUD
San Juan del Río	0.00																			
T. Der. Libramiento de San Juan del Río	5.20	3	1	15061	2.0	86.7	0.9	5.0	1.1	2.4	1.3	0.3	0.3	88.7	0.9	10.4	0.079	0.566	20.418458	-99.980287

SAN LUIS POTOSI

21 CARR: San Juan del Río - Xilitla

CLAVE: 00183

RUTA: MEX-120

AÑO: 2020

LUGAR	ESTACION				CLASIFICACION VEHICULAR EN PORCIENTO										COORDENADAS					
	KM	TE	SC	TDPA	M	A	B	C2	C3	T3S2	T3S3	T3S2R4	OTROS	A	B	C	K'	D	LATITUD	LONGITUD
T. Der. Libramiento de San Juan del Río	5.20	3	2	11541	2.0	86.7	0.9	5.0	1.1	2.4	1.3	0.3	0.3	88.7	0.9	10.4	0.084	0.566	20.418508	-99.980366
T. Der. Tequisquiapan	19.80	1	1	9809	1.7	85.8	1.6	7.4	1.1	1.1	0.7	0.3	0.3	87.5	1.6	10.9	0.105	0.501	20.518105	-99.898204
T. Der. Tequisquiapan	19.80	1	2	9837	1.8	85.6	1.7	7.4	1.1	1.1	0.7	0.3	0.3	87.4	1.7	10.9	0.095	0.501	20.518151	-99.898240
T. Der. Tequisquiapan	19.80	3	1	7427	1.7	83.6	1.5	7.3	1.9	1.7	1.3	0.5	0.5	85.3	1.5	13.2	0.095	0.505	20.522553	-99.898298
T. Der. Tequisquiapan	19.80	3	2	7579	1.6	83.8	1.4	7.4	1.9	1.7	1.4	0.4	0.4	85.4	1.4	13.2	0.084	0.505	20.522535	-99.898420
Ezequiel Montes	36.50	1	1	6143	1.9	80.9	2.4	7.6	3.0	2.2	1.0	0.5	0.5	82.8	2.4	14.8	0.097	0.503	20.665494	-99.898770
Ezequiel Montes	36.50	1	2	6067	1.8	80.8	2.5	7.6	3.0	2.3	1.0	0.5	0.5	82.6	2.5	14.9	0.098	0.503	20.665504	-99.898818
Ezequiel Montes	36.50	3	1	5196	2.1	87.4	0.9	6.2	1.4	1.0	0.5	0.3	0.2	89.5	0.9	9.6	0.110	0.505	20.665845	-99.898608
Ezequiel Montes	36.50	3	2	5091	2.1	87.4	1.0	6.1	1.4	1.0	0.5	0.3	0.2	89.5	1.0	9.5	0.096	0.505	20.665868	-99.898687
Cadereyta	47.90	3	1	4737	1.8	78.5	1.1	10.1	2.4	3.8	1.5	0.4	0.4	80.3	1.1	18.6	0.087	0.518	20.700880	-99.814594
Cadereyta	47.90	3	2	4411	1.3	79.8	1.1	9.6	2.6	3.6	1.2	0.3	0.5	81.1	1.1	17.8	0.105	0.518	20.700964	-99.814588
Vizarrón de Montes	73.50	3	0	2903	1.1	71.7	1.0	12.7	5.5	1.9	5.1	0.4	0.6	72.8	1.0	26.2	0.090	0.500	20.832884	-99.719557
T. Der. San Joaquín	79.50	3	0	1194	1.5	82.6	1.2	11.3	1.8	0.8	0.8	0.0	0.0	84.1	1.2	14.7	0.114	0.519	20.882242	-99.706545
T. Izq. Higuierillas	89.10	3	0	2178	1.8	82.6	2.2	10.4	1.7	0.7	0.6	0.0	0.0	84.4	2.2	13.4	0.133	0.505	20.946177	-99.749545
T. Izq. Peñamiller	103.00	3	0	1797	2.3	84.0	1.5	10.3	1.3	0.3	0.3	0.0	0.0	86.3	1.5	12.2	0.117	0.507	21.037917	-99.740664
Pinal de Amoles	140.00	3	0	1966	2.2	84.7	1.2	9.8	0.8	0.6	0.6	0.0	0.1	86.9	1.2	11.9	0.113	0.506	21.135222	-99.625463
Jalpan de Serra	179.30	3	0	6700	2.1	88.9	0.2	7.8	0.5	0.2	0.3	0.0	0.0	91.0	0.2	8.8	0.099	0.501	21.217968	-99.473981
Landa de Matamoros	201.60	3	0	3050	2.6	83.1	0.6	13.0	0.4	0.2	0.1	0.0	0.0	85.7	0.6	13.7	0.101	0.515	21.183034	-99.319964
El Lobo	236.40	3	0	1216	3.8	82.7	0.8	10.6	1.3	0.3	0.5	0.0	0.0	86.5	0.8	12.7	0.127	0.502	21.292718	-99.119596
Lim. Edos. Term. Qro. Ppia. S. L. P.	238.33																			
Xilitla	266.40	1	0	2535	5.4	83.2	0.5	6.7	1.6	1.7	0.5	0.1	0.3	88.6	0.5	10.9	0.103	0.519	21.384982	-98.992000
T. C. Portezuelo - Cd. Valles	276.98	1	0	2800	5.2	82.3	0.7	7.5	1.6	1.8	0.5	0.3	0.1	87.5	0.7	11.8	0.108	0.511	21.444884	-98.928310

22 CARR: San Luis Potosí - Ent. Arcinas

CLAVE: 00134

RUTA: MEX-049

AÑO: 2020

LUGAR	ESTACION				CLASIFICACION VEHICULAR EN PORCIENTO										COORDENADAS					
	KM	TE	SC	TDPA	M	A	B	C2	C3	T3S2	T3S3	T3S2R4	OTROS	A	B	C	K'	D	LATITUD	LONGITUD
T. C. San Luis Potosí - Matehuala	0.00																			
T. Izq. Periférico de San Luis Potosí	9.35	3	1	9250	5.5	77.8	1.5	9.6	1.2	2.0	1.0	1.2	0.2	83.3	1.5	15.2	0.129	0.502	22.198364	-101.019135
T. Izq. Periférico de San Luis Potosí	9.35	3	2	9328	5.5	77.9	1.5	9.6	1.2	2.0	1.0	1.1	0.2	83.4	1.5	15.1	0.101	0.502	22.198293	-101.019186
Mexquitic	22.50	1	1	6768	5.2	72.1	3.0	7.7	1.6	4.8	2.1	2.6	0.9	77.3	3.0	19.7	0.107	0.512	22.264417	-101.111442
Mexquitic	22.50	1	2	7093	5.5	71.6	3.9	8.2	1.4	3.8	1.9	2.8	0.9	77.1	3.9	19.0	0.120	0.512	22.264420	-101.111492
Mexquitic	22.50	3	1	5247	4.6	76.1	2.0	4.0	1.0	5.8	2.0	3.5	1.0	80.7	2.0	17.3	0.116	0.559	22.252537	-101.111801
Mexquitic	22.50	3	2	6648	2.5	80.9	2.6	2.6	1.2	5.8	2.2	1.5	0.7	83.4	2.6	14.0	0.110	0.559	22.252447	-101.111816
T. Der. Charcas	30.90	1	1	6154	2.9	64.0	3.0	12.3	1.5	9.1	2.5	4.0	0.7	66.9	3.0	30.1	0.101	0.504	22.313966	-101.163466

SAN LUIS POTOSI

22 CARR: San Luis Potosi - Ent. Arcinas

CLAVE: 00134

RUTA: MEX-049

AÑO: 2020

LUGAR	ESTACION				CLASIFICACION VEHICULAR EN PORCIENTO										COORDENADAS					
	KM	TE	SC	TDPA	M	A	B	C2	C3	T3S2	T3S3	T3S2R4	OTROS	A	B	C	K'	D	LATITUD	LONGITUD
T. Der. Charcas	30.90	1	2	6067	2.5	67.6	2.9	9.4	1.3	9.3	2.5	3.7	0.8	70.1	2.9	27.0	0.096	0.504	22.313876	-101.163564
T. Der. Charcas	30.90	3	1	4271	2.6	66.2	1.3	4.7	3.0	12.9	2.9	5.6	0.8	68.8	1.3	29.9	0.096	0.507	22.313921	-101.163419
T. Der. Charcas	30.90	3	2	4392	2.7	65.9	1.6	6.0	2.0	12.7	3.2	5.0	0.9	68.6	1.6	29.8	0.079	0.507	22.313833	-101.163507
Lim. Edos. Term. S. L. P. Ppia. Zac.	55.13																			
Lim. Edos. Term. Zac. Ppia. S. L. P.	89.30																			
T. Der. Salinas	99.00	1	1	3298	1.2	62.2	4.6	9.6	3.0	10.9	2.8	5.3	0.4	63.4	4.6	32.0	0.085	0.515	22.608331	-101.718037
T. Der. Salinas	99.00	1	2	3499	2.0	55.6	5.5	11.1	3.3	12.3	3.4	6.3	0.5	57.6	5.5	36.9	0.092	0.515	22.608250	-101.718071
T. Der. Salinas	99.00	3	1	3584	5.2	53.9	2.9	10.2	2.9	14.1	3.3	6.4	1.1	59.1	2.9	38.0	0.093	0.515	22.608801	-101.719112
T. Der. Salinas	99.00	3	2	3808	4.2	51.6	3.4	12.9	2.7	15.1	3.1	6.4	0.6	55.8	3.4	40.8	0.077	0.515	22.608713	-101.719151
Lim. Edos. Term. S. L. P. Ppia. Zac.	122.47																			
T. Izq. Pánfilo Natera	139.00	1	1	2920	1.4	54.2	4.9	9.6	3.5	14.4	3.5	7.7	0.8	55.6	4.9	39.5	0.082	0.536	22.680531	-102.105962
T. Izq. Pánfilo Natera	139.00	1	2	3370	1.4	54.7	4.9	9.4	3.5	14.4	3.4	7.6	0.7	56.1	4.9	39.0	0.081	0.536	22.680438	-102.105983
Ent. Arcinas	162.98	1	1	4004	1.4	62.7	4.2	7.5	2.8	11.3	3.4	6.0	0.7	64.1	4.2	31.7	0.108	0.515	22.720802	-102.329563
Ent. Arcinas	162.98	1	2	4257	1.4	59.9	4.8	7.7	3.4	11.8	3.8	6.4	0.8	61.3	4.8	33.9	0.089	0.515	22.720614	-102.329602

23 CARR: San Luis Potosi - Lagos de Moreno

CLAVE: 00133

RUTA: MEX-070-080

AÑO: 2020

LUGAR	ESTACION				CLASIFICACION VEHICULAR EN PORCIENTO										COORDENADAS					
	KM	TE	SC	TDPA	M	A	B	C2	C3	T3S2	T3S3	T3S2R4	OTROS	A	B	C	K'	D	LATITUD	LONGITUD
San Luis Potosí	0.00	3	1	14285	1.6	93.2	0.1	2.9	0.1	0.6	1.3	0.1	0.1	94.8	0.1	5.1	0.107	0.511	22.134467	-100.958410
San Luis Potosí	0.00	3	2	14937	1.7	92.5	0.1	3.5	0.1	0.6	1.3	0.1	0.1	94.2	0.1	5.7	0.099	0.511	22.134383	-100.958336
X. Periférico de San Luis Potosí	8.41	3	0	8157	2.0	79.3	0.9	6.9	2.3	5.4	1.7	0.8	0.7	81.3	0.9	17.8	0.088	0.508	22.131610	-101.034410
El Tepetate	41.90	1	0	7449	0.8	65.9	2.5	8.4	3.2	10.3	3.9	4.5	0.5	66.7	2.5	30.8	0.084	0.511	22.014770	-101.239491
El Tepetate	41.90	3	0	7125	1.0	67.4	2.7	8.2	2.9	9.3	3.6	4.0	0.9	68.4	2.7	28.9	0.089	0.515	22.014490	-101.239817
Villa de Arriaga	61.90	3	0	3895	2.4	63.9	3.3	9.4	3.2	10.7	3.9	2.5	0.7	66.3	3.3	30.4	0.084	0.501	21.911011	-101.383686
Lim. Edos. Term. S. L. P. Ppia. Zac.	70.23																			
Lim. Edos. Term. Zac. Ppia. Jal.	82.94																			
Ojuelos de Jalisco	83.20	1	0	5623	3.8	70.7	2.5	8.6	1.9	8.4	2.4	1.4	0.3	74.5	2.5	23.0	0.084	0.502	21.867938	-101.589853
Ojuelos de Jalisco	83.20	3	0	3235	3.3	56.2	3.6	7.6	3.0	14.1	5.3	6.8	0.1	59.5	3.6	36.9	0.087	0.514	21.861600	-101.593134
X. C. Lagos de Moreno - San Luis Potosí (Cuota)	140.00	1	0	3430	5.1	68.9	2.8	11.9	3.1	4.1	2.9	0.9	0.3	74.0	2.8	23.2	0.078	0.502	21.445392	-101.812913
X. C. León - Aguascalientes	146.90	1	1	5293	9.8	54.3	3.6	10.1	3.2	10.9	2.7	5.2	0.2	64.1	3.6	32.3	0.111	0.513	21.372336	-101.901277
X. C. León - Aguascalientes	146.90	1	2	5573	8.6	55.5	3.5	9.4	3.7	12.3	1.7	5.1	0.2	64.1	3.5	32.4	0.093	0.513	21.372169	-101.901215
Lagos de Moreno	150.00																			

SAN LUIS POTOSI

24 CARR: San Luis Potosi - Matehuala

CLAVE: 24508

RUTA: MEX-057

AÑO: 2020

LUGAR	ESTACION				CLASIFICACION VEHICULAR EN PORCIENTO										COORDENADAS					
	KM	TE	SC	TDPA	M	A	B	C2	C3	T3S2	T3S3	T3S2R4	OTROS	A	B	C	K'	D	LATITUD	LONGITUD
San Luis Potosi	0.00																			
X. Periférico de San Luis Potosi	7.36	3	1	14544	0.7	72.9	4.9	7.5	2.7	6.2	2.5	1.7	0.9	73.6	4.9	21.5	0.090	0.506	22.205465	-100.921495
X. Periférico de San Luis Potosi	7.36	3	2	14896	0.8	72.8	4.9	7.5	2.7	6.2	2.5	1.7	0.9	73.6	4.9	21.5	0.092	0.506	22.205525	-100.921579
Ventura (X. Nuevo Libramiento de SLP)	33.20	3	1	13819	0.5	37.3	4.9	7.9	3.6	34.9	3.4	6.7	0.8	37.8	4.9	57.3	0.098	0.500	22.326531	-100.799786
Ventura (X. Nuevo Libramiento de SLP)	33.20	3	2	13844	0.4	35.8	4.8	8.2	3.8	35.9	3.9	6.4	0.8	36.2	4.8	59.0	0.097	0.500	22.325869	-100.800923
T. Der. Villa Hidalgo	45.94	1	1	13610	0.5	38.1	4.5	7.4	3.6	35.4	3.3	6.4	0.8	38.6	4.5	56.9	0.099	0.500	22.426929	-100.711912
T. Der. Villa Hidalgo	45.94	1	2	13635	0.5	36.1	4.8	8.3	3.8	35.5	3.8	6.4	0.8	36.6	4.8	58.6	0.103	0.500	22.426878	-100.712223
T. Der. Villa Hidalgo	45.94	3	1	13614	0.5	37.8	4.5	7.5	3.5	35.7	3.4	6.3	0.8	38.3	4.5	57.2	0.100	0.501	22.426943	-100.711921
T. Der. Villa Hidalgo	45.94	3	2	13551	0.5	35.7	4.7	8.3	3.8	36.2	3.7	6.3	0.8	36.2	4.7	59.1	0.101	0.501	22.426889	-100.712221
T. Izq. Villa Arista	61.35	1	1	14520	0.5	40.0	4.3	7.1	3.5	34.5	3.2	6.2	0.7	40.5	4.3	55.2	0.076	0.501	22.567163	-100.638770
T. Izq. Villa Arista	61.35	1	2	14469	0.5	36.1	4.9	7.9	3.9	35.3	3.8	6.8	0.8	36.6	4.9	58.5	0.088	0.501	22.567311	-100.638866
T. Der. Ríoverde (Cuota)	65.22	3	1	14278	0.6	39.5	4.4	6.8	3.6	35.0	3.4	5.9	0.8	40.1	4.4	55.5	0.078	0.502	22.591602	-100.590958
T. Der. Ríoverde (Cuota)	65.22	3	2	14159	0.5	33.2	4.9	7.6	3.7	38.7	3.7	6.8	0.9	33.7	4.9	61.4	0.092	0.502	22.591690	-100.591186
T. Der. Guadalcázar	75.70	1	1	13541	0.5	38.7	4.4	7.2	3.6	35.8	3.2	5.8	0.8	39.2	4.4	56.4	0.081	0.501	22.642619	-100.517018
T. Der. Guadalcázar	75.70	1	2	13603	0.5	33.5	4.8	7.9	3.7	38.1	3.6	7.0	0.9	34.0	4.8	61.2	0.094	0.501	22.642690	-100.517185
T. Der. Guadalcázar	75.70	3	1	11740	0.6	39.6	4.2	6.8	3.3	35.5	3.2	6.0	0.8	40.2	4.2	55.6	0.093	0.501	22.642624	-100.517016
T. Der. Guadalcázar	75.70	3	2	11794	0.5	38.2	4.6	6.5	3.7	35.3	3.6	6.8	0.8	38.7	4.6	56.7	0.109	0.501	22.642694	-100.517182
T. Der. Cd. del Maiz	109.62	3	1	10069	1.4	38.5	4.5	7.1	2.7	36.0	3.9	5.3	0.6	39.9	4.5	55.6	0.075	0.506	22.928746	-100.456655
T. Der. Cd. del Maiz	109.62	3	2	10316	1.0	38.5	4.8	7.5	2.9	35.2	3.8	5.6	0.7	39.5	4.8	55.7	0.078	0.506	22.928794	-100.456770
La Bonita	171.40	1	1	7030	1.6	33.7	3.8	7.3	2.7	40.9	3.8	5.4	0.8	35.3	3.8	60.9	0.054	0.508	23.483713	-100.614886
La Bonita	171.40	1	2	6804	1.4	33.3	3.9	7.5	2.9	40.8	3.9	5.6	0.7	34.7	3.9	61.4	0.077	0.508	23.483550	-100.615015
Matehuala	187.39	1	1	9852	1.2	39.4	5.0	6.2	3.7	32.9	4.2	6.2	1.2	40.6	5.0	54.4	0.077	0.507	23.626374	-100.640276
Matehuala	187.39	1	2	10134	1.1	41.7	5.6	6.6	3.1	30.5	4.2	6.0	1.2	42.8	5.6	51.6	0.105	0.507	23.626372	-100.640555

25 CARR: T. C. (Ent. El Huizache- Ant. Morelos)-El Salto

CLAVE: 24204

RUTA: MEX-080

AÑO: 2020

LUGAR	ESTACION				CLASIFICACION VEHICULAR EN PORCIENTO										COORDENADAS					
	KM	TE	SC	TDPA	M	A	B	C2	C3	T3S2	T3S3	T3S2R4	OTROS	A	B	C	K'	D	LATITUD	LONGITUD
T. C. El Huizache - Ant. Morelos	0.00	3	0	2503	3.9	84.3	0.1	7.8	1.2	1.8	0.3	0.4	0.2	88.2	0.1	11.7	0.090	0.516	22.533303	-99.305912
Salto del Agua	12.00																			

SAN LUIS POTOSI

26 CARR: T. C. (Qro - S.L.P.) - Tierra Nueva

CLAVE: 24203

RUTA: MEX-057

AÑO: 2020

LUGAR	ESTACION				CLASIFICACION VEHICULAR EN PORCIENTO													COORDENADAS		
	KM	TE	SC	TDPA	M	A	B	C2	C3	T3S2	T3S3	T3S2R4	OTROS	A	B	C	K'	D	LATITUD	LONGITUD
T. C. Querétaro - San Luis Potosí	0.00	3	0	1993	1.7	79.0	0.4	12.6	3.3	1.4	1.4	0.1	0.1	80.7	0.4	18.9	0.093	0.507	21.694847	-100.686008
Tierra Nueva	13.10																			

27 CARR: T. C. (S.L.P. - Matehuala) - Villa Hidalgo

CLAVE: 24619

RUTA: MEX-057

AÑO: 2020

LUGAR	ESTACION				CLASIFICACION VEHICULAR EN PORCIENTO													COORDENADAS		
	KM	TE	SC	TDPA	M	A	B	C2	C3	T3S2	T3S3	T3S2R4	OTROS	A	B	C	K'	D	LATITUD	LONGITUD
Paso por Villa Hidalgo (Sur)	0.00	3	0	1900	7.7	68.7	2.0	14.7	1.2	2.8	1.3	0.9	0.7	76.4	2.0	21.6	0.115	0.541	22.427079	-100.711831
Paso por Villa Hidalgo (Norte)	10.20	1	0	2391	5.3	72.5	1.5	13.7	1.1	3.1	1.9	0.6	0.3	77.8	1.5	20.7	0.095	0.502	22.504924	-100.665522

28 CARR: Tamazunchale - San Felipe Orizatlán

CLAVE: 00609

RUTA: MEX-085

AÑO: 2020

LUGAR	ESTACION				CLASIFICACION VEHICULAR EN PORCIENTO													COORDENADAS		
	KM	TE	SC	TDPA	M	A	B	C2	C3	T3S2	T3S3	T3S2R4	OTROS	A	B	C	K'	D	LATITUD	LONGITUD
T. C. Portezuelo - Cd. Valles	0.00	3	0	10421	23.0	67.0	0.4	7.3	0.6	0.4	1.2	0.0	0.1	90.0	0.4	9.6	0.094	0.517	21.259437	-98.788156
Lim. Edos. Term. S. L. P. Ppia. Hgo.	18.50																			
San Felipe Orizatlán	27.10	1	0	2518	16.0	70.5	1.9	9.0	1.5	0.5	0.6	0.0	0.0	86.5	1.9	11.6	0.091	0.507	21.164943	-98.613257

29 CARR: Lagos de Moreno - Villa de Arriaga (Cuota)

CLAVE:

RUTA: MEX-080D

AÑO: 2020

LUGAR	ESTACION				CLASIFICACION VEHICULAR EN PORCIENTO													COORDENADAS		
	KM	TE	SC	TDPA	M	A	B	C2	C3	T3S2	T3S3	T3S2R4	OTROS	A	B	C	K'	D	LATITUD	LONGITUD
X. C. San Luis Potosí - Lagos de Moreno	12.10	3	0	3658	7.9	52.1	4.5	7.4	3.2	5.8	3.8	14.4	0.9	60.0	4.5	35.5	0.072	0.538	21.446894	-101.814372
T. Der. El Cuarenta	22.20	3	0	8501	3.6	48.0	3.8	5.3	2.7	20.7	3.4	11.8	0.7	51.6	3.8	44.6	0.076	0.528	21.501506	-101.744893
Lim. Edos. Term. Jal. Ppia. Gto.	46.30																			
X. C. Dolores Hidalgo - Ojuelos de Jalisco	58.18	1	0	7830	2.5	76.2	3.2	11.6	3.4	2.9	0.1	0.1	0.0	78.7	3.2	18.1	0.065	0.503	21.743923	-101.519803
Lim. Edos. Term. Gto. Ppia. SLP.	68.63																			
X. C. San Luis Potosí - Villa de Arriaga (Cuota)	78.00	1	0	6395	0.9	67.5	8.6	19.1	0.1	1.0	0.9	1.5	0.4	68.4	8.6	23.0	0.065	0.500	21.894675	-101.404257

30 CARR: Libramiento de Matehuala (Cuota)

CLAVE: 24205

RUTA: MEX-057D

AÑO: 2020

LUGAR	ESTACION				CLASIFICACION VEHICULAR EN PORCIENTO													COORDENADAS		
	KM	TE	SC	TDPA	M	A	B	C2	C3	T3S2	T3S3	T3S2R4	OTROS	A	B	C	K'	D	LATITUD	LONGITUD
T. C. San Luis Potosí - Matehuala	0.00	3	1	6201	1.1	32.9	4.2	5.4	3.4	42.9	3.7	5.7	0.7	34.0	4.2	61.8	0.066	0.503	23.588979	-100.632910
T. C. San Luis Potosí - Matehuala	0.00	3	2	6129	0.9	35.3	4.1	5.3	3.4	40.9	3.6	5.8	0.7	36.2	4.1	59.7	0.076	0.503	23.590267	-100.633604

SAN LUIS POTOSI

30 CARR: Libramiento de Matehuala (Cuota)

CLAVE: 24205

RUTA: MEX-057D

AÑO: 2020

LUGAR	ESTACION				CLASIFICACION VEHICULAR EN PORCIENTO														COORDENADAS	
	KM	TE	SC	TDPA	M	A	B	C2	C3	T3S2	T3S3	T3S2R4	OTROS	A	B	C	K'	D	LATITUD	LONGITUD
Plaza de Cobro Matehuala	7.00	2	1	5664	0.1	24.7	1.6	5.6	3.7	52.0	3.7	7.4	1.2	24.8	1.6	73.6	0.073	0.500	23.664125	-100.607230
Plaza de Cobro Matehuala	7.00	2	2	5664	0.1	24.7	1.6	5.6	3.7	52.0	3.7	7.4	1.2	24.8	1.6	73.6	0.073	0.500	23.664125	-100.607230
T. C. Matehuala - Ent. Puerto México	14.20	1	1	5486	0.5	23.6	4.4	6.4	2.2	52.0	4.1	6.2	0.6	24.1	4.4	71.5	0.061	0.517	23.706589	-100.612236
T. C. Matehuala - Ent. Puerto México	14.20	1	2	5116	0.9	22.7	5.1	6.4	2.0	51.4	4.6	6.1	0.8	23.6	5.1	71.3	0.062	0.517	23.705236	-100.613331

31 CARR: Libramiento Norponiente de San Luis Potosí (Cuota)

CLAVE:

RUTA: MEX-057D

AÑO: 2020

LUGAR	ESTACION				CLASIFICACION VEHICULAR EN PORCIENTO														COORDENADAS	
	KM	TE	SC	TDPA	M	A	B	C2	C3	T3S2	T3S3	T3S2R4	OTROS	A	B	C	K'	D	LATITUD	LONGITUD
T. Libramiento Oriente de San Luis Potosí (Cuota)	0.00																			
X. C. San Luis Potosí - Matehuala	5.60	1	0	2795	0.5	34.9	9.0	5.8	3.3	26.0	7.6	9.8	3.1	35.4	9.0	55.6	0.053	0.504	22.261767	-100.864974
X. C. San Luis Potosí - Matehuala	5.60	3	0	4301	1.3	28.8	4.4	6.1	3.0	33.2	6.1	15.5	1.6	30.1	4.4	65.5	0.063	0.505	22.265950	-100.870134
Plaza de Cobro Vicente Rangel Lozano	17.40	2	0	4187	0.1	22.5	2.1	4.2	5.7	37.8	6.5	18.0	3.1	22.6	2.1	75.3	0.067	0.500	22.299904	-100.971154
T. C. San Luis Potosí - Ent. Arcinas	31.20	1	0	4467	1.5	27.5	4.9	3.6	4.7	32.7	6.1	17.2	1.8	29.0	4.9	66.1	0.058	0.500	22.221689	-101.051961
T. C. San Luis Potosí - Ent. Arcinas	31.20	3	0	4933	3.3	37.8	4.9	5.4	3.8	23.0	5.7	14.2	1.9	41.1	4.9	54.0	0.069	0.509	22.213164	-101.056375
T. C. San Luis Potosí - Ent. Arcinas	31.50																			

32 CARR: Libramiento Oriente de San Luis Potosí (Cuota)

CLAVE: 24009

RUTA: MEX-057D

AÑO: 2020

LUGAR	ESTACION				CLASIFICACION VEHICULAR EN PORCIENTO														COORDENADAS	
	KM	TE	SC	TDPA	M	A	B	C2	C3	T3S2	T3S3	T3S2R4	OTROS	A	B	C	K'	D	LATITUD	LONGITUD
T. C. Querétaro - San Luis Potosí	0.00																			
X. C. Cd. Valles - San Luis Potosí	11.20	1	1	9938	1.2	39.4	5.1	7.5	3.9	31.6	4.6	5.9	0.8	40.6	5.1	54.3	0.062	0.516	22.127883	-100.824771
X. C. Cd. Valles - San Luis Potosí	11.20	1	2	10598	1.1	33.2	5.2	8.6	3.9	35.9	5.2	6.1	0.8	34.3	5.2	60.5	0.058	0.516	22.127947	-100.824977
Plaza de Cobro San Nicolás de Los Jassos	11.22	2	1	8009	0.1	22.9	1.7	5.8	4.9	49.6	4.5	8.8	1.7	23.0	1.7	75.3	0.067	0.500	22.129780	-100.825002
Plaza de Cobro San Nicolás de Los Jassos	11.22	2	2	8009	0.1	22.9	1.7	5.8	4.9	49.6	4.5	8.8	1.7	23.0	1.7	75.3	0.067	0.500	22.129780	-100.825002
T. C. San Luis Potosí - Matehuala	33.76	1	1	7518	1.3	38.5	3.9	5.4	2.9	35.1	6.6	5.6	0.7	39.8	3.9	56.3	0.067	0.504	22.326518	-100.799786
T. C. San Luis Potosí - Matehuala	33.76	1	2	7640	1.3	34.7	4.3	6.3	3.2	36.3	7.3	5.8	0.8	36.0	4.3	59.7	0.065	0.504	22.325850	-100.800928

33 CARR: Rayón - Ent. Tamuín (Cuota)

CLAVE:

RUTA: MEX-070D

AÑO: 2020

LUGAR	ESTACION				CLASIFICACION VEHICULAR EN PORCIENTO														COORDENADAS	
	KM	TE	SC	TDPA	M	A	B	C2	C3	T3S2	T3S3	T3S2R4	OTROS	A	B	C	K'	D	LATITUD	LONGITUD
Rayón	0.00																			
Plaza de Cobro Rayón	2.05	2	0	3127	0.5	90.7	1.3	2.1	1.6	1.8	0.9	0.9	0.2	91.2	1.3	7.5	0.090	0.500	21.863597	-99.623291

SAN LUIS POTOSI

33 CARR: Rayón - Ent. Tamuín (Cuota)

CLAVE:

RUTA: MEX-070D

AÑO: 2020

LUGAR	ESTACION				CLASIFICACION VEHICULAR EN PORCIENTO													COORDENADAS		
	KM	TE	SC	TDPA	M	A	B	C2	C3	T3S2	T3S3	T3S2R4	OTROS	A	B	C	K'	D	LATITUD	LONGITUD
Vicente Guerrero	19.70	1	0	2630	4.2	71.1	5.0	5.7	2.4	6.3	2.2	2.9	0.2	75.3	5.0	19.7	0.084	0.503	21.865362	-99.492019
Vicente Guerrero	19.70	3	0	2320	4.4	70.5	5.1	5.8	2.3	6.5	2.2	2.9	0.3	74.9	5.1	20.0	0.081	0.505	21.862615	-99.486672
Plaza de Cobro La Pitahaya	62.00	2	0	3977	0.8	90.7	1.3	2.0	1.9	1.5	0.9	0.7	0.2	91.5	1.3	7.2	0.090	0.500	21.967581	-99.174618
Ent. La Pitahaya	68.58	1	0	2912	4.1	71.4	4.8	5.4	2.5	6.3	2.3	3.0	0.2	75.5	4.8	19.7	0.089	0.501	22.004071	-99.119763
Ent. La Pitahaya	68.58	3	0	1960	4.2	70.6	4.9	5.5	2.6	6.4	2.3	3.2	0.3	74.8	4.9	20.3	0.093	0.510	22.002102	-99.115978
Plaza de Cobro La Calera	89.60	2	0	1036	0.3	45.2	0.8	3.7	4.9	20.2	6.3	16.6	2.0	45.5	0.8	53.7	0.090	0.500	21.904164	-98.955523
X. C. Cd. Valles - Tampico	107.33	1	0	2131	5.7	67.3	5.0	5.1	2.9	6.7	2.7	3.8	0.8	73.0	5.0	22.0	0.093	0.506	21.969224	-98.806712
X. C. Tamuín - Xolol	112.53	1	0	1952	6.0	67.9	4.8	4.8	2.9	6.4	2.7	3.7	0.8	73.9	4.8	21.3	0.094	0.503	21.982467	-98.759066
X. C. Cd. Valles - Tampico	117.30	1	0	1815	6.2	67.1	4.9	5.0	2.9	6.6	2.8	3.6	0.9	73.3	4.9	21.8	0.096	0.502	22.005304	-98.731902
T. C. Cd. Valles - Tampico	120.00																			

34 CARR: Charcas - Villa Santo Domingo

CLAVE: 24624

RUTA: SLP-017

AÑO: 2020

LUGAR	ESTACION				CLASIFICACION VEHICULAR EN PORCIENTO													COORDENADAS		
	KM	TE	SC	TDPA	M	A	B	C2	C3	T3S2	T3S3	T3S2R4	OTROS	A	B	C	K'	D	LATITUD	LONGITUD
Charcas	0.00	3	0	1713	25.5	58.3	3.1	9.7	1.9	1.0	0.3	0.1	0.1	83.8	3.1	13.1	0.118	0.517	23.129718	-101.114419
Villa Santo Domingo	75.00																			

35 CARR: Ébano - Estación Manuel

CLAVE: 24624

RUTA: SLP-TAM

AÑO: 2020

LUGAR	ESTACION				CLASIFICACION VEHICULAR EN PORCIENTO													COORDENADAS		
	KM	TE	SC	TDPA	M	A	B	C2	C3	T3S2	T3S3	T3S2R4	OTROS	A	B	C	K'	D	LATITUD	LONGITUD
Ébano	0.00	3	0	2501	19.6	65.8	0.2	9.6	1.1	2.1	0.7	0.7	0.2	85.4	0.2	14.4	0.086	0.509	22.216848	-98.375594
Lím. de Edos. Term. S. L. P. Ppia. Ver.	2.71																			
Lím. de Edos. Term. Ver. Ppia. S. L. P.	3.95																			
Lím. de Edos. Term. S. L. P. Ppia. Ver.	5.00																			
Lím. de Edos. Term. Ver. Ppia. Tamps.	25.00																			
Estación Manuel	65.60																			

36 CARR: Matehuala - La Paz

CLAVE: 24621

RUTA: SLP-020

AÑO: 2020

LUGAR	ESTACION				CLASIFICACION VEHICULAR EN PORCIENTO													COORDENADAS		
	KM	TE	SC	TDPA	M	A	B	C2	C3	T3S2	T3S3	T3S2R4	OTROS	A	B	C	K'	D	LATITUD	LONGITUD
Matehuala	0.00	3	1	2373	17.3	71.5	0.6	8.8	0.9	0.3	0.2	0.2	0.2	88.8	0.6	10.6	0.092	0.501	23.666931	-100.645343
Matehuala	0.00	3	2	2367	17.6	71.4	0.6	8.7	0.9	0.2	0.2	0.2	0.2	89.0	0.6	10.4	0.094	0.501	23.666927	-100.645337

SAN LUIS POTOSI

36 CARR: Matehuala - La Paz

CLAVE: 24621

RUTA: SLP-020

AÑO: 2020

LUGAR	ESTACION				CLASIFICACION VEHICULAR EN PORCIENTO													COORDENADAS		
	KM	TE	SC	TDPA	M	A	B	C2	C3	T3S2	T3S3	T3S2R4	OTROS	A	B	C	K'	D	LATITUD	LONGITUD
La Paz	8.00	1	1	2022	25.5	66.7	0.4	6.2	0.5	0.5	0.1	0.1	0.0	92.2	0.4	7.4	0.107	0.503	23.675485	-100.710969
La Paz	8.00	1	2	1994	25.0	66.9	0.4	6.5	0.5	0.5	0.1	0.1	0.0	91.9	0.4	7.7	0.089	0.503	23.675485	-100.710969

37 CARR: Matehuala - La Poza

CLAVE: 00086

RUTA: SLP-029-NL-061

AÑO: 2020

LUGAR	ESTACION				CLASIFICACION VEHICULAR EN PORCIENTO													COORDENADAS		
	KM	TE	SC	TDPA	M	A	B	C2	C3	T3S2	T3S3	T3S2R4	OTROS	A	B	C	K'	D	LATITUD	LONGITUD
Matehuala	0.00	3	0	3882	9.6	69.4	1.2	13.5	3.1	2.1	0.6	0.3	0.2	79.0	1.2	19.8	0.092	0.509	23.652548	-100.634859
Lim. Edos. Term. S. L. P. Ppia. N. L.	19.70																			
Lim. Edos. Term. N. L. Ppia. S. L. P.	19.90																			
Lim. Edos. Term. S. L. P. Ppia. N. L.	21.53																			
Doctor Arroyo	49.00	1	0	3519	3.8	76.1	1.1	13.7	2.6	1.9	0.3	0.4	0.1	79.9	1.1	19.0	0.088	0.503	23.674934	-100.181002
La Ascención	131.00	1	0	703	2.7	74.9	3.6	15.8	1.2	1.6	0.2	0.0	0.0	77.6	3.6	18.8	0.081	0.506	24.323247	-99.906191

38 CARR: Periférico de San Luis Potosí

CLAVE: 24618

RUTA: SLP-032

AÑO: 2020

LUGAR	ESTACION				CLASIFICACION VEHICULAR EN PORCIENTO													COORDENADAS		
	KM	TE	SC	TDPA	M	A	B	C2	C3	T3S2	T3S3	T3S2R4	OTROS	A	B	C	K'	D	LATITUD	LONGITUD
T. C. San Luis Potosí - Ent. Arcinas	0.00																			
X. C. Querétaro - San Luis Potosí (Lateral)	22.00	3	1	7044	6.9	80.0	0.3	9.9	0.5	0.9	1.1	0.1	0.3	86.9	0.3	12.8	0.072	0.522	22.126151	-100.918870
X. C. Querétaro - San Luis Potosí (Central)	22.00	3	1	16177	3.7	79.2	0.8	6.6	2.0	3.2	2.7	0.9	0.9	82.9	0.8	16.3	0.074	0.503	22.126159	-100.918889
X. C. Querétaro - San Luis Potosí (Central)	22.00	3	2	16356	3.1	78.5	0.9	7.0	2.0	3.5	3.0	1.1	0.9	81.6	0.9	17.5	0.066	0.503	22.126257	-100.918994
X. C. Querétaro - San Luis Potosí (Lateral)	22.00	3	2	6457	5.7	81.2	0.3	9.7	0.6	1.0	1.1	0.1	0.3	86.9	0.3	12.8	0.088	0.522	22.126264	-100.919007
X. C. San Luis Potosí - Cd. Valles	25.00	3	1	17343	3.4	77.9	0.7	7.8	2.2	3.6	2.7	0.9	0.8	81.3	0.7	18.0	0.072	0.511	22.155555	-100.914541
X. C. San Luis Potosí - Cd. Valles	25.00	3	2	16623	4.1	78.9	0.6	7.5	2.0	3.0	2.5	0.6	0.8	83.0	0.6	16.4	0.072	0.511	22.155553	-100.914686
X. C. San Luis Potosí - Matehuala	30.70	1	1	17084	4.3	75.0	0.8	8.8	3.1	4.0	2.1	1.0	0.9	79.3	0.8	19.9	0.074	0.514	22.202113	-100.922413
X. C. San Luis Potosí - Matehuala	30.70	1	2	16164	3.9	77.3	0.9	7.4	2.2	3.9	2.6	0.9	0.9	81.2	0.9	17.9	0.075	0.514	22.202054	-100.922501
T. C. San Luis Potosí - Ent. Arcinas	44.80																			

39 CARR: Ramal a Cerritos

CLAVE: 24615

RUTA: SLP-007

AÑO: 2020

LUGAR	ESTACION				CLASIFICACION VEHICULAR EN PORCIENTO													COORDENADAS		
	KM	TE	SC	TDPA	M	A	B	C2	C3	T3S2	T3S3	T3S2R4	OTROS	A	B	C	K'	D	LATITUD	LONGITUD
T. C. San Luis Potosí - Matehuala	0.00	3	0	326	2.4	65.4	3.8	23.9	1.3	3.2	0.0	0.0	0.0	67.8	3.8	28.4	0.129	0.532	22.613454	-100.547957
Cerritos	37.00																			

SAN LUIS POTOSI

40 CARR: Ramal a Pozo de Acuña

CLAVE: 24626

RUTA: SLP-009

AÑO: 2020

LUGAR	ESTACION				CLASIFICACION VEHICULAR EN PORCIENTO													COORDENADAS		
	KM	TE	SC	TDPA	M	A	B	C2	C3	T3S2	T3S3	T3S2R4	OTROS	A	B	C	K'	D	LATITUD	LONGITUD
T. C. San Luis Potosí - Matehuala	0.00	3	0	386	1.9	80.4	0.5	16.4	0.8	0.0	0.0	0.0	0.0	82.3	0.5	17.2	0.117	0.507	22.642670	-100.517199
Pozo de Acuña	37.90																			

41 CARR: Rayón - Arroyo Seco

CLAVE: 24008

RUTA: SLP-011

AÑO: 2020

LUGAR	ESTACION				CLASIFICACION VEHICULAR EN PORCIENTO													COORDENADAS		
	KM	TE	SC	TDPA	M	A	B	C2	C3	T3S2	T3S3	T3S2R4	OTROS	A	B	C	K'	D	LATITUD	LONGITUD
Rayón	0.00	3	0	1275	5.7	73.2	0.4	16.1	1.5	1.9	0.9	0.0	0.3	78.9	0.4	20.7	0.104	0.511	21.851380	-99.627604
Lagunillas	36.00	1	0	322	4.2	73.4	0.0	18.9	2.0	0.8	0.7	0.0	0.0	77.6	0.0	22.4	0.140	0.501	21.587173	-99.566486
Lim. De Edos. Term. S.L.P. Ppia Qro.	51.00																			
Arroyo Seco	57.00	1	0	550	6.1	73.5	0.1	19.2	0.7	0.1	0.3	0.0	0.0	79.6	0.1	20.3	0.135	0.507	21.546738	-99.692906

42 CARR: Santo Domingo - Cerro Gordo

CLAVE: 24614

RUTA: SLP-022

AÑO: 2020

LUGAR	ESTACION				CLASIFICACION VEHICULAR EN PORCIENTO													COORDENADAS		
	KM	TE	SC	TDPA	M	A	B	C2	C3	T3S2	T3S3	T3S2R4	OTROS	A	B	C	K'	D	LATITUD	LONGITUD
T. C. Cd. Valles - San Luis Potosí	0.00	3	0	4084	4.8	73.6	0.9	14.1	1.5	3.0	1.7	0.3	0.1	78.4	0.9	20.7	0.103	0.510	22.099486	-100.745226
T. C. Querétaro - San Luis Potosí	19.00	1	0	4261	5.3	73.7	1.0	15.6	1.2	2.1	0.9	0.1	0.1	79.0	1.0	20.0	0.122	0.584	21.975971	-100.819681

43 CARR: Tamuín - Estación F.F.C.C. Tamuín

CLAVE: 24022

RUTA: SLP-040

AÑO: 2020

LUGAR	ESTACION				CLASIFICACION VEHICULAR EN PORCIENTO													COORDENADAS		
	KM	TE	SC	TDPA	M	A	B	C2	C3	T3S2	T3S3	T3S2R4	OTROS	A	B	C	K'	D	LATITUD	LONGITUD
Tamuín	0.00	3	0	5572	13.1	74.5	0.6	4.3	1.2	4.3	0.8	0.4	0.8	87.6	0.6	11.8	0.083	0.503	22.002140	-98.780354
Estación F.F.C.C. Tamuín	10.00	1	0	1411	31.3	60.7	0.5	4.4	0.4	2.1	0.5	0.0	0.1	92.0	0.5	7.5	0.089	0.510	22.079018	-98.811949

44 CARR: Tamuín - Xolol

CLAVE: 24027

RUTA: SLP-014

AÑO: 2020

LUGAR	ESTACION				CLASIFICACION VEHICULAR EN PORCIENTO													COORDENADAS		
	KM	TE	SC	TDPA	M	A	B	C2	C3	T3S2	T3S3	T3S2R4	OTROS	A	B	C	K'	D	LATITUD	LONGITUD
Tamuín	0.00	3	0	3728	9.8	70.0	0.7	10.0	2.7	4.0	1.3	1.1	0.4	79.8	0.7	19.5	0.090	0.506	22.002915	-98.760826
X. C. Rayón - Ent. Tamuín (Cuota)	2.56	3	0	3012	1.9	69.4	1.6	10.9	6.4	4.8	2.2	1.6	1.2	71.3	1.6	27.1	0.098	0.525	21.982496	-98.759051
San Vicente Tancuayalab	37.62																			
Xolol	97.00																			

SAN LUIS POTOSI

45 CARR: Cerritos - Ent. Tula (Cuota)

CLAVE:

RUTA: SLP-075D

AÑO: 2020

LUGAR	ESTACION				CLASIFICACION VEHICULAR EN PORCIENTO													COORDENADAS		
	KM	TE	SC	TDPA	M	A	B	C2	C3	T3S2	T3S3	T3S2R4	OTROS	A	B	C	K'	D	LATITUD	LONGITUD
T. C. Carritos - Rioverde (Cuota)	0.00	3	0	2471	8.7	65.3	2.9	11.6	1.7	5.0	1.9	2.1	0.8	74.0	2.9	23.1	0.080	0.524	22.440523	-100.336846
T. Der. Cerritos	2.69	3	0	2126	3.2	59.3	3.7	4.7	2.4	14.3	2.0	9.7	0.7	62.5	3.7	33.8	0.074	0.503	22.456978	-100.318497
T. Der. San José	18.70	3	0	2316	2.6	60.1	2.6	5.3	2.8	13.7	2.0	10.2	0.7	62.7	2.6	34.7	0.085	0.508	22.571574	-100.233841
T. Der. Buenavista	32.15	3	0	1777	6.5	67.7	2.7	10.5	2.0	5.4	2.7	1.7	0.8	74.2	2.7	23.1	0.078	0.501	22.627513	-100.118949
T. C. Antigua Morelos-Ent. El Huizache	51.20																			

46 CARR: Cerritos - Rioverde (Cuota)

CLAVE: 00138

RUTA: SLP-D

AÑO: 2020

LUGAR	ESTACION				CLASIFICACION VEHICULAR EN PORCIENTO													COORDENADAS		
	KM	TE	SC	TDPA	M	A	B	C2	C3	T3S2	T3S3	T3S2R4	OTROS	A	B	C	K'	D	LATITUD	LONGITUD
Cerritos	0.00	3	0	5908	2.8	53.4	6.4	7.4	2.5	12.9	5.3	8.4	0.9	56.2	6.4	37.4	0.084	0.513	22.591626	-100.590848
Villa Juárez	58.00	3	0	3475	1.1	70.4	6.4	9.0	2.1	5.7	2.3	2.8	0.2	71.5	6.4	22.1	0.082	0.531	22.319147	-100.285375
Río Verde	103.00	1	0	5198	2.6	71.9	4.2	10.9	2.2	3.9	1.9	1.8	0.6	74.5	4.2	21.3	0.083	0.518	21.921162	-99.959939

47 CARR: San Luis Potosí - Villa de Arriaga (Cuota)

CLAVE: 24209

RUTA: SLP-D

AÑO: 2020

LUGAR	ESTACION				CLASIFICACION VEHICULAR EN PORCIENTO													COORDENADAS		
	KM	TE	SC	TDPA	M	A	B	C2	C3	T3S2	T3S3	T3S2R4	OTROS	A	B	C	K'	D	LATITUD	LONGITUD
T. C. Querétaro - San Luis Potosí	0.00	3	0	10054	0.8	60.8	4.1	10.2	5.4	13.3	1.8	2.8	0.8	61.6	4.1	34.3	0.081	0.503	22.018399	-100.843002
Villa de Arriaga	77.00	1	0	3057	1.7	33.7	6.8	6.0	4.0	26.0	5.1	15.7	1.0	35.4	6.8	57.8	0.076	0.517	21.897412	-101.397209

48 CARR: Rayón - Cd. del Maíz

CLAVE: 24206

RUTA: MEX-070-SLP-005

AÑO: 2020

LUGAR	ESTACION				CLASIFICACION VEHICULAR EN PORCIENTO													COORDENADAS		
	KM	TE	SC	TDPA	M	A	B	C2	C3	T3S2	T3S3	T3S2R4	OTROS	A	B	C	K'	D	LATITUD	LONGITUD
T. C. (Cd. Valles - San Luis Potosí)	0.00																			
Cárdenas	15.80	1	0	2694	3.7	87.1	1.9	5.6	0.9	0.3	0.2	0.1	0.2	90.8	1.9	7.3	0.108	0.520	21.998715	-99.644129
Cd. del Maíz	55.70	1	0	920	3.4	76.9	1.0	15.6	1.6	1.3	0.2	0.0	0.0	80.3	1.0	18.7	0.111	0.508	22.400143	-99.607277

49 CARR: San Lorenzo - Moctezuma

CLAVE: 24016

RUTA: MEX-063-SLP-012

AÑO: 2020

LUGAR	ESTACION				CLASIFICACION VEHICULAR EN PORCIENTO													COORDENADAS		
	KM	TE	SC	TDPA	M	A	B	C2	C3	T3S2	T3S3	T3S2R4	OTROS	A	B	C	K'	D	LATITUD	LONGITUD
T. C. San Luis Potosí - Matehuala	0.00	3	0	1306	4.6	76.8	1.1	10.4	1.4	3.2	1.8	0.3	0.4	81.4	1.1	17.5	0.103	0.505	22.567163	-100.638775
Estación Moctezuma	49.00																			

SAN LUIS POTOSI

49 CARR: San Lorenzo - Moctezuma

CLAVE: 24016

RUTA: MEX-063-SLP-012

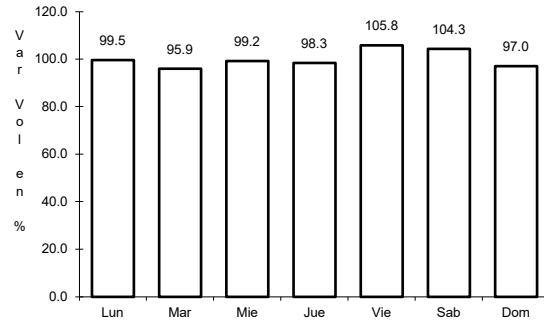
AÑO: 2020

L U G A R	E S T A C I O N				C L A S I F I C A C I O N V E H I C U L A R E N P O R C I E N T O														C O O R D E N A D A S	
	KM	TE	SC	TDPA	M	A	B	C2	C3	T3S2	T3S3	T3S2R4	OTROS	A	B	C	K'	D	LATITUD	LONGITUD
Moctezuma	54.00	1	0	2026	8.8	70.1	0.5	16.6	0.9	1.9	1.0	0.1	0.1	78.9	0.5	20.6	0.093	0.510	22.757669	-101.070406

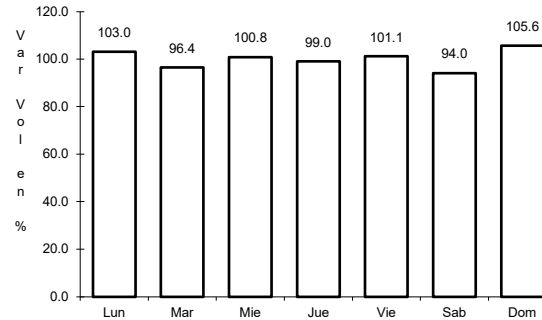
1 CARR: Antiguo Morelos - Ent. El Huizache

CLAVE: 00136

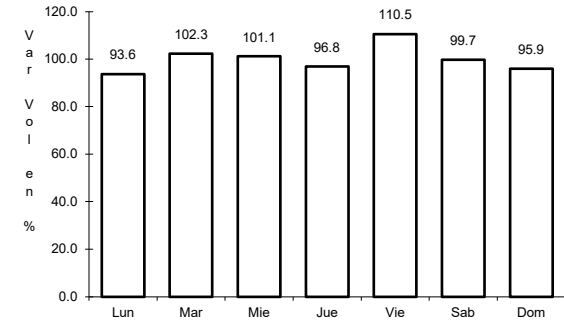
RUTA: MEX-080



Km: 0.00 Tipo: 3 Sent: 0



Km: 86.00 Tipo: 3 Sent: 0

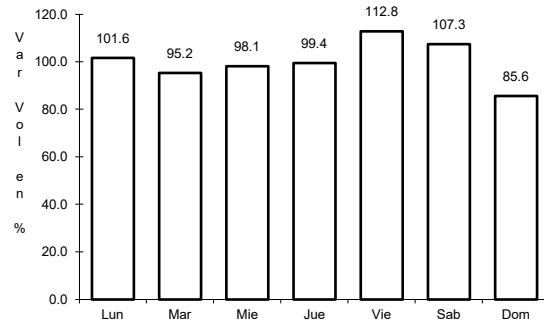


Km: 198.83 Tipo: 1 Sent: 0

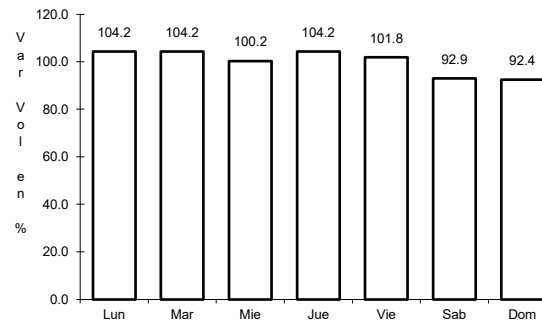
2 CARR: Carbonera - T. C. (Ent. Morelos - Saltillo)

CLAVE: 00218

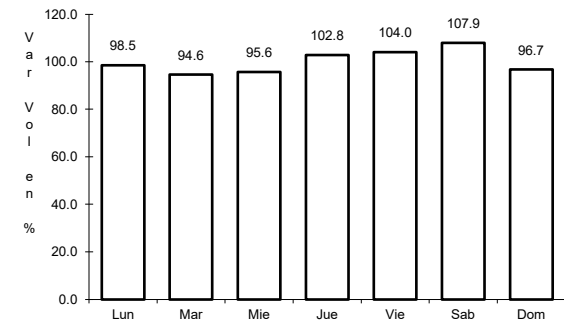
RUTA: MEX-062



Km: 0.00 Tipo: 3 Sent: 0



Km: 18.00 Tipo: 1 Sent: 0

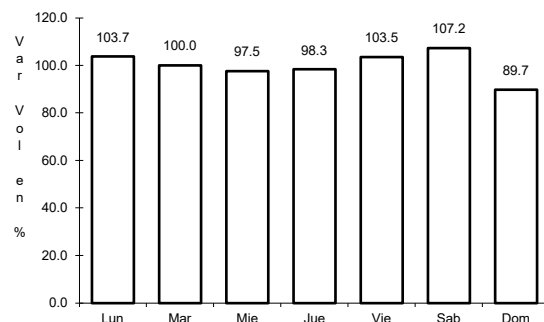


Km: 112.00 Tipo: 1 Sent: 0

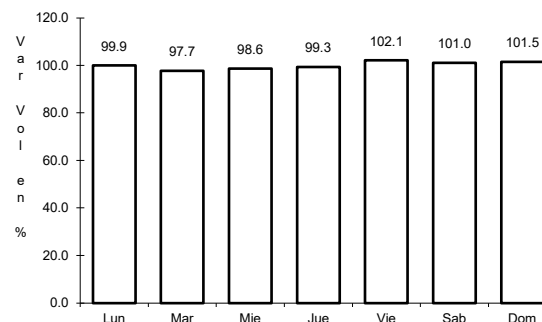
3 CARR: Cd. Valles - Cd. Victoria

CLAVE: 00509

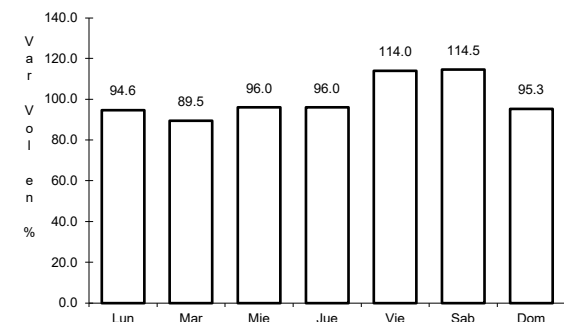
RUTA: MEX-085



Km: 0.00 Tipo: 3 Sent: 0



Km: 110.00 Tipo: 3 Sent: 0

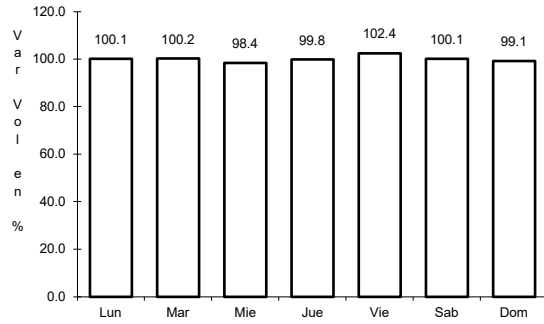


Km: 232.00 Tipo: 1 Sent: 0

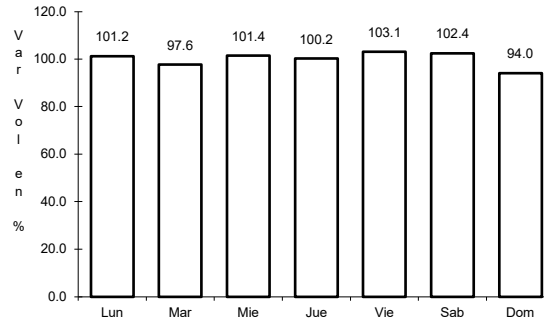
4 CARR: Cd. Valles - San Luis Potosí

CLAVE: 24135

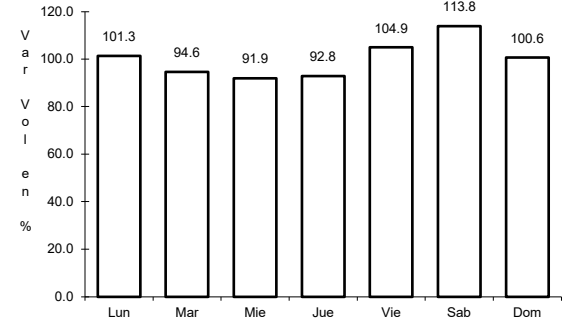
RUTA: MEX-070



Km: 0.00 Tipo: 3 Sent: 1



Km: 0.00 Tipo: 3 Sent: 2

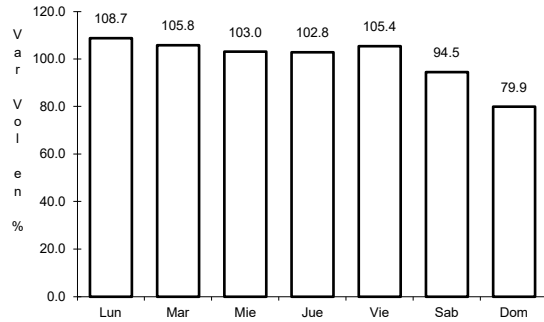


Km: 145.90 Tipo: 1 Sent: 0

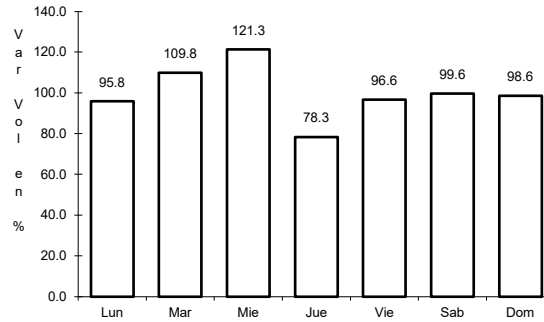
5 CARR: Cd. Valles - Tampico

CLAVE: 00138

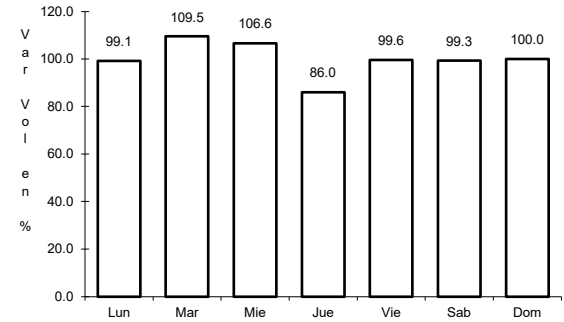
RUTA: MEX-070



Km: 0.00 Tipo: 3 Sent: 0



Km: 138.00 Tipo: 1 Sent: 1

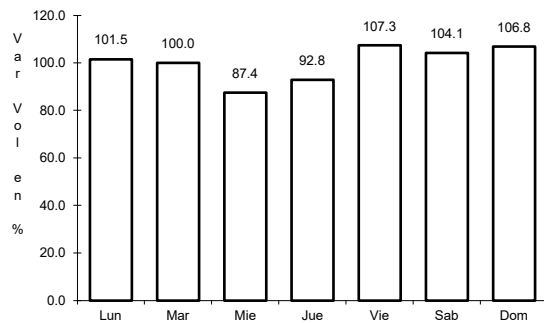


Km: 138.00 Tipo: 1 Sent: 2

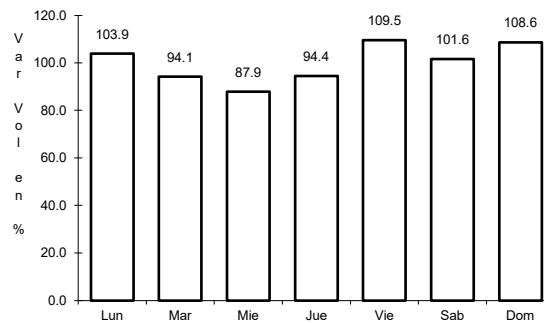
6 CARR: El Clarín - Agua Buena

CLAVE: 24283

RUTA: MEX-070



Km: 0.00 Tipo: 3 Sent: 0

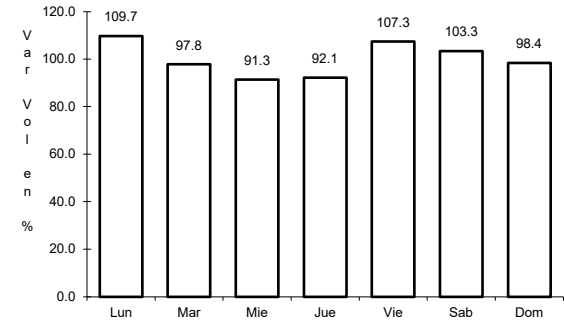
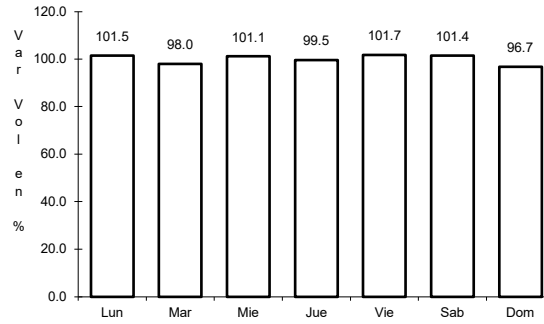
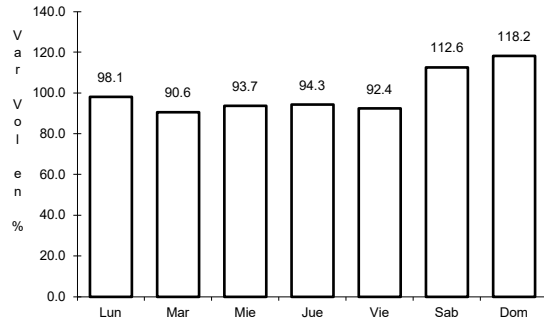


Km: 11.23 Tipo: 1 Sent: 0

7 CARR: Ent. Ahualulco - Ent. La Bonita

CLAVE: 24258

ruta: MEX-063



Km: 0.00 Tipo: 3 Sent: 0

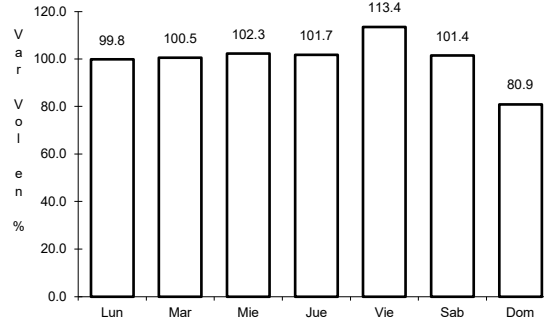
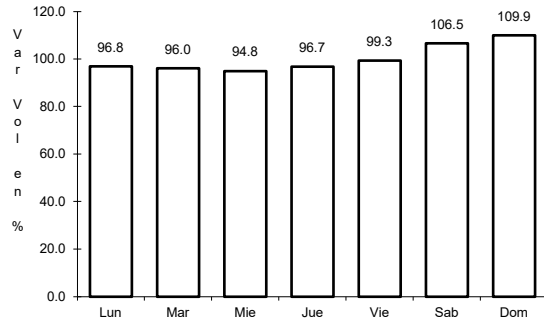
Km: 59.00 Tipo: 1 Sent: 0

Km: 169.90 Tipo: 1 Sent: 0

8 CARR: Ent. de Zaragoza - San Felipe

CLAVE: 00240

ruta: MEX-037



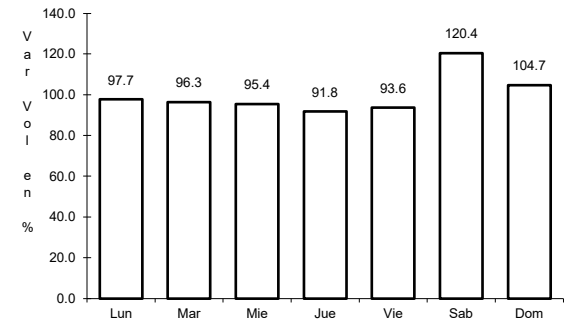
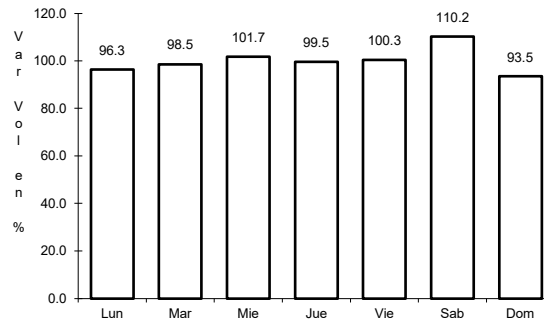
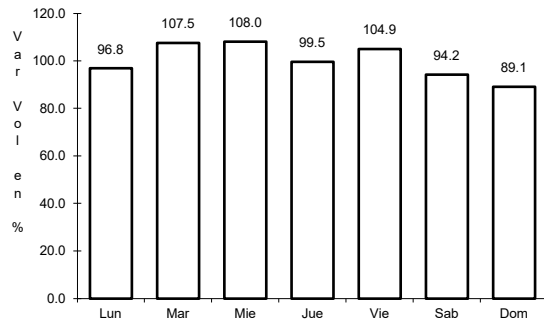
Km: 0.00 Tipo: 3 Sent: 0

Km: 72.00 Tipo: 1 Sent: 0

9 CARR: Ent. Tula - Cd. Victoria

CLAVE: 00179

ruta: MEX-101



Km: 0.00 Tipo: 3 Sent: 0

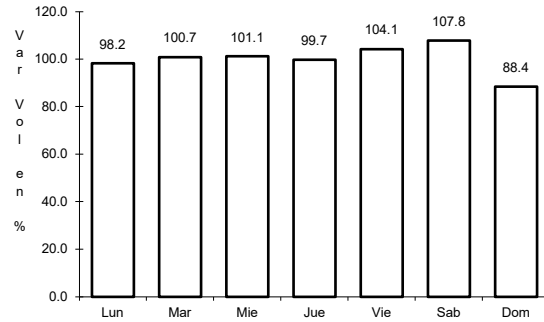
Km: 180.00 Tipo: 1 Sent: 1

Km: 180.00 Tipo: 1 Sent: 2

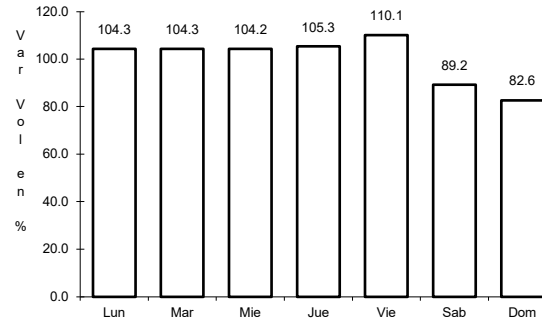
10 CARR: Jalpan de Serra - Rioverde

CLAVE: 00265

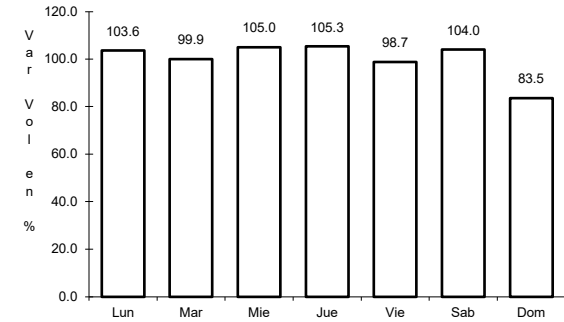
RUTA: MEX-069



Km: 0.00 Tipo: 3 Sent: 0



Km: 48.60 Tipo: 1 Sent: 0

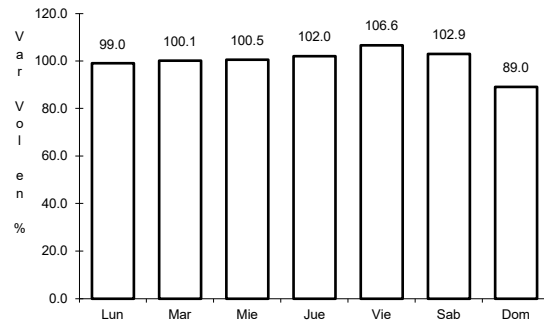


Km: 105.43 Tipo: 1 Sent: 0

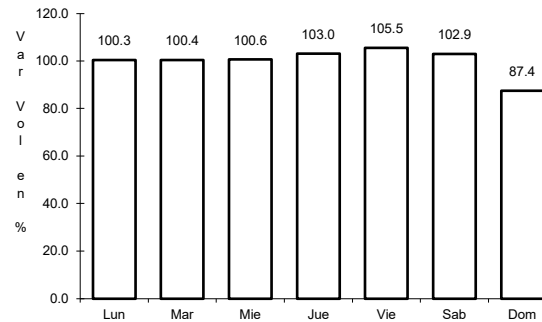
11 CARR: Libramiento de Cd. Valles

CLAVE: 24205

RUTA: MEX-070



Km: 0.00 Tipo: 3 Sent: 0

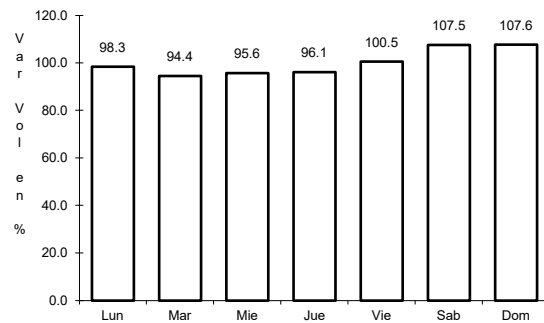


Km: 11.54 Tipo: 1 Sent: 0

12 CARR: Libramiento de Villa de Reyes

CLAVE: 24010

RUTA: MEX-037

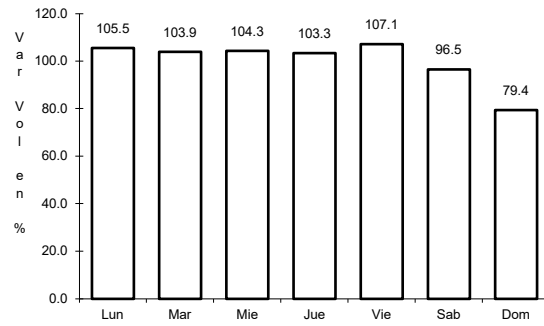


Km: 0.00 Tipo: 3 Sent: 0

13 CARR: Libramiento de Villa de Reyes (Poniente)

CLAVE:

RUTA: MEX-037



Km: 143.64

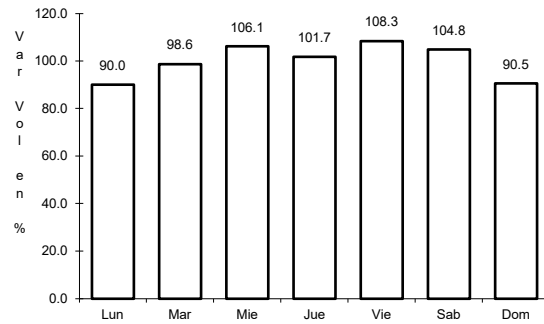
Tipo: 1

Sent: 0

14 CARR: Libramiento Villa de Arriaga

CLAVE: 24009

RUTA: MEX-080



Km: 0.00

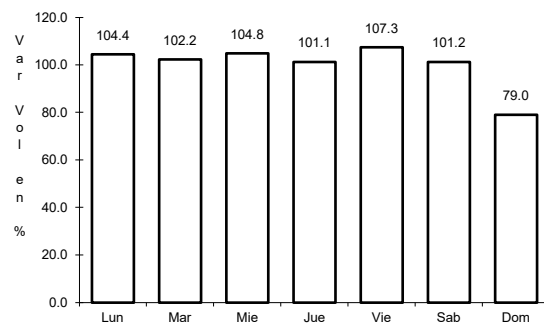
Tipo: 3

Sent: 0

15 CARR: Matchuala - Ent. Puerto México

CLAVE: 00405

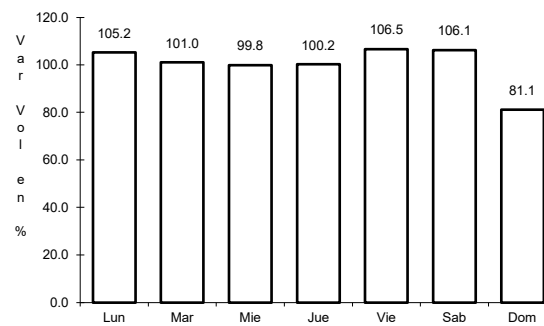
RUTA: MEX-057



Km: 0.00

Tipo: 3

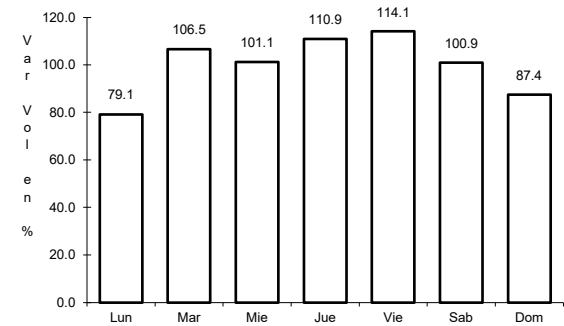
Sent: 1



Km: 0.00

Tipo: 3

Sent: 2



Km: 177.18

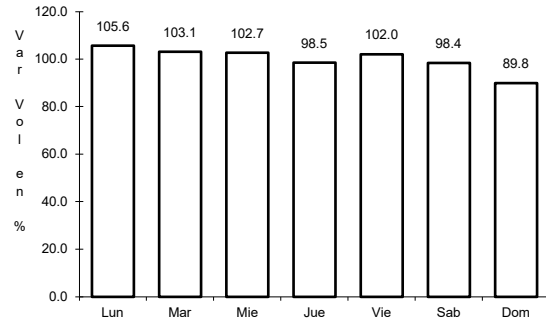
Tipo: 1

Sent: 1

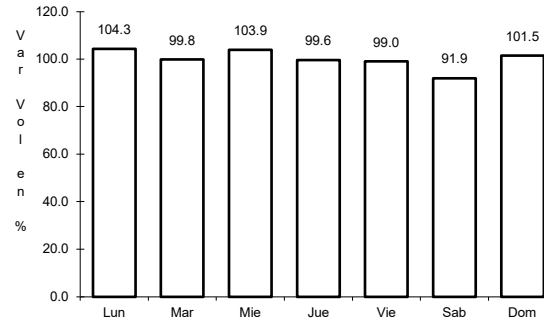
16 CARR: Portezuelo - Cd. Valles

CLAVE: 00023

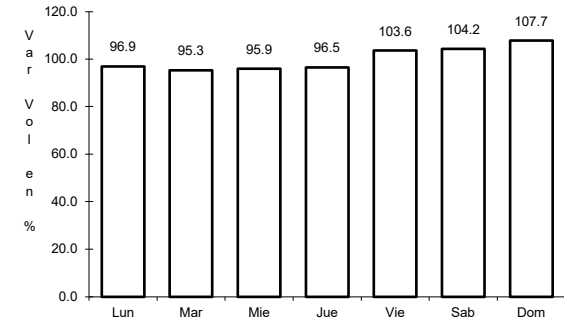
ruta: MEX-085



Km: 0.00 Tipo: 3 Sent: 0



Km: 154.00 Tipo: 3 Sent: 0

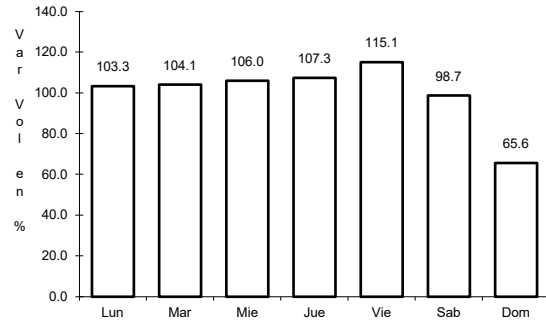


Km: 286.41 Tipo: 1 Sent: 0

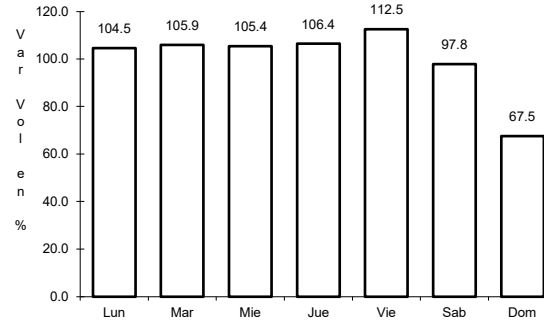
17 CARR: Querétaro - San Luis Potosí

CLAVE: 00165

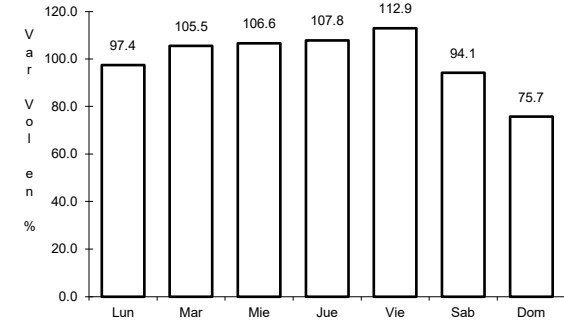
ruta: MEX-057



Km: 6.28 Tipo: 3 Sent: 1



Km: 6.28 Tipo: 3 Sent: 2

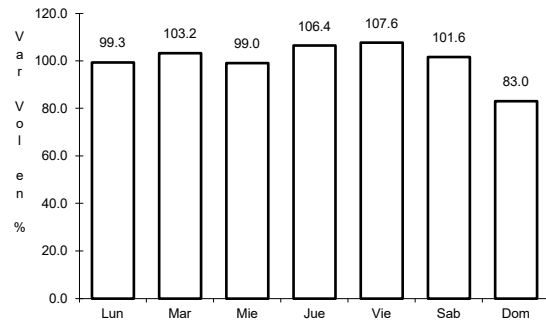


Km: 184.80 Tipo: 1 Sent: 1

18 CARR: Ramal a Aeropuerto de S. L. P.

CLAVE: 24206

ruta: MEX-057

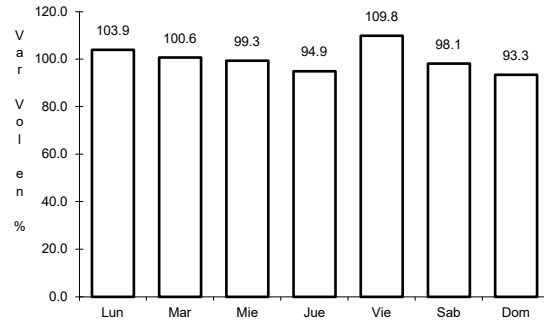


Km: 0.00 Tipo: 3 Sent: 0

19 CARR: Ramal a Ojo de Agua

CLAVE: 24023

ruta: MEX-062



Km: 0.00

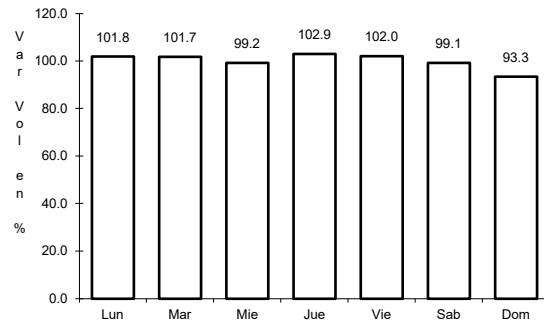
Tipo: 3

Sent: 0

20 CARR: Ramal a Rayón

CLAVE: 24626

ruta: MEX-070



Km: 1.50

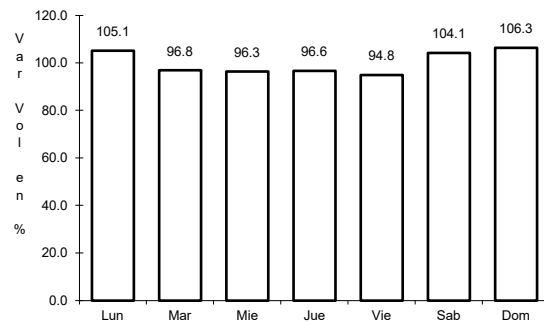
Tipo: 1

Sent: 0

21 CARR: San Juan del Río - Xilitla

CLAVE: 00183

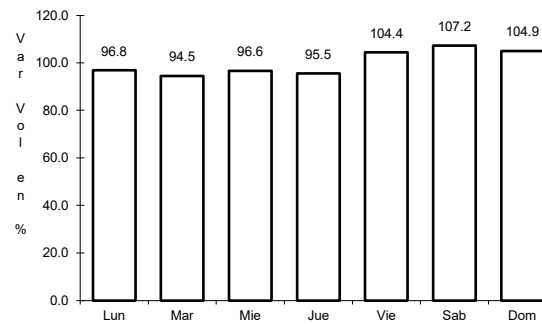
ruta: MEX-120



Km: 5.20

Tipo: 3

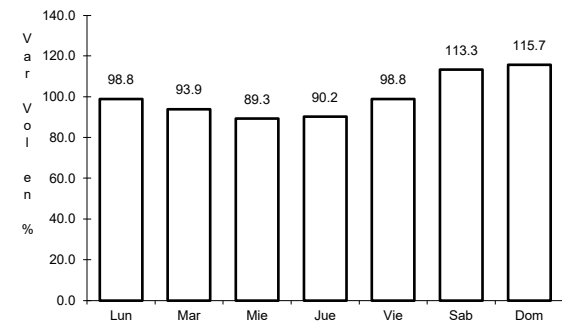
Sent: 1



Km: 5.20

Tipo: 3

Sent: 2



Km: 276.98

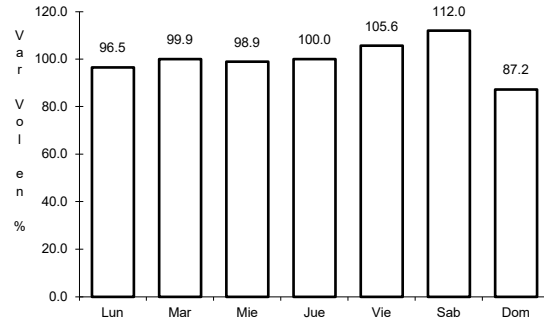
Tipo: 1

Sent: 0

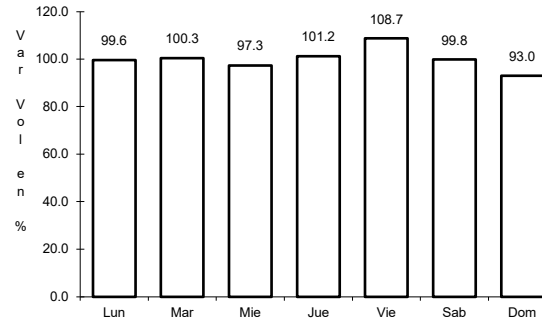
22 CARR: San Luis Potosí - Ent. Arcinas

CLAVE: 00134

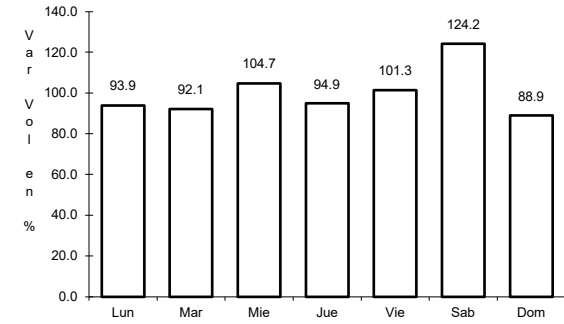
ruta: MEX-049



Km: 9.35 Tipo: 3 Sent: 1



Km: 9.35 Tipo: 3 Sent: 2

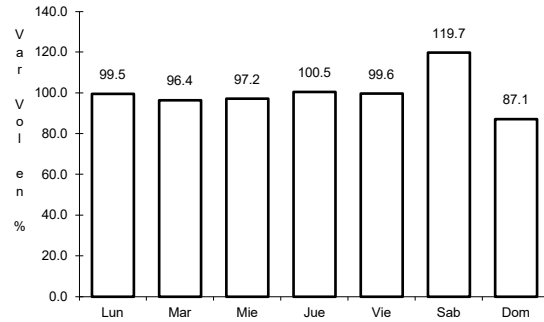


Km: 162.98 Tipo: 1 Sent: 1

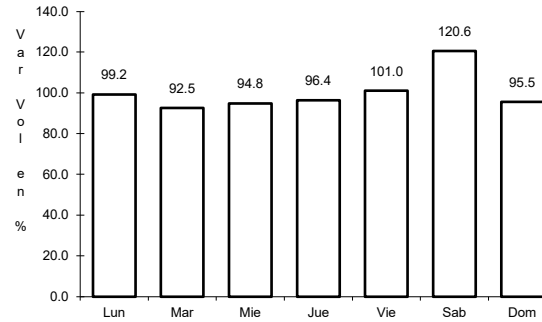
23 CARR: San Luis Potosí - Lagos de Moreno

CLAVE: 00133

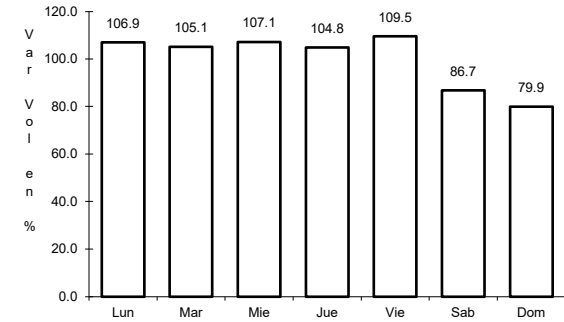
ruta: MEX-070-080



Km: 0.00 Tipo: 3 Sent: 1



Km: 0.00 Tipo: 3 Sent: 2

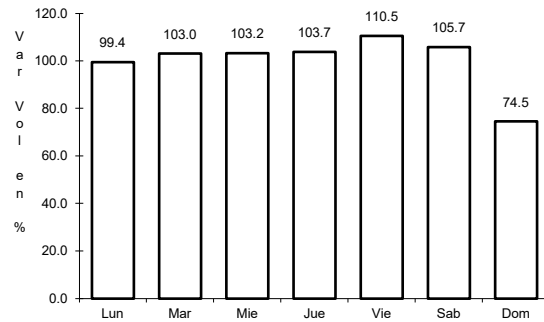


Km: 61.90 Tipo: 3 Sent: 0

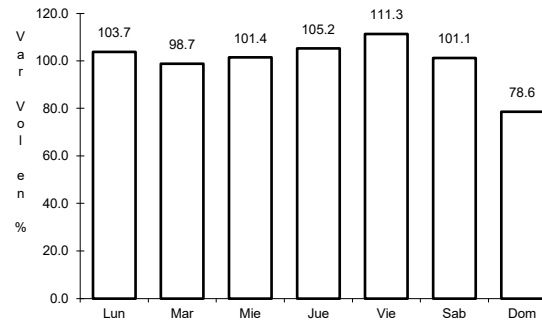
24 CARR: San Luis Potosí - Matchuala

CLAVE: 24508

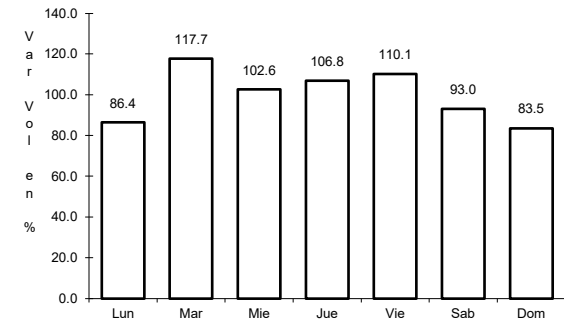
ruta: MEX-057



Km: 7.36 Tipo: 3 Sent: 1



Km: 7.36 Tipo: 3 Sent: 2

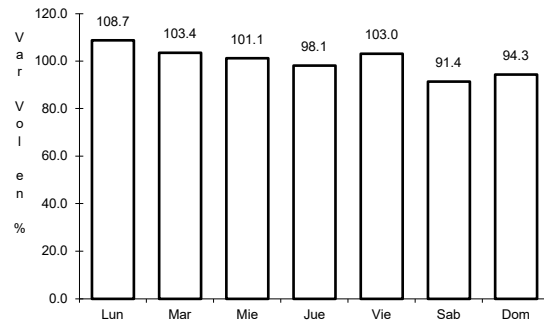


Km: 187.39 Tipo: 1 Sent: 1

25 CARR: T. C. (Ent. El Huizache- Ant. Morelos)-El Salto

CLAVE: 24204

RUTA: MEX-080



Km: 0.00

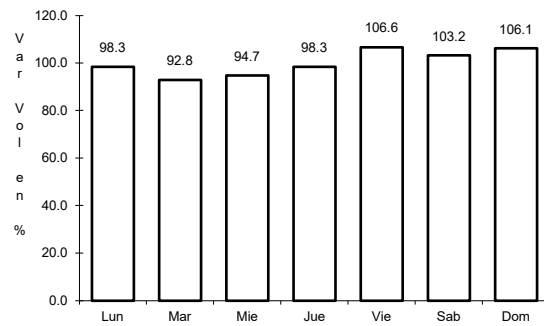
Tipo: 3

Sent: 0

26 CARR: T. C. (Qro - S.L.P.) - Tierra Nueva

CLAVE: 24203

RUTA: MEX-057



Km: 0.00

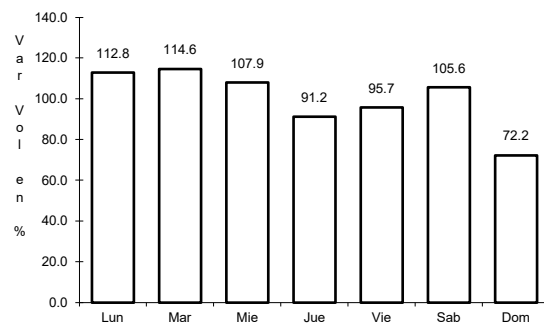
Tipo: 3

Sent: 0

27 CARR: T. C. (S.L.P. - Matchuala) - Villa Hidalgo

CLAVE: 24619

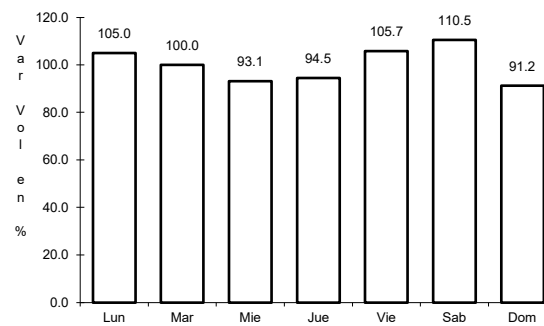
RUTA: MEX-057



Km: 0.00

Tipo: 3

Sent: 0



Km: 10.20

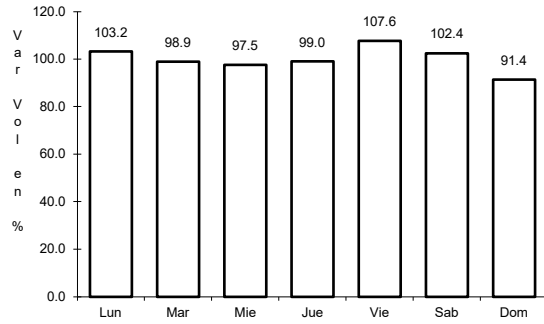
Tipo: 1

Sent: 0

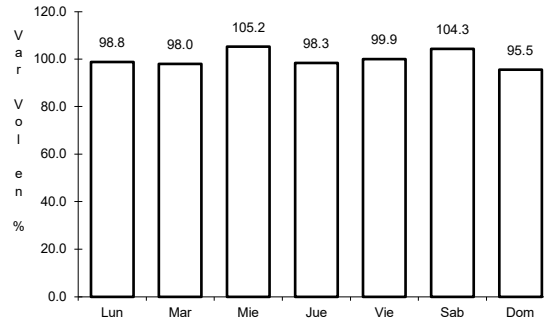
28 CARR: Tamazunchale - San Felipe Orizatlán

CLAVE: 00609

ruta: MEX-085



Km: 0.00 Tipo: 3 Sent: 0

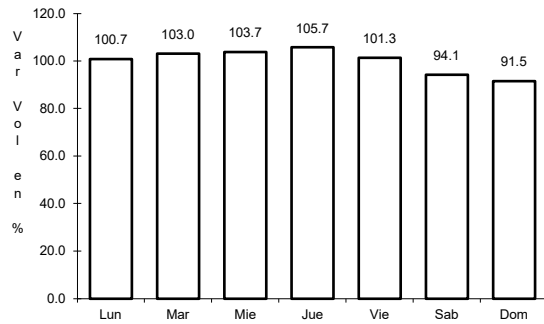


Km: 27.10 Tipo: 1 Sent: 0

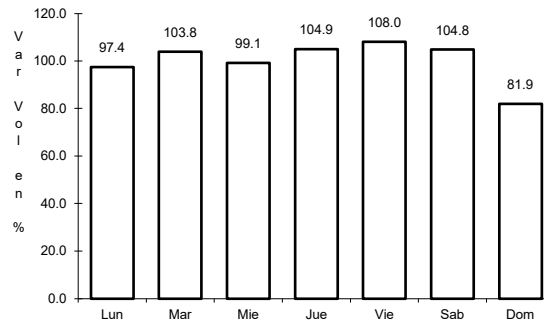
29 CARR: Lagos de Moreno - Villa de Arriaga (Cuota)

CLAVE:

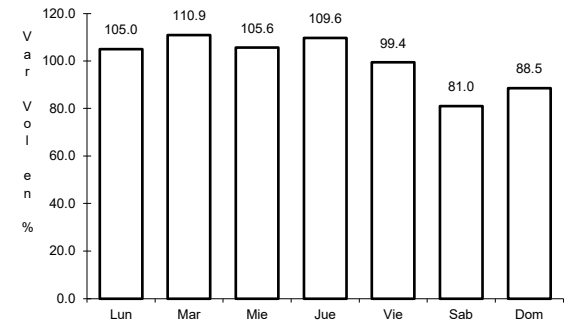
ruta: MEX-080D



Km: 12.10 Tipo: 3 Sent: 0



Km: 58.18 Tipo: 1 Sent: 0

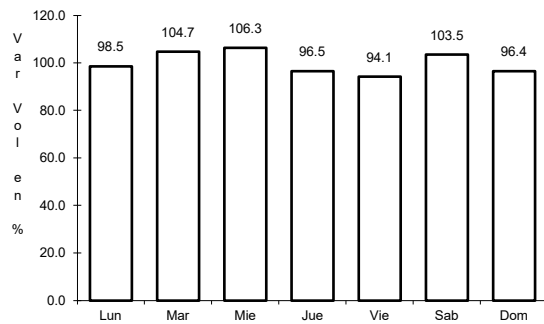


Km: 78.00 Tipo: 1 Sent: 0

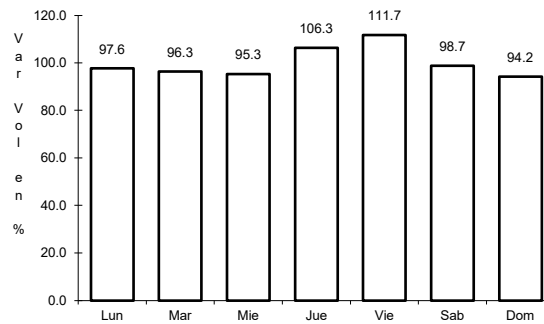
30 CARR: Libramiento de Matchuala (Cuota)

CLAVE: 24205

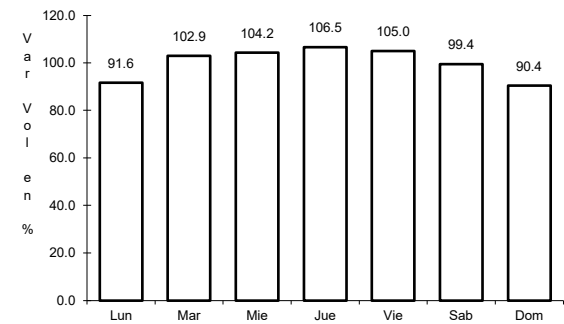
ruta: MEX-057D



Km: 0.00 Tipo: 3 Sent: 1



Km: 0.00 Tipo: 3 Sent: 2

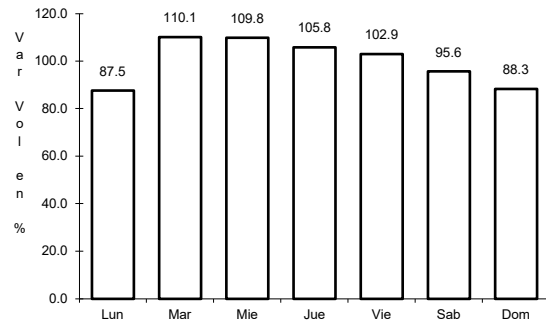


Km: 14.20 Tipo: 1 Sent: 1

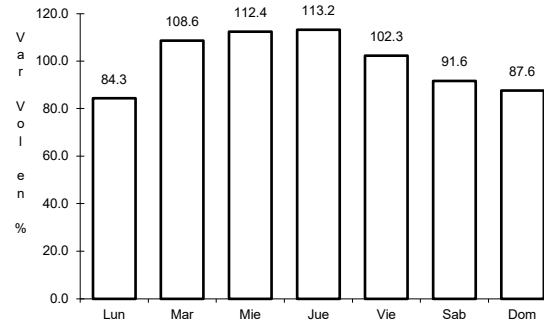
31 CARR: Libramiento Norponiente de San Luis Potosí (Cuota)

CLAVE:

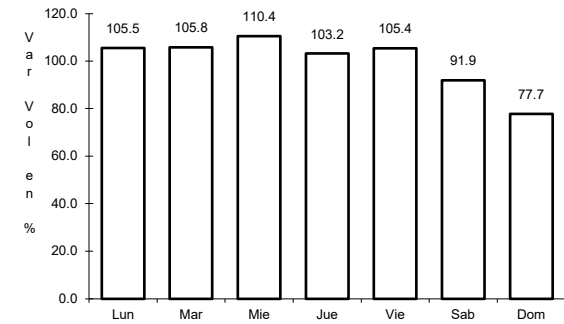
RUTA: MEX-057D



Km: 5.60 Tipo: 1 Sent: 0



Km: 5.60 Tipo: 3 Sent: 0

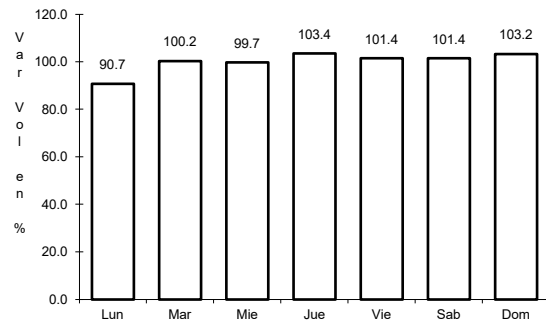


Km: 31.20 Tipo: 3 Sent: 0

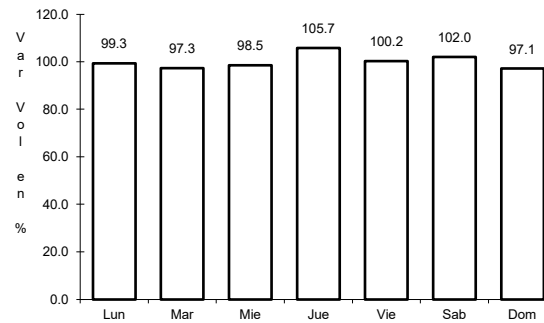
32 CARR: Libramiento Oriente de San Luis Potosí (Cuota)

CLAVE: 24009

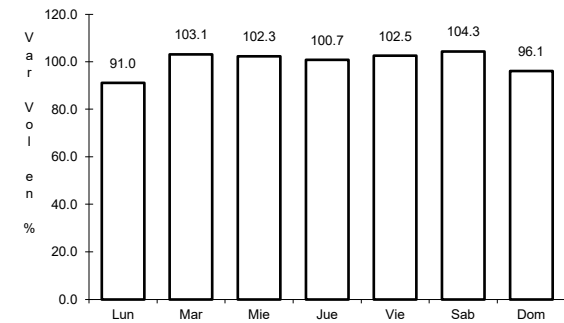
RUTA: MEX-057D



Km: 11.20 Tipo: 1 Sent: 1



Km: 11.20 Tipo: 1 Sent: 2

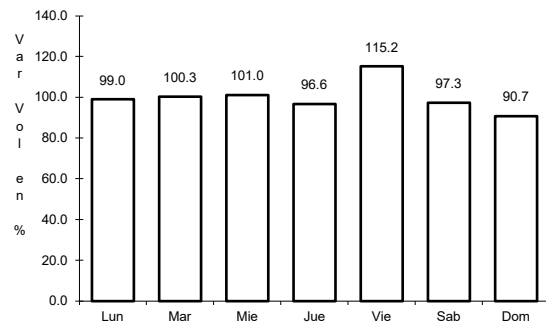


Km: 33.76 Tipo: 1 Sent: 1

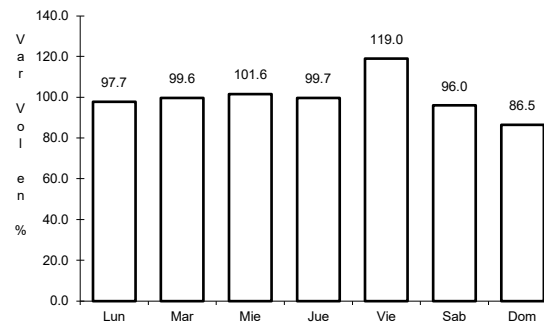
33 CARR: Rayón - Ent. Tamián (Cuota)

CLAVE:

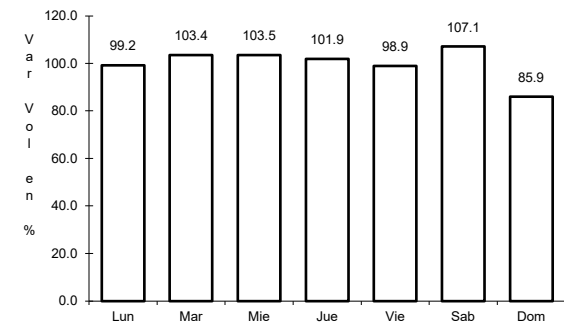
RUTA: MEX-070D



Km: 19.70 Tipo: 1 Sent: 0



Km: 68.58 Tipo: 3 Sent: 0

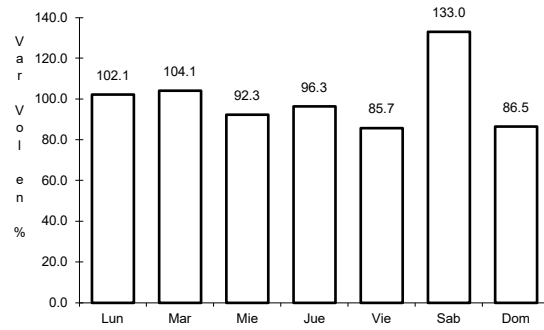


Km: 117.30 Tipo: 1 Sent: 0

34 CARR: Charcas - Villa Santo Domingo

CLAVE: 24624

RUTA: SLP-017



Km: 0.00

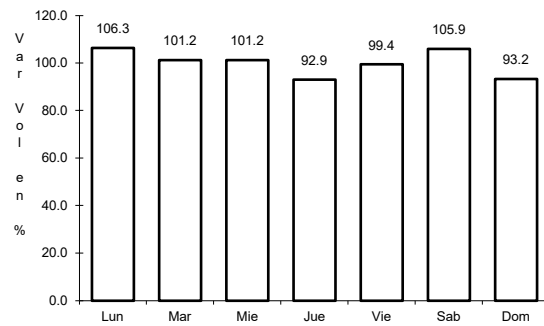
Tipo: 3

Sent: 0

35 CARR: Ébano - Estación Manuel

CLAVE: 24624

RUTA: SLP-TAM



Km: 0.00

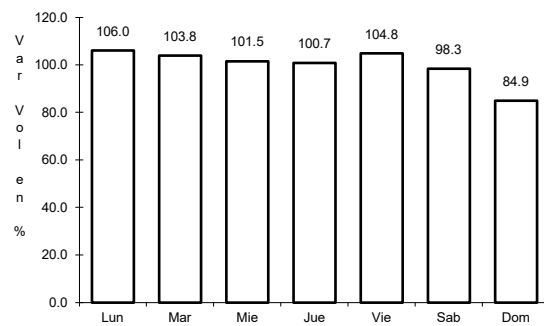
Tipo: 3

Sent: 0

36 CARR: Matchuala - La Paz

CLAVE: 24621

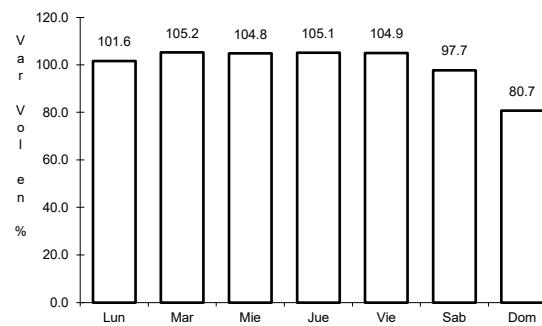
RUTA: SLP-020



Km: 0.00

Tipo: 3

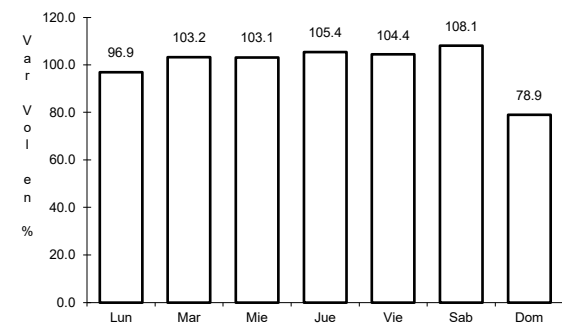
Sent: 1



Km: 0.00

Tipo: 3

Sent: 2



Km: 8.00

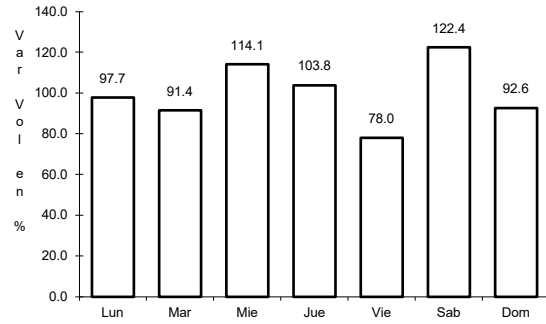
Tipo: 1

Sent: 1

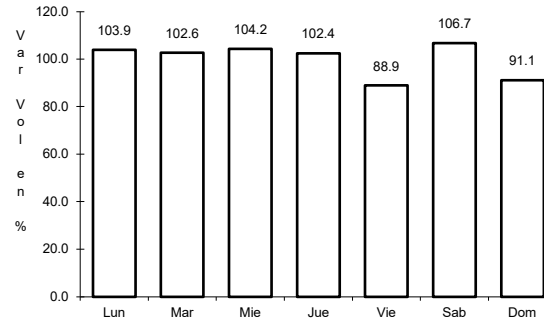
37 CARR: Matchuala - La Poza

CLAVE: 00086

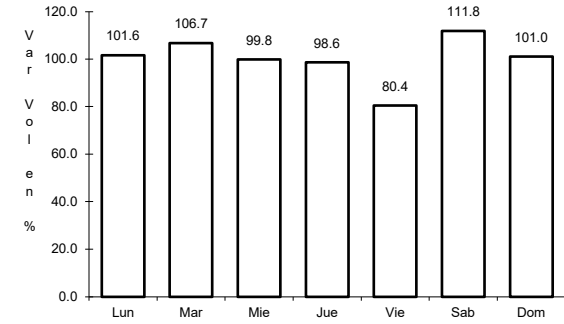
ruta: SLP-029-NL-061



Km: 0.00 Tipo: 3 Sent: 0



Km: 49.00 Tipo: 1 Sent: 0

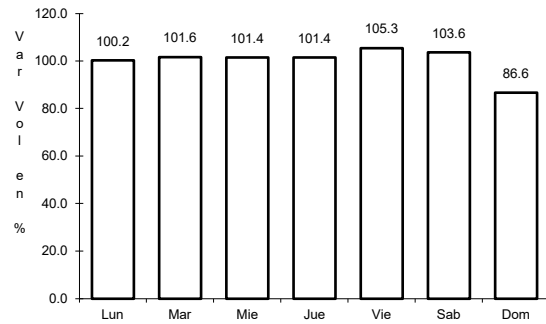


Km: 131.00 Tipo: 1 Sent: 0

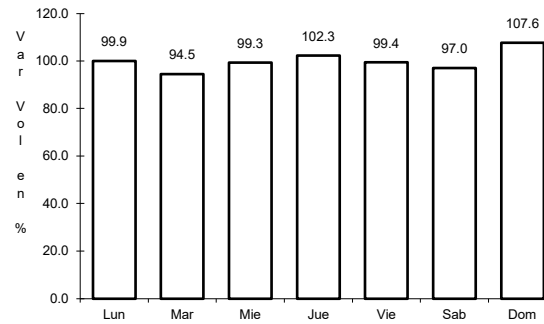
38 CARR: Periférico de San Luis Potosí

CLAVE: 24618

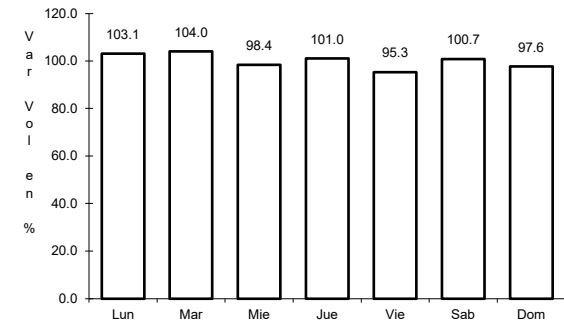
ruta: SLP-032



Km: 22.00 Tipo: 3 Sent: 1



Km: 22.00 Tipo: 3 Sent: 2

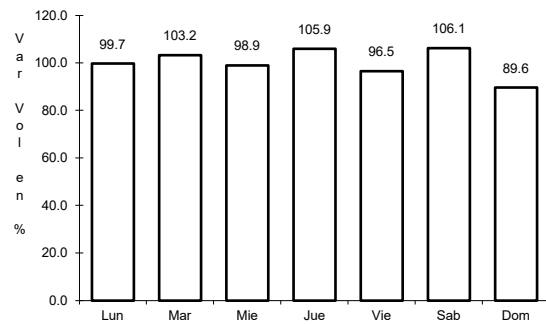


Km: 30.70 Tipo: 1 Sent: 1

39 CARR: Ramal a Cerritos

CLAVE: 24615

ruta: SLP-007

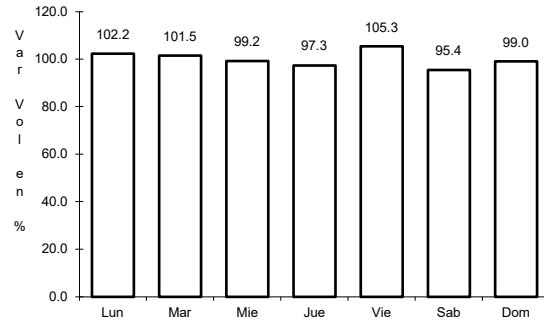


Km: 0.00 Tipo: 3 Sent: 0

40 CARR: Ramal a Pozo de Acuña

CLAVE: 24626

ruta: SLP-009



Km: 0.00

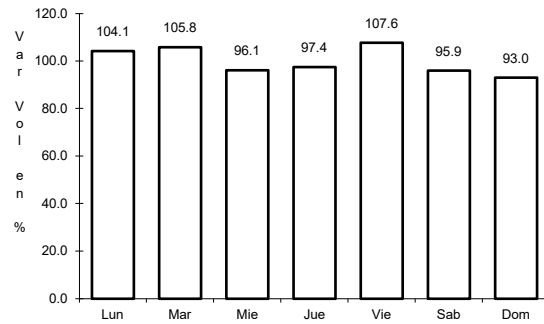
Tipo: 3

Sent: 0

41 CARR: Rayón - Arroyo Seco

CLAVE: 24008

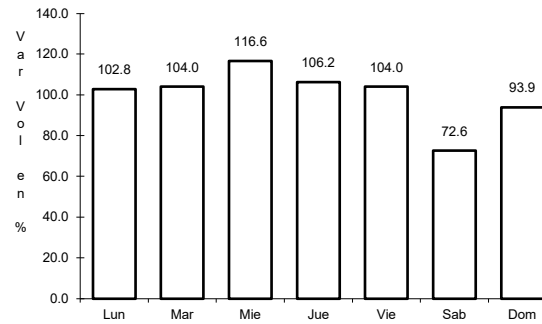
ruta: SLP-011



Km: 0.00

Tipo: 3

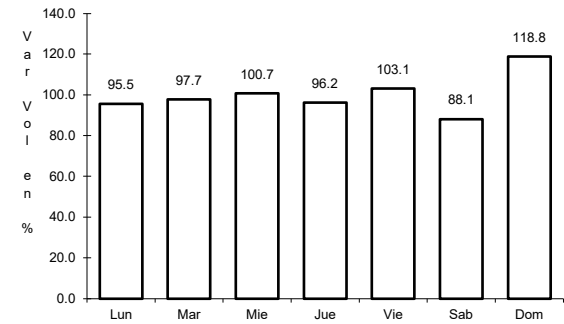
Sent: 0



Km: 36.00

Tipo: 1

Sent: 0



Km: 57.00

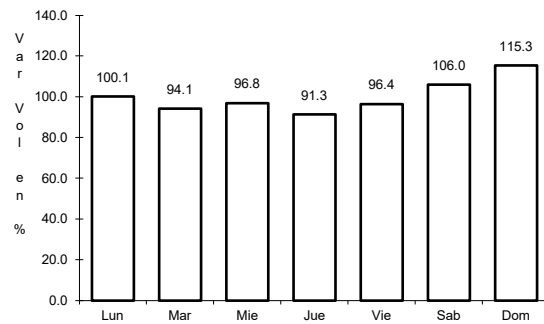
Tipo: 1

Sent: 0

42 CARR: Santo Domingo - Cerro Gordo

CLAVE: 24614

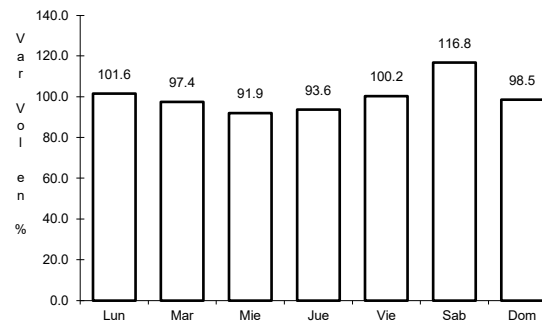
ruta: SLP-022



Km: 0.00

Tipo: 3

Sent: 0



Km: 19.00

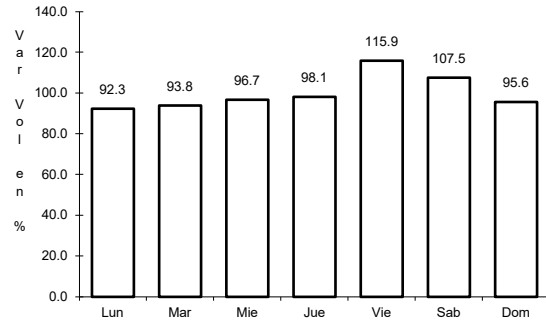
Tipo: 1

Sent: 0

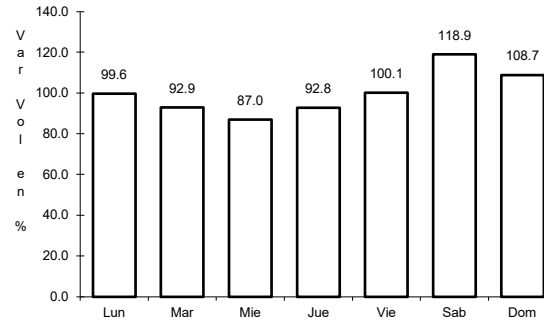
43 CARR: Tamuín - Estación F.F.C.C. Tamuín

CLAVE: 24022

RUTA: SLP-040



Km: 0.00 Tipo: 3 Sent: 0

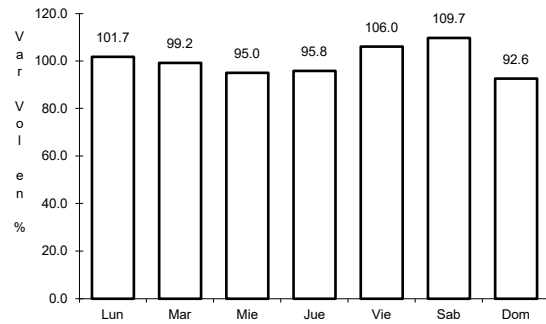


Km: 10.00 Tipo: 1 Sent: 0

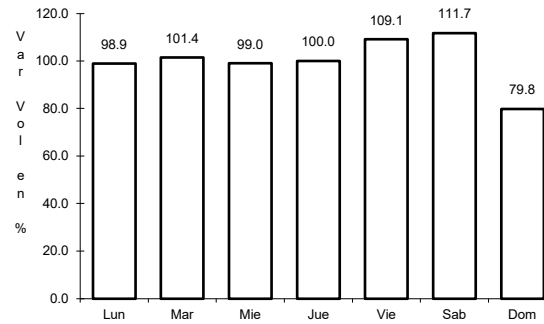
44 CARR: Tamuín - Xolol

CLAVE: 24027

RUTA: SLP-014



Km: 0.00 Tipo: 3 Sent: 0

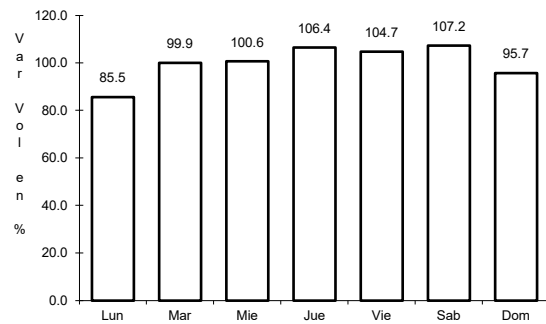


Km: 2.56 Tipo: 3 Sent: 0

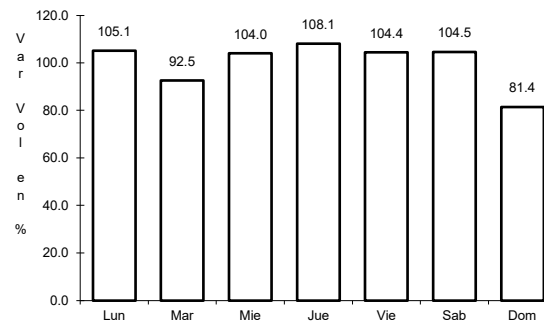
45 CARR: Cerritos - Ent. Tula (Cuota)

CLAVE:

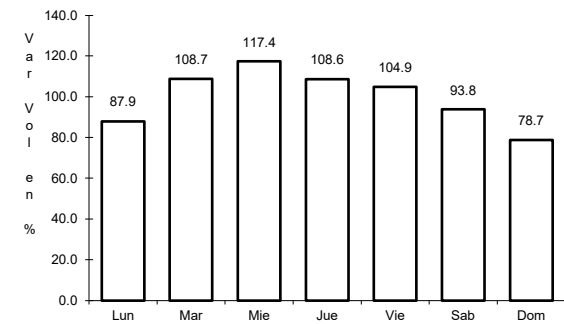
RUTA: SLP-075D



Km: 0.00 Tipo: 3 Sent: 0



Km: 18.70 Tipo: 3 Sent: 0

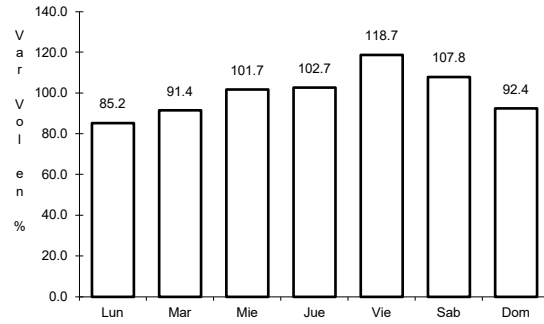


Km: 32.15 Tipo: 3 Sent: 0

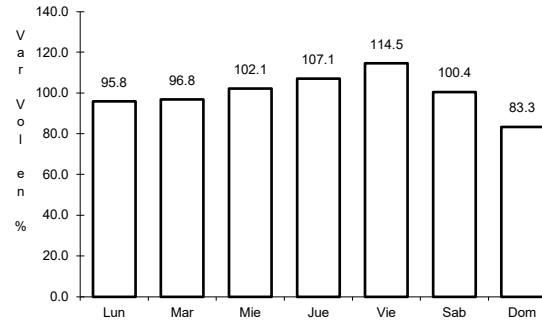
46 CARR: Cerritos - Rioverde (Cuota)

CLAVE: 00138

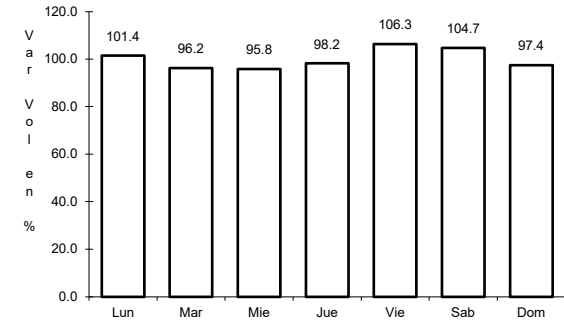
RUTA: SLP-D



Km: 0.00 Tipo: 3 Sent: 0



Km: 58.00 Tipo: 3 Sent: 0

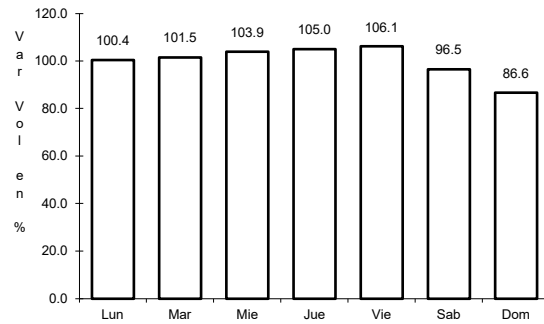


Km: 103.00 Tipo: 1 Sent: 0

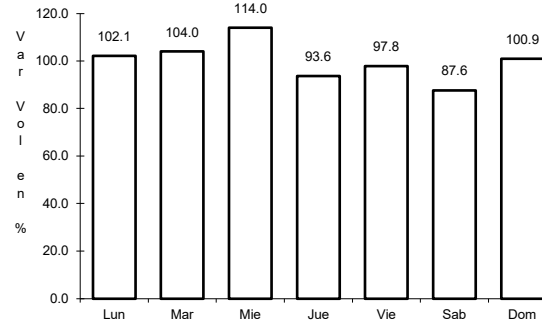
47 CARR: San Luis Potosí - Villa de Arriaga (Cuota)

CLAVE: 24209

RUTA: SLP-D



Km: 0.00 Tipo: 3 Sent: 0

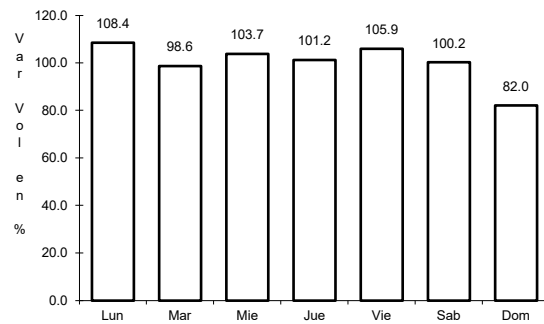


Km: 77.00 Tipo: 1 Sent: 0

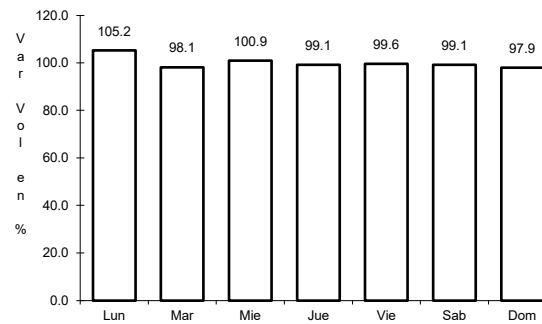
48 CARR: Rayón - Cd. del Maíz

CLAVE: 24206

RUTA: MEX-070-SLP-005



Km: 15.80 Tipo: 1 Sent: 0

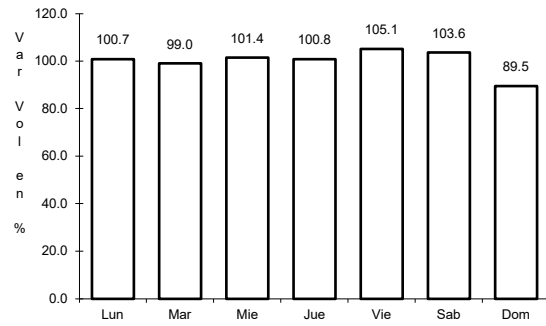


Km: 55.70 Tipo: 1 Sent: 0

49 CARR: San Lorenzo - Moctezuma

CLAVE: 24016

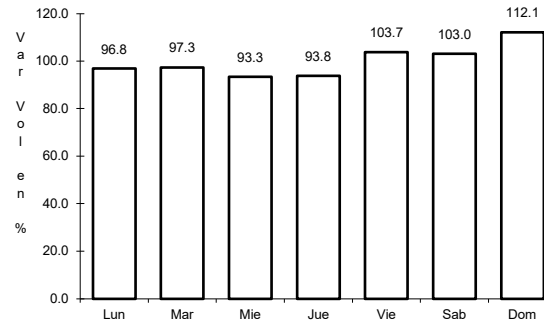
RUTA: MEX-063-SLP-012



Km: 0.00

Tipo: 3

Sent: 0



Km: 54.00

Tipo: 1

Sent: 0

