



QUINTANA ROO

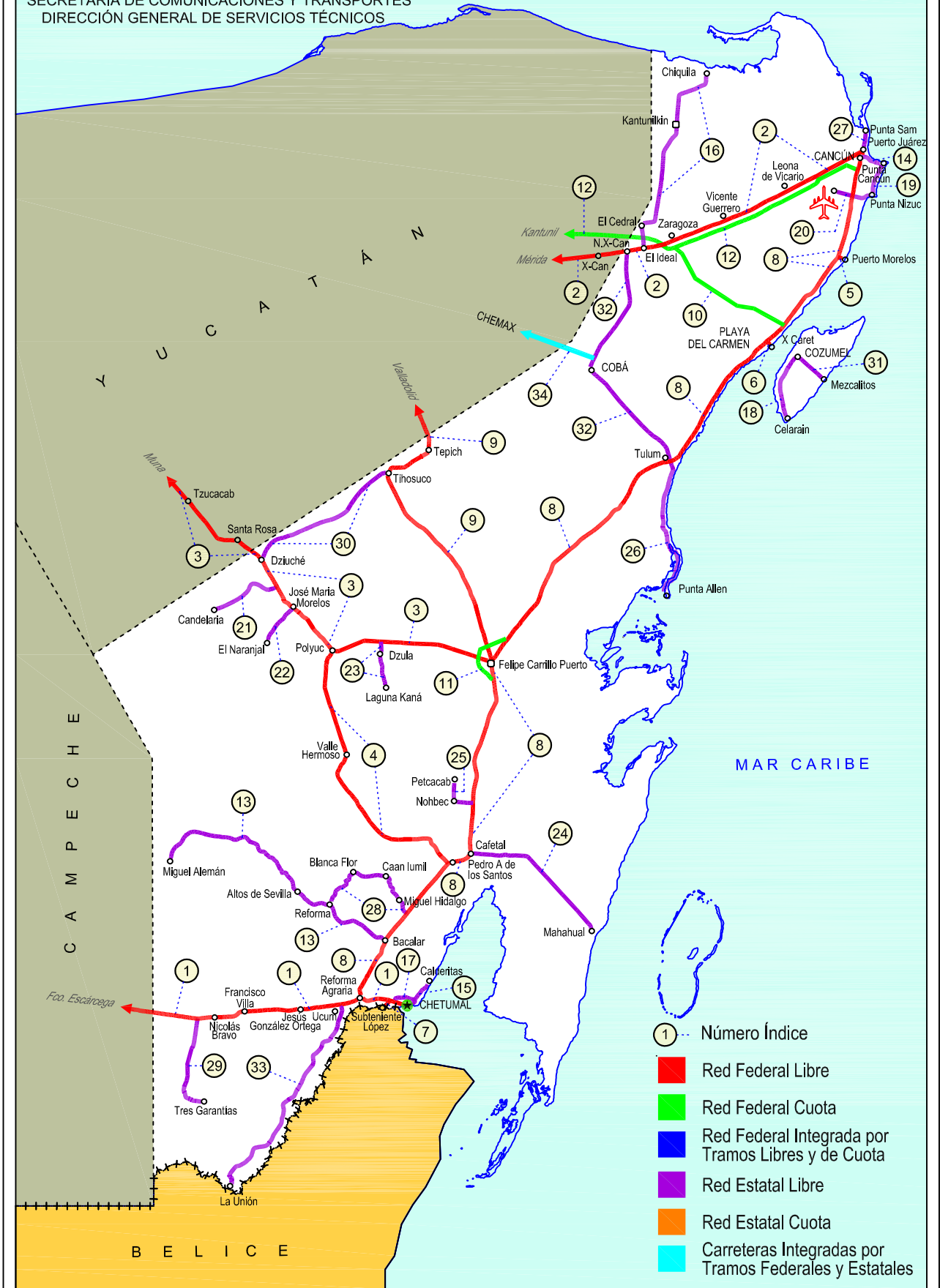
## NO. INDICE CARRETERA

## RUTA

NO. INDICE CARRETERA	RUTA
---RED FEDERAL LIBRE---	
1 Francisco Escárcega - Chetumal	MEX-186
2 Mérida - Puerto Juárez	MEX-180
3 Muna - Felipe Carrillo Puerto	MEX-184
4 Polyuc - T. C. (Reforma Agraria - Puerto Juárez)	MEX-293
5 Ramal a Puerto Morelos	MEX
6 Ramal a Punta Piedra	MEX
7 Ramal a Subteniente López	MEX-186
8 Reforma Agraria - Puerto Juárez	MEX-307
9 Valladolid - Felipe Carrillo Puerto	MEX-295
---RED FEDERAL DE CUOTA---	
10 El Cedral - Playa del Carmen (Cuota)	MEX-180D
11 Libramiento de Felipe Carrillo Puerto (Cuota)	MEX-307D
12 Mérida - Cancún (Cuota)	MEX-180D
---RED ESTATAL LIBRE---	
13 Bacalar - Miguel Alemán	QR
14 Cancún - Punta Cancún	QR
15 Chetumal - Calderitas	QR-004
16 El Ideal - Chiquila	QR-005
17 Libramiento de Chetumal	QR
18 Perimetral Cozumel	QR
19 Punta Nizuc - Cancún	QR
20 Ramal a Aeropuerto Cancún	QR
21 Ramal a Candelaria	QR
22 Ramal a El Naranjal	QR
23 Ramal a Laguna de Kaná	QR
24 Ramal a Mahahual	QR
25 Ramal a Petcacab	QR-018
26 Ramal a Punta Allen	QR-015
27 Ramal a Punta Sam	QR
28 Ramal a Reforma	QR-016
29 Ramal a Tres Garantías	QR
30 Tihosuco - Dziuche	QR
31 Transversal de Cozumel	QR
32 Tulum - Nuevo X-Can	QR
33 Ucum - Unión	QR
---CARRETERAS INTEGRADAS POR TRAMOS FEDERALES Y ESTATALES---	
34 Chemax - Cobá	YUC-MEX-180

# 23 QUINTANA ROO

SECRETARÍA DE COMUNICACIONES Y TRANSPORTES  
DIRECCIÓN GENERAL DE SERVICIOS TÉCNICOS





QUINTANA ROO

1 CARR: Francisco Escárcega - Chetumal

CLAVE: 00093

RUTA: MEX-186

AÑO: 2020

LUGAR	ESTACION				CLASIFICACION VEHICULAR EN PORCIENTO												COORDENADAS			
	KM	TE	SC	TDPA	M	A	B	C2	C3	T3S2	T3S3	T3S2R4	OTROS	A	B	C	K'	D	LATITUD	LONGITUD
Francisco Escárcega	0.00	3	0	2807	10.9	65.6	3.8	5.1	1.7	6.1	1.5	4.8	0.5	76.5	3.8	19.7	0.083	0.524	18.606392	-90.738067
Adolfo López Mateos	41.50	1	0	2480	7.7	64.4	5.7	7.5	1.7	5.6	1.7	5.1	0.6	72.1	5.7	22.2	0.084	0.522	18.640025	-90.298544
T. Der. Silvituc	55.70	1	0	2535	11.4	67.5	2.9	6.1	1.7	4.6	1.7	3.5	0.6	78.9	2.9	18.2	0.084	0.516	18.649721	-90.268364
T. Der. Silvituc	55.70	3	0	2088	4.6	61.7	6.0	8.5	2.8	6.9	2.6	6.3	0.6	66.3	6.0	27.7	0.089	0.528	18.649676	-90.268190
Conhuás	100.00	1	0	1931	8.8	60.3	6.7	7.9	2.2	5.8	2.3	5.4	0.6	69.1	6.7	24.2	0.084	0.527	18.539336	-89.900123
Xpujil	155.73	1	0	2079	6.1	63.6	4.8	7.5	1.8	7.7	1.5	6.4	0.6	69.7	4.8	25.5	0.089	0.536	18.508356	-89.394935
Lim. Edos. Term. Camp. Ppia. Qroo.	179.90																			
Nicolás Bravo	206.01	1	0	2848	9.5	60.2	4.9	6.7	1.6	8.0	1.6	6.6	0.9	69.7	4.9	25.4	0.098	0.519	18.458858	-88.928743
Nicolás Bravo	206.01	3	0	3343	9.0	69.1	3.4	4.7	1.2	5.7	1.3	4.8	0.8	78.1	3.4	18.5	0.083	0.517	18.458806	-88.928731
T. Izq. Morocoy	214.90	1	0	2292	5.0	69.1	3.7	6.4	1.9	6.3	1.3	5.5	0.8	74.1	3.7	22.2	0.081	0.523	18.478804	-88.816839
T. Izq. Morocoy	214.90	3	0	2522	3.9	67.7	4.6	6.7	1.6	7.0	1.9	6.2	0.4	71.6	4.6	23.8	0.084	0.517	18.478809	-88.816659
T. Der. Unión	247.50	1	0	3980	8.8	66.2	2.8	8.4	2.7	5.5	1.2	3.6	0.8	75.0	2.8	22.2	0.074	0.532	18.505735	-88.522629
T. Der. Unión	247.50	3	0	7031	9.3	76.7	2.0	4.8	0.9	2.8	0.6	2.4	0.5	86.0	2.0	12.0	0.075	0.524	18.505790	-88.522324
T. Izq. Fpe. Carrillo Puerto	255.15	1	0	6279	8.8	75.3	2.0	5.2	2.4	2.6	0.7	2.7	0.3	84.1	2.0	13.9	0.082	0.505	18.526528	-88.467665
T. Der. Subteniente López	268.57	1	1	6538	4.1	87.8	1.0	4.9	0.7	0.7	0.3	0.3	0.2	91.9	1.0	7.1	0.108	0.501	18.515808	-88.374202
T. Der. Subteniente López	268.57	1	2	6523	4.1	87.7	1.0	4.9	0.8	0.7	0.3	0.3	0.2	91.8	1.0	7.2	0.093	0.501	18.516006	-88.374157
T. Izq. Av. Insurgentes	270.00	1	1	9711	4.3	90.6	0.8	2.3	0.7	0.7	0.3	0.2	0.1	94.9	0.8	4.3	0.090	0.511	18.512305	-88.358114
T. Izq. Av. Insurgentes	270.00	1	2	9304	4.8	89.7	0.9	2.5	0.6	0.8	0.4	0.2	0.1	94.5	0.9	4.6	0.094	0.511	18.512475	-88.358083
T. Izq. Av. Insurgentes	270.00	3	1	3573	3.3	92.0	0.5	3.0	0.5	0.3	0.1	0.2	0.1	95.3	0.5	4.2	0.097	0.519	18.512008	-88.357422
T. Izq. Av. Insurgentes	270.00	3	2	3311	3.8	91.0	0.5	3.5	0.5	0.3	0.1	0.2	0.1	94.8	0.5	4.7	0.106	0.519	18.512201	-88.357265
Chetumal	277.36	1	1	6519	8.3	88.9	0.2	2.1	0.3	0.2	0.0	0.0	0.0	97.2	0.2	2.6	0.096	0.517	18.499919	-88.314128
Chetumal	277.36	1	2	6095	9.0	87.4	0.2	2.7	0.3	0.3	0.1	0.0	0.0	96.4	0.2	3.4	0.090	0.517	18.500011	-88.314093

2 CARR: Mérida - Puerto Juárez

CLAVE: 00067

RUTA: MEX-180

AÑO: 2020

LUGAR	ESTACION				CLASIFICACION VEHICULAR EN PORCIENTO												COORDENADAS			
	KM	TE	SC	TDPA	M	A	B	C2	C3	T3S2	T3S3	T3S2R4	OTROS	A	B	C	K'	D	LATITUD	LONGITUD
Mérida	0.00																			
X. Periférico de Mérida	5.60	1	1	10114	10.3	82.1	0.5	3.6	0.3	1.8	0.9	0.1	0.4	92.4	0.5	7.1	0.090	0.527	20.955738	-89.568343
X. Periférico de Mérida	5.60	1	2	11252	9.5	82.6	0.5	3.7	0.3	1.9	1.0	0.1	0.4	92.1	0.5	7.4	0.079	0.527	20.955991	-89.568273
X. Periférico de Mérida	5.60	3	1	15404	5.8	81.8	1.1	4.3	1.0	2.4	2.1	1.1	0.4	87.6	1.1	11.3	0.096	0.512	20.955270	-89.567112
X. Periférico de Mérida	5.60	3	2	14704	5.6	80.6	1.3	4.3	1.1	2.9	2.5	1.2	0.5	86.2	1.3	12.5	0.093	0.512	20.955551	-89.566967
Teya	13.00	1	1	10320	5.5	76.0	1.7	9.2	2.2	2.5	0.8	2.0	0.1	81.5	1.7	16.8	0.094	0.514	20.934158	-89.524034
Teya	13.00	1	2	9776	5.5	76.0	1.7	9.2	2.2	2.5	0.8	2.0	0.1	81.5	1.7	16.8	0.102	0.514	20.934316	-89.524001
T. Der. Seyé	28.79	1	1	5734	2.7	80.4	2.2	6.4	2.0	2.9	1.0	2.1	0.3	83.1	2.2	14.7	0.104	0.508	20.891552	-89.377225

QUINTANA ROO

2 CARR: Mérida - Puerto Juárez

CLAVE: 00067

RUTA: MEX-180

AÑO: 2020

LUGAR	ESTACION				CLASIFICACION VEHICULAR EN PORCIENTO														COORDENADAS	
	KM	TE	SC	TDPA	M	A	B	C2	C3	T3S2	T3S3	T3S2R4	OTROS	A	B	C	K'	D	LATITUD	LONGITUD
T. Der. Seyé	28.79	1	2	5914	2.5	79.1	2.9	7.3	1.8	3.0	0.6	2.5	0.3	81.6	2.9	15.5	0.112	0.508	20.891568	-89.377228
T. Der. Seyé	28.79	3	1	5146	1.3	81.0	2.2	6.4	2.0	3.4	1.1	2.2	0.4	82.3	2.2	15.5	0.100	0.513	20.891571	-89.377018
T. Der. Seyé	28.79	3	2	5413	1.9	79.7	2.8	6.5	2.0	3.3	0.8	2.7	0.3	81.6	2.8	15.6	0.113	0.513	20.891696	-89.377034
Tahmek	42.00	1	1	5705	1.6	80.5	2.4	6.6	1.9	3.1	1.1	2.4	0.4	82.1	2.4	15.5	0.094	0.503	20.875274	-89.255534
Tahmek	42.00	1	2	5629	1.7	80.5	2.5	6.5	1.7	3.2	1.0	2.5	0.4	82.2	2.5	15.3	0.106	0.503	20.875290	-89.255524
T. Izq. Hochtún (1º Acceso)	46.65	1	0	1985	6.4	79.0	1.8	9.1	1.2	1.6	0.4	0.3	0.2	85.4	1.8	12.8	0.093	0.508	20.865258	-89.209274
T. Izq. Hochtún (2º Acceso)	48.62	1	0	1011	13.4	74.2	1.4	6.6	1.4	2.1	0.5	0.4	0.0	87.6	1.4	11.0	0.100	0.501	20.855931	-89.196870
T. Izq. Hochtún (2º Acceso)	48.62	3	0	1747	20.8	67.7	1.5	6.5	0.9	1.7	0.5	0.3	0.1	88.5	1.5	10.0	0.105	0.501	20.855829	-89.196823
T. Libramiento de Xocchel	55.72																			
Kantunil	67.28	1	1	3163	1.6	78.4	2.7	6.8	2.4	4.2	1.0	2.4	0.5	80.0	2.7	17.3	0.083	0.506	20.796771	-89.035091
Kantunil	67.28	1	2	3084	1.7	78.1	2.9	6.7	2.6	4.2	1.0	2.4	0.4	79.8	2.9	17.3	0.102	0.506	20.796772	-89.035093
Kantunil	67.28	3	0	2588	5.1	73.8	3.7	8.5	3.7	2.9	1.2	1.0	0.1	78.9	3.7	17.4	0.092	0.509	20.796766	-89.035052
Libre Unión	92.91	1	0	2156	2.6	77.3	3.2	9.1	3.8	2.0	1.0	0.9	0.1	79.9	3.2	16.9	0.097	0.511	20.707439	-88.810110
Libre Unión	92.91	3	0	2199	4.7	73.8	3.6	9.2	4.0	2.7	1.2	0.7	0.1	78.5	3.6	17.9	0.087	0.516	20.707436	-88.810080
Piste	116.30	3	0	5312	16.8	68.1	2.0	4.9	1.4	4.6	1.1	0.5	0.6	84.9	2.0	13.1	0.117	0.574	20.698426	-88.588370
1er. Acceso a Zona Arqueológica de Chichen-Itzá	117.90	3	0	4267	12.5	71.1	2.7	7.5	1.8	2.8	1.0	0.5	0.1	83.6	2.7	13.7	0.102	0.529	20.688719	-88.576996
2do. Acceso a Zona Arqueológica de Chichen-Itzá	121.10	3	0	4058	9.9	74.9	2.5	6.5	2.2	2.6	1.0	0.3	0.1	84.8	2.5	12.7	0.090	0.502	20.671321	-88.560231
T. Der. Chankom	127.00	1	0	3551	6.1	75.9	3.0	8.7	2.6	2.5	0.8	0.3	0.1	82.0	3.0	15.0	0.095	0.502	20.642124	-88.488761
T. Der. Chankom	127.00	3	0	3500	7.3	73.5	3.4	8.8	2.6	2.6	1.1	0.5	0.2	80.8	3.4	15.8	0.084	0.518	20.642047	-88.488606
Kaua	137.47	3	0	3717	4.0	80.5	3.4	6.7	2.6	1.5	0.7	0.5	0.1	84.5	3.4	12.1	0.100	0.503	20.621913	-88.414286
X. C. Periférico de Valladolid	157.12	1	0	4933	6.5	79.7	3.1	6.2	2.2	1.1	0.6	0.5	0.1	86.2	3.1	10.7	0.084	0.515	20.678825	-88.239975
Valladolid	160.68	1	0	5015	18.5	72.2	1.3	4.1	0.4	2.8	0.3	0.2	0.2	90.7	1.3	8.0	0.086	0.509	20.689660	-88.202273
Valladolid	160.68	3	0	5952	14.2	77.3	0.6	3.6	0.4	2.9	0.4	0.3	0.3	91.5	0.6	7.9	0.103	0.538	20.689328	-88.191041
X. C. Periférico de Valladolid	165.60	3	0	7289	10.8	79.7	1.8	2.7	1.8	1.3	0.5	1.1	0.3	90.5	1.8	7.7	0.103	0.504	20.695888	-88.158078
T. Der. Coba	187.80	1	0	5769	4.2	86.8	1.6	3.6	1.4	1.2	0.3	0.7	0.2	91.0	1.6	7.4	0.092	0.507	20.658495	-87.955110
T. Der. Chemax	189.79	1	0	4418	9.3	82.3	1.2	2.4	1.9	0.9	0.6	0.8	0.6	91.6	1.2	7.2	0.094	0.511	20.659902	-87.938105
T. Der. Chemax	189.79	3	0	3130	6.5	76.7	4.4	5.9	2.0	1.5	0.8	1.3	0.9	83.2	4.4	12.4	0.092	0.509	20.659910	-87.938131
X-Can	225.00	3	0	2512	5.9	82.4	2.3	3.3	1.9	1.7	1.1	1.0	0.4	88.3	2.3	9.4	0.092	0.506	20.856249	-87.668002
Lim. Edos. Term. Yuc. Ppia. Q. R.	230.40																			
Nuevo X-Can	231.90	3	0	2629	6.1	82.3	2.3	3.5	1.9	1.8	0.4	0.9	0.8	88.4	2.3	9.3	0.089	0.505	20.869951	-87.600904
Zaragoza	239.00	1	0	3891	6.1	84.4	1.7	2.5	1.8	1.2	0.8	0.8	0.7	90.5	1.7	7.8	0.074	0.507	20.882659	-87.525363
Zaragoza	239.00	3	0	2671	4.9	83.1	2.0	3.7	1.9	1.4	1.0	1.0	1.0	88.0	2.0	10.0	0.079	0.506	20.882932	-87.523498
Vicente Guerrero	261.00	1	0	3243	6.9	81.1	2.7	3.4	1.6	1.4	1.1	0.9	0.9	88.0	2.7	9.3	0.072	0.508	20.943388	-87.325305
Leona Vicario	275.50	1	0	4684	5.5	83.8	1.4	3.7	1.6	1.4	0.6	1.1	0.9	89.3	1.4	9.3	0.073	0.505	20.987981	-87.203790
Leona Vicario	275.50	3	0	6059	8.5	83.9	1.3	2.6	1.1	0.8	0.5	0.8	0.5	92.4	1.3	6.3	0.080	0.505	20.988011	-87.203709

QUINTANA ROO

2 CARR: Mérida - Puerto Juárez

CLAVE: 00067

RUTA: MEX-180

AÑO: 2020

LUGAR	ESTACION				CLASIFICACION VEHICULAR EN PORCIENTO														COORDENADAS	
	KM	TE	SC	TDPA	M	A	B	C2	C3	T3S2	T3S3	T3S2R4	OTROS	A	B	C	K'	D	LATITUD	LONGITUD
T. Der. Aeropuerto	302.50	1	0	7754	6.2	83.5	1.5	3.6	1.9	1.1	0.8	0.7	0.7	89.7	1.5	8.8	0.076	0.503	21.099764	-86.976216
T. Der. Aeropuerto	302.50	3	1	4825	4.7	83.0	1.9	3.4	2.2	2.1	0.8	1.4	0.5	87.7	1.9	10.4	0.092	0.501	21.097574	-86.975513
T. Der. Aeropuerto	302.50	3	2	4849	4.7	82.9	1.9	3.5	2.2	2.1	0.7	1.5	0.5	87.6	1.9	10.5	0.093	0.501	21.097927	-86.975702
T. Der. Alfredo V. Bonfil	310.00	1	1	27830	5.5	84.9	0.8	2.2	1.2	1.7	0.6	2.5	0.6	90.4	0.8	8.8	0.083	0.508	21.140444	-86.894560
T. Der. Alfredo V. Bonfil	310.00	1	2	26852	5.5	84.9	0.8	2.2	1.2	1.7	0.6	2.5	0.6	90.4	0.8	8.8	0.084	0.508	21.140404	-86.894542
Puerto Juárez	321.41																			

3 CARR: Muna - Felipe Carrillo Puerto

CLAVE: 00148

RUTA: MEX-184

AÑO: 2020

LUGAR	ESTACION				CLASIFICACION VEHICULAR EN PORCIENTO														COORDENADAS	
	KM	TE	SC	TDPA	M	A	B	C2	C3	T3S2	T3S3	T3S2R4	OTROS	A	B	C	K'	D	LATITUD	LONGITUD
Muna	0.00	3	0	3440	8.7	73.7	1.3	10.0	1.5	2.4	1.0	0.8	0.6	82.4	1.3	16.3	0.088	0.500	20.484445	-89.713817
Ticul	19.10	1	0	2658	8.7	73.1	1.3	10.0	1.6	2.6	1.2	0.9	0.6	81.8	1.3	16.9	0.065	0.514	20.397130	-89.542176
Ticul	19.10	3	0	5626	40.6	49.3	0.9	4.6	0.6	2.2	0.7	0.4	0.7	89.9	0.9	9.2	0.111	0.507	20.388806	-89.531554
Oxkutzcab	40.50	3	0	4850	34.6	54.4	0.8	4.8	0.8	2.6	0.9	0.5	0.6	89.0	0.8	10.2	0.098	0.510	20.301984	-89.414872
Tekax	53.90	3	0	2786	28.4	61.8	0.8	4.8	0.9	2.4	0.3	0.3	0.3	90.2	0.8	9.0	0.100	0.515	20.201788	-89.288073
Tzucacab	86.60	1	0	1505	22.6	60.2	1.9	8.7	1.9	2.6	0.7	0.7	0.7	82.8	1.9	15.3	0.071	0.501	20.072123	-89.050090
Tzucacab	86.60	3	0	1412	26.8	62.5	0.8	6.8	0.9	0.8	0.6	0.7	0.1	89.3	0.8	9.9	0.066	0.507	20.071923	-89.043423
Santa Rosa	109.60	3	0	1769	4.0	75.7	2.1	7.8	2.9	2.6	1.7	2.8	0.4	79.7	2.1	18.2	0.090	0.503	19.952250	-88.883119
Lim. Edos. Term. Yuc. Ppia. Q. R.	117.00																			
Dziuche	118.00	1	0	2290	5.3	72.5	3.3	9.4	2.5	2.2	1.0	3.5	0.3	77.8	3.3	18.9	0.094	0.508	19.899235	-88.810588
Dziuche	118.00	3	0	2284	6.0	75.9	2.6	7.2	2.4	1.8	0.9	2.9	0.3	81.9	2.6	15.5	0.106	0.509	19.899231	-88.810591
José María Morelos	138.60	1	0	3339	9.2	78.0	1.9	6.2	1.8	0.8	0.7	1.2	0.2	87.2	1.9	10.9	0.089	0.512	19.749906	-88.710194
José María Morelos	138.60	3	0	2733	9.4	74.0	2.1	7.8	2.0	1.9	0.8	1.6	0.4	83.4	2.1	14.5	0.085	0.524	19.749904	-88.710178
Polyuc	161.94	1	0	1994	2.6	78.3	2.9	7.9	2.1	2.1	1.8	2.2	0.1	80.9	2.9	16.2	0.089	0.514	19.609658	-88.569671
Polyuc	161.94	3	0	1368	3.2	80.0	1.7	8.3	2.3	2.4	0.4	1.6	0.1	83.2	1.7	15.1	0.100	0.516	19.609496	-88.560908
T. Der. Dzulá	178.11	3	0	1385	3.2	81.4	1.8	8.6	2.5	0.4	0.4	1.7	0.0	84.6	1.8	13.6	0.099	0.516	19.643732	-88.411520
Felipe Carrillo Puerto	216.97	1	0	5705	19.9	70.9	0.6	3.4	0.5	3.7	0.5	0.1	0.4	90.8	0.6	8.6	0.093	0.500	19.580789	-88.045703

4 CARR: Polyuc - T. C. (Reforma Agraria - Puerto Juárez)

CLAVE: 23014

RUTA: MEX-293

AÑO: 2020

LUGAR	ESTACION				CLASIFICACION VEHICULAR EN PORCIENTO														COORDENADAS	
	KM	TE	SC	TDPA	M	A	B	C2	C3	T3S2	T3S3	T3S2R4	OTROS	A	B	C	K'	D	LATITUD	LONGITUD
Polyuc	0.00	3	0	2031	3.0	85.6	2.4	4.1	1.4	1.5	0.6	1.2	0.2	88.6	2.4	9.0	0.083	0.533	19.609644	-88.569620
T. Der. Ramonal	24.00	1	0	1208	3.9	79.3	3.3	3.8	2.8	3.2	0.8	2.5	0.4	83.2	3.3	13.5	0.084	0.535	19.399838	-88.564844

QUINTANA ROO

4 CARR: Polyuc - T. C. (Reforma Agraria - Puerto Juárez)

CLAVE: 23014

RUTA: MEX-293

AÑO: 2020

LUGAR	ESTACION				CLASIFICACION VEHICULAR EN PORCIENTO													COORDENADAS		
	KM	TE	SC	TDPA	M	A	B	C2	C3	T3S2	T3S3	T3S2R4	OTROS	A	B	C	K'	D	LATITUD	LONGITUD
T. Der. Ramonal	24.00	3	0	1275	3.0	80.5	3.3	4.1	2.6	3.1	0.8	2.5	0.1	83.5	3.3	13.2	0.085	0.503	19.399590	-88.564693
T. Izq. Santa María Poniente	35.00	1	0	1486	4.8	78.7	2.7	4.1	3.1	2.7	1.1	2.6	0.2	83.5	2.7	13.8	0.090	0.506	19.340519	-88.546848
T. Izq. Santa María Poniente	35.00	3	0	1307	8.2	74.0	2.2	4.4	3.8	2.8	1.6	2.9	0.1	82.2	2.2	15.6	0.087	0.507	19.340517	-88.546848
Valle Hermoso	50.00	3	0	1278	11.0	72.2	3.2	4.6	2.6	2.3	1.2	2.8	0.1	83.2	3.2	13.6	0.093	0.535	19.185029	-88.526218
T. Izq. Chacchoben	93.50	1	0	1314	8.5	76.3	2.7	3.8	2.5	2.8	0.8	2.5	0.1	84.8	2.7	12.5	0.095	0.502	18.977300	-88.213438
T. Izq. Chacchoben	93.50	3	0	1424	8.7	77.1	2.6	3.7	2.1	2.4	0.8	2.4	0.2	85.8	2.6	11.6	0.108	0.508	18.977305	-88.213434
T. C. Reforma Agraria - Puerto Juárez	99.00	1	0	1373	5.7	79.6	2.6	3.5	2.2	2.7	1.1	2.4	0.2	85.3	2.6	12.1	0.101	0.507	18.946486	-88.185017

5 CARR: Ramal a Puerto Morelos

CLAVE: 23569

RUTA: MEX

AÑO: 2020

LUGAR	ESTACION				CLASIFICACION VEHICULAR EN PORCIENTO													COORDENADAS		
	KM	TE	SC	TDPA	M	A	B	C2	C3	T3S2	T3S3	T3S2R4	OTROS	A	B	C	K'	D	LATITUD	LONGITUD
T. C. Reforma Agraria - Puerto Juárez	0.00	3	0	9802	6.3	90.5	1.2	1.5	0.2	0.2	0.0	0.1	0.0	96.8	1.2	2.0	0.106	0.512	20.855617	-86.897193
Puerto Morelos	2.20																			

6 CARR: Ramal a Punta Piedra

CLAVE: 23575

RUTA: MEX

AÑO: 2020

LUGAR	ESTACION				CLASIFICACION VEHICULAR EN PORCIENTO													COORDENADAS		
	KM	TE	SC	TDPA	M	A	B	C2	C3	T3S2	T3S3	T3S2R4	OTROS	A	B	C	K'	D	LATITUD	LONGITUD
T. C. Reforma Agraria - Puerto Juárez	0.00	3	1	9048	9.9	80.1	0.7	3.8	0.5	1.4	2.9	0.5	0.2	90.0	0.7	9.3	0.109	0.530	20.627574	-87.083517
T. C. Reforma Agraria - Puerto Juárez	0.00	3	2	8015	9.9	79.9	0.7	3.8	0.6	1.4	2.9	0.6	0.2	89.8	0.7	9.5	0.106	0.530	20.627572	-87.083516
Punta Piedra (Playa del Carmen)	1.50																			

7 CARR: Ramal a Subteniente López

CLAVE: 23567

RUTA: MEX-186

AÑO: 2020

LUGAR	ESTACION				CLASIFICACION VEHICULAR EN PORCIENTO													COORDENADAS		
	KM	TE	SC	TDPA	M	A	B	C2	C3	T3S2	T3S3	T3S2R4	OTROS	A	B	C	K'	D	LATITUD	LONGITUD
T. C. Francisco Escárcega - Chetumal	0.00	3	1	1942	8.4	83.3	0.7	1.7	0.9	1.5	0.9	1.8	0.8	91.7	0.7	7.6	0.087	0.500	18.515056	-88.373766
T. C. Francisco Escárcega - Chetumal	0.00	3	2	1941	8.4	83.2	0.8	1.6	1.0	1.6	0.8	1.8	0.8	91.6	0.8	7.6	0.089	0.500	18.515065	-88.373781
Subteniente López	3.00																			



QUINTANA ROO

8 CARR: Reforma Agraria - Puerto Juárez

CLAVE: 23132

RUTA: MEX-307

AÑO: 2020

LUGAR	ESTACION				CLASIFICACION VEHICULAR EN PORCIENTO										COORDENADAS					
	KM	TE	SC	TDPA	M	A	B	C2	C3	T3S2	T3S3	T3S2R4	OTROS	A	B	C	K'	D	LATITUD	LONGITUD
T. C. Francisco Escárcega - Chetumal	0.00	3	1	5202	3.0	84.3	1.6	6.1	1.1	1.6	0.5	1.5	0.3	87.3	1.6	11.1	0.085	0.521	18.527013	-88.465397
T. C. Francisco Escárcega - Chetumal	0.00	3	2	4790	3.0	82.2	1.9	7.0	1.1	2.0	0.6	1.9	0.3	85.2	1.9	12.9	0.085	0.521	18.527014	-88.465393
Bacalar	19.15	1	1	5160	3.2	83.0	2.4	5.5	1.1	2.3	0.6	1.6	0.3	86.2	2.4	11.4	0.077	0.505	18.681335	-88.398077
Bacalar	19.15	1	2	5269	3.0	82.7	2.4	5.6	1.3	2.5	0.5	1.7	0.3	85.7	2.4	11.9	0.083	0.505	18.681333	-88.398075
Bacalar	19.15	3	0	7834	2.0	82.3	2.7	5.9	0.9	2.6	0.6	2.5	0.5	84.3	2.7	13.0	0.099	0.504	18.681330	-88.398078
T. Izq. Reforma	22.24	3	0	7286	3.1	80.6	2.9	5.9	1.7	2.8	0.8	1.7	0.5	83.7	2.9	13.4	0.077	0.506	18.703518	-88.385943
Buenavista	46.90	1	0	4672	3.0	81.7	2.5	5.5	1.7	2.6	0.9	1.6	0.5	84.7	2.5	12.8	0.083	0.502	18.885149	-88.241286
Buenavista	46.90	3	0	4710	3.0	81.8	2.7	5.1	1.9	2.5	0.9	1.6	0.5	84.8	2.7	12.5	0.080	0.513	18.885161	-88.241284
T. Izq. Lazáro Cárdenas	56.30	1	0	4703	3.1	82.4	2.6	4.7	1.8	2.5	0.9	1.5	0.5	85.5	2.6	11.9	0.083	0.507	18.946518	-88.184987
T. Izq. Lazáro Cárdenas	56.30	3	0	4754	2.9	79.6	3.3	6.0	1.7	3.1	0.8	2.1	0.5	82.5	3.3	14.2	0.087	0.514	18.946524	-88.185008
T. Izq. Chacchoben	70.80	1	0	4143	3.2	80.3	3.8	5.3	1.6	2.7	0.9	1.7	0.5	83.5	3.8	12.7	0.097	0.516	19.029796	-88.110316
T. Izq. Chacchoben	70.80	3	0	4049	3.5	80.4	3.5	4.6	1.6	2.7	1.1	2.0	0.6	83.9	3.5	12.6	0.068	0.513	19.029797	-88.110316
T. Izq. Noh-Bec	81.94	1	0	3220	3.5	80.1	3.8	4.4	1.6	2.9	1.0	2.1	0.6	83.6	3.8	12.6	0.079	0.508	19.135261	-88.105246
T. Izq. Noh-Bec	81.94	3	0	3148	3.2	80.5	3.6	4.2	1.6	2.9	1.2	2.2	0.6	83.7	3.6	12.7	0.085	0.513	19.135264	-88.105248
Libramiento Felipe Carrillo Puerto (Cuota)	128.00	1	0	3922	3.2	80.7	3.6	4.0	1.6	2.9	1.1	2.3	0.6	83.9	3.6	12.5	0.088	0.513	19.541460	-88.040967
Felipe Carrillo Puerto	132.00	1	0	4194	3.7	81.1	3.5	3.7	1.3	2.5	1.5	2.1	0.6	84.8	3.5	11.7	0.082	0.510	19.580249	-88.044121
Felipe Carrillo Puerto	132.00	3	0	2855	2.4	72.7	4.6	9.4	1.3	3.7	1.4	3.7	0.8	75.1	4.6	20.3	0.100	0.530	19.580257	-88.044111
Libramiento Felipe Carrillo Puerto (Cuota)	138.25	1	0	2361	2.8	70.1	5.5	9.4	1.8	4.5	1.5	3.6	0.8	72.9	5.5	21.6	0.111	0.514	19.622449	-88.013734
Tulum Pueblo	227.00	1	0	5932	2.9	77.4	2.9	8.8	1.2	3.4	0.6	2.3	0.5	80.3	2.9	16.8	0.104	0.506	20.210852	-87.463701
Tulum Pueblo	227.00	3	1	9052	4.1	91.0	0.2	2.7	0.3	0.6	0.6	0.2	0.3	95.1	0.2	4.7	0.093	0.513	20.208430	-87.471285
Tulum Pueblo	227.00	3	2	8602	4.1	91.1	0.2	2.6	0.3	0.6	0.6	0.2	0.3	95.2	0.2	4.6	0.092	0.513	20.208431	-87.471283
T. Izq. Cobá	229.19	1	1	10036	4.0	90.1	0.6	3.2	0.3	0.5	0.8	0.2	0.3	94.1	0.6	5.3	0.092	0.511	20.214126	-87.453319
T. Izq. Cobá	229.19	1	2	9616	4.0	90.1	0.7	3.1	0.3	0.5	0.8	0.2	0.3	94.1	0.7	5.2	0.092	0.511	20.214126	-87.453320
T. Izq. Cobá	229.19	3	1	9849	2.0	87.4	1.5	5.1	1.0	1.3	0.7	0.6	0.4	89.4	1.5	9.1	0.097	0.510	20.214319	-87.453367
T. Izq. Cobá	229.19	3	2	9457	2.0	87.4	1.4	5.1	1.0	1.3	0.7	0.7	0.4	89.4	1.4	9.2	0.094	0.510	20.214326	-87.453349
X. C. Tulum - Aeropuerto	231.19	1	1	7633	1.6	85.7	2.0	6.0	1.0	1.6	0.8	0.8	0.5	87.3	2.0	10.7	0.113	0.506	20.219777	-87.436021
X. C. Tulum - Aeropuerto	231.19	1	2	7445	1.6	85.9	2.0	5.9	1.0	1.6	0.7	0.8	0.5	87.5	2.0	10.5	0.116	0.506	20.219867	-87.436070
X. C. Tulum - Aeropuerto	231.19	3	1	8401	0.8	84.4	2.4	7.3	1.1	1.8	0.8	1.1	0.3	85.2	2.4	12.4	0.097	0.512	20.219777	-87.435983
X. C. Tulum - Aeropuerto	231.19	3	2	7995	0.8	84.5	2.4	7.4	1.1	1.8	0.7	1.1	0.2	85.3	2.4	12.3	0.097	0.512	20.219778	-87.435984
T. Der. Xel-Ha	244.80	1	1	8041	0.8	86.6	2.3	6.3	1.0	1.3	0.5	0.9	0.3	87.4	2.3	10.3	0.096	0.515	20.322944	-87.362986
T. Der. Xel-Ha	244.80	1	2	7576	0.8	86.8	2.2	6.3	1.0	1.2	0.5	0.9	0.3	87.6	2.2	10.2	0.096	0.515	20.322945	-87.362987
T. Der. Xel-Ha	244.80	3	1	7502	0.7	86.5	2.2	6.9	1.0	1.2	0.4	0.9	0.2	87.2	2.2	10.6	0.098	0.502	20.323346	-87.362789
T. Der. Xel-Ha	244.80	3	2	7574	0.8	86.3	2.2	6.9	1.1	1.2	0.4	0.9	0.2	87.1	2.2	10.7	0.097	0.502	20.323359	-87.362831
T. Der. Akumal	254.44	1	1	8880	3.8	88.3	2.4	3.6	0.6	0.7	0.2	0.3	0.1	92.1	2.4	5.5	0.142	0.502	20.399174	-87.319369
T. Der. Akumal	254.44	1	2	8803	4.7	87.3	2.1	4.2	0.5	0.6	0.2	0.3	0.1	92.0	2.1	5.9	0.113	0.502	20.399253	-87.319496

QUINTANA ROO

8 CARR: Reforma Agraria - Puerto Juárez

CLAVE: 23132

RUTA: MEX-307

AÑO: 2020

LUGAR	ESTACION				CLASIFICACION VEHICULAR EN PORCIENTO										COORDENADAS					
	KM	TE	SC	TDPA	M	A	B	C2	C3	T3S2	T3S3	T3S2R4	OTROS	A	B	C	K'	D	LATITUD	LONGITUD
Puerto Aventuras	269.34	3	1	28169	2.9	88.5	2.1	4.1	0.5	0.3	1.2	0.3	0.1	91.4	2.1	6.5	0.115	0.509	20.506601	-87.228769
Puerto Aventuras	269.34	3	2	29257	2.9	88.6	2.1	4.1	0.5	0.3	1.1	0.3	0.1	91.5	2.1	6.4	0.099	0.509	20.506668	-87.228816
Playa del Carmen	289.70	1	1	20839	2.4	85.5	2.0	8.0	0.7	0.6	0.3	0.4	0.1	87.9	2.0	10.1	0.079	0.511	20.635029	-87.077987
Playa del Carmen	289.70	1	2	21768	2.3	85.6	2.0	8.0	0.7	0.6	0.3	0.4	0.1	87.9	2.0	10.1	0.091	0.511	20.635082	-87.078067
Playa del Carmen	289.70	3	1	28086	3.7	87.4	1.7	6.1	0.4	0.2	0.2	0.2	0.1	91.1	1.7	7.2	0.082	0.500	20.635144	-87.077895
Playa del Carmen	289.70	3	2	28071	3.6	87.6	1.6	6.0	0.4	0.3	0.2	0.2	0.1	91.2	1.6	7.2	0.089	0.500	20.635196	-87.077979
T. Der. Puerto Morelos	321.48	1	1	19722	3.7	88.0	1.6	5.5	0.3	0.3	0.3	0.2	0.1	91.7	1.6	6.7	0.084	0.518	20.855605	-86.897684
T. Der. Puerto Morelos	321.48	1	2	18336	3.7	88.0	1.6	5.5	0.4	0.3	0.2	0.2	0.1	91.7	1.6	6.7	0.092	0.518	20.855630	-86.897750
T. Der. Puerto Morelos	321.48	3	1	21861	1.8	85.1	2.5	8.6	0.8	0.7	0.2	0.2	0.1	86.9	2.5	10.6	0.104	0.504	20.855830	-86.897594
T. Der. Puerto Morelos	321.48	3	2	22218	1.8	85.1	2.5	8.6	0.8	0.7	0.2	0.2	0.1	86.9	2.5	10.6	0.089	0.504	20.855852	-86.897676
T. Izq. Aeropuerto Cancún	341.50	1	1	33381	2.0	84.4	3.4	8.5	0.6	0.5	0.3	0.2	0.1	86.4	3.4	10.2	0.109	0.505	21.030032	-86.852430
T. Izq. Aeropuerto Cancún	341.50	1	2	32617	2.0	84.4	3.4	8.5	0.6	0.5	0.3	0.2	0.1	86.4	3.4	10.2	0.101	0.505	21.030064	-86.852548
T. Izq. Aeropuerto Cancún	341.50	3	1	34185	2.3	84.2	2.4	9.4	0.4	0.6	0.4	0.2	0.1	86.5	2.4	11.1	0.107	0.506	21.030762	-86.852312
T. Izq. Aeropuerto Cancún	341.50	3	2	33221	2.3	84.2	2.4	9.4	0.4	0.6	0.4	0.2	0.1	86.5	2.4	11.1	0.120	0.506	21.030773	-86.852428
T. Izq. Alfredo V. Bonfil	348.22	1	1	19150	1.6	84.3	2.3	9.9	0.3	0.7	0.8	0.1	0.0	85.9	2.3	11.8	0.104	0.504	21.087284	-86.842432
T. Izq. Alfredo V. Bonfil	348.22	1	2	19473	1.6	84.3	2.3	9.9	0.3	0.7	0.8	0.1	0.0	85.9	2.3	11.8	0.101	0.504	21.087370	-86.842761
Cancún	355.48	1	1	30495	1.7	90.5	1.7	3.8	0.3	0.3	1.3	0.4	0.0	92.2	1.7	6.1	0.108	0.502	21.129247	-86.830400
Cancún	355.48	1	2	30243	1.7	90.5	1.7	3.8	0.3	0.3	1.3	0.4	0.0	92.2	1.7	6.1	0.096	0.502	21.129287	-86.830494
T. C. Mérida - Puerto Juárez	357.48																			

9 CARR: Valladolid - Felipe Carrillo Puerto

CLAVE: 00010

RUTA: MEX-295

AÑO: 2020

LUGAR	ESTACION				CLASIFICACION VEHICULAR EN PORCIENTO										COORDENADAS					
	KM	TE	SC	TDPA	M	A	B	C2	C3	T3S2	T3S3	T3S2R4	OTROS	A	B	C	K'	D	LATITUD	LONGITUD
Valladolid	0.00	3	0	4497	24.1	71.6	0.3	1.7	0.2	1.0	0.4	0.2	0.5	95.7	0.3	4.0	0.103	0.511	20.689593	-88.201062
Chichimilá	6.90	3	0	1959	19.2	77.9	0.3	1.1	0.6	0.3	0.0	0.2	0.4	97.1	0.3	2.6	0.094	0.506	20.631911	-88.216686
Tekom	12.05	3	0	1429	23.1	73.1	0.7	1.8	0.6	0.3	0.1	0.3	0.0	96.2	0.7	3.1	0.106	0.544	20.601556	-88.264437
Tixcacalcupul	19.80	3	0	823	17.2	78.4	0.7	1.7	0.8	0.3	0.1	0.4	0.4	95.6	0.7	3.7	0.102	0.503	20.535933	-88.270187
Lim. Edos. Term. Yuc. Ppia. Q. R.	46.00																			
Tepich	51.40	1	0	770	16.5	74.0	0.6	6.8	0.7	0.9	0.2	0.3	0.0	90.5	0.6	8.9	0.101	0.502	20.242245	-88.256048
Tihosuco	65.00	1	0	842	16.3	78.9	1.3	1.3	1.0	0.2	0.2	0.7	0.1	95.2	1.3	3.5	0.107	0.501	20.194502	-88.375242
Tihosuco	65.00	3	0	865	9.9	77.9	1.1	8.6	1.0	0.5	0.4	0.4	0.2	87.8	1.1	11.1	0.110	0.501	20.194500	-88.375228
T. Izq. San Felipe Berriozábal	99.00	1	0	516	7.1	80.8	0.9	8.5	1.2	0.7	0.2	0.3	0.3	87.9	0.9	11.2	0.116	0.507	19.962163	-88.241126
T. Izq. San Felipe Berriozábal	99.00	3	0	588	12.0	81.4	1.0	1.9	1.6	1.1	0.4	0.6	0.0	93.4	1.0	5.6	0.114	0.502	19.962164	-88.241126
Señor	116.50	1	0	873	11.7	77.8	1.4	7.3	0.7	0.6	0.3	0.2	0.0	89.5	1.4	9.1	0.123	0.512	19.842887	-88.137601

QUINTANA ROO

9 CARR: Valladolid - Felipe Carrillo Puerto

CLAVE: 00010

RUTA: MEX-295

AÑO: 2020

LUGAR	ESTACION				CLASIFICACION VEHICULAR EN PORCIENTO														COORDENADAS	
	KM	TE	SC	TDPA	M	A	B	C2	C3	T3S2	T3S3	T3S2R4	OTROS	A	B	C	K'	D	LATITUD	LONGITUD
Señor	116.50	3	0	1358	13.9	70.5	2.5	6.4	1.7	1.5	1.6	1.7	0.2	84.4	2.5	13.1	0.138	0.520	19.842882	-88.137598
Felipe Carrillo Puerto	147.70	1	0	1514	17.3	76.9	1.2	3.3	0.5	0.5	0.1	0.2	0.0	94.2	1.2	4.6	0.101	0.508	19.580778	-88.045710

10 CARR: El Cedral - Playa del Carmen (Cuota)

CLAVE:

RUTA: MEX-180D

AÑO: 2020

LUGAR	ESTACION				CLASIFICACION VEHICULAR EN PORCIENTO														COORDENADAS	
	KM	TE	SC	TDPA	M	A	B	C2	C3	T3S2	T3S3	T3S2R4	OTROS	A	B	C	K'	D	LATITUD	LONGITUD
El Cedral	0.00																			
X. C. Mérida - Cancún (Cuota)	10.05	1	0	1275	3.9	91.0	0.4	3.6	0.2	0.0	0.0	0.0	0.9	94.9	0.4	4.7	0.169	0.506	20.902414	-87.441552
X. C. Mérida - Cancún (Cuota)	10.05	3	0	1914	2.1	86.7	0.8	7.4	1.6	1.0	0.0	0.4	0.0	88.8	0.8	10.4	0.123	0.512	20.889709	-87.434206
Plaza de Cobro Tintal	50.00	2	0	1250	1.3	88.4	2.2	1.8	0.8	1.6	0.3	3.4	0.2	89.7	2.2	8.1	0.090	0.500	20.698987	-87.144285
Playa del Carmen	56.30																			

11 CARR: Libramiento de Felipe Carrillo Puerto (Cuota)

CLAVE:

RUTA: MEX-307D

AÑO: 2020

LUGAR	ESTACION				CLASIFICACION VEHICULAR EN PORCIENTO														COORDENADAS	
	KM	TE	SC	TDPA	M	A	B	C2	C3	T3S2	T3S3	T3S2R4	OTROS	A	B	C	K'	D	LATITUD	LONGITUD
T. C. Reforma Agraria - Puerto Juárez (Sur)	0.00	3	0	1341	2.9	84.2	3.0	4.0	2.0	1.3	1.0	1.5	0.1	87.1	3.0	9.9	0.118	0.500	19.545304	-88.043787
Plaza de Cobro Felipe Carrillo Puerto	6.10	2	0	802	0.9	72.5	4.8	3.4	2.8	7.3	1.5	6.2	0.6	73.4	4.8	21.8	0.090	0.500	19.590397	-88.071289
X. C. Valladolid - Felipe Carrillo Puerto	9.00	1	0	1309	2.7	84.9	2.7	3.8	2.0	1.4	1.1	1.3	0.1	87.6	2.7	9.7	0.083	0.501	19.607899	-88.055870
T. C. Reforma Agraria - Puerto Juárez (Norte)	13.92	1	0	919	4.9	81.0	2.9	4.6	2.0	1.6	1.1	1.6	0.3	85.9	2.9	11.2	0.090	0.505	19.625069	-88.011762

12 CARR: Mérida - Cancún (Cuota)

CLAVE: 00071

RUTA: MEX-180D

AÑO: 2020

LUGAR	ESTACION				CLASIFICACION VEHICULAR EN PORCIENTO														COORDENADAS	
	KM	TE	SC	TDPA	M	A	B	C2	C3	T3S2	T3S3	T3S2R4	OTROS	A	B	C	K'	D	LATITUD	LONGITUD
T. C. Mérida - Puerto Juárez	0.00																			
Plaza de Cobro Piste	51.00	1	1	1801	0.6	77.9	3.9	6.3	1.2	2.9	1.1	5.7	0.4	78.5	3.9	17.6	0.087	0.506	20.728842	-88.583241
Plaza de Cobro Piste	51.00	1	2	1760	0.7	75.5	3.9	6.9	1.4	3.4	1.2	6.6	0.4	76.2	3.9	19.9	0.101	0.506	20.728931	-88.583216
Plaza de Cobro X-Can	155.00	1	1	1537	2.5	76.8	4.8	5.5	1.1	2.7	1.5	4.6	0.5	79.3	4.8	15.9	0.094	0.517	20.876970	-87.635830
Plaza de Cobro X-Can	155.00	1	2	1644	2.6	76.5	4.9	5.5	1.2	2.9	1.1	4.8	0.5	79.1	4.9	16.0	0.085	0.517	20.876883	-87.635832
Lim. Edos. Term. Yuc. Ppia. Q. R.	160.00																			
T. C. Mérida - Puerto Juárez	292.00	1	1	1526	6.7	70.3	6.0	6.3	1.2	2.9	1.5	4.5	0.6	77.0	6.0	17.0	0.106	0.509	21.097356	-86.976027
T. C. Mérida - Puerto Juárez	292.00	1	2	1472	6.3	70.4	6.3	6.5	1.7	2.7	1.3	4.4	0.4	76.7	6.3	17.0	0.089	0.509	21.097633	-86.976166
T. C. Reforma Agraria - Puerto Juárez	308.10	1	0	13804	5.1	85.4	1.8	3.5	1.5	1.5	0.2	0.8	0.2	90.5	1.8	7.7	0.117	0.519	21.018792	-86.856880

QUINTANA ROO

13 CARR: Bacalar - Miguel Alemán

CLAVE: 20030

RUTA: QR

AÑO: 2020

LUGAR	ESTACION				CLASIFICACION VEHICULAR EN PORCIENTO										COORDENADAS					
	KM	TE	SC	TDPA	M	A	B	C2	C3	T3S2	T3S3	T3S2R4	OTROS	A	B	C	K'	D	LATITUD	LONGITUD
T. C. (Reforma Agraria - Puerto Juárez)	0.00																			
Reforma	21.00	3	0	812	20.3	69.0	0.7	7.3	0.9	1.4	0.4	0.0	0.0	89.3	0.7	10.0	0.101	0.503	18.813388	-88.572799
Altos de Sevilla	31.00	1	0	543	17.1	72.3	0.4	7.4	0.9	1.5	0.4	0.0	0.0	89.4	0.4	10.2	0.116	0.507	18.851421	-88.678605
Altos de Sevilla	31.00	3	0	424	21.6	67.8	0.7	8.8	0.5	0.5	0.1	0.0	0.0	89.4	0.7	9.9	0.116	0.502	18.851419	-88.678601
Miguel Alemán	110.00																			

14 CARR: Cancún - Punta Cancún

CLAVE: 23581

RUTA: QR

AÑO: 2020

LUGAR	ESTACION				CLASIFICACION VEHICULAR EN PORCIENTO										COORDENADAS					
	KM	TE	SC	TDPA	M	A	B	C2	C3	T3S2	T3S3	T3S2R4	OTROS	A	B	C	K'	D	LATITUD	LONGITUD
Cancún	0.00	3	1	27457	9.1	84.9	0.5	5.2	0.1	0.1	0.0	0.1	0.0	94.0	0.5	5.5	0.097	0.501	21.156821	-86.825035
Cancún	0.00	3	2	27557	9.1	85.0	0.5	5.1	0.1	0.1	0.0	0.1	0.0	94.1	0.5	5.4	0.081	0.501	21.156828	-86.825035
T. Der. Colibrí	7.00	1	1	22409	3.0	86.1	0.7	10.1	0.1	0.0	0.0	0.0	0.0	89.1	0.7	10.2	0.082	0.518	21.134842	-86.761315
T. Der. Colibrí	7.00	1	2	20823	3.4	85.1	0.9	10.5	0.1	0.0	0.0	0.0	0.0	88.5	0.9	10.6	0.071	0.518	21.134862	-86.761323
Punta Cancún	8.00	1	1	22926	4.1	82.5	0.5	12.5	0.2	0.1	0.1	0.0	0.0	86.6	0.5	12.9	0.086	0.500	21.136086	-86.752165
Punta Cancún	8.00	1	2	22891	3.9	82.7	0.5	12.5	0.2	0.1	0.1	0.0	0.0	86.6	0.5	12.9	0.078	0.500	21.136074	-86.752141

15 CARR: Chetumal - Calderitas

CLAVE: 23004

RUTA: QR-004

AÑO: 2020

LUGAR	ESTACION				CLASIFICACION VEHICULAR EN PORCIENTO										COORDENADAS					
	KM	TE	SC	TDPA	M	A	B	C2	C3	T3S2	T3S3	T3S2R4	OTROS	A	B	C	K'	D	LATITUD	LONGITUD
Chetumal	0.00	3	1	12794	11.9	84.3	0.2	2.6	0.4	0.3	0.3	0.0	0.0	96.2	0.2	3.6	0.083	0.519	18.518811	-88.288747
Chetumal	0.00	3	2	11843	11.4	84.7	0.3	2.6	0.4	0.3	0.3	0.0	0.0	96.1	0.3	3.6	0.091	0.519	18.518801	-88.288729
Calderitas	9.00	1	1	2220	8.5	89.1	0.0	2.3	0.1	0.0	0.0	0.0	0.0	97.6	0.0	2.4	0.105	0.514	18.553776	-88.254658
Calderitas	9.00	1	2	2097	8.5	88.7	0.0	2.6	0.2	0.0	0.0	0.0	0.0	97.2	0.0	2.8	0.095	0.514	18.553776	-88.254658

16 CARR: El Ideal - Chiquila

CLAVE: 23005

RUTA: QR-005

AÑO: 2020

LUGAR	ESTACION				CLASIFICACION VEHICULAR EN PORCIENTO										COORDENADAS					
	KM	TE	SC	TDPA	M	A	B	C2	C3	T3S2	T3S3	T3S2R4	OTROS	A	B	C	K'	D	LATITUD	LONGITUD
T. C. Mérida - Puerto Juárez	0.00	3	0	1093	5.9	88.1	1.1	3.1	1.1	0.5	0.1	0.1	0.0	94.0	1.1	4.9	0.093	0.506	20.879199	-87.546083
Kantunilkin	31.20	1	0	2905	6.2	82.7	1.6	6.2	0.8	2.3	0.1	0.0	0.1	88.9	1.6	9.5	0.098	0.512	21.100813	-87.486497
Kantunilkin	31.20	3	0	2432	11.6	81.2	0.2	4.4	0.9	1.5	0.1	0.0	0.1	92.8	0.2	7.0	0.094	0.531	21.100812	-87.486495
Chiquila	75.60	1	0	1946	11.6	78.5	1.8	6.5	1.1	0.5	0.0	0.0	0.0	90.1	1.8	8.1	0.125	0.501	21.426373	-87.336665

QUINTANA ROO

17 CARR: Libramiento de Chetumal

CLAVE: 23130

RUTA: QR

AÑO: 2020

LUGAR	ESTACION				CLASIFICACION VEHICULAR EN PORCIENTO										COORDENADAS					
	KM	TE	SC	TDPA	M	A	B	C2	C3	T3S2	T3S3	T3S2R4	OTROS	A	B	C	K'	D	LATITUD	LONGITUD
T. C. Francisco Escárcega - Chetumal	0.00	3	1	8722	10.8	85.9	0.6	1.2	0.7	0.5	0.1	0.2	0.0	96.7	0.6	2.7	0.072	0.514	18.512890	-88.356377
T. C. Francisco Escárcega - Chetumal	0.00	3	2	9237	10.9	85.6	0.7	1.3	0.7	0.5	0.1	0.2	0.0	96.5	0.7	2.8	0.071	0.514	18.512944	-88.356417
T. C. Chetumal - Calderitas	5.00																			

18 CARR: Perimetral Cozumel

CLAVE: 00148

RUTA: QR

AÑO: 2020

LUGAR	ESTACION				CLASIFICACION VEHICULAR EN PORCIENTO										COORDENADAS					
	KM	TE	SC	TDPA	M	A	B	C2	C3	T3S2	T3S3	T3S2R4	OTROS	A	B	C	K'	D	LATITUD	LONGITUD
Cozumel	0.00	3	0	12978	24.3	67.8	0.3	7.1	0.3	0.1	0.1	0.0	0.0	92.1	0.3	7.6	0.110	0.501	20.505067	-86.957351
El Cedral	13.40	1	1	1520	12.4	78.2	0.3	8.8	0.3	0.0	0.0	0.0	0.0	90.6	0.3	9.1	0.107	0.501	20.371918	-87.018382
El Cedral	13.40	1	2	1516	11.3	79.0	0.4	9.0	0.3	0.0	0.0	0.0	0.0	90.3	0.4	9.3	0.104	0.501	20.371918	-87.018382
El Cedral	13.40	3	1	552	10.9	84.0	0.5	4.5	0.1	0.0	0.0	0.0	0.0	94.9	0.5	4.6	0.138	0.532	20.371918	-87.018382
El Cedral	13.40	3	2	627	19.1	75.7	0.4	4.7	0.0	0.0	0.1	0.0	0.0	94.8	0.4	4.8	0.188	0.532	20.371918	-87.018382
Celarain	25.00	1	0	903	18.0	78.0	0.4	3.6	0.0	0.0	0.0	0.0	0.0	96.0	0.4	3.6	0.166	0.520	20.292792	-86.958198

19 CARR: Punta Nizuc - Cancún

CLAVE: 23014

RUTA: QR

AÑO: 2020

LUGAR	ESTACION				CLASIFICACION VEHICULAR EN PORCIENTO										COORDENADAS					
	KM	TE	SC	TDPA	M	A	B	C2	C3	T3S2	T3S3	T3S2R4	OTROS	A	B	C	K'	D	LATITUD	LONGITUD
Punta Nizuc	0.00	3	1	11872	4.9	84.4	1.4	7.0	0.4	0.9	0.7	0.1	0.2	89.3	1.4	9.3	0.092	0.521	21.033969	-86.785967
Punta Nizuc	0.00	3	2	10912	4.9	84.3	1.4	7.0	0.4	0.9	0.8	0.1	0.2	89.2	1.4	9.4	0.097	0.521	21.034127	-86.786171
Punta Cancún	12.40																			

20 CARR: Ramal a Aeropuerto Cancún

CLAVE: 23574

RUTA: QR

AÑO: 2020

LUGAR	ESTACION				CLASIFICACION VEHICULAR EN PORCIENTO										COORDENADAS					
	KM	TE	SC	TDPA	M	A	B	C2	C3	T3S2	T3S3	T3S2R4	OTROS	A	B	C	K'	D	LATITUD	LONGITUD
T. C. Reforma Agraria - Puerto Juárez	0.00	3	1	18063	1.4	91.5	0.8	4.9	0.5	0.3	0.3	0.2	0.1	92.9	0.8	6.3	0.093	0.501	21.034352	-86.855245
T. C. Reforma Agraria - Puerto Juárez	0.00	3	2	18142	1.6	90.4	0.9	5.8	0.5	0.2	0.3	0.2	0.1	92.0	0.9	7.1	0.100	0.501	21.034252	-86.855307
Aeropuerto Cancún	2.00	1	1	18418	1.4	91.0	0.9	5.3	0.5	0.3	0.3	0.2	0.1	92.4	0.9	6.7	0.096	0.501	21.041858	-86.867391
Aeropuerto Cancún	2.00	1	2	18344	1.4	91.0	0.9	5.3	0.5	0.3	0.3	0.2	0.1	92.4	0.9	6.7	0.092	0.501	21.041776	-86.867443

QUINTANA ROO

21 CARR: Ramal a Candelaria

CLAVE: 23027

RUTA: QR

AÑO: 2020

LUGAR	ESTACION				CLASIFICACION VEHICULAR EN PORCIENTO														COORDENADAS	
	KM	TE	SC	TDPA	M	A	B	C2	C3	T3S2	T3S3	T3S2R4	OTROS	A	B	C	K'	D	LATITUD	LONGITUD
T. C. Muna - Felipe Carrillo Puerto	0.00	3	0	1642	27.1	66.4	0.3	4.4	0.4	1.2	0.1	0.0	0.1	93.5	0.3	6.2	0.097	0.508	19.806936	-88.757145
Candelaria	15.30																			

22 CARR: Ramal a El Naranjal

CLAVE: 23579

RUTA: QR

AÑO: 2020

LUGAR	ESTACION				CLASIFICACION VEHICULAR EN PORCIENTO														COORDENADAS	
	KM	TE	SC	TDPA	M	A	B	C2	C3	T3S2	T3S3	T3S2R4	OTROS	A	B	C	K'	D	LATITUD	LONGITUD
José María Morelos	0.00	3	0	785	40.1	53.6	0.5	4.6	0.5	0.3	0.4	0.0	0.0	93.7	0.5	5.8	0.118	0.513	19.747607	-88.707672
El Naranjal	16.00																			

23 CARR: Ramal a Laguna de Kaná

CLAVE: 23213

RUTA: QR

AÑO: 2020

LUGAR	ESTACION				CLASIFICACION VEHICULAR EN PORCIENTO														COORDENADAS	
	KM	TE	SC	TDPA	M	A	B	C2	C3	T3S2	T3S3	T3S2R4	OTROS	A	B	C	K'	D	LATITUD	LONGITUD
T. C. Muna - Felipe Carrillo Puerto	0.00	3	0	478	23.8	65.7	1.2	7.3	1.2	0.5	0.3	0.0	0.0	89.5	1.2	9.3	0.130	0.503	19.643737	-88.411520
Laguna de Kaná	12.20																			

24 CARR: Ramal a Mahahual

CLAVE: 23583

RUTA: QR

AÑO: 2020

LUGAR	ESTACION				CLASIFICACION VEHICULAR EN PORCIENTO														COORDENADAS	
	KM	TE	SC	TDPA	M	A	B	C2	C3	T3S2	T3S3	T3S2R4	OTROS	A	B	C	K'	D	LATITUD	LONGITUD
T. C. Reforma Agraria - Puerto Juárez	0.00	3	0	1144	5.0	85.5	0.8	7.4	0.2	0.8	0.3	0.0	0.0	90.5	0.8	8.7	0.095	0.518	18.980267	-88.112743
Mahahual	60.09																			

25 CARR: Ramal a Petcacab

CLAVE: 23018

RUTA: QR-018

AÑO: 2020

LUGAR	ESTACION				CLASIFICACION VEHICULAR EN PORCIENTO														COORDENADAS	
	KM	TE	SC	TDPA	M	A	B	C2	C3	T3S2	T3S3	T3S2R4	OTROS	A	B	C	K'	D	LATITUD	LONGITUD
T. C. Reforma Agraria - Puerto Juárez	0.00	3	0	736	14.1	67.8	1.3	7.6	4.0	1.5	1.2	1.2	1.3	81.9	1.3	16.8	0.113	0.513	19.135343	-88.105145
Petcacab	37.00																			

QUINTANA ROO

26 CARR: Ramal a Punta Allen

CLAVE: 23015

RUTA: QR-015

AÑO: 2020

LUGAR	ESTACION				CLASIFICACION VEHICULAR EN PORCIENTO													COORDENADAS		
	KM	TE	SC	TDPA	M	A	B	C2	C3	T3S2	T3S3	T3S2R4	OTROS	A	B	C	K'	D	LATITUD	LONGITUD
T. C. Reforma Agraria - Puerto Juárez	0.00	3	0	11644	10.7	85.4	0.2	1.2	1.1	0.5	0.1	0.6	0.2	96.1	0.2	3.7	0.089	0.501	20.213940	-87.453235
Beh-Ha	10.20	1	0	1069	11.0	83.1	0.6	0.9	2.4	1.1	0.2	0.7	0.0	94.1	0.6	5.3	0.089	0.516	20.124698	-87.466077
Punta Allen	57.00																			

27 CARR: Ramal a Punta Sam

CLAVE: 23582

RUTA: QR

AÑO: 2020

LUGAR	ESTACION				CLASIFICACION VEHICULAR EN PORCIENTO													COORDENADAS		
	KM	TE	SC	TDPA	M	A	B	C2	C3	T3S2	T3S3	T3S2R4	OTROS	A	B	C	K'	D	LATITUD	LONGITUD
Puerto Juárez	0.00	3	0	6005	7.3	88.5	0.8	2.0	0.2	0.4	0.5	0.2	0.1	95.8	0.8	3.4	0.082	0.504	21.183971	-86.808330
Punta Sam	5.00	1	0	1908	6.3	91.2	0.5	1.5	0.2	0.1	0.1	0.1	0.0	97.5	0.5	2.0	0.090	0.505	21.232850	-86.802271

28 CARR: Ramal a Reforma

CLAVE: 23016

RUTA: QR-016

AÑO: 2020

LUGAR	ESTACION				CLASIFICACION VEHICULAR EN PORCIENTO													COORDENADAS		
	KM	TE	SC	TDPA	M	A	B	C2	C3	T3S2	T3S3	T3S2R4	OTROS	A	B	C	K'	D	LATITUD	LONGITUD
T. C. Reforma Agraria - Puerto Juárez	0.00	3	0	1924	16.8	74.5	0.6	7.0	0.5	0.2	0.2	0.2	0.0	91.3	0.6	8.1	0.107	0.507	18.703578	-88.386090
Reforma	44.00																			

29 CARR: Ramal a Tres Garantías

CLAVE: 23585

RUTA: QR

AÑO: 2020

LUGAR	ESTACION				CLASIFICACION VEHICULAR EN PORCIENTO													COORDENADAS		
	KM	TE	SC	TDPA	M	A	B	C2	C3	T3S2	T3S3	T3S2R4	OTROS	A	B	C	K'	D	LATITUD	LONGITUD
T. C. Francisco Escárcega - Chetumal	0.00	3	0	162	27.0	69.7	0.2	1.1	0.3	0.8	0.3	0.6	0.0	96.7	0.2	3.1	0.185	0.501	18.456941	-89.000791
Tres Garantías	30.00																			

30 CARR: Tihosuco - Dziuche

CLAVE: 23576

RUTA: QR

AÑO: 2020

LUGAR	ESTACION				CLASIFICACION VEHICULAR EN PORCIENTO													COORDENADAS		
	KM	TE	SC	TDPA	M	A	B	C2	C3	T3S2	T3S3	T3S2R4	OTROS	A	B	C	K'	D	LATITUD	LONGITUD
T. C. Valladolid - Felipe Carrillo Puerto	0.00	3	0	463	19.0	78.0	0.7	0.7	0.7	0.1	0.0	0.1	0.7	97.0	0.7	2.3	0.106	0.505	20.175992	-88.396162
Dziuche	60.50	1	0	1108	10.5	82.4	0.9	5.2	0.7	0.1	0.0	0.2	0.0	92.9	0.9	6.2	0.113	0.514	19.899234	-88.810593

QUINTANA ROO

31 CARR: Transversal de Cozumel

CLAVE: 23577

RUTA: QR

AÑO: 2020

LUGAR	ESTACION				CLASIFICACION VEHICULAR EN PORCIENTO													COORDENADAS		
	KM	TE	SC	TDPA	M	A	B	C2	C3	T3S2	T3S3	T3S2R4	OTROS	A	B	C	K'	D	LATITUD	LONGITUD
Cozumel	0.00	3	1	2653	40.1	54.8	0.2	2.4	0.6	0.9	0.6	0.2	0.2	94.9	0.2	4.9	0.113	0.504	20.502589	-86.939151
Cozumel	0.00	3	2	2695	40.1	54.9	0.1	2.4	0.5	0.9	0.7	0.2	0.2	95.0	0.1	4.9	0.123	0.504	20.502594	-86.939152
Mezcalitos	14.00																			

32 CARR: Tulum - Nuevo X-Can

CLAVE: 23570

RUTA: QR

AÑO: 2020

LUGAR	ESTACION				CLASIFICACION VEHICULAR EN PORCIENTO													COORDENADAS		
	KM	TE	SC	TDPA	M	A	B	C2	C3	T3S2	T3S3	T3S2R4	OTROS	A	B	C	K'	D	LATITUD	LONGITUD
T. C. Reforma Agraria - Puerto Juárez	0.00	3	1	4841	8.6	79.8	1.2	4.5	2.1	1.4	0.4	1.6	0.4	88.4	1.2	10.4	0.100	0.508	20.214216	-87.453330
T. C. Reforma Agraria - Puerto Juárez	0.00	3	2	4989	6.6	83.7	1.4	3.2	1.7	1.2	0.5	1.2	0.5	90.3	1.4	8.3	0.123	0.508	20.214215	-87.453329
T. Izq. Ruinas Cobá	42.95	1	0	3939	4.2	87.2	1.5	2.9	1.3	1.5	0.3	1.0	0.1	91.4	1.5	7.1	0.102	0.504	20.507780	-87.718055
T. Izq. Ruinas Cobá	42.95	3	0	477	4.9	81.5	1.2	11.2	0.3	0.4	0.4	0.1	0.0	86.4	1.2	12.4	0.122	0.506	20.507780	-87.718054
Lim. Edos. Term. Q. Roo. Ppia. Yuc.	49.42																			
Lim. Edos. Term. Yuc. Ppia. Q. Roo.	64.97																			
Nuevo X-Can	87.40	1	0	442	6.6	85.1	0.6	6.6	0.6	0.5	0.0	0.0	0.0	91.7	0.6	7.7	0.095	0.518	20.869957	-87.600487

33 CARR: Ucum - Unión

CLAVE: 23571

RUTA: QR

AÑO: 2020

LUGAR	ESTACION				CLASIFICACION VEHICULAR EN PORCIENTO													COORDENADAS		
	KM	TE	SC	TDPA	M	A	B	C2	C3	T3S2	T3S3	T3S2R4	OTROS	A	B	C	K'	D	LATITUD	LONGITUD
Ucum	0.00	3	0	3504	11.4	75.5	0.9	5.2	3.4	1.8	0.7	1.0	0.1	86.9	0.9	12.2	0.090	0.500	18.505781	-88.522339
T. Der. Ingenio Álvaro Obregón	31.00	1	0	1405	13.7	78.6	0.5	5.6	0.7	0.1	0.0	0.2	0.6	92.3	0.5	7.2	0.110	0.510	18.247394	-88.651422
T. Der. Ingenio Álvaro Obregón	31.00	3	0	2227	19.1	69.5	0.9	5.2	3.9	0.9	0.3	0.1	0.1	88.6	0.9	10.5	0.083	0.503	18.247388	-88.651425
T. Der. U. A. Galeras	75.00	1	0	199	38.2	57.0	0.8	1.6	0.4	0.4	0.3	0.1	1.2	95.2	0.8	4.0	0.121	0.504	17.988253	-88.850108
T. Der. U. A. Galeras	75.00	3	0	179	14.7	72.2	1.0	11.7	0.2	0.1	0.0	0.0	0.1	86.9	1.0	12.1	0.117	0.503	17.988249	-88.850116
Unión	88.00	1	0	458	20.7	68.5	0.3	9.0	0.2	1.1	0.1	0.0	0.1	89.2	0.3	10.5	0.096	0.506	17.898230	-88.877715

34 CARR: Chemax - Cobá

CLAVE:

RUTA: YUC-MEX-180

AÑO: 2020

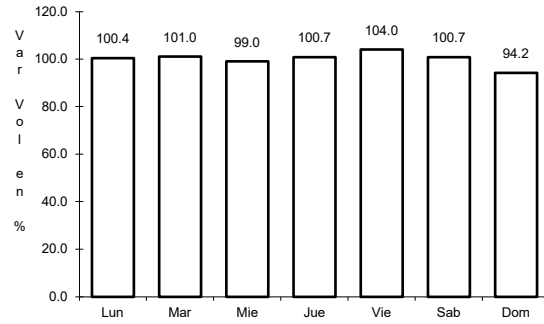
LUGAR	ESTACION				CLASIFICACION VEHICULAR EN PORCIENTO													COORDENADAS		
	KM	TE	SC	TDPA	M	A	B	C2	C3	T3S2	T3S3	T3S2R4	OTROS	A	B	C	K'	D	LATITUD	LONGITUD
Chemax	0.00	3	0	3874	3.8	84.3	1.7	4.0	1.7	1.6	0.8	1.3	0.8	88.1	1.7	10.2	0.105	0.508	20.658083	-87.954906
Lim. Edos. Term. Yucatán Ppia. Q Roo.	25.00																			
Cobá	30.90	1	0	3570	2.3	83.7	2.6	4.2	2.0	2.0	0.9	1.6	0.7	86.0	2.6	11.4	0.131	0.507	20.508231	-87.718814



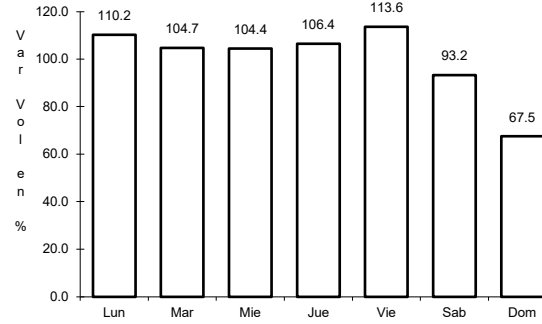
1 CARR: Francisco Escárcega - Chetumal

CLAVE: 00093

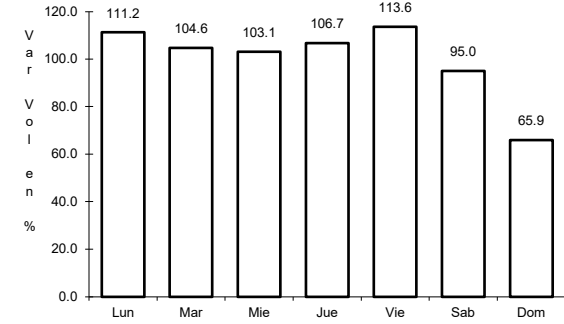
ruta: MEX-186



Km: 0.00                      Tipo: 3                      Sent: 0



Km: 277.36                      Tipo: 1                      Sent: 1

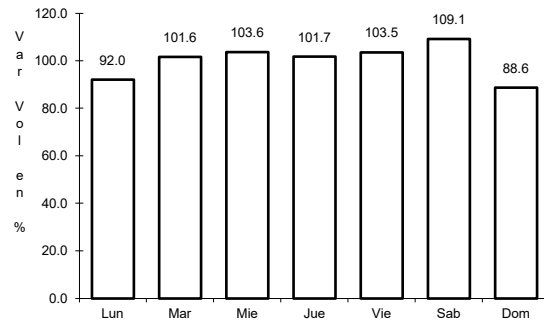


Km: 277.36                      Tipo: 1                      Sent: 2

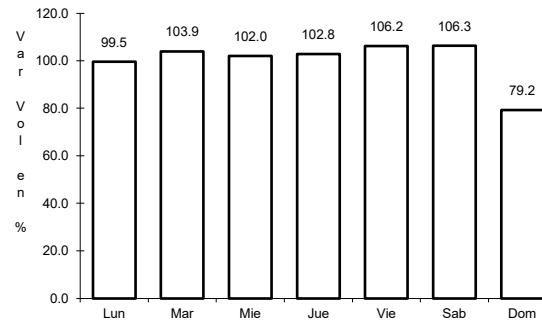
2 CARR: Mérida - Puerto Juárez

CLAVE: 00067

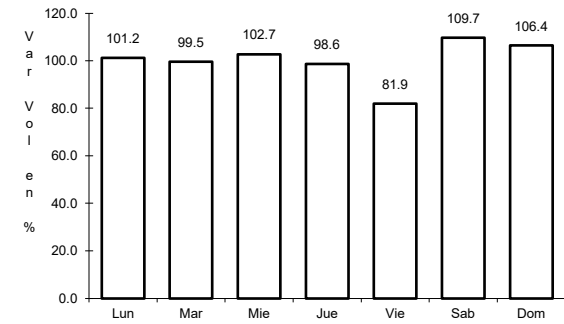
ruta: MEX-180



Km: 5.60                      Tipo: 1                      Sent: 1



Km: 5.60                      Tipo: 1                      Sent: 2

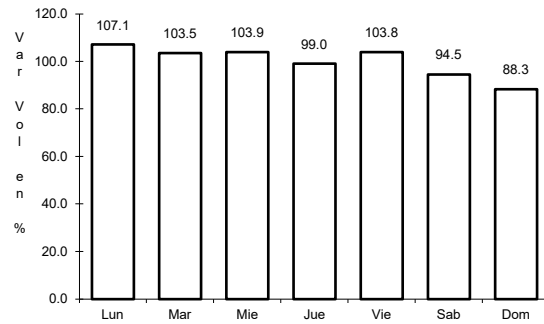


Km: 302.50                      Tipo: 1                      Sent: 0

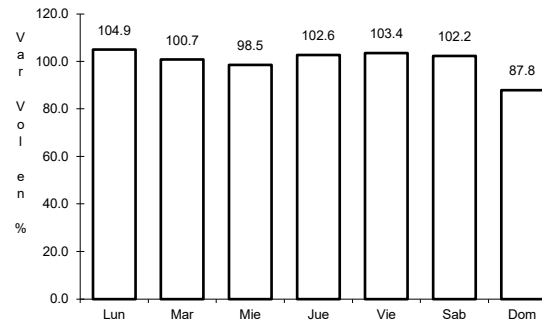
3 CARR: Muna - Felipe Carrillo Puerto

CLAVE: 00148

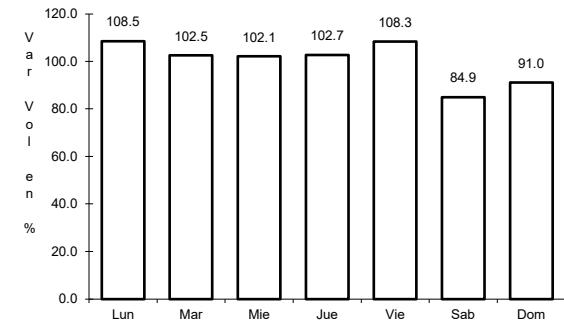
ruta: MEX-184



Km: 0.00                      Tipo: 3                      Sent: 0



Km: 109.60                      Tipo: 3                      Sent: 0

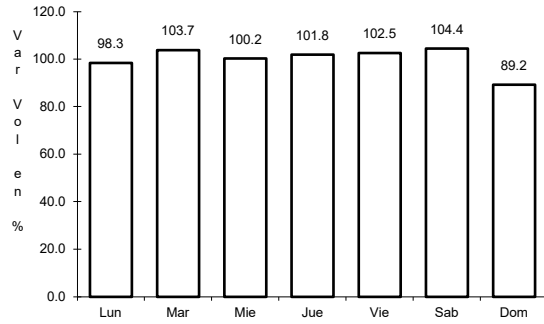


Km: 216.97                      Tipo: 1                      Sent: 0

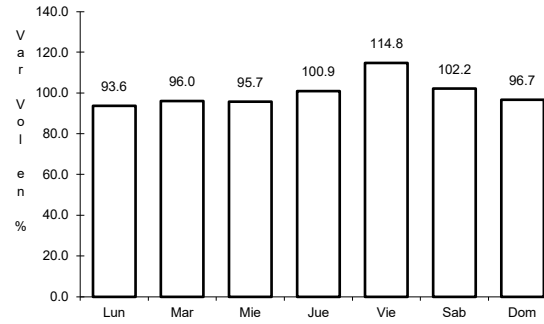
4 CARR: Polyuc - T. C. (Reforma Agraria - Puerto Juárez)

CLAVE: 23014

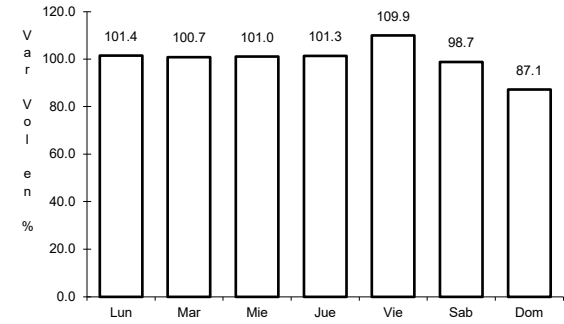
RUTA: MEX-293



Km: 0.00                      Tipo: 3                      Sent: 0



Km: 50.00                      Tipo: 3                      Sent: 0

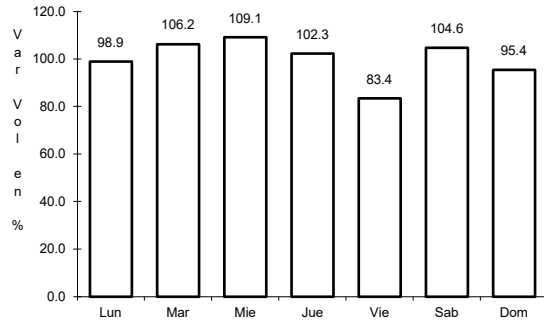


Km: 99.00                      Tipo: 1                      Sent: 0

5 CARR: Ramal a Puerto Morelos

CLAVE: 23569

RUTA: MEX

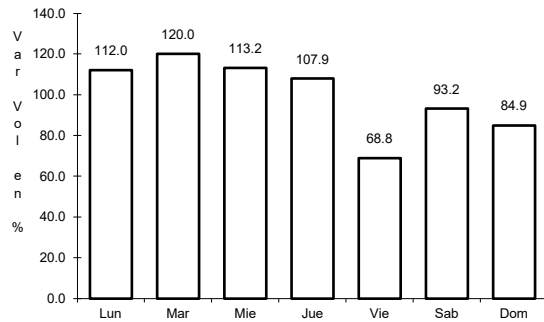


Km: 0.00                      Tipo: 3                      Sent: 0

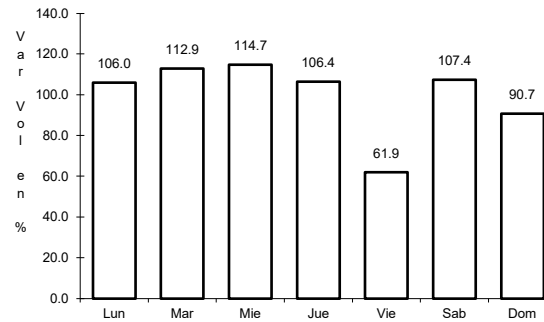
6 CARR: Ramal a Punta Piedra

CLAVE: 23575

RUTA: MEX



Km: 0.00                      Tipo: 3                      Sent: 1

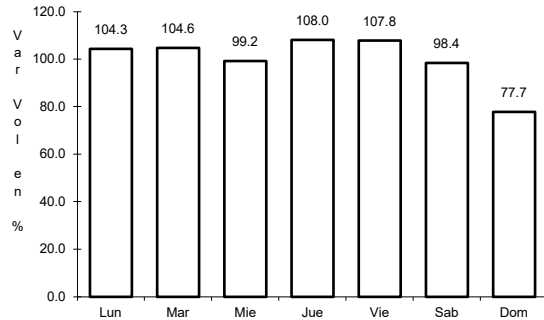


Km: 0.00                      Tipo: 3                      Sent: 2

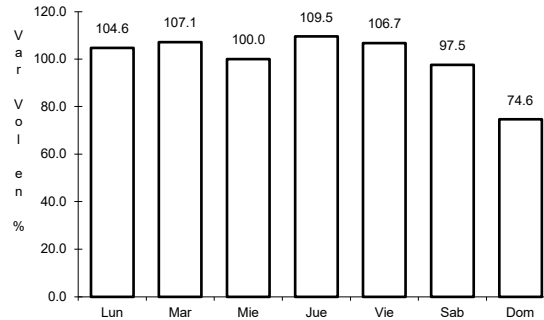
7 CARR: Ramal a Subteniente López

CLAVE: 23567

ruta: MEX-186



Km: 0.00                      Tipo: 3                      Sent: 1

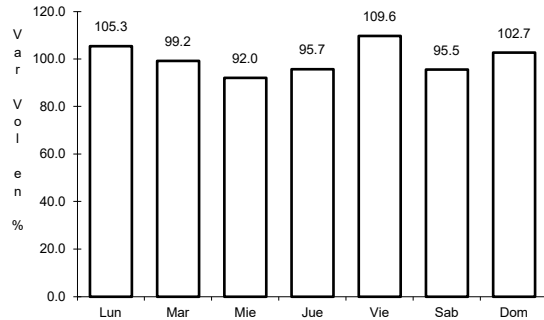


Km: 0.00                      Tipo: 3                      Sent: 2

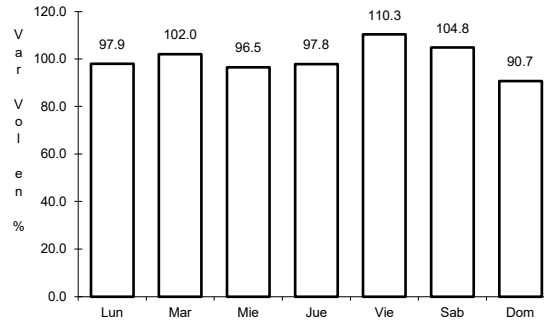
8 CARR: Reforma Agraria - Puerto Juárez

CLAVE: 23132

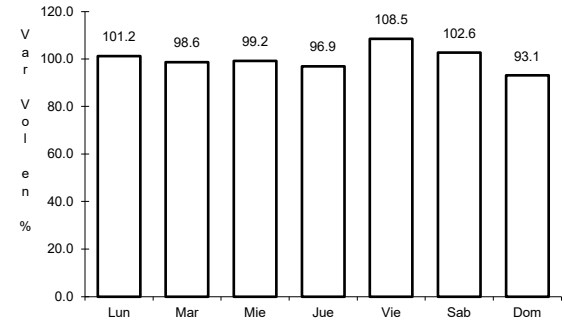
ruta: MEX-307



Km: 0.00                      Tipo: 3                      Sent: 1



Km: 0.00                      Tipo: 3                      Sent: 2

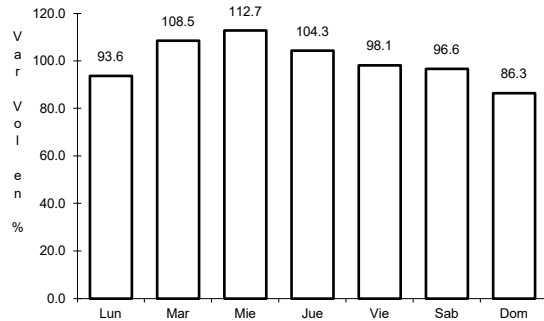


Km: 227.00                      Tipo: 1                      Sent: 0

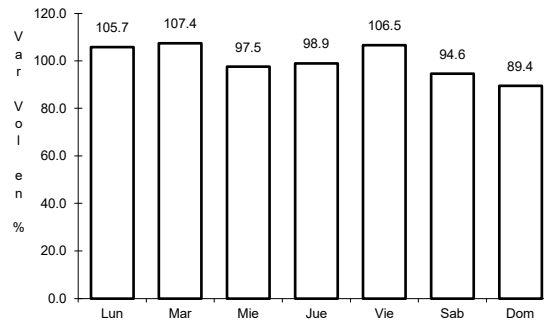
9 CARR: Valladolid - Felipe Carrillo Puerto

CLAVE: 00010

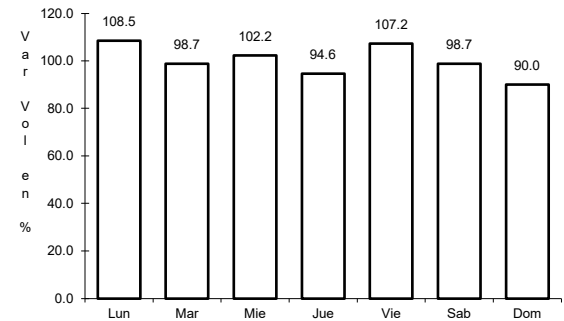
ruta: MEX-295



Km: 0.00                      Tipo: 3                      Sent: 0



Km: 99.00                      Tipo: 1                      Sent: 0

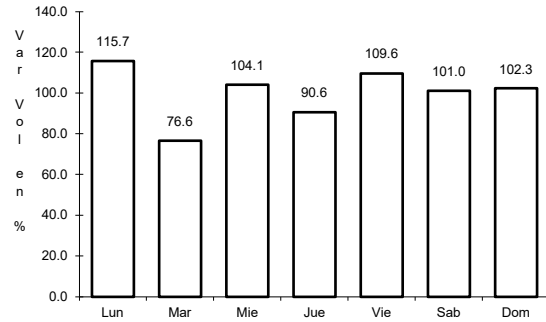


Km: 147.70                      Tipo: 1                      Sent: 0

10 CARR: El Cedral - Playa del Carmen (Cuota)

CLAVE:

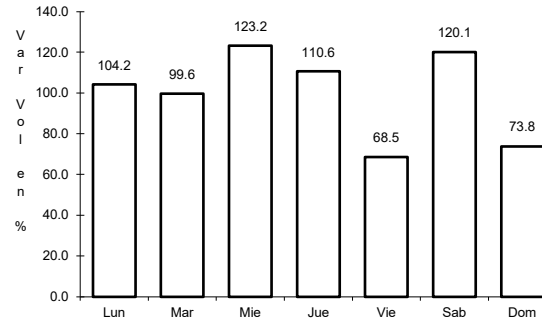
RUTA: MEX-180D



Km: 10.05

Tipo: 1

Sent: 0



Km: 10.05

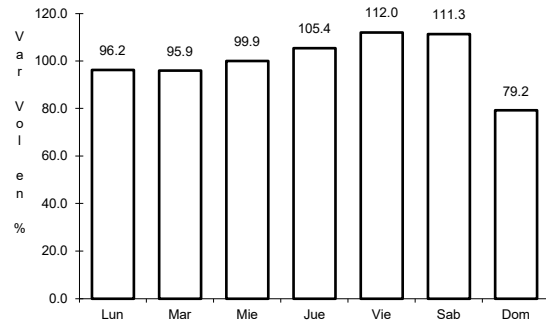
Tipo: 3

Sent: 0

11 CARR: Libramiento de Felipe Carrillo Puerto (Cuota)

CLAVE:

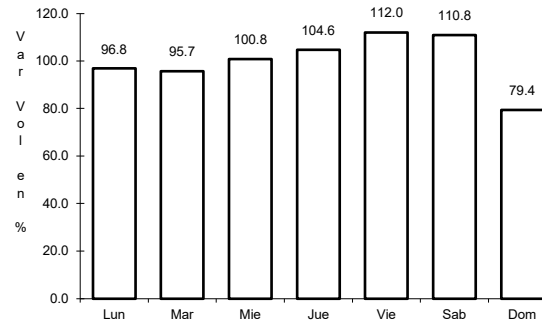
RUTA: MEX-307D



Km: 0.00

Tipo: 3

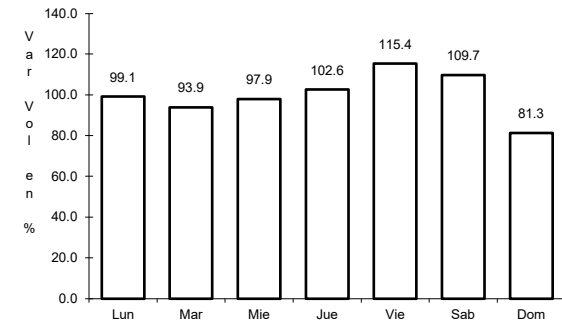
Sent: 0



Km: 9.00

Tipo: 1

Sent: 0



Km: 13.92

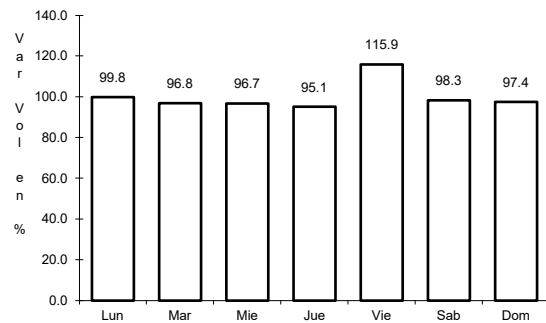
Tipo: 1

Sent: 0

12 CARR: Mérida - Cancún (Cuota)

CLAVE: 00071

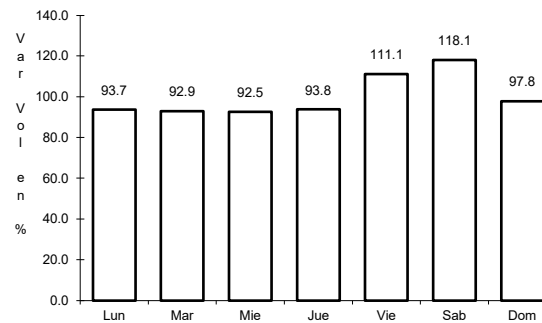
RUTA: MEX-180D



Km: 51.00

Tipo: 1

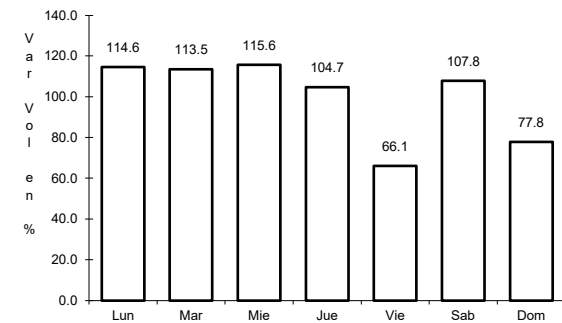
Sent: 1



Km: 51.00

Tipo: 1

Sent: 2



Km: 308.10

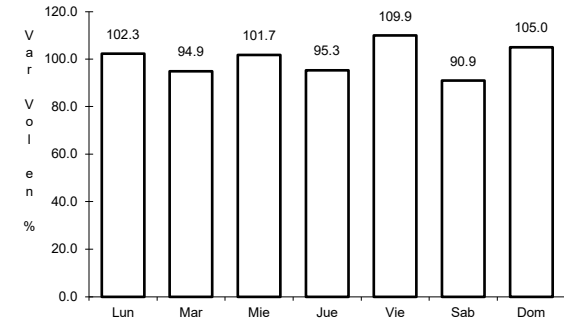
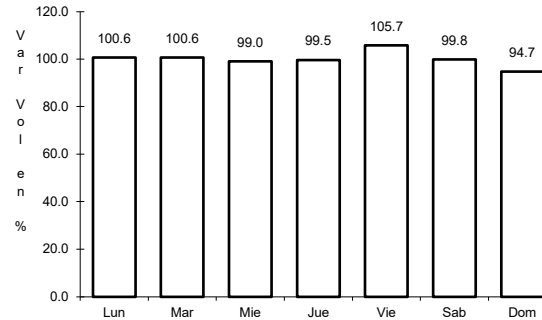
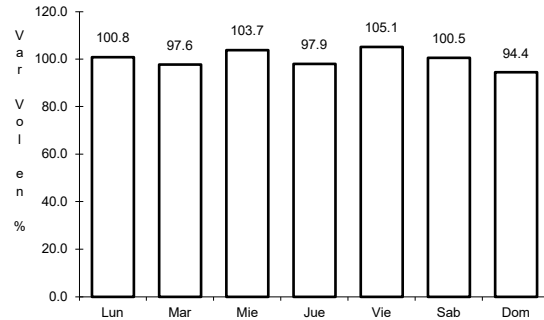
Tipo: 1

Sent: 0

13 CARR: Bacalar - Miguel Alemán

CLAVE: 20030

RUTA: QR



Km: 21.00      Tipo: 3      Sent: 0

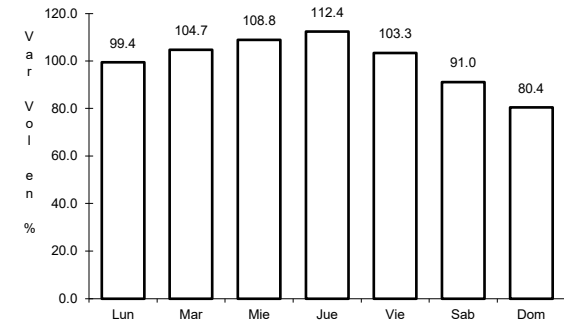
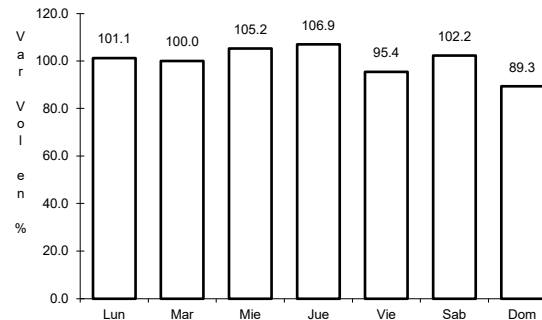
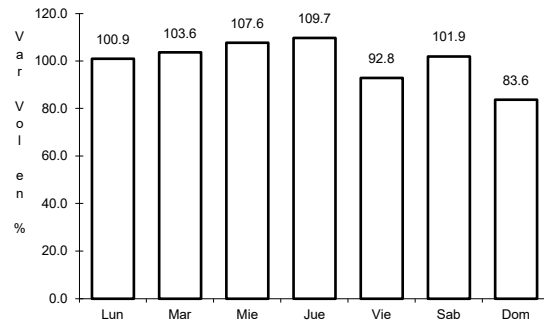
Km: 31.00      Tipo: 1      Sent: 0

Km: 31.00      Tipo: 3      Sent: 0

14 CARR: Cancún - Punta Cancún

CLAVE: 23581

RUTA: QR



Km: 0.00      Tipo: 3      Sent: 1

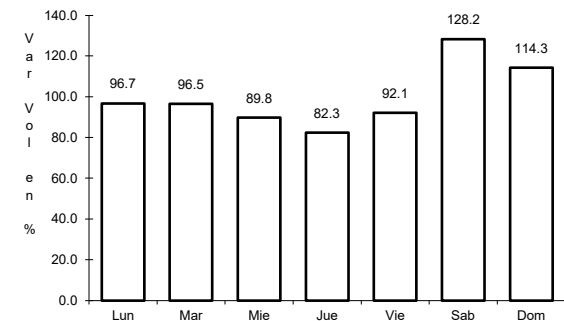
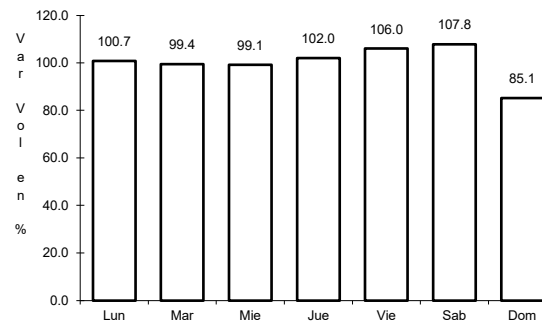
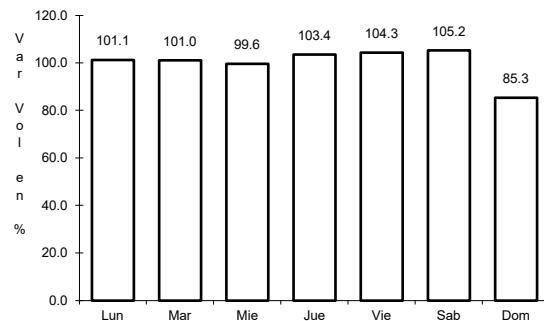
Km: 0.00      Tipo: 3      Sent: 2

Km: 8.00      Tipo: 1      Sent: 1

15 CARR: Chetumal - Calderitas

CLAVE: 23004

RUTA: QR-004



Km: 0.00      Tipo: 3      Sent: 1

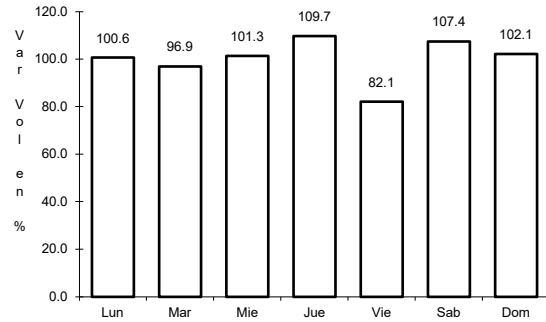
Km: 0.00      Tipo: 3      Sent: 2

Km: 9.00      Tipo: 1      Sent: 1

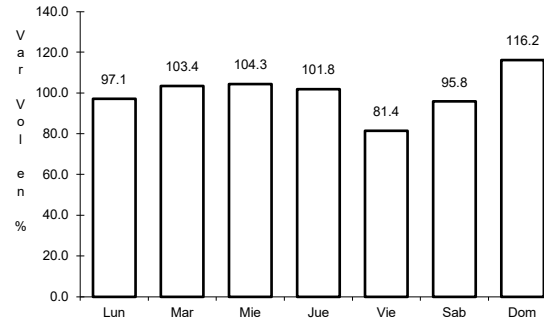
16 CARR: El Ideal - Chiquila

CLAVE: 23005

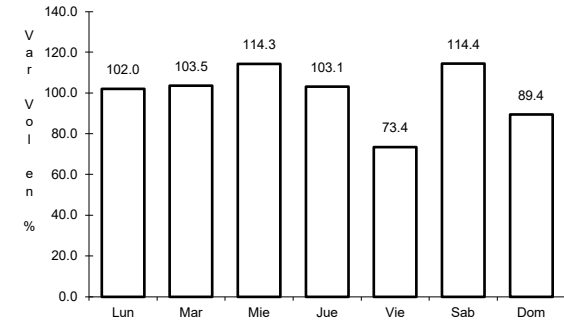
RUTA: QR-005



Km: 0.00      Tipo: 3      Sent: 0



Km: 31.20      Tipo: 1      Sent: 0

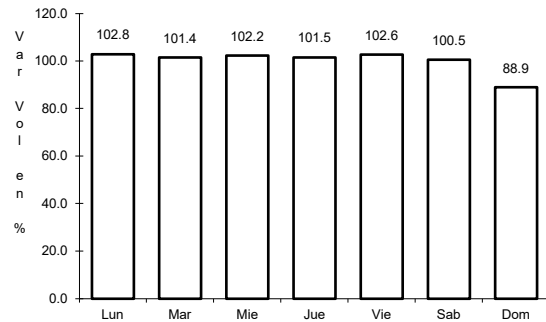


Km: 75.60      Tipo: 1      Sent: 0

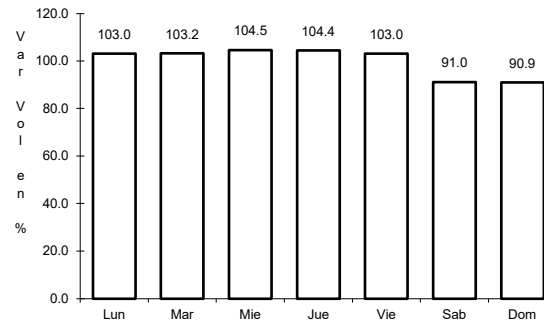
17 CARR: Libramiento de Chetumal

CLAVE: 23130

RUTA: QR



Km: 0.00      Tipo: 3      Sent: 1

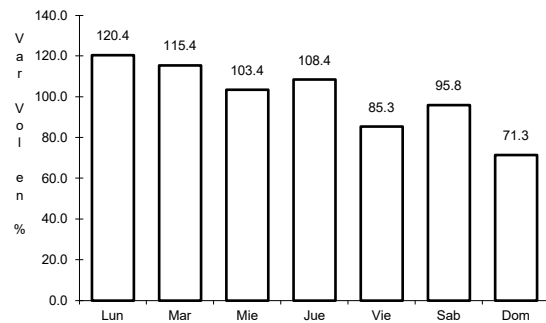


Km: 0.00      Tipo: 3      Sent: 2

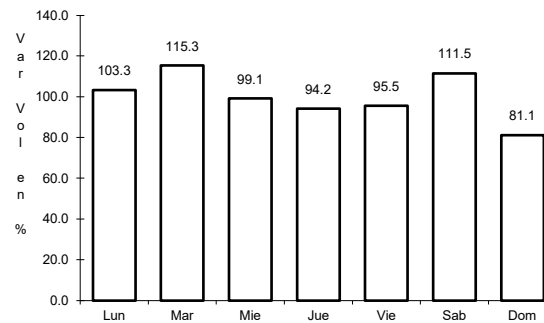
18 CARR: Perimetral Cozumel

CLAVE: 00148

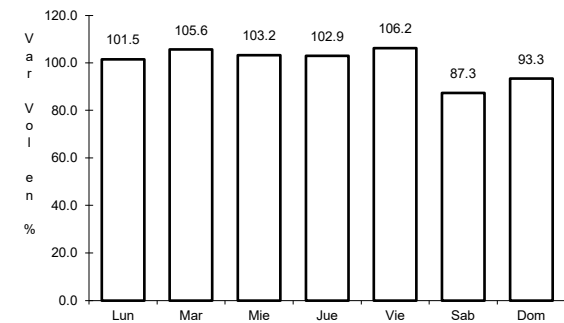
RUTA: QR



Km: 0.00      Tipo: 3      Sent: 0



Km: 13.40      Tipo: 3      Sent: 1

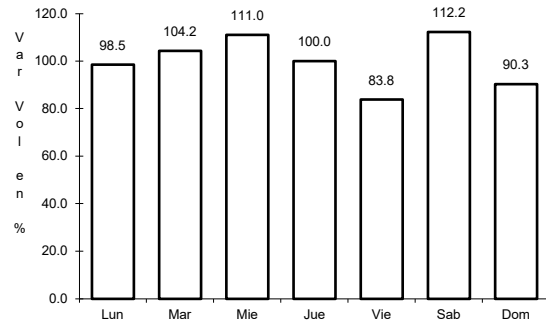


Km: 13.40      Tipo: 3      Sent: 2

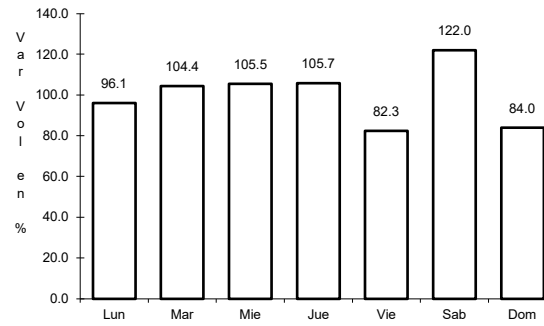
19 CARR: Punta Nizuc - Cancún

CLAVE: 23014

RUTA: QR



Km: 0.00                      Tipo: 3                      Sent: 1

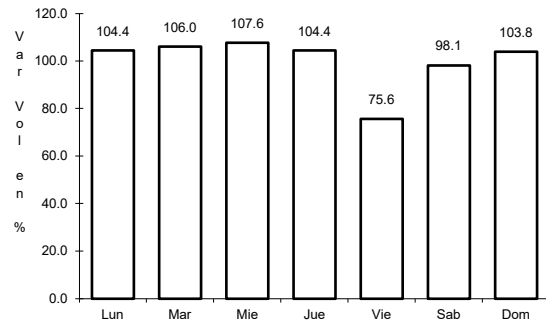


Km: 0.00                      Tipo: 3                      Sent: 2

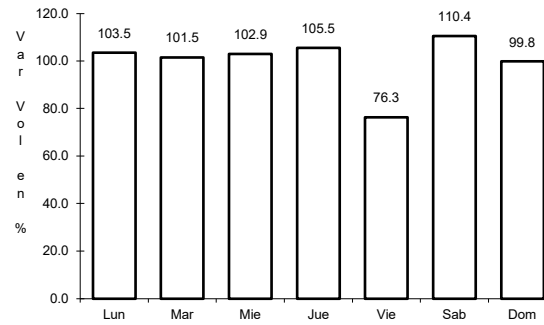
20 CARR: Ramal a Aeropuerto Cancún

CLAVE: 23574

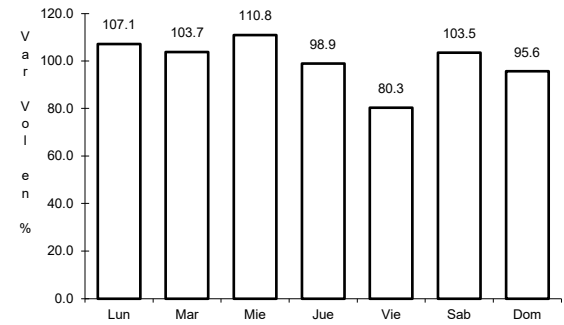
RUTA: QR



Km: 0.00                      Tipo: 3                      Sent: 1



Km: 0.00                      Tipo: 3                      Sent: 2

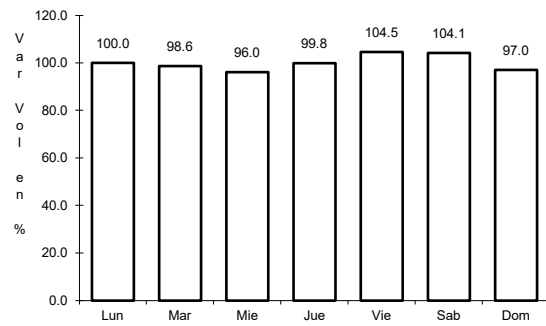


Km: 2.00                      Tipo: 1                      Sent: 1

21 CARR: Ramal a Candelaria

CLAVE: 23027

RUTA: QR

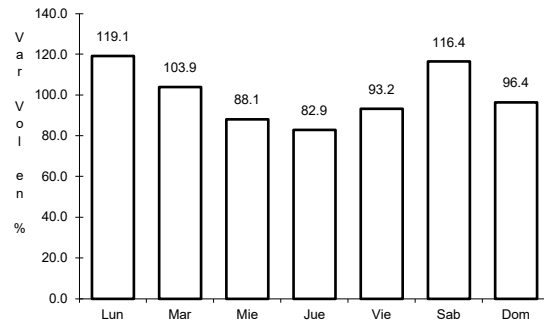


Km: 0.00                      Tipo: 3                      Sent: 0

22 CARR: Ramal a El Naranjal

CLAVE: 23579

RUTA: QR



Km: 0.00

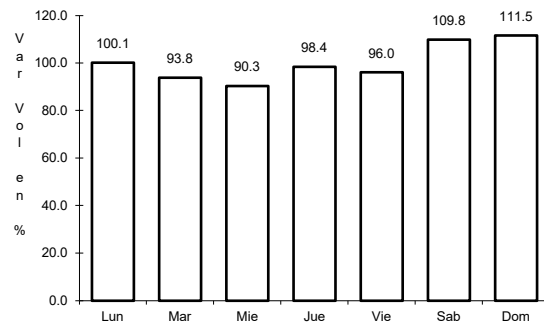
Tipo: 3

Sent: 0

23 CARR: Ramal a Laguna de Kaná

CLAVE: 23213

RUTA: QR



Km: 0.00

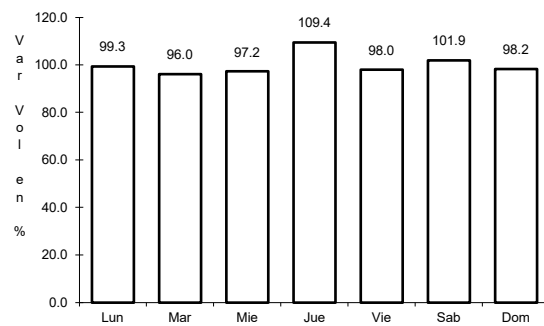
Tipo: 3

Sent: 0

24 CARR: Ramal a Mahahual

CLAVE: 23583

RUTA: QR



Km: 0.00

Tipo: 3

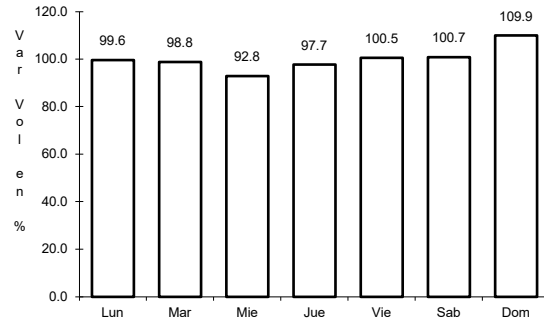
Sent: 0



25 CARR: Ramal a Petcacab

CLAVE: 23018

RUTA: QR-018



Km: 0.00

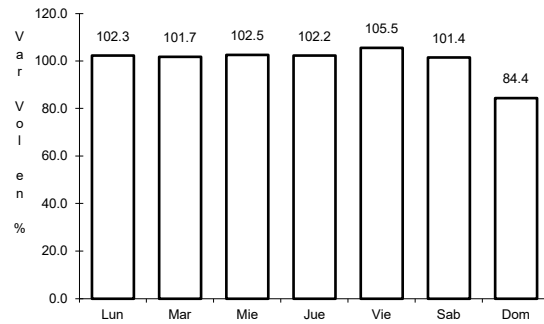
Tipo: 3

Sent: 0

26 CARR: Ramal a Punta Allen

CLAVE: 23015

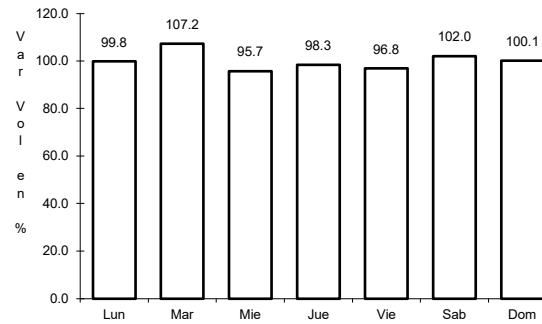
RUTA: QR-015



Km: 0.00

Tipo: 3

Sent: 0



Km: 10.20

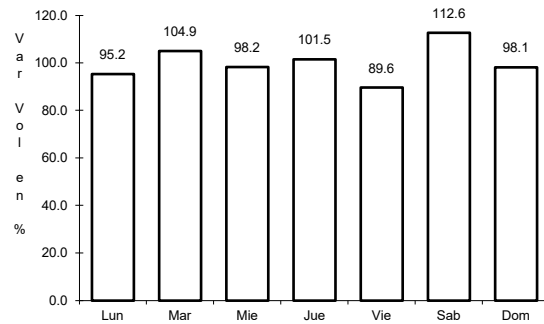
Tipo: 1

Sent: 0

27 CARR: Ramal a Punta Sam

CLAVE: 23582

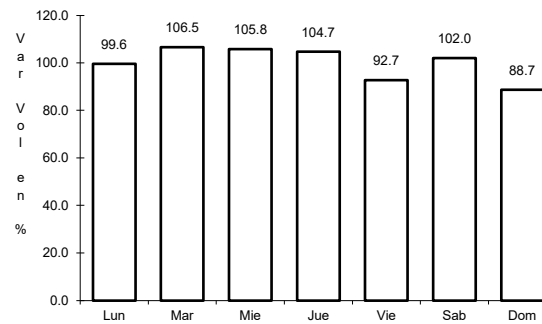
RUTA: QR



Km: 0.00

Tipo: 3

Sent: 0



Km: 5.00

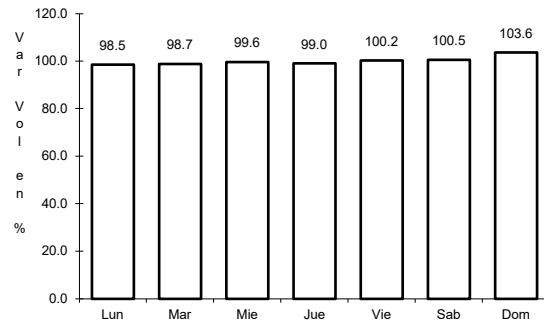
Tipo: 1

Sent: 0

28 CARR: Ramal a Reforma

CLAVE: 23016

RUTA: QR-016



Km: 0.00

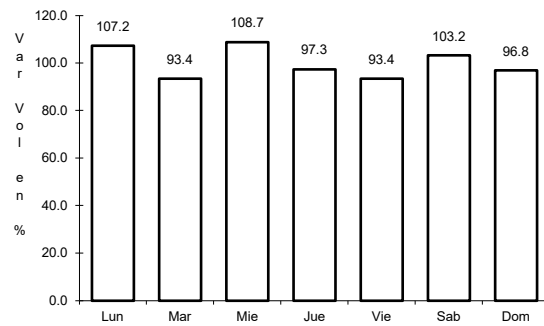
Tipo: 3

Sent: 0

29 CARR: Ramal a Tres Garantías

CLAVE: 23585

RUTA: QR



Km: 0.00

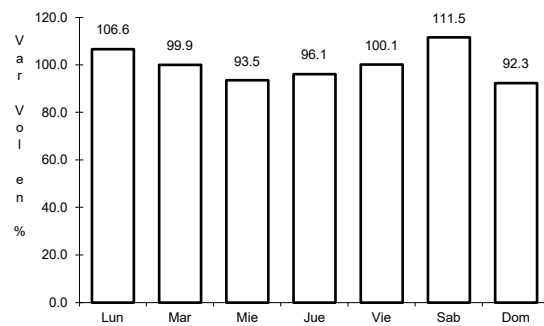
Tipo: 3

Sent: 0

30 CARR: Tihosuco - Dziuche

CLAVE: 23576

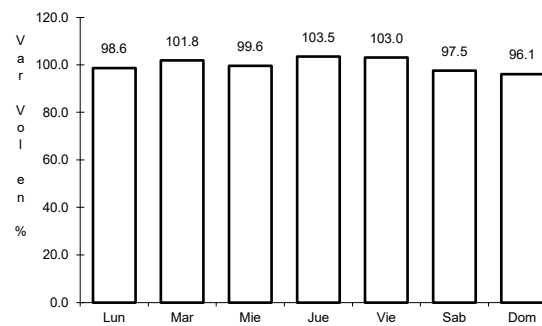
RUTA: QR



Km: 0.00

Tipo: 3

Sent: 0



Km: 60.50

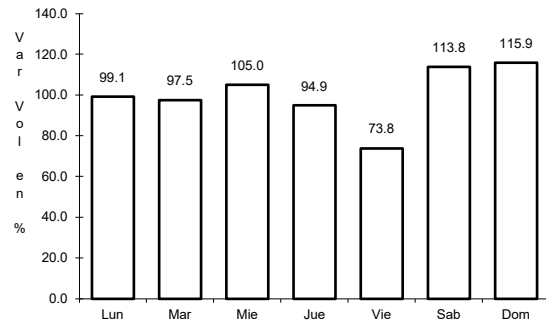
Tipo: 1

Sent: 0

31 CARR: Transversal de Cozumel

CLAVE: 23577

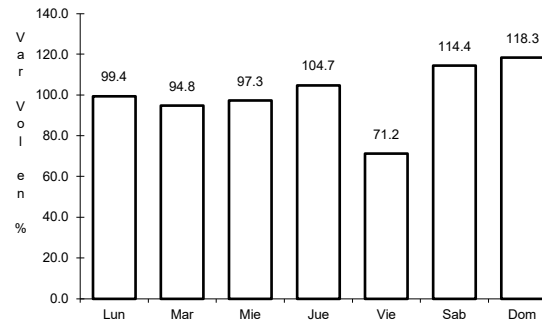
RUTA: QR



Km: 0.00

Tipo: 3

Sent: 1



Km: 0.00

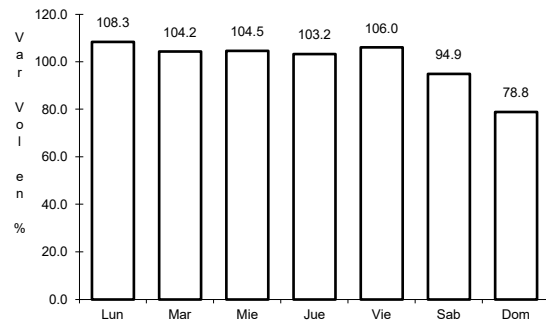
Tipo: 3

Sent: 2

32 CARR: Tulum - Nuevo X-Can

CLAVE: 23570

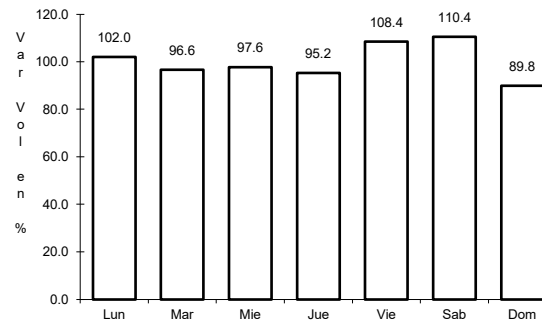
RUTA: QR



Km: 0.00

Tipo: 3

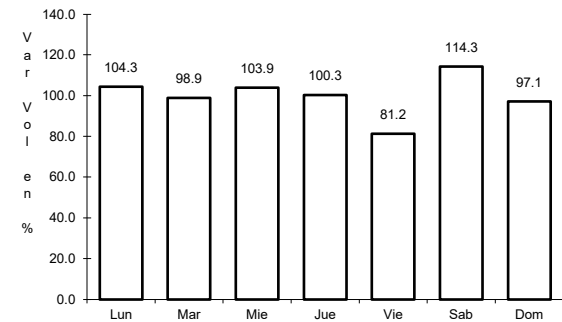
Sent: 1



Km: 42.95

Tipo: 1

Sent: 0



Km: 87.40

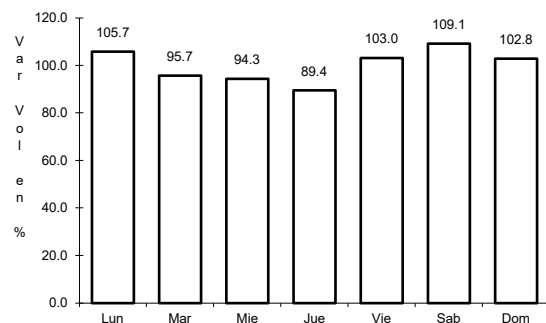
Tipo: 1

Sent: 0

33 CARR: Ucum - Unión

CLAVE: 23571

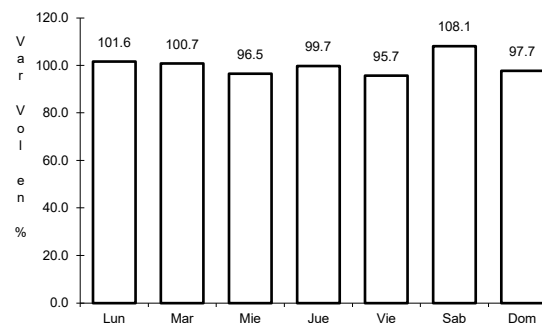
RUTA: QR



Km: 0.00

Tipo: 3

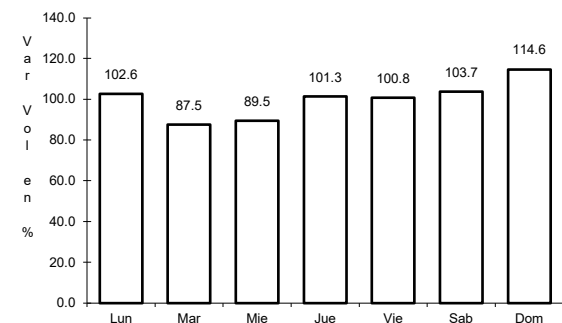
Sent: 0



Km: 31.00

Tipo: 3

Sent: 0



Km: 88.00

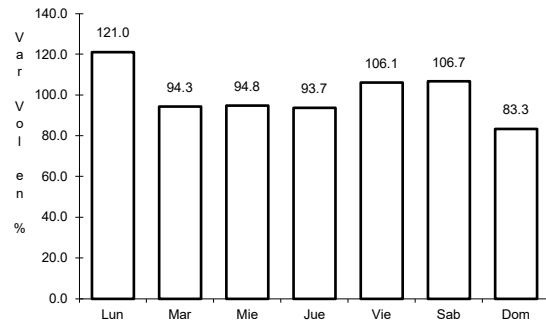
Tipo: 1

Sent: 0

34 CARR: Chemax - Cobá

CLAVE:

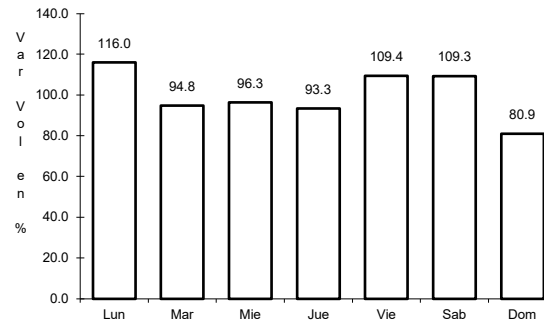
RUTA: YUC-MEX-180



Km: 0.00

Tipo: 3

Sent: 0



Km: 30.90

Tipo: 1

Sent: 0