



QUERETARO

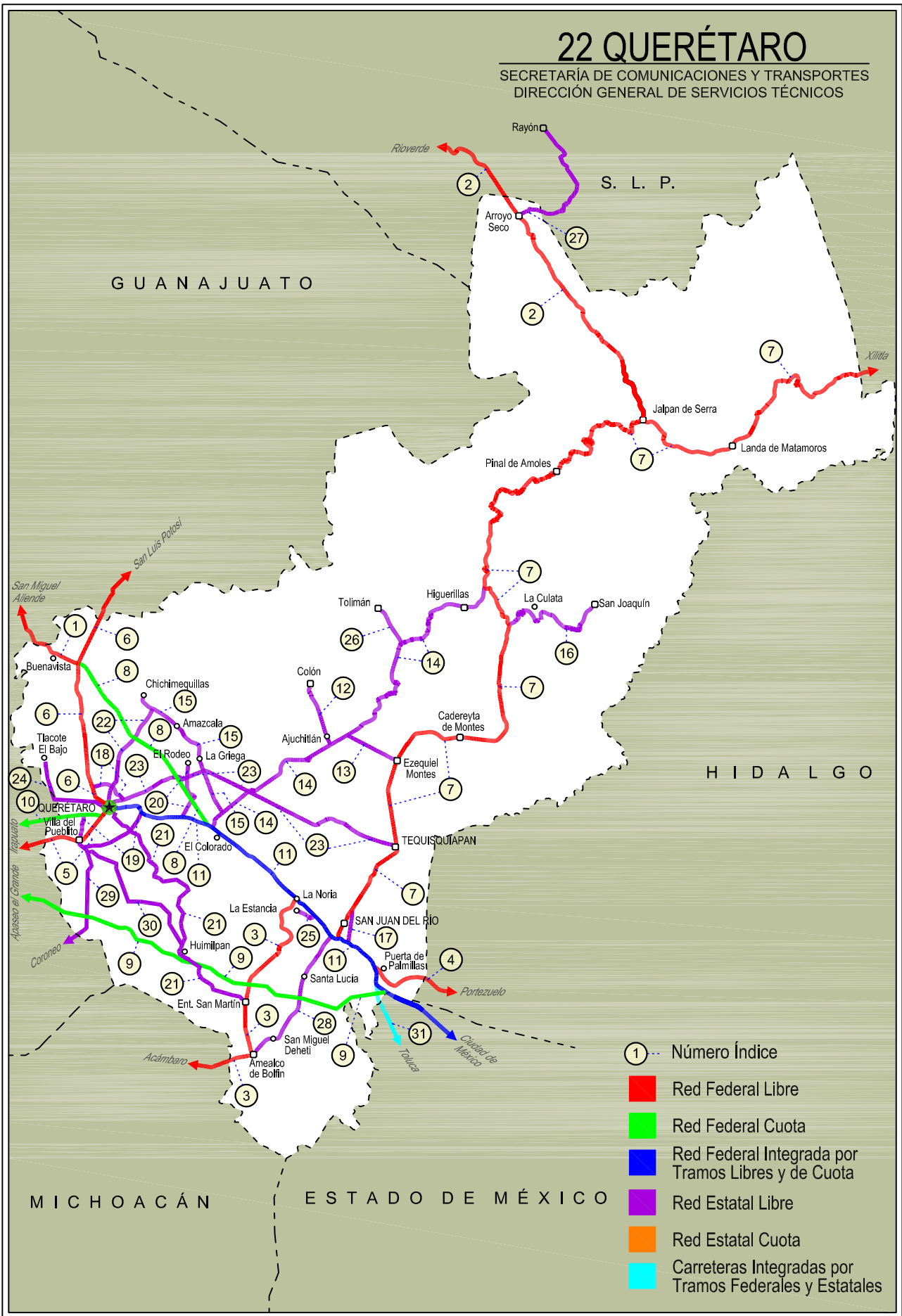
## NO. INDICE CARRETERA

## RUTA

NO. INDICE CARRETERA	RUTA
---RED FEDERAL LIBRE---	
1 Ent. Buenavista - San Miguel de Allende	MEX-057
2 Jalpan de Serra - Rioverde	MEX-069
3 La Noria - Acámbaro	MEX-120
4 Portezuelo - Palmillas	MEX-045
5 Querétaro - Irapuato (Libre)	MEX-045
6 Querétaro - San Luis Potosí	MEX-057
7 San Juan del Río - Xilitla	MEX-120
---RED FEDERAL DE CUOTA---	
8 Libramiento Nororiente de Querétaro (Cuota)	MEX-057D
9 Palmillas - Apaseo el Grande (Cuota)	MEX-045D
10 Querétaro - Irapuato (Cuota)	MEX-045D
---RED FEDERAL INTEGRADA POR TRAMOS LIBRES Y DE CUOTA---	
11 México - Querétaro (Cuota)	MEX-057-MEX-057D
---RED ESTATAL LIBRE---	
12 Ajuchitlán - Colón	QRO-005
13 Ajuchitlán - Ezequiel Montes	QRO-005
14 El Colorado - Higuierillas	QRO-004
15 Hacienda Paraíso - Chichimequillas	QRO-001
16 La Culata - San Joaquín	QRO-021
17 Libramiento de San Juan del Río	QRO
18 Libramiento Norte de Querétaro	QRO
19 Libramiento Surponiente de Querétaro	QRO
20 Peña Colorada - El Rodeo	QRO
21 Querétaro - Ent. San Martín	QRO
22 Querétaro - Estación Chichimequillas	QRO
23 Querétaro - Tequisquiapan	QRO
24 Querétaro - Tlacote El Bajo	QRO
25 Ramal a La Estancia	QRO
26 Ramal a Tolimán	QRO
27 Rayón - Arroyo Seco	SLP-011
28 San Juan del Río - Amealco	QRO
29 T. C. (Villa del Pueblito - Huimilpan) - Coroneo	QRO-GTO
30 Villa del Pueblito - Huimilpan	QRO
---CARRETERAS INTEGRADAS POR TRAMOS FEDERALES Y ESTATALES---	
31 Toluca - Palmillas	EM(D)-MEX-055

# 22 QUERÉTARO

SECRETARÍA DE COMUNICACIONES Y TRANSPORTES  
DIRECCIÓN GENERAL DE SERVICIOS TÉCNICOS





QUERETARO

1 CARR: Ent. Buenavista - San Miguel de Allende

CLAVE: 00111

RUTA: MEX-057

AÑO: 2020

LUGAR	ESTACION				CLASIFICACION VEHICULAR EN PORCIENTO													COORDENADAS		
	KM	TE	SC	TDPA	M	A	B	C2	C3	T3S2	T3S3	T3S2R4	OTROS	A	B	C	K'	D	LATITUD	LONGITUD
T. C. Querétaro - San Luis Potosí	0.00	3	0	17558	2.3	83.6	1.2	5.4	0.8	4.8	0.7	0.3	0.9	85.9	1.2	12.9	0.086	0.505	20.820340	-100.452343
Lim. Edos. Term. Qro. Ppia. Gto.	7.91																			
T. Izq. Guadalupe	12.00	1	0	9587	0.7	84.8	1.1	6.8	1.3	3.7	0.8	0.3	0.5	85.5	1.1	13.4	0.081	0.518	20.880567	-100.547790
San Miguel de Allende	35.11	1	0	11514	3.7	82.2	1.3	6.0	1.9	3.1	0.7	0.7	0.4	85.9	1.3	12.8	0.075	0.501	20.909033	-100.738714

2 CARR: Jalpan de Serra - Rioverde

CLAVE: 00265

RUTA: MEX-069

AÑO: 2020

LUGAR	ESTACION				CLASIFICACION VEHICULAR EN PORCIENTO													COORDENADAS		
	KM	TE	SC	TDPA	M	A	B	C2	C3	T3S2	T3S3	T3S2R4	OTROS	A	B	C	K'	D	LATITUD	LONGITUD
Jalpan de Serra	0.00	3	0	5288	2.5	85.5	0.2	8.1	0.4	3.0	0.2	0.0	0.1	88.0	0.2	11.8	0.095	0.500	21.231842	-99.479445
T. Izq. Conca	35.01	1	0	2472	4.2	84.2	0.4	9.1	0.6	1.2	0.2	0.0	0.1	88.4	0.4	11.2	0.101	0.513	21.450964	-99.632197
Arroyo Seco	48.60	1	0	1384	3.0	77.9	0.6	15.0	1.6	1.5	0.3	0.0	0.1	80.9	0.6	18.5	0.107	0.506	21.541570	-99.687730
Lim. Edos. Term. Qro. Ppia. S. L. P.	52.27																			
San Ciro de Acosta	69.42	1	0	1916	8.8	78.0	0.6	8.9	1.2	1.7	0.6	0.1	0.1	86.8	0.6	12.6	0.090	0.501	21.653829	-99.813863
San Ciro de Acosta	69.42	3	0	2119	4.7	80.4	0.4	11.0	0.8	2.0	0.4	0.2	0.1	85.1	0.4	14.5	0.081	0.505	21.653829	-99.813863
Rioverde	105.43	1	0	5878	3.0	77.8	0.2	14.9	0.6	2.6	0.5	0.1	0.3	80.8	0.2	19.0	0.093	0.513	21.923213	-99.993814

3 CARR: La Noria - Acámbaro

CLAVE: 00131

RUTA: MEX-120

AÑO: 2020

LUGAR	ESTACION				CLASIFICACION VEHICULAR EN PORCIENTO													COORDENADAS		
	KM	TE	SC	TDPA	M	A	B	C2	C3	T3S2	T3S3	T3S2R4	OTROS	A	B	C	K'	D	LATITUD	LONGITUD
La Noria	0.00	3	0	9005	1.6	80.8	1.5	9.9	1.5	3.6	0.7	0.3	0.1	82.4	1.5	16.1	0.089	0.516	20.439988	-100.073330
Amealco	34.66	1	0	5083	2.7	80.9	1.9	9.5	1.2	2.9	0.7	0.2	0.0	83.6	1.9	14.5	0.090	0.506	20.197223	-100.149639
Amealco	34.66	3	0	4323	2.1	85.6	1.3	6.3	0.9	2.7	0.9	0.2	0.0	87.7	1.3	11.0	0.094	0.519	20.187602	-100.150332
Lim. Edos. Term. Qro. Ppia. Mich.	39.15																			
Lim. Edos. Term. Mich. Ppia. Gto.	55.90																			
Coroneo	59.35	3	0	1794	0.5	89.1	3.7	4.1	0.9	1.5	0.2	0.0	0.0	89.6	3.7	6.7	0.089	0.523	20.199228	-100.365912
Jerécuaro	79.70	3	0	2169	3.5	86.1	2.7	6.3	0.8	0.4	0.2	0.0	0.0	89.6	2.7	7.7	0.102	0.504	20.147876	-100.511811
Acámbaro	111.12	1	0	5067	1.7	89.0	0.6	7.8	0.3	0.3	0.2	0.1	0.0	90.7	0.6	8.7	0.100	0.520	20.043443	-100.712641

4 CARR: Portezuelo - Palmillas

CLAVE: 00194

RUTA: MEX-045

AÑO: 2020

LUGAR	ESTACION				CLASIFICACION VEHICULAR EN PORCIENTO													COORDENADAS		
	KM	TE	SC	TDPA	M	A	B	C2	C3	T3S2	T3S3	T3S2R4	OTROS	A	B	C	K'	D	LATITUD	LONGITUD
Portezuelo	0.00	3	1	3626	2.0	73.4	2.8	9.7	2.1	6.0	2.6	1.0	0.4	75.4	2.8	21.8	0.088	0.514	20.486124	-99.298305

QUERETARO

4 CARR: Portezuelo - Palmillas

CLAVE: 00194

RUTA: MEX-045

AÑO: 2020

LUGAR	ESTACION				CLASIFICACION VEHICULAR EN PORCIENTO										COORDENADAS					
	KM	TE	SC	TDPA	M	A	B	C2	C3	T3S2	T3S3	T3S2R4	OTROS	A	B	C	K'	D	LATITUD	LONGITUD
Portezuelo	0.00	3	2	3426	1.9	71.6	3.4	9.3	2.6	6.7	3.0	1.0	0.5	73.5	3.4	23.1	0.084	0.514	20.485980	-99.298334
Jonacapa	29.41	3	0	4325	2.4	75.9	2.2	7.4	3.1	5.7	2.3	0.8	0.2	78.3	2.2	19.5	0.098	0.501	20.436853	-99.534074
Huichapan	45.10	1	1	3536	2.6	69.0	3.6	7.1	2.7	7.6	2.8	3.8	0.8	71.6	3.6	24.8	0.085	0.508	20.380345	-99.650289
Huichapan	45.10	1	2	3649	2.5	68.2	3.7	7.2	2.8	7.7	3.1	4.0	0.8	70.7	3.7	25.6	0.097	0.508	20.380344	-99.650284
T. Izq. Nopala	56.15	1	0	7068	2.4	78.7	2.4	6.9	1.9	1.9	2.1	2.2	1.5	81.1	2.4	16.5	0.088	0.503	20.314975	-99.715985
T. Izq. Nopala	56.15	3	0	5930	1.4	74.0	2.9	7.9	2.7	4.2	3.4	2.4	1.1	75.4	2.9	21.7	0.080	0.508	20.314217	-99.716557
Lim. Edos. Term. Hgo. Ppia. Qro.	71.40																			
Palmillas	80.00	1	1	4495	1.2	78.7	2.1	9.7	1.9	2.1	2.3	1.5	0.5	79.9	2.1	18.0	0.103	0.519	20.327083	-99.934526
Palmillas	80.00	1	2	4857	1.0	79.0	2.1	9.5	2.0	2.2	2.2	1.5	0.5	80.0	2.1	17.9	0.110	0.519	20.326933	-99.934485

5 CARR: Querétaro - Irapuato (Libre)

CLAVE: 00154

RUTA: MEX-045

AÑO: 2020

LUGAR	ESTACION				CLASIFICACION VEHICULAR EN PORCIENTO										COORDENADAS					
	KM	TE	SC	TDPA	M	A	B	C2	C3	T3S2	T3S3	T3S2R4	OTROS	A	B	C	K'	D	LATITUD	LONGITUD
Querétaro Poniente	0.00	3	1	66518	3.5	84.2	0.1	4.9	0.3	3.6	2.5	0.2	0.7	87.7	0.1	12.2	0.087	0.527	20.575432	-100.403704
Querétaro Poniente	0.00	3	2	58511	3.5	83.5	0.2	5.0	0.3	3.9	2.6	0.3	0.7	87.0	0.2	12.8	0.091	0.527	20.575373	-100.403628
T. Der. Villa del Pueblito	6.67	3	1	26691	1.3	86.0	0.2	5.2	0.4	3.3	2.7	0.3	0.6	87.3	0.2	12.5	0.077	0.530	20.533015	-100.446609
T. Der. Villa del Pueblito	6.67	3	2	22099	1.4	84.9	0.2	5.5	0.5	3.6	2.9	0.3	0.7	86.3	0.2	13.5	0.093	0.530	20.532910	-100.446651
Los Ángeles	12.60	3	1	21299	1.0	75.2	2.0	7.5	2.7	8.9	1.9	0.6	0.2	76.2	2.0	21.8	0.089	0.533	20.537119	-100.488517
Los Ángeles	12.60	3	2	18686	1.0	75.1	2.1	7.5	2.9	8.7	1.8	0.7	0.2	76.1	2.1	21.8	0.089	0.533	20.537009	-100.488489
Lim. Edos. Term. Qro. Ppia. Gto.	13.49																			
T. C. Palmillas - Apaseo el Grande (Cuota)	23.50	1	1	11411	0.6	76.4	1.8	7.4	2.7	8.4	1.8	0.7	0.2	77.0	1.8	21.2	0.089	0.548	20.499380	-100.589115
T. C. Palmillas - Apaseo el Grande (Cuota)	23.50	1	2	9414	0.6	73.7	2.0	8.3	3.2	9.3	2.0	0.7	0.2	74.3	2.0	23.7	0.104	0.548	20.499463	-100.589178
T. C. Palmillas - Apaseo el Grande (Cuota)	23.50	3	1	11008	0.6	75.5	2.2	7.8	3.1	8.1	1.8	0.7	0.2	76.1	2.2	21.7	0.110	0.515	20.496258	-100.593810
T. C. Palmillas - Apaseo el Grande (Cuota)	23.50	3	2	10373	0.7	71.9	2.3	9.2	3.6	9.1	2.1	0.9	0.2	72.6	2.3	25.1	0.091	0.515	20.496185	-100.593756
T. Izq. Apaseo El Alto	28.37	3	1	12907	2.3	75.2	2.6	5.8	3.5	8.0	1.6	0.8	0.2	77.5	2.6	19.9	0.080	0.507	20.463193	-100.632156
T. Izq. Apaseo El Alto	28.37	3	2	12567	2.2	72.6	2.9	6.7	3.7	9.1	1.8	0.8	0.2	74.8	2.9	22.3	0.076	0.507	20.463131	-100.632225
T. Der. Apaseo El Grande	40.11	3	1	19000	1.1	77.3	2.2	6.0	2.7	6.8	2.4	1.2	0.3	78.4	2.2	19.4	0.078	0.536	20.535646	-100.704824
T. Der. Apaseo El Grande	40.11	3	2	16449	1.1	74.2	2.6	7.0	2.9	7.8	2.8	1.3	0.3	75.3	2.6	22.1	0.084	0.536	20.535569	-100.704800
T. Izq. Libramiento de Celaya Ote.	49.90	1	1	16941	0.7	76.8	4.7	7.0	2.1	5.9	2.3	0.3	0.2	77.5	4.7	17.8	0.091	0.517	20.518362	-100.759082
T. Izq. Libramiento de Celaya Ote.	49.90	1	2	18162	0.7	74.7	5.2	7.6	2.2	6.7	2.4	0.3	0.2	75.4	5.2	19.4	0.077	0.517	20.518270	-100.759059
T. Izq. Libramiento de Celaya Pte.	55.61	3	1	21061	0.8	78.8	4.8	8.5	1.8	3.8	0.8	0.5	0.2	79.6	4.8	15.6	0.077	0.521	20.516659	-100.877060
T. Izq. Libramiento de Celaya Pte.	55.61	3	2	21322	0.8	78.8	4.8	8.5	1.8	3.8	0.8	0.5	0.2	79.6	4.8	15.6	0.077	0.521	20.516580	-100.877058
T. Izq. Cortazar	67.50	3	1	23095	2.1	75.6	4.8	8.4	2.1	4.7	1.3	0.8	0.2	77.7	4.8	17.5	0.081	0.503	20.511089	-100.955301
T. Izq. Cortazar	67.50	3	2	22783	2.1	75.5	4.8	8.4	2.2	4.7	1.3	0.8	0.2	77.6	4.8	17.6	0.080	0.503	20.510999	-100.955299

QUERETARO

5 CARR: Querétaro - Irapuato (Libre)

CLAVE: 00154

RUTA: MEX-045

AÑO: 2020

LUGAR	ESTACION				CLASIFICACION VEHICULAR EN PORCIENTO										COORDENADAS					
	KM	TE	SC	TDPA	M	A	B	C2	C3	T3S2	T3S3	T3S2R4	OTROS	A	B	C	K'	D	LATITUD	LONGITUD
T. Izq. Libramiento de Salamanca	93.80	1	1	19203	3.5	71.3	4.2	10.5	1.9	5.7	1.6	1.0	0.3	74.8	4.2	21.0	0.104	0.523	20.558357	-101.165072
T. Izq. Libramiento de Salamanca	93.80	1	2	17531	3.5	71.2	4.2	10.5	1.9	5.7	1.7	1.0	0.3	74.7	4.2	21.1	0.091	0.523	20.557457	-101.165447
T. Izq. Libramiento de Salamanca	102.10																			
Irapuato	113.70	1	1	11711	3.3	83.7	2.6	6.3	1.4	1.3	0.8	0.4	0.2	87.0	2.6	10.4	0.081	0.511	20.666951	-101.328494
Irapuato	113.70	1	2	12215	3.2	82.6	2.9	6.9	1.4	1.5	0.9	0.4	0.2	85.8	2.9	11.3	0.106	0.511	20.666712	-101.328639

6 CARR: Querétaro - San Luis Potosí

CLAVE: 00165

RUTA: MEX-057

AÑO: 2020

LUGAR	ESTACION				CLASIFICACION VEHICULAR EN PORCIENTO										COORDENADAS					
	KM	TE	SC	TDPA	M	A	B	C2	C3	T3S2	T3S3	T3S2R4	OTROS	A	B	C	K'	D	LATITUD	LONGITUD
Querétaro	0.00																			
T. Der. Libramiento de Querétaro	6.28	3	1	41615	0.8	91.5	1.0	3.6	0.6	1.6	0.6	0.1	0.2	92.3	1.0	6.7	0.143	0.504	20.622134	-100.422605
T. Der. Libramiento de Querétaro	6.28	3	2	42418	0.9	90.5	1.1	4.0	0.7	1.8	0.7	0.1	0.2	91.4	1.1	7.5	0.116	0.504	20.622146	-100.422843
T. Izq. Juriquilla	15.63	3	1	29752	0.8	88.2	1.5	5.6	1.2	2.0	0.4	0.2	0.1	89.0	1.5	9.5	0.131	0.506	20.691730	-100.435909
T. Izq. Juriquilla	15.63	3	2	30534	0.9	87.2	1.7	5.9	1.4	2.2	0.4	0.2	0.1	88.1	1.7	10.2	0.112	0.506	20.691697	-100.436069
T. Izq. San Miguel de Allende	28.53	1	1	28753	0.3	79.5	1.7	10.5	1.8	4.1	1.0	0.9	0.2	79.8	1.7	18.5	0.139	0.510	20.816344	-100.448715
T. Izq. San Miguel de Allende	28.53	1	2	27581	0.4	77.2	1.9	12.0	2.0	4.3	1.1	0.9	0.2	77.6	1.9	20.5	0.105	0.510	20.816425	-100.449036
T. Izq. San Miguel de Allende	28.53	3	1	17263	0.5	44.8	3.4	8.8	3.0	29.9	2.4	6.9	0.3	45.3	3.4	51.3	0.084	0.500	20.819025	-100.448398
T. Izq. San Miguel de Allende	28.53	3	2	17232	0.4	39.3	3.8	10.5	3.3	32.2	2.6	7.6	0.3	39.7	3.8	56.5	0.090	0.500	20.819164	-100.448630
Lim. Edos. Term. Qro. Ppia. Gto.	36.70																			
X. C. San José Iturbide - El Arenal	46.83	1	1	14019	1.0	41.3	4.0	8.0	3.3	31.9	3.0	7.3	0.2	42.3	4.0	53.7	0.069	0.500	20.973784	-100.431333
X. C. San José Iturbide - El Arenal	46.83	1	2	14043	1.0	41.3	4.1	7.9	3.3	31.9	3.0	7.3	0.2	42.3	4.1	53.6	0.087	0.500	20.973835	-100.431149
X. C. San José Iturbide - El Arenal	46.83	3	1	14053	1.8	50.6	4.1	8.2	3.0	23.6	3.9	4.4	0.4	52.4	4.1	43.5	0.080	0.501	20.973920	-100.431199
X. C. San José Iturbide - El Arenal	46.83	3	2	14090	1.6	50.2	4.4	8.4	2.6	24.0	3.8	4.6	0.4	51.8	4.4	43.8	0.094	0.501	20.973866	-100.431342
X. C. Ent. San Miguel de Allende - Dr. Mora	61.93	1	1	15766	2.3	48.7	4.9	9.7	3.1	22.5	3.8	4.6	0.4	51.0	4.9	44.1	0.071	0.503	21.079867	-100.515794
X. C. Ent. San Miguel de Allende - Dr. Mora	61.93	1	2	15967	2.2	49.1	4.8	9.7	3.1	22.3	3.8	4.6	0.4	51.3	4.8	43.9	0.069	0.503	21.079769	-100.516008
X. C. San Luis de La Paz - Guanajuato	86.68	1	1	12129	2.3	46.9	5.1	9.1	2.8	25.3	3.7	4.5	0.3	49.2	5.1	45.7	0.066	0.504	21.286951	-100.592570
X. C. San Luis de La Paz - Guanajuato	86.68	1	2	11960	2.3	47.0	5.1	8.9	2.8	25.2	3.8	4.6	0.3	49.3	5.1	45.6	0.066	0.504	21.286946	-100.592774
T. Izq. San Diego de La Unión	119.07	1	1	9539	1.0	52.1	5.6	6.6	2.8	22.4	3.9	5.0	0.6	53.1	5.6	41.3	0.063	0.526	21.535695	-100.744266
T. Izq. San Diego de La Unión	119.07	1	2	8603	1.0	52.1	5.5	6.6	2.6	22.5	4.1	5.0	0.6	53.1	5.5	41.4	0.066	0.526	21.535585	-100.744463
T. Izq. San Diego de La Unión	119.07	3	1	11451	0.3	55.5	5.6	7.2	2.6	19.1	4.2	5.0	0.5	55.8	5.6	38.6	0.066	0.516	21.535713	-100.744281
T. Izq. San Diego de La Unión	119.07	3	2	12216	0.3	55.5	5.5	7.3	2.6	19.1	4.2	5.0	0.5	55.8	5.5	38.7	0.072	0.516	21.535603	-100.744475
Lim. Edos. Term. Gto. Ppia. S. L. P.	124.74																			
T. Der. Tierra Nueva	140.65	1	1	9825	1.6	49.2	5.4	9.0	2.5	22.7	3.8	4.8	1.0	50.8	5.4	43.8	0.067	0.505	21.694695	-100.685899
T. Der. Tierra Nueva	140.65	1	2	10043	1.6	48.4	5.5	9.1	2.5	23.1	3.9	4.9	1.0	50.0	5.5	44.5	0.072	0.505	21.694819	-100.686011

QUERETARO

6 CARR: Querétaro - San Luis Potosí

CLAVE: 00165

RUTA: MEX-057

AÑO: 2020

LUGAR	ESTACION				CLASIFICACION VEHICULAR EN PORCIENTO										COORDENADAS					
	KM	TE	SC	TDPA	M	A	B	C2	C3	T3S2	T3S3	T3S2R4	OTROS	A	B	C	K'	D	LATITUD	LONGITUD
T. Der. Tierra Nueva	140.65	3	1	9599	1.7	52.3	5.0	8.4	2.4	20.8	3.7	4.7	1.0	54.0	5.0	41.0	0.060	0.501	21.694695	-100.685908
T. Der. Tierra Nueva	140.65	3	2	9644	1.5	48.4	5.8	8.9	2.6	23.1	3.9	4.8	1.0	49.9	5.8	44.3	0.065	0.501	21.694816	-100.686014
T. Izq. Santa María del Río	155.88	3	1	13086	1.7	50.7	5.3	8.2	2.3	22.4	3.7	4.7	1.0	52.4	5.3	42.3	0.075	0.514	21.811160	-100.727045
T. Izq. Santa María del Río	155.88	3	2	12377	1.5	45.6	6.0	9.6	2.6	24.5	4.0	5.1	1.1	47.1	6.0	46.9	0.071	0.514	21.811557	-100.730474
T. Izq. Villa de Reyes	176.35	1	1	11531	8.3	40.9	5.8	9.4	3.5	23.9	3.4	4.6	0.2	49.2	5.8	45.0	0.068	0.515	21.969231	-100.816031
T. Izq. Villa de Reyes	176.35	1	2	12225	7.9	40.3	5.8	9.5	3.5	24.8	3.4	4.6	0.2	48.2	5.8	46.0	0.067	0.515	21.969153	-100.816189
T. Izq. Villa de Reyes	176.35	3	1	23770	2.6	51.9	3.9	9.4	4.0	19.6	3.8	4.5	0.3	54.5	3.9	41.6	0.065	0.502	21.969222	-100.816022
T. Izq. Villa de Reyes	176.35	3	2	23974	2.6	52.1	3.9	9.3	3.9	19.6	3.8	4.5	0.3	54.7	3.9	41.4	0.071	0.502	21.969147	-100.816180
T. Izq. Villa de Arriaga (Cuota)	182.60	1	1	20096	0.8	67.2	2.5	7.7	2.8	13.5	2.2	2.7	0.6	68.0	2.5	29.5	0.099	0.507	22.018701	-100.842862
T. Izq. Villa de Arriaga (Cuota)	182.60	1	2	20683	0.8	64.7	2.8	8.6	2.9	14.2	2.3	3.1	0.6	65.5	2.8	31.7	0.115	0.507	22.018548	-100.842945
X. C. Libramiento de San Luis Potosí	184.80	1	1	29400	0.7	66.3	2.6	8.1	2.9	14.1	2.2	2.7	0.4	67.0	2.6	30.4	0.104	0.501	22.037687	-100.853187
X. C. Libramiento de San Luis Potosí	184.80	1	2	29287	1.0	62.5	2.8	8.9	3.1	15.6	2.5	3.2	0.4	63.5	2.8	33.7	0.107	0.501	22.037562	-100.853291
X. Periférico de San Luis Potosí (Central)	197.50	1	1	41079	0.7	89.4	0.4	1.6	0.3	2.0	4.3	0.6	0.7	90.1	0.4	9.5	0.080	0.504	22.125976	-100.918974
X. Periférico de San Luis Potosí (Lateral)	197.50	1	1	15619	3.9	79.4	1.2	8.7	2.1	2.5	1.4	0.4	0.4	83.3	1.2	15.5	0.124	0.501	22.126081	-100.918897
X. Periférico de San Luis Potosí (Lateral)	197.50	1	2	15664	3.8	78.4	1.3	9.4	2.4	2.7	1.2	0.4	0.4	82.2	1.3	16.5	0.115	0.501	22.125719	-100.919190
X. Periférico de San Luis Potosí (Central)	197.50	1	2	41787	0.7	88.7	0.5	1.8	0.3	2.0	4.7	0.6	0.7	89.4	0.5	10.1	0.075	0.504	22.125842	-100.919096
San Luis Potosí	201.66																			

7 CARR: San Juan del Río - Xilitla

CLAVE: 00183

RUTA: MEX-120

AÑO: 2020

LUGAR	ESTACION				CLASIFICACION VEHICULAR EN PORCIENTO										COORDENADAS					
	KM	TE	SC	TDPA	M	A	B	C2	C3	T3S2	T3S3	T3S2R4	OTROS	A	B	C	K'	D	LATITUD	LONGITUD
San Juan del Río	0.00																			
T. Der. Libramiento de San Juan del Río	5.20	3	1	15061	2.0	86.7	0.9	5.0	1.1	2.4	1.3	0.3	0.3	88.7	0.9	10.4	0.079	0.566	20.418458	-99.980287
T. Der. Libramiento de San Juan del Río	5.20	3	2	11541	2.0	86.7	0.9	5.0	1.1	2.4	1.3	0.3	0.3	88.7	0.9	10.4	0.084	0.566	20.418508	-99.980366
T. Der. Tequisquiapan	19.80	1	1	9809	1.7	85.8	1.6	7.4	1.1	1.1	0.7	0.3	0.3	87.5	1.6	10.9	0.105	0.501	20.518105	-99.898204
T. Der. Tequisquiapan	19.80	1	2	9837	1.8	85.6	1.7	7.4	1.1	1.1	0.7	0.3	0.3	87.4	1.7	10.9	0.095	0.501	20.518151	-99.898240
T. Der. Tequisquiapan	19.80	3	1	7427	1.7	83.6	1.5	7.3	1.9	1.7	1.3	0.5	0.5	85.3	1.5	13.2	0.095	0.505	20.522553	-99.898298
T. Der. Tequisquiapan	19.80	3	2	7579	1.6	83.8	1.4	7.4	1.9	1.7	1.4	0.4	0.4	85.4	1.4	13.2	0.084	0.505	20.522535	-99.898420
Ezequiel Montes	36.50	1	1	6143	1.9	80.9	2.4	7.6	3.0	2.2	1.0	0.5	0.5	82.8	2.4	14.8	0.097	0.503	20.665494	-99.898770
Ezequiel Montes	36.50	1	2	6067	1.8	80.8	2.5	7.6	3.0	2.3	1.0	0.5	0.5	82.6	2.5	14.9	0.098	0.503	20.665504	-99.898818
Ezequiel Montes	36.50	3	1	5196	2.1	87.4	0.9	6.2	1.4	1.0	0.5	0.3	0.2	89.5	0.9	9.6	0.110	0.505	20.665845	-99.898608
Ezequiel Montes	36.50	3	2	5091	2.1	87.4	1.0	6.1	1.4	1.0	0.5	0.3	0.2	89.5	1.0	9.5	0.096	0.505	20.665868	-99.898687
Cadereyta	47.90	3	1	4737	1.8	78.5	1.1	10.1	2.4	3.8	1.5	0.4	0.4	80.3	1.1	18.6	0.087	0.518	20.700880	-99.814594
Cadereyta	47.90	3	2	4411	1.3	79.8	1.1	9.6	2.6	3.6	1.2	0.3	0.5	81.1	1.1	17.8	0.105	0.518	20.700964	-99.814588



QUERETARO

7 CARR: San Juan del Río - Xilitla

CLAVE: 00183

RUTA: MEX-120

AÑO: 2020

LUGAR	ESTACION				CLASIFICACION VEHICULAR EN PORCIENTO										COORDENADAS					
	KM	TE	SC	TDPA	M	A	B	C2	C3	T3S2	T3S3	T3S2R4	OTROS	A	B	C	K'	D	LATITUD	LONGITUD
Vizarrón de Montes	73.50	3	0	2903	1.1	71.7	1.0	12.7	5.5	1.9	5.1	0.4	0.6	72.8	1.0	26.2	0.090	0.500	20.832884	-99.719557
T. Der. San Joaquín	79.50	3	0	1194	1.5	82.6	1.2	11.3	1.8	0.8	0.8	0.0	0.0	84.1	1.2	14.7	0.114	0.519	20.882242	-99.706545
T. Izq. Higuerillas	89.10	3	0	2178	1.8	82.6	2.2	10.4	1.7	0.7	0.6	0.0	0.0	84.4	2.2	13.4	0.133	0.505	20.946177	-99.749545
T. Izq. Peñamiller	103.00	3	0	1797	2.3	84.0	1.5	10.3	1.3	0.3	0.3	0.0	0.0	86.3	1.5	12.2	0.117	0.507	21.037917	-99.740664
Pinal de Amoles	140.00	3	0	1966	2.2	84.7	1.2	9.8	0.8	0.6	0.6	0.0	0.1	86.9	1.2	11.9	0.113	0.506	21.135222	-99.625463
Jalpan de Serra	179.30	3	0	6700	2.1	88.9	0.2	7.8	0.5	0.2	0.3	0.0	0.0	91.0	0.2	8.8	0.099	0.501	21.217968	-99.473981
Landa de Matamoros	201.60	3	0	3050	2.6	83.1	0.6	13.0	0.4	0.2	0.1	0.0	0.0	85.7	0.6	13.7	0.101	0.515	21.183034	-99.319964
El Lobo	236.40	3	0	1216	3.8	82.7	0.8	10.6	1.3	0.3	0.5	0.0	0.0	86.5	0.8	12.7	0.127	0.502	21.292718	-99.119596
Lim. Edos. Term. Qro. Ppia. S. L. P.	238.33																			
Xilitla	266.40	1	0	2535	5.4	83.2	0.5	6.7	1.6	1.7	0.5	0.1	0.3	88.6	0.5	10.9	0.103	0.519	21.384982	-98.992000
T. C. Portezuelo - Cd. Valles	276.98	1	0	2800	5.2	82.3	0.7	7.5	1.6	1.8	0.5	0.3	0.1	87.5	0.7	11.8	0.108	0.511	21.444884	-98.928310

8 CARR: Libramiento Nororiental de Querétaro (Cuota)

CLAVE: 22266

RUTA: MEX-057D

AÑO: 2020

LUGAR	ESTACION				CLASIFICACION VEHICULAR EN PORCIENTO										COORDENADAS					
	KM	TE	SC	TDPA	M	A	B	C2	C3	T3S2	T3S3	T3S2R4	OTROS	A	B	C	K'	D	LATITUD	LONGITUD
T. C. México - Querétaro	0.00	3	1	7537	1.1	50.1	5.1	6.0	2.9	25.3	3.2	5.8	0.5	51.2	5.1	43.7	0.074	0.511	20.560520	-100.229894
T. C. México - Querétaro	0.00	3	2	7861	1.4	46.7	5.5	6.3	3.1	26.4	3.6	6.6	0.4	48.1	5.5	46.4	0.082	0.511	20.560550	-100.230022
Plaza de Cobro Chichimequillas	20.32	2	1	7822	0.2	36.5	1.4	6.7	5.9	36.5	3.9	7.4	1.5	36.7	1.4	61.9	0.066	0.500	20.705589	-100.343736
Plaza de Cobro Chichimequillas	20.32	2	2	7822	0.2	36.5	1.4	6.7	5.9	36.5	3.9	7.4	1.5	36.7	1.4	61.9	0.066	0.500	20.705589	-100.343736
T. C. Querétaro - San Luis Potosí	37.50	1	1	7453	1.5	39.0	6.8	5.5	3.4	33.1	3.2	6.6	0.9	40.5	6.8	52.7	0.081	0.512	20.818935	-100.448205
T. C. Querétaro - San Luis Potosí	37.50	1	2	7825	1.3	48.8	5.3	5.7	3.1	22.7	2.9	9.4	0.8	50.1	5.3	44.6	0.086	0.512	20.816321	-100.448592

9 CARR: Palmillas - Apaseo el Grande (Cuota)

CLAVE:

RUTA: MEX-045D

AÑO: 2020

LUGAR	ESTACION				CLASIFICACION VEHICULAR EN PORCIENTO										COORDENADAS					
	KM	TE	SC	TDPA	M	A	B	C2	C3	T3S2	T3S3	T3S2R4	OTROS	A	B	C	K'	D	LATITUD	LONGITUD
T. C. México - Querétaro (Cuota)	0.00																			
Ent. Palmillas	4.00	1	1	5809	2.4	55.3	9.0	7.0	3.5	14.3	3.0	4.6	0.9	57.7	9.0	33.3	0.078	0.532	20.292498	-99.932833
Ent. Palmillas	4.00	1	2	5118	2.1	56.0	9.4	6.4	3.9	14.2	3.0	4.1	0.9	58.1	9.4	32.5	0.082	0.532	20.292371	-99.932817
Ent. Palmillas	4.00	3	1	5503	2.1	56.4	9.4	6.0	3.5	14.1	2.9	4.8	0.8	58.5	9.4	32.1	0.068	0.506	20.292490	-99.932845
Ent. Palmillas	4.00	3	2	5367	2.4	55.4	9.8	6.2	3.4	14.5	2.7	4.7	0.9	57.8	9.8	32.4	0.080	0.506	20.292374	-99.932827
T. Izq. Amealco	17.00	3	1	4964	2.2	57.1	9.0	6.6	3.4	13.0	3.1	4.5	1.1	59.3	9.0	31.7	0.077	0.509	20.280446	-100.056061
T. Izq. Amealco	17.00	3	2	4787	2.5	54.1	9.4	6.3	3.8	14.6	3.1	5.0	1.2	56.6	9.4	34.0	0.087	0.509	20.280345	-100.056151
T. C. (Villa del Pueblito - Huimilpan) - Coroneo	42.30	3	1	5375	2.4	56.1	9.7	6.2	3.2	14.1	2.8	4.3	1.2	58.5	9.7	31.8	0.065	0.501	20.348053	-100.274779

QUERETARO

9 CARR: Palmillas - Apaseo el Grande (Cuota)

CLAVE:

RUTA: MEX-045D

AÑO: 2020

LUGAR	ESTACION				CLASIFICACION VEHICULAR EN PORCIENTO														COORDENADAS	
	KM	TE	SC	TDPA	M	A	B	C2	C3	T3S2	T3S3	T3S2R4	OTROS	A	B	C	K'	D	LATITUD	LONGITUD
T. C. (Villa del Pueblito - Huimilpan) - Coroneo	42.30	3	2	5386	2.3	55.3	9.9	6.4	3.5	14.6	2.6	4.3	1.1	57.6	9.9	32.5	0.079	0.501	20.347973	-100.274893
Lim. Edos. Term. Qro. Ppia. Gto.	67.00																			
T. C. Querétaro - Irapuato (Cuota)	86.00	1	1	5334	2.3	55.3	11.2	5.2	3.9	14.8	2.1	4.2	1.0	57.6	11.2	31.2	0.086	0.505	20.532253	-100.622897
T. C. Querétaro - Irapuato (Cuota)	86.00	1	2	5451	2.4	52.2	12.1	5.6	3.5	15.8	2.4	5.0	1.0	54.6	12.1	33.3	0.104	0.505	20.532240	-100.622987
T. C. Querétaro - Irapuato (Cuota)	86.90																			

10 CARR: Querétaro - Irapuato (Cuota)

CLAVE: 00423

RUTA: MEX-045D

AÑO: 2020

LUGAR	ESTACION				CLASIFICACION VEHICULAR EN PORCIENTO														COORDENADAS	
	KM	TE	SC	TDPA	M	A	B	C2	C3	T3S2	T3S3	T3S2R4	OTROS	A	B	C	K'	D	LATITUD	LONGITUD
Querétaro	0.00	3	1	14129	0.7	63.6	7.2	7.9	5.8	7.6	2.8	3.8	0.6	64.3	7.2	28.5	0.088	0.528	20.576693	-100.417434
Querétaro	0.00	3	2	15820	0.7	63.6	7.2	7.9	5.8	7.6	2.8	3.8	0.6	64.3	7.2	28.5	0.090	0.528	20.576546	-100.417407
Plaza de Cobro Querétaro	7.00	2	1	5977	0.3	61.6	3.5	7.0	5.3	15.9	1.4	4.0	1.0	61.9	3.5	34.6	0.079	0.500	20.572203	-100.472827
Plaza de Cobro Querétaro	7.00	2	2	5977	0.3	61.6	3.5	7.0	5.3	15.9	1.4	4.0	1.0	61.9	3.5	34.6	0.079	0.500	20.572203	-100.472827
Lim. Edos. Term. Qro. Ppia. Gto.	8.97																			
T. C. Palmillas - Apaseo el Grande (Cuota)	24.50	1	1	12105	2.0	68.0	1.6	6.1	5.9	10.4	1.3	4.1	0.6	70.0	1.6	28.4	0.081	0.500	20.532438	-100.623085
T. C. Palmillas - Apaseo el Grande (Cuota)	24.50	1	2	12114	2.0	67.7	1.7	6.1	6.0	10.4	1.3	4.2	0.6	69.7	1.7	28.6	0.075	0.500	20.532301	-100.622956
T. C. Palmillas - Apaseo el Grande (Cuota)	24.50	3	1	10031	0.9	69.4	1.5	5.6	5.9	10.8	1.3	3.7	0.9	70.3	1.5	28.2	0.091	0.513	20.532422	-100.623146
T. C. Palmillas - Apaseo el Grande (Cuota)	24.50	3	2	10546	1.1	68.9	1.6	5.6	6.0	10.7	1.4	3.8	0.9	70.0	1.6	28.4	0.093	0.513	20.532287	-100.623003
T. C. Libramiento de Celaya (Cuota)	37.20	3	1	17092	0.8	69.2	2.4	6.1	5.5	10.2	1.2	3.8	0.8	70.0	2.4	27.6	0.087	0.513	20.546283	-100.747491
T. C. Libramiento de Celaya (Cuota)	37.20	3	2	18031	0.9	68.4	2.6	6.3	5.4	10.3	1.3	3.9	0.9	69.3	2.6	28.1	0.087	0.513	20.546058	-100.747485
X. C. Celaya - Dolores Hidalgo	44.10	1	1	15759	0.7	68.3	5.3	7.9	3.1	7.8	1.8	4.5	0.6	69.0	5.3	25.7	0.078	0.510	20.558058	-100.822412
X. C. Celaya - Dolores Hidalgo	44.10	1	2	16434	0.7	68.3	5.3	7.8	3.2	7.7	1.8	4.6	0.6	69.0	5.3	25.7	0.083	0.510	20.557910	-100.822420
T. Der. Juventino Rosas	63.00	3	1	12131	1.0	66.7	5.1	7.0	4.6	8.7	1.5	4.6	0.8	67.7	5.1	27.2	0.083	0.509	20.580947	-100.992361
T. Der. Juventino Rosas	63.00	3	2	12552	0.9	65.5	5.3	7.2	4.7	8.9	1.7	4.9	0.9	66.4	5.3	28.3	0.087	0.509	20.580756	-100.992381
T. C. Salamanca - León (Cuota)	78.00	1	1	13845	0.9	65.8	5.4	7.7	4.5	8.8	1.5	4.7	0.7	66.7	5.4	27.9	0.090	0.502	20.590512	-101.140099
T. C. Salamanca - León (Cuota)	78.00	1	2	13747	0.8	65.9	5.3	7.5	4.8	8.8	1.6	4.6	0.7	66.7	5.3	28.0	0.080	0.502	20.590339	-101.140148
T. Izq. Salamanca	81.54	1	1	7560	1.0	69.1	5.9	7.1	3.4	7.3	1.7	4.0	0.5	70.1	5.9	24.0	0.085	0.511	20.598584	-101.180933
T. Izq. Salamanca	81.54	1	2	7230	0.8	69.3	6.0	7.3	3.1	7.3	1.6	4.2	0.4	70.1	6.0	23.9	0.088	0.511	20.598360	-101.180972
T. Izq. Salamanca	81.54	3	1	6398	1.0	65.5	5.5	8.4	3.4	9.4	1.9	4.4	0.5	66.5	5.5	28.0	0.083	0.517	20.598591	-101.180953
T. Izq. Salamanca	81.54	3	2	5967	0.9	64.6	5.7	8.3	3.5	9.6	2.2	4.7	0.5	65.5	5.7	28.8	0.073	0.517	20.598367	-101.180992
Plaza de Cobro Salamanca	83.25	2	1	4826	0.3	53.6	2.7	7.3	8.1	18.3	2.2	6.4	1.1	53.9	2.7	43.4	0.079	0.500	20.598482	-101.180975
Plaza de Cobro Salamanca	83.25	2	2	4826	0.3	53.6	2.7	7.3	8.1	18.3	2.2	6.4	1.1	53.9	2.7	43.4	0.079	0.500	20.598482	-101.180975
T. Der. Libramiento de Irapuato	96.30	1	1	7660	0.9	66.0	5.6	8.5	3.5	9.2	1.5	4.4	0.4	66.9	5.6	27.5	0.080	0.530	20.654885	-101.291924
T. Der. Libramiento de Irapuato	96.30	1	2	6791	1.5	63.4	5.7	8.9	3.6	10.2	1.6	4.7	0.4	64.9	5.7	29.4	0.075	0.530	20.654695	-101.291766

QUERETARO

10 CARR: Querétaro - Irapuato (Cuota)

CLAVE: 00423

RUTA: MEX-045D

AÑO: 2020

LUGAR	ESTACION				CLASIFICACION VEHICULAR EN PORCIENTO													COORDENADAS		
	KM	TE	SC	TDPA	M	A	B	C2	C3	T3S2	T3S3	T3S2R4	OTROS	A	B	C	K'	D	LATITUD	LONGITUD
T. Der. Libramiento de Irapuato	96.30	3	1	13899	0.9	68.6	3.5	9.5	3.9	8.3	2.3	2.3	0.7	69.5	3.5	27.0	0.072	0.508	20.654883	-101.291936
T. Der. Libramiento de Irapuato	96.30	3	2	14339	0.9	68.6	3.5	9.5	3.9	8.3	2.3	2.3	0.7	69.5	3.5	27.0	0.069	0.508	20.654688	-101.291793
T. C. Irapuato - Zapotlanejo	104.70																			

11 CARR: México - Querétaro (Cuota)

CLAVE: 00411

RUTA: MEX-057-MEX-057D

AÑO: 2020

LUGAR	ESTACION				CLASIFICACION VEHICULAR EN PORCIENTO													COORDENADAS		
	KM	TE	SC	TDPA	M	A	B	C2	C3	T3S2	T3S3	T3S2R4	OTROS	A	B	C	K'	D	LATITUD	LONGITUD
México	0.00																			
Lim. Edos. Term. CDMX Ppia. Méx.	11.30																			
Lechería	29.41																			
Plaza de Cobro Tepetzotlán	43.01	2	1	24889	0.6	71.1	4.4	5.1	3.9	11.1	0.7	2.4	0.7	71.7	4.4	23.9	0.077	0.500	19.715361	-99.207448
Plaza de Cobro Tepetzotlán	43.01	2	2	24889	0.6	71.1	4.4	5.1	3.9	11.1	0.7	2.4	0.7	71.7	4.4	23.9	0.077	0.500	19.715361	-99.207448
Ent. Jorobas	56.18	1	1	27512	1.2	73.5	3.2	7.1	2.1	8.8	1.6	1.6	0.9	74.7	3.2	22.1	0.089	0.507	19.825510	-99.248711
Ent. Jorobas	56.18	1	2	28375	1.1	61.0	5.7	9.7	3.5	12.8	2.2	3.1	0.9	62.1	5.7	32.2	0.081	0.507	19.825295	-99.248856
Ent. Jorobas	56.18	3	1	38329	1.4	60.4	5.1	8.6	3.4	15.1	2.0	3.1	0.9	61.8	5.1	33.1	0.076	0.504	19.825531	-99.248756
Ent. Jorobas	56.18	3	2	38977	1.4	60.4	5.1	8.6	3.4	15.1	2.0	3.1	0.9	61.8	5.1	33.1	0.083	0.504	19.825316	-99.248900
Lim. Edos. Term. Méx. Ppia. Hgo.	59.85																			
T. Der. Tepeji del Río	69.36	1	1	28384	1.2	67.6	4.4	8.3	2.5	11.7	1.3	2.5	0.5	68.8	4.4	26.8	0.086	0.500	19.884267	-99.343075
T. Der. Tepeji del Río	69.36	1	2	28379	1.2	67.6	4.4	8.3	2.5	11.7	1.3	2.5	0.5	68.8	4.4	26.8	0.081	0.500	19.884140	-99.343246
T. Der. Tepeji del Río	69.36	3	1	26039	1.0	64.1	5.2	7.4	2.7	14.5	1.6	3.0	0.5	65.1	5.2	29.7	0.080	0.527	19.884287	-99.343087
T. Der. Tepeji del Río	69.36	3	2	21956	1.4	68.2	4.1	5.3	2.6	12.7	2.5	2.6	0.6	69.6	4.1	26.3	0.071	0.527	19.884170	-99.343249
T. Izq. Jilotepec	83.75	1	1	26348	1.4	65.6	5.1	4.0	6.0	13.5	1.0	2.6	0.8	67.0	5.1	27.9	0.085	0.529	19.982136	-99.437771
T. Izq. Jilotepec	83.75	1	2	22014	1.4	65.6	5.1	4.0	6.0	13.5	1.0	2.6	0.8	67.0	5.1	27.9	0.071	0.529	19.981011	-99.439293
T. Izq. Jilotepec	83.75	3	1	26964	1.3	63.6	4.7	6.3	2.8	14.6	2.3	3.5	0.9	64.9	4.7	30.4	0.095	0.508	19.982159	-99.437794
T. Izq. Jilotepec	83.75	3	2	27901	1.3	63.6	4.7	6.3	2.7	14.6	2.3	3.5	1.0	64.9	4.7	30.4	0.105	0.508	19.981035	-99.439302
Lim. Edos. Term. Hgo. Ppia. Méx.	86.00																			
X. C. Libramiento Norte de La Ciudad de México (Cuota)	89.44	3	1	22635	4.4	54.5	9.1	5.5	2.6	14.6	2.2	5.6	1.5	58.9	9.1	32.0	0.077	0.508	19.998391	-99.489806
X. C. Libramiento Norte de La Ciudad de México (Cuota)	89.44	3	2	24763	4.4	54.6	9.1	5.5	2.5	14.6	2.2	5.6	1.5	59.0	9.1	31.9	0.105	0.508	19.998155	-99.490022
T. Der. Palos Altos	97.80	1	1	28530	4.7	66.6	3.3	5.6	2.2	11.6	2.5	2.7	0.8	71.3	3.3	25.4	0.078	0.503	20.036572	-99.562056
T. Der. Palos Altos	97.80	1	2	28897	4.7	66.6	3.3	5.6	2.2	11.6	2.5	2.6	0.9	71.3	3.3	25.4	0.105	0.503	20.036255	-99.562140
X. C. Jilotepec - Maravillas	107.00	1	1	27725	4.4	62.8	4.5	4.1	5.2	14.4	0.7	3.1	0.8	67.2	4.5	28.3	0.078	0.502	20.083257	-99.628296
X. C. Jilotepec - Maravillas	107.00	1	2	28002	4.5	62.8	4.4	4.1	5.2	14.4	0.7	3.1	0.8	67.3	4.4	28.3	0.104	0.502	20.082966	-99.628366
X. C. Jilotepec - Maravillas	107.00	3	1	26800	3.7	58.0	5.1	6.9	2.9	16.6	2.2	4.0	0.6	61.7	5.1	33.2	0.080	0.513	20.083261	-99.628345
X. C. Jilotepec - Maravillas	107.00	3	2	28365	3.7	58.1	5.1	6.9	2.8	16.6	2.2	4.0	0.6	61.8	5.1	33.1	0.104	0.513	20.082977	-99.628409

QUERETARO

11 CARR: México - Querétaro (Cuota)

CLAVE: 00411

RUTA: MEX-057-MEX-057D

AÑO: 2020

LUGAR	ESTACION				CLASIFICACION VEHICULAR EN PORCIENTO										COORDENADAS					
	KM	TE	SC	TDPA	M	A	B	C2	C3	T3S2	T3S3	T3S2R4	OTROS	A	B	C	K'	D	LATITUD	LONGITUD
T. Izq. Encinillas	121.70	1	1	27799	4.3	71.7	2.7	4.1	2.3	9.5	1.5	3.3	0.6	76.0	2.7	21.3	0.079	0.511	20.150949	-99.739272
T. Izq. Encinillas	121.70	1	2	29120	4.0	63.4	3.1	5.0	3.1	12.8	3.1	4.9	0.6	67.4	3.1	29.5	0.104	0.511	20.150805	-99.739469
T. Izq. Aculco	125.00	1	1	26214	1.3	65.4	4.4	3.9	5.7	14.5	0.8	3.1	0.9	66.7	4.4	28.9	0.079	0.505	20.101791	-99.696583
T. Izq. Aculco	125.00	1	2	26738	1.1	62.1	4.7	4.6	5.9	16.2	1.0	3.5	0.9	63.2	4.7	32.1	0.107	0.505	20.101658	-99.696781
T. Izq. Aculco	125.00	3	1	25791	1.3	66.5	4.5	4.1	5.2	13.7	0.9	3.0	0.8	67.8	4.5	27.7	0.079	0.504	20.101819	-99.696596
T. Izq. Aculco	125.00	3	2	26228	1.6	62.0	5.5	4.5	5.6	15.3	1.2	3.4	0.9	63.6	5.5	30.9	0.106	0.504	20.101678	-99.696809
Polotitlán	133.00	1	1	25737	2.7	58.1	5.1	6.8	3.1	16.8	2.2	4.4	0.8	60.8	5.1	34.1	0.078	0.503	20.227038	-99.812011
Polotitlán	133.00	1	2	26100	2.7	57.1	5.0	6.9	3.6	17.3	2.6	4.1	0.7	59.8	5.0	35.2	0.106	0.503	20.226909	-99.812153
Lim. Edos. Term. Méx. Ppia. Qro.	145.50																			
Plaza de Cobro Palmillas	145.80	2	1	16963	0.4	58.6	2.7	6.2	5.4	19.3	1.7	4.3	1.4	59.0	2.7	38.3	0.077	0.500	20.296112	-99.929069
Plaza de Cobro Palmillas	145.80	2	2	16963	0.4	58.6	2.7	6.2	5.4	19.3	1.7	4.3	1.4	59.0	2.7	38.3	0.077	0.500	20.296112	-99.929069
T. Izq. Toluca	148.50	1	1	30673	2.6	55.7	4.6	7.1	3.6	18.8	2.6	4.3	0.7	58.3	4.6	37.1	0.079	0.500	20.298554	-99.932818
T. Izq. Toluca	148.50	1	2	30700	2.6	55.7	4.6	7.1	3.6	18.8	2.6	4.3	0.7	58.3	4.6	37.1	0.107	0.500	20.298275	-99.933074
T. Izq. Toluca	148.50	3	1	30915	2.9	64.0	4.9	5.9	3.3	13.0	1.9	3.2	0.9	66.9	4.9	28.2	0.071	0.504	20.299417	-99.933621
T. Izq. Toluca	148.50	3	2	30337	4.2	60.8	5.0	6.0	3.5	14.3	1.8	3.5	0.9	65.0	5.0	30.0	0.099	0.504	20.299220	-99.933922
T. Der. Portezuelo	151.53	3	1	37123	2.9	63.1	3.8	5.1	4.8	14.6	0.9	4.1	0.7	66.0	3.8	30.2	0.087	0.517	20.326713	-99.935173
T. Der. Portezuelo	151.53	3	2	35493	2.7	58.0	4.3	5.9	5.2	17.5	1.0	4.6	0.8	60.7	4.3	35.0	0.082	0.517	20.326628	-99.935431
T. Der. Poniente San Juan del Río	164.10	3	1	35634	2.9	62.8	3.9	5.2	4.6	14.9	0.9	4.1	0.7	65.7	3.9	30.4	0.087	0.517	20.370769	-99.986930
T. Der. Poniente San Juan del Río	164.10	3	2	32988	2.9	62.8	3.9	5.2	4.6	14.9	0.9	4.1	0.7	65.7	3.9	30.4	0.082	0.517	20.370487	-99.986944
La Estancia	169.40	1	1	32801	4.1	60.1	5.4	14.2	2.5	9.5	1.7	2.0	0.5	64.2	5.4	30.4	0.081	0.517	20.427711	-100.056758
La Estancia	169.40	1	2	35409	4.1	60.1	5.4	14.2	2.5	9.5	1.7	2.0	0.5	64.2	5.4	30.4	0.081	0.517	20.427561	-100.056992
T. Izq. Acámbaro	170.45	3	1	35902	4.5	66.8	3.2	7.8	2.3	11.2	1.5	2.2	0.5	71.3	3.2	25.5	0.072	0.516	20.441740	-100.071744
T. Izq. Acámbaro	170.45	3	2	38594	4.4	64.1	3.5	8.5	2.4	12.6	1.7	2.3	0.5	68.5	3.5	28.0	0.071	0.516	20.441539	-100.071927
T. Der. Libramiento Nororientado de Querétaro (Cuota)	192.50	1	1	35924	1.2	70.2	3.9	2.9	4.6	12.4	1.8	2.2	0.8	71.4	3.9	24.7	0.084	0.521	20.560416	-100.229920
T. Der. Libramiento Nororientado de Querétaro (Cuota)	192.50	1	2	39529	1.1	67.1	4.3	3.1	5.4	13.6	2.1	2.4	0.9	68.2	4.3	27.5	0.083	0.521	20.560190	-100.229880
T. Der. Libramiento Nororientado de Querétaro (Cuota)	192.50	3	1	54500	1.1	78.8	2.2	8.2	2.1	5.1	1.2	0.9	0.4	79.9	2.2	17.9	0.070	0.512	20.560426	-100.229962
T. Der. Libramiento Nororientado de Querétaro (Cuota)	192.50	3	2	51692	1.4	75.1	3.6	8.2	2.4	6.3	1.4	1.1	0.5	76.5	3.6	19.9	0.067	0.512	20.560203	-100.229924
T. Der. Libramiento de Querétaro a San Luis Potosí	207.00	1	1	57327	1.0	81.2	2.6	6.2	1.6	4.5	1.6	0.7	0.6	82.2	2.6	15.2	0.097	0.519	20.582159	-100.361800
T. Der. Libramiento de Querétaro a San Luis Potosí	207.00	1	2	62750	1.0	81.0	2.6	6.2	1.7	4.6	1.6	0.7	0.6	82.0	2.6	15.4	0.082	0.519	20.581814	-100.361756
T. Der. Libramiento de Querétaro a San Luis Potosí	207.00	3	1	56187	0.9	83.1	1.5	5.6	2.0	4.6	1.2	0.7	0.4	84.0	1.5	14.5	0.084	0.525	20.582155	-100.361814
T. Der. Libramiento de Querétaro a San Luis Potosí	207.00	3	2	62980	0.9	82.0	1.6	5.3	2.2	5.4	1.2	1.0	0.4	82.9	1.6	15.5	0.084	0.525	20.581814	-100.361774
Querétaro	211.60																			

QUERETARO

12 CARR: Ajuchitlán - Colón

CLAVE: 22010

RUTA: QRO-005

AÑO: 2020

LUGAR	ESTACION				CLASIFICACION VEHICULAR EN PORCIENTO										COORDENADAS					
	KM	TE	SC	TDPA	M	A	B	C2	C3	T3S2	T3S3	T3S2R4	OTROS	A	B	C	K'	D	LATITUD	LONGITUD
T. C. El Colorado - Higuerrillas	0.00	3	1	3964	0.7	86.5	1.8	6.2	0.5	2.6	0.8	0.3	0.6	87.2	1.8	11.0	0.098	0.505	20.691386	-100.014895
T. C. El Colorado - Higuerrillas	0.00	3	2	4045	0.7	86.6	1.7	6.1	0.6	2.6	0.8	0.2	0.7	87.3	1.7	11.0	0.111	0.505	20.691386	-100.014895
Colón	14.00	1	1	4070	0.7	89.6	0.9	7.2	0.6	0.5	0.2	0.3	0.0	90.3	0.9	8.8	0.096	0.507	20.776617	-100.053187
Colón	14.00	1	2	4187	0.7	89.8	0.8	7.2	0.5	0.5	0.2	0.3	0.0	90.5	0.8	8.7	0.108	0.507	20.776617	-100.053187

13 CARR: Ajuchitlán - Ezequiel Montes

CLAVE: 22005

RUTA: QRO-005

AÑO: 2020

LUGAR	ESTACION				CLASIFICACION VEHICULAR EN PORCIENTO										COORDENADAS					
	KM	TE	SC	TDPA	M	A	B	C2	C3	T3S2	T3S3	T3S2R4	OTROS	A	B	C	K'	D	LATITUD	LONGITUD
T. C. El Colorado - Higuerrillas	0.00	3	1	7211	0.8	88.2	1.8	4.1	1.9	1.3	1.2	0.5	0.2	89.0	1.8	9.2	0.100	0.514	20.706395	-99.983947
T. C. El Colorado - Higuerrillas	0.00	3	2	6813	0.7	87.6	1.9	4.5	2.1	1.2	1.2	0.6	0.2	88.3	1.9	9.8	0.118	0.514	20.706494	-99.983897
Ezequiel Montes	10.60	1	0	11213	1.4	82.2	0.4	9.4	0.9	3.9	0.7	0.3	0.8	83.6	0.4	16.0	0.088	0.509	20.665769	-99.898887

14 CARR: El Colorado - Higuerrillas

CLAVE: 22004

RUTA: QRO-004

AÑO: 2020

LUGAR	ESTACION				CLASIFICACION VEHICULAR EN PORCIENTO										COORDENADAS					
	KM	TE	SC	TDPA	M	A	B	C2	C3	T3S2	T3S3	T3S2R4	OTROS	A	B	C	K'	D	LATITUD	LONGITUD
T. C. México - Querétaro (Cuota)	0.00	3	1	18825	1.4	76.9	1.3	10.0	3.7	3.5	1.2	1.4	0.6	78.3	1.3	20.4	0.099	0.502	20.561830	-100.222361
T. C. México - Querétaro (Cuota)	0.00	3	2	18659	1.4	76.9	1.3	10.0	3.7	3.5	1.2	1.4	0.6	78.3	1.3	20.4	0.087	0.502	20.561909	-100.222433
T. Izq. Chichimequillas	3.80	3	1	11834	1.3	81.6	1.2	7.3	2.5	2.7	1.9	1.0	0.5	82.9	1.2	15.9	0.110	0.500	20.579781	-100.199351
T. Izq. Chichimequillas	3.80	3	2	11815	1.3	81.6	1.2	7.3	2.5	2.7	1.9	1.0	0.5	82.9	1.2	15.9	0.095	0.500	20.579879	-100.199416
X. C. Querétaro - Tequisquiapan	9.10	3	1	8799	1.5	81.4	1.1	8.8	1.8	2.4	1.8	0.7	0.5	82.9	1.1	16.0	0.102	0.517	20.613381	-100.156366
X. C. Querétaro - Tequisquiapan	9.10	3	2	8236	1.5	81.2	1.1	9.1	1.8	2.4	1.8	0.6	0.5	82.7	1.1	16.2	0.108	0.517	20.613451	-100.156423
T. Der. Ezequiel Montes	31.90	1	1	7534	1.5	80.9	1.0	9.4	2.0	2.0	2.3	0.4	0.5	82.4	1.0	16.6	0.101	0.513	20.706357	-99.985495
T. Der. Ezequiel Montes	31.90	1	2	7142	1.7	80.4	1.0	9.5	2.0	2.1	2.4	0.4	0.5	82.1	1.0	16.9	0.107	0.513	20.706429	-99.985538
T. Der. Ezequiel Montes	31.90	3	1	4555	1.5	84.1	1.3	8.0	1.5	1.1	1.6	0.4	0.5	85.6	1.3	13.1	0.104	0.513	20.707080	-99.983948
T. Der. Ezequiel Montes	31.90	3	2	4319	1.5	83.9	1.4	7.8	1.6	1.1	1.7	0.5	0.5	85.4	1.4	13.2	0.107	0.513	20.707273	-99.984095
T. Izq. San Pablo Tolimán	57.00	3	0	1382	2.2	86.4	1.2	6.2	1.6	1.2	0.6	0.0	0.6	88.6	1.2	10.2	0.167	0.511	20.854467	-99.893060
T. C. San Juan del Río - Xilitla	81.90	1	0	1426	2.3	85.8	1.3	7.2	1.8	0.6	0.5	0.0	0.5	88.1	1.3	10.6	0.168	0.513	20.944591	-99.749762

15 CARR: Hacienda Paraíso - Chichimequillas

CLAVE: 22001

RUTA: QRO-001

AÑO: 2020

LUGAR	ESTACION				CLASIFICACION VEHICULAR EN PORCIENTO										COORDENADAS					
	KM	TE	SC	TDPA	M	A	B	C2	C3	T3S2	T3S3	T3S2R4	OTROS	A	B	C	K'	D	LATITUD	LONGITUD
Hacienda Paraíso	0.00	3	1	5268	1.1	75.9	1.7	9.7	3.5	5.7	1.2	0.8	0.4	77.0	1.7	21.3	0.105	0.519	20.580515	-100.199333

QUERETARO

15 CARR: Hacienda Paraíso - Chichimequillas

CLAVE: 22001

RUTA: QRO-001

AÑO: 2020

LUGAR	ESTACION				CLASIFICACION VEHICULAR EN PORCIENTO													COORDENADAS		
	KM	TE	SC	TDPA	M	A	B	C2	C3	T3S2	T3S3	T3S2R4	OTROS	A	B	C	K'	D	LATITUD	LONGITUD
Hacienda Paraíso	0.00	3	2	4880	1.5	72.6	1.9	11.6	4.0	6.0	1.1	0.8	0.5	74.1	1.9	24.0	0.106	0.519	20.580459	-100.199423
T. Der. Navajas	7.90	3	0	11569	1.8	75.3	1.7	9.9	2.8	6.4	1.0	0.5	0.6	77.1	1.7	21.2	0.090	0.505	20.643253	-100.231317
La Griega	10.35	3	0	7887	2.0	80.0	1.5	11.2	2.1	2.3	0.6	0.3	0.0	82.0	1.5	16.5	0.091	0.508	20.676117	-100.239865
Amazcala	15.45	3	0	6791	2.0	80.1	1.4	10.0	2.6	2.1	1.0	0.4	0.4	82.1	1.4	16.5	0.088	0.501	20.703677	-100.265234
Chichimequillas	26.61																			

16 CARR: La Culata - San Joaquín

CLAVE: 22021

RUTA: QRO-021

AÑO: 2020

LUGAR	ESTACION				CLASIFICACION VEHICULAR EN PORCIENTO													COORDENADAS		
	KM	TE	SC	TDPA	M	A	B	C2	C3	T3S2	T3S3	T3S2R4	OTROS	A	B	C	K'	D	LATITUD	LONGITUD
La Culata	0.00	3	0	1646	1.0	75.7	0.9	10.6	2.8	4.3	3.4	0.5	0.8	76.7	0.9	22.4	0.114	0.511	20.882417	-99.706523
San Joaquín	31.80	1	0	1410	5.5	81.1	0.4	10.1	0.3	2.0	0.4	0.0	0.2	86.6	0.4	13.0	0.091	0.501	20.915615	-99.565192

17 CARR: Libramiento de San Juan del Río

CLAVE: 22266

RUTA: QRO

AÑO: 2020

LUGAR	ESTACION				CLASIFICACION VEHICULAR EN PORCIENTO													COORDENADAS		
	KM	TE	SC	TDPA	M	A	B	C2	C3	T3S2	T3S3	T3S2R4	OTROS	A	B	C	K'	D	LATITUD	LONGITUD
T. C. México - Querétaro (Después del F.F.C.C.)	0.00	3	1	18152	3.6	84.1	1.0	4.6	1.5	2.2	1.4	1.1	0.5	87.7	1.0	11.3	0.088	0.544	20.373383	-99.986516
T. C. México - Querétaro (Después del F.F.C.C.)	0.00	3	2	15221	3.6	84.1	1.0	4.6	1.5	2.2	1.4	1.1	0.5	87.7	1.0	11.3	0.086	0.544	20.373407	-99.986610
T. C. San Juan del Río - Xilitla	5.05	1	1	13338	2.9	85.4	0.8	4.9	1.1	2.0	1.6	0.9	0.4	88.3	0.8	10.9	0.084	0.546	20.417372	-99.980695
T. C. San Juan del Río - Xilitla	5.05	1	2	11077	2.5	84.1	1.1	5.3	1.3	2.5	1.8	1.0	0.4	86.6	1.1	12.3	0.096	0.546	20.417389	-99.980786

18 CARR: Libramiento Norte de Querétaro

CLAVE: 22500

RUTA: QRO

AÑO: 2020

LUGAR	ESTACION				CLASIFICACION VEHICULAR EN PORCIENTO													COORDENADAS		
	KM	TE	SC	TDPA	M	A	B	C2	C3	T3S2	T3S3	T3S2R4	OTROS	A	B	C	K'	D	LATITUD	LONGITUD
T. C. Querétaro - San Luis Potosí	0.00	3	1	65574	1.7	95.5	0.6	1.2	0.5	0.1	0.4	0.0	0.0	97.2	0.6	2.2	0.098	0.524	20.622001	-100.422408
T. C. Querétaro - San Luis Potosí	0.00	3	2	58704	1.7	95.5	0.6	1.2	0.5	0.1	0.4	0.0	0.0	97.2	0.6	2.2	0.088	0.524	20.622154	-100.422453
T. C. México - Querétaro	8.00	1	1	41911	1.7	94.5	0.2	1.7	0.2	0.8	0.7	0.2	0.0	96.2	0.2	3.6	0.089	0.527	20.581977	-100.361873
T. C. México - Querétaro	8.00	1	2	37208	1.3	94.7	0.2	1.8	0.2	0.8	0.8	0.2	0.0	96.0	0.2	3.8	0.084	0.527	20.582016	-100.361733
T. C. México - Querétaro	8.00	3	1	26566	0.6	92.7	0.2	3.9	0.9	0.5	1.0	0.1	0.1	93.3	0.2	6.5	0.097	0.519	20.581957	-100.361868
T. C. México - Querétaro	8.00	3	2	24430	0.6	92.8	0.2	3.9	0.9	0.5	0.9	0.1	0.1	93.4	0.2	6.4	0.127	0.519	20.582002	-100.361731
T.C. Libramiento Surponiente de Querétaro	12.00																			

QUERETARO

19 CARR: Libramiento Surponiente de Querétaro

CLAVE: 22501

RUTA: QRO

AÑO: 2020

LUGAR	ESTACION				CLASIFICACION VEHICULAR EN PORCIENTO													COORDENADAS		
	KM	TE	SC	TDPA	M	A	B	C2	C3	T3S2	T3S3	T3S2R4	OTROS	A	B	C	K'	D	LATITUD	LONGITUD
X. C. Querétaro - Ent. San Martín	0.00	3	1	30011	1.1	91.1	0.2	4.0	0.8	1.0	1.5	0.1	0.2	92.2	0.2	7.6	0.113	0.504	20.556433	-100.363238
X. C. Querétaro - Ent. San Martín	0.00	3	2	29494	1.2	90.8	0.3	4.0	0.9	1.0	1.5	0.1	0.2	92.0	0.3	7.7	0.141	0.504	20.556351	-100.363148
T. Der. a Candiles	4.20	1	1	20117	3.4	88.2	1.1	2.9	1.7	1.1	1.4	0.1	0.1	91.6	1.1	7.3	0.091	0.518	20.536376	-100.396663
T. Der. a Candiles	4.20	1	2	21604	3.2	89.0	0.9	2.7	1.6	1.0	1.4	0.1	0.1	92.2	0.9	6.9	0.084	0.518	20.536298	-100.396582
T. Izq. a Santa Bárbara (1° acceso)	5.00	1	1	19137	1.0	90.3	0.4	4.4	1.1	1.2	1.2	0.1	0.3	91.3	0.4	8.3	0.101	0.512	20.531961	-100.403143
T. Izq. a Santa Bárbara (1° acceso)	5.00	1	2	18209	1.1	90.4	0.2	4.3	0.8	1.1	1.7	0.1	0.3	91.5	0.2	8.3	0.111	0.512	20.531846	-100.403109
T. Izq. a Santa Bárbara (2° acceso)	7.30	3	1	14140	1.3	91.9	0.3	4.2	1.3	0.4	0.3	0.3	0.0	93.2	0.3	6.5	0.102	0.503	20.526080	-100.423075
T. Izq. a Santa Bárbara (2° acceso)	7.30	3	2	14323	1.5	91.2	0.3	5.0	1.1	0.4	0.2	0.3	0.0	92.7	0.3	7.0	0.155	0.503	20.525942	-100.423040
T. C. Villa del Pueblito - Huimilpan	9.40	3	1	10212	0.8	93.3	0.2	3.8	1.1	0.3	0.3	0.1	0.1	94.1	0.2	5.7	0.098	0.506	20.527217	-100.440997
T. C. Villa del Pueblito - Huimilpan	9.40	3	2	9988	0.9	92.1	0.3	4.5	1.2	0.4	0.3	0.1	0.2	93.0	0.3	6.7	0.122	0.506	20.526944	-100.440970
T. Izq. a La Negreta	10.10	3	1	11728	2.5	87.4	0.6	6.9	1.7	0.6	0.3	0.0	0.0	89.9	0.6	9.5	0.106	0.506	20.530324	-100.447876
T. Izq. a La Negreta	10.10	3	2	11437	2.5	86.1	0.6	7.6	2.1	0.8	0.3	0.0	0.0	88.6	0.6	10.8	0.106	0.506	20.530255	-100.447897
Querétaro - Irapuato	15.00	1	1	7936	1.0	89.0	0.5	5.9	2.4	0.7	0.3	0.1	0.1	90.0	0.5	9.5	0.102	0.510	20.538896	-100.479709
Querétaro - Irapuato	15.00	1	2	8253	1.0	88.0	0.6	6.7	2.5	0.8	0.3	0.1	0.0	89.0	0.6	10.4	0.130	0.510	20.538884	-100.479839
T. C. Querétaro - Irapuato (Cuota)	18.60	1	1	20549	1.4	82.3	1.2	5.8	2.5	5.1	1.1	0.4	0.2	83.7	1.2	15.1	0.103	0.515	20.570910	-100.482201
T. C. Querétaro - Irapuato (Cuota)	18.60	1	2	19355	1.7	84.8	1.0	5.5	1.7	3.2	1.3	0.5	0.3	86.5	1.0	12.5	0.118	0.515	20.570897	-100.482298
T. C. Querétaro - Irapuato (Cuota)	18.60	3	1	20009	1.7	87.6	0.9	4.1	1.6	2.4	1.1	0.3	0.3	89.3	0.9	9.8	0.098	0.505	20.570920	-100.482200
T. C. Querétaro - Irapuato (Cuota)	18.60	3	2	19647	1.4	86.1	0.7	5.4	1.6	3.1	1.1	0.4	0.2	87.5	0.7	11.8	0.132	0.505	20.570909	-100.482299
T. Der. a Las Adjuntas	21.00	3	1	23072	2.3	85.5	0.9	5.1	1.5	2.9	1.1	0.5	0.2	87.8	0.9	11.3	0.099	0.507	20.591473	-100.488958
T. Der. a Las Adjuntas	21.00	3	2	21190	1.7	86.4	0.8	5.1	1.4	2.9	1.0	0.4	0.3	88.1	0.8	11.1	0.151	0.507	20.591392	-100.489061
T. Der. a Tlacote el Bajo	27.70	1	1	14586	0.6	85.5	0.7	5.0	2.3	3.3	1.3	0.9	0.4	86.1	0.7	13.2	0.131	0.542	20.650052	-100.502386
T. Der. a Tlacote el Bajo	27.70	1	2	17269	0.6	86.3	0.4	4.9	2.3	3.0	1.3	0.9	0.3	86.9	0.4	12.7	0.105	0.542	20.649960	-100.502448
T. Der. a Tlacote el Bajo	27.70	3	1	10072	1.8	80.1	1.3	6.1	2.4	5.0	0.9	2.0	0.4	81.9	1.3	16.8	0.192	0.501	20.650058	-100.502388
T. Der. a Tlacote el Bajo	27.70	3	2	10127	1.2	80.2	2.3	5.7	2.2	4.9	1.1	2.0	0.4	81.4	2.3	16.3	0.145	0.501	20.649968	-100.502455
Obrajuelos (El Zapote)	29.70	3	1	9514	1.0	80.4	2.0	3.9	2.5	6.5	0.9	2.3	0.5	81.4	2.0	16.6	0.177	0.506	20.657526	-100.519148
Obrajuelos (El Zapote)	29.70	3	2	9289	1.5	82.6	1.6	3.8	1.8	5.2	1.0	2.0	0.5	84.1	1.6	14.3	0.121	0.506	20.657453	-100.519257
Santo Niño de Praga	31.20	3	1	9394	1.7	78.8	2.3	4.1	2.2	7.0	1.1	2.2	0.6	80.5	2.3	17.2	0.183	0.502	20.667745	-100.510621
Santo Niño de Praga	31.20	3	2	9455	1.6	82.4	1.5	3.5	1.8	5.7	0.9	2.1	0.5	84.0	1.5	14.5	0.135	0.502	20.667845	-100.510651
X. C. juriquilla - Mompani	34.00	3	1	6223	2.1	78.0	1.7	4.0	2.2	7.4	1.1	2.7	0.8	80.1	1.7	18.2	0.203	0.506	20.688562	-100.499612
X. C. juriquilla - Mompani	34.00	3	2	6383	1.7	80.9	1.4	4.2	2.2	5.8	1.1	2.1	0.6	82.6	1.4	16.0	0.156	0.506	20.688659	-100.499720
T. Der. a El Nabo	36.30	3	1	8259	1.6	81.0	1.7	3.9	1.9	6.0	1.2	2.0	0.7	82.6	1.7	15.7	0.135	0.500	20.698503	-100.481493
T. Der. a El Nabo	36.30	3	2	8252	1.5	81.8	1.6	4.1	1.8	5.8	1.0	1.9	0.5	83.3	1.6	15.1	0.135	0.500	20.698536	-100.481578
Pie de Gallo	44.10	1	1	10485	1.5	82.1	0.8	4.8	1.9	5.9	0.8	1.7	0.5	83.6	0.8	15.6	0.163	0.511	20.750594	-100.456132
Pie de Gallo	44.10	1	2	10032	12.5	71.2	1.4	4.8	1.5	4.4	1.2	1.7	1.3	83.7	1.4	14.9	0.138	0.511	20.750653	-100.456197
Pie de Gallo	44.10	3	1	10325	1.7	80.9	1.7	4.6	2.1	5.7	0.8	1.9	0.6	82.6	1.7	15.7	0.174	0.521	20.750594	-100.456134

QUERETARO

19 CARR: Libramiento Surponiente de Querétaro

CLAVE: 22501

RUTA: QRO

AÑO: 2020

LUGAR	ESTACION				CLASIFICACION VEHICULAR EN PORCIENTO														COORDENADAS	
	KM	TE	SC	TDPA	M	A	B	C2	C3	T3S2	T3S3	T3S2R4	OTROS	A	B	C	K'	D	LATITUD	LONGITUD
Pie de Gallo	44.10	3	2	9483	2.0	81.6	1.6	4.0	1.8	5.3	1.0	2.1	0.6	83.6	1.6	14.8	0.130	0.521	20.750656	-100.456192
T. C. Querétaro - San Luis Potosí	45.70																			

20 CARR: Peña Colorada - El Rodeo

CLAVE: 22002

RUTA: QRO

AÑO: 2020

LUGAR	ESTACION				CLASIFICACION VEHICULAR EN PORCIENTO														COORDENADAS	
	KM	TE	SC	TDPA	M	A	B	C2	C3	T3S2	T3S3	T3S2R4	OTROS	A	B	C	K'	D	LATITUD	LONGITUD
T. C. México - Querétaro	0.00	3	1	9603	2.2	87.6	1.2	6.6	1.2	0.6	0.4	0.0	0.2	89.8	1.2	9.0	0.095	0.513	20.573823	-100.258685
T. C. México - Querétaro	0.00	3	2	9100	2.3	87.6	1.0	6.1	1.3	0.6	0.7	0.0	0.4	89.9	1.0	9.1	0.105	0.513	20.573823	-100.258685
X. C. Querétaro - Tequisquiapan	9.00	1	1	8709	2.2	91.2	0.2	2.9	1.1	1.1	0.8	0.1	0.4	93.4	0.2	6.4	0.105	0.511	20.636511	-100.260091
X. C. Querétaro - Tequisquiapan	9.00	1	2	8332	2.3	90.6	0.3	3.7	0.7	1.4	0.6	0.1	0.3	92.9	0.3	6.8	0.098	0.511	20.636511	-100.260091
El Rodeo	11.00	1	0	1480	5.0	82.9	1.2	8.3	0.8	1.3	0.3	0.0	0.2	87.9	1.2	10.9	0.094	0.545	20.662891	-100.258633

21 CARR: Querétaro - Ent. San Martín

CLAVE: 22067

RUTA: QRO

AÑO: 2020

LUGAR	ESTACION				CLASIFICACION VEHICULAR EN PORCIENTO														COORDENADAS	
	KM	TE	SC	TDPA	M	A	B	C2	C3	T3S2	T3S3	T3S2R4	OTROS	A	B	C	K'	D	LATITUD	LONGITUD
T. C. México - Querétaro	0.00	3	1	9042	0.5	94.8	0.5	3.7	0.5	0.0	0.0	0.0	0.0	95.3	0.5	4.2	0.090	0.518	20.570727	-100.382546
T. C. México - Querétaro	0.00	3	2	9701	0.4	94.9	0.5	3.8	0.4	0.0	0.0	0.0	0.0	95.3	0.5	4.2	0.094	0.518	20.570938	-100.382291
Lagunillas	18.70	1	0	3431	1.2	86.5	0.3	8.7	1.3	1.7	0.3	0.0	0.0	87.7	0.3	12.0	0.100	0.509	20.468864	-100.291917
T. Der. Huimilpan	32.70	1	0	3837	2.1	85.4	0.9	8.7	0.9	1.8	0.2	0.0	0.0	87.5	0.9	11.6	0.103	0.520	20.378241	-100.263811
Ent. San Martín	53.00	1	0	1712	3.1	84.3	0.7	9.4	0.6	1.1	0.8	0.0	0.0	87.4	0.7	11.9	0.114	0.524	20.277794	-100.156622

22 CARR: Querétaro - Estación Chichimequillas

CLAVE: 22270

RUTA: QRO

AÑO: 2020

LUGAR	ESTACION				CLASIFICACION VEHICULAR EN PORCIENTO														COORDENADAS	
	KM	TE	SC	TDPA	M	A	B	C2	C3	T3S2	T3S3	T3S2R4	OTROS	A	B	C	K'	D	LATITUD	LONGITUD
T. C. Libramiento de Querétaro	0.00	3	1	12731	4.7	86.1	0.6	5.2	0.7	0.7	0.9	0.5	0.6	90.8	0.6	8.6	0.103	0.505	20.616257	-100.389901
T. C. Libramiento de Querétaro	0.00	3	2	13005	4.7	88.5	0.4	4.4	0.4	0.4	0.6	0.3	0.3	93.2	0.4	6.4	0.099	0.505	20.616272	-100.390020
X. C. Hacienda Paraiso - Chichimequillas	18.00	1	0	6803	1.7	86.5	1.3	7.6	1.2	0.6	0.5	0.4	0.2	88.2	1.3	10.5	0.091	0.519	20.752422	-100.321255
Estación Chichimequillas	19.20																			



QUERETARO

23 CARR: Querétaro - Tequisquiapan

CLAVE: 22502

RUTA: QRO

AÑO: 2020

LUGAR	ESTACION				CLASIFICACION VEHICULAR EN PORCIENTO										COORDENADAS					
	KM	TE	SC	TDPA	M	A	B	C2	C3	T3S2	T3S3	T3S2R4	OTROS	A	B	C	K'	D	LATITUD	LONGITUD
Querétaro	0.00	3	1	8207	1.7	91.2	0.7	5.4	0.6	0.2	0.2	0.0	0.0	92.9	0.7	6.4	0.105	0.526	20.596812	-100.372024
Querétaro	0.00	3	2	7390	1.5	91.8	0.2	5.8	0.4	0.2	0.1	0.0	0.0	93.3	0.2	6.5	0.100	0.526	20.596945	-100.372127
X. C. Peña Colorada - El Rodeo	14.00	1	1	7185	3.3	83.3	0.5	10.2	1.6	0.3	0.4	0.2	0.2	86.6	0.5	12.9	0.103	0.500	20.636585	-100.260219
X. C. Peña Colorada - El Rodeo	14.00	1	2	7184	3.3	83.6	0.6	9.4	1.7	0.5	0.4	0.2	0.3	86.9	0.6	12.5	0.112	0.500	20.636657	-100.260241
T. Izq. La Griega	16.60	3	1	5485	3.9	86.5	2.4	3.1	1.8	1.1	0.4	0.4	0.4	90.4	2.4	7.2	0.133	0.503	20.643381	-100.231021
T. Izq. La Griega	16.60	3	2	5420	3.9	86.0	3.0	3.1	1.7	1.0	0.5	0.4	0.4	89.9	3.0	7.1	0.123	0.503	20.643598	-100.231096
X. C. El Colorado - Higuierillas	25.70	1	1	7052	1.5	83.4	1.1	9.0	1.7	1.8	0.6	0.5	0.4	84.9	1.1	14.0	0.118	0.520	20.613231	-100.157381
X. C. El Colorado - Higuierillas	25.70	1	2	6520	1.6	83.6	1.2	9.1	1.7	1.2	0.8	0.3	0.5	85.2	1.2	13.6	0.088	0.520	20.613160	-100.157436
X. C. San Juan del Río - Xilitla	56.90	1	0	7818	2.1	82.9	0.9	9.8	1.8	0.9	0.6	0.5	0.5	85.0	0.9	14.1	0.102	0.504	20.529585	-99.899915
Tequisquiapan	57.40	1	0	8793	4.5	87.6	0.4	5.4	0.6	0.4	0.5	0.3	0.3	92.1	0.4	7.5	0.096	0.504	20.536229	-99.897696

24 CARR: Querétaro - Tlacote El Bajo

CLAVE: 22069

RUTA: QRO

AÑO: 2020

LUGAR	ESTACION				CLASIFICACION VEHICULAR EN PORCIENTO										COORDENADAS					
	KM	TE	SC	TDPA	M	A	B	C2	C3	T3S2	T3S3	T3S2R4	OTROS	A	B	C	K'	D	LATITUD	LONGITUD
Querétaro	0.00	3	1	11547	3.6	86.8	1.4	4.7	0.5	1.2	1.3	0.2	0.3	90.4	1.4	8.2	0.094	0.508	20.586304	-100.412780
Querétaro	0.00	3	2	11204	3.7	86.6	1.5	4.8	0.5	1.2	1.3	0.2	0.2	90.3	1.5	8.2	0.111	0.508	20.586197	-100.412794
Tlacote El Bajo	18.00																			

25 CARR: Ramal a La Estancia

CLAVE: 22504

RUTA: QRO

AÑO: 2020

LUGAR	ESTACION				CLASIFICACION VEHICULAR EN PORCIENTO										COORDENADAS					
	KM	TE	SC	TDPA	M	A	B	C2	C3	T3S2	T3S3	T3S2R4	OTROS	A	B	C	K'	D	LATITUD	LONGITUD
T. C. México - Querétaro (Cuota)	0.00	3	0	5461	9.3	78.8	0.5	6.5	0.5	3.3	0.3	0.2	0.6	88.1	0.5	11.4	0.090	0.505	20.427188	-100.057810
La Estancia	3.00																			

26 CARR: Ramal a Tolimán

CLAVE: 22265

RUTA: QRO

AÑO: 2020

LUGAR	ESTACION				CLASIFICACION VEHICULAR EN PORCIENTO										COORDENADAS					
	KM	TE	SC	TDPA	M	A	B	C2	C3	T3S2	T3S3	T3S2R4	OTROS	A	B	C	K'	D	LATITUD	LONGITUD
T. C. El Colorado - Higuierillas	0.00	3	0	3131	4.2	82.8	1.1	7.6	0.9	2.3	0.5	0.2	0.4	87.0	1.1	11.9	0.089	0.515	20.854400	-99.893470
Tolimán	7.00	1	0	3066	3.8	84.1	0.2	8.6	0.5	2.2	0.3	0.0	0.3	87.9	0.2	11.9	0.089	0.502	20.903991	-99.923356

QUERETARO

27 CARR: Rayón - Arroyo Seco

CLAVE: 24008

RUTA: SLP-011

AÑO: 2020

LUGAR	ESTACION				CLASIFICACION VEHICULAR EN PORCIENTO													COORDENADAS		
	KM	TE	SC	TDPA	M	A	B	C2	C3	T3S2	T3S3	T3S2R4	OTROS	A	B	C	K'	D	LATITUD	LONGITUD
Rayón	0.00	3	0	1275	5.7	73.2	0.4	16.1	1.5	1.9	0.9	0.0	0.3	78.9	0.4	20.7	0.104	0.511	21.851380	-99.627604
Lagunillas	36.00	1	0	322	4.2	73.4	0.0	18.9	2.0	0.8	0.7	0.0	0.0	77.6	0.0	22.4	0.140	0.501	21.587173	-99.566486
Lim. De Edos. Term. S.L.P. Ppia Qro.	51.00																			
Arroyo Seco	57.00	1	0	550	6.1	73.5	0.1	19.2	0.7	0.1	0.3	0.0	0.0	79.6	0.1	20.3	0.135	0.507	21.546738	-99.692906

28 CARR: San Juan del Río - Amealco

CLAVE: 22011

RUTA: QRO

AÑO: 2020

LUGAR	ESTACION				CLASIFICACION VEHICULAR EN PORCIENTO													COORDENADAS		
	KM	TE	SC	TDPA	M	A	B	C2	C3	T3S2	T3S3	T3S2R4	OTROS	A	B	C	K'	D	LATITUD	LONGITUD
T. C. México - Querétaro	0.00	3	0	10154	4.0	90.1	0.8	3.7	0.8	0.3	0.0	0.3	0.0	94.1	0.8	5.1	0.092	0.542	20.379848	-100.013824
Amealco	28.00	1	0	5161	1.1	86.7	1.0	6.9	0.7	1.8	0.8	0.5	0.5	87.8	1.0	11.2	0.101	0.509	20.188755	-100.143332

29 CARR: T. C. (Villa del Pueblito - Huimilpan) - Coroneo

CLAVE: 00155

RUTA: QRO-GTO

AÑO: 2020

LUGAR	ESTACION				CLASIFICACION VEHICULAR EN PORCIENTO													COORDENADAS		
	KM	TE	SC	TDPA	M	A	B	C2	C3	T3S2	T3S3	T3S2R4	OTROS	A	B	C	K'	D	LATITUD	LONGITUD
T. C. Villa del Pueblito - Huimilpan	0.00	3	0	7877	1.6	83.3	0.3	9.2	2.4	1.3	1.3	0.0	0.6	84.9	0.3	14.8	0.102	0.533	20.518091	-100.430676
T. C. Palmillas - Apaseo el Grande (Cuota)	2.60	1	0	3937	1.6	93.7	0.7	1.3	1.2	0.8	0.1	0.1	0.5	95.3	0.7	4.0	0.119	0.501	20.351292	-100.278730
T. C. Palmillas - Apaseo el Grande (Cuota)	2.60	3	0	1840	3.9	91.4	0.3	1.5	1.5	0.7	0.1	0.1	0.5	95.3	0.3	4.4	0.141	0.501	20.350821	-100.278876
Lim. Edos. Term. Qro. Ppia. Gto.	20.00																			
Coroneo	45.20	1	0	3244	5.3	87.2	4.4	2.5	0.5	0.1	0.0	0.0	0.0	92.5	4.4	3.1	0.115	0.506	20.208428	-100.364824

30 CARR: Villa del Pueblito - Huimilpan

CLAVE: 22503

RUTA: QRO

AÑO: 2020

LUGAR	ESTACION				CLASIFICACION VEHICULAR EN PORCIENTO													COORDENADAS		
	KM	TE	SC	TDPA	M	A	B	C2	C3	T3S2	T3S3	T3S2R4	OTROS	A	B	C	K'	D	LATITUD	LONGITUD
T. C. Querétaro - Irapuato (Libre)	0.00	3	1	15478	2.5	89.9	0.4	5.5	0.7	0.4	0.4	0.1	0.1	92.4	0.4	7.2	0.094	0.510	20.531697	-100.441729
T. C. Querétaro - Irapuato (Libre)	0.00	3	2	16103	1.7	90.2	0.3	5.6	1.0	0.6	0.4	0.1	0.1	91.9	0.3	7.8	0.092	0.510	20.531702	-100.441639
Huimilpan	27.00	1	0	1756	5.6	84.6	0.4	7.6	0.6	0.9	0.2	0.0	0.1	90.2	0.4	9.4	0.120	0.516	20.376257	-100.276131

31 CARR: Toluca - Palmillas

CLAVE: 00496

RUTA: EM(D)-MEX-055

AÑO: 2020

LUGAR	ESTACION				CLASIFICACION VEHICULAR EN PORCIENTO													COORDENADAS		
	KM	TE	SC	TDPA	M	A	B	C2	C3	T3S2	T3S3	T3S2R4	OTROS	A	B	C	K'	D	LATITUD	LONGITUD
Toluca	0.00																			

QUERETARO

31 CARR: Toluca - Palmillas

CLAVE: 00496

RUTA: EM(D)-MEX-055

AÑO: 2020

LUGAR	ESTACION				CLASIFICACION VEHICULAR EN PORCIENTO													COORDENADAS		
	KM	TE	SC	TDPA	M	A	B	C2	C3	T3S2	T3S3	T3S2R4	OTROS	A	B	C	K'	D	LATITUD	LONGITUD
T. Izq. Calixtlahuaca de Rayón (Baja)	7.21	3	1	9101	2.9	73.2	3.5	10.0	2.9	3.9	1.7	1.4	0.5	76.1	3.5	20.4	0.097	0.521	19.338455	-99.669266
T. Izq. Calixtlahuaca de Rayón (Alta)	7.21	3	1	22679	6.0	88.9	0.5	3.5	0.3	0.3	0.3	0.1	0.1	94.9	0.5	4.6	0.104	0.516	19.338686	-99.668965
T. Izq. Calixtlahuaca de Rayón (Baja)	7.21	3	2	9880	2.9	73.2	3.4	9.9	2.9	3.9	1.8	1.5	0.5	76.1	3.4	20.5	0.097	0.521	19.338204	-99.669630
T. Izq. Calixtlahuaca de Rayón (Alta)	7.21	3	2	24256	6.0	89.0	0.5	3.5	0.3	0.3	0.2	0.1	0.1	95.0	0.5	4.5	0.094	0.516	19.338280	-99.669486
X. C. Lib. Nororient de Toluca (Cuota)	14.21	1	1	26566	2.1	78.0	3.9	8.2	1.1	3.7	1.9	1.0	0.1	80.1	3.9	16.0	0.111	0.506	19.384470	-99.705999
X. C. Lib. Nororient de Toluca (Cuota)	14.21	1	2	25930	2.4	77.7	3.9	8.2	1.1	3.7	1.9	1.0	0.1	80.1	3.9	16.0	0.102	0.506	19.384458	-99.706094
El Dorado	16.00	1	1	33355	8.0	73.6	3.6	6.4	1.9	4.3	1.0	0.9	0.3	81.6	3.6	14.8	0.096	0.530	19.404838	-99.714502
El Dorado	16.00	1	2	29193	8.0	73.7	3.5	6.5	1.9	4.2	1.0	0.9	0.3	81.7	3.5	14.8	0.073	0.530	19.404771	-99.714794
T. C. Amomolulco - T. C. (Toluca - Palmillas)	19.76	1	1	15670	0.9	80.1	3.9	6.5	2.0	4.5	1.0	0.9	0.2	81.0	3.9	15.1	0.083	0.522	19.440362	-99.726510
T. C. Amomolulco - T. C. (Toluca - Palmillas)	19.76	1	2	17103	0.8	80.3	3.9	6.5	2.0	4.5	1.0	0.8	0.2	81.1	3.9	15.0	0.077	0.522	19.440331	-99.726868
Ixtlahuaca de Rayón	31.20	1	1	19268	0.8	80.7	3.8	5.7	1.6	5.4	0.9	0.9	0.2	81.5	3.8	14.7	0.089	0.525	19.560010	-99.760945
Ixtlahuaca de Rayón	31.20	1	2	21275	0.7	80.8	3.8	5.7	1.6	5.4	0.9	0.9	0.2	81.5	3.8	14.7	0.092	0.525	19.559792	-99.761177
Ixtlahuaca de Rayón	31.20	3	1	19714	1.0	85.6	2.6	2.9	1.3	4.9	0.8	0.7	0.2	86.6	2.6	10.8	0.097	0.508	19.577348	-99.761759
Ixtlahuaca de Rayón	31.20	3	2	20345	1.1	86.3	2.5	2.8	1.2	4.6	0.7	0.6	0.2	87.4	2.5	10.1	0.078	0.508	19.581154	-99.768578
T. C. Ixtlahuaca de Rayón - Naucalpan	32.20	1	1	16138	1.1	80.0	3.9	3.2	1.9	7.3	1.2	1.1	0.3	81.1	3.9	15.0	0.087	0.537	19.569134	-99.760090
T. C. Ixtlahuaca de Rayón - Naucalpan	32.20	1	2	18683	1.1	80.0	3.9	3.2	1.8	7.3	1.2	1.1	0.4	81.1	3.9	15.0	0.086	0.537	19.569161	-99.760457
Pastejé	45.20	1	1	16148	0.8	81.4	2.2	4.9	1.3	5.9	2.0	1.1	0.4	82.2	2.2	15.6	0.096	0.510	19.651856	-99.789069
Pastejé	45.20	1	2	15534	0.9	78.0	2.1	8.3	1.8	5.8	1.6	1.1	0.4	78.9	2.1	19.0	0.089	0.510	19.651655	-99.789398
Pastejé	45.20	3	1	15952	1.0	81.1	2.3	4.7	1.3	5.5	2.5	1.0	0.6	82.1	2.3	15.6	0.081	0.505	19.651768	-99.788975
Pastejé	45.20	3	2	15652	1.0	79.9	2.4	5.5	1.4	5.9	2.2	1.1	0.6	80.9	2.4	16.7	0.100	0.505	19.651556	-99.789328
Atlacomulco	65.00	1	1	15530	1.1	80.0	2.0	6.3	1.8	6.4	1.1	1.0	0.3	81.1	2.0	16.9	0.094	0.504	19.789667	-99.866808
Atlacomulco	65.00	1	2	15312	1.1	77.9	2.7	7.9	1.5	5.8	1.6	1.1	0.4	79.0	2.7	18.3	0.108	0.504	19.789611	-99.868265
Atlacomulco	65.00	3	1	14541	0.8	81.3	2.4	6.2	1.6	5.3	0.9	1.0	0.5	82.1	2.4	15.5	0.094	0.518	19.806321	-99.873509
Atlacomulco	65.00	3	2	15597	0.8	79.3	2.8	6.5	1.7	6.3	0.9	1.2	0.5	80.1	2.8	17.1	0.077	0.518	19.806326	-99.873620
X. C. Libramiento Norte de la Ciudad de México (Cuota)	81.52	1	1	7005	1.1	79.6	2.3	7.8	1.8	5.7	0.9	0.7	0.1	80.7	2.3	17.0	0.087	0.510	19.922598	-99.842884
X. C. Libramiento Norte de la Ciudad de México (Cuota)	81.52	1	2	6730	1.2	78.9	2.5	8.3	1.7	5.7	0.9	0.6	0.2	80.1	2.5	17.4	0.098	0.510	19.922635	-99.842973
X. C. Libramiento Norte de la Ciudad de México (Cuota)	81.52	3	1	6188	5.1	77.4	2.4	6.4	1.5	5.3	1.0	0.6	0.3	82.5	2.4	15.1	0.097	0.508	19.923788	-99.842341
X. C. Libramiento Norte de la Ciudad de México (Cuota)	81.52	3	2	6388	5.1	77.3	2.4	6.4	1.5	5.4	1.0	0.6	0.3	82.4	2.4	15.2	0.106	0.508	19.923826	-99.842414
Acambay	85.64	3	0	8968	0.9	83.3	2.5	6.6	1.7	3.3	1.0	0.5	0.2	84.2	2.5	13.3	0.081	0.519	19.958650	-99.847774
T. Der. Aculco de Espinoza	104.43	1	1	5128	3.6	68.0	3.9	9.3	2.7	9.5	1.5	1.1	0.4	71.6	3.9	24.5	0.087	0.504	20.086186	-99.863740
T. Der. Aculco de Espinoza	104.43	1	2	5039	3.6	68.1	3.9	9.3	2.8	9.5	1.3	1.1	0.4	71.7	3.9	24.4	0.083	0.504	20.086208	-99.863824
T. Der. Aculco de Espinoza	104.43	3	1	4579	1.8	64.9	4.4	9.3	3.2	11.9	2.6	1.5	0.4	66.7	4.4	28.9	0.077	0.507	20.086347	-99.863704
T. Der. Aculco de Espinoza	104.43	3	2	4452	1.2	65.5	3.1	9.9	3.1	12.8	2.2	1.6	0.6	66.7	3.1	30.2	0.082	0.507	20.086364	-99.863789
T. Der. Polotitlán	122.73	1	1	5459	1.6	67.2	4.6	10.7	3.8	9.6	1.5	0.9	0.1	68.8	4.6	26.6	0.076	0.503	20.227671	-99.901429
T. Der. Polotitlán	122.73	1	2	5396	1.6	67.1	4.6	10.7	3.9	9.6	1.5	0.9	0.1	68.7	4.6	26.7	0.081	0.503	20.227617	-99.901492

QUERETARO

31 CARR: Toluca - Palmillas

CLAVE: 00496

RUTA: EM(D)-MEX-055

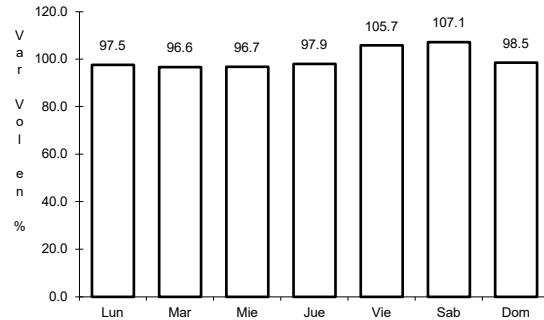
AÑO: 2020

LUGAR	ESTACION				CLASIFICACION VEHICULAR EN PORCIENTO										COORDENADAS					
	KM	TE	SC	TDPA	M	A	B	C2	C3	T3S2	T3S3	T3S2R4	OTROS	A	B	C	K'	D	LATITUD	LONGITUD
Lim. Edos. Term. Méx. Ppia. Qro.	128.10																			
T. C. Palmillas - Apaseo el Grande (Cuota)	130.60	1	1	6803	4.2	73.1	2.5	8.1	2.1	7.2	1.6	0.8	0.4	77.3	2.5	20.2	0.090	0.518	20.292403	-99.932757
T. C. Palmillas - Apaseo el Grande (Cuota)	130.60	1	2	7306	4.1	73.2	2.4	8.1	2.2	7.2	1.6	0.8	0.4	77.3	2.4	20.3	0.089	0.518	20.292384	-99.932900
T. C. México - Querétaro	131.52	1	1	6430	4.1	68.6	4.3	7.2	2.5	10.3	1.7	0.9	0.4	72.7	4.3	23.0	0.089	0.502	20.297491	-99.933481
T. C. México - Querétaro	131.52	1	2	6374	4.1	68.6	4.3	7.2	2.5	10.3	1.7	0.9	0.4	72.7	4.3	23.0	0.099	0.502	20.297489	-99.933595

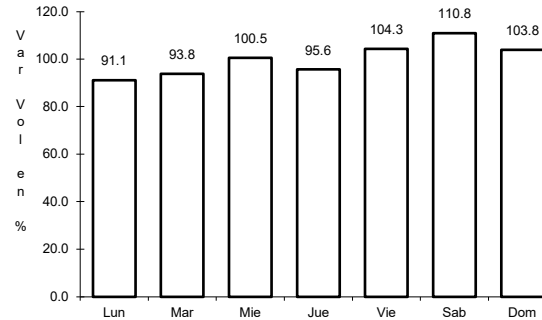
1 CARR: Ent. Buenavista - San Miguel de Allende

CLAVE: 00111

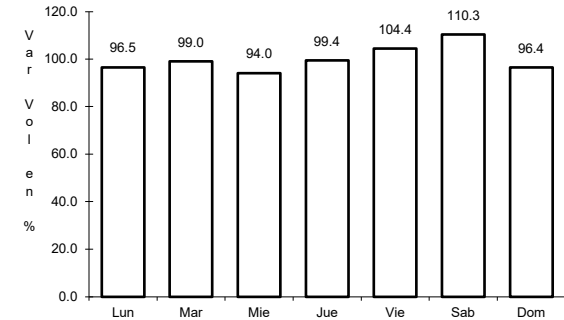
RUTA: MEX-057



Km: 0.00                      Tipo: 3                      Sent: 0



Km: 12.00                      Tipo: 1                      Sent: 0

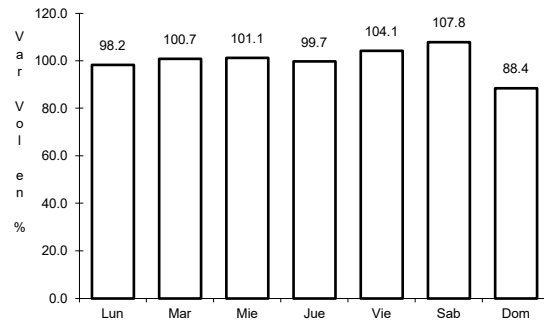


Km: 35.11                      Tipo: 1                      Sent: 0

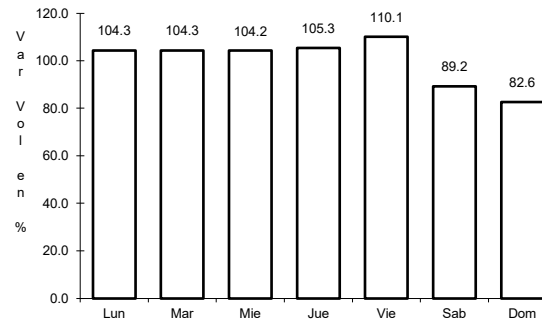
2 CARR: Jalpan de Serra - Rioverde

CLAVE: 00265

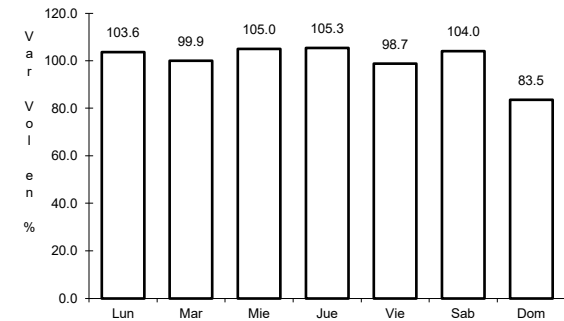
RUTA: MEX-069



Km: 0.00                      Tipo: 3                      Sent: 0



Km: 48.60                      Tipo: 1                      Sent: 0

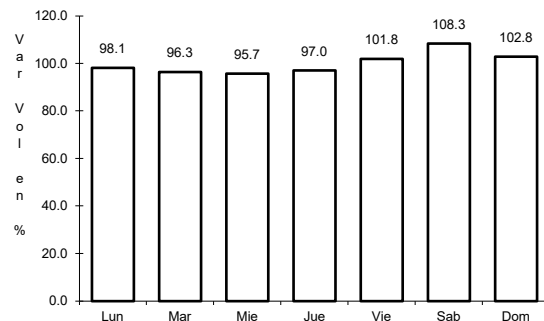


Km: 105.43                      Tipo: 1                      Sent: 0

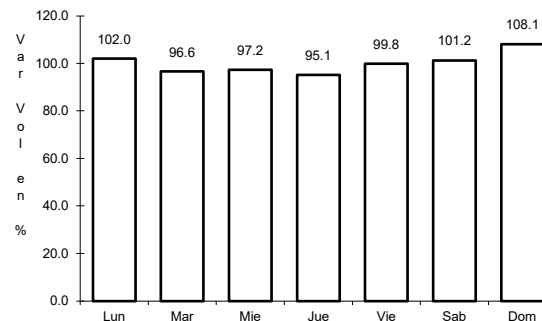
3 CARR: La Noria - Acámbaro

CLAVE: 00131

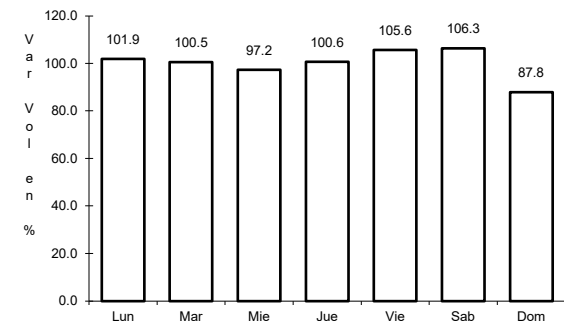
RUTA: MEX-120



Km: 0.00                      Tipo: 3                      Sent: 0



Km: 59.35                      Tipo: 3                      Sent: 0

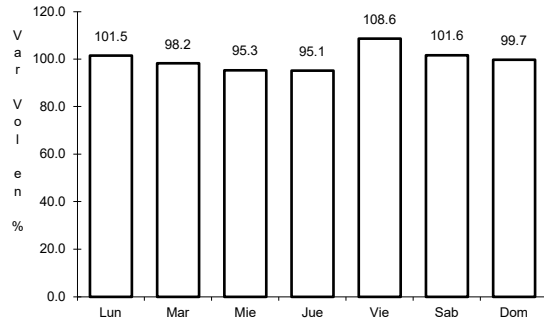


Km: 111.12                      Tipo: 1                      Sent: 0

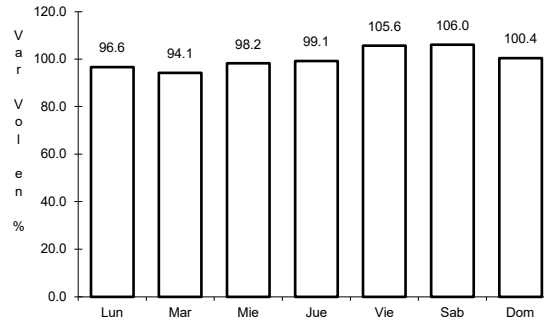
4 CARR: Portezuelo - Palmillas

CLAVE: 00194

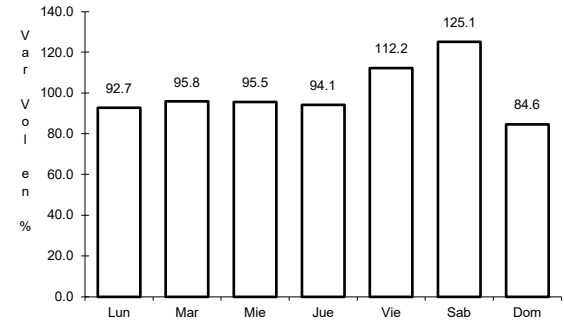
ruta: MEX-045



Km: 0.00      Tipo: 3      Sent: 1



Km: 0.00      Tipo: 3      Sent: 2

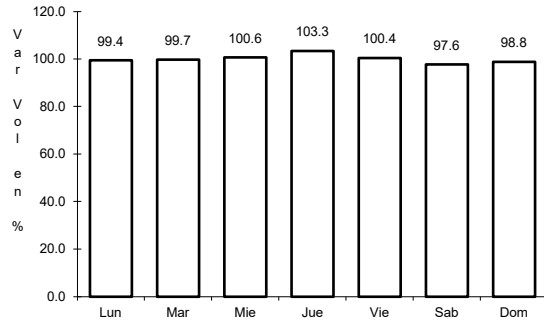


Km: 80.00      Tipo: 1      Sent: 1

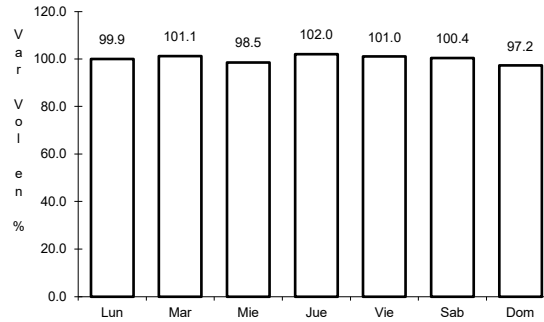
5 CARR: Querétaro - Irapuato (Libre)

CLAVE: 00154

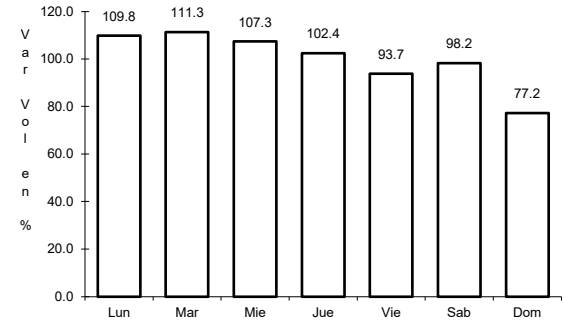
ruta: MEX-045



Km: 0.00      Tipo: 3      Sent: 1



Km: 0.00      Tipo: 3      Sent: 2

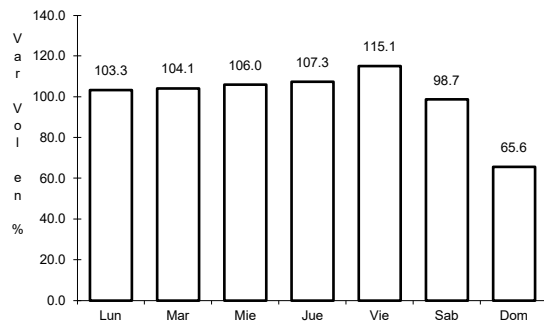


Km: 113.70      Tipo: 1      Sent: 1

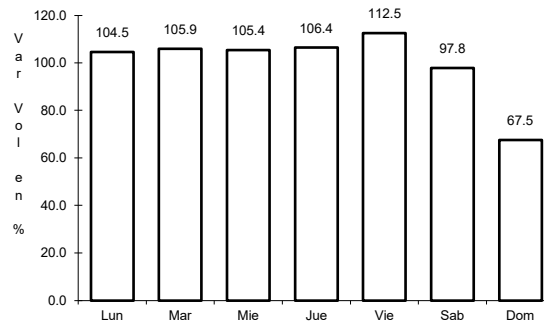
6 CARR: Querétaro - San Luis Potosí

CLAVE: 00165

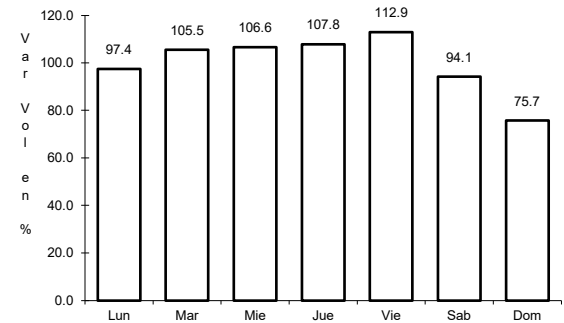
ruta: MEX-057



Km: 6.28      Tipo: 3      Sent: 1



Km: 6.28      Tipo: 3      Sent: 2

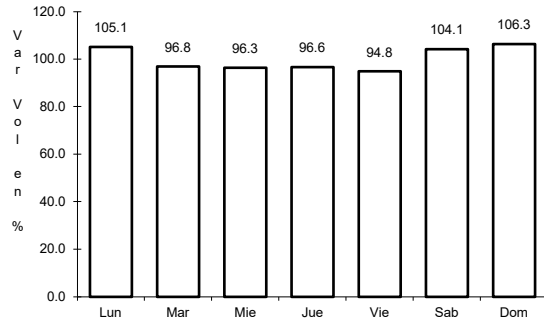


Km: 184.80      Tipo: 1      Sent: 1

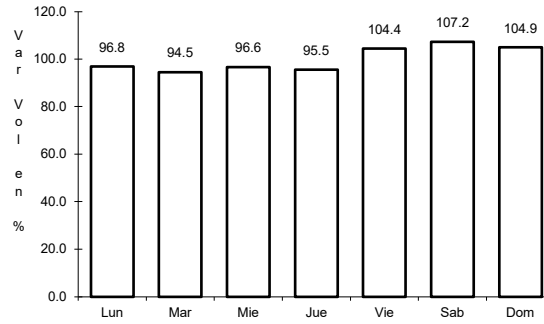
7 CARR: San Juan del Río - Xilitla

CLAVE: 00183

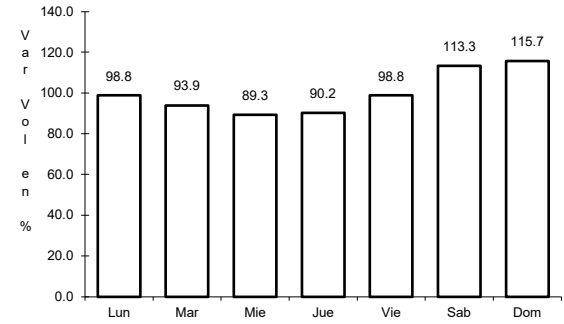
ruta: MEX-120



Km: 5.20 Tipo: 3 Sent: 1



Km: 5.20 Tipo: 3 Sent: 2

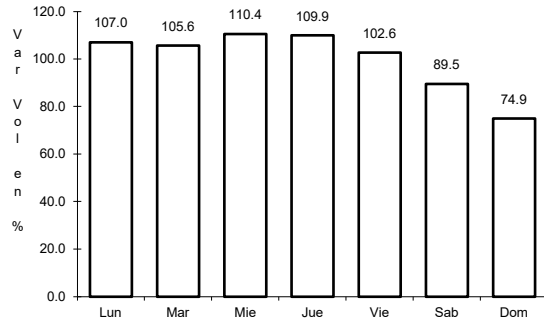


Km: 276.98 Tipo: 1 Sent: 0

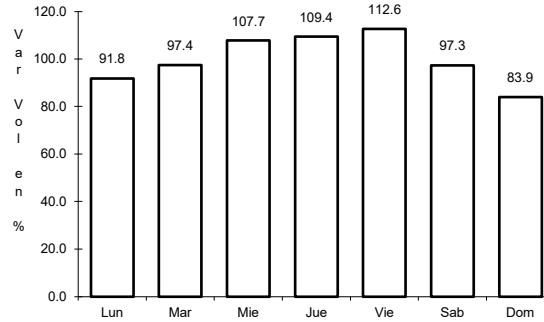
8 CARR: Libramiento Nororiental de Querétaro (Cuota)

CLAVE: 22266

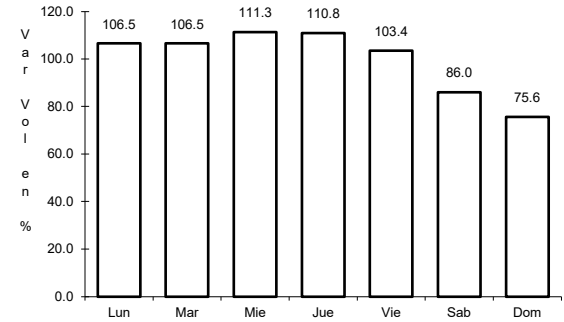
ruta: MEX-057D



Km: 0.00 Tipo: 3 Sent: 1



Km: 0.00 Tipo: 3 Sent: 2

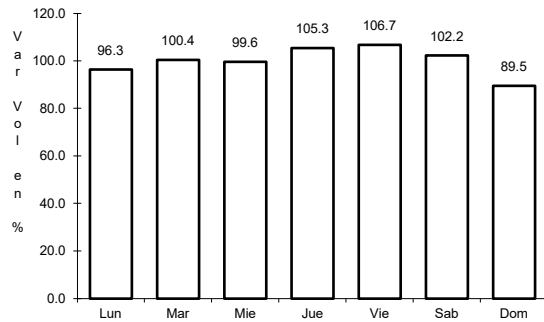


Km: 37.50 Tipo: 1 Sent: 1

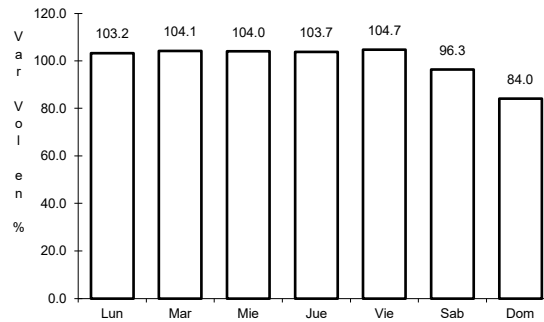
9 CARR: Palmillas - Apaseo el Grande (Cuota)

CLAVE:

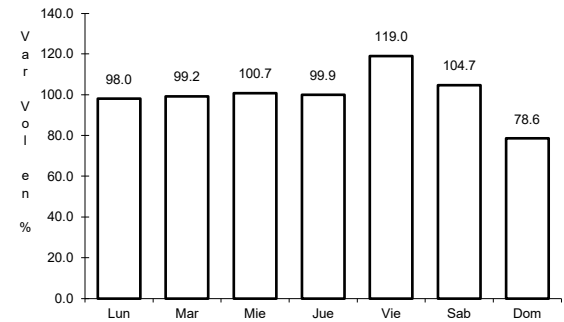
ruta: MEX-045D



Km: 4.00 Tipo: 1 Sent: 1



Km: 4.00 Tipo: 1 Sent: 2

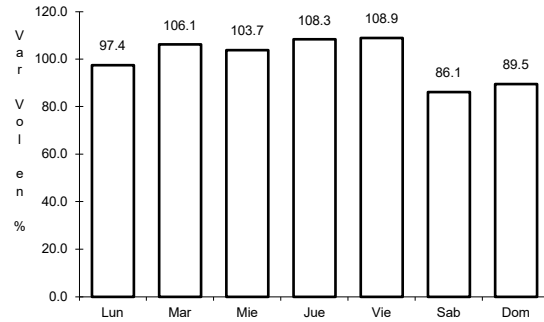


Km: 86.00 Tipo: 1 Sent: 1

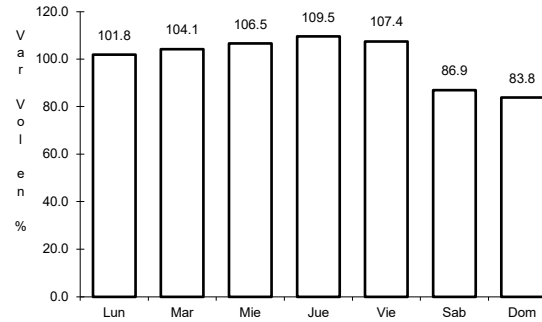
10 CARR: Querétaro - Irapuato (Cuota)

CLAVE: 00423

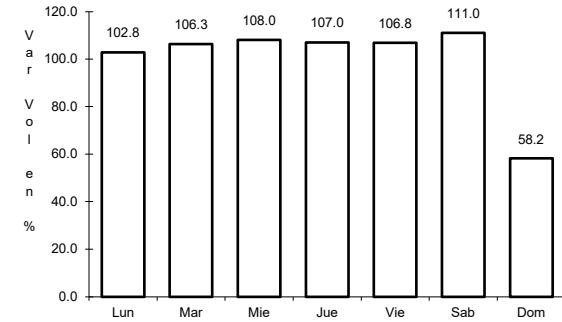
ruta: MEX-045D



Km: 0.00                      Tipo: 3                      Sent: 1



Km: 0.00                      Tipo: 3                      Sent: 2

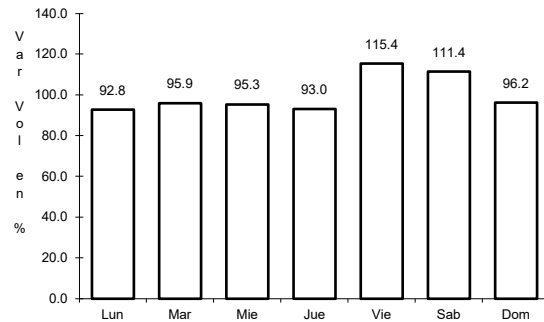


Km: 96.30                      Tipo: 3                      Sent: 1

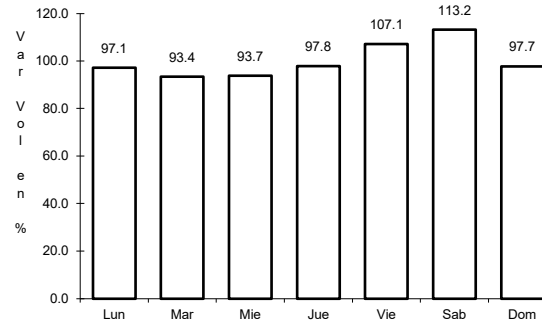
11 CARR: México - Querétaro (Cuota)

CLAVE: 00411

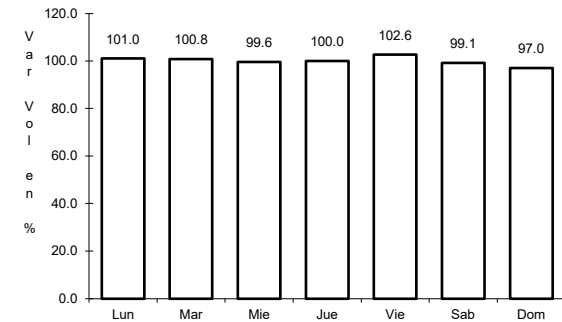
ruta: MEX-057-MEX-057D



Km: 56.18                      Tipo: 1                      Sent: 1



Km: 56.18                      Tipo: 1                      Sent: 2

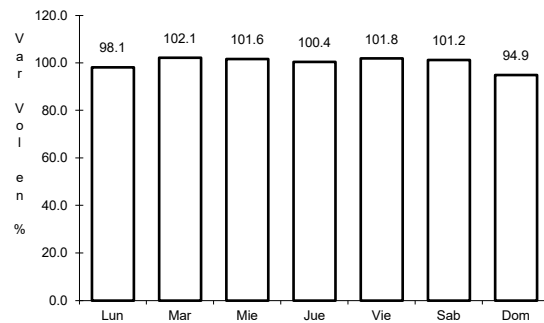


Km: 207.00                      Tipo: 3                      Sent: 1

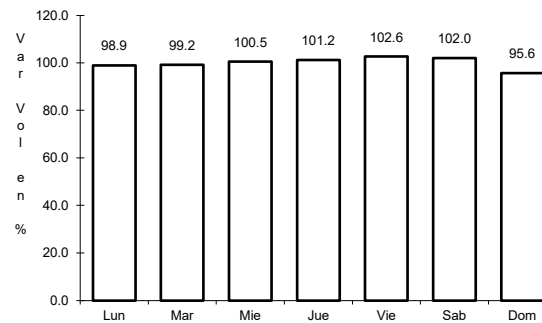
12 CARR: Ajuchitlán - Colón

CLAVE: 22010

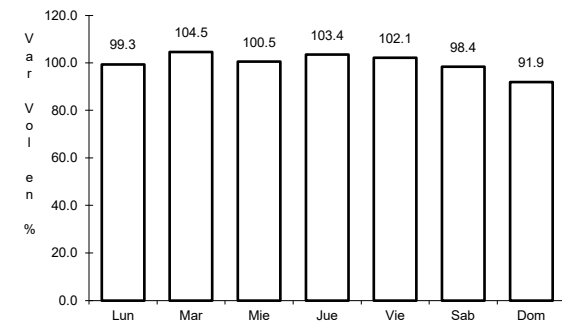
ruta: QRO-005



Km: 0.00                      Tipo: 3                      Sent: 1



Km: 14.00                      Tipo: 1                      Sent: 1



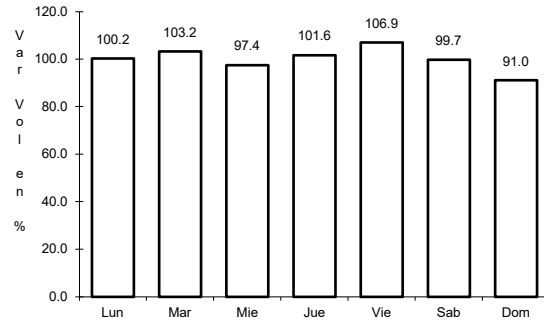
Km: 14.00                      Tipo: 1                      Sent: 2



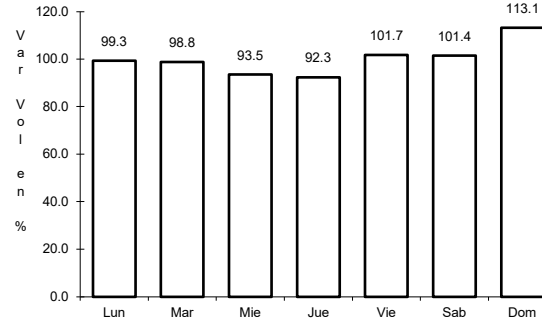
13 CARR: Ajuchitlán - Ezequiel Montes

CLAVE: 22005

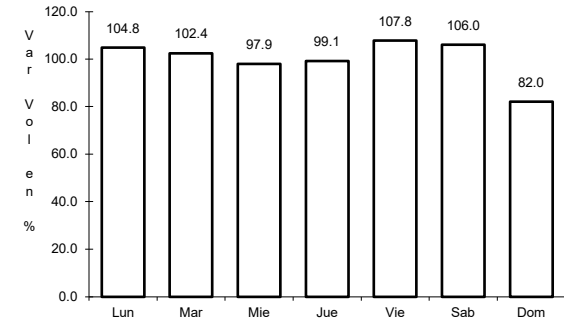
RUTA: QRO-005



Km: 0.00      Tipo: 3      Sent: 1



Km: 0.00      Tipo: 3      Sent: 2

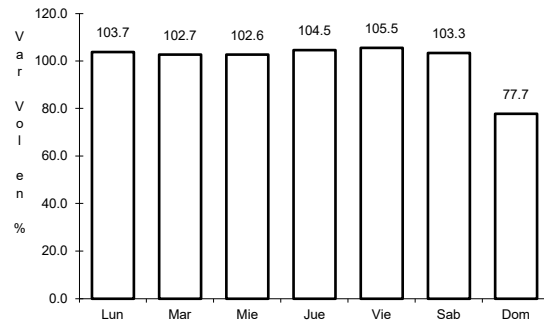


Km: 10.60      Tipo: 1      Sent: 0

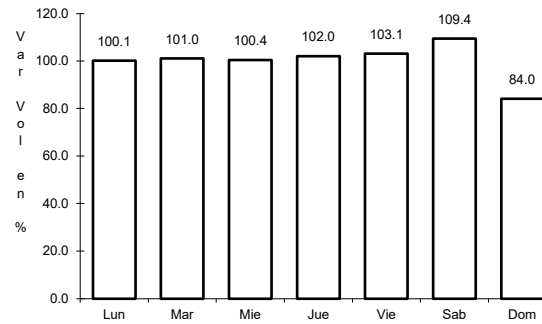
14 CARR: El Colorado - Higuierillas

CLAVE: 22004

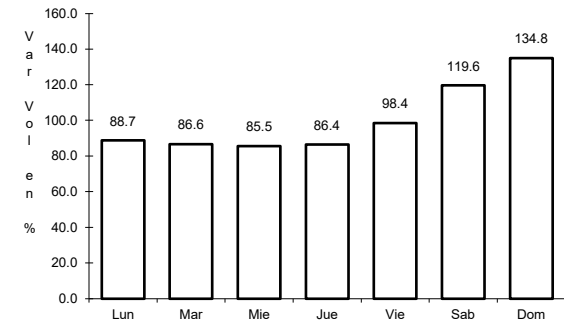
RUTA: QRO-004



Km: 0.00      Tipo: 3      Sent: 1



Km: 0.00      Tipo: 3      Sent: 2

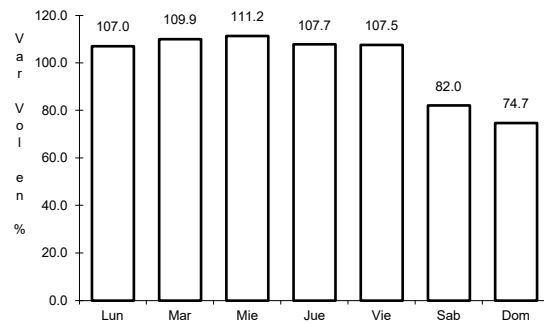


Km: 81.90      Tipo: 1      Sent: 0

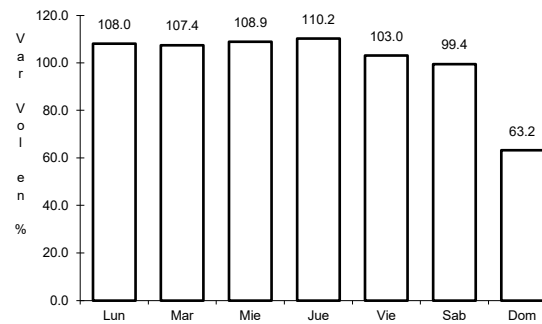
15 CARR: Hacienda Paraíso - Chichimequillas

CLAVE: 22001

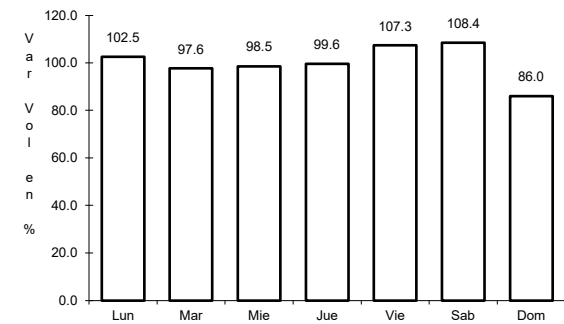
RUTA: QRO-001



Km: 0.00      Tipo: 3      Sent: 1



Km: 0.00      Tipo: 3      Sent: 2

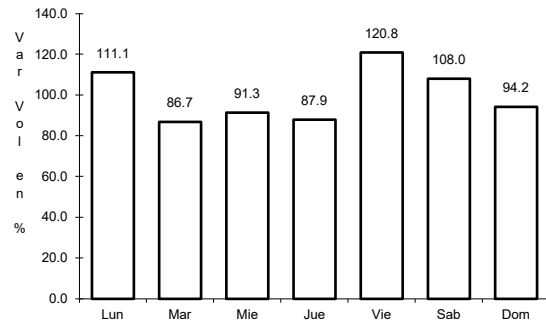


Km: 15.45      Tipo: 3      Sent: 0

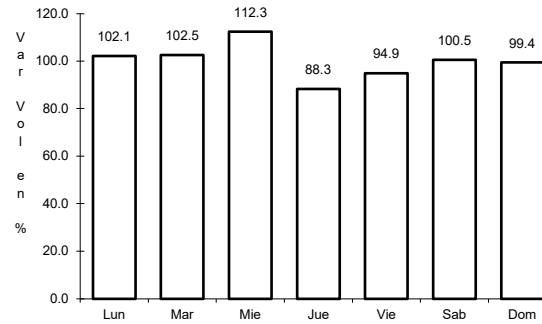
16 CARR: La Culata - San Joaquín

CLAVE: 22021

RUTA: QRO-021



Km: 0.00                      Tipo: 3                      Sent: 0

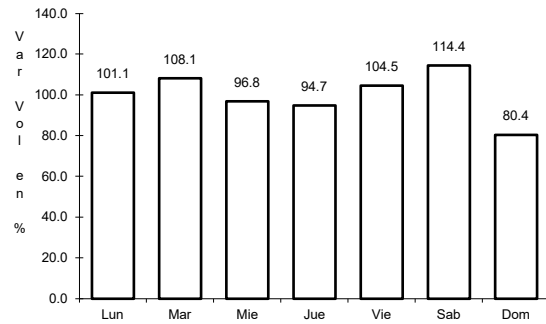


Km: 31.80                      Tipo: 1                      Sent: 0

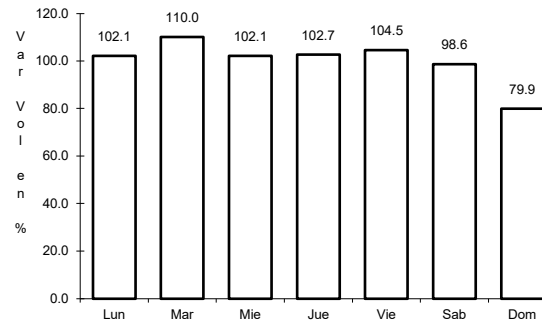
17 CARR: Libramiento de San Juan del Río

CLAVE: 22266

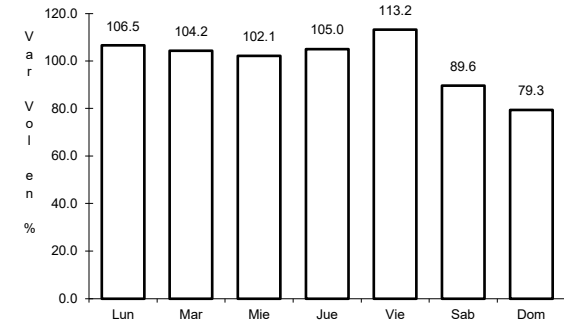
RUTA: QRO



Km: 0.00                      Tipo: 3                      Sent: 1



Km: 0.00                      Tipo: 3                      Sent: 2

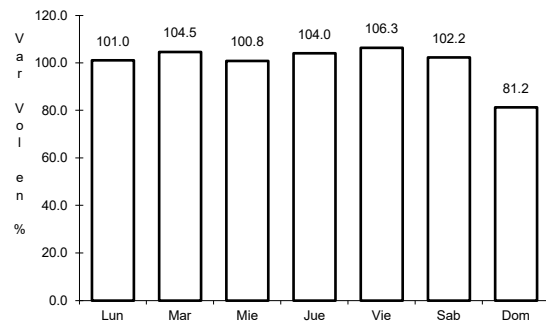


Km: 5.05                      Tipo: 1                      Sent: 1

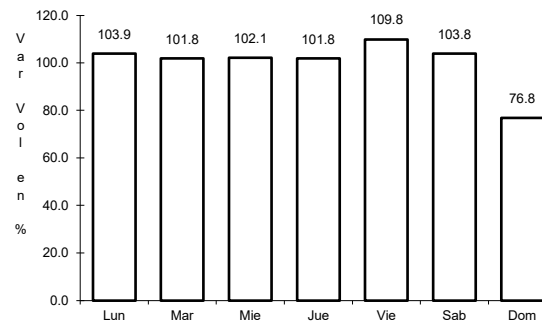
18 CARR: Libramiento Norte de Querétaro

CLAVE: 22500

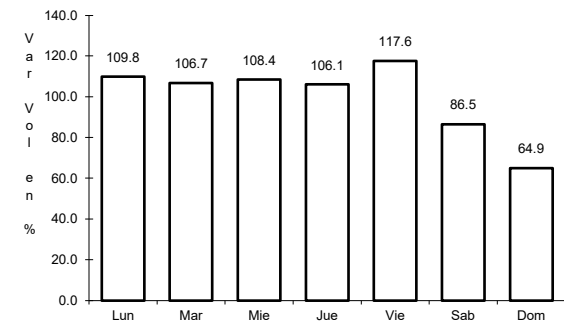
RUTA: QRO



Km: 0.00                      Tipo: 3                      Sent: 1



Km: 0.00                      Tipo: 3                      Sent: 2

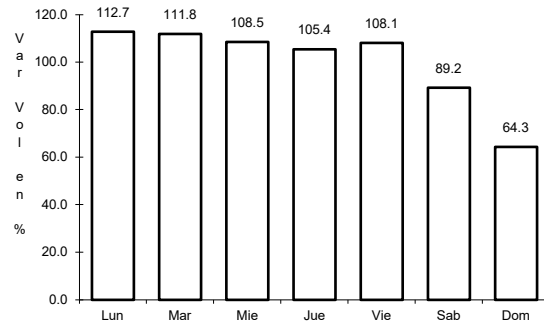


Km: 8.00                      Tipo: 3                      Sent: 1

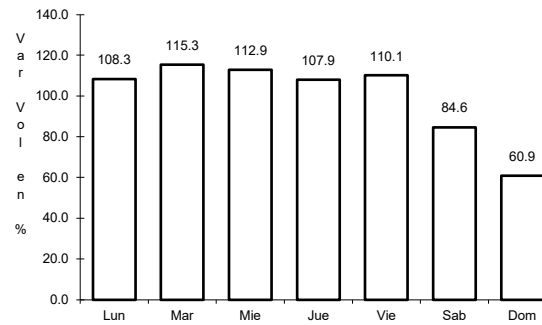
19 CARR: Libramiento Surponiente de Querétaro

CLAVE: 22501

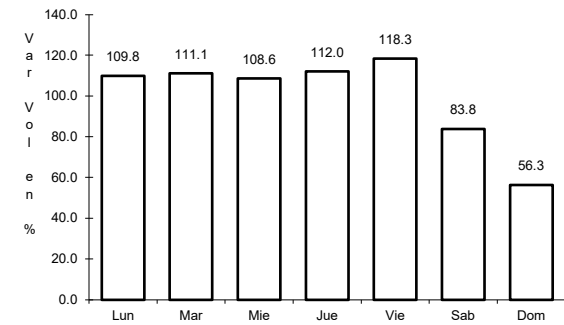
RUTA: QRO



Km: 0.00                      Tipo: 3                      Sent: 1



Km: 0.00                      Tipo: 3                      Sent: 2

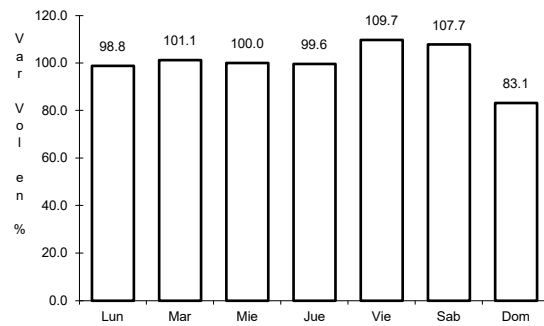


Km: 44.10                      Tipo: 3                      Sent: 1

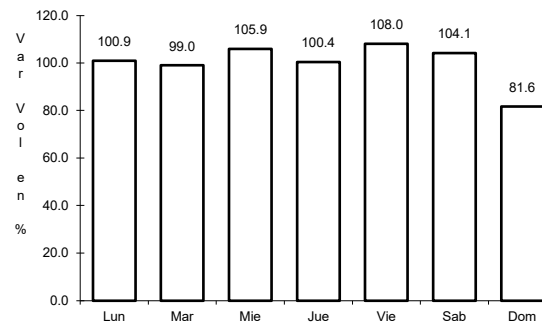
20 CARR: Peña Colorada - El Rodeo

CLAVE: 22002

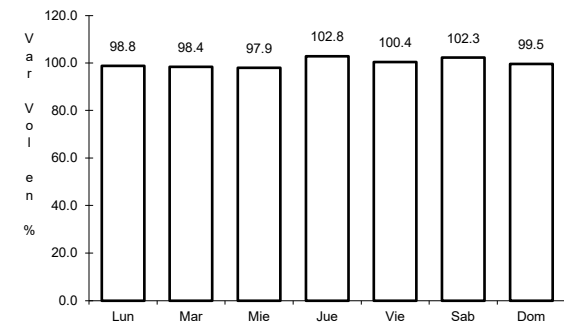
RUTA: QRO



Km: 0.00                      Tipo: 3                      Sent: 1



Km: 0.00                      Tipo: 3                      Sent: 2

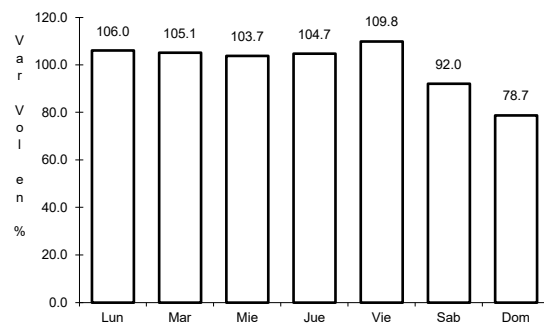


Km: 11.00                      Tipo: 1                      Sent: 0

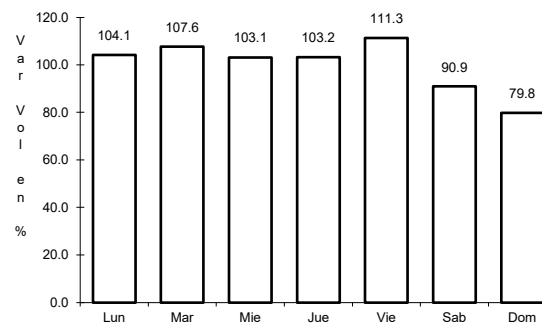
21 CARR: Querétaro - Ent. San Martín

CLAVE: 22067

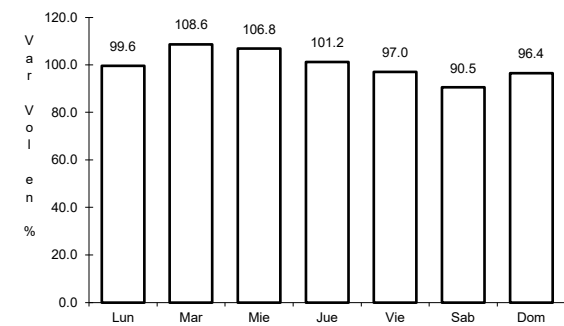
RUTA: QRO



Km: 0.00                      Tipo: 3                      Sent: 1



Km: 0.00                      Tipo: 3                      Sent: 2

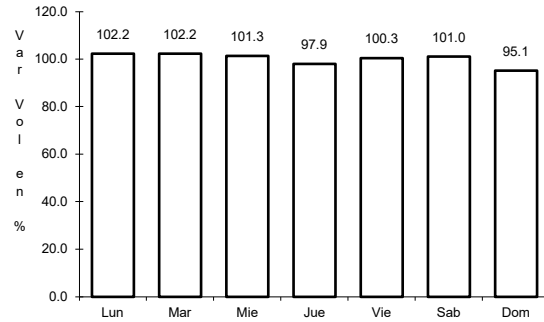


Km: 53.00                      Tipo: 1                      Sent: 0

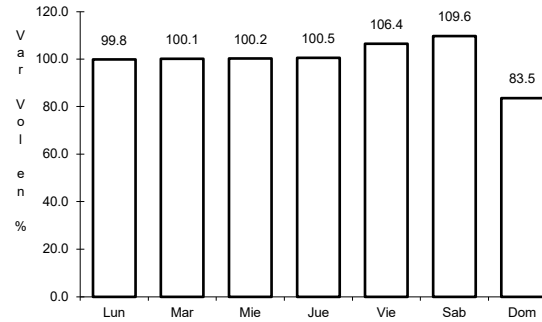
22 CARR: Querétaro - Estación Chichimequillas

CLAVE: 22270

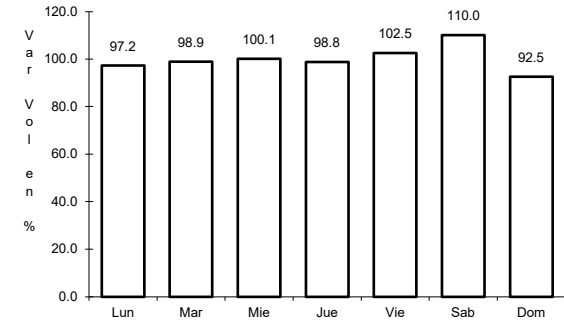
RUTA: QRO



Km: 0.00                      Tipo: 3                      Sent: 1



Km: 0.00                      Tipo: 3                      Sent: 2

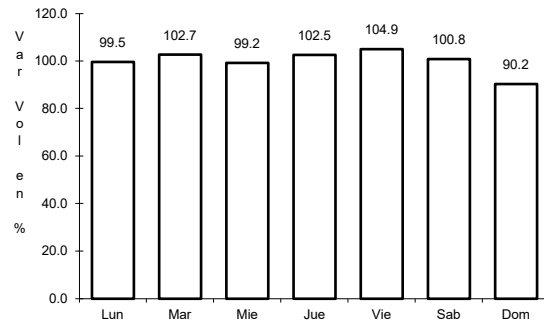


Km: 18.00                      Tipo: 1                      Sent: 0

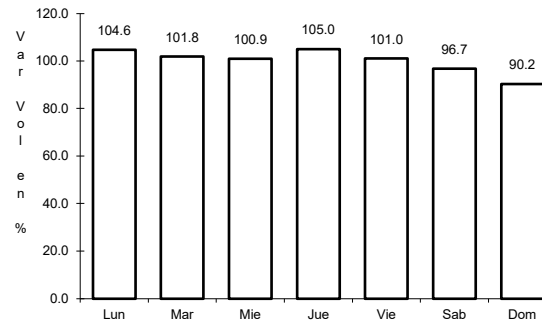
23 CARR: Querétaro - Tequisquiapan

CLAVE: 22502

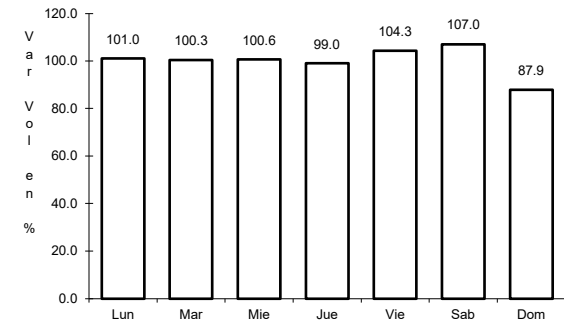
RUTA: QRO



Km: 0.00                      Tipo: 3                      Sent: 1



Km: 0.00                      Tipo: 3                      Sent: 2

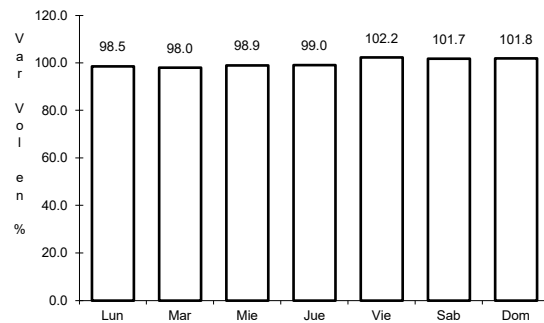


Km: 57.40                      Tipo: 1                      Sent: 0

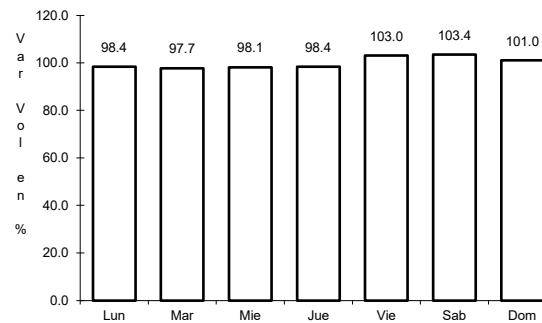
24 CARR: Querétaro - Tlacote El Bajo

CLAVE: 22069

RUTA: QRO



Km: 0.00                      Tipo: 3                      Sent: 1

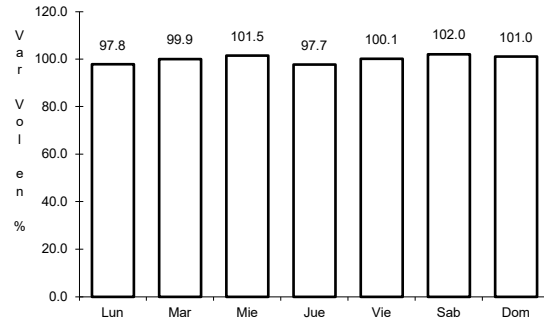


Km: 0.00                      Tipo: 3                      Sent: 2

25 CARR: Ramal a La Estancia

CLAVE: 22504

ruta: QRO



Km: 0.00

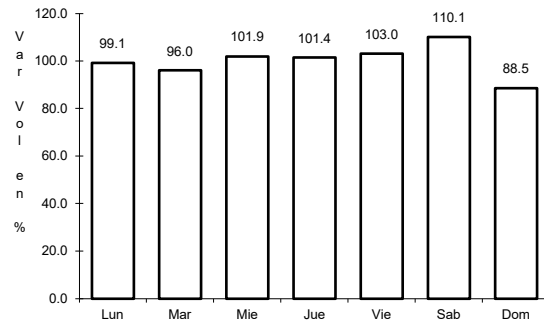
Tipo: 3

Sent: 0

26 CARR: Ramal a Tolimán

CLAVE: 22265

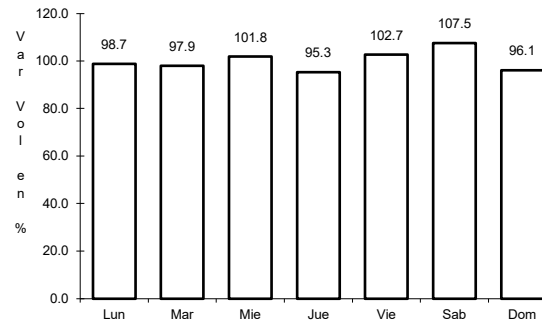
ruta: QRO



Km: 0.00

Tipo: 3

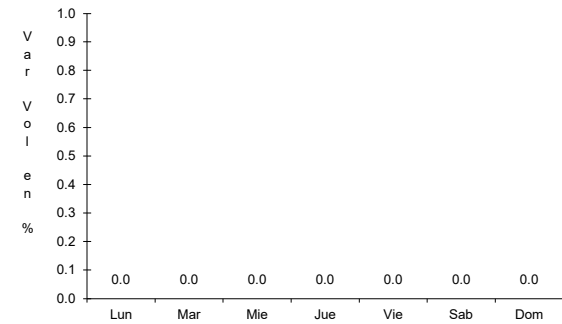
Sent: 0



Km: 7.00

Tipo: 1

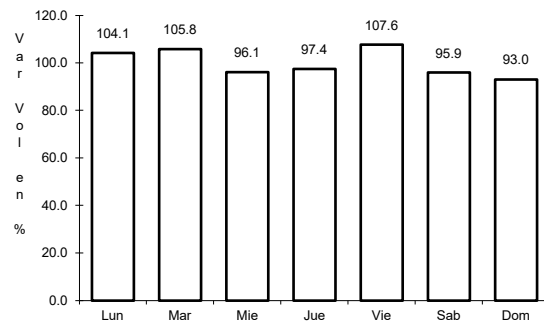
Sent: 0



27 CARR: Rayón - Arroyo Seco

CLAVE: 24008

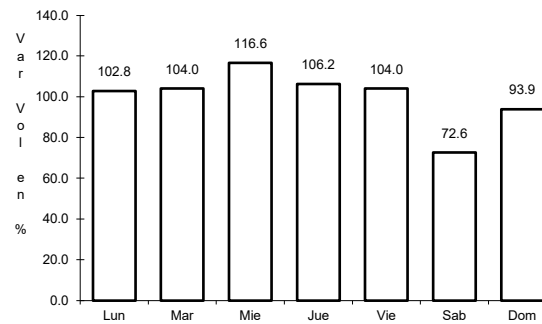
ruta: SLP-011



Km: 0.00

Tipo: 3

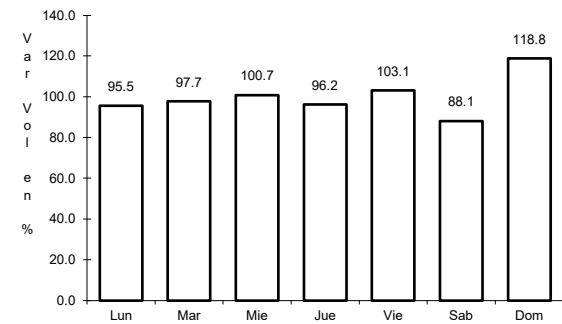
Sent: 0



Km: 36.00

Tipo: 1

Sent: 0



Km: 57.00

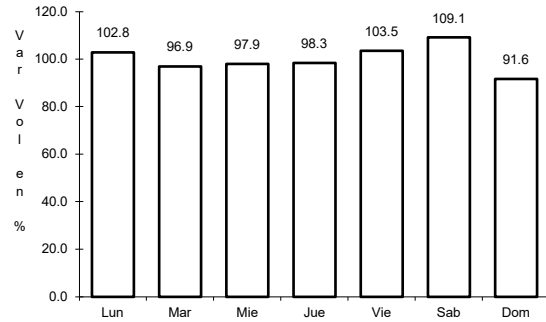
Tipo: 1

Sent: 0

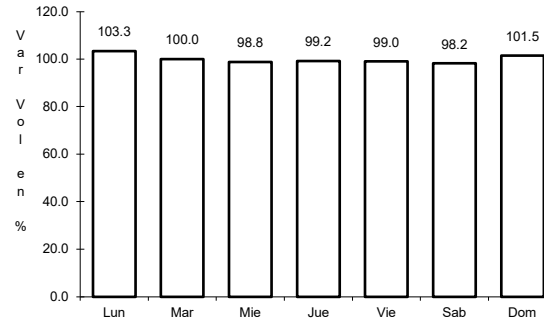
28 CARR: San Juan del Río - Amealco

CLAVE: 22011

RUTA: QRO



Km: 0.00                      Tipo: 3                      Sent: 0

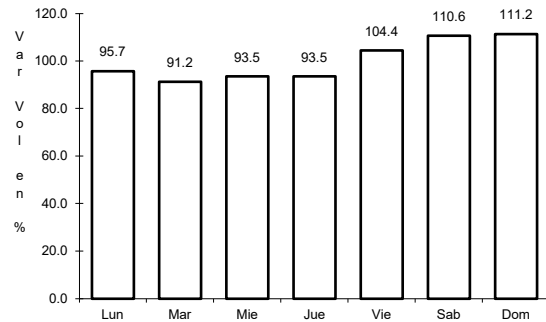


Km: 28.00                      Tipo: 1                      Sent: 0

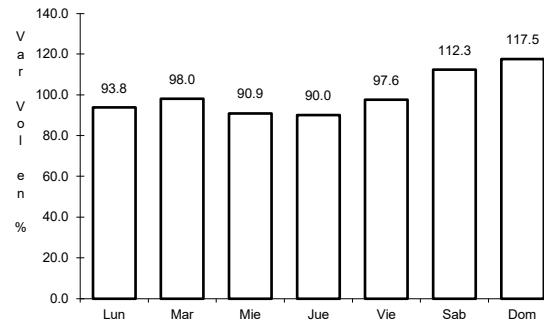
29 CARR: T. C. (Villa del Pueblito - Huimilpan) - Coroneo

CLAVE: 00155

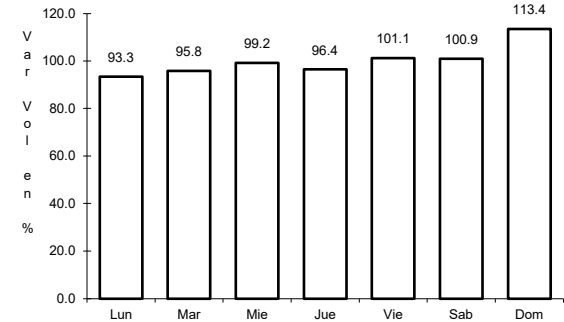
RUTA: QRO-GTO



Km: 0.00                      Tipo: 3                      Sent: 0



Km: 2.60                      Tipo: 3                      Sent: 0

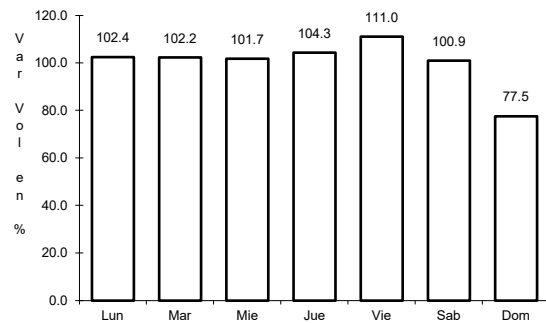


Km: 45.20                      Tipo: 1                      Sent: 0

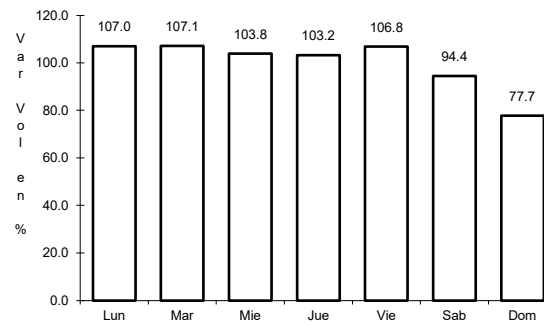
30 CARR: Villa del Pueblito - Huimilpan

CLAVE: 22503

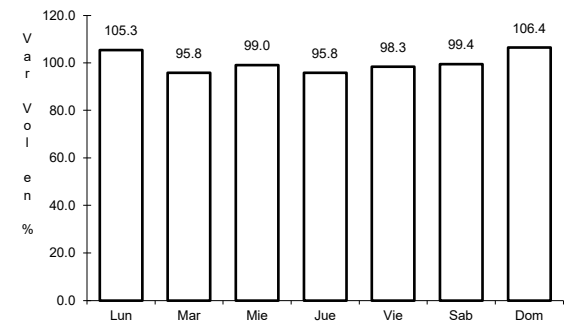
RUTA: QRO



Km: 0.00                      Tipo: 3                      Sent: 1

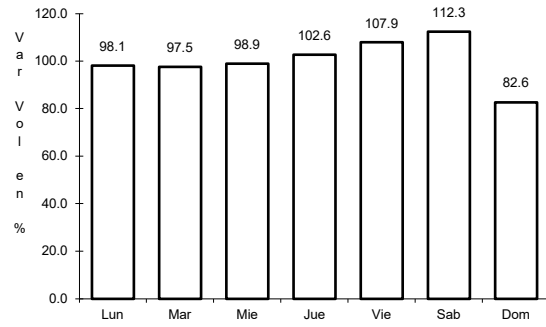


Km: 0.00                      Tipo: 3                      Sent: 2



Km: 27.00                      Tipo: 1                      Sent: 0

31 CARR: Toluca - Palmillas

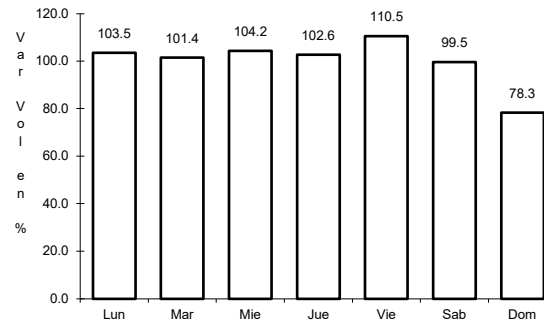


Km: 14.21

Tipo: 1

Sent: 1

CLAVE: 00496

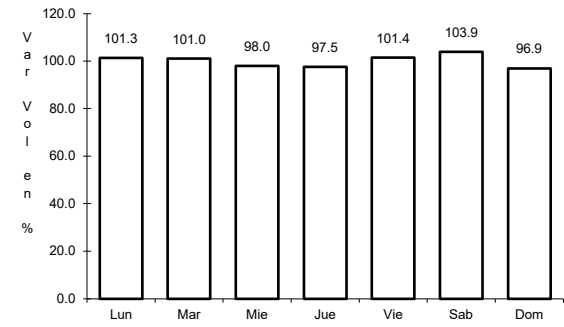


Km: 14.21

Tipo: 1

Sent: 2

RUTA: EM(D)-MEX-055



Km: 85.64

Tipo: 3

Sent: 0

