

OAXACA

## ---RED FEDERAL LIBRE---

1 Acceso al Puerto Salina Cruz	MEX-090
2 Buenavista - Tuxtepec	MEX-175
3 Cd. Alemán - Sayula	MEX-145
4 Coatzacoalcos - Salina Cruz	MEX-185
5 Ent. La Ventosa - San Pedro Tapanatepec	MEX-190
6 Huajuapán de León - Oaxaca	MEX-190
7 Juchitán - Ixtepec	MEX-185
8 La Granja - Temascal	MEX-145
9 Las Cruces - Pinotepa Nacional	MEX-200
10 Libramiento de Pochutla	MEX-200
11 Libramiento de San Pedro Tapanatepec	MEX-200
12 Libramiento de Santa María del Tule	MEX-190
13 Oaxaca - Puerto Ángel	MEX-175
14 Oaxaca - Tehuantepec	MEX-190
15 Puebla - Huajuapán de León	MEX-190
16 Ramal a Asunción Ixtaltepec	MEX-185
17 Ramal a Monte Albán	MEX
18 Ramal a Refinería Pemex (Refinería del Pacífico)	MEX
19 San Pablo Villa de Mitla - T. C. (Tuxtepec - Palomares)	MEX-179
20 Santiago Pinotepa Nacional - Salina Cruz	MEX-200
21 Tapanatepec - Talismán	MEX-200
22 Tapanatepec - Tuxtla Gutiérrez	MEX-190
23 Tehuacán - Huajuapán de León	MEX-125
24 Tuxtepec - Ent. Palomares	MEX-147
25 Tuxtepec - T. C. (Oaxaca - Tehuantepec)	MEX-175
26 Yucudaa - Santiago Pinotepa Nacional	MEX-125

## ---RED FEDERAL DE CUOTA---

27 Cuacnopalan - Oaxaca (Cuota)	MEX-135D
28 Mitla - Tehuantepec (Cuota)	MEX-190D
29 Salina Cruz - La Ventosa (Cuota)	MEX-185D

## ---RED ESTATAL LIBRE---

30 Cd. Ixtepec - Guevea de Humboldt	OAX
31 El Zapote - Copalita	OAX
32 Huajuapán de León - El Carrizal	OAX
33 Loma Bonita - Mixtán	OAX
34 Ramal a Reforma de Pineda	OAX
35 Ramal a Unión Hidalgo	OAX
36 San Antonio - Puerto Ángel	OAX

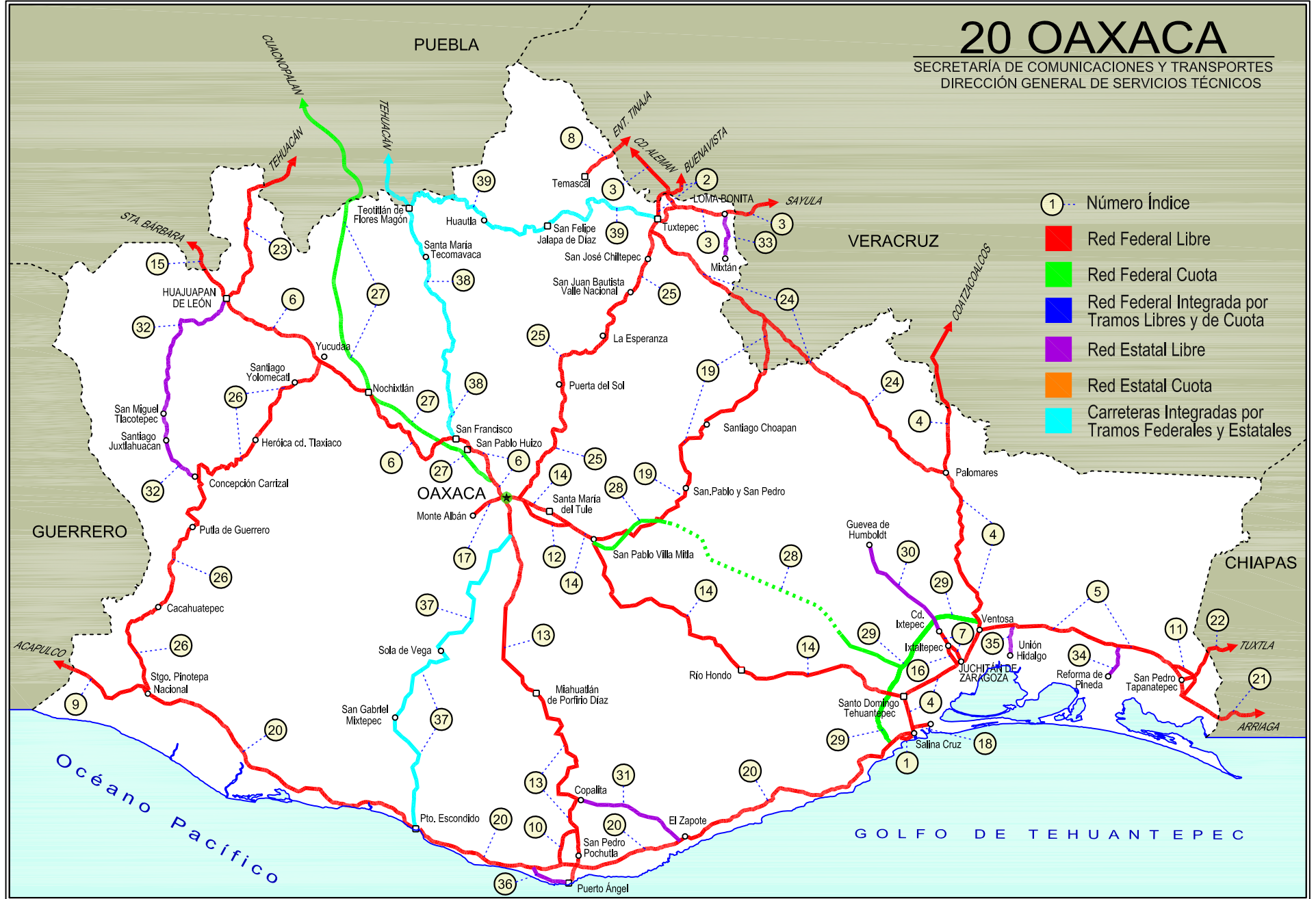
## ---CARRETERAS INTEGRADAS POR TRAMOS FEDERALES Y ESTATALES---

37 T. C. (Oaxaca - Puerto Ángel) - Puerto Escondido	MEX-OAX-161
38 Tehuacán - Huitzo	PUE-MEX-135
39 Teotitlán de Flores Magón - Tuxtepec	OAX-PUE-MEX-182

# 20 OAXACA

SECRETARÍA DE COMUNICACIONES Y TRANSPORTES  
DIRECCIÓN GENERAL DE SERVICIOS TÉCNICOS

- ① - Número Índice
- Red Federal Libre
- Red Federal Cuota
- Red Federal Integrada por Tramos Libres y de Cuota
- Red Estatal Libre
- Red Estatal Cuota
- Carreteras Integradas por Tramos Federales y Estatales





OAXACA

1 CARR: Acceso al Puerto Salina Cruz

CLAVE:

RUTA: MEX-090

AÑO: 2020

LUGAR	ESTACION				CLASIFICACION VEHICULAR EN PORCIENTO														COORDENADAS	
	KM	TE	SC	TDPA	M	A	B	C2	C3	T3S2	T3S3	T3S2R4	OTROS	A	B	C	K'	D	LATITUD	LONGITUD
T. C. Santiago Pinotepa Nacional - Salina Cruz	0.00	3	0	2419	3.1	90.1	1.6	3.4	0.4	0.9	0.2	0.2	0.1	93.2	1.6	5.2	0.081	0.506	16.180388	-95.223756
Salina Cruz	3.80																			

2 CARR: Buenavista - Tuxtepec

CLAVE: 00624

RUTA: MEX-175

AÑO: 2020

LUGAR	ESTACION				CLASIFICACION VEHICULAR EN PORCIENTO														COORDENADAS	
	KM	TE	SC	TDPA	M	A	B	C2	C3	T3S2	T3S3	T3S2R4	OTROS	A	B	C	K'	D	LATITUD	LONGITUD
T. C. Paso del Toro - Acayucan	0.00	3	0	1290	7.5	73.0	1.6	10.5	4.0	2.4	0.9	0.1	0.0	80.5	1.6	17.9	0.092	0.510	18.717169	-95.637536
Puente Tlacotalpan	1.55	2	0	1228	9.5	79.9	4.6	2.8	2.2	0.7	0.2	0.0	0.1	89.4	4.6	6.0	0.085	0.500	18.704579	-95.641360
Tlacotalpan	18.00	1	0	1684	2.8	78.0	1.7	10.2	4.4	2.2	0.5	0.1	0.1	80.8	1.7	17.5	0.099	0.519	18.611285	-95.660238
Tlacotalpan	18.00	3	0	1988	10.3	75.6	1.1	11.4	0.2	1.0	0.2	0.1	0.1	85.9	1.1	13.0	0.085	0.503	18.612486	-95.660044
Carlos A. Carrillo	56.00	1	0	3464	15.7	72.5	0.8	5.2	0.6	3.0	1.3	0.4	0.5	88.2	0.8	11.0	0.085	0.529	18.370792	-95.759338
Cosamaloapan	60.00	1	0	12603	19.9	65.0	0.5	5.8	0.8	5.6	1.3	0.7	0.4	84.9	0.5	14.6	0.085	0.507	18.363973	-95.791735
Cosamaloapan	60.00	3	0	7591	15.3	72.2	1.7	5.1	0.7	3.2	0.8	0.5	0.5	87.5	1.7	10.8	0.079	0.502	18.363983	-95.791752
T. C. La Tinaja - Santa Cruz	107.00	1	0	3301	7.8	76.1	1.4	8.6	1.6	2.7	0.6	1.0	0.2	83.9	1.4	14.7	0.073	0.506	18.168443	-96.091102
T. C. Cd. Alemán - Sayula	108.92	1	0	3320	11.8	70.1	0.9	11.7	1.3	3.2	0.4	0.3	0.3	81.9	0.9	17.2	0.083	0.500	18.168533	-96.097271
T. C. Cd. Alemán - Sayula	108.92	3	0	6205	5.3	71.2	3.3	9.7	2.3	3.9	0.9	2.9	0.5	76.5	3.3	20.2	0.076	0.502	18.168489	-96.097319
Lim. Edos. Term. Ver. Ppia. Oax.	115.00																			
Puente Caracol	117.20	2	0	5626	8.2	69.3	8.7	3.6	2.7	1.9	0.4	5.1	0.1	77.5	8.7	13.8	0.085	0.500	18.133084	-96.136714
Tuxtepec	121.25	1	1	5643	8.8	71.3	0.8	6.6	1.8	4.6	0.9	4.3	0.9	80.1	0.8	19.1	0.096	0.501	18.093451	-96.128261
Tuxtepec	121.25	1	2	5614	8.8	71.3	0.8	6.6	1.8	4.6	0.9	4.3	0.9	80.1	0.8	19.1	0.089	0.501	18.093450	-96.128263

3 CARR: Cd. Alemán - Sayula

CLAVE: 00301

RUTA: MEX-145

AÑO: 2020

LUGAR	ESTACION				CLASIFICACION VEHICULAR EN PORCIENTO														COORDENADAS	
	KM	TE	SC	TDPA	M	A	B	C2	C3	T3S2	T3S3	T3S2R4	OTROS	A	B	C	K'	D	LATITUD	LONGITUD
Cd. Alemán	0.00	3	0	6136	12.9	62.4	4.1	7.0	3.3	5.8	0.8	3.6	0.1	75.3	4.1	20.6	0.077	0.516	18.189464	-96.096620
Lim. Edos. Term. Ver. Ppia. Oax.	2.80																			
Puente Papaloapan	3.50	2	0	1930	11.9	60.7	3.3	7.1	6.9	7.6	0.7	1.5	0.3	72.6	3.3	24.1	0.076	0.500	18.159601	-96.096694
T. Der. Tuxtepec	9.36	3	0	3296	4.6	72.7	1.9	6.8	3.2	5.3	1.3	2.4	1.8	77.3	1.9	20.8	0.081	0.515	18.118631	-96.063499
T. Izq. Loma Bonita	30.00	1	0	4339	4.6	72.9	2.1	7.0	3.4	5.4	1.5	2.9	0.2	77.5	2.1	20.4	0.073	0.529	18.096773	-95.877133
T. Izq. Loma Bonita	30.00	3	0	3668	5.7	74.8	2.1	6.2	3.1	4.1	1.6	2.1	0.3	80.5	2.1	17.4	0.103	0.512	18.096803	-95.877042
Lim. Edos. Term. Oax. Ppia. Ver.	34.40																			
T. Der. Villa Azueta	41.50	1	0	3100	4.5	64.2	3.2	9.0	3.9	10.2	2.1	2.5	0.4	68.7	3.2	28.1	0.075	0.521	18.092076	-95.779184
T. Izq. Tesechoacán	56.70	1	0	2907	2.4	59.6	4.2	10.0	5.4	12.6	2.0	3.4	0.4	62.0	4.2	33.8	0.065	0.514	18.127559	-95.654987

OAXACA

3 CARR: Cd. Alemán - Sayula

CLAVE: 00301

RUTA: MEX-145

AÑO: 2020

LUGAR	ESTACION				CLASIFICACION VEHICULAR EN PORCIENTO													COORDENADAS		
	KM	TE	SC	TDPA	M	A	B	C2	C3	T3S2	T3S3	T3S2R4	OTROS	A	B	C	K'	D	LATITUD	LONGITUD
X. C. Santiago Tuxtla - Playa Vicente	71.40	1	0	3045	2.3	65.0	3.1	10.9	3.6	11.1	1.3	2.4	0.3	67.3	3.1	29.6	0.079	0.513	18.066933	-95.529716
X. C. Santiago Tuxtla - Playa Vicente	71.40	3	0	3697	4.4	65.7	3.2	9.4	2.7	12.4	0.7	1.2	0.3	70.1	3.2	26.7	0.068	0.520	18.066898	-95.529638
San Juan Evangelista	118.35	1	0	3260	2.2	59.2	3.6	8.8	4.4	15.9	2.2	2.9	0.8	61.4	3.6	35.0	0.071	0.521	17.907372	-95.118915
Sayula de Alemán	136.40	1	0	4856	2.5	67.4	2.6	7.1	3.4	11.5	2.4	2.4	0.7	69.9	2.6	27.5	0.067	0.520	17.886038	-94.958647

4 CARR: Coatzacoalcos - Salina Cruz

CLAVE: 00147

RUTA: MEX-185

AÑO: 2020

LUGAR	ESTACION				CLASIFICACION VEHICULAR EN PORCIENTO													COORDENADAS		
	KM	TE	SC	TDPA	M	A	B	C2	C3	T3S2	T3S3	T3S2R4	OTROS	A	B	C	K'	D	LATITUD	LONGITUD
Coatzacoalcos	0.00	3	1	8799	3.2	80.9	1.9	8.9	1.4	1.3	0.8	1.5	0.1	84.1	1.9	14.0	0.085	0.505	18.131750	-94.436165
Coatzacoalcos	0.00	3	2	8973	2.6	82.9	1.8	7.9	1.2	1.2	0.8	1.5	0.1	85.5	1.8	12.7	0.090	0.505	18.131689	-94.436063
T. C. Nuevo Teapa - Cosoleacaque	21.00	1	1	10054	1.2	88.8	1.7	5.2	0.6	1.1	0.9	0.4	0.1	90.0	1.7	8.3	0.086	0.506	18.021548	-94.543308
T. C. Nuevo Teapa - Cosoleacaque	21.00	1	2	9816	1.3	88.6	1.7	5.4	0.6	1.1	0.9	0.3	0.1	89.9	1.7	8.4	0.080	0.506	18.021468	-94.543269
Minatitlán	21.60	3	1	18720	1.9	87.5	0.8	4.6	0.4	1.3	2.6	0.5	0.4	89.4	0.8	9.8	0.071	0.524	17.991703	-94.568650
Minatitlán	21.60	3	2	16979	1.6	86.9	0.7	4.9	0.4	1.4	3.0	0.6	0.5	88.5	0.7	10.8	0.064	0.524	17.991584	-94.568606
Cosoleacaque	31.50	1	0	23609	4.2	83.2	1.1	8.7	0.7	1.0	0.7	0.3	0.1	87.4	1.1	11.5	0.076	0.510	17.998847	-94.637857
T. Der. Soteapan	34.00	1	0	13062	5.4	82.5	1.1	8.2	0.7	0.9	0.7	0.5	0.0	87.9	1.1	11.0	0.079	0.503	17.986915	-94.658383
T. Der. Soteapan	34.00	3	0	9394	6.4	80.9	1.2	8.3	0.8	1.1	0.7	0.5	0.1	87.3	1.2	11.5	0.074	0.504	17.986928	-94.658363
Jáltipan de Morelos	38.60	3	1	3774	5.1	82.3	1.1	6.1	1.0	1.8	1.4	0.9	0.3	87.4	1.1	11.5	0.083	0.515	17.959909	-94.713841
Jáltipan de Morelos	38.60	3	2	3548	5.1	80.8	1.6	7.7	1.3	1.4	0.8	1.0	0.3	85.9	1.6	12.5	0.080	0.515	17.959909	-94.713841
Acayucan	59.60	1	0	7245	5.8	78.6	1.9	8.0	1.6	1.9	0.8	1.2	0.2	84.4	1.9	13.7	0.080	0.512	17.948903	-94.909384
Acayucan	59.60	3	1	6884	6.6	75.9	2.2	9.1	1.5	1.7	0.9	1.3	0.8	82.5	2.2	15.3	0.089	0.510	17.941103	-94.915168
Acayucan	59.60	3	2	6613	5.9	79.7	1.9	6.2	1.5	2.0	0.7	1.4	0.7	85.6	1.9	12.5	0.089	0.510	17.941088	-94.915087
Sayula de Alemán	71.00	1	1	7289	9.3	84.1	0.7	1.9	0.5	2.1	0.6	0.5	0.3	93.4	0.7	5.9	0.076	0.514	17.881796	-94.961515
Sayula de Alemán	71.00	1	2	6899	9.3	84.0	0.7	1.9	0.4	2.1	0.7	0.5	0.4	93.3	0.7	6.0	0.074	0.514	17.881768	-94.961467
Sayula de Alemán	71.00	3	0	6945	10.5	68.8	3.7	4.8	3.9	3.8	2.0	1.6	0.9	79.3	3.7	17.0	0.075	0.508	17.881727	-94.961547
Campo Nuevo	94.50	3	0	5488	1.3	88.1	0.2	2.1	0.5	3.1	1.4	2.3	1.0	89.4	0.2	10.4	0.066	0.509	17.702632	-95.072999
T. Izq. Jesús Carranza	126.80	1	0	4402	6.4	66.1	3.9	4.9	2.6	8.1	2.6	4.5	0.9	72.5	3.9	23.6	0.074	0.533	17.435801	-95.077387
T. Izq. Jesús Carranza	126.80	3	0	3612	6.8	59.6	5.1	5.3	2.7	9.6	2.9	7.0	1.0	66.4	5.1	28.5	0.079	0.510	17.436080	-95.077443
Lim. Edos. Term. Ver. Ppia. Oax.	139.90																			
T. Der. Tuxtepec	166.20	1	0	4842	8.8	61.8	4.9	7.4	2.5	7.0	2.1	4.5	1.0	70.6	4.9	24.5	0.072	0.513	17.138558	-95.062329
T. Der. Tuxtepec	166.20	3	0	5190	8.7	66.8	4.3	7.3	2.3	5.6	1.7	3.2	0.1	75.5	4.3	20.2	0.073	0.503	17.138424	-95.062291
T. Der. Estación Mogoñe	182.15	1	0	4610	5.5	67.4	4.6	6.4	2.5	6.5	1.9	4.5	0.7	72.9	4.6	22.5	0.075	0.506	17.010986	-95.010889
T. Der. Matías Romero	196.00	1	0	8067	7.8	72.4	2.5	4.4	2.5	6.1	1.4	2.8	0.1	80.2	2.5	17.3	0.081	0.510	16.875389	-95.027423
T. Der. Barrio de La Soledad	203.05	1	0	6252	3.5	69.7	3.5	6.6	2.0	7.6	2.0	4.2	0.9	73.2	3.5	23.3	0.077	0.508	16.816316	-95.033265

OAXACA

4 CARR: Coatzacoalcos - Salina Cruz

CLAVE: 00147

RUTA: MEX-185

AÑO: 2020

LUGAR	ESTACION				CLASIFICACION VEHICULAR EN PORCIENTO													COORDENADAS		
	KM	TE	SC	TDPA	M	A	B	C2	C3	T3S2	T3S3	T3S2R4	OTROS	A	B	C	K'	D	LATITUD	LONGITUD
T. Der. Barrio de La Soledad	203.05	3	0	5196	3.2	63.4	4.9	6.2	2.3	9.2	4.2	5.8	0.8	66.6	4.9	28.5	0.066	0.516	16.816245	-95.033254
El Ajal	211.60	1	0	4386	3.9	65.3	3.3	6.9	2.3	6.8	6.0	5.4	0.1	69.2	3.3	27.5	0.080	0.507	16.772519	-95.017945
El Mezquite	222.64	1	0	4316	4.1	64.6	5.6	10.7	1.9	5.5	4.1	2.8	0.7	68.7	5.6	25.7	0.084	0.512	16.693483	-94.953636
T. C. La Ventosa - Salina Cruz (Cuota)	236.00	1	0	5070	2.1	63.4	4.8	9.2	2.6	8.2	4.0	5.3	0.4	65.5	4.8	29.7	0.075	0.511	16.591262	-94.943025
T. C. La Ventosa - Salina Cruz (Cuota)	236.00	3	0	2710	2.4	78.3	4.5	9.0	1.5	1.4	1.9	0.8	0.2	80.7	4.5	14.8	0.080	0.510	16.584138	-94.943561
T. Izq. San Pedro Tapanatepec (2° Acceso)	241.70	1	0	3013	4.1	81.7	2.6	6.7	1.5	1.3	1.4	0.6	0.1	85.8	2.6	11.6	0.082	0.514	16.551456	-94.949630
T. Izq. San Pedro Tapanatepec (2° Acceso)	241.70	3	0	6270	2.5	81.2	3.1	8.6	2.5	0.9	0.9	0.2	0.1	83.7	3.1	13.2	0.084	0.518	16.551468	-94.949654
Juchitán de Zaragoza	255.55	1	0	8194	6.0	84.5	1.9	4.8	1.1	0.8	0.6	0.2	0.1	90.5	1.9	7.6	0.091	0.503	16.446206	-95.025215
Juchitán de Zaragoza	255.55	3	1	8524	7.4	84.3	1.3	5.1	0.7	0.5	0.6	0.0	0.1	91.7	1.3	7.0	0.085	0.504	16.446076	-95.025476
Juchitán de Zaragoza	255.55	3	2	8673	6.7	84.4	1.3	5.5	0.9	0.5	0.6	0.0	0.1	91.1	1.3	7.6	0.077	0.504	16.446022	-95.025446
Santo Domingo Tehuantepec	283.95	1	1	3480	3.1	81.4	2.8	9.5	1.4	0.8	0.9	0.0	0.1	84.5	2.8	12.7	0.086	0.506	16.324818	-95.239138
Santo Domingo Tehuantepec	283.95	1	2	3569	3.2	81.9	2.7	9.1	1.4	0.8	0.8	0.0	0.1	85.1	2.7	12.2	0.073	0.506	16.324738	-95.239085
Santo Domingo Tehuantepec	283.95	3	1	9818	3.3	87.8	0.8	3.6	0.5	1.4	1.4	0.7	0.5	91.1	0.8	8.1	0.081	0.505	16.322469	-95.240035
Santo Domingo Tehuantepec	283.95	3	2	9999	3.4	87.1	1.0	3.6	0.5	1.5	1.5	0.9	0.5	90.5	1.0	8.5	0.074	0.505	16.322498	-95.239878
Salina Cruz	302.35	1	1	10547	2.7	87.2	0.8	4.9	0.7	1.0	1.4	0.9	0.4	89.9	0.8	9.3	0.088	0.504	16.199615	-95.201910
Salina Cruz	302.35	1	2	10714	2.6	86.5	0.8	5.6	0.7	1.1	1.4	0.9	0.4	89.1	0.8	10.1	0.074	0.504	16.199625	-95.201814

5 CARR: Ent. La Ventosa - San Pedro Tapanatepec

CLAVE: 20059

RUTA: MEX-190

AÑO: 2020

LUGAR	ESTACION				CLASIFICACION VEHICULAR EN PORCIENTO													COORDENADAS		
	KM	TE	SC	TDPA	M	A	B	C2	C3	T3S2	T3S3	T3S2R4	OTROS	A	B	C	K'	D	LATITUD	LONGITUD
La Ventosa	0.00	3	0	3447	3.1	87.0	3.2	5.9	0.5	0.2	0.1	0.0	0.0	90.1	3.2	6.7	0.102	0.502	16.549794	-94.945407
T. C. La Ventosa - Salina Cruz (Cuota)	7.20	3	0	5256	3.9	75.9	3.3	8.9	1.6	3.0	1.5	1.2	0.7	79.8	3.3	16.9	0.079	0.523	16.571375	-94.887277
T. Der. Unión Hidalgo	14.55	3	0	4283	2.3	63.1	4.5	5.7	3.5	9.5	3.5	7.4	0.5	65.4	4.5	30.1	0.063	0.506	16.576553	-94.816146
T. Izq. Nlítepec	38.01	3	0	4032	2.3	62.8	4.7	6.0	3.4	9.5	3.8	7.0	0.5	65.1	4.7	30.2	0.064	0.501	16.554349	-94.611946
T. Der. Reforma de Pineda	59.80	1	0	3967	2.3	63.1	4.5	5.9	3.6	9.5	3.7	6.9	0.5	65.4	4.5	30.1	0.064	0.502	16.493717	-94.427997
T. Der. Reforma de Pineda	59.80	3	0	3425	5.8	59.2	4.2	9.3	3.6	8.2	3.6	5.2	0.9	65.0	4.2	30.8	0.067	0.508	16.493715	-94.427767
Santo Domingo Zanatepec	68.25	3	0	3764	6.5	59.1	4.1	9.1	3.4	8.4	3.6	5.0	0.8	65.6	4.1	30.3	0.066	0.506	16.476322	-94.353502
San Pedro Tapanatepec	91.80	1	0	1555	8.2	79.9	1.4	9.8	0.1	0.4	0.2	0.0	0.0	88.1	1.4	10.5	0.087	0.502	16.370600	-94.193509

6 CARR: Huajuapán de León - Oaxaca

CLAVE: 20056

RUTA: MEX-190

AÑO: 2020

LUGAR	ESTACION				CLASIFICACION VEHICULAR EN PORCIENTO													COORDENADAS		
	KM	TE	SC	TDPA	M	A	B	C2	C3	T3S2	T3S3	T3S2R4	OTROS	A	B	C	K'	D	LATITUD	LONGITUD
Huajuapán de León	0.00																			

OAXACA

6 CARR: Huajuapán de León - Oaxaca

CLAVE: 20056

RUTA: MEX-190

AÑO: 2020

LUGAR	ESTACION				CLASIFICACION VEHICULAR EN PORCIENTO										COORDENADAS					
	KM	TE	SC	TDPA	M	A	B	C2	C3	T3S2	T3S3	T3S2R4	OTROS	A	B	C	K'	D	LATITUD	LONGITUD
T. Izq. Tehuacán	1.35	1	0	14804	10.3	83.6	0.3	4.4	0.4	0.3	0.5	0.1	0.1	93.9	0.3	5.8	0.073	0.501	17.813409	-97.762597
T. Izq. Tehuacán	1.35	3	0	10175	6.3	80.3	0.3	6.1	0.4	5.4	0.4	0.1	0.7	86.6	0.3	13.1	0.077	0.523	17.813386	-97.762316
Tamazulapan	38.61	1	0	2794	2.7	79.4	0.6	13.3	1.1	1.4	1.1	0.2	0.2	82.1	0.6	17.3	0.073	0.510	17.672169	-97.573904
Tamazulapan	38.61	3	0	2698	5.4	82.8	0.4	9.4	0.8	0.8	0.3	0.1	0.0	88.2	0.4	11.4	0.083	0.509	17.671971	-97.572797
T. Izq. Santiago Tejupan	49.62	3	0	2251	3.5	76.8	2.3	13.9	1.4	1.2	0.7	0.1	0.1	80.3	2.3	17.4	0.075	0.502	17.660663	-97.478065
T. Der. Tlaxiaco	61.43	3	0	2300	2.8	78.2	1.2	14.2	1.2	1.7	0.7	0.0	0.0	81.0	1.2	17.8	0.083	0.509	17.573463	-97.424624
Asunción Nochixtlán	90.40	1	0	5657	5.3	82.8	0.5	9.0	0.7	1.2	0.4	0.0	0.1	88.1	0.5	11.4	0.072	0.516	17.459773	-97.229042
T. Izq. Tehuacán	161.73	1	0	977	11.4	82.6	0.3	4.1	0.8	0.3	0.2	0.3	0.0	94.0	0.3	5.7	0.104	0.524	17.285283	-96.902900
T. Izq. Tehuacán	161.73	3	0	5981	12.2	80.9	0.4	3.8	0.5	1.6	0.3	0.2	0.1	93.1	0.4	6.5	0.078	0.503	17.285238	-96.903185
T. Der. Tlaltinango	170.29	1	0	7005	9.4	86.5	0.1	1.6	0.6	1.5	0.1	0.2	0.0	95.9	0.1	4.0	0.087	0.501	17.245225	-96.846675
T. Der. Tlaltinango	170.29	3	0	6991	6.3	90.0	0.3	1.8	0.5	0.8	0.1	0.2	0.0	96.3	0.3	3.4	0.078	0.511	17.245235	-96.846697
T. Der. Nazareno Etla	179.23	3	1	12726	5.2	91.3	0.1	1.8	0.5	0.4	0.5	0.1	0.1	96.5	0.1	3.4	0.075	0.505	17.171465	-96.789696
T. Der. Nazareno Etla	179.23	3	2	12478	4.1	93.1	0.2	1.3	0.4	0.3	0.5	0.1	0.0	97.2	0.2	2.6	0.087	0.505	17.171489	-96.789613
T. Aut. Cuacnopalan - Oaxaca	181.80	3	1	20176	11.1	80.8	0.9	3.5	0.6	1.0	1.3	0.4	0.4	91.9	0.9	7.2	0.086	0.503	17.143995	-96.778347
T. Aut. Cuacnopalan - Oaxaca	181.80	3	2	19932	11.1	80.8	0.9	3.5	0.6	1.0	1.3	0.4	0.4	91.9	0.9	7.2	0.087	0.503	17.144034	-96.778184
Oaxaca	190.60	1	1	30826	10.7	81.2	0.8	5.3	0.2	0.6	0.9	0.1	0.2	91.9	0.8	7.3	0.088	0.513	17.082790	-96.743809
Oaxaca	190.60	1	2	29117	10.7	81.2	0.8	5.3	0.2	0.6	0.9	0.1	0.2	91.9	0.8	7.3	0.081	0.513	17.082848	-96.743684

7 CARR: Juchitán - Ixtepec

CLAVE: 20359

RUTA: MEX-185

AÑO: 2020

LUGAR	ESTACION				CLASIFICACION VEHICULAR EN PORCIENTO										COORDENADAS					
	KM	TE	SC	TDPA	M	A	B	C2	C3	T3S2	T3S3	T3S2R4	OTROS	A	B	C	K'	D	LATITUD	LONGITUD
Juchitán de Zaragoza	0.00																			
X. C. Coatzacoalcos - Salina Cruz	0.15	3	1	7652	6.1	87.4	0.6	5.3	0.3	0.2	0.1	0.0	0.0	93.5	0.6	5.9	0.085	0.505	16.446367	-95.025259
X. C. Coatzacoalcos - Salina Cruz	0.15	3	2	7804	6.5	87.1	0.7	5.2	0.2	0.2	0.1	0.0	0.0	93.6	0.7	5.7	0.100	0.505	16.446329	-95.025409
Asunción Ixtaltepec	7.40	1	1	3782	9.7	80.0	0.8	8.0	0.9	0.2	0.2	0.2	0.0	89.7	0.8	9.5	0.075	0.500	16.504522	-95.064036
Asunción Ixtaltepec	7.40	1	2	3780	10.3	79.7	0.7	7.9	0.9	0.2	0.1	0.2	0.0	90.0	0.7	9.3	0.081	0.500	16.504522	-95.064036
Asunción Ixtaltepec	7.40	3	1	5160	7.5	86.1	0.5	4.3	0.5	0.4	0.4	0.2	0.1	93.6	0.5	5.9	0.078	0.510	16.504642	-95.064003
Asunción Ixtaltepec	7.40	3	2	4963	7.8	85.5	0.4	4.8	0.4	0.4	0.4	0.2	0.1	93.3	0.4	6.3	0.081	0.510	16.504646	-95.064039
Ixtepec	16.00	1	1	3556	7.7	83.0	1.3	7.3	0.2	0.4	0.1	0.0	0.0	90.7	1.3	8.0	0.086	0.501	16.555734	-95.093250
Ixtepec	16.00	1	2	3569	8.3	83.0	1.2	7.0	0.1	0.3	0.1	0.0	0.0	91.3	1.2	7.5	0.092	0.501	16.555734	-95.093251



OAXACA

8 CARR: La Granja - Temascal

CLAVE: 00275

RUTA: MEX-145

AÑO: 2020

LUGAR	ESTACION				CLASIFICACION VEHICULAR EN PORCIENTO										COORDENADAS					
	KM	TE	SC	TDPA	M	A	B	C2	C3	T3S2	T3S3	T3S2R4	OTROS	A	B	C	K'	D	LATITUD	LONGITUD
T. C. La Tinaja - Santa Cruz	0.00	3	0	3873	19.9	64.2	1.2	5.8	2.6	3.1	1.4	0.7	1.1	84.1	1.2	14.7	0.082	0.514	18.354787	-96.259435
Lim. Edos. Term. Ver. Ppia. Oax.	5.00																			
Temascal	23.00	1	0	3771	26.6	60.7	0.8	6.2	1.0	2.7	0.7	0.7	0.6	87.3	0.8	11.9	0.097	0.506	18.241480	-96.401353

9 CARR: Las Cruces - Pinotepa Nacional

CLAVE: 00073

RUTA: MEX-200

AÑO: 2020

LUGAR	ESTACION				CLASIFICACION VEHICULAR EN PORCIENTO										COORDENADAS					
	KM	TE	SC	TDPA	M	A	B	C2	C3	T3S2	T3S3	T3S2R4	OTROS	A	B	C	K'	D	LATITUD	LONGITUD
T. C. Chilpancingo - Acapulco	0.00	3	1	15385	4.3	90.4	0.4	2.3	0.7	0.6	0.6	0.2	0.5	94.7	0.4	4.9	0.071	0.520	16.886133	-99.837214
T. C. Chilpancingo - Acapulco	0.00	3	2	14211	4.3	90.3	0.4	2.1	0.8	0.6	0.7	0.2	0.6	94.6	0.4	5.0	0.076	0.520	16.886193	-99.837149
T. Der. Puerto Marqués	4.62	1	1	16595	5.0	89.1	0.3	3.5	0.6	0.5	0.6	0.2	0.2	94.1	0.3	5.6	0.074	0.528	16.862533	-99.809034
T. Der. Puerto Marqués	4.62	1	2	18598	4.6	89.6	0.3	3.4	0.6	0.5	0.6	0.2	0.2	94.2	0.3	5.5	0.076	0.528	16.862566	-99.808975
T. Der. Puerto Marqués	4.62	3	0	12776	5.1	87.1	0.7	4.4	1.3	0.6	0.6	0.1	0.1	92.2	0.7	7.1	0.080	0.503	16.862508	-99.808934
X. C. Puerto Marqués - La Venta (Cuota)	11.70	1	1	3675	5.1	84.8	1.2	5.4	1.0	1.1	0.7	0.5	0.2	89.9	1.2	8.9	0.084	0.509	16.830701	-99.759771
X. C. Puerto Marqués - La Venta (Cuota)	11.70	1	2	3543	5.0	84.4	1.2	5.5	1.2	1.3	0.8	0.5	0.1	89.4	1.2	9.4	0.082	0.509	16.830804	-99.759769
X. C. Puerto Marqués - La Venta (Cuota)	11.70	3	1	4104	4.6	84.2	1.6	5.9	1.4	1.3	0.8	0.1	0.1	88.8	1.6	9.6	0.082	0.509	16.830669	-99.759173
X. C. Puerto Marqués - La Venta (Cuota)	11.70	3	2	3954	4.8	84.2	1.6	5.9	1.3	1.2	0.8	0.1	0.1	89.0	1.6	9.4	0.085	0.509	16.830769	-99.759171
San Marcos	58.90	1	0	6464	2.8	82.8	1.8	7.1	1.5	2.4	1.2	0.3	0.1	85.6	1.8	12.6	0.098	0.501	16.793235	-99.388229
San Marcos	58.90	3	0	5946	2.8	83.1	1.7	7.1	1.5	2.2	1.2	0.3	0.1	85.9	1.7	12.4	0.108	0.542	16.793269	-99.388254
Nexpa	84.96	3	0	5515	2.6	83.8	1.7	6.2	1.8	2.4	1.1	0.3	0.1	86.4	1.7	11.9	0.106	0.510	16.782078	-99.203663
Cruz Grande	97.00	3	0	5965	2.5	83.7	1.9	6.5	1.8	2.1	1.0	0.3	0.2	86.2	1.9	11.9	0.107	0.513	16.718347	-99.123645
T. Izq. Copala (1º Acceso)	117.50	1	0	5429	2.5	83.4	1.9	6.3	1.6	2.3	1.2	0.5	0.3	85.9	1.9	12.2	0.105	0.519	16.605562	-98.982520
T. Izq. Copala (1º Acceso)	117.50	3	0	5396	2.1	83.7	1.6	7.4	1.8	1.9	0.9	0.4	0.2	85.8	1.6	12.6	0.099	0.526	16.605484	-98.982328
T. Der. Playa Ventura	124.00	1	0	4101	2.4	80.4	2.4	7.1	2.3	3.4	1.4	0.4	0.2	82.8	2.4	14.8	0.102	0.504	16.593531	-98.924573
T. Der. Playa Ventura	124.00	3	0	4789	2.4	80.1	2.6	7.1	2.3	3.4	1.4	0.5	0.2	82.5	2.6	14.9	0.110	0.516	16.593496	-98.924454
Marquelia	136.80	1	0	4464	2.6	83.9	2.2	5.8	1.9	1.8	0.9	0.6	0.3	86.5	2.2	11.3	0.093	0.506	16.581871	-98.813775
Marquelia	136.80	3	0	4061	2.3	82.1	2.5	6.2	2.1	3.4	1.2	0.2	0.0	84.4	2.5	13.1	0.104	0.508	16.581893	-98.813732
Juchitán	158.00	3	0	4297	2.4	81.8	2.5	6.2	2.1	3.4	1.4	0.2	0.0	84.2	2.5	13.3	0.098	0.512	16.627913	-98.636514
T. Izq. Ometepec	175.88	1	0	4762	2.6	82.5	1.8	8.1	2.1	2.0	0.6	0.2	0.1	85.1	1.8	13.1	0.098	0.513	16.656032	-98.501787
T. Izq. Ometepec	175.88	3	0	4078	2.4	82.6	2.6	6.6	1.9	2.7	0.7	0.3	0.2	85.0	2.6	12.4	0.103	0.530	16.656080	-98.501623
Cuajinicuilapa	200.60	1	0	3729	2.3	79.8	2.6	8.0	1.9	3.7	1.1	0.3	0.3	82.1	2.6	15.3	0.098	0.508	16.471391	-98.415000
Cuajinicuilapa	200.60	3	0	2718	2.6	79.2	2.6	7.7	2.9	3.2	1.3	0.3	0.2	81.8	2.6	15.6	0.120	0.508	16.470576	-98.411626
Lim. Edos. Term. Gro. Ppia. Oax.	207.80																			
T. Izq. San Pedro Orizaba	215.00	3	0	1681	3.7	76.9	3.0	7.1	3.7	3.8	1.8	0.0	0.0	80.6	3.0	16.4	0.089	0.502	16.443643	-98.344994
T. Izq. Tlaxiaco	245.47	1	0	2730	5.8	78.6	1.8	6.8	1.7	3.6	1.1	0.2	0.4	84.4	1.8	13.8	0.081	0.510	16.378375	-98.092805

OAXACA

9 CARR: Las Cruces - Pinotepa Nacional

CLAVE: 00073

RUTA: MEX-200

AÑO: 2020

LUGAR	ESTACION				CLASIFICACION VEHICULAR EN PORCIENTO													COORDENADAS		
	KM	TE	SC	TDPA	M	A	B	C2	C3	T3S2	T3S3	T3S2R4	OTROS	A	B	C	K'	D	LATITUD	LONGITUD
T. Izq. Tlaxiaco	245.47	3	0	5345	5.4	81.7	1.4	4.5	1.2	2.9	1.6	0.5	0.8	87.1	1.4	11.5	0.084	0.509	16.378286	-98.092770
Pinotepa Nacional	252.50																			

10 CARR: Libramiento de Pochutla

CLAVE:

RUTA: MEX-200

AÑO: 2020

LUGAR	ESTACION				CLASIFICACION VEHICULAR EN PORCIENTO													COORDENADAS		
	KM	TE	SC	TDPA	M	A	B	C2	C3	T3S2	T3S3	T3S2R4	OTROS	A	B	C	K'	D	LATITUD	LONGITUD
T. C. Santiago Pinotepa Nacional - Salina Cruz	0.00	3	0	816	22.4	66.6	1.4	5.9	1.4	1.2	0.9	0.2	0.0	89.0	1.4	9.6	0.097	0.511	15.731968	-96.481511
Pio Macaya	2.40	1	0	804	23.0	66.9	0.7	6.2	1.3	1.0	0.6	0.0	0.3	89.9	0.7	9.4	0.096	0.514	15.751517	-96.478194
Pio Macaya	2.40	3	0	584	20.8	65.1	1.4	10.0	1.7	0.6	0.4	0.0	0.0	85.9	1.4	12.7	0.094	0.518	15.751586	-96.478263
T. C. Oaxaca - Puerto Ángel	5.20	1	0	727	14.5	73.8	1.5	7.0	1.9	0.8	0.5	0.0	0.0	88.3	1.5	10.2	0.084	0.513	15.761521	-96.465020

11 CARR: Libramiento de San Pedro Tapanatepec

CLAVE:

RUTA: MEX-200

AÑO: 2020

LUGAR	ESTACION				CLASIFICACION VEHICULAR EN PORCIENTO													COORDENADAS		
	KM	TE	SC	TDPA	M	A	B	C2	C3	T3S2	T3S3	T3S2R4	OTROS	A	B	C	K'	D	LATITUD	LONGITUD
T. C. Ent. La Ventosa - San Pedro Tapanatepec	0.00																			
T. C. Tapanatepec - Tuxtla Gutiérrez	3.35	1	0	2378	9.0	64.2	3.1	6.9	2.4	6.9	3.3	3.2	1.0	73.2	3.1	23.7	0.078	0.511	16.373096	-94.180999

12 CARR: Libramiento de Santa María del Tule

CLAVE:

RUTA: MEX-190

AÑO: 2020

LUGAR	ESTACION				CLASIFICACION VEHICULAR EN PORCIENTO													COORDENADAS		
	KM	TE	SC	TDPA	M	A	B	C2	C3	T3S2	T3S3	T3S2R4	OTROS	A	B	C	K'	D	LATITUD	LONGITUD
T. C. Oaxaca - Tehuantepec (Poniente)	0.00	3	0	16843	1.1	85.2	0.9	5.8	1.1	3.8	0.8	0.5	0.8	86.3	0.9	12.8	0.082	0.511	17.060295	-96.662583
T. C. Oaxaca - Tehuantepec (Oriente)	5.80	1	0	17516	0.9	87.8	0.8	4.2	0.8	3.5	0.9	0.5	0.6	88.7	0.8	10.5	0.091	0.518	17.037044	-96.621659

13 CARR: Oaxaca - Puerto Ángel

CLAVE: 20091

RUTA: MEX-175

AÑO: 2020

LUGAR	ESTACION				CLASIFICACION VEHICULAR EN PORCIENTO													COORDENADAS		
	KM	TE	SC	TDPA	M	A	B	C2	C3	T3S2	T3S3	T3S2R4	OTROS	A	B	C	K'	D	LATITUD	LONGITUD
Oaxaca	0.00	3	1	22663	6.3	86.5	0.3	4.7	0.4	0.6	1.0	0.1	0.1	92.8	0.3	6.9	0.074	0.518	17.033505	-96.713941
Oaxaca	0.00	3	2	24335	6.3	86.5	0.3	4.7	0.4	0.6	1.0	0.1	0.1	92.8	0.3	6.9	0.065	0.518	17.033573	-96.713831
T. Der. Aeropuerto	10.46	1	1	21658	4.8	88.2	0.2	5.3	0.6	0.3	0.4	0.1	0.1	93.0	0.2	6.8	0.081	0.502	17.002874	-96.713041
T. Der. Aeropuerto	10.46	1	2	21524	4.8	88.2	0.2	5.3	0.6	0.3	0.4	0.1	0.1	93.0	0.2	6.8	0.078	0.502	17.002872	-96.712950
T. Der. Puerto Escondido	19.07	1	1	13669	5.2	87.3	0.4	5.5	0.8	0.4	0.3	0.1	0.0	92.5	0.4	7.1	0.093	0.507	16.930107	-96.703769

OAXACA

13 CARR: Oaxaca - Puerto Ángel

CLAVE: 20091

RUTA: MEX-175

AÑO: 2020

LUGAR	ESTACION				CLASIFICACION VEHICULAR EN PORCIENTO										COORDENADAS					
	KM	TE	SC	TDPA	M	A	B	C2	C3	T3S2	T3S3	T3S2R4	OTROS	A	B	C	K'	D	LATITUD	LONGITUD
T. Der. Puerto Escondido	19.07	1	2	14084	5.5	86.3	0.4	6.1	0.8	0.4	0.3	0.2	0.0	91.8	0.4	7.8	0.084	0.507	16.930122	-96.703659
T. Der. Puerto Escondido	19.07	3	0	18018	11.9	71.6	0.3	6.5	0.9	6.7	1.0	0.7	0.4	83.5	0.3	16.2	0.093	0.504	16.929939	-96.703618
Ocotlán	35.67	3	0	7260	6.5	86.4	0.1	6.2	0.3	0.1	0.0	0.1	0.3	92.9	0.1	7.0	0.107	0.508	16.784415	-96.669796
Ejutla de Crespo	64.04	1	0	5335	2.1	86.1	0.4	6.9	1.3	2.3	0.4	0.1	0.4	88.2	0.4	11.4	0.083	0.512	16.565187	-96.732160
Ejutla de Crespo	64.04	3	0	3353	3.4	82.3	0.4	10.8	2.1	0.5	0.3	0.1	0.1	85.7	0.4	13.9	0.084	0.505	16.564998	-96.732235
Miahuatlán de Porfirio Díaz	100.64	3	0	3978	1.9	86.1	0.4	6.9	1.3	2.4	0.5	0.1	0.4	88.0	0.4	11.6	0.081	0.514	16.328850	-96.589927
San Miguel Suchixtepec	144.00	1	0	1790	1.6	81.7	1.0	11.3	1.3	2.4	0.6	0.1	0.0	83.3	1.0	15.7	0.082	0.506	16.094035	-96.464951
Candelaria Loxicha	195.00	1	0	1587	1.8	84.8	1.1	9.3	1.3	0.8	0.7	0.2	0.0	86.6	1.1	12.3	0.084	0.507	15.929504	-96.487379
San Pedro Pochutla	238.00	1	0	3919	15.3	79.2	0.3	4.3	0.5	0.1	0.3	0.0	0.0	94.5	0.3	5.2	0.078	0.504	15.750559	-96.464828
Puerto Ángel	245.40	1	0	3064	25.0	72.1	0.1	1.9	0.1	0.1	0.5	0.2	0.0	97.1	0.1	2.8	0.090	0.501	15.668734	-96.487761

14 CARR: Oaxaca - Tehuantepec

CLAVE: 20057

RUTA: MEX-190

AÑO: 2020

LUGAR	ESTACION				CLASIFICACION VEHICULAR EN PORCIENTO										COORDENADAS					
	KM	TE	SC	TDPA	M	A	B	C2	C3	T3S2	T3S3	T3S2R4	OTROS	A	B	C	K'	D	LATITUD	LONGITUD
Oaxaca	0.00	3	1	14068	10.9	84.7	0.3	3.5	0.3	0.1	0.2	0.0	0.0	95.6	0.3	4.1	0.073	0.531	17.070397	-96.713523
Oaxaca	0.00	3	2	12443	10.9	83.6	0.5	4.0	0.4	0.3	0.3	0.0	0.0	94.5	0.5	5.0	0.073	0.531	17.070487	-96.713516
T. Izq. Guelatao	8.69	3	1	17372	17.0	77.4	0.5	3.8	0.5	0.5	0.3	0.0	0.0	94.4	0.5	5.1	0.078	0.503	17.065248	-96.679443
T. Izq. Guelatao	8.69	3	2	17556	9.1	83.7	1.0	4.2	0.9	0.8	0.3	0.0	0.0	92.8	1.0	6.2	0.076	0.503	17.065419	-96.679383
Libramiento Santa María el Tule	12.00	1	1	16168	9.9	85.1	0.4	4.0	0.3	0.1	0.2	0.0	0.0	95.0	0.4	4.6	0.072	0.527	17.060139	-96.662305
Libramiento Santa María el Tule	12.00	1	2	14525	10.1	84.6	0.4	4.2	0.3	0.2	0.2	0.0	0.0	94.7	0.4	4.9	0.072	0.527	17.060266	-96.662250
Santa María El Tule	13.90	1	1	5977	9.2	86.6	0.1	3.7	0.2	0.2	0.0	0.0	0.0	95.8	0.1	4.1	0.091	0.521	17.046227	-96.637267
Santa María El Tule	13.90	1	2	5492	9.2	86.5	0.2	3.7	0.3	0.1	0.0	0.0	0.0	95.7	0.2	4.1	0.087	0.521	17.046296	-96.637234
Santa María El Tule	13.90	3	0	4082	11.6	81.1	1.3	4.3	0.5	1.2	0.0	0.0	0.0	92.7	1.3	6.0	0.077	0.528	17.045229	-96.636112
T. Izq. Teotitlán del Valle	26.50	1	0	15870	6.0	87.4	0.8	3.4	1.0	0.6	0.4	0.3	0.1	93.4	0.8	5.8	0.089	0.503	16.994993	-96.525878
T. Izq. Teotitlán del Valle	26.50	3	0	12233	3.8	85.7	1.2	7.3	0.8	0.7	0.3	0.2	0.0	89.5	1.2	9.3	0.089	0.503	16.994910	-96.525742
T. Der. Tlacolula	33.64	1	0	12767	3.9	86.7	1.0	6.5	0.7	0.5	0.4	0.2	0.1	90.6	1.0	8.4	0.085	0.517	16.961801	-96.477186
T. Der. Tlacolula	33.64	3	1	4396	6.8	83.6	1.6	5.3	1.2	0.6	0.5	0.2	0.2	90.4	1.6	8.0	0.102	0.515	16.961553	-96.477041
T. Der. Tlacolula	33.64	3	2	4135	2.9	86.0	1.6	6.2	1.3	0.8	0.7	0.2	0.3	88.9	1.6	9.5	0.087	0.515	16.961625	-96.476961
T. Izq. Villa de Mitla	42.66	1	0	8912	1.7	87.4	1.4	5.8	1.5	1.1	0.7	0.3	0.1	89.1	1.4	9.5	0.086	0.500	16.919282	-96.400694
T. Izq. Villa de Mitla	42.66	3	0	4520	1.8	82.1	2.4	9.0	1.4	1.9	0.9	0.4	0.1	83.9	2.4	13.7	0.078	0.510	16.919299	-96.400748
San Pedro Totolapan	81.00	1	0	2559	4.1	76.6	4.4	7.4	2.1	2.3	1.6	1.0	0.5	80.7	4.4	14.9	0.085	0.507	16.667468	-96.302320
T. Izq. Nejapa de Madero	127.00	1	0	1930	3.7	73.1	4.2	6.2	7.0	2.9	1.9	0.8	0.2	76.8	4.2	19.0	0.082	0.510	16.613476	-96.035538
La Reforma	184.62	1	0	1966	0.7	76.7	5.6	8.4	2.4	2.6	1.8	1.6	0.2	77.4	5.6	17.0	0.080	0.517	16.399283	-95.764485
La Reforma	184.62	3	0	1814	0.9	76.6	6.3	7.6	2.4	2.5	2.1	1.5	0.1	77.5	6.3	16.2	0.085	0.518	16.399315	-95.764541

OAXACA

14 CARR: Oaxaca - Tehuantepec

CLAVE: 20057

RUTA: MEX-190

AÑO: 2020

LUGAR	ESTACION				CLASIFICACION VEHICULAR EN PORCIENTO										COORDENADAS					
	KM	TE	SC	TDPA	M	A	B	C2	C3	T3S2	T3S3	T3S2R4	OTROS	A	B	C	K'	D	LATITUD	LONGITUD
T. Der. Magdalena Tequisistlán	206.66	1	0	2681	5.2	74.3	5.7	4.8	2.4	3.2	2.0	2.0	0.4	79.5	5.7	14.8	0.082	0.510	16.413301	-95.595562
T. Izq. Jalapa de Márquez	224.60	3	0	3367	1.9	79.5	3.5	10.0	1.4	1.9	1.0	0.7	0.1	81.4	3.5	15.1	0.083	0.501	16.438316	-95.444103
X. C. La Ventosa - Salina Cruz (Cuota)	246.18	1	0	3319	1.1	80.6	3.4	9.9	1.4	1.9	0.9	0.7	0.1	81.7	3.4	14.9	0.096	0.506	16.333651	-95.281954
X. C. La Ventosa - Salina Cruz (Cuota)	246.18	3	0	4664	4.2	79.5	2.6	7.1	1.1	2.9	0.7	1.7	0.2	83.7	2.6	13.7	0.083	0.503	16.332474	-95.277090
Tehuantepec	250.60	1	0	6942	3.5	80.7	2.0	7.4	1.1	2.6	0.5	1.9	0.3	84.2	2.0	13.8	0.079	0.521	16.324190	-95.242909

15 CARR: Puebla - Huajuapán de León

CLAVE: 00049

RUTA: MEX-190

AÑO: 2020

LUGAR	ESTACION				CLASIFICACION VEHICULAR EN PORCIENTO										COORDENADAS					
	KM	TE	SC	TDPA	M	A	B	C2	C3	T3S2	T3S3	T3S2R4	OTROS	A	B	C	K'	D	LATITUD	LONGITUD
Puebla	0.00	3	1	28071	3.5	90.3	2.0	0.9	1.0	0.2	1.9	0.2	0.0	93.8	2.0	4.2	0.083	0.526	19.035529	-98.256849
Puebla	0.00	3	2	25116	3.9	89.2	2.2	1.0	1.1	0.3	2.1	0.2	0.0	93.1	2.2	4.7	0.087	0.526	19.035548	-98.256856
T. Izq. Santa María Acuyah	8.68	1	1	14346	3.7	88.4	1.1	3.9	1.3	0.8	0.4	0.3	0.1	92.1	1.1	6.8	0.098	0.507	19.023678	-98.297095
T. Izq. Santa María Acuyah	8.68	1	2	14738	3.4	89.1	1.1	3.3	1.5	0.9	0.4	0.2	0.1	92.5	1.1	6.4	0.095	0.507	19.023635	-98.297134
T. Izq. Santa María Acuyah	8.68	3	1	13417	6.6	86.5	1.0	2.7	1.6	0.8	0.2	0.5	0.1	93.1	1.0	5.9	0.099	0.524	19.023680	-98.297093
T. Izq. Santa María Acuyah	8.68	3	2	12211	3.7	88.8	0.9	3.5	1.5	0.9	0.4	0.2	0.1	92.5	0.9	6.6	0.091	0.524	19.023633	-98.297132
Chipilo	13.00	1	1	10907	5.5	87.2	0.8	3.3	1.5	1.0	0.3	0.3	0.1	92.7	0.8	6.5	0.099	0.522	19.005861	-98.331418
Chipilo	13.00	1	2	9971	6.0	85.4	1.0	3.5	1.8	1.2	0.5	0.4	0.2	91.4	1.0	7.6	0.110	0.522	19.005871	-98.331415
T. Der. Santa Isabel Cholula	17.28	1	0	14139	6.4	86.6	1.0	2.6	1.5	0.9	0.4	0.4	0.2	93.0	1.0	6.0	0.109	0.508	18.984889	-98.364588
T. Der. Santa Isabel Cholula	17.28	3	0	13318	5.9	87.3	0.7	2.6	1.6	0.9	0.4	0.4	0.2	93.2	0.7	6.1	0.102	0.508	18.984886	-98.364585
Atlixco	29.88	1	0	19812	5.3	88.0	0.8	2.7	1.4	0.7	0.6	0.4	0.1	93.3	0.8	5.9	0.098	0.519	18.913497	-98.430779
Atlixco	29.88	3	1	6853	4.5	82.6	1.1	7.8	1.5	1.0	0.7	0.8	0.0	87.1	1.1	11.8	0.093	0.507	18.903758	-98.433651
Atlixco	29.88	3	2	6670	4.7	81.7	1.3	7.9	1.5	1.1	0.7	1.1	0.0	86.4	1.3	12.3	0.097	0.507	18.903753	-98.433659
Tepeojuma	51.90	1	1	3791	1.7	84.1	1.6	5.8	1.6	1.9	1.2	1.6	0.5	85.8	1.6	12.6	0.071	0.507	18.722527	-98.451073
Tepeojuma	51.90	1	2	3692	1.8	82.6	1.9	6.6	1.6	2.0	1.3	1.7	0.5	84.4	1.9	13.7	0.067	0.507	18.722531	-98.451091
Izúcar de Matamoros	67.00	1	0	10944	5.9	77.9	1.0	7.4	1.5	3.4	0.9	1.0	1.0	83.8	1.0	15.2	0.089	0.504	18.603171	-98.465994
T. Der. Cuautla	70.00	3	0	7504	19.4	70.4	1.6	4.7	1.0	1.3	1.2	0.1	0.3	89.8	1.6	8.6	0.093	0.520	18.584770	-98.453366
Tehuizingo	113.30	1	0	5070	2.2	82.8	2.4	5.2	1.2	4.0	1.1	0.5	0.6	85.0	2.4	12.6	0.079	0.513	18.332414	-98.275760
Acatlán de Osorio	154.20	1	0	7399	6.6	82.0	0.6	4.2	0.5	5.1	0.4	0.1	0.5	88.6	0.6	10.8	0.083	0.501	18.200996	-98.048538
Chila	192.30	3	0	1863	5.7	81.9	2.3	7.4	1.6	0.5	0.5	0.1	0.0	87.6	2.3	10.1	0.094	0.511	17.970369	-97.866305
Lim. Edos. Term. Pue. Ppia. Oax.	200.30																			
T. Izq. Las Palmas	202.10	1	0	2015	2.7	81.2	2.5	10.0	1.3	1.0	0.5	0.5	0.3	83.9	2.5	13.6	0.088	0.523	17.881375	-97.835451
Huajuapán de León	219.30	1	0	3497	4.9	81.7	2.2	5.2	1.2	3.0	0.8	0.5	0.5	86.6	2.2	11.2	0.086	0.503	17.810956	-97.778712

OAXACA

16 CARR: Ramal a Asunción Ixtaltepec

CLAVE: 20624

RUTA: MEX-185

AÑO: 2020

LUGAR	ESTACION				CLASIFICACION VEHICULAR EN PORCIENTO										COORDENADAS					
	KM	TE	SC	TDPA	M	A	B	C2	C3	T3S2	T3S3	T3S2R4	OTROS	A	B	C	K'	D	LATITUD	LONGITUD
T. C. Coatzacoalcos - Salina Cruz	0.00	3	0	2189	19.3	72.3	0.2	4.7	0.5	2.1	0.6	0.2	0.1	91.6	0.2	8.2	0.120	0.509	16.435911	-95.033395
Asunción Ixtaltepec	9.70	1	0	2771	10.6	78.7	2.7	5.1	0.6	1.5	0.3	0.1	0.4	89.3	2.7	8.0	0.096	0.507	16.504522	-95.064036

17 CARR: Ramal a Monte Albán

CLAVE:

RUTA: MEX

AÑO: 2020

LUGAR	ESTACION				CLASIFICACION VEHICULAR EN PORCIENTO										COORDENADAS						
	KM	TE	SC	TDPA	M	A	B	C2	C3	T3S2	T3S3	T3S2R4	OTROS	A	B	C	K'	D	LATITUD	LONGITUD	
T. C. Oaxaca - Tehuantepec	0.00																				
Chimalpopoca	1.80	3	0	14035	9.2	80.3	0.6	4.2	0.7	1.7	0.8	1.8	0.7	89.5	0.6	9.9	0.068	0.503	17.074025	-96.756980	
T. Der. San Pedro Ixtlahuaca	2.75	3	0	1908	14.2	79.4	0.5	4.4	0.2	1.1	0.2	0.0	0.0	93.6	0.5	5.9	0.102	0.505	17.073064	-96.765130	
Monte Albán	8.00																				

18 CARR: Ramal a Refinería Pemex (Refinería del Pacifico)

CLAVE:

RUTA: MEX

AÑO: 2020

LUGAR	ESTACION				CLASIFICACION VEHICULAR EN PORCIENTO										COORDENADAS						
	KM	TE	SC	TDPA	M	A	B	C2	C3	T3S2	T3S3	T3S2R4	OTROS	A	B	C	K'	D	LATITUD	LONGITUD	
T. C. Coatzacoalcos - Salina Cruz	0.00	3	1	4801	1.9	80.1	2.3	10.2	0.9	1.8	0.9	1.6	0.3	82.0	2.3	15.7	0.099	0.525	16.221480	-95.206833	
T. C. Coatzacoalcos - Salina Cruz	0.00	3	2	5309	2.3	77.3	2.7	11.7	0.9	2.1	1.1	1.6	0.3	79.6	2.7	17.7	0.117	0.525	16.221478	-95.206833	
Refinería de Pemex	3.00																				

19 CARR: San Pablo Villa de Mitla - T. C. (Tuxtepec - Palomares)

CLAVE: 00106

RUTA: MEX-179

AÑO: 2020

LUGAR	ESTACION				CLASIFICACION VEHICULAR EN PORCIENTO										COORDENADAS						
	KM	TE	SC	TDPA	M	A	B	C2	C3	T3S2	T3S3	T3S2R4	OTROS	A	B	C	K'	D	LATITUD	LONGITUD	
T. C. Oaxaca - Tehuantepec	0.00	3	0	3203	3.1	90.8	0.6	2.9	1.7	0.3	0.2	0.3	0.1	93.9	0.6	5.5	0.104	0.522	16.919369	-96.400751	
San Pedro y San Pablo Ayutla	55.00	1	0	1561	2.1	90.8	0.7	3.4	2.2	0.3	0.3	0.2	0.0	92.9	0.7	6.4	0.092	0.516	17.026527	-96.077348	
T. Der. Zacatepec	90.00	1	0	421	1.8	89.1	0.3	7.2	0.7	0.6	0.0	0.1	0.2	90.9	0.3	8.8	0.097	0.504	17.148669	-96.036294	
Lim. Edos. Term. Oax. Ppia. Ver.	217.70																				
T. C. Tuxtepec - Ent. Palomares	238.70	1	0	1141	15.2	62.7	5.0	5.4	3.8	2.5	1.0	0.2	4.2	77.9	5.0	17.1	0.082	0.523	17.703375	-95.734818	

20 CARR: Santiago Pinotepa Nacional - Salina Cruz

CLAVE: 20074

RUTA: MEX-200

AÑO: 2020

LUGAR	ESTACION				CLASIFICACION VEHICULAR EN PORCIENTO										COORDENADAS					
	KM	TE	SC	TDPA	M	A	B	C2	C3	T3S2	T3S3	T3S2R4	OTROS	A	B	C	K'	D	LATITUD	LONGITUD
Santiago Pinotepa Nacional	0.00	3	0	3417	10.6	77.9	1.1	4.8	1.3	2.9	0.8	0.1	0.5	88.5	1.1	10.4	0.083	0.505	16.339065	-98.049439

OAXACA

20 CARR: Santiago Pinotepa Nacional - Salina Cruz

CLAVE: 20074

RUTA: MEX-200

AÑO: 2020

LUGAR	ESTACION				CLASIFICACION VEHICULAR EN PORCIENTO											COORDENADAS				
	KM	TE	SC	TDPA	M	A	B	C2	C3	T3S2	T3S3	T3S2R4	OTROS	A	B	C	K'	D	LATITUD	LONGITUD
San Andrés Huaxpaltepec	18.07	3	0	3097	10.6	79.4	0.6	4.3	1.2	2.5	0.5	0.5	0.4	90.0	0.6	9.4	0.079	0.507	16.328534	-97.915768
San José del Progreso	59.51	1	0	2650	9.0	79.7	1.4	4.7	1.1	2.5	0.8	0.3	0.5	88.7	1.4	9.9	0.095	0.502	16.096378	-97.695231
T. Izq. Tututepec	65.85	3	0	3977	7.6	83.1	0.7	4.0	1.1	1.9	0.8	0.3	0.5	90.7	0.7	8.6	0.078	0.513	16.080878	-97.638562
Río Grande	91.00	1	0	3291	7.3	81.5	0.8	4.4	1.0	2.8	1.1	0.5	0.6	88.8	0.8	10.4	0.085	0.501	16.009648	-97.434998
Río Grande	91.00	3	0	2102	8.5	79.4	0.4	5.4	2.2	2.0	1.1	0.9	0.1	87.9	0.4	11.7	0.085	0.502	16.009588	-97.434948
San Isidro Llano Grande	110.50	1	0	2055	8.0	80.5	0.4	5.2	2.3	2.0	0.9	0.7	0.0	88.5	0.4	11.1	0.081	0.501	15.950500	-97.285533
T. Izq. Bajos de Chila	131.94	1	0	4316	5.8	83.5	0.7	4.3	1.3	2.1	0.9	1.0	0.4	89.3	0.7	10.0	0.074	0.503	15.913232	-97.122163
T. Izq. Aeropuerto	137.40	1	0	5115	10.7	80.6	1.2	3.1	1.0	1.0	0.8	1.2	0.4	91.3	1.2	7.5	0.078	0.513	15.871946	-97.092021
Puerto Escondido	141.54	1	1	4921	12.2	78.7	0.9	4.5	0.8	1.0	0.8	0.6	0.5	90.9	0.9	8.2	0.075	0.501	15.861689	-97.068194
Puerto Escondido	141.54	1	2	4942	12.2	78.6	0.8	4.4	0.9	1.1	0.8	0.7	0.5	90.8	0.8	8.4	0.072	0.501	15.861746	-97.068196
Puerto Escondido	141.54	3	1	6835	13.4	77.0	0.9	4.6	0.9	1.3	0.9	0.5	0.5	90.4	0.9	8.7	0.067	0.503	15.861684	-97.068140
Puerto Escondido	141.54	3	2	6912	13.4	77.3	0.9	4.5	0.8	1.3	0.8	0.5	0.5	90.7	0.9	8.4	0.068	0.503	15.861769	-97.068147
T. Izq. Oaxaca (Cuota)	151.76	1	1	2022	11.1	79.8	0.6	5.7	0.5	1.3	0.7	0.0	0.3	90.9	0.6	8.5	0.094	0.560	15.808909	-96.985899
T. Izq. Oaxaca (Cuota)	151.76	1	2	2571	13.8	77.9	0.5	5.7	0.7	0.9	0.5	0.0	0.0	91.7	0.5	7.8	0.090	0.560	15.808992	-96.985880
T. Izq. Oaxaca (Cuota)	151.76	3	1	1754	11.4	80.5	0.5	5.6	0.7	0.8	0.5	0.0	0.0	91.9	0.5	7.6	0.104	0.559	15.808915	-96.985930
T. Izq. Oaxaca (Cuota)	151.76	3	2	2228	13.5	78.0	0.5	5.7	0.7	1.0	0.6	0.0	0.0	91.5	0.5	8.0	0.105	0.559	15.809006	-96.985894
T. Izq. Valdeflores Colotepec	167.00	1	1	1735	12.8	77.4	1.3	5.4	1.1	1.0	0.8	0.1	0.1	90.2	1.3	8.5	0.087	0.501	15.768704	-96.851272
T. Izq. Valdeflores Colotepec	167.00	1	2	1728	13.2	77.3	1.3	5.3	1.2	0.8	0.7	0.1	0.1	90.5	1.3	8.2	0.095	0.501	15.768670	-96.851212
T. Izq. Valdeflores Colotepec	167.00	3	1	1331	14.3	74.6	1.6	6.7	1.6	0.9	0.3	0.0	0.0	88.9	1.6	9.5	0.098	0.505	15.768666	-96.851215
T. Izq. Valdeflores Colotepec	167.00	3	2	1357	14.3	74.7	1.5	6.9	1.6	0.8	0.2	0.0	0.0	89.0	1.5	9.5	0.103	0.505	15.768666	-96.851215
T. Izq. Oaxaca	170.70	1	1	1607	15.3	72.9	1.0	7.1	1.1	1.6	1.0	0.0	0.0	88.2	1.0	10.8	0.085	0.506	15.755922	-96.821101
T. Izq. Oaxaca	170.70	1	2	1569	11.9	75.9	1.1	7.2	1.2	1.6	1.1	0.0	0.0	87.8	1.1	11.1	0.091	0.506	15.755935	-96.821088
T. Izq. Oaxaca	170.70	3	1	1575	15.1	72.9	0.8	7.8	0.9	1.4	1.1	0.0	0.0	88.0	0.8	11.2	0.082	0.509	15.755885	-96.821035
T. Izq. Oaxaca	170.70	3	2	1634	16.2	71.9	0.8	7.7	0.9	1.6	0.9	0.0	0.0	88.1	0.8	11.1	0.097	0.509	15.755890	-96.821034
San Isidro del Palmar	195.00	1	1	1536	10.4	78.9	1.1	5.7	1.0	1.6	1.0	0.1	0.2	89.3	1.1	9.6	0.080	0.513	15.720442	-96.609980
San Isidro del Palmar	195.00	1	2	1618	10.5	79.6	0.8	5.6	0.9	1.5	0.8	0.1	0.2	90.1	0.8	9.1	0.090	0.513	15.720544	-96.609976
T. Der. Mazunte	198.87	1	1	2193	12.9	76.8	1.2	6.5	0.7	1.2	0.6	0.0	0.1	89.7	1.2	9.1	0.085	0.504	15.716452	-96.582948
T. Der. Mazunte	198.87	1	2	2162	12.1	76.3	1.4	7.2	0.9	1.3	0.7	0.0	0.1	88.4	1.4	10.2	0.092	0.504	15.716541	-96.582957
T. Der. Mazunte	198.87	3	1	2886	10.5	78.0	2.3	5.5	0.8	1.6	0.9	0.2	0.2	88.5	2.3	9.2	0.077	0.510	15.716464	-96.582763
T. Der. Mazunte	198.87	3	2	2775	10.1	77.3	2.5	6.4	0.9	1.6	0.8	0.2	0.2	87.4	2.5	10.1	0.082	0.510	15.716550	-96.582771
T. Izq. Sta. María Tonameca	202.93	3	1	2737	12.7	77.0	1.6	5.1	0.6	1.7	0.9	0.3	0.1	89.7	1.6	8.7	0.099	0.503	15.729598	-96.538131
T. Izq. Sta. María Tonameca	202.93	3	2	2771	11.0	77.7	1.7	5.6	0.6	2.0	0.8	0.4	0.2	88.7	1.7	9.6	0.081	0.503	15.729726	-96.538185
T. Libramiento de Pochutla	209.15	1	0	6344	7.3	81.2	1.4	5.1	1.3	1.6	1.7	0.3	0.1	88.5	1.4	10.1	0.079	0.504	15.731696	-96.481848
X. C. Oaxaca - Puerto Ángel	209.95	1	0	6016	10.7	78.9	1.7	5.1	0.8	1.7	0.8	0.2	0.1	89.6	1.7	8.7	0.074	0.508	15.730374	-96.474535
X. C. Oaxaca - Puerto Ángel	209.95	3	0	4400	17.6	71.8	1.0	5.8	0.9	1.5	1.0	0.2	0.2	89.4	1.0	9.6	0.073	0.501	15.730354	-96.474524

OAXACA

20 CARR: Santiago Pinotepa Nacional - Salina Cruz

CLAVE: 20074

RUTA: MEX-200

AÑO: 2020

LUGAR	ESTACION				CLASIFICACION VEHICULAR EN PORCIENTO										COORDENADAS					
	KM	TE	SC	TDPA	M	A	B	C2	C3	T3S2	T3S3	T3S2R4	OTROS	A	B	C	K'	D	LATITUD	LONGITUD
T. Der. Cuatunulco	226.00	1	0	3151	6.7	81.4	1.5	5.7	1.1	1.9	1.0	0.4	0.3	88.1	1.5	10.4	0.087	0.504	15.733566	-96.348200
T. Der. Cuatunulco	226.00	3	0	2794	10.3	76.7	1.2	6.7	1.3	1.9	1.4	0.3	0.2	87.0	1.2	11.8	0.081	0.516	15.733564	-96.348128
T. C. El Zapote - Copalita	236.00	1	0	4196	11.6	78.3	1.0	5.8	0.9	1.2	0.8	0.2	0.2	89.9	1.0	9.1	0.075	0.509	15.763105	-96.272293
T. C. El Zapote - Copalita	236.00	3	0	7066	11.3	78.4	0.8	6.6	0.8	1.1	0.6	0.2	0.2	89.7	0.8	9.5	0.071	0.503	15.763095	-96.272355
T. Izq. Aeropuerto	237.68	3	0	7369	6.9	84.1	1.4	3.9	0.9	1.3	0.7	0.5	0.3	91.0	1.4	7.6	0.081	0.518	15.768098	-96.258123
T. Der. Santa Cruz Huatulco	250.00	1	0	8136	8.1	83.3	1.3	3.9	0.8	1.3	0.8	0.3	0.2	91.4	1.3	7.3	0.073	0.518	15.782060	-96.157645
T. Der. Santa Cruz Huatulco	250.00	3	0	2784	7.4	73.9	2.6	8.4	1.4	3.5	1.9	0.6	0.3	81.3	2.6	16.1	0.086	0.526	15.782053	-96.157648
T. Der. Tangolunda	254.50	1	0	2893	9.5	77.7	2.0	4.8	1.7	2.2	1.5	0.4	0.2	87.2	2.0	10.8	0.071	0.513	15.791323	-96.125615
T. Der. Tangolunda	263.00	1	0	1517	8.4	68.9	5.0	9.4	1.3	4.4	2.1	0.3	0.2	77.3	5.0	17.7	0.079	0.510	15.818854	-96.068279
Barra de Copalita	263.70	1	0	2138	15.2	69.7	4.0	5.2	1.1	2.6	1.7	0.2	0.3	84.9	4.0	11.1	0.096	0.508	15.819769	-96.061799
El Coyul	300.30	3	0	1358	6.1	72.4	4.0	7.6	2.2	4.8	2.5	0.3	0.1	78.5	4.0	17.5	0.080	0.505	15.916310	-95.807979
T. Der. Río Seco	307.00	3	0	1642	6.1	73.2	3.8	8.1	2.0	4.2	2.2	0.2	0.2	79.3	3.8	16.9	0.079	0.503	15.942200	-95.754078
Sta. Ma. Huamelula	316.00	1	0	1671	6.5	73.2	3.4	8.4	2.0	3.9	2.2	0.2	0.2	79.7	3.4	16.9	0.083	0.507	15.996494	-95.704449
Santiago Astata	320.00	1	0	1784	5.1	76.4	3.2	8.1	1.8	3.5	1.6	0.2	0.1	81.5	3.2	15.3	0.098	0.518	15.990276	-95.675598
T. Der. Concepción Bamba	352.10	1	0	1464	3.5	74.7	4.5	8.4	1.8	4.2	2.4	0.3	0.2	78.2	4.5	17.3	0.093	0.505	16.025233	-95.426632
T. C. La Ventosa - Salina Cruz (Cuota)	380.00	1	0	2290	2.8	81.2	2.0	7.8	0.9	3.0	1.8	0.2	0.3	84.0	2.0	14.0	0.092	0.507	16.148980	-95.286460
T. C. La Ventosa - Salina Cruz (Cuota)	380.00	3	0	2113	4.8	83.3	1.1	6.6	0.9	1.8	0.9	0.4	0.2	88.1	1.1	10.8	0.094	0.511	16.153551	-95.280890
Salina Cruz	394.00																			

21 CARR: Tapanatepec - Talismán

CLAVE: 00075

RUTA: MEX-200

AÑO: 2020

LUGAR	ESTACION				CLASIFICACION VEHICULAR EN PORCIENTO										COORDENADAS					
	KM	TE	SC	TDPA	M	A	B	C2	C3	T3S2	T3S3	T3S2R4	OTROS	A	B	C	K'	D	LATITUD	LONGITUD
Tapanatepec	0.00	3	0	4592	10.4	64.2	2.4	8.5	3.0	5.8	1.8	3.5	0.4	74.6	2.4	23.0	0.067	0.517	16.369277	-94.189208
Lim. Edos. Term. Oax. Ppia. Chis.	25.90																			
T. Der. Emiliano Zapata	26.20	1	0	2855	4.0	62.7	3.2	7.7	2.7	9.8	2.4	7.0	0.5	66.7	3.2	30.1	0.073	0.532	16.215385	-94.048795
T. Der. Emiliano Zapata	26.20	3	0	3568	5.9	67.4	2.8	7.2	2.3	6.7	2.4	4.2	1.1	73.3	2.8	23.9	0.082	0.502	16.215328	-94.048657
Arriaga	45.00	1	0	4529	10.9	66.1	2.7	6.4	1.9	6.4	2.0	3.0	0.6	77.0	2.7	20.3	0.075	0.511	16.229577	-93.912838
Arriaga	45.00	3	1	2954	11.4	77.1	2.4	7.2	0.6	0.7	0.3	0.2	0.1	88.5	2.4	9.1	0.092	0.502	16.232978	-93.894920
Arriaga	45.00	3	2	2928	10.8	77.5	2.5	7.2	0.6	0.6	0.4	0.3	0.1	88.3	2.5	9.2	0.098	0.502	16.232988	-93.894933
X. C. Arriaga- Ocozocoautla (Cuota)	47.00	3	1	3804	5.3	77.1	2.4	6.9	1.5	3.9	1.1	1.7	0.1	82.4	2.4	15.2	0.093	0.504	16.234045	-93.878837
X. C. Arriaga- Ocozocoautla (Cuota)	47.00	3	2	3740	6.2	76.6	2.5	6.6	1.5	3.6	1.3	1.5	0.2	82.8	2.5	14.7	0.105	0.504	16.234122	-93.878767
T. Der. Libramiento de Arriaga	49.50	1	1	3446	5.3	75.7	2.4	7.5	1.6	4.3	1.1	2.0	0.1	81.0	2.4	16.6	0.093	0.500	16.221312	-93.866422
T. Der. Libramiento de Arriaga	49.50	1	2	3446	5.2	76.0	2.5	7.6	1.6	4.1	1.0	1.9	0.1	81.2	2.5	16.3	0.111	0.500	16.221366	-93.866307
T. Der. Libramiento de Arriaga	49.50	3	1	3521	5.2	74.2	2.9	7.4	1.7	5.5	1.1	1.9	0.1	79.4	2.9	17.7	0.095	0.500	16.221520	-93.866534

OAXACA

21 CARR: Tapanatepec - Talismán

CLAVE: 00075

RUTA: MEX-200

AÑO: 2020

LUGAR	ESTACION				CLASIFICACION VEHICULAR EN PORCIENTO														COORDENADAS	
	KM	TE	SC	TDPA	M	A	B	C2	C3	T3S2	T3S3	T3S2R4	OTROS	A	B	C	K'	D	LATITUD	LONGITUD
T. Der. Libramiento de Arriaga	49.50	3	2	3524	5.3	74.4	3.1	7.4	1.8	5.0	1.0	1.9	0.1	79.7	3.1	17.2	0.109	0.500	16.221604	-93.866386
Tonalá	68.80	1	1	4614	2.9	76.6	3.1	7.2	1.2	5.0	1.0	2.8	0.2	79.5	3.1	17.4	0.090	0.504	16.091282	-93.752487
Tonalá	68.80	1	2	4536	3.1	76.8	3.1	7.2	1.1	4.4	1.1	3.1	0.1	79.9	3.1	17.0	0.091	0.504	16.091308	-93.752476
T. Der. Puerto Arista	73.00	1	1	4604	5.8	64.3	3.7	8.1	2.8	9.0	2.3	3.7	0.3	70.1	3.7	26.2	0.099	0.504	16.057884	-93.738143
T. Der. Puerto Arista	73.00	1	2	4525	5.9	63.9	4.0	8.0	2.7	9.1	2.3	3.7	0.4	69.8	4.0	26.2	0.116	0.504	16.057974	-93.738133
T. Der. Puerto Arista	73.00	3	1	4597	5.9	63.7	3.7	8.2	2.7	9.1	2.7	3.7	0.3	69.6	3.7	26.7	0.093	0.511	16.058749	-93.739769
T. Der. Puerto Arista	73.00	3	2	4399	5.5	62.9	3.9	8.5	2.9	9.6	2.6	3.8	0.3	68.4	3.9	27.7	0.125	0.511	16.058835	-93.739714
T. Der. Tres Picos	100.40	1	1	4704	6.0	63.0	4.0	8.0	3.0	9.1	2.0	4.0	0.9	69.0	4.0	27.0	0.086	0.501	15.911926	-93.540203
T. Der. Tres Picos	100.40	1	2	4684	6.0	63.1	3.9	8.1	3.1	9.0	2.0	4.1	0.7	69.1	3.9	27.0	0.111	0.501	15.913113	-93.539371
T. Der. Tres Picos	100.40	3	1	4516	6.1	62.9	3.9	8.0	3.0	9.0	2.1	4.0	1.0	69.0	3.9	27.1	0.085	0.511	15.911872	-93.540170
T. Der. Tres Picos	100.40	3	2	4725	5.9	62.3	4.2	8.0	3.2	9.4	2.0	4.1	0.9	68.2	4.2	27.6	0.110	0.511	15.913061	-93.539307
T. Der. Los Patos	114.75	1	1	3920	6.1	64.4	3.8	7.8	2.9	8.6	1.8	3.8	0.8	70.5	3.8	25.7	0.087	0.502	15.837936	-93.435341
T. Der. Los Patos	114.75	1	2	3885	5.9	62.4	4.2	8.1	3.2	9.3	2.1	3.9	0.9	68.3	4.2	27.5	0.103	0.502	15.838239	-93.434967
T. Der. Los Patos	114.75	3	1	4377	6.0	67.5	3.3	6.2	2.6	7.7	2.4	3.5	0.8	73.5	3.3	23.2	0.085	0.512	15.837677	-93.435068
T. Der. Los Patos	114.75	3	2	4599	5.5	68.1	3.8	6.2	2.6	7.4	2.0	3.7	0.7	73.6	3.8	22.6	0.106	0.512	15.837954	-93.434704
T. Der. San Isidro	125.00	1	1	4234	6.1	68.6	3.5	6.1	2.5	6.8	2.2	3.4	0.8	74.7	3.5	21.8	0.084	0.509	15.778123	-93.361339
T. Der. San Isidro	125.00	1	2	4381	5.4	66.5	3.9	6.8	2.7	7.6	2.3	3.9	0.9	71.9	3.9	24.2	0.105	0.509	15.779444	-93.360789
T. Der. San Isidro	125.00	3	1	4060	6.1	68.4	3.7	6.3	2.5	6.6	2.2	3.4	0.8	74.5	3.7	21.8	0.085	0.509	15.778114	-93.361356
T. Der. San Isidro	125.00	3	2	4211	5.5	66.9	3.7	6.7	2.8	7.5	2.4	3.6	0.9	72.4	3.7	23.9	0.106	0.509	15.779471	-93.360820
Pijijapan	144.45	1	1	6092	12.2	65.6	2.2	7.2	1.9	5.9	1.7	3.1	0.2	77.8	2.2	20.0	0.094	0.501	15.697180	-93.209545
Pijijapan	144.45	1	2	6066	11.9	66.3	2.6	6.7	2.0	5.7	1.7	2.9	0.2	78.2	2.6	19.2	0.093	0.501	15.697305	-93.209441
Valdivia	180.39	1	1	4554	12.0	64.4	3.1	7.7	2.2	5.7	1.4	3.3	0.2	76.4	3.1	20.5	0.089	0.503	15.503687	-92.945865
Valdivia	180.39	1	2	4493	11.7	62.5	3.5	8.2	2.4	6.4	1.6	3.5	0.2	74.2	3.5	22.3	0.077	0.503	15.503830	-92.945757
Valdivia	180.39	3	1	5123	11.8	63.2	3.3	8.0	2.4	6.2	1.5	3.4	0.2	75.0	3.3	21.7	0.093	0.501	15.503619	-92.945776
Valdivia	180.39	3	2	5094	11.9	63.8	3.2	8.2	2.2	5.7	1.4	3.4	0.2	75.7	3.2	21.1	0.086	0.501	15.503760	-92.945663
T. Der. Mapastepec	188.85	3	1	3378	11.9	64.2	3.3	7.7	2.1	6.0	1.5	3.1	0.2	76.1	3.3	20.6	0.092	0.507	15.456078	-92.886923
T. Der. Mapastepec	188.85	3	2	3279	13.9	62.5	3.5	7.5	1.8	6.2	1.4	3.0	0.2	76.4	3.5	20.1	0.093	0.507	15.457832	-92.886310
T. Der. Estación Soconusco	213.30	1	1	3480	12.0	64.7	3.0	7.6	2.0	6.0	1.4	3.1	0.2	76.7	3.0	20.3	0.090	0.503	15.337794	-92.711057
T. Der. Estación Soconusco	213.30	1	2	3441	12.5	64.6	3.4	7.2	2.1	5.6	1.5	3.0	0.1	77.1	3.4	19.5	0.085	0.503	15.349724	-92.692289
T. Der. Estación Soconusco	213.30	3	1	3404	11.9	63.7	2.7	8.4	2.2	6.8	1.4	2.7	0.2	75.6	2.7	21.7	0.091	0.501	15.337710	-92.710982
T. Der. Estación Soconusco	213.30	3	2	3416	12.0	63.0	3.2	8.0	2.2	6.9	1.5	3.0	0.2	75.0	3.2	21.8	0.088	0.501	15.349745	-92.692504
Villa Comaltitlán	233.00	1	1	3525	9.8	68.1	2.4	7.7	2.1	5.8	1.8	2.1	0.2	77.9	2.4	19.7	0.083	0.509	15.218671	-92.576773
Villa Comaltitlán	233.00	1	2	3403	9.5	67.5	2.6	7.8	2.0	6.3	1.7	2.3	0.3	77.0	2.6	20.4	0.085	0.509	15.222094	-92.567737
T. Libramiento de Huixtla Oeste	245.00																			
Huixtla	250.50	1	1	3665	9.0	69.3	2.4	7.4	2.2	6.0	1.6	1.9	0.2	78.3	2.4	19.3	0.085	0.511	15.142200	-92.461785



OAXACA

21 CARR: Tapanatepec - Talismán

CLAVE: 00075

RUTA: MEX-200

AÑO: 2020

LUGAR	ESTACION				CLASIFICACION VEHICULAR EN PORCIENTO										COORDENADAS					
	KM	TE	SC	TDPA	M	A	B	C2	C3	T3S2	T3S3	T3S2R4	OTROS	A	B	C	K'	D	LATITUD	LONGITUD
Huixtla	250.50	1	2	3513	9.3	66.9	2.7	8.2	2.3	6.4	1.8	2.2	0.2	76.2	2.7	21.1	0.088	0.511	15.142219	-92.461777
Huixtla	250.50	3	1	7179	12.8	71.4	2.1	6.3	1.6	2.9	1.5	1.2	0.2	84.2	2.1	13.7	0.091	0.504	15.142158	-92.461703
Huixtla	250.50	3	2	7069	14.0	70.0	2.0	6.8	1.5	2.8	1.4	1.3	0.2	84.0	2.0	14.0	0.093	0.504	15.142185	-92.461689
T. Libramiento de Huixtla Este	251.80																			
T. Izq. Hamburgo	262.70	3	1	7616	10.8	75.6	1.8	5.7	1.4	3.0	0.4	1.0	0.3	86.4	1.8	11.8	0.105	0.511	15.110354	-92.433028
T. Izq. Hamburgo	262.70	3	2	7291	10.9	75.2	1.8	5.6	1.5	3.1	0.5	1.1	0.3	86.1	1.8	12.1	0.102	0.511	15.110406	-92.432937
T. Izq. Huehuetán	273.70	1	1	5577	8.7	74.7	2.1	7.1	1.6	3.4	0.7	1.3	0.4	83.4	2.1	14.5	0.094	0.510	15.010953	-92.402055
T. Izq. Huehuetán	273.70	1	2	5361	8.7	74.6	2.2	7.2	1.7	3.3	0.7	1.2	0.4	83.3	2.2	14.5	0.095	0.510	15.010962	-92.401950
T. Izq. Huehuetán	273.70	3	1	5578	3.3	81.5	2.4	6.2	0.8	2.6	1.8	0.8	0.6	84.8	2.4	12.8	0.096	0.517	15.010736	-92.402008
T. Izq. Huehuetán	273.70	3	2	5982	3.2	81.7	2.5	6.1	0.7	2.7	1.8	0.7	0.6	84.9	2.5	12.6	0.086	0.517	15.010750	-92.401899
Tapachula	292.25	1	1	8839	3.3	83.4	0.7	6.3	0.8	2.6	1.6	0.7	0.6	86.7	0.7	12.6	0.105	0.510	14.908622	-92.272334
Tapachula	292.25	1	2	8502	3.2	83.7	0.7	6.2	0.9	2.6	1.6	0.6	0.5	86.9	0.7	12.4	0.093	0.510	14.908697	-92.272304
T. Der. Cd. Hidalgo	302.75	1	1	10484	3.4	87.8	0.6	5.6	0.4	1.4	0.4	0.4	0.0	91.2	0.6	8.2	0.103	0.514	14.914878	-92.192766
T. Der. Cd. Hidalgo	302.75	1	2	9930	3.4	87.6	0.6	5.6	0.5	1.6	0.3	0.4	0.0	91.0	0.6	8.4	0.096	0.514	14.914974	-92.192822
Tuxtla Chico	307.00	1	0	12431	7.0	87.5	0.5	4.1	0.3	0.2	0.4	0.0	0.0	94.5	0.5	5.0	0.089	0.507	14.938766	-92.160448
Talismán	310.77	1	0	2081	30.8	62.6	2.2	4.4	0.0	0.0	0.0	0.0	0.0	93.4	2.2	4.4	0.086	0.502	14.962851	-92.149553

22 CARR: Tapanatepec - Tuxtla Gutiérrez

CLAVE: 00060

RUTA: MEX-190

AÑO: 2020

LUGAR	ESTACION				CLASIFICACION VEHICULAR EN PORCIENTO										COORDENADAS					
	KM	TE	SC	TDPA	M	A	B	C2	C3	T3S2	T3S3	T3S2R4	OTROS	A	B	C	K'	D	LATITUD	LONGITUD
Tapanatepec	0.00	3	0	1964	8.3	77.5	1.4	11.4	0.9	0.2	0.2	0.1	0.0	85.8	1.4	12.8	0.084	0.580	16.370585	-94.193482
Libramiento de San Pedro Tapanatepec	0.75	3	0	906	8.6	73.4	1.4	9.1	2.1	2.8	2.3	0.3	0.0	82.0	1.4	16.6	0.111	0.526	16.371682	-94.180715
Lim. Edos. Term. Oax. Ppia. Chis.	17.90																			
Rizo de Oro	26.60	1	0	935	2.1	75.5	3.3	11.0	2.9	1.7	3.1	0.3	0.1	77.6	3.3	19.1	0.084	0.510	16.475233	-94.081528
T. Der. Arriaga	56.80	1	0	1796	9.3	78.2	3.1	3.4	2.4	1.5	2.0	0.1	0.0	87.5	3.1	9.4	0.095	0.509	16.571468	-93.845755
T. Der. Arriaga	56.80	3	0	3198	7.7	79.2	2.6	4.1	2.3	2.6	1.4	0.1	0.0	86.9	2.6	10.5	0.089	0.500	16.571944	-93.845097
Cintalapa	75.60	1	0	3587	10.9	80.3	1.6	2.9	1.6	1.7	0.9	0.1	0.0	91.2	1.6	7.2	0.120	0.501	16.683287	-93.729781
T. Der. Jiquipilas	82.00	1	0	5990	9.9	79.8	2.1	4.0	1.8	1.6	0.7	0.1	0.0	89.7	2.1	8.2	0.097	0.502	16.688166	-93.666447
T. Der. Jiquipilas	82.00	3	0	4500	5.7	80.3	3.1	5.1	2.4	2.1	1.1	0.2	0.0	86.0	3.1	10.9	0.093	0.502	16.688220	-93.666289
T. C. Arriaga - Ocozacoautla (Cuota)	96.20	1	0	3903	5.0	80.1	3.0	5.6	2.5	2.2	1.2	0.3	0.1	85.1	3.0	11.9	0.085	0.508	16.684549	-93.545693
Ocozacoautla	123.29	1	0	4141	13.5	69.6	2.9	8.0	2.4	1.9	1.2	0.3	0.2	83.1	2.9	14.0	0.101	0.503	16.766942	-93.379529
Ocozacoautla	123.29	3	0	5069	11.3	82.1	0.5	4.8	0.7	0.2	0.1	0.3	0.0	93.4	0.5	6.1	0.083	0.500	16.760975	-93.372190
T. Izq. Aeropuerto	132.70	1	0	4569	9.2	84.2	0.3	5.3	0.4	0.3	0.2	0.1	0.0	93.4	0.3	6.3	0.083	0.518	16.752508	-93.338011
T. Izq. Aeropuerto	132.70	3	1	2226	3.5	82.5	3.2	4.7	1.7	3.0	1.0	0.3	0.1	86.0	3.2	10.8	0.122	0.509	16.752990	-93.337418

OAXACA

22 CARR: Tapanatepec - Tuxtla Gutiérrez

CLAVE: 00060

RUTA: MEX-190

AÑO: 2020

LUGAR	ESTACION				CLASIFICACION VEHICULAR EN PORCIENTO										COORDENADAS					
	KM	TE	SC	TDPA	M	A	B	C2	C3	T3S2	T3S3	T3S2R4	OTROS	A	B	C	K'	D	LATITUD	LONGITUD
T. Izq. Aeropuerto	132.70	3	2	2309	3.7	82.5	3.0	4.6	1.8	3.2	0.8	0.3	0.1	86.2	3.0	10.8	0.128	0.509	16.752983	-93.337483
T. Izq. Berriozábal (1º Acceso)	136.40	1	1	7577	3.8	80.4	2.6	4.8	2.1	2.8	1.0	1.9	0.6	84.2	2.6	13.2	0.080	0.506	16.768177	-93.287731
T. Izq. Berriozábal (1º Acceso)	136.40	1	2	7771	3.7	81.1	2.1	4.7	2.2	2.9	1.0	1.8	0.5	84.8	2.1	13.1	0.085	0.506	16.768439	-93.287727
T. Izq. Berriozábal (1º Acceso)	136.40	3	1	8946	4.0	82.0	3.0	4.1	1.9	2.3	0.7	1.5	0.5	86.0	3.0	11.0	0.078	0.500	16.768165	-93.287641
T. Izq. Berriozábal (1º Acceso)	136.40	3	2	8938	3.6	82.9	2.7	3.9	1.7	2.5	0.7	1.5	0.5	86.5	2.7	10.8	0.083	0.500	16.768452	-93.287647
T. Izq. San Fernando	151.70	1	1	16939	2.0	84.2	1.3	6.1	0.7	2.0	2.5	0.7	0.5	86.2	1.3	12.5	0.083	0.505	16.769381	-93.195252
T. Izq. San Fernando	151.70	1	2	16573	2.0	84.1	1.3	6.1	0.7	2.1	2.5	0.7	0.5	86.1	1.3	12.6	0.094	0.505	16.769241	-93.195344
Tuxtla Gutiérrez	159.00	1	1	13022	2.0	84.0	0.8	6.4	1.3	2.1	2.1	0.7	0.6	86.0	0.8	13.2	0.091	0.544	16.754851	-93.142378
Tuxtla Gutiérrez	159.00	1	2	10901	2.0	84.2	0.8	6.4	1.3	2.1	2.0	0.7	0.5	86.2	0.8	13.0	0.087	0.544	16.754955	-93.142381

23 CARR: Tehuacán - Huajuapán de León

CLAVE: 00211

RUTA: MEX-125

AÑO: 2020

LUGAR	ESTACION				CLASIFICACION VEHICULAR EN PORCIENTO										COORDENADAS					
	KM	TE	SC	TDPA	M	A	B	C2	C3	T3S2	T3S3	T3S2R4	OTROS	A	B	C	K'	D	LATITUD	LONGITUD
Tehuacán	0.00	3	1	8486	11.6	77.0	0.1	4.3	2.6	1.3	1.1	1.4	0.6	88.6	0.1	11.3	0.090	0.508	18.458822	-97.394206
Tehuacán	0.00	3	2	8210	9.8	78.0	0.1	4.3	2.6	1.8	1.2	1.6	0.6	87.8	0.1	12.1	0.083	0.508	18.458815	-97.394146
Zapotitlán Salinas	28.00	1	0	2557	7.9	71.8	1.7	11.6	2.1	2.3	1.5	0.5	0.6	79.7	1.7	18.6	0.083	0.506	18.327598	-97.472735
Lim. Edos. Term. Pue. Ppia. Oax.	55.80																			
Santiago Chazumba	63.02	1	0	1440	7.3	72.6	0.7	5.0	4.1	3.2	2.9	2.8	1.4	79.9	0.7	19.4	0.094	0.504	18.191136	-97.678895
Santiago Chazumba	63.02	3	0	1581	7.9	79.3	1.2	3.0	1.9	3.0	2.5	0.8	0.4	87.2	1.2	11.6	0.085	0.500	18.191133	-97.678890
T. Izq. Santa María Camotlán	103.13	1	0	1281	5.7	74.5	1.8	9.6	2.2	3.5	1.9	0.5	0.3	80.2	1.8	18.0	0.080	0.504	17.905542	-97.693842
T. C. Huajuapán de León - Oaxaca	119.40	1	0	6818	6.5	83.5	0.4	2.6	0.9	3.8	0.7	0.9	0.7	90.0	0.4	9.6	0.076	0.501	17.814050	-97.761869

24 CARR: Tuxtepec - Ent. Palomares

CLAVE: 00180

RUTA: MEX-147

AÑO: 2020

LUGAR	ESTACION				CLASIFICACION VEHICULAR EN PORCIENTO										COORDENADAS					
	KM	TE	SC	TDPA	M	A	B	C2	C3	T3S2	T3S3	T3S2R4	OTROS	A	B	C	K'	D	LATITUD	LONGITUD
T. C. Tuxtepec - Oaxaca	0.00	3	0	4327	9.5	70.3	1.6	10.6	3.5	2.7	1.0	0.4	0.4	79.8	1.6	18.6	0.092	0.511	18.039569	-96.163342
X. C. El Rodeo - Reforma	15.20	3	0	2490	8.2	74.3	2.3	7.8	2.7	2.7	1.3	0.3	0.4	82.5	2.3	15.2	0.090	0.513	17.950439	-96.072867
Lim. Edos. Term. Oax. Ppia. Ver.	40.00																			
X. C. Playa Vicente - El Tomate	48.16	1	0	2096	7.2	77.2	3.7	4.4	3.7	2.5	0.8	0.4	0.1	84.4	3.7	11.9	0.084	0.510	17.783715	-95.832180
X. C. Playa Vicente - El Tomate	48.16	3	0	2255	9.7	78.6	1.1	5.2	1.7	2.6	0.9	0.1	0.1	88.3	1.1	10.6	0.091	0.508	17.783734	-95.832153
T. Der. Xochiapa	65.00	3	0	1661	4.7	77.7	4.2	5.3	2.3	2.1	2.6	1.0	0.1	82.4	4.2	13.4	0.081	0.522	17.703327	-95.734823
T. Izq. San Juan Evangelista	81.20	1	0	1527	12.3	72.7	1.8	6.8	3.8	1.9	0.5	0.1	0.1	85.0	1.8	13.2	0.091	0.503	17.614697	-95.634994
Lim. Edos. Term. Ver. Ppia. Oax.	87.00																			

OAXACA

24 CARR: Tuxtepec - Ent. Palomares

CLAVE: 00180

RUTA: MEX-147

AÑO: 2020

LUGAR	ESTACION				CLASIFICACION VEHICULAR EN PORCIENTO										COORDENADAS					
	KM	TE	SC	TDPA	M	A	B	C2	C3	T3S2	T3S3	T3S2R4	OTROS	A	B	C	K'	D	LATITUD	LONGITUD
María Lombardo de Caso	110.50	1	0	3129	22.7	67.1	0.4	8.5	0.7	0.3	0.2	0.1	0.0	89.8	0.4	9.8	0.089	0.507	17.448356	-95.428086
T. C. Coatzacoalcos - Salina Cruz	175.00	1	0	1483	14.6	78.4	0.7	4.5	0.6	0.7	0.5	0.0	0.0	93.0	0.7	6.3	0.096	0.519	17.138409	-95.062315

25 CARR: Tuxtepec - T. C. (Oaxaca - Tehuantepec)

CLAVE: 20090

RUTA: MEX-175

AÑO: 2020

LUGAR	ESTACION				CLASIFICACION VEHICULAR EN PORCIENTO										COORDENADAS					
	KM	TE	SC	TDPA	M	A	B	C2	C3	T3S2	T3S3	T3S2R4	OTROS	A	B	C	K'	D	LATITUD	LONGITUD
Tuxtepec	0.00	3	1	6239	10.1	84.9	0.7	2.2	0.7	0.6	0.1	0.6	0.1	95.0	0.7	4.3	0.089	0.507	18.073870	-96.133659
Tuxtepec	0.00	3	2	6069	9.9	84.1	0.7	2.9	0.9	0.7	0.1	0.6	0.1	94.0	0.7	5.3	0.086	0.507	18.073872	-96.133656
T. Izq. Palomares	5.75	3	0	4992	22.0	72.8	0.7	3.1	0.8	0.4	0.1	0.1	0.0	94.8	0.7	4.5	0.096	0.505	18.039528	-96.163415
San José Chiltepec	17.93	3	0	3008	19.6	75.9	0.7	2.0	1.1	0.4	0.2	0.1	0.0	95.5	0.7	3.8	0.103	0.503	17.948045	-96.172458
Valle Nacional	47.07	1	0	3370	7.4	82.4	0.8	7.0	0.7	1.4	0.1	0.0	0.2	89.8	0.8	9.4	0.087	0.506	17.775429	-96.303899
Valle Nacional	47.07	3	0	2641	8.4	85.4	0.6	3.9	0.3	1.1	0.2	0.0	0.1	93.8	0.6	5.6	0.083	0.502	17.775423	-96.303901
La Esperanza	79.85	3	0	466	2.6	89.5	1.4	5.0	1.3	0.2	0.0	0.0	0.0	92.1	1.4	6.5	0.103	0.517	17.628360	-96.367618
Puerta del Sol	125.00	3	0	572	1.9	90.9	1.1	4.4	1.2	0.4	0.1	0.0	0.0	92.8	1.1	6.1	0.110	0.504	17.529930	-96.512017
T. Der. Ixtepeji	181.39	3	0	1727	2.5	85.4	1.1	8.3	1.3	1.0	0.3	0.0	0.1	87.9	1.1	11.0	0.098	0.524	17.239658	-96.561843
T. Izq. Yuvila	193.67	1	0	1713	2.9	89.8	0.4	3.6	2.2	0.6	0.1	0.3	0.1	92.7	0.4	6.9	0.104	0.500	17.174094	-96.604560
T. C. Oaxaca - Tehuantepec	212.70	1	1	5374	8.7	88.4	0.2	1.8	0.6	0.2	0.0	0.1	0.0	97.1	0.2	2.7	0.098	0.507	17.065418	-96.679347
T. C. Oaxaca - Tehuantepec	212.70	1	2	5229	10.1	87.2	0.1	1.6	0.7	0.2	0.0	0.1	0.0	97.3	0.1	2.6	0.107	0.507	17.065419	-96.679360

26 CARR: Yucudaa - Santiago Pinotepa Nacional

CLAVE: 20030

RUTA: MEX-125

AÑO: 2020

LUGAR	ESTACION				CLASIFICACION VEHICULAR EN PORCIENTO										COORDENADAS					
	KM	TE	SC	TDPA	M	A	B	C2	C3	T3S2	T3S3	T3S2R4	OTROS	A	B	C	K'	D	LATITUD	LONGITUD
T. C. Huajuapán de León - Oaxaca	0.00	3	0	2346	3.1	74.6	2.2	14.6	1.6	1.6	1.4	0.4	0.5	77.7	2.2	20.1	0.082	0.516	17.573422	-97.424274
Yolomécatl	24.40	3	0	2318	3.1	72.1	2.5	13.7	2.7	3.2	1.6	0.6	0.5	75.2	2.5	22.3	0.081	0.508	17.471073	-97.570679
Tlaxiaco	57.00	3	0	2851	2.6	86.7	0.4	4.8	1.3	2.7	0.5	0.5	0.5	89.3	0.4	10.3	0.081	0.506	17.264203	-97.681406
T. Der. Santiago Juxcatlán	104.00	1	0	759	3.5	78.3	2.0	10.6	3.0	2.0	0.4	0.1	0.1	81.8	2.0	16.2	0.083	0.505	17.152893	-97.891194
Putla de Guerrero	145.00	1	0	2499	15.1	71.7	1.0	7.7	1.6	2.0	0.5	0.1	0.3	86.8	1.0	12.2	0.085	0.509	17.027232	-97.926018
Cacahuatpec	229.00	1	0	1289	6.6	79.1	1.6	8.0	2.1	1.4	1.1	0.1	0.0	85.7	1.6	12.7	0.087	0.501	16.615853	-98.153959
T. C. Las Cruces - Pinotepa Nacional	268.00	1	0	3385	9.6	82.8	0.8	5.1	0.7	0.4	0.4	0.0	0.2	92.4	0.8	6.8	0.081	0.513	16.378358	-98.092435

OAXACA

27 CARR: Cuacnopalan - Oaxaca (Cuota)

CLAVE: 00109

RUTA: MEX-135D

AÑO: 2020

LUGAR	ESTACION				CLASIFICACION VEHICULAR EN PORCIENTO										COORDENADAS					
	KM	TE	SC	TDPA	M	A	B	C2	C3	T3S2	T3S3	T3S2R4	OTROS	A	B	C	K'	D	LATITUD	LONGITUD
T. C. Puebla - Córdoba (Cuota)	0.00	3	0	9130	0.4	67.8	6.4	10.0	2.8	6.8	1.9	2.9	1.0	68.2	6.4	25.4	0.083	0.508	18.825152	-97.490950
T. Der. Cuacnopalan	1.80	3	0	9023	0.4	72.6	5.4	8.1	2.9	5.9	1.7	2.4	0.6	73.0	5.4	21.6	0.072	0.504	18.815803	-97.491043
Plaza de Cobro Tehuacán	40.00	2	0	9274	0.5	71.9	3.2	6.4	5.9	6.7	1.4	3.1	0.9	72.4	3.2	24.4	0.083	0.500	18.487088	-97.456196
Plaza de Cobro Tehuacán	40.00	3	0	4722	0.8	66.3	8.5	8.9	3.1	6.6	1.9	3.1	0.8	67.1	8.5	24.4	0.087	0.510	18.487118	-97.456149
X. C. Tehuacán - Huajuapán de León	48.00	3	0	6199	1.2	69.5	7.1	9.6	2.7	5.3	1.4	2.3	0.9	70.7	7.1	22.2	0.066	0.510	18.427229	-97.415503
T. Izq. San Gabriel Chilac	61.00	3	0	4957	0.7	69.1	8.5	4.4	6.1	5.1	1.3	3.4	1.4	69.8	8.5	21.7	0.090	0.536	18.334657	-97.367532
Plaza de Cobro Miahuatlán	71.42	2	0	4229	0.7	67.3	4.5	5.7	8.0	7.0	1.7	4.2	0.9	68.0	4.5	27.5	0.083	0.500	18.264632	-97.315617
Lim. Edos. Term. Pue. Ppia. Oax.	83.50																			
Plaza de Cobro Coixtlahuaca	141.30	2	0	3449	0.7	64.6	4.6	5.8	8.5	7.9	1.6	5.1	1.2	65.3	4.6	30.1	0.083	0.500	17.726021	-97.353781
T. Izq. Asunción Nochistlán	175.50	1	0	3692	1.8	68.4	5.9	10.1	4.0	4.8	1.4	3.2	0.4	70.2	5.9	23.9	0.083	0.517	17.464818	-97.248474
T. Izq. Asunción Nochistlán	175.50	3	0	5305	0.6	69.4	5.8	11.8	3.0	4.9	1.5	2.4	0.6	70.0	5.8	24.2	0.068	0.521	17.464470	-97.248246
Plaza de Cobro Huitzo	219.92	3	1	3024	2.2	77.0	3.2	6.4	3.3	2.9	1.7	2.4	0.9	79.2	3.2	17.6	0.080	0.509	17.274990	-96.915329
Plaza de Cobro Huitzo	219.92	3	2	2920	2.1	77.4	3.2	6.3	3.4	2.8	1.5	2.3	1.0	79.5	3.2	17.3	0.103	0.509	17.275088	-96.915236
Plaza de Cobro Huitzo	220.00	2	0	5082	0.9	75.8	3.0	5.0	5.4	5.1	1.0	3.2	0.6	76.7	3.0	20.3	0.083	0.500	17.275031	-96.915296
T. C. Huajuapán de León - Oaxaca	242.70	1	1	2956	1.7	75.3	2.4	7.5	3.5	3.4	1.2	2.6	2.4	77.0	2.4	20.6	0.081	0.508	17.147637	-96.781821
T. C. Huajuapán de León - Oaxaca	242.70	1	2	2868	1.6	74.8	2.6	7.6	3.5	3.4	1.2	2.7	2.6	76.4	2.6	21.0	0.101	0.508	17.147765	-96.781835

28 CARR: Mitla - Tehuantepec (Cuota)

CLAVE:

RUTA: MEX-190D

AÑO: 2020

LUGAR	ESTACION				CLASIFICACION VEHICULAR EN PORCIENTO										COORDENADAS					
	KM	TE	SC	TDPA	M	A	B	C2	C3	T3S2	T3S3	T3S2R4	OTROS	A	B	C	K'	D	LATITUD	LONGITUD
Ent. C. Oaxaca - Tehuantepec	43.00	3	0	1481	2.3	87.6	0.6	8.1	0.5	0.4	0.5	0.0	0.0	89.9	0.6	9.5	0.111	0.505	16.915244	-96.396130
Ent. Mitla	50.90	1	0	1579	2.3	88.1	0.6	7.5	0.6	0.4	0.5	0.0	0.0	90.4	0.6	9.0	0.103	0.520	16.922889	-96.328170
Ent. Mitla	50.90	3	0	1440	2.1	90.9	0.3	4.7	0.9	0.6	0.4	0.0	0.1	93.0	0.3	6.7	0.099	0.515	16.924733	-96.324976
Ent. Hierve el Agua	62.10	1	0	1611	1.3	88.2	0.5	8.0	0.9	0.6	0.5	0.0	0.0	89.5	0.5	10.0	0.088	0.511	16.924249	-96.257033
Ent. Hierve el Agua	62.10	3	0	1496	1.7	86.1	0.7	9.1	1.5	0.5	0.3	0.0	0.1	87.8	0.7	11.5	0.112	0.520	16.923374	-96.255386
Ent. Sta. María Albarradas	71.00	1	0	1480	2.8	85.6	0.4	8.3	1.6	1.0	0.3	0.0	0.0	88.4	0.4	11.2	0.107	0.524	16.957113	-96.200847

29 CARR: Salina Cruz - La Ventosa (Cuota)

CLAVE: 00275

RUTA: MEX-185D

AÑO: 2020

LUGAR	ESTACION				CLASIFICACION VEHICULAR EN PORCIENTO										COORDENADAS					
	KM	TE	SC	TDPA	M	A	B	C2	C3	T3S2	T3S3	T3S2R4	OTROS	A	B	C	K'	D	LATITUD	LONGITUD
T. C. Santiago Pinotepa Nacional - Salina Cruz	0.00																			
Plaza de Cobro Tehuantepec	1.89	2	0	728	2.6	75.8	1.2	5.3	4.8	5.5	2.7	1.7	0.4	78.4	1.2	20.4	0.082	0.500	16.162185	-95.289280
X. C. Oaxaca - Tehuantepec	23.19	1	0	1121	3.7	73.6	3.4	9.8	2.2	4.0	1.9	1.2	0.2	77.3	3.4	19.3	0.085	0.517	16.330610	-95.279644

OAXACA

29 CARR: Salina Cruz - La Ventosa (Cuota)

CLAVE: 00275

RUTA: MEX-185D

AÑO: 2020

LUGAR	ESTACION				CLASIFICACION VEHICULAR EN PORCIENTO													COORDENADAS		
	KM	TE	SC	TDPA	M	A	B	C2	C3	T3S2	T3S3	T3S2R4	OTROS	A	B	C	K'	D	LATITUD	LONGITUD
X. C. Oaxaca - Tehuantepec	23.19	3	0	2502	3.5	73.0	1.9	5.9	2.6	3.8	2.1	6.7	0.5	76.5	1.9	21.6	0.085	0.502	16.335343	-95.278865
T. Izq. Oaxaca (Cuota)	34.00	3	0	2046	4.1	68.3	3.4	7.0	2.6	4.3	4.1	5.6	0.6	72.4	3.4	24.2	0.079	0.501	16.413406	-95.236803
Plaza de Cobro Ixtepec	47.49	2	0	1084	0.7	60.9	0.7	5.5	6.6	8.0	5.0	11.4	1.2	61.6	0.7	37.7	0.082	0.500	16.561479	-95.134267
T. C. Coatzacoalcos - Salina Cruz	75.39	1	0	1890	3.7	67.9	4.0	7.3	2.7	4.2	4.3	5.3	0.6	71.6	4.0	24.4	0.087	0.504	16.585764	-94.948942

30 CARR: Cd. Ixtepec - Guevea de Humboldt

CLAVE: 00301

RUTA: OAX

AÑO: 2020

LUGAR	ESTACION				CLASIFICACION VEHICULAR EN PORCIENTO													COORDENADAS		
	KM	TE	SC	TDPA	M	A	B	C2	C3	T3S2	T3S3	T3S2R4	OTROS	A	B	C	K'	D	LATITUD	LONGITUD
Ciudad Ixtepec	0.00																			
T. C. La Ventosa - Salina Cruz (Cuota)	4.00	1	1	1847	7.6	86.0	0.3	5.1	0.3	0.4	0.2	0.0	0.1	93.6	0.3	6.1	0.089	0.507	16.562559	-95.134440
T. C. La Ventosa - Salina Cruz (Cuota)	4.00	1	2	1793	7.3	85.9	0.3	5.6	0.4	0.4	0.1	0.0	0.0	93.2	0.3	6.5	0.096	0.507	16.562561	-95.134436
T. C. La Ventosa - Salina Cruz (Cuota)	4.00	3	0	2112	9.0	83.5	0.2	6.0	0.4	0.3	0.1	0.3	0.2	92.5	0.2	7.3	0.089	0.503	16.562559	-95.134440
Guevea de Humboldt	57.00																			

31 CARR: El Zapote - Copalita

CLAVE: 00109

RUTA: OAX

AÑO: 2020

LUGAR	ESTACION				CLASIFICACION VEHICULAR EN PORCIENTO													COORDENADAS		
	KM	TE	SC	TDPA	M	A	B	C2	C3	T3S2	T3S3	T3S2R4	OTROS	A	B	C	K'	D	LATITUD	LONGITUD
T. C. Santiago Pinotepa Nacional - Salina Cruz	0.00	3	1	2058	11.6	78.9	0.5	8.0	0.5	0.1	0.2	0.0	0.2	90.5	0.5	9.0	0.082	0.502	15.763207	-96.272304
T. C. Santiago Pinotepa Nacional - Salina Cruz	0.00	3	2	2043	12.1	77.0	0.6	9.4	0.5	0.1	0.1	0.0	0.2	89.1	0.6	10.3	0.087	0.502	15.763187	-96.272387
Copalita	43.04																			

32 CARR: Huajuapán de León - El Carrizal

CLAVE: 00109

RUTA: OAX

AÑO: 2020

LUGAR	ESTACION				CLASIFICACION VEHICULAR EN PORCIENTO													COORDENADAS		
	KM	TE	SC	TDPA	M	A	B	C2	C3	T3S2	T3S3	T3S2R4	OTROS	A	B	C	K'	D	LATITUD	LONGITUD
Huajuapán de León	0.00	3	0	1835	4.6	83.7	0.9	8.4	1.1	0.5	0.5	0.2	0.1	88.3	0.9	10.8	0.094	0.504	17.797969	-97.783029
San Miguel Tlacotepec	83.60	1	0	1223	2.3	84.3	2.0	6.4	1.3	2.1	1.0	0.3	0.3	86.6	2.0	11.4	0.081	0.506	17.455765	-98.002576
Santiago Juxtlahuaca	100.00	1	0	5940	4.1	87.2	0.5	4.0	0.7	2.0	0.7	0.4	0.4	91.3	0.5	8.2	0.085	0.527	17.336134	-98.013353
Putla	130.00	1	0	622	3.0	84.7	1.3	7.8	2.1	0.8	0.3	0.0	0.0	87.7	1.3	11.0	0.088	0.505	17.152769	-97.891193
El Carrizal	131.30																			

OAXACA

33 CARR: Loma Bonita - Mixtán

CLAVE: 20043

RUTA: OAX

AÑO: 2020

LUGAR	ESTACION				CLASIFICACION VEHICULAR EN PORCIENTO													COORDENADAS		
	KM	TE	SC	TDPA	M	A	B	C2	C3	T3S2	T3S3	T3S2R4	OTROS	A	B	C	K'	D	LATITUD	LONGITUD
Loma Bonita	0.00																			
X. C. Cd. Alemán - Sayula	1.00	1	1	4586	17.7	68.5	1.4	8.4	0.8	1.4	1.0	0.4	0.4	86.2	1.4	12.4	0.094	0.510	18.096917	-95.877109
X. C. Cd. Alemán - Sayula	1.00	1	2	4410	17.6	68.5	1.3	8.4	0.8	1.4	1.1	0.4	0.5	86.1	1.3	12.6	0.100	0.510	18.096941	-95.877013
X. C. Cd. Alemán - Sayula	1.00	3	0	2532	23.8	62.3	1.0	11.1	0.9	0.2	0.4	0.1	0.2	86.1	1.0	12.9	0.107	0.517	18.096846	-95.876971
T. Izq. Aeropuerto	12.00	3	0	605	23.6	61.1	0.8	12.6	1.0	0.4	0.4	0.1	0.0	84.7	0.8	14.5	0.117	0.518	18.017626	-95.869396
Mixtán	27.00																			

34 CARR: Ramal a Reforma de Pineda

CLAVE: 20010

RUTA: OAX

AÑO: 2020

LUGAR	ESTACION				CLASIFICACION VEHICULAR EN PORCIENTO													COORDENADAS		
	KM	TE	SC	TDPA	M	A	B	C2	C3	T3S2	T3S3	T3S2R4	OTROS	A	B	C	K'	D	LATITUD	LONGITUD
T. C. La Ventosa - San Pedro Tapanatepec	0.00	3	0	1243	7.9	73.2	5.1	7.0	2.3	1.2	1.1	1.2	1.0	81.1	5.1	13.8	0.084	0.514	16.493697	-94.427528
Reforma de Pineda	12.00																			

35 CARR: Ramal a Unión Hidalgo

CLAVE: 20044

RUTA: OAX

AÑO: 2020

LUGAR	ESTACION				CLASIFICACION VEHICULAR EN PORCIENTO													COORDENADAS		
	KM	TE	SC	TDPA	M	A	B	C2	C3	T3S2	T3S3	T3S2R4	OTROS	A	B	C	K'	D	LATITUD	LONGITUD
T. C. La Ventosa - San Pedro Tapanatepec	0.00	3	1	1279	15.3	80.3	0.5	2.7	0.2	0.6	0.3	0.0	0.1	95.6	0.5	3.9	0.084	0.506	16.576642	-94.816157
T. C. La Ventosa - San Pedro Tapanatepec	0.00	3	2	1307	14.3	81.4	0.5	2.3	0.4	0.6	0.3	0.1	0.1	95.7	0.5	3.8	0.083	0.506	16.576643	-94.816156
Unión Hidalgo	12.00	1	0	1095	15.7	71.7	2.7	5.3	1.3	0.8	0.8	0.8	0.9	87.4	2.7	9.9	0.104	0.505	16.477137	-94.833304

36 CARR: San Antonio - Puerto Ángel

CLAVE:

RUTA: OAX

AÑO: 2020

LUGAR	ESTACION				CLASIFICACION VEHICULAR EN PORCIENTO													COORDENADAS		
	KM	TE	SC	TDPA	M	A	B	C2	C3	T3S2	T3S3	T3S2R4	OTROS	A	B	C	K'	D	LATITUD	LONGITUD
T. C. Santiago Pinotepa Nacional - Salina Cruz	0.00	3	0	2456	18.6	77.3	0.1	3.8	0.2	0.0	0.0	0.0	0.0	95.9	0.1	4.0	0.098	0.509	15.716483	-96.582788
Mazunte	7.30	1	0	2052	28.9	66.1	0.2	4.7	0.1	0.0	0.0	0.0	0.0	95.0	0.2	4.8	0.095	0.510	15.666699	-96.549929
Mazunte	7.30	3	0	1782	29.2	65.8	0.1	4.9	0.0	0.0	0.0	0.0	0.0	95.0	0.1	4.9	0.087	0.502	15.666698	-96.549925
Puerto Ángel	15.90																			

OAXACA

37 CARR: T. C. (Oaxaca - Puerto Ángel) - Puerto Escondido

CLAVE: 20009

RUTA: MEX-OAX-161

AÑO: 2020

LUGAR	ESTACION				CLASIFICACION VEHICULAR EN PORCIENTO										COORDENADAS					
	KM	TE	SC	TDPA	M	A	B	C2	C3	T3S2	T3S3	T3S2R4	OTROS	A	B	C	K'	D	LATITUD	LONGITUD
T. C. Oaxaca - Puerto Ángel	0.00	3	1	6206	4.2	87.7	0.4	5.9	0.8	0.5	0.3	0.1	0.1	91.9	0.4	7.7	0.106	0.506	16.927835	-96.704740
T. C. Oaxaca - Puerto Ángel	0.00	3	2	6360	4.0	87.9	0.5	5.9	0.8	0.5	0.2	0.1	0.1	91.9	0.5	7.6	0.089	0.506	16.927758	-96.704640
T. Izq. San Pablo Huixtepec	16.80	1	0	6627	9.2	77.1	0.5	7.5	1.4	3.6	0.4	0.1	0.2	86.3	0.5	13.2	0.090	0.508	16.831349	-96.788675
T. Izq. San Pablo Huixtepec	16.80	3	0	7400	6.4	79.8	0.7	7.3	1.6	3.4	0.4	0.2	0.2	86.2	0.7	13.1	0.078	0.512	16.831212	-96.788688
T. Der. El Trapiche	30.00	1	0	3982	7.0	78.7	0.9	7.4	3.3	1.8	0.4	0.3	0.2	85.7	0.9	13.4	0.078	0.503	16.761553	-96.857617
T. Der. El Trapiche	30.00	3	0	4355	7.7	82.2	0.6	4.3	2.5	1.5	0.7	0.2	0.3	89.9	0.6	9.5	0.073	0.510	16.761552	-96.857622
T. Der. Cofradía San Pedro	53.00	3	0	1599	4.1	76.0	2.4	11.5	2.3	2.2	1.0	0.2	0.3	80.1	2.4	17.5	0.079	0.507	16.602064	-96.891528
Sola de Vega	78.40	3	0	1441	10.6	73.7	3.0	8.6	1.9	1.4	0.5	0.1	0.2	84.3	3.0	12.7	0.076	0.507	16.514419	-96.980641
T. Der. Yalotepec	134.50	1	0	1304	3.5	74.4	3.6	11.6	3.6	1.7	1.1	0.2	0.3	77.9	3.6	18.5	0.099	0.539	16.251901	-97.152316
San Gabriel Mixtepec	208.00	1	0	1376	16.8	74.4	0.6	5.5	1.3	0.8	0.2	0.4	0.0	91.2	0.6	8.2	0.089	0.513	16.093988	-97.080577
Puerto Escondido	248.00	1	0	3633	14.3	76.3	0.4	5.2	0.4	2.5	0.5	0.1	0.3	90.6	0.4	9.0	0.084	0.501	15.875441	-97.077399

38 CARR: Tehuacán - Huitzo

CLAVE: 00211

RUTA: PUE-MEX-135

AÑO: 2020

LUGAR	ESTACION				CLASIFICACION VEHICULAR EN PORCIENTO										COORDENADAS					
	KM	TE	SC	TDPA	M	A	B	C2	C3	T3S2	T3S3	T3S2R4	OTROS	A	B	C	K'	D	LATITUD	LONGITUD
Tehuacán	0.00	3	0	5123	7.1	82.6	0.1	2.7	0.7	4.8	0.8	0.3	0.9	89.7	0.1	10.2	0.074	0.527	18.462924	-97.391446
T. Der. San Gabriel Chilac	14.40	1	0	4845	9.2	76.2	0.9	5.3	1.0	5.1	1.2	0.6	0.5	85.4	0.9	13.7	0.070	0.515	18.401646	-97.329242
San Sebastián Zinacatepec	23.00	3	0	4681	8.9	74.1	1.4	9.1	1.9	3.0	1.0	0.2	0.4	83.0	1.4	15.6	0.081	0.590	18.333638	-97.242536
Lim. Edos. Term. Pue. Ppia. Oax.	60.90																			
Teotitlán del Camino	63.15	3	0	2438	7.0	86.8	0.5	4.4	0.2	0.8	0.2	0.0	0.1	93.8	0.5	5.7	0.100	0.542	18.126238	-97.076259
Santa María Tecomavaca	88.34	1	0	970	5.5	85.8	0.7	5.6	0.8	0.9	0.2	0.5	0.0	91.3	0.7	8.0	0.109	0.516	17.954889	-97.024530
Santa María Tecomavaca	88.34	3	0	909	9.9	83.1	0.7	3.7	1.0	0.5	0.4	0.7	0.0	93.0	0.7	6.3	0.111	0.511	17.954887	-97.024530
T. Izq. Cuicatlán	118.80	1	0	1135	27.6	63.2	0.6	6.5	0.8	0.7	0.2	0.4	0.0	90.8	0.6	8.6	0.090	0.520	17.793390	-96.958927
T. Izq. Nacaltepec	169.84	1	0	456	7.4	84.4	0.4	6.1	0.7	0.5	0.1	0.4	0.0	91.8	0.4	7.8	0.083	0.504	17.505415	-96.933299
T. C. Huajuapán de León - Oaxaca	202.70	1	0	6442	14.7	81.6	0.2	3.1	0.1	0.1	0.2	0.0	0.0	96.3	0.2	3.5	0.086	0.509	17.285533	-96.903049

39 CARR: Teotitlán de Flores Magón - Tuxtepec

CLAVE: 00108

RUTA: OAX-PUE-MEX-182

AÑO: 2020

LUGAR	ESTACION				CLASIFICACION VEHICULAR EN PORCIENTO										COORDENADAS					
	KM	TE	SC	TDPA	M	A	B	C2	C3	T3S2	T3S3	T3S2R4	OTROS	A	B	C	K'	D	LATITUD	LONGITUD
Teotitlán del Camino	0.00	3	0	848	1.9	79.9	3.5	9.2	2.5	1.4	1.1	0.4	0.1	81.8	3.5	14.7	0.097	0.505	18.130566	-97.067443
Lim. Edos. Term. Oax. Ppia. Pue.	2.00																			
Lim. Edos. Term. Pue. Ppia. Oax.	10.00																			
Huautla	65.00	1	0	1270	5.9	84.1	0.8	6.4	1.4	0.6	0.2	0.6	0.0	90.0	0.8	9.2	0.098	0.507	18.127136	-96.837660

OAXACA

39 CARR: Teotitlán de Flores Magón - Tuxtepec

CLAVE: 00108

RUTA: OAX-PUE-MEX-182

AÑO: 2020

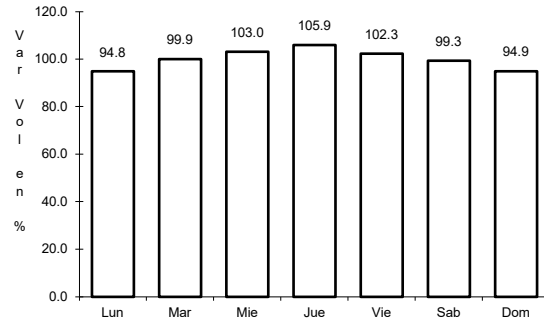
LUGAR	ESTACION				CLASIFICACION VEHICULAR EN PORCIENTO													COORDENADAS		
	KM	TE	SC	TDPA	M	A	B	C2	C3	T3S2	T3S3	T3S2R4	OTROS	A	B	C	K'	D	LATITUD	LONGITUD
San Felipe Jalapa de Díaz	140.00	3	0	3038	3.8	84.0	0.9	6.3	1.4	1.8	0.9	0.6	0.3	87.8	0.9	11.3	0.089	0.506	18.074957	-96.535178
Tuxtepec	185.00	1	0	4191	2.6	84.6	1.0	7.9	1.0	1.5	0.6	0.6	0.2	87.2	1.0	11.8	0.095	0.502	18.085883	-96.135040



1 CARR: Acceso al Puerto Salina Cruz

CLAVE:

ruta: MEX-090

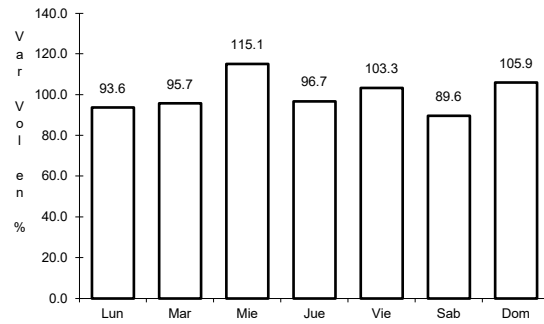


Km: 0.00                      Tipo: 3                      Sent: 0

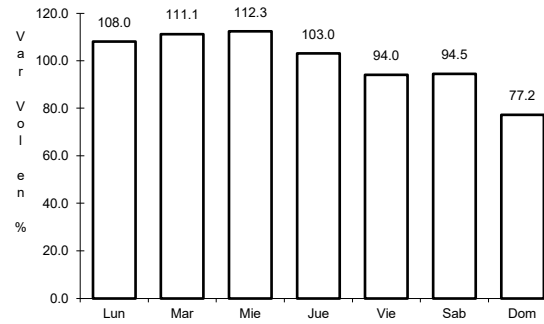
2 CARR: Buenavista - Tuxtepec

CLAVE: 00624

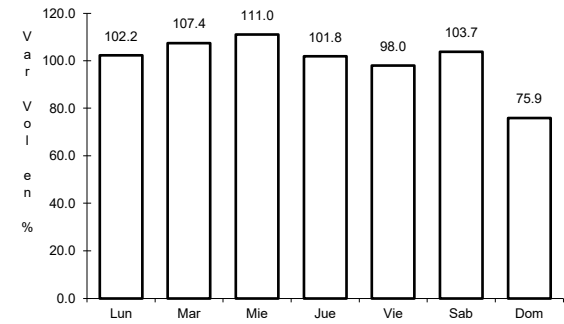
ruta: MEX-175



Km: 0.00                      Tipo: 3                      Sent: 0



Km: 121.25                      Tipo: 1                      Sent: 1

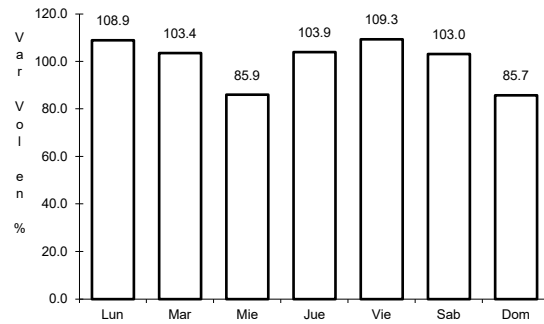


Km: 121.25                      Tipo: 1                      Sent: 2

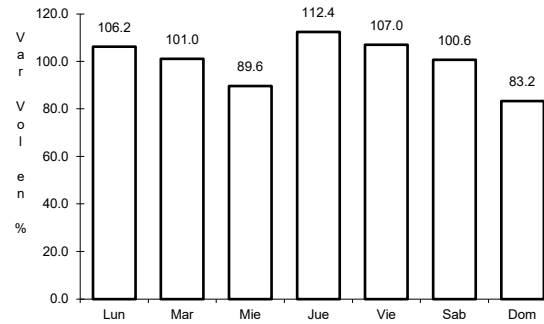
3 CARR: Cd. Alemán - Sayula

CLAVE: 00301

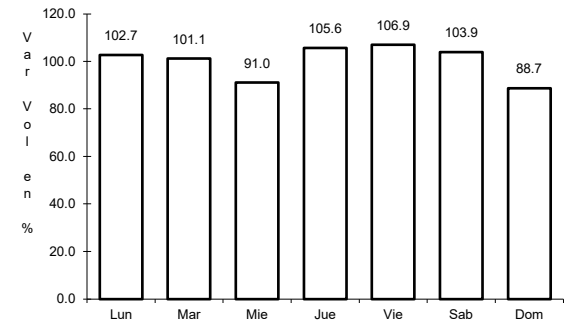
ruta: MEX-145



Km: 0.00                      Tipo: 3                      Sent: 0



Km: 71.40                      Tipo: 1                      Sent: 0

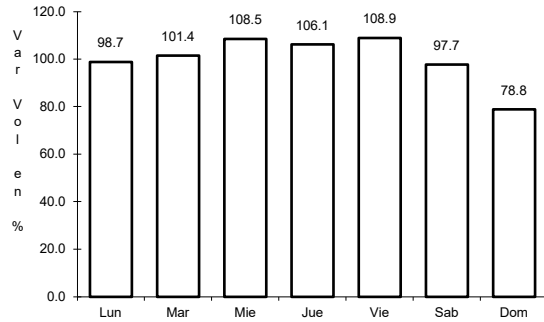


Km: 136.40                      Tipo: 1                      Sent: 0

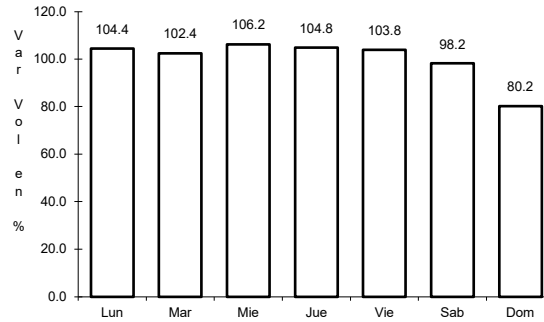
4 CARR: Coatzacoalcos - Salina Cruz

CLAVE: 00147

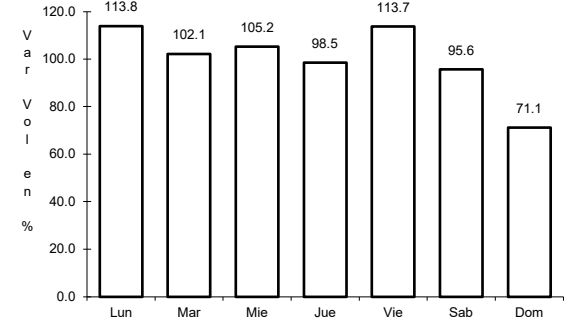
RUTA: MEX-185



Km: 0.00      Tipo: 3      Sent: 1



Km: 0.00      Tipo: 3      Sent: 2

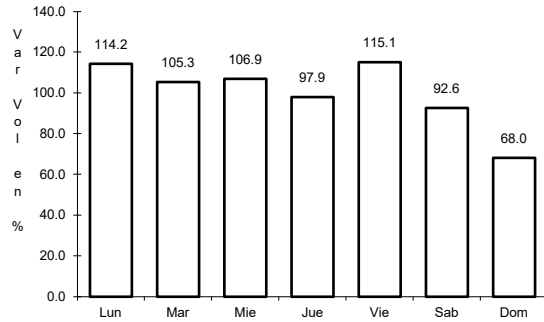


Km: 255.55      Tipo: 1      Sent: 0

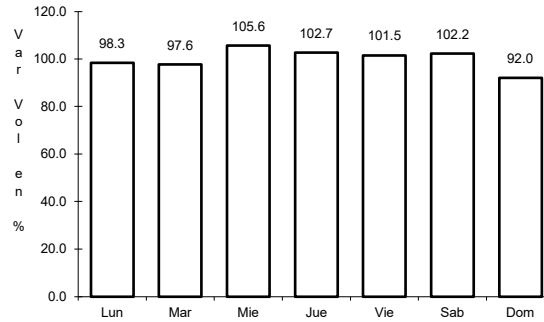
5 CARR: Ent. La Ventosa - San Pedro Tapanatepec

CLAVE: 20059

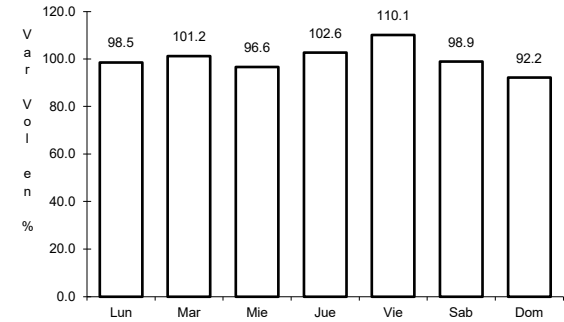
RUTA: MEX-190



Km: 0.00      Tipo: 3      Sent: 0



Km: 38.01      Tipo: 3      Sent: 0

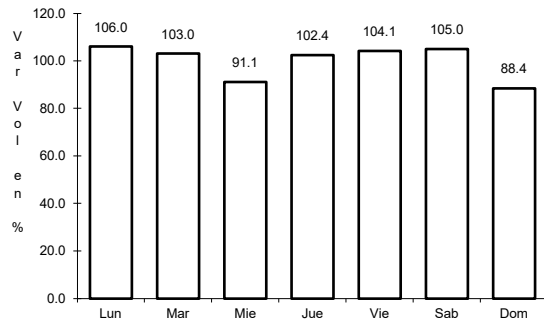


Km: 91.80      Tipo: 1      Sent: 0

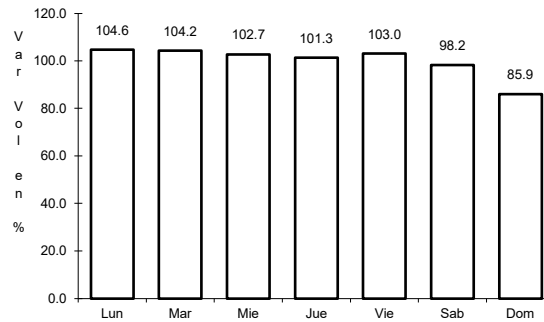
6 CARR: Huajuapán de León - Oaxaca

CLAVE: 20056

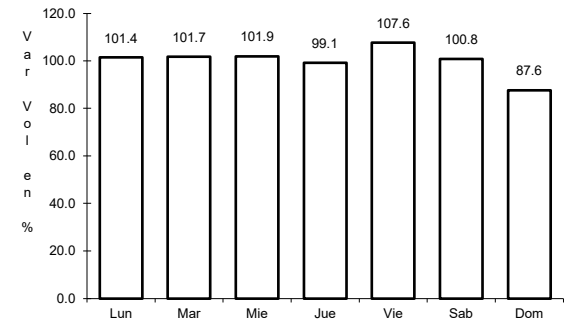
RUTA: MEX-190



Km: 1.35      Tipo: 1      Sent: 0



Km: 190.60      Tipo: 1      Sent: 1

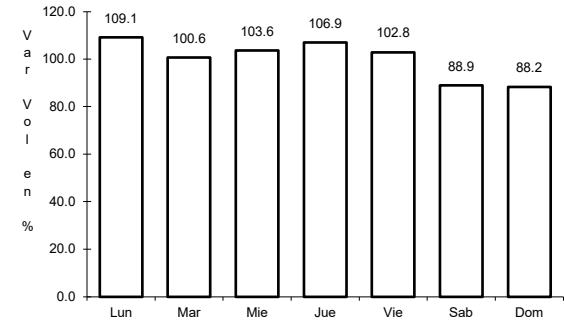
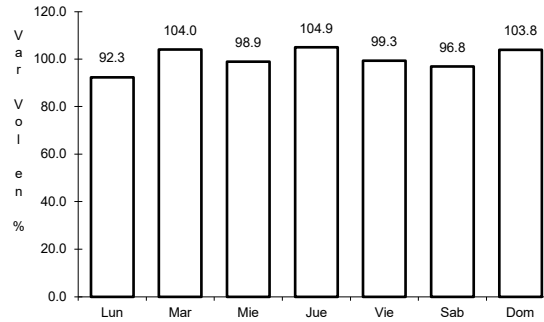
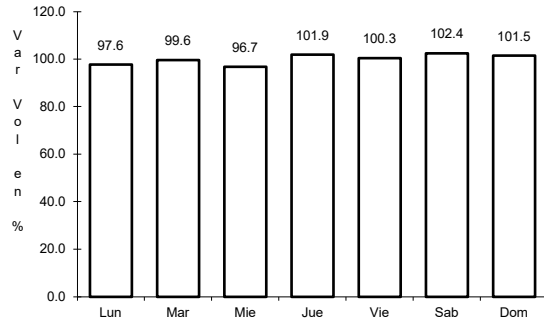


Km: 190.60      Tipo: 1      Sent: 2

7 CARR: Juchitán - Ixtepec

CLAVE: 20359

ruta: MEX-185



Km: 0.15 Tipo: 3 Sent: 1

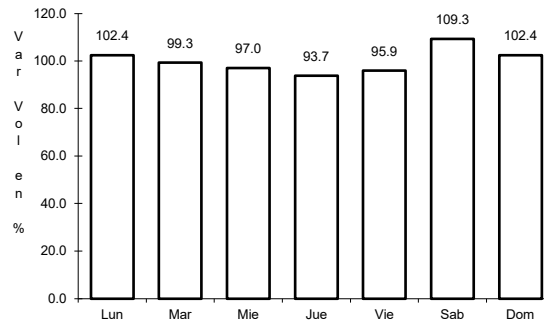
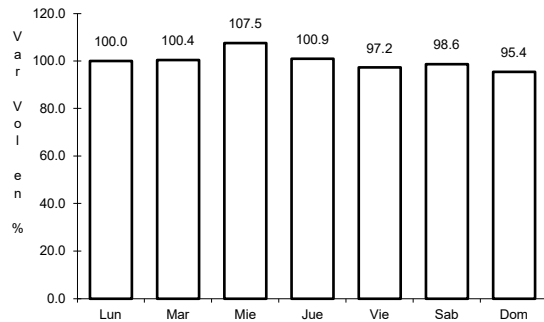
Km: 0.15 Tipo: 3 Sent: 2

Km: 16.00 Tipo: 1 Sent: 1

8 CARR: La Granja - Temascal

CLAVE: 00275

ruta: MEX-145



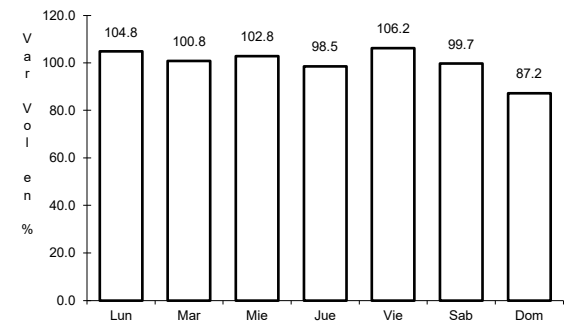
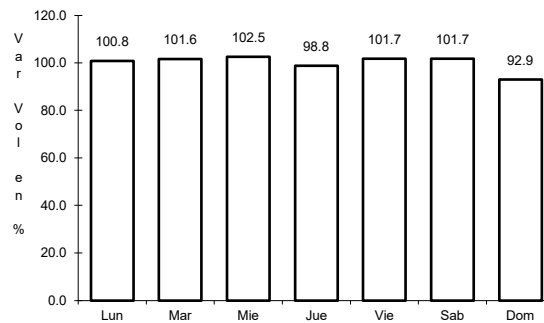
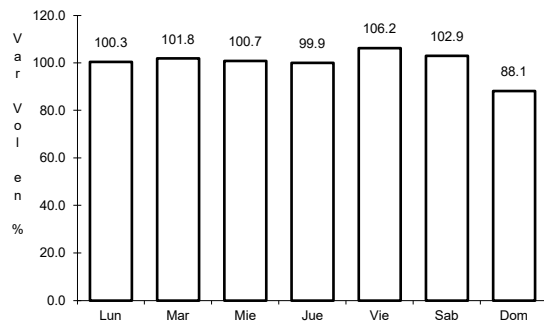
Km: 0.00 Tipo: 3 Sent: 0

Km: 23.00 Tipo: 1 Sent: 0

9 CARR: Las Cruces - Pinotepa Nacional

CLAVE: 00073

ruta: MEX-200



Km: 0.00 Tipo: 3 Sent: 1

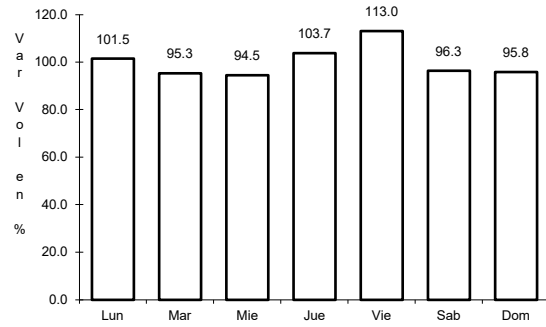
Km: 0.00 Tipo: 3 Sent: 2

Km: 245.47 Tipo: 3 Sent: 0

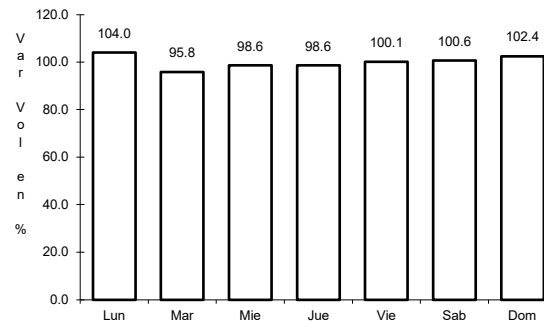
10 CARR: Libramiento de Pochutla

CLAVE:

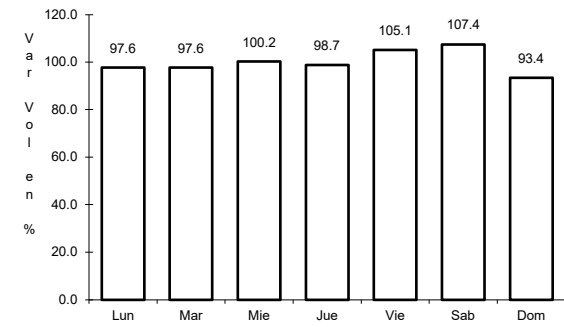
RUTA: MEX-200



Km: 0.00                      Tipo: 3                      Sent: 0



Km: 2.40                      Tipo: 1                      Sent: 0

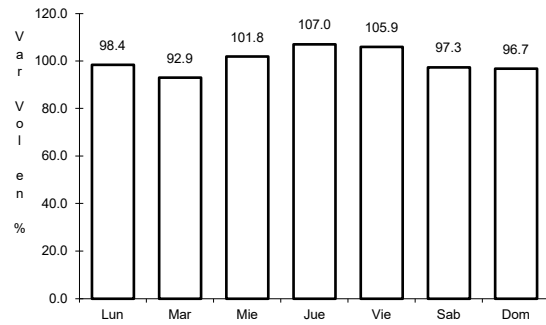


Km: 5.20                      Tipo: 1                      Sent: 0

11 CARR: Libramiento de San Pedro Tapanatepec

CLAVE:

RUTA: MEX-200

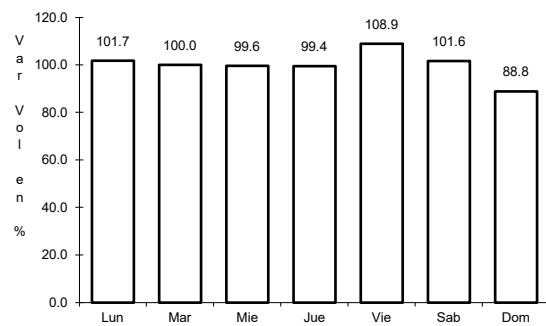


Km: 3.35                      Tipo: 1                      Sent: 0

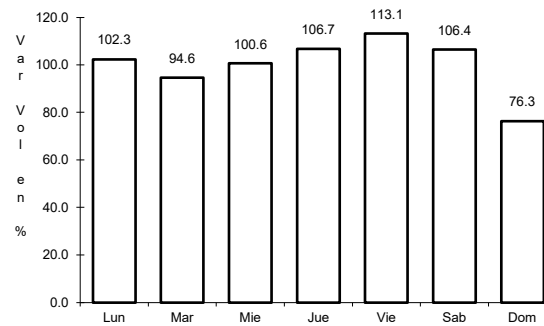
12 CARR: Libramiento de Santa María del Tule

CLAVE:

RUTA: MEX-190



Km: 0.00                      Tipo: 3                      Sent: 0

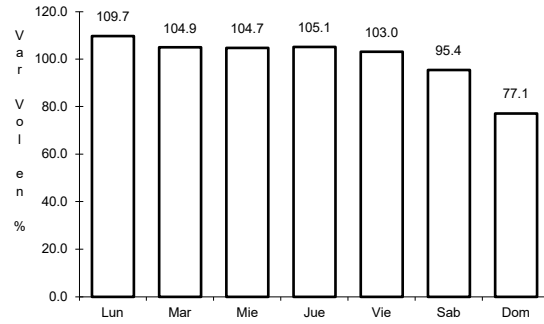


Km: 5.80                      Tipo: 1                      Sent: 0

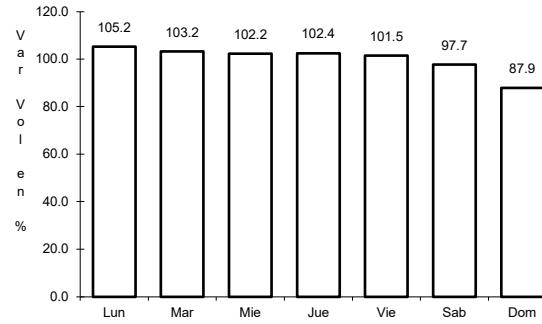
13 CARR: Oaxaca - Puerto Ángel

CLAVE: 20091

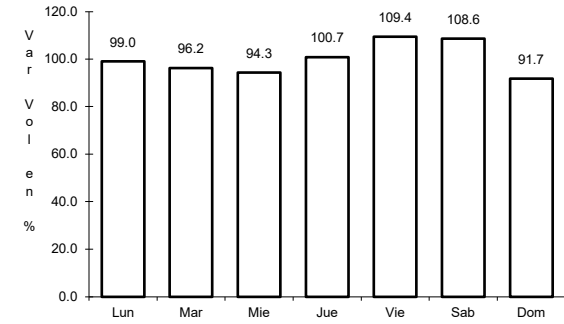
ruta: MEX-175



Km: 0.00 Tipo: 3 Sent: 1



Km: 0.00 Tipo: 3 Sent: 2

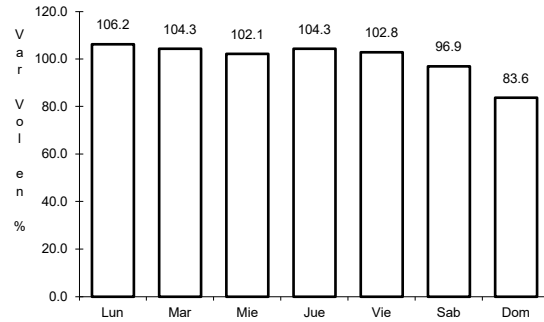


Km: 245.40 Tipo: 1 Sent: 0

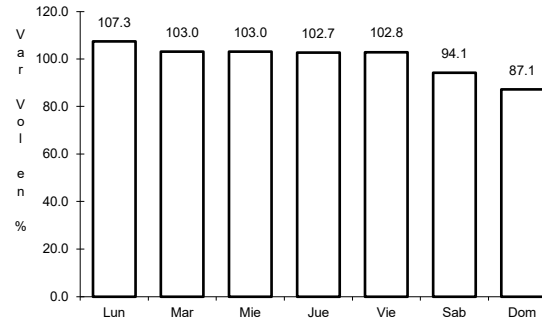
14 CARR: Oaxaca - Tehuantepec

CLAVE: 20057

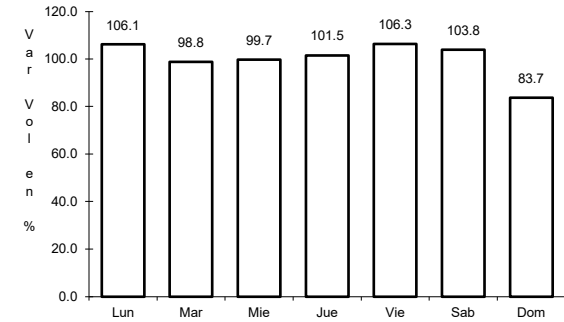
ruta: MEX-190



Km: 0.00 Tipo: 3 Sent: 1



Km: 0.00 Tipo: 3 Sent: 2

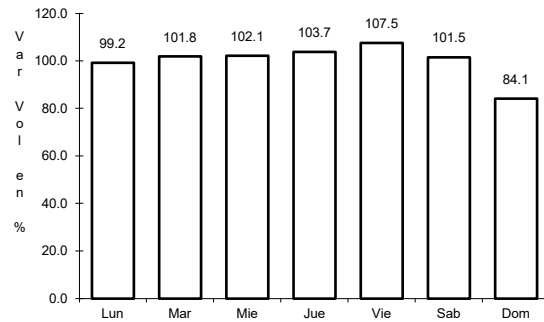


Km: 250.60 Tipo: 1 Sent: 0

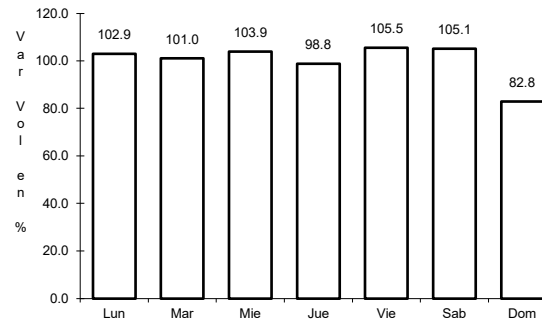
15 CARR: Puebla - Huajuapán de León

CLAVE: 00049

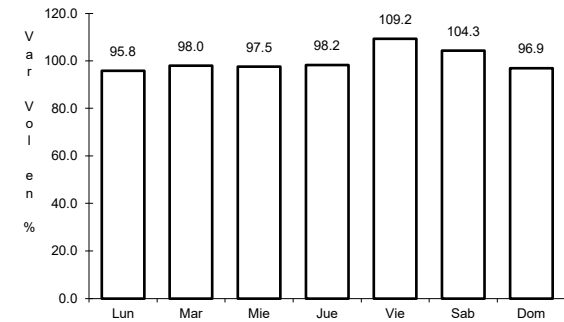
ruta: MEX-190



Km: 0.00 Tipo: 3 Sent: 1



Km: 0.00 Tipo: 3 Sent: 2

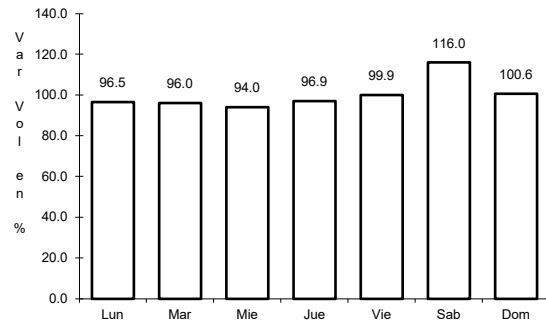


Km: 219.30 Tipo: 1 Sent: 0

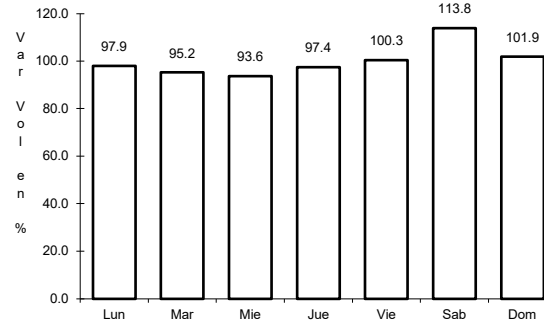
16 CARR: Ramal a Asunción Ixtaltepec

CLAVE: 20624

RUTA: MEX-185



Km: 0.00                      Tipo: 3                      Sent: 0

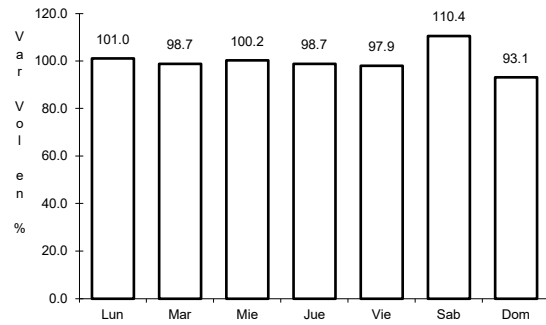


Km: 9.70                      Tipo: 1                      Sent: 0

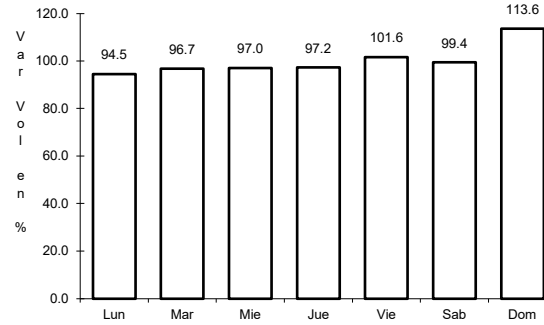
17 CARR: Ramal a Monte Albán

CLAVE:

RUTA: MEX



Km: 1.80                      Tipo: 3                      Sent: 0

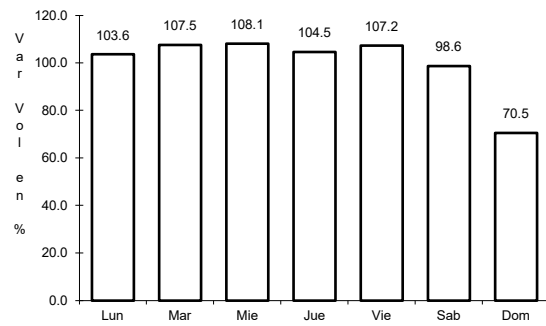


Km: 2.75                      Tipo: 3                      Sent: 0

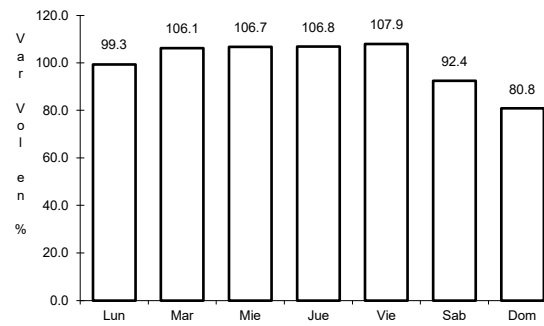
18 CARR: Ramal a Refinería Pemex (Refinería del Pacifico)

CLAVE:

RUTA: MEX



Km: 0.00                      Tipo: 3                      Sent: 1

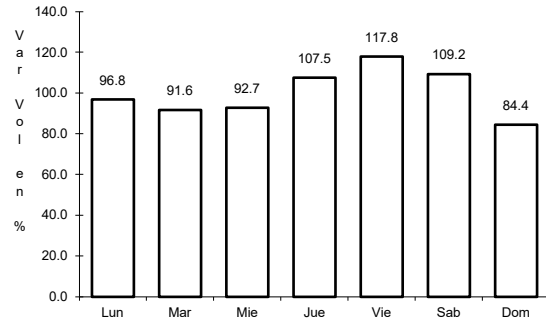


Km: 0.00                      Tipo: 3                      Sent: 2

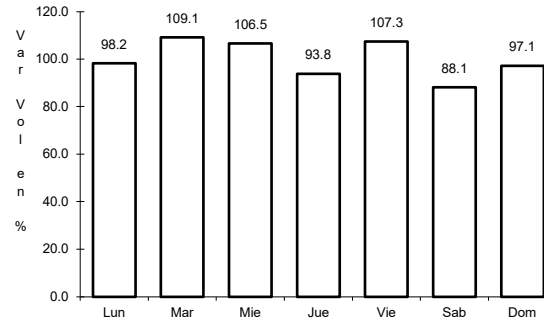
19 CARR: San Pablo Villa de Mitla - T. C. (Tuxtepec - Palomares)

CLAVE: 00106

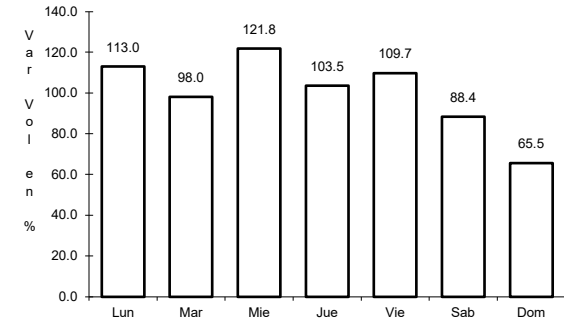
ruta: MEX-179



Km: 0.00                      Tipo: 3                      Sent: 0



Km: 90.00                      Tipo: 1                      Sent: 0

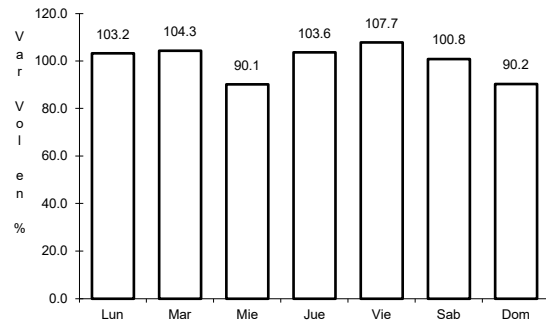


Km: 238.70                      Tipo: 1                      Sent: 0

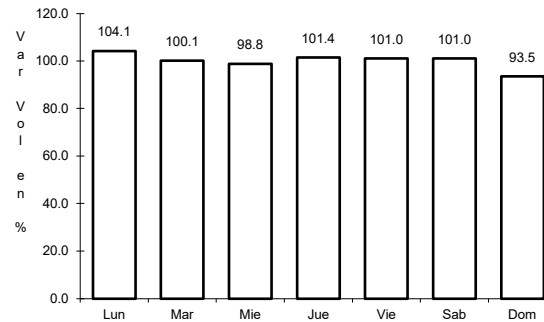
20 CARR: Santiago Pinotepa Nacional - Salina Cruz

CLAVE: 20074

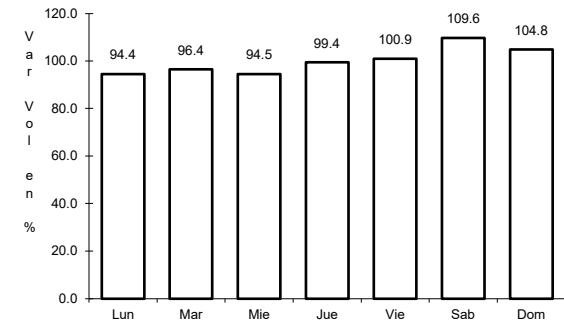
ruta: MEX-200



Km: 0.00                      Tipo: 3                      Sent: 0



Km: 209.15                      Tipo: 1                      Sent: 0

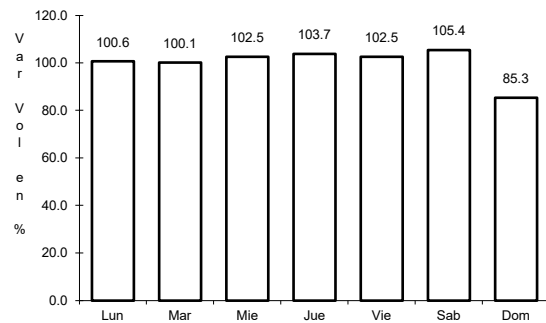


Km: 380.00                      Tipo: 3                      Sent: 0

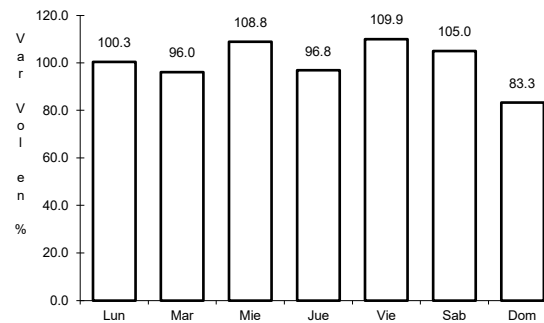
21 CARR: Tapanatepec - Talismán

CLAVE: 00075

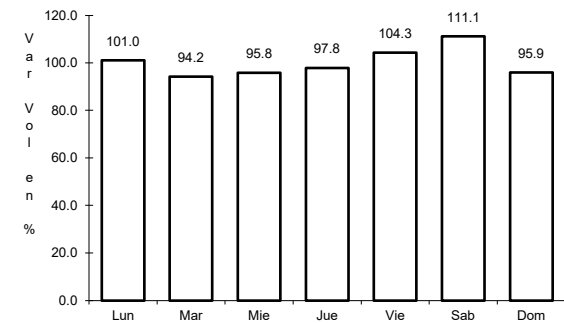
ruta: MEX-200



Km: 0.00                      Tipo: 3                      Sent: 0



Km: 45.00                      Tipo: 1                      Sent: 0

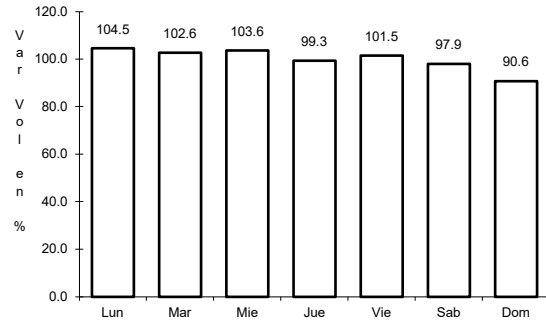


Km: 310.77                      Tipo: 1                      Sent: 0

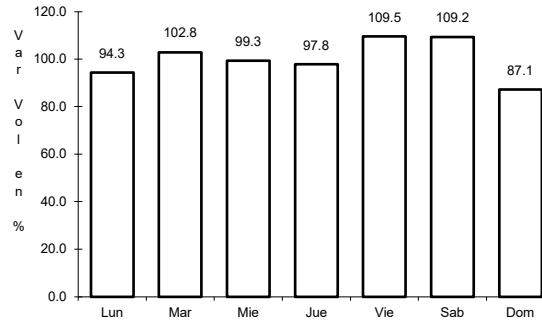
22 CARR: Tapanatepec - Tuxtla Gutiérrez

CLAVE: 00060

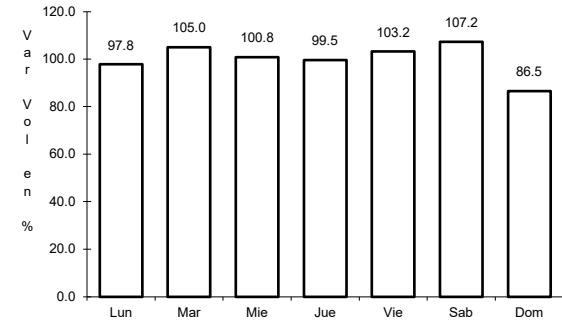
RUTA: MEX-190



Km: 0.00                      Tipo: 3                      Sent: 0



Km: 159.00                      Tipo: 1                      Sent: 1

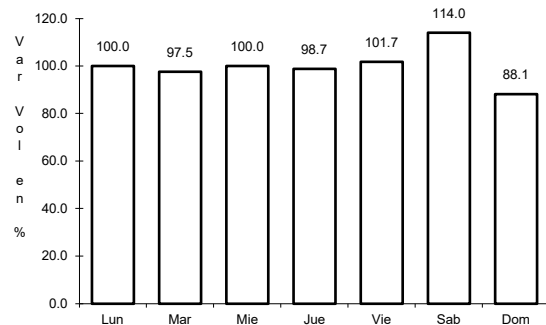


Km: 159.00                      Tipo: 1                      Sent: 2

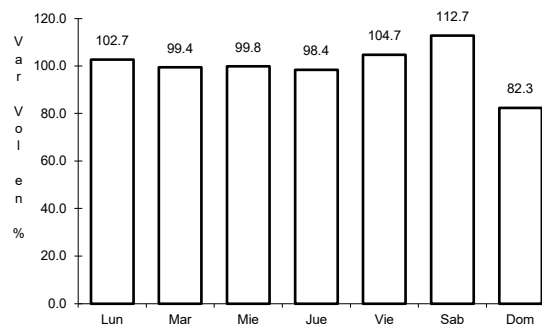
23 CARR: Tehuacán - Huajuapán de León

CLAVE: 00211

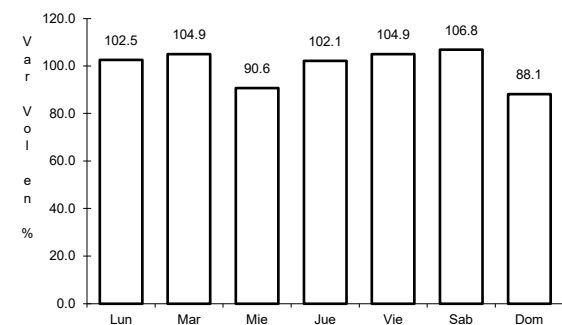
RUTA: MEX-125



Km: 0.00                      Tipo: 3                      Sent: 1



Km: 0.00                      Tipo: 3                      Sent: 2

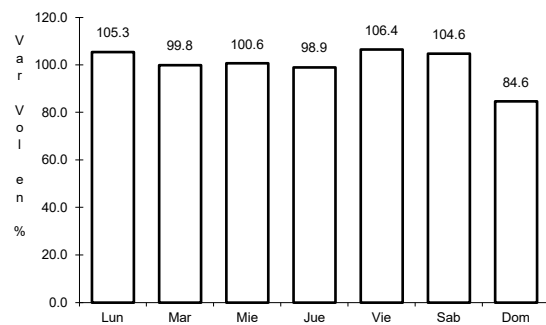


Km: 119.40                      Tipo: 1                      Sent: 0

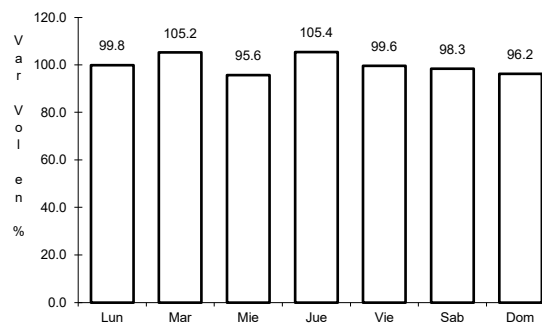
24 CARR: Tuxtepec - Ent. Palomares

CLAVE: 00180

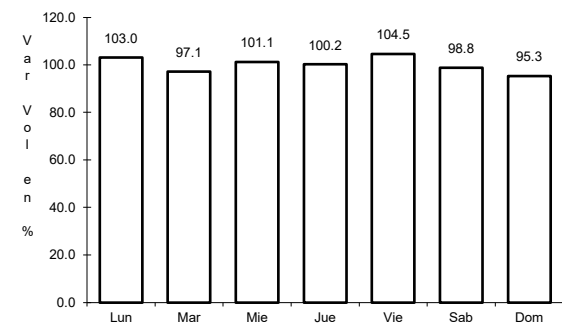
RUTA: MEX-147



Km: 0.00                      Tipo: 3                      Sent: 0



Km: 81.20                      Tipo: 1                      Sent: 0



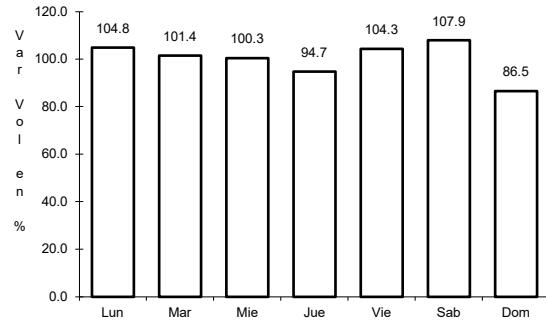
Km: 175.00                      Tipo: 1                      Sent: 0



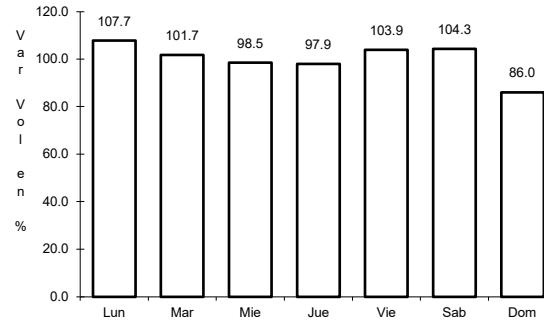
25 CARR: Tuxtepec - T. C. (Oaxaca - Tehuantepec)

CLAVE: 20090

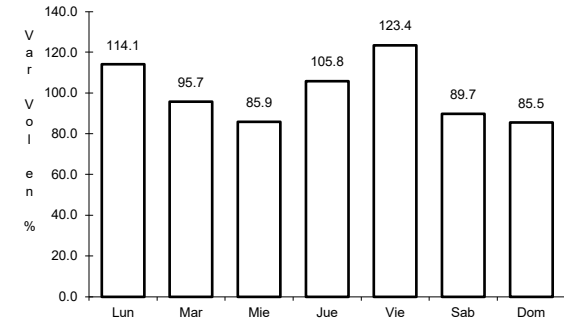
RUTA: MEX-175



Km: 0.00                      Tipo: 3                      Sent: 1



Km: 0.00                      Tipo: 3                      Sent: 2

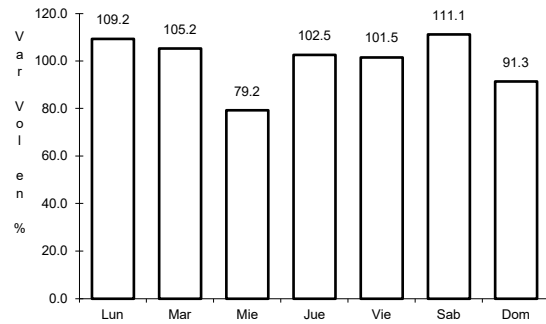


Km: 125.00                      Tipo: 3                      Sent: 0

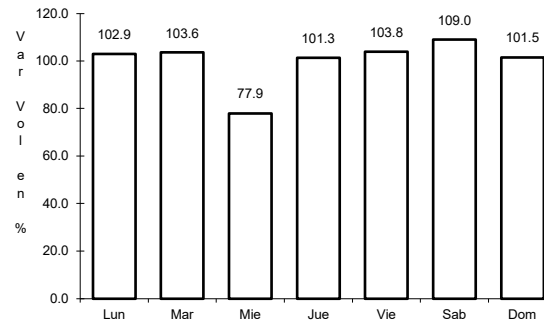
26 CARR: Yucudaa - Santiago Pinotepa Nacional

CLAVE: 20030

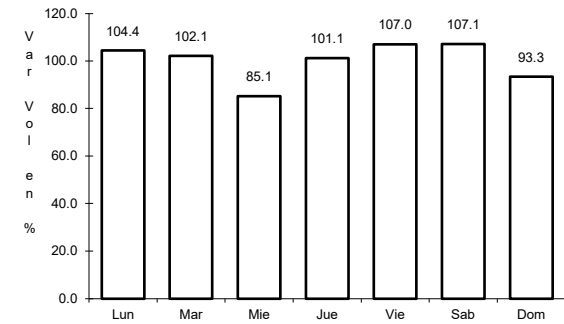
RUTA: MEX-125



Km: 0.00                      Tipo: 3                      Sent: 0



Km: 104.00                      Tipo: 1                      Sent: 0

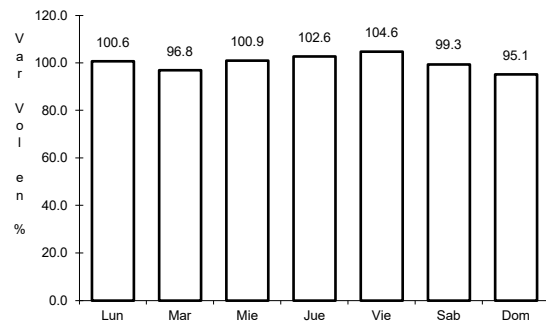


Km: 268.00                      Tipo: 1                      Sent: 0

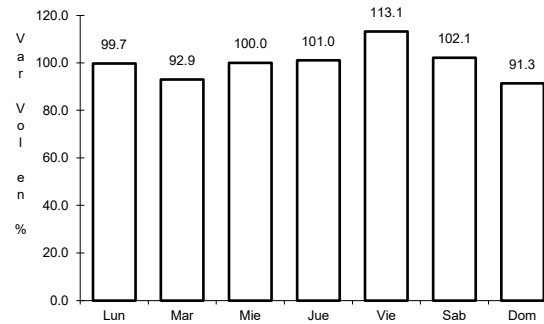
27 CARR: Cuacnopalan - Oaxaca (Cuota)

CLAVE: 00109

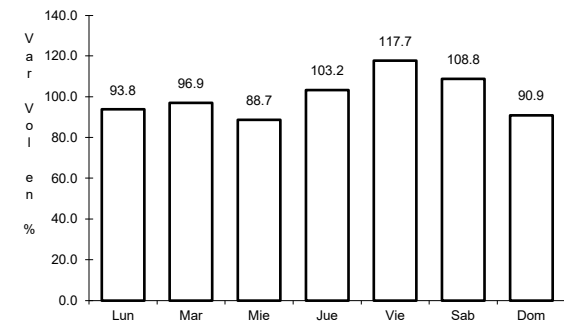
RUTA: MEX-135D



Km: 0.00                      Tipo: 3                      Sent: 0



Km: 242.70                      Tipo: 1                      Sent: 1

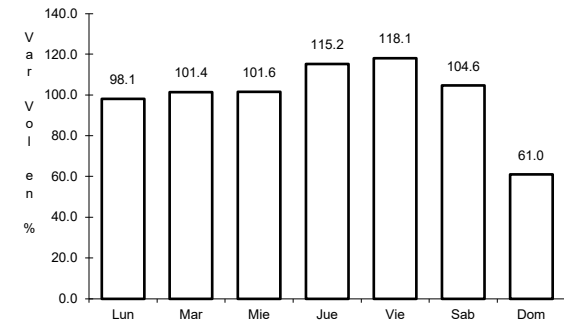
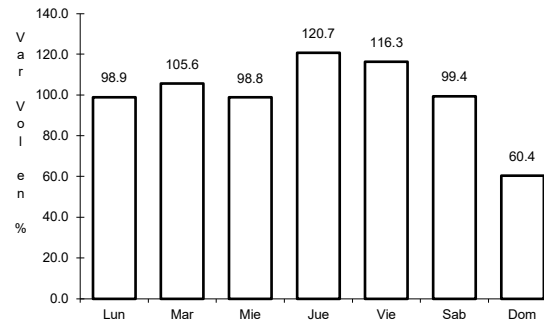
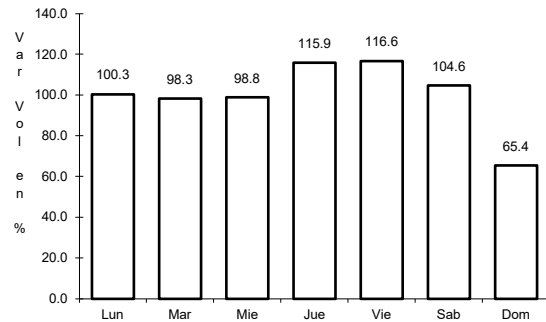


Km: 242.70                      Tipo: 1                      Sent: 2

28 CARR: Mitla - Tehuantepec (Cuota)

CLAVE:

RUTA: MEX-190D



Km: 43.00      Tipo: 3      Sent: 0

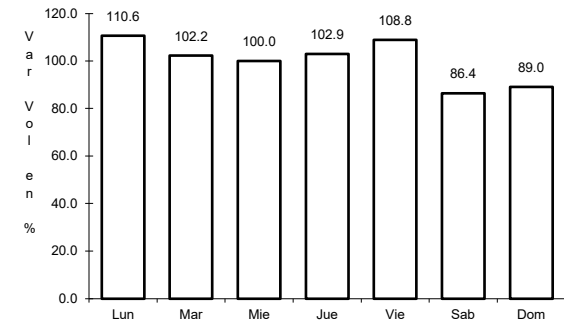
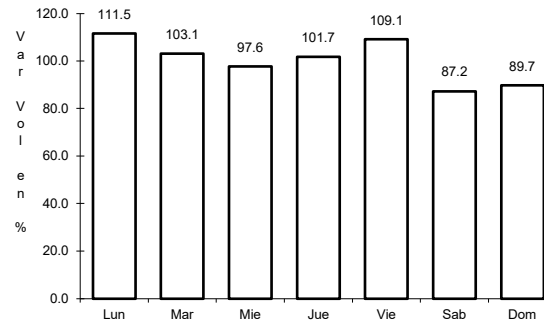
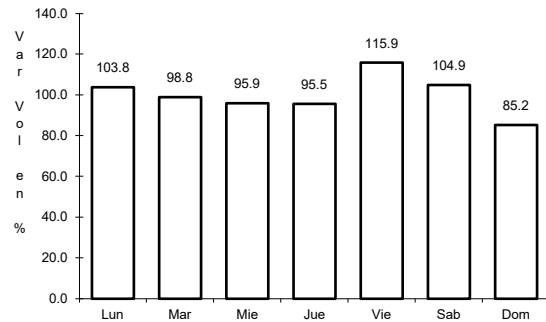
Km: 50.90      Tipo: 3      Sent: 0

Km: 71.00      Tipo: 1      Sent: 0

29 CARR: Salina Cruz - La Ventosa (Cuota)

CLAVE: 00275

RUTA: MEX-185D



Km: 23.19      Tipo: 1      Sent: 0

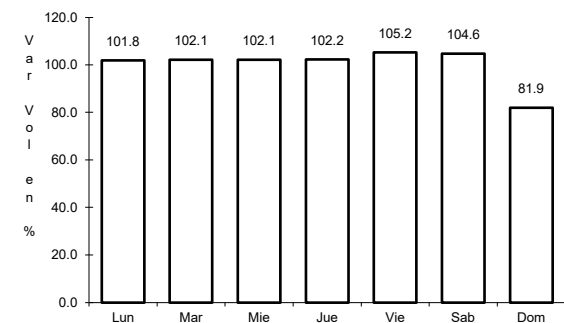
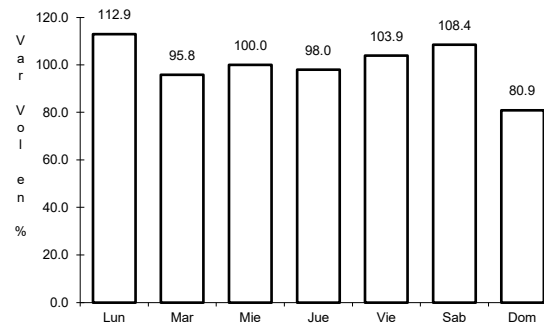
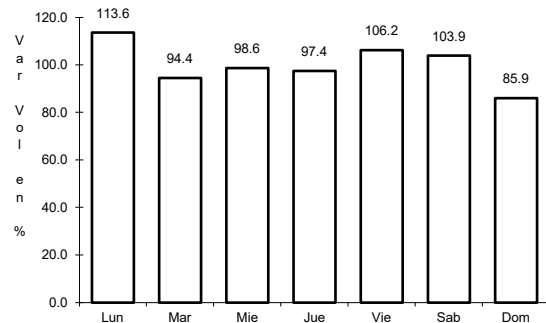
Km: 34.00      Tipo: 3      Sent: 0

Km: 75.39      Tipo: 1      Sent: 0

30 CARR: Cd. Ixtepec - Guevea de Humboldt

CLAVE: 00301

RUTA: OAX



Km: 4.00      Tipo: 1      Sent: 1

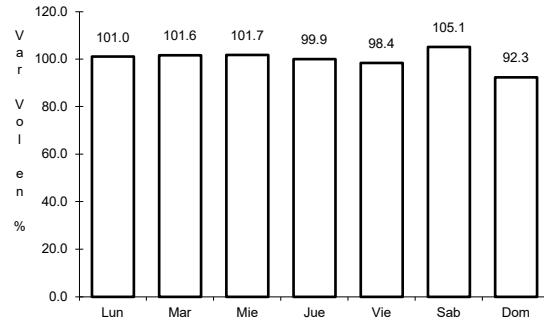
Km: 4.00      Tipo: 1      Sent: 2

Km: 4.00      Tipo: 3      Sent: 0

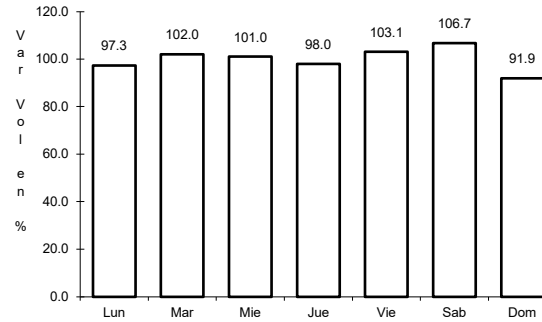
31 CARR: El Zapote - Copalita

CLAVE: 00109

RUTA: OAX



Km: 0.00                      Tipo: 3                      Sent: 1

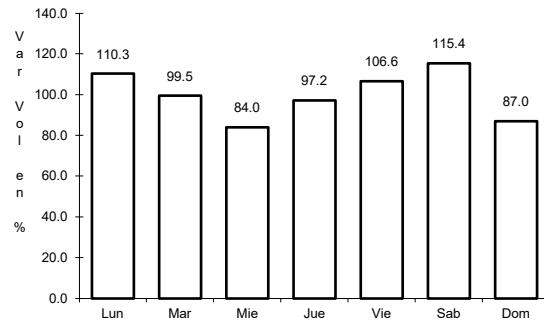


Km: 0.00                      Tipo: 3                      Sent: 2

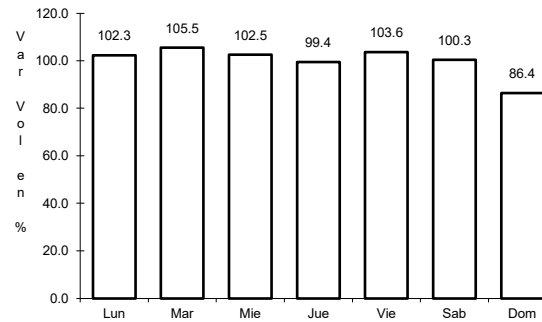
32 CARR: Huajuapán de León - El Carrizal

CLAVE: 00109

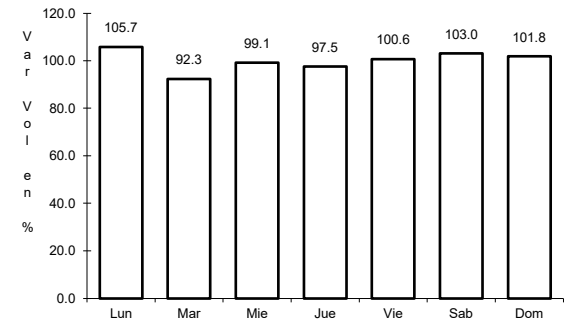
RUTA: OAX



Km: 0.00                      Tipo: 3                      Sent: 0



Km: 83.60                      Tipo: 1                      Sent: 0

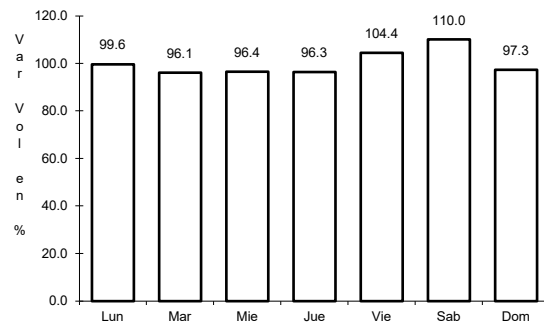


Km: 130.00                      Tipo: 1                      Sent: 0

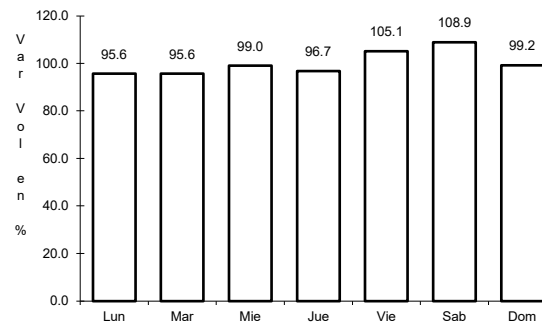
33 CARR: Loma Bonita - Mixtán

CLAVE: 20043

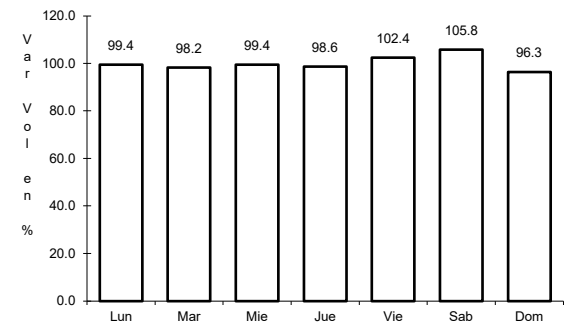
RUTA: OAX



Km: 1.00                      Tipo: 1                      Sent: 1



Km: 1.00                      Tipo: 1                      Sent: 2

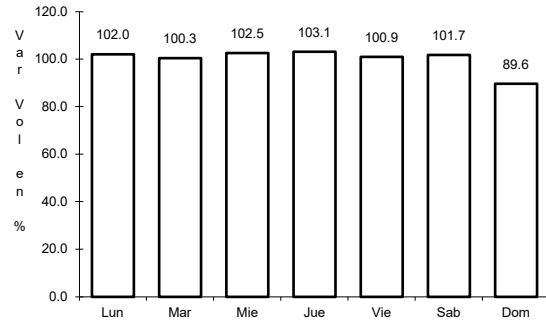


Km: 12.00                      Tipo: 3                      Sent: 0

34 CARR: Ramal a Reforma de Pineda

CLAVE: 20010

RUTA: OAX

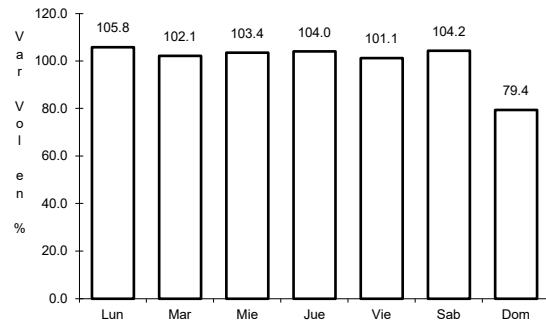


Km: 0.00                      Tipo: 3                      Sent: 0

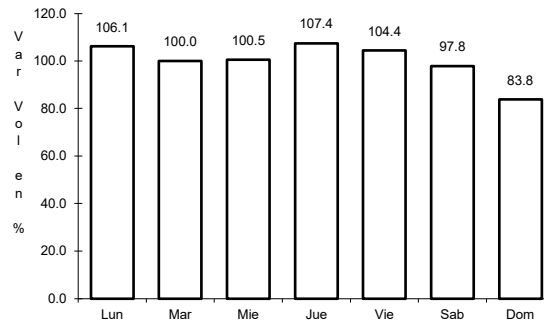
35 CARR: Ramal a Unión Hidalgo

CLAVE: 20044

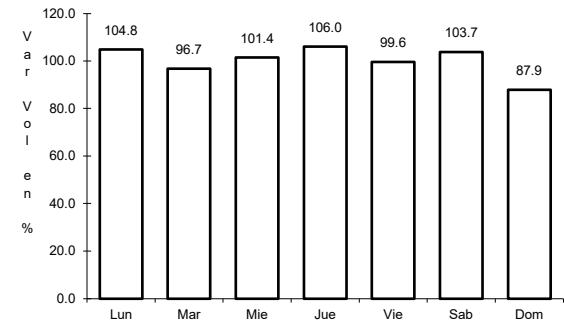
RUTA: OAX



Km: 0.00                      Tipo: 3                      Sent: 1



Km: 0.00                      Tipo: 3                      Sent: 2

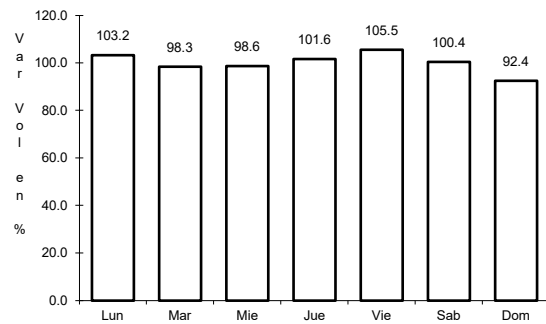


Km: 12.00                      Tipo: 1                      Sent: 0

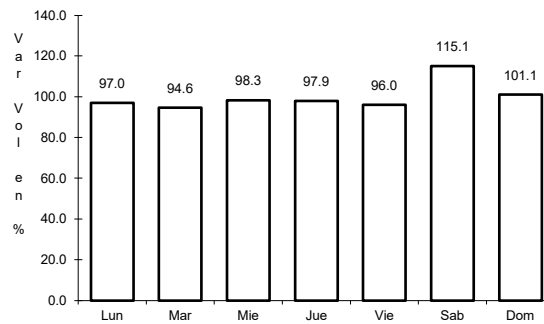
36 CARR: San Antonio - Puerto Angel

CLAVE:

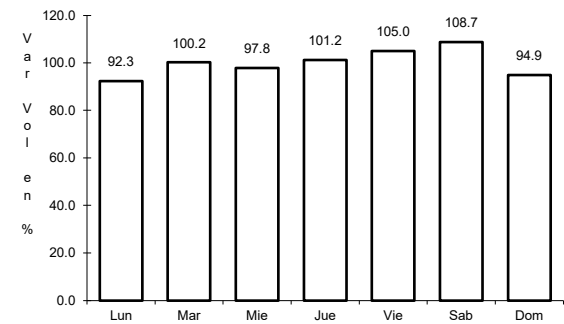
RUTA: OAX



Km: 0.00                      Tipo: 3                      Sent: 0



Km: 7.30                      Tipo: 1                      Sent: 0

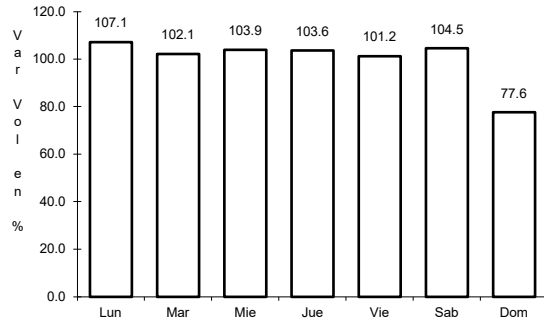


Km: 7.30                      Tipo: 3                      Sent: 0

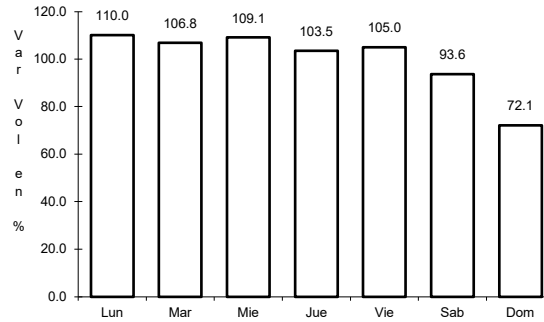
37 CARR: T. C. (Oaxaca - Puerto Ángel) - Puerto Escondido

CLAVE: 20009

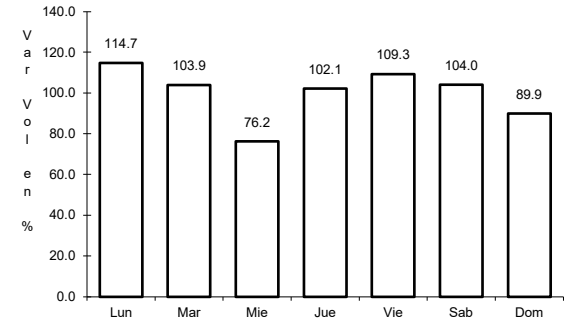
RUTA: MEX-OAX-161



Km: 0.00                      Tipo: 3                      Sent: 1



Km: 0.00                      Tipo: 3                      Sent: 2

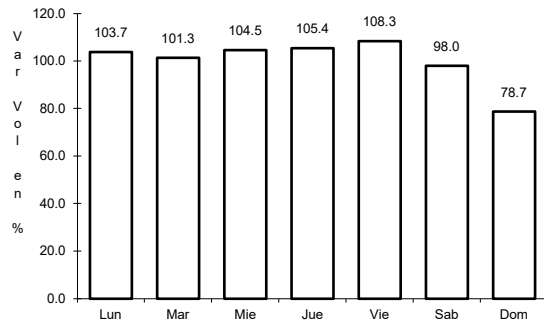


Km: 248.00                      Tipo: 1                      Sent: 0

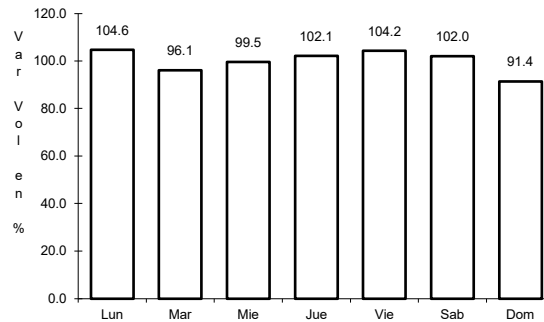
38 CARR: Tehuacán - Huitzo

CLAVE: 00211

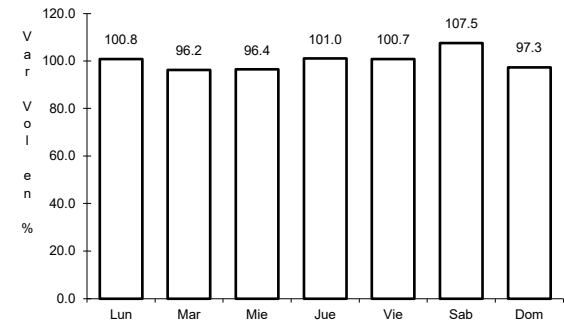
RUTA: PUE-MEX-135



Km: 0.00                      Tipo: 3                      Sent: 0



Km: 118.80                      Tipo: 1                      Sent: 0

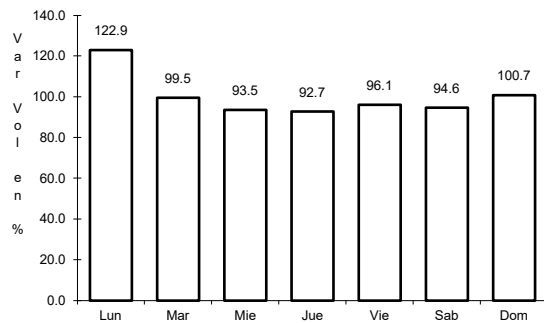


Km: 202.70                      Tipo: 1                      Sent: 0

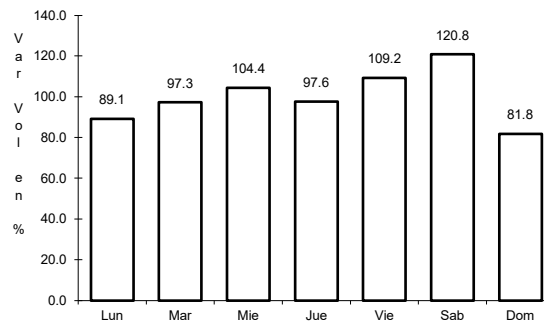
39 CARR: Teotitlán de Flores Magón - Tuxtepec

CLAVE: 00108

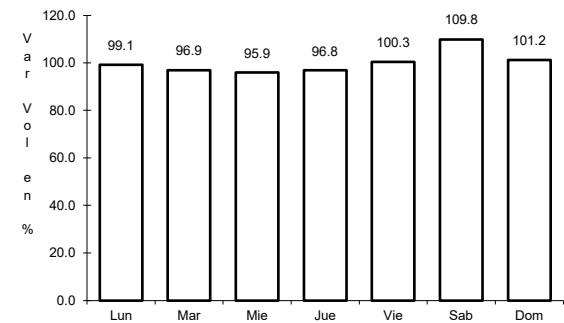
RUTA: OAX-PUE-MEX-182



Km: 0.00                      Tipo: 3                      Sent: 0



Km: 65.00                      Tipo: 1                      Sent: 0



Km: 185.00                      Tipo: 1                      Sent: 0

