

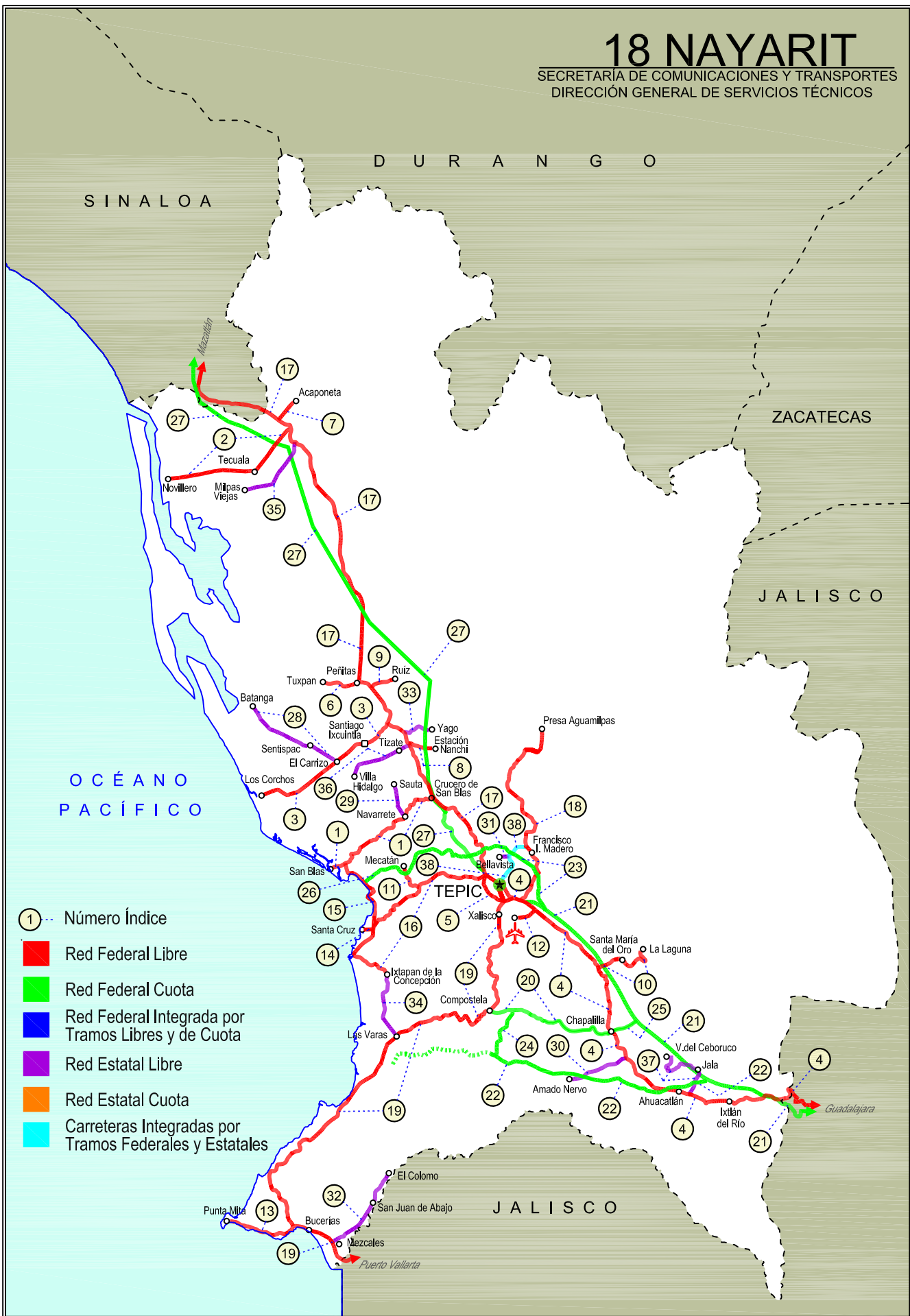


NAYARIT

NO. INDICE CARRETERA	---RED FEDERAL LIBRE---	RUTA
1	Crucero de San Blas - San Blas	MEX-015
2	Ent. Acaponeta - El Novillero	MEX-015
3	Ent. Santiago Ixcuintla - Playa Los Corchos	MEX-015
4	Guadalajara - Tepic	MEX-015
5	Libramiento de Tepic	MEX-015
6	Peñitas - Tuxpan	MEX-015
7	Ramal a Acaponeta	MEX-015
8	Ramal a Estación Nanchi	MEX-015
9	Ramal a Estación Ruíz	MEX-015
10	Ramal a La Laguna de Santa María	MEX-015
11	Ramal a Mecatán	MEX-015
12	Ramal a Nuevo Aeropuerto de Tepic	MEX-015
13	Ramal a Punta Mita	MEX-200
14	Ramal a Santa Cruz	MEX-015
15	Santa Cruz - San Blas	MEX-015
16	Tepic - Ixtapan de La Concepción	MEX-015
17	Tepic - Mazatlán	MEX-015
18	Tepic - Presa Aguamilpa	MEX-015
19	Tepic - Puerto Vallarta	MEX-200
---RED FEDERAL DE CUOTA---		
20	Chapalilla - Compostela (Cuota)	MEX-068D
21	Guadalajara - Tepic (Cuota)	MEX-015D
22	Jala - Puerto Vallarta (Cuota)	MEX-070D
23	Libramiento de Tepic (Cuota)	MEX-015D
24	Ramal a Compostela (Cuota)	MEX-200D
25	Ramal a Tequepexpan	MEX-015D
26	Tepic - San Blas (Cuota)	MEX-D
27	Tepic - Villa Unión (cuota)	MEX-015D
---RED ESTATAL LIBRE---		
28	El Carrizo - La Batanga	NAY-078
29	Navarrete - Sauta	NAY-013
30	Ramal a Amado Nervo	NAY
31	Ramal a Bellavista	NAY-059
32	Ramal a El Colomo	NAY
33	Ramal a Estación Yago	NAY
34	Ramal a Ixtapan de La Concepción	NAY
35	Ramal a Milpas Viejas	NAY
36	Ramal a Villa Hidalgo	NAY
37	Ramal a Volcán del Ceboruco	NAY
---CARRETERAS INTEGRADAS POR TRAMOS FEDERALES Y ESTATALES---		
38	Tepic - Francisco I. Madero	NAY-MEX

18 NAYARIT

SECRETARÍA DE COMUNICACIONES Y TRANSPORTES
DIRECCIÓN GENERAL DE SERVICIOS TÉCNICOS



NAYARIT

1 CARR: Crucero de San Blas - San Blas

CLAVE: 18229

RUTA: MEX-015

AÑO: 2020

LUGAR	ESTACION				CLASIFICACION VEHICULAR EN PORCIENTO										COORDENADAS					
	KM	TE	SC	TDPA	M	A	B	C2	C3	T3S2	T3S3	T3S2R4	OTROS	A	B	C	K'	D	LATITUD	LONGITUD
T. C. Tepic - Mazatlán	0.00	3	0	1290	8.4	77.5	1.1	9.7	3.0	0.2	0.1	0.0	0.0	85.9	1.1	13.0	0.095	0.501	21.692411	-105.052591
Navarrete	11.00	3	0	1574	12.4	75.1	1.3	9.7	1.4	0.1	0.0	0.0	0.0	87.5	1.3	11.2	0.097	0.534	21.648728	-105.114998
San Blas	36.00	1	0	4178	29.4	58.4	1.1	7.6	0.8	0.9	0.7	0.6	0.5	87.8	1.1	11.1	0.112	0.513	21.542811	-105.281483

2 CARR: Ent. Acaponeta - El Novillero

CLAVE: 18023

RUTA: MEX-015

AÑO: 2020

LUGAR	ESTACION				CLASIFICACION VEHICULAR EN PORCIENTO										COORDENADAS					
	KM	TE	SC	TDPA	M	A	B	C2	C3	T3S2	T3S3	T3S2R4	OTROS	A	B	C	K'	D	LATITUD	LONGITUD
T. C. Tepic - Mazatlán	0.00	3	0	4042	18.2	63.1	2.4	14.3	0.7	0.7	0.3	0.2	0.1	81.3	2.4	16.3	0.088	0.526	22.485981	-105.383960
Tecuala	13.00	1	0	4541	14.0	70.8	2.2	11.6	1.0	0.2	0.1	0.1	0.0	84.8	2.2	13.0	0.078	0.512	22.400186	-105.457820
Tecuala	13.00	3	0	4210	16.6	81.6	0.3	0.9	0.4	0.1	0.0	0.1	0.0	98.2	0.3	1.5	0.097	0.501	22.400194	-105.457823
El Novillero	36.00	1	0	1375	17.2	76.1	0.6	5.2	0.5	0.1	0.1	0.1	0.1	93.3	0.6	6.1	0.089	0.523	22.382212	-105.661168

3 CARR: Ent. Santiago Ixcuintla - Playa Los Corchos

CLAVE: 18016

RUTA: MEX-015

AÑO: 2020

LUGAR	ESTACION				CLASIFICACION VEHICULAR EN PORCIENTO										COORDENADAS					
	KM	TE	SC	TDPA	M	A	B	C2	C3	T3S2	T3S3	T3S2R4	OTROS	A	B	C	K'	D	LATITUD	LONGITUD
T. C. Tepic - Mazatlán	0.00	3	1	2486	7.5	85.7	0.7	4.0	1.3	0.6	0.2	0.0	0.0	93.2	0.7	6.1	0.103	0.503	21.855437	-105.154739
T. C. Tepic - Mazatlán	0.00	3	2	2460	7.0	86.4	0.6	3.8	1.5	0.6	0.1	0.0	0.0	93.4	0.6	6.0	0.097	0.503	21.855450	-105.154777
Santiago Ixcuintla	8.00	1	1	3613	16.3	77.6	0.4	3.5	1.5	0.5	0.1	0.1	0.0	93.9	0.4	5.7	0.084	0.504	21.808711	-105.210963
Santiago Ixcuintla	8.00	1	2	3551	15.5	79.4	0.4	2.9	1.2	0.5	0.1	0.0	0.0	94.9	0.4	4.7	0.082	0.504	21.808709	-105.210962
Santiago Ixcuintla	8.00	3	0	7373	22.9	71.7	0.6	3.5	0.6	0.3	0.1	0.2	0.1	94.6	0.6	4.8	0.092	0.514	21.808670	-105.210965
T. Der. Mexcaltitán	17.00	1	0	4282	22.3	73.1	0.4	3.2	0.7	0.2	0.0	0.1	0.0	95.4	0.4	4.2	0.111	0.503	21.772228	-105.272726
T. Der. Mexcaltitán	17.00	3	0	3445	17.5	75.7	0.5	5.0	0.5	0.3	0.2	0.2	0.1	93.2	0.5	6.3	0.102	0.520	21.771166	-105.274287
Playa Los Corchos	39.00	1	0	897	32.1	63.9	0.4	3.4	0.2	0.0	0.0	0.0	0.0	96.0	0.4	3.6	0.185	0.503	21.688987	-105.470971

4 CARR: Guadalajara - Tepic

CLAVE: 00031

RUTA: MEX-015

AÑO: 2020

LUGAR	ESTACION				CLASIFICACION VEHICULAR EN PORCIENTO										COORDENADAS					
	KM	TE	SC	TDPA	M	A	B	C2	C3	T3S2	T3S3	T3S2R4	OTROS	A	B	C	K'	D	LATITUD	LONGITUD
Guadalajara	0.00																			
T. Der. Base Aérea No. 2	8.30	3	1	40950	2.3	79.2	2.4	7.3	1.9	4.3	1.3	0.9	0.4	81.5	2.4	16.1	0.091	0.505	20.702043	-103.460332
T. Der. Base Aérea No. 2	8.30	3	2	39957	2.0	77.9	2.6	8.9	1.8	4.1	1.3	0.6	0.8	79.9	2.6	17.5	0.088	0.505	20.701944	-103.460453
T. Izq. La Primavera	20.50	1	1	17729	2.7	78.5	2.6	7.0	2.2	4.5	1.4	0.8	0.3	81.2	2.6	16.2	0.075	0.512	20.727645	-103.561496
T. Izq. La Primavera	20.50	1	2	16867	4.9	74.6	2.7	9.5	1.6	4.2	1.4	0.8	0.3	79.5	2.7	17.8	0.081	0.512	20.727278	-103.561626

NAYARIT

4 CARR: Guadalajara - Tepic

CLAVE: 00031

RUTA: MEX-015

AÑO: 2020

LUGAR	ESTACION				CLASIFICACION VEHICULAR EN PORCIENTO										COORDENADAS					
	KM	TE	SC	TDPA	M	A	B	C2	C3	T3S2	T3S3	T3S2R4	OTROS	A	B	C	K'	D	LATITUD	LONGITUD
T. C. Guadalajara - Tepic (Cuota)	22.75																			
El Arenal	36.20	1	1	6617	2.5	78.1	2.0	9.8	2.5	3.3	1.4	0.2	0.2	80.6	2.0	17.4	0.078	0.510	20.778903	-103.692167
El Arenal	36.20	1	2	6350	2.4	78.8	1.3	9.7	2.4	3.7	1.3	0.2	0.2	81.2	1.3	17.5	0.083	0.510	20.778805	-103.692295
Tequila	57.50	3	0	6006	5.0	77.8	1.0	10.6	1.6	1.9	1.0	0.3	0.8	82.8	1.0	16.2	0.079	0.565	20.886112	-103.834237
Magdalena	76.80	3	0	4677	3.9	77.4	1.9	12.2	1.3	1.7	0.4	0.3	0.9	81.3	1.9	16.8	0.078	0.548	20.908298	-103.981970
Lim. Edos. Term. Jal. Ppia. Nay.	123.09																			
Ixtlán del Río	138.84	1	0	3547	5.3	81.1	1.5	5.0	2.2	3.5	0.9	0.3	0.2	86.4	1.5	12.1	0.080	0.535	21.035266	-104.369439
Ixtlán del Río	138.84	3	0	8459	8.8	84.1	1.3	3.1	1.3	0.7	0.4	0.2	0.1	92.9	1.3	5.8	0.090	0.501	21.035265	-104.369441
Ahuacatlán	152.00	1	1	3368	3.7	83.0	1.8	3.5	3.8	2.4	1.1	0.5	0.2	86.7	1.8	11.5	0.096	0.512	21.057491	-104.481975
Ahuacatlán	152.00	1	2	3531	3.2	82.4	2.4	4.3	3.5	2.2	1.3	0.5	0.2	85.6	2.4	12.0	0.086	0.512	21.057391	-104.482004
Ahuacatlán	152.00	3	1	3069	5.7	79.8	2.1	3.6	3.0	3.2	2.4	0.1	0.1	85.5	2.1	12.4	0.078	0.528	21.057441	-104.481985
Ahuacatlán	152.00	3	2	3435	4.9	78.8	3.5	4.6	2.2	4.1	1.7	0.1	0.1	83.7	3.5	12.8	0.071	0.528	21.057441	-104.481985
X. C. Jala - Puerto Vallarta (Cuota)	154.65	3	0	4744	3.2	79.5	3.5	4.7	2.6	4.5	1.7	0.2	0.1	82.7	3.5	13.8	0.087	0.547	21.061366	-104.506846
T. Izq. Amado Nervo	167.32	1	0	4133	5.4	73.8	4.6	5.4	2.6	5.9	2.0	0.2	0.1	79.2	4.6	16.2	0.076	0.524	21.129490	-104.602007
Tequepexpan	174.70																			
T. Izq. Compostela	175.50	1	0	4915	1.5	80.9	3.0	5.5	2.7	4.2	1.8	0.3	0.1	82.4	3.0	14.6	0.168	0.520	21.191918	-104.640468
T. Izq. Compostela	175.50	3	0	3036	3.7	72.5	5.0	7.5	2.5	6.6	1.7	0.4	0.1	76.2	5.0	18.8	0.085	0.536	21.191922	-104.640469
T. Der. Santa María del Oro	196.00	1	0	3309	3.6	77.9	2.9	4.5	2.7	6.3	1.7	0.4	0.0	81.5	2.9	15.6	0.099	0.536	21.326325	-104.670495
T. Der. Santa María del Oro	196.00	3	0	5029	3.6	79.7	2.5	5.6	2.9	3.9	1.4	0.3	0.1	83.3	2.5	14.2	0.089	0.518	21.326330	-104.670494
T. Izq. Aeropuerto de Tepic	215.68	1	0	9566	6.8	74.8	1.4	7.5	4.3	3.1	1.3	0.4	0.4	81.6	1.4	17.0	0.084	0.507	21.449439	-104.814759
San Cayetano	215.90	3	1	7651	8.1	75.4	1.3	7.2	4.1	2.2	0.9	0.4	0.4	83.5	1.3	15.2	0.082	0.506	21.450735	-104.816304
San Cayetano	215.90	3	2	7455	7.8	76.0	1.2	7.4	3.8	2.4	0.8	0.3	0.3	83.8	1.2	15.0	0.092	0.506	21.450691	-104.816343
T. Izq. Libramiento de Tepic (Central)	219.10	1	1	11956	3.2	82.1	2.6	4.7	2.3	3.3	0.9	0.6	0.3	85.3	2.6	12.1	0.084	0.547	21.469037	-104.844211
T. Izq. Libramiento de Tepic (Lateral)	219.10	1	1	1975	21.0	69.7	0.4	4.9	1.0	1.6	1.1	0.1	0.2	90.7	0.4	8.9	0.089	0.710	21.469095	-104.844186
T. Izq. Libramiento de Tepic (Central)	219.10	1	2	10190	3.7	81.8	2.7	5.1	2.0	3.2	0.7	0.6	0.2	85.5	2.7	11.8	0.083	0.547	21.468977	-104.844247
T. Izq. Libramiento de Tepic (Lateral)	219.10	1	2	4833	7.3	84.3	1.0	4.0	1.5	1.2	0.3	0.3	0.1	91.6	1.0	7.4	0.103	0.710	21.468927	-104.844280
T. Izq. Libramiento de Tepic	219.10	3	1	15986	5.0	86.3	1.3	3.1	1.6	1.1	0.9	0.3	0.4	91.3	1.3	7.4	0.087	0.534	21.469066	-104.844200
T. Izq. Libramiento de Tepic	219.10	3	2	18312	4.7	87.0	1.2	2.8	1.8	1.1	0.7	0.4	0.3	91.7	1.2	7.1	0.085	0.534	21.469004	-104.844230
Tepic (Central)	224.80	1	1	12855	5.0	82.4	1.1	5.3	1.3	2.1	1.9	0.6	0.3	87.4	1.1	11.5	0.089	0.521	21.497373	-104.885086
Tepic (Lateral)	224.80	1	1	8268	8.2	78.8	1.3	5.5	1.5	2.6	1.6	0.4	0.1	87.0	1.3	11.7	0.084	0.540	21.497411	-104.885045
Tepic (Lateral)	224.80	1	2	7038	7.4	80.1	1.2	5.3	1.5	2.4	1.7	0.4	0.0	87.5	1.2	11.3	0.087	0.540	21.497267	-104.885222
Tepic (Central)	224.80	1	2	13192	5.0	83.0	1.1	4.6	1.3	2.2	1.9	0.7	0.2	88.0	1.1	10.9	0.088	0.521	21.497312	-104.885174

NAYARIT

5 CARR: Libramiento de Tepic

CLAVE: 18232

RUTA: MEX-015

AÑO: 2020

LUGAR	ESTACION				CLASIFICACION VEHICULAR EN PORCIENTO										COORDENADAS					
	KM	TE	SC	TDPA	M	A	B	C2	C3	T3S2	T3S3	T3S2R4	OTROS	A	B	C	K'	D	LATITUD	LONGITUD
T. C. Guadalajara - Tepic	0.00																			
X. C. Tepic - Puerto Vallarta	5.00	1	1	25496	11.2	79.0	1.6	3.0	1.9	2.6	0.5	0.2	0.0	90.2	1.6	8.2	0.083	0.518	21.471276	-104.888945
X. C. Tepic - Puerto Vallarta	5.00	1	2	29228	10.4	81.2	1.4	2.5	1.6	2.2	0.5	0.2	0.0	91.6	1.4	7.0	0.071	0.518	21.470883	-104.888814
T. C. Tepic - Mazatlán	18.80	1	1	11999	4.8	76.3	6.4	3.0	3.0	3.4	1.5	1.0	0.6	81.1	6.4	12.5	0.084	0.506	21.522519	-104.926437
T. C. Tepic - Mazatlán	18.80	1	2	12293	4.7	76.8	6.2	2.9	2.9	3.5	1.4	1.0	0.6	81.5	6.2	12.3	0.081	0.506	21.522585	-104.926654

6 CARR: Peñitas - Tuxpan

CLAVE: 18019

RUTA: MEX-015

AÑO: 2020

LUGAR	ESTACION				CLASIFICACION VEHICULAR EN PORCIENTO										COORDENADAS					
	KM	TE	SC	TDPA	M	A	B	C2	C3	T3S2	T3S3	T3S2R4	OTROS	A	B	C	K'	D	LATITUD	LONGITUD
Peñitas	0.00	3	0	5617	14.2	76.5	1.0	7.0	0.8	0.3	0.2	0.0	0.0	90.7	1.0	8.3	0.080	0.505	21.946114	-105.221029
Tuxpan	9.00	1	0	6350	17.5	74.5	0.5	6.6	0.5	0.2	0.2	0.0	0.0	92.0	0.5	7.5	0.067	0.500	21.942584	-105.292470

7 CARR: Ramal a Acaponeta

CLAVE: 18038

RUTA: MEX-015

AÑO: 2020

LUGAR	ESTACION				CLASIFICACION VEHICULAR EN PORCIENTO										COORDENADAS					
	KM	TE	SC	TDPA	M	A	B	C2	C3	T3S2	T3S3	T3S2R4	OTROS	A	B	C	K'	D	LATITUD	LONGITUD
T. C. Tepic - Mazatlán	0.00	3	1	5467	14.9	73.9	0.8	8.6	0.8	0.5	0.3	0.1	0.1	88.8	0.8	10.4	0.099	0.504	22.490023	-105.383108
T. C. Tepic - Mazatlán	0.00	3	2	5553	15.0	73.9	0.8	8.6	0.9	0.4	0.2	0.1	0.1	88.9	0.8	10.3	0.096	0.504	22.490022	-105.383108
Acaponeta	3.00																			

8 CARR: Ramal a Estación Nanchi

CLAVE: 18068

RUTA: MEX-015

AÑO: 2020

LUGAR	ESTACION				CLASIFICACION VEHICULAR EN PORCIENTO										COORDENADAS					
	KM	TE	SC	TDPA	M	A	B	C2	C3	T3S2	T3S3	T3S2R4	OTROS	A	B	C	K'	D	LATITUD	LONGITUD
T. C. Tepic - Mazatlán	0.00	3	0	839	18.0	71.1	0.7	8.5	1.0	0.5	0.1	0.0	0.1	89.1	0.7	10.2	0.088	0.500	21.812017	-105.106582
Estación Nanchi	5.00																			

9 CARR: Ramal a Estación Ruíz

CLAVE: 18026

RUTA: MEX-015

AÑO: 2020

LUGAR	ESTACION				CLASIFICACION VEHICULAR EN PORCIENTO										COORDENADAS					
	KM	TE	SC	TDPA	M	A	B	C2	C3	T3S2	T3S3	T3S2R4	OTROS	A	B	C	K'	D	LATITUD	LONGITUD
T. C. Tepic - Mazatlán	0.00	3	0	4121	10.2	77.5	0.5	9.7	1.6	0.3	0.1	0.1	0.0	87.7	0.5	11.8	0.115	0.506	21.931126	-105.190493
Estación Ruíz	5.50	1	0	5098	18.9	68.5	0.7	9.8	1.7	0.2	0.1	0.1	0.0	87.4	0.7	11.9	0.099	0.508	21.950968	-105.142219

NAYARIT

10 CARR: Ramal a La Laguna de Santa María

CLAVE: 18005

RUTA: MEX-015

AÑO: 2020

LUGAR	ESTACION				CLASIFICACION VEHICULAR EN PORCIENTO										COORDENADAS					
	KM	TE	SC	TDPA	M	A	B	C2	C3	T3S2	T3S3	T3S2R4	OTROS	A	B	C	K'	D	LATITUD	LONGITUD
T. C. Guadalajara - Tepic	0.00	3	0	2888	5.4	86.5	1.2	2.7	1.9	1.4	0.6	0.2	0.1	91.9	1.2	6.9	0.101	0.510	21.326526	-104.670080
Santa María del Oro	11.50	1	1	1967	5.7	89.6	0.3	3.5	0.6	0.1	0.1	0.1	0.0	95.3	0.3	4.4	0.165	0.502	21.328334	-104.590678
Santa María del Oro	11.50	1	2	1983	5.6	89.9	0.3	3.3	0.7	0.2	0.0	0.0	0.0	95.5	0.3	4.2	0.197	0.502	21.328336	-104.590674
Laguna de Santa María	20.00	1	0	879	15.8	81.7	0.1	2.0	0.4	0.0	0.0	0.0	0.0	97.5	0.1	2.4	0.362	0.501	21.361303	-104.570330

11 CARR: Ramal a Mecatán

CLAVE: 18010

RUTA: MEX-015

AÑO: 2020

LUGAR	ESTACION				CLASIFICACION VEHICULAR EN PORCIENTO										COORDENADAS						
	KM	TE	SC	TDPA	M	A	B	C2	C3	T3S2	T3S3	T3S2R4	OTROS	A	B	C	K'	D	LATITUD	LONGITUD	
T. C. (Tepic - Mazatlán) - Ixtapan de La Concepción	0.00	3	0	859	15.8	71.7	0.1	10.3	1.1	0.8	0.1	0.1	0.0	87.5	0.1	12.4	0.092	0.501	21.499396	-105.082940	
Mecatán	9.00																				

12 CARR: Ramal a Nuevo Aeropuerto de Tepic

CLAVE: 18012

RUTA: MEX-015

AÑO: 2020

LUGAR	ESTACION				CLASIFICACION VEHICULAR EN PORCIENTO										COORDENADAS						
	KM	TE	SC	TDPA	M	A	B	C2	C3	T3S2	T3S3	T3S2R4	OTROS	A	B	C	K'	D	LATITUD	LONGITUD	
T. C. Guadalajara - Tepic	0.00	3	0	4049	11.6	83.4	0.4	3.2	0.9	0.3	0.1	0.1	0.0	95.0	0.4	4.6	0.096	0.519	21.449391	-104.814806	
Aeropuerto de Tepic	5.00																				

13 CARR: Ramal a Punta Mita

CLAVE: 18020

RUTA: MEX-200

AÑO: 2020

LUGAR	ESTACION				CLASIFICACION VEHICULAR EN PORCIENTO										COORDENADAS						
	KM	TE	SC	TDPA	M	A	B	C2	C3	T3S2	T3S3	T3S2R4	OTROS	A	B	C	K'	D	LATITUD	LONGITUD	
T. C. Tepic - Puerto Vallarta	0.00	3	0	17372	5.4	86.1	0.5	7.4	0.4	0.1	0.1	0.0	0.0	91.5	0.5	8.0	0.085	0.503	20.765716	-105.371688	
San Ignacio	9.00	3	0	6496	5.8	78.6	1.8	12.9	0.8	0.0	0.1	0.0	0.0	84.4	1.8	13.8	0.108	0.510	20.756172	-105.447702	
Punta Mita	18.00																				

14 CARR: Ramal a Santa Cruz

CLAVE: 18030

RUTA: MEX-015

AÑO: 2020

LUGAR	ESTACION				CLASIFICACION VEHICULAR EN PORCIENTO										COORDENADAS						
	KM	TE	SC	TDPA	M	A	B	C2	C3	T3S2	T3S3	T3S2R4	OTROS	A	B	C	K'	D	LATITUD	LONGITUD	
T. C. Tepic - Ixtapan de La Concepción	0.00																				
Santa Cruz	1.30	1	0	2604	9.2	84.8	0.2	5.2	0.3	0.1	0.1	0.1	0.0	94.0	0.2	5.8	0.092	0.510	21.433510	-105.195170	

NAYARIT

15 CARR: Santa Cruz - San Blas

CLAVE: 18230

RUTA: MEX-015

AÑO: 2020

LUGAR	ESTACION				CLASIFICACION VEHICULAR EN PORCIENTO										COORDENADAS					
	KM	TE	SC	TDPA	M	A	B	C2	C3	T3S2	T3S3	T3S2R4	OTROS	A	B	C	K'	D	LATITUD	LONGITUD
Santa Cruz	0.00	3	0	2870	8.6	77.5	0.5	12.5	0.4	0.4	0.1	0.0	0.0	86.1	0.5	13.4	0.140	0.515	21.432311	-105.188946
Playa Los Cocos	3.90	1	0	3067	16.5	74.8	0.5	6.9	0.3	0.7	0.1	0.1	0.1	91.3	0.5	8.2	0.104	0.506	21.463590	-105.188295
Aticama	5.00	3	0	4254	20.5	71.5	0.5	6.3	0.5	0.4	0.3	0.0	0.0	92.0	0.5	7.5	0.115	0.515	21.483924	-105.195634
T. C. Crucero San Blas - San Blas	17.00	1	0	4490	13.5	79.0	0.3	6.2	0.5	0.3	0.2	0.0	0.0	92.5	0.3	7.2	0.134	0.501	21.550708	-105.254293

16 CARR: Tepic - Ixtapan de La Concepción

CLAVE: 18028

RUTA: MEX-015

AÑO: 2020

LUGAR	ESTACION				CLASIFICACION VEHICULAR EN PORCIENTO										COORDENADAS					
	KM	TE	SC	TDPA	M	A	B	C2	C3	T3S2	T3S3	T3S2R4	OTROS	A	B	C	K'	D	LATITUD	LONGITUD
T. C. Tepic - Mazatlán	0.00	3	0	7332	11.6	83.6	0.2	3.2	0.7	0.5	0.2	0.0	0.0	95.2	0.2	4.6	0.093	0.501	21.522592	-104.926662
T. Der. Mecatán	19.00	1	0	1024	11.4	84.4	0.4	2.1	0.6	0.2	0.0	0.1	0.8	95.8	0.4	3.8	0.122	0.524	21.499520	-105.082632
T. Der. Mecatán	19.00	3	0	1812	12.9	81.1	0.5	3.4	0.8	0.4	0.1	0.0	0.8	94.0	0.5	5.5	0.093	0.519	21.499204	-105.082677
Jalcocotán	27.00	1	0	2171	19.2	75.3	0.4	2.1	1.6	0.3	0.0	0.1	1.0	94.5	0.4	5.1	0.096	0.518	21.480838	-105.098324
T. Der. Santa Cruz	50.00	3	0	2769	22.1	73.5	0.5	2.0	0.4	0.4	0.1	0.1	0.9	95.6	0.5	3.9	0.102	0.543	21.427578	-105.183399
Ixtapan de La Concepción	77.42	1	0	1659	19.4	73.5	1.0	3.8	0.6	1.0	0.2	0.1	0.4	92.9	1.0	6.1	0.104	0.512	21.305124	-105.154923

17 CARR: Tepic - Mazatlán

CLAVE: 00499

RUTA: MEX-015

AÑO: 2020

LUGAR	ESTACION				CLASIFICACION VEHICULAR EN PORCIENTO										COORDENADAS					
	KM	TE	SC	TDPA	M	A	B	C2	C3	T3S2	T3S3	T3S2R4	OTROS	A	B	C	K'	D	LATITUD	LONGITUD
Tepic (Alta)	0.00	3	1	10494	2.5	91.9	0.2	0.9	0.1	1.3	2.5	0.4	0.2	94.4	0.2	5.4	0.069	0.513	21.511117	-104.904466
Tepic (Baja)	0.00	3	1	7772	2.4	87.6	0.2	7.3	0.2	0.5	1.1	0.3	0.4	90.0	0.2	9.8	0.074	0.508	21.511070	-104.904507
Tepic (Alta)	0.00	3	2	11073	2.5	92.0	0.2	0.9	0.1	1.3	2.5	0.3	0.2	94.5	0.2	5.3	0.078	0.513	21.511117	-104.904461
Tepic (Baja)	0.00	3	2	7522	2.4	87.3	0.2	7.4	0.2	0.6	1.1	0.4	0.4	89.7	0.2	10.1	0.077	0.508	21.511069	-104.904502
T. Izq. Libramiento de Tepic (Alta)	2.56	1	1	8494	4.6	92.8	0.1	2.0	0.2	0.1	0.0	0.1	0.1	97.4	0.1	2.5	0.075	0.531	21.522536	-104.926441
T. Izq. Libramiento de Tepic (Baja)	2.56	1	1	7393	9.5	80.0	0.8	8.2	1.1	0.2	0.1	0.1	0.0	89.5	0.8	9.7	0.098	0.548	21.522650	-104.926513
T. Izq. Libramiento de Tepic (Alta)	2.56	1	2	7503	5.3	92.3	0.0	2.1	0.2	0.0	0.0	0.1	0.0	97.6	0.0	2.4	0.078	0.531	21.522651	-104.926515
T. Izq. Libramiento de Tepic (Baja)	2.56	1	2	8980	6.4	82.5	1.0	8.6	1.0	0.3	0.1	0.1	0.0	88.9	1.0	10.1	0.079	0.548	21.522539	-104.926442
T. Izq. Aut. Tepic - Ent. San Blas (Cuota)	3.70	3	0	7545	6.7	76.0	1.9	8.6	2.3	3.0	1.0	0.2	0.3	82.7	1.9	15.4	0.147	0.509	21.530869	-104.931415
Los Otates	19.80	3	0	3403	3.1	67.0	3.6	7.7	6.5	7.3	2.7	1.0	1.1	70.1	3.6	26.3	0.071	0.519	21.632053	-104.968237
T. Izq. Jumatán	28.52	1	0	3506	3.8	69.5	3.3	7.3	4.6	7.0	2.9	0.8	0.8	73.3	3.3	23.4	0.072	0.514	21.666712	-105.027173
T. Izq. Jumatán	28.52	3	1	5992	1.9	68.1	4.8	7.0	2.9	10.7	1.9	1.9	0.8	70.0	4.8	25.2	0.077	0.535	21.666807	-105.027157
T. Izq. Jumatán	28.52	3	2	6892	1.8	65.1	4.1	8.5	3.0	13.1	1.6	2.0	0.8	66.9	4.1	29.0	0.099	0.535	21.666761	-105.027301
T. Izq. San Blas	33.54	1	1	4577	2.3	55.2	5.5	9.7	2.7	16.7	3.4	3.7	0.8	57.5	5.5	37.0	0.102	0.529	21.690657	-105.048913
T. Izq. San Blas	33.54	1	2	4069	2.5	51.6	5.7	9.5	2.9	20.0	2.9	4.2	0.7	54.1	5.7	40.2	0.075	0.529	21.690512	-105.049733

NAYARIT

17 CARR: Tepic - Mazatlán

CLAVE: 00499

RUTA: MEX-015

AÑO: 2020

LUGAR	ESTACION				CLASIFICACION VEHICULAR EN PORCIENTO													COORDENADAS		
	KM	TE	SC	TDPA	M	A	B	C2	C3	T3S2	T3S3	T3S2R4	OTROS	A	B	C	K'	D	LATITUD	LONGITUD
T. Izq. San Blas	33.54	3	1	6138	2.5	64.8	4.9	7.5	1.6	12.3	2.5	3.2	0.7	67.3	4.9	27.8	0.083	0.505	21.694085	-105.050468
T. Izq. San Blas	33.54	3	2	6007	2.8	62.9	4.5	8.6	2.1	14.2	1.6	2.7	0.6	65.7	4.5	29.8	0.098	0.505	21.694073	-105.050632
T. Izq. Villa Hidalgo	48.12	1	0	6701	2.3	75.6	2.1	7.6	3.2	5.5	2.4	0.7	0.6	77.9	2.1	20.0	0.085	0.522	21.807763	-105.102995
T. Izq. Villa Hidalgo	48.12	3	0	6001	7.2	65.3	3.2	9.5	4.4	7.3	2.2	0.5	0.4	72.5	3.2	24.3	0.083	0.502	21.808284	-105.103185
T. Izq. Santiago Ixcuintla	56.42	1	0	6462	2.3	70.2	4.5	10.1	3.6	6.1	2.3	0.4	0.5	72.5	4.5	23.0	0.084	0.505	21.855524	-105.154527
T. Izq. Santiago Ixcuintla	56.42	3	0	5976	3.5	70.8	3.1	7.8	4.3	7.1	2.5	0.4	0.5	74.3	3.1	22.6	0.085	0.521	21.855525	-105.154539
T. Izq. Tuxpan	70.60	1	0	6627	4.8	69.0	3.5	10.4	3.2	6.1	2.1	0.4	0.5	73.8	3.5	22.7	0.088	0.519	21.945632	-105.220361
T. Izq. Tuxpan	70.60	3	0	6451	4.7	69.0	3.6	10.3	3.8	6.1	1.7	0.4	0.4	73.7	3.6	22.7	0.078	0.514	21.946369	-105.220648
T. Der. Rosamorada	90.70	3	0	5158	7.6	57.3	5.6	9.0	4.5	12.0	3.0	0.5	0.5	64.9	5.6	29.5	0.093	0.510	22.117895	-105.216921
Tierra Generosa	110.40	1	0	2635	3.0	49.9	7.0	9.6	7.1	17.1	4.1	1.1	1.1	52.9	7.0	40.1	0.086	0.519	22.297930	-105.275213
T. Der. Acaponeta	136.52	1	0	6845	6.7	69.8	2.8	9.9	2.3	6.1	1.6	0.4	0.4	76.5	2.8	20.7	0.078	0.505	22.489989	-105.383424
T. Der. Acaponeta	136.52	3	0	3584	5.0	61.3	4.3	9.4	4.6	11.0	2.8	0.8	0.8	66.3	4.3	29.4	0.078	0.502	22.489672	-105.383357
Lim. Edos. Term. Nay. Ppia. Sin.	144.60																			
T. Der. Villa Unión (Cuota)	193.60	1	1	3313	4.4	77.3	2.4	6.8	3.1	3.6	1.6	0.4	0.4	81.7	2.4	15.9	0.082	0.507	22.807719	-105.725065
T. Der. Villa Unión (Cuota)	193.60	1	2	3411	4.2	77.6	2.3	6.9	3.1	3.7	1.4	0.4	0.4	81.8	2.3	15.9	0.097	0.507	22.807740	-105.725402
Escuinapa de Hidalgo	200.00	1	0	3650	8.5	66.8	3.1	8.2	5.0	5.2	1.8	0.7	0.7	75.3	3.1	21.6	0.084	0.500	22.834927	-105.776093
Escuinapa de Hidalgo	200.00	3	0	4392	7.5	65.0	4.5	8.7	4.4	7.0	1.8	0.6	0.5	72.5	4.5	23.0	0.091	0.514	22.834735	-105.777437
Rosario	221.71	1	0	7249	10.2	79.9	2.4	2.9	1.9	1.5	0.6	0.0	0.6	90.1	2.4	7.5	0.099	0.513	23.000271	-105.861291
Rosario	221.71	3	0	3673	6.6	73.6	2.6	9.9	4.2	1.7	0.3	1.0	0.1	80.2	2.6	17.2	0.078	0.505	23.000269	-105.861296
X. C. Durango - Mazatlán (Cuota)	265.20	1	0	4151	5.7	74.9	2.9	8.4	2.7	3.8	1.0	0.3	0.3	80.6	2.9	16.5	0.087	0.502	23.189905	-106.179466
T. Der. Durango	267.99	1	0	5116	3.9	76.4	2.7	8.7	2.2	4.2	1.2	0.4	0.3	80.3	2.7	17.0	0.099	0.524	23.189328	-106.209046
T. Der. Durango	267.99	3	1	6692	12.3	70.2	2.6	7.1	2.4	3.3	0.9	0.7	0.5	82.5	2.6	14.9	0.106	0.515	23.189336	-106.209165
T. Der. Durango	267.99	3	2	6290	10.9	72.5	2.5	6.9	1.9	3.1	1.0	0.8	0.4	83.4	2.5	14.1	0.093	0.515	23.189216	-106.209178
Villa Unión	269.52	3	1	8396	9.8	73.9	2.5	7.8	1.8	2.5	0.7	0.8	0.2	83.7	2.5	13.8	0.092	0.521	23.189007	-106.218732
Villa Unión	269.52	3	2	9117	10.0	75.2	2.2	6.6	2.4	1.9	0.8	0.5	0.4	85.2	2.2	12.6	0.115	0.521	23.188928	-106.218803
T. Der. Libramiento de Mazatlán	288.87	1	1	18656	4.7	80.6	1.8	8.2	1.4	1.9	0.6	0.7	0.1	85.3	1.8	12.9	0.099	0.519	23.230886	-106.389061
T. Der. Libramiento de Mazatlán	288.87	1	2	20098	4.7	79.1	1.9	9.4	1.6	1.9	0.6	0.7	0.1	83.8	1.9	14.3	0.087	0.519	23.230805	-106.389175
Mazatlán	292.00																			

18 CARR: Tepic - Presa Aguamilpa

CLAVE: 18029

RUTA: MEX-015

AÑO: 2020

LUGAR	ESTACION				CLASIFICACION VEHICULAR EN PORCIENTO													COORDENADAS		
	KM	TE	SC	TDPA	M	A	B	C2	C3	T3S2	T3S3	T3S2R4	OTROS	A	B	C	K'	D	LATITUD	LONGITUD
T. C. Guadalajara - Tepic	0.00	3	1	14303	12.6	75.6	0.5	7.9	1.9	0.8	0.4	0.2	0.1	88.2	0.5	11.3	0.092	0.531	21.470938	-104.849428
T. C. Guadalajara - Tepic	0.00	3	2	12630	12.6	75.6	0.4	8.0	1.9	0.8	0.4	0.2	0.1	88.2	0.4	11.4	0.085	0.531	21.470934	-104.849428

NAYARIT

18 CARR: Tepic - Presa Aguamilpa

CLAVE: 18029

RUTA: MEX-015

AÑO: 2020

LUGAR	ESTACION				CLASIFICACION VEHICULAR EN PORCIENTO										COORDENADAS					
	KM	TE	SC	TDPA	M	A	B	C2	C3	T3S2	T3S3	T3S2R4	OTROS	A	B	C	K'	D	LATITUD	LONGITUD
X. C. Tepic - Fco. I. Madero	17.50	3	0	1841	12.9	58.0	3.7	8.0	13.2	1.9	1.7	0.3	0.3	70.9	3.7	25.4	0.098	0.515	21.587502	-104.849021
Presa Aguamilpa	54.00	1	0	220	15.8	73.4	0.9	8.7	1.2	0.0	0.0	0.0	0.0	89.2	0.9	9.9	0.200	0.507	21.819766	-104.829812

19 CARR: Tepic - Puerto Vallarta

CLAVE: 00068

RUTA: MEX-200

AÑO: 2020

LUGAR	ESTACION				CLASIFICACION VEHICULAR EN PORCIENTO										COORDENADAS					
	KM	TE	SC	TDPA	M	A	B	C2	C3	T3S2	T3S3	T3S2R4	OTROS	A	B	C	K'	D	LATITUD	LONGITUD
Tepic	0.00	3	1	15860	10.4	82.0	0.1	6.8	0.2	0.1	0.3	0.1	0.0	92.4	0.1	7.5	0.087	0.517	21.498663	-104.897215
Tepic	0.00	3	2	16975	10.5	82.1	0.1	6.8	0.1	0.1	0.3	0.0	0.0	92.6	0.1	7.3	0.090	0.517	21.498660	-104.897215
Limite de Zona Urbana Tepic	1.80	3	1	14829	5.7	84.8	0.7	5.6	0.5	0.8	1.4	0.2	0.3	90.5	0.7	8.8	0.078	0.521	21.472593	-104.889384
Limite de Zona Urbana Tepic	1.80	3	2	16106	5.7	84.8	0.6	5.7	0.5	0.8	1.4	0.2	0.3	90.5	0.6	8.9	0.073	0.521	21.472591	-104.889517
X. C. Libramiento De Tepic (Alta)	3.90	3	1	14995	1.5	93.3	0.1	1.4	0.1	0.5	2.8	0.1	0.2	94.8	0.1	5.1	0.074	0.512	21.469639	-104.888585
X. C. Libramiento De Tepic (Baja)	3.90	3	1	7967	17.6	62.1	0.7	13.2	3.4	1.5	1.1	0.1	0.3	79.7	0.7	19.6	0.081	0.534	21.469682	-104.888461
X. C. Libramiento De Tepic (Baja)	3.90	3	2	6952	20.2	57.6	1.0	15.0	3.0	1.4	1.2	0.3	0.3	77.8	1.0	21.2	0.077	0.534	21.469680	-104.888465
X. C. Libramiento De Tepic (Alta)	3.90	3	2	15740	1.5	92.5	0.1	2.0	0.1	0.5	2.8	0.0	0.5	94.0	0.1	5.9	0.073	0.512	21.469640	-104.888581
Jalisco	7.15	3	0	11687	6.4	78.0	1.6	10.7	1.2	1.2	0.9	0.0	0.0	84.4	1.6	14.0	0.087	0.501	21.443875	-104.899900
T. Izq. Emiliano Zapata	18.40	3	0	5172	2.9	81.2	1.9	9.6	1.6	1.6	1.2	0.0	0.0	84.1	1.9	14.0	0.082	0.522	21.366386	-104.915617
T. Izq. Compostela (1° Acceso)	35.80	1	0	5193	3.6	80.1	1.7	9.8	1.8	1.7	1.3	0.0	0.0	83.7	1.7	14.6	0.091	0.515	21.249356	-104.902270
T. Izq. Compostela (1° Acceso)	35.80	3	0	4189	8.0	75.8	1.7	10.8	1.3	1.3	1.1	0.0	0.0	83.8	1.7	14.5	0.094	0.522	21.249351	-104.902275
Las Varas	71.30	1	0	11018	3.4	78.3	3.6	8.8	1.7	2.3	1.2	0.4	0.3	81.7	3.6	14.7	0.090	0.545	21.179604	-105.136444
Las Varas	71.30	3	0	13986	7.8	75.2	4.3	8.3	1.2	1.9	1.0	0.2	0.1	83.0	4.3	12.7	0.093	0.515	21.179601	-105.136448
T. Izq. Altavista	81.50	1	0	11404	3.4	79.2	4.3	7.9	1.6	2.0	1.3	0.1	0.2	82.6	4.3	13.1	0.102	0.520	21.108108	-105.179617
T. Der. Rincón de Guayabitos	94.50	1	1	10581	8.5	75.2	4.2	8.0	1.3	1.6	1.1	0.1	0.0	83.7	4.2	12.1	0.078	0.509	21.023097	-105.266681
T. Der. Rincón de Guayabitos	94.50	1	2	10196	8.6	75.3	4.2	7.7	1.2	1.6	1.2	0.1	0.1	83.9	4.2	11.9	0.088	0.509	21.023039	-105.266623
T. Der. Rincón de Guayabitos	94.50	3	0	11742	25.8	57.9	4.7	7.2	1.2	2.0	1.0	0.1	0.1	83.7	4.7	11.6	0.094	0.526	21.023074	-105.266660
T. Der. Lo de Marcos	107.61	1	1	5220	5.0	85.1	2.3	2.1	1.6	1.9	1.1	0.5	0.4	90.1	2.3	7.6	0.105	0.511	20.950560	-105.349473
T. Der. Lo de Marcos	107.61	1	2	4994	6.3	84.5	2.0	2.1	1.6	1.8	1.0	0.4	0.3	90.8	2.0	7.2	0.121	0.511	20.950560	-105.349473
T. Der. Lo de Marcos	107.61	3	0	8692	2.2	87.7	2.2	2.3	1.5	2.1	1.4	0.3	0.3	89.9	2.2	7.9	0.108	0.502	20.950556	-105.349473
T. Der. Sayulita	122.91	1	0	11171	8.6	75.3	4.9	6.6	1.3	1.9	1.2	0.1	0.1	83.9	4.9	11.2	0.098	0.503	20.863171	-105.425754
T. Der. Sayulita	122.91	3	0	12180	6.5	77.8	4.6	6.4	1.2	2.0	1.3	0.1	0.1	84.3	4.6	11.1	0.102	0.514	20.863168	-105.425756
T. Der. Cruz de Juanacaxtle	137.30	3	1	12641	4.7	84.4	2.1	5.4	1.0	1.6	0.5	0.1	0.2	89.1	2.1	8.8	0.121	0.507	20.765768	-105.371675
T. Der. Cruz de Juanacaxtle	137.30	3	2	12299	4.7	84.2	2.2	5.4	1.1	1.7	0.5	0.1	0.1	88.9	2.2	8.9	0.115	0.507	20.765871	-105.371579
Bucerías	140.81	3	1	18351	4.9	84.9	2.0	5.1	0.9	1.0	1.0	0.1	0.1	89.8	2.0	8.2	0.110	0.534	20.755183	-105.336288
Bucerías	140.81	3	2	17797	4.9	84.8	2.0	5.1	0.9	1.1	1.0	0.1	0.1	89.7	2.0	8.3	0.091	0.534	20.755309	-105.336188
Lim. Edos. Term. Nay. Ppia. Jal.	152.60																			

NAYARIT

19 CARR: Tepic - Puerto Vallarta

CLAVE: 00068

RUTA: MEX-200

AÑO: 2020

LUGAR	ESTACION				CLASIFICACION VEHICULAR EN PORCIENTO										COORDENADAS					
	KM	TE	SC	TDPA	M	A	B	C2	C3	T3S2	T3S3	T3S2R4	OTROS	A	B	C	K'	D	LATITUD	LONGITUD
T. Der. Aeropuerto Díaz Ordáz	158.37	1	1	26701	8.9	83.0	0.5	5.4	0.3	0.7	0.8	0.1	0.3	91.9	0.5	7.6	0.079	0.508	20.675920	-105.250105
T. Der. Aeropuerto Díaz Ordáz	158.37	1	2	25768	8.9	83.0	0.5	5.4	0.3	0.7	0.8	0.1	0.3	91.9	0.5	7.6	0.079	0.508	20.675744	-105.249838
T. Der. Aeropuerto Díaz Ordáz (Alta)	158.37	3	1	17968	3.8	94.8	0.0	0.9	0.4	0.1	0.0	0.0	0.0	98.6	0.0	1.4	0.085	0.502	20.675914	-105.250109
T. Der. Aeropuerto Díaz Ordáz (Baja)	158.37	3	1	9625	5.7	76.0	3.1	13.4	0.9	0.5	0.2	0.1	0.1	81.7	3.1	15.2	0.097	0.561	20.676458	-105.250252
T. Der. Aeropuerto Díaz Ordáz (Alta)	158.37	3	2	18101	3.8	94.8	0.0	0.9	0.4	0.1	0.0	0.0	0.0	98.6	0.0	1.4	0.084	0.502	20.675742	-105.249843
T. Der. Aeropuerto Díaz Ordáz (Baja)	158.37	3	2	12307	5.6	78.7	3.1	11.1	0.8	0.4	0.2	0.1	0.0	84.3	3.1	12.6	0.086	0.561	20.675700	-105.249804
Puerto Vallarta	166.88																			

20 CARR: Chapalilla - Compostela (Cuota)

CLAVE: 18004

RUTA: MEX-068D

AÑO: 2020

LUGAR	ESTACION				CLASIFICACION VEHICULAR EN PORCIENTO										COORDENADAS					
	KM	TE	SC	TDPA	M	A	B	C2	C3	T3S2	T3S3	T3S2R4	OTROS	A	B	C	K'	D	LATITUD	LONGITUD
T. C. Guadalajara - Tepic	0.00	3	0	3955	2.6	75.5	3.4	8.4	2.9	5.7	1.1	0.3	0.1	78.1	3.4	18.5	0.110	0.503	21.191917	-104.640442
Plaza de Cobro Compostela	31.50	2	0	3401	1.2	78.6	8.7	3.4	2.7	2.9	0.8	1.4	0.3	79.8	8.7	11.5	0.114	0.500	21.229532	-104.887408
T. C. Ramal a Compostela (Cuota)	35.00	1	0	2619	2.6	77.7	3.7	9.3	2.8	2.4	1.1	0.3	0.1	80.3	3.7	16.0	0.110	0.506	21.231743	-104.872557
T. Der. Compostela	36.50	1	0	5562	2.7	74.8	5.6	9.6	2.9	2.6	1.4	0.3	0.1	77.5	5.6	16.9	0.107	0.521	21.227798	-104.901020
T. C. Tepic - Puerto Vallarta	38.00	1	0	5506	2.5	81.0	4.5	5.7	1.8	2.8	1.2	0.4	0.1	83.5	4.5	12.0	0.134	0.547	21.232758	-104.924013

21 CARR: Guadalajara - Tepic (Cuota)

CLAVE: 00033

RUTA: MEX-015D

AÑO: 2020

LUGAR	ESTACION				CLASIFICACION VEHICULAR EN PORCIENTO										COORDENADAS					
	KM	TE	SC	TDPA	M	A	B	C2	C3	T3S2	T3S3	T3S2R4	OTROS	A	B	C	K'	D	LATITUD	LONGITUD
T. C. Guadalajara - Tepic (Libre)	0.00	3	1	5281	0.8	70.5	7.6	6.6	2.1	8.6	1.3	2.2	0.3	71.3	7.6	21.1	0.082	0.537	20.736339	-103.579933
T. C. Guadalajara - Tepic (Libre)	0.00	3	2	4545	0.8	67.3	8.2	7.6	2.5	9.6	1.3	2.4	0.3	68.1	8.2	23.7	0.117	0.537	20.736420	-103.580970
Plaza de Cobro Arenal	10.96	2	1	4278	0.7	69.4	6.3	3.8	4.4	11.1	1.6	1.9	0.8	70.1	6.3	23.6	0.092	0.500	20.778775	-103.662396
Plaza de Cobro Arenal	10.96	2	2	4278	0.7	69.4	6.3	3.8	4.4	11.1	1.6	1.9	0.8	70.1	6.3	23.6	0.092	0.500	20.778775	-103.662396
T. Izq. Libramiento Sur de Guadalajara (Cuota)	16.44	3	1	5993	0.6	61.3	9.3	7.7	3.2	12.4	2.2	2.7	0.6	61.9	9.3	28.8	0.097	0.503	20.794397	-103.712511
T. Izq. Libramiento Sur de Guadalajara (Cuota)	16.44	3	2	5913	0.6	59.2	9.7	8.1	3.4	12.7	2.3	3.3	0.7	59.8	9.7	30.5	0.132	0.503	20.794309	-103.712511
T. Der. Magdalena	45.00	1	1	5601	0.9	58.0	9.6	8.3	2.8	13.2	2.3	4.2	0.7	58.9	9.6	31.5	0.091	0.506	20.904551	-103.964525
T. Der. Magdalena	45.00	1	2	5726	0.9	55.1	10.1	9.4	3.2	13.6	2.5	4.3	0.9	56.0	10.1	33.9	0.093	0.506	20.904475	-103.964606
T. Der. Magdalena	45.00	3	1	5812	0.7	55.1	11.1	7.9	3.2	14.3	2.8	4.1	0.8	55.8	11.1	33.1	0.075	0.506	20.904555	-103.964529
T. Der. Magdalena	45.00	3	2	5960	0.7	52.6	11.1	8.7	3.3	15.9	2.8	4.2	0.7	53.3	11.1	35.6	0.095	0.506	20.904476	-103.964604
Plaza de Cobro Plan de Barrancas	69.34	2	1	5385	0.5	59.7	5.5	4.2	5.7	16.5	2.5	3.9	1.5	60.2	5.5	34.3	0.092	0.500	21.005434	-104.144062
Plaza de Cobro Plan de Barrancas	69.34	2	2	5385	0.5	59.7	5.5	4.2	5.7	16.5	2.5	3.9	1.5	60.2	5.5	34.3	0.092	0.500	21.005434	-104.144062
Lim. Edos. Term. Jal. Ppia. Nay.	84.60																			

NAYARIT

21 CARR: Guadalajara - Tepic (Cuota)

CLAVE: 00033

RUTA: MEX-015D

AÑO: 2020

LUGAR	ESTACION				CLASIFICACION VEHICULAR EN PORCIENTO														COORDENADAS	
	KM	TE	SC	TDPA	M	A	B	C2	C3	T3S2	T3S3	T3S2R4	OTROS	A	B	C	K'	D	LATITUD	LONGITUD
T. Izq. Compostela (Cuota)	106.00	1	1	6153	1.0	59.0	9.0	6.7	3.2	14.5	2.3	3.7	0.6	60.0	9.0	31.0	0.082	0.505	21.080430	-104.426290
T. Izq. Compostela (Cuota)	106.00	1	2	6269	0.9	56.8	9.4	7.2	3.4	15.6	2.3	3.8	0.6	57.7	9.4	32.9	0.135	0.505	21.080409	-104.426418
T. Izq. Compostela (Cuota)	106.00	3	1	5384	1.0	60.4	9.1	6.8	3.0	13.6	2.2	3.3	0.6	61.4	9.1	29.5	0.099	0.510	21.080432	-104.426292
T. Izq. Compostela (Cuota)	106.00	3	2	5168	0.9	56.5	9.2	7.3	3.4	15.8	2.5	3.8	0.6	57.4	9.2	33.4	0.096	0.510	21.080411	-104.426417
T. Der. Jala	107.00	3	1	3985	1.0	58.5	9.0	7.1	3.1	14.7	2.2	3.8	0.6	59.5	9.0	31.5	0.086	0.502	21.090255	-104.438912
T. Der. Jala	107.00	3	2	4018	1.0	57.1	8.9	7.0	3.5	15.8	2.3	3.8	0.6	58.1	8.9	33.0	0.111	0.502	21.090181	-104.438967
Plaza de Cobro Santa Ma. del Oro	145.32	3	1	4360	1.1	59.5	8.8	7.1	3.1	14.1	2.2	3.5	0.6	60.6	8.8	30.6	0.074	0.519	21.328284	-104.664420
Plaza de Cobro Santa Ma. del Oro	145.32	3	2	4036	1.1	55.7	9.6	7.2	3.5	15.9	2.4	4.0	0.6	56.8	9.6	33.6	0.100	0.519	21.328200	-104.664566
T. Der. Libramiento de Tepic (Cuota)	163.00	1	1	3713	1.0	58.9	8.9	7.2	3.2	14.4	2.1	3.6	0.7	59.9	8.9	31.2	0.089	0.507	21.437538	-104.793236
T. Der. Libramiento de Tepic (Cuota)	163.00	1	2	3606	1.1	58.8	9.0	7.0	3.2	14.3	2.2	3.6	0.8	59.9	9.0	31.1	0.111	0.507	21.437319	-104.793194
T. C. Guadalajara - Tepic (Libre)	168.62																			

22 CARR: Jala - Puerto Vallarta (Cuota)

CLAVE:

RUTA: MEX-070D

AÑO: 2020

LUGAR	ESTACION				CLASIFICACION VEHICULAR EN PORCIENTO														COORDENADAS	
	KM	TE	SC	TDPA	M	A	B	C2	C3	T3S2	T3S3	T3S2R4	OTROS	A	B	C	K'	D	LATITUD	LONGITUD
T. C. Guadalajara - Tepic (Cuota)	0.00	3	1	1473	0.7	76.1	10.3	8.0	1.0	2.7	0.8	0.3	0.1	76.8	10.3	12.9	0.114	0.579	21.080429	-104.426445
T. C. Guadalajara - Tepic (Cuota)	0.00	3	2	1071	1.1	73.6	11.0	8.9	1.0	2.9	1.1	0.3	0.1	74.7	11.0	14.3	0.139	0.579	21.080378	-104.426383
Plaza de Cobro Amado Nervo	32.00	2	1	907	0.6	79.6	7.5	3.1	2.6	4.1	1.4	0.7	0.4	80.2	7.5	12.3	0.090	0.500	21.089054	-104.717268
Plaza de Cobro Amado Nervo	32.00	2	2	907	0.6	79.6	7.5	3.1	2.6	4.1	1.4	0.7	0.4	80.2	7.5	12.3	0.090	0.500	21.089054	-104.717268
Ramal a Compostela	54.30																			

23 CARR: Libramiento de Tepic (Cuota)

CLAVE:

RUTA: MEX-015D

AÑO: 2020

LUGAR	ESTACION				CLASIFICACION VEHICULAR EN PORCIENTO														COORDENADAS	
	KM	TE	SC	TDPA	M	A	B	C2	C3	T3S2	T3S3	T3S2R4	OTROS	A	B	C	K'	D	LATITUD	LONGITUD
T. C. Guadalajara - Tepic	0.00																			
T. C. Guadalajara - Tepic (Cuota)	0.70	3	0	3291	5.5	51.1	6.3	10.5	2.4	15.0	2.9	5.4	0.9	56.6	6.3	37.1	0.070	0.569	21.442266	-104.794721
Plaza de Cobro La Cantera	7.70	2	0	2518	0.6	37.0	2.4	3.6	6.4	34.7	3.0	9.8	2.5	37.6	2.4	60.0	0.090	0.500	21.498477	-104.813387
T. C. Tepic - Villa Unión (Cuota)	29.47	1	0	3506	7.4	54.6	4.1	7.5	2.8	14.7	2.0	5.9	1.0	62.0	4.1	33.9	0.073	0.533	21.561084	-104.970791

NAYARIT

24 CARR: Ramal a Compostela (Cuota)

CLAVE:

RUTA: MEX-200D

AÑO: 2020

LUGAR	ESTACION				CLASIFICACION VEHICULAR EN PORCIENTO														COORDENADAS		
	KM	TE	SC	TDPA	M	A	B	C2	C3	T3S2	T3S3	T3S2R4	OTROS	A	B	C	K'	D	LATITUD	LONGITUD	
T. C. Jala - Compostela (Cuota)	0.00																				
T. C. Chapalilla - Compostela (Cuota)	12.90	1	0	2448	1.1	75.0	10.2	8.0	1.3	2.9	1.2	0.3	0.0	76.1	10.2	13.7	0.108	0.540	21.231699	-104.872592	

25 CARR: Ramal a Tequexpan

CLAVE: 00068

RUTA: MEX-015D

AÑO: 2020

LUGAR	ESTACION				CLASIFICACION VEHICULAR EN PORCIENTO														COORDENADAS	
	KM	TE	SC	TDPA	M	A	B	C2	C3	T3S2	T3S3	T3S2R4	OTROS	A	B	C	K'	D	LATITUD	LONGITUD
Chapalilla	0.00	3	0	892	2.6	68.3	5.3	7.4	3.8	7.9	1.9	2.5	0.3	70.9	5.3	23.8	0.090	0.505	21.182002	-104.629461
T. C. Guadalajara - Tepic (Cuota)	9.40	1	0	827	2.7	69.7	5.2	7.5	3.5	7.5	1.4	2.2	0.3	72.4	5.2	22.4	0.092	0.503	21.214592	-104.594456

26 CARR: Tepic - San Blas (Cuota)

CLAVE:

RUTA: MEX-D

AÑO: 2020

LUGAR	ESTACION				CLASIFICACION VEHICULAR EN PORCIENTO														COORDENADAS	
	KM	TE	SC	TDPA	M	A	B	C2	C3	T3S2	T3S3	T3S2R4	OTROS	A	B	C	K'	D	LATITUD	LONGITUD
T. C Tepic - Villa Unión (Cuota)	0.00	3	0	3767	4.1	89.1	0.3	5.0	0.7	0.6	0.2	0.0	0.0	93.2	0.3	6.5	0.235	0.508	21.561085	-104.970794
El Camalote (T. C. Sta. Cruz - San Blas)	31.00	1	0	2993	3.4	93.5	0.2	1.1	0.9	0.6	0.2	0.1	0.0	96.9	0.2	2.9	0.190	0.514	21.503926	-105.205684

27 CARR: Tepic - Villa Unión (cuota)

CLAVE: 00500

RUTA: MEX-015D

AÑO: 2020

LUGAR	ESTACION				CLASIFICACION VEHICULAR EN PORCIENTO														COORDENADAS		
	KM	TE	SC	TDPA	M	A	B	C2	C3	T3S2	T3S3	T3S2R4	OTROS	A	B	C	K'	D	LATITUD	LONGITUD	
Tepic	0.00																				
Lib. de Tepic (Cuota)	6.60																				
Plaza de Cobro Trapichillo	8.65	1	1	5782	1.4	75.9	3.9	9.3	1.6	5.6	1.1	1.1	0.1	77.3	3.9	18.8	0.126	0.514	21.571764	-104.987463	
Plaza de Cobro Trapichillo	8.65	1	2	6122	1.4	76.0	3.9	9.1	1.6	5.6	1.1	1.2	0.1	77.4	3.9	18.7	0.173	0.514	21.571767	-104.987471	
Plaza de Cobro Trapichillo	8.65	2	1	2748	0.5	98.6	0.2	0.3	0.2	0.2	0.0	0.0	0.0	99.1	0.2	0.7	0.098	0.500	21.571789	-104.987394	
Plaza de Cobro Trapichillo	8.65	2	2	2748	0.5	98.6	0.2	0.3	0.2	0.2	0.0	0.0	0.0	99.1	0.2	0.7	0.098	0.500	21.571789	-104.987394	
T. C. Tepic - Mazatlán	21.00	1	1	5107	2.0	62.0	5.6	8.5	2.0	13.7	2.1	3.5	0.6	64.0	5.6	30.4	0.079	0.514	21.666721	-105.027138	
T. C. Tepic - Mazatlán	21.00	1	2	4832	1.9	62.1	5.5	8.4	2.1	13.7	2.2	3.4	0.7	64.0	5.5	30.5	0.085	0.514	21.666679	-105.027228	
T. C. Tepic - Mazatlán (Crucero de San Blas)	24.50	3	0	6456	0.7	61.4	7.9	7.3	2.6	11.7	1.7	5.9	0.8	62.1	7.9	30.0	0.082	0.505	21.710996	-105.058493	
Est. Ruíz	54.90	1	0	6059	3.1	46.1	8.5	7.2	3.3	22.8	3.0	5.0	1.0	49.2	8.5	42.3	0.080	0.501	21.953819	-105.117694	
Est. Ruíz	54.90	3	0	5786	3.2	45.2	8.6	7.2	3.1	22.8	3.1	6.0	0.8	48.4	8.6	43.0	0.072	0.506	21.953824	-105.117697	
Rosamorada	73.50	1	0	6492	3.2	45.9	8.5	7.0	3.1	22.5	3.0	5.9	0.9	49.1	8.5	42.4	0.093	0.511	22.088675	-105.215902	
Rosamorada	73.50	3	0	6171	5.1	42.3	9.1	7.7	3.5	22.2	3.4	5.6	1.1	47.4	9.1	43.5	0.081	0.514	22.088708	-105.215907	
Acaponeta	120.20	1	0	5714	6.2	35.4	9.6	7.1	4.5	26.1	3.3	6.9	0.9	41.6	9.6	48.8	0.082	0.509	22.453872	-105.424656	

NAYARIT

27 CARR: Tepic - Villa Unión (cuota)

CLAVE: 00500

RUTA: MEX-015D

AÑO: 2020

LUGAR	ESTACION				CLASIFICACION VEHICULAR EN PORCIENTO													COORDENADAS		
	KM	TE	SC	TDPA	M	A	B	C2	C3	T3S2	T3S3	T3S2R4	OTROS	A	B	C	K'	D	LATITUD	LONGITUD
Plaza de Cobro Acaponeta	120.20	2	0	4133	1.2	43.7	4.3	3.7	4.4	28.9	2.8	8.7	2.3	44.9	4.3	50.8	0.081	0.500	22.454065	-105.418726
Acaponeta	120.20	3	0	5191	1.4	51.3	9.9	6.8	4.4	14.6	2.7	8.0	0.9	52.7	9.9	37.4	0.089	0.507	22.453873	-105.424663
Lim. Edos. Term. Nay. Ppia. Sin.	132.80																			
Escuinapa de Hidalgo	208.60	1	1	2356	1.8	41.0	9.5	8.4	4.7	21.9	3.1	9.0	0.6	42.8	9.5	47.7	0.131	0.503	22.854246	-105.749735
Escuinapa de Hidalgo	208.60	1	2	2385	1.6	41.2	9.5	8.3	4.7	21.9	3.3	8.8	0.7	42.8	9.5	47.7	0.081	0.503	22.854199	-105.749832
Escuinapa de Hidalgo	208.60	3	0	4772	1.2	41.3	10.7	5.8	3.9	23.1	3.0	10.1	0.9	42.5	10.7	46.8	0.101	0.505	22.858022	-105.753539
Rosario	220.68	1	0	5236	1.3	41.5	11.0	5.8	3.9	22.9	2.9	9.8	0.9	42.8	11.0	46.2	0.100	0.521	22.982756	-105.875651
Plaza de Cobro Rosario	220.68	2	0	4445	0.3	50.2	4.5	3.3	4.2	26.4	2.1	7.1	1.9	50.5	4.5	45.0	0.081	0.500	22.984690	-105.878103
Rosario	220.68	3	1	2950	2.2	45.6	9.8	7.0	2.6	21.1	3.7	7.0	1.0	47.8	9.8	42.4	0.116	0.504	22.986706	-105.880428
Rosario	220.68	3	2	2995	2.3	45.9	9.7	6.9	2.5	21.1	3.8	6.9	0.9	48.2	9.7	42.1	0.078	0.504	22.986708	-105.880436
X. C. Durango - Villa Unión (Cuota)	240.90	1	0	6457	2.5	39.7	9.6	6.6	3.3	23.9	3.2	10.3	0.9	42.2	9.6	48.2	0.078	0.518	23.190664	-106.183686
X. C. Durango - Villa Unión (Cuota)	240.90	3	1	4078	3.5	45.0	9.4	7.4	3.4	19.0	4.0	7.1	1.2	48.5	9.4	42.1	0.079	0.510	23.190698	-106.183724
X. C. Durango - Villa Unión (Cuota)	240.90	3	2	4244	3.4	45.2	9.3	7.5	3.3	19.0	4.0	6.9	1.4	48.6	9.3	42.1	0.098	0.510	23.190698	-106.183723

28 CARR: El Carrizo - La Batanga

CLAVE: 18107

RUTA: NAY-078

AÑO: 2020

LUGAR	ESTACION				CLASIFICACION VEHICULAR EN PORCIENTO													COORDENADAS		
	KM	TE	SC	TDPA	M	A	B	C2	C3	T3S2	T3S3	T3S2R4	OTROS	A	B	C	K'	D	LATITUD	LONGITUD
T. C. Ent. Santiago Ixcuintla - Playa Los Corchos	0.00	3	0	2849	16.8	79.3	2.4	0.6	0.5	0.1	0.1	0.1	0.1	96.1	2.4	1.5	0.097	0.511	21.772265	-105.274136
Sentispac	9.00	1	0	2097	25.1	71.7	1.4	0.6	0.8	0.2	0.1	0.1	0.0	96.8	1.4	1.8	0.093	0.512	21.806753	-105.345020
La Batanga	25.00	1	0	168	3.9	91.0	0.4	3.6	0.2	0.0	0.0	0.0	0.9	94.9	0.4	4.7	0.143	0.506	21.887783	-105.462013

29 CARR: Navarrete - Sauta

CLAVE: 18013

RUTA: NAY-013

AÑO: 2020

LUGAR	ESTACION				CLASIFICACION VEHICULAR EN PORCIENTO													COORDENADAS		
	KM	TE	SC	TDPA	M	A	B	C2	C3	T3S2	T3S3	T3S2R4	OTROS	A	B	C	K'	D	LATITUD	LONGITUD
T. C. Crucero San Blas - San Blas	0.00	3	0	1020	28.8	63.7	0.7	5.3	1.1	0.4	0.0	0.0	0.0	92.5	0.7	6.8	0.114	0.522	21.649013	-105.115141
Sauta	7.00	1	0	2212	44.6	48.5	0.7	5.1	0.8	0.3	0.0	0.0	0.0	93.1	0.7	6.2	0.095	0.502	21.721547	-105.140428

30 CARR: Ramal a Amado Nervo

CLAVE: 18011

RUTA: NAY

AÑO: 2020

LUGAR	ESTACION				CLASIFICACION VEHICULAR EN PORCIENTO													COORDENADAS		
	KM	TE	SC	TDPA	M	A	B	C2	C3	T3S2	T3S3	T3S2R4	OTROS	A	B	C	K'	D	LATITUD	LONGITUD
T. C. Guadalajara - Tepic	0.00	3	0	898	4.9	77.2	0.3	11.9	4.7	0.8	0.1	0.0	0.1	82.1	0.3	17.6	0.106	0.508	21.129726	-104.602243
Amado Nervo	15.00																			

NAYARIT

31 CARR: Ramal a Bellavista

CLAVE: 18059

RUTA: NAY-059

AÑO: 2020

LUGAR	ESTACION				CLASIFICACION VEHICULAR EN PORCIENTO														COORDENADAS	
	KM	TE	SC	TDPA	M	A	B	C2	C3	T3S2	T3S3	T3S2R4	OTROS	A	B	C	K'	D	LATITUD	LONGITUD
T. C. Tepic - Francisco I. Madero	0.00	3	0	2586	30.6	58.6	0.4	9.1	1.3	0.0	0.0	0.0	0.0	89.2	0.4	10.4	0.106	0.522	21.564387	-104.875020
Bellavista	1.30																			

32 CARR: Ramal a El Colomo

CLAVE: 18014

RUTA: NAY

AÑO: 2020

LUGAR	ESTACION				CLASIFICACION VEHICULAR EN PORCIENTO														COORDENADAS	
	KM	TE	SC	TDPA	M	A	B	C2	C3	T3S2	T3S3	T3S2R4	OTROS	A	B	C	K'	D	LATITUD	LONGITUD
T. C. Tepic - Puerto Vallarta	0.00																			
San Vicente	3.00	1	1	14263	8.8	80.2	5.7	1.1	1.7	1.4	0.5	0.2	0.4	89.0	5.7	5.3	0.095	0.510	20.748635	-105.250886
San Vicente	3.00	1	2	13726	8.9	80.3	5.4	1.5	1.5	1.1	0.5	0.3	0.5	89.2	5.4	5.4	0.089	0.510	20.748676	-105.250897
El Colomo	21.00																			

33 CARR: Ramal a Estación Yago

CLAVE: 18224

RUTA: NAY

AÑO: 2020

LUGAR	ESTACION				CLASIFICACION VEHICULAR EN PORCIENTO														COORDENADAS	
	KM	TE	SC	TDPA	M	A	B	C2	C3	T3S2	T3S3	T3S2R4	OTROS	A	B	C	K'	D	LATITUD	LONGITUD
T. C. Tepic - Mazatlán	0.00	3	0	1684	23.6	68.6	0.9	2.3	2.9	1.3	0.3	0.1	0.0	92.2	0.9	6.9	0.107	0.508	21.836028	-105.117273
Estacion Yago	7.00																			

34 CARR: Ramal a Ixtapan de La Concepción

CLAVE: 18233

RUTA: NAY

AÑO: 2020

LUGAR	ESTACION				CLASIFICACION VEHICULAR EN PORCIENTO														COORDENADAS	
	KM	TE	SC	TDPA	M	A	B	C2	C3	T3S2	T3S3	T3S2R4	OTROS	A	B	C	K'	D	LATITUD	LONGITUD
T. C. Tepic - Puerto Vallarta (Las Varas)	0.00	3	0	4188	15.1	76.3	0.4	7.0	0.6	0.4	0.1	0.1	0.0	91.4	0.4	8.2	0.101	0.502	21.179697	-105.136613
Ixtapan de La Concepción	20.00	1	0	2075	13.7	74.5	1.5	6.6	2.0	0.5	0.4	0.4	0.4	88.2	1.5	10.3	0.109	0.511	21.305137	-105.154910

35 CARR: Ramal a Milpas Viejas

CLAVE: 18007

RUTA: NAY

AÑO: 2020

LUGAR	ESTACION				CLASIFICACION VEHICULAR EN PORCIENTO														COORDENADAS	
	KM	TE	SC	TDPA	M	A	B	C2	C3	T3S2	T3S3	T3S2R4	OTROS	A	B	C	K'	D	LATITUD	LONGITUD
T. C. Tepic - Mazatlán	0.00	3	0	1689	24.3	64.9	0.3	9.4	0.6	0.4	0.1	0.0	0.0	89.2	0.3	10.5	0.102	0.512	22.456173	-105.360290
Milpas Viejas	17.00																			

NAYARIT

36 CARR: Ramal a Villa Hidalgo

CLAVE: 18031

RUTA: NAY

AÑO: 2020

LUGAR	ESTACION				CLASIFICACION VEHICULAR EN PORCIENTO													COORDENADAS		
	KM	TE	SC	TDPA	M	A	B	C2	C3	T3S2	T3S3	T3S2R4	OTROS	A	B	C	K'	D	LATITUD	LONGITUD
T. C. Tepic - Mazatlán	0.00	3	0	2774	22.2	69.0	1.3	3.7	2.0	1.1	0.6	0.1	0.0	91.2	1.3	7.5	0.082	0.510	21.807922	-105.103464
Villa Hidalgo	16.00	1	0	4841	28.8	65.9	0.9	2.6	0.9	0.5	0.2	0.2	0.0	94.7	0.9	4.4	0.098	0.503	21.746332	-105.230561

37 CARR: Ramal a Volcán del Ceboruco

CLAVE: 18003

RUTA: NAY

AÑO: 2020

LUGAR	ESTACION				CLASIFICACION VEHICULAR EN PORCIENTO													COORDENADAS		
	KM	TE	SC	TDPA	M	A	B	C2	C3	T3S2	T3S3	T3S2R4	OTROS	A	B	C	K'	D	LATITUD	LONGITUD
T. C. Guadalajara - Tepic	0.00	3	0	4992	4.0	75.7	2.2	14.7	1.0	1.0	0.5	0.4	0.5	79.7	2.2	18.1	0.091	0.501	21.049540	-104.460563
Volcán Ceboruco	25.00																			

38 CARR: Tepic - Francisco I. Madero

CLAVE: 18009

RUTA: NAY-MEX

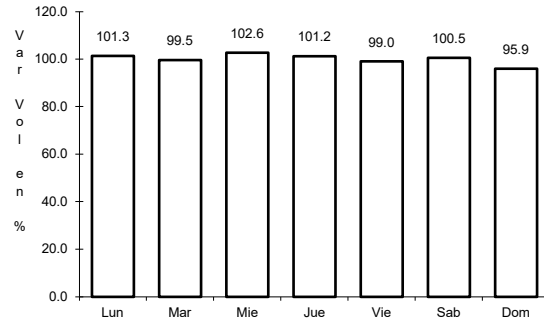
AÑO: 2020

LUGAR	ESTACION				CLASIFICACION VEHICULAR EN PORCIENTO													COORDENADAS		
	KM	TE	SC	TDPA	M	A	B	C2	C3	T3S2	T3S3	T3S2R4	OTROS	A	B	C	K'	D	LATITUD	LONGITUD
Tepic	0.00	3	0	6078	7.9	84.4	0.2	5.4	1.7	0.1	0.1	0.1	0.1	92.3	0.2	7.5	0.094	0.520	21.511967	-104.891586
Bellavista	9.00	3	0	4165	11.3	86.6	0.2	1.4	0.2	0.2	0.0	0.1	0.0	97.9	0.2	1.9	0.085	0.504	21.564298	-104.874743
Francisco I. Madero	16.00																			

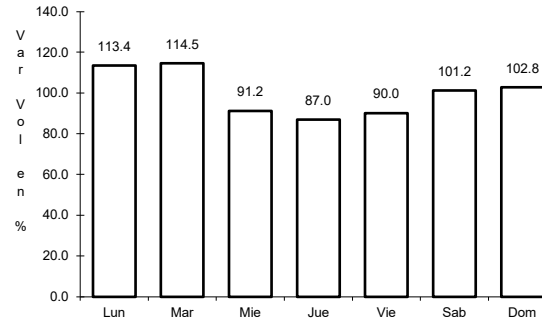
1 CARR: Crucero de San Blas - San Blas

CLAVE: 18229

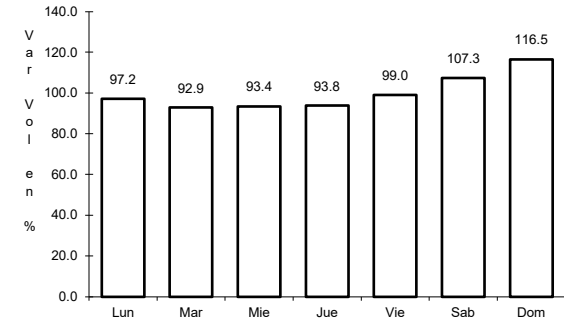
RUTA: MEX-015



Km: 0.00 Tipo: 3 Sent: 0



Km: 11.00 Tipo: 3 Sent: 0

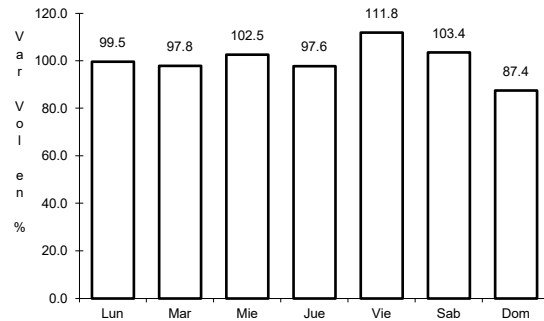


Km: 36.00 Tipo: 1 Sent: 0

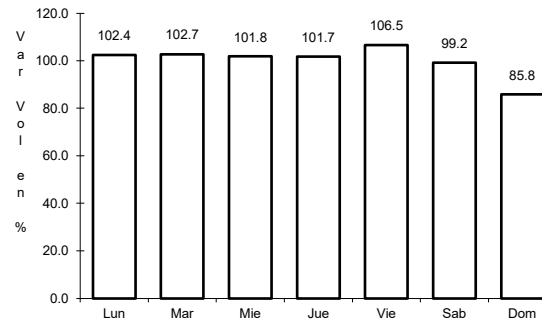
2 CARR: Ent. Acaponeta - El Novillero

CLAVE: 18023

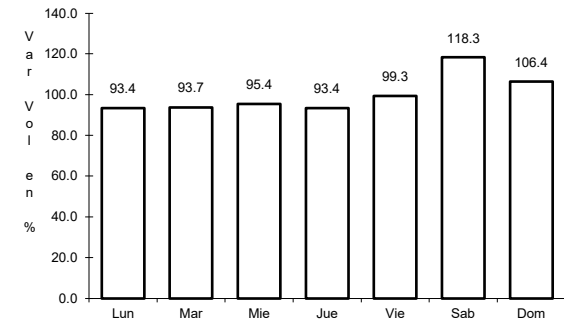
RUTA: MEX-015



Km: 0.00 Tipo: 3 Sent: 0



Km: 13.00 Tipo: 1 Sent: 0

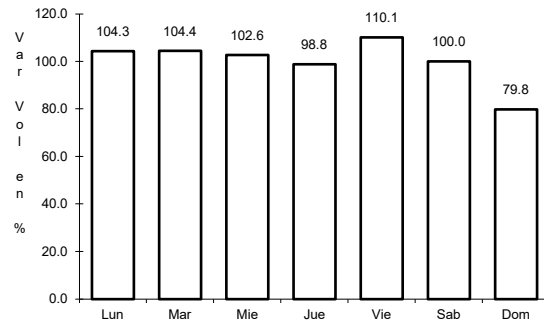


Km: 36.00 Tipo: 1 Sent: 0

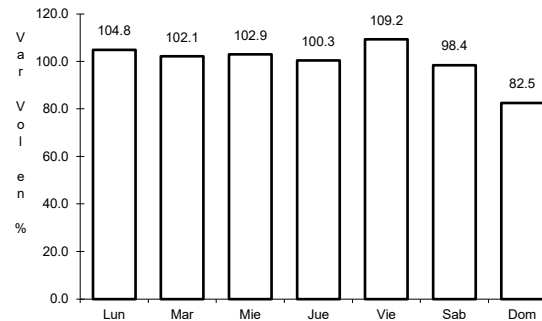
3 CARR: Ent. Santiago Ixcuintla - Playa Los Corchos

CLAVE: 18016

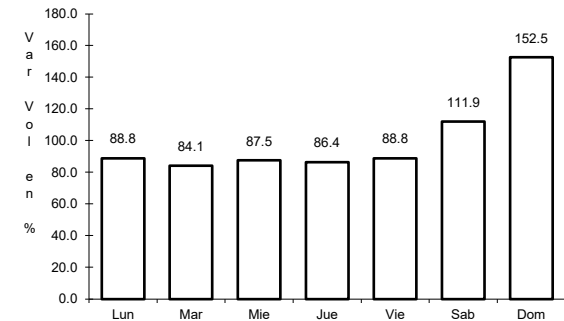
RUTA: MEX-015



Km: 0.00 Tipo: 3 Sent: 1



Km: 0.00 Tipo: 3 Sent: 2

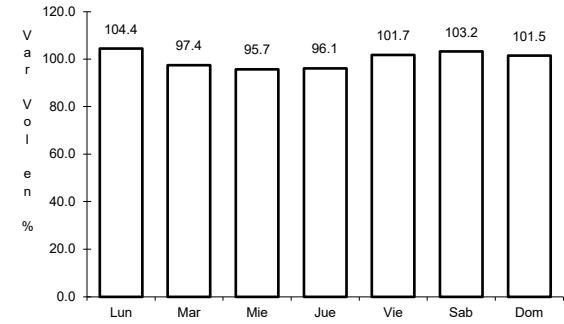
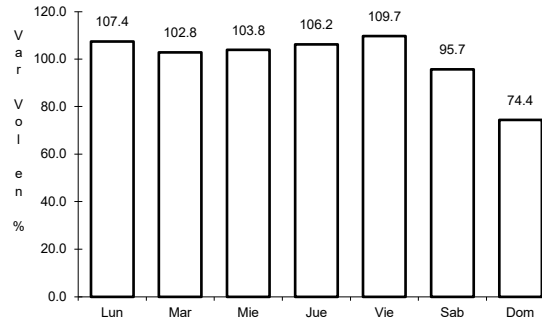
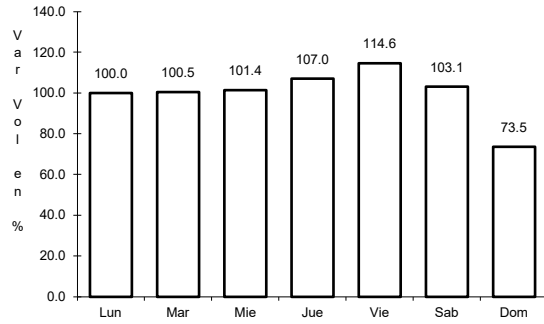


Km: 39.00 Tipo: 1 Sent: 0

4 CARR: Guadalajara - Tepic

CLAVE: 00031

ruta: MEX-015



Km: 8.30 Tipo: 3 Sent: 1

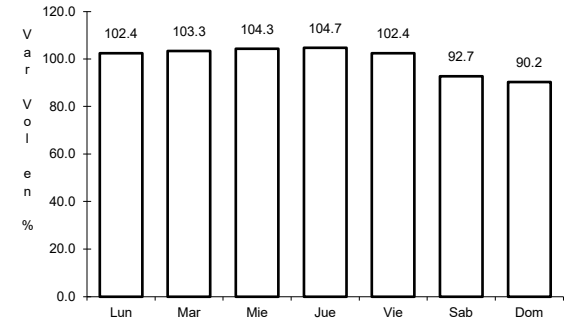
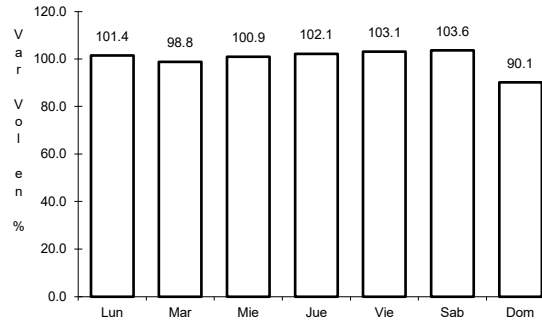
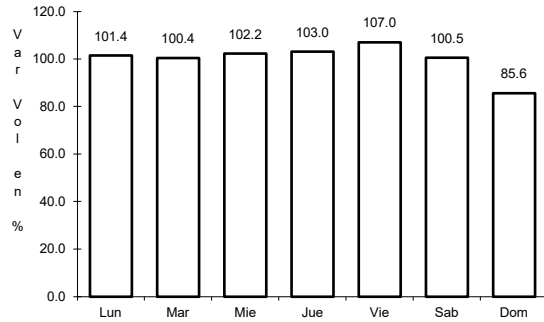
Km: 8.30 Tipo: 3 Sent: 2

Km: 138.84 Tipo: 1 Sent: 0

5 CARR: Libramiento de Tepic

CLAVE: 18232

ruta: MEX-015



Km: 5.00 Tipo: 1 Sent: 1

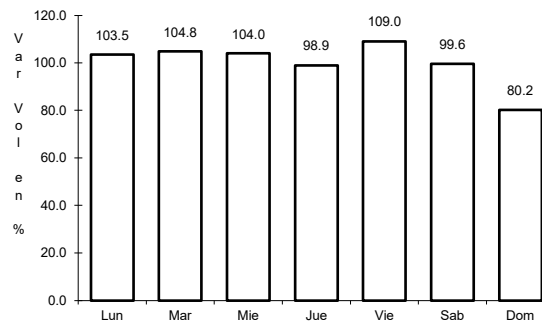
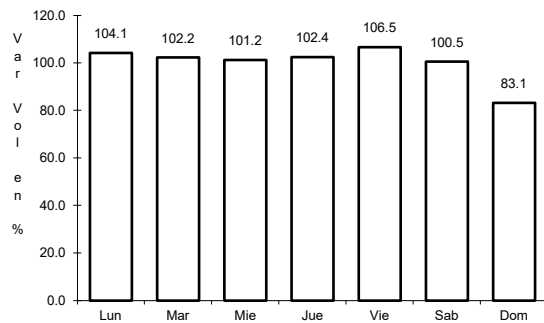
Km: 5.00 Tipo: 1 Sent: 2

Km: 18.80 Tipo: 1 Sent: 1

6 CARR: Peñitas - Tuxpan

CLAVE: 18019

ruta: MEX-015



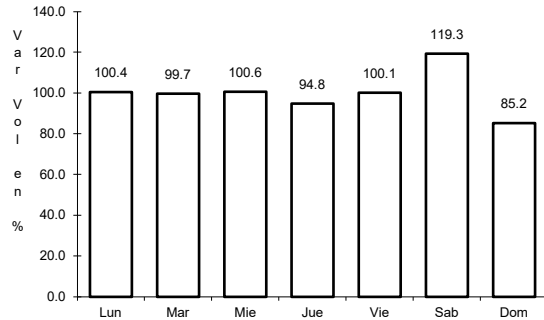
Km: 0.00 Tipo: 3 Sent: 0

Km: 9.00 Tipo: 1 Sent: 0

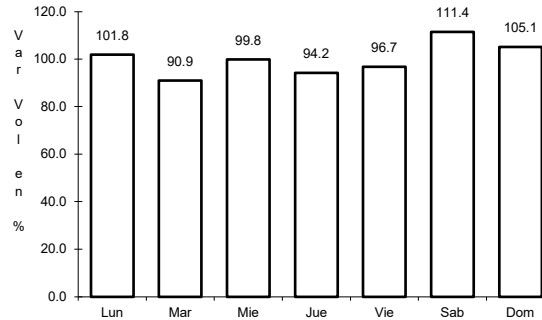
7 CARR: Ramal a Acaponeta

CLAVE: 18038

RUTA: MEX-015



Km: 0.00 Tipo: 3 Sent: 1

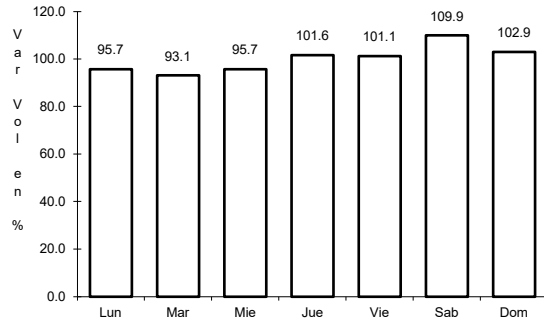


Km: 0.00 Tipo: 3 Sent: 2

8 CARR: Ramal a Estación Nanchi

CLAVE: 18068

RUTA: MEX-015

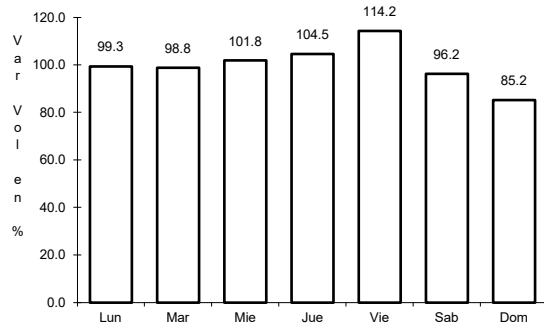


Km: 0.00 Tipo: 3 Sent: 0

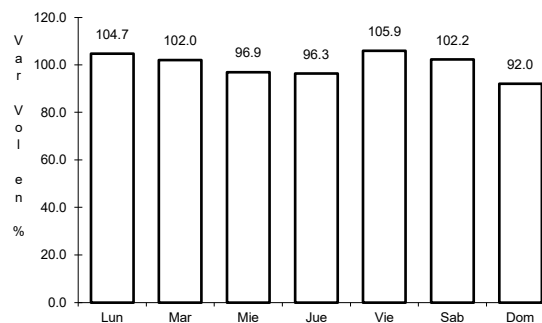
9 CARR: Ramal a Estación Ruíz

CLAVE: 18026

RUTA: MEX-015



Km: 0.00 Tipo: 3 Sent: 0

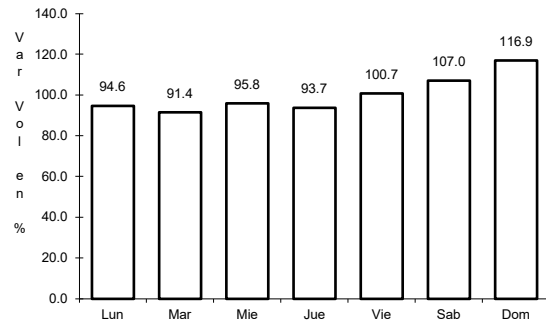


Km: 5.50 Tipo: 1 Sent: 0

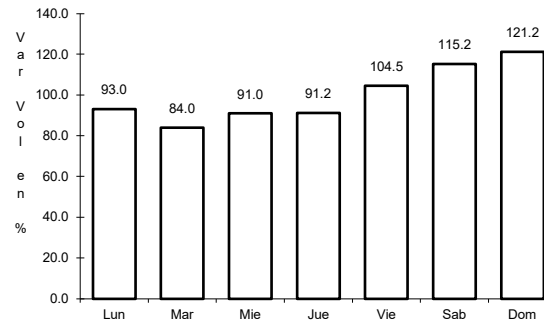
10 CARR: Ramal a La Laguna de Santa María

CLAVE: 18005

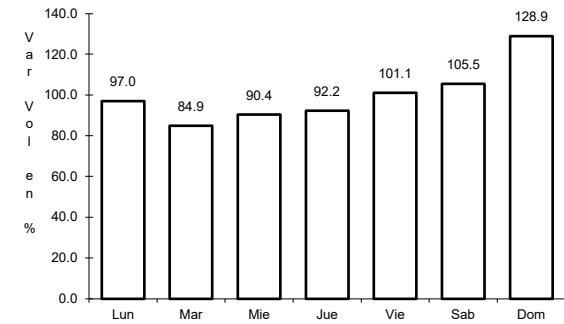
RUTA: MEX-015



Km: 0.00 Tipo: 3 Sent: 0



Km: 11.50 Tipo: 1 Sent: 1

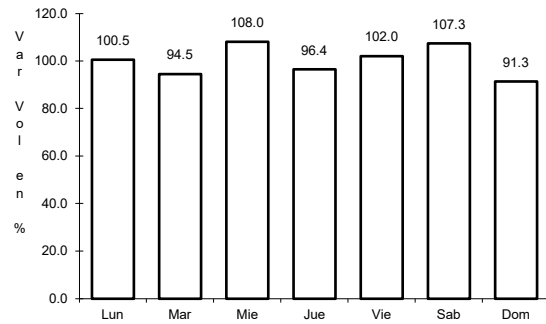


Km: 11.50 Tipo: 1 Sent: 2

11 CARR: Ramal a Mecatán

CLAVE: 18010

RUTA: MEX-015

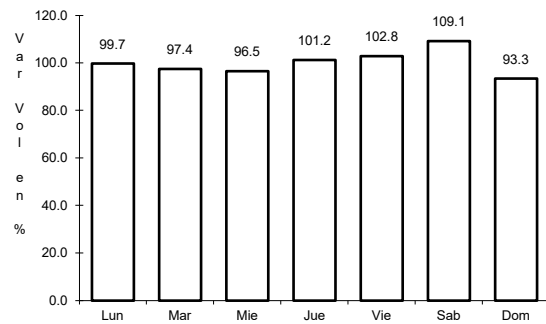


Km: 0.00 Tipo: 3 Sent: 0

12 CARR: Ramal a Nuevo Aeropuerto de Tepic

CLAVE: 18012

RUTA: MEX-015

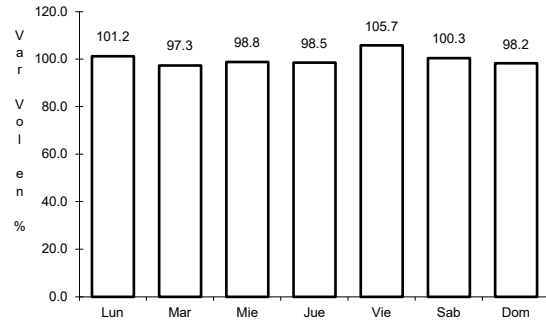


Km: 0.00 Tipo: 3 Sent: 0

13 CARR: Ramal a Punta Mita

CLAVE: 18020

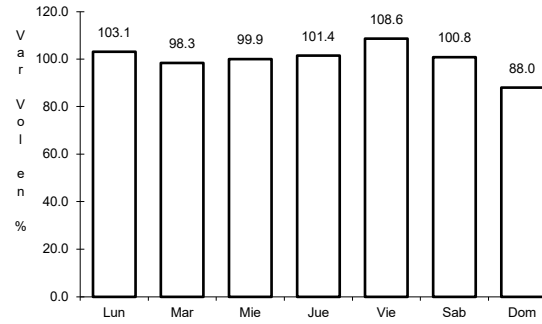
RUTA: MEX-200



Km: 0.00

Tipo: 3

Sent: 0



Km: 9.00

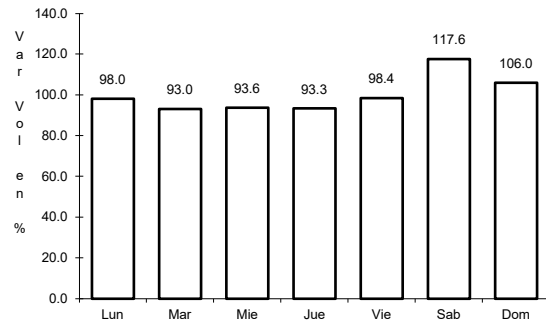
Tipo: 3

Sent: 0

14 CARR: Ramal a Santa Cruz

CLAVE: 18030

RUTA: MEX-015



Km: 1.30

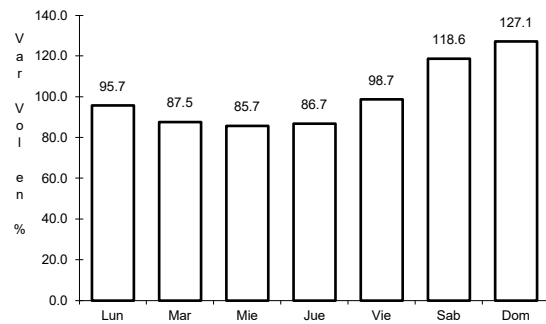
Tipo: 1

Sent: 0

15 CARR: Santa Cruz - San Blas

CLAVE: 18230

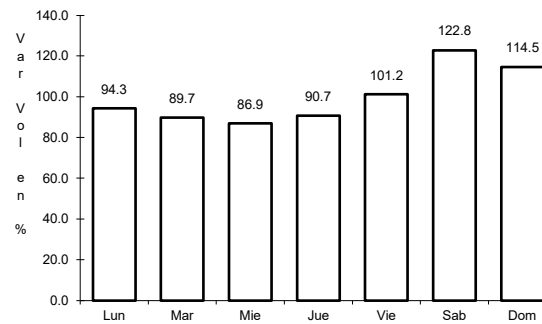
RUTA: MEX-015



Km: 0.00

Tipo: 3

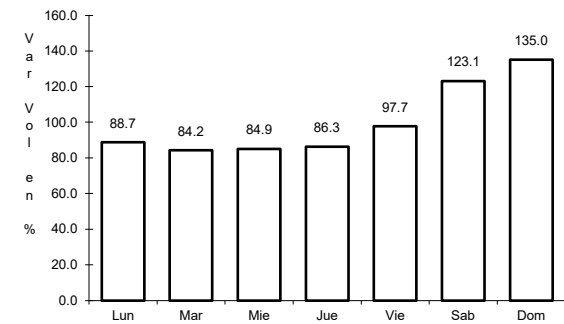
Sent: 0



Km: 5.00

Tipo: 3

Sent: 0



Km: 17.00

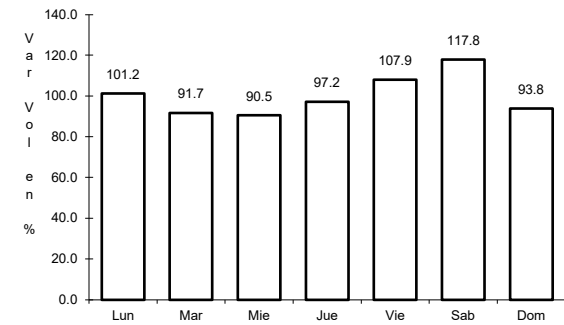
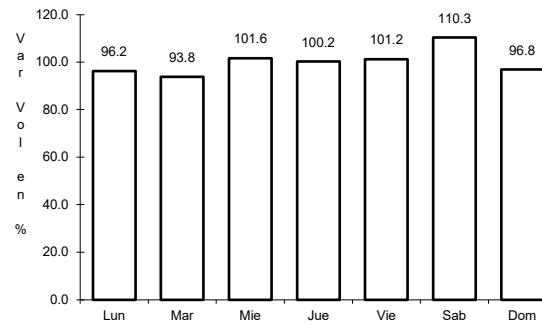
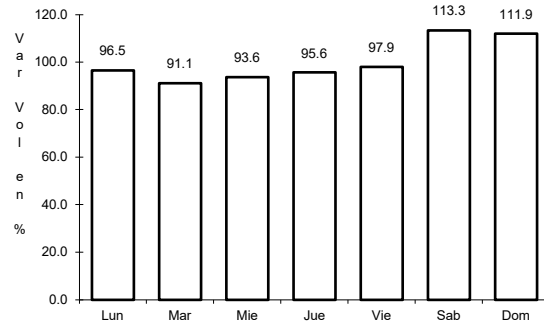
Tipo: 1

Sent: 0

16 CARR: Tepic - Ixtapan de La Concepción

CLAVE: 18028

ruta: MEX-015



Km: 0.00 Tipo: 3 Sent: 0

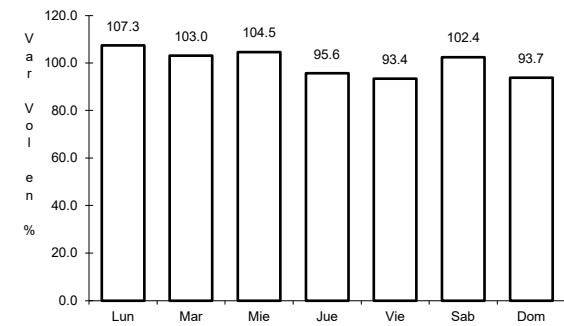
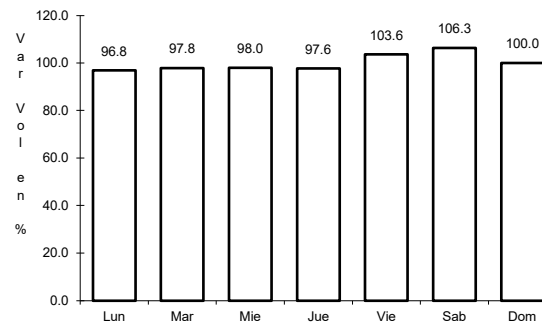
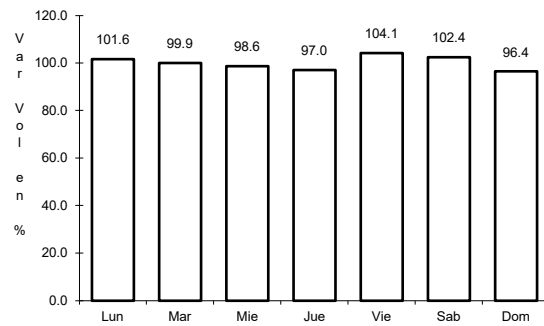
Km: 27.00 Tipo: 1 Sent: 0

Km: 77.42 Tipo: 1 Sent: 0

17 CARR: Tepic - Mazatlán

CLAVE: 00499

ruta: MEX-015



Km: 0.00 Tipo: 3 Sent: 1

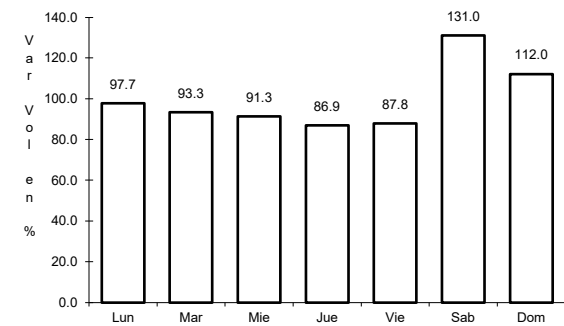
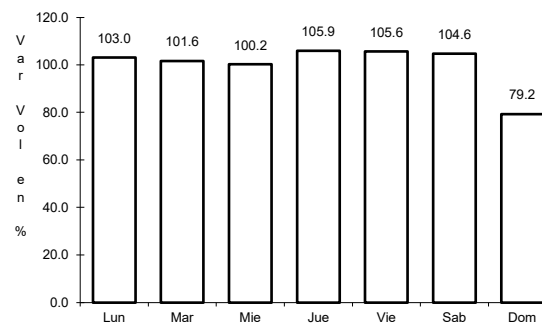
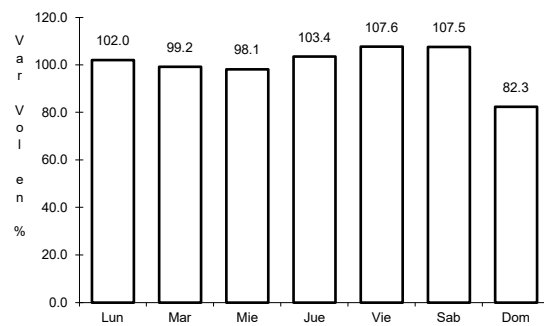
Km: 136.52 Tipo: 1 Sent: 0

Km: 267.99 Tipo: 1 Sent: 0

18 CARR: Tepic - Presa Aguamilpa

CLAVE: 18029

ruta: MEX-015



Km: 0.00 Tipo: 3 Sent: 1

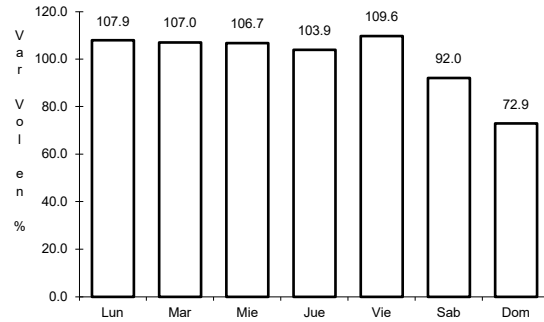
Km: 0.00 Tipo: 3 Sent: 2

Km: 54.00 Tipo: 1 Sent: 0

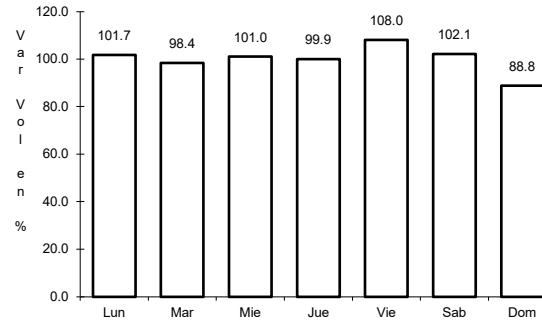
19 CARR: Tepic - Puerto Vallarta

CLAVE: 00068

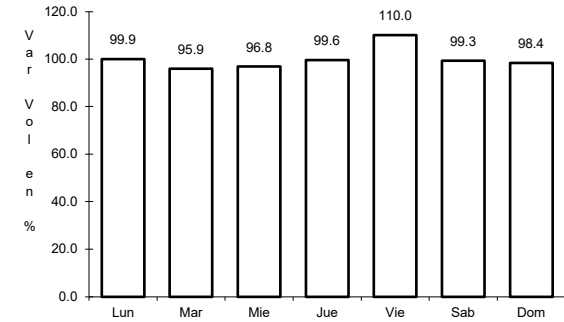
ruta: MEX-200



Km: 0.00 Tipo: 3 Sent: 1



Km: 71.30 Tipo: 1 Sent: 0

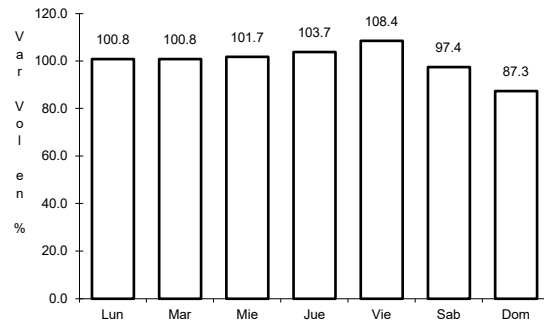


Km: 122.91 Tipo: 3 Sent: 0

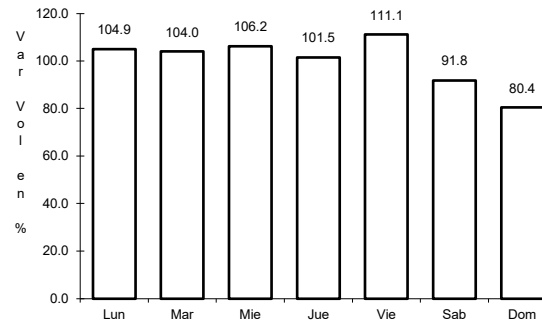
20 CARR: Chapalilla - Compostela (Cuota)

CLAVE: 18004

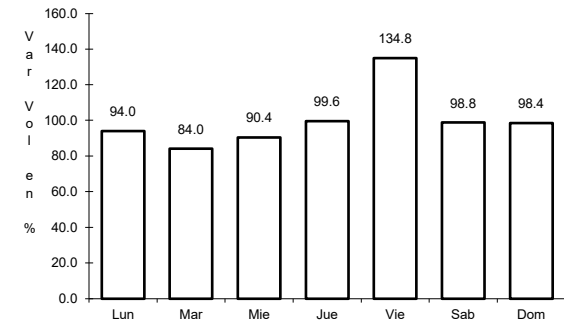
ruta: MEX-068D



Km: 0.00 Tipo: 3 Sent: 0



Km: 36.50 Tipo: 1 Sent: 0

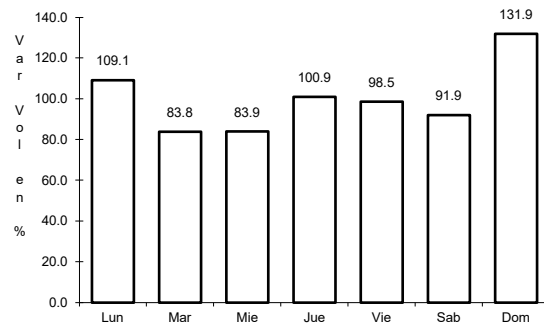


Km: 38.00 Tipo: 1 Sent: 0

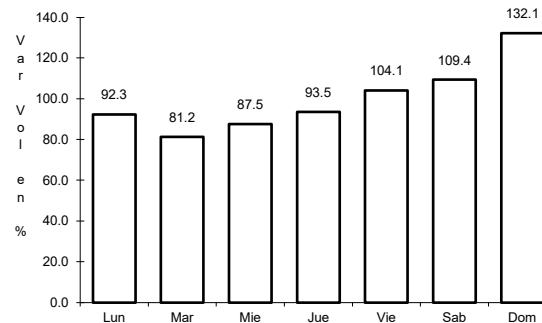
21 CARR: Guadalajara - Tepic (Cuota)

CLAVE: 00033

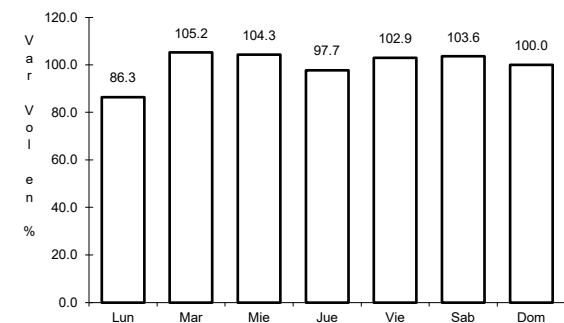
ruta: MEX-015D



Km: 0.00 Tipo: 3 Sent: 1



Km: 0.00 Tipo: 3 Sent: 2

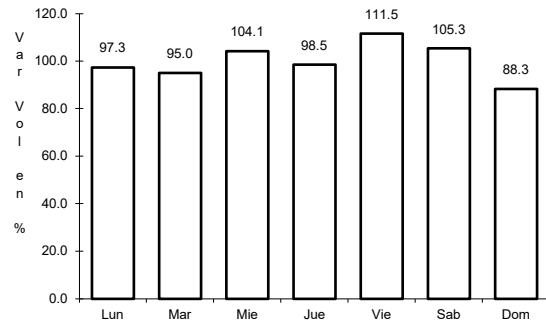


Km: 145.32 Tipo: 3 Sent: 1

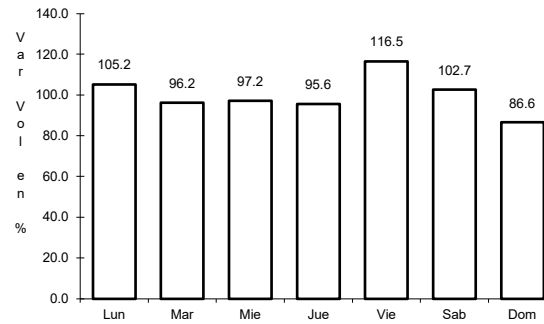
22 CARR: Jala - Puerto Vallarta (Cuota)

CLAVE:

RUTA: MEX-070D



Km: 0.00 Tipo: 3 Sent: 1

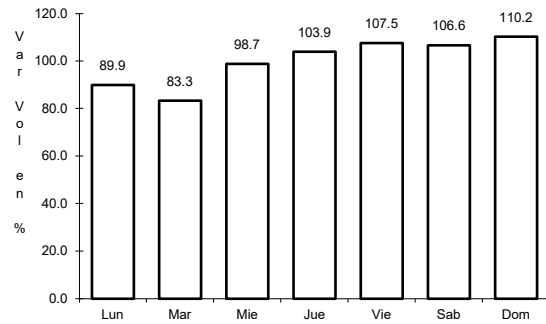


Km: 0.00 Tipo: 3 Sent: 2

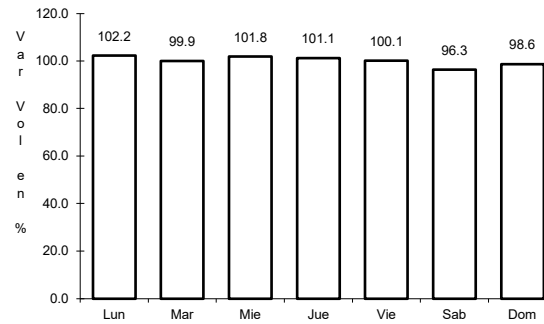
23 CARR: Libramiento de Tepic (Cuota)

CLAVE:

RUTA: MEX-015D



Km: 0.70 Tipo: 3 Sent: 0

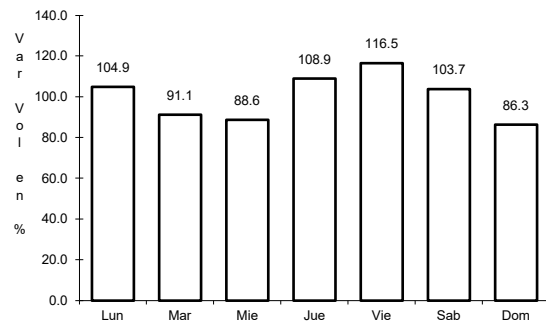


Km: 29.47 Tipo: 1 Sent: 0

24 CARR: Ramal a Compostela (Cuota)

CLAVE:

RUTA: MEX-200D

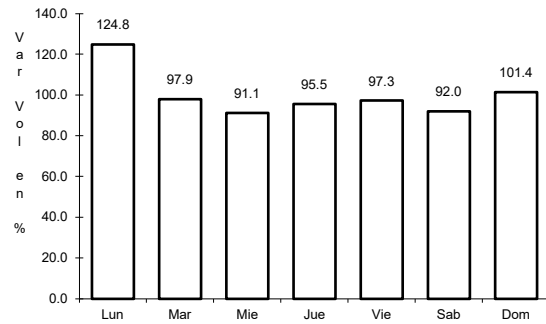


Km: 12.90 Tipo: 1 Sent: 0

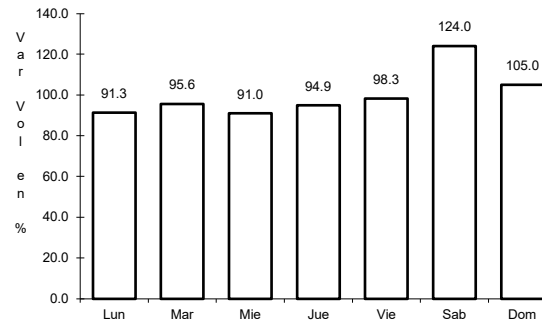
25 CARR: Ramal a Tequexpan

CLAVE: 00068

RUTA: MEX-015D



Km: 0.00 Tipo: 3 Sent: 0

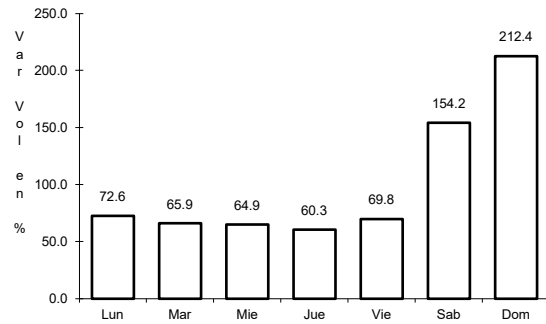


Km: 9.40 Tipo: 1 Sent: 0

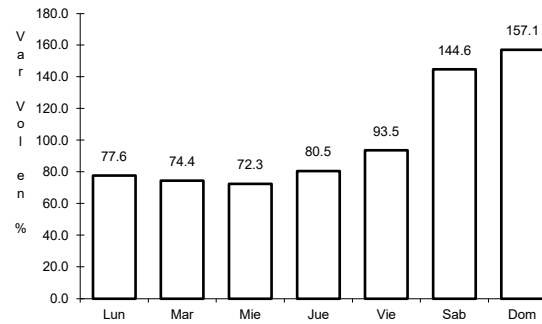
26 CARR: Tepic - San Blas (Cuota)

CLAVE:

RUTA: MEX-D



Km: 0.00 Tipo: 3 Sent: 0

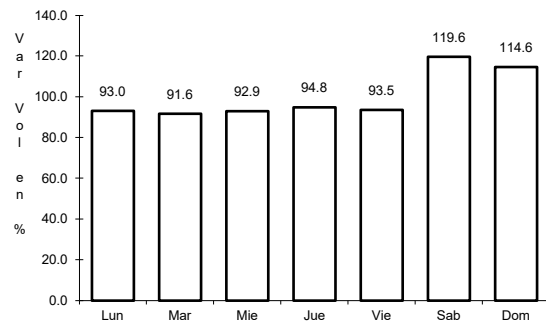


Km: 31.00 Tipo: 1 Sent: 0

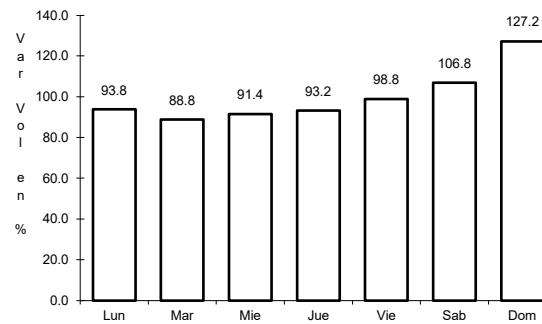
27 CARR: Tepic - Villa Unión (cuota)

CLAVE: 00500

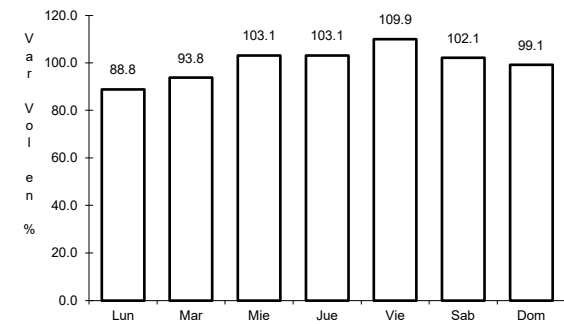
RUTA: MEX-015D



Km: 8.65 Tipo: 1 Sent: 1



Km: 8.65 Tipo: 1 Sent: 2

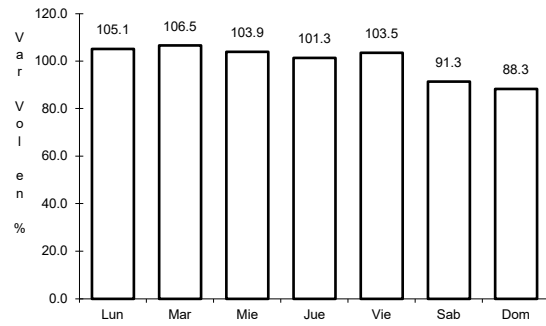


Km: 240.90 Tipo: 1 Sent: 0

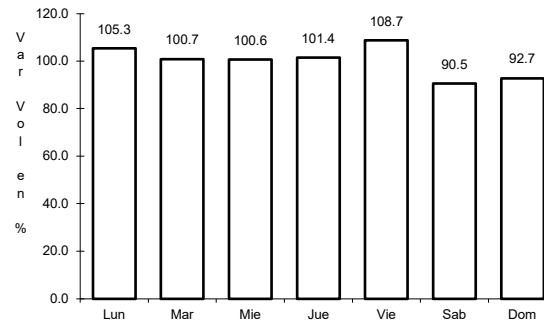
28 CARR: El Carrizo - La Batanga

CLAVE: 18107

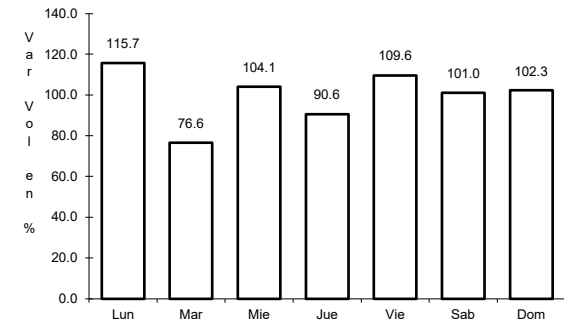
RUTA: NAY-078



Km: 0.00 Tipo: 3 Sent: 0



Km: 9.00 Tipo: 1 Sent: 0

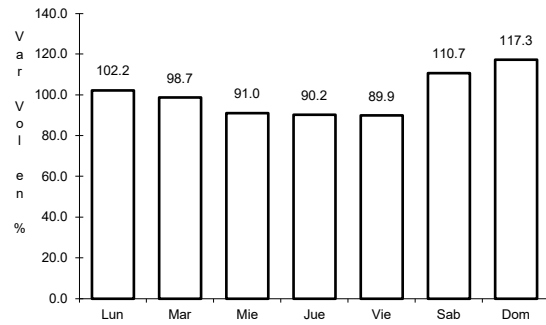


Km: 25.00 Tipo: 1 Sent: 0

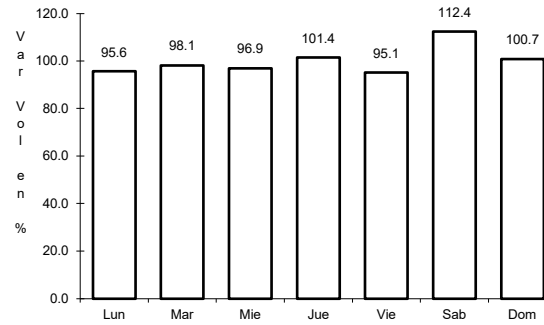
29 CARR: Navarrete - Sauta

CLAVE: 18013

RUTA: NAY-013



Km: 0.00 Tipo: 3 Sent: 0

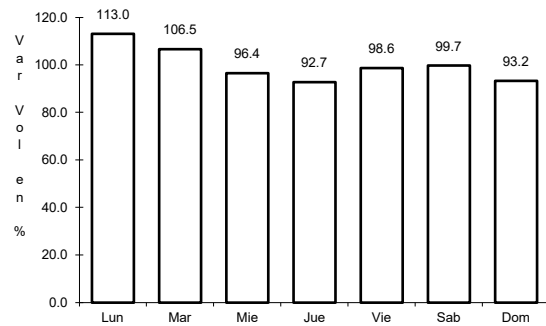


Km: 7.00 Tipo: 1 Sent: 0

30 CARR: Ramal a Amado Nervo

CLAVE: 18011

RUTA: NAY

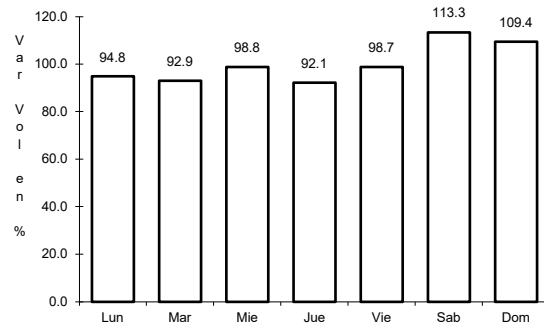


Km: 0.00 Tipo: 3 Sent: 0

31 CARR: Ramal a Bellavista

CLAVE: 18059

RUTA: NAY-059



Km: 0.00

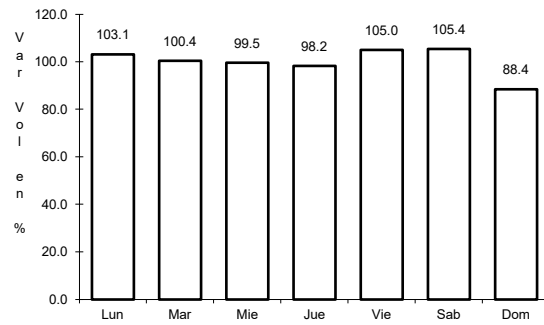
Tipo: 3

Sent: 0

32 CARR: Ramal a El Colomo

CLAVE: 18014

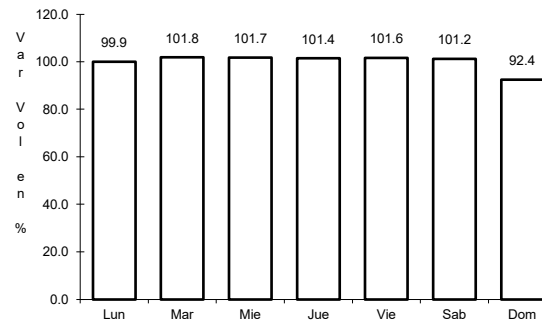
RUTA: NAY



Km: 3.00

Tipo: 1

Sent: 1



Km: 3.00

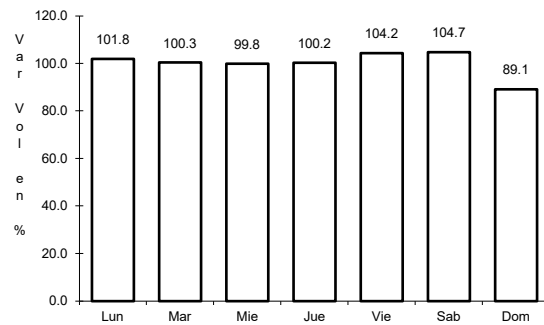
Tipo: 1

Sent: 2

33 CARR: Ramal a Estación Yago

CLAVE: 18224

RUTA: NAY



Km: 0.00

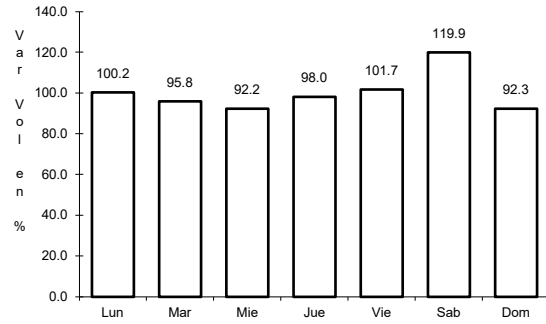
Tipo: 3

Sent: 0

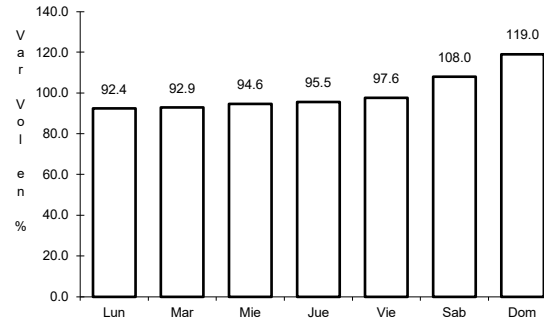
34 CARR: Ramal a Ixtapán de La Concepción

CLAVE: 18233

RUTA: NAY



Km: 0.00 Tipo: 3 Sent: 0

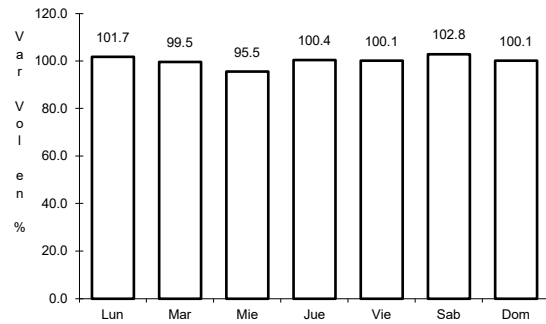


Km: 20.00 Tipo: 1 Sent: 0

35 CARR: Ramal a Milpas Viejas

CLAVE: 18007

RUTA: NAY

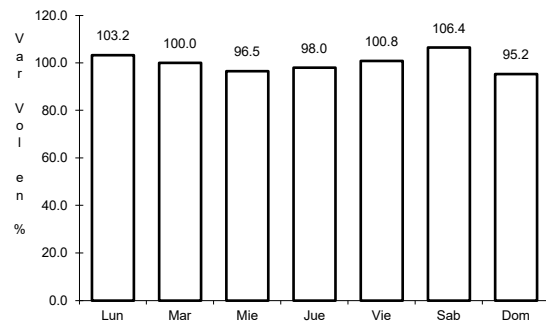


Km: 0.00 Tipo: 3 Sent: 0

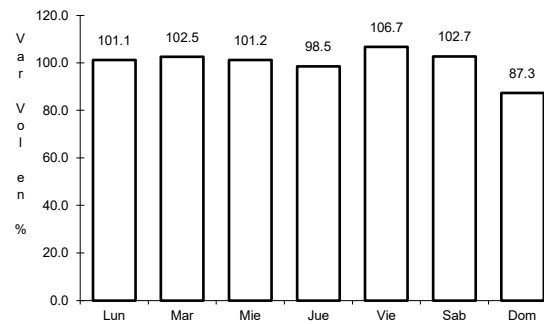
36 CARR: Ramal a Villa Hidalgo

CLAVE: 18031

RUTA: NAY



Km: 0.00 Tipo: 3 Sent: 0

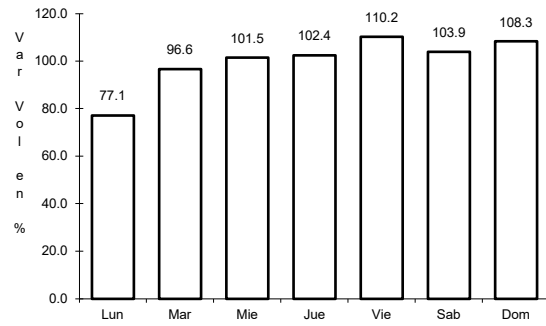


Km: 16.00 Tipo: 1 Sent: 0

37 CARR: Ramal a Volcán del Ceboruco

CLAVE: 18003

RUTA: NAY



Km: 0.00

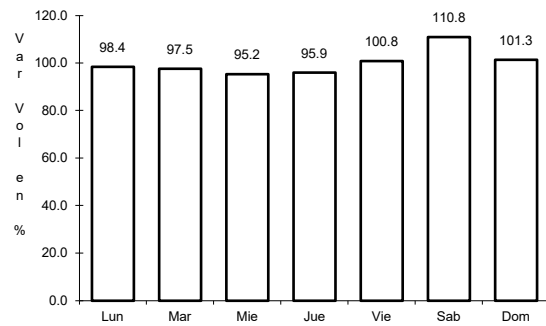
Tipo: 3

Sent: 0

38 CARR: Tepic - Francisco I. Madero

CLAVE: 18009

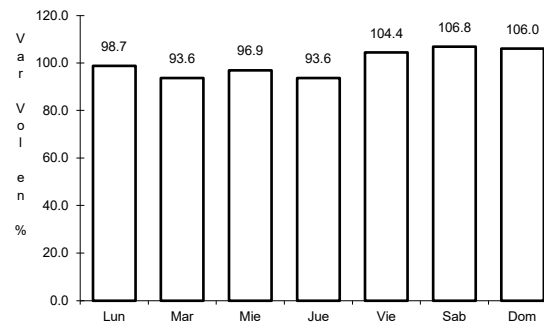
RUTA: NAY-MEX



Km: 0.00

Tipo: 3

Sent: 0



Km: 9.00

Tipo: 3

Sent: 0

