



HIDALGO

NO. INDICE CARRETERA	RUTA
---RED FEDERAL LIBRE---	
1 Álamo - Huejutla de Reyes	MEX-127
2 Apizaco - Tejocotal	MEX-119
3 Ent. Colonia - Portezuelo	MEX-085
4 Ent. Jorobas - Tula	MEX-087
5 México - Pachuca (Libre)	MEX-085
6 Pachuca - Cd. Sahagún	MEX
7 Pachuca - Tempoal	MEX-105
8 Pachuca - Tuxpam	MEX-130
9 Portezuelo - Cd. Valles	MEX-085
10 Portezuelo - Palmillas	MEX-045
11 Tamazunchale - San Felipe Orizatlán	MEX-085
12 Venta de Carpio - T. C. (Pachuca - Tuxpam)	MEX-132
---RED FEDERAL DE CUOTA---	
13 Ent. Tulancingo - Venta Grande (Cuota)	MEX-132D
14 Libramiento Norte de la Ciudad de México (Cuota)	MEX-M40D
15 México - Pachuca (Cuota)	MEX-085D
16 Tejocotal - Nuevo Necaxa (Cuota)	MEX-132D
17 Tlaxco - Tejocotal (Cuota)	MEX-119D
---RED FEDERAL INTEGRADA POR TRAMOS LIBRES Y DE CUOTA---	
18 México - Querétaro (Cuota)	MEX-057-MEX-057D
---RED ESTATAL LIBRE---	
19 Actopan - Progreso	HGO
20 El Saucillo - Amealco	HGO-103
21 Ent. Emiliano Zapata - Cd. Sahagún	HGO
22 Ent. Tepeji del Río - Tlahuelilpan	HGO-017
23 Ent. Tolman - Cd. Sahagún	EM-009-HGO
24 Francisco I. Madero - Tula de Allende	HGO
25 Huichapan - Tecozautla	HGO-030
26 Jilotepec - Maravillas	EM-HGO
27 Libramiento de Atotonilco El Grande	HGO
28 Lolotla - Atlapexco	HGO
29 Los Reyes - El Tephé	EM-HGO
30 Otumba - Tizayuca	EM-HGO
31 Ramal a El Chico	HGO
32 Ramal a Pachuca	HGO
33 San Alejo - Huayacocotla	HGO-051-VER-113
34 San Felipe Orizatlán - Huejutla de Reyes	HGO
35 Santo Domingo - T. C. (México - Querétaro)	EM-011-HGO
36 T. C. (Los Reyes - El Tephé) - Tizayuca	EM-HGO
37 Tepeji del Río - T.C. (México - Querétaro)	HGO
38 Tlahuelilpan - San Agustín Tlaxiaca	HGO
---CARRETERAS INTEGRADAS POR TRAMOS FEDERALES Y ESTATALES---	
39 Calpulalpan - El Ocote	MEX-HGO





HIDALGO

1 CARR: Álamo - Huejutla de Reyes

CLAVE: 00116

RUTA: MEX-127

AÑO: 2020

LUGAR	ESTACION				CLASIFICACION VEHICULAR EN PORCIENTO													COORDENADAS		
	KM	TE	SC	TDPA	M	A	B	C2	C3	T3S2	T3S3	T3S2R4	OTROS	A	B	C	K'	D	LATITUD	LONGITUD
T. C. Tihuatlán - Potrero del Llano	0.00	3	0	3604	14.1	71.1	0.7	7.1	1.7	3.7	1.2	0.2	0.2	85.2	0.7	14.1	0.087	0.501	20.941828	-97.702633
Benito Juárez	73.00	1	0	1572	1.0	93.8	0.3	3.9	0.8	0.1	0.1	0.0	0.0	94.8	0.3	4.9	0.115	0.516	20.884275	-98.199400
T. Der. Chicontepec de Tejada	78.00	3	0	899	6.1	84.9	0.3	6.4	0.6	1.3	0.4	0.0	0.0	91.0	0.3	8.7	0.112	0.502	20.922235	-98.219604
Lim. Edos. Term. Ver. Ppia. Hgo.	78.70																			
T. C. Pachuca - Tempoal (Huejutla de Reyes)	110.00																			

2 CARR: Apizaco - Tejocotal

CLAVE: 00430

RUTA: MEX-119

AÑO: 2020

LUGAR	ESTACION				CLASIFICACION VEHICULAR EN PORCIENTO													COORDENADAS		
	KM	TE	SC	TDPA	M	A	B	C2	C3	T3S2	T3S3	T3S2R4	OTROS	A	B	C	K'	D	LATITUD	LONGITUD
Apizaco	0.00	3	1	9921	1.1	86.8	1.1	5.0	1.2	2.2	1.4	0.6	0.6	87.9	1.1	11.0	0.106	0.512	19.418299	-98.145428
Apizaco	0.00	3	2	9451	1.1	86.8	1.1	5.0	1.2	2.2	1.4	0.6	0.6	87.9	1.1	11.0	0.096	0.512	19.418299	-98.145428
T. Der. Tetla	6.60	3	0	17579	1.0	83.3	2.4	7.3	1.3	2.6	1.0	0.7	0.4	84.3	2.4	13.3	0.091	0.515	19.464976	-98.112991
T. Izq. Atlangatepec	12.15	1	0	11806	1.1	84.7	2.3	6.6	1.2	1.9	1.4	0.4	0.4	85.8	2.3	11.9	0.108	0.511	19.514052	-98.118125
Tlaxco	23.91	1	1	3849	1.9	82.5	1.0	8.5	0.9	3.4	0.9	0.4	0.5	84.4	1.0	14.6	0.096	0.500	19.614139	-98.119084
Tlaxco	23.91	1	2	3857	1.8	82.9	1.0	8.3	0.9	3.4	0.9	0.3	0.5	84.7	1.0	14.3	0.092	0.500	19.614139	-98.119084
Tlaxco	23.91	3	0	6004	2.4	81.4	1.1	8.5	1.1	3.5	1.2	0.4	0.4	83.8	1.1	15.1	0.113	0.505	19.614142	-98.119087
Lim. Edos. Term. Tlax. Ppia. Pue.	34.45																			
T. Der. Tetela de Ocampo	52.20	1	0	6117	2.5	79.8	0.9	7.9	1.2	5.0	1.3	0.6	0.8	82.3	0.9	16.8	0.107	0.514	19.803995	-98.024779
Zacatlán	71.25	1	0	10830	7.0	83.0	1.0	4.1	0.5	2.7	1.2	0.1	0.4	90.0	1.0	9.0	0.113	0.507	19.931507	-97.961484
Lim. Edos. Term. Pue. Ppia. Hgo.	110.45																			
T. C. Pachuca - Tuxpam	113.15	1	0	6649	1.8	83.2	1.5	9.8	1.0	1.1	0.8	0.6	0.2	85.0	1.5	13.5	0.100	0.502	20.126931	-98.127367

3 CARR: Ent. Colonia - Portezuelo

CLAVE: 13257

RUTA: MEX-085

AÑO: 2020

LUGAR	ESTACION				CLASIFICACION VEHICULAR EN PORCIENTO													COORDENADAS		
	KM	TE	SC	TDPA	M	A	B	C2	C3	T3S2	T3S3	T3S2R4	OTROS	A	B	C	K'	D	LATITUD	LONGITUD
Ent. Colonia	0.00	3	1	26185	3.8	90.6	0.7	2.1	0.9	0.8	0.7	0.2	0.2	94.4	0.7	4.9	0.092	0.523	20.060402	-98.786706
Ent. Colonia	0.00	3	2	23699	4.1	90.5	0.5	2.1	0.7	0.9	0.8	0.2	0.2	94.6	0.5	4.9	0.084	0.523	20.060345	-98.786833
T. Der. Pachuca	8.34	3	1	14740	2.2	89.8	1.4	3.4	1.2	0.7	0.5	0.4	0.4	92.0	1.4	6.6	0.094	0.502	20.121935	-98.831139
T. Der. Pachuca	8.34	3	2	14858	2.1	90.2	1.4	3.3	1.2	0.6	0.5	0.4	0.3	92.3	1.4	6.3	0.084	0.502	20.121840	-98.831243
T. Der. San Agustín Tlaxiaca	15.36	3	1	9523	2.2	89.0	1.9	3.8	0.9	0.8	0.6	0.5	0.3	91.2	1.9	6.9	0.094	0.506	20.135582	-98.885998
T. Der. San Agustín Tlaxiaca	15.36	3	2	9311	2.2	89.1	1.9	3.6	0.9	0.9	0.6	0.5	0.3	91.3	1.9	6.8	0.094	0.506	20.135221	-98.886094
Actopan	34.13	1	1	10674	7.0	82.4	2.1	4.8	1.1	1.5	0.7	0.3	0.1	89.4	2.1	8.5	0.097	0.540	20.267462	-98.948430
Actopan	34.13	1	2	12543	7.0	82.4	2.0	4.8	1.1	1.5	0.7	0.4	0.1	89.4	2.0	8.6	0.104	0.540	20.267329	-98.948622

HIDALGO

3 CARR: Ent. Colonia - Portezuelo

CLAVE: 13257

RUTA: MEX-085

AÑO: 2020

LUGAR	ESTACION				CLASIFICACION VEHICULAR EN PORCIENTO													COORDENADAS		
	KM	TE	SC	TDPA	M	A	B	C2	C3	T3S2	T3S3	T3S2R4	OTROS	A	B	C	K'	D	LATITUD	LONGITUD
Actopan	34.13	3	1	7258	6.1	82.1	1.3	5.2	1.4	2.5	0.9	0.3	0.2	88.2	1.3	10.5	0.096	0.521	20.271211	-98.950249
Actopan	34.13	3	2	6661	7.3	81.8	1.4	5.3	1.1	1.8	0.8	0.3	0.2	89.1	1.4	9.5	0.088	0.521	20.271263	-98.950002
T. Izq. Tula	68.20	1	1	5978	6.1	81.5	1.5	6.2	1.5	2.2	0.6	0.3	0.1	87.6	1.5	10.9	0.088	0.516	20.441615	-99.170268
T. Izq. Tula	68.20	1	2	5597	6.9	81.1	1.5	5.0	1.8	2.4	0.8	0.4	0.1	88.0	1.5	10.5	0.103	0.516	20.441476	-99.170347
Ixmiquilpan	75.20	1	1	8699	7.2	80.2	1.6	5.0	2.1	2.1	1.3	0.3	0.2	87.4	1.6	11.0	0.085	0.520	20.476187	-99.213829
Ixmiquilpan	75.20	1	2	9414	7.1	82.6	1.3	5.0	1.4	1.4	0.7	0.3	0.2	89.7	1.3	9.0	0.093	0.520	20.476255	-99.213768
Ixmiquilpan	75.20	3	1	6704	3.1	90.9	0.9	1.0	0.8	0.9	0.9	0.8	0.7	94.0	0.9	5.1	0.092	0.507	20.477720	-99.221997
Ixmiquilpan	75.20	3	2	6517	7.2	86.9	0.8	0.9	0.8	0.9	0.9	0.9	0.7	94.1	0.8	5.1	0.081	0.507	20.477714	-99.221995
Portezuelo	82.00																			

4 CARR: Ent. Jorobas - Tula

CLAVE: 00159

RUTA: MEX-087

AÑO: 2020

LUGAR	ESTACION				CLASIFICACION VEHICULAR EN PORCIENTO													COORDENADAS		
	KM	TE	SC	TDPA	M	A	B	C2	C3	T3S2	T3S3	T3S2R4	OTROS	A	B	C	K'	D	LATITUD	LONGITUD
T. C. México - Querétaro (Cuota)	0.00	3	1	15205	7.3	77.7	2.3	4.9	2.2	3.7	1.0	0.8	0.1	85.0	2.3	12.7	0.080	0.508	19.826201	-99.248356
T. C. México - Querétaro (Cuota)	0.00	3	2	14755	7.6	77.2	2.3	5.2	2.1	3.8	1.0	0.7	0.1	84.8	2.3	12.9	0.085	0.508	19.826283	-99.248530
Lim. Edos. Term. Méx. Ppia. Hgo.	5.90																			
T. Der. Atotonilco	21.50	1	1	6492	1.5	82.1	1.1	6.7	2.5	3.6	1.7	0.6	0.2	83.6	1.1	15.3	0.100	0.507	20.020207	-99.247936
T. Der. Atotonilco	21.50	1	2	6687	1.7	82.9	1.1	5.6	2.5	3.4	1.9	0.7	0.2	84.6	1.1	14.3	0.124	0.507	20.020213	-99.248126
Tula de Allende	37.70	1	1	12816	3.0	87.2	1.0	3.4	1.4	1.8	1.0	0.8	0.4	90.2	1.0	8.8	0.087	0.512	20.053023	-99.334095
Tula de Allende	37.70	1	2	13442	2.7	85.3	1.1	4.4	1.9	2.0	1.3	0.7	0.6	88.0	1.1	10.9	0.109	0.512	20.053037	-99.334097

5 CARR: México - Pachuca (Libre)

CLAVE: 00431

RUTA: MEX-085

AÑO: 2020

LUGAR	ESTACION				CLASIFICACION VEHICULAR EN PORCIENTO													COORDENADAS		
	KM	TE	SC	TDPA	M	A	B	C2	C3	T3S2	T3S3	T3S2R4	OTROS	A	B	C	K'	D	LATITUD	LONGITUD
México	0.00																			
Lim. Edos. Term. CDMX Ppia. Méx.	9.89																			
T. Der. Pirámides	26.93	1	1	11063	5.0	85.8	0.4	4.3	0.3	2.0	1.3	0.2	0.7	90.8	0.4	8.8	0.067	0.504	19.620741	-99.005242
T. Der. Pirámides	26.93	1	2	10905	5.0	85.5	0.4	4.3	0.3	2.1	1.3	0.3	0.8	90.5	0.4	9.1	0.055	0.504	19.620733	-99.005272
Venta de Carpio	27.00	3	1	26388	3.7	87.6	0.7	4.6	0.8	1.2	1.1	0.1	0.2	91.3	0.7	8.0	0.073	0.504	19.623435	-99.003875
Venta de Carpio	27.00	3	2	25882	3.7	87.6	0.7	4.7	0.8	1.2	1.0	0.1	0.2	91.3	0.7	8.0	0.064	0.504	19.623443	-99.004004
T. Der. Aut. México - Pachuca (Cuota)	37.52	1	1	30527	3.7	90.4	0.2	4.3	0.6	0.5	0.3	0.0	0.0	94.1	0.2	5.7	0.075	0.504	19.706517	-98.977281
T. Der. Aut. México - Pachuca (Cuota)	37.52	1	2	31063	3.8	90.3	0.2	4.3	0.6	0.5	0.3	0.0	0.0	94.1	0.2	5.7	0.076	0.504	19.706578	-98.977404
T. Izq. Zumpango	44.68	1	1	14716	3.6	83.4	0.9	8.5	1.0	1.1	1.0	0.2	0.3	87.0	0.9	12.1	0.077	0.502	19.765111	-98.973401

HIDALGO

5 CARR: México - Pachuca (Libre)

CLAVE: 00431

RUTA: MEX-085

AÑO: 2020

LUGAR	ESTACION				CLASIFICACION VEHICULAR EN PORCIENTO										COORDENADAS					
	KM	TE	SC	TDPA	M	A	B	C2	C3	T3S2	T3S3	T3S2R4	OTROS	A	B	C	K'	D	LATITUD	LONGITUD
T. Izq. Zumpango	44.68	1	2	14611	5.5	81.4	1.1	8.0	1.2	1.1	1.0	0.3	0.4	86.9	1.1	12.0	0.072	0.502	19.765110	-98.973380
T. Izq. Zumpango	44.68	3	1	9831	4.7	78.8	1.5	10.5	2.0	1.2	0.7	0.3	0.3	83.5	1.5	15.0	0.081	0.502	19.765558	-98.973379
T. Izq. Zumpango	44.68	3	2	9911	6.1	79.1	1.5	9.3	1.9	1.1	0.6	0.2	0.2	85.2	1.5	13.3	0.073	0.502	19.765556	-98.973447
Lim. Edos. Term. Méx. Ppia. Hgo.	49.30																			
Tizayuca	52.50	1	1	8254	7.1	80.7	2.5	7.1	1.0	0.8	0.4	0.1	0.3	87.8	2.5	9.7	0.083	0.512	19.827828	-98.977966
Tizayuca	52.50	1	2	7882	5.6	81.5	2.6	7.6	1.1	0.9	0.4	0.1	0.2	87.1	2.6	10.3	0.076	0.512	19.827804	-98.978240
Tizayuca	52.50	3	1	14147	5.4	83.2	1.6	5.5	1.2	1.1	1.5	0.3	0.2	88.6	1.6	9.8	0.084	0.500	19.855718	-98.970843
Tizayuca	52.50	3	2	14128	5.7	82.8	1.7	5.2	1.2	1.2	1.7	0.3	0.2	88.5	1.7	9.8	0.083	0.500	19.855775	-98.970918
T. C. México - Tizayuca (Cuota)	61.00	1	1	6761	5.0	82.7	2.9	6.6	1.1	0.7	0.4	0.2	0.4	87.7	2.9	9.4	0.080	0.528	19.888528	-98.937125
T. C. México - Tizayuca (Cuota)	61.00	1	2	6047	4.2	84.1	3.1	5.6	1.0	0.8	0.5	0.2	0.5	88.3	3.1	8.6	0.074	0.528	19.888673	-98.937260
T. C. México - Tizayuca (Cuota)	61.00	3	1	20605	0.6	87.0	2.7	5.8	1.3	1.6	0.6	0.3	0.1	87.6	2.7	9.7	0.084	0.508	19.888628	-98.936487
T. C. México - Tizayuca (Cuota)	61.00	3	2	21255	0.7	85.6	3.1	6.4	1.4	1.7	0.7	0.3	0.1	86.3	3.1	10.6	0.106	0.508	19.889050	-98.936911
X. C. Arco Norte de La Ciudad de México	64.20	1	1	21229	0.5	86.4	2.6	6.2	1.4	1.9	0.5	0.4	0.1	86.9	2.6	10.5	0.084	0.525	19.929629	-98.892573
X. C. Arco Norte de La Ciudad de México	64.20	1	2	19198	0.5	86.4	2.6	6.2	1.4	1.9	0.5	0.4	0.1	86.9	2.6	10.5	0.078	0.525	19.929829	-98.892812
X. C. Arco Norte de La Ciudad de México	64.20	3	1	19320	0.8	86.4	3.8	5.6	0.8	1.6	0.5	0.3	0.2	87.2	3.8	9.0	0.087	0.512	19.930093	-98.891966
X. C. Arco Norte de La Ciudad de México	64.20	3	2	20271	0.8	84.9	4.3	6.4	0.9	1.6	0.6	0.3	0.2	85.7	4.3	10.0	0.085	0.512	19.930215	-98.892255
Ent. Colonia	83.97	1	1	38494	1.1	90.0	2.0	4.5	0.5	1.3	0.4	0.1	0.1	91.1	2.0	6.9	0.082	0.520	20.057028	-98.785922
Ent. Colonia	83.97	1	2	35190	0.8	89.3	2.3	5.1	0.5	1.4	0.4	0.1	0.1	90.1	2.3	7.6	0.091	0.520	20.057252	-98.786342
X. C. Libramiento de Pachuca	86.50	1	1	28318	0.8	88.8	3.2	3.8	0.7	1.2	1.0	0.3	0.2	89.6	3.2	7.2	0.085	0.502	20.100000	-98.763767
X. C. Libramiento de Pachuca	86.50	1	2	28132	0.6	87.6	3.6	4.4	0.8	1.4	1.1	0.3	0.2	88.2	3.6	8.2	0.071	0.502	20.100103	-98.763887
Pachuca	94.00																			

6 CARR: Pachuca - Cd. Sahagún

CLAVE: 13088

RUTA: MEX

AÑO: 2020

LUGAR	ESTACION				CLASIFICACION VEHICULAR EN PORCIENTO										COORDENADAS					
	KM	TE	SC	TDPA	M	A	B	C2	C3	T3S2	T3S3	T3S2R4	OTROS	A	B	C	K'	D	LATITUD	LONGITUD
Pachuca	0.00	3	1	27743	1.3	91.9	0.4	4.3	0.8	0.9	0.2	0.1	0.1	93.2	0.4	6.4	0.099	0.503	20.085850	-98.745694
Pachuca	0.00	3	2	27462	1.3	91.9	0.4	4.3	0.8	0.8	0.3	0.1	0.1	93.2	0.4	6.4	0.085	0.503	20.085860	-98.745568
T. Der. Palma Gorda	11.00	1	1	28194	4.4	88.5	0.7	4.3	0.8	0.8	0.3	0.1	0.1	92.9	0.7	6.4	0.112	0.514	20.037710	-98.731827
T. Der. Palma Gorda	11.00	1	2	26482	4.5	88.3	0.8	4.3	0.8	0.8	0.3	0.1	0.1	92.8	0.8	6.4	0.098	0.514	20.037742	-98.731750
X. C. Venta de Carpio - Tulancingo	29.40	1	1	7661	1.4	86.8	1.0	6.3	1.4	1.8	1.0	0.2	0.1	88.2	1.0	10.8	0.090	0.510	19.878940	-98.664377
X. C. Venta de Carpio - Tulancingo	29.40	1	2	7347	0.5	89.0	0.9	5.7	1.2	1.6	0.9	0.2	0.0	89.5	0.9	9.6	0.087	0.510	19.878960	-98.664290
X. C. Venta de Carpio - Tulancingo	29.40	3	1	5902	0.6	90.1	1.1	4.3	1.2	1.4	0.5	0.4	0.4	90.7	1.1	8.2	0.115	0.504	19.876008	-98.663294
X. C. Venta de Carpio - Tulancingo	29.40	3	2	5995	1.1	89.7	1.7	3.8	1.7	1.2	0.2	0.3	0.3	90.8	1.7	7.5	0.106	0.504	19.875995	-98.663200
T. Izq. Tepeapulco	40.00	1	1	5522	1.2	89.6	0.6	4.7	1.4	1.7	0.6	0.2	0.0	90.8	0.6	8.6	0.097	0.534	19.825894	-98.591947

HIDALGO

6 CARR: Pachuca - Cd. Sahagún

CLAVE: 13088

RUTA: MEX

AÑO: 2020

LUGAR	ESTACION				CLASIFICACION VEHICULAR EN PORCIENTO										COORDENADAS					
	KM	TE	SC	TDPA	M	A	B	C2	C3	T3S2	T3S3	T3S2R4	OTROS	A	B	C	K'	D	LATITUD	LONGITUD
T. Izq. Tepeapulco	40.00	1	2	4818	0.9	88.7	0.8	4.5	1.7	2.0	1.0	0.2	0.2	89.6	0.8	9.6	0.095	0.534	19.825989	-98.591907
T. Izq. Tepeapulco	40.00	3	1	4824	0.8	90.5	1.1	3.1	1.4	1.9	0.8	0.3	0.1	91.3	1.1	7.6	0.091	0.530	19.822902	-98.588167
T. Izq. Tepeapulco	40.00	3	2	4284	0.7	90.1	1.6	3.2	1.0	2.1	0.9	0.2	0.2	90.8	1.6	7.6	0.107	0.530	19.822952	-98.588076
Cd. Sahagún	44.70																			

7 CARR: Pachuca - Tempoal

CLAVE: 00113

RUTA: MEX-105

AÑO: 2020

LUGAR	ESTACION				CLASIFICACION VEHICULAR EN PORCIENTO										COORDENADAS					
	KM	TE	SC	TDPA	M	A	B	C2	C3	T3S2	T3S3	T3S2R4	OTROS	A	B	C	K'	D	LATITUD	LONGITUD
Pachuca	0.00	3	0	3813	0.7	96.8	0.7	1.8	0.0	0.0	0.0	0.0	0.0	97.5	0.7	1.8	0.097	0.513	20.125410	-98.723796
T. Der. Omitlán de Juárez (1º Acceso)	18.20	1	0	11276	0.6	91.4	1.3	3.7	1.2	0.8	0.8	0.0	0.2	92.0	1.3	6.7	0.087	0.507	20.164960	-98.655381
T. Der a Huasca	22.20																			
T. Libramiento de Atotonilco El Grande	30.25																			
Atotonilco El Grande	33.85	3	1	4883	1.0	88.8	1.4	6.1	1.3	0.8	0.6	0.0	0.0	89.8	1.4	8.8	0.096	0.508	20.286848	-98.669567
Atotonilco El Grande	33.85	3	2	5048	0.9	88.9	1.4	6.0	1.4	0.8	0.6	0.0	0.0	89.8	1.4	8.8	0.100	0.508	20.286818	-98.669575
T. Libramiento de Atotonilco El Grande	35.45																			
Cerro Colorado	48.15																			
T. Izq. Metztlán	63.70	1	0	4878	1.0	85.8	1.7	8.3	1.2	1.0	1.0	0.0	0.0	86.8	1.7	11.5	0.089	0.510	20.469011	-98.668219
T. Izq. Metztlán	63.70	3	0	3805	0.9	84.3	1.7	6.7	1.6	2.8	0.9	0.2	0.9	85.2	1.7	13.1	0.086	0.510	20.469000	-98.668253
Metzquitlán	75.00	1	0	4277	1.3	84.7	2.3	6.7	1.5	2.0	1.1	0.2	0.2	86.0	2.3	11.7	0.089	0.511	20.530897	-98.639808
T. Izq. Zacualtipán	96.50	1	0	7062	2.1	87.7	1.4	6.0	0.8	0.8	0.9	0.0	0.3	89.8	1.4	8.8	0.087	0.503	20.650457	-98.648310
T. Izq. Zacualtipán	96.50	3	0	5090	2.6	84.5	2.0	7.3	1.4	0.9	0.8	0.2	0.3	87.1	2.0	10.9	0.094	0.504	20.650451	-98.648287
X. C. Molango - Xochicoatlán	129.80	1	0	3149	2.4	83.0	2.2	5.8	1.7	2.9	1.4	0.2	0.4	85.4	2.2	12.4	0.093	0.508	20.790198	-98.725165
X. C. Molango - Xochicoatlán	129.80	3	0	2954	2.4	84.2	2.2	4.8	1.4	2.7	1.1	0.3	0.9	86.6	2.2	11.2	0.093	0.516	20.790209	-98.725165
T. Izq. Tepehuacán de Guerrero	157.70	1	0	2395	2.1	81.8	3.1	5.9	2.4	2.9	1.2	0.3	0.3	83.9	3.1	13.0	0.092	0.506	20.965298	-98.681629
Tehuacán	199.20	1	0	2395	4.7	80.4	2.0	5.4	1.9	2.7	1.7	0.4	0.8	85.1	2.0	12.9	0.095	0.519	21.053760	-98.510445
T. Izq. Huejutla (1º Acceso)	214.60	1	1	5139	3.6	83.6	0.6	3.5	0.5	4.6	2.0	0.6	1.0	87.2	0.6	12.2	0.103	0.507	21.123156	-98.412838
T. Izq. Huejutla (1º Acceso)	214.60	1	2	5294	3.7	83.6	0.6	3.5	0.5	4.6	1.9	0.6	1.0	87.3	0.6	12.1	0.100	0.507	21.123156	-98.412838
T. Izq. Huejutla (1º Acceso)	214.60	3	0	9529	4.4	81.1	0.9	5.0	0.6	5.4	1.1	0.6	0.9	85.5	0.9	13.6	0.085	0.508	21.123148	-98.412747
Lim. Edos. Term. Hgo. Ppia. Ver.	217.20																			
T. C. Alazán - Canoas	260.68	1	0	2221	5.6	77.1	1.6	10.5	1.9	1.7	1.2	0.2	0.2	82.7	1.6	15.7	0.092	0.559	21.492335	-98.356321



HIDALGO

8 CARR: Pachuca - Tuxpam

CLAVE: 00608

RUTA: MEX-130

AÑO: 2020

LUGAR	ESTACION				CLASIFICACION VEHICULAR EN PORCIENTO										COORDENADAS					
	KM	TE	SC	TDPA	M	A	B	C2	C3	T3S2	T3S3	T3S2R4	OTROS	A	B	C	K'	D	LATITUD	LONGITUD
Pachuca	0.00																			
X. C. Libramiento de Pachuca	2.60	3	1	25087	2.4	94.5	0.3	2.0	0.3	0.2	0.1	0.1	0.1	96.9	0.3	2.8	0.086	0.513	20.103857	-98.719459
X. C. Libramiento de Pachuca	2.60	3	2	26383	2.4	94.6	0.2	2.0	0.3	0.2	0.1	0.1	0.1	97.0	0.2	2.8	0.078	0.513	20.103889	-98.719383
T. Izq. Pachuquilla (1º Acceso)	7.00	1	1	18156	2.1	90.8	0.5	4.9	0.7	0.4	0.3	0.2	0.1	92.9	0.5	6.6	0.086	0.506	20.075633	-98.707746
T. Izq. Pachuquilla (1º Acceso)	7.00	1	2	18581	2.1	90.8	0.5	4.9	0.7	0.4	0.3	0.2	0.1	92.9	0.5	6.6	0.082	0.506	20.075762	-98.707600
T. Izq. Pachuquilla (2º Acceso)	10.50	1	1	10201	1.3	88.0	0.9	7.2	1.1	0.6	0.4	0.3	0.2	89.3	0.9	9.8	0.080	0.516	20.066748	-98.673619
T. Izq. Pachuquilla (2º Acceso)	10.50	1	2	9583	1.3	88.1	0.9	7.2	1.1	0.6	0.3	0.3	0.2	89.4	0.9	9.7	0.080	0.516	20.066657	-98.673631
T. Der. Cd. Sahagún	16.59	1	1	9090	1.6	90.2	0.7	5.6	0.9	0.5	0.2	0.2	0.1	91.8	0.7	7.5	0.096	0.520	20.051190	-98.618994
T. Der. Cd. Sahagún	16.59	1	2	8396	1.6	90.4	0.7	5.6	0.9	0.4	0.2	0.1	0.1	92.0	0.7	7.3	0.107	0.520	20.051731	-98.618747
T. Der. Cd. Sahagún	16.59	3	1	6892	1.6	89.9	0.8	5.4	0.9	0.5	0.3	0.4	0.2	91.5	0.8	7.7	0.078	0.510	20.051122	-98.618808
T. Der. Cd. Sahagún	16.59	3	2	6626	1.6	89.9	0.9	5.4	0.8	0.5	0.3	0.4	0.2	91.5	0.9	7.6	0.082	0.510	20.051691	-98.618577
T. C. Venta de Carpio - Tulancingo	36.45	1	1	8418	1.2	86.8	1.1	7.1	2.0	0.7	0.4	0.4	0.3	88.0	1.1	10.9	0.077	0.517	20.056104	-98.457297
T. C. Venta de Carpio - Tulancingo	36.45	1	2	7873	1.3	86.6	1.1	7.1	2.0	0.7	0.5	0.4	0.3	87.9	1.1	11.0	0.087	0.517	20.056226	-98.457297
T. C. Venta de Carpio - Tulancingo	36.45	3	1	14042	1.7	88.0	1.0	6.0	1.7	0.8	0.4	0.2	0.2	89.7	1.0	9.3	0.083	0.503	20.059511	-98.447923
T. C. Venta de Carpio - Tulancingo	36.45	3	2	14224	1.7	88.1	1.0	6.0	1.6	0.8	0.4	0.2	0.2	89.8	1.0	9.2	0.083	0.503	20.059656	-98.447996
T. Izq. Libramiento de Tulancingo	59.33	3	1	5886	2.0	86.9	0.5	7.6	1.3	0.5	0.6	0.3	0.3	88.9	0.5	10.6	0.110	0.509	20.150941	-98.285573
T. Izq. Libramiento de Tulancingo	59.33	3	2	6094	2.0	86.9	0.5	7.5	1.4	0.5	0.6	0.4	0.2	88.9	0.5	10.6	0.106	0.509	20.150991	-98.285657
T. Izq. Huayacocotla	60.16	3	0	10772	2.1	85.7	3.4	5.3	1.0	0.9	0.5	0.7	0.4	87.8	3.4	8.8	0.068	0.513	20.153391	-98.284055
T. Izq. Honey	63.00	3	0	8923	1.4	88.7	0.5	6.8	1.1	0.5	0.4	0.3	0.3	90.1	0.5	9.4	0.102	0.503	20.162010	-98.263167
Lim. Edos. Term. Hgo. Ppia. Pue.	83.18																			
T. Der. Huauchinango (1º Acceso)	94.00	1	0	4560	2.4	79.2	1.4	10.9	0.8	3.4	0.8	0.4	0.7	81.6	1.4	17.0	0.088	0.509	20.169598	-98.073221
T. Der. Huauchinango (2º Acceso)	100.00	3	0	6772	4.6	86.9	1.6	4.3	1.4	0.6	0.3	0.3	0.0	91.5	1.6	6.9	0.087	0.503	20.192081	-98.036162
Villa Ávila Camacho	141.75	1	0	2324	5.1	73.2	3.3	14.5	2.2	1.0	0.4	0.3	0.0	78.3	3.3	18.4	0.088	0.502	20.388198	-97.880359
Villa Ávila Camacho	141.75	3	0	3731	4.9	83.7	2.4	6.3	1.6	0.7	0.3	0.1	0.0	88.6	2.4	9.0	0.092	0.502	20.388209	-97.880342
Piedras Negras	158.70	1	0	4038	8.1	71.4	2.5	7.7	4.3	2.5	0.7	2.6	0.2	79.5	2.5	18.0	0.087	0.507	20.440280	-97.761123
T. Izq. Venustiano Carranza	174.10	3	0	3779	3.3	75.3	4.4	7.8	3.7	3.7	1.3	0.4	0.1	78.6	4.4	17.0	0.088	0.510	20.478083	-97.647700
Lim. Edos. Term. Pue. Ppia. Ver.	180.00																			
T. Der. Poza Rica	197.00	1	0	15936	2.1	77.1	2.1	4.3	1.0	8.8	2.7	1.1	0.8	79.2	2.1	18.7	0.088	0.504	20.544818	-97.476484
T. Der. Poza Rica	197.00	3	0	15789	2.1	80.2	2.2	5.0	1.1	5.7	2.2	0.7	0.8	82.3	2.2	15.5	0.094	0.503	20.544881	-97.476380
Tihuatlán	217.00	1	0	9900	1.1	96.3	0.1	0.4	0.2	0.8	0.4	0.3	0.4	97.4	0.1	2.5	0.096	0.507	20.714684	-97.533131
Tihuatlán	217.00	3	0	2360	3.4	78.1	0.4	12.1	1.0	2.7	1.6	0.4	0.3	81.5	0.4	18.1	0.083	0.508	20.714697	-97.533167
T. C. Tihuatlán - Tuxpam (Cuota)	232.50	1	0	1999	8.2	75.1	1.0	8.6	1.4	3.1	1.9	0.4	0.3	83.3	1.0	15.7	0.095	0.500	20.819181	-97.478931

HIDALGO

9 CARR: Portezuelo - Cd. Valles

CLAVE: 00023

RUTA: MEX-085

AÑO: 2020

LUGAR	ESTACION				CLASIFICACION VEHICULAR EN PORCIENTO										COORDENADAS					
	KM	TE	SC	TDPA	M	A	B	C2	C3	T3S2	T3S3	T3S2R4	OTROS	A	B	C	K'	D	LATITUD	LONGITUD
Portezuelo	0.00	3	0	5184	4.2	88.8	1.4	2.8	0.9	0.9	0.7	0.2	0.1	93.0	1.4	5.6	0.090	0.505	20.487283	-99.297336
T. Der. Tasquillo (2° Acceso)	10.50	1	0	4204	5.4	81.6	0.6	6.7	1.2	2.5	1.2	0.2	0.6	87.0	0.6	12.4	0.084	0.505	20.551959	-99.324920
T. Izq. Zimapán (1° Acceso)	32.00	1	0	5236	3.7	88.6	1.5	3.5	0.6	0.7	0.9	0.2	0.3	92.3	1.5	6.2	0.083	0.505	20.704879	-99.335960
T. Izq. Zimapán (1° Acceso)	32.00	3	0	2073	4.6	82.8	1.4	6.6	1.5	1.7	0.9	0.2	0.3	87.4	1.4	11.2	0.082	0.532	20.704911	-99.335984
La Estancia	41.00	3	0	1875	3.5	83.5	1.3	7.5	1.3	1.5	0.8	0.3	0.3	87.0	1.3	11.7	0.093	0.504	20.777212	-99.310842
Trancas	51.00	3	0	1468	3.6	79.2	1.9	9.2	1.8	1.7	1.7	0.4	0.5	82.8	1.9	15.3	0.087	0.505	20.799217	-99.266012
Jacala	98.60	3	0	2098	7.2	78.9	0.9	9.9	0.8	1.4	0.3	0.3	0.3	86.1	0.9	13.0	0.085	0.514	21.008342	-99.190025
Zacate Grande	143.10	1	0	859	3.7	83.5	2.8	7.0	1.3	1.0	0.7	0.0	0.0	87.2	2.8	10.0	0.084	0.508	21.117105	-99.002862
T. Izq. Pisaflares	154.00	3	0	1905	6.3	83.3	1.3	6.3	1.5	0.6	0.5	0.1	0.1	89.6	1.3	9.1	0.093	0.505	21.154376	-98.946166
Lim. Edos. Term. Hgo. Ppia. S. L. P.	168.63																			
Tamazunchale	192.80	1	0	4957	18.4	67.8	1.7	6.5	0.9	3.1	0.8	0.2	0.6	86.2	1.7	12.1	0.088	0.503	21.259463	-98.788169
T. Izq. Xilitla	228.75	1	0	4609	7.1	76.0	1.6	8.2	1.9	2.7	1.0	0.6	0.9	83.1	1.6	15.3	0.095	0.502	21.445243	-98.928029
T. Izq. Xilitla	228.75	3	0	4157	6.1	75.8	1.8	9.4	2.3	3.2	0.8	0.1	0.5	81.9	1.8	16.3	0.090	0.501	21.445211	-98.928041
T. Izq. Aquismón	252.50	1	0	4682	4.6	74.4	1.8	10.3	2.3	3.9	1.2	0.6	0.9	79.0	1.8	19.2	0.094	0.516	21.623451	-98.986848
Agua Hedionda	265.00	1	0	4329	3.5	77.8	1.8	8.9	2.9	3.2	1.1	0.3	0.5	81.3	1.8	16.9	0.094	0.511	21.731431	-98.964346
X. C. Rayón - Ent. Tamuín (Cuota)	286.41	1	0	6584	6.5	78.6	1.6	5.5	3.8	1.9	0.9	0.4	0.8	85.1	1.6	13.3	0.090	0.500	21.903621	-98.950223
Cd. Valles	300.00	1	1	4864	1.3	79.5	2.1	8.3	1.8	4.9	0.8	0.5	0.8	80.8	2.1	17.1	0.099	0.510	21.981449	-99.005618
Cd. Valles	300.00	1	2	5060	1.3	79.5	2.1	8.2	1.8	4.9	0.8	0.5	0.9	80.8	2.1	17.1	0.094	0.510	21.981449	-99.005618

10 CARR: Portezuelo - Palmillas

CLAVE: 00194

RUTA: MEX-045

AÑO: 2020

LUGAR	ESTACION				CLASIFICACION VEHICULAR EN PORCIENTO										COORDENADAS					
	KM	TE	SC	TDPA	M	A	B	C2	C3	T3S2	T3S3	T3S2R4	OTROS	A	B	C	K'	D	LATITUD	LONGITUD
Portezuelo	0.00	3	1	3626	2.0	73.4	2.8	9.7	2.1	6.0	2.6	1.0	0.4	75.4	2.8	21.8	0.088	0.514	20.486124	-99.298305
Portezuelo	0.00	3	2	3426	1.9	71.6	3.4	9.3	2.6	6.7	3.0	1.0	0.5	73.5	3.4	23.1	0.084	0.514	20.485980	-99.298334
Jonacapa	29.41	3	0	4325	2.4	75.9	2.2	7.4	3.1	5.7	2.3	0.8	0.2	78.3	2.2	19.5	0.098	0.501	20.436853	-99.534074
Huichapan	45.10	1	1	3536	2.6	69.0	3.6	7.1	2.7	7.6	2.8	3.8	0.8	71.6	3.6	24.8	0.085	0.508	20.380345	-99.650289
Huichapan	45.10	1	2	3649	2.5	68.2	3.7	7.2	2.8	7.7	3.1	4.0	0.8	70.7	3.7	25.6	0.097	0.508	20.380344	-99.650284
T. Izq. Nopala	56.15	1	0	7068	2.4	78.7	2.4	6.9	1.9	1.9	2.1	2.2	1.5	81.1	2.4	16.5	0.088	0.503	20.314975	-99.715985
T. Izq. Nopala	56.15	3	0	5930	1.4	74.0	2.9	7.9	2.7	4.2	3.4	2.4	1.1	75.4	2.9	21.7	0.080	0.508	20.314217	-99.716557
Lim. Edos. Term. Hgo. Ppia. Qro.	71.40																			
Palmillas	80.00	1	1	4495	1.2	78.7	2.1	9.7	1.9	2.1	2.3	1.5	0.5	79.9	2.1	18.0	0.103	0.519	20.327083	-99.934526
Palmillas	80.00	1	2	4857	1.0	79.0	2.1	9.5	2.0	2.2	2.2	1.5	0.5	80.0	2.1	17.9	0.110	0.519	20.326933	-99.934485

HIDALGO

11 CARR: Tamazunchale - San Felipe Orizatlán

CLAVE: 00609

RUTA: MEX-085

AÑO: 2020

LUGAR	ESTACION				CLASIFICACION VEHICULAR EN PORCIENTO										COORDENADAS					
	KM	TE	SC	TDPA	M	A	B	C2	C3	T3S2	T3S3	T3S2R4	OTROS	A	B	C	K'	D	LATITUD	LONGITUD
T. C. Portezuelo - Cd. Valles	0.00	3	0	10421	23.0	67.0	0.4	7.3	0.6	0.4	1.2	0.0	0.1	90.0	0.4	9.6	0.094	0.517	21.259437	-98.788156
Lim. Edos. Term. S. L. P. Ppia. Hgo.	18.50																			
San Felipe Orizatlán	27.10	1	0	2518	16.0	70.5	1.9	9.0	1.5	0.5	0.6	0.0	0.0	86.5	1.9	11.6	0.091	0.507	21.164943	-98.613257

12 CARR: Venta de Carpio - T. C. (Pachuca - Tuxpam)

CLAVE: 00455

RUTA: MEX-132

AÑO: 2020

LUGAR	ESTACION				CLASIFICACION VEHICULAR EN PORCIENTO										COORDENADAS					
	KM	TE	SC	TDPA	M	A	B	C2	C3	T3S2	T3S3	T3S2R4	OTROS	A	B	C	K'	D	LATITUD	LONGITUD
T. C. México - Pachuca (Libre)	0.00																			
T. Der. Texcoco	6.42	3	1	11658	3.9	86.3	0.3	5.6	1.6	1.8	0.4	0.1	0.0	90.2	0.3	9.5	0.096	0.504	19.611013	-98.948183
T. Der. Texcoco	6.42	3	2	11863	4.7	85.9	0.3	5.7	1.5	1.3	0.5	0.1	0.0	90.6	0.3	9.1	0.075	0.504	19.611101	-98.948176
Tepexpan	7.57	3	1	9828	6.4	86.7	0.3	2.9	2.0	1.1	0.6	0.0	0.0	93.1	0.3	6.6	0.079	0.520	19.617036	-98.935887
Tepexpan	7.57	3	2	9071	4.5	87.5	0.3	3.7	1.7	1.4	0.8	0.1	0.0	92.0	0.3	7.7	0.084	0.520	19.617053	-98.935883
Acolman	12.42	1	0	12077	2.3	89.4	0.5	5.0	1.1	1.1	0.4	0.0	0.2	91.7	0.5	7.8	0.076	0.501	19.636421	-98.912536
Teotihuacán	20.70	3	0	21026	5.1	87.4	0.2	4.1	1.4	0.6	0.8	0.1	0.3	92.5	0.2	7.3	0.079	0.507	19.685586	-98.868456
T. Der. Otumba	31.79	1	0	14412	4.0	85.2	1.0	6.7	0.9	0.8	0.7	0.3	0.4	89.2	1.0	9.8	0.079	0.503	19.718166	-98.801042
T. Der. Otumba	31.79	3	0	6473	2.6	82.9	1.1	6.6	1.4	3.0	0.9	0.7	0.8	85.5	1.1	13.4	0.079	0.526	19.718627	-98.799218
Ent. Santiago Tolman	34.09																			
X. C. Tizayuca - Otumba	37.85	1	1	10895	2.1	70.5	2.7	7.7	3.6	7.2	3.2	1.7	1.3	72.6	2.7	24.7	0.124	0.528	19.752134	-98.756158
X. C. Tizayuca - Otumba	37.85	1	2	12204	1.4	74.2	3.8	9.0	2.4	4.7	1.9	1.7	0.9	75.6	3.8	20.6	0.138	0.528	19.752215	-98.756240
X. C. Tizayuca - Otumba	37.85	3	1	8025	1.1	72.0	3.9	8.5	3.3	5.4	2.6	2.1	1.1	73.1	3.9	23.0	0.066	0.558	19.753795	-98.754548
X. C. Tizayuca - Otumba	37.85	3	2	8266	1.5	78.9	2.9	6.7	2.0	4.1	1.9	1.1	0.9	80.4	2.9	16.7	0.078	0.558	19.753876	-98.754629
X. C. Arco Norte de La Ciudad de México	48.00	1	1	9182	1.1	78.1	2.5	7.5	2.1	5.1	1.8	1.3	0.5	79.2	2.5	18.3	0.097	0.504	19.832000	-98.701948
X. C. Arco Norte de La Ciudad de México	48.00	1	2	9019	1.1	76.0	2.7	8.4	2.9	5.0	1.8	1.5	0.6	77.1	2.7	20.2	0.080	0.504	19.832094	-98.702029
X. C. Arco Norte de La Ciudad de México	48.00	3	1	9788	3.9	75.1	3.2	7.9	2.3	3.4	2.0	1.4	0.8	79.0	3.2	17.8	0.104	0.512	19.835609	-98.698078
X. C. Arco Norte de La Ciudad de México	48.00	3	2	9346	0.8	78.3	3.9	6.8	2.0	3.2	2.8	1.8	0.4	79.1	3.9	17.0	0.102	0.512	19.835515	-98.697982
Lim. Edos. Term. Méx. Ppia. Hgo.	51.00																			
X. C. Pachuca - Cd. Sahagún	54.00	3	1	10062	0.8	78.1	3.2	7.9	4.1	2.4	2.3	0.9	0.3	78.9	3.2	17.9	0.095	0.518	19.878960	-98.661969
X. C. Pachuca - Cd. Sahagún	54.00	3	2	9359	0.9	79.5	2.9	6.7	2.5	3.9	1.6	1.6	0.4	80.4	2.9	16.7	0.096	0.518	19.879000	-98.662010
X. C. Calpulalpan - El Ocote	64.17	1	1	9067	0.8	81.2	2.1	6.8	3.0	3.0	1.4	1.4	0.3	82.0	2.1	15.9	0.088	0.500	19.922288	-98.581254
X. C. Calpulalpan - El Ocote	64.17	1	2	9083	1.0	78.5	2.4	7.5	3.4	3.4	1.7	1.6	0.5	79.5	2.4	18.1	0.109	0.500	19.922375	-98.581354
X. C. Calpulalpan - El Ocote	64.17	3	1	9729	0.9	76.3	2.4	8.5	3.7	4.1	2.1	1.6	0.4	77.2	2.4	20.4	0.123	0.503	19.924131	-98.578847
X. C. Calpulalpan - El Ocote	64.17	3	2	9607	3.0	74.8	2.9	8.3	3.6	3.8	1.7	1.5	0.4	77.8	2.9	19.3	0.089	0.503	19.924246	-98.578926
T. C. Pachuca - Tuxpam	84.08	1	1	10809	0.6	82.0	3.3	5.3	2.5	2.9	1.6	1.1	0.7	82.6	3.3	14.1	0.096	0.538	20.055271	-98.456117
T. C. Pachuca - Tuxpam	84.08	1	2	9271	0.8	80.1	3.7	5.9	2.8	3.2	1.7	1.1	0.7	80.9	3.7	15.4	0.096	0.538	20.055361	-98.456192

HIDALGO

13 CARR: Ent. Tulancingo - Venta Grande (Cuota)

CLAVE: 00026

RUTA: MEX-132D

AÑO: 2020

LUGAR	ESTACION				CLASIFICACION VEHICULAR EN PORCIENTO										COORDENADAS					
	KM	TE	SC	TDPA	M	A	B	C2	C3	T3S2	T3S3	T3S2R4	OTROS	A	B	C	K'	D	LATITUD	LONGITUD
T. C. Pachuca - Tuxpam	0.00																			
T. Izq. Acatlán	7.80	1	0	13608	1.7	75.4	4.5	7.8	3.1	3.4	1.6	2.0	0.5	77.1	4.5	18.4	0.099	0.569	20.106791	-98.403167
T. Izq. Acatlán	7.80	3	0	11305	1.6	72.3	5.2	8.3	2.8	4.2	2.2	2.7	0.7	73.9	5.2	20.9	0.102	0.543	20.109404	-98.396944
Plaza de Cobro San Alejo (Tejocotal)	21.80	1	0	11266	2.2	73.2	4.6	8.7	2.8	3.7	1.9	2.3	0.6	75.4	4.6	20.0	0.099	0.561	20.147492	-98.286277
Plaza de Cobro San Alejo (Tejocotal)	21.80	2	0	7113	0.8	69.2	4.4	4.1	5.1	6.9	2.8	5.5	1.2	70.0	4.4	25.6	0.115	0.500	20.147472	-98.285748
T. C. Tlaxco - Tejocotal (Cuota)	39.60	1	0	9970	1.9	70.1	5.5	11.8	2.7	3.1	2.0	2.4	0.5	72.0	5.5	22.5	0.101	0.547	20.138765	-98.127186

14 CARR: Libramiento Norte de la Ciudad de México (Cuota)

CLAVE: 0902

RUTA: MEX-M40D

AÑO: 2020

LUGAR	ESTACION				CLASIFICACION VEHICULAR EN PORCIENTO										COORDENADAS					
	KM	TE	SC	TDPA	M	A	B	C2	C3	T3S2	T3S3	T3S2R4	OTROS	A	B	C	K'	D	LATITUD	LONGITUD
T. C. Toluca - Palmillas	0.00																			
X. C. Toluca - Palmillas	12.90	1	1	3749	2.6	56.7	10.3	5.6	4.1	12.7	2.3	4.6	1.1	59.3	10.3	30.4	0.093	0.509	19.924835	-99.842015
X. C. Toluca - Palmillas	12.90	1	2	3887	2.6	56.8	10.3	5.5	4.1	12.8	2.2	4.6	1.1	59.4	10.3	30.3	0.103	0.509	19.925054	-99.841996
X. C. Toluca - Palmillas	12.90	3	1	3923	1.8	58.8	9.6	5.1	3.0	13.4	2.1	5.1	1.1	60.6	9.6	29.8	0.097	0.513	19.924834	-99.842010
X. C. Toluca - Palmillas	12.90	3	2	4141	1.7	58.9	9.6	5.4	3.0	13.4	2.0	4.9	1.1	60.6	9.6	29.8	0.104	0.513	19.925054	-99.841993
C. P. Jilotepec	48.70	1	1	3867	1.3	61.2	7.3	6.2	3.1	13.1	1.3	5.2	1.3	62.5	7.3	30.2	0.101	0.515	19.977034	-99.533186
C. P. Jilotepec	48.70	1	2	4114	1.4	61.4	7.2	6.1	3.2	13.2	1.3	5.0	1.2	62.8	7.2	30.0	0.103	0.515	19.977020	-99.533015
C. P. Jilotepec	48.70	3	1	4940	1.5	62.0	7.1	6.1	2.7	13.1	2.4	4.3	0.8	63.5	7.1	29.4	0.088	0.502	19.977014	-99.533015
C. P. Jilotepec	48.70	3	2	4900	1.5	61.8	7.1	6.2	2.7	13.1	2.4	4.2	1.0	63.3	7.1	29.6	0.091	0.502	19.977045	-99.533187
X. C. México - Querétaro	54.00	3	1	7308	1.0	53.6	7.6	5.9	3.1	17.2	3.7	6.4	1.5	54.6	7.6	37.8	0.090	0.507	20.001331	-99.486014
X. C. México - Querétaro	54.00	3	2	7107	1.0	53.4	7.6	5.9	3.2	17.2	3.6	6.5	1.6	54.4	7.6	38.0	0.083	0.507	20.001414	-99.486059
Plaza de Cobro Querétaro	55.00	3	1	7372	0.3	52.1	1.5	4.9	6.7	19.5	4.5	8.2	2.3	52.4	1.5	46.1	0.067	0.500	19.998714	-99.487788
Plaza de Cobro Querétaro	55.00	3	2	7372	0.3	52.1	1.5	4.9	6.7	19.5	4.5	8.2	2.3	52.4	1.5	46.1	0.067	0.500	19.998714	-99.487788
Lim. Edos. Term. Méx. Ppia. Hgo.	60.72																			
X. C. Ent. Tepeji del Río - Tlahuelilpan	79.00	1	1	6797	2.0	51.8	6.9	6.4	4.8	17.4	4.3	5.5	0.9	53.8	6.9	39.3	0.078	0.513	20.099095	-99.283469
X. C. Ent. Tepeji del Río - Tlahuelilpan	79.00	1	2	6451	2.0	52.2	6.9	6.3	4.9	17.3	4.2	5.4	0.8	54.2	6.9	38.9	0.080	0.513	20.099195	-99.283333
X. C. Ent. Tepeji del Río - Tlahuelilpan	79.00	3	1	8958	1.5	60.8	6.1	3.7	3.1	15.2	3.6	5.2	0.8	62.3	6.1	31.6	0.073	0.513	20.099094	-99.283459
X. C. Ent. Tepeji del Río - Tlahuelilpan	79.00	3	2	8492	1.5	60.7	6.0	3.8	3.1	15.1	3.7	5.2	0.9	62.2	6.0	31.8	0.091	0.513	20.099194	-99.283327
X. C. Los Reyes - El Tephé	86.40	1	1	8656	1.2	59.9	4.8	7.4	3.2	13.5	3.6	5.6	0.8	61.1	4.8	34.1	0.071	0.517	20.066622	-99.220743
X. C. Los Reyes - El Tephé	86.40	1	2	8084	1.3	59.8	4.8	7.3	3.1	13.5	3.7	5.7	0.8	61.1	4.8	34.1	0.075	0.517	20.066775	-99.220704
X. C. Los Reyes - El Tephé	86.40	3	1	7863	1.3	58.9	3.7	6.4	3.6	15.1	3.9	6.2	0.9	60.2	3.7	36.1	0.079	0.502	20.066623	-99.220747
X. C. Los Reyes - El Tephé	86.40	3	2	7924	1.4	58.8	3.8	6.3	3.6	15.1	3.9	6.2	0.9	60.2	3.8	36.0	0.078	0.502	20.066776	-99.220706
Lim. Edos. Term. Hgo. Ppia. Méx.	95.75																			
X. C. (Los Reyes - El Tephé) - Tianguistongo	108.60	1	1	8056	1.2	56.4	5.6	6.6	3.3	16.4	3.5	6.1	0.9	57.6	5.6	36.8	0.080	0.502	19.955898	-99.054281

HIDALGO

14 CARR: Libramiento Norte de la Ciudad de México (Cuota)

CLAVE: 0902

RUTA: MEX-M40D

AÑO: 2020

LUGAR	ESTACION				CLASIFICACION VEHICULAR EN PORCIENTO														COORDENADAS	
	KM	TE	SC	TDPA	M	A	B	C2	C3	T3S2	T3S3	T3S2R4	OTROS	A	B	C	K'	D	LATITUD	LONGITUD
X. C. (Los Reyes - El Tephé) - Tianguistongo	108.60	1	2	8000	1.3	56.3	5.5	6.6	3.3	16.4	3.6	6.1	0.9	57.6	5.5	36.9	0.081	0.502	19.956052	-99.054247
X. C. (Los Reyes - El Tephé) - Tianguistongo	108.60	3	1	8670	1.2	58.6	5.4	6.1	3.2	15.2	3.5	6.0	0.8	59.8	5.4	34.8	0.080	0.502	19.955900	-99.054272
X. C. (Los Reyes - El Tephé) - Tianguistongo	108.60	3	2	8608	1.2	58.6	5.4	6.1	3.2	15.2	3.5	6.0	0.8	59.8	5.4	34.8	0.081	0.502	19.956048	-99.054238
Lim. Edos. Term. Méx. Ppia. Hgo.	115.89																			
X. C. México - Pachuca	127.30	1	1	8172	1.5	59.6	6.8	5.5	2.5	14.3	3.3	5.8	0.7	61.1	6.8	32.1	0.078	0.506	19.930009	-98.892865
X. C. México - Pachuca	127.30	1	2	8357	1.5	59.6	6.8	5.5	2.5	14.3	3.3	5.8	0.7	61.1	6.8	32.1	0.079	0.506	19.930178	-98.892736
X. C. México - Pachuca	127.30	3	1	7054	0.9	55.6	5.1	7.5	3.1	15.5	4.3	7.3	0.7	56.5	5.1	38.4	0.079	0.502	19.929674	-98.890614
X. C. México - Pachuca	127.30	3	2	7106	0.9	55.7	5.1	7.5	3.1	15.5	4.2	7.4	0.6	56.6	5.1	38.3	0.079	0.502	19.929465	-98.890693
Lim. Edos. Term. Hgo. Ppia. Méx.	143.98																			
X. C. Venta de Carpio - T. C. (Pachuca - Tulancingo)	151.11	1	1	6933	1.2	52.8	5.5	7.6	3.0	17.7	3.9	7.4	0.9	54.0	5.5	40.5	0.081	0.502	19.835143	-98.702118
X. C. Venta de Carpio - T. C. (Pachuca - Tulancingo)	151.11	1	2	6877	1.2	52.9	5.4	7.6	3.0	17.7	3.9	7.4	0.9	54.1	5.4	40.5	0.080	0.502	19.835237	-98.702060
X. C. Venta de Carpio - T. C. (Pachuca - Tulancingo)	151.11	3	1	5857	1.8	48.2	5.8	7.3	4.3	19.7	4.1	7.9	0.9	50.0	5.8	44.2	0.083	0.502	19.832061	-98.698306
X. C. Venta de Carpio - T. C. (Pachuca - Tulancingo)	151.11	3	2	5804	1.7	48.3	5.8	7.4	4.3	19.7	4.0	7.9	0.9	50.0	5.8	44.2	0.080	0.502	19.832117	-98.698257
X. C. Ent. Tolman - Cd. Sahagún	162.55	1	1	7422	0.9	52.1	5.2	7.7	3.7	17.9	3.9	7.8	0.8	53.0	5.2	41.8	0.080	0.502	19.757668	-98.630059
X. C. Ent. Tolman - Cd. Sahagún	162.55	1	2	7468	0.9	51.7	5.2	7.8	3.7	18.1	3.9	7.9	0.8	52.6	5.2	42.2	0.091	0.502	19.757711	-98.629954
X. C. Ent. Tolman - Cd. Sahagún	162.55	3	1	8229	1.3	52.2	6.6	7.8	3.2	17.4	3.7	6.8	1.0	53.5	6.6	39.9	0.088	0.504	19.754559	-98.628419
X. C. Ent. Tolman - Cd. Sahagún	162.55	3	2	8376	1.3	52.1	6.7	7.8	3.3	17.4	3.7	6.8	0.9	53.4	6.7	39.9	0.090	0.504	19.754730	-98.628261
Lim. Edos. Term. Méx. Ppia. Hgo.	166.53																			
X. C. Calpulallpan - El Ocote	180.39	1	1	7959	1.3	53.3	6.2	7.8	3.6	15.9	3.7	7.4	0.8	54.6	6.2	39.2	0.077	0.503	19.622009	-98.550207
X. C. Calpulallpan - El Ocote	180.39	1	2	7878	1.3	53.2	6.2	7.8	3.6	15.9	3.7	7.5	0.8	54.5	6.2	39.3	0.081	0.503	19.622109	-98.550047
X. C. Calpulallpan - El Ocote	180.39	3	1	6692	0.9	52.4	5.2	7.0	3.5	18.2	4.0	7.8	1.0	53.3	5.2	41.5	0.088	0.500	19.618348	-98.547057
X. C. Calpulallpan - El Ocote	180.39	3	2	6679	0.9	52.5	5.1	6.9	3.6	18.2	3.9	7.8	1.1	53.4	5.1	41.5	0.085	0.500	19.618434	-98.546922
Lim. Edos. Term. Hgo. Ppia. Tlax.	180.98																			
X. C. Los Reyes - Zacatepec	196.70	1	1	7316	3.1	59.7	5.7	3.9	3.5	14.8	3.0	5.5	0.8	62.8	5.7	31.5	0.092	0.510	19.518428	-98.471389
X. C. Los Reyes - Zacatepec	196.70	1	2	7607	2.9	60.7	5.5	3.7	3.3	15.4	2.7	5.0	0.8	63.6	5.5	30.9	0.086	0.510	19.518441	-98.471315
X. C. Los Reyes - Zacatepec	196.70	3	1	7624	2.2	60.6	5.6	4.8	2.7	14.7	3.2	5.5	0.7	62.8	5.6	31.6	0.080	0.501	19.511123	-98.467769
X. C. Los Reyes - Zacatepec	196.70	3	2	7647	2.2	60.3	5.7	4.8	2.8	14.8	3.2	5.4	0.8	62.5	5.7	31.8	0.076	0.501	19.511119	-98.467774
X. C. San Martín Texmelucan - Tlaxcala - El Molinito	220.95	1	1	7199	2.6	62.7	5.5	3.8	3.0	13.8	2.9	4.8	0.9	65.3	5.5	29.2	0.089	0.506	19.297032	-98.410167
X. C. San Martín Texmelucan - Tlaxcala - El Molinito	220.95	1	2	7019	2.8	62.1	5.3	4.1	3.1	13.9	2.9	4.9	0.9	64.9	5.3	29.8	0.087	0.506	19.297031	-98.410180
X. C. San Martín Texmelucan - Tlaxcala - El Molinito	220.95	3	1	8731	3.2	64.2	6.3	5.3	2.0	12.0	1.9	4.2	0.9	67.4	6.3	26.3	0.085	0.504	19.295927	-98.410349
X. C. San Martín Texmelucan - Tlaxcala - El Molinito	220.95	3	2	8589	3.3	63.7	6.1	5.0	2.4	12.3	2.1	4.2	0.9	67.0	6.1	26.9	0.093	0.504	19.295922	-98.410271
Plaza de Cobro San Martín Texmelucan	222.00	1	1	6468	0.3	50.3	1.7	5.9	6.4	21.8	3.6	8.3	1.7	50.6	1.7	47.7	0.067	0.500	19.301809	-98.409588
Plaza de Cobro San Martín Texmelucan	222.00	1	2	6468	0.3	50.3	1.7	5.9	6.4	21.8	3.6	8.3	1.7	50.6	1.7	47.7	0.067	0.500	19.301809	-98.409588
T. C. San Martín Texmelucan - Ocotoxco (Cuota)	222.44																			
T. C. México - Puebla (Cuota)	226.73	1	1	7694	2.0	65.8	6.6	4.1	2.7	11.9	1.9	4.2	0.8	67.8	6.6	25.6	0.096	0.517	19.268604	-98.421737

HIDALGO

14 CARR : Libramiento Norte de la Ciudad de México (Cuota)

CLAVE: 0902

RUTA : MEX-M40D

AÑO : 2020

LUGAR	ESTACION				CLASIFICACION VEHICULAR EN PORCIENTO														COORDENADAS	
	KM	TE	SC	TDPA	M	A	B	C2	C3	T3S2	T3S3	T3S2R4	OTROS	A	B	C	K'	D	LATITUD	LONGITUD
T. C. México - Puebla (Cuota)	226.73	1	2	8223	2.0	66.0	6.6	4.4	2.4	11.6	2.0	4.2	0.8	68.0	6.6	25.4	0.091	0.517	19.268605	-98.421763

15 CARR : México - Pachuca (Cuota)

CLAVE: 00432

RUTA : MEX-085D

AÑO : 2020

LUGAR	ESTACION				CLASIFICACION VEHICULAR EN PORCIENTO														COORDENADAS	
	KM	TE	SC	TDPA	M	A	B	C2	C3	T3S2	T3S3	T3S2R4	OTROS	A	B	C	K'	D	LATITUD	LONGITUD
T. C. México - Pachuca (Libre)	0.00																			
Lim. Edos. Term. CDMX Ppia. Méx.	9.86																			
Plaza de Cobro Ojo de Agua	25.00	2	1	28734	1.4	87.3	4.8	2.7	1.6	1.6	0.2	0.3	0.1	88.7	4.8	6.5	0.081	0.500	19.618737	-99.029315
Plaza de Cobro Ojo de Agua	25.00	2	2	28734	1.4	87.3	4.8	2.7	1.6	1.6	0.2	0.3	0.1	88.7	4.8	6.5	0.081	0.500	19.618737	-99.029315
Plaza de Cobro Ojo de Agua	25.00	3	1	34195	1.4	83.6	2.4	8.4	1.6	1.8	0.3	0.3	0.2	85.0	2.4	12.6	0.089	0.505	19.618738	-99.029291
Plaza de Cobro Ojo de Agua	25.00	3	2	33403	1.5	83.6	2.4	8.3	1.6	1.8	0.3	0.3	0.2	85.1	2.4	12.5	0.079	0.505	19.618844	-99.029516
T. Izq. Tecámac	35.62	3	1	29530	1.7	84.9	2.2	6.8	1.5	2.1	0.4	0.3	0.1	86.6	2.2	11.2	0.083	0.504	19.702575	-98.970075
T. Izq. Tecámac	35.62	3	2	30036	1.5	83.5	2.2	7.4	1.9	2.7	0.4	0.3	0.1	85.0	2.2	12.8	0.086	0.504	19.702676	-98.970203
Lim. Edos. Term. Méx. Ppia. Hgo.	49.60																			
X. C. Otumba - Tizayuca	53.45	1	1	22779	1.7	84.4	2.8	6.5	1.5	2.0	0.2	0.4	0.5	86.1	2.8	11.1	0.096	0.524	19.833704	-98.950765
X. C. Otumba - Tizayuca	53.45	1	2	20682	1.8	84.5	2.7	6.4	1.6	2.0	0.3	0.4	0.3	86.3	2.7	11.0	0.090	0.524	19.833706	-98.950838
T. C. México - Pachuca (Libre)	60.50	1	1	19855	1.1	84.2	3.2	6.1	1.7	2.5	0.5	0.4	0.3	85.3	3.2	11.5	0.094	0.508	19.886241	-98.937279
T. C. México - Pachuca (Libre)	60.50	1	2	20488	1.2	83.7	2.9	7.1	1.6	2.2	0.6	0.4	0.3	84.9	2.9	12.2	0.108	0.508	19.886247	-98.937358

16 CARR : Tejocotal - Nuevo Necaxa (Cuota)

CLAVE: 00211

RUTA : MEX-132D

AÑO : 2020

LUGAR	ESTACION				CLASIFICACION VEHICULAR EN PORCIENTO														COORDENADAS	
	KM	TE	SC	TDPA	M	A	B	C2	C3	T3S2	T3S3	T3S2R4	OTROS	A	B	C	K'	D	LATITUD	LONGITUD
T. C. Tlaxco - Tejocotal (Cuota)	0.00	3	0	10998	2.5	73.5	4.9	8.3	3.4	3.6	1.4	1.9	0.5	76.0	4.9	19.1	0.086	0.524	20.137185	-98.123476
Lim. Edos. Term. Hgo. Ppia. Pue.	2.10																			
Plaza de Cobro Nuevo Necaxa	17.00	1	1	2862	1.3	73.4	4.8	6.6	3.0	5.0	2.2	2.6	1.1	74.7	4.8	20.5	0.070	0.504	20.186535	-98.029077
Plaza de Cobro Nuevo Necaxa	17.00	1	2	2819	1.4	73.1	4.8	6.8	3.1	5.0	2.1	2.6	1.1	74.5	4.8	20.7	0.094	0.504	20.186500	-98.029200
Plaza de Cobro Nuevo Necaxa	17.00	2	0	1293	0.6	79.2	0.6	5.4	5.8	3.5	2.5	1.6	0.8	79.8	0.6	19.6	0.092	0.500	20.186559	-98.029829
T. C. Pachuca - Túxpam	18.70																			

HIDALGO

17 CARR: Tlaxco - Tejocotal (Cuota)

CLAVE: 00209

RUTA: MEX-119D

AÑO: 2020

LUGAR	ESTACION				CLASIFICACION VEHICULAR EN PORCIENTO													COORDENADAS		
	KM	TE	SC	TDPA	M	A	B	C2	C3	T3S2	T3S3	T3S2R4	OTROS	A	B	C	K'	D	LATITUD	LONGITUD
T.C. Apan - Tlaxco	23.00	3	0	4179	2.3	83.3	2.7	7.7	1.7	0.9	0.3	0.5	0.6	85.6	2.7	11.7	0.170	0.514	19.603947	-98.156475
Lim. Edos. Term. Tlax. Ppia. Pue.	30.70																			
Ent. Chignahuapan	56.20	3	0	3072	1.4	85.8	2.2	5.2	2.0	1.6	1.0	0.7	0.1	87.2	2.2	10.6	0.166	0.506	19.868314	-98.060881
Lim. Edos. Term. Pue. Ppia. Hgo.	84.80																			
T. C. Apizaco - Tejocotal	85.60																			

18 CARR: México - Querétaro (Cuota)

CLAVE: 00411

RUTA: MEX-057-MEX-057D

AÑO: 2020

LUGAR	ESTACION				CLASIFICACION VEHICULAR EN PORCIENTO													COORDENADAS		
	KM	TE	SC	TDPA	M	A	B	C2	C3	T3S2	T3S3	T3S2R4	OTROS	A	B	C	K'	D	LATITUD	LONGITUD
México	0.00																			
Lim. Edos. Term. CDMX Ppia. Méx.	11.30																			
Lechería	29.41																			
Plaza de Cobro Tepotzotlán	43.01	2	1	24889	0.6	71.1	4.4	5.1	3.9	11.1	0.7	2.4	0.7	71.7	4.4	23.9	0.077	0.500	19.715361	-99.207448
Plaza de Cobro Tepotzotlán	43.01	2	2	24889	0.6	71.1	4.4	5.1	3.9	11.1	0.7	2.4	0.7	71.7	4.4	23.9	0.077	0.500	19.715361	-99.207448
Ent. Jorobas	56.18	1	1	27512	1.2	73.5	3.2	7.1	2.1	8.8	1.6	1.6	0.9	74.7	3.2	22.1	0.089	0.507	19.825510	-99.248711
Ent. Jorobas	56.18	1	2	28375	1.1	61.0	5.7	9.7	3.5	12.8	2.2	3.1	0.9	62.1	5.7	32.2	0.081	0.507	19.825295	-99.248856
Ent. Jorobas	56.18	3	1	38329	1.4	60.4	5.1	8.6	3.4	15.1	2.0	3.1	0.9	61.8	5.1	33.1	0.076	0.504	19.825531	-99.248756
Ent. Jorobas	56.18	3	2	38977	1.4	60.4	5.1	8.6	3.4	15.1	2.0	3.1	0.9	61.8	5.1	33.1	0.083	0.504	19.825316	-99.248900
Lim. Edos. Term. Méx. Ppia. Hgo.	59.85																			
T. Der. Tepeji del Río	69.36	1	1	28384	1.2	67.6	4.4	8.3	2.5	11.7	1.3	2.5	0.5	68.8	4.4	26.8	0.086	0.500	19.884267	-99.343075
T. Der. Tepeji del Río	69.36	1	2	28379	1.2	67.6	4.4	8.3	2.5	11.7	1.3	2.5	0.5	68.8	4.4	26.8	0.081	0.500	19.884140	-99.343246
T. Der. Tepeji del Río	69.36	3	1	26039	1.0	64.1	5.2	7.4	2.7	14.5	1.6	3.0	0.5	65.1	5.2	29.7	0.080	0.527	19.884287	-99.343087
T. Der. Tepeji del Río	69.36	3	2	21956	1.4	68.2	4.1	5.3	2.6	12.7	2.5	2.6	0.6	69.6	4.1	26.3	0.071	0.527	19.884170	-99.343249
T. Izq. Jilotepec	83.75	1	1	26348	1.4	65.6	5.1	4.0	6.0	13.5	1.0	2.6	0.8	67.0	5.1	27.9	0.085	0.529	19.982136	-99.437771
T. Izq. Jilotepec	83.75	1	2	22014	1.4	65.6	5.1	4.0	6.0	13.5	1.0	2.6	0.8	67.0	5.1	27.9	0.071	0.529	19.981011	-99.439293
T. Izq. Jilotepec	83.75	3	1	26964	1.3	63.6	4.7	6.3	2.8	14.6	2.3	3.5	0.9	64.9	4.7	30.4	0.095	0.508	19.982159	-99.437794
T. Izq. Jilotepec	83.75	3	2	27901	1.3	63.6	4.7	6.3	2.7	14.6	2.3	3.5	1.0	64.9	4.7	30.4	0.105	0.508	19.981035	-99.439302
Lim. Edos. Term. Hgo. Ppia. Méx.	86.00																			
X. C. Libramiento Norte de La Ciudad de México (Cuota)	89.44	3	1	22635	4.4	54.5	9.1	5.5	2.6	14.6	2.2	5.6	1.5	58.9	9.1	32.0	0.077	0.508	19.998391	-99.489806
X. C. Libramiento Norte de La Ciudad de México (Cuota)	89.44	3	2	24763	4.4	54.6	9.1	5.5	2.5	14.6	2.2	5.6	1.5	59.0	9.1	31.9	0.105	0.508	19.998155	-99.490022
T. Der. Palos Altos	97.80	1	1	28530	4.7	66.6	3.3	5.6	2.2	11.6	2.5	2.7	0.8	71.3	3.3	25.4	0.078	0.503	20.036572	-99.562056
T. Der. Palos Altos	97.80	1	2	28897	4.7	66.6	3.3	5.6	2.2	11.6	2.5	2.6	0.9	71.3	3.3	25.4	0.105	0.503	20.036255	-99.562140
X. C. Jilotepec - Maravillas	107.00	1	1	27725	4.4	62.8	4.5	4.1	5.2	14.4	0.7	3.1	0.8	67.2	4.5	28.3	0.078	0.502	20.083257	-99.628296
X. C. Jilotepec - Maravillas	107.00	1	2	28002	4.5	62.8	4.4	4.1	5.2	14.4	0.7	3.1	0.8	67.3	4.4	28.3	0.104	0.502	20.082966	-99.628366

HIDALGO

18 CARR: México - Querétaro (Cuota)

CLAVE: 00411

RUTA: MEX-057-MEX-057D

AÑO: 2020

LUGAR	ESTACION				CLASIFICACION VEHICULAR EN PORCIENTO													COORDENADAS		
	KM	TE	SC	TDPA	M	A	B	C2	C3	T3S2	T3S3	T3S2R4	OTROS	A	B	C	K'	D	LATITUD	LONGITUD
X. C. Jilotepec - Maravillas	107.00	3	1	26800	3.7	58.0	5.1	6.9	2.9	16.6	2.2	4.0	0.6	61.7	5.1	33.2	0.080	0.513	20.083261	-99.628345
X. C. Jilotepec - Maravillas	107.00	3	2	28365	3.7	58.1	5.1	6.9	2.8	16.6	2.2	4.0	0.6	61.8	5.1	33.1	0.104	0.513	20.082977	-99.628409
T. Izq. Encinillas	121.70	1	1	27799	4.3	71.7	2.7	4.1	2.3	9.5	1.5	3.3	0.6	76.0	2.7	21.3	0.079	0.511	20.150949	-99.739272
T. Izq. Encinillas	121.70	1	2	29120	4.0	63.4	3.1	5.0	3.1	12.8	3.1	4.9	0.6	67.4	3.1	29.5	0.104	0.511	20.150805	-99.739469
T. Izq. Aculco	125.00	1	1	26214	1.3	65.4	4.4	3.9	5.7	14.5	0.8	3.1	0.9	66.7	4.4	28.9	0.079	0.505	20.101791	-99.696583
T. Izq. Aculco	125.00	1	2	26738	1.1	62.1	4.7	4.6	5.9	16.2	1.0	3.5	0.9	63.2	4.7	32.1	0.107	0.505	20.101658	-99.696781
T. Izq. Aculco	125.00	3	1	25791	1.3	66.5	4.5	4.1	5.2	13.7	0.9	3.0	0.8	67.8	4.5	27.7	0.079	0.504	20.101819	-99.696596
T. Izq. Aculco	125.00	3	2	26228	1.6	62.0	5.5	4.5	5.6	15.3	1.2	3.4	0.9	63.6	5.5	30.9	0.106	0.504	20.101678	-99.696809
Polotitlán	133.00	1	1	25737	2.7	58.1	5.1	6.8	3.1	16.8	2.2	4.4	0.8	60.8	5.1	34.1	0.078	0.503	20.227038	-99.812011
Polotitlán	133.00	1	2	26100	2.7	57.1	5.0	6.9	3.6	17.3	2.6	4.1	0.7	59.8	5.0	35.2	0.106	0.503	20.226909	-99.812153
Lim. Edos. Term. Méx. Ppia. Qro.	145.50																			
Plaza de Cobro Palmillas	145.80	2	1	16963	0.4	58.6	2.7	6.2	5.4	19.3	1.7	4.3	1.4	59.0	2.7	38.3	0.077	0.500	20.296112	-99.929069
Plaza de Cobro Palmillas	145.80	2	2	16963	0.4	58.6	2.7	6.2	5.4	19.3	1.7	4.3	1.4	59.0	2.7	38.3	0.077	0.500	20.296112	-99.929069
T. Izq. Toluca	148.50	1	1	30673	2.6	55.7	4.6	7.1	3.6	18.8	2.6	4.3	0.7	58.3	4.6	37.1	0.079	0.500	20.298554	-99.932818
T. Izq. Toluca	148.50	1	2	30700	2.6	55.7	4.6	7.1	3.6	18.8	2.6	4.3	0.7	58.3	4.6	37.1	0.107	0.500	20.298275	-99.933074
T. Izq. Toluca	148.50	3	1	30915	2.9	64.0	4.9	5.9	3.3	13.0	1.9	3.2	0.9	66.9	4.9	28.2	0.071	0.504	20.299417	-99.933621
T. Izq. Toluca	148.50	3	2	30337	4.2	60.8	5.0	6.0	3.5	14.3	1.8	3.5	0.9	65.0	5.0	30.0	0.099	0.504	20.299220	-99.933922
T. Der. Portezuelo	151.53	3	1	37123	2.9	63.1	3.8	5.1	4.8	14.6	0.9	4.1	0.7	66.0	3.8	30.2	0.087	0.517	20.326713	-99.935173
T. Der. Portezuelo	151.53	3	2	35493	2.7	58.0	4.3	5.9	5.2	17.5	1.0	4.6	0.8	60.7	4.3	35.0	0.082	0.517	20.326628	-99.935431
T. Der. Poniente San Juan del Río	164.10	3	1	35634	2.9	62.8	3.9	5.2	4.6	14.9	0.9	4.1	0.7	65.7	3.9	30.4	0.087	0.517	20.370769	-99.986930
T. Der. Poniente San Juan del Río	164.10	3	2	32988	2.9	62.8	3.9	5.2	4.6	14.9	0.9	4.1	0.7	65.7	3.9	30.4	0.082	0.517	20.370487	-99.986944
La Estancia	169.40	1	1	32801	4.1	60.1	5.4	14.2	2.5	9.5	1.7	2.0	0.5	64.2	5.4	30.4	0.081	0.517	20.427711	-100.056758
La Estancia	169.40	1	2	35409	4.1	60.1	5.4	14.2	2.5	9.5	1.7	2.0	0.5	64.2	5.4	30.4	0.081	0.517	20.427561	-100.056992
T. Izq. Acámbaro	170.45	3	1	35902	4.5	66.8	3.2	7.8	2.3	11.2	1.5	2.2	0.5	71.3	3.2	25.5	0.072	0.516	20.441740	-100.071744
T. Izq. Acámbaro	170.45	3	2	38594	4.4	64.1	3.5	8.5	2.4	12.6	1.7	2.3	0.5	68.5	3.5	28.0	0.071	0.516	20.441539	-100.071927
T. Der. Libramiento Nororientado de Querétaro (Cuota)	192.50	1	1	35924	1.2	70.2	3.9	2.9	4.6	12.4	1.8	2.2	0.8	71.4	3.9	24.7	0.084	0.521	20.560416	-100.229920
T. Der. Libramiento Nororientado de Querétaro (Cuota)	192.50	1	2	39529	1.1	67.1	4.3	3.1	5.4	13.6	2.1	2.4	0.9	68.2	4.3	27.5	0.083	0.521	20.560190	-100.229880
T. Der. Libramiento Nororientado de Querétaro (Cuota)	192.50	3	1	54500	1.1	78.8	2.2	8.2	2.1	5.1	1.2	0.9	0.4	79.9	2.2	17.9	0.070	0.512	20.560426	-100.229962
T. Der. Libramiento Nororientado de Querétaro (Cuota)	192.50	3	2	51692	1.4	75.1	3.6	8.2	2.4	6.3	1.4	1.1	0.5	76.5	3.6	19.9	0.067	0.512	20.560203	-100.229924
T. Der. Libramiento de Querétaro a San Luis Potosí	207.00	1	1	57327	1.0	81.2	2.6	6.2	1.6	4.5	1.6	0.7	0.6	82.2	2.6	15.2	0.097	0.519	20.582159	-100.361800
T. Der. Libramiento de Querétaro a San Luis Potosí	207.00	1	2	62750	1.0	81.0	2.6	6.2	1.7	4.6	1.6	0.7	0.6	82.0	2.6	15.4	0.082	0.519	20.581814	-100.361756
T. Der. Libramiento de Querétaro a San Luis Potosí	207.00	3	1	56187	0.9	83.1	1.5	5.6	2.0	4.6	1.2	0.7	0.4	84.0	1.5	14.5	0.084	0.525	20.582155	-100.361814
T. Der. Libramiento de Querétaro a San Luis Potosí	207.00	3	2	62980	0.9	82.0	1.6	5.3	2.2	5.4	1.2	1.0	0.4	82.9	1.6	15.5	0.084	0.525	20.581814	-100.361774
Querétaro	211.60																			



HIDALGO

19 CARR: Actopan - Progreso

CLAVE: 13038

RUTA: HGO

AÑO: 2020

LUGAR	ESTACION				CLASIFICACION VEHICULAR EN PORCIENTO													COORDENADAS		
	KM	TE	SC	TDPA	M	A	B	C2	C3	T3S2	T3S3	T3S2R4	OTROS	A	B	C	K'	D	LATITUD	LONGITUD
Actopan	0.00	3	1	6998	5.5	86.3	0.5	6.5	0.7	0.3	0.2	0.0	0.0	91.8	0.5	7.7	0.131	0.513	20.269098	-98.949638
Actopan	0.00	3	2	6649	3.7	88.5	0.4	6.3	0.6	0.3	0.2	0.0	0.0	92.2	0.4	7.4	0.111	0.513	20.269114	-98.949601
Progreso	23.90	1	1	6593	8.4	82.3	1.0	5.8	0.9	0.6	0.5	0.3	0.2	90.7	1.0	8.3	0.082	0.513	20.245087	-99.178566
Progreso	23.90	1	2	6953	6.5	84.3	1.0	5.8	0.9	0.5	0.5	0.3	0.2	90.8	1.0	8.2	0.082	0.513	20.244969	-99.178582

20 CARR: El Saucillo - Amealco

CLAVE: 13103

RUTA: HGO-103

AÑO: 2020

LUGAR	ESTACION				CLASIFICACION VEHICULAR EN PORCIENTO													COORDENADAS		
	KM	TE	SC	TDPA	M	A	B	C2	C3	T3S2	T3S3	T3S2R4	OTROS	A	B	C	K'	D	LATITUD	LONGITUD
T. C. Portezuelo - Palmillas	0.00	3	0	3423	2.5	88.6	2.3	2.7	1.7	0.9	0.7	0.5	0.1	91.1	2.3	6.6	0.096	0.500	20.313983	-99.715965
Nopala	11.00	1	1	1870	2.2	85.9	2.9	4.2	1.5	1.4	1.2	0.4	0.3	88.1	2.9	9.0	0.090	0.508	20.250441	-99.647558
Nopala	11.00	1	2	1929	2.4	85.4	2.8	4.0	1.5	1.8	1.4	0.4	0.3	87.8	2.8	9.4	0.096	0.508	20.250401	-99.647596
Nopala	11.00	3	0	4119	1.3	82.6	2.9	5.7	2.0	2.7	1.6	0.5	0.7	83.9	2.9	13.2	0.078	0.510	20.248555	-99.645345
Amealco	21.40	1	0	2039	1.6	82.5	2.4	6.3	1.6	2.0	1.9	0.8	0.9	84.1	2.4	13.5	0.081	0.503	20.239066	-99.554535

21 CARR: Ent. Emiliano Zapata - Cd. Sahagún

CLAVE: 13255

RUTA: HGO

AÑO: 2020

LUGAR	ESTACION				CLASIFICACION VEHICULAR EN PORCIENTO													COORDENADAS		
	KM	TE	SC	TDPA	M	A	B	C2	C3	T3S2	T3S3	T3S2R4	OTROS	A	B	C	K'	D	LATITUD	LONGITUD
T. C. Calpulalpan - El Ocote	0.00																			
Emiliano Zapata	2.70	1	1	3561	2.5	82.6	1.2	6.6	1.9	3.1	1.3	0.7	0.1	85.1	1.2	13.7	0.104	0.502	19.653208	-98.543928
Emiliano Zapata	2.70	1	2	3526	2.3	81.1	1.6	7.2	1.9	3.3	1.8	0.7	0.1	83.4	1.6	15.0	0.089	0.502	19.652829	-98.544977
T. Izq. Otumba	14.00	1	1	4635	3.0	81.2	1.4	7.2	1.7	3.3	1.7	0.4	0.1	84.2	1.4	14.4	0.090	0.507	19.754039	-98.588699
T. Izq. Otumba	14.00	1	2	4504	2.8	79.7	1.6	7.6	1.9	4.0	1.8	0.5	0.1	82.5	1.6	15.9	0.087	0.507	19.754038	-98.588773
Cd. Sahagún	17.98	1	1	6618	5.5	84.5	1.2	5.0	1.8	0.8	0.8	0.3	0.1	90.0	1.2	8.8	0.098	0.503	19.763375	-98.587447
Cd. Sahagún	17.98	1	2	6532	4.7	85.3	1.0	5.7	1.2	0.7	0.9	0.4	0.1	90.0	1.0	9.0	0.102	0.503	19.763379	-98.587521

22 CARR: Ent. Tepeji del Río - Tlahuelilpan

CLAVE: 13017

RUTA: HGO-017

AÑO: 2020

LUGAR	ESTACION				CLASIFICACION VEHICULAR EN PORCIENTO													COORDENADAS		
	KM	TE	SC	TDPA	M	A	B	C2	C3	T3S2	T3S3	T3S2R4	OTROS	A	B	C	K'	D	LATITUD	LONGITUD
T. C. México - Querétaro (Cuota)	0.00																			
T. Izq. Tepeji del Río	3.00	3	1	6396	2.8	85.0	1.6	6.5	1.2	0.6	1.4	0.6	0.3	87.8	1.6	10.6	0.084	0.508	19.938717	-99.339553
T. Izq. Tepeji del Río	3.00	3	2	6190	2.8	85.1	1.6	6.4	1.2	0.6	1.4	0.6	0.3	87.9	1.6	10.5	0.084	0.508	19.938141	-99.339408
Tula de Allende	18.00	1	0	13133	3.6	84.2	1.2	5.5	0.8	2.7	1.1	0.6	0.3	87.8	1.2	11.0	0.104	0.505	20.052103	-99.343350

HIDALGO

22 CARR: Ent. Tepeji del Río - Tlahuelilpan

CLAVE: 13017

RUTA: HGO-017

AÑO: 2020

LUGAR	ESTACION				CLASIFICACION VEHICULAR EN PORCIENTO													COORDENADAS		
	KM	TE	SC	TDPA	M	A	B	C2	C3	T3S2	T3S3	T3S2R4	OTROS	A	B	C	K'	D	LATITUD	LONGITUD
X. C. Arco Norte de La Ciudad de México	19.40	1	1	9525	3.1	81.5	1.8	5.5	2.2	2.7	1.5	1.3	0.4	84.6	1.8	13.6	0.080	0.506	20.097682	-99.285654
X. C. Arco Norte de La Ciudad de México	19.40	1	2	9316	3.1	81.5	1.8	5.5	2.2	2.7	1.6	1.2	0.4	84.6	1.8	13.6	0.079	0.506	20.097821	-99.285738
Tlahuelilpan	32.00	1	1	5981	2.9	84.0	1.0	8.6	1.3	0.9	0.6	0.3	0.4	86.9	1.0	12.1	0.095	0.501	20.130342	-99.236173
Tlahuelilpan	32.00	1	2	5999	3.1	83.9	1.0	8.5	1.3	0.9	0.6	0.3	0.4	87.0	1.0	12.0	0.094	0.501	20.130428	-99.236213

23 CARR: Ent. Tolman - Cd. Sahagún

CLAVE: 00119

RUTA: EM-009-HGO

AÑO: 2020

LUGAR	ESTACION				CLASIFICACION VEHICULAR EN PORCIENTO													COORDENADAS		
	KM	TE	SC	TDPA	M	A	B	C2	C3	T3S2	T3S3	T3S2R4	OTROS	A	B	C	K'	D	LATITUD	LONGITUD
T. C. Venta de Carpio - Tulancingo	0.00	3	0	12530	3.6	86.8	0.6	6.4	0.9	0.8	0.5	0.3	0.1	90.4	0.6	9.0	0.085	0.522	19.714918	-98.792085
Otumba	5.00	3	0	4776	2.9	83.2	1.0	8.9	0.9	1.5	1.2	0.3	0.1	86.1	1.0	12.9	0.092	0.510	19.705116	-98.749837
T. Der. Jaltepec	21.00	3	0	3645	3.3	78.0	1.7	12.8	1.5	1.5	0.9	0.2	0.1	81.3	1.7	17.0	0.090	0.508	19.748594	-98.656699
Lim. Edos. Term. Méx. Ppia. Hgo.	25.00																			
Cd. Sahagún	32.00	1	0	6045	4.9	81.6	1.9	6.6	1.9	1.7	0.8	0.4	0.2	86.5	1.9	11.6	0.081	0.513	19.754615	-98.592274

24 CARR: Francisco I. Madero - Tula de Allende

CLAVE: 13043

RUTA: HGO

AÑO: 2020

LUGAR	ESTACION				CLASIFICACION VEHICULAR EN PORCIENTO													COORDENADAS		
	KM	TE	SC	TDPA	M	A	B	C2	C3	T3S2	T3S3	T3S2R4	OTROS	A	B	C	K'	D	LATITUD	LONGITUD
T. C. Portezuelo - Palmillas	0.00	3	0	4951	2.3	88.2	0.3	8.8	0.1	0.1	0.2	0.0	0.0	90.5	0.3	9.2	0.101	0.505	20.448588	-99.362356
Gral. Pedro María Anaya	38.20	1	0	3873	5.6	85.4	0.4	6.3	1.0	0.6	0.5	0.1	0.1	91.0	0.4	8.6	0.099	0.501	20.155692	-99.355541
T. C. (México - Querétaro) - Tlahuelilpan de Ocampo	52.70	1	0	8169	2.9	89.0	0.4	5.0	1.3	0.7	0.5	0.1	0.1	91.9	0.4	7.7	0.085	0.502	20.066262	-99.330003

25 CARR: Huichapan - Tecozautla

CLAVE: 13030

RUTA: HGO-030

AÑO: 2020

LUGAR	ESTACION				CLASIFICACION VEHICULAR EN PORCIENTO													COORDENADAS		
	KM	TE	SC	TDPA	M	A	B	C2	C3	T3S2	T3S3	T3S2R4	OTROS	A	B	C	K'	D	LATITUD	LONGITUD
Huichapan	0.00	3	0	4494	1.7	87.4	1.4	5.5	1.2	1.7	0.9	0.1	0.1	89.1	1.4	9.5	0.096	0.515	20.381958	-99.659000
Tecozautla	30.85																			

26 CARR: Jilotepec - Maravillas

CLAVE: 00015

RUTA: EM-HGO

AÑO: 2020

LUGAR	ESTACION				CLASIFICACION VEHICULAR EN PORCIENTO													COORDENADAS		
	KM	TE	SC	TDPA	M	A	B	C2	C3	T3S2	T3S3	T3S2R4	OTROS	A	B	C	K'	D	LATITUD	LONGITUD
Jilotepec	0.00	3	0	7896	1.8	83.6	2.1	6.7	0.6	3.5	0.6	0.4	0.7	85.4	2.1	12.5	0.088	0.509	19.954140	-99.548909

HIDALGO

26 CARR: Jilotepec - Maravillas

CLAVE: 00015

RUTA: EM-HGO

AÑO: 2020

LUGAR	ESTACION				CLASIFICACION VEHICULAR EN PORCIENTO													COORDENADAS		
	KM	TE	SC	TDPA	M	A	B	C2	C3	T3S2	T3S3	T3S2R4	OTROS	A	B	C	K'	D	LATITUD	LONGITUD
X. C. México - Querétaro (Cuota)	21.30	1	0	2867	2.3	80.2	2.8	8.3	1.5	1.5	1.4	0.9	1.1	82.5	2.8	14.7	0.112	0.528	20.082110	-99.629747
X. C. México - Querétaro (Cuota)	21.30	3	0	3216	3.0	82.0	1.1	11.8	0.8	0.5	0.4	0.1	0.3	85.0	1.1	13.9	0.131	0.510	20.084120	-99.627417
Acazuchitlán	29.00	1	0	2332	1.9	83.0	1.5	10.1	1.0	1.3	0.4	0.4	0.4	84.9	1.5	13.6	0.091	0.539	20.147740	-99.596757
Lim. Edos. Term. Méx. Ppia. Hgo.	29.30																			
Maravillas	36.40	1	0	1444	2.0	83.5	3.1	7.7	1.5	1.1	0.4	0.5	0.2	85.5	3.1	11.4	0.141	0.520	20.202833	-99.588504
T. C. El Saucillo - Amealco	40.00	1	0	2582	2.0	89.0	1.0	6.1	0.9	0.6	0.2	0.2	0.0	91.0	1.0	8.0	0.126	0.510	20.235662	-99.595735

27 CARR: Libramiento de Atotonilco El Grande

CLAVE: 13238

RUTA: HGO

AÑO: 2020

LUGAR	ESTACION				CLASIFICACION VEHICULAR EN PORCIENTO													COORDENADAS		
	KM	TE	SC	TDPA	M	A	B	C2	C3	T3S2	T3S3	T3S2R4	OTROS	A	B	C	K'	D	LATITUD	LONGITUD
T. C. Pachuca - Tempoal (1er. Acceso)	0.00	3	1	3004	0.8	85.1	1.5	7.9	1.9	1.4	1.3	0.0	0.1	85.9	1.5	12.6	0.082	0.508	20.270570	-98.646454
T. C. Pachuca - Tempoal (1er. Acceso)	0.00	3	2	3102	0.8	85.1	1.5	7.9	1.9	1.4	1.3	0.0	0.1	85.9	1.5	12.6	0.082	0.508	20.270570	-98.646454
T. C. Pachuca - Tempoal (2do. Acceso)	6.30	1	1	4307	1.3	86.3	1.5	7.8	1.5	0.8	0.7	0.0	0.1	87.6	1.5	10.9	0.100	0.507	20.297793	-98.678103
T. C. Pachuca - Tempoal (2do. Acceso)	6.30	1	2	4181	0.8	84.7	1.7	9.4	1.7	0.8	0.8	0.0	0.1	85.5	1.7	12.8	0.092	0.507	20.297793	-98.678103

28 CARR: Lolotla - Atlapexco

CLAVE: 13238

RUTA: HGO

AÑO: 2020

LUGAR	ESTACION				CLASIFICACION VEHICULAR EN PORCIENTO													COORDENADAS		
	KM	TE	SC	TDPA	M	A	B	C2	C3	T3S2	T3S3	T3S2R4	OTROS	A	B	C	K'	D	LATITUD	LONGITUD
T. C. Pachuca - Tempoal	0.00	3	0	1096	5.7	88.1	0.9	3.7	0.3	1.2	0.1	0.0	0.0	93.8	0.9	5.3	0.102	0.536	20.873645	-98.703979
Atlapexco	68.00	1	0	2437	5.2	87.2	1.1	4.1	0.2	1.8	0.2	0.1	0.1	92.4	1.1	6.5	0.097	0.501	21.029568	-98.346406
T. C. Álamo - Huejutla de Reyes	69.80																			

29 CARR: Los Reyes - El Tephé

CLAVE: 00021

RUTA: EM-HGO

AÑO: 2020

LUGAR	ESTACION				CLASIFICACION VEHICULAR EN PORCIENTO													COORDENADAS		
	KM	TE	SC	TDPA	M	A	B	C2	C3	T3S2	T3S3	T3S2R4	OTROS	A	B	C	K'	D	LATITUD	LONGITUD
T. C. México - Pachuca (Libre)	0.00																			
Los Reyes	1.35	3	1	8254	5.1	86.0	0.2	7.2	0.7	0.6	0.2	0.0	0.0	91.1	0.2	8.7	0.092	0.514	19.773234	-98.982907
Los Reyes	1.35	3	2	8721	5.3	85.7	0.4	6.9	0.8	0.7	0.2	0.0	0.0	91.0	0.4	8.6	0.082	0.514	19.773233	-98.982908
Zumpango	15.35	1	1	10814	7.9	84.7	0.1	6.2	0.5	0.3	0.3	0.0	0.0	92.6	0.1	7.3	0.088	0.515	19.798060	-99.100179
Zumpango	15.35	1	2	11497	8.1	85.1	0.1	5.9	0.4	0.3	0.1	0.0	0.0	93.2	0.1	6.7	0.088	0.515	19.798055	-99.100184
Zumpango	15.35	3	0	15498	8.3	75.0	2.7	8.1	2.2	1.0	1.9	0.4	0.4	83.3	2.7	14.0	0.084	0.514	19.798122	-99.100742
Tequixquiac	29.00	1	0	8231	8.3	74.5	1.9	9.8	1.3	1.8	1.5	0.4	0.5	82.8	1.9	15.3	0.083	0.509	19.905382	-99.146521

HIDALGO

29 CARR: Los Reyes - El Tephé

CLAVE: 00021

RUTA: EM-HGO

AÑO: 2020

LUGAR	ESTACION				CLASIFICACION VEHICULAR EN PORCIENTO										COORDENADAS					
	KM	TE	SC	TDPA	M	A	B	C2	C3	T3S2	T3S3	T3S2R4	OTROS	A	B	C	K'	D	LATITUD	LONGITUD
Apaxco	39.00	3	1	4149	8.2	75.3	2.2	8.3	2.3	2.3	0.9	0.3	0.2	83.5	2.2	14.3	0.092	0.506	19.981499	-99.177534
Apaxco	39.00	3	2	4059	7.8	73.1	2.9	9.8	2.6	2.2	1.0	0.4	0.2	80.9	2.9	16.2	0.093	0.506	19.981473	-99.177618
Lim. Edos. Term. Méx. Ppia. Hgo.	40.00																			
T. Izq. Atotonilco (1° Acceso)	42.00	1	0	7412	8.1	75.0	2.1	8.1	2.4	3.1	0.5	0.5	0.2	83.1	2.1	14.8	0.094	0.509	20.003222	-99.190404
X. C. Arco Norte de La Ciudad de México	50.00	3	1	5853	7.6	83.8	0.4	5.5	0.8	0.9	0.6	0.1	0.3	91.4	0.4	8.2	0.090	0.503	20.068738	-99.220418
X. C. Arco Norte de La Ciudad de México	50.00	3	2	5913	6.9	83.7	0.4	6.3	0.7	0.9	0.7	0.1	0.3	90.6	0.4	9.0	0.094	0.503	20.068754	-99.220597
Tlaxcoapan	52.00	3	0	8454	10.5	78.8	0.4	8.8	0.9	0.3	0.3	0.0	0.0	89.3	0.4	10.3	0.099	0.502	20.100369	-99.221332
Tlahuelilpan	60.00	3	1	8876	3.9	83.4	0.8	8.3	1.0	1.2	0.9	0.2	0.3	87.3	0.8	11.9	0.081	0.503	20.131416	-99.234389
Tlahuelilpan	60.00	3	2	8782	3.5	83.6	0.9	8.3	1.0	1.2	1.0	0.2	0.3	87.1	0.9	12.0	0.079	0.503	20.131422	-99.234433
Progreso	72.00	1	1	10126	3.9	85.6	0.8	5.4	1.1	1.5	1.0	0.2	0.5	89.5	0.8	9.7	0.088	0.504	20.245811	-99.190738
Progreso	72.00	1	2	9967	3.8	85.7	0.8	5.4	1.1	1.5	1.0	0.2	0.5	89.5	0.8	9.7	0.082	0.504	20.245850	-99.190715
El Tephé	97.00	1	0	6325	6.6	79.8	1.0	8.8	1.3	1.0	1.2	0.2	0.1	86.4	1.0	12.6	0.117	0.521	20.440745	-99.172636

30 CARR: Otumba - Tizayuca

CLAVE: 00012

RUTA: EM-HGO

AÑO: 2020

LUGAR	ESTACION				CLASIFICACION VEHICULAR EN PORCIENTO										COORDENADAS					
	KM	TE	SC	TDPA	M	A	B	C2	C3	T3S2	T3S3	T3S2R4	OTROS	A	B	C	K'	D	LATITUD	LONGITUD
Otumba	0.00	3	0	3796	5.0	88.2	0.1	3.2	0.1	3.0	0.1	0.0	0.3	93.2	0.1	6.7	0.085	0.508	19.700575	-98.757403
X. C. Venta de Carpio - Tulancingo	6.00	3	1	1975	1.4	87.5	0.4	6.1	0.9	1.8	1.5	0.1	0.3	88.9	0.4	10.7	0.087	0.513	19.754329	-98.755968
X. C. Venta de Carpio - Tulancingo	6.00	3	2	2078	1.6	86.8	0.3	6.4	1.1	2.1	1.4	0.1	0.2	88.4	0.3	11.3	0.088	0.513	19.754328	-98.755968
Temascalapa	26.50	3	1	3020	7.7	84.5	0.3	5.7	1.1	0.4	0.2	0.0	0.1	92.2	0.3	7.5	0.099	0.504	19.828124	-98.902625
Temascalapa	26.50	3	2	3070	7.7	84.2	0.3	5.8	1.3	0.4	0.2	0.0	0.1	91.9	0.3	7.8	0.107	0.504	19.828124	-98.902625
Lim. Edos. Term. Méx. Ppia. Hgo.	29.00																			
Tizayuca	37.10	1	1	6237	4.8	88.1	0.9	3.2	0.7	1.2	0.4	0.3	0.4	92.9	0.9	6.2	0.086	0.500	19.841116	-98.978391
Tizayuca	37.10	1	2	6225	4.8	88.0	0.9	3.3	0.8	1.1	0.4	0.3	0.4	92.8	0.9	6.3	0.077	0.500	19.841027	-98.978427

31 CARR: Ramal a El Chico

CLAVE: 13256

RUTA: HGO

AÑO: 2020

LUGAR	ESTACION				CLASIFICACION VEHICULAR EN PORCIENTO										COORDENADAS					
	KM	TE	SC	TDPA	M	A	B	C2	C3	T3S2	T3S3	T3S2R4	OTROS	A	B	C	K'	D	LATITUD	LONGITUD
T. C. Pachuca - Tempoal	0.00	3	0	2566	4.0	87.3	0.8	2.9	0.7	1.8	0.9	0.7	0.9	91.3	0.8	7.9	0.095	0.502	20.130400	-98.731309
Mineral El Chico	21.00	1	0	1205	3.0	90.7	0.3	5.2	0.3	0.4	0.1	0.0	0.0	93.7	0.3	6.0	0.226	0.502	20.212884	-98.730161

HIDALGO

32 CARR: Ramal a Pachuca

CLAVE: 13254

RUTA: HGO

AÑO: 2020

LUGAR	ESTACION				CLASIFICACION VEHICULAR EN PORCIENTO														COORDENADAS	
	KM	TE	SC	TDPA	M	A	B	C2	C3	T3S2	T3S3	T3S2R4	OTROS	A	B	C	K'	D	LATITUD	LONGITUD
T. C. Colonia - Portezuelo	0.00	3	1	12630	2.0	89.6	1.1	5.4	1.0	0.4	0.3	0.1	0.1	91.6	1.1	7.3	0.089	0.500	20.119111	-98.824867
T. C. Colonia - Portezuelo	0.00	3	2	12649	2.0	89.5	1.2	5.4	1.0	0.4	0.3	0.1	0.1	91.5	1.2	7.3	0.093	0.500	20.119292	-98.824950
Pachuca	10.00																			

33 CARR: San Alejo - Huayacocotla

CLAVE: 00132

RUTA: HGO-051-VER-113

AÑO: 2020

LUGAR	ESTACION				CLASIFICACION VEHICULAR EN PORCIENTO														COORDENADAS	
	KM	TE	SC	TDPA	M	A	B	C2	C3	T3S2	T3S3	T3S2R4	OTROS	A	B	C	K'	D	LATITUD	LONGITUD
T. C. Pachuca - Tuxpam	0.00	3	0	5383	5.2	79.1	0.8	9.5	1.5	2.8	0.7	0.2	0.2	84.3	0.8	14.9	0.087	0.505	20.154204	-98.284841
Metepec	11.80	3	0	2942	7.1	75.6	4.0	11.2	1.1	0.4	0.3	0.1	0.2	82.7	4.0	13.3	0.080	0.510	20.236613	-98.325455
Agua Blanca	29.48	3	0	3308	3.9	84.1	1.3	8.2	0.9	0.9	0.3	0.2	0.2	88.0	1.3	10.7	0.083	0.528	20.351506	-98.358095
Lim. Edos. Term. Hgo. Ppia. Ver.	36.48																			
Huayacocotla	66.00	1	0	2247	6.0	79.5	1.9	5.9	1.3	3.1	1.1	0.7	0.5	85.5	1.9	12.6	0.094	0.506	20.533719	-98.488421

34 CARR: San Felipe Orizatlán - Huejutla de Reyes

CLAVE: 13258

RUTA: HGO

AÑO: 2020

LUGAR	ESTACION				CLASIFICACION VEHICULAR EN PORCIENTO														COORDENADAS	
	KM	TE	SC	TDPA	M	A	B	C2	C3	T3S2	T3S3	T3S2R4	OTROS	A	B	C	K'	D	LATITUD	LONGITUD
San Felipe Orizatlán	0.00	3	0	2996	14.7	79.1	0.7	3.8	0.3	0.5	0.4	0.1	0.4	93.8	0.7	5.5	0.087	0.510	21.171168	-98.603627
Huejutla de Reyes	25.00	1	0	2525	14.7	79.1	0.6	4.1	0.3	0.5	0.4	0.0	0.3	93.8	0.6	5.6	0.089	0.513	21.127267	-98.458433

35 CARR: Santo Domingo - T. C. (México - Querétaro)

CLAVE: 00433

RUTA: EM-011-HGO

AÑO: 2020

LUGAR	ESTACION				CLASIFICACION VEHICULAR EN PORCIENTO														COORDENADAS	
	KM	TE	SC	TDPA	M	A	B	C2	C3	T3S2	T3S3	T3S2R4	OTROS	A	B	C	K'	D	LATITUD	LONGITUD
T. C. Toluca - Palmillas	0.00	3	0	6827	0.7	91.9	1.1	3.8	0.9	0.9	0.6	0.0	0.1	92.6	1.1	6.3	0.084	0.518	19.621003	-99.776522
X. C. Los Reyes - Ixtlahuaca	6.11	3	0	6785	1.8	84.9	0.5	9.1	1.2	1.3	0.9	0.1	0.2	86.7	0.5	12.8	0.089	0.504	19.655769	-99.728158
X. C. Villa del Carbón - Atlacomulco	23.94	3	1	2587	1.5	75.3	2.9	6.9	2.1	6.1	2.0	2.1	1.1	76.8	2.9	20.3	0.121	0.504	19.785451	-99.701914
X. C. Villa del Carbón - Atlacomulco	23.94	3	2	2624	1.6	75.6	2.7	6.8	2.2	5.7	2.1	2.1	1.2	77.2	2.7	20.1	0.088	0.504	19.785451	-99.701914
T. Der. Chapa de Mota	42.70	1	1	5156	1.9	88.1	0.4	6.3	1.1	1.3	0.6	0.2	0.1	90.0	0.4	9.6	0.109	0.502	19.926276	-99.581844
T. Der. Chapa de Mota	42.70	1	2	5124	2.0	87.3	0.5	6.3	1.1	1.4	0.7	0.3	0.4	89.3	0.5	10.2	0.107	0.502	19.926276	-99.581844
Lim. Edos. Term. Méx. Ppia. Hgo.	63.34																			
T. C. México - Querétaro (Cuota)	65.84	1	1	3794	1.1	86.1	0.5	8.3	1.7	1.4	0.5	0.2	0.2	87.2	0.5	12.3	0.146	0.508	19.980534	-99.439792
T. C. México - Querétaro (Cuota)	65.84	1	2	3911	2.5	85.1	0.5	7.5	1.7	1.5	0.6	0.3	0.3	87.6	0.5	11.9	0.115	0.508	19.980537	-99.439797

HIDALGO

36 CARR: T. C. (Los Reyes - El Tephé) - Tizayuca

CLAVE: 00014

RUTA: EM-HGO

AÑO: 2020

LUGAR	ESTACION				CLASIFICACION VEHICULAR EN PORCIENTO										COORDENADAS					
	KM	TE	SC	TDPA	M	A	B	C2	C3	T3S2	T3S3	T3S2R4	OTROS	A	B	C	K'	D	LATITUD	LONGITUD
T. C. Los Reyes - El Tephé	0.00	3	0	5372	9.2	77.8	0.4	4.0	1.3	5.1	1.0	0.8	0.4	87.0	0.4	12.6	0.085	0.500	19.781992	-99.027190
Lim. Edos. Term. Méx. Ppia. Hgo.	6.50																			
Tizayuca	8.00	1	0	9880	11.1	75.6	0.4	4.5	0.2	6.2	1.1	0.2	0.7	86.7	0.4	12.9	0.099	0.507	19.834796	-98.981975

37 CARR: Tepeji del Río - T.C. (México - Querétaro)

CLAVE: 13104

RUTA: HGO

AÑO: 2020

LUGAR	ESTACION				CLASIFICACION VEHICULAR EN PORCIENTO										COORDENADAS					
	KM	TE	SC	TDPA	M	A	B	C2	C3	T3S2	T3S3	T3S2R4	OTROS	A	B	C	K'	D	LATITUD	LONGITUD
T. C. Ent. Tepeji del Río - Tlahuelilpan de Ocampo	0.00	3	0	6471	1.1	80.1	0.7	10.0	1.6	3.7	1.5	0.9	0.4	81.2	0.7	18.1	0.089	0.517	19.939483	-99.339690
T. C. México - Querétaro	12.40	1	0	2797	4.0	70.3	3.5	15.8	1.3	1.8	1.5	0.9	0.9	74.3	3.5	22.2	0.096	0.517	19.978776	-99.436286

38 CARR: Tlahuelilpan - San Agustín Tlaxiaca

CLAVE: 13435

RUTA: HGO

AÑO: 2020

LUGAR	ESTACION				CLASIFICACION VEHICULAR EN PORCIENTO										COORDENADAS					
	KM	TE	SC	TDPA	M	A	B	C2	C3	T3S2	T3S3	T3S2R4	OTROS	A	B	C	K'	D	LATITUD	LONGITUD
Tlahuelilpan	0.00	3	0	2586	10.2	84.8	0.1	4.2	0.7	0.0	0.0	0.0	0.0	95.0	0.1	4.9	0.099	0.509	20.133624	-99.230542
Ignacio Zaragoza	25.50	3	0	2631	2.6	85.0	1.2	10.0	1.0	0.1	0.1	0.0	0.0	87.6	1.2	11.2	0.086	0.529	20.131328	-98.996844
T. C. (La Colonia - Portezuelo)	48.00	1	0	5003	2.9	91.4	0.5	4.3	0.5	0.2	0.1	0.1	0.0	94.3	0.5	5.2	0.091	0.500	20.135025	-98.886097

39 CARR: Calpulalpan - El Ocote

CLAVE: 00054

RUTA: MEX-HGO

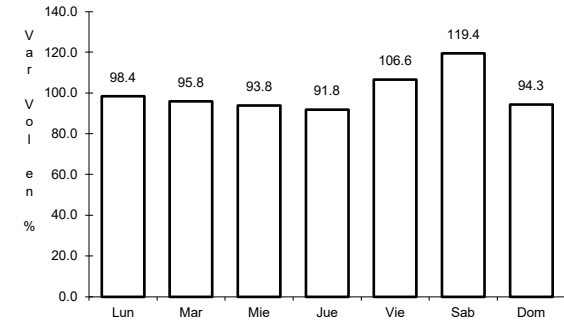
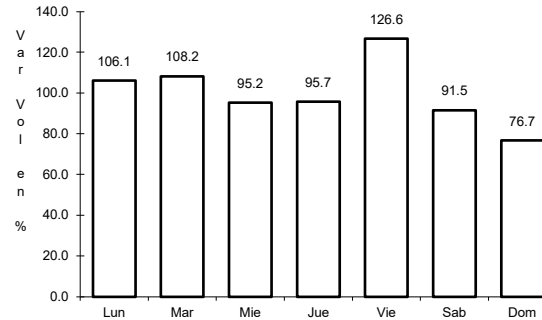
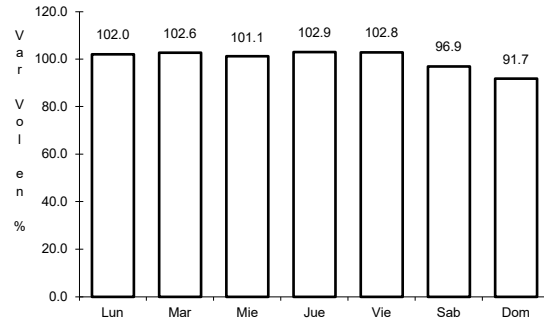
AÑO: 2020

LUGAR	ESTACION				CLASIFICACION VEHICULAR EN PORCIENTO										COORDENADAS					
	KM	TE	SC	TDPA	M	A	B	C2	C3	T3S2	T3S3	T3S2R4	OTROS	A	B	C	K'	D	LATITUD	LONGITUD
Calpulalpan	0.00	3	0	7686	1.1	75.8	1.8	7.7	2.1	7.3	1.7	1.6	0.9	76.9	1.8	21.3	0.082	0.508	19.592569	-98.575426
X. C. Arco Norte de La Ciudad de México	4.00	3	1	3516	1.9	79.1	1.9	7.2	2.1	5.7	1.3	0.4	0.4	81.0	1.9	17.1	0.098	0.538	19.621892	-98.546908
X. C. Arco Norte de La Ciudad de México	4.00	3	2	4091	2.0	79.5	2.0	6.3	2.4	6.2	0.9	0.3	0.4	81.5	2.0	16.5	0.086	0.538	19.621455	-98.546908
Lim. Edos. Term. Tlax. Ppia. Hgo.	5.00																			
Apan	19.58	3	1	3072	3.2	93.1	0.1	2.1	0.6	0.5	0.3	0.1	0.0	96.3	0.1	3.6	0.088	0.521	19.711813	-98.453937
Apan	19.58	3	2	3342	3.2	92.7	0.1	2.4	0.7	0.5	0.3	0.1	0.0	95.9	0.1	4.0	0.083	0.521	19.711814	-98.453938
Tepeapulco	34.92	3	0	4082	1.8	88.3	0.3	7.6	1.1	0.7	0.2	0.0	0.0	90.1	0.3	9.6	0.093	0.515	19.788662	-98.554580
X. C. Venta de Carpio - Tulancingo	51.18	1	1	1169	1.0	86.7	0.9	7.6	2.1	1.0	0.4	0.1	0.2	87.7	0.9	11.4	0.093	0.508	19.920975	-98.579480
X. C. Venta de Carpio - Tulancingo	51.18	1	2	1207	1.2	86.3	0.9	7.4	2.5	1.1	0.3	0.1	0.2	87.5	0.9	11.6	0.089	0.508	19.920975	-98.579480
X. C. Venta de Carpio - Tulancingo	51.18	3	0	1911	2.9	82.8	0.7	10.4	1.3	1.4	0.5	0.0	0.0	85.7	0.7	13.6	0.091	0.525	19.925052	-98.581514
El Ocote	70.44	1	1	1660	2.1	95.1	0.2	2.0	0.4	0.2	0.0	0.0	0.0	97.2	0.2	2.6	0.106	0.516	20.049413	-98.618252
El Ocote	70.44	1	2	1556	1.1	93.3	0.2	5.0	0.3	0.1	0.0	0.0	0.0	94.4	0.2	5.4	0.105	0.516	20.049413	-98.618252

1 CARR: Álamo - Huejutla de Reyes

CLAVE: 00116

ruta: MEX-127



Km: 0.00      Tipo: 3      Sent: 0

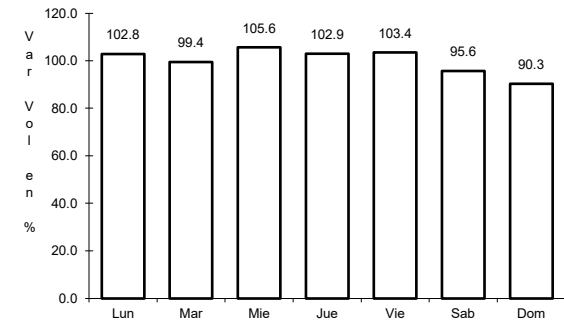
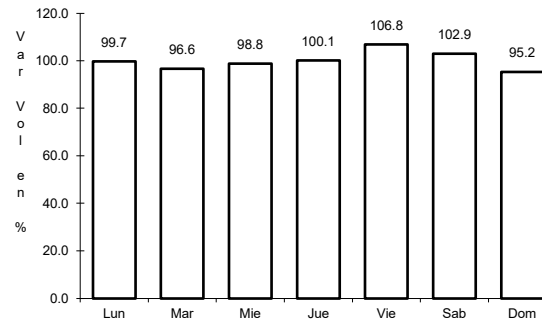
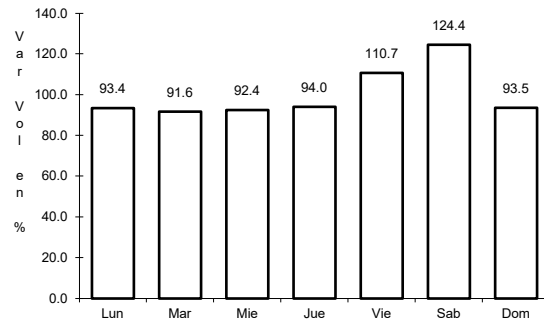
Km: 73.00      Tipo: 1      Sent: 0

Km: 78.00      Tipo: 3      Sent: 0

2 CARR: Apizaco - Tejocotal

CLAVE: 00430

ruta: MEX-119



Km: 0.00      Tipo: 3      Sent: 1

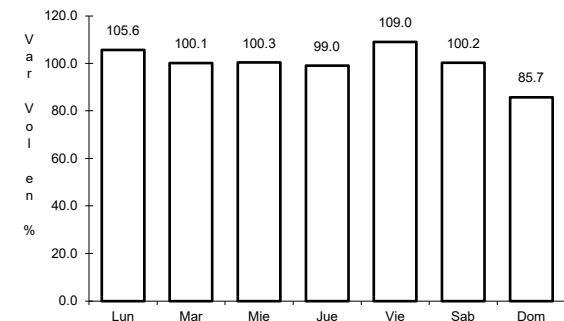
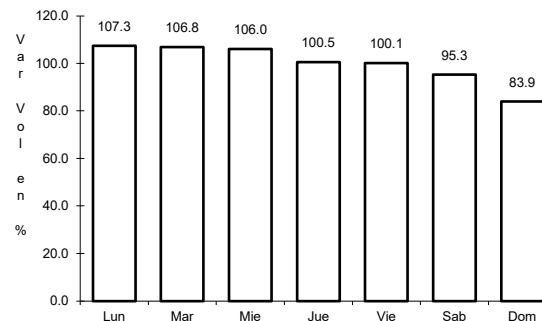
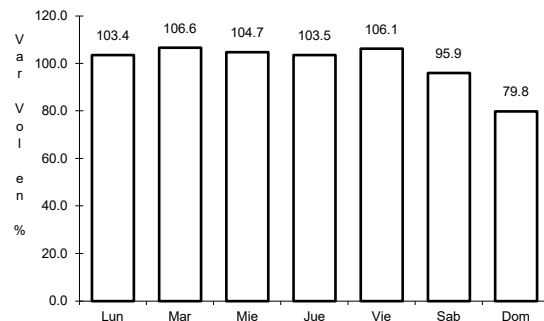
Km: 0.00      Tipo: 3      Sent: 2

Km: 113.15      Tipo: 1      Sent: 0

3 CARR: Ent. Colonia - Portezuelo

CLAVE: 13257

ruta: MEX-085



Km: 0.00      Tipo: 3      Sent: 1

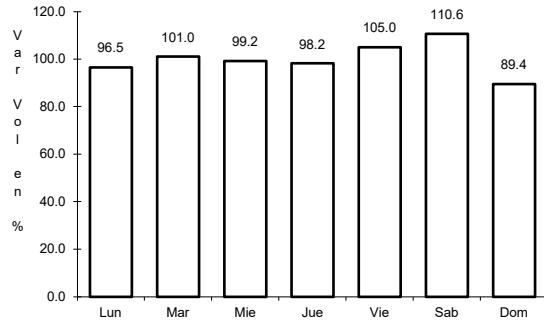
Km: 0.00      Tipo: 3      Sent: 2

Km: 75.20      Tipo: 3      Sent: 1

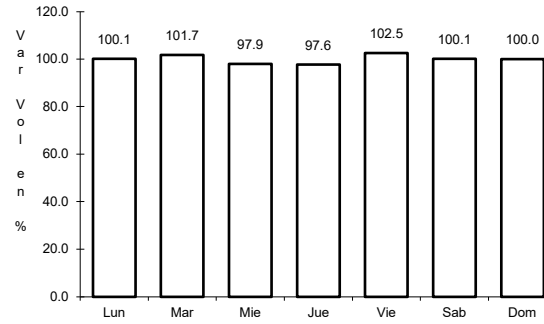
4 CARR: Ent. Jorobas - Tula

CLAVE: 00159

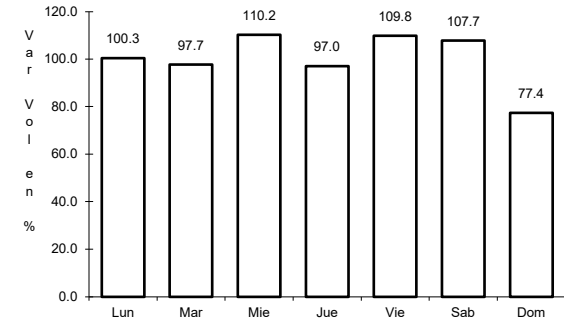
ruta: MEX-087



Km: 0.00                      Tipo: 3                      Sent: 1



Km: 0.00                      Tipo: 3                      Sent: 2

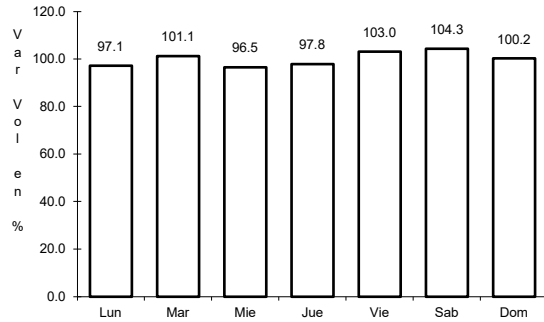


Km: 37.70                      Tipo: 1                      Sent: 1

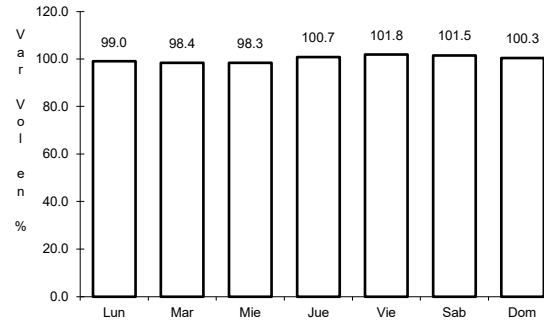
5 CARR: México - Pachuca (Libre)

CLAVE: 00431

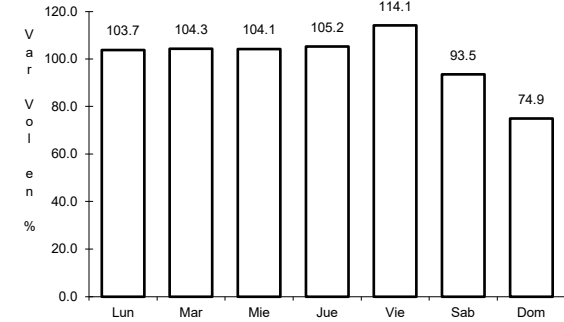
ruta: MEX-085



Km: 26.93                      Tipo: 1                      Sent: 1



Km: 26.93                      Tipo: 1                      Sent: 2

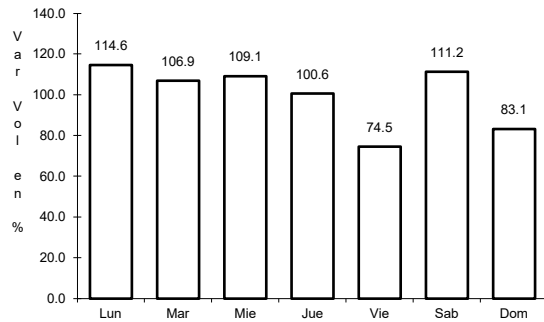


Km: 86.50                      Tipo: 1                      Sent: 1

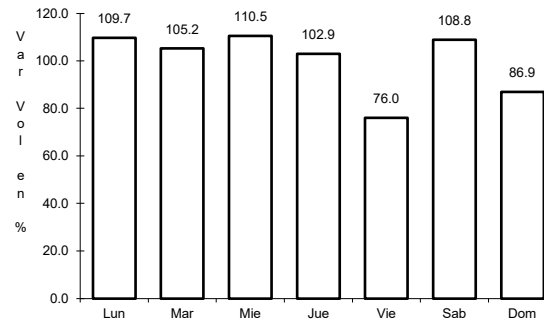
6 CARR: Pachuca - Cd. Sahagún

CLAVE: 13088

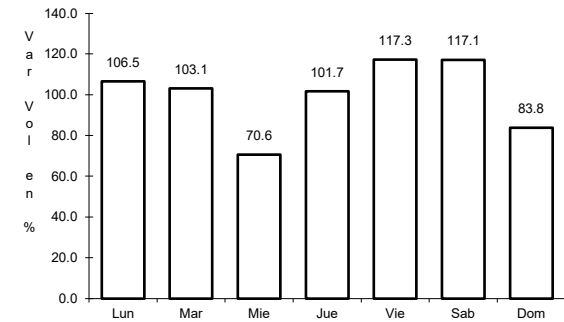
ruta: MEX



Km: 0.00                      Tipo: 3                      Sent: 1



Km: 0.00                      Tipo: 3                      Sent: 2



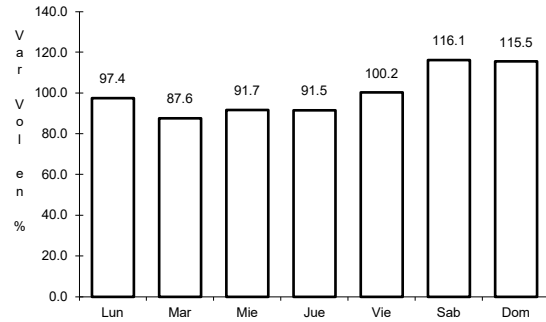
Km: 40.00                      Tipo: 3                      Sent: 1



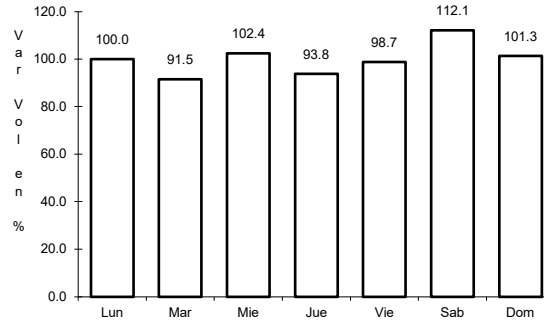
7 CARR: Pachuca - Tempoal

CLAVE: 00113

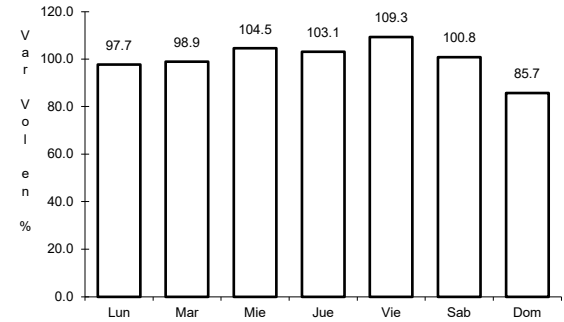
ruta: MEX-105



Km: 0.00                      Tipo: 3                      Sent: 0



Km: 129.80                      Tipo: 1                      Sent: 0

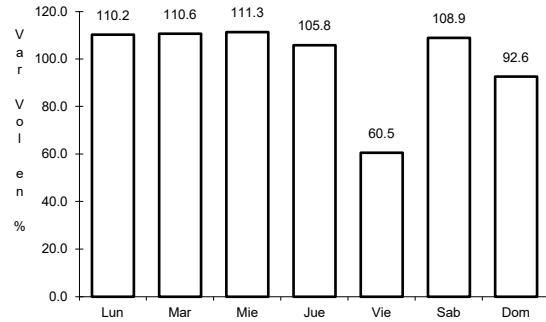


Km: 260.68                      Tipo: 1                      Sent: 0

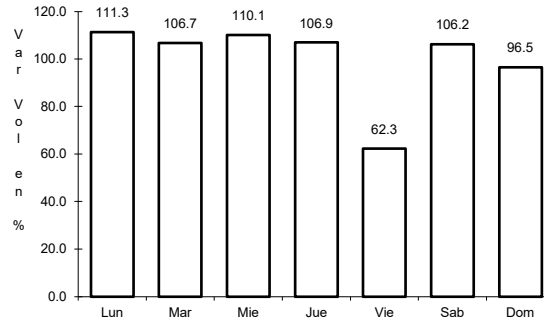
8 CARR: Pachuca - Tuxpam

CLAVE: 00608

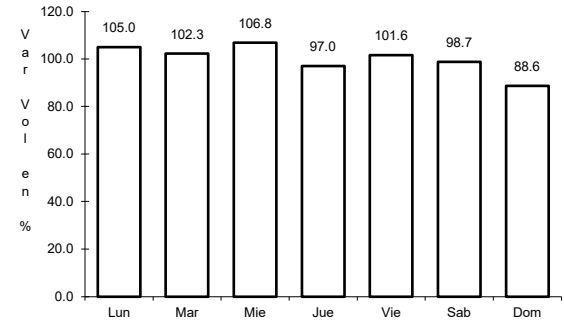
ruta: MEX-130



Km: 2.60                      Tipo: 3                      Sent: 1



Km: 2.60                      Tipo: 3                      Sent: 2

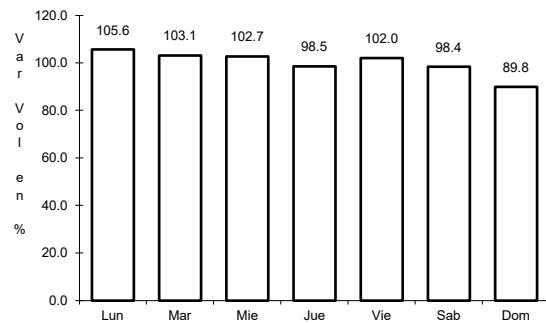


Km: 232.50                      Tipo: 1                      Sent: 0

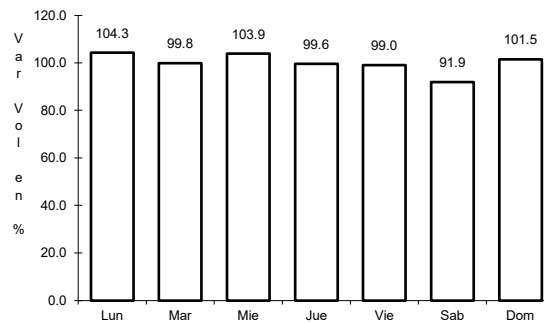
9 CARR: Portezuelo - Cd. Valles

CLAVE: 00023

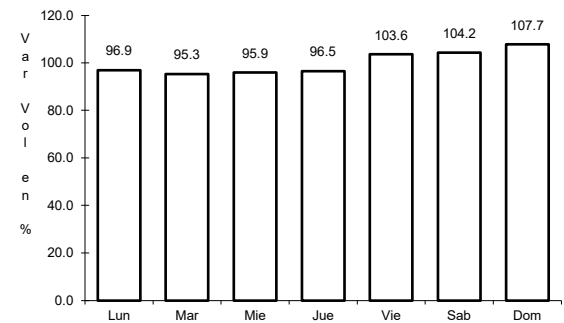
ruta: MEX-085



Km: 0.00                      Tipo: 3                      Sent: 0



Km: 154.00                      Tipo: 3                      Sent: 0

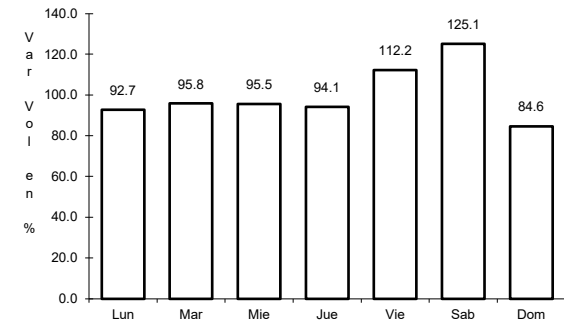
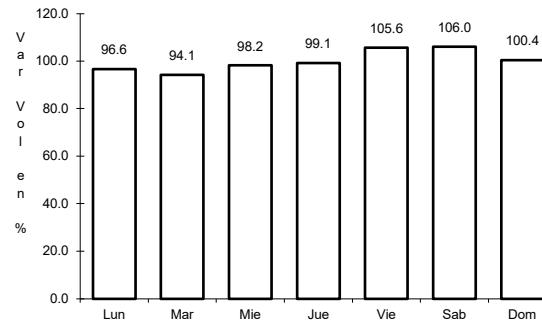
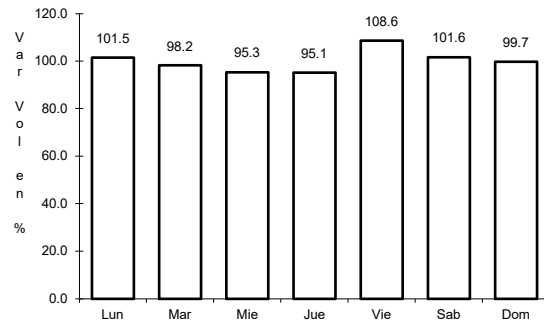


Km: 286.41                      Tipo: 1                      Sent: 0

10 CARR: Portezuelo - Palmillas

CLAVE: 00194

ruta: MEX-045



Km: 0.00      Tipo: 3      Sent: 1

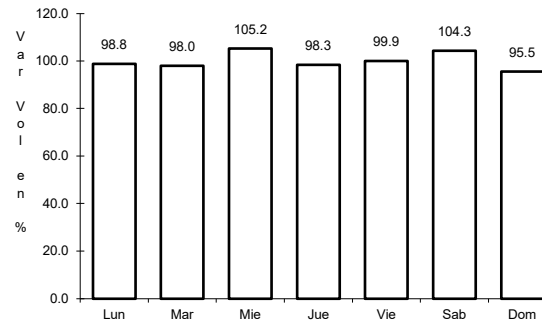
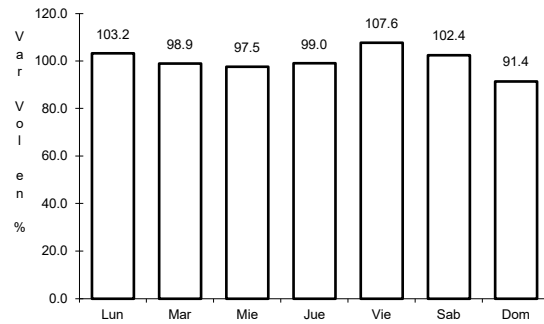
Km: 0.00      Tipo: 3      Sent: 2

Km: 80.00      Tipo: 1      Sent: 1

11 CARR: Tamazunchale - San Felipe Orizatlán

CLAVE: 00609

ruta: MEX-085



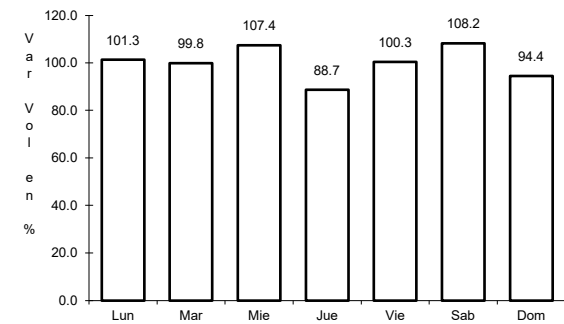
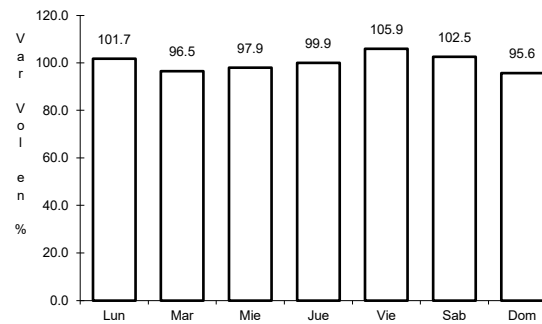
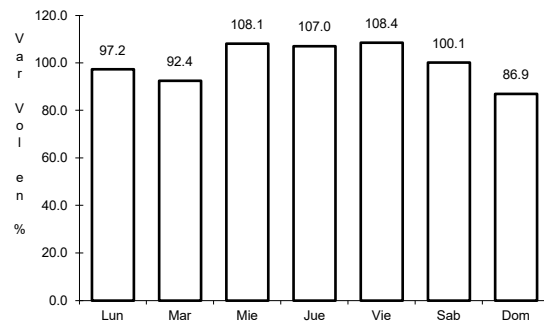
Km: 0.00      Tipo: 3      Sent: 0

Km: 27.10      Tipo: 1      Sent: 0

12 CARR: Venta de Carpio - T. C. (Pachuca - Tuxpam)

CLAVE: 00455

ruta: MEX-132



Km: 6.42      Tipo: 3      Sent: 1

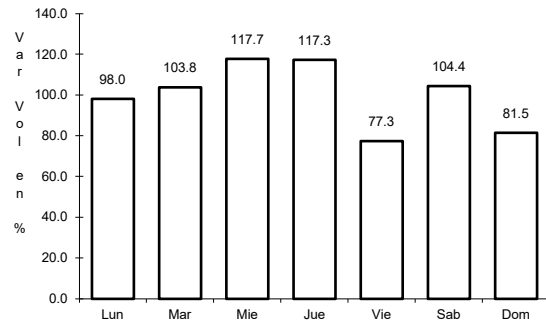
Km: 6.42      Tipo: 3      Sent: 2

Km: 31.79      Tipo: 3      Sent: 0

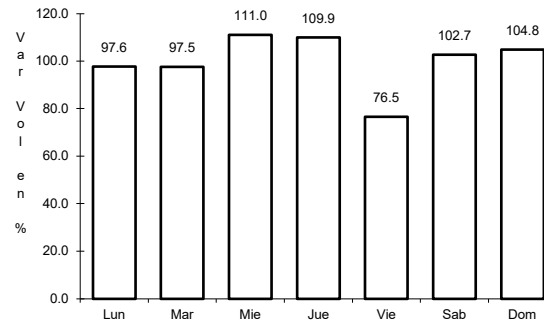
13 CARR: Ent. Tulancingo - Venta Grande (Cuota)

CLAVE: 00026

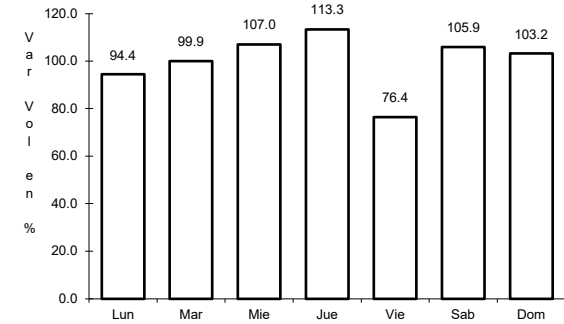
ruta: MEX-132D



Km: 7.80 Tipo: 1 Sent: 0



Km: 21.80 Tipo: 1 Sent: 0

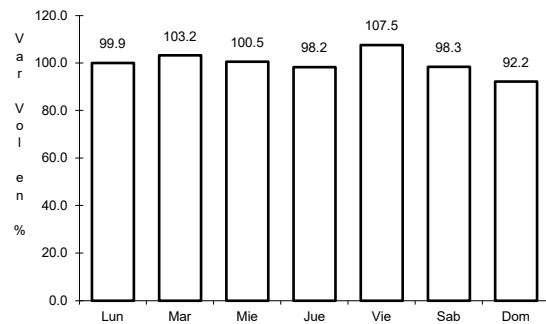


Km: 39.60 Tipo: 1 Sent: 0

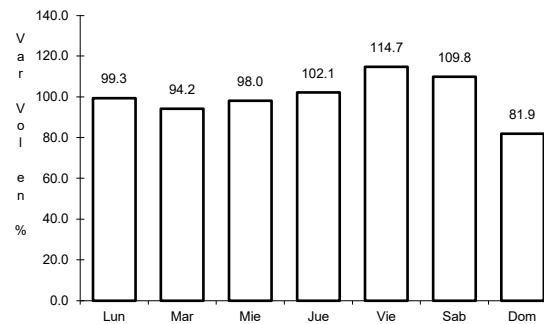
14 CARR: Libramiento Norte de la Ciudad de México (Cuota)

CLAVE: 0902

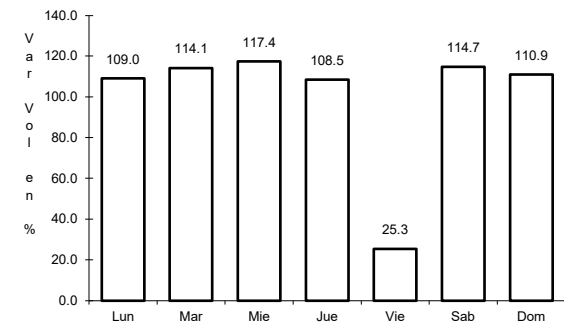
ruta: MEX-M40D



Km: 12.90 Tipo: 1 Sent: 1



Km: 12.90 Tipo: 1 Sent: 2

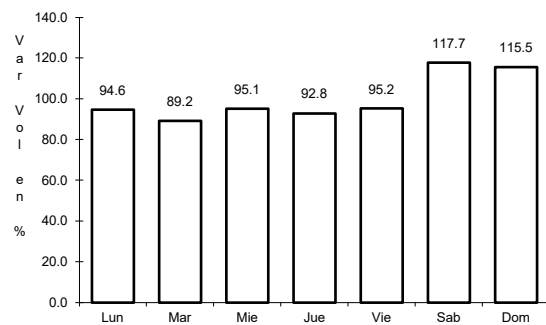


Km: 226.73 Tipo: 1 Sent: 1

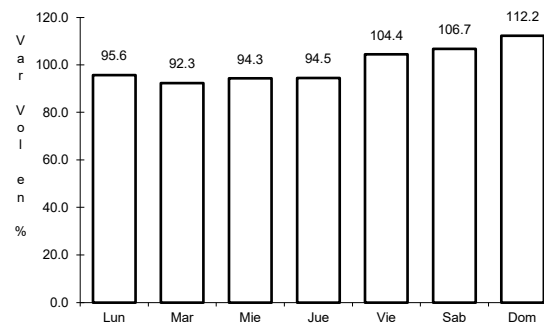
15 CARR: México - Pachuca (Cuota)

CLAVE: 00432

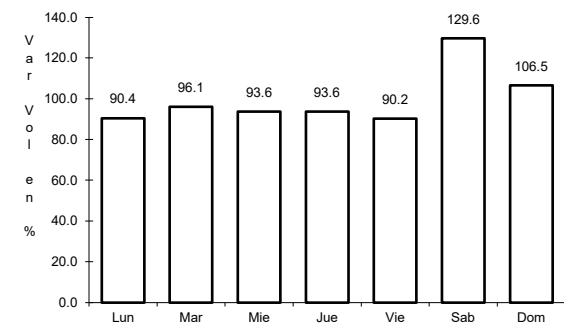
ruta: MEX-085D



Km: 25.00 Tipo: 3 Sent: 1



Km: 25.00 Tipo: 3 Sent: 2

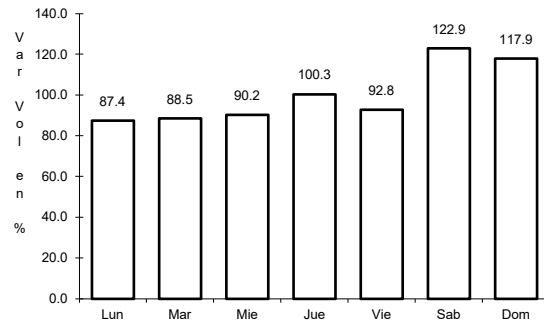


Km: 60.50 Tipo: 1 Sent: 1

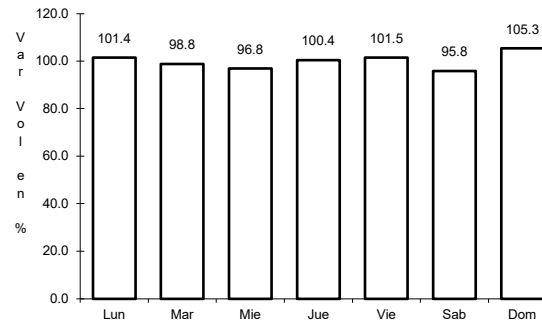
16 CARR: Tejocotal - Nuevo Necaxa (Cuota)

CLAVE: 00211

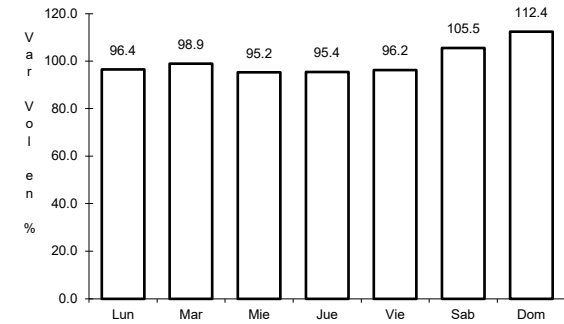
RUTA: MEX-132D



Km: 0.00                      Tipo: 3                      Sent: 0



Km: 17.00                      Tipo: 1                      Sent: 1

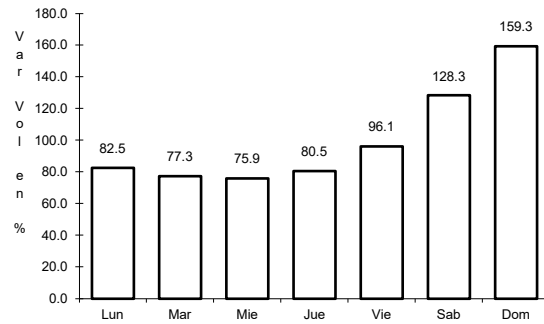


Km: 17.00                      Tipo: 1                      Sent: 2

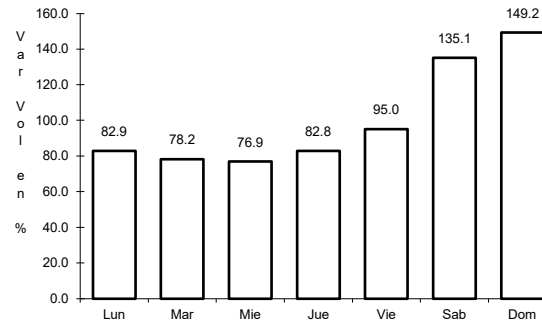
17 CARR: Tlaxco - Tejocotal (Cuota)

CLAVE: 00209

RUTA: MEX-119D



Km: 23.00                      Tipo: 3                      Sent: 0

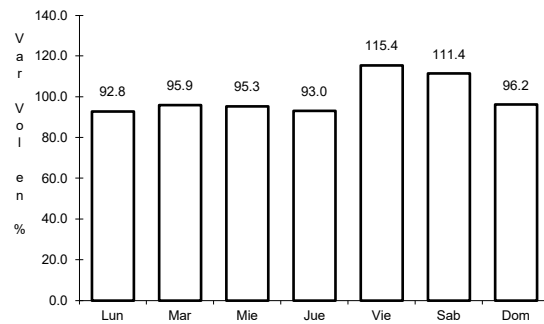


Km: 56.20                      Tipo: 3                      Sent: 0

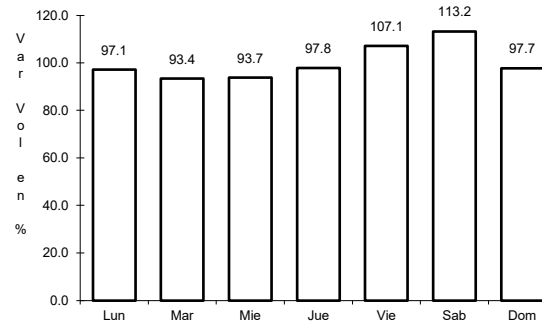
18 CARR: México - Querétaro (Cuota)

CLAVE: 00411

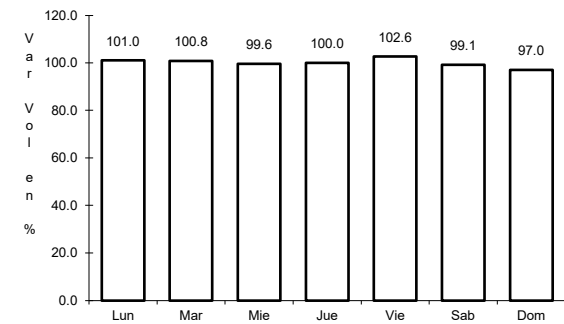
RUTA: MEX-057-MEX-057D



Km: 56.18                      Tipo: 1                      Sent: 1



Km: 56.18                      Tipo: 1                      Sent: 2

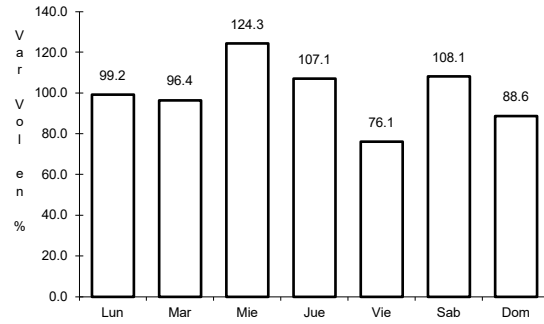


Km: 207.00                      Tipo: 3                      Sent: 1

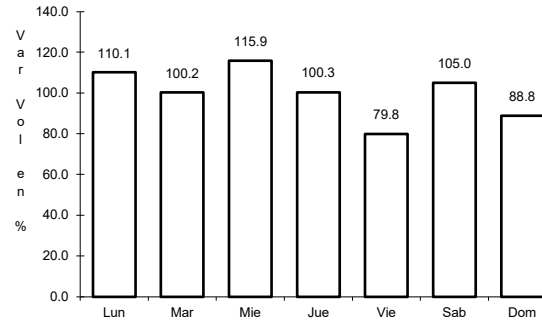
19 CARR: Actopan - Progreso

CLAVE: 13038

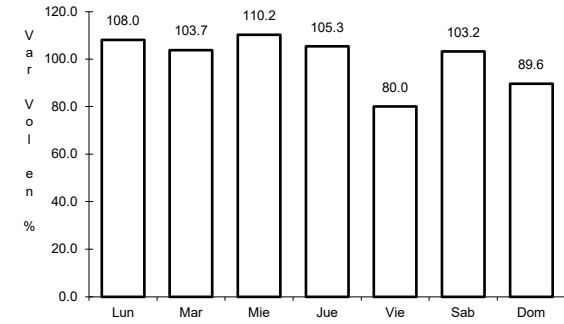
RUTA: HGO



Km: 0.00                      Tipo: 3                      Sent: 1



Km: 0.00                      Tipo: 3                      Sent: 2

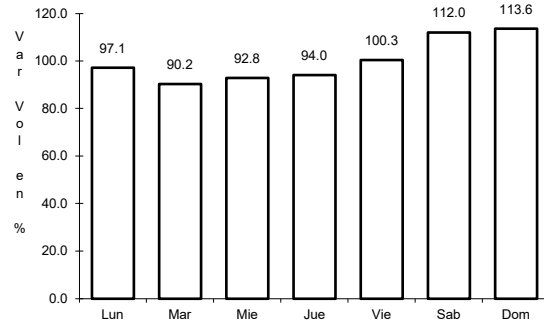


Km: 23.90                      Tipo: 1                      Sent: 1

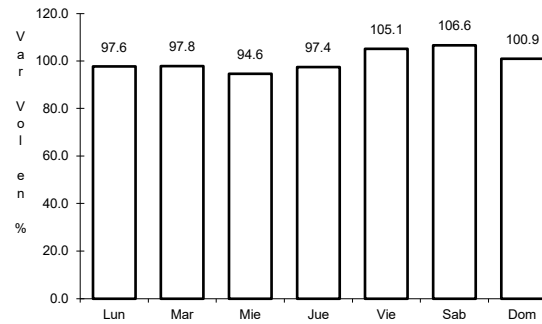
20 CARR: El Saucillo - Amealco

CLAVE: 13103

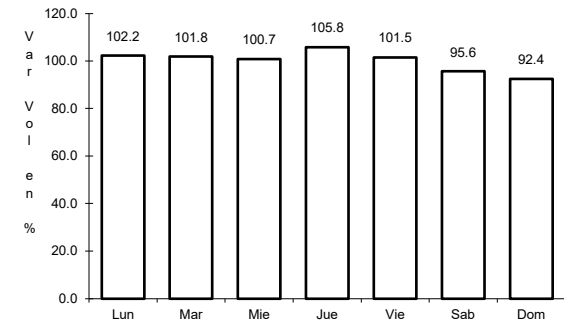
RUTA: HGO-103



Km: 0.00                      Tipo: 3                      Sent: 0



Km: 11.00                      Tipo: 3                      Sent: 0

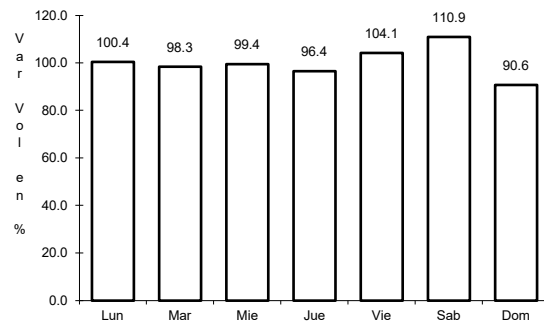


Km: 21.40                      Tipo: 1                      Sent: 0

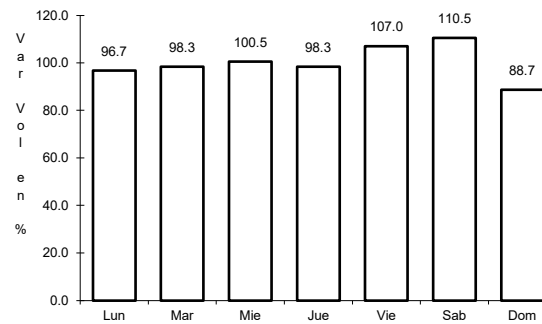
21 CARR: Ent. Emiliano Zapata - Cd. Sahagún

CLAVE: 13255

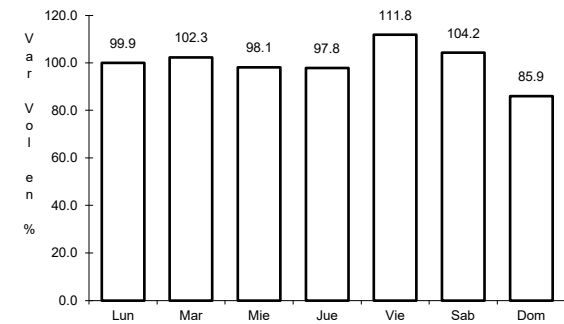
RUTA: HGO



Km: 2.70                      Tipo: 1                      Sent: 1



Km: 2.70                      Tipo: 1                      Sent: 2

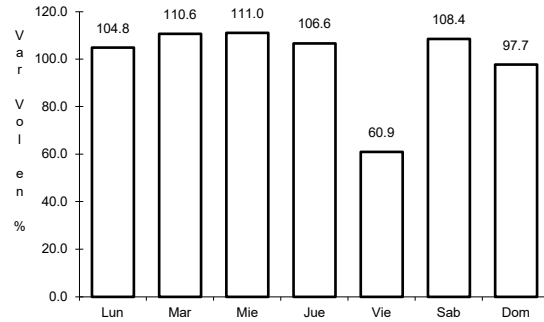


Km: 17.98                      Tipo: 1                      Sent: 1

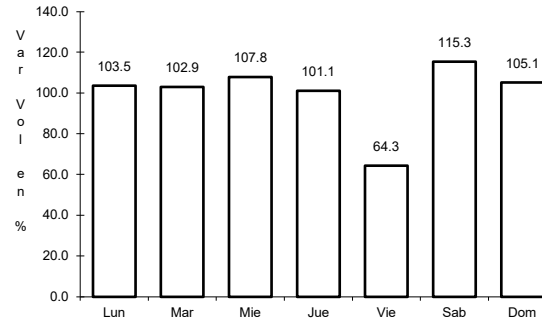
22 CARR: Ent. Tepeji del Río - Tlahuelilpan

CLAVE: 13017

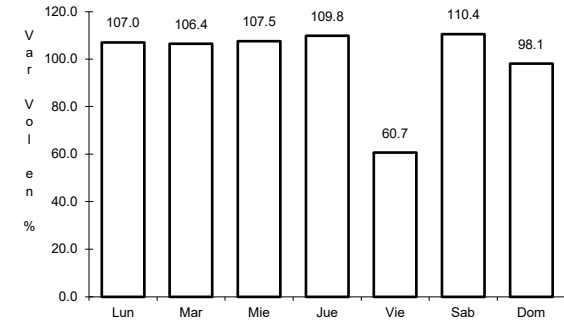
ruta: HGO-017



Km: 3.00 Tipo: 3 Sent: 1



Km: 3.00 Tipo: 3 Sent: 2

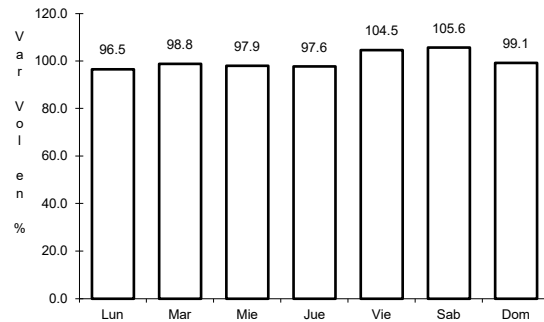


Km: 18.00 Tipo: 1 Sent: 0

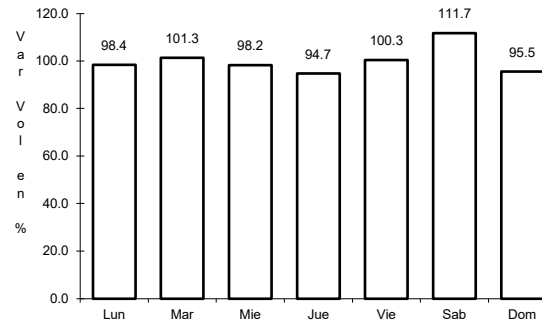
23 CARR: Ent. Tolman - Cd. Sahagún

CLAVE: 00119

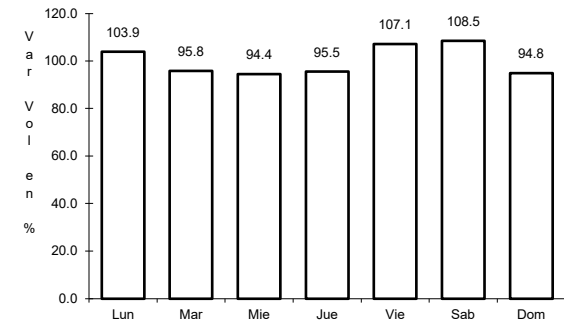
ruta: EM-009-HGO



Km: 0.00 Tipo: 3 Sent: 0



Km: 21.00 Tipo: 3 Sent: 0

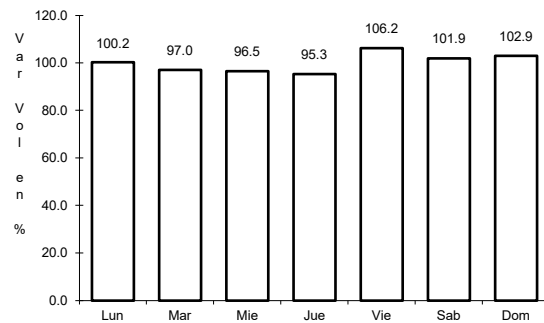


Km: 32.00 Tipo: 1 Sent: 0

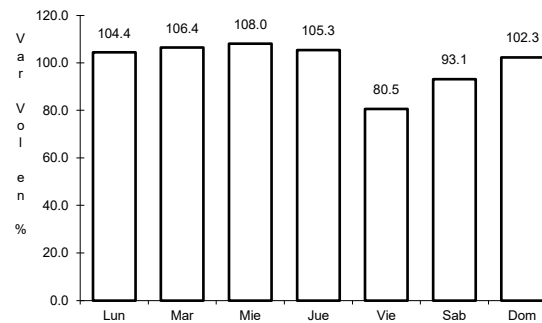
24 CARR: Francisco I. Madero - Tula de Allende

CLAVE: 13043

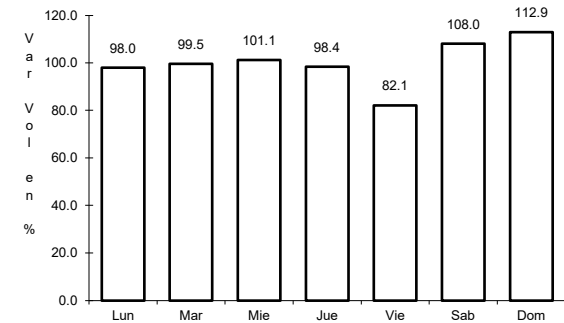
ruta: HGO



Km: 0.00 Tipo: 3 Sent: 0



Km: 38.20 Tipo: 1 Sent: 0

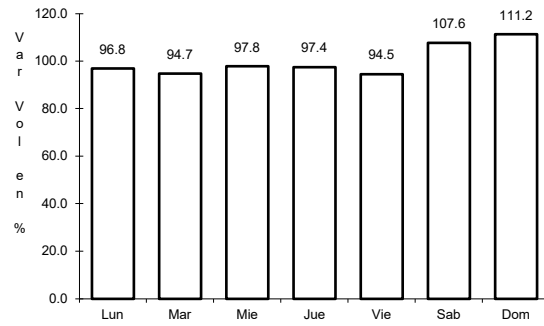


Km: 52.70 Tipo: 1 Sent: 0

25 CARR: Huichapan - Tecozautla

CLAVE: 13030

ruta: HGO-030



Km: 0.00

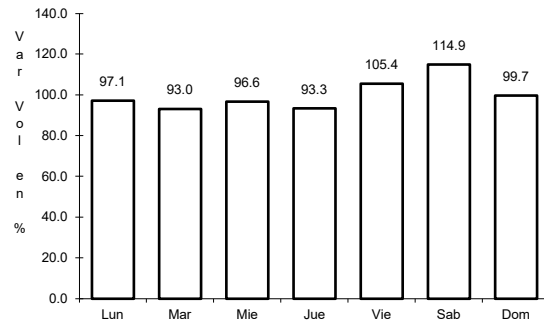
Tipo: 3

Sent: 0

26 CARR: Jilotepec - Maravillas

CLAVE: 00015

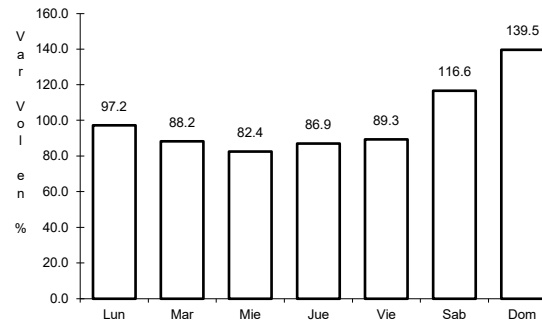
ruta: EM-HGO



Km: 0.00

Tipo: 3

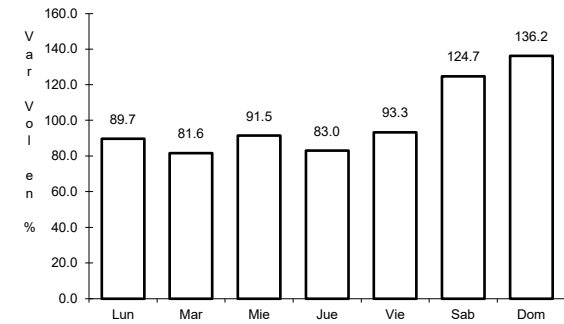
Sent: 0



Km: 21.30

Tipo: 1

Sent: 0



Km: 40.00

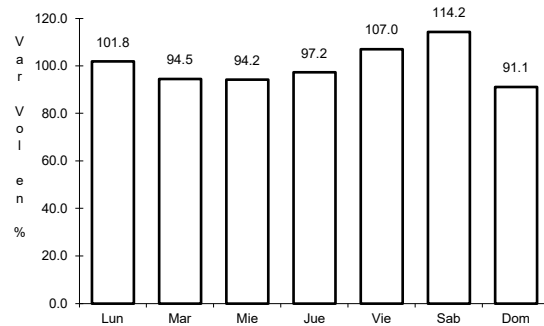
Tipo: 1

Sent: 0

27 CARR: Libramiento de Atotonilco El Grande

CLAVE: 13238

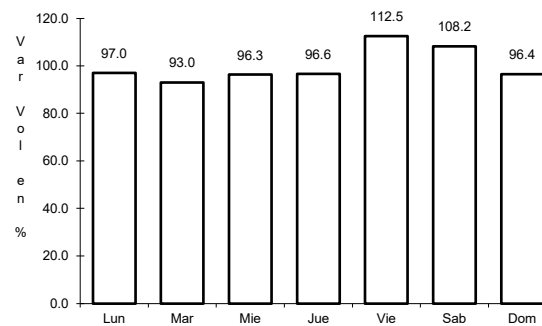
ruta: HGO



Km: 0.00

Tipo: 3

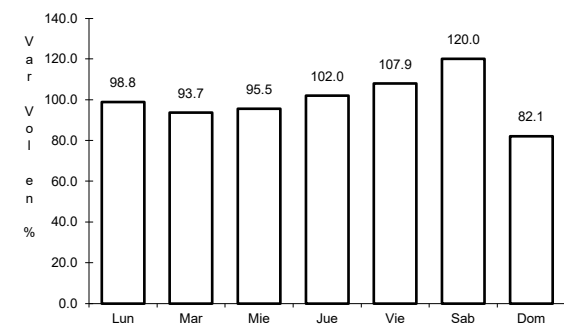
Sent: 1



Km: 0.00

Tipo: 3

Sent: 2



Km: 6.30

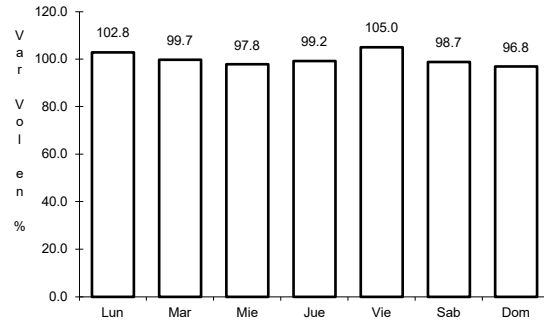
Tipo: 1

Sent: 1

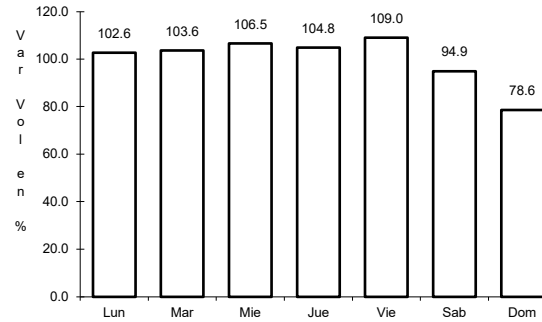
28 CARR: Lolotla - Atlapexco

CLAVE: 13238

RUTA: HGO



Km: 0.00      Tipo: 3      Sent: 0

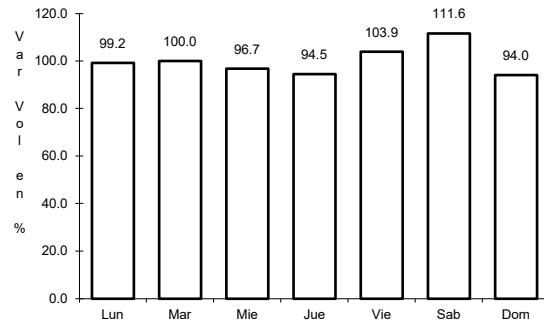


Km: 68.00      Tipo: 1      Sent: 0

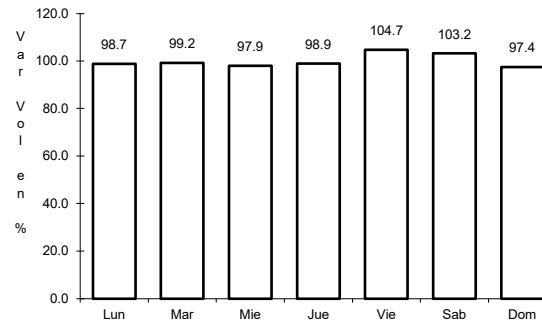
29 CARR: Los Reyes - El Tephé

CLAVE: 00021

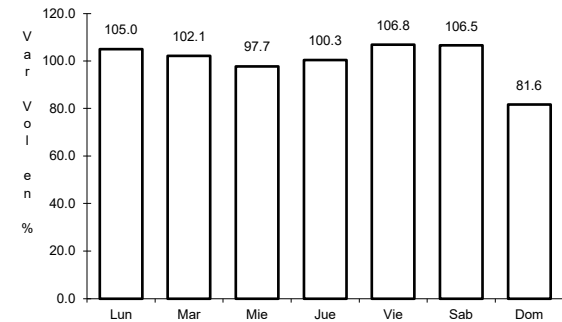
RUTA: EM-HGO



Km: 1.35      Tipo: 3      Sent: 1



Km: 1.35      Tipo: 3      Sent: 2

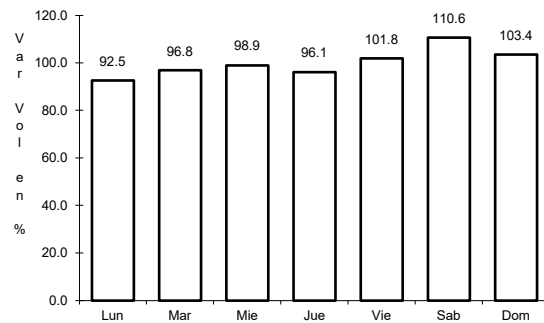


Km: 42.00      Tipo: 1      Sent: 0

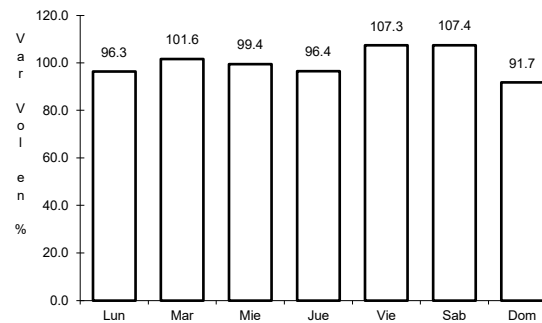
30 CARR: Otumba - Tizayuca

CLAVE: 00012

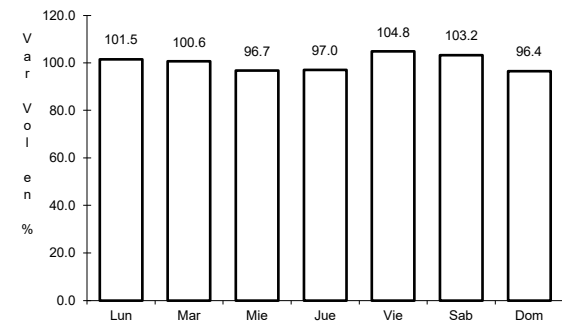
RUTA: EM-HGO



Km: 0.00      Tipo: 3      Sent: 0



Km: 37.10      Tipo: 1      Sent: 1



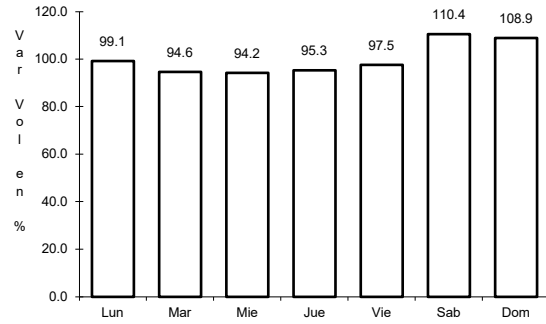
Km: 37.10      Tipo: 1      Sent: 2



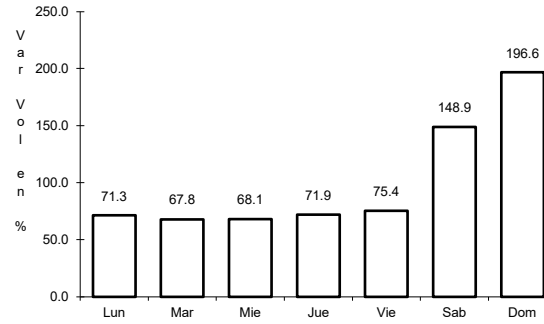
31 CARR: Ramal a El Chico

CLAVE: 13256

RUTA: HGO



Km: 0.00                      Tipo: 3                      Sent: 0

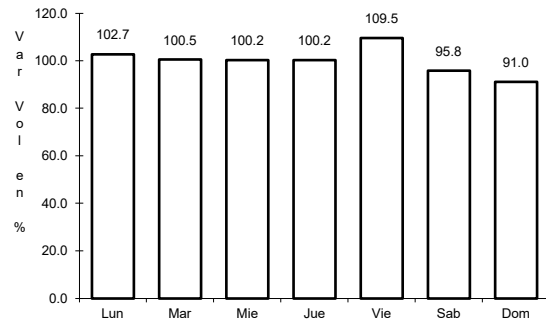


Km: 21.00                      Tipo: 1                      Sent: 0

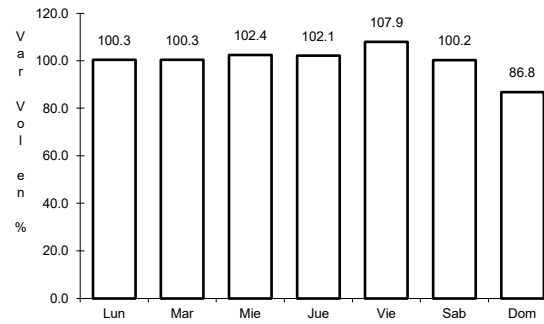
32 CARR: Ramal a Pachuca

CLAVE: 13254

RUTA: HGO



Km: 0.00                      Tipo: 3                      Sent: 1

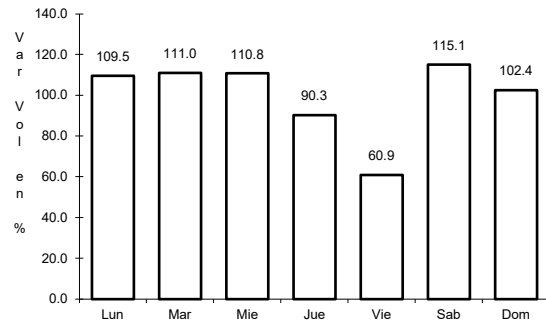


Km: 0.00                      Tipo: 3                      Sent: 2

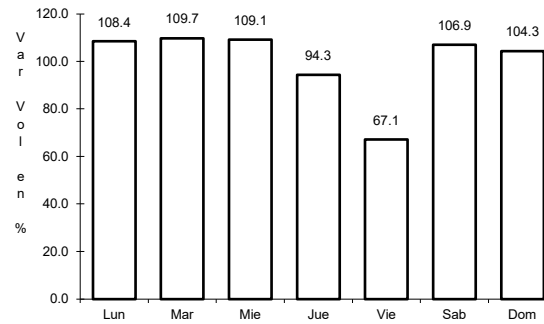
33 CARR: San Alejo - Huayacocotla

CLAVE: 00132

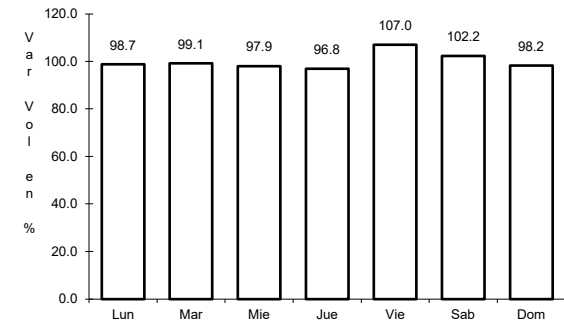
RUTA: HGO-051-VER-113



Km: 0.00                      Tipo: 3                      Sent: 0



Km: 29.48                      Tipo: 3                      Sent: 0

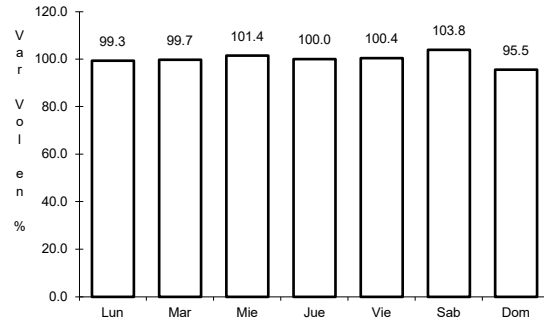


Km: 66.00                      Tipo: 1                      Sent: 0

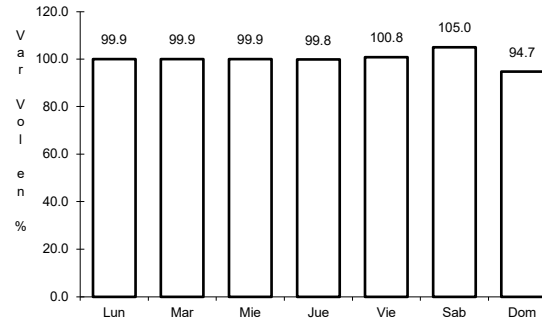
34 CARR: San Felipe Orizatlán - Huejutla de Reyes

CLAVE: 13258

RUTA: HGO



Km: 0.00                      Tipo: 3                      Sent: 0

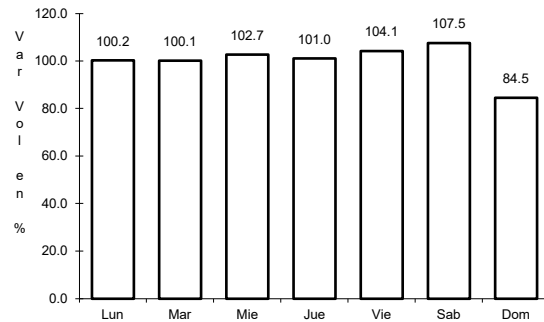


Km: 25.00                      Tipo: 1                      Sent: 0

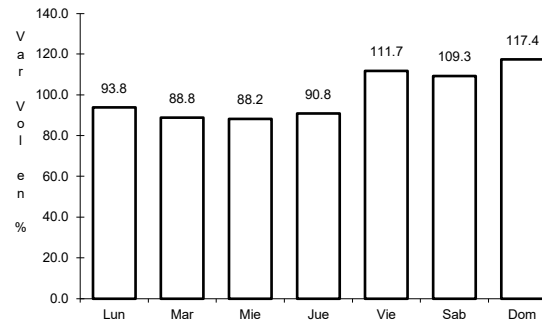
35 CARR: Santo Domingo - T. C. (México - Querétaro)

CLAVE: 00433

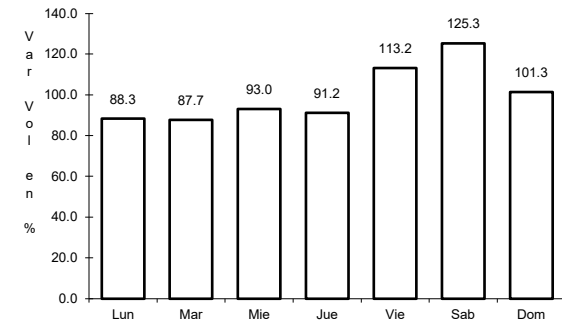
RUTA: EM-011-HGO



Km: 0.00                      Tipo: 3                      Sent: 0



Km: 65.84                      Tipo: 1                      Sent: 1

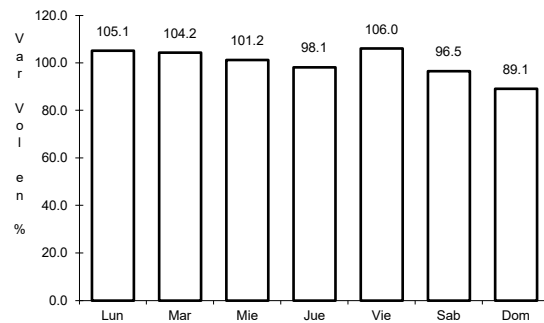


Km: 65.84                      Tipo: 1                      Sent: 2

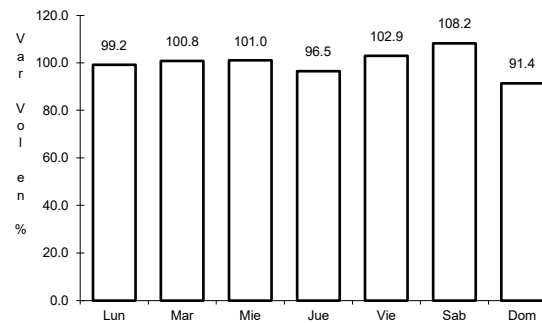
36 CARR: T. C. (Los Reyes - El Tephé) - Tizayuca

CLAVE: 00014

RUTA: EM-HGO



Km: 0.00                      Tipo: 3                      Sent: 0

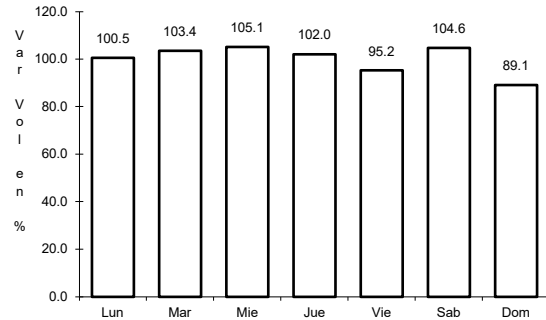


Km: 8.00                      Tipo: 1                      Sent: 0

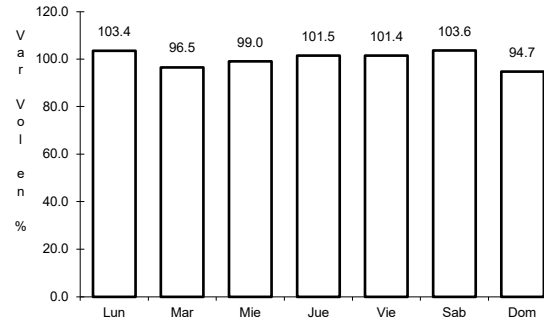
37 CARR: Tepeji del Río - T.C. (México - Querétaro)

CLAVE: 13104

RUTA: HGO



Km: 0.00                      Tipo: 3                      Sent: 0

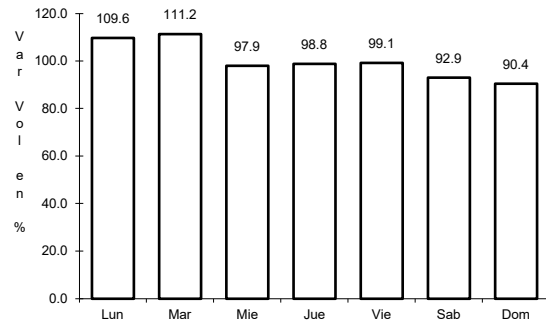


Km: 12.40                      Tipo: 1                      Sent: 0

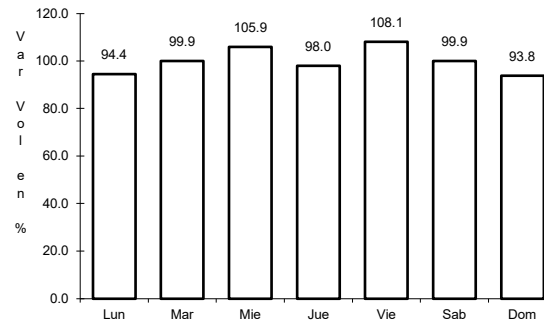
38 CARR: Tlahuelilpan - San Agustín Tlaxiaca

CLAVE: 13435

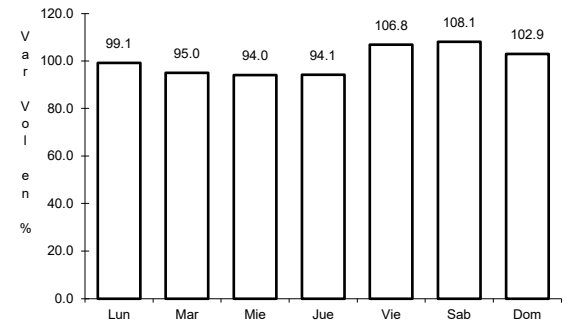
RUTA: HGO



Km: 0.00                      Tipo: 3                      Sent: 0



Km: 25.50                      Tipo: 3                      Sent: 0

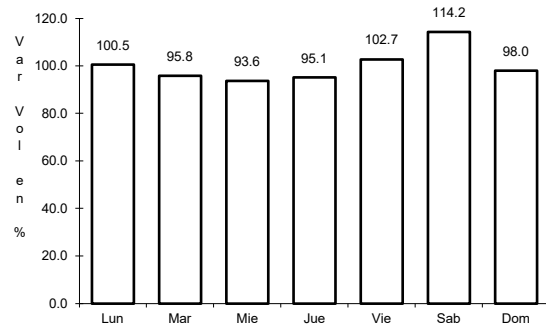


Km: 48.00                      Tipo: 1                      Sent: 0

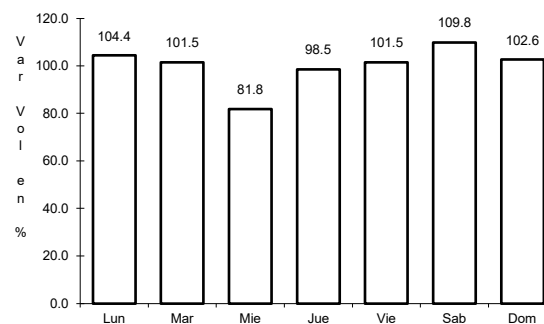
39 CARR: Calpulpan - El Ocote

CLAVE: 00054

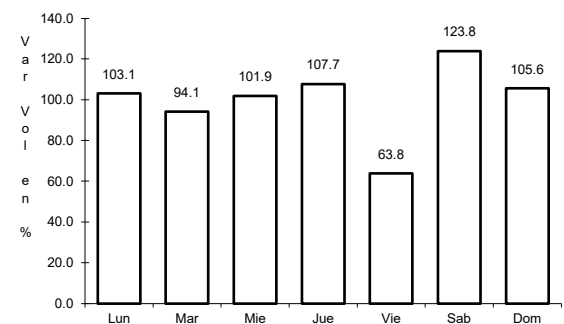
RUTA: MEX-HGO



Km: 0.00                      Tipo: 3                      Sent: 0



Km: 34.92                      Tipo: 3                      Sent: 0



Km: 70.44                      Tipo: 1                      Sent: 1

