



GUERRERO

NO. INDICE CARRETERA	RUTA
---RED FEDERAL LIBRE---	
1 Acapulco - Zihuatanejo	MEX-200
2 Cd. Altamirano - T. C. (Zihuatanejo - La Mira)	MEX-134
3 Chilpancingo - Acapulco	MEX-095
4 Chilpancingo - Chichihualco	MEX-095
5 Chilpancingo - Jilotepec	MEX-093
6 Cuernavaca - Chilpancingo	MEX-095
7 Ent. Alpuyecá - Grutas de Cacahuamilpa	MEX-166
8 Iguala - Cd. Altamirano	MEX-051
9 La Sabana - Puerto Marqués	MEX-200
10 Las Cruces - Pinotepa Nacional	MEX-200
11 Libramiento Norte de Acapulco	MEX-095
12 Milpillas - T. C. (Acapulco - Zihuatanejo)	MEX-196
13 Ramal a Aeropuerto Zihuatanejo	MEX-200
14 Ramal a La Unión	MEX-200
15 San Juan de Los Llanos - Ometepec	MEX-200
16 Tierra Colorada - Cruz Grande	MEX-198
17 Toluca - Cd. Altamirano	MEX-134
18 Zihuatanejo - La Mira	MEX-200
---RED FEDERAL DE CUOTA---	
19 Cuernavaca - Acapulco (Cuota)	MEX-095D
20 Libramiento de Tépán (Cuota)	MEX-200D
21 Nueva Italia - Lázaro Cárdenas (Cuota)	MEX-037D
22 Puente de Ixtla - Iguala (Cuota)	MEX-091D
23 Rancho Viejo - Taxco (Cuota)	MEX-092D
24 Zacapalco - Rancho Viejo (Cuota)	MEX-092D
---RED ESTATAL LIBRE---	
25 Acapulco - Aeropuerto Acapulco	GRO
26 Ent. Potrero - Lomas de Chapultepec	GRO
27 Las Petaquillas - Quechultenango	GRO
28 Pie de La Cuesta - Barra de Coyoaca	GRO
29 Ramal a Cocula	GRO
30 T. C. (Iguala - Chilpancingo) - Atenango del Río	GRO-001
31 Taxco - Ixcateopan	GRO
32 Teloloapan - Apaxtla de Castrejón	GRO
33 Tlapa de Comonfort - Marquelia	GRO
---RED ESTATAL DE CUOTA---	
34 Puerto Marqués - La Venta (Cuota)	GRO-D
---CARRETERAS INTEGRADAS POR TRAMOS FEDERALES Y ESTATALES---	
35 Toluca - Axixintla	EM-MEX-055

12 GUERRERO

SECRETARÍA DE COMUNICACIONES Y TRANSPORTES
DIRECCIÓN GENERAL DE SERVICIOS TÉCNICOS



GUERRERO

1 CARR: Acapulco - Zihuatanejo

CLAVE: 12072

RUTA: MEX-200

AÑO: 2020

LUGAR	ESTACION				CLASIFICACION VEHICULAR EN PORCIENTO										COORDENADAS					
	KM	TE	SC	TDPA	M	A	B	C2	C3	T3S2	T3S3	T3S2R4	OTROS	A	B	C	K'	D	LATITUD	LONGITUD
Acapulco	0.00																			
T. Izq. Pie de La Cuesta	10.37	1	0	19672	6.6	86.9	0.5	5.0	0.4	0.3	0.2	0.0	0.1	93.5	0.5	6.0	0.090	0.515	16.896883	-99.961208
T. Izq. Pie de La Cuesta	10.37	3	0	15044	3.1	89.6	1.0	4.9	0.4	0.4	0.5	0.0	0.1	92.7	1.0	6.3	0.103	0.540	16.896842	-99.961116
T. Der. Libramiento de Acapulco	21.37	3	0	7516	3.4	84.8	2.2	6.7	1.4	0.8	0.6	0.0	0.1	88.2	2.2	9.6	0.094	0.510	16.961794	-99.976898
Coyuca de Benítez	33.60	3	0	6897	6.5	82.7	2.0	6.0	1.3	0.8	0.6	0.0	0.1	89.2	2.0	8.8	0.134	0.504	17.007451	-100.087010
Pénjamo	36.60	3	0	3760	5.8	79.9	3.5	7.9	1.2	0.9	0.6	0.1	0.1	85.7	3.5	10.8	0.144	0.505	17.012635	-100.115340
Col La Laja	72.60	1	0	6154	8.0	73.0	4.4	10.6	1.6	1.4	0.8	0.1	0.1	81.0	4.4	14.6	0.110	0.548	17.140753	-100.395368
T. Der. Atoyac de Álvarez	77.85	3	0	7215	12.5	77.7	1.7	5.7	1.1	0.6	0.6	0.0	0.1	90.2	1.7	8.1	0.094	0.503	17.163187	-100.432116
San Jerónimo de Juárez	82.40	3	0	4188	5.0	82.9	3.3	6.4	0.9	0.7	0.6	0.1	0.1	87.9	3.3	8.8	0.121	0.502	17.142562	-100.467209
T. C. Libramiento de Técpan (Cuota)	102.00	1	0	6150	3.0	83.9	2.5	7.3	1.5	0.9	0.7	0.1	0.1	86.9	2.5	10.6	0.111	0.507	17.194475	-100.619809
Técpan de Galeana	103.60	1	0	4942	4.5	84.6	2.0	5.8	0.4	2.6	0.1	0.0	0.0	89.1	2.0	8.9	0.101	0.501	17.219438	-100.630565
Técpan de Galeana	103.60	3	0	11644	10.5	83.5	0.6	3.7	0.7	0.2	0.2	0.3	0.3	94.0	0.6	5.4	0.080	0.518	17.219483	-100.630561
T. C. Libramiento de Técpan (Cuota)	110.20	3	0	6062	7.4	80.0	1.5	7.9	1.7	0.8	0.5	0.1	0.1	87.4	1.5	11.1	0.090	0.515	17.204997	-100.651971
T. Ixq. Nuxco	119.00	1	0	3103	1.7	82.1	3.2	8.5	1.6	1.8	0.8	0.1	0.2	83.8	3.2	13.0	0.095	0.515	17.211942	-100.775481
San Luis San Pedro	131.50	1	0	4593	10.6	76.9	2.0	6.4	1.1	1.9	0.7	0.2	0.2	87.5	2.0	10.5	0.089	0.501	17.266811	-100.878858
Buenavista de Juárez	138.45	3	0	4205	9.7	77.6	2.1	6.3	1.3	1.9	0.8	0.1	0.2	87.3	2.1	10.6	0.093	0.528	17.272382	-100.941172
Papanao	162.25	1	0	3191	5.9	77.8	4.4	6.0	2.2	2.3	0.9	0.2	0.3	83.7	4.4	11.9	0.112	0.505	17.323355	-101.041354
Petatán	206.30	1	0	3241	3.7	87.0	0.6	3.3	1.9	2.1	1.1	0.1	0.2	90.7	0.6	8.7	0.097	0.501	17.536438	-101.267160
Petatán	206.30	3	0	5680	4.3	83.5	1.8	7.0	0.9	1.5	0.5	0.2	0.3	87.8	1.8	10.4	0.089	0.511	17.539028	-101.270186
San Jerónimo	216.00	3	0	5044	3.9	84.1	1.7	6.0	1.3	2.0	0.7	0.1	0.2	88.0	1.7	10.3	0.090	0.505	17.566770	-101.344384
T. Izq. Aeropuerto	234.75	1	0	10256	5.0	85.7	0.8	2.8	0.5	4.0	0.5	0.1	0.6	90.7	0.8	8.5	0.097	0.501	17.636736	-101.495789
Zihuatanejo	242.90	1	1	8921	5.7	84.2	1.4	5.8	0.9	0.4	0.4	0.7	0.5	89.9	1.4	8.7	0.102	0.508	17.648852	-101.533066
Zihuatanejo	242.90	1	2	9195	5.7	84.8	1.3	5.5	0.8	0.4	0.5	0.6	0.4	90.5	1.3	8.2	0.092	0.508	17.648769	-101.533112

2 CARR: Cd. Altamirano - T. C. (Zihuatanejo - La Mira)

CLAVE: 12422

RUTA: MEX-134

AÑO: 2020

LUGAR	ESTACION				CLASIFICACION VEHICULAR EN PORCIENTO										COORDENADAS					
	KM	TE	SC	TDPA	M	A	B	C2	C3	T3S2	T3S3	T3S2R4	OTROS	A	B	C	K'	D	LATITUD	LONGITUD
Cd. Altamirano	0.00	3	1	7336	8.1	86.9	0.2	2.6	0.2	0.9	0.6	0.2	0.3	95.0	0.2	4.8	0.098	0.502	18.355581	-100.670539
Cd. Altamirano	0.00	3	2	7395	8.1	86.9	0.2	2.6	0.2	0.9	0.6	0.2	0.3	95.0	0.2	4.8	0.087	0.502	18.355485	-100.670449
T. Der. Zirándaro	15.00	3	0	1902	3.7	86.9	0.5	5.7	0.5	1.7	0.3	0.3	0.4	90.6	0.5	8.9	0.104	0.514	18.319467	-100.784382
T. C. Zihuatanejo - La Mira	187.36	1	0	842	5.6	78.6	0.6	10.0	2.6	1.6	1.0	0.0	0.0	84.2	0.6	15.2	0.107	0.506	17.727997	-101.607057

GUERRERO

3 CARR: Chilpancingo - Acapulco

CLAVE: 12045

RUTA: MEX-095

AÑO: 2020

LUGAR	ESTACION				CLASIFICACION VEHICULAR EN PORCIENTO										COORDENADAS					
	KM	TE	SC	TDPA	M	A	B	C2	C3	T3S2	T3S3	T3S2R4	OTROS	A	B	C	K'	D	LATITUD	LONGITUD
Chilpancingo	0.00																			
T. C. Cuernavaca - Acapulco (Cuota) Central	4.20	1	1	14449	2.6	90.2	1.8	2.8	0.8	0.9	0.5	0.3	0.1	92.8	1.8	5.4	0.091	0.504	17.515332	-99.481834
T. C. Cuernavaca - Acapulco (Cuota) Lateral	4.20	1	1	10134	2.6	91.8	0.6	2.7	0.7	0.8	0.4	0.3	0.1	94.4	0.6	5.0	0.096	0.505	17.515321	-99.481886
T. C. Cuernavaca - Acapulco (Cuota) Central	4.20	1	2	14238	2.6	89.2	1.8	3.3	1.0	1.1	0.5	0.4	0.1	91.8	1.8	6.4	0.098	0.504	17.515348	-99.481775
T. C. Cuernavaca - Acapulco (Cuota) Lateral	4.20	1	2	9922	2.6	91.8	0.5	2.8	0.7	0.8	0.4	0.3	0.1	94.4	0.5	5.1	0.104	0.505	17.515372	-99.481685
T. C. Cuernavaca - Acapulco (Cuota)	4.20	3	1	11310	5.8	87.0	0.9	4.2	0.7	0.6	0.4	0.2	0.2	92.8	0.9	6.3	0.099	0.503	17.515150	-99.481796
T. C. Cuernavaca - Acapulco (Cuota)	4.20	3	2	11450	5.8	86.8	0.9	4.3	0.7	0.6	0.4	0.3	0.2	92.6	0.9	6.5	0.085	0.503	17.515165	-99.481748
Petaquillas	12.01	1	1	9536	5.6	87.3	0.3	5.9	0.4	0.2	0.2	0.0	0.1	92.9	0.3	6.8	0.105	0.501	17.487107	-99.459483
Petaquillas	12.01	1	2	9562	5.4	87.9	0.3	5.3	0.5	0.3	0.2	0.1	0.0	93.3	0.3	6.4	0.097	0.501	17.487163	-99.459403
Petaquillas	12.01	3	0	6619	4.8	90.2	0.5	3.2	0.7	0.2	0.3	0.0	0.1	95.0	0.5	4.5	0.099	0.509	17.487252	-99.459505
El Ocotito	50.68	1	0	5927	6.7	86.5	0.9	2.5	1.4	1.5	0.5	0.0	0.0	93.2	0.9	5.9	0.082	0.501	17.247217	-99.513018
El Ocotito	50.68	3	0	4683	5.6	86.3	0.8	2.8	1.1	1.9	1.3	0.1	0.1	91.9	0.8	7.3	0.082	0.508	17.247207	-99.513024
T. Izq. Tierra Colorada Inicia	61.18	1	0	3923	4.9	86.2	1.1	2.5	1.1	2.7	0.8	0.2	0.5	91.1	1.1	7.8	0.090	0.501	17.174565	-99.520702
T. Izq. Tierra Colorada Termina	65.14	3	0	3708	3.9	83.5	1.8	5.8	1.6	2.2	0.8	0.2	0.2	87.4	1.8	10.8	0.082	0.513	17.169937	-99.541415
X. C. Cuernavaca - Acapulco (Cuota)	70.10	3	0	2254	4.2	86.3	1.2	3.7	1.9	1.5	0.8	0.1	0.3	90.5	1.2	8.3	0.116	0.516	17.177537	-99.554664
T. Der. Pablo Galeana	88.15	3	0	2210	3.9	85.0	1.4	4.4	2.5	1.7	1.0	0.0	0.1	88.9	1.4	9.7	0.091	0.515	17.119998	-99.693527
T. Der. Libramiento Norte de Acapulco	112.80	1	0	8497	2.0	91.8	0.5	2.6	0.7	0.5	1.0	0.2	0.7	93.8	0.5	5.7	0.076	0.509	16.978941	-99.812136
T. Der. Libramiento Norte de Acapulco	112.80	3	0	9908	1.0	90.6	0.7	4.3	0.9	1.1	1.0	0.1	0.3	91.6	0.7	7.7	0.074	0.503	16.978929	-99.812141
T. C. Cuernavaca - Acapulco (Cuota)	120.60																			
Acapulco	132.67																			

4 CARR: Chilpancingo - Chichihualco

CLAVE: 12426

RUTA: MEX-095

AÑO: 2020

LUGAR	ESTACION				CLASIFICACION VEHICULAR EN PORCIENTO										COORDENADAS					
	KM	TE	SC	TDPA	M	A	B	C2	C3	T3S2	T3S3	T3S2R4	OTROS	A	B	C	K'	D	LATITUD	LONGITUD
T. C. Cuernavaca - Chilpancingo	0.00	3	0	4162	5.2	75.7	0.1	11.3	2.3	3.2	1.5	0.5	0.2	80.9	0.1	19.0	0.100	0.504	17.589128	-99.517101
T. Der. El Palmar	15.10	1	0	1112	5.5	87.6	0.1	4.8	0.6	1.0	0.3	0.1	0.0	93.1	0.1	6.8	0.108	0.510	17.644837	-99.603171
Chichihualco	26.30	1	0	1382	5.6	88.6	0.0	3.9	0.5	1.1	0.2	0.1	0.0	94.2	0.0	5.8	0.114	0.509	17.649943	-99.674579

5 CARR: Chilpancingo - Jilotepec

CLAVE: 12002

RUTA: MEX-093

AÑO: 2020

LUGAR	ESTACION				CLASIFICACION VEHICULAR EN PORCIENTO										COORDENADAS					
	KM	TE	SC	TDPA	M	A	B	C2	C3	T3S2	T3S3	T3S2R4	OTROS	A	B	C	K'	D	LATITUD	LONGITUD
Chilpancingo	0.00	3	0	4790	5.8	88.5	0.1	0.6	1.0	0.9	1.1	1.0	1.0	94.3	0.1	5.6	0.091	0.515	17.551260	-99.488506
T. Der. Tixtla de Guerrero	16.30	3	0	5933	11.7	80.2	0.2	2.5	0.4	3.1	1.2	0.1	0.6	91.9	0.2	7.9	0.096	0.505	17.574771	-99.397184

GUERRERO

5 CARR: Chilpancingo - Jilotepec

CLAVE: 12002

RUTA: MEX-093

AÑO: 2020

LUGAR	ESTACION				CLASIFICACION VEHICULAR EN PORCIENTO										COORDENADAS					
	KM	TE	SC	TDPA	M	A	B	C2	C3	T3S2	T3S3	T3S2R4	OTROS	A	B	C	K'	D	LATITUD	LONGITUD
T. Izq. Almolonga	28.20	3	0	3360	2.2	86.9	0.8	5.5	1.0	2.1	0.8	0.3	0.4	89.1	0.8	10.1	0.092	0.518	17.605461	-99.313824
Chilapa de Álvarez	53.62	3	0	5209	19.9	71.8	0.6	6.0	0.5	1.1	0.1	0.0	0.0	91.7	0.6	7.7	0.090	0.517	17.599653	-99.176031
Tlapa de Comonfort	178.50	1	0	4053	9.4	82.8	0.2	5.8	0.8	0.6	0.3	0.0	0.1	92.2	0.2	7.6	0.087	0.509	17.546422	-98.575171
Huamuxtitlán	200.63	1	0	4225	10.3	79.5	1.4	6.1	0.9	1.2	0.5	0.1	0.0	89.8	1.4	8.8	0.085	0.512	17.802243	-98.559632
Xochihuehuetlán	216.80	1	0	1985	16.6	71.3	2.6	7.2	0.9	1.2	0.2	0.0	0.0	87.9	2.6	9.5	0.085	0.513	17.906249	-98.493287
Jilotepec	235.00	1	0	1805	3.7	81.3	3.2	6.8	2.0	2.3	0.5	0.2	0.0	85.0	3.2	11.8	0.088	0.519	17.965340	-98.478596

6 CARR: Cuernavaca - Chilpancingo

CLAVE: 00042

RUTA: MEX-095

AÑO: 2020

LUGAR	ESTACION				CLASIFICACION VEHICULAR EN PORCIENTO										COORDENADAS					
	KM	TE	SC	TDPA	M	A	B	C2	C3	T3S2	T3S3	T3S2R4	OTROS	A	B	C	K'	D	LATITUD	LONGITUD
Cuernavaca	0.00																			
T. Izq. Chipitlán	4.85	1	1	17025	16.5	69.2	4.3	9.7	0.2	0.0	0.0	0.0	0.1	85.7	4.3	10.0	0.084	0.507	18.893087	-99.228232
T. Izq. Chipitlán	4.85	1	2	17477	16.0	69.0	4.6	10.1	0.2	0.0	0.0	0.0	0.1	85.0	4.6	10.4	0.071	0.507	18.893122	-99.228144
T. Izq. Chipitlán	4.85	3	1	8577	6.3	77.7	5.6	7.1	0.2	0.8	1.6	0.4	0.3	84.0	5.6	10.4	0.105	0.508	18.888879	-99.228649
T. Izq. Chipitlán	4.85	3	2	8301	5.9	78.1	5.5	7.1	0.2	0.9	1.6	0.4	0.3	84.0	5.5	10.5	0.095	0.508	18.888837	-99.228546
Temixco	9.80	1	1	9134	4.4	81.3	5.7	6.7	0.2	0.6	0.8	0.2	0.1	85.7	5.7	8.6	0.128	0.539	18.854929	-99.224821
Temixco	9.80	1	2	10678	5.5	79.0	6.0	7.5	0.2	0.6	0.9	0.2	0.1	84.5	6.0	9.5	0.089	0.539	18.854987	-99.224741
Temixco	9.80	3	1	18729	3.8	81.5	5.2	7.6	0.2	0.7	0.7	0.1	0.2	85.3	5.2	9.5	0.079	0.519	18.853355	-99.224661
Temixco	9.80	3	2	17342	4.7	79.2	6.2	7.9	0.2	0.8	0.7	0.1	0.2	83.9	6.2	9.9	0.080	0.519	18.853367	-99.224600
Acatlpa	12.43	1	1	15850	3.9	83.8	4.0	6.9	0.2	0.3	0.6	0.1	0.2	87.7	4.0	8.3	0.087	0.529	18.821366	-99.232023
Acatlpa	12.43	1	2	14111	4.8	81.9	4.5	7.3	0.2	0.3	0.7	0.1	0.2	86.7	4.5	8.8	0.081	0.529	18.821292	-99.231882
Acatlpa	12.43	3	1	12739	5.5	81.9	3.9	7.3	0.2	0.3	0.5	0.1	0.3	87.4	3.9	8.7	0.077	0.520	18.821366	-99.232023
Acatlpa	12.43	3	2	13806	7.1	79.4	4.2	7.8	0.2	0.3	0.6	0.1	0.3	86.5	4.2	9.3	0.080	0.520	18.821292	-99.231882
T. Izq. Emiliano Zapata	13.50	1	1	11011	7.8	80.6	3.5	5.7	0.2	0.8	0.7	0.2	0.5	88.4	3.5	8.1	0.092	0.507	18.835865	-99.225848
T. Izq. Emiliano Zapata	13.50	1	2	11326	5.7	80.6	4.0	7.1	0.2	0.9	0.8	0.2	0.5	86.3	4.0	9.7	0.091	0.507	18.835960	-99.225667
T. Izq. Emiliano Zapata	13.50	3	1	11198	4.0	87.2	2.9	4.1	0.5	0.4	0.5	0.2	0.2	91.2	2.9	5.9	0.093	0.504	18.835865	-99.225848
T. Izq. Emiliano Zapata	13.50	3	2	11360	4.9	85.1	3.3	4.9	0.5	0.4	0.5	0.2	0.2	90.0	3.3	6.7	0.086	0.504	18.835960	-99.225667
T. Izq. Xochitepec	16.05	1	1	6361	4.5	87.7	3.0	3.1	0.5	0.4	0.5	0.2	0.1	92.2	3.0	4.8	0.091	0.501	18.797998	-99.239351
T. Izq. Xochitepec	16.05	1	2	6333	5.1	86.4	3.2	3.6	0.5	0.4	0.5	0.2	0.1	91.5	3.2	5.3	0.088	0.501	18.797912	-99.239316
T. Izq. Xochitepec	16.05	3	1	4508	6.2	82.3	4.2	5.4	0.7	0.6	0.3	0.2	0.1	88.5	4.2	7.3	0.097	0.507	18.798070	-99.239200
T. Izq. Xochitepec	16.05	3	2	4642	5.9	81.5	4.6	6.1	0.7	0.6	0.3	0.2	0.1	87.4	4.6	8.0	0.131	0.507	18.797996	-99.239152
X. C. Alpuyeca - Jojutla	24.15	1	1	9641	8.1	79.6	4.2	5.6	0.6	1.0	0.7	0.1	0.1	87.7	4.2	8.1	0.093	0.522	18.735861	-99.260326
X. C. Alpuyeca - Jojutla	24.15	1	2	8838	8.6	78.2	4.5	6.0	0.6	1.0	0.9	0.1	0.1	86.8	4.5	8.7	0.091	0.522	18.735827	-99.260334
X. C. Alpuyeca - Jojutla	24.15	3	0	8881	6.4	81.7	2.2	6.5	1.4	1.2	0.5	0.1	0.0	88.1	2.2	9.7	0.094	0.507	18.732816	-99.263530

GUERRERO

6 CARR: Cuernavaca - Chilpancingo

CLAVE: 00042

RUTA: MEX-095

AÑO: 2020

LUGAR	ESTACION				CLASIFICACION VEHICULAR EN PORCIENTO										COORDENADAS					
	KM	TE	SC	TDPA	M	A	B	C2	C3	T3S2	T3S3	T3S2R4	OTROS	A	B	C	K'	D	LATITUD	LONGITUD
T. Der. Coatetelco	28.00	3	0	5400	4.0	83.2	2.2	6.2	2.1	1.6	0.4	0.2	0.1	87.2	2.2	10.6	0.083	0.505	18.713657	-99.272157
T. Der. Michapa	44.36	1	0	7506	2.3	83.7	2.0	4.8	1.3	4.0	1.2	0.1	0.6	86.0	2.0	12.0	0.081	0.502	18.609982	-99.361292
T. Izq. Cuernavaca - Iguala (Cuota)	46.93	1	0	5992	7.4	81.3	1.1	4.2	0.9	3.6	1.1	0.3	0.1	88.7	1.1	10.2	0.080	0.501	18.604345	-99.377996
T. Izq. Cuernavaca - Iguala (Cuota)	46.93	3	0	5363	4.0	85.9	2.7	3.7	0.3	2.1	0.7	0.1	0.5	89.9	2.7	7.4	0.079	0.505	18.604032	-99.378502
Huajintla	52.00	3	0	2797	5.9	86.4	1.2	3.5	0.2	1.5	0.5	0.1	0.7	92.3	1.2	6.5	0.095	0.512	18.610317	-99.427444
Lim. Edos. Term. Mor. Ppia. Gro.	57.10																			
T. Der. Ixtapan de La Sal (Axixintla)	63.47	1	0	1656	9.1	78.6	0.4	7.2	2.2	1.3	0.4	0.6	0.2	87.7	0.4	11.9	0.101	0.509	18.611529	-99.507099
Taxco	89.90	3	0	5073	4.8	87.5	0.8	1.9	0.6	2.3	1.6	0.3	0.2	92.3	0.8	6.9	0.071	0.501	18.547244	-99.612110
Iguala	119.63	1	0	6703	11.0	85.0	0.6	2.3	0.5	0.3	0.1	0.1	0.1	96.0	0.6	3.4	0.085	0.505	18.349536	-99.529756
T. Izq. Puente de Ixtla	123.98	3	0	13258	4.2	86.0	1.5	4.6	1.5	1.0	0.7	0.3	0.2	90.2	1.5	8.3	0.089	0.501	18.330239	-99.506740
T. Der. Sabana Grande	144.95	1	0	5175	2.6	88.0	2.4	2.0	2.1	1.6	1.0	0.3	0.0	90.6	2.4	7.0	0.107	0.503	18.159353	-99.552545
T. Der. Tecuexcontitlán	146.78	1	0	4512	2.1	81.4	2.7	5.8	3.5	2.7	1.3	0.3	0.2	83.5	2.7	13.8	0.097	0.506	18.129459	-99.555817
T. Der. Mezcala	173.14	1	0	4733	1.8	83.9	2.4	6.5	2.4	1.4	1.3	0.2	0.1	85.7	2.4	11.9	0.107	0.524	17.931995	-99.590827
T. Der. Filo de Caballo	189.89	3	0	3940	2.6	83.7	2.7	6.0	2.3	1.5	1.0	0.1	0.1	86.3	2.7	11.0	0.110	0.503	17.797911	-99.564022
T. C. Cuernavaca - Acapulco (Cuota)	219.89																			
Chilpancingo	223.70	1	1	20055	3.2	87.1	2.0	5.1	0.8	0.9	0.5	0.3	0.1	90.3	2.0	7.7	0.100	0.504	17.550551	-99.508527
Chilpancingo	223.70	1	2	19729	3.3	86.2	2.1	5.8	0.8	0.9	0.4	0.4	0.1	89.5	2.1	8.4	0.090	0.504	17.550533	-99.508442

7 CARR: Ent. Alpuyecá - Grutas de Cacahuamilpa

CLAVE: 00421

RUTA: MEX-166

AÑO: 2020

LUGAR	ESTACION				CLASIFICACION VEHICULAR EN PORCIENTO										COORDENADAS					
	KM	TE	SC	TDPA	M	A	B	C2	C3	T3S2	T3S3	T3S2R4	OTROS	A	B	C	K'	D	LATITUD	LONGITUD
T. C. Cuernavaca - Chilpancingo	0.00	3	0	5789	4.5	85.4	0.8	7.7	0.5	0.5	0.4	0.2	0.0	89.9	0.8	9.3	0.073	0.515	18.737274	-99.261462
T. Der. Zona Arq. de Xochicalco	8.40	3	1	2637	5.3	87.0	0.9	4.9	1.3	0.4	0.2	0.0	0.0	92.3	0.9	6.8	0.086	0.503	18.778387	-99.301288
T. Der. Zona Arq. de Xochicalco	8.40	3	2	2671	5.7	86.0	1.0	5.3	1.4	0.4	0.2	0.0	0.0	91.7	1.0	7.3	0.101	0.503	18.778384	-99.301275
Miacatlán	14.95	3	1	3967	9.0	88.3	0.2	2.2	0.1	0.1	0.1	0.0	0.0	97.3	0.2	2.5	0.081	0.508	18.773229	-99.351620
Miacatlán	14.95	3	2	4099	8.6	88.5	0.2	2.2	0.1	0.2	0.1	0.0	0.1	97.1	0.2	2.7	0.080	0.508	18.773230	-99.351617
Mazatepec	18.28	3	0	6230	4.7	88.6	0.9	1.9	0.8	0.5	0.3	0.2	2.1	93.3	0.9	5.8	0.077	0.511	18.727101	-99.364548
Tetecala	25.05	3	0	5058	4.8	91.3	0.7	2.3	0.2	0.2	0.3	0.1	0.1	96.1	0.7	3.2	0.075	0.502	18.727869	-99.399458
Coatlán del Río	29.80	3	0	3059	4.8	90.8	0.4	3.2	0.3	0.2	0.1	0.1	0.1	95.6	0.4	4.0	0.080	0.514	18.743982	-99.434442
Michapa	41.26	1	0	2465	4.7	91.3	0.3	3.2	0.2	0.1	0.1	0.1	0.0	96.0	0.3	3.7	0.077	0.513	18.702718	-99.479256
Lim. Edos. Term. Mor. Ppia. Gro.	42.40																			
T. C. Toluca - Axixintla	48.65																			

GUERRERO

8 CARR: Iguala - Cd. Altamirano

CLAVE: 12195

RUTA: MEX-051

AÑO: 2020

LUGAR	ESTACION				CLASIFICACION VEHICULAR EN PORCIENTO										COORDENADAS					
	KM	TE	SC	TDPA	M	A	B	C2	C3	T3S2	T3S3	T3S2R4	OTROS	A	B	C	K'	D	LATITUD	LONGITUD
Iguala	0.00																			
T. Izq. Cocula	9.40	1	0	5977	20.9	64.6	1.3	8.2	1.0	2.4	0.7	0.4	0.5	85.5	1.3	13.2	0.103	0.506	18.323026	-99.600255
T. Izq. Cocula	9.40	3	0	3492	20.6	64.2	2.3	6.3	1.7	2.6	1.4	0.2	0.7	84.8	2.3	12.9	0.097	0.505	18.322260	-99.600902
T. Izq. Teloloapan	63.99	1	0	3995	20.8	63.5	2.1	7.4	1.4	3.0	1.0	0.2	0.6	84.3	2.1	13.6	0.103	0.501	18.368329	-99.862295
T. Izq. Almoloya	116.60	1	0	1131	3.9	75.3	4.7	7.4	3.1	2.5	1.9	0.9	0.3	79.2	4.7	16.1	0.117	0.533	18.373350	-100.176465
T. Izq. Arcelia	131.98	3	0	4199	13.2	78.7	1.4	4.7	0.3	0.9	0.7	0.1	0.0	91.9	1.4	6.7	0.090	0.545	18.330799	-100.292846
Cd. Altamirano	184.55	1	1	6647	13.1	79.9	4.6	0.4	0.9	0.2	0.4	0.3	0.2	93.0	4.6	2.4	0.087	0.520	18.355844	-100.669434
Cd. Altamirano	184.55	1	2	7208	13.1	79.9	4.8	0.3	0.9	0.2	0.3	0.3	0.2	93.0	4.8	2.2	0.090	0.520	18.355694	-100.669573

9 CARR: La Sabana - Puerto Marqués

CLAVE: 12291

RUTA: MEX-200

AÑO: 2020

LUGAR	ESTACION				CLASIFICACION VEHICULAR EN PORCIENTO										COORDENADAS					
	KM	TE	SC	TDPA	M	A	B	C2	C3	T3S2	T3S3	T3S2R4	OTROS	A	B	C	K'	D	LATITUD	LONGITUD
T. C. Las Cruces - Pinotepa Nacional	0.00	3	1	14361	3.8	89.4	0.8	4.1	0.6	0.6	0.3	0.2	0.2	93.2	0.8	6.0	0.074	0.511	16.861891	-99.809150
T. C. Las Cruces - Pinotepa Nacional	0.00	3	2	15009	3.8	89.4	0.8	4.1	0.6	0.6	0.3	0.2	0.2	93.2	0.8	6.0	0.075	0.511	16.861788	-99.809083
X. C. Acapulco - Aeropuerto Acapulco	7.20	1	1	18018	4.6	90.3	0.3	2.9	0.8	0.4	0.4	0.2	0.1	94.9	0.3	4.8	0.101	0.512	16.805672	-99.825373
X. C. Acapulco - Aeropuerto Acapulco	7.20	1	2	18898	4.6	90.3	0.3	2.9	0.8	0.4	0.4	0.2	0.1	94.9	0.3	4.8	0.105	0.512	16.805768	-99.825512
Puerto Marqués	8.70																			

10 CARR: Las Cruces - Pinotepa Nacional

CLAVE: 00073

RUTA: MEX-200

AÑO: 2020

LUGAR	ESTACION				CLASIFICACION VEHICULAR EN PORCIENTO										COORDENADAS					
	KM	TE	SC	TDPA	M	A	B	C2	C3	T3S2	T3S3	T3S2R4	OTROS	A	B	C	K'	D	LATITUD	LONGITUD
T. C. Chilpancingo - Acapulco	0.00	3	1	15385	4.3	90.4	0.4	2.3	0.7	0.6	0.6	0.2	0.5	94.7	0.4	4.9	0.071	0.520	16.886133	-99.837214
T. C. Chilpancingo - Acapulco	0.00	3	2	14211	4.3	90.3	0.4	2.1	0.8	0.6	0.7	0.2	0.6	94.6	0.4	5.0	0.076	0.520	16.886193	-99.837149
T. Der. Puerto Marqués	4.62	1	1	16595	5.0	89.1	0.3	3.5	0.6	0.5	0.6	0.2	0.2	94.1	0.3	5.6	0.074	0.528	16.862533	-99.809034
T. Der. Puerto Marqués	4.62	1	2	18598	4.6	89.6	0.3	3.4	0.6	0.5	0.6	0.2	0.2	94.2	0.3	5.5	0.076	0.528	16.862566	-99.808975
T. Der. Puerto Marqués	4.62	3	0	12776	5.1	87.1	0.7	4.4	1.3	0.6	0.6	0.1	0.1	92.2	0.7	7.1	0.080	0.503	16.862508	-99.808934
X. C. Puerto Marqués - La Venta (Cuota)	11.70	1	1	3675	5.1	84.8	1.2	5.4	1.0	1.1	0.7	0.5	0.2	89.9	1.2	8.9	0.084	0.509	16.830701	-99.759771
X. C. Puerto Marqués - La Venta (Cuota)	11.70	1	2	3543	5.0	84.4	1.2	5.5	1.2	1.3	0.8	0.5	0.1	89.4	1.2	9.4	0.082	0.509	16.830804	-99.759769
X. C. Puerto Marqués - La Venta (Cuota)	11.70	3	1	4104	4.6	84.2	1.6	5.9	1.4	1.3	0.8	0.1	0.1	88.8	1.6	9.6	0.082	0.509	16.830669	-99.759173
X. C. Puerto Marqués - La Venta (Cuota)	11.70	3	2	3954	4.8	84.2	1.6	5.9	1.3	1.2	0.8	0.1	0.1	89.0	1.6	9.4	0.085	0.509	16.830769	-99.759171
San Marcos	58.90	1	0	6464	2.8	82.8	1.8	7.1	1.5	2.4	1.2	0.3	0.1	85.6	1.8	12.6	0.098	0.501	16.793235	-99.388229
San Marcos	58.90	3	0	5946	2.8	83.1	1.7	7.1	1.5	2.2	1.2	0.3	0.1	85.9	1.7	12.4	0.108	0.542	16.793269	-99.388254
Nexpa	84.96	3	0	5515	2.6	83.8	1.7	6.2	1.8	2.4	1.1	0.3	0.1	86.4	1.7	11.9	0.106	0.510	16.782078	-99.203663

GUERRERO

10 CARR: Las Cruces - Pinotepa Nacional

CLAVE: 00073

RUTA: MEX-200

AÑO: 2020

LUGAR	ESTACION				CLASIFICACION VEHICULAR EN PORCIENTO										COORDENADAS					
	KM	TE	SC	TDPA	M	A	B	C2	C3	T3S2	T3S3	T3S2R4	OTROS	A	B	C	K'	D	LATITUD	LONGITUD
Cruz Grande	97.00	3	0	5965	2.5	83.7	1.9	6.5	1.8	2.1	1.0	0.3	0.2	86.2	1.9	11.9	0.107	0.513	16.718347	-99.123645
T. Izq. Copala (1º Acceso)	117.50	1	0	5429	2.5	83.4	1.9	6.3	1.6	2.3	1.2	0.5	0.3	85.9	1.9	12.2	0.105	0.519	16.605562	-98.982520
T. Izq. Copala (1º Acceso)	117.50	3	0	5396	2.1	83.7	1.6	7.4	1.8	1.9	0.9	0.4	0.2	85.8	1.6	12.6	0.099	0.526	16.605484	-98.982328
T. Der. Playa Ventura	124.00	1	0	4101	2.4	80.4	2.4	7.1	2.3	3.4	1.4	0.4	0.2	82.8	2.4	14.8	0.102	0.504	16.593531	-98.924573
T. Der. Playa Ventura	124.00	3	0	4789	2.4	80.1	2.6	7.1	2.3	3.4	1.4	0.5	0.2	82.5	2.6	14.9	0.110	0.516	16.593496	-98.924454
Marquelia	136.80	1	0	4464	2.6	83.9	2.2	5.8	1.9	1.8	0.9	0.6	0.3	86.5	2.2	11.3	0.093	0.506	16.581871	-98.813775
Marquelia	136.80	3	0	4061	2.3	82.1	2.5	6.2	2.1	3.4	1.2	0.2	0.0	84.4	2.5	13.1	0.104	0.508	16.581893	-98.813732
Juchitán	158.00	3	0	4297	2.4	81.8	2.5	6.2	2.1	3.4	1.4	0.2	0.0	84.2	2.5	13.3	0.098	0.512	16.627913	-98.636514
T. Izq. Ometepec	175.88	1	0	4762	2.6	82.5	1.8	8.1	2.1	2.0	0.6	0.2	0.1	85.1	1.8	13.1	0.098	0.513	16.656032	-98.501787
T. Izq. Ometepec	175.88	3	0	4078	2.4	82.6	2.6	6.6	1.9	2.7	0.7	0.3	0.2	85.0	2.6	12.4	0.103	0.530	16.656080	-98.501623
Cuajinicuilapa	200.60	1	0	3729	2.3	79.8	2.6	8.0	1.9	3.7	1.1	0.3	0.3	82.1	2.6	15.3	0.098	0.508	16.471391	-98.415000
Cuajinicuilapa	200.60	3	0	2718	2.6	79.2	2.6	7.7	2.9	3.2	1.3	0.3	0.2	81.8	2.6	15.6	0.120	0.508	16.470576	-98.411626
Lim. Edos. Term. Gro. Ppia. Oax.	207.80																			
T. Izq. San Pedro Orizaba	215.00	3	0	1681	3.7	76.9	3.0	7.1	3.7	3.8	1.8	0.0	0.0	80.6	3.0	16.4	0.089	0.502	16.443643	-98.344994
T. Izq. Tlaxiaco	245.47	1	0	2730	5.8	78.6	1.8	6.8	1.7	3.6	1.1	0.2	0.4	84.4	1.8	13.8	0.081	0.510	16.378375	-98.092805
T. Izq. Tlaxiaco	245.47	3	0	5345	5.4	81.7	1.4	4.5	1.2	2.9	1.6	0.5	0.8	87.1	1.4	11.5	0.084	0.509	16.378286	-98.092770
Pinotepa Nacional	252.50																			

11 CARR: Libramiento Norte de Acapulco

CLAVE: 12421

RUTA: MEX-095

AÑO: 2020

LUGAR	ESTACION				CLASIFICACION VEHICULAR EN PORCIENTO										COORDENADAS					
	KM	TE	SC	TDPA	M	A	B	C2	C3	T3S2	T3S3	T3S2R4	OTROS	A	B	C	K'	D	LATITUD	LONGITUD
T. C. Chilpancingo - Acapulco	0.00	3	0	4080	2.6	72.3	2.7	14.4	3.5	2.2	1.5	0.3	0.5	74.9	2.7	22.4	0.079	0.507	16.978615	-99.812392
T. Der. Pelillo	6.40	3	0	3685	2.6	74.6	2.7	11.2	4.2	2.4	1.5	0.2	0.6	77.2	2.7	20.1	0.090	0.504	16.982493	-99.863272
T. C. Acapulco - Zihuatanejo	21.10	1	0	4666	3.1	79.7	2.1	6.5	2.0	3.7	1.5	0.6	0.8	82.8	2.1	15.1	0.083	0.507	16.961981	-99.976792

12 CARR: Milpillas - T. C. (Acapulco - Zihuatanejo)

CLAVE: 12012

RUTA: MEX-196

AÑO: 2020

LUGAR	ESTACION				CLASIFICACION VEHICULAR EN PORCIENTO										COORDENADAS					
	KM	TE	SC	TDPA	M	A	B	C2	C3	T3S2	T3S3	T3S2R4	OTROS	A	B	C	K'	D	LATITUD	LONGITUD
T. C. Cuernavaca - Chilpancingo	0.00	3	0	996	2.3	83.7	0.5	10.5	2.0	0.7	0.3	0.0	0.0	86.0	0.5	13.5	0.091	0.510	17.797658	-99.564201
Los Morros	45.07	1	0	944	2.9	83.1	0.4	9.6	3.0	0.6	0.4	0.0	0.0	86.0	0.4	13.6	0.093	0.543	17.686367	-99.803131
Atoyac de Álvarez	233.50	1	0	1062	13.2	81.4	0.0	4.7	0.4	0.3	0.0	0.0	0.0	94.6	0.0	5.4	0.112	0.520	17.210717	-100.430380
T. C. Acapulco - Zihuatanejo	237.00	1	1	4279	3.9	93.1	0.1	2.3	0.2	0.3	0.1	0.0	0.0	97.0	0.1	2.9	0.106	0.506	17.163471	-100.432919
T. C. Acapulco - Zihuatanejo	237.00	1	2	4174	3.8	93.1	0.1	2.4	0.2	0.3	0.1	0.0	0.0	96.9	0.1	3.0	0.093	0.506	17.163469	-100.432930

GUERRERO

13 CARR: Ramal a Aeropuerto Zihuatanejo

CLAVE: 12423

RUTA: MEX-200

AÑO: 2020

LUGAR	ESTACION				CLASIFICACION VEHICULAR EN PORCIENTO													COORDENADAS		
	KM	TE	SC	TDPA	M	A	B	C2	C3	T3S2	T3S3	T3S2R4	OTROS	A	B	C	K'	D	LATITUD	LONGITUD
T. C. Acapulco - Zihuatanejo	0.00	3	0	3327	5.5	85.4	2.3	3.9	0.5	0.7	0.6	0.4	0.7	90.9	2.3	6.8	0.081	0.515	17.623884	-101.458551
Aeropuerto	2.00																			

14 CARR: Ramal a La Unión

CLAVE:

RUTA: MEX-200

AÑO: 2020

LUGAR	ESTACION				CLASIFICACION VEHICULAR EN PORCIENTO													COORDENADAS		
	KM	TE	SC	TDPA	M	A	B	C2	C3	T3S2	T3S3	T3S2R4	OTROS	A	B	C	K'	D	LATITUD	LONGITUD
T. C. Zihuatanejo - La Mira	0.00	3	0	1987	3.2	80.3	3.4	8.7	1.6	0.9	0.6	0.4	0.9	83.5	3.4	13.1	0.088	0.554	17.936267	-101.829421
La Unión	6.10																			

15 CARR: San Juan de Los Llanos - Ometepec

CLAVE: 12011

RUTA: MEX-200

AÑO: 2020

LUGAR	ESTACION				CLASIFICACION VEHICULAR EN PORCIENTO													COORDENADAS		
	KM	TE	SC	TDPA	M	A	B	C2	C3	T3S2	T3S3	T3S2R4	OTROS	A	B	C	K'	D	LATITUD	LONGITUD
T. C. Las Cruces - Pinotepa Nacional	0.00	3	0	4269	3.2	84.0	1.1	5.6	1.1	3.3	1.2	0.2	0.3	87.2	1.1	11.7	0.091	0.506	16.656654	-98.500956
Ometepec	15.94	1	1	3354	6.6	85.4	0.7	5.1	0.8	0.8	0.5	0.0	0.1	92.0	0.7	7.3	0.100	0.508	16.691223	-98.408169
Ometepec	15.94	1	2	3465	6.6	85.3	0.7	5.3	0.8	0.8	0.4	0.0	0.1	91.9	0.7	7.4	0.100	0.508	16.691223	-98.408169

16 CARR: Tierra Colorada - Cruz Grande

CLAVE: 12420

RUTA: MEX-198

AÑO: 2020

LUGAR	ESTACION				CLASIFICACION VEHICULAR EN PORCIENTO													COORDENADAS		
	KM	TE	SC	TDPA	M	A	B	C2	C3	T3S2	T3S3	T3S2R4	OTROS	A	B	C	K'	D	LATITUD	LONGITUD
Tierra Colorada	0.00	3	0	2100	5.3	80.5	1.8	6.6	2.8	1.9	0.9	0.1	0.1	85.8	1.8	12.4	0.090	0.519	17.160232	-99.530433
Tecoanapa	61.00	1	0	2772	5.0	84.7	1.6	5.2	1.6	0.6	0.6	0.4	0.3	89.7	1.6	8.7	0.100	0.537	16.985636	-99.260676
Ayutla de Los Libres	82.00	1	0	4753	3.3	88.8	1.1	4.2	1.0	0.5	0.6	0.4	0.1	92.1	1.1	6.8	0.100	0.517	16.964628	-99.099918
Ayutla de Los Libres	82.00	3	0	3450	4.4	85.1	1.0	6.0	1.2	1.7	0.3	0.1	0.2	89.5	1.0	9.5	0.091	0.526	16.964624	-99.099919
Cruz Grande	113.80	1	0	2432	5.5	79.8	1.8	6.4	2.1	1.1	1.2	1.1	1.0	85.3	1.8	12.9	0.095	0.501	16.723390	-99.123533
T. C. Las Cruces - Pinotepa Nacional	114.80																			

17 CARR: Toluca - Cd. Altamirano

CLAVE: 00020

RUTA: MEX-134

AÑO: 2020

LUGAR	ESTACION				CLASIFICACION VEHICULAR EN PORCIENTO													COORDENADAS		
	KM	TE	SC	TDPA	M	A	B	C2	C3	T3S2	T3S3	T3S2R4	OTROS	A	B	C	K'	D	LATITUD	LONGITUD
T. C. Toluca - Axixintla	0.00																			
T. Izq. Capultitlán	1.78	3	1	19015	4.8	90.9	0.5	2.1	0.7	0.7	0.3	0.0	0.0	95.7	0.5	3.8	0.086	0.500	19.256612	-99.663493

GUERRERO

17 CARR: Toluca - Cd. Altamirano

CLAVE: 00020

RUTA: MEX-134

AÑO: 2020

LUGAR	ESTACION				CLASIFICACION VEHICULAR EN PORCIENTO										COORDENADAS					
	KM	TE	SC	TDPA	M	A	B	C2	C3	T3S2	T3S3	T3S2R4	OTROS	A	B	C	K'	D	LATITUD	LONGITUD
T. Izq. Capultitlán	1.78	3	2	19004	5.4	90.1	0.5	2.1	0.8	0.7	0.3	0.1	0.0	95.5	0.5	4.0	0.089	0.500	19.256361	-99.663526
T. Der. Zinacatepec	10.21	3	1	11656	3.9	88.6	0.6	4.1	1.3	0.7	0.4	0.3	0.1	92.5	0.6	6.9	0.092	0.515	19.252535	-99.742793
T. Der. Zinacatepec	10.21	3	2	10996	4.0	87.6	0.7	4.8	1.4	0.7	0.4	0.3	0.1	91.6	0.7	7.7	0.083	0.515	19.252414	-99.742792
T. Izq. Sultepec	18.72	3	0	5918	2.7	84.8	2.0	5.7	1.5	1.6	1.1	0.4	0.2	87.5	2.0	10.5	0.101	0.512	19.213389	-99.807254
T. Der. Valle de Bravo	52.00	3	0	5269	2.3	85.5	1.9	5.5	1.5	1.6	1.1	0.4	0.2	87.8	1.9	10.3	0.103	0.516	19.146750	-99.915448
Temascaltepec	68.76	1	0	4212	2.9	85.6	1.9	4.8	1.5	1.6	1.1	0.4	0.2	88.5	1.9	9.6	0.115	0.530	19.047557	-100.053364
Temascaltepec	68.76	3	0	4685	2.6	85.8	1.6	5.2	1.4	1.4	0.9	0.6	0.5	88.4	1.6	10.0	0.107	0.530	19.041697	-100.040426
T. Izq. San Diego Cuentla	84.34	3	0	5418	6.0	84.5	0.9	6.0	1.0	0.9	0.4	0.2	0.1	90.5	0.9	8.6	0.100	0.528	18.970192	-100.073416
Tejupilco de Hidalgo	100.76	1	0	5813	6.1	84.3	0.9	6.1	1.0	0.9	0.3	0.2	0.2	90.4	0.9	8.7	0.095	0.521	18.920856	-100.146267
Tejupilco de Hidalgo	100.76	3	0	4706	8.2	82.7	0.6	4.5	0.7	0.8	2.2	0.2	0.1	90.9	0.6	8.5	0.123	0.503	18.903363	-100.162524
Cuadrilla de López	113.20	3	0	2549	4.7	84.0	1.0	5.0	1.3	1.8	1.8	0.3	0.1	88.7	1.0	10.3	0.103	0.523	18.876842	-100.227715
T. Izq. Bejucos	147.57	1	0	1457	8.3	78.8	1.7	5.1	1.6	2.7	1.5	0.2	0.1	87.1	1.7	11.2	0.106	0.517	18.784537	-100.421680
Lim. Edos. Term. Méx. Ppia. Gro.	148.00																			
Cutzamala	196.00	1	0	2921	11.8	75.9	1.0	6.3	1.5	1.8	1.3	0.2	0.2	87.7	1.0	11.3	0.119	0.502	18.467476	-100.581605
Lim. Edos. Term. Gro. Ppia. Mich.	201.00																			
Lim. Edos. Term. Mich. Ppia. Gro.	210.30																			
Cd. Altamirano	216.00	1	0	4000	12.9	77.8	0.9	4.4	0.9	1.8	1.1	0.1	0.1	90.7	0.9	8.4	0.117	0.500	18.359083	-100.667599

18 CARR: Zihuatanejo - La Mira

CLAVE: 00121

RUTA: MEX-200

AÑO: 2020

LUGAR	ESTACION				CLASIFICACION VEHICULAR EN PORCIENTO										COORDENADAS					
	KM	TE	SC	TDPA	M	A	B	C2	C3	T3S2	T3S3	T3S2R4	OTROS	A	B	C	K'	D	LATITUD	LONGITUD
Zihuatanejo	0.00	3	1	14180	5.2	90.7	0.6	2.0	0.7	0.4	0.2	0.1	0.1	95.9	0.6	3.5	0.082	0.505	17.651204	-101.547779
Zihuatanejo	0.00	3	2	14461	5.2	90.9	0.5	2.0	0.7	0.3	0.2	0.1	0.1	96.1	0.5	3.4	0.082	0.505	17.651058	-101.547870
T. Izq. Ixtapa	2.25	3	0	10407	7.9	86.7	0.9	1.9	1.2	0.6	0.3	0.3	0.2	94.6	0.9	4.5	0.089	0.776	17.656662	-101.573613
T. Izq. Ixtapa	8.00	3	0	7181	14.1	80.3	0.5	1.9	1.6	0.4	0.4	0.4	0.4	94.4	0.5	5.1	0.084	0.514	17.676182	-101.598912
T. Izq. Pantla (1er Acceso)	15.75	1	0	4832	2.5	86.3	2.7	3.3	1.9	1.3	0.9	0.6	0.5	88.8	2.7	8.5	0.117	0.507	17.740553	-101.626857
T. Der. Cd. Altamirano	16.30	1	0	2820	11.5	83.3	0.3	2.6	2.1	0.2	0.0	0.0	0.0	94.8	0.3	4.9	0.095	0.520	17.727988	-101.607112
T. Der. Cd. Altamirano	16.30	3	0	2739	14.3	79.6	0.3	2.8	2.4	0.4	0.1	0.1	0.0	93.9	0.3	5.8	0.088	0.515	17.727990	-101.607117
T. Izq. Pantla (2do Acceso)	19.00	1	0	3803	2.2	85.3	3.5	3.2	1.9	1.8	1.0	0.6	0.5	87.5	3.5	9.0	0.148	0.581	17.755284	-101.650887
T. Der. Buenavista	23.50	3	0	4131	5.2	83.8	2.7	2.9	1.8	1.5	0.9	0.6	0.6	89.0	2.7	8.3	0.137	0.511	17.779100	-101.677306
T. Izq. Lagunillas	31.46	3	0	3477	4.0	85.1	3.2	3.4	1.6	1.6	0.8	0.2	0.1	89.1	3.2	7.7	0.147	0.510	17.835776	-101.713884
T. Der. La Unión	52.00	1	0	3334	1.9	83.7	3.8	3.2	2.5	2.1	1.3	0.7	0.8	85.6	3.8	10.6	0.146	0.514	17.936720	-101.829727
T. Der. La Unión	52.00	3	0	3669	2.9	82.7	3.7	3.2	2.6	2.1	1.4	0.7	0.7	85.6	3.7	10.7	0.131	0.509	17.936731	-101.829720
X. C. Nueva Italia - Lázaro Cárdenas (Cuota)	65.00	3	0	1031	6.7	79.0	3.2	3.4	5.3	1.5	0.9	0.0	0.0	85.7	3.2	11.1	0.122	0.505	18.003146	-101.963498

GUERRERO

18 CARR: Zihuatanejo - La Mira

CLAVE: 00121

RUTA: MEX-200

AÑO: 2020

LUGAR	ESTACION				CLASIFICACION VEHICULAR EN PORCIENTO										COORDENADAS					
	KM	TE	SC	TDPA	M	A	B	C2	C3	T3S2	T3S3	T3S2R4	OTROS	A	B	C	K'	D	LATITUD	LONGITUD
X. C. Nueva Italia - Lázaro Cárdenas (Cuota)	91.70	1	0	5427	7.8	76.7	1.7	2.2	4.1	2.2	0.7	3.6	1.0	84.5	1.7	13.8	0.109	0.502	17.997990	-102.169556
Zacatula	93.10	1	0	2577	9.4	84.2	0.2	1.2	4.6	0.3	0.0	0.1	0.0	93.6	0.2	6.2	0.110	0.505	18.008118	-102.177103
Lim. Edos. Term. Gro. Ppia. Mich.	102.30																			
La Villita	103.80	3	0	1541	8.5	78.4	1.6	3.8	2.6	1.6	1.7	1.3	0.5	86.9	1.6	11.5	0.090	0.508	18.044410	-102.187778
Guacamayas	107.00	1	0	2407	4.8	88.8	0.4	3.4	0.6	1.6	0.2	0.2	0.0	93.6	0.4	6.0	0.084	0.513	18.019184	-102.210099
T. Izq. Lázaro Cárdenas	110.85	1	1	13253	6.8	86.7	0.7	3.3	1.2	0.4	0.4	0.3	0.2	93.5	0.7	5.8	0.078	0.516	17.996342	-102.223778
T. Izq. Lázaro Cárdenas	110.85	1	2	12434	6.0	89.2	0.7	1.4	0.7	0.5	0.6	0.5	0.4	95.2	0.7	4.1	0.105	0.516	17.996273	-102.223706
Buenos Aires	117.00	1	0	10428	4.4	87.7	1.2	4.9	1.0	0.4	0.4	0.0	0.0	92.1	1.2	6.7	0.081	0.508	18.022790	-102.282302
La Mira	123.60	1	0	10676	3.4	88.6	1.4	5.0	0.8	0.4	0.4	0.0	0.0	92.0	1.4	6.6	0.077	0.501	18.035036	-102.328135

19 CARR: Cuernavaca - Acapulco (Cuota)

CLAVE: 00045

RUTA: MEX-095D

AÑO: 2020

LUGAR	ESTACION				CLASIFICACION VEHICULAR EN PORCIENTO										COORDENADAS					
	KM	TE	SC	TDPA	M	A	B	C2	C3	T3S2	T3S3	T3S2R4	OTROS	A	B	C	K'	D	LATITUD	LONGITUD
Cuernavaca	0.00	3	1	46739	2.5	88.9	1.7	4.5	0.7	0.7	0.5	0.4	0.1	91.4	1.7	6.9	0.097	0.519	18.887435	-99.229226
Cuernavaca	0.00	3	2	42874	2.5	89.0	1.7	4.5	0.7	0.7	0.5	0.3	0.1	91.5	1.7	6.8	0.085	0.519	18.887405	-99.229128
T. Izq. Burgos	3.35	1	1	44509	2.9	87.9	1.8	5.0	0.7	0.7	0.5	0.4	0.1	90.8	1.8	7.4	0.086	0.500	18.861126	-99.220943
T. Izq. Burgos	3.35	1	2	44432	2.9	87.9	1.8	5.0	0.7	0.7	0.5	0.4	0.1	90.8	1.8	7.4	0.080	0.500	18.861123	-99.221027
T. Izq. Burgos	3.35	3	1	38832	2.6	86.9	2.2	4.9	1.1	1.2	0.5	0.5	0.1	89.5	2.2	8.3	0.085	0.501	18.860635	-99.221011
T. Izq. Burgos	3.35	3	2	39037	2.6	86.9	2.2	4.9	1.1	1.2	0.5	0.5	0.1	89.5	2.2	8.3	0.074	0.501	18.860631	-99.220929
T. Der. Acatlipa	4.70	1	1	35846	2.8	86.8	2.1	4.8	1.2	1.2	0.5	0.5	0.1	89.6	2.1	8.3	0.083	0.505	18.848786	-99.219610
T. Der. Acatlipa	4.70	1	2	34985	2.8	86.8	2.1	4.8	1.2	1.2	0.5	0.5	0.1	89.6	2.1	8.3	0.075	0.505	18.848809	-99.219534
T. Der. Acatlipa	4.70	3	1	29583	2.6	86.3	2.3	5.4	1.1	1.2	0.5	0.5	0.1	88.9	2.3	8.8	0.082	0.503	18.847012	-99.219082
T. Der. Acatlipa	4.70	3	2	29238	2.6	86.3	2.3	5.4	1.1	1.2	0.5	0.5	0.1	88.9	2.3	8.8	0.072	0.503	18.847030	-99.218999
T. Izq. Miguel Hidalgo	5.85	3	1	20395	2.2	86.2	2.4	5.3	1.1	1.6	0.6	0.5	0.1	88.4	2.4	9.2	0.091	0.507	18.838792	-99.217074
T. Izq. Miguel Hidalgo	5.85	3	2	20936	2.2	86.1	2.4	5.3	1.1	1.7	0.6	0.5	0.1	88.3	2.4	9.3	0.106	0.507	18.838809	-99.217161
T. Der. Aeropuerto Cuernavaca	9.83	1	1	20108	2.5	85.0	2.8	5.6	1.3	1.3	0.7	0.7	0.1	87.5	2.8	9.7	0.081	0.504	18.803194	-99.220395
T. Der. Aeropuerto Cuernavaca	9.83	1	2	20406	2.5	84.8	2.8	5.6	1.4	1.3	0.7	0.7	0.2	87.3	2.8	9.9	0.074	0.504	18.803177	-99.220312
T. Der. Aeropuerto Cuernavaca	9.83	3	1	11945	3.1	79.5	5.3	6.7	1.7	1.7	1.0	0.8	0.2	82.6	5.3	12.1	0.088	0.518	18.801365	-99.220554
T. Der. Aeropuerto Cuernavaca	9.83	3	2	12853	3.0	79.7	5.2	6.7	1.7	1.7	1.0	0.8	0.2	82.7	5.2	12.1	0.112	0.518	18.801337	-99.220460
T. Izq. Club de Golf Santa Fe	17.48	1	1	11367	1.9	80.7	5.1	6.4	1.8	2.1	0.8	1.0	0.2	82.6	5.1	12.3	0.097	0.517	18.741655	-99.248883
T. Izq. Club de Golf Santa Fe	17.48	1	2	12150	1.9	80.6	5.1	6.4	1.8	2.1	0.9	1.0	0.2	82.5	5.1	12.4	0.093	0.517	18.741608	-99.248787
Plaza de Cobro Alpuyeca	19.80	1	1	8452	1.7	79.5	5.6	7.2	1.6	2.0	1.2	0.9	0.3	81.2	5.6	13.2	0.126	0.504	18.723836	-99.259883
Plaza de Cobro Alpuyeca	19.80	1	2	8583	1.7	79.6	5.6	7.1	1.6	2.0	1.3	0.8	0.3	81.3	5.6	13.1	0.151	0.504	18.723621	-99.259792
Plaza de Cobro Alpuyeca	19.80	3	1	6307	1.7	79.2	5.7	7.2	1.6	2.0	1.2	0.9	0.5	80.9	5.7	13.4	0.126	0.511	18.723565	-99.260430

GUERRERO

19 CARR: Cuernavaca - Acapulco (Cuota)

CLAVE: 00045

RUTA: MEX-095D

AÑO: 2020

LUGAR	ESTACION				CLASIFICACION VEHICULAR EN PORCIENTO													COORDENADAS		
	KM	TE	SC	TDPA	M	A	B	C2	C3	T3S2	T3S3	T3S2R4	OTROS	A	B	C	K'	D	LATITUD	LONGITUD
Plaza de Cobro Alpuyeca	19.80	3	2	6591	1.7	79.2	5.6	7.1	1.6	2.1	1.3	1.0	0.4	80.9	5.6	13.5	0.146	0.511	18.723334	-99.260335
Plaza de Cobro Ing. Francisco Velasco Durán	23.10	2	1	6328	1.2	84.9	3.7	2.7	2.8	2.4	0.8	1.1	0.4	86.1	3.7	10.2	0.111	0.500	18.698498	-99.278028
Plaza de Cobro Ing. Francisco Velasco Durán	23.10	2	2	6328	1.2	84.9	3.7	2.7	2.8	2.4	0.8	1.1	0.4	86.1	3.7	10.2	0.111	0.500	18.698498	-99.278028
T. C. Puente de Ixtla - Iguala (Cuota)	28.58	3	1	6035	1.3	86.8	0.9	4.2	2.6	1.9	0.6	1.2	0.5	88.1	0.9	11.0	0.098	0.506	18.654406	-99.295391
T. C. Puente de Ixtla - Iguala (Cuota)	28.58	3	2	5889	1.3	87.0	0.9	4.2	2.6	1.8	0.6	1.2	0.4	88.3	0.9	10.8	0.115	0.506	18.654409	-99.295251
T. C. Xoxocotla - Tilzapotla	37.50	3	1	4172	1.7	80.8	1.9	5.9	3.4	2.8	1.0	1.9	0.6	82.5	1.9	15.6	0.123	0.509	18.587679	-99.258454
T. C. Xoxocotla - Tilzapotla	37.50	3	2	4028	1.7	80.7	1.9	5.9	3.4	2.9	1.0	1.9	0.6	82.4	1.9	15.7	0.166	0.509	18.587774	-99.258395
T. C. Autopista Siglo XXI (Jaltelco - Xicatlacotla)	41.00	3	1	3569	2.6	76.9	2.4	6.7	4.3	3.0	1.1	2.2	0.8	79.5	2.4	18.1	0.107	0.529	18.571835	-99.230777
T. C. Autopista Siglo XXI (Jaltelco - Xicatlacotla)	41.00	3	2	4014	2.6	77.0	2.3	6.7	4.3	2.9	1.2	2.2	0.8	79.6	2.3	18.1	0.167	0.529	18.571896	-99.230735
Lim. Edos. Term. Mor. Ppia. Gro.	53.30																			
Plaza de Cobro Paso Morelos	82.94	1	1	3227	1.0	89.4	3.7	1.9	0.8	1.6	0.4	0.9	0.3	90.4	3.7	5.9	0.127	0.509	18.231825	-99.215485
Plaza de Cobro Paso Morelos	82.94	1	2	3113	1.0	89.7	3.7	1.9	0.7	1.5	0.4	0.8	0.3	90.7	3.7	5.6	0.211	0.509	18.231788	-99.215352
Plaza de Cobro Paso Morelos	82.94	2	1	3687	0.7	82.6	4.5	2.8	2.4	3.6	0.7	2.0	0.7	83.3	4.5	12.2	0.111	0.500	18.231462	-99.215446
Plaza de Cobro Paso Morelos	82.94	2	2	3687	0.7	82.6	4.5	2.8	2.4	3.6	0.7	2.0	0.7	83.3	4.5	12.2	0.111	0.500	18.231462	-99.215446
T. C. Cuernavaca - Chilpancingo	171.90	1	1	3734	0.9	88.7	3.2	3.6	0.7	1.5	0.4	0.7	0.3	89.6	3.2	7.2	0.140	0.506	17.604832	-99.518445
T. C. Cuernavaca - Chilpancingo	171.90	1	2	3827	0.7	88.8	3.2	3.7	0.7	1.5	0.4	0.8	0.2	89.5	3.2	7.3	0.194	0.506	17.604820	-99.518360
Plaza de Cobro Palo Blanco	193.90	1	1	4476	0.8	78.9	7.6	5.6	1.4	2.6	1.1	1.4	0.6	79.7	7.6	12.7	0.081	0.510	17.424081	-99.467115
Plaza de Cobro Palo Blanco	193.90	1	2	4295	0.9	77.2	8.0	6.0	1.5	3.0	1.2	1.6	0.6	78.1	8.0	13.9	0.096	0.510	17.424150	-99.467054
Plaza de Cobro Palo Blanco	193.90	2	1	4513	0.7	83.9	4.0	2.6	2.7	3.2	0.9	1.5	0.5	84.6	4.0	11.4	0.097	0.500	17.423983	-99.466911
Plaza de Cobro Palo Blanco	193.90	2	2	4513	0.7	83.9	4.0	2.6	2.7	3.2	0.9	1.5	0.5	84.6	4.0	11.4	0.097	0.500	17.423983	-99.466911
X. C. Chilpancingo - Acapulco (Tierra Colorada)	226.20	1	1	4638	0.7	77.4	8.4	6.2	1.3	2.8	1.1	1.7	0.4	78.1	8.4	13.5	0.123	0.515	17.178981	-99.552440
X. C. Chilpancingo - Acapulco (Tierra Colorada)	226.20	1	2	4915	0.8	78.5	7.9	5.9	1.3	2.7	1.2	1.4	0.3	79.3	7.9	12.8	0.138	0.515	17.178971	-99.552377
Plaza de Cobro La Venta	269.95	1	1	3896	1.0	77.0	7.5	5.7	2.1	3.3	1.3	1.6	0.5	78.0	7.5	14.5	0.104	0.505	16.928442	-99.801674
Plaza de Cobro La Venta	269.95	1	2	3968	1.0	77.8	6.3	6.2	1.6	3.4	1.5	1.5	0.7	78.8	6.3	14.9	0.100	0.505	16.928353	-99.801639
Plaza de Cobro La Venta	269.95	2	1	4259	0.7	82.2	4.8	2.8	2.9	3.5	0.9	1.6	0.6	82.9	4.8	12.3	0.097	0.500	16.928232	-99.801857
Plaza de Cobro La Venta	269.95	2	2	4259	0.7	82.2	4.8	2.8	2.9	3.5	0.9	1.6	0.6	82.9	4.8	12.3	0.097	0.500	16.928232	-99.801857
T. C. Chilpancingo - Acapulco (Ent. La Venta)	271.50	1	1	4549	1.4	82.2	6.3	4.6	1.0	2.6	0.7	0.9	0.3	83.6	6.3	10.1	0.082	0.508	16.921880	-99.813400
T. C. Chilpancingo - Acapulco (Ent. La Venta)	271.50	1	2	4703	1.4	79.9	7.7	5.2	1.1	2.7	0.7	1.0	0.3	81.3	7.7	11.0	0.114	0.508	16.921804	-99.813352

20 CARR: Libramiento de Técpan (Cuota)

CLAVE: 00073

RUTA: MEX-200D

AÑO: 2020

LUGAR	ESTACION				CLASIFICACION VEHICULAR EN PORCIENTO													COORDENADAS		
	KM	TE	SC	TDPA	M	A	B	C2	C3	T3S2	T3S3	T3S2R4	OTROS	A	B	C	K'	D	LATITUD	LONGITUD
T. C. Acapulco - Zihuatanejo (Oriente)	0.00	3	0	2160	13.8	75.9	2.6	3.1	1.4	1.7	1.2	0.2	0.1	89.7	2.6	7.7	0.131	0.504	17.194461	-100.619945
Plaza de Cobro Técpan	2.60	2	0	1241	1.7	80.9	1.0	4.1	4.1	3.9	3.0	0.2	1.1	82.6	1.0	16.4	0.102	0.500	17.197071	-100.626751

GUERRERO

20 CARR : Libramiento de Técpan (Cuota)

CLAVE: 00073

RUTA : MEX-200D

AÑO : 2020

LUGAR	ESTACION				CLASIFICACION VEHICULAR EN PORCIENTO													COORDENADAS		
	KM	TE	SC	TDPA	M	A	B	C2	C3	T3S2	T3S3	T3S2R4	OTROS	A	B	C	K'	D	LATITUD	LONGITUD
T. C. Acapulco - Zihuatanejo (Poniente)	4.40																			

21 CARR : Nueva Italia - Lázaro Cárdenas (Cuota)

CLAVE: 00032

RUTA : MEX-037D

AÑO : 2020

LUGAR	ESTACION				CLASIFICACION VEHICULAR EN PORCIENTO													COORDENADAS		
	KM	TE	SC	TDPA	M	A	B	C2	C3	T3S2	T3S3	T3S2R4	OTROS	A	B	C	K'	D	LATITUD	LONGITUD
T. Der. Apatzingán	153.90	3	0	5442	5.2	66.6	4.0	7.8	2.0	4.8	3.2	5.5	0.9	71.8	4.0	24.2	0.076	0.508	18.990760	-102.087509
Plaza de Cobro Las Cañas	211.40	2	0	3818	0.4	63.0	4.7	2.6	3.1	7.5	3.5	12.0	3.2	63.4	4.7	31.9	0.078	0.500	18.554183	-101.970404
Lim. Edos. Term. Mich. Ppia. Gro.	252.25																			
Plaza de Cobro Feliciano	282.00	2	0	2547	0.7	82.2	5.3	3.0	4.1	2.5	1.2	0.5	0.5	82.9	5.3	11.8	0.078	0.500	18.004090	-101.961847
X. C. Zihuatanejo - La Mira	282.37	1	0	4566	5.7	57.5	6.2	7.0	3.6	6.2	3.8	9.4	0.6	63.2	6.2	30.6	0.093	0.512	18.004230	-101.962959
X. C. Zihuatanejo - La Mira	282.37	3	0	4136	6.3	56.9	5.6	7.8	3.6	6.3	3.5	9.4	0.6	63.2	5.6	31.2	0.082	0.501	18.004254	-101.962946
Lim. Edos. Term. Gro. Ppia. Mich.	307.00																			
Lázaro Cárdenas	311.30																			

22 CARR : Puente de Ixtla - Iguala (Cuota)

CLAVE: 00043

RUTA : MEX-091D

AÑO : 2020

LUGAR	ESTACION				CLASIFICACION VEHICULAR EN PORCIENTO													COORDENADAS		
	KM	TE	SC	TDPA	M	A	B	C2	C3	T3S2	T3S3	T3S2R4	OTROS	A	B	C	K'	D	LATITUD	LONGITUD
T. C. Cuernavaca - Acapulco (Cuota)	0.00																			
T. Izq. Puente de Ixtla	2.00	3	0	7225	3.4	82.6	3.5	5.1	1.8	1.5	1.1	0.8	0.2	86.0	3.5	10.5	0.095	0.507	18.631522	-99.322992
T. Der. Amacuzac	9.63	3	0	7740	3.2	83.8	4.0	3.8	1.8	1.3	1.1	0.9	0.1	87.0	4.0	9.0	0.086	0.507	18.602176	-99.375539
Lim. Edos. Term. Mor. Ppia. Gro.	18.20																			
T. Izq. Buenavista	33.58	3	0	4959	1.1	68.6	7.1	9.3	4.3	4.6	2.9	1.6	0.5	69.7	7.1	23.2	0.082	0.512	18.464788	-99.423808
Plaza de Cobro Iguala	59.14	2	0	3690	0.8	73.5	3.6	5.5	7.2	3.4	3.0	1.7	1.3	74.3	3.6	22.1	0.076	0.500	18.336191	-99.508296
T. Der. Iguala	59.50	1	0	4058	1.4	68.2	6.3	9.3	5.1	4.4	3.0	1.7	0.6	69.6	6.3	24.1	0.083	0.507	18.334204	-99.507430
T. C. Cuernavaca - Chilpancingo	62.80																			

23 CARR : Rancho Viejo - Taxco (Cuota)

CLAVE: 12010

RUTA : MEX-092D

AÑO : 2020

LUGAR	ESTACION				CLASIFICACION VEHICULAR EN PORCIENTO													COORDENADAS		
	KM	TE	SC	TDPA	M	A	B	C2	C3	T3S2	T3S3	T3S2R4	OTROS	A	B	C	K'	D	LATITUD	LONGITUD
X. C. Cuernavaca - Chilpancingo	0.00																			
Plaza de Cobro Taxco	0.62	2	0	2287	5.3	88.0	2.6	2.9	0.7	0.2	0.2	0.0	0.1	93.3	2.6	4.1	0.111	0.500	18.588609	-99.559993
T. C. Cuernavaca - Chilpancingo	8.10	1	0	2914	7.3	82.9	3.9	3.8	0.4	1.0	0.4	0.0	0.3	90.2	3.9	5.9	0.079	0.515	18.565496	-99.598177

GUERRERO

24 CARR: Zacapalco - Rancho Viejo (Cuota)

CLAVE: 12010

RUTA: MEX-092D

AÑO: 2020

LUGAR	ESTACION				CLASIFICACION VEHICULAR EN PORCIENTO													COORDENADAS		
	KM	TE	SC	TDPA	M	A	B	C2	C3	T3S2	T3S3	T3S2R4	OTROS	A	B	C	K'	D	LATITUD	LONGITUD
T. C. Puente de Ixtla - Iguala (Cuota)	0.00																			
Plaza de Cobro Zacapalco	0.50	2	0	1351	3.8	87.8	2.9	3.4	1.1	0.4	0.3	0.0	0.3	91.6	2.9	5.5	0.131	0.500	18.537999	-99.447424
X. C. Cuernavaca - Chilpancingo	17.20	1	0	2659	2.3	79.9	5.2	9.0	2.0	1.1	0.3	0.1	0.1	82.2	5.2	12.6	0.099	0.510	18.589380	-99.555024

25 CARR: Acapulco - Aeropuerto Acapulco

CLAVE: 12292

RUTA: GRO

AÑO: 2020

LUGAR	ESTACION				CLASIFICACION VEHICULAR EN PORCIENTO													COORDENADAS		
	KM	TE	SC	TDPA	M	A	B	C2	C3	T3S2	T3S3	T3S2R4	OTROS	A	B	C	K'	D	LATITUD	LONGITUD
Acapulco	0.00																			
Puerto Marqués	8.70	1	1	15366	3.4	93.0	0.5	2.4	0.3	0.2	0.1	0.1	0.0	96.4	0.5	3.1	0.090	0.509	16.805554	-99.825769
Puerto Marqués	8.70	1	2	15931	3.5	92.9	0.5	2.3	0.2	0.3	0.2	0.1	0.0	96.4	0.5	3.1	0.097	0.509	16.805587	-99.825757
Puerto Marqués	8.70	3	1	28585	2.8	91.8	0.6	2.9	0.5	0.7	0.5	0.1	0.1	94.6	0.6	4.8	0.081	0.504	16.805579	-99.825740
Puerto Marqués	8.70	3	2	29070	2.7	91.8	0.6	2.9	0.5	0.7	0.6	0.1	0.1	94.5	0.6	4.9	0.087	0.504	16.805560	-99.825758
T. Der. Los Amates	14.90	3	1	2922	6.2	91.0	0.4	0.8	0.4	0.4	0.2	0.4	0.2	97.2	0.4	2.4	0.090	0.501	16.771568	-99.772692
T. Der. Los Amates	14.90	3	2	2912	6.0	91.5	0.4	0.8	0.4	0.2	0.2	0.3	0.2	97.5	0.4	2.1	0.092	0.501	16.771571	-99.772691
Aeropuerto	16.20																			

26 CARR: Ent. Potrero - Lomas de Chapultepec

CLAVE: 12293

RUTA: GRO

AÑO: 2020

LUGAR	ESTACION				CLASIFICACION VEHICULAR EN PORCIENTO													COORDENADAS		
	KM	TE	SC	TDPA	M	A	B	C2	C3	T3S2	T3S3	T3S2R4	OTROS	A	B	C	K'	D	LATITUD	LONGITUD
T. C. Acapulco - Aeropuerto Acapulco	0.00	3	1	7132	3.8	90.8	0.4	3.0	1.3	0.5	0.2	0.0	0.0	94.6	0.4	5.0	0.109	0.502	16.771000	-99.773351
T. C. Acapulco - Aeropuerto Acapulco	0.00	3	2	7079	4.0	90.5	0.3	3.0	1.4	0.6	0.2	0.0	0.0	94.5	0.3	5.2	0.118	0.502	16.770890	-99.773210
T. C. Las Cruces - Pinotepa Nacional	29.00																			

27 CARR: Las Petaquillas - Quechultenango

CLAVE:

RUTA: GRO

AÑO: 2020

LUGAR	ESTACION				CLASIFICACION VEHICULAR EN PORCIENTO													COORDENADAS		
	KM	TE	SC	TDPA	M	A	B	C2	C3	T3S2	T3S3	T3S2R4	OTROS	A	B	C	K'	D	LATITUD	LONGITUD
Las Petaquillas	0.00	3	0	3931	4.7	87.9	0.1	6.4	0.5	0.2	0.2	0.0	0.0	92.6	0.1	7.3	0.097	0.505	17.487121	-99.459213
Quechultenango	26.60																			

GUERRERO

28 CARR: Pie de La Cuesta - Barra de Coyuca

CLAVE: 12427

RUTA: GRO

AÑO: 2020

LUGAR	ESTACION				CLASIFICACION VEHICULAR EN PORCIENTO													COORDENADAS		
	KM	TE	SC	TDPA	M	A	B	C2	C3	T3S2	T3S3	T3S2R4	OTROS	A	B	C	K'	D	LATITUD	LONGITUD
T. C. Acapulco - Zihuatanejo	0.00	3	0	4403	11.9	77.7	0.5	4.8	0.3	3.7	0.4	0.2	0.5	89.6	0.5	9.9	0.121	0.500	16.896882	-99.961312
Barra de Coyuca	16.50	1	1	705	6.8	89.6	0.3	2.9	0.0	0.2	0.2	0.0	0.0	96.4	0.3	3.3	0.244	0.522	16.945270	-100.089626
Barra de Coyuca	16.50	1	2	771	9.1	87.4	0.4	2.9	0.1	0.1	0.0	0.0	0.0	96.5	0.4	3.1	0.318	0.522	16.945270	-100.089626

29 CARR: Ramal a Cocula

CLAVE: 12082

RUTA: GRO

AÑO: 2020

LUGAR	ESTACION				CLASIFICACION VEHICULAR EN PORCIENTO													COORDENADAS		
	KM	TE	SC	TDPA	M	A	B	C2	C3	T3S2	T3S3	T3S2R4	OTROS	A	B	C	K'	D	LATITUD	LONGITUD
T. C. Iguala - Ciudad Altamirano	0.00	3	0	3354	12.0	85.1	0.3	1.3	0.9	0.2	0.1	0.1	0.0	97.1	0.3	2.6	0.095	0.502	18.320053	-99.602845
Cocula	13.00																			

30 CARR: T. C. (Iguala - Chilpancingo) - Atenango del Río

CLAVE: 12001

RUTA: GRO-001

AÑO: 2020

LUGAR	ESTACION				CLASIFICACION VEHICULAR EN PORCIENTO													COORDENADAS		
	KM	TE	SC	TDPA	M	A	B	C2	C3	T3S2	T3S3	T3S2R4	OTROS	A	B	C	K'	D	LATITUD	LONGITUD
T. C. Cuernavaca - Chilpancingo	0.00	3	0	5642	5.8	85.2	0.8	5.7	0.7	1.6	0.1	0.1	0.0	91.0	0.8	8.2	0.100	0.504	18.293001	-99.509038
T. Der. Pololcingo	11.20	1	0	3873	5.4	85.0	0.2	5.9	0.5	2.3	0.3	0.1	0.3	90.4	0.2	9.4	0.099	0.501	18.303129	-99.422716
T. Der. Pololcingo	11.20	3	0	3208	6.2	85.7	0.2	5.3	0.6	1.5	0.2	0.1	0.2	91.9	0.2	7.9	0.101	0.506	18.303245	-99.422372
Huitzuco	22.00	3	0	1977	8.6	79.3	0.8	9.0	0.7	1.2	0.2	0.1	0.1	87.9	0.8	11.3	0.104	0.500	18.299632	-99.336767
Atenango del Río	62.00	1	0	1379	9.9	79.9	0.6	7.9	0.4	0.8	0.1	0.0	0.4	89.8	0.6	9.6	0.084	0.501	18.104565	-99.108579

31 CARR: Taxco - Ixcateopan

CLAVE: 12083

RUTA: GRO

AÑO: 2020

LUGAR	ESTACION				CLASIFICACION VEHICULAR EN PORCIENTO													COORDENADAS		
	KM	TE	SC	TDPA	M	A	B	C2	C3	T3S2	T3S3	T3S2R4	OTROS	A	B	C	K'	D	LATITUD	LONGITUD
Taxco	0.00	3	0	2683	13.9	81.1	0.0	1.4	0.1	2.6	0.5	0.1	0.3	95.0	0.0	5.0	0.095	0.513	18.551575	-99.618664
Ixcateopan	36.00	1	0	295	9.3	85.5	0.1	3.9	0.9	0.2	0.0	0.0	0.1	94.8	0.1	5.1	0.112	0.503	18.505992	-99.791274

32 CARR: Teloloapan - Apaxtla de Castrejón

CLAVE: 12081

RUTA: GRO

AÑO: 2020

LUGAR	ESTACION				CLASIFICACION VEHICULAR EN PORCIENTO													COORDENADAS		
	KM	TE	SC	TDPA	M	A	B	C2	C3	T3S2	T3S3	T3S2R4	OTROS	A	B	C	K'	D	LATITUD	LONGITUD
T. C. Iguala - Ciudad Altamirano	0.00	3	0	5487	13.7	75.8	0.4	7.6	0.3	1.9	0.3	0.0	0.0	89.5	0.4	10.1	0.093	0.503	18.358248	-99.853203
Apaxtla de Castrejón	34.00																			

GUERRERO

33 CARR: Tlapa de Comonfort - Marquelia

CLAVE:

RUTA: GRO

AÑO: 2020

LUGAR	ESTACION				CLASIFICACION VEHICULAR EN PORCIENTO										COORDENADAS					
	KM	TE	SC	TDPA	M	A	B	C2	C3	T3S2	T3S3	T3S2R4	OTROS	A	B	C	K'	D	LATITUD	LONGITUD
Tlapa de Comonfort	0.00	3	0	2750	5.9	87.5	0.2	5.4	0.5	0.3	0.2	0.0	0.0	93.4	0.2	6.4	0.084	0.507	17.539805	-98.591040
Marquelia	163.00	1	0	2638	12.6	82.5	0.2	4.1	0.4	0.2	0.0	0.0	0.0	95.1	0.2	4.7	0.092	0.504	16.583341	-98.818376

34 CARR: Puerto Marqués - La Venta (Cuota)

CLAVE: 00043

RUTA: GRO-D

AÑO: 2020

LUGAR	ESTACION				CLASIFICACION VEHICULAR EN PORCIENTO										COORDENADAS					
	KM	TE	SC	TDPA	M	A	B	C2	C3	T3S2	T3S3	T3S2R4	OTROS	A	B	C	K'	D	LATITUD	LONGITUD
Puerto Marqués	0.00																			
X. C. Las Cruces - Pinotepa Nacional	6.33	1	1	1747	3.0	87.4	1.6	4.9	0.8	1.5	0.3	0.3	0.2	90.4	1.6	8.0	0.077	0.504	16.830557	-99.759338
X. C. Las Cruces - Pinotepa Nacional	6.33	1	2	1721	3.1	87.6	1.6	4.7	0.8	1.3	0.4	0.3	0.2	90.7	1.6	7.7	0.079	0.504	16.830599	-99.759607
X. C. Las Cruces - Pinotepa Nacional	6.33	3	1	2006	1.0	83.7	3.3	6.6	1.5	2.0	0.9	0.8	0.2	84.7	3.3	12.0	0.101	0.528	16.831797	-99.759108
X. C. Las Cruces - Pinotepa Nacional	6.33	3	2	2246	1.1	83.8	3.3	6.3	1.5	2.1	1.0	0.7	0.2	84.9	3.3	11.8	0.095	0.528	16.831869	-99.759368
La Venta	20.80																			

35 CARR: Toluca - Axixintla

CLAVE: 00122

RUTA: EM-MEX-055

AÑO: 2020

LUGAR	ESTACION				CLASIFICACION VEHICULAR EN PORCIENTO										COORDENADAS					
	KM	TE	SC	TDPA	M	A	B	C2	C3	T3S2	T3S3	T3S2R4	OTROS	A	B	C	K'	D	LATITUD	LONGITUD
Toluca	0.00																			
T. Izq. Metepec	4.74	1	1	42820	1.3	90.4	0.7	3.7	1.0	1.6	1.2	0.0	0.1	91.7	0.7	7.6	0.065	0.525	19.235933	-99.598004
T. Izq. Metepec	4.74	1	2	47884	1.3	89.8	0.6	4.1	1.0	1.7	1.4	0.0	0.1	91.1	0.6	8.3	0.076	0.525	19.235930	-99.597997
Mexicalcingo	8.80	1	1	45870	0.6	91.4	0.3	3.7	1.0	1.5	1.3	0.1	0.1	92.0	0.3	7.7	0.086	0.504	19.216632	-99.590911
Mexicalcingo	8.80	1	2	46725	0.6	90.5	0.3	4.1	1.2	1.7	1.4	0.1	0.1	91.1	0.3	8.6	0.087	0.504	19.216635	-99.590922
Mexicalcingo	8.80	3	1	35692	1.5	90.8	0.5	4.0	1.1	1.2	0.8	0.1	0.0	92.3	0.5	7.2	0.091	0.517	19.203419	-99.586096
Mexicalcingo	8.80	3	2	38564	0.9	90.2	0.3	4.6	1.1	1.5	1.2	0.1	0.1	91.1	0.3	8.6	0.083	0.517	19.203459	-99.585994
T. Der. Calimaya	12.70	3	1	27672	1.1	89.1	0.5	6.0	1.2	1.1	0.9	0.0	0.1	90.2	0.5	9.3	0.081	0.528	19.184384	-99.579121
T. Der. Calimaya	12.70	3	2	33067	1.3	89.3	0.5	5.8	1.1	1.1	0.7	0.1	0.1	90.6	0.5	8.9	0.072	0.528	19.184465	-99.578985
Santa María Rayón	17.60	3	1	19989	1.3	87.7	0.7	7.4	1.2	1.1	0.4	0.1	0.1	89.0	0.7	10.3	0.089	0.524	19.148496	-99.584103
Santa María Rayón	17.60	3	2	18123	1.3	87.6	0.9	6.4	1.2	1.5	0.7	0.2	0.2	88.9	0.9	10.2	0.086	0.524	19.148497	-99.584101
Tenango de Arista	23.00	1	1	17487	1.6	84.9	0.9	7.2	1.2	2.0	1.7	0.2	0.3	86.5	0.9	12.6	0.090	0.528	19.105277	-99.586586
Tenango de Arista	23.00	1	2	15632	1.9	85.5	0.9	6.8	1.4	1.6	1.5	0.2	0.2	87.4	0.9	11.7	0.091	0.528	19.105293	-99.586599
San Bartolomé Atlatlahuaca	28.12	1	0	14140	0.7	84.6	0.7	4.8	0.8	5.8	1.4	0.5	0.7	85.3	0.7	14.0	0.075	0.503	19.069966	-99.603543
San Bartolomé Atlatlahuaca	28.12	3	0	11553	0.7	84.3	0.8	4.8	0.9	5.8	1.4	0.5	0.8	85.0	0.8	14.2	0.077	0.503	19.069987	-99.603545
T. Izq. Joquicingo de León Guzmán	35.70	1	0	11031	1.0	83.5	1.2	6.0	0.7	5.6	1.1	0.3	0.6	84.5	1.2	14.3	0.084	0.505	19.027269	-99.562324
T. Izq. Joquicingo de León Guzmán	35.70	3	0	11856	1.0	87.8	1.2	5.9	0.8	1.3	1.1	0.4	0.5	88.8	1.2	10.0	0.083	0.505	19.024814	-99.561709

GUERRERO

35 CARR: Toluca - Axixintla

CLAVE: 00122

RUTA: EM-MEX-055

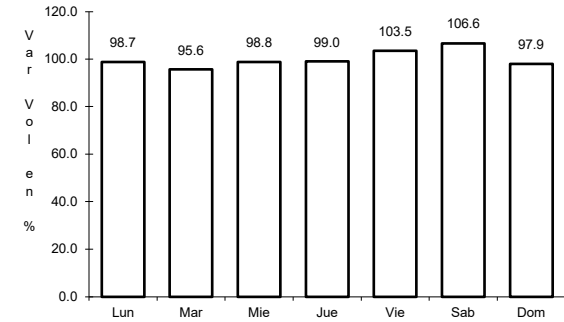
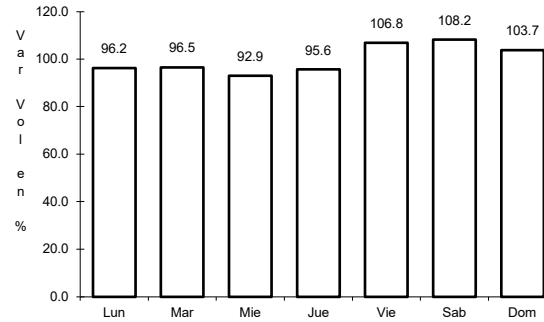
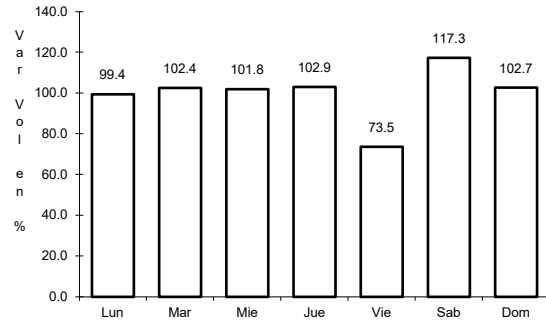
AÑO: 2020

L U G A R	E S T A C I O N				C L A S I F I C A C I O N V E H I C U L A R E N P O R C I E N T O										C O O R D E N A D A S					
	KM	TE	SC	TDPA	M	A	B	C2	C3	T3S2	T3S3	T3S2R4	OTROS	A	B	C	K'	D	LATITUD	LONGITUD
Tenancingo	44.80	3	0	11494	2.8	81.8	0.8	8.3	2.1	3.0	0.4	0.4	0.4	84.6	0.8	14.6	0.092	0.504	18.961825	-99.591474
T. Izq. Villa Guerrero	56.84	3	0	6538	1.7	84.9	0.5	7.2	0.6	3.3	0.5	0.5	0.8	86.6	0.5	12.9	0.107	0.502	18.968202	-99.644311
Ixtapan de La Sal	80.00	1	1	3004	2.5	86.8	1.9	6.2	0.8	0.7	0.5	0.3	0.3	89.3	1.9	8.8	0.121	0.515	18.853301	-99.672538
Ixtapan de La Sal	80.00	1	2	3184	2.5	87.1	1.8	6.1	0.7	0.7	0.5	0.3	0.3	89.6	1.8	8.6	0.148	0.515	18.853301	-99.672538
Ixtapan de La Sal	80.00	3	1	7688	2.7	91.2	1.4	2.1	0.3	0.7	1.2	0.2	0.2	93.9	1.4	4.7	0.108	0.502	18.834709	-99.670281
Ixtapan de La Sal	80.00	3	2	7627	2.7	91.4	1.3	2.1	0.3	0.7	1.2	0.1	0.2	94.1	1.3	4.6	0.096	0.502	18.834709	-99.670281
Tonatico	86.20	3	0	4670	2.5	86.1	1.6	4.9	0.9	2.0	1.2	0.3	0.5	88.6	1.6	9.8	0.118	0.505	18.809906	-99.665524
Lim. Edos. Term. Méx. Ppia. Gro.	98.50																			
Cacahuamilpa	120.30	1	0	2005	3.4	87.3	2.1	3.7	1.2	0.6	0.3	0.6	0.8	90.7	2.1	7.2	0.152	0.520	18.683221	-99.507025
T. C. Cuernavaca - Chilpancingo	125.30	1	0	1137	4.7	87.6	2.6	2.3	1.2	0.7	0.4	0.0	0.5	92.3	2.6	5.1	0.157	0.525	18.611924	-99.507336

1 CARR: Acapulco - Zihuatanejo

CLAVE: 12072

RUTA: MEX-200



Km: 10.37 Tipo: 1 Sent: 0

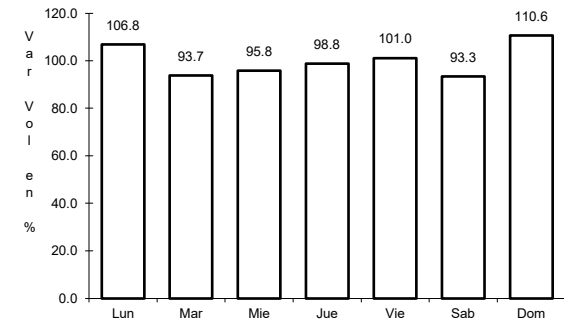
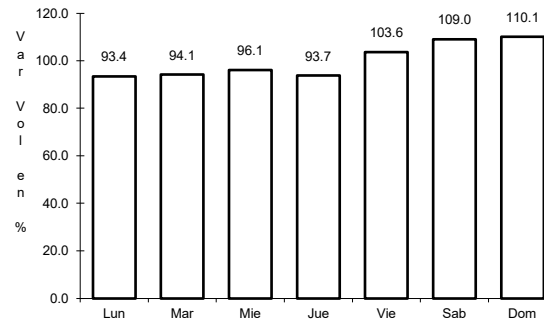
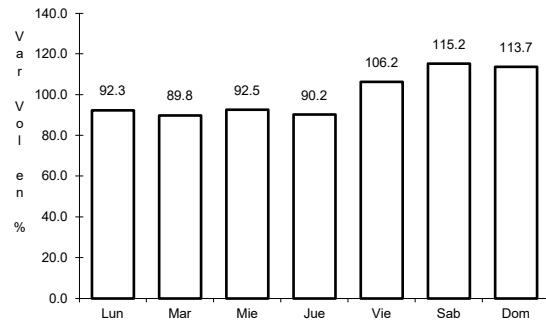
Km: 242.90 Tipo: 1 Sent: 1

Km: 242.90 Tipo: 1 Sent: 2

2 CARR: Cd. Altamirano - T. C. (Zihuatanejo - La Mira)

CLAVE: 12422

RUTA: MEX-134



Km: 0.00 Tipo: 3 Sent: 1

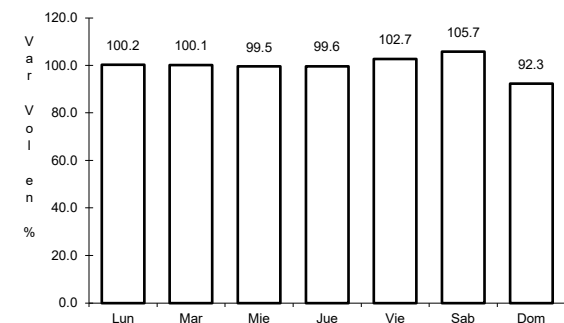
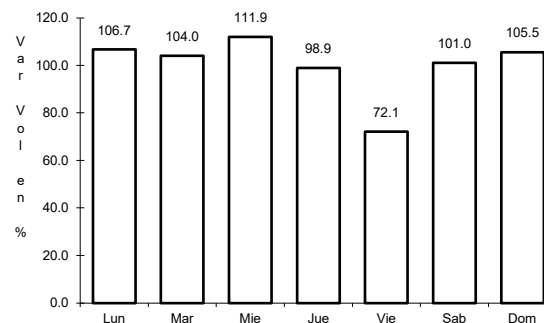
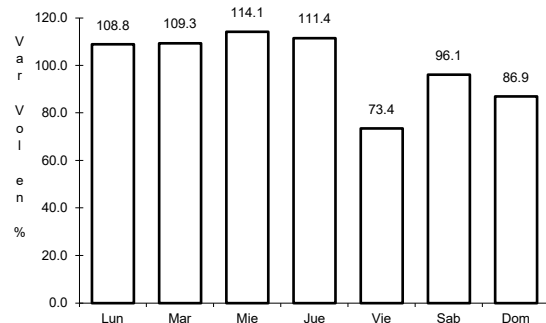
Km: 0.00 Tipo: 3 Sent: 2

Km: 187.36 Tipo: 1 Sent: 0

3 CARR: Chilpancingo - Acapulco

CLAVE: 12045

RUTA: MEX-095



Km: 4.20 Tipo: 1 Sent: 1

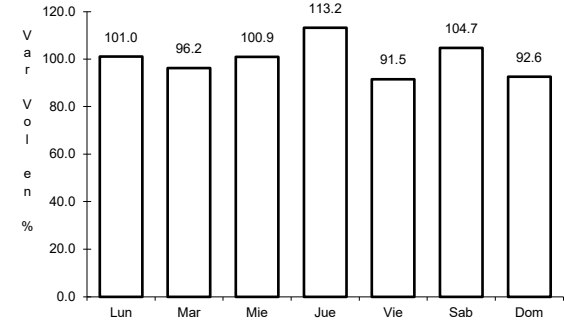
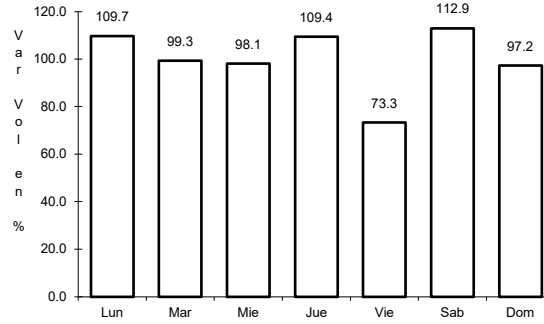
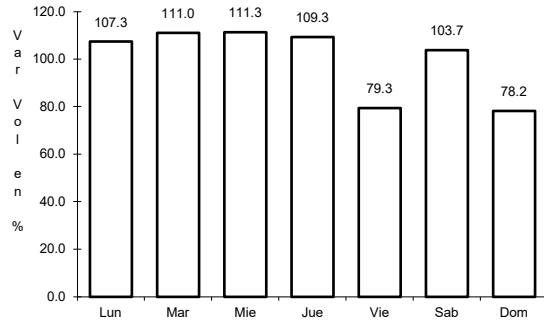
Km: 4.20 Tipo: 1 Sent: 2

Km: 112.80 Tipo: 3 Sent: 0

4 CARR: Chilpancingo - Chichihualco

CLAVE: 12426

RUTA: MEX-095



Km: 0.00 Tipo: 3 Sent: 0

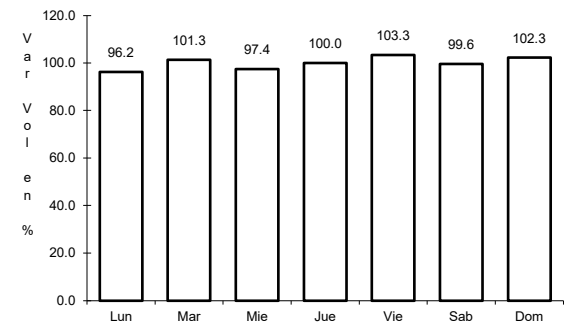
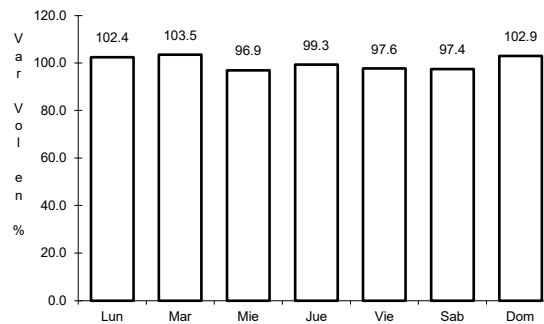
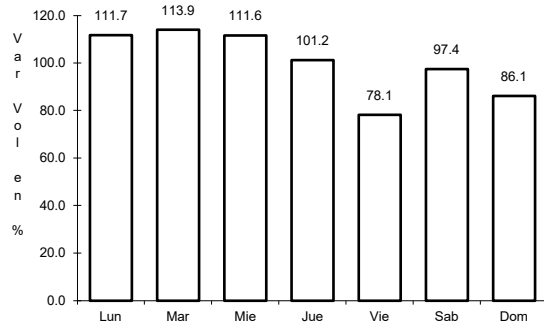
Km: 15.10 Tipo: 1 Sent: 0

Km: 26.30 Tipo: 1 Sent: 0

5 CARR: Chilpancingo - Jilotepec

CLAVE: 12002

RUTA: MEX-093



Km: 0.00 Tipo: 3 Sent: 0

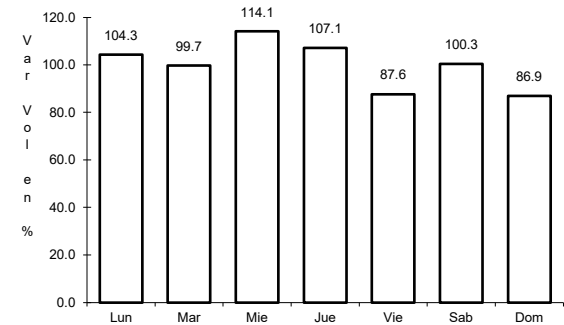
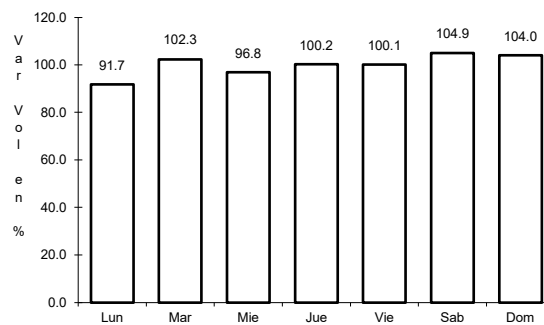
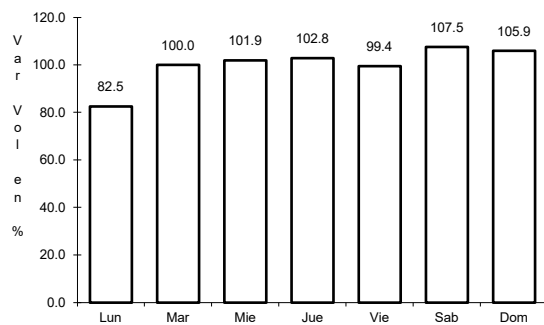
Km: 53.62 Tipo: 3 Sent: 0

Km: 235.00 Tipo: 1 Sent: 0

6 CARR: Cuernavaca - Chilpancingo

CLAVE: 00042

RUTA: MEX-095



Km: 9.80 Tipo: 1 Sent: 1

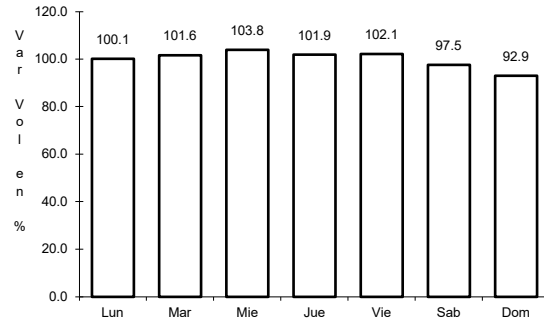
Km: 9.80 Tipo: 1 Sent: 2

Km: 119.63 Tipo: 1 Sent: 0

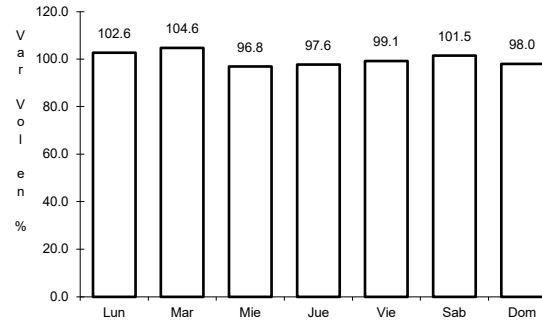
7 CARR: Ent. Alpuyecá - Grutas de Cacahuamilpa

CLAVE: 00421

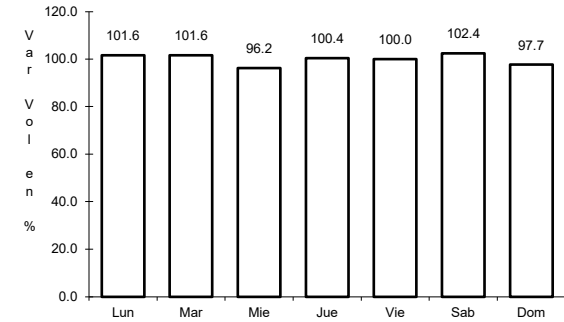
ruta: MEX-166



Km: 0.00 Tipo: 3 Sent: 0



Km: 18.28 Tipo: 3 Sent: 0

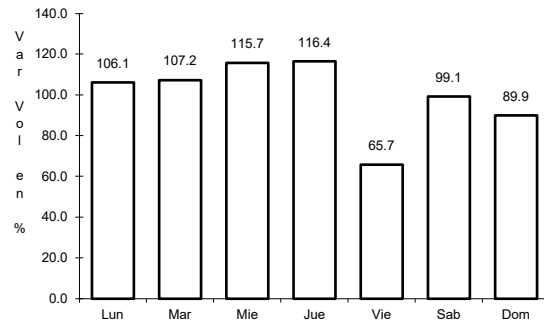


Km: 41.26 Tipo: 1 Sent: 0

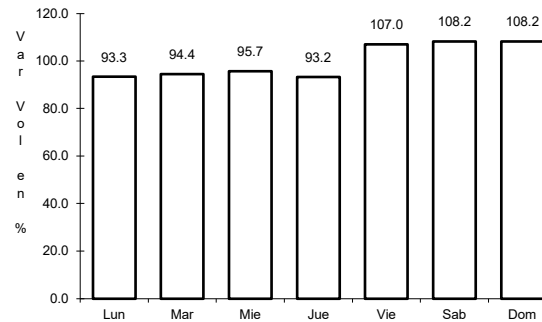
8 CARR: Iguala - Cd. Altamirano

CLAVE: 12195

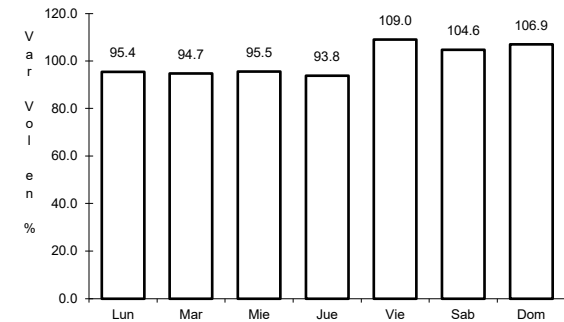
ruta: MEX-051



Km: 9.40 Tipo: 1 Sent: 0



Km: 184.55 Tipo: 1 Sent: 1

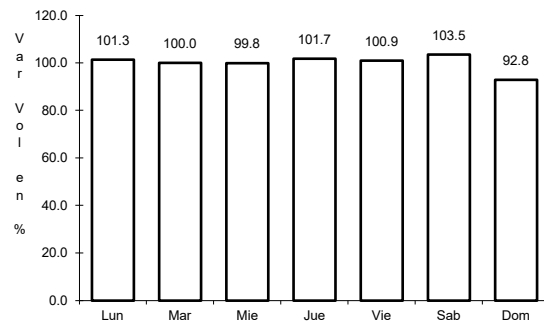


Km: 184.55 Tipo: 1 Sent: 2

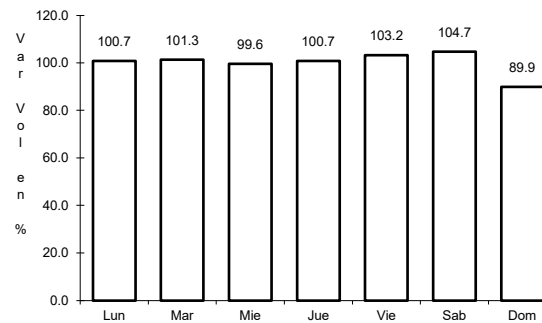
9 CARR: La Sabana - Puerto Marqués

CLAVE: 12291

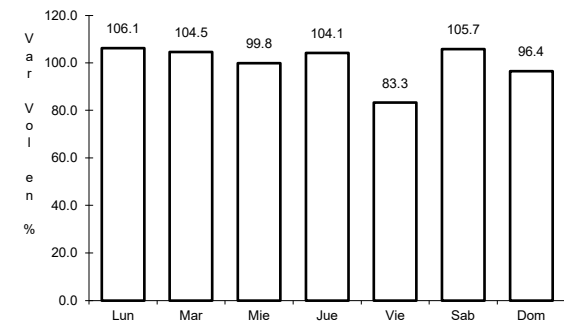
ruta: MEX-200



Km: 0.00 Tipo: 3 Sent: 1



Km: 0.00 Tipo: 3 Sent: 2

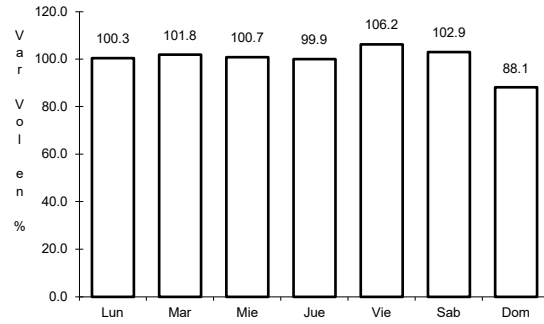


Km: 7.20 Tipo: 1 Sent: 1

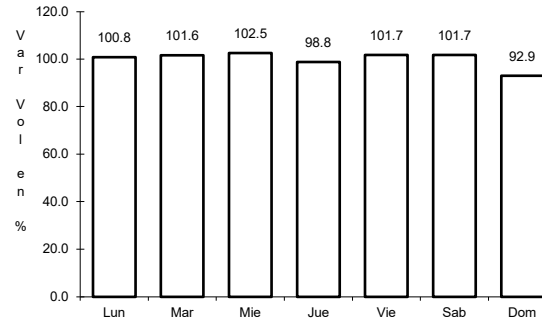
10 CARR: Las Cruces - Pinotepa Nacional

CLAVE: 00073

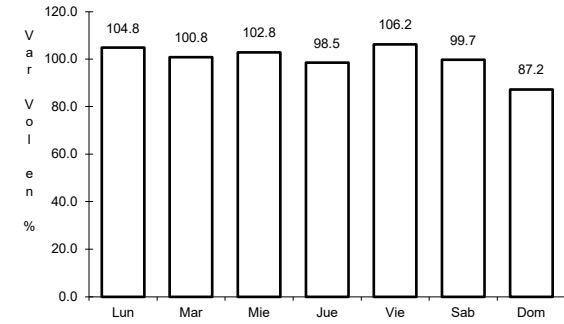
ruta: MEX-200



Km: 0.00 Tipo: 3 Sent: 1



Km: 0.00 Tipo: 3 Sent: 2

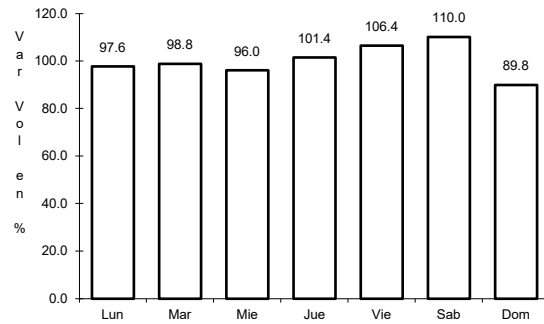


Km: 245.47 Tipo: 3 Sent: 0

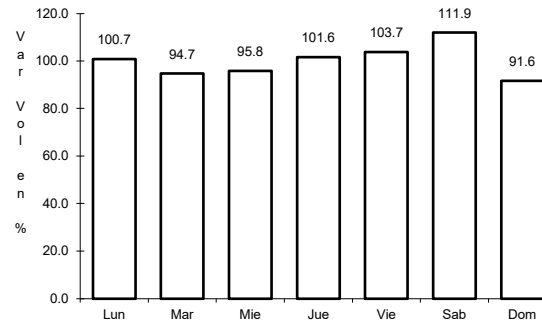
11 CARR: Libramiento Norte de Acapulco

CLAVE: 12421

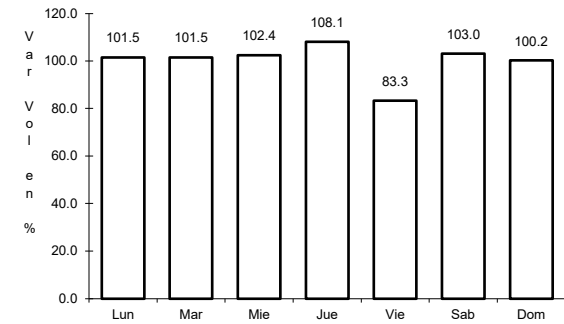
ruta: MEX-095



Km: 0.00 Tipo: 3 Sent: 0



Km: 6.40 Tipo: 3 Sent: 0

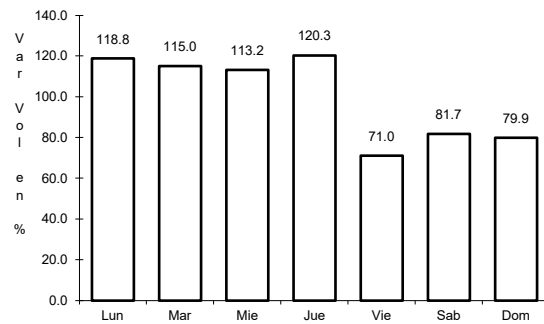


Km: 21.10 Tipo: 1 Sent: 0

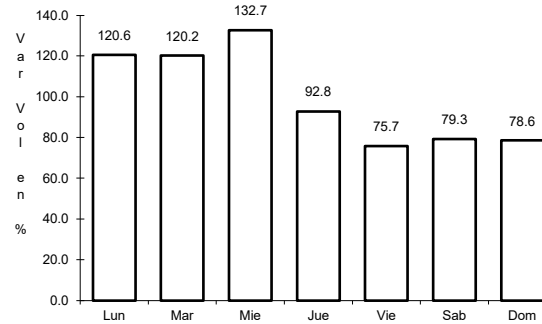
12 CARR: Milpillas - T. C. (Acapulco - Zihuatanejo)

CLAVE: 12012

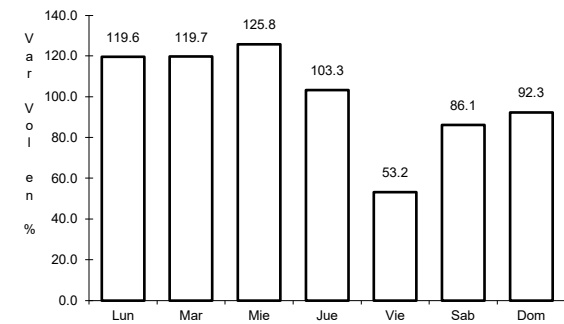
ruta: MEX-196



Km: 0.00 Tipo: 3 Sent: 0



Km: 237.00 Tipo: 1 Sent: 1

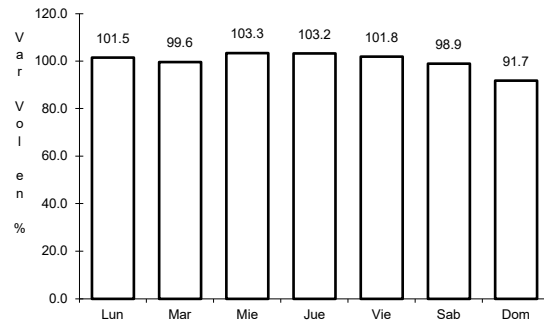


Km: 237.00 Tipo: 1 Sent: 2

13 CARR: Ramal a Aeropuerto Zihuatanejo

CLAVE: 12423

ruta: MEX-200



Km: 0.00

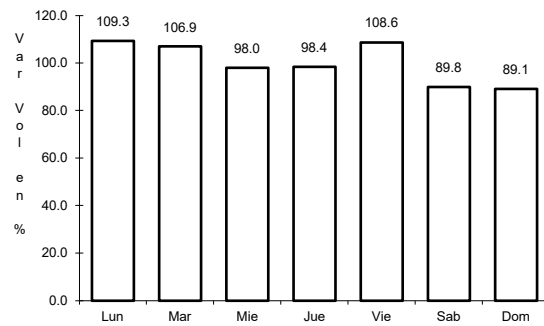
Tipo: 3

Sent: 0

14 CARR: Ramal a La Unión

CLAVE:

ruta: MEX-200



Km: 0.00

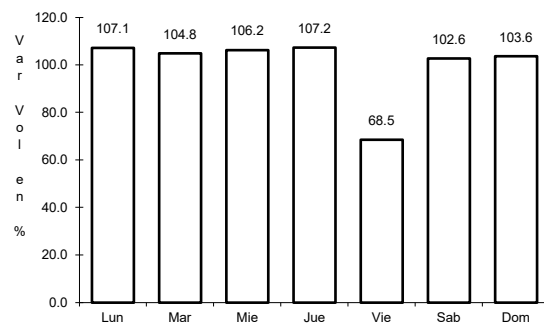
Tipo: 3

Sent: 0

15 CARR: San Juan de Los Llanos - Ometepec

CLAVE: 12011

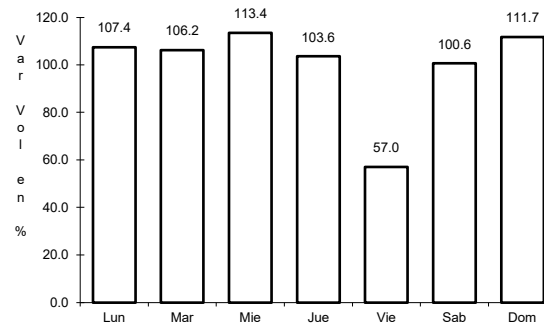
ruta: MEX-200



Km: 0.00

Tipo: 3

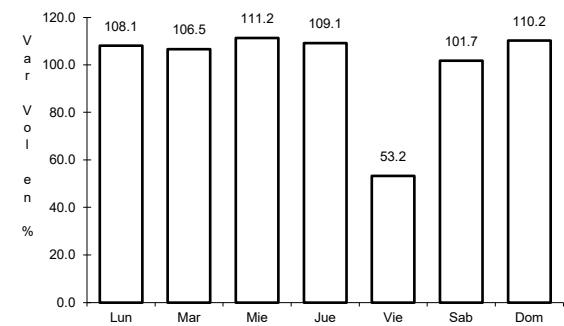
Sent: 0



Km: 15.94

Tipo: 1

Sent: 1



Km: 15.94

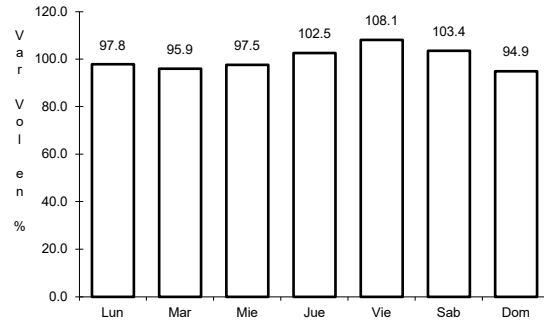
Tipo: 1

Sent: 2

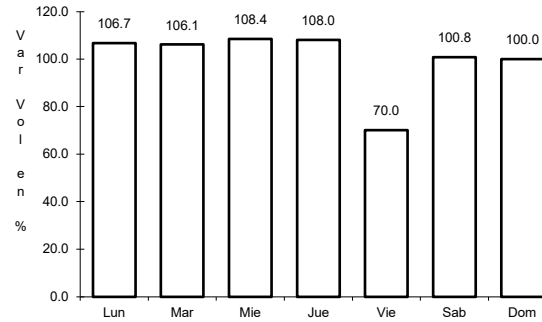
16 CARR: Tierra Colorada - Cruz Grande

CLAVE: 12420

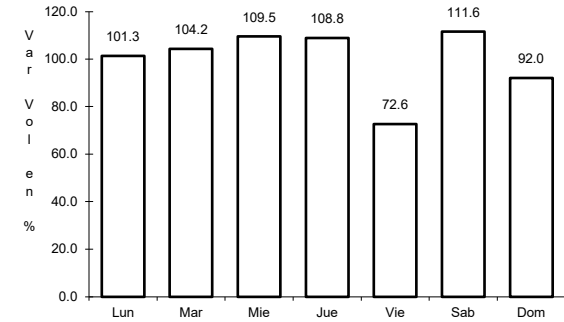
RUTA: MEX-198



Km: 0.00 Tipo: 3 Sent: 0



Km: 61.00 Tipo: 1 Sent: 0

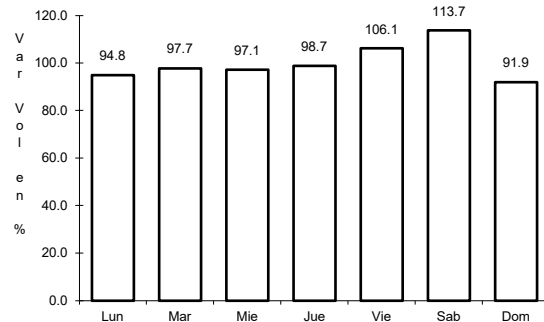


Km: 113.80 Tipo: 1 Sent: 0

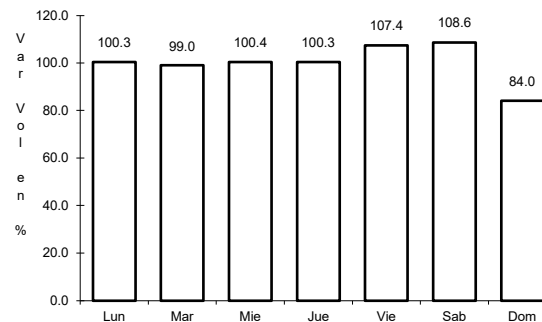
17 CARR: Toluca - Cd. Altamirano

CLAVE: 00020

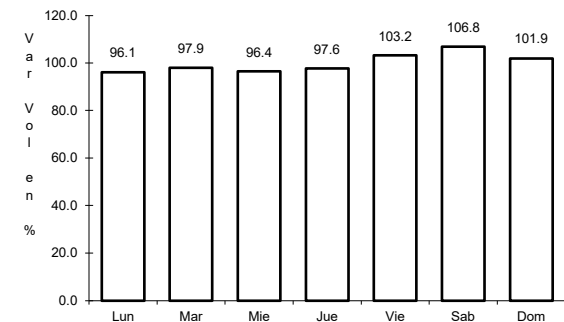
RUTA: MEX-134



Km: 1.78 Tipo: 3 Sent: 1



Km: 1.78 Tipo: 3 Sent: 2

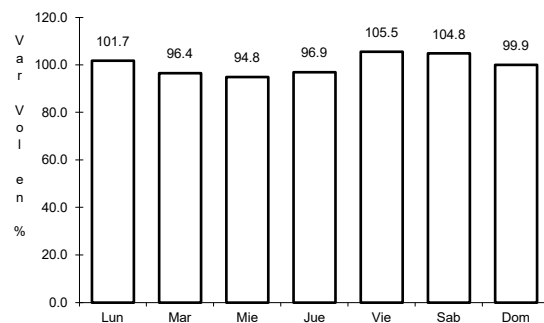


Km: 216.00 Tipo: 1 Sent: 0

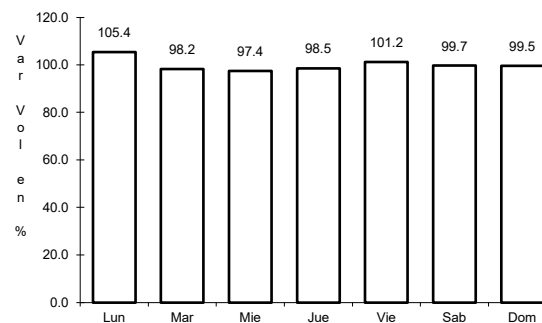
18 CARR: Zihuatanejo - La Mira

CLAVE: 00121

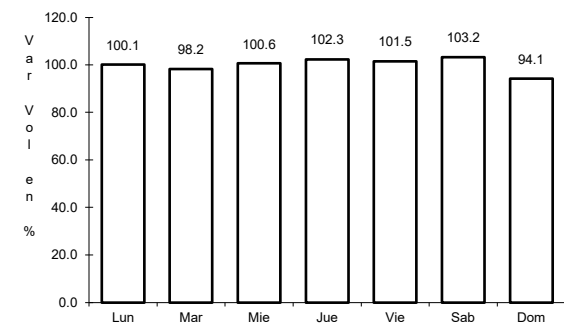
RUTA: MEX-200



Km: 2.25 Tipo: 3 Sent: 0



Km: 65.00 Tipo: 3 Sent: 0

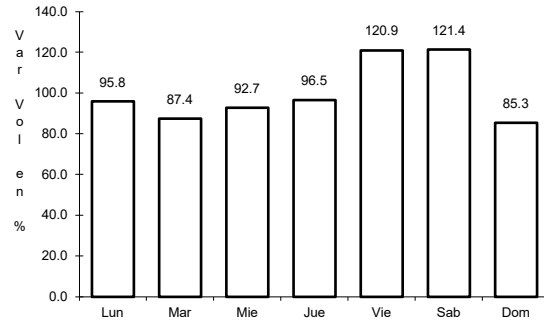


Km: 123.60 Tipo: 1 Sent: 0

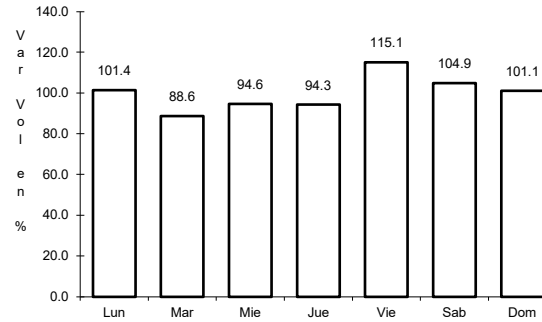
19 CARR: Cuernavaca - Acapulco (Cuota)

CLAVE: 00045

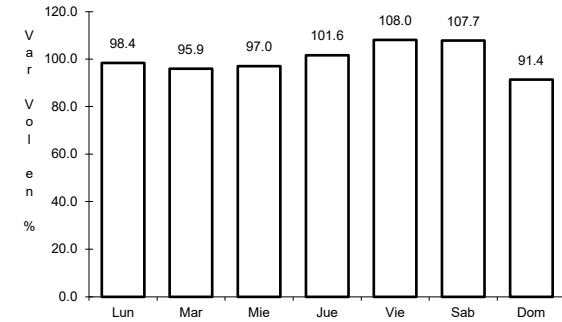
ruta: MEX-095D



Km: 0.00 Tipo: 3 Sent: 1



Km: 0.00 Tipo: 3 Sent: 2

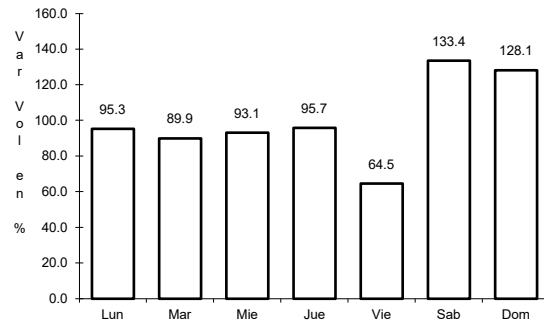


Km: 271.50 Tipo: 1 Sent: 1

20 CARR: Libramiento de Tépam (Cuota)

CLAVE: 00073

ruta: MEX-200D

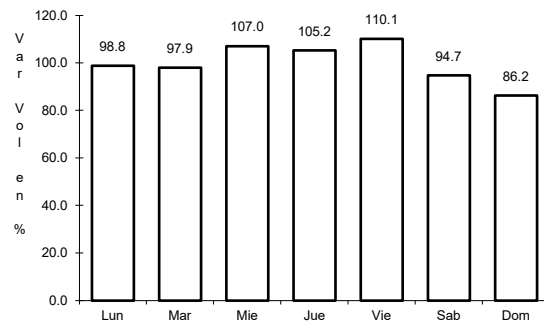


Km: 0.00 Tipo: 3 Sent: 0

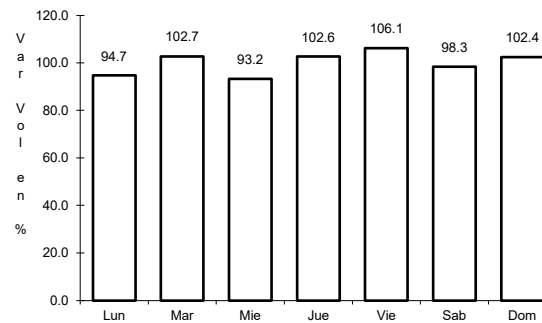
21 CARR: Nueva Italia - Lázaro Cárdenas (Cuota)

CLAVE: 00032

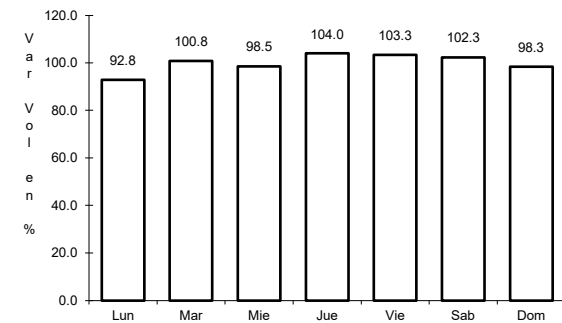
ruta: MEX-037D



Km: 153.90 Tipo: 3 Sent: 0



Km: 282.37 Tipo: 1 Sent: 0

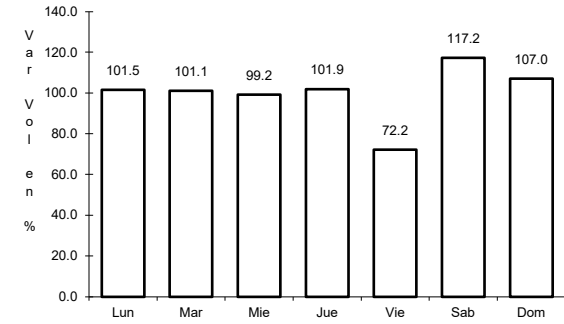
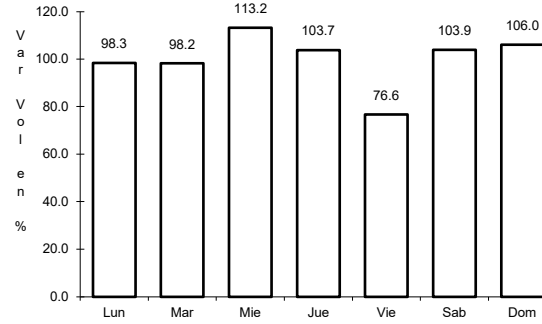
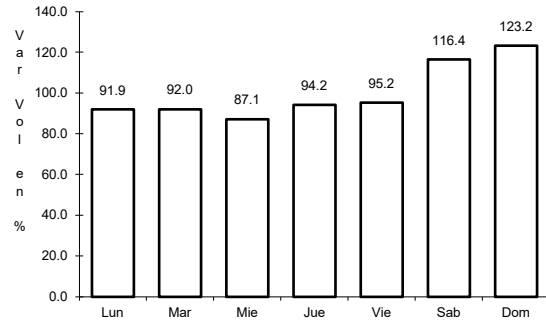


Km: 282.37 Tipo: 3 Sent: 0

22 CARR: Puente de Ixtla - Iguala (Cuota)

CLAVE: 00043

ruta: MEX-091D



Km: 2.00 Tipo: 3 Sent: 0

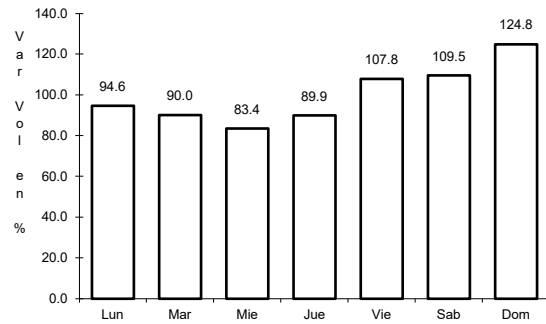
Km: 33.58 Tipo: 3 Sent: 0

Km: 59.50 Tipo: 1 Sent: 0

23 CARR: Rancho Viejo - Taxco (Cuota)

CLAVE: 12010

ruta: MEX-092D

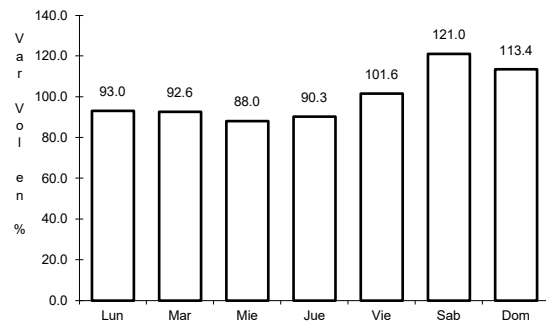


Km: 8.10 Tipo: 1 Sent: 0

24 CARR: Zacapalco - Rancho Viejo (Cuota)

CLAVE: 12010

ruta: MEX-092D

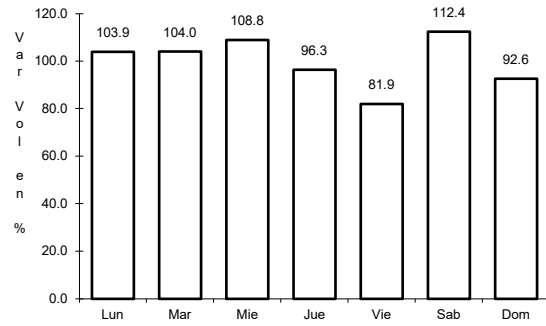


Km: 17.20 Tipo: 1 Sent: 0

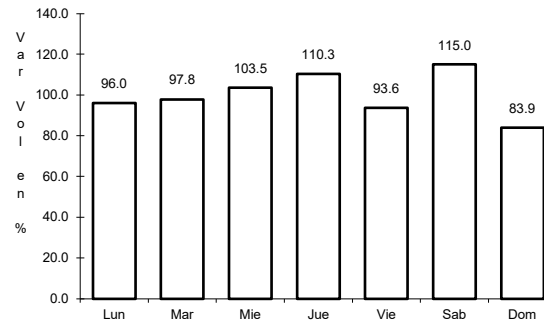
25 CARR: Acapulco - Aeropuerto Acapulco

CLAVE: 12292

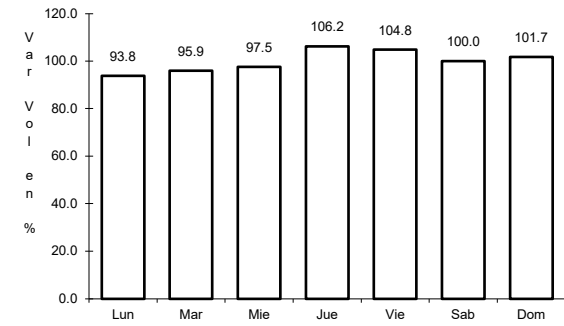
RUTA: GRO



Km: 8.70 Tipo: 1 Sent: 1



Km: 8.70 Tipo: 1 Sent: 2

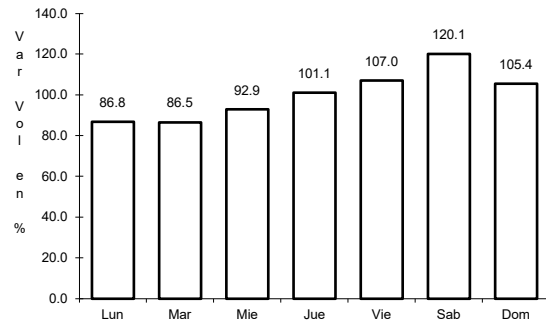


Km: 14.90 Tipo: 3 Sent: 1

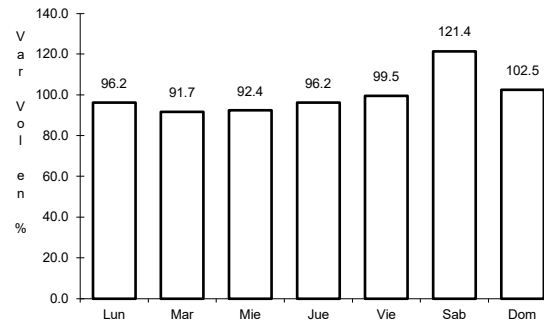
26 CARR: Ent. Potrero - Lomas de Chapultepec

CLAVE: 12293

RUTA: GRO



Km: 0.00 Tipo: 3 Sent: 1

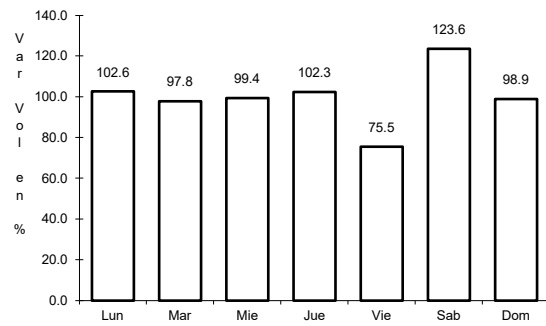


Km: 0.00 Tipo: 3 Sent: 2

27 CARR: Las Petaquillas - Quechultenango

CLAVE:

RUTA: GRO

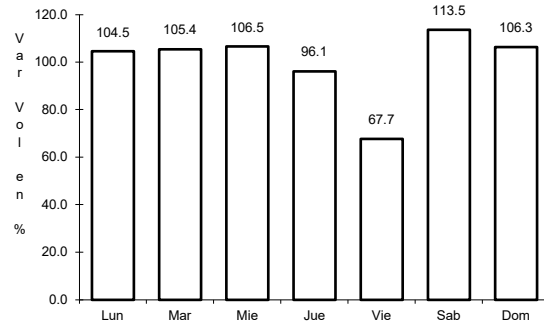


Km: 0.00 Tipo: 3 Sent: 0

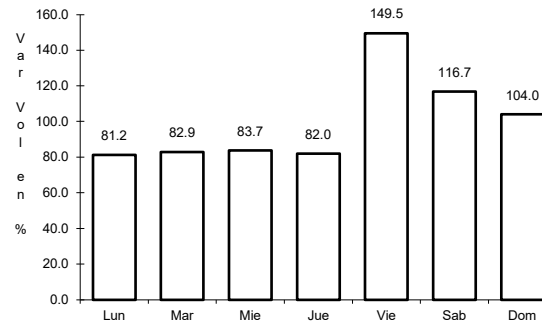
28 CARR: Pie de La Cuesta - Barra de Coyuca

CLAVE: 12427

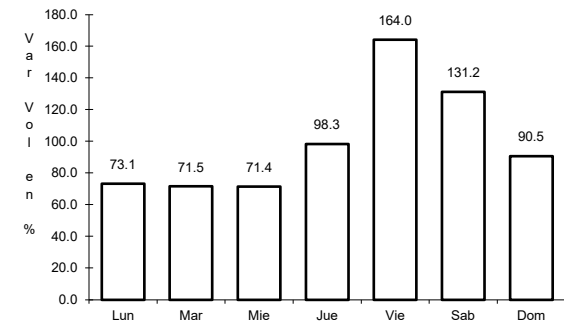
RUTA: GRO



Km: 0.00 Tipo: 3 Sent: 0



Km: 16.50 Tipo: 1 Sent: 1

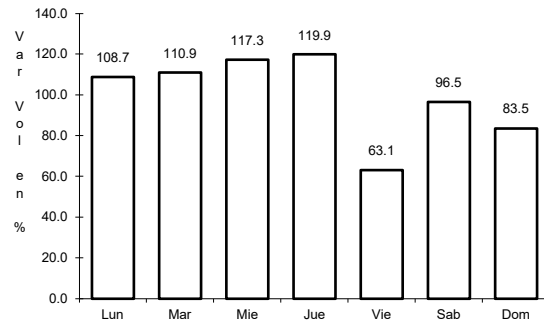


Km: 16.50 Tipo: 1 Sent: 2

29 CARR: Ramal a Cocula

CLAVE: 12082

RUTA: GRO

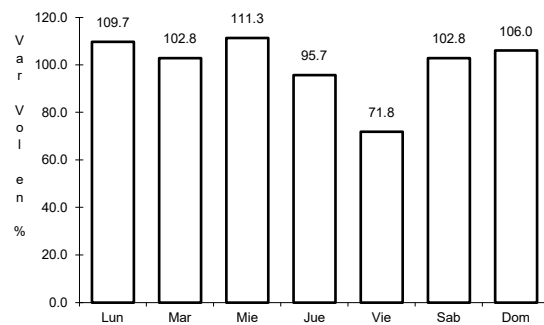


Km: 0.00 Tipo: 3 Sent: 0

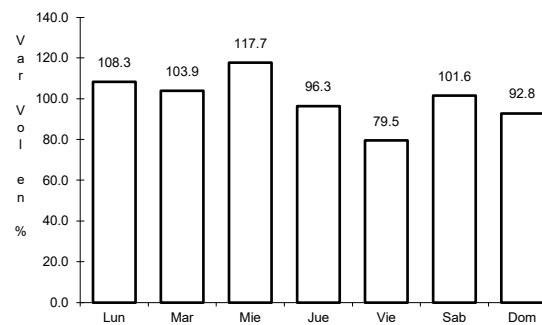
30 CARR: T. C. (Iguala - Chilpancingo) - Atenango del Río

CLAVE: 12001

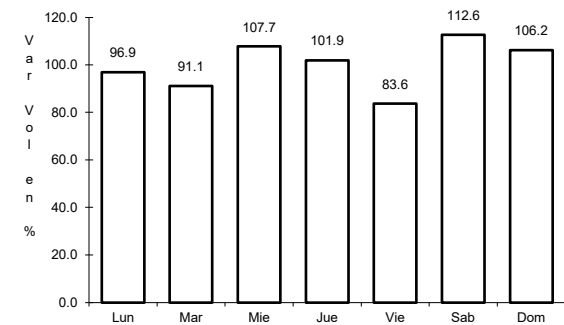
RUTA: GRO-001



Km: 0.00 Tipo: 3 Sent: 0



Km: 22.00 Tipo: 3 Sent: 0

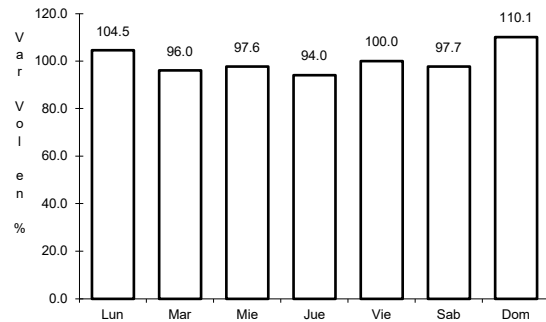


Km: 62.00 Tipo: 1 Sent: 0

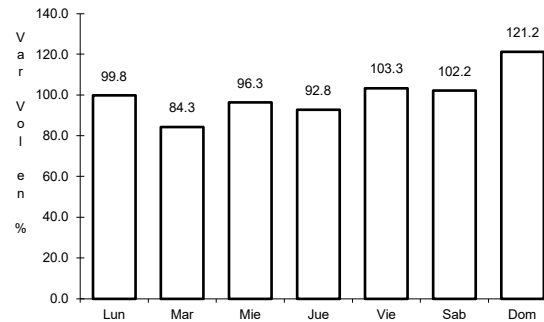
31 CARR: Taxco - Ixcateopan

CLAVE: 12083

RUTA: GRO



Km: 0.00 Tipo: 3 Sent: 0

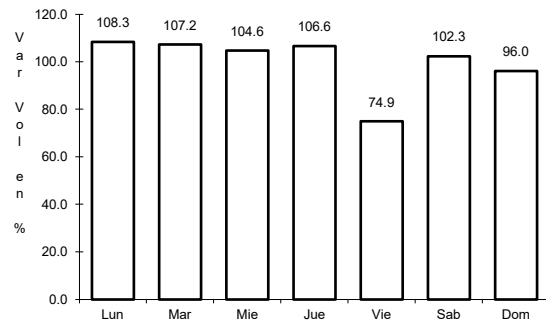


Km: 36.00 Tipo: 1 Sent: 0

32 CARR: Teloloapan - Apaxtla de Castrejón

CLAVE: 12081

RUTA: GRO

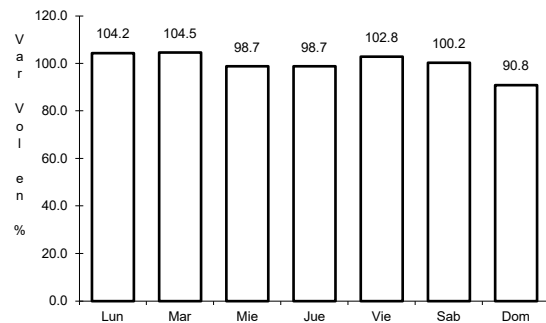


Km: 0.00 Tipo: 3 Sent: 0

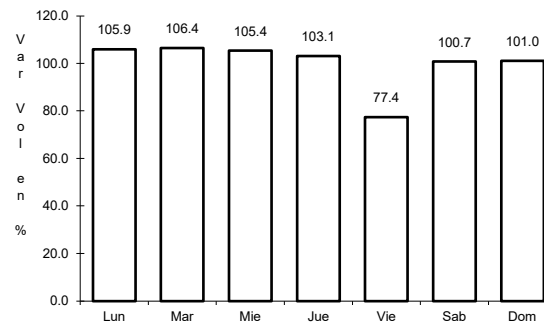
33 CARR: Tlapa de Comonfort - Marquelia

CLAVE:

RUTA: GRO



Km: 0.00 Tipo: 3 Sent: 0

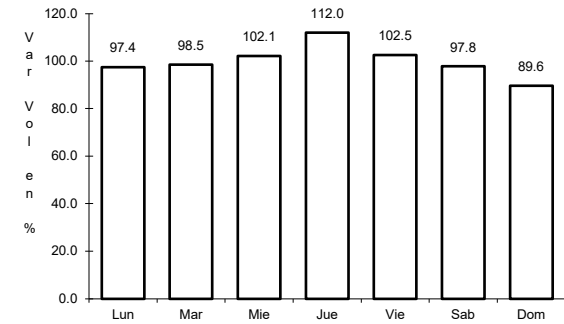
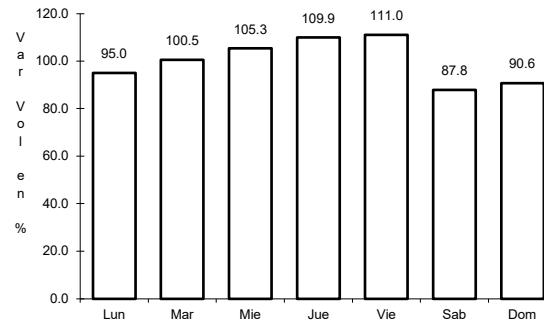
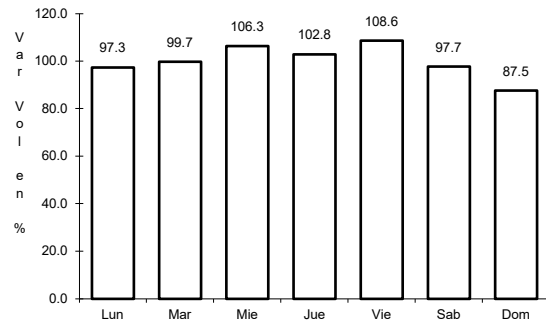


Km: 163.00 Tipo: 1 Sent: 0

34 CARR: Puerto Marqués - La Venta (Cuota)

CLAVE: 00043

ruta: GRO-D



Km: 6.33

Tipo: 1

Sent: 1

Km: 6.33

Tipo: 1

Sent: 2

Km: 6.33

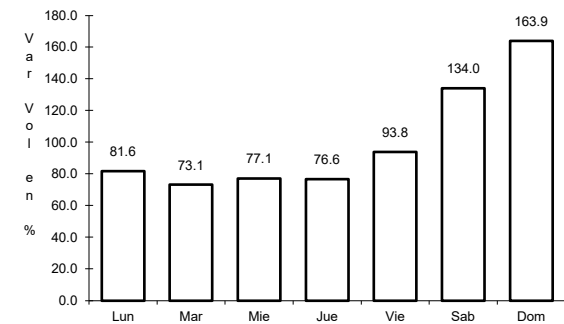
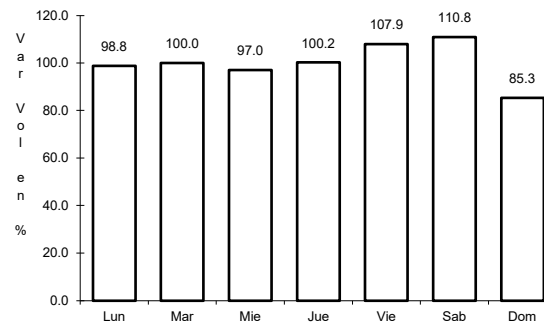
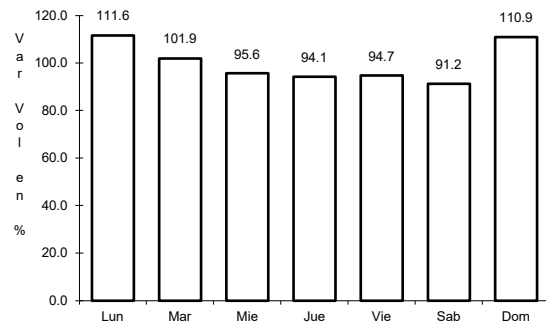
Tipo: 3

Sent: 1

35 CARR: Toluca - Axixintla

CLAVE: 00122

ruta: EM-MEX-055



Km: 4.74

Tipo: 1

Sent: 1

Km: 4.74

Tipo: 1

Sent: 2

Km: 125.30

Tipo: 1

Sent: 0