

DURANGO

---RED FEDERAL LIBRE---

1 Bermejillo - El Palmito	MEX-030
2 Durango - Ent. La Zarca	MEX-045
3 Durango - Mezquital	MEX-023
4 Durango - Torreón	MEX-040
5 Durango - Villa Unión	MEX-040
6 Ent. La Chicharrona - Cuencamé	MEX-049
7 Ent. La Zarca - Hidalgo del Parral	MEX-045
8 Ent. Los Herrera - Topia	MEX-036
9 Gómez Palacio - Jiménez	MEX-049
10 Gómez Palacio - La Unión	MEX-040
11 Gómez Palacio - Tlahualillo	MEX-040
12 Gregorio García - Francisco I. Madero	MEX-040
13 Guadalupe Aguilera - Tepehuanes	MEX-023
14 Hidalgo del Parral - Guadalupe y Calvo	MEX-024
15 Libramiento Cuencamé	MEX
16 Libramiento Oriente de Durango	MEX-045
17 Libramiento Sur de Durango	MEX-045
18 Pedriceña - Ent. Rodeo	MEX-034
19 Ramal a Otinapa	MEX
20 Ramal a Santa Clara	MEX-049
21 Ramal a Villa Juárez	MEX-040
22 Ramal Distribuidor Presa Peña del Águila	MEX-045
23 Zacatecas - Durango	MEX-045

---RED FEDERAL DE CUOTA---

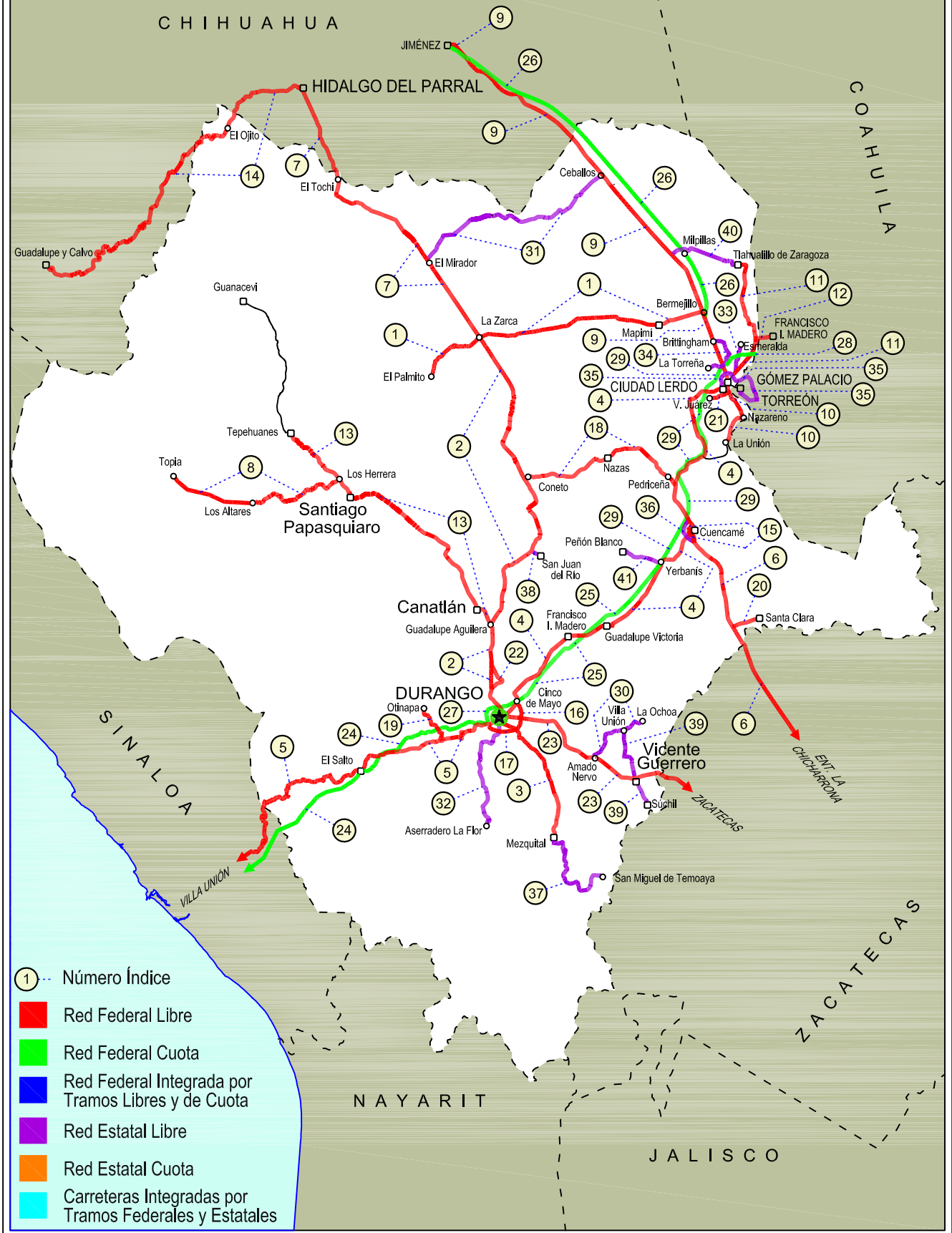
24 Durango - Mazatlán (Cuota)	MEX-040D
25 Durango - Yerbanís (Cuota)	MEX-040D
26 Gómez Palacio - Corralitos (Cuota)	MEX-049D
27 Libramiento de Durango (Cuota)	MEX-040D
28 Libramiento Norte de Torreón (Cuota)	MEX-040D
29 Yerbanís - Gómez Palicio (Cuota)	MEX-040D

---RED ESTATAL LIBRE---

30 Amado Nervo - La Ochoa	DGO-542
31 Ceballos - El Mirador	DGO-044
32 Durango - Aserradero La Flor	DGO-115
33 Jabonoso - Esmeralda	DGO-363
34 La Torreña - Brittingham	DGO-325
35 Libramiento de Torreón	COA
36 Libramiento Exterior Cuencamé	DGO
37 Mezquital - San Miguel de Temoaya	DGO
38 Ramal a San Juan del Río	DGO-290
39 Súchil - Villa Unión	DGO-241
40 Tlahualillo de Zaragoza - T.C. Gómez Palacio - Jiménez	DGO
41 Yerbanís - Peñón Blanco	DGO-316

10 DURANGO

SECRETARÍA DE COMUNICACIONES Y TRANSPORTES
DIRECCIÓN GENERAL DE SERVICIOS TÉCNICOS



DURANGO

1 CARR: Bermejillo - El Palmito

CLAVE: 10105

RUTA: MEX-030

AÑO: 2020

LUGAR	ESTACION				CLASIFICACION VEHICULAR EN PORCIENTO										COORDENADAS					
	KM	TE	SC	TDPA	M	A	B	C2	C3	T3S2	T3S3	T3S2R4	OTROS	A	B	C	K'	D	LATITUD	LONGITUD
Bermejillo	0.00	3	0	1980	1.8	71.0	1.7	15.1	3.3	4.9	1.9	0.2	0.1	72.8	1.7	25.5	0.115	0.510	25.892619	-103.628839
Santo Domingo	86.00	1	0	422	3.7	67.7	1.4	14.0	6.8	3.4	2.5	0.2	0.3	71.4	1.4	27.2	0.109	0.507	25.814611	-104.446528
Santo Domingo	86.00	3	0	291	2.0	88.4	1.5	2.5	2.3	1.8	1.2	0.3	0.0	90.4	1.5	8.1	0.144	0.509	25.814354	-104.447016
Ent. La Zarca	120.00	1	0	486	0.7	84.7	0.8	9.5	1.8	1.3	1.0	0.1	0.1	85.4	0.8	13.8	0.111	0.503	25.782946	-104.762463
Ent. La Zarca	120.00	3	0	167	1.0	87.5	0.5	9.3	1.1	0.3	0.2	0.1	0.0	88.5	0.5	11.0	0.138	0.507	25.782305	-104.763999
El Palmito	160.00	1	0	255	0.3	69.6	26.4	1.8	1.8	0.1	0.0	0.0	0.0	69.9	26.4	3.7	0.090	0.525	25.614992	-105.003996

2 CARR: Durango - Ent. La Zarca

CLAVE: 10016

RUTA: MEX-045

AÑO: 2020

LUGAR	ESTACION				CLASIFICACION VEHICULAR EN PORCIENTO										COORDENADAS					
	KM	TE	SC	TDPA	M	A	B	C2	C3	T3S2	T3S3	T3S2R4	OTROS	A	B	C	K'	D	LATITUD	LONGITUD
Durango	0.00	3	1	15198	2.4	90.5	0.4	1.9	0.3	2.0	2.0	0.2	0.3	92.9	0.4	6.7	0.082	0.524	24.027216	-104.656037
Durango	0.00	3	2	13800	2.4	89.6	0.5	2.6	0.5	2.1	1.7	0.3	0.3	92.0	0.5	7.5	0.085	0.524	24.027196	-104.656088
Caseta Fiscal Zona Industrial	5.30	1	1	9229	2.5	84.8	1.1	8.3	1.7	0.9	0.6	0.1	0.0	87.3	1.1	11.6	0.098	0.519	24.057707	-104.656471
Caseta Fiscal Zona Industrial	5.30	1	2	8543	2.1	84.5	1.2	9.0	1.8	0.9	0.4	0.1	0.0	86.6	1.2	12.2	0.095	0.519	24.057699	-104.656606
Caseta Fiscal Zona Industrial	5.30	3	1	6756	1.6	84.7	1.4	9.1	1.5	1.1	0.5	0.1	0.0	86.3	1.4	12.3	0.097	0.503	24.057744	-104.656483
Caseta Fiscal Zona Industrial	5.30	3	2	6685	1.5	83.3	1.5	10.2	1.8	1.1	0.5	0.1	0.0	84.8	1.5	13.7	0.098	0.503	24.057723	-104.656607
X. Periférico de Durango	6.20	3	1	4853	1.7	79.4	1.6	13.5	1.5	1.4	0.7	0.1	0.1	81.1	1.6	17.3	0.081	0.599	24.069638	-104.654326
X. Periférico de Durango	6.20	3	2	5066	1.3	82.7	1.3	10.9	1.6	1.2	0.8	0.1	0.1	84.0	1.3	14.7	0.080	0.599	24.069618	-104.654588
T. Der. San José del Molino	28.00																			
T. Izq. Canatlán	55.25	1	0	4805	0.7	77.8	2.4	12.2	1.6	3.1	1.6	0.2	0.4	78.5	2.4	19.1	0.103	0.509	24.439789	-104.698952
T. Izq. Canatlán	55.25	3	0	2173	1.9	77.2	2.4	13.9	1.9	1.8	0.7	0.1	0.1	79.1	2.4	18.5	0.096	0.517	24.439702	-104.698986
T. Der. San Juan del Río	105.81	1	0	1799	1.9	74.7	3.0	15.1	2.1	2.1	0.9	0.1	0.1	76.6	3.0	20.4	0.095	0.508	24.797919	-104.499831
T. Der. San Juan del Río	105.81	3	0	1677	1.3	70.8	3.0	19.4	2.8	1.7	0.8	0.2	0.0	72.1	3.0	24.9	0.089	0.510	24.797888	-104.499792
T. Der. Nazas	155.50	3	0	2225	1.8	78.6	2.2	14.1	1.6	1.0	0.6	0.0	0.1	80.4	2.2	17.4	0.103	0.524	25.128705	-104.538271
T. Der. Rodeo	160.70	1	0	3123	1.4	78.6	2.6	13.9	1.4	1.2	0.7	0.1	0.1	80.0	2.6	17.4	0.078	0.503	25.181564	-104.561781
T. Izq. Abasolo	178.00	3	0	1323	1.9	75.8	3.7	14.1	1.2	2.1	1.1	0.1	0.0	77.7	3.7	18.6	0.080	0.525	25.308772	-104.640707
Ent. La Zarca	239.50	1	0	752	2.0	70.6	3.3	12.6	2.2	5.8	2.9	0.5	0.1	72.6	3.3	24.1	0.090	0.500	25.782059	-104.762971

3 CARR: Durango - Mezquital

CLAVE: 10423

RUTA: MEX-023

AÑO: 2020

LUGAR	ESTACION				CLASIFICACION VEHICULAR EN PORCIENTO										COORDENADAS					
	KM	TE	SC	TDPA	M	A	B	C2	C3	T3S2	T3S3	T3S2R4	OTROS	A	B	C	K'	D	LATITUD	LONGITUD
Durango	0.00	3	1	6698	3.7	84.4	0.8	9.2	0.9	0.4	0.4	0.1	0.1	88.1	0.8	11.1	0.082	0.511	24.008906	-104.662347
Durango	0.00	3	2	6988	3.8	84.3	0.8	9.1	1.0	0.3	0.5	0.1	0.1	88.1	0.8	11.1	0.076	0.511	24.009033	-104.662372

DURANGO

3 CARR: Durango - Mezquital

CLAVE: 10423

RUTA: MEX-023

AÑO: 2020

LUGAR	ESTACION				CLASIFICACION VEHICULAR EN PORCIENTO										COORDENADAS					
	KM	TE	SC	TDPA	M	A	B	C2	C3	T3S2	T3S3	T3S2R4	OTROS	A	B	C	K'	D	LATITUD	LONGITUD
Gabino Santillán	8.00	3	1	3311	5.3	80.0	0.7	10.0	2.2	0.8	0.7	0.2	0.1	85.3	0.7	14.0	0.108	0.505	23.981750	-104.594960
Gabino Santillán	8.00	3	2	3248	5.4	80.1	0.7	9.8	2.2	0.9	0.7	0.1	0.1	85.5	0.7	13.8	0.119	0.505	23.981751	-104.594960
T. Izq. Monte Morelos	13.00	3	0	4083	6.2	71.8	1.1	16.6	2.9	0.8	0.2	0.2	0.2	78.0	1.1	20.9	0.113	0.503	23.953850	-104.563696
Pino Suarez	24.20	3	0	2179	3.4	72.9	0.6	21.2	1.5	0.3	0.1	0.0	0.0	76.3	0.6	23.1	0.084	0.506	23.878431	-104.488655
Mezquital	82.00	1	1	1217	6.1	74.6	0.4	17.6	1.1	0.1	0.1	0.0	0.0	80.7	0.4	18.9	0.076	0.500	23.473292	-104.395875
Mezquital	82.00	1	2	1219	6.3	71.1	0.5	20.6	1.2	0.2	0.0	0.0	0.1	77.4	0.5	22.1	0.072	0.500	23.473311	-104.395897

4 CARR: Durango - Torreón

CLAVE: 10085

RUTA: MEX-040

AÑO: 2020

LUGAR	ESTACION				CLASIFICACION VEHICULAR EN PORCIENTO										COORDENADAS					
	KM	TE	SC	TDPA	M	A	B	C2	C3	T3S2	T3S3	T3S2R4	OTROS	A	B	C	K'	D	LATITUD	LONGITUD
Durango	0.00	3	1	10262	2.7	87.9	1.1	5.4	1.1	1.0	0.5	0.1	0.2	90.6	1.1	8.3	0.082	0.507	24.033172	-104.638893
Durango	0.00	3	2	9980	2.7	87.2	1.3	6.2	1.1	0.8	0.4	0.1	0.2	89.9	1.3	8.8	0.093	0.507	24.033203	-104.639072
T. Der. Cd. de Los Niños	7.70	3	1	7573	1.6	84.6	2.7	8.0	1.1	1.2	0.5	0.2	0.1	86.2	2.7	11.1	0.088	0.528	24.080810	-104.587417
T. Der. Cd. de Los Niños	7.70	3	2	8486	1.5	84.3	2.3	8.7	1.0	1.2	0.7	0.2	0.1	85.8	2.3	11.9	0.085	0.528	24.080926	-104.587568
X. Periférico de Durango	9.00	1	1	7312	1.9	84.6	1.6	8.2	1.2	1.4	0.7	0.3	0.1	86.5	1.6	11.9	0.090	0.504	24.090392	-104.579253
X. Periférico de Durango	9.00	1	2	7439	1.5	84.4	1.9	7.9	1.3	1.8	0.8	0.3	0.1	85.9	1.9	12.2	0.088	0.504	24.090467	-104.579371
T. Der. Aeropuerto	9.42	1	1	7153	3.6	83.5	3.6	4.5	0.9	2.7	0.6	0.5	0.1	87.1	3.6	9.3	0.090	0.518	24.094252	-104.575845
T. Der. Aeropuerto	9.42	1	2	7677	3.1	85.2	3.3	3.6	0.7	2.8	0.7	0.5	0.1	88.3	3.3	8.4	0.093	0.518	24.094361	-104.576058
T. Der. Aeropuerto	9.42	3	1	3162	9.7	79.9	2.0	2.4	1.9	1.6	1.1	0.9	0.5	89.6	2.0	8.4	0.103	0.510	24.095876	-104.575865
T. Der. Aeropuerto	9.42	3	2	3037	8.4	80.9	2.4	2.2	2.1	1.6	1.0	0.9	0.5	89.3	2.4	8.3	0.094	0.510	24.095506	-104.576138
La Calera	10.85	3	0	4362	76.9	14.3	1.4	1.5	1.5	1.5	1.3	0.9	0.7	91.2	1.4	7.4	0.092	0.509	24.104195	-104.573669
Abraham González	27.10	3	0	3257	2.1	80.6	3.2	4.1	1.7	4.5	2.8	0.6	0.4	82.7	3.2	14.1	0.090	0.505	24.199944	-104.526585
Francisco I. Madero	56.30	1	0	2955	2.4	79.3	3.3	4.2	1.9	4.6	2.8	0.8	0.7	81.7	3.3	15.0	0.092	0.507	24.400011	-104.318358
Francisco I. Madero	56.30	3	0	3263	2.1	80.5	3.2	4.0	1.9	4.2	2.7	1.0	0.4	82.6	3.2	14.2	0.096	0.516	24.400011	-104.318362
Guadalupe Victoria	77.50	1	0	4233	5.3	72.0	3.4	9.1	2.5	4.2	2.4	0.6	0.5	77.3	3.4	19.3	0.096	0.516	24.446695	-104.123073
Guadalupe Victoria	77.50	3	0	4627	3.0	72.6	3.1	11.4	2.9	3.5	2.6	0.6	0.3	75.6	3.1	21.3	0.096	0.528	24.446713	-104.123063
T. Der. Ignacio Allende	90.13	1	0	4561	1.7	66.7	2.7	12.4	4.8	5.6	5.2	0.6	0.3	68.4	2.7	28.9	0.066	0.505	24.498387	-104.022037
T. Der. Ignacio Allende	90.13	3	0	2409	2.1	62.9	3.6	15.8	5.3	6.2	2.4	1.1	0.6	65.0	3.6	31.4	0.093	0.530	24.498376	-104.022004
T. Izq. Peñón Blanco	120.90	1	0	2489	2.7	55.5	5.4	8.6	8.6	8.6	8.7	1.3	0.6	58.2	5.4	36.4	0.061	0.516	24.736179	-103.841519
T. Izq. Peñón Blanco	120.90	3	0	1713	2.4	55.2	4.0	8.7	8.3	12.1	7.7	1.4	0.2	57.6	4.0	38.4	0.095	0.514	24.736230	-103.841485
Cuencamé	144.30	1	0	1972	1.9	54.4	5.4	11.4	6.5	11.9	5.9	2.1	0.5	56.3	5.4	38.3	0.072	0.508	24.870493	-103.698685
Cuencamé	144.30	3	1	4114	2.5	50.3	4.5	11.5	4.7	15.7	4.6	5.1	1.1	52.8	4.5	42.7	0.080	0.501	24.870500	-103.698685
Cuencamé	144.30	3	2	4102	3.0	49.2	5.8	11.0	4.6	15.6	4.7	5.0	1.1	52.2	5.8	42.0	0.077	0.501	24.870500	-103.698685
T. C. Libramiento Exterior Cuencamé	148.70	1	0	1929	3.7	66.4	4.6	13.5	4.4	3.3	2.9	0.7	0.5	70.1	4.6	25.3	0.091	0.524	24.902871	-103.703458

DURANGO

4 CARR: Durango - Torreón

CLAVE: 10085

RUTA: MEX-040

AÑO: 2020

LUGAR	ESTACION				CLASIFICACION VEHICULAR EN PORCIENTO										COORDENADAS					
	KM	TE	SC	TDPA	M	A	B	C2	C3	T3S2	T3S3	T3S2R4	OTROS	A	B	C	K'	D	LATITUD	LONGITUD
X. C. Yerbanís - Gómez Palicio (Cuota)	155.80																			
T. Izq. Nazas	171.61	1	0	3584	1.6	61.8	2.8	9.5	4.0	12.5	4.7	2.0	1.1	63.4	2.8	33.8	0.086	0.513	25.089340	-103.770385
T. Izq. Nazas	171.61	3	0	5107	3.7	56.9	3.9	6.1	6.8	12.8	4.4	4.2	1.2	60.6	3.9	35.5	0.079	0.504	25.089353	-103.770383
T. Der. Villa Juárez	194.40	3	0	4498	2.7	60.4	3.0	6.0	6.8	12.9	4.1	3.2	0.9	63.1	3.0	33.9	0.099	0.507	25.225105	-103.630138
León Guzmán	229.58	3	0	8404	2.6	67.7	2.1	11.9	3.9	7.1	2.7	1.3	0.7	70.3	2.1	27.6	0.079	0.530	25.501323	-103.657542
Cd. Lerdo	244.80	1	1	4976	2.6	72.7	1.5	10.1	2.5	5.4	2.4	2.3	0.5	75.3	1.5	23.2	0.087	0.513	25.523493	-103.529588
Cd. Lerdo	244.80	1	2	5246	2.7	69.8	1.6	11.5	2.7	6.1	2.8	2.4	0.4	72.5	1.6	25.9	0.080	0.513	25.523544	-103.531013
T. Izq. Gómez Palacio	248.90	3	1	15623	8.3	84.6	0.4	4.7	0.7	0.5	0.4	0.3	0.1	92.9	0.4	6.7	0.104	0.511	25.550972	-103.482238
T. Izq. Gómez Palacio	248.90	3	2	14923	8.3	84.6	0.4	4.7	0.7	0.5	0.4	0.2	0.2	92.9	0.4	6.7	0.116	0.511	25.551088	-103.482234
Lim. Edos. Term. Dgo. Ppia. Coah.	251.00																			
Torreón	255.80	1	1	18715	10.5	82.4	0.5	4.7	0.6	0.5	0.4	0.2	0.2	92.9	0.5	6.6	0.074	0.512	25.544117	-103.468718
Torreón	255.80	1	2	17864	10.5	82.2	0.5	4.7	0.7	0.5	0.4	0.3	0.2	92.7	0.5	6.8	0.089	0.512	25.544342	-103.467612

5 CARR: Durango - Villa Unión

CLAVE: 0083

RUTA: MEX-040

AÑO: 2020

LUGAR	ESTACION				CLASIFICACION VEHICULAR EN PORCIENTO										COORDENADAS					
	KM	TE	SC	TDPA	M	A	B	C2	C3	T3S2	T3S3	T3S2R4	OTROS	A	B	C	K'	D	LATITUD	LONGITUD
Durango	0.00	3	0	2880	1.2	75.5	2.0	14.1	3.7	2.1	1.2	0.1	0.1	76.7	2.0	21.3	0.079	0.500	24.010104	-104.692304
T. Der. Pino	22.86	3	0	2043	2.0	66.9	3.5	15.0	4.5	5.5	2.4	0.1	0.1	68.9	3.5	27.6	0.094	0.505	23.968012	-104.816652
T. Izq. Estación Navíos	58.42	3	0	1638	2.1	66.2	3.7	18.0	4.8	3.3	1.7	0.2	0.0	68.3	3.7	28.0	0.098	0.505	23.898120	-105.048670
Llano Grande	77.23	1	0	1759	3.6	66.8	2.8	12.4	6.4	4.5	3.0	0.4	0.1	70.4	2.8	26.8	0.085	0.509	23.866065	-105.206115
El Salto	99.76	1	0	1919	3.7	69.4	2.2	13.9	4.5	3.6	2.4	0.0	0.3	73.1	2.2	24.7	0.110	0.508	23.782016	-105.361043
El Salto	99.76	3	0	1646	3.8	73.5	1.4	16.5	2.0	1.6	1.0	0.1	0.1	77.3	1.4	21.3	0.113	0.507	23.781985	-105.361011
Las Adjuntas	119.00	1	0	1082	4.8	72.2	2.6	14.2	3.0	2.0	1.2	0.0	0.0	77.0	2.6	20.4	0.113	0.511	23.725423	-105.476899
La Ciudad	145.50	1	0	986	5.0	86.2	1.9	2.6	2.0	1.4	0.7	0.2	0.0	91.2	1.9	6.9	0.135	0.517	23.730236	-105.685011
La Ciudad	145.50	3	0	461	20.0	67.5	2.3	4.5	2.6	1.4	1.5	0.2	0.0	87.5	2.3	10.2	0.141	0.505	23.730199	-105.685026
Lim. Edos. Term. Dgo. Ppia. Sin.	198.50																			
Concordia	273.50	1	0	1526	4.1	77.6	2.8	9.6	1.1	2.8	1.1	0.9	0.0	81.7	2.8	15.5	0.113	0.502	23.286450	-106.064465
T. C. Tepic - Mazatlán	294.40	1	0	3162	4.5	70.6	5.9	10.9	3.0	3.6	1.4	0.0	0.1	75.1	5.9	19.0	0.084	0.504	23.189397	-106.209024

6 CARR: Ent. La Chicharrona - Cuencamé

CLAVE: 00152

RUTA: MEX-049

AÑO: 2020

LUGAR	ESTACION				CLASIFICACION VEHICULAR EN PORCIENTO										COORDENADAS					
	KM	TE	SC	TDPA	M	A	B	C2	C3	T3S2	T3S3	T3S2R4	OTROS	A	B	C	K'	D	LATITUD	LONGITUD
Ent. La Chicharrona	0.00	3	1	4466	0.5	58.0	4.2	10.0	2.8	15.3	3.8	4.7	0.7	58.5	4.2	37.3	0.082	0.525	23.300373	-102.959613

DURANGO

6 CARR: Ent. La Chicharrona - Cuencamé

CLAVE: 00152

RUTA: MEX-049

AÑO: 2020

LUGAR	ESTACION				CLASIFICACION VEHICULAR EN PORCIENTO														COORDENADAS	
	KM	TE	SC	TDPA	M	A	B	C2	C3	T3S2	T3S3	T3S2R4	OTROS	A	B	C	K'	D	LATITUD	LONGITUD
Ent. La Chicharrona	0.00	3	2	4935	0.6	55.2	4.6	11.1	3.1	15.2	4.2	5.2	0.8	55.8	4.6	39.6	0.091	0.525	23.300373	-102.959596
T. Der. Cañitas de Felipe Pescador	25.86	1	1	3919	0.5	56.3	4.7	10.0	2.9	15.0	4.8	5.0	0.8	56.8	4.7	38.5	0.085	0.518	23.532357	-102.959584
T. Der. Cañitas de Felipe Pescador	25.86	1	2	4210	0.5	56.2	4.8	10.0	3.0	15.0	4.6	5.1	0.8	56.7	4.8	38.5	0.083	0.518	23.532171	-102.959774
T. Libramiento de Río Grande Sur	57.00																			
Río Grande	60.00	1	0	7297	0.8	54.4	5.0	9.5	2.9	16.7	4.3	5.8	0.6	55.2	5.0	39.8	0.078	0.518	23.819343	-103.030502
Río Grande	60.00	3	0	6609	2.1	51.5	5.1	12.6	2.4	15.6	4.9	5.2	0.6	53.6	5.1	41.3	0.082	0.506	23.821339	-103.041282
T. Libramiento de Río Grande Norte	67.40																			
T. Der. Nieves	78.00	3	0	7533	0.7	51.1	6.0	10.4	2.7	17.3	5.6	5.6	0.6	51.8	6.0	42.2	0.078	0.507	23.920930	-103.157910
X. C. Juan Aldama - Miguel Auza	124.50	1	0	7008	1.0	53.5	5.4	10.5	3.0	16.7	3.9	5.3	0.7	54.5	5.4	40.1	0.083	0.516	24.281917	-103.404120
X. C. Juan Aldama - Miguel Auza	124.50	3	0	5422	1.2	52.3	5.9	10.3	2.9	16.0	4.9	5.8	0.7	53.5	5.9	40.6	0.080	0.516	24.281906	-103.404117
Lim. Edos. Term. Zac. Ppia. Dgo.	134.30																			
T. Der. Santa Clara	144.00	1	0	4761	2.8	39.9	6.6	9.0	3.5	22.8	5.4	8.7	1.3	42.7	6.6	50.7	0.075	0.505	24.439219	-103.488374
T. Der. Santa Clara	144.00	3	0	4350	3.1	39.6	6.8	8.9	4.0	21.6	5.6	8.8	1.6	42.7	6.8	50.5	0.069	0.502	24.439226	-103.488376
T. C. Libramiento Exterior Cuencamé	196.10	1	0	4626	2.7	42.1	7.0	7.7	3.7	21.2	5.8	9.4	0.4	44.8	7.0	48.2	0.067	0.500	24.836117	-103.689068
Cuencamé	199.10	1	0	1289	5.8	65.4	7.0	9.2	4.3	2.8	2.7	2.3	0.5	71.2	7.0	21.8	0.078	0.500	24.870498	-103.698672

7 CARR: Ent. La Zarca - Hidalgo del Parral

CLAVE: 00488

RUTA: MEX-045

AÑO: 2020

LUGAR	ESTACION				CLASIFICACION VEHICULAR EN PORCIENTO														COORDENADAS	
	KM	TE	SC	TDPA	M	A	B	C2	C3	T3S2	T3S3	T3S2R4	OTROS	A	B	C	K'	D	LATITUD	LONGITUD
Ent. La Zarca	0.00	3	0	1038	5.7	65.1	6.3	11.5	2.6	4.3	2.6	1.0	0.9	70.8	6.3	22.9	0.085	0.506	25.783405	-104.763877
T. Der. Ceballos	47.85	1	0	736	3.1	68.2	6.0	11.5	3.7	3.0	2.5	1.1	0.9	71.3	6.0	22.7	0.114	0.506	26.140694	-105.029378
T. Der. Ceballos	47.85	3	0	1293	6.6	59.7	6.0	19.6	1.9	2.7	1.6	1.2	0.7	66.3	6.0	27.7	0.084	0.503	26.141352	-105.029861
T. Izq. Canutillo	92.35	3	0	1167	2.4	79.6	4.0	4.1	2.3	2.9	3.0	0.8	0.9	82.0	4.0	14.0	0.091	0.508	26.389185	-105.352091
Las Nieves	97.60	3	0	1591	5.1	71.3	5.4	9.3	2.1	2.8	2.1	1.2	0.7	76.4	5.4	18.2	0.097	0.518	26.401055	-105.396919
T. Izq. Ocampo	109.22	3	0	1239	7.0	77.6	2.9	5.8	1.7	2.1	1.5	0.7	0.7	84.6	2.9	12.5	0.090	0.508	26.441565	-105.493956
Lim. Edos. Term. Dgo. Ppia. Chih.	122.89																			
Matamoros	148.00	1	0	1236	2.6	71.6	3.7	12.7	2.4	2.6	2.9	0.7	0.8	74.2	3.7	22.1	0.090	0.523	26.759591	-105.584811
Hidalgo del Parral	171.00	1	0	3184	0.9	87.7	1.7	3.8	1.3	1.4	1.4	0.9	0.9	88.6	1.7	9.7	0.095	0.506	26.922264	-105.644137

8 CARR: Ent. Los Herrera - Topia

CLAVE: 10090

RUTA: MEX-036

AÑO: 2020

LUGAR	ESTACION				CLASIFICACION VEHICULAR EN PORCIENTO														COORDENADAS	
	KM	TE	SC	TDPA	M	A	B	C2	C3	T3S2	T3S3	T3S2R4	OTROS	A	B	C	K'	D	LATITUD	LONGITUD
T. C. Guadalupe Aguilera - Tepehuanes	0.00	3	0	509	1.1	51.6	2.0	26.1	7.4	7.0	4.7	0.0	0.1	52.7	2.0	45.3	0.128	0.501	25.123141	-105.472365

DURANGO

8 CARR: Ent. Los Herrera - Topia

CLAVE: 10090

RUTA: MEX-036

AÑO: 2020

LUGAR	ESTACION				CLASIFICACION VEHICULAR EN PORCIENTO														COORDENADAS	
	KM	TE	SC	TDPA	M	A	B	C2	C3	T3S2	T3S3	T3S2R4	OTROS	A	B	C	K'	D	LATITUD	LONGITUD
Los Altares	80.00	1	0	398	1.3	57.8	2.1	26.8	5.4	3.7	2.9	0.0	0.0	59.1	2.1	38.8	0.121	0.501	25.016793	-105.905105
Topia	229.00																			

9 CARR: Gómez Palacio - Jiménez

CLAVE: 00006

RUTA: MEX-049

AÑO: 2020

LUGAR	ESTACION				CLASIFICACION VEHICULAR EN PORCIENTO														COORDENADAS	
	KM	TE	SC	TDPA	M	A	B	C2	C3	T3S2	T3S3	T3S2R4	OTROS	A	B	C	K'	D	LATITUD	LONGITUD
Gómez Palacio	0.00	3	1	10585	4.1	68.7	3.3	8.8	2.7	7.4	2.3	2.2	0.5	72.8	3.3	23.9	0.075	0.513	25.568305	-103.499377
Gómez Palacio	0.00	3	2	11137	4.1	68.7	3.3	8.9	2.8	7.2	2.2	2.2	0.6	72.8	3.3	23.9	0.078	0.513	25.568312	-103.499365
X. C. La Torreña - Brittingham	10.96	1	1	9061	4.3	66.3	2.3	9.0	2.6	10.1	2.4	2.5	0.5	70.6	2.3	27.1	0.088	0.512	25.642499	-103.524655
X. C. La Torreña - Brittingham	10.96	1	2	9506	4.4	66.3	2.3	9.0	2.6	10.1	2.4	2.4	0.5	70.7	2.3	27.0	0.101	0.512	25.642454	-103.524800
T. Izq. Dinamita	26.27	1	1	5346	3.4	65.7	3.3	9.2	2.2	10.7	2.6	2.4	0.5	69.1	3.3	27.6	0.089	0.511	25.757423	-103.570446
T. Izq. Dinamita	26.27	1	2	5589	3.4	65.0	3.4	9.4	2.3	11.0	2.7	2.3	0.5	68.4	3.4	28.2	0.098	0.511	25.757400	-103.570655
T. C. Gómez Palacio - Corralitos (Cuota)	37.92	1	1	4718	3.1	60.8	3.4	5.5	3.2	16.9	3.4	3.2	0.5	63.9	3.4	32.7	0.088	0.506	25.866224	-103.612488
T. C. Gómez Palacio - Corralitos (Cuota)	37.92	1	2	4841	3.0	60.9	3.4	5.4	3.3	16.8	3.3	3.3	0.6	63.9	3.4	32.7	0.088	0.506	25.866122	-103.612709
Bermejillo	39.30	1	1	3268	7.3	65.0	3.0	5.1	2.8	12.5	2.6	1.1	0.6	72.3	3.0	24.7	0.096	0.511	25.882194	-103.620021
Bermejillo	39.30	1	2	3412	7.4	65.1	3.0	5.1	2.4	12.7	2.6	1.1	0.6	72.5	3.0	24.5	0.099	0.511	25.882194	-103.620021
T. Izq. Ent. La Zarca	40.89	3	0	2644	5.5	45.2	3.2	12.4	5.4	21.6	4.6	1.6	0.5	50.7	3.2	46.1	0.084	0.513	25.895911	-103.625485
Yermo	107.95	1	0	2010	2.5	37.3	3.2	10.9	4.1	30.9	7.8	2.7	0.6	39.8	3.2	57.0	0.070	0.519	26.386522	-104.001633
Yermo	107.95	3	0	2070	2.5	36.8	3.9	10.9	5.2	31.6	6.3	2.4	0.4	39.3	3.9	56.8	0.077	0.510	26.386533	-104.001642
Ceballos	127.20	1	0	2046	2.4	34.7	4.9	9.8	5.2	32.1	7.7	2.5	0.7	37.1	4.9	58.0	0.070	0.504	26.525408	-104.128463
Ceballos	127.20	3	0	2104	2.4	36.3	2.6	12.5	5.5	31.5	6.0	2.6	0.6	38.7	2.6	58.7	0.083	0.505	26.525418	-104.128474
Lim. Edos. Term. Dgo. Ppia. Chih.	146.15																			
Estación Escalón	160.89	3	0	2174	9.4	44.3	3.6	8.6	3.5	20.6	7.4	2.1	0.5	53.7	3.6	42.7	0.073	0.507	26.753225	-104.338159
Jiménez	223.00	1	1	2263	2.4	50.2	6.0	9.5	2.2	19.5	4.8	4.6	0.8	52.6	6.0	41.4	0.097	0.568	27.132443	-104.908440
Jiménez	223.00	1	2	2978	2.3	50.6	6.0	9.8	1.9	19.7	4.6	4.3	0.8	52.9	6.0	41.1	0.071	0.568	27.132373	-104.908567

10 CARR: Gómez Palacio - La Unión

CLAVE: 10009

RUTA: MEX-040

AÑO: 2020

LUGAR	ESTACION				CLASIFICACION VEHICULAR EN PORCIENTO														COORDENADAS	
	KM	TE	SC	TDPA	M	A	B	C2	C3	T3S2	T3S3	T3S2R4	OTROS	A	B	C	K'	D	LATITUD	LONGITUD
Gómez Palacio	0.00	3	0	4909	7.8	81.7	1.1	3.4	0.8	1.3	1.3	0.8	1.8	89.5	1.1	9.4	0.094	0.523	25.546984	-103.501938
X. C. Torreón - Villa Juárez	4.30	3	0	5021	11.4	70.7	0.9	11.3	1.1	2.2	1.4	0.5	0.5	82.1	0.9	17.0	0.099	0.505	25.520766	-103.489197
Nazareno	20.90	1	0	2490	6.1	76.7	1.7	12.9	2.0	0.3	0.1	0.1	0.1	82.8	1.7	15.5	0.093	0.504	25.398332	-103.420438
Nazareno	20.90	3	0	1599	5.2	60.1	3.7	5.3	2.4	5.9	6.2	2.8	8.4	65.3	3.7	31.0	0.106	0.514	25.397209	-103.421037

DURANGO

10 CARR : Gómez Palacio - La Unión

CLAVE: 10009

RUTA: MEX-040

AÑO : 2020

LUGAR	ESTACION				CLASIFICACION VEHICULAR EN PORCIENTO														COORDENADAS	
	KM	TE	SC	TDPA	M	A	B	C2	C3	T3S2	T3S3	T3S2R4	OTROS	A	B	C	K'	D	LATITUD	LONGITUD
La Unión	42.20	1	0	475	6.0	62.0	6.5	9.9	4.0	7.8	2.2	0.6	1.0	68.0	6.5	25.5	0.139	0.531	25.291792	-103.512034

11 CARR : Gómez Palacio - Tlahualillo

CLAVE: 10005

RUTA: MEX-040

AÑO : 2020

LUGAR	ESTACION				CLASIFICACION VEHICULAR EN PORCIENTO														COORDENADAS	
	KM	TE	SC	TDPA	M	A	B	C2	C3	T3S2	T3S3	T3S2R4	OTROS	A	B	C	K'	D	LATITUD	LONGITUD
T. C. Gómez Palacio - Jiménez	0.00																			
T. Izq. Esmeralda	5.60	1	0	12569	6.7	79.8	0.7	7.2	2.4	1.7	0.6	0.7	0.2	86.5	0.7	12.8	0.093	0.515	25.611834	-103.460336
T. Izq. Esmeralda	5.60	3	1	4654	4.7	78.8	1.1	8.6	2.9	1.6	0.9	1.1	0.3	83.5	1.1	15.4	0.105	0.516	25.611840	-103.460339
T. Izq. Esmeralda	5.60	3	2	4971	4.7	78.9	1.1	8.6	2.9	1.5	0.9	1.1	0.3	83.6	1.1	15.3	0.095	0.516	25.611843	-103.460338
Gregorio García	26.00	3	0	5835	5.0	75.6	0.6	12.1	2.7	1.7	0.8	1.2	0.3	80.6	0.6	18.8	0.102	0.505	25.753620	-103.348471
T. Izq. Esmeralda	31.44	1	0	7090	8.7	72.9	0.4	10.7	3.5	1.5	0.5	1.5	0.3	81.6	0.4	18.0	0.106	0.507	25.758592	-103.353401
San Francisco	48.90	1	0	2567	7.7	77.1	0.4	10.1	3.0	0.9	0.4	0.4	0.0	84.8	0.4	14.8	0.104	0.508	25.935966	-103.418229
San Francisco	48.90	3	0	1657	7.0	76.4	1.8	5.9	4.8	1.9	1.4	0.8	0.0	83.4	1.8	14.8	0.085	0.511	25.935954	-103.418193
Tlahualillo	72.90	1	0	2307	6.7	77.0	0.6	13.2	1.1	0.8	0.2	0.3	0.1	83.7	0.6	15.7	0.085	0.500	26.111343	-103.436858

12 CARR : Gregorio García - Francisco I. Madero

CLAVE: 00110

RUTA: MEX-040

AÑO : 2020

LUGAR	ESTACION				CLASIFICACION VEHICULAR EN PORCIENTO														COORDENADAS	
	KM	TE	SC	TDPA	M	A	B	C2	C3	T3S2	T3S3	T3S2R4	OTROS	A	B	C	K'	D	LATITUD	LONGITUD
T. C. Gómez Palacio - Tlahualillo	0.00																			
Lim. Edos. Term. Dgo. Ppia. Coah.	3.60																			
Francisco I. Madero	9.60	1	0	5717	5.1	79.9	0.9	9.9	1.4	1.4	0.7	0.6	0.1	85.0	0.9	14.1	0.116	0.505	25.773635	-103.272918

13 CARR : Guadalupe Aguilera - Tepehuanes

CLAVE: 10220

RUTA: MEX-023

AÑO : 2020

LUGAR	ESTACION				CLASIFICACION VEHICULAR EN PORCIENTO														COORDENADAS	
	KM	TE	SC	TDPA	M	A	B	C2	C3	T3S2	T3S3	T3S2R4	OTROS	A	B	C	K'	D	LATITUD	LONGITUD
Guadalupe Aguilera	0.00	3	1	2483	4.1	87.4	1.6	2.8	1.1	1.5	1.1	0.3	0.1	91.5	1.6	6.9	0.101	0.501	24.454776	-104.709571
Guadalupe Aguilera	0.00	3	2	2494	3.9	87.3	1.5	2.9	1.0	1.4	1.6	0.3	0.1	91.2	1.5	7.3	0.112	0.501	24.454771	-104.709590
Canatlán	14.00	3	0	2437	1.0	74.2	3.0	13.5	1.7	3.3	2.8	0.4	0.1	75.2	3.0	21.8	0.101	0.502	24.526543	-104.773385
La Soledad	45.80	3	0	3156	1.6	92.8	1.5	2.5	0.5	0.5	0.3	0.2	0.1	94.4	1.5	4.1	0.105	0.506	24.762496	-104.925451
T. Der. Coneto de Comonfort	51.60	1	0	2729	2.5	70.7	3.3	17.8	2.2	1.8	1.3	0.2	0.2	73.2	3.3	23.5	0.073	0.505	24.804826	-104.923530
José María Morelos	90.20	1	0	2124	1.7	83.9	2.5	4.7	1.8	2.2	2.7	0.4	0.1	85.6	2.5	11.9	0.100	0.505	25.012528	-105.211132
Santiago Papasquiaro	117.00	3	0	3558	2.0	72.8	1.1	16.6	3.7	2.3	1.3	0.1	0.1	74.8	1.1	24.1	0.102	0.503	25.047397	-105.418925

DURANGO

13 CARR: Guadalupe Aguilera - Tepehuanes

CLAVE: 10220

RUTA: MEX-023

AÑO: 2020

LUGAR	ESTACION				CLASIFICACION VEHICULAR EN PORCIENTO										COORDENADAS					
	KM	TE	SC	TDPA	M	A	B	C2	C3	T3S2	T3S3	T3S2R4	OTROS	A	B	C	K'	D	LATITUD	LONGITUD
Las Herreras	133.00	3	0	1087	1.4	76.4	2.6	13.8	3.8	1.2	0.8	0.0	0.0	77.8	2.6	19.6	0.085	0.504	25.157769	-105.502451
Tepehuanes	169.00	1	0	1472	2.4	72.7	2.5	18.5	2.6	0.7	0.5	0.0	0.1	75.1	2.5	22.4	0.083	0.501	25.333535	-105.720672

14 CARR: Hidalgo del Parral - Guadalupe y Calvo

CLAVE: 00802

RUTA: MEX-024

AÑO: 2020

LUGAR	ESTACION				CLASIFICACION VEHICULAR EN PORCIENTO										COORDENADAS					
	KM	TE	SC	TDPA	M	A	B	C2	C3	T3S2	T3S3	T3S2R4	OTROS	A	B	C	K'	D	LATITUD	LONGITUD
T. C. Hidalgo del Parral - Santa Bárbara	0.00	3	0	2465	1.9	75.8	1.3	12.8	3.6	2.4	1.8	0.1	0.3	77.7	1.3	21.0	0.095	0.518	26.914926	-105.762511
T. Der. Guacho chic	35.00	1	0	841	1.6	62.7	1.9	16.4	8.2	5.1	2.3	0.0	1.8	64.3	1.9	33.8	0.073	0.511	26.813048	-106.014778
T. Der. Guacho chic	35.00	3	0	672	2.1	71.4	1.7	15.1	4.8	2.0	1.2	0.0	1.7	73.5	1.7	24.8	0.119	0.513	26.812498	-106.015153
Lim. Edos. Term. Chih. Ppia. Dgo	38.00																			
Lim. Edos. Term. Dgo. Ppia. Chih.	57.00																			
El Vergel	110.00	1	0	942	1.5	67.8	1.5	20.9	4.8	1.8	0.9	0.0	0.8	69.3	1.5	29.2	0.106	0.533	26.479983	-106.380150
Puerto Sabinal	212.00	1	0	665	1.9	67.7	1.3	20.4	4.9	2.1	1.0	0.0	0.7	69.6	1.3	29.1	0.107	0.514	26.067342	-106.787073
Guadalupe y Calvo	234.00																			

15 CARR: Libramiento Cuencamé

CLAVE: 10006

RUTA: MEX

AÑO: 2020

LUGAR	ESTACION				CLASIFICACION VEHICULAR EN PORCIENTO										COORDENADAS					
	KM	TE	SC	TDPA	M	A	B	C2	C3	T3S2	T3S3	T3S2R4	OTROS	A	B	C	K'	D	LATITUD	LONGITUD
T. C. La Chicharrona - Cuencamé	0.00	3	1	1052	3.3	75.7	2.3	11.5	2.2	2.0	1.5	0.9	0.6	79.0	2.3	18.7	0.086	0.503	24.862822	-103.699061
T. C. La Chicharrona - Cuencamé	0.00	3	2	1064	2.9	74.4	3.1	12.1	2.4	2.3	1.7	0.7	0.4	77.3	3.1	19.6	0.077	0.503	24.862771	-103.699105
T. C. Durango - Torreón	2.60	1	1	742	3.7	67.1	4.3	11.6	4.6	3.7	4.0	0.7	0.3	70.8	4.3	24.9	0.075	0.501	24.881979	-103.699616
T. C. Durango - Torreón	2.60	1	2	744	2.9	65.5	4.7	12.9	4.8	4.0	4.3	0.6	0.3	68.4	4.7	26.9	0.077	0.501	24.882059	-103.699641

16 CARR: Libramiento Oriente de Durango

CLAVE:

RUTA: MEX-045

AÑO: 2020

LUGAR	ESTACION				CLASIFICACION VEHICULAR EN PORCIENTO										COORDENADAS					
	KM	TE	SC	TDPA	M	A	B	C2	C3	T3S2	T3S3	T3S2R4	OTROS	A	B	C	K'	D	LATITUD	LONGITUD
T. C. Zacatecas - Durango	0.00	3	1	2020	2.6	73.6	1.8	10.8	2.5	3.7	2.8	1.3	0.9	76.2	1.8	22.0	0.094	0.504	24.020524	-104.519775
T. C. Zacatecas - Durango	0.00	3	2	2057	2.4	73.7	1.7	10.9	2.5	3.8	2.8	1.3	0.9	76.1	1.7	22.2	0.103	0.504	24.020537	-104.519878
T. C. Durango - Ent. La Zarca	10.50	1	1	2134	3.5	64.7	2.3	18.1	2.7	4.2	2.1	1.8	0.6	68.2	2.3	29.5	0.099	0.511	24.094440	-104.574779
T. C. Durango - Ent. La Zarca	10.50	1	2	2229	3.4	64.5	2.6	18.2	2.7	4.0	2.2	1.8	0.6	67.9	2.6	29.5	0.097	0.511	24.094413	-104.574814

DURANGO

17 CARR: Libramiento Sur de Durango

CLAVE:

RUTA: MEX-045

AÑO: 2020

LUGAR	ESTACION				CLASIFICACION VEHICULAR EN PORCIENTO													COORDENADAS		
	KM	TE	SC	TDPA	M	A	B	C2	C3	T3S2	T3S3	T3S2R4	OTROS	A	B	C	K'	D	LATITUD	LONGITUD
T. C. Zacatecas - Durango	0.00	3	0	2578	4.4	74.0	3.2	5.5	4.5	3.7	3.6	0.7	0.4	78.4	3.2	18.4	0.095	0.509	24.020529	-104.519835
T. C. Durango - Mezquital	8.45	1	0	2830	4.4	68.8	14.1	4.4	2.0	3.3	2.0	0.8	0.2	73.2	14.1	12.7	0.094	0.520	23.967878	-104.575665
T. C. Durango - Mezquital	8.45	3	0	1148	5.7	66.2	11.2	6.1	5.8	2.6	1.1	1.3	0.0	71.9	11.2	16.9	0.099	0.525	23.967892	-104.575676
T. C. Durango - Aserradero La Flor	19.50	1	0	873	6.5	67.3	12.5	5.9	3.4	2.1	1.2	1.0	0.1	73.8	12.5	13.7	0.090	0.508	23.952322	-104.668241
T. C. Durango - Aserradero La Flor	19.50	3	0	926	7.7	65.3	13.2	5.6	2.7	2.8	1.5	1.0	0.2	73.0	13.2	13.8	0.093	0.507	23.952325	-104.668260
T. C. Durango - Villa Unión	27.70	1	0	1490	2.1	76.0	8.3	6.6	2.9	2.5	1.2	0.1	0.3	78.1	8.3	13.6	0.112	0.505	23.996861	-104.724776

18 CARR: Pedriceña - Ent. Rodeo

CLAVE: 10002

RUTA: MEX-034

AÑO: 2020

LUGAR	ESTACION				CLASIFICACION VEHICULAR EN PORCIENTO													COORDENADAS		
	KM	TE	SC	TDPA	M	A	B	C2	C3	T3S2	T3S3	T3S2R4	OTROS	A	B	C	K'	D	LATITUD	LONGITUD
T. C. Cuencamé - Torreón	0.00	3	0	2076	2.3	76.8	1.1	14.8	2.2	1.3	0.9	0.3	0.3	79.1	1.1	19.8	0.095	0.501	25.089627	-103.770340
Nazas	45.00	1	0	2209	5.5	72.8	0.8	17.0	2.1	1.0	0.6	0.1	0.1	78.3	0.8	20.9	0.093	0.503	25.227193	-104.113797
Nazas	45.00	3	0	906	6.7	70.7	0.8	16.8	2.6	1.3	1.1	0.0	0.0	77.4	0.8	21.8	0.110	0.516	25.227206	-104.113736
T. C. (Durango - Ent. La Zarca)-Ent. Rodeo	98.00	1	0	606	4.5	70.8	0.8	19.8	2.1	1.1	0.7	0.1	0.1	75.3	0.8	23.9	0.119	0.501	25.128796	-104.538206

19 CARR: Ramal a Otinapa

CLAVE: 10002

RUTA: MEX

AÑO: 2020

LUGAR	ESTACION				CLASIFICACION VEHICULAR EN PORCIENTO													COORDENADAS		
	KM	TE	SC	TDPA	M	A	B	C2	C3	T3S2	T3S3	T3S2R4	OTROS	A	B	C	K'	D	LATITUD	LONGITUD
T. C. Durango - Villa Unión	0.00	3	0	231	3.0	83.2	0.7	9.5	1.3	0.9	0.2	0.7	0.5	86.2	0.7	13.1	0.229	0.524	23.925172	-104.940008
Otinapa	19.65																			

20 CARR: Ramal a Santa Clara

CLAVE: 10287

RUTA: MEX-049

AÑO: 2020

LUGAR	ESTACION				CLASIFICACION VEHICULAR EN PORCIENTO													COORDENADAS		
	KM	TE	SC	TDPA	M	A	B	C2	C3	T3S2	T3S3	T3S2R4	OTROS	A	B	C	K'	D	LATITUD	LONGITUD
T. C. Ent. La Chicharrona - Cuencamé	0.00	3	0	797	1.8	76.3	2.3	16.4	1.5	0.5	0.6	0.4	0.2	78.1	2.3	19.6	0.113	0.528	24.439231	-103.488221
Santa Clara	14.00																			

21 CARR: Ramal a Villa Juárez

CLAVE: 10287

RUTA: MEX-040

AÑO: 2020

LUGAR	ESTACION				CLASIFICACION VEHICULAR EN PORCIENTO													COORDENADAS		
	KM	TE	SC	TDPA	M	A	B	C2	C3	T3S2	T3S3	T3S2R4	OTROS	A	B	C	K'	D	LATITUD	LONGITUD
T. C. Gómez Palacio - La Unión	0.00	3	1	2240	11.3	81.9	0.1	5.5	0.7	0.3	0.1	0.1	0.0	93.2	0.1	6.7	0.104	0.508	25.520555	-103.489214

DURANGO

21 CARR: Ramal a Villa Juárez

CLAVE: 10287

RUTA: MEX-040

AÑO: 2020

LUGAR	ESTACION				CLASIFICACION VEHICULAR EN PORCIENTO														COORDENADAS	
	KM	TE	SC	TDPA	M	A	B	C2	C3	T3S2	T3S3	T3S2R4	OTROS	A	B	C	K'	D	LATITUD	LONGITUD
T. C. Gómez Palacio - La Unión	0.00	3	2	2169	9.4	84.6	0.1	5.1	0.6	0.1	0.1	0.0	0.0	94.0	0.1	5.9	0.095	0.508	25.520539	-103.489202
Villa Juárez	13.00																			

22 CARR: Ramal Distribuidor Presa Peña del Águila

CLAVE: 10016

RUTA: MEX-045

AÑO: 2020

LUGAR	ESTACION				CLASIFICACION VEHICULAR EN PORCIENTO														COORDENADAS	
	KM	TE	SC	TDPA	M	A	B	C2	C3	T3S2	T3S3	T3S2R4	OTROS	A	B	C	K'	D	LATITUD	LONGITUD
T. C. Durango - Ent. La Zarca Sur	0.00																			
T. Der. San José del Molino	10.50	1	0	476	7.0	67.2	6.9	16.0	1.0	1.0	0.9	0.0	0.0	74.2	6.9	18.9	0.166	0.566	24.208858	-104.666806
T. C. Durango - Ent. La Zarca Norte	19.00																			

23 CARR: Zacatecas - Durango

CLAVE: 00544

RUTA: MEX-045

AÑO: 2020

LUGAR	ESTACION				CLASIFICACION VEHICULAR EN PORCIENTO														COORDENADAS	
	KM	TE	SC	TDPA	M	A	B	C2	C3	T3S2	T3S3	T3S2R4	OTROS	A	B	C	K'	D	LATITUD	LONGITUD
Zacatecas	0.00																			
T. Izq. Guadalajara	6.40	3	1	13903	2.8	81.4	2.6	2.5	8.3	1.9	0.4	0.1	0.0	84.2	2.6	13.2	0.089	0.526	22.774985	-102.623434
T. Izq. Guadalajara	6.40	3	2	12538	3.9	78.2	3.1	2.7	8.8	2.9	0.3	0.1	0.0	82.1	3.1	14.8	0.094	0.526	22.774590	-102.623564
T. Der. Saltillo (T. Morelos)	15.00	3	1	11595	1.1	78.8	2.9	6.7	0.9	4.7	2.0	2.1	0.8	79.9	2.9	17.2	0.082	0.505	22.865353	-102.628087
T. Der. Saltillo (T. Morelos)	15.00	3	2	11344	1.2	75.7	3.2	8.0	1.0	5.4	2.2	2.3	1.0	76.9	3.2	19.9	0.091	0.505	22.855751	-102.645824
T. Libramiento de Víctor Rosales	26.20																			
Víctor Rosales	28.00	1	1	11349	0.7	75.4	2.2	6.4	1.5	7.0	2.8	3.3	0.7	76.1	2.2	21.7	0.093	0.511	22.946003	-102.699768
Víctor Rosales	28.00	1	2	10841	0.7	75.7	2.2	6.3	1.4	6.9	2.8	3.2	0.8	76.4	2.2	21.4	0.083	0.511	22.946006	-102.699752
T. Der. Facultad de Veterinaria	32.30	1	1	6563	1.4	70.8	4.1	6.7	1.8	9.2	2.4	2.7	0.9	72.2	4.1	23.7	0.081	0.507	22.975931	-102.723100
T. Der. Facultad de Veterinaria	32.30	1	2	6747	1.2	67.8	4.7	7.3	2.0	10.3	2.7	3.1	0.9	69.0	4.7	26.3	0.106	0.507	22.975936	-102.723098
Gral. Enrique Estrada	34.60	3	1	9008	0.7	74.3	3.1	7.7	2.0	7.2	2.1	2.3	0.6	75.0	3.1	21.9	0.085	0.501	22.997625	-102.741791
Gral. Enrique Estrada	34.60	3	2	9059	0.8	70.8	3.6	9.0	2.2	7.9	2.4	2.5	0.8	71.6	3.6	24.8	0.081	0.501	22.997660	-102.741750
T. Libramiento de Víctor Rosales	35.90																			
T. Libramiento de Fresnillo Sur	49.30																			
Fresnillo	58.50	1	1	8051	0.9	82.9	2.8	7.8	1.7	2.0	1.0	0.4	0.5	83.8	2.8	13.4	0.084	0.507	23.167237	-102.856186
Fresnillo	58.50	1	2	7839	1.0	81.1	3.1	8.7	1.9	2.3	1.1	0.3	0.5	82.1	3.1	14.8	0.090	0.507	23.167209	-102.856261
T. Libramiento de Fresnillo Norte	66.70																			
Ent. La Chicharrona	74.30	1	1	6251	0.8	62.1	5.1	11.9	2.5	10.4	2.7	3.8	0.7	62.9	5.1	32.0	0.080	0.513	23.298339	-102.958140
Ent. La Chicharrona	74.30	1	2	5931	0.8	60.4	5.6	13.2	2.3	10.7	2.8	3.6	0.6	61.2	5.6	33.2	0.068	0.513	23.296742	-102.958799
Ent. La Chicharrona	74.30	3	0	5853	1.7	65.0	3.7	21.2	2.1	3.3	1.8	1.0	0.2	66.7	3.7	29.6	0.085	0.502	23.300366	-102.959615

DURANGO

23 CARR: Zacatecas - Durango

CLAVE: 00544

RUTA: MEX-045

AÑO: 2020

LUGAR	ESTACION				CLASIFICACION VEHICULAR EN PORCIENTO													COORDENADAS		
	KM	TE	SC	TDPA	M	A	B	C2	C3	T3S2	T3S3	T3S2R4	OTROS	A	B	C	K'	D	LATITUD	LONGITUD
T. Der. Sain Alto	121.00	3	0	3860	1.7	68.3	5.0	14.1	2.5	4.5	2.1	1.2	0.6	70.0	5.0	25.0	0.083	0.505	23.578100	-103.272556
T. Izq. Sombrerete (2º Acceso)	161.50	3	0	6173	1.5	72.8	3.4	11.9	1.8	5.3	1.6	1.0	0.7	74.3	3.4	22.3	0.080	0.505	23.638445	-103.642515
T. C. Libramiento de Sombrerete	165.00	3	0	5020	2.6	72.7	3.6	14.1	1.8	2.5	1.3	0.9	0.5	75.3	3.6	21.1	0.082	0.501	23.655185	-103.653302
Lim. Edos. Term. Zac. Ppia. Dgo.	190.08																			
X. C. SÚchil - Villa Unión	206.98	1	0	2985	2.8	68.5	5.9	7.6	2.2	6.9	3.0	2.6	0.5	71.3	5.9	22.8	0.088	0.503	23.742899	-103.986842
X. C. SÚchil - Villa Unión	206.98	3	0	6564	5.6	74.3	3.3	9.1	1.4	3.2	1.5	1.4	0.2	79.9	3.3	16.8	0.089	0.511	23.742899	-103.986846
T. Izq. Graceros	210.00	1	0	5087	6.8	71.1	4.7	8.1	1.4	4.1	1.7	1.7	0.4	77.9	4.7	17.4	0.086	0.515	23.748187	-104.041378
Amado Nervo	231.51	1	0	4677	8.6	66.9	5.7	9.8	1.5	4.0	1.6	1.6	0.3	75.5	5.7	18.8	0.086	0.520	23.842907	-104.189009
Amado Nervo	231.51	3	0	5430	3.6	75.9	4.8	6.6	1.7	4.1	1.6	1.5	0.2	79.5	4.8	15.7	0.087	0.532	23.842908	-104.189002
Nombre de Dios	236.80	1	0	2463	8.6	78.6	4.6	6.8	0.7	0.4	0.1	0.1	0.1	87.2	4.6	8.2	0.098	0.506	23.847300	-104.244701
Nombre de Dios	236.80	3	0	3661	3.0	81.9	2.2	11.8	0.8	0.2	0.1	0.0	0.0	84.9	2.2	12.9	0.113	0.526	23.847306	-104.244705
T. Der. Constanacia	240.60	3	0	5718	2.4	75.5	3.7	12.7	1.8	2.1	1.0	0.5	0.3	77.9	3.7	18.4	0.103	0.501	23.870134	-104.264140
T. Der. Tuitán	250.80	3	0	4428	2.6	73.5	4.1	12.8	2.0	2.6	1.3	0.8	0.3	76.1	4.1	19.8	0.095	0.512	23.920865	-104.337305
T. Der. Independencia y Libertad	261.70	1	0	6118	2.4	74.6	3.4	12.0	2.0	2.9	1.4	1.0	0.3	77.0	3.4	19.6	0.092	0.509	23.999319	-104.378821
T. Der. Independencia y Libertad	261.70	3	1	2713	8.0	72.6	4.0	8.1	1.9	2.5	1.7	0.9	0.3	80.6	4.0	15.4	0.110	0.506	23.999334	-104.378793
T. Der. Independencia y Libertad	261.70	3	2	2783	8.1	72.2	4.0	8.0	2.0	2.8	1.8	0.8	0.3	80.3	4.0	15.7	0.103	0.506	23.999292	-104.378897
T. Izq. Parras de La Fuente	276.60	1	1	3141	6.6	75.4	2.8	7.9	1.9	2.7	1.5	1.0	0.2	82.0	2.8	15.2	0.108	0.501	24.020599	-104.519785
T. Izq. Parras de La Fuente	276.60	1	2	3133	6.7	75.2	3.0	7.8	1.8	2.6	1.5	1.2	0.2	81.9	3.0	15.1	0.117	0.501	24.020474	-104.519840
T. Izq. Parras de La Fuente	276.60	3	1	3107	8.7	71.9	2.5	11.5	1.5	2.1	0.8	0.8	0.2	80.6	2.5	16.9	0.097	0.511	24.020601	-104.519784
T. Izq. Parras de La Fuente	276.60	3	2	2977	8.8	71.9	2.5	11.4	1.4	2.1	1.0	0.7	0.2	80.7	2.5	16.8	0.120	0.511	24.020473	-104.519845
Durango	287.30	1	1	4492	3.0	79.0	1.7	12.6	1.3	1.2	0.5	0.5	0.2	82.0	1.7	16.3	0.100	0.506	24.031204	-104.619796
Durango	287.30	1	2	4392	3.1	79.0	1.7	12.5	1.3	1.2	0.5	0.5	0.2	82.1	1.7	16.2	0.105	0.506	24.031039	-104.620036

24 CARR: Durango - Mazatlán (Cuota)

CLAVE: 00084

RUTA: MEX-040D

AÑO: 2020

LUGAR	ESTACION				CLASIFICACION VEHICULAR EN PORCIENTO													COORDENADAS		
	KM	TE	SC	TDPA	M	A	B	C2	C3	T3S2	T3S3	T3S2R4	OTROS	A	B	C	K'	D	LATITUD	LONGITUD
Libramiento de Durango	20.50	3	0	2626	5.5	60.9	5.7	5.3	2.7	10.5	2.4	6.7	0.3	66.4	5.7	27.9	0.118	0.509	24.010010	-104.727533
Plaza de Cobro Durango	22.20	2	0	2965	0.8	67.9	2.6	2.9	3.1	11.9	1.9	7.8	1.1	68.7	2.6	28.7	0.108	0.500	24.005080	-104.734540
Ent. Otinapa	44.50	1	0	2315	2.5	63.8	5.7	5.3	2.2	10.2	2.0	7.0	1.3	66.3	5.7	28.0	0.114	0.511	23.980380	-104.954162
Plaza de Cobro Llano Grande	73.80	2	0	2588	0.8	63.9	2.7	3.3	3.4	13.7	2.0	9.1	1.1	64.7	2.7	32.6	0.108	0.500	23.864514	-105.233202
T. Der. El Salto	104.20	1	0	1683	3.9	54.6	6.1	6.7	2.7	13.6	3.3	8.8	0.3	58.5	6.1	35.4	0.095	0.506	23.759376	-105.428195
T. Der. El Salto	104.20	3	0	2649	3.8	53.3	6.3	6.7	2.8	14.5	3.5	8.8	0.3	57.1	6.3	36.6	0.090	0.507	23.759346	-105.428220
T. Der. La Campana	117.00	3	0	2159	4.0	58.3	5.9	6.3	2.7	10.2	3.3	9.1	0.2	62.3	5.9	31.8	0.102	0.501	23.725415	-105.476907
Lim. Edos. Term. Dgo. Ppia. Sin.	157.40																			

DURANGO

24 CARR: Durango - Mazatlán (Cuota)

CLAVE: 00084

RUTA: MEX-040D

AÑO: 2020

LUGAR	ESTACION				CLASIFICACION VEHICULAR EN PORCIENTO										COORDENADAS					
	KM	TE	SC	TDPA	M	A	B	C2	C3	T3S2	T3S3	T3S2R4	OTROS	A	B	C	K'	D	LATITUD	LONGITUD
Entronque Santa Lucia	172.20	3	0	2288	4.4	59.1	5.5	4.4	2.0	12.7	3.3	8.2	0.4	63.5	5.5	31.0	0.103	0.503	23.455472	-105.843495
Concordia	188.35	1	0	2324	4.7	60.5	5.7	4.6	2.2	11.4	2.9	7.0	1.0	65.2	5.7	29.1	0.102	0.505	23.257482	-106.051412
Concordia	188.35	3	0	1694	4.1	57.3	12.4	10.2	4.1	6.7	2.9	1.7	0.6	61.4	12.4	26.2	0.115	0.503	23.257479	-106.051418
Villa Unión	208.35	1	0	1705	4.4	54.9	13.7	10.6	4.1	6.9	3.0	2.0	0.4	59.3	13.7	27.0	0.120	0.505	23.190681	-106.183691

25 CARR: Durango - Yerbanís (Cuota)

CLAVE: 10003

RUTA: MEX-040D

AÑO: 2020

LUGAR	ESTACION				CLASIFICACION VEHICULAR EN PORCIENTO										COORDENADAS					
	KM	TE	SC	TDPA	M	A	B	C2	C3	T3S2	T3S3	T3S2R4	OTROS	A	B	C	K'	D	LATITUD	LONGITUD
T. C. Durango - Torreón	0.00																			
T. Der. Aeropuerto	5.30	1	1	3145	1.2	80.0	2.5	8.1	1.0	3.9	1.5	1.7	0.1	81.2	2.5	16.3	0.100	0.501	24.127986	-104.537046
T. Der. Aeropuerto	5.30	1	2	3153	1.3	78.6	2.7	8.9	1.1	4.0	1.5	1.8	0.1	79.9	2.7	17.4	0.094	0.501	24.128064	-104.537292
Plaza de Cobro Durango	5.50	2	1	1319	0.5	64.8	3.6	3.9	2.5	12.2	2.8	8.4	1.3	65.3	3.6	31.1	0.117	0.500	24.131646	-104.534037
Plaza de Cobro Durango	5.50	2	2	1319	0.5	64.8	3.6	3.9	2.5	12.2	2.8	8.4	1.3	65.3	3.6	31.1	0.117	0.500	24.131646	-104.534037
Plaza de Cobro Yerbanís	112.19	2	1	1071	0.5	60.1	4.1	4.2	2.9	14.0	2.9	9.7	1.6	60.6	4.1	35.3	0.117	0.500	24.730819	-103.861843
Plaza de Cobro Yerbanís	112.19	2	2	1071	0.5	60.1	4.1	4.2	2.9	14.0	2.9	9.7	1.6	60.6	4.1	35.3	0.117	0.500	24.730819	-103.861843
Ent. Yerbanís	118.00																			

26 CARR: Gómez Palacio - Corralitos (Cuota)

CLAVE: 00016

RUTA: MEX-049D

AÑO: 2020

LUGAR	ESTACION				CLASIFICACION VEHICULAR EN PORCIENTO										COORDENADAS					
	KM	TE	SC	TDPA	M	A	B	C2	C3	T3S2	T3S3	T3S2R4	OTROS	A	B	C	K'	D	LATITUD	LONGITUD
T. C. Gómez Palacio - Jiménez (Libre)	38.00																			
T. Izq. Bermejillo	40.10	1	1	2215	11.8	24.3	8.7	5.8	2.2	29.7	6.6	9.7	1.2	36.1	8.7	55.2	0.090	0.506	25.889055	-103.610140
T. Izq. Bermejillo	40.10	1	2	2161	2.0	35.6	8.5	5.6	2.2	28.9	6.4	9.6	1.2	37.6	8.5	53.9	0.078	0.506	25.889058	-103.610234
T. Izq. Bermejillo	40.10	3	1	1813	2.7	36.0	8.3	5.4	2.1	29.1	6.3	9.4	0.7	38.7	8.3	53.0	0.099	0.506	25.889060	-103.610137
T. Izq. Bermejillo	40.10	3	2	1770	2.9	33.0	8.5	5.6	2.3	29.9	6.8	10.2	0.8	35.9	8.5	55.6	0.092	0.506	25.889061	-103.610238
Plaza de Cobro Bermejillo	44.16	2	1	1840	0.2	33.1	9.5	2.4	1.7	32.5	6.2	11.2	3.2	33.3	9.5	57.2	0.079	0.500	25.923705	-103.622079
Plaza de Cobro Bermejillo	44.16	2	2	1840	0.2	33.1	9.5	2.4	1.7	32.5	6.2	11.2	3.2	33.3	9.5	57.2	0.079	0.500	25.923705	-103.622079
Plaza de Cobro Ceballos	128.80	2	1	1793	0.2	34.5	4.9	3.0	5.2	30.8	6.4	11.3	3.7	34.7	4.9	60.4	0.079	0.500	26.586801	-104.057535
Plaza de Cobro Ceballos	128.80	2	2	1793	0.2	34.5	4.9	3.0	5.2	30.8	6.4	11.3	3.7	34.7	4.9	60.4	0.079	0.500	26.586801	-104.057535
Lim. Edos. Term. Dgo. Ppia. Chih.	158.00																			
T. C. Gómez Palacio - Jiménez	188.46	3	1	1916	1.9	35.1	8.6	8.9	2.6	28.6	5.2	8.5	0.6	37.0	8.6	54.4	0.082	0.516	26.906276	-104.556674
T. C. Gómez Palacio - Jiménez	188.46	3	2	1794	1.7	35.8	8.7	8.6	2.7	27.6	5.2	8.8	0.9	37.5	8.7	53.8	0.076	0.516	26.904473	-104.555335
T. C. Gómez Palacio - Jiménez (Libre)	226.50	1	1	2088	1.9	34.6	8.6	8.6	2.4	29.2	5.6	8.4	0.7	36.5	8.6	54.9	0.110	0.522	27.104611	-104.872292

DURANGO

26 CARR: Gómez Palacio - Corralitos (Cuota)

CLAVE: 00016

RUTA: MEX-049D

AÑO: 2020

LUGAR	ESTACION				CLASIFICACION VEHICULAR EN PORCIENTO														COORDENADAS	
	KM	TE	SC	TDPA	M	A	B	C2	C3	T3S2	T3S3	T3S2R4	OTROS	A	B	C	K'	D	LATITUD	LONGITUD
T. C. Gómez Palacio - Jiménez (Libre)	226.50	1	2	2284	2.1	34.8	8.7	8.6	2.5	28.9	5.2	8.3	0.9	36.9	8.7	54.4	0.111	0.522	27.098515	-104.865087

27 CARR: Libramiento de Durango (Cuota)

CLAVE: 10006

RUTA: MEX-040D

AÑO: 2020

LUGAR	ESTACION				CLASIFICACION VEHICULAR EN PORCIENTO														COORDENADAS	
	KM	TE	SC	TDPA	M	A	B	C2	C3	T3S2	T3S3	T3S2R4	OTROS	A	B	C	K'	D	LATITUD	LONGITUD
T. C. Durango - Torreón	0.00	3	0	3866	2.7	69.0	3.1	4.6	3.6	8.8	3.6	4.3	0.3	71.7	3.1	25.2	0.087	0.512	24.094907	-104.576070
T. C. Durango - Villa Unión (Cuota)	21.60	1	0	3778	1.9	64.7	4.8	12.7	6.3	5.7	3.0	0.2	0.7	66.6	4.8	28.6	0.088	0.507	24.009979	-104.727534

28 CARR: Libramiento Norte de Torreón (Cuota)

CLAVE:

RUTA: MEX-040D

AÑO: 2020

LUGAR	ESTACION				CLASIFICACION VEHICULAR EN PORCIENTO														COORDENADAS	
	KM	TE	SC	TDPA	M	A	B	C2	C3	T3S2	T3S3	T3S2R4	OTROS	A	B	C	K'	D	LATITUD	LONGITUD
X. C. Gómez Palacio - Jiménez	0.00	3	0	2831	1.9	53.7	2.4	9.2	2.8	15.9	5.4	7.7	1.0	55.6	2.4	42.0	0.073	0.506	25.624794	-103.516204
Lim. Edos. Term. Dgo. Ppia. Coah.	15.60																			
X. C. La Cuchilla - Torreón	17.36	1	0	2829	1.5	51.8	2.9	10.7	2.5	15.3	5.3	9.0	1.0	53.3	2.9	43.8	0.070	0.508	25.649946	-103.365062
X. C. La Cuchilla - Torreón	17.36	3	0	2589	1.6	51.2	3.7	12.2	2.5	15.0	5.0	7.8	1.0	52.8	3.7	43.5	0.071	0.505	25.649922	-103.365092
X. C. Torreón - Saltillo	40.70	1	0	2974	1.4	51.3	2.6	9.4	3.0	16.4	5.5	9.6	0.8	52.7	2.6	44.7	0.074	0.508	25.538288	-103.215022

29 CARR: Yerbanis - Gómez Palicio (Cuota)

CLAVE: 10003

RUTA: MEX-040D

AÑO: 2020

LUGAR	ESTACION				CLASIFICACION VEHICULAR EN PORCIENTO														COORDENADAS	
	KM	TE	SC	TDPA	M	A	B	C2	C3	T3S2	T3S3	T3S2R4	OTROS	A	B	C	K'	D	LATITUD	LONGITUD
Ent. Yerbanis	118.00																			
Plaza de Cobro Cuencamé	143.22	2	1	1074	0.5	61.1	4.5	4.1	2.9	13.4	2.8	9.2	1.5	61.6	4.5	33.9	0.089	0.500	24.981714	-103.735206
Plaza de Cobro Cuencamé	143.22	2	2	1074	0.5	61.1	4.5	4.1	2.9	13.4	2.8	9.2	1.5	61.6	4.5	33.9	0.089	0.500	24.981714	-103.735206
X. C. Cuencamé - Torreón	180.00	1	1	2584	3.5	48.3	4.1	4.8	4.3	20.7	4.7	8.6	1.0	51.8	4.1	44.1	0.075	0.520	25.136400	-103.756281
X. C. Cuencamé - Torreón	180.00	1	2	2801	4.8	47.1	6.7	4.1	3.2	20.8	3.8	8.5	1.0	51.9	6.7	41.4	0.070	0.520	25.136361	-103.756399
X. C. Cuencamé - Torreón	180.00	3	1	2777	2.9	46.3	9.8	6.0	1.5	18.9	4.4	9.3	0.9	49.2	9.8	41.0	0.077	0.504	25.140614	-103.757880
X. C. Cuencamé - Torreón	180.00	3	2	2821	2.9	47.1	6.8	3.9	2.2	22.4	4.2	9.5	1.0	50.0	6.8	43.2	0.071	0.504	25.140606	-103.758051
Plaza de Cobro León Guzmán	212.71	1	1	3068	2.4	55.3	8.3	3.4	1.5	17.5	3.6	7.4	0.6	57.7	8.3	34.0	0.116	0.503	25.520576	-103.639325
Plaza de Cobro León Guzmán	212.71	1	2	3105	2.2	55.1	8.4	3.6	1.5	17.4	3.6	7.6	0.6	57.3	8.4	34.3	0.092	0.503	25.520601	-103.639606
Plaza de Cobro León Guzmán	212.71	2	1	1778	0.3	39.2	5.5	4.0	3.9	28.0	4.9	11.8	2.4	39.5	5.5	55.0	0.089	0.500	25.520645	-103.639471
Plaza de Cobro León Guzmán	212.71	2	2	1778	0.3	39.2	5.5	4.0	3.9	28.0	4.9	11.8	2.4	39.5	5.5	55.0	0.089	0.500	25.520645	-103.639471
Plaza de Cobro León Guzmán	212.71	3	1	1987	2.8	64.1	5.0	3.1	2.0	15.8	2.1	4.5	0.6	66.9	5.0	28.1	0.097	0.515	25.520580	-103.639313

DURANGO

29 CARR: Yerbanis - Gómez Palicio (Cuota)

CLAVE: 10003

RUTA: MEX-040D

AÑO: 2020

LUGAR	ESTACION				CLASIFICACION VEHICULAR EN PORCIENTO													COORDENADAS		
	KM	TE	SC	TDPA	M	A	B	C2	C3	T3S2	T3S3	T3S2R4	OTROS	A	B	C	K'	D	LATITUD	LONGITUD
Plaza de Cobro León Guzmán	212.71	3	2	1871	2.8	63.8	4.9	3.2	1.9	15.8	2.5	4.4	0.7	66.6	4.9	28.5	0.105	0.515	25.520601	-103.639606
T. C. Gómez Palacio - Jiménez	220.00																			

30 CARR: Amado Nervo - La Ochoa

CLAVE: 10012

RUTA: DGO-542

AÑO: 2020

LUGAR	ESTACION				CLASIFICACION VEHICULAR EN PORCIENTO													COORDENADAS		
	KM	TE	SC	TDPA	M	A	B	C2	C3	T3S2	T3S3	T3S2R4	OTROS	A	B	C	K'	D	LATITUD	LONGITUD
Amado Nervo	0.00	3	0	1807	7.1	75.1	1.6	14.5	1.1	0.3	0.3	0.0	0.0	82.2	1.6	16.2	0.074	0.502	23.842877	-104.189036
Villa Unión	25.00	1	0	3258	8.5	80.0	0.7	9.5	0.4	0.3	0.4	0.1	0.1	88.5	0.7	10.8	0.100	0.521	23.965537	-104.047748
La Ochoa	42.00	1	0	398	11.0	69.9	0.9	17.5	0.7	0.0	0.0	0.0	0.0	80.9	0.9	18.2	0.116	0.505	24.020271	-103.915926

31 CARR: Ceballos - El Mirador

CLAVE: 10417

RUTA: DGO-044

AÑO: 2020

LUGAR	ESTACION				CLASIFICACION VEHICULAR EN PORCIENTO													COORDENADAS		
	KM	TE	SC	TDPA	M	A	B	C2	C3	T3S2	T3S3	T3S2R4	OTROS	A	B	C	K'	D	LATITUD	LONGITUD
Ceballos	0.00	3	0	653	4.6	68.9	0.7	20.3	2.5	1.7	0.4	0.6	0.3	73.5	0.7	25.8	0.133	0.509	26.530529	-104.133529
T. C. Ent. La Zarca - Hidalgo del Parral	113.50	1	0	163	0.5	73.0	0.1	22.3	3.8	0.3	0.0	0.0	0.0	73.5	0.1	26.4	0.141	0.512	26.140923	-105.029550

32 CARR: Durango - Aserradero La Flor

CLAVE: 10422

RUTA: DGO-115

AÑO: 2020

LUGAR	ESTACION				CLASIFICACION VEHICULAR EN PORCIENTO													COORDENADAS		
	KM	TE	SC	TDPA	M	A	B	C2	C3	T3S2	T3S3	T3S2R4	OTROS	A	B	C	K'	D	LATITUD	LONGITUD
Durango	0.00	3	1	8297	5.7	82.8	0.4	9.0	0.6	0.8	0.5	0.0	0.2	88.5	0.4	11.1	0.116	0.521	24.019137	-104.664332
Durango	0.00	3	2	7619	5.7	82.7	0.5	9.0	0.6	0.8	0.5	0.0	0.2	88.4	0.5	11.1	0.114	0.521	24.019162	-104.664169
T. Der. Presa Guadalupe Victoria	4.00	3	1	4716	7.1	84.1	0.3	7.1	0.7	0.3	0.1	0.2	0.1	91.2	0.3	8.5	0.102	0.514	23.983298	-104.664438
T. Der. Presa Guadalupe Victoria	4.00	3	2	4985	7.0	84.3	0.3	7.1	0.7	0.3	0.1	0.1	0.1	91.3	0.3	8.4	0.118	0.514	23.983290	-104.664296
Periférico Sur de Durango	8.00	3	0	470	14.4	58.2	1.0	19.5	3.3	2.5	0.8	0.0	0.3	72.6	1.0	26.4	0.111	0.503	23.952497	-104.668154
La Casita	39.00	1	0	154	6.3	40.0	3.3	30.6	12.1	6.3	1.4	0.0	0.0	46.3	3.3	50.4	0.143	0.544	23.753105	-104.756450
Aserradero La Flor	72.00																			

33 CARR: Jabonoso - Esmeralda

CLAVE: 10004

RUTA: DGO-363

AÑO: 2020

LUGAR	ESTACION				CLASIFICACION VEHICULAR EN PORCIENTO													COORDENADAS		
	KM	TE	SC	TDPA	M	A	B	C2	C3	T3S2	T3S3	T3S2R4	OTROS	A	B	C	K'	D	LATITUD	LONGITUD
Jabonoso	0.00	3	0	3434	12.8	70.1	1.0	8.7	3.9	1.6	0.7	0.8	0.4	82.9	1.0	16.1	0.083	0.502	25.626246	-103.459094

DURANGO

33 CARR: Jabonoso - Esmeralda

CLAVE: 10004

RUTA: DGO-363

AÑO: 2020

LUGAR	ESTACION				CLASIFICACION VEHICULAR EN PORCIENTO													COORDENADAS		
	KM	TE	SC	TDPA	M	A	B	C2	C3	T3S2	T3S3	T3S2R4	OTROS	A	B	C	K'	D	LATITUD	LONGITUD
T. Izq. Chimal	10.00	3	0	3529	21.6	64.2	0.3	7.7	1.8	0.8	0.8	0.3	2.5	85.8	0.3	13.9	0.081	0.521	25.689097	-103.443503
Esmeralda	16.30	1	0	2723	23.2	67.2	0.7	2.2	1.5	1.2	0.9	0.4	2.7	90.4	0.7	8.9	0.086	0.528	25.748771	-103.429184

34 CARR: La Torreña - Brittingham

CLAVE: 10010

RUTA: DGO-325

AÑO: 2020

LUGAR	ESTACION				CLASIFICACION VEHICULAR EN PORCIENTO													COORDENADAS		
	KM	TE	SC	TDPA	M	A	B	C2	C3	T3S2	T3S3	T3S2R4	OTROS	A	B	C	K'	D	LATITUD	LONGITUD
La Torreña	0.00	3	0	1439	23.7	59.0	1.7	4.1	2.2	4.4	3.1	1.3	0.5	82.7	1.7	15.6	0.156	0.517	25.636937	-103.582923
X. C. Gómez Palacio - Jiménez	7.00	1	0	4012	10.8	76.9	1.2	3.1	1.3	3.0	2.1	1.3	0.3	87.7	1.2	11.1	0.084	0.503	25.642415	-103.525175
X. C. Gómez Palacio - Jiménez	7.00	3	0	2241	6.1	79.3	3.5	3.7	1.4	1.9	1.5	2.2	0.4	85.4	3.5	11.1	0.095	0.514	25.641654	-103.523958
Chimal	16.00	1	0	2581	12.8	75.4	1.0	3.5	2.1	2.1	1.2	1.1	0.8	88.2	1.0	10.8	0.093	0.523	25.692089	-103.488470
Chimal	16.00	3	0	1510	15.9	67.0	1.2	2.2	3.1	3.7	4.5	1.8	0.6	82.9	1.2	15.9	0.093	0.520	25.692642	-103.488063
Brittingham	33.00	1	0	838	9.2	76.2	1.2	3.8	4.0	3.2	0.7	1.2	0.5	85.4	1.2	13.4	0.128	0.502	25.772419	-103.576152

35 CARR: Libramiento de Torreón

CLAVE: 05516

RUTA: COA

AÑO: 2020

LUGAR	ESTACION				CLASIFICACION VEHICULAR EN PORCIENTO													COORDENADAS		
	KM	TE	SC	TDPA	M	A	B	C2	C3	T3S2	T3S3	T3S2R4	OTROS	A	B	C	K'	D	LATITUD	LONGITUD
X. C. Saltillo - Torreón	0.00	3	1	31894	1.6	83.6	1.6	5.7	2.1	2.1	2.2	0.7	0.4	85.2	1.6	13.2	0.087	0.535	25.535209	-103.370219
X. C. Saltillo - Torreón	0.00	3	2	37252	1.6	83.7	1.6	5.6	2.1	2.1	2.2	0.7	0.4	85.3	1.6	13.1	0.095	0.535	25.535163	-103.370573
T. C. La Cuchilla - Torreón (Baja)	7.30	1	1	30927	1.8	82.8	0.8	3.8	0.8	4.1	3.2	1.8	0.9	84.6	0.8	14.6	0.113	0.511	25.585632	-103.408797
T. C. La Cuchilla - Torreón (Alta)	7.30	1	1	14412	1.2	85.7	1.1	5.2	2.0	3.1	0.9	0.6	0.2	86.9	1.1	12.0	0.127	0.506	25.585595	-103.409664
T. C. La Cuchilla - Torreón (Baja)	7.30	1	2	32519	1.3	81.8	0.8	4.1	0.9	4.7	3.5	2.0	0.9	83.1	0.8	16.1	0.117	0.511	25.585632	-103.408797
T. C. La Cuchilla - Torreón (Alta)	7.30	1	2	14748	1.2	85.7	1.1	5.2	2.0	3.1	0.9	0.6	0.2	86.9	1.1	12.0	0.155	0.506	25.585483	-103.409722
Lim. Edos. Term. Coah. Ppia. Dgo.	11.80																			
T. C. Durango - Torreón	28.60																			

36 CARR: Libramiento Exterior Cuencamé

CLAVE: 10006

RUTA: DGO

AÑO: 2020

LUGAR	ESTACION				CLASIFICACION VEHICULAR EN PORCIENTO													COORDENADAS		
	KM	TE	SC	TDPA	M	A	B	C2	C3	T3S2	T3S3	T3S2R4	OTROS	A	B	C	K'	D	LATITUD	LONGITUD
Ent. La Chicharrona - Cuencamé	0.00	3	0	4494	3.1	40.2	6.3	7.2	4.7	23.0	5.6	8.6	1.3	43.3	6.3	50.4	0.069	0.519	24.839009	-103.691429
T. C. Durango - Torreón	7.65	1	0	4957	4.4	43.3	5.4	6.2	6.3	21.6	5.7	7.0	0.1	47.7	5.4	46.9	0.062	0.519	24.902508	-103.703454
T. C. Durango - Torreón	8.40																			

DURANGO

37 CARR: Mezquital - San Miguel de Temoaya

CLAVE: 10006

RUTA: DGO

AÑO: 2020

LUGAR	ESTACION				CLASIFICACION VEHICULAR EN PORCIENTO										COORDENADAS					
	KM	TE	SC	TDPA	M	A	B	C2	C3	T3S2	T3S3	T3S2R4	OTROS	A	B	C	K'	D	LATITUD	LONGITUD
T. C. Durango - Mezquital	0.00	3	0	318	3.8	62.9	0.3	30.8	1.4	0.5	0.3	0.0	0.0	66.7	0.3	33.0	0.123	0.505	23.496791	-104.386846
San Miguel de Temoaya	48.00	1	0	212	4.7	55.2	0.6	37.0	1.3	0.8	0.4	0.0	0.0	59.9	0.6	39.5	0.132	0.513	23.302986	-104.509141

38 CARR: Ramal a San Juan del Río

CLAVE: 10001

RUTA: DGO-290

AÑO: 2020

LUGAR	ESTACION				CLASIFICACION VEHICULAR EN PORCIENTO										COORDENADAS					
	KM	TE	SC	TDPA	M	A	B	C2	C3	T3S2	T3S3	T3S2R4	OTROS	A	B	C	K'	D	LATITUD	LONGITUD
T. C. Durango - Ent. La Zarca	0.00	3	0	2833	1.0	80.2	1.0	16.3	0.8	0.2	0.1	0.2	0.2	81.2	1.0	17.8	0.078	0.524	24.797611	-104.499235
San Juan del Río	5.00	1	1	1856	2.0	79.6	0.7	16.5	0.9	0.1	0.1	0.0	0.1	81.6	0.7	17.7	0.094	0.503	24.776737	-104.461071
San Juan del Río	5.00	1	2	1836	2.1	76.7	0.8	19.0	1.0	0.1	0.2	0.0	0.1	78.8	0.8	20.4	0.100	0.503	24.776737	-104.461069

39 CARR: Súchil - Villa Unión

CLAVE: 10419

RUTA: DGO-241

AÑO: 2020

LUGAR	ESTACION				CLASIFICACION VEHICULAR EN PORCIENTO										COORDENADAS					
	KM	TE	SC	TDPA	M	A	B	C2	C3	T3S2	T3S3	T3S2R4	OTROS	A	B	C	K'	D	LATITUD	LONGITUD
Súchil	0.00	3	1	1269	7.7	79.0	1.5	10.1	1.1	0.4	0.1	0.1	0.0	86.7	1.5	11.8	0.092	0.506	23.625100	-103.919711
Súchil	0.00	3	2	1240	5.5	79.7	1.7	10.4	1.3	0.7	0.4	0.3	0.0	85.2	1.7	13.1	0.095	0.506	23.625100	-103.919708
Vicente Guerrero	13.40	1	0	1928	4.9	79.2	1.9	12.3	0.6	0.2	0.2	0.0	0.7	84.1	1.9	14.0	0.098	0.502	23.731521	-103.987052
X. C. Zacatecas - Durango	14.50	1	1	4180	4.3	80.9	1.5	11.7	0.8	0.3	0.3	0.1	0.1	85.2	1.5	13.3	0.089	0.537	23.743135	-103.985333
X. C. Zacatecas - Durango	14.50	1	2	4857	4.3	80.8	1.5	11.8	0.8	0.3	0.3	0.1	0.1	85.1	1.5	13.4	0.094	0.537	23.743109	-103.985419
X. C. Zacatecas - Durango	14.50	3	0	2538	5.5	85.4	0.8	6.7	0.9	0.4	0.1	0.2	0.0	90.9	0.8	8.3	0.091	0.504	23.743299	-103.986903
Villa Unión	41.40	1	0	2109	6.3	77.6	1.2	12.5	1.1	0.5	0.4	0.4	0.0	83.9	1.2	14.9	0.097	0.515	23.965536	-104.047748

40 CARR: Tlahualillo de Zaragoza - T.C. Gómez Palacio - Jiménez

CLAVE: 10419

RUTA: DGO

AÑO: 2020

LUGAR	ESTACION				CLASIFICACION VEHICULAR EN PORCIENTO										COORDENADAS					
	KM	TE	SC	TDPA	M	A	B	C2	C3	T3S2	T3S3	T3S2R4	OTROS	A	B	C	K'	D	LATITUD	LONGITUD
Tlahualillo	0.00	3	0	747	11.2	71.3	0.8	12.3	1.3	1.1	0.9	0.9	0.2	82.5	0.8	16.7	0.108	0.518	26.116372	-103.440930
T. C. Gómez Palacio - Jiménez	37.00	1	0	85	8.1	68.2	2.6	7.6	0.9	2.9	2.0	4.1	3.6	76.3	2.6	21.1	0.224	0.549	26.155162	-103.777257

41 CARR: Yerbanis - Peñón Blanco

CLAVE: 10032

RUTA: DGO-316

AÑO: 2020

LUGAR	ESTACION				CLASIFICACION VEHICULAR EN PORCIENTO										COORDENADAS					
	KM	TE	SC	TDPA	M	A	B	C2	C3	T3S2	T3S3	T3S2R4	OTROS	A	B	C	K'	D	LATITUD	LONGITUD
Yerbanis	0.00	3	0	906	2.9	73.9	3.9	10.0	3.8	2.3	1.5	1.1	0.6	76.8	3.9	19.3	0.094	0.510	24.736086	-103.841880

DURANGO

41 CARR: Yerbanís - Peñón Blanco

CLAVE: 10032

RUTA: DGO-316

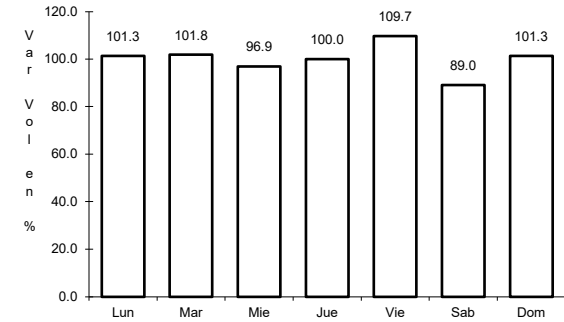
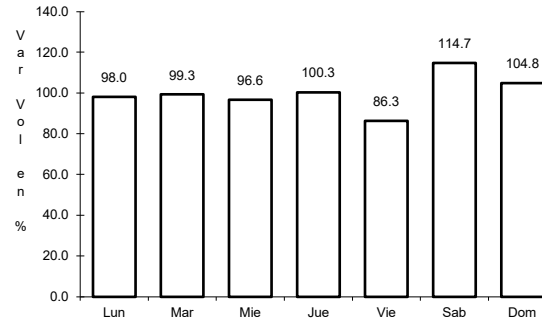
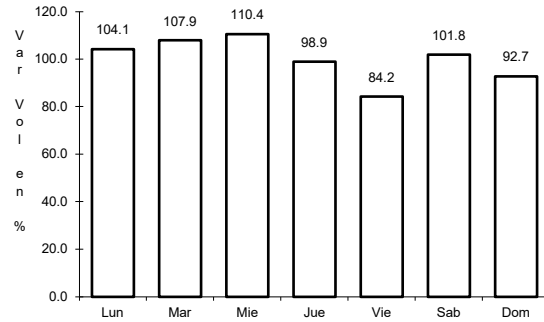
AÑO: 2020

L U G A R	E S T A C I O N				C L A S I F I C A C I O N V E H I C U L A R E N P O R C I E N T O														C O O R D E N A D A S	
	KM	TE	SC	TDPA	M	A	B	C2	C3	T3S2	T3S3	T3S2R4	OTROS	A	B	C	K'	D	LATITUD	LONGITUD
Peñón Blanco	22.00	1	0	836	3.2	87.0	0.9	6.6	1.0	0.3	0.2	0.0	0.8	90.2	0.9	8.9	0.109	0.504	24.789670	-104.023640

1 CARR: Bermejillo - El Palmito

CLAVE: 10105

RUTA: MEX-030



Km: 0.00

Tipo: 3

Sent: 0

Km: 86.00

Tipo: 1

Sent: 0

Km: 160.00

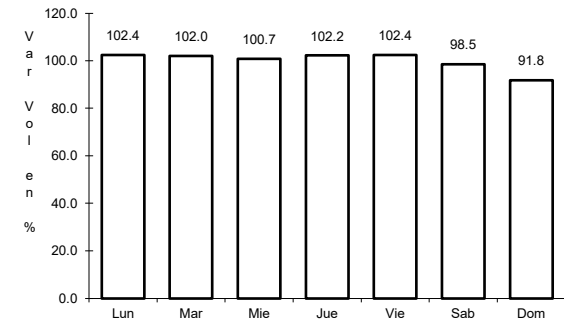
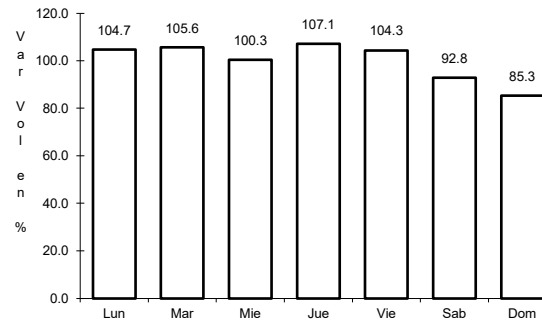
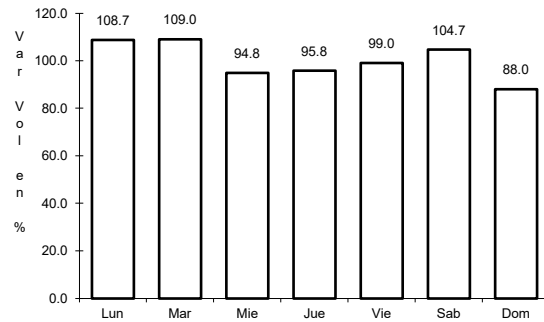
Tipo: 1

Sent: 0

2 CARR: Durango - Ent. La Zarca

CLAVE: 10016

RUTA: MEX-045



Km: 0.00

Tipo: 3

Sent: 1

Km: 0.00

Tipo: 3

Sent: 2

Km: 239.50

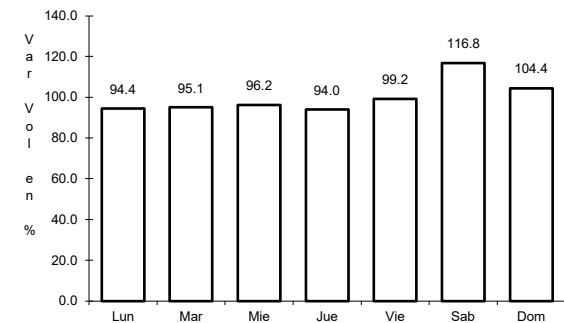
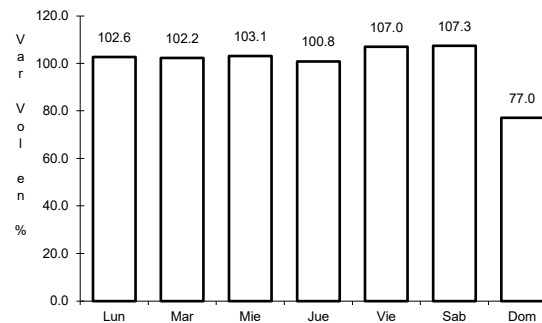
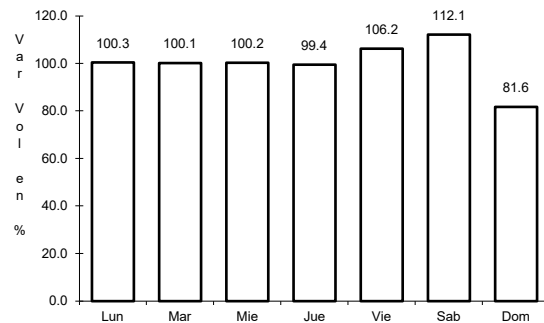
Tipo: 1

Sent: 0

3 CARR: Durango - Mezquital

CLAVE: 10423

RUTA: MEX-023



Km: 0.00

Tipo: 3

Sent: 1

Km: 0.00

Tipo: 3

Sent: 2

Km: 13.00

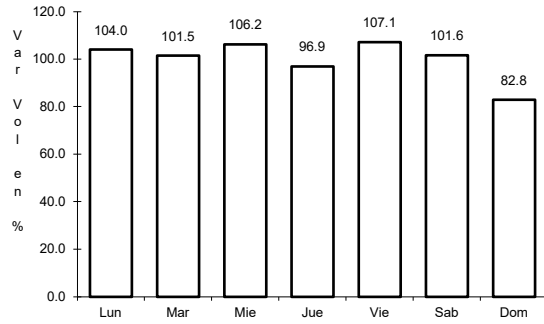
Tipo: 3

Sent: 0

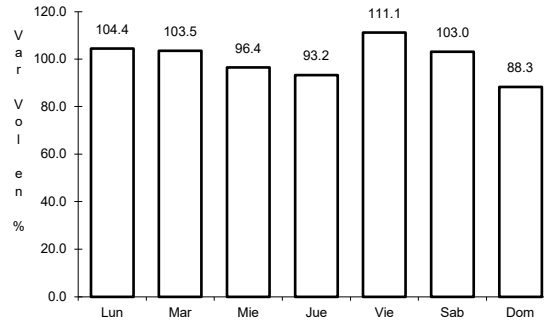
4 CARR: Durango - Torreón

CLAVE: 10085

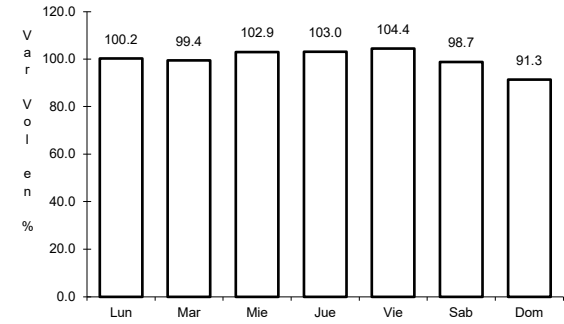
RUTA: MEX-040



Km: 0.00 Tipo: 3 Sent: 1



Km: 0.00 Tipo: 3 Sent: 2

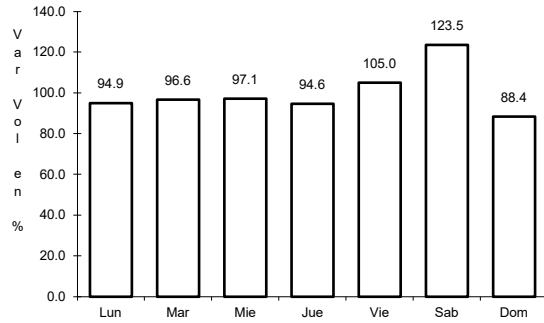


Km: 120.90 Tipo: 1 Sent: 0

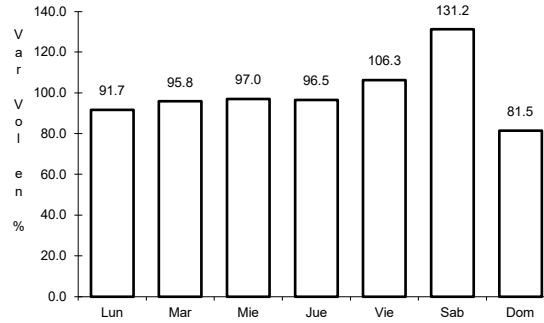
5 CARR: Durango - Villa Unión

CLAVE: 0083

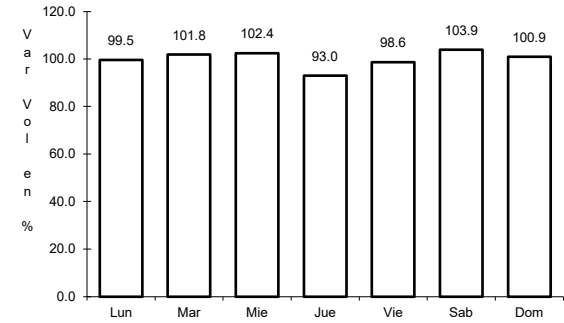
RUTA: MEX-040



Km: 0.00 Tipo: 3 Sent: 0



Km: 145.50 Tipo: 1 Sent: 0

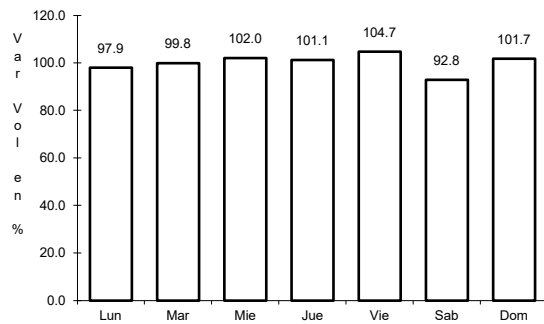


Km: 294.40 Tipo: 1 Sent: 0

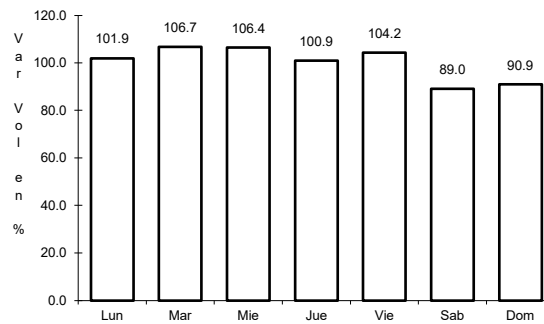
6 CARR: Ent. La Chicharrona - Cuencamé

CLAVE: 00152

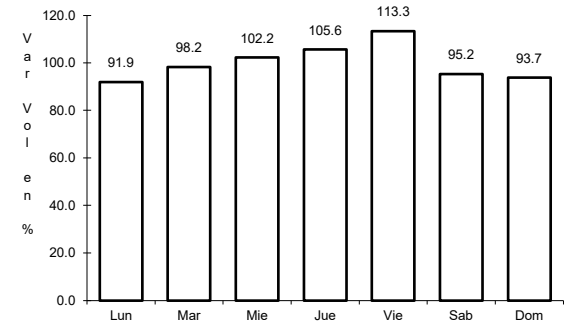
RUTA: MEX-049



Km: 0.00 Tipo: 3 Sent: 1



Km: 0.00 Tipo: 3 Sent: 2

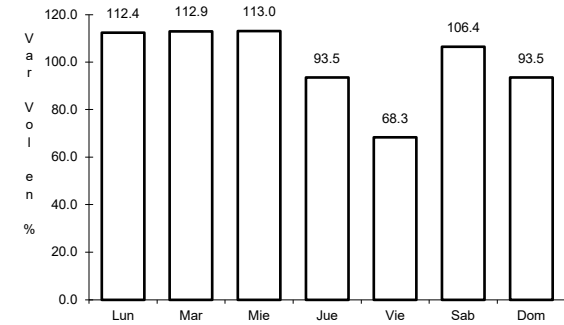
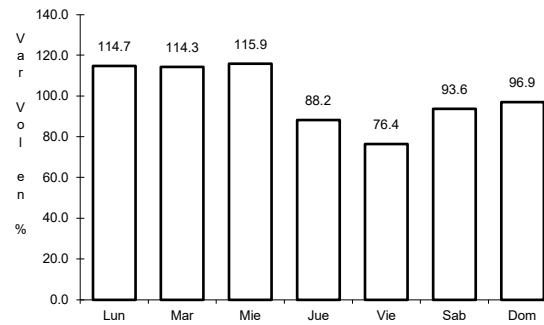
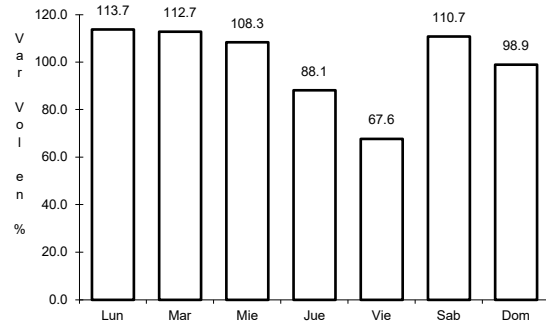


Km: 124.50 Tipo: 1 Sent: 0

7 CARR: Ent. La Zarca - Hidalgo del Parral

CLAVE: 00488

ruta: MEX-045



Km: 0.00 Tipo: 3 Sent: 0

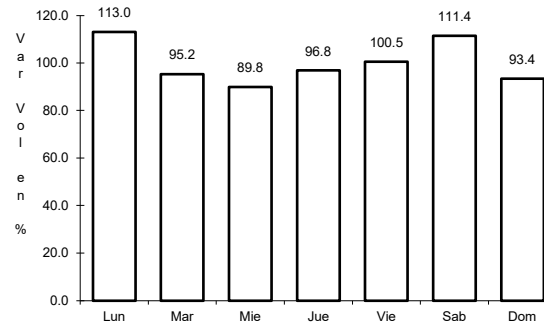
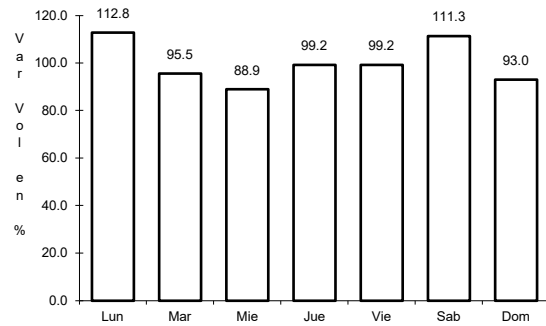
Km: 92.35 Tipo: 3 Sent: 0

Km: 171.00 Tipo: 1 Sent: 0

8 CARR: Ent. Los Herrera - Topia

CLAVE: 10090

ruta: MEX-036



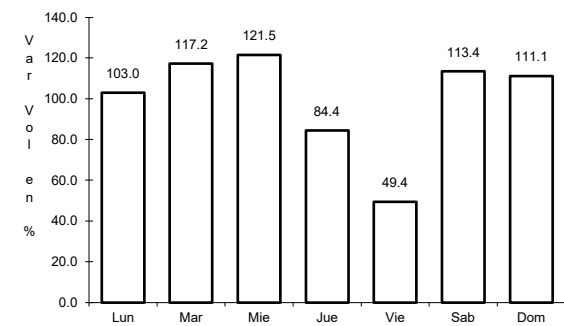
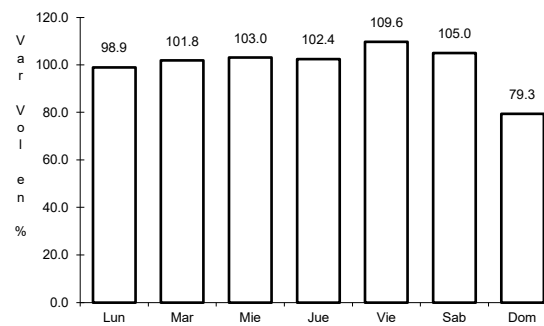
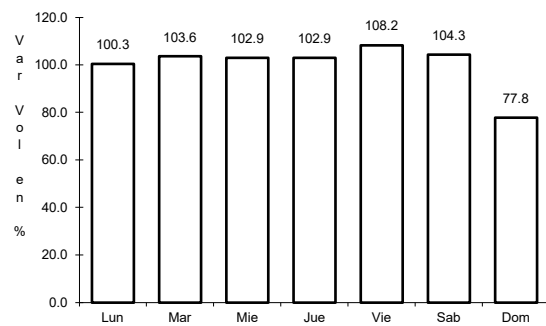
Km: 0.00 Tipo: 3 Sent: 0

Km: 80.00 Tipo: 1 Sent: 0

9 CARR: Gómez Palacio - Jiménez

CLAVE: 00006

ruta: MEX-049



Km: 0.00 Tipo: 3 Sent: 1

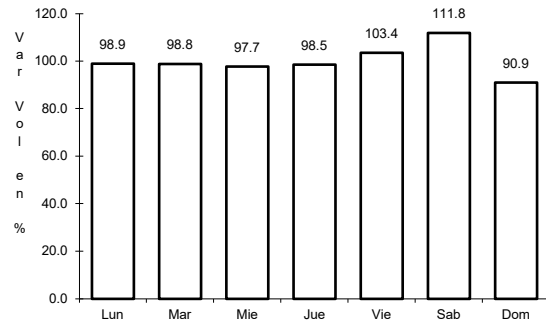
Km: 0.00 Tipo: 3 Sent: 2

Km: 107.95 Tipo: 1 Sent: 0

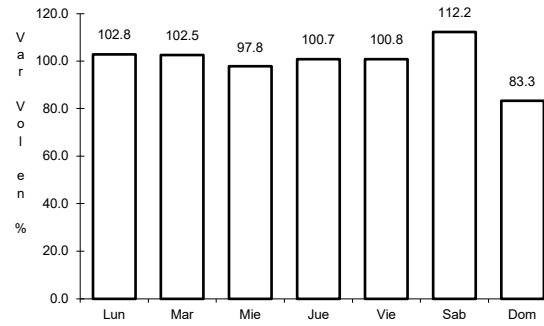
10 CARR: Gómez Palacio - La Unión

CLAVE: 10009

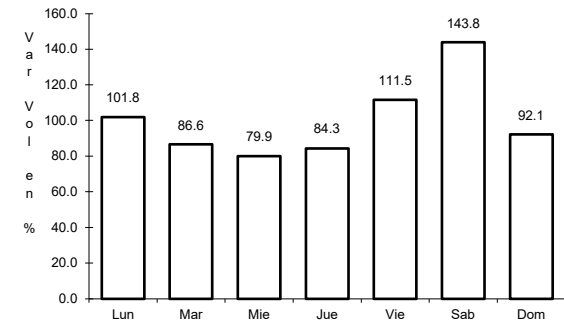
ruta: MEX-040



Km: 0.00 Tipo: 3 Sent: 0



Km: 20.90 Tipo: 1 Sent: 0

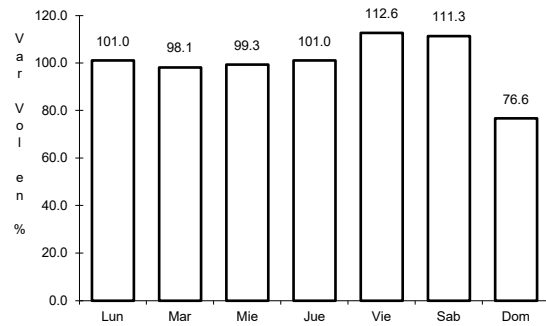


Km: 42.20 Tipo: 1 Sent: 0

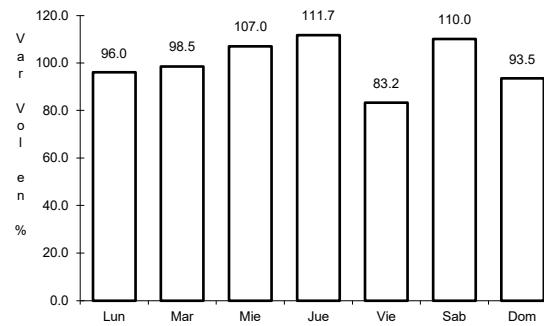
11 CARR: Gómez Palacio - Tlahualillo

CLAVE: 10005

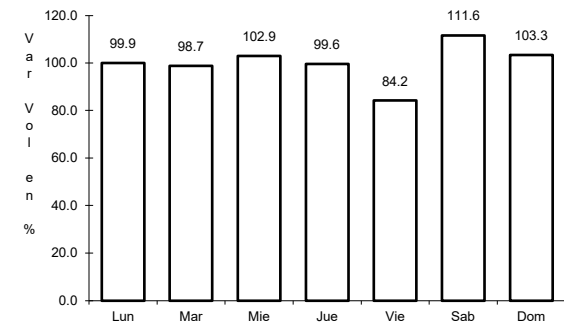
ruta: MEX-040



Km: 5.60 Tipo: 1 Sent: 0



Km: 31.44 Tipo: 1 Sent: 0

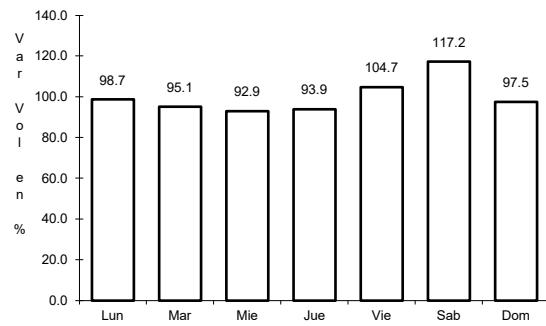


Km: 72.90 Tipo: 1 Sent: 0

12 CARR: Gregorio García - Francisco I. Madero

CLAVE: 00110

ruta: MEX-040

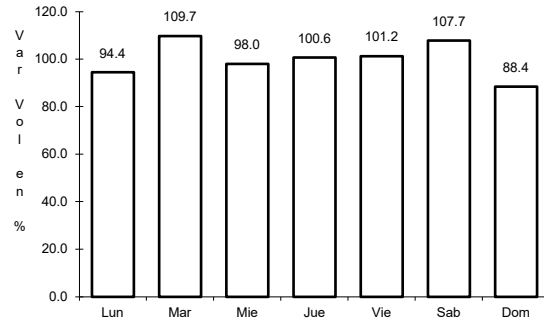


Km: 9.60 Tipo: 1 Sent: 0

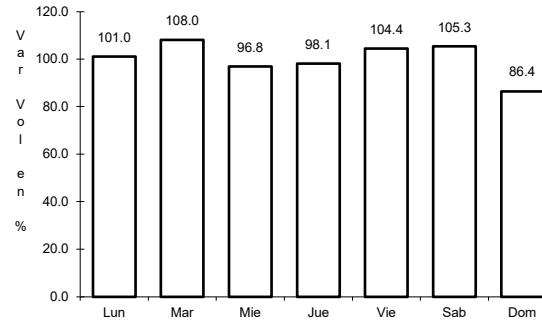
13 CARR: Guadalupe Aguilera - Tepehuanes

CLAVE: 10220

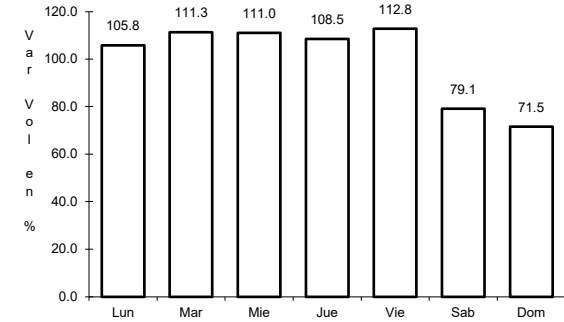
ruta: MEX-023



Km: 0.00 Tipo: 3 Sent: 1



Km: 0.00 Tipo: 3 Sent: 2

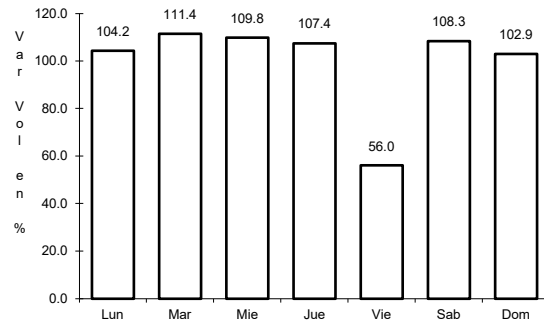


Km: 169.00 Tipo: 1 Sent: 0

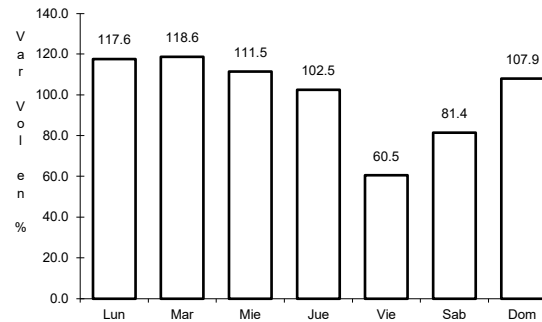
14 CARR: Hidalgo del Parral - Guadalupe y Calvo

CLAVE: 00802

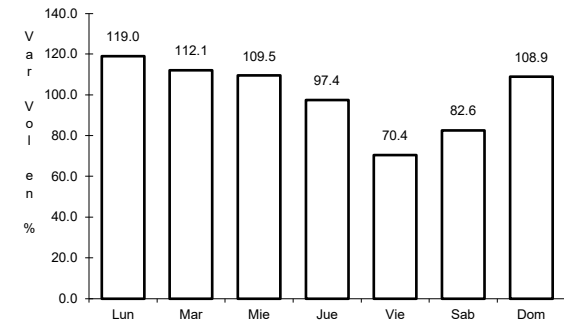
ruta: MEX-024



Km: 0.00 Tipo: 3 Sent: 0



Km: 110.00 Tipo: 1 Sent: 0

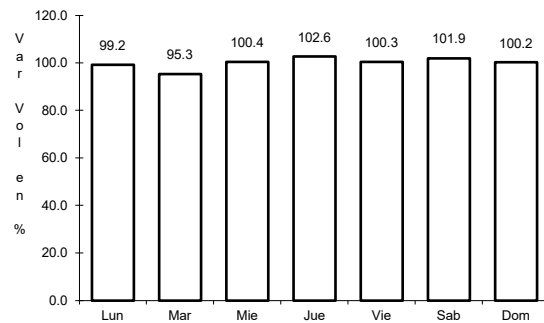


Km: 212.00 Tipo: 1 Sent: 0

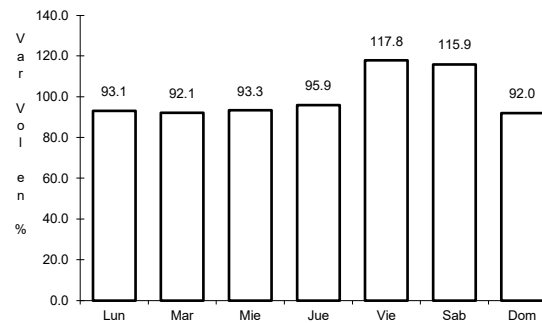
15 CARR: Libramiento Cuencamé

CLAVE: 10006

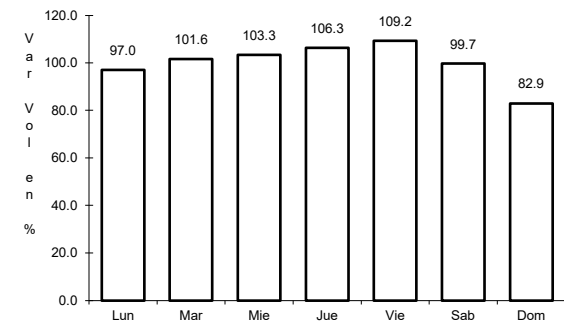
ruta: MEX



Km: 0.00 Tipo: 3 Sent: 1

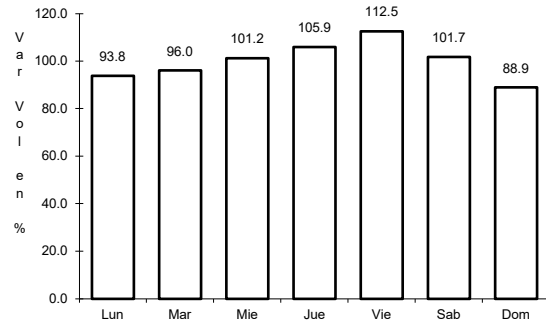


Km: 0.00 Tipo: 3 Sent: 2



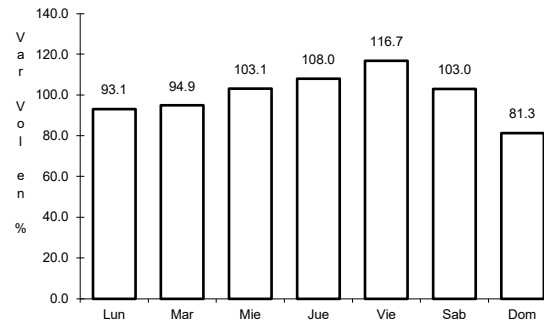
Km: 2.60 Tipo: 1 Sent: 1

16 CARR: Libramiento Oriente de Durango



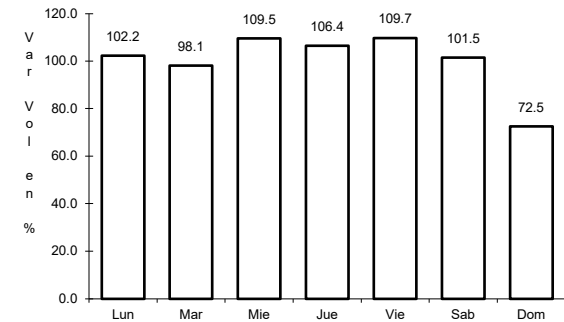
Km: 0.00 Tipo: 3 Sent: 1

CLAVE:



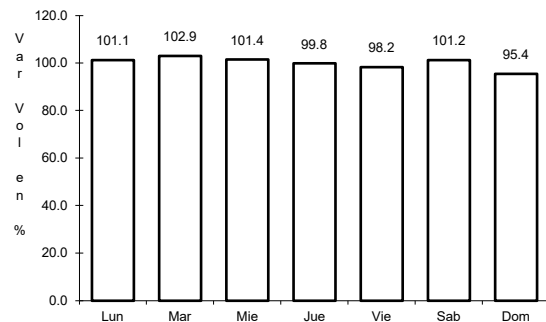
Km: 0.00 Tipo: 3 Sent: 2

ruta: MEX-045



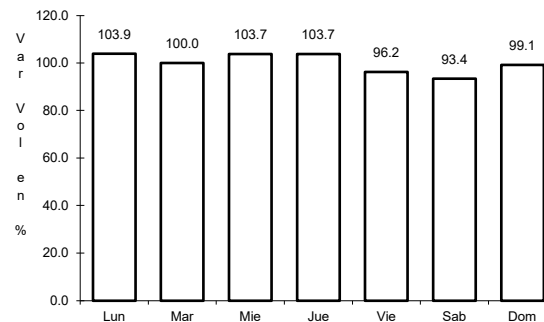
Km: 10.50 Tipo: 1 Sent: 1

17 CARR: Libramiento Sur de Durango



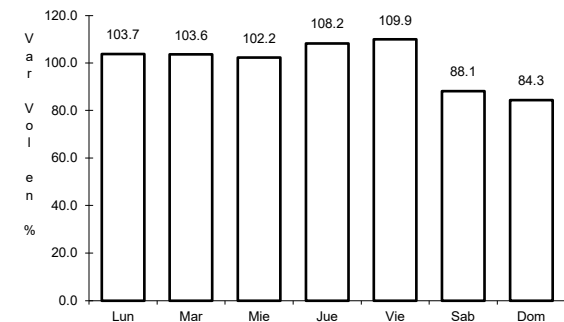
Km: 0.00 Tipo: 3 Sent: 0

CLAVE:



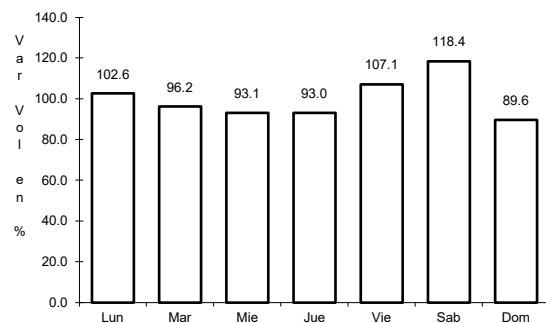
Km: 19.50 Tipo: 1 Sent: 0

ruta: MEX-045



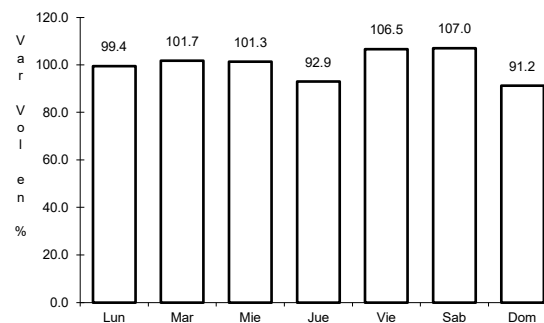
Km: 27.70 Tipo: 1 Sent: 0

18 CARR: Pedriceña - Ent. Rodeo



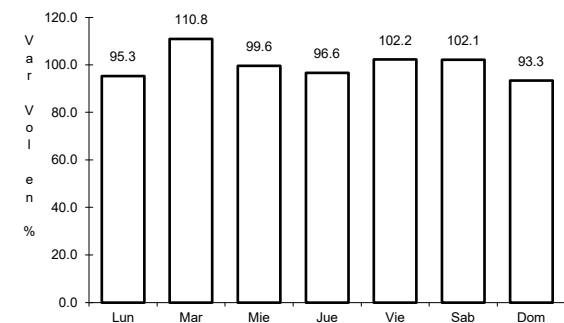
Km: 0.00 Tipo: 3 Sent: 0

CLAVE: 10002



Km: 45.00 Tipo: 1 Sent: 0

ruta: MEX-034

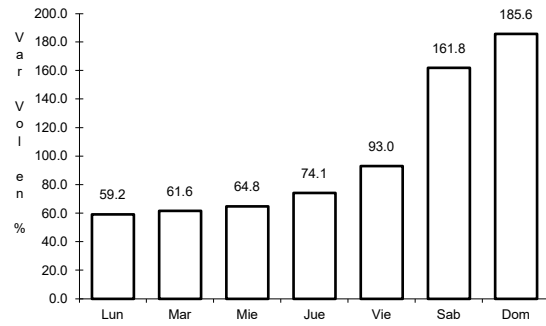


Km: 98.00 Tipo: 1 Sent: 0

19 CARR: Ramal a Otinapa

CLAVE: 10002

RUTA: MEX



Km: 0.00

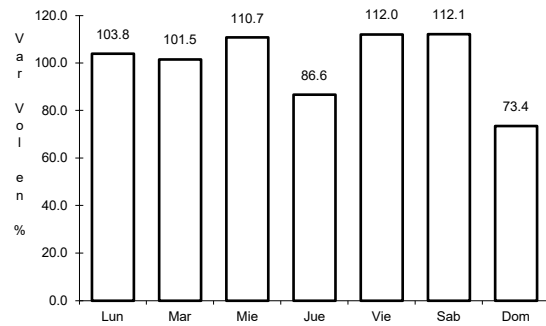
Tipo: 3

Sent: 0

20 CARR: Ramal a Santa Clara

CLAVE: 10287

RUTA: MEX-049



Km: 0.00

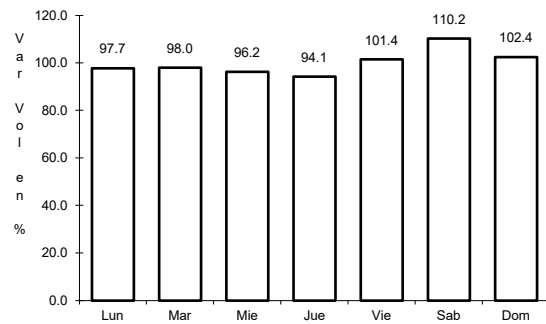
Tipo: 3

Sent: 0

21 CARR: Ramal a Villa Juárez

CLAVE: 10287

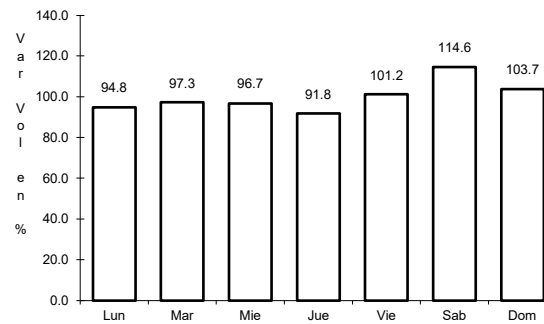
RUTA: MEX-040



Km: 0.00

Tipo: 3

Sent: 1



Km: 0.00

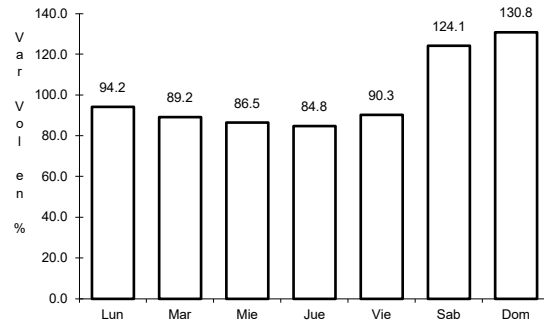
Tipo: 3

Sent: 2

22 CARR: Ramal Distribuidor Presa Peña del Águila

CLAVE: 10016

ruta: MEX-045



Km: 10.50

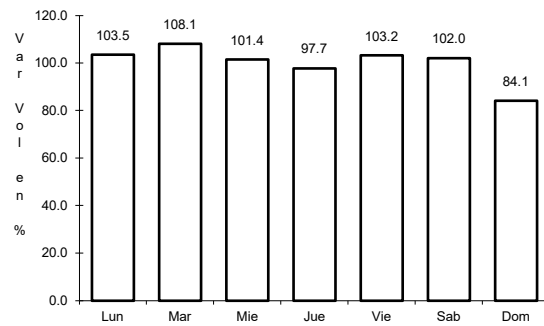
Tipo: 1

Sent: 0

23 CARR: Zacatecas - Durango

CLAVE: 00544

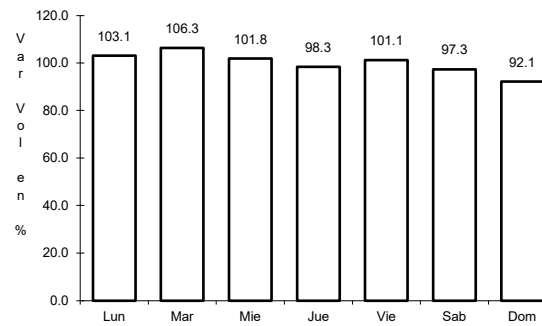
ruta: MEX-045



Km: 6.40

Tipo: 3

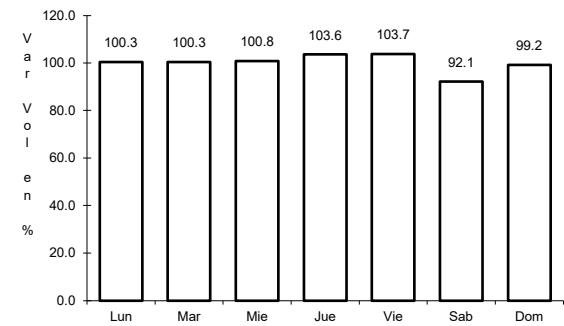
Sent: 1



Km: 6.40

Tipo: 3

Sent: 2



Km: 261.70

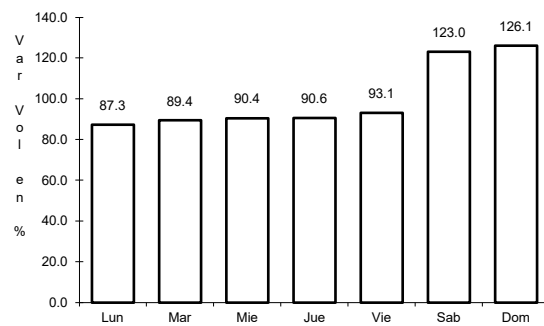
Tipo: 1

Sent: 0

24 CARR: Durango - Mazatlán (Cuota)

CLAVE: 00084

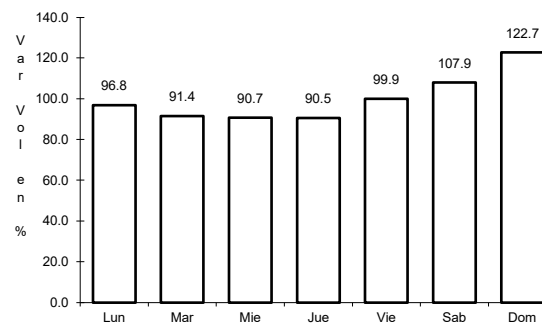
ruta: MEX-040D



Km: 20.50

Tipo: 3

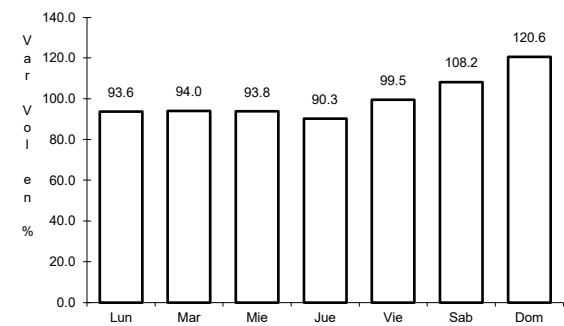
Sent: 0



Km: 117.00

Tipo: 3

Sent: 0



Km: 208.35

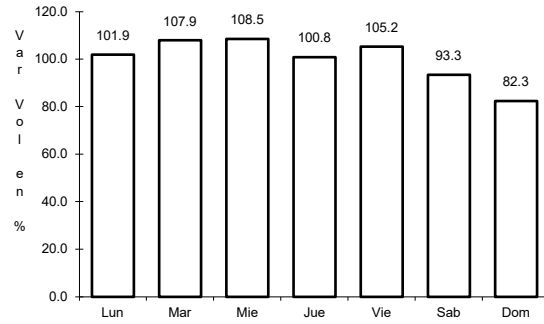
Tipo: 1

Sent: 0

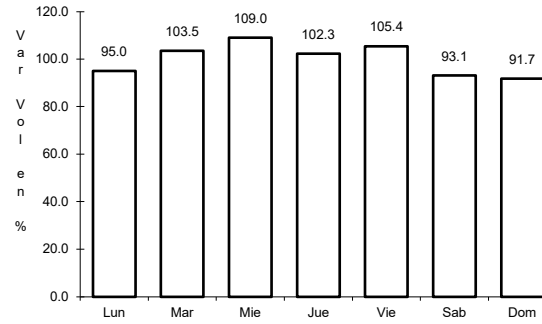
25 CARR: Durango - Yerbanís (Cuota)

CLAVE: 10003

ruta: MEX-040D



Km: 5.30 Tipo: 1 Sent: 1

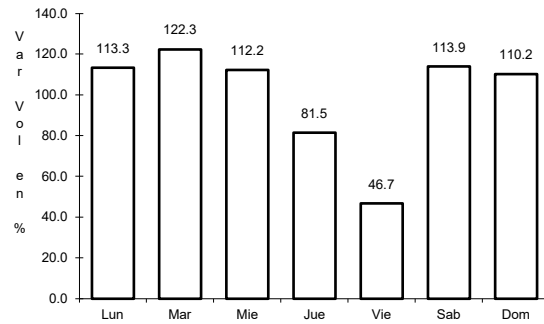


Km: 5.30 Tipo: 1 Sent: 2

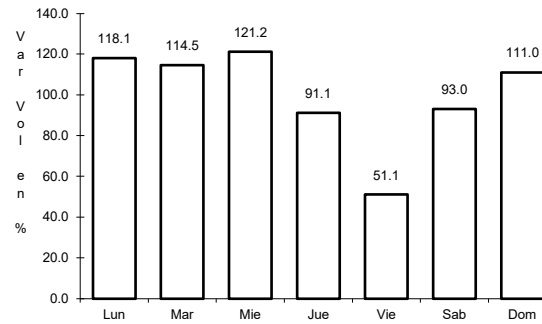
26 CARR: Gómez Palacio - Corralitos (Cuota)

CLAVE: 00016

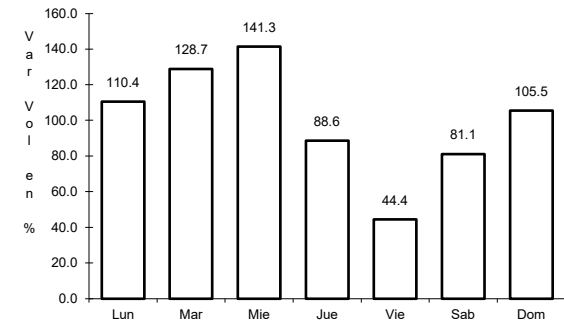
ruta: MEX-049D



Km: 40.10 Tipo: 1 Sent: 1



Km: 40.10 Tipo: 1 Sent: 2

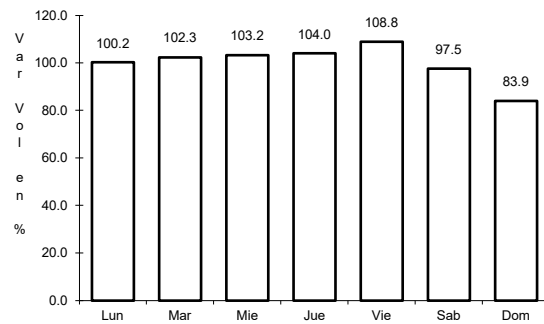


Km: 226.50 Tipo: 1 Sent: 1

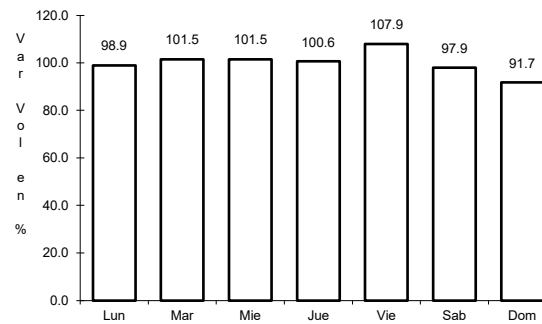
27 CARR: Libramiento de Durango (Cuota)

CLAVE: 10006

ruta: MEX-040D

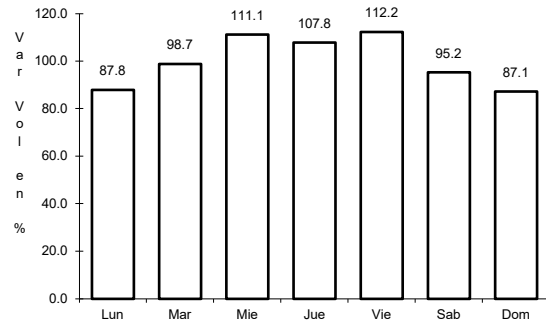


Km: 0.00 Tipo: 3 Sent: 0



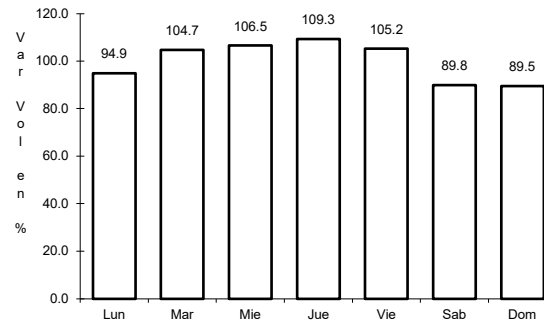
Km: 21.60 Tipo: 1 Sent: 0

28 CARR: Libramiento Norte de Torreón (Cuota)



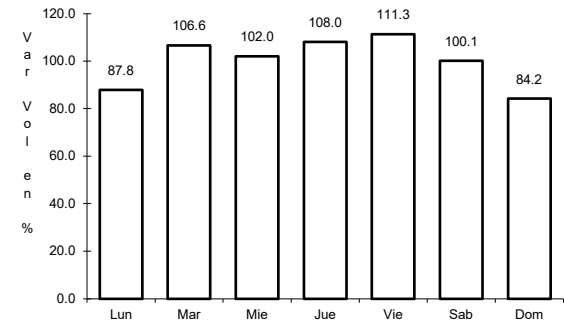
Km: 0.00 Tipo: 3 Sent: 0

CLAVE:



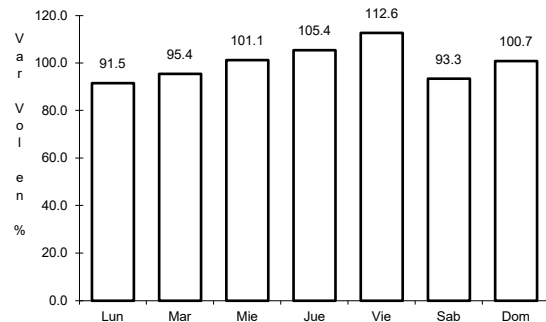
Km: 17.36 Tipo: 1 Sent: 0

RUTA: MEX-040D



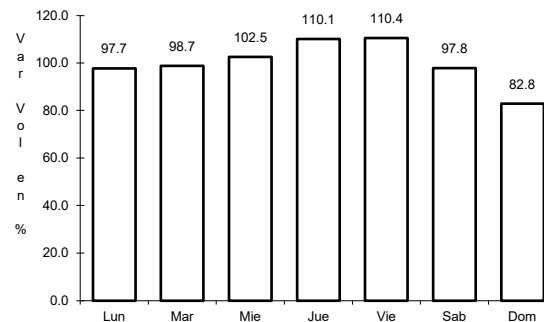
Km: 40.70 Tipo: 1 Sent: 0

29 CARR: Yerbanís - Gómez Palacio (Cuota)



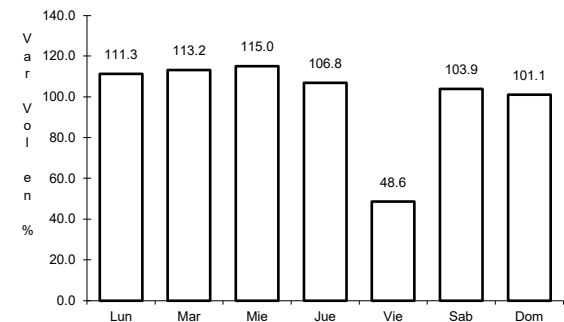
Km: 180.00 Tipo: 1 Sent: 1

CLAVE: 10003



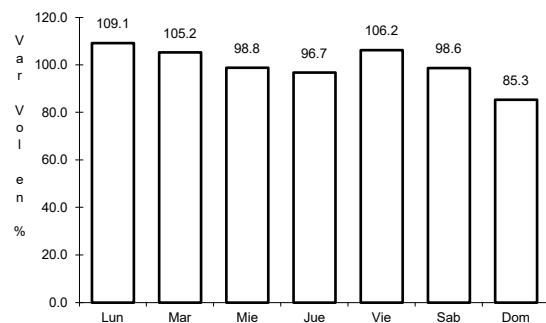
Km: 180.00 Tipo: 1 Sent: 2

RUTA: MEX-040D



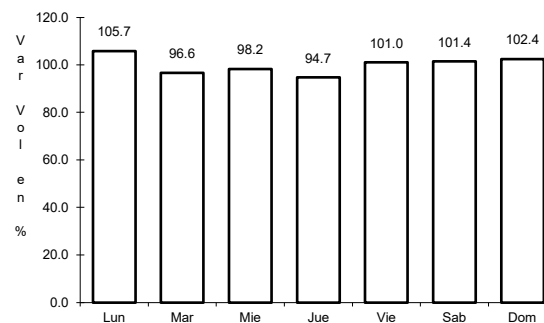
Km: 212.71 Tipo: 3 Sent: 1

30 CARR: Amado Nervo - La Ochoa



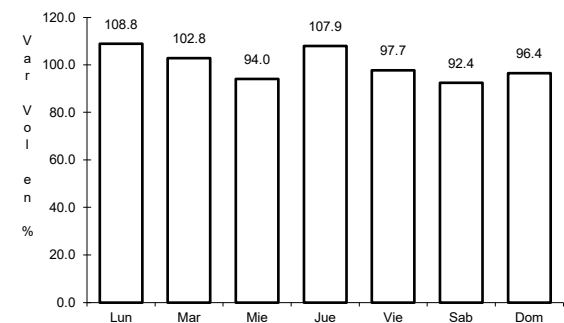
Km: 0.00 Tipo: 3 Sent: 0

CLAVE: 10012



Km: 25.00 Tipo: 1 Sent: 0

RUTA: DGO-542

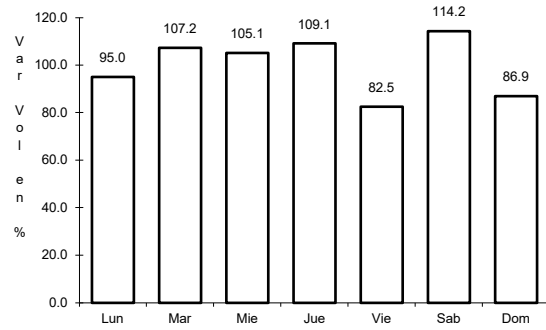


Km: 42.00 Tipo: 1 Sent: 0

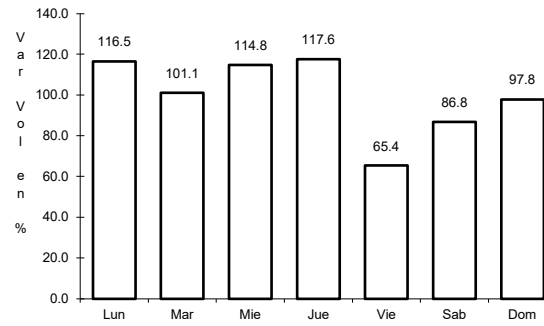
31 CARR: Ceballos - El Mirador

CLAVE: 10417

ruta: DGO-044



Km: 0.00 Tipo: 3 Sent: 0

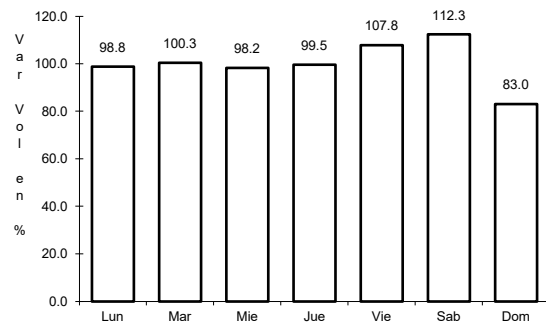


Km: 113.50 Tipo: 1 Sent: 0

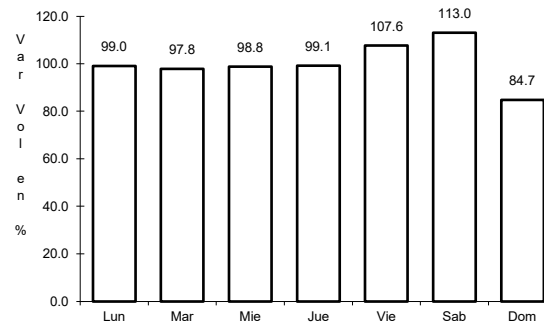
32 CARR: Durango - Aserradero La Flor

CLAVE: 10422

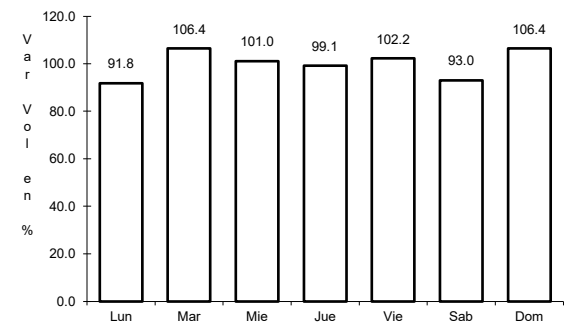
ruta: DGO-115



Km: 0.00 Tipo: 3 Sent: 1



Km: 0.00 Tipo: 3 Sent: 2

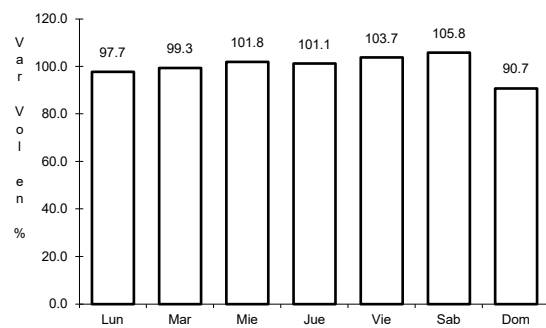


Km: 39.00 Tipo: 1 Sent: 0

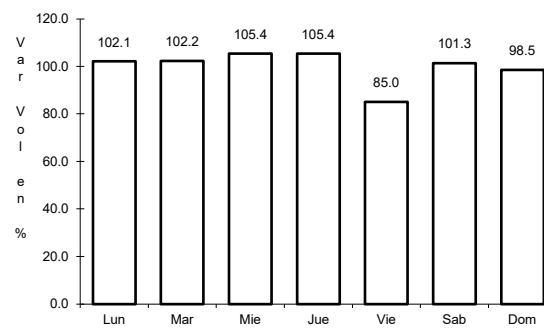
33 CARR: Jabonoso - Esmeralda

CLAVE: 10004

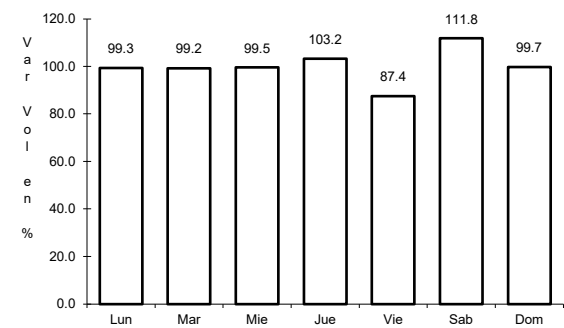
ruta: DGO-363



Km: 0.00 Tipo: 3 Sent: 0



Km: 10.00 Tipo: 3 Sent: 0

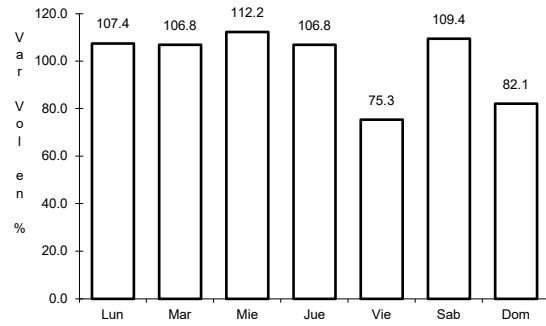


Km: 16.30 Tipo: 1 Sent: 0

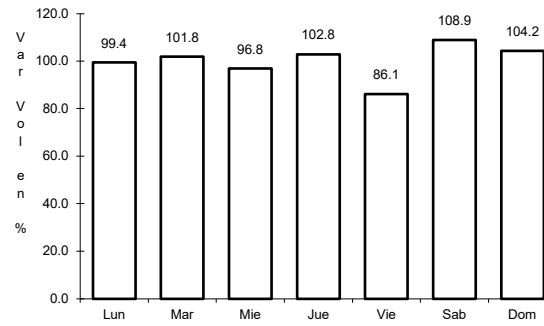
34 CARR: La Torreña - Brittingham

CLAVE: 10010

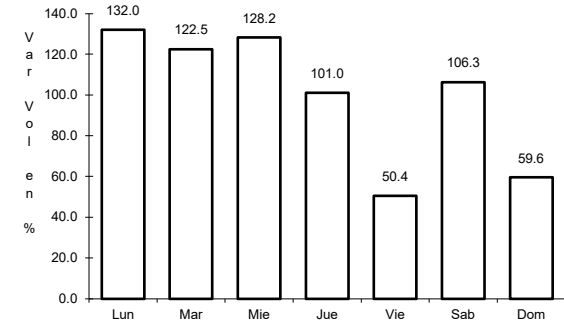
RUTA: DGO-325



Km: 0.00 Tipo: 3 Sent: 0



Km: 16.00 Tipo: 1 Sent: 0

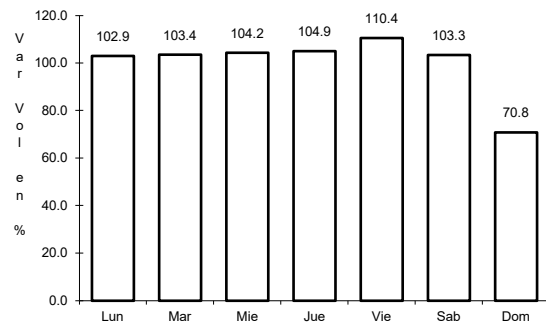


Km: 33.00 Tipo: 1 Sent: 0

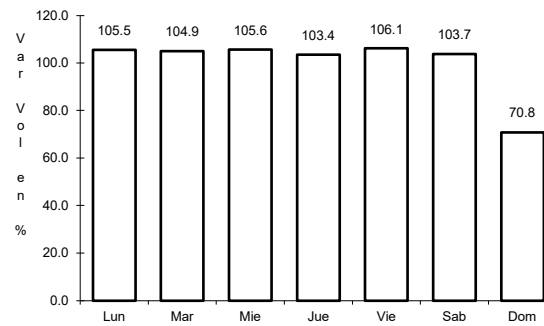
35 CARR: Libramiento de Torreón

CLAVE: 05516

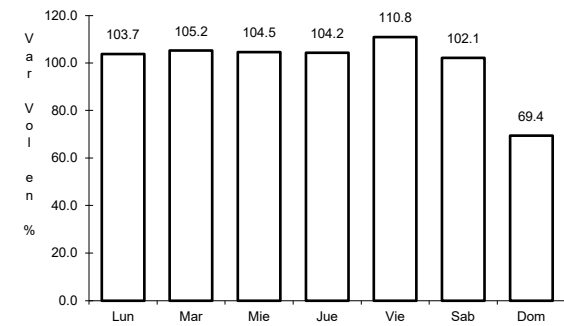
RUTA: COA



Km: 0.00 Tipo: 3 Sent: 1



Km: 0.00 Tipo: 3 Sent: 2

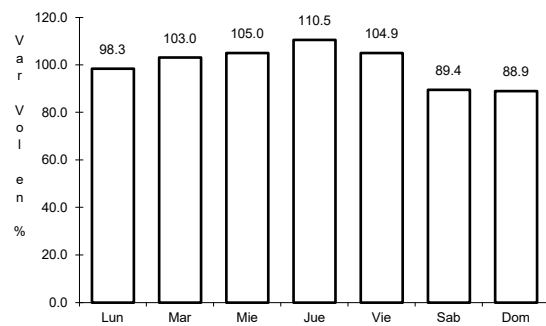


Km: 7.30 Tipo: 1 Sent: 1

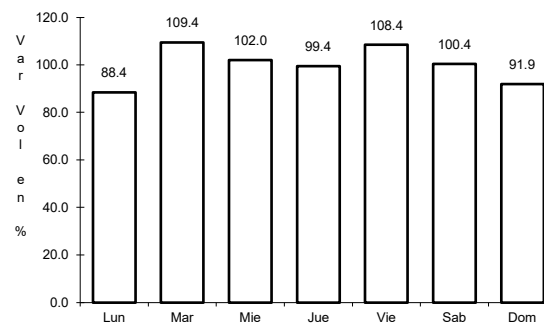
36 CARR: Libramiento Exterior Cuencamé

CLAVE: 10006

RUTA: DGO



Km: 0.00 Tipo: 3 Sent: 0

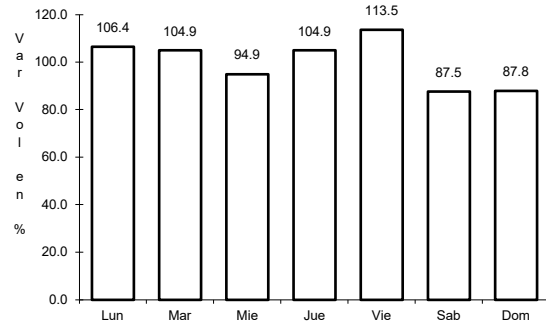


Km: 7.65 Tipo: 1 Sent: 0

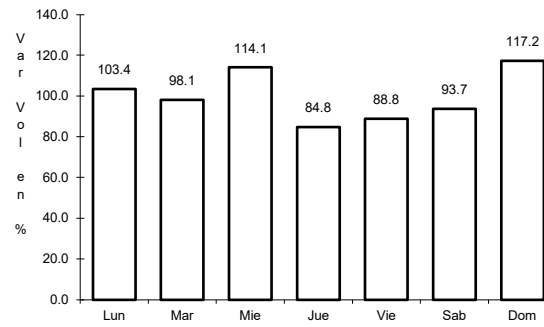
37 CARR: Mezquital - San Miguel de Temoaya

CLAVE: 10006

RUTA: DGO



Km: 0.00 Tipo: 3 Sent: 0

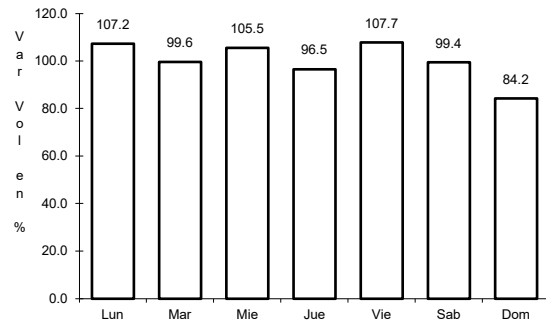


Km: 48.00 Tipo: 1 Sent: 0

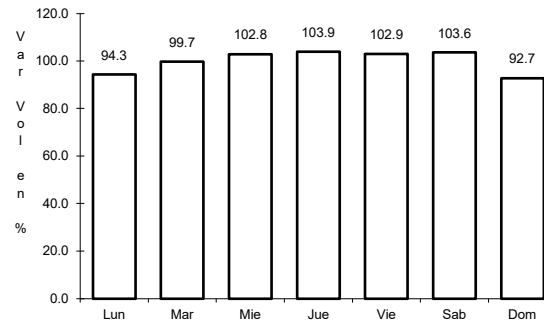
38 CARR: Ramal a San Juan del Río

CLAVE: 10001

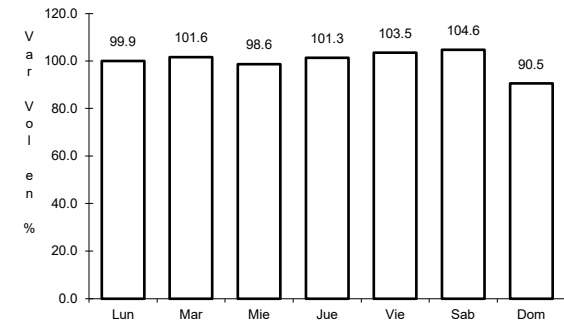
RUTA: DGO-290



Km: 0.00 Tipo: 3 Sent: 0



Km: 5.00 Tipo: 1 Sent: 1

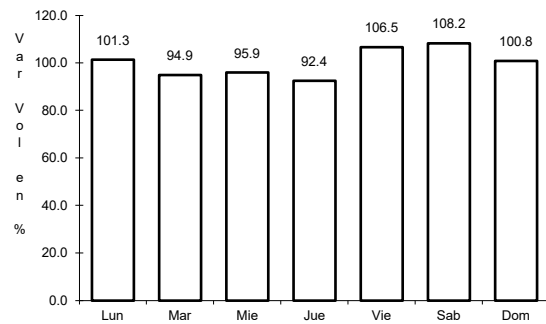


Km: 5.00 Tipo: 1 Sent: 2

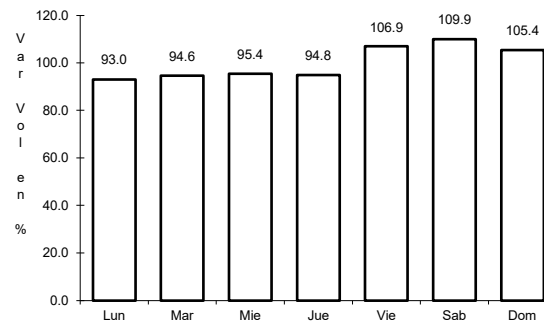
39 CARR: Súchil - Villa Unión

CLAVE: 10419

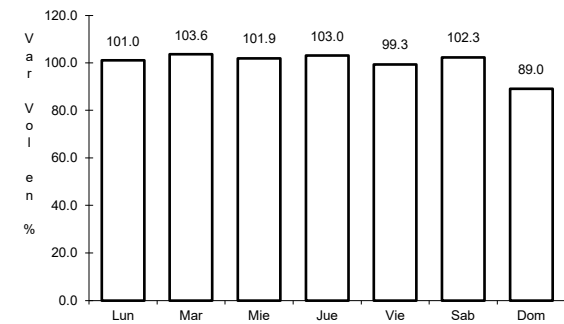
RUTA: DGO-241



Km: 0.00 Tipo: 3 Sent: 1



Km: 0.00 Tipo: 3 Sent: 2

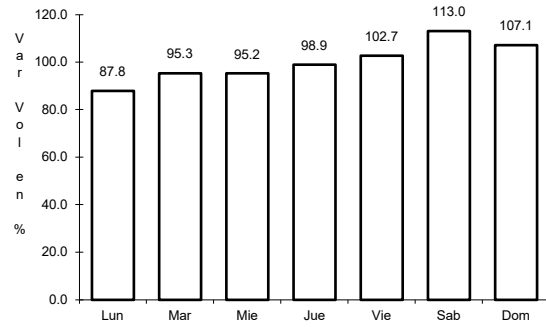


Km: 41.40 Tipo: 1 Sent: 0

40 CARR: Tlahualillo de Zaragoza - T.C. Gómez Palacio - Jiménez

CLAVE: 10419

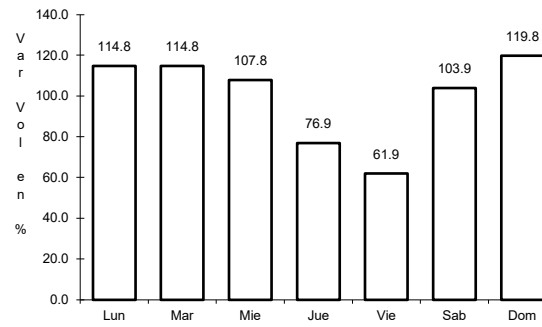
RUTA: DGO



Km: 0.00

Tipo: 3

Sent: 0



Km: 37.00

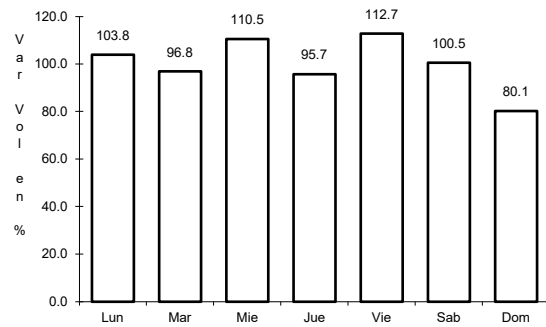
Tipo: 1

Sent: 0

41 CARR: Yerbanís - Peñón Blanco

CLAVE: 10032

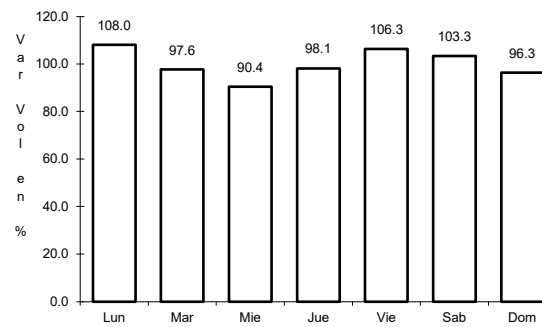
RUTA: DGO-316



Km: 0.00

Tipo: 3

Sent: 0



Km: 22.00

Tipo: 1

Sent: 0