

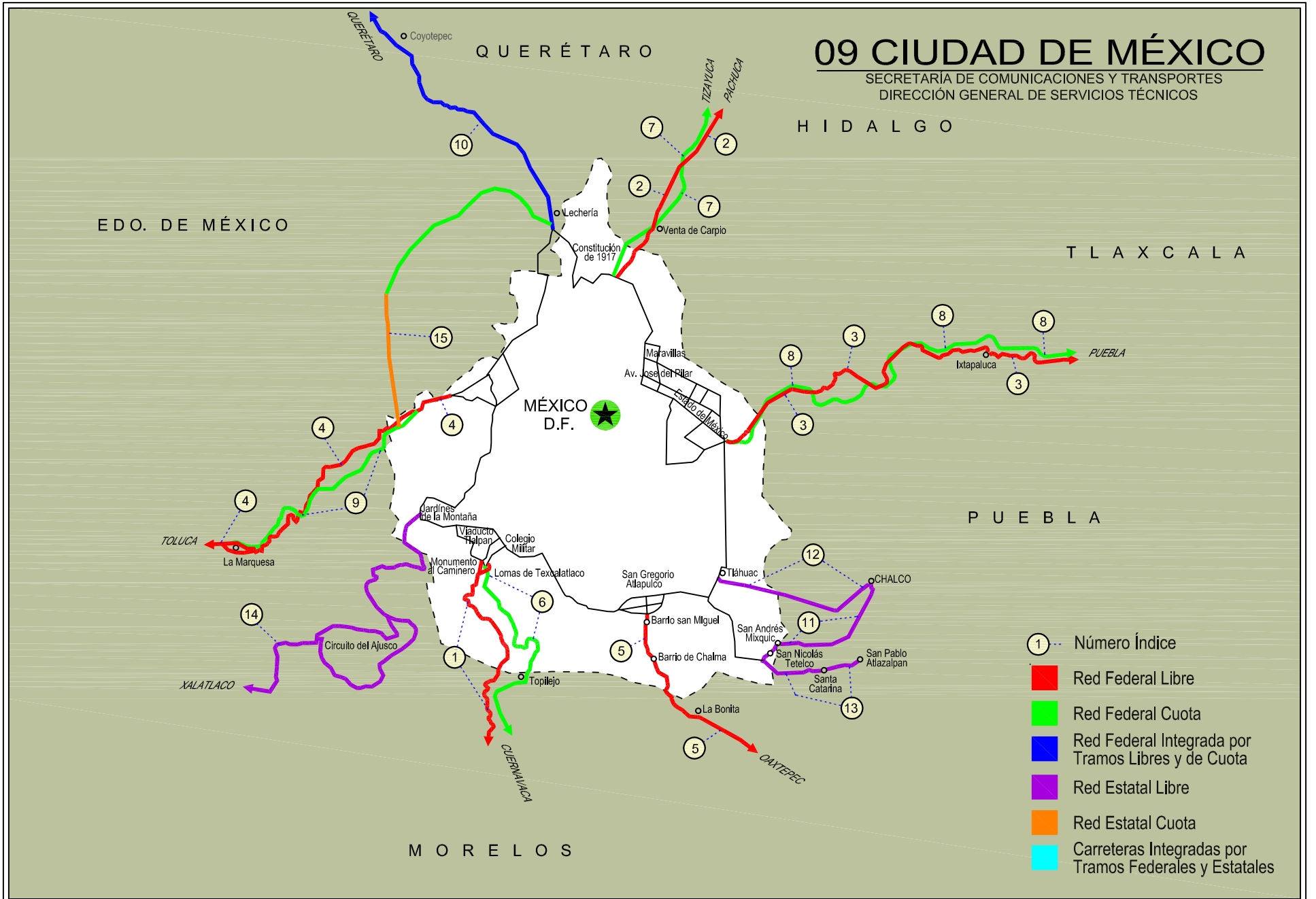


# CIUDAD DE MEXICO

NO. INDICE CARRETERA	---RED FEDERAL LIBRE---	RUTA
	---RED FEDERAL LIBRE---	
1 México - Cuernavaca (Libre)		MEX-095
2 México - Pachuca (Libre)		MEX-085
3 México - Puebla (Libre)		MEX-150
4 México - Toluca		MEX-015
5 San Gregorio - Oaxtepec		MEX-113
	---RED FEDERAL DE CUOTA---	
6 México - Cuernavaca (Cuota)		MEX-095D
7 México - Pachuca (Cuota)		MEX-085D
8 México - Puebla (Cuota)		MEX-150D
9 México - Toluca (Cuota)		MEX-015D
	---RED FEDERAL INTEGRADA POR TRAMOS LIBRES Y DE CUOTA---	
10 México - Querétaro (Cuota)		MEX-057-MEX-057D
	---RED ESTATAL LIBRE---	
11 Chalco - Mixquic		EM-CDMX
12 Chalco - Tláhuac		EM-CDMX
13 T. C. (México - Mixquic) - San Pablo Atlazalpan		EM-106-CDMX
14 Xalatlaco - El Ajusco		EM-CDMX
	---RED ESTATAL DE CUOTA---	
15 La Venta - Chamapa (Cuota)		EM-D

# 09 CIUDAD DE MÉXICO

SECRETARÍA DE COMUNICACIONES Y TRANSPORTES  
DIRECCIÓN GENERAL DE SERVICIOS TÉCNICOS





CIUDAD DE MEXICO

1 CARR: México - Cuernavaca (Libre)

CLAVE: 00040

RUTA: MEX-095

AÑO: 2020

LUGAR	ESTACION				CLASIFICACION VEHICULAR EN PORCIENTO										COORDENADAS					
	KM	TE	SC	TDPA	M	A	B	C2	C3	T3S2	T3S3	T3S2R4	OTROS	A	B	C	K'	D	LATITUD	LONGITUD
México	0.00																			
T., Izq. San Miguel Xicalco	25.50	1	0	23165	5.6	83.0	5.3	4.2	0.8	0.9	0.2	0.0	0.0	88.6	5.3	6.1	0.082	0.513	19.235373	-99.157459
T., Izq. San Miguel Xicalco	25.50	3	0	24754	5.0	85.5	3.1	4.9	0.8	0.2	0.5	0.0	0.0	90.5	3.1	6.4	0.083	0.513	19.235332	-99.157455
T. Izq. San Miguel Topilejo	28.78	1	1	10658	3.5	87.9	2.6	4.0	0.9	0.6	0.5	0.0	0.0	91.4	2.6	6.0	0.084	0.507	19.211977	-99.154642
T. Izq. San Miguel Topilejo	28.78	1	2	10360	2.9	87.2	3.0	4.9	0.9	0.6	0.5	0.0	0.0	90.1	3.0	6.9	0.094	0.507	19.211915	-99.154565
T. Izq. San Miguel Topilejo	28.78	3	0	7748	2.7	89.5	1.3	5.0	0.9	0.5	0.1	0.0	0.0	92.2	1.3	6.5	0.082	0.510	19.211871	-99.154676
Parres El Guarda	39.50	1	0	7561	2.0	92.1	1.3	3.7	0.6	0.3	0.0	0.0	0.0	94.1	1.3	4.6	0.114	0.503	19.134490	-99.175799
Parres El Guarda	39.50	3	0	6463	2.0	90.8	1.6	4.8	0.5	0.2	0.1	0.0	0.0	92.8	1.6	5.6	0.115	0.503	19.134406	-99.175986
Lim. Edos. Term. CDMX Ppia. Mor.	45.44																			
T. Der. Zempoala	51.40	1	0	8248	2.3	89.9	1.8	4.6	0.9	0.4	0.1	0.0	0.0	92.2	1.8	6.0	0.107	0.511	19.054449	-99.244239
T. Der. Zempoala	51.40	3	0	4853	2.7	90.4	1.3	4.6	0.7	0.2	0.1	0.0	0.0	93.1	1.3	5.6	0.109	0.514	19.054281	-99.244239
T. Izq. Coajomulco	57.12	3	0	5969	2.5	88.8	3.6	4.2	0.6	0.1	0.2	0.0	0.0	91.3	3.6	5.1	0.106	0.512	19.027072	-99.210373
T. Der. Huitzilac	64.20	1	0	7484	2.4	89.5	3.8	3.1	0.5	0.3	0.4	0.0	0.0	91.9	3.8	4.3	0.111	0.516	19.001543	-99.258857
T. Der. Huitzilac	64.20	3	0	11714	1.5	91.8	3.5	2.2	0.6	0.3	0.1	0.0	0.0	93.3	3.5	3.2	0.094	0.502	19.001276	-99.258914
T. Izq. Tepoztlán	71.36	1	0	21516	2.9	88.5	3.9	4.3	0.2	0.2	0.0	0.0	0.0	91.4	3.9	4.7	0.083	0.513	18.965581	-99.246959
T. Izq. Tepoztlán	71.36	3	1	15085	2.3	90.1	3.8	3.4	0.4	0.0	0.0	0.0	0.0	92.4	3.8	3.8	0.087	0.503	18.965467	-99.247013
T. Izq. Tepoztlán	71.36	3	2	15262	2.0	89.3	4.2	4.1	0.4	0.0	0.0	0.0	0.0	91.3	4.2	4.5	0.086	0.503	18.965524	-99.246815
Cuernavaca	75.42																			

2 CARR: México - Pachuca (Libre)

CLAVE: 00431

RUTA: MEX-085

AÑO: 2020

LUGAR	ESTACION				CLASIFICACION VEHICULAR EN PORCIENTO										COORDENADAS					
	KM	TE	SC	TDPA	M	A	B	C2	C3	T3S2	T3S3	T3S2R4	OTROS	A	B	C	K'	D	LATITUD	LONGITUD
México	0.00																			
Lim. Edos. Term. CDMX Ppia. Méx.	9.89																			
T. Der. Pirámides	26.93	1	1	11063	5.0	85.8	0.4	4.3	0.3	2.0	1.3	0.2	0.7	90.8	0.4	8.8	0.067	0.504	19.620741	-99.005242
T. Der. Pirámides	26.93	1	2	10905	5.0	85.5	0.4	4.3	0.3	2.1	1.3	0.3	0.8	90.5	0.4	9.1	0.055	0.504	19.620733	-99.005272
Venta de Carpio	27.00	3	1	26388	3.7	87.6	0.7	4.6	0.8	1.2	1.1	0.1	0.2	91.3	0.7	8.0	0.073	0.504	19.623435	-99.003875
Venta de Carpio	27.00	3	2	25882	3.7	87.6	0.7	4.7	0.8	1.2	1.0	0.1	0.2	91.3	0.7	8.0	0.064	0.504	19.623443	-99.004004
T. Der. Aut. México - Pachuca (Cuota)	37.52	1	1	30527	3.7	90.4	0.2	4.3	0.6	0.5	0.3	0.0	0.0	94.1	0.2	5.7	0.075	0.504	19.706517	-98.977281
T. Der. Aut. México - Pachuca (Cuota)	37.52	1	2	31063	3.8	90.3	0.2	4.3	0.6	0.5	0.3	0.0	0.0	94.1	0.2	5.7	0.076	0.504	19.706578	-98.977404
T. Izq. Zumpango	44.68	1	1	14716	3.6	83.4	0.9	8.5	1.0	1.1	1.0	0.2	0.3	87.0	0.9	12.1	0.077	0.502	19.765111	-98.973401
T. Izq. Zumpango	44.68	1	2	14611	5.5	81.4	1.1	8.0	1.2	1.1	1.0	0.3	0.4	86.9	1.1	12.0	0.072	0.502	19.765110	-98.973380
T. Izq. Zumpango	44.68	3	1	9831	4.7	78.8	1.5	10.5	2.0	1.2	0.7	0.3	0.3	83.5	1.5	15.0	0.081	0.502	19.765558	-98.973379
T. Izq. Zumpango	44.68	3	2	9911	6.1	79.1	1.5	9.3	1.9	1.1	0.6	0.2	0.2	85.2	1.5	13.3	0.073	0.502	19.765556	-98.973447

CIUDAD DE MEXICO

2 CARR: México - Pachuca (Libre)

CLAVE: 00431

RUTA: MEX-085

AÑO: 2020

LUGAR	ESTACION				CLASIFICACION VEHICULAR EN PORCIENTO										COORDENADAS					
	KM	TE	SC	TDPA	M	A	B	C2	C3	T3S2	T3S3	T3S2R4	OTROS	A	B	C	K'	D	LATITUD	LONGITUD
Lim. Edos. Term. Méx. Ppia. Hgo.	49.30																			
Tizayuca	52.50	1	1	8254	7.1	80.7	2.5	7.1	1.0	0.8	0.4	0.1	0.3	87.8	2.5	9.7	0.083	0.512	19.827828	-98.977966
Tizayuca	52.50	1	2	7882	5.6	81.5	2.6	7.6	1.1	0.9	0.4	0.1	0.2	87.1	2.6	10.3	0.076	0.512	19.827804	-98.978240
Tizayuca	52.50	3	1	14147	5.4	83.2	1.6	5.5	1.2	1.1	1.5	0.3	0.2	88.6	1.6	9.8	0.084	0.500	19.855718	-98.970843
Tizayuca	52.50	3	2	14128	5.7	82.8	1.7	5.2	1.2	1.2	1.7	0.3	0.2	88.5	1.7	9.8	0.083	0.500	19.855775	-98.970918
T. C. México - Tizayuca (Cuota)	61.00	1	1	6761	5.0	82.7	2.9	6.6	1.1	0.7	0.4	0.2	0.4	87.7	2.9	9.4	0.080	0.528	19.888528	-98.937125
T. C. México - Tizayuca (Cuota)	61.00	1	2	6047	4.2	84.1	3.1	5.6	1.0	0.8	0.5	0.2	0.5	88.3	3.1	8.6	0.074	0.528	19.888673	-98.937260
T. C. México - Tizayuca (Cuota)	61.00	3	1	20605	0.6	87.0	2.7	5.8	1.3	1.6	0.6	0.3	0.1	87.6	2.7	9.7	0.084	0.508	19.888628	-98.936487
T. C. México - Tizayuca (Cuota)	61.00	3	2	21255	0.7	85.6	3.1	6.4	1.4	1.7	0.7	0.3	0.1	86.3	3.1	10.6	0.106	0.508	19.889050	-98.936911
X. C. Arco Norte de La Ciudad de México	64.20	1	1	21229	0.5	86.4	2.6	6.2	1.4	1.9	0.5	0.4	0.1	86.9	2.6	10.5	0.084	0.525	19.929629	-98.892573
X. C. Arco Norte de La Ciudad de México	64.20	1	2	19198	0.5	86.4	2.6	6.2	1.4	1.9	0.5	0.4	0.1	86.9	2.6	10.5	0.078	0.525	19.929829	-98.892812
X. C. Arco Norte de La Ciudad de México	64.20	3	1	19320	0.8	86.4	3.8	5.6	0.8	1.6	0.5	0.3	0.2	87.2	3.8	9.0	0.087	0.512	19.930093	-98.891966
X. C. Arco Norte de La Ciudad de México	64.20	3	2	20271	0.8	84.9	4.3	6.4	0.9	1.6	0.6	0.3	0.2	85.7	4.3	10.0	0.085	0.512	19.930215	-98.892255
Ent. Colonia	83.97	1	1	38494	1.1	90.0	2.0	4.5	0.5	1.3	0.4	0.1	0.1	91.1	2.0	6.9	0.082	0.520	20.057028	-98.785922
Ent. Colonia	83.97	1	2	35190	0.8	89.3	2.3	5.1	0.5	1.4	0.4	0.1	0.1	90.1	2.3	7.6	0.091	0.520	20.057252	-98.786342
X. C. Libramiento de Pachuca	86.50	1	1	28318	0.8	88.8	3.2	3.8	0.7	1.2	1.0	0.3	0.2	89.6	3.2	7.2	0.085	0.502	20.100000	-98.763767
X. C. Libramiento de Pachuca	86.50	1	2	28132	0.6	87.6	3.6	4.4	0.8	1.4	1.1	0.3	0.2	88.2	3.6	8.2	0.071	0.502	20.100103	-98.763887
Pachuca	94.00																			

3 CARR: México - Puebla (Libre)

CLAVE: 00449

RUTA: MEX-150

AÑO: 2020

LUGAR	ESTACION				CLASIFICACION VEHICULAR EN PORCIENTO										COORDENADAS					
	KM	TE	SC	TDPA	M	A	B	C2	C3	T3S2	T3S3	T3S2R4	OTROS	A	B	C	K'	D	LATITUD	LONGITUD
México	0.00																			
Lim. Edos. Term. CDMX Ppia. Méx.	18.66																			
T. Der. Chalco	28.85	1	1	32233	3.2	89.2	0.5	4.7	0.8	0.6	0.6	0.2	0.2	92.4	0.5	7.1	0.073	0.516	19.311281	-98.901484
T. Der. Chalco	28.85	1	2	34526	3.8	87.8	0.5	5.1	0.9	0.8	0.7	0.2	0.2	91.6	0.5	7.9	0.067	0.516	19.311517	-98.901507
T. Der. Chalco (Central)	28.85	3	1	20053	4.7	89.2	0.3	4.1	0.7	0.4	0.5	0.0	0.1	93.9	0.3	5.8	0.076	0.505	19.311670	-98.900249
T. Der. Chalco (Lateral)	28.85	3	1	7792	4.3	88.6	0.6	3.2	0.8	0.8	0.9	0.4	0.4	92.9	0.6	6.5	0.081	0.509	19.311669	-98.900248
T. Der. Chalco (Central)	28.85	3	2	19641	4.7	89.2	0.3	4.1	0.7	0.4	0.5	0.0	0.1	93.9	0.3	5.8	0.074	0.505	19.311670	-98.900249
T. Der. Chalco (Lateral)	28.85	3	2	7510	5.0	86.4	0.8	4.0	0.9	0.9	1.0	0.4	0.6	91.4	0.8	7.8	0.083	0.509	19.311668	-98.900250
Ixtapaluca	31.06	3	1	24857	4.2	88.5	0.7	2.9	0.9	0.8	0.8	0.6	0.6	92.7	0.7	6.6	0.067	0.520	19.315184	-98.880120
Ixtapaluca	31.06	3	2	22922	4.3	87.9	0.7	3.8	0.8	0.8	0.7	0.5	0.5	92.2	0.7	7.1	0.072	0.520	19.315182	-98.880141
T. Der. C. México - Puebla (Cuota) (Río Frío)	62.06	1	0	2689	3.2	74.4	2.6	8.7	5.1	5.3	0.7	0.0	0.0	77.6	2.6	19.8	0.091	0.533	19.352462	-98.667595
T. Der. C. México - Puebla (Cuota) (Río Frío)	62.06	3	0	1004	2.8	78.5	1.4	8.1	4.8	4.0	0.4	0.0	0.0	81.3	1.4	17.3	0.092	0.505	19.352633	-98.667365

CIUDAD DE MEXICO

3 CARR: México - Puebla (Libre)

CLAVE: 00449

RUTA: MEX-150

AÑO: 2020

LUGAR	ESTACION				CLASIFICACION VEHICULAR EN PORCIENTO												COORDENADAS			
	KM	TE	SC	TDPA	M	A	B	C2	C3	T3S2	T3S3	T3S2R4	OTROS	A	B	C	K'	D	LATITUD	LONGITUD
Lim. Edos. Term. Méx. Ppia. Pue.	62.98																			
San Martín Texmelucan	70.00	1	0	10835	11.9	74.6	0.6	11.0	0.5	0.6	0.6	0.1	0.1	86.5	0.6	12.9	0.090	0.524	19.283044	-98.437002
X. C. México - Puebla (Cuota)	74.10	3	1	8737	5.8	78.9	0.9	9.4	0.9	2.1	1.3	0.3	0.4	84.7	0.9	14.4	0.095	0.500	19.272006	-98.432267
X. C. México - Puebla (Cuota)	74.10	3	2	8749	5.8	78.9	0.9	9.4	0.9	2.1	1.3	0.3	0.4	84.7	0.9	14.4	0.089	0.500	19.272005	-98.432158
Huejotzingo	88.00	1	1	5743	3.6	80.8	1.3	11.2	1.0	1.3	0.6	0.1	0.1	84.4	1.3	14.3	0.084	0.502	19.170696	-98.412409
Huejotzingo	88.00	1	2	5794	3.6	81.0	1.3	11.1	1.0	1.2	0.6	0.1	0.1	84.6	1.3	14.1	0.089	0.502	19.170751	-98.412321
Huejotzingo	88.00	3	1	5955	1.6	84.9	1.1	9.1	1.3	1.4	0.4	0.1	0.1	86.5	1.1	12.4	0.112	0.504	19.149228	-98.401208
Huejotzingo	88.00	3	2	6042	1.6	84.8	1.1	9.2	1.2	1.4	0.5	0.1	0.1	86.4	1.1	12.5	0.103	0.504	19.149341	-98.401193
T. Izq. Aeropuerto	92.80	1	1	5709	5.3	83.4	2.0	5.5	1.9	1.4	0.3	0.2	0.0	88.7	2.0	9.3	0.116	0.507	19.134233	-98.375393
T. Izq. Aeropuerto	92.80	1	2	5867	5.4	83.8	2.0	5.2	1.8	1.3	0.3	0.2	0.0	89.2	2.0	8.8	0.093	0.507	19.134281	-98.375335
T. Der. Cholula	101.00	1	1	12616	1.9	87.9	0.3	4.9	0.9	1.7	1.8	0.2	0.4	89.8	0.3	9.9	0.087	0.523	19.072072	-98.316261
T. Der. Cholula	101.00	1	2	11506	2.0	87.9	0.3	4.9	0.9	1.7	1.7	0.2	0.4	89.9	0.3	9.8	0.077	0.523	19.072256	-98.316299
T. Der. Cholula	101.00	3	1	17180	2.2	89.8	0.3	4.3	0.9	1.4	0.6	0.2	0.3	92.0	0.3	7.7	0.081	0.510	19.071470	-98.315446
T. Der. Cholula	101.00	3	2	16497	2.1	89.8	0.3	4.3	0.9	1.5	0.6	0.2	0.3	91.9	0.3	7.8	0.087	0.510	19.071570	-98.315394
Puebla	131.00																			

4 CARR: México - Toluca

CLAVE: 00447

RUTA: MEX-015

AÑO: 2020

LUGAR	ESTACION				CLASIFICACION VEHICULAR EN PORCIENTO												COORDENADAS			
	KM	TE	SC	TDPA	M	A	B	C2	C3	T3S2	T3S3	T3S2R4	OTROS	A	B	C	K'	D	LATITUD	LONGITUD
México	0.00																			
Ent. Constituyentes y Reforma	12.84	3	1	33992	2.9	88.6	1.4	4.6	0.6	1.1	0.6	0.1	0.1	91.5	1.4	7.1	0.067	0.507	19.391553	-99.239066
Ent. Constituyentes y Reforma	12.84	3	2	35060	2.8	88.7	1.5	4.4	0.6	1.2	0.6	0.1	0.1	91.5	1.5	7.0	0.073	0.507	19.391568	-99.239076
T. Der. Cuajimalpa (1° Acceso)	20.56	1	1	36366	1.2	90.1	1.4	4.5	0.8	1.1	0.7	0.1	0.1	91.3	1.4	7.3	0.081	0.508	19.362595	-99.286059
T. Der. Cuajimalpa (1° Acceso)	20.56	1	2	37799	1.1	90.1	1.7	4.4	0.7	1.2	0.6	0.1	0.1	91.2	1.7	7.1	0.091	0.508	19.362613	-99.286059
T. Izq. Desierto de Los Leones	23.96	1	1	34712	0.8	87.1	1.5	7.6	1.0	1.2	0.6	0.1	0.1	87.9	1.5	10.6	0.102	0.505	19.336978	-99.311588
T. Izq. Desierto de Los Leones	23.96	1	2	35496	0.8	87.4	1.4	7.4	1.0	1.2	0.6	0.1	0.1	88.2	1.4	10.4	0.086	0.505	19.336976	-99.311616
Lim. Edos. Term. CDMX Ppia. Méx.	33.44																			
T. Der. Huixquilucan	33.98	1	1	23768	0.9	90.5	1.0	5.2	0.6	1.1	0.5	0.1	0.1	91.4	1.0	7.6	0.087	0.540	19.299806	-99.370106
T. Der. Huixquilucan	33.98	1	2	20242	2.0	80.2	3.0	11.5	1.5	1.1	0.5	0.1	0.1	82.2	3.0	14.8	0.107	0.540	19.299833	-99.370117
T. C. Constituyentes - La Marquesa (Cuota)	35.28																			
T. C. La Marquesa - Lerma (Cuota)	36.98																			
X. C. Amomolulco - Stgo. Tianguistenco	47.26	1	1	46127	1.4	85.4	2.0	5.4	1.3	2.7	0.7	0.8	0.3	86.8	2.0	11.2	0.084	0.533	19.284841	-99.491024
X. C. Amomolulco - Stgo. Tianguistenco	47.26	1	2	44264	1.1	85.2	2.4	5.5	1.6	2.0	1.0	0.8	0.4	86.3	2.4	11.3	0.081	0.533	19.281698	-99.491471
T. Der. Lerma - Izq. San Pedro Tultepec	51.71	1	1	66274	2.7	85.9	1.9	4.7	1.0	2.2	0.8	0.5	0.3	88.6	1.9	9.5	0.076	0.510	19.281298	-99.514135

CIUDAD DE MEXICO

4 CARR: México - Toluca

CLAVE: 00447

RUTA: MEX-015

AÑO: 2020

LUGAR	ESTACION				CLASIFICACION VEHICULAR EN PORCIENTO										COORDENADAS					
	KM	TE	SC	TDPA	M	A	B	C2	C3	T3S2	T3S3	T3S2R4	OTROS	A	B	C	K'	D	LATITUD	LONGITUD
T. Der. Lerma - Izq. San Pedro Tultepec	51.71	1	2	63177	3.4	85.1	2.0	4.7	1.1	1.9	0.9	0.5	0.4	88.5	2.0	9.5	0.081	0.510	19.280922	-99.514099
T. Izq. San Mateo Atenco (Baja)	52.00	3	1	14718	6.0	67.1	4.4	12.6	3.2	4.6	0.8	1.0	0.3	73.1	4.4	22.5	0.074	0.527	19.286199	-99.530173
T. Izq. San Mateo Atenco (Alta)	52.00	3	1	71568	4.6	95.0	0.1	0.1	0.1	0.1	0.0	0.0	0.0	99.6	0.1	0.3	0.074	0.524	19.285401	-99.528880
T. Izq. San Mateo Atenco (Alta)	52.00	3	2	64437	5.3	94.3	0.1	0.1	0.1	0.1	0.0	0.0	0.0	99.6	0.1	0.3	0.083	0.524	19.285255	-99.528853
T. Izq. San Mateo Atenco (Baja)	52.00	3	2	13223	22.9	53.0	4.4	11.8	1.7	3.6	0.8	1.5	0.3	75.9	4.4	19.7	0.069	0.527	19.284851	-99.528969
X. C. Libramiento de Toluca (Baja)	62.20	1	1	6716	11.7	67.8	3.3	11.1	1.7	3.4	0.4	0.5	0.1	79.5	3.3	17.2	0.091	0.544	19.288583	-99.627411
X. C. Libramiento de Toluca (Alta)	62.20	1	1	60761	1.3	98.3	0.1	0.1	0.1	0.0	0.0	0.0	0.1	99.6	0.1	0.3	0.076	0.523	19.288244	-99.627076
X. C. Libramiento de Toluca (Baja)	62.20	1	2	8022	9.4	66.8	3.4	15.0	1.5	3.3	0.4	0.0	0.2	76.2	3.4	20.4	0.085	0.544	19.287659	-99.626147
X. C. Libramiento de Toluca (Alta)	62.20	1	2	54737	0.8	99.2	0.0	0.0	0.0	0.0	0.0	0.0	0.0	100.0	0.0	0.0	0.075	0.523	19.287820	-99.626119
Toluca	66.00																			

5 CARR: San Gregorio - Oaxtepec

CLAVE: 00901

RUTA: MEX-113

AÑO: 2020

LUGAR	ESTACION				CLASIFICACION VEHICULAR EN PORCIENTO										COORDENADAS					
	KM	TE	SC	TDPA	M	A	B	C2	C3	T3S2	T3S3	T3S2R4	OTROS	A	B	C	K'	D	LATITUD	LONGITUD
San Gregorio	0.00	3	0	15610	5.1	85.8	0.9	6.6	0.5	0.3	0.7	0.0	0.1	90.9	0.9	8.2	0.077	0.507	19.253217	-99.056221
X. C. Milpa Alta - San Lorenzo Tlacoyucan	9.00	3	0	7981	2.9	86.6	2.0	5.8	0.9	0.4	0.6	0.3	0.5	89.5	2.0	8.5	0.091	0.511	19.181158	-99.029906
Lim. Edos. Term. CDMX Ppia. Méx.	18.80																			
Lim. Edos. Term. Méx. Ppia. Mor.	28.50																			
T. Der. San Felipe Neri	33.80	1	0	4276	2.3	86.5	1.3	8.0	1.1	0.5	0.3	0.0	0.0	88.8	1.3	9.9	0.156	0.502	19.039218	-98.938544
T. Der. Tlalnepantla	40.50	3	0	4370	5.4	85.8	0.3	7.9	0.4	0.1	0.1	0.0	0.0	91.2	0.3	8.5	0.134	0.503	19.005738	-98.990416
Tlayacapan	48.50	3	0	9630	7.9	86.5	0.3	4.2	0.3	0.2	0.6	0.0	0.0	94.4	0.3	5.3	0.100	0.529	18.952011	-98.980465
T. Der. Yautepec	53.00	1	0	11148	7.7	86.3	0.2	4.8	0.2	0.2	0.5	0.0	0.1	94.0	0.2	5.8	0.102	0.504	18.921496	-98.970998
T. Der. Yautepec	53.00	3	1	6618	12.6	80.5	0.4	5.5	0.4	0.3	0.1	0.1	0.1	93.1	0.4	6.5	0.098	0.515	18.921349	-98.971173
T. Der. Yautepec	53.00	3	2	6232	12.7	80.2	0.4	5.7	0.4	0.3	0.1	0.1	0.1	92.9	0.4	6.7	0.100	0.515	18.921359	-98.971104
Oaxtepec	56.00																			

6 CARR: México - Cuernavaca (Cuota)

CLAVE: 00041

RUTA: MEX-095D

AÑO: 2020

LUGAR	ESTACION				CLASIFICACION VEHICULAR EN PORCIENTO										COORDENADAS					
	KM	TE	SC	TDPA	M	A	B	C2	C3	T3S2	T3S3	T3S2R4	OTROS	A	B	C	K'	D	LATITUD	LONGITUD
México	0.00																			
T. C. México - Cuernavaca (Libre)	18.65	3	1	21293	2.1	84.3	4.9	2.9	1.4	2.1	0.5	0.9	0.9	86.4	4.9	8.7	0.082	0.537	19.274420	-99.165232
T. C. México - Cuernavaca (Libre)	18.65	3	2	26227	2.1	84.2	4.9	2.9	1.5	2.1	0.5	0.9	0.9	86.3	4.9	8.8	0.092	0.537	19.274441	-99.165184
Plaza de Cobro Tlalpan	23.36	2	1	12388	2.1	84.9	3.5	2.7	2.0	2.8	0.6	1.0	0.4	87.0	3.5	9.5	0.145	0.500	19.242519	-99.148716



CIUDAD DE MEXICO

6 CARR: México - Cuernavaca (Cuota)

CLAVE: 00041

RUTA: MEX-095D

AÑO: 2020

LUGAR	ESTACION				CLASIFICACION VEHICULAR EN PORCIENTO										COORDENADAS					
	KM	TE	SC	TDPA	M	A	B	C2	C3	T3S2	T3S3	T3S2R4	OTROS	A	B	C	K'	D	LATITUD	LONGITUD
Plaza de Cobro Tlalpan	23.36	2	2	12388	2.1	84.9	3.5	2.7	2.0	2.8	0.6	1.0	0.4	87.0	3.5	9.5	0.145	0.500	19.242519	-99.148716
Lim. Edos. Term. CDMX Ppia. Mor.	47.09																			
Tres Marias	53.00	1	1	16413	0.7	85.9	5.0	2.6	1.4	2.4	0.4	1.0	0.6	86.6	5.0	8.4	0.153	0.503	19.053964	-99.241661
Tres Marias	53.00	1	2	16639	0.7	85.7	5.0	2.7	1.5	2.4	0.4	1.0	0.6	86.4	5.0	8.6	0.176	0.503	19.053957	-99.241723
Tres Marias	53.00	3	1	16917	0.5	84.3	5.7	3.4	1.4	2.6	0.4	1.1	0.6	84.8	5.7	9.5	0.106	0.501	19.053777	-99.241757
Tres Marias	53.00	3	2	16953	0.6	84.5	5.6	3.3	1.4	2.5	0.4	1.1	0.6	85.1	5.6	9.3	0.094	0.501	19.053783	-99.241638
T. Izq. Cuautla	70.50	1	1	16726	0.8	84.4	5.3	4.2	1.2	2.4	0.7	0.8	0.2	85.2	5.3	9.5	0.120	0.517	19.012080	-99.166641
T. Izq. Cuautla	70.50	1	2	15654	1.0	84.3	5.3	4.1	1.2	2.4	0.6	0.8	0.3	85.3	5.3	9.4	0.102	0.517	19.011989	-99.166594
T. Izq. A Glorieta La Paloma	79.26	1	1	15858	0.9	83.8	5.0	4.5	1.2	2.6	0.8	0.9	0.3	84.7	5.0	10.3	0.148	0.513	18.970327	-99.239797
T. Izq. A Glorieta La Paloma	79.26	1	2	15049	0.9	83.7	5.1	4.5	1.2	2.6	0.8	0.9	0.3	84.6	5.1	10.3	0.159	0.513	18.970389	-99.239726
Libramiento de Cuernavaca	80.50	1	1	18130	2.2	83.7	2.8	5.5	1.2	2.4	1.3	0.5	0.4	85.9	2.8	11.3	0.137	0.505	18.969117	-99.238121
Libramiento de Cuernavaca	80.50	1	2	18474	2.3	81.6	3.2	6.1	1.4	2.8	1.5	0.6	0.5	83.9	3.2	12.9	0.107	0.505	18.969270	-99.237975

7 CARR: México - Pachuca (Cuota)

CLAVE: 00432

RUTA: MEX-085D

AÑO: 2020

LUGAR	ESTACION				CLASIFICACION VEHICULAR EN PORCIENTO										COORDENADAS					
	KM	TE	SC	TDPA	M	A	B	C2	C3	T3S2	T3S3	T3S2R4	OTROS	A	B	C	K'	D	LATITUD	LONGITUD
T. C. México - Pachuca (Libre)	0.00																			
Lim. Edos. Term. CDMX Ppia. Méx.	9.86																			
Plaza de Cobro Ojo de Agua	25.00	2	1	28734	1.4	87.3	4.8	2.7	1.6	1.6	0.2	0.3	0.1	88.7	4.8	6.5	0.081	0.500	19.618737	-99.029315
Plaza de Cobro Ojo de Agua	25.00	2	2	28734	1.4	87.3	4.8	2.7	1.6	1.6	0.2	0.3	0.1	88.7	4.8	6.5	0.081	0.500	19.618737	-99.029315
Plaza de Cobro Ojo de Agua	25.00	3	1	34195	1.4	83.6	2.4	8.4	1.6	1.8	0.3	0.3	0.2	85.0	2.4	12.6	0.089	0.505	19.618738	-99.029291
Plaza de Cobro Ojo de Agua	25.00	3	2	33403	1.5	83.6	2.4	8.3	1.6	1.8	0.3	0.3	0.2	85.1	2.4	12.5	0.079	0.505	19.618844	-99.029516
T. Izq. Tecámac	35.62	3	1	29530	1.7	84.9	2.2	6.8	1.5	2.1	0.4	0.3	0.1	86.6	2.2	11.2	0.083	0.504	19.702575	-98.970075
T. Izq. Tecámac	35.62	3	2	30036	1.5	83.5	2.2	7.4	1.9	2.7	0.4	0.3	0.1	85.0	2.2	12.8	0.086	0.504	19.702676	-98.970203
Lim. Edos. Term. Méx. Ppia. Hgo.	49.60																			
X. C. Otumba - Tizayuca	53.45	1	1	22779	1.7	84.4	2.8	6.5	1.5	2.0	0.2	0.4	0.5	86.1	2.8	11.1	0.096	0.524	19.833704	-98.950765
X. C. Otumba - Tizayuca	53.45	1	2	20682	1.8	84.5	2.7	6.4	1.6	2.0	0.3	0.4	0.3	86.3	2.7	11.0	0.090	0.524	19.833706	-98.950838
T. C. México - Pachuca (Libre)	60.50	1	1	19855	1.1	84.2	3.2	6.1	1.7	2.5	0.5	0.4	0.3	85.3	3.2	11.5	0.094	0.508	19.886241	-98.937279
T. C. México - Pachuca (Libre)	60.50	1	2	20488	1.2	83.7	2.9	7.1	1.6	2.2	0.6	0.4	0.3	84.9	2.9	12.2	0.108	0.508	19.886247	-98.937358

CIUDAD DE MEXICO

8 CARR: México - Puebla (Cuota)

CLAVE: 00450

RUTA: MEX-150D

AÑO: 2020

LUGAR	ESTACION				CLASIFICACION VEHICULAR EN PORCIENTO										COORDENADAS					
	KM	TE	SC	TDPA	M	A	B	C2	C3	T3S2	T3S3	T3S2R4	OTROS	A	B	C	K'	D	LATITUD	LONGITUD
México	0.00																			
Ent Concordía (T. Izq. Los Reyes) Lateral	17.00	3	1	8921	7.3	74.9	0.6	14.6	1.4	0.8	0.3	0.1	0.0	82.2	0.6	17.2	0.091	0.719	19.357493	-98.994253
Ent Concordía (T. Izq. Los Reyes) Central	17.00	3	1	74105	2.5	89.9	1.3	3.6	0.7	1.1	0.7	0.1	0.1	92.4	1.3	6.3	0.077	0.502	19.357639	-98.994168
Ent Concordía (T. Izq. Los Reyes) Lateral	17.00	3	2	22857	4.9	75.2	2.9	12.3	1.4	2.3	0.6	0.2	0.2	80.1	2.9	17.0	0.076	0.719	19.357753	-98.993961
Ent Concordía (T. Izq. Los Reyes) Central	17.00	3	2	72825	2.0	90.9	1.2	3.6	0.5	1.1	0.5	0.1	0.1	92.9	1.2	5.9	0.074	0.502	19.357712	-98.994093
Lim. Edos. Term. CDMX Ppia. Méx.	17.51																			
Av. Las Torres (Eje 6) Central	19.27	1	1	73845	2.5	88.7	1.2	4.5	0.8	1.2	0.9	0.1	0.1	91.2	1.2	7.6	0.075	0.505	19.346204	-98.981754
Av. Las Torres (Eje 6) Lateral	19.27	1	1	20314	2.2	84.3	2.1	9.2	0.9	0.6	0.5	0.1	0.1	86.5	2.1	11.4	0.078	0.500	19.346102	-98.981926
Av. Las Torres (Eje 6) Central	19.27	1	2	75596	2.7	90.9	0.7	3.9	0.6	0.6	0.4	0.1	0.1	93.6	0.7	5.7	0.073	0.505	19.346265	-98.981677
Av. Las Torres (Eje 6) Lateral	19.27	1	2	20323	5.2	73.1	3.2	13.8	1.4	2.4	0.4	0.3	0.2	78.3	3.2	18.5	0.078	0.500	19.346356	-98.981575
Av. Las Torres (Eje 6) Lateral	19.27	3	1	23158	3.7	82.7	1.3	8.7	0.8	1.6	0.8	0.1	0.3	86.4	1.3	12.3	0.073	0.545	19.344917	-98.980678
Av. Las Torres (Eje 6) Central	19.27	3	1	74676	2.6	89.1	1.1	4.5	0.8	1.1	0.6	0.1	0.1	91.7	1.1	7.2	0.077	0.505	19.345031	-98.980558
Av. Las Torres (Eje 6) Central	19.27	3	2	76195	2.6	89.5	0.9	4.4	0.7	1.0	0.7	0.1	0.1	92.1	0.9	7.0	0.073	0.505	19.345107	-98.980456
Av. Las Torres (Eje 6) Lateral	19.27	3	2	19318	3.1	66.1	4.7	20.1	1.8	2.7	0.9	0.3	0.3	69.2	4.7	26.1	0.064	0.545	19.345131	-98.980284
Eje 10 Sur (Lateral)	22.80	1	1	25566	3.9	81.9	1.9	10.7	0.6	0.4	0.4	0.1	0.1	85.8	1.9	12.3	0.080	0.542	19.323288	-98.958314
Eje 10 Sur (Central)	22.80	1	1	68459	2.7	88.9	1.2	4.7	0.7	1.0	0.6	0.1	0.1	91.6	1.2	7.2	0.086	0.505	19.323343	-98.958209
Eje 10 Sur (Lateral)	22.80	1	2	20317	3.6	74.3	3.1	13.8	1.4	2.3	1.0	0.2	0.3	77.9	3.1	19.0	0.071	0.542	19.323464	-98.957857
Eje 10 Sur (Central)	22.80	1	2	70050	2.6	89.0	1.1	4.6	0.7	1.2	0.6	0.1	0.1	91.6	1.1	7.3	0.081	0.505	19.323454	-98.958013
Eje 10 Sur (Central)	22.80	3	1	33772	1.3	89.4	1.7	4.2	1.0	1.7	0.4	0.2	0.1	90.7	1.7	7.6	0.082	0.506	19.322758	-98.957635
Eje 10 Sur (Lateral)	22.80	3	1	26636	3.3	82.7	2.3	9.6	0.7	0.8	0.4	0.1	0.1	86.0	2.3	11.7	0.082	0.603	19.322361	-98.957772
Eje 10 Sur (Central)	22.80	3	2	34708	1.3	89.4	1.7	4.1	1.0	1.7	0.5	0.2	0.1	90.7	1.7	7.6	0.081	0.506	19.322984	-98.957414
Eje 10 Sur (Lateral)	22.80	3	2	42202	3.6	85.6	0.9	7.6	0.5	0.7	0.8	0.1	0.2	89.2	0.9	9.9	0.082	0.603	19.323081	-98.957313
X. C. Santa Bárbara - Izúcar de Matamoros (Lateral)	32.14	1	1	9084	1.9	84.6	0.8	9.8	0.9	1.1	0.5	0.2	0.2	86.5	0.8	12.7	0.079	0.660	19.292828	-98.883188
X. C. Santa Bárbara - Izúcar de Matamoros (Central)	32.14	1	1	33337	1.8	86.0	2.5	5.0	1.2	2.5	0.5	0.4	0.1	87.8	2.5	9.7	0.104	0.504	19.292985	-98.883216
X. C. Santa Bárbara - Izúcar de Matamoros (Central)	32.14	1	2	35976	1.4	87.4	2.1	5.0	1.4	2.0	0.3	0.3	0.1	88.8	2.1	9.1	0.077	0.504	19.293102	-98.883242
X. C. Santa Bárbara - Izúcar de Matamoros (Lateral)	32.14	1	2	17645	1.8	88.8	0.8	6.0	0.9	1.3	0.2	0.1	0.1	90.6	0.8	8.6	0.082	0.660	19.293400	-98.883286
X. C. Santa Bárbara - Izúcar de Matamoros (Lateral)	32.14	3	1	1304	5.9	68.4	4.8	9.1	1.8	4.6	0.8	4.2	0.4	74.3	4.8	20.9	0.086	0.507	19.293553	-98.879999
X. C. Santa Bárbara - Izúcar de Matamoros (Central)	32.14	3	1	10557	0.5	79.2	5.0	6.4	2.1	5.4	0.5	0.8	0.1	79.7	5.0	15.3	0.095	0.510	19.293763	-98.880058
X. C. Santa Bárbara - Izúcar de Matamoros (Lateral)	32.14	3	2	1268	1.7	73.5	5.6	7.2	1.5	3.7	1.5	4.3	1.0	75.2	5.6	19.2	0.105	0.507	19.294023	-98.880138
X. C. Santa Bárbara - Izúcar de Matamoros (Central)	32.14	3	2	10977	0.4	79.0	5.0	6.6	2.2	5.4	0.5	0.7	0.2	79.4	5.0	15.6	0.114	0.510	19.293892	-98.880082
Plaza de Cobro San Marcos	33.30	2	1	13228	0.5	73.8	4.5	5.6	4.1	7.5	0.7	2.9	0.4	74.3	4.5	21.2	0.068	0.500	19.296272	-98.870712
Plaza de Cobro San Marcos	33.30	2	2	13228	0.5	73.8	4.5	5.6	4.1	7.5	0.7	2.9	0.4	74.3	4.5	21.2	0.068	0.500	19.296272	-98.870712
T. Izq. Río Frío	63.79	3	1	12579	0.9	77.3	6.4	5.6	2.3	4.7	0.9	1.6	0.3	78.2	6.4	15.4	0.086	0.510	19.351005	-98.666111
T. Izq. Río Frío	63.79	3	2	12089	0.9	77.3	6.3	5.6	2.3	4.7	0.9	1.6	0.4	78.2	6.3	15.5	0.102	0.510	19.351108	-98.666167
Lim. Edos. Term. Méx. Ppia. Pue.	65.46																			

CIUDAD DE MEXICO

8 CARR: México - Puebla (Cuota)

CLAVE: 00450

RUTA: MEX-150D

AÑO: 2020

LUGAR	ESTACION				CLASIFICACION VEHICULAR EN PORCIENTO										COORDENADAS					
	KM	TE	SC	TDPA	M	A	B	C2	C3	T3S2	T3S3	T3S2R4	OTROS	A	B	C	K'	D	LATITUD	LONGITUD
T. Izq. Tlaxcala	90.61	1	1	20008	1.0	79.3	5.2	5.5	2.2	4.0	0.7	1.8	0.3	80.3	5.2	14.5	0.078	0.505	19.267618	-98.424992
T. Izq. Tlaxcala	90.61	1	2	20406	1.0	79.1	5.5	5.2	1.9	4.3	0.9	1.6	0.5	80.1	5.5	14.4	0.087	0.505	19.267720	-98.424899
T. Izq. Tlaxcala	90.61	3	1	24155	0.8	66.8	6.1	9.4	3.0	8.5	1.6	3.4	0.4	67.6	6.1	26.3	0.093	0.535	19.267067	-98.424447
T. Izq. Tlaxcala	90.61	3	2	21027	1.0	65.1	6.5	9.4	3.2	8.9	1.9	3.6	0.4	66.1	6.5	27.4	0.077	0.535	19.267173	-98.424339
Plaza de Cobro San Martín Texmelucan	91.17	2	1	20515	0.7	68.3	3.9	5.4	4.8	10.7	1.3	4.2	0.7	69.0	3.9	27.1	0.068	0.500	19.241190	-98.385786
Plaza de Cobro San Martín Texmelucan	91.17	2	2	20515	0.7	68.3	3.9	5.4	4.8	10.7	1.3	4.2	0.7	69.0	3.9	27.1	0.068	0.500	19.241190	-98.385786
Lim. Edos. Term. Pue. Ppia. Tlax.	99.11																			
T. Der. Aeropuerto Internacional De Puebla	101.10	3	1	29523	0.7	71.9	6.6	5.0	3.7	6.9	1.3	3.0	0.9	72.6	6.6	20.8	0.095	0.508	19.215966	-98.357730
T. Der. Aeropuerto Internacional De Puebla	101.10	3	2	28515	0.8	71.6	6.6	5.0	3.7	6.9	1.3	3.1	1.0	72.4	6.6	21.0	0.089	0.508	19.216034	-98.357664
X. C. Xoxtla - Huactzinco	107.98	1	1	31911	0.7	71.7	7.3	6.2	2.6	6.3	1.5	2.8	0.9	72.4	7.3	20.3	0.086	0.506	19.174812	-98.307690
X. C. Xoxtla - Huactzinco	107.98	1	2	32726	0.7	69.3	7.9	6.7	3.1	6.7	1.7	2.9	1.0	70.0	7.9	22.1	0.083	0.506	19.174900	-98.307604
X. C. Xoxtla - Huactzinco	107.98	3	1	41695	0.9	75.7	3.8	7.8	2.0	5.6	1.4	2.1	0.7	76.6	3.8	19.6	0.074	0.514	19.174705	-98.307555
X. C. Xoxtla - Huactzinco	107.98	3	2	39043	0.7	76.1	3.9	7.7	2.1	5.4	1.4	2.0	0.7	76.8	3.9	19.3	0.074	0.514	19.174795	-98.307473
Lim. Edos. Term. Tlax. Ppia. Pue.	108.00																			
Anillo Periferico Poniente de Puebla (Central)	114.00	3	1	23058	0.8	72.1	6.2	5.6	3.7	7.2	0.9	2.9	0.6	72.9	6.2	20.9	0.072	0.510	19.131843	-98.268661
Anillo Periferico Poniente de Puebla (Lateral)	114.00	3	1	29428	1.1	80.3	4.4	6.7	2.1	3.7	0.8	0.7	0.2	81.4	4.4	14.2	0.080	0.534	19.131705	-98.268833
Anillo Periferico Poniente de Puebla (Central)	114.00	3	2	25433	0.9	71.3	6.2	5.7	3.9	7.5	0.9	3.0	0.6	72.2	6.2	21.6	0.079	0.510	19.132048	-98.268445
Anillo Periferico Poniente de Puebla (Lateral)	114.00	3	2	25437	1.1	80.0	4.5	6.8	2.2	3.7	0.8	0.7	0.2	81.1	4.5	14.4	0.074	0.534	19.132164	-98.268328
Boulevard Hermanos Serdán	120.46	3	1	53539	0.7	79.5	4.9	6.1	3.4	3.3	0.5	1.4	0.2	80.2	4.9	14.9	0.074	0.522	19.095516	-98.227255
Boulevard Hermanos Serdán	120.46	3	2	48503	0.7	77.8	5.2	6.5	4.0	3.5	0.5	1.6	0.2	78.5	5.2	16.3	0.079	0.522	19.095587	-98.227202
X. C. Puebla - Tlaxcala (Lateral)	123.00	3	1	24237	0.7	84.6	7.6	3.6	1.6	1.1	0.5	0.1	0.2	85.3	7.6	7.1	0.082	0.547	19.086554	-98.203721
X. C. Puebla - Tlaxcala (Central)	123.00	3	1	51463	1.4	85.6	2.2	3.4	1.2	3.1	1.7	0.5	0.9	87.0	2.2	10.8	0.080	0.500	19.086699	-98.203698
X. C. Puebla - Tlaxcala (Lateral)	123.00	3	2	20079	0.9	83.4	7.9	3.9	1.9	1.2	0.5	0.1	0.2	84.3	7.9	7.8	0.102	0.547	19.086939	-98.203625
X. C. Puebla - Tlaxcala (Central)	123.00	3	2	51469	1.4	84.6	2.5	3.6	1.2	3.3	2.0	0.6	0.8	86.0	2.5	11.5	0.090	0.500	19.086805	-98.203670
T. C. Puebla - Tlaxcala	124.90																			

9 CARR: México - Toluca (Cuota)

CLAVE: 00446

RUTA: MEX-015D

AÑO: 2020

LUGAR	ESTACION				CLASIFICACION VEHICULAR EN PORCIENTO										COORDENADAS					
	KM	TE	SC	TDPA	M	A	B	C2	C3	T3S2	T3S3	T3S2R4	OTROS	A	B	C	K'	D	LATITUD	LONGITUD
T. C. México - Toluca (Libre) (Puente Conafrut)	0.00	3	1	28588	0.4	87.5	3.6	4.8	0.5	1.2	1.0	0.6	0.4	87.9	3.6	8.5	0.075	0.506	19.385756	-99.243803
T. C. México - Toluca (Libre) (Puente Conafrut)	0.00	3	2	27851	0.5	87.0	3.6	5.2	0.5	1.2	1.0	0.6	0.4	87.5	3.6	8.9	0.116	0.506	19.385755	-99.243801
Plaza de Cobro Santa Fe	3.50	1	1	27443	0.4	89.8	3.0	4.1	0.3	1.4	0.7	0.2	0.1	90.2	3.0	6.8	0.074	0.506	19.363362	-99.267301
Plaza de Cobro Santa Fe	3.50	1	2	26798	0.5	89.4	3.0	4.1	0.3	1.5	0.8	0.3	0.1	89.9	3.0	7.1	0.116	0.506	19.363363	-99.267297
Plaza de Cobro Santa Fe	3.50	3	1	20923	0.4	88.9	3.3	4.0	0.4	1.3	1.0	0.4	0.3	89.3	3.3	7.4	0.090	0.518	19.359315	-99.273822

CIUDAD DE MEXICO

9 CARR: México - Toluca (Cuota)

CLAVE: 00446

RUTA: MEX-015D

AÑO: 2020

LUGAR	ESTACION				CLASIFICACION VEHICULAR EN PORCIENTO										COORDENADAS					
	KM	TE	SC	TDPA	M	A	B	C2	C3	T3S2	T3S3	T3S2R4	OTROS	A	B	C	K'	D	LATITUD	LONGITUD
Plaza de Cobro Santa Fe	3.50	3	2	22474	0.5	88.0	3.5	4.4	0.4	1.4	1.1	0.4	0.3	88.5	3.5	8.0	0.111	0.518	19.359228	-99.273765
Plaza de Cobro La Venta	10.00	1	1	22630	0.4	88.1	3.3	4.8	0.4	1.3	1.1	0.3	0.3	88.5	3.3	8.2	0.091	0.523	19.332809	-99.314146
Plaza de Cobro La Venta	10.00	1	2	24822	0.4	87.9	3.6	4.4	0.4	1.5	1.2	0.3	0.3	88.3	3.6	8.1	0.114	0.523	19.332818	-99.314171
Plaza de Cobro La Venta	10.00	2	1	15980	0.9	90.6	2.9	2.5	0.9	1.4	0.1	0.6	0.1	91.5	2.9	5.6	0.089	0.500	19.332816	-99.314301
Plaza de Cobro La Venta	10.00	2	2	15980	0.9	90.6	2.9	2.5	0.9	1.4	0.1	0.6	0.1	91.5	2.9	5.6	0.089	0.500	19.332816	-99.314301
Plaza de Cobro La Venta	10.00	3	1	26216	0.4	88.3	3.5	3.3	0.7	2.2	0.7	0.6	0.3	88.7	3.5	7.8	0.098	0.500	19.332825	-99.314255
Plaza de Cobro La Venta	10.00	3	2	26223	0.4	88.3	3.5	3.3	0.7	2.2	0.7	0.6	0.3	88.7	3.5	7.8	0.102	0.500	19.332847	-99.314278
Lim. Edos. Term. CDMX Ppia. Méx.	18.66																			
T. C. México - Toluca (Libre) (La Marquesa)	19.20	1	1	26115	0.5	88.7	3.5	3.2	0.6	2.0	0.7	0.5	0.3	89.2	3.5	7.3	0.085	0.502	19.301382	-99.367384
T. C. México - Toluca (Libre) (La Marquesa)	19.20	1	2	25889	0.5	88.7	3.5	3.2	0.6	2.0	0.7	0.5	0.3	89.2	3.5	7.3	0.086	0.502	19.301310	-99.367425

10 CARR: México - Querétaro (Cuota)

CLAVE: 00411

RUTA: MEX-057-MEX-057D

AÑO: 2020

LUGAR	ESTACION				CLASIFICACION VEHICULAR EN PORCIENTO										COORDENADAS					
	KM	TE	SC	TDPA	M	A	B	C2	C3	T3S2	T3S3	T3S2R4	OTROS	A	B	C	K'	D	LATITUD	LONGITUD
México	0.00																			
Lim. Edos. Term. CDMX Ppia. Méx.	11.30																			
Lechería	29.41																			
Plaza de Cobro Tepetzotlán	43.01	2	1	24889	0.6	71.1	4.4	5.1	3.9	11.1	0.7	2.4	0.7	71.7	4.4	23.9	0.077	0.500	19.715361	-99.207448
Plaza de Cobro Tepetzotlán	43.01	2	2	24889	0.6	71.1	4.4	5.1	3.9	11.1	0.7	2.4	0.7	71.7	4.4	23.9	0.077	0.500	19.715361	-99.207448
Ent. Jorobas	56.18	1	1	27512	1.2	73.5	3.2	7.1	2.1	8.8	1.6	1.6	0.9	74.7	3.2	22.1	0.089	0.507	19.825510	-99.248711
Ent. Jorobas	56.18	1	2	28375	1.1	61.0	5.7	9.7	3.5	12.8	2.2	3.1	0.9	62.1	5.7	32.2	0.081	0.507	19.825295	-99.248856
Ent. Jorobas	56.18	3	1	38329	1.4	60.4	5.1	8.6	3.4	15.1	2.0	3.1	0.9	61.8	5.1	33.1	0.076	0.504	19.825531	-99.248756
Ent. Jorobas	56.18	3	2	38977	1.4	60.4	5.1	8.6	3.4	15.1	2.0	3.1	0.9	61.8	5.1	33.1	0.083	0.504	19.825316	-99.248900
Lim. Edos. Term. Méx. Ppia. Hgo.	59.85																			
T. Der. Tepeji del Río	69.36	1	1	28384	1.2	67.6	4.4	8.3	2.5	11.7	1.3	2.5	0.5	68.8	4.4	26.8	0.086	0.500	19.884267	-99.343075
T. Der. Tepeji del Río	69.36	1	2	28379	1.2	67.6	4.4	8.3	2.5	11.7	1.3	2.5	0.5	68.8	4.4	26.8	0.081	0.500	19.884140	-99.343246
T. Der. Tepeji del Río	69.36	3	1	26039	1.0	64.1	5.2	7.4	2.7	14.5	1.6	3.0	0.5	65.1	5.2	29.7	0.080	0.527	19.884287	-99.343087
T. Der. Tepeji del Río	69.36	3	2	21956	1.4	68.2	4.1	5.3	2.6	12.7	2.5	2.6	0.6	69.6	4.1	26.3	0.071	0.527	19.884170	-99.343249
T. Izq. Jilotepec	83.75	1	1	26348	1.4	65.6	5.1	4.0	6.0	13.5	1.0	2.6	0.8	67.0	5.1	27.9	0.085	0.529	19.982136	-99.437771
T. Izq. Jilotepec	83.75	1	2	22014	1.4	65.6	5.1	4.0	6.0	13.5	1.0	2.6	0.8	67.0	5.1	27.9	0.071	0.529	19.981011	-99.439293
T. Izq. Jilotepec	83.75	3	1	26964	1.3	63.6	4.7	6.3	2.8	14.6	2.3	3.5	0.9	64.9	4.7	30.4	0.095	0.508	19.982159	-99.437794
T. Izq. Jilotepec	83.75	3	2	27901	1.3	63.6	4.7	6.3	2.7	14.6	2.3	3.5	1.0	64.9	4.7	30.4	0.105	0.508	19.981035	-99.439302
Lim. Edos. Term. Hgo. Ppia. Méx.	86.00																			
X. C. Libramiento Norte de La Ciudad de México (Cuota)	89.44	3	1	22635	4.4	54.5	9.1	5.5	2.6	14.6	2.2	5.6	1.5	58.9	9.1	32.0	0.077	0.508	19.998391	-99.489806

CIUDAD DE MEXICO

10 CARR: México - Querétaro (Cuota)

CLAVE: 00411

RUTA: MEX-057-MEX-057D

AÑO: 2020

LUGAR	ESTACION				CLASIFICACION VEHICULAR EN PORCIENTO										COORDENADAS					
	KM	TE	SC	TDPA	M	A	B	C2	C3	T3S2	T3S3	T3S2R4	OTROS	A	B	C	K'	D	LATITUD	LONGITUD
X. C. Libramiento Norte de La Ciudad de México (Cuota)	89.44	3	2	24763	4.4	54.6	9.1	5.5	2.5	14.6	2.2	5.6	1.5	59.0	9.1	31.9	0.105	0.508	19.998155	-99.490022
T. Der. Palos Altos	97.80	1	1	28530	4.7	66.6	3.3	5.6	2.2	11.6	2.5	2.7	0.8	71.3	3.3	25.4	0.078	0.503	20.036572	-99.562056
T. Der. Palos Altos	97.80	1	2	28897	4.7	66.6	3.3	5.6	2.2	11.6	2.5	2.6	0.9	71.3	3.3	25.4	0.105	0.503	20.036255	-99.562140
X. C. Jilotepec - Maravillas	107.00	1	1	27725	4.4	62.8	4.5	4.1	5.2	14.4	0.7	3.1	0.8	67.2	4.5	28.3	0.078	0.502	20.083257	-99.628296
X. C. Jilotepec - Maravillas	107.00	1	2	28002	4.5	62.8	4.4	4.1	5.2	14.4	0.7	3.1	0.8	67.3	4.4	28.3	0.104	0.502	20.082966	-99.628366
X. C. Jilotepec - Maravillas	107.00	3	1	26800	3.7	58.0	5.1	6.9	2.9	16.6	2.2	4.0	0.6	61.7	5.1	33.2	0.080	0.513	20.083261	-99.628345
X. C. Jilotepec - Maravillas	107.00	3	2	28365	3.7	58.1	5.1	6.9	2.8	16.6	2.2	4.0	0.6	61.8	5.1	33.1	0.104	0.513	20.082977	-99.628409
T. Izq. Encinillas	121.70	1	1	27799	4.3	71.7	2.7	4.1	2.3	9.5	1.5	3.3	0.6	76.0	2.7	21.3	0.079	0.511	20.150949	-99.739272
T. Izq. Encinillas	121.70	1	2	29120	4.0	63.4	3.1	5.0	3.1	12.8	3.1	4.9	0.6	67.4	3.1	29.5	0.104	0.511	20.150805	-99.739469
T. Izq. Aculco	125.00	1	1	26214	1.3	65.4	4.4	3.9	5.7	14.5	0.8	3.1	0.9	66.7	4.4	28.9	0.079	0.505	20.101791	-99.696583
T. Izq. Aculco	125.00	1	2	26738	1.1	62.1	4.7	4.6	5.9	16.2	1.0	3.5	0.9	63.2	4.7	32.1	0.107	0.505	20.101658	-99.696781
T. Izq. Aculco	125.00	3	1	25791	1.3	66.5	4.5	4.1	5.2	13.7	0.9	3.0	0.8	67.8	4.5	27.7	0.079	0.504	20.101819	-99.696596
T. Izq. Aculco	125.00	3	2	26228	1.6	62.0	5.5	4.5	5.6	15.3	1.2	3.4	0.9	63.6	5.5	30.9	0.106	0.504	20.101678	-99.696809
Polotitlán	133.00	1	1	25737	2.7	58.1	5.1	6.8	3.1	16.8	2.2	4.4	0.8	60.8	5.1	34.1	0.078	0.503	20.227038	-99.812011
Polotitlán	133.00	1	2	26100	2.7	57.1	5.0	6.9	3.6	17.3	2.6	4.1	0.7	59.8	5.0	35.2	0.106	0.503	20.226909	-99.812153
Lim. Edos. Term. Méx. Ppia. Qro.	145.50																			
Plaza de Cobro Palmillas	145.80	2	1	16963	0.4	58.6	2.7	6.2	5.4	19.3	1.7	4.3	1.4	59.0	2.7	38.3	0.077	0.500	20.296112	-99.929069
Plaza de Cobro Palmillas	145.80	2	2	16963	0.4	58.6	2.7	6.2	5.4	19.3	1.7	4.3	1.4	59.0	2.7	38.3	0.077	0.500	20.296112	-99.929069
T. Izq. Toluca	148.50	1	1	30673	2.6	55.7	4.6	7.1	3.6	18.8	2.6	4.3	0.7	58.3	4.6	37.1	0.079	0.500	20.298554	-99.932818
T. Izq. Toluca	148.50	1	2	30700	2.6	55.7	4.6	7.1	3.6	18.8	2.6	4.3	0.7	58.3	4.6	37.1	0.107	0.500	20.298275	-99.933074
T. Izq. Toluca	148.50	3	1	30915	2.9	64.0	4.9	5.9	3.3	13.0	1.9	3.2	0.9	66.9	4.9	28.2	0.071	0.504	20.299417	-99.933621
T. Izq. Toluca	148.50	3	2	30337	4.2	60.8	5.0	6.0	3.5	14.3	1.8	3.5	0.9	65.0	5.0	30.0	0.099	0.504	20.299220	-99.933922
T. Der. Portezuelo	151.53	3	1	37123	2.9	63.1	3.8	5.1	4.8	14.6	0.9	4.1	0.7	66.0	3.8	30.2	0.087	0.517	20.326713	-99.935173
T. Der. Portezuelo	151.53	3	2	35493	2.7	58.0	4.3	5.9	5.2	17.5	1.0	4.6	0.8	60.7	4.3	35.0	0.082	0.517	20.326628	-99.935431
T. Der. Poniente San Juan del Río	164.10	3	1	35634	2.9	62.8	3.9	5.2	4.6	14.9	0.9	4.1	0.7	65.7	3.9	30.4	0.087	0.517	20.370769	-99.986930
T. Der. Poniente San Juan del Río	164.10	3	2	32988	2.9	62.8	3.9	5.2	4.6	14.9	0.9	4.1	0.7	65.7	3.9	30.4	0.082	0.517	20.370487	-99.986944
La Estancia	169.40	1	1	32801	4.1	60.1	5.4	14.2	2.5	9.5	1.7	2.0	0.5	64.2	5.4	30.4	0.081	0.517	20.427711	-100.056758
La Estancia	169.40	1	2	35409	4.1	60.1	5.4	14.2	2.5	9.5	1.7	2.0	0.5	64.2	5.4	30.4	0.081	0.517	20.427561	-100.056992
T. Izq. Acámbaro	170.45	3	1	35902	4.5	66.8	3.2	7.8	2.3	11.2	1.5	2.2	0.5	71.3	3.2	25.5	0.072	0.516	20.441740	-100.071744
T. Izq. Acámbaro	170.45	3	2	38594	4.4	64.1	3.5	8.5	2.4	12.6	1.7	2.3	0.5	68.5	3.5	28.0	0.071	0.516	20.441539	-100.071927
T. Der. Libramiento Nororiente de Querétaro (Cuota)	192.50	1	1	35924	1.2	70.2	3.9	2.9	4.6	12.4	1.8	2.2	0.8	71.4	3.9	24.7	0.084	0.521	20.560416	-100.229920
T. Der. Libramiento Nororiente de Querétaro (Cuota)	192.50	1	2	39529	1.1	67.1	4.3	3.1	5.4	13.6	2.1	2.4	0.9	68.2	4.3	27.5	0.083	0.521	20.560190	-100.229880
T. Der. Libramiento Nororiente de Querétaro (Cuota)	192.50	3	1	54500	1.1	78.8	2.2	8.2	2.1	5.1	1.2	0.9	0.4	79.9	2.2	17.9	0.070	0.512	20.560426	-100.229962
T. Der. Libramiento Nororiente de Querétaro (Cuota)	192.50	3	2	51692	1.4	75.1	3.6	8.2	2.4	6.3	1.4	1.1	0.5	76.5	3.6	19.9	0.067	0.512	20.560203	-100.229924
T. Der. Libramiento de Querétaro a San Luis Potosí	207.00	1	1	57327	1.0	81.2	2.6	6.2	1.6	4.5	1.6	0.7	0.6	82.2	2.6	15.2	0.097	0.519	20.582159	-100.361800

CIUDAD DE MEXICO

10 CARR: México - Querétaro (Cuota)

CLAVE: 00411

RUTA: MEX-057-MEX-057D

AÑO: 2020

LUGAR	ESTACION				CLASIFICACION VEHICULAR EN PORCIENTO														COORDENADAS	
	KM	TE	SC	TDPA	M	A	B	C2	C3	T3S2	T3S3	T3S2R4	OTROS	A	B	C	K'	D	LATITUD	LONGITUD
T. Der. Libramiento de Querétaro a San Luis Potosí	207.00	1	2	62750	1.0	81.0	2.6	6.2	1.7	4.6	1.6	0.7	0.6	82.0	2.6	15.4	0.082	0.519	20.581814	-100.361756
T. Der. Libramiento de Querétaro a San Luis Potosí	207.00	3	1	56187	0.9	83.1	1.5	5.6	2.0	4.6	1.2	0.7	0.4	84.0	1.5	14.5	0.084	0.525	20.582155	-100.361814
T. Der. Libramiento de Querétaro a San Luis Potosí	207.00	3	2	62980	0.9	82.0	1.6	5.3	2.2	5.4	1.2	1.0	0.4	82.9	1.6	15.5	0.084	0.525	20.581814	-100.361774
Querétaro	211.60																			

11 CARR: Chalco - Mixquic

CLAVE: 00171

RUTA: EM-CDMX

AÑO: 2020

LUGAR	ESTACION				CLASIFICACION VEHICULAR EN PORCIENTO														COORDENADAS	
	KM	TE	SC	TDPA	M	A	B	C2	C3	T3S2	T3S3	T3S2R4	OTROS	A	B	C	K'	D	LATITUD	LONGITUD
Chalco	0.00	3	1	12313	6.1	88.3	0.3	4.0	0.7	0.4	0.2	0.0	0.0	94.4	0.3	5.3	0.073	0.515	19.250807	-98.903207
Chalco	0.00	3	2	13087	7.8	87.5	0.2	3.0	0.7	0.4	0.4	0.0	0.0	95.3	0.2	4.5	0.078	0.515	19.250813	-98.903214
Lim. Edos. Term. Méx. Ppia. CDMX	8.00																			
Mixquic	10.00	1	0	6854	10.6	82.2	0.3	4.9	0.6	1.1	0.2	0.0	0.1	92.8	0.3	6.9	0.083	0.508	19.225858	-98.964842

12 CARR: Chalco - Tláhuac

CLAVE: 00170

RUTA: EM-CDMX

AÑO: 2020

LUGAR	ESTACION				CLASIFICACION VEHICULAR EN PORCIENTO														COORDENADAS	
	KM	TE	SC	TDPA	M	A	B	C2	C3	T3S2	T3S3	T3S2R4	OTROS	A	B	C	K'	D	LATITUD	LONGITUD
Chalco	0.00	3	1	9125	6.3	83.8	0.7	6.6	1.0	0.9	0.5	0.0	0.2	90.1	0.7	9.2	0.084	0.507	19.263309	-98.903895
Chalco	0.00	3	2	8889	5.5	83.7	1.1	7.1	1.1	0.7	0.6	0.0	0.2	89.2	1.1	9.7	0.083	0.507	19.263315	-98.903900
Lim. Edos. Term. Méx. Ppia. CDMX	7.50																			
Tláhuac	12.00	1	1	10498	4.7	83.0	0.7	6.9	1.5	1.3	1.0	0.4	0.5	87.7	0.7	11.6	0.081	0.501	19.265855	-98.998904
Tláhuac	12.00	1	2	10533	4.7	81.5	0.7	8.2	1.5	1.4	1.1	0.4	0.5	86.2	0.7	13.1	0.081	0.501	19.265853	-98.998899

13 CARR: T. C. (México - Mixquic) - San Pablo Atlazalpan

CLAVE: 00044

RUTA: EM-106-CDMX

AÑO: 2020

LUGAR	ESTACION				CLASIFICACION VEHICULAR EN PORCIENTO														COORDENADAS	
	KM	TE	SC	TDPA	M	A	B	C2	C3	T3S2	T3S3	T3S2R4	OTROS	A	B	C	K'	D	LATITUD	LONGITUD
T. C. México - Mixquic	0.00	3	0	7476	10.2	83.6	0.2	4.5	0.2	0.6	0.3	0.1	0.3	93.8	0.2	6.0	0.074	0.505	19.214421	-98.974235
Lim. Edos. Term. CDMX Ppia. Méx.	2.00																			
San Pablo Atlazalpan	7.00																			

CIUDAD DE MEXICO

14 CARR: Xalatlaco - El Ajusco

CLAVE: 00017

RUTA: EM-CDMX

AÑO: 2020

LUGAR	ESTACION				CLASIFICACION VEHICULAR EN PORCIENTO													COORDENADAS		
	KM	TE	SC	TDPA	M	A	B	C2	C3	T3S2	T3S3	T3S2R4	OTROS	A	B	C	K'	D	LATITUD	LONGITUD
T. C. Ent. Cruz de La Misión - San Nicolás Coatepec	0.00	3	0	1546	7.4	82.3	0.7	6.8	1.4	0.7	0.5	0.1	0.1	89.7	0.7	9.6	0.082	0.514	19.165064	-99.407456
Lim. Edos. Term. Méx. Ppia. CDMX	17.70																			
T. C. Circuito del Ajusco	27.60	1	0	764	7.4	82.0	0.5	8.5	0.8	0.5	0.2	0.1	0.0	89.4	0.5	10.1	0.085	0.516	19.208540	-99.275061

15 CARR: La Venta - Chamapa (Cuota)

CLAVE: 15014

RUTA: EM-D

AÑO: 2020

LUGAR	ESTACION				CLASIFICACION VEHICULAR EN PORCIENTO													COORDENADAS		
	KM	TE	SC	TDPA	M	A	B	C2	C3	T3S2	T3S3	T3S2R4	OTROS	A	B	C	K'	D	LATITUD	LONGITUD
T. C. México - Toluca	0.00																			
Plaza de Cobro La Venta	0.10	2	1	11094	0.6	85.9	0.6	4.6	2.5	4.4	0.3	0.8	0.3	86.5	0.6	12.9	0.090	0.500	19.348946	-99.306623
Plaza de Cobro La Venta	0.10	2	2	11094	0.6	85.9	0.6	4.6	2.5	4.4	0.3	0.8	0.3	86.5	0.6	12.9	0.090	0.500	19.348946	-99.306623
Plaza de Cobro La Venta	0.10	3	1	11128	0.9	81.5	1.8	7.0	2.1	4.8	0.5	1.0	0.4	82.4	1.8	15.8	0.091	0.511	19.348873	-99.306563
Plaza de Cobro La Venta	0.10	3	2	11642	2.1	80.4	1.9	7.2	2.6	4.0	0.6	0.9	0.3	82.5	1.9	15.6	0.127	0.511	19.348923	-99.306708
Lim. Edos. Term. CDMX Tab. Ppia. Méx.	2.70																			
T. Der. Interlomas	5.60	3	1	20962	4.4	79.6	1.8	6.7	2.3	3.6	0.6	0.7	0.3	84.0	1.8	14.2	0.107	0.519	19.393141	-99.295856
T. Der. Interlomas	5.60	3	2	19437	4.4	79.7	1.7	6.7	2.3	3.6	0.6	0.7	0.3	84.1	1.7	14.2	0.146	0.519	19.393150	-99.295942
X. C. Naucalpan - Toluca	11.10	1	1	21026	5.5	79.6	1.5	6.3	2.2	3.6	0.5	0.5	0.3	85.1	1.5	13.4	0.101	0.515	19.437468	-99.297138
X. C. Naucalpan - Toluca	11.10	1	2	19819	5.5	78.8	1.6	6.8	2.2	3.7	0.5	0.6	0.3	84.3	1.6	14.1	0.142	0.515	19.437468	-99.297235

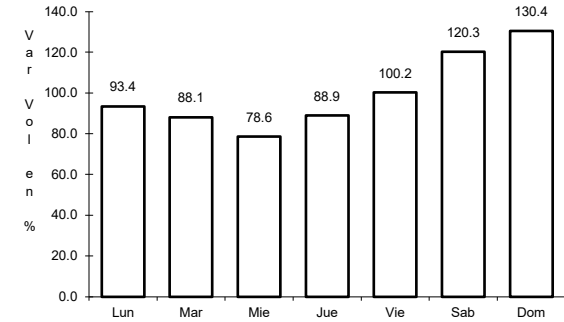
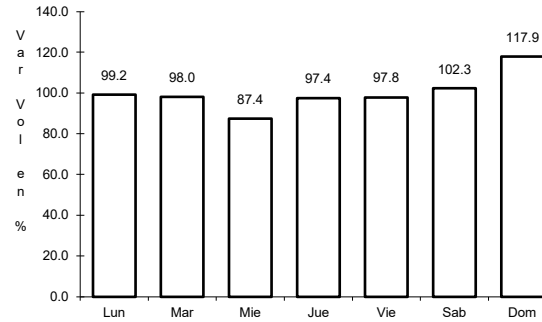
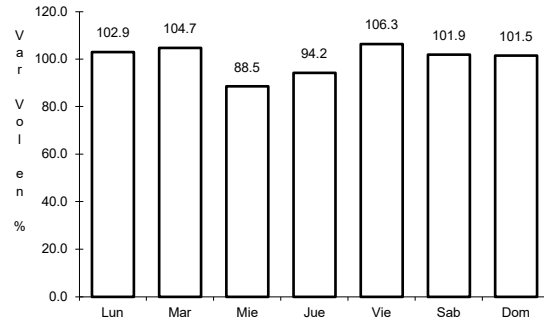




1 CARR: México - Cuernavaca (Libre)

CLAVE: 00040

RUTA: MEX-095



Km: 28.78 Tipo: 1 Sent: 1

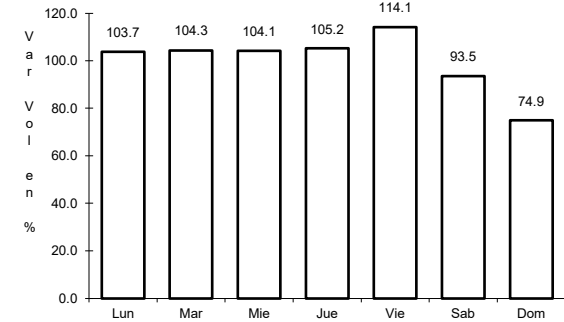
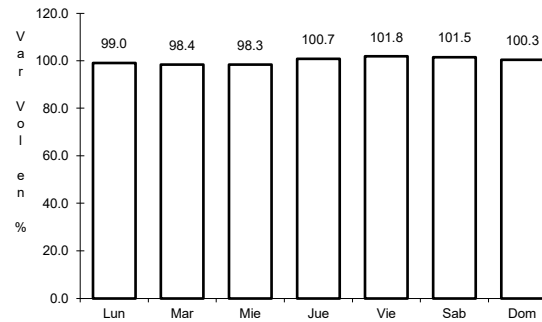
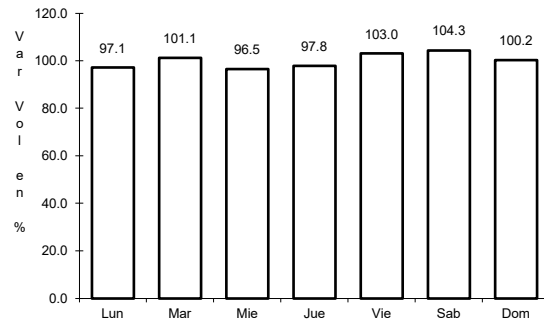
Km: 28.78 Tipo: 1 Sent: 2

Km: 51.40 Tipo: 3 Sent: 0

2 CARR: México - Pachuca (Libre)

CLAVE: 00431

RUTA: MEX-085



Km: 26.93 Tipo: 1 Sent: 1

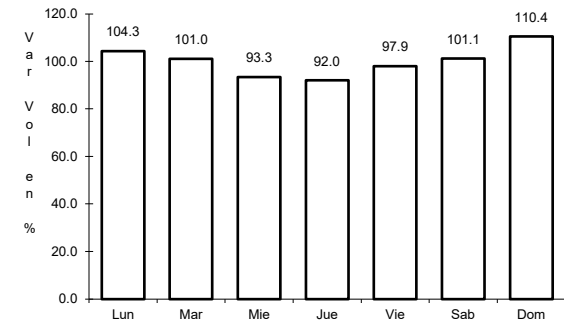
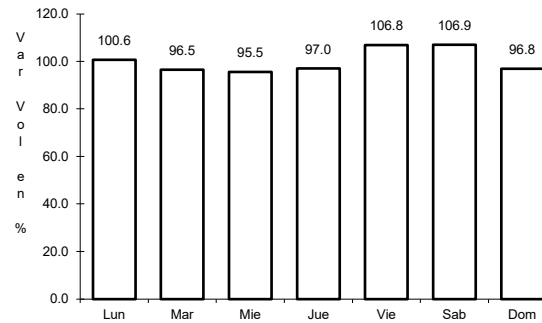
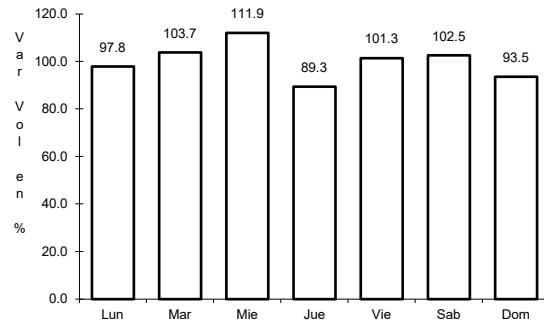
Km: 26.93 Tipo: 1 Sent: 2

Km: 86.50 Tipo: 1 Sent: 1

3 CARR: México - Puebla (Libre)

CLAVE: 00449

RUTA: MEX-150



Km: 28.85 Tipo: 1 Sent: 1

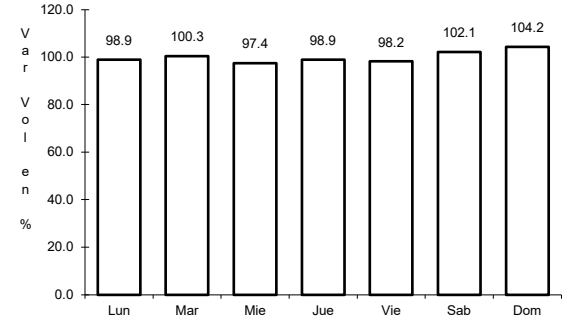
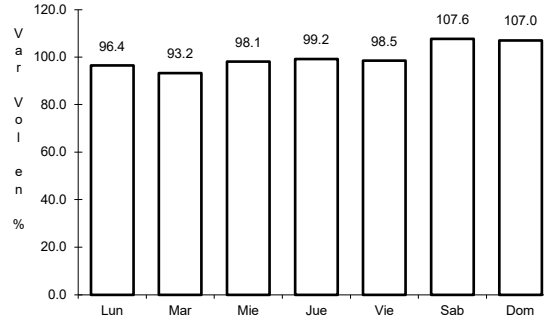
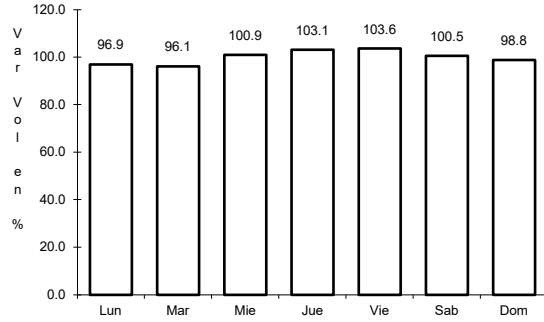
Km: 28.85 Tipo: 1 Sent: 2

Km: 62.06 Tipo: 1 Sent: 0

4 CARR: México - Toluca

CLAVE: 00447

RUTA: MEX-015



Km: 12.84

Tipo: 3

Sent: 1

Km: 12.84

Tipo: 3

Sent: 2

Km: 51.71

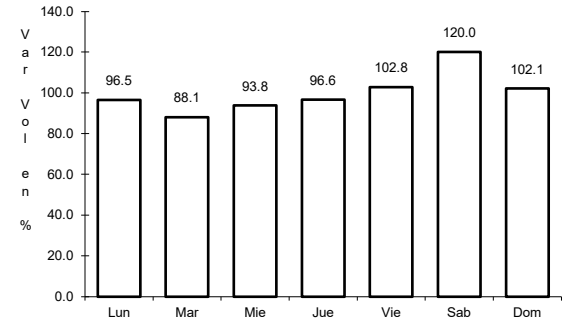
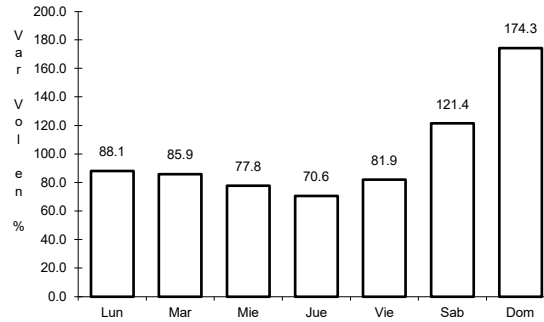
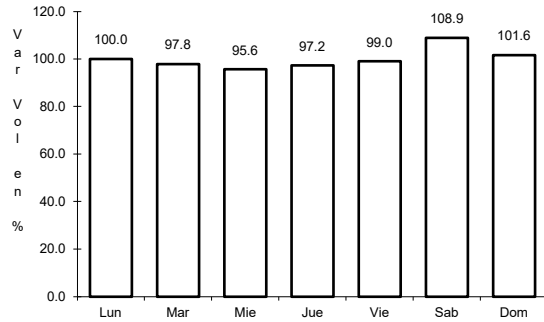
Tipo: 1

Sent: 1

5 CARR: San Gregorio - Oaxtepec

CLAVE: 00901

RUTA: MEX-113



Km: 0.00

Tipo: 3

Sent: 0

Km: 33.80

Tipo: 1

Sent: 0

Km: 53.00

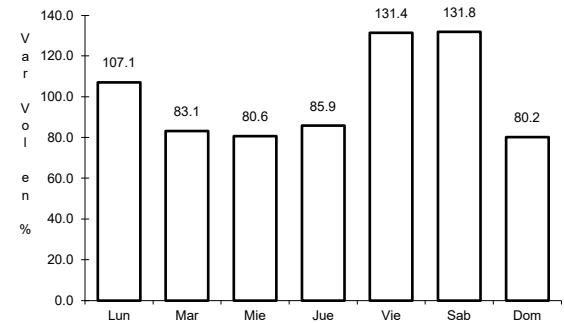
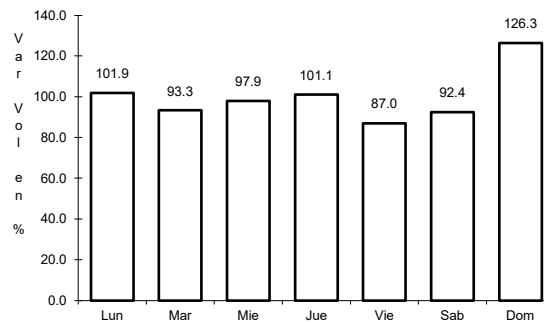
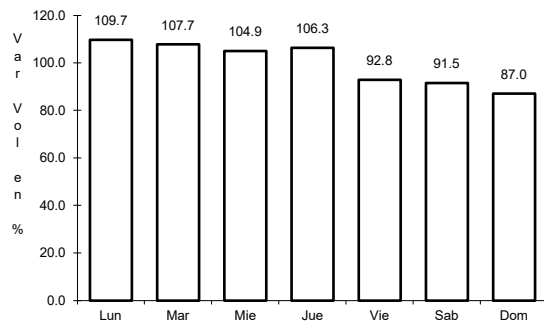
Tipo: 3

Sent: 1

6 CARR: México - Cuernavaca (Cuota)

CLAVE: 00041

RUTA: MEX-095D



Km: 18.65

Tipo: 3

Sent: 1

Km: 18.65

Tipo: 3

Sent: 2

Km: 70.50

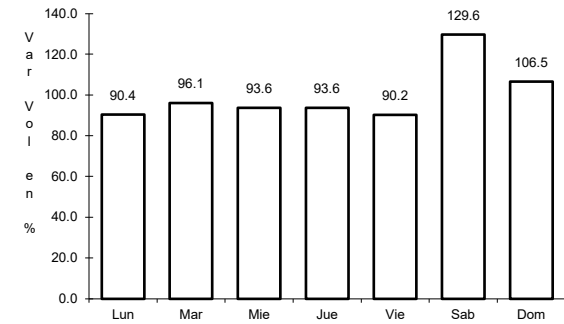
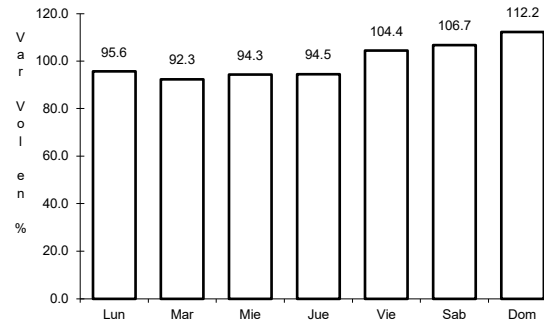
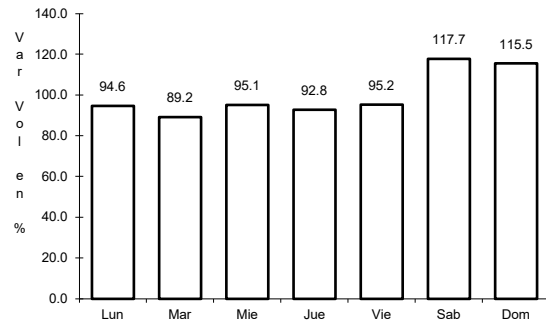
Tipo: 1

Sent: 1

7 CARR: México - Pachuca (Cuota)

CLAVE: 00432

RUTA: MEX-085D



Km: 25.00

Tipo: 3

Sent: 1

Km: 25.00

Tipo: 3

Sent: 2

Km: 60.50

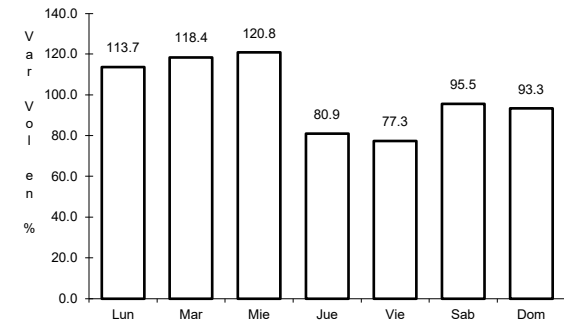
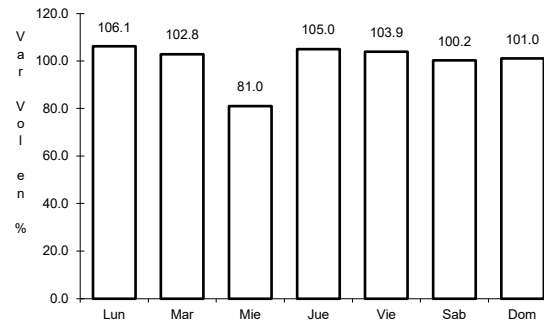
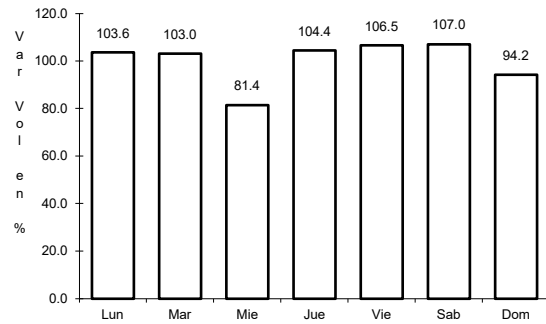
Tipo: 1

Sent: 1

8 CARR: México - Puebla (Cuota)

CLAVE: 00450

RUTA: MEX-150D



Km: 17.00

Tipo: 3

Sent: 1

Km: 17.00

Tipo: 3

Sent: 2

Km: 120.46

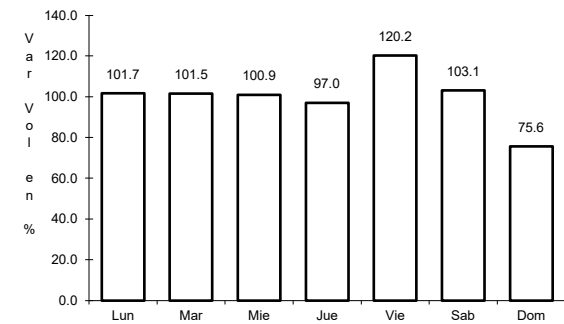
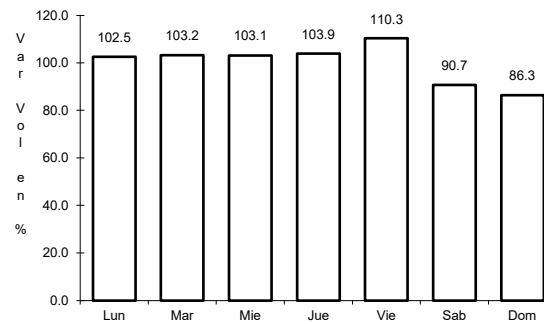
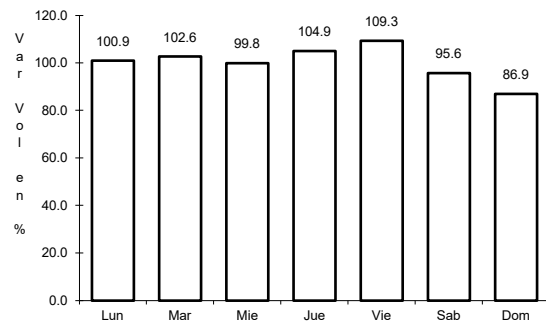
Tipo: 3

Sent: 1

9 CARR: México - Toluca (Cuota)

CLAVE: 00446

RUTA: MEX-015D



Km: 0.00

Tipo: 3

Sent: 1

Km: 0.00

Tipo: 3

Sent: 2

Km: 19.20

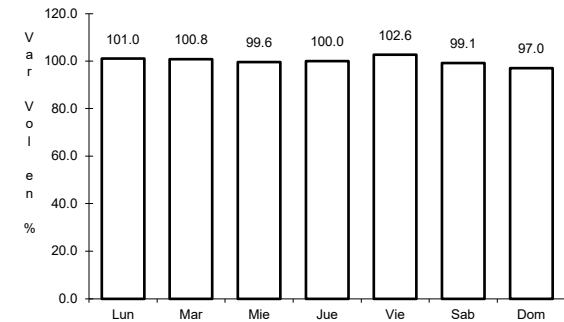
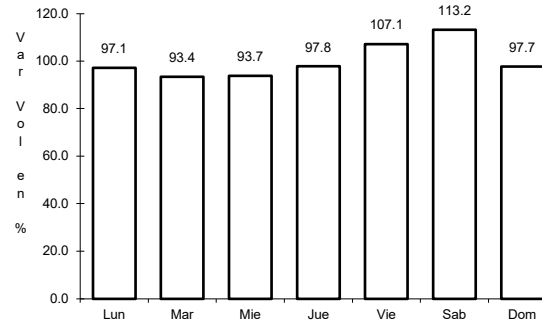
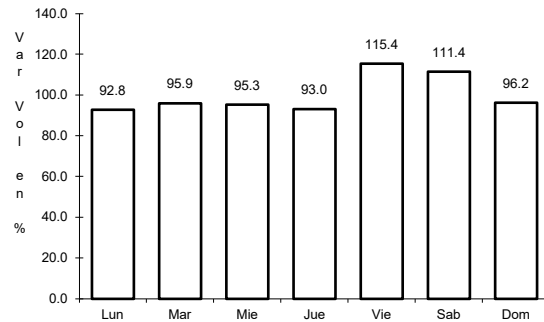
Tipo: 1

Sent: 1

10 CARR: México - Querétaro (Cuota)

CLAVE: 00411

RUTA: MEX-057-MEX-057D



Km: 56.18      Tipo: 1      Sent: 1

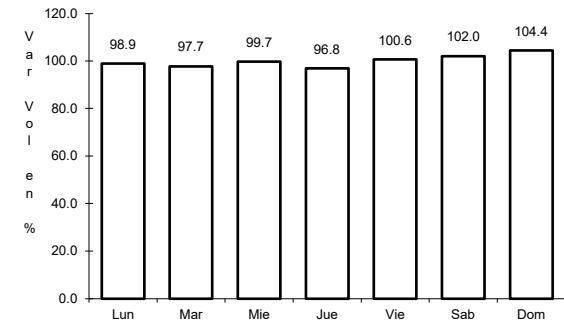
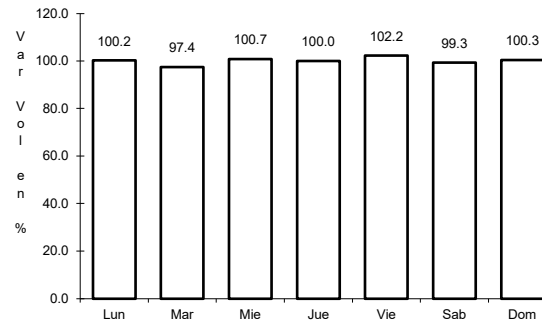
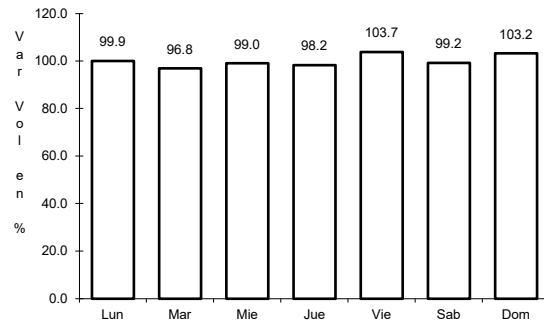
Km: 56.18      Tipo: 1      Sent: 2

Km: 207.00      Tipo: 3      Sent: 1

11 CARR: Chalco - Mixquic

CLAVE: 00171

RUTA: EM-CDMX



Km: 0.00      Tipo: 3      Sent: 1

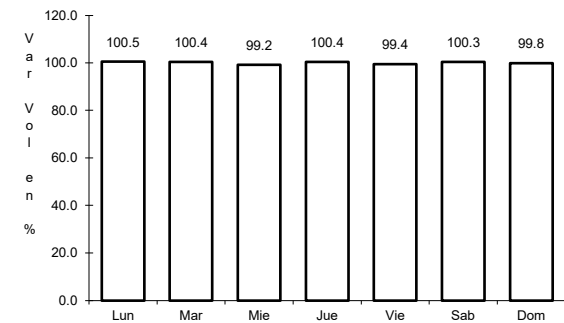
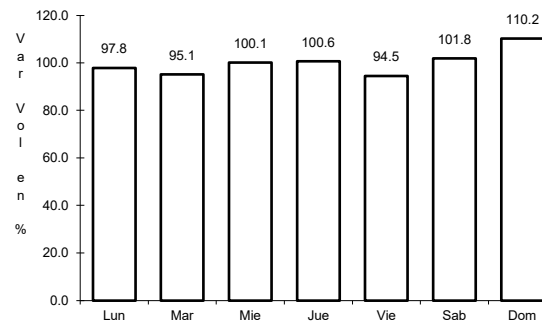
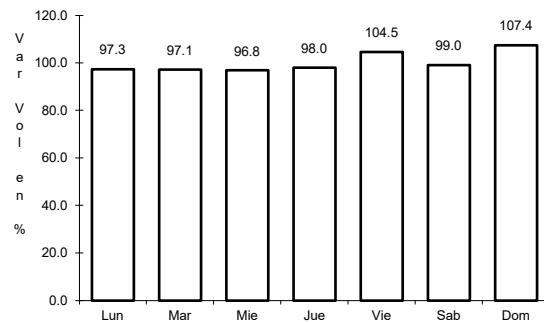
Km: 0.00      Tipo: 3      Sent: 2

Km: 10.00      Tipo: 1      Sent: 0

12 CARR: Chalco - Tláhuac

CLAVE: 00170

RUTA: EM-CDMX



Km: 0.00      Tipo: 3      Sent: 1

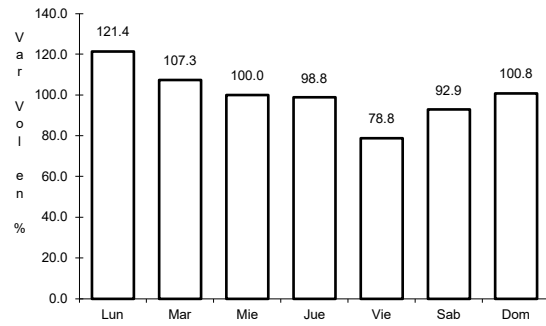
Km: 0.00      Tipo: 3      Sent: 2

Km: 12.00      Tipo: 1      Sent: 1

13 CARR: T. C. (México - Mixquic) - San Pablo Atlazalpan

CLAVE: 00044

RUTA: EM-106-CDMX



Km: 0.00

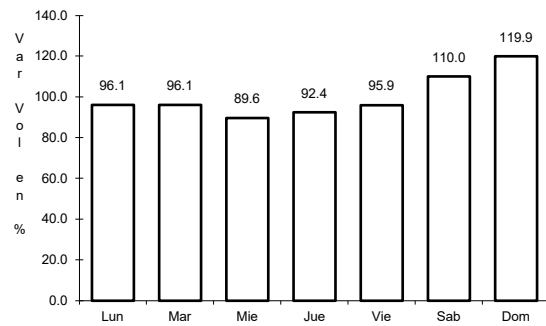
Tipo: 3

Sent: 0

14 CARR: Xalatlaco - El Ajusco

CLAVE: 00017

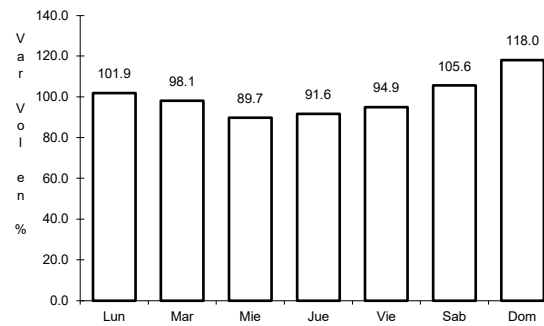
RUTA: EM-CDMX



Km: 0.00

Tipo: 3

Sent: 0



Km: 27.60

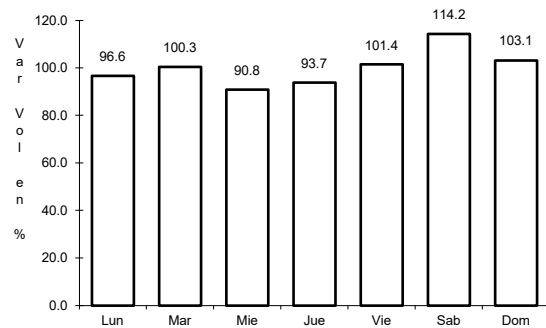
Tipo: 1

Sent: 0

15 CARR: La Venta - Chamapa (Cuota)

CLAVE: 15014

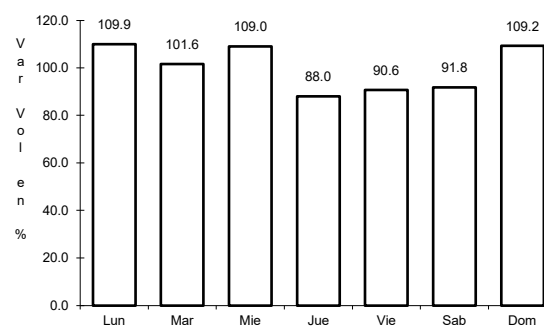
RUTA: EM-D



Km: 0.10

Tipo: 3

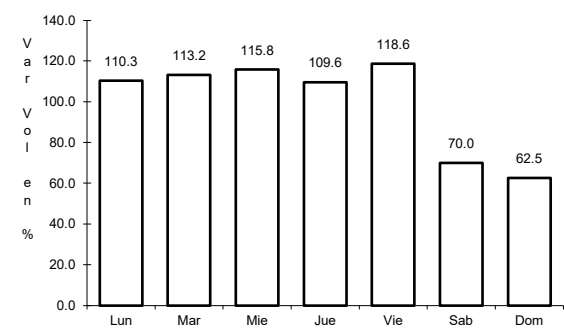
Sent: 1



Km: 0.10

Tipo: 3

Sent: 2



Km: 11.10

Tipo: 1

Sent: 1

