

CHIHUAHUA

---RED FEDERAL LIBRE---

1 Cd. Juárez - Janos	MEX-002
2 Chihuahua - El Sueco	MEX-045
3 Chihuahua - Ojinaga	MEX-016
4 Delicias - Chihuahua (Libre)	MEX-045
5 El Sueco - Janos	MEX-010
6 Ent. Ciudad Camargo - Saucillo	MEX-045
7 Ent. La Zarca - Hidalgo del Parral	MEX-045
8 Gómez Palacio - Jiménez	MEX-049
9 Hidalgo del Parral - Ent. Nuevo Palomas (Vía Corta)	MEX-024
10 Hidalgo del Parral - Guadalupe y Calvo	MEX-024
11 Hidalgo del Parral - Jiménez	MEX-045
12 Janos - Agua Prieta	MEX-002
13 Jerónimo - Sta. Teresa	MEX-002
14 La Junta - Yécora	MEX-016
15 Libramiento de Delicias - Meoqui	MEX-045
16 Porvenir - Cd. Juárez	MEX-002
17 Ramal a Aeropuerto de Chihuahua	MEX-016
18 Ramal a Palomas	MEX-002
19 Villa Ahumada - Cd. Juárez (Libre)	MEX-045

---RED FEDERAL DE CUOTA---

20 Camargo - Delicias (Cuota)	MEX-045D
21 Chihuahua - Sacramento (Cuota)	MEX-045D
22 El Sueco - Villa Ahumada (Cuota)	MEX-045D
23 Gómez Palacio - Corralitos (Cuota)	MEX-049D
24 Jiménez - Camargo (Cuota)	MEX-045D
25 Libramiento Oriente Chihuahua (Cuota)	MEX-045D

---RED ESTATAL LIBRE---

26 Ahumada - Ricardo Flores Magón	CHIH
27 Cuauhtémoc - Buenaventura	CHIH
28 Delicias - Saucillo	CHIH-007
29 Ent. Peña Blanca - Ent. La Concha	CHIH
30 Ent. Puerto Justo - Ent. Guachochic	CHIH
31 Jiménez - Camargo	CHIH-049
32 Lázaro Cárdenas - Ent. Colonia San José	CHIH-004
33 Libramiento de Hidalgo del Parral	CHIH
34 Libramiento de Jiménez	CHIH
35 Meoqui - Julimes	CHIH-005
36 Ramal a San Pedro Creel	CHIH-025
37 Samachique - Batopilas	CHIH
38 San Juanito - Ent. Basaseachi	CHIH
39 San Pedro Creel - Guachochi	CHIH-025
40 T. C. (Jiménez - Camargo) - Ojinaga	CHIH-018
41 T. Julimes - La Boquilla	CHIH-018

---RED ESTATAL DE CUOTA---

42 Ent. El Álamo - Ent. Ricardo Flores Magón (Cuota)	CHIH-D
43 Ricardo Flores Magón - Galeana (Cuota)	CHIH-D
44 Samalayuca - San Jerónimo (Cuota)	CHIH-D
45 T. C. (Chihuahua - Ojinaga) - La Mula (Cuota)	CHIH-D

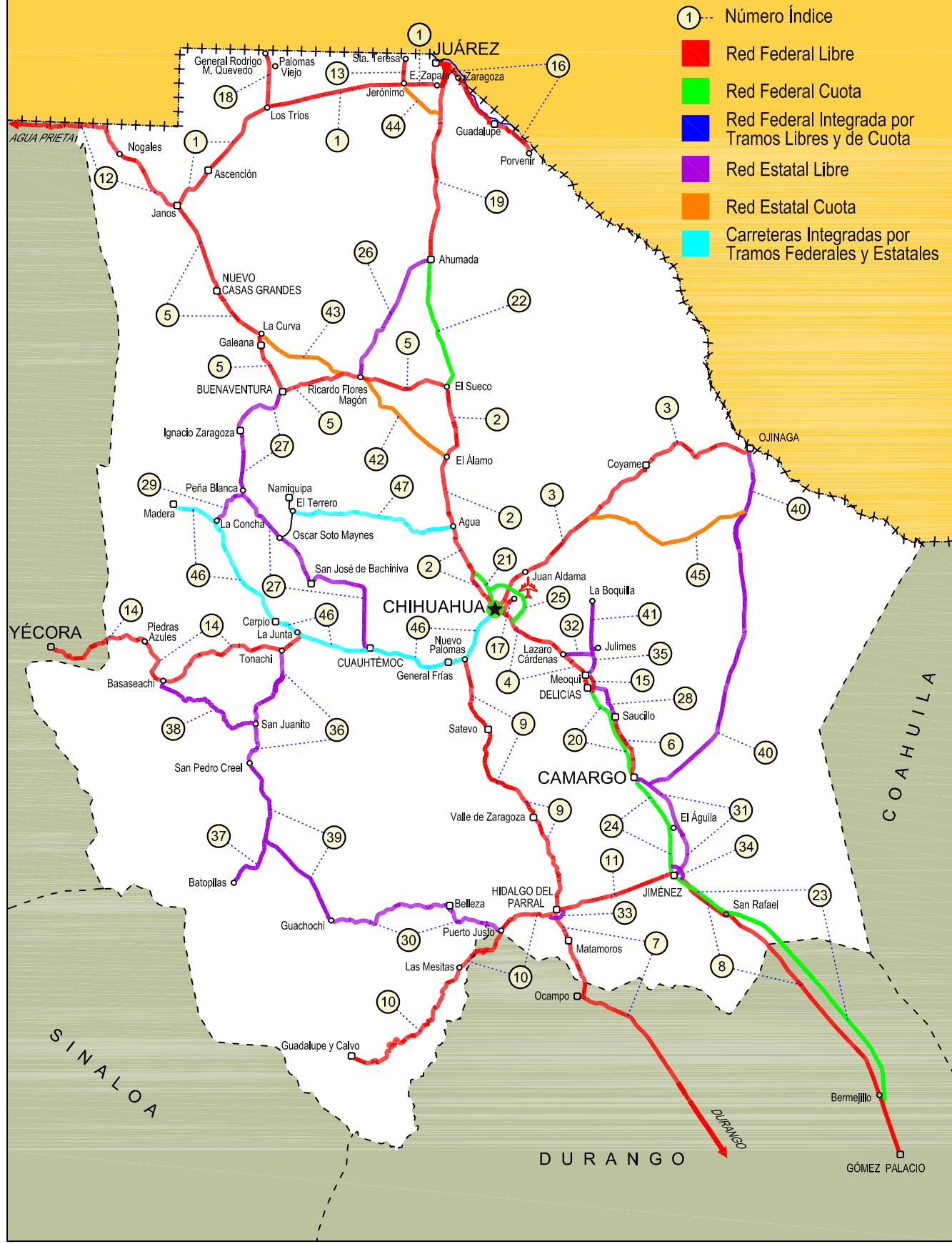
---CARRETERAS INTEGRADAS POR TRAMOS FEDERALES Y ESTATALES---

46 Chihuahua - Madera	CHIH-D-MEX-001-CHIH
47 Ent. Agua Caliente - El Terrero	CHIH-MEX

08 CHIHUAHUA

SECRETARÍA DE COMUNICACIONES Y TRANSPORTES
DIRECCIÓN GENERAL DE SERVICIOS TÉCNICOS

ESTADOS UNIDOS DE AMERICA



CHIHUAHUA

1 CARR: Cd. Juárez - Janos

CLAVE: 08041

RUTA: MEX-002

AÑO: 2020

LUGAR	ESTACION				CLASIFICACION VEHICULAR EN PORCIENTO													COORDENADAS		
	KM	TE	SC	TDPA	M	A	B	C2	C3	T3S2	T3S3	T3S2R4	OTROS	A	B	C	K'	D	LATITUD	LONGITUD
T. C. El Sueco - Cd. Juárez	0.00	3	1	6986	0.9	73.7	4.5	13.5	2.0	4.0	0.5	0.5	0.4	74.6	4.5	20.9	0.098	0.515	31.606980	-106.452099
T. C. El Sueco - Cd. Juárez	0.00	3	2	6575	0.9	74.0	4.4	13.5	2.0	4.0	0.4	0.5	0.3	74.9	4.4	20.7	0.096	0.515	31.606863	-106.452145
T. C. Jerónimo - Sta. Teresa	22.40																			
T. Der. Palomas	112.00	1	0	1838	2.0	65.3	2.8	13.4	3.0	8.4	2.2	2.5	0.4	67.3	2.8	29.9	0.096	0.515	31.470002	-107.611635
Ascensión	170.95	1	0	2590	0.6	66.1	2.1	19.0	2.6	6.5	1.5	1.4	0.2	66.7	2.1	31.2	0.091	0.500	31.092765	-107.996319
Janos	205.00	1	0	3219	1.8	69.0	1.8	18.0	2.2	4.9	0.9	1.2	0.2	70.8	1.8	27.4	0.091	0.505	30.889533	-108.188615

2 CARR: Chihuahua - El Sueco

CLAVE: 08419

RUTA: MEX-045

AÑO: 2020

LUGAR	ESTACION				CLASIFICACION VEHICULAR EN PORCIENTO													COORDENADAS		
	KM	TE	SC	TDPA	M	A	B	C2	C3	T3S2	T3S3	T3S2R4	OTROS	A	B	C	K'	D	LATITUD	LONGITUD
Chihuahua	0.00																			
T. C. Chihuahua - Sacramento (Cuota)	16.70																			
San Cristóbal	24.00	1	0	3022	3.1	66.0	1.5	8.9	3.4	13.6	2.9	0.4	0.2	69.1	1.5	29.4	0.103	0.537	28.800671	-106.218917
T. C. Chihuahua - Sacramento (Cuota)	32.00	1	0	3983	2.7	68.1	1.5	11.0	2.2	11.3	2.5	0.5	0.2	70.8	1.5	27.7	0.096	0.515	28.862593	-106.224165
T. C. Chihuahua - Sacramento (Cuota)	32.00	3	1	5995	4.0	62.5	3.8	11.6	1.0	12.9	1.6	2.1	0.5	66.5	3.8	29.7	0.080	0.516	28.862674	-106.224018
T. C. Chihuahua - Sacramento (Cuota)	32.00	3	2	6392	3.2	61.4	4.3	12.8	1.1	12.6	2.0	2.1	0.5	64.6	4.3	31.1	0.076	0.516	28.862587	-106.224181
T. Der. El Sauz	55.38	3	1	4186	1.1	49.0	3.9	10.0	1.3	25.0	4.2	4.6	0.9	50.1	3.9	46.0	0.067	0.505	29.050336	-106.328943
T. Der. El Sauz	55.38	3	2	4273	0.8	49.2	3.6	9.8	1.4	24.4	5.2	4.7	0.9	50.0	3.6	46.4	0.067	0.505	29.050292	-106.329260
Ent. El Sueco	155.87	1	1	2688	1.2	72.7	2.0	8.0	0.8	11.1	2.5	0.9	0.8	73.9	2.0	24.1	0.096	0.502	29.889530	-106.395596
Ent. El Sueco	155.87	1	2	2708	1.4	71.6	2.7	8.4	1.3	10.6	2.3	1.0	0.7	73.0	2.7	24.3	0.098	0.502	29.888904	-106.396223

3 CARR: Chihuahua - Ojinaga

CLAVE: 08042

RUTA: MEX-016

AÑO: 2020

LUGAR	ESTACION				CLASIFICACION VEHICULAR EN PORCIENTO													COORDENADAS		
	KM	TE	SC	TDPA	M	A	B	C2	C3	T3S2	T3S3	T3S2R4	OTROS	A	B	C	K'	D	LATITUD	LONGITUD
Chihuahua	0.00																			
T. Der. Aeropuerto	6.50	1	1	18552	1.3	85.1	0.8	7.2	0.9	2.8	1.3	0.4	0.2	86.4	0.8	12.8	0.098	0.511	28.688932	-106.013592
T. Der. Aeropuerto	6.50	1	2	17728	1.3	85.0	0.8	7.3	0.9	2.8	1.3	0.4	0.2	86.3	0.8	12.9	0.098	0.511	28.689011	-106.013687
T. Der. Aeropuerto	6.50	3	1	9207	1.2	85.9	1.2	8.1	1.0	1.3	0.8	0.3	0.2	87.1	1.2	11.7	0.122	0.505	28.688938	-106.013588
T. Der. Aeropuerto	6.50	3	2	9012	1.3	85.7	1.3	8.0	1.0	1.3	0.8	0.4	0.2	87.0	1.3	11.7	0.101	0.505	28.689016	-106.013686
Aldama	26.80	1	1	4885	0.6	81.7	2.4	12.6	0.7	1.0	0.8	0.1	0.1	82.3	2.4	15.3	0.112	0.504	28.837728	-105.912319
Aldama	26.80	1	2	4814	0.5	81.6	2.4	12.6	0.8	1.0	0.9	0.1	0.1	82.1	2.4	15.5	0.102	0.504	28.837720	-105.912321
Aldama	26.80	3	0	1774	1.7	77.5	1.7	16.1	0.8	0.9	0.9	0.2	0.2	79.2	1.7	19.1	0.108	0.524	28.838551	-105.910744
El Morrión	84.00	3	0	1275	2.1	74.7	1.8	17.8	1.8	0.9	0.7	0.0	0.2	76.8	1.8	21.4	0.093	0.532	29.058690	-105.611517

CHIHUAHUA

3 CARR: Chihuahua - Ojinaga

CLAVE: 08042

RUTA: MEX-016

AÑO: 2020

LUGAR	ESTACION				CLASIFICACION VEHICULAR EN PORCIENTO										COORDENADAS					
	KM	TE	SC	TDPA	M	A	B	C2	C3	T3S2	T3S3	T3S2R4	OTROS	A	B	C	K'	D	LATITUD	LONGITUD
Coyame	141.00	1	0	284	0.6	75.4	0.9	18.8	2.0	1.2	0.9	0.0	0.2	76.0	0.9	23.1	0.102	0.501	29.456670	-105.092173
Ojinaga	224.00	1	0	2221	1.6	71.2	0.4	24.3	1.8	0.3	0.3	0.0	0.1	72.8	0.4	26.8	0.107	0.503	29.549484	-104.425621

4 CARR: Delicias - Chihuahua (Libre)

CLAVE: 08418

RUTA: MEX-045

AÑO: 2020

LUGAR	ESTACION				CLASIFICACION VEHICULAR EN PORCIENTO										COORDENADAS					
	KM	TE	SC	TDPA	M	A	B	C2	C3	T3S2	T3S3	T3S2R4	OTROS	A	B	C	K'	D	LATITUD	LONGITUD
Delicias	138.00																			
T. C. Libramiento de Delicias - Meoqui	150.10	3	1	7797	1.3	66.2	3.8	12.4	1.4	10.6	1.6	2.4	0.3	67.5	3.8	28.7	0.118	0.506	28.289474	-105.494269
T. C. Libramiento de Delicias - Meoqui	150.10	3	2	7996	1.2	66.5	3.8	12.4	1.4	10.5	1.6	2.3	0.3	67.7	3.8	28.5	0.101	0.506	28.288687	-105.494151
T. Der. Lazáro Cárdenas	166.87	1	1	6693	1.3	68.3	4.8	8.8	1.7	9.0	1.5	3.8	0.8	69.6	4.8	25.6	0.077	0.516	28.386850	-105.629792
T. Der. Lazáro Cárdenas	166.87	1	2	7131	1.0	69.5	4.5	7.4	1.8	9.8	1.6	3.6	0.8	70.5	4.5	25.0	0.087	0.516	28.386787	-105.629889
T. Der. Lazáro Cárdenas	166.87	3	1	5976	1.0	62.0	3.7	8.1	1.6	17.0	2.6	3.1	0.9	63.0	3.7	33.3	0.124	0.508	28.386855	-105.629794
T. Der. Lazáro Cárdenas	166.87	3	2	5796	1.1	62.7	3.6	8.3	1.6	16.6	2.3	2.9	0.9	63.8	3.6	32.6	0.105	0.508	28.386799	-105.629896
T. C. Libramiento Oriente Chihuahua (Cuota)	208.40	1	1	7056	1.5	74.5	3.6	8.6	2.0	6.6	1.3	1.4	0.5	76.0	3.6	20.4	0.096	0.511	28.579994	-105.958485
T. C. Libramiento Oriente Chihuahua (Cuota)	208.40	1	2	7376	1.5	74.7	3.5	8.6	2.0	6.6	1.3	1.4	0.4	76.2	3.5	20.3	0.086	0.511	28.579878	-105.958665
T. Der. Aquiles Serdán	210.00	1	1	6760	1.3	74.1	5.0	7.8	2.0	6.4	0.9	1.7	0.8	75.4	5.0	19.6	0.129	0.507	28.591144	-105.961308
T. Der. Aquiles Serdán	210.00	1	2	6586	1.6	72.1	5.7	7.9	2.2	7.0	1.0	1.8	0.7	73.7	5.7	20.6	0.100	0.507	28.591111	-105.961498
Chihuahua	222.56																			

5 CARR: El Sueco - Janos

CLAVE: 08037

RUTA: MEX-010

AÑO: 2020

LUGAR	ESTACION				CLASIFICACION VEHICULAR EN PORCIENTO										COORDENADAS					
	KM	TE	SC	TDPA	M	A	B	C2	C3	T3S2	T3S3	T3S2R4	OTROS	A	B	C	K'	D	LATITUD	LONGITUD
El Sueco	0.00	3	0	463	9.2	61.8	4.2	15.7	2.1	4.4	1.7	0.8	0.1	71.0	4.2	24.8	0.117	0.502	29.892656	-106.399192
Ricardo Flores Magón	59.00	3	0	3934	4.9	56.7	3.7	14.0	1.6	14.0	2.7	2.3	0.1	61.6	3.7	34.7	0.089	0.513	29.943694	-106.965452
T. C. Ricardo Flores Magón - Galeana (Cuota)	68.90																			
Buenaventura	114.00	1	0	1209	2.7	76.2	5.5	6.1	1.8	3.8	2.0	1.0	0.9	78.9	5.5	15.6	0.129	0.535	29.843825	-107.470879
Buenaventura	114.00	3	0	4096	1.5	76.4	1.4	17.3	1.2	0.7	0.7	0.6	0.2	77.9	1.4	20.7	0.087	0.503	29.843703	-107.471395
T. C. Ricardo Flores Magón - Galeana (Cuota)	154.90																			
Nuevo Casas Grandes	195.00	3	0	5964	1.0	65.0	1.8	14.5	2.2	9.8	2.8	2.7	0.2	66.0	1.8	32.2	0.088	0.507	30.416513	-107.914521
Janos	257.00	1	0	4175	1.0	58.2	2.3	16.9	2.4	11.8	3.4	3.8	0.2	59.2	2.3	38.5	0.078	0.502	30.887921	-108.187661

CHIHUAHUA

6 CARR: Ent. Ciudad Camargo - Saucillo

CLAVE: 08417

RUTA: MEX-045

AÑO: 2020

LUGAR	ESTACION				CLASIFICACION VEHICULAR EN PORCIENTO												COORDENADAS			
	KM	TE	SC	TDPA	M	A	B	C2	C3	T3S2	T3S3	T3S2R4	OTROS	A	B	C	K'	D	LATITUD	LONGITUD
Camargo	0.00	3	0	3751	1.5	73.1	1.3	10.3	2.2	8.8	1.9	0.6	0.3	74.6	1.3	24.1	0.076	0.504	27.719908	-105.192869
T. Der. La Cruz	20.92	3	0	2285	1.8	75.3	2.5	10.2	2.5	6.5	0.8	0.2	0.2	77.1	2.5	20.4	0.074	0.505	27.862762	-105.203489
Saucillo	42.52	1	0	3692	1.4	77.1	2.0	11.6	1.7	5.0	0.8	0.2	0.2	78.5	2.0	19.5	0.087	0.504	28.027168	-105.291672

7 CARR: Ent. La Zarca - Hidalgo del Parral

CLAVE: 00488

RUTA: MEX-045

AÑO: 2020

LUGAR	ESTACION				CLASIFICACION VEHICULAR EN PORCIENTO												COORDENADAS			
	KM	TE	SC	TDPA	M	A	B	C2	C3	T3S2	T3S3	T3S2R4	OTROS	A	B	C	K'	D	LATITUD	LONGITUD
Ent. La Zarca	0.00	3	0	1038	5.7	65.1	6.3	11.5	2.6	4.3	2.6	1.0	0.9	70.8	6.3	22.9	0.085	0.506	25.783405	-104.763877
T. Der. Ceballos	47.85	1	0	736	3.1	68.2	6.0	11.5	3.7	3.0	2.5	1.1	0.9	71.3	6.0	22.7	0.114	0.506	26.140694	-105.029378
T. Der. Ceballos	47.85	3	0	1293	6.6	59.7	6.0	19.6	1.9	2.7	1.6	1.2	0.7	66.3	6.0	27.7	0.084	0.503	26.141352	-105.029861
T. Izq. Canutillo	92.35	3	0	1167	2.4	79.6	4.0	4.1	2.3	2.9	3.0	0.8	0.9	82.0	4.0	14.0	0.091	0.508	26.389185	-105.352091
Las Nieves	97.60	3	0	1591	5.1	71.3	5.4	9.3	2.1	2.8	2.1	1.2	0.7	76.4	5.4	18.2	0.097	0.518	26.401055	-105.396919
T. Izq. Ocampo	109.22	3	0	1239	7.0	77.6	2.9	5.8	1.7	2.1	1.5	0.7	0.7	84.6	2.9	12.5	0.090	0.508	26.441565	-105.493956
Lim. Edos. Term. Dgo. Ppia. Chih.	122.89																			
Matamoros	148.00	1	0	1236	2.6	71.6	3.7	12.7	2.4	2.6	2.9	0.7	0.8	74.2	3.7	22.1	0.090	0.523	26.759591	-105.584811
Hidalgo del Parral	171.00	1	0	3184	0.9	87.7	1.7	3.8	1.3	1.4	1.4	0.9	0.9	88.6	1.7	9.7	0.095	0.506	26.922264	-105.644137

8 CARR: Gómez Palacio - Jiménez

CLAVE: 00006

RUTA: MEX-049

AÑO: 2020

LUGAR	ESTACION				CLASIFICACION VEHICULAR EN PORCIENTO												COORDENADAS			
	KM	TE	SC	TDPA	M	A	B	C2	C3	T3S2	T3S3	T3S2R4	OTROS	A	B	C	K'	D	LATITUD	LONGITUD
Gómez Palacio	0.00	3	1	10585	4.1	68.7	3.3	8.8	2.7	7.4	2.3	2.2	0.5	72.8	3.3	23.9	0.075	0.513	25.568305	-103.499377
Gómez Palacio	0.00	3	2	11137	4.1	68.7	3.3	8.9	2.8	7.2	2.2	2.2	0.6	72.8	3.3	23.9	0.078	0.513	25.568312	-103.499365
X. C. La Torreña - Brittingham	10.96	1	1	9061	4.3	66.3	2.3	9.0	2.6	10.1	2.4	2.5	0.5	70.6	2.3	27.1	0.088	0.512	25.642499	-103.524655
X. C. La Torreña - Brittingham	10.96	1	2	9506	4.4	66.3	2.3	9.0	2.6	10.1	2.4	2.4	0.5	70.7	2.3	27.0	0.101	0.512	25.642454	-103.524800
T. Izq. Dinamita	26.27	1	1	5346	3.4	65.7	3.3	9.2	2.2	10.7	2.6	2.4	0.5	69.1	3.3	27.6	0.089	0.511	25.757423	-103.570446
T. Izq. Dinamita	26.27	1	2	5589	3.4	65.0	3.4	9.4	2.3	11.0	2.7	2.3	0.5	68.4	3.4	28.2	0.098	0.511	25.757400	-103.570655
T. C. Gómez Palacio - Corralitos (Cuota)	37.92	1	1	4718	3.1	60.8	3.4	5.5	3.2	16.9	3.4	3.2	0.5	63.9	3.4	32.7	0.088	0.506	25.866224	-103.612488
T. C. Gómez Palacio - Corralitos (Cuota)	37.92	1	2	4841	3.0	60.9	3.4	5.4	3.3	16.8	3.3	3.3	0.6	63.9	3.4	32.7	0.088	0.506	25.866122	-103.612709
Bermejillo	39.30	1	1	3268	7.3	65.0	3.0	5.1	2.8	12.5	2.6	1.1	0.6	72.3	3.0	24.7	0.096	0.511	25.882194	-103.620021
Bermejillo	39.30	1	2	3412	7.4	65.1	3.0	5.1	2.4	12.7	2.6	1.1	0.6	72.5	3.0	24.5	0.099	0.511	25.882194	-103.620021
T. Izq. Ent. La Zarca	40.89	3	0	2644	5.5	45.2	3.2	12.4	5.4	21.6	4.6	1.6	0.5	50.7	3.2	46.1	0.084	0.513	25.895911	-103.625485
Yermo	107.95	1	0	2010	2.5	37.3	3.2	10.9	4.1	30.9	7.8	2.7	0.6	39.8	3.2	57.0	0.070	0.519	26.386522	-104.001633
Yermo	107.95	3	0	2070	2.5	36.8	3.9	10.9	5.2	31.6	6.3	2.4	0.4	39.3	3.9	56.8	0.077	0.510	26.386533	-104.001642

CHIHUAHUA

8 CARR: Gómez Palacio - Jiménez

CLAVE: 00006

RUTA: MEX-049

AÑO: 2020

LUGAR	ESTACION				CLASIFICACION VEHICULAR EN PORCIENTO													COORDENADAS		
	KM	TE	SC	TDPA	M	A	B	C2	C3	T3S2	T3S3	T3S2R4	OTROS	A	B	C	K'	D	LATITUD	LONGITUD
Ceballos	127.20	1	0	2046	2.4	34.7	4.9	9.8	5.2	32.1	7.7	2.5	0.7	37.1	4.9	58.0	0.070	0.504	26.525408	-104.128463
Ceballos	127.20	3	0	2104	2.4	36.3	2.6	12.5	5.5	31.5	6.0	2.6	0.6	38.7	2.6	58.7	0.083	0.505	26.525418	-104.128474
Lim. Edos. Term. Dgo. Ppia. Chih.	146.15																			
Estación Escalón	160.89	3	0	2174	9.4	44.3	3.6	8.6	3.5	20.6	7.4	2.1	0.5	53.7	3.6	42.7	0.073	0.507	26.753225	-104.338159
Jiménez	223.00	1	1	2263	2.4	50.2	6.0	9.5	2.2	19.5	4.8	4.6	0.8	52.6	6.0	41.4	0.097	0.568	27.132443	-104.908440
Jiménez	223.00	1	2	2978	2.3	50.6	6.0	9.8	1.9	19.7	4.6	4.3	0.8	52.9	6.0	41.1	0.071	0.568	27.132373	-104.908567

9 CARR: Hidalgo del Parral - Ent. Nuevo Palomas (Vía Corta)

CLAVE: 08811

RUTA: MEX-024

AÑO: 2020

LUGAR	ESTACION				CLASIFICACION VEHICULAR EN PORCIENTO													COORDENADAS		
	KM	TE	SC	TDPA	M	A	B	C2	C3	T3S2	T3S3	T3S2R4	OTROS	A	B	C	K'	D	LATITUD	LONGITUD
Hidalgo del Parral	0.00	3	0	3915	1.1	68.3	3.5	15.6	3.0	4.3	2.8	1.1	0.3	69.4	3.5	27.1	0.083	0.506	26.967971	-105.662800
Valle Zaragoza	66.00	1	0	3359	1.2	84.6	2.3	3.4	0.8	4.5	1.8	1.2	0.2	85.8	2.3	11.9	0.128	0.530	27.447529	-105.811831
Satevo	126.00	3	0	3244	1.4	81.3	3.4	5.3	1.2	3.9	2.3	0.9	0.3	82.7	3.4	13.9	0.146	0.552	27.965725	-106.125339
T. C. Chihuahua - Madera	182.40	1	0	3771	1.2	69.8	3.9	13.7	2.4	5.6	2.6	0.4	0.4	71.0	3.9	25.1	0.101	0.506	28.359702	-106.263273

10 CARR: Hidalgo del Parral - Guadalupe y Calvo

CLAVE: 00802

RUTA: MEX-024

AÑO: 2020

LUGAR	ESTACION				CLASIFICACION VEHICULAR EN PORCIENTO													COORDENADAS		
	KM	TE	SC	TDPA	M	A	B	C2	C3	T3S2	T3S3	T3S2R4	OTROS	A	B	C	K'	D	LATITUD	LONGITUD
T. C. Hidalgo del Parral - Santa Bárbara	0.00	3	0	2465	1.9	75.8	1.3	12.8	3.6	2.4	1.8	0.1	0.3	77.7	1.3	21.0	0.095	0.518	26.914926	-105.762511
T. Der. Guacho chic	35.00	1	0	841	1.6	62.7	1.9	16.4	8.2	5.1	2.3	0.0	1.8	64.3	1.9	33.8	0.073	0.511	26.813048	-106.014778
T. Der. Guacho chic	35.00	3	0	672	2.1	71.4	1.7	15.1	4.8	2.0	1.2	0.0	1.7	73.5	1.7	24.8	0.119	0.513	26.812498	-106.015153
Lim. Edos. Term. Chih. Ppia. Dgo	38.00																			
Lim. Edos. Term. Dgo. Ppia. Chih.	57.00																			
El Vergel	110.00	1	0	942	1.5	67.8	1.5	20.9	4.8	1.8	0.9	0.0	0.8	69.3	1.5	29.2	0.106	0.533	26.479983	-106.380150
Puerto Sabiná	212.00	1	0	665	1.9	67.7	1.3	20.4	4.9	2.1	1.0	0.0	0.7	69.6	1.3	29.1	0.107	0.514	26.067342	-106.787073
Guadalupe y Calvo	234.00																			

11 CARR: Hidalgo del Parral - Jiménez

CLAVE: 08444

RUTA: MEX-045

AÑO: 2020

LUGAR	ESTACION				CLASIFICACION VEHICULAR EN PORCIENTO													COORDENADAS		
	KM	TE	SC	TDPA	M	A	B	C2	C3	T3S2	T3S3	T3S2R4	OTROS	A	B	C	K'	D	LATITUD	LONGITUD
Hidalgo del Parral	0.00	3	1	4368	1.4	79.7	1.4	10.3	2.6	1.9	1.9	0.5	0.3	81.1	1.4	17.5	0.106	0.514	26.929251	-105.651448
Hidalgo del Parral	0.00	3	2	4130	1.5	77.9	1.2	11.6	3.0	2.0	1.9	0.6	0.3	79.4	1.2	19.4	0.094	0.514	26.929354	-105.651616

CHIHUAHUA

11 CARR: Hidalgo del Parral - Jiménez

CLAVE: 08444

RUTA: MEX-045

AÑO: 2020

LUGAR	ESTACION				CLASIFICACION VEHICULAR EN PORCIENTO													COORDENADAS		
	KM	TE	SC	TDPA	M	A	B	C2	C3	T3S2	T3S3	T3S2R4	OTROS	A	B	C	K'	D	LATITUD	LONGITUD
Jiménez	76.63	1	1	2146	1.8	74.0	2.1	13.0	1.8	3.5	2.1	1.1	0.6	75.8	2.1	22.1	0.105	0.504	27.144699	-104.929277
Jiménez	76.63	1	2	2180	1.6	71.5	2.0	14.9	2.3	3.8	2.2	1.2	0.5	73.1	2.0	24.9	0.095	0.504	27.144772	-104.929334

12 CARR: Janos - Agua Prieta

CLAVE: 00220

RUTA: MEX-002

AÑO: 2020

LUGAR	ESTACION				CLASIFICACION VEHICULAR EN PORCIENTO													COORDENADAS		
	KM	TE	SC	TDPA	M	A	B	C2	C3	T3S2	T3S3	T3S2R4	OTROS	A	B	C	K'	D	LATITUD	LONGITUD
T. C. Cd. Juárez - Janos	0.00	3	0	3040	4.1	51.8	2.8	16.8	2.8	13.0	3.6	4.3	0.8	55.9	2.8	41.3	0.095	0.508	30.889533	-108.188625
Los Mimbres	56.00	3	0	2189	2.0	49.3	2.9	21.1	2.7	13.6	3.7	3.9	0.8	51.3	2.9	45.8	0.092	0.509	31.242228	-108.577608
Lim. Edos. Term. Chih. Ppia. Son.	78.00																			
Rancho Guadalupe	116.00																			
Agua Prieta	160.00	1	0	2449	4.7	45.7	3.3	11.8	2.9	18.7	5.8	6.2	0.9	50.4	3.3	46.3	0.132	0.514	31.316414	-109.542486

13 CARR: Jerónimo - Sta. Teresa

CLAVE: 08043

RUTA: MEX-002

AÑO: 2020

LUGAR	ESTACION				CLASIFICACION VEHICULAR EN PORCIENTO													COORDENADAS		
	KM	TE	SC	TDPA	M	A	B	C2	C3	T3S2	T3S3	T3S2R4	OTROS	A	B	C	K'	D	LATITUD	LONGITUD
X. C. Cd. Juárez - Janos	0.00	3	0	2397	1.8	65.6	4.9	13.1	3.9	9.7	0.4	0.3	0.3	67.4	4.9	27.7	0.178	0.515	31.608962	-106.684607
El Mirador	20.00																			

14 CARR: La Junta - Yécora

CLAVE: 00065

RUTA: MEX-016

AÑO: 2020

LUGAR	ESTACION				CLASIFICACION VEHICULAR EN PORCIENTO													COORDENADAS		
	KM	TE	SC	TDPA	M	A	B	C2	C3	T3S2	T3S3	T3S2R4	OTROS	A	B	C	K'	D	LATITUD	LONGITUD
T. C. Chihuahua - Madera	0.00	3	0	2572	1.9	72.4	2.6	15.9	2.1	3.0	1.6	0.3	0.2	74.3	2.6	23.1	0.084	0.506	28.476783	-107.314592
T. Izq. San Juanito	16.00	1	0	2056	1.6	66.9	2.5	21.8	2.4	2.9	1.3	0.1	0.5	68.5	2.5	29.0	0.099	0.512	28.389400	-107.440080
T. Izq. San Juanito	16.00	3	0	944	0.9	66.4	1.0	20.5	3.3	5.1	1.9	0.2	0.7	67.3	1.0	31.7	0.103	0.535	28.389407	-107.440089
Tomochi	70.00	3	0	1151	2.0	64.7	1.0	22.7	2.7	5.0	1.7	0.0	0.2	66.7	1.0	32.3	0.072	0.501	28.352827	-107.849092
Lim. Edos. Term. Chih. Ppia. Son.	190.00																			
Yécora	253.00	1	0	382	3.3	55.7	2.5	28.0	3.4	4.8	2.2	0.0	0.1	59.0	2.5	38.5	0.126	0.505	28.365972	-108.924866

CHIHUAHUA

15 CARR: Libramiento de Delicias - Meoqui

CLAVE: 08813

RUTA: MEX-045

AÑO: 2020

LUGAR	ESTACION				CLASIFICACION VEHICULAR EN PORCIENTO										COORDENADAS					
	KM	TE	SC	TDPA	M	A	B	C2	C3	T3S2	T3S3	T3S2R4	OTROS	A	B	C	K'	D	LATITUD	LONGITUD
T. C. Jiménez - Chihuahua (Sur)	0.00	3	1	11002	2.4	73.1	2.7	7.1	1.8	9.1	1.5	1.9	0.4	75.5	2.7	21.8	0.113	0.530	28.186541	-105.451945
T. C. Jiménez - Chihuahua (Sur)	0.00	3	2	9751	2.3	73.2	2.7	7.1	1.9	9.0	1.4	2.0	0.4	75.5	2.7	21.8	0.106	0.530	28.186438	-105.452310
T. Izq. Delicias	4.95	1	1	7555	2.6	72.8	2.8	7.1	1.9	8.9	1.6	1.9	0.4	75.4	2.8	21.8	0.100	0.524	28.229007	-105.459659
T. Izq. Delicias	4.95	1	2	6863	2.6	72.9	2.8	7.1	2.0	8.9	1.5	1.8	0.4	75.5	2.8	21.7	0.091	0.524	28.228875	-105.459814
T. Izq. Delicias	4.95	3	1	8523	1.0	72.1	3.0	9.2	1.6	9.2	1.6	2.0	0.3	73.1	3.0	23.9	0.114	0.506	28.229007	-105.459659
T. Izq. Delicias	4.95	3	2	8316	1.1	72.3	3.1	9.1	1.6	9.1	1.5	1.9	0.3	73.4	3.1	23.5	0.099	0.506	28.228878	-105.459816
T. C. Jiménez - Chihuahua (Norte)	13.60	1	1	8633	0.9	72.1	3.1	9.4	1.5	9.3	1.5	1.9	0.3	73.0	3.1	23.9	0.123	0.505	28.289483	-105.494168
T. C. Jiménez - Chihuahua (Norte)	13.60	1	2	8465	1.0	71.8	3.1	9.4	1.5	9.3	1.6	1.9	0.4	72.8	3.1	24.1	0.109	0.505	28.288747	-105.494054

16 CARR: Porvenir - Cd. Juárez

CLAVE: 08169

RUTA: MEX-002

AÑO: 2020

LUGAR	ESTACION				CLASIFICACION VEHICULAR EN PORCIENTO										COORDENADAS					
	KM	TE	SC	TDPA	M	A	B	C2	C3	T3S2	T3S3	T3S2R4	OTROS	A	B	C	K'	D	LATITUD	LONGITUD
Porvenir	0.00																			
T. Der. Puente Porvenir	1.67	3	0	1017	0.6	78.5	6.3	13.1	0.4	0.6	0.2	0.0	0.3	79.1	6.3	14.6	0.130	0.534	31.254882	-105.879041
Guadalupe	30.54	1	0	2087	0.6	78.8	4.0	15.1	0.4	0.6	0.2	0.3	0.0	79.4	4.0	16.6	0.134	0.507	31.389993	-106.101261
San Isidro	55.93	1	0	3740	1.1	70.6	6.8	17.8	0.8	2.2	0.3	0.2	0.2	71.7	6.8	21.5	0.123	0.520	31.547388	-106.277854
Zaragoza	70.32	1	1	15853	1.1	83.6	4.3	7.2	1.1	1.5	0.9	0.1	0.2	84.7	4.3	11.0	0.101	0.504	31.644052	-106.346629
Zaragoza	70.32	1	2	15628	1.1	83.6	4.3	7.2	1.1	1.5	0.9	0.1	0.2	84.7	4.3	11.0	0.104	0.504	31.643924	-106.346694
Cd. Juárez	81.43																			

17 CARR: Ramal a Aeropuerto de Chihuahua

CLAVE: 08421

RUTA: MEX-016

AÑO: 2020

LUGAR	ESTACION				CLASIFICACION VEHICULAR EN PORCIENTO										COORDENADAS					
	KM	TE	SC	TDPA	M	A	B	C2	C3	T3S2	T3S3	T3S2R4	OTROS	A	B	C	K'	D	LATITUD	LONGITUD
T. C. Chihuahua - Ojinaga	0.00	3	1	9009	1.7	91.8	0.9	4.0	0.6	0.4	0.4	0.1	0.1	93.5	0.9	5.6	0.096	0.534	28.688810	-106.013535
T. C. Chihuahua - Ojinaga	0.00	3	2	10340	1.7	92.3	0.8	3.9	0.5	0.3	0.3	0.1	0.1	94.0	0.8	5.2	0.081	0.534	28.688920	-106.013472
Aeropuerto	5.00																			

18 CARR: Ramal a Palomas

CLAVE: 08019

RUTA: MEX-002

AÑO: 2020

LUGAR	ESTACION				CLASIFICACION VEHICULAR EN PORCIENTO										COORDENADAS					
	KM	TE	SC	TDPA	M	A	B	C2	C3	T3S2	T3S3	T3S2R4	OTROS	A	B	C	K'	D	LATITUD	LONGITUD
T. C. Cd. Juárez - Janos	0.00	3	0	1708	0.4	72.0	1.5	22.7	2.0	1.0	0.3	0.0	0.1	72.4	1.5	26.1	0.093	0.513	31.469995	-107.611650
T. Izq. Guadalupe Victoria	4.50	3	0	1266	2.5	70.4	0.9	21.6	1.8	2.7	0.1	0.0	0.0	72.9	0.9	26.2	0.117	0.501	31.509753	-107.613520

CHIHUAHUA

18 CARR: Ramal a Palomas

CLAVE: 08019

RUTA: MEX-002

AÑO: 2020

LUGAR	ESTACION				CLASIFICACION VEHICULAR EN PORCIENTO														COORDENADAS		
	KM	TE	SC	TDPA	M	A	B	C2	C3	T3S2	T3S3	T3S2R4	OTROS	A	B	C	K'	D	LATITUD	LONGITUD	
Palomas	34.10																				

19 CARR: Villa Ahumada - Cd. Juárez (Libre)

CLAVE: 08420

RUTA: MEX-045

AÑO: 2020

LUGAR	ESTACION				CLASIFICACION VEHICULAR EN PORCIENTO														COORDENADAS	
	KM	TE	SC	TDPA	M	A	B	C2	C3	T3S2	T3S3	T3S2R4	OTROS	A	B	C	K'	D	LATITUD	LONGITUD
Villa Ahumada	83.63	3	1	3099	5.5	55.7	4.5	10.4	1.4	18.3	1.7	1.8	0.7	61.2	4.5	34.3	0.114	0.523	30.615176	-106.514429
Villa Ahumada	83.63	3	2	3396	5.0	55.2	4.6	11.1	1.4	18.3	1.8	2.0	0.6	60.2	4.6	35.2	0.092	0.523	30.615183	-106.514651
Samalayuca	167.65	3	1	3698	5.3	59.3	4.3	12.3	1.4	13.6	1.4	1.7	0.7	64.6	4.3	31.1	0.087	0.513	31.340515	-106.470593
Samalayuca	167.65	3	2	3895	5.4	58.6	3.8	12.6	1.3	14.2	1.5	2.1	0.5	64.0	3.8	32.2	0.131	0.513	31.340560	-106.470924
T. Izq. Janos	197.92	1	1	7272	5.8	60.8	3.3	13.9	3.5	10.2	1.0	1.1	0.4	66.6	3.3	30.1	0.115	0.511	31.606831	-106.451979
T. Izq. Janos	197.92	1	2	7592	6.2	62.8	3.4	12.6	3.5	9.5	0.9	0.7	0.4	69.0	3.4	27.6	0.120	0.511	31.606838	-106.452121
T. Der. Antiguo Aeropuerto	201.35	1	1	17811	1.1	83.4	2.8	8.3	1.1	1.8	0.7	0.3	0.5	84.5	2.8	12.7	0.089	0.515	31.636486	-106.438366
T. Der. Antiguo Aeropuerto	201.35	1	2	16771	1.1	81.0	3.2	7.9	1.4	2.8	1.3	0.6	0.7	82.1	3.2	14.7	0.085	0.515	31.636566	-106.438575
Cd. Juárez	219.00																			

20 CARR: Camargo - Delicias (Cuota)

CLAVE: 08418

RUTA: MEX-045D

AÑO: 2020

LUGAR	ESTACION				CLASIFICACION VEHICULAR EN PORCIENTO														COORDENADAS	
	KM	TE	SC	TDPA	M	A	B	C2	C3	T3S2	T3S3	T3S2R4	OTROS	A	B	C	K'	D	LATITUD	LONGITUD
Camargo	68.98																			
Plaza de Cobro Altavista	73.00	2	1	2646	0.1	56.0	4.5	5.2	3.2	21.2	2.8	5.4	1.6	56.1	4.5	39.4	0.088	0.500	27.730871	-105.197567
Plaza de Cobro Altavista	73.00	2	2	2646	0.1	56.0	4.5	5.2	3.2	21.2	2.8	5.4	1.6	56.1	4.5	39.4	0.088	0.500	27.730871	-105.197567
T. C. Ent. Ciudad Camargo - Saucillo	73.17	1	1	4410	1.0	53.3	6.2	11.5	2.0	18.0	2.6	4.6	0.8	54.3	6.2	39.5	0.074	0.510	27.719849	-105.192924
T. C. Ent. Ciudad Camargo - Saucillo	73.17	1	2	4234	1.0	53.4	6.2	11.4	2.0	17.9	2.7	4.6	0.8	54.4	6.2	39.4	0.072	0.510	27.719833	-105.193095
Saucillo	111.50	3	1	3268	1.3	53.5	6.5	11.5	2.0	18.1	2.8	3.5	0.8	54.8	6.5	38.7	0.072	0.511	28.029022	-105.322121
Saucillo	111.50	3	2	3132	0.8	53.8	6.4	11.5	2.1	18.1	3.1	3.5	0.7	54.6	6.4	39.0	0.072	0.511	28.029013	-105.322238
Plaza de Cobro Saucillo	116.30	2	1	3170	0.1	57.3	4.2	5.1	3.1	21.3	2.8	4.6	1.5	57.4	4.2	38.4	0.088	0.500	28.046417	-105.329309
Plaza de Cobro Saucillo	116.30	2	2	3170	0.1	57.3	4.2	5.1	3.1	21.3	2.8	4.6	1.5	57.4	4.2	38.4	0.088	0.500	28.046417	-105.329309
Delicias	138.00	1	1	8123	1.3	70.0	3.8	10.2	2.0	9.2	1.3	1.9	0.3	71.3	3.8	24.9	0.082	0.507	28.182338	-105.449784
Delicias	138.00	1	2	8367	1.3	66.6	4.2	11.8	2.3	9.8	1.5	2.2	0.3	67.9	4.2	27.9	0.079	0.507	28.182295	-105.449865

CHIHUAHUA

21 CARR: Chihuahua - Sacramento (Cuota)

CLAVE: 08015

RUTA: MEX-045D

AÑO: 2020

LUGAR	ESTACION				CLASIFICACION VEHICULAR EN PORCIENTO										COORDENADAS					
	KM	TE	SC	TDPA	M	A	B	C2	C3	T3S2	T3S3	T3S2R4	OTROS	A	B	C	K'	D	LATITUD	LONGITUD
T. C. Chihuahua - El Sueco	18.12	3	1	5371	1.1	75.7	3.3	9.7	1.7	6.7	0.7	0.9	0.2	76.8	3.3	19.9	0.104	0.503	28.764014	-106.169491
T. C. Chihuahua - El Sueco	18.12	3	2	5435	1.1	75.7	3.3	9.6	1.8	6.7	0.6	1.0	0.2	76.8	3.3	19.9	0.110	0.503	28.763998	-106.169663
Francisco Villa	20.00	3	1	6968	1.2	77.5	2.9	8.7	1.7	6.4	0.6	0.8	0.2	78.7	2.9	18.4	0.099	0.503	28.775873	-106.171777
Francisco Villa	20.00	3	2	7047	1.2	77.5	2.9	8.7	1.7	6.4	0.6	0.8	0.2	78.7	2.9	18.4	0.102	0.503	28.775824	-106.171996
T. C. Libramiento Oriente Chihuahua (Cuota)	21.17	3	1	5539	1.4	64.6	3.7	12.0	1.1	12.8	1.9	1.9	0.6	66.0	3.7	30.3	0.092	0.505	28.790681	-106.174671
T. C. Libramiento Oriente Chihuahua (Cuota)	21.17	3	2	5420	1.4	64.5	3.7	12.0	1.1	12.8	1.9	2.0	0.6	65.9	3.7	30.4	0.104	0.505	28.790775	-106.174968
T. C. (Chihuahua - El Sueco)	31.30																			

22 CARR: El Sueco - Villa Ahumada (Cuota)

CLAVE: 08420

RUTA: MEX-045D

AÑO: 2020

LUGAR	ESTACION				CLASIFICACION VEHICULAR EN PORCIENTO										COORDENADAS					
	KM	TE	SC	TDPA	M	A	B	C2	C3	T3S2	T3S3	T3S2R4	OTROS	A	B	C	K'	D	LATITUD	LONGITUD
Ent. El Sueco	0.00	3	1	3663	0.9	60.5	3.8	9.6	1.8	18.6	1.7	2.3	0.8	61.4	3.8	34.8	0.112	0.519	29.889845	-106.395583
Ent. El Sueco	0.00	3	2	3392	0.8	60.2	3.7	8.7	2.0	19.6	1.8	2.4	0.8	61.0	3.7	35.3	0.068	0.519	29.889004	-106.396233
Plaza de Cobro Villa Ahumada	82.00	2	1	2667	0.0	69.4	4.2	3.3	1.9	17.0	1.1	2.2	0.9	69.4	4.2	26.4	0.103	0.500	30.437059	-106.521897
Plaza de Cobro Villa Ahumada	82.00	2	2	2667	0.0	69.4	4.2	3.3	1.9	17.0	1.1	2.2	0.9	69.4	4.2	26.4	0.103	0.500	30.437059	-106.521897
Villa Ahumada	83.63																			

23 CARR: Gómez Palacio - Corralitos (Cuota)

CLAVE: 00016

RUTA: MEX-049D

AÑO: 2020

LUGAR	ESTACION				CLASIFICACION VEHICULAR EN PORCIENTO										COORDENADAS					
	KM	TE	SC	TDPA	M	A	B	C2	C3	T3S2	T3S3	T3S2R4	OTROS	A	B	C	K'	D	LATITUD	LONGITUD
T. C. Gómez Palacio - Jiménez (Libre)	38.00																			
T. Izq. Bermejillo	40.10	1	1	2215	11.8	24.3	8.7	5.8	2.2	29.7	6.6	9.7	1.2	36.1	8.7	55.2	0.090	0.506	25.889055	-103.610140
T. Izq. Bermejillo	40.10	1	2	2161	2.0	35.6	8.5	5.6	2.2	28.9	6.4	9.6	1.2	37.6	8.5	53.9	0.078	0.506	25.889058	-103.610234
T. Izq. Bermejillo	40.10	3	1	1813	2.7	36.0	8.3	5.4	2.1	29.1	6.3	9.4	0.7	38.7	8.3	53.0	0.099	0.506	25.889060	-103.610137
T. Izq. Bermejillo	40.10	3	2	1770	2.9	33.0	8.5	5.6	2.3	29.9	6.8	10.2	0.8	35.9	8.5	55.6	0.092	0.506	25.889061	-103.610238
Plaza de Cobro Bermejillo	44.16	2	1	1840	0.2	33.1	9.5	2.4	1.7	32.5	6.2	11.2	3.2	33.3	9.5	57.2	0.079	0.500	25.923705	-103.622079
Plaza de Cobro Bermejillo	44.16	2	2	1840	0.2	33.1	9.5	2.4	1.7	32.5	6.2	11.2	3.2	33.3	9.5	57.2	0.079	0.500	25.923705	-103.622079
Plaza de Cobro Ceballos	128.80	2	1	1793	0.2	34.5	4.9	3.0	5.2	30.8	6.4	11.3	3.7	34.7	4.9	60.4	0.079	0.500	26.586801	-104.057535
Plaza de Cobro Ceballos	128.80	2	2	1793	0.2	34.5	4.9	3.0	5.2	30.8	6.4	11.3	3.7	34.7	4.9	60.4	0.079	0.500	26.586801	-104.057535
Lim. Edos. Term. Dgo. Ppia. Chih.	158.00																			
T. C. Gómez Palacio - Jiménez	188.46	3	1	1916	1.9	35.1	8.6	8.9	2.6	28.6	5.2	8.5	0.6	37.0	8.6	54.4	0.082	0.516	26.906276	-104.556674
T. C. Gómez Palacio - Jiménez	188.46	3	2	1794	1.7	35.8	8.7	8.6	2.7	27.6	5.2	8.8	0.9	37.5	8.7	53.8	0.076	0.516	26.904473	-104.555335
T. C. Gómez Palacio - Jiménez (Libre)	226.50	1	1	2088	1.9	34.6	8.6	8.6	2.4	29.2	5.6	8.4	0.7	36.5	8.6	54.9	0.110	0.522	27.104611	-104.872292

CHIHUAHUA

23 CARR: Gómez Palacio - Corralitos (Cuota)

CLAVE: 00016

RUTA: MEX-049D

AÑO: 2020

LUGAR	ESTACION				CLASIFICACION VEHICULAR EN PORCIENTO														COORDENADAS	
	KM	TE	SC	TDPA	M	A	B	C2	C3	T3S2	T3S3	T3S2R4	OTROS	A	B	C	K'	D	LATITUD	LONGITUD
T. C. Gómez Palacio - Jiménez (Libre)	226.50	1	2	2284	2.1	34.8	8.7	8.6	2.5	28.9	5.2	8.3	0.9	36.9	8.7	54.4	0.111	0.522	27.098515	-104.865087

24 CARR: Jiménez - Camargo (Cuota)

CLAVE: 08418

RUTA: MEX-045D

AÑO: 2020

LUGAR	ESTACION				CLASIFICACION VEHICULAR EN PORCIENTO														COORDENADAS	
	KM	TE	SC	TDPA	M	A	B	C2	C3	T3S2	T3S3	T3S2R4	OTROS	A	B	C	K'	D	LATITUD	LONGITUD
Jiménez	0.00	3	1	3444	1.3	45.7	6.2	10.5	2.1	24.1	3.5	5.7	0.9	47.0	6.2	46.8	0.062	0.512	27.144807	-104.929179
Jiménez	0.00	3	2	3610	1.2	46.0	6.2	10.4	2.2	24.1	3.3	5.7	0.9	47.2	6.2	46.6	0.063	0.512	27.144786	-104.929272
Plaza de Cobro Camargo	11.00	2	1	2268	0.0	43.9	5.1	5.0	3.7	29.8	3.9	6.7	1.9	43.9	5.1	51.0	0.085	0.500	27.244960	-104.933154
Plaza de Cobro Camargo	11.00	2	2	2268	0.0	43.9	5.1	5.0	3.7	29.8	3.9	6.7	1.9	43.9	5.1	51.0	0.085	0.500	27.244960	-104.933154
Camargo	68.98	1	1	3484	1.5	46.2	6.8	11.6	2.0	21.8	4.1	5.1	0.9	47.7	6.8	45.5	0.101	0.526	27.671620	-105.157177
Camargo	68.98	1	2	3145	1.4	46.2	6.8	11.6	2.1	21.8	4.2	5.0	0.9	47.6	6.8	45.6	0.066	0.526	27.671564	-105.157303

25 CARR: Libramiento Oriente Chihuahua (Cuota)

CLAVE:

RUTA: MEX-045D

AÑO: 2020

LUGAR	ESTACION				CLASIFICACION VEHICULAR EN PORCIENTO														COORDENADAS	
	KM	TE	SC	TDPA	M	A	B	C2	C3	T3S2	T3S3	T3S2R4	OTROS	A	B	C	K'	D	LATITUD	LONGITUD
T. C. Delicias - Chihuahua	0.00	3	0	2872	7.5	36.3	6.6	4.5	1.9	29.9	4.4	8.4	0.5	43.8	6.6	49.6	0.070	0.531	28.579988	-105.958452
Plaza de Cobro Jiménez	3.00	2	0	2530	0.2	40.4	1.8	3.6	3.1	31.8	6.7	11.3	1.1	40.6	1.8	57.6	0.090	0.500	28.603444	-105.951440
T. C. Chihuahua - Ojinaga	22.00	1	0	3999	2.2	56.0	3.1	7.0	2.6	19.6	3.4	5.3	0.8	58.2	3.1	38.7	0.083	0.509	28.739506	-105.986391
T. C. Chihuahua - Ojinaga	22.00	3	0	3190	2.3	53.2	3.6	12.3	2.6	17.3	2.9	4.8	1.0	55.5	3.6	40.9	0.088	0.500	28.739506	-105.986403
Plaza de Cobro Sacramento	38.30	2	0	3121	0.5	47.1	1.5	3.5	2.8	27.4	6.3	10.0	0.9	47.6	1.5	50.9	0.090	0.500	28.790516	-106.139354
T. C. Chihuahua - Sacramento (Cuota)	42.20																			

26 CARR: Ahumada - Ricardo Flores Magón

CLAVE: 08804

RUTA: CHIH

AÑO: 2020

LUGAR	ESTACION				CLASIFICACION VEHICULAR EN PORCIENTO														COORDENADAS	
	KM	TE	SC	TDPA	M	A	B	C2	C3	T3S2	T3S3	T3S2R4	OTROS	A	B	C	K'	D	LATITUD	LONGITUD
Ahumada	0.00	3	0	1277	2.3	57.8	1.0	19.7	3.6	13.0	2.0	0.5	0.1	60.1	1.0	38.9	0.111	0.525	30.615137	-106.514706
Ricardo Flores Magón	96.00	1	0	1954	0.7	76.9	2.0	12.4	1.5	4.2	1.8	0.5	0.0	77.6	2.0	20.4	0.079	0.525	29.947322	-106.961731

CHIHUAHUA

27 CARR: Cuauhtémoc - Buenaventura

CLAVE: 08015

RUTA: CHIH

AÑO: 2020

LUGAR	ESTACION				CLASIFICACION VEHICULAR EN PORCIENTO										COORDENADAS					
	KM	TE	SC	TDPA	M	A	B	C2	C3	T3S2	T3S3	T3S2R4	OTROS	A	B	C	K'	D	LATITUD	LONGITUD
T. C. Chihuahua - Madera	0.00	3	1	10860	0.9	84.4	0.8	9.7	1.0	1.0	1.0	1.0	0.2	85.3	0.8	13.9	0.094	0.501	28.402076	-106.895166
T. C. Chihuahua - Madera	0.00	3	2	10892	0.9	84.2	0.8	9.8	1.0	1.1	1.0	1.0	0.2	85.1	0.8	14.1	0.127	0.501	28.402058	-106.895315
Álvaro Obregón	42.00	3	1	3609	0.6	72.1	1.2	16.5	2.3	4.2	2.3	0.6	0.2	72.7	1.2	26.1	0.089	0.508	28.752707	-106.909395
Álvaro Obregón	42.00	3	2	3497	0.6	72.1	1.2	16.5	2.3	4.2	2.3	0.6	0.2	72.7	1.2	26.1	0.100	0.508	28.752700	-106.909395
Bachiniva	77.50	1	0	2675	1.5	75.7	1.3	17.6	2.1	1.0	0.6	0.2	0.0	77.2	1.3	21.5	0.099	0.514	28.769502	-107.254180
T. Der. Namiquipa	112.06	3	0	3049	1.3	77.1	0.6	16.2	2.3	1.1	0.9	0.3	0.2	78.4	0.6	21.0	0.111	0.512	29.025255	-107.449502
T. Izq. Madera	150.50	3	0	991	2.2	75.6	2.2	17.5	1.2	0.8	0.5	0.0	0.0	77.8	2.2	20.0	0.099	0.510	29.264157	-107.707362
Buenaventura	253.30	1	0	597	1.3	83.6	2.0	6.7	0.4	3.3	2.5	0.2	0.0	84.9	2.0	13.1	0.102	0.501	29.843630	-107.471672

28 CARR: Delicias - Saucillo

CLAVE: 08007

RUTA: CHIH-007

AÑO: 2020

LUGAR	ESTACION				CLASIFICACION VEHICULAR EN PORCIENTO										COORDENADAS					
	KM	TE	SC	TDPA	M	A	B	C2	C3	T3S2	T3S3	T3S2R4	OTROS	A	B	C	K'	D	LATITUD	LONGITUD
Delicias	0.00	3	0	4525	13.0	71.0	1.0	10.5	1.7	1.1	0.7	0.5	0.5	84.0	1.0	15.0	0.091	0.511	28.194951	-105.452401
Las Varas	17.00	1	0	1728	5.5	75.7	1.1	16.1	1.2	0.3	0.1	0.0	0.0	81.2	1.1	17.7	0.115	0.503	28.155917	-105.342168
Saucillo	33.00	1	0	5762	2.9	81.7	1.0	11.4	1.2	0.7	0.7	0.0	0.4	84.6	1.0	14.4	0.098	0.506	28.032313	-105.288052

29 CARR: Ent. Peña Blanca - Ent. La Concha

CLAVE: 08493

RUTA: CHIH

AÑO: 2020

LUGAR	ESTACION				CLASIFICACION VEHICULAR EN PORCIENTO										COORDENADAS					
	KM	TE	SC	TDPA	M	A	B	C2	C3	T3S2	T3S3	T3S2R4	OTROS	A	B	C	K'	D	LATITUD	LONGITUD
T. C. Cuauhtémoc - Buenaventura	0.00	3	0	698	1.5	74.6	1.1	18.5	2.1	1.2	1.0	0.0	0.0	76.1	1.1	22.8	0.150	0.519	29.263561	-107.707831
T. C. Chihuahua - Madera	17.00	1	0	341	2.1	62.9	0.8	16.1	4.0	5.7	7.8	0.0	0.6	65.0	0.8	34.2	0.103	0.525	29.120590	-107.906968

30 CARR: Ent. Puerto Justo - Ent. Guacho chic

CLAVE: 08044

RUTA: CHIH

AÑO: 2020

LUGAR	ESTACION				CLASIFICACION VEHICULAR EN PORCIENTO										COORDENADAS					
	KM	TE	SC	TDPA	M	A	B	C2	C3	T3S2	T3S3	T3S2R4	OTROS	A	B	C	K'	D	LATITUD	LONGITUD
T. C. Hidalgo del Parral - Pto. Sabinal	0.00	3	0	170	0.7	92.6	2.2	4.3	0.0	0.0	0.0	0.2	0.0	93.3	2.2	4.5	0.112	0.507	26.813148	-106.015804
Guacho chic	130.00																			

CHIHUAHUA

31 CARR: Jiménez - Camargo

CLAVE: 08021

RUTA: CHIH-049

AÑO: 2020

LUGAR	ESTACION				CLASIFICACION VEHICULAR EN PORCIENTO													COORDENADAS		
	KM	TE	SC	TDPA	M	A	B	C2	C3	T3S2	T3S3	T3S2R4	OTROS	A	B	C	K'	D	LATITUD	LONGITUD
Jiménez	0.00	3	0	2409	2.4	66.7	2.1	16.3	3.0	5.1	2.0	1.2	1.2	69.1	2.1	28.8	0.095	0.516	27.138155	-104.913515
T. Der. Ojinaga	65.80	3	0	1616	2.5	61.5	1.9	19.7	3.4	8.3	2.1	0.3	0.3	64.0	1.9	34.1	0.111	0.531	27.646963	-105.076224
T. C. Jiménez - Chihuahua (Cuota)	78.20	1	0	1977	2.3	61.4	1.9	20.6	3.9	7.5	1.8	0.3	0.3	63.7	1.9	34.4	0.102	0.516	27.676467	-105.145840

32 CARR: Lázaro Cárdenas - Ent. Colonia San José

CLAVE: 08004

RUTA: CHIH-004

AÑO: 2020

LUGAR	ESTACION				CLASIFICACION VEHICULAR EN PORCIENTO													COORDENADAS		
	KM	TE	SC	TDPA	M	A	B	C2	C3	T3S2	T3S3	T3S2R4	OTROS	A	B	C	K'	D	LATITUD	LONGITUD
T. C. Jiménez - Chihuahua	0.00	3	1	2715	19.2	65.9	1.5	10.1	0.7	0.5	0.6	0.9	0.6	85.1	1.5	13.4	0.094	0.516	28.387290	-105.629110
T. C. Jiménez - Chihuahua	0.00	3	2	2897	19.4	66.4	1.5	9.4	0.7	0.5	0.6	0.9	0.6	85.8	1.5	12.7	0.091	0.516	28.387291	-105.629108
T. C. Meoqui - Julimes	16.00	1	0	1245	19.3	65.4	2.1	10.7	1.0	1.0	0.3	0.0	0.2	84.7	2.1	13.2	0.091	0.517	28.386058	-105.439663

33 CARR: Libramiento de Hidalgo del Parral

CLAVE: 08221

RUTA: CHIH

AÑO: 2020

LUGAR	ESTACION				CLASIFICACION VEHICULAR EN PORCIENTO													COORDENADAS		
	KM	TE	SC	TDPA	M	A	B	C2	C3	T3S2	T3S3	T3S2R4	OTROS	A	B	C	K'	D	LATITUD	LONGITUD
T. C. Hidalgo del Parral - Santa Bárbara	0.00																			
T. C. Ent. La Zarca - Hidalgo del Parral	8.00	3	1	3923	2.4	86.8	0.8	7.7	0.9	0.9	0.3	0.1	0.1	89.2	0.8	10.0	0.095	0.501	26.923082	-105.643844
T. C. Ent. La Zarca - Hidalgo del Parral	8.00	3	2	3902	2.5	85.4	1.1	8.5	1.0	1.0	0.3	0.1	0.1	87.9	1.1	11.0	0.088	0.501	26.923079	-105.643844
T. C. Hidalgo del Parral - Jiménez	10.00																			

34 CARR: Libramiento de Jiménez

CLAVE: 08047

RUTA: CHIH

AÑO: 2020

LUGAR	ESTACION				CLASIFICACION VEHICULAR EN PORCIENTO													COORDENADAS		
	KM	TE	SC	TDPA	M	A	B	C2	C3	T3S2	T3S3	T3S2R4	OTROS	A	B	C	K'	D	LATITUD	LONGITUD
T. C. Gómez Palacio - Jiménez	0.00	3	1	5522	5.0	68.7	3.9	3.5	1.3	10.7	2.2	3.8	0.9	73.7	3.9	22.4	0.080	0.517	27.132621	-104.908633
T. C. Gómez Palacio - Jiménez	0.00	3	2	5154	4.1	67.7	4.3	3.9	1.6	11.1	2.2	4.2	0.9	71.8	4.3	23.9	0.080	0.517	27.132528	-104.908713
T. C. Jiménez - Chihuahua (Cuota)	3.40	1	1	4202	1.1	58.1	5.1	10.0	1.6	15.4	3.6	4.4	0.7	59.2	5.1	35.7	0.073	0.500	27.143376	-104.926736
T. C. Jiménez - Chihuahua (Cuota)	3.40	1	2	4202	1.1	58.2	4.9	10.0	1.7	15.4	3.5	4.5	0.7	59.3	4.9	35.8	0.072	0.500	27.143378	-104.926731

35 CARR: Meoqui - Julimes

CLAVE: 08005

RUTA: CHIH-005

AÑO: 2020

LUGAR	ESTACION				CLASIFICACION VEHICULAR EN PORCIENTO													COORDENADAS		
	KM	TE	SC	TDPA	M	A	B	C2	C3	T3S2	T3S3	T3S2R4	OTROS	A	B	C	K'	D	LATITUD	LONGITUD
Meoqui	0.00	3	0	6329	4.2	79.2	0.9	13.5	1.1	0.5	0.4	0.0	0.2	83.4	0.9	15.7	0.084	0.503	28.276538	-105.468329

CHIHUAHUA

35 CARR: Mecoqui - Julimes

CLAVE: 08005

RUTA: CHIH-005

AÑO: 2020

LUGAR	ESTACION				CLASIFICACION VEHICULAR EN PORCIENTO										COORDENADAS					
	KM	TE	SC	TDPA	M	A	B	C2	C3	T3S2	T3S3	T3S2R4	OTROS	A	B	C	K'	D	LATITUD	LONGITUD
Loreto	8.00	3	0	4040	3.7	77.4	1.2	13.2	1.3	1.1	0.8	0.6	0.7	81.1	1.2	17.7	0.089	0.512	28.312919	-105.438420
Regina	15.40	3	0	2856	4.0	79.6	1.3	14.0	0.7	0.3	0.1	0.0	0.0	83.6	1.3	15.1	0.083	0.517	28.407907	-105.448836
Julimes	23.00	1	0	3161	2.4	90.6	2.0	3.4	1.0	0.4	0.1	0.1	0.0	93.0	2.0	5.0	0.098	0.506	28.426776	-105.431800

36 CARR: Ramal a San Pedro Creel

CLAVE: 08812

RUTA: CHIH-025

AÑO: 2020

LUGAR	ESTACION				CLASIFICACION VEHICULAR EN PORCIENTO										COORDENADAS					
	KM	TE	SC	TDPA	M	A	B	C2	C3	T3S2	T3S3	T3S2R4	OTROS	A	B	C	K'	D	LATITUD	LONGITUD
T. C. La Junta - Yepachi	0.00	3	0	1773	1.8	72.0	2.8	17.5	2.2	2.0	1.2	0.2	0.3	73.8	2.8	23.4	0.095	0.523	28.389167	-107.440499
San Juanito	58.00	3	0	1641	2.7	73.7	2.4	14.7	1.9	2.7	1.5	0.0	0.4	76.4	2.4	21.2	0.094	0.533	27.969758	-107.612074
San Pedro Creel	85.00	1	0	1294	4.2	69.5	3.4	20.2	1.0	1.3	0.3	0.0	0.1	73.7	3.4	22.9	0.124	0.537	27.752763	-107.636923

37 CARR: Samachique - Batopilas

CLAVE:

RUTA: CHIH

AÑO: 2020

LUGAR	ESTACION				CLASIFICACION VEHICULAR EN PORCIENTO										COORDENADAS					
	KM	TE	SC	TDPA	M	A	B	C2	C3	T3S2	T3S3	T3S2R4	OTROS	A	B	C	K'	D	LATITUD	LONGITUD
Samachique	0.00	3	0	69	11.7	65.7	0.2	20.7	1.3	0.0	0.4	0.0	0.0	77.4	0.2	22.4	0.203	0.511	27.289082	-107.529515
Batopilas	61.00																			

38 CARR: San Juanito - Ent. Basaseachi

CLAVE: 08045

RUTA: CHIH

AÑO: 2020

LUGAR	ESTACION				CLASIFICACION VEHICULAR EN PORCIENTO										COORDENADAS					
	KM	TE	SC	TDPA	M	A	B	C2	C3	T3S2	T3S3	T3S2R4	OTROS	A	B	C	K'	D	LATITUD	LONGITUD
San Juanito	0.00	3	0	655	1.1	59.1	1.2	35.6	2.3	0.3	0.3	0.0	0.1	60.2	1.2	38.6	0.119	0.509	27.969758	-107.612074
T. C. La Junta - Yécora	84.00	1	0	394	1.4	72.1	1.1	23.0	1.1	0.5	0.8	0.0	0.0	73.5	1.1	25.4	0.104	0.504	28.191446	-108.173384

39 CARR: San Pedro Creel - Guachochi

CLAVE:

RUTA: CHIH-025

AÑO: 2020

LUGAR	ESTACION				CLASIFICACION VEHICULAR EN PORCIENTO										COORDENADAS					
	KM	TE	SC	TDPA	M	A	B	C2	C3	T3S2	T3S3	T3S2R4	OTROS	A	B	C	K'	D	LATITUD	LONGITUD
San Pedro Creel	90.30																			
Samachique	164.30	1	0	104	1.8	67.9	0.1	27.9	1.4	0.6	0.3	0.0	0.0	69.7	0.1	30.2	0.202	0.517	27.299107	-107.526069
Samachique	164.30	3	0	139	3.0	62.0	0.6	30.8	1.6	1.4	0.6	0.0	0.0	65.0	0.6	34.4	0.137	0.501	27.299109	-107.526071
Guachochi	246.00																			

CHIHUAHUA

40 CARR: T. C. (Jiménez - Camargo) - Ojinaga

CLAVE: 08009

RUTA: CHIH-018

AÑO: 2020

LUGAR	ESTACION				CLASIFICACION VEHICULAR EN PORCIENTO													COORDENADAS		
	KM	TE	SC	TDPA	M	A	B	C2	C3	T3S2	T3S3	T3S2R4	OTROS	A	B	C	K'	D	LATITUD	LONGITUD
T. C. Jimenez - Camargo	0.00	3	1	364	3.6	73.9	0.9	10.7	1.0	5.7	2.4	1.0	0.8	77.5	0.9	21.6	0.113	0.501	27.646985	-105.074629
T. C. Jimenez - Camargo	0.00	3	2	362	4.2	67.6	1.6	12.9	1.3	6.5	3.6	1.5	0.8	71.8	1.6	26.6	0.119	0.501	27.646986	-105.074622
T. Der. La Perla	97.00	3	0	407	1.4	51.8	1.8	22.3	3.0	10.2	5.6	2.5	1.4	53.2	1.8	45.0	0.120	0.506	28.298383	-104.571210
T. Der. Majjoma	174.20	3	0	353	0.7	60.1	1.5	28.9	4.1	3.0	1.7	0.0	0.0	60.8	1.5	37.7	0.164	0.501	28.935058	-104.480994
T. Der. Manuel Benavides	218.00	3	0	1624	0.2	70.5	2.0	20.9	0.8	4.5	0.5	0.2	0.4	70.7	2.0	27.3	0.106	0.508	29.310989	-104.402982
Ojinaga	247.00	1	0	2184	0.4	73.3	1.5	20.1	2.4	1.8	0.3	0.1	0.1	73.7	1.5	24.8	0.158	0.558	29.537052	-104.426077

41 CARR: T. Julimes - La Boquilla

CLAVE: 08009

RUTA: CHIH-018

AÑO: 2020

LUGAR	ESTACION				CLASIFICACION VEHICULAR EN PORCIENTO													COORDENADAS		
	KM	TE	SC	TDPA	M	A	B	C2	C3	T3S2	T3S3	T3S2R4	OTROS	A	B	C	K'	D	LATITUD	LONGITUD
T. C. Meoqui - Julimes	0.00	3	0	1268	6.3	86.4	1.8	3.7	0.9	0.6	0.2	0.1	0.0	92.7	1.8	5.5	0.105	0.502	28.425889	-105.455458
La Boquilla	7.50																			

42 CARR: Ent. El Álamo - Ent. Ricardo Flores Magón (Cuota)

CLAVE: 08046

RUTA: CHIH-D

AÑO: 2020

LUGAR	ESTACION				CLASIFICACION VEHICULAR EN PORCIENTO													COORDENADAS		
	KM	TE	SC	TDPA	M	A	B	C2	C3	T3S2	T3S3	T3S2R4	OTROS	A	B	C	K'	D	LATITUD	LONGITUD
T. C. Chihuahua - El Sueco	0.00	3	0	1787	1.5	53.4	4.1	11.7	3.1	16.4	4.5	5.2	0.1	54.9	4.1	41.0	0.090	0.521	29.477378	-106.403110
T. C. El Sueco - Janos	75.00																			

43 CARR: Ricardo Flores Magón - Galeana (Cuota)

CLAVE: 08019

RUTA: CHIH-D

AÑO: 2020

LUGAR	ESTACION				CLASIFICACION VEHICULAR EN PORCIENTO													COORDENADAS		
	KM	TE	SC	TDPA	M	A	B	C2	C3	T3S2	T3S3	T3S2R4	OTROS	A	B	C	K'	D	LATITUD	LONGITUD
T. C. El Sueco - Janos	0.00	3	0	2222	2.0	49.4	3.2	17.2	3.6	16.1	4.0	4.2	0.3	51.4	3.2	45.4	0.084	0.546	29.966898	-107.062885
Galeana	58.00	1	0	2281	2.3	47.8	3.8	16.6	3.5	16.5	4.1	4.5	0.9	50.1	3.8	46.1	0.090	0.508	30.180171	-107.626126

44 CARR: Samalayuca - San Jerónimo (Cuota)

CLAVE: 08019

RUTA: CHIH-D

AÑO: 2020

LUGAR	ESTACION				CLASIFICACION VEHICULAR EN PORCIENTO													COORDENADAS		
	KM	TE	SC	TDPA	M	A	B	C2	C3	T3S2	T3S3	T3S2R4	OTROS	A	B	C	K'	D	LATITUD	LONGITUD
T. C. El Sueco - Cd. Juárez	0.00	3	0	1116	0.8	80.2	0.6	13.3	1.9	2.5	0.5	0.0	0.2	81.0	0.6	18.4	0.140	0.517	31.450573	-106.466709
San Jerónimo	28.10																			

CHIHUAHUA

45 CARR: T. C. (Chihuahua - Ojinaga) - La Mula (Cuota)

CLAVE: 08170

RUTA: CHIH-D

AÑO: 2020

LUGAR	ESTACION				CLASIFICACION VEHICULAR EN PORCIENTO										COORDENADAS					
	KM	TE	SC	TDPA	M	A	B	C2	C3	T3S2	T3S3	T3S2R4	OTROS	A	B	C	K'	D	LATITUD	LONGITUD
T. C. Chihuahua - Ojinaga	0.00	3	0	1043	0.6	67.0	2.7	22.3	2.8	2.7	1.3	0.5	0.1	67.6	2.7	29.7	0.094	0.514	29.147005	-105.490866
La Mula	110.00	1	0	982	0.7	66.7	2.9	22.4	3.2	2.6	1.2	0.3	0.0	67.4	2.9	29.7	0.104	0.520	29.182873	-104.466319

46 CARR: Chihuahua - Madera

CLAVE: 08038

RUTA: CHIH-D-MEX-001-CHIH

AÑO: 2020

LUGAR	ESTACION				CLASIFICACION VEHICULAR EN PORCIENTO										COORDENADAS					
	KM	TE	SC	TDPA	M	A	B	C2	C3	T3S2	T3S3	T3S2R4	OTROS	A	B	C	K'	D	LATITUD	LONGITUD
Chihuahua	0.00																			
T. Der. Presa Chihuahua	10.50	1	1	9148	2.0	72.5	3.0	14.7	2.0	3.7	1.5	0.5	0.1	74.5	3.0	22.5	0.114	0.509	28.567809	-106.144074
T. Der. Presa Chihuahua	10.50	1	2	9465	2.0	73.4	2.9	14.1	1.9	3.6	1.5	0.5	0.1	75.4	2.9	21.7	0.094	0.509	28.567691	-106.143990
T. Der. Presa Chihuahua	10.50	3	1	6607	1.1	74.5	2.9	14.1	1.5	3.7	1.5	0.5	0.2	75.6	2.9	21.5	0.113	0.530	28.567804	-106.144082
T. Der. Presa Chihuahua	10.50	3	2	7461	1.0	74.4	2.8	14.3	1.5	3.9	1.5	0.4	0.2	75.4	2.8	21.8	0.091	0.530	28.567686	-106.143995
T. Izq. Hidalgo del Parral (Vía Corta)	36.20	1	1	5195	1.1	73.3	3.1	14.5	1.9	3.8	1.6	0.5	0.2	74.4	3.1	22.5	0.096	0.508	28.359805	-106.263309
T. Izq. Hidalgo del Parral (Vía Corta)	36.20	1	2	5027	1.1	73.5	2.9	14.7	1.8	3.8	1.5	0.4	0.3	74.6	2.9	22.5	0.122	0.508	28.359698	-106.263286
T. Izq. Hidalgo del Parral (Vía Corta)	36.20	3	1	3831	1.5	72.9	2.4	13.7	1.7	4.8	1.8	0.8	0.4	74.4	2.4	23.2	0.099	0.505	28.359803	-106.263311
T. Izq. Hidalgo del Parral (Vía Corta)	36.20	3	2	3914	1.6	72.7	2.5	13.5	1.7	4.8	2.0	0.8	0.4	74.3	2.5	23.2	0.097	0.505	28.359696	-106.263295
Cuahtémoc	103.50	1	1	4269	1.3	76.6	3.3	13.4	1.4	2.3	1.0	0.4	0.3	77.9	3.3	18.8	0.113	0.502	28.407191	-106.866877
Cuahtémoc	103.50	1	2	4241	1.3	76.6	3.2	13.2	1.6	2.3	1.2	0.4	0.2	77.9	3.2	18.9	0.092	0.502	28.406480	-106.866233
Cuahtémoc	103.50	3	1	8894	1.2	80.5	2.0	12.7	1.0	1.4	0.8	0.3	0.1	81.7	2.0	16.3	0.115	0.502	28.407187	-106.866888
Cuahtémoc	103.50	3	2	8974	1.3	80.1	2.0	12.8	1.0	1.5	0.9	0.3	0.1	81.4	2.0	16.6	0.123	0.502	28.406472	-106.866245
T. Der. Álvaro Obregón	107.10	3	1	5217	1.0	79.7	1.1	11.4	1.9	2.0	1.7	0.5	0.7	80.7	1.1	18.2	0.094	0.501	28.402000	-106.895373
T. Der. Álvaro Obregón	107.10	3	2	5198	0.9	80.4	1.1	11.3	1.8	2.0	1.6	0.3	0.6	81.3	1.1	17.6	0.125	0.501	28.401857	-106.895351
T. Izq. Yepachi	150.80	1	1	2473	1.1	75.2	2.3	15.6	1.6	2.6	1.3	0.1	0.2	76.3	2.3	21.4	0.093	0.510	28.470311	-107.298274
T. Izq. Yepachi	150.80	1	2	2576	1.3	74.7	2.3	15.6	1.7	2.5	1.4	0.2	0.3	76.0	2.3	21.7	0.095	0.510	28.470180	-107.298312
Guerrero	169.80	3	0	2180	2.5	73.5	1.4	18.2	2.3	1.4	0.7	0.0	0.0	76.0	1.4	22.6	0.109	0.500	28.550590	-107.486147
T. Der. Peña Blanca	261.30	1	0	777	3.8	67.0	2.7	17.9	2.6	2.4	2.8	0.0	0.8	70.8	2.7	26.5	0.104	0.505	29.120073	-107.906502
T. Der. Peña Blanca	261.30	3	0	870	4.2	70.0	1.9	16.0	3.1	2.0	2.3	0.2	0.3	74.2	1.9	23.9	0.091	0.505	29.120023	-107.907376
Madera	279.00																			

47 CARR: Ent. Agua Caliente - El Terrero

CLAVE: 08170

RUTA: CHIH-MEX

AÑO: 2020

LUGAR	ESTACION				CLASIFICACION VEHICULAR EN PORCIENTO										COORDENADAS					
	KM	TE	SC	TDPA	M	A	B	C2	C3	T3S2	T3S3	T3S2R4	OTROS	A	B	C	K'	D	LATITUD	LONGITUD
T. C. Chihuahua - El Sueco	0.00	3	0	547	3.1	59.7	1.1	23.7	5.0	4.7	1.9	0.5	0.3	62.8	1.1	36.1	0.113	0.507	29.096537	-106.342296
Nuevas Delicias	22.00	1	0	538	6.5	61.8	0.9	26.0	2.6	1.7	0.5	0.0	0.0	68.3	0.9	30.8	0.126	0.521	29.074210	-106.505209

CHIHUAHUA

47 CARR: Ent. Agua Caliente - El Terrero

CLAVE: 08170

RUTA: CHIH-MEX

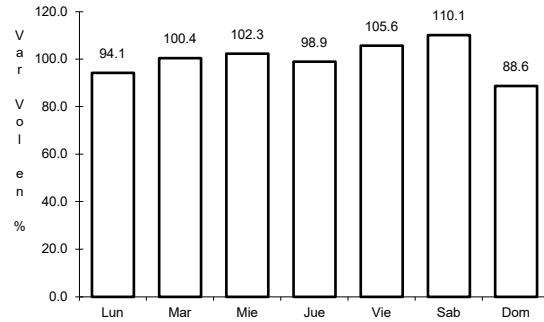
AÑO: 2020

L U G A R	E S T A C I O N				C L A S I F I C A C I O N V E H I C U L A R E N P O R C I E N T O														C O O R D E N A D A S	
	KM	TE	SC	TDPA	M	A	B	C2	C3	T3S2	T3S3	T3S2R4	OTROS	A	B	C	K'	D	LATITUD	LONGITUD
El Terrero	120.00	1	0	1274	1.9	74.9	0.5	18.8	2.2	1.1	0.5	0.0	0.1	76.8	0.5	22.7	0.120	0.512	29.178925	-107.385377

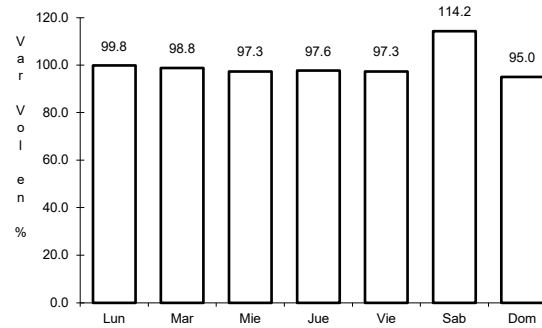
1 CARR: Cd. Juárez - Janos

CLAVE: 08041

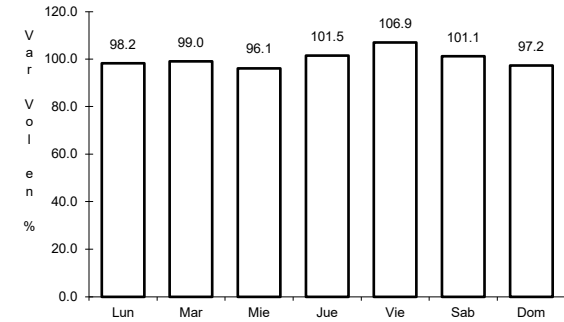
RUTA: MEX-002



Km: 0.00 Tipo: 3 Sent: 1



Km: 0.00 Tipo: 3 Sent: 2

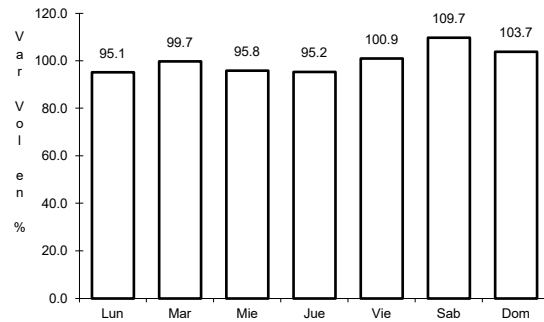


Km: 205.00 Tipo: 1 Sent: 0

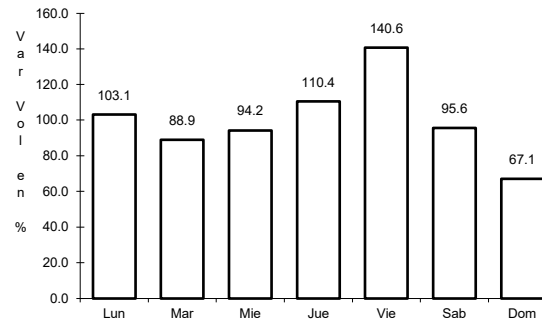
2 CARR: Chihuahua - El Succo

CLAVE: 08419

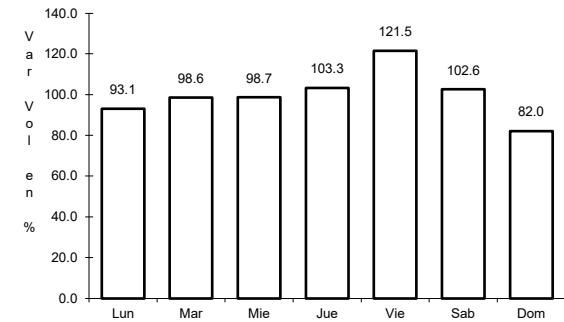
RUTA: MEX-045



Km: 24.00 Tipo: 1 Sent: 0



Km: 155.87 Tipo: 1 Sent: 1

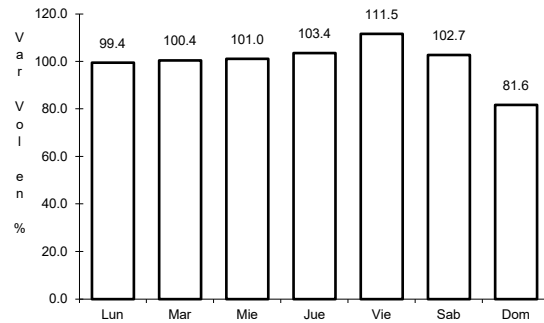


Km: 155.87 Tipo: 1 Sent: 2

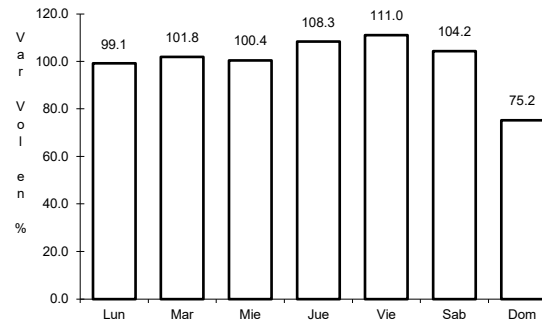
3 CARR: Chihuahua - Ojinaga

CLAVE: 08042

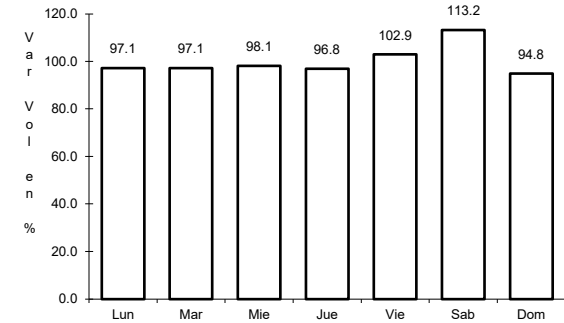
RUTA: MEX-016



Km: 6.50 Tipo: 1 Sent: 1



Km: 6.50 Tipo: 1 Sent: 2

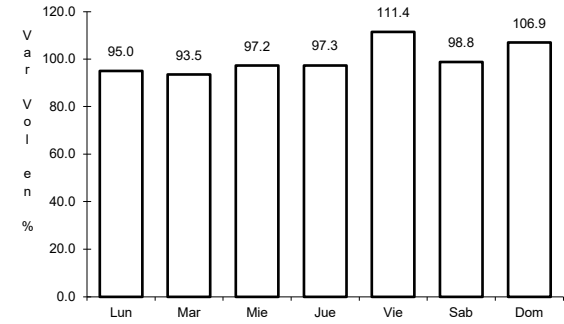
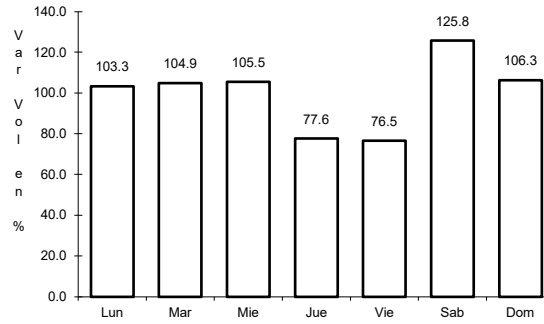
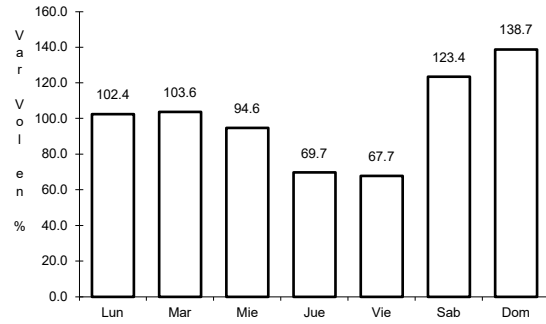


Km: 224.00 Tipo: 1 Sent: 0

4 CARR: Delicias - Chihuahua (Libre)

CLAVE: 08418

RUTA: MEX-045



Km: 150.10 Tipo: 3 Sent: 1

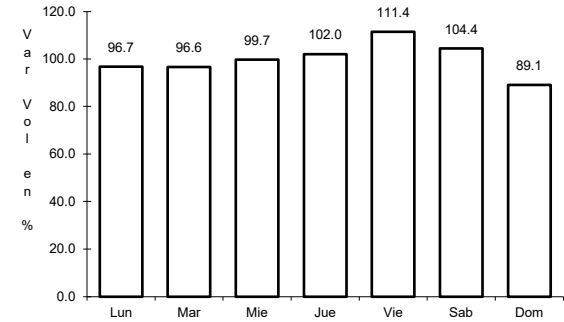
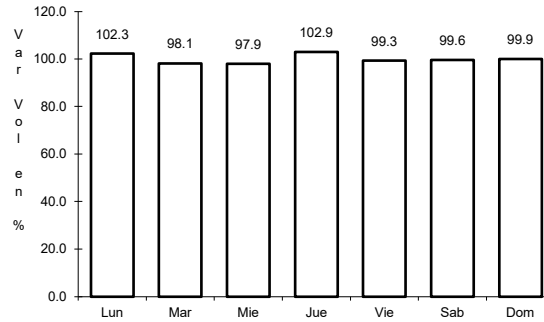
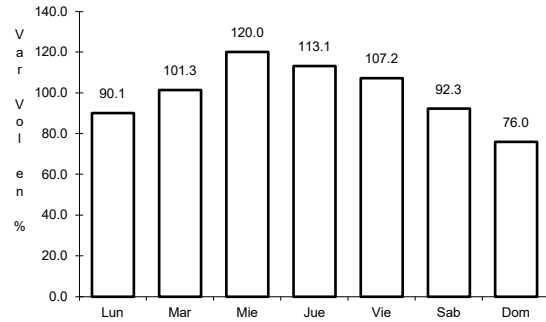
Km: 150.10 Tipo: 3 Sent: 2

Km: 210.00 Tipo: 1 Sent: 1

5 CARR: El Sueco - Janos

CLAVE: 08037

RUTA: MEX-010



Km: 0.00 Tipo: 3 Sent: 0

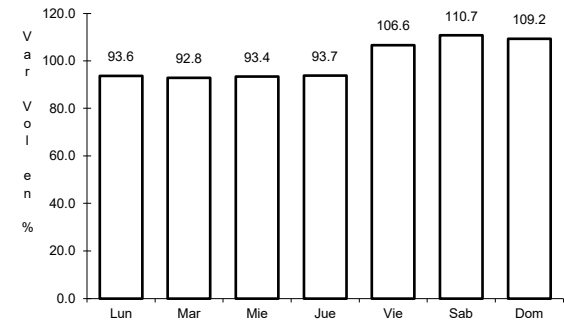
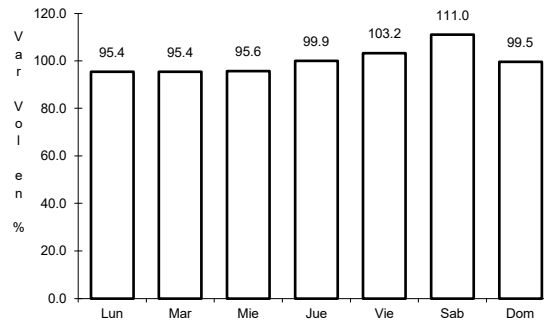
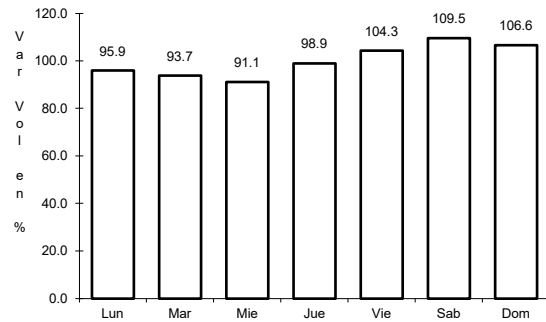
Km: 114.00 Tipo: 1 Sent: 0

Km: 257.00 Tipo: 1 Sent: 0

6 CARR: Ent. Ciudad Camargo - Saucillo

CLAVE: 08417

RUTA: MEX-045



Km: 0.00 Tipo: 3 Sent: 0

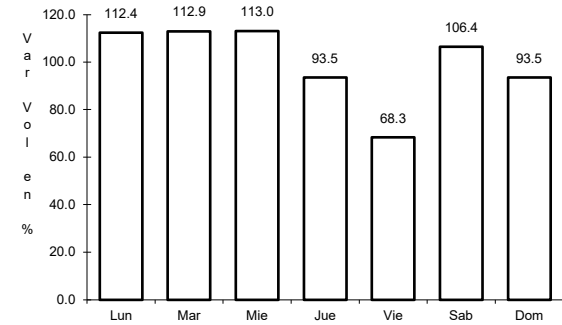
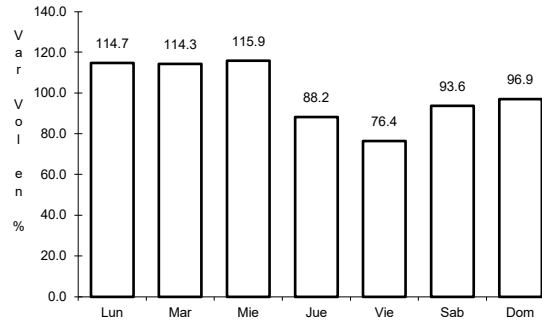
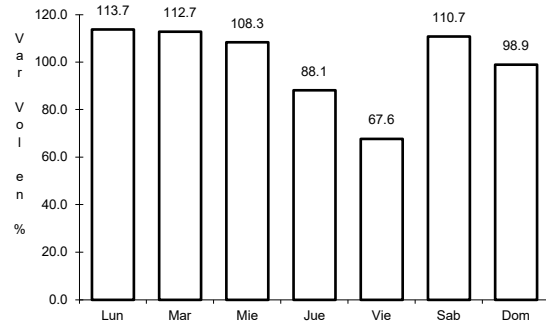
Km: 20.92 Tipo: 3 Sent: 0

Km: 42.52 Tipo: 1 Sent: 0

7 CARR: Ent. La Zarca - Hidalgo del Parral

CLAVE: 00488

ruta: MEX-045



Km: 0.00 Tipo: 3 Sent: 0

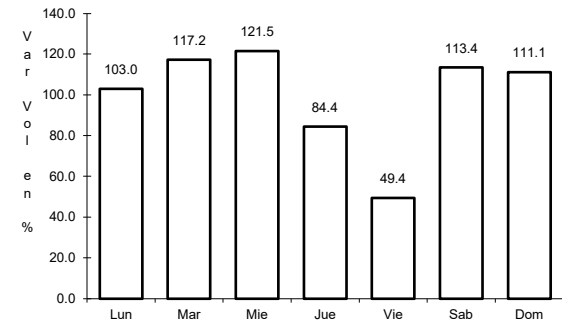
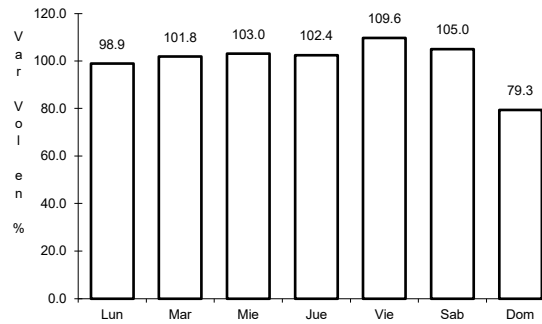
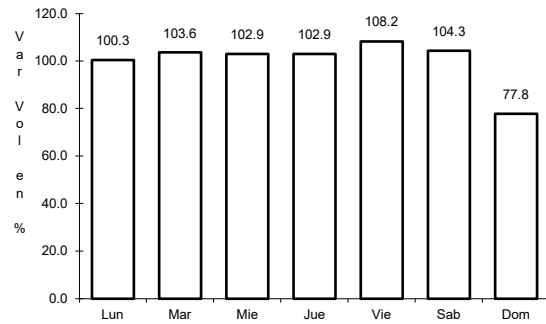
Km: 92.35 Tipo: 3 Sent: 0

Km: 171.00 Tipo: 1 Sent: 0

8 CARR: Gómez Palacio - Jiménez

CLAVE: 00006

ruta: MEX-049



Km: 0.00 Tipo: 3 Sent: 1

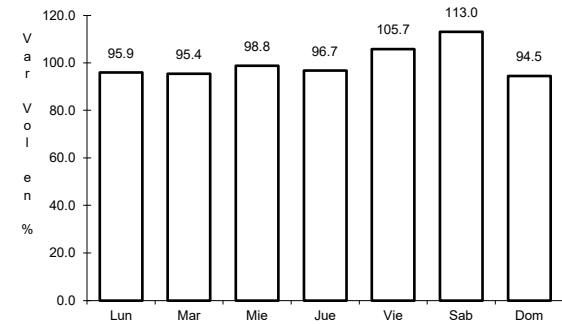
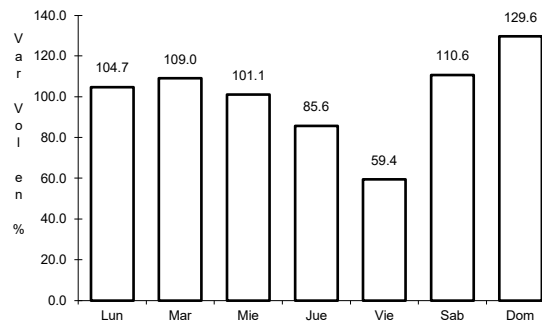
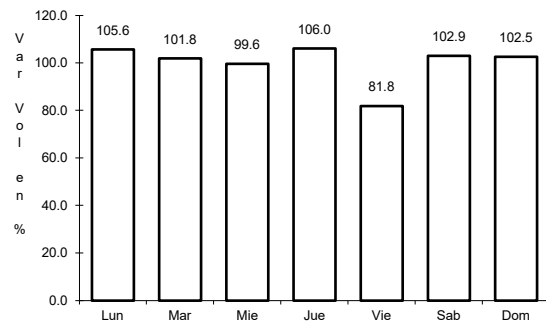
Km: 0.00 Tipo: 3 Sent: 2

Km: 107.95 Tipo: 1 Sent: 0

9 CARR: Hidalgo del Parral - Ent. Nuevo Palomas (Vía Corta)

CLAVE: 08811

ruta: MEX-024



Km: 0.00 Tipo: 3 Sent: 0

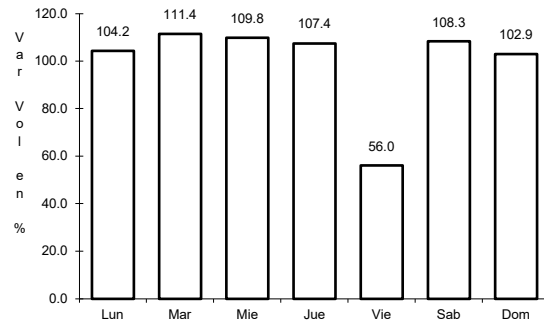
Km: 66.00 Tipo: 1 Sent: 0

Km: 182.40 Tipo: 1 Sent: 0

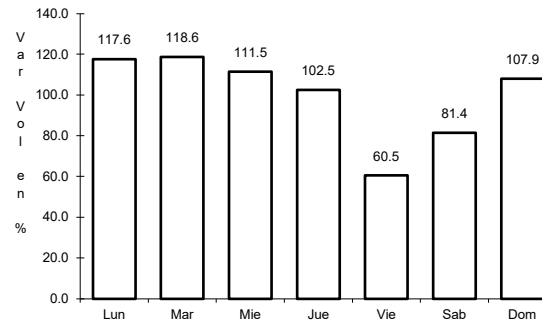
10 CARR: Hidalgo del Parral - Guadalupe y Calvo

CLAVE: 00802

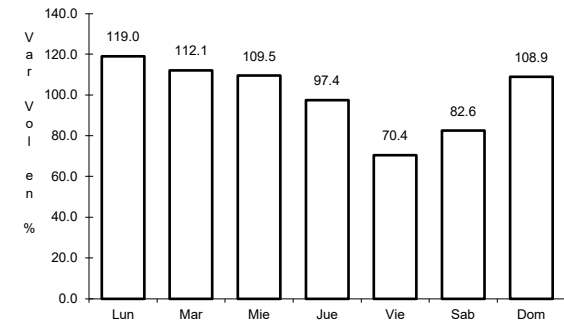
ruta: MEX-024



Km: 0.00 Tipo: 3 Sent: 0



Km: 110.00 Tipo: 1 Sent: 0

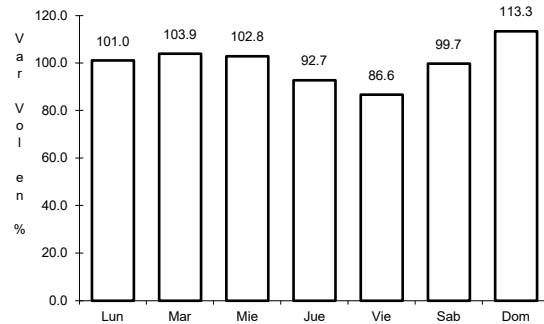


Km: 212.00 Tipo: 1 Sent: 0

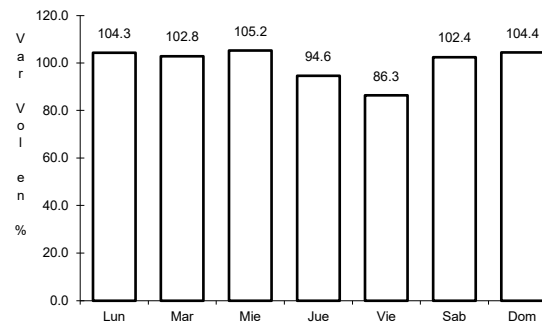
11 CARR: Hidalgo del Parral - Jiménez

CLAVE: 08444

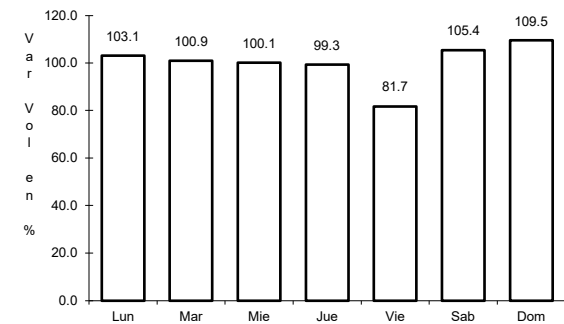
ruta: MEX-045



Km: 0.00 Tipo: 3 Sent: 1



Km: 0.00 Tipo: 3 Sent: 2

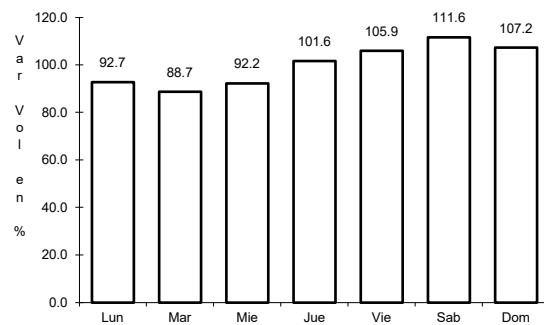


Km: 76.63 Tipo: 1 Sent: 1

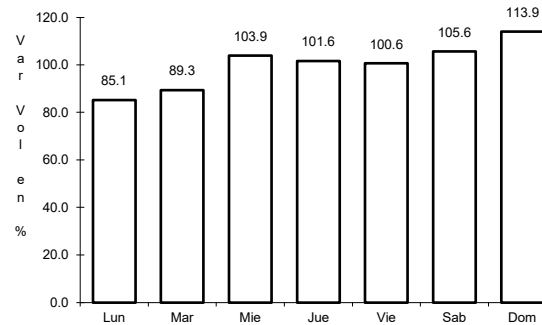
12 CARR: Janos - Agua Prieta

CLAVE: 00220

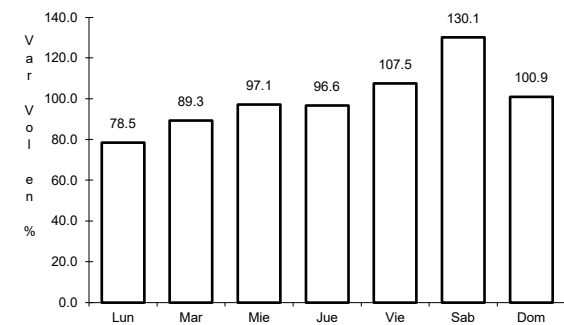
ruta: MEX-002



Km: 0.00 Tipo: 3 Sent: 0



Km: 56.00 Tipo: 3 Sent: 0

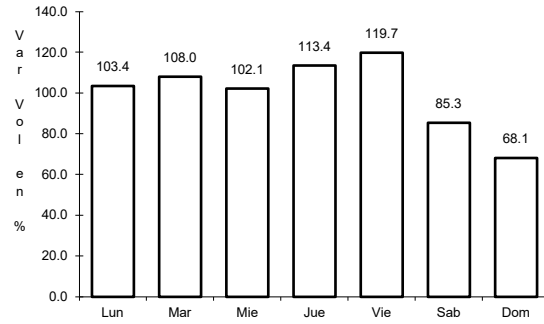


Km: 160.00 Tipo: 1 Sent: 0

13 CARR: Jerónimo - Sta. Teresa

CLAVE: 08043

RUTA: MEX-002



Km: 0.00

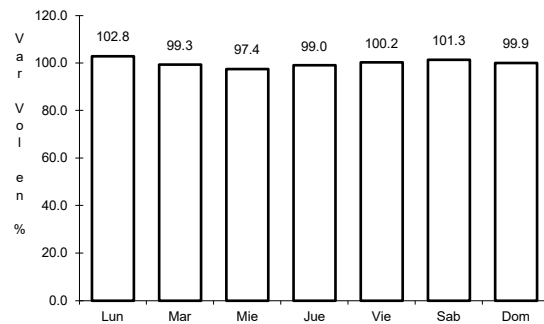
Tipo: 3

Sent: 0

14 CARR: La Junta - Yécora

CLAVE: 00065

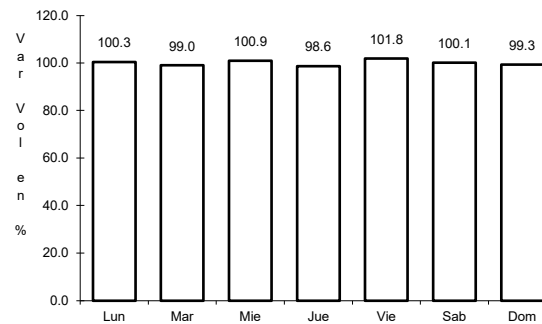
RUTA: MEX-016



Km: 0.00

Tipo: 3

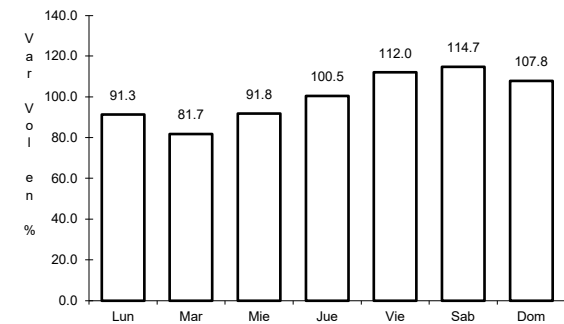
Sent: 0



Km: 70.00

Tipo: 3

Sent: 0



Km: 253.00

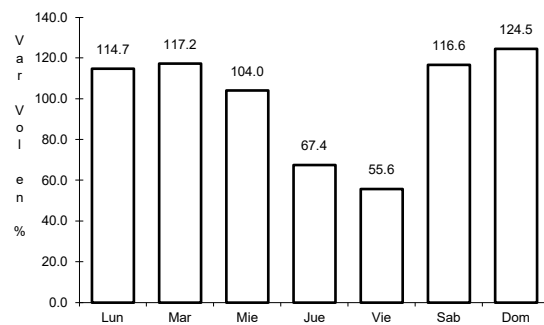
Tipo: 1

Sent: 0

15 CARR: Libramiento de Delicias - Meoqui

CLAVE: 08813

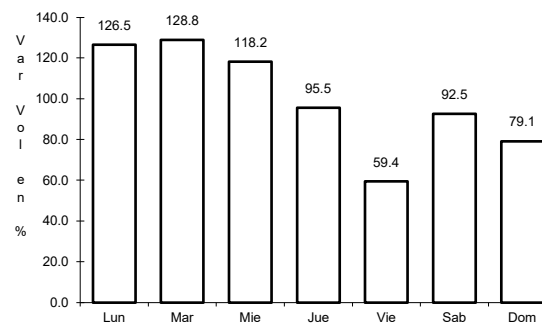
RUTA: MEX-045



Km: 0.00

Tipo: 3

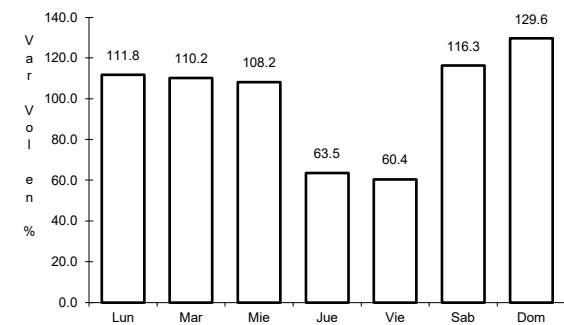
Sent: 1



Km: 0.00

Tipo: 3

Sent: 2



Km: 13.60

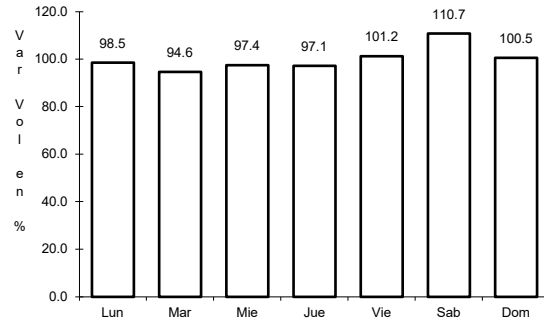
Tipo: 1

Sent: 1

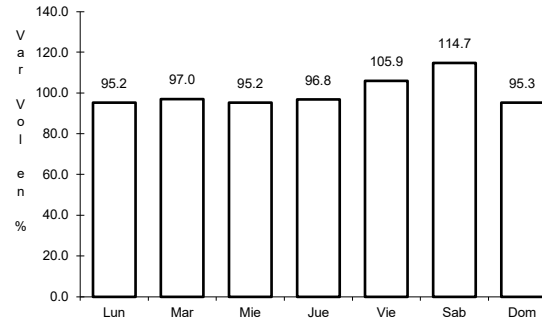
16 CARR: Porvenir - Cd. Juárez

CLAVE: 08169

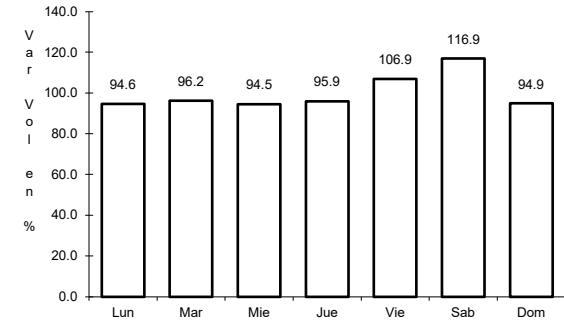
RUTA: MEX-002



Km: 1.67 Tipo: 3 Sent: 0



Km: 70.32 Tipo: 1 Sent: 1

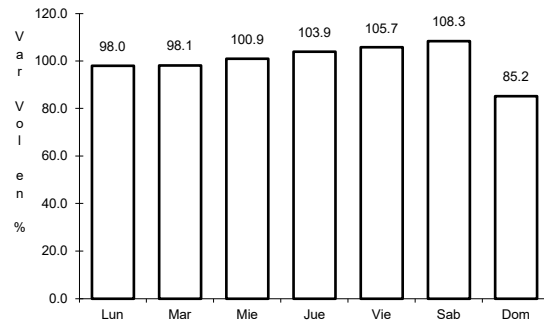


Km: 70.32 Tipo: 1 Sent: 2

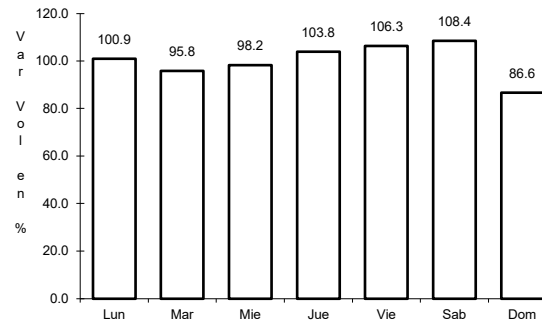
17 CARR: Ramal a Aeropuerto de Chihuahua

CLAVE: 08421

RUTA: MEX-016



Km: 0.00 Tipo: 3 Sent: 1

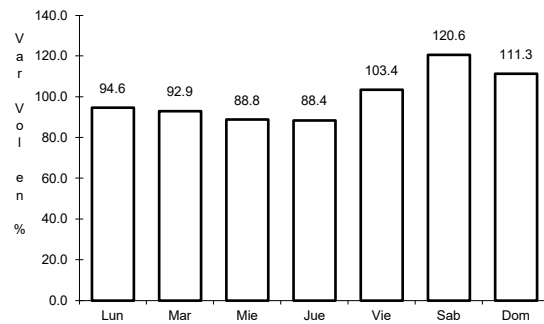


Km: 0.00 Tipo: 3 Sent: 2

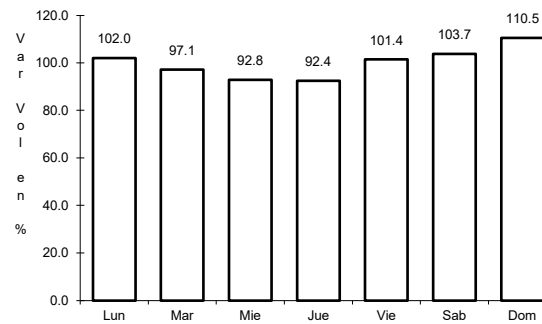
18 CARR: Ramal a Palomas

CLAVE: 08019

RUTA: MEX-002



Km: 0.00 Tipo: 3 Sent: 0

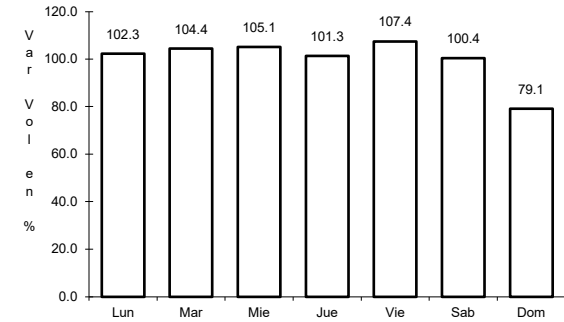
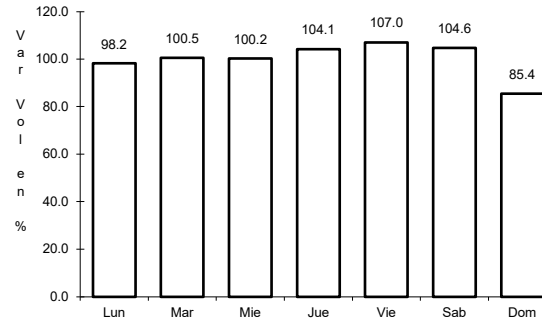
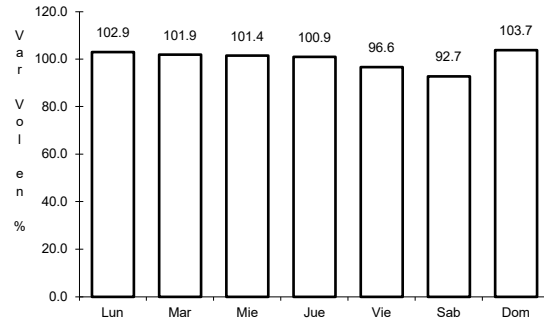


Km: 4.50 Tipo: 3 Sent: 0

19 CARR: Villa Ahumada - Cd. Juárez (Libre)

CLAVE: 08420

RUTA: MEX-045



Km: 83.63 Tipo: 3 Sent: 1

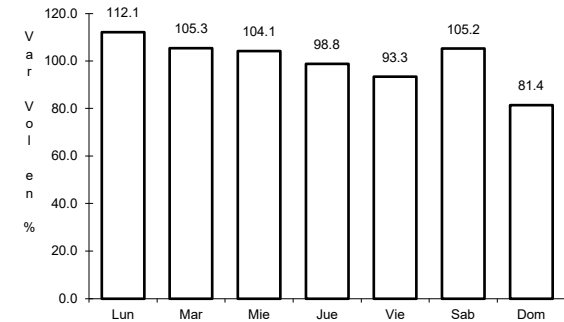
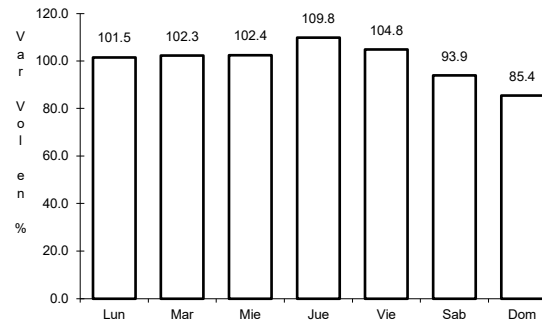
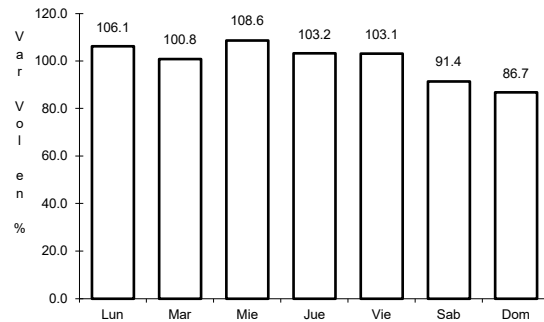
Km: 83.63 Tipo: 3 Sent: 2

Km: 201.35 Tipo: 1 Sent: 1

20 CARR: Camargo - Delicias (Cuota)

CLAVE: 08418

RUTA: MEX-045D



Km: 73.17 Tipo: 1 Sent: 1

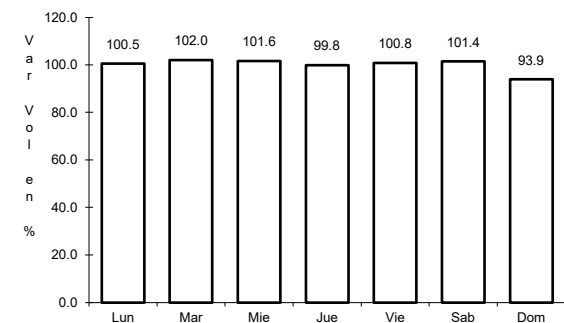
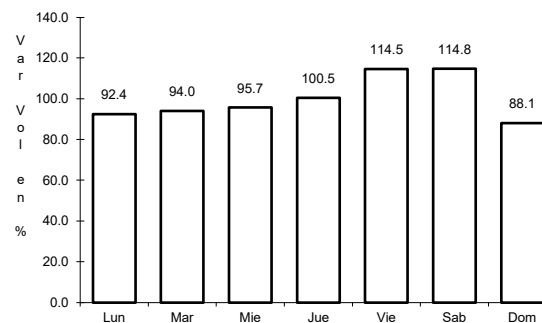
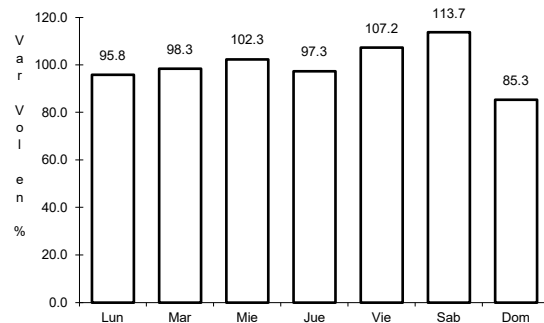
Km: 73.17 Tipo: 1 Sent: 2

Km: 138.00 Tipo: 1 Sent: 1

21 CARR: Chihuahua - Sacramento (Cuota)

CLAVE: 08015

RUTA: MEX-045D



Km: 18.12 Tipo: 3 Sent: 1

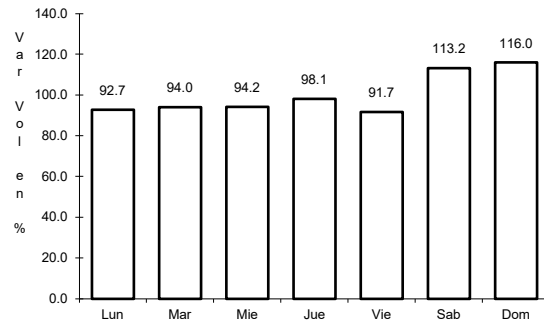
Km: 18.12 Tipo: 3 Sent: 2

Km: 21.17 Tipo: 3 Sent: 1

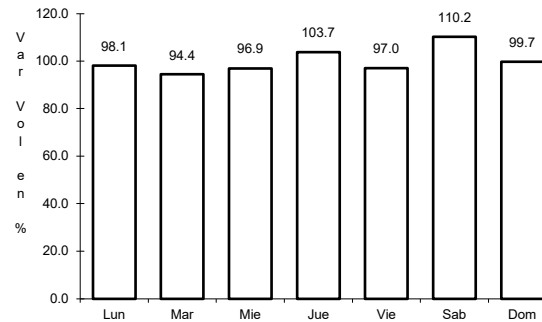
22 CARR: El Sueco - Villa Ahumada (Cuota)

CLAVE: 08420

ruta: MEX-045D



Km: 0.00 Tipo: 3 Sent: 1

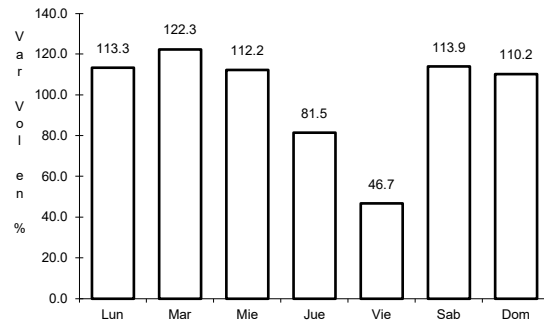


Km: 0.00 Tipo: 3 Sent: 2

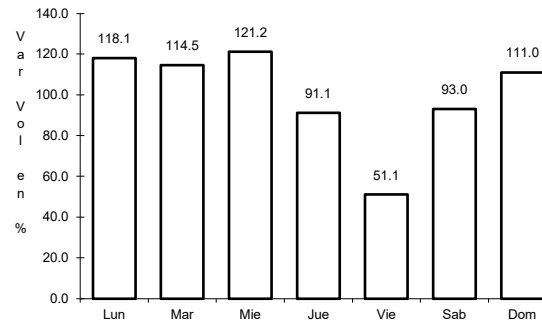
23 CARR: Gómez Palacio - Corralitos (Cuota)

CLAVE: 00016

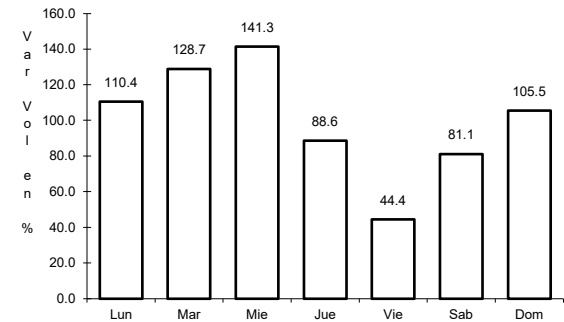
ruta: MEX-049D



Km: 40.10 Tipo: 1 Sent: 1



Km: 40.10 Tipo: 1 Sent: 2

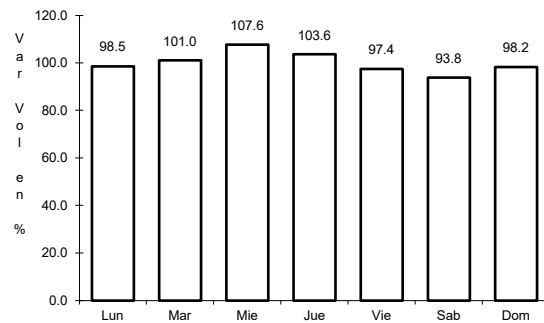


Km: 226.50 Tipo: 1 Sent: 1

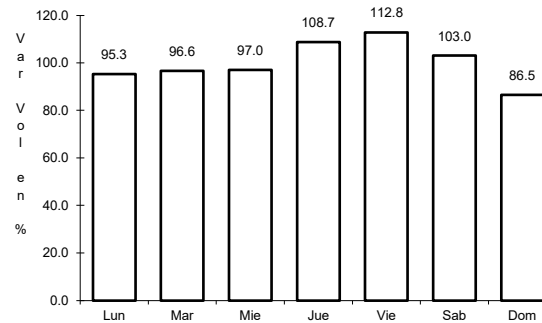
24 CARR: Jiménez - Camargo (Cuota)

CLAVE: 08418

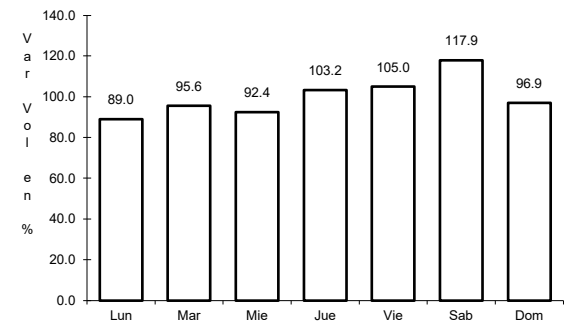
ruta: MEX-045D



Km: 0.00 Tipo: 3 Sent: 1



Km: 0.00 Tipo: 3 Sent: 2

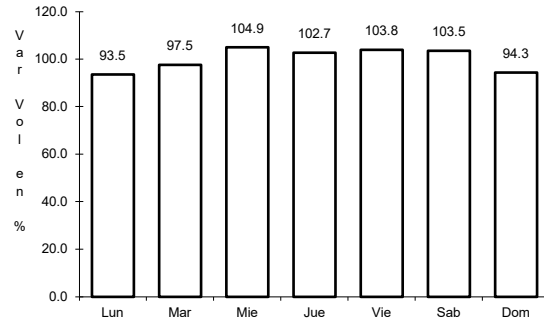


Km: 68.98 Tipo: 1 Sent: 1

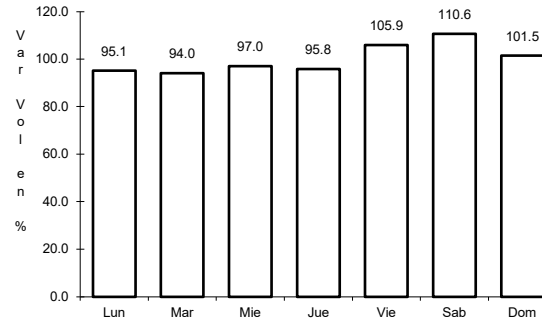
25 CARR: Libramiento Oriente Chihuahua (Cuota)

CLAVE:

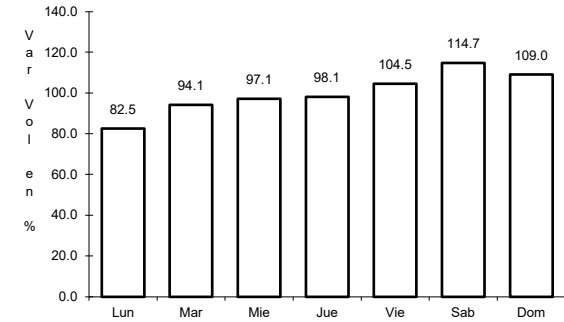
RUTA: MEX-045D



Km: 0.00 Tipo: 3 Sent: 0



Km: 22.00 Tipo: 1 Sent: 0

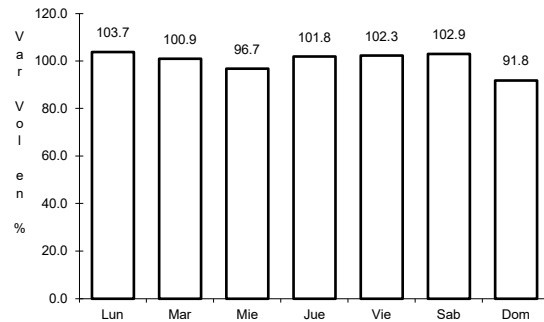


Km: 22.00 Tipo: 3 Sent: 0

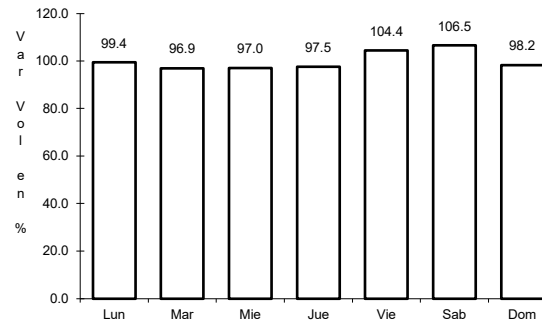
26 CARR: Ahumada - Ricardo Flores Magón

CLAVE: 08804

RUTA: CHIH



Km: 0.00 Tipo: 3 Sent: 0

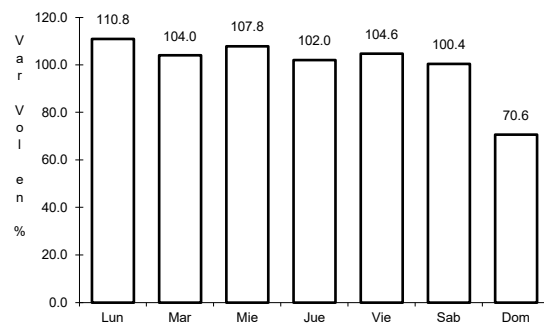


Km: 96.00 Tipo: 1 Sent: 0

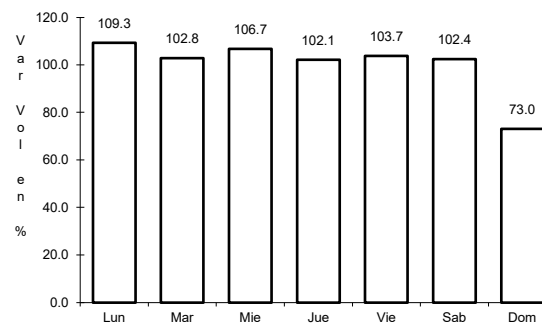
27 CARR: Cuauhtémoc - Buenaventura

CLAVE: 08015

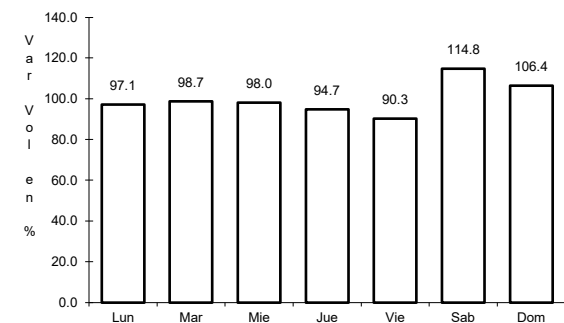
RUTA: CHIH



Km: 0.00 Tipo: 3 Sent: 1



Km: 0.00 Tipo: 3 Sent: 2

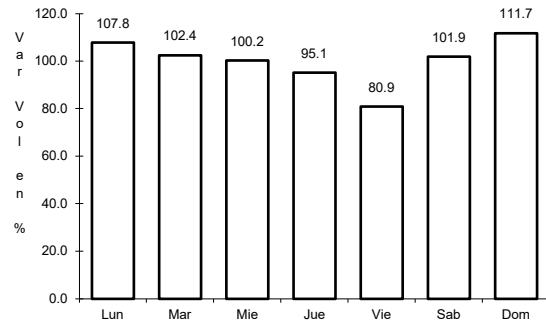


Km: 253.30 Tipo: 1 Sent: 0

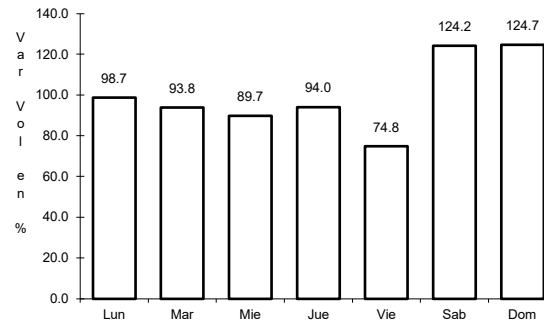
28 CARR: Delicias - Saucillo

CLAVE: 08007

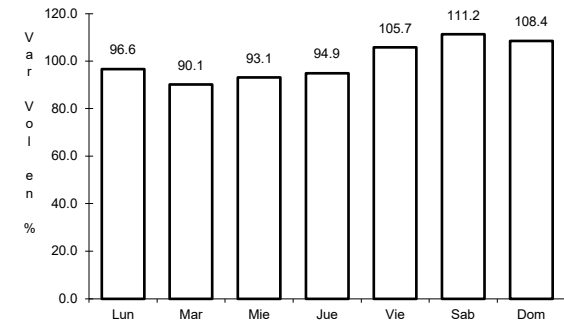
RUTA: CHIH-007



Km: 0.00 Tipo: 3 Sent: 0



Km: 17.00 Tipo: 1 Sent: 0

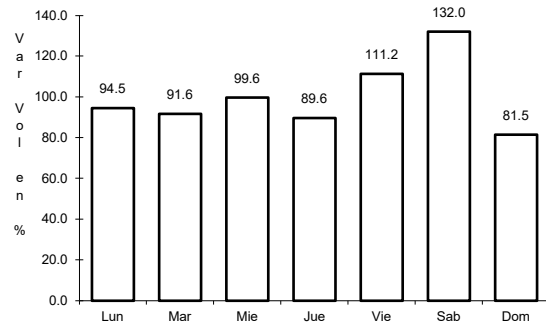


Km: 33.00 Tipo: 1 Sent: 0

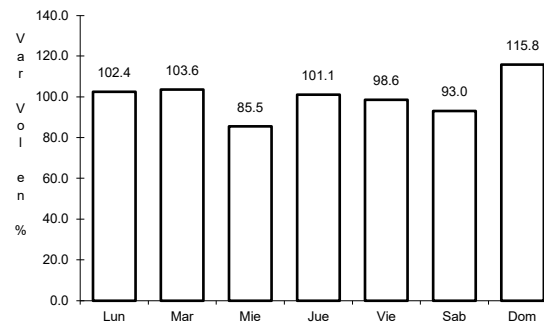
29 CARR: Ent. Peña Blanca - Ent. La Concha

CLAVE: 08493

RUTA: CHIH



Km: 0.00 Tipo: 3 Sent: 0

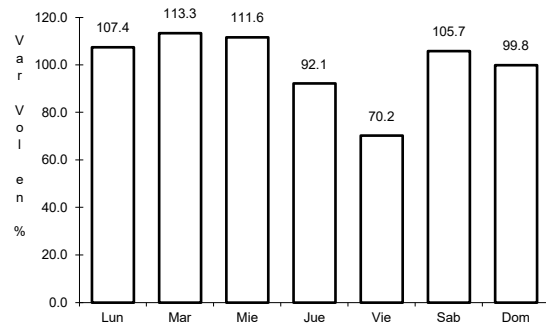


Km: 17.00 Tipo: 1 Sent: 0

30 CARR: Ent. Puerto Justo - Ent. Guachoic

CLAVE: 08044

RUTA: CHIH

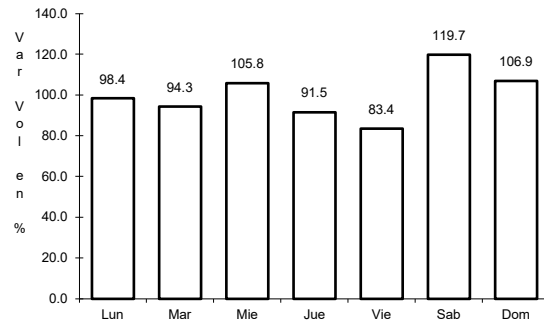


Km: 0.00 Tipo: 3 Sent: 0

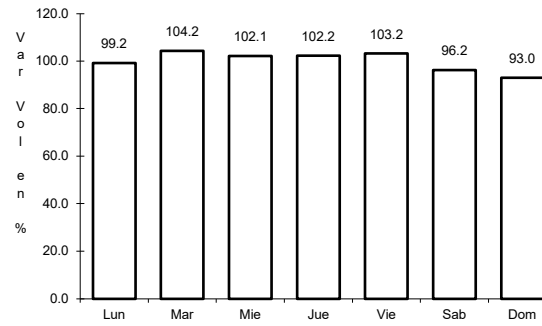
31 CARR: Jiménez - Camargo

CLAVE: 08021

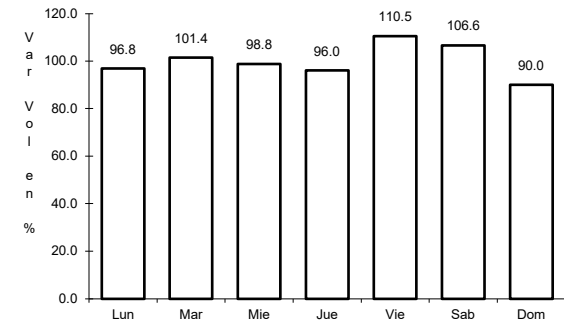
ruta: CHIH-049



Km: 0.00 Tipo: 3 Sent: 0



Km: 65.80 Tipo: 3 Sent: 0

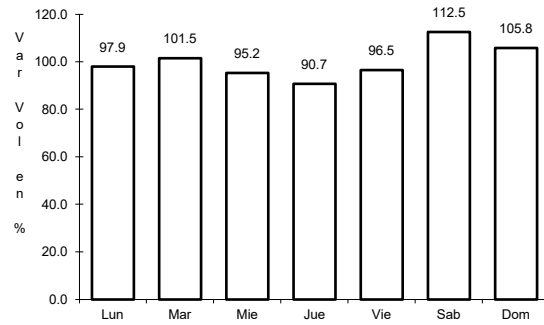


Km: 78.20 Tipo: 1 Sent: 0

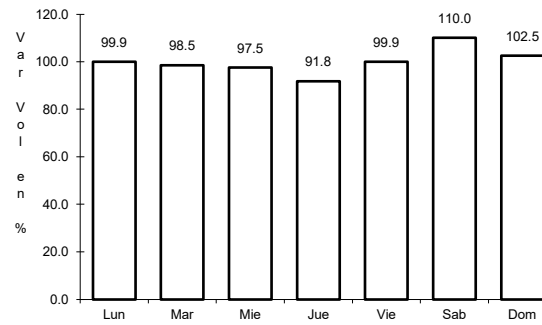
32 CARR: Lázaro Cárdenas - Ent. Colonia San José

CLAVE: 08004

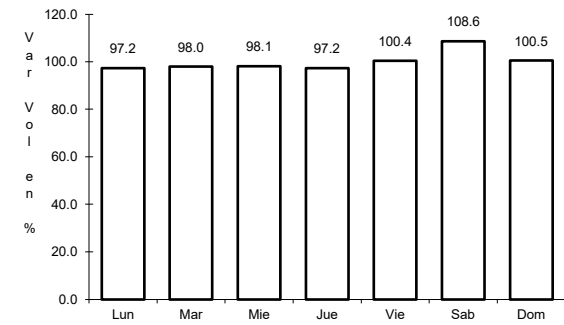
ruta: CHIH-004



Km: 0.00 Tipo: 3 Sent: 1



Km: 0.00 Tipo: 3 Sent: 2

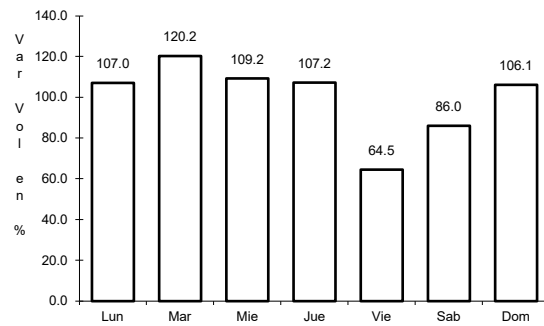


Km: 16.00 Tipo: 1 Sent: 0

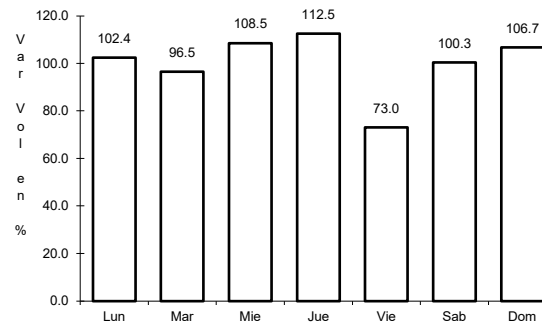
33 CARR: Libramiento de Hidalgo del Parral

CLAVE: 08221

ruta: CHIH



Km: 8.00 Tipo: 3 Sent: 1

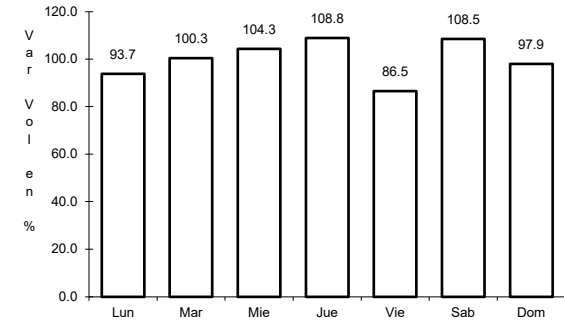
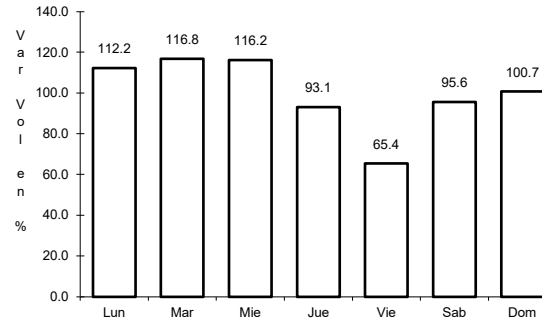
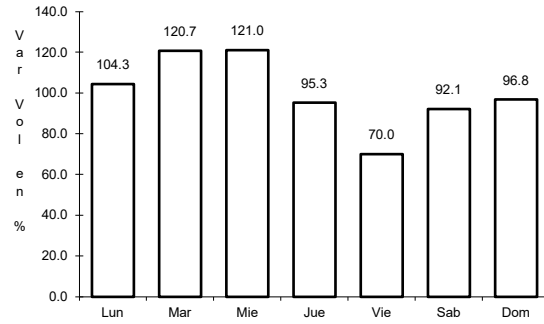


Km: 8.00 Tipo: 3 Sent: 2

34 CARR: Libramiento de Jiménez

CLAVE: 08047

RUTA: CHIH



Km: 0.00 Tipo: 3 Sent: 1

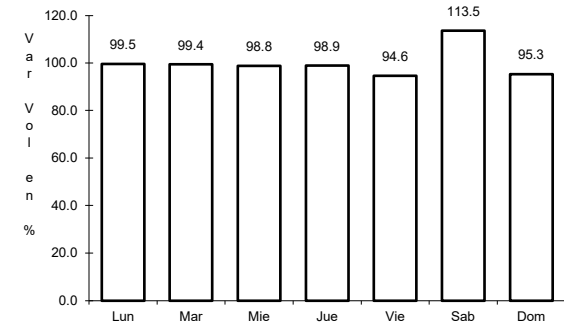
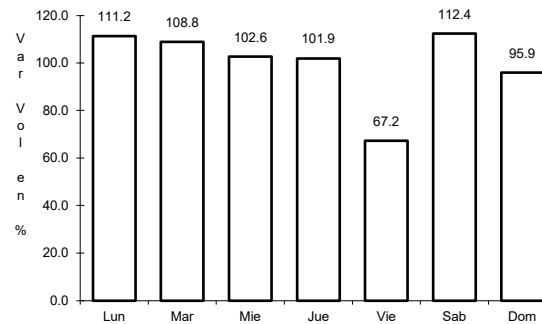
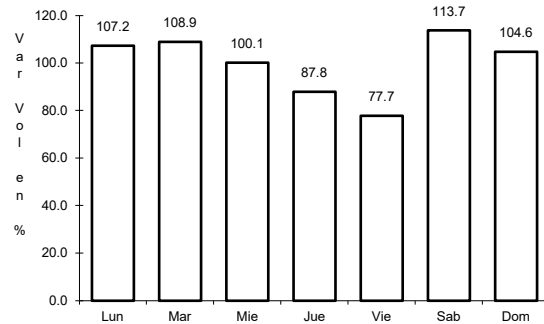
Km: 0.00 Tipo: 3 Sent: 2

Km: 3.40 Tipo: 1 Sent: 1

35 CARR: Meoqui - Julimes

CLAVE: 08005

RUTA: CHIH-005



Km: 0.00 Tipo: 3 Sent: 0

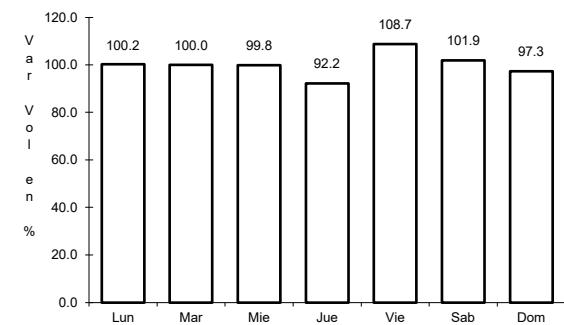
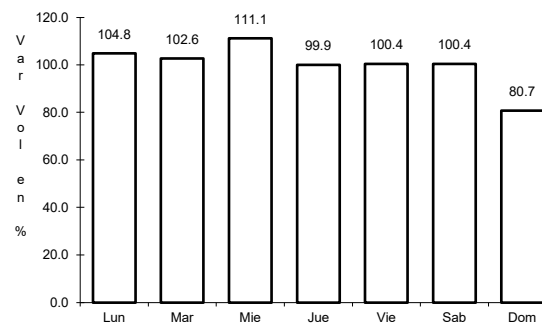
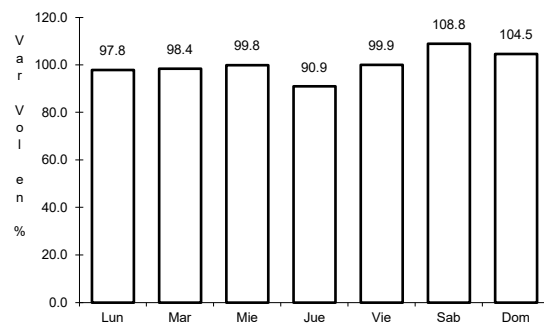
Km: 15.40 Tipo: 3 Sent: 0

Km: 23.00 Tipo: 1 Sent: 0

36 CARR: Ramal a San Pedro Creel

CLAVE: 08812

RUTA: CHIH-025



Km: 0.00 Tipo: 3 Sent: 0

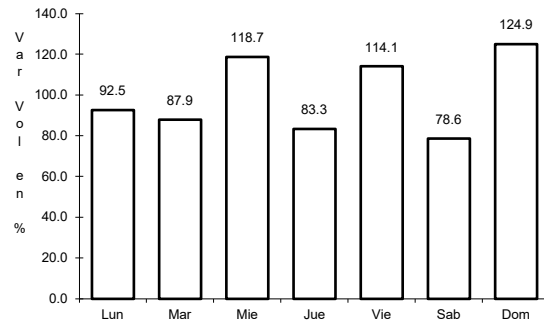
Km: 58.00 Tipo: 3 Sent: 0

Km: 85.00 Tipo: 1 Sent: 0

37 CARR: Samachique - Batopilas

CLAVE:

RUTA: CHIH



Km: 0.00

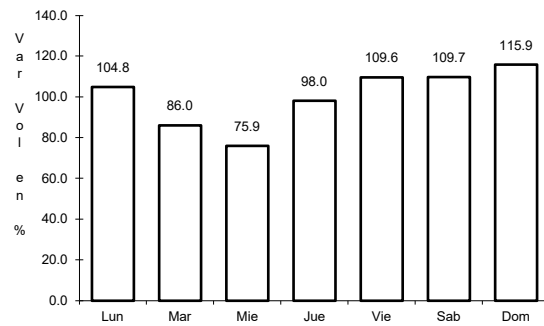
Tipo: 3

Sent: 0

38 CARR: San Juanito - Ent. Basaseachi

CLAVE: 08045

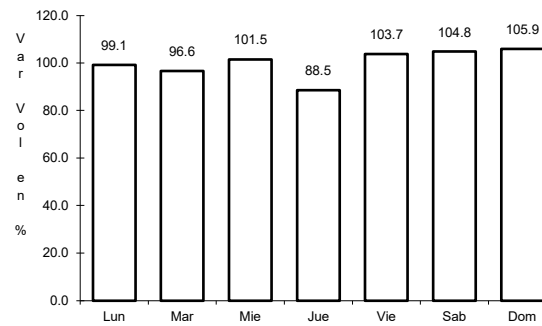
RUTA: CHIH



Km: 0.00

Tipo: 3

Sent: 0



Km: 84.00

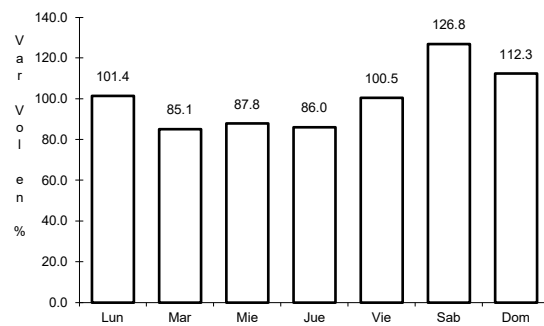
Tipo: 1

Sent: 0

39 CARR: San Pedro Creel - Guachochi

CLAVE:

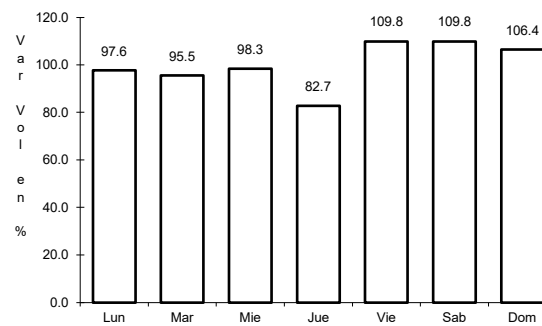
RUTA: CHIH-025



Km: 164.30

Tipo: 1

Sent: 0



Km: 164.30

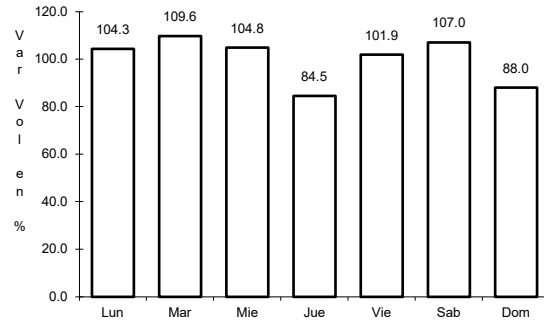
Tipo: 3

Sent: 0

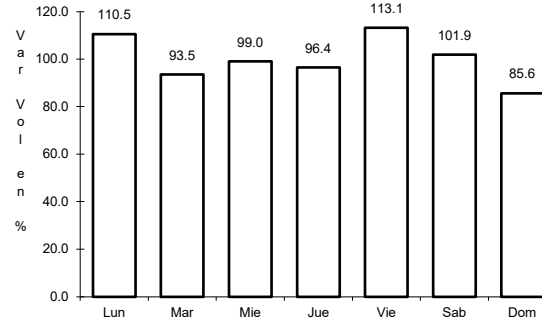
40 CARR: T. C. (Jiménez - Camargo) - Ojinaga

CLAVE: 08009

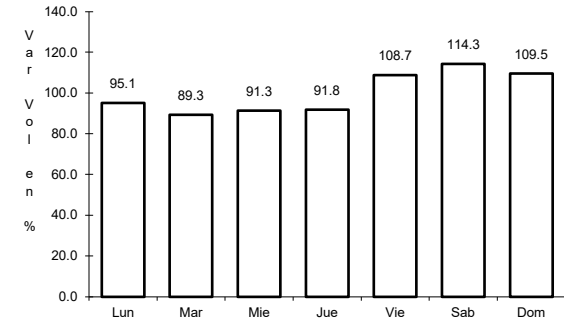
RUTA: CHIH-018



Km: 0.00 Tipo: 3 Sent: 1



Km: 97.00 Tipo: 3 Sent: 0

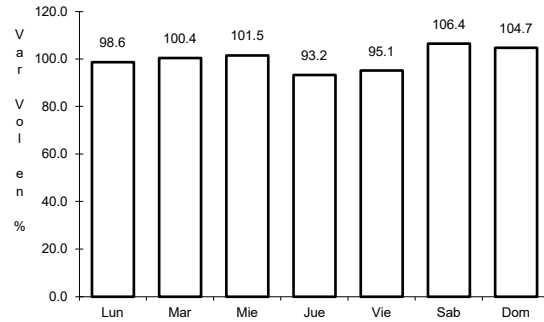


Km: 247.00 Tipo: 1 Sent: 0

41 CARR: T. Julimes - La Boquilla

CLAVE: 08009

RUTA: CHIH-018

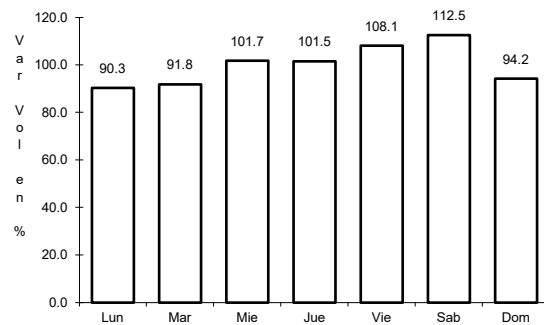


Km: 0.00 Tipo: 3 Sent: 0

42 CARR: Ent. El Álamo - Ent. Ricardo Flores Magón (Cuota)

CLAVE: 08046

RUTA: CHIH-D

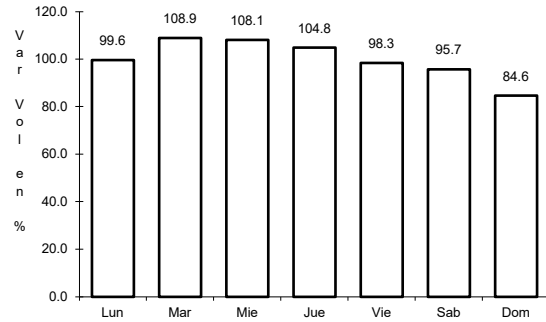


Km: 0.00 Tipo: 3 Sent: 0

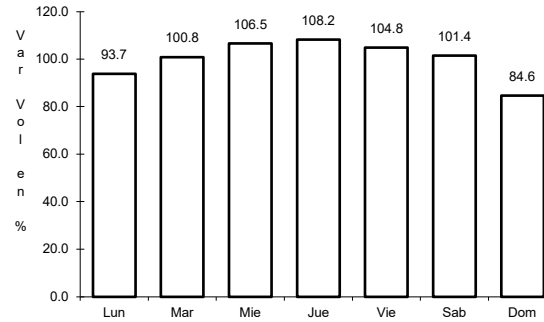
43 CARR: Ricardo Flores Magón - Galeana (Cuota)

CLAVE: 08019

RUTA: CHIH-D



Km: 0.00 Tipo: 3 Sent: 0

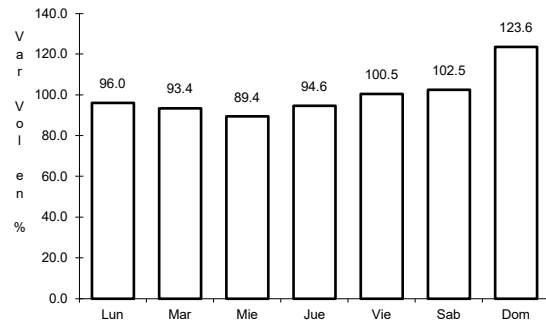


Km: 58.00 Tipo: 1 Sent: 0

44 CARR: Samalayuca - San Jerónimo (Cuota)

CLAVE: 08019

RUTA: CHIH-D

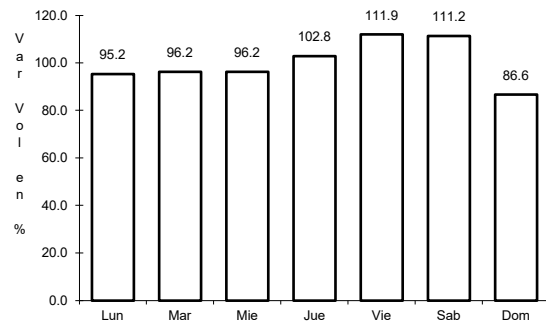


Km: 0.00 Tipo: 3 Sent: 0

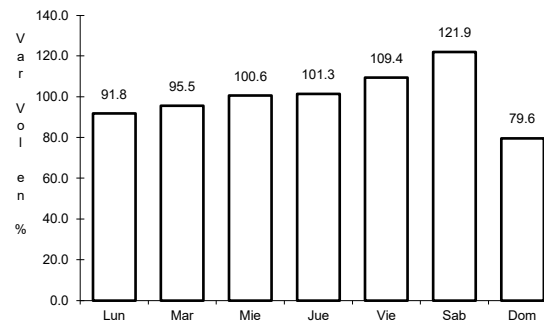
45 CARR: T. C. (Chihuahua - Ojinaga) - La Mula (Cuota)

CLAVE: 08170

RUTA: CHIH-D



Km: 0.00 Tipo: 3 Sent: 0

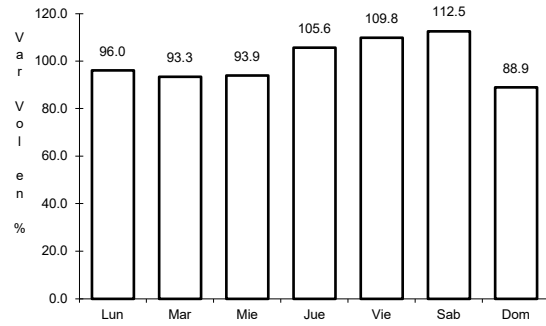


Km: 110.00 Tipo: 1 Sent: 0

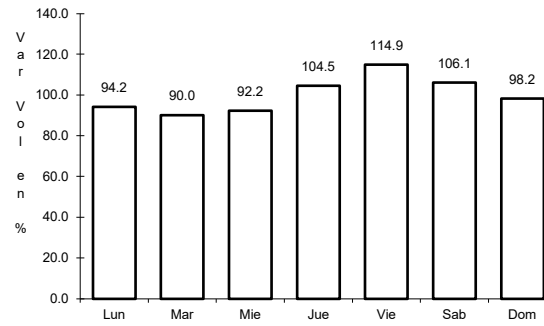
46 CARR: Chihuahua - Madera

CLAVE: 08038

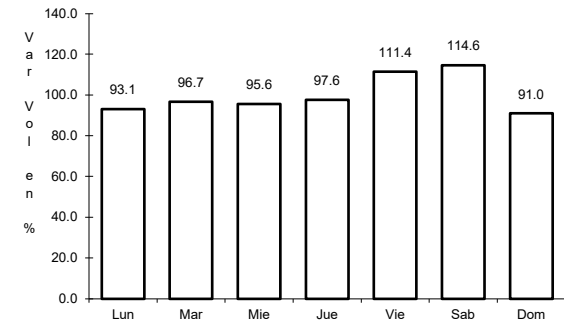
ruta: CHIH-D-MEX-001-CHIH



Km: 10.50 Tipo: 1 Sent: 2



Km: 10.50 Tipo: 1 Sent: 1

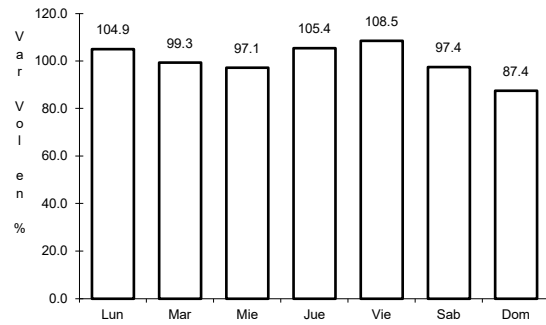


Km: 261.30 Tipo: 3 Sent: 0

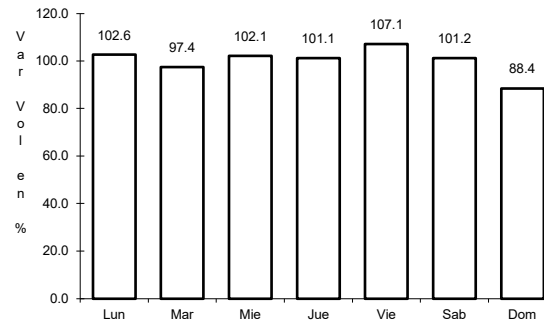
47 CARR: Ent. Agua Caliente - El Terrero

CLAVE: 08170

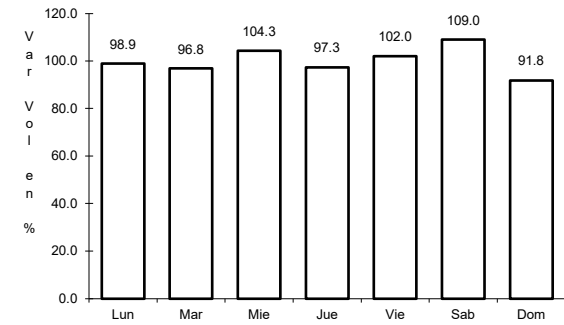
ruta: CHIH-MEX



Km: 0.00 Tipo: 3 Sent: 0



Km: 22.00 Tipo: 1 Sent: 0



Km: 120.00 Tipo: 1 Sent: 0