

CHIAPAS

---RED FEDERAL LIBRE---

1 Benemérito de Las Américas - Palenque	MEX-307
2 Catazajá - T. C. (Tuxtla Gtz. - Cd. Cuauhtémoc)	MEX-199
3 El Suspiro - Tenosique	MEX-203
4 Ent. Jaritas - Ciudad Hidalgo	MEX-225
5 Huixtla - El Jocote	MEX-211
6 La Trinitaria - Benemérito de Las Américas	MEX-307
7 Las Cruces - Arriaga	MEX-190
8 Libramiento de Arriaga	MEX-200
9 Libramiento de Huixtla	MEX-200
10 Libramiento de Ocozocoautla	MEX-190
11 Malpaso - El Bellote	MEX-187
12 Ocozocoautla - Ent. El Sabino	MEX-190
13 Ramal a Cd. Hidalgo	MEX-200
14 Ramal a La Gloria	MEX-200
15 Ramal a Paredón	MEX-200
16 Ramal a Puerto Arista	MEX-200
17 Ramal a Unión Juárez	MEX-200
18 Tapachula - Puerto Madero	MEX-225
19 Tapanatepec - Talismán	MEX-200
20 Tapanatepec - Tuxtla Gutiérrez	MEX-190
21 Terán - Chicoasén	MEX-190
22 Tuxtla Gutiérrez - Angostura	MEX-190
23 Tuxtla Gutiérrez - Cd. Cuauhtémoc	MEX-190
24 Villahermosa - Escopetazo	MEX-195
25 Villahermosa - Francisco Escárcega	MEX-186

---RED FEDERAL DE CUOTA---

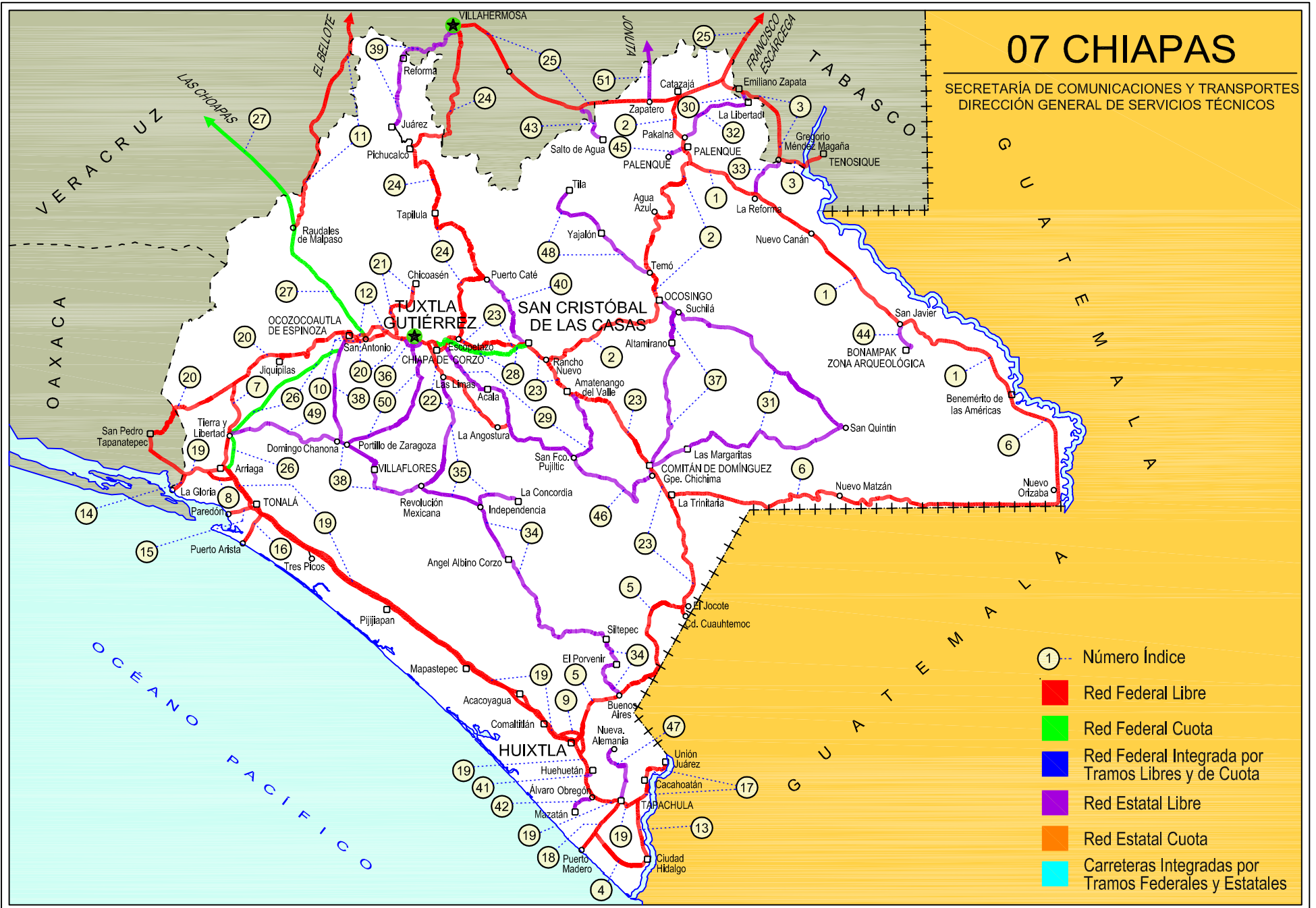
26 Arriaga - Ocozocoautla (Cuota)	MEX-200D
27 Las Choapas - Ocozocoautla (Cuota)	MEX-187D
28 Tuxtla Gutiérrez - San Cristóbal de Las Casas (Cuota)	MEX-190D

---RED ESTATAL LIBRE---

29 Chiapa de Corzo - Amatenango del Valle	CHIS
30 Ent. Emiliano Zapata - La Libertad	CHIS-TAB
31 Ent. Suschilá - Comitán	CHIS-TAB
32 Estación Palenque - La Libertad	CHIS-010
33 Gregorio Méndez Magaña - Reforma de Ocampo	CHIS
34 Independencia - Buenos Aires	CHIS
35 Las Limas - La Concordia	CHIS
36 Libramiento Sur de Tuxtla Gutiérrez	CHIS
37 Ocosingo - Comitán	CHIS
38 Ocozocoautla - Revolución Mexicana	CHIS-053-230
39 Paso de Cunduacán - Estación Juárez	TAB-CHIS
40 Puerto Caté - San Cristóbal de Las Casas	CHIS
41 Ramal a Huehuetán	CHIS
42 Ramal a Mazatán	CHIS-219
43 Ramal a Salto del Agua	TAB-CHIS
44 Ramal Zona Arqueológica " Bonampak "	CHIS
45 Ramal Zona Arqueológica " Palenque "	CHIS
46 San Francisco Pujilic - Ent. Comitán	CHIS
47 Tapachula - Nueva Alemania	CHIS-229
48 Temo - Tila	CHIS
49 Tierra y Libertad - Ent. Dr. Domingo Chanona	CHIS
50 Tuxtla Gutiérrez - Portillo Zaragoza	CHIS-133
51 Zapatero - T. C. (Jalapa - Jonuta)	CHIS-TAB

07 CHIAPAS

SECRETARÍA DE COMUNICACIONES Y TRANSPORTES
DIRECCIÓN GENERAL DE SERVICIOS TÉCNICOS



CHIAPAS

1 CARR: Benemérito de Las Américas - Palenque

CLAVE: 07095

RUTA: MEX-307

AÑO: 2020

LUGAR	ESTACION				CLASIFICACION VEHICULAR EN PORCIENTO										COORDENADAS					
	KM	TE	SC	TDPA	M	A	B	C2	C3	T3S2	T3S3	T3S2R4	OTROS	A	B	C	K'	D	LATITUD	LONGITUD
Benemérito de las Américas	0.00																			
Frontera Corozal	42.00	3	0	468	12.6	72.5	1.1	2.6	2.0	6.3	1.9	1.0	0.0	85.1	1.1	13.8	0.098	0.509	16.761646	-91.007929
San Javier	67.00	3	0	517	7.9	78.8	0.7	2.4	1.0	6.3	1.4	1.4	0.1	86.7	0.7	12.6	0.106	0.521	16.800593	-91.106004
Reforma de Ocampo	160.00	1	0	1259	8.3	78.3	0.6	6.8	1.6	3.4	0.5	0.3	0.2	86.6	0.6	12.8	0.095	0.502	17.320431	-91.694236
T. C. Catazajá - T. C. (Tuxtla Gtz. - Cd. Cuauhtémoc)	194.00	1	0	2946	4.6	82.3	0.3	9.4	1.6	1.4	0.2	0.1	0.1	86.9	0.3	12.8	0.114	0.507	17.444063	-91.962944

2 CARR: Catazajá - T. C. (Tuxtla Gtz. - Cd. Cuauhtémoc)

CLAVE: 07582

RUTA: MEX-199

AÑO: 2020

LUGAR	ESTACION				CLASIFICACION VEHICULAR EN PORCIENTO										COORDENADAS					
	KM	TE	SC	TDPA	M	A	B	C2	C3	T3S2	T3S3	T3S2R4	OTROS	A	B	C	K'	D	LATITUD	LONGITUD
Catazajá	0.00																			
X. C. Villahermosa - Francisco Escárcega	2.20	3	0	4135	2.7	80.7	2.7	8.7	1.6	2.4	0.7	0.3	0.2	83.4	2.7	13.9	0.083	0.520	17.711554	-92.012906
Pakalná	23.46	1	0	8300	8.1	82.3	1.4	4.9	0.9	0.9	0.6	0.6	0.3	90.4	1.4	8.2	0.077	0.502	17.548861	-91.984609
T. Izq. Palenque	27.50	1	1	8598	6.2	88.7	0.6	2.0	0.7	0.5	0.5	0.4	0.4	94.9	0.6	4.5	0.075	0.532	17.508500	-91.989659
T. Izq. Palenque	27.50	1	2	9777	8.4	86.3	0.6	2.4	0.6	0.5	0.4	0.4	0.4	94.7	0.6	4.7	0.077	0.532	17.508495	-91.989676
T. Izq. Palenque	27.50	3	0	6932	4.8	85.6	1.1	4.1	0.8	1.3	0.6	0.9	0.8	90.4	1.1	8.5	0.089	0.501	17.508553	-91.989736
T. Izq. Bonampak	33.20	3	0	2720	2.2	87.2	2.3	3.8	1.6	1.0	0.7	0.8	0.4	89.4	2.3	8.3	0.088	0.502	17.444231	-91.963044
T. Der. Salto del Agua	54.00	1	0	2272	2.5	88.8	1.2	3.7	1.0	1.4	0.9	0.3	0.2	91.3	1.2	7.5	0.086	0.503	17.361661	-92.051692
T. Der. Agua Azul	68.30	1	0	1291	3.2	87.7	1.2	1.8	1.1	2.8	1.6	0.4	0.2	90.9	1.2	7.9	0.104	0.506	17.236353	-92.094847
T. Der. Chilón	111.00	1	0	2346	4.2	87.0	0.7	4.5	0.6	2.2	0.6	0.1	0.1	91.2	0.7	8.1	0.113	0.502	17.016249	-92.135339
T. Der. Chilón	111.00	3	0	2519	5.9	83.3	0.7	2.0	0.8	3.4	2.3	0.8	0.8	89.2	0.7	10.1	0.106	0.515	17.016245	-92.135336
Ocosingo	136.00	3	0	3256	8.5	80.7	1.4	2.3	0.8	2.3	1.9	1.2	0.9	89.2	1.4	9.4	0.103	0.520	16.906750	-92.098115
T. Izq. Altamirano	152.00	1	0	3184	2.1	88.3	0.8	4.9	0.8	2.2	0.6	0.1	0.2	90.4	0.8	8.8	0.087	0.511	16.817218	-92.171684
Huixtán	190.60	1	0	3380	2.1	88.3	0.8	4.9	0.8	2.2	0.6	0.1	0.2	90.4	0.8	8.8	0.091	0.511	16.710551	-92.452745
Huixtán	190.60	3	0	3323	1.9	86.5	0.6	6.7	0.7	2.4	0.8	0.1	0.3	88.4	0.6	11.0	0.091	0.516	16.710548	-92.452744
T. C. Tuxtla Gutiérrez - Cd. Cuauhtémoc	210.00	1	0	4503	1.6	84.6	0.7	8.5	0.7	2.6	0.7	0.2	0.4	86.2	0.7	13.1	0.089	0.500	16.666256	-92.566497

3 CARR: El Suspiro - Tenosique

CLAVE: 00276

RUTA: MEX-203

AÑO: 2020

LUGAR	ESTACION				CLASIFICACION VEHICULAR EN PORCIENTO										COORDENADAS					
	KM	TE	SC	TDPA	M	A	B	C2	C3	T3S2	T3S3	T3S2R4	OTROS	A	B	C	K'	D	LATITUD	LONGITUD
Ent. El Suspiro	0.00	3	0	4859	2.2	80.2	2.0	9.7	1.4	3.0	0.7	0.5	0.3	82.4	2.0	15.6	0.087	0.501	17.773591	-91.828682
Lim. Edos. Term. Chis. Ppia. Tab.	8.00																			
Emiliano Zapata	8.61	3	0	5560	5.9	80.5	1.8	7.2	1.4	2.3	0.4	0.1	0.4	86.4	1.8	11.8	0.086	0.503	17.742351	-91.765617
T. Der. La Libertad	12.10	3	0	3466	4.1	83.1	1.5	7.9	1.4	1.3	0.4	0.2	0.1	87.2	1.5	11.3	0.076	0.500	17.723972	-91.745538

CHIAPAS

3 CARR: El Suspiro - Tenosique

CLAVE: 00276

RUTA: MEX-203

AÑO: 2020

LUGAR	ESTACION				CLASIFICACION VEHICULAR EN PORCIENTO										COORDENADAS					
	KM	TE	SC	TDPA	M	A	B	C2	C3	T3S2	T3S3	T3S2R4	OTROS	A	B	C	K'	D	LATITUD	LONGITUD
T. Izq. Balancán	32.60	1	0	2842	4.0	82.6	1.9	8.8	1.4	0.8	0.4	0.1	0.0	86.6	1.9	11.5	0.089	0.504	17.632516	-91.601605
T. Izq. Balancán	32.60	3	0	2314	4.8	78.8	2.3	9.3	2.6	1.3	0.6	0.3	0.0	83.6	2.3	14.1	0.082	0.503	17.632515	-91.601602
Estación Zapata	53.00	1	0	1982	2.8	81.2	2.0	8.6	1.5	2.7	0.8	0.3	0.1	84.0	2.0	14.0	0.093	0.504	17.456871	-91.597452
Estación Zapata	53.00	3	0	2711	7.8	81.1	1.5	3.1	0.8	1.5	1.7	1.9	0.6	88.9	1.5	9.6	0.080	0.511	17.456872	-91.597451
Tenosique	75.30																			

4 CARR: Ent. Jaritas - Ciudad Hidalgo

CLAVE: 07094

RUTA: MEX-225

AÑO: 2020

LUGAR	ESTACION				CLASIFICACION VEHICULAR EN PORCIENTO										COORDENADAS					
	KM	TE	SC	TDPA	M	A	B	C2	C3	T3S2	T3S3	T3S2R4	OTROS	A	B	C	K'	D	LATITUD	LONGITUD
T. C. Tapachula - Puerto Madero	0.00	3	0	2284	13.9	68.0	1.8	7.4	2.8	4.1	1.2	0.7	0.1	81.9	1.8	16.3	0.106	0.510	14.785357	-92.366869
T. Der. Ignacio López Rayón	33.35	1	0	2481	14.0	67.5	2.9	8.2	3.0	3.9	0.4	0.1	0.0	81.5	2.9	15.6	0.087	0.527	14.628982	-92.185527
Ciudad Hidalgo	49.00	1	0	6664	13.0	69.2	2.3	8.1	2.8	3.3	0.5	0.4	0.4	82.2	2.3	15.5	0.098	0.529	14.677399	-92.151866

5 CARR: Huixtla - El Jocote

CLAVE: 07577

RUTA: MEX-211

AÑO: 2020

LUGAR	ESTACION				CLASIFICACION VEHICULAR EN PORCIENTO										COORDENADAS					
	KM	TE	SC	TDPA	M	A	B	C2	C3	T3S2	T3S3	T3S2R4	OTROS	A	B	C	K'	D	LATITUD	LONGITUD
Huixtla	0.00	3	0	2842	9.7	75.9	3.6	5.0	3.5	0.8	1.0	0.2	0.3	85.6	3.6	10.8	0.075	0.502	15.144353	-92.460204
B. Domínguez (Loma Bonita)	27.00	3	0	2105	11.0	75.9	1.7	6.0	1.5	2.6	0.7	0.3	0.3	86.9	1.7	11.4	0.080	0.508	15.301187	-92.380144
Motozintla	57.00	1	0	2993	9.6	79.4	1.0	5.7	0.6	2.4	0.6	0.2	0.5	89.0	1.0	10.0	0.079	0.511	15.355662	-92.246995
Motozintla	57.00	3	0	5319	10.7	80.6	0.5	4.2	0.4	2.7	0.4	0.1	0.4	91.3	0.5	8.2	0.077	0.509	15.368160	-92.241570
Amatenango de La Frontera	77.00	1	0	1749	5.4	85.0	1.1	5.2	0.8	1.3	0.5	0.4	0.3	90.4	1.1	8.5	0.089	0.508	15.434239	-92.116444
Amatenango de La Frontera	77.00	3	0	1678	6.0	81.1	1.6	6.6	1.4	1.9	0.7	0.5	0.2	87.1	1.6	11.3	0.078	0.510	15.434341	-92.114459
Frontera Comalapa	108.00	1	0	5215	20.3	70.9	0.3	3.2	0.3	3.7	0.5	0.1	0.7	91.2	0.3	8.5	0.085	0.503	15.656870	-92.141891
El Jocote	126.00	1	0	5157	14.3	75.3	0.6	5.2	0.6	2.9	0.5	0.3	0.3	89.6	0.6	9.8	0.089	0.505	15.683446	-92.004845

6 CARR: La Trinitaria - Benemérito de Las Américas

CLAVE: 07267

RUTA: MEX-307

AÑO: 2020

LUGAR	ESTACION				CLASIFICACION VEHICULAR EN PORCIENTO										COORDENADAS					
	KM	TE	SC	TDPA	M	A	B	C2	C3	T3S2	T3S3	T3S2R4	OTROS	A	B	C	K'	D	LATITUD	LONGITUD
T. C. Tuxtla Gutiérrez - Cd. Cuauhtémoc	0.00	3	0	5534	3.2	86.6	1.4	4.7	0.5	1.9	1.2	0.2	0.3	89.8	1.4	8.8	0.097	0.507	16.129937	-92.062944
Santa Rita	10.00	1	0	4169	3.6	85.0	0.8	6.0	0.9	1.2	1.7	0.5	0.3	88.6	0.8	10.6	0.084	0.522	16.140689	-91.971302
Santa Rita	10.00	3	0	3744	3.6	85.1	1.1	6.0	0.7	1.3	1.5	0.4	0.3	88.7	1.1	10.2	0.095	0.509	16.140703	-91.971466
T. Izq. La Independencia	20.00	3	0	3420	5.5	86.3	1.1	3.9	0.7	1.2	0.4	0.3	0.6	91.8	1.1	7.1	0.103	0.511	16.127540	-91.852389

CHIAPAS

6 CARR: La Trinitaria - Benemérito de Las Américas

CLAVE: 07267

RUTA: MEX-307

AÑO: 2020

LUGAR	ESTACION				CLASIFICACION VEHICULAR EN PORCIENTO										COORDENADAS					
	KM	TE	SC	TDPA	M	A	B	C2	C3	T3S2	T3S3	T3S2R4	OTROS	A	B	C	K'	D	LATITUD	LONGITUD
Montebello	39.76	1	0	1966	6.1	84.6	1.2	5.4	0.6	1.8	0.3	0.0	0.0	90.7	1.2	8.1	0.088	0.505	16.103590	-91.734606
Montebello	39.76	3	0	1548	6.8	85.4	1.1	4.1	1.2	0.8	0.6	0.0	0.0	92.2	1.1	6.7	0.104	0.513	16.103531	-91.734568
Nuevo San Juan Chamula	72.00	3	0	1319	6.3	86.0	0.7	5.1	0.8	0.7	0.4	0.0	0.0	92.3	0.7	7.0	0.091	0.512	16.144599	-91.444117
Benemérito de las Américas	268.00																			
Benemérito de las Américas	268.00	1	0	2188	12.7	75.0	0.4	6.0	1.0	3.4	0.6	0.2	0.7	87.7	0.4	11.9	0.107	0.504	16.512786	-90.656510

7 CARR: Las Cruces - Arriaga

CLAVE: 07196

RUTA: MEX-190

AÑO: 2020

LUGAR	ESTACION				CLASIFICACION VEHICULAR EN PORCIENTO										COORDENADAS					
	KM	TE	SC	TDPA	M	A	B	C2	C3	T3S2	T3S3	T3S2R4	OTROS	A	B	C	K'	D	LATITUD	LONGITUD
Las Cruces	0.00	3	0	1312	4.8	81.0	1.2	9.5	1.2	1.5	0.3	0.2	0.3	85.8	1.2	13.0	0.106	0.500	16.571096	-93.844952
Santa Isabel	27.90	3	0	235	9.4	83.4	0.3	5.6	0.7	0.3	0.3	0.0	0.0	92.8	0.3	6.9	0.119	0.500	16.357311	-93.866928
Arriaga	49.00	1	0	974	34.6	61.9	0.1	3.0	0.3	0.1	0.0	0.0	0.0	96.5	0.1	3.4	0.113	0.503	16.233013	-93.894918

8 CARR: Libramiento de Arriaga

CLAVE:

RUTA: MEX-200

AÑO: 2020

LUGAR	ESTACION				CLASIFICACION VEHICULAR EN PORCIENTO										COORDENADAS					
	KM	TE	SC	TDPA	M	A	B	C2	C3	T3S2	T3S3	T3S2R4	OTROS	A	B	C	K'	D	LATITUD	LONGITUD
T. C. Tapanatepec - Talismán	0.00	3	0	2023	6.0	59.3	3.6	7.3	2.3	9.7	3.0	8.2	0.6	65.3	3.6	31.1	0.072	0.509	16.222549	-93.927523
T. Der. Villa del Mar	2.60	1	0	2453	6.6	79.7	2.7	7.2	1.6	1.4	0.6	0.2	0.0	86.3	2.7	11.0	0.080	0.514	16.206719	-93.910831
T. Der. Villa del Mar	2.60	3	0	2003	3.3	63.1	3.9	7.5	4.8	4.5	4.7	8.1	0.1	66.4	3.9	29.7	0.073	0.541	16.206735	-93.910847
T. C. Tapanatepec - Talismán	7.50	1	0	1728	5.7	54.8	3.8	6.7	4.1	11.1	4.6	8.6	0.6	60.5	3.8	35.7	0.076	0.502	16.219240	-93.869605

9 CARR: Libramiento de Huixtla

CLAVE:

RUTA: MEX-200

AÑO: 2020

LUGAR	ESTACION				CLASIFICACION VEHICULAR EN PORCIENTO										COORDENADAS					
	KM	TE	SC	TDPA	M	A	B	C2	C3	T3S2	T3S3	T3S2R4	OTROS	A	B	C	K'	D	LATITUD	LONGITUD
T. C. Tapanatepec - Talismán	0.00	3	1	2832	2.7	74.3	3.0	8.8	2.0	5.2	1.2	2.4	0.4	77.0	3.0	20.0	0.094	0.509	15.157897	-92.493999
T. C. Tapanatepec - Talismán	0.00	3	2	2732	3.2	71.6	3.4	9.4	2.2	5.9	1.2	2.7	0.4	74.8	3.4	21.8	0.086	0.509	15.157887	-92.493993
T. C. Huixtla - El Jocote	5.80	1	1	2910	2.8	74.8	2.8	8.2	1.9	5.5	1.1	2.5	0.4	77.6	2.8	19.6	0.091	0.506	15.145789	-92.447330
T. C. Huixtla - El Jocote	5.80	1	2	2843	3.1	72.0	3.2	9.1	2.2	6.3	1.1	2.6	0.4	75.1	3.2	21.7	0.082	0.506	15.145789	-92.447328
T. C. Huixtla - El Jocote	5.80	3	1	3524	6.9	68.7	3.2	8.8	2.2	6.0	1.0	2.6	0.6	75.6	3.2	21.2	0.085	0.523	15.145783	-92.447322
T. C. Huixtla - El Jocote	5.80	3	2	3212	7.1	68.3	3.2	8.9	2.5	6.0	0.9	2.5	0.6	75.4	3.2	21.4	0.098	0.523	15.145785	-92.447315
T. C. Tapanatepec - Talismán	7.07																			

CHIAPAS

10 CARR: Libramiento de Ocozocoautla

CLAVE: 07583

RUTA: MEX-190

AÑO: 2020

LUGAR	ESTACION				CLASIFICACION VEHICULAR EN PORCIENTO													COORDENADAS		
	KM	TE	SC	TDPA	M	A	B	C2	C3	T3S2	T3S3	T3S2R4	OTROS	A	B	C	K'	D	LATITUD	LONGITUD
T. C. Tapanatepec - Tuxtla Gutiérrez	0.00	3	0	6416	5.5	76.5	1.0	10.6	2.8	1.8	0.7	0.7	0.4	82.0	1.0	17.0	0.098	0.505	16.770729	-93.388743
T. C. Arriaga - Ocozocoautla (Cuota)	5.54	1	0	6900	3.0	75.5	1.0	9.8	3.2	4.6	1.6	0.9	0.4	78.5	1.0	20.5	0.091	0.528	16.737806	-93.364998
T. C. Arriaga - Ocozocoautla (Cuota)	5.54	3	0	10165	3.4	75.3	2.8	6.9	2.1	5.0	1.2	2.3	1.0	78.7	2.8	18.5	0.087	0.503	16.737764	-93.364990
T. C. Tapanatepec - Tuxtla Gutiérrez	9.00	1	0	11787	2.7	75.8	2.9	7.2	2.2	4.3	1.2	2.8	0.9	78.5	2.9	18.6	0.072	0.502	16.751569	-93.337010

11 CARR: Malpaso - El Bellote

CLAVE: 00137

RUTA: MEX-187

AÑO: 2020

LUGAR	ESTACION				CLASIFICACION VEHICULAR EN PORCIENTO													COORDENADAS		
	KM	TE	SC	TDPA	M	A	B	C2	C3	T3S2	T3S3	T3S2R4	OTROS	A	B	C	K'	D	LATITUD	LONGITUD
Presa Malpaso	0.00																			
Lim. Edos. Term. Chis. Ppia. Tab.	43.99																			
Lim. Edos. Term. Tab. Ppia. Chis.	44.59																			
Lim. Edos. Term. Chis. Ppia. Tab.	45.26																			
Lim. Edos. Term. Tab. Ppia. Chis.	45.63																			
Lim. Edos. Term. Chis. Ppia. Tab.	55.04																			
Macabil (La Estrella)	70.12	1	0	3324	10.4	75.0	2.0	9.2	1.2	1.7	0.4	0.0	0.1	85.4	2.0	12.6	0.097	0.504	17.626425	-93.499862
Estación Chontalpa	75.69	1	0	4982	11.0	75.0	1.8	8.0	0.8	2.7	0.4	0.1	0.2	86.0	1.8	12.2	0.087	0.512	17.664837	-93.479779
Estación Chontalpa	75.69	3	0	4930	10.3	70.7	1.5	12.0	1.3	2.9	0.6	0.4	0.3	81.0	1.5	17.5	0.081	0.503	17.666287	-93.479092
T. Izq. Francisco Rueda	90.49	1	0	5418	10.8	75.7	1.7	6.9	0.9	3.0	0.4	0.3	0.3	86.5	1.7	11.8	0.081	0.503	17.790528	-93.437390
T. Izq. Francisco Rueda	90.49	3	0	8631	11.5	74.4	0.9	7.8	0.9	3.0	0.5	0.6	0.4	85.9	0.9	13.2	0.085	0.500	17.790700	-93.437276
Huimanguillo	98.03	1	1	5827	17.7	73.5	0.6	5.6	0.6	0.9	0.7	0.2	0.2	91.2	0.6	8.2	0.093	0.509	17.822204	-93.398816
Huimanguillo	98.03	1	2	6043	18.0	72.3	0.6	6.3	0.7	0.9	0.8	0.2	0.2	90.3	0.6	9.1	0.090	0.509	17.822383	-93.399078
Huimanguillo	98.03	3	1	5639	10.3	78.1	1.3	6.7	0.9	1.2	0.8	0.5	0.2	88.4	1.3	10.3	0.087	0.508	17.831491	-93.398113
Huimanguillo	98.03	3	2	5824	10.1	77.0	1.4	7.4	1.1	1.4	0.7	0.6	0.3	87.1	1.4	11.5	0.088	0.508	17.831498	-93.398199
Cárdenas	117.56	1	0	10951	7.6	81.4	1.2	6.2	0.8	1.8	0.6	0.2	0.2	89.0	1.2	9.8	0.066	0.504	17.988198	-93.379047
Cárdenas	117.56	3	0	13291	3.9	87.9	0.6	4.9	0.5	1.1	0.7	0.2	0.2	91.8	0.6	7.6	0.080	0.521	18.001669	-93.372927
Tulipán	134.70	3	0	7180	4.6	80.9	0.9	7.1	1.1	3.8	0.9	0.2	0.5	85.5	0.9	13.6	0.100	0.504	18.117312	-93.297403
T. Der. Cunduacán	141.70	1	0	5716	6.6	79.0	1.5	7.6	0.7	3.2	0.7	0.2	0.5	85.6	1.5	12.9	0.087	0.514	18.141331	-93.270597
T. Der. Cunduacán	141.70	3	0	5144	4.7	79.6	1.8	7.5	1.1	3.8	0.8	0.2	0.5	84.3	1.8	13.9	0.099	0.503	18.141400	-93.270545
T. Der. Jalpa	153.50	1	0	9060	9.2	77.9	1.3	8.5	1.2	1.0	0.7	0.1	0.1	87.1	1.3	11.6	0.097	0.507	18.246879	-93.212713
T. Der. Jalpa	153.50	3	1	8053	7.8	81.6	0.6	7.3	0.4	1.0	0.9	0.1	0.3	89.4	0.6	10.0	0.094	0.514	18.247078	-93.212779
T. Der. Jalpa	153.50	3	2	7605	7.7	81.8	0.6	7.2	0.4	1.0	0.9	0.1	0.3	89.5	0.6	9.9	0.104	0.514	18.247066	-93.212817
Paraíso	176.85	1	1	10341	5.3	83.0	0.5	6.8	1.1	1.6	1.1	0.5	0.1	88.3	0.5	11.2	0.114	0.502	18.393775	-93.210229
Paraíso	176.85	1	2	10269	5.9	82.3	0.5	6.9	1.1	1.7	1.1	0.5	0.0	88.2	0.5	11.3	0.089	0.502	18.393817	-93.210296
Paraíso	176.85	3	1	7624	5.9	89.1	0.2	4.0	0.3	0.3	0.2	0.0	0.0	95.0	0.2	4.8	0.090	0.513	18.400053	-93.206646

CHIAPAS

11 CARR: Malpaso - El Bellote

CLAVE: 00137

RUTA: MEX-187

AÑO: 2020

LUGAR	ESTACION				CLASIFICACION VEHICULAR EN PORCIENTO													COORDENADAS		
	KM	TE	SC	TDPA	M	A	B	C2	C3	T3S2	T3S3	T3S2R4	OTROS	A	B	C	K'	D	LATITUD	LONGITUD
Paraíso	176.85	3	2	7236	5.7	88.6	0.3	4.5	0.3	0.3	0.2	0.0	0.1	94.3	0.3	5.4	0.090	0.513	18.400112	-93.206757
Ceiba	182.00	3	0	7824	8.4	83.5	0.5	4.6	1.3	0.9	0.6	0.1	0.1	91.9	0.5	7.6	0.090	0.504	18.413396	-93.177018
El Bellote	185.47																			

12 CARR: Ocozocoautla - Ent. El Sabino

CLAVE: 07579

RUTA: MEX-190

AÑO: 2020

LUGAR	ESTACION				CLASIFICACION VEHICULAR EN PORCIENTO													COORDENADAS		
	KM	TE	SC	TDPA	M	A	B	C2	C3	T3S2	T3S3	T3S2R4	OTROS	A	B	C	K'	D	LATITUD	LONGITUD
T. C. Tapanatepec - Tuxtla Gutiérrez	0.00																			
X. C. Tapanatepec - Tuxtla Gutiérrez	7.85	3	0	4400	7.6	76.9	1.0	9.4	1.1	2.9	0.6	0.2	0.3	84.5	1.0	14.5	0.108	0.514	16.768777	-93.286634
T. C. Tapanatepec - Tuxtla Gutiérrez	18.25	1	0	7974	3.6	84.3	0.3	7.1	0.4	3.1	0.4	0.1	0.7	87.9	0.3	11.8	0.128	0.501	16.774238	-93.203384

13 CARR: Ramal a Cd. Hidalgo

CLAVE: 07274

RUTA: MEX-200

AÑO: 2020

LUGAR	ESTACION				CLASIFICACION VEHICULAR EN PORCIENTO													COORDENADAS		
	KM	TE	SC	TDPA	M	A	B	C2	C3	T3S2	T3S3	T3S2R4	OTROS	A	B	C	K'	D	LATITUD	LONGITUD
T. C. Tapanatepec - Talismán	0.00	3	0	7057	3.2	85.7	0.4	4.4	0.9	3.9	0.4	1.0	0.1	88.9	0.4	10.7	0.084	0.530	14.914829	-92.191951
Metapa de Domínguez	9.00	3	0	5752	4.2	81.0	0.8	3.5	1.2	6.0	0.9	1.5	0.9	85.2	0.8	14.0	0.079	0.508	14.835415	-92.190969
Frontera Hidalgo	15.30	3	0	6624	8.6	76.3	0.7	3.6	0.9	7.0	0.9	1.1	0.9	84.9	0.7	14.4	0.091	0.566	14.781420	-92.182250
Cd. Hidalgo	27.00	1	0	6160	24.5	67.8	0.4	2.1	1.1	1.9	0.4	1.7	0.1	92.3	0.4	7.3	0.093	0.516	14.684493	-92.151075

14 CARR: Ramal a La Gloria

CLAVE: 07091

RUTA: MEX-200

AÑO: 2020

LUGAR	ESTACION				CLASIFICACION VEHICULAR EN PORCIENTO													COORDENADAS		
	KM	TE	SC	TDPA	M	A	B	C2	C3	T3S2	T3S3	T3S2R4	OTROS	A	B	C	K'	D	LATITUD	LONGITUD
T. C. Tapanatepec - Talismán	0.00	3	0	1164	23.2	63.6	0.3	12.8	0.1	0.0	0.0	0.0	0.0	86.8	0.3	12.9	0.084	0.506	16.214956	-94.046603
La Gloria	6.00																			

15 CARR: Ramal a Paredón

CLAVE: 07269

RUTA: MEX-200

AÑO: 2020

LUGAR	ESTACION				CLASIFICACION VEHICULAR EN PORCIENTO													COORDENADAS		
	KM	TE	SC	TDPA	M	A	B	C2	C3	T3S2	T3S3	T3S2R4	OTROS	A	B	C	K'	D	LATITUD	LONGITUD
T. C. Tapanatepec - Talismán	0.00	3	0	4930	20.2	72.9	0.2	3.4	0.3	1.8	0.7	0.2	0.3	93.1	0.2	6.7	0.087	0.502	16.091298	-93.752450
Paredón	14.00																			

CHIAPAS

16 CARR: Ramal a Puerto Arista

CLAVE: 07270

RUTA: MEX-200

AÑO: 2020

LUGAR	ESTACION				CLASIFICACION VEHICULAR EN PORCIENTO										COORDENADAS					
	KM	TE	SC	TDPA	M	A	B	C2	C3	T3S2	T3S3	T3S2R4	OTROS	A	B	C	K'	D	LATITUD	LONGITUD
T. C. Tapanatepec - Talismán	0.00	3	0	3821	13.1	80.8	0.3	4.3	0.2	0.7	0.2	0.2	0.2	93.9	0.3	5.8	0.097	0.503	16.056160	-93.737653
T. Der. Paredón	11.00	3	0	3245	17.3	76.0	0.2	4.7	0.3	0.9	0.3	0.2	0.1	93.3	0.2	6.5	0.140	0.525	15.977567	-93.774035
Puerto Arista	17.00	1	0	2355	28.4	67.9	0.1	3.3	0.2	0.1	0.0	0.0	0.0	96.3	0.1	3.6	0.184	0.523	15.933205	-93.809448

17 CARR: Ramal a Unión Juárez

CLAVE: 07273

RUTA: MEX-200

AÑO: 2020

LUGAR	ESTACION				CLASIFICACION VEHICULAR EN PORCIENTO										COORDENADAS					
	KM	TE	SC	TDPA	M	A	B	C2	C3	T3S2	T3S3	T3S2R4	OTROS	A	B	C	K'	D	LATITUD	LONGITUD
T. C. Tapanatepec - Talismán	0.00																			
Cacahoatán	5.00	1	0	7751	4.0	90.8	0.5	4.4	0.1	0.1	0.1	0.0	0.0	94.8	0.5	4.7	0.083	0.516	14.989399	-92.166682
Unión Juárez	22.00	1	0	1057	3.2	91.6	0.3	4.9	0.0	0.0	0.0	0.0	0.0	94.8	0.3	4.9	0.101	0.520	15.059097	-92.081807

18 CARR: Tapachula - Puerto Madero

CLAVE: 07018

RUTA: MEX-225

AÑO: 2020

LUGAR	ESTACION				CLASIFICACION VEHICULAR EN PORCIENTO										COORDENADAS					
	KM	TE	SC	TDPA	M	A	B	C2	C3	T3S2	T3S3	T3S2R4	OTROS	A	B	C	K'	D	LATITUD	LONGITUD
Tapachula	0.00	3	1	7954	6.6	84.3	0.4	5.5	1.3	0.9	0.6	0.2	0.2	90.9	0.4	8.7	0.114	0.503	14.888916	-92.277189
Tapachula	0.00	3	2	7864	6.9	82.9	0.4	6.2	1.5	1.1	0.6	0.2	0.2	89.8	0.4	9.8	0.090	0.503	14.888863	-92.277112
T. Der. Aeropuerto	14.50	3	1	3834	9.8	79.3	0.8	4.6	1.7	2.1	0.8	0.7	0.2	89.1	0.8	10.1	0.110	0.501	14.787773	-92.365507
T. Der. Aeropuerto	14.50	3	2	3817	9.8	78.0	0.9	5.2	1.8	2.3	1.0	0.8	0.2	87.8	0.9	11.3	0.104	0.501	14.787719	-92.365454
Puerto Madero	27.00	1	0	6616	32.2	64.6	0.3	2.6	0.1	0.0	0.0	0.0	0.2	96.8	0.3	2.9	0.081	0.520	14.719318	-92.421908

19 CARR: Tapanatepec - Talismán

CLAVE: 00075

RUTA: MEX-200

AÑO: 2020

LUGAR	ESTACION				CLASIFICACION VEHICULAR EN PORCIENTO										COORDENADAS					
	KM	TE	SC	TDPA	M	A	B	C2	C3	T3S2	T3S3	T3S2R4	OTROS	A	B	C	K'	D	LATITUD	LONGITUD
Tapanatepec	0.00	3	0	4592	10.4	64.2	2.4	8.5	3.0	5.8	1.8	3.5	0.4	74.6	2.4	23.0	0.067	0.517	16.369277	-94.189208
Lim. Edos. Term. Oax. Ppia. Chis.	25.90																			
T. Der. Emiliano Zapata	26.20	1	0	2855	4.0	62.7	3.2	7.7	2.7	9.8	2.4	7.0	0.5	66.7	3.2	30.1	0.073	0.532	16.215385	-94.048795
T. Der. Emiliano Zapata	26.20	3	0	3568	5.9	67.4	2.8	7.2	2.3	6.7	2.4	4.2	1.1	73.3	2.8	23.9	0.082	0.502	16.215328	-94.048657
Arriaga	45.00	1	0	4529	10.9	66.1	2.7	6.4	1.9	6.4	2.0	3.0	0.6	77.0	2.7	20.3	0.075	0.511	16.229577	-93.912838
Arriaga	45.00	3	1	2954	11.4	77.1	2.4	7.2	0.6	0.7	0.3	0.2	0.1	88.5	2.4	9.1	0.092	0.502	16.232978	-93.894920
Arriaga	45.00	3	2	2928	10.8	77.5	2.5	7.2	0.6	0.6	0.4	0.3	0.1	88.3	2.5	9.2	0.098	0.502	16.232988	-93.894933
X. C. Arriaga- Ocozocoautla (Cuota)	47.00	3	1	3804	5.3	77.1	2.4	6.9	1.5	3.9	1.1	1.7	0.1	82.4	2.4	15.2	0.093	0.504	16.234045	-93.878837
X. C. Arriaga- Ocozocoautla (Cuota)	47.00	3	2	3740	6.2	76.6	2.5	6.6	1.5	3.6	1.3	1.5	0.2	82.8	2.5	14.7	0.105	0.504	16.234122	-93.878767

CHIAPAS

19 CARR: Tapanatepec - Talismán

CLAVE: 00075

RUTA: MEX-200

AÑO: 2020

LUGAR	ESTACION				CLASIFICACION VEHICULAR EN PORCIENTO													COORDENADAS		
	KM	TE	SC	TDPA	M	A	B	C2	C3	T3S2	T3S3	T3S2R4	OTROS	A	B	C	K'	D	LATITUD	LONGITUD
T. Der. Libramiento de Arriaga	49.50	1	1	3446	5.3	75.7	2.4	7.5	1.6	4.3	1.1	2.0	0.1	81.0	2.4	16.6	0.093	0.500	16.221312	-93.866422
T. Der. Libramiento de Arriaga	49.50	1	2	3446	5.2	76.0	2.5	7.6	1.6	4.1	1.0	1.9	0.1	81.2	2.5	16.3	0.111	0.500	16.221366	-93.866307
T. Der. Libramiento de Arriaga	49.50	3	1	3521	5.2	74.2	2.9	7.4	1.7	5.5	1.1	1.9	0.1	79.4	2.9	17.7	0.095	0.500	16.221520	-93.866534
T. Der. Libramiento de Arriaga	49.50	3	2	3524	5.3	74.4	3.1	7.4	1.8	5.0	1.0	1.9	0.1	79.7	3.1	17.2	0.109	0.500	16.221604	-93.866386
Tonalá	68.80	1	1	4614	2.9	76.6	3.1	7.2	1.2	5.0	1.0	2.8	0.2	79.5	3.1	17.4	0.090	0.504	16.091282	-93.752487
Tonalá	68.80	1	2	4536	3.1	76.8	3.1	7.2	1.1	4.4	1.1	3.1	0.1	79.9	3.1	17.0	0.091	0.504	16.091308	-93.752476
T. Der. Puerto Arista	73.00	1	1	4604	5.8	64.3	3.7	8.1	2.8	9.0	2.3	3.7	0.3	70.1	3.7	26.2	0.099	0.504	16.057884	-93.738143
T. Der. Puerto Arista	73.00	1	2	4525	5.9	63.9	4.0	8.0	2.7	9.1	2.3	3.7	0.4	69.8	4.0	26.2	0.116	0.504	16.057974	-93.738133
T. Der. Puerto Arista	73.00	3	1	4597	5.9	63.7	3.7	8.2	2.7	9.1	2.7	3.7	0.3	69.6	3.7	26.7	0.093	0.511	16.058749	-93.739769
T. Der. Puerto Arista	73.00	3	2	4399	5.5	62.9	3.9	8.5	2.9	9.6	2.6	3.8	0.3	68.4	3.9	27.7	0.125	0.511	16.058835	-93.739714
T. Der. Tres Picos	100.40	1	1	4704	6.0	63.0	4.0	8.0	3.0	9.1	2.0	4.0	0.9	69.0	4.0	27.0	0.086	0.501	15.911926	-93.540203
T. Der. Tres Picos	100.40	1	2	4684	6.0	63.1	3.9	8.1	3.1	9.0	2.0	4.1	0.7	69.1	3.9	27.0	0.111	0.501	15.913113	-93.539371
T. Der. Tres Picos	100.40	3	1	4516	6.1	62.9	3.9	8.0	3.0	9.0	2.1	4.0	1.0	69.0	3.9	27.1	0.085	0.511	15.911872	-93.540170
T. Der. Tres Picos	100.40	3	2	4725	5.9	62.3	4.2	8.0	3.2	9.4	2.0	4.1	0.9	68.2	4.2	27.6	0.110	0.511	15.913061	-93.539307
T. Der. Los Patos	114.75	1	1	3920	6.1	64.4	3.8	7.8	2.9	8.6	1.8	3.8	0.8	70.5	3.8	25.7	0.087	0.502	15.837936	-93.435341
T. Der. Los Patos	114.75	1	2	3885	5.9	62.4	4.2	8.1	3.2	9.3	2.1	3.9	0.9	68.3	4.2	27.5	0.103	0.502	15.838239	-93.434967
T. Der. Los Patos	114.75	3	1	4377	6.0	67.5	3.3	6.2	2.6	7.7	2.4	3.5	0.8	73.5	3.3	23.2	0.085	0.512	15.837677	-93.435068
T. Der. Los Patos	114.75	3	2	4599	5.5	68.1	3.8	6.2	2.6	7.4	2.0	3.7	0.7	73.6	3.8	22.6	0.106	0.512	15.837954	-93.434704
T. Der. San Isidro	125.00	1	1	4234	6.1	68.6	3.5	6.1	2.5	6.8	2.2	3.4	0.8	74.7	3.5	21.8	0.084	0.509	15.778123	-93.361339
T. Der. San Isidro	125.00	1	2	4381	5.4	66.5	3.9	6.8	2.7	7.6	2.3	3.9	0.9	71.9	3.9	24.2	0.105	0.509	15.779444	-93.360789
T. Der. San Isidro	125.00	3	1	4060	6.1	68.4	3.7	6.3	2.5	6.6	2.2	3.4	0.8	74.5	3.7	21.8	0.085	0.509	15.778114	-93.361356
T. Der. San Isidro	125.00	3	2	4211	5.5	66.9	3.7	6.7	2.8	7.5	2.4	3.6	0.9	72.4	3.7	23.9	0.106	0.509	15.779471	-93.360820
Pijijapan	144.45	1	1	6092	12.2	65.6	2.2	7.2	1.9	5.9	1.7	3.1	0.2	77.8	2.2	20.0	0.094	0.501	15.697180	-93.209545
Pijijapan	144.45	1	2	6066	11.9	66.3	2.6	6.7	2.0	5.7	1.7	2.9	0.2	78.2	2.6	19.2	0.093	0.501	15.697305	-93.209441
Valdivia	180.39	1	1	4554	12.0	64.4	3.1	7.7	2.2	5.7	1.4	3.3	0.2	76.4	3.1	20.5	0.089	0.503	15.503687	-92.945865
Valdivia	180.39	1	2	4493	11.7	62.5	3.5	8.2	2.4	6.4	1.6	3.5	0.2	74.2	3.5	22.3	0.077	0.503	15.503830	-92.945757
Valdivia	180.39	3	1	5123	11.8	63.2	3.3	8.0	2.4	6.2	1.5	3.4	0.2	75.0	3.3	21.7	0.093	0.501	15.503619	-92.945776
Valdivia	180.39	3	2	5094	11.9	63.8	3.2	8.2	2.2	5.7	1.4	3.4	0.2	75.7	3.2	21.1	0.086	0.501	15.503760	-92.945663
T. Der. Mapastepec	188.85	3	1	3378	11.9	64.2	3.3	7.7	2.1	6.0	1.5	3.1	0.2	76.1	3.3	20.6	0.092	0.507	15.456078	-92.886923
T. Der. Mapastepec	188.85	3	2	3279	13.9	62.5	3.5	7.5	1.8	6.2	1.4	3.0	0.2	76.4	3.5	20.1	0.093	0.507	15.457832	-92.886310
T. Der. Estación Soconusco	213.30	1	1	3480	12.0	64.7	3.0	7.6	2.0	6.0	1.4	3.1	0.2	76.7	3.0	20.3	0.090	0.503	15.337794	-92.711057
T. Der. Estación Soconusco	213.30	1	2	3441	12.5	64.6	3.4	7.2	2.1	5.6	1.5	3.0	0.1	77.1	3.4	19.5	0.085	0.503	15.349724	-92.692289
T. Der. Estación Soconusco	213.30	3	1	3404	11.9	63.7	2.7	8.4	2.2	6.8	1.4	2.7	0.2	75.6	2.7	21.7	0.091	0.501	15.337710	-92.710982
T. Der. Estación Soconusco	213.30	3	2	3416	12.0	63.0	3.2	8.0	2.2	6.9	1.5	3.0	0.2	75.0	3.2	21.8	0.088	0.501	15.349745	-92.692504
Villa Comaltitlán	233.00	1	1	3525	9.8	68.1	2.4	7.7	2.1	5.8	1.8	2.1	0.2	77.9	2.4	19.7	0.083	0.509	15.218671	-92.576773

CHIAPAS

19 CARR: Tapanatepec - Talismán

CLAVE: 00075

RUTA: MEX-200

AÑO: 2020

LUGAR	ESTACION				CLASIFICACION VEHICULAR EN PORCIENTO														COORDENADAS	
	KM	TE	SC	TDPA	M	A	B	C2	C3	T3S2	T3S3	T3S2R4	OTROS	A	B	C	K'	D	LATITUD	LONGITUD
Villa Comaltitlán	233.00	1	2	3403	9.5	67.5	2.6	7.8	2.0	6.3	1.7	2.3	0.3	77.0	2.6	20.4	0.085	0.509	15.222094	-92.567737
T. Libramiento de Huixtla Oeste	245.00																			
Huixtla	250.50	1	1	3665	9.0	69.3	2.4	7.4	2.2	6.0	1.6	1.9	0.2	78.3	2.4	19.3	0.085	0.511	15.142200	-92.461785
Huixtla	250.50	1	2	3513	9.3	66.9	2.7	8.2	2.3	6.4	1.8	2.2	0.2	76.2	2.7	21.1	0.088	0.511	15.142219	-92.461777
Huixtla	250.50	3	1	7179	12.8	71.4	2.1	6.3	1.6	2.9	1.5	1.2	0.2	84.2	2.1	13.7	0.091	0.504	15.142158	-92.461703
Huixtla	250.50	3	2	7069	14.0	70.0	2.0	6.8	1.5	2.8	1.4	1.3	0.2	84.0	2.0	14.0	0.093	0.504	15.142185	-92.461689
T. Libramiento de Huixtla Este	251.80																			
T. Izq. Hamburgo	262.70	3	1	7616	10.8	75.6	1.8	5.7	1.4	3.0	0.4	1.0	0.3	86.4	1.8	11.8	0.105	0.511	15.110354	-92.433028
T. Izq. Hamburgo	262.70	3	2	7291	10.9	75.2	1.8	5.6	1.5	3.1	0.5	1.1	0.3	86.1	1.8	12.1	0.102	0.511	15.110406	-92.432937
T. Izq. Huehuetán	273.70	1	1	5577	8.7	74.7	2.1	7.1	1.6	3.4	0.7	1.3	0.4	83.4	2.1	14.5	0.094	0.510	15.010953	-92.402055
T. Izq. Huehuetán	273.70	1	2	5361	8.7	74.6	2.2	7.2	1.7	3.3	0.7	1.2	0.4	83.3	2.2	14.5	0.095	0.510	15.010962	-92.401950
T. Izq. Huehuetán	273.70	3	1	5578	3.3	81.5	2.4	6.2	0.8	2.6	1.8	0.8	0.6	84.8	2.4	12.8	0.096	0.517	15.010736	-92.402008
T. Izq. Huehuetán	273.70	3	2	5982	3.2	81.7	2.5	6.1	0.7	2.7	1.8	0.7	0.6	84.9	2.5	12.6	0.086	0.517	15.010750	-92.401899
Tapachula	292.25	1	1	8839	3.3	83.4	0.7	6.3	0.8	2.6	1.6	0.7	0.6	86.7	0.7	12.6	0.105	0.510	14.908622	-92.272334
Tapachula	292.25	1	2	8502	3.2	83.7	0.7	6.2	0.9	2.6	1.6	0.6	0.5	86.9	0.7	12.4	0.093	0.510	14.908697	-92.272304
T. Der. Cd. Hidalgo	302.75	1	1	10484	3.4	87.8	0.6	5.6	0.4	1.4	0.4	0.4	0.0	91.2	0.6	8.2	0.103	0.514	14.914878	-92.192766
T. Der. Cd. Hidalgo	302.75	1	2	9930	3.4	87.6	0.6	5.6	0.5	1.6	0.3	0.4	0.0	91.0	0.6	8.4	0.096	0.514	14.914974	-92.192822
Tuxtla Chico	307.00	1	0	12431	7.0	87.5	0.5	4.1	0.3	0.2	0.4	0.0	0.0	94.5	0.5	5.0	0.089	0.507	14.938766	-92.160448
Talismán	310.77	1	0	2081	30.8	62.6	2.2	4.4	0.0	0.0	0.0	0.0	0.0	93.4	2.2	4.4	0.086	0.502	14.962851	-92.149553

20 CARR: Tapanatepec - Tuxtla Gutiérrez

CLAVE: 00060

RUTA: MEX-190

AÑO: 2020

LUGAR	ESTACION				CLASIFICACION VEHICULAR EN PORCIENTO														COORDENADAS	
	KM	TE	SC	TDPA	M	A	B	C2	C3	T3S2	T3S3	T3S2R4	OTROS	A	B	C	K'	D	LATITUD	LONGITUD
Tapanatepec	0.00	3	0	1964	8.3	77.5	1.4	11.4	0.9	0.2	0.2	0.1	0.0	85.8	1.4	12.8	0.084	0.580	16.370585	-94.193482
Libramiento de San Pedro Tapanatepec	0.75	3	0	906	8.6	73.4	1.4	9.1	2.1	2.8	2.3	0.3	0.0	82.0	1.4	16.6	0.111	0.526	16.371682	-94.180715
Lim. Edos. Term. Oax. Ppia. Chis.	17.90																			
Rizo de Oro	26.60	1	0	935	2.1	75.5	3.3	11.0	2.9	1.7	3.1	0.3	0.1	77.6	3.3	19.1	0.084	0.510	16.475233	-94.081528
T. Der. Arriaga	56.80	1	0	1796	9.3	78.2	3.1	3.4	2.4	1.5	2.0	0.1	0.0	87.5	3.1	9.4	0.095	0.509	16.571468	-93.845755
T. Der. Arriaga	56.80	3	0	3198	7.7	79.2	2.6	4.1	2.3	2.6	1.4	0.1	0.0	86.9	2.6	10.5	0.089	0.500	16.571944	-93.845097
Cintalapa	75.60	1	0	3587	10.9	80.3	1.6	2.9	1.6	1.7	0.9	0.1	0.0	91.2	1.6	7.2	0.120	0.501	16.683287	-93.729781
T. Der. Jiquipilas	82.00	1	0	5990	9.9	79.8	2.1	4.0	1.8	1.6	0.7	0.1	0.0	89.7	2.1	8.2	0.097	0.502	16.688166	-93.666447
T. Der. Jiquipilas	82.00	3	0	4500	5.7	80.3	3.1	5.1	2.4	2.1	1.1	0.2	0.0	86.0	3.1	10.9	0.093	0.502	16.688220	-93.666289
T. C. Arriaga - Ocozocoautla (Cuota)	96.20	1	0	3903	5.0	80.1	3.0	5.6	2.5	2.2	1.2	0.3	0.1	85.1	3.0	11.9	0.085	0.508	16.684549	-93.545693
Ocozocoautla	123.29	1	0	4141	13.5	69.6	2.9	8.0	2.4	1.9	1.2	0.3	0.2	83.1	2.9	14.0	0.101	0.503	16.766942	-93.379529

CHIAPAS

20 CARR: Tapanatepec - Tuxtla Gutiérrez

CLAVE: 00060

RUTA: MEX-190

AÑO: 2020

LUGAR	ESTACION				CLASIFICACION VEHICULAR EN PORCIENTO										COORDENADAS					
	KM	TE	SC	TDPA	M	A	B	C2	C3	T3S2	T3S3	T3S2R4	OTROS	A	B	C	K'	D	LATITUD	LONGITUD
Ocozacoautla	123.29	3	0	5069	11.3	82.1	0.5	4.8	0.7	0.2	0.1	0.3	0.0	93.4	0.5	6.1	0.083	0.500	16.760975	-93.372190
T. Izq. Aeropuerto	132.70	1	0	4569	9.2	84.2	0.3	5.3	0.4	0.3	0.2	0.1	0.0	93.4	0.3	6.3	0.083	0.518	16.752508	-93.338011
T. Izq. Aeropuerto	132.70	3	1	2226	3.5	82.5	3.2	4.7	1.7	3.0	1.0	0.3	0.1	86.0	3.2	10.8	0.122	0.509	16.752990	-93.337418
T. Izq. Aeropuerto	132.70	3	2	2309	3.7	82.5	3.0	4.6	1.8	3.2	0.8	0.3	0.1	86.2	3.0	10.8	0.128	0.509	16.752983	-93.337483
T. Izq. Berriozábal (1º Acceso)	136.40	1	1	7577	3.8	80.4	2.6	4.8	2.1	2.8	1.0	1.9	0.6	84.2	2.6	13.2	0.080	0.506	16.768177	-93.287731
T. Izq. Berriozábal (1º Acceso)	136.40	1	2	7771	3.7	81.1	2.1	4.7	2.2	2.9	1.0	1.8	0.5	84.8	2.1	13.1	0.085	0.506	16.768439	-93.287727
T. Izq. Berriozábal (1º Acceso)	136.40	3	1	8946	4.0	82.0	3.0	4.1	1.9	2.3	0.7	1.5	0.5	86.0	3.0	11.0	0.078	0.500	16.768165	-93.287641
T. Izq. Berriozábal (1º Acceso)	136.40	3	2	8938	3.6	82.9	2.7	3.9	1.7	2.5	0.7	1.5	0.5	86.5	2.7	10.8	0.083	0.500	16.768452	-93.287647
T. Izq. San Fernando	151.70	1	1	16939	2.0	84.2	1.3	6.1	0.7	2.0	2.5	0.7	0.5	86.2	1.3	12.5	0.083	0.505	16.769381	-93.195252
T. Izq. San Fernando	151.70	1	2	16573	2.0	84.1	1.3	6.1	0.7	2.1	2.5	0.7	0.5	86.1	1.3	12.6	0.094	0.505	16.769241	-93.195344
Tuxtla Gutiérrez	159.00	1	1	13022	2.0	84.0	0.8	6.4	1.3	2.1	2.1	0.7	0.6	86.0	0.8	13.2	0.091	0.544	16.754851	-93.142378
Tuxtla Gutiérrez	159.00	1	2	10901	2.0	84.2	0.8	6.4	1.3	2.1	2.0	0.7	0.5	86.2	0.8	13.0	0.087	0.544	16.754955	-93.142381

21 CARR: Terán - Chicoasén

CLAVE: 07072

RUTA: MEX-190

AÑO: 2020

LUGAR	ESTACION				CLASIFICACION VEHICULAR EN PORCIENTO										COORDENADAS					
	KM	TE	SC	TDPA	M	A	B	C2	C3	T3S2	T3S3	T3S2R4	OTROS	A	B	C	K'	D	LATITUD	LONGITUD
Terán	0.00	3	0	9275	3.3	80.6	0.7	9.7	0.6	3.7	0.6	0.4	0.4	83.9	0.7	15.4	0.095	0.501	16.768054	-93.177866
T. Izq. San Fernando (1º Acceso)	14.00	1	0	9398	7.5	81.2	0.8	4.3	0.8	3.7	0.6	0.4	0.7	88.7	0.8	10.5	0.084	0.510	16.865014	-93.203592
Chicoasén	34.00																			

22 CARR: Tuxtla Gutiérrez - Angostura

CLAVE: 07584

RUTA: MEX-190

AÑO: 2020

LUGAR	ESTACION				CLASIFICACION VEHICULAR EN PORCIENTO										COORDENADAS					
	KM	TE	SC	TDPA	M	A	B	C2	C3	T3S2	T3S3	T3S2R4	OTROS	A	B	C	K'	D	LATITUD	LONGITUD
T. C. Tuxtla Gutiérrez - Cd. Cuauhtémoc	0.00	3	1	13974	2.1	91.1	0.2	2.8	0.7	1.2	1.4	0.2	0.3	93.2	0.2	6.6	0.092	0.502	16.734992	-93.047503
T. C. Tuxtla Gutiérrez - Cd. Cuauhtémoc	0.00	3	2	13859	2.1	91.1	0.2	2.8	0.7	1.2	1.4	0.2	0.3	93.2	0.2	6.6	0.094	0.502	16.735017	-93.047468
T. Der. Revolución Mexicana	16.70	3	0	3607	6.4	83.0	1.5	3.9	1.9	1.0	0.9	1.2	0.2	89.4	1.5	9.1	0.074	0.533	16.610296	-92.993104
Angostura	52.00	1	0	1527	13.9	75.8	1.2	8.4	0.2	0.2	0.2	0.0	0.1	89.7	1.2	9.1	0.092	0.504	16.402154	-92.708254

23 CARR: Tuxtla Gutiérrez - Cd. Cuauhtémoc

CLAVE: 07061

RUTA: MEX-190

AÑO: 2020

LUGAR	ESTACION				CLASIFICACION VEHICULAR EN PORCIENTO										COORDENADAS					
	KM	TE	SC	TDPA	M	A	B	C2	C3	T3S2	T3S3	T3S2R4	OTROS	A	B	C	K'	D	LATITUD	LONGITUD
Tuxtla Gutiérrez	0.00																			

CHIAPAS

23 CARR: Tuxtla Gutiérrez - Cd. Cuauhtémoc

CLAVE: 07061

RUTA: MEX-190

AÑO: 2020

LUGAR	ESTACION				CLASIFICACION VEHICULAR EN PORCIENTO										COORDENADAS					
	KM	TE	SC	TDPA	M	A	B	C2	C3	T3S2	T3S3	T3S2R4	OTROS	A	B	C	K'	D	LATITUD	LONGITUD
T. Der. Presa La Angostura	7.50	1	1	30051	1.8	93.3	0.5	2.3	0.6	0.6	0.2	0.5	0.2	95.1	0.5	4.4	0.093	0.546	16.735059	-93.047522
T. Der. Presa La Angostura	7.50	1	2	24510	1.8	94.0	0.5	1.9	0.4	0.5	0.2	0.5	0.2	95.8	0.5	3.7	0.084	0.546	16.735062	-93.047525
T. Der. Presa La Angostura	7.50	3	1	13194	2.2	88.1	1.4	6.7	0.5	0.6	0.3	0.2	0.0	90.3	1.4	8.3	0.095	0.554	16.735075	-93.047369
T. Der. Presa La Angostura	7.50	3	2	16393	1.9	91.2	0.8	3.6	1.0	0.9	0.2	0.3	0.1	93.1	0.8	6.1	0.089	0.554	16.735072	-93.047381
Chiapa de Corzo	15.33	3	0	10064	8.8	83.9	0.6	4.0	0.9	0.4	0.4	0.4	0.6	92.7	0.6	6.7	0.086	0.504	16.713310	-93.010305
T. Izq. Pichucalco	34.41	1	0	3065	2.1	91.2	1.4	2.1	1.6	0.9	0.3	0.3	0.1	93.3	1.4	5.3	0.104	0.516	16.759668	-92.944583
T. Izq. Pichucalco	34.41	3	0	962	1.8	95.0	0.7	1.3	0.4	0.3	0.3	0.0	0.2	96.8	0.7	2.5	0.102	0.500	16.759664	-92.944596
San Cristóbal de Las Casas	85.19	1	0	5215	9.5	86.3	0.3	1.8	0.3	0.9	0.4	0.2	0.3	95.8	0.3	3.9	0.079	0.501	16.729984	-92.659418
San Cristóbal de Las Casas	85.19	3	0	10391	2.1	78.4	1.2	7.5	1.0	7.1	1.2	0.5	1.0	80.5	1.2	18.3	0.077	0.508	16.712412	-92.618341
T. Izq. Ocosingo	95.90	3	0	6778	2.1	82.6	1.7	4.8	1.1	5.7	1.0	0.4	0.6	84.7	1.7	13.6	0.090	0.505	16.665999	-92.566770
Teopisca	116.90	1	0	7041	3.8	81.0	1.2	5.0	1.0	5.7	1.2	0.2	0.9	84.8	1.2	14.0	0.085	0.531	16.541491	-92.472881
Teopisca	116.90	3	0	5671	3.9	81.3	1.5	5.5	1.0	4.7	1.1	0.2	0.8	85.2	1.5	13.3	0.090	0.516	16.541450	-92.472893
T. Der. Las Rosas	121.00	3	0	6664	2.3	82.6	1.4	5.1	0.9	5.5	1.1	0.4	0.7	84.9	1.4	13.7	0.078	0.526	16.304980	-92.185583
Amatenango del Valle	122.00	3	0	7333	3.6	83.4	1.4	4.8	0.9	3.7	1.2	0.3	0.7	87.0	1.4	11.6	0.082	0.514	16.530011	-92.434675
Comitán	171.60	1	0	7313	3.9	82.9	1.6	5.6	0.8	3.6	0.8	0.3	0.5	86.8	1.6	11.6	0.099	0.512	16.240067	-92.136697
Comitán	171.60	3	1	7035	3.2	86.7	0.9	5.8	0.9	1.6	0.6	0.1	0.2	89.9	0.9	9.2	0.097	0.500	16.240032	-92.136727
Comitán	171.60	3	2	7033	3.2	86.7	0.8	6.0	0.9	1.5	0.6	0.1	0.2	89.9	0.8	9.3	0.088	0.500	16.240070	-92.136640
T. Izq. Montebello	187.46	1	1	5509	3.3	89.3	0.6	4.6	0.9	0.8	0.3	0.1	0.1	92.6	0.6	6.8	0.096	0.504	16.130110	-92.063554
T. Izq. Montebello	187.46	1	2	5428	3.0	89.1	0.8	4.8	0.8	1.0	0.3	0.1	0.1	92.1	0.8	7.1	0.079	0.504	16.130146	-92.063492
La Trinitaria	189.00	3	0	3921	3.0	84.2	1.7	7.8	1.6	0.9	0.5	0.1	0.2	87.2	1.7	11.1	0.084	0.501	16.117007	-92.055602
T. Izq. Chihuahua	201.04	3	0	3994	2.9	87.7	1.3	3.3	1.2	2.4	0.8	0.1	0.3	90.6	1.3	8.1	0.087	0.504	16.022668	-92.017411
T. Der. Frontera Comalapa	251.26	1	0	3325	2.8	87.7	1.7	3.3	1.2	2.3	0.7	0.1	0.2	90.5	1.7	7.8	0.106	0.501	15.683852	-92.004523
Cd. Cuauhtémoc	256.00	1	0	4517	16.2	77.5	0.7	3.7	0.7	0.6	0.3	0.2	0.1	93.7	0.7	5.6	0.087	0.504	15.665981	-92.002395

24 CARR: Villahermosa - Escopetazo

CLAVE: 00104

RUTA: MEX-195

AÑO: 2020

LUGAR	ESTACION				CLASIFICACION VEHICULAR EN PORCIENTO										COORDENADAS					
	KM	TE	SC	TDPA	M	A	B	C2	C3	T3S2	T3S3	T3S2R4	OTROS	A	B	C	K'	D	LATITUD	LONGITUD
Villahermosa	0.00	3	1	24045	3.0	90.5	0.5	4.5	0.4	0.7	0.3	0.1	0.0	93.5	0.5	6.0	0.114	0.511	17.970873	-92.923952
Villahermosa	0.00	3	2	26678	2.9	90.8	0.5	4.3	0.4	0.7	0.3	0.1	0.0	93.7	0.5	5.8	0.111	0.511	17.971026	-92.923818
Parrilla	10.00	1	1	19726	3.2	88.9	0.9	4.1	0.9	0.8	0.8	0.3	0.1	92.1	0.9	7.0	0.115	0.508	17.908233	-92.922360
Parrilla	10.00	1	2	20336	3.1	89.1	0.9	4.0	0.9	0.8	0.8	0.3	0.1	92.2	0.9	6.9	0.113	0.508	17.908222	-92.922272
Parrilla	10.00	3	1	21614	3.6	89.1	0.4	5.3	0.5	0.6	0.4	0.1	0.0	92.7	0.4	6.9	0.114	0.507	17.907286	-92.922669
Parrilla	10.00	3	2	22225	3.5	89.3	0.4	5.2	0.5	0.6	0.4	0.1	0.0	92.8	0.4	6.8	0.112	0.507	17.907260	-92.922585
T. Izq. Subte. García	20.00	3	1	7397	6.4	78.7	0.8	5.8	1.1	5.0	1.1	0.7	0.4	85.1	0.8	14.1	0.133	0.507	17.829774	-92.928656

CHIAPAS

24 CARR: Villahermosa - Escopetazo

CLAVE: 00104

RUTA: MEX-195

AÑO: 2020

LUGAR	ESTACION				CLASIFICACION VEHICULAR EN PORCIENTO														COORDENADAS	
	KM	TE	SC	TDPA	M	A	B	C2	C3	T3S2	T3S3	T3S2R4	OTROS	A	B	C	K'	D	LATITUD	LONGITUD
T. Izq. Subte. García	20.00	3	2	7608	6.2	79.0	0.7	5.8	1.1	4.9	1.1	0.7	0.5	85.2	0.7	14.1	0.130	0.507	17.826621	-92.929049
La Arena	44.00	1	0	6604	5.6	72.3	1.4	9.7	1.7	6.0	1.4	1.1	0.8	77.9	1.4	20.7	0.081	0.505	17.652272	-92.963034
T. Izq. Teapa	54.80	1	0	9441	5.0	80.7	0.3	6.0	0.9	5.1	0.8	0.3	0.9	85.7	0.3	14.0	0.086	0.505	17.569842	-92.955754
T. Izq. Teapa	54.80	3	0	5297	7.4	79.8	0.9	7.7	0.6	2.6	0.6	0.2	0.2	87.2	0.9	11.9	0.090	0.509	17.569681	-92.955666
Lim. Edos. Term. Tab. Ppia. Chis.	61.42																			
Pichucalco	76.00	1	0	2423	8.3	77.9	1.0	9.9	1.0	1.2	0.6	0.0	0.1	86.2	1.0	12.8	0.074	0.502	17.514770	-93.114873
Pichucalco	76.00	3	0	3215	13.3	79.6	0.3	4.0	0.8	1.3	0.5	0.0	0.2	92.9	0.3	6.8	0.083	0.515	17.508674	-93.116903
Solusuchiapa	112.00	1	0	1502	6.7	82.9	0.6	5.2	1.5	1.7	1.0	0.1	0.3	89.6	0.6	9.8	0.094	0.502	17.427041	-93.031938
Solusuchiapa	112.00	3	0	1432	7.0	83.2	0.8	4.3	1.5	1.8	1.1	0.2	0.1	90.2	0.8	9.0	0.085	0.501	17.427067	-93.032821
Rayón	146.00	1	0	2077	3.3	87.1	0.3	5.2	0.6	2.3	0.6	0.2	0.4	90.4	0.3	9.3	0.079	0.505	17.200529	-93.012369
Jitotol	197.79	1	0	1868	2.2	91.0	0.2	4.1	0.7	1.3	0.3	0.0	0.2	93.2	0.2	6.6	0.085	0.504	17.065246	-92.862256
Jitotol	197.79	3	0	2449	4.0	88.7	0.3	4.3	1.1	0.9	0.3	0.2	0.2	92.7	0.3	7.0	0.107	0.501	17.065271	-92.862278
Bochil	211.00	1	0	4526	3.7	88.3	0.4	3.8	1.2	1.5	0.5	0.3	0.3	92.0	0.4	7.6	0.099	0.512	16.994487	-92.889413
Soyaló	229.00	3	0	2515	2.9	89.3	0.5	3.9	1.3	1.4	0.4	0.2	0.1	92.2	0.5	7.3	0.091	0.503	16.887157	-92.921518
Ixtapa	247.00	1	0	3418	3.1	90.4	0.4	3.5	1.0	0.9	0.3	0.3	0.1	93.5	0.4	6.1	0.087	0.506	16.803739	-92.907153
Escopetazo	259.00	1	0	2548	1.6	90.8	0.9	3.3	1.5	1.2	0.4	0.2	0.1	92.4	0.9	6.7	0.114	0.501	16.759600	-92.944255

25 CARR: Villahermosa - Francisco Escárcega

CLAVE: 00092

RUTA: MEX-186

AÑO: 2020

LUGAR	ESTACION				CLASIFICACION VEHICULAR EN PORCIENTO														COORDENADAS	
	KM	TE	SC	TDPA	M	A	B	C2	C3	T3S2	T3S3	T3S2R4	OTROS	A	B	C	K'	D	LATITUD	LONGITUD
Villahermosa	0.00	3	1	14606	1.8	82.4	1.7	7.6	1.3	2.9	0.7	1.4	0.2	84.2	1.7	14.1	0.075	0.506	17.999546	-92.920444
Villahermosa	0.00	3	2	14236	1.8	81.2	1.8	7.9	1.4	3.2	0.9	1.6	0.2	83.0	1.8	15.2	0.075	0.506	17.999433	-92.920468
T. Izq. Aeropuerto (Baja)	12.00	1	1	1368	10.7	77.0	1.0	5.8	1.5	2.6	0.6	0.6	0.2	87.7	1.0	11.3	0.078	0.514	17.981532	-92.824766
T. Izq. Aeropuerto (Alta)	12.00	1	1	15236	1.6	83.4	1.2	6.4	1.3	3.1	1.2	1.5	0.3	85.0	1.2	13.8	0.074	0.513	17.981572	-92.824727
T. Izq. Aeropuerto (Baja)	12.00	1	2	1295	10.5	76.0	1.1	6.4	1.7	2.8	0.6	0.7	0.2	86.5	1.1	12.4	0.075	0.514	17.981678	-92.824625
T. Izq. Aeropuerto (Alta)	12.00	1	2	14471	2.1	81.0	1.4	7.4	1.4	3.5	1.3	1.6	0.3	83.1	1.4	15.5	0.084	0.513	17.981641	-92.824659
Puente Grijalva	17.60	2	1	6071	3.0	78.1	3.8	3.6	2.1	4.6	1.5	2.9	0.4	81.1	3.8	15.1	0.079	0.500	17.947602	-92.785235
Puente Grijalva	17.60	2	2	6071	3.0	78.1	3.8	3.6	2.1	4.6	1.5	2.9	0.4	81.1	3.8	15.1	0.079	0.500	17.947602	-92.785235
X. C. Cacaos - La Granja	32.46	1	1	7113	1.4	79.9	1.4	7.3	1.6	4.4	1.3	2.4	0.3	81.3	1.4	17.3	0.082	0.502	17.828063	-92.716991
X. C. Cacaos - La Granja	32.46	1	2	7169	1.8	76.5	1.6	8.7	1.9	4.9	1.5	2.8	0.3	78.3	1.6	20.1	0.086	0.502	17.828175	-92.716718
X. C. Cacaos - La Granja	32.46	3	1	5238	1.7	78.4	1.7	7.5	1.9	4.3	1.6	2.7	0.2	80.1	1.7	18.2	0.077	0.512	17.827977	-92.716775
X. C. Cacaos - La Granja	32.46	3	2	5492	1.4	77.5	1.8	7.9	2.1	4.5	1.7	2.9	0.2	78.9	1.8	19.3	0.102	0.512	17.827977	-92.716774
X. C. Jalapa - Jonuta	40.00	3	1	5429	2.5	77.7	2.0	6.7	1.8	4.8	1.5	2.8	0.2	80.2	2.0	17.8	0.078	0.515	17.781246	-92.681713
X. C. Jalapa - Jonuta	40.00	3	2	5762	2.4	75.3	2.4	7.6	1.9	5.4	1.7	3.1	0.2	77.7	2.4	19.9	0.096	0.515	17.781243	-92.681713

CHIAPAS

25 CARR: Villahermosa - Francisco Escárcega

CLAVE: 00092

RUTA: MEX-186

AÑO: 2020

LUGAR	ESTACION				CLASIFICACION VEHICULAR EN PORCIENTO													COORDENADAS		
	KM	TE	SC	TDPA	M	A	B	C2	C3	T3S2	T3S3	T3S2R4	OTROS	A	B	C	K'	D	LATITUD	LONGITUD
T. Izq. Macuspana	46.20	1	1	5483	1.3	75.5	2.6	8.0	2.3	5.4	1.6	2.9	0.4	76.8	2.6	20.6	0.079	0.510	17.739225	-92.627849
T. Izq. Macuspana	46.20	1	2	5711	2.0	73.6	2.6	8.7	2.6	5.5	1.7	3.0	0.3	75.6	2.6	21.8	0.078	0.510	17.739224	-92.627847
T. Izq. Macuspana	46.20	3	1	5427	4.5	69.9	2.4	8.1	3.5	6.2	1.9	3.2	0.3	74.4	2.4	23.2	0.070	0.509	17.739225	-92.627850
T. Izq. Macuspana	46.20	3	2	5240	4.2	67.8	2.5	9.2	3.7	6.4	2.1	3.7	0.4	72.0	2.5	25.5	0.079	0.509	17.739224	-92.627850
X. C. Estación Macuspana - Vernet	54.30	1	0	8810	3.3	69.5	3.0	9.8	2.7	6.5	1.9	2.9	0.4	72.8	3.0	24.2	0.085	0.521	17.708385	-92.569065
T. Der. Chivalito (Est. Pino Suárez)	70.00	1	0	8166	5.7	66.6	3.5	8.2	2.5	7.5	2.0	3.5	0.5	72.3	3.5	24.2	0.085	0.521	17.667544	-92.436768
T. Der. Chivalito (Est. Pino Suárez)	70.00	3	1	3034	2.9	70.0	3.2	7.2	2.5	6.0	2.1	5.6	0.5	72.9	3.2	23.9	0.082	0.509	17.667473	-92.436615
T. Der. Chivalito (Est. Pino Suárez)	70.00	3	2	3151	3.7	66.6	3.4	8.4	2.7	6.5	2.4	5.9	0.4	70.3	3.4	26.3	0.089	0.509	17.667479	-92.436615
T. Der. Estación Zopo	71.00	1	0	5843	3.4	72.6	3.0	7.3	2.6	5.7	2.0	3.0	0.4	76.0	3.0	21.0	0.079	0.511	17.672835	-92.414364
T. Der. Estación Zopo	71.00	3	1	3136	7.5	60.7	4.1	7.7	2.6	9.2	2.0	5.8	0.4	68.2	4.1	27.7	0.119	0.501	17.672806	-92.414361
T. Der. Estación Zopo	71.00	3	2	3145	7.5	58.7	4.1	8.2	2.6	9.6	2.4	6.4	0.5	66.2	4.1	29.7	0.131	0.501	17.672808	-92.414357
Lim. Edos. Term. Tab. Ppia. Chis.	76.90																			
T. Izq. Bonanza	88.00	1	0	5326	2.5	72.2	2.4	6.2	2.3	6.6	2.6	4.7	0.5	74.7	2.4	22.9	0.080	0.509	17.699881	-92.253351
T. Izq. Jonuta	101.00	1	0	5071	2.7	69.8	2.6	6.5	2.5	7.6	2.5	5.2	0.6	72.5	2.6	24.9	0.082	0.511	17.697744	-92.131987
T. Izq. Jonuta	101.00	3	0	5708	2.6	69.8	2.6	6.7	2.5	7.6	2.4	5.2	0.6	72.4	2.6	25.0	0.086	0.505	17.697746	-92.131838
X. C. Catazajá - Palenque	114.00	1	0	5621	4.1	68.0	2.5	7.0	2.4	8.3	2.1	5.1	0.5	72.1	2.5	25.4	0.094	0.504	17.711457	-92.013035
X. C. Catazajá - Palenque	114.00	3	0	7989	4.1	65.3	2.5	8.4	2.8	9.0	2.1	5.3	0.5	69.4	2.5	28.1	0.084	0.500	17.711519	-92.012811
T. Der. Emiliano Zapata	134.70	1	0	5950	5.0	65.3	2.4	9.1	2.7	8.1	1.9	5.0	0.5	70.3	2.4	27.3	0.080	0.501	17.773311	-91.829241
T. Der. Emiliano Zapata	134.70	3	0	4142	4.2	65.1	2.5	8.3	2.9	9.1	2.2	5.2	0.5	69.3	2.5	28.2	0.086	0.510	17.773442	-91.828937
Lim. Edos. Term. Chis. Ppia. Tab.	140.70																			
Puente Usumacinta	145.20	2	0	3382	6.1	60.1	3.6	4.4	4.2	11.0	1.8	8.0	0.8	66.2	3.6	30.2	0.079	0.500	17.859905	-91.783654
T. Izq. Palizada	154.05	1	0	3503	4.5	58.6	5.3	7.4	2.9	10.5	2.6	7.9	0.3	63.1	5.3	31.6	0.080	0.505	17.941417	-91.734218
T. Izq. Palizada	154.05	3	0	2927	4.5	59.1	5.1	7.5	2.9	10.2	2.6	7.8	0.3	63.6	5.1	31.3	0.081	0.506	17.941520	-91.734118
Lim. Edos. Term. Tab. Ppia. Camp.	154.60																			
T. Der. Candelaria	233.40	1	0	3514	5.2	57.0	4.6	6.6	2.1	12.1	2.5	9.0	0.9	62.2	4.6	33.2	0.071	0.509	18.378315	-91.198450
T. Der. Felipe Ángeles	253.00	1	0	3666	11.0	58.8	3.9	3.0	1.9	10.2	2.0	7.3	1.9	69.8	3.9	26.3	0.104	0.509	18.506513	-91.104469
T. Izq. Sabancuy	274.10	1	0	3633	10.8	59.5	3.9	3.1	1.7	10.0	2.0	7.1	1.9	70.3	3.9	25.8	0.103	0.504	18.629188	-90.983222
Francisco Escárcega	297.04	1	0	7034	13.5	64.7	2.4	2.8	1.6	7.1	1.2	5.3	1.4	78.2	2.4	19.4	0.084	0.526	18.606119	-90.740031

26 CARR: Arriaga - Ocozocoautla (Cuota)

CLAVE: 00092

RUTA: MEX-200D

AÑO: 2020

LUGAR	ESTACION				CLASIFICACION VEHICULAR EN PORCIENTO													COORDENADAS		
	KM	TE	SC	TDPA	M	A	B	C2	C3	T3S2	T3S3	T3S2R4	OTROS	A	B	C	K'	D	LATITUD	LONGITUD
Arriaga	0.00	3	0	4233	0.8	70.3	3.6	10.8	2.1	6.4	1.7	3.9	0.4	71.1	3.6	25.3	0.100	0.519	16.235002	-93.880728
Plaza de Cobro Arriaga	2.70	2	0	4203	0.9	74.3	3.1	6.0	3.5	6.5	1.6	3.5	0.6	75.2	3.1	21.7	0.087	0.500	16.257485	-93.875377

CHIAPAS

26 CARR: Arriaga - Ocozocoautla (Cuota)

CLAVE: 00092

RUTA: MEX-200D

AÑO: 2020

LUGAR	ESTACION				CLASIFICACION VEHICULAR EN PORCIENTO													COORDENADAS		
	KM	TE	SC	TDPA	M	A	B	C2	C3	T3S2	T3S3	T3S2R4	OTROS	A	B	C	K'	D	LATITUD	LONGITUD
Plaza de Cobro Arriaga	2.70	3	0	4581	0.7	69.3	5.1	10.4	2.0	6.7	1.7	3.6	0.5	70.0	5.1	24.9	0.110	0.504	16.257304	-93.875488
T. Izq. Tierra y Libertad	20.70	1	0	4884	1.0	70.0	4.8	9.9	2.0	6.0	2.0	3.3	1.0	71.0	4.8	24.2	0.074	0.510	16.362797	-93.867772
T. Izq. Tierra y Libertad	21.55	3	0	3675	1.1	71.9	4.7	6.2	2.4	7.0	1.6	4.2	0.9	73.0	4.7	22.3	0.088	0.501	16.362872	-93.867768
Plaza de Cobro Jiquipilas	61.05	2	0	3442	0.6	72.6	2.5	6.0	3.8	7.7	1.9	4.2	0.7	73.2	2.5	24.3	0.087	0.500	16.620512	-93.602104
Plaza de Cobro Jiquipilas	61.05	3	0	4357	1.4	65.5	4.5	11.5	3.1	7.0	2.0	4.5	0.5	66.9	4.5	28.6	0.073	0.504	16.620472	-93.602143
Plaza de Cobro Montes Azules	70.60	2	0	3685	0.9	72.7	2.4	6.3	3.9	7.4	1.8	3.9	0.7	73.6	2.4	24.0	0.087	0.500	16.620609	-93.600526
Plaza de Cobro Ocozocoautla	92.00	1	0	6189	1.3	72.4	4.2	9.7	2.4	5.3	1.4	2.5	0.8	73.7	4.2	22.1	0.083	0.508	16.738513	-93.400345
Plaza de Cobro Ocozocoautla	92.00	2	0	5952	0.9	77.1	3.4	5.7	3.2	5.2	1.5	2.5	0.5	78.0	3.4	18.6	0.087	0.500	16.738487	-93.400346
Ocozocoautla	93.77																			

27 CARR: Las Choapas - Ocozocoautla (Cuota)

CLAVE: 00077

RUTA: MEX-187D

AÑO: 2020

LUGAR	ESTACION				CLASIFICACION VEHICULAR EN PORCIENTO													COORDENADAS		
	KM	TE	SC	TDPA	M	A	B	C2	C3	T3S2	T3S3	T3S2R4	OTROS	A	B	C	K'	D	LATITUD	LONGITUD
T. C. Coatzacoalcos - Villahermosa	0.00	3	0	3145	1.4	50.5	6.2	6.9	5.3	15.0	4.4	9.6	0.7	51.9	6.2	41.9	0.076	0.518	18.065729	-94.247962
Plaza de Cobro Las Choapas	16.80	1	0	3836	1.7	46.8	7.7	6.9	6.6	16.0	2.9	10.5	0.9	48.5	7.7	43.8	0.078	0.508	17.944829	-94.172265
Plaza de Cobro Las Choapas	16.80	3	0	3317	1.6	40.4	10.5	7.5	5.1	18.2	3.7	12.1	0.9	42.0	10.5	47.5	0.074	0.510	17.944842	-94.172287
Lim. Edos. Term. Ver. Ppia. Tab.	96.68																			
Plaza de Cobro Malpasito	112.70	1	0	2655	1.7	40.4	9.9	8.2	5.1	18.5	3.6	11.3	1.3	42.1	9.9	48.0	0.080	0.510	17.349108	-93.586477
Plaza de Cobro Malpasito	112.70	2	0	2566	0.3	34.8	4.4	6.2	10.1	22.1	4.1	15.9	2.1	35.1	4.4	60.5	0.072	0.500	17.349070	-93.586472
Lim. Edos. Term. Tab. Ppia. Chis.	113.70																			
T. Izq. Malpaso	123.79	1	0	4270	1.6	57.8	7.9	12.8	3.8	7.5	2.8	4.9	0.9	59.4	7.9	32.7	0.080	0.509	17.258110	-93.567507
Plaza de Cobro Ocozocoautla	182.50	1	0	5143	1.5	62.2	6.4	11.6	3.2	7.7	1.8	4.4	1.2	63.7	6.4	29.9	0.076	0.510	16.863177	-93.406875
Plaza de Cobro Ocozocoautla	182.50	2	0	4037	0.4	54.3	3.6	7.2	7.1	13.5	2.4	10.1	1.4	54.7	3.6	41.7	0.072	0.500	16.863183	-93.406856
T. C. Tapanatepec - Tuxtla Gutiérrez	197.50	1	0	5691	1.3	61.2	6.1	8.2	3.4	10.7	2.1	6.0	1.0	62.5	6.1	31.4	0.076	0.512	16.769763	-93.316513

28 CARR: Tuxtla Gutiérrez - San Cristóbal de Las Casas (Cuota)

CLAVE: 07580

RUTA: MEX-190D

AÑO: 2020

LUGAR	ESTACION				CLASIFICACION VEHICULAR EN PORCIENTO													COORDENADAS		
	KM	TE	SC	TDPA	M	A	B	C2	C3	T3S2	T3S3	T3S2R4	OTROS	A	B	C	K'	D	LATITUD	LONGITUD
T. C. Tuxtla Gutiérrez - Cd. Cuauhtémoc	0.00																			
Plaza de Cobro Chiapa de Corzo	1.30	2	0	10588	0.7	88.3	2.3	3.8	1.8	1.7	0.7	0.6	0.1	89.0	2.3	8.7	0.088	0.500	16.730567	-93.009544
Plaza de Cobro Chiapa de Corzo	1.30	3	0	10666	1.5	85.3	1.5	3.8	4.5	1.1	1.0	0.7	0.6	86.8	1.5	11.7	0.084	0.510	16.730602	-93.009505
T. C. Libramiento de San Cristóbal de Las Casas	46.00	1	0	10206	1.3	80.7	2.1	7.0	4.3	2.2	1.0	0.6	0.8	82.0	2.1	15.9	0.083	0.504	16.720667	-92.654746

CHIAPAS

29 CARR: Chiapa de Corzo - Amatenango del Valle

CLAVE: 07024

RUTA: CHIS

AÑO: 2020

LUGAR	ESTACION				CLASIFICACION VEHICULAR EN PORCIENTO										COORDENADAS					
	KM	TE	SC	TDPA	M	A	B	C2	C3	T3S2	T3S3	T3S2R4	OTROS	A	B	C	K'	D	LATITUD	LONGITUD
T. C. Tuxtla Gutiérrez - Cd. Cuauhtémoc	0.00	3	0	1747	3.8	77.1	1.5	5.1	2.4	3.6	2.7	2.4	1.4	80.9	1.5	17.6	0.085	0.505	16.722090	-92.981858
Flores Magón	74.00	1	0	2297	4.6	81.8	0.7	5.1	1.4	2.6	2.2	1.2	0.4	86.4	0.7	12.9	0.087	0.501	16.392599	-92.698429
Flores Magón	74.00	3	0	2013	8.3	77.8	0.7	4.8	1.5	3.0	1.8	1.6	0.5	86.1	0.7	13.2	0.097	0.510	16.392234	-92.698106
T. Izq. Venustiano Carranza (1° Acceso)	92.80	1	0	2453	5.7	81.7	0.4	5.6	1.3	2.0	1.5	1.4	0.4	87.4	0.4	12.2	0.080	0.502	16.344187	-92.578570
T. Izq. Venustiano Carranza (1° Acceso)	92.80	3	0	1697	9.1	74.0	0.7	9.2	1.8	1.9	1.6	1.4	0.3	83.1	0.7	16.2	0.097	0.512	16.344187	-92.578571
Soyatitán	111.20	1	0	3447	5.8	82.9	0.3	6.2	0.9	2.4	0.9	0.3	0.3	88.7	0.3	11.0	0.080	0.502	16.296132	-92.426353
T. Der. Las Rosas (1° Acceso)	120.22	1	0	2836	4.6	86.8	0.4	4.4	0.5	2.5	0.3	0.2	0.3	91.4	0.4	8.2	0.087	0.504	16.354696	-92.378409
T. Der. Las Rosas (1° Acceso)	120.22	3	0	3284	7.9	85.4	0.3	3.3	0.9	1.3	0.3	0.3	0.3	93.3	0.3	6.4	0.073	0.505	16.354632	-92.378409
T. C. Tuxtla Gutiérrez - Cd. Cuauhtémoc	146.50	1	0	1759	7.5	84.9	0.4	4.5	0.7	1.4	0.2	0.2	0.2	92.4	0.4	7.2	0.089	0.504	16.528716	-92.445211

30 CARR: Ent. Emiliano Zapata - La Libertad

CLAVE: 00062

RUTA: CHIS-TAB

AÑO: 2020

LUGAR	ESTACION				CLASIFICACION VEHICULAR EN PORCIENTO										COORDENADAS					
	KM	TE	SC	TDPA	M	A	B	C2	C3	T3S2	T3S3	T3S2R4	OTROS	A	B	C	K'	D	LATITUD	LONGITUD
T. C. El Suspiro - Tenosique	0.00	3	0	1759	8.6	85.7	0.3	4.5	0.6	0.2	0.1	0.0	0.0	94.3	0.3	5.4	0.085	0.506	17.723911	-91.745272
Lim. Edos. Term. Tab. Ppia. Chis.	8.00																			
La Libertad	10.00	1	0	1237	7.8	81.7	0.3	8.0	0.4	1.6	0.2	0.0	0.0	89.5	0.3	10.2	0.086	0.520	17.690435	-91.721123

31 CARR: Ent. Suschilá - Comitán

CLAVE: 00061

RUTA: CHIS-TAB

AÑO: 2020

LUGAR	ESTACION				CLASIFICACION VEHICULAR EN PORCIENTO										COORDENADAS					
	KM	TE	SC	TDPA	M	A	B	C2	C3	T3S2	T3S3	T3S2R4	OTROS	A	B	C	K'	D	LATITUD	LONGITUD
T. C. Ocosingo - Comitán	0.00	3	0	509	8.1	85.0	0.0	5.5	0.9	0.5	0.0	0.0	0.0	93.1	0.0	6.9	0.081	0.522	16.866472	-92.026836
Shuvi	23.40	1	0	430	7.5	84.1	0.0	6.8	1.1	0.5	0.0	0.0	0.0	91.6	0.0	8.4	0.109	0.507	16.806573	-91.888809
Shuvi	23.40	3	0	417	5.5	84.8	0.2	7.7	1.0	0.6	0.2	0.0	0.0	90.3	0.2	9.5	0.108	0.524	16.806578	-91.888806
Nuevo Momón	205.00	1	0	190	7.2	84.0	0.0	7.7	0.0	1.1	0.0	0.0	0.0	91.2	0.0	8.8	0.116	0.514	16.333702	-91.749336
Nuevo Momón	205.00	3	0	323	10.0	80.4	0.0	8.3	0.1	1.1	0.1	0.0	0.0	90.4	0.0	9.6	0.121	0.545	16.333700	-91.749341
Las Margaritas	242.50	1	0	2734	20.2	72.5	0.1	5.6	0.0	1.4	0.1	0.0	0.1	92.7	0.1	7.2	0.099	0.516	16.315745	-91.982683
Las Margaritas	242.50	3	1	2656	0.9	92.6	0.1	5.4	0.4	0.3	0.1	0.1	0.1	93.5	0.1	6.4	0.089	0.532	16.315747	-91.982685
Las Margaritas	242.50	3	2	3022	0.8	93.5	0.1	4.8	0.3	0.2	0.1	0.1	0.1	94.3	0.1	5.6	0.091	0.532	16.315747	-91.982684
Caxh	257.50	1	0	5436	5.1	89.3	0.2	4.5	0.7	0.1	0.1	0.0	0.0	94.4	0.2	5.4	0.097	0.503	16.264083	-92.098591
Caxh	257.50	3	1	6183	9.7	85.1	0.1	4.3	0.5	0.2	0.1	0.0	0.0	94.8	0.1	5.1	0.101	0.501	16.264110	-92.098765
Caxh	257.50	3	2	6196	9.7	85.1	0.1	4.3	0.5	0.2	0.1	0.0	0.0	94.8	0.1	5.1	0.100	0.501	16.264044	-92.098746
Comitán	261.00																			

CHIAPAS

32 CARR: Estación Palenque - La Libertad

CLAVE: 07002

RUTA: CHIS-010

AÑO: 2020

LUGAR	ESTACION				CLASIFICACION VEHICULAR EN PORCIENTO										COORDENADAS					
	KM	TE	SC	TDPA	M	A	B	C2	C3	T3S2	T3S3	T3S2R4	OTROS	A	B	C	K'	D	LATITUD	LONGITUD
Estación Palenque	0.00	3	0	2510	15.0	71.3	1.0	7.6	1.5	0.9	1.0	0.8	0.9	86.3	1.0	12.7	0.104	0.511	17.548705	-91.984515
La Libertad	40.00	1	0	812	13.6	77.9	0.5	5.9	0.5	1.1	0.5	0.0	0.0	91.5	0.5	8.0	0.094	0.500	17.690437	-91.721130

33 CARR: Gregorio Méndez Magaña - Reforma de Ocampo

CLAVE: 00103

RUTA: CHIS

AÑO: 2020

LUGAR	ESTACION				CLASIFICACION VEHICULAR EN PORCIENTO										COORDENADAS					
	KM	TE	SC	TDPA	M	A	B	C2	C3	T3S2	T3S3	T3S2R4	OTROS	A	B	C	K'	D	LATITUD	LONGITUD
Gregorio Méndez Magaña	0.00	3	0	638	29.8	58.9	0.5	6.6	2.4	0.4	0.9	0.5	0.0	88.7	0.5	10.8	0.100	0.518	17.454472	-91.596683
Lim. Edos. Term. Tab. Ppia. Chis.	3.00																			
T. C. Benemérito de Las Américas - Palenque	21.00	1	0	2200	16.1	75.3	0.6	5.0	2.0	0.3	0.4	0.2	0.1	91.4	0.6	8.0	0.079	0.501	17.320409	-91.694225
Reforma de Ocampo	22.00																			

34 CARR: Independencia - Buenos Aires

CLAVE: 07098

RUTA: CHIS

AÑO: 2020

LUGAR	ESTACION				CLASIFICACION VEHICULAR EN PORCIENTO										COORDENADAS					
	KM	TE	SC	TDPA	M	A	B	C2	C3	T3S2	T3S3	T3S2R4	OTROS	A	B	C	K'	D	LATITUD	LONGITUD
Independencia	0.00																			
El Porvenir	139.00	3	0	1233	6.4	85.8	0.3	5.9	0.6	0.7	0.3	0.0	0.0	92.2	0.3	7.5	0.077	0.521	15.456476	-92.282813
Buenos Aires	159.00	1	0	1115	6.3	86.5	0.4	5.5	0.5	0.6	0.2	0.0	0.0	92.8	0.4	6.8	0.112	0.515	15.334037	-92.277279

35 CARR: Las Limas - La Concordia

CLAVE: 07028

RUTA: CHIS

AÑO: 2020

LUGAR	ESTACION				CLASIFICACION VEHICULAR EN PORCIENTO										COORDENADAS					
	KM	TE	SC	TDPA	M	A	B	C2	C3	T3S2	T3S3	T3S2R4	OTROS	A	B	C	K'	D	LATITUD	LONGITUD
T. C. Tuxtla Gutiérrez - Angostura	0.00	3	0	4414	3.8	82.0	1.3	8.9	0.7	2.2	0.7	0.2	0.2	85.8	1.3	12.9	0.072	0.503	16.610291	-92.993101
Revolución Mexicana	83.00	1	0	2502	3.7	85.2	1.1	6.2	1.0	1.8	0.4	0.4	0.2	88.9	1.1	10.0	0.089	0.505	16.171851	-93.076044
La Concordia	135.00																			

36 CARR: Libramiento Sur de Tuxtla Gutiérrez

CLAVE: 07578

RUTA: CHIS

AÑO: 2020

LUGAR	ESTACION				CLASIFICACION VEHICULAR EN PORCIENTO										COORDENADAS					
	KM	TE	SC	TDPA	M	A	B	C2	C3	T3S2	T3S3	T3S2R4	OTROS	A	B	C	K'	D	LATITUD	LONGITUD
T. C. Tapanatepec - Tuxtla Gutiérrez	0.00	3	1	14695	1.8	87.9	0.3	4.5	0.2	1.3	3.4	0.2	0.4	89.7	0.3	10.0	0.090	0.522	16.754734	-93.142243
T. C. Tapanatepec - Tuxtla Gutiérrez	0.00	3	2	13452	1.8	88.0	0.3	4.4	0.2	1.3	3.4	0.2	0.4	89.8	0.3	9.9	0.089	0.522	16.754727	-93.142162
T. C. Tuxtla Gutiérrez - Cd. Cuauhtémoc	9.20	1	1	20198	2.8	87.7	0.2	3.5	0.3	1.9	2.5	0.4	0.7	90.5	0.2	9.3	0.076	0.505	16.742188	-93.074335

CHIAPAS

36 CARR: Libramiento Sur de Tuxtla Gutiérrez

CLAVE: 07578

RUTA: CHIS

AÑO: 2020

LUGAR	ESTACION				CLASIFICACION VEHICULAR EN PORCIENTO													COORDENADAS		
	KM	TE	SC	TDPA	M	A	B	C2	C3	T3S2	T3S3	T3S2R4	OTROS	A	B	C	K'	D	LATITUD	LONGITUD
T. C. Tuxtla Gutiérrez - Cd. Cuauhtémoc	9.20	1	2	19802	2.8	87.7	0.2	3.5	0.3	1.9	2.5	0.4	0.7	90.5	0.2	9.3	0.077	0.505	16.742386	-93.074399

37 CARR: Ocosingo - Comitán

CLAVE: 07092

RUTA: CHIS

AÑO: 2020

LUGAR	ESTACION				CLASIFICACION VEHICULAR EN PORCIENTO													COORDENADAS		
	KM	TE	SC	TDPA	M	A	B	C2	C3	T3S2	T3S3	T3S2R4	OTROS	A	B	C	K'	D	LATITUD	LONGITUD
Ocosingo	0.00	3	0	6961	10.6	74.7	0.9	4.1	0.7	6.3	1.3	0.6	0.8	85.3	0.9	13.8	0.101	0.507	16.909337	-92.092524
Altamirano	24.00	1	0	1641	3.4	82.2	0.8	5.8	2.5	2.2	1.6	1.2	0.3	85.6	0.8	13.6	0.102	0.511	16.733052	-92.042079
Altamirano	24.00	3	0	2247	4.9	84.9	0.8	4.9	0.6	2.7	0.8	0.1	0.3	89.8	0.8	9.4	0.103	0.504	16.733055	-92.042077
La Mendoza	30.00	1	0	1282	3.0	84.4	1.1	5.8	1.2	2.0	1.4	0.6	0.5	87.4	1.1	11.5	0.110	0.705	16.684008	-92.024265
Comitán	100.00	1	0	4349	13.5	79.8	0.4	2.0	0.4	2.7	0.7	0.1	0.4	93.3	0.4	6.3	0.097	0.500	16.267645	-92.129626

38 CARR: Ocozacoautla - Revolución Mexicana

CLAVE: 07571

RUTA: CHIS-053-230

AÑO: 2020

LUGAR	ESTACION				CLASIFICACION VEHICULAR EN PORCIENTO													COORDENADAS		
	KM	TE	SC	TDPA	M	A	B	C2	C3	T3S2	T3S3	T3S2R4	OTROS	A	B	C	K'	D	LATITUD	LONGITUD
Ocozacoautla	0.00	3	0	4906	7.1	70.6	0.9	10.3	3.4	4.1	1.5	1.0	1.1	77.7	0.9	21.4	0.085	0.510	16.757675	-93.374286
Nuevo México	36.00	3	0	2688	4.7	75.9	0.7	11.3	2.4	3.3	0.9	0.6	0.2	80.6	0.7	18.7	0.084	0.509	16.468183	-93.438439
T. Der. Cristóbal Obregón	41.00	3	0	2134	4.9	76.4	0.6	10.7	2.4	3.3	0.9	0.6	0.2	81.3	0.6	18.1	0.102	0.520	16.425701	-93.421750
T. Izq. Tuxtla Gutiérrez	76.00	1	0	3716	5.0	74.4	2.6	10.4	2.5	3.6	0.9	0.4	0.2	79.4	2.6	18.0	0.079	0.509	16.316135	-93.330795
T. Izq. Tuxtla Gutiérrez	76.00	3	0	5677	5.9	79.1	0.6	6.6	1.8	3.7	0.9	0.7	0.7	85.0	0.6	14.4	0.079	0.510	16.315865	-93.331057
Villa Flores	84.00	1	0	6517	5.9	78.6	0.7	6.9	1.7	3.9	1.0	0.7	0.6	84.5	0.7	14.8	0.080	0.504	16.238132	-93.266722
Villa de Corzo	94.00	1	0	7466	14.0	74.6	0.7	4.6	0.7	3.2	0.9	0.6	0.7	88.6	0.7	10.7	0.079	0.514	16.185195	-93.267694
Revolución Mexicana	119.00	1	0	2978	14.0	74.2	0.8	4.7	0.8	3.3	0.9	0.6	0.7	88.2	0.8	11.0	0.089	0.513	16.171854	-93.076045

39 CARR: Paso de Cunduacán - Estación Juárez

CLAVE: 00588

RUTA: TAB-CHIS

AÑO: 2020

LUGAR	ESTACION				CLASIFICACION VEHICULAR EN PORCIENTO													COORDENADAS		
	KM	TE	SC	TDPA	M	A	B	C2	C3	T3S2	T3S3	T3S2R4	OTROS	A	B	C	K'	D	LATITUD	LONGITUD
Paso de Cunduacán	0.00	3	0	9010	2.3	83.5	0.4	8.4	1.1	2.4	1.1	0.6	0.2	85.8	0.4	13.8	0.130	0.502	17.973574	-93.130331
Lim. Edos. Term. Tab. Ppia. Chis.	9.00																			
Santa Teresa 2° Secc.	18.00	3	0	1913	8.3	81.9	0.6	6.4	1.1	1.3	0.4	0.0	0.0	90.2	0.6	9.2	0.084	0.529	17.771222	-93.170003
Estación Juárez	57.80	1	0	2025	8.3	81.8	0.3	6.4	0.9	1.8	0.4	0.0	0.1	90.1	0.3	9.6	0.074	0.508	17.601646	-93.183839

CHIAPAS

40 CARR: Puerto Caté - San Cristóbal de Las Casas

CLAVE: 07097

RUTA: CHIS

AÑO: 2020

LUGAR	ESTACION				CLASIFICACION VEHICULAR EN PORCIENTO													COORDENADAS		
	KM	TE	SC	TDPA	M	A	B	C2	C3	T3S2	T3S3	T3S2R4	OTROS	A	B	C	K'	D	LATITUD	LONGITUD
Puerto Caté	0.00	3	0	1188	2.5	83.5	4.7	5.0	0.8	1.9	0.5	0.6	0.5	86.0	4.7	9.3	0.091	0.530	16.997252	-92.821465
Larrazar	20.00	1	0	3284	3.8	82.9	3.5	3.4	1.7	2.9	1.0	0.3	0.5	86.7	3.5	9.8	0.103	0.523	16.883621	-92.716001
T. Izq. Chamula	32.00	1	0	3973	3.1	83.8	3.1	3.3	2.2	2.0	1.6	0.3	0.6	86.9	3.1	10.0	0.086	0.513	16.782734	-92.694581
San Cristóbal de Las Casas	40.00	1	0	8173	2.4	86.9	2.3	1.6	1.7	2.0	2.0	0.3	0.8	89.3	2.3	8.4	0.102	0.522	16.744493	-92.658307

41 CARR: Ramal a Huehuetán

CLAVE: 07360

RUTA: CHIS

AÑO: 2020

LUGAR	ESTACION				CLASIFICACION VEHICULAR EN PORCIENTO													COORDENADAS		
	KM	TE	SC	TDPA	M	A	B	C2	C3	T3S2	T3S3	T3S2R4	OTROS	A	B	C	K'	D	LATITUD	LONGITUD
T. C. Tapanatepec - Talismán	0.00	3	1	3458	23.7	71.8	0.1	4.1	0.0	0.1	0.1	0.0	0.1	95.5	0.1	4.4	0.080	0.512	15.010832	-92.401906
T. C. Tapanatepec - Talismán	0.00	3	2	3298	26.3	68.9	0.1	4.4	0.0	0.1	0.1	0.0	0.1	95.2	0.1	4.7	0.074	0.512	15.010832	-92.401906
Huehuetán	2.50																			

42 CARR: Ramal a Mazatán

CLAVE: 07560

RUTA: CHIS-219

AÑO: 2020

LUGAR	ESTACION				CLASIFICACION VEHICULAR EN PORCIENTO													COORDENADAS		
	KM	TE	SC	TDPA	M	A	B	C2	C3	T3S2	T3S3	T3S2R4	OTROS	A	B	C	K'	D	LATITUD	LONGITUD
T. C. Tapanatepec - Talismán	0.00	3	1	3450	2.3	89.1	0.2	6.5	0.8	0.8	0.1	0.1	0.1	91.4	0.2	8.4	0.100	0.517	14.930550	-92.372560
T. C. Tapanatepec - Talismán	0.00	3	2	3220	14.4	76.3	0.2	6.9	0.9	0.9	0.2	0.1	0.1	90.7	0.2	9.1	0.106	0.517	14.930553	-92.372559
Mazatán	12.00																			

43 CARR: Ramal a Salto del Agua

CLAVE: 00069

RUTA: TAB-CHIS

AÑO: 2020

LUGAR	ESTACION				CLASIFICACION VEHICULAR EN PORCIENTO													COORDENADAS		
	KM	TE	SC	TDPA	M	A	B	C2	C3	T3S2	T3S3	T3S2R4	OTROS	A	B	C	K'	D	LATITUD	LONGITUD
T. C. Villahermosa - Francisco Escárcega	0.00	3	0	1327	6.3	69.8	1.4	4.5	4.5	4.9	3.7	4.6	0.3	76.1	1.4	22.5	0.087	0.502	17.667486	-92.436515
Lim. Edos. Term. Tab. Ppia. Chis.	12.00																			
Salto del Agua	17.00	1	0	1448	9.8	81.7	0.7	5.7	1.0	0.7	0.4	0.0	0.0	91.5	0.7	7.8	0.106	0.511	17.555926	-92.347969

44 CARR: Ramal Zona Arqueológica " Bonampak "

CLAVE: 07100

RUTA: CHIS

AÑO: 2020

LUGAR	ESTACION				CLASIFICACION VEHICULAR EN PORCIENTO													COORDENADAS		
	KM	TE	SC	TDPA	M	A	B	C2	C3	T3S2	T3S3	T3S2R4	OTROS	A	B	C	K'	D	LATITUD	LONGITUD
T. C. Benemérito de Las Américas - Palenque	0.00	3	0	336	12.5	85.9	0.1	0.9	0.5	0.0	0.1	0.0	0.0	98.4	0.1	1.5	0.113	0.511	16.800676	-91.106120
Zona Arqueológica Bonampak	13.00																			

CHIAPAS

45 CARR: Ramal Zona Arqueológica " Palenque "

CLAVE: 07099

RUTA: CHIS

AÑO : 2020

LUGAR	ESTACION				CLASIFICACION VEHICULAR EN PORCIENTO										COORDENADAS					
	KM	TE	SC	TDPA	M	A	B	C2	C3	T3S2	T3S3	T3S2R4	OTROS	A	B	C	K'	D	LATITUD	LONGITUD
T. C. (Catazajá - T. C. (Tuxtla Gtz. - Cd. Cuauhtémoc))	0.00	3	0	2716	7.7	85.7	1.1	4.5	0.1	0.7	0.1	0.0	0.1	93.4	1.1	5.5	0.091	0.502	17.504869	-91.992361
Zona Arqueológica Palenque	7.30	1	0	1058	5.9	86.9	1.4	4.8	0.1	0.7	0.1	0.0	0.1	92.8	1.4	5.8	0.229	0.503	17.484930	-92.048753

46 CARR: San Francisco Pujilic - Ent. Comitán

CLAVE: 07093

RUTA: CHIS

AÑO : 2020

LUGAR	ESTACION				CLASIFICACION VEHICULAR EN PORCIENTO										COORDENADAS					
	KM	TE	SC	TDPA	M	A	B	C2	C3	T3S2	T3S3	T3S2R4	OTROS	A	B	C	K'	D	LATITUD	LONGITUD
T. C. Chiapa de Corzo - Amatenango del Valle	0.00	3	0	2252	13.8	60.0	0.6	5.5	13.0	3.2	2.6	0.6	0.7	73.8	0.6	25.6	0.079	0.503	16.273342	-92.445012
Comitán	54.00	1	0	4224	11.9	79.2	0.5	5.5	0.6	0.8	0.8	0.5	0.2	91.1	0.5	8.4	0.138	0.514	16.214213	-92.115225

47 CARR: Tapachula - Nueva Alemania

CLAVE: 07581

RUTA: CHIS-229

AÑO : 2020

LUGAR	ESTACION				CLASIFICACION VEHICULAR EN PORCIENTO										COORDENADAS					
	KM	TE	SC	TDPA	M	A	B	C2	C3	T3S2	T3S3	T3S2R4	OTROS	A	B	C	K'	D	LATITUD	LONGITUD
Tapachula	0.00	3	0	4924	8.1	86.1	0.1	4.4	0.2	0.6	0.2	0.0	0.3	94.2	0.1	5.7	0.089	0.516	14.916747	-92.261392
Nueva Alemania	27.20																			

48 CARR: Temo - Tila

CLAVE: 07090

RUTA: CHIS

AÑO : 2020

LUGAR	ESTACION				CLASIFICACION VEHICULAR EN PORCIENTO										COORDENADAS					
	KM	TE	SC	TDPA	M	A	B	C2	C3	T3S2	T3S3	T3S2R4	OTROS	A	B	C	K'	D	LATITUD	LONGITUD
Temo	0.00	3	0	2122	3.4	90.3	0.2	3.0	0.9	1.4	0.4	0.4	0.0	93.7	0.2	6.1	0.091	0.522	17.016245	-92.135342
Yajalón	28.00	1	0	2530	3.4	90.5	0.2	3.0	0.8	1.3	0.4	0.4	0.0	93.9	0.2	5.9	0.094	0.522	17.174459	-92.327438
Tila	50.00	1	0	1766	5.3	88.6	0.2	3.0	0.8	1.3	0.4	0.4	0.0	93.9	0.2	5.9	0.094	0.522	17.299637	-92.430965

49 CARR: Tierra y Libertad - Ent. Dr. Domingo Chanona

CLAVE: 07096

RUTA: CHIS

AÑO : 2020

LUGAR	ESTACION				CLASIFICACION VEHICULAR EN PORCIENTO										COORDENADAS					
	KM	TE	SC	TDPA	M	A	B	C2	C3	T3S2	T3S3	T3S2R4	OTROS	A	B	C	K'	D	LATITUD	LONGITUD
T. C. Las Cruces - Arriaga	0.00	3	0	224	7.4	81.0	1.6	3.4	4.6	0.4	0.6	0.3	0.7	88.4	1.6	10.0	0.152	0.500	16.366800	-93.867641
T. C. Ocozocoautla - Revolución Mexicana	60.00	1	0	3180	9.8	79.6	0.3	5.8	0.7	2.6	0.7	0.3	0.2	89.4	0.3	10.3	0.097	0.515	16.345326	-93.405357

CHIAPAS

50 CARR: Tuxtla Gutiérrez - Portillo Zaragoza

CLAVE: 07574

RUTA: CHIS-133

AÑO: 2020

LUGAR	ESTACION				CLASIFICACION VEHICULAR EN PORCIENTO										COORDENADAS					
	KM	TE	SC	TDPA	M	A	B	C2	C3	T3S2	T3S3	T3S2R4	OTROS	A	B	C	K'	D	LATITUD	LONGITUD
Ent. Periférico Tuxtla Gutiérrez	0.00	3	0	13374	6.7	91.2	0.2	0.9	0.4	0.2	0.0	0.3	0.1	97.9	0.2	1.9	0.078	0.500	16.734554	-93.112790
Suchiapa	19.00	1	0	5341	13.7	81.6	0.3	1.3	2.2	0.5	0.1	0.3	0.0	95.3	0.3	4.4	0.089	0.511	16.623878	-93.099184
Las Cruces	53.50	1	0	2452	12.9	83.4	0.5	2.7	0.3	0.1	0.0	0.1	0.0	96.3	0.5	3.2	0.095	0.504	16.405005	-93.186762
Las Cruces	53.50	3	0	2532	5.9	89.9	0.5	2.8	0.6	0.1	0.1	0.1	0.0	95.8	0.5	3.7	0.084	0.505	16.405001	-93.186768
Portillo de Tacubaya	79.00	1	0	3105	11.7	84.1	0.4	2.8	0.6	0.2	0.1	0.1	0.0	95.8	0.4	3.8	0.088	0.508	16.315670	-93.330688

51 CARR: Zapatero - T. C. (Jalapa - Jonuta)

CLAVE: 00061

RUTA: CHIS-TAB

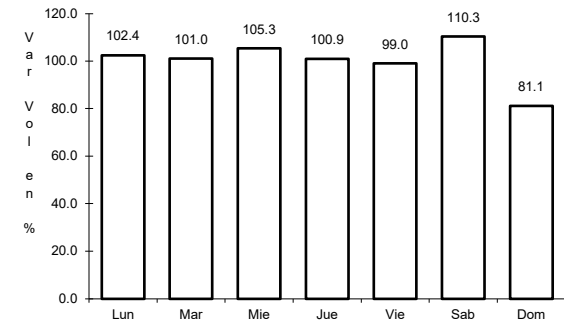
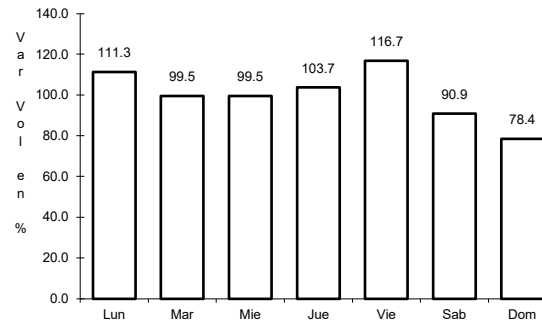
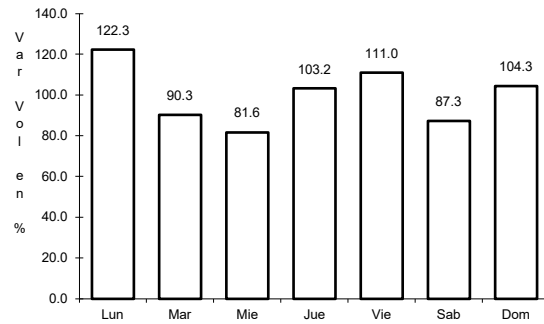
AÑO: 2020

LUGAR	ESTACION				CLASIFICACION VEHICULAR EN PORCIENTO										COORDENADAS					
	KM	TE	SC	TDPA	M	A	B	C2	C3	T3S2	T3S3	T3S2R4	OTROS	A	B	C	K'	D	LATITUD	LONGITUD
T. C. Villahermosa - Francisco Escárcega	0.00	3	0	1145	11.7	80.3	0.3	4.8	0.8	1.5	0.3	0.2	0.1	92.0	0.3	7.7	0.090	0.506	17.698082	-92.131913
Lim. Edos. Term. Chis. Ppia. Tab.	16.00																			
T. C. Jalapa - Jonuta	41.00	1	0	1122	11.0	83.9	0.3	4.0	0.3	0.4	0.1	0.0	0.0	94.9	0.3	4.8	0.102	0.542	18.032005	-92.157660

1 CARR: Benemérito de Las Américas - Palenque

CLAVE: 07095

RUTA: MEX-307



Km: 42.00 Tipo: 3 Sent: 0

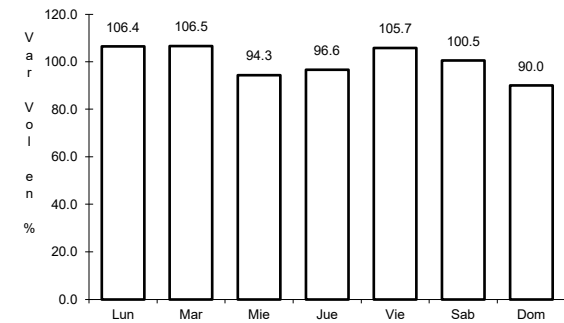
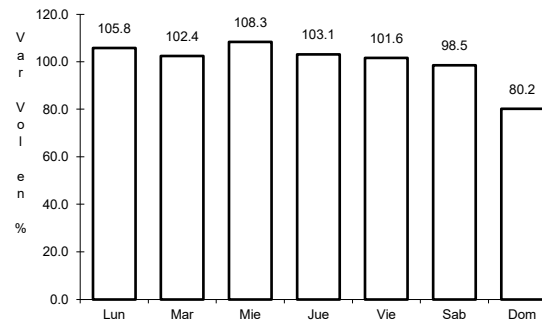
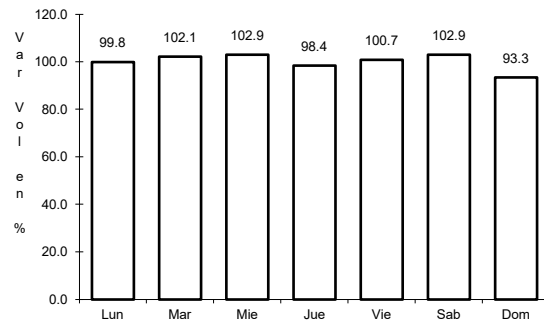
Km: 160.00 Tipo: 1 Sent: 0

Km: 194.00 Tipo: 1 Sent: 0

2 CARR: Catazajá - T. C. (Tuxtla Gtz. - Cd. Cuauhtémoc)

CLAVE: 07582

RUTA: MEX-199



Km: 2.20 Tipo: 3 Sent: 0

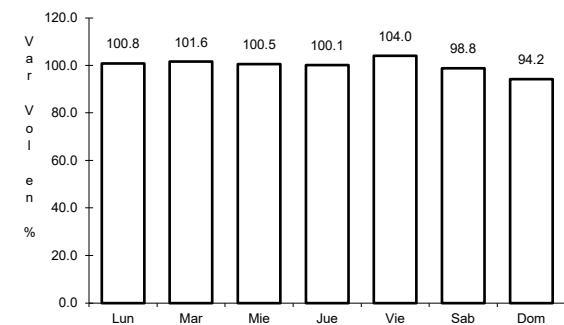
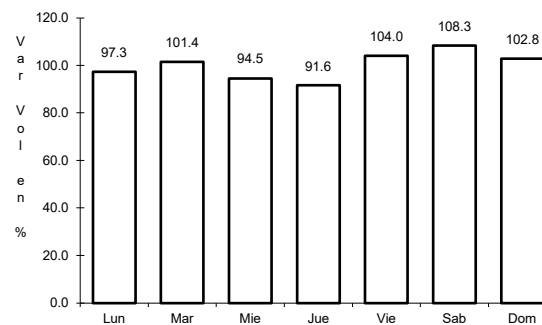
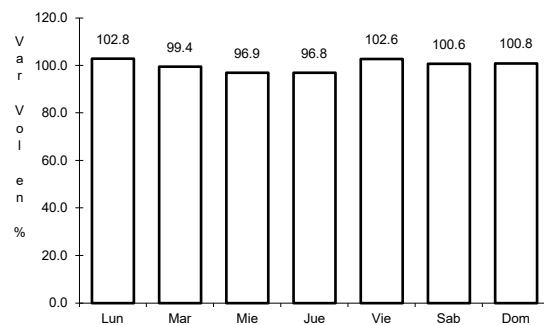
Km: 68.30 Tipo: 1 Sent: 0

Km: 210.00 Tipo: 1 Sent: 0

3 CARR: El Suspiro - Tenosique

CLAVE: 00276

RUTA: MEX-203



Km: 0.00 Tipo: 3 Sent: 0

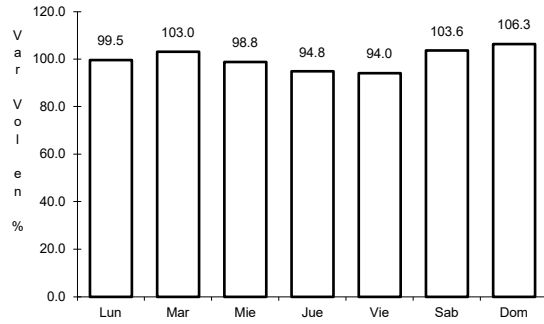
Km: 32.60 Tipo: 1 Sent: 0

Km: 53.00 Tipo: 3 Sent: 0

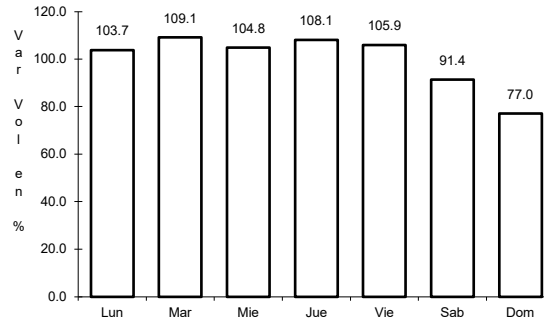
4 CARR: Ent. Jaritas - Ciudad Hidalgo

CLAVE: 07094

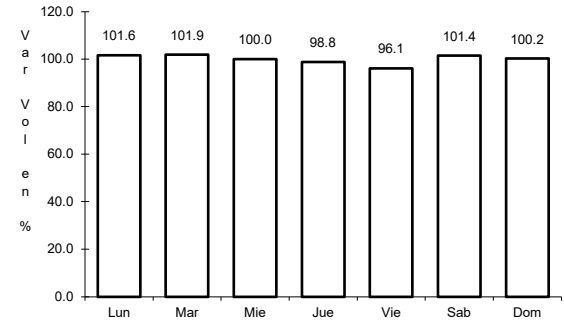
RUTA: MEX-225



Km: 0.00 Tipo: 3 Sent: 0



Km: 33.35 Tipo: 1 Sent: 0

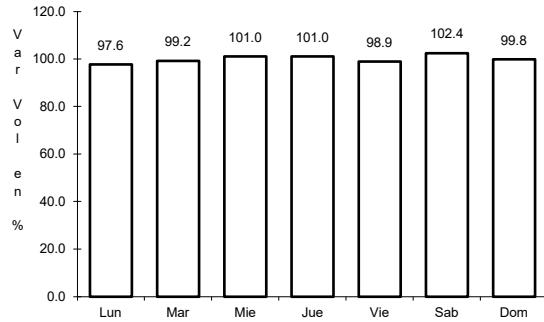


Km: 49.00 Tipo: 1 Sent: 0

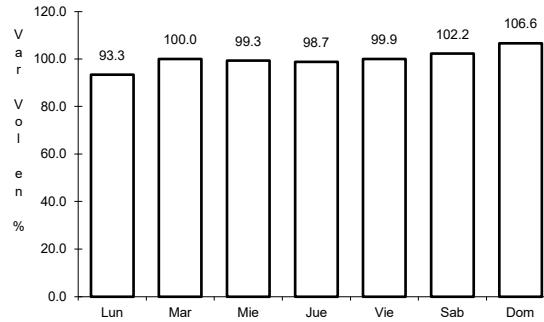
5 CARR: Huixtla - El Jocote

CLAVE: 07577

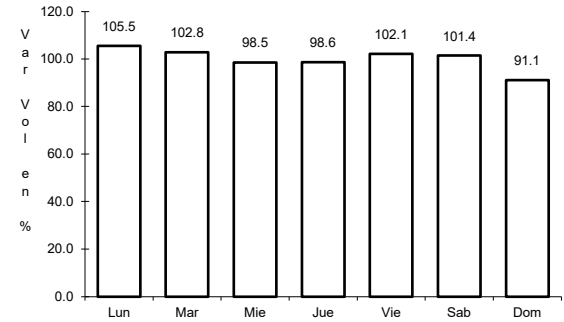
RUTA: MEX-211



Km: 0.00 Tipo: 3 Sent: 0



Km: 57.00 Tipo: 1 Sent: 0

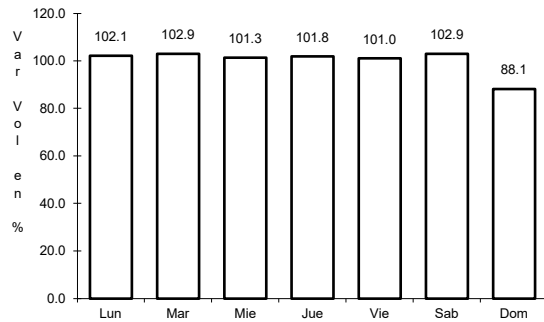


Km: 126.00 Tipo: 1 Sent: 0

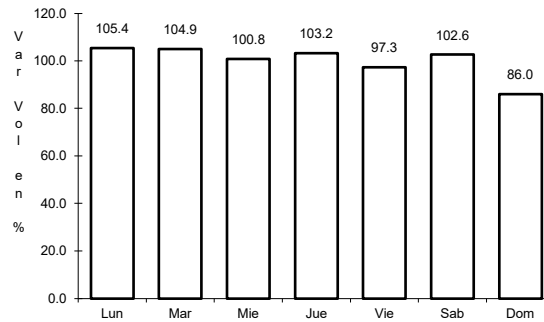
6 CARR: La Trinitaria - Benemérito de Las Américas

CLAVE: 07267

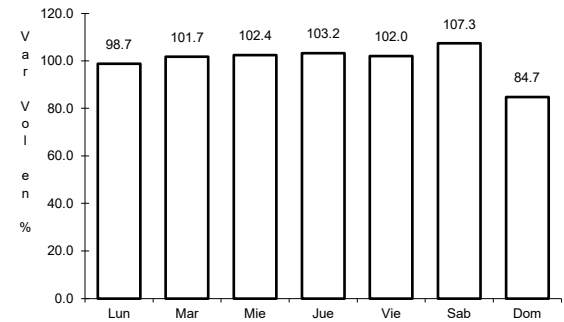
RUTA: MEX-307



Km: 0.00 Tipo: 3 Sent: 0



Km: 39.76 Tipo: 3 Sent: 0

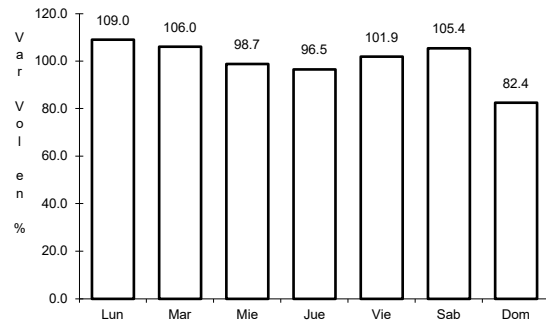


Km: 72.00 Tipo: 3 Sent: 0

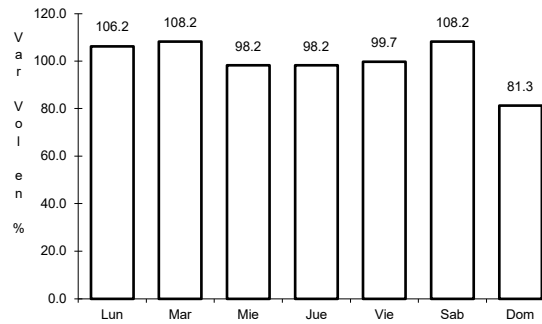
7 CARR: Las Cruces - Arriaga

CLAVE: 07196

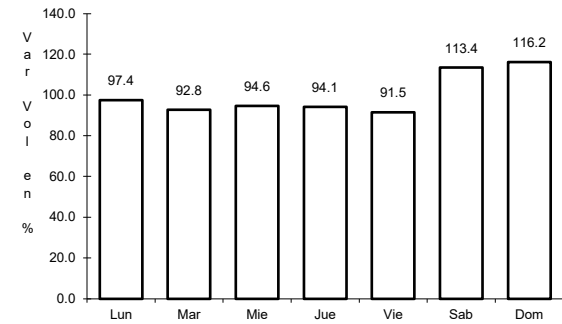
ruta: MEX-190



Km: 0.00 Tipo: 3 Sent: 0



Km: 27.90 Tipo: 3 Sent: 0

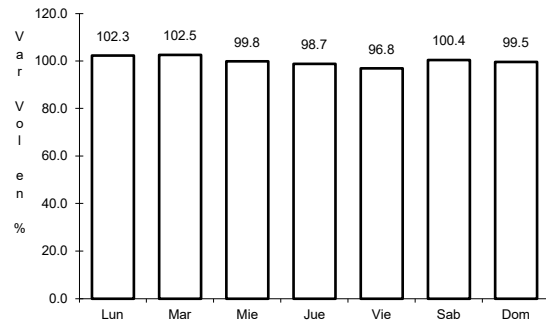


Km: 49.00 Tipo: 1 Sent: 0

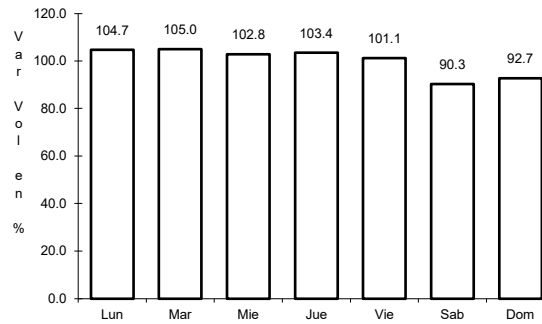
8 CARR: Libramiento de Arriaga

CLAVE:

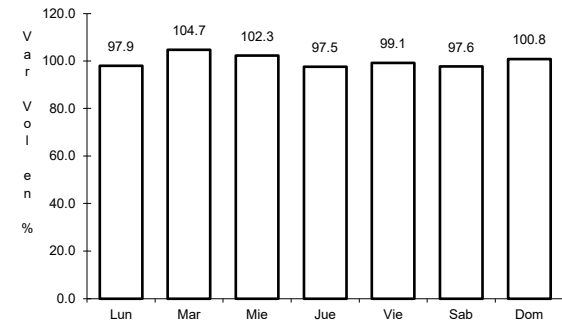
ruta: MEX-200



Km: 0.00 Tipo: 3 Sent: 0



Km: 2.60 Tipo: 1 Sent: 0

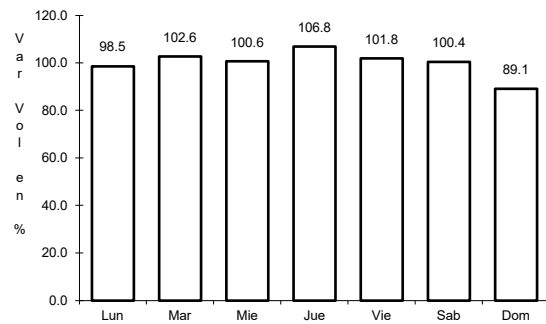


Km: 7.50 Tipo: 1 Sent: 0

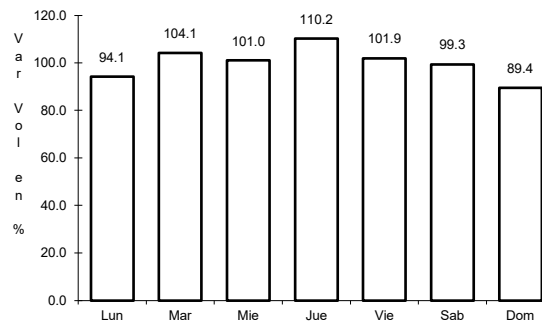
9 CARR: Libramiento de Huixtla

CLAVE:

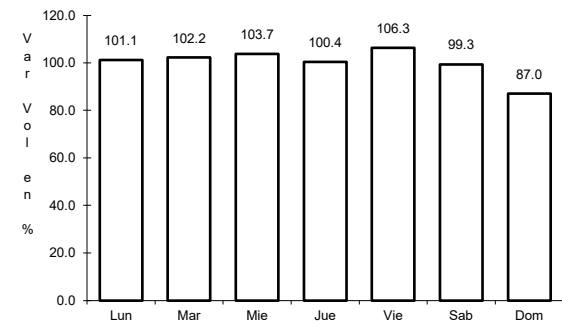
ruta: MEX-200



Km: 0.00 Tipo: 3 Sent: 1



Km: 0.00 Tipo: 3 Sent: 2

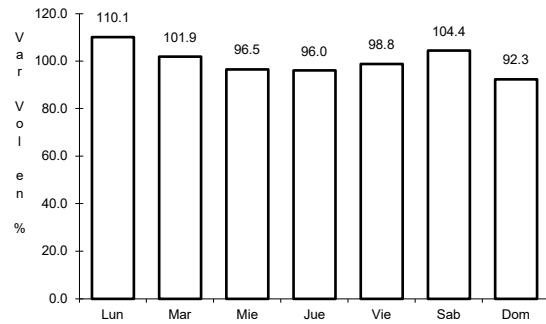


Km: 5.80 Tipo: 3 Sent: 1

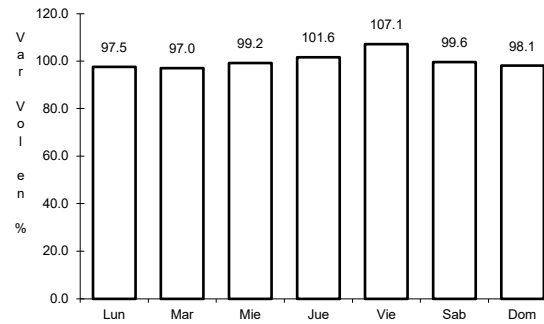
10 CARR: Libramiento de Ocozocoautla

CLAVE: 07583

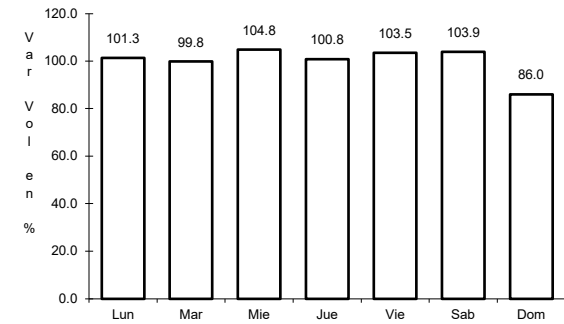
ruta: MEX-190



Km: 0.00 Tipo: 3 Sent: 0



Km: 5.54 Tipo: 1 Sent: 0

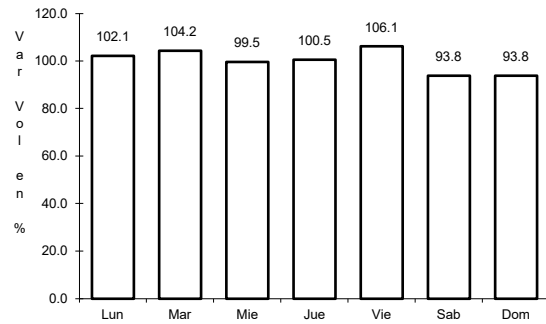


Km: 9.00 Tipo: 1 Sent: 0

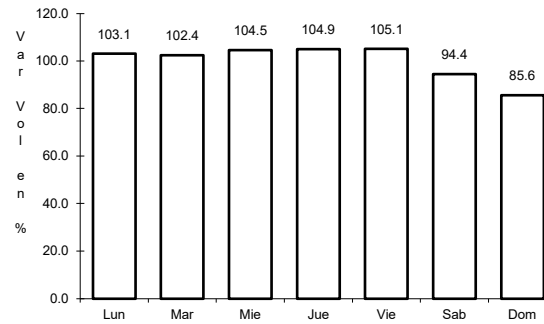
11 CARR: Malpaso - El Bellote

CLAVE: 00137

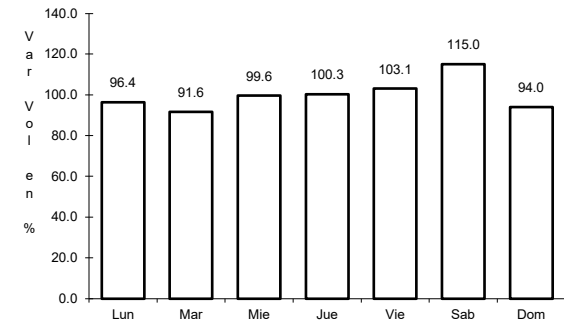
ruta: MEX-187



Km: 70.12 Tipo: 1 Sent: 0



Km: 134.70 Tipo: 3 Sent: 0

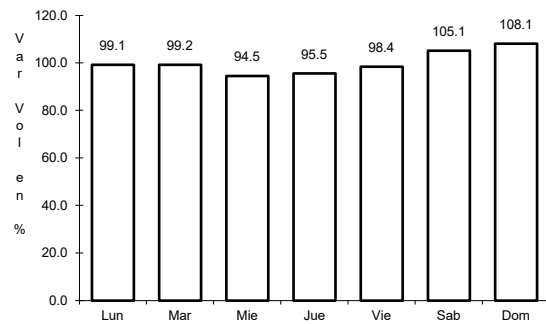


Km: 182.00 Tipo: 3 Sent: 0

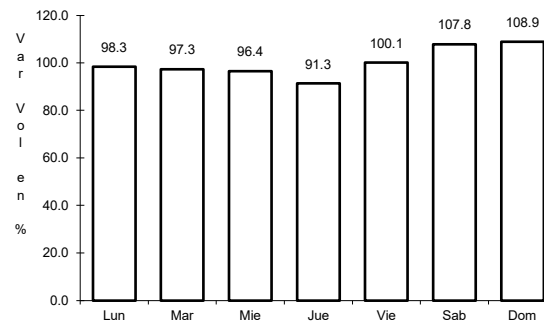
12 CARR: Ocozocoautla - Ent. El Sabino

CLAVE: 07579

ruta: MEX-190



Km: 7.85 Tipo: 3 Sent: 0

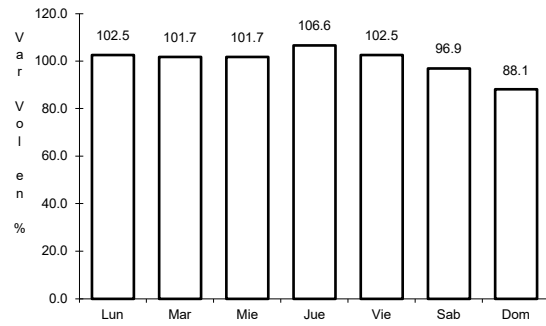


Km: 18.25 Tipo: 1 Sent: 0

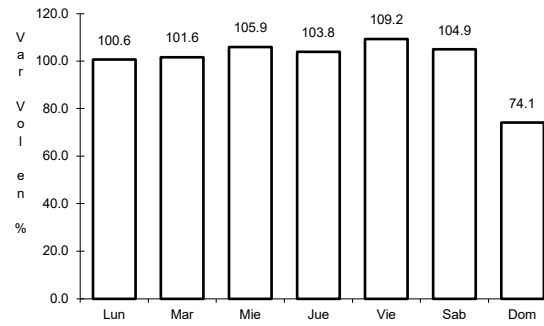
13 CARR: Ramal a Cd. Hidalgo

CLAVE: 07274

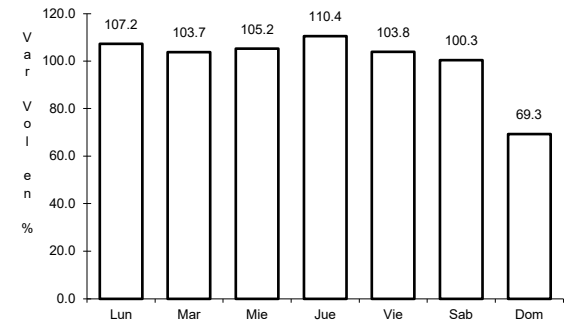
ruta: MEX-200



Km: 0.00 Tipo: 3 Sent: 0



Km: 15.30 Tipo: 3 Sent: 0

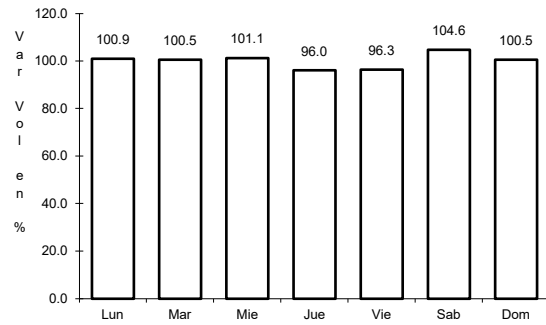


Km: 27.00 Tipo: 1 Sent: 0

14 CARR: Ramal a La Gloria

CLAVE: 07091

ruta: MEX-200

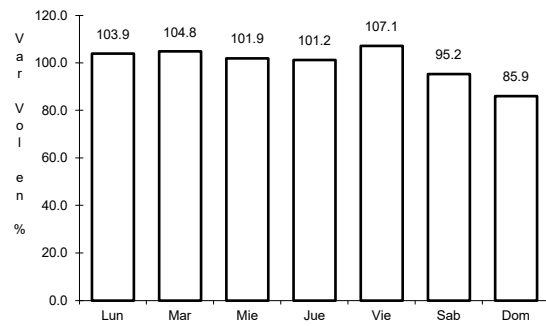


Km: 0.00 Tipo: 3 Sent: 0

15 CARR: Ramal a Paredón

CLAVE: 07269

ruta: MEX-200

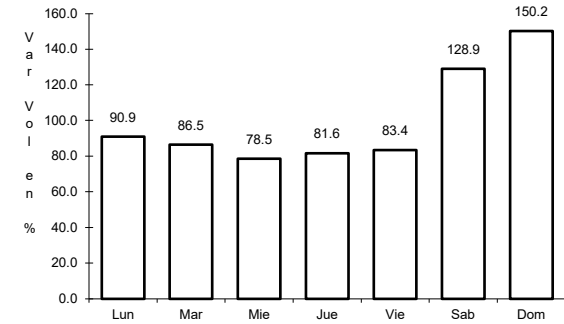
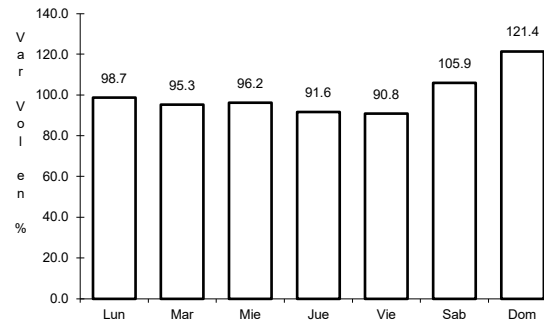
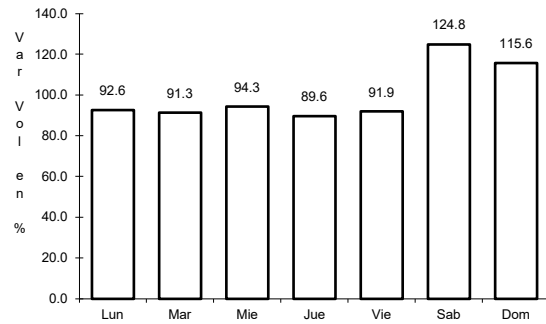


Km: 0.00 Tipo: 3 Sent: 0

16 CARR: Ramal a Puerto Arista

CLAVE: 07270

RUTA: MEX-200



Km: 0.00 Tipo: 3 Sent: 0

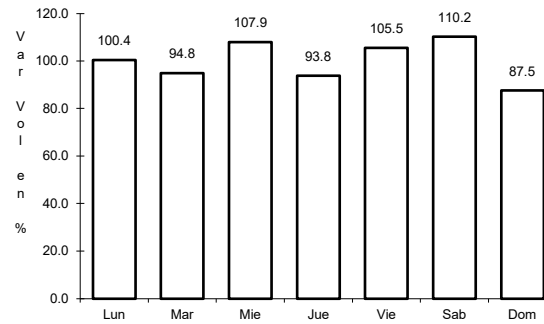
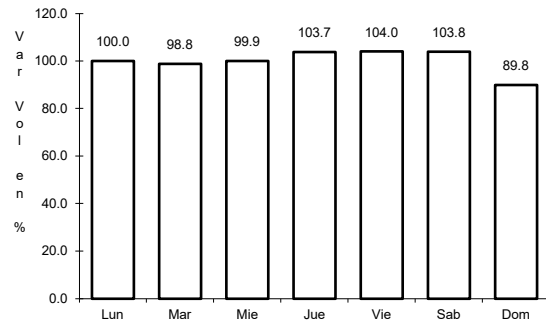
Km: 11.00 Tipo: 3 Sent: 0

Km: 17.00 Tipo: 1 Sent: 0

17 CARR: Ramal a Unión Juárez

CLAVE: 07273

RUTA: MEX-200



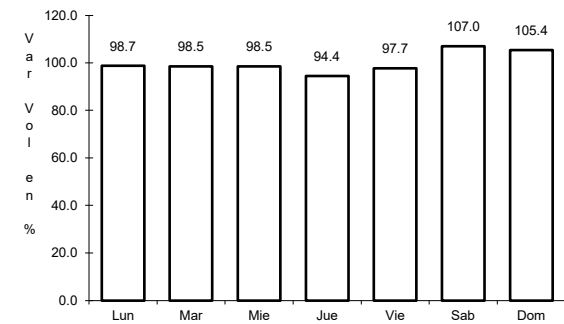
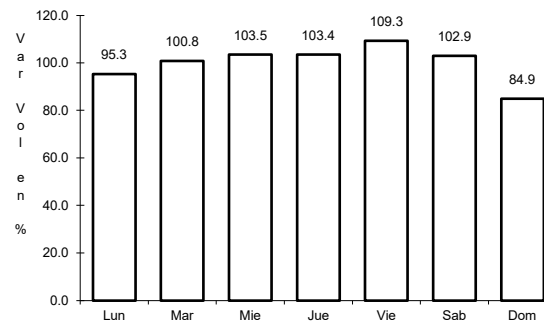
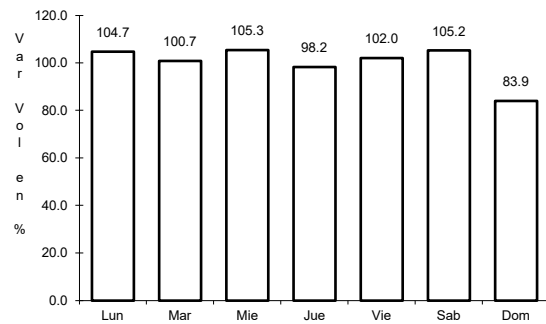
Km: 5.00 Tipo: 1 Sent: 0

Km: 22.00 Tipo: 1 Sent: 0

18 CARR: Tapachula - Puerto Madero

CLAVE: 07018

RUTA: MEX-225



Km: 0.00 Tipo: 3 Sent: 1

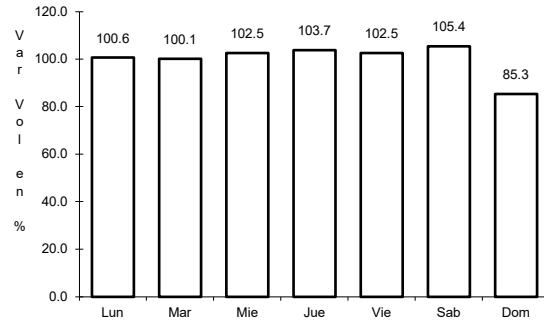
Km: 0.00 Tipo: 3 Sent: 2

Km: 27.00 Tipo: 1 Sent: 0

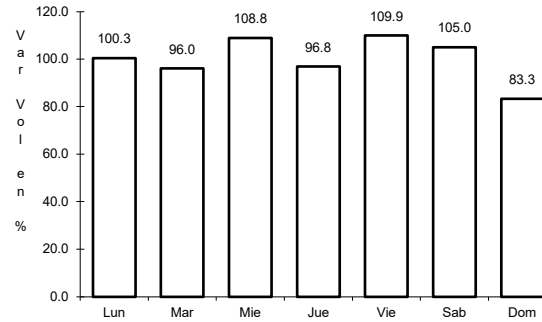
19 CARR: Tapanatepec - Talismán

CLAVE: 00075

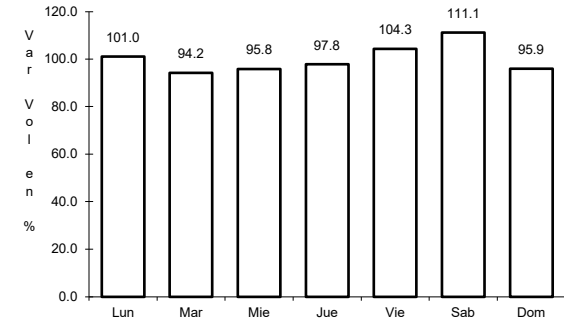
ruta: MEX-200



Km: 0.00 Tipo: 3 Sent: 0



Km: 45.00 Tipo: 1 Sent: 0

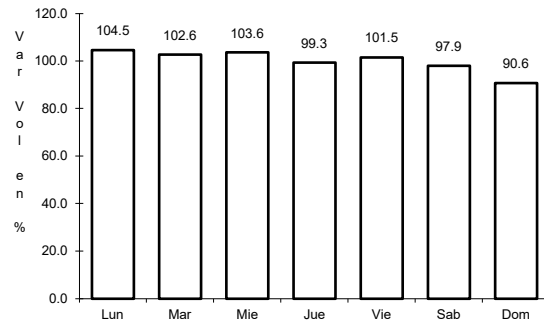


Km: 310.77 Tipo: 1 Sent: 0

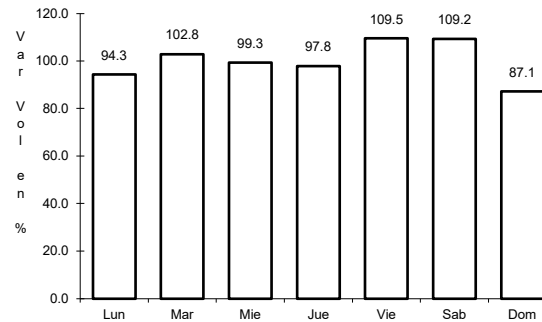
20 CARR: Tapanatepec - Tuxtla Gutiérrez

CLAVE: 00060

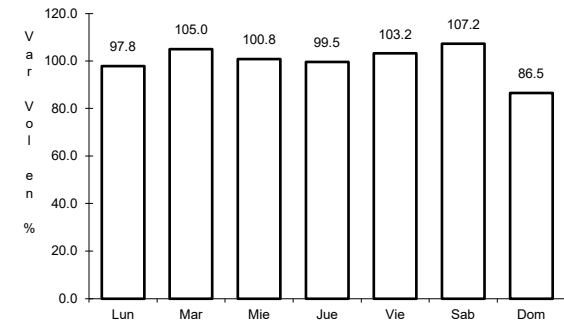
ruta: MEX-190



Km: 0.00 Tipo: 3 Sent: 0



Km: 159.00 Tipo: 1 Sent: 1

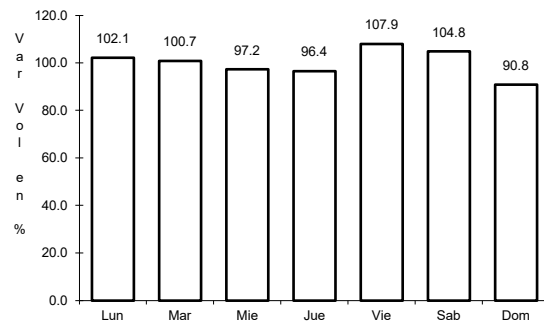


Km: 159.00 Tipo: 1 Sent: 2

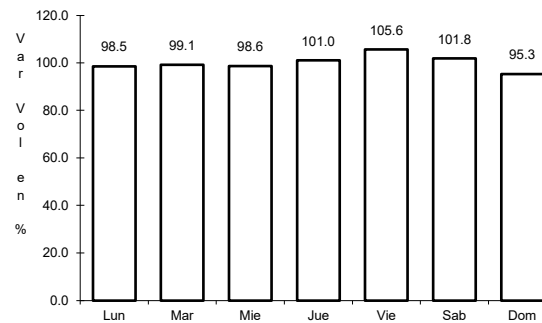
21 CARR: Terán - Chicoasén

CLAVE: 07072

ruta: MEX-190



Km: 0.00 Tipo: 3 Sent: 0

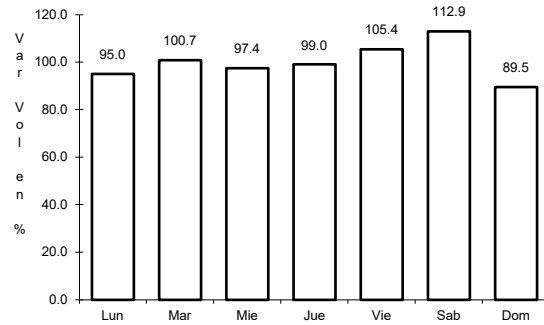


Km: 14.00 Tipo: 1 Sent: 0

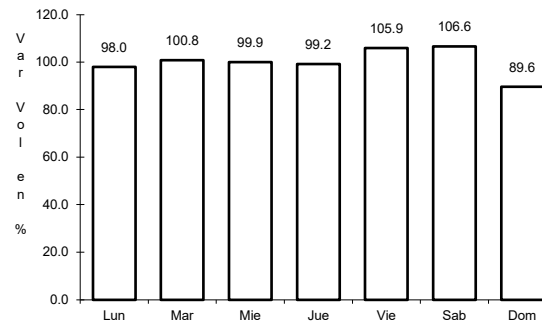
22 CARR: Tuxtla Gutiérrez - Angostura

CLAVE: 07584

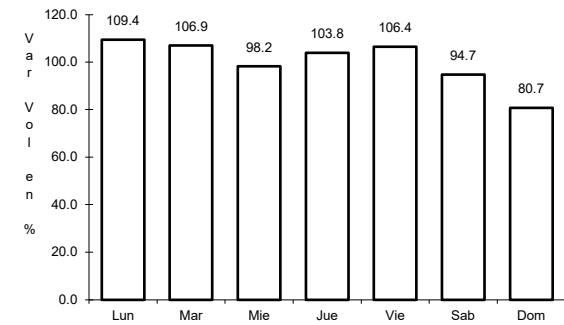
RUTA: MEX-190



Km: 0.00 Tipo: 3 Sent: 1



Km: 0.00 Tipo: 3 Sent: 2

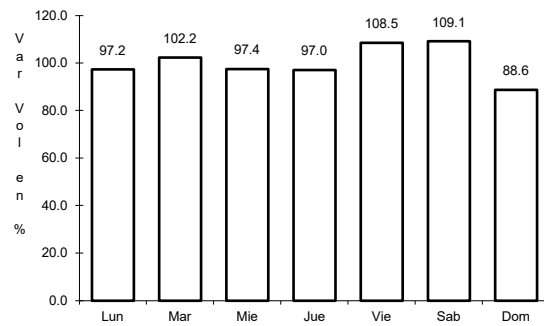


Km: 52.00 Tipo: 1 Sent: 0

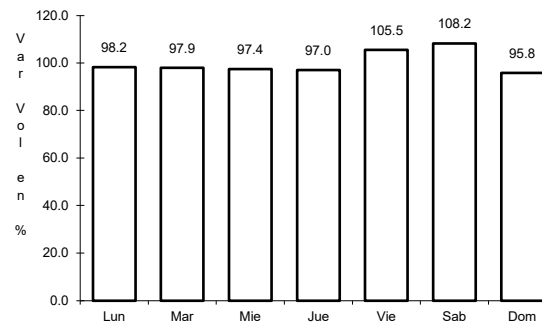
23 CARR: Tuxtla Gutiérrez - Cd. Cuauhtémoc

CLAVE: 07061

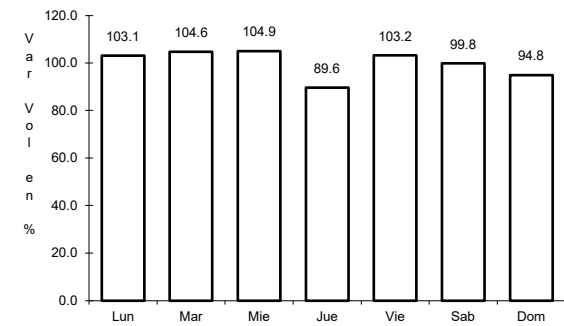
RUTA: MEX-190



Km: 7.50 Tipo: 1 Sent: 1



Km: 7.50 Tipo: 1 Sent: 2

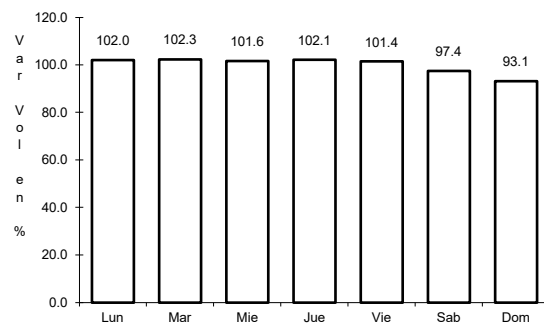


Km: 256.00 Tipo: 1 Sent: 0

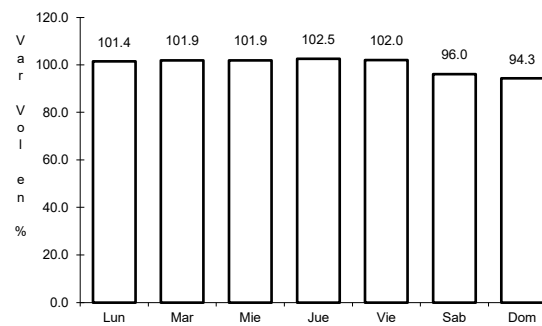
24 CARR: Villahermosa - Escopetazo

CLAVE: 00104

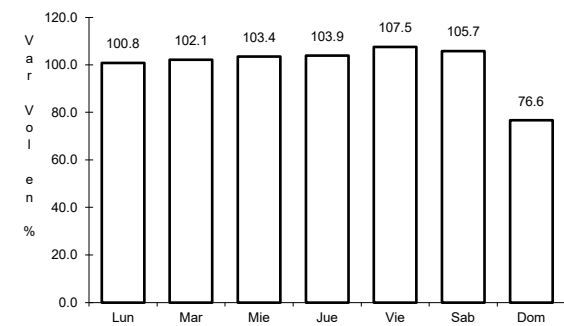
RUTA: MEX-195



Km: 0.00 Tipo: 3 Sent: 1



Km: 0.00 Tipo: 3 Sent: 2

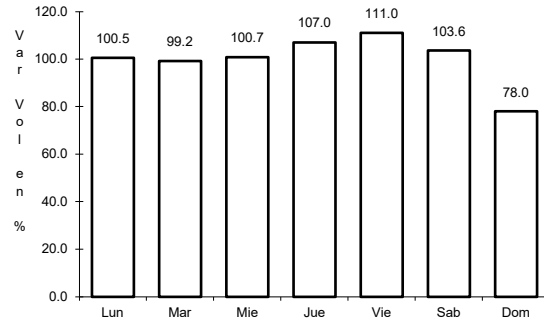


Km: 259.00 Tipo: 1 Sent: 0

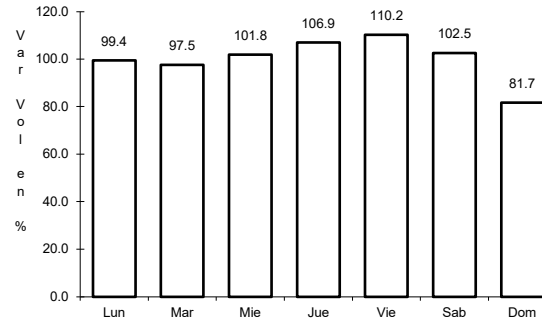
25 CARR: Villahermosa - Francisco Escárcega

CLAVE: 00092

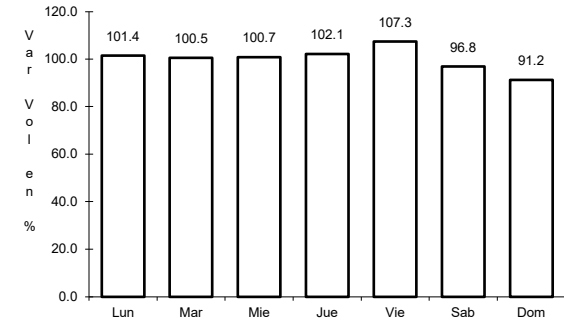
ruta: MEX-186



Km: 0.00 Tipo: 3 Sent: 1



Km: 0.00 Tipo: 3 Sent: 2

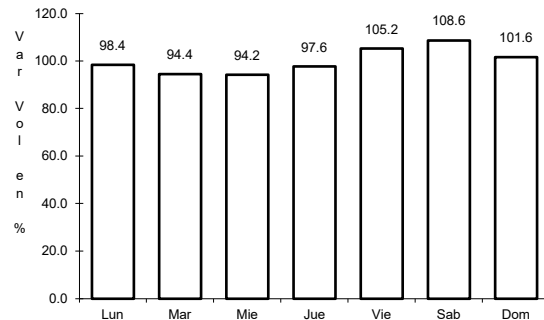


Km: 297.04 Tipo: 1 Sent: 0

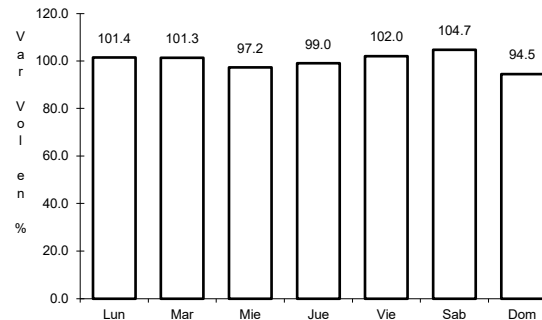
26 CARR: Arriaga - Ocozocoautla (Cuota)

CLAVE: 00092

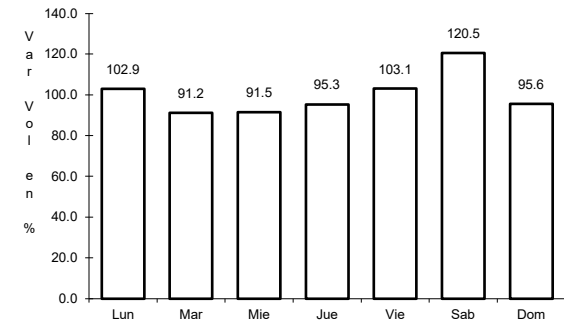
ruta: MEX-200D



Km: 0.00 Tipo: 3 Sent: 0



Km: 20.70 Tipo: 1 Sent: 0

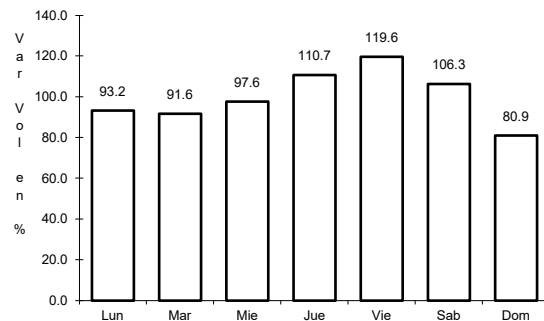


Km: 92.00 Tipo: 1 Sent: 0

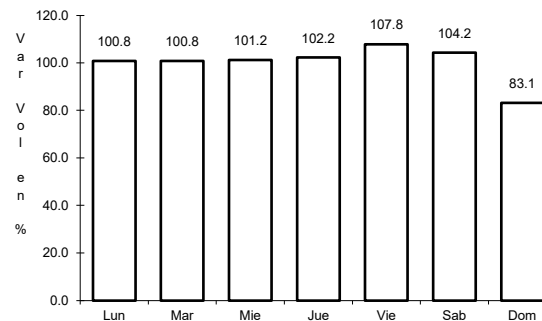
27 CARR: Las Choapas - Ocozocoautla (Cuota)

CLAVE: 00077

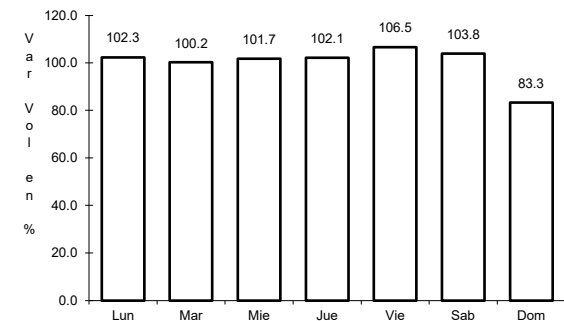
ruta: MEX-187D



Km: 0.00 Tipo: 3 Sent: 0



Km: 123.79 Tipo: 1 Sent: 0

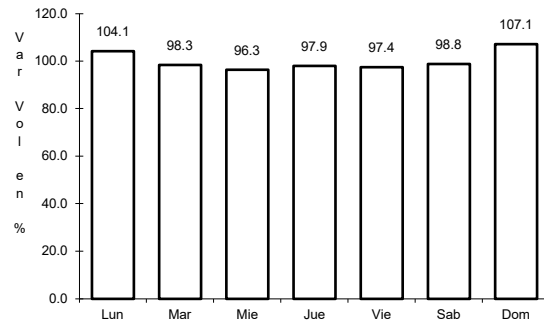


Km: 197.50 Tipo: 1 Sent: 0

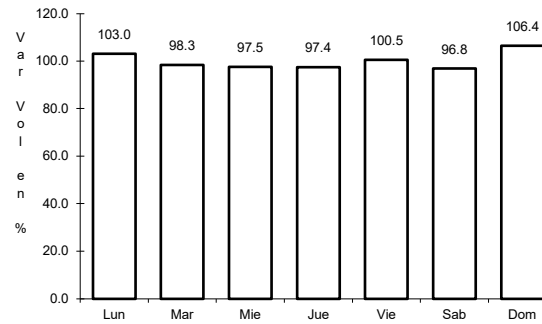
28 CARR: Tuxtla Gutiérrez - San Cristóbal de Las Casas (Cuota)

CLAVE: 07580

ruta: MEX-190D



Km: 1.30 Tipo: 3 Sent: 0

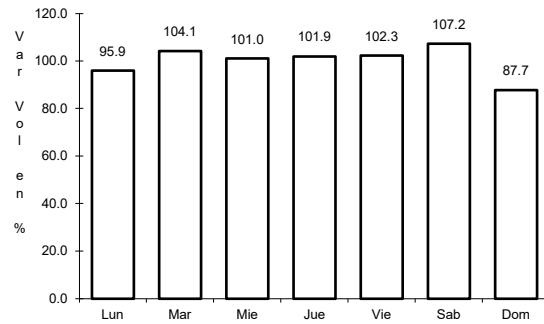


Km: 46.00 Tipo: 1 Sent: 0

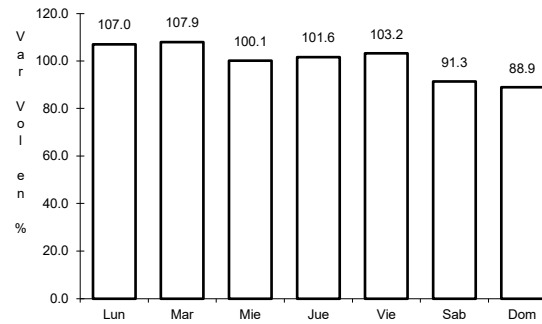
29 CARR: Chiapa de Corzo - Amatenango del Valle

CLAVE: 07024

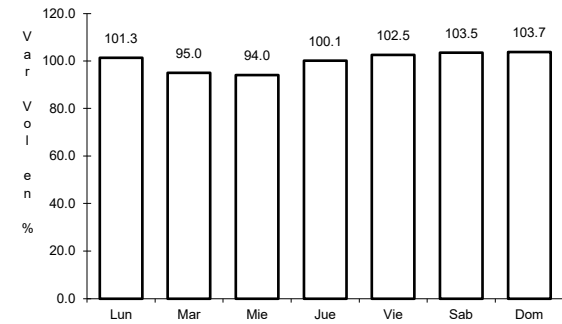
ruta: CHIS



Km: 0.00 Tipo: 3 Sent: 0



Km: 74.00 Tipo: 1 Sent: 0

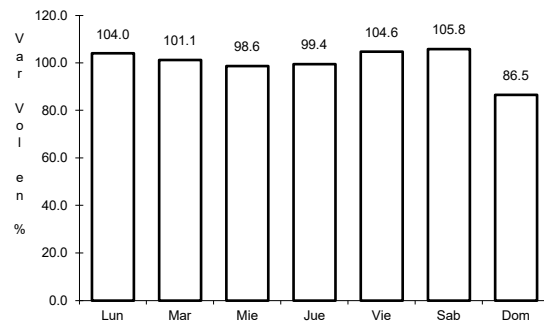


Km: 146.50 Tipo: 1 Sent: 0

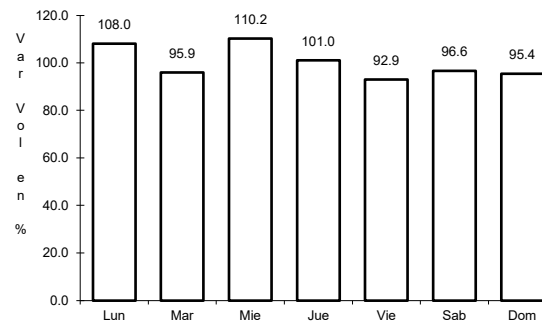
30 CARR: Ent. Emiliano Zapata - La Libertad

CLAVE: 00062

ruta: CHIS-TAB



Km: 0.00 Tipo: 3 Sent: 0

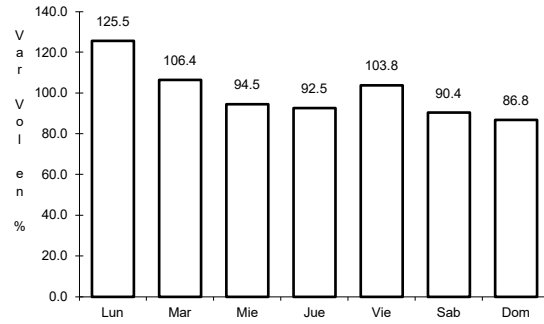


Km: 10.00 Tipo: 1 Sent: 0

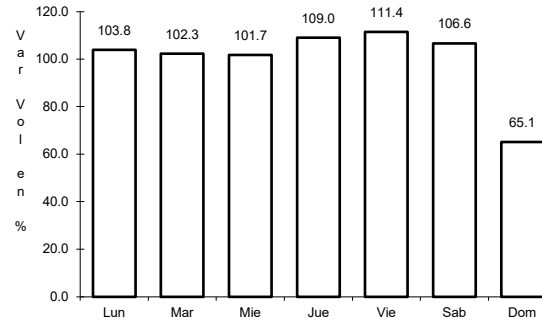
31 CARR: Ent. Suschilá - Comitán

CLAVE: 00061

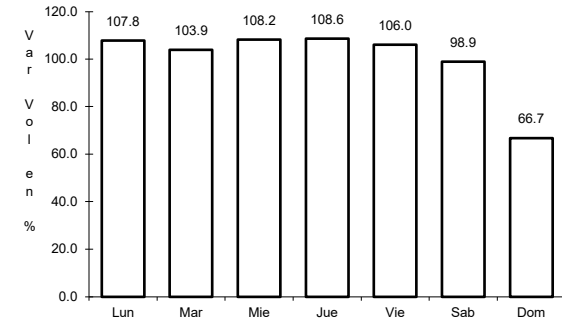
RUTA: CHIS-TAB



Km: 205.00 Tipo: 1 Sent: 0



Km: 257.50 Tipo: 3 Sent: 1

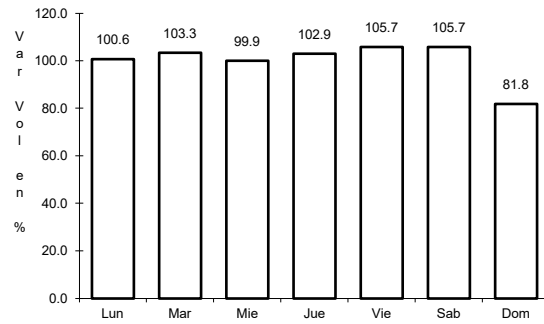


Km: 257.50 Tipo: 3 Sent: 2

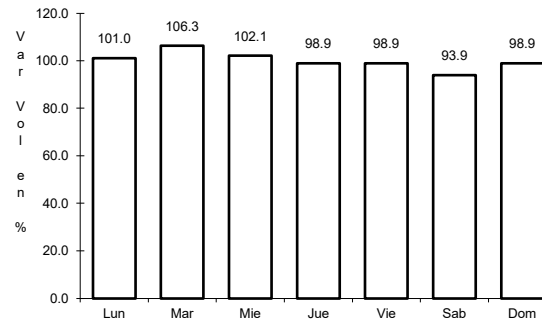
32 CARR: Estación Palenque - La Libertad

CLAVE: 07002

RUTA: CHIS-010



Km: 0.00 Tipo: 3 Sent: 0

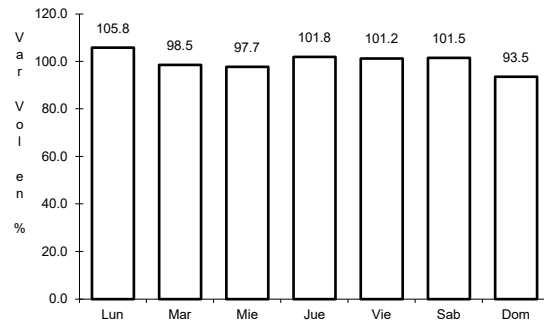


Km: 40.00 Tipo: 1 Sent: 0

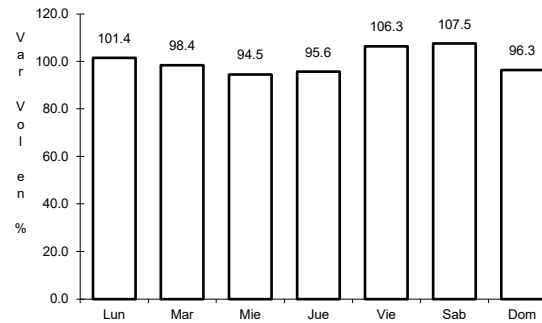
33 CARR: Gregorio Méndez Magaña - Reforma de Ocampo

CLAVE: 00103

RUTA: CHIS



Km: 0.00 Tipo: 3 Sent: 0

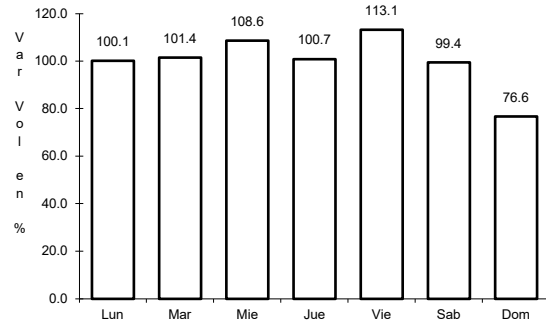


Km: 21.00 Tipo: 1 Sent: 0

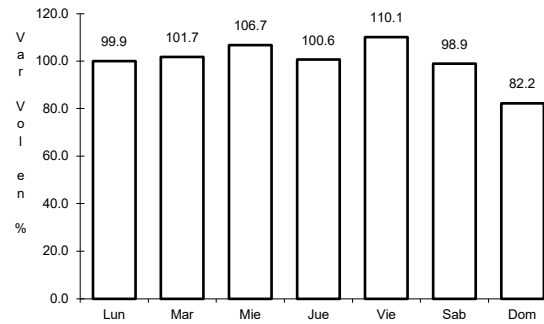
34 CARR: Independencia - Buenos Aires

CLAVE: 07098

RUTA: CHIS



Km: 139.00 Tipo: 3 Sent: 0

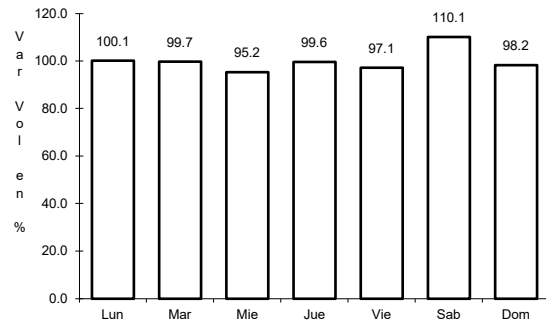


Km: 159.00 Tipo: 1 Sent: 0

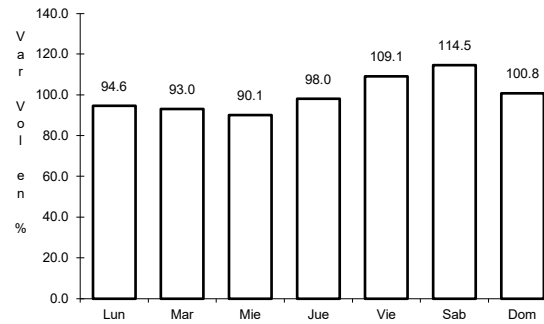
35 CARR: Las Limas - La Concordia

CLAVE: 07028

RUTA: CHIS



Km: 0.00 Tipo: 3 Sent: 0

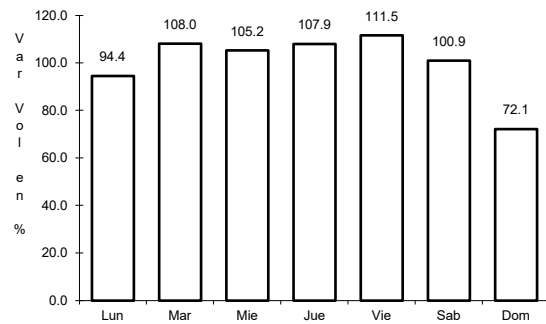


Km: 83.00 Tipo: 1 Sent: 0

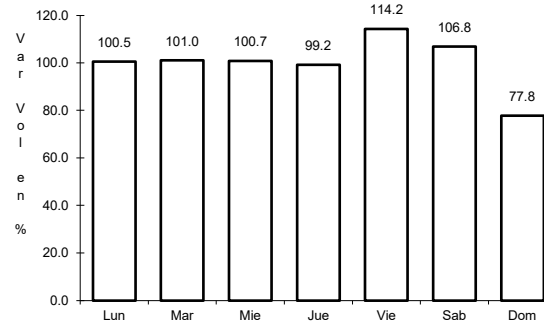
36 CARR: Libramiento Sur de Tuxtla Gutiérrez

CLAVE: 07578

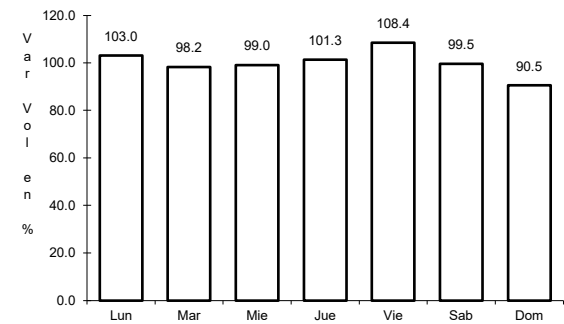
RUTA: CHIS



Km: 0.00 Tipo: 3 Sent: 1



Km: 0.00 Tipo: 3 Sent: 2

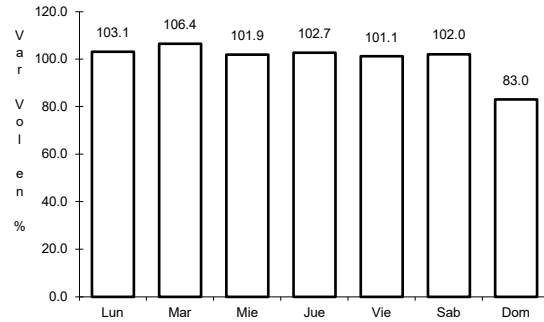


Km: 9.20 Tipo: 1 Sent: 1

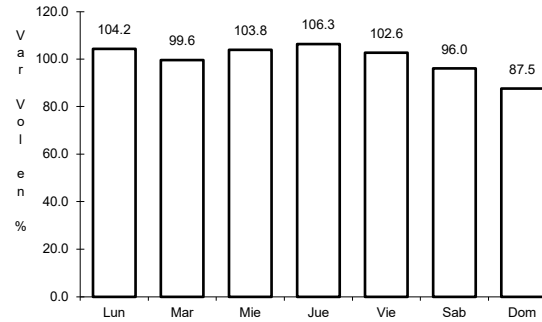
37 CARR: Ocosingo - Comitán

CLAVE: 07092

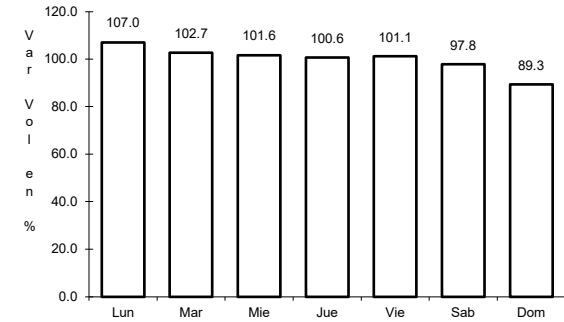
ruta: CHIS



Km: 0.00 Tipo: 3 Sent: 0



Km: 30.00 Tipo: 1 Sent: 0

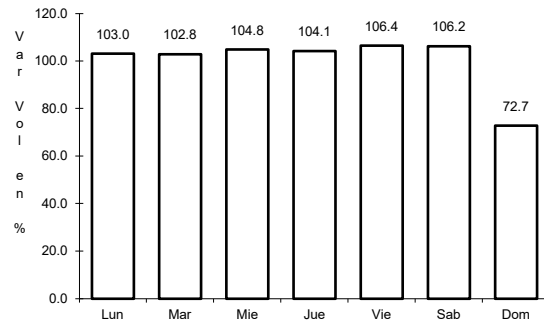


Km: 100.00 Tipo: 1 Sent: 0

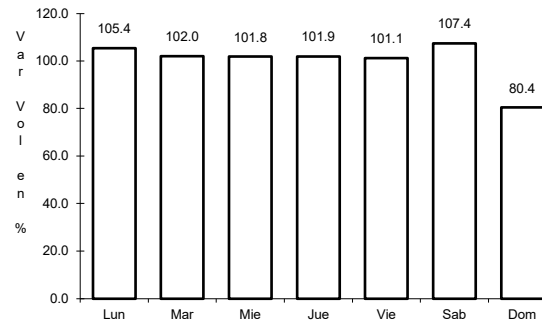
38 CARR: Ocozacoautla - Revolución Mexicana

CLAVE: 07571

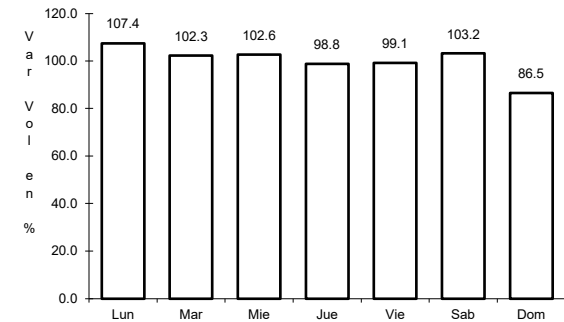
ruta: CHIS-053-230



Km: 0.00 Tipo: 3 Sent: 0



Km: 76.00 Tipo: 1 Sent: 0

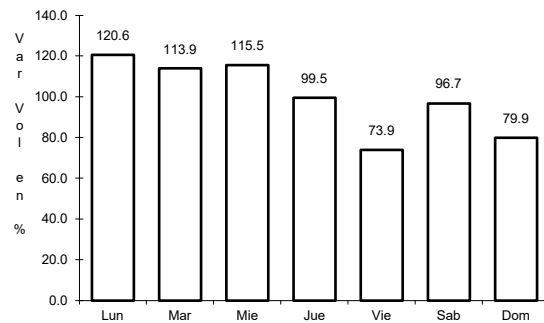


Km: 119.00 Tipo: 1 Sent: 0

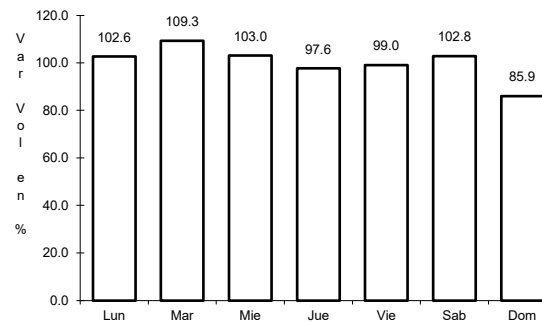
39 CARR: Paso de Cunduacán - Estación Juárez

CLAVE: 00588

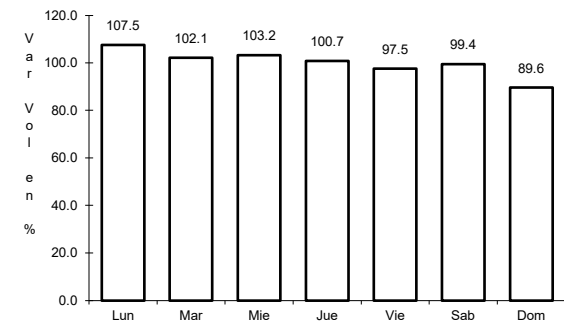
ruta: TAB-CHIS



Km: 0.00 Tipo: 3 Sent: 0



Km: 18.00 Tipo: 3 Sent: 0

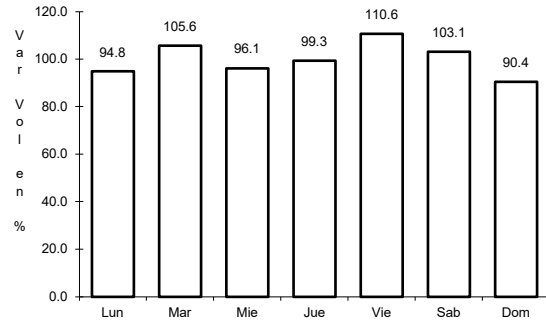


Km: 57.80 Tipo: 1 Sent: 0

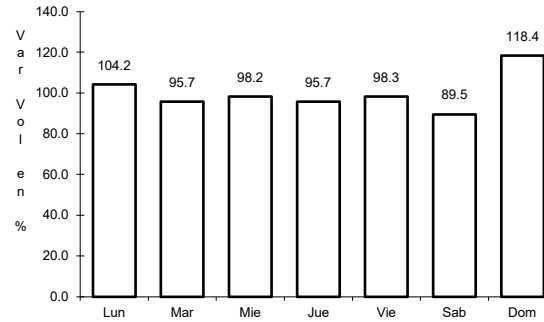
40 CARR: Puerto Caté - San Cristóbal de Las Casas

CLAVE: 07097

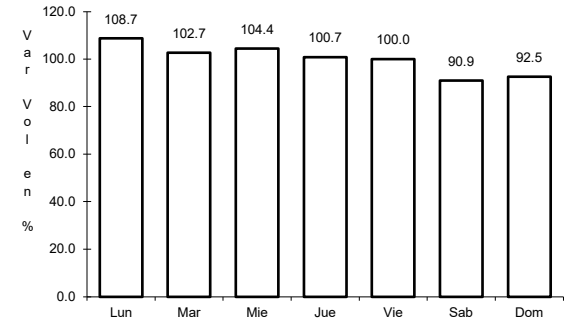
RUTA: CHIS



Km: 0.00 Tipo: 3 Sent: 0



Km: 20.00 Tipo: 1 Sent: 0

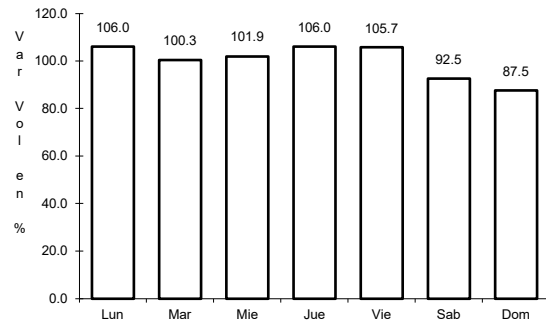


Km: 40.00 Tipo: 1 Sent: 0

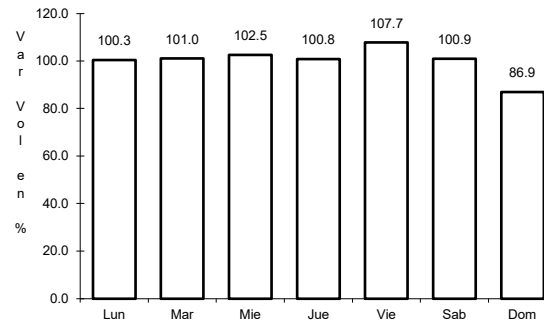
41 CARR: Ramal a Huehuetán

CLAVE: 07360

RUTA: CHIS



Km: 0.00 Tipo: 3 Sent: 1

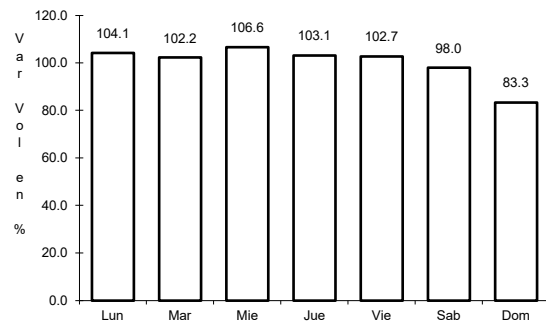


Km: 0.00 Tipo: 3 Sent: 2

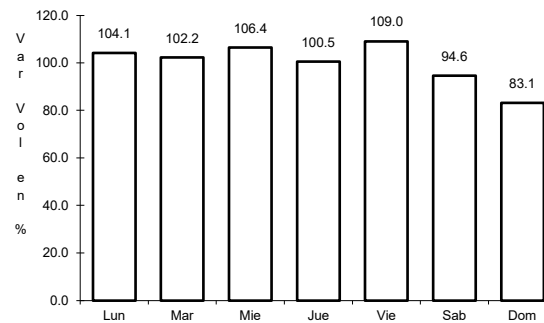
42 CARR: Ramal a Mazatán

CLAVE: 07560

RUTA: CHIS-219



Km: 0.00 Tipo: 3 Sent: 1

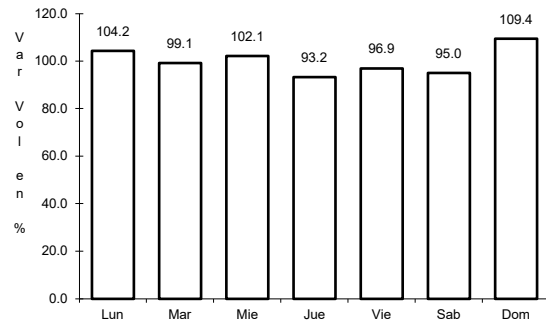


Km: 0.00 Tipo: 3 Sent: 2

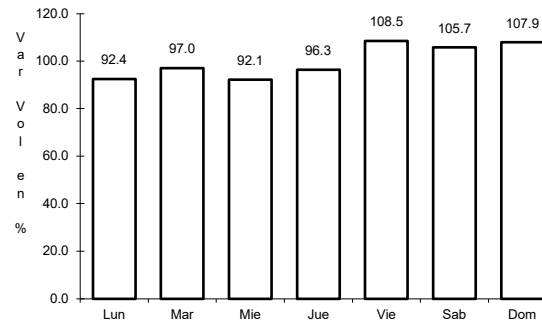
43 CARR: Ramal a Salto del Agua

CLAVE: 00069

RUTA: TAB-CHIS



Km: 0.00 Tipo: 3 Sent: 0

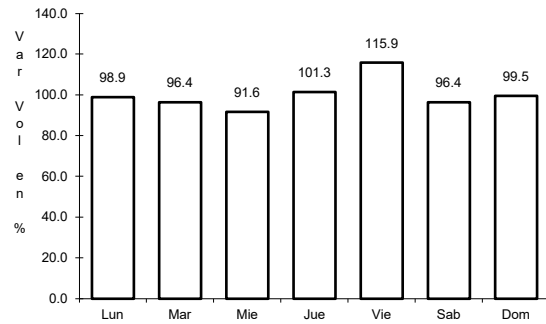


Km: 17.00 Tipo: 1 Sent: 0

44 CARR: Ramal Zona Arqueológica " Bonampak "

CLAVE: 07100

RUTA: CHIS

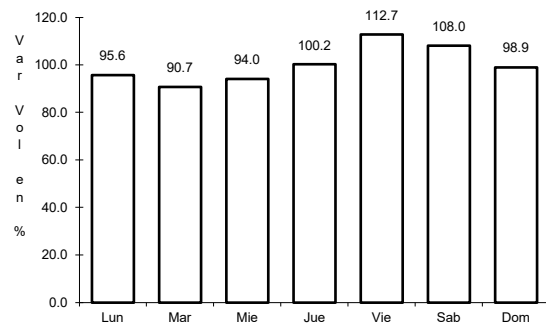


Km: 0.00 Tipo: 3 Sent: 0

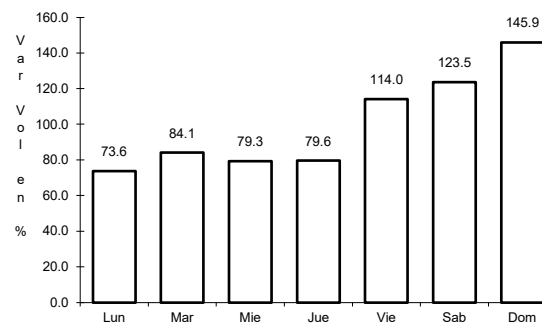
45 CARR: Ramal Zona Arqueológica " Palenque "

CLAVE: 07099

RUTA: CHIS



Km: 0.00 Tipo: 3 Sent: 0

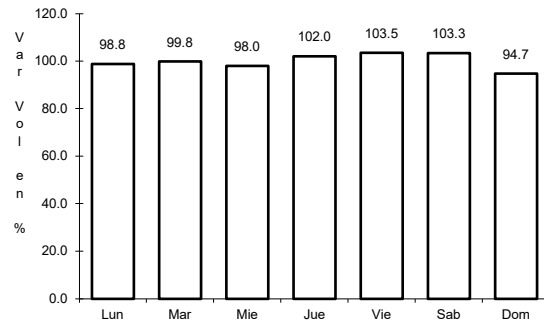


Km: 7.30 Tipo: 1 Sent: 0

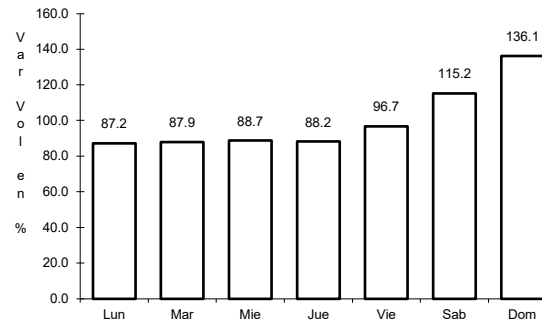
46 CARR: San Francisco Pujilic - Ent. Comitán

CLAVE: 07093

RUTA: CHIS



Km: 0.00 Tipo: 3 Sent: 0

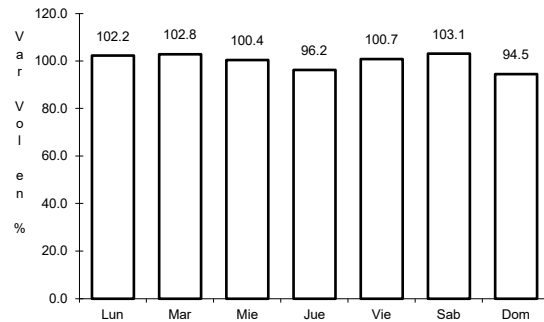


Km: 54.00 Tipo: 1 Sent: 0

47 CARR: Tapachula - Nueva Alemania

CLAVE: 07581

RUTA: CHIS-229

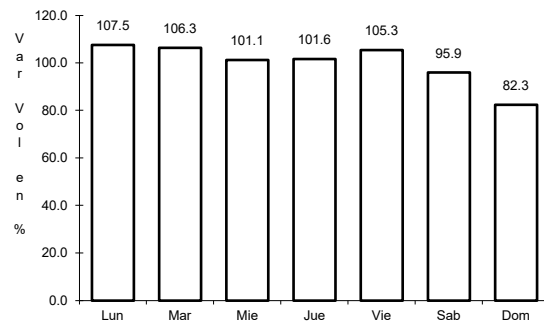


Km: 0.00 Tipo: 3 Sent: 0

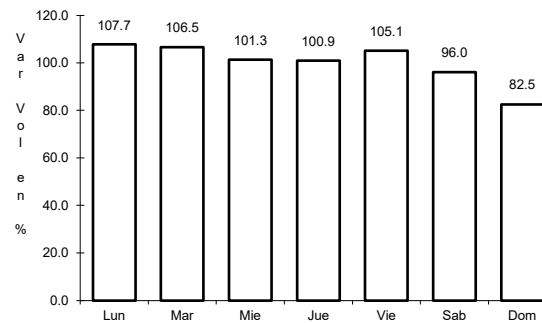
48 CARR: Temo - Tila

CLAVE: 07090

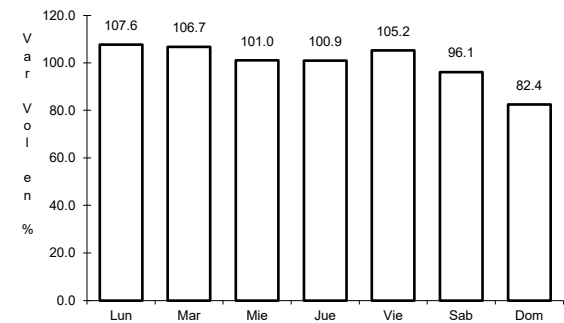
RUTA: CHIS



Km: 0.00 Tipo: 3 Sent: 0



Km: 28.00 Tipo: 1 Sent: 0

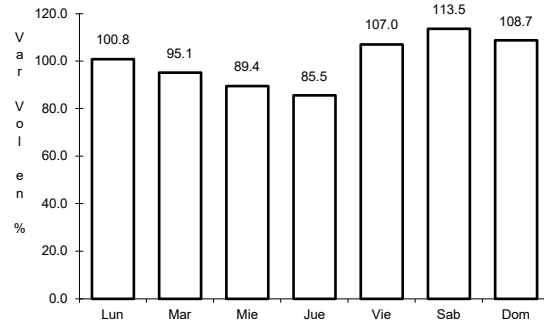


Km: 50.00 Tipo: 1 Sent: 0

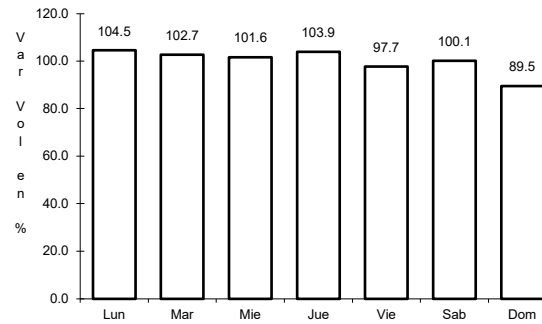
49 CARR: Tierra y Libertad - Ent. Dr. Domingo Chanona

CLAVE: 07096

RUTA: CHIS



Km: 0.00 Tipo: 3 Sent: 0

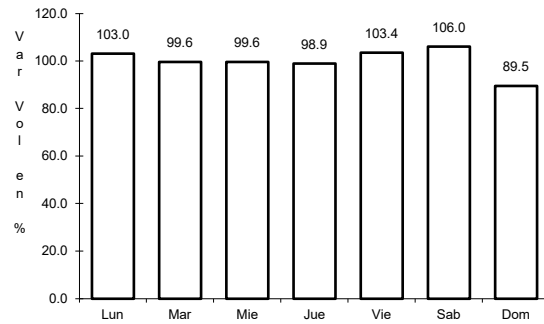


Km: 60.00 Tipo: 1 Sent: 0

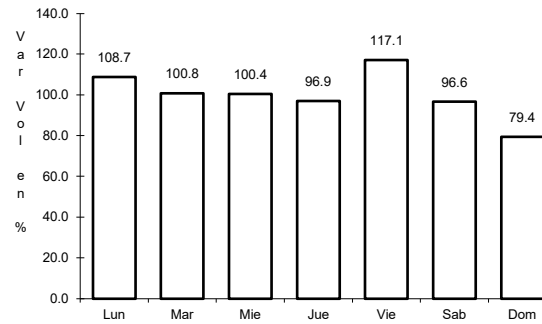
50 CARR: Tuxtla Gutiérrez - Portillo Zaragoza

CLAVE: 07574

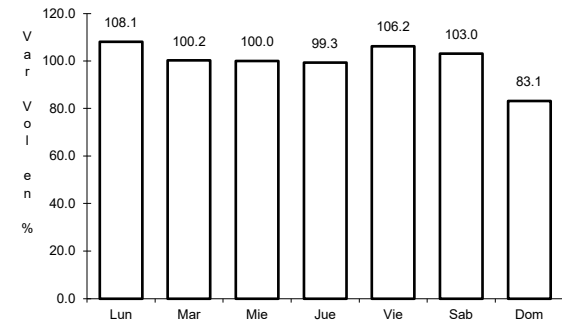
RUTA: CHIS-133



Km: 0.00 Tipo: 3 Sent: 0



Km: 53.50 Tipo: 1 Sent: 0

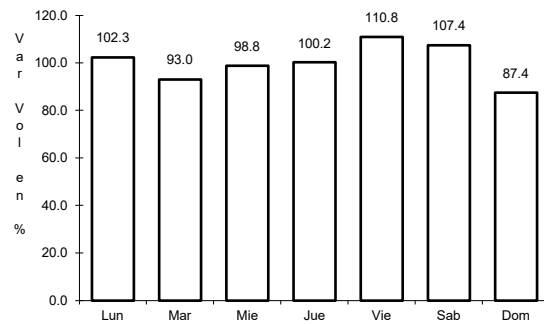


Km: 79.00 Tipo: 1 Sent: 0

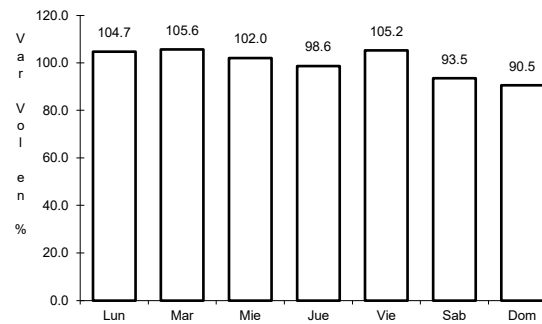
51 CARR: Zapatero - T. C. (Jalapa - Jonuta)

CLAVE: 00061

RUTA: CHIS-TAB



Km: 0.00 Tipo: 3 Sent: 0



Km: 41.00 Tipo: 1 Sent: 0

