

COLIMA

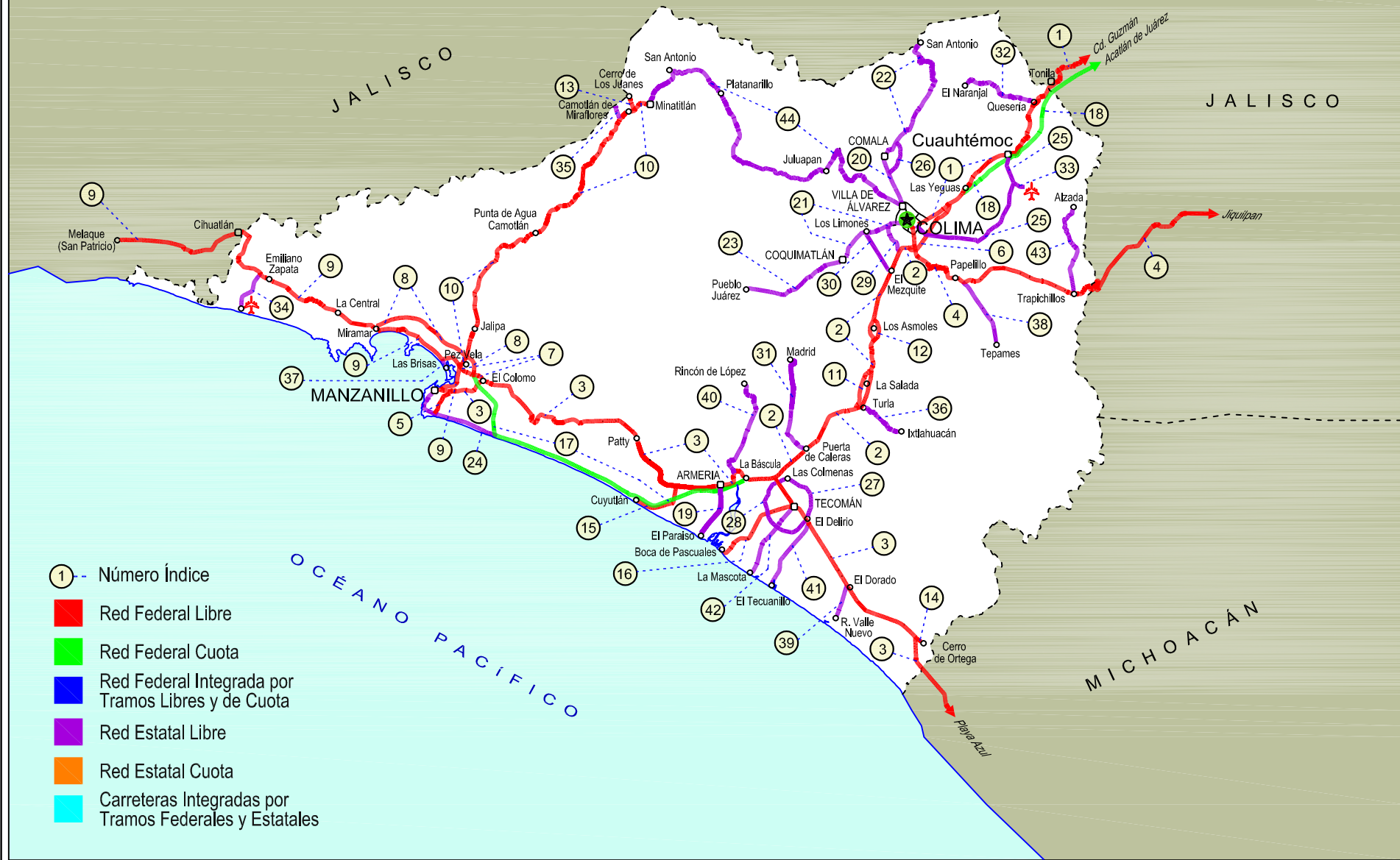
NO. INDICE CARRETERA

RUTA

NO. INDICE CARRETERA	RUTA
---RED FEDERAL LIBRE---	
1 Cd. Guzmán - Colima	MEX-054
2 Colima - Ent. Tecomán	MEX-110
3 Ent. Playa Azul - Manzanillo	MEX-200
4 Jiquilpan - Colima	MEX-110
5 Libramiento Campos - Alameda	MEX
6 Libramiento de Colima	MEX-054
7 Libramiento de Manzanillo (Libre)	MEX-200
8 Libramiento de Manzanillo Norte	MEX-200
9 Manzanillo - Puerto Vallarta	MEX-200
10 Minatitlán - Ent. Pez Vela	MEX-098
11 Paso por La Salada	MEX-110
12 Paso por Los Asmoles	MEX-110
13 Ramal a Cerro de Los Juanes	MEX-098
14 Ramal a Cerro de Ortega	MEX-200
15 Ramal a Cuyutlán	MEX-200
16 Tecomán - Boca de Pascuales	MEX-200
---RED FEDERAL DE CUOTA---	
17 Armería - Manzanillo (Cuota)	MEX-200D
18 Guadalajara - Colima (Cuota)	MEX-054D
---RED ESTATAL LIBRE---	
19 Armería - Playa El Paraíso	COL
20 Colima - Comala	COL-016
21 Colima - Coquimatlán	COL-034
22 Comala - San Antonio	COL-016
23 Coquimatlán - Pueblo Juárez	COL-034
24 Costera Laguna de Cuyutlán	COL
25 Cuauhtémoc - Colima	COL-019
26 Libramiento de Comala	COL-016
27 Libramiento de Tecomán	COL
28 Libramiento Poniente Arco Sur de Tecomán	COL
29 Libramiento Poniente de Colima	COL
30 Los Limones - Loma de Juárez	COL
31 Puerta de Caleras - Madrid	COL-014
32 Quesería - El Naranjal	COL-001
33 Ramal a Aeropuerto de Colima	COL
34 Ramal a Aeropuerto Manzanillo	COL
35 Ramal a Camotlán de Miraflores	COL
36 Ramal a Ixtlahuacán	COL-005
37 Ramal a Las Brisas	COL
38 Ramal a Los Tepames	COL-004
39 Ramal a Rancho Valle Nuevo	COL
40 Ramal a Rincón de López	COL
41 Ramal a Tecuanillo	COL-009
42 Tecomán - La Mascota	COL
43 Trapichillos - Estación Alzada	COL-003
44 Villa de Álvarez - Minatitlán	COL

06 COLIMA

SECRETARÍA DE COMUNICACIONES Y TRANSPORTES
DIRECCIÓN GENERAL DE SERVICIOS TÉCNICOS



COLIMA

1 CARR: Cd. Guzmán - Colima

CLAVE: 00117

RUTA: MEX-054

AÑO: 2020

LUGAR	ESTACION				CLASIFICACION VEHICULAR EN PORCIENTO												COORDENADAS			
	KM	TE	SC	TDPA	M	A	B	C2	C3	T3S2	T3S3	T3S2R4	OTROS	A	B	C	K'	D	LATITUD	LONGITUD
Cd. Guzmán	0.00	3	1	8431	3.8	82.8	0.9	8.3	0.8	1.0	0.9	0.9	0.6	86.6	0.9	12.5	0.085	0.503	19.690176	-103.468845
Cd. Guzmán	0.00	3	2	8335	5.9	79.3	1.0	9.2	0.9	1.0	1.1	0.9	0.7	85.2	1.0	13.8	0.085	0.503	19.690127	-103.468740
T. Izq. Zapotiltic	4.35	3	0	5591	2.2	81.5	1.1	8.2	2.8	2.4	1.0	0.3	0.5	83.7	1.1	15.2	0.081	0.500	19.652087	-103.473977
T. Der. Tepozal y Nevado de Colima	15.50	1	0	4433	2.1	81.9	1.0	7.5	2.8	2.7	1.4	0.2	0.4	84.0	1.0	15.0	0.079	0.531	19.557841	-103.440076
Atenquique	31.90	1	0	2617	4.5	70.1	2.7	6.3	7.9	5.9	1.6	0.4	0.6	74.6	2.7	22.7	0.085	0.512	19.529739	-103.437839
Atenquique	31.90	3	0	1933	2.1	78.9	2.0	6.4	4.9	2.3	2.3	0.4	0.7	81.0	2.0	17.0	0.086	0.518	19.528236	-103.440091
Lim. Edos. Term. Jal. Ppia. Col.	56.50																			
T. Der. Quesería	58.35	1	0	2937	4.2	74.7	1.0	10.6	4.8	2.6	1.4	0.4	0.3	78.9	1.0	20.1	0.091	0.504	19.387305	-103.566868
Cuahtémoc	66.25	1	0	3772	3.0	83.5	0.9	7.6	2.1	1.9	0.7	0.1	0.2	86.5	0.9	12.6	0.085	0.510	19.325442	-103.601716
Cuahtémoc	66.25	3	0	3920	3.6	81.9	1.4	7.2	2.6	2.1	1.1	0.0	0.1	85.5	1.4	13.1	0.107	0.549	19.325420	-103.601734
El Trapiche	76.55	3	1	14090	1.9	75.0	2.1	5.1	2.4	5.3	2.2	5.4	0.6	76.9	2.1	21.0	0.080	0.534	19.283718	-103.660448
El Trapiche	76.55	3	2	12310	1.9	75.0	2.1	5.1	2.4	5.3	2.2	5.4	0.6	76.9	2.1	21.0	0.086	0.534	19.283616	-103.660382
T. Izq. Libramiento de Colima	78.05	1	1	15650	1.9	74.7	2.5	5.3	2.4	4.8	2.7	5.0	0.7	76.6	2.5	20.9	0.080	0.536	19.265725	-103.680874
T. Izq. Libramiento de Colima	78.05	1	2	13523	1.9	74.8	2.5	5.3	2.4	4.8	2.7	5.0	0.6	76.7	2.5	20.8	0.088	0.536	19.265576	-103.680245
T. C. Cuahtémoc - Colima	83.40																			

2 CARR: Colima - Ent. Tecomán

CLAVE: 06119

RUTA: MEX-110

AÑO: 2020

LUGAR	ESTACION				CLASIFICACION VEHICULAR EN PORCIENTO												COORDENADAS			
	KM	TE	SC	TDPA	M	A	B	C2	C3	T3S2	T3S3	T3S2R4	OTROS	A	B	C	K'	D	LATITUD	LONGITUD
T. C. Jiquilpan - Colima	0.00	3	1	16286	2.8	78.5	3.8	3.7	1.2	4.3	2.0	2.9	0.8	81.3	3.8	14.9	0.082	0.518	19.212919	-103.722204
T. C. Jiquilpan - Colima	0.00	3	2	15144	2.8	78.3	3.8	3.7	1.3	4.3	2.0	2.9	0.9	81.1	3.8	15.1	0.081	0.518	19.212841	-103.722203
T. Izq. Libramiento Poniente de Colima	2.00	3	1	11558	3.6	75.5	3.8	4.8	1.6	5.2	1.3	3.3	0.9	79.1	3.8	17.1	0.074	0.503	19.213196	-103.739245
T. Izq. Libramiento Poniente de Colima	2.00	3	2	11718	3.4	76.6	3.8	4.7	1.4	5.1	1.1	3.1	0.8	80.0	3.8	16.2	0.086	0.503	19.213093	-103.739095
T. Izq. Los Asmoles	13.00	3	1	9839	2.9	73.1	3.5	5.4	1.8	5.2	2.0	4.6	1.5	76.0	3.5	20.5	0.079	0.501	19.128561	-103.774236
T. Izq. Los Asmoles	13.00	3	2	9813	2.8	73.4	3.5	5.4	1.8	5.1	2.0	4.5	1.5	76.2	3.5	20.3	0.097	0.501	19.128515	-103.774105
T. Der. Caleras	34.55	1	1	10317	3.6	72.9	3.4	5.6	1.6	5.1	2.1	4.8	0.9	76.5	3.4	20.1	0.077	0.502	18.977715	-103.858073
T. Der. Caleras	34.55	1	2	10245	3.4	72.6	3.8	5.6	1.5	5.3	2.1	4.9	0.8	76.0	3.8	20.2	0.086	0.502	18.977576	-103.857967
T. C. Ent. Playa Azul - Manzanillo	40.10	1	1	11134	2.8	74.1	2.7	5.6	2.0	4.8	2.2	4.8	1.0	76.9	2.7	20.4	0.097	0.507	18.945717	-103.896693
T. C. Ent. Playa Azul - Manzanillo	40.10	1	2	10820	2.7	74.3	2.7	5.6	1.9	4.8	2.2	4.8	1.0	77.0	2.7	20.3	0.084	0.507	18.945586	-103.896599

COLIMA

3 CARR: Ent. Playa Azul - Manzanillo

CLAVE: 00495

RUTA: MEX-200

AÑO: 2020

LUGAR	ESTACION				CLASIFICACION VEHICULAR EN PORCIENTO										COORDENADAS					
	KM	TE	SC	TDPA	M	A	B	C2	C3	T3S2	T3S3	T3S2R4	OTROS	A	B	C	K'	D	LATITUD	LONGITUD
T. C. Carapan - Playa Azul	0.00	3	0	3719	2.3	87.1	1.3	7.7	0.9	0.4	0.2	0.1	0.0	89.4	1.3	9.3	0.103	0.506	18.019504	-102.340089
Caleta de Campos	50.24	1	0	2443	11.4	78.3	0.8	7.4	0.8	0.9	0.3	0.1	0.0	89.7	0.8	9.5	0.101	0.513	18.079820	-102.753212
Caleta de Campos	50.24	3	0	1538	12.7	76.7	0.6	6.6	1.2	1.6	0.5	0.0	0.1	89.4	0.6	10.0	0.111	0.502	18.079827	-102.753216
Tizupan	106.60	1	0	437	19.1	62.5	2.5	8.3	3.0	2.9	1.5	0.2	0.0	81.6	2.5	15.9	0.126	0.506	18.226028	-103.129161
Maruata	149.75	1	0	508	18.8	64.1	1.7	8.5	2.3	2.8	1.3	0.3	0.2	82.9	1.7	15.4	0.124	0.514	18.275992	-103.349240
Maruata	149.75	3	0	743	18.3	63.2	1.8	9.0	3.0	3.0	1.5	0.1	0.1	81.5	1.8	16.7	0.110	0.506	18.275999	-103.349261
T. Der. Aquila	190.10	1	0	772	8.9	78.0	1.5	7.3	1.8	1.6	0.7	0.1	0.1	86.9	1.5	11.6	0.167	0.502	18.565978	-103.622265
T. Der. Aquila	190.10	3	0	2414	10.0	78.6	0.4	5.9	1.6	2.8	0.4	0.3	0.0	88.6	0.4	11.0	0.090	0.524	18.565975	-103.622276
Lim. Edos. Term. Mich. Ppia. Col.	229.60																			
Cerro de Ortega	233.20	1	0	5325	11.2	72.6	1.2	4.6	1.5	4.0	4.5	0.3	0.1	83.8	1.2	15.0	0.103	0.521	18.752817	-103.724302
El Balcón	242.95	1	0	5283	3.2	78.8	1.9	6.1	2.5	3.7	3.4	0.3	0.1	82.0	1.9	16.1	0.106	0.512	18.783899	-103.773391
El Balcón	242.95	3	0	5757	4.4	80.8	1.4	4.7	2.0	3.9	2.3	0.3	0.2	85.2	1.4	13.4	0.097	0.525	18.783910	-103.773378
Cofradía de Morelos	252.45	1	0	7726	12.8	72.1	1.0	6.4	1.9	2.5	3.0	0.1	0.2	84.9	1.0	14.1	0.093	0.507	18.864193	-103.837596
Cofradía de Morelos	252.45	3	1	3882	12.9	73.2	1.2	5.0	2.4	2.0	2.6	0.5	0.2	86.1	1.2	12.7	0.150	0.504	18.864180	-103.837580
Cofradía de Morelos	252.45	3	2	3943	10.7	76.9	1.4	4.1	1.9	2.2	2.3	0.3	0.2	87.6	1.4	11.0	0.156	0.504	18.864149	-103.837654
Tecomán	258.15																			
T. C. Colima - Ent. Tecomán	263.75	1	1	5689	12.7	73.0	0.9	7.5	1.4	1.6	2.3	0.2	0.4	85.7	0.9	13.4	0.125	0.506	18.908010	-103.866076
T. C. Colima - Ent. Tecomán	263.75	1	2	5546	12.7	73.0	0.9	7.5	1.4	1.6	2.3	0.2	0.4	85.7	0.9	13.4	0.138	0.506	18.907932	-103.866231
T. Der. Rincón de López	269.25	1	0	4544	12.4	66.7	2.7	9.7	2.2	4.0	1.8	0.4	0.1	79.1	2.7	18.2	0.096	0.509	18.950165	-103.946717
Ent. Tecomán	270.50	3	1	10449	5.5	73.3	2.6	4.1	1.9	5.2	2.2	4.3	0.9	78.8	2.6	18.6	0.087	0.504	18.944059	-103.899390
Ent. Tecomán	270.50	3	2	10297	5.5	73.2	2.6	4.1	1.9	5.3	2.1	4.3	1.0	78.7	2.6	18.7	0.091	0.504	18.943881	-103.899349
Armería	272.50	1	0	4752	14.3	68.3	1.2	5.8	2.4	5.4	2.1	0.2	0.3	82.6	1.2	16.2	0.091	0.535	18.936141	-103.961738
T. Izq. Cuyutlán	278.17	1	0	4888	7.0	72.9	1.5	5.4	3.6	6.1	2.5	1.0	0.0	79.9	1.5	18.6	0.095	0.508	18.935586	-104.018901
Santa Rita	292.50	1	0	4301	9.9	68.8	2.1	6.3	4.4	4.7	2.4	1.1	0.3	78.7	2.1	19.2	0.091	0.502	19.013387	-104.094032
Santa Rita	292.50	3	0	3807	9.6	71.5	2.0	5.3	2.4	5.8	2.3	0.9	0.2	81.1	2.0	16.9	0.072	0.508	19.013396	-104.094051
Las Nuevas Juntas	310.65	1	0	4504	6.2	76.4	1.9	6.4	2.2	4.5	2.0	0.3	0.1	82.6	1.9	15.5	0.090	0.518	19.054227	-104.224582
T. Der. Libramiento de Manzanillo (Libre)	312.65	1	0	8163	10.7	67.0	0.9	11.0	1.6	5.5	1.9	0.7	0.7	77.7	0.9	21.4	0.084	0.513	19.055654	-104.239342
T. Der. Libramiento de Manzanillo (Libre)	312.65	3	0	4124	20.8	68.1	1.0	8.2	1.1	0.3	0.2	0.2	0.1	88.9	1.0	10.1	0.079	0.523	19.055642	-104.242419
Manzanillo	321.12	1	0	7470	15.9	71.5	0.4	11.1	0.3	0.3	0.1	0.3	0.1	87.4	0.4	12.2	0.076	0.509	19.050707	-104.309951

4 CARR: Jiquilpan - Colima

CLAVE: 00156

RUTA: MEX-110

AÑO: 2020

LUGAR	ESTACION				CLASIFICACION VEHICULAR EN PORCIENTO										COORDENADAS					
	KM	TE	SC	TDPA	M	A	B	C2	C3	T3S2	T3S3	T3S2R4	OTROS	A	B	C	K'	D	LATITUD	LONGITUD
Jiquilpan	0.00	3	0	4744	3.2	78.0	1.1	10.1	2.9	3.2	1.0	0.3	0.2	81.2	1.1	17.7	0.094	0.512	19.999965	-102.718570

COLIMA

4 CARR: Jiquilpan - Colima

CLAVE: 00156

RUTA: MEX-110

AÑO: 2020

LUGAR	ESTACION				CLASIFICACION VEHICULAR EN PORCIENTO										COORDENADAS					
	KM	TE	SC	TDPA	M	A	B	C2	C3	T3S2	T3S3	T3S2R4	OTROS	A	B	C	K'	D	LATITUD	LONGITUD
San José de Gracia	37.93	1	0	3842	4.9	80.1	0.8	9.1	1.5	2.6	0.5	0.2	0.3	85.0	0.8	14.2	0.086	0.506	19.994936	-103.020173
Lim. Edos. Term. Mich. Ppia. Jal.	41.00																			
Mazamitla	48.65	1	0	4443	6.6	83.4	0.7	6.8	0.3	1.9	0.1	0.0	0.2	90.0	0.7	9.3	0.081	0.509	19.919789	-103.019372
Mazamitla	48.65	3	0	3681	4.8	76.5	1.3	7.6	2.2	5.1	1.6	0.1	0.8	81.3	1.3	17.4	0.092	0.503	19.918218	-103.023060
Villa de Contla	84.25	3	0	4134	6.9	80.0	1.5	4.5	1.7	2.6	0.9	0.8	1.1	86.9	1.5	11.6	0.079	0.512	19.752690	-103.180892
T. Izq. Tamazula de Gordiano (2º Acceso)	96.70	3	0	8713	7.4	71.5	1.5	6.9	3.7	4.6	2.6	0.8	1.0	78.9	1.5	19.6	0.082	0.504	19.681151	-103.261094
T. Der. Cd. Guzmán	108.50	1	0	6389	7.4	70.3	2.7	6.8	3.6	4.7	2.7	0.8	1.0	77.7	2.7	19.6	0.090	0.505	19.646299	-103.335632
T. Der. Cd. Guzmán	108.50	3	0	2988	5.0	76.1	1.9	5.5	3.5	4.1	1.5	0.9	1.5	81.1	1.9	17.0	0.073	0.515	19.646326	-103.335638
T. Der. Cerca Lisa	110.00	1	0	1427	8.1	74.9	0.8	10.8	3.2	1.3	0.6	0.0	0.3	83.0	0.8	16.2	0.090	0.500	19.632263	-103.331935
Tecalitlán	132.00	3	0	2769	4.8	80.5	0.8	10.3	2.0	1.2	0.3	0.0	0.1	85.3	0.8	13.9	0.090	0.501	19.471518	-103.307101
T. Der. Atenquique	137.67	3	0	1219	5.3	77.0	0.9	11.5	3.0	1.1	1.1	0.1	0.0	82.3	0.9	16.8	0.094	0.504	19.458254	-103.346888
Pihuamo	168.19	3	0	2225	5.7	78.5	0.8	8.7	3.2	2.0	0.7	0.0	0.4	84.2	0.8	15.0	0.092	0.517	19.253729	-103.382467
Lim. Edos. Term. Jal. Ppia. Col.	189.60																			
T. Der. Estación Alzada	198.60	3	0	1482	6.2	77.4	0.6	8.8	1.5	2.9	2.4	0.1	0.1	83.6	0.6	15.8	0.092	0.505	19.160019	-103.524301
T. Izq. Los Tepames	214.20	1	0	1828	5.9	78.8	0.9	8.6	0.9	2.6	1.8	0.2	0.3	84.7	0.9	14.4	0.092	0.512	19.173523	-103.660885
T. Izq. Los Tepames	214.20	3	0	2800	4.0	81.7	0.6	8.8	0.8	2.3	1.3	0.3	0.2	85.7	0.6	13.7	0.102	0.519	19.173532	-103.660870
X. C. Libramiento de Colima	220.00	1	0	8169	7.4	78.7	0.4	6.3	1.1	4.8	1.3	0.0	0.0	86.1	0.4	13.5	0.082	0.509	19.211910	-103.721420
Colima	222.00	1	1	8045	7.6	85.9	0.4	5.1	0.6	0.2	0.2	0.0	0.0	93.5	0.4	6.1	0.099	0.513	19.230182	-103.723130
Colima	222.00	1	2	7639	5.0	88.3	0.5	5.3	0.5	0.2	0.2	0.0	0.0	93.3	0.5	6.2	0.094	0.513	19.230183	-103.723255

5 CARR: Libramiento Campos - Alameda

CLAVE:

RUTA: MEX

AÑO: 2020

LUGAR	ESTACION				CLASIFICACION VEHICULAR EN PORCIENTO										COORDENADAS					
	KM	TE	SC	TDPA	M	A	B	C2	C3	T3S2	T3S3	T3S2R4	OTROS	A	B	C	K'	D	LATITUD	LONGITUD
T. C. Costera Laguna de Cuyutlán	0.00	3	0	1589	12.9	76.8	1.5	2.9	1.0	1.3	1.3	1.4	0.9	89.7	1.5	8.8	0.102	0.513	19.022460	-104.317631
T. C. Playa Azul - Manzanillo	5.00	1	0	1736	24.1	69.1	1.2	2.3	0.6	0.8	0.3	1.3	0.3	93.2	1.2	5.6	0.115	0.517	19.048878	-104.296836

6 CARR: Libramiento de Colima

CLAVE: 06573

RUTA: MEX-054

AÑO: 2020

LUGAR	ESTACION				CLASIFICACION VEHICULAR EN PORCIENTO										COORDENADAS					
	KM	TE	SC	TDPA	M	A	B	C2	C3	T3S2	T3S3	T3S2R4	OTROS	A	B	C	K'	D	LATITUD	LONGITUD
T. C. Cd. Guzmán - Colima	0.00	3	1	8459	2.4	76.5	2.5	5.1	2.0	4.7	2.1	4.0	0.7	78.9	2.5	18.6	0.104	0.501	19.265217	-103.681234
T. C. Cd. Guzmán - Colima	0.00	3	2	8419	2.5	72.4	2.7	6.2	2.2	5.3	2.3	5.5	0.9	74.9	2.7	22.4	0.091	0.501	19.265335	-103.680382
T. C. Colima - Ent. Tecomán	9.00	1	1	17181	1.2	81.2	1.5	5.1	1.8	3.5	2.0	2.9	0.8	82.4	1.5	16.1	0.088	0.504	19.213410	-103.719359
T. C. Colima - Ent. Tecomán	9.00	1	2	17452	1.3	81.3	1.4	5.8	1.2	3.8	2.2	2.1	0.9	82.6	1.4	16.0	0.091	0.504	19.213510	-103.719447

COLIMA

7 CARR: Libramiento de Manzanillo (Libre)

CLAVE: 06574

RUTA: MEX-200

AÑO: 2020

LUGAR	ESTACION				CLASIFICACION VEHICULAR EN PORCIENTO												COORDENADAS			
	KM	TE	SC	TDPA	M	A	B	C2	C3	T3S2	T3S3	T3S2R4	OTROS	A	B	C	K'	D	LATITUD	LONGITUD
T. C. Ent. Playa Azul - Manzanillo	0.00	3	0	8386	3.9	79.9	1.9	7.8	2.4	2.7	0.9	0.2	0.3	83.8	1.9	14.3	0.092	0.523	19.055651	-104.239348
T. C. Manzanillo - Puerto Vallarta	6.30	1	1	6280	5.0	75.9	1.9	5.6	3.2	3.6	2.7	1.5	0.6	80.9	1.9	17.2	0.093	0.521	19.074737	-104.283816
T. C. Manzanillo - Puerto Vallarta	6.30	1	2	5768	5.1	75.5	2.0	5.7	3.2	3.6	2.7	1.6	0.6	80.6	2.0	17.4	0.076	0.521	19.074634	-104.283898

8 CARR: Libramiento de Manzanillo Norte

CLAVE: 06122

RUTA: MEX-200

AÑO: 2020

LUGAR	ESTACION				CLASIFICACION VEHICULAR EN PORCIENTO												COORDENADAS			
	KM	TE	SC	TDPA	M	A	B	C2	C3	T3S2	T3S3	T3S2R4	OTROS	A	B	C	K'	D	LATITUD	LONGITUD
T. C. Armería - Manzanillo (Cuota)	0.00	3	0	15274	6.8	72.7	0.9	5.9	2.1	4.7	1.7	4.4	0.8	79.5	0.9	19.6	0.105	0.549	19.068117	-104.270091
T. C. Minatitlán - Ent. Pez Vela	3.00	3	0	16203	8.7	80.1	1.0	5.8	1.8	1.2	0.5	0.6	0.3	88.8	1.0	10.2	0.123	0.525	19.094120	-104.275731
T. Izq. Manzanillo	6.60	3	0	18765	9.8	82.2	0.5	3.9	1.4	0.9	0.6	0.5	0.2	92.0	0.5	7.5	0.102	0.546	19.109862	-104.306939
T. Der. Chandialbo	12.00	1	1	5551	9.4	81.0	0.9	5.2	1.2	0.9	0.7	0.3	0.4	90.4	0.9	8.7	0.115	0.505	19.138394	-104.341105
T. Der. Chandialbo	12.00	1	2	5657	9.5	81.0	0.8	5.2	1.2	0.9	0.7	0.3	0.4	90.5	0.8	8.7	0.129	0.505	19.138315	-104.341192
T. C. Manzanillo - Puerto Vallarta	19.00	1	0	4941	4.1	79.6	1.8	8.1	2.9	1.6	1.3	0.5	0.1	83.7	1.8	14.5	0.092	0.511	19.126582	-104.398290

9 CARR: Manzanillo - Puerto Vallarta

CLAVE: 00070

RUTA: MEX-200

AÑO: 2020

LUGAR	ESTACION				CLASIFICACION VEHICULAR EN PORCIENTO												COORDENADAS			
	KM	TE	SC	TDPA	M	A	B	C2	C3	T3S2	T3S3	T3S2R4	OTROS	A	B	C	K'	D	LATITUD	LONGITUD
Manzanillo	0.00	3	1	12867	5.2	88.9	0.7	4.2	0.3	0.2	0.1	0.3	0.1	94.1	0.7	5.2	0.089	0.502	19.053964	-104.309103
Manzanillo	0.00	3	2	12770	5.2	88.9	0.7	4.2	0.3	0.2	0.1	0.3	0.1	94.1	0.7	5.2	0.094	0.502	19.054052	-104.309215
T. Der. Minatitlán	4.50	1	1	14497	4.5	89.7	0.4	3.8	0.6	0.2	0.1	0.5	0.2	94.2	0.4	5.4	0.090	0.551	19.074768	-104.284690
T. Der. Minatitlán	4.50	1	2	14198	4.5	89.8	0.4	3.8	0.5	0.3	0.1	0.5	0.1	94.3	0.4	5.3	0.089	0.551	19.074706	-104.284944
Santiago	13.80	1	1	9597	11.7	82.1	0.7	2.7	0.9	0.6	0.4	0.5	0.4	93.8	0.7	5.5	0.102	0.507	19.119629	-104.355211
Santiago	13.80	1	2	9883	11.8	82.2	0.7	2.7	0.8	0.5	0.4	0.5	0.4	94.0	0.7	5.3	0.087	0.507	19.119542	-104.355268
Santiago	13.80	3	1	5465	9.3	82.9	1.0	6.5	0.3	0.0	0.0	0.0	0.0	92.2	1.0	6.8	0.099	0.500	19.119632	-104.355219
Santiago	13.80	3	2	5466	9.4	82.9	0.9	6.5	0.3	0.0	0.0	0.0	0.0	92.3	0.9	6.8	0.088	0.500	19.119547	-104.355273
T. Der. Libramiento de Manzanillo Norte	19.00	3	0	7170	8.8	79.2	1.4	5.6	2.0	1.5	0.7	0.4	0.4	88.0	1.4	10.6	0.085	0.504	19.125321	-104.400657
San Juan de Cuatro Vientos	35.65	3	0	4727	7.7	79.7	1.8	3.0	3.3	1.5	1.6	0.8	0.6	87.4	1.8	10.8	0.097	0.524	19.190207	-104.535562
T. Izq. Aeropuerto Manzanillo	37.35	3	0	4878	4.5	82.3	2.4	3.1	3.0	1.6	1.7	0.9	0.5	86.8	2.4	10.8	0.091	0.501	19.195425	-104.550327
Lim. Edos. Term. Col. Ppia. Jal.	43.44																			
Cihuatlán	44.70	1	0	7304	8.4	79.4	1.8	7.0	1.4	1.2	0.6	0.1	0.1	87.8	1.8	10.4	0.090	0.501	19.235978	-104.565261
Cihuatlán	44.70	3	0	9028	9.0	78.8	1.4	7.8	1.5	1.0	0.4	0.1	0.0	87.8	1.4	10.8	0.085	0.505	19.236001	-104.565248
T. Izq. San Francisco	50.97	3	0	8058	7.7	78.3	2.1	7.6	1.3	1.9	0.8	0.2	0.1	86.0	2.1	11.9	0.081	0.502	19.213555	-104.617096
Melaque	61.00	1	0	14226	9.4	80.3	0.7	6.4	0.6	1.6	0.8	0.1	0.1	89.7	0.7	9.6	0.082	0.501	19.227730	-104.708290

COLIMA

9 CARR: Manzanillo - Puerto Vallarta

CLAVE: 00070

RUTA: MEX-200

AÑO: 2020

LUGAR	ESTACION				CLASIFICACION VEHICULAR EN PORCIENTO										COORDENADAS					
	KM	TE	SC	TDPA	M	A	B	C2	C3	T3S2	T3S3	T3S2R4	OTROS	A	B	C	K'	D	LATITUD	LONGITUD
Melaque	61.00	3	0	6842	8.4	79.7	0.9	7.7	0.8	1.4	0.7	0.2	0.2	88.1	0.9	11.0	0.092	0.500	19.228207	-104.708828
T. Izq. La Manzanilla	75.90	1	0	2776	6.9	81.7	0.7	7.4	0.9	1.3	0.7	0.2	0.2	88.6	0.7	10.7	0.096	0.507	19.292950	-104.779583
T. Izq. La Manzanilla	75.90	3	0	2281	7.0	81.6	0.9	7.0	0.8	1.2	0.9	0.3	0.3	88.6	0.9	10.5	0.096	0.513	19.292954	-104.779584
T. Izq. Boca de Iguanas	78.85	3	0	1912	6.8	77.6	2.0	7.7	2.0	2.2	1.0	0.4	0.3	84.4	2.0	13.6	0.095	0.514	19.311547	-104.796802
T. Izq. Tenacatita	89.60	3	0	2023	6.7	77.8	1.7	8.0	2.0	2.3	0.9	0.4	0.2	84.5	1.7	13.8	0.095	0.511	19.346723	-104.878641
T. Der. Villa Purificación	133.30	1	0	2446	6.5	79.1	1.9	7.0	1.9	2.2	0.8	0.4	0.2	85.6	1.9	12.5	0.090	0.512	19.586665	-105.092509
T. Der. Villa Purificación	133.30	3	0	2747	6.5	79.5	1.6	6.9	1.8	2.2	0.8	0.6	0.1	86.0	1.6	12.4	0.089	0.507	19.586661	-105.092509
T. Der. Tomatlán	177.50	1	0	1802	7.7	75.7	1.4	9.6	2.5	1.6	1.0	0.2	0.3	83.4	1.4	15.2	0.098	0.512	19.875634	-105.335078
T. Der. Tomatlán	177.50	3	0	2201	7.8	75.6	1.5	9.1	2.2	2.3	1.0	0.3	0.2	83.4	1.5	15.1	0.087	0.527	19.875639	-105.335079
T. Izq. El Tuito	231.71	3	0	2617	5.9	82.1	0.8	7.2	1.3	1.4	1.0	0.1	0.2	88.0	0.8	11.2	0.110	0.503	20.316652	-105.317778
Puerto Vallarta	275.84	1	0	9323	3.5	88.2	0.6	5.8	0.3	0.3	1.0	0.1	0.2	91.7	0.6	7.7	0.114	0.509	20.613743	-105.231646

10 CARR: Minatitlán - Ent. Pez Vela

CLAVE: 06015

RUTA: MEX-098

AÑO: 2020

LUGAR	ESTACION				CLASIFICACION VEHICULAR EN PORCIENTO										COORDENADAS					
	KM	TE	SC	TDPA	M	A	B	C2	C3	T3S2	T3S3	T3S2R4	OTROS	A	B	C	K'	D	LATITUD	LONGITUD
Minatitlán	0.00																			
T. Der. Jalipa	49.50	1	0	2354	12.7	76.5	0.3	7.2	1.2	0.7	0.2	1.1	0.1	89.2	0.3	10.5	0.097	0.503	19.125541	-104.263639
T. Der. Jalipa	49.50	3	1	4331	10.6	68.3	0.7	5.1	3.8	4.1	1.1	5.6	0.7	78.9	0.7	20.4	0.108	0.517	19.125540	-104.263641
T. Der. Jalipa	49.50	3	2	4054	10.6	68.5	0.7	5.2	3.7	4.1	1.0	5.6	0.6	79.1	0.7	20.2	0.111	0.517	19.125540	-104.263641
T. C. Manzanillo - Puerto Vallarta	58.50	1	1	10423	10.1	63.0	0.6	4.5	3.3	6.7	3.0	8.2	0.6	73.1	0.6	26.3	0.113	0.507	19.079836	-104.285835
T. C. Manzanillo - Puerto Vallarta	58.50	1	2	10138	10.5	62.6	0.4	4.6	3.1	6.8	3.0	8.3	0.7	73.1	0.4	26.5	0.093	0.507	19.079858	-104.285847

11 CARR: Paso por La Salada

CLAVE: 06121

RUTA: MEX-110

AÑO: 2020

LUGAR	ESTACION				CLASIFICACION VEHICULAR EN PORCIENTO										COORDENADAS					
	KM	TE	SC	TDPA	M	A	B	C2	C3	T3S2	T3S3	T3S2R4	OTROS	A	B	C	K'	D	LATITUD	LONGITUD
La Salada	4.80	3	0	40	8.4	80.6	1.1	9.1	0.4	0.4	0.0	0.0	0.0	89.0	1.1	9.9	0.225	0.509	19.053145	-103.785913
T. C. Ramal a Ixtlahuacán	8.00																			

12 CARR: Paso por Los Asmoles

CLAVE: 06120

RUTA: MEX-110

AÑO: 2020

LUGAR	ESTACION				CLASIFICACION VEHICULAR EN PORCIENTO										COORDENADAS					
	KM	TE	SC	TDPA	M	A	B	C2	C3	T3S2	T3S3	T3S2R4	OTROS	A	B	C	K'	D	LATITUD	LONGITUD
T. C. Colima - Ent. Tecomán	0.00																			

COLIMA

12 CARR: Paso por Los Asmoles

CLAVE: 06120

RUTA: MEX-110

AÑO: 2020

LUGAR	ESTACION				CLASIFICACION VEHICULAR EN PORCIENTO										COORDENADAS					
	KM	TE	SC	TDPA	M	A	B	C2	C3	T3S2	T3S3	T3S2R4	OTROS	A	B	C	K'	D	LATITUD	LONGITUD
Los Asmoles	1.80	3	0	1843	3.7	88.4	0.4	4.3	0.5	1.3	0.4	0.5	0.5	92.1	0.4	7.5	0.078	0.507	19.123184	-103.772395
T. C. Colima - Ent. Tecmán	2.90																			

13 CARR: Ramal a Cerro de Los Juanes

CLAVE: 06009

RUTA: MEX-098

AÑO: 2020

LUGAR	ESTACION				CLASIFICACION VEHICULAR EN PORCIENTO										COORDENADAS					
	KM	TE	SC	TDPA	M	A	B	C2	C3	T3S2	T3S3	T3S2R4	OTROS	A	B	C	K'	D	LATITUD	LONGITUD
T. C. Minatitlán - Ent. Pez Vela	0.00	3	0	692	5.7	70.0	2.3	20.2	1.0	0.6	0.2	0.0	0.0	75.7	2.3	22.0	0.132	0.506	19.378058	-104.079549
Cerro de Los Juanes	3.30																			

14 CARR: Ramal a Cerro de Ortega

CLAVE: 06009

RUTA: MEX-200

AÑO: 2020

LUGAR	ESTACION				CLASIFICACION VEHICULAR EN PORCIENTO										COORDENADAS					
	KM	TE	SC	TDPA	M	A	B	C2	C3	T3S2	T3S3	T3S2R4	OTROS	A	B	C	K'	D	LATITUD	LONGITUD
T. C. Ent. Playa Azul - Manzanillo	0.00	3	0	2830	35.5	53.9	1.5	7.9	0.4	0.3	0.1	0.2	0.2	89.4	1.5	9.1	0.108	0.559	18.755521	-103.723485
Cerro de Ortega	1.00																			

15 CARR: Ramal a Cuyutlán

CLAVE: 06225

RUTA: MEX-200

AÑO: 2020

LUGAR	ESTACION				CLASIFICACION VEHICULAR EN PORCIENTO										COORDENADAS					
	KM	TE	SC	TDPA	M	A	B	C2	C3	T3S2	T3S3	T3S2R4	OTROS	A	B	C	K'	D	LATITUD	LONGITUD
T. C. Ent. Playa Azul - Manzanillo	0.00	3	0	693	12.3	78.3	0.1	8.5	0.4	0.2	0.1	0.0	0.1	90.6	0.1	9.3	0.105	0.511	18.935236	-104.019457
Cuyutlán	7.00	1	0	669	5.1	87.6	0.2	7.0	0.0	0.1	0.0	0.0	0.0	92.7	0.2	7.1	0.108	0.532	18.916997	-104.064521

16 CARR: Tecmán - Boca de Pascuales

CLAVE: 06226

RUTA: MEX-200

AÑO: 2020

LUGAR	ESTACION				CLASIFICACION VEHICULAR EN PORCIENTO										COORDENADAS					
	KM	TE	SC	TDPA	M	A	B	C2	C3	T3S2	T3S3	T3S2R4	OTROS	A	B	C	K'	D	LATITUD	LONGITUD
Tecmán	0.00	3	0	2364	13.1	80.2	0.6	5.2	0.6	0.2	0.1	0.0	0.0	93.3	0.6	6.1	0.237	0.554	18.910096	-103.882502
Boca de Pascuales	12.00																			

COLIMA

17 CARR: Armeria - Manzanillo (Cuota)

CLAVE: 06585

RUTA: MEX-200D

AÑO: 2020

LUGAR	ESTACION				CLASIFICACION VEHICULAR EN PORCIENTO											COORDENADAS				
	KM	TE	SC	TDPA	M	A	B	C2	C3	T3S2	T3S3	T3S2R4	OTROS	A	B	C	K'	D	LATITUD	LONGITUD
T. C. Ent. Playa Azul - Manzanillo	0.00	3	1	7947	3.3	74.2	1.0	4.1	1.4	5.4	1.7	8.5	0.4	77.5	1.0	21.5	0.081	0.504	18.941145	-103.934604
T. C. Ent. Playa Azul - Manzanillo	0.00	3	2	7807	3.5	74.1	1.0	4.1	1.4	5.4	1.6	8.5	0.4	77.6	1.0	21.4	0.094	0.504	18.941057	-103.934480
T. Izq. Playa Paraíso	3.50	3	1	5504	2.9	70.6	1.4	4.2	1.4	6.0	3.9	8.8	0.8	73.5	1.4	25.1	0.076	0.506	18.929413	-103.964425
T. Izq. Playa Paraíso	3.50	3	2	5372	3.0	70.5	1.5	4.2	1.3	5.9	3.9	8.8	0.9	73.5	1.5	25.0	0.085	0.506	18.929278	-103.964401
T. Izq. Cuyutlán	17.58	3	1	4566	4.8	66.6	3.1	2.5	1.6	8.3	2.0	10.3	0.8	71.4	3.1	25.5	0.089	0.501	18.926984	-104.065838
T. Izq. Cuyutlán	17.58	3	2	4551	4.7	66.5	3.1	2.5	1.6	8.3	2.1	10.4	0.8	71.2	3.1	25.7	0.089	0.501	18.926902	-104.065862
Plaza de Cobro Cuyutlán	18.00	2	1	4611	0.0	73.3	1.5	2.0	1.6	5.6	2.6	11.5	1.9	73.3	1.5	25.2	0.096	0.500	18.927852	-104.081512
Plaza de Cobro Cuyutlán	18.00	2	2	4611	0.0	73.3	1.5	2.0	1.6	5.6	2.6	11.5	1.9	73.3	1.5	25.2	0.096	0.500	18.927852	-104.081512
T. C. Ent. Playa Azul - Manzanillo	44.00	1	1	4855	3.3	74.2	1.4	5.2	1.0	7.7	4.4	1.9	0.9	77.5	1.4	21.1	0.078	0.528	19.051189	-104.268321
T. C. Ent. Playa Azul - Manzanillo	44.00	1	2	5441	3.3	74.0	1.4	5.3	1.1	7.6	4.4	2.0	0.9	77.3	1.4	21.3	0.085	0.528	19.051116	-104.268387
T. C. Ent. Playa Azul - Manzanillo	44.00	3	1	5467	3.1	67.1	2.0	4.9	1.4	7.5	2.3	10.9	0.8	70.2	2.0	27.8	0.085	0.526	19.051171	-104.268294
T. C. Ent. Playa Azul - Manzanillo	44.00	3	2	4923	3.0	67.5	1.9	5.0	1.3	7.4	2.3	10.8	0.8	70.5	1.9	27.6	0.091	0.526	19.051061	-104.268347
T. C. Libramiento de Manzanillo (Libre)	46.00																			

18 CARR: Guadalajara - Colima (Cuota)

CLAVE: 00118

RUTA: MEX-054D

AÑO: 2020

LUGAR	ESTACION				CLASIFICACION VEHICULAR EN PORCIENTO											COORDENADAS				
	KM	TE	SC	TDPA	M	A	B	C2	C3	T3S2	T3S3	T3S2R4	OTROS	A	B	C	K'	D	LATITUD	LONGITUD
T. C. Ent. Santa Cruz - Melaque	0.00																			
Plaza de Cobro Acatlán	0.20	2	1	6044	0.4	65.0	2.0	4.8	4.0	8.1	4.2	10.0	1.5	65.4	2.0	32.6	0.084	0.500	20.373443	-103.576317
Plaza de Cobro Acatlán	0.20	2	2	6044	0.4	65.0	2.0	4.8	4.0	8.1	4.2	10.0	1.5	65.4	2.0	32.6	0.084	0.500	20.373443	-103.576317
Plaza de Cobro Acatlán	0.20	3	1	6117	1.1	73.1	4.0	3.9	3.1	5.8	2.4	6.1	0.5	74.2	4.0	21.8	0.093	0.506	20.373451	-103.576462
Plaza de Cobro Acatlán	0.20	3	2	5971	1.1	73.2	4.0	3.9	3.0	5.8	2.4	6.1	0.5	74.3	4.0	21.7	0.120	0.506	20.373456	-103.576218
T. Izq. San Marcos	10.80	1	1	6008	1.1	72.5	4.0	4.0	2.8	6.1	2.7	6.3	0.5	73.6	4.0	22.4	0.099	0.503	20.299102	-103.558224
T. Izq. San Marcos	10.80	1	2	5948	1.0	72.6	4.0	4.0	2.7	6.1	2.7	6.3	0.6	73.6	4.0	22.4	0.125	0.503	20.299186	-103.557858
T. Izq. Teocuitatlán de Corona	36.12	3	1	6294	1.0	72.6	3.8	3.9	2.9	6.1	2.8	6.4	0.5	73.6	3.8	22.6	0.073	0.514	20.131506	-103.507394
T. Izq. Teocuitatlán de Corona	36.12	3	2	6652	1.1	72.6	3.8	3.9	2.9	6.1	2.8	6.3	0.5	73.7	3.8	22.5	0.108	0.514	20.131386	-103.507024
T. Der. Usmajac	67.80	1	1	7490	1.0	70.6	4.3	4.2	3.2	6.1	3.0	6.9	0.7	71.6	4.3	24.1	0.072	0.504	19.875856	-103.515339
T. Der. Usmajac	67.80	1	2	7626	1.1	71.7	3.8	4.4	3.0	5.7	2.8	6.9	0.6	72.8	3.8	23.4	0.120	0.504	19.875791	-103.515380
T. Izq. Cd. Guzmán	86.70	1	1	6877	1.5	72.7	3.9	4.0	3.0	5.1	2.9	6.4	0.5	74.2	3.9	21.9	0.087	0.507	19.702798	-103.498815
T. Izq. Cd. Guzmán	86.70	1	2	7083	1.0	70.1	4.1	4.6	3.3	5.9	3.1	7.4	0.5	71.1	4.1	24.8	0.087	0.507	19.702847	-103.498664
T. Izq. Cd. Guzmán	86.70	3	1	7130	1.3	76.0	2.8	3.5	2.7	4.3	2.5	6.5	0.4	77.3	2.8	19.9	0.078	0.508	19.701335	-103.498220
T. Izq. Cd. Guzmán	86.70	3	2	7348	1.1	74.2	3.4	3.6	2.9	4.8	2.7	6.9	0.4	75.3	3.4	21.3	0.086	0.508	19.701395	-103.498058
T. Izq. Cd. Tuxpan	107.27	1	0	11292	3.5	73.1	0.7	3.4	1.6	8.1	4.1	3.8	1.7	76.6	0.7	22.7	0.067	0.522	19.535382	-103.422761
Plaza de Cobro San Marcos	126.60	2	1	5385	0.3	49.2	1.9	7.9	6.5	14.1	6.9	11.2	2.0	49.5	1.9	48.6	0.084	0.500	19.433745	-103.494491

COLIMA

18 CARR: Guadalajara - Colima (Cuota)

CLAVE: 00118

RUTA: MEX-054D

AÑO: 2020

LUGAR	ESTACION				CLASIFICACION VEHICULAR EN PORCIENTO														COORDENADAS	
	KM	TE	SC	TDPA	M	A	B	C2	C3	T3S2	T3S3	T3S2R4	OTROS	A	B	C	K'	D	LATITUD	LONGITUD
Plaza de Cobro San Marcos	126.60	2	2	5385	0.3	49.2	1.9	7.9	6.5	14.1	6.9	11.2	2.0	49.5	1.9	48.6	0.084	0.500	19.433745	-103.494491
Lim. Edos. Term. Jal. Ppia. Col.	129.50																			
X. C. Cuauhtémoc - Colima	140.70	1	1	7673	1.0	70.8	3.1	6.5	2.5	6.2	2.9	6.6	0.4	71.8	3.1	25.1	0.089	0.511	19.312836	-103.601926
X. C. Cuauhtémoc - Colima	140.70	1	2	7356	1.0	70.6	3.1	6.6	2.6	6.2	2.9	6.6	0.4	71.6	3.1	25.3	0.097	0.511	19.312706	-103.601872
X. C. Cuauhtémoc - Colima	140.70	3	1	8465	2.4	72.1	3.1	9.3	1.8	4.3	2.7	3.8	0.5	74.5	3.1	22.4	0.077	0.504	19.311286	-103.604776
X. C. Cuauhtémoc - Colima	140.70	3	2	8607	2.4	72.3	3.0	9.3	1.8	4.3	2.7	3.7	0.5	74.7	3.0	22.3	0.095	0.504	19.311147	-103.604715
T. Der. Chiapa	146.36	3	1	13432	2.2	71.3	2.4	9.4	1.7	4.8	2.6	5.2	0.4	73.5	2.4	24.1	0.085	0.504	19.290507	-103.652076
T. Der. Chiapa	146.36	3	2	13236	2.2	71.2	2.4	9.4	1.8	4.8	2.6	5.2	0.4	73.4	2.4	24.2	0.087	0.504	19.290399	-103.651975
T. C. Cd. Guzmán - Colima	148.00																			

19 CARR: Armería - Playa El Paraíso

CLAVE: 06580

RUTA: COL

AÑO: 2020

LUGAR	ESTACION				CLASIFICACION VEHICULAR EN PORCIENTO														COORDENADAS	
	KM	TE	SC	TDPA	M	A	B	C2	C3	T3S2	T3S3	T3S2R4	OTROS	A	B	C	K'	D	LATITUD	LONGITUD
T. C. Ent. Playa Azul - Manzanillo	0.00	3	0	2373	14.6	77.0	0.2	6.7	0.9	0.2	0.4	0.0	0.0	91.6	0.2	8.2	0.120	0.523	18.935735	-103.964666
Playa Paraíso	7.50	1	0	1336	13.7	80.3	0.3	5.5	0.2	0.0	0.0	0.0	0.0	94.0	0.3	5.7	0.194	0.506	18.875546	-103.991766

20 CARR: Colima - Comala

CLAVE: 06016

RUTA: COL-016

AÑO: 2020

LUGAR	ESTACION				CLASIFICACION VEHICULAR EN PORCIENTO														COORDENADAS	
	KM	TE	SC	TDPA	M	A	B	C2	C3	T3S2	T3S3	T3S2R4	OTROS	A	B	C	K'	D	LATITUD	LONGITUD
Colima	0.00																			
Villa Álvarez	3.00	3	1	11769	7.4	87.7	1.2	1.8	0.4	0.3	0.4	0.2	0.6	95.1	1.2	3.7	0.106	0.514	19.274240	-103.739699
Villa Álvarez	3.00	3	2	11145	7.4	88.2	1.1	1.7	0.4	0.2	0.3	0.2	0.5	95.6	1.1	3.3	0.096	0.514	19.274181	-103.739867
Comala	10.00																			

21 CARR: Colima - Coquimatlán

CLAVE: 06034

RUTA: COL-034

AÑO: 2020

LUGAR	ESTACION				CLASIFICACION VEHICULAR EN PORCIENTO														COORDENADAS	
	KM	TE	SC	TDPA	M	A	B	C2	C3	T3S2	T3S3	T3S2R4	OTROS	A	B	C	K'	D	LATITUD	LONGITUD
Colima	0.00																			
T. Der. Villa Álvarez	3.00	3	1	10780	8.7	84.5	0.6	4.8	0.5	0.3	0.4	0.1	0.1	93.2	0.6	6.2	0.095	0.507	19.244189	-103.748613
T. Der. Villa Álvarez	3.00	3	2	11077	8.7	84.5	0.5	4.9	0.5	0.3	0.4	0.1	0.1	93.2	0.5	6.3	0.086	0.507	19.244124	-103.748600
Coquimatlán	11.00	1	1	5458	9.9	82.9	0.6	4.6	0.5	0.8	0.5	0.0	0.2	92.8	0.6	6.6	0.098	0.504	19.212808	-103.805552
Coquimatlán	11.00	1	2	5545	9.9	82.8	0.7	4.5	0.6	0.7	0.5	0.0	0.3	92.7	0.7	6.6	0.082	0.504	19.212770	-103.805473

COLIMA

22 CARR: Comala - San Antonio

CLAVE: 06030

RUTA: COL-016

AÑO: 2020

LUGAR	ESTACION				CLASIFICACION VEHICULAR EN PORCIENTO										COORDENADAS					
	KM	TE	SC	TDPA	M	A	B	C2	C3	T3S2	T3S3	T3S2R4	OTROS	A	B	C	K'	D	LATITUD	LONGITUD
Comala	0.00	3	1	1492	0.3	92.6	0.4	6.4	0.1	0.0	0.0	0.0	0.2	92.9	0.4	6.7	0.095	0.526	19.326902	-103.755879
Comala	0.00	3	2	1346	0.1	93.0	0.4	6.4	0.0	0.0	0.0	0.0	0.1	93.1	0.4	6.5	0.102	0.526	19.326906	-103.755880
Suchitlán	10.00	1	0	5232	17.5	76.1	0.6	4.3	0.5	0.5	0.4	0.0	0.1	93.6	0.6	5.8	0.093	0.524	19.377595	-103.716179
San Antonio	20.50																			

23 CARR: Coquimatlán - Pueblo Juárez

CLAVE: 06029

RUTA: COL-034

AÑO: 2020

LUGAR	ESTACION				CLASIFICACION VEHICULAR EN PORCIENTO										COORDENADAS					
	KM	TE	SC	TDPA	M	A	B	C2	C3	T3S2	T3S3	T3S2R4	OTROS	A	B	C	K'	D	LATITUD	LONGITUD
Coquimatlán	0.00	3	0	3317	4.1	83.6	1.3	7.2	1.3	1.8	0.4	0.0	0.3	87.7	1.3	11.0	0.082	0.502	19.198328	-103.811122
Pueblo Juárez	16.00																			

24 CARR: Costera Laguna de Cuyutlán

CLAVE: 06010

RUTA: COL

AÑO: 2020

LUGAR	ESTACION				CLASIFICACION VEHICULAR EN PORCIENTO										COORDENADAS					
	KM	TE	SC	TDPA	M	A	B	C2	C3	T3S2	T3S3	T3S2R4	OTROS	A	B	C	K'	D	LATITUD	LONGITUD
T. C. Armería - Manzanillo (Cuota)	0.00	3	0	427	17.9	68.1	0.9	2.4	1.0	3.2	1.2	5.3	0.0	86.0	0.9	13.1	0.136	0.516	19.006065	-104.265032
Manzanillo	13.00	1	0	1830	19.5	65.3	2.1	5.8	3.9	1.5	0.9	0.5	0.5	84.8	2.1	13.1	0.096	0.506	19.044757	-104.320905

25 CARR: Cuauhtémoc - Colima

CLAVE: 06019

RUTA: COL-019

AÑO: 2020

LUGAR	ESTACION				CLASIFICACION VEHICULAR EN PORCIENTO										COORDENADAS					
	KM	TE	SC	TDPA	M	A	B	C2	C3	T3S2	T3S3	T3S2R4	OTROS	A	B	C	K'	D	LATITUD	LONGITUD
Cuauhtémoc	0.00	3	0	4565	3.6	88.7	0.6	3.1	0.9	2.3	0.6	0.2	0.0	92.3	0.6	7.1	0.096	0.500	19.325258	-103.601688
X. C. Libramiento de Colima	19.50	1	1	11027	8.8	84.7	0.3	4.8	0.2	0.5	0.5	0.0	0.2	93.5	0.3	6.2	0.084	0.505	19.236384	-103.701702
X. C. Libramiento de Colima	19.50	1	2	11244	8.0	85.6	0.3	4.6	0.2	0.5	0.6	0.0	0.2	93.6	0.3	6.1	0.083	0.505	19.236202	-103.701708
Colima	22.40																			

26 CARR: Libramiento de Comala

CLAVE:

RUTA: COL-016

AÑO: 2020

LUGAR	ESTACION				CLASIFICACION VEHICULAR EN PORCIENTO										COORDENADAS					
	KM	TE	SC	TDPA	M	A	B	C2	C3	T3S2	T3S3	T3S2R4	OTROS	A	B	C	K'	D	LATITUD	LONGITUD
T. C. Colima - Comala	0.00	3	0	4322	5.5	85.1	0.6	3.7	0.7	2.5	0.7	0.5	0.7	90.6	0.6	8.8	0.124	0.509	19.290758	-103.747780
T. C. Comala - San Antonio	7.10	1	0	2576	4.6	88.0	0.2	4.1	0.6	1.9	0.3	0.1	0.2	92.6	0.2	7.2	0.138	0.511	19.343645	-103.741091

COLIMA

27 CARR: Libramiento de Tecmán

CLAVE: 06122

RUTA: COL

AÑO: 2020

LUGAR	ESTACION				CLASIFICACION VEHICULAR EN PORCIENTO													COORDENADAS		
	KM	TE	SC	TDPA	M	A	B	C2	C3	T3S2	T3S3	T3S2R4	OTROS	A	B	C	K'	D	LATITUD	LONGITUD
T. C. Ent. Playa Azul - Manzanillo (Sur)	0.00	3	1	2260	9.8	68.1	1.2	8.4	3.3	4.0	3.7	0.7	0.8	77.9	1.2	20.9	0.117	0.509	18.897844	-103.859147
T. C. Ent. Playa Azul - Manzanillo (Sur)	0.00	3	2	2183	9.8	68.2	1.3	8.5	3.3	3.8	3.5	0.8	0.8	78.0	1.3	20.7	0.115	0.509	18.897911	-103.859281
T. C. Ent. Playa Azul - Manzanillo (Norte)	7.90	1	1	2747	8.0	75.8	0.9	6.4	2.2	2.7	2.7	0.5	0.8	83.8	0.9	15.3	0.094	0.521	18.940260	-103.894373
T. C. Ent. Playa Azul - Manzanillo (Norte)	7.90	1	2	2992	7.8	75.9	1.0	6.4	2.4	2.7	2.6	0.5	0.7	83.7	1.0	15.3	0.097	0.521	18.940148	-103.894313

28 CARR: Libramiento Poniente Arco Sur de Tecmán

CLAVE:

RUTA: COL

AÑO: 2020

LUGAR	ESTACION				CLASIFICACION VEHICULAR EN PORCIENTO													COORDENADAS		
	KM	TE	SC	TDPA	M	A	B	C2	C3	T3S2	T3S3	T3S2R4	OTROS	A	B	C	K'	D	LATITUD	LONGITUD
Ent. C. Playa Azul - Manzanillo	0.00	3	0	3045	8.0	78.7	1.7	3.2	2.9	3.1	1.4	0.7	0.3	86.7	1.7	11.6	0.093	0.523	18.940060	-103.894994
X. C. Tecmán - Boca de Pascuales	4.60	3	0	2936	8.4	70.5	1.9	8.4	3.2	4.9	1.8	0.5	0.4	78.9	1.9	19.2	0.078	0.503	18.903328	-103.905920
X. C. Tecmán - La Mascota	6.90	3	0	2562	9.1	66.0	2.5	9.2	4.8	4.8	2.3	0.9	0.4	75.1	2.5	22.4	0.085	0.525	18.890940	-103.891124
Ent. C. Playa Azul - Manzanillo	11.17																			

29 CARR: Libramiento Poniente de Colima

CLAVE: 06122

RUTA: COL

AÑO: 2020

LUGAR	ESTACION				CLASIFICACION VEHICULAR EN PORCIENTO													COORDENADAS		
	KM	TE	SC	TDPA	M	A	B	C2	C3	T3S2	T3S3	T3S2R4	OTROS	A	B	C	K'	D	LATITUD	LONGITUD
T. C. Colima - Ent. Tecmán	0.00	3	1	9289	3.7	87.1	0.4	5.6	1.1	0.6	0.5	0.7	0.3	90.8	0.4	8.8	0.103	0.506	19.213485	-103.739567
T. C. Colima - Ent. Tecmán	0.00	3	2	9073	3.7	87.2	0.3	5.8	1.1	0.5	0.5	0.6	0.3	90.9	0.3	8.8	0.079	0.506	19.213301	-103.739742
T. C. Colima - Coquimatlán	6.00																			

30 CARR: Los Limones - Loma de Juárez

CLAVE: 06122

RUTA: COL

AÑO: 2020

LUGAR	ESTACION				CLASIFICACION VEHICULAR EN PORCIENTO													COORDENADAS		
	KM	TE	SC	TDPA	M	A	B	C2	C3	T3S2	T3S3	T3S2R4	OTROS	A	B	C	K'	D	LATITUD	LONGITUD
Los Limones	0.00																			
T. C. Colima - Ent. Tecmán	5.77	1	0	1739	3.7	85.6	0.8	7.4	0.9	0.6	0.7	0.3	0.0	89.3	0.8	9.9	0.108	0.514	19.189103	-103.751069

31 CARR: Puerta de Caleras - Madrid

CLAVE: 06014

RUTA: COL-014

AÑO: 2020

LUGAR	ESTACION				CLASIFICACION VEHICULAR EN PORCIENTO													COORDENADAS		
	KM	TE	SC	TDPA	M	A	B	C2	C3	T3S2	T3S3	T3S2R4	OTROS	A	B	C	K'	D	LATITUD	LONGITUD
T. C. Colima - Ent. Tecmán	0.00	3	0	2386	8.4	74.8	1.6	7.4	3.1	2.2	2.3	0.1	0.1	83.2	1.6	15.2	0.099	0.512	18.977766	-103.858554
Madrid	14.00																			

COLIMA

32 CARR: Quesería - El Naranjal

CLAVE: 06001

RUTA: COL-001

AÑO: 2020

LUGAR	ESTACION				CLASIFICACION VEHICULAR EN PORCIENTO														COORDENADAS	
	KM	TE	SC	TDPA	M	A	B	C2	C3	T3S2	T3S3	T3S2R4	OTROS	A	B	C	K'	D	LATITUD	LONGITUD
Quesería	0.00	3	0	1254	5.0	67.1	2.2	11.0	13.3	0.9	0.5	0.0	0.0	72.1	2.2	25.7	0.096	0.506	19.388271	-103.578035
El Naranjal	10.00	1	0	746	14.3	74.5	1.4	4.9	3.4	1.4	0.0	0.1	0.0	88.8	1.4	9.8	0.208	0.522	19.412076	-103.655207

33 CARR: Ramal a Aeropuerto de Colima

CLAVE: 06224

RUTA: COL

AÑO: 2020

LUGAR	ESTACION				CLASIFICACION VEHICULAR EN PORCIENTO														COORDENADAS	
	KM	TE	SC	TDPA	M	A	B	C2	C3	T3S2	T3S3	T3S2R4	OTROS	A	B	C	K'	D	LATITUD	LONGITUD
T. C. Cuauhtémoc - Colima	0.00	3	0	1132	1.2	91.5	0.6	6.2	0.3	0.0	0.0	0.1	0.1	92.7	0.6	6.7	0.096	0.501	19.293108	-103.595802
Aeropuerto de Colima	1.00																			

34 CARR: Ramal a Aeropuerto Manzanillo

CLAVE: 06582

RUTA: COL

AÑO: 2020

LUGAR	ESTACION				CLASIFICACION VEHICULAR EN PORCIENTO														COORDENADAS	
	KM	TE	SC	TDPA	M	A	B	C2	C3	T3S2	T3S3	T3S2R4	OTROS	A	B	C	K'	D	LATITUD	LONGITUD
T. C. Manzanillo - Puerto Vallarta	0.00	3	0	851	11.3	78.2	0.3	9.2	0.4	0.4	0.1	0.1	0.0	89.5	0.3	10.2	0.127	0.524	19.190689	-104.550547
Aeropuerto Manzanillo	5.50	1	0	789	4.9	89.9	0.4	4.1	0.1	0.2	0.2	0.2	0.0	94.8	0.4	4.8	0.110	0.504	19.149779	-104.560723

35 CARR: Ramal a Camotlán de Miraflores

CLAVE: 06009

RUTA: COL

AÑO: 2020

LUGAR	ESTACION				CLASIFICACION VEHICULAR EN PORCIENTO														COORDENADAS	
	KM	TE	SC	TDPA	M	A	B	C2	C3	T3S2	T3S3	T3S2R4	OTROS	A	B	C	K'	D	LATITUD	LONGITUD
T. C. Minatitlán - Ent. Pez Vela	0.00	3	0	2076	19.5	71.0	0.3	8.6	0.1	0.2	0.2	0.0	0.1	90.5	0.3	9.2	0.092	0.501	19.215920	-104.232769
Camotlán de Miraflores	1.00																			

36 CARR: Ramal a Ixtlahuacán

CLAVE: 06577

RUTA: COL-005

AÑO: 2020

LUGAR	ESTACION				CLASIFICACION VEHICULAR EN PORCIENTO														COORDENADAS	
	KM	TE	SC	TDPA	M	A	B	C2	C3	T3S2	T3S3	T3S2R4	OTROS	A	B	C	K'	D	LATITUD	LONGITUD
T. C. Colima - Ent. Tecomán	0.00	3	0	692	4.1	80.8	1.0	8.2	2.6	0.9	2.3	0.1	0.0	84.9	1.0	14.1	0.098	0.520	19.026425	-103.793453
Ixtlahuacán	8.50																			

COLIMA

37 CARR: Ramal a Las Brisas

CLAVE: 06571

RUTA: COL

AÑO: 2020

LUGAR	ESTACION				CLASIFICACION VEHICULAR EN PORCIENTO										COORDENADAS					
	KM	TE	SC	TDPA	M	A	B	C2	C3	T3S2	T3S3	T3S2R4	OTROS	A	B	C	K'	D	LATITUD	LONGITUD
T. C. Manzanillo - Puerto Vallarta (Central)	0.00	3	0	5149	11.0	85.0	0.1	3.7	0.1	0.1	0.0	0.0	0.0	96.0	0.1	3.9	0.078	0.654	19.076373	-104.304390
T. C. Manzanillo - Puerto Vallarta (Lateral)	0.00	3	1	6843	7.7	88.0	0.1	3.7	0.2	0.2	0.1	0.0	0.0	95.7	0.1	4.2	0.085	0.644	19.076351	-104.304478
T. C. Manzanillo - Puerto Vallarta (Lateral)	0.00	3	2	3775	7.6	88.0	0.1	3.6	0.3	0.3	0.1	0.0	0.0	95.6	0.1	4.3	0.081	0.644	19.076384	-104.304306
Las Brisas	2.30																			

38 CARR: Ramal a Los Tepames

CLAVE: 06004

RUTA: COL-004

AÑO: 2020

LUGAR	ESTACION				CLASIFICACION VEHICULAR EN PORCIENTO										COORDENADAS					
	KM	TE	SC	TDPA	M	A	B	C2	C3	T3S2	T3S3	T3S2R4	OTROS	A	B	C	K'	D	LATITUD	LONGITUD
T. C. Jiquilpan - Colima	0.00	3	0	1378	4.0	84.4	0.9	8.1	0.8	1.4	0.4	0.0	0.0	88.4	0.9	10.7	0.083	0.502	19.173153	-103.661057
Los Tepames	9.50																			

39 CARR: Ramal a Rancho Valle Nuevo

CLAVE: 06583

RUTA: COL

AÑO: 2020

LUGAR	ESTACION				CLASIFICACION VEHICULAR EN PORCIENTO										COORDENADAS					
	KM	TE	SC	TDPA	M	A	B	C2	C3	T3S2	T3S3	T3S2R4	OTROS	A	B	C	K'	D	LATITUD	LONGITUD
T. C. Ent. Playa Azul - Manzanillo	0.00	3	0	598	8.7	74.8	0.9	13.5	1.3	0.6	0.1	0.1	0.0	83.5	0.9	15.6	0.125	0.529	18.818812	-103.808504
Rancho Valle Nuevo	4.00																			

40 CARR: Ramal a Rincón de López

CLAVE: 06578

RUTA: COL

AÑO: 2020

LUGAR	ESTACION				CLASIFICACION VEHICULAR EN PORCIENTO										COORDENADAS					
	KM	TE	SC	TDPA	M	A	B	C2	C3	T3S2	T3S3	T3S2R4	OTROS	A	B	C	K'	D	LATITUD	LONGITUD
T. C. Ent. Playa Azul - Manzanillo	0.00	3	0	4089	12.0	77.7	0.8	7.7	0.9	0.3	0.3	0.2	0.1	89.7	0.8	9.5	0.094	0.519	18.950192	-103.946811
Rincón de López	14.00																			

41 CARR: Ramal a Tecuanillo

CLAVE: 06009

RUTA: COL-009

AÑO: 2020

LUGAR	ESTACION				CLASIFICACION VEHICULAR EN PORCIENTO										COORDENADAS					
	KM	TE	SC	TDPA	M	A	B	C2	C3	T3S2	T3S3	T3S2R4	OTROS	A	B	C	K'	D	LATITUD	LONGITUD
T. C. Ent. Playa Azul - Manzanillo	0.00	3	0	1846	10.9	70.8	1.4	13.3	0.7	2.2	0.2	0.2	0.3	81.7	1.4	16.9	0.108	0.526	18.890915	-103.854991
Tecuanillo	10.00																			

COLIMA

42 CARR: Tecomán - La Mascota

CLAVE: 06572

RUTA: COL

AÑO: 2020

LUGAR	ESTACION				CLASIFICACION VEHICULAR EN PORCIENTO													COORDENADAS		
	KM	TE	SC	TDPA	M	A	B	C2	C3	T3S2	T3S3	T3S2R4	OTROS	A	B	C	K'	D	LATITUD	LONGITUD
Tecomán	0.00	3	0	2316	10.9	69.8	1.8	9.0	2.1	3.2	1.1	1.0	1.1	80.7	1.8	17.5	0.107	0.523	18.907247	-103.877268
X. Libramiento Poniente Arco Sur de Tecomán	2.70	3	0	1692	15.7	71.6	1.0	9.3	0.9	1.5	0.0	0.0	0.0	87.3	1.0	11.7	0.121	0.534	18.890348	-103.891388
La Mascota	11.00																			

43 CARR: Trapichillos - Estación Alzada

CLAVE: 06003

RUTA: COL-003

AÑO: 2020

LUGAR	ESTACION				CLASIFICACION VEHICULAR EN PORCIENTO													COORDENADAS		
	KM	TE	SC	TDPA	M	A	B	C2	C3	T3S2	T3S3	T3S2R4	OTROS	A	B	C	K'	D	LATITUD	LONGITUD
T. C. Jiquilpan - Colima	0.00	3	0	379	14.1	61.5	1.8	8.6	7.9	3.3	1.7	0.9	0.2	75.6	1.8	22.6	0.106	0.507	19.160351	-103.524560
Estación Alzada	12.50	1	0	464	13.0	55.7	1.8	13.0	10.7	3.1	1.7	0.9	0.1	68.7	1.8	29.5	0.103	0.508	19.253006	-103.529179

44 CARR: Villa de Álvarez - Minatitlán

CLAVE: 06040

RUTA: COL

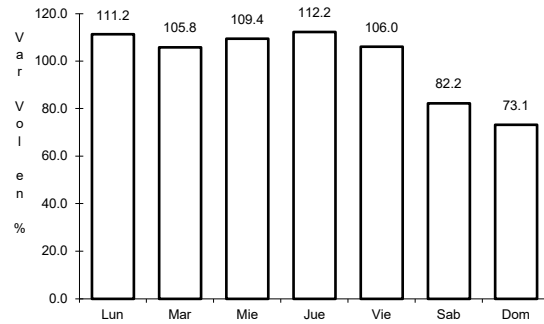
AÑO: 2020

LUGAR	ESTACION				CLASIFICACION VEHICULAR EN PORCIENTO													COORDENADAS		
	KM	TE	SC	TDPA	M	A	B	C2	C3	T3S2	T3S3	T3S2R4	OTROS	A	B	C	K'	D	LATITUD	LONGITUD
T. C. Colima - Comala	0.00	3	0	12145	3.0	81.6	1.2	7.5	2.1	1.6	1.0	1.2	0.8	84.6	1.2	14.2	0.091	0.515	19.266324	-103.739278
T. C. Minatitlán - Ent. Pez Vela	55.00																			

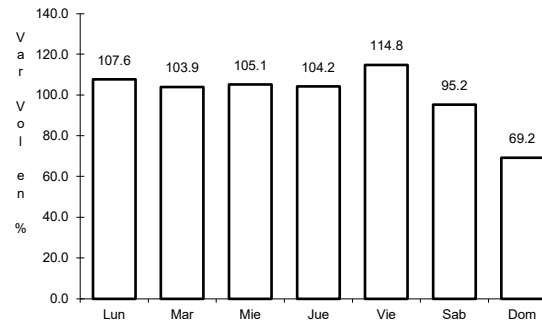
1 CARR: Cd. Guzmán - Colima

CLAVE: 00117

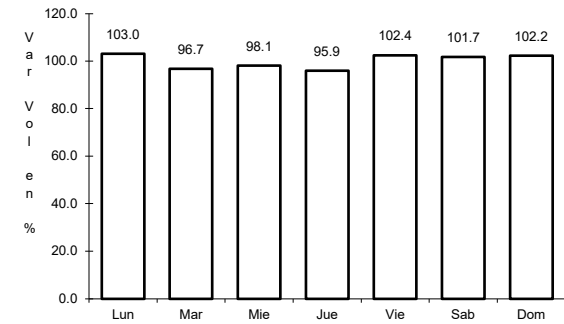
ruta: MEX-054



Km: 0.00 Tipo: 3 Sent: 1



Km: 0.00 Tipo: 3 Sent: 2

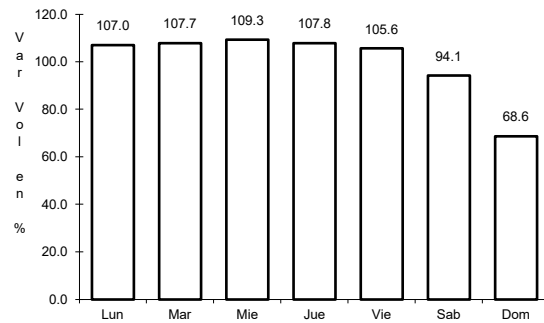


Km: 58.35 Tipo: 1 Sent: 0

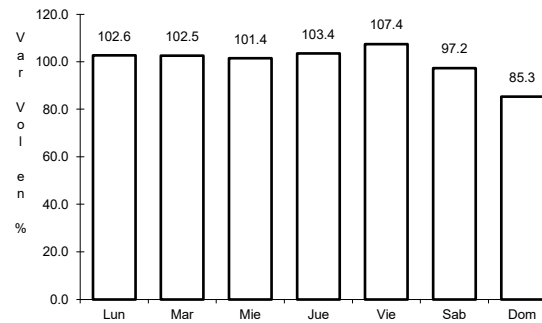
2 CARR: Colima - Ent. Tecomán

CLAVE: 06119

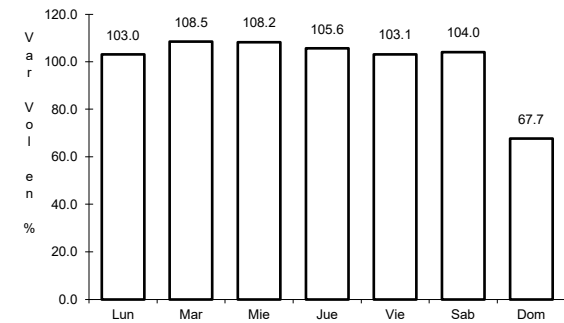
ruta: MEX-110



Km: 0.00 Tipo: 3 Sent: 1



Km: 0.00 Tipo: 3 Sent: 2

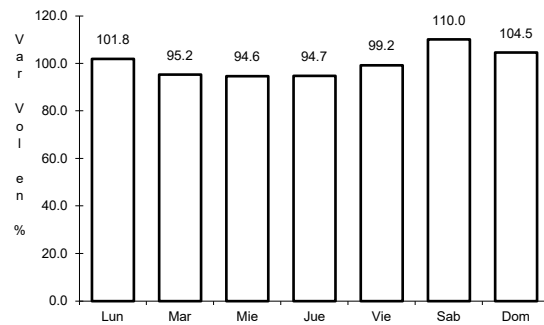


Km: 40.10 Tipo: 1 Sent: 1

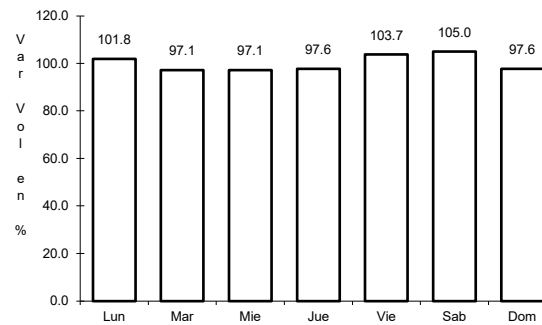
3 CARR: Ent. Playa Azul - Manzanillo

CLAVE: 00495

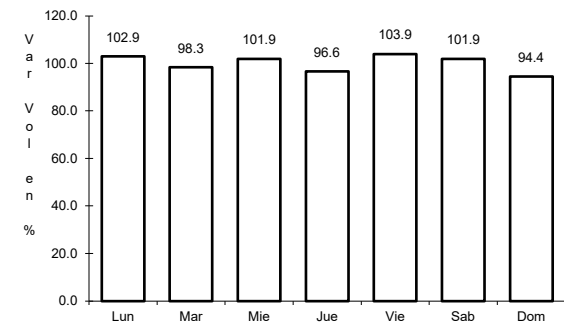
ruta: MEX-200



Km: 0.00 Tipo: 3 Sent: 0



Km: 190.10 Tipo: 3 Sent: 0

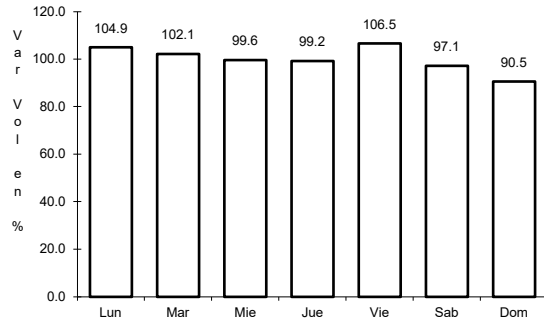


Km: 321.12 Tipo: 1 Sent: 0

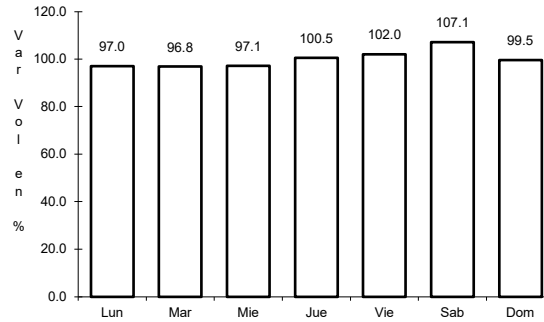
4 CARR: Jiquilpan - Colima

CLAVE: 00156

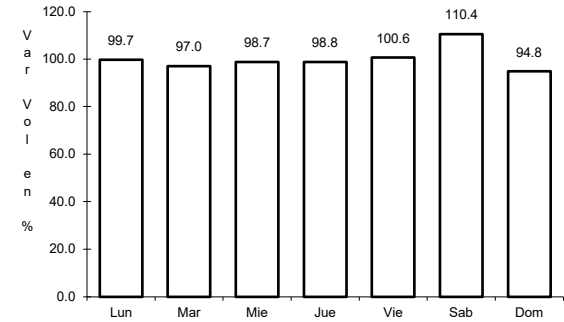
RUTA: MEX-110



Km: 0.00 Tipo: 3 Sent: 0



Km: 108.50 Tipo: 1 Sent: 0

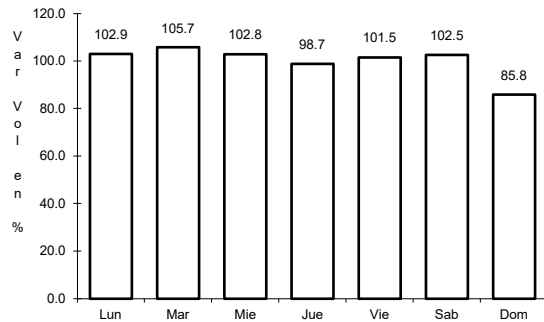


Km: 220.00 Tipo: 1 Sent: 0

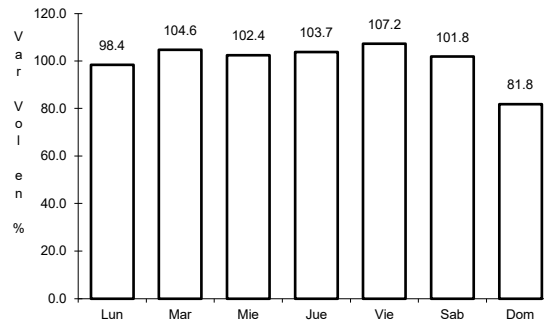
5 CARR: Libramiento Campos - Alameda

CLAVE:

RUTA: MEX



Km: 0.00 Tipo: 3 Sent: 0

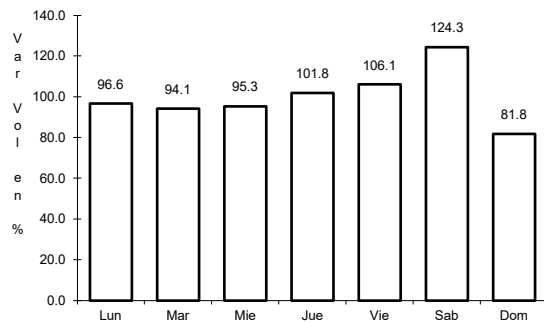


Km: 5.00 Tipo: 1 Sent: 0

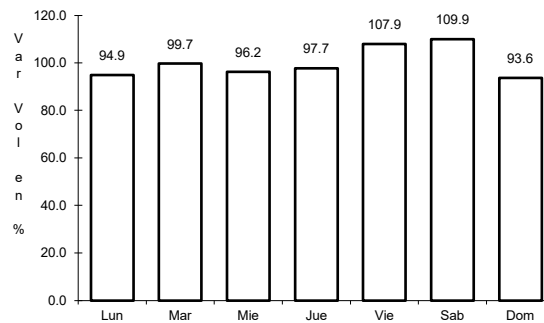
6 CARR: Libramiento de Colima

CLAVE: 06573

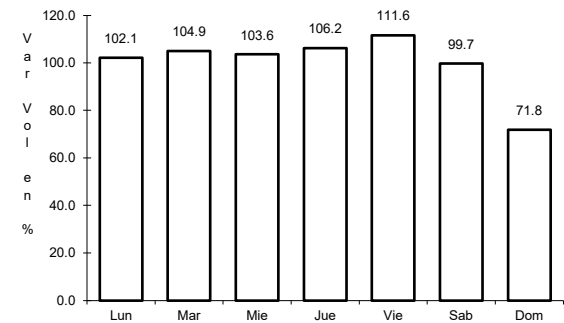
RUTA: MEX-054



Km: 0.00 Tipo: 3 Sent: 1



Km: 0.00 Tipo: 3 Sent: 2

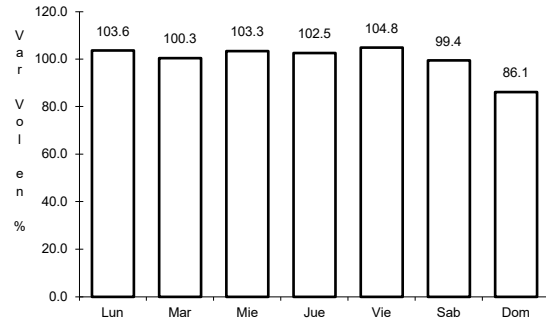


Km: 9.00 Tipo: 1 Sent: 1

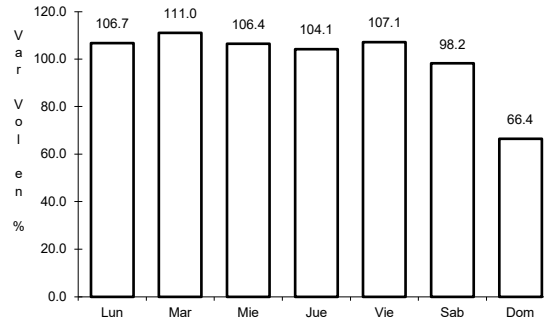
7 CARR: Libramiento de Manzanillo (Libre)

CLAVE: 06574

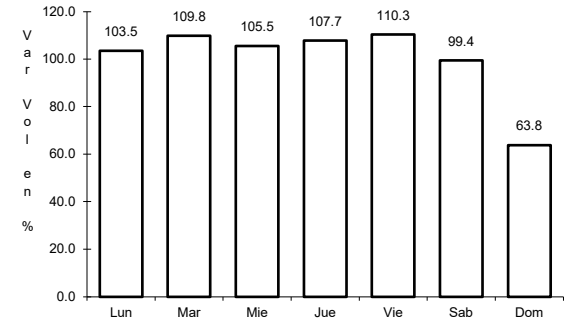
RUTA: MEX-200



Km: 0.00 Tipo: 3 Sent: 0



Km: 6.30 Tipo: 1 Sent: 1

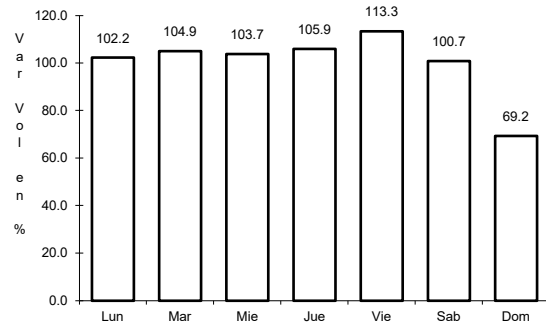


Km: 6.30 Tipo: 1 Sent: 2

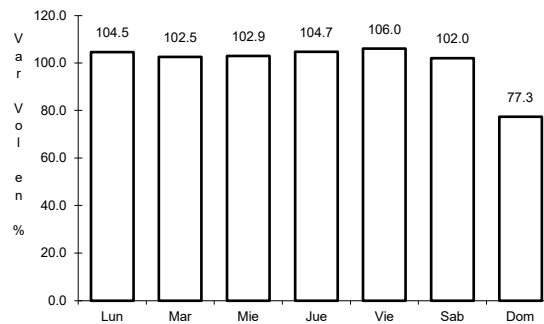
8 CARR: Libramiento de Manzanillo Norte

CLAVE: 06122

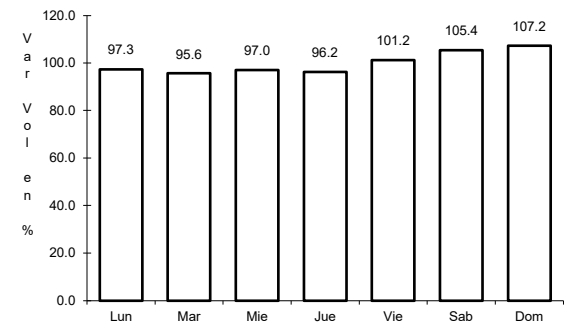
RUTA: MEX-200



Km: 0.00 Tipo: 3 Sent: 0



Km: 6.60 Tipo: 3 Sent: 0

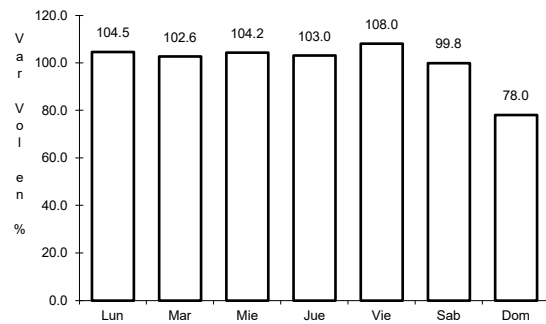


Km: 19.00 Tipo: 1 Sent: 0

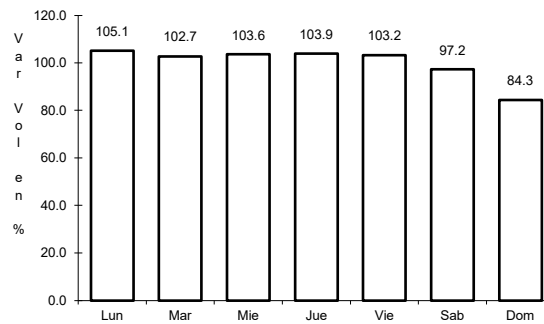
9 CARR: Manzanillo - Puerto Vallarta

CLAVE: 00070

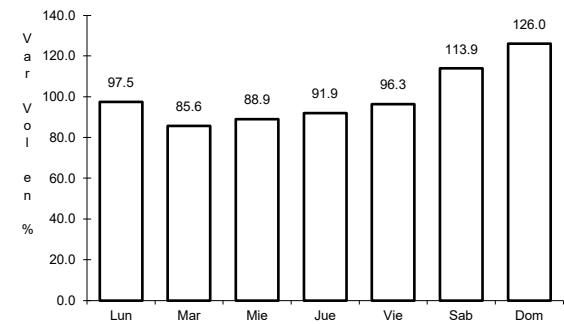
RUTA: MEX-200



Km: 0.00 Tipo: 3 Sent: 1



Km: 0.00 Tipo: 3 Sent: 2

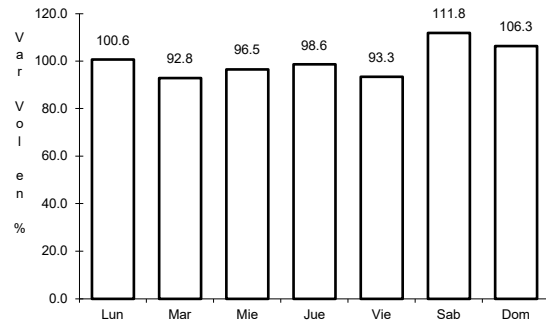


Km: 275.84 Tipo: 1 Sent: 0

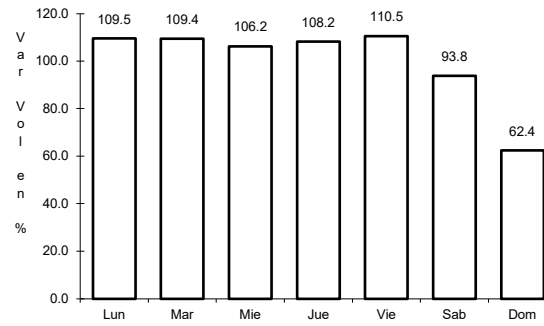
10 CARR: Minatitlán - Ent. Pez Vela

CLAVE: 06015

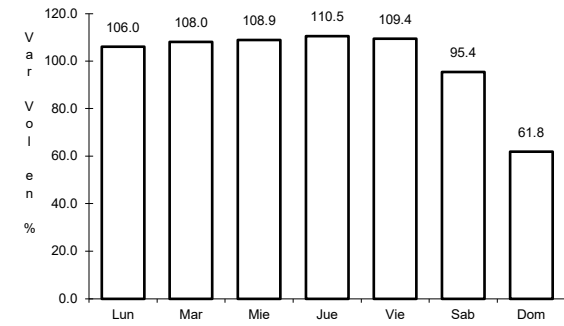
ruta: MEX-098



Km: 49.50 Tipo: 1 Sent: 0



Km: 58.50 Tipo: 1 Sent: 1

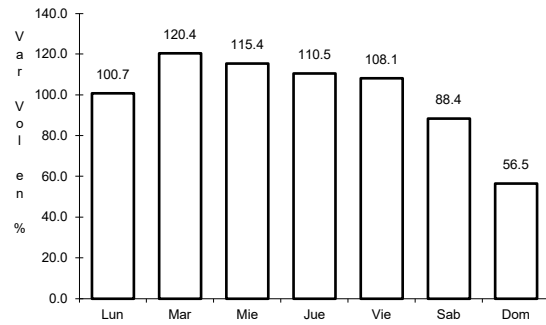


Km: 58.50 Tipo: 1 Sent: 2

11 CARR: Paso por La Salada

CLAVE: 06121

ruta: MEX-110

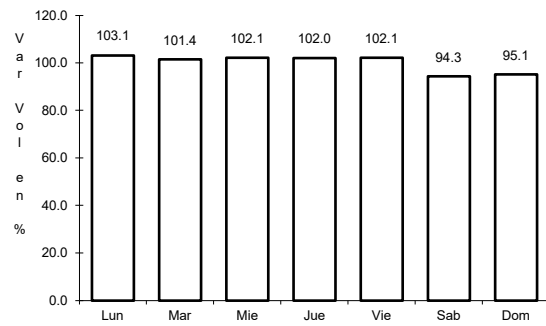


Km: 4.80 Tipo: 3 Sent: 0

12 CARR: Paso por Los Asmoles

CLAVE: 06120

ruta: MEX-110

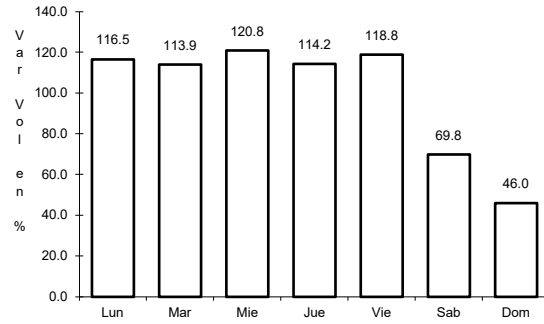


Km: 1.80 Tipo: 3 Sent: 0

13 CARR: Ramal a Cerro de Los Juanes

CLAVE: 06009

RUTA: MEX-098



Km: 0.00

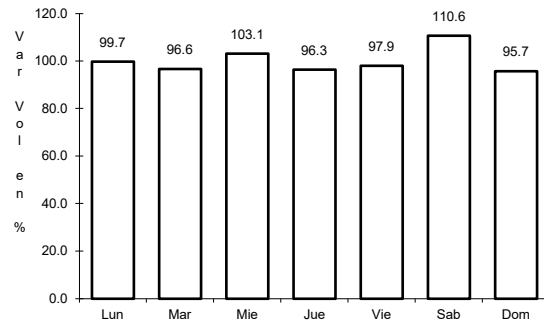
Tipo: 3

Sent: 0

14 CARR: Ramal a Cerro de Ortega

CLAVE: 06009

RUTA: MEX-200



Km: 0.00

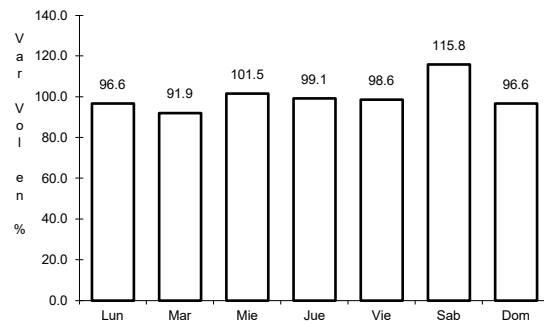
Tipo: 3

Sent: 0

15 CARR: Ramal a Cuyutlán

CLAVE: 06225

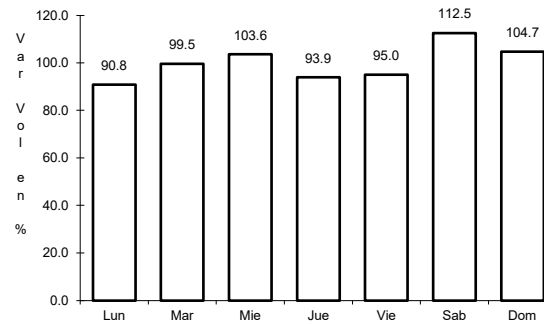
RUTA: MEX-200



Km: 0.00

Tipo: 3

Sent: 0



Km: 7.00

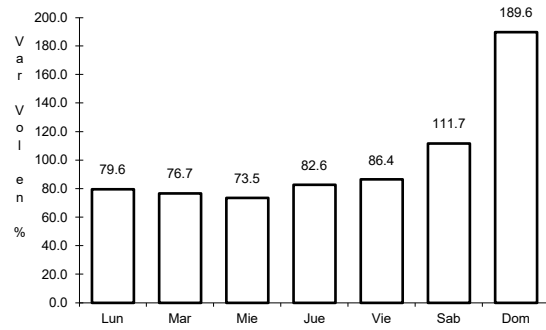
Tipo: 1

Sent: 0

16 CARR: Tecomán - Boca de Pascuales

CLAVE: 06226

ruta: MEX-200



Km: 0.00

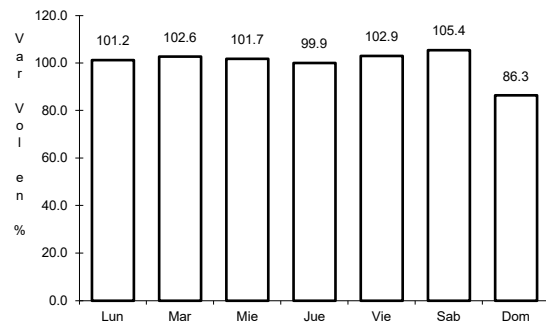
Tipo: 3

Sent: 0

17 CARR: Armería - Manzanillo (Cuota)

CLAVE: 06585

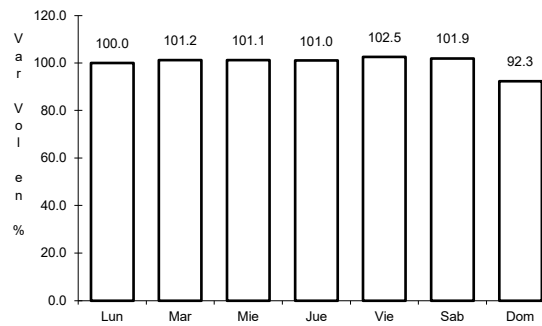
ruta: MEX-200D



Km: 0.00

Tipo: 3

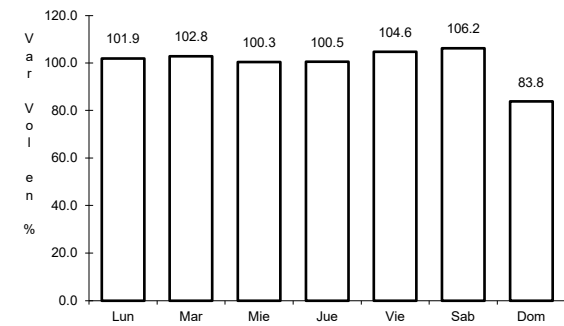
Sent: 1



Km: 0.00

Tipo: 3

Sent: 2



Km: 44.00

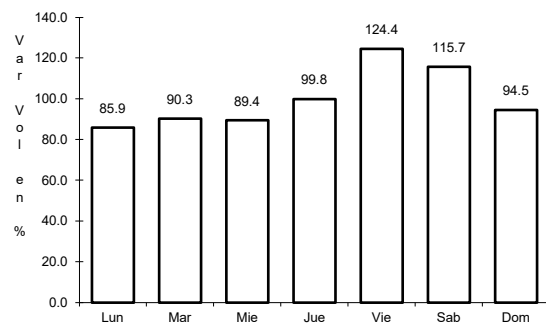
Tipo: 3

Sent: 1

18 CARR: Guadalajara - Colima (Cuota)

CLAVE: 00118

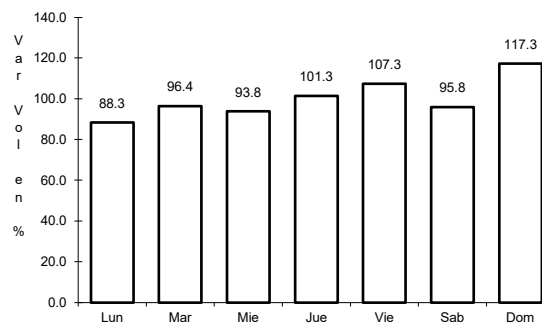
ruta: MEX-054D



Km: 0.20

Tipo: 3

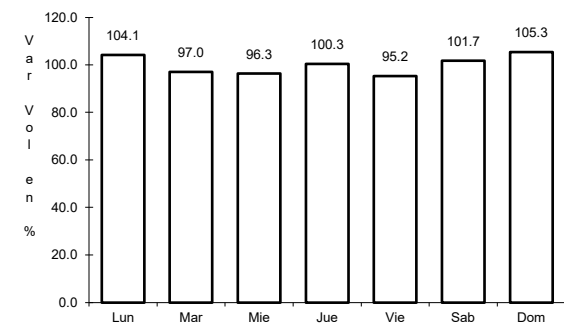
Sent: 1



Km: 0.20

Tipo: 3

Sent: 2



Km: 107.27

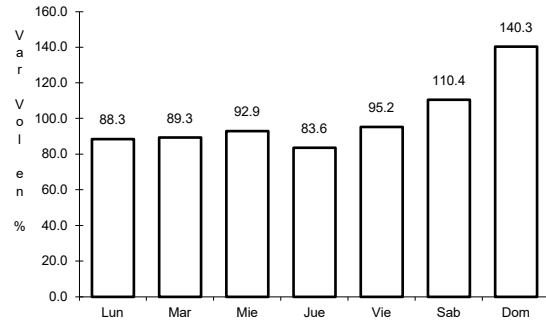
Tipo: 1

Sent: 0

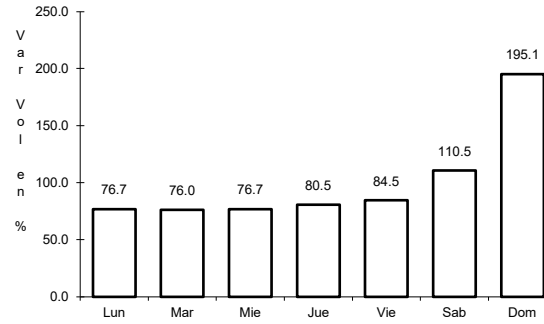
19 CARR: Armería - Playa El Paraíso

CLAVE: 06580

RUTA: COL



Km: 0.00 Tipo: 3 Sent: 0

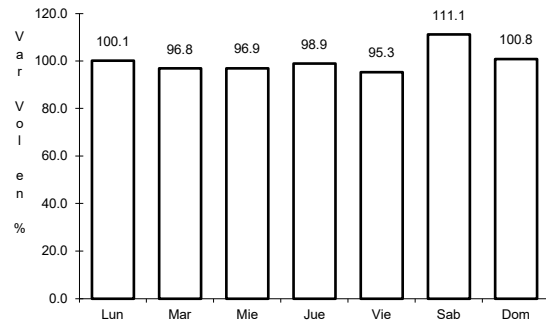


Km: 7.50 Tipo: 1 Sent: 0

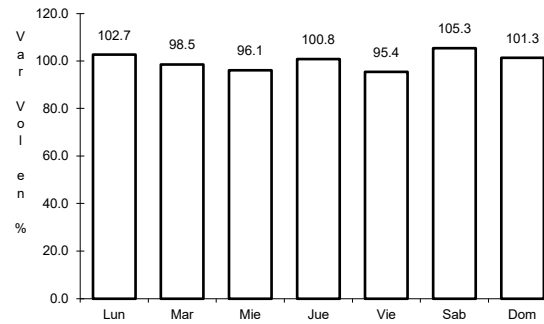
20 CARR: Colima - Comala

CLAVE: 06016

RUTA: COL-016



Km: 3.00 Tipo: 3 Sent: 1

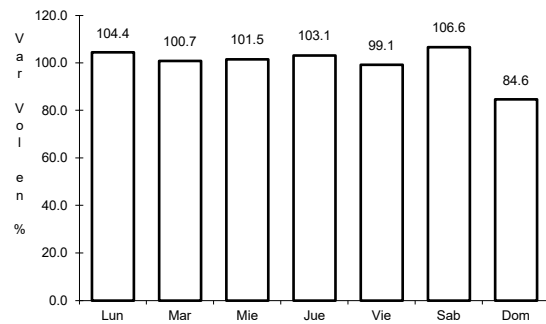


Km: 3.00 Tipo: 3 Sent: 2

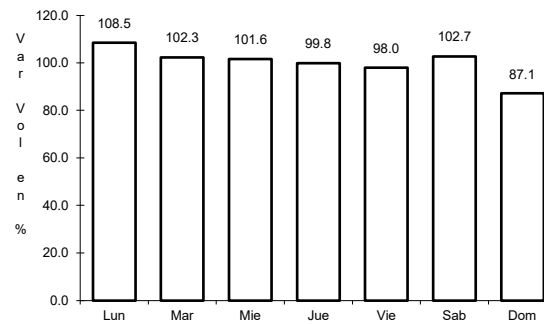
21 CARR: Colima - Coquimatlán

CLAVE: 06034

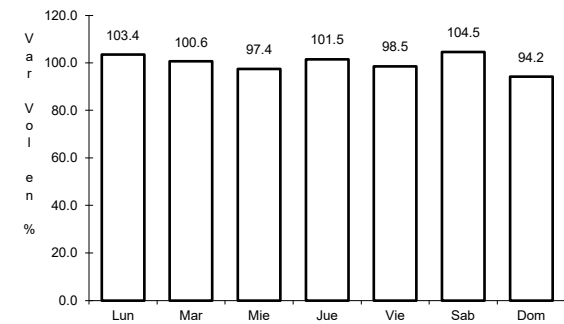
RUTA: COL-034



Km: 3.00 Tipo: 3 Sent: 1



Km: 3.00 Tipo: 3 Sent: 2

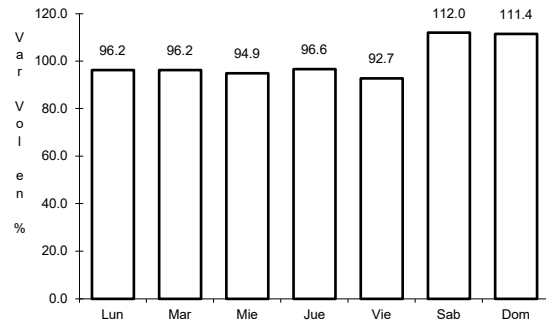


Km: 11.00 Tipo: 1 Sent: 1

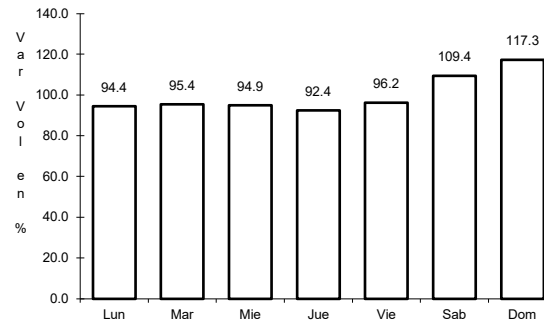
22 CARR: Comala - San Antonio

CLAVE: 06030

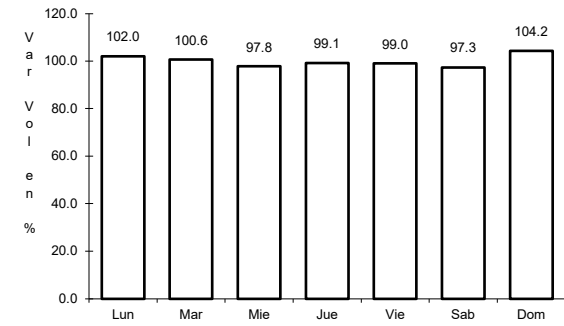
RUTA: COL-016



Km: 0.00 Tipo: 3 Sent: 1



Km: 0.00 Tipo: 3 Sent: 2

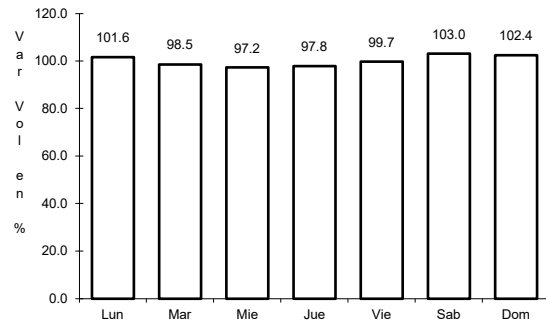


Km: 10.00 Tipo: 1 Sent: 0

23 CARR: Coquimatlán - Pueblo Juárez

CLAVE: 06029

RUTA: COL-034

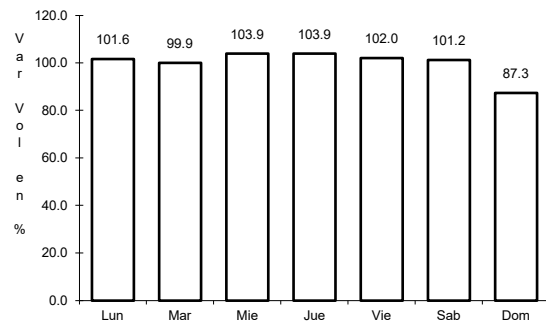


Km: 0.00 Tipo: 3 Sent: 0

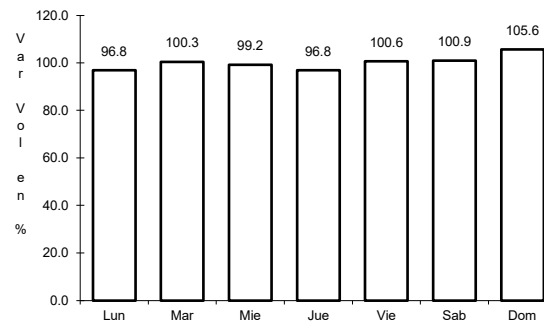
24 CARR: Costera Laguna de Cuyutlán

CLAVE: 06010

RUTA: COL



Km: 0.00 Tipo: 3 Sent: 0

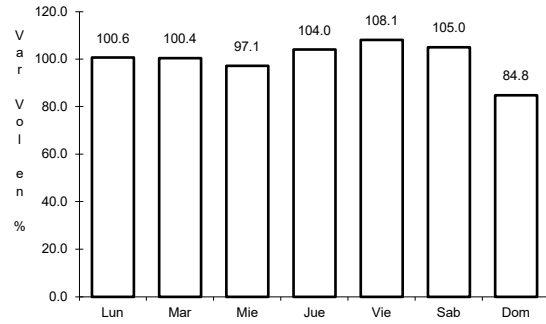


Km: 13.00 Tipo: 1 Sent: 0

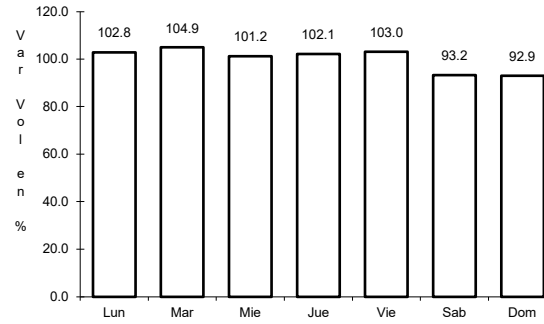
25 CARR: Cuauhtémoc - Colima

CLAVE: 06019

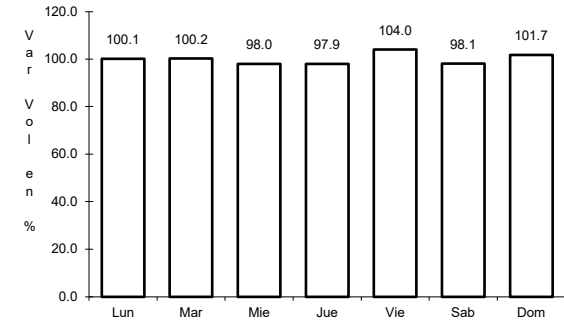
ruta: COL-019



Km: 0.00 Tipo: 3 Sent: 0



Km: 19.50 Tipo: 1 Sent: 1

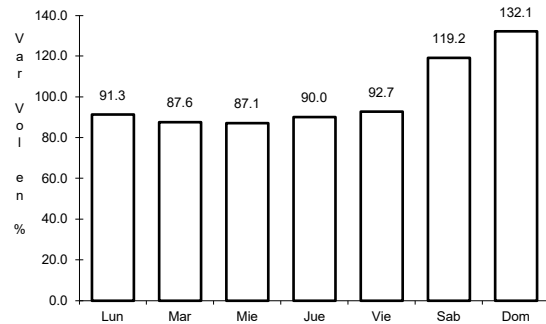


Km: 19.50 Tipo: 1 Sent: 2

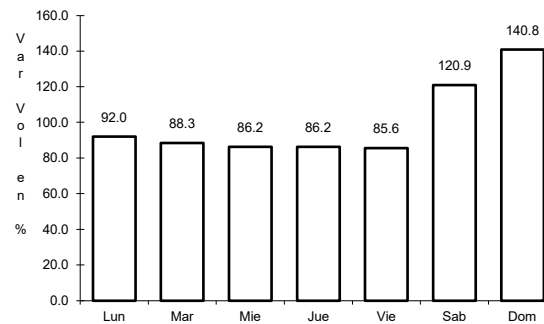
26 CARR: Libramiento de Comala

CLAVE:

ruta: COL-016



Km: 0.00 Tipo: 3 Sent: 0

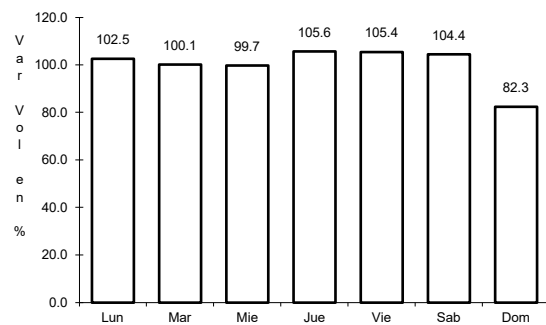


Km: 7.10 Tipo: 1 Sent: 0

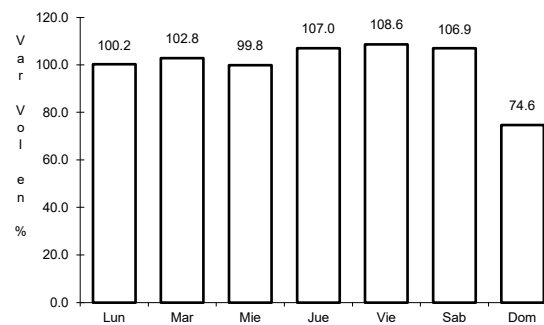
27 CARR: Libramiento de Tecomán

CLAVE: 06122

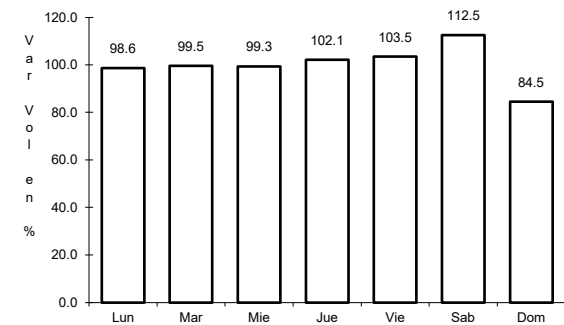
ruta: COL



Km: 0.00 Tipo: 3 Sent: 1



Km: 0.00 Tipo: 3 Sent: 2

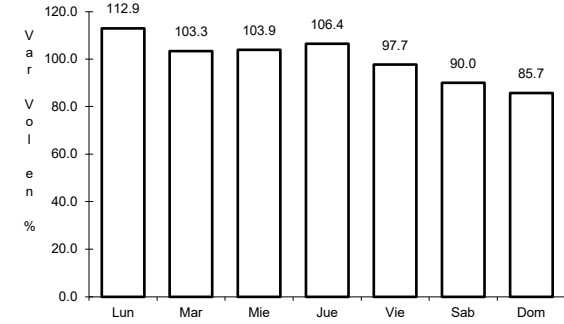
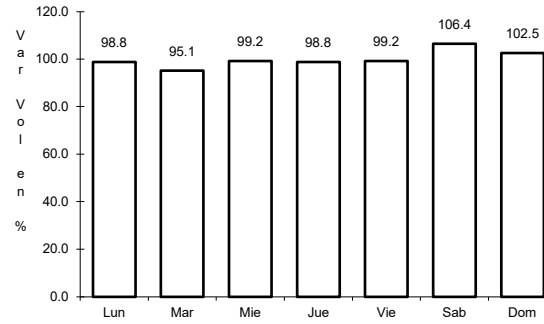
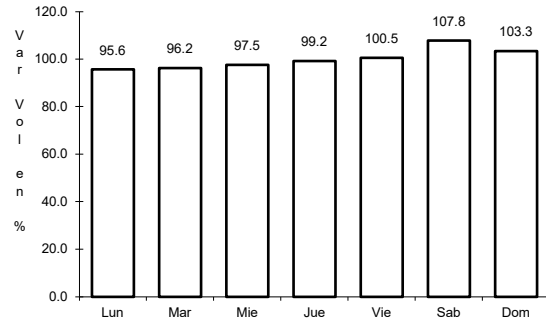


Km: 7.90 Tipo: 1 Sent: 1

28 CARR: Libramiento Poniente Arco Sur de Tecomán

CLAVE:

RUTA: COL



Km: 0.00 Tipo: 3 Sent: 0

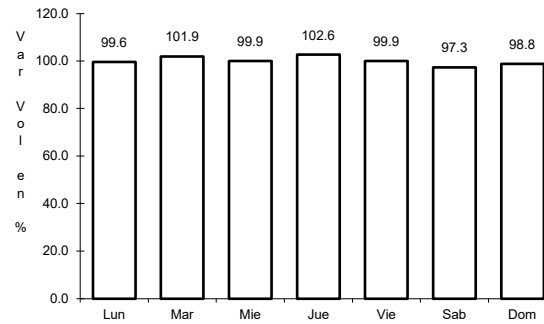
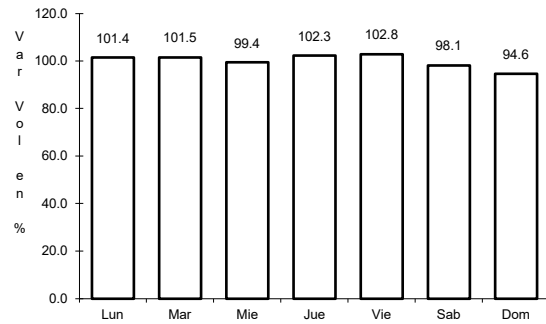
Km: 4.60 Tipo: 3 Sent: 0

Km: 6.90 Tipo: 3 Sent: 0

29 CARR: Libramiento Poniente de Colima

CLAVE: 06122

RUTA: COL



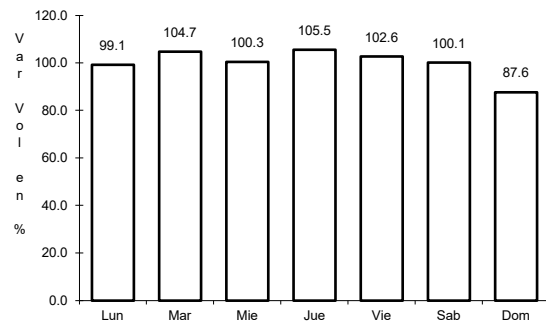
Km: 0.00 Tipo: 3 Sent: 1

Km: 0.00 Tipo: 3 Sent: 2

30 CARR: Los Limones - Loma de Juárez

CLAVE: 06122

RUTA: COL

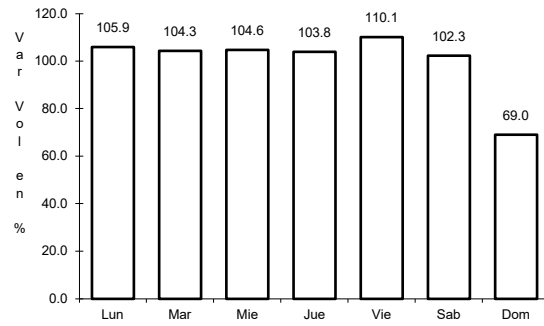


Km: 5.77 Tipo: 1 Sent: 0

31 CARR: Puerta de Caleras - Madrid

CLAVE: 06014

RUTA: COL-014



Km: 0.00

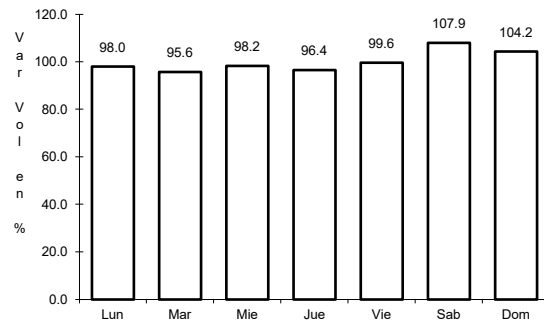
Tipo: 3

Sent: 0

32 CARR: Quesería - El Naranjal

CLAVE: 06001

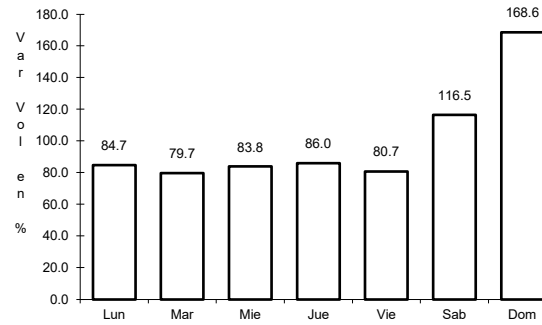
RUTA: COL-001



Km: 0.00

Tipo: 3

Sent: 0



Km: 10.00

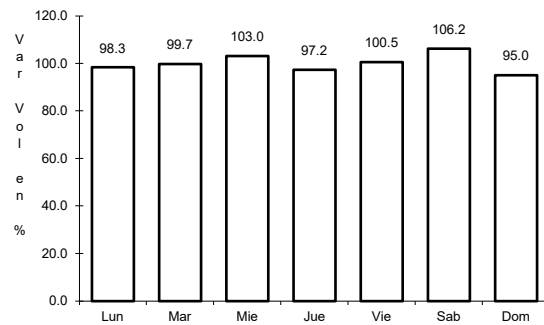
Tipo: 1

Sent: 0

33 CARR: Ramal a Aeropuerto de Colima

CLAVE: 06224

RUTA: COL



Km: 0.00

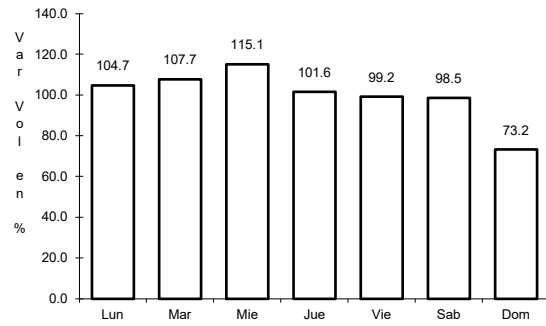
Tipo: 3

Sent: 0

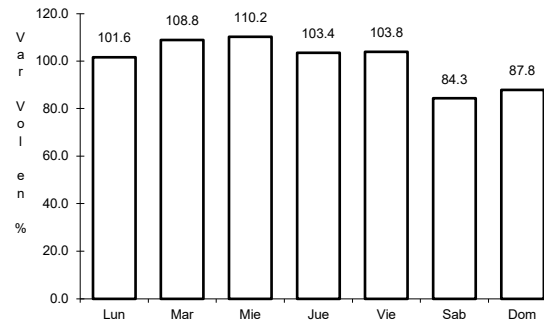
34 CARR: Ramal a Aeropuerto Manzanillo

CLAVE: 06582

RUTA: COL



Km: 0.00 Tipo: 3 Sent: 0

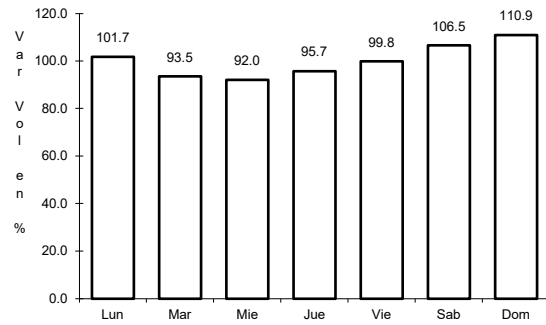


Km: 5.50 Tipo: 1 Sent: 0

35 CARR: Ramal a Camotlán de Miraflores

CLAVE: 06009

RUTA: COL

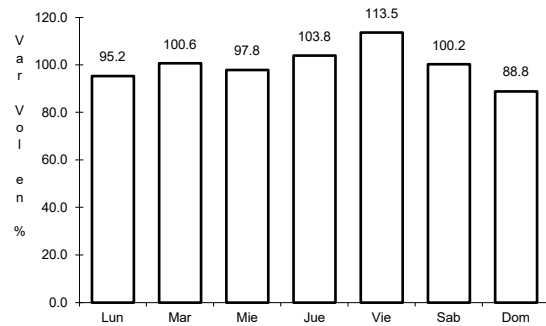


Km: 0.00 Tipo: 3 Sent: 0

36 CARR: Ramal a Ixtlahuacán

CLAVE: 06577

RUTA: COL-005

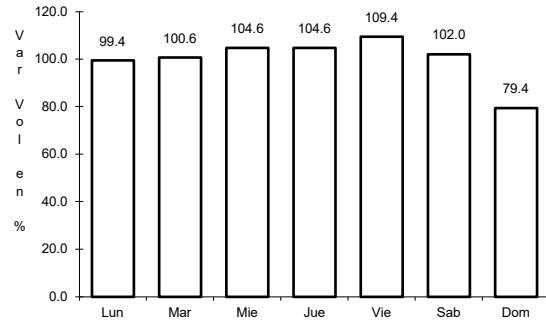


Km: 0.00 Tipo: 3 Sent: 0

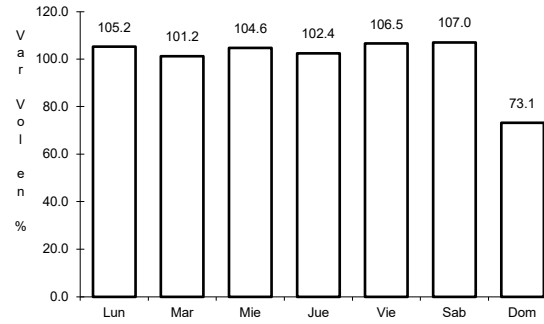
37 CARR: Ramal a Las Brisas

CLAVE: 06571

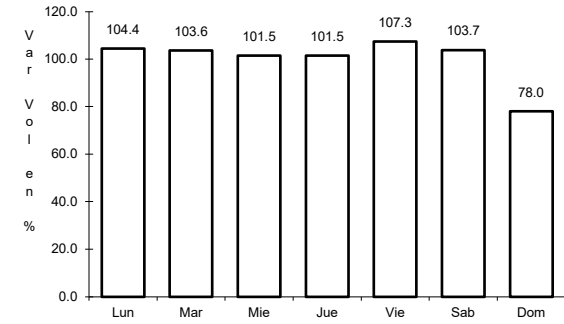
RUTA: COL



Km: 0.00 Tipo: 3 Sent: 0



Km: 0.00 Tipo: 3 Sent: 1

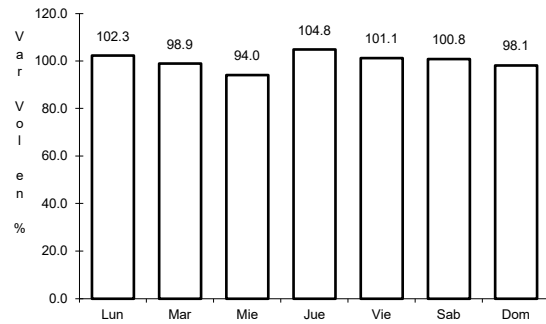


Km: 0.00 Tipo: 3 Sent: 2

38 CARR: Ramal a Los Tepames

CLAVE: 06004

RUTA: COL-004

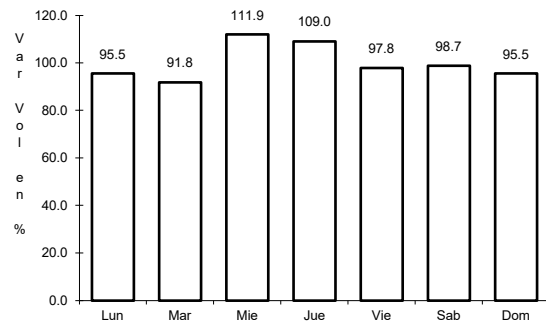


Km: 0.00 Tipo: 3 Sent: 0

39 CARR: Ramal a Rancho Valle Nuevo

CLAVE: 06583

RUTA: COL

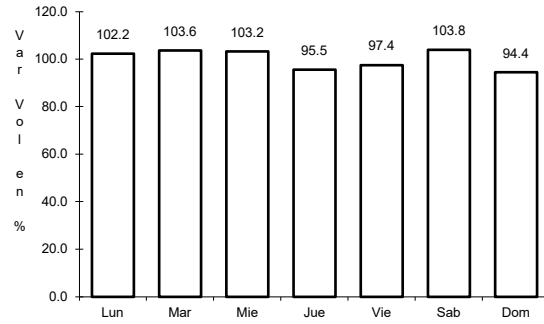


Km: 0.00 Tipo: 3 Sent: 0

40 CARR: Ramal a Rincón de López

CLAVE: 06578

ruta: COL



Km: 0.00

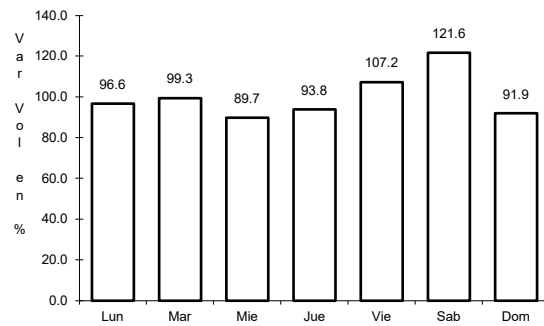
Tipo: 3

Sent: 0

41 CARR: Ramal a Tecuanillo

CLAVE: 06009

ruta: COL-009



Km: 0.00

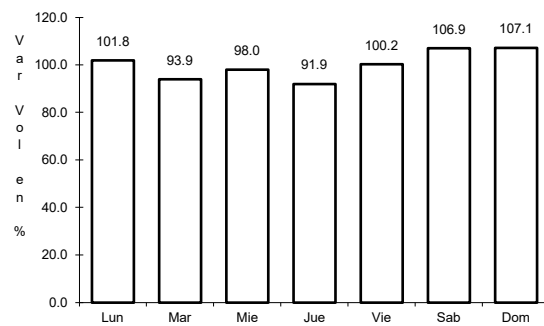
Tipo: 3

Sent: 0

42 CARR: Tecomán - La Mascota

CLAVE: 06572

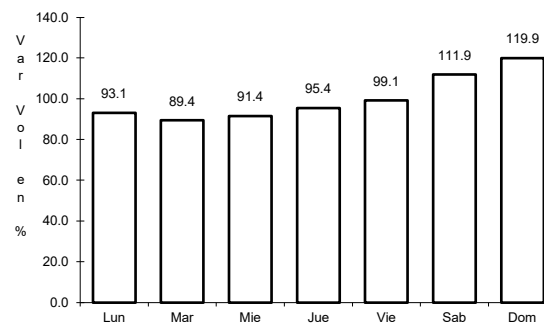
ruta: COL



Km: 0.00

Tipo: 3

Sent: 0



Km: 2.70

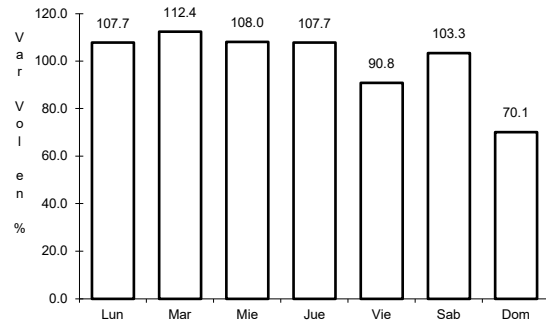
Tipo: 3

Sent: 0

43 CARR: Trapichillos - Estación Alzada

CLAVE: 06003

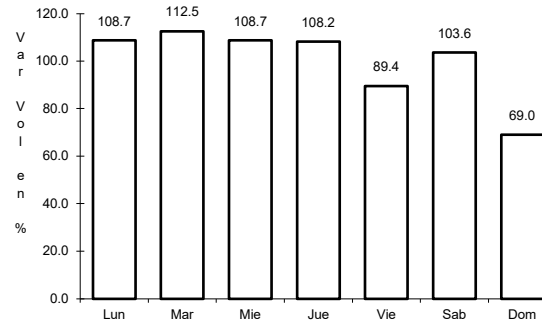
RUTA: COL-003



Km: 0.00

Tipo: 3

Sent: 0



Km: 12.50

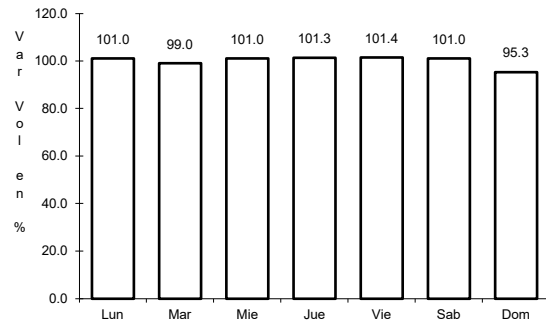
Tipo: 1

Sent: 0

44 CARR: Villa de Álvarez - Minatitlán

CLAVE: 06040

RUTA: COL



Km: 0.00

Tipo: 3

Sent: 0

