

COAHUILA

## ---RED FEDERAL LIBRE---

1 Cd. Acuña - Presa de La Amistad	MEX-002
2 Durango - Torreón	MEX-040
3 Ent. Bella Unión - Saltillo	MEX-057
4 Ent. La Cuchilla - Torreón	MEX-030
5 Ent. Morelos - Saltillo	MEX-054
6 Gregorio García - Francisco I. Madero	MEX-040
7 Libramiento Allende - Nava	MEX-057
8 Monclova - Piedras Negras	MEX-057
9 Monclova - San Pedro de Las Colonias	MEX-030
10 Monterrey - Castaños	MEX-053
11 Morelos - Cd. Acuña	MEX-029
12 Nueva Rosita - Boquillas del Carmen	MEX-053
13 Ojo Caliente - Santa Cruz	MEX-057
14 Piedras Negras - Cd. Acuña	MEX-002
15 Piedras Negras - Nuevo Laredo	MEX-002
16 Puerto México - La Encantada	MEX-057
17 Saltillo - Monclova	MEX-057
18 Saltillo - Monterrey	MEX-040
19 Saltillo - Torreón	MEX-040

## ---RED FEDERAL DE CUOTA---

20 Libramiento Norponiente de Saltillo (Cuota)	MEX-S30
21 Libramiento Norte de Torreón (Cuota)	MEX-040D
22 Libramiento Oriente de Saltillo (Cuota)	MEX-057D
23 Nueva Rosita - Ent. Allende (Cuota)	MEX-057D
24 Puerto México - La Carbonera (Cuota)	MEX-057D
25 Saltillo - Monterrey (Cuota)	MEX-040D
26 Torreón - Saltillo (Cuota)	MEX-040D

## ---RED ESTATAL LIBRE---

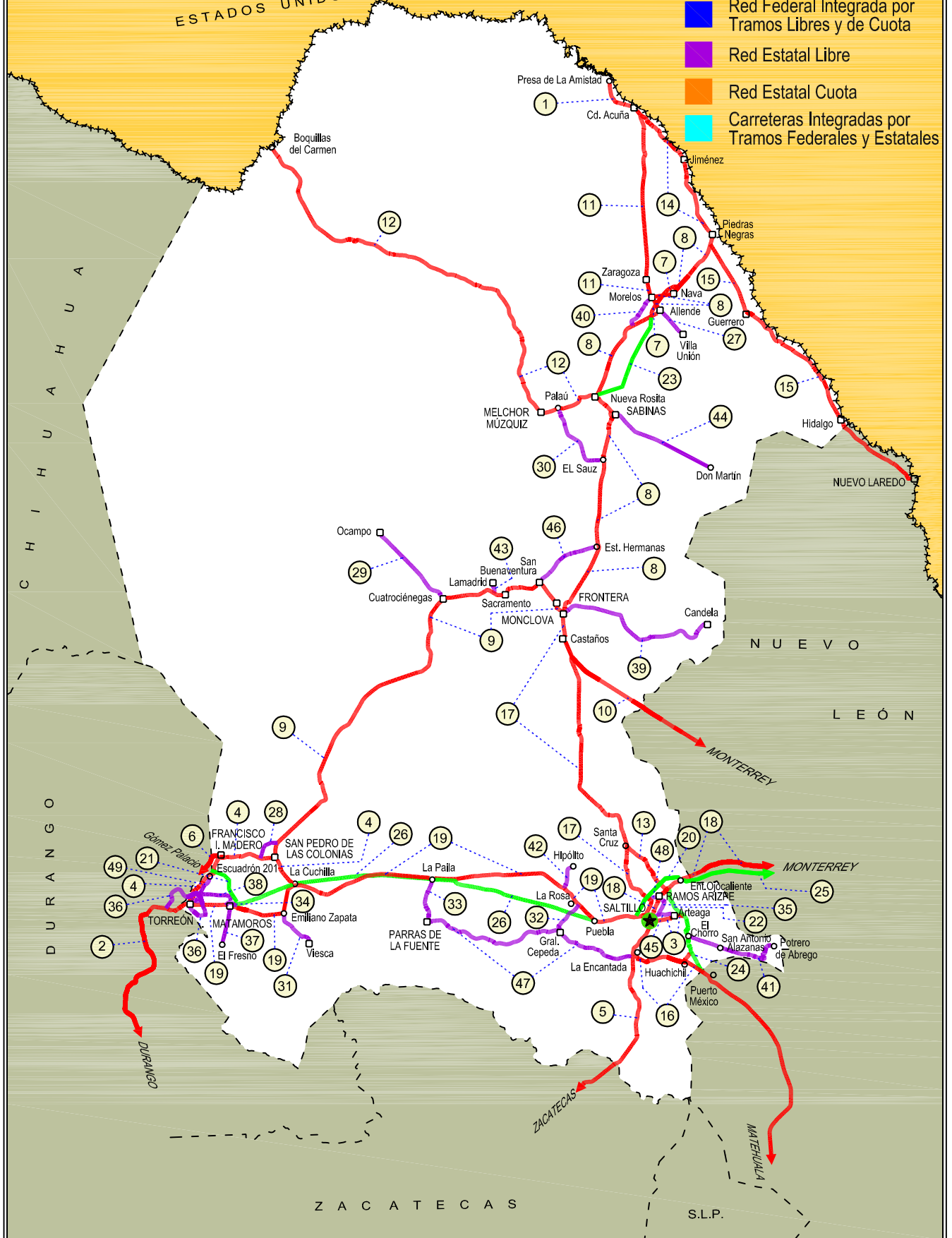
27 Allende - Villa Unión	COA-015
28 Corredor Libramiento de San Pedro	COA-087
29 Cuatro Ciénegas - Ocampo	COA-048
30 El Sauz - Palau	COA-022
31 Emiliano Zapata - Viesca	COA-082
32 Ent. La Rosa - General Cepeda	COA-034
33 Ent. Paila - Parras de La Fuente	COA-102
34 Libramiento de Matamoros	COA
35 Libramiento de Saltillo J.L.P.	COA
36 Libramiento de Torreón	COA
37 Matamoros - El Fresno	COA-078
38 Matamoros - La Unión	COA-070
39 Monclova - Estación Candela	COA-030-NL
40 Morelos - Ent. Las Corrientes	COA-010
41 Puerto de Flores - El Hondable	COA-112
42 Ramal a Hipólito	COA-114
43 Ramal a Lamadrid	COA-042
44 Sabinas - Don Martín	COA-025
45 Saltillo - Arteaga	COA-106
46 San Buenaventura - Estación Hermanas	COA-034
47 T. C. (Ent. Morelos - Saltillo) - Parras de La Fuente	COA-105
48 T. C. (Saltillo - Monclova) - Ramos Arizpe	COA
49 Torreón - Escuadrón 201	COA-011

# 05 COAHUILA

SECRETARÍA DE COMUNICACIONES Y TRANSPORTES  
DIRECCIÓN GENERAL DE SERVICIOS TÉCNICOS

ESTADOS UNIDOS DE AMÉRICA

- ① --- Número Índice
- Red Federal Libre
- Red Federal Cuota
- Red Federal Integrada por Tramos Libres y de Cuota
- Red Estatal Libre
- Red Estatal Cuota
- Carreteras Integradas por Tramos Federales y Estatales





COAHUILA

1 CARR: Cd. Acuña - Presa de La Amistad

CLAVE: 05085

RUTA: MEX-002

AÑO: 2020

LUGAR	ESTACION				CLASIFICACION VEHICULAR EN PORCIENTO													COORDENADAS		
	KM	TE	SC	TDPA	M	A	B	C2	C3	T3S2	T3S3	T3S2R4	OTROS	A	B	C	K'	D	LATITUD	LONGITUD
Cd. Acuña	0.00	3	1	8788	0.9	88.5	1.1	5.6	0.7	1.6	1.1	0.3	0.2	89.4	1.1	9.5	0.116	0.523	29.331787	-100.955561
Cd. Acuña	0.00	3	2	9651	0.9	88.3	1.1	5.7	0.8	1.6	1.1	0.3	0.2	89.2	1.1	9.7	0.126	0.523	29.331675	-100.955590
T. Izq. Santa Eulalia	10.60	1	1	4012	1.2	80.5	4.4	9.2	1.7	1.6	1.4	0.0	0.0	81.7	4.4	13.9	0.165	0.501	29.346359	-101.017554
T. Izq. Santa Eulalia	10.60	1	2	3989	1.1	80.4	4.4	9.3	1.7	1.7	1.4	0.0	0.0	81.5	4.4	14.1	0.139	0.501	29.346360	-101.017557
Presa de La Amistad	23.00	1	0	481	2.5	73.4	4.7	15.7	3.7	0.0	0.0	0.0	0.0	75.9	4.7	19.4	0.150	0.511	29.449827	-101.064118

2 CARR: Durango - Torreón

CLAVE: 10085

RUTA: MEX-040

AÑO: 2020

LUGAR	ESTACION				CLASIFICACION VEHICULAR EN PORCIENTO													COORDENADAS		
	KM	TE	SC	TDPA	M	A	B	C2	C3	T3S2	T3S3	T3S2R4	OTROS	A	B	C	K'	D	LATITUD	LONGITUD
Durango	0.00	3	1	10262	2.7	87.9	1.1	5.4	1.1	1.0	0.5	0.1	0.2	90.6	1.1	8.3	0.082	0.507	24.033172	-104.638893
Durango	0.00	3	2	9980	2.7	87.2	1.3	6.2	1.1	0.8	0.4	0.1	0.2	89.9	1.3	8.8	0.093	0.507	24.033203	-104.639072
T. Der. Cd. de Los Niños	7.70	3	1	7573	1.6	84.6	2.7	8.0	1.1	1.2	0.5	0.2	0.1	86.2	2.7	11.1	0.088	0.528	24.080810	-104.587417
T. Der. Cd. de Los Niños	7.70	3	2	8486	1.5	84.3	2.3	8.7	1.0	1.2	0.7	0.2	0.1	85.8	2.3	11.9	0.085	0.528	24.080926	-104.587568
X. Periférico de Durango	9.00	1	1	7312	1.9	84.6	1.6	8.2	1.2	1.4	0.7	0.3	0.1	86.5	1.6	11.9	0.090	0.504	24.090392	-104.579253
X. Periférico de Durango	9.00	1	2	7439	1.5	84.4	1.9	7.9	1.3	1.8	0.8	0.3	0.1	85.9	1.9	12.2	0.088	0.504	24.090467	-104.579371
T. Der. Aeropuerto	9.42	1	1	7153	3.6	83.5	3.6	4.5	0.9	2.7	0.6	0.5	0.1	87.1	3.6	9.3	0.090	0.518	24.094252	-104.575845
T. Der. Aeropuerto	9.42	1	2	7677	3.1	85.2	3.3	3.6	0.7	2.8	0.7	0.5	0.1	88.3	3.3	8.4	0.093	0.518	24.094361	-104.576058
T. Der. Aeropuerto	9.42	3	1	3162	9.7	79.9	2.0	2.4	1.9	1.6	1.1	0.9	0.5	89.6	2.0	8.4	0.103	0.510	24.095876	-104.575865
T. Der. Aeropuerto	9.42	3	2	3037	8.4	80.9	2.4	2.2	2.1	1.6	1.0	0.9	0.5	89.3	2.4	8.3	0.094	0.510	24.095506	-104.576138
La Calera	10.85	3	0	4362	76.9	14.3	1.4	1.5	1.5	1.5	1.3	0.9	0.7	91.2	1.4	7.4	0.092	0.509	24.104195	-104.573669
Abraham González	27.10	3	0	3257	2.1	80.6	3.2	4.1	1.7	4.5	2.8	0.6	0.4	82.7	3.2	14.1	0.090	0.505	24.199944	-104.526585
Francisco I. Madero	56.30	1	0	2955	2.4	79.3	3.3	4.2	1.9	4.6	2.8	0.8	0.7	81.7	3.3	15.0	0.092	0.507	24.400011	-104.318358
Francisco I. Madero	56.30	3	0	3263	2.1	80.5	3.2	4.0	1.9	4.2	2.7	1.0	0.4	82.6	3.2	14.2	0.096	0.516	24.400011	-104.318362
Guadalupe Victoria	77.50	1	0	4233	5.3	72.0	3.4	9.1	2.5	4.2	2.4	0.6	0.5	77.3	3.4	19.3	0.096	0.516	24.446695	-104.123073
Guadalupe Victoria	77.50	3	0	4627	3.0	72.6	3.1	11.4	2.9	3.5	2.6	0.6	0.3	75.6	3.1	21.3	0.096	0.528	24.446713	-104.123063
T. Der. Ignacio Allende	90.13	1	0	4561	1.7	66.7	2.7	12.4	4.8	5.6	5.2	0.6	0.3	68.4	2.7	28.9	0.066	0.505	24.498387	-104.022037
T. Der. Ignacio Allende	90.13	3	0	2409	2.1	62.9	3.6	15.8	5.3	6.2	2.4	1.1	0.6	65.0	3.6	31.4	0.093	0.530	24.498376	-104.022004
T. Izq. Peñón Blanco	120.90	1	0	2489	2.7	55.5	5.4	8.6	8.6	8.6	8.7	1.3	0.6	58.2	5.4	36.4	0.061	0.516	24.736179	-103.841519
T. Izq. Peñón Blanco	120.90	3	0	1713	2.4	55.2	4.0	8.7	8.3	12.1	7.7	1.4	0.2	57.6	4.0	38.4	0.095	0.514	24.736230	-103.841485
Cuencamé	144.30	1	0	1972	1.9	54.4	5.4	11.4	6.5	11.9	5.9	2.1	0.5	56.3	5.4	38.3	0.072	0.508	24.870493	-103.698685
Cuencamé	144.30	3	1	4114	2.5	50.3	4.5	11.5	4.7	15.7	4.6	5.1	1.1	52.8	4.5	42.7	0.080	0.501	24.870500	-103.698685
Cuencamé	144.30	3	2	4102	3.0	49.2	5.8	11.0	4.6	15.6	4.7	5.0	1.1	52.2	5.8	42.0	0.077	0.501	24.870500	-103.698685
T. C. Libramiento Exterior Cuencamé	148.70	1	0	1929	3.7	66.4	4.6	13.5	4.4	3.3	2.9	0.7	0.5	70.1	4.6	25.3	0.091	0.524	24.902871	-103.703458
X. C. Yerbanís - Gómez Palicio (Cuota)	155.80																			

COAHUILA

2 CARR: Durango - Torreón

CLAVE: 10085

RUTA: MEX-040

AÑO: 2020

LUGAR	ESTACION				CLASIFICACION VEHICULAR EN PORCIENTO										COORDENADAS					
	KM	TE	SC	TDPA	M	A	B	C2	C3	T3S2	T3S3	T3S2R4	OTROS	A	B	C	K'	D	LATITUD	LONGITUD
T. Izq. Nazas	171.61	1	0	3584	1.6	61.8	2.8	9.5	4.0	12.5	4.7	2.0	1.1	63.4	2.8	33.8	0.086	0.513	25.089340	-103.770385
T. Izq. Nazas	171.61	3	0	5107	3.7	56.9	3.9	6.1	6.8	12.8	4.4	4.2	1.2	60.6	3.9	35.5	0.079	0.504	25.089353	-103.770383
T. Der. Villa Juárez	194.40	3	0	4498	2.7	60.4	3.0	6.0	6.8	12.9	4.1	3.2	0.9	63.1	3.0	33.9	0.099	0.507	25.225105	-103.630138
León Guzmán	229.58	3	0	8404	2.6	67.7	2.1	11.9	3.9	7.1	2.7	1.3	0.7	70.3	2.1	27.6	0.079	0.530	25.501323	-103.657542
Cd. Lerdo	244.80	1	1	4976	2.6	72.7	1.5	10.1	2.5	5.4	2.4	2.3	0.5	75.3	1.5	23.2	0.087	0.513	25.523493	-103.529588
Cd. Lerdo	244.80	1	2	5246	2.7	69.8	1.6	11.5	2.7	6.1	2.8	2.4	0.4	72.5	1.6	25.9	0.080	0.513	25.523544	-103.531013
T. Izq. Gómez Palacio	248.90	3	1	15623	8.3	84.6	0.4	4.7	0.7	0.5	0.4	0.3	0.1	92.9	0.4	6.7	0.104	0.511	25.550972	-103.482238
T. Izq. Gómez Palacio	248.90	3	2	14923	8.3	84.6	0.4	4.7	0.7	0.5	0.4	0.2	0.2	92.9	0.4	6.7	0.116	0.511	25.551088	-103.482234
Lim. Edos. Term. Dgo. Ppia. Coah.	251.00																			
Torreón	255.80	1	1	18715	10.5	82.4	0.5	4.7	0.6	0.5	0.4	0.2	0.2	92.9	0.5	6.6	0.074	0.512	25.544117	-103.468718
Torreón	255.80	1	2	17864	10.5	82.2	0.5	4.7	0.7	0.5	0.4	0.3	0.2	92.7	0.5	6.8	0.089	0.512	25.544342	-103.467612

3 CARR: Ent. Bella Unión - Saltillo

CLAVE: 05003

RUTA: MEX-057

AÑO: 2020

LUGAR	ESTACION				CLASIFICACION VEHICULAR EN PORCIENTO										COORDENADAS					
	KM	TE	SC	TDPA	M	A	B	C2	C3	T3S2	T3S3	T3S2R4	OTROS	A	B	C	K'	D	LATITUD	LONGITUD
T. C. Ent. Puerto México - Ent. Ojo Caliente (Cuota)	0.00																			
T. Der. Arteaga	4.61	1	1	4774	0.7	76.6	0.8	12.7	1.2	6.1	1.0	0.4	0.5	77.3	0.8	21.9	0.175	0.506	25.446352	-100.845306
T. Der. Arteaga	4.61	1	2	4894	0.7	76.6	0.8	12.7	1.2	6.1	1.0	0.4	0.5	77.3	0.8	21.9	0.145	0.506	25.446220	-100.845291
Saltillo	17.00	1	1	20130	0.8	87.9	0.2	9.3	1.0	0.4	0.3	0.0	0.1	88.7	0.2	11.1	0.108	0.505	25.427493	-100.969909
Saltillo	17.00	1	2	19767	0.8	87.1	0.2	10.0	1.1	0.4	0.3	0.0	0.1	87.9	0.2	11.9	0.106	0.505	25.427174	-100.969813

4 CARR: Ent. La Cuchilla - Torreón

CLAVE: 05021

RUTA: MEX-030

AÑO: 2020

LUGAR	ESTACION				CLASIFICACION VEHICULAR EN PORCIENTO										COORDENADAS					
	KM	TE	SC	TDPA	M	A	B	C2	C3	T3S2	T3S3	T3S2R4	OTROS	A	B	C	K'	D	LATITUD	LONGITUD
La Cuchilla	0.00	3	0	916	5.6	72.9	4.7	4.9	2.6	5.1	1.1	2.2	0.9	78.5	4.7	16.8	0.096	0.502	25.625624	-102.877756
T. Der. Mayran	3.30	3	0	1090	7.5	69.2	7.0	7.2	2.4	3.9	0.6	1.3	0.9	76.7	7.0	16.3	0.109	0.507	25.645776	-102.904212
T. Izq. San Patricio	9.07	3	0	1675	11.2	72.6	2.8	4.8	2.9	2.4	1.9	1.1	0.3	83.8	2.8	13.4	0.103	0.527	25.679027	-102.934727
San Pedro de Las Colonias	18.70	1	1	2245	14.2	75.0	3.7	3.9	1.6	0.7	0.2	0.5	0.2	89.2	3.7	7.1	0.095	0.536	25.758583	-102.983908
San Pedro de Las Colonias	18.70	1	2	1942	17.1	71.7	3.8	3.8	1.7	0.9	0.4	0.4	0.2	88.8	3.8	7.4	0.140	0.536	25.758537	-102.983905
San Pedro de Las Colonias	18.70	3	1	4800	5.2	82.9	2.0	5.7	1.3	1.2	0.6	0.8	0.3	88.1	2.0	9.9	0.091	0.538	25.758583	-102.983909
San Pedro de Las Colonias	18.70	3	2	5578	6.0	84.0	1.7	4.8	1.1	1.2	0.6	0.4	0.2	90.0	1.7	8.3	0.101	0.538	25.758535	-102.983910
Urquizo	33.00	1	1	4292	2.1	79.9	4.6	8.3	1.4	1.7	1.1	0.6	0.3	82.0	4.6	13.4	0.091	0.584	25.774243	-103.133155
Urquizo	33.00	1	2	3061	2.8	73.2	6.5	11.1	1.6	2.3	1.4	0.7	0.4	76.0	6.5	17.5	0.098	0.584	25.774153	-103.133107

COAHUILA

4 CARR: Ent. La Cuchilla - Torreón

CLAVE: 05021

RUTA: MEX-030

AÑO: 2020

LUGAR	ESTACION				CLASIFICACION VEHICULAR EN PORCIENTO														COORDENADAS	
	KM	TE	SC	TDPA	M	A	B	C2	C3	T3S2	T3S3	T3S2R4	OTROS	A	B	C	K'	D	LATITUD	LONGITUD
Urquizo	33.00	3	1	4074	5.5	80.7	2.2	5.5	1.6	1.8	1.5	0.7	0.5	86.2	2.2	11.6	0.089	0.507	25.774242	-103.133158
Urquizo	33.00	3	2	3969	5.3	80.7	2.4	5.8	1.7	1.8	1.3	0.6	0.4	86.0	2.4	11.6	0.092	0.507	25.774154	-103.133112
T. Izq. San Lorenzo	37.30	3	1	3624	2.6	77.5	7.1	6.3	1.3	2.1	1.5	1.0	0.6	80.1	7.1	12.8	0.094	0.520	25.762919	-103.155946
T. Izq. San Lorenzo	37.30	3	2	3918	2.2	79.2	6.0	6.1	1.7	2.0	1.2	1.0	0.6	81.4	6.0	12.6	0.085	0.520	25.762838	-103.155908
T. Der. Colón	41.00	3	1	4700	4.5	79.2	5.1	5.3	1.5	1.7	1.4	0.8	0.5	83.7	5.1	11.2	0.092	0.500	25.760758	-103.191964
T. Der. Colón	41.00	3	2	4704	4.2	80.7	4.2	5.2	1.6	1.7	1.2	0.7	0.5	84.9	4.2	10.9	0.086	0.500	25.760662	-103.191942
T. Izq. Guadalupe Victoria	41.78	3	1	5104	5.6	81.4	2.4	5.5	1.8	1.6	0.5	0.7	0.5	87.0	2.4	10.6	0.104	0.500	25.761314	-103.224511
T. Izq. Guadalupe Victoria	41.78	3	2	5094	5.3	82.5	2.4	5.2	1.6	1.5	0.7	0.6	0.2	87.8	2.4	9.8	0.109	0.500	25.761227	-103.224540
T. Der. Fco. I. Madero	43.80	1	1	5200	3.2	81.3	2.9	6.8	1.9	2.1	1.1	0.6	0.1	84.5	2.9	12.6	0.082	0.512	25.761573	-103.267320
T. Der. Fco. I. Madero	43.80	1	2	4961	3.3	80.4	3.3	7.1	1.7	2.5	0.9	0.7	0.1	83.7	3.3	13.0	0.094	0.512	25.761433	-103.267343
T. Der. Fco. I. Madero	43.80	3	1	7085	3.5	84.7	0.9	4.7	2.0	2.2	0.7	1.1	0.2	88.2	0.9	10.9	0.112	0.508	25.761575	-103.267324
T. Der. Fco. I. Madero	43.80	3	2	7326	3.8	85.4	0.9	4.4	1.8	1.8	0.7	1.0	0.2	89.2	0.9	9.9	0.103	0.508	25.761433	-103.267350
T. Izq. Escuadrón 201	62.40	3	1	7790	3.5	80.1	5.8	5.4	2.5	1.1	0.8	0.6	0.2	83.6	5.8	10.6	0.093	0.509	25.672527	-103.348744
T. Izq. Escuadrón 201	62.40	3	2	7526	2.7	80.3	5.2	5.5	2.6	1.3	1.6	0.7	0.1	83.0	5.2	11.8	0.097	0.509	25.672448	-103.348729
Torreón	84.00	1	1	22082	2.8	95.3	0.3	1.3	0.2	0.1	0.0	0.0	0.0	98.1	0.3	1.6	0.087	0.511	25.563913	-103.429434
Torreón	84.00	1	2	23083	2.4	95.8	0.3	1.2	0.2	0.1	0.0	0.0	0.0	98.2	0.3	1.5	0.095	0.511	25.563813	-103.429343

5 CARR: Ent. Morelos - Saltillo

CLAVE: 00149

RUTA: MEX-054

AÑO: 2020

LUGAR	ESTACION				CLASIFICACION VEHICULAR EN PORCIENTO														COORDENADAS	
	KM	TE	SC	TDPA	M	A	B	C2	C3	T3S2	T3S3	T3S2R4	OTROS	A	B	C	K'	D	LATITUD	LONGITUD
T. C. Zacatecas - Durango	0.00	3	1	3740	0.9	72.5	3.9	10.2	2.1	6.0	1.6	2.1	0.7	73.4	3.9	22.7	0.091	0.513	22.862221	-102.625375
T. C. Zacatecas - Durango	0.00	3	2	3946	0.7	70.6	4.0	10.9	2.3	6.7	1.7	2.4	0.7	71.3	4.0	24.7	0.106	0.513	22.863282	-102.626248
T. Der. Sta. Mónica	11.00	1	1	3738	0.5	56.3	6.1	18.4	0.8	16.1	0.6	0.9	0.3	56.8	6.1	37.1	0.086	0.517	22.944604	-102.564854
T. Der. Sta. Mónica	11.00	1	2	3494	2.1	47.1	8.3	28.8	0.8	11.6	0.6	0.5	0.2	49.2	8.3	42.5	0.100	0.517	22.944659	-102.564918
T. Der. Sta. Mónica	11.00	3	1	3357	0.5	55.6	6.8	21.1	0.8	13.4	0.7	0.8	0.3	56.1	6.8	37.1	0.087	0.520	22.944610	-102.564850
T. Der. Sta. Mónica	11.00	3	2	3102	1.4	50.2	6.8	25.1	0.9	13.7	0.8	0.8	0.3	51.6	6.8	41.6	0.097	0.520	22.944667	-102.564914
T. Izq. Villa de Cos	53.90	1	1	2947	1.6	44.7	8.5	24.0	1.2	17.5	0.8	1.4	0.3	46.3	8.5	45.2	0.081	0.514	23.269331	-102.330036
T. Izq. Villa de Cos	53.90	1	2	3119	1.2	42.1	9.5	24.0	1.3	19.6	1.0	0.9	0.4	43.3	9.5	47.2	0.109	0.514	23.269430	-102.330083
T. Izq. Villa de Cos	53.90	3	1	3130	1.8	49.2	8.3	23.9	1.8	10.6	2.2	1.5	0.7	51.0	8.3	40.7	0.099	0.521	23.269337	-102.330033
T. Izq. Villa de Cos	53.90	3	2	2873	1.8	53.7	8.9	19.5	2.1	9.6	1.7	2.1	0.6	55.5	8.9	35.6	0.097	0.521	23.269433	-102.330081
T. Der. Illescas	58.41	3	1	2567	2.1	48.2	7.3	24.0	1.8	11.0	2.2	2.7	0.7	50.3	7.3	42.4	0.093	0.508	23.286993	-102.317306
T. Der. Illescas	58.41	3	2	2655	1.5	37.1	10.2	32.0	1.5	13.2	1.0	2.9	0.6	38.6	10.2	51.2	0.091	0.508	23.287079	-102.317445
Sierra Vieja	85.50	3	1	2260	2.0	47.6	9.8	23.3	1.6	11.2	1.3	2.4	0.8	49.6	9.8	40.6	0.096	0.519	23.495908	-102.132891
Sierra Vieja	85.50	3	2	2441	1.7	38.2	10.3	29.7	1.2	15.6	1.1	1.5	0.7	39.9	10.3	49.8	0.088	0.519	23.495985	-102.133008

COAHUILA

5 CARR: Ent. Morelos - Saltillo

CLAVE: 00149

RUTA: MEX-054

AÑO: 2020

LUGAR	ESTACION				CLASIFICACION VEHICULAR EN PORCIENTO										COORDENADAS					
	KM	TE	SC	TDPA	M	A	B	C2	C3	T3S2	T3S3	T3S2R4	OTROS	A	B	C	K'	D	LATITUD	LONGITUD
T. Der. Majoma	144.50	3	1	2038	2.0	43.5	7.3	24.9	2.3	9.7	3.5	6.0	0.8	45.5	7.3	47.2	0.087	0.517	23.877176	-101.736276
T. Der. Majoma	144.50	3	2	2180	2.6	36.0	8.3	29.7	2.3	10.0	3.9	6.4	0.8	38.6	8.3	53.1	0.078	0.517	23.877099	-101.736101
T. Der. San Tiburcio	185.25	1	1	2281	1.0	50.2	6.0	19.1	2.9	11.0	2.9	6.1	0.8	51.2	6.0	42.8	0.089	0.525	24.158298	-101.495110
T. Der. San Tiburcio	185.25	1	2	2061	1.3	46.9	6.1	20.6	2.9	11.9	3.1	6.2	1.0	48.2	6.1	45.7	0.089	0.525	24.158409	-101.495298
T. Der. San Tiburcio	185.25	3	1	2606	1.2	51.9	6.8	15.6	2.3	13.0	3.5	5.0	0.7	53.1	6.8	40.1	0.079	0.524	24.158308	-101.495109
T. Der. San Tiburcio	185.25	3	2	2370	2.5	47.2	7.4	16.4	2.3	14.3	4.0	5.2	0.7	49.7	7.4	42.9	0.085	0.524	24.158411	-101.495292
T. Izq. Concepción del Oro	240.00	1	1	2290	2.5	41.9	5.3	30.8	1.3	14.8	1.6	1.2	0.6	44.4	5.3	50.3	0.092	0.543	24.619837	-101.384827
T. Izq. Concepción del Oro	240.00	1	2	1930	2.9	40.7	5.8	27.2	1.4	17.6	2.3	1.6	0.5	43.6	5.8	50.6	0.076	0.543	24.619765	-101.384855
T. Izq. Concepción del Oro	240.00	3	1	2677	0.4	57.1	4.0	15.7	1.3	15.4	1.8	3.6	0.7	57.5	4.0	38.5	0.090	0.500	24.619888	-101.384597
T. Izq. Concepción del Oro	240.00	3	2	2680	0.3	56.9	4.6	11.5	1.5	18.1	2.2	4.2	0.7	57.2	4.6	38.2	0.081	0.500	24.619822	-101.384730
Lim. Edos. Term. Zac. Ppia. Coah.	266.50																			
Agua Nueva	322.00	1	0	5166	3.7	62.1	4.0	3.9	2.3	17.2	2.6	3.6	0.6	65.8	4.0	30.2	0.083	0.528	25.188540	-101.092811
T. Der. La Trinidad	333.00	3	1	7844	0.8	78.7	9.2	6.5	1.1	2.3	0.4	0.6	0.4	79.5	9.2	11.3	0.125	0.528	25.276245	-101.090944
T. Der. La Trinidad	333.00	3	2	8771	0.7	81.0	8.1	5.5	1.2	2.2	0.3	0.6	0.4	81.7	8.1	10.2	0.107	0.528	25.276245	-101.090944
X. C. Libramiento de Saltillo	348.00	1	1	16935	1.9	86.9	1.3	6.0	0.8	2.0	0.7	0.2	0.2	88.8	1.3	9.9	0.095	0.514	25.375536	-101.011827
X. C. Libramiento de Saltillo	348.00	1	2	16043	2.1	86.0	1.6	6.2	0.9	2.1	0.7	0.2	0.2	88.1	1.6	10.3	0.105	0.514	25.375576	-101.011991
Saltillo	354.00	1	1	14809	1.7	90.6	0.7	5.5	0.5	0.5	0.2	0.1	0.2	92.3	0.7	7.0	0.089	0.503	25.423944	-100.989679
Saltillo	354.00	1	2	14972	1.8	90.7	0.9	5.2	0.4	0.5	0.2	0.1	0.2	92.5	0.9	6.6	0.092	0.503	25.423949	-100.989683

6 CARR: Gregorio García - Francisco I. Madero

CLAVE: 00110

RUTA: MEX-040

AÑO: 2020

LUGAR	ESTACION				CLASIFICACION VEHICULAR EN PORCIENTO										COORDENADAS					
	KM	TE	SC	TDPA	M	A	B	C2	C3	T3S2	T3S3	T3S2R4	OTROS	A	B	C	K'	D	LATITUD	LONGITUD
T. C. Gómez Palacio - Tlahualillo	0.00																			
Lim. Edos. Term. Dgo. Ppia. Coah.	3.60																			
Francisco I. Madero	9.60	1	0	5717	5.1	79.9	0.9	9.9	1.4	1.4	0.7	0.6	0.1	85.0	0.9	14.1	0.116	0.505	25.773635	-103.272918

7 CARR: Libramiento Allende - Nava

CLAVE: 05518

RUTA: MEX-057

AÑO: 2020

LUGAR	ESTACION				CLASIFICACION VEHICULAR EN PORCIENTO										COORDENADAS					
	KM	TE	SC	TDPA	M	A	B	C2	C3	T3S2	T3S3	T3S2R4	OTROS	A	B	C	K'	D	LATITUD	LONGITUD
T. C. Monclova - Piedras Negras	0.00	3	1	3049	0.6	62.9	1.0	16.3	1.9	9.1	4.3	3.3	0.6	63.5	1.0	35.5	0.088	0.523	28.322263	-100.888323
T. C. Monclova - Piedras Negras	0.00	3	2	3340	0.5	63.2	0.9	16.3	2.0	9.1	4.1	3.4	0.5	63.7	0.9	35.4	0.091	0.523	28.322332	-100.888450
X. Der. Allende - Izq. Morelos	6.06	3	1	4699	1.3	73.8	2.2	8.2	1.0	7.2	3.1	2.5	0.7	75.1	2.2	22.7	0.073	0.505	28.371763	-100.864971
X. Der. Allende - Izq. Morelos	6.06	3	2	4612	1.3	72.7	2.4	8.6	1.2	7.4	3.1	2.6	0.7	74.0	2.4	23.6	0.101	0.505	28.371650	-100.864903



COAHUILA

7 CARR: Libramiento Allende - Nava

CLAVE: 05518

RUTA: MEX-057

AÑO: 2020

LUGAR	ESTACION				CLASIFICACION VEHICULAR EN PORCIENTO											COORDENADAS				
	KM	TE	SC	TDPA	M	A	B	C2	C3	T3S2	T3S3	T3S2R4	OTROS	A	B	C	K'	D	LATITUD	LONGITUD
T. C. Monclova - Piedras Negras	18.55	1	1	3729	1.4	67.4	2.7	11.8	1.6	8.4	4.1	1.9	0.7	68.8	2.7	28.5	0.075	0.544	28.435930	-100.763426
T. C. Monclova - Piedras Negras	18.55	1	2	4441	1.3	68.5	2.7	11.2	1.4	8.3	4.3	1.8	0.5	69.8	2.7	27.5	0.070	0.544	28.436111	-100.763412

8 CARR: Monclova - Piedras Negras

CLAVE: 05407

RUTA: MEX-057

AÑO: 2020

LUGAR	ESTACION				CLASIFICACION VEHICULAR EN PORCIENTO											COORDENADAS				
	KM	TE	SC	TDPA	M	A	B	C2	C3	T3S2	T3S3	T3S2R4	OTROS	A	B	C	K'	D	LATITUD	LONGITUD
Monclova	0.00	3	1	9252	1.0	86.0	2.1	8.7	0.5	0.8	0.7	0.1	0.1	87.0	2.1	10.9	0.087	0.509	26.930910	-101.415886
Monclova	0.00	3	2	9591	1.0	87.0	1.5	8.2	0.5	0.9	0.7	0.1	0.1	88.0	1.5	10.5	0.084	0.509	26.930823	-101.415669
T. Der. Libramiento de Monclova	10.80	3	1	4327	1.2	69.6	2.5	12.6	1.7	6.8	1.7	3.1	0.8	70.8	2.5	26.7	0.083	0.501	26.974976	-101.377834
T. Der. Libramiento de Monclova	10.80	3	2	4307	1.2	69.6	2.5	12.6	1.7	6.8	1.7	3.1	0.8	70.8	2.5	26.7	0.088	0.501	26.975169	-101.378088
T. Der. Progreso	61.50	1	1	3686	0.8	68.5	2.8	7.2	2.3	9.9	2.1	5.6	0.8	69.3	2.8	27.9	0.081	0.502	27.387992	-101.215036
T. Der. Progreso	61.50	1	2	3655	0.8	68.6	2.9	7.0	2.3	9.8	2.1	5.6	0.9	69.4	2.9	27.7	0.085	0.502	27.388001	-101.215200
T. Izq. Palau	88.50	1	1	2997	0.8	65.9	2.7	9.9	2.2	9.4	1.9	6.5	0.7	66.7	2.7	30.6	0.082	0.513	27.640937	-101.183802
T. Izq. Palau	88.50	1	2	2850	0.8	63.4	2.7	10.8	2.3	10.0	2.0	7.2	0.8	64.2	2.7	33.1	0.083	0.513	27.640947	-101.183942
T. Izq. Palau	88.50	3	1	3299	0.8	67.7	3.4	9.4	2.3	7.2	2.9	5.6	0.7	68.5	3.4	28.1	0.079	0.510	27.640941	-101.183803
T. Izq. Palau	88.50	3	2	3167	0.7	67.6	3.3	9.4	2.2	7.2	3.0	5.8	0.8	68.3	3.3	28.4	0.082	0.510	27.640951	-101.183942
T. Der. Sabinas (2º Acceso)	115.00	1	1	5692	1.1	74.1	1.4	9.4	1.9	6.3	2.1	2.8	0.9	75.2	1.4	23.4	0.085	0.501	27.870986	-101.134625
T. Der. Sabinas (2º Acceso)	115.00	1	2	5670	1.0	74.4	1.4	9.4	2.0	6.2	2.0	2.8	0.8	75.4	1.4	23.2	0.084	0.501	27.871248	-101.134951
Agujita	118.85	1	1	10043	1.1	80.3	0.8	9.4	0.9	2.9	2.5	1.2	0.9	81.4	0.8	17.8	0.080	0.501	27.896096	-101.158874
Agujita	118.85	1	2	10007	1.1	80.4	0.8	9.3	0.9	2.9	2.5	1.2	0.9	81.5	0.8	17.7	0.080	0.501	27.896198	-101.158842
Agujita	118.85	3	0	18995	1.2	79.6	0.8	9.6	1.0	3.0	2.6	1.3	0.9	80.8	0.8	18.4	0.083	0.512	27.896148	-101.158850
T. Izq. Nueva Rosita (1º Acceso)	126.30	3	0	4592	1.3	56.4	1.5	13.1	2.5	11.2	10.8	2.4	0.8	57.7	1.5	40.8	0.084	0.509	27.937354	-101.203445
T. Izq. Libramiento de Allende	182.00	1	0	4718	1.2	54.0	1.4	13.8	2.7	11.7	11.8	2.7	0.7	55.2	1.4	43.4	0.087	0.504	28.322116	-100.888568
Allende	187.20	3	1	3865	1.3	83.2	2.8	11.3	0.4	0.5	0.4	0.1	0.0	84.5	2.8	12.7	0.093	0.516	28.344588	-100.852247
Allende	187.20	3	2	3630	1.3	83.1	2.9	11.3	0.5	0.4	0.4	0.1	0.0	84.4	2.9	12.7	0.110	0.516	28.344582	-100.852284
Nava	206.85	1	1	1885	1.2	79.1	3.0	15.5	0.8	0.3	0.1	0.0	0.0	80.3	3.0	16.7	0.100	0.509	28.423008	-100.761556
Nava	206.85	1	2	1821	1.5	78.6	3.0	15.7	0.9	0.3	0.0	0.0	0.0	80.1	3.0	16.9	0.106	0.509	28.423011	-100.761729
Nava	206.85	3	1	7434	0.6	77.4	2.4	11.7	1.2	4.3	1.1	1.0	0.3	78.0	2.4	19.6	0.085	0.543	28.423038	-100.761549
Nava	206.85	3	2	6262	0.7	77.2	2.4	11.7	1.2	4.3	1.1	1.1	0.3	77.9	2.4	19.7	0.114	0.543	28.423045	-100.761727
T. Der. Guerrero	240.28	1	1	7130	1.4	78.9	1.1	11.7	2.1	3.5	0.5	0.6	0.2	80.3	1.1	18.6	0.103	0.501	28.646431	-100.556343
T. Der. Guerrero	240.28	1	2	7149	1.4	78.6	1.7	11.7	1.9	3.2	0.6	0.7	0.2	80.0	1.7	18.3	0.120	0.501	28.646554	-100.556424
Piedras Negras	248.00																			

COAHUILA

9 CARR: Monclova - San Pedro de Las Colonias

CLAVE: 05062

RUTA: MEX-030

AÑO: 2020

LUGAR	ESTACION				CLASIFICACION VEHICULAR EN PORCIENTO										COORDENADAS					
	KM	TE	SC	TDPA	M	A	B	C2	C3	T3S2	T3S3	T3S2R4	OTROS	A	B	C	K'	D	LATITUD	LONGITUD
Monclova	0.00																			
Frontera	2.00	3	1	8031	0.9	84.2	2.4	9.8	0.8	0.8	0.6	0.4	0.1	85.1	2.4	12.5	0.103	0.502	26.935730	-101.442869
Frontera	2.00	3	2	7968	1.0	83.5	2.6	10.1	0.9	0.9	0.6	0.3	0.1	84.5	2.6	12.9	0.100	0.502	26.935581	-101.442868
8 de Enero	11.00	3	1	7151	1.4	84.8	2.0	8.8	0.9	0.9	0.7	0.4	0.1	86.2	2.0	11.8	0.113	0.501	27.001010	-101.494850
8 de Enero	11.00	3	2	7191	1.4	83.6	2.1	9.8	1.0	0.9	0.7	0.4	0.1	85.0	2.1	12.9	0.107	0.501	27.000934	-101.494974
Nadadores	27.00	3	1	1963	3.5	77.5	2.9	9.4	1.4	2.6	1.3	1.0	0.4	81.0	2.9	16.1	0.107	0.500	27.029432	-101.593076
Nadadores	27.00	3	2	1961	3.3	78.0	2.7	9.4	1.4	2.5	1.3	1.0	0.4	81.3	2.7	16.0	0.134	0.500	27.029416	-101.593078
Sacramento	45.27	1	1	1607	3.4	75.9	3.1	10.8	1.6	2.5	1.3	1.1	0.3	79.3	3.1	17.6	0.114	0.507	27.003968	-101.725656
Sacramento	45.27	1	2	1650	3.4	76.2	2.8	10.5	1.5	2.8	1.4	1.0	0.4	79.6	2.8	17.6	0.128	0.507	27.003992	-101.725665
T. Der. La Madrid	51.00	3	1	1205	2.1	76.1	2.7	10.0	1.7	3.4	1.9	1.7	0.4	78.2	2.7	19.1	0.106	0.518	27.015555	-101.792691
T. Der. La Madrid	51.00	3	2	1120	2.4	72.5	2.9	11.9	1.8	4.0	2.3	1.7	0.5	74.9	2.9	22.2	0.123	0.518	27.015647	-101.792638
Cuatro Ciénegas	80.15	3	0	1186	1.1	66.7	3.6	10.6	3.4	7.6	3.1	3.1	0.8	67.8	3.6	28.6	0.116	0.511	26.987178	-102.066882
San Pedro de Las Colonias	267.00	1	1	685	5.5	60.0	3.5	11.5	3.9	8.3	2.9	3.2	1.2	65.5	3.5	31.0	0.095	0.512	25.758736	-102.978121
San Pedro de Las Colonias	267.00	1	2	652	5.8	59.4	3.8	11.2	4.2	8.3	2.7	3.3	1.3	65.2	3.8	31.0	0.106	0.512	25.758747	-102.978194

10 CARR: Monterrey - Castaños

CLAVE: 00128

RUTA: MEX-053

AÑO: 2020

LUGAR	ESTACION				CLASIFICACION VEHICULAR EN PORCIENTO										COORDENADAS					
	KM	TE	SC	TDPA	M	A	B	C2	C3	T3S2	T3S3	T3S2R4	OTROS	A	B	C	K'	D	LATITUD	LONGITUD
T. C. Monterrey - Nuevo Laredo	0.00	3	0	19600	6.5	72.6	1.7	10.9	2.6	2.3	1.7	0.8	0.9	79.1	1.7	19.2	0.084	0.510	25.802948	-100.276345
X. C. Libramiento Noroeste de Monterrey	3.46	3	1	14483	2.2	71.7	1.3	11.0	4.1	5.4	2.4	1.2	0.7	73.9	1.3	24.8	0.087	0.500	25.825037	-100.300286
X. C. Libramiento Noroeste de Monterrey	3.46	3	2	14505	2.3	71.7	1.6	10.2	4.8	5.2	2.3	1.1	0.8	74.0	1.6	24.4	0.073	0.500	25.825006	-100.300475
T. Der. Villa del Carmen	13.80	1	1	6853	0.9	73.5	1.3	11.0	2.4	5.3	2.9	2.2	0.5	74.4	1.3	24.3	0.090	0.505	25.898625	-100.353410
T. Der. Villa del Carmen	13.80	1	2	6713	0.9	73.3	1.3	11.1	2.4	5.3	3.0	2.2	0.5	74.2	1.3	24.5	0.086	0.505	25.898578	-100.353484
T. Izq. Hidalgo	24.78	1	0	12352	0.9	75.4	1.3	10.5	2.0	4.8	2.5	2.2	0.4	76.3	1.3	22.4	0.090	0.519	25.977496	-100.445246
T. Izq. Hidalgo	24.78	3	0	9117	1.2	68.1	1.8	10.2	2.2	7.9	4.5	3.5	0.6	69.3	1.8	28.9	0.086	0.503	25.977498	-100.445274
T. Izq. Mina	34.75	1	0	6231	0.9	65.4	2.9	10.2	2.1	9.1	4.6	4.1	0.7	66.3	2.9	30.8	0.081	0.506	26.003122	-100.532233
T. Izq. Espinazo	91.90	1	0	3542	2.9	55.3	2.6	10.6	3.3	12.0	6.8	5.9	0.6	58.2	2.6	39.2	0.080	0.572	26.363410	-100.879912
T. Izq. Espinazo	91.90	3	0	3580	2.5	53.6	2.3	9.2	3.7	14.7	8.0	5.4	0.6	56.1	2.3	41.6	0.079	0.500	26.363408	-100.879919
Lim. Edos. Term. N. L. Ppia. Coah.	115.90																			
T. C. Saltillo - Monclova	155.90	1	1	1786	1.8	59.0	2.6	8.4	2.7	11.6	7.0	5.7	1.2	60.8	2.6	36.6	0.092	0.500	26.698374	-101.388240
T. C. Saltillo - Monclova	155.90	1	2	1785	1.6	54.9	3.3	9.5	2.9	12.8	8.1	5.8	1.1	56.5	3.3	40.2	0.080	0.500	26.697782	-101.388288

COAHUILA

11 CARR: Morelos - Cd. Acuña

CLAVE: 05029

RUTA: MEX-029

AÑO: 2020

LUGAR	ESTACION				CLASIFICACION VEHICULAR EN PORCIENTO													COORDENADAS		
	KM	TE	SC	TDPA	M	A	B	C2	C3	T3S2	T3S3	T3S2R4	OTROS	A	B	C	K'	D	LATITUD	LONGITUD
Morelos	0.00	3	1	2427	0.7	72.0	2.9	19.2	1.1	2.9	0.5	0.6	0.1	72.7	2.9	24.4	0.117	0.511	28.407488	-100.885687
Morelos	0.00	3	2	2535	0.8	71.2	2.7	21.3	0.5	2.6	0.3	0.5	0.1	72.0	2.7	25.3	0.104	0.511	28.407470	-100.885733
T. Izq. El Remolino	40.10	1	0	1625	2.5	66.1	2.6	17.0	1.6	8.1	1.0	1.0	0.1	68.6	2.6	28.8	0.106	0.556	28.722661	-100.912150
T. Izq. El Remolino	40.10	3	0	1440	1.2	71.5	2.0	12.5	1.8	9.0	1.1	0.9	0.0	72.7	2.0	25.3	0.100	0.503	28.722667	-100.912153
San Carlos	73.84	1	0	1637	0.7	74.2	1.8	11.7	1.6	8.1	0.9	0.9	0.1	74.9	1.8	23.3	0.103	0.525	29.023963	-100.904071
T. Der. Piedras Negras	104.50	3	1	5803	1.3	72.6	5.0	15.8	1.8	2.1	0.8	0.3	0.3	73.9	5.0	21.1	0.098	0.513	29.292744	-100.912346
T. Der. Piedras Negras	104.50	3	2	6116	1.2	72.7	4.9	15.9	1.7	2.1	0.8	0.4	0.3	73.9	4.9	21.2	0.101	0.513	29.292952	-100.912532
Cd. Acuña	109.10	1	1	6507	0.9	81.5	1.5	14.3	0.8	0.4	0.3	0.2	0.1	82.4	1.5	16.1	0.106	0.523	29.309419	-100.930872
Cd. Acuña	109.10	1	2	7147	0.9	82.0	1.5	14.1	0.7	0.4	0.2	0.1	0.1	82.9	1.5	15.6	0.108	0.523	29.309413	-100.930966

12 CARR: Nueva Rosita - Boquillas del Carmen

CLAVE: 05028

RUTA: MEX-053

AÑO: 2020

LUGAR	ESTACION				CLASIFICACION VEHICULAR EN PORCIENTO													COORDENADAS		
	KM	TE	SC	TDPA	M	A	B	C2	C3	T3S2	T3S3	T3S2R4	OTROS	A	B	C	K'	D	LATITUD	LONGITUD
Nueva Rosita	0.00	3	1	3513	3.0	78.8	0.7	14.2	1.3	1.1	0.3	0.5	0.1	81.8	0.7	17.5	0.104	0.501	27.939299	-101.229116
Nueva Rosita	0.00	3	2	3525	3.0	79.3	0.7	13.6	1.1	1.3	0.4	0.5	0.1	82.3	0.7	17.0	0.102	0.501	27.939276	-101.229057
T. Der. Santa María	14.00	3	1	2327	1.2	73.9	2.0	15.2	1.8	2.7	2.6	0.5	0.1	75.1	2.0	22.9	0.079	0.507	27.941346	-101.302694
T. Der. Santa María	14.00	3	2	2389	0.9	74.4	2.3	15.5	1.2	2.6	2.6	0.4	0.1	75.3	2.3	22.4	0.090	0.507	27.941346	-101.302694
Palau	25.00	1	1	3252	2.4	76.0	1.5	13.2	2.0	2.8	1.7	0.3	0.1	78.4	1.5	20.1	0.093	0.503	27.888748	-101.417207
Palau	25.00	1	2	3296	2.6	75.9	1.5	13.1	2.0	2.8	1.7	0.3	0.1	78.5	1.5	20.0	0.093	0.503	27.888750	-101.417207
Palau	25.00	3	1	3714	1.6	75.2	1.9	14.8	2.7	2.0	0.9	0.4	0.5	76.8	1.9	21.3	0.087	0.529	27.888958	-101.417982
Palau	25.00	3	2	4171	1.6	75.6	1.9	14.4	2.7	2.0	0.9	0.4	0.5	77.2	1.9	20.9	0.084	0.529	27.889053	-101.417961
Melchor Múzquiz	35.00	3	0	2975	1.8	78.5	0.1	14.9	1.7	2.0	0.6	0.2	0.2	80.3	0.1	19.6	0.095	0.508	27.889391	-101.520178
Boquillas del Carmen	250.00																			

13 CARR: Ojo Caliente - Santa Cruz

CLAVE: 05007

RUTA: MEX-057

AÑO: 2020

LUGAR	ESTACION				CLASIFICACION VEHICULAR EN PORCIENTO													COORDENADAS		
	KM	TE	SC	TDPA	M	A	B	C2	C3	T3S2	T3S3	T3S2R4	OTROS	A	B	C	K'	D	LATITUD	LONGITUD
T. C. Saltillo - Monterrey	0.00	3	0	5175	2.9	59.0	2.2	8.1	1.9	15.7	4.3	4.9	1.0	61.9	2.2	35.9	0.094	0.521	25.591268	-100.886910
T. C. Saltillo - Monclova	34.00	1	0	3812	0.5	69.4	3.1	10.0	1.2	6.8	3.0	5.3	0.7	69.9	3.1	27.0	0.083	0.509	25.788510	-101.109258

COAHUILA

14 CARR: Piedras Negras - Cd. Acuña

CLAVE: 05061

RUTA: MEX-002

AÑO: 2020

LUGAR	ESTACION				CLASIFICACION VEHICULAR EN PORCIENTO													COORDENADAS		
	KM	TE	SC	TDPA	M	A	B	C2	C3	T3S2	T3S3	T3S2R4	OTROS	A	B	C	K'	D	LATITUD	LONGITUD
Piedras Negras	0.00	3	1	2837	2.1	72.1	2.7	16.3	3.7	1.6	1.0	0.2	0.3	74.2	2.7	23.1	0.081	0.500	28.702654	-100.543473
Piedras Negras	0.00	3	2	2831	2.1	71.9	2.6	16.4	3.9	1.5	1.2	0.2	0.2	74.0	2.6	23.4	0.083	0.500	28.702640	-100.543641
T. C. Morelos - Cd. Acuña	83.30	1	0	3987	1.2	70.2	3.4	19.1	1.6	2.9	1.0	0.3	0.3	71.4	3.4	25.2	0.085	0.505	29.292706	-100.912320

15 CARR: Piedras Negras - Nuevo Laredo

CLAVE: 00503

RUTA: MEX-002

AÑO: 2020

LUGAR	ESTACION				CLASIFICACION VEHICULAR EN PORCIENTO													COORDENADAS		
	KM	TE	SC	TDPA	M	A	B	C2	C3	T3S2	T3S3	T3S2R4	OTROS	A	B	C	K'	D	LATITUD	LONGITUD
T. C. Monclova - Piedras Negras	0.00	3	1	4318	1.4	69.9	1.1	13.7	3.1	8.3	1.0	0.8	0.7	71.3	1.1	27.6	0.091	0.511	28.646424	-100.556351
T. C. Monclova - Piedras Negras	0.00	3	2	4125	1.4	70.0	1.1	13.8	2.9	8.4	1.0	0.7	0.7	71.4	1.1	27.5	0.094	0.511	28.646586	-100.556267
El Saucito	16.90	3	0	1264	3.4	60.0	1.7	17.1	3.4	9.0	1.1	3.6	0.7	63.4	1.7	34.9	0.089	0.508	28.502795	-100.467866
T. Der. Villa Unión	37.00	1	0	1143	3.7	59.3	1.9	16.6	3.5	9.2	1.1	4.0	0.7	63.0	1.9	35.1	0.090	0.504	28.337758	-100.389948
T. Der. Villa Unión	37.00	3	0	1029	5.5	52.0	2.8	15.8	2.9	12.1	1.9	6.5	0.5	57.5	2.8	39.7	0.097	0.506	28.337744	-100.389953
Guerrero	42.00	3	0	876	5.8	53.9	3.0	14.7	3.1	12.1	1.5	5.5	0.4	59.7	3.0	37.3	0.106	0.505	28.308235	-100.367604
Lim. Edos. Term. Coah. Ppia. N. L.	124.40																			
T. C. Monclova - Colombia	134.00	3	0	2902	4.0	59.4	1.8	15.2	2.9	11.9	2.0	2.2	0.6	63.4	1.8	34.8	0.096	0.511	27.689444	-99.779863
Lim. Edos. Term. N. L. Ppia. Tamps.	138.20																			
T. Der. Libramiento de Nuevo Laredo	157.70	1	1	3984	9.5	44.8	1.3	7.7	10.8	22.5	1.2	1.2	1.0	54.3	1.3	44.4	0.097	0.511	27.567735	-99.589395
T. Der. Libramiento de Nuevo Laredo	157.70	1	2	4163	8.4	43.2	1.3	7.6	11.0	25.0	1.4	1.1	1.0	51.6	1.3	47.1	0.085	0.511	27.567799	-99.589281
Nuevo Laredo	175.00	1	1	7710	0.9	52.4	1.8	13.6	8.6	19.3	1.9	0.7	0.8	53.3	1.8	44.9	0.102	0.528	27.517954	-99.562402
Nuevo Laredo	175.00	1	2	6895	1.0	52.3	1.8	13.6	8.7	19.2	1.9	0.7	0.8	53.3	1.8	44.9	0.108	0.528	27.517992	-99.562332

16 CARR: Puerto México - La Encantada

CLAVE: 05002

RUTA: MEX-057

AÑO: 2020

LUGAR	ESTACION				CLASIFICACION VEHICULAR EN PORCIENTO													COORDENADAS		
	KM	TE	SC	TDPA	M	A	B	C2	C3	T3S2	T3S3	T3S2R4	OTROS	A	B	C	K'	D	LATITUD	LONGITUD
T. C. Aut. Puerto México - Ojo Caliente	0.00	3	0	1378	0.6	72.8	4.9	14.0	1.0	4.7	1.1	0.6	0.3	73.4	4.9	21.7	0.094	0.502	25.226730	-100.820562
Lim. Edos. Term. N. L. Ppia. Coah.	3.50																			
T. C. Ent. Morelos - Saltillo	41.00	1	0	1935	1.5	63.7	6.6	10.7	2.9	12.8	0.9	0.5	0.4	65.2	6.6	28.2	0.104	0.504	25.262622	-101.091397

17 CARR: Saltillo - Monclova

CLAVE: 05406

RUTA: MEX-057

AÑO: 2020

LUGAR	ESTACION				CLASIFICACION VEHICULAR EN PORCIENTO													COORDENADAS		
	KM	TE	SC	TDPA	M	A	B	C2	C3	T3S2	T3S3	T3S2R4	OTROS	A	B	C	K'	D	LATITUD	LONGITUD
Saltillo	0.00																			

COAHUILA

17 CARR: Saltillo - Monclova

CLAVE: 05406

RUTA: MEX-057

AÑO: 2020

LUGAR	ESTACION				CLASIFICACION VEHICULAR EN PORCIENTO													COORDENADAS		
	KM	TE	SC	TDPA	M	A	B	C2	C3	T3S2	T3S3	T3S2R4	OTROS	A	B	C	K'	D	LATITUD	LONGITUD
T. Der. Ramos Arizpe	13.00	1	0	3947	1.9	76.5	0.9	11.1	1.6	5.7	1.0	0.8	0.5	78.4	0.9	20.7	0.104	0.513	25.527952	-101.003403
T. Der. Ramos Arizpe	13.00	3	0	2261	3.0	72.3	2.3	14.0	3.8	2.9	1.0	0.4	0.3	75.3	2.3	22.4	0.099	0.501	25.527959	-101.003409
T. C. Ojo Caliente - Santa Cruz	49.60	1	0	376	1.3	75.6	2.6	11.5	1.2	6.7	0.9	0.2	0.0	76.9	2.6	20.5	0.104	0.506	25.788502	-101.109258
T. C. Ojo Caliente - Santa Cruz	49.60	3	0	3869	1.9	66.4	3.2	9.5	0.9	9.8	2.9	4.0	1.4	68.3	3.2	28.5	0.115	0.501	25.788520	-101.109268
T. Der. Paredón	64.00	1	0	4101	1.6	70.6	2.6	8.4	1.1	7.6	2.5	5.0	0.6	72.2	2.6	25.2	0.103	0.510	25.913664	-101.152429
T. Der. Paredón	64.00	3	0	4095	1.6	73.1	3.5	8.4	1.0	6.0	2.0	3.5	0.9	74.7	3.5	21.8	0.113	0.501	25.913675	-101.152430
T. Izq. Hipólito	78.00	1	0	3595	1.5	73.5	3.2	6.1	0.9	6.2	3.3	4.6	0.7	75.0	3.2	21.8	0.095	0.503	25.973708	-101.263210
T. Izq. Hipólito	78.00	3	0	3307	2.7	70.2	3.7	5.9	1.0	7.8	3.0	5.1	0.6	72.9	3.7	23.4	0.129	0.514	25.973719	-101.263212
T. Der. Monterrey	165.50	1	0	3275	2.5	69.8	2.9	6.3	1.2	7.4	3.5	5.5	0.9	72.3	2.9	24.8	0.124	0.509	26.697758	-101.388296
T. Der. Monterrey	165.50	3	1	3635	2.5	67.5	3.3	2.8	1.7	10.7	6.2	4.1	1.2	70.0	3.3	26.7	0.109	0.527	26.698382	-101.388248
T. Der. Monterrey	165.50	3	2	3265	1.9	66.5	3.7	3.2	1.8	10.8	6.3	4.6	1.2	68.4	3.7	27.9	0.131	0.527	26.697783	-101.388295
T. Der. Libramiento de Castaños (1º Acceso)	175.20	1	1	6925	1.5	74.2	1.7	9.0	2.2	5.0	2.9	2.6	0.9	75.7	1.7	22.6	0.088	0.519	26.781759	-101.417151
T. Der. Libramiento de Castaños (1º Acceso)	175.20	1	2	7486	1.2	76.4	1.6	8.5	2.3	4.6	2.4	2.1	0.9	77.6	1.6	20.8	0.094	0.519	26.781701	-101.417265
T. Der. Libramiento de Castaños (2º Acceso)	177.10	3	1	9363	4.4	73.4	2.0	8.0	2.2	4.6	2.9	2.0	0.5	77.8	2.0	20.2	0.079	0.514	26.798035	-101.422484
T. Der. Libramiento de Castaños (2º Acceso)	177.10	3	2	8863	4.1	73.2	2.0	8.2	2.2	4.6	2.8	2.3	0.6	77.3	2.0	20.7	0.092	0.514	26.798021	-101.422605
T. Izq. Libramiento Lic. Carlos Salinas De Gortari	184.10	1	1	10205	4.8	42.0	7.2	9.5	7.4	20.5	4.8	3.0	0.8	46.8	7.2	46.0	0.083	0.505	26.858547	-101.426854
T. Izq. Libramiento Lic. Carlos Salinas De Gortari	184.10	1	2	10419	3.7	43.3	7.4	9.5	7.9	19.5	5.0	2.9	0.8	47.0	7.4	45.6	0.083	0.505	26.858545	-101.426927
T. Izq. Libramiento Lic. Carlos Salinas De Gortari	184.10	3	1	20833	1.6	86.8	1.1	4.6	1.8	1.5	1.8	0.5	0.3	88.4	1.1	10.5	0.090	0.505	26.858552	-101.426854
T. Izq. Libramiento Lic. Carlos Salinas De Gortari	184.10	3	2	20436	1.5	86.4	1.1	4.8	2.1	1.4	1.9	0.5	0.3	87.9	1.1	11.0	0.084	0.505	26.858548	-101.426928
Monclova	192.00	1	1	28530	1.6	86.9	1.1	4.7	1.9	1.4	1.7	0.4	0.3	88.5	1.1	10.4	0.084	0.508	26.913189	-101.428989
Monclova	192.00	1	2	27499	1.7	85.8	1.1	5.6	1.9	1.4	1.8	0.4	0.3	87.5	1.1	11.4	0.084	0.508	26.913222	-101.429065

18 CARR: Saltillo - Monterrey

CLAVE: 00087

RUTA: MEX-040

AÑO: 2020

LUGAR	ESTACION				CLASIFICACION VEHICULAR EN PORCIENTO													COORDENADAS			
	KM	TE	SC	TDPA	M	A	B	C2	C3	T3S2	T3S3	T3S2R4	OTROS	A	B	C	K'	D	LATITUD	LONGITUD	
T. C. Saltillo - Arteaga	0.00																				
T. Izq. Zinacamex	4.25	3	1	38355	0.5	87.0	0.8	5.7	0.8	1.7	2.9	0.5	0.1	87.5	0.8	11.7	0.088	0.512	25.479744	-100.973589	
T. Izq. Zinacamex	4.25	3	2	36306	0.5	87.0	0.8	5.7	0.8	1.7	2.9	0.5	0.1	87.5	0.8	11.7	0.092	0.512	25.479790	-100.973732	
Ramos Arizpe	11.30	1	1	38647	0.8	86.5	1.0	6.8	0.8	1.8	1.7	0.2	0.4	87.3	1.0	11.7	0.121	0.501	25.539678	-100.943780	
Ramos Arizpe	11.30	1	2	38806	0.9	86.8	0.8	6.4	0.9	2.0	1.6	0.2	0.4	87.7	0.8	11.5	0.101	0.501	25.539741	-100.943875	
T. Der. Aeropuerto	13.00	3	1	27545	0.5	84.6	0.9	7.5	0.9	1.8	2.8	0.5	0.5	85.1	0.9	14.0	0.096	0.504	25.550456	-100.932681	
T. Der. Aeropuerto	13.00	3	2	27112	0.5	84.6	0.9	7.5	0.9	1.8	2.8	0.5	0.5	85.1	0.9	14.0	0.108	0.504	25.550578	-100.932774	
T. Der. Libramiento J.L.P.	16.00	3	1	21686	0.5	86.0	0.8	7.1	0.9	1.6	2.1	0.5	0.5	86.5	0.8	12.7	0.087	0.502	25.559480	-100.922238	
T. Der. Libramiento J.L.P.	16.00	3	2	21541	0.5	84.1	0.8	8.1	1.0	1.7	2.8	0.5	0.5	84.6	0.8	14.6	0.101	0.502	25.559568	-100.922343	

COAHUILA

18 CARR: Saltillo - Monterrey

CLAVE: 00087

RUTA: MEX-040

AÑO: 2020

LUGAR	ESTACION				CLASIFICACION VEHICULAR EN PORCIENTO										COORDENADAS					
	KM	TE	SC	TDPA	M	A	B	C2	C3	T3S2	T3S3	T3S2R4	OTROS	A	B	C	K'	D	LATITUD	LONGITUD
Ojo Caliente	26.30	1	1	16370	0.8	62.1	2.9	7.9	2.2	19.5	2.0	2.4	0.2	62.9	2.9	34.2	0.083	0.503	25.616472	-100.832952
Ojo Caliente	26.30	1	2	16574	0.8	58.1	3.4	9.5	2.4	20.5	2.5	2.6	0.2	58.9	3.4	37.7	0.074	0.503	25.616568	-100.833902
Lim. Edos. Term. Coah. Ppia. N. L.	33.00																			
T. Izq. Libramiento Noroeste de Monterrey	54.00	1	1	15996	1.3	47.4	3.0	8.9	2.7	27.7	3.9	4.1	1.0	48.7	3.0	48.3	0.073	0.574	25.698472	-100.559011
T. Izq. Libramiento Noroeste de Monterrey	54.00	1	2	21548	1.3	47.6	2.9	8.9	2.7	27.7	3.8	4.1	1.0	48.9	2.9	48.2	0.069	0.574	25.698657	-100.559137
T. Der. Santa Catarina (1° Acceso)	62.46	1	1	39618	1.4	83.9	1.3	7.1	1.2	2.8	1.4	0.6	0.3	85.3	1.3	13.4	0.091	0.505	25.685195	-100.489473
T. Der. Santa Catarina (1° Acceso)	62.46	1	2	40614	1.4	83.9	1.3	7.1	1.2	2.8	1.4	0.6	0.3	85.3	1.3	13.4	0.076	0.505	25.685371	-100.489406
Ppia. Monterrey	79.20	1	1	79860	1.1	86.4	0.7	5.8	1.3	2.1	1.7	0.4	0.5	87.5	0.7	11.8	0.085	0.519	25.673741	-100.395122
Ppia. Monterrey	79.20	1	2	86825	1.1	86.4	0.7	5.8	1.3	2.1	1.7	0.4	0.5	87.5	0.7	11.8	0.080	0.519	25.673855	-100.395086

19 CARR: Saltillo - Torreón

CLAVE: 05086

RUTA: MEX-040

AÑO: 2020

LUGAR	ESTACION				CLASIFICACION VEHICULAR EN PORCIENTO										COORDENADAS					
	KM	TE	SC	TDPA	M	A	B	C2	C3	T3S2	T3S3	T3S2R4	OTROS	A	B	C	K'	D	LATITUD	LONGITUD
Saltillo	0.00																			
T. Der. Monclova	6.10	3	1	5234	0.7	64.8	3.7	9.4	2.6	11.4	3.0	3.7	0.7	65.5	3.7	30.8	0.075	0.520	25.454044	-101.032484
T. Der. Monclova	6.10	3	2	4838	0.5	63.1	3.6	9.9	2.8	12.3	3.4	3.5	0.9	63.6	3.6	32.8	0.081	0.520	25.453913	-101.032462
T. C. Torreón - Saltillo (Cuota)	33.80																			
T. Izq. General Cepeda	44.14	1	0	3335	1.4	64.4	2.8	15.2	2.9	9.1	2.3	1.3	0.6	65.8	2.8	31.4	0.087	0.520	25.508097	-101.378009
T. Izq. General Cepeda	44.14	3	0	2823	1.6	47.0	6.4	13.5	3.4	17.4	6.7	3.5	0.5	48.6	6.4	45.0	0.090	0.512	25.508106	-101.378021
T. Der. Estación Marte	91.20	1	0	1653	3.1	53.6	4.0	13.8	4.2	14.0	4.7	1.9	0.7	56.7	4.0	39.3	0.082	0.512	25.658820	-101.766106
T. C. Torreón - Saltillo (Cuota)	118.10																			
Ent. Paila	127.90	1	1	4058	0.5	57.9	5.6	5.7	1.8	18.1	3.9	5.6	0.9	58.4	5.6	36.0	0.063	0.524	25.650118	-102.146064
Ent. Paila	127.90	1	2	3680	0.3	58.3	5.4	5.7	1.7	17.6	4.1	6.0	0.9	58.6	5.4	36.0	0.071	0.524	25.648693	-102.146209
T. Der. San Pedro de Las Colonias (La Cuchilla)	204.58	1	1	3311	0.5	56.7	5.3	6.2	2.3	17.8	3.8	6.6	0.8	57.2	5.3	37.5	0.074	0.540	25.626467	-102.879379
T. Der. San Pedro de Las Colonias (La Cuchilla)	204.58	1	2	2823	0.7	56.5	5.3	6.3	2.3	17.6	3.6	6.8	0.9	57.2	5.3	37.5	0.072	0.540	25.626555	-102.879493
Emiliano Zapata	221.68	1	0	960	1.5	56.2	4.9	10.9	3.4	17.4	4.2	1.4	0.1	57.7	4.9	37.4	0.099	0.503	25.489262	-102.943265
Emiliano Zapata	221.68	3	0	1799	1.7	57.0	3.3	18.5	3.6	10.7	3.3	1.0	0.9	58.7	3.3	38.0	0.099	0.520	25.489021	-102.943495
T. Der. Libramiento de Matamoros (1° Acceso)	246.80	1	0	5182	1.6	68.7	1.5	16.0	3.0	5.9	1.7	1.0	0.6	70.3	1.5	28.2	0.114	0.513	25.527440	-103.216704
T. Der. Libramiento de Matamoros (1° Acceso)	246.80	3	1	4109	6.8	85.1	1.1	6.8	0.2	0.0	0.0	0.0	0.0	91.9	1.1	7.0	0.101	0.532	25.527553	-103.216762
T. Der. Libramiento de Matamoros (1° Acceso)	246.80	3	2	3619	6.9	84.7	1.3	6.8	0.2	0.1	0.0	0.0	0.0	91.6	1.3	7.1	0.093	0.532	25.527565	-103.216709
Matamoros	252.80	3	1	8938	6.8	85.3	1.1	6.6	0.2	0.0	0.0	0.0	0.0	92.1	1.1	6.8	0.102	0.533	25.530398	-103.228939
Matamoros	252.80	3	2	7830	6.7	85.1	1.3	6.8	0.1	0.0	0.0	0.0	0.0	91.8	1.3	6.9	0.094	0.533	25.530342	-103.228960
T. Der. Libramiento de Matamoros (2° Acceso)	253.12	3	1	10840	5.6	77.3	3.4	4.4	1.9	5.0	0.9	1.2	0.3	82.9	3.4	13.7	0.098	0.509	25.535349	-103.252169
T. Der. Libramiento de Matamoros (2° Acceso)	253.12	3	2	10437	4.5	76.2	3.3	6.6	2.0	4.8	1.2	1.1	0.3	80.7	3.3	16.0	0.097	0.509	25.535235	-103.252158

COAHUILA

19 CARR: Saltillo - Torreón

CLAVE: 05086

RUTA: MEX-040

AÑO: 2020

LUGAR	ESTACION				CLASIFICACION VEHICULAR EN PORCIENTO										COORDENADAS					
	KM	TE	SC	TDPA	M	A	B	C2	C3	T3S2	T3S3	T3S2R4	OTROS	A	B	C	K'	D	LATITUD	LONGITUD
T. Der. Libramiento de Torreón	264.50	3	1	35883	4.4	89.1	1.0	3.4	0.5	0.4	0.1	0.9	0.2	93.5	1.0	5.5	0.097	0.560	25.535159	-103.370582
T. Der. Libramiento de Torreón	264.50	3	2	34551	4.6	89.0	1.0	3.4	0.5	0.4	0.1	0.9	0.1	93.6	1.0	5.4	0.100	0.560	25.534921	-103.370569
Torreón	291.00																			

20 CARR: Libramiento Norponiente de Saltillo (Cuota)

CLAVE: 05022

RUTA: MEX-S30

AÑO: 2020

LUGAR	ESTACION				CLASIFICACION VEHICULAR EN PORCIENTO										COORDENADAS					
	KM	TE	SC	TDPA	M	A	B	C2	C3	T3S2	T3S3	T3S2R4	OTROS	A	B	C	K'	D	LATITUD	LONGITUD
T. C. Ent. Morelos - Saltillo	0.00	3	0	4950	4.9	35.7	5.2	7.3	3.3	31.0	3.2	7.9	1.5	40.6	5.2	54.2	0.076	0.521	25.276240	-101.091041
X. C. Saltillo - Torreón	22.44	1	0	4920	4.8	35.0	6.3	7.5	3.5	30.9	2.6	7.9	1.5	39.8	6.3	53.9	0.078	0.517	25.453541	-101.065857
X. C. Saltillo - Torreón	22.44	3	0	7411	1.5	38.9	4.9	6.7	2.9	29.3	4.2	10.1	1.5	40.4	4.9	54.7	0.081	0.515	25.453554	-101.065857
X. C. Saltillo - Monclova	32.44	1	0	8863	2.1	39.5	4.5	6.9	2.8	28.3	4.0	10.2	1.7	41.6	4.5	53.9	0.078	0.513	25.520665	-100.995173
X. C. Saltillo - Monclova	32.44	3	0	9135	1.7	38.9	5.6	8.0	2.6	27.3	3.8	11.2	0.9	40.6	5.6	53.8	0.077	0.512	25.520668	-100.995163
Ojo Caliente	46.21	1	0	8700	1.3	48.8	4.3	6.0	2.8	19.9	4.1	11.7	1.1	50.1	4.3	45.6	0.079	0.515	25.613784	-100.911345

21 CARR: Libramiento Norte de Torreón (Cuota)

CLAVE:

RUTA: MEX-040D

AÑO: 2020

LUGAR	ESTACION				CLASIFICACION VEHICULAR EN PORCIENTO										COORDENADAS					
	KM	TE	SC	TDPA	M	A	B	C2	C3	T3S2	T3S3	T3S2R4	OTROS	A	B	C	K'	D	LATITUD	LONGITUD
X. C. Gómez Palacio - Jiménez	0.00	3	0	2831	1.9	53.7	2.4	9.2	2.8	15.9	5.4	7.7	1.0	55.6	2.4	42.0	0.073	0.506	25.624794	-103.516204
Lim. Edos. Term. Dgo. Ppia. Coah.	15.60																			
X. C. La Cuchilla - Torreón	17.36	1	0	2829	1.5	51.8	2.9	10.7	2.5	15.3	5.3	9.0	1.0	53.3	2.9	43.8	0.070	0.508	25.649946	-103.365062
X. C. La Cuchilla - Torreón	17.36	3	0	2589	1.6	51.2	3.7	12.2	2.5	15.0	5.0	7.8	1.0	52.8	3.7	43.5	0.071	0.505	25.649922	-103.365092
X. C. Torreón - Saltillo	40.70	1	0	2974	1.4	51.3	2.6	9.4	3.0	16.4	5.5	9.6	0.8	52.7	2.6	44.7	0.074	0.508	25.538288	-103.215022

22 CARR: Libramiento Oriente de Saltillo (Cuota)

CLAVE: 00115

RUTA: MEX-057D

AÑO: 2020

LUGAR	ESTACION				CLASIFICACION VEHICULAR EN PORCIENTO										COORDENADAS					
	KM	TE	SC	TDPA	M	A	B	C2	C3	T3S2	T3S3	T3S2R4	OTROS	A	B	C	K'	D	LATITUD	LONGITUD
Ent. La Carbonera	0.00																			
Plaza de Cobro Carbonera	12.30	2	1	6584	0.3	31.5	4.0	4.3	2.4	46.0	4.0	6.4	1.1	31.8	4.0	64.2	0.072	0.500	25.510948	-100.868249
Plaza de Cobro Carbonera	12.30	2	2	6584	0.3	31.5	4.0	4.3	2.4	46.0	4.0	6.4	1.1	31.8	4.0	64.2	0.072	0.500	25.510948	-100.868249
Plaza de Cobro Carbonera	12.30	3	1	5486	4.2	27.1	6.4	4.1	2.7	45.4	3.6	5.5	1.0	31.3	6.4	62.3	0.076	0.501	25.510951	-100.868256
Plaza de Cobro Carbonera	12.30	3	2	5518	4.0	27.3	6.4	4.1	2.7	45.5	3.6	5.5	0.9	31.3	6.4	62.3	0.074	0.501	25.510991	-100.868425
T. C. Saltillo - Monterrey	21.00																			

COAHUILA

23 CARR: Nueva Rosita - Ent. Allende (Cuota)

CLAVE: 05502

RUTA: MEX-057D

AÑO: 2020

LUGAR	ESTACION				CLASIFICACION VEHICULAR EN PORCIENTO										COORDENADAS					
	KM	TE	SC	TDPA	M	A	B	C2	C3	T3S2	T3S3	T3S2R4	OTROS	A	B	C	K'	D	LATITUD	LONGITUD
T. C. Monclova - Piedras Negras	0.00	3	1	1595	0.3	69.2	3.9	15.8	1.5	4.6	0.7	3.8	0.2	69.5	3.9	26.6	0.099	0.516	27.932424	-101.199109
T. C. Monclova - Piedras Negras	0.00	3	2	1496	0.4	64.4	4.8	17.9	1.8	5.3	0.7	4.4	0.3	64.8	4.8	30.4	0.107	0.516	27.932499	-101.199140
Allende	52.20																			
T. C. Monclova - Piedras Negras	54.00	1	1	1678	0.6	66.4	3.8	17.4	1.3	4.8	1.2	3.9	0.6	67.0	3.8	29.2	0.092	0.532	28.315122	-100.902683
T. C. Monclova - Piedras Negras	54.00	1	2	1910	0.7	67.3	3.4	18.0	1.2	4.5	0.8	3.6	0.5	68.0	3.4	28.6	0.124	0.532	28.315024	-100.903006

24 CARR: Puerto México - La Carbonera (Cuota)

CLAVE: 00115

RUTA: MEX-057D

AÑO: 2020

LUGAR	ESTACION				CLASIFICACION VEHICULAR EN PORCIENTO										COORDENADAS					
	KM	TE	SC	TDPA	M	A	B	C2	C3	T3S2	T3S3	T3S2R4	OTROS	A	B	C	K'	D	LATITUD	LONGITUD
Ent. Puerto México	202.00																			
Plaza de Cobro Los Chorros	203.64	2	1	6333	0.1	30.3	4.7	2.8	1.7	48.6	3.7	6.9	1.2	30.4	4.7	64.9	0.076	0.500	25.186696	-100.731988
Plaza de Cobro Los Chorros	203.64	2	2	6333	0.1	30.3	4.7	2.8	1.7	48.6	3.7	6.9	1.2	30.4	4.7	64.9	0.076	0.500	25.186696	-100.731988
Lim. Edos. Term. N. L. Ppia. Coah.	204.07																			
Lim. Edos. Term. Coah. Ppia. N. L.	204.50																			
Lim. Edos. Term. N. L. Ppia. Coah.	205.76																			
T. Der. San Antonio de Las Alazanas	224.94	1	1	6033	2.4	44.8	4.5	7.8	2.3	28.2	3.8	5.3	0.9	47.2	4.5	48.3	0.071	0.518	25.348931	-100.794399
T. Der. San Antonio de Las Alazanas	224.94	1	2	6482	2.3	41.6	5.1	8.9	2.5	28.7	4.2	5.8	0.9	43.9	5.1	51.0	0.077	0.518	25.348920	-100.794516
T. Der. San Antonio de Las Alazanas	224.94	3	1	7159	2.3	54.1	3.6	8.3	1.7	21.1	3.7	4.2	1.0	56.4	3.6	40.0	0.088	0.523	25.348937	-100.794397
T. Der. San Antonio de Las Alazanas	224.94	3	2	7856	2.2	48.3	4.0	9.7	2.0	24.2	4.1	4.5	1.0	50.5	4.0	45.5	0.088	0.523	25.348927	-100.794515
Los Lirios	228.30	3	1	9728	1.7	49.9	4.0	9.2	2.1	24.9	3.5	3.7	1.0	51.6	4.0	44.4	0.126	0.502	25.376680	-100.795803
Los Lirios	228.30	3	2	9633	1.6	45.6	4.9	10.8	2.4	25.8	3.9	3.9	1.1	47.2	4.9	47.9	0.120	0.502	25.376780	-100.795924
Ent. La Carbonera	235.60																			

25 CARR: Saltillo - Monterrey (Cuota)

CLAVE: 00087

RUTA: MEX-040D

AÑO: 2020

LUGAR	ESTACION				CLASIFICACION VEHICULAR EN PORCIENTO										COORDENADAS					
	KM	TE	SC	TDPA	M	A	B	C2	C3	T3S2	T3S3	T3S2R4	OTROS	A	B	C	K'	D	LATITUD	LONGITUD
Ojo Caliente	46.21	3	1	3793	2.2	52.8	4.1	6.6	3.6	19.1	4.1	6.5	1.0	55.0	4.1	40.9	0.087	0.503	25.613764	-100.911296
Ojo Caliente	46.21	3	2	3833	2.0	53.1	4.2	6.7	3.5	19.1	4.0	6.5	0.9	55.1	4.2	40.7	0.080	0.503	25.613800	-100.911399
Lim. Edos. Term. Coah. Ppia. N. L.	61.08																			
T. Izq. Anillo Periférico de Monterrey (Cuota)	82.00	1	1	7663	2.0	72.5	5.0	7.0	1.6	6.8	1.6	2.7	0.8	74.5	5.0	20.5	0.081	0.519	25.695133	-100.570977
T. Izq. Anillo Periférico de Monterrey (Cuota)	82.00	1	2	7098	2.1	69.9	5.4	7.7	1.6	7.6	1.8	2.9	1.0	72.0	5.4	22.6	0.085	0.519	25.695190	-100.570853
T. Izq. Anillo Periférico de Monterrey (Cuota)	82.00	3	1	4164	0.6	92.6	2.1	4.4	0.1	0.1	0.0	0.0	0.1	93.2	2.1	4.7	0.109	0.525	25.695145	-100.570993
T. Izq. Anillo Periférico de Monterrey (Cuota)	82.00	3	2	4604	0.5	91.8	2.2	5.2	0.1	0.1	0.0	0.0	0.1	92.3	2.2	5.5	0.116	0.525	25.695211	-100.570882



COAHUILA

25 CARR : Saltillo - Monterrey (Cuota)

CLAVE: 00087

RUTA: MEX-040D

AÑO : 2020

LUGAR	ESTACION	CLASIFICACION VEHICULAR EN PORCIENTO																COORDENADAS				
		KM	TE	SC	TDPA	M	A	B	C2	C3	T3S2	T3S3	T3S2R4	OTROS	A	B	C	K'	D	LATITUD	LONGITUD	
Morones Prieto	96.10																					

26 CARR : Torreón - Saltillo (Cuota)

CLAVE:

RUTA: MEX-040D

AÑO : 2020

LUGAR	ESTACION	CLASIFICACION VEHICULAR EN PORCIENTO																COORDENADAS				
		KM	TE	SC	TDPA	M	A	B	C2	C3	T3S2	T3S3	T3S2R4	OTROS	A	B	C	K'	D	LATITUD	LONGITUD	
Matamoros	0.00																					
Plaza de Cobro La Cuchilla	37.00	2	1	2723	0.3	41.6	6.2	2.5	1.4	27.2	5.9	12.3	2.6	41.9	6.2	51.9	0.091	0.500	25.627052	-102.878352		
Plaza de Cobro La Cuchilla	37.00	2	2	2723	0.3	41.6	6.2	2.5	1.4	27.2	5.9	12.3	2.6	41.9	6.2	51.9	0.091	0.500	25.627052	-102.878352		
T. C. Saltillo - Torreón (Libre)	128.60																					
Plaza de Cobro Plan de Ayala	205.00	2	1	2821	0.4	45.3	6.9	2.0	1.2	25.0	5.2	11.6	2.4	45.7	6.9	47.4	0.091	0.500	25.444203	-101.303908		
Plaza de Cobro Plan de Ayala	205.00	2	2	2821	0.4	45.3	6.9	2.0	1.2	25.0	5.2	11.6	2.4	45.7	6.9	47.4	0.091	0.500	25.444203	-101.303908		
T. C. Saltillo - Torreón (Libre)	206.80																					

27 CARR : Allende - Villa Unión

CLAVE: 05001

RUTA: COA-015

AÑO : 2020

LUGAR	ESTACION	CLASIFICACION VEHICULAR EN PORCIENTO																COORDENADAS				
		KM	TE	SC	TDPA	M	A	B	C2	C3	T3S2	T3S3	T3S2R4	OTROS	A	B	C	K'	D	LATITUD	LONGITUD	
Allende	0.00	3	0	2189	2.9	73.7	1.7	19.7	0.3	1.5	0.1	0.1	0.0	76.6	1.7	21.7	0.122	0.534	28.336208	-100.849575		
Villa Unión	19.00																					

28 CARR : Corredor Libramiento de San Pedro

CLAVE: 05023

RUTA: COA-087

AÑO : 2020

LUGAR	ESTACION	CLASIFICACION VEHICULAR EN PORCIENTO																COORDENADAS		
		KM	TE	SC	TDPA	M	A	B	C2	C3	T3S2	T3S3	T3S2R4	OTROS	A	B	C	K'	D	LATITUD
T. C. Monclova - San Pedro de las Colonias	0.00	3	0	2685	13.8	61.1	1.8	10.2	2.6	5.9	1.7	2.5	0.4	74.9	1.8	23.3	0.109	0.511	25.774992	-102.978845
T. C. La Cuchilla - Torreón	3.60	1	0	4561	12.3	67.5	1.6	8.9	1.6	4.6	1.5	1.8	0.2	79.8	1.6	18.6	0.102	0.509	25.757164	-103.001296

29 CARR : Cuatro Ciénegas - Ocampo

CLAVE: 05026

RUTA: COA-048

AÑO : 2020

LUGAR	ESTACION	CLASIFICACION VEHICULAR EN PORCIENTO																COORDENADAS				
		KM	TE	SC	TDPA	M	A	B	C2	C3	T3S2	T3S3	T3S2R4	OTROS	A	B	C	K'	D	LATITUD	LONGITUD	
Cuatro Ciénegas	0.00	3	0	1028	4.1	70.8	1.0	20.0	0.6	1.8	0.6	0.9	0.2	74.9	1.0	24.1	0.101	0.501	26.987154	-102.066950		
Ocampo	50.00																					

COAHUILA

30 CARR: El Sauz - Palau

CLAVE: 05060

RUTA: COA-022

AÑO: 2020

LUGAR	ESTACION				CLASIFICACION VEHICULAR EN PORCIENTO										COORDENADAS					
	KM	TE	SC	TDPA	M	A	B	C2	C3	T3S2	T3S3	T3S2R4	OTROS	A	B	C	K'	D	LATITUD	LONGITUD
El Sauz	0.00	3	1	1241	0.6	69.0	5.4	14.0	2.0	4.0	2.7	2.0	0.3	69.6	5.4	25.0	0.085	0.503	27.640873	-101.184056
El Sauz	0.00	3	2	1257	0.6	66.8	5.7	15.3	2.1	4.4	2.7	2.0	0.4	67.4	5.7	26.9	0.088	0.503	27.640873	-101.184057
Minas de Barroterán	31.00	3	1	1182	2.1	63.6	4.2	16.0	3.0	4.8	2.7	2.2	1.4	65.7	4.2	30.1	0.106	0.500	27.649786	-101.284835
Minas de Barroterán	31.00	3	2	1180	2.1	64.1	4.1	16.2	2.8	4.9	2.6	1.9	1.3	66.2	4.1	29.7	0.084	0.500	27.649785	-101.284832
Palau	42.50	1	1	1162	1.6	71.3	0.6	13.8	2.3	5.2	4.0	0.9	0.3	72.9	0.6	26.5	0.102	0.518	27.888632	-101.417294
Palau	42.50	1	2	1082	1.6	64.4	0.7	17.7	3.0	6.1	5.0	1.2	0.3	66.0	0.7	33.3	0.096	0.518	27.888634	-101.417292

31 CARR: Emiliano Zapata - Viesca

CLAVE: 05521

RUTA: COA-082

AÑO: 2020

LUGAR	ESTACION				CLASIFICACION VEHICULAR EN PORCIENTO										COORDENADAS					
	KM	TE	SC	TDPA	M	A	B	C2	C3	T3S2	T3S3	T3S2R4	OTROS	A	B	C	K'	D	LATITUD	LONGITUD
Emiliano Zapata	0.00	3	0	787	5.1	76.5	1.1	15.2	1.3	0.6	0.2	0.0	0.0	81.6	1.1	17.3	0.121	0.511	25.488984	-102.943462
Viesca	24.00																			

32 CARR: Ent. La Rosa - General Cepeda

CLAVE: 05034

RUTA: COA-034

AÑO: 2020

LUGAR	ESTACION				CLASIFICACION VEHICULAR EN PORCIENTO										COORDENADAS					
	KM	TE	SC	TDPA	M	A	B	C2	C3	T3S2	T3S3	T3S2R4	OTROS	A	B	C	K'	D	LATITUD	LONGITUD
T. C. Saltillo - Torreón	0.00	3	0	1107	0.8	79.2	0.3	17.4	0.9	1.1	0.2	0.0	0.1	80.0	0.3	19.7	0.113	0.500	25.508175	-101.378098
Gral. Cepeda	21.00	1	0	1066	2.5	70.0	2.0	23.0	1.1	0.5	0.3	0.0	0.6	72.5	2.0	25.5	0.107	0.509	25.377123	-101.475822

33 CARR: Ent. Paila - Parras de La Fuente

CLAVE: 05014

RUTA: COA-102

AÑO: 2020

LUGAR	ESTACION				CLASIFICACION VEHICULAR EN PORCIENTO										COORDENADAS					
	KM	TE	SC	TDPA	M	A	B	C2	C3	T3S2	T3S3	T3S2R4	OTROS	A	B	C	K'	D	LATITUD	LONGITUD
Ent. Paila	0.00	3	0	1922	2.2	84.0	2.4	6.7	1.4	2.3	0.4	0.4	0.2	86.2	2.4	11.4	0.111	0.503	25.648755	-102.146229
Parras de La Fuente	20.05	1	1	1783	3.7	86.1	2.1	5.1	1.0	1.2	0.5	0.2	0.1	89.8	2.1	8.1	0.140	0.510	25.447097	-102.171753
Parras de La Fuente	20.05	1	2	1857	3.5	86.6	2.0	5.3	0.9	1.3	0.2	0.2	0.0	90.1	2.0	7.9	0.135	0.510	25.447162	-102.171824

34 CARR: Libramiento de Matamoros

CLAVE: 05032

RUTA: COA

AÑO: 2020

LUGAR	ESTACION				CLASIFICACION VEHICULAR EN PORCIENTO										COORDENADAS					
	KM	TE	SC	TDPA	M	A	B	C2	C3	T3S2	T3S3	T3S2R4	OTROS	A	B	C	K'	D	LATITUD	LONGITUD
T. C. Saltillo - Torreón	0.00	3	0	7830	4.2	72.8	1.4	12.5	3.8	3.4	1.2	0.6	0.1	77.0	1.4	21.6	0.091	0.519	25.527524	-103.216736
X. C. Matamoros - La Unión	3.70	3	1	6354	6.3	67.7	2.0	9.1	3.1	7.0	1.7	2.4	0.7	74.0	2.0	24.0	0.089	0.510	25.537965	-103.223875

COAHUILA

34 CARR: Libramiento de Matamoros

CLAVE: 05032

RUTA: COA

AÑO: 2020

LUGAR	ESTACION				CLASIFICACION VEHICULAR EN PORCIENTO													COORDENADAS		
	KM	TE	SC	TDPA	M	A	B	C2	C3	T3S2	T3S3	T3S2R4	OTROS	A	B	C	K'	D	LATITUD	LONGITUD
X. C. Matamoros - La Unión	3.70	3	2	6109	7.7	66.6	2.0	8.4	3.2	7.0	1.7	2.7	0.7	74.3	2.0	23.7	0.089	0.510	25.537737	-103.223979
T. C. Saltillo - Torreón	5.32	1	1	7243	6.5	68.2	3.4	7.9	2.8	6.9	1.3	2.3	0.7	74.7	3.4	21.9	0.086	0.511	25.535346	-103.252159
T. C. Saltillo - Torreón	5.32	1	2	6937	6.5	68.0	2.6	8.2	2.7	6.9	2.0	2.3	0.8	74.5	2.6	22.9	0.086	0.511	25.535246	-103.252137

35 CARR: Libramiento de Saltillo J.L.P.

CLAVE: 05031

RUTA: COA

AÑO: 2020

LUGAR	ESTACION				CLASIFICACION VEHICULAR EN PORCIENTO													COORDENADAS		
	KM	TE	SC	TDPA	M	A	B	C2	C3	T3S2	T3S3	T3S2R4	OTROS	A	B	C	K'	D	LATITUD	LONGITUD
T. C. Ent. Bella Unión - Saltillo	0.00																			
X. C. Saltillo - Arteaga	2.50	3	1	12028	0.8	76.8	0.7	8.8	3.6	5.8	2.1	0.7	0.7	77.6	0.7	21.7	0.129	0.515	25.446274	-100.891130
X. C. Saltillo - Arteaga	2.50	3	2	12750	0.8	76.0	0.8	9.6	3.6	5.7	2.1	0.7	0.7	76.8	0.8	22.4	0.127	0.515	25.446242	-100.891166
T. C. Saltillo - Monterrey	18.00	1	1	9845	1.0	72.6	1.8	8.8	3.5	9.9	1.1	0.7	0.6	73.6	1.8	24.6	0.146	0.501	25.559176	-100.922043
T. C. Saltillo - Monterrey	18.00	1	2	9810	0.9	73.2	1.8	8.9	3.3	9.2	1.2	0.7	0.8	74.1	1.8	24.1	0.125	0.501	25.559091	-100.922158

36 CARR: Libramiento de Torreón

CLAVE: 05516

RUTA: COA

AÑO: 2020

LUGAR	ESTACION				CLASIFICACION VEHICULAR EN PORCIENTO													COORDENADAS		
	KM	TE	SC	TDPA	M	A	B	C2	C3	T3S2	T3S3	T3S2R4	OTROS	A	B	C	K'	D	LATITUD	LONGITUD
X. C. Saltillo - Torreón	0.00	3	1	31894	1.6	83.6	1.6	5.7	2.1	2.1	2.2	0.7	0.4	85.2	1.6	13.2	0.087	0.535	25.535209	-103.370219
X. C. Saltillo - Torreón	0.00	3	2	37252	1.6	83.7	1.6	5.6	2.1	2.1	2.2	0.7	0.4	85.3	1.6	13.1	0.095	0.535	25.535163	-103.370573
T. C. La Cuchilla - Torreón (Baja)	7.30	1	1	30927	1.8	82.8	0.8	3.8	0.8	4.1	3.2	1.8	0.9	84.6	0.8	14.6	0.113	0.511	25.585632	-103.408797
T. C. La Cuchilla - Torreón (Alta)	7.30	1	1	14412	1.2	85.7	1.1	5.2	2.0	3.1	0.9	0.6	0.2	86.9	1.1	12.0	0.127	0.506	25.585595	-103.409664
T. C. La Cuchilla - Torreón (Baja)	7.30	1	2	32519	1.3	81.8	0.8	4.1	0.9	4.7	3.5	2.0	0.9	83.1	0.8	16.1	0.117	0.511	25.585632	-103.408797
T. C. La Cuchilla - Torreón (Alta)	7.30	1	2	14748	1.2	85.7	1.1	5.2	2.0	3.1	0.9	0.6	0.2	86.9	1.1	12.0	0.155	0.506	25.585483	-103.409722
Lim. Edos. Term. Coah. Ppia. Dgo.	11.80																			
T. C. Durango - Torreón	28.60																			

37 CARR: Matamoros - El Fresno

CLAVE: 05023

RUTA: COA-078

AÑO: 2020

LUGAR	ESTACION				CLASIFICACION VEHICULAR EN PORCIENTO													COORDENADAS		
	KM	TE	SC	TDPA	M	A	B	C2	C3	T3S2	T3S3	T3S2R4	OTROS	A	B	C	K'	D	LATITUD	LONGITUD
Matamoros	0.00	3	0	3180	9.9	64.1	0.7	18.4	2.4	2.7	1.2	0.4	0.2	74.0	0.7	25.3	0.102	0.505	25.527990	-103.219065
El Fresno	12.60	1	0	1086	11.5	62.0	6.7	11.6	4.3	3.2	0.7	0.0	0.0	73.5	6.7	19.8	0.088	0.508	25.424800	-103.223033

COAHUILA

38 CARR: Matamoros - La Unión

CLAVE: 05023

RUTA: COA-070

AÑO: 2020

LUGAR	ESTACION				CLASIFICACION VEHICULAR EN PORCIENTO										COORDENADAS					
	KM	TE	SC	TDPA	M	A	B	C2	C3	T3S2	T3S3	T3S2R4	OTROS	A	B	C	K'	D	LATITUD	LONGITUD
X. C. Libramiento de Matamoros	1.00	3	1	1603	4.4	70.9	2.2	13.8	3.0	2.6	1.6	0.8	0.7	75.3	2.2	22.5	0.100	0.504	25.537887	-103.223848
X. C. Libramiento de Matamoros	1.00	3	2	1627	4.5	70.4	2.1	14.2	3.2	2.5	1.7	0.7	0.7	74.9	2.1	23.0	0.095	0.504	25.537874	-103.223875
La Partida	14.09	1	0	3530	7.2	70.3	0.8	11.1	4.6	4.1	1.3	0.3	0.3	77.5	0.8	21.7	0.093	0.501	25.590347	-103.302670
La Partida	14.09	3	0	4458	4.8	75.2	1.7	8.8	2.8	3.8	1.5	0.9	0.5	80.0	1.7	18.3	0.106	0.506	25.590375	-103.302704
X. C. Antigua Carretera a San Pedro	22.00	1	1	5752	2.1	87.1	0.2	6.3	2.0	1.2	0.6	0.3	0.2	89.2	0.2	10.6	0.095	0.501	25.597960	-103.381629
X. C. Antigua Carretera a San Pedro	22.00	1	2	5721	2.1	87.4	0.2	6.3	2.0	1.1	0.5	0.2	0.2	89.5	0.2	10.3	0.111	0.501	25.597871	-103.381658
La Unión	25.00	1	1	10203	1.7	86.0	0.3	5.2	1.3	2.7	1.8	0.7	0.3	87.7	0.3	12.0	0.101	0.501	25.597312	-103.402962
La Unión	25.00	1	2	10172	1.7	86.2	0.3	5.2	1.3	2.6	1.7	0.7	0.3	87.9	0.3	11.8	0.122	0.501	25.597223	-103.403018

39 CARR: Monclova - Estación Candela

CLAVE: 00501

RUTA: COA-030-NL

AÑO: 2020

LUGAR	ESTACION				CLASIFICACION VEHICULAR EN PORCIENTO										COORDENADAS					
	KM	TE	SC	TDPA	M	A	B	C2	C3	T3S2	T3S3	T3S2R4	OTROS	A	B	C	K'	D	LATITUD	LONGITUD
T. C. Monclova - Piedras Negras	0.00																			
T. Izq. Libramiento de Monclova	5.10	1	1	2475	3.6	77.6	0.9	14.9	1.2	1.1	0.4	0.0	0.3	81.2	0.9	17.9	0.086	0.504	26.937547	-101.380913
T. Izq. Libramiento de Monclova	5.10	1	2	2514	3.1	76.1	0.8	17.2	1.2	1.0	0.4	0.0	0.2	79.2	0.8	20.0	0.093	0.504	26.937495	-101.380880
Lim. Edos. Term. Coah. Ppia. N. L.	118.00																			
T. C. Monterrey - Colombia	125.50	1	0	520	0.1	71.8	1.6	16.5	1.2	7.7	0.3	0.7	0.1	71.9	1.6	26.5	0.181	0.516	26.837545	-100.492884

40 CARR: Morelos - Ent. Las Corrientes

CLAVE: 05500

RUTA: COA-010

AÑO: 2020

LUGAR	ESTACION				CLASIFICACION VEHICULAR EN PORCIENTO										COORDENADAS					
	KM	TE	SC	TDPA	M	A	B	C2	C3	T3S2	T3S3	T3S2R4	OTROS	A	B	C	K'	D	LATITUD	LONGITUD
T. C. Morelos - Cd. Acuña	0.00	3	0	1150	2.4	87.6	2.2	6.4	1.0	0.2	0.1	0.1	0.0	90.0	2.2	7.8	0.131	0.517	28.405486	-100.884831
Los Álamos	9.20	1	0	778	2.7	87.3	2.6	6.6	0.6	0.2	0.0	0.0	0.0	90.0	2.6	7.4	0.163	0.504	28.355566	-100.945215
T. C. Monclova - Piedras Negras	20.00																			

41 CARR: Puerto de Flores - El Hondable

CLAVE: 05512

RUTA: COA-112

AÑO: 2020

LUGAR	ESTACION				CLASIFICACION VEHICULAR EN PORCIENTO										COORDENADAS					
	KM	TE	SC	TDPA	M	A	B	C2	C3	T3S2	T3S3	T3S2R4	OTROS	A	B	C	K'	D	LATITUD	LONGITUD
T. C. Aut. Puerto México - Ojo Caliente	0.00	3	0	2286	1.2	76.3	0.8	18.2	1.1	1.5	0.5	0.3	0.1	77.5	0.8	21.7	0.110	0.503	25.348964	-100.794512
San Antonio de Las Alazanas	24.00	1	0	1885	1.3	80.9	1.2	14.4	0.6	1.2	0.2	0.1	0.1	82.2	1.2	16.6	0.141	0.506	25.270951	-100.578872
El Hondable	50.50																			

COAHUILA

42 CARR: Ramal a Hipólito

CLAVE: 05509

RUTA: COA-114

AÑO: 2020

LUGAR	ESTACION				CLASIFICACION VEHICULAR EN PORCIENTO													COORDENADAS		
	KM	TE	SC	TDPA	M	A	B	C2	C3	T3S2	T3S3	T3S2R4	OTROS	A	B	C	K'	D	LATITUD	LONGITUD
T. C. Saltillo - Torreón	0.00	3	0	346	1.8	78.8	3.6	10.2	0.8	2.6	1.4	0.8	0.0	80.6	3.6	15.8	0.095	0.519	25.592739	-101.453215
Hipólito	13.00																			

43 CARR: Ramal a Lamadrid

CLAVE: 05522

RUTA: COA-042

AÑO: 2020

LUGAR	ESTACION				CLASIFICACION VEHICULAR EN PORCIENTO													COORDENADAS		
	KM	TE	SC	TDPA	M	A	B	C2	C3	T3S2	T3S3	T3S2R4	OTROS	A	B	C	K'	D	LATITUD	LONGITUD
T. C. Monclova - San Pedro de las Colonias	0.00	3	0	975	1.4	85.0	4.2	8.6	0.6	0.2	0.0	0.0	0.0	86.4	4.2	9.4	0.123	0.503	27.015648	-101.792565
Lamadrid	4.00																			

44 CARR: Sabinas - Don Martín

CLAVE: 05501

RUTA: COA-025

AÑO: 2020

LUGAR	ESTACION				CLASIFICACION VEHICULAR EN PORCIENTO													COORDENADAS		
	KM	TE	SC	TDPA	M	A	B	C2	C3	T3S2	T3S3	T3S2R4	OTROS	A	B	C	K'	D	LATITUD	LONGITUD
Sabinas	0.00	3	0	2046	4.7	70.8	0.2	21.4	0.6	1.6	0.2	0.3	0.2	75.5	0.2	24.3	0.089	0.505	27.857623	-101.106628
T. Izq. La Mezquitosa	3.00	3	0	1119	1.5	63.2	0.5	31.1	1.0	1.3	0.5	0.6	0.3	64.7	0.5	34.8	0.111	0.535	27.848079	-101.091079
Juárez	53.00	3	0	389	1.5	62.7	1.2	27.5	2.9	1.7	0.8	0.9	0.8	64.2	1.2	34.6	0.098	0.528	27.620614	-100.705607
Don Martín	66.00	1	0	363	1.9	73.8	1.2	15.6	3.5	1.5	1.0	0.7	0.8	75.7	1.2	23.1	0.096	0.523	27.525183	-100.619483

45 CARR: Saltillo - Arteaga

CLAVE: 05008

RUTA: COA-106

AÑO: 2020

LUGAR	ESTACION				CLASIFICACION VEHICULAR EN PORCIENTO													COORDENADAS		
	KM	TE	SC	TDPA	M	A	B	C2	C3	T3S2	T3S3	T3S2R4	OTROS	A	B	C	K'	D	LATITUD	LONGITUD
Saltillo	0.00	3	1	9341	1.2	90.1	0.5	5.7	1.0	0.6	0.5	0.2	0.2	91.3	0.5	8.2	0.095	0.509	25.434849	-100.979639
Saltillo	0.00	3	2	9687	1.1	89.0	0.5	6.7	1.1	0.7	0.5	0.2	0.2	90.1	0.5	9.4	0.092	0.509	25.434926	-100.979615
X. C. Libramiento de Matehuala - Monterrey	9.00	1	1	4997	1.5	81.7	1.3	9.5	2.4	2.2	0.8	0.2	0.4	83.2	1.3	15.5	0.100	0.524	25.446162	-100.891154
X. C. Libramiento de Matehuala - Monterrey	9.00	1	2	5512	1.0	85.0	0.9	7.1	2.0	2.1	1.2	0.2	0.5	86.0	0.9	13.1	0.119	0.524	25.446079	-100.891112
X. C. Libramiento de Matehuala - Monterrey	9.00	3	1	3039	1.4	84.6	0.5	10.1	1.3	1.3	0.6	0.1	0.1	86.0	0.5	13.5	0.148	0.518	25.446224	-100.891160
X. C. Libramiento de Matehuala - Monterrey	9.00	3	2	2833	1.6	83.3	0.5	11.1	1.4	1.3	0.6	0.1	0.1	84.9	0.5	14.6	0.197	0.518	25.446220	-100.891120
Arteaga	12.00	1	1	3020	1.6	84.8	0.8	10.5	0.9	0.8	0.4	0.1	0.1	86.4	0.8	12.8	0.207	0.532	25.450635	-100.851982
Arteaga	12.00	1	2	2655	2.2	79.6	1.0	14.4	1.3	0.9	0.4	0.1	0.1	81.8	1.0	17.2	0.108	0.532	25.450581	-100.851904
T. C. Ent. Bella Unión - Saltillo	18.00																			

COAHUILA

46 CARR: San Buenaventura - Estación Hermanas

CLAVE: 05004

RUTA: COA-034

AÑO: 2020

LUGAR	ESTACION				CLASIFICACION VEHICULAR EN PORCIENTO										COORDENADAS					
	KM	TE	SC	TDPA	M	A	B	C2	C3	T3S2	T3S3	T3S2R4	OTROS	A	B	C	K'	D	LATITUD	LONGITUD
San Buenaventura	0.00	3	0	1826	4.2	87.2	0.9	4.8	1.3	1.1	0.5	0.0	0.0	91.4	0.9	7.7	0.123	0.502	27.069380	-101.548578
T. Izq. Santa Gertrudis	2.48	1	0	1840	3.2	77.4	2.1	13.3	1.5	1.1	0.5	0.5	0.4	80.6	2.1	17.3	0.096	0.508	27.091758	-101.510264
Abasolo	15.71	1	0	784	4.7	75.9	2.4	14.3	1.4	1.0	0.3	0.0	0.0	80.6	2.4	17.0	0.108	0.506	27.180972	-101.425559
Los Rodríguez	31.00	3	0	517	4.2	73.9	5.3	13.8	1.7	0.8	0.3	0.0	0.0	78.1	5.3	16.6	0.108	0.511	27.200442	-101.358381
Estación Hermanas	50.00	1	0	469	4.9	67.6	4.3	19.8	2.0	0.8	0.6	0.0	0.0	72.5	4.3	23.2	0.111	0.512	27.223081	-101.225122

47 CARR: T. C. (Ent. Morelos - Saltillo) - Parras de La Fuente

CLAVE: 05510

RUTA: COA-105

AÑO: 2020

LUGAR	ESTACION				CLASIFICACION VEHICULAR EN PORCIENTO										COORDENADAS					
	KM	TE	SC	TDPA	M	A	B	C2	C3	T3S2	T3S3	T3S2R4	OTROS	A	B	C	K'	D	LATITUD	LONGITUD
T. C. Morelos - Saltillo	0.00	3	1	6022	1.6	67.8	1.2	13.0	3.3	11.2	1.0	0.5	0.4	69.4	1.2	29.4	0.145	0.514	25.262744	-101.091487
T. C. Morelos - Saltillo	0.00	3	2	5693	1.7	67.9	1.2	13.0	3.3	11.2	0.9	0.5	0.3	69.6	1.2	29.2	0.152	0.514	25.262586	-101.091496
Gral. Cepeda	40.00	1	0	1350	1.8	68.5	1.7	26.7	0.5	0.5	0.3	0.0	0.0	70.3	1.7	28.0	0.117	0.542	25.374540	-101.478265
Gral. Cepeda	40.00	3	0	992	2.7	67.7	2.1	25.9	0.5	0.7	0.4	0.0	0.0	70.4	2.1	27.5	0.153	0.537	25.374540	-101.478267
Parras de La Fuente	102.00	1	0	2364	3.9	70.8	1.1	20.3	2.8	1.0	0.1	0.0	0.0	74.7	1.1	24.2	0.100	0.520	25.447094	-102.171846

48 CARR: T. C. (Saltillo - Monclova) - Ramos Arizpe

CLAVE: 05508

RUTA: COA

AÑO: 2020

LUGAR	ESTACION				CLASIFICACION VEHICULAR EN PORCIENTO										COORDENADAS					
	KM	TE	SC	TDPA	M	A	B	C2	C3	T3S2	T3S3	T3S2R4	OTROS	A	B	C	K'	D	LATITUD	LONGITUD
T. C. Saltillo - Monclova	0.00	3	0	4731	3.8	65.6	1.4	10.9	2.9	11.6	1.7	1.7	0.4	69.4	1.4	29.2	0.100	0.505	25.527979	-101.003385
Ramos Arizpe	12.00																			

49 CARR: Torreón - Escuadrón 201

CLAVE: 05022

RUTA: COA-011

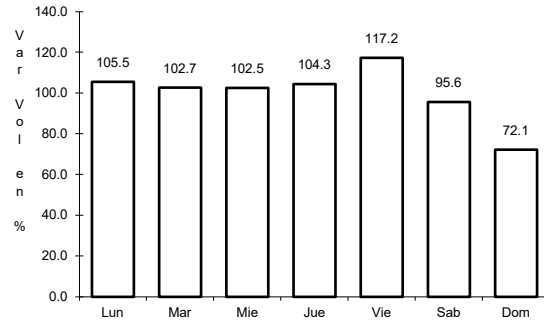
AÑO: 2020

LUGAR	ESTACION				CLASIFICACION VEHICULAR EN PORCIENTO										COORDENADAS					
	KM	TE	SC	TDPA	M	A	B	C2	C3	T3S2	T3S3	T3S2R4	OTROS	A	B	C	K'	D	LATITUD	LONGITUD
Torreón	0.00	3	1	16147	5.6	83.9	0.5	6.4	1.2	0.9	1.0	0.3	0.2	89.5	0.5	10.0	0.094	0.508	25.547230	-103.390822
Torreón	0.00	3	2	15629	8.1	79.2	0.5	7.7	1.6	1.1	1.0	0.5	0.3	87.3	0.5	12.2	0.100	0.508	25.547258	-103.391080
El Aguila	11.35	1	0	3030	9.3	76.3	0.6	9.9	1.8	1.8	0.2	0.1	0.0	85.6	0.6	13.8	0.081	0.515	25.627044	-103.365718
Escuadrón 201	17.06	1	0	1027	7.6	68.7	0.5	18.5	1.3	1.6	0.6	0.3	0.9	76.3	0.5	23.2	0.103	0.515	25.672550	-103.348866

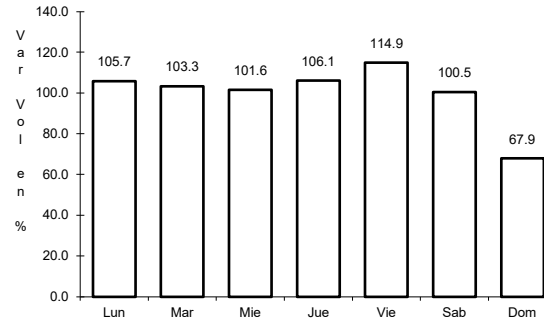
1 CARR: Cd. Acuña - Presa de La Amistad

CLAVE: 05085

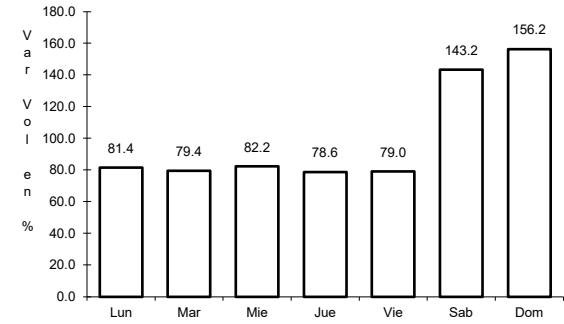
RUTA: MEX-002



Km: 0.00                      Tipo: 3                      Sent: 1



Km: 0.00                      Tipo: 3                      Sent: 2

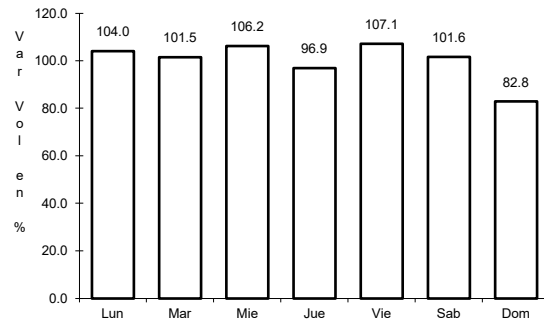


Km: 23.00                      Tipo: 1                      Sent: 0

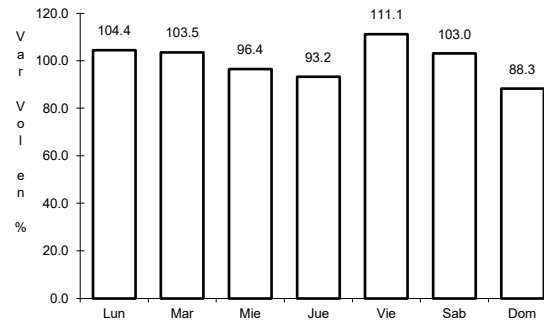
2 CARR: Durango - Torreón

CLAVE: 10085

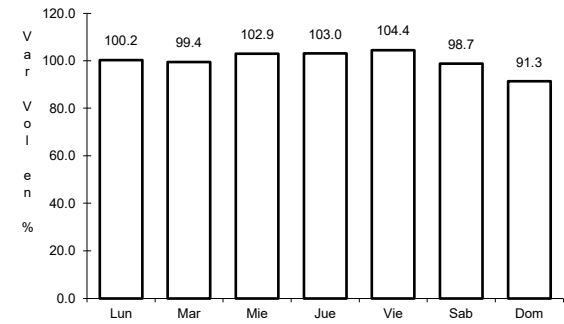
RUTA: MEX-040



Km: 0.00                      Tipo: 3                      Sent: 1



Km: 0.00                      Tipo: 3                      Sent: 2

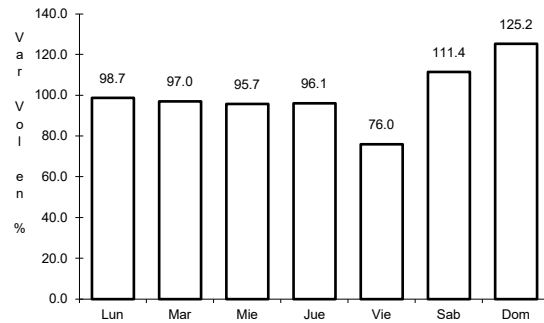


Km: 120.90                      Tipo: 1                      Sent: 0

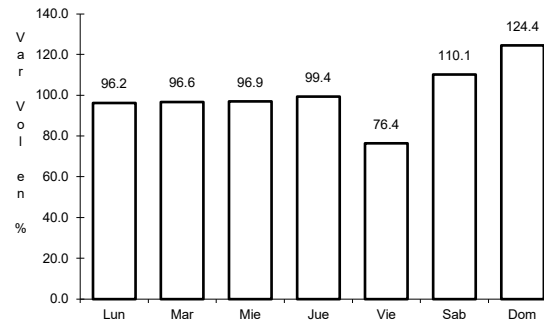
3 CARR: Ent. Bella Unión - Saltillo

CLAVE: 05003

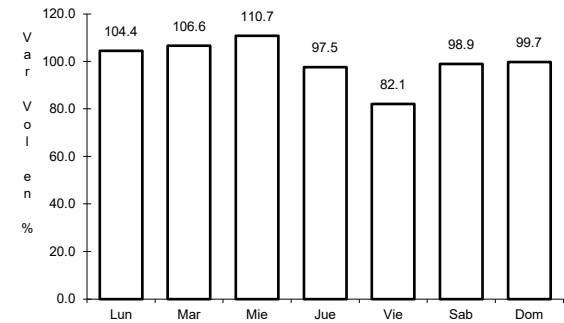
RUTA: MEX-057



Km: 4.61                      Tipo: 1                      Sent: 1



Km: 4.61                      Tipo: 1                      Sent: 2

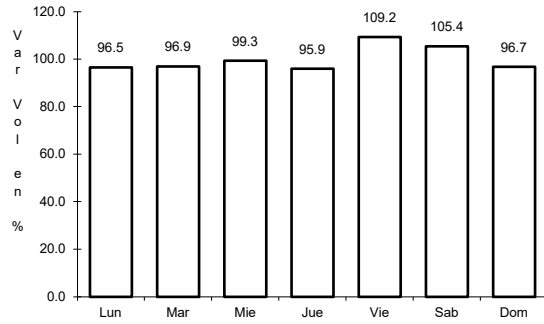


Km: 17.00                      Tipo: 1                      Sent: 1

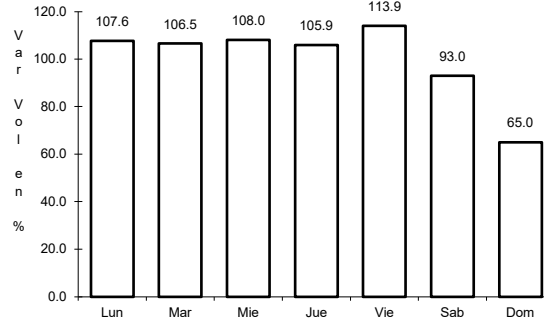
4 CARR: Ent. La Cuchilla - Torreón

CLAVE: 05021

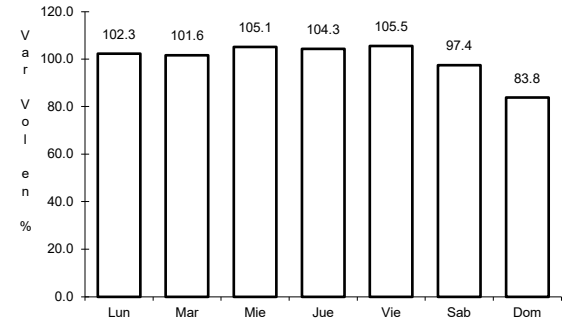
RUTA: MEX-030



Km: 0.00                      Tipo: 3                      Sent: 0



Km: 84.00                      Tipo: 1                      Sent: 1

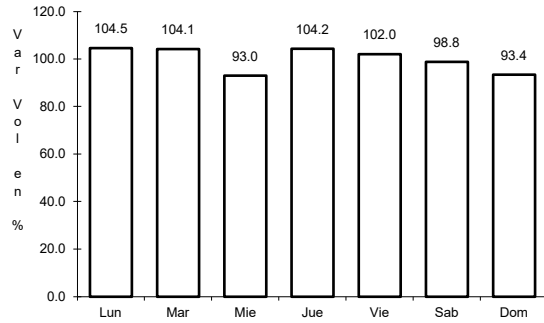


Km: 84.00                      Tipo: 1                      Sent: 2

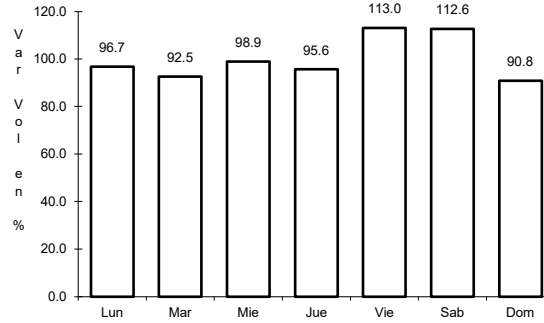
5 CARR: Ent. Morelos - Saltillo

CLAVE: 00149

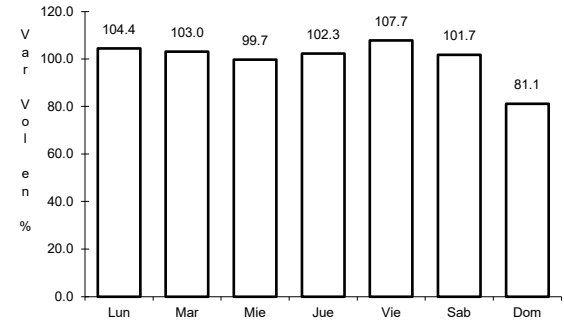
RUTA: MEX-054



Km: 0.00                      Tipo: 3                      Sent: 1



Km: 0.00                      Tipo: 3                      Sent: 2

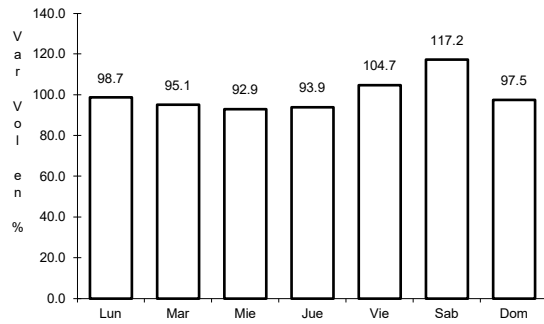


Km: 333.00                      Tipo: 3                      Sent: 1

6 CARR: Gregorio García - Francisco I. Madero

CLAVE: 00110

RUTA: MEX-040



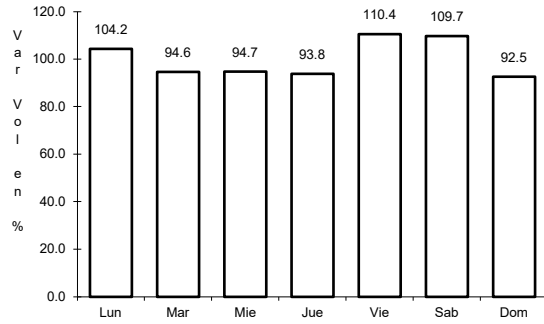
Km: 9.60                      Tipo: 1                      Sent: 0



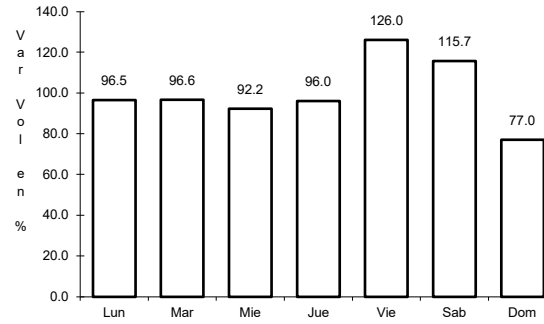
7 CARR: Libramiento Allende - Nava

CLAVE: 05518

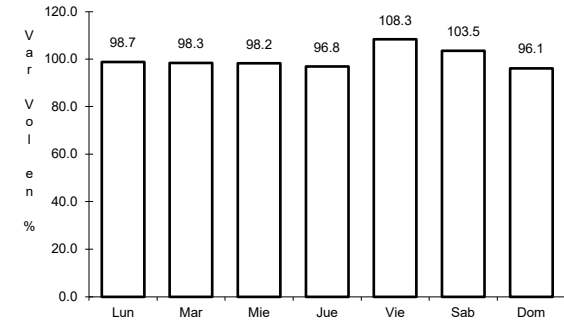
ruta: MEX-057



Km: 0.00      Tipo: 3      Sent: 1



Km: 0.00      Tipo: 3      Sent: 2

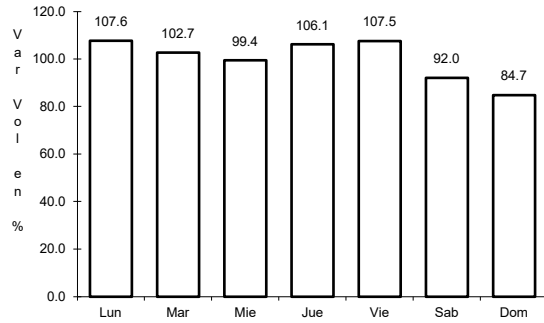


Km: 18.55      Tipo: 1      Sent: 1

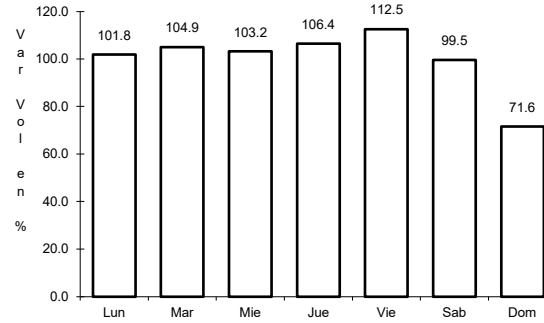
8 CARR: Monclova - Piedras Negras

CLAVE: 05407

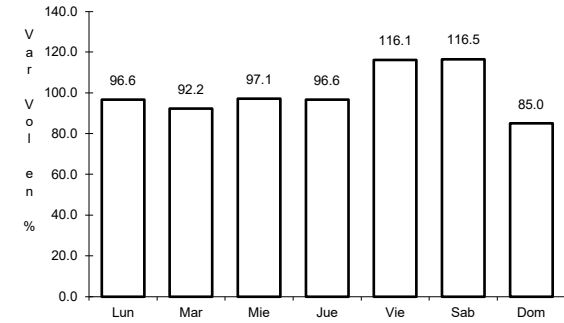
ruta: MEX-057



Km: 0.00      Tipo: 3      Sent: 1



Km: 0.00      Tipo: 3      Sent: 2

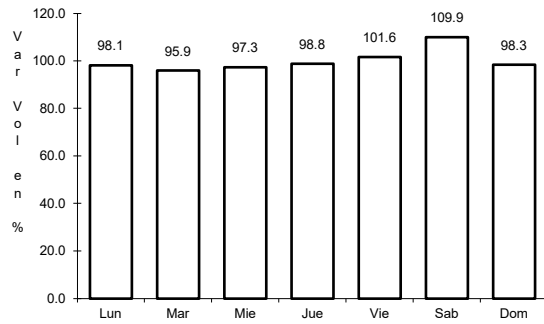


Km: 182.00      Tipo: 1      Sent: 0

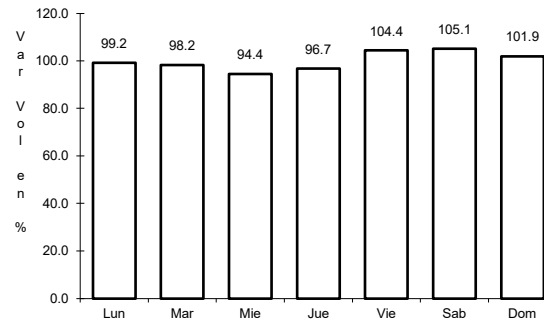
9 CARR: Monclova - San Pedro de Las Colonias

CLAVE: 05062

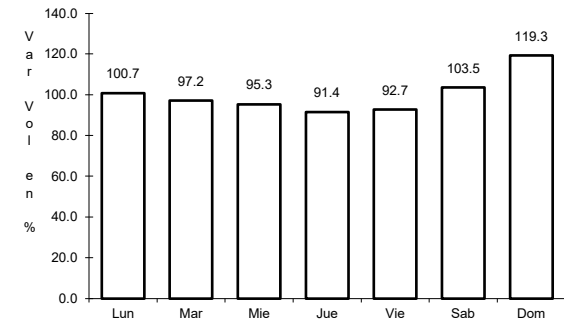
ruta: MEX-030



Km: 2.00      Tipo: 3      Sent: 1



Km: 2.00      Tipo: 3      Sent: 2

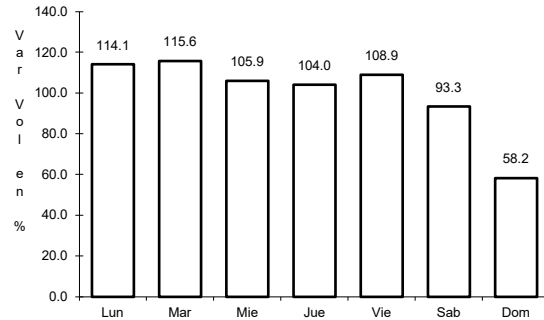


Km: 80.15      Tipo: 3      Sent: 0

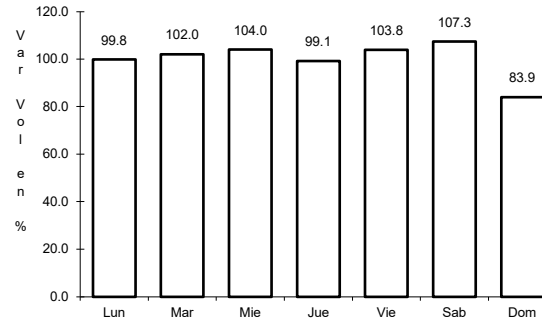
10 CARR: Monterrey - Castaños

CLAVE: 00128

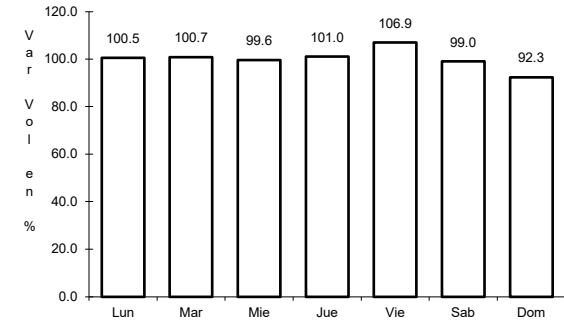
RUTA: MEX-053



Km: 0.00                      Tipo: 3                      Sent: 0



Km: 155.90                      Tipo: 1                      Sent: 1

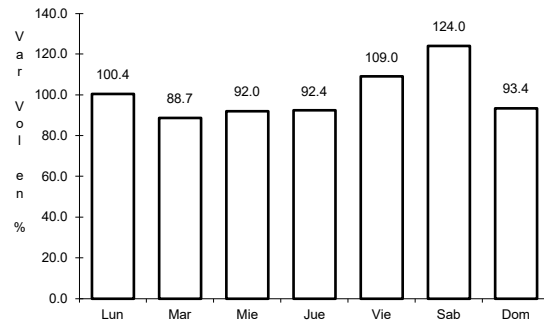


Km: 155.90                      Tipo: 1                      Sent: 2

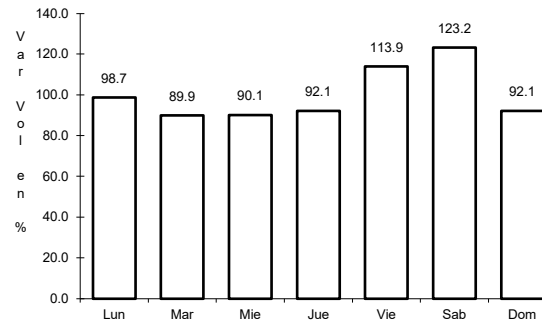
11 CARR: Morelos - Cd. Acuña

CLAVE: 05029

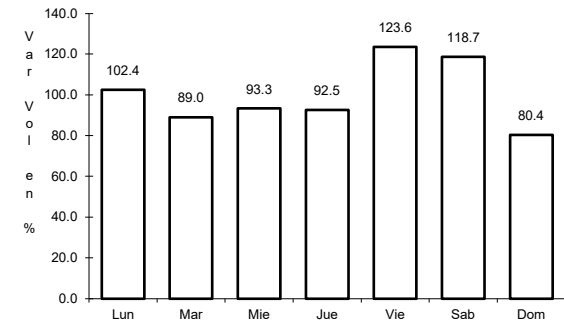
RUTA: MEX-029



Km: 0.00                      Tipo: 3                      Sent: 1



Km: 0.00                      Tipo: 3                      Sent: 2

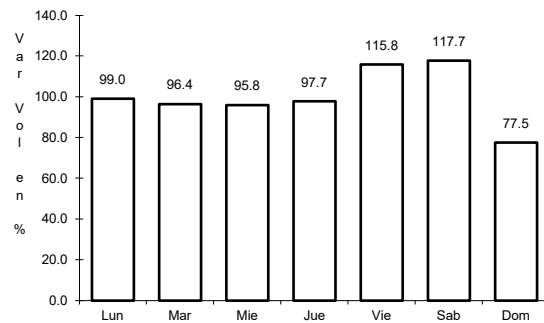


Km: 73.84                      Tipo: 1                      Sent: 0

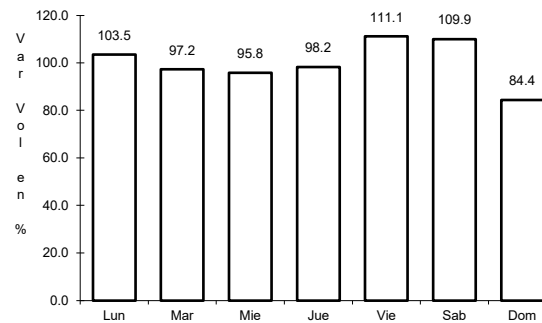
12 CARR: Nueva Rosita - Boquillas del Carmen

CLAVE: 05028

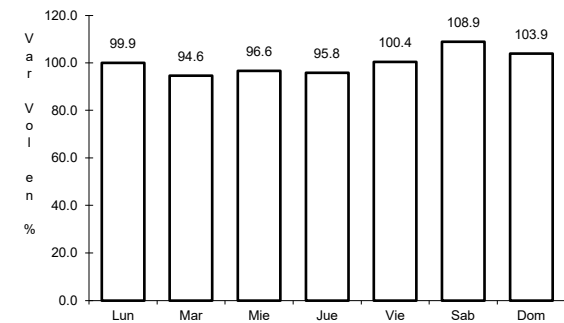
RUTA: MEX-053



Km: 0.00                      Tipo: 3                      Sent: 1



Km: 0.00                      Tipo: 3                      Sent: 2

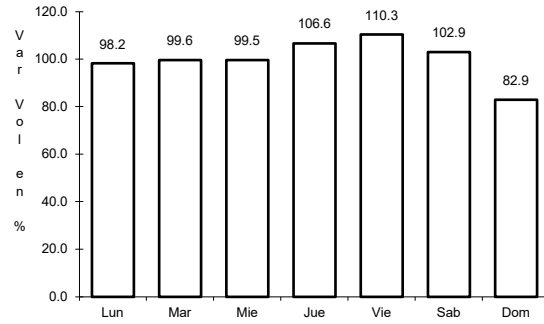


Km: 35.00                      Tipo: 3                      Sent: 0

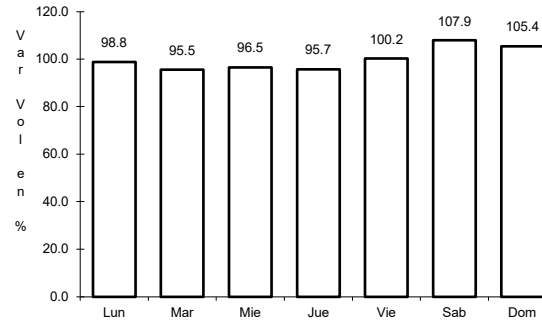
13 CARR: Ojo Caliente - Santa Cruz

CLAVE: 05007

RUTA: MEX-057



Km: 0.00                      Tipo: 3                      Sent: 0

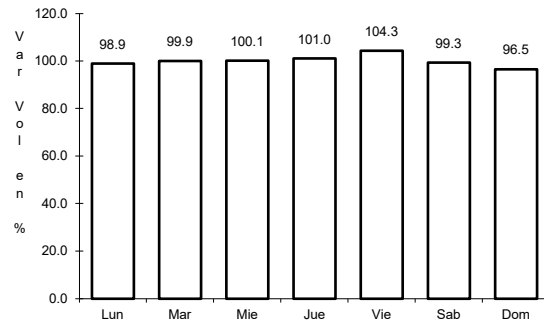


Km: 34.00                      Tipo: 1                      Sent: 0

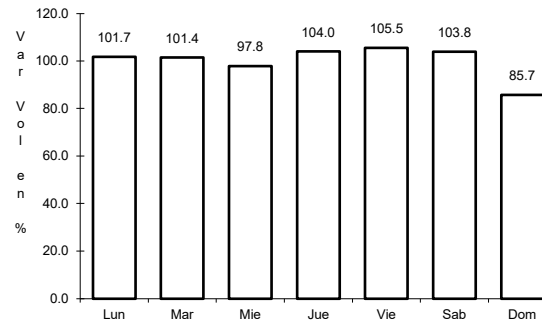
14 CARR: Piedras Negras - Cd. Acuña

CLAVE: 05061

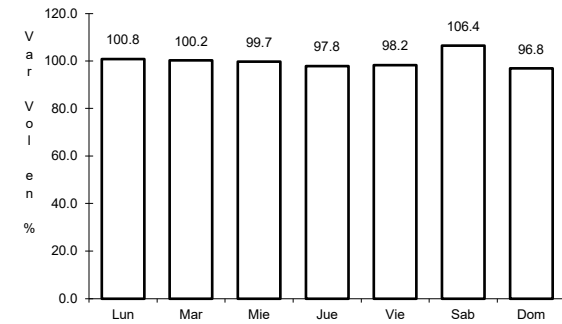
RUTA: MEX-002



Km: 0.00                      Tipo: 3                      Sent: 1



Km: 0.00                      Tipo: 3                      Sent: 2

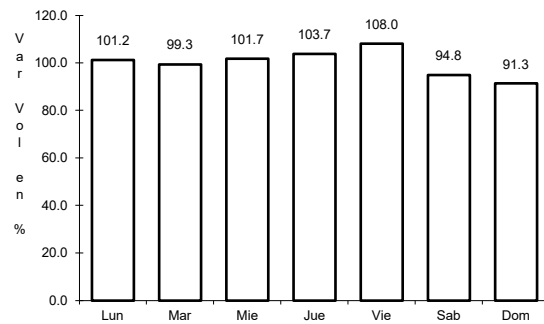


Km: 83.30                      Tipo: 1                      Sent: 0

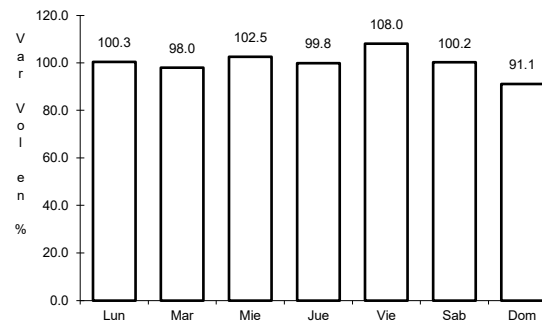
15 CARR: Piedras Negras - Nuevo Laredo

CLAVE: 00503

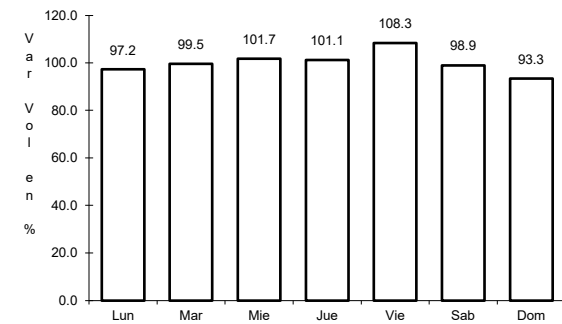
RUTA: MEX-002



Km: 0.00                      Tipo: 3                      Sent: 1



Km: 0.00                      Tipo: 3                      Sent: 2

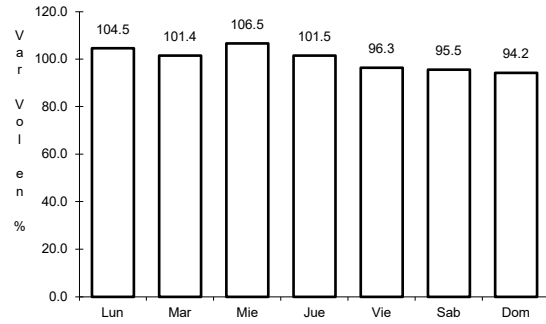


Km: 134.00                      Tipo: 3                      Sent: 0

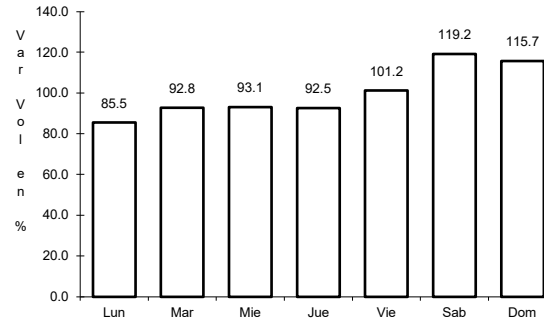
16 CARR: Puerto México - La Encantada

CLAVE: 05002

ruta: MEX-057



Km: 0.00                      Tipo: 3                      Sent: 0

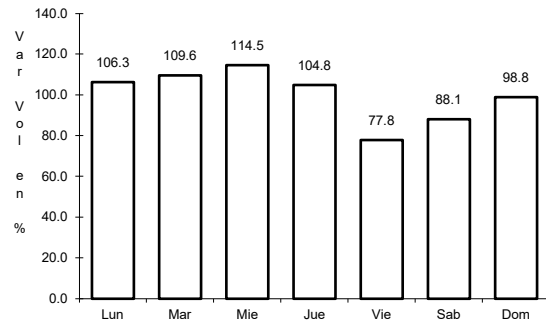


Km: 41.00                      Tipo: 1                      Sent: 0

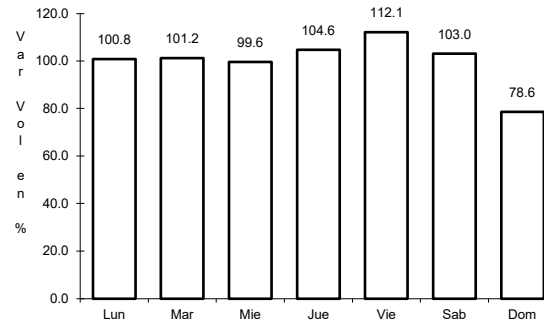
17 CARR: Saltillo - Monclova

CLAVE: 05406

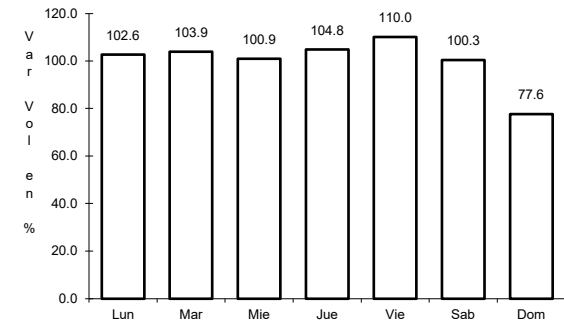
ruta: MEX-057



Km: 13.00                      Tipo: 1                      Sent: 0



Km: 192.00                      Tipo: 1                      Sent: 1

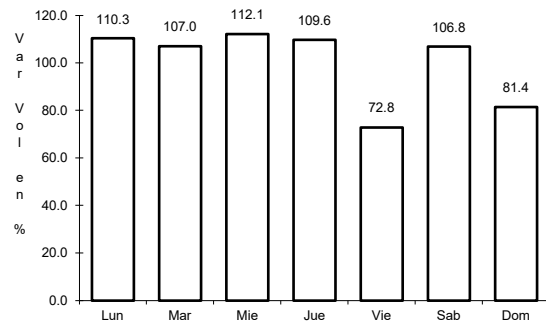


Km: 192.00                      Tipo: 1                      Sent: 2

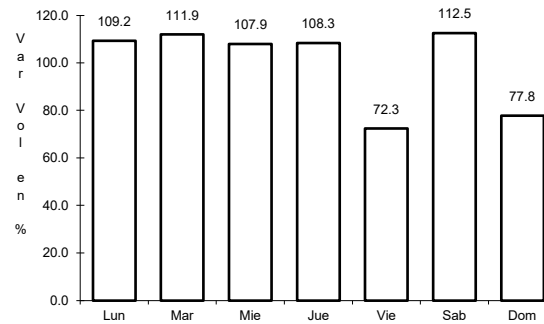
18 CARR: Saltillo - Monterrey

CLAVE: 00087

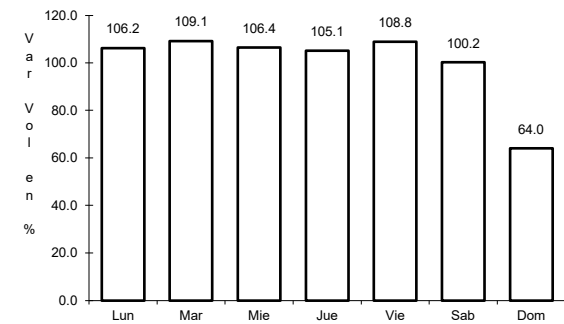
ruta: MEX-040



Km: 4.25                      Tipo: 3                      Sent: 1



Km: 4.25                      Tipo: 3                      Sent: 2

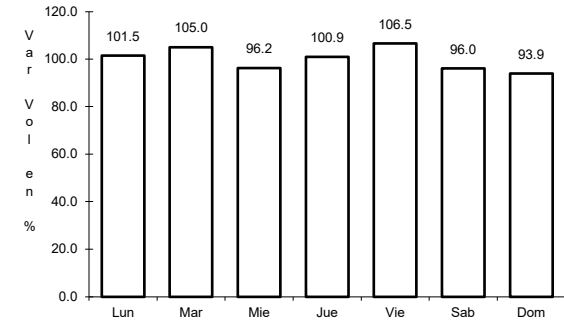
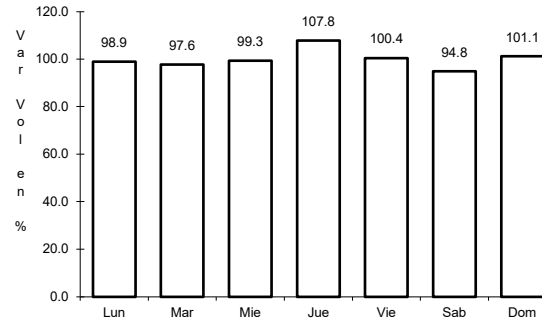
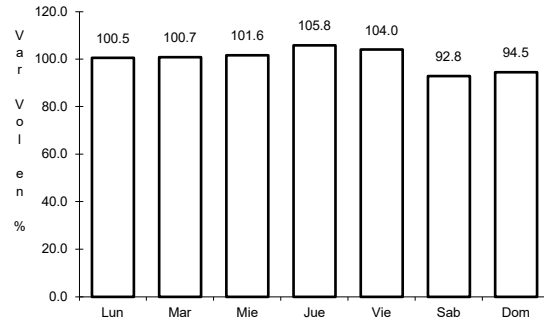


Km: 79.20                      Tipo: 1                      Sent: 1

19 CARR: Saltillo - Torreón

CLAVE: 05086

ruta: MEX-040



Km: 6.10                      Tipo: 3                      Sent: 1

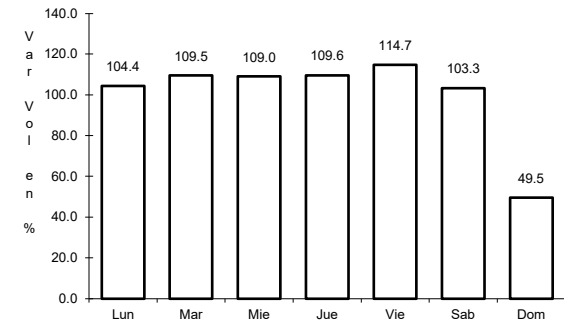
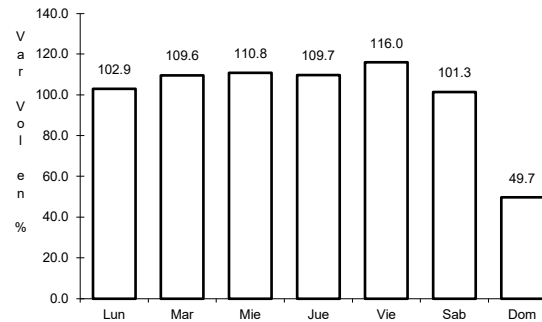
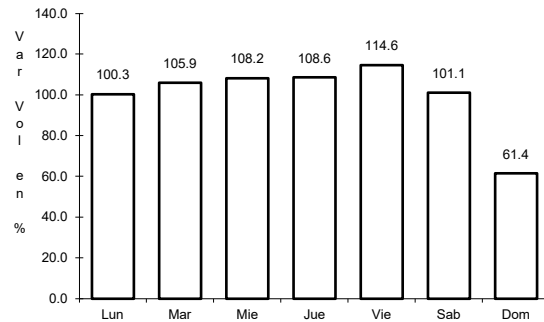
Km: 6.10                      Tipo: 3                      Sent: 2

Km: 91.20                      Tipo: 1                      Sent: 0

20 CARR: Libramiento Norponiente de Saltillo (Cuota)

CLAVE: 05022

ruta: MEX-S30



Km: 0.00                      Tipo: 3                      Sent: 0

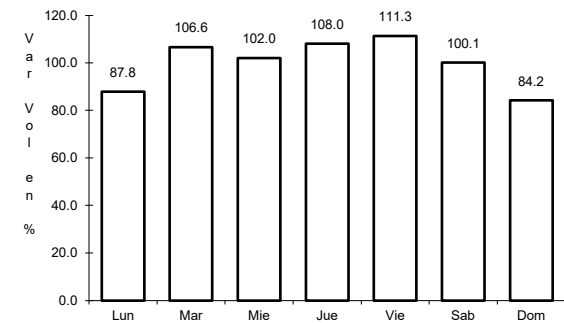
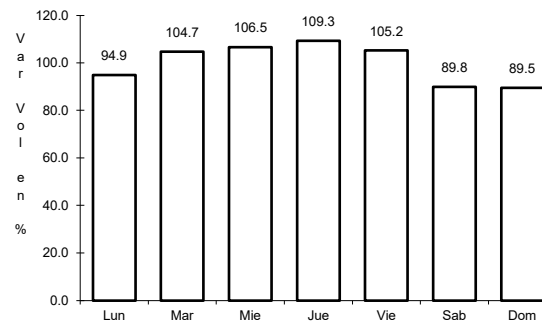
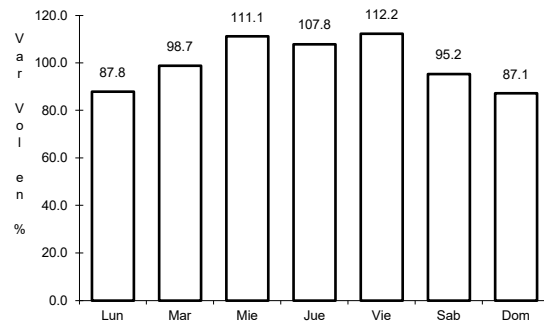
Km: 22.44                      Tipo: 3                      Sent: 0

Km: 46.21                      Tipo: 1                      Sent: 0

21 CARR: Libramiento Norte de Torreón (Cuota)

CLAVE:

ruta: MEX-040D



Km: 0.00                      Tipo: 3                      Sent: 0

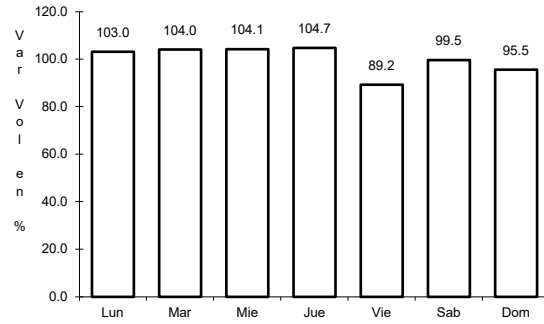
Km: 17.36                      Tipo: 1                      Sent: 0

Km: 40.70                      Tipo: 1                      Sent: 0

22 CARR: Libramiento Oriente de Saltillo (Cuota)

CLAVE: 00115

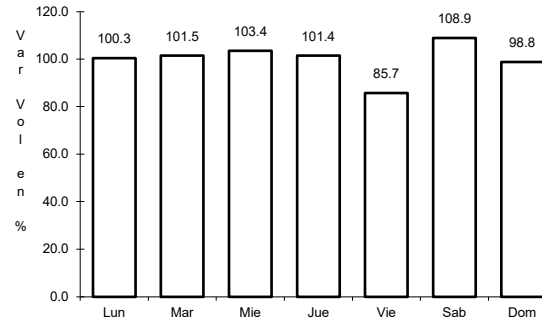
ruta: MEX-057D



Km: 12.30

Tipo: 3

Sent: 1



Km: 12.30

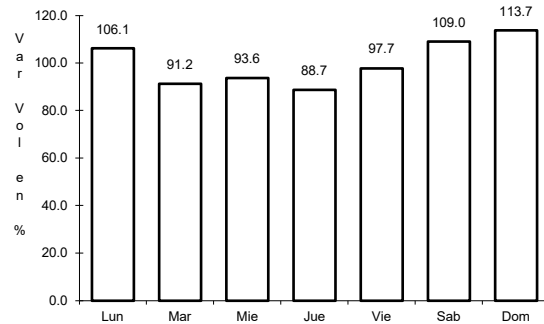
Tipo: 3

Sent: 2

23 CARR: Nueva Rosita - Ent. Allende (Cuota)

CLAVE: 05502

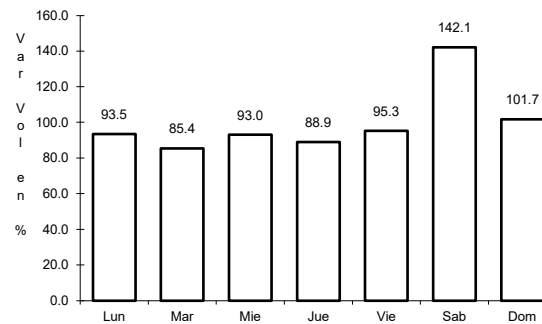
ruta: MEX-057D



Km: 0.00

Tipo: 3

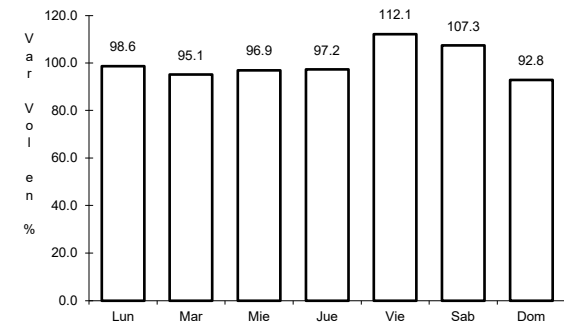
Sent: 1



Km: 0.00

Tipo: 3

Sent: 2



Km: 54.00

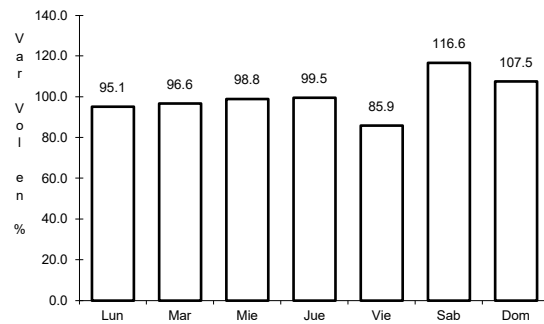
Tipo: 1

Sent: 1

24 CARR: Puerto México - La Carbonera (Cuota)

CLAVE: 00115

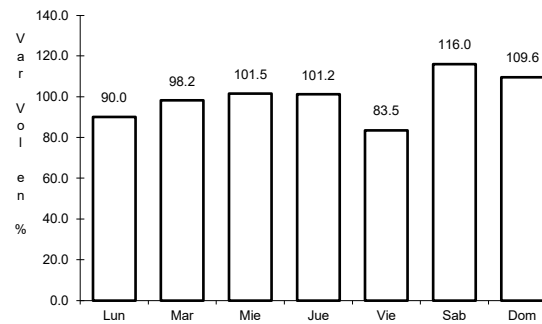
ruta: MEX-057D



Km: 224.94

Tipo: 1

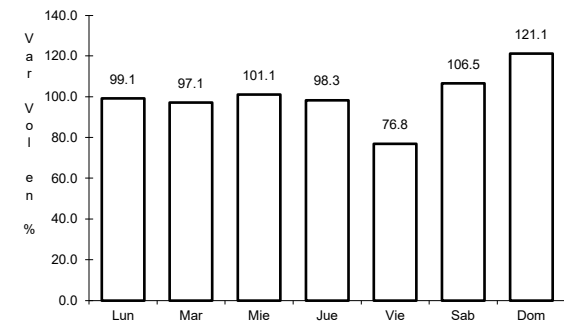
Sent: 1



Km: 224.94

Tipo: 1

Sent: 2



Km: 228.30

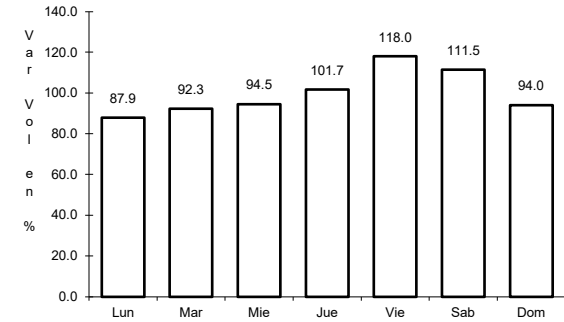
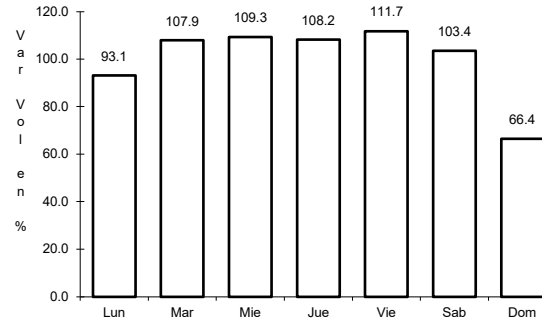
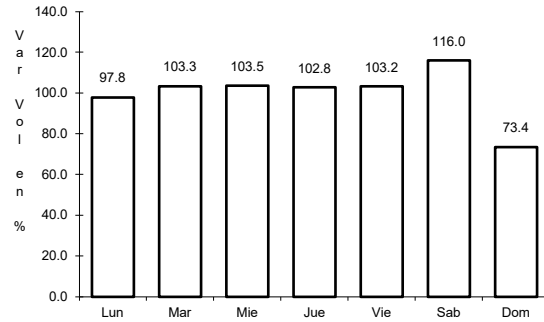
Tipo: 3

Sent: 1

25 CARR: Saltillo - Monterrey (Cuota)

CLAVE: 00087

RUTA: MEX-040D



Km: 46.21 Tipo: 3 Sent: 1

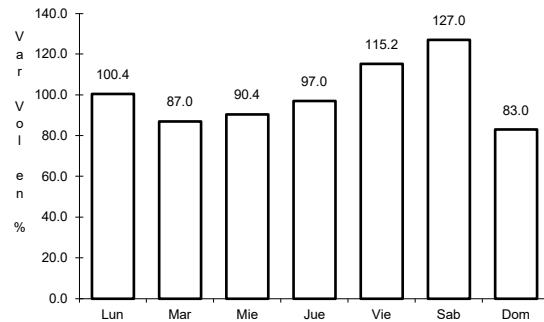
Km: 46.21 Tipo: 3 Sent: 2

Km: 82.00 Tipo: 3 Sent: 1

27 CARR: Allende - Villa Unión

CLAVE: 05001

RUTA: COA-015

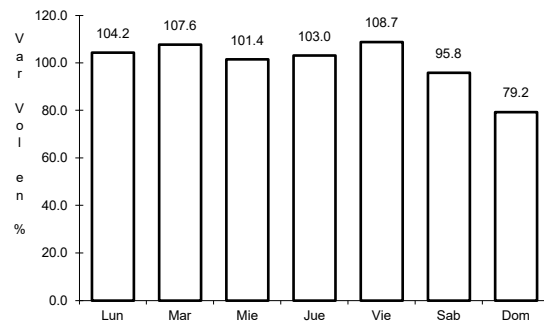


Km: 0.00 Tipo: 3 Sent: 0

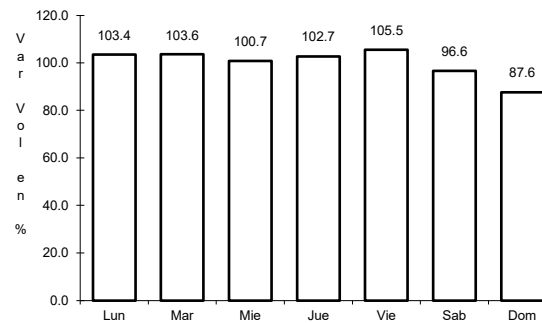
28 CARR: Corredor Libramiento de San Pedro

CLAVE: 05023

RUTA: COA-087



Km: 0.00 Tipo: 3 Sent: 0

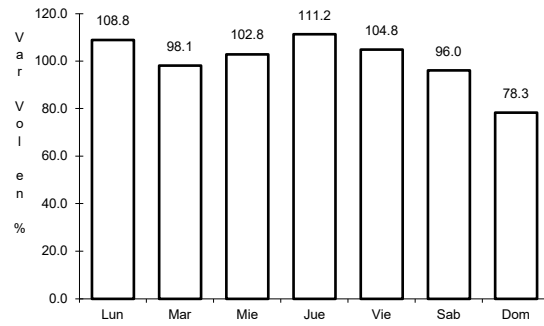


Km: 3.60 Tipo: 1 Sent: 0

29 CARR: Cuatro Ciénegas - Ocampo

CLAVE: 05026

RUTA: COA-048



Km: 0.00

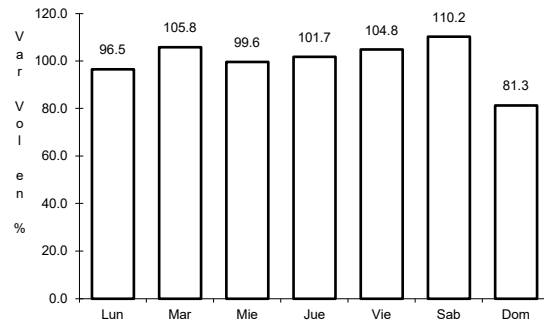
Tipo: 3

Sent: 0

30 CARR: El Sauz - Palau

CLAVE: 05060

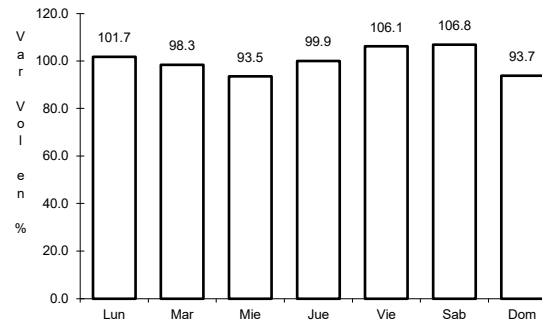
RUTA: COA-022



Km: 0.00

Tipo: 3

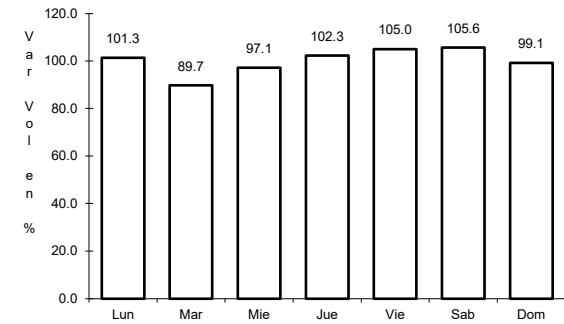
Sent: 1



Km: 0.00

Tipo: 3

Sent: 2



Km: 42.50

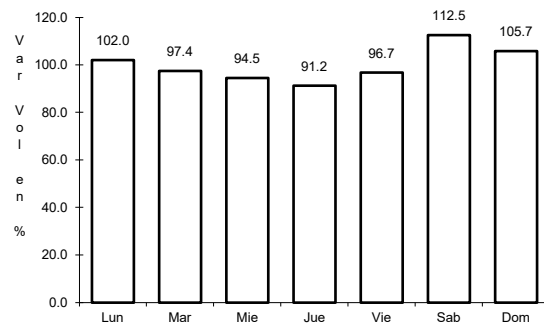
Tipo: 1

Sent: 1

31 CARR: Emiliano Zapata - Viesca

CLAVE: 05521

RUTA: COA-082



Km: 0.00

Tipo: 3

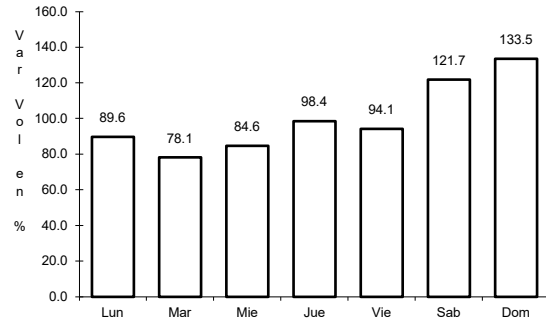
Sent: 0



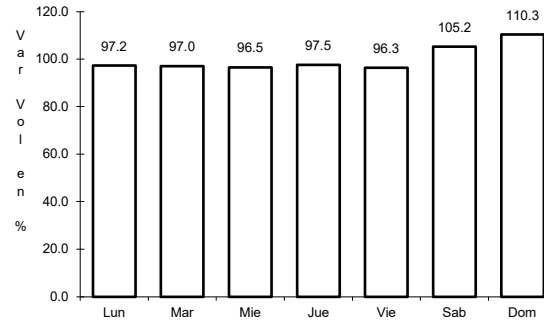
32 CARR: Ent. La Rosa - General Cepeda

CLAVE: 05034

RUTA: COA-034



Km: 0.00      Tipo: 3      Sent: 0

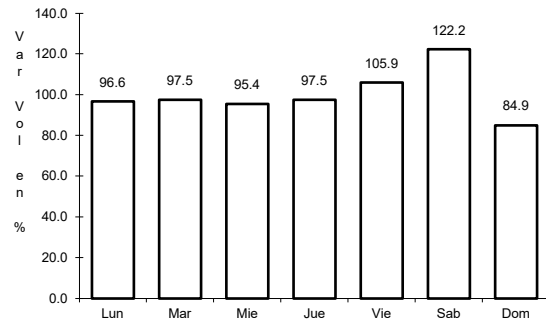


Km: 21.00      Tipo: 1      Sent: 0

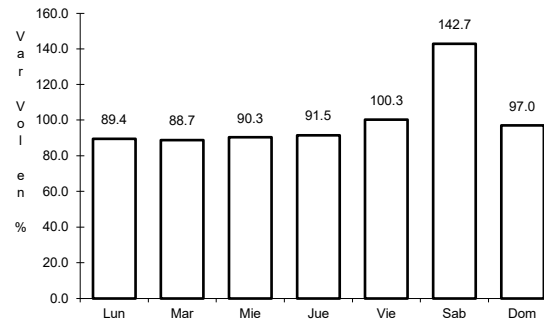
33 CARR: Ent. Paila - Parras de La Fuente

CLAVE: 05014

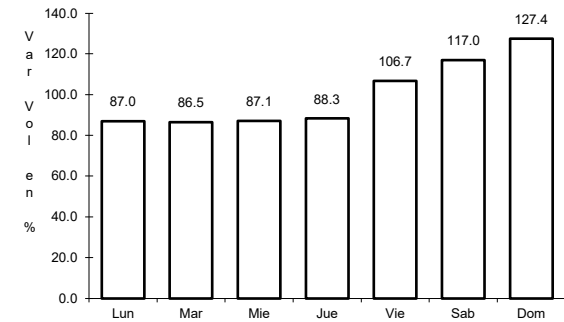
RUTA: COA-102



Km: 0.00      Tipo: 3      Sent: 0



Km: 20.05      Tipo: 1      Sent: 1

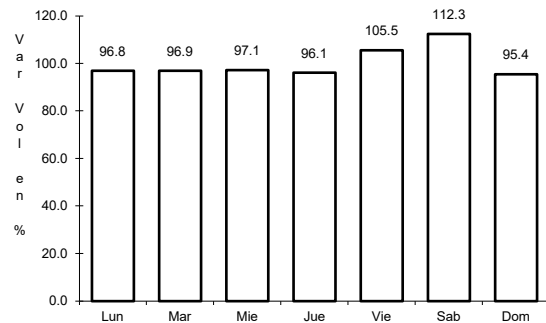


Km: 20.05      Tipo: 1      Sent: 2

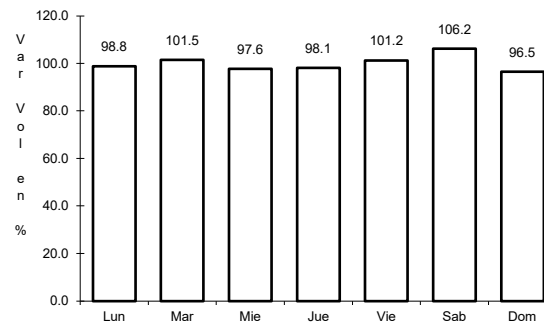
34 CARR: Libramiento de Matamoros

CLAVE: 05032

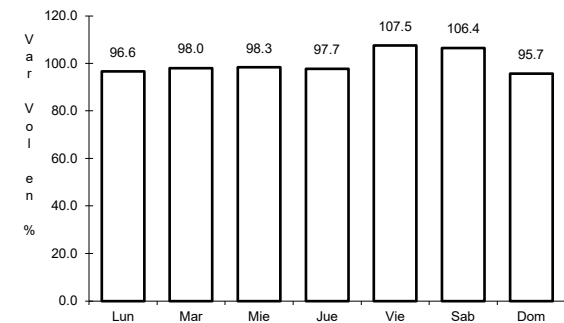
RUTA: COA



Km: 0.00      Tipo: 3      Sent: 0



Km: 5.32      Tipo: 1      Sent: 1

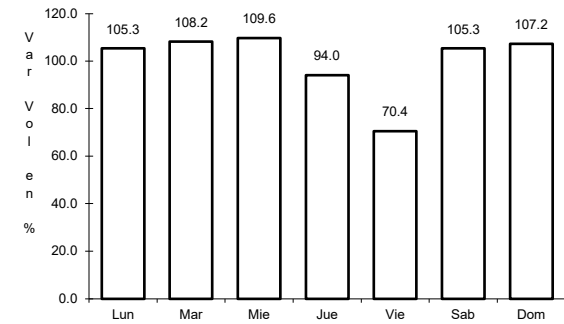
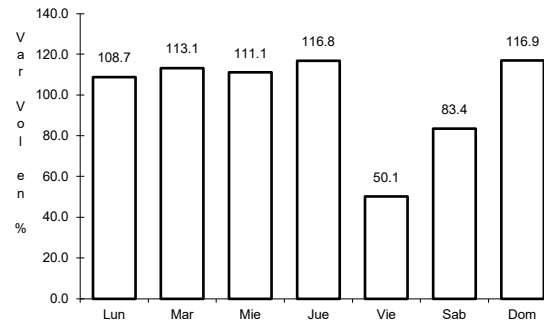
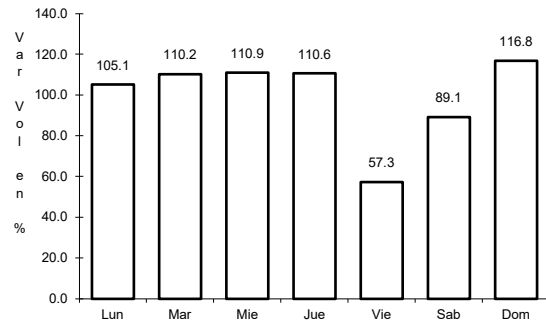


Km: 5.32      Tipo: 1      Sent: 2

35 CARR: Libramiento de Saltillo J.L.P.

CLAVE: 05031

RUTA: COA



Km: 2.50                      Tipo: 3                      Sent: 1

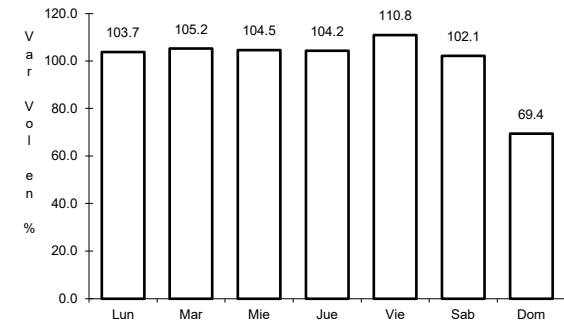
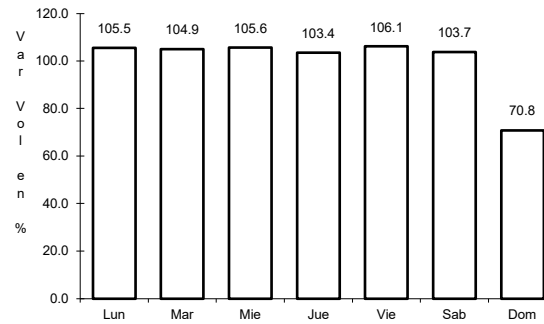
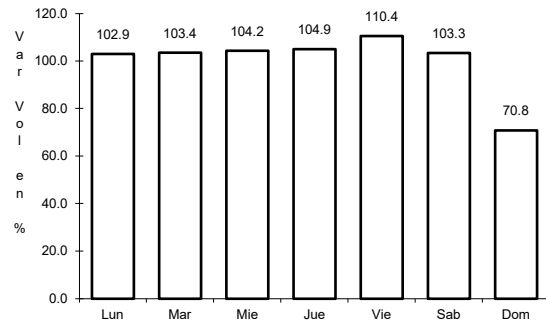
Km: 2.50                      Tipo: 3                      Sent: 2

Km: 18.00                      Tipo: 1                      Sent: 1

36 CARR: Libramiento de Torreón

CLAVE: 05516

RUTA: COA



Km: 0.00                      Tipo: 3                      Sent: 1

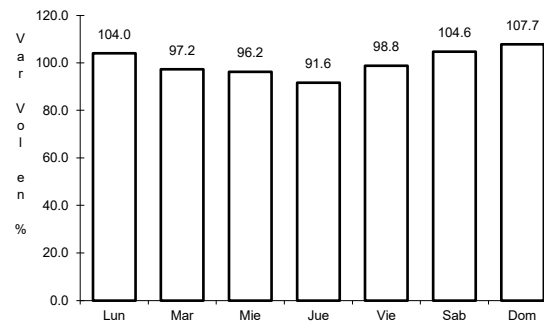
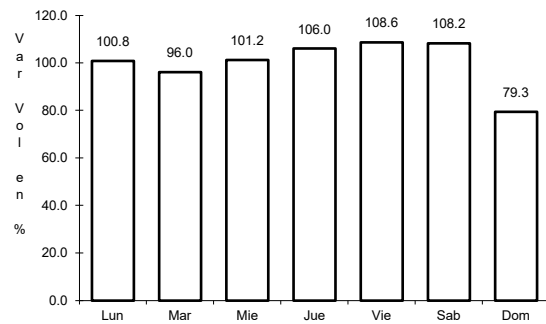
Km: 0.00                      Tipo: 3                      Sent: 2

Km: 7.30                      Tipo: 1                      Sent: 1

37 CARR: Matamoros - El Fresno

CLAVE: 05023

RUTA: COA-078



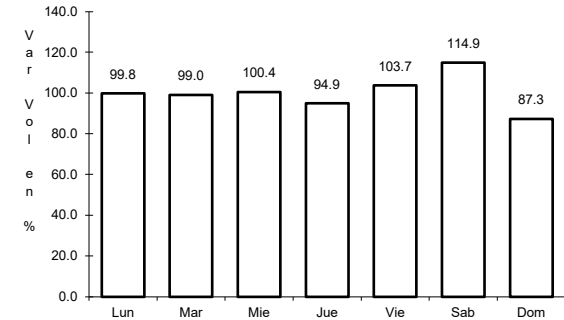
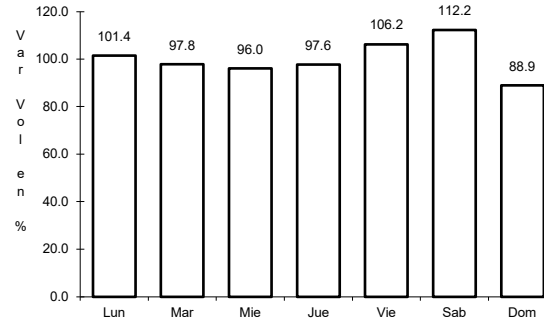
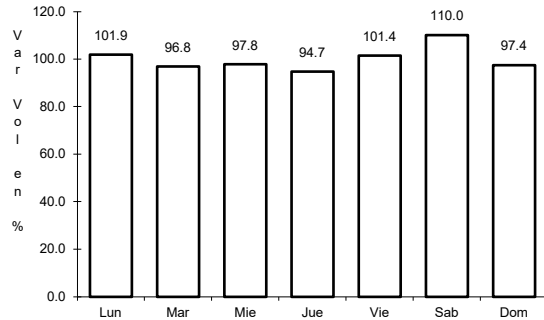
Km: 0.00                      Tipo: 3                      Sent: 0

Km: 12.60                      Tipo: 1                      Sent: 0

38 CARR: Matamoros - La Unión

CLAVE: 05023

RUTA: COA-070



Km: 1.00      Tipo: 3      Sent: 1

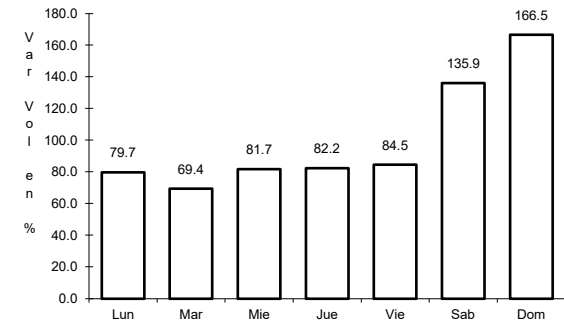
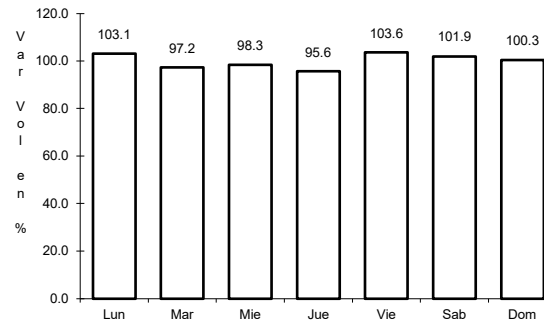
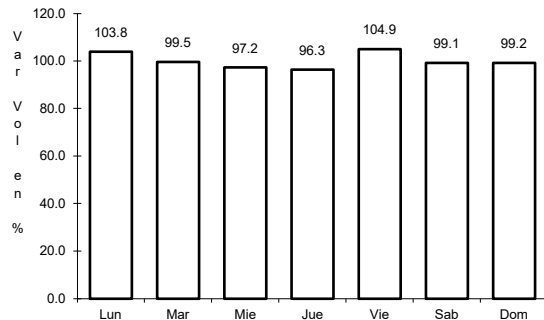
Km: 1.00      Tipo: 3      Sent: 2

Km: 14.09      Tipo: 1      Sent: 0

39 CARR: Monclova - Estación Candela

CLAVE: 00501

RUTA: COA-030-NL



Km: 5.10      Tipo: 1      Sent: 1

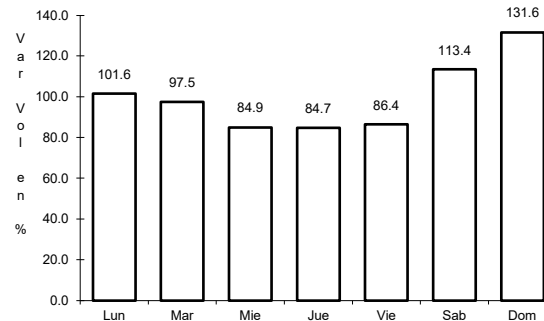
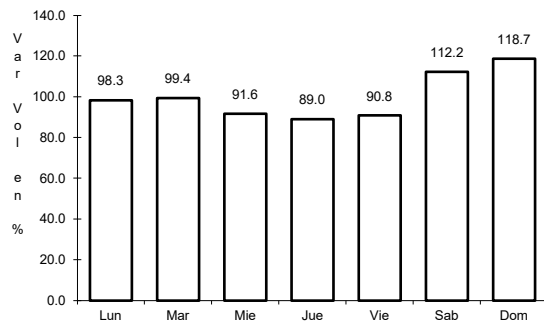
Km: 5.10      Tipo: 1      Sent: 2

Km: 125.50      Tipo: 1      Sent: 0

40 CARR: Morelos - Ent. Las Corrientes

CLAVE: 05500

RUTA: COA-010



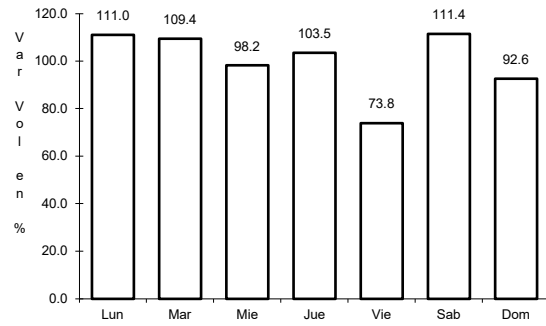
Km: 0.00      Tipo: 3      Sent: 0

Km: 9.20      Tipo: 1      Sent: 0

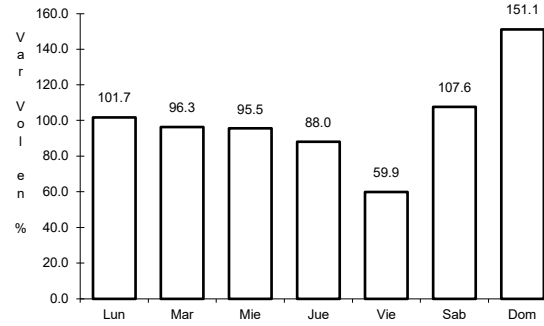
41 CARR: Puerto de Flores - El Hondable

CLAVE: 05512

RUTA: COA-112



Km: 0.00                      Tipo: 3                      Sent: 0

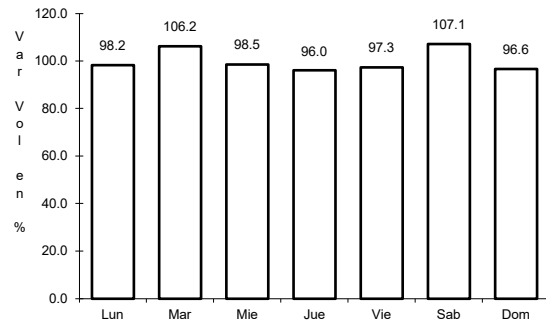


Km: 24.00                      Tipo: 1                      Sent: 0

42 CARR: Ramal a Hipólito

CLAVE: 05509

RUTA: COA-114

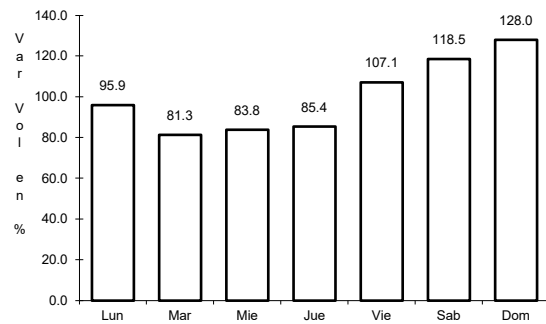


Km: 0.00                      Tipo: 3                      Sent: 0

43 CARR: Ramal a Lamadrid

CLAVE: 05522

RUTA: COA-042

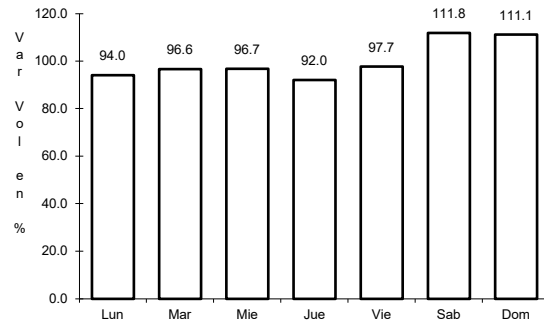


Km: 0.00                      Tipo: 3                      Sent: 0

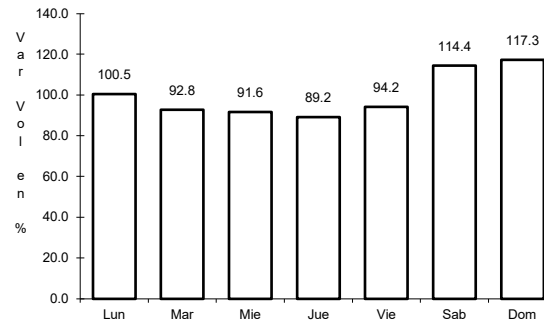
44 CARR: Sabinas - Don Martín

CLAVE: 05501

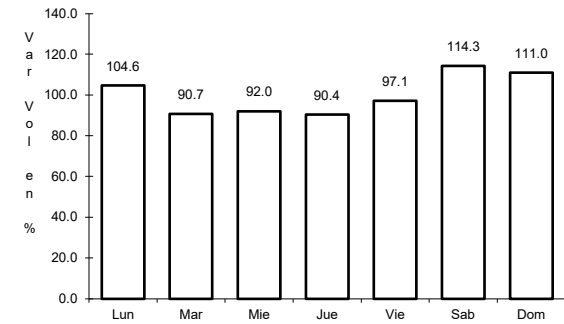
RUTA: COA-025



Km: 0.00                      Tipo: 3                      Sent: 0



Km: 53.00                      Tipo: 3                      Sent: 0

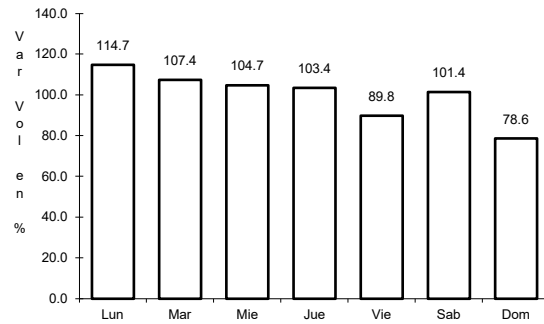


Km: 66.00                      Tipo: 1                      Sent: 0

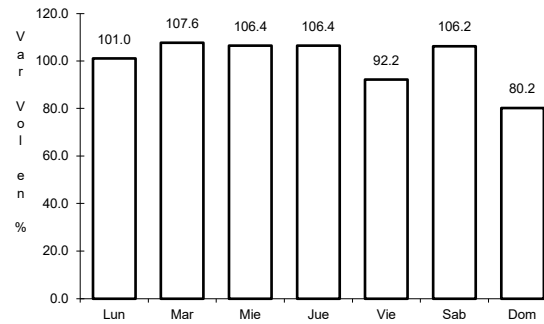
45 CARR: Saltillo - Arteaga

CLAVE: 05008

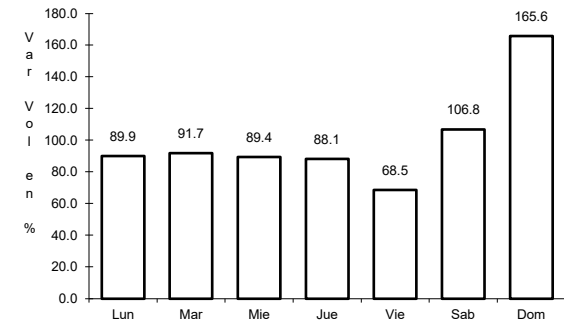
RUTA: COA-106



Km: 0.00                      Tipo: 3                      Sent: 1



Km: 0.00                      Tipo: 3                      Sent: 2

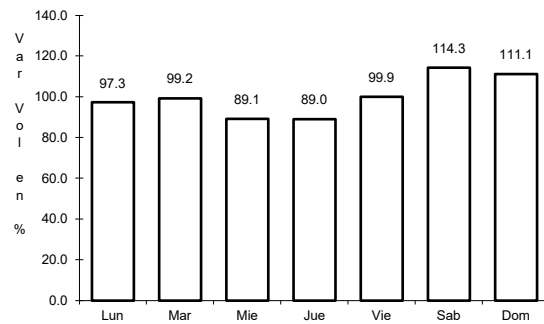


Km: 12.00                      Tipo: 1                      Sent: 1

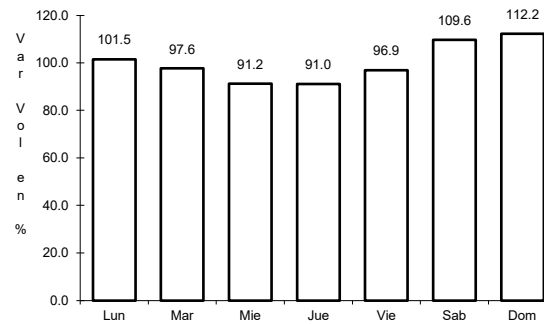
46 CARR: San Buenaventura - Estación Hermanas

CLAVE: 05004

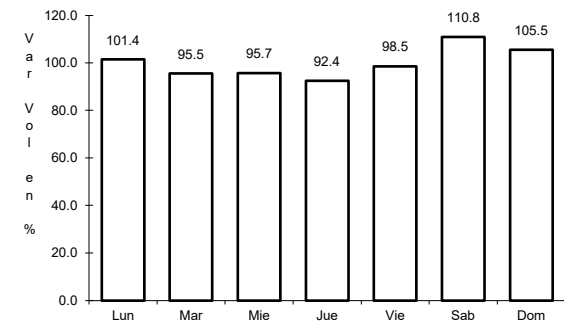
RUTA: COA-034



Km: 0.00                      Tipo: 3                      Sent: 0



Km: 15.71                      Tipo: 1                      Sent: 0

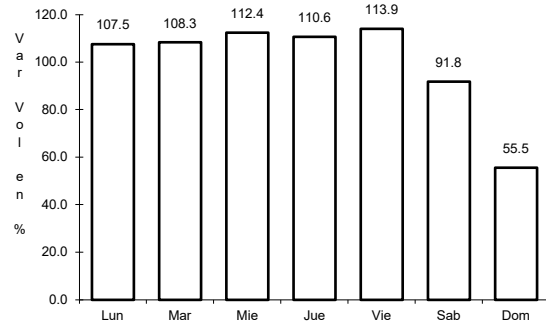


Km: 50.00                      Tipo: 1                      Sent: 0

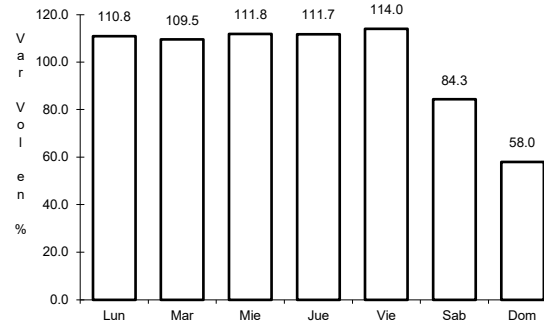
47 CARR: T. C. (Ent. Morelos - Saltillo) - Parras de La Fuente

CLAVE: 05510

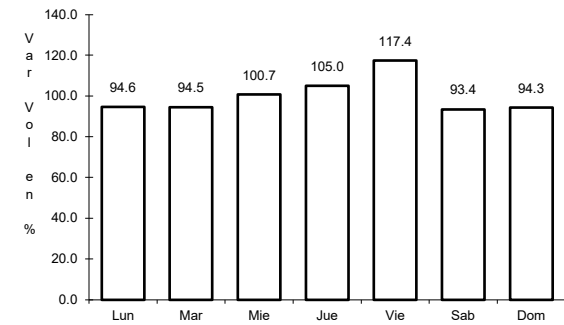
RUTA: COA-105



Km: 0.00                      Tipo: 3                      Sent: 1



Km: 0.00                      Tipo: 3                      Sent: 2

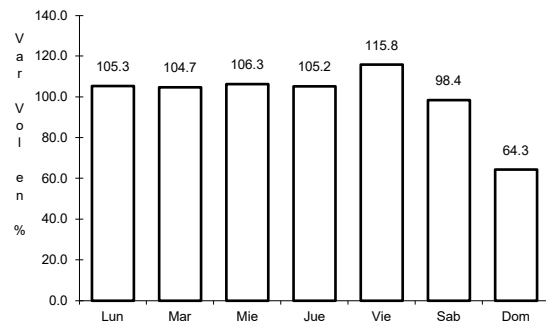


Km: 102.00                      Tipo: 1                      Sent: 0

48 CARR: T. C. (Saltillo - Monclova) - Ramos Arizpe

CLAVE: 05508

RUTA: COA

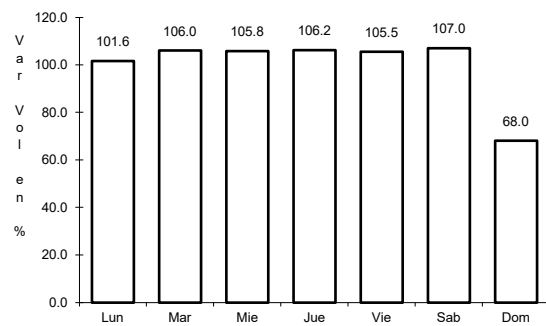


Km: 0.00                      Tipo: 3                      Sent: 0

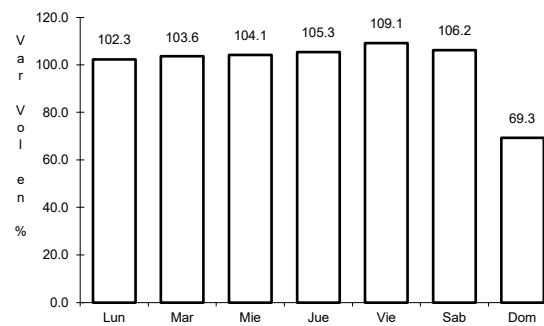
49 CARR: Torreón - Escuadrón 201

CLAVE: 05022

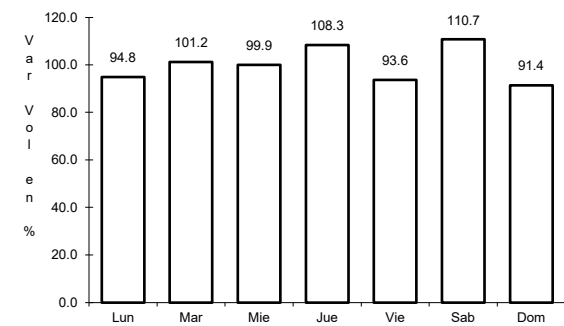
RUTA: COA-011



Km: 0.00                      Tipo: 3                      Sent: 1



Km: 0.00                      Tipo: 3                      Sent: 2



Km: 17.06                      Tipo: 1                      Sent: 0