



CAMPECHE

## ---RED FEDERAL LIBRE---

1 Campeche - Mérida	MEX-180
2 Campeche - Tixmucuy	MEX-180
3 Campeche - Umán	MEX-261
4 Cd. del Carmen - Campeche	MEX-180
5 Chencoyi - Tenabo	MEX-180
6 Dzítbalché - Ent. San Bernardo	MEX-180
7 Francisco Escárcega - Champotón	MEX-201
8 Francisco Escárcega - Chetumal	MEX-186
9 Haltunchén - San Antonio Cayal	MEX-180
10 Periférico Pablo García y Montilla (Libramiento de Campeche)	MEX-202
11 Presidente Díaz Ordaz - Sabancuy	MEX-186
12 Ramal a Nuevo Coahuila	MEX-186
13 Ramal a Ruíz Cortines	MEX-180
14 San Marcos - Palizada	MEX-186
15 Villahermosa - Cd. del Carmen	MEX-180
16 Villahermosa - Francisco Escárcega	MEX-186

## ---RED FEDERAL DE CUOTA---

17 Champotón - Campeche (Cuota)	MEX-180D
---------------------------------	----------

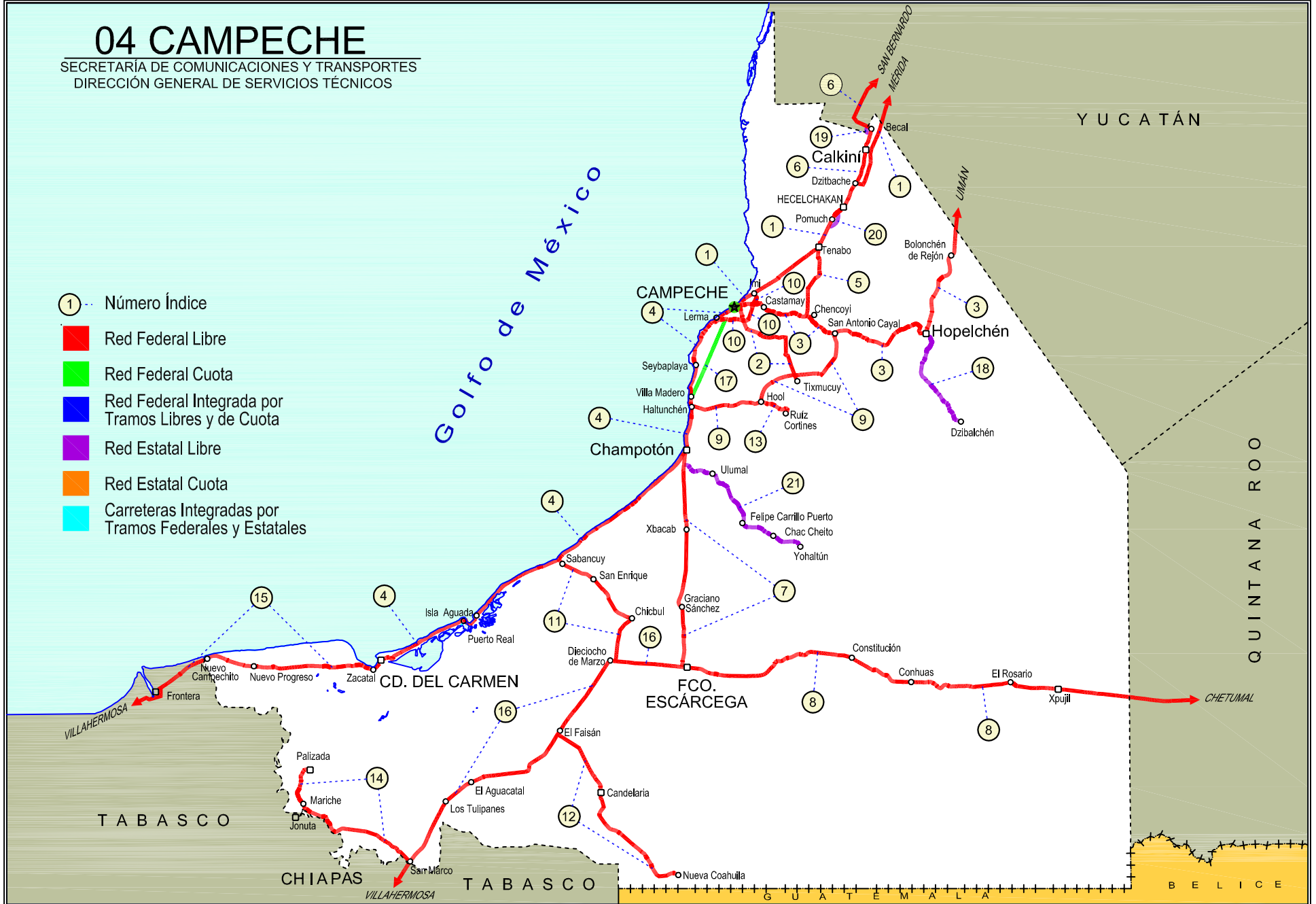
## ---RED ESTATAL LIBRE---

18 Hopelchén - Dzítbalché	CAM-261
19 Libramiento de Becal	CAM
20 Libramiento de Pomuch	CAM
21 T. C. (Francisco Escárcega - Champotón) - Yohaltún	CAM

# 04 CAMPECHE

SECRETARÍA DE COMUNICACIONES Y TRANSPORTES  
DIRECCIÓN GENERAL DE SERVICIOS TÉCNICOS

- ① Número Índice
- Red Federal Libre
- Red Federal Cuota
- Red Federal Integrada por Tramos Libres y de Cuota
- Red Estatal Libre
- Red Estatal Cuota
- Carreteras Integradas por Tramos Federales y Estatales





CAMPECHE

1 CARR: Campeche - Mérida

CLAVE: 00066

RUTA: MEX-180

AÑO: 2020

LUGAR	ESTACION				CLASIFICACION VEHICULAR EN PORCIENTO														COORDENADAS	
	KM	TE	SC	TDPA	M	A	B	C2	C3	T3S2	T3S3	T3S2R4	OTROS	A	B	C	K'	D	LATITUD	LONGITUD
Campeche	0.00	3	1	6577	7.6	84.7	0.4	5.2	0.6	0.6	0.8	0.0	0.1	92.3	0.4	7.3	0.093	0.516	19.858423	-90.521517
Campeche	0.00	3	2	6172	7.6	84.6	0.4	5.3	0.6	0.6	0.8	0.0	0.1	92.2	0.4	7.4	0.081	0.516	19.858420	-90.521523
T. Der. Periférico Pablo García y Montilla (Libramiento De Campeche)	7.00	3	1	5342	5.8	72.3	3.2	6.3	1.6	5.5	1.1	3.6	0.6	78.1	3.2	18.7	0.072	0.508	19.890625	-90.463951
T. Der. Periférico Pablo García y Montilla (Libramiento De Campeche)	7.00	3	2	5510	5.8	72.0	3.2	6.2	1.6	5.7	1.2	3.7	0.6	77.8	3.2	19.0	0.083	0.508	19.890627	-90.463954
Tenabo	40.00	1	1	5261	1.7	74.8	3.4	5.7	1.6	6.3	1.2	4.7	0.6	76.5	3.4	20.1	0.092	0.505	20.030460	-90.226568
Tenabo	40.00	1	2	5149	1.7	74.8	3.4	5.6	1.7	6.3	1.3	4.7	0.5	76.5	3.4	20.1	0.088	0.505	20.030457	-90.226569
Tenabo	40.00	3	1	4471	2.4	74.2	3.3	5.7	1.7	6.6	1.3	4.2	0.6	76.6	3.3	20.1	0.087	0.518	20.038727	-90.216777
Tenabo	40.00	3	2	4164	2.5	72.9	3.6	6.1	1.7	6.6	1.3	4.6	0.7	75.4	3.6	21.0	0.090	0.518	20.038725	-90.216794
T. Libramiento de Pomuch	46.30																			
T. Der. Libramiento de Pomuch (2º Acceso)	50.00	3	1	4395	2.1	76.3	3.3	5.3	1.3	5.8	1.5	3.8	0.6	78.4	3.3	18.3	0.118	0.503	20.147240	-90.165113
T. Der. Libramiento de Pomuch (2º Acceso)	50.00	3	2	4442	2.1	76.2	3.1	5.3	1.4	5.8	1.6	3.8	0.7	78.3	3.1	18.6	0.106	0.503	20.147262	-90.165165
Poc Boc	64.60	3	1	4438	2.9	72.2	4.3	6.5	1.5	6.4	1.4	4.0	0.8	75.1	4.3	20.6	0.109	0.507	20.250767	-90.093614
Poc Boc	64.60	3	2	4565	3.1	72.1	4.2	6.6	1.5	6.3	1.4	4.0	0.8	75.2	4.2	20.6	0.095	0.507	20.250767	-90.093614
Calkiní	79.76	3	1	4313	2.7	73.3	4.7	4.6	1.7	6.6	1.4	4.3	0.7	76.0	4.7	19.3	0.107	0.504	20.366313	-90.040204
Calkiní	79.76	3	2	4384	2.6	73.4	4.8	4.7	1.8	6.5	1.4	4.2	0.6	76.0	4.8	19.2	0.082	0.504	20.366313	-90.040288
Lim. Edos. Term. Camp. Ppia. Yuc.	96.96																			
T. Der. Maxcanú	104.61	1	1	3478	2.4	71.4	5.0	4.8	2.2	7.1	1.4	4.9	0.8	73.8	5.0	21.2	0.119	0.504	20.585852	-89.972817
T. Der. Maxcanú	104.61	1	2	3422	2.8	69.2	5.2	5.4	2.3	8.0	1.5	4.8	0.8	72.0	5.2	22.8	0.090	0.504	20.585855	-89.972818
T. Der. Maxcanú	104.61	3	1	2989	2.2	67.7	4.8	6.0	2.4	9.0	1.7	5.3	0.9	69.9	4.8	25.3	0.093	0.520	20.585908	-89.972797
T. Der. Maxcanú	104.61	3	2	3234	2.3	67.8	4.6	5.8	2.3	9.2	1.8	5.2	1.0	70.1	4.6	25.3	0.104	0.520	20.585911	-89.972803
Kopomá	124.29	3	1	5478	1.3	77.3	2.7	6.4	1.6	5.3	1.6	3.1	0.7	78.6	2.7	18.7	0.091	0.507	20.648689	-89.899435
Kopomá	124.29	3	2	5334	1.4	74.5	2.8	7.1	1.9	6.1	1.6	4.0	0.6	75.9	2.8	21.3	0.127	0.507	20.648683	-89.899419
T. Der. Libramiento de Chocholá (1º Acceso)	137.89	1	1	4704	1.7	75.1	2.7	7.0	1.5	6.2	1.4	3.9	0.5	76.8	2.7	20.5	0.108	0.507	20.738381	-89.836493
T. Der. Libramiento de Chocholá (1º Acceso)	137.89	1	2	4829	1.7	74.2	2.6	7.0	1.5	7.2	1.4	3.7	0.7	75.9	2.6	21.5	0.104	0.507	20.738446	-89.836594
T. Izq. Umán	146.99	3	1	5471	1.5	75.3	3.2	7.0	1.6	5.6	1.5	3.8	0.5	76.8	3.2	20.0	0.120	0.518	20.793375	-89.814189
T. Izq. Umán	146.99	3	2	5870	1.5	75.3	3.2	7.0	1.6	5.6	1.5	3.8	0.5	76.8	3.2	20.0	0.105	0.518	20.793379	-89.814187
X. C. Campeche - Umán	160.49	1	1	5876	2.0	74.4	2.5	5.9	2.4	6.1	2.2	3.7	0.8	76.4	2.5	21.1	0.092	0.526	20.841124	-89.742578
X. C. Campeche - Umán	160.49	1	2	5305	1.6	74.0	2.5	5.5	2.7	6.8	2.3	3.7	0.9	75.6	2.5	21.9	0.117	0.526	20.841132	-89.742584
T. C. Periférico de Mérida	171.21																			
T. C. Periférico de Mérida	171.21	1	1	5390	1.9	71.1	2.3	6.5	4.5	6.8	2.7	3.6	0.6	73.0	2.3	24.7	0.094	0.527	20.902356	-89.675418
T. C. Periférico de Mérida	171.21	1	2	5996	1.8	72.4	2.2	6.5	4.2	6.4	2.5	3.4	0.6	74.2	2.2	23.6	0.091	0.527	20.902525	-89.675507

CAMPECHE

2 CARR: Campeche - Tixmucuy

CLAVE: 04575

RUTA: MEX-180

AÑO: 2020

LUGAR	ESTACION				CLASIFICACION VEHICULAR EN PORCIENTO													COORDENADAS		
	KM	TE	SC	TDPA	M	A	B	C2	C3	T3S2	T3S3	T3S2R4	OTROS	A	B	C	K'	D	LATITUD	LONGITUD
Campeche	0.00	3	1	6510	13.9	74.6	0.4	3.9	0.8	3.5	1.7	0.4	0.8	88.5	0.4	11.1	0.082	0.502	19.839795	-90.516439
Campeche	0.00	3	2	6554	14.0	74.5	0.5	3.9	0.8	3.5	1.8	0.3	0.7	88.5	0.5	11.0	0.097	0.502	19.839793	-90.516439
T. Der. Periférico Pablo García y Montilla (Libramiento De Campeche)	4.00	3	1	3194	31.5	62.7	0.1	4.4	0.9	0.2	0.1	0.1	0.0	94.2	0.1	5.7	0.085	0.502	19.793233	-90.502285
T. Der. Periférico Pablo García y Montilla (Libramiento De Campeche)	4.00	3	2	3214	31.4	62.8	0.1	4.4	0.9	0.2	0.1	0.1	0.0	94.2	0.1	5.7	0.081	0.502	19.793229	-90.502287
X. C. Haltunchén - Cayal	39.00	1	0	1447	6.7	80.3	0.8	8.7	1.4	1.3	0.5	0.3	0.0	87.0	0.8	12.2	0.093	0.505	19.603352	-90.319532
Tixmucuy	42.00	1	0	529	19.8	68.8	1.1	8.1	1.0	0.6	0.3	0.3	0.0	88.6	1.1	10.3	0.119	0.501	19.581924	-90.317131

3 CARR: Campeche - Umán

CLAVE: 00164

RUTA: MEX-261

AÑO: 2020

LUGAR	ESTACION				CLASIFICACION VEHICULAR EN PORCIENTO													COORDENADAS		
	KM	TE	SC	TDPA	M	A	B	C2	C3	T3S2	T3S3	T3S2R4	OTROS	A	B	C	K'	D	LATITUD	LONGITUD
Campeche	0.00																			
T. Der. Periférico Pablo García y Montilla (Libramiento De Campeche)	7.00	1	0	3716	9.7	79.3	0.3	6.2	0.6	3.1	0.5	0.0	0.3	89.0	0.3	10.7	0.087	0.503	19.850622	-90.468705
T. Der. Periférico Pablo García y Montilla (Libramiento De Campeche)	7.00	3	0	2050	10.5	77.6	0.5	8.6	0.8	1.4	0.4	0.0	0.2	88.1	0.5	11.4	0.112	0.500	19.850505	-90.468238
T. Izq. Tenabo	30.88	1	0	1410	8.6	73.7	0.8	13.9	1.0	1.0	0.4	0.3	0.3	82.3	0.8	16.9	0.093	0.507	19.804693	-90.274427
T. Izq. Tenabo	30.88	3	0	1507	7.0	70.9	1.8	10.0	2.4	2.8	1.9	1.6	1.6	77.9	1.8	20.3	0.096	0.509	19.804689	-90.274425
T. Der. Edzna	44.51	1	0	1428	10.7	65.5	2.5	10.5	2.1	3.1	2.0	2.0	1.6	76.2	2.5	21.3	0.100	0.509	19.744257	-90.173914
T. Der. Edzna	44.51	3	0	1587	14.5	61.4	2.6	11.4	2.5	2.8	1.4	1.8	1.6	75.9	2.6	21.5	0.098	0.506	19.744258	-90.173911
Hopelchén	84.88	1	0	1948	11.5	74.5	0.4	11.3	0.6	1.4	0.3	0.0	0.0	86.0	0.4	13.6	0.084	0.504	19.744580	-89.845202
Bolonchén de Rejón	117.88	3	0	965	18.9	63.2	1.0	10.4	1.9	1.8	0.7	2.0	0.1	82.1	1.0	16.9	0.102	0.507	20.005293	-89.746138
Lim. Edos. Term. Camp. Ppia. Yuc.	126.88																			
T. Der. Sayil	140.88	1	0	446	6.9	69.0	2.4	13.2	2.5	1.9	1.6	2.5	0.0	75.9	2.4	21.7	0.103	0.501	20.212971	-89.665499
Santa Elena	158.88	1	0	863	33.6	52.0	1.4	8.5	1.2	1.5	0.4	1.3	0.1	85.6	1.4	13.0	0.141	0.502	20.324081	-89.645313
T. Izq. Ruinas de Uxmal	172.48	1	0	604	16.4	63.8	1.1	8.9	2.4	2.6	0.9	3.8	0.1	80.2	1.1	18.7	0.134	0.501	20.363274	-89.768320
Muna	187.43	1	0	1255	21.2	66.5	0.8	7.3	0.9	1.4	0.4	1.4	0.1	87.7	0.8	11.5	0.101	0.544	20.484448	-89.713814
Muna	187.43	3	0	4311	4.8	76.8	0.8	12.5	1.6	2.0	0.6	0.8	0.1	81.6	0.8	17.6	0.072	0.519	20.484447	-89.713819
Xtepén	225.38	1	0	3693	2.5	79.5	0.7	9.2	1.5	2.5	3.0	0.8	0.3	82.0	0.7	17.3	0.100	0.505	20.822258	-89.742516
Umán	230.83	1	0	3220	13.0	66.8	1.2	8.8	3.3	5.2	1.1	0.4	0.2	79.8	1.2	19.0	0.104	0.507	20.878563	-89.746767

4 CARR: Cd. del Carmen - Campeche

CLAVE: 04065

RUTA: MEX-180

AÑO: 2020

LUGAR	ESTACION				CLASIFICACION VEHICULAR EN PORCIENTO													COORDENADAS		
	KM	TE	SC	TDPA	M	A	B	C2	C3	T3S2	T3S3	T3S2R4	OTROS	A	B	C	K'	D	LATITUD	LONGITUD
Cd. del Carmen	0.00	3	1	10591	5.2	83.5	1.1	5.1	0.9	1.9	0.8	0.9	0.6	88.7	1.1	10.2	0.111	0.507	18.649734	-91.805788
Cd. del Carmen	0.00	3	2	10280	5.5	81.7	1.2	5.7	1.0	2.2	0.8	1.1	0.8	87.2	1.2	11.6	0.114	0.507	18.649729	-91.805789

CAMPECHE

4 CARR: Cd. del Carmen - Campeche

CLAVE: 04065

RUTA: MEX-180

AÑO: 2020

LUGAR	ESTACION				CLASIFICACION VEHICULAR EN PORCIENTO													COORDENADAS		
	KM	TE	SC	TDPA	M	A	B	C2	C3	T3S2	T3S3	T3S2R4	OTROS	A	B	C	K'	D	LATITUD	LONGITUD
La Palma	26.70	1	0	4044	1.9	68.1	4.9	7.0	1.8	9.1	1.5	5.3	0.4	70.0	4.9	25.1	0.095	0.507	18.733666	-91.631742
Isla Aguada	37.75	3	0	4044	1.9	68.1	4.9	7.0	1.8	9.1	1.5	5.3	0.4	70.0	4.9	25.1	0.095	0.507	18.786396	-91.494815
T. Der. Sabancuy	78.05	3	0	3406	2.1	66.4	5.2	6.7	1.9	9.5	1.8	5.7	0.7	68.5	5.2	26.3	0.093	0.507	18.989687	-91.191270
Champotón	141.80	1	0	3649	1.6	65.0	5.8	6.3	2.2	10.7	1.8	6.1	0.5	66.6	5.8	27.6	0.083	0.504	19.346617	-90.730775
Champotón	141.80	3	1	4074	5.1	69.7	3.4	7.5	1.4	6.4	1.6	4.2	0.7	74.8	3.4	21.8	0.098	0.504	19.346593	-90.730770
Champotón	141.80	3	2	4012	5.1	70.0	3.1	6.5	1.7	7.4	1.2	4.5	0.5	75.1	3.1	21.8	0.090	0.504	19.346593	-90.730770
Haltunchén	161.81																			
T. Der. Libramiento de Seybaplaya (1° Acceso)	175.71	1	0	2550	12.5	73.7	1.6	6.6	3.0	1.7	0.4	0.3	0.2	86.2	1.6	12.2	0.087	0.508	19.623623	-90.685183
T. Der. Libramiento de Seybaplaya (1° Acceso)	175.71	3	1	536	20.5	70.8	0.4	7.5	0.4	0.3	0.1	0.0	0.0	91.3	0.4	8.3	0.103	0.517	19.623625	-90.685184
T. Der. Libramiento de Seybaplaya (1° Acceso)	175.71	3	2	502	22.4	68.4	0.5	8.2	0.3	0.1	0.1	0.0	0.0	90.8	0.5	8.7	0.092	0.517	19.623620	-90.685184
T. Der. Libramiento de Seybaplaya (2do. Acceso)	179.00	3	0	2195	13.9	75.9	0.6	7.0	1.0	0.5	0.6	0.3	0.2	89.8	0.6	9.6	0.091	0.512	19.651023	-90.686697
T. Der. Periférico Pablo García y Montilla (Libramiento De Campeche)	195.70	1	0	2096	7.3	81.0	1.0	7.3	1.4	1.6	0.3	0.0	0.1	88.3	1.0	10.7	0.093	0.505	19.790045	-90.619828
Lerma	199.51	1	1	1042	16.4	75.7	0.3	6.0	0.5	0.4	0.6	0.1	0.0	92.1	0.3	7.6	0.111	0.504	19.806384	-90.601129
Lerma	199.51	1	2	1024	17.2	74.4	0.3	6.5	0.5	0.4	0.6	0.1	0.0	91.6	0.3	8.1	0.141	0.504	19.806384	-90.601129
Campeche	203.18																			

5 CARR: Chencoyi - Tenabo

CLAVE: 04576

RUTA: MEX-180

AÑO: 2020

LUGAR	ESTACION				CLASIFICACION VEHICULAR EN PORCIENTO													COORDENADAS		
	KM	TE	SC	TDPA	M	A	B	C2	C3	T3S2	T3S3	T3S2R4	OTROS	A	B	C	K'	D	LATITUD	LONGITUD
T. C. Campeche - Umán	0.00																			
Tenabo	28.00	1	0	914	13.0	71.0	0.8	7.9	1.6	2.8	1.4	1.0	0.5	84.0	0.8	15.2	0.102	0.510	20.039749	-90.225506

6 CARR: Dzitbalché - Ent. San Bernardo

CLAVE: 00162

RUTA: MEX-180

AÑO: 2020

LUGAR	ESTACION				CLASIFICACION VEHICULAR EN PORCIENTO													COORDENADAS		
	KM	TE	SC	TDPA	M	A	B	C2	C3	T3S2	T3S3	T3S2R4	OTROS	A	B	C	K'	D	LATITUD	LONGITUD
T. C. Campeche - Mérida	0.00																			
T. Izq. Libramiento de Becal (1° Acceso)	12.33	1	0	3284	19.8	72.0	0.9	4.5	0.4	2.0	0.2	0.1	0.1	91.8	0.9	7.3	0.081	0.503	20.426627	-90.031032
T. Izq. Libramiento de Becal (2° Acceso)	15.41	3	0	1195	16.0	72.0	1.0	7.7	1.0	2.0	0.1	0.1	0.1	88.0	1.0	11.0	0.078	0.524	20.448433	-90.037269
Lim. Edos. Term. Camp. Ppia. Yuc.	15.80																			
Halachó	21.08	1	0	1266	18.6	70.0	1.0	7.3	0.8	2.0	0.3	0.0	0.0	88.6	1.0	10.4	0.077	0.504	20.477204	-90.081101
T. Izq. Libramiento de Maxcanú (1° Acceso)	35.60	1	0	1946	25.3	62.4	0.9	7.9	0.9	2.1	0.3	0.1	0.1	87.7	0.9	11.4	0.094	0.508	20.585135	-90.017498
T. Der. Muna	40.36	3	0	2654	7.0	72.8	1.1	15.5	0.9	2.1	0.3	0.2	0.1	79.8	1.1	19.1	0.105	0.502	20.600478	-89.977268
Ent. San Bernardo	41.53																			

CAMPECHE

7 CARR: Francisco Escárcega - Champotón

CLAVE: 04103

RUTA: MEX-201

AÑO: 2020

LUGAR	ESTACION				CLASIFICACION VEHICULAR EN PORCIENTO													COORDENADAS		
	KM	TE	SC	TDPA	M	A	B	C2	C3	T3S2	T3S3	T3S2R4	OTROS	A	B	C	K'	D	LATITUD	LONGITUD
Francisco Escárcega	0.00	3	0	4908	20.7	59.4	2.2	3.1	2.0	6.3	1.2	4.1	1.0	80.1	2.2	17.7	0.081	0.552	18.609404	-90.745448
T. Izq. Ley Federal de La Reforma Agraria	51.40	1	0	2707	3.4	58.5	3.4	7.3	2.1	10.7	2.5	11.6	0.5	61.9	3.4	34.7	0.085	0.502	19.067048	-90.725245
T. Der. Ulumal y Patzajol	77.00	1	0	3422	6.0	62.8	2.5	7.2	2.3	9.0	2.3	7.2	0.7	68.8	2.5	28.7	0.086	0.501	19.299168	-90.731617
Champotón	81.40	1	0	4853	8.7	67.1	1.8	6.8	1.7	7.4	1.6	4.4	0.5	75.8	1.8	22.4	0.082	0.515	19.334931	-90.726706

8 CARR: Francisco Escárcega - Chetumal

CLAVE: 00093

RUTA: MEX-186

AÑO: 2020

LUGAR	ESTACION				CLASIFICACION VEHICULAR EN PORCIENTO													COORDENADAS		
	KM	TE	SC	TDPA	M	A	B	C2	C3	T3S2	T3S3	T3S2R4	OTROS	A	B	C	K'	D	LATITUD	LONGITUD
Francisco Escárcega	0.00	3	0	2807	10.9	65.6	3.8	5.1	1.7	6.1	1.5	4.8	0.5	76.5	3.8	19.7	0.083	0.524	18.606392	-90.738067
Adolfo López Mateos	41.50	1	0	2480	7.7	64.4	5.7	7.5	1.7	5.6	1.7	5.1	0.6	72.1	5.7	22.2	0.084	0.522	18.640025	-90.298544
T. Der. Silvituc	55.70	1	0	2535	11.4	67.5	2.9	6.1	1.7	4.6	1.7	3.5	0.6	78.9	2.9	18.2	0.084	0.516	18.649721	-90.268364
T. Der. Silvituc	55.70	3	0	2088	4.6	61.7	6.0	8.5	2.8	6.9	2.6	6.3	0.6	66.3	6.0	27.7	0.089	0.528	18.649676	-90.268190
Conhuás	100.00	1	0	1931	8.8	60.3	6.7	7.9	2.2	5.8	2.3	5.4	0.6	69.1	6.7	24.2	0.084	0.527	18.539336	-89.900123
Xpujil	155.73	1	0	2079	6.1	63.6	4.8	7.5	1.8	7.7	1.5	6.4	0.6	69.7	4.8	25.5	0.089	0.536	18.508356	-89.394935
Lim. Edos. Term. Camp. Ppia. Qroo.	179.90																			
Nicolás Bravo	206.01	1	0	2848	9.5	60.2	4.9	6.7	1.6	8.0	1.6	6.6	0.9	69.7	4.9	25.4	0.098	0.519	18.458858	-88.928743
Nicolás Bravo	206.01	3	0	3343	9.0	69.1	3.4	4.7	1.2	5.7	1.3	4.8	0.8	78.1	3.4	18.5	0.083	0.517	18.458806	-88.928731
T. Izq. Morocoy	214.90	1	0	2292	5.0	69.1	3.7	6.4	1.9	6.3	1.3	5.5	0.8	74.1	3.7	22.2	0.081	0.523	18.478804	-88.816839
T. Izq. Morocoy	214.90	3	0	2522	3.9	67.7	4.6	6.7	1.6	7.0	1.9	6.2	0.4	71.6	4.6	23.8	0.084	0.517	18.478809	-88.816659
T. Der. Unión	247.50	1	0	3980	8.8	66.2	2.8	8.4	2.7	5.5	1.2	3.6	0.8	75.0	2.8	22.2	0.074	0.532	18.505735	-88.522629
T. Der. Unión	247.50	3	0	7031	9.3	76.7	2.0	4.8	0.9	2.8	0.6	2.4	0.5	86.0	2.0	12.0	0.075	0.524	18.505790	-88.522324
T. Izq. Fpe. Carrillo Puerto	255.15	1	0	6279	8.8	75.3	2.0	5.2	2.4	2.6	0.7	2.7	0.3	84.1	2.0	13.9	0.082	0.505	18.526528	-88.467665
T. Der. Subteniente López	268.57	1	1	6538	4.1	87.8	1.0	4.9	0.7	0.7	0.3	0.3	0.2	91.9	1.0	7.1	0.108	0.501	18.515808	-88.374202
T. Der. Subteniente López	268.57	1	2	6523	4.1	87.7	1.0	4.9	0.8	0.7	0.3	0.3	0.2	91.8	1.0	7.2	0.093	0.501	18.516006	-88.374157
T. Izq. Av. Insurgentes	270.00	1	1	9711	4.3	90.6	0.8	2.3	0.7	0.7	0.3	0.2	0.1	94.9	0.8	4.3	0.090	0.511	18.512305	-88.358114
T. Izq. Av. Insurgentes	270.00	1	2	9304	4.8	89.7	0.9	2.5	0.6	0.8	0.4	0.2	0.1	94.5	0.9	4.6	0.094	0.511	18.512475	-88.358083
T. Izq. Av. Insurgentes	270.00	3	1	3573	3.3	92.0	0.5	3.0	0.5	0.3	0.1	0.2	0.1	95.3	0.5	4.2	0.097	0.519	18.512008	-88.357422
T. Izq. Av. Insurgentes	270.00	3	2	3311	3.8	91.0	0.5	3.5	0.5	0.3	0.1	0.2	0.1	94.8	0.5	4.7	0.106	0.519	18.512201	-88.357265
Chetumal	277.36	1	1	6519	8.3	88.9	0.2	2.1	0.3	0.2	0.0	0.0	0.0	97.2	0.2	2.6	0.096	0.517	18.499919	-88.314128
Chetumal	277.36	1	2	6095	9.0	87.4	0.2	2.7	0.3	0.3	0.1	0.0	0.0	96.4	0.2	3.4	0.090	0.517	18.500011	-88.314093



CAMPECHE

9 CARR: Haltunchén - San Antonio Cayal

CLAVE: 04009

RUTA: MEX-180

AÑO: 2020

LUGAR	ESTACION				CLASIFICACION VEHICULAR EN PORCIENTO													COORDENADAS		
	KM	TE	SC	TDPA	M	A	B	C2	C3	T3S2	T3S3	T3S2R4	OTROS	A	B	C	K'	D	LATITUD	LONGITUD
T. C. Cd. del Carmen - Campeche	0.00	3	0	1242	17.8	70.9	0.8	6.1	0.9	1.9	0.5	1.1	0.0	88.7	0.8	10.5	0.102	0.500	19.499606	-90.703218
Sihochac	14.00	3	0	1249	22.0	66.4	0.5	7.0	0.7	1.9	0.7	0.6	0.2	88.4	0.5	11.1	0.094	0.513	19.500875	-90.583589
X. C. China - Tixmucuy	47.10	1	0	485	9.1	73.9	1.2	8.7	2.2	2.0	1.2	1.7	0.0	83.0	1.2	15.8	0.105	0.507	19.603352	-90.319534
Edzna	59.00	1	0	1013	8.1	74.8	1.2	9.3	3.1	1.3	0.8	1.4	0.0	82.9	1.2	15.9	0.101	0.504	19.604438	-90.225035
T. Der. Pichucalco	60.00	3	0	497	19.1	60.5	1.3	10.2	2.6	3.3	1.4	1.6	0.0	79.6	1.3	19.1	0.109	0.501	19.604540	-90.224452
San Antonio Cayal	79.00	1	0	486	24.2	51.9	0.8	9.3	3.9	4.3	3.6	1.5	0.5	76.1	0.8	23.1	0.119	0.501	19.744255	-90.173910

10 CARR: Periférico Pablo García y Montilla (Libramiento de Campeche)

CLAVE: 04573

RUTA: MEX-202

AÑO: 2020

LUGAR	ESTACION				CLASIFICACION VEHICULAR EN PORCIENTO													COORDENADAS		
	KM	TE	SC	TDPA	M	A	B	C2	C3	T3S2	T3S3	T3S2R4	OTROS	A	B	C	K'	D	LATITUD	LONGITUD
Ent. Lerma	0.00	3	1	2233	5.1	88.1	0.3	4.2	1.1	0.6	0.5	0.1	0.0	93.2	0.3	6.5	0.123	0.514	19.790154	-90.619101
Ent. Lerma	0.00	3	2	2362	6.2	85.8	0.4	5.1	1.1	0.7	0.5	0.1	0.1	92.0	0.4	7.6	0.124	0.514	19.790273	-90.619109
T. Izq. Av. Escenica	5.00	3	1	2221	4.2	86.3	0.5	6.0	1.6	0.6	0.4	0.4	0.0	90.5	0.5	9.0	0.110	0.525	19.799015	-90.576200
T. Izq. Av. Escenica	5.00	3	2	2454	4.2	86.4	0.4	5.6	1.8	0.6	0.6	0.3	0.1	90.6	0.4	9.0	0.079	0.525	19.799150	-90.576214
X. C. Champotón - Campeche (Cuota)	10.00	3	1	5611	7.1	72.1	2.3	5.5	2.0	5.4	1.4	3.8	0.4	79.2	2.3	18.5	0.083	0.514	19.797361	-90.524732
X. C. Champotón - Campeche (Cuota)	10.00	3	2	5308	6.1	74.1	2.6	5.7	1.8	5.1	1.1	2.9	0.6	80.2	2.6	17.2	0.110	0.514	19.797483	-90.524743
X. C. Campeche - Umán	21.00	1	1	5808	2.2	75.2	2.9	6.2	2.0	5.9	1.2	3.8	0.6	77.4	2.9	19.7	0.079	0.541	19.849892	-90.468299
X. C. Campeche - Umán	21.00	1	2	4930	2.2	75.2	2.9	6.2	2.1	5.9	1.2	3.8	0.5	77.4	2.9	19.7	0.068	0.541	19.849930	-90.468384
T. C. Campeche - Mérida	26.00	1	1	4311	3.9	70.5	3.3	6.3	2.0	7.3	1.3	4.9	0.5	74.4	3.3	22.3	0.067	0.517	19.889886	-90.463748
T. C. Campeche - Mérida	26.00	1	2	4607	3.4	68.0	3.7	7.3	2.5	7.7	1.4	5.4	0.6	71.4	3.7	24.9	0.064	0.517	19.889962	-90.463861

11 CARR: Presidente Díaz Ordaz - Sabancuy

CLAVE: 04570

RUTA: MEX-186

AÑO: 2020

LUGAR	ESTACION				CLASIFICACION VEHICULAR EN PORCIENTO													COORDENADAS		
	KM	TE	SC	TDPA	M	A	B	C2	C3	T3S2	T3S3	T3S2R4	OTROS	A	B	C	K'	D	LATITUD	LONGITUD
T. C. Villahermosa - Francisco Escárcega	0.00	3	0	1134	9.6	67.5	2.3	8.7	3.4	3.3	2.2	2.1	0.9	77.1	2.3	20.6	0.090	0.519	18.629199	-90.983062
Chicbul	18.00	1	0	1360	17.1	75.7	0.8	2.4	0.9	0.8	0.8	0.9	0.6	92.8	0.8	6.4	0.090	0.519	18.772992	-90.928283
T. C. Cd. del Carmen - Campeche	57.00	1	0	1455	12.7	79.5	2.5	2.0	0.9	0.9	0.6	0.8	0.1	92.2	2.5	5.3	0.100	0.501	18.989410	-91.191088

12 CARR: Ramal a Nuevo Coahuila

CLAVE: 04015

RUTA: MEX-186

AÑO: 2020

LUGAR	ESTACION				CLASIFICACION VEHICULAR EN PORCIENTO													COORDENADAS		
	KM	TE	SC	TDPA	M	A	B	C2	C3	T3S2	T3S3	T3S2R4	OTROS	A	B	C	K'	D	LATITUD	LONGITUD
T. C. Villahermosa - Francisco Escárcega	0.00	3	0	836	3.5	80.5	1.4	10.1	1.0	1.8	0.7	1.0	0.0	84.0	1.4	14.6	0.115	0.512	18.378683	-91.198374

CAMPECHE

12 CARR: Ramal a Nuevo Coahuila

CLAVE: 04015

RUTA: MEX-186

AÑO: 2020

LUGAR	ESTACION				CLASIFICACION VEHICULAR EN PORCIENTO										COORDENADAS					
	KM	TE	SC	TDPA	M	A	B	C2	C3	T3S2	T3S3	T3S2R4	OTROS	A	B	C	K'	D	LATITUD	LONGITUD
Candelaria	28.00	3	0	2345	6.0	88.6	0.5	2.8	0.9	0.5	0.2	0.3	0.2	94.6	0.5	4.9	0.097	0.501	18.187815	-91.047153
Reforma	44.50	3	0	1221	16.2	72.9	0.6	7.6	1.2	0.9	0.4	0.2	0.0	89.1	0.6	10.3	0.093	0.516	18.080538	-91.033448
T. Izq. Pedro Baranda	54.80	1	0	661	14.9	73.1	1.1	9.1	0.8	0.5	0.1	0.4	0.0	88.0	1.1	10.9	0.095	0.502	17.968342	-90.905639
T. Izq. Pedro Baranda	54.80	3	0	607	12.2	76.7	0.7	6.8	2.1	1.1	0.1	0.3	0.0	88.9	0.7	10.4	0.112	0.501	17.968344	-90.905641
Nuevo Coahuila	70.00	1	0	675	28.3	62.2	1.2	5.7	1.1	0.7	0.2	0.3	0.3	90.5	1.2	8.3	0.123	0.502	17.892188	-90.778461

13 CARR: Ramal a Ruíz Cortines

CLAVE: 04101

RUTA: MEX-180

AÑO: 2020

LUGAR	ESTACION				CLASIFICACION VEHICULAR EN PORCIENTO										COORDENADAS					
	KM	TE	SC	TDPA	M	A	B	C2	C3	T3S2	T3S3	T3S2R4	OTROS	A	B	C	K'	D	LATITUD	LONGITUD
Hool	0.00																			
T. Der. Hool	1.00	3	0	346	36.7	56.3	0.9	3.0	2.1	0.4	0.6	0.0	0.0	93.0	0.9	6.1	0.121	0.509	19.512036	-90.451910
Ruiz Cortines	12.00																			

14 CARR: San Marcos - Palizada

CLAVE: 00490

RUTA: MEX-186

AÑO: 2020

LUGAR	ESTACION				CLASIFICACION VEHICULAR EN PORCIENTO										COORDENADAS					
	KM	TE	SC	TDPA	M	A	B	C2	C3	T3S2	T3S3	T3S2R4	OTROS	A	B	C	K'	D	LATITUD	LONGITUD
T. C. Villahermosa - Francisco Escárcega	0.00	3	0	895	12.2	73.0	1.9	8.3	2.8	1.1	0.7	0.0	0.0	85.2	1.9	12.9	0.116	0.514	17.941510	-91.734142
Lim. Edos. Term. Tab. Ppia. Camp.	1.50																			
T. Izq. Jonuta	46.20	1	0	575	7.2	82.8	0.5	7.3	1.0	0.8	0.4	0.0	0.0	90.0	0.5	9.5	0.101	0.530	18.127550	-92.112507
T. Izq. Jonuta	46.20	3	0	712	12.0	79.8	0.5	7.1	0.5	0.1	0.0	0.0	0.0	91.8	0.5	7.7	0.097	0.501	18.127551	-92.112510
Palizada	68.00																			

15 CARR: Villahermosa - Cd. del Carmen

CLAVE: 00064

RUTA: MEX-180

AÑO: 2020

LUGAR	ESTACION				CLASIFICACION VEHICULAR EN PORCIENTO										COORDENADAS					
	KM	TE	SC	TDPA	M	A	B	C2	C3	T3S2	T3S3	T3S2R4	OTROS	A	B	C	K'	D	LATITUD	LONGITUD
Villahermosa	0.00																			
T. Izq. Cd. Industrial	4.30	3	1	30389	18.0	73.5	0.8	3.3	0.8	1.7	0.8	1.0	0.1	91.5	0.8	7.7	0.093	0.550	18.031605	-92.902747
T. Izq. Cd. Industrial	4.30	3	2	29768	18.0	73.1	0.9	3.3	0.8	1.7	0.9	1.2	0.1	91.1	0.9	8.0	0.087	0.550	18.031651	-92.902828
Macultepec	18.60	1	1	11760	14.0	76.2	1.4	2.9	0.6	2.8	1.0	0.4	0.7	90.2	1.4	8.4	0.092	0.532	18.148657	-92.862956
Macultepec	18.60	1	2	10358	5.3	84.6	1.5	2.8	0.6	3.3	1.0	0.4	0.5	89.9	1.5	8.6	0.081	0.532	18.148674	-92.863042
Macultepec	18.60	3	1	4923	1.9	78.0	3.5	6.1	2.0	4.7	1.0	2.5	0.3	79.9	3.5	16.6	0.078	0.519	18.148754	-92.862930
Macultepec	18.60	3	2	4569	2.0	77.3	3.7	6.3	2.2	4.6	1.1	2.3	0.5	79.3	3.7	17.0	0.083	0.519	18.148780	-92.863012

CAMPECHE

15 CARR: Villahermosa - Cd. del Carmen

CLAVE: 00064

RUTA: MEX-180

AÑO: 2020

LUGAR	ESTACION				CLASIFICACION VEHICULAR EN PORCIENTO												COORDENADAS			
	KM	TE	SC	TDPA	M	A	B	C2	C3	T3S2	T3S3	T3S2R4	OTROS	A	B	C	K'	D	LATITUD	LONGITUD
El Espino	33.20	1	0	7587	2.8	76.3	4.7	6.5	1.5	5.5	1.2	0.9	0.6	79.1	4.7	16.2	0.080	0.503	18.247531	-92.831689
El Espino	33.20	3	0	7736	3.1	72.3	4.9	6.6	2.5	5.9	1.2	3.0	0.5	75.4	4.9	19.7	0.075	0.522	18.247773	-92.831709
T. Izq. El Bellote	49.67	3	0	7628	6.2	74.1	2.4	6.8	1.9	4.3	1.1	2.8	0.4	80.3	2.4	17.3	0.092	0.528	18.389635	-92.797193
Frontera	74.59	1	0	8661	12.7	64.1	3.1	10.8	1.1	4.5	1.1	2.5	0.1	76.8	3.1	20.1	0.086	0.510	18.525575	-92.637233
Frontera	74.59	3	0	5488	8.8	61.8	5.8	7.7	1.6	8.7	1.3	3.7	0.6	70.6	5.8	23.6	0.075	0.520	18.526178	-92.636854
T. Izq. Escolleras	78.00	3	0	4501	3.9	68.5	5.5	7.7	1.3	7.0	1.6	3.9	0.6	72.4	5.5	22.1	0.079	0.509	18.558354	-92.607188
Puente San Pedro	96.50	3	0	4361	4.4	67.0	8.4	8.6	1.6	6.0	1.7	1.5	0.8	71.4	8.4	20.2	0.075	0.513	18.641043	-92.465082
Lim. Edos. Term. Tab. Ppia. Camp.	99.75																			
Nuevo Campechito	100.00	3	0	4324	1.9	62.6	8.3	7.7	2.2	9.8	2.4	4.7	0.4	64.5	8.3	27.2	0.086	0.533	18.641667	-92.461706
Nuevo Progreso	116.57	1	0	4165	2.3	71.8	3.3	8.7	2.8	8.1	1.2	1.4	0.4	74.1	3.3	22.6	0.077	0.505	18.622321	-92.293196
Puente Zacatal	162.41	1	0	4427	3.3	66.5	5.4	7.1	2.3	8.5	1.9	4.4	0.6	69.8	5.4	24.8	0.081	0.520	18.612226	-91.857302
Puente Zacatal	162.41	2	0	4708	1.8	65.8	4.0	5.5	3.8	11.2	1.9	5.3	0.7	67.6	4.0	28.4	0.077	0.500	18.641814	-92.460301
Cd. del Carmen	167.50																			

16 CARR: Villahermosa - Francisco Escárcega

CLAVE: 00092

RUTA: MEX-186

AÑO: 2020

LUGAR	ESTACION				CLASIFICACION VEHICULAR EN PORCIENTO												COORDENADAS			
	KM	TE	SC	TDPA	M	A	B	C2	C3	T3S2	T3S3	T3S2R4	OTROS	A	B	C	K'	D	LATITUD	LONGITUD
Villahermosa	0.00	3	1	14606	1.8	82.4	1.7	7.6	1.3	2.9	0.7	1.4	0.2	84.2	1.7	14.1	0.075	0.506	17.999546	-92.920444
Villahermosa	0.00	3	2	14236	1.8	81.2	1.8	7.9	1.4	3.2	0.9	1.6	0.2	83.0	1.8	15.2	0.075	0.506	17.999433	-92.920468
T. Izq. Aeropuerto (Baja)	12.00	1	1	1368	10.7	77.0	1.0	5.8	1.5	2.6	0.6	0.6	0.2	87.7	1.0	11.3	0.078	0.514	17.981532	-92.824766
T. Izq. Aeropuerto (Alta)	12.00	1	1	15236	1.6	83.4	1.2	6.4	1.3	3.1	1.2	1.5	0.3	85.0	1.2	13.8	0.074	0.513	17.981572	-92.824727
T. Izq. Aeropuerto (Baja)	12.00	1	2	1295	10.5	76.0	1.1	6.4	1.7	2.8	0.6	0.7	0.2	86.5	1.1	12.4	0.075	0.514	17.981678	-92.824625
T. Izq. Aeropuerto (Alta)	12.00	1	2	14471	2.1	81.0	1.4	7.4	1.4	3.5	1.3	1.6	0.3	83.1	1.4	15.5	0.084	0.513	17.981641	-92.824659
Puente Grijalva	17.60	2	1	6071	3.0	78.1	3.8	3.6	2.1	4.6	1.5	2.9	0.4	81.1	3.8	15.1	0.079	0.500	17.947602	-92.785235
Puente Grijalva	17.60	2	2	6071	3.0	78.1	3.8	3.6	2.1	4.6	1.5	2.9	0.4	81.1	3.8	15.1	0.079	0.500	17.947602	-92.785235
X. C. Cacaos - La Granja	32.46	1	1	7113	1.4	79.9	1.4	7.3	1.6	4.4	1.3	2.4	0.3	81.3	1.4	17.3	0.082	0.502	17.828063	-92.716991
X. C. Cacaos - La Granja	32.46	1	2	7169	1.8	76.5	1.6	8.7	1.9	4.9	1.5	2.8	0.3	78.3	1.6	20.1	0.086	0.502	17.828175	-92.716718
X. C. Cacaos - La Granja	32.46	3	1	5238	1.7	78.4	1.7	7.5	1.9	4.3	1.6	2.7	0.2	80.1	1.7	18.2	0.077	0.512	17.827977	-92.716775
X. C. Cacaos - La Granja	32.46	3	2	5492	1.4	77.5	1.8	7.9	2.1	4.5	1.7	2.9	0.2	78.9	1.8	19.3	0.102	0.512	17.827977	-92.716774
X. C. Jalapa - Jonuta	40.00	3	1	5429	2.5	77.7	2.0	6.7	1.8	4.8	1.5	2.8	0.2	80.2	2.0	17.8	0.078	0.515	17.781246	-92.681713
X. C. Jalapa - Jonuta	40.00	3	2	5762	2.4	75.3	2.4	7.6	1.9	5.4	1.7	3.1	0.2	77.7	2.4	19.9	0.096	0.515	17.781243	-92.681713
T. Izq. Macuspana	46.20	1	1	5483	1.3	75.5	2.6	8.0	2.3	5.4	1.6	2.9	0.4	76.8	2.6	20.6	0.079	0.510	17.739225	-92.627849
T. Izq. Macuspana	46.20	1	2	5711	2.0	73.6	2.6	8.7	2.6	5.5	1.7	3.0	0.3	75.6	2.6	21.8	0.078	0.510	17.739224	-92.627847
T. Izq. Macuspana	46.20	3	1	5427	4.5	69.9	2.4	8.1	3.5	6.2	1.9	3.2	0.3	74.4	2.4	23.2	0.070	0.509	17.739225	-92.627850

CAMPECHE

16 CARR: Villahermosa - Francisco Escárcega

CLAVE: 00092

RUTA: MEX-186

AÑO: 2020

LUGAR	ESTACION				CLASIFICACION VEHICULAR EN PORCIENTO										COORDENADAS					
	KM	TE	SC	TDPA	M	A	B	C2	C3	T3S2	T3S3	T3S2R4	OTROS	A	B	C	K'	D	LATITUD	LONGITUD
T. Izq. Macuspana	46.20	3	2	5240	4.2	67.8	2.5	9.2	3.7	6.4	2.1	3.7	0.4	72.0	2.5	25.5	0.079	0.509	17.739224	-92.627850
X. C. Estación Macuspana - Vernet	54.30	1	0	8810	3.3	69.5	3.0	9.8	2.7	6.5	1.9	2.9	0.4	72.8	3.0	24.2	0.085	0.521	17.708385	-92.569065
T. Der. Chivalito (Est. Pino Suárez)	70.00	1	0	8166	5.7	66.6	3.5	8.2	2.5	7.5	2.0	3.5	0.5	72.3	3.5	24.2	0.085	0.521	17.667544	-92.436768
T. Der. Chivalito (Est. Pino Suárez)	70.00	3	1	3034	2.9	70.0	3.2	7.2	2.5	6.0	2.1	5.6	0.5	72.9	3.2	23.9	0.082	0.509	17.667473	-92.436615
T. Der. Chivalito (Est. Pino Suárez)	70.00	3	2	3151	3.7	66.6	3.4	8.4	2.7	6.5	2.4	5.9	0.4	70.3	3.4	26.3	0.089	0.509	17.667479	-92.436615
T. Der. Estación Zopo	71.00	1	0	5843	3.4	72.6	3.0	7.3	2.6	5.7	2.0	3.0	0.4	76.0	3.0	21.0	0.079	0.511	17.672835	-92.414364
T. Der. Estación Zopo	71.00	3	1	3136	7.5	60.7	4.1	7.7	2.6	9.2	2.0	5.8	0.4	68.2	4.1	27.7	0.119	0.501	17.672806	-92.414361
T. Der. Estación Zopo	71.00	3	2	3145	7.5	58.7	4.1	8.2	2.6	9.6	2.4	6.4	0.5	66.2	4.1	29.7	0.131	0.501	17.672808	-92.414357
Lim. Edos. Term. Tab. Ppia. Chis.	76.90																			
T. Izq. Bonanza	88.00	1	0	5326	2.5	72.2	2.4	6.2	2.3	6.6	2.6	4.7	0.5	74.7	2.4	22.9	0.080	0.509	17.699881	-92.253351
T. Izq. Jonuta	101.00	1	0	5071	2.7	69.8	2.6	6.5	2.5	7.6	2.5	5.2	0.6	72.5	2.6	24.9	0.082	0.511	17.697744	-92.131987
T. Izq. Jonuta	101.00	3	0	5708	2.6	69.8	2.6	6.7	2.5	7.6	2.4	5.2	0.6	72.4	2.6	25.0	0.086	0.505	17.697746	-92.131838
X. C. Catazajá - Palenque	114.00	1	0	5621	4.1	68.0	2.5	7.0	2.4	8.3	2.1	5.1	0.5	72.1	2.5	25.4	0.094	0.504	17.711457	-92.013035
X. C. Catazajá - Palenque	114.00	3	0	7989	4.1	65.3	2.5	8.4	2.8	9.0	2.1	5.3	0.5	69.4	2.5	28.1	0.084	0.500	17.711519	-92.012811
T. Der. Emiliano Zapata	134.70	1	0	5950	5.0	65.3	2.4	9.1	2.7	8.1	1.9	5.0	0.5	70.3	2.4	27.3	0.080	0.501	17.773311	-91.829241
T. Der. Emiliano Zapata	134.70	3	0	4142	4.2	65.1	2.5	8.3	2.9	9.1	2.2	5.2	0.5	69.3	2.5	28.2	0.086	0.510	17.773442	-91.828937
Lim. Edos. Term. Chis. Ppia. Tab.	140.70																			
Puente Usumacinta	145.20	2	0	3382	6.1	60.1	3.6	4.4	4.2	11.0	1.8	8.0	0.8	66.2	3.6	30.2	0.079	0.500	17.859905	-91.783654
T. Izq. Palizada	154.05	1	0	3503	4.5	58.6	5.3	7.4	2.9	10.5	2.6	7.9	0.3	63.1	5.3	31.6	0.080	0.505	17.941417	-91.734218
T. Izq. Palizada	154.05	3	0	2927	4.5	59.1	5.1	7.5	2.9	10.2	2.6	7.8	0.3	63.6	5.1	31.3	0.081	0.506	17.941520	-91.734118
Lim. Edos. Term. Tab. Ppia. Camp.	154.60																			
T. Der. Candelaria	233.40	1	0	3514	5.2	57.0	4.6	6.6	2.1	12.1	2.5	9.0	0.9	62.2	4.6	33.2	0.071	0.509	18.378315	-91.198450
T. Der. Felipe Ángeles	253.00	1	0	3666	11.0	58.8	3.9	3.0	1.9	10.2	2.0	7.3	1.9	69.8	3.9	26.3	0.104	0.509	18.506513	-91.104469
T. Izq. Sabancuy	274.10	1	0	3633	10.8	59.5	3.9	3.1	1.7	10.0	2.0	7.1	1.9	70.3	3.9	25.8	0.103	0.504	18.629188	-90.983222
Francisco Escárcega	297.04	1	0	7034	13.5	64.7	2.4	2.8	1.6	7.1	1.2	5.3	1.4	78.2	2.4	19.4	0.084	0.526	18.606119	-90.740031

17 CARR: Champotón - Campeche (Cuota)

CLAVE: 04014

RUTA: MEX-180D

AÑO: 2020

LUGAR	ESTACION				CLASIFICACION VEHICULAR EN PORCIENTO										COORDENADAS					
	KM	TE	SC	TDPA	M	A	B	C2	C3	T3S2	T3S3	T3S2R4	OTROS	A	B	C	K'	D	LATITUD	LONGITUD
T. C. Cd. del Carmen - Campeche	160.00	3	1	2748	2.7	64.9	5.3	4.6	3.1	11.6	1.7	5.9	0.2	67.6	5.3	27.1	0.094	0.515	19.510052	-90.701998
T. C. Cd. del Carmen - Campeche	160.00	3	2	2587	3.5	65.0	4.7	4.0	2.6	11.8	2.1	6.1	0.2	68.5	4.7	26.8	0.095	0.515	19.510037	-90.701987
Plaza de Cobro Seybaplaya	174.80	2	1	2611	1.0	63.7	1.9	5.0	4.3	13.2	1.9	8.1	0.9	64.7	1.9	33.4	0.088	0.500	19.636235	-90.671582
Plaza de Cobro Seybaplaya	174.80	2	2	2611	1.0	63.7	1.9	5.0	4.3	13.2	1.9	8.1	0.9	64.7	1.9	33.4	0.088	0.500	19.636235	-90.671582
T. Der. Periferico Pablo García y Montilla (Libramiento De Campeche)	199.80	1	1	3211	1.5	69.0	4.0	7.0	2.0	8.7	1.2	6.0	0.6	70.5	4.0	25.5	0.095	0.503	19.796861	-90.528166

CAMPECHE

17 CARR: Champotón - Campeche (Cuota)

CLAVE: 04014

RUTA: MEX-180D

AÑO: 2020

LUGAR	ESTACION				CLASIFICACION VEHICULAR EN PORCIENTO														COORDENADAS	
	KM	TE	SC	TDPA	M	A	B	C2	C3	T3S2	T3S3	T3S2R4	OTROS	A	B	C	K'	D	LATITUD	LONGITUD
T. Der. Periférico Pablo García y Montilla (Libramiento De Campeche)	199.80	1	2	3174	1.5	69.1	4.0	7.2	2.2	8.4	1.4	5.5	0.7	70.6	4.0	25.4	0.080	0.503	19.796853	-90.528159

18 CARR: Hopelchén - Dzibalchén

CLAVE: 04572

RUTA: CAM-261

AÑO: 2020

LUGAR	ESTACION				CLASIFICACION VEHICULAR EN PORCIENTO														COORDENADAS	
	KM	TE	SC	TDPA	M	A	B	C2	C3	T3S2	T3S3	T3S2R4	OTROS	A	B	C	K'	D	LATITUD	LONGITUD
Hopelchén	0.00	3	0	1305	9.2	72.8	0.6	14.8	0.7	0.9	0.1	0.9	0.0	82.0	0.6	17.4	0.080	0.518	19.744581	-89.845209
Dzibalchén	41.00																			

19 CARR: Libramiento de Becal

CLAVE: 04010

RUTA: CAM

AÑO: 2020

LUGAR	ESTACION				CLASIFICACION VEHICULAR EN PORCIENTO														COORDENADAS	
	KM	TE	SC	TDPA	M	A	B	C2	C3	T3S2	T3S3	T3S2R4	OTROS	A	B	C	K'	D	LATITUD	LONGITUD
T. C. Dzitbalché - Ent. San Bernardo (1° Acceso)	0.00																			
T. C. Campeche - Mérida (2° Acceso)	2.30	1	0	1487	16.8	75.7	1.1	3.5	1.0	1.7	0.2	0.0	0.0	92.5	1.1	6.4	0.075	0.523	20.448430	-90.037266

20 CARR: Libramiento de Pomuch

CLAVE: 04579

RUTA: CAM

AÑO: 2020

LUGAR	ESTACION				CLASIFICACION VEHICULAR EN PORCIENTO														COORDENADAS	
	KM	TE	SC	TDPA	M	A	B	C2	C3	T3S2	T3S3	T3S2R4	OTROS	A	B	C	K'	D	LATITUD	LONGITUD
T. C. Campeche - Mérida (1° Acceso)	0.00	3	1	3783	1.3	74.2	3.6	5.7	1.6	6.6	1.6	5.3	0.1	75.5	3.6	20.9	0.080	0.503	20.120294	-90.184841
T. C. Campeche - Mérida (1° Acceso)	0.00	3	2	3828	1.9	71.8	4.4	5.7	1.7	7.1	1.9	5.4	0.1	73.7	4.4	21.9	0.076	0.503	20.120294	-90.184842
T. C. Campeche - Mérida (2° Acceso)	4.10																			

21 CARR: T. C. (Francisco Escárcega - Champotón) - Yohaltún

CLAVE: 04581

RUTA: CAM

AÑO: 2020

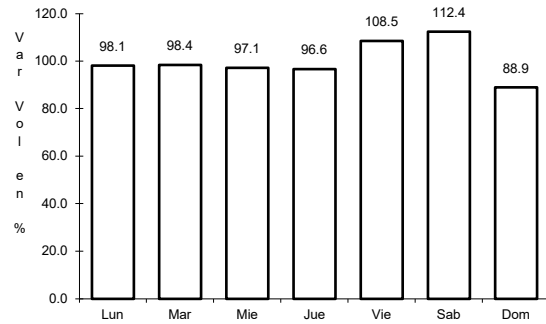
LUGAR	ESTACION				CLASIFICACION VEHICULAR EN PORCIENTO														COORDENADAS	
	KM	TE	SC	TDPA	M	A	B	C2	C3	T3S2	T3S3	T3S2R4	OTROS	A	B	C	K'	D	LATITUD	LONGITUD
T. C. Francisco Escárcega - Champotón	0.00	3	0	1288	20.5	74.0	0.5	2.0	2.1	0.4	0.4	0.1	0.0	94.5	0.5	5.0	0.116	0.502	19.299247	-90.731422
Felipe Carrillo Puerto	36.50	1	0	651	28.8	65.6	0.4	2.8	1.6	0.4	0.2	0.2	0.0	94.4	0.4	5.2	0.101	0.504	19.094682	-90.519298
Felipe Carrillo Puerto	36.50	3	0	963	21.7	73.9	0.4	0.6	2.3	0.6	0.1	0.4	0.0	95.6	0.4	4.0	0.117	0.523	19.094683	-90.519294
Yohaltún	70.60																			



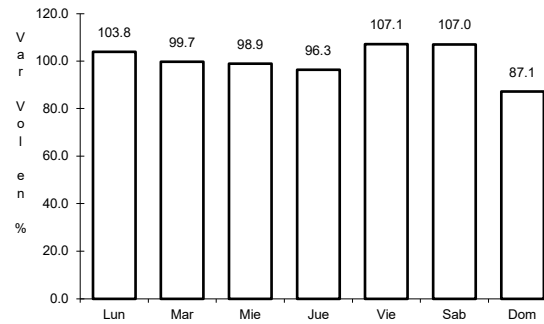
1 CARR: Campeche - Mérida

CLAVE: 00066

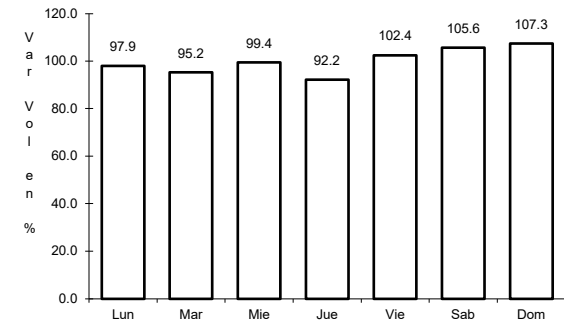
RUTA: MEX-180



Km: 0.00                      Tipo: 3                      Sent: 1



Km: 0.00                      Tipo: 3                      Sent: 2

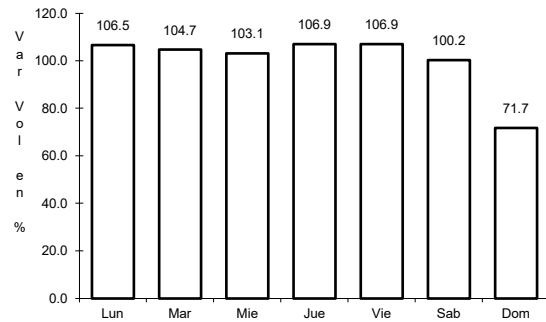


Km: 171.21                      Tipo: 1                      Sent: 1

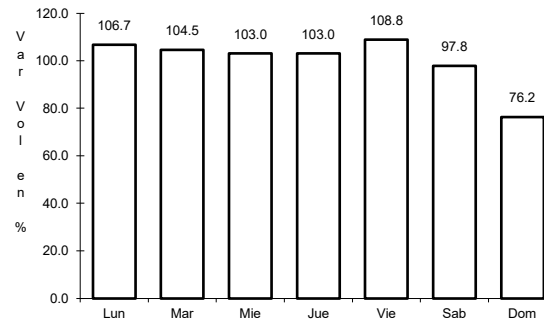
2 CARR: Campeche - Tixmucuy

CLAVE: 04575

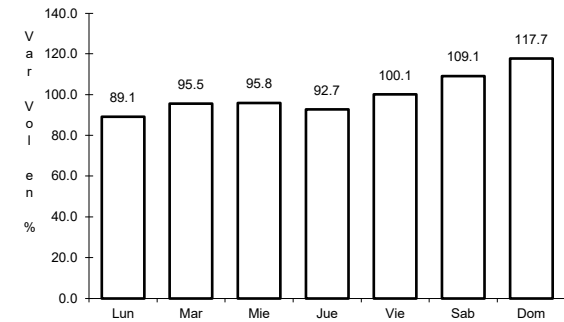
RUTA: MEX-180



Km: 0.00                      Tipo: 3                      Sent: 1



Km: 0.00                      Tipo: 3                      Sent: 2

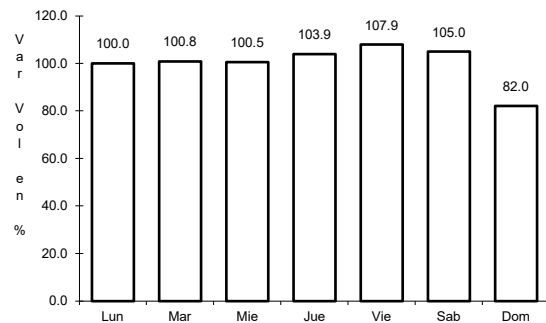


Km: 42.00                      Tipo: 1                      Sent: 0

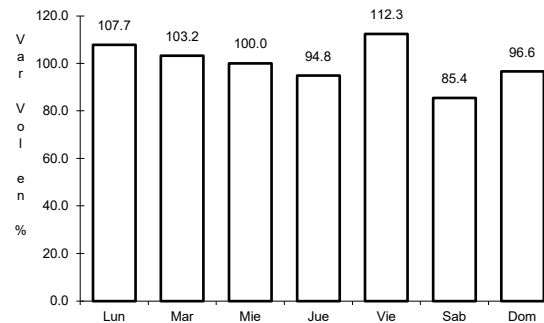
3 CARR: Campeche - Umán

CLAVE: 00164

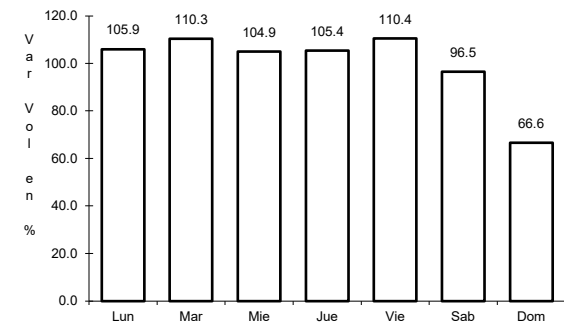
RUTA: MEX-261



Km: 7.00                      Tipo: 1                      Sent: 0



Km: 117.88                      Tipo: 3                      Sent: 0

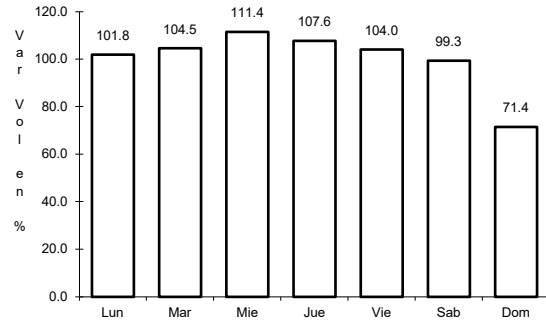


Km: 230.83                      Tipo: 1                      Sent: 0

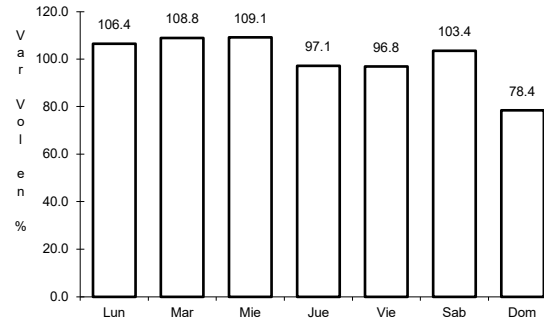
4 CARR: Cd. del Carmen - Campeche

CLAVE: 04065

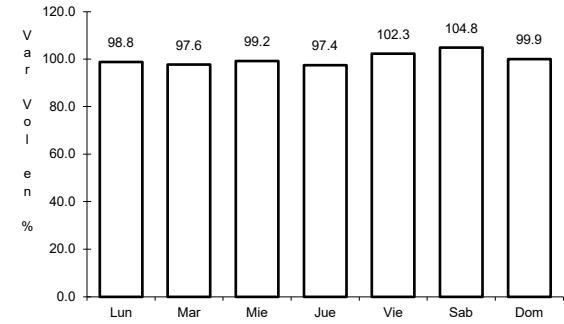
RUTA: MEX-180



Km: 0.00                      Tipo: 3                      Sent: 1



Km: 0.00                      Tipo: 3                      Sent: 2

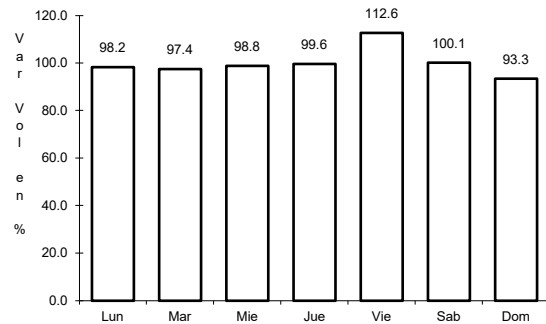


Km: 141.80                      Tipo: 1                      Sent: 0

5 CARR: Chencoyi - Tenabo

CLAVE: 04576

RUTA: MEX-180

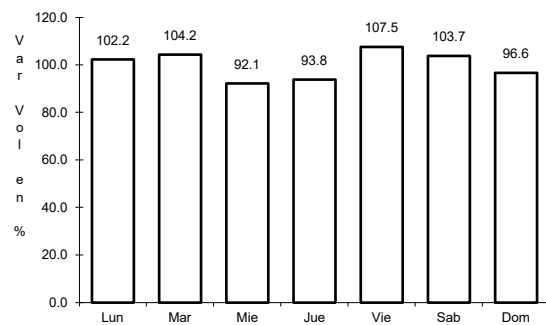


Km: 28.00                      Tipo: 1                      Sent: 0

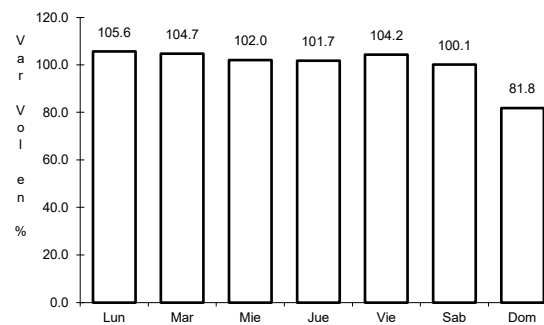
6 CARR: Dzitbalché - Ent. San Bernardo

CLAVE: 00162

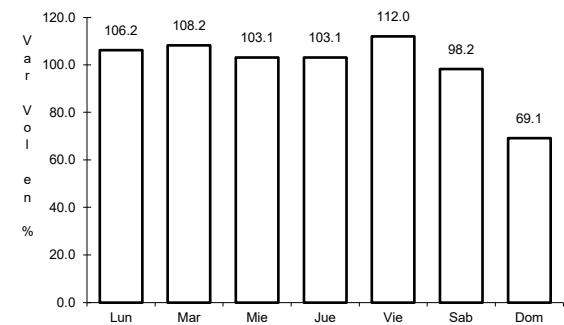
RUTA: MEX-180



Km: 12.33                      Tipo: 1                      Sent: 0



Km: 21.08                      Tipo: 1                      Sent: 0



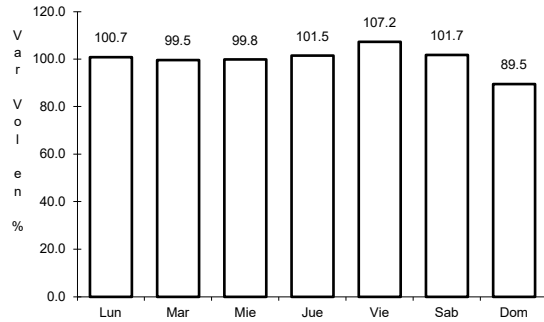
Km: 40.36                      Tipo: 3                      Sent: 0



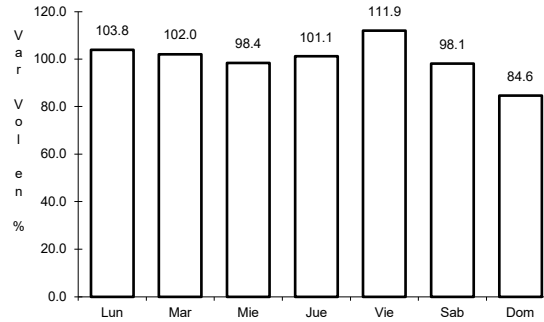
7 CARR: Francisco Escárcega - Champotón

CLAVE: 04103

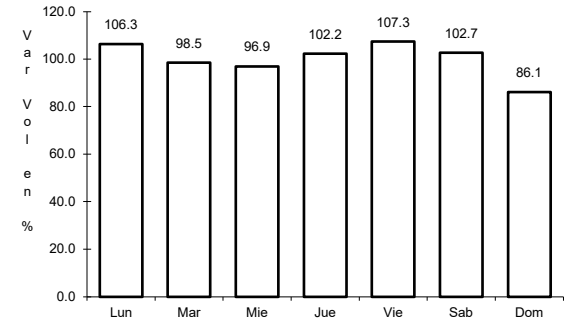
RUTA: MEX-201



Km: 0.00      Tipo: 3      Sent: 0



Km: 51.40      Tipo: 1      Sent: 0

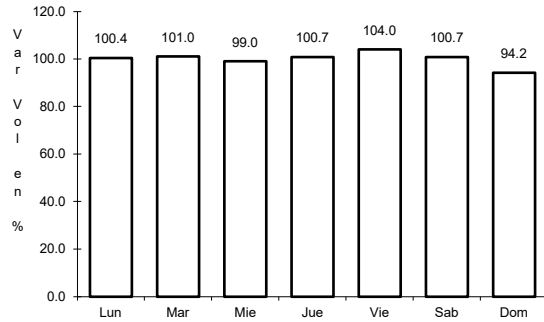


Km: 81.40      Tipo: 1      Sent: 0

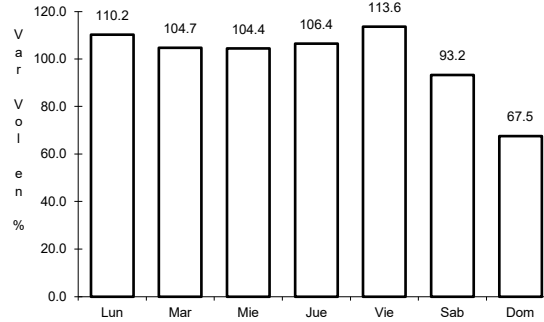
8 CARR: Francisco Escárcega - Chetumal

CLAVE: 00093

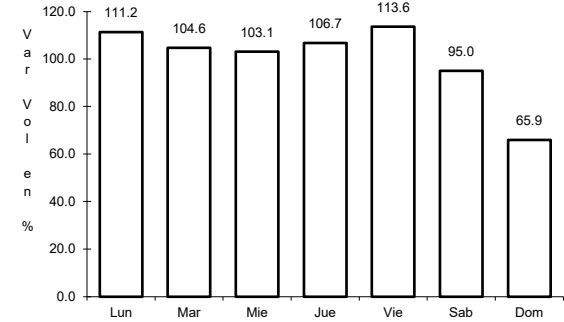
RUTA: MEX-186



Km: 0.00      Tipo: 3      Sent: 0



Km: 277.36      Tipo: 1      Sent: 1

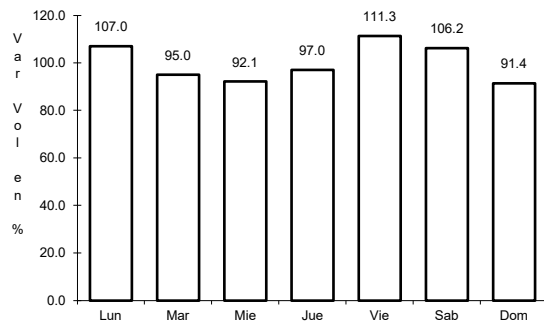


Km: 277.36      Tipo: 1      Sent: 2

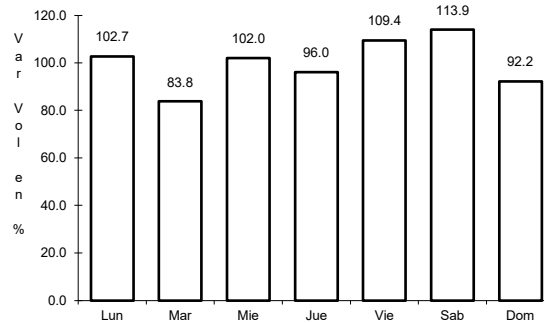
9 CARR: Haltunchén - San Antonio Cayal

CLAVE: 04009

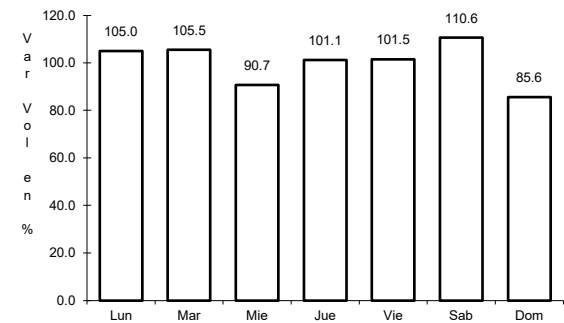
RUTA: MEX-180



Km: 0.00      Tipo: 3      Sent: 0



Km: 47.10      Tipo: 1      Sent: 0

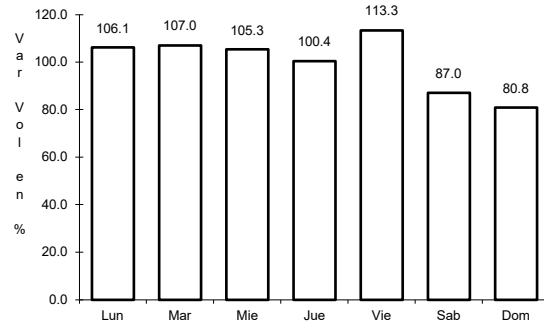


Km: 79.00      Tipo: 1      Sent: 0

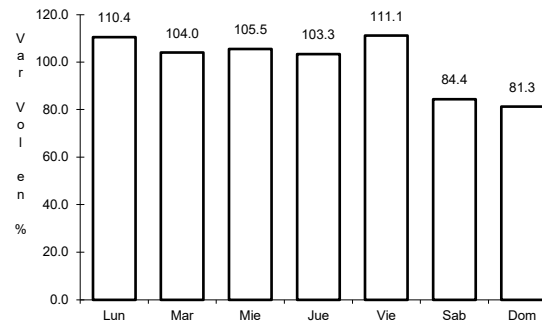
10 CARR: Periférico Pablo García y Montilla (Libramiento de Campeche)

CLAVE: 04573

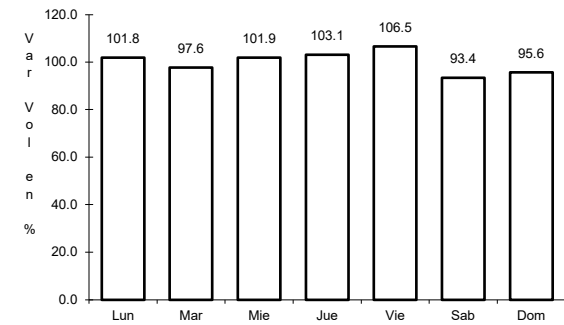
RUTA: MEX-202



Km: 0.00      Tipo: 3      Sent: 1



Km: 0.00      Tipo: 3      Sent: 2

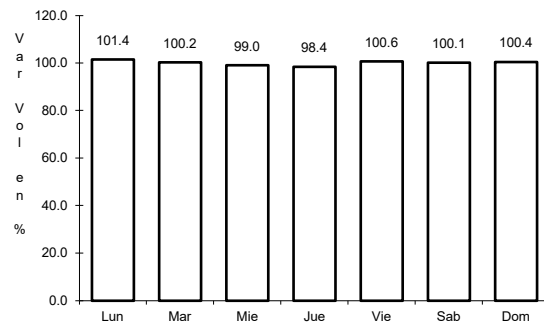


Km: 26.00      Tipo: 1      Sent: 1

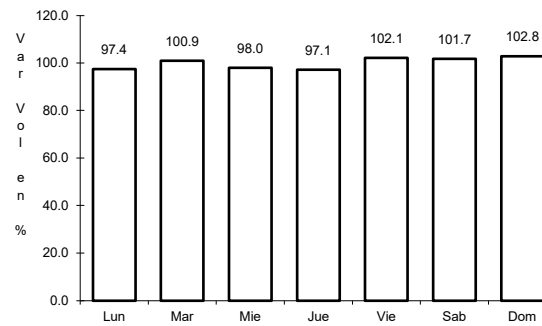
11 CARR: Presidente Díaz Ordaz - Sabancuy

CLAVE: 04570

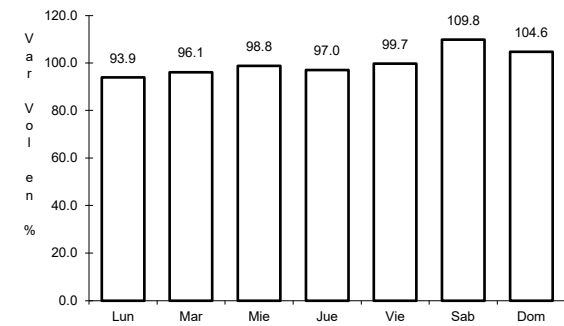
RUTA: MEX-186



Km: 0.00      Tipo: 3      Sent: 0



Km: 18.00      Tipo: 1      Sent: 0

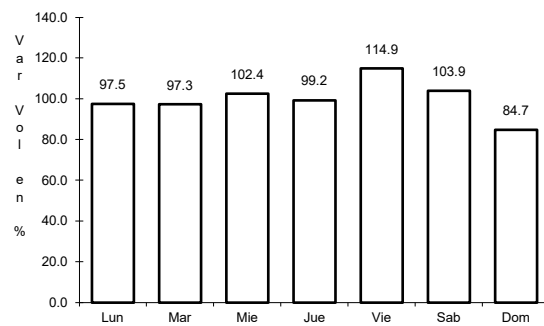


Km: 57.00      Tipo: 1      Sent: 0

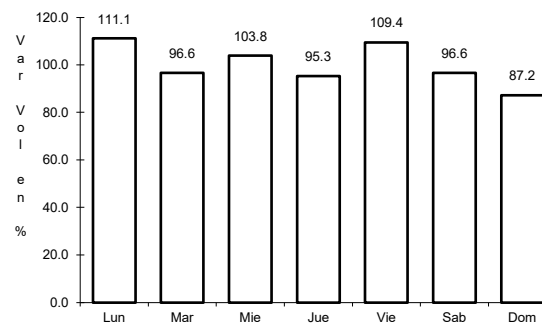
12 CARR: Ramal a Nuevo Coahuila

CLAVE: 04015

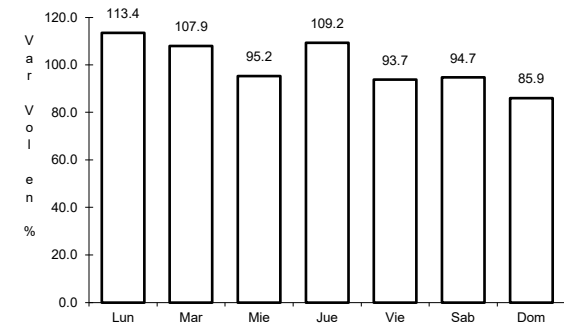
RUTA: MEX-186



Km: 0.00      Tipo: 3      Sent: 0



Km: 44.50      Tipo: 3      Sent: 0

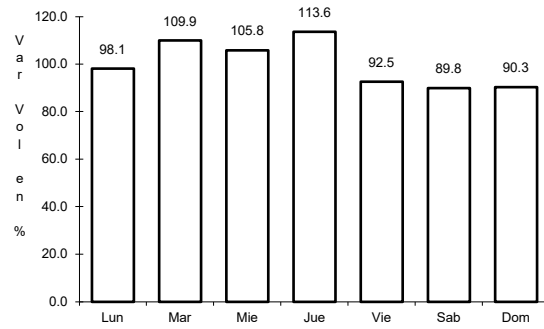


Km: 70.00      Tipo: 1      Sent: 0

13 CARR: Ramal a Ruíz Cortines

CLAVE: 04101

ruta: MEX-180



Km: 1.00

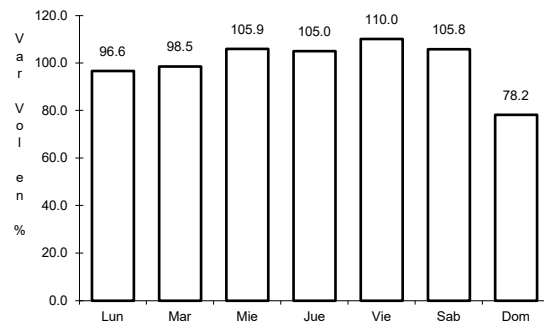
Tipo: 3

Sent: 0

14 CARR: San Marcos - Palizada

CLAVE: 00490

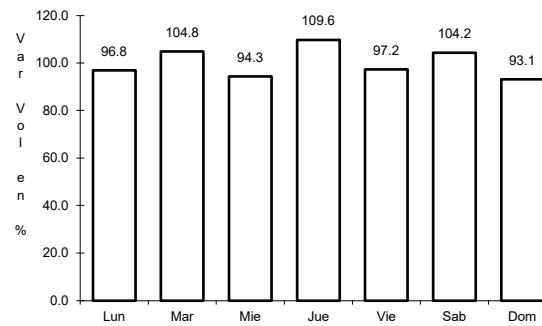
ruta: MEX-186



Km: 0.00

Tipo: 3

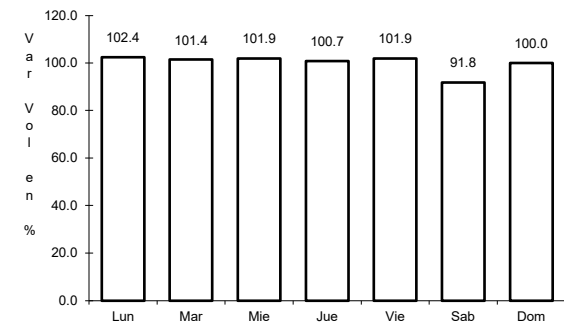
Sent: 0



Km: 46.20

Tipo: 1

Sent: 0



Km: 46.20

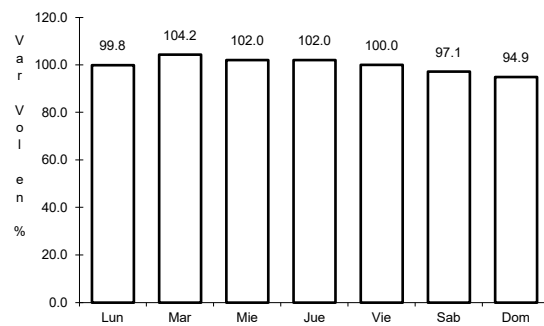
Tipo: 3

Sent: 0

15 CARR: Villahermosa - Cd. del Carmen

CLAVE: 00064

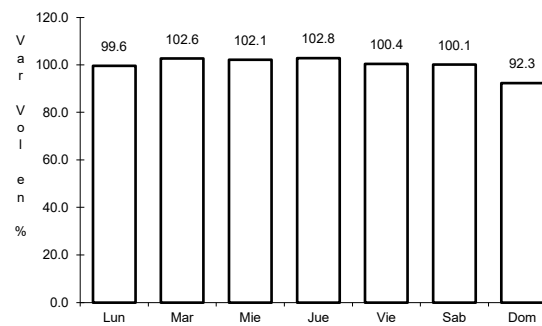
ruta: MEX-180



Km: 4.30

Tipo: 3

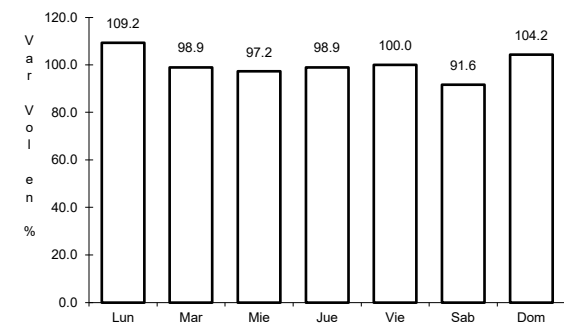
Sent: 1



Km: 4.30

Tipo: 3

Sent: 2



Km: 162.41

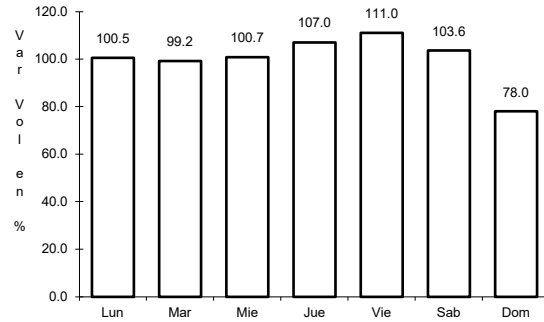
Tipo: 1

Sent: 0

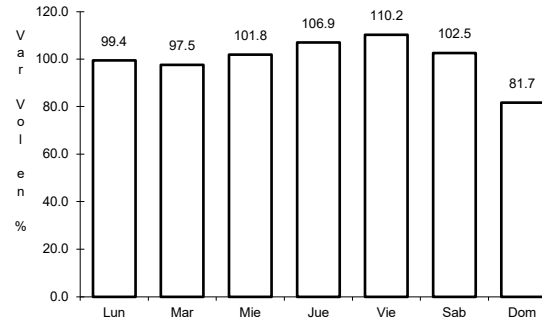
16 CARR: Villahermosa - Francisco Escárcega

CLAVE: 00092

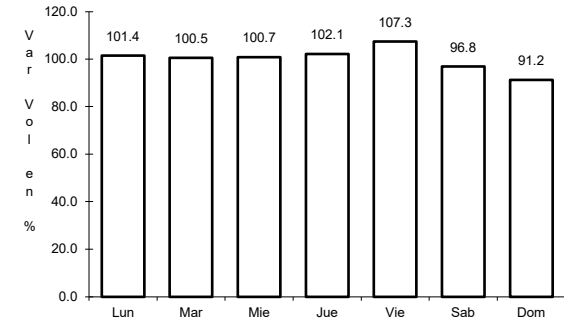
ruta: MEX-186



Km: 0.00                      Tipo: 3                      Sent: 1



Km: 0.00                      Tipo: 3                      Sent: 2

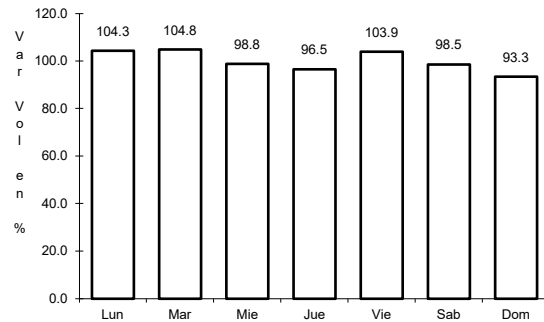


Km: 297.04                      Tipo: 1                      Sent: 0

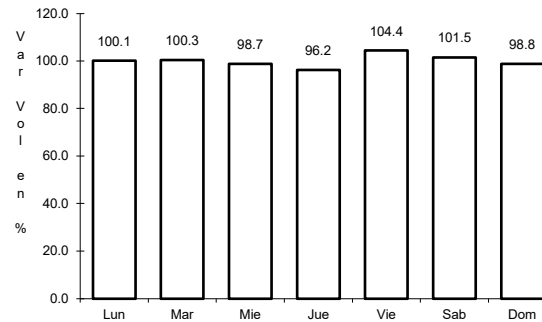
17 CARR: Champotón - Campeche (Cuota)

CLAVE: 04014

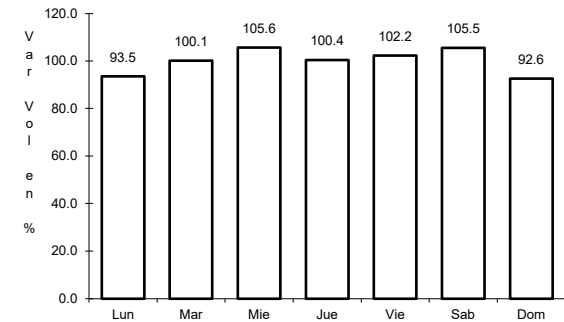
ruta: MEX-180D



Km: 160.00                      Tipo: 3                      Sent: 1



Km: 160.00                      Tipo: 3                      Sent: 2

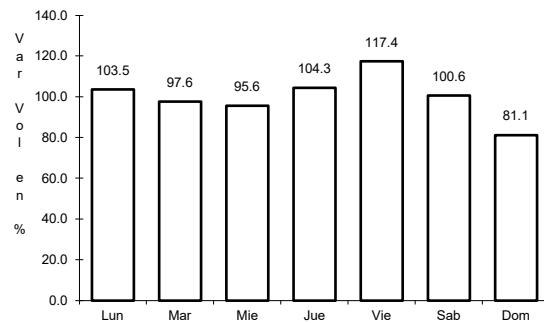


Km: 199.80                      Tipo: 1                      Sent: 1

18 CARR: Hopelchén - Dzibalchén

CLAVE: 04572

ruta: CAM-261

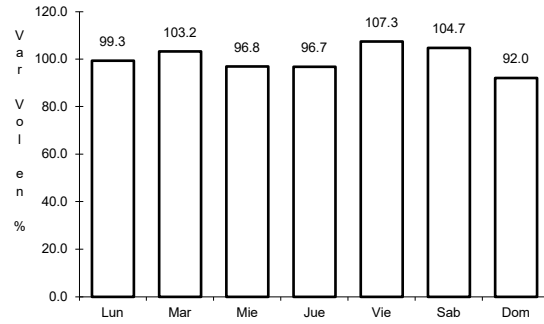


Km: 0.00                      Tipo: 3                      Sent: 0

19 CARR: Libramiento de Becal

CLAVE: 04010

RUTA: CAM



Km: 2.30

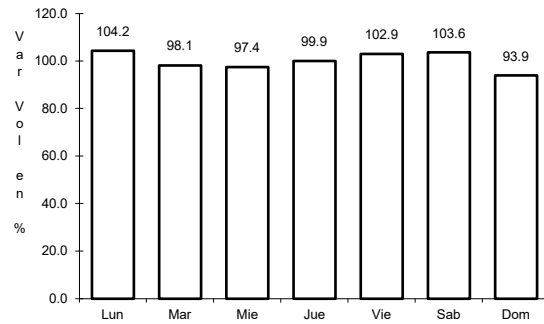
Tipo: 1

Sent: 0

20 CARR: Libramiento de Pomuch

CLAVE: 04579

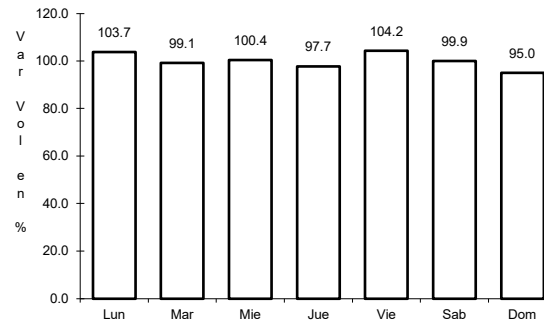
RUTA: CAM



Km: 0.00

Tipo: 3

Sent: 1



Km: 0.00

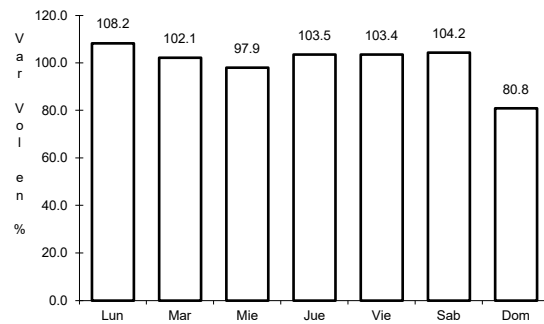
Tipo: 3

Sent: 2

21 CARR: T. C. (Francisco Escárcega - Champotón) - Yohaltún

CLAVE: 04581

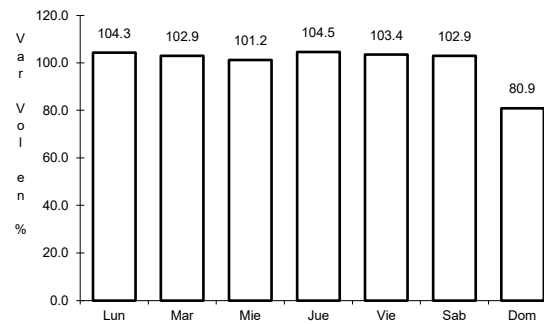
RUTA: CAM



Km: 0.00

Tipo: 3

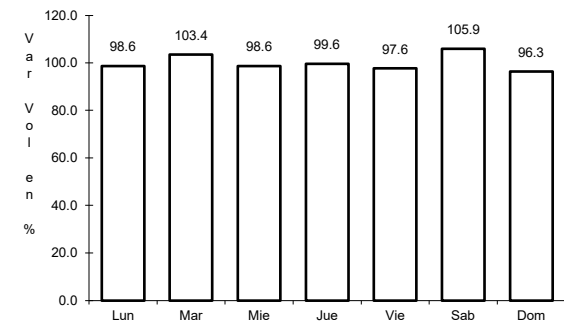
Sent: 0



Km: 36.50

Tipo: 1

Sent: 0



Km: 36.50

Tipo: 3

Sent: 0

