



BAJA CALIFORNIA SUR

---RED FEDERAL LIBRE---

1 Cabo San Lucas - La Paz	MEX-001
2 Cd. Constitución - Puerto San Carlos	MEX-001
3 Cd. Insurgentes - Loreto	MEX-001
4 Ent. Punta Prieta - Guerrero Negro	MEX-001
5 La Paz - Cd. Insurgentes	MEX-001
6 La Paz - Pichilingue	MEX-011
7 Libramiento de Cabo San Lucas	MEX-001
8 Libramiento de Todos Santos	MEX-019
9 Loreto - Santa Rosalía	MEX-001
10 Ramal a Aeropuerto de La Paz	MEX-001
11 Ramal a Aeropuerto de Los Cabos	MEX-001
12 Ramal a Los Paredones	MEX-001
13 Ramal a Miraflores	MEX-001
14 Ramal a Puerto Escondido	MEX-001
15 Ramal a San Ignacio	MEX-001
16 Ramal a Santiago	MEX-001
17 Ramal Aeropista San Ignacio	MEX-001
18 San Pedro - Cabo San Lucas	MEX-019
19 Santa Rosalía - Guerrero Negro	MEX-001

---RED FEDERAL DE CUOTA---

20 Libramiento San José del Cabo - Aeropuerto Los Cabos (Cuota)	MEX-001D
21 Ramal a El Mague (Cuota)	MEX-001D
22 San José del Cabo - Libramiento de Cabo San Lucas - (Cuota)	MEX-001D

---RED ESTATAL LIBRE---

23 Cd. Insurgentes - La Purísima	BCS-001
24 Cd. Insurgentes - Pto. Adolfo López Mateos	BCS
25 Ent. Campo Fisher - Punta Abreojos	BCS
26 La Paz - Ensenada de Muertos	BCS-246
27 Libramiento de La Paz	BCS
28 Libramiento Norte de La Paz	BCS
29 Ramal a Benito Juárez	BCS
30 Ramal a Ejido Ley Federal de Aguas Número Cuatro	BCS
31 Ramal a El Carrizal	BCS
32 Ramal a Guerrero Negro	BCS
33 Ramal a La Ribera	BCS
34 Ramal a Melitón Albáñez	BCS
35 Ramal a Santa Catarina	BCS

---CARRETERAS INTEGRADAS POR TRAMOS FEDERALES Y ESTATALES---

36 Ramal a Bahía de Tortugas	MEX-001-BCS
37 Ramal a Ejido Ley Federal de Aguas Número Dos	BCS-MEX-001
38 Ramal a Ley Federal de Aguas Número Cinco	BCS-MEX-001
39 Ramal a San Juan de La Costa	BCS-163-MEX-001

03 BAJA CALIFORNIA SUR

SECRETARÍA DE COMUNICACIONES Y TRANSPORTES
DIRECCIÓN GENERAL DE SERVICIOS TÉCNICOS



- ① - Número Índice
- Red Federal Libre
- Red Federal Cuota
- Red Federal Integrada por Tramos Libres y de Cuota
- Red Estatal Libre
- Red Estatal Cuota
- Carreteras Integradas por Tramos Federales y Estatales

BAJA CALIFORNIA SUR

1 CARR: Cabo San Lucas - La Paz

CLAVE: 03102

RUTA: MEX-001

AÑO: 2020

LUGAR	ESTACION				CLASIFICACION VEHICULAR EN PORCIENTO										COORDENADAS					
	KM	TE	SC	TDPA	M	A	B	C2	C3	T3S2	T3S3	T3S2R4	OTROS	A	B	C	K'	D	LATITUD	LONGITUD
Cabo San Lucas	0.00	3	1	20511	1.4	86.6	0.6	9.2	1.1	0.4	0.3	0.2	0.2	88.0	0.6	11.4	0.097	0.510	22.880367	-109.912966
Cabo San Lucas	0.00	3	2	21306	1.4	86.0	0.5	10.2	1.0	0.4	0.2	0.2	0.1	87.4	0.5	12.1	0.118	0.510	22.880461	-109.913136
El Tule	13.00	3	1	14045	1.3	83.1	2.1	11.4	1.2	0.4	0.2	0.2	0.1	84.4	2.1	13.5	0.091	0.502	22.936030	-109.816450
El Tule	13.00	3	2	14146	1.3	83.0	2.2	11.4	1.2	0.4	0.2	0.2	0.1	84.3	2.2	13.5	0.099	0.502	22.936108	-109.816615
San José del Cabo	31.00	1	1	18261	1.9	90.2	0.9	5.4	0.8	0.3	0.2	0.1	0.2	92.1	0.9	7.0	0.106	0.516	23.054007	-109.703543
San José del Cabo	31.00	1	2	17131	1.9	90.2	0.9	5.4	0.9	0.3	0.1	0.1	0.2	92.1	0.9	7.0	0.120	0.516	23.054008	-109.703744
San José del Cabo	31.00	3	1	25680	1.9	87.5	1.9	7.3	0.6	0.3	0.1	0.3	0.1	89.4	1.9	8.7	0.098	0.522	23.054009	-109.703543
San José del Cabo	31.00	3	2	25444	1.9	87.7	1.8	7.2	0.6	0.3	0.1	0.3	0.1	89.6	1.8	8.6	0.096	0.522	23.054010	-109.703745
T. Der. Santa Catarina	41.00	1	1	14010	1.9	84.1	0.8	11.9	0.7	0.2	0.2	0.1	0.1	86.0	0.8	13.2	0.088	0.501	23.135337	-109.710259
T. Der. Santa Catarina	41.00	1	2	13976	1.9	84.1	0.8	11.9	0.7	0.2	0.2	0.1	0.1	86.0	0.8	13.2	0.088	0.501	23.135357	-109.710381
T. Izq. Aeropuerto	43.46	1	1	10677	3.3	86.4	1.6	7.6	0.5	0.2	0.2	0.2	0.0	89.7	1.6	8.7	0.086	0.511	23.156397	-109.708150
T. Izq. Aeropuerto	43.46	1	2	11153	3.3	86.4	1.5	7.6	0.6	0.2	0.2	0.2	0.0	89.7	1.5	8.8	0.087	0.511	23.156447	-109.708294
Santa Anita	46.00	1	0	7311	1.1	86.7	0.7	10.3	0.6	0.2	0.3	0.1	0.0	87.8	0.7	11.5	0.095	0.513	23.180514	-109.702427
Santa Anita	46.00	3	0	3735	2.1	89.7	0.7	5.8	0.8	0.4	0.3	0.2	0.0	91.8	0.7	7.5	0.122	0.506	23.180515	-109.702425
T. Izq. Miraflores	71.50	3	0	1902	0.8	86.2	1.0	10.4	0.8	0.3	0.2	0.2	0.1	87.0	1.0	12.0	0.146	0.506	23.370276	-109.752276
T. Izq. Santiago	84.00	3	0	1939	0.6	87.6	0.4	9.5	1.0	0.3	0.3	0.2	0.1	88.2	0.4	11.4	0.152	0.514	23.473767	-109.694217
La Cueva	95.20	3	0	2119	0.9	88.1	0.7	8.7	0.9	0.5	0.2	0.0	0.0	89.0	0.7	10.3	0.115	0.511	23.544717	-109.674379
T. Der. Bahía de Las Palmas	110.00	3	0	1472	0.9	88.7	0.6	7.1	1.5	0.7	0.5	0.0	0.0	89.6	0.6	9.8	0.113	0.508	23.678811	-109.704590
San Bartolo	128.50	1	0	1285	1.7	85.0	0.8	10.5	0.9	0.8	0.3	0.0	0.0	86.7	0.8	12.5	0.090	0.523	23.738427	-109.845569
San Antonio	156.00	3	0	1202	2.3	85.4	1.1	9.7	0.9	0.4	0.2	0.0	0.0	87.7	1.1	11.2	0.107	0.530	23.810026	-110.058638
El Triunfo	162.80	1	0	1195	2.2	85.6	0.7	9.9	0.9	0.5	0.2	0.0	0.0	87.8	0.7	11.5	0.114	0.529	23.802959	-110.108893
El Triunfo	162.80	3	0	1120	1.8	83.4	0.9	12.3	0.5	0.5	0.2	0.0	0.4	85.2	0.9	13.9	0.111	0.513	23.802958	-110.108893
T. Izq. Todos Santos	184.40	1	0	1482	1.6	86.4	0.9	9.9	0.6	0.5	0.1	0.0	0.0	88.0	0.9	11.1	0.128	0.503	23.884033	-110.252763
T. Izq. Todos Santos	184.40	3	1	3140	1.4	84.8	1.4	7.5	0.9	2.4	0.6	0.9	0.1	86.2	1.4	12.4	0.135	0.508	23.884098	-110.252892
T. Izq. Todos Santos	184.40	3	2	3038	1.5	83.6	1.7	8.0	1.0	2.7	0.7	0.7	0.1	85.1	1.7	13.2	0.104	0.508	23.884060	-110.252897
San Pedro	191.00	1	1	3223	1.0	84.8	1.2	7.8	1.1	2.5	0.9	0.6	0.1	85.8	1.2	13.0	0.134	0.501	23.926571	-110.264616
San Pedro	191.00	1	2	3211	1.4	84.4	1.4	7.6	1.1	2.5	0.8	0.7	0.1	85.8	1.4	12.8	0.104	0.501	23.926521	-110.264804
San Pedro	191.00	3	1	3771	1.5	84.0	1.4	8.2	1.2	2.3	0.7	0.6	0.1	85.5	1.4	13.1	0.148	0.503	23.926574	-110.264614
San Pedro	191.00	3	2	3728	1.6	83.8	1.5	8.3	1.1	2.4	0.6	0.6	0.1	85.4	1.5	13.1	0.110	0.503	23.926524	-110.264807
Limite Zona Urbana de La Paz	211.00	1	1	5426	1.8	83.3	1.5	8.5	1.2	2.3	0.6	0.7	0.1	85.1	1.5	13.4	0.134	0.509	24.046314	-110.300809
Limite Zona Urbana de La Paz	211.00	1	2	5633	2.0	82.8	1.8	8.8	1.1	2.0	0.7	0.7	0.1	84.8	1.8	13.4	0.102	0.509	24.046317	-110.300799
La Paz	213.00																			

BAJA CALIFORNIA SUR

2 CARR: Cd. Constitución - Puerto San Carlos

CLAVE: 03231

RUTA: MEX-001

AÑO: 2020

LUGAR	ESTACION				CLASIFICACION VEHICULAR EN PORCIENTO										COORDENADAS					
	KM	TE	SC	TDPA	M	A	B	C2	C3	T3S2	T3S3	T3S2R4	OTROS	A	B	C	K'	D	LATITUD	LONGITUD
Cd. Constitución	0.00	3	0	2481	1.6	80.4	1.9	12.8	1.9	0.9	0.4	0.0	0.1	82.0	1.9	16.1	0.097	0.504	25.039252	-111.676979
T. Der. Benito Juárez	10.00	1	0	1709	0.5	84.6	2.0	9.1	1.9	1.4	0.4	0.1	0.0	85.1	2.0	12.9	0.094	0.502	25.036076	-111.768230
T. Der. Benito Juárez	10.00	3	0	1358	0.6	81.4	2.6	11.0	2.4	1.5	0.5	0.0	0.0	82.0	2.6	15.4	0.099	0.520	25.035635	-111.769148
Puerto San Carlos	57.70																			

3 CARR: Cd. Insurgentes - Loreto

CLAVE: 03092

RUTA: MEX-001

AÑO: 2020

LUGAR	ESTACION				CLASIFICACION VEHICULAR EN PORCIENTO										COORDENADAS					
	KM	TE	SC	TDPA	M	A	B	C2	C3	T3S2	T3S3	T3S2R4	OTROS	A	B	C	K'	D	LATITUD	LONGITUD
Cd. Insurgentes	0.00	3	0	2065	2.4	79.6	2.1	10.4	1.3	3.4	0.4	0.4	0.0	82.0	2.1	15.9	0.103	0.538	25.254357	-111.775641
T. Der. Ley Federal de Aguas Número Dos	13.46	3	0	1291	1.2	72.3	2.7	12.0	2.0	7.6	1.3	0.7	0.2	73.5	2.7	23.8	0.098	0.502	25.316079	-111.660369
T. Izq. Ley Federal de Aguas Número Uno	16.50	3	0	1200	1.1	73.0	2.4	10.4	2.7	8.0	1.1	1.2	0.1	74.1	2.4	23.5	0.082	0.516	25.331971	-111.635483
T. Der. Puerto Agua Verde	65.00	1	0	961	1.0	71.2	2.7	10.8	2.1	9.6	1.3	1.2	0.1	72.2	2.7	25.1	0.096	0.524	25.608854	-111.315389
T. Der. Puerto Agua Verde	65.00	3	0	1059	1.7	70.8	3.0	10.7	2.2	9.1	1.3	1.1	0.1	72.5	3.0	24.5	0.100	0.514	25.608856	-111.315387
El Ligüi	84.50	1	0	1366	7.8	62.2	2.7	12.4	1.8	10.5	1.1	1.4	0.1	70.0	2.7	27.3	0.096	0.515	25.734194	-111.271190
T. Der. Puerto Escondido	95.40	1	0	1404	3.1	71.8	2.6	11.5	1.9	7.0	1.1	0.9	0.1	74.9	2.6	22.5	0.087	0.537	25.802217	-111.327987
T. Der. Puerto Escondido	95.40	3	0	1945	2.5	75.0	2.4	12.6	1.6	4.8	0.6	0.4	0.1	77.5	2.4	20.1	0.087	0.509	25.802209	-111.327985
Nopoló	109.50	1	0	2012	2.3	71.0	2.7	14.8	2.3	5.1	0.9	0.8	0.1	73.3	2.7	24.0	0.093	0.515	25.938438	-111.368726
T. Der. Aeropuerto de Loreto	117.30	1	0	3311	0.7	78.3	1.7	12.2	1.6	4.1	0.8	0.5	0.1	79.0	1.7	19.3	0.089	0.517	25.988431	-111.366936
T. Der. Loreto	120.00	1	0	3712	1.3	80.0	1.3	12.1	1.6	2.9	0.5	0.2	0.1	81.3	1.3	17.4	0.088	0.514	26.010189	-111.361066

4 CARR: Ent. Punta Prieta - Guerrero Negro

CLAVE: 00321

RUTA: MEX-001

AÑO: 2020

LUGAR	ESTACION				CLASIFICACION VEHICULAR EN PORCIENTO										COORDENADAS					
	KM	TE	SC	TDPA	M	A	B	C2	C3	T3S2	T3S3	T3S2R4	OTROS	A	B	C	K'	D	LATITUD	LONGITUD
Parador Punta Prieta	0.00	3	0	614	4.4	55.4	2.8	14.6	2.0	18.0	2.1	0.7	0.0	59.8	2.8	37.4	0.137	0.521	28.928494	-114.156706
Rosarito	50.60	3	0	816	4.2	56.0	2.8	14.3	2.1	17.5	2.3	0.8	0.0	60.2	2.8	37.0	0.141	0.516	28.636185	-114.020101
Tanatán	70.10	3	0	718	0.5	63.3	2.7	11.8	2.4	16.4	2.2	0.7	0.0	63.8	2.7	33.5	0.106	0.518	28.508485	-114.023923
Tampico	105.00	1	0	859	1.6	65.9	2.7	12.5	2.5	12.3	2.0	0.5	0.0	67.5	2.7	29.8	0.109	0.503	28.193505	-114.001480
Lim. Edos. Term. B.C. Ppia. B.C.S. (Paralelo 28)	128.56																			
Ent. Guerrero Negro	130.00	1	0	1566	1.0	74.8	1.5	9.3	1.7	10.2	1.0	0.5	0.0	75.8	1.5	22.7	0.094	0.522	27.967483	-114.013281

BAJA CALIFORNIA SUR

5 CARR: La Paz - Cd. Insurgentes

CLAVE: 03101

RUTA: MEX-001

AÑO: 2020

LUGAR	ESTACION				CLASIFICACION VEHICULAR EN PORCIENTO										COORDENADAS					
	KM	TE	SC	TDPA	M	A	B	C2	C3	T3S2	T3S3	T3S2R4	OTROS	A	B	C	K'	D	LATITUD	LONGITUD
La Paz	0.00	3	1	10210	1.1	91.8	0.4	3.8	0.4	1.1	1.1	0.1	0.2	92.9	0.4	6.7	0.102	0.507	24.131411	-110.325627
La Paz	0.00	3	2	10502	1.1	91.8	0.4	3.9	0.4	1.0	1.1	0.1	0.2	92.9	0.4	6.7	0.098	0.507	24.131323	-110.325491
T. Izq. Aeropuerto	8.90	1	1	11390	1.8	93.1	0.6	1.8	0.9	0.9	0.4	0.3	0.2	94.9	0.6	4.5	0.093	0.501	24.105795	-110.366345
T. Izq. Aeropuerto	8.90	1	2	11338	1.8	93.2	0.6	1.8	0.9	0.9	0.4	0.2	0.2	95.0	0.6	4.4	0.096	0.501	24.105622	-110.366387
T. Izq. Aeropuerto	8.90	3	1	7175	1.2	91.9	0.6	4.2	0.8	0.9	0.3	0.1	0.0	93.1	0.6	6.3	0.096	0.502	24.105796	-110.366350
T. Izq. Aeropuerto	8.90	3	2	7123	1.2	91.3	0.6	4.7	0.8	0.9	0.3	0.2	0.0	92.5	0.6	6.9	0.099	0.502	24.105620	-110.366393
El Centenario	13.50	3	1	4038	2.0	91.8	0.8	2.6	0.8	1.2	0.5	0.2	0.1	93.8	0.8	5.4	0.092	0.515	24.099490	-110.408839
El Centenario	13.50	3	2	4282	1.9	91.8	0.7	2.5	0.9	1.4	0.5	0.2	0.1	93.7	0.7	5.6	0.088	0.515	24.099424	-110.408931
T. Der. San Juan de La Costa	17.00	1	0	5050	1.9	90.8	1.4	2.5	0.7	1.5	0.8	0.4	0.0	92.7	1.4	5.9	0.105	0.511	24.119120	-110.433978
T. Der. San Juan de La Costa	17.00	3	0	2153	3.6	85.8	2.0	3.0	0.7	3.3	1.0	0.5	0.1	89.4	2.0	8.6	0.106	0.516	24.119132	-110.433980
T. Der. Alfredo V. Bonfil	24.00	3	0	2645	0.8	89.7	1.0	1.9	0.7	4.3	1.0	0.5	0.1	90.5	1.0	8.5	0.096	0.503	24.091230	-110.518755
T. Izq. El Conejo	79.60	1	0	1726	5.3	82.8	3.1	3.0	0.9	3.0	1.0	0.9	0.0	88.1	3.1	8.8	0.093	0.523	24.185001	-110.945493
T. Izq. El Conejo	79.60	3	0	1786	3.4	85.9	2.2	2.5	0.8	3.4	1.1	0.6	0.1	89.3	2.2	8.5	0.108	0.506	24.185004	-110.945493
El Ciento Veintiocho	118.20	1	0	2056	1.3	88.6	1.9	2.2	0.9	3.4	1.0	0.6	0.1	89.9	1.9	8.2	0.099	0.506	24.466652	-111.220323
Santa Rita	156.70	1	0	1709	0.9	90.3	1.8	1.5	0.8	3.4	0.7	0.6	0.0	91.2	1.8	7.0	0.092	0.503	24.589754	-111.467878
Santa Rita	156.70	3	0	1766	1.9	89.2	1.6	1.5	0.8	2.8	1.3	0.9	0.0	91.1	1.6	7.3	0.097	0.508	24.589758	-111.467882
Cd. Constitución	213.00	1	0	3276	1.3	78.8	1.4	11.3	1.8	3.9	0.7	0.8	0.0	80.1	1.4	18.5	0.102	0.501	25.031630	-111.672924
Cd. Constitución	213.00	3	1	3668	1.9	86.0	0.9	7.8	1.0	1.8	0.4	0.2	0.0	87.9	0.9	11.2	0.106	0.510	25.031638	-111.672900
Cd. Constitución	213.00	3	2	3811	1.8	86.4	0.9	7.6	1.0	1.7	0.3	0.3	0.0	88.2	0.9	10.9	0.118	0.510	25.031622	-111.672949
T. Der. Ley Federal de Aguas Número Cuatro	229.00	1	1	2211	0.5	90.5	1.3	2.4	0.9	3.0	0.5	0.4	0.5	91.0	1.3	7.7	0.090	0.503	25.198643	-111.750028
T. Der. Ley Federal de Aguas Número Cuatro	229.00	1	2	2234	0.6	88.6	1.2	3.7	1.1	3.1	0.6	0.4	0.7	89.2	1.2	9.6	0.095	0.503	25.198627	-111.750162
Cd. Insurgentes	236.50	1	1	1977	0.7	91.5	0.9	1.6	0.8	3.1	0.5	0.4	0.5	92.2	0.9	6.9	0.109	0.507	25.259122	-111.777942
Cd. Insurgentes	236.50	1	2	2036	0.7	90.4	1.0	2.2	0.9	3.1	0.6	0.4	0.7	91.1	1.0	7.9	0.099	0.507	25.259048	-111.778113

6 CARR: La Paz - Pichilingue

CLAVE: 03230

RUTA: MEX-011

AÑO: 2020

LUGAR	ESTACION				CLASIFICACION VEHICULAR EN PORCIENTO										COORDENADAS					
	KM	TE	SC	TDPA	M	A	B	C2	C3	T3S2	T3S3	T3S2R4	OTROS	A	B	C	K'	D	LATITUD	LONGITUD
La Paz	0.00	3	1	6550	2.7	90.1	0.1	5.6	0.7	0.3	0.4	0.0	0.1	92.8	0.1	7.1	0.143	0.512	24.163569	-110.316391
La Paz	0.00	3	2	6871	2.6	90.3	0.1	5.6	0.7	0.3	0.3	0.0	0.1	92.9	0.1	7.0	0.162	0.512	24.163616	-110.316425
Escuela Técnica Pesquera	9.30	3	0	1354	2.8	77.7	0.6	6.8	5.7	2.3	2.2	1.8	0.1	80.5	0.6	18.9	0.261	0.505	24.229008	-110.309381
Pichilingue	17.00	1	0	2782	2.2	79.9	1.0	4.4	3.5	6.7	1.0	1.1	0.2	82.1	1.0	16.9	0.140	0.502	24.275285	-110.326164

BAJA CALIFORNIA SUR

7 CARR: Libramiento de Cabo San Lucas

CLAVE: 03100

RUTA: MEX-001

AÑO: 2020

LUGAR	ESTACION				CLASIFICACION VEHICULAR EN PORCIENTO												COORDENADAS			
	KM	TE	SC	TDPA	M	A	B	C2	C3	T3S2	T3S3	T3S2R4	OTROS	A	B	C	K'	D	LATITUD	LONGITUD
T. C. San Pedro - Cabo San Lucas	0.00	3	1	14792	2.0	86.7	1.0	6.8	1.7	0.8	0.8	0.1	0.1	88.7	1.0	10.3	0.085	0.556	22.898098	-109.925171
T. C. San Pedro - Cabo San Lucas	0.00	3	2	18500	1.9	86.8	1.0	7.1	1.3	0.9	0.8	0.1	0.1	88.7	1.0	10.3	0.095	0.556	22.898164	-109.925253
T. C. Cabo San Lucas - La Paz	3.00	1	1	20466	1.9	86.1	0.9	7.3	1.9	0.6	0.7	0.3	0.3	88.0	0.9	11.1	0.101	0.502	22.896383	-109.905291
T. C. Cabo San Lucas - La Paz	3.00	1	2	20273	1.8	86.6	0.8	7.2	1.8	0.6	0.6	0.3	0.3	88.4	0.8	10.8	0.106	0.502	22.896454	-109.905199

8 CARR: Libramiento de Todos Santos

CLAVE:

RUTA: MEX-019

AÑO: 2020

LUGAR	ESTACION				CLASIFICACION VEHICULAR EN PORCIENTO												COORDENADAS			
	KM	TE	SC	TDPA	M	A	B	C2	C3	T3S2	T3S3	T3S2R4	OTROS	A	B	C	K'	D	LATITUD	LONGITUD
T. C. San Pedro - Cabo San Lucas Norte	0.00	3	0	3381	1.3	83.4	2.5	4.2	1.9	4.2	0.7	1.6	0.2	84.7	2.5	12.8	0.100	0.520	23.481108	-110.212558
T. C. San Pedro - Cabo San Lucas Sur	7.50																			

9 CARR: Loreto - Santa Rosalía

CLAVE: 03393

RUTA: MEX-001

AÑO: 2020

LUGAR	ESTACION				CLASIFICACION VEHICULAR EN PORCIENTO												COORDENADAS			
	KM	TE	SC	TDPA	M	A	B	C2	C3	T3S2	T3S3	T3S2R4	OTROS	A	B	C	K'	D	LATITUD	LONGITUD
Loreto	0.00	3	0	1071	10.6	58.2	1.8	17.7	3.5	6.8	0.9	0.4	0.1	68.8	1.8	29.4	0.101	0.503	26.010607	-111.360463
Rosarito	63.00	1	0	719	1.3	72.7	3.4	14.2	1.2	3.6	2.0	1.6	0.0	74.0	3.4	22.6	0.106	0.524	26.456011	-111.648301
Rosarito	63.00	3	0	704	1.3	72.0	3.3	14.4	1.2	4.1	2.1	1.5	0.1	73.3	3.3	23.4	0.112	0.519	26.456015	-111.648302
Mulegé	135.00	1	0	1999	2.7	76.6	1.8	11.7	0.9	4.7	0.8	0.7	0.1	79.3	1.8	18.9	0.090	0.580	26.889015	-111.986992
Mulegé	135.00	3	0	994	3.3	69.1	4.5	13.3	1.4	5.2	1.9	1.3	0.0	72.4	4.5	23.1	0.095	0.514	26.889014	-111.986994
T. Izq. Santa Águeda	189.00	1	0	1583	1.0	78.8	2.3	11.6	0.8	3.7	1.1	0.7	0.0	79.8	2.3	17.9	0.096	0.510	27.275687	-112.244547
T. Izq. Santa Águeda	189.00	3	0	1844	1.0	79.4	1.8	11.4	0.7	4.2	0.9	0.6	0.0	80.4	1.8	17.8	0.095	0.506	27.275694	-112.244546
Santa Rosalía	197.00	1	0	2639	1.9	76.3	1.6	13.4	1.0	4.1	0.8	0.9	0.0	78.2	1.6	20.2	0.085	0.507	27.338060	-112.265300

10 CARR: Ramal a Aeropuerto de La Paz

CLAVE: 03396

RUTA: MEX-001

AÑO: 2020

LUGAR	ESTACION				CLASIFICACION VEHICULAR EN PORCIENTO												COORDENADAS			
	KM	TE	SC	TDPA	M	A	B	C2	C3	T3S2	T3S3	T3S2R4	OTROS	A	B	C	K'	D	LATITUD	LONGITUD
T. C. La Paz - Cd. Insurgentes	0.00	3	1	2274	3.7	85.9	0.7	8.8	0.5	0.3	0.1	0.0	0.0	89.6	0.7	9.7	0.148	0.546	24.105587	-110.366459
T. C. La Paz - Cd. Insurgentes	0.00	3	2	2740	2.7	89.0	0.6	7.1	0.4	0.2	0.0	0.0	0.0	91.7	0.6	7.7	0.100	0.546	24.105618	-110.366368
Aeropuerto	3.44																			

BAJA CALIFORNIA SUR

11 CARR: Ramal a Aeropuerto de Los Cabos

CLAVE: 03394

RUTA: MEX-001

AÑO: 2020

LUGAR	ESTACION				CLASIFICACION VEHICULAR EN PORCIENTO													COORDENADAS		
	KM	TE	SC	TDPA	M	A	B	C2	C3	T3S2	T3S3	T3S2R4	OTROS	A	B	C	K'	D	LATITUD	LONGITUD
T. C. Cabo San Lucas - La Paz	0.00	3	0	8814	0.9	84.9	0.7	12.3	0.3	0.3	0.3	0.3	0.0	85.8	0.7	13.5	0.112	0.502	23.156607	-109.708328
Aeropuerto Los Cabos	1.00																			

12 CARR: Ramal a Los Paredones

CLAVE: 03407

RUTA: MEX-001

AÑO: 2020

LUGAR	ESTACION				CLASIFICACION VEHICULAR EN PORCIENTO													COORDENADAS		
	KM	TE	SC	TDPA	M	A	B	C2	C3	T3S2	T3S3	T3S2R4	OTROS	A	B	C	K'	D	LATITUD	LONGITUD
T. C. Cd. Santa Rosalía - Guerrero Negro	0.00	3	0	869	3.8	85.6	0.7	8.9	0.2	0.8	0.0	0.0	0.0	89.4	0.7	9.9	0.087	0.500	27.301585	-112.898463
Paredones	1.40																			

13 CARR: Ramal a Miraflores

CLAVE: 03407

RUTA: MEX-001

AÑO: 2020

LUGAR	ESTACION				CLASIFICACION VEHICULAR EN PORCIENTO													COORDENADAS		
	KM	TE	SC	TDPA	M	A	B	C2	C3	T3S2	T3S3	T3S2R4	OTROS	A	B	C	K'	D	LATITUD	LONGITUD
T. C. Cabo San Lucas - La Paz	0.00	3	1	887	0.8	91.6	0.4	6.6	0.4	0.0	0.0	0.0	0.2	92.4	0.4	7.2	0.120	0.524	23.370324	-109.752298
T. C. Cabo San Lucas - La Paz	0.00	3	2	977	0.5	91.6	0.2	7.4	0.2	0.1	0.0	0.0	0.0	92.1	0.2	7.7	0.112	0.524	23.370248	-109.752322
Miraflores	2.20																			

14 CARR: Ramal a Puerto Escondido

CLAVE: 03407

RUTA: MEX-001

AÑO: 2020

LUGAR	ESTACION				CLASIFICACION VEHICULAR EN PORCIENTO													COORDENADAS		
	KM	TE	SC	TDPA	M	A	B	C2	C3	T3S2	T3S3	T3S2R4	OTROS	A	B	C	K'	D	LATITUD	LONGITUD
T. C. Cd. Insurgentes - Loreto	0.00	3	0	278	2.3	85.0	0.7	10.2	0.9	0.1	0.1	0.1	0.6	87.3	0.7	12.0	0.126	0.539	25.802414	-111.327569
Puerto Escondido	2.50																			

15 CARR: Ramal a San Ignacio

CLAVE: 03413

RUTA: MEX-001

AÑO: 2020

LUGAR	ESTACION				CLASIFICACION VEHICULAR EN PORCIENTO													COORDENADAS		
	KM	TE	SC	TDPA	M	A	B	C2	C3	T3S2	T3S3	T3S2R4	OTROS	A	B	C	K'	D	LATITUD	LONGITUD
T. C. Santa Rosalía - Guerrero Negro	0.00	3	0	1265	2.4	90.9	0.3	5.3	0.7	0.2	0.1	0.0	0.1	93.3	0.3	6.4	0.097	0.511	27.301253	-112.893384
San Ignacio	2.70																			

BAJA CALIFORNIA SUR

16 CARR: Ramal a Santiago

CLAVE: 03051

RUTA: MEX-001

AÑO: 2020

LUGAR	ESTACION				CLASIFICACION VEHICULAR EN PORCIENTO														COORDENADAS	
	KM	TE	SC	TDPA	M	A	B	C2	C3	T3S2	T3S3	T3S2R4	OTROS	A	B	C	K'	D	LATITUD	LONGITUD
T. C. Cabo San Lucas - La Paz	0.00	3	1	693	2.5	88.1	1.3	7.6	0.5	0.0	0.0	0.0	0.0	90.6	1.3	8.1	0.088	0.512	23.473871	-109.694553
T. C. Cabo San Lucas - La Paz	0.00	3	2	661	2.4	87.6	1.5	7.9	0.6	0.0	0.0	0.0	0.0	90.0	1.5	8.5	0.098	0.512	23.473871	-109.694553
Santiago	2.30																			

17 CARR: Ramal Aeropista San Ignacio

CLAVE: 03053

RUTA: MEX-001

AÑO: 2020

LUGAR	ESTACION				CLASIFICACION VEHICULAR EN PORCIENTO														COORDENADAS	
	KM	TE	SC	TDPA	M	A	B	C2	C3	T3S2	T3S3	T3S2R4	OTROS	A	B	C	K'	D	LATITUD	LONGITUD
T.C. Cd. Santa Rosalia - Guerrero Negro	0.00	3	0	2	0.0	100.0	0.0	0.0	0.0	0.0	0.0	0.0	0.0	100.0	0.0	0.0	1.000	0.500	27.287785	-112.936074
Aeropista San Ignacio	1.00																			

18 CARR: San Pedro - Cabo San Lucas

CLAVE: 03003

RUTA: MEX-019

AÑO: 2020

LUGAR	ESTACION				CLASIFICACION VEHICULAR EN PORCIENTO														COORDENADAS	
	KM	TE	SC	TDPA	M	A	B	C2	C3	T3S2	T3S3	T3S2R4	OTROS	A	B	C	K'	D	LATITUD	LONGITUD
T. C. Cabo San Lucas - La Paz	0.00	3	1	2693	1.0	86.7	1.6	2.5	1.8	3.7	0.8	1.0	0.9	87.7	1.6	10.7	0.137	0.505	23.884049	-110.252876
T. C. Cabo San Lucas - La Paz	0.00	3	2	2638	1.1	87.0	1.5	2.3	1.7	3.8	0.8	1.0	0.8	88.1	1.5	10.4	0.097	0.505	23.884022	-110.252782
T. Der. Melitón Albáñez	16.00	1	1	2493	3.3	84.3	1.8	2.6	1.5	3.5	1.0	1.4	0.6	87.6	1.8	10.6	0.131	0.503	23.653613	-110.224652
T. Der. Melitón Albáñez	16.00	1	2	2459	3.5	84.5	1.6	2.5	1.6	3.3	1.0	1.3	0.7	88.0	1.6	10.4	0.109	0.503	23.653601	-110.224507
T. Der. Melitón Albáñez	16.00	3	1	2517	1.3	85.6	2.2	2.9	1.5	3.7	0.8	1.1	0.9	86.9	2.2	10.9	0.135	0.507	23.653610	-110.224652
T. Der. Melitón Albáñez	16.00	3	2	2445	1.1	85.5	2.3	3.0	1.4	4.0	0.9	0.9	0.9	86.6	2.3	11.1	0.092	0.507	23.653599	-110.224509
Todos Santos	52.00	1	0	2951	2.4	91.6	1.4	2.7	1.3	0.3	0.3	0.0	0.0	94.0	1.4	4.6	0.100	0.507	23.446990	-110.227066
Todos Santos	52.00	3	0	4830	2.2	93.0	0.9	1.2	1.6	0.6	0.5	0.0	0.0	95.2	0.9	3.9	0.106	0.507	23.446990	-110.227068
El Pescadero	62.00	1	1	3930	1.2	89.9	1.2	2.5	1.2	2.4	0.6	0.7	0.3	91.1	1.2	7.7	0.120	0.503	23.365706	-110.173400
El Pescadero	62.00	1	2	3890	1.1	90.0	1.2	2.4	1.3	2.4	0.6	0.7	0.3	91.1	1.2	7.7	0.099	0.503	23.365730	-110.173255
El Pescadero	62.00	3	1	3282	2.1	83.9	2.3	5.5	1.8	2.3	0.7	0.9	0.5	86.0	2.3	11.7	0.136	0.502	23.365703	-110.173396
El Pescadero	62.00	3	2	3256	2.0	83.9	2.4	5.6	1.8	2.3	0.7	0.9	0.4	85.9	2.4	11.7	0.097	0.502	23.365727	-110.173264
Migriño	102.50	1	1	2460	1.4	85.3	2.0	2.9	1.8	3.3	1.3	1.4	0.6	86.7	2.0	11.3	0.138	0.507	23.046384	-110.092360
Migriño	102.50	1	2	2533	1.4	85.9	1.9	2.6	1.8	3.3	1.2	1.4	0.5	87.3	1.9	10.8	0.147	0.507	23.046484	-110.092336
Cabo San Lucas	131.00	1	1	6557	1.1	88.9	0.5	7.2	1.1	0.6	0.4	0.1	0.1	90.0	0.5	9.5	0.106	0.505	22.898165	-109.925528
Cabo San Lucas	131.00	1	2	6692	1.0	89.0	0.5	7.2	1.1	0.7	0.3	0.1	0.1	90.0	0.5	9.5	0.116	0.505	22.898223	-109.925439

BAJA CALIFORNIA SUR

19 CARR: Santa Rosalía - Guerrero Negro

CLAVE: 03095

RUTA: MEX-001

AÑO: 2020

LUGAR	ESTACION				CLASIFICACION VEHICULAR EN PORCIENTO												COORDENADAS			
	KM	TE	SC	TDPA	M	A	B	C2	C3	T3S2	T3S3	T3S2R4	OTROS	A	B	C	K'	D	LATITUD	LONGITUD
Santa Rosalía	0.00	3	0	2858	1.8	75.9	1.8	14.5	1.3	3.5	0.5	0.7	0.0	77.7	1.8	20.5	0.104	0.513	27.338065	-112.265333
Cuesta Infiernillo	12.00	1	0	800	2.2	74.4	3.4	11.8	1.0	5.1	1.4	0.7	0.0	76.6	3.4	20.0	0.098	0.502	27.386555	-112.352725
Cuesta Infiernillo	12.00	3	0	794	2.3	72.8	2.7	12.8	1.9	5.1	1.5	0.9	0.0	75.1	2.7	22.2	0.097	0.500	27.386557	-112.352728
T. Izq. San Ignacio	73.60	1	0	984	2.5	72.1	2.0	11.0	1.2	8.5	1.5	1.1	0.1	74.6	2.0	23.4	0.089	0.515	27.301775	-112.893084
T. Izq. San Ignacio	73.60	3	0	1402	4.1	73.8	2.0	11.8	1.8	4.9	1.0	0.5	0.1	77.9	2.0	20.1	0.097	0.605	27.301775	-112.893090
T. Izq. Punta Abreojos	95.70	1	0	699	1.5	76.3	2.2	10.5	2.0	5.2	1.5	0.7	0.1	77.8	2.2	20.0	0.094	0.516	27.329400	-113.116665
T. Izq. Punta Abreojos	95.70	3	0	815	1.5	73.4	2.3	11.6	2.1	6.7	1.3	1.0	0.1	74.9	2.3	22.8	0.099	0.526	27.329401	-113.116665
Los Ángeles	117.90	1	0	1121	2.5	75.3	3.4	11.3	1.4	4.2	1.4	0.5	0.0	77.8	3.4	18.8	0.110	0.546	27.484131	-113.295426
Los Ángeles	117.90	3	0	1131	1.0	77.4	2.9	11.8	1.3	3.6	1.4	0.5	0.1	78.4	2.9	18.7	0.107	0.514	27.484140	-113.295432
T. Izq. Vizcaino	144.00	1	0	2292	0.7	77.1	2.7	9.8	2.2	5.9	1.0	0.5	0.1	77.8	2.7	19.5	0.085	0.518	27.648053	-113.385076
T. Izq. Vizcaino	144.00	3	0	1457	1.4	76.1	2.6	11.6	1.3	5.6	0.9	0.5	0.0	77.5	2.6	19.9	0.104	0.509	27.648061	-113.385084
T. Der. El Arco	189.00	1	0	1019	2.2	73.5	2.8	10.8	1.4	6.9	1.3	0.9	0.2	75.7	2.8	21.5	0.085	0.516	27.853656	-113.769538
T. Der. El Arco	189.00	3	0	1018	1.9	73.8	2.1	12.8	1.8	5.9	1.1	0.6	0.0	75.7	2.1	22.2	0.107	0.509	27.853662	-113.769572
Ent. Guerrero Negro	216.85	1	0	1311	1.2	75.7	2.3	12.7	1.0	5.5	1.1	0.5	0.0	76.9	2.3	20.8	0.092	0.515	27.967505	-114.013298

20 CARR: Libramiento San José del Cabo - Aeropuerto Los Cabos (Cuota)

CLAVE: 03392

RUTA: MEX-001D

AÑO: 2020

LUGAR	ESTACION				CLASIFICACION VEHICULAR EN PORCIENTO												COORDENADAS				
	KM	TE	SC	TDPA	M	A	B	C2	C3	T3S2	T3S3	T3S2R4	OTROS	A	B	C	K'	D	LATITUD	LONGITUD	
Aeropuerto de Los Cabos	100.00																				
Plaza de Cobro Aeropuerto los Cabos	105.10	2	0	3408	0.1	97.5	0.8	0.5	0.2	0.3	0.2	0.4	0.0	97.6	0.8	1.6	0.102	0.500	23.150467	-109.740500	
Plaza de Cobro Los Cabos	118.20	2	0	2835	0.1	98.0	1.0	0.6	0.1	0.1	0.1	0.0	0.0	98.1	1.0	0.9	0.102	0.500	23.049876	-109.719565	
T. C. Cabo San Lucas - La Paz	120.20	1	0	13551	1.2	93.3	0.4	4.6	0.3	0.1	0.1	0.0	0.0	94.5	0.4	5.1	0.114	0.506	23.044466	-109.706188	

21 CARR: Ramal a El Mangle (Cuota)

CLAVE:

RUTA: MEX-001D

AÑO: 2020

LUGAR	ESTACION				CLASIFICACION VEHICULAR EN PORCIENTO												COORDENADAS				
	KM	TE	SC	TDPA	M	A	B	C2	C3	T3S2	T3S3	T3S2R4	OTROS	A	B	C	K'	D	LATITUD	LONGITUD	
T. C. Libramiento Cabo San Lucas - San José del Cabo (Cuota)	0.00																				
T. C. San Pedro - Cabo San Lucas	11.20	1	0	847	0.7	86.7	0.7	7.4	1.1	1.2	0.9	1.2	0.1	87.4	0.7	11.9	0.123	0.506	22.944269	-109.992336	

BAJA CALIFORNIA SUR

22 CARR: San José del Cabo - Libramiento de Cabo San Lucas - (Cuota)

CLAVE:

RUTA: MEX-001D

AÑO: 2020

LUGAR	ESTACION				CLASIFICACION VEHICULAR EN PORCIENTO													COORDENADAS		
	KM	TE	SC	TDPA	M	A	B	C2	C3	T3S2	T3S3	T3S2R4	OTROS	A	B	C	K'	D	LATITUD	LONGITUD
T. C. Libramiento San José del Cabo	0.00	3	0	2152	0.7	86.5	0.3	10.0	0.4	0.7	0.5	0.8	0.1	87.2	0.3	12.5	0.146	0.507	23.073231	-109.746752
Cabo San Lucas	27.48	1	0	1144	1.0	86.6	0.3	11.0	0.3	0.4	0.0	0.2	0.2	87.6	0.3	12.1	0.171	0.520	22.903370	-109.917979

23 CARR: Cd. Insurgentes - La Purísima

CLAVE: 03005

RUTA: BCS-001

AÑO: 2020

LUGAR	ESTACION				CLASIFICACION VEHICULAR EN PORCIENTO													COORDENADAS		
	KM	TE	SC	TDPA	M	A	B	C2	C3	T3S2	T3S3	T3S2R4	OTROS	A	B	C	K'	D	LATITUD	LONGITUD
Cd. Insurgentes	0.00	3	0	1910	0.7	79.8	0.9	14.1	1.9	2.4	0.1	0.1	0.0	80.5	0.9	18.6	0.090	0.511	25.260701	-111.778786
Ignacio Zaragoza	18.00	1	0	1072	0.9	78.9	0.7	14.8	2.2	2.2	0.2	0.1	0.0	79.8	0.7	19.5	0.104	0.513	25.394070	-111.840519
Ignacio Zaragoza	18.00	3	1	808	0.3	85.3	0.5	10.5	1.5	1.4	0.3	0.1	0.1	85.6	0.5	13.9	0.100	0.551	25.400049	-111.843345
Ignacio Zaragoza	18.00	3	2	657	0.3	84.9	0.5	10.6	1.8	1.4	0.2	0.2	0.1	85.2	0.5	14.3	0.104	0.551	25.400052	-111.843341
T. Izq. Santo Domingo	28.70	1	0	516	1.0	87.4	0.5	8.4	2.3	0.3	0.1	0.0	0.0	88.4	0.5	11.1	0.101	0.505	25.503444	-111.891291
Francisco Villa	64.00	3	0	230	3.1	81.2	0.7	12.7	1.6	0.4	0.3	0.0	0.0	84.3	0.7	15.0	0.222	0.504	25.801044	-112.029244
La Purísima	107.00	1	0	243	0.9	84.6	1.0	10.9	2.4	0.1	0.1	0.0	0.0	85.5	1.0	13.5	0.152	0.510	26.181624	-112.080609

24 CARR: Cd. Insurgentes - Pto. Adolfo López Mateos

CLAVE: 03404

RUTA: BCS

AÑO: 2020

LUGAR	ESTACION				CLASIFICACION VEHICULAR EN PORCIENTO													COORDENADAS		
	KM	TE	SC	TDPA	M	A	B	C2	C3	T3S2	T3S3	T3S2R4	OTROS	A	B	C	K'	D	LATITUD	LONGITUD
T. C. Cd. Insurgentes - La Purísima	0.00	3	0	513	1.0	89.8	2.0	4.6	0.7	0.6	0.2	0.0	1.1	90.8	2.0	7.2	0.115	0.514	25.274250	-111.785843
Puerto Adolfo López Mateos	35.50	1	0	415	1.6	92.6	0.9	2.2	1.0	0.5	0.3	0.0	0.9	94.2	0.9	4.9	0.149	0.504	25.192503	-112.108617

25 CARR: Ent. Campo Fisher - Punta Abreojos

CLAVE: 03411

RUTA: BCS

AÑO: 2020

LUGAR	ESTACION				CLASIFICACION VEHICULAR EN PORCIENTO													COORDENADAS		
	KM	TE	SC	TDPA	M	A	B	C2	C3	T3S2	T3S3	T3S2R4	OTROS	A	B	C	K'	D	LATITUD	LONGITUD
T. C. Santa Rosalía - Paralelo 28	0.00	3	0	162	1.1	76.8	3.1	13.0	4.3	1.5	0.2	0.0	0.0	77.9	3.1	19.0	0.173	0.524	27.328832	-113.116965
Punta Abreojos	88.00																			

26 CARR: La Paz - Ensenada de Muertos

CLAVE: 03103

RUTA: BCS-246

AÑO: 2020

LUGAR	ESTACION				CLASIFICACION VEHICULAR EN PORCIENTO													COORDENADAS		
	KM	TE	SC	TDPA	M	A	B	C2	C3	T3S2	T3S3	T3S2R4	OTROS	A	B	C	K'	D	LATITUD	LONGITUD
La Paz	0.00	3	0	3793	1.6	83.5	0.5	11.0	1.5	1.1	0.4	0.3	0.1	85.1	0.5	14.4	0.131	0.515	24.123778	-110.309649
T. Izq. El Sargento	45.00	1	0	1200	2.7	84.4	0.3	10.8	1.1	0.6	0.1	0.0	0.0	87.1	0.3	12.6	0.133	0.505	23.982215	-109.993607

BAJA CALIFORNIA SUR

26 CARR: La Paz - Ensenada de Muertos

CLAVE: 03103

RUTA: BCS-246

AÑO: 2020

LUGAR	ESTACION				CLASIFICACION VEHICULAR EN PORCIENTO													COORDENADAS		
	KM	TE	SC	TDPA	M	A	B	C2	C3	T3S2	T3S3	T3S2R4	OTROS	A	B	C	K'	D	LATITUD	LONGITUD
T. Izq. El Sargento	45.00	3	0	1193	1.5	87.4	0.4	8.8	1.2	0.6	0.1	0.0	0.0	88.9	0.4	10.7	0.127	0.522	23.981989	-109.992981
Ensenada de Muertos	57.50	1	0	242	6.8	87.8	0.3	4.1	0.3	0.4	0.1	0.2	0.0	94.6	0.3	5.1	0.194	0.501	24.001042	-109.838993

27 CARR: Libramiento de La Paz

CLAVE: 03004

RUTA: BCS

AÑO: 2020

LUGAR	ESTACION				CLASIFICACION VEHICULAR EN PORCIENTO													COORDENADAS		
	KM	TE	SC	TDPA	M	A	B	C2	C3	T3S2	T3S3	T3S2R4	OTROS	A	B	C	K'	D	LATITUD	LONGITUD
T. C. Cabo San Lucas - La Paz	0.00	3	0	11359	1.7	89.8	0.9	3.2	1.9	1.4	0.5	0.6	0.0	91.5	0.9	7.6	0.074	0.509	24.107760	-110.311211
T. C. La Paz - Cd. Insurgentes	10.00																			

28 CARR: Libramiento Norte de La Paz

CLAVE: 03006

RUTA: BCS

AÑO: 2020

LUGAR	ESTACION				CLASIFICACION VEHICULAR EN PORCIENTO													COORDENADAS		
	KM	TE	SC	TDPA	M	A	B	C2	C3	T3S2	T3S3	T3S2R4	OTROS	A	B	C	K'	D	LATITUD	LONGITUD
T. C. La Paz - Pichilingue	0.00	3	0	2742	2.9	68.3	1.3	7.8	6.8	7.5	2.5	2.3	0.6	71.2	1.3	27.5	0.092	0.516	24.232807	-110.302983
T. C. La Paz - Ensenada de Muertos	18.80	1	0	3446	4.1	70.2	1.4	6.2	6.4	6.1	2.7	2.6	0.3	74.3	1.4	24.3	0.077	0.500	24.121467	-110.294872
T. C. La Paz - Ensenada de Muertos	18.80	3	0	4766	1.3	82.2	1.1	7.2	2.9	2.8	1.2	1.1	0.2	83.5	1.1	15.4	0.075	0.515	24.121276	-110.295251
T. C. Cabo San Lucas - La Paz	20.70	1	0	8172	2.3	84.7	0.5	6.3	2.2	2.1	1.0	0.7	0.2	87.0	0.5	12.5	0.108	0.511	24.112104	-110.311112

29 CARR: Ramal a Benito Juárez

CLAVE: 03405

RUTA: BCS

AÑO: 2020

LUGAR	ESTACION				CLASIFICACION VEHICULAR EN PORCIENTO													COORDENADAS		
	KM	TE	SC	TDPA	M	A	B	C2	C3	T3S2	T3S3	T3S2R4	OTROS	A	B	C	K'	D	LATITUD	LONGITUD
T. C. Cd. Constitución - Puerto San Carlos	0.00	3	0	573	1.4	84.6	0.7	10.0	2.5	0.7	0.1	0.0	0.0	86.0	0.7	13.3	0.098	0.515	25.036368	-111.768931
Benito Juárez	11.50	1	0	573	1.5	85.2	0.7	10.8	0.9	0.3	0.1	0.0	0.5	86.7	0.7	12.6	0.108	0.504	25.114689	-111.822405

30 CARR: Ramal a Ejido Ley Federal de Aguas Número Cuatro

CLAVE: 03007

RUTA: BCS

AÑO: 2020

LUGAR	ESTACION				CLASIFICACION VEHICULAR EN PORCIENTO													COORDENADAS		
	KM	TE	SC	TDPA	M	A	B	C2	C3	T3S2	T3S3	T3S2R4	OTROS	A	B	C	K'	D	LATITUD	LONGITUD
T. C. La Paz - Cd. Insurgentes	0.00	3	0	602	4.7	70.7	2.2	13.7	4.9	3.4	0.4	0.0	0.0	75.4	2.2	22.4	0.105	0.510	25.198646	-111.749565
Ejido Ley Federal de Aguas Número Cuatro	19.20																			

BAJA CALIFORNIA SUR

31 CARR: Ramal a El Carrizal

CLAVE: 03050

RUTA: BCS

AÑO: 2020

LUGAR	ESTACION				CLASIFICACION VEHICULAR EN PORCIENTO														COORDENADAS	
	KM	TE	SC	TDPA	M	A	B	C2	C3	T3S2	T3S3	T3S2R4	OTROS	A	B	C	K'	D	LATITUD	LONGITUD
T. C. San Pedro - Cabo San Lucas Carrizal	0.00	3	0	380	1.5	85.5	1.9	8.2	0.8	1.6	0.1	0.0	0.4	87.0	1.9	11.1	0.105	0.502	23.833455	-110.249095
	10.00																			

32 CARR: Ramal a Guerrero Negro

CLAVE: 03395

RUTA: BCS

AÑO: 2020

LUGAR	ESTACION				CLASIFICACION VEHICULAR EN PORCIENTO														COORDENADAS	
	KM	TE	SC	TDPA	M	A	B	C2	C3	T3S2	T3S3	T3S2R4	OTROS	A	B	C	K'	D	LATITUD	LONGITUD
T. C. Santa Rosalía - Guerrero Negro Guerrero Negro	0.00	3	0	2053	2.3	82.9	2.6	9.5	0.5	1.8	0.2	0.2	0.0	85.2	2.6	12.2	0.093	0.506	27.967527	-114.017424
	4.50																			

33 CARR: Ramal a La Ribera

CLAVE: 03406

RUTA: BCS

AÑO: 2020

LUGAR	ESTACION				CLASIFICACION VEHICULAR EN PORCIENTO														COORDENADAS	
	KM	TE	SC	TDPA	M	A	B	C2	C3	T3S2	T3S3	T3S2R4	OTROS	A	B	C	K'	D	LATITUD	LONGITUD
T. C. Cabo San Lucas - La Paz La Ribera	0.00	3	0	1592	2.2	81.5	2.8	7.9	2.2	1.7	1.7	0.0	0.0	83.7	2.8	13.5	0.089	0.505	23.536760	-109.672282
	12.00																			

34 CARR: Ramal a Melitón Albáñez

CLAVE: 03407

RUTA: BCS

AÑO: 2020

LUGAR	ESTACION				CLASIFICACION VEHICULAR EN PORCIENTO														COORDENADAS	
	KM	TE	SC	TDPA	M	A	B	C2	C3	T3S2	T3S3	T3S2R4	OTROS	A	B	C	K'	D	LATITUD	LONGITUD
T. C. San Pedro - Cabo San Lucas Melitón Albáñez	0.00	3	0	454	1.6	83.9	2.0	9.6	1.2	1.7	0.0	0.0	0.0	85.5	2.0	12.5	0.130	0.520	23.653513	-110.225064
	23.50																			

35 CARR: Ramal a Santa Catarina

CLAVE: 03052

RUTA: BCS

AÑO: 2020

LUGAR	ESTACION				CLASIFICACION VEHICULAR EN PORCIENTO														COORDENADAS	
	KM	TE	SC	TDPA	M	A	B	C2	C3	T3S2	T3S3	T3S2R4	OTROS	A	B	C	K'	D	LATITUD	LONGITUD
T. C. Cabo San Lucas - La Paz Santa Catarina	0.00	3	0	909	14.9	74.8	0.6	8.1	0.4	1.1	0.1	0.0	0.0	89.7	0.6	9.7	0.105	0.502	23.135356	-109.710291
	1.00																			

BAJA CALIFORNIA SUR

36 CARR: Ramal a Bahía de Tortugas

CLAVE: 03397

RUTA: MEX-001-BCS

AÑO: 2020

LUGAR	ESTACION				CLASIFICACION VEHICULAR EN PORCIENTO														COORDENADAS	
	KM	TE	SC	TDPA	M	A	B	C2	C3	T3S2	T3S3	T3S2R4	OTROS	A	B	C	K'	D	LATITUD	LONGITUD
T. C. Santa Rosalía - Guerrero Negro	0.00	3	0	4855	2.9	81.9	1.6	9.0	0.9	2.0	0.6	0.6	0.5	84.8	1.6	13.6	0.098	0.506	27.646856	-113.384813
Vizcaíno	6.00	3	0	1542	1.9	74.2	4.8	10.7	2.1	2.2	1.4	1.5	1.2	76.1	4.8	19.1	0.116	0.508	27.642460	-113.447356
Bahía de Tortugas	198.00																			

37 CARR: Ramal a Ejido Ley Federal de Aguas Número Dos

CLAVE: 03050

RUTA: BCS-MEX-001

AÑO: 2020

LUGAR	ESTACION				CLASIFICACION VEHICULAR EN PORCIENTO														COORDENADAS	
	KM	TE	SC	TDPA	M	A	B	C2	C3	T3S2	T3S3	T3S2R4	OTROS	A	B	C	K'	D	LATITUD	LONGITUD
T. C. Cd. Insurgentes - Loreto	0.00	3	0	135	2.9	88.5	1.3	5.4	1.2	0.2	0.3	0.2	0.0	91.4	1.3	7.3	0.215	0.520	25.315851	-111.660222
T. Ramal a Ley Federal de Aguas No 3	5.40																			
Ejido Ley Federal de Aguas Número Dos	10.00																			

38 CARR: Ramal a Ley Federal de Aguas Número Cinco

CLAVE: 03407

RUTA: BCS-MEX-001

AÑO: 2020

LUGAR	ESTACION				CLASIFICACION VEHICULAR EN PORCIENTO														COORDENADAS	
	KM	TE	SC	TDPA	M	A	B	C2	C3	T3S2	T3S3	T3S2R4	OTROS	A	B	C	K'	D	LATITUD	LONGITUD
Cd. Constitución	0.00	3	1	1225	2.1	84.1	0.2	10.5	2.2	0.6	0.2	0.0	0.1	86.2	0.2	13.6	0.105	0.510	25.020918	-111.667780
Cd. Constitución	0.00	3	2	1278	1.9	82.1	0.3	12.4	2.4	0.7	0.2	0.0	0.0	84.0	0.3	15.7	0.124	0.510	25.020988	-111.667812
Ramal a el Quemado	7.35																			
Ley Federal de Aguas Número Cinco	17.50																			

39 CARR: Ramal a San Juan de La Costa

CLAVE: 03403

RUTA: BCS-163-MEX-001

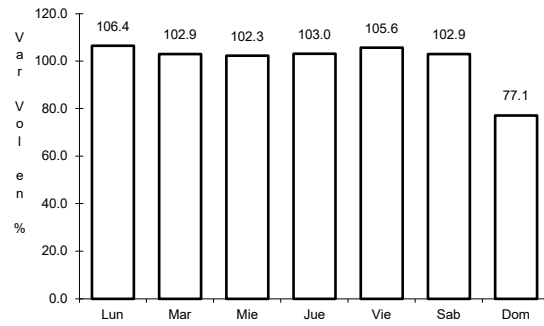
AÑO: 2020

LUGAR	ESTACION				CLASIFICACION VEHICULAR EN PORCIENTO														COORDENADAS	
	KM	TE	SC	TDPA	M	A	B	C2	C3	T3S2	T3S3	T3S2R4	OTROS	A	B	C	K'	D	LATITUD	LONGITUD
T. C. La Paz - Cd. Insurgentes	0.00	3	0	679	1.0	77.8	2.8	16.3	1.4	0.6	0.1	0.0	0.0	78.8	2.8	18.4	0.150	0.514	24.121521	-110.438155
Puerto Cajete	23.00	3	0	459	0.5	65.2	2.6	28.2	2.2	1.1	0.2	0.0	0.0	65.7	2.6	31.7	0.105	0.545	24.248301	-110.606417
San Juan de La Costa	40.70	1	0	390	0.6	66.4	2.2	25.7	3.1	1.1	0.6	0.0	0.3	67.0	2.2	30.8	0.090	0.508	24.370857	-110.690688

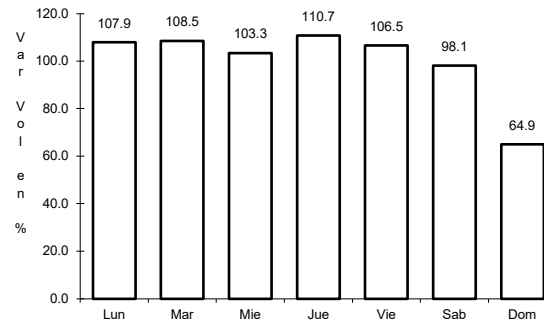
1 CARR: Cabo San Lucas - La Paz

CLAVE: 03102

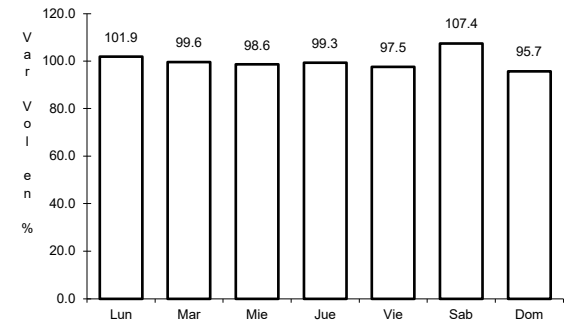
RUTA: MEX-001



Km: 0.00 Tipo: 3 Sent: 1



Km: 0.00 Tipo: 3 Sent: 2

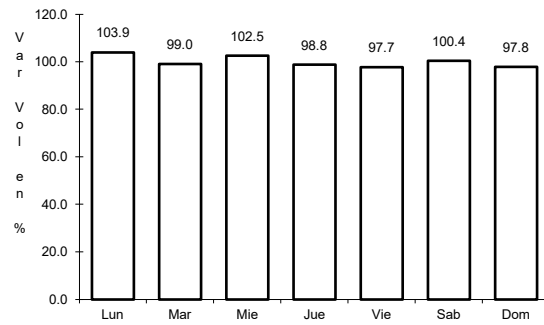


Km: 110.00 Tipo: 3 Sent: 0

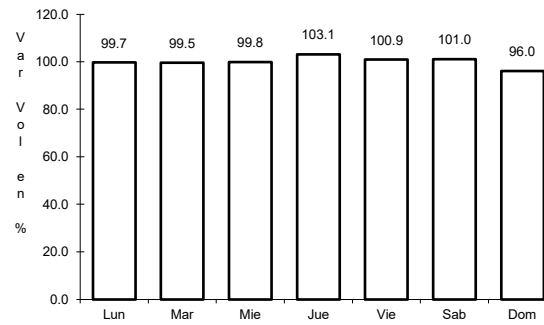
2 CARR: Cd. Constitución - Puerto San Carlos

CLAVE: 03231

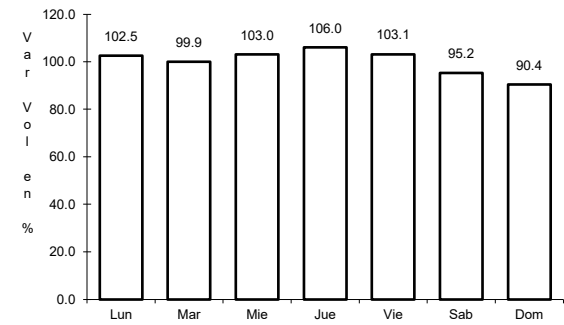
RUTA: MEX-001



Km: 0.00 Tipo: 3 Sent: 0



Km: 10.00 Tipo: 1 Sent: 0

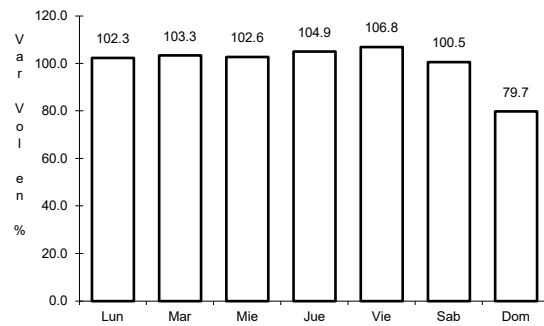


Km: 10.00 Tipo: 3 Sent: 0

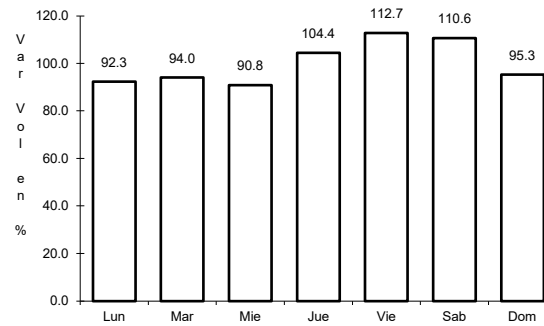
3 CARR: Cd. Insurgentes - Loreto

CLAVE: 03092

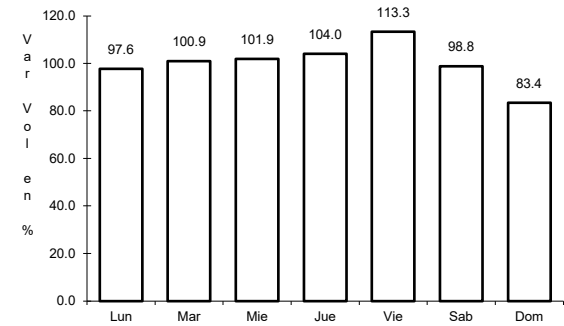
RUTA: MEX-001



Km: 0.00 Tipo: 3 Sent: 0



Km: 65.00 Tipo: 1 Sent: 0

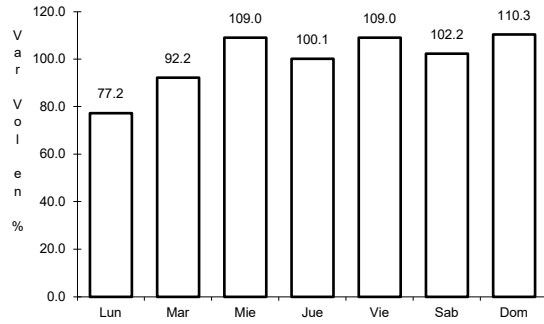


Km: 117.30 Tipo: 1 Sent: 0

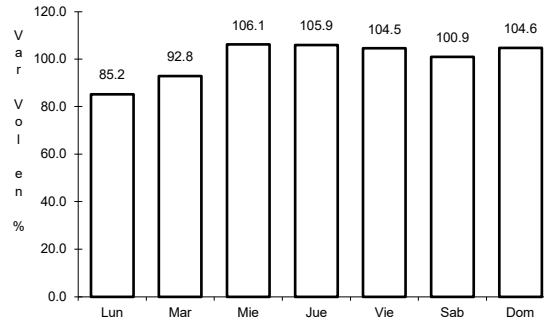
4 CARR: Ent. Punta Prieta - Guerrero Negro

CLAVE: 00321

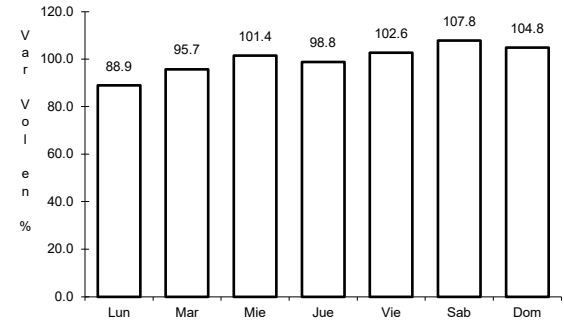
RUTA: MEX-001



Km: 0.00 Tipo: 3 Sent: 0



Km: 70.10 Tipo: 3 Sent: 0

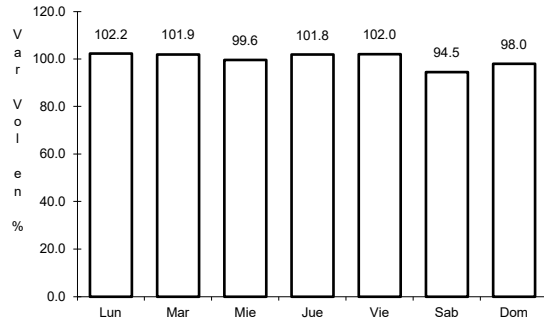


Km: 130.00 Tipo: 1 Sent: 0

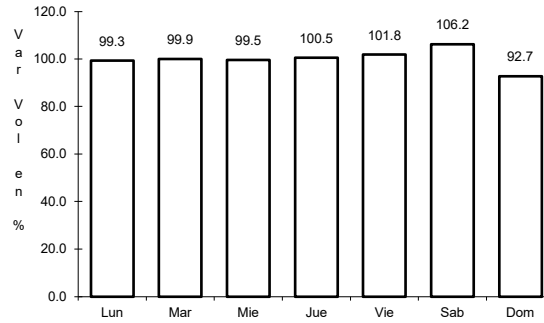
5 CARR: La Paz - Cd. Insurgentes

CLAVE: 03101

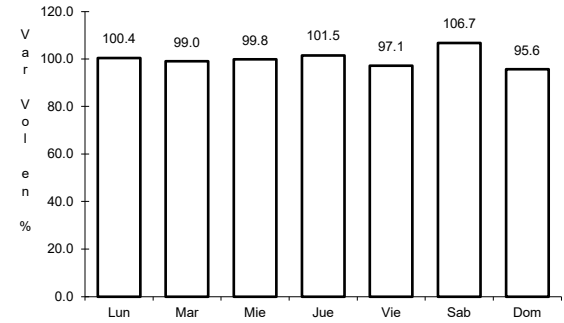
RUTA: MEX-001



Km: 0.00 Tipo: 3 Sent: 1



Km: 0.00 Tipo: 3 Sent: 2

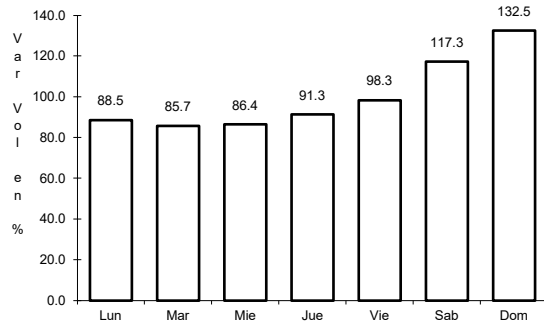


Km: 118.20 Tipo: 1 Sent: 0

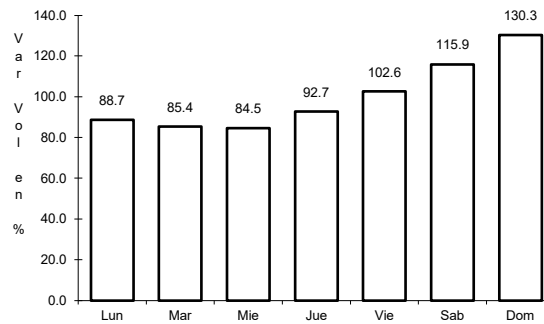
6 CARR: La Paz - Pichilingue

CLAVE: 03230

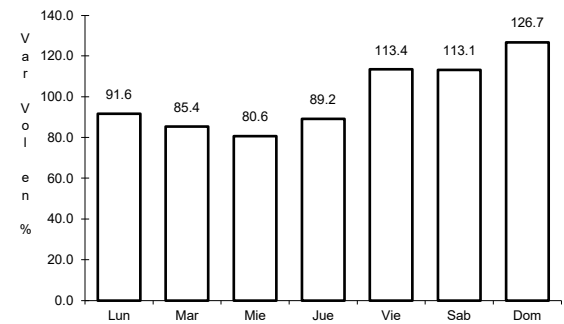
RUTA: MEX-011



Km: 0.00 Tipo: 3 Sent: 1



Km: 0.00 Tipo: 3 Sent: 2

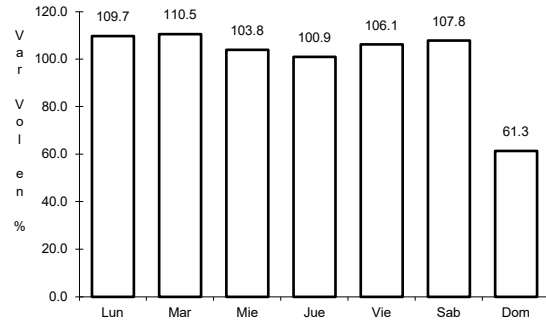


Km: 17.00 Tipo: 1 Sent: 0

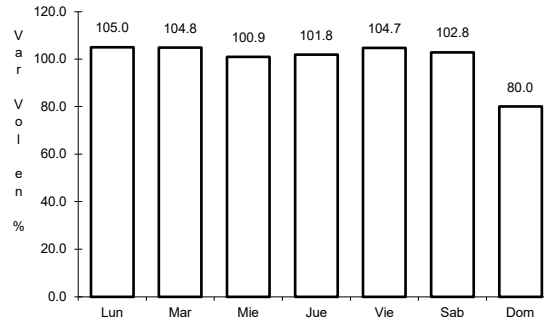
7 CARR: Libramiento de Cabo San Lucas

CLAVE: 03100

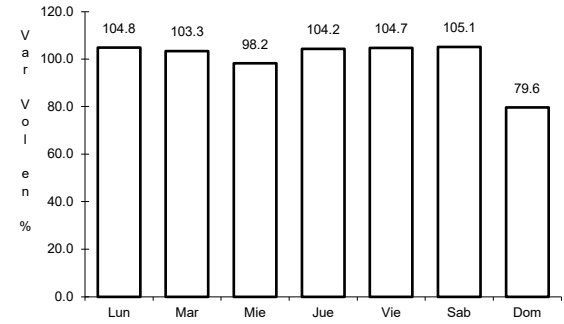
RUTA: MEX-001



Km: 0.00 Tipo: 3 Sent: 1



Km: 0.00 Tipo: 3 Sent: 2

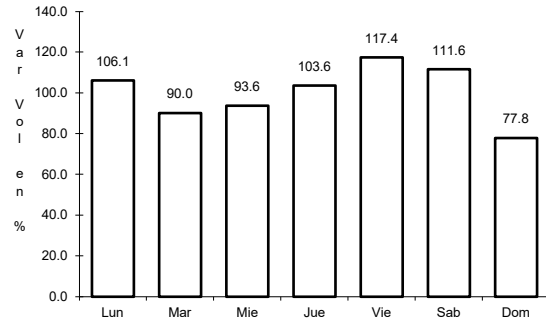


Km: 3.00 Tipo: 1 Sent: 1

8 CARR: Libramiento de Todos Santos

CLAVE:

RUTA: MEX-019

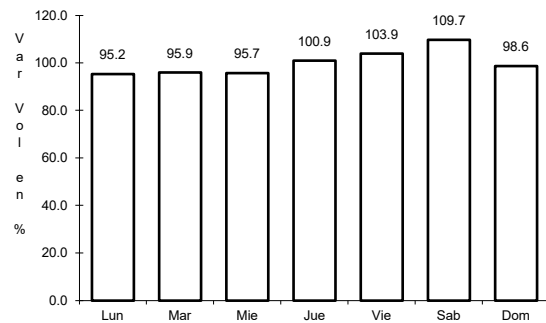


Km: 0.00 Tipo: 3 Sent: 0

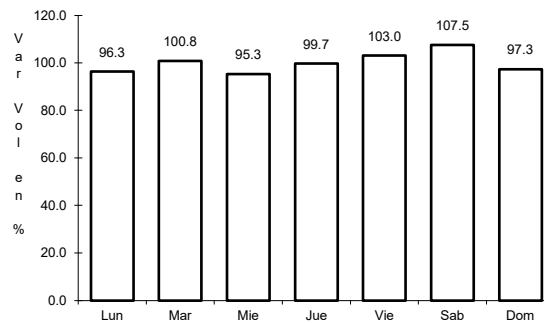
9 CARR: Loreto - Santa Rosalía

CLAVE: 03393

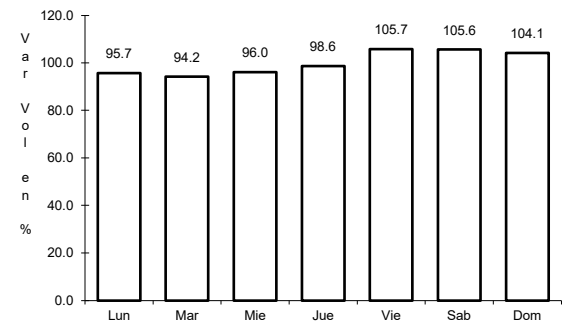
RUTA: MEX-001



Km: 0.00 Tipo: 3 Sent: 0



Km: 135.00 Tipo: 1 Sent: 0

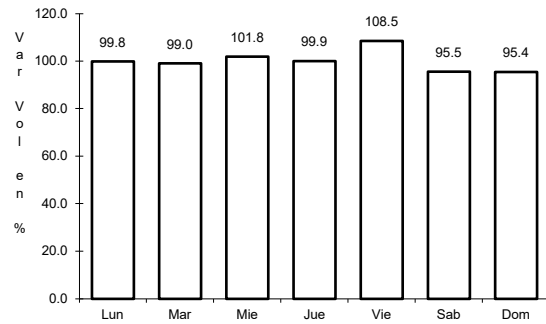


Km: 197.00 Tipo: 1 Sent: 0

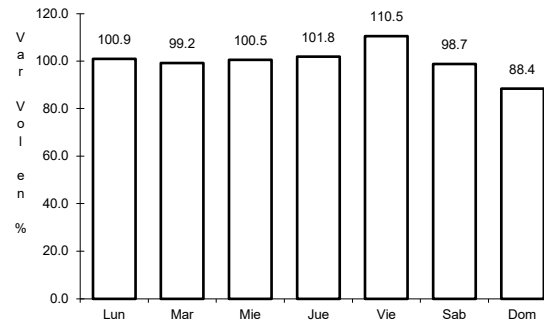
10 CARR: Ramal a Aeropuerto de La Paz

CLAVE: 03396

RUTA: MEX-001



Km: 0.00 Tipo: 3 Sent: 1

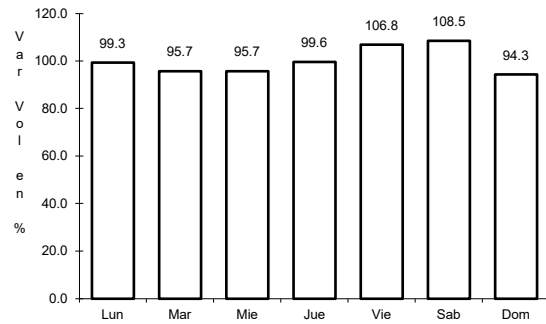


Km: 0.00 Tipo: 3 Sent: 2

11 CARR: Ramal a Aeropuerto de Los Cabos

CLAVE: 03394

RUTA: MEX-001

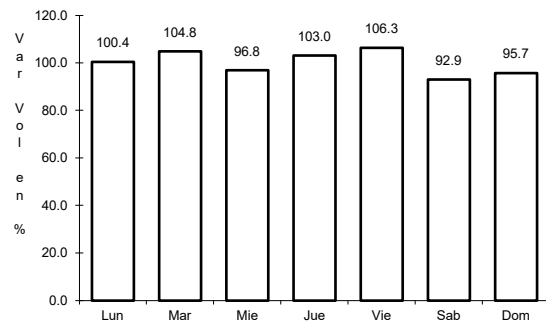


Km: 0.00 Tipo: 3 Sent: 0

12 CARR: Ramal a Los Paredones

CLAVE: 03407

RUTA: MEX-001

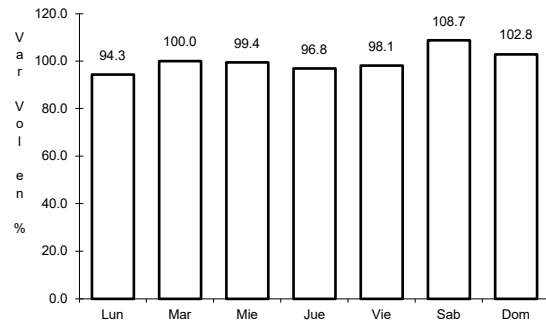


Km: 0.00 Tipo: 3 Sent: 0

13 CARR: Ramal a Miraflores

CLAVE: 03407

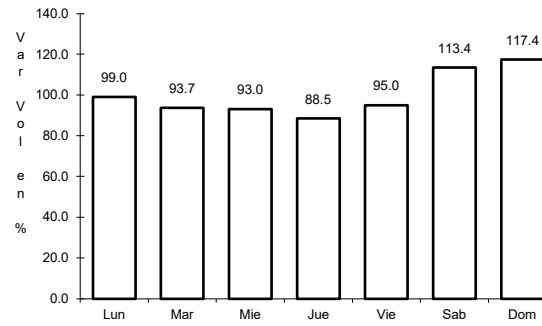
RUTA: MEX-001



Km: 0.00

Tipo: 3

Sent: 1



Km: 0.00

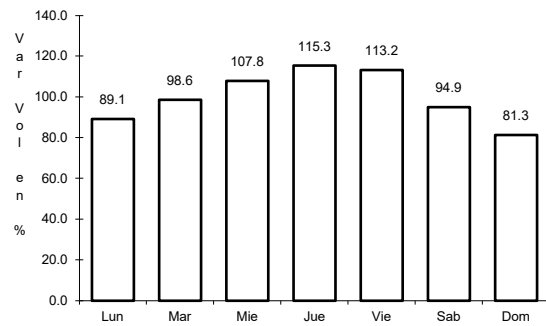
Tipo: 3

Sent: 2

14 CARR: Ramal a Puerto Escondido

CLAVE: 03407

RUTA: MEX-001



Km: 0.00

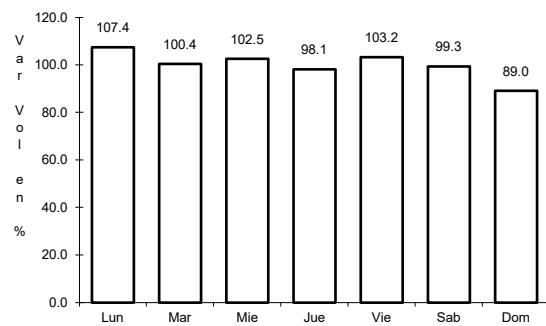
Tipo: 3

Sent: 0

15 CARR: Ramal a San Ignacio

CLAVE: 03413

RUTA: MEX-001



Km: 0.00

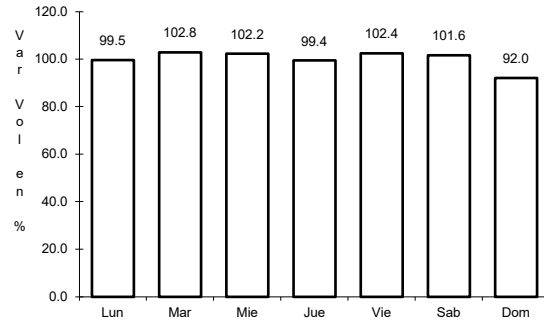
Tipo: 3

Sent: 0

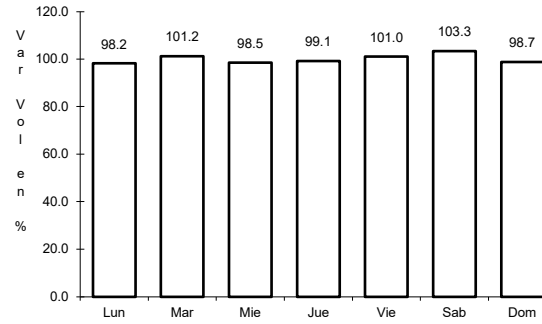
16 CARR: Ramal a Santiago

CLAVE: 03051

ruta: MEX-001



Km: 0.00 Tipo: 3 Sent: 1

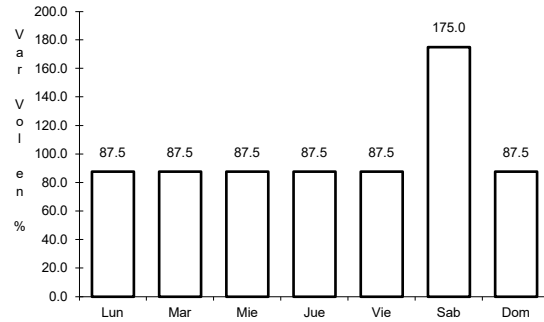


Km: 0.00 Tipo: 3 Sent: 2

17 CARR: Ramal Aeropista San Ignacio

CLAVE: 03053

ruta: MEX-001

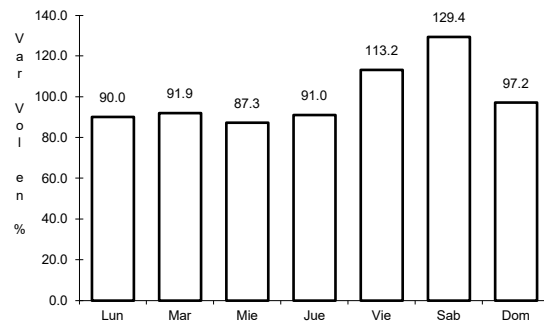


Km: 0.00 Tipo: 3 Sent: 0

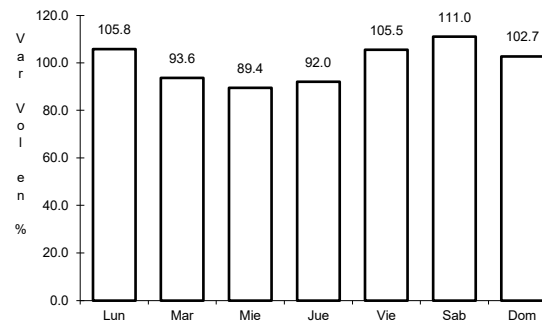
18 CARR: San Pedro - Cabo San Lucas

CLAVE: 03003

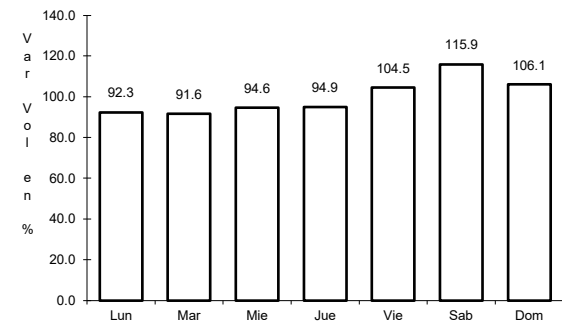
ruta: MEX-019



Km: 0.00 Tipo: 3 Sent: 1



Km: 0.00 Tipo: 3 Sent: 2

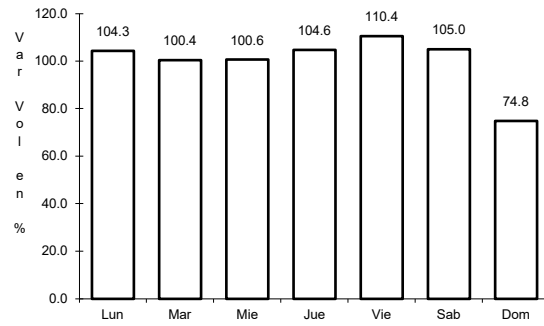


Km: 52.00 Tipo: 1 Sent: 0

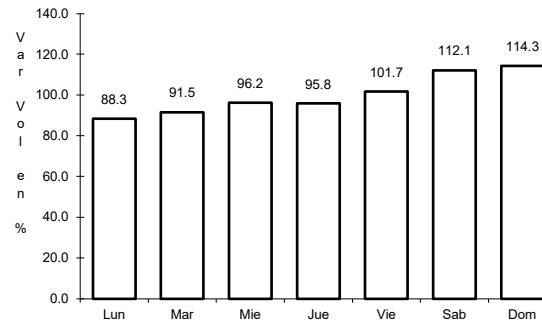
19 CARR: Santa Rosalía - Guerrero Negro

CLAVE: 03095

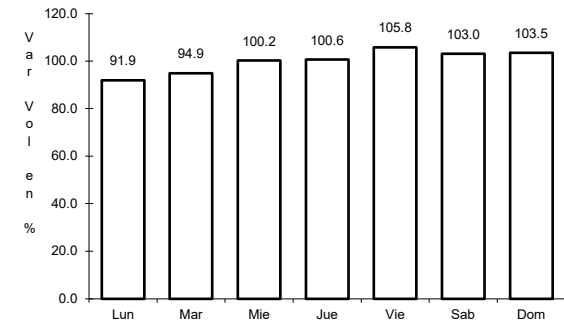
RUTA: MEX-001



Km: 0.00 Tipo: 3 Sent: 0



Km: 117.90 Tipo: 1 Sent: 0

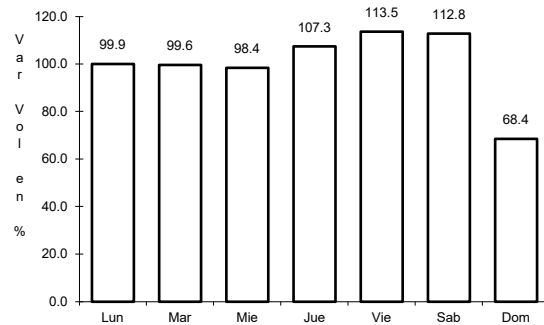


Km: 216.85 Tipo: 1 Sent: 0

20 CARR: Libramiento San José del Cabo - Aeropuerto Los Cabos (Cuota)

CLAVE: 03392

RUTA: MEX-001D

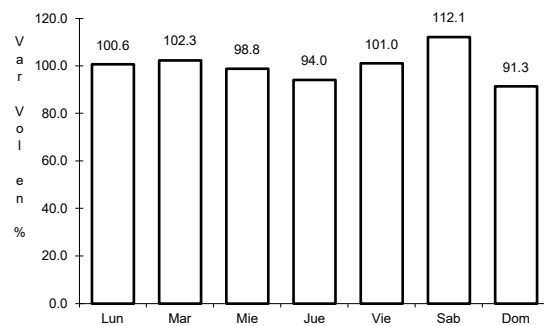


Km: 120.20 Tipo: 1 Sent: 0

21 CARR: Ramal a El Mangle (Cuota)

CLAVE:

RUTA: MEX-001D

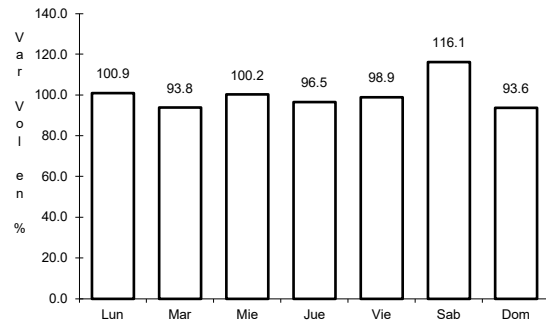


Km: 11.20 Tipo: 1 Sent: 0

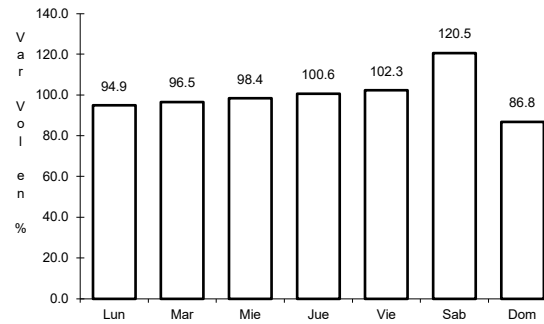
22 CARR: San José del Cabo - Libramiento de Cabo San Lucas - (Cuota)

CLAVE:

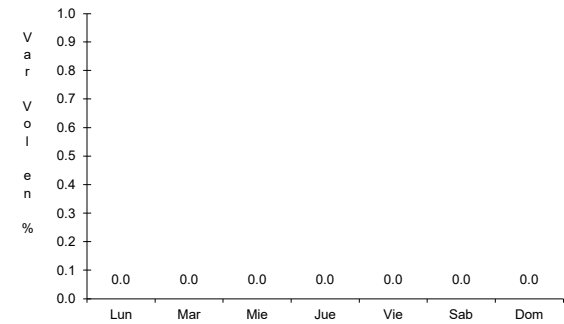
RUTA: MEX-001D



Km: 0.00 Tipo: 3 Sent: 0



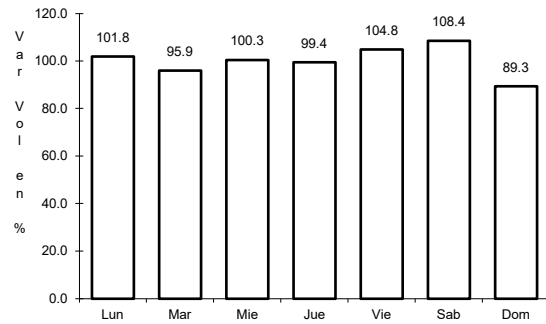
Km: 27.48 Tipo: 1 Sent: 0



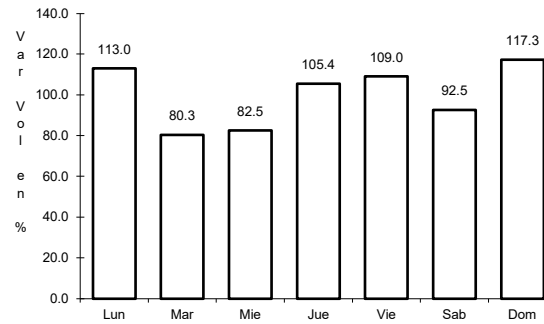
23 CARR: Cd. Insurgentes - La Purísima

CLAVE: 03005

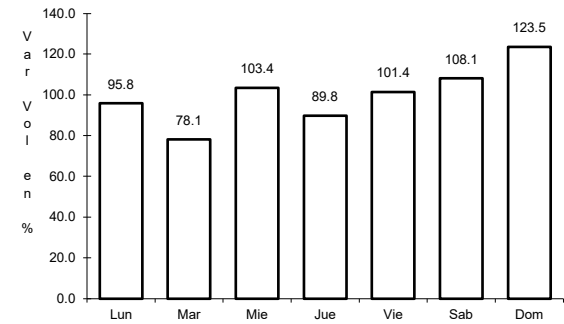
RUTA: BCS-001



Km: 0.00 Tipo: 3 Sent: 0



Km: 64.00 Tipo: 3 Sent: 0

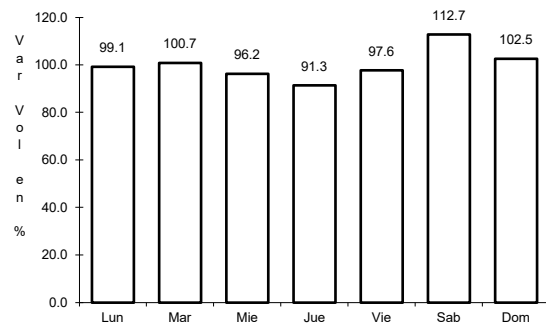


Km: 107.00 Tipo: 1 Sent: 0

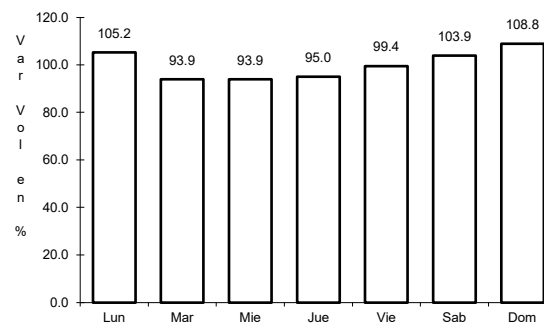
24 CARR: Cd. Insurgentes - Pto. Adolfo López Mateos

CLAVE: 03404

RUTA: BCS



Km: 0.00 Tipo: 3 Sent: 0

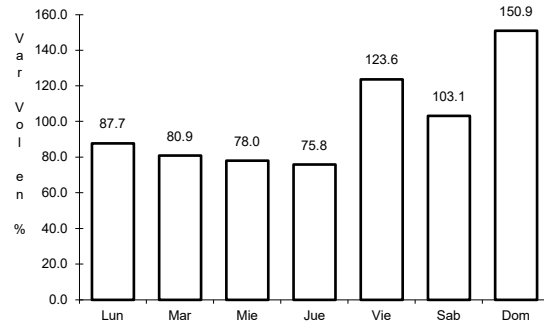


Km: 35.50 Tipo: 1 Sent: 0

25 CARR: Ent. Campo Fisher - Punta Abreojos

CLAVE: 03411

RUTA: BCS



Km: 0.00

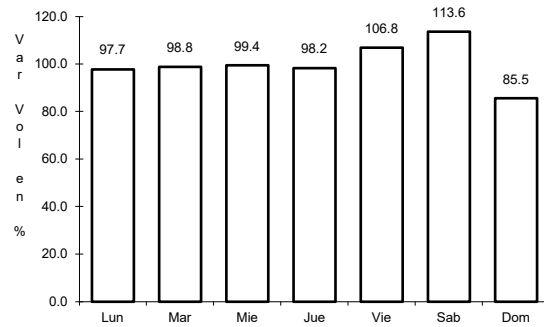
Tipo: 3

Sent: 0

26 CARR: La Paz - Ensenada de Muertos

CLAVE: 03103

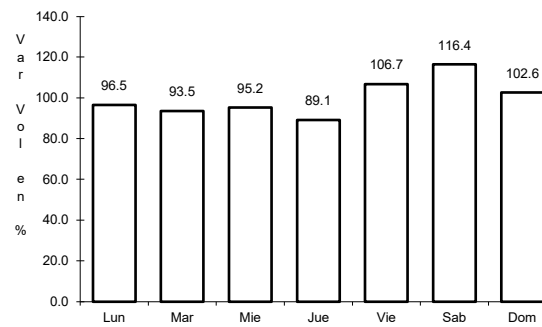
RUTA: BCS-246



Km: 0.00

Tipo: 3

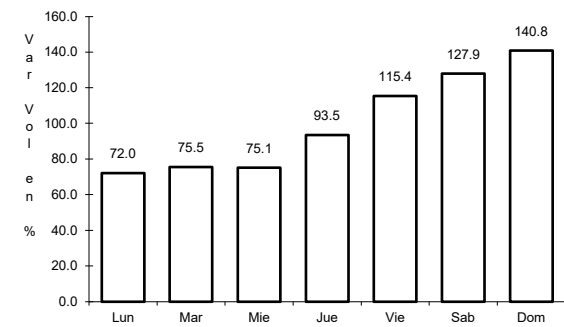
Sent: 0



Km: 45.00

Tipo: 1

Sent: 0



Km: 57.50

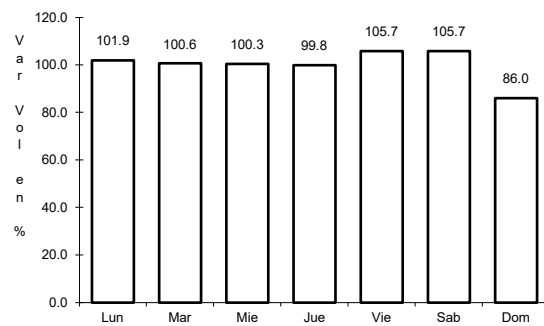
Tipo: 1

Sent: 0

27 CARR: Libramiento de La Paz

CLAVE: 03004

RUTA: BCS



Km: 0.00

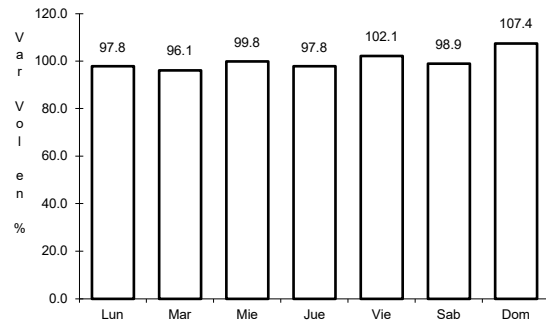
Tipo: 3

Sent: 0

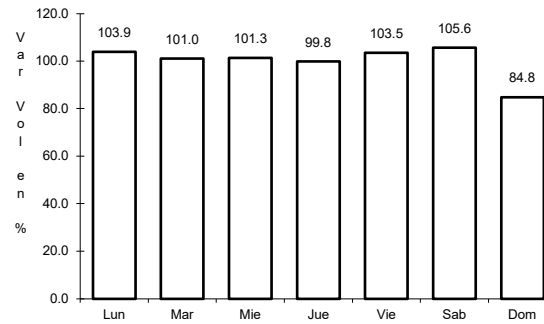
28 CARR: Libramiento Norte de La Paz

CLAVE: 03006

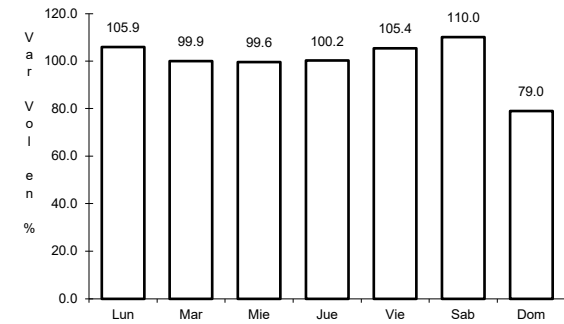
RUTA: BCS



Km: 0.00 Tipo: 3 Sent: 0



Km: 18.80 Tipo: 1 Sent: 0

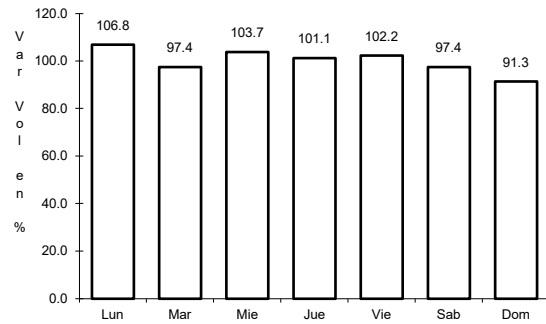


Km: 20.70 Tipo: 1 Sent: 0

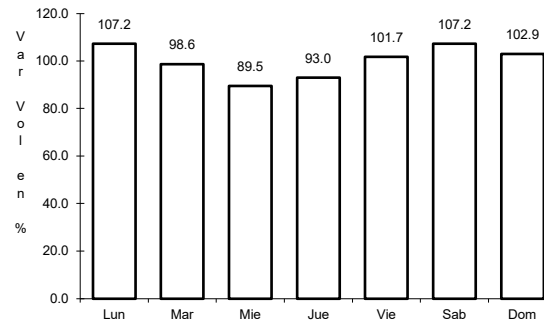
29 CARR: Ramal a Benito Juárez

CLAVE: 03405

RUTA: BCS



Km: 0.00 Tipo: 3 Sent: 0

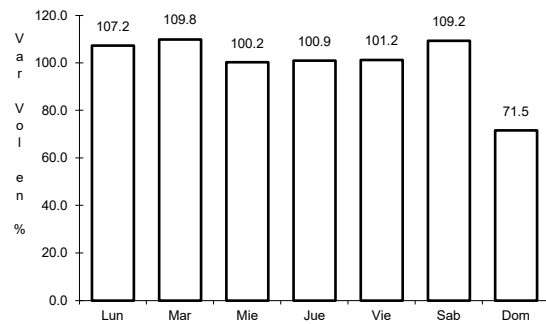


Km: 11.50 Tipo: 1 Sent: 0

30 CARR: Ramal a Ejido Ley Federal de Aguas Número Cuatro

CLAVE: 03007

RUTA: BCS

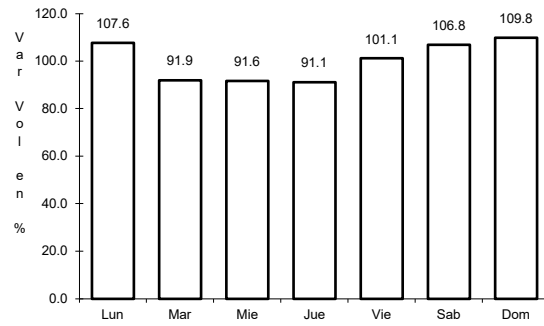


Km: 0.00 Tipo: 3 Sent: 0

31 CARR: Ramal a El Carrizal

CLAVE: 03050

RUTA: BCS



Km: 0.00

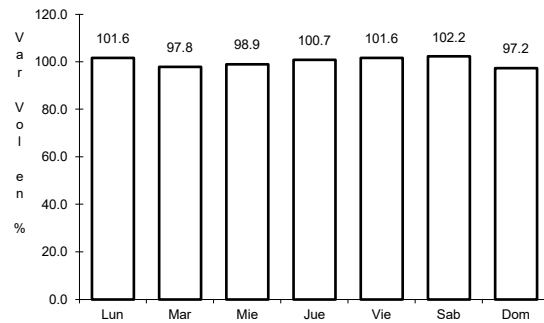
Tipo: 3

Sent: 0

32 CARR: Ramal a Guerrero Negro

CLAVE: 03395

RUTA: BCS



Km: 0.00

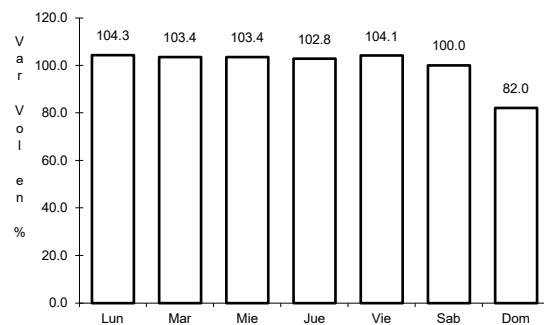
Tipo: 3

Sent: 0

33 CARR: Ramal a La Ribera

CLAVE: 03406

RUTA: BCS



Km: 0.00

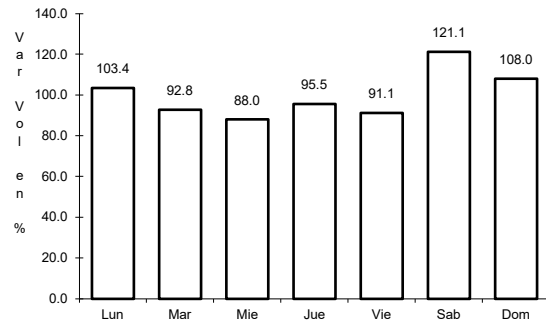
Tipo: 3

Sent: 0

34 CARR: Ramal a Melitón Albáñez

CLAVE: 03407

RUTA: BCS



Km: 0.00

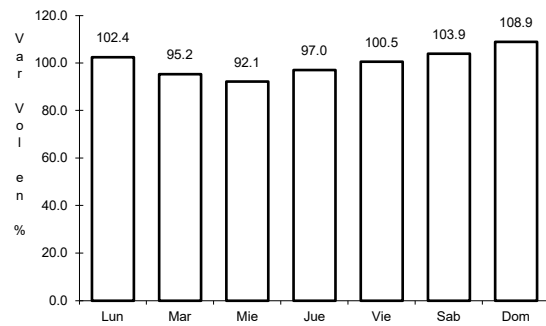
Tipo: 3

Sent: 0

35 CARR: Ramal a Santa Catarina

CLAVE: 03052

RUTA: BCS



Km: 0.00

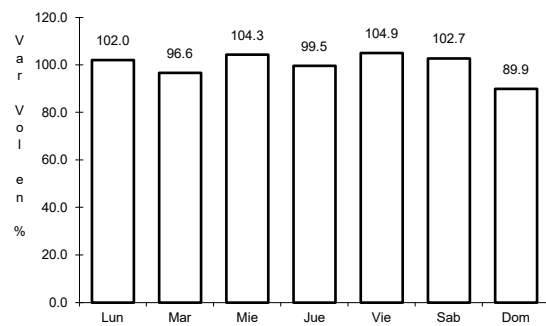
Tipo: 3

Sent: 0

36 CARR: Ramal a Bahía de Tortugas

CLAVE: 03397

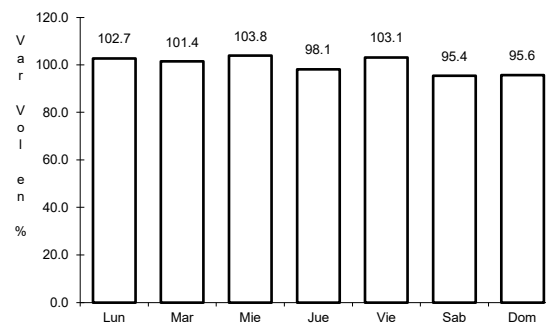
RUTA: MEX-001-BCS



Km: 0.00

Tipo: 3

Sent: 0



Km: 6.00

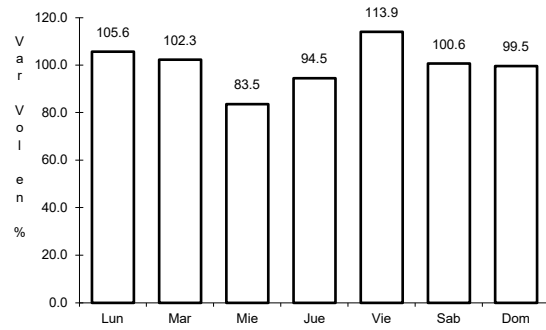
Tipo: 3

Sent: 0

37 CARR: Ramal a Ejido Ley Federal de Aguas Número Dos

CLAVE: 03050

RUTA: BCS-MEX-001



Km: 0.00

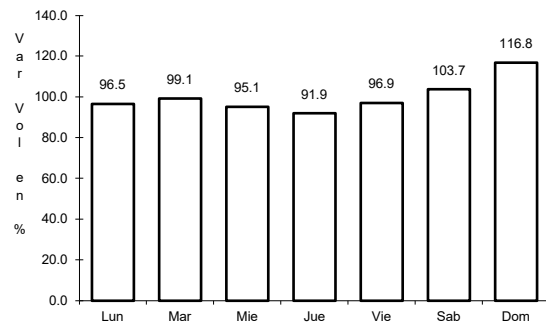
Tipo: 3

Sent: 0

38 CARR: Ramal a Ley Federal de Aguas Número Cinco

CLAVE: 03407

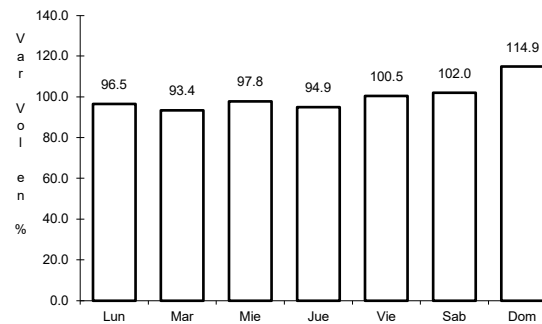
RUTA: BCS-MEX-001



Km: 0.00

Tipo: 3

Sent: 1



Km: 0.00

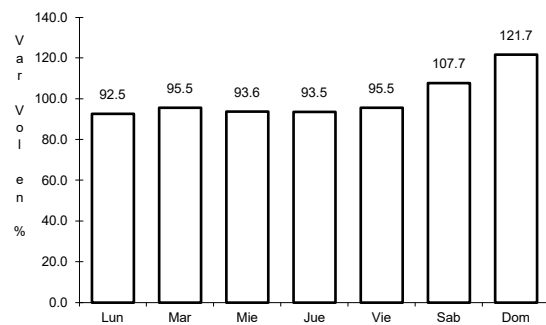
Tipo: 3

Sent: 2

39 CARR: Ramal a San Juan de La Costa

CLAVE: 03403

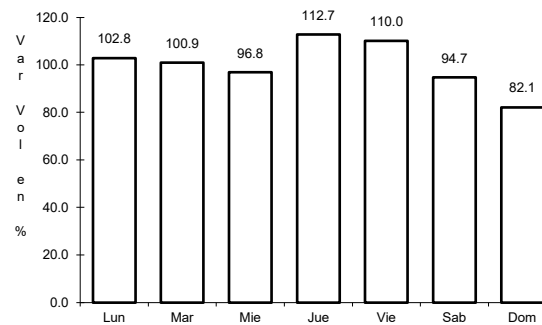
RUTA: BCS-163-MEX-001



Km: 0.00

Tipo: 3

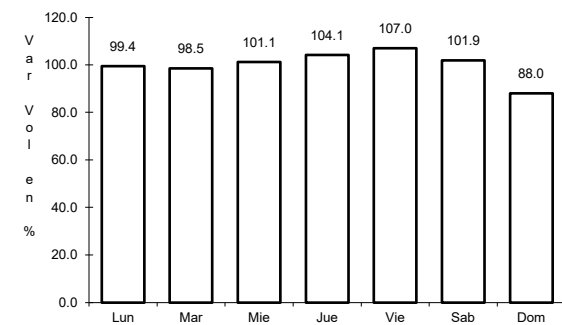
Sent: 0



Km: 23.00

Tipo: 3

Sent: 0



Km: 40.70

Tipo: 1

Sent: 0

