



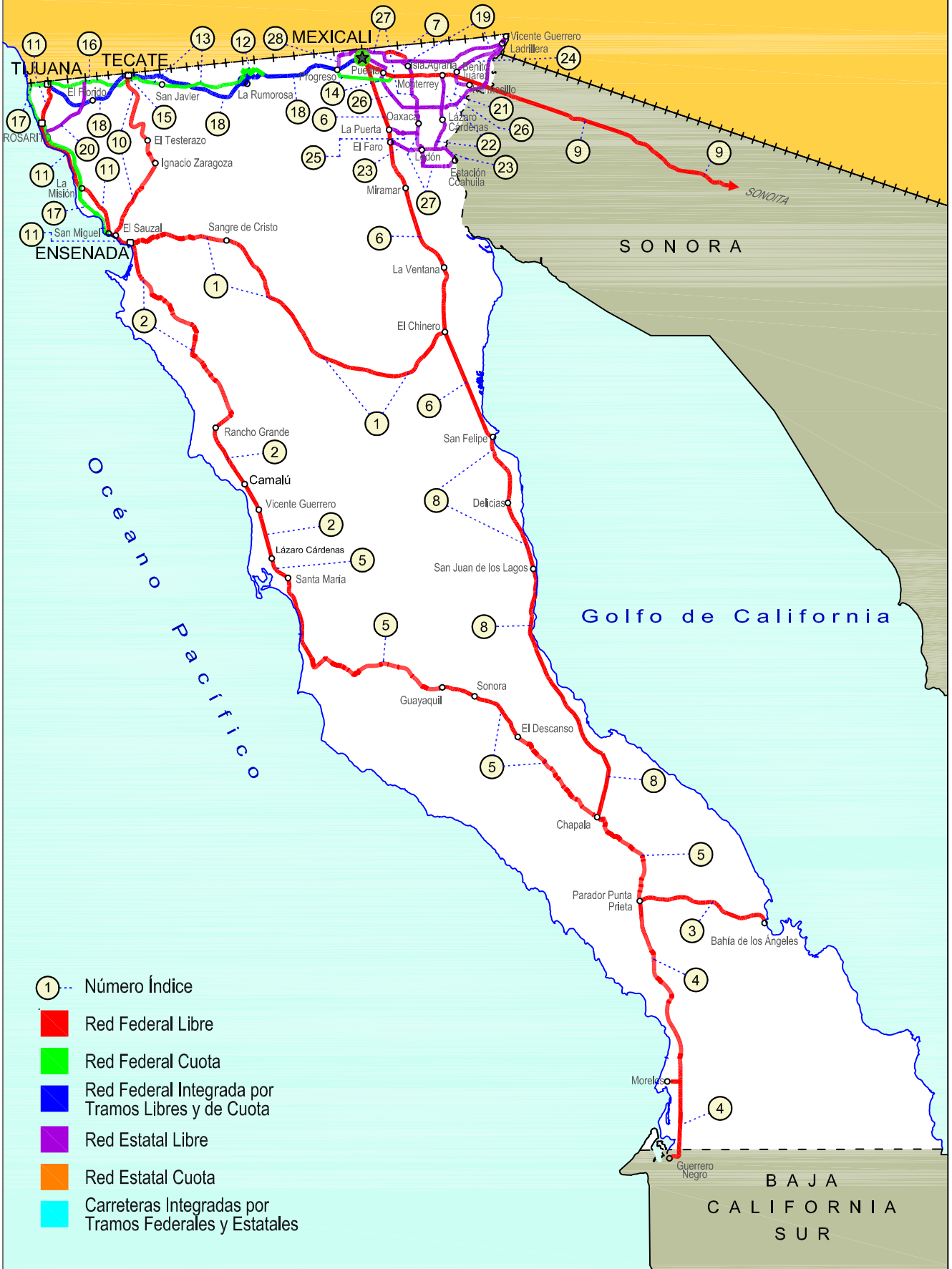
BAJA CALIFORNIA

NO. INDICE CARRETERA	RUTA
---RED FEDERAL LIBRE---	
1 Ensenada - El Chinero	MEX-003
2 Ensenada - Lázaro Cárdenas	MEX-001
3 Ent. Punta Prieta - Bahía de Los Ángeles	MEX-001
4 Ent. Punta Prieta - Guerrero Negro	MEX-001
5 Lázaro Cárdenas - Ent. Punta Prieta	MEX-001
6 Mexicali - San Felipe	MEX-005
7 Ramal a Aeropuerto de Mexicali	MEX-002
8 San Felipe - Chapala	MEX-005
9 Sonoma - Mexicali	MEX-002
10 Tecate - El Sauzal	MEX-003
11 Tijuana - Ensenada (Libre)	MEX-001
---RED FEDERAL DE CUOTA---	
12 El Centinela - La Rumorosa (Cuota)	MEX-002D
13 La Rumorosa - Tecate (Cuota)	MEX-002D
14 Libramiento de Mexicali (Cuota)	MEX-002D
15 Libramiento de Tecate (Cuota)	MEX-002D
16 Tecate - Tijuana (Cuota)	MEX-002D
17 Tijuana - Ensenada (Cuota)	MEX-001D
---RED FEDERAL INTEGRADA POR TRAMOS LIBRES Y DE CUOTA---	
18 Mexicali - Tijuana	MEX-002D-MEX
---RED ESTATAL LIBRE---	
19 Algodones - Ent. Islas Agrarias Grupo B	BC-008
20 Corredor Tijuana 2000	BC
21 Ejido Benito Juárez - Ejido Chiapas	BC-061
22 Ejido Monterrey - Mazón	BC-003
23 El Faro - Estación Coahuila	BC-004
24 Ent. Santa Rosa - Ent. Pachuca	BC-006
25 La Puerta - T. C. (Mexicali - Estación Coahuila)	BC-010
26 Mexicali - Algodones	BC-002
27 Mexicali - Estación Coahuila	BC-001
28 Mexicali - Progreso	BC-005

02 BAJA CALIFORNIA

SECRETARÍA DE COMUNICACIONES Y TRANSPORTES
DIRECCIÓN GENERAL DE SERVICIOS TÉCNICOS

ESTADOS UNIDOS DE NORTE AMÉRICA



BAJA CALIFORNIA

1 CARR: Ensenada - El Chinero

CLAVE: 02009

RUTA: MEX-003

AÑO: 2020

LUGAR	ESTACION				CLASIFICACION VEHICULAR EN PORCIENTO													COORDENADAS		
	KM	TE	SC	TDPA	M	A	B	C2	C3	T3S2	T3S3	T3S2R4	OTROS	A	B	C	K'	D	LATITUD	LONGITUD
Ensenada	0.00	3	0	8037	2.0	84.1	0.7	10.0	1.0	1.2	0.8	0.0	0.2	86.1	0.7	13.2	0.110	0.519	31.864848	-116.591328
El Tule	12.40	1	0	2004	1.1	77.4	0.7	14.3	1.7	2.7	2.0	0.0	0.1	78.5	0.7	20.8	0.125	0.504	31.890261	-116.502654
El Tule	12.40	3	0	1846	1.9	74.7	1.1	16.8	1.5	2.1	1.6	0.1	0.2	76.6	1.1	22.3	0.128	0.517	31.890264	-116.502655
Ojos Negros	38.50	1	0	1449	1.8	72.1	1.1	17.4	2.0	3.4	2.0	0.1	0.1	73.9	1.1	25.0	0.122	0.526	31.891208	-116.274945
San Salvador	60.50	1	0	631	1.8	79.2	1.4	11.2	2.0	2.9	1.1	0.1	0.3	81.0	1.4	17.6	0.109	0.504	31.831579	-116.060192
Héroes de La Independencia	93.00	3	0	569	1.2	78.0	1.4	9.8	1.5	6.4	0.9	0.3	0.5	79.2	1.4	19.4	0.111	0.503	31.610925	-115.889067
Leyes de Reforma	103.00	3	0	691	1.3	75.3	1.5	14.5	1.9	4.4	0.9	0.0	0.2	76.6	1.5	21.9	0.117	0.500	31.539808	-115.824139
Lázaro Cárdenas	122.00	3	0	633	1.5	75.4	2.0	11.9	1.6	6.1	1.2	0.0	0.3	76.9	2.0	21.1	0.103	0.501	31.404807	-115.722973
Francisco R. Serrano	137.50	3	0	412	1.8	72.0	2.0	12.6	2.1	7.7	1.1	0.3	0.4	73.8	2.0	24.2	0.143	0.508	31.332677	-115.541172
El Chinero	196.00	1	0	382	1.1	70.6	2.2	11.3	2.5	9.9	1.8	0.0	0.6	71.7	2.2	26.1	0.141	0.510	31.432731	-115.052723

2 CARR: Ensenada - Lázaro Cárdenas

CLAVE: 02098

RUTA: MEX-001

AÑO: 2020

LUGAR	ESTACION				CLASIFICACION VEHICULAR EN PORCIENTO													COORDENADAS		
	KM	TE	SC	TDPA	M	A	B	C2	C3	T3S2	T3S3	T3S2R4	OTROS	A	B	C	K'	D	LATITUD	LONGITUD
Ensenada	0.00	3	1	34758	1.0	87.8	0.5	7.1	0.5	1.3	1.3	0.1	0.4	88.8	0.5	10.7	0.083	0.503	31.862703	-116.607109
Ensenada	0.00	3	2	35234	1.0	87.8	0.5	7.1	0.5	1.3	1.3	0.1	0.4	88.8	0.5	10.7	0.081	0.503	31.862725	-116.606981
T. Der. Aeropuerto	13.50	3	1	21660	1.1	86.5	0.5	8.2	0.5	1.4	1.3	0.2	0.3	87.6	0.5	11.9	0.078	0.500	31.798571	-116.594438
T. Der. Aeropuerto	13.50	3	2	21662	1.1	86.7	0.5	8.0	0.5	1.4	1.3	0.2	0.3	87.8	0.5	11.7	0.081	0.500	31.798612	-116.594268
T. Der. La Bufadora	21.16	1	1	14604	1.1	84.9	0.8	9.4	0.8	2.3	0.5	0.0	0.2	86.0	0.8	13.2	0.083	0.504	31.728724	-116.577872
T. Der. La Bufadora	21.16	1	2	14353	1.1	84.7	0.8	9.6	0.8	2.3	0.5	0.0	0.2	85.8	0.8	13.4	0.085	0.504	31.728822	-116.577759
T. Der. La Bufadora	21.16	3	0	19511	1.0	79.4	1.0	13.5	1.2	3.0	0.4	0.2	0.3	80.4	1.0	18.6	0.092	0.501	31.728719	-116.577869
Cañón Buenavista	30.40	1	0	8126	1.0	79.2	1.1	13.4	1.2	3.0	0.5	0.3	0.3	80.2	1.1	18.7	0.104	0.501	31.669659	-116.519030
Cañón Buenavista	30.40	3	0	5238	2.3	73.5	1.6	14.3	1.6	5.3	0.6	0.4	0.4	75.8	1.6	22.6	0.114	0.500	31.669653	-116.519018
Santo Tomás	52.00	1	0	4521	0.9	69.6	1.9	15.2	1.5	9.3	0.7	0.5	0.4	70.5	1.9	27.6	0.113	0.502	31.554322	-116.409025
Misión San Vicente	90.00	1	0	3723	1.2	65.6	2.8	17.0	1.6	10.5	1.0	0.1	0.2	66.8	2.8	30.4	0.092	0.503	31.325597	-116.247240
El Salado	104.50	1	0	2924	1.1	71.6	2.6	13.1	1.7	8.7	1.0	0.1	0.1	72.7	2.6	24.7	0.093	0.507	31.222873	-116.164932
Punta Colonet	128.00	1	0	4253	1.2	71.7	3.1	11.8	1.9	8.6	1.0	0.7	0.0	72.9	3.1	24.0	0.091	0.514	31.065427	-116.208127
Punta Colonet	128.00	3	0	4543	1.2	72.0	3.6	12.3	1.4	7.3	1.0	0.7	0.5	73.2	3.6	23.2	0.092	0.526	31.065437	-116.208151
Camalú	159.00	1	0	6056	0.9	82.0	2.8	8.7	1.0	3.0	0.7	0.5	0.4	82.9	2.8	14.3	0.096	0.501	30.841438	-116.061890
Colonia Vicente Guerrero (Lázaro Cárdenas)	172.40	3	0	11906	0.5	83.6	2.9	9.1	0.9	2.3	0.4	0.1	0.2	84.1	2.9	13.0	0.091	0.500	30.728445	-115.990597
San Quintín	193.00	1	0	9361	0.8	84.3	2.7	8.9	0.7	1.9	0.4	0.3	0.0	85.1	2.7	12.2	0.095	0.508	30.556680	-115.940629
San Quintín	193.00	3	1	8746	0.3	88.6	1.7	7.4	0.4	1.2	0.3	0.0	0.1	88.9	1.7	9.4	0.131	0.502	30.556664	-115.940669
San Quintín	193.00	3	2	8822	0.3	88.8	1.7	7.3	0.3	1.2	0.3	0.0	0.1	89.1	1.7	9.2	0.138	0.502	30.556737	-115.940600
Lázaro Cárdenas	196.00																			

BAJA CALIFORNIA

3 CARR: Ent. Punta Prieta - Bahía de Los Ángeles

CLAVE: 02322

RUTA: MEX-001

AÑO: 2020

LUGAR	ESTACION				CLASIFICACION VEHICULAR EN PORCIENTO										COORDENADAS					
	KM	TE	SC	TDPA	M	A	B	C2	C3	T3S2	T3S3	T3S2R4	OTROS	A	B	C	K'	D	LATITUD	LONGITUD
Parador Punta Prieta	0.00	3	0	137	3.5	59.4	3.3	29.1	3.8	0.8	0.0	0.0	0.1	62.9	3.3	33.8	0.161	0.503	29.045365	-114.151056
Bahía de Los Ángeles	68.00	1	0	183	5.8	65.9	0.7	24.0	2.7	0.8	0.0	0.0	0.1	71.7	0.7	27.6	0.230	0.513	28.950021	-113.559803

4 CARR: Ent. Punta Prieta - Guerrero Negro

CLAVE: 00321

RUTA: MEX-001

AÑO: 2020

LUGAR	ESTACION				CLASIFICACION VEHICULAR EN PORCIENTO										COORDENADAS					
	KM	TE	SC	TDPA	M	A	B	C2	C3	T3S2	T3S3	T3S2R4	OTROS	A	B	C	K'	D	LATITUD	LONGITUD
Parador Punta Prieta	0.00	3	0	614	4.4	55.4	2.8	14.6	2.0	18.0	2.1	0.7	0.0	59.8	2.8	37.4	0.137	0.521	28.928494	-114.156706
Rosarito	50.60	3	0	816	4.2	56.0	2.8	14.3	2.1	17.5	2.3	0.8	0.0	60.2	2.8	37.0	0.141	0.516	28.636185	-114.020101
Tanatán	70.10	3	0	718	0.5	63.3	2.7	11.8	2.4	16.4	2.2	0.7	0.0	63.8	2.7	33.5	0.106	0.518	28.508485	-114.023923
Tampico	105.00	1	0	859	1.6	65.9	2.7	12.5	2.5	12.3	2.0	0.5	0.0	67.5	2.7	29.8	0.109	0.503	28.193505	-114.001480
Lim. Edos. Term. B.C. Ppia. B.C.S. (Paralelo 28)	128.56																			
Ent. Guerrero Negro	130.00	1	0	1566	1.0	74.8	1.5	9.3	1.7	10.2	1.0	0.5	0.0	75.8	1.5	22.7	0.094	0.522	27.967483	-114.013281

5 CARR: Lázaro Cárdenas - Ent. Punta Prieta

CLAVE: 02319

RUTA: MEX-001

AÑO: 2020

LUGAR	ESTACION				CLASIFICACION VEHICULAR EN PORCIENTO										COORDENADAS					
	KM	TE	SC	TDPA	M	A	B	C2	C3	T3S2	T3S3	T3S2R4	OTROS	A	B	C	K'	D	LATITUD	LONGITUD
Lázaro Cárdenas	0.00	3	0	9638	1.3	83.7	3.4	8.7	1.2	1.2	0.2	0.3	0.0	85.0	3.4	11.6	0.098	0.513	30.529331	-115.932140
T. Der. Ramal a Venustiano Carranza	14.50	1	0	2120	1.2	75.2	3.9	11.7	0.4	7.2	0.3	0.1	0.0	76.4	3.9	19.7	0.092	0.500	30.392060	-115.870024
Rosario de Arriba	53.70	1	0	1177	4.0	68.7	5.3	8.5	1.1	11.4	0.6	0.4	0.0	72.7	5.3	22.0	0.094	0.506	30.060532	-115.723330
Rosario de Arriba	53.70	3	0	1944	1.9	72.8	2.4	10.3	2.2	9.8	0.3	0.2	0.1	74.7	2.4	22.9	0.104	0.520	30.060532	-115.723329
T. Der. Emiliano Zapata	80.00	3	0	614	2.0	64.1	3.0	10.2	0.2	19.2	1.0	0.3	0.0	66.1	3.0	30.9	0.098	0.520	30.026710	-115.534860
San Agustín	140.00	1	0	581	2.7	57.8	2.8	13.0	2.1	19.9	1.2	0.5	0.0	60.5	2.8	36.7	0.095	0.531	29.921757	-114.976387
San Agustín	140.00	3	0	603	1.9	57.9	7.5	11.9	1.0	18.6	0.8	0.4	0.0	59.8	7.5	32.7	0.095	0.523	29.921770	-114.976377
San Luis	173.00	1	0	879	5.2	58.2	2.8	12.8	1.5	17.9	0.9	0.6	0.1	63.4	2.8	33.8	0.124	0.513	29.730595	-114.721229
Rancho Chapala	222.80	1	0	410	1.3	58.9	3.6	3.6	0.5	29.6	2.1	0.4	0.0	60.2	3.6	36.2	0.095	0.518	29.385149	-114.382458
Parador Punta Prieta	275.66	1	0	706	1.7	64.5	2.8	4.4	0.4	23.4	2.0	0.8	0.0	66.2	2.8	31.0	0.103	0.518	29.045100	-114.152768

6 CARR: Mexicali - San Felipe

CLAVE: 02096

RUTA: MEX-005

AÑO: 2020

LUGAR	ESTACION				CLASIFICACION VEHICULAR EN PORCIENTO										COORDENADAS					
	KM	TE	SC	TDPA	M	A	B	C2	C3	T3S2	T3S3	T3S2R4	OTROS	A	B	C	K'	D	LATITUD	LONGITUD
Mexicali	0.00	3	1	11240	0.4	84.3	1.1	7.7	2.4	2.8	0.9	0.2	0.2	84.7	1.1	14.2	0.098	0.507	32.612875	-115.439427
Mexicali	0.00	3	2	10943	0.4	84.3	1.1	7.7	2.4	2.8	0.9	0.2	0.2	84.7	1.1	14.2	0.107	0.507	32.612572	-115.438885

BAJA CALIFORNIA

6 CARR: Mexicali - San Felipe

CLAVE: 02096

RUTA: MEX-005

AÑO: 2020

LUGAR	ESTACION				CLASIFICACION VEHICULAR EN PORCIENTO										COORDENADAS					
	KM	TE	SC	TDPA	M	A	B	C2	C3	T3S2	T3S3	T3S2R4	OTROS	A	B	C	K'	D	LATITUD	LONGITUD
La Puerta	32.00	1	1	3798	0.8	82.7	0.9	9.9	1.5	1.3	1.3	0.8	0.8	83.5	0.9	15.6	0.113	0.508	32.337577	-115.331251
La Puerta	32.00	1	2	3679	0.7	82.2	0.9	10.2	1.6	1.5	1.2	0.8	0.9	82.9	0.9	16.2	0.103	0.508	32.337557	-115.331098
T. Izq. Estación Coahuila	39.00	1	1	2509	0.8	81.6	1.0	9.9	1.5	1.8	1.6	0.9	0.9	82.4	1.0	16.6	0.119	0.510	32.273412	-115.321998
T. Izq. Estación Coahuila	39.00	1	2	2607	0.9	81.1	1.0	9.8	1.7	1.9	1.6	1.0	1.0	82.0	1.0	17.0	0.110	0.510	32.273411	-115.321876
T. Izq. Estación Coahuila	39.00	3	0	2899	1.2	74.8	0.8	13.9	1.6	2.9	1.6	2.3	0.9	76.0	0.8	23.2	0.121	0.506	32.273214	-115.321754
El Chinero	141.00	1	0	1896	1.3	72.7	1.8	17.7	1.4	3.7	0.6	0.4	0.4	74.0	1.8	24.2	0.118	0.501	31.439352	-115.052679
El Chinero	141.00	3	0	1869	1.5	77.2	1.0	15.3	1.4	2.7	0.9	0.0	0.0	78.7	1.0	20.3	0.127	0.508	31.435331	-115.050822
San Felipe	189.60	1	1	2707	0.7	83.7	0.5	12.3	1.4	1.0	0.4	0.0	0.0	84.4	0.5	15.1	0.095	0.501	31.025797	-114.842944
San Felipe	189.60	1	2	2723	0.8	83.6	0.4	12.1	1.4	1.1	0.6	0.0	0.0	84.4	0.4	15.2	0.107	0.501	31.025512	-114.843063

7 CARR: Ramal a Aeropuerto de Mexicali

CLAVE: 02321

RUTA: MEX-002

AÑO: 2020

LUGAR	ESTACION				CLASIFICACION VEHICULAR EN PORCIENTO										COORDENADAS					
	KM	TE	SC	TDPA	M	A	B	C2	C3	T3S2	T3S3	T3S2R4	OTROS	A	B	C	K'	D	LATITUD	LONGITUD
T. C. Mexicali - Estación Coahuila	0.00	3	0	9634	0.7	85.7	0.3	8.1	1.9	3.1	0.1	0.1	0.0	86.4	0.3	13.3	0.096	0.511	32.652556	-115.350985
Aeropuerto	10.00	1	0	5272	1.1	87.2	0.2	9.4	0.7	1.2	0.1	0.1	0.0	88.3	0.2	11.5	0.086	0.508	32.627223	-115.250616
T. C. Algodones - Islas Agrarias Grupo B	12.10																			

8 CARR: San Felipe - Chapala

CLAVE: 02503

RUTA: MEX-005

AÑO: 2020

LUGAR	ESTACION				CLASIFICACION VEHICULAR EN PORCIENTO										COORDENADAS					
	KM	TE	SC	TDPA	M	A	B	C2	C3	T3S2	T3S3	T3S2R4	OTROS	A	B	C	K'	D	LATITUD	LONGITUD
San Felipe	0.00	3	1	1431	2.1	85.4	0.3	9.8	1.4	0.8	0.2	0.0	0.0	87.5	0.3	12.2	0.101	0.502	31.019727	-114.845012
San Felipe	0.00	3	2	1422	1.9	83.5	0.4	11.0	2.0	0.9	0.3	0.0	0.0	85.4	0.4	14.2	0.114	0.502	31.019724	-114.845013
Playa Curbina	75.46	3	0	354	3.9	77.1	1.2	15.1	1.3	1.1	0.3	0.0	0.0	81.0	1.2	17.8	0.150	0.548	30.362347	-114.643506
T. C. Lazaro Cárdenas - Parador Punta Prieta	213.00																			

9 CARR: Sonoita - Mexicali

CLAVE: 00081

RUTA: MEX-002

AÑO: 2020

LUGAR	ESTACION				CLASIFICACION VEHICULAR EN PORCIENTO										COORDENADAS					
	KM	TE	SC	TDPA	M	A	B	C2	C3	T3S2	T3S3	T3S2R4	OTROS	A	B	C	K'	D	LATITUD	LONGITUD
Sonoita	0.00	3	0	3940	1.8	46.5	6.5	7.7	2.3	23.4	3.2	8.3	0.3	48.3	6.5	45.2	0.147	0.529	31.863376	-112.848148
Los Vidrios	58.75	3	0	3526	5.5	39.5	6.8	6.0	2.6	27.1	3.8	7.3	1.4	45.0	6.8	48.2	0.146	0.531	32.026690	-113.421672
San Luis Río Colorado	191.80	1	0	3739	4.4	47.8	6.7	7.5	2.5	20.4	3.1	6.9	0.7	52.2	6.7	41.1	0.171	0.538	32.473966	-114.749565
San Luis Río Colorado	191.80	3	1	9099	0.5	80.7	1.8	8.7	0.5	5.1	0.8	1.7	0.2	81.2	1.8	17.0	0.107	0.502	32.473967	-114.749564

BAJA CALIFORNIA

9 CARR: Sonoita - Mexicali

CLAVE: 00081

RUTA: MEX-002

AÑO: 2020

LUGAR	ESTACION				CLASIFICACION VEHICULAR EN PORCIENTO														COORDENADAS	
	KM	TE	SC	TDPA	M	A	B	C2	C3	T3S2	T3S3	T3S2R4	OTROS	A	B	C	K'	D	LATITUD	LONGITUD
San Luis Río Colorado	191.80	3	2	9030	0.5	80.7	1.8	8.7	0.5	5.1	0.8	1.7	0.2	81.2	1.8	17.0	0.098	0.502	32.473875	-114.749600
Lim. Edos. Term. Son. Ppia. B.C.	203.69																			
X. C. Mexicali - Algodones	206.78	1	1	10543	0.6	80.7	1.5	8.9	0.6	5.1	0.8	1.6	0.2	81.3	1.5	17.2	0.098	0.504	32.502481	-114.843922
X. C. Mexicali - Algodones	206.78	1	2	10709	0.5	80.7	1.5	8.9	0.6	5.1	0.8	1.6	0.3	81.2	1.5	17.3	0.089	0.504	32.502361	-114.843917
X. C. Mexicali - Algodones	206.78	3	1	7850	0.4	78.0	2.4	7.6	0.8	7.4	1.0	2.0	0.4	78.4	2.4	19.2	0.105	0.501	32.502484	-114.843931
X. C. Mexicali - Algodones	206.78	3	2	7882	0.4	78.1	2.3	7.7	0.8	7.4	0.9	2.0	0.4	78.5	2.3	19.2	0.095	0.501	32.502362	-114.843927
T. Izq. Ejido Hermosillo	214.80	3	1	7716	0.5	75.9	2.9	7.3	0.8	8.7	1.2	2.2	0.5	76.4	2.9	20.7	0.098	0.500	32.524468	-114.918329
T. Izq. Ejido Hermosillo	214.80	3	2	7705	0.3	77.0	2.4	8.2	0.8	7.9	1.0	2.0	0.4	77.3	2.4	20.3	0.090	0.500	32.524330	-114.918351
T. Izq. Ejido Tehuantepec	223.83	3	1	8533	0.7	78.8	2.8	6.0	0.9	7.8	0.9	1.6	0.5	79.5	2.8	17.7	0.092	0.515	32.555632	-115.023626
T. Izq. Ejido Tehuantepec	223.83	3	2	8035	0.8	78.2	3.0	6.3	1.0	8.0	0.6	1.7	0.4	79.0	3.0	18.0	0.096	0.515	32.555531	-115.023721
Ejido Monterrey	228.63	3	1	8936	1.0	78.9	3.5	4.8	1.1	7.4	1.1	1.6	0.6	79.9	3.5	16.6	0.092	0.514	32.551918	-115.074659
Ejido Monterrey	228.63	3	2	8447	1.2	77.9	3.6	5.8	1.2	7.2	0.7	1.8	0.6	79.1	3.6	17.3	0.092	0.514	32.551802	-115.074649
X. C. Mexicali - Estación Coahuila	242.17	1	1	9266	0.9	79.5	3.4	4.8	1.2	7.1	0.9	1.6	0.6	80.4	3.4	16.2	0.094	0.508	32.552923	-115.215028
X. C. Mexicali - Estación Coahuila	242.17	1	2	9556	1.2	77.3	3.6	5.6	1.3	7.7	1.0	1.7	0.6	78.5	3.6	17.9	0.093	0.508	32.552818	-115.215020
T. Izq. Libramiento de Mexicali (Cuota)	249.32	1	1	10427	0.5	77.5	1.9	9.3	0.9	6.4	1.1	2.0	0.4	78.0	1.9	20.1	0.109	0.501	32.556572	-115.293600
T. Izq. Libramiento de Mexicali (Cuota)	249.32	1	2	10466	0.5	77.6	1.9	9.3	0.9	6.4	1.1	2.0	0.3	78.1	1.9	20.0	0.120	0.501	32.556452	-115.293695
X. C. Mexicali - Algodones	256.47	1	1	11578	0.5	83.0	1.3	10.0	0.9	2.7	0.5	0.8	0.3	83.5	1.3	15.2	0.096	0.500	32.572865	-115.346501
X. C. Mexicali - Algodones	256.47	1	2	11582	0.5	82.9	1.3	10.1	0.9	2.7	0.5	0.8	0.3	83.4	1.3	15.3	0.107	0.500	32.572374	-115.346556
T. C. Mexicali - San Felipe	265.12																			

10 CARR: Tecate - El Sauzal

CLAVE: 02097

RUTA: MEX-003

AÑO: 2020

LUGAR	ESTACION				CLASIFICACION VEHICULAR EN PORCIENTO														COORDENADAS	
	KM	TE	SC	TDPA	M	A	B	C2	C3	T3S2	T3S3	T3S2R4	OTROS	A	B	C	K'	D	LATITUD	LONGITUD
Tecate	0.00	3	0	8284	1.1	83.5	1.1	10.1	1.0	1.1	1.0	0.8	0.3	84.6	1.1	14.3	0.111	0.503	32.563633	-116.625702
T. Der. Valle de Las Palmas	27.80	1	0	3362	1.9	79.0	1.6	10.7	1.2	3.3	1.3	0.8	0.2	80.9	1.6	17.5	0.115	0.502	32.366495	-116.614929
El Tezterazo	48.80	3	0	2629	2.0	79.7	1.4	9.8	1.5	3.0	1.0	1.2	0.4	81.7	1.4	16.9	0.130	0.510	32.295957	-116.533742
T. Izq. San Marcos	63.50	1	0	2398	3.0	77.5	1.4	11.9	1.3	2.3	1.1	1.2	0.3	80.5	1.4	18.1	0.130	0.512	32.194217	-116.487986
El Porvenir Guadalupe	74.80	3	0	4336	0.8	83.1	1.1	10.2	0.8	1.7	1.0	1.1	0.2	83.9	1.1	15.0	0.123	0.515	32.101028	-116.563257
Las Palmas	85.00	1	0	4305	1.6	86.1	1.4	7.2	1.0	1.3	0.6	0.6	0.2	87.7	1.4	10.9	0.129	0.510	32.028244	-116.617001
San Antonio de Las Minas	93.90	1	1	3885	1.4	85.9	0.8	8.2	0.9	1.2	0.3	1.0	0.3	87.3	0.8	11.9	0.137	0.500	31.972564	-116.656449
San Antonio de Las Minas	93.90	1	2	3882	1.4	86.0	0.8	8.1	0.8	1.3	0.3	1.0	0.3	87.4	0.8	11.8	0.133	0.500	31.972499	-116.656347
El Sauzal	104.53	1	1	4176	1.3	83.9	0.9	9.6	0.5	1.8	0.9	0.7	0.4	85.2	0.9	13.9	0.115	0.508	31.899303	-116.705645
El Sauzal	104.53	1	2	4308	1.3	83.9	0.9	9.7	0.5	1.8	0.8	0.7	0.4	85.2	0.9	13.9	0.117	0.508	31.899293	-116.705591

BAJA CALIFORNIA

11 CARR: Tijuana - Ensenada (Libre)

CLAVE: 02099

RUTA: MEX-001

AÑO: 2020

LUGAR	ESTACION				CLASIFICACION VEHICULAR EN PORCIENTO										COORDENADAS					
	KM	TE	SC	TDPA	M	A	B	C2	C3	T3S2	T3S3	T3S2R4	OTROS	A	B	C	K'	D	LATITUD	LONGITUD
Tijuana	0.00																			
X. C. Tijuana - San Miguel (Cuota)	22.00	1	1	20798	1.0	91.1	0.5	5.2	0.6	0.9	0.4	0.2	0.1	92.1	0.5	7.4	0.089	0.525	32.375676	-117.058168
X. C. Tijuana - San Miguel (Cuota)	22.00	1	2	22949	1.0	91.3	0.5	5.1	0.6	0.9	0.3	0.2	0.1	92.3	0.5	7.2	0.085	0.525	32.375381	-117.058181
Rosarito	25.94	1	1	12297	1.4	91.9	0.3	4.1	0.5	0.8	0.5	0.2	0.3	93.3	0.3	6.4	0.094	0.543	32.350842	-117.060069
Rosarito	25.94	1	2	14590	1.4	92.1	0.3	4.1	0.4	0.8	0.6	0.1	0.2	93.5	0.3	6.2	0.091	0.543	32.350829	-117.059857
Rosarito	25.94	3	1	8535	1.1	91.7	0.5	4.7	0.4	0.7	0.4	0.3	0.2	92.8	0.5	6.7	0.096	0.521	32.350837	-117.060069
Rosarito	25.94	3	2	9291	1.1	91.6	0.5	4.7	0.4	0.7	0.5	0.3	0.2	92.7	0.5	6.8	0.093	0.521	32.350826	-117.059856
Complejo la Paloma	28.64																			
T. Izq. Aut. Tijuana - San Miguel	46.12	1	1	5641	2.4	84.8	0.7	9.4	0.7	1.2	0.3	0.3	0.2	87.2	0.7	12.1	0.124	0.580	32.227311	-116.920384
T. Izq. Aut. Tijuana - San Miguel	46.12	1	2	4091	1.7	86.7	0.5	9.1	0.6	0.5	0.3	0.3	0.3	88.4	0.5	11.1	0.101	0.580	32.227379	-116.920245
Población Plaza Santa María	56.98	1	0	1519	3.3	93.3	0.3	1.7	1.1	0.2	0.0	0.1	0.0	96.6	0.3	3.1	0.173	0.518	32.139661	-116.888813
La Misión	64.98	1	0	3286	1.7	94.6	0.4	2.4	0.5	0.2	0.1	0.1	0.0	96.3	0.4	3.3	0.144	0.500	32.093619	-116.851034
T. Izq. Colonia Guadalupe	82.90	1	0	1764	2.5	93.0	0.6	3.0	0.5	0.2	0.1	0.1	0.0	95.5	0.6	3.9	0.198	0.529	31.987353	-116.745267
Ent. San Miguel	95.80	1	0	1372	3.3	91.2	0.6	3.7	0.7	0.3	0.1	0.1	0.0	94.5	0.6	4.9	0.124	0.528	31.903732	-116.728462
El Sauzal	102.00	1	1	7330	1.1	82.0	2.1	3.3	1.6	7.5	0.3	1.7	0.4	83.1	2.1	14.8	0.120	0.504	31.892192	-116.694797
El Sauzal	102.00	1	2	7459	1.3	83.3	1.7	2.7	1.8	6.7	0.5	1.6	0.4	84.6	1.7	13.7	0.101	0.504	31.892284	-116.694703
El Sauzal	102.00	3	1	19719	0.8	85.3	0.8	8.5	0.6	3.2	0.3	0.4	0.1	86.1	0.8	13.1	0.093	0.510	31.892189	-116.694794
El Sauzal	102.00	3	2	18949	0.8	85.2	0.8	8.5	0.7	3.2	0.3	0.4	0.1	86.0	0.8	13.2	0.074	0.510	31.892280	-116.694697
Ensenada	110.00																			

12 CARR: El Centinela - La Rumorosa (Cuota)

CLAVE: 02011

RUTA: MEX-002D

AÑO: 2020

LUGAR	ESTACION				CLASIFICACION VEHICULAR EN PORCIENTO										COORDENADAS					
	KM	TE	SC	TDPA	M	A	B	C2	C3	T3S2	T3S3	T3S2R4	OTROS	A	B	C	K'	D	LATITUD	LONGITUD
Ent. El Centinela	20.30																			
Laguna Salada	25.00	1	1	4730	1.1	73.2	3.2	8.8	1.1	8.0	1.7	2.2	0.7	74.3	3.2	22.5	0.103	0.525	32.576387	-115.744824
Laguna Salada	25.00	1	2	4287	1.0	73.6	3.3	8.8	1.1	7.6	1.6	2.2	0.8	74.6	3.3	22.1	0.093	0.525	32.576289	-115.744811
La Rumorosa	67.60	1	1	1815	1.4	72.8	1.3	10.1	1.5	9.4	2.4	0.8	0.3	74.2	1.3	24.5	0.094	0.540	32.523188	-116.061367
La Rumorosa	67.60	1	2	2127	1.5	72.7	1.2	10.9	1.3	9.0	2.2	0.7	0.5	74.2	1.2	24.6	0.120	0.540	32.523114	-116.061322

13 CARR: La Rumorosa - Tecate (Cuota)

CLAVE: 02011

RUTA: MEX-002D

AÑO: 2020

LUGAR	ESTACION				CLASIFICACION VEHICULAR EN PORCIENTO										COORDENADAS					
	KM	TE	SC	TDPA	M	A	B	C2	C3	T3S2	T3S3	T3S2R4	OTROS	A	B	C	K'	D	LATITUD	LONGITUD
La Rumorosa	62.00	3	1	3805	1.2	71.8	5.1	3.0	0.9	12.2	1.3	3.7	0.8	73.0	5.1	21.9	0.117	0.516	32.560168	-116.047524

BAJA CALIFORNIA

13 CARR: La Rumorosa - Tecate (Cuota)

CLAVE: 02011

RUTA: MEX-002D

AÑO: 2020

LUGAR	ESTACION				CLASIFICACION VEHICULAR EN PORCIENTO												COORDENADAS			
	KM	TE	SC	TDPA	M	A	B	C2	C3	T3S2	T3S3	T3S2R4	OTROS	A	B	C	K'	D	LATITUD	LONGITUD
La Rumorosa	62.00	3	2	4059	1.0	74.9	4.7	3.0	0.8	11.0	1.3	2.8	0.5	75.9	4.7	19.4	0.091	0.516	32.559415	-116.046707
Plaza de Cobro El Hongo	92.00	1	1	3505	0.6	69.0	4.2	7.7	1.2	11.4	1.5	3.7	0.7	69.6	4.2	26.2	0.104	0.503	32.521903	-116.319921
Plaza de Cobro El Hongo	92.00	1	2	3467	0.5	65.9	4.5	8.3	1.1	13.1	1.7	4.2	0.7	66.4	4.5	29.1	0.112	0.503	32.521747	-116.319971
Plaza de Cobro El Hongo	92.00	2	1	3341	0.3	68.4	3.4	3.7	1.6	15.6	0.8	5.3	0.9	68.7	3.4	27.9	0.087	0.500	32.521843	-116.320010
Plaza de Cobro El Hongo	92.00	2	2	3341	0.3	68.4	3.4	3.7	1.6	15.6	0.8	5.3	0.9	68.7	3.4	27.9	0.087	0.500	32.521843	-116.320010
Plaza de Cobro El Hongo	92.00	3	1	3618	0.5	69.2	4.1	7.2	1.1	11.9	1.5	3.8	0.7	69.7	4.1	26.2	0.104	0.503	32.521901	-116.319929
Plaza de Cobro El Hongo	92.00	3	2	3580	0.5	65.2	4.4	8.7	1.1	13.5	1.7	4.1	0.8	65.7	4.4	29.9	0.115	0.503	32.521748	-116.319973
T. Der. Mexicali (1er. Acceso)	118.00	3	1	3463	2.1	74.6	5.6	2.8	1.2	8.9	1.3	2.7	0.8	76.7	5.6	17.7	0.126	0.536	32.561909	-116.577623
T. Der. Mexicali (1er. Acceso)	118.00	3	2	4004	2.3	73.1	6.0	3.3	1.3	9.7	1.1	2.5	0.7	75.4	6.0	18.6	0.103	0.536	32.561278	-116.576585
X. C. Tecate - El Sauzal	122.85	3	1	3831	2.8	76.0	5.6	3.1	1.5	6.0	1.3	2.9	0.8	78.8	5.6	15.6	0.095	0.549	32.551285	-116.623121
X. C. Tecate - El Sauzal	122.85	3	2	4660	2.5	76.9	4.4	2.9	2.0	5.8	1.4	3.2	0.9	79.4	4.4	16.2	0.073	0.549	32.551103	-116.623189
T. C. Mexicali - Tijuana (Libre)	130.60																			

14 CARR: Libramiento de Mexicali (Cuota)

CLAVE: 02319

RUTA: MEX-002D

AÑO: 2020

LUGAR	ESTACION				CLASIFICACION VEHICULAR EN PORCIENTO												COORDENADAS			
	KM	TE	SC	TDPA	M	A	B	C2	C3	T3S2	T3S3	T3S2R4	OTROS	A	B	C	K'	D	LATITUD	LONGITUD
T. C. Sonoyta - Mexicali	0.00	3	0	4106	1.8	54.5	3.6	7.8	3.0	18.8	2.9	6.7	0.9	56.3	3.6	40.1	0.077	0.504	32.556467	-115.293736
T. C. Mexicali - Tijuana	40.60	1	0	2486	4.4	44.5	3.2	8.0	3.2	24.9	3.3	6.6	1.9	48.9	3.2	47.9	0.083	0.533	32.595129	-115.684749

15 CARR: Libramiento de Tecate (Cuota)

CLAVE: 02082

RUTA: MEX-002D

AÑO: 2020

LUGAR	ESTACION				CLASIFICACION VEHICULAR EN PORCIENTO												COORDENADAS			
	KM	TE	SC	TDPA	M	A	B	C2	C3	T3S2	T3S3	T3S2R4	OTROS	A	B	C	K'	D	LATITUD	LONGITUD
T. C. Mexicali - Tijuana (Libre) Oriente	118.35																			
Plaza de Cobro Tecate	130.50	2	1	6219	0.4	76.7	1.1	4.2	1.7	11.5	0.8	2.9	0.7	77.1	1.1	21.8	0.091	0.500	32.545717	-116.852059
Plaza de Cobro Tecate	130.50	2	2	6219	0.4	76.7	1.1	4.2	1.7	11.5	0.8	2.9	0.7	77.1	1.1	21.8	0.091	0.500	32.545717	-116.852059
T. C. Mexicali - Tijuana (Libre) Poniente	130.60																			

16 CARR: Tecate - Tijuana (Cuota)

CLAVE: 02011

RUTA: MEX-002D

AÑO: 2020

LUGAR	ESTACION				CLASIFICACION VEHICULAR EN PORCIENTO												COORDENADAS			
	KM	TE	SC	TDPA	M	A	B	C2	C3	T3S2	T3S3	T3S2R4	OTROS	A	B	C	K'	D	LATITUD	LONGITUD
T. C. Mexicali - Tijuana (Libre)	130.60																			
Plaza de Cobro Tijuana	147.60	1	1	4308	0.6	71.7	3.4	4.6	1.4	14.2	1.8	2.0	0.3	72.3	3.4	24.3	0.101	0.509	32.545840	-116.852240

BAJA CALIFORNIA

16 CARR: Tecate - Tijuana (Cuota)

CLAVE: 02011

RUTA: MEX-002D

AÑO: 2020

LUGAR	ESTACION				CLASIFICACION VEHICULAR EN PORCIENTO										COORDENADAS					
	KM	TE	SC	TDPA	M	A	B	C2	C3	T3S2	T3S3	T3S2R4	OTROS	A	B	C	K'	D	LATITUD	LONGITUD
Plaza de Cobro Tijuana	147.60	1	2	4160	0.7	71.5	3.5	4.6	1.3	14.3	1.8	2.0	0.3	72.2	3.5	24.3	0.096	0.509	32.545692	-116.852007
Plaza de Cobro Tijuana	147.60	2	1	3802	0.4	72.4	1.3	4.6	1.9	14.4	0.8	3.5	0.7	72.8	1.3	25.9	0.091	0.500	32.545717	-116.852059
Plaza de Cobro Tijuana	147.60	2	2	3802	0.4	72.4	1.3	4.6	1.9	14.4	0.8	3.5	0.7	72.8	1.3	25.9	0.091	0.500	32.545717	-116.852059
Plaza de Cobro Tijuana	147.60	3	1	20977	0.9	84.0	2.0	6.0	1.1	4.6	0.9	0.4	0.1	84.9	2.0	13.1	0.098	0.511	32.545840	-116.852241
Plaza de Cobro Tijuana	147.60	3	2	20096	1.0	83.6	2.1	6.1	1.1	4.7	0.9	0.4	0.1	84.6	2.1	13.3	0.143	0.511	32.545689	-116.852010
Termina Autopista Principia Tijuana	148.15																			

17 CARR: Tijuana - Ensenada (Cuota)

CLAVE: 02100

RUTA: MEX-001D

AÑO: 2020

LUGAR	ESTACION				CLASIFICACION VEHICULAR EN PORCIENTO										COORDENADAS					
	KM	TE	SC	TDPA	M	A	B	C2	C3	T3S2	T3S3	T3S2R4	OTROS	A	B	C	K'	D	LATITUD	LONGITUD
Tijuana	0.00																			
T. Der. Playas de Tijuana	7.50	3	1	7095	0.8	87.0	0.2	10.4	0.5	0.4	0.2	0.3	0.2	87.8	0.2	12.0	0.125	0.521	32.533244	-117.108528
T. Der. Playas de Tijuana	7.50	3	2	6522	0.7	87.1	0.2	10.5	0.7	0.3	0.2	0.1	0.2	87.8	0.2	12.0	0.107	0.521	32.533224	-117.108399
Plaza de Cobro Playas de Tijuana	9.70	2	1	7668	0.9	97.8	0.3	0.4	0.3	0.3	0.0	0.0	0.0	98.7	0.3	1.0	0.100	0.500	32.514051	-117.109566
Plaza de Cobro Playas de Tijuana	9.70	2	2	7668	0.9	97.8	0.3	0.4	0.3	0.3	0.0	0.0	0.0	98.7	0.3	1.0	0.100	0.500	32.514051	-117.109566
T. Izq. La Joya	14.50	3	1	6948	0.4	97.1	0.3	0.4	0.7	0.3	0.3	0.3	0.2	97.5	0.3	2.2	0.102	0.513	32.484300	-117.121809
T. Izq. La Joya	14.50	3	2	6585	0.4	97.8	0.2	0.3	0.5	0.2	0.2	0.2	0.2	98.2	0.2	1.6	0.094	0.513	32.484318	-117.121701
San Antonio Norte	17.80	1	1	6328	0.4	96.8	0.3	0.5	0.6	0.3	0.4	0.4	0.3	97.2	0.3	2.5	0.115	0.501	32.456501	-117.112388
San Antonio Norte	17.80	1	2	6309	0.4	97.4	0.2	0.4	0.6	0.2	0.3	0.2	0.3	97.8	0.2	2.0	0.131	0.501	32.456525	-117.112322
San Antonio del Mar	19.30	1	1	7878	0.4	97.7	0.3	0.6	0.4	0.3	0.1	0.1	0.1	98.1	0.3	1.6	0.124	0.511	32.444706	-117.102772
San Antonio del Mar	19.30	1	2	7538	0.4	97.4	0.3	0.5	0.4	0.4	0.2	0.2	0.2	97.8	0.3	1.9	0.153	0.511	32.444759	-117.102663
Brisas del Mar	22.00	1	1	7722	0.6	97.1	0.2	0.6	0.3	0.3	0.3	0.3	0.3	97.7	0.2	2.1	0.107	0.506	32.422753	-117.095662
Brisas del Mar	22.00	1	2	7536	0.5	97.8	0.2	0.5	0.2	0.2	0.2	0.2	0.2	98.3	0.2	1.5	0.088	0.506	32.422784	-117.095563
Baja Malibu	22.50	3	1	6347	0.7	96.7	0.3	0.7	0.3	0.4	0.3	0.3	0.3	97.4	0.3	2.3	0.100	0.519	32.417807	-117.094391
Baja Malibu	22.50	3	2	6855	0.5	97.9	0.2	0.4	0.2	0.2	0.2	0.2	0.2	98.4	0.2	1.4	0.081	0.519	32.417822	-117.094312
T. Izq. Rancho del Mar	24.60	1	1	9948	0.5	97.8	0.2	0.5	0.2	0.2	0.2	0.2	0.2	98.3	0.2	1.5	0.125	0.529	32.399705	-117.089423
T. Izq. Rancho del Mar	24.60	1	2	11189	0.5	98.3	0.2	0.5	0.1	0.1	0.1	0.1	0.1	98.8	0.2	1.0	0.096	0.529	32.399747	-117.089315
T. Izq. Rancho del Mar	24.60	3	1	6427	1.2	95.3	0.4	1.1	0.8	0.5	0.2	0.3	0.2	96.5	0.4	3.1	0.122	0.534	32.399702	-117.089419
T. Izq. Rancho del Mar	24.60	3	2	7354	1.2	95.2	0.4	1.1	0.8	0.5	0.3	0.3	0.2	96.4	0.4	3.2	0.099	0.534	32.399744	-117.089315
X. C. Tijuana - Ensenada	29.50	1	1	9029	0.7	90.8	0.2	7.4	0.5	0.3	0.1	0.0	0.0	91.5	0.2	8.3	0.101	0.503	32.375557	-117.058225
X. C. Tijuana - Ensenada	29.50	1	2	9153	0.7	91.1	0.2	7.0	0.5	0.3	0.1	0.0	0.1	91.8	0.2	8.0	0.129	0.503	32.375563	-117.058113
X. C. Tijuana - Ensenada	29.50	3	1	14209	1.0	88.0	0.6	8.1	0.7	1.2	0.2	0.1	0.1	89.0	0.6	10.4	0.093	0.504	32.375552	-117.058229
X. C. Tijuana - Ensenada	29.50	3	2	14457	0.9	87.7	0.6	8.5	0.7	1.2	0.2	0.1	0.1	88.6	0.6	10.8	0.083	0.504	32.375556	-117.058114
T. Izq. Rosarito	30.60	3	1	17047	0.8	89.1	0.6	7.4	0.6	1.1	0.2	0.1	0.1	89.9	0.6	9.5	0.092	0.502	32.365474	-117.056868

BAJA CALIFORNIA

17 CARR: Tijuana - Ensenada (Cuota)

CLAVE: 02100

RUTA: MEX-001D

AÑO: 2020

LUGAR	ESTACION				CLASIFICACION VEHICULAR EN PORCIENTO										COORDENADAS					
	KM	TE	SC	TDPA	M	A	B	C2	C3	T3S2	T3S3	T3S2R4	OTROS	A	B	C	K'	D	LATITUD	LONGITUD
T. Izq. Rosarito	30.60	3	2	17211	0.7	88.1	0.6	8.3	0.7	1.2	0.2	0.1	0.1	88.8	0.6	10.6	0.084	0.502	32.365489	-117.056755
Plaza de Cobro Rosarito	35.43	2	1	4981	0.7	91.8	1.1	1.9	0.5	3.0	0.2	0.7	0.1	92.5	1.1	6.4	0.100	0.500	32.311096	-117.044403
Plaza de Cobro Rosarito	35.43	2	2	4981	0.7	91.8	1.1	1.9	0.5	3.0	0.2	0.7	0.1	92.5	1.1	6.4	0.100	0.500	32.311096	-117.044403
T. Izq. Corredor Tijuana 2000	40.00	3	1	4868	1.1	83.8	2.1	2.7	1.0	7.2	0.5	1.4	0.2	84.9	2.1	13.0	0.145	0.527	32.285132	-117.031026
T. Izq. Corredor Tijuana 2000	40.00	3	2	5435	1.2	84.7	2.1	2.8	0.9	6.3	0.6	1.2	0.2	85.9	2.1	12.0	0.163	0.527	32.285173	-117.030937
T. Der. Puerto Nuevo	49.27	3	1	6092	1.6	85.4	2.5	2.9	0.8	5.1	0.4	1.0	0.3	87.0	2.5	10.5	0.119	0.504	32.251526	-116.947366
T. Der. Puerto Nuevo	49.27	3	2	6197	1.7	84.6	2.1	2.7	0.9	6.0	0.5	1.2	0.3	86.3	2.1	11.6	0.144	0.504	32.251659	-116.947259
T. Der. Cantamar	53.00	3	1	5983	1.3	84.8	2.3	3.1	0.9	5.7	0.4	1.2	0.3	86.1	2.3	11.6	0.134	0.501	32.227405	-116.919668
T. Der. Cantamar	53.00	3	2	5952	1.1	84.8	2.0	3.3	0.9	5.9	0.5	1.3	0.2	85.9	2.0	12.1	0.151	0.501	32.227455	-116.919477
T. Izq. El Descanso	55.40	3	1	5823	1.2	85.4	1.8	3.2	0.9	5.5	0.6	1.2	0.2	86.6	1.8	11.6	0.133	0.506	32.209171	-116.910583
T. Izq. El Descanso	55.40	3	2	5972	1.1	85.2	2.0	3.2	0.9	5.7	0.5	1.2	0.2	86.3	2.0	11.7	0.151	0.506	32.209226	-116.910452
T. Der. Campo López	58.30	1	1	5720	1.5	84.2	1.8	3.5	0.9	6.1	0.6	1.2	0.2	85.7	1.8	12.5	0.135	0.502	32.181602	-116.908277
T. Der. Campo López	58.30	1	2	5665	1.5	84.4	1.8	3.2	0.9	6.0	0.6	1.4	0.2	85.9	1.8	12.3	0.153	0.502	32.181664	-116.908100
T. Der. La Misión	66.44	3	1	5736	1.1	81.9	1.6	7.2	0.9	5.7	0.6	0.8	0.2	83.0	1.6	15.4	0.122	0.503	32.119845	-116.884160
T. Der. La Misión	66.44	3	2	5666	1.3	82.1	1.5	7.1	0.8	5.6	0.5	0.9	0.2	83.4	1.5	15.1	0.135	0.503	32.119851	-116.883933
T. Der. La Salina	72.85	1	1	5231	1.0	84.6	1.6	4.8	0.7	5.6	0.4	1.0	0.3	85.6	1.6	12.8	0.133	0.505	32.057876	-116.877384
T. Der. La Salina	72.85	1	2	5333	1.0	84.4	1.7	5.0	0.7	5.4	0.5	1.0	0.3	85.4	1.7	12.9	0.125	0.505	32.057886	-116.877200
T. Der. La Salina	72.85	3	1	5116	1.1	84.9	1.2	4.9	0.7	5.5	0.5	0.9	0.3	86.0	1.2	12.8	0.122	0.506	32.057879	-116.877384
T. Der. La Salina	72.85	3	2	4994	1.1	84.8	1.3	5.3	0.7	4.9	0.6	1.0	0.3	85.9	1.3	12.8	0.120	0.506	32.057886	-116.877200
T. Der. Baja Mar	77.60	3	1	5038	1.2	82.9	1.0	7.7	0.6	5.0	0.6	0.8	0.2	84.1	1.0	14.9	0.131	0.507	32.020023	-116.858657
T. Der. Baja Mar	77.60	3	2	4897	1.3	80.5	1.1	8.7	0.7	5.9	0.7	0.9	0.2	81.8	1.1	17.1	0.128	0.507	32.020130	-116.858502
Plaza de Cobro Ensenada	98.60	2	1	5425	0.5	83.1	1.2	3.2	1.0	8.6	0.4	1.7	0.3	83.6	1.2	15.2	0.100	0.500	31.903097	-116.732777
Plaza de Cobro Ensenada	98.60	2	2	5425	0.5	83.1	1.2	3.2	1.0	8.6	0.4	1.7	0.3	83.6	1.2	15.2	0.100	0.500	31.903097	-116.732777
T. C. Tijuana - Ensenada (Libre)	98.80																			

18 CARR: Mexicali - Tijuana

CLAVE: 02082

RUTA: MEX-002D-MEX

AÑO: 2020

LUGAR	ESTACION				CLASIFICACION VEHICULAR EN PORCIENTO										COORDENADAS					
	KM	TE	SC	TDPA	M	A	B	C2	C3	T3S2	T3S3	T3S2R4	OTROS	A	B	C	K'	D	LATITUD	LONGITUD
Mexicali	0.00																			
Colonia Progreso	7.80	3	1	5082	1.7	74.6	2.3	10.4	2.1	6.4	1.1	1.1	0.3	76.3	2.3	21.4	0.103	0.517	32.581709	-115.584292
Colonia Progreso	7.80	3	2	5438	1.6	75.0	2.1	10.4	1.9	6.4	1.0	1.2	0.4	76.6	2.1	21.3	0.142	0.517	32.581584	-115.584355
La Rumorosa	66.80																			
T. Der. Estación de Microondas	69.62	3	0	2823	1.5	71.9	1.5	11.8	1.9	9.2	1.5	0.3	0.4	73.4	1.5	25.1	0.083	0.511	32.515152	-116.079384
Agua Hechicera	87.00	1	0	2485	1.2	74.1	1.6	6.7	1.5	11.7	2.6	0.3	0.3	75.3	1.6	23.1	0.093	0.501	32.497344	-116.222903

BAJA CALIFORNIA

18 CARR: Mexicali - Tijuana

CLAVE: 02082

RUTA: MEX-002D-MEX

AÑO: 2020

LUGAR	ESTACION				CLASIFICACION VEHICULAR EN PORCIENTO												COORDENADAS			
	KM	TE	SC	TDPA	M	A	B	C2	C3	T3S2	T3S3	T3S2R4	OTROS	A	B	C	K'	D	LATITUD	LONGITUD
El Encinal	112.15	1	0	4723	1.6	81.4	1.2	6.2	0.8	7.3	1.1	0.2	0.2	83.0	1.2	15.8	0.097	0.520	32.559992	-116.443375
Tecate	132.00	1	1	6699	0.7	88.4	1.8	2.9	0.7	4.3	0.4	0.4	0.4	89.1	1.8	9.1	0.091	0.535	32.573630	-116.626623
Tecate	132.00	1	2	5821	0.8	87.5	1.3	4.1	0.8	3.8	0.8	0.6	0.3	88.3	1.3	10.4	0.077	0.535	32.573574	-116.626608
Tecate	132.00	3	1	10344	0.3	85.7	1.2	8.5	0.9	2.4	0.6	0.2	0.2	86.0	1.2	12.8	0.097	0.532	32.573629	-116.626627
Tecate	132.00	3	2	9107	0.2	85.4	1.3	8.5	1.1	2.6	0.6	0.2	0.1	85.6	1.3	13.1	0.089	0.532	32.573572	-116.626617
Presa Abelardo L. Rodríguez	165.00	3	0	6321	1.2	91.7	0.9	3.4	0.6	0.7	0.5	0.5	0.5	92.9	0.9	6.2	0.089	0.520	32.446464	-116.909125
Tijuana	182.60																			

19 CARR: Algodones - Ent. Islas Agrarias Grupo B

CLAVE: 02006

RUTA: BC-008

AÑO: 2020

LUGAR	ESTACION				CLASIFICACION VEHICULAR EN PORCIENTO												COORDENADAS			
	KM	TE	SC	TDPA	M	A	B	C2	C3	T3S2	T3S3	T3S2R4	OTROS	A	B	C	K'	D	LATITUD	LONGITUD
Algodones	0.00	3	0	3263	0.6	90.2	0.3	8.5	0.4	0.0	0.0	0.0	0.0	90.8	0.3	8.9	0.129	0.505	32.713635	-114.733944
T. Izq. Cd. Morelos	14.00	1	0	3311	0.6	88.5	0.3	9.6	0.4	0.3	0.2	0.0	0.1	89.1	0.3	10.6	0.107	0.506	32.666001	-114.853569
Mérida	20.30	3	0	1459	0.5	86.5	0.7	10.4	0.6	0.7	0.6	0.0	0.0	87.0	0.7	12.3	0.132	0.505	32.664845	-114.922178
T. Izq. Ejido Lazáro Cárdenas	31.50	1	0	2224	0.7	88.0	0.5	9.8	0.3	0.2	0.4	0.1	0.0	88.7	0.5	10.8	0.101	0.511	32.614536	-115.017470
Islas Agrarias Grupo B	55.50	1	0	3728	3.2	84.6	0.8	10.7	0.4	0.3	0.0	0.0	0.0	87.8	0.8	11.4	0.108	0.513	32.614436	-115.272491

20 CARR: Corredor Tijuana 2000

CLAVE: 02006

RUTA: BC

AÑO: 2020

LUGAR	ESTACION				CLASIFICACION VEHICULAR EN PORCIENTO												COORDENADAS			
	KM	TE	SC	TDPA	M	A	B	C2	C3	T3S2	T3S3	T3S2R4	OTROS	A	B	C	K'	D	LATITUD	LONGITUD
T. C. Mexicali - Tijuana (Cuota)	0.00	3	1	16895	1.0	84.8	1.8	6.5	1.5	3.0	0.9	0.3	0.2	85.8	1.8	12.4	0.132	0.509	32.542216	-116.854447
T. C. Mexicali - Tijuana (Cuota)	0.00	3	2	16315	0.9	84.2	1.8	6.7	1.6	3.4	0.9	0.3	0.2	85.1	1.8	13.1	0.136	0.509	32.542223	-116.854223
T. C. Mexicali - Tijuana	11.00	1	1	29206	0.7	86.4	1.7	6.3	1.1	2.8	0.6	0.2	0.2	87.1	1.7	11.2	0.092	0.517	32.455156	-116.833670
T. C. Mexicali - Tijuana	11.00	1	2	27106	0.7	86.4	1.8	6.3	1.0	2.8	0.6	0.2	0.2	87.1	1.8	11.1	0.090	0.517	32.455274	-116.833400
T. C. Tijuana - San Miguel (Cuota)	40.00	1	1	4750	1.5	86.9	1.1	2.6	1.3	4.5	0.6	1.2	0.3	88.4	1.1	10.5	0.126	0.508	32.286481	-117.028319
T. C. Tijuana - San Miguel (Cuota)	40.00	1	2	4609	1.8	85.2	1.4	2.7	1.7	4.9	0.6	1.3	0.4	87.0	1.4	11.6	0.145	0.508	32.286477	-117.028317

21 CARR: Ejido Benito Juárez - Ejido Chiapas

CLAVE: 02501

RUTA: BC-061

AÑO: 2020

LUGAR	ESTACION				CLASIFICACION VEHICULAR EN PORCIENTO												COORDENADAS			
	KM	TE	SC	TDPA	M	A	B	C2	C3	T3S2	T3S3	T3S2R4	OTROS	A	B	C	K'	D	LATITUD	LONGITUD
Ejido Benito Juárez	0.00	3	0	3009	0.7	92.0	0.4	6.7	0.1	0.1	0.0	0.0	0.0	92.7	0.4	6.9	0.132	0.501	32.559719	-114.993014
Ejido México	7.00	1	0	1063	3.6	84.5	0.8	10.7	0.3	0.1	0.0	0.0	0.0	88.1	0.8	11.1	0.132	0.514	32.518513	-114.977281

BAJA CALIFORNIA

21 CARR: Ejido Benito Juárez - Ejido Chiapas

CLAVE: 02501

RUTA: BC-061

AÑO: 2020

LUGAR	ESTACION				CLASIFICACION VEHICULAR EN PORCIENTO														COORDENADAS	
	KM	TE	SC	TDPA	M	A	B	C2	C3	T3S2	T3S3	T3S2R4	OTROS	A	B	C	K'	D	LATITUD	LONGITUD
Ejido Chiapas	10.56	1	0	1023	1.1	84.1	1.5	12.9	0.3	0.1	0.0	0.0	0.0	85.2	1.5	13.3	0.119	0.520	32.499959	-114.963813

22 CARR: Ejido Monterrey - Mazón

CLAVE: 02004

RUTA: BC-003

AÑO: 2020

LUGAR	ESTACION				CLASIFICACION VEHICULAR EN PORCIENTO														COORDENADAS	
	KM	TE	SC	TDPA	M	A	B	C2	C3	T3S2	T3S3	T3S2R4	OTROS	A	B	C	K'	D	LATITUD	LONGITUD
T. C. Sonoita - Mexicali	0.00	3	0	4508	7.2	74.7	3.0	9.5	1.0	2.3	0.5	1.2	0.6	81.9	3.0	15.1	0.119	0.511	32.551754	-115.074653
X. C. Mexicali - Algodones	15.16	1	0	4323	7.2	73.2	1.9	12.4	1.3	2.3	0.8	0.4	0.5	80.4	1.9	17.7	0.120	0.510	32.418469	-115.067281
X. C. Mexicali - Algodones	15.16	3	0	7598	7.5	73.7	1.5	13.5	0.9	1.5	0.6	0.4	0.4	81.2	1.5	17.3	0.099	0.509	32.418469	-115.067279
Guadalupe Victoria	30.47	1	0	8653	7.3	71.6	1.0	16.9	1.0	0.8	0.6	0.4	0.4	78.9	1.0	20.1	0.094	0.506	32.286467	-115.101185
Mazón	35.00	1	0	6359	2.2	87.0	0.5	2.0	0.5	5.3	1.5	0.4	0.6	89.2	0.5	10.3	0.135	0.566	32.239593	-115.111066

23 CARR: El Faro - Estación Coahuila

CLAVE: 02013

RUTA: BC-004

AÑO: 2020

LUGAR	ESTACION				CLASIFICACION VEHICULAR EN PORCIENTO														COORDENADAS	
	KM	TE	SC	TDPA	M	A	B	C2	C3	T3S2	T3S3	T3S2R4	OTROS	A	B	C	K'	D	LATITUD	LONGITUD
T. C. Mexicali - San Felipe	0.00	3	0	2518	1.0	78.0	1.6	13.2	1.7	2.4	1.5	0.3	0.3	79.0	1.6	19.4	0.091	0.508	32.273355	-115.321594
X. C. Mexicali - Estación Coahuila	16.30	1	0	2922	0.7	81.4	0.9	12.1	1.1	2.3	1.4	0.0	0.1	82.1	0.9	17.0	0.125	0.523	32.239574	-115.167538
X. C. Mexicali - Estación Coahuila	16.30	3	0	6625	0.8	84.8	1.3	10.9	0.6	1.3	0.2	0.0	0.1	85.6	1.3	13.1	0.103	0.502	32.239451	-115.167504
T. Izq. Carr. Ejido Monterrey - Mazón	26.70	3	0	4330	0.6	84.1	1.1	11.4	1.0	1.0	0.8	0.0	0.0	84.7	1.1	14.2	0.114	0.514	32.239519	-115.111080
Francisco Murguía	30.00	3	0	3390	1.1	83.0	1.4	10.9	0.8	1.8	0.8	0.0	0.2	84.1	1.4	14.5	0.134	0.515	32.239718	-115.065130
Estación Coahuila	34.50	1	0	4863	0.6	84.0	1.1	11.5	1.1	0.9	0.8	0.0	0.0	84.6	1.1	14.3	0.137	0.519	32.197043	-114.998712

24 CARR: Ent. Santa Rosa - Ent. Pachuca

CLAVE: 02015

RUTA: BC-006

AÑO: 2020

LUGAR	ESTACION				CLASIFICACION VEHICULAR EN PORCIENTO														COORDENADAS	
	KM	TE	SC	TDPA	M	A	B	C2	C3	T3S2	T3S3	T3S2R4	OTROS	A	B	C	K'	D	LATITUD	LONGITUD
T. C. Sonoita - Mexicali	0.00	3	0	5682	0.5	87.1	0.9	9.8	0.6	0.8	0.3	0.0	0.0	87.6	0.9	11.5	0.097	0.500	32.555629	-115.023591
Paredones	10.90	3	0	6089	0.5	87.5	0.9	9.5	0.5	0.8	0.3	0.0	0.0	88.0	0.9	11.1	0.119	0.501	32.607441	-114.927361
Cd. Morelos	18.00	3	0	1989	1.8	83.3	1.1	11.7	0.2	1.5	0.2	0.1	0.1	85.1	1.1	13.8	0.110	0.530	32.635411	-114.852497
T. C. Mexicali - Algodones	23.22																			

BAJA CALIFORNIA

25 CARR: La Puerta - T. C. (Mexicali - Estación Coahuila)

CLAVE: 02502

RUTA: BC-010

AÑO: 2020

LUGAR	ESTACION				CLASIFICACION VEHICULAR EN PORCIENTO										COORDENADAS					
	KM	TE	SC	TDPA	M	A	B	C2	C3	T3S2	T3S3	T3S2R4	OTROS	A	B	C	K'	D	LATITUD	LONGITUD
T. C. Mexicali - San Felipe	0.00																			
Zakamoto	4.60	1	0	1907	1.4	87.0	1.7	7.7	0.4	0.6	0.4	0.4	0.4	88.4	1.7	9.9	0.120	0.512	32.325633	-115.285532
Nayarit	9.00	3	0	2709	1.0	89.2	0.3	7.6	0.7	0.9	0.2	0.0	0.1	90.2	0.3	9.5	0.086	0.508	32.313206	-115.238240
T. C. Mexicali - Estación Coahuila	15.00																			

26 CARR: Mexicali - Algodones

CLAVE: 02012

RUTA: BC-002

AÑO: 2020

LUGAR	ESTACION				CLASIFICACION VEHICULAR EN PORCIENTO										COORDENADAS					
	KM	TE	SC	TDPA	M	A	B	C2	C3	T3S2	T3S3	T3S2R4	OTROS	A	B	C	K'	D	LATITUD	LONGITUD
T. C. Mexicali - San Felipe	0.00																			
Ejido Puebla	12.00	3	0	7627	2.3	81.4	2.2	8.3	2.1	1.9	0.9	0.6	0.3	83.7	2.2	14.1	0.104	0.541	32.566900	-115.353525
T. C. Geotérmica - Estación Delta	31.50	1	0	4486	0.9	86.3	1.1	9.5	0.7	0.7	0.5	0.2	0.1	87.2	1.1	11.7	0.105	0.506	32.419822	-115.257496
X. C. Mexicali - Estación Coahuila	37.70	1	0	3122	0.9	86.5	1.1	9.1	0.6	1.1	0.5	0.1	0.1	87.4	1.1	11.5	0.111	0.512	32.419108	-115.194803
X. C. Mexicali - Estación Coahuila	37.70	3	0	4318	1.2	84.3	1.7	10.9	0.7	0.7	0.4	0.0	0.1	85.5	1.7	12.8	0.117	0.520	32.419099	-115.192594
X. C. Ejido Monterrey - Mazón	49.65	1	0	5251	0.7	84.2	1.4	11.3	0.7	1.2	0.4	0.1	0.0	84.9	1.4	13.7	0.090	0.520	32.418467	-115.067278
X. C. Ejido Monterrey - Mazón	49.65	3	0	1882	1.0	78.6	0.6	16.6	0.8	1.4	0.8	0.0	0.2	79.6	0.6	19.8	0.085	0.514	32.418476	-115.066916
T. Izq. Tres de Marzo	60.50	1	0	943	1.3	79.9	1.1	15.0	1.0	1.0	0.7	0.0	0.0	81.2	1.1	17.7	0.074	0.507	32.469259	-114.943856
X. C. Sonoita - Mexicali	72.00	1	0	1439	1.5	82.1	1.3	12.9	0.8	1.0	0.4	0.0	0.0	83.6	1.3	15.1	0.082	0.507	32.504867	-114.848222
X. C. Sonoita - Mexicali	72.00	3	0	3815	0.5	87.4	0.2	10.7	0.8	0.3	0.1	0.0	0.0	87.9	0.2	11.9	0.084	0.512	32.504003	-114.843590
Pachuca	83.00	1	0	3343	1.0	88.6	0.3	9.3	0.4	0.3	0.1	0.0	0.0	89.6	0.3	10.1	0.105	0.512	32.612327	-114.829002
Algodones	94.46	1	0	3780	0.9	89.1	0.6	8.4	0.2	0.2	0.2	0.2	0.2	90.0	0.6	9.4	0.100	0.515	32.713528	-114.733947

27 CARR: Mexicali - Estación Coahuila

CLAVE: 02016

RUTA: BC-001

AÑO: 2020

LUGAR	ESTACION				CLASIFICACION VEHICULAR EN PORCIENTO										COORDENADAS					
	KM	TE	SC	TDPA	M	A	B	C2	C3	T3S2	T3S3	T3S2R4	OTROS	A	B	C	K'	D	LATITUD	LONGITUD
Mexicali	0.00	3	1	11370	1.0	91.7	0.2	5.6	0.4	0.3	0.4	0.2	0.2	92.7	0.2	7.1	0.111	0.519	32.654349	-115.411825
Mexicali	0.00	3	2	12259	1.0	91.7	0.3	5.6	0.3	0.3	0.4	0.2	0.2	92.7	0.3	7.0	0.100	0.519	32.654470	-115.411841
T. Izq. Aeropuerto	11.30	1	1	11540	1.0	85.5	0.5	6.6	1.7	3.6	0.5	0.2	0.4	86.5	0.5	13.0	0.096	0.514	32.652551	-115.351034
T. Izq. Aeropuerto	11.30	1	2	10931	1.0	85.5	0.5	6.6	1.7	3.6	0.5	0.2	0.4	86.5	0.5	13.0	0.096	0.514	32.652514	-115.351169
Islas Agrarias Grupo a	14.10	1	0	9879	1.2	88.0	0.4	7.7	0.7	1.1	0.3	0.3	0.3	89.2	0.4	10.4	0.106	0.520	32.614134	-115.333820
X. C. Sonoita - Mexicali	30.79	1	0	3060	1.1	75.9	1.6	15.7	1.1	3.3	0.7	0.0	0.6	77.0	1.6	21.4	0.125	0.513	32.553473	-115.215006
X. C. Sonoita - Mexicali	30.79	3	0	4888	1.1	83.4	0.8	10.1	0.8	1.3	0.8	0.8	0.9	84.5	0.8	14.7	0.115	0.507	32.552871	-115.215066
Ejido Nuevo León	46.83	1	0	4612	1.0	85.5	0.7	10.6	0.7	1.0	0.2	0.2	0.1	86.5	0.7	12.8	0.110	0.509	32.413332	-115.194747
Ejido Nuevo León	46.83	3	0	4628	1.2	85.7	1.2	8.9	0.8	0.9	0.8	0.5	0.0	86.9	1.2	11.9	0.099	0.516	32.413322	-115.194746

BAJA CALIFORNIA

27 CARR: Mexicali - Estación Coahuila

CLAVE: 02016

RUTA: BC-001

AÑO: 2020

LUGAR	ESTACION				CLASIFICACION VEHICULAR EN PORCIENTO													COORDENADAS		
	KM	TE	SC	TDPA	M	A	B	C2	C3	T3S2	T3S3	T3S2R4	OTROS	A	B	C	K'	D	LATITUD	LONGITUD
T. Der. La Puerta	60.26	1	0	2964	1.3	85.6	1.1	8.9	0.9	1.0	0.8	0.3	0.1	86.9	1.1	12.0	0.103	0.524	32.313295	-115.189542
X. C. El Faro - Estación Coahuila	71.30	1	0	1136	6.2	80.3	2.1	8.6	0.3	1.3	1.1	0.0	0.1	86.5	2.1	11.4	0.114	0.509	32.239592	-115.167477
T. Der. Leona Vicario	80.50	1	0	472	5.8	76.2	4.6	11.0	1.0	0.5	0.6	0.1	0.2	82.0	4.6	13.4	0.146	0.509	32.166954	-115.157388
Estación Coahuila	96.65	1	0	953	2.7	86.4	0.6	9.0	0.5	0.4	0.1	0.2	0.1	89.1	0.6	10.3	0.126	0.503	32.191526	-114.998952

28 CARR: Mexicali - Progreso

CLAVE: 02507

RUTA: BC-005

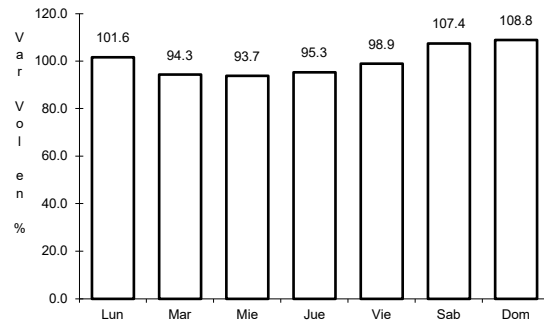
AÑO: 2020

LUGAR	ESTACION				CLASIFICACION VEHICULAR EN PORCIENTO													COORDENADAS		
	KM	TE	SC	TDPA	M	A	B	C2	C3	T3S2	T3S3	T3S2R4	OTROS	A	B	C	K'	D	LATITUD	LONGITUD
T. C. Mexicali - Tijuana	0.00																			
Progreso	15.30	1	0	6005	3.2	88.1	1.8	5.5	0.5	0.6	0.2	0.1	0.0	91.3	1.8	6.9	0.115	0.503	32.581789	-115.584234

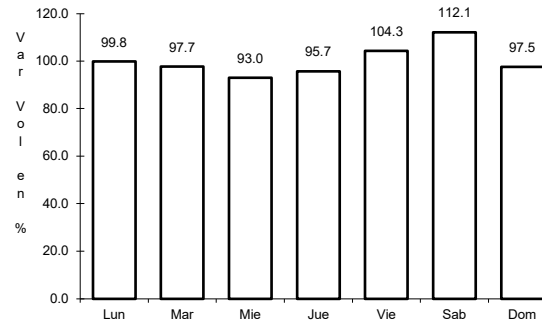
1 CARR: Ensenada - El Chinero

CLAVE: 02009

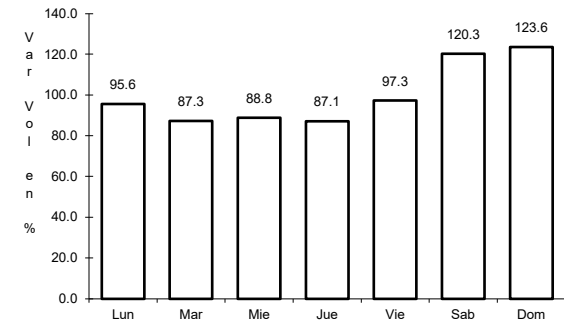
ruta: MEX-003



Km: 0.00 Tipo: 3 Sent: 0



Km: 93.00 Tipo: 3 Sent: 0

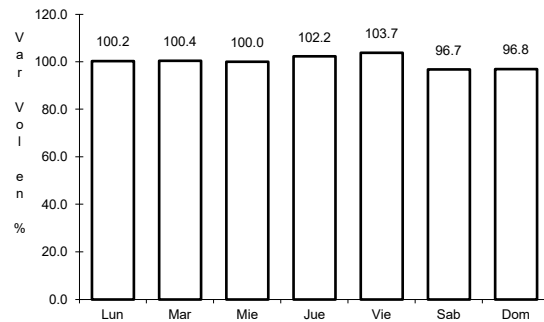


Km: 196.00 Tipo: 1 Sent: 0

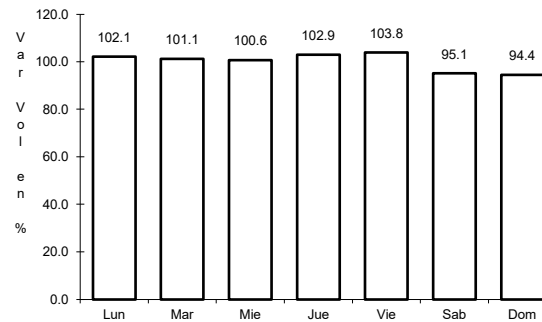
2 CARR: Ensenada - Lázaro Cárdenas

CLAVE: 02098

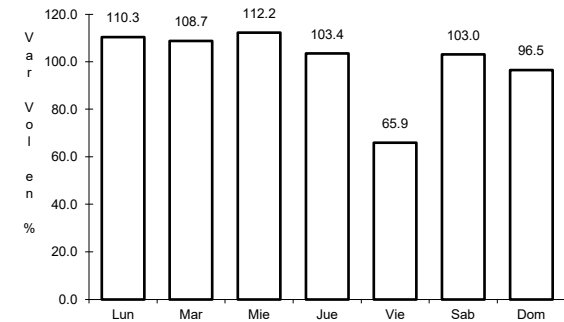
ruta: MEX-001



Km: 0.00 Tipo: 3 Sent: 1



Km: 0.00 Tipo: 3 Sent: 2

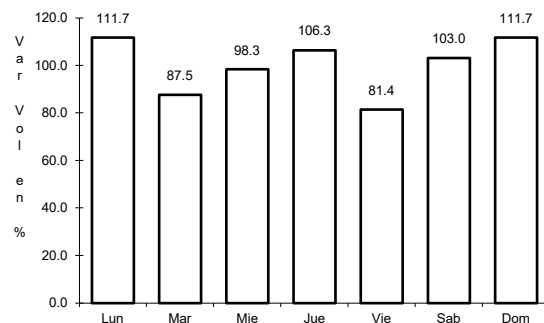


Km: 193.00 Tipo: 1 Sent: 0

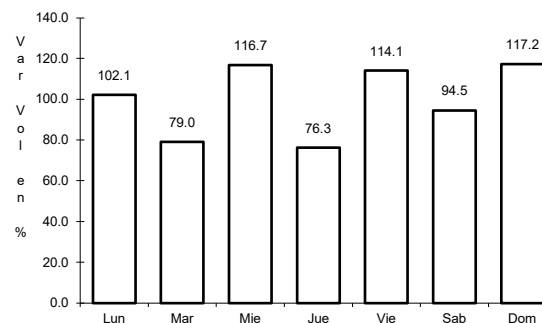
3 CARR: Ent. Punta Prieta - Bahía de Los Ángeles

CLAVE: 02322

ruta: MEX-001



Km: 0.00 Tipo: 3 Sent: 0

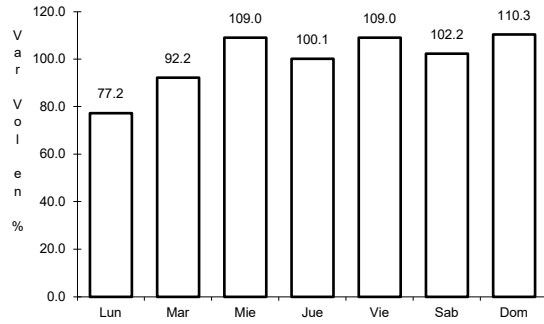


Km: 68.00 Tipo: 1 Sent: 0

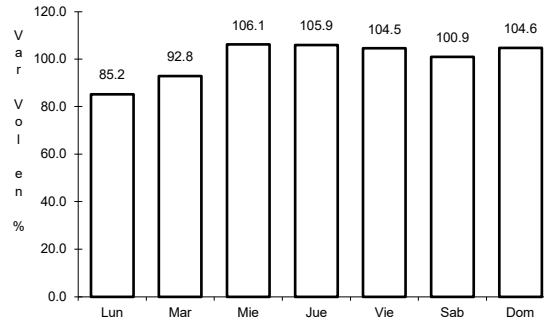
4 CARR: Ent. Punta Prieta - Guerrero Negro

CLAVE: 00321

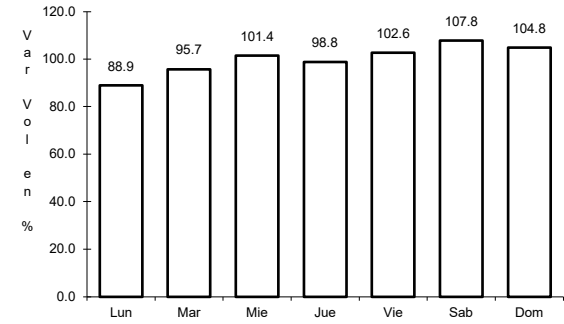
RUTA: MEX-001



Km: 0.00 Tipo: 3 Sent: 0



Km: 70.10 Tipo: 3 Sent: 0

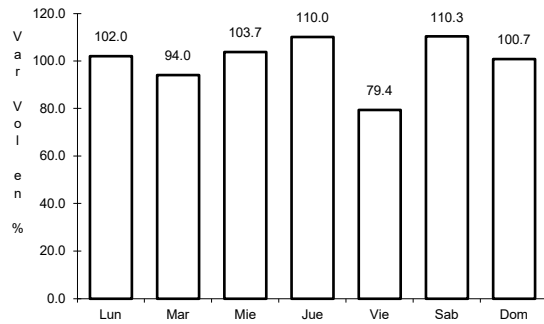


Km: 130.00 Tipo: 1 Sent: 0

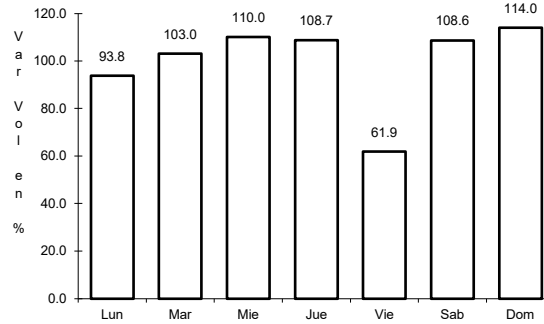
5 CARR: Lázaro Cárdenas - Ent. Punta Prieta

CLAVE: 02319

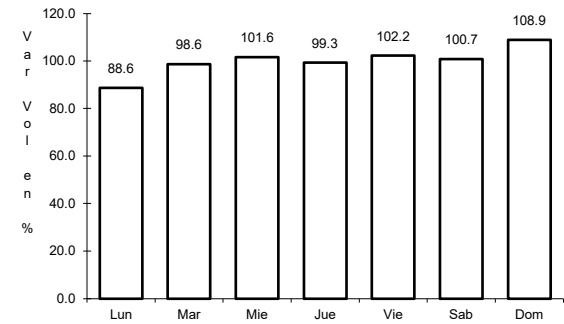
RUTA: MEX-001



Km: 0.00 Tipo: 3 Sent: 0



Km: 140.00 Tipo: 1 Sent: 0

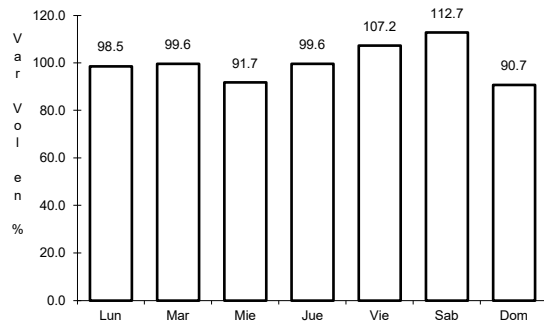


Km: 275.66 Tipo: 1 Sent: 0

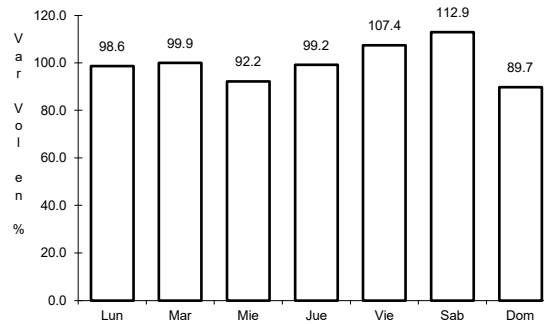
6 CARR: Mexicali - San Felipe

CLAVE: 02096

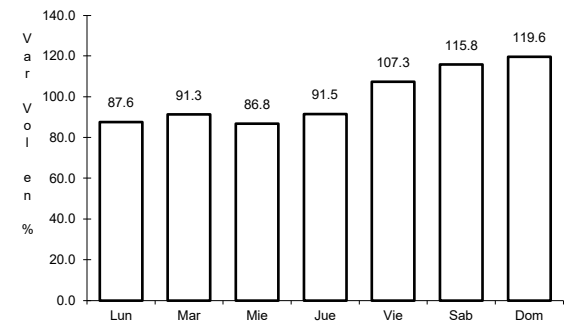
RUTA: MEX-005



Km: 0.00 Tipo: 3 Sent: 1



Km: 0.00 Tipo: 3 Sent: 2

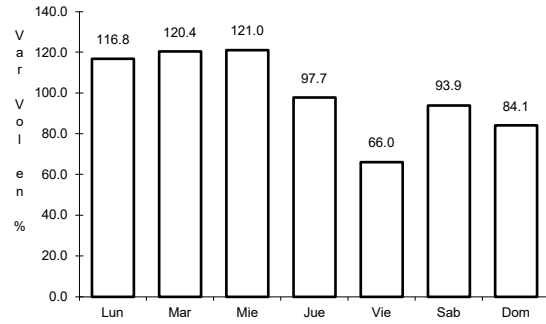


Km: 141.00 Tipo: 1 Sent: 0

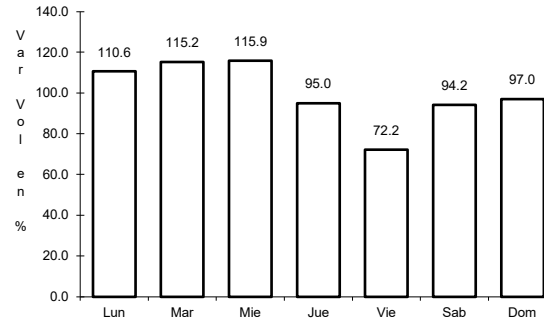
7 CARR: Ramal a Aeropuerto de Mexicali

CLAVE: 02321

RUTA: MEX-002



Km: 0.00 Tipo: 3 Sent: 0

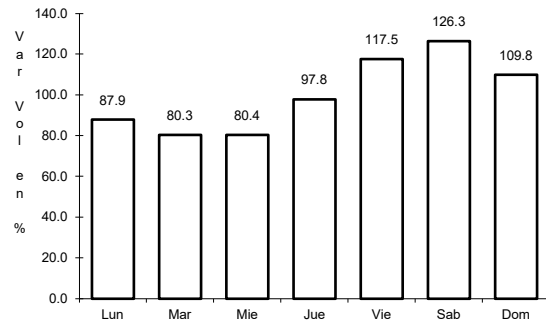


Km: 10.00 Tipo: 1 Sent: 0

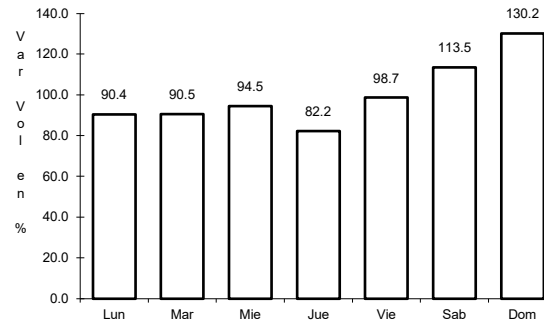
8 CARR: San Felipe - Chapala

CLAVE: 02503

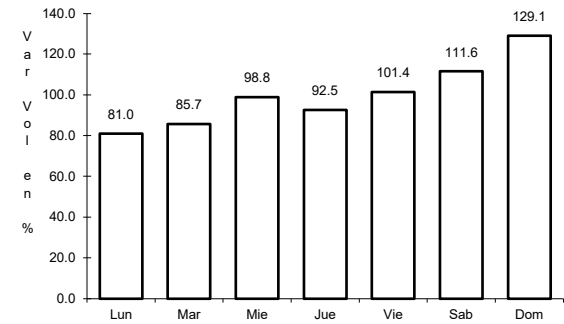
RUTA: MEX-005



Km: 0.00 Tipo: 3 Sent: 1



Km: 0.00 Tipo: 3 Sent: 2

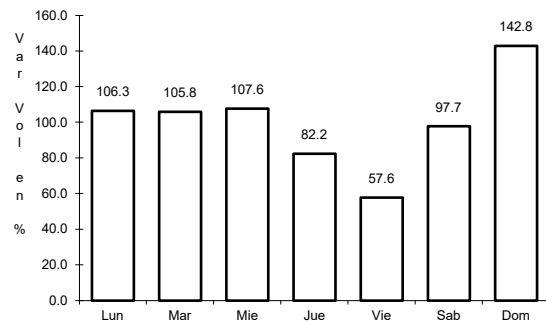


Km: 75.46 Tipo: 3 Sent: 0

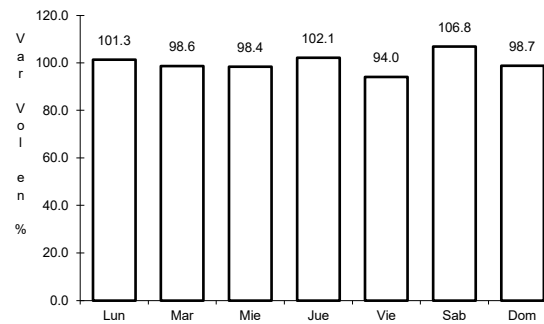
9 CARR: Sonoita - Mexicali

CLAVE: 00081

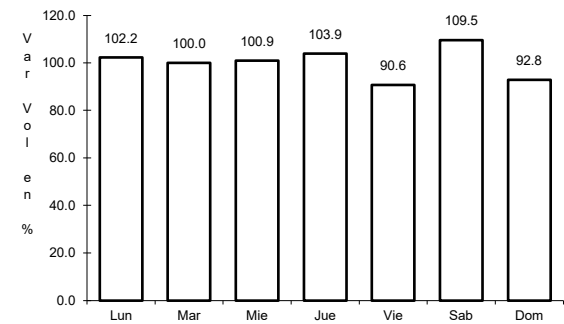
RUTA: MEX-002



Km: 0.00 Tipo: 3 Sent: 0



Km: 256.47 Tipo: 1 Sent: 1

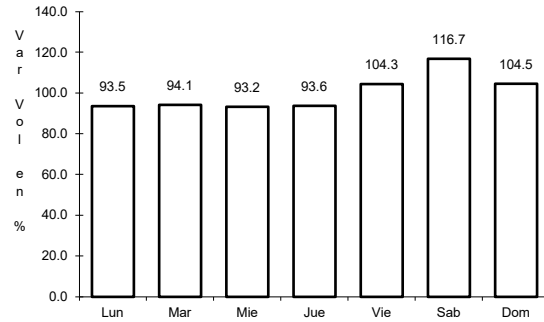


Km: 256.47 Tipo: 1 Sent: 2

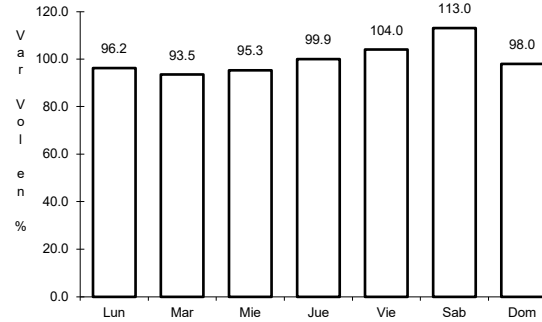
10 CARR: Tecate - El Sauzal

CLAVE: 02097

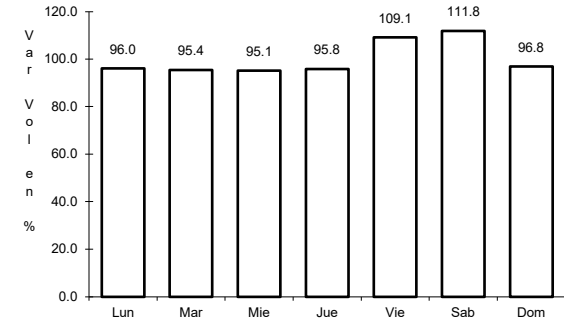
RUTA: MEX-003



Km: 0.00 Tipo: 3 Sent: 0



Km: 104.53 Tipo: 1 Sent: 1

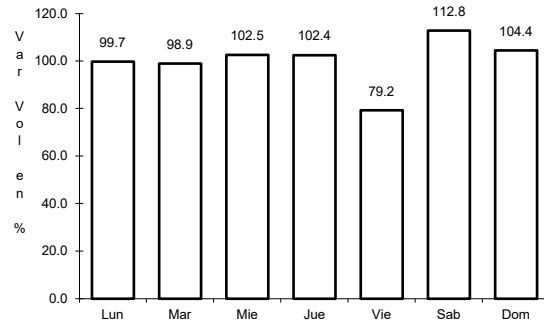


Km: 104.53 Tipo: 1 Sent: 2

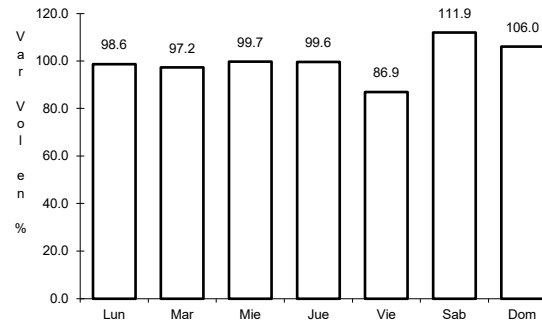
11 CARR: Tijuana - Ensenada (Libre)

CLAVE: 02099

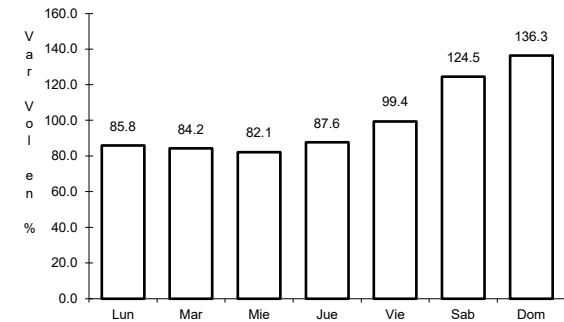
RUTA: MEX-001



Km: 22.00 Tipo: 1 Sent: 1



Km: 22.00 Tipo: 1 Sent: 2

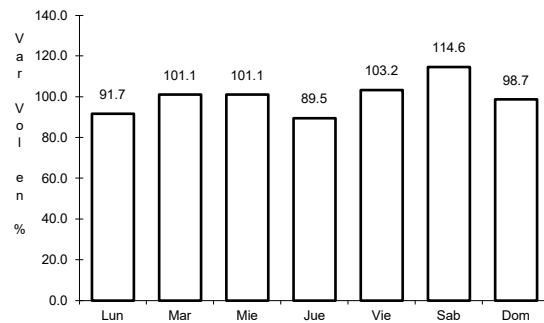


Km: 56.98 Tipo: 1 Sent: 0

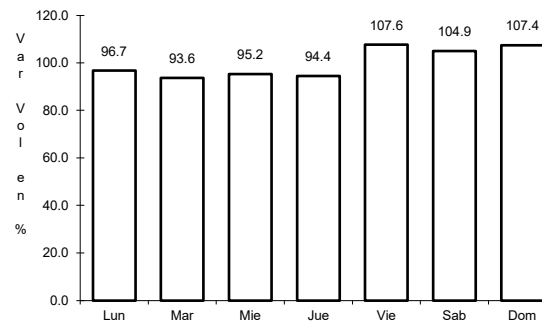
12 CARR: El Centinela - La Rumorosa (Cuota)

CLAVE: 02011

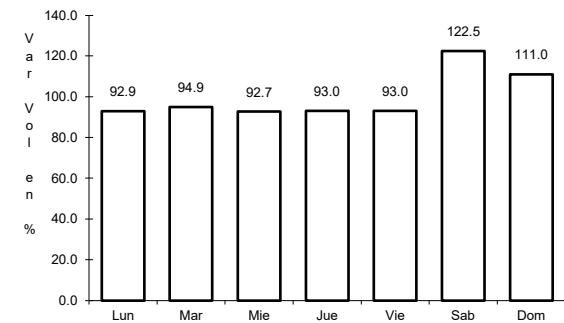
RUTA: MEX-002D



Km: 25.00 Tipo: 1 Sent: 1

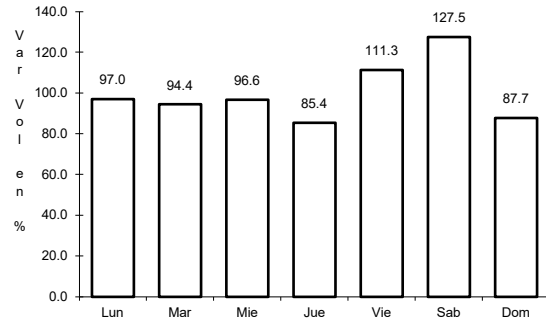


Km: 25.00 Tipo: 1 Sent: 2



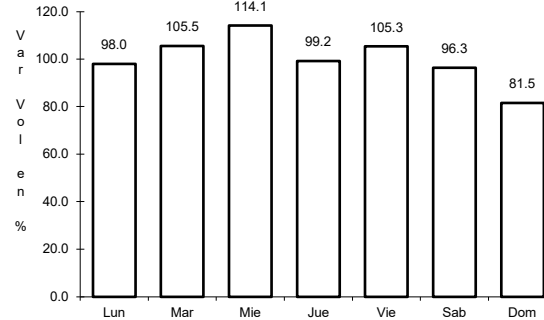
Km: 67.60 Tipo: 1 Sent: 1

13 CARR: La Rumorosa - Tecate (Cuota)



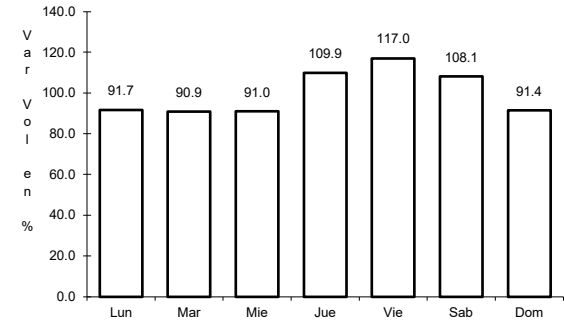
Km: 62.00 Tipo: 3 Sent: 1

CLAVE: 02011



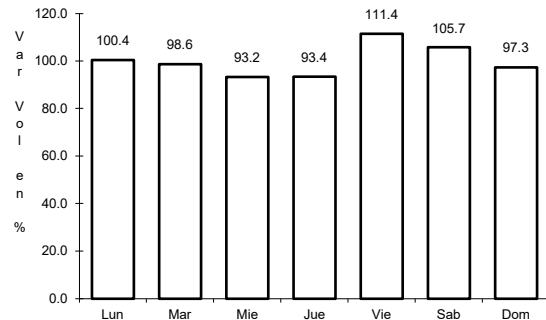
Km: 62.00 Tipo: 3 Sent: 2

RUTA: MEX-002D



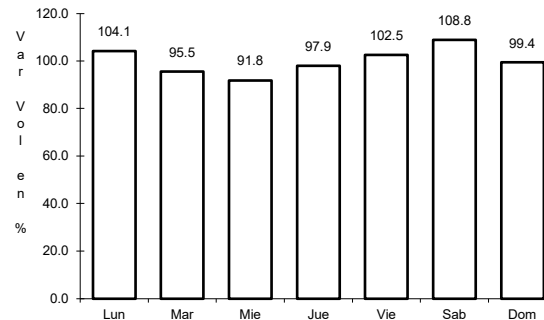
Km: 122.85 Tipo: 3 Sent: 1

14 CARR: Libramiento de Mexicali (Cuota)



Km: 0.00 Tipo: 3 Sent: 0

CLAVE: 02319

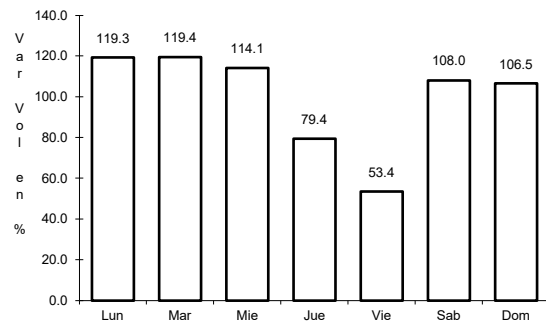


Km: 40.60 Tipo: 1 Sent: 0

RUTA: MEX-002D

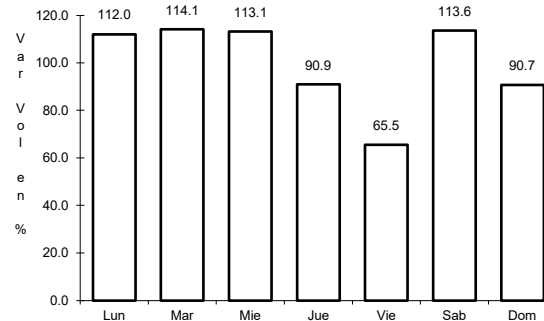


16 CARR: Tecate - Tijuana (Cuota)



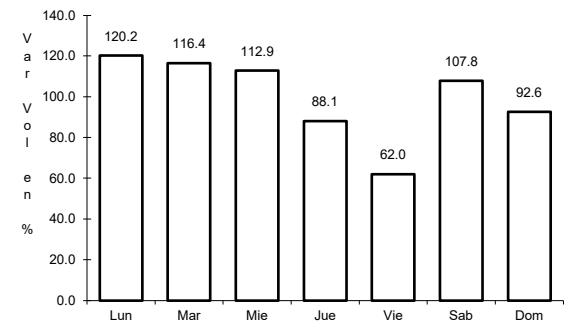
Km: 147.60 Tipo: 1 Sent: 1

CLAVE: 02011



Km: 147.60 Tipo: 1 Sent: 2

RUTA: MEX-002D

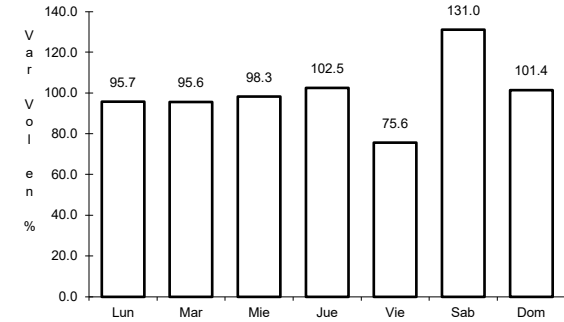
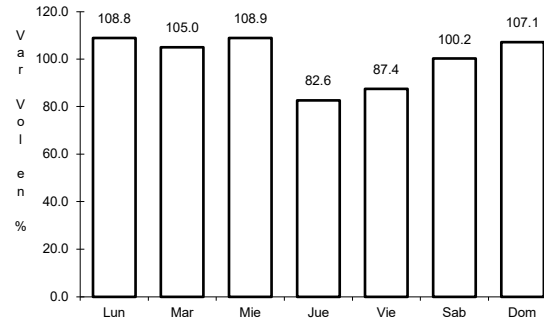
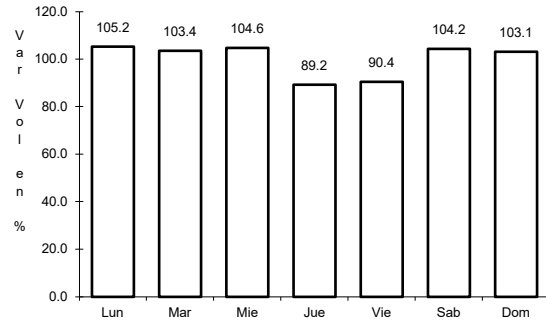


Km: 147.60 Tipo: 3 Sent: 1

17 CARR: Tijuana - Ensenada (Cuota)

CLAVE: 02100

ruta: MEX-001D



Km: 7.50 Tipo: 3 Sent: 1

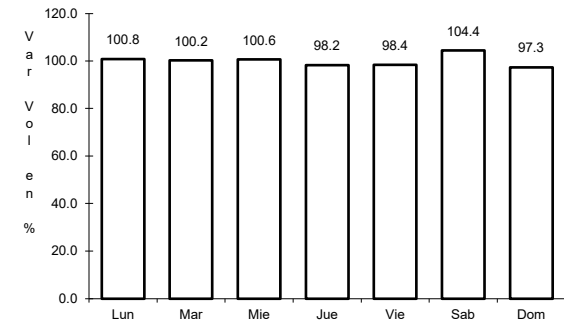
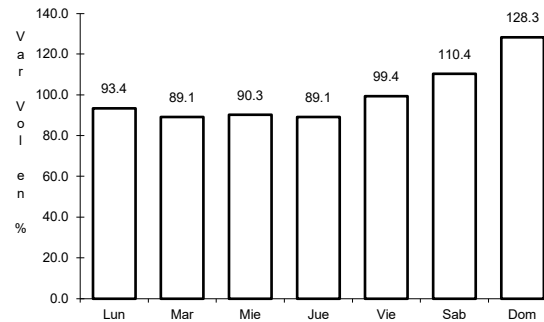
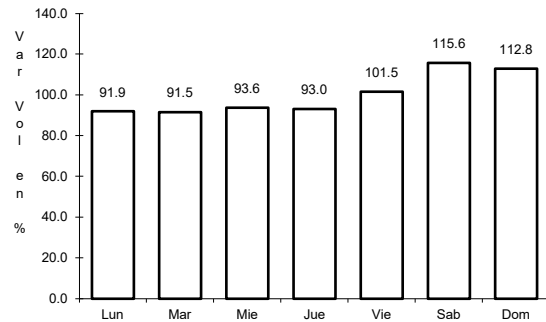
Km: 7.50 Tipo: 3 Sent: 2

Km: 77.60 Tipo: 3 Sent: 1

18 CARR: Mexicali - Tijuana

CLAVE: 02082

ruta: MEX-002D-MEX



Km: 7.80 Tipo: 3 Sent: 1

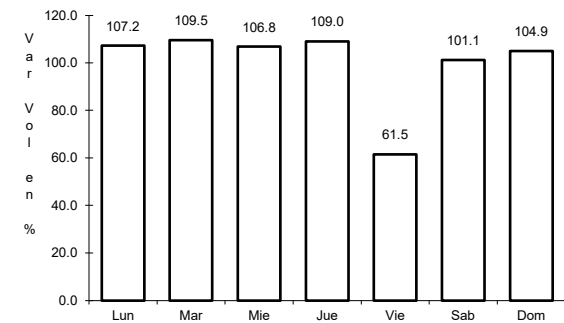
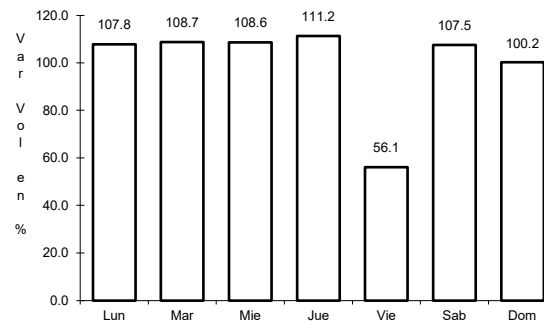
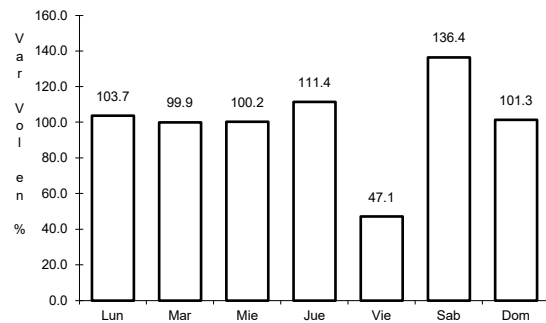
Km: 7.80 Tipo: 3 Sent: 2

Km: 165.00 Tipo: 3 Sent: 0

19 CARR: Algodones - Ent. Islas Agrarias Grupo B

CLAVE: 02006

ruta: BC-008



Km: 0.00 Tipo: 3 Sent: 0

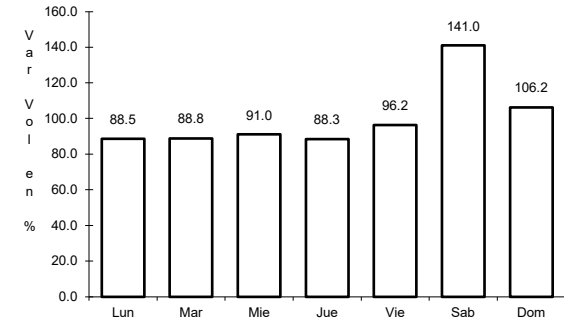
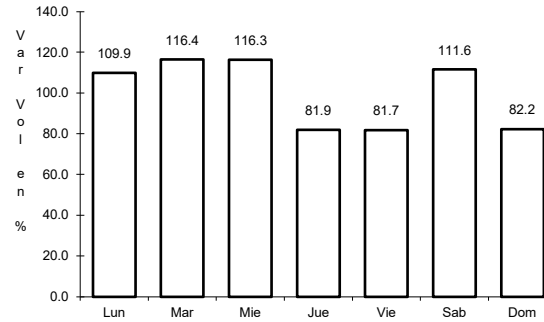
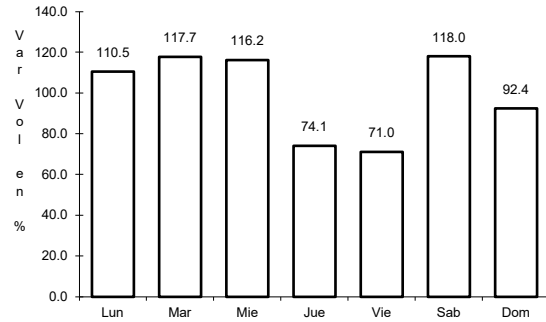
Km: 31.50 Tipo: 1 Sent: 0

Km: 55.50 Tipo: 1 Sent: 0

20 CARR: Corredor Tijuana 2000

CLAVE: 02006

RUTA: BC



Km: 0.00 Tipo: 3 Sent: 1

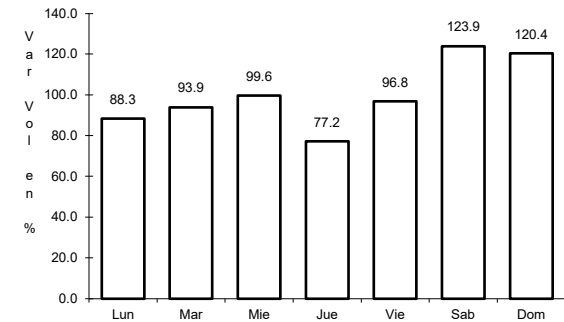
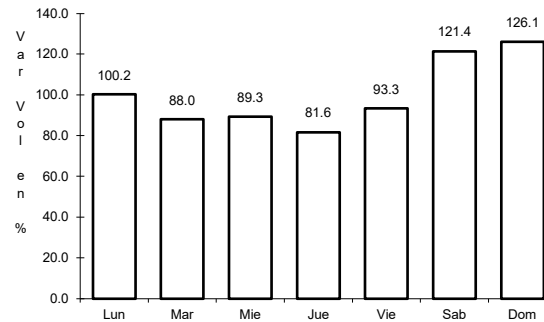
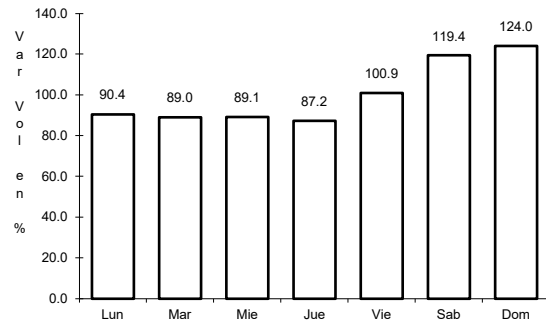
Km: 0.00 Tipo: 3 Sent: 2

Km: 40.00 Tipo: 1 Sent: 1

21 CARR: Ejido Benito Juárez - Ejido Chiapas

CLAVE: 02501

RUTA: BC-061



Km: 0.00 Tipo: 3 Sent: 0

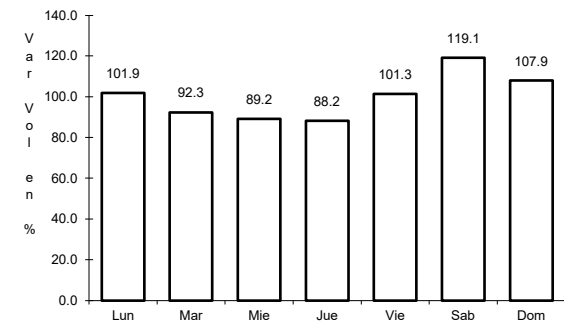
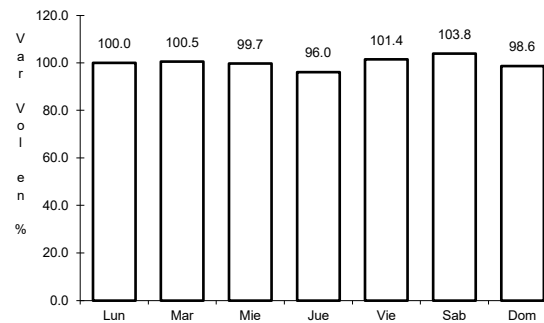
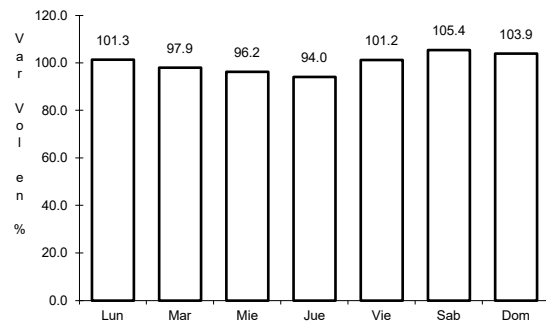
Km: 7.00 Tipo: 1 Sent: 0

Km: 10.56 Tipo: 1 Sent: 0

22 CARR: Ejido Monterrey - Mazón

CLAVE: 02004

RUTA: BC-003



Km: 0.00 Tipo: 3 Sent: 0

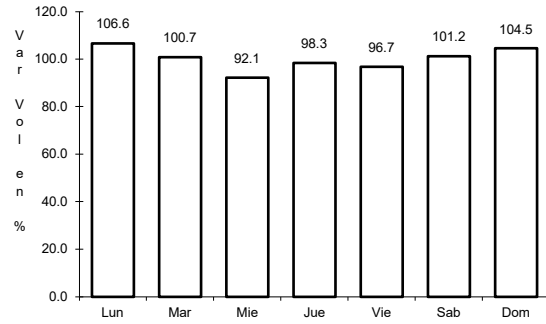
Km: 15.16 Tipo: 3 Sent: 0

Km: 35.00 Tipo: 1 Sent: 0

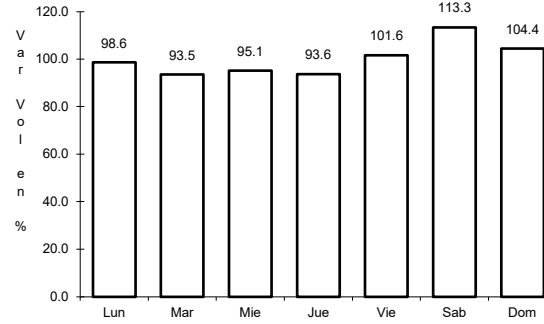
23 CARR: El Faro - Estación Coahuila

CLAVE: 02013

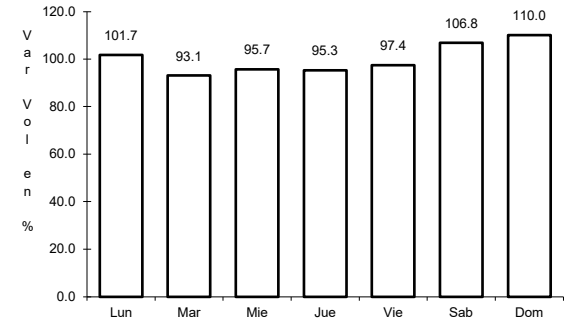
ruta: BC-004



Km: 0.00 Tipo: 3 Sent: 0



Km: 16.30 Tipo: 1 Sent: 0

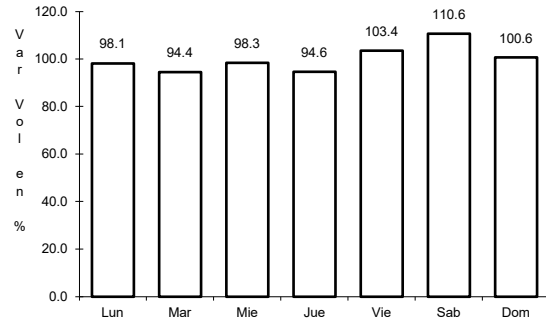


Km: 34.50 Tipo: 1 Sent: 0

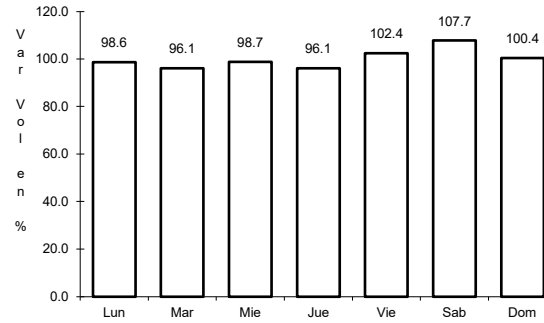
24 CARR: Ent. Santa Rosa - Ent. Pachuca

CLAVE: 02015

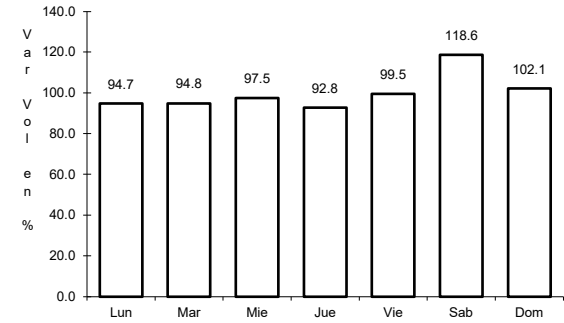
ruta: BC-006



Km: 0.00 Tipo: 3 Sent: 0



Km: 10.90 Tipo: 3 Sent: 0

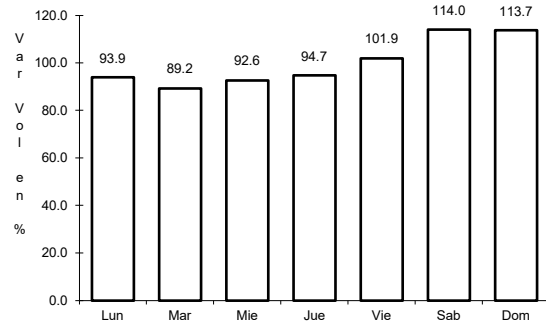


Km: 18.00 Tipo: 3 Sent: 0

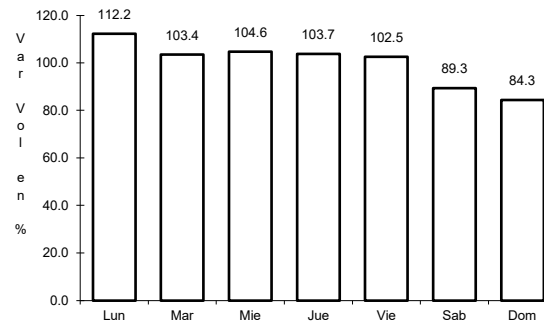
25 CARR: La Puerta - T. C. (Mexicali - Estación Coahuila)

CLAVE: 02502

ruta: BC-010



Km: 4.60 Tipo: 1 Sent: 0

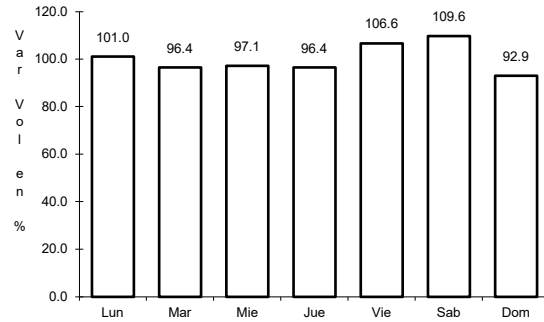


Km: 9.00 Tipo: 3 Sent: 0

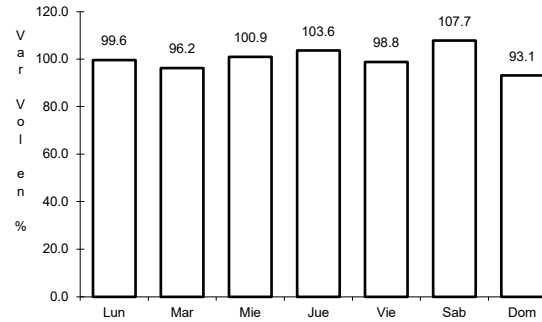
26 CARR: Mexicali - Algodones

CLAVE: 02012

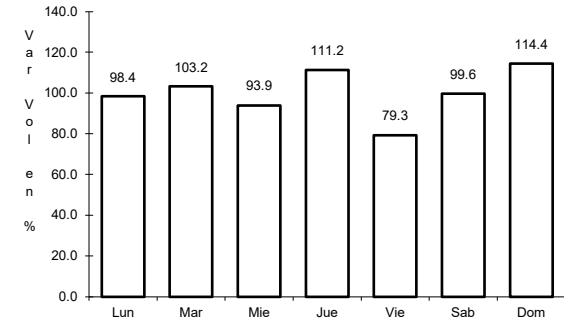
ruta: BC-002



Km: 12.00 Tipo: 3 Sent: 0



Km: 49.65 Tipo: 1 Sent: 0

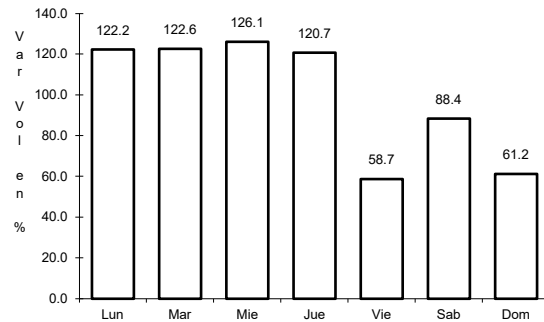


Km: 94.46 Tipo: 1 Sent: 0

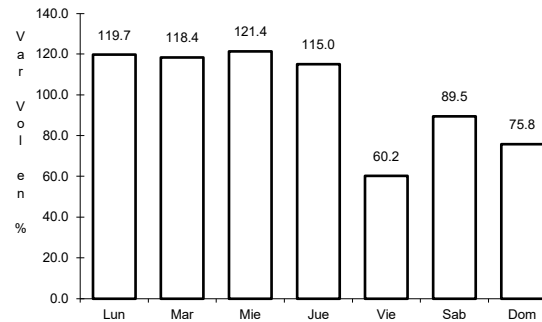
27 CARR: Mexicali - Estación Coahuila

CLAVE: 02016

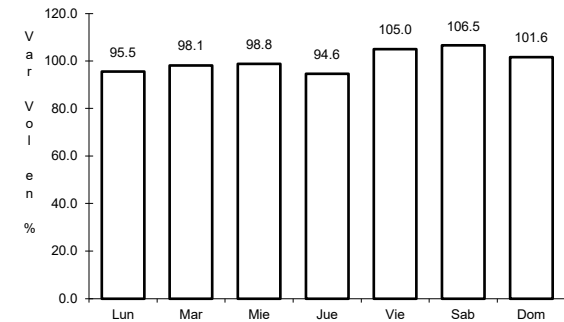
ruta: BC-001



Km: 0.00 Tipo: 3 Sent: 1



Km: 0.00 Tipo: 3 Sent: 2

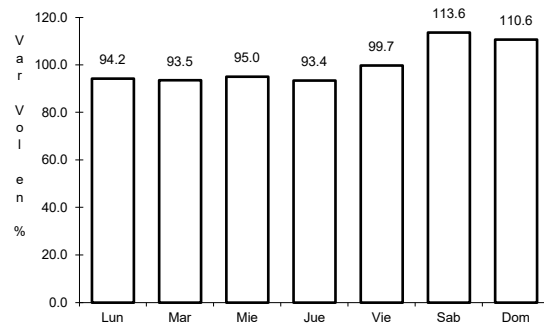


Km: 96.65 Tipo: 1 Sent: 0

28 CARR: Mexicali - Progreso

CLAVE: 02507

ruta: BC-005



Km: 15.30 Tipo: 1 Sent: 0

