

AGUASCALIENTES

---RED FEDERAL LIBRE---

1 Acceso a Pabellón de Arteaga	MEX-045
2 Aguascalientes - Jalpa	MEX-070
3 Aguascalientes - Zacatecas	MEX-045
4 El Retoño - Ent. Asturias	MEX-070
5 Ent. Cosío - Ent. Cuauhtémoc	MEX-045
6 Ent. Penitenciaría - Villa Hidalgo	MEX-071
7 Ent. Rivier - San Marcos	MEX-066
8 León - Aguascalientes	MEX-045
9 Libramiento Rincón de Romos	MEX-045
10 Ojo Caliente - Malpaso	MEX-070
11 Ojuelos - Aguascalientes	MEX-070
12 Providencia - Luis Moya	MEX-071
13 Ramal a Aeropuerto de Aguascalientes	MEX-045
14 Rincón de Romos - Ciénega Grande	MEX-039

---RED ESTATAL LIBRE---

15 Aguascalientes - Ent. Cd. de Los Niños	AGS
16 Aguascalientes - Jesús María	AGS-095
17 Aguascalientes - José María Morelos	AGS
18 Carboneras - Villa Juárez	AGS-004
19 Cosío - Santa María de La Paz	AGS
20 Crucero Ojo de Agua de Crucitas - Santa Rosa	AGS
21 El Tanque - San José de La Ordeña	AGS
22 El Taray - T. C.(Ramal Aeropuerto de Aguascalientes)	AGS-002
23 Ent. Arellano - El Retoño	AGS
24 Ent. Buenavista - Gracias a Dios	AGS
25 Ent. El Novillo - Villa Juárez	AGS-005
26 Ent. La Calavera - Ent. San Pedro	AGS-043
27 Ent. La Chirida - San Francisco de Los Romo	AGS
28 Ent. Pabellón de Arteaga - California	AGS
29 Ent. Pabellón de Arteaga - San José de Gracia	AGS-019
30 Ent. Rincón de Romos - La Boquilla	AGS
31 Ent. San Carlos - Ent. El Milagro	AGS-010
32 Ent. San Felipe - Jesús María	AGS
33 Ent. San Isidro - Ent. El Salitre	AGS-016
34 Est. Coyotes - Ent. San Bartolo	AGS-069
35 Fracc. Ojo Caliente - El Conejal	AGS-079
36 Jesús María - Palomas	AGS-018
37 La Panadera - Palo Alto	AGS-017
38 La Punta - Mesillas	AGS-026
39 La Rinconada - El Terrero del Refugio	AGS-007
40 Las Norias de Ojo Caliente - La Luz	AGS-068
41 Libramiento San Francisco de Los Romo	AGS
42 Pabellón de Hidalgo - Rincón de Romos	AGS
43 Pilotos - Los Campos	AGS-030
44 Pocitos - Granja Miravalle	AGS-053
45 Ramal a San Pedro Piedra Gorda	ZAC-AGS
46 San Gil - Jarillas	AGS-012-ZAC
47 San Isidro El Grande - Bajío de San José	AGS-036
48 San Rafael - Villa García	AGS-ZAC
49 Santa Rosa - Pabellón de Hidalgo	AGS
50 T. Caldera - Ent. Ojo de Agua de Los Montes	AGS
51 Viñedos de California - Adolfo López Mateos	AGS

---RED ESTATAL DE CUOTA---

52 Libramiento Surponiente de Aguascalientes (Cuota)	MEX-A40
--	---------

01 AGUASCALIENTES

SECRETARÍA DE COMUNICACIONES Y TRANSPORTES
DIRECCIÓN GENERAL DE SERVICIOS TÉCNICOS

① Número Índice

- Red Federal Libre
- Red Federal Cuota
- Red Federal Integrada por Tramos Libres y de Cuota
- Red Estatal Libre
- Red Estatal Cuota
- Carreteras Integradas por Tramos Federales y Estatales



AGUASCALIENTES

1 CARR: Acceso a Pabellón de Arteaga

CLAVE: 01113

RUTA: MEX-045

AÑO: 2020

LUGAR	ESTACION				CLASIFICACION VEHICULAR EN PORCIENTO													COORDENADAS		
	KM	TE	SC	TDPA	M	A	B	C2	C3	T3S2	T3S3	T3S2R4	OTROS	A	B	C	K'	D	LATITUD	LONGITUD
T. C. Aguascalientes - Zacatecas (Baja)	0.00	3	1	928	5.4	86.0	3.6	4.3	0.2	0.3	0.2	0.0	0.0	91.4	3.6	5.0	0.080	0.501	22.146445	-102.292198
T. C. Aguascalientes - Zacatecas (Alta)	0.00	3	1	5803	2.2	89.7	0.1	5.6	0.4	0.4	0.6	0.9	0.1	91.9	0.1	8.0	0.082	0.507	22.146532	-102.292199
T. C. Aguascalientes - Zacatecas (Alta)	0.00	3	2	6015	2.3	88.9	0.1	6.0	0.4	0.4	0.7	1.1	0.1	91.2	0.1	8.7	0.077	0.507	22.146612	-102.292209
T. C. Aguascalientes - Zacatecas (Baja)	0.00	3	2	930	6.7	84.8	3.4	4.3	0.2	0.4	0.2	0.0	0.0	91.5	3.4	5.1	0.082	0.501	22.146692	-102.292219
Pabellón de Arteaga	1.80	1	1	6184	2.5	89.8	0.2	5.1	0.3	0.7	1.2	0.1	0.1	92.3	0.2	7.5	0.083	0.508	22.147472	-102.279192
Pabellón de Arteaga	1.80	1	2	5979	2.3	89.2	0.2	5.8	0.3	0.8	1.2	0.1	0.1	91.5	0.2	8.3	0.074	0.508	22.147546	-102.279195
T. C. Providencia - Luis Moya	4.64																			

2 CARR: Aguascalientes - Jalpa

CLAVE: 00095

RUTA: MEX-070

AÑO: 2020

LUGAR	ESTACION				CLASIFICACION VEHICULAR EN PORCIENTO													COORDENADAS		
	KM	TE	SC	TDPA	M	A	B	C2	C3	T3S2	T3S3	T3S2R4	OTROS	A	B	C	K'	D	LATITUD	LONGITUD
Aguascalientes	0.00	3	1	9465	3.8	85.3	0.5	8.7	1.0	0.4	0.1	0.1	0.1	89.1	0.5	10.4	0.093	0.503	21.871617	-102.318900
Aguascalientes	0.00	3	2	9371	4.1	86.0	0.6	7.5	1.0	0.4	0.2	0.1	0.1	90.1	0.6	9.3	0.096	0.503	21.871463	-102.318852
T. Der. Jesús María	7.30	1	1	8258	3.1	87.2	0.6	7.4	0.8	0.5	0.2	0.1	0.1	90.3	0.6	9.1	0.106	0.511	21.881925	-102.364523
T. Der. Jesús María	7.30	1	2	7897	3.5	86.5	0.6	7.8	0.8	0.4	0.2	0.1	0.1	90.0	0.6	9.4	0.088	0.511	21.881797	-102.364567
T. Izq. Villa Hidalgo	7.80	3	1	5594	1.7	86.3	0.9	8.6	1.4	0.7	0.2	0.1	0.1	88.0	0.9	11.1	0.159	0.512	21.882853	-102.368067
T. Izq. Villa Hidalgo	7.80	3	2	5866	1.7	85.8	1.1	8.8	1.5	0.7	0.2	0.1	0.1	87.5	1.1	11.4	0.162	0.512	21.882720	-102.368094
Libramiento Poniente de Aguascalientes	11.00	1	1	5823	2.1	86.7	0.8	8.5	1.0	0.5	0.2	0.1	0.1	88.8	0.8	10.4	0.134	0.517	21.890489	-102.396624
Libramiento Poniente de Aguascalientes	11.00	1	2	5433	2.3	86.0	1.2	8.6	1.0	0.5	0.2	0.1	0.1	88.3	1.2	10.5	0.134	0.517	21.890390	-102.396674
Libramiento Poniente de Aguascalientes	11.00	3	1	5253	2.2	88.0	0.4	5.2	2.4	1.4	0.2	0.1	0.1	90.2	0.4	9.4	0.154	0.508	21.891718	-102.401174
Libramiento Poniente de Aguascalientes	11.00	3	2	5085	2.3	87.6	0.3	5.6	2.4	1.4	0.2	0.1	0.1	89.9	0.3	9.8	0.186	0.508	21.891611	-102.401215
T. Der. Gracias a Dios	20.00	3	0	7722	2.7	84.7	0.4	7.0	0.9	3.0	1.1	0.1	0.1	87.4	0.4	12.2	0.103	0.510	21.887896	-102.461999
T. Izq. El Salitre	23.17	3	0	7859	2.2	85.0	0.5	6.9	1.0	3.0	1.2	0.1	0.1	87.2	0.5	12.3	0.111	0.505	21.888599	-102.492399
T. Izq. Malpaso	45.10	1	0	7293	2.4	84.7	0.9	7.6	0.9	2.5	0.7	0.2	0.1	87.1	0.9	12.0	0.107	0.516	21.881903	-102.669734
T. Der. Presa La Codorniz	49.30	3	1	8929	4.4	87.2	0.4	6.9	0.6	0.4	0.1	0.0	0.0	91.6	0.4	8.0	0.096	0.516	21.865532	-102.691019
T. Der. Presa La Codorniz	49.30	3	2	9503	4.3	87.9	0.4	6.3	0.6	0.4	0.1	0.0	0.0	92.2	0.4	7.4	0.087	0.516	21.865437	-102.690888
Calvillo	52.30	3	1	4383	8.5	82.0	0.5	6.7	1.0	0.8	0.3	0.1	0.1	90.5	0.5	9.0	0.108	0.510	21.845966	-102.718812
Calvillo	52.30	3	2	4566	8.7	81.9	0.4	6.7	1.0	0.8	0.3	0.1	0.1	90.6	0.4	9.0	0.096	0.510	21.845908	-102.718800
T. Der. Jaltiche de Abajo	63.80	3	0	2351	2.6	85.1	1.1	7.2	1.7	1.2	0.4	0.4	0.3	87.7	1.1	11.2	0.105	0.505	21.776949	-102.802260
Lim. Edos. Term. Ags. Ppia. Zac.	65.66																			
T. C. Guadalajara - Zacatecas	90.66	1	0	4017	3.9	66.4	0.7	19.9	5.6	1.5	0.6	0.7	0.7	70.3	0.7	29.0	0.098	0.500	21.648747	-102.970412

AGUASCALIENTES

3 CARR: Aguascalientes - Zacatecas

CLAVE: 00524

RUTA: MEX-045

AÑO: 2020

LUGAR	ESTACION				CLASIFICACION VEHICULAR EN PORCIENTO										COORDENADAS					
	KM	TE	SC	TDPA	M	A	B	C2	C3	T3S2	T3S3	T3S2R4	OTROS	A	B	C	K'	D	LATITUD	LONGITUD
Aguascalientes	0.00																			
T. Izq. Pocitos	6.00	1	1	17903	3.7	88.5	1.4	3.9	0.6	1.0	0.4	0.2	0.3	92.2	1.4	6.4	0.075	0.507	21.925285	-102.291409
T. Izq. Pocitos	6.00	1	2	17387	3.8	87.9	1.5	4.2	0.6	1.1	0.4	0.2	0.3	91.7	1.5	6.8	0.073	0.507	21.925310	-102.291688
T. Der. Loreto	9.83	3	1	25941	3.8	86.7	1.3	4.2	0.6	2.5	0.4	0.2	0.3	90.5	1.3	8.2	0.061	0.505	21.962343	-102.289822
T. Der. Loreto	9.83	3	2	26454	3.9	86.4	1.4	4.1	0.6	2.7	0.4	0.2	0.3	90.3	1.4	8.3	0.065	0.505	21.962354	-102.289940
Santa Fé	16.00	1	1	27280	3.5	82.5	1.2	5.5	0.8	3.1	1.6	1.5	0.3	86.0	1.2	12.8	0.082	0.510	22.021369	-102.284741
Santa Fé	16.00	1	2	26160	3.6	83.3	1.4	5.5	0.8	3.2	0.4	1.5	0.3	86.9	1.4	11.7	0.085	0.510	22.021543	-102.285467
Santa Fé	16.00	3	1	22207	3.4	80.0	1.2	6.7	2.0	3.5	1.4	1.5	0.3	83.4	1.2	15.4	0.082	0.509	22.021822	-102.284594
Santa Fé	16.00	3	2	23043	3.5	80.0	1.4	6.2	2.0	3.5	1.6	1.5	0.3	83.5	1.4	15.1	0.083	0.509	22.021966	-102.285317
La Concepción	18.00	3	1	22429	3.4	79.0	1.7	6.6	2.0	3.5	1.4	2.1	0.3	82.4	1.7	15.9	0.082	0.509	22.033474	-102.281709
La Concepción	18.00	3	2	23263	3.5	79.1	1.7	6.2	2.0	3.5	1.6	2.1	0.3	82.6	1.7	15.7	0.083	0.509	22.033501	-102.281821
T. Libramiento de San Francisco de los Romo Sur	18.80																			
San Francisco de Los Romo	22.73	1	1	6501	4.0	83.4	1.3	9.4	0.6	0.7	0.4	0.1	0.1	87.4	1.3	11.3	0.098	0.502	22.075871	-102.273150
San Francisco de Los Romo	22.73	1	2	6542	3.8	84.0	1.3	9.0	0.6	0.7	0.4	0.1	0.1	87.8	1.3	10.9	0.107	0.502	22.075889	-102.273260
T. Izq. Libramiento San Francisco de Los Romo	24.80	3	1	14934	3.3	77.0	2.9	6.0	1.9	5.2	1.4	2.0	0.3	80.3	2.9	16.8	0.097	0.507	22.092201	-102.273805
T. Izq. Libramiento San Francisco de Los Romo	24.80	3	2	15355	3.3	76.7	2.7	6.2	2.1	4.9	1.6	2.2	0.3	80.0	2.7	17.3	0.096	0.507	22.092190	-102.273927
T. Der. Estación Pabellón	31.00	1	1	13352	3.3	76.6	2.6	6.8	2.0	5.2	1.3	1.9	0.3	79.9	2.6	17.5	0.078	0.504	22.146152	-102.292584
T. Der. Estación Pabellón	31.00	1	2	13547	3.2	76.3	2.8	6.5	2.0	5.0	1.6	2.3	0.3	79.5	2.8	17.7	0.085	0.504	22.146114	-102.292692
T. Der. Estación Pabellón	31.00	3	1	11312	3.3	76.9	2.6	6.1	2.1	5.2	1.5	2.0	0.3	80.2	2.6	17.2	0.077	0.506	22.146127	-102.292562
T. Der. Estación Pabellón	31.00	3	2	11609	3.2	75.4	2.8	6.8	2.1	5.4	1.7	2.3	0.3	78.6	2.8	18.6	0.082	0.506	22.146080	-102.292667
T. Der. Libramiento Rincón de Romos	35.50	1	1	10409	3.1	75.2	2.6	8.7	1.9	5.0	1.3	1.9	0.3	78.3	2.6	19.1	0.076	0.500	22.186570	-102.295111
T. Der. Libramiento Rincón de Romos	35.50	1	2	10400	3.1	74.2	2.9	8.2	2.1	5.4	1.7	2.1	0.3	77.3	2.9	19.8	0.081	0.500	22.186572	-102.295034
T. Der. Libramiento Rincón de Romos	35.50	3	1	4514	3.3	80.6	2.7	4.2	1.4	3.2	1.7	2.1	0.8	83.9	2.7	13.4	0.072	0.520	22.186997	-102.295022
T. Der. Libramiento Rincón de Romos	35.50	3	2	4893	3.1	82.6	2.7	3.4	1.2	2.3	1.7	2.3	0.7	85.7	2.7	11.6	0.079	0.520	22.186998	-102.295086
Rincón de Romos	40.90	3	0	5248	2.7	85.5	0.5	7.8	0.4	2.6	0.3	0.0	0.2	88.2	0.5	11.3	0.092	0.510	22.230058	-102.321064
T. Libramiento Rincón de Romos Norte	46.00																			
La Punta	51.00	1	1	8769	3.1	67.3	3.7	8.5	2.0	8.6	2.1	3.8	0.9	70.4	3.7	25.9	0.085	0.512	22.320076	-102.294996
La Punta	51.00	1	2	8359	3.2	63.5	4.2	9.3	2.2	9.6	2.5	4.5	1.0	66.7	4.2	29.1	0.080	0.512	22.320097	-102.295091
La Punta	51.00	3	1	8084	3.1	66.5	3.8	7.7	2.1	8.8	3.2	3.8	1.0	69.6	3.8	26.6	0.085	0.505	22.324469	-102.293821
La Punta	51.00	3	2	7923	3.3	64.5	4.0	7.9	2.2	9.5	3.4	4.2	1.0	67.8	4.0	28.2	0.083	0.505	22.324491	-102.293897
Cosío	56.00	3	1	7050	3.3	66.9	3.8	7.1	2.6	8.7	3.0	3.7	0.9	70.2	3.8	26.0	0.090	0.502	22.367004	-102.296905
Cosío	56.00	3	2	7093	3.4	64.9	3.9	7.8	2.4	9.4	3.6	3.7	0.9	68.3	3.9	27.8	0.088	0.502	22.366984	-102.296988
Ent. Cosío	57.30																			
Lim. Edos. Term. Ags. Ppia. Zac.	62.67																			
Luis Moya	65.80	1	0	3339	0.4	78.6	0.2	11.2	3.7	4.5	1.2	0.2	0.0	79.0	0.2	20.8	0.103	0.501	22.429789	-102.248470

AGUASCALIENTES

3 CARR: Aguascalientes - Zacatecas

CLAVE: 00524

RUTA: MEX-045

AÑO: 2020

LUGAR	ESTACION				CLASIFICACION VEHICULAR EN PORCIENTO													COORDENADAS		
	KM	TE	SC	TDPA	M	A	B	C2	C3	T3S2	T3S3	T3S2R4	OTROS	A	B	C	K'	D	LATITUD	LONGITUD
Luis Moya	65.80	3	1	2915	1.3	81.9	2.2	10.6	1.1	1.5	0.5	0.7	0.2	83.2	2.2	14.6	0.102	0.501	22.433820	-102.248615
Luis Moya	65.80	3	2	2923	1.3	81.7	2.2	10.7	1.1	1.5	0.5	0.7	0.3	83.0	2.2	14.8	0.090	0.501	22.433807	-102.248650
T. Der. San Luis Potosi	100.00	1	0	5694	1.0	79.7	2.6	13.3	1.5	1.2	0.4	0.3	0.0	80.7	2.6	16.7	0.107	0.505	22.719438	-102.330519
T. Der. San Luis Potosi	100.00	3	1	4517	0.9	69.6	3.8	8.3	2.3	7.9	2.4	4.0	0.8	70.5	3.8	25.7	0.115	0.502	22.719476	-102.330554
T. Der. San Luis Potosi	100.00	3	2	4480	0.8	66.8	4.1	9.3	2.5	8.4	2.7	4.5	0.9	67.6	4.1	28.3	0.126	0.502	22.719399	-102.330682
T. Izq. Aguascalientes (Cuota)	113.50	1	1	9443	1.5	76.7	2.0	10.3	1.9	4.7	1.2	1.3	0.4	78.2	2.0	19.8	0.109	0.507	22.751221	-102.452915
T. Izq. Aguascalientes (Cuota)	113.50	1	2	9171	1.5	76.7	2.8	10.2	1.7	4.9	0.8	1.1	0.3	78.2	2.8	19.0	0.095	0.507	22.751068	-102.452935
T. Izq. Libramiento De Guadalupe Y Zacatecas	118.20	1	1	17761	1.8	81.3	2.2	9.6	1.9	2.4	0.4	0.3	0.1	83.1	2.2	14.7	0.104	0.510	22.750863	-102.496602
T. Izq. Libramiento De Guadalupe Y Zacatecas Zacatecas	118.20 119.82	1	2	17077	1.9	81.0	2.3	9.7	1.9	2.4	0.4	0.3	0.1	82.9	2.3	14.8	0.111	0.510	22.750739	-102.496606

4 CARR: El Retoño - Ent. Asturias

CLAVE: 01124

RUTA: MEX-070

AÑO: 2020

LUGAR	ESTACION				CLASIFICACION VEHICULAR EN PORCIENTO													COORDENADAS		
	KM	TE	SC	TDPA	M	A	B	C2	C3	T3S2	T3S3	T3S2R4	OTROS	A	B	C	K'	D	LATITUD	LONGITUD
El Retoño	0.00	3	0	839	10.1	73.0	1.0	10.5	3.7	1.0	0.3	0.3	0.1	83.1	1.0	15.9	0.074	0.524	21.841323	-102.162245
Ent. Asturias	8.98	1	0	1227	9.0	78.2	0.6	8.7	1.7	1.2	0.5	0.0	0.1	87.2	0.6	12.2	0.093	0.540	21.860748	-102.222542

5 CARR: Ent. Cosio - Ent. Cuauhtémoc

CLAVE: 00579

RUTA: MEX-045

AÑO: 2020

LUGAR	ESTACION				CLASIFICACION VEHICULAR EN PORCIENTO													COORDENADAS		
	KM	TE	SC	TDPA	M	A	B	C2	C3	T3S2	T3S3	T3S2R4	OTROS	A	B	C	K'	D	LATITUD	LONGITUD
T. C. Aguascalientes - Zacatecas	57.20	3	0	7896	0.9	56.4	5.6	8.3	2.8	15.1	3.9	6.1	0.9	57.3	5.6	37.1	0.063	0.506	22.388176	-102.303179
Lim. Edos. Term. Ags. Ppia. Zac.	64.00																			
T. C. Ent. Cuauhtémoc - Ent. Osiris Cuota	70.00	1	0	10587	0.6	60.2	5.5	7.8	3.4	12.7	3.5	5.7	0.6	60.8	5.5	33.7	0.078	0.501	22.481444	-102.354129
T. C. Ent. Cuauhtémoc - Ent. Osiris (Cuota)	70.40																			

6 CARR: Ent. Penitenciaria - Villa Hidalgo

CLAVE: 00120

RUTA: MEX-071

AÑO: 2020

LUGAR	ESTACION				CLASIFICACION VEHICULAR EN PORCIENTO													COORDENADAS		
	KM	TE	SC	TDPA	M	A	B	C2	C3	T3S2	T3S3	T3S2R4	OTROS	A	B	C	K'	D	LATITUD	LONGITUD
T. C. Aguascalientes - Jalpa	0.00	3	1	7426	5.6	66.5	2.1	5.7	3.4	8.6	3.0	4.0	1.1	72.1	2.1	25.8	0.079	0.515	21.882324	-102.368730
T. C. Aguascalientes - Jalpa	0.00	3	2	7001	8.8	66.4	1.3	4.7	2.9	8.5	2.1	4.2	1.1	75.2	1.3	23.5	0.089	0.515	21.882311	-102.368604
T. Izq. El Niágara	9.20	3	0	3889	0.9	85.3	1.3	8.9	1.0	1.7	0.6	0.1	0.2	86.2	1.3	12.5	0.095	0.538	21.804191	-102.391740
El Taray	27.00	3	0	3845	2.8	89.3	1.0	6.0	0.5	0.2	0.2	0.0	0.0	92.1	1.0	6.9	0.106	0.511	21.728790	-102.497244

AGUASCALIENTES

6 CARR: Ent. Penitenciaria - Villa Hidalgo

CLAVE: 00120

RUTA: MEX-071

AÑO: 2020

LUGAR	ESTACION				CLASIFICACION VEHICULAR EN PORCIENTO												COORDENADAS			
	KM	TE	SC	TDPA	M	A	B	C2	C3	T3S2	T3S3	T3S2R4	OTROS	A	B	C	K'	D	LATITUD	LONGITUD
Lim. Edos. Term. Ags. Ppia. Jal.	29.58																			
Villa Hidalgo	41.80	1	0	3847	2.7	89.9	0.7	5.5	0.7	0.3	0.2	0.0	0.0	92.6	0.7	6.7	0.101	0.518	21.679436	-102.588865

7 CARR: Ent. Rivier - San Marcos

CLAVE: 00285

RUTA: MEX-066

AÑO: 2020

LUGAR	ESTACION				CLASIFICACION VEHICULAR EN PORCIENTO												COORDENADAS			
	KM	TE	SC	TDPA	M	A	B	C2	C3	T3S2	T3S3	T3S2R4	OTROS	A	B	C	K'	D	LATITUD	LONGITUD
T. C. Aguascalientes - Zacatecas	0.00	3	1	7336	3.1	85.8	0.5	6.1	1.9	1.0	0.8	0.4	0.4	88.9	0.5	10.6	0.080	0.502	21.962625	-102.289575
T. C. Aguascalientes - Zacatecas	0.00	3	2	7387	3.1	86.0	0.5	6.1	1.8	1.0	0.9	0.3	0.3	89.1	0.5	10.4	0.076	0.502	21.962776	-102.289567
T. Izq. El Tepetate	10.50	3	0	9015	7.1	80.3	1.8	5.5	2.4	0.8	0.4	0.6	1.1	87.4	1.8	10.8	0.084	0.515	21.998657	-102.200314
T. Der. Jilotepec	23.60	3	0	8003	5.5	79.2	1.6	10.6	0.9	0.9	0.3	0.4	0.6	84.7	1.6	13.7	0.099	0.518	22.051017	-102.102449
Villa Juárez	30.00	3	0	8581	6.3	77.6	1.4	11.3	1.3	0.9	0.3	0.3	0.6	83.9	1.4	14.7	0.092	0.509	22.095898	-102.067902
Ciénega Grande	41.50	1	0	7323	6.1	81.4	2.5	7.4	1.4	0.7	0.1	0.0	0.4	87.5	2.5	10.0	0.084	0.503	22.193771	-102.018592
Ciénega Grande	41.50	3	0	5662	1.8	84.4	1.7	6.5	1.7	1.1	1.2	0.3	1.3	86.2	1.7	12.1	0.087	0.508	22.194120	-102.018478
Lim. Edos. Term. Ags. Ppia. Zac.	45.75																			
San Marcos	55.34	1	0	7765	12.7	79.2	1.2	2.5	1.5	1.0	0.7	0.7	0.5	91.9	1.2	6.9	0.146	0.540	22.277996	-101.953065

8 CARR: León - Aguascalientes

CLAVE: 00167

RUTA: MEX-045

AÑO: 2020

LUGAR	ESTACION				CLASIFICACION VEHICULAR EN PORCIENTO												COORDENADAS			
	KM	TE	SC	TDPA	M	A	B	C2	C3	T3S2	T3S3	T3S2R4	OTROS	A	B	C	K'	D	LATITUD	LONGITUD
León	0.00																			
T. Der. Libramiento de León	11.00	1	1	13704	3.2	82.6	1.5	9.9	1.3	1.3	0.2	0.0	0.0	85.8	1.5	12.7	0.077	0.508	21.172511	-101.734631
T. Der. Libramiento de León	11.00	1	2	14171	3.2	82.6	1.5	9.9	1.3	1.3	0.2	0.0	0.0	85.8	1.5	12.7	0.083	0.508	21.172281	-101.734983
T. Der. Libramiento de León	11.00	3	1	10627	3.3	78.8	2.1	10.1	2.5	2.5	0.6	0.1	0.0	82.1	2.1	15.8	0.095	0.502	21.173210	-101.735550
T. Der. Libramiento de León	11.00	3	2	10731	3.3	78.7	2.2	10.2	2.5	2.5	0.5	0.1	0.0	82.0	2.2	15.8	0.121	0.502	21.173057	-101.735731
T. Izq. Centro de León	12.00	3	1	7897	3.0	88.7	0.8	6.9	0.2	0.2	0.1	0.1	0.0	91.7	0.8	7.5	0.116	0.502	21.178397	-101.741504
T. Izq. Centro de León	12.00	3	2	7948	3.1	88.6	0.8	6.9	0.2	0.2	0.0	0.1	0.1	91.7	0.8	7.5	0.087	0.502	21.178373	-101.741573
Lim. Edos. Term. Gto. Ppia. Jal.	17.88																			
X. C. San Luis Potosí - Lagos de Moreno	44.18	1	1	9323	5.0	78.8	2.4	7.1	2.2	2.9	0.8	0.3	0.5	83.8	2.4	13.8	0.091	0.505	21.370721	-101.901819
X. C. San Luis Potosí - Lagos de Moreno	44.18	1	2	9140	4.9	77.9	2.4	8.0	2.3	2.9	0.8	0.3	0.5	82.8	2.4	14.8	0.093	0.505	21.370749	-101.901739
T. Izq. Libramiento Lagos de Moreno	48.70	1	0	7419	2.4	82.5	2.3	8.0	3.3	0.7	0.4	0.2	0.2	84.9	2.3	12.8	0.093	0.519	21.371958	-101.962147
T. Izq. Libramiento Lagos de Moreno	48.70	3	0	8380	6.0	75.1	1.3	7.9	3.8	3.9	1.5	0.4	0.1	81.1	1.3	17.6	0.081	0.508	21.372891	-101.963084
T. Der. El Destierro	80.80	1	0	4765	1.5	70.7	1.6	12.2	4.7	6.5	1.7	0.8	0.3	72.2	1.6	26.2	0.078	0.505	21.499947	-102.195505
Encarnación de Díaz	88.20	1	0	5575	4.1	77.4	1.8	7.7	3.2	4.0	1.2	0.3	0.3	81.5	1.8	16.7	0.093	0.511	21.514199	-102.238792

AGUASCALIENTES

8 CARR: León - Aguascalientes

CLAVE: 00167

RUTA: MEX-045

AÑO: 2020

LUGAR	ESTACION				CLASIFICACION VEHICULAR EN PORCIENTO										COORDENADAS					
	KM	TE	SC	TDPA	M	A	B	C2	C3	T3S2	T3S3	T3S2R4	OTROS	A	B	C	K'	D	LATITUD	LONGITUD
T. Izq. Libramiento de Encarnación de Díaz	89.18	1	1	1327	7.4	85.4	0.5	5.1	0.4	0.3	0.1	0.0	0.8	92.8	0.5	6.7	0.114	0.507	21.536644	-102.239432
T. Izq. Libramiento de Encarnación de Díaz	89.18	1	2	1364	17.9	74.7	0.4	5.3	0.5	0.2	0.1	0.0	0.9	92.6	0.4	7.0	0.089	0.507	21.536651	-102.239510
T. Izq. Libramiento de Encarnación de Díaz	89.18	3	0	8422	5.5	67.6	3.5	10.6	3.5	5.8	2.1	0.8	0.6	73.1	3.5	23.4	0.082	0.521	21.537406	-102.239399
T. C. León - Aguascalientes (Cuota)	99.44	3	1	10575	0.8	67.9	4.8	7.5	2.8	9.4	2.6	3.5	0.7	68.7	4.8	26.5	0.061	0.501	21.622620	-102.276144
T. C. León - Aguascalientes (Cuota)	99.44	3	2	10529	0.8	69.0	4.8	6.4	2.8	9.4	2.6	3.5	0.7	69.8	4.8	25.4	0.061	0.501	21.622625	-102.276241
Lim. Edos. Term. Jal. Ppia. Ags.	103.30																			
T. Izq. Aeropuerto de Aguascalientes	110.15	1	1	11789	0.8	68.6	4.5	6.9	3.0	9.3	2.6	3.6	0.7	69.4	4.5	26.1	0.068	0.502	21.719845	-102.276670
T. Izq. Aeropuerto de Aguascalientes	110.15	1	2	11897	0.8	68.8	4.6	6.9	2.9	9.2	2.6	3.5	0.7	69.6	4.6	25.8	0.072	0.502	21.719847	-102.276810
T. Izq. Aeropuerto de Aguascalientes	110.15	3	1	18528	0.8	77.9	3.3	6.0	1.6	5.5	2.2	2.0	0.7	78.7	3.3	18.0	0.094	0.503	21.725806	-102.276724
T. Izq. Aeropuerto de Aguascalientes	110.15	3	2	18324	0.8	78.0	3.3	6.0	1.6	5.4	2.2	2.0	0.7	78.8	3.3	17.9	0.080	0.503	21.725809	-102.276824
Libramiento Poniente de Aguascalientes	116.50	1	1	19055	1.3	76.2	3.4	7.2	2.6	5.7	1.4	1.8	0.4	77.5	3.4	19.1	0.103	0.504	21.766346	-102.277708
Libramiento Poniente de Aguascalientes	116.50	1	2	19372	0.8	76.9	3.4	7.1	2.5	5.7	1.4	1.8	0.4	77.7	3.4	18.9	0.084	0.504	21.766353	-102.277535
Libramiento Poniente de Aguascalientes	116.50	3	1	17985	1.1	80.1	4.2	7.7	1.8	3.3	0.8	0.7	0.3	81.2	4.2	14.6	0.078	0.504	21.774123	-102.278868
Libramiento Poniente de Aguascalientes	116.50	3	2	18282	1.1	80.2	4.2	7.6	1.8	3.3	0.8	0.7	0.3	81.3	4.2	14.5	0.083	0.504	21.774089	-102.279015
T. Der. Estación Arellano (Lateral)	118.40	3	1	8298	3.2	80.2	2.7	5.6	3.2	2.4	0.9	1.4	0.4	83.4	2.7	13.9	0.072	0.509	21.797882	-102.282781
T. Der. Estación Arellano (Central)	118.40	3	1	13434	4.3	79.6	3.4	6.2	1.7	3.0	0.7	0.6	0.5	83.9	3.4	12.7	0.093	0.564	21.797872	-102.282827
T. Der. Estación Arellano (Lateral)	118.40	3	2	6028	3.1	80.3	2.8	5.6	3.1	2.5	0.9	1.3	0.4	83.4	2.8	13.8	0.073	0.509	21.797852	-102.282962
T. Der. Estación Arellano (Central)	118.40	3	2	17127	4.4	79.6	3.4	6.1	1.7	3.0	0.7	0.6	0.5	84.0	3.4	12.6	0.062	0.564	21.797856	-102.282908
Aguascalientes	129.18	1	1	23166	1.6	81.4	3.3	8.3	1.6	2.6	0.5	0.5	0.2	83.0	3.3	13.7	0.105	0.517	21.858436	-102.292958
Aguascalientes	129.18	1	2	24755	1.6	81.4	3.3	8.3	1.6	2.6	0.5	0.5	0.2	83.0	3.3	13.7	0.097	0.517	21.858431	-102.293081

9 CARR: Libramiento Rincón de Romos

CLAVE: 00167

RUTA: MEX-045

AÑO: 2020

LUGAR	ESTACION				CLASIFICACION VEHICULAR EN PORCIENTO										COORDENADAS					
	KM	TE	SC	TDPA	M	A	B	C2	C3	T3S2	T3S3	T3S2R4	OTROS	A	B	C	K'	D	LATITUD	LONGITUD
T. C. Aguascalientes - Zacatecas (Sur)	0.00	3	0	14360	3.4	63.7	7.7	4.0	2.1	14.9	1.6	2.2	0.4	67.1	7.7	25.2	0.066	0.503	22.187393	-102.294980
T. C. Aguascalientes - Zacatecas (Norte)	10.00	1	0	10861	1.2	61.8	6.5	5.9	3.4	12.5	2.6	5.5	0.6	63.0	6.5	30.5	0.080	0.511	22.264808	-102.307878

10 CARR: Ojo Caliente - Malpaso

CLAVE: 01123

RUTA: MEX-070

AÑO: 2020

LUGAR	ESTACION				CLASIFICACION VEHICULAR EN PORCIENTO										COORDENADAS					
	KM	TE	SC	TDPA	M	A	B	C2	C3	T3S2	T3S3	T3S2R4	OTROS	A	B	C	K'	D	LATITUD	LONGITUD
T. C. Aguascalientes - Jalpa	0.00	3	0	3543	1.4	90.4	0.3	7.2	0.2	0.1	0.2	0.1	0.1	91.8	0.3	7.9	0.091	0.600	21.881647	-102.670075
Malpaso	3.10	1	0	2178	7.1	88.4	0.1	4.1	0.2	0.1	0.0	0.0	0.0	95.5	0.1	4.4	0.119	0.503	21.861882	-102.664680

AGUASCALIENTES

11 CARR: Ojuelos - Aguascalientes

CLAVE: 00094

RUTA: MEX-070

AÑO: 2020

LUGAR	ESTACION				CLASIFICACION VEHICULAR EN PORCIENTO													COORDENADAS		
	KM	TE	SC	TDPA	M	A	B	C2	C3	T3S2	T3S3	T3S2R4	OTROS	A	B	C	K'	D	LATITUD	LONGITUD
Ojuelos	0.00	3	0	4067	1.8	69.5	2.8	13.8	2.7	6.3	1.6	1.2	0.3	71.3	2.8	25.9	0.089	0.500	21.869561	-101.597531
Matancillas	6.92	3	0	3621	1.6	71.1	3.2	12.4	2.4	6.2	1.8	1.0	0.3	72.7	3.2	24.1	0.086	0.512	21.887715	-101.648824
Vergel	40.70	3	0	4100	1.5	71.2	2.4	12.7	2.2	6.2	1.9	1.2	0.7	72.7	2.4	24.9	0.087	0.505	21.767002	-101.935862
Lim. Edos. Term. Jal. Ppia. Ags.	57.20																			
T. Der. Palo Alto	60.80	1	0	6502	1.8	76.7	1.9	9.2	2.5	5.5	1.5	0.7	0.2	78.5	1.9	19.6	0.088	0.501	21.819574	-102.096313
San Isidro	61.00	3	0	8203	1.5	79.6	1.5	9.3	1.8	4.3	1.3	0.5	0.2	81.1	1.5	17.4	0.085	0.500	21.820632	-102.099390
El Retoño	68.00	1	0	8432	1.5	80.3	1.5	8.8	1.9	3.9	1.2	0.5	0.4	81.8	1.5	16.7	0.089	0.502	21.840410	-102.159796
T. C. El Retoño - Asturias	78.00	1	1	7810	2.0	84.6	0.7	7.7	1.1	2.1	1.3	0.2	0.3	86.6	0.7	12.7	0.130	0.501	21.860198	-102.220213
T. C. El Retoño - Asturias	78.00	1	2	7845	2.0	84.7	0.6	7.6	1.1	2.1	1.4	0.2	0.3	86.7	0.6	12.7	0.106	0.501	21.860077	-102.220243
T. C. El Retoño - Asturias	78.00	3	1	9343	2.0	84.9	0.5	7.4	1.1	2.1	1.4	0.3	0.3	86.9	0.5	12.6	0.115	0.501	21.860316	-102.220660
T. C. El Retoño - Asturias	78.00	3	2	9377	2.0	84.9	0.6	7.4	1.1	2.1	1.3	0.3	0.3	86.9	0.6	12.5	0.105	0.501	21.860190	-102.220704
Salto del Ojo Caliente (Central)	81.51	1	1	15393	4.2	86.0	0.6	4.3	0.5	2.1	1.7	0.3	0.3	90.2	0.6	9.2	0.078	0.501	21.867708	-102.244193
Salto del Ojo Caliente (Lateral)	81.51	1	1	3474	6.0	88.1	0.2	4.0	0.5	0.5	0.4	0.2	0.1	94.1	0.2	5.7	0.070	0.527	21.867967	-102.244122
Salto del Ojo Caliente (Lateral)	81.51	1	2	3877	6.2	88.1	0.1	4.1	0.4	0.4	0.4	0.2	0.1	94.3	0.1	5.6	0.075	0.527	21.867387	-102.244293
Salto del Ojo Caliente (Central)	81.51	1	2	16804	4.2	86.2	0.5	4.3	0.5	2.0	1.7	0.3	0.3	90.4	0.5	9.1	0.086	0.501	21.867582	-102.244233

12 CARR: Providencia - Luis Moya

CLAVE: 00112

RUTA: MEX-071

AÑO: 2020

LUGAR	ESTACION				CLASIFICACION VEHICULAR EN PORCIENTO													COORDENADAS		
	KM	TE	SC	TDPA	M	A	B	C2	C3	T3S2	T3S3	T3S2R4	OTROS	A	B	C	K'	D	LATITUD	LONGITUD
T. C. Aguascalientes - Zacatecas	0.00	3	0	4759	3.7	76.3	0.9	8.2	2.8	2.9	2.4	2.1	0.7	80.0	0.9	19.1	0.082	0.516	22.060925	-102.275719
T. Izq. Pabellón de Arteaga	12.10	1	0	5237	3.0	77.2	1.0	8.0	1.5	2.6	2.9	3.3	0.5	80.2	1.0	18.8	0.080	0.500	22.149653	-102.248249
T. Der. Villa Juárez	14.90	3	0	6187	3.3	76.8	0.6	9.5	1.5	3.4	2.3	2.4	0.2	80.1	0.6	19.3	0.087	0.502	22.174878	-102.245494
X. C. Rincón de Romos - Ciénega Grande	21.22	3	0	4912	3.3	77.9	2.0	9.7	1.3	2.9	1.6	1.0	0.3	81.2	2.0	16.8	0.085	0.516	22.227546	-102.241664
X. C. La Punta - Mesillas	30.35	3	0	2911	7.3	73.2	1.5	9.8	2.0	2.7	2.0	1.0	0.5	80.5	1.5	18.0	0.100	0.502	22.313702	-102.234065
San Jacinto	34.25	3	0	1790	6.9	71.5	0.4	10.4	2.9	4.5	0.8	2.1	0.5	78.4	0.4	21.2	0.094	0.506	22.348244	-102.231485
Lim. Edos. Term. Ags. Ppia. Zac.	37.50																			
Luis Moya	43.52	1	0	4199	2.3	86.1	1.0	3.9	2.2	1.4	1.5	1.1	0.5	88.4	1.0	10.6	0.097	0.507	22.429854	-102.247870

13 CARR: Ramal a Aeropuerto de Aguascalientes

CLAVE: 01116

RUTA: MEX-045

AÑO: 2020

LUGAR	ESTACION				CLASIFICACION VEHICULAR EN PORCIENTO													COORDENADAS		
	KM	TE	SC	TDPA	M	A	B	C2	C3	T3S2	T3S3	T3S2R4	OTROS	A	B	C	K'	D	LATITUD	LONGITUD
T. C. León - Aguascalientes	0.00																			
Aeropuerto	6.13	1	1	1461	2.2	91.3	0.2	5.5	0.2	0.2	0.1	0.1	0.2	93.5	0.2	6.3	0.123	0.502	21.702156	-102.312720

AGUASCALIENTES

13 CARR: Ramal a Aeropuerto de Aguascalientes

CLAVE: 01116

RUTA: MEX-045

AÑO: 2020

LUGAR	ESTACION				CLASIFICACION VEHICULAR EN PORCIENTO													COORDENADAS		
	KM	TE	SC	TDPA	M	A	B	C2	C3	T3S2	T3S3	T3S2R4	OTROS	A	B	C	K'	D	LATITUD	LONGITUD
Aeropuerto	6.13	1	2	1449	2.0	91.4	0.2	5.6	0.2	0.2	0.1	0.1	0.2	93.4	0.2	6.4	0.101	0.502	21.702044	-102.312717

14 CARR: Rincón de Romos - Ciénega Grande

CLAVE: 01002

RUTA: MEX-039

AÑO: 2020

LUGAR	ESTACION				CLASIFICACION VEHICULAR EN PORCIENTO													COORDENADAS		
	KM	TE	SC	TDPA	M	A	B	C2	C3	T3S2	T3S3	T3S2R4	OTROS	A	B	C	K'	D	LATITUD	LONGITUD
Rincón de Romos	0.00	3	0	8358	3.0	83.1	0.6	7.5	0.9	3.5	0.8	0.0	0.6	86.1	0.6	13.3	0.093	0.503	22.223251	-102.318589
X. C. Providencia - Luis Moya	8.00	3	0	3131	2.9	83.5	0.4	8.2	2.1	1.4	1.1	0.1	0.3	86.4	0.4	13.2	0.084	0.503	22.227230	-102.241296
Tepezala	15.00	3	0	1260	4.7	79.6	2.0	9.2	1.5	1.4	1.2	0.0	0.4	84.3	2.0	13.7	0.094	0.503	22.221680	-102.169642
Asientos	27.70	3	0	1890	6.6	78.9	1.3	11.6	0.4	0.9	0.2	0.0	0.1	85.5	1.3	13.2	0.079	0.517	22.234271	-102.086164
Ciénega Grande	36.70	1	0	3470	7.7	72.5	1.8	14.1	1.1	2.2	0.4	0.1	0.1	80.2	1.8	18.0	0.077	0.501	22.196891	-102.017272

15 CARR: Aguascalientes - Ent. Cd. de Los Niños

CLAVE: 01130

RUTA: AGS

AÑO: 2020

LUGAR	ESTACION				CLASIFICACION VEHICULAR EN PORCIENTO													COORDENADAS		
	KM	TE	SC	TDPA	M	A	B	C2	C3	T3S2	T3S3	T3S2R4	OTROS	A	B	C	K'	D	LATITUD	LONGITUD
T. C. Aguascalientes - Jalpa	0.00	3	1	13593	4.2	89.1	0.3	1.8	0.2	1.1	3.2	0.0	0.1	93.3	0.3	6.4	0.094	0.527	21.871021	-102.322530
T. C. Aguascalientes - Jalpa	0.00	3	2	15153	3.6	90.4	0.3	1.8	0.2	0.9	2.8	0.0	0.0	94.0	0.3	5.7	0.093	0.527	21.870968	-102.322470
T. C. Ent. Penitenciaría - Villa Hidalgo	8.00	1	0	1058	4.3	88.3	0.4	3.9	2.1	0.8	0.1	0.1	0.0	92.6	0.4	7.0	0.129	0.530	21.838256	-102.376241

16 CARR: Aguascalientes - Jesús María

CLAVE: 01112

RUTA: AGS-095

AÑO: 2020

LUGAR	ESTACION				CLASIFICACION VEHICULAR EN PORCIENTO													COORDENADAS		
	KM	TE	SC	TDPA	M	A	B	C2	C3	T3S2	T3S3	T3S2R4	OTROS	A	B	C	K'	D	LATITUD	LONGITUD
T. C. Aguascalientes - Zacatecas	0.00																			
Pocitos	3.30	3	1	20098	3.9	91.9	0.1	3.0	0.2	0.3	0.4	0.1	0.1	95.8	0.1	4.1	0.079	0.508	21.918417	-102.314384
Pocitos	3.30	3	2	20712	3.2	92.0	0.1	3.6	0.2	0.3	0.4	0.1	0.1	95.2	0.1	4.7	0.077	0.508	21.918392	-102.314550
T. Der. Maravillas	7.00	3	1	9929	6.3	90.8	0.4	1.7	0.4	0.1	0.1	0.1	0.1	97.1	0.4	2.5	0.084	0.529	21.937498	-102.324919
T. Der. Maravillas	7.00	3	2	11171	4.6	92.6	0.3	1.7	0.4	0.1	0.1	0.1	0.1	97.2	0.3	2.5	0.083	0.529	21.937443	-102.325043
Jesús María	8.10	1	1	9956	4.0	91.5	0.3	3.6	0.3	0.2	0.1	0.0	0.0	95.5	0.3	4.2	0.065	0.502	21.958898	-102.342586
Jesús María	8.10	1	2	10050	4.0	91.2	0.3	4.0	0.3	0.1	0.1	0.0	0.0	95.2	0.3	4.5	0.064	0.502	21.958795	-102.342710

AGUASCALIENTES

17 CARR: Aguascalientes - José María Morelos

CLAVE: 01131

RUTA: AGS

AÑO: 2020

LUGAR	ESTACION				CLASIFICACION VEHICULAR EN PORCIENTO										COORDENADAS					
	KM	TE	SC	TDPA	M	A	B	C2	C3	T3S2	T3S3	T3S2R4	OTROS	A	B	C	K'	D	LATITUD	LONGITUD
Las Cumbres (Av. Siglo XXI)	0.00	3	0	4493	3.8	80.4	0.6	9.9	2.7	1.8	0.4	0.2	0.2	84.2	0.6	15.2	0.080	0.504	21.907020	-102.256966
T. Der. San Jose de La Ordeña	8.00	3	0	3132	3.8	76.6	0.5	14.2	2.5	1.6	0.4	0.2	0.2	80.4	0.5	19.1	0.083	0.507	21.959185	-102.214974
José María Morelos	12.60																			

18 CARR: Carboneras - Villa Juárez

CLAVE: 01111

RUTA: AGS-004

AÑO: 2020

LUGAR	ESTACION				CLASIFICACION VEHICULAR EN PORCIENTO										COORDENADAS					
	KM	TE	SC	TDPA	M	A	B	C2	C3	T3S2	T3S3	T3S2R4	OTROS	A	B	C	K'	D	LATITUD	LONGITUD
Carboneras	0.00	3	0	1373	3.7	82.8	0.4	10.6	0.8	1.5	0.2	0.0	0.0	86.5	0.4	13.1	0.087	0.519	22.174868	-102.245396
Clavellinas	14.00	1	0	1460	9.9	75.6	0.5	9.9	1.8	1.5	0.5	0.1	0.2	85.5	0.5	14.0	0.075	0.547	22.138359	-102.137690
Ent. Villa Juárez	23.10	1	0	2597	5.4	79.1	1.0	10.5	1.8	1.7	0.4	0.0	0.1	84.5	1.0	14.5	0.084	0.507	22.102289	-102.063120

19 CARR: Cosío - Santa María de La Paz

CLAVE: 01132

RUTA: AGS

AÑO: 2020

LUGAR	ESTACION				CLASIFICACION VEHICULAR EN PORCIENTO										COORDENADAS					
	KM	TE	SC	TDPA	M	A	B	C2	C3	T3S2	T3S3	T3S2R4	OTROS	A	B	C	K'	D	LATITUD	LONGITUD
T. C. Aguascalientes - Zacatecas	0.00	3	0	1196	13.9	73.3	2.0	9.3	0.3	0.8	0.1	0.0	0.3	87.2	2.0	10.8	0.102	0.505	22.371224	-102.297867
Santa María de La Paz	5.60																			

20 CARR: Crucero Ojo de Agua de Crucitas - Santa Rosa

CLAVE: 01140

RUTA: AGS

AÑO: 2020

LUGAR	ESTACION				CLASIFICACION VEHICULAR EN PORCIENTO										COORDENADAS					
	KM	TE	SC	TDPA	M	A	B	C2	C3	T3S2	T3S3	T3S2R4	OTROS	A	B	C	K'	D	LATITUD	LONGITUD
T. C. Ent. La Calavera - Ent. San Pedro	0.00	3	0	905	11.3	77.0	0.1	9.1	1.2	0.9	0.4	0.0	0.0	88.3	0.1	11.6	0.095	0.506	21.939647	-101.976495
Santa Rosa	5.00																			

21 CARR: El Tanque - San José de La Ordeña

CLAVE: 01143

RUTA: AGS

AÑO: 2020

LUGAR	ESTACION				CLASIFICACION VEHICULAR EN PORCIENTO										COORDENADAS					
	KM	TE	SC	TDPA	M	A	B	C2	C3	T3S2	T3S3	T3S2R4	OTROS	A	B	C	K'	D	LATITUD	LONGITUD
T. C. Aguascalientes - José María Morelos	0.00	3	0	1602	6.4	76.9	0.3	12.5	2.0	1.1	0.4	0.2	0.2	83.3	0.3	16.4	0.135	0.506	21.959189	-102.214972
San José de La Ordeña	8.50																			

AGUASCALIENTES

22 CARR: El Taray - T. C.(Ramal Aeropuerto de Aguascalientes)

CLAVE: 01121

RUTA: AGS-002

AÑO: 2020

LUGAR	ESTACION				CLASIFICACION VEHICULAR EN PORCIENTO										COORDENADAS					
	KM	TE	SC	TDPA	M	A	B	C2	C3	T3S2	T3S3	T3S2R4	OTROS	A	B	C	K'	D	LATITUD	LONGITUD
T. C. Ent. Penitenciaría - Villa Hidalgo	0.00	3	0	675	4.3	82.2	0.5	12.1	0.8	0.1	0.0	0.0	0.0	86.5	0.5	13.0	0.133	0.523	21.735132	-102.491426
T. C. Ramal Aeropuerto de Aguascalientes	22.00	1	1	912	4.7	75.8	0.9	16.5	1.2	0.5	0.2	0.2	0.0	80.5	0.9	18.6	0.158	0.525	21.725726	-102.306335
T. C. Ramal Aeropuerto de Aguascalientes	22.00	1	2	825	4.5	75.2	0.9	17.2	1.2	0.7	0.2	0.1	0.0	79.7	0.9	19.4	0.158	0.525	21.725726	-102.306344

23 CARR: Ent. Arellano - El Retoño

CLAVE: 01121

RUTA: AGS

AÑO: 2020

LUGAR	ESTACION				CLASIFICACION VEHICULAR EN PORCIENTO										COORDENADAS					
	KM	TE	SC	TDPA	M	A	B	C2	C3	T3S2	T3S3	T3S2R4	OTROS	A	B	C	K'	D	LATITUD	LONGITUD
T. C. León - Aguascalientes	0.00	3	0	6236	5.7	73.4	1.4	9.1	4.2	3.8	0.8	1.3	0.3	79.1	1.4	19.5	0.093	0.520	21.797671	-102.282222
T. Izq. Villa Jesús Terán (Calvillito)	12.20	1	0	1963	7.7	67.1	6.2	7.4	3.7	3.3	3.1	1.4	0.1	74.8	6.2	19.0	0.085	0.505	21.818441	-102.186398
T. Izq. Villa Jesús Terán (Calvillito)	12.20	3	0	1814	8.7	64.8	7.0	6.9	3.2	3.4	3.3	2.5	0.2	73.5	7.0	19.5	0.079	0.505	21.818443	-102.186396
T. C. Ojuelos - Aguascalientes	15.92	1	0	1688	4.1	71.7	5.7	7.3	3.7	3.4	2.7	1.2	0.2	75.8	5.7	18.5	0.076	0.504	21.840499	-102.159997

24 CARR: Ent. Buenavista - Gracias a Dios

CLAVE: 01138

RUTA: AGS

AÑO: 2020

LUGAR	ESTACION				CLASIFICACION VEHICULAR EN PORCIENTO										COORDENADAS						
	KM	TE	SC	TDPA	M	A	B	C2	C3	T3S2	T3S3	T3S2R4	OTROS	A	B	C	K'	D	LATITUD	LONGITUD	
T. C. Aguascalientes - Jalpa	0.00	3	0	822	2.2	85.7	0.7	10.0	0.4	1.0	0.0	0.0	0.0	87.9	0.7	11.4	0.107	0.505	21.887916	-102.462011	
Gracias a Dios	6.30																				

25 CARR: Ent. El Novillo - Villa Juárez

CLAVE: 01103

RUTA: AGS-005

AÑO: 2020

LUGAR	ESTACION				CLASIFICACION VEHICULAR EN PORCIENTO										COORDENADAS						
	KM	TE	SC	TDPA	M	A	B	C2	C3	T3S2	T3S3	T3S2R4	OTROS	A	B	C	K'	D	LATITUD	LONGITUD	
T. C. Ent. La Calavera - Ent. San Pedro	0.00																				
Villa Juárez	12.60	1	0	2012	5.4	77.7	1.1	11.9	1.6	1.7	0.4	0.1	0.1	83.1	1.1	15.8	0.088	0.523	22.098313	-102.065362	

26 CARR: Ent. La Calavera - Ent. San Pedro

CLAVE: 01102

RUTA: AGS-043

AÑO: 2020

LUGAR	ESTACION				CLASIFICACION VEHICULAR EN PORCIENTO										COORDENADAS					
	KM	TE	SC	TDPA	M	A	B	C2	C3	T3S2	T3S3	T3S2R4	OTROS	A	B	C	K'	D	LATITUD	LONGITUD
T. C. Ojuelos - Aguascalientes	0.00	3	0	2948	7.0	76.3	3.6	4.5	2.6	2.0	2.9	1.0	0.1	83.3	3.6	13.1	0.074	0.502	21.820169	-102.097916
T. Der. Palo Alto	15.00	1	0	3809	3.7	82.0	0.8	8.5	2.2	2.2	0.4	0.1	0.1	85.7	0.8	13.5	0.087	0.501	21.919567	-101.969387
T. Der. Palo Alto	15.00	3	0	2832	5.1	74.1	2.0	12.8	3.0	1.8	0.6	0.5	0.1	79.2	2.0	18.8	0.088	0.502	21.919567	-101.969390
T. Izq. Ent. El Novillo - Villa Juárez	28.10	1	0	1778	3.2	77.5	1.6	12.3	2.9	1.7	0.6	0.2	0.0	80.7	1.6	17.7	0.102	0.503	22.011228	-101.993933

AGUASCALIENTES

26 CARR: Ent. La Calavera - Ent. San Pedro

CLAVE: 01102

RUTA: AGS-043

AÑO: 2020

LUGAR	ESTACION				CLASIFICACION VEHICULAR EN PORCIENTO										COORDENADAS					
	KM	TE	SC	TDPA	M	A	B	C2	C3	T3S2	T3S3	T3S2R4	OTROS	A	B	C	K'	D	LATITUD	LONGITUD
T. Izq. Ent. El Novillo - Villa Juárez	28.10	3	0	2189	4.6	78.5	1.7	11.1	1.9	1.6	0.2	0.3	0.1	83.1	1.7	15.2	0.095	0.510	22.011229	-101.993933
Pilotos	33.50	3	0	2802	10.8	75.6	1.2	8.8	1.4	1.6	0.4	0.1	0.1	86.4	1.2	12.4	0.092	0.508	22.038163	-101.960823
T. C. Rivier - San Marcos	47.60	1	0	2806	2.9	82.1	1.1	10.7	1.0	1.5	0.4	0.2	0.1	85.0	1.1	13.9	0.082	0.501	22.136822	-102.041845

27 CARR: Ent. La Chirida - San Francisco de Los Romo

CLAVE: 01016

RUTA: AGS

AÑO: 2020

LUGAR	ESTACION				CLASIFICACION VEHICULAR EN PORCIENTO										COORDENADAS					
	KM	TE	SC	TDPA	M	A	B	C2	C3	T3S2	T3S3	T3S2R4	OTROS	A	B	C	K'	D	LATITUD	LONGITUD
T. C. Jesús María - Palomas	0.00																			
San Francisco de Los Romo	1.50	1	0	4811	11.2	74.1	0.3	8.7	1.8	2.8	0.7	0.2	0.2	85.3	0.3	14.4	0.078	0.507	22.070461	-102.274517

28 CARR: Ent. Pabellón de Arteaga - California

CLAVE: 01137

RUTA: AGS

AÑO: 2020

LUGAR	ESTACION				CLASIFICACION VEHICULAR EN PORCIENTO										COORDENADAS					
	KM	TE	SC	TDPA	M	A	B	C2	C3	T3S2	T3S3	T3S2R4	OTROS	A	B	C	K'	D	LATITUD	LONGITUD
T. C. Aguascalientes - Zacatecas	0.00	3	1	3178	4.3	85.3	0.7	6.2	0.8	2.0	0.4	0.1	0.2	89.6	0.7	9.7	0.087	0.570	22.105865	-102.274611
T. C. Aguascalientes - Zacatecas	0.00	3	2	2398	5.2	85.0	0.9	5.2	0.9	2.0	0.5	0.1	0.2	90.2	0.9	8.9	0.090	0.570	22.105865	-102.274611
Pabellón de Arteaga	5.60	3	0	3164	7.5	81.8	0.6	6.1	0.7	1.9	0.5	0.5	0.4	89.3	0.6	10.1	0.082	0.501	22.147841	-102.275060
X. C. Rincón de Romos - Ciénega Grande	13.30	1	0	2142	8.5	80.5	0.4	7.6	1.0	1.4	0.2	0.3	0.1	89.0	0.4	10.6	0.082	0.514	22.225343	-102.278371
X. C. Rincón de Romos - Ciénega Grande	13.30	3	0	1438	9.2	80.5	0.4	7.6	1.0	1.0	0.2	0.0	0.1	89.7	0.4	9.9	0.102	0.507	22.225342	-102.278366
Ejido California	20.50	1	0	938	9.3	80.2	0.5	7.7	1.0	0.9	0.3	0.0	0.1	89.5	0.5	10.0	0.100	0.506	22.284027	-102.252909

29 CARR: Ent. Pabellón de Arteaga - San José de Gracia

CLAVE: 01031

RUTA: AGS-019

AÑO: 2020

LUGAR	ESTACION				CLASIFICACION VEHICULAR EN PORCIENTO										COORDENADAS					
	KM	TE	SC	TDPA	M	A	B	C2	C3	T3S2	T3S3	T3S2R4	OTROS	A	B	C	K'	D	LATITUD	LONGITUD
T. C. Aguascalientes - Zacatecas	0.00	3	1	2791	3.0	85.4	0.5	8.3	1.8	0.4	0.4	0.1	0.1	88.4	0.5	11.1	0.121	0.559	22.146493	-102.292944
T. C. Aguascalientes - Zacatecas	0.00	3	2	2198	3.9	83.2	0.7	9.7	1.8	0.2	0.5	0.0	0.0	87.1	0.7	12.2	0.086	0.559	22.146491	-102.292943
T. Der. La Cieneguita	10.00	1	1	1811	3.2	90.0	0.4	5.6	0.6	0.1	0.1	0.0	0.0	93.2	0.4	6.4	0.172	0.512	22.140589	-102.381504
T. Der. La Cieneguita	10.00	1	2	1725	3.8	87.9	0.4	6.9	0.8	0.1	0.1	0.0	0.0	91.7	0.4	7.9	0.139	0.512	22.140592	-102.381506
San José de Gracia	13.80	1	1	1614	4.9	84.2	1.1	8.5	1.1	0.1	0.1	0.0	0.0	89.1	1.1	9.8	0.149	0.506	22.149957	-102.411257
San José de Gracia	13.80	1	2	1573	4.7	85.1	1.3	7.7	1.0	0.1	0.1	0.0	0.0	89.8	1.3	8.9	0.102	0.506	22.149955	-102.411259

AGUASCALIENTES

30 CARR: Ent. Rincón de Romos - La Boquilla

CLAVE: 01139

RUTA: AGS

AÑO: 2020

LUGAR	ESTACION				CLASIFICACION VEHICULAR EN PORCIENTO														COORDENADAS	
	KM	TE	SC	TDPA	M	A	B	C2	C3	T3S2	T3S3	T3S2R4	OTROS	A	B	C	K'	D	LATITUD	LONGITUD
T. C. Aguascalientes - Zacatecas	0.00	3	0	1721	9.5	79.7	0.5	8.8	0.5	0.8	0.1	0.1	0.0	89.2	0.5	10.3	0.113	0.506	22.243209	-102.316029
La Boquilla	6.90																			

31 CARR: Ent. San Carlos - Ent. El Milagro

CLAVE: 01141

RUTA: AGS-010

AÑO: 2020

LUGAR	ESTACION				CLASIFICACION VEHICULAR EN PORCIENTO														COORDENADAS	
	KM	TE	SC	TDPA	M	A	B	C2	C3	T3S2	T3S3	T3S2R4	OTROS	A	B	C	K'	D	LATITUD	LONGITUD
T. C. Jesús María - Palomas	0.00	3	0	1939	7.2	79.6	0.1	7.7	2.1	1.5	1.6	0.1	0.1	86.8	0.1	13.1	0.091	0.508	22.047999	-102.302937
T. C. (T. C-(Ags. - Zac.)- San José de Gracia)	13.60	1	0	1141	8.7	75.3	0.2	9.7	4.0	0.6	1.1	0.2	0.2	84.0	0.2	15.8	0.119	0.513	22.143217	-102.336075

32 CARR: Ent. San Felipe - Jesús María

CLAVE: 01144

RUTA: AGS

AÑO: 2020

LUGAR	ESTACION				CLASIFICACION VEHICULAR EN PORCIENTO														COORDENADAS	
	KM	TE	SC	TDPA	M	A	B	C2	C3	T3S2	T3S3	T3S2R4	OTROS	A	B	C	K'	D	LATITUD	LONGITUD
T. C. Aguascalientes - Jalpa	0.00	3	0	1814	11.6	78.1	1.2	5.0	2.8	0.6	0.4	0.2	0.1	89.7	1.2	9.1	0.084	0.524	21.882906	-102.368443
Jesús María	12.70	1	0	2074	4.9	76.9	0.7	9.0	2.3	4.1	1.2	0.4	0.5	81.8	0.7	17.5	0.095	0.512	21.960744	-102.347668

33 CARR: Ent. San Isidro - Ent. El Salitre

CLAVE: 01142

RUTA: AGS-016

AÑO: 2020

LUGAR	ESTACION				CLASIFICACION VEHICULAR EN PORCIENTO														COORDENADAS	
	KM	TE	SC	TDPA	M	A	B	C2	C3	T3S2	T3S3	T3S2R4	OTROS	A	B	C	K'	D	LATITUD	LONGITUD
T. C. Aguascalientes - Jalpa	0.00	3	0	1506	1.0	85.8	0.4	10.3	1.5	0.8	0.2	0.0	0.0	86.8	0.4	12.8	0.106	0.513	21.888594	-102.492412
T. C. Ent. Penitenciaría - Villa Hidalgo	20.40	1	0	458	1.5	87.0	0.5	8.9	1.6	0.5	0.0	0.0	0.0	88.5	0.5	11.0	0.096	0.511	21.757397	-102.490555

34 CARR: Est. Coyotes - Ent. San Bartolo

CLAVE: 01134

RUTA: AGS-069

AÑO: 2020

LUGAR	ESTACION				CLASIFICACION VEHICULAR EN PORCIENTO														COORDENADAS	
	KM	TE	SC	TDPA	M	A	B	C2	C3	T3S2	T3S3	T3S2R4	OTROS	A	B	C	K'	D	LATITUD	LONGITUD
T. C. León - Aguascalientes	0.00	3	0	2540	5.6	72.7	0.8	7.5	8.0	2.8	0.5	1.9	0.2	78.3	0.8	20.9	0.090	0.501	21.749308	-102.277024
T. C. San Isidro El Grande - Bajío de San José	13.10																			

AGUASCALIENTES

35 CARR: Fracc. Ojo Caliente - El Conejal

CLAVE: 01129

RUTA: AGS-079

AÑO: 2020

LUGAR	ESTACION				CLASIFICACION VEHICULAR EN PORCIENTO										COORDENADAS					
	KM	TE	SC	TDPA	M	A	B	C2	C3	T3S2	T3S3	T3S2R4	OTROS	A	B	C	K'	D	LATITUD	LONGITUD
Fracc. Ojo Caliente	0.00																			
Las Norias de Ojo Caliente	3.50	1	1	6140	5.6	86.4	0.4	5.7	0.8	0.7	0.2	0.1	0.1	92.0	0.4	7.6	0.098	0.505	21.889960	-102.216651
Las Norias de Ojo Caliente	3.50	1	2	6021	5.7	86.8	0.3	5.3	0.8	0.7	0.2	0.1	0.1	92.5	0.3	7.2	0.108	0.505	21.889925	-102.216587
Las Norias de Ojo Caliente	3.50	3	0	1884	11.2	75.7	0.7	8.9	2.0	1.2	0.2	0.0	0.1	86.9	0.7	12.4	0.104	0.501	21.889983	-102.216586
El Conejal	7.50																			

36 CARR: Jesús María - Palomas

CLAVE: 01018

RUTA: AGS-018

AÑO: 2020

LUGAR	ESTACION				CLASIFICACION VEHICULAR EN PORCIENTO										COORDENADAS					
	KM	TE	SC	TDPA	M	A	B	C2	C3	T3S2	T3S3	T3S2R4	OTROS	A	B	C	K'	D	LATITUD	LONGITUD
Jesús María	0.00	3	1	9344	7.8	81.5	0.1	3.3	1.4	2.5	1.4	1.3	0.7	89.3	0.1	10.6	0.078	0.502	21.961682	-102.343564
Jesús María	0.00	3	2	9434	7.5	81.8	0.1	3.1	1.2	2.6	1.3	1.4	1.0	89.3	0.1	10.6	0.095	0.502	21.961685	-102.343599
Valladolid	7.30	3	0	3554	5.7	82.8	0.2	8.8	1.7	0.5	0.2	0.0	0.1	88.5	0.2	11.3	0.089	0.555	22.019112	-102.316064
Palomas	21.70	1	0	1771	6.3	75.9	1.3	10.5	2.8	1.4	1.2	0.0	0.6	82.2	1.3	16.5	0.113	0.506	22.103577	-102.274673

37 CARR: La Panadera - Palo Alto

CLAVE: 01105

RUTA: AGS-017

AÑO: 2020

LUGAR	ESTACION				CLASIFICACION VEHICULAR EN PORCIENTO										COORDENADAS					
	KM	TE	SC	TDPA	M	A	B	C2	C3	T3S2	T3S3	T3S2R4	OTROS	A	B	C	K'	D	LATITUD	LONGITUD
T. C. Aguascalientes - Jalpa	0.00	3	0	4834	2.4	86.2	0.2	7.3	0.5	2.5	0.4	0.2	0.3	88.6	0.2	11.2	0.077	0.535	21.865435	-102.691423
T. Izq. La Ordeña	8.40	3	0	2548	2.3	87.5	0.2	8.8	0.5	0.3	0.4	0.0	0.0	89.8	0.2	10.0	0.103	0.500	21.918895	-102.701042
La Labor	12.80	3	0	1526	4.1	83.6	0.3	11.2	0.8	0.0	0.0	0.0	0.0	87.7	0.3	12.0	0.108	0.502	21.963902	-102.690692
Palo Alto	23.30	1	0	195	5.0	86.1	0.4	8.3	0.2	0.0	0.0	0.0	0.0	91.1	0.4	8.5	0.092	0.501	22.041064	-102.682428

38 CARR: La Punta - Mesillas

CLAVE: 01104

RUTA: AGS-026

AÑO: 2020

LUGAR	ESTACION				CLASIFICACION VEHICULAR EN PORCIENTO										COORDENADAS					
	KM	TE	SC	TDPA	M	A	B	C2	C3	T3S2	T3S3	T3S2R4	OTROS	A	B	C	K'	D	LATITUD	LONGITUD
T. C. Aguascalientes - Zacatecas	0.00	3	0	1274	8.5	76.6	2.4	9.5	1.3	0.9	0.3	0.5	0.0	85.1	2.4	12.5	0.109	0.524	22.318154	-102.295480
X. C. Providencia - Luis Moya	6.50	3	0	1739	10.5	79.4	0.8	7.9	1.1	0.2	0.1	0.0	0.0	89.9	0.8	9.3	0.098	0.509	22.313700	-102.234064
Mesillas	13.50	1	0	880	15.7	72.6	0.8	9.4	0.7	0.7	0.1	0.0	0.0	88.3	0.8	10.9	0.119	0.505	22.314311	-102.167381

AGUASCALIENTES

39 CARR: La Rinconada - El Terrero del Refugio

CLAVE: 01133

RUTA: AGS-007

AÑO: 2020

LUGAR	ESTACION				CLASIFICACION VEHICULAR EN PORCIENTO										COORDENADAS					
	KM	TE	SC	TDPA	M	A	B	C2	C3	T3S2	T3S3	T3S2R4	OTROS	A	B	C	K'	D	LATITUD	LONGITUD
T. C. Aguascalientes - Jalpa	0.00	3	0	1646	3.4	87.9	0.2	6.3	0.5	1.3	0.2	0.0	0.2	91.3	0.2	8.5	0.097	0.505	21.789837	-102.797592
El Terrero del Refugio	15.00																			

40 CARR: Las Norias de Ojo Caliente - La Luz

CLAVE: 01122

RUTA: AGS-068

AÑO: 2020

LUGAR	ESTACION				CLASIFICACION VEHICULAR EN PORCIENTO										COORDENADAS					
	KM	TE	SC	TDPA	M	A	B	C2	C3	T3S2	T3S3	T3S2R4	OTROS	A	B	C	K'	D	LATITUD	LONGITUD
Las Norias de Ojo Caliente	0.00	3	0	4072	8.1	77.7	0.7	9.8	1.2	1.9	0.3	0.0	0.3	85.8	0.7	13.5	0.118	0.517	21.889984	-102.216578
T. Der. Sandoval	10.50	3	0	1731	2.6	85.0	1.3	8.4	1.1	1.0	0.3	0.2	0.1	87.6	1.3	11.1	0.109	0.502	21.911888	-102.124324
La Luz	27.60	1	0	1370	4.6	83.9	0.7	8.5	0.8	1.0	0.5	0.0	0.0	88.5	0.7	10.8	0.103	0.524	21.998950	-101.997939

41 CARR: Libramiento San Francisco de Los Romo

CLAVE: 01137

RUTA: AGS

AÑO: 2020

LUGAR	ESTACION				CLASIFICACION VEHICULAR EN PORCIENTO										COORDENADAS					
	KM	TE	SC	TDPA	M	A	B	C2	C3	T3S2	T3S3	T3S2R4	OTROS	A	B	C	K'	D	LATITUD	LONGITUD
T. C. Aguascalientes - Zacatecas (Sur)	0.00	3	1	13367	0.7	79.2	1.9	6.6	2.0	5.5	1.5	2.3	0.3	79.9	1.9	18.2	0.135	0.509	22.048461	-102.280396
T. C. Aguascalientes - Zacatecas (Sur)	0.00	3	2	13841	0.7	79.4	1.8	6.6	2.0	5.4	1.5	2.3	0.3	80.1	1.8	18.1	0.119	0.509	22.048442	-102.280529
T. C. Aguascalientes - Zacatecas (Norte)	5.50	1	1	13902	0.8	77.6	3.2	6.8	1.8	5.6	1.5	2.5	0.2	78.4	3.2	18.4	0.106	0.509	22.086115	-102.275258
T. C. Aguascalientes - Zacatecas (Norte)	5.50	1	2	13430	0.8	77.5	3.2	6.8	1.8	5.6	1.6	2.5	0.2	78.3	3.2	18.5	0.091	0.509	22.086152	-102.275369

42 CARR: Pabellón de Hidalgo - Rincón de Romos

CLAVE: 01136

RUTA: AGS

AÑO: 2020

LUGAR	ESTACION				CLASIFICACION VEHICULAR EN PORCIENTO										COORDENADAS					
	KM	TE	SC	TDPA	M	A	B	C2	C3	T3S2	T3S3	T3S2R4	OTROS	A	B	C	K'	D	LATITUD	LONGITUD
Pabellón de Hidalgo	0.00	3	0	2457	14.6	80.2	0.3	3.3	0.6	0.8	0.0	0.0	0.2	94.8	0.3	4.9	0.098	0.504	22.179460	-102.339274
Rincón de Romos	6.70																			

43 CARR: Pilotos - Los Campos

CLAVE: 00007

RUTA: AGS-030

AÑO: 2020

LUGAR	ESTACION				CLASIFICACION VEHICULAR EN PORCIENTO										COORDENADAS					
	KM	TE	SC	TDPA	M	A	B	C2	C3	T3S2	T3S3	T3S2R4	OTROS	A	B	C	K'	D	LATITUD	LONGITUD
T. C. Ent. La Calavera - Ent. San Pedro	0.00	3	0	2003	8.4	82.4	0.6	7.3	0.8	0.2	0.2	0.0	0.1	90.8	0.6	8.6	0.106	0.507	22.042276	-101.961492
Lim. Edos. Term. Ags. Ppia. Jal.	10.50																			
Los Campos	12.00																			

AGUASCALIENTES

44 CARR: Pocitos - Granja Miravalle

CLAVE: 01109

RUTA: AGS-053

AÑO: 2020

LUGAR	ESTACION				CLASIFICACION VEHICULAR EN PORCIENTO										COORDENADAS					
	KM	TE	SC	TDPA	M	A	B	C2	C3	T3S2	T3S3	T3S2R4	OTROS	A	B	C	K'	D	LATITUD	LONGITUD
T. C. Aguascalientes - Jesús María	0.00																			
Maravillas	1.50	3	1	4558	8.6	83.8	0.4	5.6	1.1	0.4	0.1	0.0	0.0	92.4	0.4	7.2	0.104	0.509	21.950836	-102.323961
Maravillas	1.50	3	2	4404	8.9	84.2	0.3	4.8	1.3	0.4	0.1	0.0	0.0	93.1	0.3	6.6	0.097	0.509	21.950880	-102.324080
Granja Miravalle	5.70	1	0	3904	5.9	85.7	1.0	5.8	0.9	0.4	0.2	0.0	0.1	91.6	1.0	7.4	0.092	0.532	21.984850	-102.316939

45 CARR: Ramal a San Pedro Piedra Gorda

CLAVE: 00553

RUTA: ZAC-AGS

AÑO: 2020

LUGAR	ESTACION				CLASIFICACION VEHICULAR EN PORCIENTO										COORDENADAS					
	KM	TE	SC	TDPA	M	A	B	C2	C3	T3S2	T3S3	T3S2R4	OTROS	A	B	C	K'	D	LATITUD	LONGITUD
T. C. Aguascalientes - Zacatecas	0.00	3	0	1414	3.2	82.6	1.0	11.4	0.9	0.7	0.2	0.0	0.0	85.8	1.0	13.2	0.125	0.528	22.465645	-102.261776
Lim. Edos. Term. Zac. Ppia. Ags.	5.00																			
Lim. Edos. Term. Ags. Ppia. Zac.	8.00																			
San Pedro Piedra Gorda	9.00	1	0	2207	5.7	80.6	0.6	10.6	0.5	1.7	0.2	0.0	0.1	86.3	0.6	13.1	0.105	0.516	22.452032	-102.340341

46 CARR: San Gil - Jarillas

CLAVE: 00527

RUTA: AGS-012-ZAC

AÑO: 2020

LUGAR	ESTACION				CLASIFICACION VEHICULAR EN PORCIENTO										COORDENADAS					
	KM	TE	SC	TDPA	M	A	B	C2	C3	T3S2	T3S3	T3S2R4	OTROS	A	B	C	K'	D	LATITUD	LONGITUD
T. C. Rincón de Romos - Ciénega Grande	0.00	3	0	2401	8.2	71.3	1.4	14.2	2.0	2.1	0.7	0.0	0.1	79.5	1.4	19.1	0.083	0.501	22.211883	-102.023233
Guadalupe de Atlas	5.40	1	0	1983	14.5	61.8	2.9	17.2	1.4	1.5	0.5	0.1	0.1	76.3	2.9	20.8	0.085	0.505	22.267690	-102.028769
Lim. Edos. Term. Ags. Ppia. Zac.	10.00																			
Lim. Edos. Term. Zac. Ppia. Ags.	11.30																			
Jarillas	12.00																			

47 CARR: San Isidro El Grande - Bajío de San José

CLAVE: 00526

RUTA: AGS-036

AÑO: 2020

LUGAR	ESTACION				CLASIFICACION VEHICULAR EN PORCIENTO										COORDENADAS					
	KM	TE	SC	TDPA	M	A	B	C2	C3	T3S2	T3S3	T3S2R4	OTROS	A	B	C	K'	D	LATITUD	LONGITUD
T. C. Ojuelos - Aguascalientes	0.00	3	0	1108	10.1	67.5	1.3	11.8	5.7	1.7	0.9	0.9	0.1	77.6	1.3	21.1	0.087	0.501	21.819295	-102.100535
Ent. San Bartolo	11.50	3	0	1576	5.3	78.4	0.6	10.0	3.7	1.2	0.6	0.0	0.2	83.7	0.6	15.7	0.082	0.508	21.748653	-102.171778
Lim. Edos. Term. Ags. Ppia. Jal.	17.50																			
Bajío de San José	22.50																			

AGUASCALIENTES

48 CARR: San Rafael - Villa García

CLAVE: 00525

RUTA: AGS-ZAC

AÑO: 2020

LUGAR	ESTACION				CLASIFICACION VEHICULAR EN PORCIENTO													COORDENADAS		
	KM	TE	SC	TDPA	M	A	B	C2	C3	T3S2	T3S3	T3S2R4	OTROS	A	B	C	K'	D	LATITUD	LONGITUD
T. C. Ent. La Calavera - Ent. San Pedro	0.00	3	0	1811	8.2	79.5	0.5	8.9	0.9	1.4	0.3	0.1	0.2	87.7	0.5	11.8	0.092	0.500	22.115857	-102.012412
Lim. Edos. Term. Ags. Ppia. Zac.	3.00																			
Villa García	10.00	1	0	2727	9.8	79.3	0.5	7.2	0.3	2.4	0.3	0.0	0.2	89.1	0.5	10.4	0.119	0.510	22.160726	-101.955117

49 CARR: Santa Rosa - Pabellón de Hidalgo

CLAVE: 01135

RUTA: AGS

AÑO: 2020

LUGAR	ESTACION				CLASIFICACION VEHICULAR EN PORCIENTO													COORDENADAS		
	KM	TE	SC	TDPA	M	A	B	C2	C3	T3S2	T3S3	T3S2R4	OTROS	A	B	C	K'	D	LATITUD	LONGITUD
T. C. Aguascalientes - Zacatecas	0.00	3	0	2399	5.0	84.4	0.7	5.5	2.6	0.9	0.4	0.3	0.2	89.4	0.7	9.9	0.116	0.515	22.156863	-102.296797
Pabellón de Hidalgo	5.10																			

50 CARR: T. Caldera - Ent. Ojo de Agua de Los Montes

CLAVE: 01137

RUTA: AGS

AÑO: 2020

LUGAR	ESTACION				CLASIFICACION VEHICULAR EN PORCIENTO													COORDENADAS		
	KM	TE	SC	TDPA	M	A	B	C2	C3	T3S2	T3S3	T3S2R4	OTROS	A	B	C	K'	D	LATITUD	LONGITUD
T. C. Carboneras - Villa Juárez	0.00	3	0	234	12.4	76.6	2.0	3.8	2.0	0.5	1.7	0.1	0.9	89.0	2.0	9.0	0.137	0.504	22.162549	-102.198976
Arroyo Hondo Acceso 1	3.60	1	0	288	13.3	77.3	1.1	3.1	2.4	0.1	2.3	0.0	0.4	90.6	1.1	8.3	0.156	0.537	22.186737	-102.187360
Arroyo Hondo Acceso 2	4.90	3	0	983	8.3	81.1	1.5	1.9	3.1	0.4	3.0	0.1	0.6	89.4	1.5	9.1	0.081	0.531	22.191537	-102.195882
X. C. Rincón de Romos - Ciénega Grande	8.60	1	0	1010	7.3	82.3	1.4	2.2	2.9	0.5	2.6	0.1	0.7	89.6	1.4	9.0	0.081	0.549	22.223679	-102.183295
X. C. Rincón de Romos - Ciénega Grande	8.60	3	0	801	24.2	67.0	1.6	2.0	2.0	0.4	2.3	0.2	0.3	91.2	1.6	7.2	0.111	0.561	22.223677	-102.183292
T. C. La Punta - Mesillas	19.00	1	0	801	24.2	67.0	1.6	2.0	2.0	0.4	2.3	0.2	0.3	91.2	1.6	7.2	0.111	0.561	22.311190	-102.200112

51 CARR: Viñedos de California - Adolfo López Mateos

CLAVE: 01137

RUTA: AGS

AÑO: 2020

LUGAR	ESTACION				CLASIFICACION VEHICULAR EN PORCIENTO													COORDENADAS		
	KM	TE	SC	TDPA	M	A	B	C2	C3	T3S2	T3S3	T3S2R4	OTROS	A	B	C	K'	D	LATITUD	LONGITUD
T. C. Providencia - Luis Moya	0.00	3	0	2785	4.9	83.0	0.3	8.5	1.0	1.5	0.8	0.0	0.0	87.9	0.3	11.8	0.084	0.511	22.150788	-102.247559
Adolfo López Mateos	5.00																			

52 CARR: Libramiento Surponiente de Aguascalientes (Cuota)

CLAVE: 00167

RUTA: MEX-A40

AÑO: 2020

LUGAR	ESTACION				CLASIFICACION VEHICULAR EN PORCIENTO													COORDENADAS		
	KM	TE	SC	TDPA	M	A	B	C2	C3	T3S2	T3S3	T3S2R4	OTROS	A	B	C	K'	D	LATITUD	LONGITUD
T. C. León - Aguascalientes	0.00	3	0	7017	6.3	54.6	1.1	4.9	8.0	8.8	5.6	9.2	1.5	60.9	1.1	38.0	0.100	0.507	21.772095	-102.281795
T. Der. Aguascalientes	8.34	3	0	5651	5.6	53.4	1.3	4.7	7.9	10.3	6.0	9.4	1.4	59.0	1.3	39.7	0.089	0.516	21.805250	-102.344387

AGUASCALIENTES

52 CARR: Libramiento Surponiente de Aguascalientes (Cuota)

CLAVE: 00167

RUTA: MEX-A40

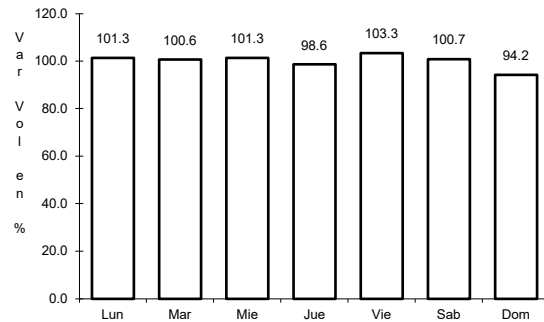
AÑO: 2020

L U G A R	E S T A C I O N				C L A S I F I C A C I O N V E H I C U L A R E N P O R C I E N T O														C O O R D E N A D A S	
	KM	TE	SC	TDPA	M	A	B	C2	C3	T3S2	T3S3	T3S2R4	OTROS	A	B	C	K'	D	LATITUD	LONGITUD
T. C. Aguascalientes - Jalpa	21.00	1	0	1063	2.3	74.3	2.6	9.1	5.0	4.7	1.4	0.4	0.2	76.6	2.6	20.8	0.080	0.512	21.889348	-102.399729

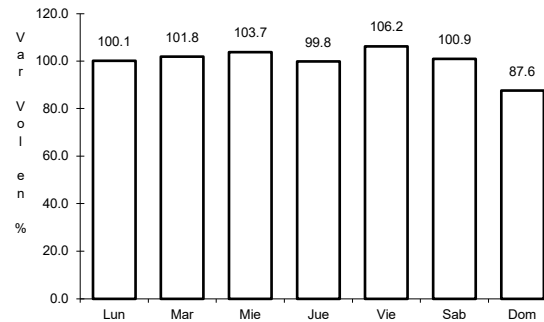
1 CARR: Acceso a Pabellón de Arteaga

CLAVE: 01113

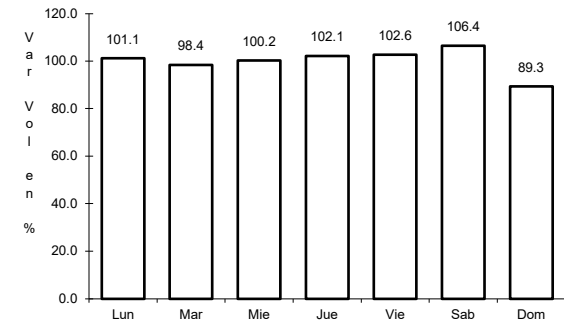
ruta: MEX-045



Km: 0.00 Tipo: 3 Sent: 1



Km: 1.80 Tipo: 1 Sent: 1

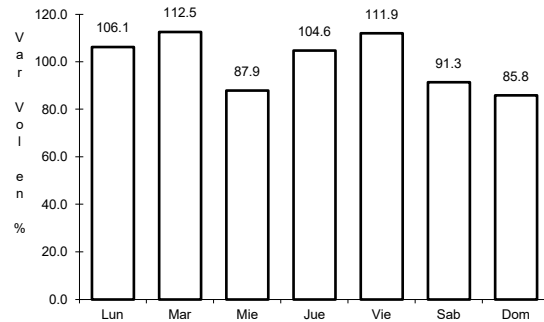


Km: 1.80 Tipo: 1 Sent: 2

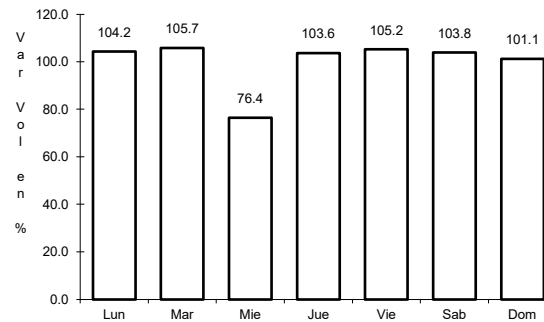
2 CARR: Aguascalientes - Jalpa

CLAVE: 00095

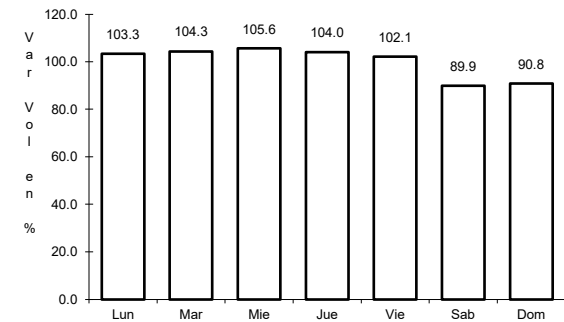
ruta: MEX-070



Km: 0.00 Tipo: 3 Sent: 1



Km: 0.00 Tipo: 3 Sent: 2

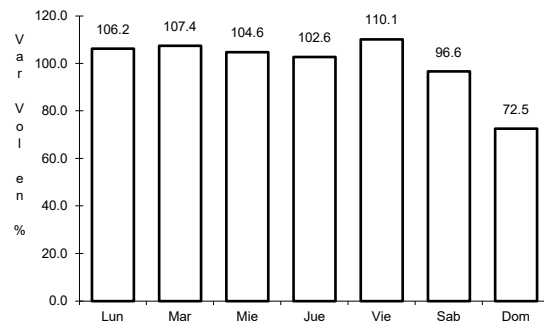


Km: 90.66 Tipo: 1 Sent: 0

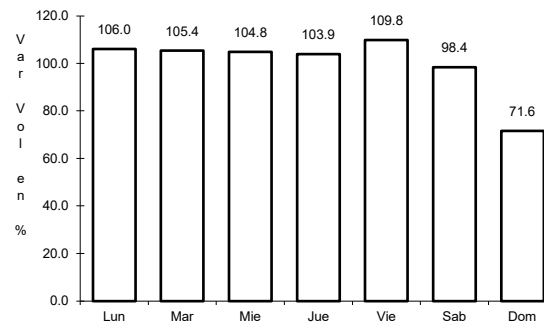
3 CARR: Aguascalientes - Zacatecas

CLAVE: 00524

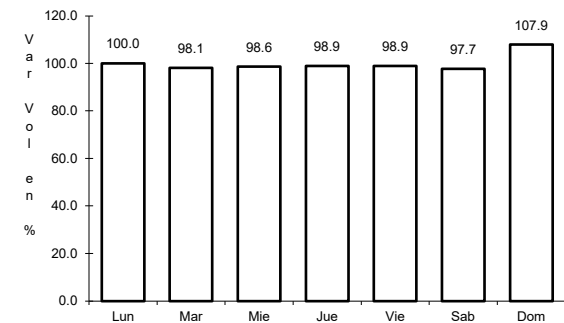
ruta: MEX-045



Km: 6.00 Tipo: 1 Sent: 1



Km: 6.00 Tipo: 1 Sent: 2

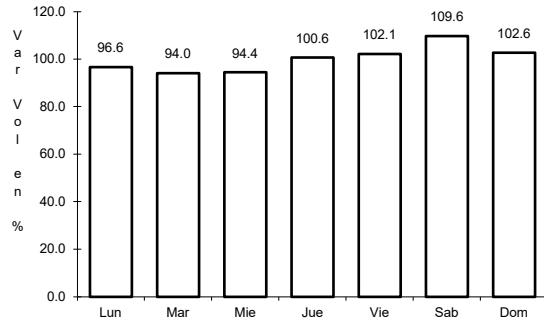


Km: 40.90 Tipo: 3 Sent: 0

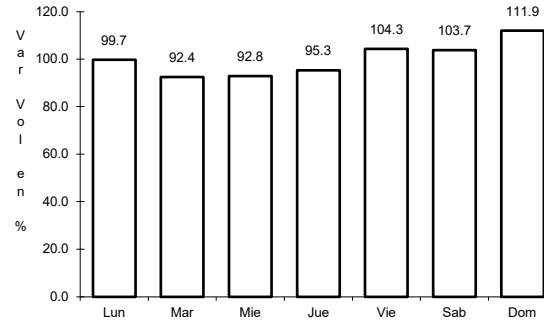
4 CARR: El Retoño - Ent. Asturias

CLAVE: 01124

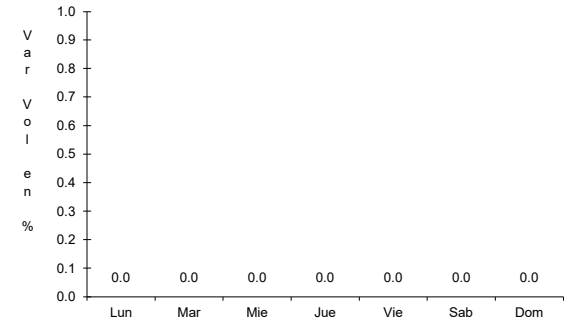
ruta: MEX-070



Km: 0.00 Tipo: 3 Sent: 0



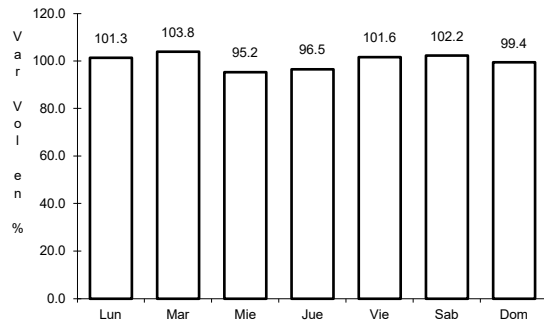
Km: 8.98 Tipo: 1 Sent: 0



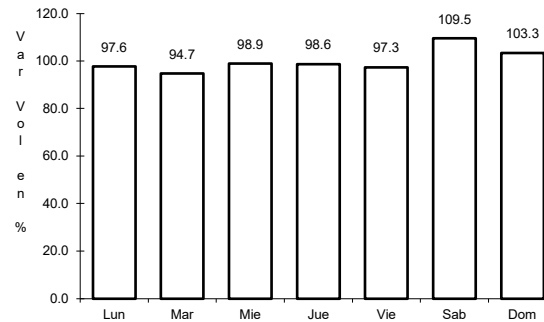
5 CARR: Ent. Cosío - Ent. Cuauhtémoc

CLAVE: 00579

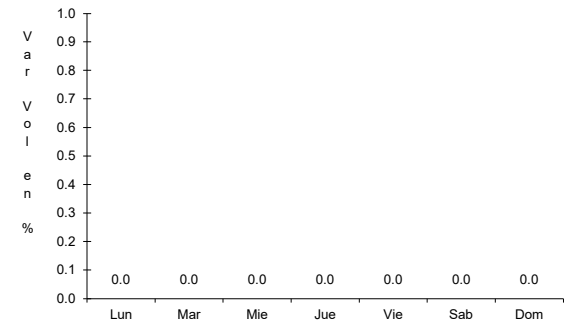
ruta: MEX-045



Km: 57.20 Tipo: 3 Sent: 0



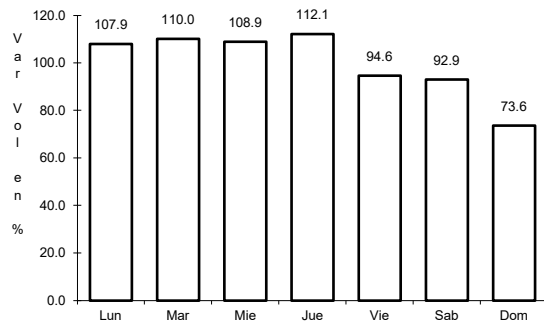
Km: 70.00 Tipo: 1 Sent: 0



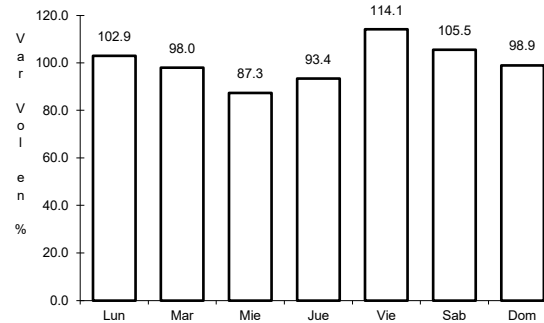
6 CARR: Ent. Penitenciaría - Villa Hidalgo

CLAVE: 00120

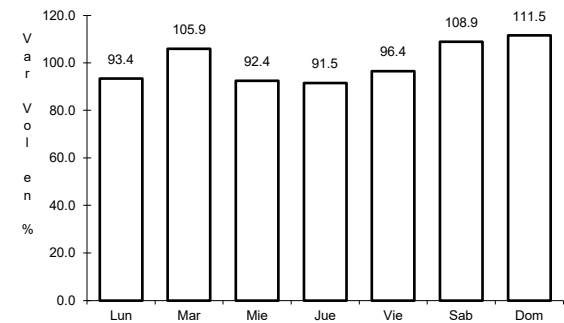
ruta: MEX-071



Km: 0.00 Tipo: 3 Sent: 1



Km: 0.00 Tipo: 3 Sent: 2

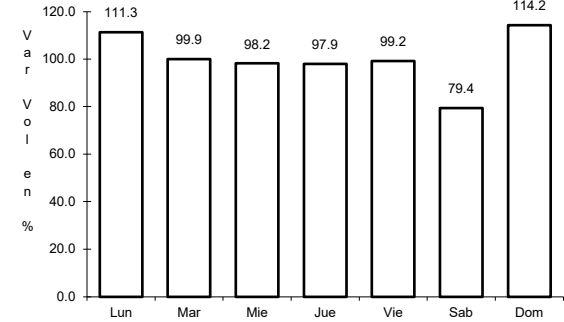
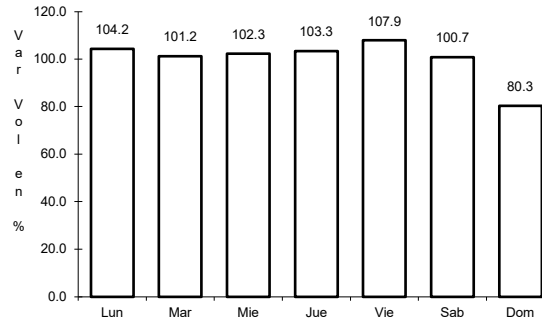
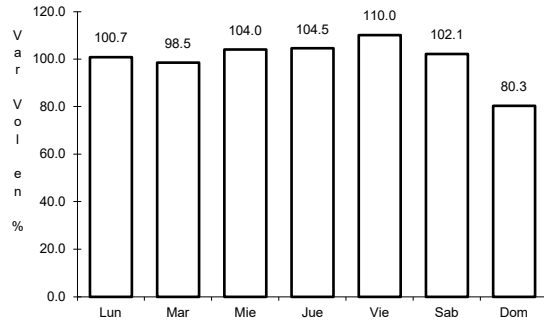


Km: 41.80 Tipo: 1 Sent: 0

7 CARR: Ent. Rivier - San Marcos

CLAVE: 00285

ruta: MEX-066



Km: 0.00 Tipo: 3 Sent: 1

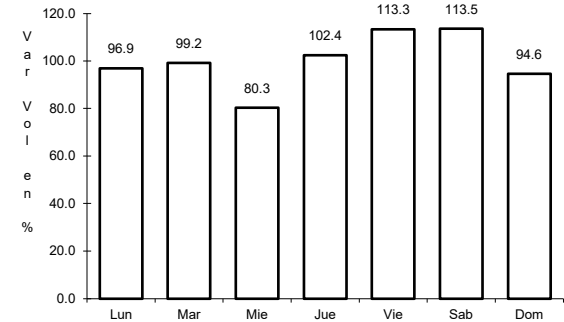
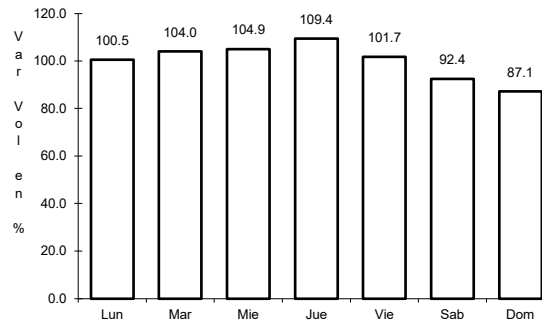
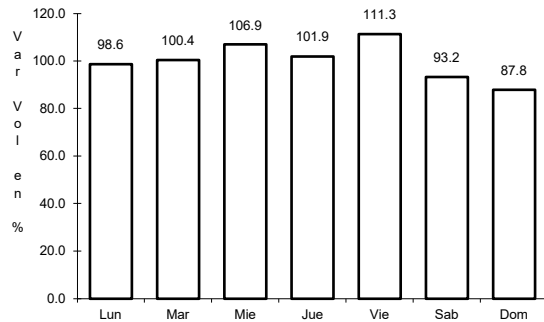
Km: 0.00 Tipo: 3 Sent: 2

Km: 55.34 Tipo: 1 Sent: 0

8 CARR: León - Aguascalientes

CLAVE: 00167

ruta: MEX-045



Km: 11.00 Tipo: 1 Sent: 1

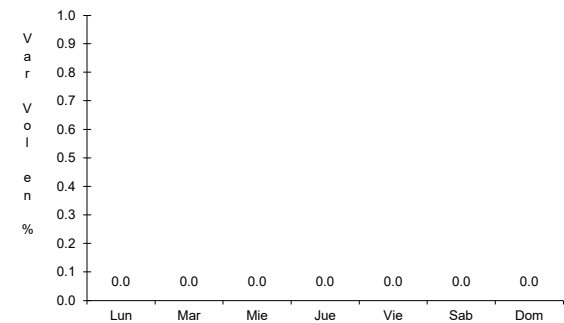
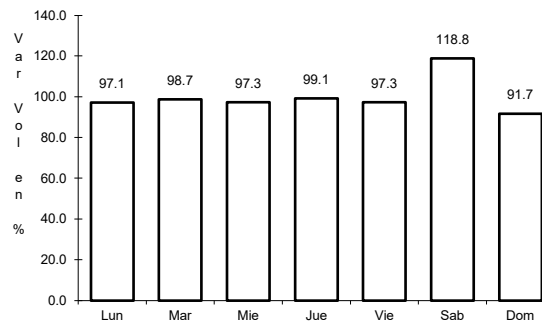
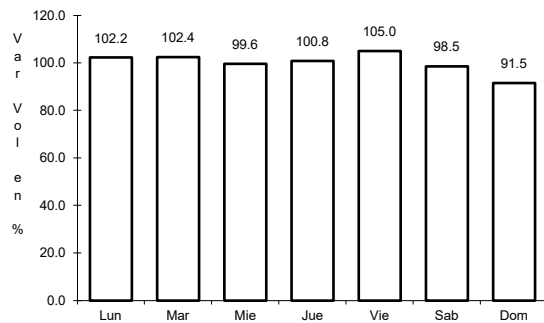
Km: 11.00 Tipo: 1 Sent: 2

Km: 89.18 Tipo: 3 Sent: 0

9 CARR: Libramiento Rincón de Romos

CLAVE: 00167

ruta: MEX-045



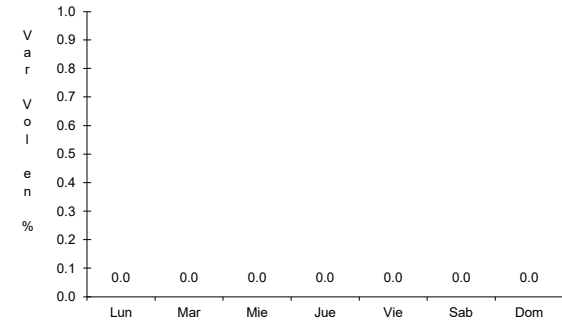
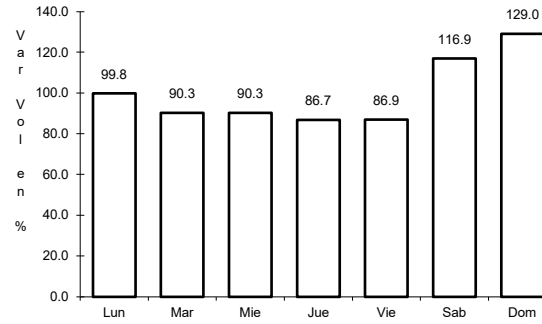
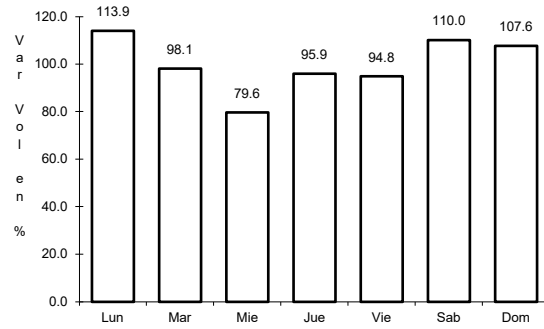
Km: 0.00 Tipo: 3 Sent: 0

Km: 10.00 Tipo: 1 Sent: 0

10 CARR: Ojo Caliente - Malpaso

CLAVE: 01123

RUTA: MEX-070



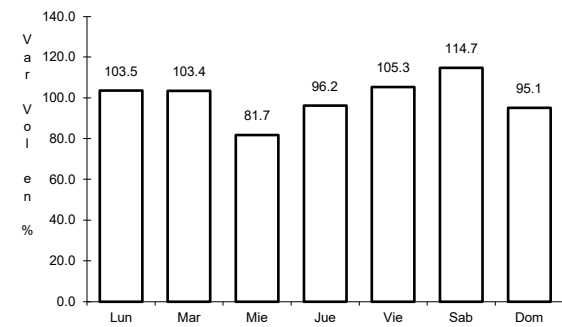
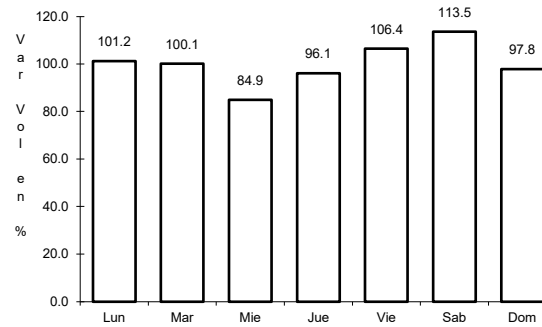
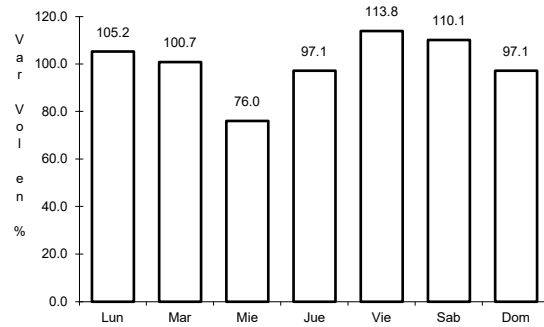
Km: 0.00 Tipo: 3 Sent: 0

Km: 3.10 Tipo: 1 Sent: 0

11 CARR: Ojuelos - Aguascalientes

CLAVE: 00094

RUTA: MEX-070



Km: 0.00 Tipo: 3 Sent: 0

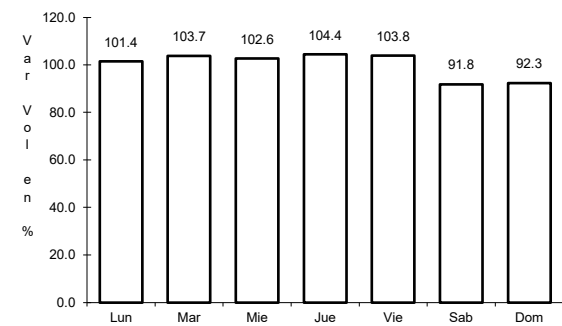
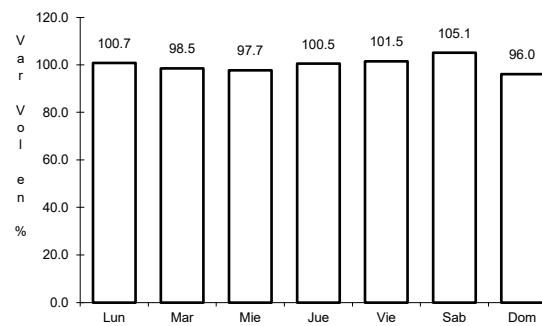
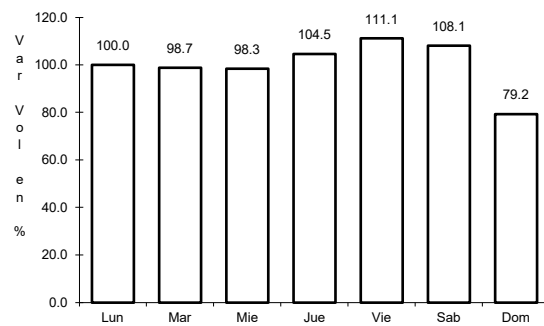
Km: 81.51 Tipo: 1 Sent: 1

Km: 81.51 Tipo: 1 Sent: 2

12 CARR: Providencia - Luis Moya

CLAVE: 00112

RUTA: MEX-071



Km: 0.00 Tipo: 3 Sent: 0

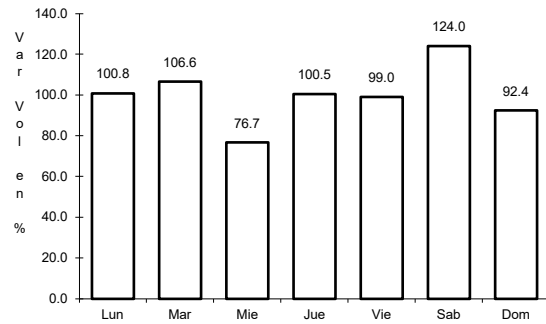
Km: 21.22 Tipo: 3 Sent: 0

Km: 43.52 Tipo: 1 Sent: 0

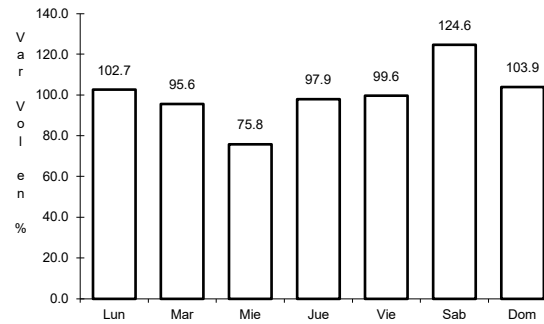
13 CARR: Ramal a Aeropuerto de Aguascalientes

CLAVE: 01116

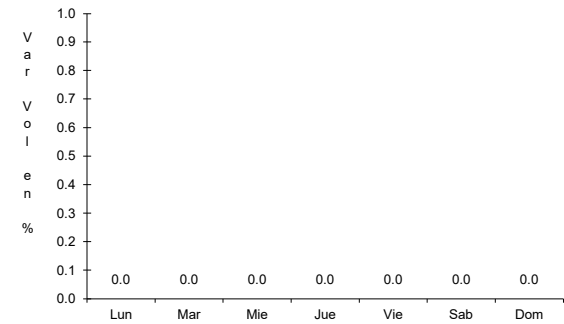
ruta: MEX-045



Km: 6.13 Tipo: 1 Sent: 1



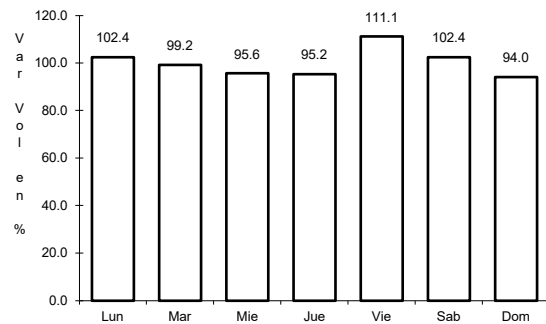
Km: 6.13 Tipo: 1 Sent: 2



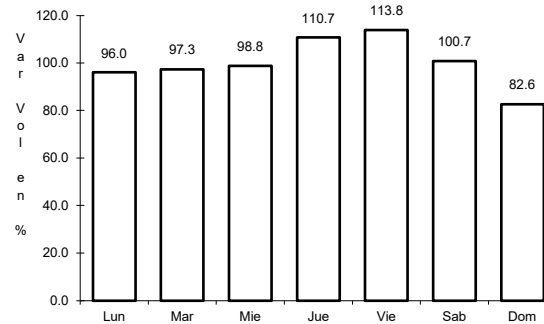
14 CARR: Rincón de Romos - Ciénega Grande

CLAVE: 01002

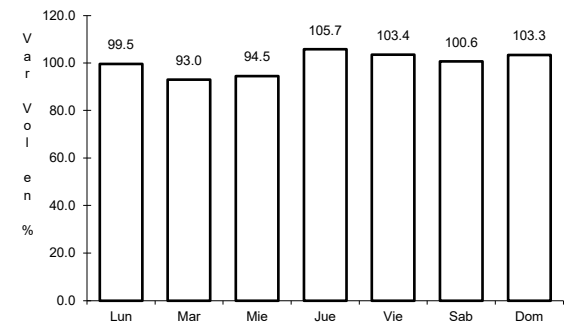
ruta: MEX-039



Km: 0.00 Tipo: 3 Sent: 0



Km: 15.00 Tipo: 3 Sent: 0

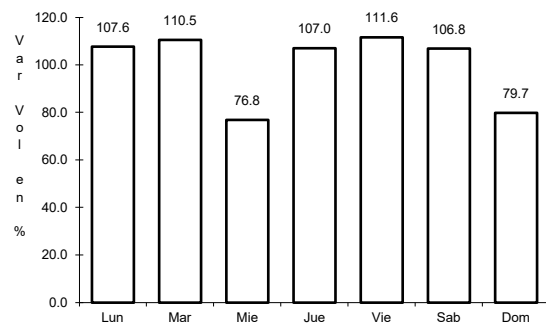


Km: 36.70 Tipo: 1 Sent: 0

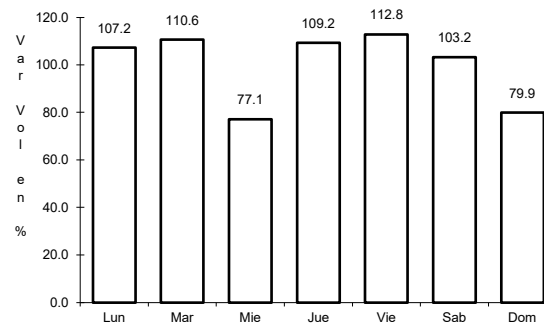
15 CARR: Aguascalientes - Ent. Cd. de Los Niños

CLAVE: 01130

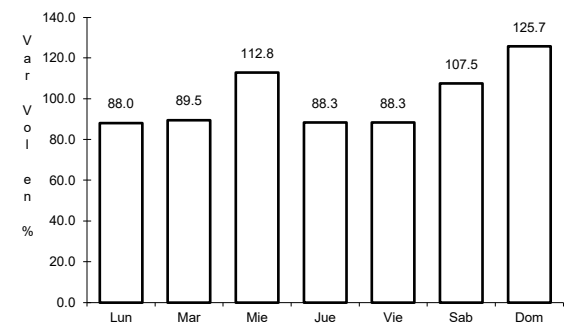
ruta: AGS



Km: 0.00 Tipo: 3 Sent: 1



Km: 0.00 Tipo: 3 Sent: 2

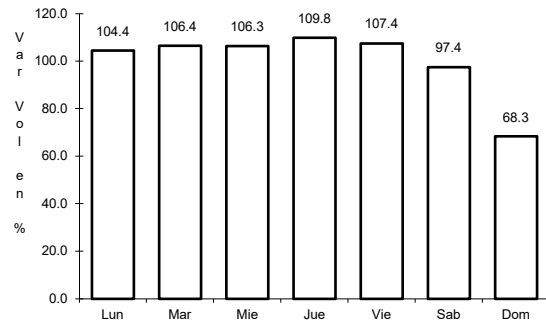


Km: 8.00 Tipo: 1 Sent: 0

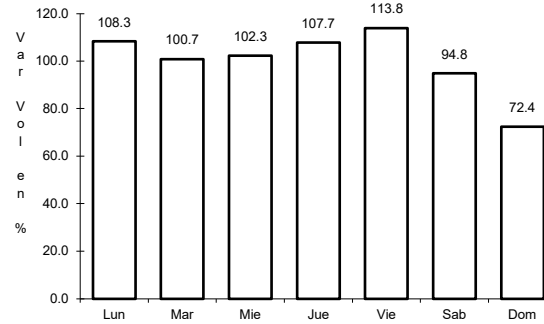
16 CARR: Aguascalientes - Jesús María

CLAVE: 01112

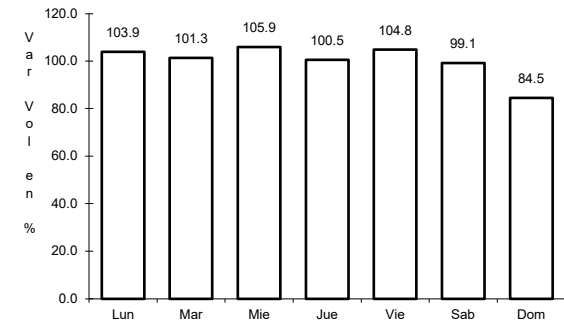
RUTA: AGS-095



Km: 3.30 Tipo: 3 Sent: 1



Km: 3.30 Tipo: 3 Sent: 2

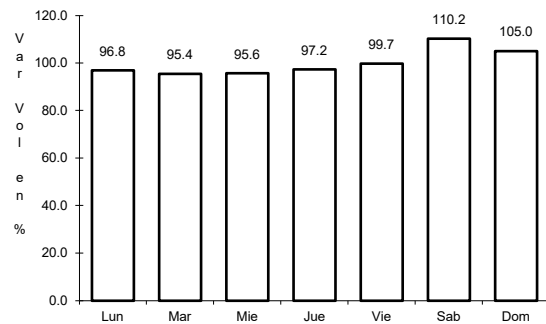


Km: 8.10 Tipo: 1 Sent: 1

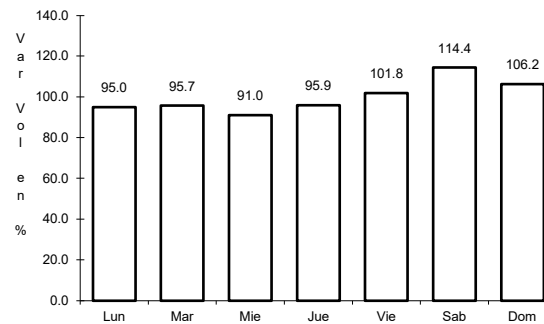
17 CARR: Aguascalientes - José María Morelos

CLAVE: 01131

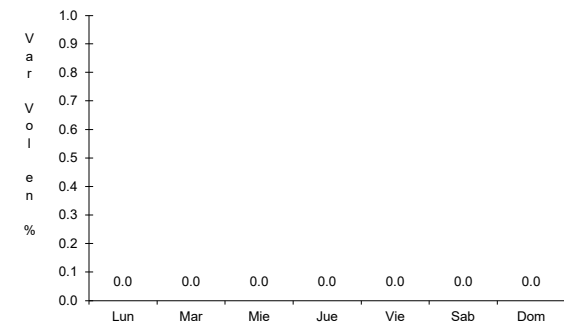
RUTA: AGS



Km: 0.00 Tipo: 3 Sent: 0



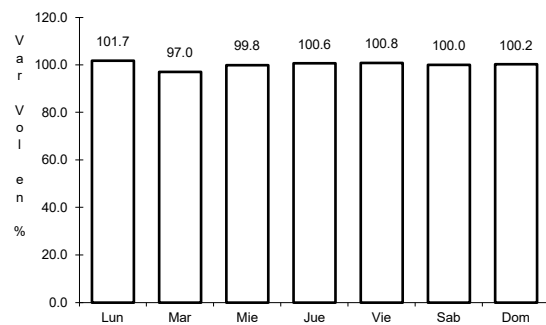
Km: 8.00 Tipo: 3 Sent: 0



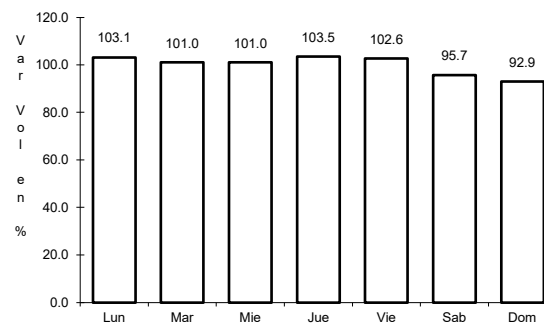
18 CARR: Carboneras - Villa Juárez

CLAVE: 01111

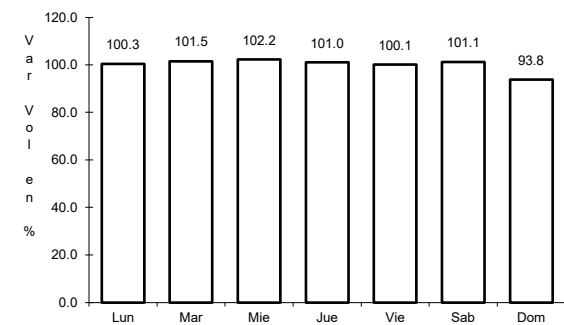
RUTA: AGS-004



Km: 0.00 Tipo: 3 Sent: 0



Km: 14.00 Tipo: 1 Sent: 0

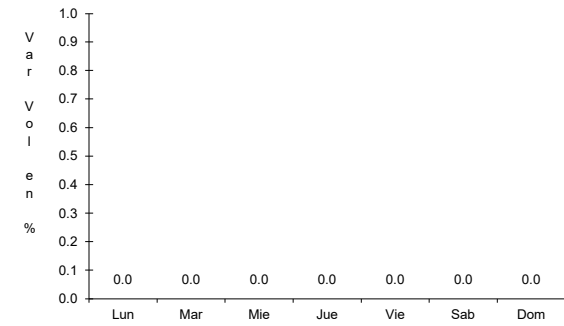
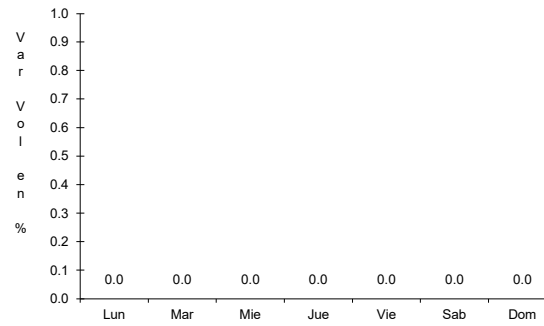
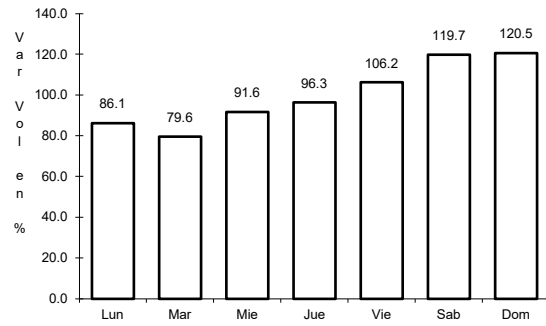


Km: 23.10 Tipo: 1 Sent: 0

19 CARR: Cosío - Santa María de La Paz

CLAVE: 01132

RUTA: AGS

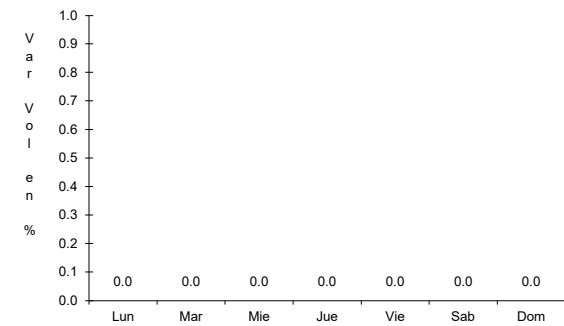
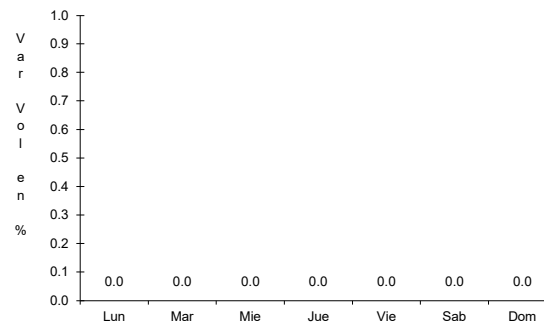
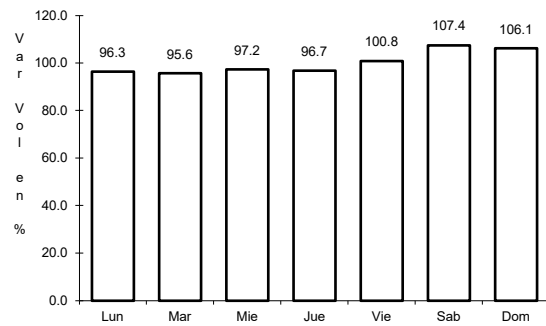


Km: 0.00 Tipo: 3 Sent: 0

20 CARR: Crucero Ojo de Agua de Crucitas - Santa Rosa

CLAVE: 01140

RUTA: AGS

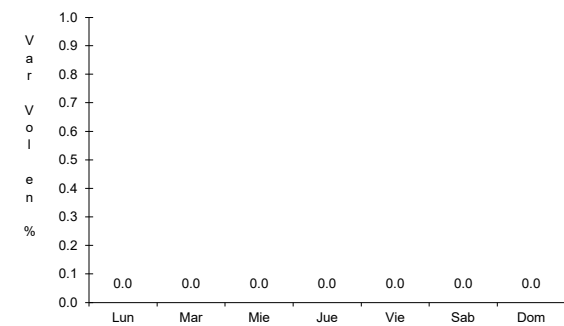
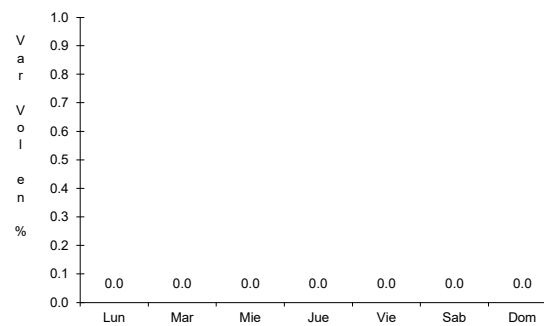
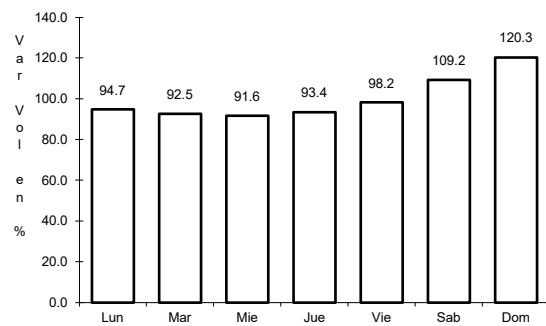


Km: 0.00 Tipo: 3 Sent: 0

21 CARR: El Tanque - San José de La Ordeña

CLAVE: 01143

RUTA: AGS

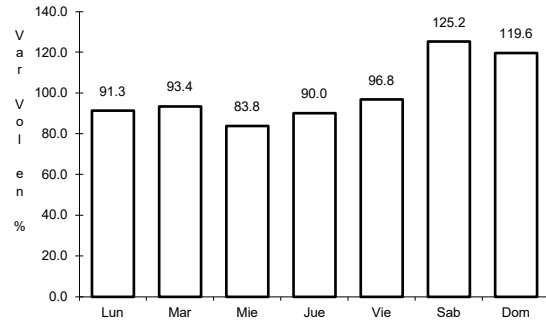


Km: 0.00 Tipo: 3 Sent: 0

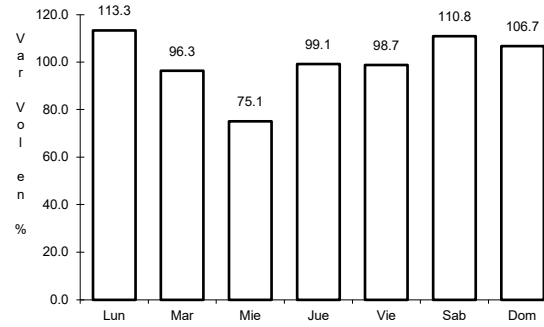
22 CARR: El Taray - T. C.(Ramal Aeropuerto de Aguascalientes)

CLAVE: 01121

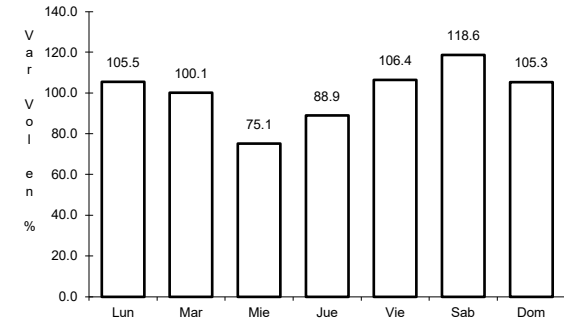
ruta: AGS-002



Km: 0.00 Tipo: 3 Sent: 0



Km: 22.00 Tipo: 1 Sent: 1

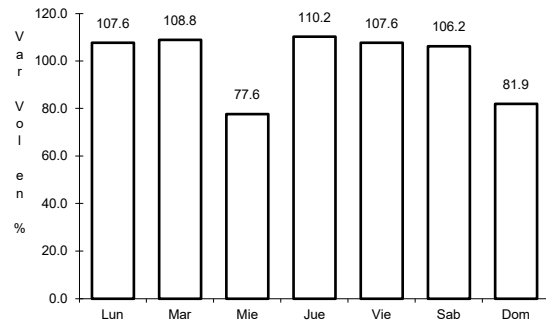


Km: 22.00 Tipo: 1 Sent: 2

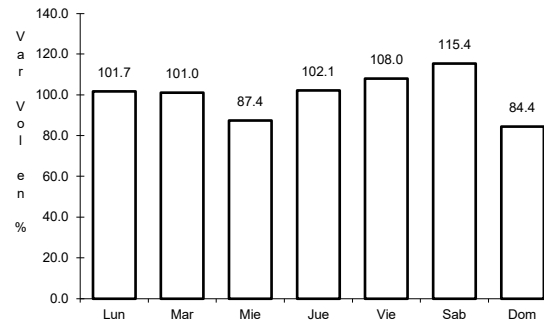
23 CARR: Ent. Arellano - El Retoño

CLAVE: 01121

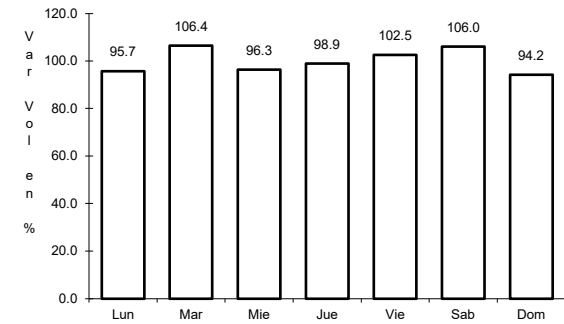
ruta: AGS



Km: 0.00 Tipo: 3 Sent: 0



Km: 12.20 Tipo: 1 Sent: 0

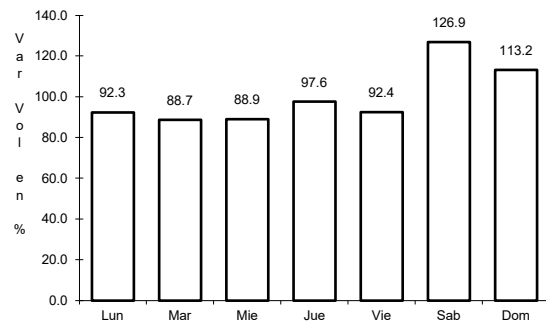


Km: 15.92 Tipo: 1 Sent: 0

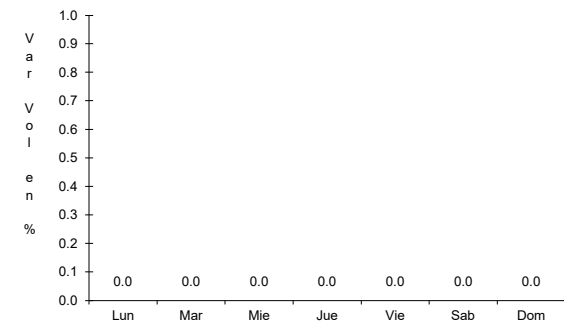
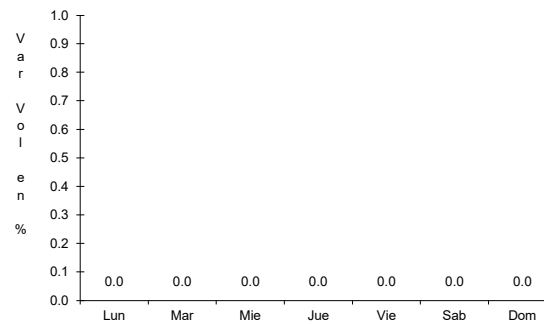
24 CARR: Ent. Buenavista - Gracias a Dios

CLAVE: 01138

ruta: AGS



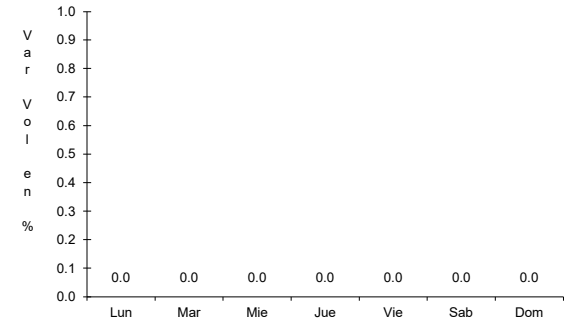
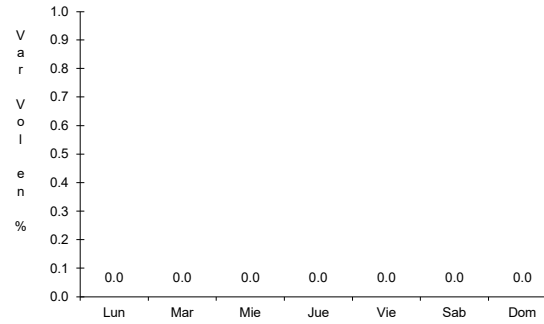
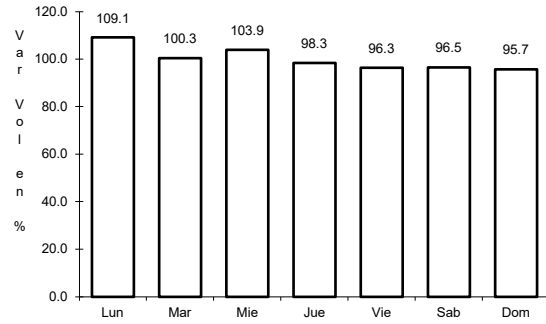
Km: 0.00 Tipo: 3 Sent: 0



25 CARR: Ent. El Novillo - Villa Juárez

CLAVE: 01103

RUTA: AGS-005

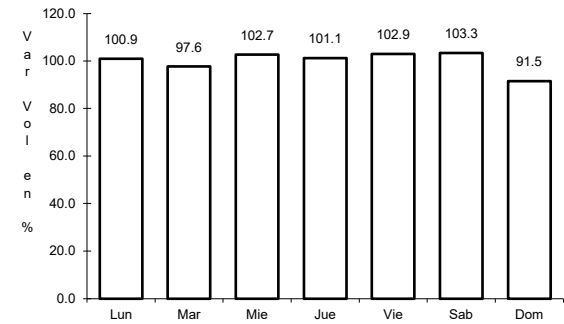
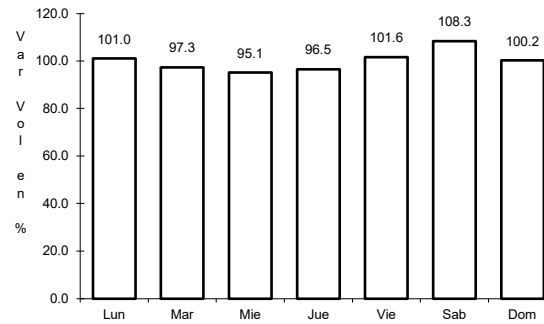
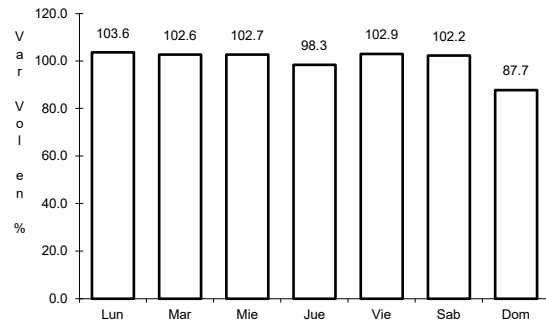


Km: 12.60 Tipo: 1 Sent: 0

26 CARR: Ent. La Calavera - Ent. San Pedro

CLAVE: 01102

RUTA: AGS-043



Km: 0.00 Tipo: 3 Sent: 0

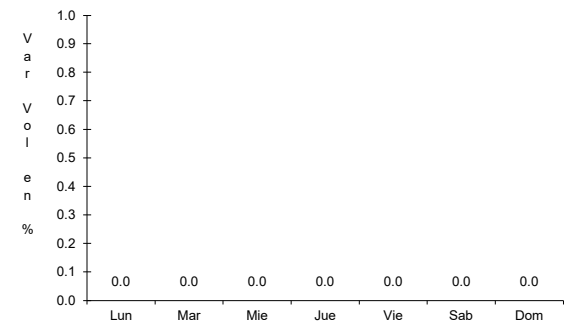
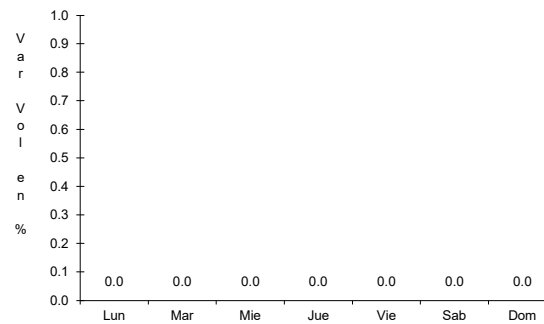
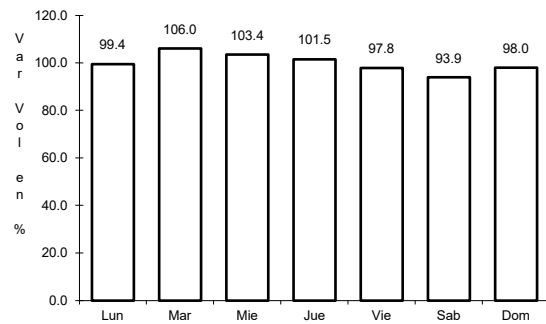
Km: 28.10 Tipo: 1 Sent: 0

Km: 47.60 Tipo: 1 Sent: 0

27 CARR: Ent. La Chirida - San Francisco de Los Romo

CLAVE: 01016

RUTA: AGS

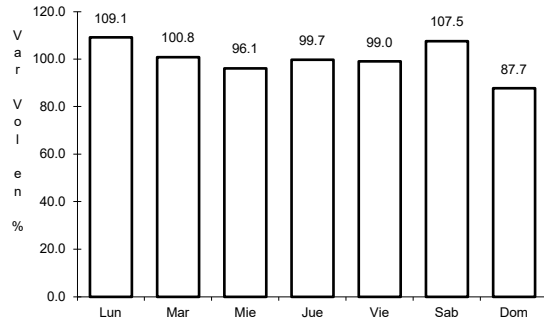


Km: 1.50 Tipo: 1 Sent: 0

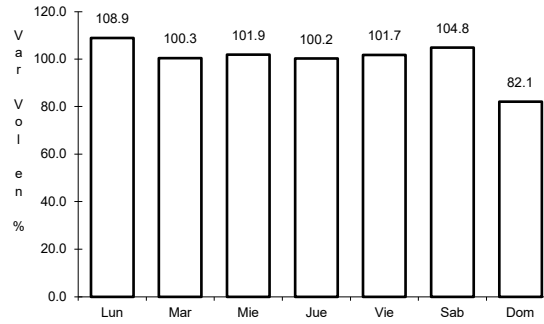
28 CARR: Ent. Pabellón de Arteaga - California

CLAVE: 01137

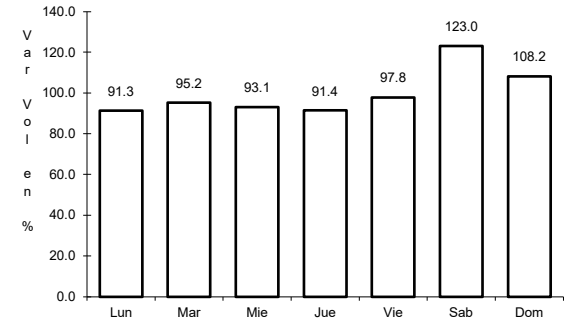
RUTA: AGS



Km: 0.00 Tipo: 3 Sent: 1



Km: 13.30 Tipo: 1 Sent: 0

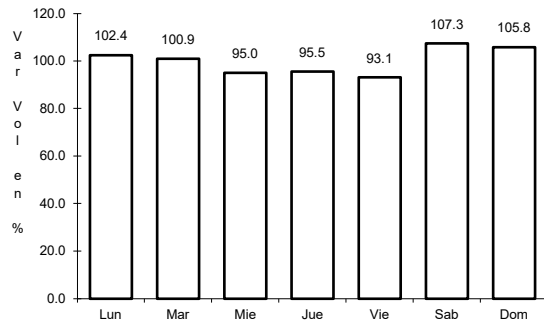


Km: 20.50 Tipo: 1 Sent: 0

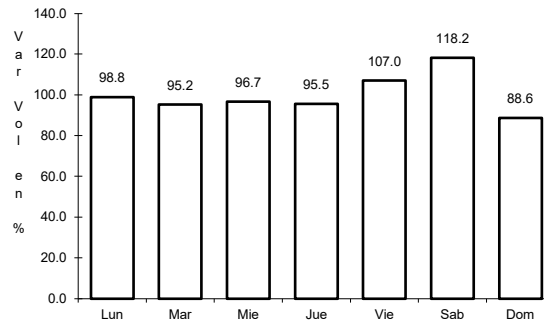
29 CARR: Ent. Pabellón de Arteaga - San José de Gracia

CLAVE: 01031

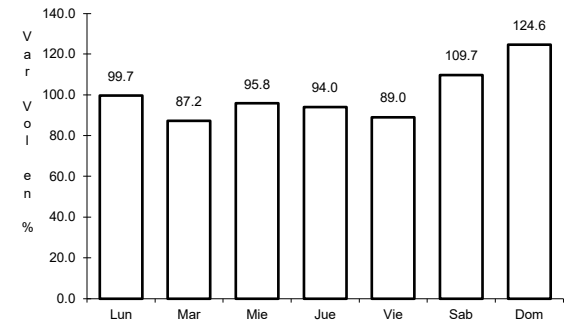
RUTA: AGS-019



Km: 0.00 Tipo: 3 Sent: 1



Km: 0.00 Tipo: 3 Sent: 2

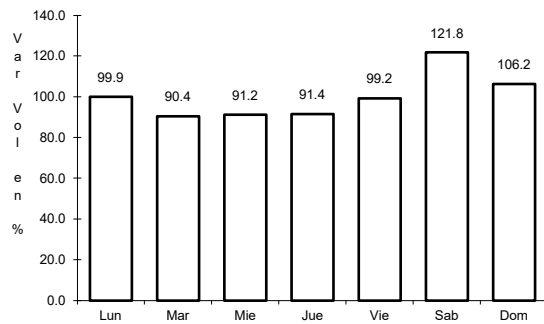


Km: 13.80 Tipo: 1 Sent: 1

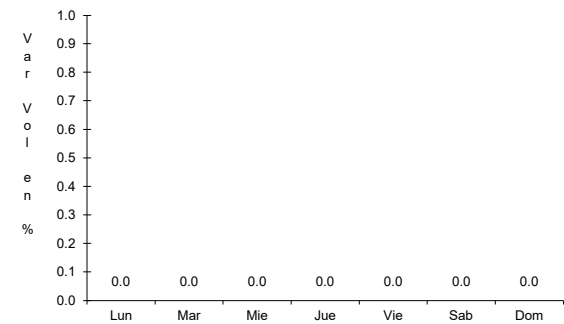
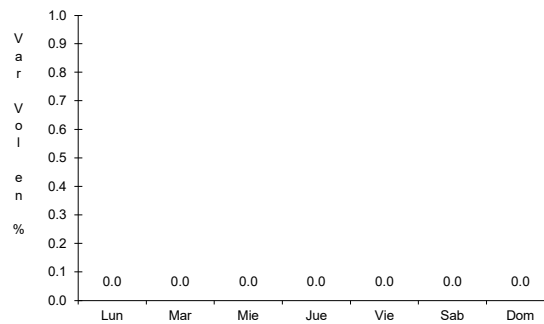
30 CARR: Ent. Rincón de Romos - La Boquilla

CLAVE: 01139

RUTA: AGS



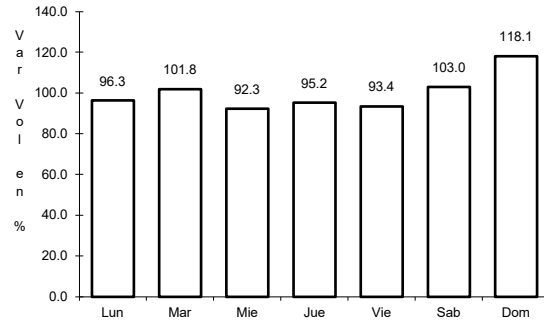
Km: 0.00 Tipo: 3 Sent: 0



31 CARR: Ent. San Carlos - Ent. El Milagro

CLAVE: 01141

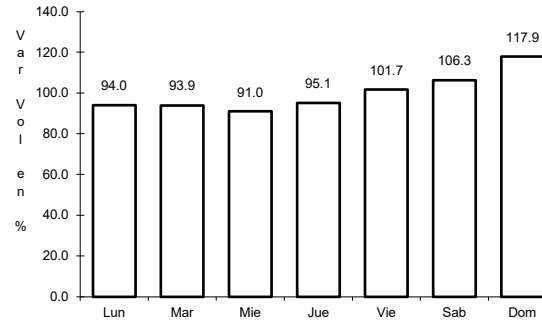
RUTA: AGS-010



Km: 0.00

Tipo: 3

Sent: 0



Km: 13.60

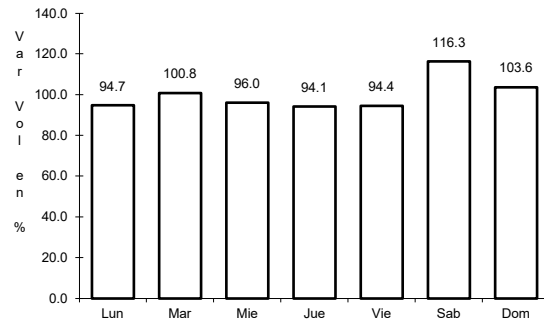
Tipo: 1

Sent: 0

32 CARR: Ent. San Felipe - Jesús María

CLAVE: 01144

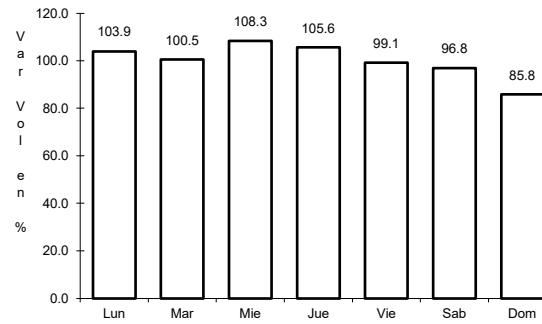
RUTA: AGS



Km: 0.00

Tipo: 3

Sent: 0



Km: 12.70

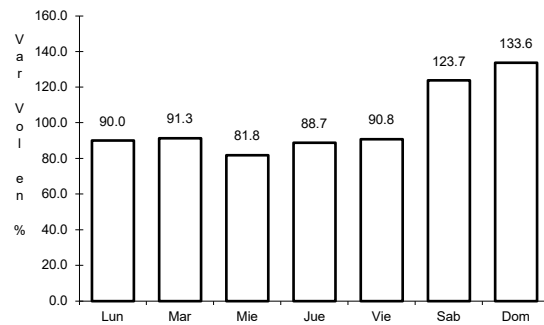
Tipo: 1

Sent: 0

33 CARR: Ent. San Isidro - Ent. El Salitre

CLAVE: 01142

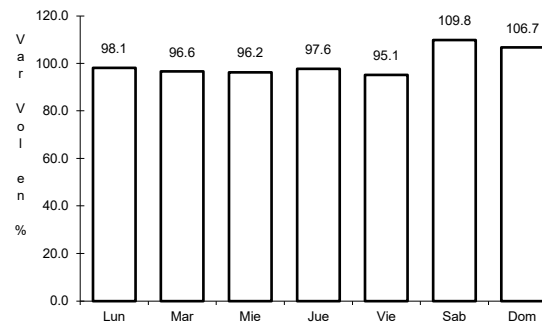
RUTA: AGS-016



Km: 0.00

Tipo: 3

Sent: 0



Km: 20.40

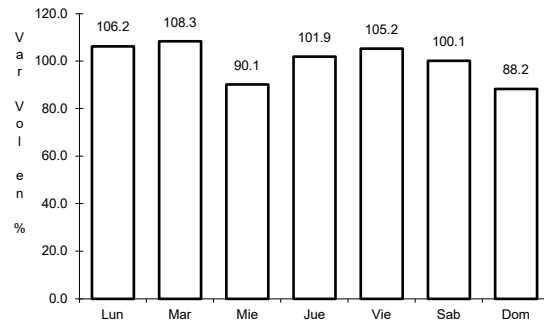
Tipo: 1

Sent: 0

34 CARR: Est. Coyotes - Ent. San Bartolo

CLAVE: 01134

RUTA: AGS-069



Km: 0.00

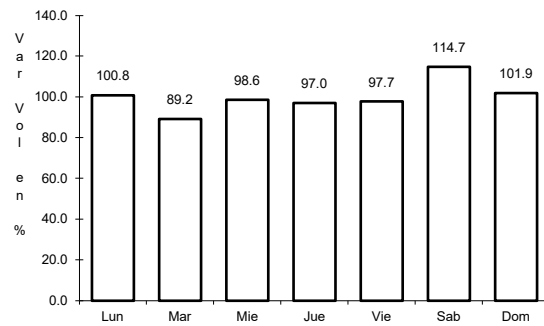
Tipo: 3

Sent: 0

35 CARR: Fracc. Ojo Caliente - El Conejal

CLAVE: 01129

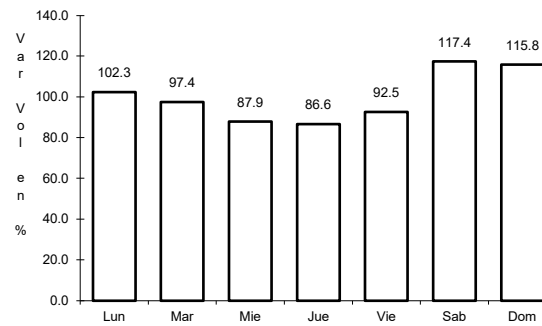
RUTA: AGS-079



Km: 3.50

Tipo: 1

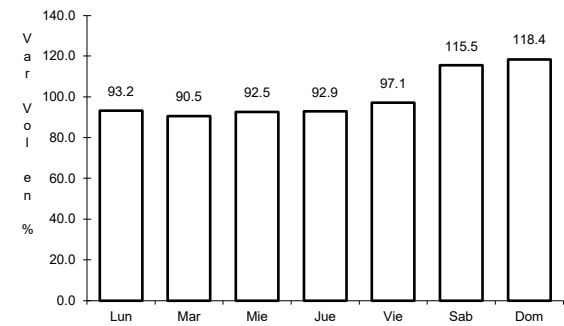
Sent: 1



Km: 3.50

Tipo: 1

Sent: 2



Km: 3.50

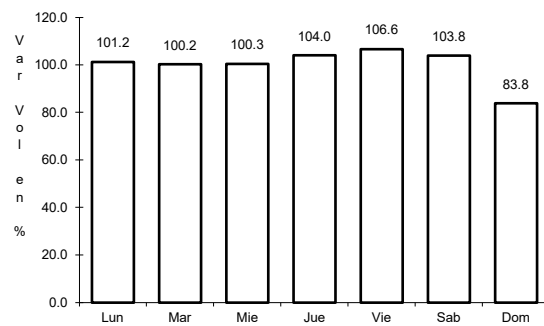
Tipo: 3

Sent: 0

36 CARR: Jesús María - Palomas

CLAVE: 01018

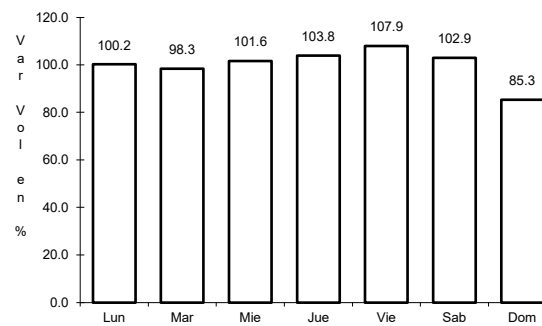
RUTA: AGS-018



Km: 0.00

Tipo: 3

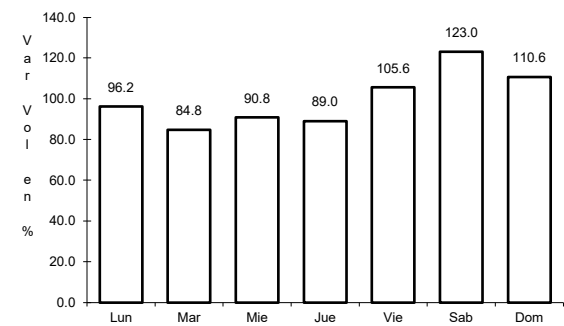
Sent: 1



Km: 0.00

Tipo: 3

Sent: 2



Km: 21.70

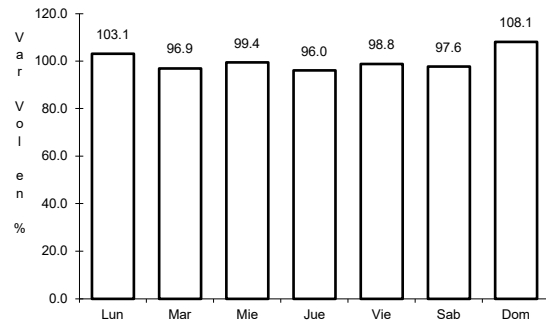
Tipo: 1

Sent: 0

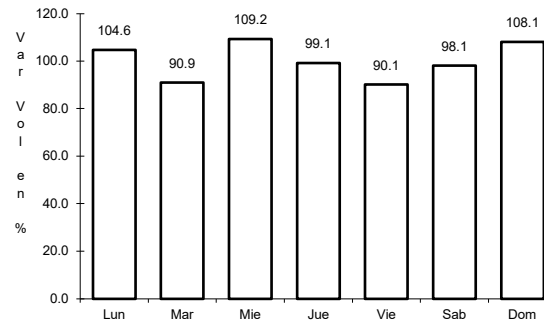
37 CARR: La Panadera - Palo Alto

CLAVE: 01105

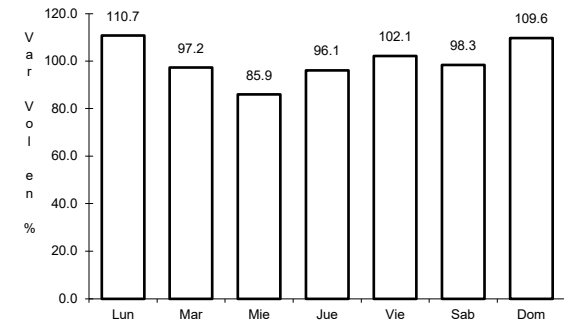
RUTA: AGS-017



Km: 0.00 Tipo: 3 Sent: 0



Km: 12.80 Tipo: 3 Sent: 0

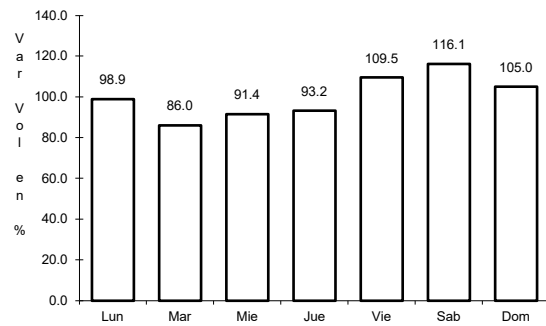


Km: 23.30 Tipo: 1 Sent: 0

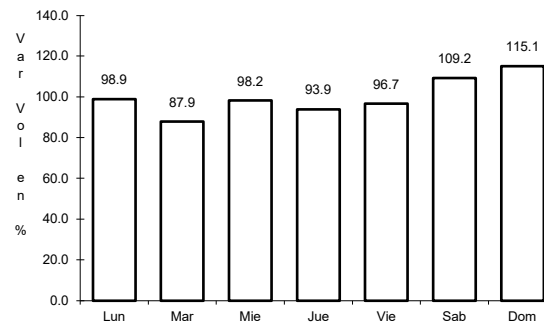
38 CARR: La Punta - Mesillas

CLAVE: 01104

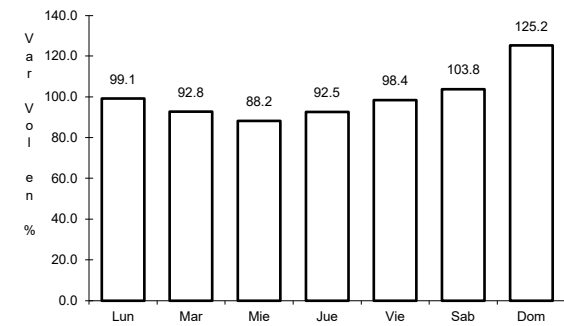
RUTA: AGS-026



Km: 0.00 Tipo: 3 Sent: 0



Km: 6.50 Tipo: 3 Sent: 0

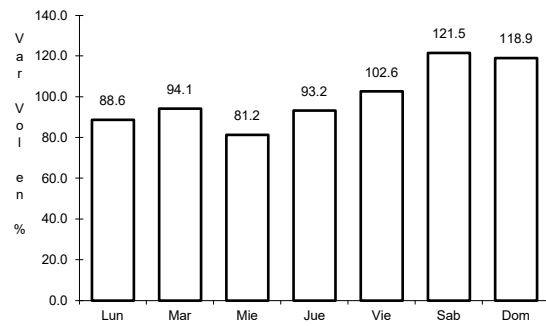


Km: 13.50 Tipo: 1 Sent: 0

39 CARR: La Rinconada - El Terrero del Refugio

CLAVE: 01133

RUTA: AGS-007

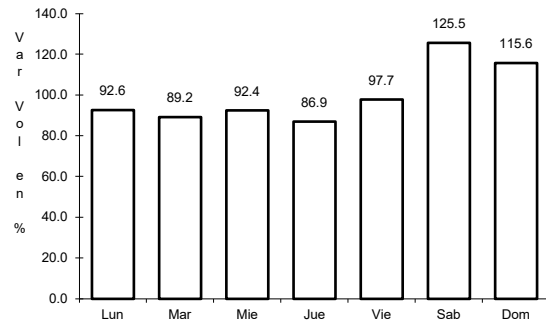


Km: 0.00 Tipo: 3 Sent: 0

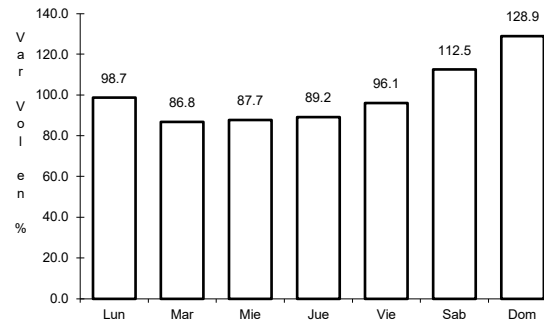
40 CARR: Las Norias de Ojo Caliente - La Luz

CLAVE: 01122

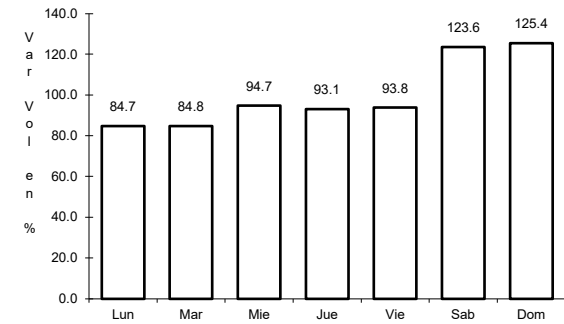
RUTA: AGS-068



Km: 0.00 Tipo: 3 Sent: 0



Km: 10.50 Tipo: 3 Sent: 0

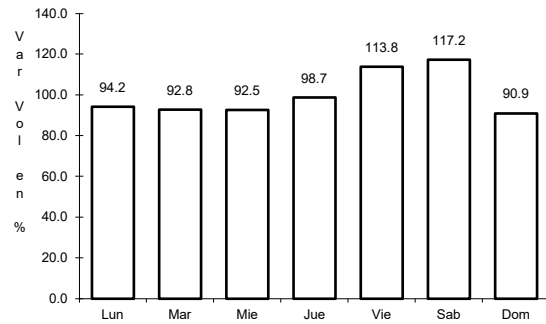


Km: 27.60 Tipo: 1 Sent: 0

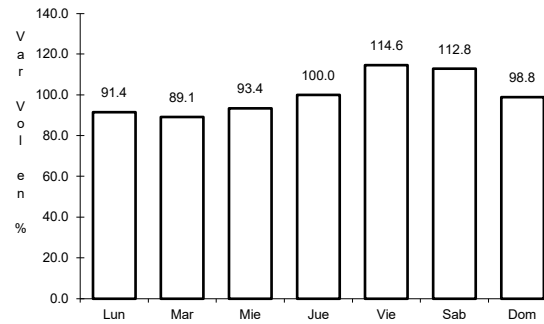
41 CARR: Libramiento San Francisco de Los Romo

CLAVE: 01137

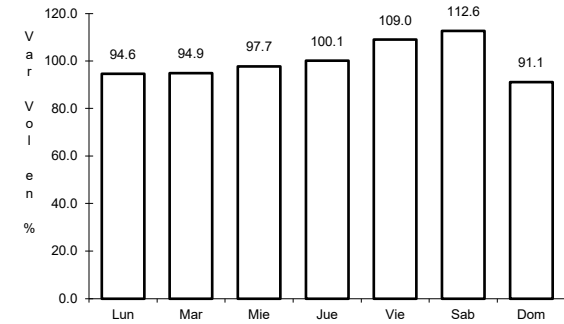
RUTA: AGS



Km: 0.00 Tipo: 3 Sent: 1



Km: 0.00 Tipo: 3 Sent: 2

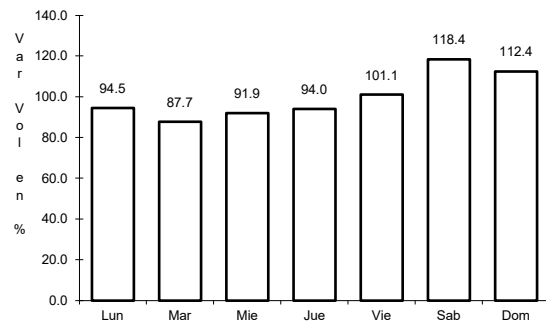


Km: 5.50 Tipo: 1 Sent: 1

42 CARR: Pabellón de Hidalgo - Rincón de Romos

CLAVE: 01136

RUTA: AGS

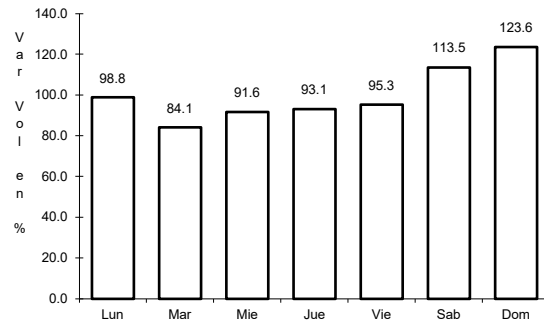


Km: 0.00 Tipo: 3 Sent: 0

43 CARR: Pilotos - Los Campos

CLAVE: 00007

RUTA: AGS-030



Km: 0.00

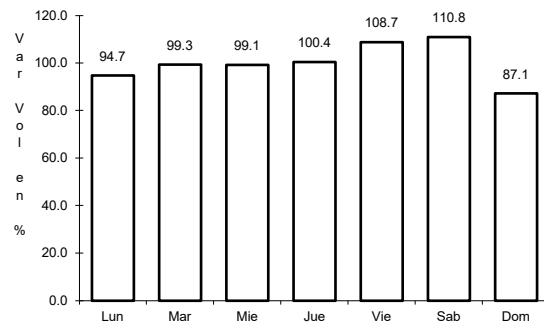
Tipo: 3

Sent: 0

44 CARR: Pocitos - Granja Miravalle

CLAVE: 01109

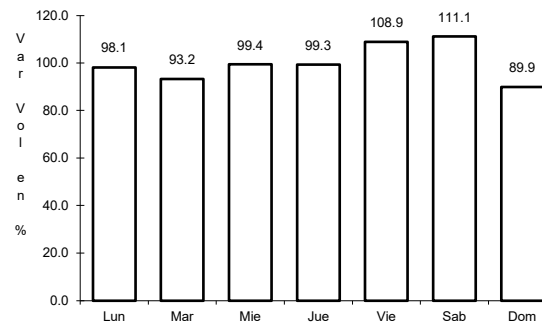
RUTA: AGS-053



Km: 1.50

Tipo: 3

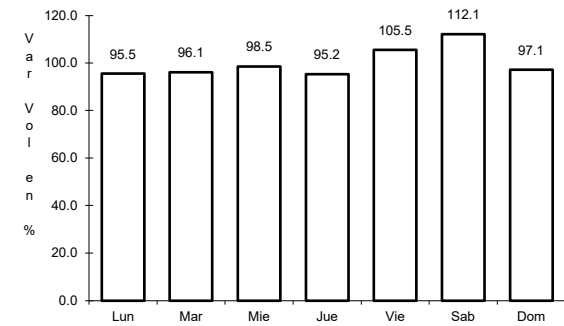
Sent: 1



Km: 1.50

Tipo: 3

Sent: 2



Km: 5.70

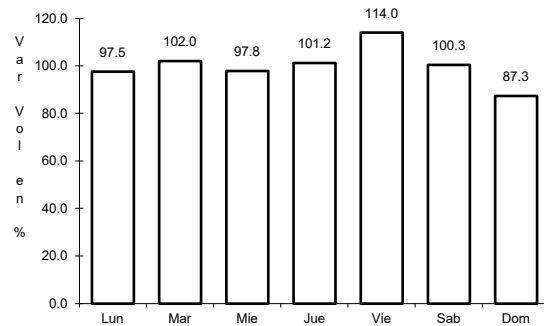
Tipo: 1

Sent: 0

45 CARR: Ramal a San Pedro Piedra Gorda

CLAVE: 00553

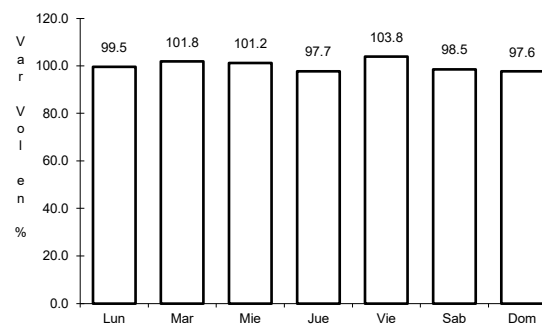
RUTA: ZAC-AGS



Km: 0.00

Tipo: 3

Sent: 0



Km: 9.00

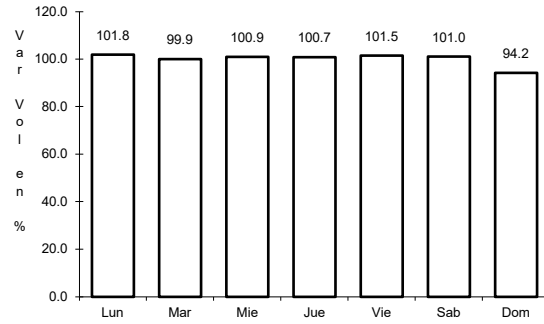
Tipo: 1

Sent: 0

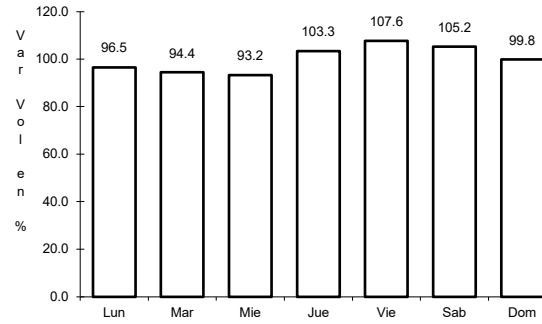
46 CARR: San Gil - Jarillas

CLAVE: 00527

RUTA: AGS-012-ZAC



Km: 0.00 Tipo: 3 Sent: 0

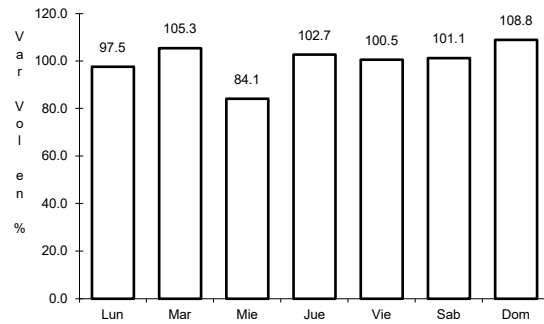


Km: 5.40 Tipo: 1 Sent: 0

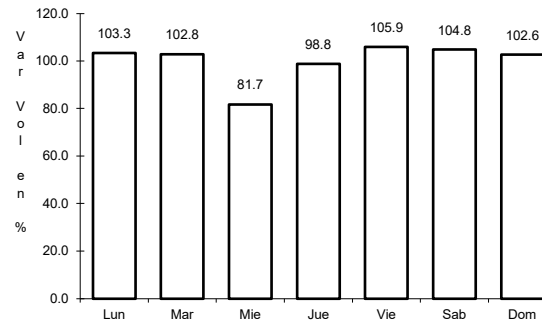
47 CARR: San Isidro El Grande - Bajío de San José

CLAVE: 00526

RUTA: AGS-036



Km: 0.00 Tipo: 3 Sent: 0

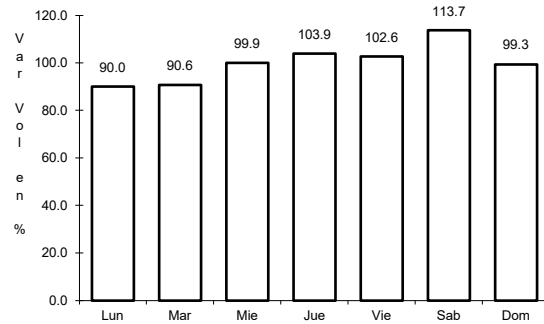


Km: 11.50 Tipo: 3 Sent: 0

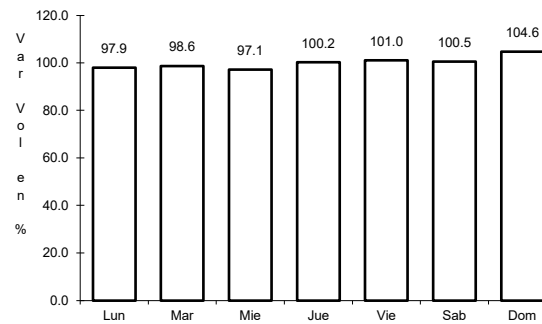
48 CARR: San Rafael - Villa García

CLAVE: 00525

RUTA: AGS-ZAC



Km: 0.00 Tipo: 3 Sent: 0

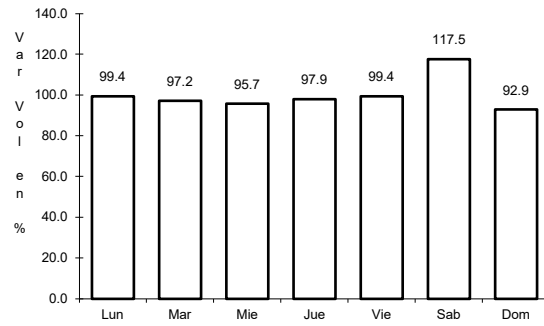


Km: 10.00 Tipo: 1 Sent: 0

49 CARR: Santa Rosa - Pabellón de Hidalgo

CLAVE: 01135

RUTA: AGS



Km: 0.00

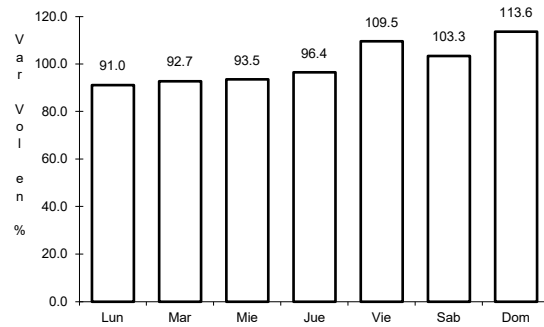
Tipo: 3

Sent: 0

50 CARR: T. Caldera - Ent. Ojo de Agua de Los Montes

CLAVE: 01137

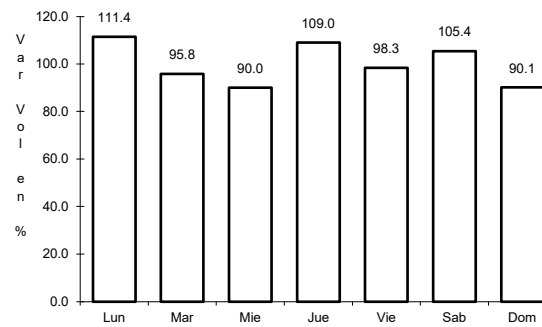
RUTA: AGS



Km: 0.00

Tipo: 3

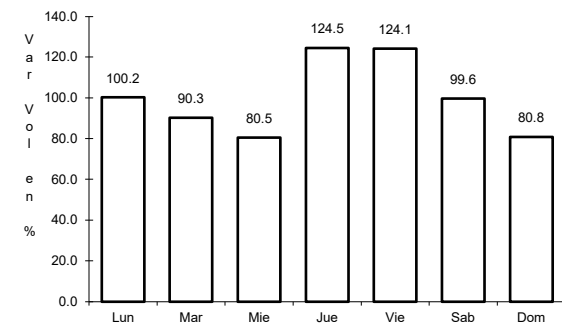
Sent: 0



Km: 8.60

Tipo: 1

Sent: 0



Km: 19.00

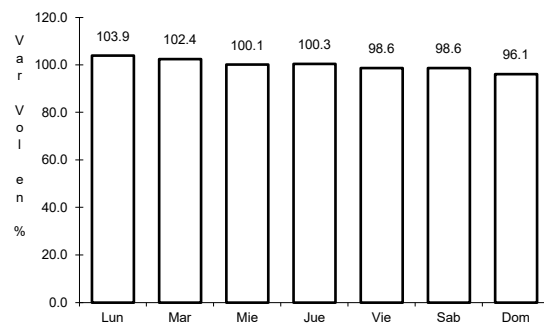
Tipo: 1

Sent: 0

51 CARR: Viñedos de California - Adolfo López Mateos

CLAVE: 01137

RUTA: AGS



Km: 0.00

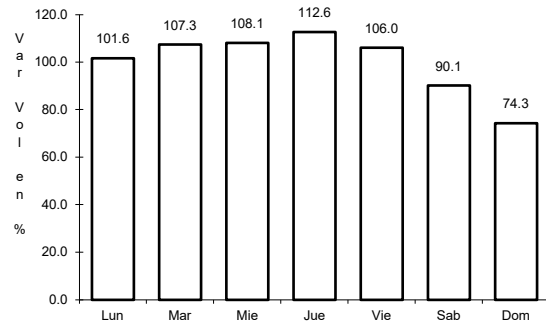
Tipo: 3

Sent: 0

52 CARR: Libramiento Surponiente de Aguascalientes (Cuota)

CLAVE: 00167

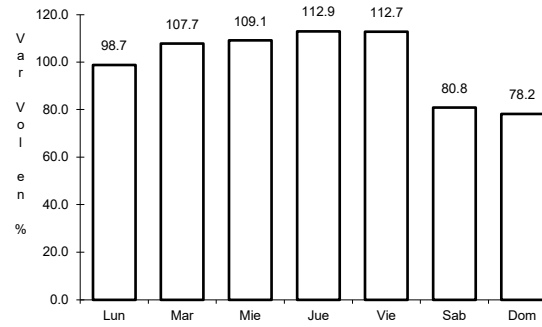
RUTA: MEX-A40



Km: 0.00

Tipo: 3

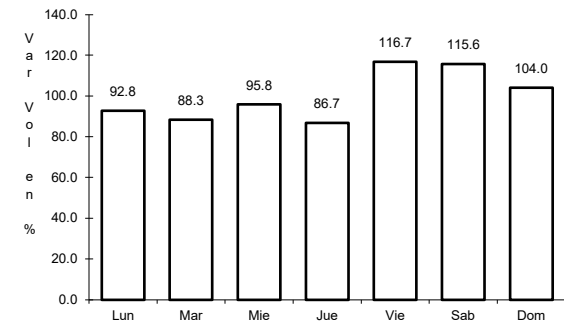
Sent: 0



Km: 8.34

Tipo: 3

Sent: 0



Km: 21.00

Tipo: 1

Sent: 0