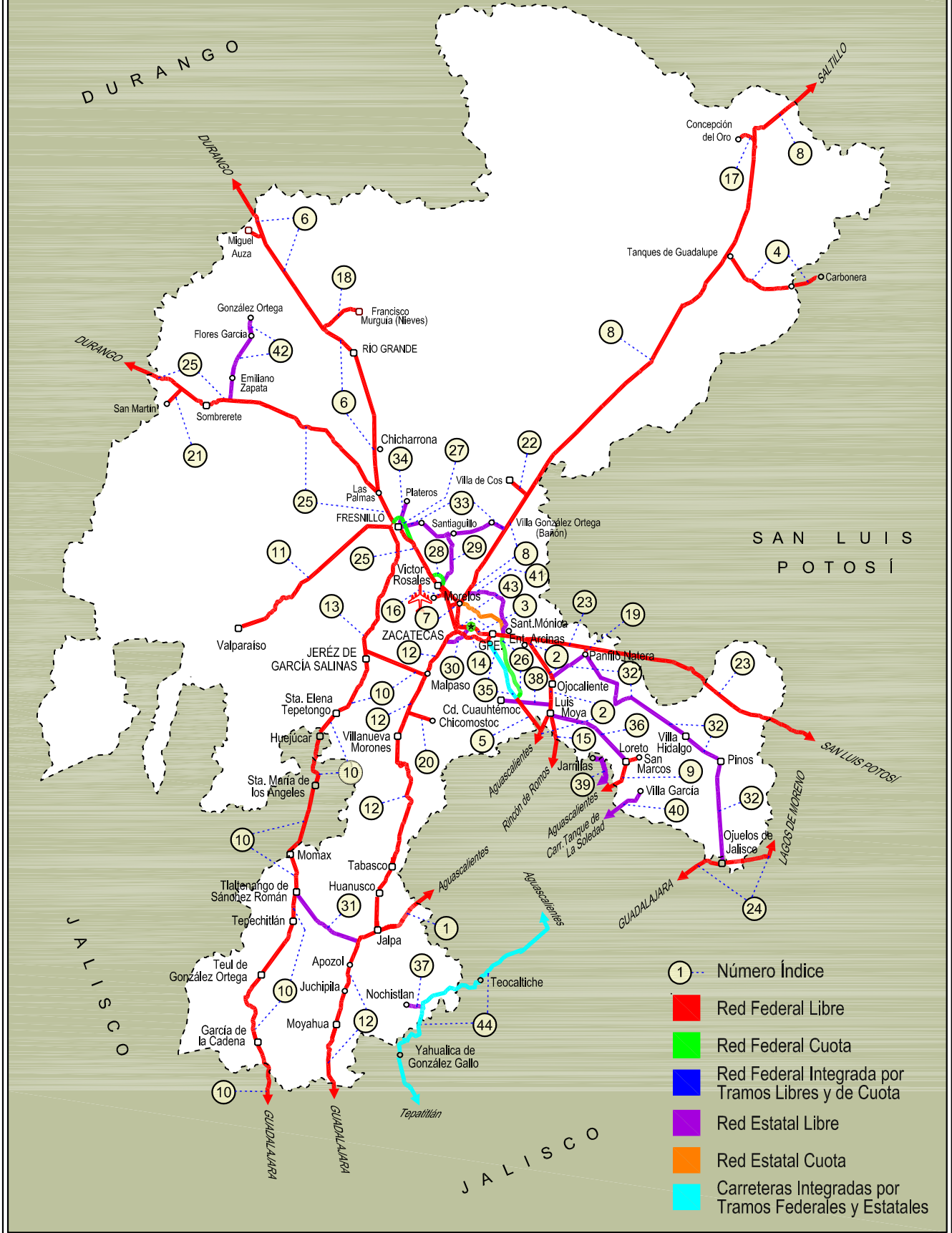


32 ZACATECAS

SECRETARÍA DE COMUNICACIONES Y TRANSPORTES
DIRECCIÓN GENERAL DE SERVICIOS TÉCNICOS

COAHUILA





ZACATECAS

---RED FEDERAL LIBRE---

1 Aguascalientes - Jalpa	MEX-070
2 Aguascalientes - Zacatecas	MEX-045
3 Blvd. Guadalupe - Zacatecas - La Escondida	MEX-045
4 Carbonera - T. C. (Ent. Morelos - Saltillo)	MEX-062
5 Ent. Cosío - Ent. Cuauhtémoc	MEX-045
6 Ent. La Chicharrona - Cuencamé	MEX-049
7 Ent. Morelos - Ent. Noria de Gringos	MEX-045
8 Ent. Morelos - Saltillo	MEX-054
9 Ent. Rivier - San Marcos	MEX-066
10 Ent. Tesislán - Ent. Malpaso	MEX-023
11 Fresnillo - Valparaíso	MEX-044
12 Guadalajara - Zacatecas	MEX-054
13 Jerez - Fresnillo	MEX-023
14 Libramiento de Guadalupe - Zacatecas	MEX-045
15 Providencia - Luis Moya	MEX-071
16 Ramal a Aeropuerto Zacatecas	MEX-045
17 Ramal a Concepción del Oro	MEX-054
18 Ramal a Francisco Murguía (Nieves)	MEX-049
19 Ramal a Gral. Pánfilo Natera	MEX-049
20 Ramal a Ruinas de Chicomostoc	MEX-045
21 Ramal a San Martín	MEX-045
22 Ramal a Villa de Cos	MEX-054
23 San Luis Potosí - Ent. Arcinas	MEX-049
24 San Luis Potosí - Lagos de Moreno	MEX-070-080
25 Zacatecas - Durango	MEX-045

---RED FEDERAL DE CUOTA---

26 Ent. Cuauhtémoc - Ent. Osiris (Cuota)	MEX-045D
27 Libramiento de Fresnillo (Cuota)	MEX-045D
28 Libramiento de Víctor Rosales (Cuota)	MEX-045D

---RED ESTATAL LIBRE---

29 Calera de Víctor Rosales - Santiaguillo	ZAC-016
30 Cieneguillas - Zacatecas	ZAC
31 Corral de Piedras - Tlaltenango	ZAC
32 Ent. Ojo Caliente - Ent. Ojuelos de Jalisco	ZAC
33 Fresnillo - Ent. Bañón	ZAC
34 Fresnillo - Plateros	ZAC-022
35 Guadalupe - Ent. Cuauhtémoc	ZAC-118
36 Ramal a Loreto	ZAC
37 Ramal a Nochistlán	ZAC
38 Ramal a San Pedro Piedra Gorda	ZAC-AGS
39 San Gil - Jarillas	AGS-012-ZAC
40 San Rafael - Villa García	AGS-ZAC
41 Santa Mónica - Pozo de Gamboa	ZAC
42 Sombbrero - González Ortega	ZAC

---RED ESTATAL DE CUOTA---

43 Libramiento Noreste de Zacatecas (Cuota)	ZAC-D
---	-------

---CARRETERAS INTEGRADAS POR TRAMOS FEDERALES Y ESTATALES---

44 Tepatlán - Jaralillo	MEX-JAL-ZAC
-------------------------	-------------

ZACATECAS

1 CARR: Aguascalientes - Jalpa

CLAVE: 00095

RUTA: MEX-070

AÑO: 2018

LUGAR	ESTACION				CLASIFICACION VEHICULAR EN PORCIENTO										COORDENADAS					
	KM	TE	SC	TDPA	M	A	B	C2	C3	T3S2	T3S3	T3S2R4	OTROS	A	B	C	K'	D	LATITUD	LONGITUD
Aguascalientes	0.00	3	1	10088	1.9	89.8	0.4	6.3	0.8	0.4	0.2	0.2	0.0	91.7	0.4	7.9	0.114	0.524	21.874481	-102.336606
Aguascalientes	0.00	3	2	9155	2.6	85.8	0.5	9.2	0.9	0.5	0.2	0.2	0.1	88.4	0.5	11.1	0.085	0.524	21.874354	-102.336624
T. Der. Jesús María	7.30	1	1	8581	1.4	87.1	0.6	8.9	1.1	0.6	0.3	0.0	0.0	88.5	0.6	10.9	0.083	0.504	21.881279	-102.362102
T. Der. Jesús María	7.30	1	2	8722	2.0	87.9	0.4	7.6	1.0	0.7	0.4	0.0	0.0	89.9	0.4	9.7	0.082	0.504	21.881118	-102.362129
T. Izq. Villa Hidalgo	7.80	3	1	5615	1.5	88.1	0.5	7.7	1.2	0.7	0.3	0.0	0.0	89.6	0.5	9.9	0.097	0.504	21.884376	-102.373675
T. Izq. Villa Hidalgo	7.80	3	2	5704	0.3	86.9	0.9	9.4	1.5	0.7	0.2	0.1	0.0	87.2	0.9	11.9	0.118	0.504	21.884229	-102.373715
Libramiento Poniente de Aguascalientes	11.00	1	1	5957	0.7	85.0	1.2	11.4	0.9	0.6	0.2	0.0	0.0	85.7	1.2	13.1	0.084	0.502	21.889690	-102.393549
Libramiento Poniente de Aguascalientes	11.00	1	2	5996	0.3	89.2	0.5	6.9	1.8	0.8	0.3	0.1	0.1	89.5	0.5	10.0	0.099	0.502	21.889576	-102.393594
Libramiento Poniente de Aguascalientes	11.00	3	1	5818	0.9	92.6	0.4	3.5	1.4	0.8	0.3	0.0	0.1	93.5	0.4	6.1	0.083	0.501	21.892152	-102.403258
Libramiento Poniente de Aguascalientes	11.00	3	2	5784	0.7	87.9	0.4	6.1	3.2	1.1	0.4	0.1	0.1	88.6	0.4	11.0	0.087	0.501	21.892287	-102.403199
T. Der. Gracias a Dios	20.00	3	0	10709	0.7	85.9	0.6	7.3	1.3	3.2	0.6	0.1	0.3	86.6	0.6	12.8	0.073	0.501	21.887162	-102.464740
T. Izq. Malpaso	45.10	1	0	7005	0.4	84.9	0.8	9.7	1.3	2.3	0.3	0.1	0.2	85.3	0.8	13.9	0.089	0.500	21.880917	-102.653377
T. Der. Presa La Codorniz	49.30	3	1	9762	2.1	87.8	0.5	8.5	0.7	0.3	0.1	0.0	0.0	89.9	0.5	9.6	0.081	0.503	21.864101	-102.692157
T. Der. Presa La Codorniz	49.30	3	2	9874	1.8	90.2	0.3	6.3	0.7	0.5	0.2	0.0	0.0	92.0	0.3	7.7	0.082	0.503	21.864013	-102.692026
Calvillo	52.30	3	1	5220	2.2	89.6	0.2	6.7	0.9	0.3	0.1	0.0	0.0	91.8	0.2	8.0	0.082	0.501	21.835233	-102.746336
Calvillo	52.30	3	2	5238	2.3	87.5	0.4	8.6	0.8	0.3	0.1	0.0	0.0	89.8	0.4	9.8	0.079	0.501	21.835111	-102.746249
T. Der. Jaltiche de Abajo	63.80	3	0	2521	0.8	85.3	1.0	10.4	1.5	0.8	0.2	0.0	0.0	86.1	1.0	12.9	0.093	0.511	21.772492	-102.803823
Lim. Edos. Term. Ags. Ppia. Zac.	65.66																			
T. C. Guadalajara - Zacatecas	90.66	1	0	4866	3.2	83.4	0.7	10.3	1.1	0.7	0.4	0.1	0.1	86.6	0.7	12.7	0.078	0.512	21.652536	-102.963813

2 CARR: Aguascalientes - Zacatecas

CLAVE: 00524

RUTA: MEX-045

AÑO: 2018

LUGAR	ESTACION				CLASIFICACION VEHICULAR EN PORCIENTO										COORDENADAS					
	KM	TE	SC	TDPA	M	A	B	C2	C3	T3S2	T3S3	T3S2R4	OTROS	A	B	C	K'	D	LATITUD	LONGITUD
Aguascalientes	0.00																			
T. Izq. Pocitos	6.00	1	1	19768	2.0	91.0	1.1	4.4	0.2	0.5	0.6	0.1	0.1	93.0	1.1	5.9	0.077	0.505	21.920025	-102.291720
T. Izq. Pocitos	6.00	1	2	19386	2.3	89.2	1.1	5.2	0.2	0.4	1.2	0.1	0.3	91.5	1.1	7.4	0.074	0.505	21.919696	-102.291835
T. Der. Loreto	9.83	3	1	28193	1.2	82.9	1.4	5.9	1.4	3.7	1.8	1.3	0.4	84.1	1.4	14.5	0.082	0.502	21.972847	-102.289353
T. Der. Loreto	9.83	3	2	28432	1.2	84.4	1.2	5.3	1.3	3.5	1.6	1.1	0.4	85.6	1.2	13.2	0.068	0.502	21.972847	-102.289524
Santa Fé	16.00	1	1	27444	0.8	82.7	1.7	5.7	2.2	3.7	1.3	1.6	0.3	83.5	1.7	14.8	0.081	0.505	22.014141	-102.286520
Santa Fé	16.00	1	2	26879	0.8	80.7	1.9	6.5	2.6	3.9	1.4	1.9	0.3	81.5	1.9	16.6	0.073	0.505	22.014168	-102.286640
Santa Fé	16.00	3	1	24392	0.6	81.7	1.9	6.4	2.0	4.2	1.3	1.7	0.2	82.3	1.9	15.8	0.082	0.507	22.026693	-102.283393
Santa Fé	16.00	3	2	25076	0.6	80.1	2.1	7.0	2.1	4.6	1.4	1.9	0.2	80.7	2.1	17.2	0.074	0.507	22.028339	-102.283108
La Concepción	18.00	3	1	21822	0.8	81.2	1.9	6.3	1.8	4.4	1.5	1.8	0.3	82.0	1.9	16.1	0.082	0.526	22.037407	-102.280928
La Concepción	18.00	3	2	24234	0.9	78.8	2.2	7.1	2.0	4.9	1.7	2.1	0.3	79.7	2.2	18.1	0.083	0.526	22.037441	-102.281049

ZACATECAS

2 CARR: Aguascalientes - Zacatecas

CLAVE: 00524

RUTA: MEX-045

AÑO: 2018

LUGAR	ESTACION				CLASIFICACION VEHICULAR EN PORCIENTO													COORDENADAS		
	KM	TE	SC	TDPA	M	A	B	C2	C3	T3S2	T3S3	T3S2R4	OTROS	A	B	C	K'	D	LATITUD	LONGITUD
San Francisco de Los Romo	22.73	1	1	7305	3.0	83.6	0.9	10.5	0.5	0.8	0.5	0.1	0.1	86.6	0.9	12.5	0.070	0.509	22.064239	-102.275521
San Francisco de Los Romo	22.73	1	2	7036	2.7	83.2	1.0	10.9	0.5	1.0	0.5	0.1	0.1	85.9	1.0	13.1	0.071	0.509	22.064252	-102.275657
T. Der. Estación Pabellón	31.00	1	1	15383	1.1	77.9	2.4	7.4	1.7	5.6	1.3	2.4	0.2	79.0	2.4	18.6	0.072	0.514	22.131472	-102.286203
T. Der. Estación Pabellón	31.00	1	2	16250	1.0	75.5	2.7	8.8	1.9	5.7	1.5	2.7	0.2	76.5	2.7	20.8	0.082	0.514	22.131416	-102.286340
T. Der. Estación Pabellón	31.00	3	1	12733	1.0	76.5	2.8	7.9	1.8	6.0	1.5	2.2	0.3	77.5	2.8	19.7	0.076	0.508	22.152181	-102.295140
T. Der. Estación Pabellón	31.00	3	2	13123	1.1	73.5	3.1	9.5	2.0	6.4	1.6	2.5	0.3	74.6	3.1	22.3	0.076	0.508	22.152126	-102.295274
Rincón de Romos	40.90	3	0	6004	4.9	83.7	0.6	7.5	0.3	2.6	0.2	0.0	0.2	88.6	0.6	10.8	0.088	0.508	22.237362	-102.317704
La Punta	51.00	1	1	8027	0.6	69.9	4.0	8.1	1.9	8.6	2.1	3.9	0.9	70.5	4.0	25.5	0.080	0.502	22.314141	-102.296528
La Punta	51.00	1	2	7970	0.6	66.8	4.4	9.3	2.0	9.5	2.4	4.1	0.9	67.4	4.4	28.2	0.079	0.502	22.314162	-102.296649
Cosío	56.00	3	1	6532	1.4	66.8	4.4	8.1	2.5	8.7	3.3	4.2	0.6	68.2	4.4	27.4	0.070	0.527	22.372605	-102.298412
Cosío	56.00	3	2	5874	0.9	64.4	4.9	8.2	2.6	9.9	3.7	4.6	0.8	65.3	4.9	29.8	0.079	0.527	22.372581	-102.298524
Lim. Edos. Term. Ags. Ppia. Zac.	62.67																			
Luis Moya	65.80	1	0	3637	2.6	79.8	1.5	9.8	1.7	2.4	1.7	0.3	0.2	82.4	1.5	16.1	0.072	0.502	22.422219	-102.259298
Luis Moya	65.80	3	1	3135	2.3	79.7	1.3	11.3	1.2	1.9	1.3	0.8	0.2	82.0	1.3	16.7	0.077	0.501	22.445534	-102.253173
Luis Moya	65.80	3	2	3144	2.2	78.0	1.5	12.7	1.3	1.9	1.4	0.8	0.2	80.2	1.5	18.3	0.076	0.501	22.445498	-102.253285
T. Der. San Luis Potosi	100.00	1	0	6492	0.9	80.8	1.5	10.2	1.6	2.6	1.5	0.8	0.1	81.7	1.5	16.8	0.089	0.508	22.711748	-102.325143
T. Der. San Luis Potosi	100.00	3	1	5833	0.5	66.9	3.9	10.4	1.9	9.1	2.2	4.6	0.5	67.4	3.9	28.7	0.083	0.501	22.727233	-102.336016
T. Der. San Luis Potosi	100.00	3	2	5855	0.8	63.7	4.6	10.2	2.6	9.6	2.7	4.9	0.9	64.5	4.6	30.9	0.084	0.501	22.727088	-102.336348
T. Izq. Aguascalientes (Cuota)	113.50	1	1	11203	0.6	75.0	1.9	10.7	2.0	5.3	1.3	2.9	0.3	75.6	1.9	22.5	0.082	0.503	22.751361	-102.439029
T. Izq. Aguascalientes (Cuota)	113.50	1	2	11085	1.3	74.1	2.1	11.1	2.1	5.3	1.3	2.5	0.2	75.4	2.1	22.5	0.085	0.503	22.751185	-102.439003
T. Izq. Libramiento De Guadalupe Y Zacatecas	118.20	1	1	23935	1.4	83.1	2.6	7.5	1.2	2.4	0.6	1.0	0.2	84.5	2.6	12.9	0.101	0.517	22.750769	-102.492459
T. Izq. Libramiento De Guadalupe Y Zacatecas	118.20	1	2	22386	1.7	81.4	3.1	8.1	1.2	2.5	0.8	1.1	0.1	83.1	3.1	13.8	0.081	0.517	22.750666	-102.492803
Zacatecas	119.82																			

3 CARR: Blvd. Guadalupe - Zacatecas - La Escondida

CLAVE: 00544

RUTA: MEX-045

AÑO: 2018

LUGAR	ESTACION				CLASIFICACION VEHICULAR EN PORCIENTO													COORDENADAS		
	KM	TE	SC	TDPA	M	A	B	C2	C3	T3S2	T3S3	T3S2R4	OTROS	A	B	C	K'	D	LATITUD	LONGITUD
T. Izq. Lib. Guadalupe - Zacatecas (Baja)	0.00	3	1	1261	4.4	81.2	1.0	9.9	1.0	1.2	0.6	0.4	0.3	85.6	1.0	13.4	0.092	0.530	22.752583	-102.500823
T. Izq. Lib. Guadalupe - Zacatecas (Alta)	0.00	3	1	25847	1.6	92.7	0.4	3.1	0.3	0.8	0.9	0.1	0.1	94.3	0.4	5.3	0.073	0.521	22.752487	-102.500882
T. Izq. Lib. Guadalupe - Zacatecas (Baja)	0.00	3	2	1420	3.8	82.1	1.0	10.2	1.0	1.0	0.4	0.3	0.2	85.9	1.0	13.1	0.102	0.530	22.752956	-102.502650
T. Izq. Lib. Guadalupe - Zacatecas (Alta)	0.00	3	2	28132	1.7	92.1	0.4	3.5	0.3	0.8	1.0	0.1	0.1	93.8	0.4	5.8	0.066	0.521	22.753062	-102.502606
X. Av. Universidad	7.70	1	1	42390	1.4	93.8	0.6	4.0	0.1	0.0	0.0	0.0	0.1	95.2	0.6	4.2	0.069	0.539	22.765473	-102.559667
X. Av. Universidad	7.70	1	2	49559	1.3	93.7	0.7	4.1	0.1	0.0	0.0	0.0	0.1	95.0	0.7	4.3	0.073	0.539	22.765049	-102.558965
T. C. Zacatecas - Durango (Alta)	14.50	1	1	17478	0.9	92.7	1.1	4.0	0.2	0.4	0.6	0.0	0.1	93.6	1.1	5.3	0.075	0.542	22.774962	-102.611072

ZACATECAS

3 CARR: Blvd. Guadalupe - Zacatecas - La Escondida

CLAVE: 00544

RUTA: MEX-045

AÑO: 2018

LUGAR	ESTACION				CLASIFICACION VEHICULAR EN PORCIENTO													COORDENADAS		
	KM	TE	SC	TDPA	M	A	B	C2	C3	T3S2	T3S3	T3S2R4	OTROS	A	B	C	K'	D	LATITUD	LONGITUD
T. C. Zacatecas - Durango (Baja)	14.50	1	1	7649	1.2	85.0	0.8	10.4	0.1	0.7	1.6	0.1	0.1	86.2	0.8	13.0	0.175	0.930	22.775097	-102.611076
T. C. Zacatecas - Durango (Baja)	14.50	1	2	576	1.0	78.0	2.1	14.7	0.1	0.7	3.2	0.1	0.1	79.0	2.1	18.9	0.116	0.930	22.774633	-102.611065
T. C. Zacatecas - Durango (Alta)	14.50	1	2	19778	0.8	91.9	1.3	4.5	0.2	0.4	0.8	0.0	0.1	92.7	1.3	6.0	0.089	0.542	22.774781	-102.611089

4 CARR: Carbonera - T. C. (Ent. Morelos - Saltillo)

CLAVE: 00218

RUTA: MEX-062

AÑO: 2018

LUGAR	ESTACION				CLASIFICACION VEHICULAR EN PORCIENTO													COORDENADAS		
	KM	TE	SC	TDPA	M	A	B	C2	C3	T3S2	T3S3	T3S2R4	OTROS	A	B	C	K'	D	LATITUD	LONGITUD
Carbonera	0.00	3	0	3295	10.0	73.4	1.0	9.8	1.9	2.2	0.6	1.0	0.1	83.4	1.0	15.6	0.081	0.517	23.702410	-100.625821
Cedral	18.00	1	0	4002	7.0	75.4	0.7	12.4	1.1	2.4	0.3	0.5	0.2	82.4	0.7	16.9	0.101	0.512	23.800748	-100.703663
Cedral	18.00	3	0	3786	9.1	75.3	0.7	9.2	1.7	2.6	0.7	0.5	0.2	84.4	0.7	14.9	0.070	0.517	23.829298	-100.738709
Lim. Edos. Term. S. L. P. Ppia. Zac.	79.20																			
T. C. Ent. Morelos - Saltillo	112.00	1	0	1301	2.1	78.8	1.4	13.7	1.9	1.8	0.2	0.1	0.0	80.9	1.4	17.7	0.069	0.542	24.157517	-101.494042

5 CARR: Ent. Cosio - Ent. Cuauhtémoc

CLAVE: 00579

RUTA: MEX-045

AÑO: 2018

LUGAR	ESTACION				CLASIFICACION VEHICULAR EN PORCIENTO													COORDENADAS		
	KM	TE	SC	TDPA	M	A	B	C2	C3	T3S2	T3S3	T3S2R4	OTROS	A	B	C	K'	D	LATITUD	LONGITUD
T. C. Aguascalientes - Zacatecas	57.20	3	0	9056	0.8	57.8	5.6	7.9	2.9	14.1	3.9	6.1	0.9	58.6	5.6	35.8	0.078	0.508	22.392980	-102.306046
Lim. Edos. Term. Ags. Ppia. Zac.	64.00																			
T. C. Ent. Cuauhtémoc - Ent. Osiris (Cuota)	70.40																			

6 CARR: Ent. La Chicharrona - Cuencamé

CLAVE: 00152

RUTA: MEX-049

AÑO: 2018

LUGAR	ESTACION				CLASIFICACION VEHICULAR EN PORCIENTO													COORDENADAS		
	KM	TE	SC	TDPA	M	A	B	C2	C3	T3S2	T3S3	T3S2R4	OTROS	A	B	C	K'	D	LATITUD	LONGITUD
Ent. La Chicharrona	0.00	3	1	4483	0.6	61.4	4.4	9.7	2.2	12.7	3.6	4.5	0.9	62.0	4.4	33.6	0.080	0.509	23.305440	-102.958694
Ent. La Chicharrona	0.00	3	2	4642	0.7	58.7	4.6	10.2	2.3	13.8	3.7	5.0	1.0	59.4	4.6	36.0	0.082	0.509	23.305432	-102.958887
T. Der. Cañitas de Felipe Pescador	25.86	1	1	4051	0.6	56.6	5.2	9.2	2.2	15.6	3.9	5.5	1.2	57.2	5.2	37.6	0.067	0.508	23.506228	-102.959452
T. Der. Cañitas de Felipe Pescador	25.86	1	2	4174	0.5	54.9	5.0	8.9	2.2	17.1	4.7	5.2	1.5	55.4	5.0	39.6	0.063	0.508	23.506222	-102.959668
Río Grande	60.00	1	0	7309	0.9	54.6	5.5	9.0	2.3	16.6	4.2	5.9	1.0	55.5	5.5	39.0	0.070	0.505	23.791484	-103.016245
Río Grande	60.00	3	0	6757	2.1	52.1	5.5	12.6	2.8	15.7	3.0	5.1	1.1	54.2	5.5	40.3	0.073	0.506	23.879187	-103.094356
T. Der. Nieves	78.00	3	0	6853	0.6	44.8	6.5	10.3	2.8	20.3	5.9	7.4	1.4	45.4	6.5	48.1	0.068	0.502	23.924567	-103.160568
X. C. Juan Aldama - Miguel Auza	124.50	1	0	6900	2.6	50.8	5.5	10.7	3.5	16.5	3.6	5.4	1.4	53.4	5.5	41.1	0.065	0.518	24.272325	-103.400200
X. C. Juan Aldama - Miguel Auza	124.50	3	0	5969	0.4	46.4	7.6	10.0	2.7	18.9	4.9	7.5	1.6	46.8	7.6	45.6	0.068	0.513	24.286880	-103.406249

ZACATECAS

6 CARR: Ent. La Chicharrona - Cuencamé

CLAVE: 00152

RUTA: MEX-049

AÑO: 2018

LUGAR	ESTACION				CLASIFICACION VEHICULAR EN PORCIENTO													COORDENADAS		
	KM	TE	SC	TDPA	M	A	B	C2	C3	T3S2	T3S3	T3S2R4	OTROS	A	B	C	K'	D	LATITUD	LONGITUD
Lim. Edos. Term. Zac. Ppia. Dgo.	134.30																			
T. Der. Santa Clara	144.00	1	0	4681	2.5	39.3	6.5	9.2	3.2	23.9	5.2	8.8	1.4	41.8	6.5	51.7	0.071	0.520	24.432805	-103.484213
T. Der. Santa Clara	144.00	3	0	5161	1.6	34.9	7.1	9.1	3.3	26.6	5.9	10.1	1.4	36.5	7.1	56.4	0.057	0.512	24.445102	-103.492271
Cuencamé	199.10	1	0	1201	4.5	75.2	2.3	12.7	1.4	2.0	0.9	0.7	0.3	79.7	2.3	18.0	0.130	0.501	24.853207	-103.693636

7 CARR: Ent. Morelos - Ent. Noria de Gringos

CLAVE: 00544

RUTA: MEX-045

AÑO: 2018

LUGAR	ESTACION				CLASIFICACION VEHICULAR EN PORCIENTO													COORDENADAS		
	KM	TE	SC	TDPA	M	A	B	C2	C3	T3S2	T3S3	T3S2R4	OTROS	A	B	C	K'	D	LATITUD	LONGITUD
Ent. Morelos	0.00																			
T. Der. Lib. Noreste de Zacatecas	0.50	1	1	4428	1.2	78.5	2.8	7.4	1.5	4.7	1.9	1.6	0.4	79.7	2.8	17.5	0.077	0.646	22.862111	-102.627228
T. Der. Lib. Noreste de Zacatecas	0.50	1	2	4850	2.1	78.0	2.2	7.8	1.5	4.4	2.0	1.5	0.5	80.1	2.2	17.7	0.088	0.646	22.861760	-102.626579
T. Der. Lib. Noreste de Zacatecas	0.50	3	0	7753	1.1	70.1	4.2	9.2	2.0	6.3	1.9	5.1	0.1	71.2	4.2	24.6	0.084	0.526	22.858625	-102.635785
Ent. Noria de Gringos	2.20																			

8 CARR: Ent. Morelos - Saltillo

CLAVE: 00149

RUTA: MEX-054

AÑO: 2018

LUGAR	ESTACION				CLASIFICACION VEHICULAR EN PORCIENTO													COORDENADAS		
	KM	TE	SC	TDPA	M	A	B	C2	C3	T3S2	T3S3	T3S2R4	OTROS	A	B	C	K'	D	LATITUD	LONGITUD
T. C. Zacatecas - Durango	0.00	3	1	4172	0.9	73.6	3.9	10.7	1.5	5.3	1.3	2.4	0.4	74.5	3.9	21.6	0.067	0.503	22.868920	-102.619591
T. C. Zacatecas - Durango	0.00	3	2	4115	0.7	71.9	4.1	10.4	1.8	6.0	2.3	2.5	0.3	72.6	4.1	23.3	0.084	0.503	22.868962	-102.619664
T. Der. Sta. Mónica	11.00	1	1	3628	1.0	67.8	3.6	8.2	2.3	11.1	2.7	2.9	0.4	68.8	3.6	27.6	0.101	0.508	22.937460	-102.570168
T. Der. Sta. Mónica	11.00	1	2	3750	1.1	65.0	3.9	10.1	2.0	11.2	2.9	3.1	0.7	66.1	3.9	30.0	0.089	0.508	22.937500	-102.570238
T. Der. Sta. Mónica	11.00	3	1	3214	0.7	59.5	4.3	9.7	2.0	14.1	4.6	4.4	0.7	60.2	4.3	35.5	0.077	0.514	22.950395	-102.559213
T. Der. Sta. Mónica	11.00	3	2	3399	0.9	61.7	3.8	7.7	2.4	14.6	4.2	4.0	0.7	62.6	3.8	33.6	0.095	0.514	22.950452	-102.559281
T. Izq. Villa de Cos	53.90	1	1	3274	1.1	58.8	5.0	12.0	2.0	13.9	2.5	3.9	0.8	59.9	5.0	35.1	0.071	0.515	23.261524	-102.335746
T. Izq. Villa de Cos	53.90	1	2	3483	1.0	58.6	4.9	12.2	2.0	13.6	3.1	3.9	0.7	59.6	4.9	35.5	0.078	0.515	23.261582	-102.335834
T. Izq. Villa de Cos	53.90	3	1	2822	1.0	54.7	5.4	12.0	2.0	17.1	2.3	4.5	1.0	55.7	5.4	38.9	0.086	0.516	23.276887	-102.324678
T. Izq. Villa de Cos	53.90	3	2	3011	1.0	54.8	5.0	12.1	2.0	16.5	3.6	4.1	0.9	55.8	5.0	39.2	0.077	0.516	23.276939	-102.324778
Sierra Vieja	85.50	3	1	2125	0.6	50.1	7.0	11.9	2.7	18.3	2.8	5.9	0.7	50.7	7.0	42.3	0.069	0.516	23.505541	-102.121947
Sierra Vieja	85.50	3	2	1989	0.6	45.1	7.2	12.5	2.9	20.6	3.4	6.9	0.8	45.7	7.2	47.1	0.064	0.516	23.505435	-102.121835
T. Der. Majoma	144.50	3	1	1826	0.0	41.9	8.2	10.3	2.5	24.7	3.9	7.1	1.4	41.9	8.2	49.9	0.062	0.543	23.878141	-101.735481
T. Der. Majoma	144.50	3	2	2167	0.8	42.3	7.4	10.2	2.5	25.5	4.3	6.2	0.8	43.1	7.4	49.5	0.073	0.543	23.878341	-101.735549
T. Der. San Tiburcio	185.25	1	1	1984	1.1	51.3	6.4	9.5	2.7	18.4	3.0	6.3	1.3	52.4	6.4	41.2	0.069	0.543	24.157548	-101.495739
T. Der. San Tiburcio	185.25	1	2	2352	0.5	49.4	6.8	10.2	3.0	18.5	3.3	7.0	1.3	49.9	6.8	43.3	0.086	0.543	24.157638	-101.495872

ZACATECAS

8 CARR: Ent. Morelos - Saltillo

CLAVE: 00149

RUTA: MEX-054

AÑO: 2018

LUGAR	ESTACION				CLASIFICACION VEHICULAR EN PORCIENTO													COORDENADAS		
	KM	TE	SC	TDPA	M	A	B	C2	C3	T3S2	T3S3	T3S2R4	OTROS	A	B	C	K'	D	LATITUD	LONGITUD
T. Der. San Tiburcio	185.25	3	1	2576	1.4	55.9	6.2	13.2	2.3	13.7	2.1	4.7	0.5	57.3	6.2	36.5	0.076	0.513	24.160267	-101.493751
T. Der. San Tiburcio	185.25	3	2	2716	1.4	51.4	6.7	14.5	2.6	15.0	2.4	5.2	0.8	52.8	6.7	40.5	0.101	0.513	24.160358	-101.493871
T. Izq. Concepción del Oro	240.00	1	1	3140	1.4	60.6	4.4	11.1	1.7	13.8	2.0	4.4	0.6	62.0	4.4	33.6	0.062	0.514	24.612121	-101.369831
T. Izq. Concepción del Oro	240.00	1	2	3313	1.5	59.5	4.4	13.1	1.4	13.1	2.2	3.8	1.0	61.0	4.4	34.6	0.084	0.514	24.612006	-101.369904
T. Izq. Concepción del Oro	240.00	3	1	3505	0.6	60.4	4.7	13.2	1.5	13.6	1.7	3.9	0.4	61.0	4.7	34.3	0.071	0.507	24.625853	-101.381892
T. Izq. Concepción del Oro	240.00	3	2	3612	1.5	59.5	5.0	14.0	1.8	12.7	1.4	3.5	0.6	61.0	5.0	34.0	0.079	0.507	24.625921	-101.381932
Lim. Edos. Term. Zac. Ppia. Coah.	266.50																			
Agua Nueva	322.00	1	0	6079	1.1	57.5	5.1	13.1	2.5	13.6	2.4	3.8	0.9	58.6	5.1	36.3	0.077	0.513	25.180349	-101.094449
T. Der. La Trinidad	333.00	3	0	15204	0.5	74.8	2.9	12.6	1.5	5.5	1.0	0.3	0.9	75.3	2.9	21.8	0.095	0.504	25.291179	-101.084734
X. C. Libramiento de Saltillo	348.00	1	1	19197	2.0	81.4	1.9	8.8	1.3	2.3	1.8	0.3	0.2	83.4	1.9	14.7	0.069	0.501	25.367437	-101.015532
X. C. Libramiento de Saltillo	348.00	1	2	19257	1.9	79.9	2.0	10.0	1.4	2.4	1.9	0.3	0.2	81.8	2.0	16.2	0.083	0.501	25.367477	-101.015732
Saltillo	354.00	1	1	16658	1.4	88.8	1.1	7.3	0.4	0.6	0.3	0.0	0.1	90.2	1.1	8.7	0.082	0.507	25.387841	-101.006245
Saltillo	354.00	1	2	16218	1.4	87.9	1.2	8.1	0.4	0.6	0.3	0.0	0.1	89.3	1.2	9.5	0.083	0.507	25.387887	-101.006359

9 CARR: Ent. Rivier - San Marcos

CLAVE: 00285

RUTA: MEX-066

AÑO: 2018

LUGAR	ESTACION				CLASIFICACION VEHICULAR EN PORCIENTO													COORDENADAS		
	KM	TE	SC	TDPA	M	A	B	C2	C3	T3S2	T3S3	T3S2R4	OTROS	A	B	C	K'	D	LATITUD	LONGITUD
T. C. Aguascalientes - Zacatecas	0.00	3	1	8351	2.2	87.1	0.4	6.5	1.4	1.2	0.8	0.2	0.2	89.3	0.4	10.3	0.077	0.501	21.962324	-102.287851
T. C. Aguascalientes - Zacatecas	0.00	3	2	8395	1.8	86.7	0.4	7.0	1.5	1.2	1.0	0.2	0.2	88.5	0.4	11.1	0.096	0.501	21.962456	-102.287841
T. Izq. El Tepetate	10.50	3	0	9902	1.1	82.9	1.1	9.2	1.4	3.2	0.6	0.1	0.4	84.0	1.1	14.9	0.083	0.513	21.999545	-102.193041
T. Der. Jilotepec	23.60	3	0	8204	1.1	82.6	0.6	10.5	1.6	2.7	0.5	0.1	0.3	83.7	0.6	15.7	0.087	0.513	22.056827	-102.097923
Villa Juárez	30.00	3	0	8995	1.4	82.5	0.9	9.5	1.3	3.3	0.5	0.2	0.4	83.9	0.9	15.2	0.097	0.523	22.112101	-102.056247
Ciénega Grande	41.50	1	0	7625	1.2	78.7	1.8	12.9	1.6	2.8	0.6	0.1	0.3	79.9	1.8	18.3	0.082	0.512	22.179387	-102.022806
Ciénega Grande	41.50	3	0	6392	1.9	81.9	0.7	10.6	1.9	2.4	0.2	0.1	0.3	83.8	0.7	15.5	0.079	0.522	22.204816	-102.012459
Lim. Edos. Term. Ags. Ppia. Zac.	45.75																			
San Marcos	55.34	1	0	8192	7.7	72.6	0.5	10.1	0.7	6.2	1.0	0.4	0.8	80.3	0.5	19.2	0.079	0.508	22.277520	-101.954217

10 CARR: Ent. Tesislán - Ent. Malpaso

CLAVE: 00584

RUTA: MEX-023

AÑO: 2018

LUGAR	ESTACION				CLASIFICACION VEHICULAR EN PORCIENTO													COORDENADAS		
	KM	TE	SC	TDPA	M	A	B	C2	C3	T3S2	T3S3	T3S2R4	OTROS	A	B	C	K'	D	LATITUD	LONGITUD
T. C. Guadalajara - Tesislán	0.00	3	1	15235	5.0	87.1	0.1	5.5	0.6	0.5	0.9	0.2	0.1	92.1	0.1	7.8	0.104	0.520	20.794569	-103.459547
T. C. Guadalajara - Tesislán	0.00	3	2	14078	3.7	86.9	0.1	6.6	0.7	0.7	0.9	0.2	0.2	90.6	0.1	9.3	0.121	0.520	20.794587	-103.459628
Lim. Edos. Term. Jal. Ppia. Zac.	42.00																			

ZACATECAS

10 CARR: Ent. Tesistán - Ent. Malpaso

CLAVE: 00584

RUTA: MEX-023

AÑO: 2018

LUGAR	ESTACION				CLASIFICACION VEHICULAR EN PORCIENTO													COORDENADAS		
	KM	TE	SC	TDPA	M	A	B	C2	C3	T3S2	T3S3	T3S2R4	OTROS	A	B	C	K'	D	LATITUD	LONGITUD
García de La Cadena	54.00	1	0	1561	1.9	82.3	1.9	8.8	1.5	1.7	1.6	0.1	0.2	84.2	1.9	13.9	0.081	0.521	21.193464	-103.464736
Tlaltenango de Sánchez Román	147.50	3	0	6217	5.5	80.9	1.2	9.7	0.8	1.0	0.9	0.0	0.0	86.4	1.2	12.4	0.063	0.503	21.803674	-103.298674
Momax	165.00	3	0	3171	2.9	84.3	1.7	6.3	1.2	1.3	1.2	1.0	0.1	87.2	1.7	11.1	0.085	0.510	21.935988	-103.307411
Lim. Edos. Term. Zac. Ppia. Jal.	171.80																			
Colotlán	175.00	1	0	4433	1.8	84.6	1.5	8.0	0.9	1.0	1.3	0.8	0.1	86.4	1.5	12.1	0.074	0.531	22.089188	-103.272031
Lim. Edos. Term. Jal. Ppia. Zac.	209.90																			
Lim. Edos. Term. Zac. Ppia. Jal.	214.80																			
Lim. Edos. Term. Jal. Ppia. Zac.	223.95																			
Tepetongo	235.00	3	0	4521	1.5	84.3	0.9	9.5	0.7	1.4	0.9	0.7	0.1	85.8	0.9	13.3	0.071	0.530	22.466102	-103.142392
Jerez de García Salinas	249.00	1	1	3670	1.7	88.6	0.4	6.3	0.7	0.5	0.6	0.9	0.3	90.3	0.4	9.3	0.072	0.511	22.600855	-103.017281
Jerez de García Salinas	249.00	1	2	3515	1.5	88.3	0.6	6.8	0.6	0.6	0.6	0.9	0.1	89.8	0.6	9.6	0.074	0.511	22.600927	-103.017400
T. C. Guadalajara - Zacatecas	275.00	1	1	3610	0.6	88.9	1.6	6.1	0.8	1.2	0.6	0.1	0.1	89.5	1.6	8.9	0.103	0.505	22.617225	-102.785187
T. C. Guadalajara - Zacatecas	275.00	1	2	3679	1.0	86.7	2.0	7.2	1.0	1.3	0.6	0.1	0.1	87.7	2.0	10.3	0.092	0.505	22.617318	-102.785166

11 CARR: Fresnillo - Valparaíso

CLAVE: 32547

RUTA: MEX-044

AÑO: 2018

LUGAR	ESTACION				CLASIFICACION VEHICULAR EN PORCIENTO													COORDENADAS		
	KM	TE	SC	TDPA	M	A	B	C2	C3	T3S2	T3S3	T3S2R4	OTROS	A	B	C	K'	D	LATITUD	LONGITUD
Fresnillo	0.00	3	0	7903	2.4	75.7	1.5	12.4	1.8	3.5	1.5	1.0	0.2	78.1	1.5	20.4	0.084	0.502	23.173976	-102.919700
T. Izq. Guanajuato	24.50	1	0	2288	1.4	83.2	1.0	11.2	1.3	1.2	0.7	0.0	0.0	84.6	1.0	14.4	0.078	0.500	23.106602	-103.080156
T. Izq. Sombrerete	45.00	3	0	1538	1.2	80.2	2.8	13.3	1.4	0.9	0.2	0.0	0.0	81.4	2.8	15.8	0.105	0.513	22.995835	-103.215357
T. Izq. San José de Llanetes	55.00	3	0	1399	3.2	74.4	3.3	12.2	2.6	2.9	1.4	0.0	0.0	77.6	3.3	19.1	0.078	0.513	22.915515	-103.301874
T. Izq. Lobatos	71.00	3	0	2067	1.0	84.0	1.4	10.8	1.5	1.0	0.3	0.0	0.0	85.0	1.4	13.6	0.086	0.503	22.831701	-103.423101
Valparaíso	90.00	1	0	2320	1.2	82.2	1.7	11.9	1.3	1.2	0.5	0.0	0.0	83.4	1.7	14.9	0.076	0.503	22.797502	-103.542418

12 CARR: Guadalajara - Zacatecas

CLAVE: 00150

RUTA: MEX-054

AÑO: 2018

LUGAR	ESTACION				CLASIFICACION VEHICULAR EN PORCIENTO													COORDENADAS		
	KM	TE	SC	TDPA	M	A	B	C2	C3	T3S2	T3S3	T3S2R4	OTROS	A	B	C	K'	D	LATITUD	LONGITUD
Guadalajara	0.00																			
X. Periférico de Guadalajara	6.19	3	1	4377	2.1	79.7	1.2	12.4	0.9	0.7	0.7	1.4	0.9	81.8	1.2	17.0	0.072	0.512	20.768415	-103.339871
X. Periférico de Guadalajara	6.19	3	2	4599	2.3	78.0	1.0	13.9	0.9	0.9	0.9	1.3	0.8	80.3	1.0	18.7	0.102	0.512	20.767740	-103.339752
T. Der. Ixtlahuacán del Río	49.46	3	0	5376	2.2	82.9	1.7	9.6	0.9	1.1	1.5	0.0	0.1	85.1	1.7	13.2	0.067	0.511	20.871042	-103.236917
Lim. Edos. Term. Jal. Ppia. Zac.	76.49																			
T. Izq. Moyahua	106.43	1	0	2246	3.6	75.6	4.0	6.6	4.3	2.4	3.5	0.0	0.0	79.2	4.0	16.8	0.073	0.510	21.251145	-103.161752

ZACATECAS

12 CARR: Guadalajara - Zacatecas

CLAVE: 00150

RUTA: MEX-054

AÑO: 2018

LUGAR	ESTACION				CLASIFICACION VEHICULAR EN PORCIENTO										COORDENADAS					
	KM	TE	SC	TDPA	M	A	B	C2	C3	T3S2	T3S3	T3S2R4	OTROS	A	B	C	K'	D	LATITUD	LONGITUD
Apozol	129.28	1	0	5169	2.0	83.4	1.8	6.8	0.8	1.8	1.1	1.8	0.5	85.4	1.8	12.8	0.071	0.506	21.451183	-103.093724
Jalpa	159.39	1	0	4648	1.1	84.5	1.8	6.8	0.9	1.5	1.2	1.5	0.7	85.6	1.8	12.6	0.072	0.503	21.617903	-103.005847
Tabasco	189.40	1	0	3413	1.3	79.5	1.2	11.9	1.2	2.0	1.1	1.5	0.3	80.8	1.2	18.0	0.088	0.514	21.843521	-102.933640
Tabasco	189.40	3	0	3966	2.4	81.5	1.5	9.1	0.7	1.6	2.4	0.6	0.2	83.9	1.5	14.6	0.080	0.516	21.884220	-102.907926
Villanueva	255.70	3	0	4181	1.0	83.0	1.5	9.3	1.3	1.5	0.7	1.0	0.7	84.0	1.5	14.5	0.094	0.516	22.378220	-102.880449
T. Izq. Jerez de García Salinas	289.13	1	1	2165	0.6	78.1	4.0	13.3	1.4	1.8	0.7	0.0	0.1	78.7	4.0	17.3	0.092	0.500	22.598512	-102.765894
T. Izq. Jerez de García Salinas	289.13	1	2	2169	1.1	76.7	4.4	13.7	1.5	1.9	0.6	0.0	0.1	77.8	4.4	17.8	0.083	0.500	22.598554	-102.766019
T. Izq. Jerez de García Salinas	289.13	3	1	5165	0.7	86.8	1.8	7.1	1.1	1.4	0.7	0.1	0.3	87.5	1.8	10.7	0.105	0.501	22.627583	-102.749740
T. Izq. Jerez de García Salinas	289.13	3	2	5183	0.8	85.8	2.0	7.8	1.1	1.6	0.6	0.1	0.2	86.6	2.0	11.4	0.079	0.501	22.627615	-102.749848
T. C. Zacatecas - Durango	311.83	1	1	8728	0.6	89.4	0.9	5.9	0.8	1.0	0.8	0.2	0.4	90.0	0.9	9.1	0.081	0.560	22.771401	-102.631195
T. C. Zacatecas - Durango	311.83	1	2	11128	0.7	87.8	1.0	7.0	0.8	1.2	0.9	0.2	0.4	88.5	1.0	10.5	0.085	0.560	22.771513	-102.631265

13 CARR: Jerez - Fresnillo

CLAVE: 32542

RUTA: MEX-023

AÑO: 2018

LUGAR	ESTACION				CLASIFICACION VEHICULAR EN PORCIENTO										COORDENADAS					
	KM	TE	SC	TDPA	M	A	B	C2	C3	T3S2	T3S3	T3S2R4	OTROS	A	B	C	K'	D	LATITUD	LONGITUD
Jerez	0.00	3	0	2328	2.9	85.4	1.4	6.9	1.2	1.4	0.6	0.1	0.1	88.3	1.4	10.3	0.079	0.504	22.683401	-103.015763
T. C. Ent. Fresnillo - Valparaiso	60.00	1	0	4260	3.8	81.4	0.8	7.8	3.1	2.2	0.6	0.1	0.2	85.2	0.8	14.0	0.086	0.525	23.156558	-102.882066

14 CARR: Libramiento de Guadalupe - Zacatecas

CLAVE: 32582

RUTA: MEX-045

AÑO: 2018

LUGAR	ESTACION				CLASIFICACION VEHICULAR EN PORCIENTO										COORDENADAS					
	KM	TE	SC	TDPA	M	A	B	C2	C3	T3S2	T3S3	T3S2R4	OTROS	A	B	C	K'	D	LATITUD	LONGITUD
T. C. Aguascalientes - Zacatecas (Baja)	0.00	3	1	5149	3.5	85.9	0.3	7.8	0.8	0.9	0.5	0.1	0.2	89.4	0.3	10.3	0.091	0.512	22.741090	-102.504054
T. C. Aguascalientes - Zacatecas (Alta)	0.00	3	1	13921	1.0	81.5	2.0	6.9	1.7	3.9	1.1	1.5	0.4	82.5	2.0	15.5	0.076	0.532	22.740946	-102.503993
T. C. Aguascalientes - Zacatecas (Baja)	0.00	3	2	5401	2.8	85.3	0.3	8.7	1.0	1.0	0.6	0.1	0.2	88.1	0.3	11.6	0.092	0.512	22.740556	-102.503863
T. C. Aguascalientes - Zacatecas (Alta)	0.00	3	2	10856	1.0	81.4	2.4	6.0	1.8	4.2	1.3	1.7	0.2	82.4	2.4	15.2	0.073	0.532	22.740843	-102.503943
X. C. Cieneguillas - Zacatecas (Alta)	13.00	3	1	8717	1.3	81.0	2.6	6.9	1.6	3.8	1.1	1.5	0.2	82.3	2.6	15.1	0.127	0.509	22.756583	-102.594493
X. C. Cieneguillas - Zacatecas (Baja)	13.00	3	1	4155	2.4	87.5	0.5	5.6	0.2	0.9	2.3	0.3	0.3	89.9	0.5	9.6	0.095	0.506	22.756564	-102.594191
X. C. Cieneguillas - Zacatecas (Baja)	13.00	3	2	4057	2.3	87.4	0.4	5.7	0.2	0.7	2.6	0.3	0.4	89.7	0.4	9.9	0.103	0.506	22.756431	-102.594572
X. C. Cieneguillas - Zacatecas (Alta)	13.00	3	2	8392	1.2	79.0	2.9	7.5	1.8	4.2	1.3	1.9	0.2	80.2	2.9	16.9	0.113	0.509	22.756501	-102.594511
T. C. Zacatecas - Durango	17.50	1	1	12206	0.6	83.6	2.2	5.1	1.8	3.6	1.1	1.6	0.4	84.2	2.2	13.6	0.146	0.527	22.772758	-102.617092
T. C. Zacatecas - Durango	17.50	1	2	13572	0.8	82.8	2.2	4.9	2.0	4.0	1.3	1.8	0.2	83.6	2.2	14.2	0.122	0.527	22.772950	-102.618180

ZACATECAS

15 CARR: Providencia - Luis Moya

CLAVE: 00112

RUTA: MEX-071

AÑO: 2018

LUGAR	ESTACION				CLASIFICACION VEHICULAR EN PORCIENTO										COORDENADAS					
	KM	TE	SC	TDPA	M	A	B	C2	C3	T3S2	T3S3	T3S2R4	OTROS	A	B	C	K'	D	LATITUD	LONGITUD
T. C. Aguascalientes - Zacatecas	0.00	3	0	5352	2.7	76.8	0.7	8.0	3.1	3.4	1.9	2.9	0.5	79.5	0.7	19.8	0.071	0.502	22.060778	-102.274094
T. Izq. Pabellón de Arteaga	12.10	1	0	6019	1.8	78.7	2.0	8.1	2.0	2.6	2.3	2.1	0.4	80.5	2.0	17.5	0.067	0.521	22.144532	-102.251608
T. Der. Villa Juárez	14.90	3	0	6037	1.8	77.8	0.5	9.3	1.7	3.2	2.5	2.8	0.4	79.6	0.5	19.9	0.079	0.510	22.176877	-102.245285
X. C. Rincón de Romos - Ciénega Grande	21.22	3	0	5524	3.0	77.1	1.6	10.4	1.7	2.8	1.7	1.3	0.4	80.1	1.6	18.3	0.065	0.506	22.230835	-102.241394
X. C. La Punta - Mesillas	30.35	3	0	3245	2.8	77.9	1.4	11.0	1.9	1.9	2.1	0.9	0.1	80.7	1.4	17.9	0.085	0.509	22.318067	-102.233617
San Jacinto	34.25	3	0	2293	5.9	73.3	0.4	11.0	2.2	3.2	1.8	1.9	0.3	79.2	0.4	20.4	0.073	0.520	22.353217	-102.232493
Lim. Edos. Term. Ags. Ppia. Zac.	37.50																			
Luis Moya	43.52	1	0	4377	2.6	74.3	0.5	16.1	1.1	2.9	1.4	0.8	0.3	76.9	0.5	22.6	0.078	0.522	22.423499	-102.246241

16 CARR: Ramal a Aeropuerto Zacatecas

CLAVE: 32546

RUTA: MEX-045

AÑO: 2018

LUGAR	ESTACION				CLASIFICACION VEHICULAR EN PORCIENTO										COORDENADAS					
	KM	TE	SC	TDPA	M	A	B	C2	C3	T3S2	T3S3	T3S2R4	OTROS	A	B	C	K'	D	LATITUD	LONGITUD
T. C. Zacatecas - Durango	0.00	3	1	2072	1.9	85.1	0.5	10.5	0.9	0.8	0.3	0.0	0.0	87.0	0.5	12.5	0.137	0.511	22.910801	-102.673525
T. C. Zacatecas - Durango	0.00	3	2	1985	2.4	84.1	0.5	11.0	0.9	0.7	0.3	0.0	0.1	86.5	0.5	13.0	0.127	0.511	22.910747	-102.673433
Aeropuerto	1.95																			

17 CARR: Ramal a Concepción del Oro

CLAVE: 32565

RUTA: MEX-054

AÑO: 2018

LUGAR	ESTACION				CLASIFICACION VEHICULAR EN PORCIENTO										COORDENADAS					
	KM	TE	SC	TDPA	M	A	B	C2	C3	T3S2	T3S3	T3S2R4	OTROS	A	B	C	K'	D	LATITUD	LONGITUD
T. C. Ent. Morelos - Saltillo	0.00	3	0	5782	1.0	88.4	0.6	9.5	0.1	0.2	0.2	0.0	0.0	89.4	0.6	10.0	0.079	0.527	24.620434	-101.402920
Concepción del Oro	3.20																			

18 CARR: Ramal a Francisco Murguía (Nieves)

CLAVE: 32541

RUTA: MEX-049

AÑO: 2018

LUGAR	ESTACION				CLASIFICACION VEHICULAR EN PORCIENTO										COORDENADAS					
	KM	TE	SC	TDPA	M	A	B	C2	C3	T3S2	T3S3	T3S2R4	OTROS	A	B	C	K'	D	LATITUD	LONGITUD
T. C. Ent. La Chicharrona - Cuencamé	0.00	3	0	1511	0.3	76.5	0.5	20.4	0.9	0.6	0.6	0.1	0.1	76.8	0.5	22.7	0.100	0.518	23.925367	-103.155519
Francisco Murguía (Nieves)	17.40																			

ZACATECAS

19 CARR: Ramal a Gral. Pánfilo Natera

CLAVE: 32559

RUTA: MEX-049

AÑO: 2018

LUGAR	ESTACION				CLASIFICACION VEHICULAR EN PORCIENTO										COORDENADAS					
	KM	TE	SC	TDPA	M	A	B	C2	C3	T3S2	T3S3	T3S2R4	OTROS	A	B	C	K'	D	LATITUD	LONGITUD
T. C. San Luis Potosí - Ent. Arcinas	0.00	3	1	2320	7.7	77.1	1.5	12.4	0.8	0.3	0.1	0.0	0.1	84.8	1.5	13.7	0.088	0.506	22.674612	-102.107651
T. C. San Luis Potosí - Ent. Arcinas	0.00	3	2	2264	7.4	77.0	1.4	13.0	1.0	0.1	0.1	0.0	0.0	84.4	1.4	14.2	0.080	0.506	22.674591	-102.107554
Gral. Pánfilo Natera	1.50																			

20 CARR: Ramal a Ruinas de Chicomostoc

CLAVE: 00544

RUTA: MEX-045

AÑO: 2018

LUGAR	ESTACION				CLASIFICACION VEHICULAR EN PORCIENTO										COORDENADAS					
	KM	TE	SC	TDPA	M	A	B	C2	C3	T3S2	T3S3	T3S2R4	OTROS	A	B	C	K'	D	LATITUD	LONGITUD
T. C. Guadalajara - Zacatecas	0.00	3	0	82	5.1	88.8	2.3	3.4	0.4	0.0	0.0	0.0	0.0	93.9	2.3	3.8	0.159	0.519	22.456362	-102.826310
Ruinas de Chicomostoc	2.20																			

21 CARR: Ramal a San Martín

CLAVE: 00544

RUTA: MEX-045

AÑO: 2018

LUGAR	ESTACION				CLASIFICACION VEHICULAR EN PORCIENTO										COORDENADAS					
	KM	TE	SC	TDPA	M	A	B	C2	C3	T3S2	T3S3	T3S2R4	OTROS	A	B	C	K'	D	LATITUD	LONGITUD
T. C. Zacatecas - Durango	0.00	3	0	1343	1.2	82.2	0.1	12.2	1.8	1.4	0.7	0.2	0.2	83.4	0.1	16.5	0.104	0.505	23.691667	-103.718539
San Martín	4.00																			

22 CARR: Ramal a Villa de Cos

CLAVE: 32564

RUTA: MEX-054

AÑO: 2018

LUGAR	ESTACION				CLASIFICACION VEHICULAR EN PORCIENTO										COORDENADAS					
	KM	TE	SC	TDPA	M	A	B	C2	C3	T3S2	T3S3	T3S2R4	OTROS	A	B	C	K'	D	LATITUD	LONGITUD
T. C. Ent. Morelos - Saltillo	0.00	3	1	2044	3.3	90.2	0.5	3.5	0.9	0.9	0.5	0.0	0.2	93.5	0.5	6.0	0.117	0.501	23.272892	-102.332330
T. C. Ent. Morelos - Saltillo	0.00	3	2	2051	3.1	91.0	0.5	3.4	0.8	0.7	0.3	0.0	0.2	94.1	0.5	5.4	0.118	0.501	23.272841	-102.332413
Villa de Cos	3.30	1	1	2933	5.4	79.0	0.6	13.4	0.4	0.8	0.3	0.0	0.1	84.4	0.6	15.0	0.116	0.514	23.288554	-102.342779
Villa de Cos	3.30	1	2	3105	4.9	82.1	0.4	11.2	0.3	0.7	0.3	0.0	0.1	87.0	0.4	12.6	0.129	0.514	23.288476	-102.342915

23 CARR: San Luis Potosí - Ent. Arcinas

CLAVE: 00134

RUTA: MEX-049

AÑO: 2018

LUGAR	ESTACION				CLASIFICACION VEHICULAR EN PORCIENTO										COORDENADAS					
	KM	TE	SC	TDPA	M	A	B	C2	C3	T3S2	T3S3	T3S2R4	OTROS	A	B	C	K'	D	LATITUD	LONGITUD
T. C. San Luis Potosí - Matehuala	0.00																			
T. Izq. Periférico de San Luis Potosí	9.35	3	1	11406	6.4	78.0	0.9	8.4	1.3	2.1	1.4	1.0	0.5	84.4	0.9	14.7	0.092	0.500	22.206318	-101.031314
T. Izq. Periférico de San Luis Potosí	9.35	3	2	11412	6.2	78.1	1.1	8.4	1.2	2.2	1.3	1.1	0.4	84.3	1.1	14.6	0.085	0.500	22.206233	-101.031402
Mexquitic	22.50	1	1	7643	4.7	69.0	2.6	9.5	2.1	6.3	1.9	3.1	0.8	73.7	2.6	23.7	0.099	0.500	22.249477	-101.105499

ZACATECAS

23 CARR: San Luis Potosí - Ent. Arcinas

CLAVE: 00134

RUTA: MEX-049

AÑO: 2018

LUGAR	ESTACION				CLASIFICACION VEHICULAR EN PORCIENTO													COORDENADAS		
	KM	TE	SC	TDPA	M	A	B	C2	C3	T3S2	T3S3	T3S2R4	OTROS	A	B	C	K'	D	LATITUD	LONGITUD
Mexquitic	22.50	1	2	7632	4.7	71.1	2.4	5.9	1.7	7.3	2.5	3.7	0.7	75.8	2.4	21.8	0.104	0.500	22.249335	-101.105576
T. Der. Charcas	30.90	1	1	6719	1.7	70.6	2.6	7.1	2.4	8.1	2.7	4.0	0.8	72.3	2.6	25.1	0.081	0.504	22.311212	-101.159804
T. Der. Charcas	30.90	1	2	6601	1.8	69.0	2.6	7.4	2.5	8.7	2.8	4.4	0.8	70.8	2.6	26.6	0.085	0.504	22.311109	-101.159911
Lim. Edos. Term. S. L. P. Ppia. Zac.	55.13																			
Lim. Edos. Term. Zac. Ppia. S. L. P.	89.30																			
T. Der. Salinas	99.00	1	1	4173	1.7	49.7	6.2	12.1	3.5	14.8	3.5	7.7	0.8	51.4	6.2	42.4	0.069	0.511	22.604466	-101.709293
T. Der. Salinas	99.00	1	2	4000	1.4	54.4	5.0	11.0	3.1	13.5	3.6	7.3	0.7	55.8	5.0	39.2	0.066	0.511	22.604341	-101.709384
T. Der. Salinas	99.00	3	1	3995	0.7	58.4	5.5	8.6	3.2	13.1	3.0	6.8	0.7	59.1	5.5	35.4	0.070	0.513	22.620414	-101.746543
T. Der. Salinas	99.00	3	2	4206	0.7	56.3	5.9	9.4	3.3	13.3	3.3	7.0	0.8	57.0	5.9	37.1	0.066	0.513	22.620234	-101.746574
Lim. Edos. Term. S. L. P. Ppia. Zac.	122.47																			
T. Izq. Pánfilo Natera	139.00	1	1	3498	0.8	54.0	5.4	10.2	2.4	14.5	3.5	8.5	0.7	54.8	5.4	39.8	0.066	0.506	22.679277	-102.099028
T. Izq. Pánfilo Natera	139.00	1	2	3421	2.4	53.9	5.0	11.3	2.3	12.8	3.8	7.5	1.0	56.3	5.0	38.7	0.072	0.506	22.679085	-102.099075
Ent. Arcinas	162.98	1	1	3939	0.4	63.3	3.4	5.4	3.0	13.3	3.0	7.5	0.7	63.7	3.4	32.9	0.065	0.504	22.720006	-102.325491
Ent. Arcinas	162.98	1	2	3873	0.9	64.8	3.3	7.8	2.4	9.5	3.9	5.4	2.0	65.7	3.3	31.0	0.076	0.504	22.719829	-102.325539

24 CARR: San Luis Potosí - Lagos de Moreno

CLAVE: 00133

RUTA: MEX-070-080

AÑO: 2018

LUGAR	ESTACION				CLASIFICACION VEHICULAR EN PORCIENTO													COORDENADAS		
	KM	TE	SC	TDPA	M	A	B	C2	C3	T3S2	T3S3	T3S2R4	OTROS	A	B	C	K'	D	LATITUD	LONGITUD
San Luis Potosí	0.00	3	1	16823	1.3	93.2	0.1	3.1	0.1	0.6	1.4	0.1	0.1	94.5	0.1	5.4	0.088	0.504	22.134768	-101.029506
San Luis Potosí	0.00	3	2	17118	1.7	92.5	0.1	3.4	0.1	0.6	1.4	0.1	0.1	94.2	0.1	5.7	0.078	0.504	22.134671	-101.029445
X. Periférico de San Luis Potosí	8.41	3	0	11310	2.6	79.4	1.1	6.7	2.4	5.0	1.4	0.4	1.0	82.0	1.1	16.9	0.067	0.501	22.128260	-101.045423
El Tepetate	41.90	1	0	6495	5.8	62.2	2.7	7.8	3.1	12.4	4.1	0.9	1.0	68.0	2.7	29.3	0.080	0.501	22.022563	-101.228670
El Tepetate	41.90	3	0	6666	0.6	65.3	3.9	11.3	4.3	9.5	3.2	1.2	0.7	65.9	3.9	30.2	0.087	0.508	22.006108	-101.251499
Villa de Arriaga	61.90	3	0	4275	1.9	64.1	3.3	9.5	3.2	9.5	4.3	3.3	0.9	66.0	3.3	30.7	0.077	0.504	21.896145	-101.414461
Lim. Edos. Term. S. L. P. Ppia. Zac.	70.23																			
Lim. Edos. Term. Zac. Ppia. Jal.	82.94																			
Ojuelos de Jalisco	83.20	1	0	6465	1.3	70.5	2.4	9.2	3.3	7.0	2.7	2.7	0.9	71.8	2.4	25.8	0.078	0.533	21.875682	-101.571553
Ojuelos de Jalisco	83.20	3	0	3003	2.4	65.2	3.6	7.6	3.6	9.6	5.0	2.6	0.4	67.6	3.6	28.8	0.073	0.500	21.852319	-101.594143
X. C. Lagos de Moreno - San Luis Potosí (Cuota)	140.00	1	0	3520	4.5	63.0	2.0	12.7	3.7	7.0	3.8	2.8	0.5	67.5	2.0	30.5	0.083	0.502	21.448984	-101.804872
X. C. León - Aguascalientes	146.90	1	1	5532	5.4	61.3	2.4	9.0	3.6	10.0	2.5	5.3	0.5	66.7	2.4	30.9	0.092	0.526	21.375807	-101.894270
X. C. León - Aguascalientes	146.90	1	2	4979	3.0	66.0	2.0	10.7	3.1	7.0	2.4	5.4	0.4	69.0	2.0	29.0	0.105	0.526	21.375732	-101.894196
Lagos de Moreno	150.00																			

ZACATECAS

25 CARR: Zacatecas - Durango

CLAVE: 00544

RUTA: MEX-045

AÑO: 2018

LUGAR	ESTACION				CLASIFICACION VEHICULAR EN PORCIENTO										COORDENADAS					
	KM	TE	SC	TDPA	M	A	B	C2	C3	T3S2	T3S3	T3S2R4	OTROS	A	B	C	K'	D	LATITUD	LONGITUD
Zacatecas	0.00																			
T. Izq. Guadalajara	6.40	3	1	14225	0.6	82.6	2.7	6.2	1.1	3.4	1.6	1.1	0.7	83.2	2.7	14.1	0.089	0.507	22.782526	-102.627244
T. Izq. Guadalajara	6.40	3	2	13827	0.6	83.2	1.8	5.9	1.1	3.7	1.8	1.1	0.8	83.8	1.8	14.4	0.083	0.507	22.782569	-102.627327
T. Der. Saltillo (T. Morelos)	15.00	3	1	12931	0.7	76.7	3.1	7.1	1.1	5.4	2.2	2.4	1.3	77.4	3.1	19.5	0.093	0.501	22.869707	-102.632014
T. Der. Saltillo (T. Morelos)	15.00	3	2	12900	0.5	76.6	3.1	8.1	1.1	5.1	2.1	2.2	1.2	77.1	3.1	19.8	0.094	0.501	22.874449	-102.653572
Víctor Rosales	28.00	1	1	11872	0.8	76.9	2.2	6.5	1.4	6.0	2.3	2.8	1.1	77.7	2.2	20.1	0.077	0.505	22.928971	-102.684599
Víctor Rosales	28.00	1	2	12106	0.8	74.4	2.4	7.0	1.6	6.6	2.5	3.3	1.4	75.2	2.4	22.4	0.091	0.505	22.928819	-102.684866
T. Der. Facultad de Veterinaria	32.30	1	1	7520	0.5	68.6	4.8	7.5	1.9	10.0	2.5	3.2	1.0	69.1	4.8	26.1	0.079	0.518	22.970379	-102.718899
T. Der. Facultad de Veterinaria	32.30	1	2	6995	0.5	68.3	4.2	7.5	2.1	10.2	3.0	3.2	1.0	68.8	4.2	27.0	0.098	0.518	22.970338	-102.718988
Gral. Enrique Estrada	34.60	3	1	9615	0.8	74.3	3.0	7.9	1.9	7.0	2.2	2.3	0.6	75.1	3.0	21.9	0.078	0.510	23.012135	-102.751665
Gral. Enrique Estrada	34.60	3	2	10009	1.2	71.0	3.3	8.7	2.2	7.9	2.5	2.5	0.7	72.2	3.3	24.5	0.089	0.510	23.011989	-102.751932
Fresnillo	58.50	1	1	8371	1.9	82.5	2.7	7.6	1.7	2.0	1.0	0.3	0.3	84.4	2.7	12.9	0.079	0.508	23.159913	-102.852102
Fresnillo	58.50	1	2	8111	1.0	80.7	3.2	9.0	2.0	2.3	1.1	0.3	0.4	81.7	3.2	15.1	0.083	0.508	23.159867	-102.852201
Ent. La Chicharrona	74.30	1	1	8129	0.7	63.6	5.5	11.2	2.2	9.7	2.9	3.5	0.7	64.3	5.5	30.2	0.073	0.510	23.290334	-102.952755
Ent. La Chicharrona	74.30	1	2	7824	0.7	60.0	6.3	12.6	2.3	10.7	3.0	3.7	0.7	60.7	6.3	33.0	0.078	0.510	23.290168	-102.952982
Ent. La Chicharrona	74.30	3	0	6709	1.8	66.1	3.8	20.0	2.2	3.3	1.8	0.9	0.1	67.9	3.8	28.3	0.061	0.506	23.307666	-102.964613
T. Der. Sain Alto	121.00	3	0	4425	1.7	68.8	4.9	13.4	2.7	4.5	2.0	1.3	0.7	70.5	4.9	24.6	0.067	0.506	23.580701	-103.273849
T. Izq. Sombrerete (2° Acceso)	161.50	3	0	6376	1.5	74.1	3.2	11.3	1.7	4.9	1.6	1.0	0.7	75.6	3.2	21.2	0.071	0.502	23.646696	-103.651463
Lim. Edos. Term. Zac. Ppia. Dgo.	190.08																			
X. C. Súchil - Villa Unión	206.98	1	0	3618	2.1	66.1	6.7	14.8	2.5	4.3	2.3	1.1	0.1	68.2	6.7	25.1	0.074	0.506	23.750085	-103.963269
X. C. Súchil - Villa Unión	206.98	3	0	5977	3.8	71.5	4.3	13.6	1.7	2.8	1.5	0.7	0.1	75.3	4.3	20.4	0.074	0.505	23.744289	-104.000125
T. Izq. Graceros	210.00	1	0	5259	1.2	74.3	4.2	10.4	1.7	4.2	2.2	1.2	0.6	75.5	4.2	20.3	0.074	0.502	23.747330	-104.026581
Amado Nervo	231.51	1	0	4479	1.3	71.2	4.8	13.1	2.5	3.7	2.3	0.8	0.3	72.5	4.8	22.7	0.078	0.501	23.839260	-104.180425
Amado Nervo	231.51	3	0	6248	2.2	75.0	3.5	13.1	1.7	2.4	1.4	0.4	0.3	77.2	3.5	19.3	0.080	0.509	23.844374	-104.197014
Nombre de Dios	236.80	1	0	2954	3.8	74.0	3.4	17.5	0.8	0.2	0.2	0.1	0.0	77.8	3.4	18.8	0.080	0.540	23.843783	-104.223871
Nombre de Dios	236.80	3	0	3856	4.2	80.3	2.7	11.8	0.7	0.2	0.1	0.0	0.0	84.5	2.7	12.8	0.098	0.502	23.854380	-104.251940
T. Der. Constanacia	240.60	3	0	6095	1.6	75.5	4.0	11.5	2.0	2.8	1.6	0.7	0.3	77.1	4.0	18.9	0.073	0.505	23.872149	-104.269022
T. Der. Tuitán	250.80	3	0	5306	1.0	76.6	4.1	11.7	1.7	2.9	1.2	0.6	0.2	77.6	4.1	18.3	0.091	0.509	23.922879	-104.337256
T. Der. Independencia y Libertad	261.70	1	0	6253	0.8	77.0	3.8	10.5	2.0	3.3	1.7	0.7	0.2	77.8	3.8	18.4	0.086	0.503	23.994199	-104.374538
T. Der. Independencia y Libertad	261.70	3	1	3538	1.3	76.5	4.1	11.7	1.5	2.7	1.4	0.5	0.3	77.8	4.1	18.1	0.122	0.511	24.012259	-104.400466
T. Der. Independencia y Libertad	261.70	3	2	3391	1.0	81.3	4.6	5.6	2.0	2.7	1.9	0.7	0.2	82.3	4.6	13.1	0.091	0.511	24.012168	-104.400467
T. Izq. Parras de La Fuente	276.60	1	1	4433	0.9	79.7	3.0	10.1	1.5	2.5	1.5	0.7	0.1	80.6	3.0	16.4	0.088	0.500	24.019168	-104.506517
T. Izq. Parras de La Fuente	276.60	1	2	4433	0.7	81.5	2.8	8.4	1.8	2.7	1.3	0.7	0.1	82.2	2.8	15.0	0.112	0.500	24.019055	-104.506532
T. Izq. Parras de La Fuente	276.60	3	1	4466	2.2	78.7	2.6	12.0	1.3	1.9	0.6	0.6	0.1	80.9	2.6	16.5	0.092	0.506	24.021299	-104.526584
T. Izq. Parras de La Fuente	276.60	3	2	4358	2.3	80.3	2.3	10.8	1.3	1.7	0.6	0.6	0.1	82.6	2.3	15.1	0.089	0.506	24.021166	-104.526614

ZACATECAS

25 CARR: Zacatecas - Durango

CLAVE: 00544

RUTA: MEX-045

AÑO: 2018

LUGAR	ESTACION				CLASIFICACION VEHICULAR EN PORCIENTO										COORDENADAS					
	KM	TE	SC	TDPA	M	A	B	C2	C3	T3S2	T3S3	T3S2R4	OTROS	A	B	C	K'	D	LATITUD	LONGITUD
Durango	287.30	1	1	5937	3.1	79.3	1.8	12.6	1.3	1.1	0.3	0.4	0.1	82.4	1.8	15.8	0.085	0.507	24.026345	-104.574466
Durango	287.30	1	2	5770	3.1	79.8	1.6	12.5	1.2	1.0	0.3	0.4	0.1	82.9	1.6	15.5	0.086	0.507	24.026247	-104.574489

26 CARR: Ent. Cuauhtémoc - Ent. Osiris (Cuota)

CLAVE: 32558

RUTA: MEX-045D

AÑO: 2018

LUGAR	ESTACION				CLASIFICACION VEHICULAR EN PORCIENTO										COORDENADAS					
	KM	TE	SC	TDPA	M	A	B	C2	C3	T3S2	T3S3	T3S2R4	OTROS	A	B	C	K'	D	LATITUD	LONGITUD
T. C. Ent. Cosío - Ent. Cuauhtémoc	70.40	3	0	8416	0.7	55.1	6.2	6.4	2.6	16.4	3.6	7.5	1.5	55.8	6.2	38.0	0.063	0.501	22.488936	-102.358839
Caseta de Cobro Zacatecas	97.80	2	0	9010	0.4	54.8	6.9	4.6	4.6	16.1	3.4	8.1	1.1	55.2	6.9	37.9	0.067	0.500	22.710742	-102.448827
T. C. Aguascalientes - Zacatecas	103.40	1	0	8375	0.7	53.7	7.0	8.0	2.9	15.9	3.8	7.4	0.6	54.4	7.0	38.6	0.073	0.517	22.746258	-102.453716

27 CARR: Libramiento de Fresnillo (Cuota)

CLAVE: 32581

RUTA: MEX-045D

AÑO: 2018

LUGAR	ESTACION				CLASIFICACION VEHICULAR EN PORCIENTO										COORDENADAS					
	KM	TE	SC	TDPA	M	A	B	C2	C3	T3S2	T3S3	T3S2R4	OTROS	A	B	C	K'	D	LATITUD	LONGITUD
T. C. Zacatecas - Durango	49.80	3	1	2959	1.3	46.3	5.7	10.9	2.7	20.4	3.7	7.8	1.2	47.6	5.7	46.7	0.071	0.506	23.118612	-102.807026
T. C. Zacatecas - Durango	49.80	3	2	3037	1.0	50.9	4.7	6.9	2.5	21.2	4.1	7.8	0.9	51.9	4.7	43.4	0.085	0.506	23.118562	-102.807315
Caseta de Cobro Morfin Chávez	57.05	2	1	3317	7.3	49.0	3.3	4.2	3.6	19.4	3.7	8.6	0.9	56.3	3.3	40.4	0.088	0.500	23.177904	-102.828678
Caseta de Cobro Morfin Chávez	57.05	2	2	3317	7.3	49.0	3.3	4.2	3.6	19.4	3.7	8.6	0.9	56.3	3.3	40.4	0.088	0.500	23.177904	-102.828678
T. Der. Plateros	61.70	1	1	3157	0.9	49.8	5.2	9.6	2.4	19.9	3.7	7.4	1.1	50.7	5.2	44.1	0.075	0.505	23.194407	-102.835287
T. Der. Plateros	61.70	1	2	3222	0.8	55.4	3.8	5.0	3.1	20.0	3.9	7.0	1.0	56.2	3.8	40.0	0.078	0.505	23.194348	-102.835566
T. Der. Plateros	61.70	3	1	3118	1.1	51.7	5.6	10.6	2.7	16.9	3.7	6.8	0.9	52.8	5.6	41.6	0.079	0.505	23.211450	-102.856158
T. Der. Plateros	61.70	3	2	3186	1.1	50.6	5.1	9.8	2.4	19.4	4.0	6.7	0.9	51.7	5.1	43.2	0.077	0.505	23.211238	-102.856322
T. C. Zacatecas - Durango	69.85	1	1	3072	0.8	56.0	4.1	8.8	2.4	15.2	4.6	5.7	2.4	56.8	4.1	39.1	0.072	0.517	23.235680	-102.908427
T. C. Zacatecas - Durango	69.85	1	2	3284	0.7	54.9	3.9	6.9	2.7	18.4	4.3	7.2	1.0	55.6	3.9	40.5	0.084	0.517	23.235444	-102.908557

28 CARR: Libramiento de Víctor Rosales (Cuota)

CLAVE: 32015

RUTA: MEX-045D

AÑO: 2018

LUGAR	ESTACION				CLASIFICACION VEHICULAR EN PORCIENTO										COORDENADAS					
	KM	TE	SC	TDPA	M	A	B	C2	C3	T3S2	T3S3	T3S2R4	OTROS	A	B	C	K'	D	LATITUD	LONGITUD
T. C. Zacatecas - Durango	0.00	3	1	7201	0.7	68.3	4.6	6.6	1.7	9.6	3.2	4.3	1.0	69.0	4.6	26.4	0.076	0.501	22.936618	-102.688790
T. C. Zacatecas - Durango	0.00	3	2	7173	1.1	66.0	5.5	7.0	1.8	9.7	3.3	4.5	1.1	67.1	5.5	27.4	0.091	0.501	22.936594	-102.688978
Caseta de Cobro Calera Víctor Rosales	0.50	2	1	8114	10.0	65.9	0.1	2.9	3.2	9.9	2.3	5.1	0.6	75.9	0.1	24.0	0.085	0.500	22.941860	-102.689827
Caseta de Cobro Calera Víctor Rosales	0.50	2	2	8114	10.0	65.9	0.1	2.9	3.2	9.9	2.3	5.1	0.6	75.9	0.1	24.0	0.085	0.500	22.941860	-102.689827
T. C. Calera de Víctor Rosales - Santiagoullo	2.50	3	1	7410	0.6	65.7	4.7	8.3	2.2	10.5	2.5	4.4	1.1	66.3	4.7	29.0	0.074	0.509	22.955399	-102.692620

ZACATECAS

28 CARR: Libramiento de Víctor Rosales (Cuota)

CLAVE: 32015

RUTA: MEX-045D

AÑO: 2018

LUGAR	ESTACION				CLASIFICACION VEHICULAR EN PORCIENTO										COORDENADAS					
	KM	TE	SC	TDPA	M	A	B	C2	C3	T3S2	T3S3	T3S2R4	OTROS	A	B	C	K'	D	LATITUD	LONGITUD
T. C. Calera de Víctor Rosales - Santiagoullo	2.50	3	2	7670	0.9	66.2	5.5	7.2	2.0	9.9	2.9	4.5	0.9	67.1	5.5	27.4	0.095	0.509	22.955370	-102.692817
T. C. Zacatecas - Durango	12.20	1	1	7758	0.5	68.9	5.4	6.4	2.3	9.9	2.4	3.0	1.2	69.4	5.4	25.2	0.069	0.524	23.005629	-102.744082
T. C. Zacatecas - Durango	12.20	1	2	7038	0.5	66.8	5.4	7.7	2.3	10.0	2.9	3.4	1.0	67.3	5.4	27.3	0.091	0.524	23.005483	-102.744169

29 CARR: Calera de Víctor Rosales - Santiagoullo

CLAVE: 32016

RUTA: ZAC-016

AÑO: 2018

LUGAR	ESTACION				CLASIFICACION VEHICULAR EN PORCIENTO										COORDENADAS					
	KM	TE	SC	TDPA	M	A	B	C2	C3	T3S2	T3S3	T3S2R4	OTROS	A	B	C	K'	D	LATITUD	LONGITUD
Calera de Víctor Rosales	0.00	3	0	3623	9.4	66.9	2.0	14.9	2.1	3.0	1.1	0.3	0.3	76.3	2.0	21.7	0.076	0.507	22.958878	-102.683718
T. C. Fresnillo - Ent. Bañón	23.60																			

30 CARR: Cieneguillas - Zacatecas

CLAVE: 32579

RUTA: ZAC

AÑO: 2018

LUGAR	ESTACION				CLASIFICACION VEHICULAR EN PORCIENTO										COORDENADAS					
	KM	TE	SC	TDPA	M	A	B	C2	C3	T3S2	T3S3	T3S2R4	OTROS	A	B	C	K'	D	LATITUD	LONGITUD
T. C. Guadalajara - Zacatecas	0.00	3	0	2748	1.7	78.6	0.2	15.9	1.3	1.6	0.5	0.1	0.1	80.3	0.2	19.5	0.088	0.532	22.759497	-102.653273
X. C. Libramiento de Guadalupe - Zacatecas	7.70	3	1	11389	2.4	92.3	0.0	2.9	0.1	0.5	1.5	0.1	0.2	94.7	0.0	5.3	0.079	0.503	22.756891	-102.589724
X. C. Libramiento de Guadalupe - Zacatecas	7.70	3	2	11520	2.9	91.2	0.0	3.3	0.1	0.5	1.7	0.1	0.2	94.1	0.0	5.9	0.067	0.503	22.756987	-102.589767
Zacatecas	9.33																			

31 CARR: Corral de Piedras - Tlaltenango

CLAVE: 32579

RUTA: ZAC

AÑO: 2018

LUGAR	ESTACION				CLASIFICACION VEHICULAR EN PORCIENTO										COORDENADAS					
	KM	TE	SC	TDPA	M	A	B	C2	C3	T3S2	T3S3	T3S2R4	OTROS	A	B	C	K'	D	LATITUD	LONGITUD
T. C. Guadalajara - Zacatecas	0.00	3	0	579	1.6	84.6	0.8	11.1	1.0	0.7	0.2	0.0	0.0	86.2	0.8	13.0	0.092	0.504	21.620897	-103.048674
Tlaltenango	57.10	1	0	1457	14.5	76.4	0.4	6.8	0.4	1.1	0.3	0.0	0.1	90.9	0.4	8.7	0.088	0.507	21.768400	-103.282219

32 CARR: Ent. Ojo Caliente - Ent. Ojuelos de Jalisco

CLAVE: 00126

RUTA: ZAC

AÑO: 2018

LUGAR	ESTACION				CLASIFICACION VEHICULAR EN PORCIENTO										COORDENADAS					
	KM	TE	SC	TDPA	M	A	B	C2	C3	T3S2	T3S3	T3S2R4	OTROS	A	B	C	K'	D	LATITUD	LONGITUD
T. C. Aguascalientes - Zacatecas	0.00	3	0	2778	3.3	75.6	0.9	17.7	1.0	1.1	0.3	0.0	0.1	78.9	0.9	20.2	0.100	0.517	22.601117	-102.246867
Gral. Pánfilo Natera	16.00	3	0	1843	4.2	83.2	0.4	10.3	0.5	1.2	0.2	0.0	0.0	87.4	0.4	12.2	0.091	0.504	22.652393	-102.103713
Lim. Edos. Term. Zac. Ppia. Jal.	134.00																			
T. C. San Luis Potosí - Lagos de Moreno	137.00																			

ZACATECAS

33 CARR: Fresnillo - Ent. Bañón

CLAVE: 32070

RUTA: ZAC

AÑO: 2018

LUGAR	ESTACION				CLASIFICACION VEHICULAR EN PORCIENTO													COORDENADAS		
	KM	TE	SC	TDPA	M	A	B	C2	C3	T3S2	T3S3	T3S2R4	OTROS	A	B	C	K'	D	LATITUD	LONGITUD
T. C. Zacatecas - Durango	0.00																			
X. Lib. Fresnillo (Cuota)	2.40	3	1	4409	4.3	82.2	1.0	10.3	0.9	0.7	0.4	0.1	0.1	86.5	1.0	12.5	0.089	0.506	23.177940	-102.822882
X. Lib. Fresnillo (Cuota)	2.40	3	2	4307	4.4	83.0	0.9	9.5	0.8	0.8	0.4	0.1	0.1	87.4	0.9	11.7	0.081	0.506	23.178075	-102.822956
T. Der. Víctor Rosales	23.80	1	0	2329	7.3	71.2	1.0	11.6	4.8	2.1	1.4	0.4	0.2	78.5	1.0	20.5	0.074	0.507	23.143929	-102.666192
T. Der. Víctor Rosales	23.80	3	0	1663	2.6	67.9	3.6	17.5	2.7	3.3	1.6	0.5	0.3	70.5	3.6	25.9	0.084	0.511	23.144351	-102.640377
González Ortega Bañón	45.80	1	0	1672	5.3	67.8	2.1	16.2	4.9	2.4	0.9	0.3	0.1	73.1	2.1	24.8	0.086	0.505	23.176480	-102.481622
T. C. Ent. Morelos - Saltillo	49.00	1	0	2412	6.9	67.0	2.7	15.4	2.7	2.9	1.5	0.5	0.4	73.9	2.7	23.4	0.091	0.512	23.157427	-102.425711

34 CARR: Fresnillo - Plateros

CLAVE: 32022

RUTA: ZAC-022

AÑO: 2018

LUGAR	ESTACION				CLASIFICACION VEHICULAR EN PORCIENTO													COORDENADAS		
	KM	TE	SC	TDPA	M	A	B	C2	C3	T3S2	T3S3	T3S2R4	OTROS	A	B	C	K'	D	LATITUD	LONGITUD
Fresnillo (Lateral)	0.00	3	1	150	33.8	60.9	0.3	4.0	0.3	0.2	0.3	0.0	0.2	94.7	0.3	5.0	0.133	0.503	23.203628	-102.855131
Fresnillo (Central)	0.00	3	1	4248	9.3	78.3	0.7	10.7	0.5	0.4	0.1	0.0	0.0	87.6	0.7	11.7	0.070	0.509	23.203680	-102.855272
Fresnillo (Central)	0.00	3	2	4396	6.6	81.3	0.7	10.3	0.5	0.5	0.1	0.0	0.0	87.9	0.7	11.4	0.084	0.509	23.203724	-102.855374
Fresnillo (Lateral)	0.00	3	2	151	35.7	59.2	0.3	3.8	0.3	0.2	0.3	0.0	0.2	94.9	0.3	4.8	0.192	0.503	23.203814	-102.855645
Plateros	4.90																			

35 CARR: Guadalupe - Ent. Cuauhtémoc

CLAVE: 00579

RUTA: ZAC-118

AÑO: 2018

LUGAR	ESTACION				CLASIFICACION VEHICULAR EN PORCIENTO													COORDENADAS		
	KM	TE	SC	TDPA	M	A	B	C2	C3	T3S2	T3S3	T3S2R4	OTROS	A	B	C	K'	D	LATITUD	LONGITUD
T. C. Libramiento de Guadalupe - Zacatecas (Alta)	0.00	3	1	7655	2.2	92.2	0.1	3.4	0.6	0.7	0.6	0.1	0.1	94.4	0.1	5.5	0.068	0.510	22.735178	-102.495977
T. C. Libramiento de Guadalupe - Zacatecas (Baja)	0.00	3	1	2719	3.4	82.7	0.5	12.3	0.6	0.1	0.3	0.0	0.1	86.1	0.5	13.4	0.078	0.541	22.735153	-102.496071
T. C. Libramiento de Guadalupe - Zacatecas (Baja)	0.00	3	2	2315	4.2	79.0	0.4	15.1	0.7	0.1	0.4	0.0	0.1	83.2	0.4	16.4	0.102	0.541	22.735215	-102.495778
T. C. Libramiento de Guadalupe - Zacatecas (Alta)	0.00	3	2	7378	1.9	92.1	0.1	3.6	0.6	0.9	0.6	0.1	0.1	94.0	0.1	5.9	0.076	0.510	22.735200	-102.495873
T. C. Ent. Cuauhtémoc - Ent. Osiris Cuota	39.31	3	0	1295	1.0	88.5	0.7	8.3	0.5	0.9	0.1	0.0	0.0	89.5	0.7	9.8	0.097	0.505	22.485250	-102.360328

36 CARR: Ramal a Loreto

CLAVE: 32067

RUTA: ZAC

AÑO: 2018

LUGAR	ESTACION				CLASIFICACION VEHICULAR EN PORCIENTO													COORDENADAS		
	KM	TE	SC	TDPA	M	A	B	C2	C3	T3S2	T3S3	T3S2R4	OTROS	A	B	C	K'	D	LATITUD	LONGITUD
T. C. Providencia - Luis Moya	0.00	3	0	1843	2.2	76.2	2.1	13.4	1.5	2.7	1.3	0.4	0.2	78.4	2.1	19.5	0.098	0.501	22.390745	-102.239064
Loreto	32.30																			

ZACATECAS

37 CARR: Ramal a Nochistlán

CLAVE: 32545

RUTA: ZAC

AÑO: 2018

LUGAR	ESTACION				CLASIFICACION VEHICULAR EN PORCIENTO										COORDENADAS					
	KM	TE	SC	TDPA	M	A	B	C2	C3	T3S2	T3S3	T3S2R4	OTROS	A	B	C	K'	D	LATITUD	LONGITUD
T. C. Tepatitlán - Jaralillo	0.00	3	1	2265	4.9	82.1	1.8	9.4	1.3	0.3	0.1	0.1	0.0	87.0	1.8	11.2	0.081	0.514	21.355547	-102.794529
T. C. Tepatitlán - Jaralillo	0.00	3	2	2392	6.0	83.6	1.7	7.0	1.2	0.3	0.1	0.0	0.1	89.6	1.7	8.7	0.080	0.514	21.355430	-102.794573
Nochistlán	5.70	1	1	2840	7.8	77.3	1.9	11.9	0.9	0.1	0.1	0.0	0.0	85.1	1.9	13.0	0.076	0.509	21.356367	-102.819811
Nochistlán	5.70	1	2	2736	6.2	82.0	1.5	8.8	1.1	0.2	0.1	0.0	0.1	88.2	1.5	10.3	0.080	0.509	21.356244	-102.819819

38 CARR: Ramal a San Pedro Piedra Gorda

CLAVE: 00553

RUTA: ZAC-AGS

AÑO: 2018

LUGAR	ESTACION				CLASIFICACION VEHICULAR EN PORCIENTO										COORDENADAS					
	KM	TE	SC	TDPA	M	A	B	C2	C3	T3S2	T3S3	T3S2R4	OTROS	A	B	C	K'	D	LATITUD	LONGITUD
T. C. Aguascalientes - Zacatecas	0.00	3	0	1432	3.7	81.6	1.4	11.4	1.0	0.8	0.1	0.0	0.0	85.3	1.4	13.3	0.089	0.503	22.465179	-102.264229
Lim. Edos. Term. Zac. Ppia. Ags.	5.00																			
Lim. Edos. Term. Ags. Ppia. Zac.	8.00																			
San Pedro Piedra Gorda	9.00	1	0	2171	9.2	77.4	0.6	10.2	0.6	1.7	0.2	0.0	0.1	86.6	0.6	12.8	0.081	0.507	22.452460	-102.337714

39 CARR: San Gil - Jarillas

CLAVE: 00527

RUTA: AGS-012-ZAC

AÑO: 2018

LUGAR	ESTACION				CLASIFICACION VEHICULAR EN PORCIENTO										COORDENADAS					
	KM	TE	SC	TDPA	M	A	B	C2	C3	T3S2	T3S3	T3S2R4	OTROS	A	B	C	K'	D	LATITUD	LONGITUD
T. C. Rincón de Romos - Ciénega Grande	0.00	3	0	2496	6.0	71.6	3.1	14.3	2.3	1.5	1.1	0.0	0.1	77.6	3.1	19.3	0.066	0.501	22.216485	-102.022150
Guadalupe de Atlas	5.40	1	0	2316	7.8	63.8	3.7	16.4	3.8	2.3	2.2	0.0	0.0	71.6	3.7	24.7	0.074	0.505	22.258393	-102.026514
Lim. Edos. Term. Ags. Ppia. Zac.	10.00																			
Lim. Edos. Term. Zac. Ppia. Ags.	11.30																			
Jarillas	12.00																			

40 CARR: San Rafael - Villa García

CLAVE: 00525

RUTA: AGS-ZAC

AÑO: 2018

LUGAR	ESTACION				CLASIFICACION VEHICULAR EN PORCIENTO										COORDENADAS					
	KM	TE	SC	TDPA	M	A	B	C2	C3	T3S2	T3S3	T3S2R4	OTROS	A	B	C	K'	D	LATITUD	LONGITUD
T. C. Ent. La Calavera - Ent. San Pedro	0.00	3	0	2187	8.1	80.8	0.5	8.1	0.7	1.3	0.2	0.1	0.2	88.9	0.5	10.6	0.079	0.500	22.116923	-102.010710
Lim. Edos. Term. Ags. Ppia. Zac.	3.00																			
Villa García	10.00	1	0	3235	9.9	79.4	0.5	7.0	0.3	2.4	0.3	0.0	0.2	89.3	0.5	10.2	0.075	0.515	22.135261	-101.969949

ZACATECAS

41 CARR: Santa Mónica - Pozo de Gamboa

CLAVE: 32568

RUTA: ZAC

AÑO: 2018

LUGAR	ESTACION				CLASIFICACION VEHICULAR EN PORCIENTO													COORDENADAS		
	KM	TE	SC	TDPA	M	A	B	C2	C3	T3S2	T3S3	T3S2R4	OTROS	A	B	C	K'	D	LATITUD	LONGITUD
T. C. Aguascalientes - Zacatecas	0.00	3	0	6456	1.4	84.3	1.3	11.3	0.9	0.5	0.3	0.0	0.0	85.7	1.3	13.0	0.079	0.522	22.760112	-102.422462
Tacoaleche	7.60	3	0	3505	5.5	74.9	1.1	13.0	2.3	1.4	1.5	0.1	0.2	80.4	1.1	18.5	0.079	0.514	22.831470	-102.398551
Pozo de Gamboa	34.50																			

42 CARR: Sombrerete - González Ortega

CLAVE: 32568

RUTA: ZAC

AÑO: 2018

LUGAR	ESTACION				CLASIFICACION VEHICULAR EN PORCIENTO													COORDENADAS		
	KM	TE	SC	TDPA	M	A	B	C2	C3	T3S2	T3S3	T3S2R4	OTROS	A	B	C	K'	D	LATITUD	LONGITUD
T. C. Zacatecas - Durango	0.00	3	0	1081	3.2	78.3	2.6	12.7	1.5	1.1	0.4	0.1	0.1	81.5	2.6	15.9	0.081	0.531	23.658431	-103.543680
González Ortega	38.70	1	0	840	4.0	76.2	2.2	13.7	2.4	0.8	0.4	0.2	0.1	80.2	2.2	17.6	0.100	0.549	23.937312	-103.460798

43 CARR: Libramiento Noreste de Zacatecas (Cuota)

CLAVE: 32582

RUTA: ZAC-D

AÑO: 2018

LUGAR	ESTACION				CLASIFICACION VEHICULAR EN PORCIENTO													COORDENADAS		
	KM	TE	SC	TDPA	M	A	B	C2	C3	T3S2	T3S3	T3S2R4	OTROS	A	B	C	K'	D	LATITUD	LONGITUD
T. C. Aguascalientes - Zacatecas	0.00	3	0	6424	0.8	41.6	5.8	8.1	4.3	22.1	5.0	11.1	1.2	42.4	5.8	51.8	0.052	0.521	22.757500	-102.459344
T. C. Ent. Morelos - Saltillo	21.00	1	0	5329	1.0	45.4	6.6	10.4	3.9	16.6	4.0	10.9	1.2	46.4	6.6	47.0	0.062	0.508	22.852755	-102.617914

44 CARR: Tepatitlán - Jaralillo

CLAVE: 00146

RUTA: MEX-JAL-ZAC

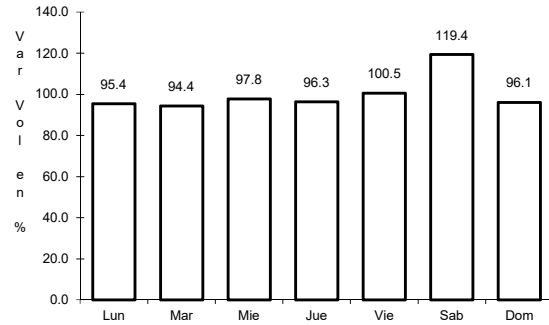
AÑO: 2018

LUGAR	ESTACION				CLASIFICACION VEHICULAR EN PORCIENTO													COORDENADAS		
	KM	TE	SC	TDPA	M	A	B	C2	C3	T3S2	T3S3	T3S2R4	OTROS	A	B	C	K'	D	LATITUD	LONGITUD
T. C. Lagos de Moreno - Guadalajara	0.00	3	0	9083	4.8	71.6	2.3	13.4	3.0	3.5	1.0	0.3	0.1	76.4	2.3	21.3	0.083	0.515	20.797979	-102.791800
T. Izq. Mezcala	22.40	3	0	1574	0.9	82.3	2.2	11.5	2.3	0.4	0.3	0.0	0.1	83.2	2.2	14.6	0.083	0.508	20.962887	-102.816411
Yahualica de González Gallo	57.40	3	1	1694	2.3	91.2	1.1	3.5	0.8	0.5	0.2	0.2	0.2	93.5	1.1	5.4	0.081	0.516	21.196111	-102.884820
Yahualica de González Gallo	57.40	3	2	1588	2.5	89.7	0.9	4.8	0.9	0.4	0.6	0.1	0.1	92.2	0.9	6.9	0.080	0.516	21.196109	-102.884892
T. Der. Mexicacán	72.45	3	0	1172	1.3	83.1	0.7	12.2	1.7	0.8	0.2	0.0	0.0	84.4	0.7	14.9	0.078	0.517	21.254621	-102.802735
Lim. Edos. Term. Jal. Ppia. Zac.	83.50																			
Lim. Edos. Term. Zac. Ppia. Jal.	106.00																			
Teocaltiche	111.00	1	0	3886	3.3	86.6	1.9	5.5	0.8	1.4	0.4	0.0	0.1	89.9	1.9	8.2	0.075	0.515	21.425763	-102.590046
Teocaltiche	111.00	3	0	3632	2.3	82.6	2.0	9.6	1.1	1.4	1.0	0.0	0.0	84.9	2.0	13.1	0.071	0.525	21.455302	-102.555781
T. C. León - Aguascalientes	157.00	1	0	2954	2.4	82.0	1.7	7.3	1.6	2.6	1.8	0.2	0.4	84.4	1.7	13.9	0.077	0.504	21.640503	-102.281894

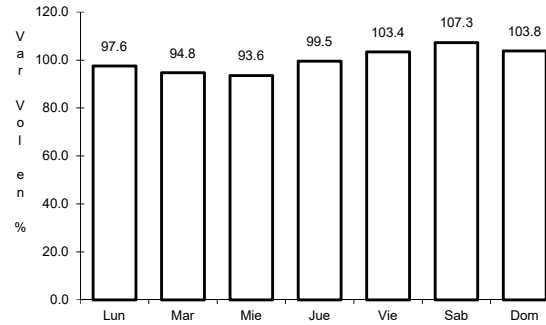
1 CARR: Aguascalientes - Jalpa

CLAVE: 00095

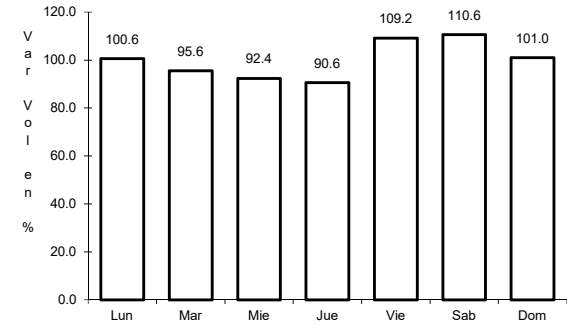
RUTA: MEX-070



Km: 0.00 Tipo: 3 Sent: 1



Km: 0.00 Tipo: 3 Sent: 2

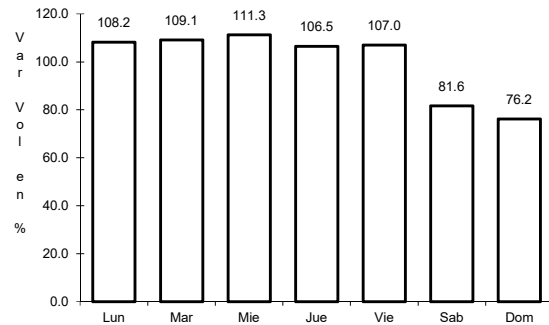


Km: 90.66 Tipo: 1 Sent: 0

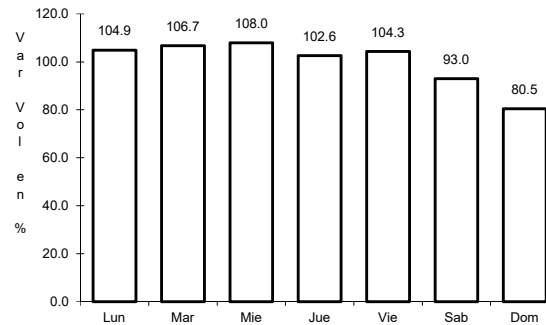
2 CARR: Aguascalientes - Zacatecas

CLAVE: 00524

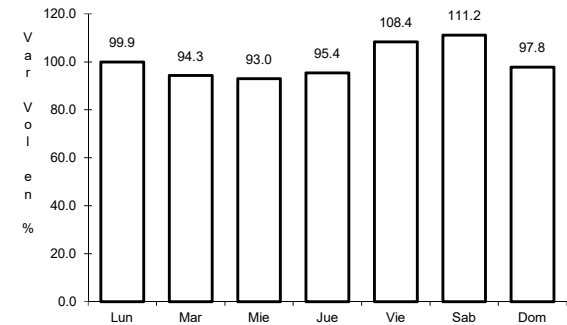
RUTA: MEX-045



Km: 6.00 Tipo: 1 Sent: 1



Km: 6.00 Tipo: 1 Sent: 2

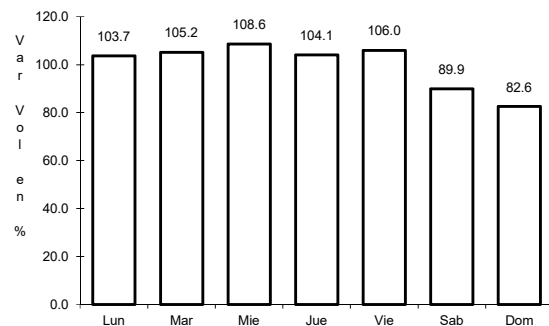


Km: 40.90 Tipo: 3 Sent: 0

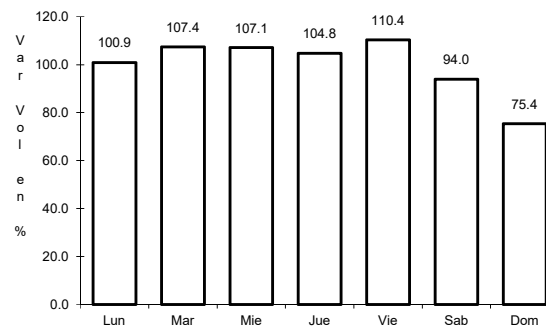
3 CARR: Blvd. Guadalupe - Zacatecas - La Escondida

CLAVE: 00544

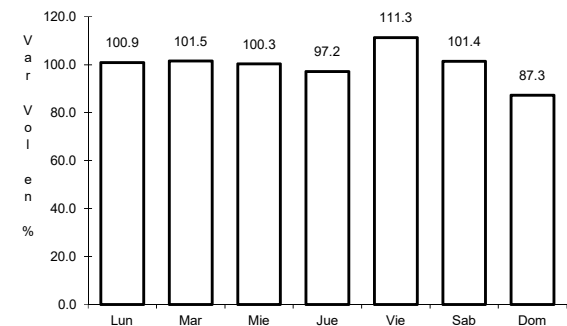
RUTA: MEX-045



Km: 7.70 Tipo: 1 Sent: 1



Km: 7.70 Tipo: 1 Sent: 2

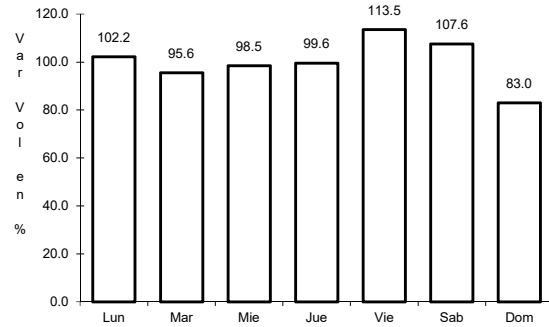


Km: 14.50 Tipo: 1 Sent: 1

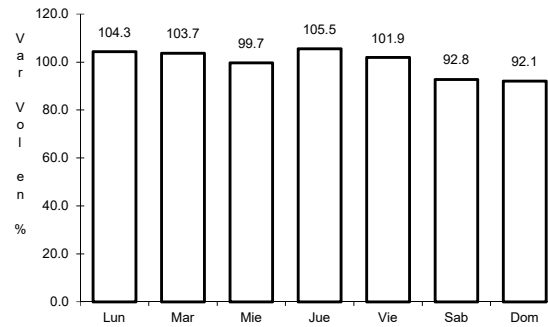
4 CARR: Carbonera - T. C. (Ent. Morelos - Saltillo)

CLAVE: 00218

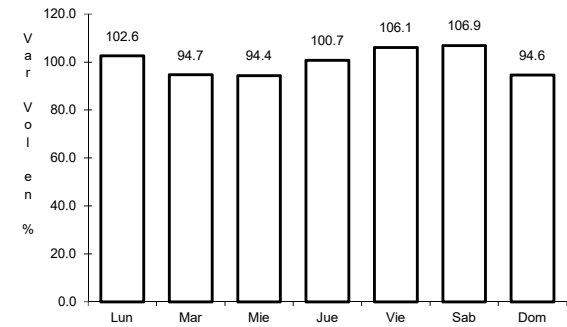
ruta: MEX-062



Km: 0.00 Tipo: 3 Sent: 0



Km: 18.00 Tipo: 1 Sent: 0

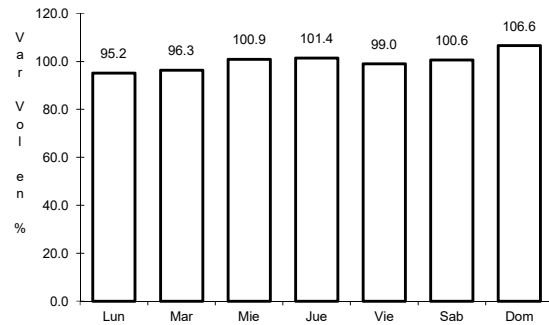


Km: 112.00 Tipo: 1 Sent: 0

5 CARR: Ent. Cosío - Ent. Cuauhtémoc

CLAVE: 00579

ruta: MEX-045

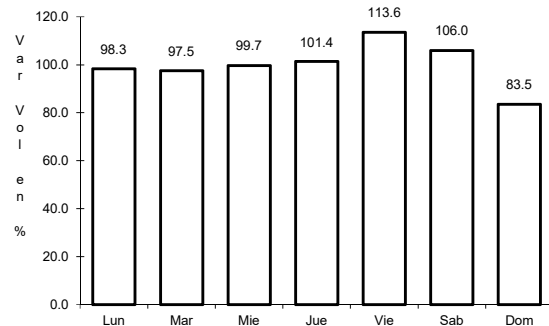


Km: 57.20 Tipo: 3 Sent: 0

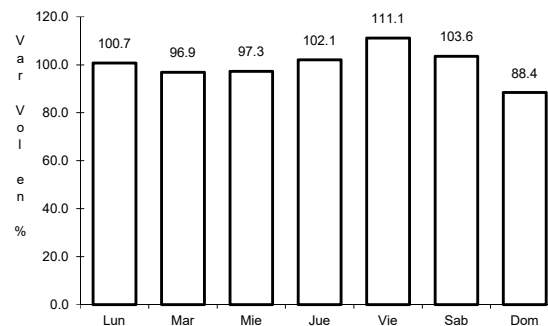
6 CARR: Ent. La Chicharrona - Cuencamé

CLAVE: 00152

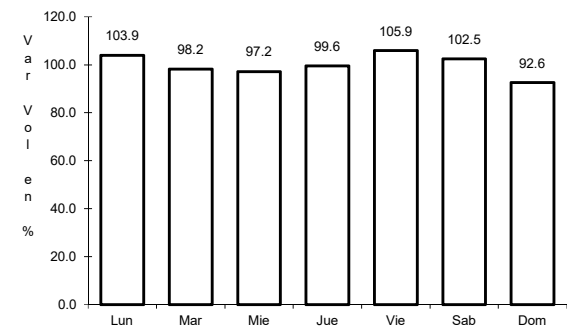
ruta: MEX-049



Km: 0.00 Tipo: 3 Sent: 1



Km: 0.00 Tipo: 3 Sent: 2

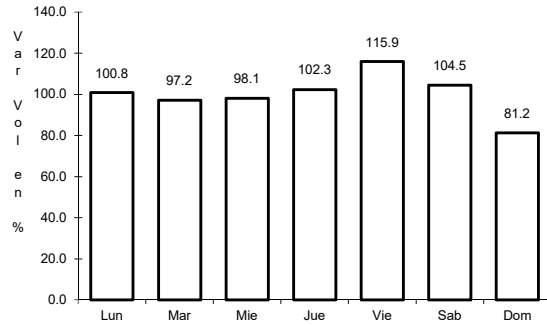


Km: 124.50 Tipo: 1 Sent: 0

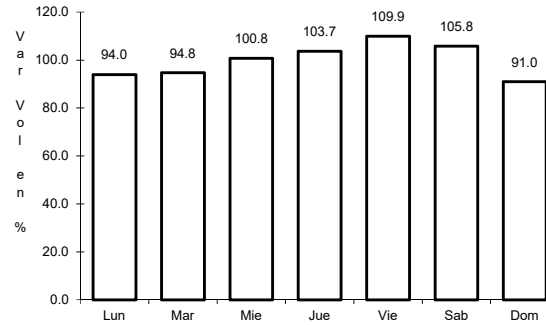
7 CARR: Ent. Morelos - Ent. Noria de Gringos

CLAVE: 00544

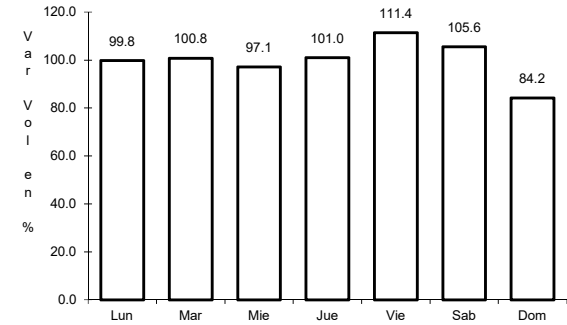
ruta: MEX-045



Km: 0.50 Tipo: 1 Sent: 1



Km: 0.50 Tipo: 1 Sent: 2

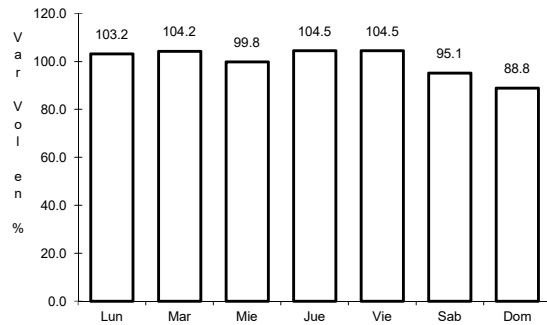


Km: 0.50 Tipo: 3 Sent: 0

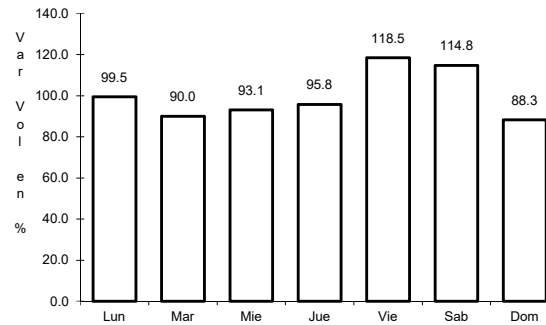
8 CARR: Ent. Morelos - Saltillo

CLAVE: 00149

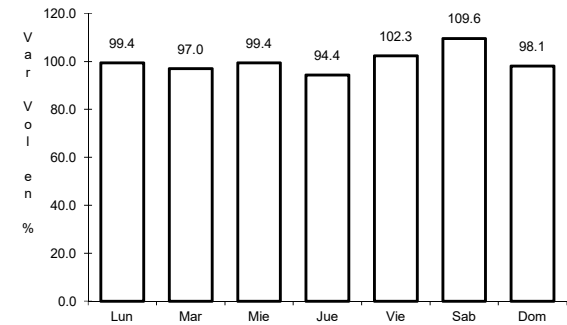
ruta: MEX-054



Km: 0.00 Tipo: 3 Sent: 1



Km: 0.00 Tipo: 3 Sent: 2

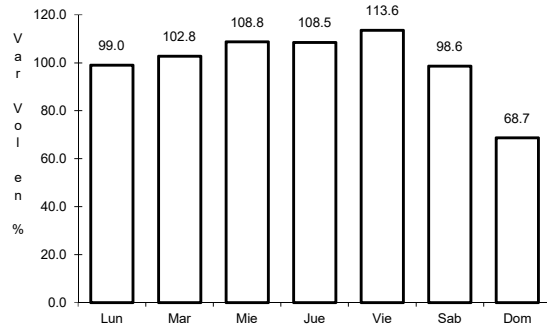


Km: 333.00 Tipo: 3 Sent: 0

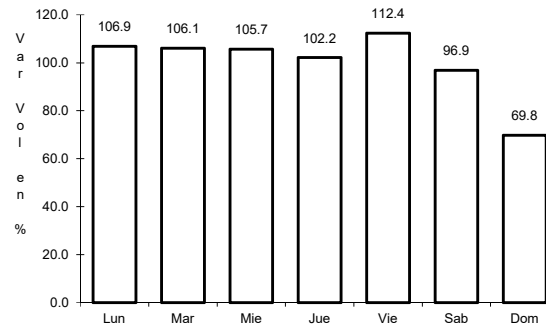
9 CARR: Ent. Rivier - San Marcos

CLAVE: 00285

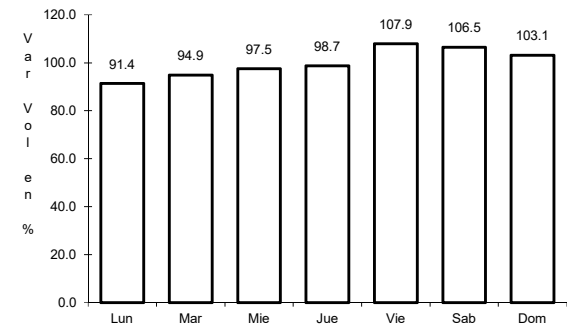
ruta: MEX-066



Km: 0.00 Tipo: 3 Sent: 1



Km: 0.00 Tipo: 3 Sent: 2

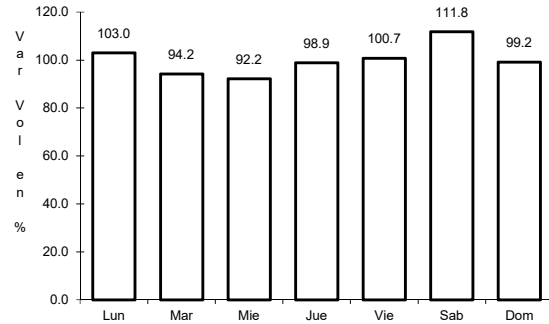


Km: 55.34 Tipo: 1 Sent: 0

10 CARR: Ent. Tesistán - Ent. Malpaso

CLAVE: 00584

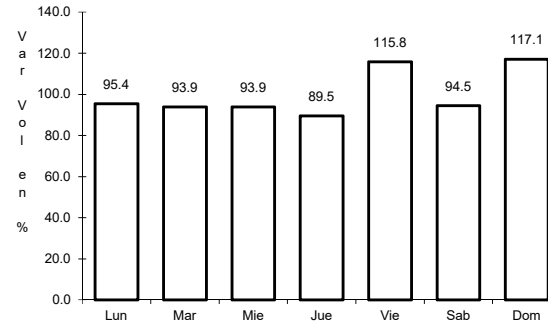
ruta: MEX-023



Km: 54.00

Tipo: 1

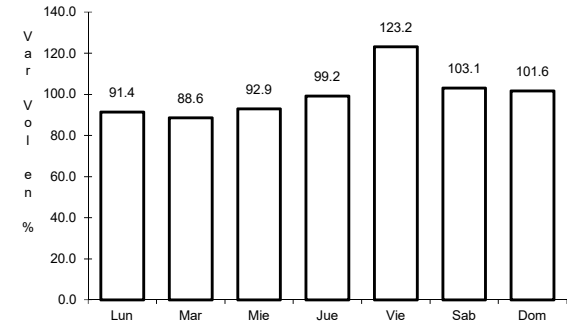
Sent: 0



Km: 275.00

Tipo: 1

Sent: 1



Km: 275.00

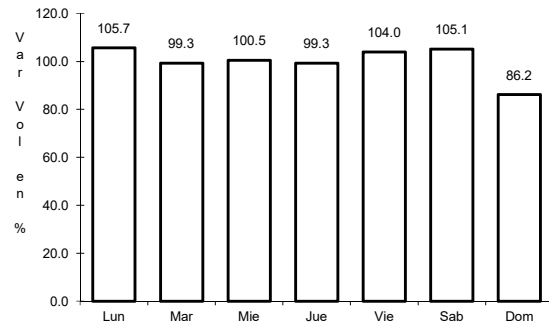
Tipo: 1

Sent: 2

11 CARR: Fresnillo - Valparaíso

CLAVE: 32547

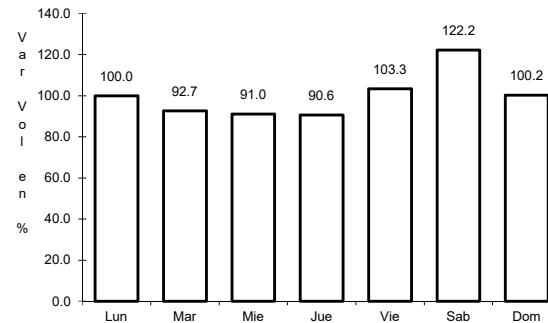
ruta: MEX-044



Km: 0.00

Tipo: 3

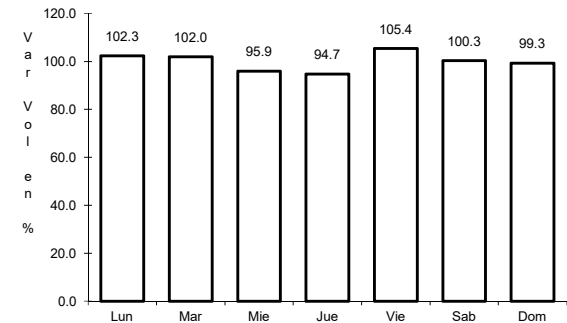
Sent: 0



Km: 45.00

Tipo: 3

Sent: 0



Km: 90.00

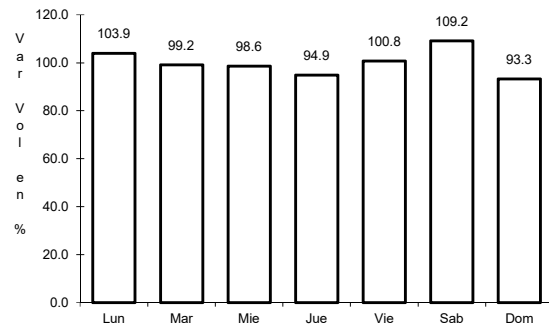
Tipo: 1

Sent: 0

12 CARR: Guadalajara - Zacatecas

CLAVE: 00150

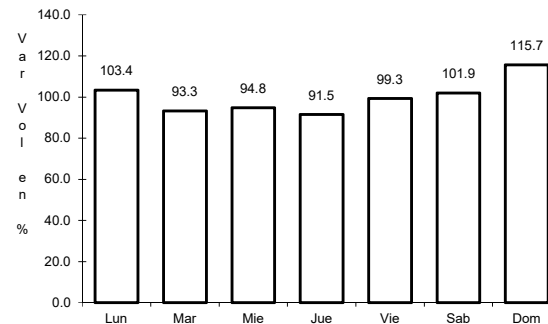
ruta: MEX-054



Km: 6.19

Tipo: 3

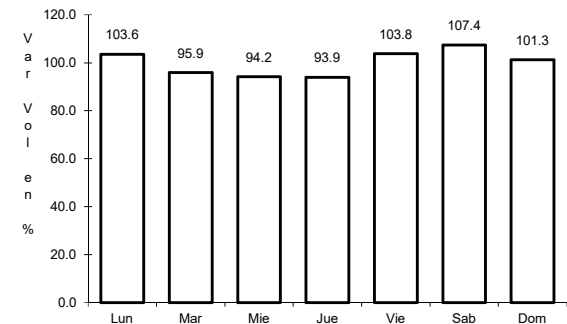
Sent: 1



Km: 6.19

Tipo: 3

Sent: 2



Km: 159.39

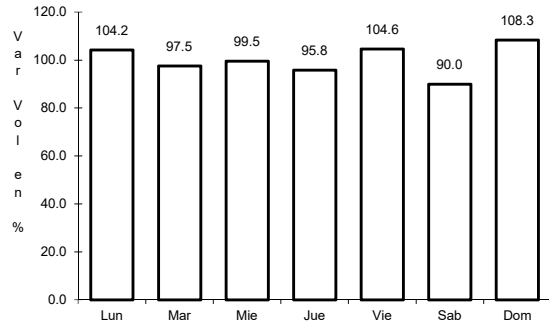
Tipo: 1

Sent: 0

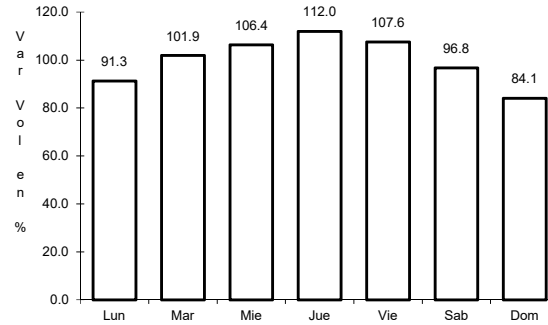
13 CARR: Jerez - Fresnillo

CLAVE: 32542

ruta: MEX-023



Km: 0.00 Tipo: 3 Sent: 0

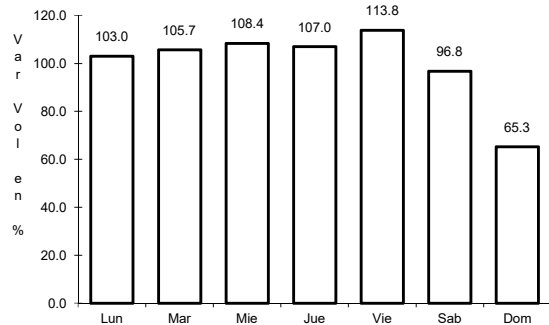


Km: 60.00 Tipo: 1 Sent: 0

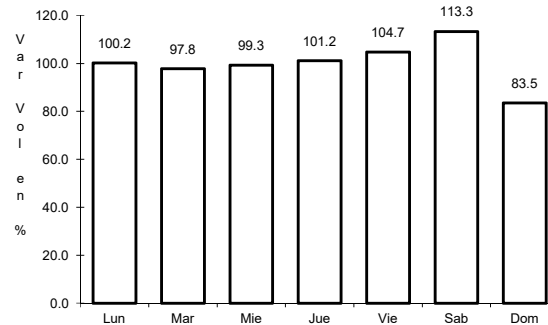
14 CARR: Libramiento de Guadalupe - Zacatecas

CLAVE: 32582

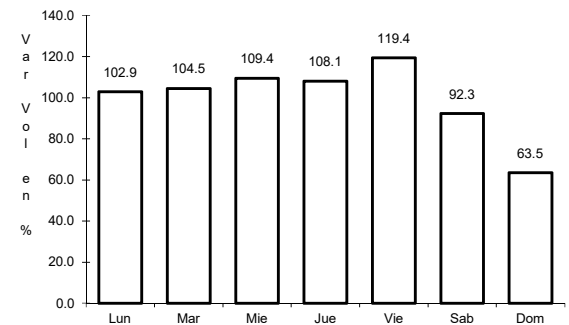
ruta: MEX-045



Km: 13.00 Tipo: 3 Sent: 1



Km: 13.00 Tipo: 3 Sent: 2

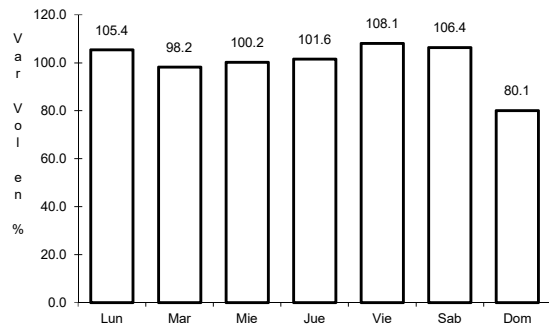


Km: 17.50 Tipo: 1 Sent: 1

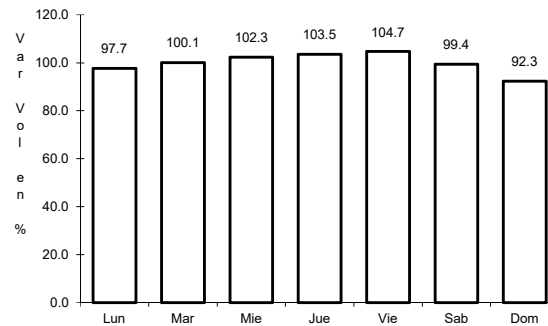
15 CARR: Providencia - Luis Moya

CLAVE: 00112

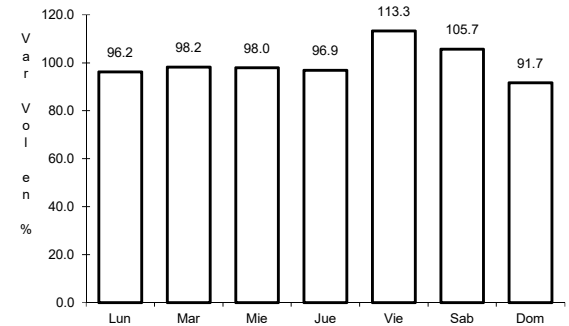
ruta: MEX-071



Km: 0.00 Tipo: 3 Sent: 0



Km: 21.22 Tipo: 3 Sent: 0

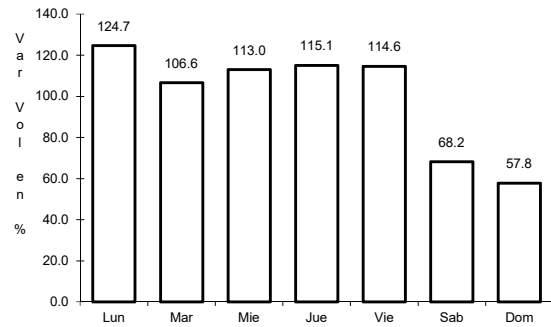


Km: 43.52 Tipo: 1 Sent: 0

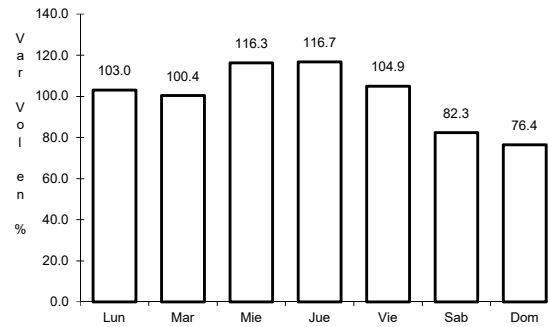
16 CARR: Ramal a Aeropuerto Zacatecas

CLAVE: 32546

RUTA: MEX-045



Km: 0.00 Tipo: 3 Sent: 1

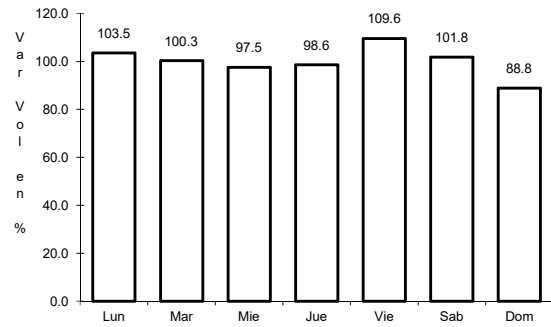


Km: 0.00 Tipo: 3 Sent: 2

17 CARR: Ramal a Concepción del Oro

CLAVE: 32565

RUTA: MEX-054

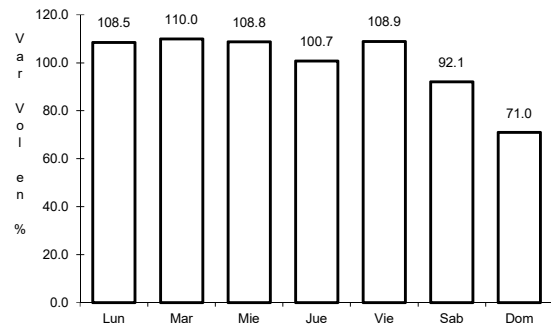


Km: 0.00 Tipo: 3 Sent: 0

18 CARR: Ramal a Francisco Murguía (Nieves)

CLAVE: 32541

RUTA: MEX-049

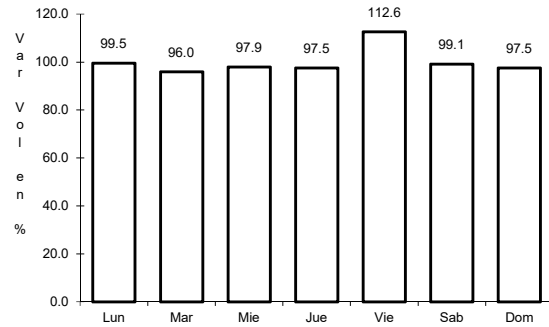


Km: 0.00 Tipo: 3 Sent: 0

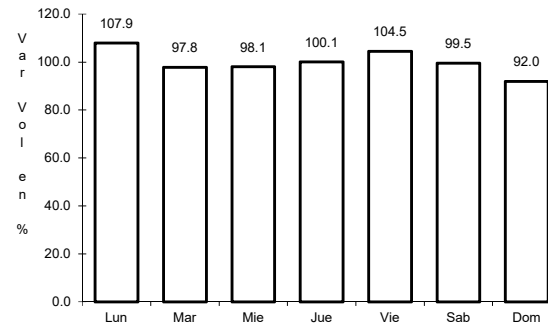
19 CARR: Ramal a Gral. Pánfilo Natera

CLAVE: 32559

ruta: MEX-049



Km: 0.00 Tipo: 3 Sent: 1

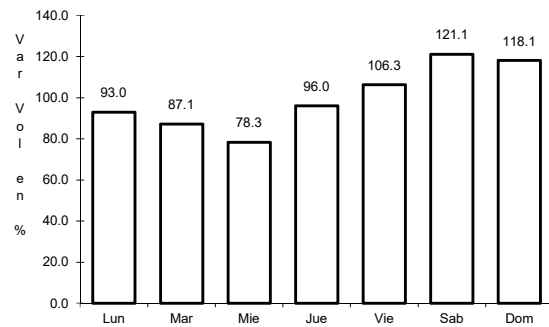


Km: 0.00 Tipo: 3 Sent: 2

20 CARR: Ramal a Ruinas de Chicomostoc

CLAVE: 00544

ruta: MEX-045

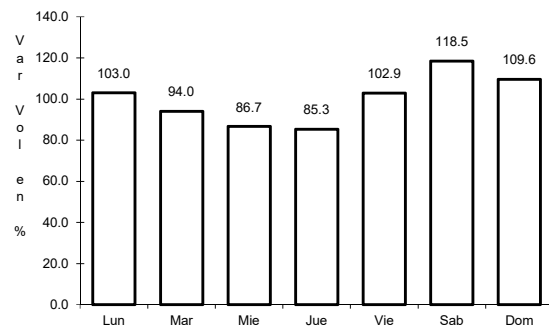


Km: 0.00 Tipo: 3 Sent: 0

21 CARR: Ramal a San Martín

CLAVE: 00544

ruta: MEX-045

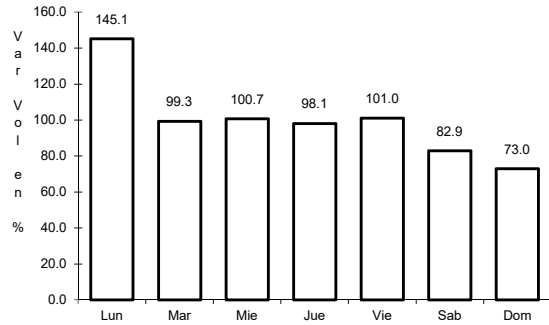


Km: 0.00 Tipo: 3 Sent: 0

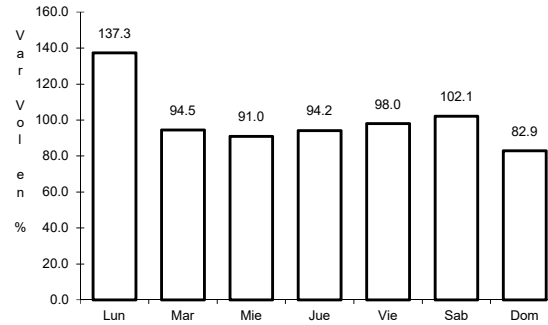
22 CARR: Ramal a Villa de Cos

CLAVE: 32564

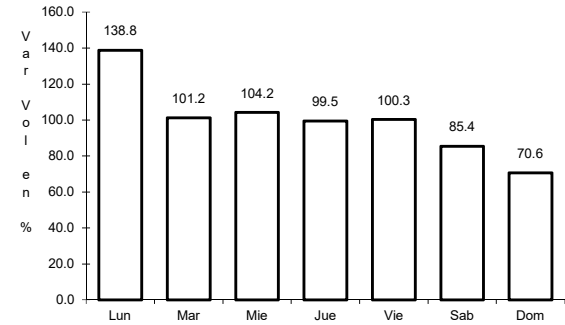
ruta: MEX-054



Km: 0.00 Tipo: 3 Sent: 1



Km: 0.00 Tipo: 3 Sent: 2

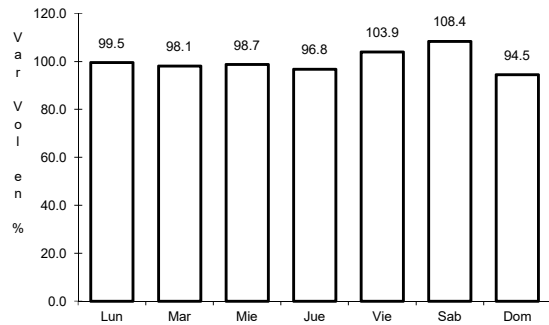


Km: 3.30 Tipo: 1 Sent: 1

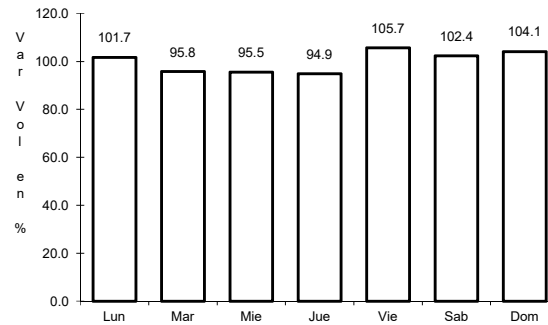
23 CARR: San Luis Potosí - Ent. Arcinas

CLAVE: 00134

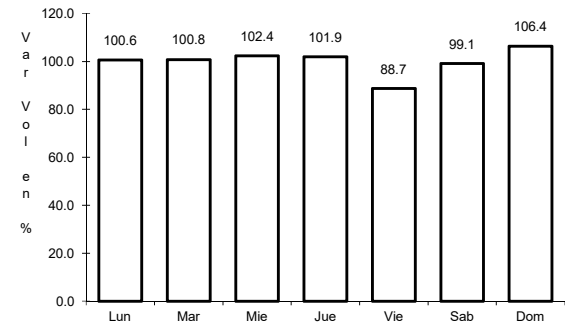
ruta: MEX-049



Km: 9.35 Tipo: 3 Sent: 1



Km: 9.35 Tipo: 3 Sent: 2

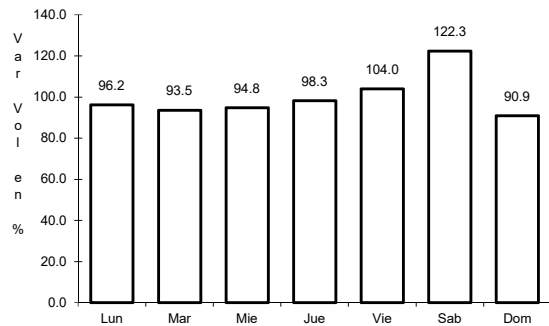


Km: 162.98 Tipo: 1 Sent: 1

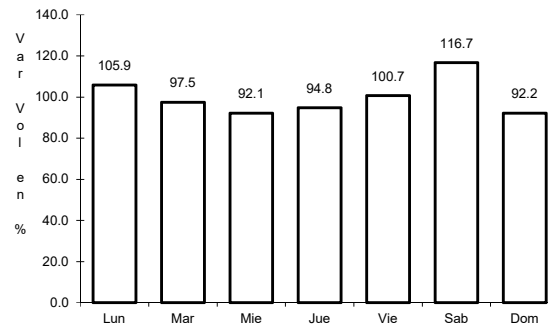
24 CARR: San Luis Potosí - Lagos de Moreno

CLAVE: 00133

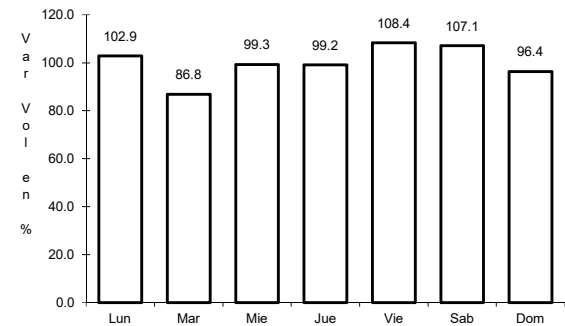
ruta: MEX-070-080



Km: 0.00 Tipo: 3 Sent: 1



Km: 0.00 Tipo: 3 Sent: 2

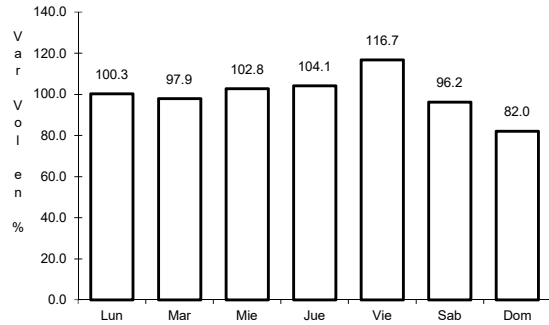


Km: 61.90 Tipo: 3 Sent: 0

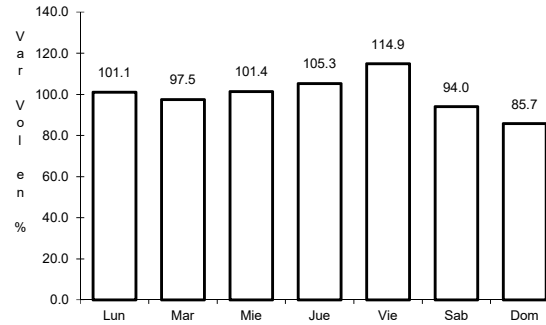
25 CARR: Zacatecas - Durango

CLAVE: 00544

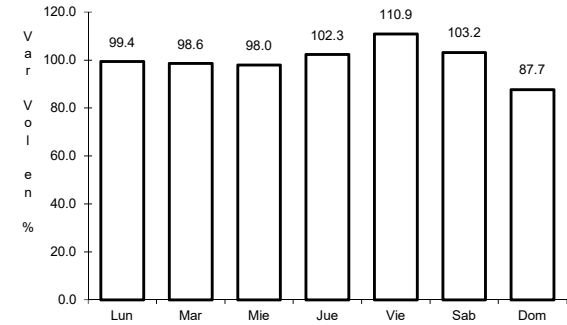
RUTA: MEX-045



Km: 6.40 Tipo: 3 Sent: 1



Km: 6.40 Tipo: 3 Sent: 2

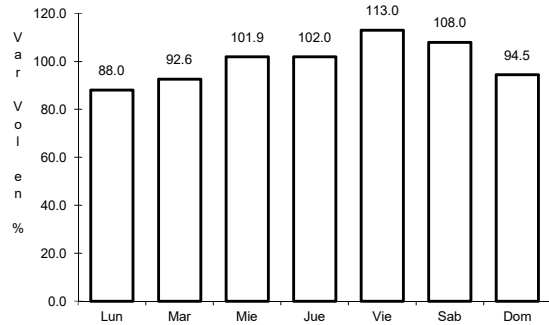


Km: 121.00 Tipo: 3 Sent: 0

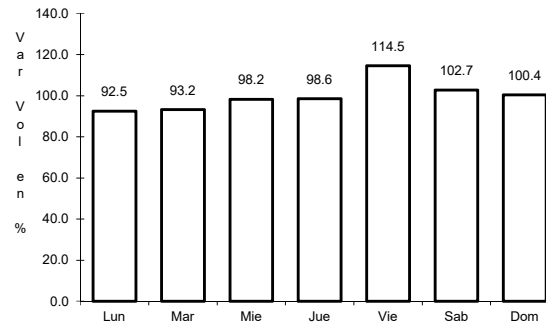
26 CARR: Ent. Cuauhtémoc - Ent. Osiris (Cuota)

CLAVE: 32558

RUTA: MEX-045D



Km: 70.40 Tipo: 3 Sent: 0

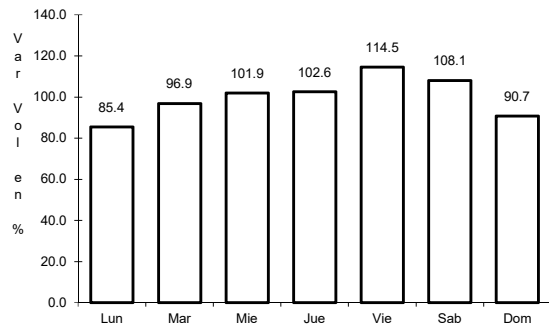


Km: 103.40 Tipo: 1 Sent: 0

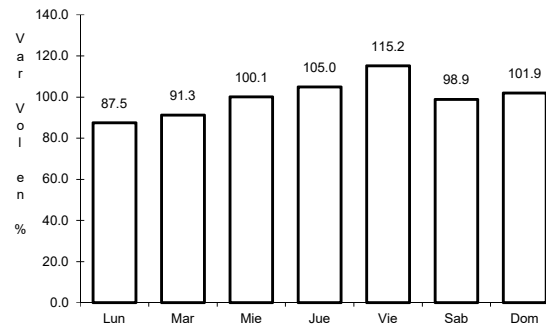
27 CARR: Libramiento de Fresnillo (Cuota)

CLAVE: 32581

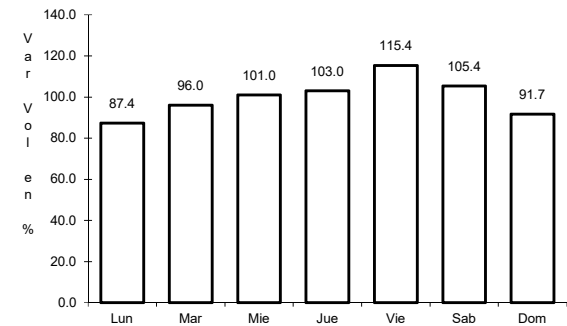
RUTA: MEX-045D



Km: 49.80 Tipo: 3 Sent: 1



Km: 49.80 Tipo: 3 Sent: 2

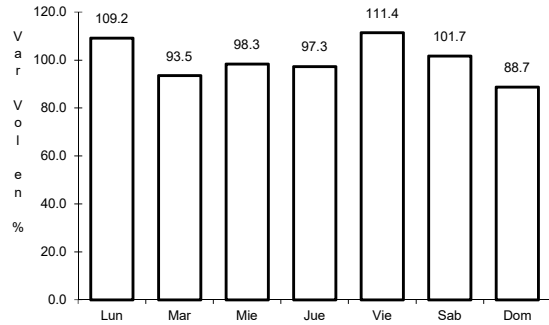


Km: 69.85 Tipo: 1 Sent: 1

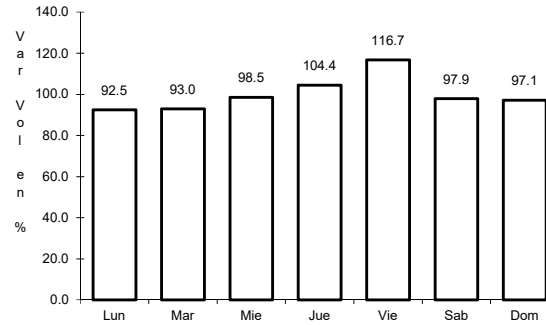
28 CARR: Libramiento de Víctor Rosales (Cuota)

CLAVE: 32015

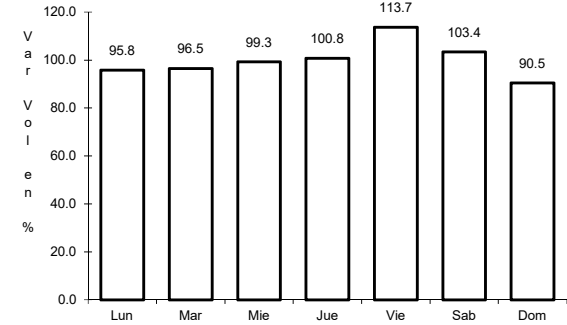
RUTA: MEX-045D



Km: 0.00 Tipo: 3 Sent: 1



Km: 0.00 Tipo: 3 Sent: 2

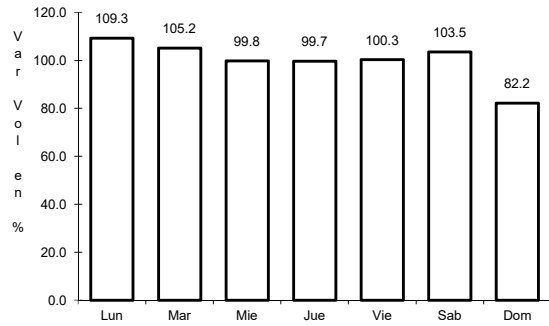


Km: 12.20 Tipo: 1 Sent: 1

29 CARR: Calera de Victor Rosales - Santiaguillo

CLAVE: 32016

RUTA: ZAC-016

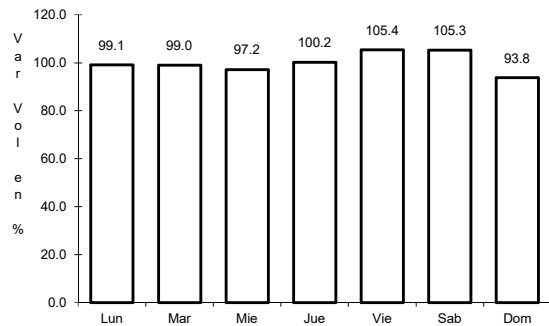


Km: 0.00 Tipo: 3 Sent: 0

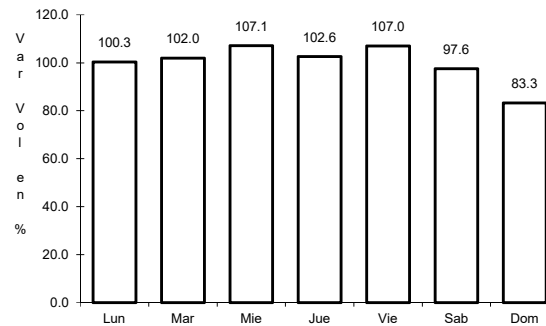
30 CARR: Cieneguillas - Zacatecas

CLAVE: 32579

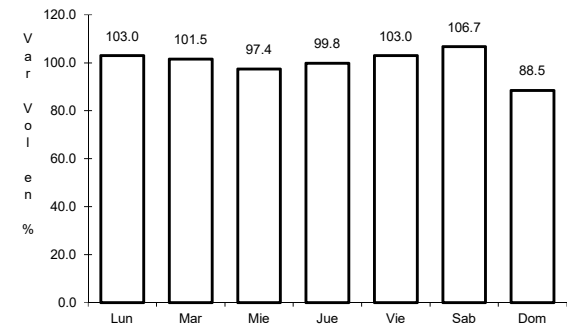
RUTA: ZAC



Km: 0.00 Tipo: 3 Sent: 0



Km: 7.70 Tipo: 3 Sent: 1

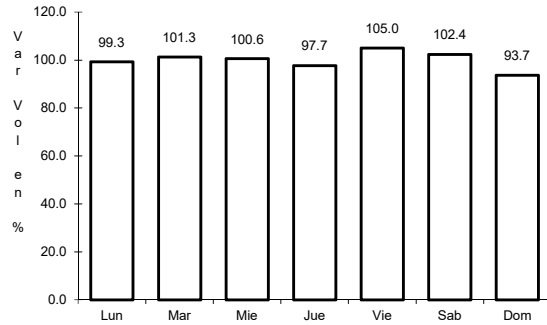


Km: 7.70 Tipo: 3 Sent: 2

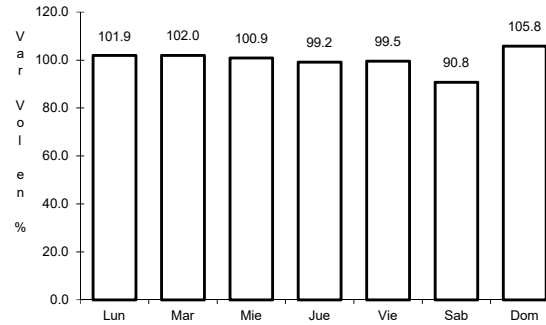
31 CARR: Corral de Piedras - Tlaltenango

CLAVE: 32579

RUTA: ZAC



Km: 0.00 Tipo: 3 Sent: 0

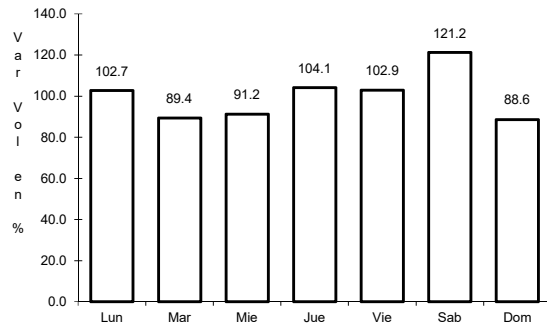


Km: 57.10 Tipo: 1 Sent: 0

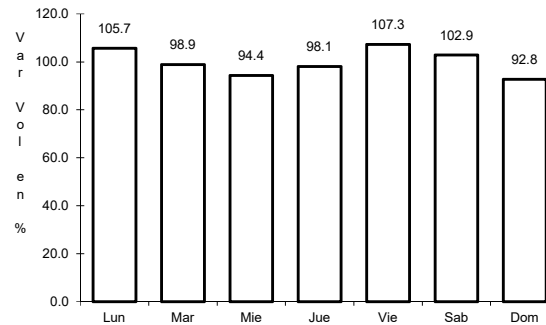
32 CARR: Ent. Ojo Caliente - Ent. Ojuelos de Jalisco

CLAVE: 00126

RUTA: ZAC



Km: 0.00 Tipo: 3 Sent: 0

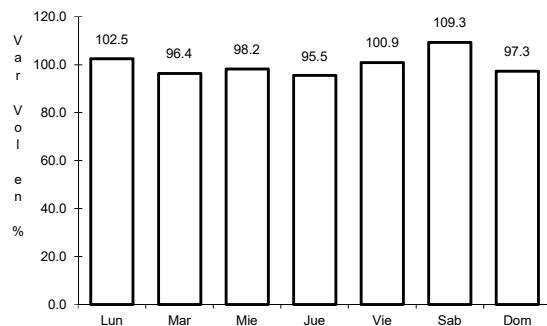


Km: 16.00 Tipo: 3 Sent: 0

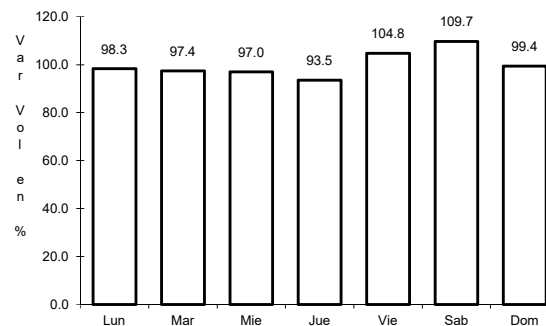
33 CARR: Fresnillo - Ent. Bañón

CLAVE: 32070

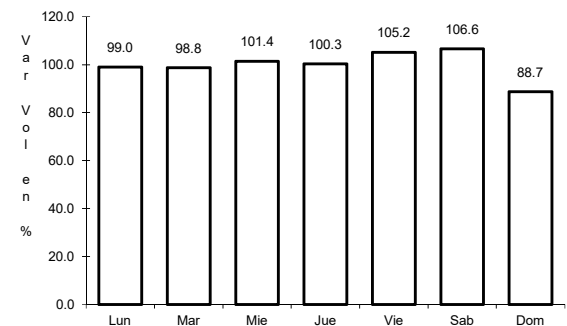
RUTA: ZAC



Km: 2.40 Tipo: 3 Sent: 1



Km: 2.40 Tipo: 3 Sent: 2

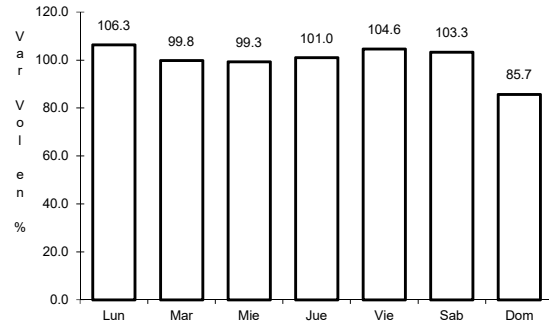


Km: 49.00 Tipo: 1 Sent: 0

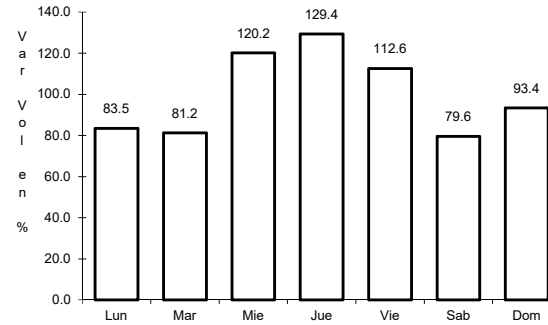
34 CARR: Fresnillo - Plateros

CLAVE: 32022

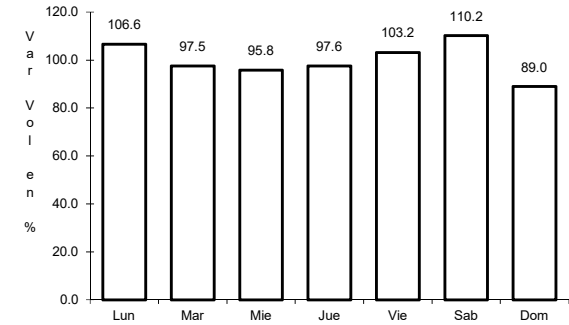
ruta: ZAC-022



Km: 0.00 Tipo: 3 Sent: 1



Km: 0.00 Tipo: 3 Sent: 1

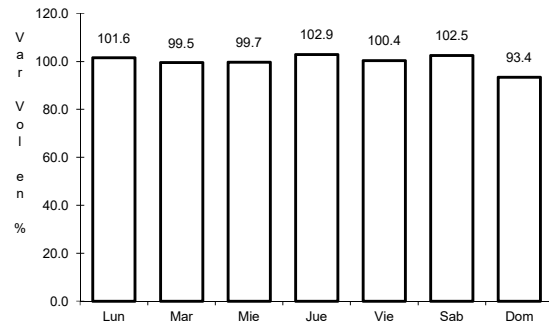


Km: 0.00 Tipo: 3 Sent: 2

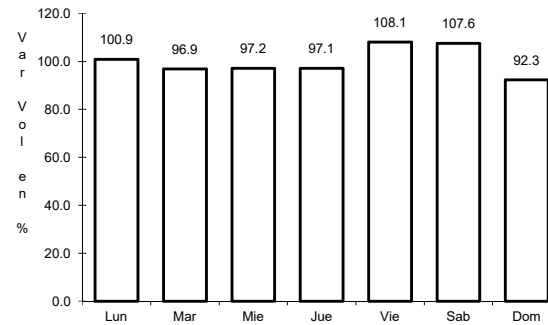
35 CARR: Guadalupe - Ent. Cuauhtémoc

CLAVE: 00579

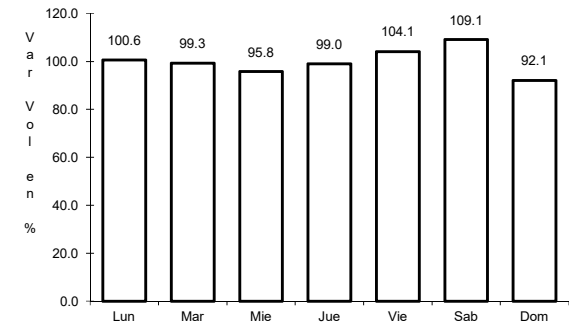
ruta: ZAC-118



Km: 0.00 Tipo: 3 Sent: 1



Km: 0.00 Tipo: 3 Sent: 2

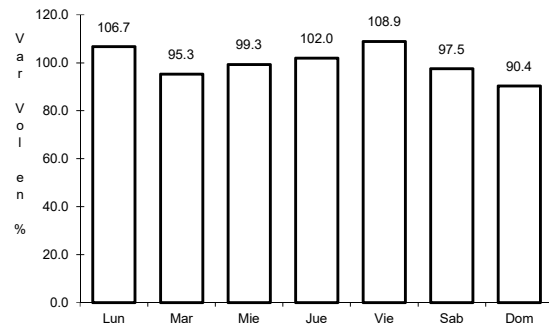


Km: 39.31 Tipo: 3 Sent: 0

36 CARR: Ramal a Loreto

CLAVE: 32067

ruta: ZAC

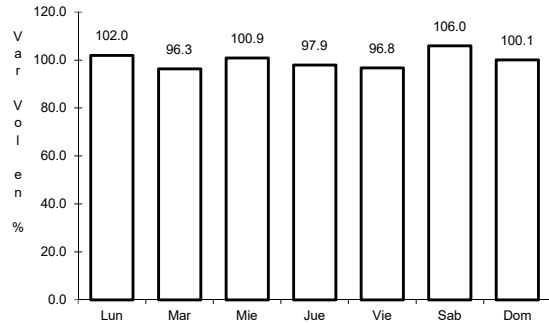


Km: 0.00 Tipo: 3 Sent: 0

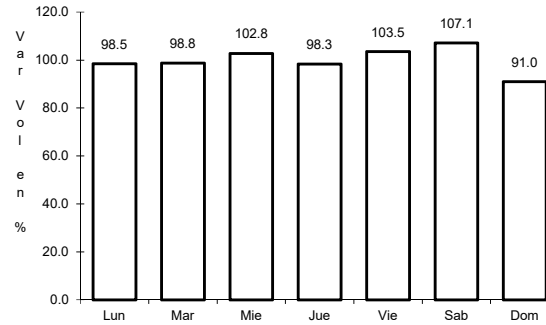
37 CARR: Ramal a Nochistlán

CLAVE: 32545

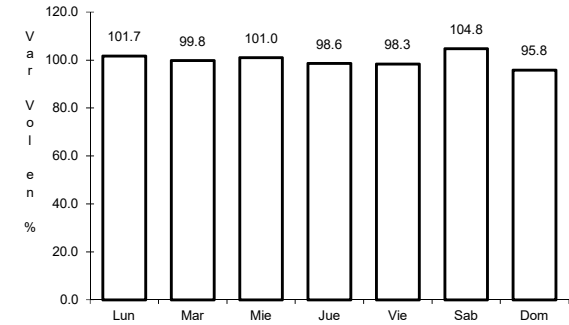
ruta: ZAC



Km: 0.00 Tipo: 3 Sent: 1



Km: 0.00 Tipo: 3 Sent: 2

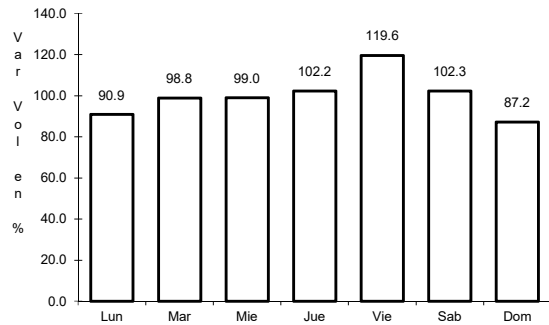


Km: 5.70 Tipo: 1 Sent: 1

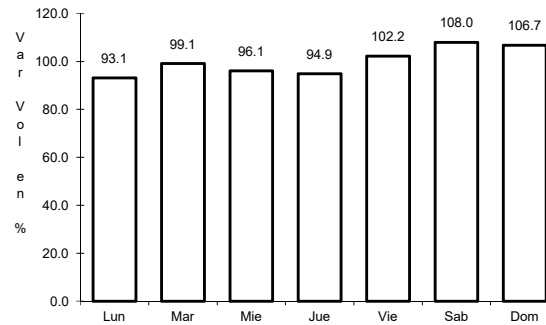
38 CARR: Ramal a San Pedro Piedra Gorda

CLAVE: 00553

ruta: ZAC-AGS



Km: 0.00 Tipo: 3 Sent: 0

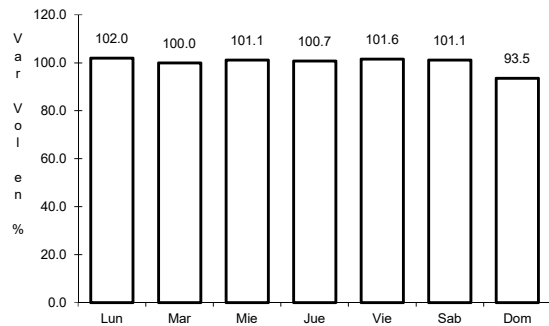


Km: 9.00 Tipo: 1 Sent: 0

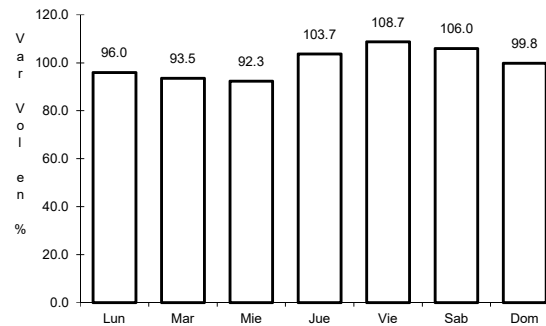
39 CARR: San Gil - Jarillas

CLAVE: 00527

ruta: AGS-012-ZAC



Km: 0.00 Tipo: 3 Sent: 0

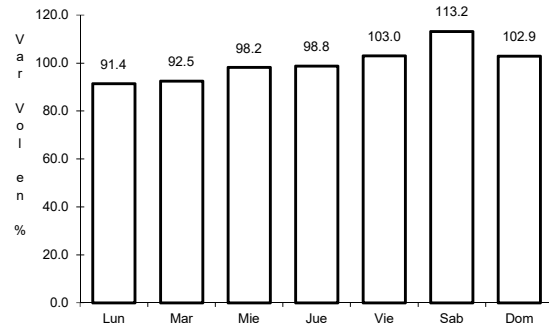


Km: 5.40 Tipo: 1 Sent: 0

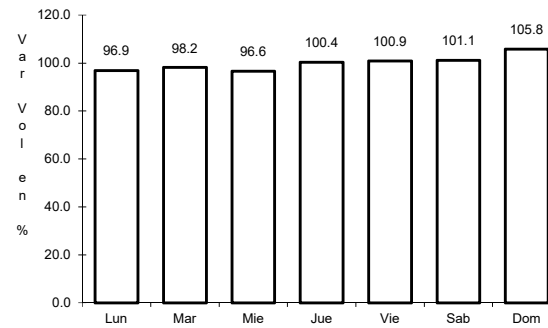
40 CARR: San Rafael - Villa García

CLAVE: 00525

ruta: AGS-ZAC



Km: 0.00 Tipo: 3 Sent: 0

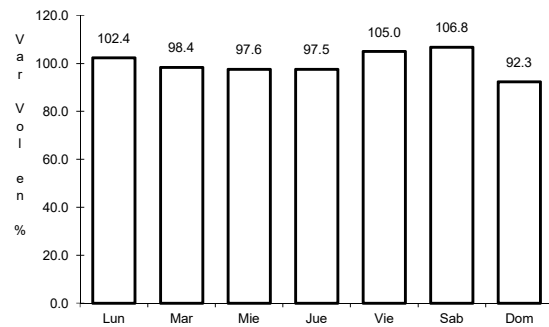


Km: 10.00 Tipo: 1 Sent: 0

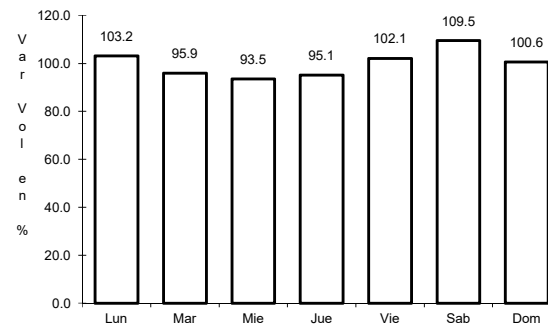
41 CARR: Santa Mónica - Pozo de Gamboa

CLAVE: 32568

ruta: ZAC



Km: 0.00 Tipo: 3 Sent: 0

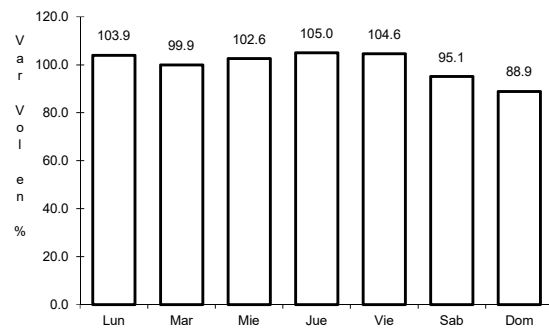


Km: 7.60 Tipo: 3 Sent: 0

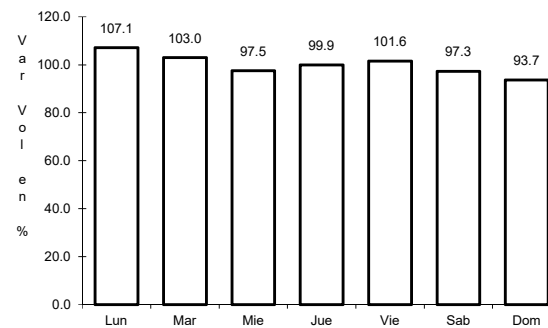
42 CARR: Sombrerete - González Ortega

CLAVE: 32568

ruta: ZAC



Km: 0.00 Tipo: 3 Sent: 0

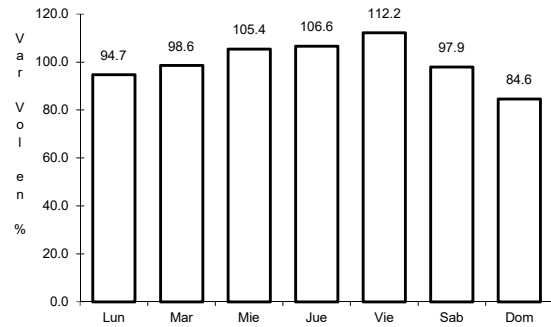


Km: 38.70 Tipo: 1 Sent: 0

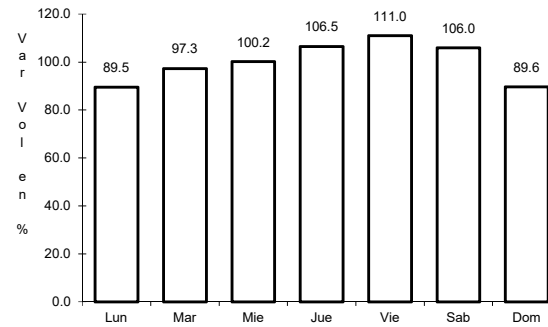
43 CARR: Libramiento Noreste de Zacatecas (Cuota)

CLAVE: 32582

ruta: ZAC-D



Km: 0.00 Tipo: 3 Sent: 0

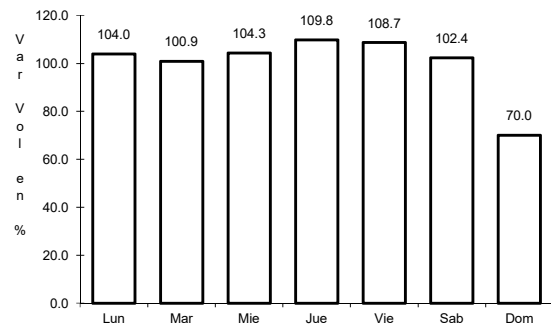


Km: 21.00 Tipo: 1 Sent: 0

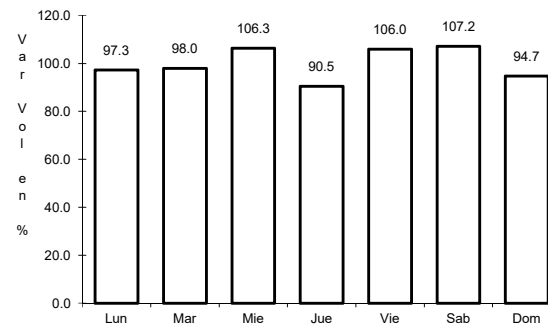
44 CARR: Tepatlán - Jaralillo

CLAVE: 00146

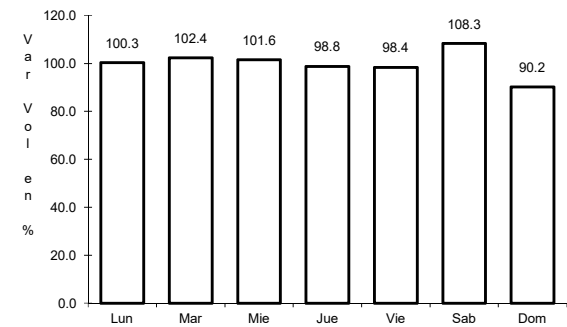
ruta: MEX-JAL-ZAC



Km: 0.00 Tipo: 3 Sent: 0



Km: 72.45 Tipo: 3 Sent: 0



Km: 157.00 Tipo: 1 Sent: 0

