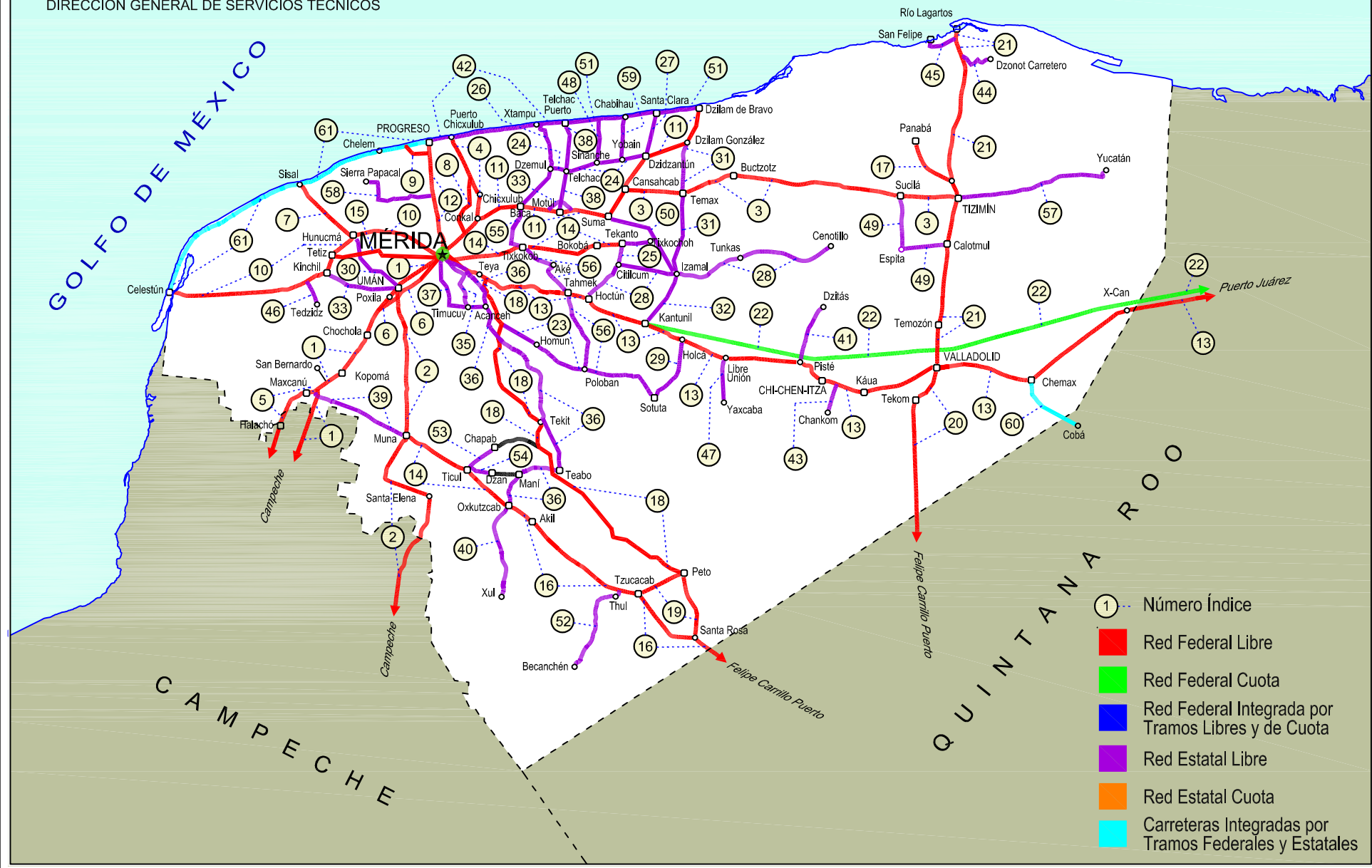
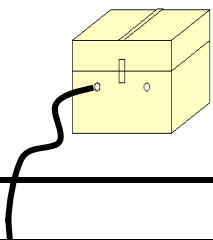


31 YUCATÁN

SECRETARÍA DE COMUNICACIONES Y TRANSPORTES
DIRECCIÓN GENERAL DE SERVICIOS TÉCNICOS





YUCATAN

---RED FEDERAL LIBRE---

1 Campeche - Mérida	MEX-180
2 Campeche - Umán	MEX-261
3 Cansahcab - Tizimín	MEX-176
4 Conkal - Puerto Chicxulub	MEX-176
5 Dzitbalché - Ent. San Bernardo	MEX-180
6 Ent. Poxilá - Mérida	MEX-180
7 Hunucmá - Sisal	MEX-281
8 Libramiento de Conkal	MEX
9 Libramiento de Progreso	MEX-261
10 Mérida - Celestún	MEX-281
11 Mérida - Dzilam de Bravo	MEX-176
12 Mérida - Progreso	MEX-261
13 Mérida - Puerto Juárez	MEX-180
14 Mérida - Tekanto	MEX-180
15 Mérida - Tetiz	MEX-281
16 Muna - Felipe Carrillo Puerto	MEX-184
17 Ramal a Panabá	MEX-295
18 Teya -Peto	MEX-184
19 Tzucacab - Santa Rosa	MEX
20 Valladolid - Felipe Carrillo Puerto	MEX-295
21 Valladolid - Río Lagartos	MEX-295

---RED FEDERAL DE CUOTA---

22 Mérida - Cancún (Cuota)	MEX-180D
----------------------------	----------

---RED ESTATAL LIBRE---

23 Acanceh - Estación Polabán	YUC
24 Baca - Dzidzantún	YUC
25 Citilcum - Tixkochoh	YUC
26 Dzemul - Xtampú	YUC
27 Dzidzantún - Santa Clara	YUC
28 Hochtún - Cenotillo	YUC-011
29 Holcá - Sotuta	YUC
30 Hunucmá - Umán	YUC
31 Izamal - Dzilam González	YUC
32 Kantunil - Izamal	YUC
33 Kinchil - Umán	YUC
34 Libramiento Norte de Motul	YUC
35 Mérida - Acanceh	YUC
36 Mérida - Oxkutzcab	YUC-018
37 Mérida - Timucuy	YUC
38 Motul - Puerto Telchac	YUC-172
39 Muna - Maxcanú	YUC
40 Oxkutzcab - Xul	YUC-031
41 Piste - Dzitás	YUC-013
42 Progreso - Telchac Puerto	YUC-027
43 Ramal a Chankom	YUC
44 Ramal a Dzonot Carretero	YUC
45 Ramal a San Felipe	YUC
46 Ramal a Tedzidz	YUC
47 Ramal a Yaxcabá	YUC-289
48 Sinanché - Xitibcanul	YUC
49 Sucilá - Calotmul	YUC
50 Suma - Izamal	YUC-081
51 Telchac Puerto - Dzilam de Bravo	YUC
52 Thul - Becanchén	YUC-281
53 Ticul - Chapab	YUC
54 Ticul - Dzan	YUC
55 Tixkokob - Baca	YUC
56 Tixkokob - Sotuta	YUC
57 Tizimín - Yucatán	YUC
58 Yaxché - Sierra Papacal	YUC
59 Yobaín - Chabihau	YUC

---CARRETERAS INTEGRADAS POR TRAMOS FEDERALES Y ESTATALES---

60 Chemax - Cobá	YUC-MEX-180
61 Progreso - Celestún	MEX-YUC

YUCATAN

1 CARR: Campeche - Mérida

CLAVE: 00066

RUTA: MEX-180

AÑO: 2018

LUGAR	ESTACION				CLASIFICACION VEHICULAR EN PORCIENTO										COORDENADAS					
	KM	TE	SC	TDPA	M	A	B	C2	C3	T3S2	T3S3	T3S2R4	OTROS	A	B	C	K'	D	LATITUD	LONGITUD
Campeche	0.00	3	1	7181	7.6	85.7	0.3	4.7	0.4	0.5	0.7	0.0	0.1	93.3	0.3	6.4	0.079	0.517	19.891077	-90.464607
Campeche	0.00	3	2	6702	7.3	83.6	0.4	6.7	0.5	0.5	0.9	0.0	0.1	90.9	0.4	8.7	0.068	0.517	19.891201	-90.464528
T. Der. Periférico Pablo García y Montilla (Libramiento De Campeche)	7.00	3	1	6042	5.8	72.3	3.2	6.9	1.6	5.1	1.0	3.7	0.4	78.1	3.2	18.7	0.089	0.506	19.896714	-90.454998
T. Der. Periférico Pablo García y Montilla (Libramiento De Campeche)	7.00	3	2	5908	4.6	76.1	2.5	5.4	1.6	5.3	0.7	3.5	0.3	80.7	2.5	16.8	0.083	0.506	19.896948	-90.455096
Tenabo	40.00	1	1	5412	1.6	75.3	3.3	5.2	1.6	6.2	1.5	4.8	0.5	76.9	3.3	19.8	0.090	0.505	20.028194	-90.241880
Tenabo	40.00	1	2	5529	1.5	75.3	3.5	5.7	1.4	6.3	1.1	4.7	0.5	76.8	3.5	19.7	0.068	0.505	20.028300	-90.241955
T. Der. Libramiento de Pomuch (2º Acceso)	50.00	3	1	5058	1.9	74.9	3.6	6.2	1.3	5.9	1.5	4.2	0.5	76.8	3.6	19.6	0.099	0.507	20.149547	-90.163127
T. Der. Libramiento de Pomuch (2º Acceso)	50.00	3	2	5196	4.0	74.6	2.9	4.8	1.6	6.1	1.1	4.5	0.4	78.6	2.9	18.5	0.079	0.507	20.149677	-90.163233
Lim. Edos. Term. Camp. Ppia. Yuc.	96.96																			
Kopomá	124.29	3	1	4960	1.5	72.4	3.4	8.0	2.0	6.3	1.5	4.4	0.5	73.9	3.4	22.7	0.084	0.500	20.663185	-89.890187
Kopomá	124.29	3	2	4955	1.4	72.0	3.4	8.5	1.9	6.4	1.4	4.5	0.5	73.4	3.4	23.2	0.101	0.500	20.663227	-89.890350
T. Der. Libramiento de Chocholá (1º Acceso)	137.89	1	1	4975	1.3	74.6	3.0	6.4	2.0	6.3	1.5	4.4	0.5	75.9	3.0	21.1	0.082	0.500	20.725561	-89.843352
T. Der. Libramiento de Chocholá (1º Acceso)	137.89	1	2	4979	1.3	71.0	3.7	9.4	1.8	6.3	1.5	4.5	0.5	72.3	3.7	24.0	0.100	0.500	20.725642	-89.843542
T. Izq. Umán	146.99	3	1	4887	1.0	74.1	3.2	6.6	2.0	6.3	1.8	4.4	0.6	75.1	3.2	21.7	0.087	0.504	20.801539	-89.805636
T. Izq. Umán	146.99	3	2	4973	1.1	73.9	3.5	6.7	2.1	6.1	1.5	4.5	0.6	75.0	3.5	21.5	0.101	0.504	20.801658	-89.805759
X. C. Campeche - Umán	160.49	1	1	5300	1.3	72.2	3.3	6.4	2.9	6.8	1.8	4.8	0.5	73.5	3.3	23.2	0.087	0.510	20.836265	-89.754650
X. C. Campeche - Umán	160.49	1	2	5510	1.1	71.4	3.5	6.5	3.0	7.0	1.9	5.1	0.5	72.5	3.5	24.0	0.102	0.510	20.836444	-89.754738
T. C. Periférico de Mérida	171.21																			

2 CARR: Campeche - Umán

CLAVE: 00164

RUTA: MEX-261

AÑO: 2018

LUGAR	ESTACION				CLASIFICACION VEHICULAR EN PORCIENTO										COORDENADAS					
	KM	TE	SC	TDPA	M	A	B	C2	C3	T3S2	T3S3	T3S2R4	OTROS	A	B	C	K'	D	LATITUD	LONGITUD
Campeche	0.00																			
T. Der. Periférico Pablo García y Montilla (Libramiento De Campeche)	7.00	1	0	5563	9.5	79.4	0.3	5.7	1.1	3.2	0.4	0.1	0.3	88.9	0.3	10.8	0.099	0.513	19.849206	-90.473768
T. Der. Periférico Pablo García y Montilla (Libramiento De Campeche)	7.00	3	0	2579	10.5	78.0	0.5	8.6	0.7	1.3	0.3	0.0	0.1	88.5	0.5	11.0	0.088	0.500	19.848158	-90.453081
T. Izq. Tenabo	30.88	1	0	1566	8.6	74.3	0.7	14.0	1.0	1.1	0.3	0.0	0.0	82.9	0.7	16.4	0.082	0.506	19.804954	-90.280497
T. Izq. Tenabo	30.88	3	0	1579	7.9	75.8	1.0	10.8	1.5	2.1	0.5	0.3	0.1	83.7	1.0	15.3	0.085	0.506	19.804484	-90.271972
T. Der. Edzna	44.51	1	0	1530	11.7	72.7	1.2	10.9	1.0	1.8	0.4	0.3	0.0	84.4	1.2	14.4	0.089	0.501	19.743557	-90.178673
T. Der. Edzna	44.51	3	0	1541	15.1	67.2	1.6	11.5	1.5	2.2	0.7	0.2	0.0	82.3	1.6	16.1	0.084	0.504	19.745729	-90.169921
Hopelchén	84.88	1	0	2045	11.4	75.1	0.4	11.0	0.5	1.3	0.2	0.0	0.1	86.5	0.4	13.1	0.088	0.504	19.754601	-89.854670
Bolonchén de Rejón	117.88	3	0	1038	18.5	64.1	1.0	10.3	1.7	1.7	0.7	1.9	0.1	82.6	1.0	16.4	0.102	0.512	20.012936	-89.733997
Lim. Edos. Term. Camp. Ppia. Yuc.	126.88																			
T. Der. Sayil	140.88	1	0	553	6.3	70.2	1.8	12.0	2.8	3.0	1.3	2.6	0.0	76.5	1.8	21.7	0.110	0.515	20.207584	-89.672034
Santa Elena	158.88	1	0	1014	29.6	54.9	1.4	7.3	1.6	2.6	0.9	1.6	0.1	84.5	1.4	14.1	0.128	0.516	20.319098	-89.643296

YUCATAN

2 CARR: Campeche - Umán

CLAVE: 00164

RUTA: MEX-261

AÑO: 2018

LUGAR	ESTACION				CLASIFICACION VEHICULAR EN PORCIENTO												COORDENADAS			
	KM	TE	SC	TDPA	M	A	B	C2	C3	T3S2	T3S3	T3S2R4	OTROS	A	B	C	K'	D	LATITUD	LONGITUD
T. Izq. Ruinas de Uxmal	172.48	1	0	704	16.3	65.8	1.1	8.7	1.9	2.2	0.7	3.2	0.1	82.1	1.1	16.8	0.107	0.501	20.361920	-89.763699
Muna	187.43	1	0	1330	21.2	66.0	0.9	7.7	0.9	1.5	0.4	1.3	0.1	87.2	0.9	11.9	0.099	0.559	20.460838	-89.725089
Muna	187.43	3	0	4029	5.0	79.1	0.5	10.4	1.3	2.2	0.5	0.8	0.2	84.1	0.5	15.4	0.095	0.526	20.511064	-89.709191
Xtepén	225.38	1	0	4689	2.4	79.2	0.7	9.4	1.5	2.6	3.2	0.8	0.2	81.6	0.7	17.7	0.094	0.508	20.803354	-89.734068
Umán	230.83	1	0	3531	13.3	65.4	1.2	9.2	3.6	5.5	0.9	0.4	0.5	78.7	1.2	20.1	0.078	0.501	20.865852	-89.745959

3 CARR: Cansahcab - Tizimin

CLAVE: 31014

RUTA: MEX-176

AÑO: 2018

LUGAR	ESTACION				CLASIFICACION VEHICULAR EN PORCIENTO												COORDENADAS			
	KM	TE	SC	TDPA	M	A	B	C2	C3	T3S2	T3S3	T3S2R4	OTROS	A	B	C	K'	D	LATITUD	LONGITUD
Cansahcab	0.00	3	0	3762	7.4	69.1	1.6	12.6	2.6	3.5	1.1	1.7	0.4	76.5	1.6	21.9	0.069	0.527	21.156887	-89.077721
Temax	16.73	3	0	3296	6.5	75.2	1.2	7.9	3.0	2.8	1.0	2.3	0.1	81.7	1.2	17.1	0.072	0.518	21.155573	-88.915750
Buctzotz	32.92	3	0	2915	5.8	72.3	1.5	13.0	2.4	2.2	1.0	1.7	0.1	78.1	1.5	20.4	0.072	0.535	21.199522	-88.773320
Tizimin	99.14	1	0	3699	8.0	75.7	0.9	7.6	2.3	2.4	0.8	2.2	0.1	83.7	0.9	15.4	0.071	0.510	21.150063	-88.187543

4 CARR: Conkal - Puerto Chicxulub

CLAVE: 31004

RUTA: MEX-176

AÑO: 2018

LUGAR	ESTACION				CLASIFICACION VEHICULAR EN PORCIENTO												COORDENADAS			
	KM	TE	SC	TDPA	M	A	B	C2	C3	T3S2	T3S3	T3S2R4	OTROS	A	B	C	K'	D	LATITUD	LONGITUD
Conkal	0.00	3	0	2924	29.5	61.2	0.1	7.1	0.9	1.1	0.1	0.0	0.0	90.7	0.1	9.2	0.088	0.512	21.082921	-89.520079
Puerto Chicxulub	27.00	1	0	3775	3.9	85.9	1.4	5.9	1.0	1.9	0.0	0.0	0.0	89.8	1.4	8.8	0.096	0.505	21.285102	-89.600352

5 CARR: Dzitbalché - Ent. San Bernardo

CLAVE: 00162

RUTA: MEX-180

AÑO: 2018

LUGAR	ESTACION				CLASIFICACION VEHICULAR EN PORCIENTO												COORDENADAS			
	KM	TE	SC	TDPA	M	A	B	C2	C3	T3S2	T3S3	T3S2R4	OTROS	A	B	C	K'	D	LATITUD	LONGITUD
T. C. Campeche - Mérida	0.00																			
T. Izq. Libramiento de Becal (1º Acceso)	12.33	1	0	3223	18.9	72.3	0.9	4.7	0.4	2.1	0.3	0.1	0.3	91.2	0.9	7.9	0.079	0.507	20.418770	-90.033975
T. Izq. Libramiento de Becal (2º Acceso)	15.41	3	0	1682	13.1	75.8	1.7	7.0	0.7	1.5	0.1	0.0	0.1	88.9	1.7	9.4	0.077	0.508	20.450859	-90.040625
Lim. Edos. Term. Camp. Ppia. Yuc.	15.80																			
Halachó	21.08	1	0	1959	19.6	69.0	1.3	7.6	0.7	1.6	0.1	0.0	0.1	88.6	1.3	10.1	0.073	0.507	20.469244	-90.066449
T. Izq. Libramiento de Maxcanú (1º Acceso)	35.60	1	0	2489	23.9	63.8	1.0	8.3	0.9	1.6	0.3	0.1	0.1	87.7	1.0	11.3	0.089	0.500	20.577279	-90.035452
T. Der. Muna	40.36	3	0	3370	7.3	71.5	1.2	16.8	0.8	1.9	0.3	0.1	0.1	78.8	1.2	20.0	0.094	0.502	20.601756	-89.975494
Ent. San Bernardo	41.53																			

YUCATAN

6 CARR: Ent. Poxilá - Mérida

CLAVE: 31003

RUTA: MEX-180

AÑO: 2018

LUGAR	ESTACION				CLASIFICACION VEHICULAR EN PORCIENTO													COORDENADAS			
	KM	TE	SC	TDPA	M	A	B	C2	C3	T3S2	T3S3	T3S2R4	OTROS	A	B	C	K'	D	LATITUD	LONGITUD	
T. C. Campeche - Mérida	0.00																				
Umán	9.46	1	0	3325	14.0	63.8	1.6	11.5	3.5	4.5	0.5	0.3	0.3	77.8	1.6	20.6	0.086	0.502	20.866508	-89.757823	
X. Periférico de Mérida	16.37	1	1	17551	7.2	79.2	0.7	7.1	2.0	1.8	1.2	0.5	0.3	86.4	0.7	12.9	0.084	0.505	20.921609	-89.694523	
X. Periférico de Mérida	16.37	1	2	17207	6.6	78.8	0.7	7.2	2.3	2.0	1.4	0.6	0.4	85.4	0.7	13.9	0.077	0.505	20.921684	-89.694563	
Mérida	25.70	1	1	20563	5.6	80.3	1.2	7.9	1.6	1.7	1.1	0.5	0.1	85.9	1.2	12.9	0.077	0.508	20.926831	-89.684149	
Mérida	25.70	1	2	21227	5.8	81.0	0.9	7.2	1.8	1.5	1.2	0.5	0.1	86.8	0.9	12.3	0.073	0.508	20.927050	-89.684263	

7 CARR: Hunucmá - Sisal

CLAVE: 31021

RUTA: MEX-281

AÑO: 2018

LUGAR	ESTACION				CLASIFICACION VEHICULAR EN PORCIENTO													COORDENADAS		
	KM	TE	SC	TDPA	M	A	B	C2	C3	T3S2	T3S3	T3S2R4	OTROS	A	B	C	K'	D	LATITUD	LONGITUD
Hunucmá	0.00	3	0	1641	11.0	76.9	0.6	9.5	0.7	0.9	0.1	0.2	0.1	87.9	0.6	11.5	0.150	0.501	21.030354	-89.896610
Sisal	23.20	1	0	1392	10.3	78.3	0.4	9.0	0.9	1.0	0.1	0.0	0.0	88.6	0.4	11.0	0.119	0.501	21.161631	-90.030285

8 CARR: Libramiento de Conkal

CLAVE:

RUTA: MEX

AÑO: 2018

LUGAR	ESTACION				CLASIFICACION VEHICULAR EN PORCIENTO													COORDENADAS		
	KM	TE	SC	TDPA	M	A	B	C2	C3	T3S2	T3S3	T3S2R4	OTROS	A	B	C	K'	D	LATITUD	LONGITUD
T. C. Mérida - Dzilam de Bravo	0.00	3	0	7844	4.5	87.4	0.8	5.0	1.3	0.5	0.2	0.2	0.1	91.9	0.8	7.3	0.081	0.515	21.051736	-89.545269
T. C. Conkal - Puerto Chicxulub	14.00	1	0	3454	4.5	88.1	0.8	4.9	1.1	0.4	0.1	0.1	0.0	92.6	0.8	6.6	0.082	0.515	21.151706	-89.531366

9 CARR: Libramiento de Progreso

CLAVE: 31631

RUTA: MEX-261

AÑO: 2018

LUGAR	ESTACION				CLASIFICACION VEHICULAR EN PORCIENTO													COORDENADAS		
	KM	TE	SC	TDPA	M	A	B	C2	C3	T3S2	T3S3	T3S2R4	OTROS	A	B	C	K'	D	LATITUD	LONGITUD
T. C. Mérida - Progreso	0.00	3	0	4986	3.0	93.0	0.2	3.4	0.4	0.0	0.0	0.0	0.0	96.0	0.2	3.8	0.162	0.516	21.258166	-89.664926
Yucalpetén	6.50	1	0	4155	2.0	94.0	0.1	3.6	0.3	0.0	0.0	0.0	0.0	96.0	0.1	3.9	0.174	0.527	21.271206	-89.712393

10 CARR: Mérida - Celestún

CLAVE: 31025

RUTA: MEX-281

AÑO: 2018

LUGAR	ESTACION				CLASIFICACION VEHICULAR EN PORCIENTO													COORDENADAS		
	KM	TE	SC	TDPA	M	A	B	C2	C3	T3S2	T3S3	T3S2R4	OTROS	A	B	C	K'	D	LATITUD	LONGITUD
Mérida	0.00	3	1	20755	6.5	84.7	0.3	6.8	0.3	0.4	0.5	0.3	0.2	91.2	0.3	8.5	0.071	0.501	20.987219	-89.659680
Mérida	0.00	3	2	20809	5.7	85.1	0.3	7.2	0.3	0.4	0.5	0.3	0.2	90.8	0.3	8.9	0.070	0.501	20.987091	-89.659724
X. Periférico de Mérida	5.10	1	1	32946	2.5	90.5	0.2	4.7	0.5	0.5	0.6	0.3	0.2	93.0	0.2	6.8	0.069	0.532	20.993792	-89.670288

YUCATAN

10 CARR: Mérida - Celestún

CLAVE: 31025

RUTA: MEX-281

AÑO: 2018

LUGAR	ESTACION				CLASIFICACION VEHICULAR EN PORCIENTO										COORDENADAS					
	KM	TE	SC	TDPA	M	A	B	C2	C3	T3S2	T3S3	T3S2R4	OTROS	A	B	C	K'	D	LATITUD	LONGITUD
X. Periférico de Mérida	5.10	1	2	29011	4.0	88.7	0.2	4.9	0.5	0.5	0.7	0.3	0.2	92.7	0.2	7.1	0.070	0.532	20.993687	-89.670364
X. Periférico de Mérida	5.10	3	1	20943	6.1	88.1	0.2	4.6	0.2	0.3	0.3	0.1	0.1	94.2	0.2	5.6	0.094	0.505	20.998626	-89.678096
X. Periférico de Mérida	5.10	3	2	20544	5.3	88.7	0.2	4.8	0.2	0.3	0.3	0.1	0.1	94.0	0.2	5.8	0.100	0.505	20.998570	-89.678196
Ucú	14.80	1	0	4783	16.0	71.0	0.7	10.1	0.4	1.6	0.1	0.0	0.1	87.0	0.7	12.3	0.065	0.513	21.027257	-89.734190
Hunucmá	26.00	1	0	2572	15.9	66.8	1.0	13.4	0.5	1.8	0.3	0.1	0.2	82.7	1.0	16.3	0.089	0.508	21.027430	-89.850414
Hunucmá	26.00	3	0	2479	30.9	56.6	1.0	9.1	0.3	2.0	0.1	0.0	0.0	87.5	1.0	11.5	0.072	0.508	21.002449	-89.886280
Kinchil	40.00	3	0	2069	12.3	70.7	1.4	8.4	2.8	3.5	0.7	0.1	0.1	83.0	1.4	15.6	0.073	0.501	20.911589	-89.963627
T. Izq. San Mateo	67.00	1	0	1164	2.7	87.2	0.4	6.4	2.1	0.7	0.3	0.2	0.0	89.9	0.4	9.7	0.118	0.516	20.859867	-90.187148
Celestún	89.00	1	0	1210	13.4	73.5	2.2	8.1	1.2	1.2	0.4	0.0	0.0	86.9	2.2	10.9	0.102	0.509	20.857442	-90.380417

11 CARR: Mérida - Dzilam de Bravo

CLAVE: 31001

RUTA: MEX-176

AÑO: 2018

LUGAR	ESTACION				CLASIFICACION VEHICULAR EN PORCIENTO										COORDENADAS					
	KM	TE	SC	TDPA	M	A	B	C2	C3	T3S2	T3S3	T3S2R4	OTROS	A	B	C	K'	D	LATITUD	LONGITUD
Mérida	0.00																			
X. Periférico de Mérida	5.90	1	1	10428	3.0	91.5	0.1	2.5	0.1	0.9	1.5	0.1	0.3	94.5	0.1	5.4	0.078	0.535	21.019130	-89.568450
X. Periférico de Mérida	5.90	1	2	11988	3.8	90.4	0.1	2.7	0.1	0.9	1.6	0.1	0.3	94.2	0.1	5.7	0.072	0.535	21.019175	-89.568531
X. Periférico de Mérida	5.90	3	1	15746	4.9	78.0	1.2	12.2	1.0	1.0	0.9	0.4	0.4	82.9	1.2	15.9	0.071	0.527	21.037949	-89.550359
X. Periférico de Mérida	5.90	3	2	17518	3.2	77.8	1.3	13.8	1.1	1.0	1.0	0.4	0.4	81.0	1.3	17.7	0.079	0.527	21.038027	-89.550456
Conkal	18.00	1	1	11747	6.3	83.4	0.4	5.8	1.0	1.7	0.8	0.3	0.3	89.7	0.4	9.9	0.084	0.500	21.050212	-89.538428
Conkal	18.00	1	2	11758	6.3	83.0	0.4	5.9	1.1	1.8	0.9	0.3	0.3	89.3	0.4	10.3	0.100	0.500	21.050283	-89.538502
Baca	34.40	1	0	1900	36.6	53.1	0.2	7.2	0.6	1.7	0.4	0.1	0.1	89.7	0.2	10.1	0.083	0.505	21.108957	-89.409945
Motul	44.00	1	1	5801	11.0	77.9	0.6	7.3	1.2	1.0	0.5	0.5	0.0	88.9	0.6	10.5	0.106	0.513	21.097661	-89.313506
Motul	44.00	1	2	5515	9.8	78.1	0.6	7.7	1.4	1.2	0.5	0.6	0.1	87.9	0.6	11.5	0.108	0.513	21.097773	-89.313495
Motul	44.00	3	0	5000	4.9	80.7	1.0	7.4	1.7	2.5	0.8	0.9	0.1	85.6	1.0	13.4	0.081	0.529	21.115568	-89.271675
Cansahcab	68.00	3	0	1787	15.1	77.1	0.7	5.1	1.0	1.0	0.0	0.0	0.0	92.2	0.7	7.1	0.087	0.506	21.165872	-89.100662
Dzidzantún	80.00	1	0	2131	17.7	74.4	0.4	6.5	0.8	0.2	0.0	0.0	0.0	92.1	0.4	7.5	0.090	0.510	21.235510	-89.051594
Dzilam de Bravo	105.00	1	0	2794	44.3	47.4	0.2	5.2	0.3	2.0	0.3	0.1	0.2	91.7	0.2	8.1	0.077	0.503	21.389285	-88.892027

12 CARR: Mérida - Progreso

CLAVE: 31091

RUTA: MEX-261

AÑO: 2018

LUGAR	ESTACION				CLASIFICACION VEHICULAR EN PORCIENTO										COORDENADAS					
	KM	TE	SC	TDPA	M	A	B	C2	C3	T3S2	T3S3	T3S2R4	OTROS	A	B	C	K'	D	LATITUD	LONGITUD
T. C. Mérida - Dzilam de Bravo	0.00																			
Periférico Mérida	5.40	1	1	22576	2.2	91.3	0.4	3.4	0.2	0.4	1.3	0.3	0.5	93.5	0.4	6.1	0.082	0.532	21.043730	-89.629175

YUCATAN

12 CARR: Mérida - Progreso

CLAVE: 31091

RUTA: MEX-261

AÑO: 2018

LUGAR	ESTACION				CLASIFICACION VEHICULAR EN PORCIENTO													COORDENADAS		
	KM	TE	SC	TDPA	M	A	B	C2	C3	T3S2	T3S3	T3S2R4	OTROS	A	B	C	K'	D	LATITUD	LONGITUD
Periférico Mérida	5.40	1	2	19854	2.7	90.4	0.4	3.7	0.2	0.5	1.4	0.3	0.4	93.1	0.4	6.5	0.081	0.532	21.043711	-89.629298
T. Izq. Dzityá	10.40	1	1	27556	2.3	90.2	1.5	2.5	0.4	1.3	1.2	0.3	0.3	92.5	1.5	6.0	0.075	0.510	21.051406	-89.630524
T. Izq. Dzityá	10.40	1	2	26440	2.9	88.8	1.9	2.8	0.4	1.3	1.3	0.3	0.3	91.7	1.9	6.4	0.078	0.510	21.051361	-89.630826
T. Izq. Dzityá	10.40	3	1	20261	1.7	87.8	2.6	4.0	1.3	1.0	1.0	0.4	0.2	89.5	2.6	7.9	0.094	0.501	21.064670	-89.632763
T. Izq. Dzityá	10.40	3	2	20313	2.3	86.2	2.9	4.5	1.4	1.0	1.1	0.4	0.2	88.5	2.9	8.6	0.075	0.501	21.064819	-89.633207
Progreso	35.04	1	1	13085	3.9	87.0	0.4	3.3	0.8	2.3	1.5	0.4	0.4	90.9	0.4	8.7	0.103	0.511	21.267877	-89.660656
Progreso	35.04	1	2	12530	4.2	86.2	0.4	3.7	0.8	2.2	1.7	0.4	0.4	90.4	0.4	9.2	0.108	0.511	21.270064	-89.661537

13 CARR: Mérida - Puerto Juárez

CLAVE: 00067

RUTA: MEX-180

AÑO: 2018

LUGAR	ESTACION				CLASIFICACION VEHICULAR EN PORCIENTO													COORDENADAS		
	KM	TE	SC	TDPA	M	A	B	C2	C3	T3S2	T3S3	T3S2R4	OTROS	A	B	C	K'	D	LATITUD	LONGITUD
Mérida	0.00																			
X. Periférico de Mérida	5.60	1	1	12885	8.9	83.0	0.6	4.1	0.3	1.8	1.0	0.2	0.1	91.9	0.6	7.5	0.067	0.502	20.957594	-89.572463
X. Periférico de Mérida	5.60	1	2	13008	9.1	82.9	0.7	4.0	0.3	1.8	0.9	0.2	0.1	92.0	0.7	7.3	0.068	0.502	20.957683	-89.572449
X. Periférico de Mérida	5.60	3	1	15914	5.7	80.8	1.2	4.5	1.1	2.7	2.5	1.1	0.4	86.5	1.2	12.3	0.076	0.514	20.954940	-89.566197
X. Periférico de Mérida	5.60	3	2	15067	6.3	81.1	0.9	4.4	1.2	2.6	1.9	1.2	0.4	87.4	0.9	11.7	0.066	0.514	20.955208	-89.566482
Teya	13.00	1	1	10808	3.8	82.2	1.6	5.8	1.4	2.3	1.1	1.6	0.2	86.0	1.6	12.4	0.093	0.510	20.938071	-89.537220
Teya	13.00	1	2	10367	3.4	81.3	1.8	6.4	1.5	2.5	1.2	1.7	0.2	84.7	1.8	13.5	0.088	0.510	20.938185	-89.537175
T. Der. Seyé	28.79	1	1	5966	2.6	80.8	2.5	6.4	1.9	2.4	0.7	2.5	0.2	83.4	2.5	14.1	0.066	0.508	20.894851	-89.389690
T. Der. Seyé	28.79	1	2	6161	3.3	80.7	2.3	6.6	1.7	2.2	0.6	2.4	0.2	84.0	2.3	13.7	0.093	0.508	20.894944	-89.389626
T. Der. Seyé	28.79	3	1	5488	1.0	81.1	3.3	7.0	1.8	2.4	0.7	2.6	0.1	82.1	3.3	14.6	0.079	0.512	20.891938	-89.371317
T. Der. Seyé	28.79	3	2	5240	1.0	80.6	3.2	7.2	1.9	2.7	0.6	2.7	0.1	81.6	3.2	15.2	0.091	0.512	20.892040	-89.371326
Tahmek	42.00	1	1	5457	1.2	82.8	3.0	5.9	1.8	2.4	0.8	2.0	0.1	84.0	3.0	13.0	0.080	0.502	20.876046	-89.279041
Tahmek	42.00	1	2	5420	0.7	84.3	2.5	5.7	1.7	2.4	0.7	1.9	0.1	85.0	2.5	12.5	0.092	0.502	20.876155	-89.279029
T. Izq. Hochtún (1º Acceso)	46.65	1	0	2514	14.5	66.6	6.3	7.8	3.2	0.8	0.4	0.4	0.0	81.1	6.3	12.6	0.068	0.517	20.867467	-89.214138
T. Izq. Hochtún (2º Acceso)	48.62	1	0	1137	9.2	72.9	1.4	9.9	2.8	2.3	1.0	0.5	0.0	82.1	1.4	16.5	0.087	0.508	20.858561	-89.201872
T. Izq. Hochtún (2º Acceso)	48.62	3	0	2276	16.4	70.6	2.7	7.2	0.9	1.8	0.3	0.1	0.0	87.0	2.7	10.3	0.080	0.518	20.854008	-89.195694
Kantunil	67.28	3	0	2905	4.0	78.0	3.6	7.8	3.6	2.3	0.3	0.3	0.1	82.0	3.6	14.4	0.075	0.542	20.791310	-89.019414
Libre Unión	92.91	1	0	2623	5.1	74.5	3.8	9.1	3.9	1.9	0.7	0.9	0.1	79.6	3.8	16.6	0.088	0.520	20.707907	-88.813433
Libre Unión	92.91	3	0	2462	3.6	75.9	4.1	9.9	3.4	1.6	0.9	0.5	0.1	79.5	4.1	16.4	0.084	0.523	20.706852	-88.801283
Piste	116.30	3	0	6829	5.4	79.9	2.6	6.9	1.4	2.4	0.9	0.3	0.2	85.3	2.6	12.1	0.080	0.531	20.690621	-88.579280
1er. Acceso a Zona Arqueológica de Chichen-Itzá	117.90	3	0	5633	9.3	73.4	3.7	8.5	2.0	1.8	0.7	0.4	0.2	82.7	3.7	13.6	0.078	0.500	20.688764	-88.570386
2do. Acceso a Zona Arqueológica de Chichen-Itzá	121.10	3	0	5744	6.5	77.4	3.2	7.3	1.9	2.5	0.8	0.2	0.2	83.9	3.2	12.9	0.082	0.511	20.667454	-88.554557
T. Der. Chankom	127.00	1	0	4324	3.6	75.9	4.2	11.4	2.5	1.7	0.3	0.3	0.1	79.5	4.2	16.3	0.081	0.503	20.643945	-88.494276

YUCATAN

13 CARR: Mérida - Puerto Juárez

CLAVE: 00067

RUTA: MEX-180

AÑO: 2018

LUGAR	ESTACION				CLASIFICACION VEHICULAR EN PORCIENTO													COORDENADAS		
	KM	TE	SC	TDPA	M	A	B	C2	C3	T3S2	T3S3	T3S2R4	OTROS	A	B	C	K'	D	LATITUD	LONGITUD
T. Der. Chankom	127.00	3	0	3922	3.6	80.1	3.4	6.6	2.9	1.5	1.2	0.6	0.1	83.7	3.4	12.9	0.081	0.507	20.640267	-88.482672
Valladolid	160.68	1	0	6411	14.9	77.1	1.4	5.5	0.6	0.4	0.1	0.0	0.0	92.0	1.4	6.6	0.069	0.529	20.682641	-88.233735
Valladolid	160.68	3	0	6871	14.3	77.6	1.0	4.3	0.6	1.9	0.1	0.2	0.0	91.9	1.0	7.1	0.081	0.531	20.694932	-88.164276
T. Der. Coba	187.80	1	0	6302	2.1	81.6	2.1	10.1	1.5	1.2	0.5	0.9	0.0	83.7	2.1	14.2	0.084	0.547	20.659487	-87.960958
T. Der. Chemax	189.79	1	0	4450	4.0	84.6	1.5	4.9	1.9	2.4	0.4	0.2	0.1	88.6	1.5	9.9	0.091	0.533	20.657899	-87.951566
T. Der. Chemax	189.79	3	0	3398	5.6	81.3	2.7	6.8	1.8	1.1	0.3	0.3	0.1	86.9	2.7	10.4	0.083	0.521	20.664992	-87.924923
X-Can	225.00	3	0	2704	2.0	82.2	2.8	8.4	1.8	1.7	0.5	0.5	0.1	84.2	2.8	13.0	0.102	0.527	20.860593	-87.655802
Lim. Edos. Term. Yuc. Ppia. Q. R.	230.40																			
Nuevo X-Can	231.90	3	0	3003	2.3	84.2	2.1	6.6	1.8	1.9	0.6	0.4	0.1	86.5	2.1	11.4	0.106	0.515	20.871598	-87.591067
Zaragoza	239.00	1	0	4268	1.8	86.8	2.0	6.0	1.4	1.2	0.4	0.3	0.1	88.6	2.0	9.4	0.071	0.508	20.881203	-87.534181
Vicente Guerrero	261.00	1	0	3092	2.1	82.5	2.7	7.6	2.1	2.0	0.5	0.4	0.1	84.6	2.7	12.7	0.100	0.501	20.940788	-87.331979
Leona Vicario	275.50	1	0	5354	2.4	85.2	1.9	5.9	1.5	1.9	0.5	0.4	0.3	87.6	1.9	10.5	0.084	0.513	20.981102	-87.222578
Leona Vicario	275.50	3	0	5942	3.3	83.8	1.5	7.5	1.3	1.4	0.5	0.5	0.2	87.1	1.5	11.4	0.078	0.511	20.993232	-87.189286
T. Der. Aeropuerto	302.50	1	0	7233	2.1	83.5	1.1	7.1	1.5	2.6	1.2	0.7	0.2	85.6	1.1	13.3	0.077	0.509	21.096193	-86.983479
T. Der. Aeropuerto	302.50	3	1	4822	3.2	81.8	1.8	7.4	1.8	1.5	1.0	1.3	0.2	85.0	1.8	13.2	0.116	0.510	21.103135	-86.969298
T. Der. Aeropuerto	302.50	3	2	4626	2.8	81.0	1.9	8.1	1.9	1.8	0.8	1.5	0.2	83.8	1.9	14.3	0.134	0.510	21.103297	-86.969378
T. Der. Alfredo V. Bonfil	310.00	1	1	23134	4.8	81.0	0.2	3.0	0.3	4.6	3.9	1.1	1.1	85.8	0.2	14.0	0.056	0.507	21.138315	-86.898707
T. Der. Alfredo V. Bonfil	310.00	1	2	23746	4.8	79.6	0.2	3.4	0.3	5.2	4.2	1.2	1.1	84.4	0.2	15.4	0.056	0.507	21.138444	-86.898797
Puerto Juárez	321.41																			

14 CARR: Mérida - Tekanto

CLAVE: 31587

RUTA: MEX-180

AÑO: 2018

LUGAR	ESTACION				CLASIFICACION VEHICULAR EN PORCIENTO													COORDENADAS		
	KM	TE	SC	TDPA	M	A	B	C2	C3	T3S2	T3S3	T3S2R4	OTROS	A	B	C	K'	D	LATITUD	LONGITUD
T. C. Mérida - Puerto Juárez	0.00																			
X. Periférico de Mérida	5.70	1	0	14220	11.3	79.5	0.1	7.6	0.2	0.3	0.9	0.0	0.1	90.8	0.1	9.1	0.070	0.507	20.961361	-89.569706
T. Der. Tixpéhual	13.25	1	0	6659	9.8	78.7	0.6	6.5	1.6	2.2	0.3	0.1	0.2	88.5	0.6	10.9	0.070	0.520	20.976413	-89.463430
T. Der. Tixpéhual	13.25	3	0	3689	8.6	81.3	0.5	7.1	0.6	1.7	0.1	0.0	0.1	89.9	0.5	9.6	0.096	0.506	20.981835	-89.454592
Tixkokob	21.00	1	0	4018	8.4	82.1	0.4	6.7	0.6	1.6	0.2	0.0	0.0	90.5	0.4	9.1	0.102	0.524	21.003786	-89.420480
Tixkokob	21.00	3	0	3548	31.7	58.4	0.4	8.9	0.5	0.1	0.0	0.0	0.0	90.1	0.4	9.5	0.066	0.520	21.000440	-89.375439
Cacalchén	38.00	1	0	1882	23.8	57.3	1.8	15.9	1.0	0.2	0.0	0.0	0.0	81.1	1.8	17.1	0.093	0.514	20.985793	-89.247721
Tekanto	51.00	1	0	1033	42.8	45.1	0.3	11.2	0.4	0.1	0.0	0.0	0.1	87.9	0.3	11.8	0.121	0.501	21.010425	-89.118042

YUCATAN

15 CARR: Mérida - Tetiz

CLAVE: 31610

RUTA: MEX-281

AÑO: 2018

LUGAR	ESTACION				CLASIFICACION VEHICULAR EN PORCIENTO										COORDENADAS					
	KM	TE	SC	TDPA	M	A	B	C2	C3	T3S2	T3S3	T3S2R4	OTROS	A	B	C	K'	D	LATITUD	LONGITUD
Anillo Periferico Lic. Manuel Berzunza	0.00	3	0	12054	6.5	84.7	0.7	4.8	1.1	1.8	0.2	0.2	0.0	91.2	0.7	8.1	0.103	0.532	20.983528	-89.699924
X. C. Hunucmá - Umán	17.98	1	0	4390	13.1	70.8	1.2	10.5	1.9	1.5	0.4	0.5	0.1	83.9	1.2	14.9	0.082	0.516	20.982063	-89.841937
X. C. Hunucmá - Umán	17.98	3	0	2320	5.8	80.9	1.1	8.2	1.4	1.7	0.6	0.1	0.2	86.7	1.1	12.2	0.084	0.502	20.979259	-89.860953
X. C. Mérida - Celestún	24.40	1	0	2924	2.1	86.4	1.2	7.0	1.0	1.2	0.4	0.2	0.5	88.5	1.2	10.3	0.069	0.501	20.979843	-89.908668

16 CARR: Muna - Felipe Carrillo Puerto

CLAVE: 00148

RUTA: MEX-184

AÑO: 2018

LUGAR	ESTACION				CLASIFICACION VEHICULAR EN PORCIENTO										COORDENADAS					
	KM	TE	SC	TDPA	M	A	B	C2	C3	T3S2	T3S3	T3S2R4	OTROS	A	B	C	K'	D	LATITUD	LONGITUD
Muna	0.00	3	0	3894	10.4	73.5	1.1	9.5	1.5	2.5	0.8	0.4	0.3	83.9	1.1	15.0	0.068	0.512	20.474398	-89.694377
Ticul	19.10	1	0	3615	8.3	77.2	0.9	9.6	1.2	1.9	0.4	0.4	0.1	85.5	0.9	13.6	0.083	0.506	20.406437	-89.573253
Ticul	19.10	3	0	6645	35.4	52.5	0.5	7.0	0.6	2.9	0.5	0.2	0.4	87.9	0.5	11.6	0.075	0.508	20.372761	-89.517034
Oxkutzcab	40.50	3	0	6086	27.7	61.9	0.7	5.6	0.7	2.5	0.4	0.2	0.3	89.6	0.7	9.7	0.078	0.502	20.281829	-89.374849
Tekax	53.90	3	0	3557	27.6	63.9	0.3	5.2	0.5	2.1	0.3	0.0	0.1	91.5	0.3	8.2	0.072	0.511	20.188246	-89.267838
Tzucacab	86.60	1	0	1896	25.8	63.7	0.4	7.9	0.8	1.2	0.2	0.0	0.0	89.5	0.4	10.1	0.073	0.502	20.078492	-89.062326
Tzucacab	86.60	3	0	1434	29.1	62.3	0.3	6.5	0.6	0.9	0.2	0.1	0.0	91.4	0.3	8.3	0.080	0.505	20.062736	-89.036353
Santa Rosa	109.60	3	0	2095	5.8	74.4	1.9	8.5	2.7	2.5	1.4	2.7	0.1	80.2	1.9	17.9	0.064	0.510	19.947575	-88.880554
Lim. Edos. Term. Yuc. Ppia. Q. R.	117.00																			
Dziuche	118.00	1	0	2301	4.2	74.0	3.3	9.8	2.3	2.1	0.9	3.3	0.1	78.2	3.3	18.5	0.080	0.508	19.905588	-88.819782
Dziuche	118.00	3	0	2984	5.0	78.0	2.6	7.8	1.8	1.6	0.7	2.4	0.1	83.0	2.6	14.4	0.075	0.507	19.888435	-88.803582
José María Morelos	138.60	1	0	3840	8.8	79.8	1.5	6.0	1.4	0.9	0.5	1.0	0.1	88.6	1.5	9.9	0.081	0.519	19.764608	-88.725213
José María Morelos	138.60	3	0	3068	9.1	75.6	2.0	8.4	1.5	1.2	0.7	1.4	0.1	84.7	2.0	13.3	0.069	0.526	19.736853	-88.692076
Polyuc	161.94	1	0	2571	6.8	76.3	2.0	7.7	2.3	2.1	1.0	1.7	0.1	83.1	2.0	14.9	0.068	0.504	19.611768	-88.571782
Polyuc	161.94	3	0	1327	8.9	78.4	0.7	7.9	1.5	1.4	0.5	0.6	0.1	87.3	0.7	12.0	0.083	0.503	19.609485	-88.556426
T. Der. Dzúlá	178.11	3	0	1306	6.3	80.6	1.3	8.0	1.6	0.9	0.3	1.0	0.0	86.9	1.3	11.8	0.080	0.552	19.643472	-88.405909
Felipe Carrillo Puerto	216.97	1	0	5610	19.8	71.0	0.6	3.4	0.5	3.7	0.5	0.1	0.4	90.8	0.6	8.6	0.075	0.508	19.584634	-88.058438

17 CARR: Ramal a Panabá

CLAVE: 31609

RUTA: MEX-295

AÑO: 2018

LUGAR	ESTACION				CLASIFICACION VEHICULAR EN PORCIENTO										COORDENADAS					
	KM	TE	SC	TDPA	M	A	B	C2	C3	T3S2	T3S3	T3S2R4	OTROS	A	B	C	K'	D	LATITUD	LONGITUD
T. C. Valladolid - Río Lagartos	0.00	3	0	1562	21.4	70.6	0.5	5.9	0.6	0.9	0.1	0.0	0.0	92.0	0.5	7.5	0.075	0.510	21.194271	-88.170544
Panabá	18.00	1	0	1520	23.5	67.4	0.6	6.4	0.5	1.3	0.1	0.0	0.2	90.9	0.6	8.5	0.072	0.510	21.284642	-88.268676

YUCATAN

18 CARR: Teya -Peto

CLAVE: 31042

RUTA: MEX-184

AÑO: 2018

LUGAR	ESTACION				CLASIFICACION VEHICULAR EN PORCIENTO													COORDENADAS		
	KM	TE	SC	TDPA	M	A	B	C2	C3	T3S2	T3S3	T3S2R4	OTROS	A	B	C	K'	D	LATITUD	LONGITUD
T. C. Mérida - Puerto Juárez	0.00																			
San Antonio Tehuizt	3.80	3	1	4733	6.4	79.8	0.2	7.5	2.4	1.9	0.7	0.9	0.2	86.2	0.2	13.6	0.105	0.506	20.887923	-89.507767
San Antonio Tehuizt	3.80	3	2	4627	6.0	79.4	0.2	7.9	2.6	2.1	0.7	0.9	0.2	85.4	0.2	14.4	0.107	0.506	20.887972	-89.507685
T. Izq. Acanceh	13.70	1	1	3178	5.7	80.0	1.4	7.2	2.1	1.6	0.8	1.1	0.1	85.7	1.4	12.9	0.115	0.512	20.816554	-89.471856
T. Izq. Acanceh	13.70	1	2	3329	6.2	78.0	1.5	7.8	2.3	1.7	0.8	1.6	0.1	84.2	1.5	14.3	0.099	0.512	20.816528	-89.471718
Tecoh	22.00	3	1	3385	6.8	78.6	1.2	7.2	2.3	1.5	0.9	1.4	0.1	85.4	1.2	13.4	0.097	0.505	20.711483	-89.476054
Tecoh	22.00	3	2	3320	6.2	77.9	1.4	8.2	2.2	1.8	0.8	1.4	0.1	84.1	1.4	14.5	0.082	0.505	20.711485	-89.475936
T. Der. Zona Arq. de Mayapan	37.65	1	1	2162	1.6	82.2	1.7	7.2	2.7	1.8	1.0	1.7	0.1	83.8	1.7	14.5	0.125	0.504	20.633543	-89.459113
T. Der. Zona Arq. de Mayapan	37.65	1	2	2193	1.8	80.7	1.8	8.3	2.6	2.0	0.9	1.8	0.1	82.5	1.8	15.7	0.099	0.504	20.633605	-89.458975
T. Izq. Teabo	69.05	1	1	2072	1.7	82.9	1.5	6.6	2.6	1.9	1.0	1.7	0.1	84.6	1.5	13.9	0.112	0.511	20.408488	-89.307082
T. Izq. Teabo	69.05	1	2	1981	3.9	78.6	1.7	7.8	2.7	2.1	1.2	1.9	0.1	82.5	1.7	15.8	0.093	0.511	20.408495	-89.307020
T. Izq. Tixmehuac	97.10	1	0	2289	3.1	76.8	2.6	7.2	3.1	2.8	1.6	2.6	0.2	79.9	2.6	17.5	0.084	0.513	20.231206	-89.129532
Peto	120.70	1	0	2540	5.4	76.3	2.5	6.1	2.8	2.6	1.5	2.6	0.2	81.7	2.5	15.8	0.083	0.507	20.125633	-88.951335

19 CARR: Tzucacab - Santa Rosa

CLAVE: 31017

RUTA: MEX

AÑO: 2018

LUGAR	ESTACION				CLASIFICACION VEHICULAR EN PORCIENTO													COORDENADAS		
	KM	TE	SC	TDPA	M	A	B	C2	C3	T3S2	T3S3	T3S2R4	OTROS	A	B	C	K'	D	LATITUD	LONGITUD
Tzucacab	0.00	3	0	1563	19.4	68.7	0.6	9.2	0.9	1.0	0.2	0.0	0.0	88.1	0.6	11.3	0.080	0.506	20.073955	-89.035167
Peto	16.00	3	0	2162	6.1	76.7	2.0	6.1	2.5	2.5	1.2	2.8	0.1	82.8	2.0	15.2	0.104	0.507	20.083679	-88.911954
Santa Rosa	34.50	1	0	1891	5.9	71.8	2.7	9.5	3.0	2.4	1.4	3.1	0.2	77.7	2.7	19.6	0.085	0.527	19.979180	-88.885893

20 CARR: Valladolid - Felipe Carrillo Puerto

CLAVE: 00010

RUTA: MEX-295

AÑO: 2018

LUGAR	ESTACION				CLASIFICACION VEHICULAR EN PORCIENTO													COORDENADAS		
	KM	TE	SC	TDPA	M	A	B	C2	C3	T3S2	T3S3	T3S2R4	OTROS	A	B	C	K'	D	LATITUD	LONGITUD
Valladolid	0.00	3	0	5471	21.5	73.7	0.3	2.1	0.1	1.9	0.2	0.1	0.1	95.2	0.3	4.5	0.084	0.518	20.672930	-88.204631
Chichimilá	6.90	3	0	2299	11.9	82.4	0.4	3.2	0.6	1.2	0.1	0.1	0.1	94.3	0.4	5.3	0.076	0.501	20.620587	-88.235735
Tekom	12.05	3	0	1534	11.1	79.8	3.1	5.1	0.5	0.4	0.0	0.0	0.0	90.9	3.1	6.0	0.077	0.510	20.590893	-88.265367
Tixcacalcupul	19.80	3	0	943	12.7	78.8	0.5	6.2	0.8	0.7	0.2	0.1	0.0	91.5	0.5	8.0	0.087	0.502	20.519940	-88.270818
Lim. Edos. Term. Yuc. Ppia. Q. R.	46.00																			
Tepich	51.40	1	0	714	11.2	78.2	0.4	8.2	0.5	1.0	0.4	0.1	0.0	89.4	0.4	10.2	0.108	0.507	20.249275	-88.255217
Tihosuco	65.00	1	0	848	8.8	80.3	1.1	7.9	0.7	0.8	0.3	0.1	0.0	89.1	1.1	9.8	0.087	0.506	20.193180	-88.359837
Tihosuco	65.00	3	0	1014	10.0	79.2	1.3	7.9	0.6	0.6	0.2	0.1	0.1	89.2	1.3	9.5	0.077	0.522	20.190165	-88.387081
T. Izq. San Felipe Berriozábal	99.00	1	0	599	6.7	81.7	1.0	7.7	1.5	0.8	0.3	0.3	0.0	88.4	1.0	10.6	0.093	0.507	19.962690	-88.241886

YUCATAN

20 CARR: Valladolid - Felipe Carrillo Puerto

CLAVE: 00010

RUTA: MEX-295

AÑO: 2018

LUGAR	ESTACION				CLASIFICACION VEHICULAR EN PORCIENTO													COORDENADAS		
	KM	TE	SC	TDPA	M	A	B	C2	C3	T3S2	T3S3	T3S2R4	OTROS	A	B	C	K'	D	LATITUD	LONGITUD
T. Izq. San Felipe Berriozábal	99.00	3	0	660	5.7	83.0	1.4	7.5	1.3	0.4	0.4	0.3	0.0	88.7	1.4	9.9	0.094	0.507	19.961450	-88.240635
Señor	116.50	1	0	879	4.9	83.6	1.5	7.7	0.7	0.9	0.4	0.3	0.0	88.5	1.5	10.0	0.090	0.502	19.853057	-88.145024
Señor	116.50	3	0	1307	7.0	82.6	1.4	7.2	0.6	0.6	0.4	0.2	0.0	89.6	1.4	9.0	0.075	0.511	19.831117	-88.130877
Felipe Carrillo Puerto	147.70	1	0	1511	5.8	82.9	1.3	8.8	0.5	0.4	0.2	0.1	0.0	88.7	1.3	10.0	0.084	0.506	19.603282	-88.053813

21 CARR: Valladolid - Río Lagartos

CLAVE: 31035

RUTA: MEX-295

AÑO: 2018

LUGAR	ESTACION				CLASIFICACION VEHICULAR EN PORCIENTO													COORDENADAS		
	KM	TE	SC	TDPA	M	A	B	C2	C3	T3S2	T3S3	T3S2R4	OTROS	A	B	C	K'	D	LATITUD	LONGITUD
Valladolid	0.00	3	1	4662	10.8	78.7	1.7	4.9	0.9	1.4	0.4	1.0	0.2	89.5	1.7	8.8	0.073	0.507	20.729917	-88.202831
Valladolid	0.00	3	2	4530	9.6	79.2	1.9	5.1	1.0	1.5	0.4	1.1	0.2	88.8	1.9	9.3	0.069	0.507	20.729916	-88.202953
Temozón	12.70	3	0	3698	5.0	81.8	1.8	6.2	1.3	2.2	0.6	1.0	0.1	86.8	1.8	11.4	0.069	0.535	20.820277	-88.194685
Tizimin	51.80	1	0	3248	8.8	79.2	1.2	5.1	1.2	2.7	0.4	1.3	0.1	88.0	1.2	10.8	0.066	0.529	21.093665	-88.161334
Tizimin	51.80	3	0	3368	23.4	66.8	0.3	6.5	0.8	0.7	0.4	1.0	0.1	90.2	0.3	9.5	0.078	0.505	21.187899	-88.166391
T. Der. Dzonot Carretero	79.90	1	0	1396	12.8	74.5	1.2	6.5	0.9	2.0	0.6	1.2	0.3	87.3	1.2	11.5	0.092	0.523	21.370622	-88.143559
Río Lagartos	103.90																			

22 CARR: Mérida - Cancún (Cuota)

CLAVE: 00071

RUTA: MEX-180D

AÑO: 2018

LUGAR	ESTACION				CLASIFICACION VEHICULAR EN PORCIENTO													COORDENADAS		
	KM	TE	SC	TDPA	M	A	B	C2	C3	T3S2	T3S3	T3S2R4	OTROS	A	B	C	K'	D	LATITUD	LONGITUD
T. C. Mérida - Puerto Juárez	0.00																			
Caseta de Cobro Piste	51.00	1	1	2071	0.4	72.5	3.3	10.4	1.4	3.4	1.4	7.0	0.2	72.9	3.3	23.8	0.077	0.504	20.733720	-88.605136
Caseta de Cobro Piste	51.00	1	2	2042	0.8	69.1	3.5	11.6	1.5	3.9	1.4	8.0	0.2	69.9	3.5	26.6	0.098	0.504	20.733891	-88.604791
Caseta de Cobro X-Can	155.00	1	1	1355	0.6	75.7	6.2	6.3	0.8	3.0	0.5	6.8	0.1	76.3	6.2	17.5	0.125	0.528	20.877077	-87.632106
Caseta de Cobro X-Can	155.00	1	2	1514	1.0	75.2	5.8	6.4	1.0	3.0	0.7	6.8	0.1	76.2	5.8	18.0	0.155	0.528	20.877380	-87.631840
Lim. Edos. Term. Yuc. Ppia. Q. R.	160.00																			
T. C. Mérida - Puerto Juárez	292.00	1	1	1481	3.7	67.7	8.0	7.2	1.2	3.3	1.0	7.5	0.4	71.4	8.0	20.6	0.089	0.526	21.095768	-86.979054
T. C. Mérida - Puerto Juárez	292.00	1	2	1646	3.5	69.5	7.5	6.4	1.2	3.2	1.0	7.3	0.4	73.0	7.5	19.5	0.074	0.526	21.095867	-86.979526
T. C. Reforma Agraria - Puerto Juárez	308.10	1	0	14889	3.8	81.5	1.7	8.2	1.7	1.2	0.5	1.2	0.2	85.3	1.7	13.0	0.097	0.523	21.021643	-86.860494

YUCATAN

23 CARR: Acanceh - Estación Polabán

CLAVE: 31615

RUTA: YUC

AÑO: 2018

LUGAR	ESTACION				CLASIFICACION VEHICULAR EN PORCIENTO													COORDENADAS		
	KM	TE	SC	TDPA	M	A	B	C2	C3	T3S2	T3S3	T3S2R4	OTROS	A	B	C	K'	D	LATITUD	LONGITUD
Acanceh	0.00	3	0	1959	19.4	69.1	0.4	8.4	1.0	1.3	0.2	0.2	0.0	88.5	0.4	11.1	0.087	0.502	20.808923	-89.440212
Homún	20.00	3	0	1096	44.1	47.8	4.0	4.1	0.0	0.0	0.0	0.0	0.0	91.9	4.0	4.1	0.089	0.531	20.734939	-89.268013
Estación Polabán	24.40	1	0	783	27.5	58.4	5.6	7.0	1.5	0.0	0.0	0.0	0.0	85.9	5.6	8.5	0.098	0.505	20.726855	-89.224735

24 CARR: Baca - Dzidzantún

CLAVE: 31591

RUTA: YUC

AÑO: 2018

LUGAR	ESTACION				CLASIFICACION VEHICULAR EN PORCIENTO													COORDENADAS		
	KM	TE	SC	TDPA	M	A	B	C2	C3	T3S2	T3S3	T3S2R4	OTROS	A	B	C	K'	D	LATITUD	LONGITUD
Baca	0.00	3	0	1799	32.0	60.7	0.5	4.9	0.8	0.8	0.3	0.0	0.0	92.7	0.5	6.8	0.084	0.534	21.122562	-89.393912
Dzemul	15.00	1	0	333	13.1	79.9	0.6	4.8	1.4	0.1	0.1	0.0	0.0	93.0	0.6	6.4	0.096	0.537	21.205036	-89.319423
Dzemul	15.00	3	0	1563	51.9	42.0	0.2	3.8	0.5	1.4	0.1	0.0	0.1	93.9	0.2	5.9	0.109	0.501	21.208931	-89.296992
Pueblo Telchac	19.10	1	0	1869	40.7	54.7	0.1	4.1	0.2	0.1	0.0	0.1	0.0	95.4	0.1	4.5	0.074	0.530	21.205426	-89.280766
Sinanché	29.10	3	0	759	33.4	56.8	0.6	7.9	1.0	0.3	0.0	0.0	0.0	90.2	0.6	9.2	0.096	0.526	21.225966	-89.174459
Dzidzantún	43.00	1	0	987	45.4	48.6	0.1	4.6	0.4	0.8	0.1	0.0	0.0	94.0	0.1	5.9	0.092	0.502	21.244629	-89.055577

25 CARR: Citilcum - Tixkochoh

CLAVE: 31064

RUTA: YUC

AÑO: 2018

LUGAR	ESTACION				CLASIFICACION VEHICULAR EN PORCIENTO													COORDENADAS		
	KM	TE	SC	TDPA	M	A	B	C2	C3	T3S2	T3S3	T3S2R4	OTROS	A	B	C	K'	D	LATITUD	LONGITUD
Citilcum	0.00	3	0	1015	41.7	51.5	0.4	5.1	0.3	0.9	0.1	0.0	0.0	93.2	0.4	6.4	0.085	0.515	20.957396	-89.115888
Tekanto	7.00	1	0	650	42.7	53.4	0.6	1.7	0.3	1.2	0.1	0.0	0.0	96.1	0.6	3.3	0.097	0.502	21.001265	-89.105074
Tixkochoh	10.00	1	0	660	65.5	30.7	0.3	2.2	0.4	0.7	0.1	0.0	0.1	96.2	0.3	3.5	0.085	0.523	21.014014	-89.087838

26 CARR: Dzemul - Xtampú

CLAVE: 31608

RUTA: YUC

AÑO: 2018

LUGAR	ESTACION				CLASIFICACION VEHICULAR EN PORCIENTO													COORDENADAS		
	KM	TE	SC	TDPA	M	A	B	C2	C3	T3S2	T3S3	T3S2R4	OTROS	A	B	C	K'	D	LATITUD	LONGITUD
Dzemul	0.00	3	0	566	25.1	63.7	0.9	7.5	1.2	1.5	0.1	0.0	0.0	88.8	0.9	10.3	0.085	0.507	21.213040	-89.321305
Xtampú	10.00	1	0	665	27.5	64.8	0.1	6.4	0.9	0.3	0.0	0.0	0.0	92.3	0.1	7.6	0.096	0.511	21.330919	-89.348680

27 CARR: Dzidzantún - Santa Clara

CLAVE: 31592

RUTA: YUC

AÑO: 2018

LUGAR	ESTACION				CLASIFICACION VEHICULAR EN PORCIENTO													COORDENADAS		
	KM	TE	SC	TDPA	M	A	B	C2	C3	T3S2	T3S3	T3S2R4	OTROS	A	B	C	K'	D	LATITUD	LONGITUD
Dzidzantún	0.00	3	0	1049	46.9	46.3	0.1	5.6	0.3	0.3	0.3	0.2	0.0	93.2	0.1	6.7	0.098	0.508	21.258676	-89.041529

YUCATAN

27 CARR: Dzidzantún - Santa Clara

CLAVE: 31592

RUTA: YUC

AÑO: 2018

LUGAR	ESTACION				CLASIFICACION VEHICULAR EN PORCIENTO														COORDENADAS	
	KM	TE	SC	TDPA	M	A	B	C2	C3	T3S2	T3S3	T3S2R4	OTROS	A	B	C	K'	D	LATITUD	LONGITUD
Santa Clara	14.00	1	0	748	35.1	58.9	0.2	5.0	0.0	0.7	0.1	0.0	0.0	94.0	0.2	5.8	0.100	0.500	21.371394	-89.014342

28 CARR: Hoctún - Cenotillo

CLAVE: 31011

RUTA: YUC-011

AÑO: 2018

LUGAR	ESTACION				CLASIFICACION VEHICULAR EN PORCIENTO														COORDENADAS	
	KM	TE	SC	TDPA	M	A	B	C2	C3	T3S2	T3S3	T3S2R4	OTROS	A	B	C	K'	D	LATITUD	LONGITUD
Hoctún	0.00	3	0	3345	2.8	87.5	1.6	6.0	0.5	1.3	0.1	0.2	0.0	90.3	1.6	8.1	0.078	0.546	20.879966	-89.189069
Citilcum	13.20	3	0	1887	34.9	58.4	0.3	4.7	0.5	1.1	0.1	0.0	0.0	93.3	0.3	6.4	0.093	0.516	20.950799	-89.110572
Izamal	24.00	3	0	2230	33.0	58.8	0.4	5.7	0.5	1.4	0.1	0.0	0.1	91.8	0.4	7.8	0.076	0.508	20.934001	-89.000349
Tunkás	55.20	3	0	580	38.4	52.1	1.6	5.8	1.7	0.3	0.1	0.0	0.0	90.5	1.6	7.9	0.072	0.534	20.916036	-88.735512
Cenotillo	70.90	1	0	504	41.8	48.4	1.3	7.2	1.0	0.3	0.0	0.0	0.0	90.2	1.3	8.5	0.099	0.504	20.963544	-88.623985

29 CARR: Holcá - Sotuta

CLAVE: 31626

RUTA: YUC

AÑO: 2018

LUGAR	ESTACION				CLASIFICACION VEHICULAR EN PORCIENTO														COORDENADAS	
	KM	TE	SC	TDPA	M	A	B	C2	C3	T3S2	T3S3	T3S2R4	OTROS	A	B	C	K'	D	LATITUD	LONGITUD
T. C. Mérida - Puerto Juárez	0.00	3	0	835	10.9	79.3	1.0	7.2	1.1	0.3	0.1	0.1	0.0	90.2	1.0	8.8	0.081	0.524	20.750557	-88.930492
Tibolón	10.00	3	0	809	10.1	75.9	0.9	9.7	2.3	0.9	0.0	0.2	0.0	86.0	0.9	13.1	0.088	0.546	20.660293	-88.949399
Sotuta	20.00	1	0	891	17.7	71.2	0.9	7.9	1.3	0.8	0.0	0.2	0.0	88.9	0.9	10.2	0.071	0.513	20.606893	-89.002568

30 CARR: Hunucmá - Umán

CLAVE: 31610

RUTA: YUC

AÑO: 2018

LUGAR	ESTACION				CLASIFICACION VEHICULAR EN PORCIENTO														COORDENADAS	
	KM	TE	SC	TDPA	M	A	B	C2	C3	T3S2	T3S3	T3S2R4	OTROS	A	B	C	K'	D	LATITUD	LONGITUD
Hunucmá	0.00	3	0	4199	23.0	65.3	0.5	6.7	0.6	3.0	0.4	0.1	0.4	88.3	0.5	11.2	0.106	0.503	21.002346	-89.862500
X. C. Mérida - Tetiz	4.87	1	0	4620	11.1	75.6	0.9	8.4	1.0	2.2	0.4	0.1	0.3	86.7	0.9	12.4	0.077	0.517	20.982673	-89.854812
X. C. Mérida - Tetiz	4.87	3	0	1147	31.7	58.3	0.5	7.8	0.4	1.1	0.2	0.0	0.0	90.0	0.5	9.5	0.096	0.513	20.974720	-89.851845
Hacienda Dzibikak	16.16	1	0	1286	35.0	57.9	0.3	4.3	1.1	0.8	0.3	0.3	0.0	92.9	0.3	6.8	0.088	0.507	20.905590	-89.798206
Hacienda Dzibikak	16.16	3	0	2303	42.7	51.2	0.2	3.5	1.4	0.6	0.1	0.3	0.0	93.9	0.2	5.9	0.096	0.503	20.902091	-89.787009
Umán	22.00	1	0	3647	41.6	49.9	0.3	3.7	0.7	2.6	0.6	0.2	0.4	91.5	0.3	8.2	0.126	0.515	20.894241	-89.763865

YUCATAN

31 CARR: Izamal - Dzilam González

CLAVE: 31605

RUTA: YUC

AÑO: 2018

LUGAR	ESTACION				CLASIFICACION VEHICULAR EN PORCIENTO													COORDENADAS		
	KM	TE	SC	TDPA	M	A	B	C2	C3	T3S2	T3S3	T3S2R4	OTROS	A	B	C	K'	D	LATITUD	LONGITUD
Izamal	0.00	3	0	1572	43.8	50.2	0.8	4.0	0.4	0.7	0.1	0.0	0.0	94.0	0.8	5.2	0.087	0.500	20.944801	-89.006542
Temax	30.00	1	0	789	28.2	62.1	1.3	7.3	0.6	0.5	0.0	0.0	0.0	90.3	1.3	8.4	0.070	0.526	21.132848	-88.938837
Dzilam González	43.00	1	0	988	50.3	43.6	0.6	4.3	0.4	0.7	0.1	0.0	0.0	93.9	0.6	5.5	0.087	0.501	21.272297	-88.930931

32 CARR: Kantunil - Izamal

CLAVE: 31012

RUTA: YUC

AÑO: 2018

LUGAR	ESTACION				CLASIFICACION VEHICULAR EN PORCIENTO													COORDENADAS		
	KM	TE	SC	TDPA	M	A	B	C2	C3	T3S2	T3S3	T3S2R4	OTROS	A	B	C	K'	D	LATITUD	LONGITUD
Kantunil	0.00	3	0	1023	19.9	71.5	0.9	5.8	0.5	1.1	0.3	0.0	0.0	91.4	0.9	7.7	0.113	0.507	20.811256	-89.026215
Izamal	17.80	1	0	2095	31.5	64.3	0.4	2.4	0.2	1.1	0.0	0.0	0.1	95.8	0.4	3.8	0.091	0.507	20.920500	-89.013330

33 CARR: Kinchil - Umán

CLAVE: 31009

RUTA: YUC

AÑO: 2018

LUGAR	ESTACION				CLASIFICACION VEHICULAR EN PORCIENTO													COORDENADAS		
	KM	TE	SC	TDPA	M	A	B	C2	C3	T3S2	T3S3	T3S2R4	OTROS	A	B	C	K'	D	LATITUD	LONGITUD
Kinchil	0.00	3	0	1829	31.9	57.9	1.0	6.2	0.8	2.1	0.1	0.0	0.0	89.8	1.0	9.2	0.076	0.509	20.911581	-89.938111
Umán	26.00																			

34 CARR: Libramiento Norte de Motul

CLAVE: 31610

RUTA: YUC

AÑO: 2018

LUGAR	ESTACION				CLASIFICACION VEHICULAR EN PORCIENTO													COORDENADAS		
	KM	TE	SC	TDPA	M	A	B	C2	C3	T3S2	T3S3	T3S2R4	OTROS	A	B	C	K'	D	LATITUD	LONGITUD
T. C. Mérida - Dzilam de Bravo Poniente	0.00	3	0	6437	5.6	79.8	1.3	7.3	1.9	2.4	0.7	0.9	0.1	85.4	1.3	13.3	0.081	0.520	21.101320	-89.301304
X. C. Motul - Puerto Telchac	3.16	1	0	6827	2.9	81.4	1.9	6.6	2.3	2.2	1.0	1.6	0.1	84.3	1.9	13.8	0.071	0.533	21.114459	-89.284177
X. C. Motul - Puerto Telchac	3.16	3	0	6314	4.7	78.6	1.9	7.5	2.1	2.7	1.0	1.4	0.1	83.3	1.9	14.8	0.077	0.506	21.114490	-89.278757
X. C. Libramiento Suma de Hidalgo	3.70	3	0	1284	22.1	65.4	4.3	6.6	1.6	0.0	0.0	0.0	0.0	87.5	4.3	8.2	0.088	0.539	21.112426	-89.274139
T. C. Mérida - Dzilam de Bravo Oriente	6.53	1	0	795	21.6	67.2	2.6	7.5	0.6	0.5	0.0	0.0	0.0	88.8	2.6	8.6	0.077	0.543	21.096744	-89.261110

35 CARR: Mérida - Acanceh

CLAVE: 31023

RUTA: YUC

AÑO: 2018

LUGAR	ESTACION				CLASIFICACION VEHICULAR EN PORCIENTO													COORDENADAS		
	KM	TE	SC	TDPA	M	A	B	C2	C3	T3S2	T3S3	T3S2R4	OTROS	A	B	C	K'	D	LATITUD	LONGITUD
Mérida	0.00	3	0	8647	20.5	68.2	0.1	5.3	1.9	1.1	0.9	1.6	0.4	88.7	0.1	11.2	0.073	0.624	20.935048	-89.579615
T. Der. Uxec Tamán	11.00	1	0	600	33.6	61.6	0.4	3.7	0.5	0.1	0.1	0.0	0.0	95.2	0.4	4.4	0.082	0.520	20.875525	-89.528543
T. Der. Uxec Tamán	11.00	3	0	425	23.7	66.0	0.6	8.4	0.6	0.7	0.0	0.0	0.0	89.7	0.6	9.7	0.094	0.502	20.862824	-89.532184

YUCATAN

35 CARR: Mérida - Acanceh

CLAVE: 31023

RUTA: YUC

AÑO: 2018

LUGAR	ESTACION				CLASIFICACION VEHICULAR EN PORCIENTO										COORDENADAS					
	KM	TE	SC	TDPA	M	A	B	C2	C3	T3S2	T3S3	T3S2R4	OTROS	A	B	C	K'	D	LATITUD	LONGITUD
Timucuy	20.00	3	0	1050	33.7	57.4	0.7	5.8	1.0	1.0	0.4	0.0	0.0	91.1	0.7	8.2	0.089	0.509	20.812437	-89.504103
Acanceh	26.00	1	0	1133	35.1	57.4	0.6	4.3	0.4	1.8	0.3	0.0	0.1	92.5	0.6	6.9	0.090	0.520	20.812502	-89.473413

36 CARR: Mérida - Oxkutzcab

CLAVE: 31018

RUTA: YUC-018

AÑO: 2018

LUGAR	ESTACION				CLASIFICACION VEHICULAR EN PORCIENTO										COORDENADAS					
	KM	TE	SC	TDPA	M	A	B	C2	C3	T3S2	T3S3	T3S2R4	OTROS	A	B	C	K'	D	LATITUD	LONGITUD
Mérida	0.00	3	1	11193	11.1	79.7	0.2	7.3	0.2	0.7	0.6	0.1	0.1	90.8	0.2	9.0	0.063	0.521	20.944904	-89.582702
Mérida	0.00	3	2	12193	11.8	79.1	0.3	7.3	0.1	0.7	0.6	0.0	0.1	90.9	0.3	8.8	0.068	0.521	20.944983	-89.582664
Kanasín	5.97	1	1	10626	23.5	67.8	0.3	6.7	0.4	0.6	0.5	0.1	0.1	91.3	0.3	8.4	0.060	0.505	20.941231	-89.572540
Kanasín	5.97	1	2	10848	23.5	68.2	0.3	6.3	0.4	0.7	0.4	0.1	0.1	91.7	0.3	8.0	0.064	0.505	20.941320	-89.572499
Acanceh	20.39	1	0	5035	25.0	63.0	0.5	6.1	0.4	3.7	0.5	0.2	0.6	88.0	0.5	11.5	0.077	0.501	20.823000	-89.466167
Acanceh	20.39	3	1	3292	7.7	75.5	1.4	8.3	2.8	1.9	0.9	1.1	0.4	83.2	1.4	15.4	0.073	0.506	20.789368	-89.460490
Acanceh	20.39	3	2	3376	8.1	75.8	1.3	7.9	2.6	1.9	0.9	1.1	0.4	83.9	1.3	14.8	0.079	0.506	20.789345	-89.460379
Tekit	61.70	1	0	359	25.1	69.0	0.7	4.4	0.6	0.2	0.0	0.0	0.0	94.1	0.7	5.2	0.084	0.515	20.544207	-89.338218
Maní	98.20	1	0	3026	12.3	74.7	1.0	7.3	1.9	1.8	0.3	0.6	0.1	87.0	1.0	12.0	0.078	0.500	20.399332	-89.361105
Maní	98.20	3	0	1734	34.3	57.0	0.5	6.7	0.2	1.1	0.1	0.0	0.1	91.3	0.5	8.2	0.087	0.508	20.370628	-89.400369
Oxkutzcab	109.30	1	0	1792	29.8	62.2	0.3	6.0	0.4	1.2	0.0	0.0	0.1	92.0	0.3	7.7	0.079	0.506	20.328113	-89.416685

37 CARR: Mérida - Timucuy

CLAVE: 31024

RUTA: YUC

AÑO: 2018

LUGAR	ESTACION				CLASIFICACION VEHICULAR EN PORCIENTO										COORDENADAS					
	KM	TE	SC	TDPA	M	A	B	C2	C3	T3S2	T3S3	T3S2R4	OTROS	A	B	C	K'	D	LATITUD	LONGITUD
Mérida	0.00	3	0	5413	18.3	72.1	0.0	7.6	1.0	0.5	0.2	0.3	0.0	90.4	0.0	9.6	0.069	0.514	20.899024	-89.599517
Tekik de Regil	15.10	1	0	1763	17.1	70.6	0.4	10.4	0.6	0.8	0.1	0.0	0.0	87.7	0.4	11.9	0.078	0.537	20.822809	-89.559614
Tekik de Regil	15.10	3	0	1202	26.0	60.1	0.2	12.4	0.3	0.7	0.3	0.0	0.0	86.1	0.2	13.7	0.086	0.505	20.815780	-89.554778
Timucuy	18.65	1	0	1177	24.1	63.2	0.3	11.0	0.3	0.8	0.2	0.0	0.1	87.3	0.3	12.4	0.075	0.523	20.812747	-89.527266

38 CARR: Motul - Puerto Telchac

CLAVE: 31006

RUTA: YUC-172

AÑO: 2018

LUGAR	ESTACION				CLASIFICACION VEHICULAR EN PORCIENTO										COORDENADAS					
	KM	TE	SC	TDPA	M	A	B	C2	C3	T3S2	T3S3	T3S2R4	OTROS	A	B	C	K'	D	LATITUD	LONGITUD
Motul	0.00	3	0	3681	25.4	69.0	0.4	2.3	0.9	1.2	0.2	0.1	0.5	94.4	0.4	5.2	0.089	0.507	21.120725	-89.280730
Pueblo Telchac	12.00	3	0	2373	28.2	65.6	0.4	4.6	0.3	0.7	0.2	0.0	0.0	93.8	0.4	5.8	0.102	0.505	21.213698	-89.271555
Puerto Telchac	28.00																			

YUCATAN

39 CARR: Muna - Maxcanú

CLAVE: 31053

RUTA: YUC

AÑO: 2018

LUGAR	ESTACION				CLASIFICACION VEHICULAR EN PORCIENTO										COORDENADAS					
	KM	TE	SC	TDPA	M	A	B	C2	C3	T3S2	T3S3	T3S2R4	OTROS	A	B	C	K'	D	LATITUD	LONGITUD
Muna	0.00	3	0	1164	23.5	65.1	1.3	6.3	0.7	2.3	0.2	0.5	0.1	88.6	1.3	10.1	0.090	0.516	20.490898	-89.736016
Opichén	17.00	3	0	1356	24.4	63.0	1.2	7.5	1.3	1.7	0.5	0.4	0.0	87.4	1.2	11.4	0.091	0.507	20.554786	-89.869078
T. C. Campeche - Mérida	31.00	1	0	1284	20.0	67.2	1.8	8.4	0.7	1.4	0.2	0.3	0.0	87.2	1.8	11.0	0.079	0.512	20.582200	-89.966965

40 CARR: Oxkutzcab - Xul

CLAVE: 31051

RUTA: YUC-031

AÑO: 2018

LUGAR	ESTACION				CLASIFICACION VEHICULAR EN PORCIENTO										COORDENADAS					
	KM	TE	SC	TDPA	M	A	B	C2	C3	T3S2	T3S3	T3S2R4	OTROS	A	B	C	K'	D	LATITUD	LONGITUD
Oxkutzcab	0.00	3	0	2754	36.0	57.5	0.1	4.4	0.1	1.4	0.5	0.0	0.0	93.5	0.1	6.4	0.129	0.500	20.283660	-89.426610
Emiliano Zapata	10.00	3	0	1303	50.5	43.0	0.2	5.1	0.1	0.9	0.2	0.0	0.0	93.5	0.2	6.3	0.097	0.508	20.216342	-89.463413
Xul	25.00	1	0	852	43.5	48.7	0.2	6.6	0.1	0.8	0.1	0.0	0.0	92.2	0.2	7.6	0.092	0.509	20.108582	-89.457519

41 CARR: Piste - Dzitás

CLAVE: 31013

RUTA: YUC-013

AÑO: 2018

LUGAR	ESTACION				CLASIFICACION VEHICULAR EN PORCIENTO										COORDENADAS					
	KM	TE	SC	TDPA	M	A	B	C2	C3	T3S2	T3S3	T3S2R4	OTROS	A	B	C	K'	D	LATITUD	LONGITUD
Piste	0.00	3	0	2319	17.5	74.1	1.1	5.1	0.4	1.2	0.4	0.1	0.1	91.6	1.1	7.3	0.084	0.534	20.708759	-88.586002
Dzitás	18.00	1	0	649	24.8	72.5	0.3	1.8	0.3	0.2	0.1	0.0	0.0	97.3	0.3	2.4	0.069	0.506	20.829033	-88.540815

42 CARR: Progreso - Telchac Puerto

CLAVE: 31616

RUTA: YUC-027

AÑO: 2018

LUGAR	ESTACION				CLASIFICACION VEHICULAR EN PORCIENTO										COORDENADAS					
	KM	TE	SC	TDPA	M	A	B	C2	C3	T3S2	T3S3	T3S2R4	OTROS	A	B	C	K'	D	LATITUD	LONGITUD
Progreso	0.00	3	1	6436	6.3	88.4	0.2	2.9	0.6	0.9	0.5	0.0	0.2	94.7	0.2	5.1	0.119	0.517	21.276491	-89.655387
Progreso	0.00	3	2	6022	6.3	88.9	0.1	2.5	0.7	0.8	0.5	0.0	0.2	95.2	0.1	4.7	0.102	0.517	21.276579	-89.655430
Chicxulub Puerto	6.00	1	1	4374	3.1	92.5	0.2	3.0	0.7	0.3	0.2	0.0	0.0	95.6	0.2	4.2	0.125	0.503	21.288296	-89.608628
Chicxulub Puerto	6.00	1	2	4325	4.0	92.8	0.2	1.9	0.6	0.3	0.2	0.0	0.0	96.8	0.2	3.0	0.132	0.503	21.288382	-89.608618
Chicxulub Puerto	6.00	3	0	11518	2.0	90.2	0.2	4.5	0.4	2.1	0.2	0.0	0.4	92.2	0.2	7.6	0.086	0.505	21.296803	-89.575592
Xtampú	20.00	1	0	1530	13.6	76.7	0.6	6.2	1.5	1.0	0.2	0.2	0.0	90.3	0.6	9.1	0.118	0.504	21.332614	-89.352569
Xtampú	20.00	3	0	1692	8.9	82.9	0.5	5.8	1.2	0.5	0.1	0.1	0.0	91.8	0.5	7.7	0.109	0.501	21.333977	-89.343084
Telchac Puerto	33.00	1	0	1988	21.1	70.4	0.3	5.1	0.7	1.8	0.2	0.2	0.2	91.5	0.3	8.2	0.113	0.516	21.340167	-89.291170

YUCATAN

43 CARR: Ramal a Chankom

CLAVE: 31049

RUTA: YUC

AÑO: 2018

LUGAR	ESTACION				CLASIFICACION VEHICULAR EN PORCIENTO													COORDENADAS		
	KM	TE	SC	TDPA	M	A	B	C2	C3	T3S2	T3S3	T3S2R4	OTROS	A	B	C	K'	D	LATITUD	LONGITUD
T. C. Mérida - Puerto Juárez	0.00	3	0	487	16.1	78.4	0.5	4.3	0.6	0.1	0.0	0.0	0.0	94.5	0.5	5.0	0.092	0.503	20.637723	-88.490015
Chankom	9.00	1	0	422	6.0	85.0	0.5	7.9	0.6	0.0	0.0	0.0	0.0	91.0	0.5	8.5	0.092	0.505	20.582295	-88.508039

44 CARR: Ramal a Dzonot Carretero

CLAVE: 31614

RUTA: YUC

AÑO: 2018

LUGAR	ESTACION				CLASIFICACION VEHICULAR EN PORCIENTO													COORDENADAS		
	KM	TE	SC	TDPA	M	A	B	C2	C3	T3S2	T3S3	T3S2R4	OTROS	A	B	C	K'	D	LATITUD	LONGITUD
T. C. Valladolid - Río Lagartos	0.00	3	0	606	40.8	55.0	0.0	1.5	1.6	0.3	0.1	0.1	0.6	95.8	0.0	4.2	0.091	0.500	21.378061	-88.136715
Dzonot Carretero	35.00																			

45 CARR: Ramal a San Felipe

CLAVE: 31628

RUTA: YUC

AÑO: 2018

LUGAR	ESTACION				CLASIFICACION VEHICULAR EN PORCIENTO													COORDENADAS		
	KM	TE	SC	TDPA	M	A	B	C2	C3	T3S2	T3S3	T3S2R4	OTROS	A	B	C	K'	D	LATITUD	LONGITUD
T. C. Valladolid - Río Lagartos	0.00	3	0	539	17.4	75.6	1.0	5.6	0.0	0.4	0.0	0.0	0.0	93.0	1.0	6.0	0.089	0.502	21.572295	-88.161420
San Felipe	7.20	1	0	625	13.8	78.5	0.3	6.8	0.1	0.5	0.0	0.0	0.0	92.3	0.3	7.4	0.082	0.508	21.553038	-88.231962

46 CARR: Ramal a Tedzidz

CLAVE: 31600

RUTA: YUC

AÑO: 2018

LUGAR	ESTACION				CLASIFICACION VEHICULAR EN PORCIENTO													COORDENADAS		
	KM	TE	SC	TDPA	M	A	B	C2	C3	T3S2	T3S3	T3S2R4	OTROS	A	B	C	K'	D	LATITUD	LONGITUD
T. C. Mérida - Celestún	0.00																			
Tedzidz	6.00	1	0	155	45.7	49.7	0.9	3.1	0.1	0.4	0.0	0.1	0.0	95.4	0.9	3.7	0.135	0.513	20.843195	-89.975033

47 CARR: Ramal a Yaxcabá

CLAVE: 31111

RUTA: YUC-289

AÑO: 2018

LUGAR	ESTACION				CLASIFICACION VEHICULAR EN PORCIENTO													COORDENADAS		
	KM	TE	SC	TDPA	M	A	B	C2	C3	T3S2	T3S3	T3S2R4	OTROS	A	B	C	K'	D	LATITUD	LONGITUD
T. C. Mérida - Puerto Juárez	0.00	3	0	723	20.3	70.4	0.6	3.5	1.9	2.2	0.0	1.1	0.0	90.7	0.6	8.7	0.091	0.529	20.696870	-88.811510
Yaxcabá	18.00	1	0	601	13.6	74.4	0.8	5.7	1.4	2.5	0.4	1.1	0.1	88.0	0.8	11.2	0.078	0.514	20.563972	-88.824217

YUCATAN

48 CARR: Sinanché - Xitibcanul

CLAVE: 31619

RUTA: YUC

AÑO: 2018

LUGAR	ESTACION				CLASIFICACION VEHICULAR EN PORCIENTO										COORDENADAS					
	KM	TE	SC	TDPA	M	A	B	C2	C3	T3S2	T3S3	T3S2R4	OTROS	A	B	C	K'	D	LATITUD	LONGITUD
Sinanché	0.00	3	0	582	42.8	52.1	0.3	3.9	0.0	0.6	0.3	0.0	0.0	94.9	0.3	4.8	0.095	0.522	21.234497	-89.184412
Xitibcanul	7.00	1	0	446	46.7	47.1	0.2	4.6	1.0	0.4	0.0	0.0	0.0	93.8	0.2	6.0	0.143	0.518	21.350493	-89.172114

49 CARR: Sucilá - Calotmul

CLAVE: 31617

RUTA: YUC

AÑO: 2018

LUGAR	ESTACION				CLASIFICACION VEHICULAR EN PORCIENTO										COORDENADAS					
	KM	TE	SC	TDPA	M	A	B	C2	C3	T3S2	T3S3	T3S2R4	OTROS	A	B	C	K'	D	LATITUD	LONGITUD
Sucilá	0.00																			
X. C. Cansahcab - Tizimin	2.00	3	0	1076	20.0	72.6	1.0	5.6	0.6	0.2	0.0	0.0	0.0	92.6	1.0	6.4	0.076	0.509	21.137998	-88.313530
Calotmul	30.20	1	0	813	21.5	69.3	1.0	7.4	0.4	0.4	0.0	0.0	0.0	90.8	1.0	8.2	0.074	0.502	21.017744	-88.186040

50 CARR: Suma - Izamal

CLAVE: 31081

RUTA: YUC-081

AÑO: 2018

LUGAR	ESTACION				CLASIFICACION VEHICULAR EN PORCIENTO										COORDENADAS					
	KM	TE	SC	TDPA	M	A	B	C2	C3	T3S2	T3S3	T3S2R4	OTROS	A	B	C	K'	D	LATITUD	LONGITUD
Suma	0.00	3	0	794	27.8	63.6	1.0	7.1	0.2	0.3	0.0	0.0	0.0	91.4	1.0	7.6	0.084	0.530	21.083029	-89.139705
Izamal	22.00	1	0	923	32.3	59.1	1.2	7.1	0.2	0.1	0.0	0.0	0.0	91.4	1.2	7.4	0.094	0.506	20.948628	-89.020414

51 CARR: Telchac Puerto - Dzilam de Bravo

CLAVE: 31042

RUTA: YUC

AÑO: 2018

LUGAR	ESTACION				CLASIFICACION VEHICULAR EN PORCIENTO										COORDENADAS					
	KM	TE	SC	TDPA	M	A	B	C2	C3	T3S2	T3S3	T3S2R4	OTROS	A	B	C	K'	D	LATITUD	LONGITUD
Telchac Puerto	0.00	3	0	1301	10.9	77.2	5.9	4.3	1.6	0.0	0.0	0.0	0.1	88.1	5.9	6.0	0.121	0.502	21.343535	-89.247982
T. Der. Sinanché	8.00	1	0	1030	16.1	70.1	5.7	6.1	1.5	0.5	0.0	0.0	0.0	86.2	5.7	8.1	0.131	0.507	21.352608	-89.179182
T. Der. Sinanché	8.00	3	0	949	17.9	62.8	9.4	7.6	2.3	0.0	0.0	0.0	0.0	80.7	9.4	9.9	0.097	0.509	21.352128	-89.164583
Chabihau	15.00	1	0	602	20.0	70.2	2.7	5.7	1.2	0.1	0.1	0.0	0.0	90.2	2.7	7.1	0.118	0.508	21.355114	-89.130631
Chabihau	15.00	3	0	426	8.3	80.4	5.4	5.9	0.0	0.0	0.0	0.0	0.0	88.7	5.4	5.9	0.136	0.542	21.359060	-89.101140
Santa Clara	26.00	1	0	467	13.0	73.4	7.2	5.4	0.9	0.0	0.0	0.0	0.1	86.4	7.2	6.4	0.101	0.516	21.371565	-89.025127
Santa Clara	26.00	3	0	312	14.0	70.0	8.2	7.8	0.0	0.0	0.0	0.0	0.0	84.0	8.2	7.8	0.167	0.510	21.374425	-89.002260
Dzilam de Bravo	39.00	1	0	408	17.8	72.9	1.1	7.3	0.8	0.0	0.1	0.0	0.0	90.7	1.1	8.2	0.108	0.523	21.387513	-88.912222

YUCATAN

52 CARR: Thul - Becanchén

CLAVE: 31104

RUTA: YUC-281

AÑO: 2018

LUGAR	ESTACION				CLASIFICACION VEHICULAR EN PORCIENTO														COORDENADAS	
	KM	TE	SC	TDPA	M	A	B	C2	C3	T3S2	T3S3	T3S2R4	OTROS	A	B	C	K'	D	LATITUD	LONGITUD
T. C. Muna - Felipe Carrillo Puerto	0.00	3	0	238	36.9	48.8	3.1	8.1	1.6	1.1	0.4	0.0	0.0	85.7	3.1	11.2	0.109	0.501	20.086004	-89.099523
Becanchén	32.00																			

53 CARR: Ticul - Chapab

CLAVE: 31623

RUTA: YUC

AÑO: 2018

LUGAR	ESTACION				CLASIFICACION VEHICULAR EN PORCIENTO														COORDENADAS	
	KM	TE	SC	TDPA	M	A	B	C2	C3	T3S2	T3S3	T3S2R4	OTROS	A	B	C	K'	D	LATITUD	LONGITUD
Ticul	0.00	3	0	1590	33.4	61.4	0.6	3.4	0.5	0.6	0.0	0.0	0.1	94.8	0.6	4.6	0.087	0.552	20.412517	-89.520841
Chapab	8.00	1	0	1820	41.8	53.0	0.6	2.9	0.5	1.0	0.1	0.0	0.1	94.8	0.6	4.6	0.084	0.505	20.454932	-89.461797

54 CARR: Ticul - Dzan

CLAVE: 31621

RUTA: YUC

AÑO: 2018

LUGAR	ESTACION				CLASIFICACION VEHICULAR EN PORCIENTO														COORDENADAS	
	KM	TE	SC	TDPA	M	A	B	C2	C3	T3S2	T3S3	T3S2R4	OTROS	A	B	C	K'	D	LATITUD	LONGITUD
Ticul	0.00																			
T. Izq. Libramiento de Ticul	2.50	3	0	3251	43.6	52.8	0.9	1.4	0.2	0.9	0.2	0.0	0.0	96.4	0.9	2.7	0.087	0.509	20.393927	-89.506144
Dzan	7.00	1	0	3452	45.0	51.0	0.8	1.5	0.3	1.2	0.2	0.0	0.0	96.0	0.8	3.2	0.078	0.501	20.390455	-89.481980

55 CARR: Tixkokob - Baca

CLAVE: 31010

RUTA: YUC

AÑO: 2018

LUGAR	ESTACION				CLASIFICACION VEHICULAR EN PORCIENTO														COORDENADAS	
	KM	TE	SC	TDPA	M	A	B	C2	C3	T3S2	T3S3	T3S2R4	OTROS	A	B	C	K'	D	LATITUD	LONGITUD
Tixkokob	0.00	3	0	3431	55.5	38.5	0.3	2.3	0.8	2.4	0.2	0.0	0.0	94.0	0.3	5.7	0.086	0.513	21.007267	-89.416627
Baca	15.00	1	0	2436	55.4	39.0	0.2	2.7	0.5	1.8	0.3	0.0	0.1	94.4	0.2	5.4	0.086	0.502	21.096868	-89.398027

56 CARR: Tixkokob - Sotuta

CLAVE: 31106

RUTA: YUC

AÑO: 2018

LUGAR	ESTACION				CLASIFICACION VEHICULAR EN PORCIENTO														COORDENADAS	
	KM	TE	SC	TDPA	M	A	B	C2	C3	T3S2	T3S3	T3S2R4	OTROS	A	B	C	K'	D	LATITUD	LONGITUD
Tixkokob	0.00	3	0	2091	52.7	43.9	0.6	2.4	0.1	0.2	0.1	0.0	0.0	96.6	0.6	2.8	0.137	0.511	20.998297	-89.380722
Tahmek	24.00	3	0	1512	28.4	63.9	0.4	4.9	0.9	1.2	0.2	0.0	0.1	92.3	0.4	7.3	0.081	0.501	20.863029	-89.255502
Hocabá	31.00	3	0	740	26.9	59.7	0.7	10.2	1.6	0.8	0.1	0.0	0.0	86.6	0.7	12.7	0.085	0.546	20.808930	-89.239268
Huhí	43.00	1	0	615	35.0	53.7	0.3	10.3	0.3	0.4	0.0	0.0	0.0	88.7	0.3	11.0	0.096	0.525	20.724372	-89.176515
Sotuta	65.00	1	0	150	47.3	45.6	0.0	7.0	0.0	0.0	0.1	0.0	0.0	92.9	0.0	7.1	0.107	0.534	20.603158	-89.020932

YUCATAN

57 CARR: Tizimin - Yucatán

CLAVE: 31588

RUTA: YUC

AÑO: 2018

LUGAR	ESTACION				CLASIFICACION VEHICULAR EN PORCIENTO													COORDENADAS		
	KM	TE	SC	TDPA	M	A	B	C2	C3	T3S2	T3S3	T3S2R4	OTROS	A	B	C	K'	D	LATITUD	LONGITUD
Tizimin	0.00	3	0	3590	18.6	70.9	1.3	4.8	1.5	1.4	0.7	0.7	0.1	89.5	1.3	9.2	0.082	0.507	21.149461	-88.110856
T. Der. Buenaventura	30.00	3	0	1849	8.6	75.3	1.8	8.6	2.4	1.5	0.9	0.8	0.1	83.9	1.8	14.3	0.074	0.524	21.179971	-87.922535
Yucatán	46.50	1	0	2102	11.2	76.0	1.1	7.3	1.7	1.6	0.3	0.6	0.2	87.2	1.1	11.7	0.080	0.512	21.203488	-87.728105

58 CARR: Yaxché - Sierra Papacal

CLAVE: 31620

RUTA: YUC

AÑO: 2018

LUGAR	ESTACION				CLASIFICACION VEHICULAR EN PORCIENTO													COORDENADAS		
	KM	TE	SC	TDPA	M	A	B	C2	C3	T3S2	T3S3	T3S2R4	OTROS	A	B	C	K'	D	LATITUD	LONGITUD
T. C. Mérida - Progreso	0.00	3	0	3846	20.4	68.8	1.2	7.6	1.0	0.6	0.2	0.2	0.0	89.2	1.2	9.6	0.121	0.512	21.105290	-89.641547
Sierra Papacal	12.00	1	0	2570	4.1	90.5	0.2	4.7	0.5	0.0	0.0	0.0	0.0	94.6	0.2	5.2	0.125	0.543	21.122349	-89.722310

59 CARR: Yobain - Chabihau

CLAVE: 31610

RUTA: YUC

AÑO: 2018

LUGAR	ESTACION				CLASIFICACION VEHICULAR EN PORCIENTO													COORDENADAS		
	KM	TE	SC	TDPA	M	A	B	C2	C3	T3S2	T3S3	T3S2R4	OTROS	A	B	C	K'	D	LATITUD	LONGITUD
T. C. Baca - Dzidzantún	0.00	3	0	840	32.1	65.3	0.1	0.6	0.2	0.4	0.2	0.1	1.0	97.4	0.1	2.5	0.125	0.504	21.239521	-89.116848
Chabihau	12.00	1	0	424	51.0	46.6	0.1	1.2	0.2	0.7	0.2	0.0	0.0	97.6	0.1	2.3	0.092	0.502	21.354476	-89.117230

60 CARR: Chemax - Cobá

CLAVE:

RUTA: YUC-MEX-180

AÑO: 2018

LUGAR	ESTACION				CLASIFICACION VEHICULAR EN PORCIENTO													COORDENADAS		
	KM	TE	SC	TDPA	M	A	B	C2	C3	T3S2	T3S3	T3S2R4	OTROS	A	B	C	K'	D	LATITUD	LONGITUD
Chemax	0.00	3	0	4604	1.6	88.1	1.6	3.2	2.3	1.5	0.5	1.0	0.2	89.7	1.6	8.7	0.101	0.516	20.656720	-87.954421
Lim. Edos. Term. Yucatán Ppia. Q Roo.	25.00																			
Cobá	30.90	1	0	3971	2.0	86.1	2.2	4.1	1.9	1.7	0.6	1.3	0.1	88.1	2.2	9.7	0.094	0.504	20.508859	-87.719968

61 CARR: Progreso - Celestún

CLAVE: 31040

RUTA: MEX-YUC

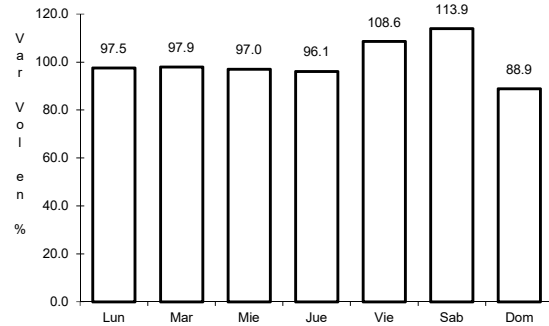
AÑO: 2018

LUGAR	ESTACION				CLASIFICACION VEHICULAR EN PORCIENTO													COORDENADAS		
	KM	TE	SC	TDPA	M	A	B	C2	C3	T3S2	T3S3	T3S2R4	OTROS	A	B	C	K'	D	LATITUD	LONGITUD
T. C. Mérida - Progreso	0.00	3	1	4811	17.6	76.1	0.2	5.6	0.4	0.1	0.0	0.0	0.0	93.7	0.2	6.1	0.090	0.506	21.274439	-89.692644
T. C. Mérida - Progreso	0.00	3	2	4923	18.9	73.7	0.2	6.7	0.4	0.1	0.0	0.0	0.0	92.6	0.2	7.2	0.092	0.506	21.274427	-89.692706
Yucalpetén	6.00	3	0	7867	6.5	86.1	0.2	3.8	0.2	3.1	0.1	0.0	0.0	92.6	0.2	7.2	0.140	0.507	21.274778	-89.724310
Celestún	80.00																			

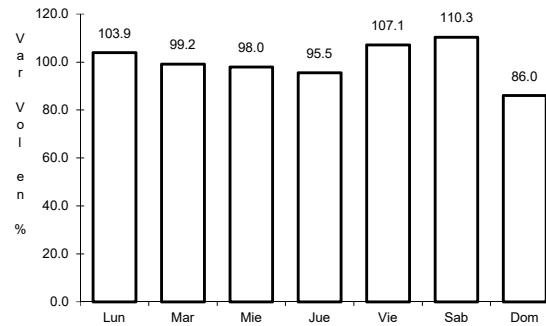
1 CARR: Campeche - Mérida

CLAVE: 00066

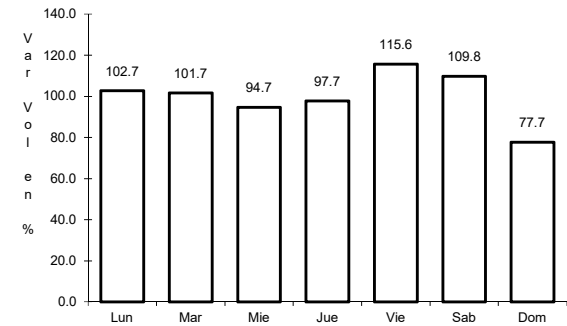
RUTA: MEX-180



Km: 0.00 Tipo: 3 Sent: 1



Km: 0.00 Tipo: 3 Sent: 2

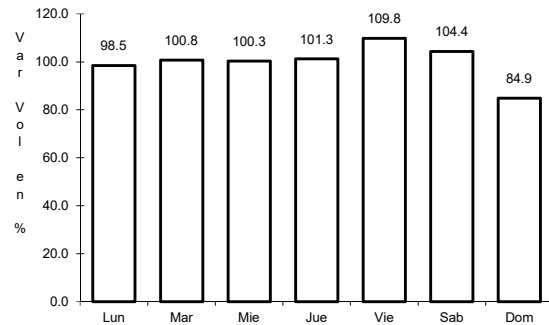


Km: 160.49 Tipo: 1 Sent: 1

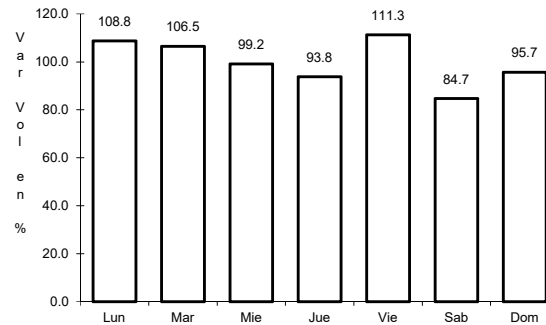
2 CARR: Campeche - Umán

CLAVE: 00164

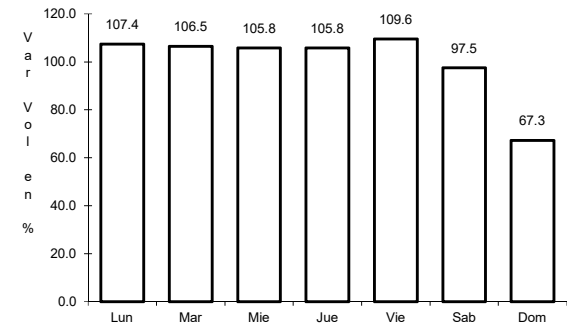
RUTA: MEX-261



Km: 7.00 Tipo: 1 Sent: 0



Km: 117.88 Tipo: 3 Sent: 0

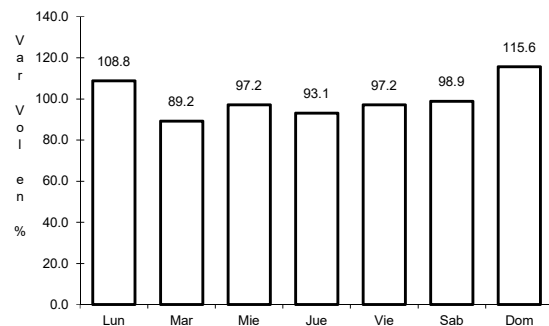


Km: 230.83 Tipo: 1 Sent: 0

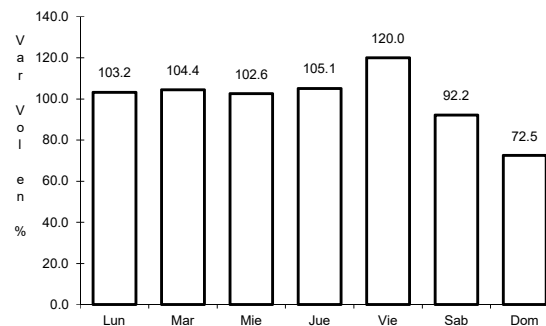
3 CARR: Cansahcab - Tizimin

CLAVE: 31014

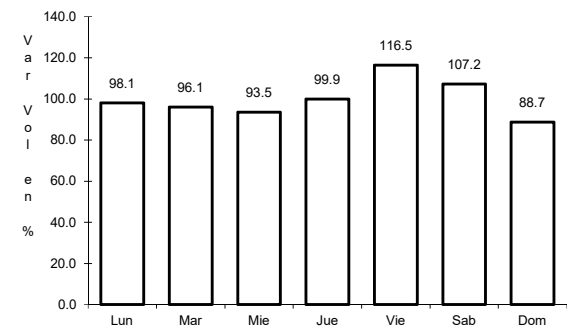
RUTA: MEX-176



Km: 0.00 Tipo: 3 Sent: 0



Km: 32.92 Tipo: 3 Sent: 0

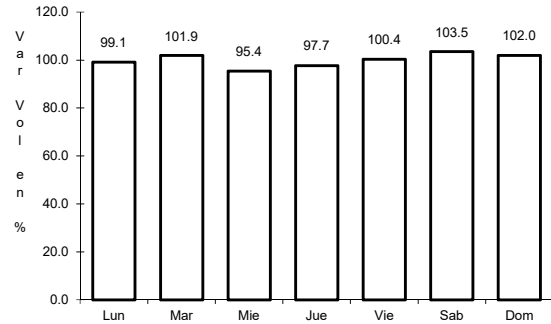


Km: 99.14 Tipo: 1 Sent: 0

4 CARR: Conkal - Puerto Chicxulub

CLAVE: 31004

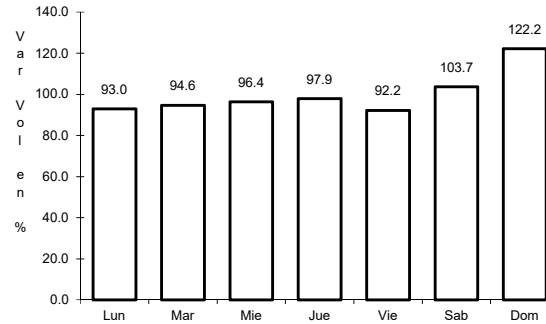
RUTA: MEX-176



Km: 0.00

Tipo: 3

Sent: 0



Km: 27.00

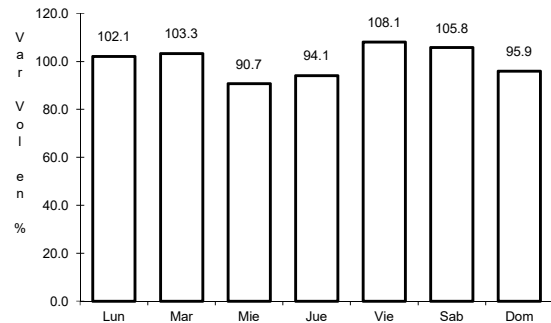
Tipo: 1

Sent: 0

5 CARR: Dzitbalché - Ent. San Bernardo

CLAVE: 00162

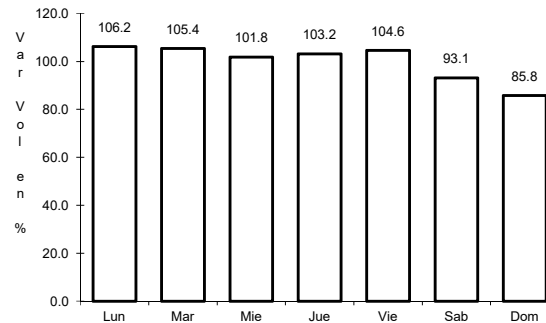
RUTA: MEX-180



Km: 12.33

Tipo: 1

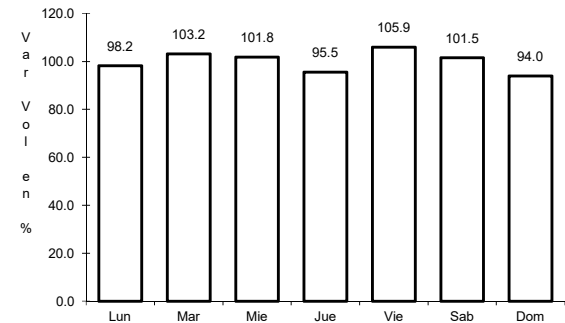
Sent: 0



Km: 21.08

Tipo: 1

Sent: 0



Km: 40.36

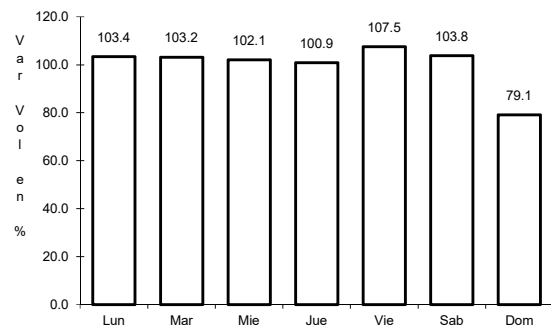
Tipo: 3

Sent: 0

6 CARR: Ent. Poxilá - Mérida

CLAVE: 31003

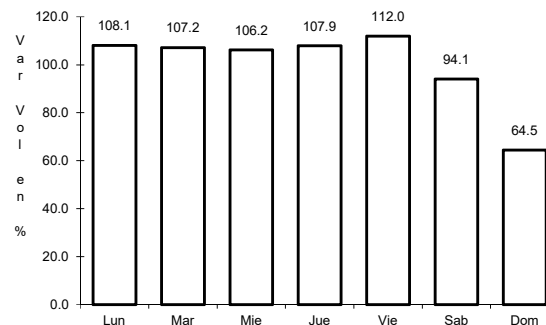
RUTA: MEX-180



Km: 9.46

Tipo: 1

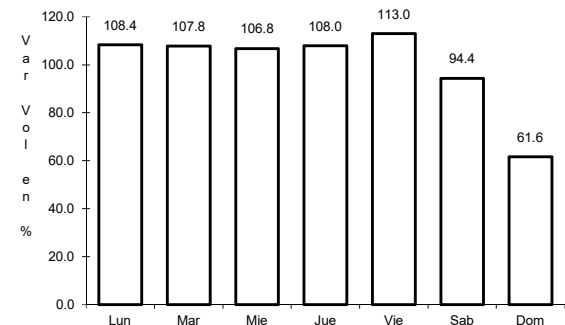
Sent: 0



Km: 25.70

Tipo: 1

Sent: 1



Km: 25.70

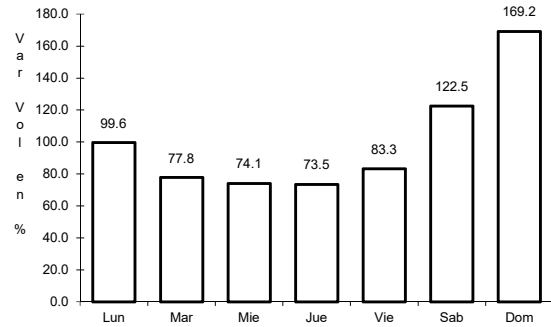
Tipo: 1

Sent: 2

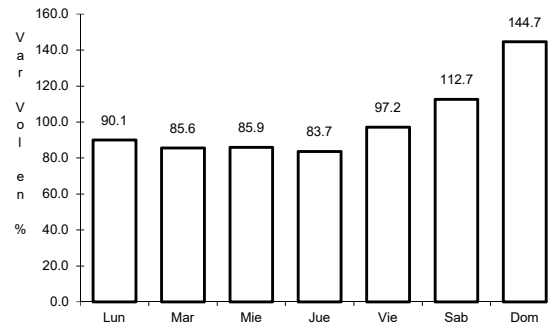
7 CARR: Hunucmá - Sisal

CLAVE: 31021

ruta: MEX-281



Km: 0.00 Tipo: 3 Sent: 0

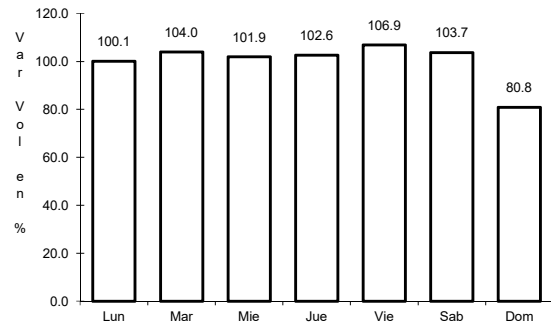


Km: 23.20 Tipo: 1 Sent: 0

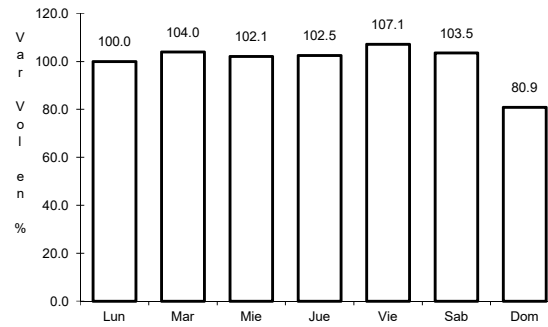
8 CARR: Libramiento de Conkal

CLAVE:

ruta: MEX



Km: 0.00 Tipo: 3 Sent: 0

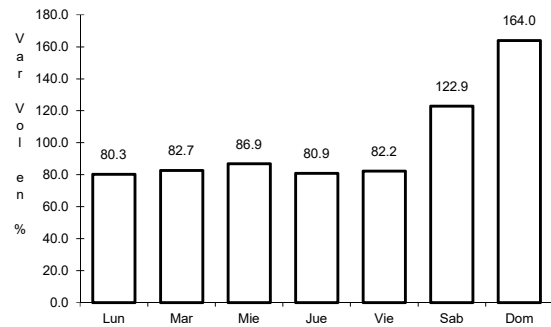


Km: 14.00 Tipo: 1 Sent: 0

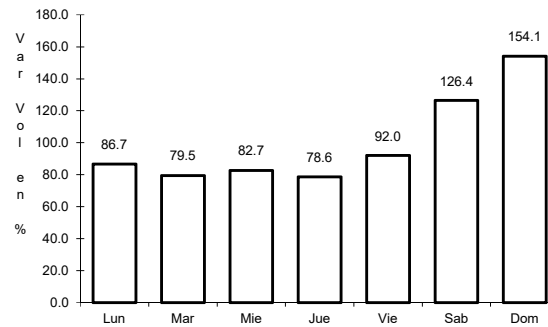
9 CARR: Libramiento de Progreso

CLAVE: 31631

ruta: MEX-261



Km: 0.00 Tipo: 3 Sent: 0

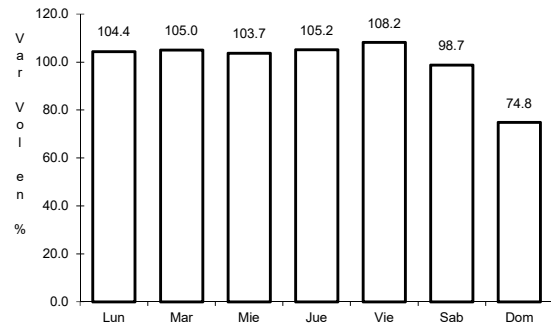


Km: 6.50 Tipo: 1 Sent: 0

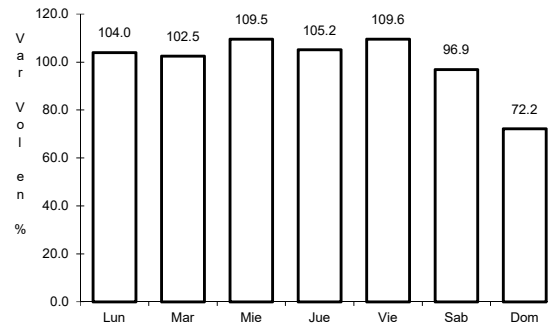
10 CARR: Mérida - Celestún

CLAVE: 31025

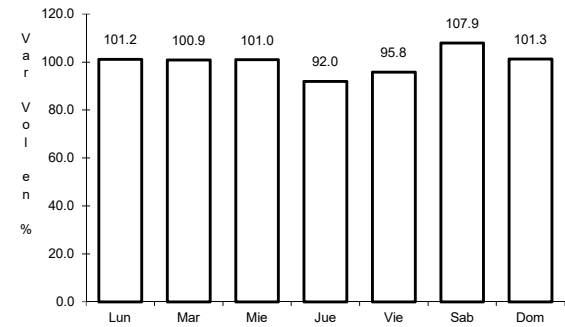
RUTA: MEX-281



Km: 0.00 Tipo: 3 Sent: 1



Km: 0.00 Tipo: 3 Sent: 2

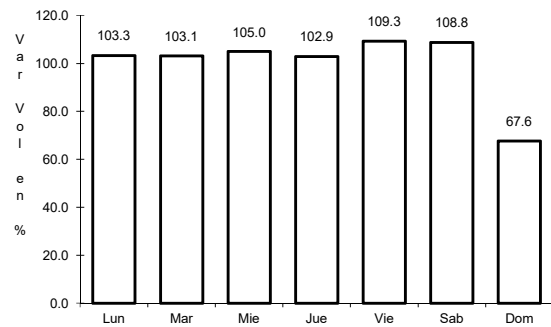


Km: 40.00 Tipo: 3 Sent: 0

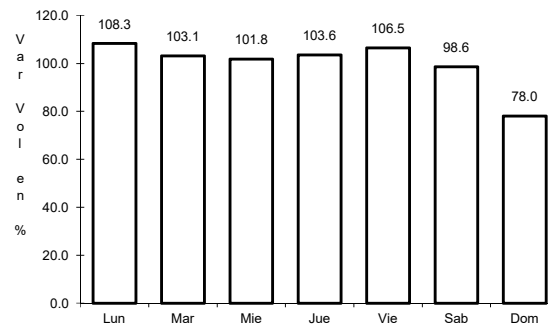
11 CARR: Mérida - Dzilam de Bravo

CLAVE: 31001

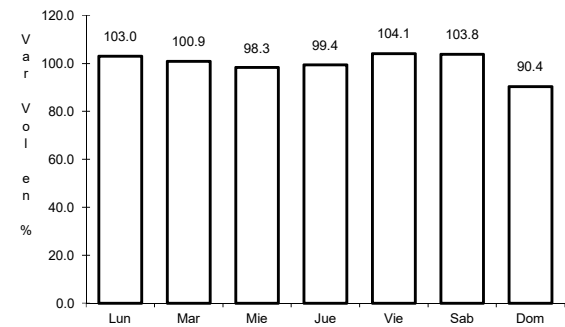
RUTA: MEX-176



Km: 5.90 Tipo: 1 Sent: 1



Km: 5.90 Tipo: 1 Sent: 2

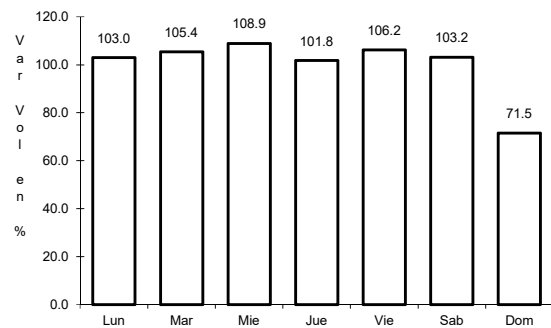


Km: 105.00 Tipo: 1 Sent: 0

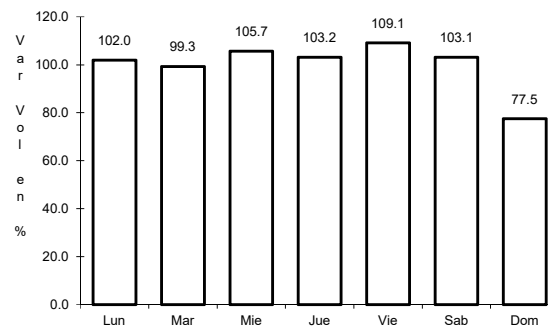
12 CARR: Mérida - Progreso

CLAVE: 31091

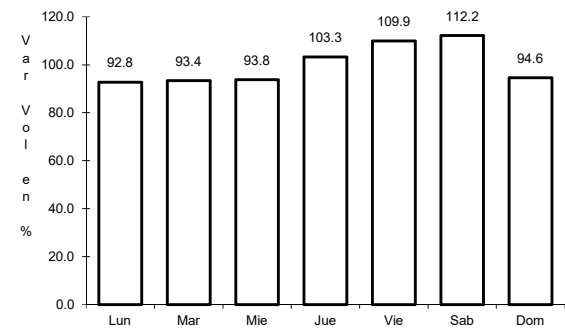
RUTA: MEX-261



Km: 5.40 Tipo: 1 Sent: 1



Km: 5.40 Tipo: 1 Sent: 2

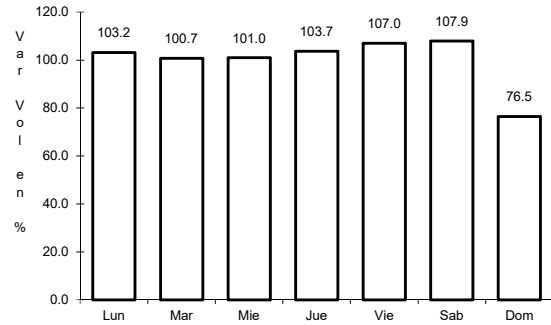


Km: 35.04 Tipo: 1 Sent: 1

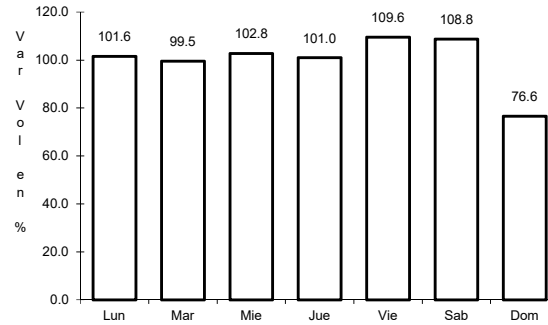
13 CARR: Mérida - Puerto Juárez

CLAVE: 00067

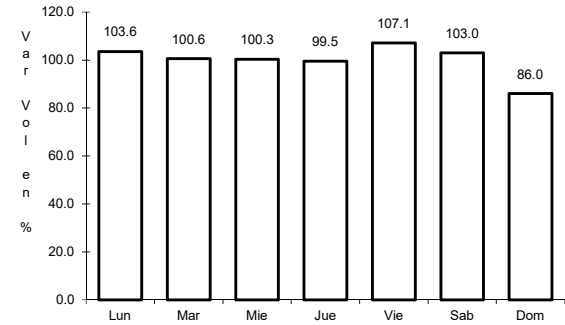
RUTA: MEX-180



Km: 5.60 Tipo: 1 Sent: 1



Km: 5.60 Tipo: 1 Sent: 2

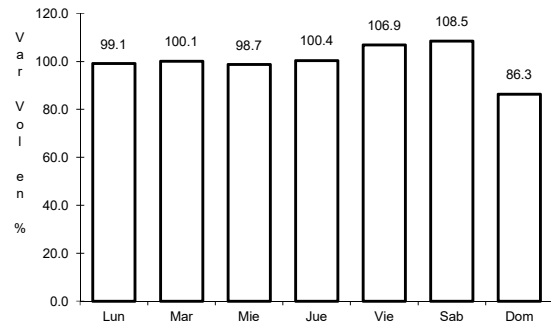


Km: 160.68 Tipo: 1 Sent: 0

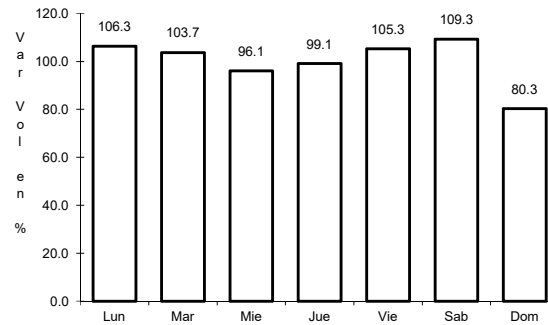
14 CARR: Mérida - Tekanto

CLAVE: 31587

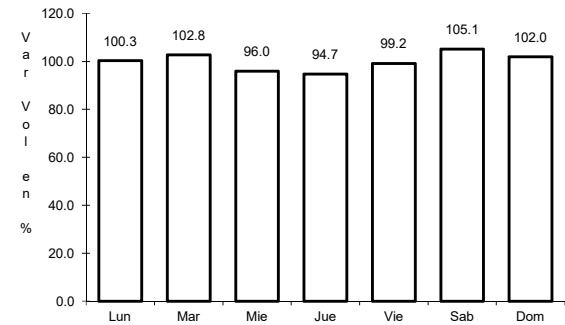
RUTA: MEX-180



Km: 5.70 Tipo: 1 Sent: 0



Km: 21.00 Tipo: 1 Sent: 0

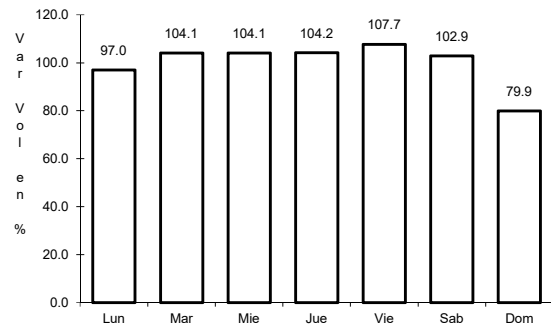


Km: 51.00 Tipo: 1 Sent: 0

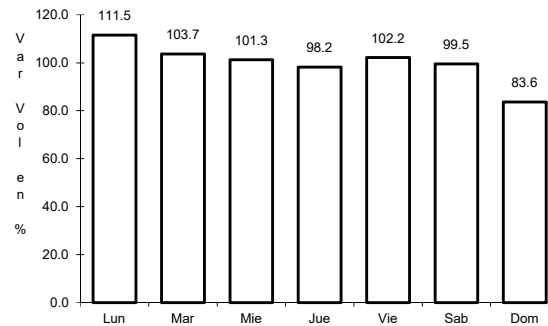
15 CARR: Mérida - Tetiz

CLAVE: 31610

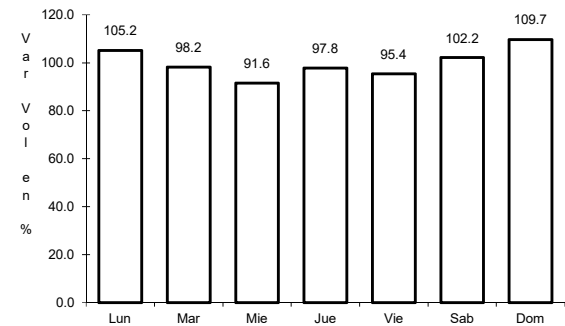
RUTA: MEX-281



Km: 0.00 Tipo: 3 Sent: 0



Km: 17.98 Tipo: 1 Sent: 0

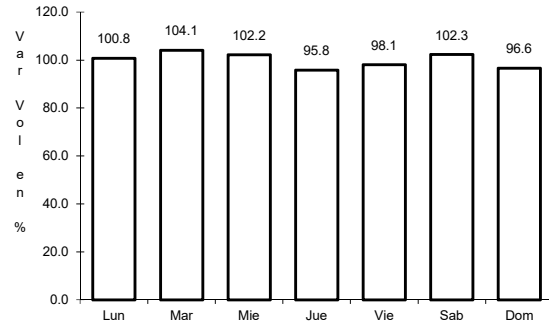


Km: 24.40 Tipo: 1 Sent: 0

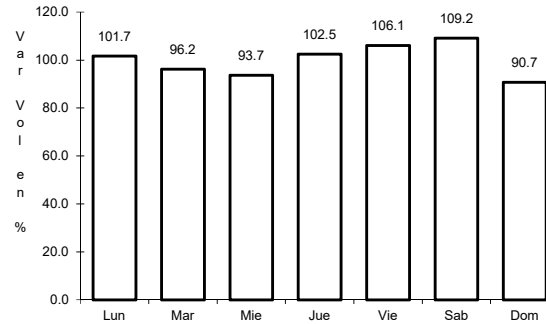
16 CARR: Muna - Felipe Carrillo Puerto

CLAVE: 00148

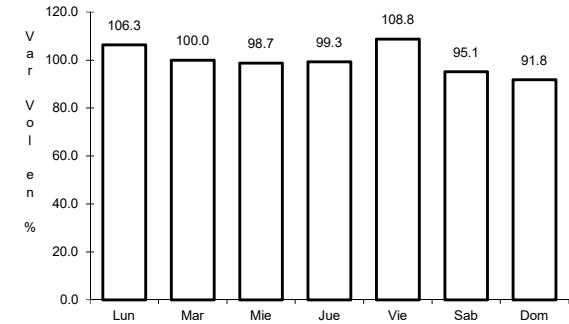
ruta: MEX-184



Km: 0.00 Tipo: 3 Sent: 0



Km: 109.60 Tipo: 3 Sent: 0

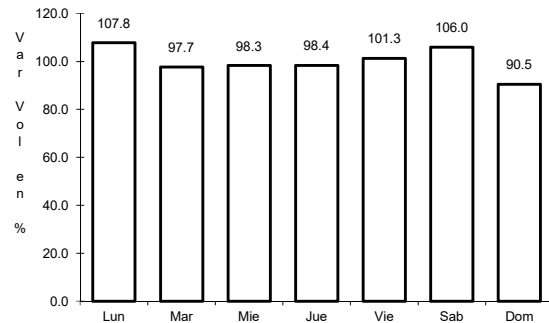


Km: 216.97 Tipo: 1 Sent: 0

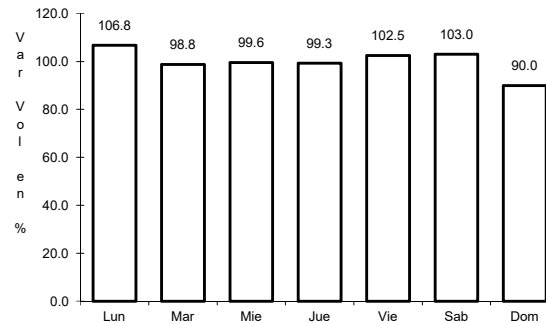
17 CARR: Ramal a Panabá

CLAVE: 31609

ruta: MEX-295



Km: 0.00 Tipo: 3 Sent: 0

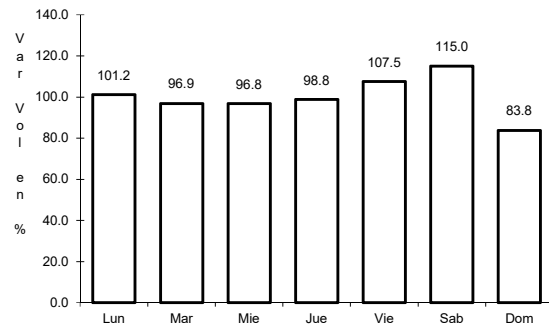


Km: 18.00 Tipo: 1 Sent: 0

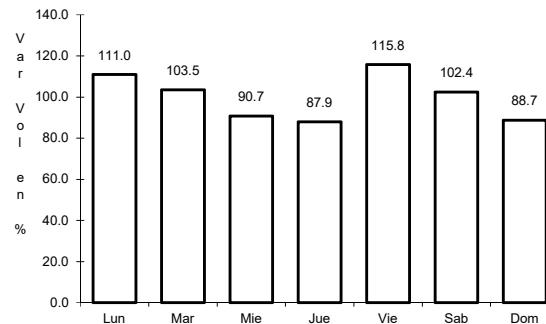
18 CARR: Teya -Peto

CLAVE: 31042

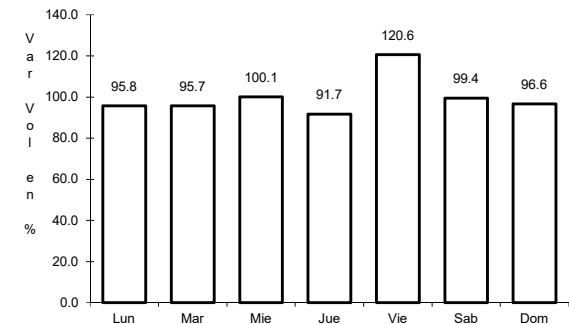
ruta: MEX-184



Km: 3.80 Tipo: 3 Sent: 1



Km: 97.10 Tipo: 1 Sent: 0

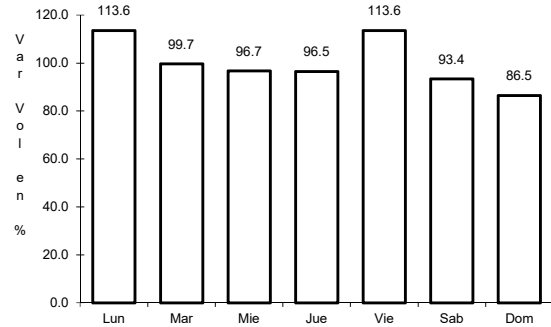


Km: 120.70 Tipo: 1 Sent: 0

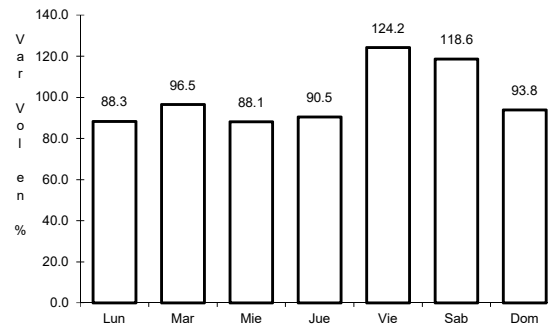
19 CARR: Tzacab - Santa Rosa

CLAVE: 31017

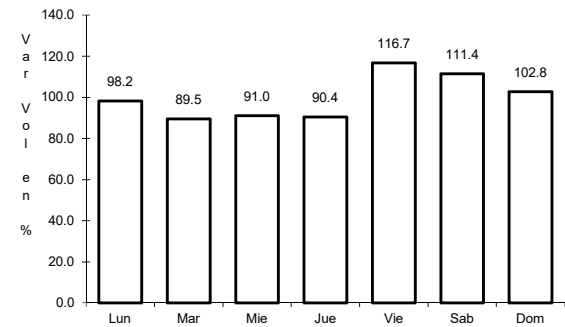
RUTA: MEX



Km: 0.00 Tipo: 3 Sent: 0



Km: 16.00 Tipo: 3 Sent: 0

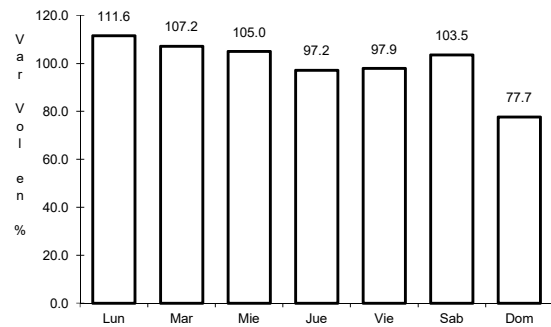


Km: 34.50 Tipo: 1 Sent: 0

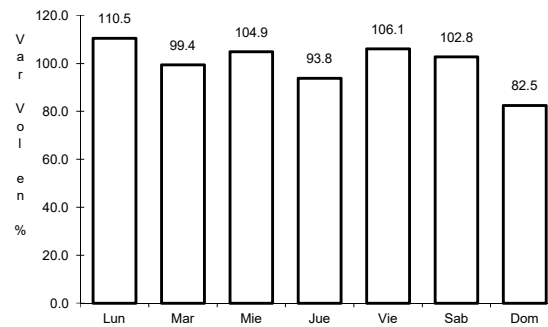
20 CARR: Valladolid - Felipe Carrillo Puerto

CLAVE: 00010

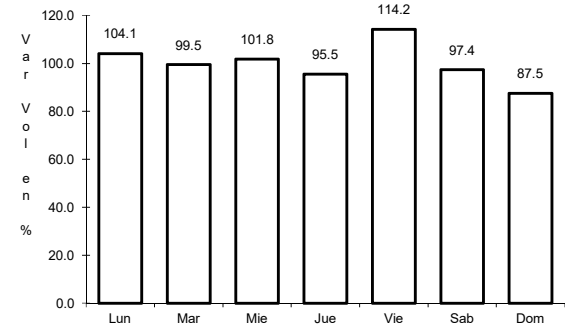
RUTA: MEX-295



Km: 0.00 Tipo: 3 Sent: 0



Km: 99.00 Tipo: 1 Sent: 0

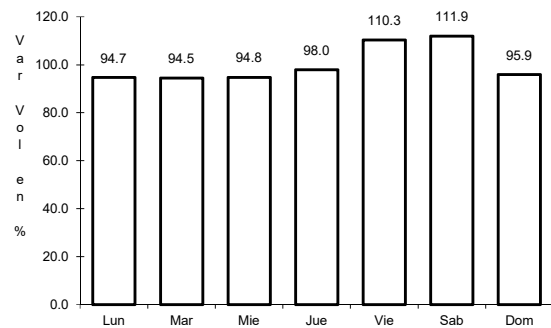


Km: 147.70 Tipo: 1 Sent: 0

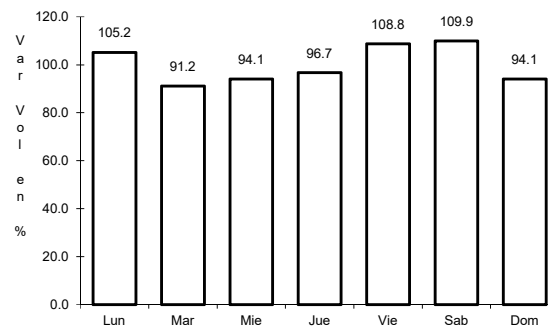
21 CARR: Valladolid - Río Lagartos

CLAVE: 31035

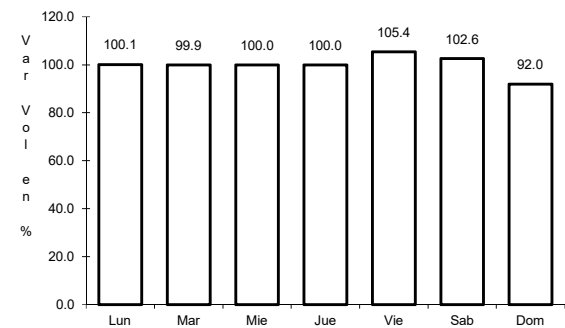
RUTA: MEX-295



Km: 0.00 Tipo: 3 Sent: 1



Km: 0.00 Tipo: 3 Sent: 2

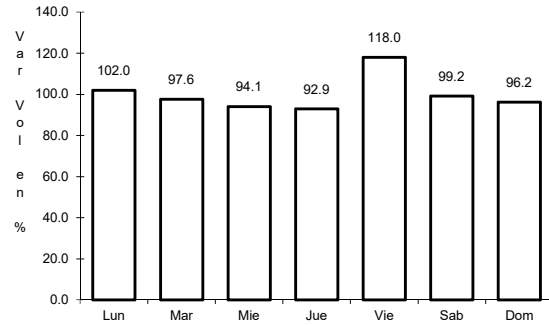


Km: 79.90 Tipo: 1 Sent: 0

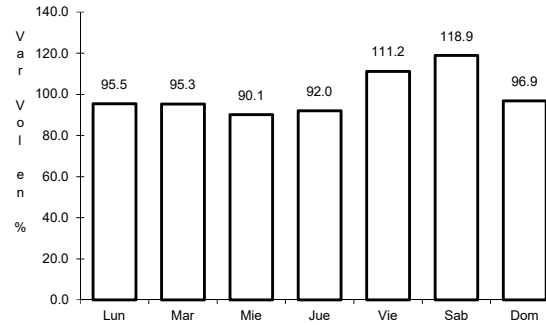
22 CARR: Mérida - Cancún (Cuota)

CLAVE: 00071

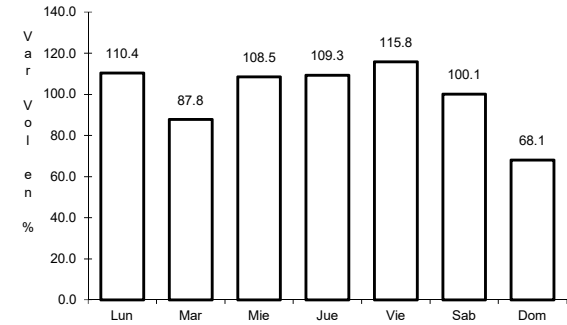
RUTA: MEX-180D



Km: 51.00 Tipo: 1 Sent: 1



Km: 51.00 Tipo: 1 Sent: 2

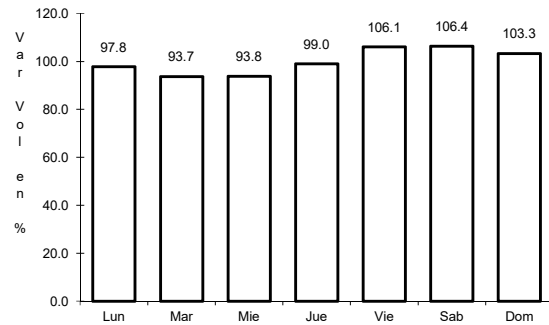


Km: 308.10 Tipo: 1 Sent: 0

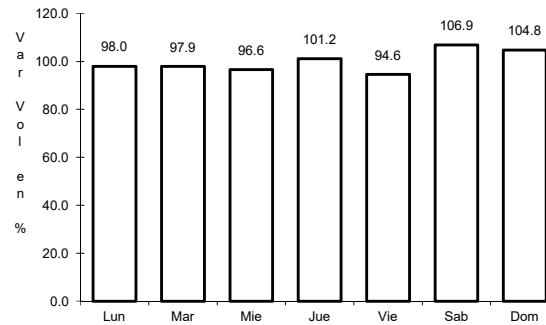
23 CARR: Acanceh - Estación Polabán

CLAVE: 31615

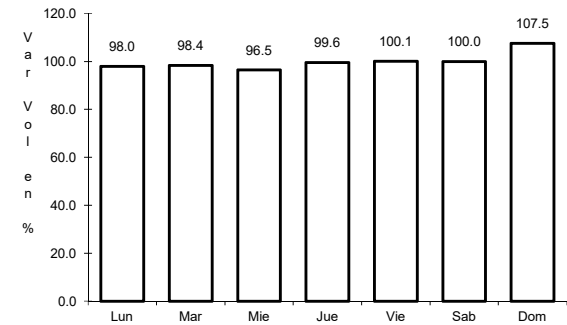
RUTA: YUC



Km: 0.00 Tipo: 3 Sent: 0



Km: 20.00 Tipo: 3 Sent: 0

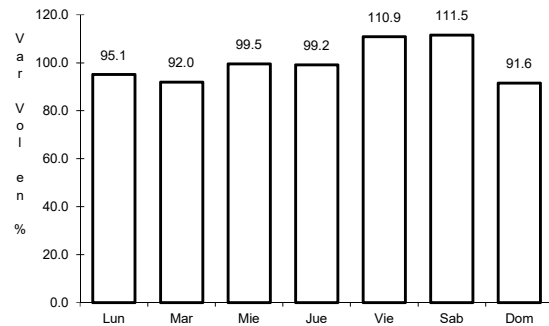


Km: 24.40 Tipo: 1 Sent: 0

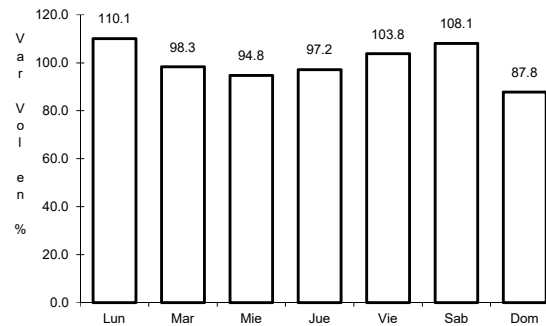
24 CARR: Baca - Dzidantún

CLAVE: 31591

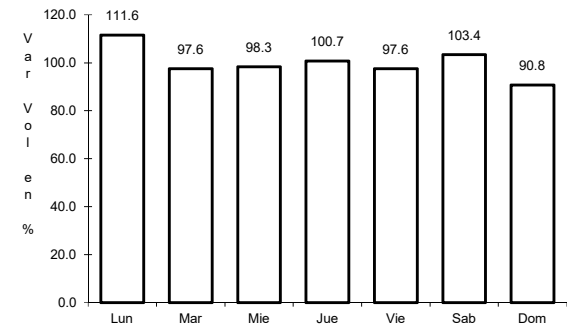
RUTA: YUC



Km: 0.00 Tipo: 3 Sent: 0



Km: 19.10 Tipo: 1 Sent: 0

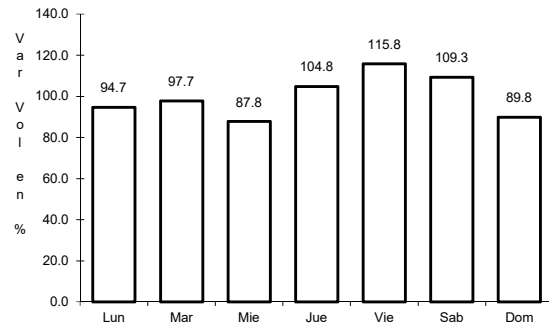


Km: 43.00 Tipo: 1 Sent: 0

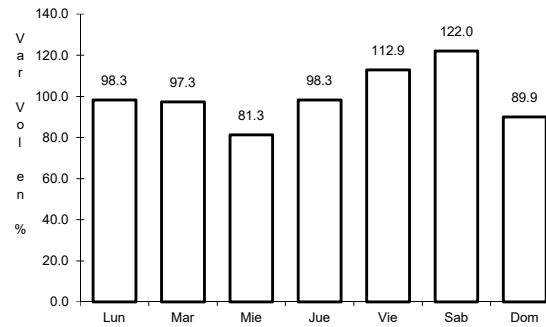
25 CARR: Citilcum - Tixkochoh

CLAVE: 31064

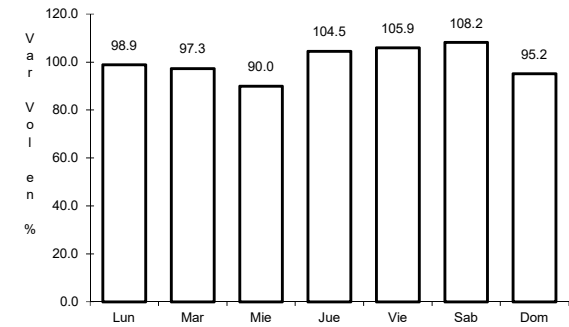
RUTA: YUC



Km: 0.00 Tipo: 3 Sent: 0



Km: 7.00 Tipo: 1 Sent: 0

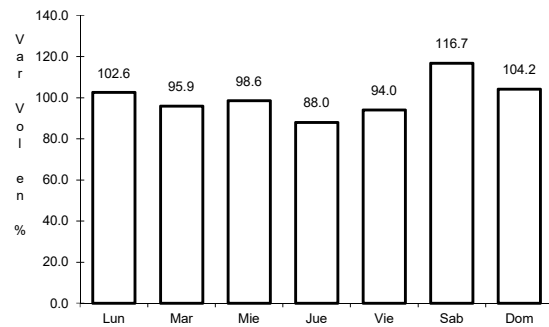


Km: 10.00 Tipo: 1 Sent: 0

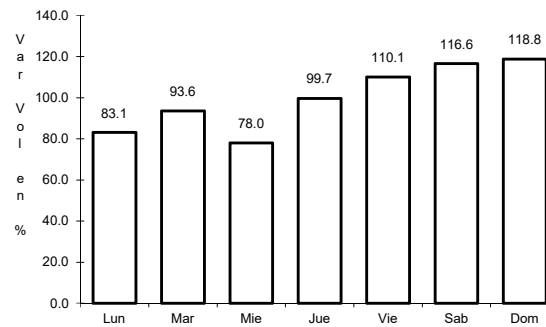
26 CARR: Dzemul - Xtampú

CLAVE: 31608

RUTA: YUC



Km: 0.00 Tipo: 3 Sent: 0

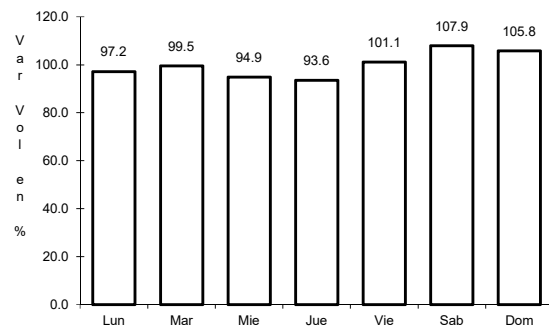


Km: 10.00 Tipo: 1 Sent: 0

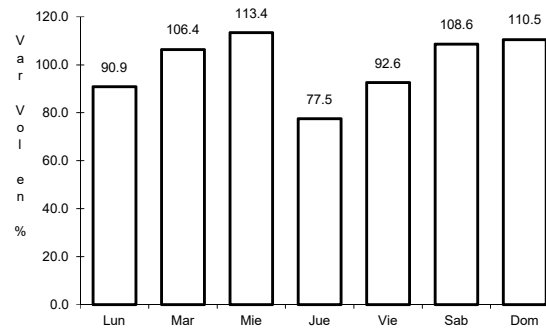
27 CARR: Dzidzantún - Santa Clara

CLAVE: 31592

RUTA: YUC



Km: 0.00 Tipo: 3 Sent: 0

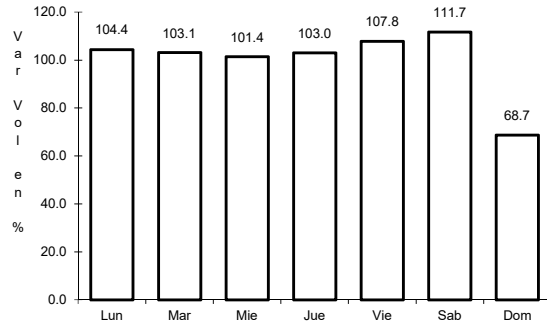


Km: 14.00 Tipo: 1 Sent: 0

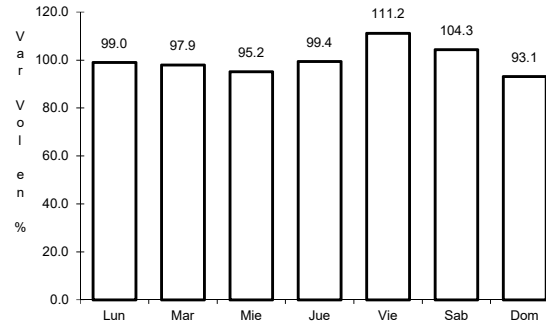
28 CARR: Hoctún - Cenotillo

CLAVE: 31011

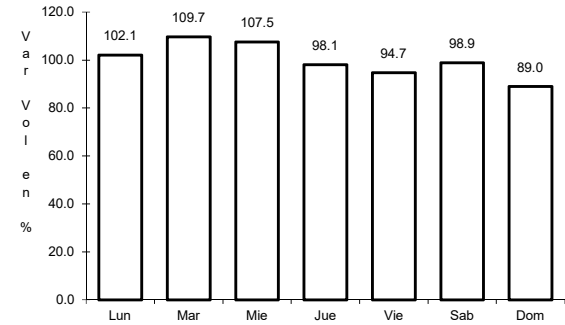
RUTA: YUC-011



Km: 0.00 Tipo: 3 Sent: 0



Km: 24.00 Tipo: 3 Sent: 0

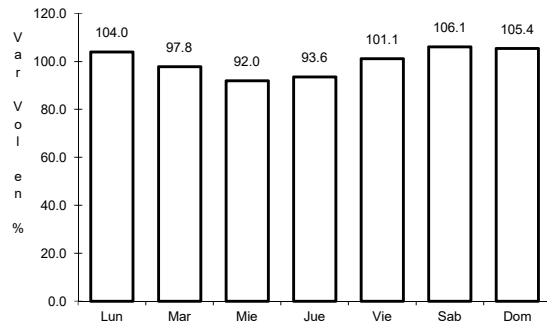


Km: 70.90 Tipo: 1 Sent: 0

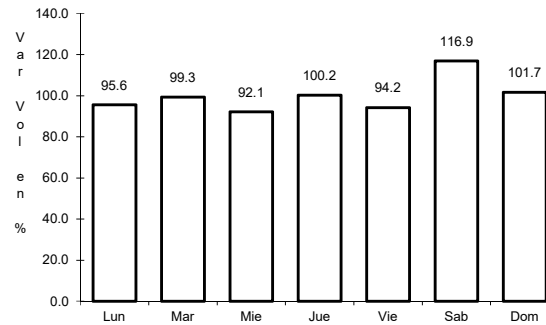
29 CARR: Holcá - Sotuta

CLAVE: 31626

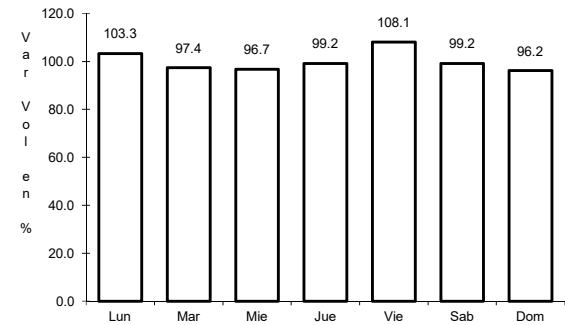
RUTA: YUC



Km: 0.00 Tipo: 3 Sent: 0



Km: 10.00 Tipo: 3 Sent: 0

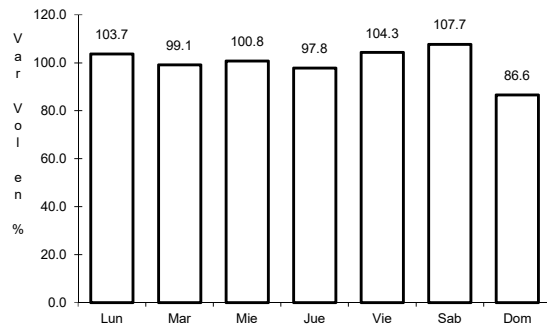


Km: 20.00 Tipo: 1 Sent: 0

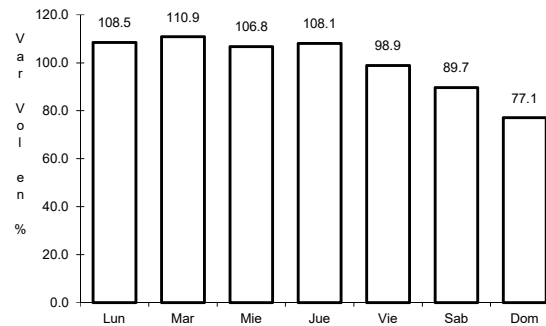
30 CARR: Hunucmá - Umán

CLAVE: 31610

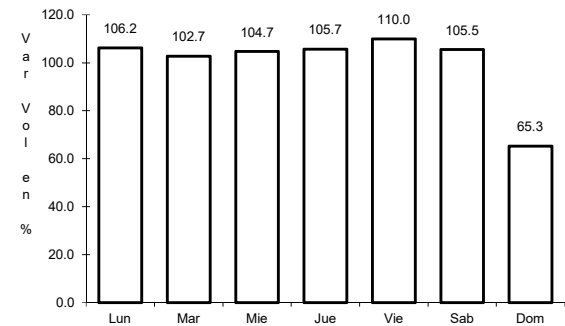
RUTA: YUC



Km: 0.00 Tipo: 3 Sent: 0



Km: 16.16 Tipo: 1 Sent: 0

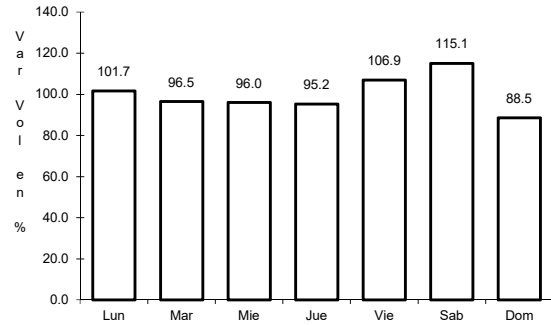


Km: 22.00 Tipo: 1 Sent: 0

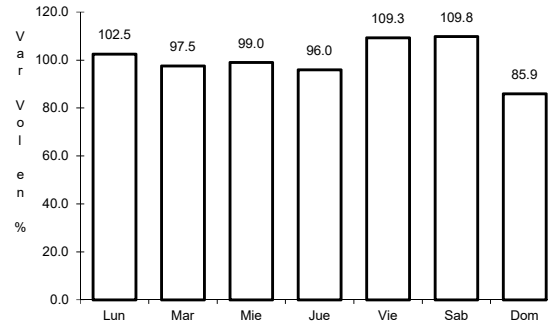
31 CARR: Izamal - Dzilam González

CLAVE: 31605

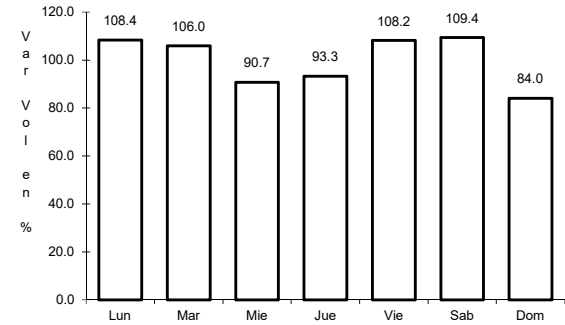
RUTA: YUC



Km: 0.00 Tipo: 3 Sent: 0



Km: 30.00 Tipo: 1 Sent: 0

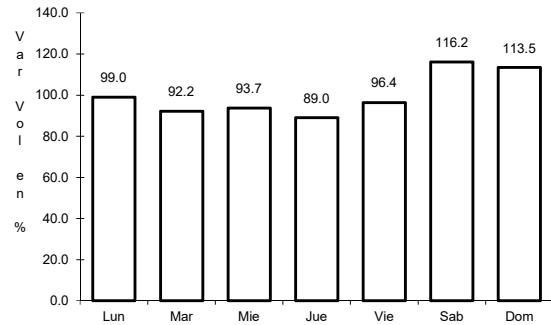


Km: 43.00 Tipo: 1 Sent: 0

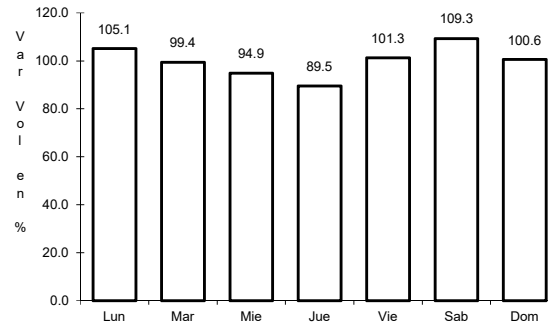
32 CARR: Kantunil - Izamal

CLAVE: 31012

RUTA: YUC



Km: 0.00 Tipo: 3 Sent: 0

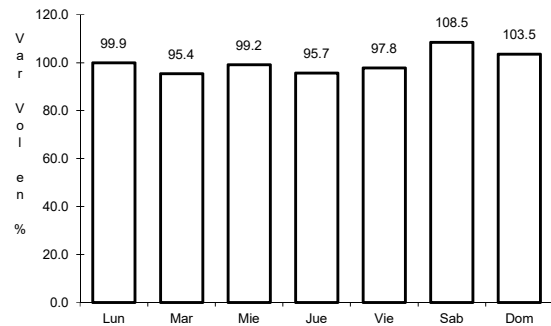


Km: 17.80 Tipo: 1 Sent: 0

33 CARR: Kinchil - Umán

CLAVE: 31009

RUTA: YUC

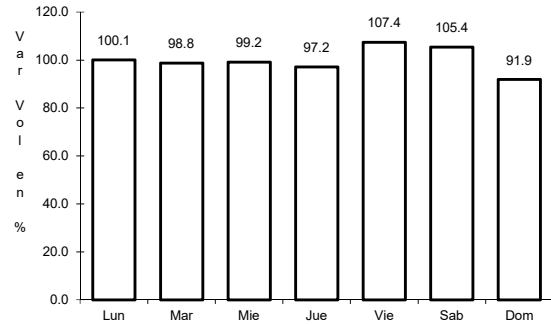


Km: 0.00 Tipo: 3 Sent: 0

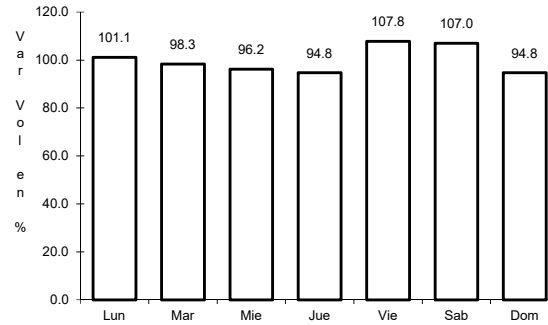
34 CARR: Libramiento Norte de Motul

CLAVE: 31610

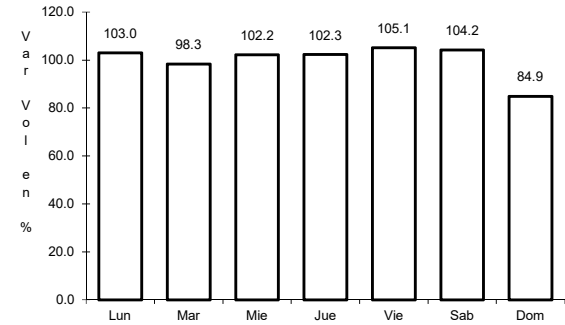
RUTA: YUC



Km: 0.00 Tipo: 3 Sent: 0



Km: 3.16 Tipo: 3 Sent: 0

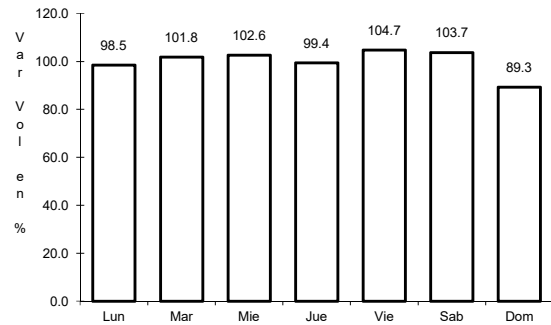


Km: 6.53 Tipo: 1 Sent: 0

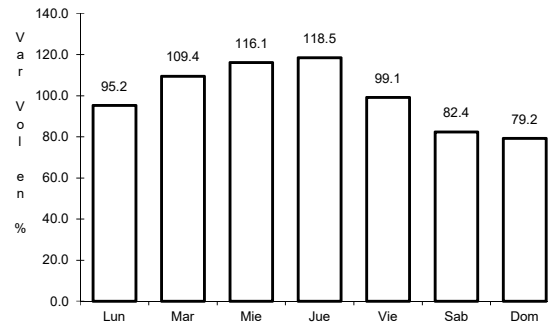
35 CARR: Mérida - Acanceh

CLAVE: 31023

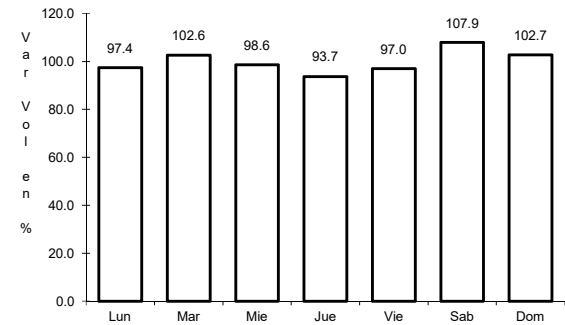
RUTA: YUC



Km: 0.00 Tipo: 3 Sent: 0



Km: 11.00 Tipo: 3 Sent: 0

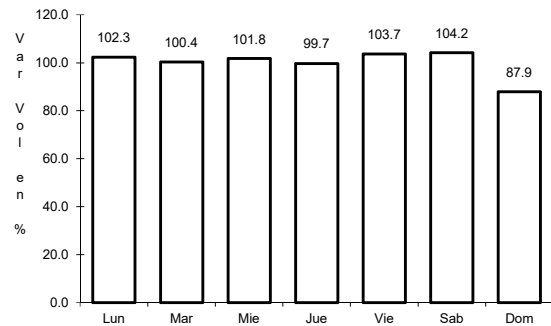


Km: 26.00 Tipo: 1 Sent: 0

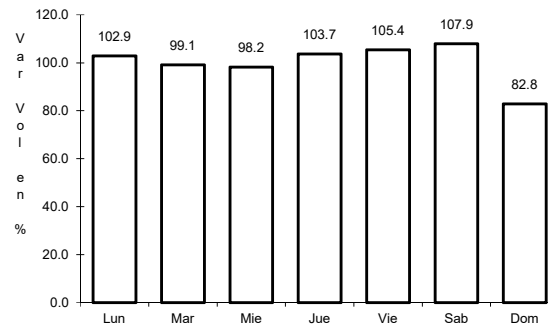
36 CARR: Mérida - Oxkutzcab

CLAVE: 31018

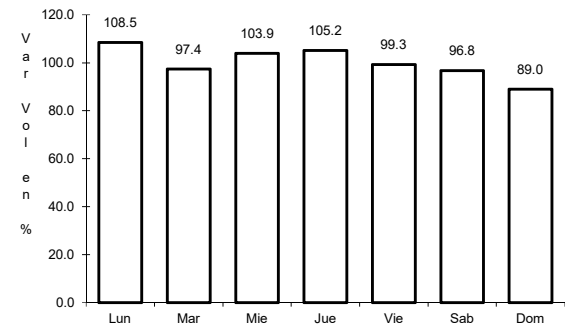
RUTA: YUC-018



Km: 0.00 Tipo: 3 Sent: 1



Km: 0.00 Tipo: 3 Sent: 2

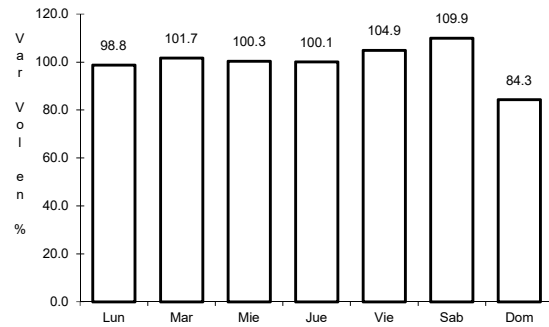


Km: 109.30 Tipo: 1 Sent: 0

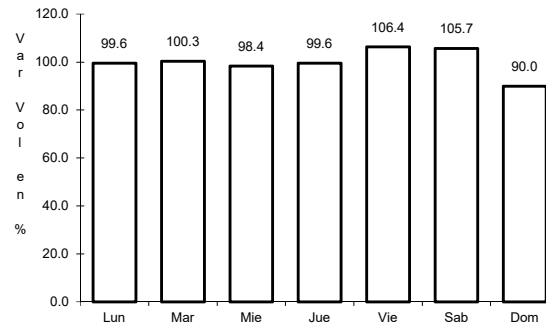
37 CARR: Mérida - Timucuy

CLAVE: 31024

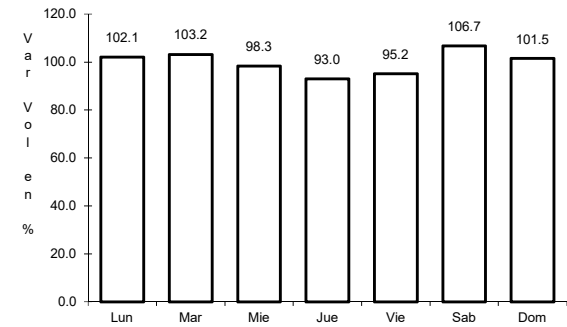
RUTA: YUC



Km: 0.00 Tipo: 3 Sent: 0



Km: 15.10 Tipo: 1 Sent: 0

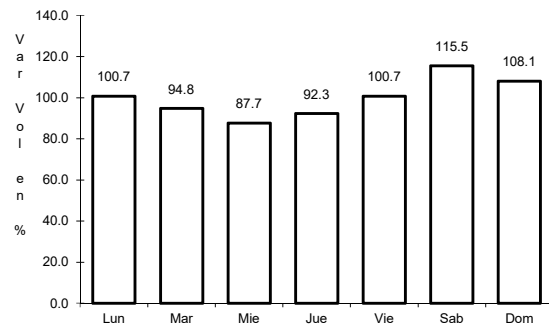


Km: 18.65 Tipo: 1 Sent: 0

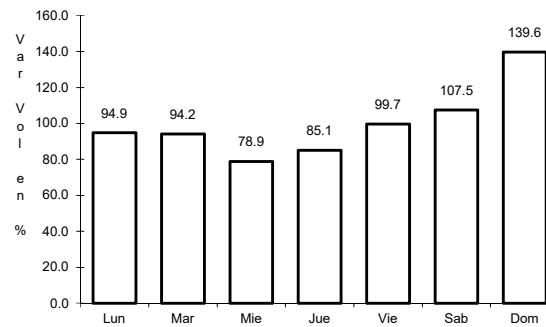
38 CARR: Motul - Puerto Telchac

CLAVE: 31006

RUTA: YUC-172



Km: 0.00 Tipo: 3 Sent: 0

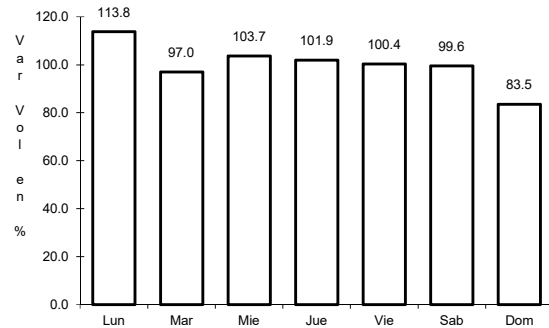


Km: 12.00 Tipo: 3 Sent: 0

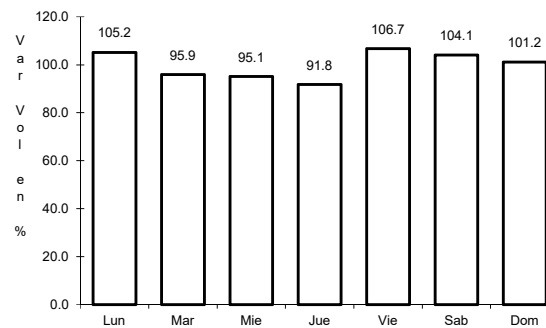
39 CARR: Muna - Maxcanú

CLAVE: 31053

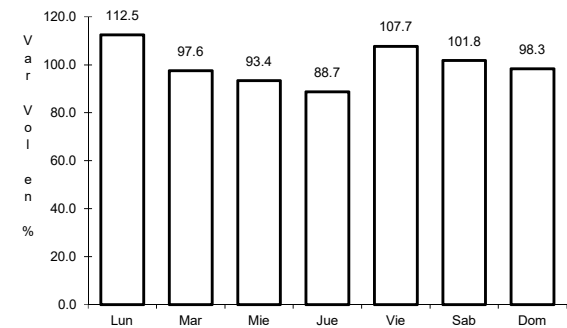
RUTA: YUC



Km: 0.00 Tipo: 3 Sent: 0



Km: 17.00 Tipo: 3 Sent: 0

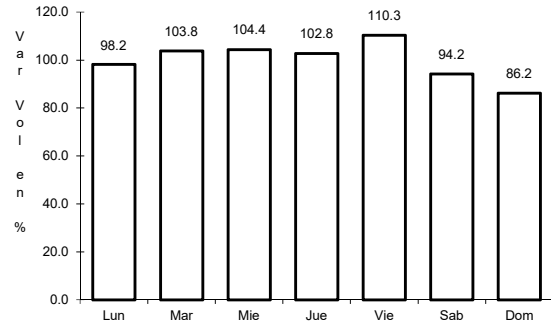


Km: 31.00 Tipo: 1 Sent: 0

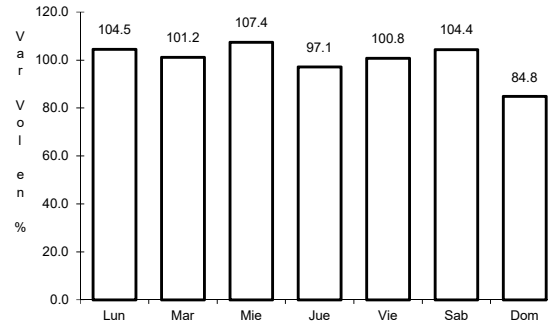
40 CARR: Oxkutzcab - Xul

CLAVE: 31051

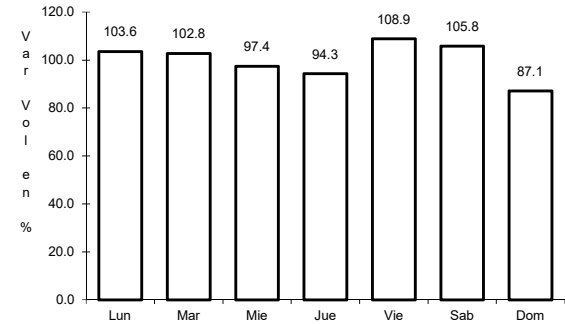
ruta: YUC-031



Km: 0.00 Tipo: 3 Sent: 0



Km: 10.00 Tipo: 3 Sent: 0

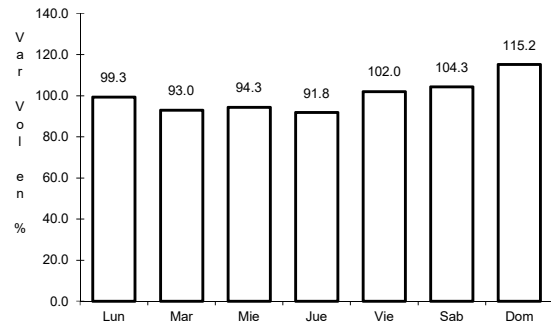


Km: 25.00 Tipo: 1 Sent: 0

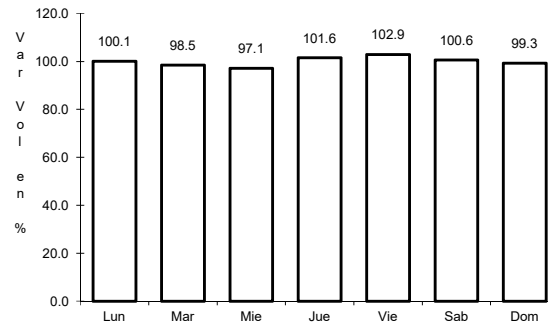
41 CARR: Pisté - Dzitás

CLAVE: 31013

ruta: YUC-013



Km: 0.00 Tipo: 3 Sent: 0

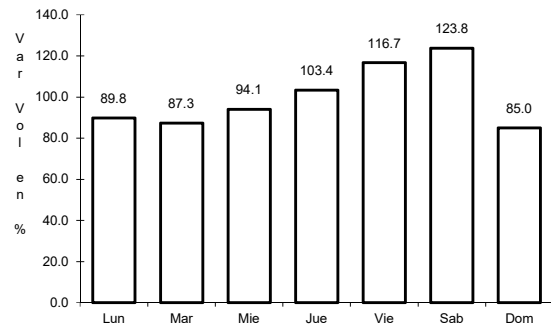


Km: 18.00 Tipo: 1 Sent: 0

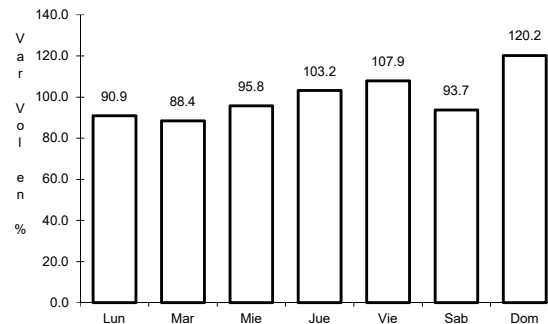
42 CARR: Progreso - Telchac Puerto

CLAVE: 31616

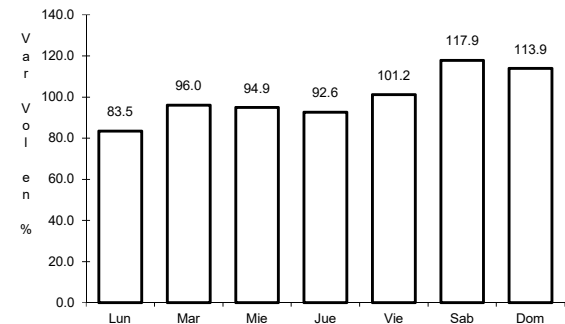
ruta: YUC-027



Km: 0.00 Tipo: 3 Sent: 1



Km: 0.00 Tipo: 3 Sent: 2

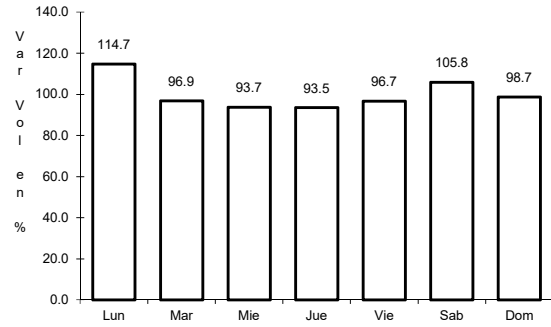


Km: 33.00 Tipo: 1 Sent: 0

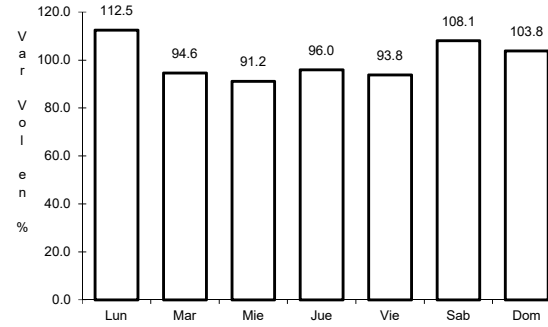
43 CARR: Ramal a Chankom

CLAVE: 31049

ruta: YUC



Km: 0.00 Tipo: 3 Sent: 0

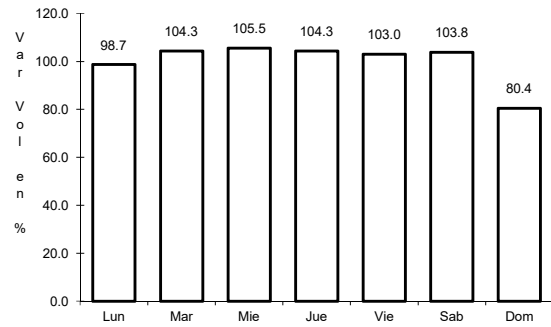


Km: 9.00 Tipo: 1 Sent: 0

44 CARR: Ramal a Dzonot Carretero

CLAVE: 31614

ruta: YUC

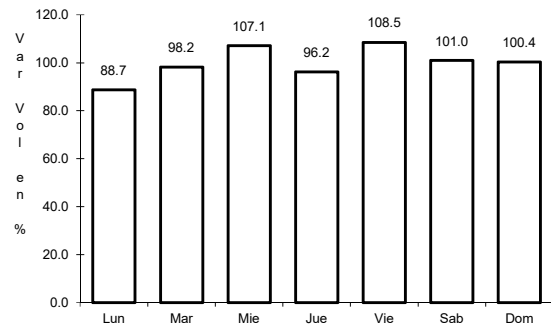


Km: 0.00 Tipo: 3 Sent: 0

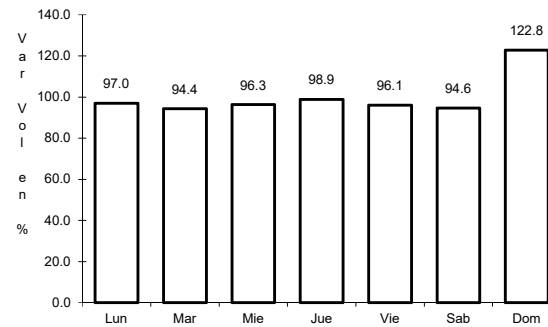
45 CARR: Ramal a San Felipe

CLAVE: 31628

ruta: YUC



Km: 0.00 Tipo: 3 Sent: 0

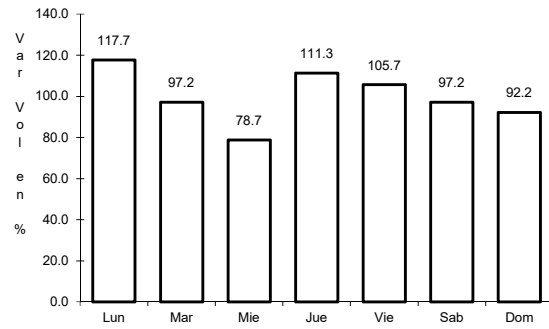


Km: 7.20 Tipo: 1 Sent: 0

46 CARR: Ramal a Tedzidz

CLAVE: 31600

RUTA: YUC



Km: 6.00

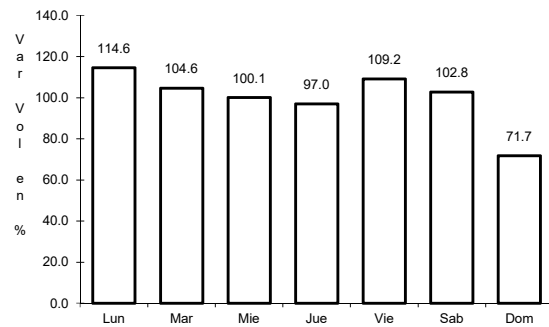
Tipo: 1

Sent: 0

47 CARR: Ramal a Yaxcabá

CLAVE: 31111

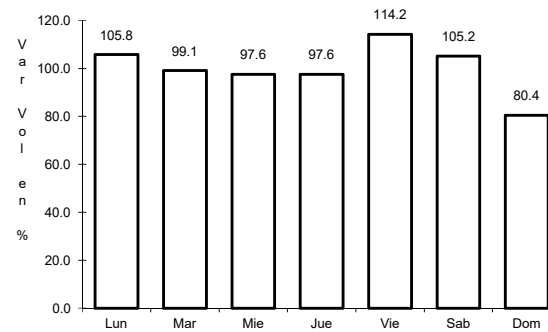
RUTA: YUC-289



Km: 0.00

Tipo: 3

Sent: 0



Km: 18.00

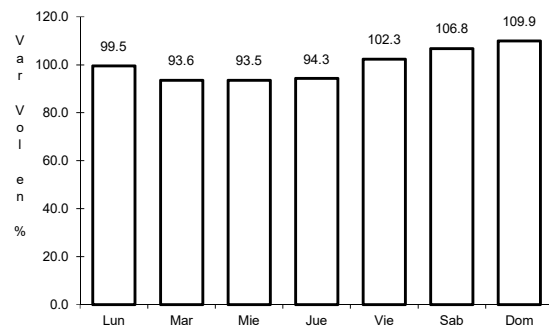
Tipo: 1

Sent: 0

48 CARR: Sinanché - Xitibcanul

CLAVE: 31619

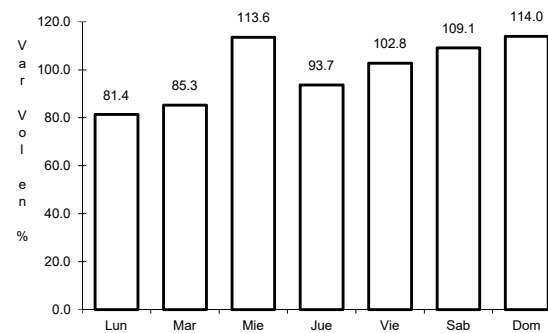
RUTA: YUC



Km: 0.00

Tipo: 3

Sent: 0



Km: 7.00

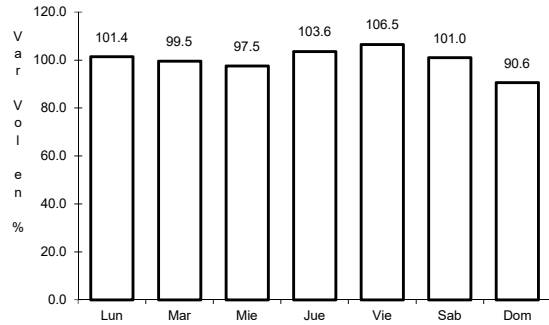
Tipo: 1

Sent: 0

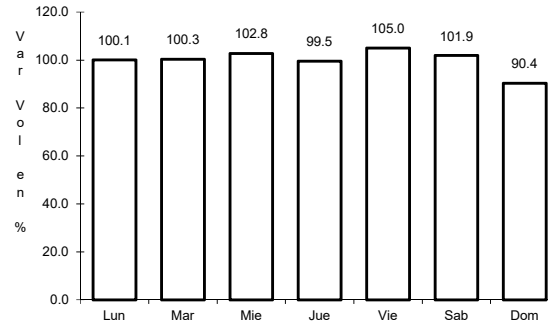
49 CARR: Sucilá - Calotmul

CLAVE: 31617

RUTA: YUC



Km: 2.00 Tipo: 3 Sent: 0

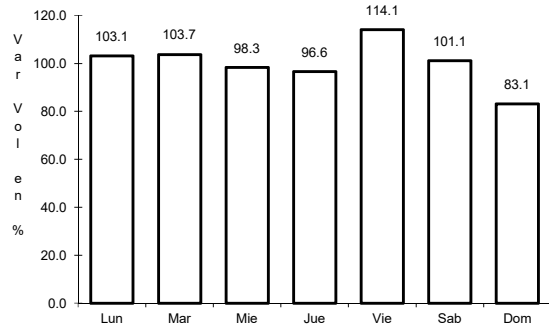


Km: 30.20 Tipo: 1 Sent: 0

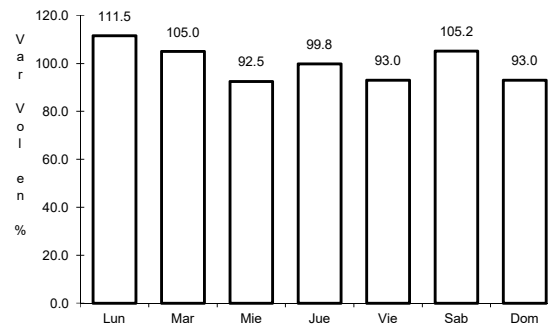
50 CARR: Suma - Izamal

CLAVE: 31081

RUTA: YUC-081



Km: 0.00 Tipo: 3 Sent: 0

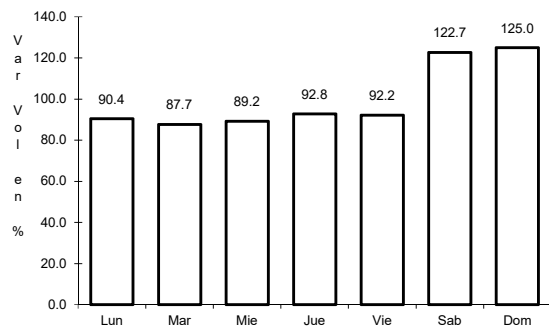


Km: 22.00 Tipo: 1 Sent: 0

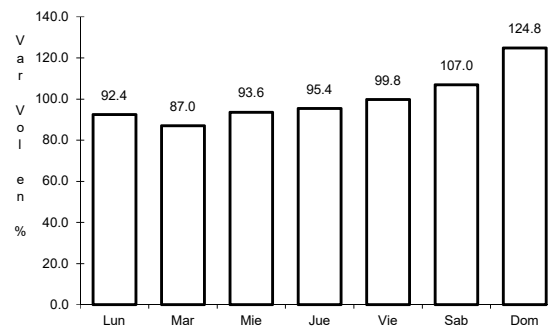
51 CARR: Telchac Puerto - Dzilam de Bravo

CLAVE: 31042

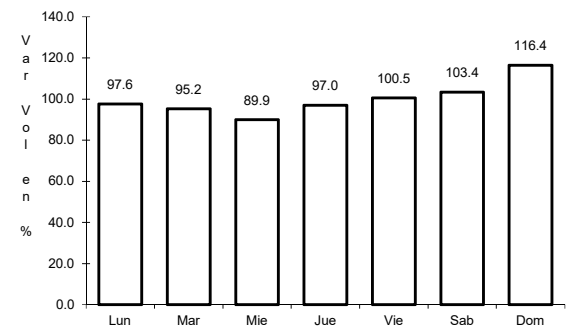
RUTA: YUC



Km: 0.00 Tipo: 3 Sent: 0



Km: 26.00 Tipo: 1 Sent: 0

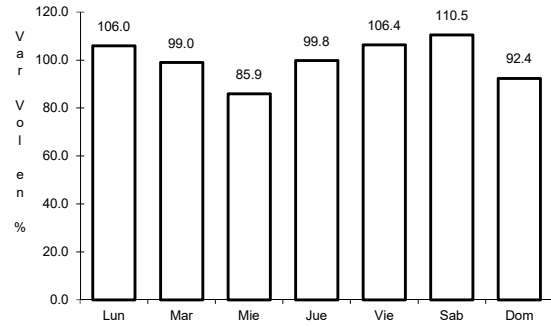


Km: 39.00 Tipo: 1 Sent: 0

52 CARR: Thul - Becanchén

CLAVE: 31104

RUTA: YUC-281



Km: 0.00

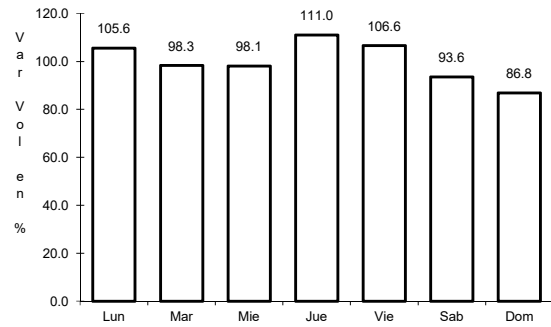
Tipo: 3

Sent: 0

53 CARR: Ticul - Chapab

CLAVE: 31623

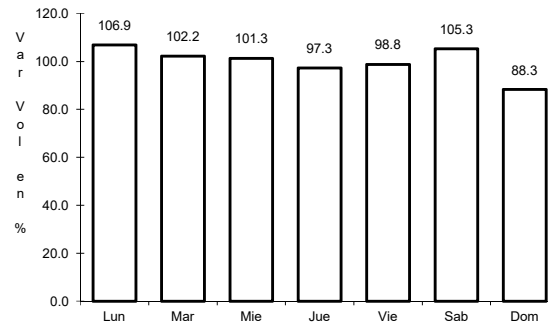
RUTA: YUC



Km: 0.00

Tipo: 3

Sent: 0



Km: 8.00

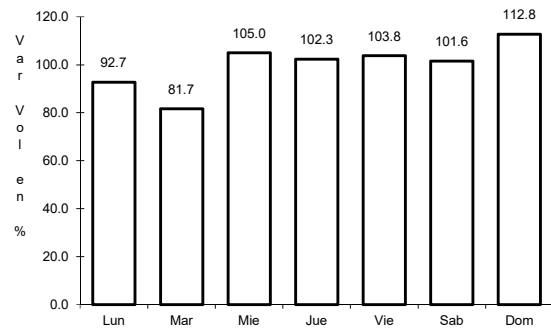
Tipo: 1

Sent: 0

54 CARR: Ticul - Dzan

CLAVE: 31621

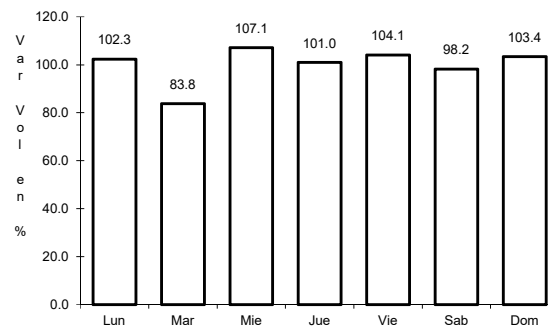
RUTA: YUC



Km: 2.50

Tipo: 3

Sent: 0



Km: 7.00

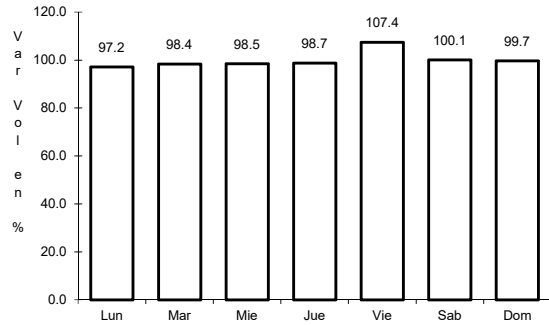
Tipo: 1

Sent: 0

55 CARR: Tixkokob - Baca

CLAVE: 31010

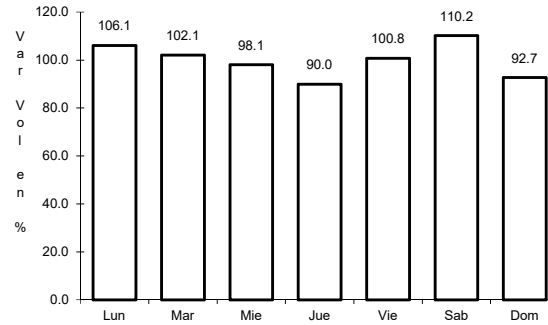
RUTA: YUC



Km: 0.00

Tipo: 3

Sent: 0



Km: 15.00

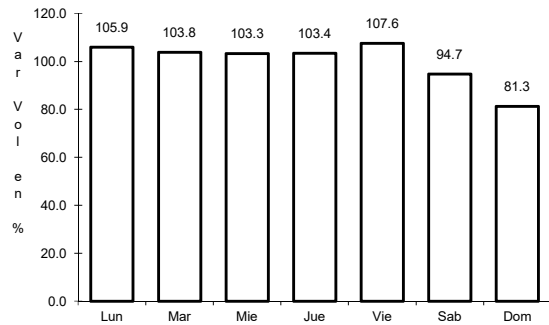
Tipo: 1

Sent: 0

56 CARR: Tixkokob - Sotuta

CLAVE: 31106

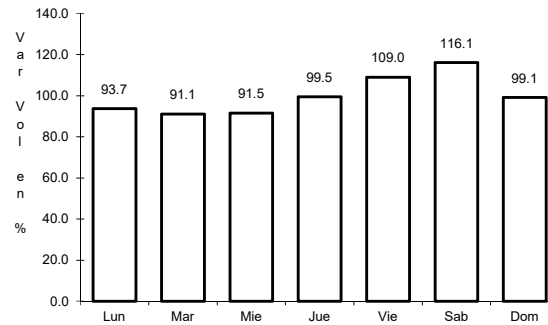
RUTA: YUC



Km: 0.00

Tipo: 3

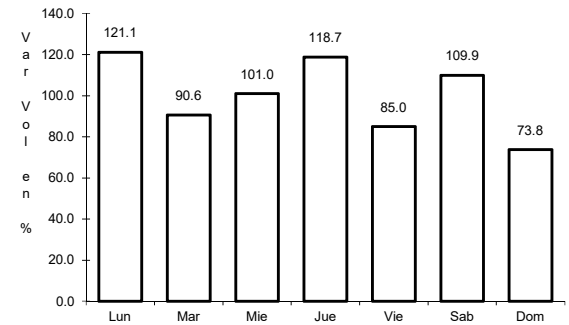
Sent: 0



Km: 31.00

Tipo: 3

Sent: 0



Km: 65.00

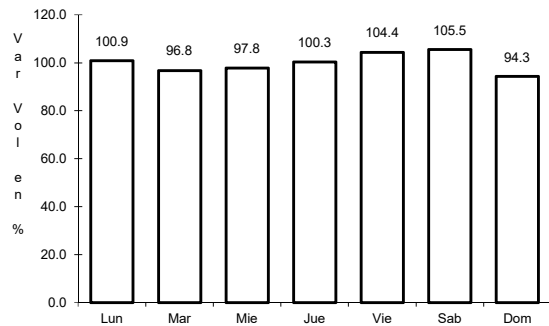
Tipo: 1

Sent: 0

57 CARR: Tizimin - Yucatán

CLAVE: 31588

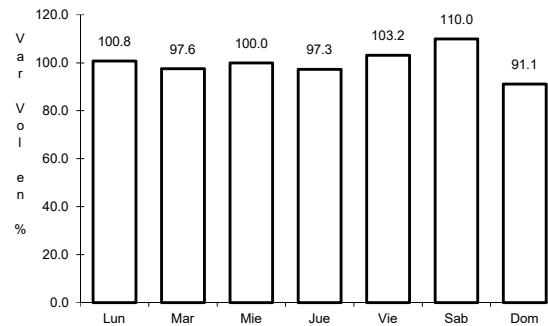
RUTA: YUC



Km: 0.00

Tipo: 3

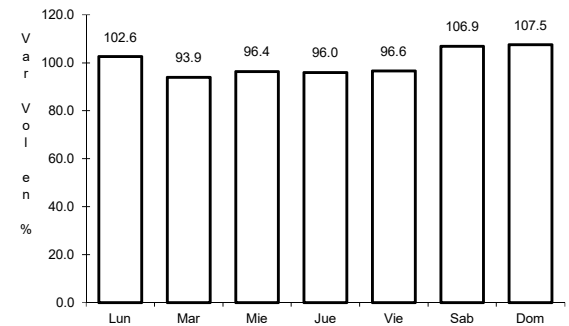
Sent: 0



Km: 30.00

Tipo: 3

Sent: 0



Km: 46.50

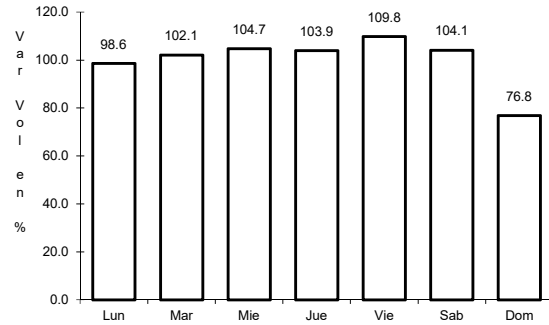
Tipo: 1

Sent: 0

58 CARR: Yaxché - Sierra Papacal

CLAVE: 31620

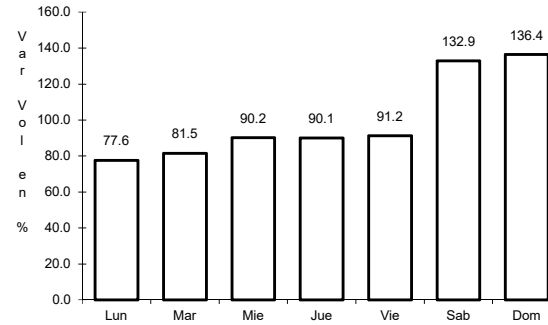
RUTA: YUC



Km: 0.00

Tipo: 3

Sent: 0



Km: 12.00

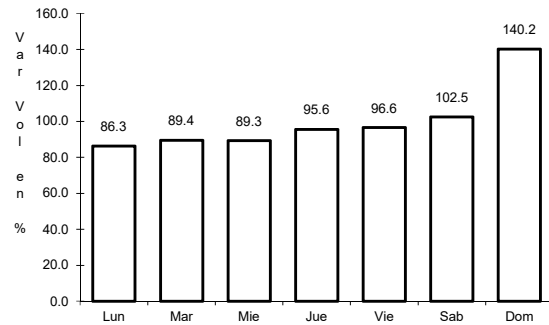
Tipo: 1

Sent: 0

59 CARR: Yobain - Chabihau

CLAVE: 31610

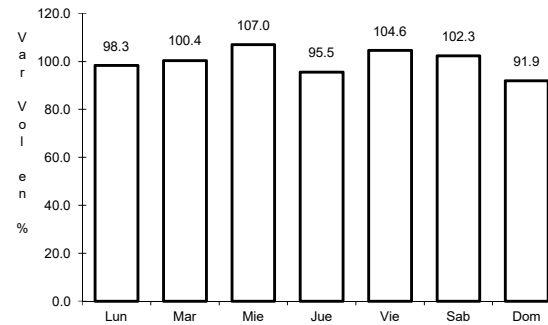
RUTA: YUC



Km: 0.00

Tipo: 3

Sent: 0



Km: 12.00

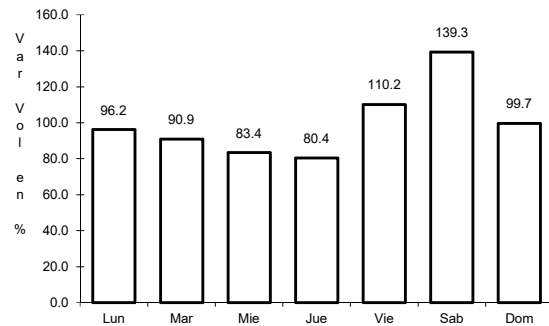
Tipo: 1

Sent: 0

60 CARR: Chemax - Cobá

CLAVE:

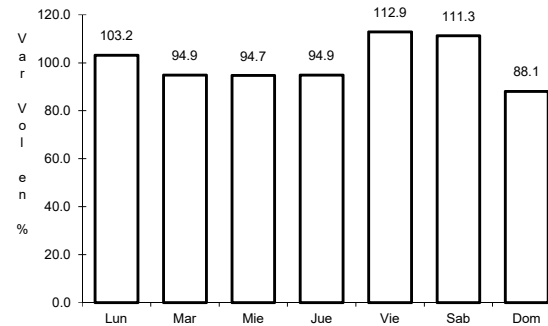
RUTA: YUC-MEX-180



Km: 0.00

Tipo: 3

Sent: 0

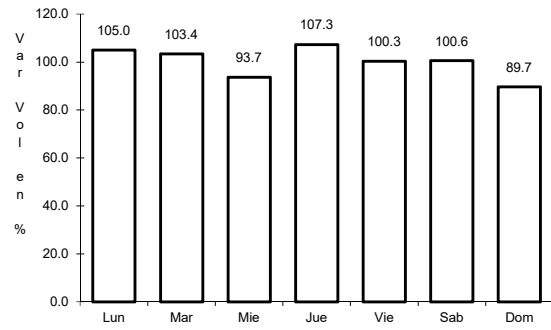


Km: 30.90

Tipo: 1

Sent: 0

61 CARR: Progreso - Celestún

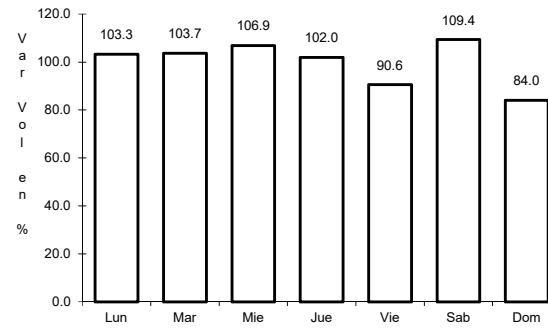


Km: 0.00

Tipo: 3

Sent: 1

CLAVE: 31040

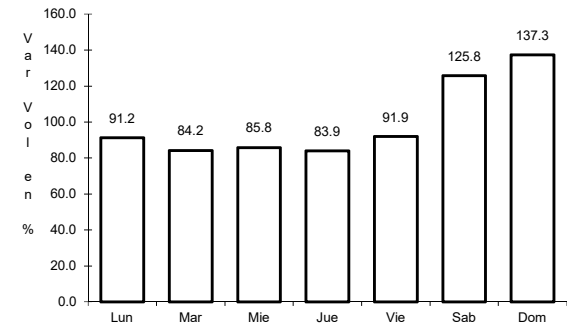


Km: 0.00

Tipo: 3

Sent: 2

RUTA: MEX-YUC



Km: 6.00

Tipo: 3

Sent: 0

