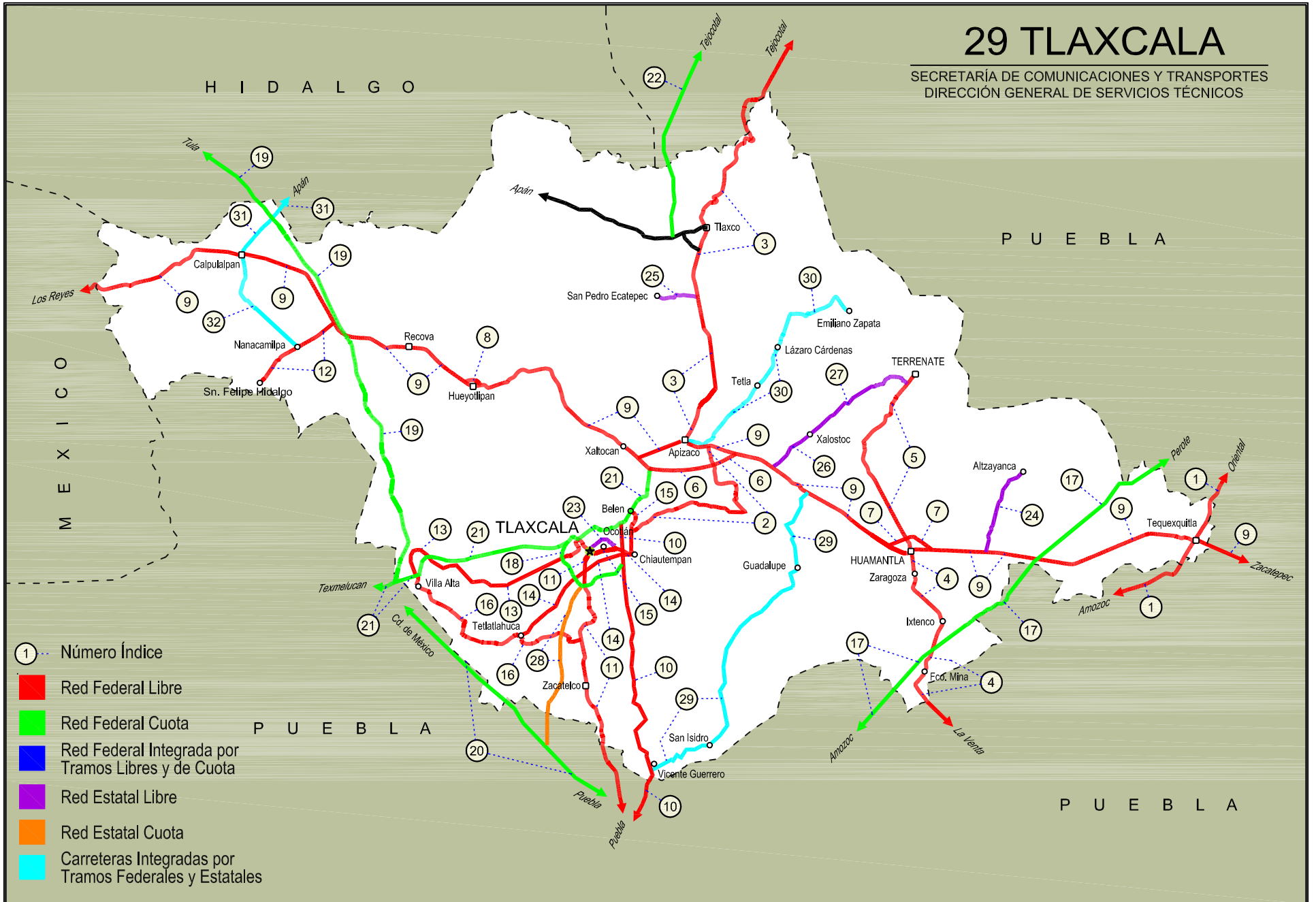


29 TLAXCALA

SECRETARÍA DE COMUNICACIONES Y TRANSPORTES
DIRECCIÓN GENERAL DE SERVICIOS TÉCNICOS





TLAXCALA

NO. INDICE CARRETERA	RUTA
---RED FEDERAL LIBRE---	
1 Amozoc - Teziutlán	MEX-129
2 Apizaco - San Pablo Apetatitlán	MEX-119
3 Apizaco - Tejocotal	MEX-119
4 Huamantla - La Venta	MEX-136
5 Huamantla - Terrenate	MEX-136
6 Libramiento de Apizaco	MEX-136
7 Libramiento Huamantla	MEX-136
8 Libramiento Hueyotlipan	MEX-136
9 Los Reyes - Zacatepec	MEX-136
10 Puebla - Belem	MEX-121
11 Puebla - Tlaxcala	MEX-119
12 Ramal a San Felipe de Hidalgo	MEX-136
13 San Martín Texmelucan - Tlaxcala	MEX-117
14 Tetlatlahuca - Santa Ana Chiautempan	MEX-119
15 Tlaxcala - Belem	MEX-119
16 Villa Alta - T. C. (Puebla - Tlaxcala)	MEX-119
---RED FEDERAL DE CUOTA---	
17 Amozoc - Perote (Cuota)	MEX-140D
18 Libramiento de Tlaxcala (Cuota)	MEX-117D
19 Libramiento Norte de la Ciudad de México (Cuota)	MEX-M40D
20 México - Puebla (Cuota)	MEX-150D
21 San Martín Texmelucan - Tlaxcala - El Molinito (Cuota)	MEX-117D
22 Tlaxco - Tejocotal (Cuota)	MEX-119D
---RED ESTATAL LIBRE---	
23 Libramiento de Ocotlán	TLAX
24 Ramal a Altzayanca de Hidalgo	TLAX
25 Ramal a San Pedro Ecatepec	TLAX
26 Ramal a Xalostoc	TLAX
27 Xalostoc - Terrenate	TLAX
---RED ESTATAL DE CUOTA---	
28 Puebla - Tlaxcala (Cuota)	PUE-D
---CARRETERAS INTEGRADAS POR TRAMOS FEDERALES Y ESTATALES---	
29 Acocotla - Vicente Guerrero	MEX-TLAX
30 Apizaco - Emiliano Zapata	TLAX-MEX-136
31 Calpulalpan - El Ocote	MEX-HGO
32 Calpulalpan - Nanacamilpa	TLAX-MEX-136

TLAXCALA

1 CARR: Amozoc - Teziutlán

CLAVE: 00210

RUTA: MEX-129

AÑO: 2018

LUGAR	ESTACION				CLASIFICACION VEHICULAR EN PORCIENTO										COORDENADAS					
	KM	TE	SC	TDPA	M	A	B	C2	C3	T3S2	T3S3	T3S2R4	OTROS	A	B	C	K'	D	LATITUD	LONGITUD
Amozoc	0.00																			
X. C. Puebla - Córdoba (Cuota)	1.40	3	0	11569	0.8	66.1	2.2	15.2	4.1	6.3	3.9	0.6	0.8	66.9	2.2	30.9	0.075	0.504	19.051561	-98.027314
Acajete	12.00	3	0	8762	1.5	71.6	1.3	14.2	2.7	5.4	1.8	0.6	0.9	73.1	1.3	25.6	0.072	0.511	19.118411	-97.942132
Rafael Lara Grajales	35.50	1	0	4906	1.2	74.8	2.9	7.7	5.4	4.9	1.9	0.6	0.6	76.0	2.9	21.1	0.081	0.502	19.236833	-97.808193
Rafael Lara Grajales	35.50	3	0	8999	2.5	77.4	2.1	6.3	2.8	5.9	1.7	0.6	0.7	79.9	2.1	18.0	0.084	0.503	19.231107	-97.786363
Lim. Edos. Term. Pue. Ppia. Tlax.	50.54																			
X. C. Los Reyes - Zacatepec	56.31	1	0	3652	1.7	77.1	2.7	6.1	5.1	3.9	2.7	0.5	0.2	78.8	2.7	18.5	0.081	0.508	19.314311	-97.655472
Lim. Edos. Term. Tlax. Ppia. Pue.	60.22																			
Oriental	62.62	1	0	5976	2.7	81.4	1.9	7.7	1.3	2.8	1.7	0.3	0.2	84.1	1.9	14.0	0.071	0.502	19.364260	-97.629883
Oriental	62.62	3	0	6833	2.6	82.6	1.6	6.2	1.9	3.7	1.1	0.2	0.1	85.2	1.6	13.2	0.086	0.531	19.383318	-97.618897
X. C. Amozoc - Perote (Cuota)	69.00	1	1	3882	2.9	85.4	1.8	6.3	1.2	1.1	1.0	0.1	0.2	88.3	1.8	9.9	0.086	0.513	19.411078	-97.635444
X. C. Amozoc - Perote (Cuota)	69.00	1	2	4083	3.1	83.8	2.1	6.9	1.4	1.3	1.1	0.1	0.2	86.9	2.1	11.0	0.084	0.513	19.411058	-97.635506
X. C. Amozoc - Perote (Cuota)	69.00	3	0	8613	1.9	82.6	2.5	6.4	1.7	3.2	1.1	0.2	0.4	84.5	2.5	13.0	0.076	0.506	19.421989	-97.646443
Libres	76.35	3	0	8705	1.8	81.1	2.4	7.3	1.7	3.6	1.2	0.4	0.5	82.9	2.4	14.7	0.072	0.510	19.482180	-97.673787
San Miguel Tenextatiloyán	106.70	1	0	3860	2.6	80.6	2.4	7.7	1.5	3.8	0.9	0.2	0.3	83.2	2.4	14.4	0.134	0.514	19.702661	-97.598936
T. Izq. Zacapoaxtla	114.80	1	0	7097	2.1	85.3	1.7	4.7	1.0	3.6	0.8	0.1	0.7	87.4	1.7	10.9	0.070	0.508	19.759361	-97.568207
T. Izq. Zacapoaxtla	114.80	3	0	9892	1.9	84.3	1.4	5.0	0.5	5.0	0.7	0.2	1.0	86.2	1.4	12.4	0.070	0.502	19.764689	-97.564310
Zaragoza	116.80	3	0	7703	2.2	85.3	2.3	5.1	0.8	3.3	0.5	0.1	0.4	87.5	2.3	10.2	0.067	0.505	19.782763	-97.544252
Teziutlán	157.80	1	0	11892	2.6	80.2	1.2	8.5	0.4	5.1	0.7	0.3	1.0	82.8	1.2	16.0	0.066	0.503	19.817570	-97.379439

2 CARR: Apizaco - San Pablo Apetatitlán

CLAVE: 29035

RUTA: MEX-119

AÑO: 2018

LUGAR	ESTACION				CLASIFICACION VEHICULAR EN PORCIENTO										COORDENADAS					
	KM	TE	SC	TDPA	M	A	B	C2	C3	T3S2	T3S3	T3S2R4	OTROS	A	B	C	K'	D	LATITUD	LONGITUD
T. C. Los Reyes - Zacatepec	0.00	3	0	6806	5.4	83.2	1.0	3.8	1.0	3.7	0.6	0.5	0.8	88.6	1.0	10.4	0.079	0.513	19.411133	-98.118819
T. Der. Tecnológico	0.55	3	0	8932	4.5	86.0	0.7	2.2	0.5	4.3	0.5	0.3	1.0	90.5	0.7	8.8	0.077	0.532	19.404930	-98.117243
Cuaxomulco	9.10	3	0	3194	8.5	76.8	2.5	4.3	1.5	2.1	1.6	1.3	1.4	85.3	2.5	12.2	0.085	0.513	19.355826	-98.106271
Santa Cruz Tlaxcala	14.50	3	0	5922	6.2	85.3	0.5	2.4	0.7	2.8	0.9	0.7	0.5	91.5	0.5	8.0	0.086	0.509	19.353421	-98.157575
T. Izq. Contla	18.90	1	0	9436	5.3	84.0	0.1	1.6	0.1	5.7	1.1	0.5	1.6	89.3	0.1	10.6	0.063	0.518	19.337461	-98.187057
San Pablo Apetatitlán	20.00	1	0	13924	4.8	79.9	0.4	2.5	0.4	7.8	1.2	0.6	2.4	84.7	0.4	14.9	0.062	0.502	19.335633	-98.190513

TLAXCALA

3 CARR: Apizaco - Tejocotal

CLAVE: 00430

RUTA: MEX-119

AÑO: 2018

LUGAR	ESTACION				CLASIFICACION VEHICULAR EN PORCIENTO												COORDENADAS			
	KM	TE	SC	TDPA	M	A	B	C2	C3	T3S2	T3S3	T3S2R4	OTROS	A	B	C	K'	D	LATITUD	LONGITUD
Apizaco	0.00	3	1	12098	1.1	87.4	1.1	5.1	1.1	1.9	1.3	0.5	0.5	88.5	1.1	10.4	0.076	0.508	19.428410	-98.135818
Apizaco	0.00	3	2	12494	1.3	86.1	1.2	5.5	1.1	2.2	1.5	0.5	0.6	87.4	1.2	11.4	0.076	0.508	19.428438	-98.135874
T. Der. Tetla	6.60	3	0	19478	0.9	83.8	2.3	6.9	1.3	2.6	1.1	0.7	0.4	84.7	2.3	13.0	0.074	0.501	19.473381	-98.112579
T. Izq. Atlangatepec	12.15	1	0	14806	0.9	83.7	2.5	7.0	1.3	2.5	1.0	0.7	0.4	84.6	2.5	12.9	0.097	0.501	19.506436	-98.117082
Tlaxco	23.91	1	0	9099	1.1	78.9	2.1	9.2	1.7	4.2	1.4	0.6	0.8	80.0	2.1	17.9	0.090	0.606	19.582725	-98.130630
Tlaxco	23.91	3	0	5304	1.7	79.8	1.1	8.7	1.7	4.2	1.8	0.4	0.6	81.5	1.1	17.4	0.088	0.509	19.626435	-98.124693
Lim. Edos. Term. Tlax. Ppia. Pue.	34.45																			
T. Der. Tetela de Ocampo	52.20	1	0	6970	2.6	80.2	0.6	7.8	1.2	5.1	1.4	0.4	0.7	82.8	0.6	16.6	0.081	0.506	19.800385	-98.026804
Zacatlán	71.25	1	0	10013	3.0	82.1	1.0	5.6	0.5	4.8	1.4	0.5	1.1	85.1	1.0	13.9	0.072	0.515	19.918496	-97.959144
Lim. Edos. Term. Pue. Ppia. Hgo.	110.45																			
T. C. Pachuca - Tuxpam	113.15	1	0	8887	1.8	82.1	1.9	10.4	1.1	1.1	0.9	0.5	0.2	83.9	1.9	14.2	0.072	0.513	20.123284	-98.128825

4 CARR: Huamantla - La Venta

CLAVE: 29564

RUTA: MEX-136

AÑO: 2018

LUGAR	ESTACION				CLASIFICACION VEHICULAR EN PORCIENTO												COORDENADAS			
	KM	TE	SC	TDPA	M	A	B	C2	C3	T3S2	T3S3	T3S2R4	OTROS	A	B	C	K'	D	LATITUD	LONGITUD
Huamantla	0.00	3	1	5502	2.6	85.8	0.5	9.0	0.5	0.8	0.6	0.1	0.1	88.4	0.5	11.1	0.065	0.512	19.298976	-97.921170
Huamantla	0.00	3	2	5767	3.2	84.4	0.5	9.7	0.5	0.8	0.7	0.1	0.1	87.6	0.5	11.9	0.062	0.512	19.299002	-97.921062
Ignacio Zaragoza	2.30	3	0	6245	2.1	83.9	0.8	8.9	0.6	2.7	0.8	0.1	0.1	86.0	0.8	13.2	0.070	0.506	19.284043	-97.920734
Ixtenco	8.00	1	0	6224	1.8	83.3	0.7	10.6	0.5	2.3	0.6	0.1	0.1	85.1	0.7	14.2	0.066	0.505	19.261146	-97.899813
Ixtenco	8.00	3	0	4629	1.5	81.5	1.3	12.4	0.8	1.8	0.4	0.1	0.2	83.0	1.3	15.7	0.076	0.512	19.242363	-97.896488
X. C. Amozoc - Perote (Cuota)	11.40	1	0	4465	1.5	81.2	0.7	12.8	0.9	2.2	0.4	0.1	0.2	82.7	0.7	16.6	0.069	0.502	19.226987	-97.902356
Zitlaltepec	13.60	1	0	3579	1.8	82.6	1.0	10.4	0.9	2.5	0.6	0.1	0.1	84.4	1.0	14.6	0.074	0.504	19.215648	-97.907720
Zitlaltepec	13.60	3	0	3556	2.4	77.8	0.5	14.9	0.7	2.4	0.9	0.2	0.2	80.2	0.5	19.3	0.069	0.503	19.195713	-97.917175
T. C. Amozoc - Teziutlán	17.60	1	0	3127	1.7	78.9	0.4	13.3	1.0	2.8	1.3	0.3	0.3	80.6	0.4	19.0	0.067	0.506	19.176515	-97.909263

5 CARR: Huamantla - Terrenate

CLAVE: 29036

RUTA: MEX-136

AÑO: 2018

LUGAR	ESTACION				CLASIFICACION VEHICULAR EN PORCIENTO												COORDENADAS			
	KM	TE	SC	TDPA	M	A	B	C2	C3	T3S2	T3S3	T3S2R4	OTROS	A	B	C	K'	D	LATITUD	LONGITUD
Huamantla	0.00	3	0	1651	5.5	83.1	0.3	7.9	0.9	1.5	0.5	0.1	0.2	88.6	0.3	11.1	0.091	0.506	19.335434	-97.933924
T. Izq. Xicoténcatl	12.50	1	0	846	5.8	84.2	0.2	7.4	1.2	0.7	0.5	0.0	0.0	90.0	0.2	9.8	0.128	0.530	19.412684	-97.968836
Terrenate	21.00	1	0	1216	3.2	86.3	0.1	7.4	1.0	1.1	0.4	0.1	0.4	89.5	0.1	10.4	0.073	0.500	19.463873	-97.929909

TLAXCALA

6 CARR: Libramiento de Apizaco

CLAVE: 29567

RUTA: MEX-136

AÑO: 2018

LUGAR	ESTACION				CLASIFICACION VEHICULAR EN PORCIENTO													COORDENADAS		
	KM	TE	SC	TDPA	M	A	B	C2	C3	T3S2	T3S3	T3S2R4	OTROS	A	B	C	K'	D	LATITUD	LONGITUD
T. C. Los Reyes - Zacatepec	0.00																			
T. Der. Amaxac de Guerrero	6.00	1	1	12512	1.2	78.3	2.5	4.4	2.3	5.7	2.9	1.7	1.0	79.5	2.5	18.0	0.084	0.503	19.376140	-98.151852
T. Der. Amaxac de Guerrero	6.00	1	2	12645	0.9	76.5	2.7	4.8	2.5	6.5	2.9	2.1	1.1	77.4	2.7	19.9	0.070	0.503	19.376308	-98.151811
T. Der. Amaxac de Guerrero	6.00	3	1	14290	1.3	75.9	3.4	4.6	2.6	6.5	2.6	2.1	1.0	77.2	3.4	19.4	0.070	0.539	19.400102	-98.101476
T. Der. Amaxac de Guerrero	6.00	3	2	12216	0.6	78.1	2.9	5.8	2.1	5.0	2.8	1.8	0.9	78.7	2.9	18.4	0.081	0.539	19.400138	-98.101557
T. C. Los Reyes - Zacatepec	10.40																			

7 CARR: Libramiento Huamantla

CLAVE: 29567

RUTA: MEX-136

AÑO: 2018

LUGAR	ESTACION				CLASIFICACION VEHICULAR EN PORCIENTO													COORDENADAS		
	KM	TE	SC	TDPA	M	A	B	C2	C3	T3S2	T3S3	T3S2R4	OTROS	A	B	C	K'	D	LATITUD	LONGITUD
T. C. Los Reyes - Zacatepec (Poniente)	0.00	3	1	7698	0.8	73.5	3.8	5.9	2.7	6.9	2.9	2.7	0.8	74.3	3.8	21.9	0.086	0.518	19.324196	-97.932047
T. C. Los Reyes - Zacatepec (Poniente)	0.00	3	2	8261	0.8	71.1	4.1	6.3	3.0	7.7	3.3	2.8	0.9	71.9	4.1	24.0	0.100	0.518	19.324271	-97.932122
T. C. Los Reyes - Zacatepec (Oriente)	4.60	1	1	8212	1.2	69.9	3.5	8.6	2.4	7.1	3.8	2.7	0.8	71.1	3.5	25.4	0.075	0.505	19.319994	-97.911109
T. C. Los Reyes - Zacatepec (Oriente)	4.60	1	2	8382	1.2	66.1	4.1	9.4	2.7	8.2	4.6	2.8	0.9	67.3	4.1	28.6	0.073	0.505	19.320066	-97.911055

8 CARR: Libramiento Hueyotlipan

CLAVE: 29567

RUTA: MEX-136

AÑO: 2018

LUGAR	ESTACION				CLASIFICACION VEHICULAR EN PORCIENTO													COORDENADAS		
	KM	TE	SC	TDPA	M	A	B	C2	C3	T3S2	T3S3	T3S2R4	OTROS	A	B	C	K'	D	LATITUD	LONGITUD
T. C. Los Reyes - Zacatepec (Poniente)	0.00	3	1	7259	0.9	68.1	2.9	5.8	3.8	10.5	3.2	3.9	0.9	69.0	2.9	28.1	0.074	0.508	19.476073	-98.353899
T. C. Los Reyes - Zacatepec (Poniente)	0.00	3	2	7508	0.4	65.1	3.2	6.3	4.3	12.1	3.5	4.0	1.1	65.5	3.2	31.3	0.070	0.508	19.476169	-98.353914
T. C. Los Reyes - Zacatepec (Oriente)	2.70	1	1	7404	1.3	59.3	3.5	6.8	5.0	14.8	4.0	4.3	1.0	60.6	3.5	35.9	0.062	0.507	19.472368	-98.338681
T. C. Los Reyes - Zacatepec (Oriente)	2.70	1	2	7605	1.6	57.2	3.6	7.3	5.6	15.0	4.2	4.4	1.1	58.8	3.6	37.6	0.064	0.507	19.472532	-98.338693

9 CARR: Los Reyes - Zacatepec

CLAVE: 00052

RUTA: MEX-136

AÑO: 2018

LUGAR	ESTACION				CLASIFICACION VEHICULAR EN PORCIENTO													COORDENADAS		
	KM	TE	SC	TDPA	M	A	B	C2	C3	T3S2	T3S3	T3S2R4	OTROS	A	B	C	K'	D	LATITUD	LONGITUD
T. C. México - Puebla (Libre)	0.00																			
T. Izq. La Magdalena	3.35	3	1	46980	2.5	85.6	0.4	5.1	1.4	2.2	2.2	0.2	0.4	88.1	0.4	11.5	0.047	0.500	19.380086	-98.941096
T. Izq. La Magdalena	3.35	3	2	46948	3.3	83.6	0.4	5.7	1.5	2.5	2.4	0.2	0.4	86.9	0.4	12.7	0.051	0.500	19.380159	-98.941272
T. Izq. Chimalhuacán	8.45	1	1	39072	2.6	84.8	0.4	5.3	1.4	2.3	2.4	0.2	0.6	87.4	0.4	12.2	0.057	0.505	19.412976	-98.920196
T. Izq. Chimalhuacán	8.45	1	2	38290	3.2	83.2	0.4	5.8	1.6	2.5	2.5	0.2	0.6	86.4	0.4	13.2	0.062	0.505	19.413071	-98.920347
T. C. San Bernardino - Tepexpan	17.00	3	1	15091	3.6	87.1	0.2	7.4	0.8	0.5	0.2	0.1	0.1	90.7	0.2	9.1	0.068	0.506	19.483700	-98.886613

TLAXCALA

9 CARR: Los Reyes - Zacatepec

CLAVE: 00052

RUTA: MEX-136

AÑO: 2018

LUGAR	ESTACION				CLASIFICACION VEHICULAR EN PORCIENTO														COORDENADAS	
	KM	TE	SC	TDPA	M	A	B	C2	C3	T3S2	T3S3	T3S2R4	OTROS	A	B	C	K'	D	LATITUD	LONGITUD
T. C. San Bernardino - Tepexpan	17.00	3	2	14749	3.3	87.2	0.2	7.5	0.9	0.5	0.2	0.1	0.1	90.5	0.2	9.3	0.078	0.506	19.483800	-98.886733
Texcoco	23.02	3	1	19788	1.6	80.1	1.9	7.3	2.6	3.8	1.8	0.6	0.3	81.7	1.9	16.4	0.076	0.506	19.527159	-98.858035
Texcoco	23.02	3	2	20251	1.6	78.5	2.2	7.7	2.6	4.6	1.9	0.6	0.3	80.1	2.2	17.7	0.075	0.506	19.527247	-98.858096
T. Izq. Tepetlaoxtoc	30.03	1	1	18072	1.5	78.3	2.2	8.2	2.4	4.5	2.0	0.6	0.3	79.8	2.2	18.0	0.074	0.518	19.545831	-98.826093
T. Izq. Tepetlaoxtoc	30.03	1	2	16784	1.9	76.9	2.3	8.4	2.7	4.8	2.1	0.6	0.3	78.8	2.3	18.9	0.073	0.518	19.545921	-98.826142
T. Der. Totolapan	42.00	3	1	7245	0.6	79.8	2.1	4.5	2.7	7.1	1.8	0.9	0.5	80.4	2.1	17.5	0.075	0.514	19.556961	-98.730561
T. Der. Totolapan	42.00	3	2	7663	0.7	77.5	2.2	5.3	3.2	7.5	2.0	1.1	0.5	78.2	2.2	19.6	0.116	0.514	19.557074	-98.730604
Lim. Edos. Term. Méx. Ppia. Tlax.	43.15																			
Calpulalpan	59.58	3	0	18059	0.8	74.9	2.5	8.2	2.4	7.8	1.9	1.1	0.4	75.7	2.5	21.8	0.071	0.502	19.582554	-98.534636
T. Der. Nanacamilpa	71.76	3	0	14485	0.7	73.6	2.8	8.4	3.4	7.9	1.7	1.1	0.4	74.3	2.8	22.9	0.076	0.515	19.522518	-98.477763
X. C. Arco Norte de La Ciudad de México	73.80	3	1	8745	1.1	75.2	2.2	5.6	2.5	7.4	3.1	2.4	0.5	76.3	2.2	21.5	0.068	0.512	19.513611	-98.457135
X. C. Arco Norte de La Ciudad de México	73.80	3	2	8348	1.1	67.1	4.1	8.5	2.5	9.8	3.7	2.8	0.4	68.2	4.1	27.7	0.093	0.512	19.513673	-98.457127
Hueyotlipan	88.21	3	1	8505	0.5	74.8	4.3	7.0	1.6	7.8	1.7	1.4	0.9	75.3	4.3	20.4	0.063	0.513	19.467815	-98.329007
Hueyotlipan	88.21	3	2	8085	0.5	72.8	4.6	7.3	1.7	8.6	2.0	1.6	0.9	73.3	4.6	22.1	0.094	0.513	19.467891	-98.329026
Xaltocan	108.10	1	1	9770	0.6	71.8	2.1	7.4	2.9	8.9	2.9	2.5	0.9	72.4	2.1	25.5	0.069	0.502	19.425910	-98.219742
Xaltocan	108.10	1	2	9831	0.5	74.1	1.4	4.4	3.5	8.9	3.3	2.8	1.1	74.6	1.4	24.0	0.096	0.502	19.425981	-98.219699
Apizaco	117.74	1	1	23245	0.8	87.3	0.7	6.9	0.6	1.5	1.7	0.2	0.3	88.1	0.7	11.2	0.064	0.527	19.400803	-98.172653
Apizaco	117.74	1	2	20904	1.0	87.4	0.8	5.9	0.6	1.7	1.8	0.3	0.5	88.4	0.8	10.8	0.067	0.527	19.400851	-98.172767
Apizaco	117.74	3	0	19923	1.7	88.8	0.7	5.8	0.4	1.0	0.9	0.5	0.2	90.5	0.7	8.8	0.069	0.503	19.411978	-98.128308
T. Der. Cuaxomulco	119.85	3	1	11533	1.8	90.2	0.5	4.0	0.5	1.4	1.2	0.1	0.3	92.0	0.5	7.5	0.065	0.526	19.413105	-98.115036
T. Der. Cuaxomulco	119.85	3	2	10388	2.0	90.2	0.5	4.4	0.4	1.0	1.1	0.1	0.3	92.2	0.5	7.3	0.068	0.526	19.413232	-98.115143
T. Izq. Xalostoc	126.67	3	1	12936	0.7	77.5	3.1	7.7	1.6	5.1	2.0	1.4	0.9	78.2	3.1	18.7	0.073	0.513	19.389510	-98.052486
T. Izq. Xalostoc	126.67	3	2	13610	0.7	76.8	3.4	8.1	1.7	4.7	2.4	1.6	0.6	77.5	3.4	19.1	0.083	0.513	19.389617	-98.052453
T. Izq. Libramiento de Huamantla	141.70	1	1	12319	0.8	74.9	3.6	9.0	1.6	5.6	2.0	1.7	0.8	75.7	3.6	20.7	0.071	0.510	19.325207	-97.953235
T. Izq. Libramiento de Huamantla	141.70	1	2	12827	0.8	75.0	3.6	8.9	1.8	5.0	2.6	1.7	0.6	75.8	3.6	20.6	0.085	0.510	19.325290	-97.953188
Huamantla	143.02	3	1	9947	0.7	71.3	2.9	7.4	3.1	7.2	3.7	3.0	0.7	72.0	2.9	25.1	0.069	0.511	19.314775	-97.875304
Huamantla	143.02	3	2	10394	0.9	68.9	3.3	8.6	3.1	7.4	3.8	3.2	0.8	69.8	3.3	26.9	0.061	0.511	19.314867	-97.875302
X. C. Amozoc - Perote (Cuota)	156.76	1	1	7993	1.4	67.8	4.0	7.3	3.4	9.4	4.3	1.7	0.7	69.2	4.0	26.8	0.069	0.509	19.308299	-97.809848
X. C. Amozoc - Perote (Cuota)	156.76	1	2	7711	1.1	65.9	4.5	8.6	3.1	9.2	4.8	2.2	0.6	67.0	4.5	28.5	0.080	0.509	19.308383	-97.809844
T. Der. Cuapiaxtla	159.40	1	0	10861	1.3	60.0	2.6	10.3	4.0	13.1	5.0	2.8	0.9	61.3	2.6	36.1	0.058	0.523	19.303435	-97.779773
X. C. Amozoc - Teziutlán	173.47	1	0	9234	1.3	58.5	3.7	10.0	3.8	13.1	5.3	3.2	1.1	59.8	3.7	36.5	0.057	0.528	19.325520	-97.663815
X. C. Amozoc - Teziutlán	173.47	3	0	6397	0.4	50.8	3.6	8.5	9.7	12.3	9.7	4.3	0.7	51.2	3.6	45.2	0.062	0.507	19.311329	-97.623524
Lim. Edos. Term. Tlax. Ppia. Pue.	177.57																			
Zacatepec	187.67	1	0	6742	0.3	46.5	3.9	9.1	8.8	18.0	8.7	4.1	0.6	46.8	3.9	49.3	0.058	0.500	19.269930	-97.540682

TLAXCALA

10 CARR: Puebla - Belem

CLAVE: 00055

RUTA: MEX-121

AÑO: 2018

LUGAR	ESTACION				CLASIFICACION VEHICULAR EN PORCIENTO										COORDENADAS					
	KM	TE	SC	TDPA	M	A	B	C2	C3	T3S2	T3S3	T3S2R4	OTROS	A	B	C	K'	D	LATITUD	LONGITUD
T. C. Puebla - Tlaxcala	0.00																			
X. C. Puebla - Córdoba (Cuota)	4.00	3	1	32883	1.3	85.2	1.7	8.3	0.7	1.4	0.9	0.3	0.2	86.5	1.7	11.8	0.065	0.512	19.097977	-98.183297
X. C. Puebla - Córdoba (Cuota)	4.00	3	2	34564	1.6	82.8	1.9	9.7	0.8	1.6	1.1	0.3	0.2	84.4	1.9	13.7	0.071	0.512	19.098061	-98.183545
Lim. Edos. Term. Pue. Ppia. Tlax.	6.60																			
Lim. Edos. Term. Tlax. Ppia. Pue.	9.77																			
Lim. Edos. Term. Pue. Ppia. Tlax.	10.25																			
T. Izq. Zacatelco	16.70	1	1	17699	1.4	85.2	0.9	8.0	1.1	2.1	0.6	0.6	0.1	86.6	0.9	12.5	0.063	0.524	19.205690	-98.195774
T. Izq. Zacatelco	16.70	1	2	16080	1.3	84.4	0.9	8.7	1.2	2.2	0.6	0.6	0.1	85.7	0.9	13.4	0.071	0.524	19.204528	-98.195569
X. C. Tlaxcala - Belem	28.80	1	1	24753	1.6	88.4	0.6	4.1	0.6	2.1	1.8	0.4	0.4	90.0	0.6	9.4	0.064	0.510	19.316756	-98.203795
X. C. Tlaxcala - Belem	28.80	1	2	23760	1.7	87.7	0.6	4.2	0.8	2.4	1.8	0.4	0.4	89.4	0.6	10.0	0.075	0.510	19.316729	-98.203710
T. C. San Martín Texmelucan - Ocotoxco (Cuota)	34.90																			

11 CARR: Puebla - Tlaxcala

CLAVE: 00475

RUTA: MEX-119

AÑO: 2018

LUGAR	ESTACION				CLASIFICACION VEHICULAR EN PORCIENTO										COORDENADAS					
	KM	TE	SC	TDPA	M	A	B	C2	C3	T3S2	T3S3	T3S2R4	OTROS	A	B	C	K'	D	LATITUD	LONGITUD
Puebla	0.00																			
X. C. Puebla - Córdoba (Cuota) Central	5.41	3	1	11786	1.4	87.4	0.4	3.7	0.8	2.0	3.0	0.5	0.8	88.8	0.4	10.8	0.082	0.559	19.096598	-98.207157
X. C. Puebla - Córdoba (Cuota) Lateral	5.41	3	1	4519	3.5	81.0	0.6	12.2	0.6	1.0	0.6	0.1	0.4	84.5	0.6	14.9	0.085	0.560	19.096600	-98.207059
X. C. Puebla - Córdoba (Cuota) Lateral	5.41	3	2	3551	4.1	77.6	0.7	14.0	0.9	1.3	0.9	0.1	0.4	81.7	0.7	17.6	0.072	0.560	19.096600	-98.207300
X. C. Puebla - Córdoba (Cuota) Central	5.41	3	2	10760	1.5	86.3	0.5	3.8	0.8	2.3	3.6	0.5	0.7	87.8	0.5	11.7	0.061	0.559	19.096589	-98.207219
Lim. Edos. Term. Pue. Ppia. Tlax.	11.83																			
Panzacola	13.14	3	1	11040	1.9	86.9	0.3	5.1	0.3	2.2	2.3	0.4	0.6	88.8	0.3	10.9	0.061	0.511	19.151604	-98.223602
Panzacola	13.14	3	2	11531	1.9	85.8	0.3	5.6	0.3	2.5	2.5	0.4	0.7	87.7	0.3	12.0	0.058	0.511	19.151610	-98.223688
San Toribio Xicohtzinco	16.10	3	1	9784	2.6	86.0	0.3	6.3	0.2	2.4	1.9	0.1	0.2	88.6	0.3	11.1	0.064	0.519	19.185253	-98.237753
San Toribio Xicohtzinco	16.10	3	2	10571	2.5	85.1	0.3	7.4	0.2	2.2	2.0	0.1	0.2	87.6	0.3	12.1	0.065	0.519	19.185340	-98.237826
Zacatelco	20.78	1	1	10842	2.8	87.9	0.3	6.3	0.2	1.4	0.9	0.0	0.2	90.7	0.3	9.0	0.061	0.507	19.207371	-98.240444
Zacatelco	20.78	1	2	10541	3.3	87.1	0.3	6.7	0.2	1.2	1.0	0.0	0.2	90.4	0.3	9.3	0.061	0.507	19.207353	-98.240533
T. Izq. San Martín Texmelucan	22.99	1	1	11544	2.1	90.7	0.3	4.4	0.2	1.2	0.8	0.1	0.2	92.8	0.3	6.9	0.065	0.502	19.234034	-98.243025
T. Izq. San Martín Texmelucan	22.99	1	2	11450	2.3	89.7	0.3	4.9	0.2	1.3	1.0	0.1	0.2	92.0	0.3	7.7	0.066	0.502	19.234026	-98.243127
T. Der. Tepeyanco (2º Acceso)	24.97	3	1	10336	1.9	91.4	0.3	3.7	0.2	1.1	1.0	0.1	0.3	93.3	0.3	6.4	0.070	0.505	19.249978	-98.235155
T. Der. Tepeyanco (2º Acceso)	24.97	3	2	10115	2.0	90.9	0.3	4.1	0.2	1.1	1.0	0.1	0.3	92.9	0.3	6.8	0.070	0.505	19.250028	-98.235197
T. Der. Ocotlán (Alta)	32.45	1	1	9463	1.8	93.7	0.0	0.7	0.0	0.7	2.6	0.1	0.4	95.5	0.0	4.5	0.071	0.547	19.302935	-98.241097
T. Der. Ocotlán (Baja)	32.45	1	1	5443	1.7	94.3	0.1	2.4	0.1	0.9	0.4	0.0	0.1	96.0	0.1	3.9	0.073	0.524	19.302929	-98.240958
T. Der. Ocotlán (Alta)	32.45	1	2	7822	1.6	93.5	0.0	0.7	0.0	0.8	2.9	0.1	0.4	95.1	0.0	4.9	0.069	0.547	19.302936	-98.241166

TLAXCALA

11 CARR: Puebla - Tlaxcala

CLAVE: 00475

RUTA: MEX-119

AÑO: 2018

LUGAR	ESTACION				CLASIFICACION VEHICULAR EN PORCIENTO													COORDENADAS		
	KM	TE	SC	TDPA	M	A	B	C2	C3	T3S2	T3S3	T3S2R4	OTROS	A	B	C	K'	D	LATITUD	LONGITUD
T. Der. Ocotlán (Baja)	32.45	1	2	5991	1.2	94.8	0.1	2.1	0.1	0.3	1.3	0.0	0.1	96.0	0.1	3.9	0.070	0.524	19.302942	-98.241295
Tlaxcala	33.22	1	1	9564	2.3	95.1	0.0	1.4	0.1	0.1	0.8	0.1	0.1	97.4	0.0	2.6	0.068	0.529	19.309845	-98.240478
Tlaxcala	33.22	1	2	10744	1.5	95.8	0.0	1.5	0.1	0.1	0.8	0.1	0.1	97.3	0.0	2.7	0.066	0.529	19.309840	-98.240446

12 CARR: Ramal a San Felipe de Hidalgo

CLAVE: 29565

RUTA: MEX-136

AÑO: 2018

LUGAR	ESTACION				CLASIFICACION VEHICULAR EN PORCIENTO													COORDENADAS		
	KM	TE	SC	TDPA	M	A	B	C2	C3	T3S2	T3S3	T3S2R4	OTROS	A	B	C	K'	D	LATITUD	LONGITUD
T. C. Los Reyes - Zacatepec	0.00	3	0	3786	1.1	87.4	0.8	7.1	1.2	2.0	0.2	0.1	0.1	88.5	0.8	10.7	0.077	0.513	19.523711	-98.486591
San Felipe de Hidalgo	10.50	1	0	1925	2.1	90.0	0.8	5.5	0.2	1.3	0.1	0.0	0.0	92.1	0.8	7.1	0.073	0.501	19.474913	-98.552173

13 CARR: San Martín Texmelucan - Tlaxcala

CLAVE: 00158

RUTA: MEX-117

AÑO: 2018

LUGAR	ESTACION				CLASIFICACION VEHICULAR EN PORCIENTO													COORDENADAS		
	KM	TE	SC	TDPA	M	A	B	C2	C3	T3S2	T3S3	T3S2R4	OTROS	A	B	C	K'	D	LATITUD	LONGITUD
San Martín Texmelucan	0.00	3	1	10464	4.8	84.4	0.3	3.8	0.5	1.9	3.1	0.4	0.8	89.2	0.3	10.5	0.067	0.523	19.287593	-98.423815
San Martín Texmelucan	0.00	3	2	9548	5.7	83.5	0.2	3.7	0.3	2.0	2.8	0.7	1.1	89.2	0.2	10.6	0.068	0.523	19.287683	-98.423856
X. C. San Martín Texmelucan - Ocotoxco (Cuota)	1.65	3	0	21312	6.3	84.5	0.5	6.0	0.4	0.9	1.1	0.1	0.2	90.8	0.5	8.7	0.065	0.505	19.290500	-98.414723
Lim. Edos. Term. Pue. Ppia. Tlax.	2.84																			
T. Der. Tepetitla	3.45	3	1	7682	6.0	86.8	0.3	4.3	0.4	0.9	1.0	0.1	0.2	92.8	0.3	6.9	0.070	0.501	19.293926	-98.404236
T. Der. Tepetitla	3.45	3	2	7646	6.9	85.0	0.3	5.0	0.4	1.0	1.1	0.1	0.2	91.9	0.3	7.8	0.077	0.501	19.293879	-98.404281
San Diego Xocoyucan	7.21	3	0	7505	6.5	84.3	0.2	2.7	0.3	4.4	0.7	0.2	0.7	90.8	0.2	9.0	0.068	0.505	19.307874	-98.369505
T. Der. Panotla	19.72	1	0	7911	3.9	85.3	0.2	4.5	0.3	4.5	0.5	0.1	0.7	89.2	0.2	10.6	0.079	0.557	19.319448	-98.276858
T. Der. Panotla	19.72	3	0	8541	4.6	84.8	0.2	3.2	0.3	5.3	0.5	0.2	0.9	89.4	0.2	10.4	0.072	0.505	19.319582	-98.269897
Totolac	21.38	1	0	8795	3.6	84.5	0.1	1.8	0.2	6.5	1.0	0.5	1.8	88.1	0.1	11.8	0.083	0.523	19.322624	-98.260387
Totolac	21.38	3	0	12145	2.6	83.1	0.1	2.6	0.2	7.6	1.2	0.7	1.9	85.7	0.1	14.2	0.062	0.546	19.329593	-98.249776
Tlaxcala	24.81	1	0	15028	2.8	93.7	0.1	2.1	0.1	0.3	0.7	0.1	0.1	96.5	0.1	3.4	0.076	0.524	19.326487	-98.244333

14 CARR: Tetlatlahuca - Santa Ana Chiautempan

CLAVE: 00158

RUTA: MEX-119

AÑO: 2018

LUGAR	ESTACION				CLASIFICACION VEHICULAR EN PORCIENTO													COORDENADAS		
	KM	TE	SC	TDPA	M	A	B	C2	C3	T3S2	T3S3	T3S2R4	OTROS	A	B	C	K'	D	LATITUD	LONGITUD
Tetlatlahuca	0.00																			
San Bartolomé Tenango	2.39	1	0	4410	4.2	86.3	0.2	5.5	0.6	2.2	0.6	0.1	0.3	90.5	0.2	9.3	0.073	0.502	19.247098	-98.296625
San Damián Texoloc	5.50	1	0	4352	3.8	87.0	0.3	4.5	0.7	3.0	0.5	0.1	0.1	90.8	0.3	8.9	0.077	0.502	19.272290	-98.284770

TLAXCALA

14 CARR: Tetlatlahuca - Santa Ana Chiautempan

CLAVE: 00158

RUTA: MEX-119

AÑO: 2018

LUGAR	ESTACION				CLASIFICACION VEHICULAR EN PORCIENTO										COORDENADAS					
	KM	TE	SC	TDPA	M	A	B	C2	C3	T3S2	T3S3	T3S2R4	OTROS	A	B	C	K'	D	LATITUD	LONGITUD
San Damián Texoloc	5.50	3	0	6700	3.1	87.5	0.1	4.7	0.4	3.3	0.4	0.1	0.4	90.6	0.1	9.3	0.068	0.503	19.277314	-98.276863
T. Izq. Cuauhtelupan	9.63	1	0	10361	2.1	87.8	0.1	3.2	0.3	5.7	0.5	0.1	0.2	89.9	0.1	10.0	0.069	0.501	19.288234	-98.251488
T. Izq. Cuauhtelupan	9.63	3	0	14898	0.9	88.6	0.2	2.1	0.3	5.5	1.0	0.7	0.7	89.5	0.2	10.3	0.069	0.509	19.292193	-98.249444
T. Der. Puebla	9.94	1	0	13656	1.3	86.3	0.1	3.0	0.1	7.9	0.7	0.5	0.1	87.6	0.1	12.3	0.065	0.506	19.301005	-98.245557
Santa Ana Chiautempan	16.00																			

15 CARR: Tlaxcala - Belem

CLAVE: 29389

RUTA: MEX-119

AÑO: 2018

LUGAR	ESTACION				CLASIFICACION VEHICULAR EN PORCIENTO										COORDENADAS					
	KM	TE	SC	TDPA	M	A	B	C2	C3	T3S2	T3S3	T3S2R4	OTROS	A	B	C	K'	D	LATITUD	LONGITUD
Tlaxcala	0.00																			
T. Der. Ocotlán	3.91	1	1	15794	2.4	93.9	0.1	2.5	0.1	0.3	0.5	0.1	0.1	96.3	0.1	3.6	0.066	0.545	19.325385	-98.215514
T. Der. Ocotlán	3.91	1	2	18898	2.3	94.5	0.1	2.3	0.1	0.1	0.4	0.1	0.1	96.8	0.1	3.1	0.068	0.545	19.325460	-98.215409
X. C. Puebla - Belem	4.55	1	1	23322	2.7	93.8	0.1	2.1	0.2	0.5	0.4	0.1	0.1	96.5	0.1	3.4	0.066	0.526	19.321408	-98.209886
X. C. Puebla - Belem	4.55	1	2	25892	2.4	93.9	0.1	2.3	0.2	0.5	0.4	0.1	0.1	96.3	0.1	3.6	0.065	0.526	19.321544	-98.209766
Santa Ana Chiautempan	5.82	1	1	10728	2.7	92.7	0.1	1.1	0.1	0.6	1.6	0.7	0.4	95.4	0.1	4.5	0.064	0.505	19.315994	-98.200606
Santa Ana Chiautempan	5.82	1	2	10962	2.8	92.0	0.1	1.3	0.1	0.6	1.8	0.9	0.4	94.8	0.1	5.1	0.057	0.505	19.316024	-98.200579
T. Der. Ixcotla	7.19	3	1	10904	4.2	90.2	0.3	1.6	0.2	1.3	1.8	0.2	0.2	94.4	0.3	5.3	0.066	0.518	19.327000	-98.194000
T. Der. Ixcotla	7.19	3	2	10156	4.9	89.7	0.2	1.9	0.1	1.5	1.3	0.1	0.3	94.6	0.2	5.2	0.077	0.518	19.327000	-98.194106
Belem	10.06	1	0	7323	4.3	86.2	0.3	4.0	0.3	3.8	0.5	0.2	0.4	90.5	0.3	9.2	0.070	0.503	19.337623	-98.193322

16 CARR: Villa Alta - T. C. (Puebla - Tlaxcala)

CLAVE: 29566

RUTA: MEX-119

AÑO: 2018

LUGAR	ESTACION				CLASIFICACION VEHICULAR EN PORCIENTO										COORDENADAS					
	KM	TE	SC	TDPA	M	A	B	C2	C3	T3S2	T3S3	T3S2R4	OTROS	A	B	C	K'	D	LATITUD	LONGITUD
T. C. San Martín Texmelucan - Tlaxcala	0.00	3	0	7779	13.0	72.4	0.5	7.8	0.5	4.4	0.6	0.2	0.6	85.4	0.5	14.1	0.071	0.508	19.284753	-98.401569
Nativitas	10.50	3	0	7916	5.8	81.4	0.2	6.0	0.1	4.8	0.6	0.2	0.9	87.2	0.2	12.6	0.071	0.500	19.238415	-98.308254
T. C. Puebla - Tlaxcala	22.05	1	0	7683	2.2	82.6	0.2	8.6	0.2	4.5	0.6	0.2	0.9	84.8	0.2	15.0	0.073	0.504	19.234872	-98.244053

17 CARR: Amozoc - Perote (Cuota)

CLAVE: 00030

RUTA: MEX-140D

AÑO: 2018

LUGAR	ESTACION				CLASIFICACION VEHICULAR EN PORCIENTO										COORDENADAS					
	KM	TE	SC	TDPA	M	A	B	C2	C3	T3S2	T3S3	T3S2R4	OTROS	A	B	C	K'	D	LATITUD	LONGITUD
T. C. Puebla - Córdoba (Cuota)	0.00	3	0	9852	0.6	80.0	6.5	3.5	2.0	4.4	1.0	1.3	0.7	80.6	6.5	12.9	0.083	0.504	19.076276	-98.058240
Caseta de Cobro Amozoc	0.68	2	0	11090	0.6	78.1	7.0	3.4	2.7	5.5	0.8	1.4	0.5	78.7	7.0	14.3	0.085	0.500	19.063641	-98.069094

TLAXCALA

17 CARR: Amozoc - Perote (Cuota)

CLAVE: 00030

RUTA: MEX-140D

AÑO: 2018

LUGAR	ESTACION				CLASIFICACION VEHICULAR EN PORCIENTO													COORDENADAS		
	KM	TE	SC	TDPA	M	A	B	C2	C3	T3S2	T3S3	T3S2R4	OTROS	A	B	C	K'	D	LATITUD	LONGITUD
Lim. Edos. Term. Pue. Ppia. Tlax.	20.08																			
X. C. Huamantla - La Venta	25.80	3	0	9537	0.6	78.3	6.8	4.3	2.4	4.8	1.0	1.2	0.6	78.9	6.8	14.3	0.098	0.500	19.227803	-97.897597
Lim. Edos. Term. Tlax. Ppia. Pue.	30.50																			
Lim. Edos. Term. Pue. Ppia. Tlax.	31.26																			
Lim. Edos. Term. Tlax. Ppia. Pue.	31.67																			
Lim. Edos. Term. Pue. Ppia. Tlax.	38.93																			
Caseta de Cobro Cuapiaxtla	40.34	2	0	6203	0.7	82.5	5.2	3.4	2.5	2.8	0.8	1.6	0.5	83.2	5.2	11.6	0.085	0.500	19.310369	-97.797544
Lim. Edos. Term. Tlax. Ppia. Pue.	54.50																			
T. Der. Oriental	61.45	1	0	10670	0.8	77.4	7.5	4.5	2.6	4.3	1.0	1.3	0.6	78.2	7.5	14.3	0.070	0.519	19.413810	-97.646514
T. Der. Oriental	61.45	3	1	4197	1.7	74.4	6.9	7.8	1.9	2.8	1.4	2.4	0.7	76.1	6.9	17.0	0.092	0.504	19.420107	-97.638239
T. Der. Oriental	61.45	3	2	4272	1.5	72.4	7.3	8.5	2.1	3.3	1.5	2.6	0.8	73.9	7.3	18.8	0.163	0.504	19.420153	-97.638299
T. Izq. Teziutlán	62.70	3	0	6252	1.3	70.8	8.0	7.1	2.4	4.9	2.2	2.4	0.9	72.1	8.0	19.9	0.102	0.523	19.426363	-97.630037
Lim. Edos. Term. Pue. Ppia. Ver.	90.36																			
T. C. Lib. de Perote	105.00																			

18 CARR: Libramiento de Tlaxcala (Cuota)

CLAVE:

RUTA: MEX-117D

AÑO: 2018

LUGAR	ESTACION				CLASIFICACION VEHICULAR EN PORCIENTO													COORDENADAS		
	KM	TE	SC	TDPA	M	A	B	C2	C3	T3S2	T3S3	T3S2R4	OTROS	A	B	C	K'	D	LATITUD	LONGITUD
T. C. San Martín Texmelucan - Ocotoxco (Cuota)	0.00	3	1	10672	1.3	91.4	0.6	4.1	0.5	0.9	0.6	0.5	0.1	92.7	0.6	6.7	0.081	0.501	19.316236	-98.257334
T. C. San Martín Texmelucan - Ocotoxco (Cuota)	0.00	3	2	10714	1.4	90.7	0.6	4.5	0.5	1.1	0.6	0.5	0.1	92.1	0.6	7.3	0.082	0.501	19.316164	-98.257255
X. C. Puebla - Tlaxcala	6.50	1	1	10232	1.2	91.9	0.6	3.4	0.5	1.1	0.6	0.5	0.2	93.1	0.6	6.3	0.088	0.506	19.296146	-98.253771
X. C. Puebla - Tlaxcala	6.50	1	2	10481	1.3	91.2	0.6	3.8	0.6	1.2	0.6	0.5	0.2	92.5	0.6	6.9	0.083	0.506	19.296216	-98.253612
X. C. Puebla - Tlaxcala	6.50	3	1	12043	1.8	92.7	0.3	2.7	0.7	1.0	0.6	0.1	0.1	94.5	0.3	5.2	0.082	0.515	19.288172	-98.233647
X. C. Puebla - Tlaxcala	6.50	3	2	11331	1.8	92.2	0.3	2.9	0.8	1.2	0.6	0.1	0.1	94.0	0.3	5.7	0.095	0.515	19.288232	-98.233741
T. C. Puebla - Belén Atzitzimitlán	11.00	1	1	11504	1.6	91.9	0.4	3.9	0.5	0.9	0.6	0.1	0.1	93.5	0.4	6.1	0.082	0.506	19.302156	-98.202561
T. C. Puebla - Belén Atzitzimitlán	11.00	1	2	11220	1.6	91.3	0.4	4.1	0.5	1.1	0.8	0.1	0.1	92.9	0.4	6.7	0.081	0.506	19.302232	-98.202622

19 CARR: Libramiento Norte de la Ciudad de México (Cuota)

CLAVE: 0902

RUTA: MEX-M40D

AÑO: 2018

LUGAR	ESTACION				CLASIFICACION VEHICULAR EN PORCIENTO													COORDENADAS		
	KM	TE	SC	TDPA	M	A	B	C2	C3	T3S2	T3S3	T3S2R4	OTROS	A	B	C	K'	D	LATITUD	LONGITUD
T. C. Toluca - Palmillas	0.00																			
X. C. Toluca - Palmillas	12.90	1	1	3555	0.7	60.5	4.6	6.2	3.9	14.2	2.7	6.2	1.0	61.2	4.6	34.2	0.103	0.510	19.918614	-99.850318
X. C. Toluca - Palmillas	12.90	1	2	3701	1.0	54.6	4.8	7.0	4.5	16.8	3.1	7.2	1.0	55.6	4.8	39.6	0.091	0.510	19.918634	-99.850365

TLAXCALA

19 CARR: Libramiento Norte de la Ciudad de México (Cuota)

CLAVE: 0902

RUTA: MEX-M40D

AÑO: 2018

LUGAR	ESTACION				CLASIFICACION VEHICULAR EN PORCIENTO										COORDENADAS					
	KM	TE	SC	TDPA	M	A	B	C2	C3	T3S2	T3S3	T3S2R4	OTROS	A	B	C	K'	D	LATITUD	LONGITUD
X. C. Toluca - Palmillas	12.90	3	1	3443	0.7	57.9	8.2	6.6	3.3	14.0	2.8	5.6	0.9	58.6	8.2	33.2	0.099	0.508	19.922863	-99.835770
X. C. Toluca - Palmillas	12.90	3	2	3555	1.1	53.6	8.5	7.4	3.7	15.0	3.1	6.6	1.0	54.7	8.5	36.8	0.085	0.508	19.922924	-99.835758
C. P. Jilotepec	48.70	1	1	3869	0.7	61.1	6.9	5.2	3.7	13.2	2.4	5.8	1.0	61.8	6.9	31.3	0.090	0.539	19.969222	-99.537867
C. P. Jilotepec	48.70	1	2	3311	1.1	48.9	8.7	9.9	3.6	16.6	3.5	6.5	1.2	50.0	8.7	41.3	0.076	0.539	19.969340	-99.538015
C. P. Jilotepec	48.70	3	1	4987	0.6	63.1	5.2	6.6	3.3	13.9	2.5	4.0	0.8	63.7	5.2	31.1	0.098	0.515	19.978360	-99.526018
C. P. Jilotepec	48.70	3	2	4692	1.2	59.3	5.4	7.4	3.6	15.0	2.8	4.4	0.9	60.5	5.4	34.1	0.079	0.515	19.978503	-99.525984
X. C. México - Querétaro	54.00	3	1	8257	0.7	57.0	3.1	6.9	4.1	17.3	3.9	6.1	0.9	57.7	3.1	39.2	0.094	0.515	20.004214	-99.481856
X. C. México - Querétaro	54.00	3	2	8774	1.0	52.1	3.5	7.5	4.7	19.1	4.3	6.9	0.9	53.1	3.5	43.4	0.086	0.515	20.002940	-99.483856
Caseta de Cobro Querétaro	55.00	3	1	8418	0.3	55.3	2.2	5.1	6.1	18.1	4.1	7.2	1.6	55.6	2.2	42.2	0.067	0.500	19.998714	-99.487788
Caseta de Cobro Querétaro	55.00	3	2	8418	0.3	55.3	2.2	5.1	6.1	18.1	4.1	7.2	1.6	55.6	2.2	42.2	0.067	0.500	19.998714	-99.487788
Lim. Edos. Term. Méx. Ppia. Hgo.	60.72																			
X. C. Ent. Tepeji del Río - Tlahuelilpan	79.00	1	1	7644	1.2	54.8	5.2	8.0	3.3	15.4	4.4	6.9	0.8	56.0	5.2	38.8	0.086	0.502	20.088484	-99.316066
X. C. Ent. Tepeji del Río - Tlahuelilpan	79.00	1	2	7704	1.0	50.5	6.1	9.1	3.7	16.8	4.5	7.4	0.9	51.5	6.1	42.4	0.087	0.502	20.088142	-99.317260
X. C. Ent. Tepeji del Río - Tlahuelilpan	79.00	3	1	8468	0.7	61.9	3.7	5.5	3.5	14.6	3.5	5.8	0.8	62.6	3.7	33.7	0.080	0.502	20.097214	-99.276999
X. C. Ent. Tepeji del Río - Tlahuelilpan	79.00	3	2	8406	1.2	58.5	4.1	6.1	4.0	15.4	3.7	6.0	1.0	59.7	4.1	36.2	0.080	0.502	20.097355	-99.276873
X. C. Los Reyes - El Tephé	86.40	1	1	8301	0.7	62.9	3.5	5.8	3.3	13.7	3.6	5.7	0.8	63.6	3.5	32.9	0.079	0.502	20.071908	-99.231150
X. C. Los Reyes - El Tephé	86.40	1	2	8242	1.2	57.7	4.0	6.6	3.6	16.1	3.9	6.0	0.9	58.9	4.0	37.1	0.080	0.502	20.072044	-99.231045
X. C. Los Reyes - El Tephé	86.40	3	1	8893	0.7	61.3	3.5	5.9	3.5	14.9	3.7	5.7	0.8	62.0	3.5	34.5	0.090	0.519	20.062765	-99.205737
X. C. Los Reyes - El Tephé	86.40	3	2	8237	1.4	57.4	3.9	6.7	3.7	15.3	4.0	6.7	0.9	58.8	3.9	37.3	0.078	0.519	20.062915	-99.205682
Lim. Edos. Term. Hgo. Ppia. Méx.	95.75																			
X. C. (Los Reyes - El Tephé) - Tianguistongo	108.60	1	1	8759	1.1	54.1	6.0	8.7	2.9	16.0	3.8	6.5	0.9	55.2	6.0	38.8	0.075	0.503	19.958402	-99.067527
X. C. (Los Reyes - El Tephé) - Tianguistongo	108.60	1	2	8858	1.0	55.8	5.3	7.9	3.0	16.1	3.6	6.5	0.8	56.8	5.3	37.9	0.080	0.503	19.958559	-99.067509
X. C. (Los Reyes - El Tephé) - Tianguistongo	108.60	3	1	8938	1.2	56.9	5.4	8.0	2.7	15.2	3.5	6.4	0.7	58.1	5.4	36.5	0.077	0.513	19.957701	-99.037626
X. C. (Los Reyes - El Tephé) - Tianguistongo	108.60	3	2	9427	1.0	52.4	6.1	9.0	3.1	16.9	3.7	7.0	0.8	53.4	6.1	40.5	0.082	0.513	19.957866	-99.037706
Lim. Edos. Term. Méx. Ppia. Hgo.	115.89																			
X. C. México - Pachuca	127.30	1	1	8908	1.3	62.4	5.5	7.0	3.0	9.2	3.8	7.0	0.8	63.7	5.5	30.8	0.077	0.507	19.934138	-98.923175
X. C. México - Pachuca	127.30	1	2	9146	1.0	59.6	6.1	7.9	3.3	10.0	4.1	7.2	0.8	60.6	6.1	33.3	0.081	0.507	19.934324	-98.923167
X. C. México - Pachuca	127.30	3	1	8167	1.1	53.9	5.2	6.9	3.2	16.6	4.4	7.8	0.9	55.0	5.2	39.8	0.076	0.507	19.926244	-98.876790
X. C. México - Pachuca	127.30	3	2	7930	0.9	49.4	5.8	7.8	3.5	17.8	4.9	8.9	1.0	50.3	5.8	43.9	0.080	0.507	19.926405	-98.876754
Lim. Edos. Term. Hgo. Ppia. Méx.	143.98																			
X. C. Venta de Carpio - T. C. (Pachuca - Tulancingo)	151.11	1	1	7908	1.2	52.8	5.4	7.5	3.5	17.4	3.8	7.5	0.9	54.0	5.4	40.6	0.077	0.500	19.838972	-98.706972
X. C. Venta de Carpio - T. C. (Pachuca - Tulancingo)	151.11	1	2	7914	0.9	49.1	5.8	8.0	3.8	18.7	4.3	8.4	1.0	50.0	5.8	44.2	0.079	0.500	19.839089	-98.706849
X. C. Venta de Carpio - T. C. (Pachuca - Tulancingo)	151.11	3	1	8143	1.0	54.3	5.1	7.5	3.6	16.4	3.9	7.4	0.8	55.3	5.1	39.6	0.076	0.502	19.826892	-98.691783
X. C. Venta de Carpio - T. C. (Pachuca - Tulancingo)	151.11	3	2	8066	0.9	50.3	5.7	8.3	3.9	17.6	4.2	8.2	0.9	51.2	5.7	43.1	0.085	0.502	19.827020	-98.691690
X. C. Ent. Tolman - Cd. Sahagún	162.55	1	1	7907	1.1	54.1	5.0	7.4	3.4	16.7	3.9	7.5	0.9	55.2	5.0	39.8	0.077	0.500	19.764503	-98.634268

TLAXCALA

19 CARR: Libramiento Norte de la Ciudad de México (Cuota)

CLAVE: 0902

RUTA: MEX-M40D

AÑO: 2018

LUGAR	ESTACION				CLASIFICACION VEHICULAR EN PORCIENTO														COORDENADAS	
	KM	TE	SC	TDPA	M	A	B	C2	C3	T3S2	T3S3	T3S2R4	OTROS	A	B	C	K'	D	LATITUD	LONGITUD
X. C. Ent. Tolman - Cd. Sahagún	162.55	1	2	7908	0.9	49.0	5.6	8.2	3.9	19.2	4.2	8.1	0.9	49.9	5.6	44.5	0.084	0.500	19.764593	-98.634129
X. C. Ent. Tolman - Cd. Sahagún	162.55	3	1	8318	0.9	57.0	5.1	6.6	3.3	15.4	3.8	7.0	0.9	57.9	5.1	37.0	0.076	0.500	19.749726	-98.625870
X. C. Ent. Tolman - Cd. Sahagún	162.55	3	2	8318	0.9	51.1	5.5	7.5	3.7	17.9	4.5	8.0	0.9	52.0	5.5	42.5	0.084	0.500	19.749801	-98.625722
Lim. Edos. Term. Méx. Ppia. Hgo.	166.53																			
X. C. Calpulallpan - El Ocote	180.39	1	1	8569	0.8	54.8	5.0	7.0	3.3	17.1	3.8	7.4	0.8	55.6	5.0	39.4	0.079	0.501	19.624624	-98.552426
X. C. Calpulallpan - El Ocote	180.39	1	2	8531	0.9	50.6	5.4	7.7	3.9	18.6	4.2	7.8	0.9	51.5	5.4	43.1	0.080	0.501	19.624729	-98.552294
X. C. Calpulallpan - El Ocote	180.39	3	1	8522	0.9	55.7	4.7	7.0	3.4	17.1	3.5	6.9	0.8	56.6	4.7	38.7	0.083	0.502	19.610567	-98.540476
X. C. Calpulallpan - El Ocote	180.39	3	2	8470	0.8	50.8	5.3	7.4	3.8	19.0	4.0	7.9	1.0	51.6	5.3	43.1	0.083	0.502	19.610655	-98.540337
Lim. Edos. Term. Hgo. Ppia. Tlax.	180.98																			
X. C. Los Reyes - Zacatepec	196.70	1	1	8523	0.8	57.7	3.9	6.1	3.6	15.6	3.9	6.5	1.9	58.5	3.9	37.6	0.076	0.512	19.520014	-98.472714
X. C. Los Reyes - Zacatepec	196.70	1	2	8117	0.9	53.6	4.2	6.2	3.8	17.6	4.2	7.5	2.0	54.5	4.2	41.3	0.078	0.512	19.520043	-98.472623
X. C. Los Reyes - Zacatepec	196.70	3	1	7073	1.5	57.4	4.7	7.6	3.2	14.3	3.8	5.6	1.9	58.9	4.7	36.4	0.079	0.500	19.503166	-98.465644
X. C. Los Reyes - Zacatepec	196.70	3	2	7070	1.0	53.9	4.9	7.8	3.4	16.0	4.2	6.7	2.1	54.9	4.9	40.2	0.069	0.500	19.503166	-98.465524
X. C. San Martín Texmelucan - Tlaxcala - El Molinito	220.95	1	1	7007	1.1	57.6	4.3	5.9	3.3	16.1	3.7	6.2	1.8	58.7	4.3	37.0	0.077	0.512	19.309769	-98.408332
X. C. San Martín Texmelucan - Tlaxcala - El Molinito	220.95	1	2	7355	1.0	52.8	5.0	6.6	3.6	18.4	4.2	6.4	2.0	53.8	5.0	41.2	0.073	0.512	19.309759	-98.408242
X. C. San Martín Texmelucan - Tlaxcala - El Molinito	220.95	3	1	9606	0.8	62.2	5.7	5.9	2.8	12.9	3.1	5.1	1.5	63.0	5.7	31.3	0.076	0.506	19.287908	-98.410757
X. C. San Martín Texmelucan - Tlaxcala - El Molinito	220.95	3	2	9372	0.8	58.5	6.2	6.3	3.1	14.8	3.2	5.4	1.7	59.3	6.2	34.5	0.071	0.506	19.287943	-98.410637
Caseta de Cobro San Martín Texmelucan	222.00	1	1	7917	0.3	53.7	2.3	5.9	5.9	19.9	3.2	7.5	1.3	54.0	2.3	43.7	0.067	0.500	19.301809	-98.409588
Caseta de Cobro San Martín Texmelucan	222.00	1	2	7917	0.3	53.7	2.3	5.9	5.9	19.9	3.2	7.5	1.3	54.0	2.3	43.7	0.067	0.500	19.301809	-98.409588
T. C. San Martín Texmelucan - Ocotoxco (Cuota)	222.44																			
T. C. México - Puebla (Cuota)	226.73	1	1	9360	0.8	60.9	5.9	6.2	3.0	13.5	3.1	5.1	1.5	61.7	5.9	32.4	0.076	0.515	19.269749	-98.420403
T. C. México - Puebla (Cuota)	226.73	1	2	8803	0.9	58.0	6.1	6.6	3.2	14.3	3.5	5.5	1.9	58.9	6.1	35.0	0.076	0.515	19.269674	-98.420306

20 CARR: México - Puebla (Cuota)

CLAVE: 00450

RUTA: MEX-150D

AÑO: 2018

LUGAR	ESTACION				CLASIFICACION VEHICULAR EN PORCIENTO														COORDENADAS	
	KM	TE	SC	TDPA	M	A	B	C2	C3	T3S2	T3S3	T3S2R4	OTROS	A	B	C	K'	D	LATITUD	LONGITUD
México	0.00																			
Ent Concordía (T. Izq. Los Reyes) Central	17.00	3	1	69672	1.0	88.8	1.8	5.4	0.9	1.2	0.6	0.1	0.2	89.8	1.8	8.4	0.072	0.521	19.353351	-98.989473
Ent Concordía (T. Izq. Los Reyes) Lateral	17.00	3	1	10415	3.4	75.7	2.7	13.5	1.3	1.9	0.9	0.2	0.4	79.1	2.7	18.2	0.075	0.699	19.353273	-98.989564
Ent Concordía (T. Izq. Los Reyes) Central	17.00	3	2	65305	1.5	87.3	1.9	6.1	1.0	1.2	0.7	0.1	0.2	88.8	1.9	9.3	0.068	0.521	19.353464	-98.989314
Ent Concordía (T. Izq. Los Reyes) Lateral	17.00	3	2	24130	2.9	75.2	2.8	14.1	1.4	2.0	1.0	0.2	0.4	78.1	2.8	19.1	0.061	0.699	19.353571	-98.989145
Lim. Edos. Term. CDMX Ppia. Méx.	17.51																			
Av. Las Torres (Eje 6) Lateral	19.27	1	1	24967	3.3	83.7	1.3	9.1	0.8	0.9	0.5	0.2	0.2	87.0	1.3	11.7	0.057	0.515	19.346621	-98.982409
Av. Las Torres (Eje 6) Central	19.27	1	1	63063	1.0	88.7	1.8	5.7	0.6	1.2	0.7	0.1	0.2	89.7	1.8	8.5	0.070	0.522	19.346713	-98.982332

TLAXCALA

20 CARR: México - Puebla (Cuota)

CLAVE: 00450

RUTA: MEX-150D

AÑO: 2018

LUGAR	ESTACION				CLASIFICACION VEHICULAR EN PORCIENTO														COORDENADAS	
	KM	TE	SC	TDPA	M	A	B	C2	C3	T3S2	T3S3	T3S2R4	OTROS	A	B	C	K'	D	LATITUD	LONGITUD
Av. Las Torres (Eje 6) Central	19.27	1	2	65100	1.5	87.0	2.0	6.5	0.6	1.4	0.7	0.1	0.2	88.5	2.0	9.5	0.062	0.522	19.346813	-98.982262
Av. Las Torres (Eje 6) Lateral	19.27	1	2	26490	3.4	82.2	1.4	10.3	0.8	1.0	0.5	0.2	0.2	85.6	1.4	13.0	0.061	0.515	19.347153	-98.982424
Av. Las Torres (Eje 6) Central	19.27	3	1	68114	2.1	87.4	2.2	5.6	0.7	1.1	0.6	0.1	0.2	89.5	2.2	8.3	0.062	0.516	19.339646	-98.976333
Av. Las Torres (Eje 6) Lateral	19.27	3	1	28309	3.4	75.9	2.9	13.6	1.2	1.8	0.7	0.2	0.3	79.3	2.9	17.8	0.069	0.552	19.339600	-98.976409
Av. Las Torres (Eje 6) Central	19.27	3	2	56658	2.2	86.6	2.3	6.0	0.7	1.3	0.6	0.1	0.2	88.8	2.3	8.9	0.070	0.516	19.339709	-98.976200
Av. Las Torres (Eje 6) Lateral	19.27	3	2	22945	3.5	74.1	3.1	14.8	1.3	2.0	0.7	0.2	0.3	77.6	3.1	19.3	0.060	0.552	19.339776	-98.976081
Eje 10 Sur (Central)	22.80	1	1	68146	2.1	87.1	2.1	6.0	0.7	1.0	0.7	0.1	0.2	89.2	2.1	8.7	0.057	0.517	19.329695	-98.965649
Eje 10 Sur (Lateral)	22.80	1	1	25567	3.7	78.9	1.4	13.1	0.9	1.1	0.6	0.1	0.2	82.6	1.4	16.0	0.064	0.544	19.329629	-98.965715
Eje 10 Sur (Central)	22.80	1	2	58344	2.3	86.0	2.2	6.6	0.8	1.1	0.7	0.1	0.2	88.3	2.2	9.5	0.062	0.517	19.332094	-98.968254
Eje 10 Sur (Lateral)	22.80	1	2	21446	3.7	77.3	1.5	14.4	1.0	1.2	0.6	0.1	0.2	81.0	1.5	17.5	0.059	0.544	19.332192	-98.968167
Eje 10 Sur (Central)	22.80	3	1	38377	1.8	85.9	2.7	6.2	0.9	1.5	0.6	0.2	0.2	87.7	2.7	9.6	0.069	0.504	19.313741	-98.946817
Eje 10 Sur (Lateral)	22.80	3	1	21318	3.4	84.7	1.3	8.4	0.6	0.7	0.6	0.1	0.2	88.1	1.3	10.6	0.074	0.614	19.313650	-98.946908
Eje 10 Sur (Lateral)	22.80	3	2	33886	3.0	84.7	1.4	8.5	0.7	0.8	0.6	0.1	0.2	87.7	1.4	10.9	0.068	0.614	19.315514	-98.948375
Eje 10 Sur (Central)	22.80	3	2	41218	2.0	85.0	3.1	6.5	0.9	1.5	0.6	0.2	0.2	87.0	3.1	9.9	0.073	0.504	19.315416	-98.948443
X. C. Santa Bárbara - Izúcar de Matamoros (Lateral)	32.14	1	1	10063	6.7	79.0	1.4	9.7	1.0	1.3	0.5	0.2	0.2	85.7	1.4	12.9	0.068	0.685	19.292192	-98.891994
X. C. Santa Bárbara - Izúcar de Matamoros (Central)	32.14	1	1	41494	1.8	86.5	2.7	5.7	0.9	1.5	0.5	0.2	0.2	88.3	2.7	9.0	0.061	0.514	19.292300	-98.892006
X. C. Santa Bárbara - Izúcar de Matamoros (Lateral)	32.14	1	2	21898	3.4	81.9	1.4	10.0	1.0	1.4	0.5	0.2	0.2	85.3	1.4	13.3	0.072	0.685	19.292578	-98.892011
X. C. Santa Bárbara - Izúcar de Matamoros (Central)	32.14	1	2	43871	1.5	85.4	3.2	6.2	1.1	1.7	0.5	0.2	0.2	86.9	3.2	9.9	0.067	0.514	19.292445	-98.891997
X. C. Santa Bárbara - Izúcar de Matamoros (Central)	32.14	3	1	15390	0.8	78.1	9.4	6.0	0.8	3.8	0.4	0.5	0.2	78.9	9.4	11.7	0.099	0.524	19.294743	-98.876263
X. C. Santa Bárbara - Izúcar de Matamoros (Lateral)	32.14	3	1	1542	6.2	66.0	5.1	10.1	2.5	4.2	0.7	4.2	1.0	72.2	5.1	22.7	0.073	0.522	19.294566	-98.876386
X. C. Santa Bárbara - Izúcar de Matamoros (Central)	32.14	3	2	14005	0.7	77.2	9.6	6.5	0.8	4.1	0.4	0.5	0.2	77.9	9.6	12.5	0.149	0.524	19.294842	-98.876295
X. C. Santa Bárbara - Izúcar de Matamoros (Lateral)	32.14	3	2	1415	2.0	73.0	2.6	8.6	2.2	5.2	1.3	4.1	1.0	75.0	2.6	22.4	0.107	0.522	19.294965	-98.876546
Caseta de Cobro San Marcos	33.30	2	1	16393	0.4	72.6	7.4	4.2	5.2	6.8	0.5	2.6	0.3	73.0	7.4	19.6	0.068	0.500	19.296272	-98.870712
Caseta de Cobro San Marcos	33.30	2	2	16393	0.4	72.6	7.4	4.2	5.2	6.8	0.5	2.6	0.3	73.0	7.4	19.6	0.068	0.500	19.296272	-98.870712
T. Izq. Río Frío	63.79	3	1	17207	0.8	79.9	8.3	5.2	1.0	3.3	0.6	0.5	0.4	80.7	8.3	11.0	0.073	0.504	19.350727	-98.658800
T. Izq. Río Frío	63.79	3	2	16907	1.0	77.0	9.7	5.9	1.2	3.7	0.6	0.5	0.4	78.0	9.7	12.3	0.108	0.504	19.351770	-98.660351
Lim. Edos. Term. Méx. Ppia. Pue.	65.46																			
T. Izq. Tlaxcala	90.61	1	1	18760	1.3	71.8	8.2	8.4	2.2	5.1	0.7	1.9	0.4	73.1	8.2	18.7	0.073	0.505	19.273746	-98.435708
T. Izq. Tlaxcala	90.61	1	2	19125	1.2	70.4	8.5	9.1	2.3	5.3	0.7	2.1	0.4	71.6	8.5	19.9	0.078	0.505	19.273843	-98.435648
T. Izq. Tlaxcala	90.61	3	1	24501	0.7	67.6	6.2	9.4	2.8	8.3	1.3	3.3	0.4	68.3	6.2	25.5	0.070	0.528	19.261900	-98.417420
T. Izq. Tlaxcala	90.61	3	2	21915	1.0	67.9	5.8	8.1	2.8	8.6	1.9	3.5	0.4	68.9	5.8	25.3	0.077	0.528	19.261842	-98.417470
Caseta de Cobro San Martín Texmelucan	91.17	2	1	24843	0.5	68.7	6.8	3.9	4.9	9.7	1.2	3.8	0.5	69.2	6.8	24.0	0.068	0.500	19.241190	-98.385786
Caseta de Cobro San Martín Texmelucan	91.17	2	2	24843	0.5	68.7	6.8	3.9	4.9	9.7	1.2	3.8	0.5	69.2	6.8	24.0	0.068	0.500	19.241190	-98.385786
Lim. Edos. Term. Pue. Ppia. Tlax.	99.11																			
T. Der. Aeropuerto Internacional De Puebla	101.10	3	1	28305	0.8	74.7	5.3	5.9	2.6	5.8	1.3	2.7	0.9	75.5	5.3	19.2	0.072	0.504	19.209521	-98.349955

TLAXCALA

20 CARR: México - Puebla (Cuota)

CLAVE: 00450

RUTA: MEX-150D

AÑO: 2018

LUGAR	ESTACION				CLASIFICACION VEHICULAR EN PORCIENTO										COORDENADAS					
	KM	TE	SC	TDPA	M	A	B	C2	C3	T3S2	T3S3	T3S2R4	OTROS	A	B	C	K'	D	LATITUD	LONGITUD
T. Der. Aeropuerto Internacional De Puebla	101.10	3	2	28759	0.9	72.3	5.4	6.5	3.0	6.4	1.5	3.0	1.0	73.2	5.4	21.4	0.078	0.504	19.209623	-98.349873
X. C. Xoxtla - Huactzinco	107.98	1	1	31041	0.9	73.8	5.1	6.6	2.7	6.2	1.5	2.4	0.8	74.7	5.1	20.2	0.070	0.507	19.179867	-98.313900
X. C. Xoxtla - Huactzinco	107.98	1	2	31952	0.8	71.3	5.6	6.8	2.9	7.2	1.7	2.8	0.9	72.1	5.6	22.3	0.075	0.507	19.179987	-98.313820
X. C. Xoxtla - Huactzinco	107.98	3	1	33722	0.9	75.5	3.8	7.8	2.1	5.6	1.4	2.1	0.8	76.4	3.8	19.8	0.076	0.504	19.166519	-98.299004
X. C. Xoxtla - Huactzinco	107.98	3	2	33123	0.9	72.9	4.5	8.9	2.4	5.7	1.6	2.3	0.8	73.8	4.5	21.7	0.077	0.504	19.166589	-98.298903
Lim. Edos. Term. Tlax. Ppia. Pue.	108.00																			
Anillo Periferico Poniente de Puebla (Lateral)	114.00	3	1	26159	0.6	83.5	3.2	6.7	2.6	1.4	0.5	0.7	0.8	84.1	3.2	12.7	0.106	0.521	19.126228	-98.263345
Anillo Periferico Poniente de Puebla (Central)	114.00	3	1	22985	0.7	74.0	5.5	4.8	3.7	7.1	0.9	2.7	0.6	74.7	5.5	19.8	0.067	0.506	19.126312	-98.263258
Anillo Periferico Poniente de Puebla (Lateral)	114.00	3	2	28496	0.4	81.9	3.4	7.4	3.1	1.6	0.5	0.9	0.8	82.3	3.4	14.3	0.113	0.521	19.126545	-98.262939
Anillo Periferico Poniente de Puebla (Central)	114.00	3	2	22484	0.7	70.6	6.3	5.8	4.0	7.9	1.0	3.1	0.6	71.3	6.3	22.4	0.079	0.506	19.126492	-98.263000
Boulevard Hermanos Serdán	120.46	3	1	56312	0.7	80.3	4.8	6.0	3.1	3.0	0.6	1.3	0.2	81.0	4.8	14.2	0.063	0.502	19.093255	-98.223988
Boulevard Hermanos Serdán	120.46	3	2	55861	0.7	77.7	5.3	6.9	3.7	3.5	0.6	1.4	0.2	78.4	5.3	16.3	0.065	0.502	19.093342	-98.223928
X. C. Puebla - Tlaxcala (Lateral)	123.00	3	1	30065	0.7	85.6	6.5	3.5	1.9	1.0	0.5	0.1	0.2	86.3	6.5	7.2	0.071	0.507	19.086033	-98.200631
X. C. Puebla - Tlaxcala (Central)	123.00	3	1	41809	0.7	79.9	3.2	6.1	3.1	3.0	1.5	2.3	0.2	80.6	3.2	16.2	0.079	0.505	19.086166	-98.200591
X. C. Puebla - Tlaxcala (Central)	123.00	3	2	40994	0.7	77.8	3.7	6.7	3.5	3.3	1.5	2.6	0.2	78.5	3.7	17.8	0.082	0.505	19.086225	-98.200582
X. C. Puebla - Tlaxcala (Lateral)	123.00	3	2	24905	0.8	83.5	7.8	3.9	2.0	1.2	0.5	0.1	0.2	84.3	7.8	7.9	0.105	0.507	19.086386	-98.200570
T. C. Puebla - Tlaxcala	124.90																			

21 CARR: San Martín Texmelucan - Tlaxcala - El Molinito (Cuota)

CLAVE: 00212

RUTA: MEX-117D

AÑO: 2018

LUGAR	ESTACION				CLASIFICACION VEHICULAR EN PORCIENTO										COORDENADAS					
	KM	TE	SC	TDPA	M	A	B	C2	C3	T3S2	T3S3	T3S2R4	OTROS	A	B	C	K'	D	LATITUD	LONGITUD
T. C. México - Puebla (Cuota)	0.00																			
X. C. San Martín Texmelucan - Tlaxcala	1.80	1	0	4494	2.7	76.7	3.0	8.8	2.7	3.1	1.4	0.8	0.8	79.4	3.0	17.6	0.143	0.650	19.293447	-98.414779
Lim. Edos. Term. Pue. Ppia. Tlax.	4.05																			
Caseta de Cobro San Martín Texmelucan	5.45	2	1	3412	0.6	79.0	9.2	0.0	4.1	0.3	3.4	0.0	3.4	79.6	9.2	11.2	0.088	0.500	19.301602	-98.404063
Caseta de Cobro San Martín Texmelucan	5.45	2	2	3412	0.6	79.0	9.2	0.0	4.1	0.3	3.4	0.0	3.4	79.6	9.2	11.2	0.088	0.500	19.301602	-98.404063
X. C. San Martín Texmelucan - Tlaxcala (Trébol)	24.75	1	1	20851	1.4	90.6	1.7	3.6	0.4	1.0	0.6	0.5	0.2	92.0	1.7	6.3	0.084	0.515	19.325724	-98.249662
X. C. San Martín Texmelucan - Tlaxcala (Trébol)	24.75	1	2	19650	1.3	90.0	1.9	3.9	0.4	1.1	0.7	0.5	0.2	91.3	1.9	6.8	0.080	0.515	19.325936	-98.249598
X. C. San Martín Texmelucan - Tlaxcala (Trébol)	24.75	3	1	20585	1.1	87.3	2.0	7.0	0.6	0.9	0.4	0.6	0.1	88.4	2.0	9.6	0.075	0.532	19.331741	-98.239625
X. C. San Martín Texmelucan - Tlaxcala (Trébol)	24.75	3	2	18129	1.1	87.2	2.4	6.6	0.6	0.8	0.5	0.7	0.1	88.3	2.4	9.3	0.073	0.532	19.331799	-98.239657
T. Izq. Tizatlán	29.00	3	1	18729	0.5	86.2	3.0	7.5	0.9	0.9	0.3	0.6	0.1	86.7	3.0	10.3	0.073	0.539	19.337660	-98.230864
T. Izq. Tizatlán	29.00	3	2	16033	0.9	86.6	3.0	6.3	1.0	0.9	0.6	0.6	0.1	87.5	3.0	9.5	0.079	0.539	19.337696	-98.230974
T. Der. San Pablo Apetatitlán	31.65	3	1	37017	0.9	87.8	1.4	5.7	0.9	1.6	1.2	0.4	0.1	88.7	1.4	9.9	0.067	0.519	19.347418	-98.194728
T. Der. San Pablo Apetatitlán	31.65	3	2	39923	0.8	87.2	1.3	6.9	0.9	1.4	1.0	0.4	0.1	88.0	1.3	10.7	0.070	0.519	19.347566	-98.194837

TLAXCALA

21 CARR: San Martin Texmelucan - Tlaxcala - El Molinito (Cuota)

CLAVE: 00212

RUTA: MEX-117D

AÑO: 2018

LUGAR	ESTACION				CLASIFICACION VEHICULAR EN PORCIENTO													COORDENADAS		
	KM	TE	SC	TDPA	M	A	B	C2	C3	T3S2	T3S3	T3S2R4	OTROS	A	B	C	K'	D	LATITUD	LONGITUD
Ocotoxco	35.20	1	1	33559	1.0	87.0	1.2	6.3	1.1	1.9	0.9	0.5	0.1	88.0	1.2	10.8	0.068	0.501	19.374470	-98.180090
Ocotoxco	35.20	1	2	33667	1.1	85.7	1.8	7.9	1.0	1.3	0.7	0.4	0.1	86.8	1.8	11.4	0.071	0.501	19.374472	-98.180256

22 CARR: Tlaxco - Tejocotal (Cuota)

CLAVE: 00209

RUTA: MEX-119D

AÑO: 2018

LUGAR	ESTACION				CLASIFICACION VEHICULAR EN PORCIENTO													COORDENADAS		
	KM	TE	SC	TDPA	M	A	B	C2	C3	T3S2	T3S3	T3S2R4	OTROS	A	B	C	K'	D	LATITUD	LONGITUD
T.C. Apan - Tlaxco	23.00	3	0	4156	0.8	82.2	4.3	7.3	1.4	2.0	0.9	0.8	0.3	83.0	4.3	12.7	0.101	0.512	19.614961	-98.157070
Lim. Edos. Term. Tlax. Ppia. Pue.	30.70																			
Ent. Chignahuapan	56.20	3	0	2814	1.3	76.8	4.7	9.0	2.5	2.2	1.3	1.9	0.3	78.1	4.7	17.2	0.097	0.504	19.877562	-98.061828
Lim. Edos. Term. Pue. Ppia. Hgo.	84.80																			
T. C. Apizaco - Tejocotal	85.60																			

23 CARR: Libramiento de Ocotlán

CLAVE: 29567

RUTA: TLAX

AÑO: 2018

LUGAR	ESTACION				CLASIFICACION VEHICULAR EN PORCIENTO													COORDENADAS		
	KM	TE	SC	TDPA	M	A	B	C2	C3	T3S2	T3S3	T3S2R4	OTROS	A	B	C	K'	D	LATITUD	LONGITUD
T. C. Tlaxcala - Belem	0.00	3	1	14842	1.6	92.3	0.1	0.7	0.1	1.0	3.4	0.3	0.5	93.9	0.1	6.0	0.068	0.516	19.317805	-98.214608
T. C. Tlaxcala - Belem	0.00	3	2	13941	1.8	91.6	0.1	0.9	0.1	1.1	3.6	0.3	0.5	93.4	0.1	6.5	0.064	0.516	19.317702	-98.214589
T. Libramiento IPN	5.50																			

24 CARR: Ramal a Altzayanca de Hidalgo

CLAVE: 29562

RUTA: TLAX

AÑO: 2018

LUGAR	ESTACION				CLASIFICACION VEHICULAR EN PORCIENTO													COORDENADAS		
	KM	TE	SC	TDPA	M	A	B	C2	C3	T3S2	T3S3	T3S2R4	OTROS	A	B	C	K'	D	LATITUD	LONGITUD
T. C. Los Reyes - Zacatepec	0.00	3	0	3121	3.8	80.0	2.0	8.8	0.9	2.4	1.0	0.3	0.8	83.8	2.0	14.2	0.066	0.527	19.341101	-97.839140
Xicoténcatl	6.50	3	0	2367	3.7	84.5	0.6	7.8	0.5	1.9	0.6	0.0	0.4	88.2	0.6	11.2	0.065	0.502	19.356920	-97.831902
Altzayanca de Hidalgo	15.00	1	0	2070	8.3	79.7	0.4	6.6	0.8	2.8	0.4	0.5	0.5	88.0	0.4	11.6	0.080	0.502	19.422794	-97.804226

25 CARR: Ramal a San Pedro Ecatepec

CLAVE: 29561

RUTA: TLAX

AÑO: 2018

LUGAR	ESTACION				CLASIFICACION VEHICULAR EN PORCIENTO													COORDENADAS		
	KM	TE	SC	TDPA	M	A	B	C2	C3	T3S2	T3S3	T3S2R4	OTROS	A	B	C	K'	D	LATITUD	LONGITUD
T. C. Apizaco - Tejocotal	0.00	3	0	1925	2.9	85.0	0.1	9.7	0.6	1.3	0.2	0.1	0.1	87.9	0.1	12.0	0.084	0.502	19.514457	-98.119500
San Pedro Ecatepec	4.60	1	0	1927	3.6	84.9	0.1	8.8	0.9	1.3	0.4	0.0	0.0	88.5	0.1	11.4	0.080	0.504	19.518917	-98.153633

TLAXCALA

26 CARR: Ramal a Xalostoc

CLAVE: 29563

RUTA: TLAX

AÑO: 2018

LUGAR	ESTACION				CLASIFICACION VEHICULAR EN PORCIENTO										COORDENADAS					
	KM	TE	SC	TDPA	M	A	B	C2	C3	T3S2	T3S3	T3S2R4	OTROS	A	B	C	K'	D	LATITUD	LONGITUD
T. C. Los Reyes - Zacatepec	0.00	3	0	9846	1.8	85.7	0.2	4.2	0.4	6.2	0.5	0.2	0.8	87.5	0.2	12.3	0.059	0.509	19.396055	-98.057177
Xalostoc	2.50	1	0	10434	2.7	86.0	0.1	3.8	0.3	5.3	0.6	0.2	1.0	88.7	0.1	11.2	0.065	0.509	19.400365	-98.051788

27 CARR: Xalostoc - Terrenate

CLAVE: 29390

RUTA: TLAX

AÑO: 2018

LUGAR	ESTACION				CLASIFICACION VEHICULAR EN PORCIENTO										COORDENADAS					
	KM	TE	SC	TDPA	M	A	B	C2	C3	T3S2	T3S3	T3S2R4	OTROS	A	B	C	K'	D	LATITUD	LONGITUD
Xalostoc	0.00	3	0	3671	2.2	89.4	0.2	5.0	0.6	2.2	0.2	0.0	0.2	91.6	0.2	8.2	0.076	0.500	19.431742	-98.013537
San Francisco Teometitla	7.10	3	0	1964	1.5	87.0	0.5	9.4	0.4	1.1	0.1	0.0	0.0	88.5	0.5	11.0	0.077	0.504	19.457947	-97.980366
T. C. Huamantla - Terrenate	17.50	1	0	1915	3.0	77.2	0.1	18.3	0.5	0.7	0.1	0.0	0.1	80.2	0.1	19.7	0.077	0.530	19.467115	-97.930881

28 CARR: Puebla - Tlaxcala (Cuota)

CLAVE:

RUTA: PUE-D

AÑO: 2018

LUGAR	ESTACION				CLASIFICACION VEHICULAR EN PORCIENTO										COORDENADAS					
	KM	TE	SC	TDPA	M	A	B	C2	C3	T3S2	T3S3	T3S2R4	OTROS	A	B	C	K'	D	LATITUD	LONGITUD
Anillo Periferico Poniente de Puebla	0.00	3	0	8583	0.5	87.6	1.4	4.9	0.6	2.6	0.8	1.2	0.4	88.1	1.4	10.5	0.077	0.531	19.150600	-98.269317
T Der. Zacatelco	8.00	1	0	8668	0.5	88.9	1.4	4.0	0.6	2.6	0.5	1.2	0.3	89.4	1.4	9.2	0.078	0.534	19.202667	-98.261950
T Der. Zacatelco	8.00	3	0	9632	1.0	90.8	1.3	2.1	0.3	1.4	0.8	1.8	0.5	91.8	1.3	6.9	0.073	0.520	19.229367	-98.272017
Lib. de Tlaxcala (Cuota)	17.80	1	0	8860	0.5	87.9	1.5	4.7	0.7	2.6	0.7	1.1	0.3	88.4	1.5	10.1	0.076	0.527	19.279777	-98.248750

29 CARR: Acocotla - Vicente Guerrero

CLAVE: 29560

RUTA: MEX-TLAX

AÑO: 2018

LUGAR	ESTACION				CLASIFICACION VEHICULAR EN PORCIENTO										COORDENADAS					
	KM	TE	SC	TDPA	M	A	B	C2	C3	T3S2	T3S3	T3S2R4	OTROS	A	B	C	K'	D	LATITUD	LONGITUD
T. C. Los Reyes - Zacatepec	0.00	3	0	2123	3.1	78.3	2.7	5.8	2.0	2.1	1.8	2.1	2.1	81.4	2.7	15.9	0.084	0.520	19.371256	-98.028587
Vicente Guerrero	35.60	1	0	2840	8.3	71.9	1.7	17.3	0.3	0.4	0.1	0.0	0.0	80.2	1.7	18.1	0.074	0.508	19.135892	-98.144602

30 CARR: Apizaco - Emiliano Zapata

CLAVE: 29033

RUTA: TLAX-MEX-136

AÑO: 2018

LUGAR	ESTACION				CLASIFICACION VEHICULAR EN PORCIENTO										COORDENADAS					
	KM	TE	SC	TDPA	M	A	B	C2	C3	T3S2	T3S3	T3S2R4	OTROS	A	B	C	K'	D	LATITUD	LONGITUD
Apizaco	0.00	3	0	8410	5.9	80.2	0.6	4.9	0.6	4.8	1.1	0.5	1.4	86.1	0.6	13.3	0.064	0.501	19.417375	-98.130445
Capula	16.00	1	0	3468	3.5	86.6	1.1	3.9	0.8	1.2	0.9	1.2	0.8	90.1	1.1	8.8	0.078	0.503	19.529962	-98.041044
Emiliano Zapata	37.00	1	0	1466	2.3	80.9	1.9	4.5	1.3	1.9	2.2	1.9	3.1	83.2	1.9	14.9	0.132	0.531	19.552206	-97.917045

TLAXCALA

31 CARR: Calpulalpan - El Ocote

CLAVE: 00054

RUTA: MEX-HGO

AÑO: 2018

LUGAR	ESTACION				CLASIFICACION VEHICULAR EN PORCIENTO													COORDENADAS		
	KM	TE	SC	TDPA	M	A	B	C2	C3	T3S2	T3S3	T3S2R4	OTROS	A	B	C	K'	D	LATITUD	LONGITUD
Calpulalpan	0.00	3	0	9311	0.9	74.5	1.9	7.9	2.2	8.2	1.9	1.7	0.8	75.4	1.9	22.7	0.062	0.511	19.594335	-98.573756
X. C. Arco Norte de La Ciudad de México	4.00	3	0	8716	1.9	78.7	2.2	6.6	2.4	6.6	1.0	0.2	0.4	80.6	2.2	17.2	0.084	0.559	19.626981	-98.542015
Lim. Edos. Term. Tlax. Ppia. Hgo.	5.00																			
Apan	19.58	3	1	4775	1.5	90.6	0.3	5.8	0.6	0.6	0.3	0.1	0.2	92.1	0.3	7.6	0.073	0.514	19.728601	-98.470960
Apan	19.58	3	2	5050	1.5	89.5	0.6	6.9	0.5	0.4	0.3	0.1	0.2	91.0	0.6	8.4	0.066	0.514	19.728527	-98.471047
Tepeapulco	34.92	3	0	4336	1.2	85.1	0.6	8.2	1.4	2.5	0.5	0.2	0.3	86.3	0.6	13.1	0.098	0.505	19.800537	-98.561821
X. C. Venta de Carpio - Tulancingo	51.18	1	1	1613	1.1	83.5	0.8	10.9	2.7	0.6	0.4	0.0	0.0	84.6	0.8	14.6	0.078	0.511	19.918427	-98.576377
X. C. Venta de Carpio - Tulancingo	51.18	1	2	1547	1.2	81.2	1.0	12.6	3.0	0.6	0.4	0.0	0.0	82.4	1.0	16.6	0.085	0.511	19.918427	-98.576377
X. C. Venta de Carpio - Tulancingo	51.18	3	0	2134	2.9	83.2	0.7	10.2	1.2	1.2	0.4	0.0	0.2	86.1	0.7	13.2	0.083	0.524	19.927394	-98.582748
El Ocote	70.44	1	1	1777	1.4	90.3	0.3	5.4	1.1	0.9	0.5	0.0	0.1	91.7	0.3	8.0	0.091	0.503	20.041073	-98.621543
El Ocote	70.44	1	2	1795	0.7	90.4	0.3	5.9	1.3	1.0	0.4	0.0	0.0	91.1	0.3	8.6	0.097	0.503	20.041143	-98.621648

32 CARR: Calpulalpan - Nanacamilpa

CLAVE: 29034

RUTA: TLAX-MEX-136

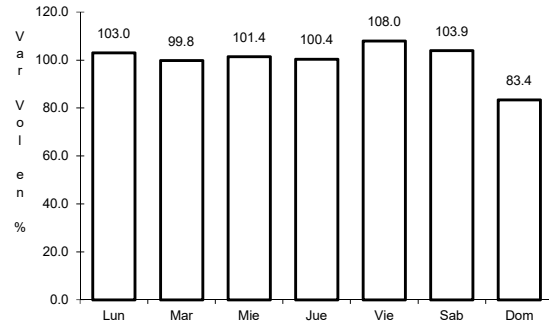
AÑO: 2018

LUGAR	ESTACION				CLASIFICACION VEHICULAR EN PORCIENTO													COORDENADAS		
	KM	TE	SC	TDPA	M	A	B	C2	C3	T3S2	T3S3	T3S2R4	OTROS	A	B	C	K'	D	LATITUD	LONGITUD
Calpulalpan	0.00	3	0	2380	5.1	84.3	0.3	7.0	0.8	1.6	0.3	0.1	0.5	89.4	0.3	10.3	0.087	0.522	19.567933	-98.568443
Nanacamilpa	15.50	1	0	1801	9.2	80.8	0.4	6.1	1.2	1.8	0.2	0.1	0.2	90.0	0.4	9.6	0.117	0.540	19.498638	-98.533191

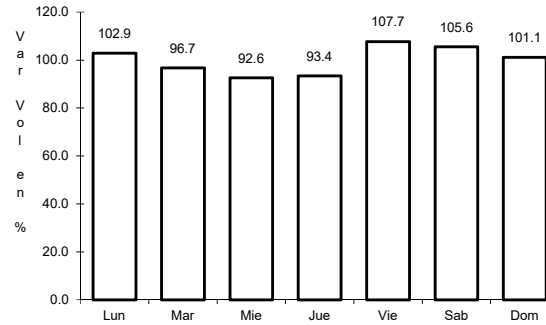
1 CARR: Amozoc - Teziutlán

CLAVE: 00210

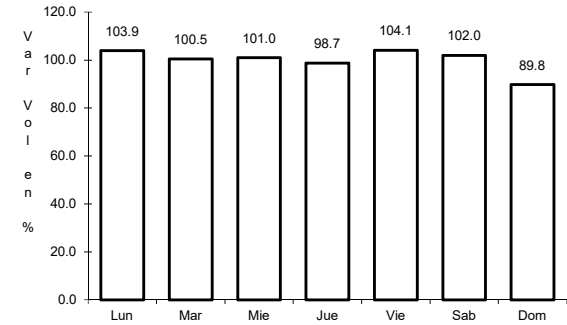
RUTA: MEX-129



Km: 1.40 Tipo: 3 Sent: 0



Km: 76.35 Tipo: 3 Sent: 0

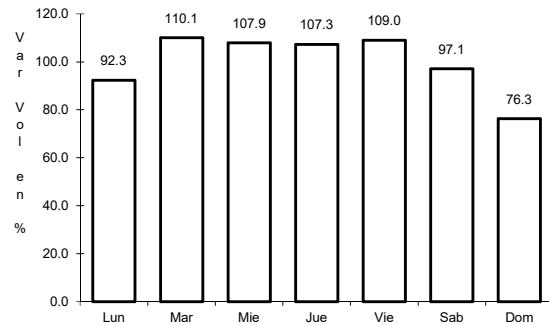


Km: 157.80 Tipo: 1 Sent: 0

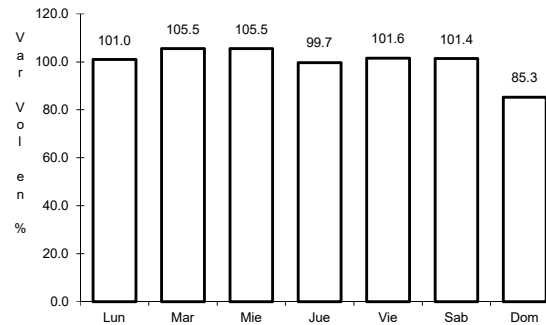
2 CARR: Apizaco - San Pablo Apetatitlán

CLAVE: 29035

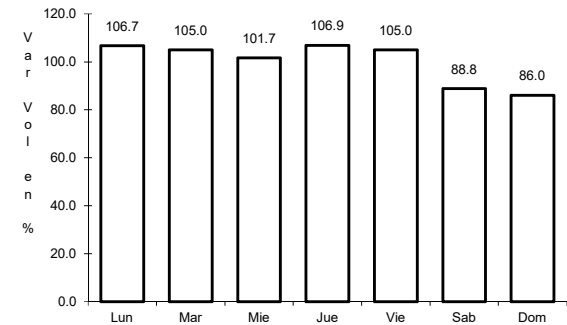
RUTA: MEX-119



Km: 0.00 Tipo: 3 Sent: 0



Km: 14.50 Tipo: 3 Sent: 0

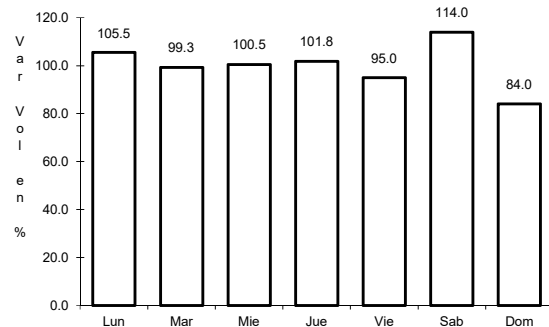


Km: 20.00 Tipo: 1 Sent: 0

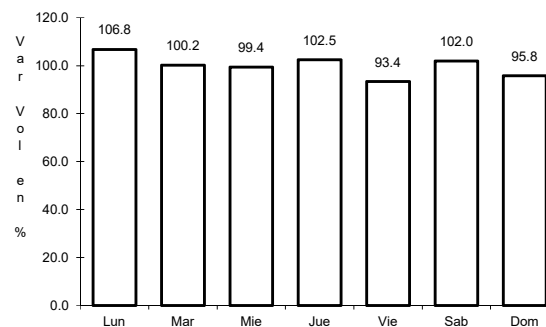
3 CARR: Apizaco - Tejocotal

CLAVE: 00430

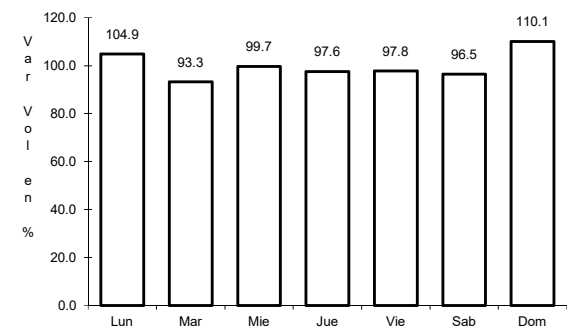
RUTA: MEX-119



Km: 0.00 Tipo: 3 Sent: 1



Km: 0.00 Tipo: 3 Sent: 2

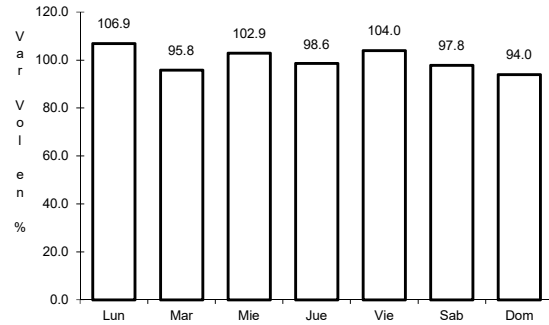


Km: 113.15 Tipo: 1 Sent: 0

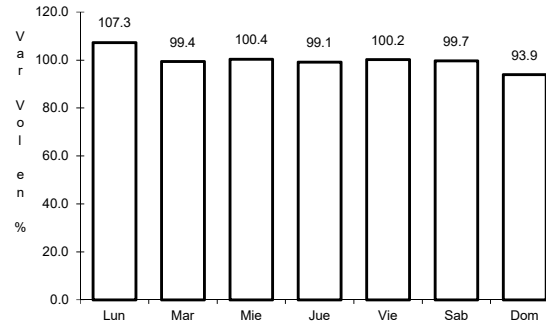
4 CARR: Huamantla - La Venta

CLAVE: 29564

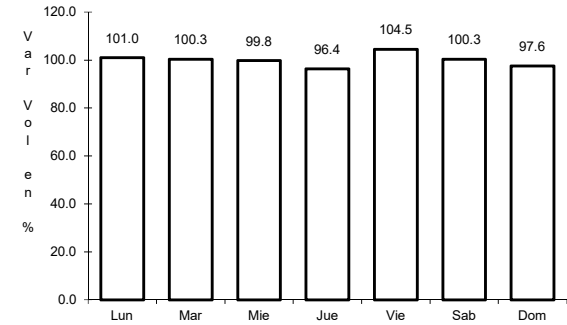
RUTA: MEX-136



Km: 0.00 Tipo: 3 Sent: 1



Km: 0.00 Tipo: 3 Sent: 2

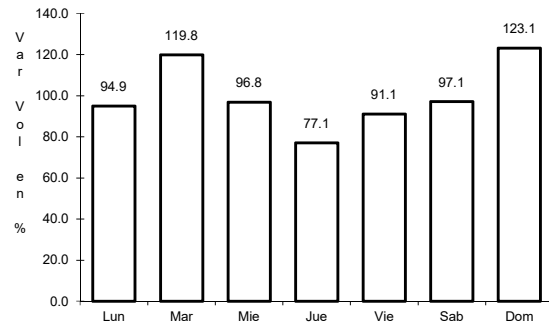


Km: 17.60 Tipo: 1 Sent: 0

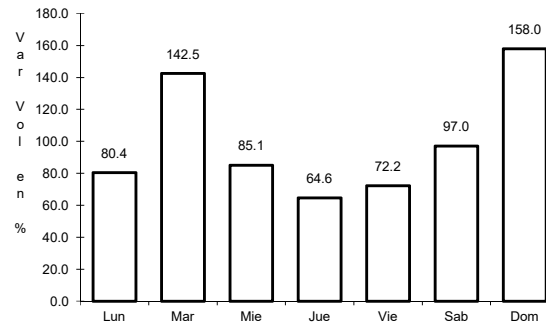
5 CARR: Huamantla - Terrenate

CLAVE: 29036

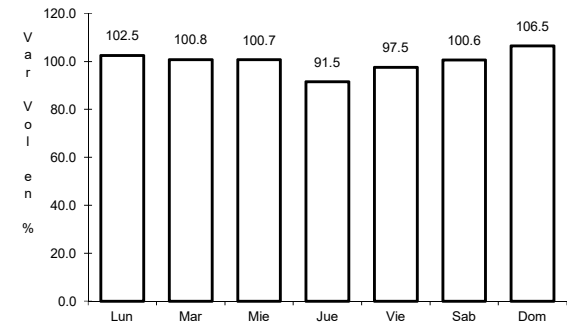
RUTA: MEX-136



Km: 0.00 Tipo: 3 Sent: 0



Km: 12.50 Tipo: 1 Sent: 0

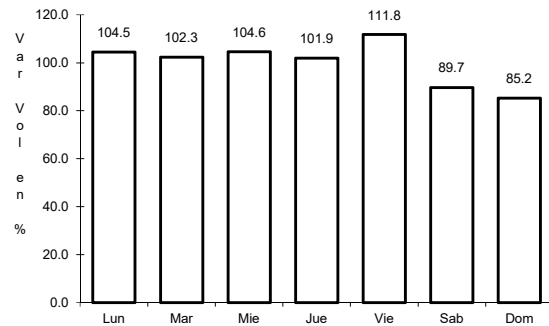


Km: 21.00 Tipo: 1 Sent: 0

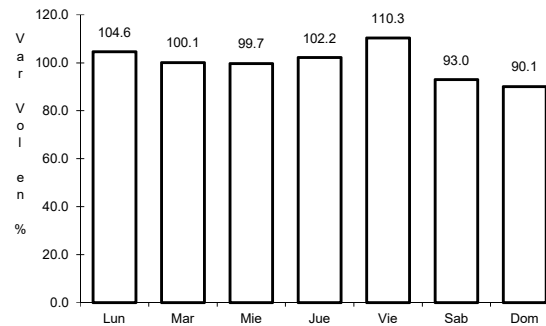
6 CARR: Libramiento de Apizaco

CLAVE: 29567

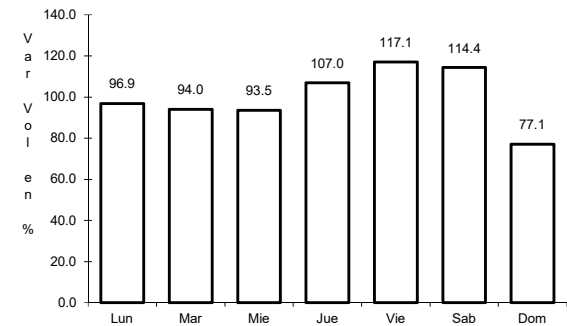
RUTA: MEX-136



Km: 6.00 Tipo: 1 Sent: 1



Km: 6.00 Tipo: 1 Sent: 2

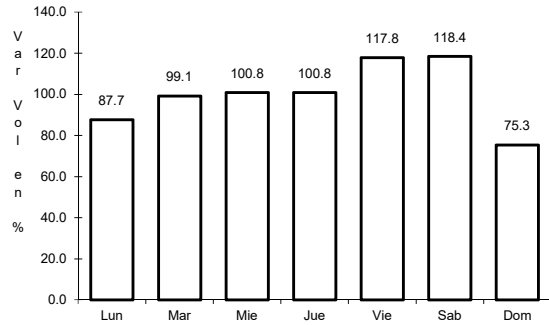


Km: 6.00 Tipo: 3 Sent: 1

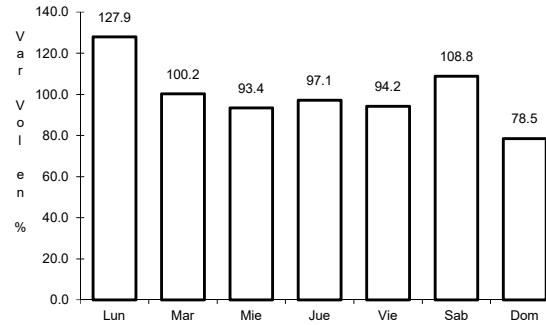
7 CARR: Libramiento Huamantla

CLAVE: 29567

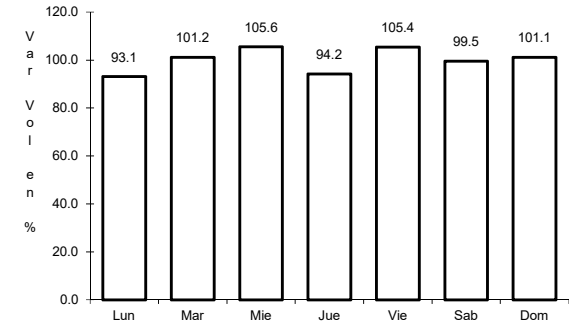
RUTA: MEX-136



Km: 0.00 Tipo: 3 Sent: 1



Km: 0.00 Tipo: 3 Sent: 2

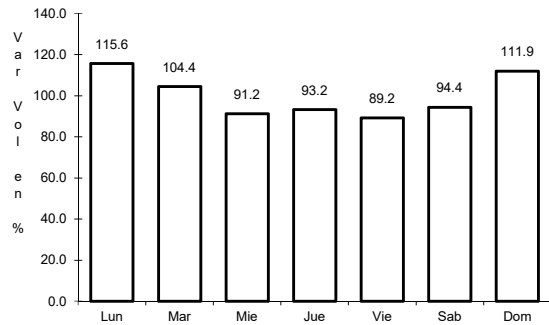


Km: 4.60 Tipo: 1 Sent: 1

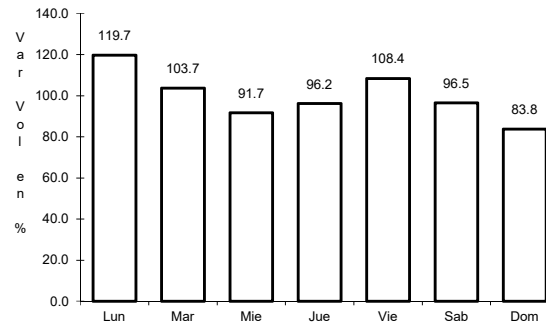
8 CARR: Libramiento Hueyotlipan

CLAVE: 29567

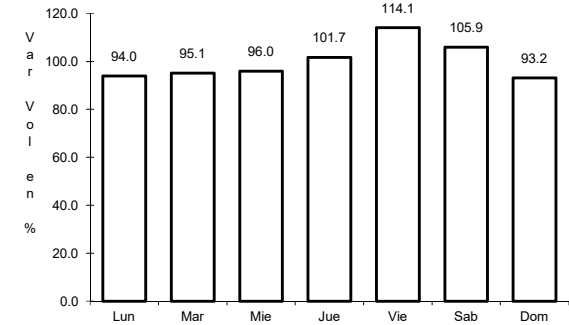
RUTA: MEX-136



Km: 0.00 Tipo: 3 Sent: 1



Km: 0.00 Tipo: 3 Sent: 2

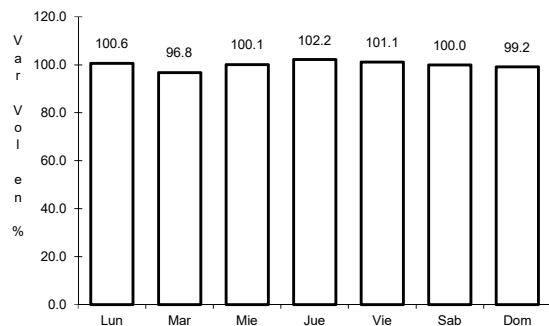


Km: 2.70 Tipo: 1 Sent: 1

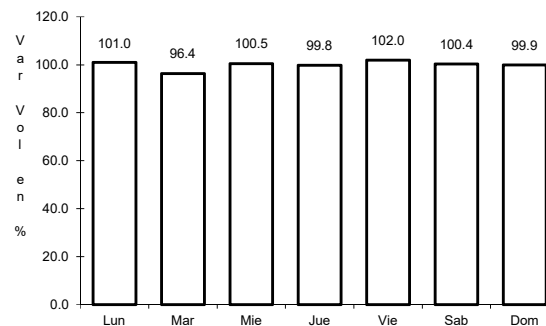
9 CARR: Los Reyes - Zacatepec

CLAVE: 00052

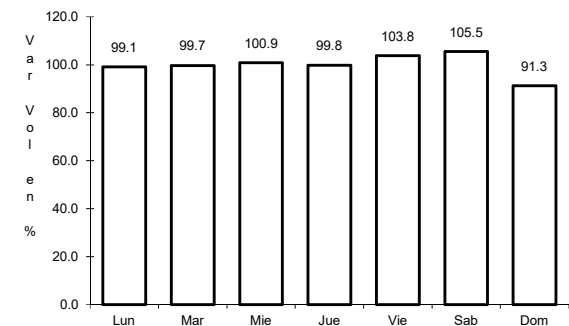
RUTA: MEX-136



Km: 3.35 Tipo: 3 Sent: 1



Km: 3.35 Tipo: 3 Sent: 2

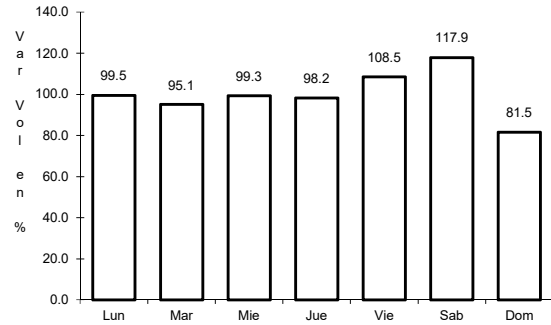


Km: 173.47 Tipo: 3 Sent: 0

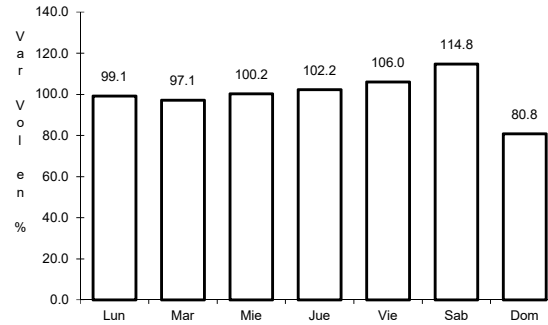
10 CARR: Puebla - Belem

CLAVE: 00055

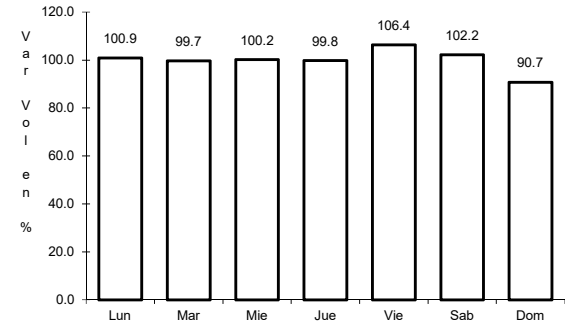
RUTA: MEX-121



Km: 4.00 Tipo: 3 Sent: 1



Km: 4.00 Tipo: 3 Sent: 2

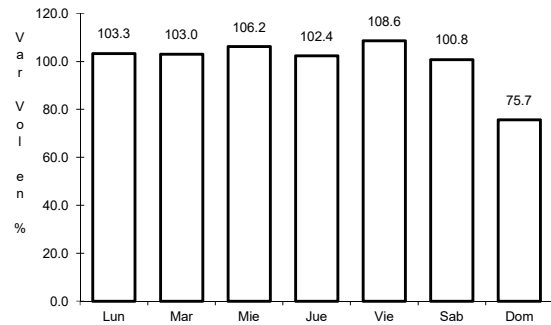


Km: 28.80 Tipo: 1 Sent: 1

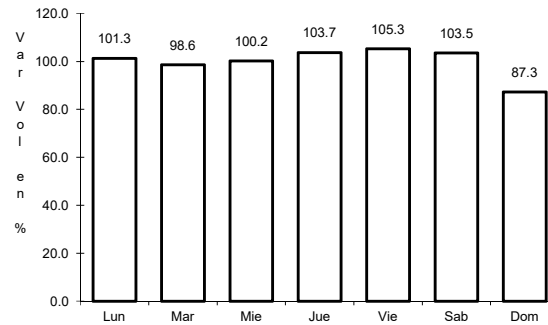
11 CARR: Puebla - Tlaxcala

CLAVE: 00475

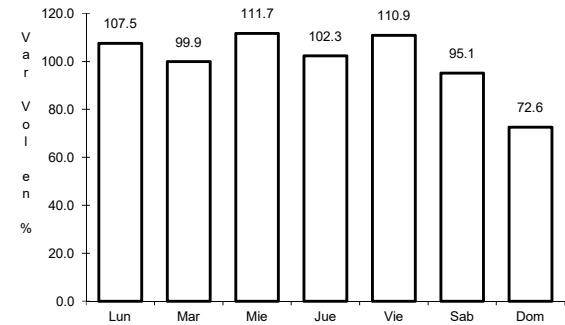
RUTA: MEX-119



Km: 5.41 Tipo: 3 Sent: 1



Km: 5.41 Tipo: 3 Sent: 2

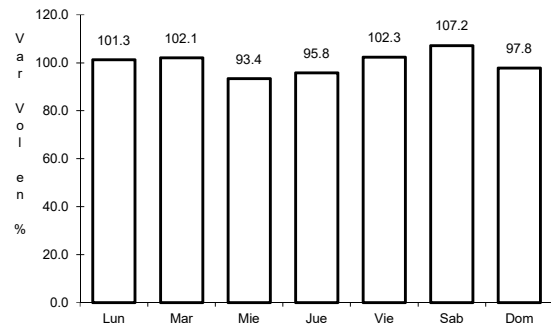


Km: 33.22 Tipo: 1 Sent: 1

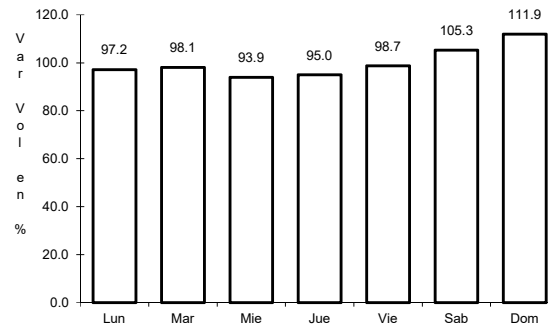
12 CARR: Ramal a San Felipe de Hidalgo

CLAVE: 29565

RUTA: MEX-136



Km: 0.00 Tipo: 3 Sent: 0

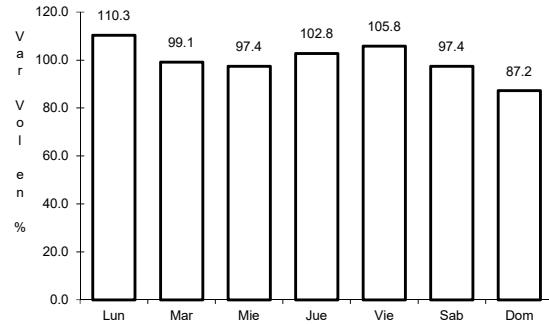


Km: 10.50 Tipo: 1 Sent: 0

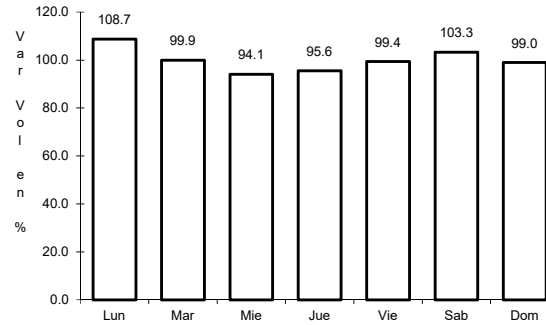
13 CARR: San Martín Texmelucan - Tlaxcala

CLAVE: 00158

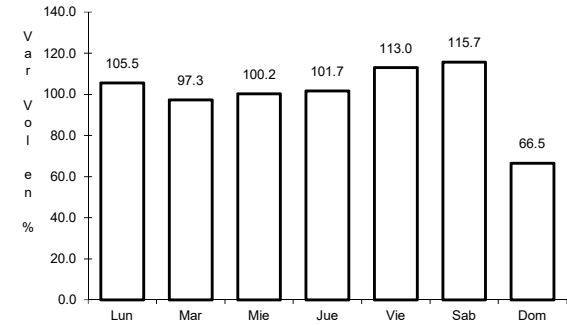
ruta: MEX-117



Km: 0.00 Tipo: 3 Sent: 1



Km: 0.00 Tipo: 3 Sent: 2

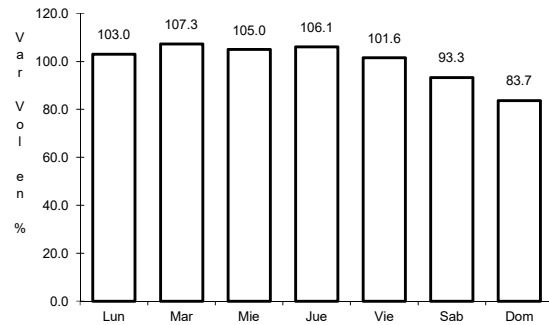


Km: 24.81 Tipo: 1 Sent: 0

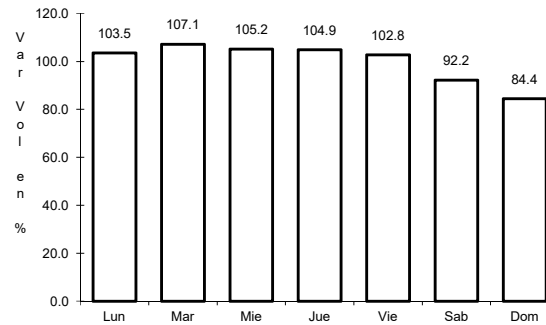
14 CARR: Tetlatlahuca - Santa Ana Chiautempan

CLAVE: 00158

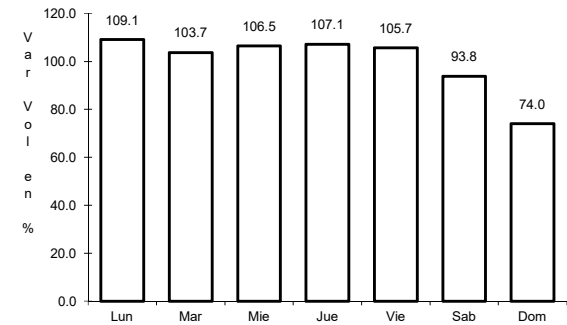
ruta: MEX-119



Km: 2.39 Tipo: 1 Sent: 0



Km: 5.50 Tipo: 1 Sent: 0

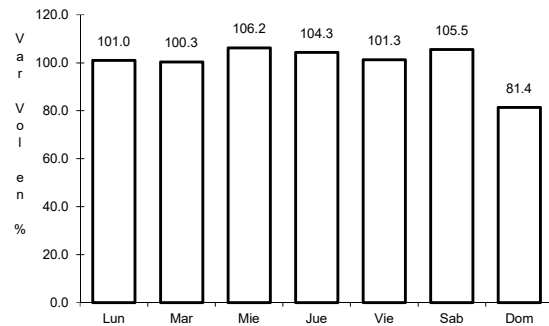


Km: 9.94 Tipo: 1 Sent: 0

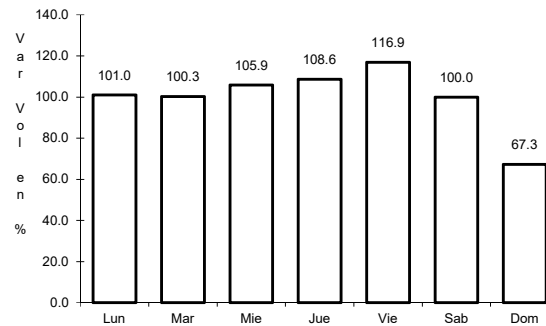
15 CARR: Tlaxcala - Belem

CLAVE: 29389

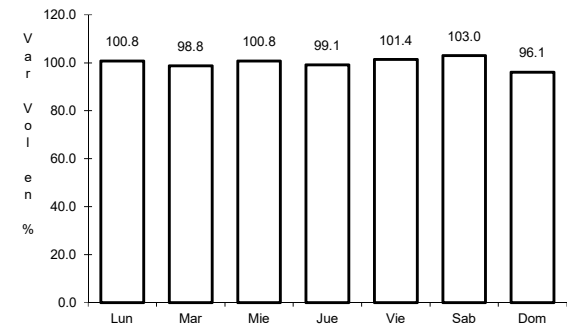
ruta: MEX-119



Km: 3.91 Tipo: 1 Sent: 1



Km: 3.91 Tipo: 1 Sent: 2

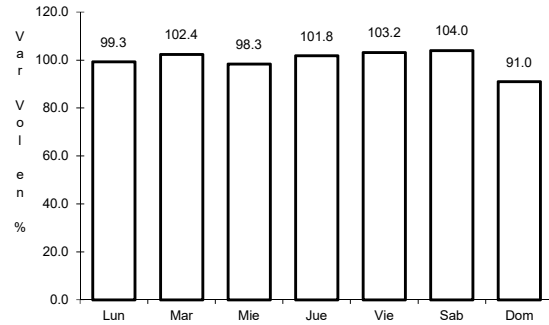


Km: 10.06 Tipo: 1 Sent: 0

16 CARR: Villa Alta - T. C. (Puebla - Tlaxcala)

CLAVE: 29566

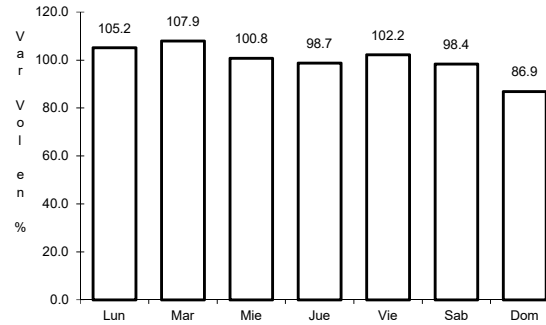
RUTA: MEX-119



Km: 0.00

Tipo: 3

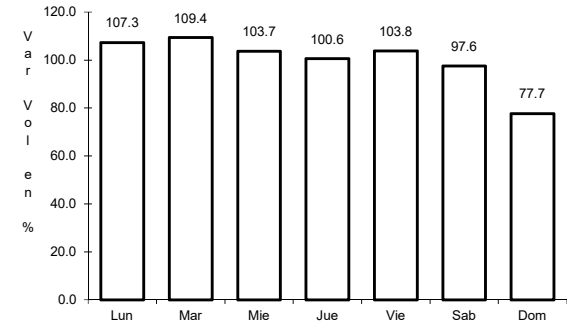
Sent: 0



Km: 10.50

Tipo: 3

Sent: 0



Km: 22.05

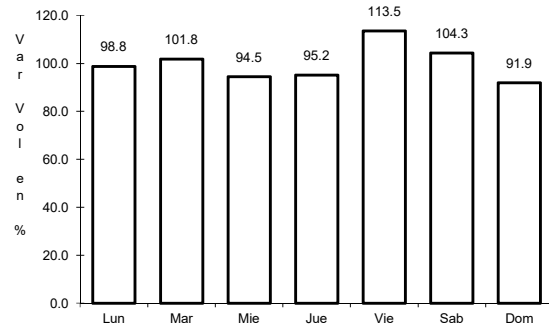
Tipo: 1

Sent: 0

17 CARR: Amozoc - Perote (Cuota)

CLAVE: 00030

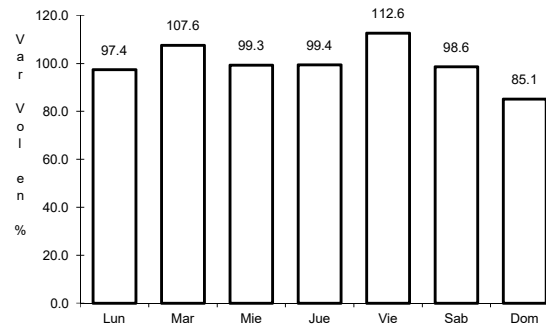
RUTA: MEX-140D



Km: 0.00

Tipo: 3

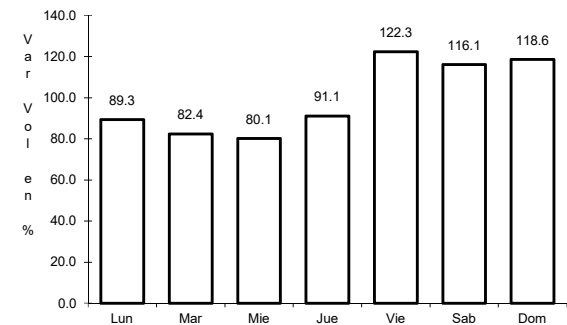
Sent: 0



Km: 25.80

Tipo: 3

Sent: 0



Km: 62.70

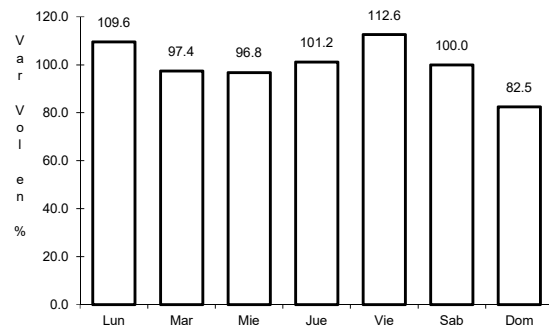
Tipo: 3

Sent: 0

18 CARR: Libramiento de Tlaxcala (Cuota)

CLAVE:

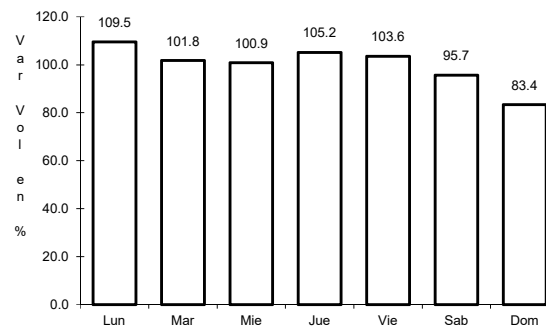
RUTA: MEX-117D



Km: 0.00

Tipo: 3

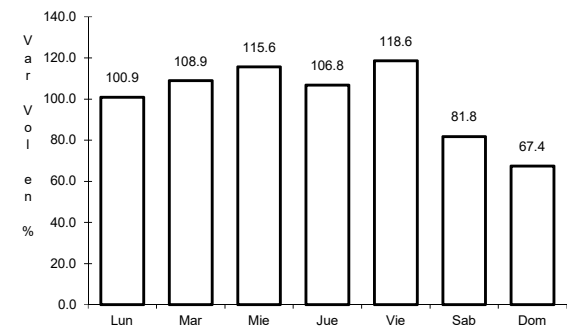
Sent: 1



Km: 0.00

Tipo: 3

Sent: 2



Km: 11.00

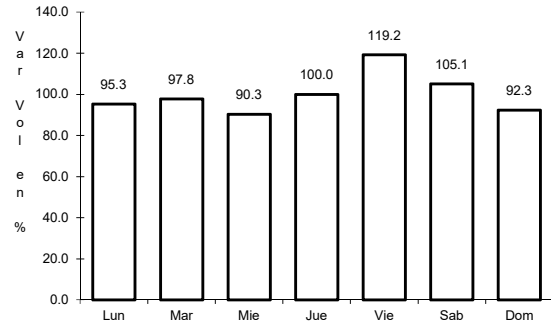
Tipo: 1

Sent: 1

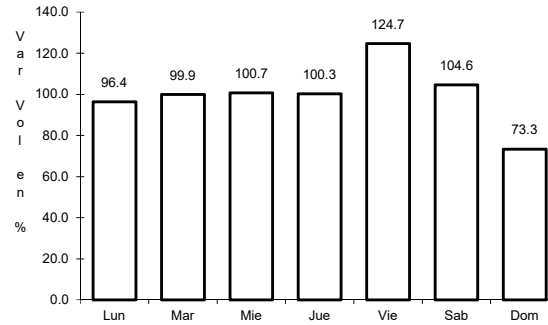
19 CARR: Libramiento Norte de la Ciudad de México (Cuota)

CLAVE: 0902

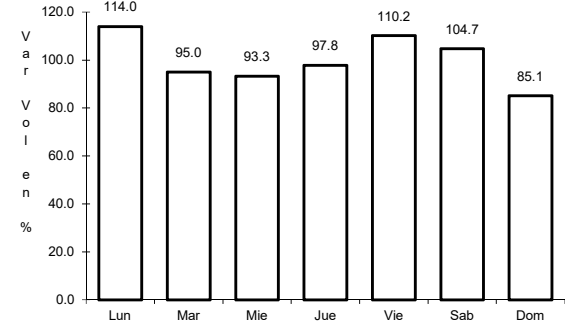
RUTA: MEX-M40D



Km: 12.90 Tipo: 1 Sent: 1



Km: 12.90 Tipo: 1 Sent: 2

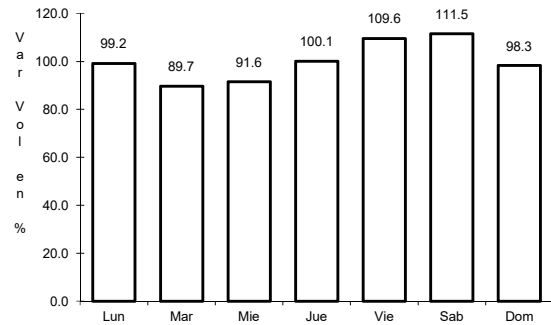


Km: 226.73 Tipo: 1 Sent: 1

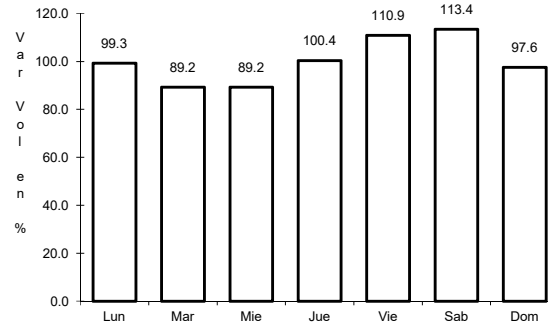
20 CARR: México - Puebla (Cuota)

CLAVE: 00450

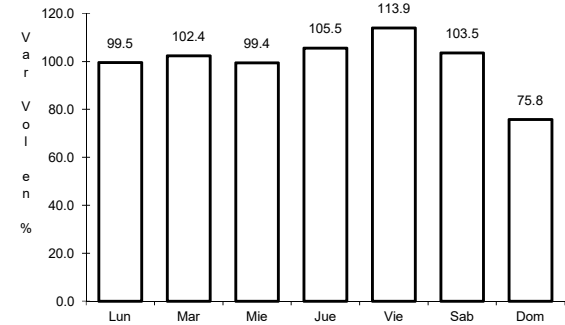
RUTA: MEX-150D



Km: 17.00 Tipo: 3 Sent: 1



Km: 17.00 Tipo: 3 Sent: 2

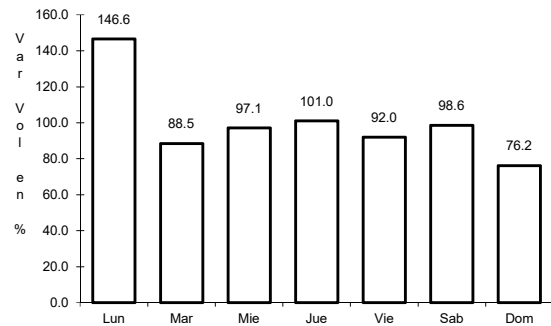


Km: 120.46 Tipo: 3 Sent: 1

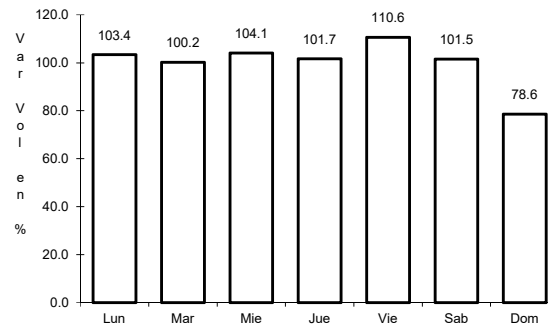
21 CARR: San Martin Texmelucan - Tlaxcala - El Molinito (Cuota)

CLAVE: 00212

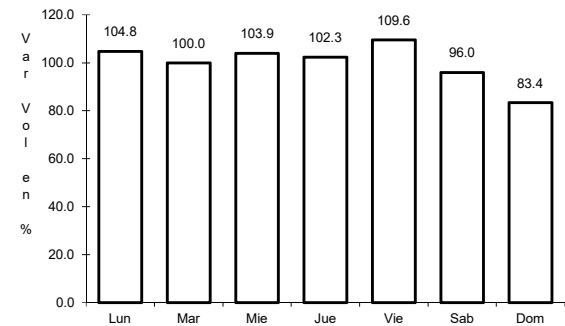
RUTA: MEX-117D



Km: 1.80 Tipo: 1 Sent: 0



Km: 35.20 Tipo: 1 Sent: 1

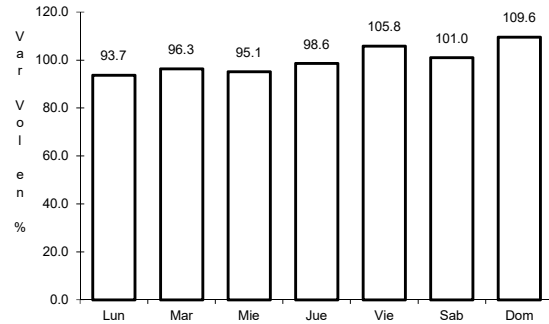


Km: 35.20 Tipo: 1 Sent: 2

22 CARR: Tlaxco - Tejocotal (Cuota)

CLAVE: 00209

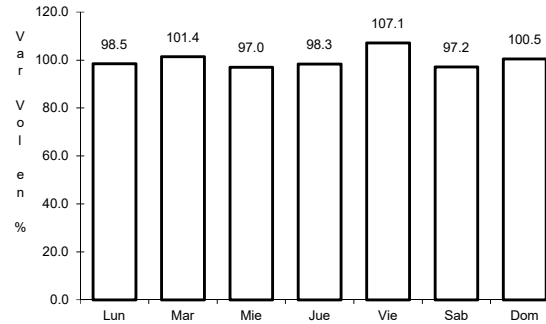
RUTA: MEX-119D



Km: 23.00

Tipo: 3

Sent: 0



Km: 56.20

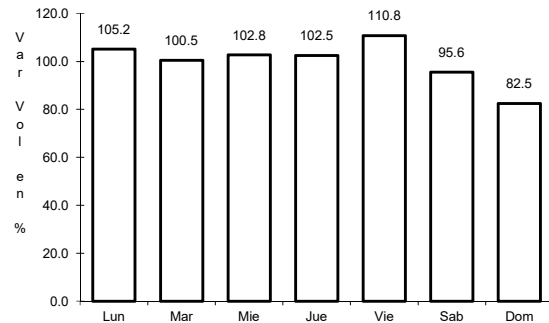
Tipo: 3

Sent: 0

23 CARR: Libramiento de Ocotlán

CLAVE: 29567

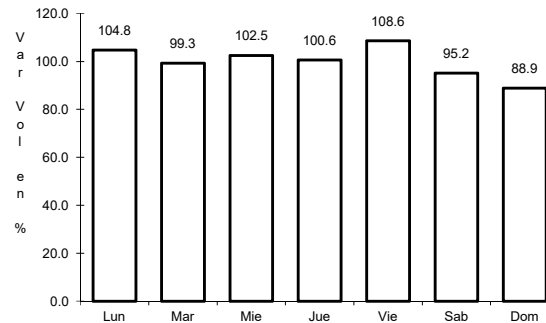
RUTA: TLAX



Km: 0.00

Tipo: 3

Sent: 1



Km: 0.00

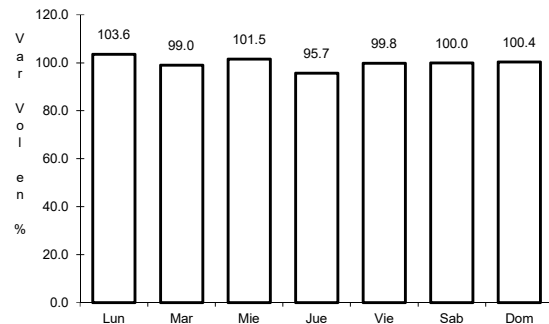
Tipo: 3

Sent: 2

24 CARR: Ramal a Altzayanca de Hidalgo

CLAVE: 29562

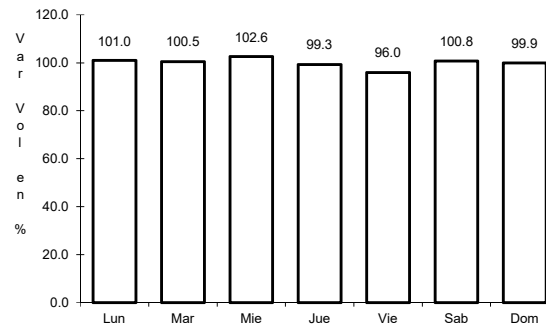
RUTA: TLAX



Km: 0.00

Tipo: 3

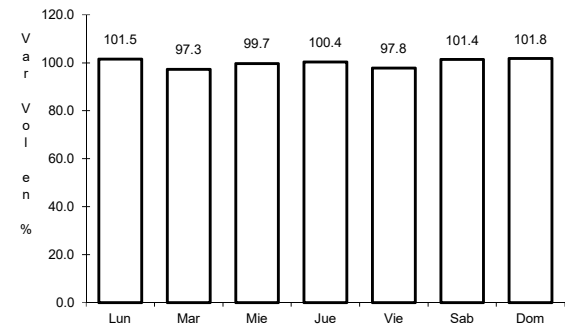
Sent: 0



Km: 6.50

Tipo: 3

Sent: 0



Km: 15.00

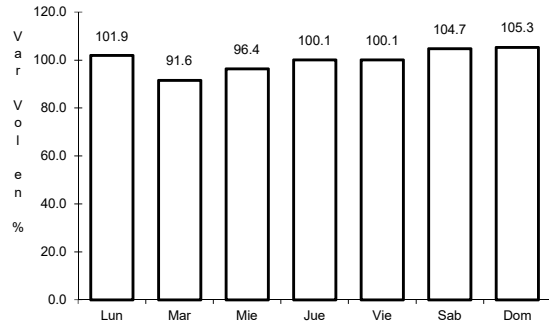
Tipo: 1

Sent: 0

25 CARR: Ramal a San Pedro Ecatepec

CLAVE: 29561

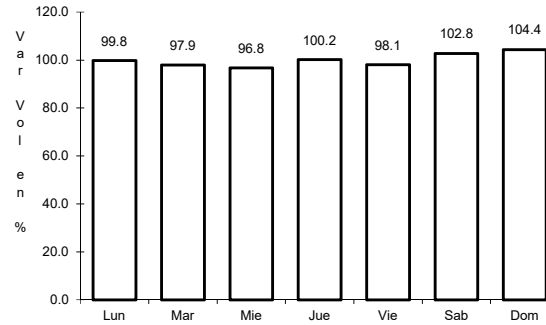
ruta: TLAX



Km: 0.00

Tipo: 3

Sent: 0



Km: 4.60

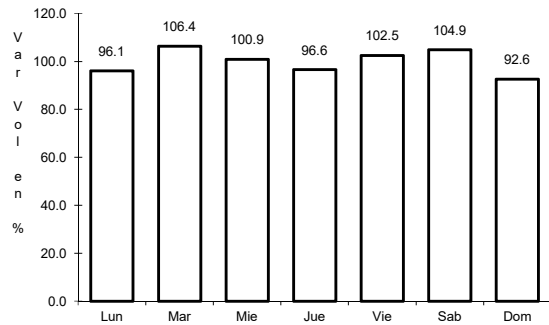
Tipo: 1

Sent: 0

26 CARR: Ramal a Xalostoc

CLAVE: 29563

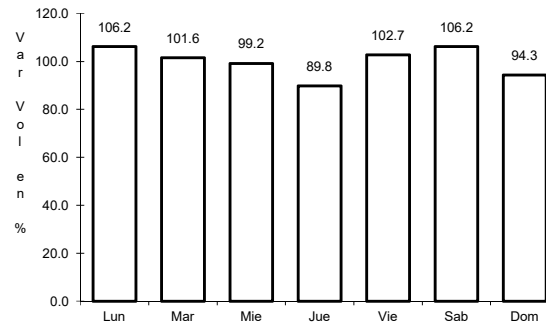
ruta: TLAX



Km: 0.00

Tipo: 3

Sent: 0



Km: 2.50

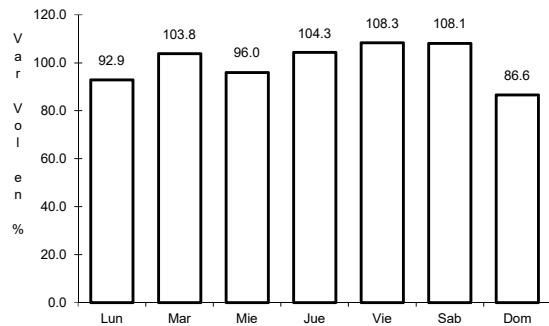
Tipo: 1

Sent: 0

27 CARR: Xalostoc - Terrenate

CLAVE: 29390

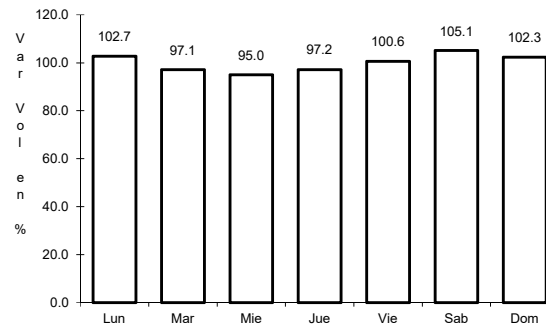
ruta: TLAX



Km: 0.00

Tipo: 3

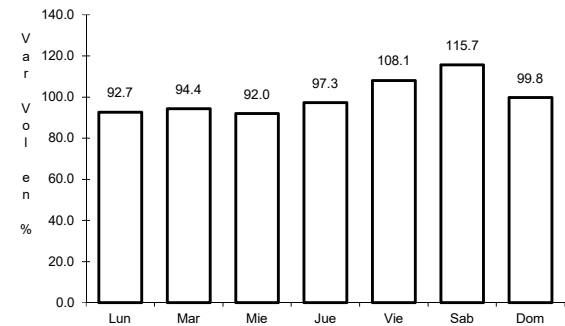
Sent: 0



Km: 7.10

Tipo: 3

Sent: 0



Km: 17.50

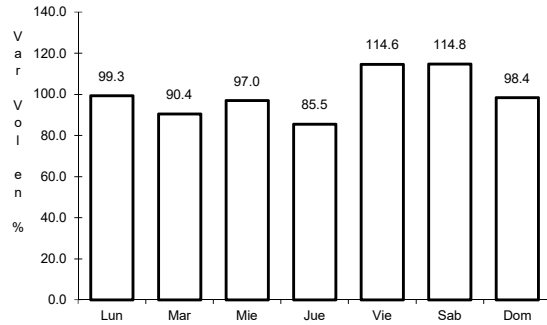
Tipo: 1

Sent: 0

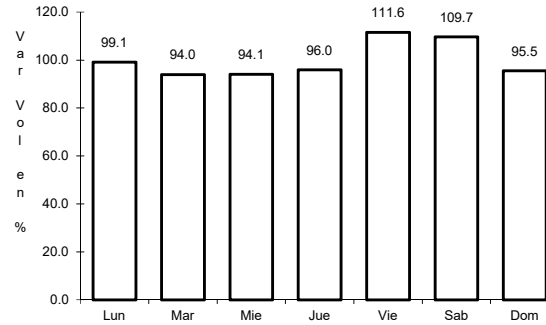
28 CARR: Puebla - Tlaxcala (Cuota)

CLAVE:

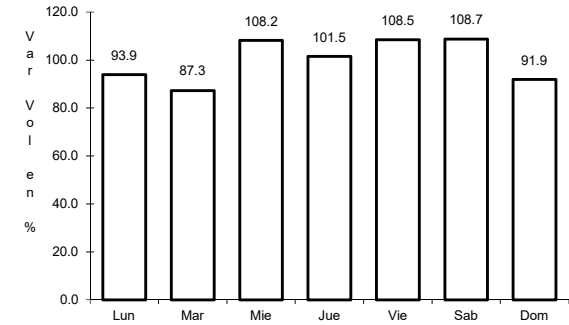
RUTA: PUE-D



Km: 0.00 Tipo: 3 Sent: 0



Km: 8.00 Tipo: 3 Sent: 0

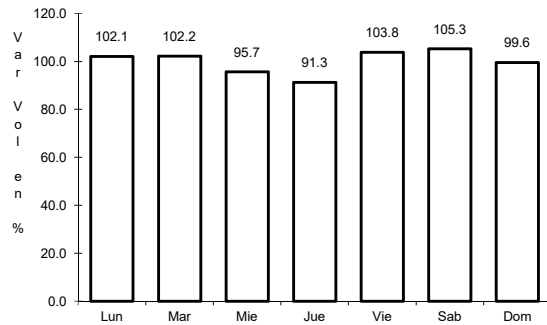


Km: 17.80 Tipo: 1 Sent: 0

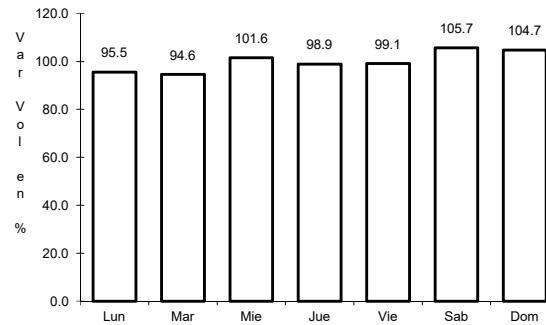
29 CARR: Acocotla - Vicente Guerrero

CLAVE: 29560

RUTA: MEX-TLAX



Km: 0.00 Tipo: 3 Sent: 0

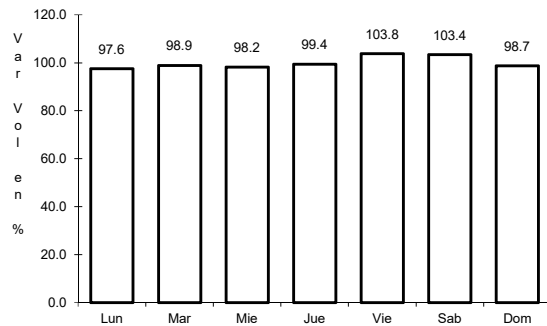


Km: 35.60 Tipo: 1 Sent: 0

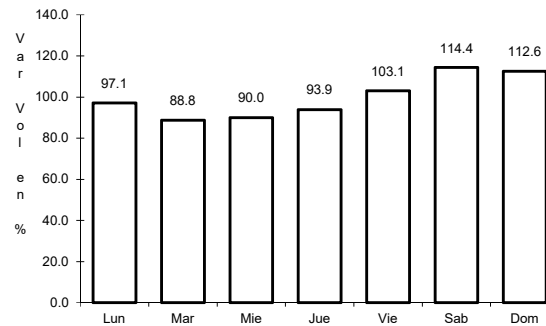
30 CARR: Apizaco - Emiliano Zapata

CLAVE: 29033

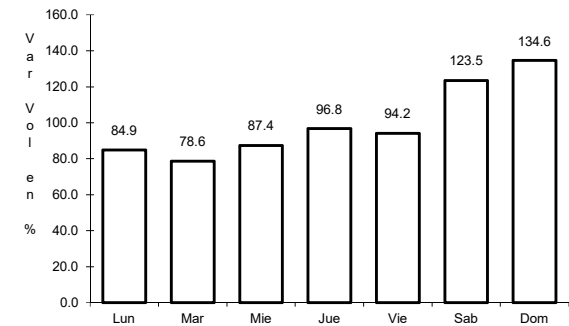
RUTA: TLAX-MEX-136



Km: 0.00 Tipo: 3 Sent: 0



Km: 16.00 Tipo: 1 Sent: 0

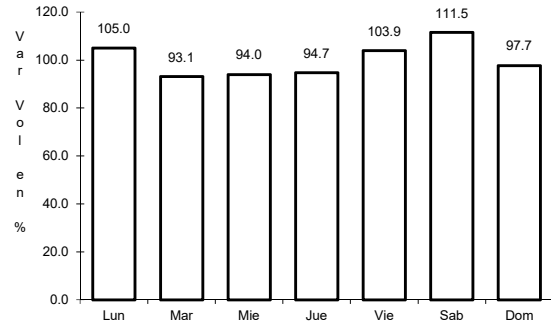


Km: 37.00 Tipo: 1 Sent: 0

31 CARR: Calpulalpan - El Ocote

CLAVE: 00054

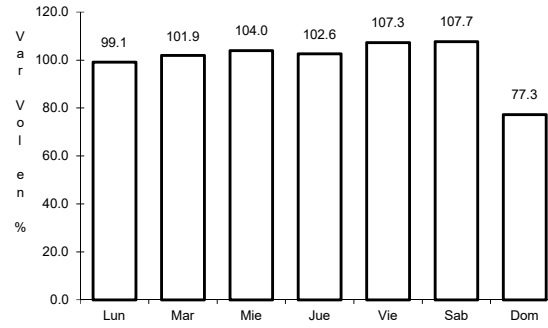
RUTA: MEX-HGO



Km: 0.00

Tipo: 3

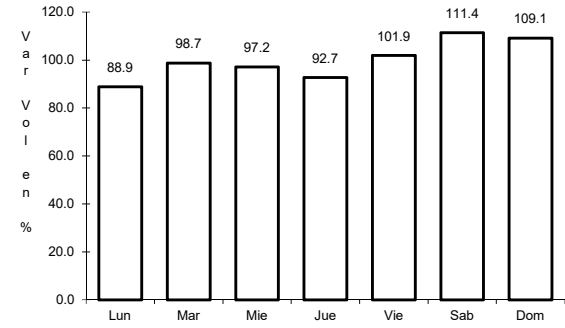
Sent: 0



Km: 34.92

Tipo: 3

Sent: 0



Km: 70.44

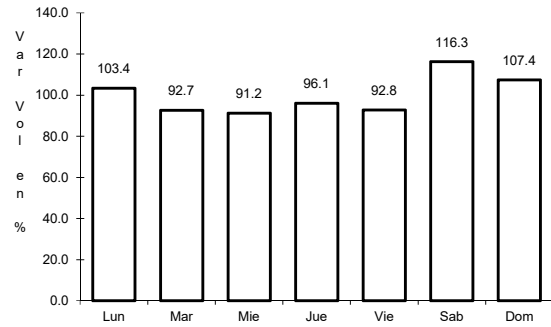
Tipo: 1

Sent: 1

32 CARR: Calpulalpan - Nanacamilpa

CLAVE: 29034

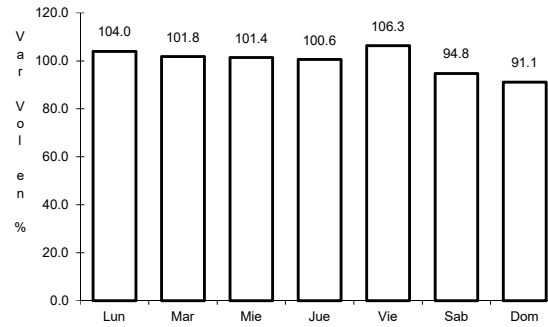
RUTA: TLAX-MEX-136



Km: 0.00

Tipo: 3

Sent: 0



Km: 15.50

Tipo: 1

Sent: 0

